



PROPERTY AND CASUALTY COMPANIES - ASSOCIATION EDITION

QUARTERLY STATEMENT

AS OF MARCH 31, 2022  
OF THE CONDITION AND AFFAIRS OF THE

ALLIED INSURANCE COMPANY OF AMERICA

NAIC Group Code 0140 0140 NAIC Company Code 10127 Employer's ID Number 27-0114983  
(Current) (Prior)

Organized under the Laws of OH , State of Domicile or Port of Entry OH

Country of Domicile United States of America

Incorporated/Organized 02/16/2005 Commenced Business 01/01/2015

Statutory Home Office ONE WEST NATIONWIDE BLVD. COLUMBUS, OH, US 43215-2220  
(Street and Number) (City or Town, State, Country and Zip Code)

Main Administrative Office ONE WEST NATIONWIDE BLVD.  
(Street and Number)  
COLUMBUS, OH, US 43215-2220 800-882-2822  
(City or Town, State, Country and Zip Code) (Area Code) (Telephone Number)

Mail Address ONE WEST NATIONWIDE BLVD., 1-14-301 COLUMBUS, OH, US 43215-2220  
(Street and Number or P.O. Box) (City or Town, State, Country and Zip Code)

Primary Location of Books and Records ONE WEST NATIONWIDE BLVD., 1-14-301  
(Street and Number)  
COLUMBUS, OH, US 43215-2220 614-249-9724  
(City or Town, State, Country and Zip Code) (Area Code) (Telephone Number)

Internet Website Address WWW.NATIONWIDE.COM

Statutory Statement Contact ANDREA D. IACOBONI 614-249-9724  
(Name) (Area Code) (Telephone Number)  
FINRPT@NATIONWIDE.COM 866-315-1430  
(E-mail Address) (FAX Number)

OFFICERS

PRESIDENT & COO MARK ALLEN BERVEN VP & TREASURER PETER JUSTIN ROTHERMEL #  
SVP & SECRETARY DENISE LYNN SKINGLE

OTHER

PAMELA ANN BIESECKER, SVP-HEAD OF TAXATION

DIRECTORS OR TRUSTEES  
MARK ALLEN BERVEN GARY ANTHONY DOUGLAS OSCAR GUERRERO  
ELIZABETH MARGARET RICZKO ERIC EUGENE SMITH

State of OHIO SS:  
County of FRANKLIN

The officers of this reporting entity being duly sworn, each depose and say that they are the described officers of said reporting entity, and that on the reporting period stated above, all of the herein described assets were the absolute property of the said reporting entity, free and clear from any liens or claims thereon, except as herein stated, and that this statement, together with related exhibits, schedules and explanations therein contained, annexed or referred to, is a full and true statement of all the assets and liabilities and of the condition and affairs of the said reporting entity as of the reporting period stated above, and of its income and deductions therefrom for the period ended, and have been completed in accordance with the NAIC Annual Statement Instructions and Accounting Practices and Procedures manual except to the extent that: (1) state law may differ; or, (2) that state rules or regulations require differences in reporting not related to accounting practices and procedures, according to the best of their information, knowledge and belief, respectively. Furthermore, the scope of this attestation by the described officers also includes the related corresponding electronic filing with the NAIC, when required, that is an exact copy (except for formatting differences due to electronic filing) of the enclosed statement. The electronic filing may be requested by various regulators in lieu of or in addition to the enclosed statement.

MARK ALLEN BERVEN DENISE LYNN SKINGLE PETER JUSTIN ROTHERMEL  
PRESIDENT & COO SVP & SECRETARY VP & TREASURER

Subscribed and sworn to before me this 22nd day of April 2022

a. Is this an original filing? ..... Yes [ X ] No [ ]  
b. If no,  
1. State the amendment number.....  
2. Date filed .....  
3. Number of pages attached.....



ANDREW SWARTZEL  
NOTARY PUBLIC • STATE OF OHIO  
Comm. No. 2021-RE-839107  
My Commission Expires Oct. 24, 2026

STATEMENT AS OF MARCH 31, 2022 OF THE ALLIED INSURANCE COMPANY OF AMERICA

ASSETS

	Current Statement Date			4 December 31 Prior Year Net Admitted Assets
	1 Assets	2 Nonadmitted Assets	3 Net Admitted Assets (Cols. 1 - 2)	
1. Bonds .....	15,648,898		15,648,898	11,173,161
2. Stocks:				
2.1 Preferred stocks .....				
2.2 Common stocks .....				
3. Mortgage loans on real estate:				
3.1 First liens .....				
3.2 Other than first liens.....				
4. Real estate:				
4.1 Properties occupied by the company (less \$ ..... encumbrances) .....				
4.2 Properties held for the production of income (less \$ ..... encumbrances) .....				
4.3 Properties held for sale (less \$ ..... encumbrances) .....				
5. Cash (\$ .....1,243 ), cash equivalents (\$ .....247,946 ) and short-term investments (\$ ..... ) .....	249,189		249,189	5,358,033
6. Contract loans (including \$ ..... premium notes) .....				
7. Derivatives .....				
8. Other invested assets .....				
9. Receivables for securities .....				
10. Securities lending reinvested collateral assets .....				
11. Aggregate write-ins for invested assets .....				
12. Subtotals, cash and invested assets (Lines 1 to 11) .....	15,898,087		15,898,087	16,531,194
13. Title plants less \$ ..... charged off (for Title insurers only) .....				
14. Investment income due and accrued .....	63,868		63,868	46,687
15. Premiums and considerations:				
15.1 Uncollected premiums and agents' balances in the course of collection .....	4,749,661		4,749,661	6,760,878
15.2 Deferred premiums, agents' balances and installments booked but deferred and not yet due (including \$ ..... earned but unbilled premiums) .....	71,908,841		71,908,841	85,830,817
15.3 Accrued retrospective premiums (\$ ..... ) and contracts subject to redetermination (\$ ..... ) .....				
16. Reinsurance:				
16.1 Amounts recoverable from reinsurers .....	14,859,032		14,859,032	16,562,494
16.2 Funds held by or deposited with reinsured companies .....	29,640		29,640	26,465
16.3 Other amounts receivable under reinsurance contracts .....	3,271,531		3,271,531	4,401,189
17. Amounts receivable relating to uninsured plans .....				
18.1 Current federal and foreign income tax recoverable and interest thereon .....				
18.2 Net deferred tax asset .....				
19. Guaranty funds receivable or on deposit .....				
20. Electronic data processing equipment and software .....				
21. Furniture and equipment, including health care delivery assets (\$ ..... ) .....				
22. Net adjustment in assets and liabilities due to foreign exchange rates .....				
23. Receivables from parent, subsidiaries and affiliates .....	19,283,382		19,283,382	23,449,617
24. Health care (\$ ..... ) and other amounts receivable .....				
25. Aggregate write-ins for other than invested assets .....	715,003		715,003	27,928
26. Total assets excluding Separate Accounts, Segregated Accounts and Protected Cell Accounts (Lines 12 to 25) .....	130,779,045		130,779,045	153,637,269
27. From Separate Accounts, Segregated Accounts and Protected Cell Accounts .....				
28. Total (Lines 26 and 27)	130,779,045		130,779,045	153,637,269
DETAILS OF WRITE-INS				
1101. ....				
1102. ....				
1103. ....				
1198. Summary of remaining write-ins for Line 11 from overflow page .....				
1199. Totals (Lines 1101 through 1103 plus 1198)(Line 11 above)				
2501. Other miscellaneous .....	715,003		715,003	27,928
2502. ....				
2503. ....				
2598. Summary of remaining write-ins for Line 25 from overflow page .....				
2599. Totals (Lines 2501 through 2503 plus 2598)(Line 25 above)	715,003		715,003	27,928

STATEMENT AS OF MARCH 31, 2022 OF THE ALLIED INSURANCE COMPANY OF AMERICA

LIABILITIES, SURPLUS AND OTHER FUNDS

	1 Current Statement Date	2 December 31, Prior Year
1. Losses (current accident year \$ ..... ) .....		
2. Reinsurance payable on paid losses and loss adjustment expenses .....		
3. Loss adjustment expenses .....		
4. Commissions payable, contingent commissions and other similar charges .....		
5. Other expenses (excluding taxes, licenses and fees) .....		
6. Taxes, licenses and fees (excluding federal and foreign income taxes) .....		
7.1 Current federal and foreign income taxes (including \$ ..... (258) on realized capital gains (losses)) .....	48,767	36,355
7.2 Net deferred tax liability .....	35,522	31,577
8. Borrowed money \$ ..... and interest thereon \$ .....		
9. Unearned premiums (after deducting unearned premiums for ceded reinsurance of \$ .....111,970,222 and including warranty reserves of \$ ..... and accrued accident and health experience rating refunds including \$ ..... for medical loss ratio rebate per the Public Health Service Act) .....		
10. Advance premium .....		
11. Dividends declared and unpaid:		
11.1 Stockholders .....		
11.2 Policyholders .....		
12. Ceded reinsurance premiums payable (net of ceding commissions) .....	93,591,491	113,068,897
13. Funds held by company under reinsurance treaties .....	29,640	26,465
14. Amounts withheld or retained by company for account of others .....		
15. Remittances and items not allocated .....		
16. Provision for reinsurance (including \$ ..... certified) .....		
17. Net adjustments in assets and liabilities due to foreign exchange rates .....		
18. Drafts outstanding .....		
19. Payable to parent, subsidiaries and affiliates .....	19,710,229	23,966,113
20. Derivatives .....		
21. Payable for securities .....		
22. Payable for securities lending .....		
23. Liability for amounts held under uninsured plans .....		
24. Capital notes \$ ..... and interest thereon \$ .....		
25. Aggregate write-ins for liabilities .....	794,000	
26. Total liabilities excluding protected cell liabilities (Lines 1 through 25) .....	114,209,649	137,129,407
27. Protected cell liabilities .....		
28. Total liabilities (Lines 26 and 27) .....	114,209,649	137,129,407
29. Aggregate write-ins for special surplus funds .....		
30. Common capital stock .....	4,200,000	4,200,000
31. Preferred capital stock .....		
32. Aggregate write-ins for other than special surplus funds .....		
33. Surplus notes .....		
34. Gross paid in and contributed surplus .....	10,000,000	10,000,000
35. Unassigned funds (surplus) .....	2,369,396	2,307,862
36. Less treasury stock, at cost:		
36.1 ..... shares common (value included in Line 30 \$ ..... ) .....		
36.2 ..... shares preferred (value included in Line 31 \$ ..... ) .....		
37. Surplus as regards policyholders (Lines 29 to 35, less 36) .....	16,569,396	16,507,862
38. Totals (Page 2, Line 28, Col. 3)	130,779,045	153,637,269
<b>DETAILS OF WRITE-INS</b>		
2501. Miscellaneous liabilities .....	794,000	
2502. ....		
2503. ....		
2598. Summary of remaining write-ins for Line 25 from overflow page .....		
2599. Totals (Lines 2501 through 2503 plus 2598)(Line 25 above)	794,000	
2901. ....		
2902. ....		
2903. ....		
2998. Summary of remaining write-ins for Line 29 from overflow page .....		
2999. Totals (Lines 2901 through 2903 plus 2998)(Line 29 above)		
3201. ....		
3202. ....		
3203. ....		
3298. Summary of remaining write-ins for Line 32 from overflow page .....		
3299. Totals (Lines 3201 through 3203 plus 3298)(Line 32 above)		

STATEMENT OF INCOME

	1	2	3
	Current Year to Date	Prior Year to Date	Prior Year Ended December 31
UNDERWRITING INCOME			
1. Premiums earned:			
1.1 Direct (written \$ 42,062,154 )	65,978,573	77,919,394	308,590,180
1.2 Assumed (written \$ 109,902 )	111,338	73,234	297,889
1.3 Ceded (written \$ 42,172,056 )	66,089,911	77,992,628	308,888,069
1.4 Net (written \$ )			
DEDUCTIONS:			
2. Losses incurred (current accident year \$ )::			
2.1 Direct	38,818,778	74,223,836	230,819,127
2.2 Assumed	96,502	54,613	263,705
2.3 Ceded	38,915,280	74,278,449	231,082,832
2.4 Net			
3. Loss adjustment expenses incurred			
4. Other underwriting expenses incurred			
5. Aggregate write-ins for underwriting deductions			
6. Total underwriting deductions (Lines 2 through 5)			
7. Net income of protected cells			
8. Net underwriting gain or (loss) (Line 1 minus Line 6 + Line 7)			
INVESTMENT INCOME			
9. Net investment income earned	77,939	63,658	271,870
10. Net realized capital gains (losses) less capital gains tax of \$ (258)	209	851	(1,910)
11. Net investment gain (loss) (Lines 9 + 10)	78,148	64,509	269,960
OTHER INCOME			
12. Net gain or (loss) from agents' or premium balances charged off (amount recovered \$ 0 amount charged off \$ )			
13. Finance and service charges not included in premiums			
14. Aggregate write-ins for miscellaneous income			(3,268)
15. Total other income (Lines 12 through 14)			(3,268)
16. Net income before dividends to policyholders, after capital gains tax and before all other federal and foreign income taxes (Lines 8 + 11 + 15)	78,148	64,509	266,692
17. Dividends to policyholders			
18. Net income, after dividends to policyholders, after capital gains tax and before all other federal and foreign income taxes (Line 16 minus Line 17)	78,148	64,509	266,692
19. Federal and foreign income taxes incurred	12,669	9,972	38,333
20. Net income (Line 18 minus Line 19)(to Line 22)	65,479	54,537	228,359
CAPITAL AND SURPLUS ACCOUNT			
21. Surplus as regards policyholders, December 31 prior year	16,507,863	15,095,852	15,095,852
22. Net income (from Line 20)	65,479	54,537	228,359
23. Net transfers (to) from Protected Cell accounts			
24. Change in net unrealized capital gains (losses) less capital gains tax of \$			
25. Change in net unrealized foreign exchange capital gain (loss)			
26. Change in net deferred income tax	(3,946)	332,157	(16,349)
27. Change in nonadmitted assets		(1,602,255)	
28. Change in provision for reinsurance			
29. Change in surplus notes			
30. Surplus (contributed to) withdrawn from protected cells			
31. Cumulative effect of changes in accounting principles			
32. Capital changes:			
32.1 Paid in		1,200,000	1,200,000
32.2 Transferred from surplus (Stock Dividend)			
32.3 Transferred to surplus			
33. Surplus adjustments:			
33.1 Paid in			
33.2 Transferred to capital (Stock Dividend)			
33.3 Transferred from capital			
34. Net remittances from or (to) Home Office			
35. Dividends to stockholders			
36. Change in treasury stock			
37. Aggregate write-ins for gains and losses in surplus		1,602,256	
38. Change in surplus as regards policyholders (Lines 22 through 37)	61,533	1,586,695	1,412,010
39. Surplus as regards policyholders, as of statement date (Lines 21 plus 38)	16,569,396	16,682,547	16,507,862
DETAILS OF WRITE-INS			
0501.			
0502.			
0503.			
0598. Summary of remaining write-ins for Line 5 from overflow page			
0599. Totals (Lines 0501 through 0503 plus 0598)(Line 5 above)			
1401. Other income			(3,268)
1402.			
1403.			
1498. Summary of remaining write-ins for Line 14 from overflow page			
1499. Totals (Lines 1401 through 1403 plus 1498)(Line 14 above)			(3,268)
3701. Change in surplus – pooled nonadmitted premiums in the course of collection offset		1,602,256	
3702.			
3703.			
3798. Summary of remaining write-ins for Line 37 from overflow page			
3799. Totals (Lines 3701 through 3703 plus 3798)(Line 37 above)		1,602,256	



STATEMENT AS OF MARCH 31, 2022 OF THE ALLIED INSURANCE COMPANY OF AMERICA

CASH FLOW

	1 Current Year To Date	2 Prior Year To Date	3 Prior Year Ended December 31
<b>Cash from Operations</b>			
1. Premiums collected net of reinsurance .....	(3,544,213)	2,200,861	(1,511,813)
2. Net investment income .....	45,958	47,217	230,085
3. Miscellaneous income .....	(3,175)	(937)	(10,075)
4. Total (Lines 1 to 3) .....	(3,501,430)	2,247,141	(1,291,803)
5. Benefit and loss related payments .....	(1,703,462)	10,710,935	2,081,958
6. Net transfers to Separate Accounts, Segregated Accounts and Protected Cell Accounts .....			
7. Commissions, expenses paid and aggregate write-ins for deductions .....	(1,129,658)	928,087	(1,201,686)
8. Dividends paid to policyholders .....			
9. Federal and foreign income taxes paid (recovered) net of \$ ..... tax on capital gains (losses) .....	(1)		57,231
10. Total (Lines 5 through 9) .....	(2,833,121)	11,639,022	937,503
11. Net cash from operations (Line 4 minus Line 10) .....	(668,309)	(9,391,881)	(2,229,306)
<b>Cash from Investments</b>			
12. Proceeds from investments sold, matured or repaid:			
12.1 Bonds .....	3,075,744	163,062	796,585
12.2 Stocks .....			
12.3 Mortgage loans .....			
12.4 Real estate .....			
12.5 Other invested assets .....			
12.6 Net gains or (losses) on cash, cash equivalents and short-term investments .....			
12.7 Miscellaneous proceeds .....			
12.8 Total investment proceeds (Lines 12.1 to 12.7) .....	3,075,744	163,062	796,585
13. Cost of investments acquired (long-term only):			
13.1 Bonds .....	7,536,730		1
13.2 Stocks .....			
13.3 Mortgage loans .....			
13.4 Real estate .....			
13.5 Other invested assets .....			
13.6 Miscellaneous applications .....			
13.7 Total investments acquired (Lines 13.1 to 13.6) .....	7,536,730		1
14. Net increase (or decrease) in contract loans and premium notes .....			
15. Net cash from investments (Line 12.8 minus Line 13.7 and Line 14) .....	(4,460,986)	163,062	796,584
<b>Cash from Financing and Miscellaneous Sources</b>			
16. Cash provided (applied):			
16.1 Surplus notes, capital notes .....			
16.2 Capital and paid in surplus, less treasury stock .....		1,200,000	1,200,000
16.3 Borrowed funds .....			
16.4 Net deposits on deposit-type contracts and other insurance liabilities .....			
16.5 Dividends to stockholders .....			
16.6 Other cash provided (applied) .....	20,451	9,440,470	2,401,364
17. Net cash from financing and miscellaneous sources (Line 16.1 through Line 16.4 minus Line 16.5 plus Line 16.6) .....	20,451	10,640,470	3,601,364
<b>RECONCILIATION OF CASH, CASH EQUIVALENTS AND SHORT-TERM INVESTMENTS</b>			
18. Net change in cash, cash equivalents and short-term investments (Line 11, plus Lines 15 and 17) .....	(5,108,844)	1,411,651	2,168,642
19. Cash, cash equivalents and short-term investments:			
19.1 Beginning of year .....	5,358,033	3,189,391	3,189,391
19.2 End of period (Line 18 plus Line 19.1) .....	249,189	4,601,042	5,358,033

Note: Supplemental disclosures of cash flow information for non-cash transactions:

--	--	--	--

NOTES TO THE FINANCIAL STATEMENTS

Note 1 – Summary of Significant Accounting Policies and Going Concern

A. Accounting Practices

The accompanying statutory financial statements of Allied Insurance Company of America (the Company) have been prepared in conformity with accounting practices prescribed or permitted by the National Association of Insurance Commissioners (NAIC) and the State of Ohio.

The Ohio Department of Insurance (Department) recognizes only statutory accounting practices (SAP) prescribed or permitted by the State of Ohio for determining and reporting the financial condition and results of operations of an insurance company, as well as, determining its solvency under the Ohio Insurance law. The NAIC’s *Accounting Practices and Procedures Manual* (NAIC SAP) has been adopted as a component of prescribed or permitted practices by the State of Ohio. The Company has no statutory accounting practices that differ from the NAIC SAP.

A reconciliation of the Company’s net income and capital and surplus between NAIC SAP and practices prescribed and permitted by the State of Ohio is shown below:

	SSAP #	F/S Page	F/S Line #	2022	2021
<b>Net Income</b>					
(1) Allied Insurance Company of America state basis (Page 4, Line 20, Columns 1 & 3)	XXX	XXX	XXX	\$ 65,479	\$ 228,359
(2) State Prescribed Practice that is an increase/(decrease) from NAIC SAP				-	-
(3) State Permitted Practice that is an increase/(decrease) from NAIC SAP				-	-
(4) NAIC SAP (1-2-3=4)	XXX	XXX	XXX	\$ 65,479	\$ 228,359
<b>Surplus</b>					
(5) Allied Insurance Company of America state basis (Page 3, Line 37, Columns 1 & 2)	XXX	XXX	XXX	\$ 16,569,396	\$ 16,507,862
(6) State Prescribed Practice that is an increase/(decrease) from NAIC SAP				-	-
(7) State Permitted Practice that is an increase/(decrease) from NAIC SAP				-	-
(8) NAIC SAP (5-6-7=8)	XXX	XXX	XXX	\$ 16,569,396	\$ 16,507,862

B. Use of Estimates in the Preparation of the Financial Statements

There were no changes that were considered significant to the Company from prior year end.

C. Accounting Policies

1. There were no changes that were considered significant to the Company from prior year end.
2. Bonds, excluding loan-backed and structured securities, are stated at amortized cost except those with a NAIC designation of “3” through “6” which are stated at the lower of amortized cost or fair value. Amortization of premiums and discounts is calculated using the effective yield method. The Company does not hold any mandatory convertible securities or SVO-identified investments.
- 3-5. There were no changes that were considered significant to the Company from prior year end.
6. Loan-backed and structured securities (collectively, loan-backed securities) are stated at amortized cost or the lower of amortized cost or fair value in accordance with the provisions of Statement of Statutory Accounting Principles No. 43-Revised and the Purposes and Procedures Manual of the NAIC Securities Valuation Office. The retrospective adjustment method is used to value loan-backed securities where the collection of all contractual cash flows is probable. For all other loan-backed securities, the Company uses the prospective adjustment method.
- 7-13. There were no changes that were considered significant to the Company from prior year end.

D. Going Concern

Not applicable.

Note 2 – Accounting Changes and Corrections of Errors

There were no changes that were considered significant to the Company from prior year end.

Note 3 - Business Combinations and Goodwill

Not applicable.

Note 4 – Discontinued Operations

Not applicable.

Note 5 – Investments

A. Mortgage Loans

Not applicable.

B. Troubled Debt Restructuring

Not applicable.

C. Reverse Mortgages

Not applicable.

D. Loan-Backed Securities

1. Prepayment assumptions are generally obtained using a model provided by a third-party vendor.
2. Not applicable.

NOTES TO THE FINANCIAL STATEMENTS

3. Not applicable.
4. All impaired securities (fair value is less than cost or amortized cost) for which an other-than-temporary impairment has not been recognized in earnings as a realized loss (including securities with a recognized other-than-temporary impairment for non-interest related declines when a non-recognized interest related impairment remains):

a. The aggregate amount of unrealized losses:	1. Less than 12 Months	\$ (119,068)
	2. 12 Months or Longer	\$ (110,898)
b. The aggregate related fair value of securities with unrealized losses:	1. Less than 12 Months	\$ 1,843,961
	2. 12 Months or Longer	\$ 1,247,365

5. The Company reviews all loan-backed and structured securities in which the fair value of the given security is less than the amortized cost to determine if a given security is other-than-temporarily impaired. The Company examines characteristics of the underlying collateral, such as delinquency and default rates, the quality of the underlying borrower, the type of collateral in the pool, the vintage year of the collateral, subordination levels within the structure of the collateral pool, and the quality of any credit guarantors, to determine the cash flows expected to be received for the security.

If the severity and duration of the security's unrealized loss indicates a risk of an other-than-temporary impairment, then the Company will evaluate if the amortized cost basis of the security will be recovered by comparing the present value of the cash flows expected to be received for the given security with the amortized cost basis of the security. If the present value of cash flows is greater than the amortized cost basis of a security, then the security is deemed not to be other-than-temporarily impaired.

- E. Dollar Repurchase Agreements and/or Securities Lending Transactions
- 1-7. Not applicable, as the Company does not participate in a securities lending program and has no open dollar repurchase agreements.
- F. Repurchase Agreements Transactions Accounted for as Secured Borrowing
- Not applicable.
- G. Reverse Repurchase Agreements Transactions Accounted for as Secured Borrowing
- There were no changes that were considered significant to the Company from prior year end.
- H. Repurchase Agreements Transactions Accounted for as a Sale
- Not applicable.
- I. Reverse Repurchase Agreements Transactions Accounted for as a Sale
- Not applicable.
- J. Real Estate
- Not applicable.
- K. Low-Income Housing Tax Credits
- There were no changes that were considered significant to the Company from prior year end.
- L. Restricted Assets
- There were no changes that were considered significant to the Company from prior year end.
- M. Working Capital Finance Investments
- Not applicable.
- N. Offsetting and Netting of Assets and Liabilities
- No assets or liabilities are offset and reported net in accordance with a valid right to offset per SSAP No 64, Offsetting and Netting of Assets and Liabilities.
- O. 5GI Securities
- There were no changes that were considered significant to the Company from prior year end.
- P. Short Sales
- Not applicable.
- Q. Prepayment Penalty and Acceleration Fees
- There were no changes that were considered significant to the Company from prior year end.
- R. Reporting Entity's Share of Cash Pool by Asset Type

Asset Type	Percent Share
(1) Cash	3%
(2) Cash equivalents	65%
(3) Short-term investments	32%
(4) Total	100%

**Note 6 - Joint Ventures, Partnerships and Limited Liability Companies**

There were no changes that were considered significant to the Company from prior year end.

NOTES TO THE FINANCIAL STATEMENTS

**Note 7 - Investment Income**

There were no changes that were considered significant to the Company from prior year end.

**Note 8 - Derivative Instruments**

Not applicable.

**Note 9 - Income Taxes**

There were no changes that were considered significant to the Company from prior year end.

**Note 10 – Information concerning parent, subs, and affiliates**

There were no changes that were considered significant to the Company from prior year end.

**Note 11 - Debt**

A. All Other Debt

Not applicable.

B. Funding Agreements with Federal Home Loan Bank (FHLB)

Not applicable.

**Note 12 - Retirement Plans, Deferred Compensation, Postemployment Benefits and Compensated Absences and Other Postretirement Benefit Plans**

Not applicable.

**Note 13 – Capital and Surplus, Dividend Restrictions and Quasi-Reorganizations**

There were no changes that were considered significant to the Company from prior year end.

**Note 14 – Contingencies**

There were no changes that were considered significant to the Company from prior year end.

**Note 15 – Leases**

Not applicable.

**Note 16 - Information About Financial Instruments With Off-Balance Sheet Risk And Financial Instruments With Concentrations of Credit Risk**

Not applicable.

**Note 17 – Sale, Transfer and Servicing of Financial Assets and Extinguishments of Liabilities**

A. Transfers of Receivables Reported as Sales

Not applicable.

B. Transfers and Servicing of Financial Assets

Not applicable.

C. Wash Sales

Not applicable.

**Note 18 - Gain or Loss to the Reporting Entity from Uninsured Plans and the Uninsured Portion of Partially Insured Plans**

Not applicable.

**Note 19 - Direct Premium Written/Produced by Managing General Agents/Third Party Administrators**

Not applicable.

**Note 20 – Fair Value Measurements**

A. Fair value is defined as the price that would be received to sell an asset or paid to transfer a liability in an orderly transaction between market participants at the measurement date. Fair value measurements are based upon observable and unobservable inputs. Observable inputs reflect market data obtained from independent sources while unobservable inputs reflect the Company's view of market assumptions in the absence of observable market information. The Company utilizes valuation techniques that maximize the use of observable inputs and minimize the use of unobservable inputs. In determining fair value, the Company uses various methods including market, income and cost approaches.

The Company categorizes its financial instruments into a three-level hierarchy based on the priority of the inputs to the valuation technique. The fair value hierarchy gives the highest priority to quoted prices in active markets for identical assets or liabilities (Level 1) and the lowest priority to unobservable inputs (Level 3). If the inputs used to measure fair value fall within different levels of the hierarchy, the category level is based on the lowest priority level input that is significant to the fair value measurement of the instrument in its entirety.

NOTES TO THE FINANCIAL STATEMENTS

The Company categorizes assets and liabilities held at fair value in the statutory statements of assets and liabilities, surplus and other funds as follows:

*Level 1.* Unadjusted quoted prices accessible in active markets for identical assets or liabilities at the measurement date and mutual funds where the value per share (unit) is determined and published daily and is the basis for current transactions.

*Level 2.* Unadjusted quoted prices for similar assets or liabilities in active markets or inputs (other than quoted prices) that are observable or that are derived principally from or corroborated by observable market data through correlation or other means. Primary inputs to this valuation technique may include comparative trades, bid/asks, interest rate movements, U.S. Treasury rates, London Interbank Offered Rate, prime rates, cash flows, maturity dates, call ability, estimated prepayments and/or underlying collateral values.

*Level 3.* Prices or valuation techniques that require inputs that are both unobservable and significant to the overall fair value measurement. Inputs reflect management’s best estimates of the assumptions market participants would use at the measurement date in pricing the asset or liability. Consideration is given to the risk inherent in both the method of valuation and the valuation inputs. Primary inputs to this valuation technique include broker quotes and comparative trades.

The Company reviews its fair value hierarchy classifications for assets and liabilities quarterly. Changes in observability of significant valuation inputs identified during these reviews may trigger reclassifications. Reclassifications are reported as transfers at the beginning of the period in which the change occurs.

Independent pricing services are most often utilized to determine the fair value of bonds and stocks for which market quotations or quotations on comparable securities are available. For these bonds and stocks, the Company obtains the pricing services’ methodologies, pricing from additional sources, inputs and assumptions and classifies the investments accordingly in the fair value hierarchy.

A corporate pricing matrix is used in valuing certain corporate bonds. The corporate pricing matrix was developed using publicly available spreads for privately placed corporate securities with varying weighted average lives and credit quality ratings. The weighted average life and credit quality rating of a particular bond to be priced using the corporate pricing matrix are important inputs into the model and are used to determine a corresponding spread that is added to the appropriate U.S. Treasury yield to create an estimated market yield for that bond. The estimated market yield and other relevant factors are then used to estimate the fair value of the particular bond.

Non-binding broker quotes are also utilized to determine the fair value of certain bonds when deemed appropriate or when quotes are not available from independent pricing services or a corporate pricing matrix. These bonds are classified with the lowest priority in the fair value hierarchy as only one broker quote is ordinarily obtained, the investment is not traded on an exchange, the pricing is not available to other entities and/or the transaction volume in the same or similar investments has decreased. Inputs used in the development of prices are not provided to the Company by the brokers as the brokers often do not provide the necessary transparency into their quotes and methodologies. At least annually, the Company performs reviews and tests to ensure that quotes are a reasonable estimate of the investments’ fair value. Price movements of broker quotes are subject to validation and require approval from the Company’s management. Management uses its knowledge of the investment and current market conditions to determine if the price is indicative of the investment’s fair value.

The Company carries short-term investments at amortized cost, which approximates fair value.

No assets or liabilities were held at fair value as of March 31, 2022.

B. & C. The following table summarizes the carrying value and fair value of the Company’s assets not held at fair value as of March 31, 2022:

	Aggregate Fair Value	Admitted Assets	Level 1	Level 2	Level 3	Net Asset Value (NAV)	Not Practicable (Carrying Value)
<b>Assets</b>							
Bonds	\$15,268,162	\$15,648,898	\$8,408,493	\$6,859,669	\$-	\$-	\$-
Cash, Cash Equivalents and Short-term investments	249,189	249,189	1,243	247,946	-	-	-
<b>Total Assets</b>	<b>\$15,517,351</b>	<b>\$15,898,087</b>	<b>\$8,409,736</b>	<b>\$7,107,615</b>	<b>\$-</b>	<b>\$-</b>	<b>\$-</b>

D. Not Practicable to Estimate Fair Value

Not applicable.

E. Measured using net asset value

Not applicable.

Note 21 - Other Items

There were no changes that were considered significant to the Company from prior year end.

Note 22 - Events Subsequent

Type I – Recognized Subsequent Events:

Subsequent events have been considered through May 5, 2022 for the statutory statement issued on May 13, 2022.

There were no material Type I events occurring subsequent to the end of the period that merited recognition or disclosure in these statements that have not already been reflected as required.

Type II – Nonrecognized Subsequent Events:

Subsequent events have been considered through May 5, 2022 for the statutory statement issued on May 13, 2022.

There were no material Type II events occurring subsequent to the end of the period that merited recognition or disclosure in these statements that have not already been reflected as required.

Note 23 - Reinsurance

There were no changes that were considered significant to the Company from prior year end.

Note 24 - Retrospectively Rated Contracts and Contracts Subject to Redetermination

Not applicable.

NOTES TO THE FINANCIAL STATEMENTS

**Note 25 - Changes in Incurred Losses and Loss Adjustment Expenses**

There were no changes that were considered significant to the Company from prior year end.

**Note 26 - Intercompany Pooling Arrangements**

There were no changes that were considered significant to the Company from prior year end.

**Note 27 - Structured Settlements**

Not applicable.

**Note 28 - Health Care Receivables**

Not applicable.

**Note 29 – Participating Policies**

Not applicable.

**Note 30 – Premium Deficiency Reserves**

There were no changes that were considered significant to the Company from prior year end.

**Note 31 – High Deductibles**

Not applicable.

**Note 32 - Discounting of Liabilities for Unpaid Losses or Unpaid Loss Adjustment Expenses**

Not applicable.

**Note 33 - Asbestos/Environmental Reserves**

Not applicable.

**Note 34 – Subscriber Savings Accounts**

Not applicable.

**Note 35 – Multiple Peril Crop Insurance**

Not applicable.

**Note 36 – Financial Guaranty Insurance**

Not applicable.

STATEMENT AS OF MARCH 31, 2022 OF THE ALLIED INSURANCE COMPANY OF AMERICA

GENERAL INTERROGATORIES

PART 1 - COMMON INTERROGATORIES

GENERAL

- 1.1

Did the reporting entity experience any material transactions requiring the filing of Disclosure of Material Transactions with the State of Domicile, as required by the Model Act? .....

Yes [ ] No [ X ]
- 1.2

If yes, has the report been filed with the domiciliary state? .....

Yes [ ] No [ ]
- 2.1

Has any change been made during the year of this statement in the charter, by-laws, articles of incorporation, or deed of settlement of the reporting entity? .....

Yes [ ] No [ X ]
- 2.2

If yes, date of change: .....
- 3.1

Is the reporting entity a member of an Insurance Holding Company System consisting of two or more affiliated persons, one or more of which is an insurer? .....

If yes, complete Schedule Y, Parts 1 and 1A.

Yes [ X ] No [ ]
- 3.2

Have there been any substantial changes in the organizational chart since the prior quarter end? .....

Yes [ X ] No [ ]
- 3.3

If the response to 3.2 is yes, provide a brief description of those changes.  
Harleysville Life Insurance Company removed due to its elimination by merger in Jan 2022
- 3.4

Is the reporting entity publicly traded or a member of a publicly traded group? .....

Yes [ ] No [ X ]
- 3.5

If the response to 3.4 is yes, provide the CIK (Central Index Key) code issued by the SEC for the entity/group. ....
- 4.1

Has the reporting entity been a party to a merger or consolidation during the period covered by this statement? .....

Yes [ ] No [ X ]
- 4.2

If yes, provide the name of the entity, NAIC Company Code, and state of domicile (use two letter state abbreviation) for any entity that has ceased to exist as a result of the merger or consolidation.

1	2	3
Name of Entity	NAIC Company Code	State of Domicile

5.

If the reporting entity is subject to a management agreement, including third-party administrator(s), managing general agent(s), attorney-in-fact, or similar agreement, have there been any significant changes regarding the terms of the agreement or principals involved? .....

If yes, attach an explanation.

Yes [ ] No [ X ] N/A [ ]
- 6.1

State as of what date the latest financial examination of the reporting entity was made or is being made. ....

12/31/2021
- 6.2

State the as of date that the latest financial examination report became available from either the state of domicile or the reporting entity. This date should be the date of the examined balance sheet and not the date the report was completed or released. ....

12/31/2016
- 6.3

State as of what date the latest financial examination report became available to other states or the public from either the state of domicile or the reporting entity. This is the release date or completion date of the examination report and not the date of the examination (balance sheet date). ....

05/24/2018
- 6.4

By what department or departments?  
OH
- 6.5

Have all financial statement adjustments within the latest financial examination report been accounted for in a subsequent financial statement filed with Departments? .....

Yes [ ] No [ ] N/A [ X ]
- 6.6

Have all of the recommendations within the latest financial examination report been complied with? .....

Yes [ ] No [ ] N/A [ X ]
- 7.1

Has this reporting entity had any Certificates of Authority, licenses or registrations (including corporate registration, if applicable) suspended or revoked by any governmental entity during the reporting period? .....

Yes [ ] No [ X ]
- 7.2

If yes, give full information:
- 8.1

Is the company a subsidiary of a bank holding company regulated by the Federal Reserve Board? .....

Yes [ ] No [ X ]
- 8.2

If response to 8.1 is yes, please identify the name of the bank holding company.
- 8.3

Is the company affiliated with one or more banks, thrifts or securities firms? .....

Yes [ X ] No [ ]
- 8.4

If response to 8.3 is yes, please provide below the names and location (city and state of the main office) of any affiliates regulated by a federal regulatory services agency [i.e. the Federal Reserve Board (FRB), the Office of the Comptroller of the Currency (OCC), the Federal Deposit Insurance Corporation (FDIC) and the Securities Exchange Commission (SEC)] and identify the affiliate's primary federal regulator.

1	2	3	4	5	6
Affiliate Name	Location (City, State)	FRB	OCC	FDIC	SEC
Nationwide Trust Company, FSB .....	Columbus, OH .....	NO	YES	NO	NO
Nationwide Investment Services Corp. ....	Columbus, OH .....	NO	NO	NO	YES
Nationwide Investment Advisors, LLC .....	Columbus, OH .....	NO	NO	NO	YES
Nationwide Securities, LLC .....	Columbus, OH .....	NO	NO	NO	YES
Nationwide Fund Advisors .....	Columbus, OH .....	NO	NO	NO	YES
Nationwide Fund Distributors, LLC .....	Columbus, OH .....	NO	NO	NO	YES
Nationwide Asset Management, LLC .....	Columbus, OH .....	NO	NO	NO	YES
Jefferson National Securities Corporation .....	Louisville, KY .....	NO	NO	NO	YES



STATEMENT AS OF MARCH 31, 2022 OF THE ALLIED INSURANCE COMPANY OF AMERICA

GENERAL INTERROGATORIES

- 9.1

Are the senior officers (principal executive officer, principal financial officer, principal accounting officer or controller, or persons performing similar functions) of the reporting entity subject to a code of ethics, which includes the following standards? .....  
(a) Honest and ethical conduct, including the ethical handling of actual or apparent conflicts of interest between personal and professional relationships;  
(b) Full, fair, accurate, timely and understandable disclosure in the periodic reports required to be filed by the reporting entity;  
(c) Compliance with applicable governmental laws, rules and regulations;  
(d) The prompt internal reporting of violations to an appropriate person or persons identified in the code; and  
(e) Accountability for adherence to the code.

Yes [ X ] No [ ]
- 9.11

If the response to 9.1 is No, please explain:
- 9.2

Has the code of ethics for senior managers been amended? .....

Yes [ X ] No [ ]
- 9.21

If the response to 9.2 is Yes, provide information related to amendment(s).  
Updated the "Fair competition and antitrust" and "Records retention, legal holds" sections.
- 9.3

Have any provisions of the code of ethics been waived for any of the specified officers? .....

Yes [ ] No [ X ]
- 9.31

If the response to 9.3 is Yes, provide the nature of any waiver(s).

FINANCIAL

- 10.1

Does the reporting entity report any amounts due from parent, subsidiaries or affiliates on Page 2 of this statement? .....

Yes [ X ] No [ ]
- 10.2

If yes, indicate any amounts receivable from parent included in the Page 2 amount: .....

\$ .....

INVESTMENT

- 11.1

Were any of the stocks, bonds, or other assets of the reporting entity loaned, placed under option agreement, or otherwise made available for use by another person? (Exclude securities under securities lending agreements.) .....

Yes [ ] No [ X ]
- 11.2

If yes, give full and complete information relating thereto:
12.

Amount of real estate and mortgages held in other invested assets in Schedule BA: .....

\$ .....
13.

Amount of real estate and mortgages held in short-term investments: .....

\$ .....
- 14.1

Does the reporting entity have any investments in parent, subsidiaries and affiliates? .....

Yes [ ] No [ X ]
- 14.2

If yes, please complete the following:
- |   | 1   | 2  |
|---|---|--|
|   | Prior Year-End<br>Book/Adjusted<br>Carrying Value | Current Quarter<br>Book/Adjusted<br>Carrying Value |
| 14.21 Bonds .....   | \$ .....  | \$ .....   |
| 14.22 Preferred Stock .....   | \$ .....  | \$ .....   |
| 14.23 Common Stock .....  | \$ .....  | \$ .....   |
| 14.24 Short-Term Investments .....  | \$ .....  | \$ .....   |
| 14.25 Mortgage Loans on Real Estate .....   | \$ .....  | \$ .....   |
| 14.26 All Other .....   | \$ .....  | \$ .....   |
| 14.27 Total Investment in Parent, Subsidiaries and Affiliates (Subtotal Lines 14.21 to 14.26) ..... | \$ .....  | \$ .....   |
| 14.28 Total Investment in Parent included in Lines 14.21 to 14.26 above .....                       | \$ .....  | \$ .....   |
- 15.1

Has the reporting entity entered into any hedging transactions reported on Schedule DB? .....

Yes [ ] No [ X ]
- 15.2

If yes, has a comprehensive description of the hedging program been made available to the domiciliary state? .....  
If no, attach a description with this statement.

Yes [ ] No [ ] N/A [ ]
16.

For the reporting entity's security lending program, state the amount of the following as of the current statement date:
- 16.1

Total fair value of reinvested collateral assets reported on Schedule DL, Parts 1 and 2. ....

\$ .....
- 16.2

Total book adjusted/carrying value of reinvested collateral assets reported on Schedule DL, Parts 1 and 2 .....

\$ .....
- 16.3

Total payable for securities lending reported on the liability page. ....

\$ .....

STATEMENT AS OF MARCH 31, 2022 OF THE ALLIED INSURANCE COMPANY OF AMERICA

GENERAL INTERROGATORIES

17. Excluding items in Schedule E - Part 3 - Special Deposits, real estate, mortgage loans and investments held physically in the reporting entity's offices, vaults or safety deposit boxes, were all stocks, bonds and other securities, owned throughout the current year held pursuant to a custodial agreement with a qualified bank or trust company in accordance with Section 1, III - General Examination Considerations, F. Outsourcing of Critical Functions, Custodial or Safekeeping Agreements of the NAIC Financial Condition Examiners Handbook? ..... Yes [ X ] No [ ]
- 17.1 For all agreements that comply with the requirements of the NAIC Financial Condition Examiners Handbook, complete the following:

1 Name of Custodian(s)	2 Custodian Address
The Bank of New York Mellon .....	1 Wall Street, New York, NY 10286 .....

- 17.2 For all agreements that do not comply with the requirements of the NAIC Financial Condition Examiners Handbook, provide the name, location and a complete explanation:

1 Name(s)	2 Location(s)	3 Complete Explanation(s)

- 17.3 Have there been any changes, including name changes, in the custodian(s) identified in 17.1 during the current quarter? ..... Yes [ ] No [ X ]
- 17.4 If yes, give full information relating thereto:

1 Old Custodian	2 New Custodian	3 Date of Change	4 Reason

- 17.5 Investment management – Identify all investment advisors, investment managers, broker/dealers, including individuals that have the authority to make investment decisions on behalf of the reporting entity. For assets that are managed internally by employees of the reporting entity, note as such. ["...that have access to the investment accounts"; "...handle securities"]

1 Name of Firm or Individual	2 Affiliation
Members of the investment staff designated by the Chief Investment Officer as detailed in the Corporate Resolution .....	I.....

- 17.5097 For those firms/individuals listed in the table for Question 17.5, do any firms/individuals unaffiliated with the reporting entity (i.e. designated with a "U") manage more than 10% of the reporting entity's invested assets?..... Yes [ ] No [ X ]
- 17.5098 For firms/individuals unaffiliated with the reporting entity (i.e. designated with a "U") listed in the table for Question 17.5, does the total assets under management aggregate to more than 50% of the reporting entity's invested assets?..... Yes [ ] No [ X ]
- 17.6 For those firms or individuals listed in the table for 17.5 with an affiliation code of "A" (affiliated) or "U" (unaffiliated), provide the information for the table below.

1 Central Registration Depository Number	2 Name of Firm or Individual	3 Legal Entity Identifier (LEI)	4 Registered With	5 Investment Management Agreement (IMA) Filed

- 18.1 Have all the filing requirements of the Purposes and Procedures Manual of the NAIC Investment Analysis Office been followed? ..... Yes [ X ] No [ ]
- 18.2 If no, list exceptions:

19. By self-designating 5GI securities, the reporting entity is certifying the following elements for each self-designated 5GI security:

a. Documentation necessary to permit a full credit analysis of the security does not exist or an NAIC CRP credit rating for an FE or PL security is not available.

b. Issuer or obligor is current on all contracted interest and principal payments.

c. The insurer has an actual expectation of ultimate payment of all contracted interest and principal.

Has the reporting entity self-designated 5GI securities? ..... Yes [ ] No [ X ]
20. By self-designating PLGI securities, the reporting entity is certifying the following elements of each self-designated PLGI security:

a. The security was purchased prior to January 1, 2018.

b. The reporting entity is holding capital commensurate with the NAIC Designation reported for the security.

c. The NAIC Designation was derived from the credit rating assigned by an NAIC CRP in its legal capacity as a NRSRO which is shown on a current private letter rating held by the insurer and available for examination by state insurance regulators.

d. The reporting entity is not permitted to share this credit rating of the PL security with the SVO.

Has the reporting entity self-designated PLGI securities? ..... Yes [ ] No [ X ]
21. By assigning FE to a Schedule BA non-registered private fund, the reporting entity is certifying the following elements of each self-designated FE fund:

a. The shares were purchased prior to January 1, 2019.

b. The reporting entity is holding capital commensurate with the NAIC Designation reported for the security.

c. The security had a public credit rating(s) with annual surveillance assigned by an NAIC CRP in its legal capacity as an NRSRO prior to January 1, 2019.

d. The fund only or predominantly holds bonds in its portfolio.

e. The current reported NAIC Designation was derived from the public credit rating(s) with annual surveillance assigned by an NAIC CRP in its legal capacity as an NRSRO.

f. The public credit rating(s) with annual surveillance assigned by an NAIC CRP has not lapsed.

Has the reporting entity assigned FE to Schedule BA non-registered private funds that complied with the above criteria? ..... Yes [ ] No [ X ]
- 7.2

GENERAL INTERROGATORIES

PART 2 - PROPERTY & CASUALTY INTERROGATORIES

1.

If the reporting entity is a member of a pooling arrangement, did the agreement or the reporting entity's participation change? .....  
If yes, attach an explanation.

Yes [ ] No [ X ] N/A [ ]
2.

Has the reporting entity reinsured any risk with any other reporting entity and agreed to release such entity from liability, in whole or in part, from any loss that may occur on the risk, or portion thereof, reinsured? .....  
If yes, attach an explanation.

Yes [ ] No [ X ]
- 3.1

Have any of the reporting entity's primary reinsurance contracts been canceled? .....

Yes [ ] No [ X ]
- 3.2

If yes, give full and complete information thereto.
- 4.1

Are any of the liabilities for unpaid losses and loss adjustment expenses other than certain workers' compensation tabular reserves (see Annual Statement Instructions pertaining to disclosure of discounting for definition of " tabular reserves" ) discounted at a rate of interest greater than zero? .....

Yes [ ] No [ X ]
- 4.2

If yes, complete the following schedule:

			TOTAL DISCOUNT				DISCOUNT TAKEN DURING PERIOD			
1	2	3	4	5	6	7	8	9	10	11
Line of Business	Maximum Interest	Discount Rate	Unpaid Losses	Unpaid LAE	IBNR	TOTAL	Unpaid Losses	Unpaid LAE	IBNR	TOTAL
TOTAL										

5.

Operating Percentages:
- 5.1

A&H loss percent .....

0.000 %
- 5.2

A&H cost containment percent .....

0.000 %
- 5.3

A&H expense percent excluding cost containment expenses .....

0.000 %
- 6.1

Do you act as a custodian for health savings accounts? .....

Yes [ ] No [ X ]
- 6.2

If yes, please provide the amount of custodial funds held as of the reporting date .....\$.....
- 6.3

Do you act as an administrator for health savings accounts? .....

Yes [ ] No [ X ]
- 6.4

If yes, please provide the balance of the funds administered as of the reporting date .....\$.....
7.

Is the reporting entity licensed or chartered, registered, qualified, eligible or writing business in at least two states? .....

Yes [ X ] No [ ]
- 7.1

If no, does the reporting entity assume reinsurance business that covers risks residing in at least one state other than the state of domicile of the reporting entity? .....

Yes [ ] No [ ]

STATEMENT AS OF MARCH 31, 2022 OF THE ALLIED INSURANCE COMPANY OF AMERICA

## SCHEDULE F - CEDED REINSURANCE

Showing All New Reinsurers - Current Year to Date

1	2	3	4	5	6	7
NAIC Company Code	ID Number	Name of Reinsurer	Domiciliary Jurisdiction	Type of Reinsurer	Certified Reinsurer Rating (1 through 6)	Effective Date of Certified Reinsurer Rating
NONE						

# NONE

SCHEDULE T - EXHIBIT OF PREMIUMS WRITTEN

Current Year to Date - Allocated by States and Territories

			1 Active Status (a)	Direct Premiums Written		Direct Losses Paid (Deducting Salvage)		Direct Losses Unpaid	
				2 Current Year To Date	3 Prior Year To Date	4 Current Year To Date	5 Prior Year To Date	6 Current Year To Date	7 Prior Year To Date
States, etc.									
1.	Alabama	AL	L	1,139,684	2,814,745	290,696	536,609	4,305,184	3,090,427
2.	Alaska	AK	N						
3.	Arizona	AZ	L	671,914	1,177,389	2,225,993	2,095,575	3,966,571	6,685,912
4.	Arkansas	AR	L	404,624	668,590	439,806	1,006,542	1,837,679	2,046,236
5.	California	CA	N						
6.	Colorado	CO	L	2,413,173	2,365,050	1,308,087	1,475,026	4,119,044	5,085,878
7.	Connecticut	CT	L	231,114	190,260	329,715	384,956	1,767,001	1,853,046
8.	Delaware	DE	L	221,480	701,783	252,714	192,987	1,774,060	1,032,611
9.	District of Columbia	DC	L	15,117	307,653	172,790	68,463	514,436	291,927
10.	Florida	FL	L	9,595,583	10,369,134	6,676,522	5,006,650	39,896,743	40,522,892
11.	Georgia	GA	L	5,006,962	6,113,595	4,071,851	1,961,776	10,487,400	9,447,462
12.	Hawaii	HI	N						
13.	Idaho	ID	L	70,588	250,344	54,413	132,039	185,834	240,926
14.	Illinois	IL	L	340,780	555,449	202,539	1,704,774	5,096,467	4,617,812
15.	Indiana	IN	L	169,693	413,262	192,842	188,039	1,112,529	1,760,222
16.	Iowa	IA	L	406,268	727,923	529,318	1,396,966	1,041,751	1,208,106
17.	Kansas	KS	L	676,411	1,808,643	472,009	261,122	3,897,498	2,449,563
18.	Kentucky	KY	L	360,877	657,287	642,700	194,980	1,002,041	1,015,044
19.	Louisiana	LA	N						
20.	Maine	ME	L	59,226	41,106	51,355	4,567	42,886	37,259
21.	Maryland	MD	L	813,598	2,319,940	853,355	1,226,242	3,978,225	4,943,383
22.	Massachusetts	MA	L						
23.	Michigan	MI	L	1,673,433	1,873,253	1,299,203	3,222,517	8,231,243	7,538,767
24.	Minnesota	MN	L	139,775	354,791	166,752	221,447	1,666,872	1,452,683
25.	Mississippi	MS	L	265,085	774,785	194,844	2,433,674	1,856,097	1,370,589
26.	Missouri	MO	L	851,000	2,881,774	1,525,932	2,984,702	6,305,909	7,981,448
27.	Montana	MT	L	482,432	708,996	208,870	243,727	1,912,009	3,110,440
28.	Nebraska	NE	L	426,996	1,017,838	281,069	480,244	1,363,703	1,104,330
29.	Nevada	NV	L	224,112	433,501	503,290	985,353	6,189,466	8,945,645
30.	New Hampshire	NH	L	48,355	117,039	14,069	21,453	80,024	65,749
31.	New Jersey	NJ	L						
32.	New Mexico	NM	L	114,284	199,227	33,795	50,113	542,790	623,459
33.	New York	NY	L	3,614,223	3,756,668	2,542,084	1,460,739	21,196,332	7,901,264
34.	North Carolina	NC	L	1,094,075	7,811,364	1,991,811	361,462	4,030,042	1,058,560
35.	North Dakota	ND	L	99,971	185,595	17,646	58,802	93,693	214,084
36.	Ohio	OH	L	1,218,228	2,431,195	1,371,557	1,653,604	3,812,755	4,419,192
37.	Oklahoma	OK	N						
38.	Oregon	OR	L	205,466	1,069,285	126,550	341,662	2,260,855	1,917,458
39.	Pennsylvania	PA	L	633,146	4,272,412	1,666,299	1,609,577	8,448,189	6,805,155
40.	Rhode Island	RI	L	91,952	504,461	487,940	83,777	1,189,350	483,345
41.	South Carolina	SC	L	2,172,637	2,243,099	1,477,528	381,803	3,042,771	1,278,299
42.	South Dakota	SD	L	112,966	278,910	52,372	26,831	224,284	284,920
43.	Tennessee	TN	L	750,850	1,536,858	1,052,435	1,513,883	6,170,051	5,373,738
44.	Texas	TX	L	549,154	7,036,777	2,345,745	8,393,275	9,478,214	16,278,377
45.	Utah	UT	L	252,709	748,571	737,748	442,717	771,589	1,570,310
46.	Vermont	VT	L	38,858	73,542	28,295	3,129	35,301	44,265
47.	Virginia	VA	L	600,632	2,035,827	851,776	747,266	2,927,085	2,808,029
48.	Washington	WA	L	2,993,427	2,992,711	2,531,630	1,359,319	6,366,838	5,733,159
49.	West Virginia	WV	L	149,127	857,695	23,669	276,002	1,377,475	739,842
50.	Wisconsin	WI	L	304,232	206,178	(10,525)	67,724	169,111	363,990
51.	Wyoming	WY	L	357,938	588,332	189,732	553,331	561,940	829,195
52.	American Samoa	AS	N						
53.	Guam	GU	N						
54.	Puerto Rico	PR	N						
55.	U.S. Virgin Islands	VI	N						
56.	Northern Mariana Islands	MP	N						
57.	Canada	CAN	N						
58.	Aggregate Other Alien	OT	XXX						
59.	Totals	XXX		42,062,155	78,472,837	40,478,821	47,815,446	185,329,337	176,624,998
DETAILS OF WRITE-INS									
58001.		XXX							
58002.		XXX							
58003.		XXX							
58998.	Summary of remaining write-ins for Line 58 from overflow page	XXX							
58999.	Totals (Lines 58001 through 58003 plus 58998)(Line 58 above)	XXX							

(a) Active Status Counts:

L - Licensed or Chartered - Licensed Insurance carrier or domiciled RRG.....46

E - Eligible - Reporting entities eligible or approved to write surplus lines in the state (other than their state of domicile - see DSLI).....

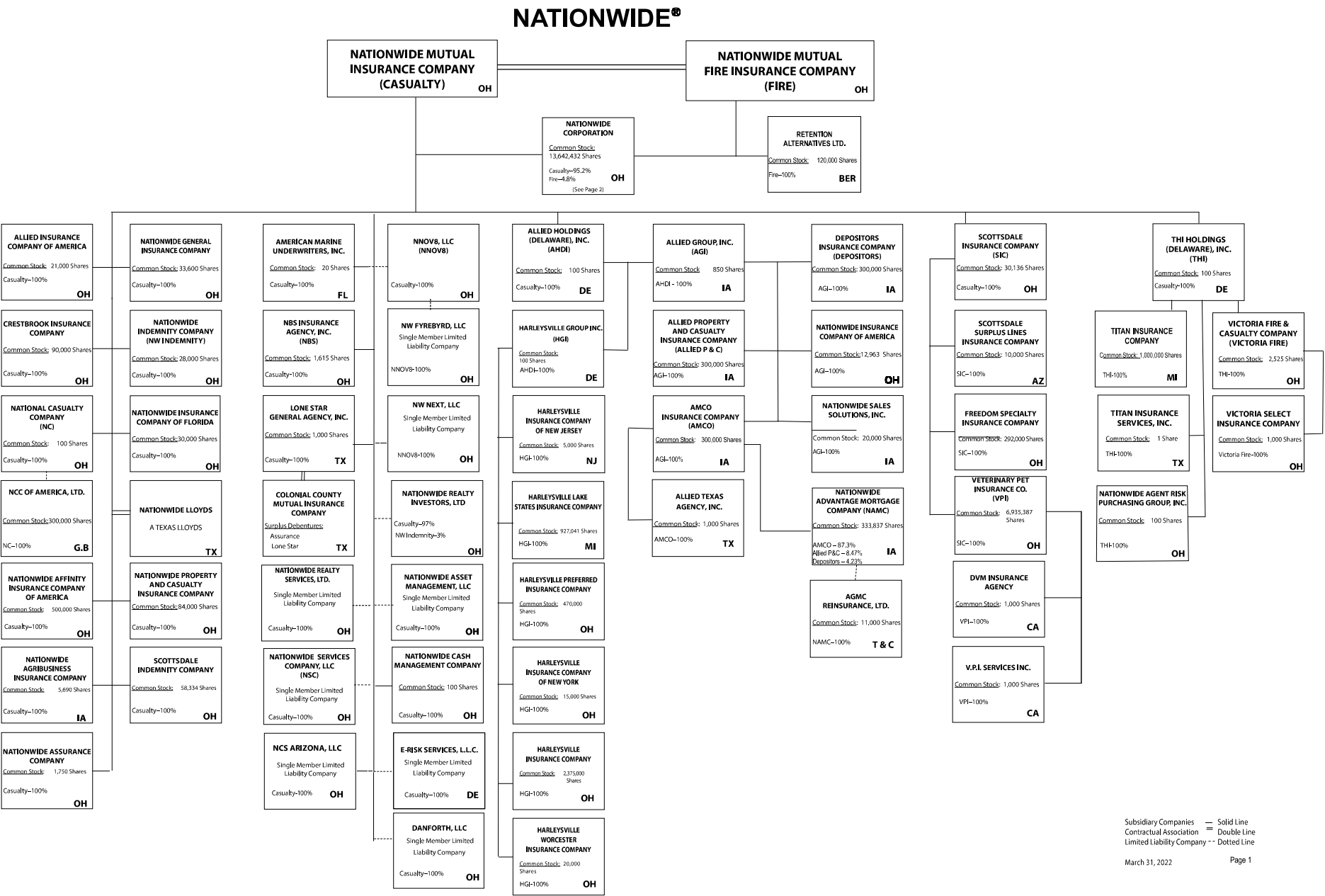
D - Domestic Surplus Lines Insurer (DSLI) - Reporting entities authorized to write surplus lines in the state of domicile.....

R - Registered - Non-domiciled RRGs.....

Q - Qualified - Qualified or accredited reinsurer.....

N - None of the above - Not allowed to write business in the state .....11

STATEMENT AS OF MARCH 31, 2022 OF THE ALLIED INSURANCE COMPANY OF AMERICA



(Casualty/Fire subsidiaries)

## 11.1



Page 2

(Nationwide Corp. subsidiaries)



STATEMENT AS OF MARCH 31, 2022 OF THE ALLIED INSURANCE COMPANY OF AMERICA

NATIONWIDE INSURANCE COMPANIES

NAIC Group Code	Group Name	NAIC Company Code	State of Domicile	Federal ID Number	Name of Company
0140	Nationwide	10127	OH	27-0114983	Allied Insurance Company of America
0140	Nationwide	42579	IA	42-1201931	Allied Property and Casualty Insurance Company
0140	Nationwide	19100	IA	42-6054959	AMCO Insurance Company
0140	Nationwide	29262	TX	74-1061659	Colonial County Mutual Insurance Company
0140	Nationwide	18961	OH	68-0066866	Crestbrook Insurance Company
0140	Nationwide	42587	IA	42-1207150	Depositors Insurance Company
0140	Nationwide	15821	OH	42-4523959	Eagle Captive Reinsurance, LLC
0140	Nationwide	22209	OH	75-6013587	Freedom Specialty Insurance Company
0140	Nationwide	23582	OH	41-0417250	Harleysville Insurance Company
0140	Nationwide	42900	NJ	23-2253669	Harleysville Insurance Company of New Jersey
0140	Nationwide	10674	OH	23-2864924	Harleysville Insurance Company of New York
0140	Nationwide	14516	MI	38-3198542	Harleysville Lake States Insurance Company
0140	Nationwide	35696	OH	23-2384978	Harleysville Preferred Insurance Company
0140	Nationwide	26182	OH	04-1989660	Harleysville Worcester Insurance Company
0140	Nationwide	64017	TX	75-0300900	Jefferson National Life Insurance Company
0140	Nationwide	15727	NY	47-1180302	Jefferson National Life Insurance Company of New York
0140	Nationwide	11991	OH	38-0865250	National Casualty Company
0140	Nationwide	26093	OH	48-0470690	Nationwide Affinity Insurance Company of America
0140	Nationwide	28223	IA	42-1015537	Nationwide Agribusiness Insurance Company
0140	Nationwide	10723	OH	95-0639970	Nationwide Assurance Company
0140	Nationwide	23760	OH	31-4425763	Nationwide General Insurance Company
0140	Nationwide	10070	OH	31-1399201	Nationwide Indemnity Company
0140	Nationwide	25453	OH	95-2130882	Nationwide Insurance Company of America
0140	Nationwide	10948	OH	31-1613686	Nationwide Insurance Company of Florida
0140	Nationwide	92657	OH	31-1000740	Nationwide Life and Annuity Insurance Company
0140	Nationwide	66869	OH	31-4156830	Nationwide Life Insurance Company
0140	Nationwide	42110	TX	75-1780981	Nationwide Lloyds
0140	Nationwide	23779	OH	31-4177110	Nationwide Mutual Fire Insurance Company
0140	Nationwide	23787	OH	31-4177100	Nationwide Mutual Insurance Company
0140	Nationwide	37877	OH	31-0970750	Nationwide Property & Casualty Insurance Company
0140	Nationwide	13999	VT	27-1712056	Olentangy Reinsurance, LLC
0140	Nationwide	15580	OH	31-1117969	Scottsdale Indemnity Company
0140	Nationwide	41297	OH	31-1024978	Scottsdale Insurance Company
0140	Nationwide	10672	AZ	86-0835870	Scottsdale Surplus Lines Insurance Company
0140	Nationwide	36269	MI	86-0619597	Titan Insurance Company
0140	Nationwide	42285	OH	95-3750113	Veterinary Pet Insurance Company
0140	Nationwide	42889	OH	34-1394913	Victoria Fire & Casualty Company
0140	Nationwide	10105	OH	34-1777972	Victoria Select Insurance Company

STATEMENT AS OF MARCH 31, 2022 OF THE ALLIED INSURANCE COMPANY OF AMERICA

SCHEDULE Y  
PART 1A - DETAIL OF INSURANCE HOLDING COMPANY SYSTEM

1	2	3	4	5	6	7	8	9	10	11	12	13	14	15	16
Group Code	Group Name	NAIC Company Code	ID Number	Federal RSSD	CIK	Name of Securities Exchange if Publicly Traded (U.S. or International)	Names of Parent, Subsidiaries Or Affiliates	Domi-ciliary Location	Relation-ship to Reporting Entity	Directly Controlled by (Name of Entity/Person)	Type of Control (Ownership, Board, Management, Attorney-in-Fact, Influence, Other)	If Control is Ownership Provide Percen-tage	Ultimate Controlling Entity(ies)/Person(s)	Is an SCA Filing Re-quired? (Yes/No)	*
.0140	Nationwide		31-1486309				10 W. Nationwide, LLC	OH	NIA	Nationwide Realty Investors, Ltd.	Ownership	100.000	Nationwide Mutual Insurance Company	..NO	
.0140	Nationwide		31-1486309				1000 Yard Street, LLC	OH	NIA	Nationwide Realty Investors, Ltd.	Ownership	100.000	Nationwide Mutual Insurance Company	..NO	
.0140	Nationwide		31-1486309				1015 Long Street, LLC	OH	NIA	Nationwide Realty Investors, Ltd.	Ownership	100.000	Nationwide Mutual Insurance Company	..NO	
.0140	Nationwide		31-1486309				1050 Yard Street, LLC	OH	NIA	Nationwide Realty Investors, Ltd.	Ownership	100.000	Nationwide Mutual Insurance Company	..NO	
.0140	Nationwide		31-1486309				1125 Rail Street, LLC	OH	NIA	Nationwide Realty Investors, Ltd.	Ownership	100.000	Nationwide Mutual Insurance Company	..NO	
.0140	Nationwide		31-1733036				120 Acre Partners, LLC	DE	NIA	Nationwide Realty Investors, Ltd.	Ownership	95.000	Nationwide Mutual Insurance Company	..NO	1
.0140	Nationwide		20-4939866				1125 Yard Street, LLC	OH	NIA	NRI Equity Land Investments, LLC	Ownership	100.000	Nationwide Mutual Insurance Company	..NO	
.0140	Nationwide		20-4939867				1175 Bobcat, LLC	OH	NIA	NRI Equity Land Investments, LLC	Ownership	100.000	Nationwide Mutual Insurance Company	..NO	
.0140	Nationwide		26-2451988				1492 Capital, LLC	OH	NIA	Nationwide Mutual Insurance Company	Ownership	100.000	Nationwide Mutual Insurance Company	..NO	
.0140	Nationwide		31-1486309				111 Rivulon Boulevard, LLC	OH	NIA	NRI-Rivulon, LLC	Ownership	100.000	Nationwide Mutual Insurance Company	..NO	
.0140	Nationwide		31-1486309				155 Rivulon Boulevard, LLC	OH	NIA	NRI-Rivulon, LLC	Ownership	100.000	Nationwide Mutual Insurance Company	..NO	
.0140	Nationwide		31-1486309				161 Rivulon Boulevard, LLC	OH	NIA	NRI-Rivulon, LLC	Ownership	100.000	Nationwide Mutual Insurance Company	..NO	
.0140	Nationwide		31-1580283				170 Marconi, LLC	OH	NIA	NID Investments, LLC	Ownership	100.000	Nationwide Mutual Insurance Company	..NO	
.0140	Nationwide		31-1580283				245 Parks Edge Place, LLC	OH	NIA	NID Investments, LLC	Ownership	100.000	Nationwide Mutual Insurance Company	..NO	
.0140	Nationwide		31-1486309				275 Rivulon Boulevard, LLC	OH	NIA	NRI-Rivulon, LLC	Ownership	100.000	Nationwide Mutual Insurance Company	..NO	
.0140	Nationwide		31-1486309				300 Rivulon Boulevard, LLC	OH	NIA	NRI-Rivulon, LLC	Ownership	100.000	Nationwide Mutual Insurance Company	..NO	
.0140	Nationwide		31-1486309				310 Rivulon Boulevard, LLC	OH	NIA	NRI-Rivulon, LLC	Ownership	100.000	Nationwide Mutual Insurance Company	..NO	
.0140	Nationwide		31-1486309				343 N. Front, LLC	OH	NIA	Nationwide Realty Investors, Ltd.	Ownership	100.000	Nationwide Mutual Insurance Company	..NO	
.0140	Nationwide		31-1486309				400 Rivulon Boulevard, LLC	OH	NIA	NRI-Rivulon, LLC	Ownership	100.000	Nationwide Mutual Insurance Company	..NO	
.0140	Nationwide		31-1580283				400 West Nationwide Boulevard, LLC	OH	NIA	NID Investments, LLC	Ownership	100.000	Nationwide Mutual Insurance Company	..NO	
.0140	Nationwide		31-1486309				410 Rivulon Boulevard, LLC	OH	NIA	NRI-Rivulon, LLC	Ownership	100.000	Nationwide Mutual Insurance Company	..NO	
.0140	Nationwide		31-1580283				425 West Nationwide Boulevard, LLC	OH	NIA	NID Investments, LLC	Ownership	100.000	Nationwide Mutual Insurance Company	..NO	
.0140	Nationwide		31-1486309				44 Chestnut, LLC	OH	NIA	Nationwide Realty Investors, Ltd.	Ownership	100.000	Nationwide Mutual Insurance Company	..NO	
.0140	Nationwide		38-4118665				500 Neil Avenue, LLC	OH	NIA	NID HP, LLC	Ownership	100.000	Nationwide Mutual Insurance Company	..NO	
.0140	Nationwide		38-4118665				515 Kilbourne Street, LLC	OH	NIA	NID HP, LLC	Ownership	100.000	Nationwide Mutual Insurance Company	..NO	
.0140	Nationwide		87-1954007				525 Cleveland Avenue, LLC	OH	NIA	Nationwide Financial Services, Inc.	Ownership	100.000	Nationwide Mutual Insurance Company	..NO	
.0140	Nationwide		20-4939866				735 Bobcat Avenue, LLC	OH	NIA	GVY Residential, LLC	Ownership	100.000	Nationwide Mutual Insurance Company	..NO	
.0140	Nationwide		31-1486309				75 Rivulon Boulevard, LLC	OH	NIA	NRI-Rivulon, LLC	Ownership	100.000	Nationwide Mutual Insurance Company	..NO	
.0140	Nationwide		20-4939866				775 Yard Street, LLC	OH	NIA	NRI Equity Land Investments, LLC	Ownership	100.000	Nationwide Mutual Insurance Company	..NO	
.0140	Nationwide		20-4939866				777 Swan Street, LLC	OH	NIA	NRI Equity Land Investments, LLC	Ownership	100.000	Nationwide Mutual Insurance Company	..NO	
.0140	Nationwide		20-4939866				780 Yard Street, LLC	OH	NIA	NRI Equity Land Investments, LLC	Ownership	100.000	Nationwide Mutual Insurance Company	..NO	
.0140	Nationwide		20-4939866				795 Rail Street, LLC	OH	NIA	NRI Equity Land Investments, LLC	Ownership	100.000	Nationwide Mutual Insurance Company	..NO	
.0140	Nationwide		20-4939866				800 Bobcat Avenue, LLC	OH	NIA	NRI Equity Land Investments, LLC	Ownership	100.000	Nationwide Mutual Insurance Company	..NO	
.0140	Nationwide		20-4939866				800 Goodale Boulevard, LLC	OH	NIA	NRI Equity Land Investments, LLC	Ownership	100.000	Nationwide Mutual Insurance Company	..NO	
.0140	Nationwide		20-4939866				800 Yard Street, LLC	OH	NIA	NRI Equity Land Investments, LLC	Ownership	100.000	Nationwide Mutual Insurance Company	..NO	
.0140	Nationwide		20-4939866				805 Bobcat Avenue, LLC	OH	NIA	GVY Residential, LLC	Ownership	100.000	Nationwide Mutual Insurance Company	..NO	
.0140	Nationwide		20-4939866				808 Yard Street, LLC	OH	NIA	GVY Residential, LLC	Ownership	100.000	Nationwide Mutual Insurance Company	..NO	
.0140	Nationwide		20-4939866				820 Goodale Boulevard, LLC	OH	NIA	NRI Equity Land Investments, LLC	Ownership	100.000	Nationwide Mutual Insurance Company	..NO	
.0140	Nationwide		20-4939866				822 Williams Avenue, LLC	OH	NIA	GVY Residential, LLC	Ownership	100.000	Nationwide Mutual Insurance Company	..NO	
.0140	Nationwide		20-4939866				825 Junction Way, LLC	OH	NIA	GVY Residential, LLC	Ownership	100.000	Nationwide Mutual Insurance Company	..NO	
.0140	Nationwide		20-4939866				828 Bobcat Avenue, LLC	OH	NIA	NRI Equity Land Investments, LLC	Ownership	100.000	Nationwide Mutual Insurance Company	..NO	
.0140	Nationwide		20-4939866				840 Third Avenue, LLC	OH	NIA	NRI Equity Land Investments, LLC	Ownership	100.000	Nationwide Mutual Insurance Company	..NO	
.0140	Nationwide		20-4939866				840 Yard Street, LLC	OH	NIA	GVY Residential, LLC	Ownership	100.000	Nationwide Mutual Insurance Company	..NO	
.0140	Nationwide		20-4939866				845 Yard Street, LLC	OH	NIA	GVY Residential, LLC	Ownership	100.000	Nationwide Mutual Insurance Company	..NO	
.0140	Nationwide		20-4939866				855 Third Avenue, LLC	OH	NIA	NRI Equity Land Investments, LLC	Ownership	100.000	Nationwide Mutual Insurance Company	..NO	
.0140	Nationwide		20-4939866				860 Third Avenue, LLC	OH	NIA	NRI Equity Land Investments, LLC	Ownership	100.000	Nationwide Mutual Insurance Company	..NO	
.0140	Nationwide		20-4939866				880 Third Avenue, LLC	OH	NIA	NRI Equity Land Investments, LLC	Ownership	100.000	Nationwide Mutual Insurance Company	..NO	
.0140	Nationwide		20-4939866				880 Yard Street, LLC	OH	NIA	GVY Residential, LLC	Ownership	100.000	Nationwide Mutual Insurance Company	..NO	
.0140	Nationwide		20-4939866				895 W. Third Avenue, LLC	OH	NIA	NRI Equity Land Investments, LLC	Ownership	100.000	Nationwide Mutual Insurance Company	..NO	
.0140	Nationwide		20-4939866				950 Dorchester Way, LLC	OH	NIA	GVY Residential, LLC	Ownership	100.000	Nationwide Mutual Insurance Company	..NO	
.0140	Nationwide		20-4939866				950 Goodale Boulevard, LLC	OH	NIA	NRI Equity Land Investments, LLC	Ownership	100.000	Nationwide Mutual Insurance Company	..NO	
.0140	Nationwide		31-1486309				960 Bobcat Avenue, LLC	OH	NIA	Nationwide Realty Investors, Ltd.	Ownership	100.000	Nationwide Mutual Insurance Company	..NO	
.0140	Nationwide		31-1486309				975 Rail Street, LLC	OH	NIA	Nationwide Realty Investors, Ltd.	Ownership	100.000	Nationwide Mutual Insurance Company	..NO	
.0140	Nationwide		31-1486309				995 Yard Street, LLC	OH	NIA	Nationwide Realty Investors, Ltd.	Ownership	100.000	Nationwide Mutual Insurance Company	..NO	

STATEMENT AS OF MARCH 31, 2022 OF THE ALLIED INSURANCE COMPANY OF AMERICA

SCHEDULE Y  
PART 1A - DETAIL OF INSURANCE HOLDING COMPANY SYSTEM

1	2	3	4	5	6	7	8	9	10	11	12	13	14	15	16
Group Code	Group Name	NAIC Company Code	ID Number	Federal RSSD	CIK	Name of Securities Exchange if Publicly Traded (U.S. or International)	Names of Parent, Subsidiaries Or Affiliates	Domi-ciliary Location	Relation-ship to Reporting Entity	Directly Controlled by (Name of Entity/Person)	Type of Control (Ownership, Board, Management, Attorney-in-Fact, Influence, Other)	If Control is Owner-ship Provide Percen-tage	Ultimate Controlling Entity(ies)/Person(s)	Is an SCA Filing Re-quired? (Yes/No)	*
.0140	Nationwide		31-1486309				18615 Claret Drive, LLC	.OH	NIA	NRI Cavasson, LLC	Ownership	100.000	Nationwide Mutual Insurance Company	.NO	
.0140	Nationwide		31-1486309				18700 Hayden Road, LLC	.OH	NIA	NRI Cavasson, LLC	Ownership	100.000	Nationwide Mutual Insurance Company	.NO	
.0140	Nationwide		31-1486309				18750 Hayden Road, LLC	.OH	NIA	NRI Cavasson, LLC	Ownership	100.000	Nationwide Mutual Insurance Company	.NO	
.0140	Nationwide		31-1580283				AD DORA, LLC	.OH	NIA	NID Investments, LLC	Ownership	100.000	Nationwide Mutual Insurance Company	.NO	
.0140	Nationwide		31-1580283				ADTV, LLC	.OH	NIA	NID Investments, LLC	Ownership	100.000	Nationwide Mutual Insurance Company	.NO	
.0140	Nationwide		52-2227314				AGMC Reinsurance, Ltd.	.TCA	NIA	Nationwide Advantage Mortgage Company	Ownership	100.000	Nationwide Mutual Insurance Company	.NO	
.0140	Nationwide		42-0958655				ALLIED Group, Inc.	.IA	.IA	Allied Holdings (Delaware), Inc.	Ownership	100.000	Nationwide Mutual Insurance Company	.NO	
.0140	Nationwide		46-4628790				Allied Holdings (Delaware), Inc.	.DE	.IA	Nationwide Mutual Insurance Company	Ownership	100.000	Nationwide Mutual Insurance Company	.YES	
.0140	Nationwide	10127	27-0114983				ALLIED Insurance Company of America	.OH	.RE	Nationwide Mutual Insurance Company	Ownership	100.000	Nationwide Mutual Insurance Company	.NO	
							ALLIED Property and Casualty Insurance Company								
.0140	Nationwide	42579	42-1201931				ALLIED Texas Agency, Inc.	.IA	.IA	ALLIED Group, Inc.	Ownership	100.000	Nationwide Mutual Insurance Company	.NO	
.0140	Nationwide		42-1527863				AMCO Insurance Company	.TX	.IA	AMCO Insurance Company	Ownership	100.000	Nationwide Mutual Insurance Company	.NO	
.0140	Nationwide	19100	42-6054959				ALLIED Group, Inc.	.IA	.IA	ALLIED Group, Inc.	Ownership	100.000	Nationwide Mutual Insurance Company	.NO	
.0140	Nationwide		59-1031596				American Marine Underwriters, Inc.	.FL	NIA	Nationwide Mutual Insurance Company	Ownership	100.000	Nationwide Mutual Insurance Company	.NO	
.0140	Nationwide		81-4532504				American Tax Credit Fund 2017-A, LLC	.OH	NIA	Nationwide Life Insurance Company	Ownership	100.000	Nationwide Mutual Insurance Company	.NO	
.0140	Nationwide		82-2001573				American Tax Credit Fund 2017-B, LLC	.OH	NIA	Nationwide Life Insurance Company	Ownership	100.000	Nationwide Mutual Insurance Company	.NO	
.0140	Nationwide		82-4591498				American Tax Credit Fund 2018-A, LLC	.OH	NIA	Nationwide Life Insurance Company	Ownership	100.000	Nationwide Mutual Insurance Company	.NO	
.0140	Nationwide		83-0606592				American Tax Credit Fund 2018-B, LLC	.OH	NIA	Nationwide Life Insurance Company	Ownership	100.000	Nationwide Mutual Insurance Company	.NO	
.0140	Nationwide		83-0620232				American Tax Credit Fund 2018-C, LLC	.OH	NIA	Nationwide Life Insurance Company	Ownership	100.000	Nationwide Mutual Insurance Company	.NO	
.0140	Nationwide		83-3900932				American Tax Credit Fund 2019-A, LLC	.OH	NIA	Nationwide Life Insurance Company	Ownership	100.000	Nationwide Mutual Insurance Company	.NO	
.0140	Nationwide		83-3953721				American Tax Credit Fund 2019-B, LLC	.OH	NIA	Nationwide Life Insurance Company	Ownership	100.000	Nationwide Mutual Insurance Company	.NO	
.0140	Nationwide		84-3443067				American Tax Credit Fund 2020-A, LLC	.OH	NIA	Nationwide Life Insurance Company	Ownership	100.000	Nationwide Mutual Insurance Company	.NO	
.0140	Nationwide		85-2359702				American Tax Credit Fund 2020-B, LLC	.OH	NIA	Nationwide Life Insurance Company	Ownership	100.000	Nationwide Mutual Insurance Company	.NO	
							American Tax Credit Fund 2021-A, LLC (fka American Tax Credit Fund 2020-C, LLC)	.OH	NIA	Nationwide Life Insurance Company	Ownership	100.000	Nationwide Mutual Insurance Company	.NO	
.0140	Nationwide		85-2649655				American Tax Credit Fund 2021-B, LLC	.OH	NIA	Nationwide Life Insurance Company	Ownership	100.000	Nationwide Mutual Insurance Company	.NO	
.0140	Nationwide		86-2502912				American Tax Credit Fund 2021-C, LLC	.OH	NIA	Nationwide Life Insurance Company	Ownership	100.000	Nationwide Mutual Insurance Company	.NO	
.0140	Nationwide		87-1349942				American Tax Credit Fund 2021-C, LLC	.OH	NIA	Nationwide Life Insurance Company	Ownership	100.000	Nationwide Mutual Insurance Company	.NO	
.0140	Nationwide		87-4753681				American Tax Credit Fund 2022-A, LLC	.OH	NIA	Nationwide Life Insurance Company	Ownership	100.000	Nationwide Mutual Insurance Company	.NO	
.0140	Nationwide		87-4771309				American Tax Credit Fund 2022-B, LLC	.OH	NIA	Nationwide Life Insurance Company	Ownership	100.000	Nationwide Mutual Insurance Company	.NO	
.0140	Nationwide		31-1580283				Arena District CA I, LLC	.OH	NIA	NID Investments, LLC	Ownership	100.000	Nationwide Mutual Insurance Company	.NO	
							Arena District Owners Association	.OH	.OTH	Other non-Nationwide	n/a	0.000	Other non-Nationwide	.NO	2
.0140	Nationwide		31-1486309				Ballantrae Woods, LLC	.OH	NIA	Nationwide Realty Investors, Ltd.	Ownership	100.000	Nationwide Mutual Insurance Company	.NO	
.0140	Nationwide		31-1486309				Cavasson Hotel, LLC	.OH	NIA	Cavasson Hotel Holdings, LLC	Ownership	100.000	Nationwide Mutual Insurance Company	.NO	
.0140	Nationwide		31-1486309				Cavasson Hotel Holdings, LLC	.OH	NIA	NRI Cavasson, LLC	Ownership	100.000	Nationwide Mutual Insurance Company	.NO	
.0140	Nationwide		20-1618232				CNRI-Cannonsport Condominium, LLC	.OH	NIA	CNRI-Cannonsport, LLC	Ownership	100.000	Nationwide Mutual Insurance Company	.NO	
.0140	Nationwide		20-1618232				CNRI-Cannonsport, LLC	.OH	NIA	Nationwide Realty Investors, Ltd.	Ownership	100.000	Nationwide Mutual Insurance Company	.NO	
.0140	Nationwide	29262	74-1061659				Colonial County Mutual Insurance Company	.TX	.IA	Other non-Nationwide	contract	0.000	Other non-Nationwide	.NO	2
.0140	Nationwide		31-1486309				Cottages at Hyatts LLC	.OH	NIA	Nationwide Realty Investors, Ltd.	Ownership	100.000	Nationwide Mutual Insurance Company	.NO	
.0140	Nationwide	18961	68-0066866				Crestbrook Insurance Company	.OH	.IA	Nationwide Mutual Insurance Company	Ownership	100.000	Nationwide Mutual Insurance Company	.NO	
.0140	Nationwide		31-1486309				Crewville, Ltd.	.OH	NIA	Nationwide Realty Investors, Ltd.	Ownership	100.000	Nationwide Mutual Insurance Company	.NO	
.0140	Nationwide		84-5052608				Danforth, LLC	.OH	NIA	Nationwide Mutual Insurance Company	Ownership	100.000	Nationwide Mutual Insurance Company	.NO	
.0140	Nationwide	42587	42-1207150				Depositors Insurance Company	.IA	.IA	ALLIED Group, Inc.	Ownership	100.000	Nationwide Mutual Insurance Company	.NO	
							Discover Affordable Housing Investment Fund I LLC								
							46-4104813								
.0140	Nationwide		33-0096671				DVM Insurance Agency	.CA	NIA	Veterinary Pet Insurance Company	Ownership	100.000	Nationwide Mutual Insurance Company	.NO	
.0140	Nationwide	15821	47-4523959				Eagle Captive Reinsurance, LLC	.OH	.IA	Nationwide Life Insurance Company	Ownership	100.000	Nationwide Mutual Insurance Company	.NO	
.0140	Nationwide		26-3260559				E-Risk Services, L.L.C.	.DE	NIA	Nationwide Mutual Insurance Company	Ownership	100.000	Nationwide Mutual Insurance Company	.NO	
.0140	Nationwide	22209	75-6013587				Freedom Specialty Insurance Company	.OH	.IA	Scottsdale Insurance Company	Ownership	100.000	Nationwide Mutual Insurance Company	.NO	
.0140	Nationwide		20-4939866				Grandview Yard Hotel Holdings, LLC	.OH	NIA	NRI Equity Land Investments, LLC	Ownership	100.000	Nationwide Mutual Insurance Company	.NO	
.0140	Nationwide		20-4939866				Grandview Yard Hotel, LLC	.OH	NIA	Grandview Yard Hotel Holdings, LLC	Ownership	100.000	Nationwide Mutual Insurance Company	.NO	
.0140	Nationwide		20-4939866				GVY Residential, LLC	.OH	NIA	NRI Equity Land Investments, LLC	Ownership	100.000	Nationwide Mutual Insurance Company	.NO	
.0140	Nationwide		31-1486309				Harlem Road Developers, LLC	.OH	NIA	Nationwide Realty Investors, Ltd.	Ownership	100.000	Nationwide Mutual Insurance Company	.NO	
.0140	Nationwide		51-0241172				Harleysville Group Inc.	.DE	NIA	Allied Holdings (Delaware), Inc.	Ownership	100.000	Nationwide Mutual Insurance Company	.NO	
.0140	Nationwide	23582	41-0417250				Harleysville Insurance Company	.OH	.IA	Harleysville Group, Inc.	Ownership	100.000	Nationwide Mutual Insurance Company	.NO	

STATEMENT AS OF MARCH 31, 2022 OF THE ALLIED INSURANCE COMPANY OF AMERICA

SCHEDULE Y  
PART 1A - DETAIL OF INSURANCE HOLDING COMPANY SYSTEM

1	2	3	4	5	6	7	8	9	10	11	12 Type of Control (Ownership, Board, Management, Attorney-in-Fact, Influence, Other)	13 If Control is Owner- ship Provide Percen- tage	14 Ultimate Controlling Entity(ies)/Person(s)	15 Is an SCA Filing Re- quired? (Yes/No)	16 *
Group Code	Group Name	NAIC Company Code	ID Number	Federal RSSD	CIK	Name of Securities Exchange if Publicly Traded (U.S. or International)	Names of Parent, Subsidiaries Or Affiliates	Domi- ciliary Loca- tion	Relation- ship to Reporting Entity	Directly Controlled by (Name of Entity/Person)					
.0140	Nationwide	42900	23-2253669				Harleysville Insurance Company of New Jersey	NJ	IA	Harleysville Group, Inc.	Ownership	100.000	Nationwide Mutual Insurance Company	NO	
.0140	Nationwide	10674	23-2864924				Harleysville Insurance Company of New York	OH	IA	Harleysville Group, Inc.	Ownership	100.000	Nationwide Mutual Insurance Company	NO	
.0140	Nationwide	14516	38-3198542				Harleysville Lake States Insurance Company	MI	IA	Harleysville Group, Inc.	Ownership	100.000	Nationwide Mutual Insurance Company	NO	
.0140	Nationwide	35696	23-2384978				Harleysville Preferred Insurance Company	OH	IA	Harleysville Group, Inc.	Ownership	100.000	Nationwide Mutual Insurance Company	NO	
.0140	Nationwide	26182	04-1989660				Harleysville Worcester Insurance Company	OH	IA	Harleysville Group, Inc.	Ownership	100.000	Nationwide Mutual Insurance Company	NO	
.0140	Nationwide		20-3289512				Jefferson National Financial Corp.	DE	NIA	Nationwide Life Insurance Company	Ownership	100.000	Nationwide Mutual Insurance Company	YES	
.0140	Nationwide	64017	75-0300900				Jefferson National Life Insurance Company	TX	IA	Jefferson National Financial Corporation	Ownership	100.000	Nationwide Mutual Insurance Company	NO	
.0140	Nationwide	15727	47-1180302				Jefferson National Life Insurance Company of New York	NY	IA	Jefferson National Life Insurance Company	Ownership	100.000	Nationwide Mutual Insurance Company	NO	
.0140	Nationwide		61-1340595				Jefferson National Securities Corporation	DE	NIA	Jefferson National Financial Corporation	Ownership	100.000	Nationwide Mutual Insurance Company	NO	
.0140	Nationwide		31-1486309				Jerome Village Company, LLC	OH	NIA	Nationwide Realty Investors, Ltd.	Ownership	100.000	Nationwide Mutual Insurance Company	NO	
.0140	Nationwide		31-1486309				JV Developers, LLC	OH	NIA	Nationwide Realty Investors, Ltd.	Ownership	100.000	Nationwide Mutual Insurance Company	NO	
.0140	Nationwide		74-1395229				Lone Star General Agency, Inc.	TX	IA	Nationwide Mutual Insurance Company	Ownership	100.000	Nationwide Mutual Insurance Company	NO	
.0140	Nationwide	11991	38-0865250				National Casualty Company	OH	IA	Nationwide Mutual Insurance Company	Ownership	100.000	Nationwide Mutual Insurance Company	NO	
.0140	Nationwide						National Casualty Company of America, Ltd.	GBR	IA	National Casualty Company	Ownership	100.000	Nationwide Mutual Insurance Company	NO	
.0140	Nationwide		42-1154244				Nationwide Advantage Mortgage Company	IA	NIA	AMCO Insurance Company	Ownership	87.300	Nationwide Mutual Insurance Company	YES	1
.0140	Nationwide		42-1154244				Nationwide Advantage Mortgage Company	IA	NIA	ALLIED Property & Casualty Insurance Company	Ownership	8.470	Nationwide Mutual Insurance Company	YES	1
.0140	Nationwide		42-1154244				Nationwide Advantage Mortgage Company	IA	NIA	Depositors Insurance Company	Ownership	4.230	Nationwide Mutual Insurance Company	YES	1
.0140	Nationwide	26093	48-0470690				Nationwide Affinity Insurance Company of America	OH	IA	Nationwide Mutual Insurance Company	Ownership	100.000	Nationwide Mutual Insurance Company	NO	
.0140	Nationwide	28223	42-1015537				Nationwide Agribusiness Insurance Company	IA	IA	Nationwide Mutual Insurance Company	Ownership	100.000	Nationwide Mutual Insurance Company	NO	
.0140	Nationwide		31-1578869				Nationwide Arena, LLC	OH	NIA	NRI Arena, LLC	Ownership	90.000	Nationwide Mutual Insurance Company	NO	1
.0140	Nationwide		20-8670712				Nationwide Asset Management, LLC	OH	NIA	Nationwide Mutual Insurance Company	Ownership	100.000	Nationwide Mutual Insurance Company	NO	
.0140	Nationwide	10723	95-0639970				Nationwide Assurance Company	OH	IA	Nationwide Mutual Insurance Company	Ownership	100.000	Nationwide Mutual Insurance Company	NO	
.0140	Nationwide		31-1036287				Nationwide Cash Management Company	OH	NIA	Nationwide Mutual Insurance Company	Ownership	100.000	Nationwide Mutual Insurance Company	NO	
.0140	Nationwide		31-4416546				Nationwide Corporation	OH	NIA	Nationwide Mutual Insurance Company	Ownership	95.200	Nationwide Mutual Insurance Company	YES	1
.0140	Nationwide		31-4416546				Nationwide Corporation	OH	NIA	Nationwide Mutual Fire Insurance Company	Ownership	4.800	Nationwide Mutual Insurance Company	YES	1
.0140	Nationwide		31-1667326				Nationwide Financial Assignment Company	OH	NIA	Nationwide Life Insurance Company	Ownership	100.000	Nationwide Mutual Insurance Company	NO	
.0140	Nationwide		23-2412039				Nationwide Financial General Agency, Inc.	PA	NIA	NFS Distributors, Inc.	Ownership	100.000	Nationwide Mutual Insurance Company	NO	
.0140	Nationwide		31-6554353				Nationwide Financial Services Capital Trust	DE	NIA	Nationwide Financial Services, Inc.	Ownership	100.000	Nationwide Mutual Insurance Company	NO	
.0140	Nationwide		31-1486870				Nationwide Financial Services, Inc.	DE	NIA	Nationwide Corporation	Ownership	100.000	Nationwide Mutual Insurance Company	NO	
.0140	Nationwide		52-6969857				Nationwide Fund Advisors	DE	NIA	Nationwide Financial Services, Inc.	Ownership	100.000	Nationwide Mutual Insurance Company	NO	
.0140	Nationwide		31-1748721				Nationwide Fund Distributors LLC	DE	NIA	NFS Distributors, Inc.	Ownership	100.000	Nationwide Mutual Insurance Company	NO	
.0140	Nationwide		31-0900518				Nationwide Fund Management LLC	DE	NIA	NFS Distributors, Inc.	Ownership	100.000	Nationwide Mutual Insurance Company	NO	
.0140	Nationwide	23760	31-4425763				Nationwide General Insurance Company	OH	IA	Nationwide Mutual Insurance Company	Ownership	100.000	Nationwide Mutual Insurance Company	NO	
.0140	Nationwide	10070	31-1399201				Nationwide Indemnity Company	OH	IA	Nationwide Mutual Insurance Company	Ownership	100.000	Nationwide Mutual Insurance Company	NO	
.0140	Nationwide	25453	95-2130882				Nationwide Insurance Company of America	OH	IA	ALLIED Group, Inc.	Ownership	100.000	Nationwide Mutual Insurance Company	NO	
.0140	Nationwide	10948	31-1613686				Nationwide Insurance Company of Florida	OH	IA	Nationwide Mutual Insurance Company	Ownership	100.000	Nationwide Mutual Insurance Company	NO	
.0140	Nationwide		41-2206199				Nationwide Investment Advisors, LLC	OH	NIA	Nationwide Life Insurance Company	Ownership	100.000	Nationwide Mutual Insurance Company	NO	
.0140	Nationwide		73-0988442				Nationwide Investment Services Corporation	OK	NIA	Nationwide Life Insurance Company	Ownership	100.000	Nationwide Mutual Insurance Company	YES	
.0140	Nationwide						Nationwide Life and Annuity Insurance Company								
.0140	Nationwide	92657	31-1000740					OH	IA	Nationwide Life Insurance Company	Ownership	100.000	Nationwide Mutual Insurance Company	NO	
.0140	Nationwide	66869	31-4156830				Nationwide Life Insurance Company	OH	IA	Nationwide Financial Services, Inc.	Ownership	100.000	Nationwide Mutual Insurance Company	NO	
.0140	Nationwide		13-4212969				Nationwide Life Tax Credit Partners 2002-A, LLC	OH	NIA	Nationwide Life Insurance Company	Other	0.010	Nationwide Mutual Insurance Company	NO	1
.0140	Nationwide		01-0749754				Nationwide Life Tax Credit Partners 2002-B, LLC	OH	NIA	Nationwide Life Insurance Company	Other	0.010	Nationwide Mutual Insurance Company	NO	1
.0140	Nationwide		54-2113175				Nationwide Life Tax Credit Partners 2003-A, LLC	OH	NIA	Nationwide Life Insurance Company	Other	0.010	Nationwide Mutual Insurance Company	NO	1
.0140	Nationwide		58-2672725				Nationwide Life Tax Credit Partners 2003-B, LLC	OH	NIA	Nationwide Life Insurance Company	Other	0.010	Nationwide Mutual Insurance Company	NO	1

STATEMENT AS OF MARCH 31, 2022 OF THE ALLIED INSURANCE COMPANY OF AMERICA

SCHEDULE Y  
PART 1A - DETAIL OF INSURANCE HOLDING COMPANY SYSTEM

1	2	3	4	5	6	7	8	9	10	11	12	13	14	15	16
Group Code	Group Name	NAIC Company Code	ID Number	Federal RSSD	CIK	Name of Securities Exchange if Publicly Traded (U.S. or International)	Names of Parent, Subsidiaries Or Affiliates	Domi-ciliary Location	Relation-ship to Reporting Entity	Directly Controlled by (Name of Entity/Person)	Type of Control (Ownership, Board, Management, Attorney-in-Fact, Influence, Other)	If Control is Ownership Provide Percen-tage	Ultimate Controlling Entity(ies)/Person(s)	Is an SCA Filing Re-quired? (Yes/No)	*
.0140	Nationwide		20-0382144				Nationwide Life Tax Credit Partners 2004-A, LLC	OH	NIA	Nationwide Life Insurance Company	Other	0.010	Nationwide Mutual Insurance Company	NO	1
.0140	Nationwide		20-0745965				Nationwide Life Tax Credit Partners 2004-C, LLC	OH	NIA	Nationwide Life Insurance Company	Other	0.010	Nationwide Mutual Insurance Company	NO	1
.0140	Nationwide		20-1918935				Nationwide Life Tax Credit Partners 2004-F, LLC	OH	NIA	Nationwide Life Insurance Company	Other	0.010	Nationwide Mutual Insurance Company	NO	1
.0140	Nationwide		20-2303694				Nationwide Life Tax Credit Partners 2005-A, LLC	OH	NIA	Nationwide Life Insurance Company	Other	0.010	Nationwide Mutual Insurance Company	NO	1
.0140	Nationwide		20-2303602				Nationwide Life Tax Credit Partners 2005-B, LLC	OH	NIA	Nationwide Life Insurance Company	Other	0.010	Nationwide Mutual Insurance Company	NO	1
.0140	Nationwide		20-2450960				Nationwide Life Tax Credit Partners 2005-C, LLC	OH	NIA	Nationwide Life Insurance Company	Other	0.010	Nationwide Mutual Insurance Company	NO	1
.0140	Nationwide		20-2774223				Nationwide Life Tax Credit Partners 2005-E, LLC	OH	NIA	Nationwide Life Insurance Company	Other	0.010	Nationwide Mutual Insurance Company	NO	1
.0140	Nationwide		21-1288836				Nationwide Life Tax Credit Partners 2007-A, LLC	OH	NIA	Nationwide Life Insurance Company	Other	0.010	Nationwide Mutual Insurance Company	NO	1
.0140	Nationwide		27-1362364				Nationwide Life Tax Credit Partners 2009-I, LLC	OH	NIA	Nationwide Life Insurance Company	Other	0.010	Nationwide Mutual Insurance Company	NO	1
.0140	Nationwide		45-0469525				Nationwide Life Tax Credit Partners No. 1, LLC	OH	NIA	Nationwide Life Insurance Company	Other	0.010	Nationwide Mutual Insurance Company	NO	1
.0140	Nationwide	42110	75-1780981				Nationwide Lloyds	TX	IA	n/a	contract	0.000	Nationwide Mutual Insurance Company	NO	2
.0140	Nationwide		42-1373380				Nationwide Sales Solutions, Inc. (fka	IA	NIA	ALLIED Group, Inc.	Ownership	100.000	Nationwide Mutual Insurance Company	NO	
.0140	Nationwide		75-3191025				Nationwide Member Solutions Agency Inc.)	OH	NIA	Nationwide Mutual Insurance Company	Ownership	100.000	Nationwide Mutual Insurance Company	NO	
.0140	Nationwide	23779	31-4177110				Nationwide Mutual Capital, LLC	OH	IA	Other non-Nationwide	n/a	0.000	Other non-Nationwide	NO	2
.0140	Nationwide	23787	31-4177100				Nationwide Mutual Fire Insurance Company	OH	UDP	Other non-Nationwide	n/a	0.000	Other non-Nationwide	NO	2
.0140	Nationwide		34-2012765				Nationwide Mutual Insurance Company	OH	NIA	Nationwide Mutual Insurance Company	Ownership	100.000	Nationwide Mutual Insurance Company	NO	
.0140	Nationwide	37877	31-0970750				Nationwide Private Equity Fund, LLC	OH	NIA	Nationwide Mutual Insurance Company	Ownership	100.000	Nationwide Mutual Insurance Company	NO	
.0140	Nationwide		31-1486309				Nationwide Property and Casualty Insurance Company	OH	IA	Nationwide Mutual Insurance Company	Ownership	100.000	Nationwide Mutual Insurance Company	NO	
.0140	Nationwide		31-1486309				Nationwide Realty Investors, Ltd.	OH	NIA	Nationwide Mutual Insurance Company	Ownership	97.000	Nationwide Mutual Insurance Company	NO	1
.0140	Nationwide		31-1486309				Nationwide Realty Investors, Ltd.	OH	NIA	Nationwide Indemnity Company	Ownership	3.000	Nationwide Mutual Insurance Company	NO	1
.0140	Nationwide		31-1486309				Nationwide Realty Management, LLC	OH	NIA	Nationwide Realty Investors, Ltd.	Ownership	100.000	Nationwide Mutual Insurance Company	NO	
.0140	Nationwide						Nationwide Realty Services, Ltd.	OH	NIA	Nationwide Mutual Insurance Company	Ownership	100.000	Nationwide Mutual Insurance Company	NO	
.0140	Nationwide		73-0948330				Nationwide Retirement Solutions, Inc.	DE	NIA	NFS Distributors, Inc.	Ownership	100.000	Nationwide Mutual Insurance Company	NO	
.0140	Nationwide		83-2250056				Nationwide Life and Annuity Insurance Company	OH	NIA	Nationwide Mutual Insurance Company	Ownership	100.000	Nationwide Mutual Insurance Company	NO	
.0140	Nationwide		36-2434406				Nationwide SBL, LLC	OH	NIA	NFS Distributors, Inc.	Ownership	100.000	Nationwide Mutual Insurance Company	NO	
.0140	Nationwide		31-4177100				Nationwide Securities, LLC	OH	NIA	Nationwide Mutual Insurance Company	Ownership	100.000	Nationwide Mutual Insurance Company	NO	
.0140	Nationwide		46-1952215				Nationwide Services Company, LLC	OH	NIA	Nationwide Mutual Insurance Company	Ownership	0.010	Nationwide Mutual Insurance Company	NO	1
.0140	Nationwide		46-1971926				Nationwide Tax Credit Partners 2013-A, LLC	OH	NIA	Nationwide Life Insurance Company	Other	0.010	Nationwide Mutual Insurance Company	NO	1
.0140	Nationwide		31-1592130	2729677			Nationwide Tax Credit Partners 2013-B, LLC	OH	NIA	Nationwide Life Insurance Company	Other	0.010	Nationwide Mutual Insurance Company	NO	1
.0140	Nationwide		20-5976272				Nationwide Trust Company, FSB	US	OTH	Nationwide Financial Services, Inc.	Ownership	100.000	Nationwide Mutual Insurance Company	NO	2
.0140	Nationwide		31-0871532				Nationwide Ventures, LLC	OH	NIA	Nationwide Mutual Insurance Company	Ownership	100.000	Nationwide Mutual Insurance Company	NO	
.0140	Nationwide		85-4193218				NBS Insurance Agency, Inc.	OH	IA	Nationwide Mutual Insurance Company	Ownership	100.000	Nationwide Mutual Insurance Company	NO	
.0140	Nationwide		11-3651828				NCS Arizona, LLC	OH	NIA	Nationwide Mutual Insurance Company	Ownership	100.000	Nationwide Mutual Insurance Company	NO	
.0140	Nationwide		31-1630871				ND La Quinta Partners, LLC	DE	NIA	Nationwide Mutual Insurance Company	Ownership	95.000	Nationwide Mutual Insurance Company	NO	1
.0140	Nationwide		82-5195340				NFS Distributors, Inc.	DE	NIA	Nationwide Realty Investors, Ltd.	Ownership	100.000	Nationwide Mutual Insurance Company	NO	
.0140	Nationwide		82-5194959				NLIC REO Holdings, LLC	OH	NIA	Nationwide Financial Services, Inc.	Ownership	100.000	Nationwide Mutual Insurance Company	NO	
.0140	Nationwide		46-3762545				NMIC REO Holdings, LLC	OH	NIA	Nationwide Life Insurance Company	Ownership	100.000	Nationwide Mutual Insurance Company	NO	
.0140	Nationwide		20-4939866				NNOV8, LLC	OH	NIA	Nationwide Mutual Insurance Company	Ownership	100.000	Nationwide Mutual Insurance Company	NO	
.0140	Nationwide		31-1486309				North of Third, LLC	OH	NIA	Nationwide Mutual Insurance Company	Ownership	100.000	Nationwide Mutual Insurance Company	NO	
.0140	Nationwide		31-1486309				NRI Arena, LLC	OH	NIA	NRI Equity Land Investments, LLC	Ownership	100.000	Nationwide Mutual Insurance Company	NO	
.0140	Nationwide		31-1486309				NRI Brooksedge, LLC	OH	NIA	Nationwide Realty Investors, Ltd.	Ownership	100.000	Nationwide Mutual Insurance Company	NO	
.0140	Nationwide		31-1486309				NRI Builders, LLC	OH	NIA	Nationwide Realty Investors, Ltd.	Ownership	100.000	Nationwide Mutual Insurance Company	NO	
.0140	Nationwide		31-1486309				NRI Cavasson, LLC	OH	NIA	Nationwide Realty Investors, Ltd.	Ownership	100.000	Nationwide Mutual Insurance Company	NO	

STATEMENT AS OF MARCH 31, 2022 OF THE ALLIED INSURANCE COMPANY OF AMERICA

SCHEDULE Y

PART 1A - DETAIL OF INSURANCE HOLDING COMPANY SYSTEM

1	2	3	4	5	6	7	8	9	10	11	12	13	14	15	16
Group Code	Group Name	NAIC Company Code	ID Number	Federal RSSD	CIK	Name of Securities Exchange if Publicly Traded (U.S. or International)	Names of Parent, Subsidiaries Or Affiliates	Domi-ciliary Location	Relation-ship to Reporting Entity	Directly Controlled by (Name of Entity/Person)	Type of Control (Ownership, Board, Management, Attorney-in-Fact, Influence, Other)	If Control is Ownership Provide Percen-tage	Ultimate Controlling Entity(ies)/Person(s)	Is an SCA Filing Re-quired? (Yes/No)	*
.0140	Nationwide		31-1486309				NRI Communities/Harris Blvd., LLC	OH	NIA	Nationwide Realty Investors, Ltd.	Ownership	100.000	Nationwide Mutual Insurance Company	.NO.	
.0140	Nationwide		31-1486309				NRI Corporate Housing, LLC	OH	NIA	Nationwide Realty Investors, Ltd.	Ownership	100.000	Nationwide Mutual Insurance Company	.NO.	
.0140	Nationwide		31-1486309				NRI Cramer Creek, LLC	OH	NIA	Nationwide Realty Investors, Ltd.	Ownership	100.000	Nationwide Mutual Insurance Company	.NO.	
.0140	Nationwide		20-4939866				NRI Equity Land Investments, LLC	OH	NIA	Nationwide Realty Investors, Ltd.	Ownership	80.000	Nationwide Mutual Insurance Company	.NO.	1
.0140	Nationwide		26-0212217				NRI Equity Tampa, LLC	OH	NIA	Nationwide Realty Investors, Ltd.	Ownership	100.000	Nationwide Mutual Insurance Company	.NO.	
.0140	Nationwide		31-1486309				NRI Office Ventures, Ltd.	OH	NIA	Nationwide Realty Investors, Ltd.	Ownership	100.000	Nationwide Mutual Insurance Company	.NO.	
.0140	Nationwide		31-1580283				NRI Telecom, LLC	OH	NIA	NID Investments, LLC	Ownership	100.000	Nationwide Mutual Insurance Company	.NO.	
.0140	Nationwide		31-1486309				NRI-Rivulon, LLC	OH	NIA	Nationwide Realty Investors, Ltd.	Ownership	100.000	Nationwide Mutual Insurance Company	.NO.	
.0140	Nationwide		90-0729552				NTCIF-2011, LLC	OH	NIA	Nationwide Mutual Insurance Company	Ownership	50.000	Nationwide Mutual Insurance Company	.NO.	1
.0140	Nationwide		90-0729552				NTCIF-2011, LLC	OH	NIA	Nationwide Mutual Fire Insurance Company	Ownership	50.000	Nationwide Mutual Insurance Company	.NO.	1
.0140	Nationwide		27-4700627				NTCP 2011-A, LLC	OH	OTH	Nationwide Life Insurance Company	Other	0.010	Nationwide Mutual Insurance Company	.NO.	2
.0140	Nationwide		46-0741029				NTCP 2012-A, LLC	OH	OTH	Nationwide Life Insurance Company	Other	0.010	Nationwide Mutual Insurance Company	.NO.	2
.0140	Nationwide		46-3309896				NTCP 2013-C, LLC	OH	OTH	Nationwide Mutual Insurance Company	Other	0.010	Nationwide Mutual Insurance Company	.NO.	2
.0140	Nationwide		46-4111078				NTCP 2014-A, LLC	OH	OTH	Nationwide Life Insurance Company	Other	0.010	Nationwide Mutual Insurance Company	.NO.	2
.0140	Nationwide		47-1404116				NTCP 2014-B, LLC	OH	OTH	Nationwide Life Insurance Company	Other	0.010	Nationwide Mutual Insurance Company	.NO.	2
.0140	Nationwide		47-1413242				NTCP 2014-C, LLC	OH	OTH	Nationwide Life Insurance Company	Other	0.010	Nationwide Mutual Insurance Company	.NO.	2
.0140	Nationwide		47-3909345				NTCP 2015-A, LLC	OH	OTH	Nationwide Life Insurance Company	Other	0.010	Nationwide Mutual Insurance Company	.NO.	2
.0140	Nationwide		47-4148470				NTCP 2015-B, LLC	OH	OTH	Nationwide Life Insurance Company	Other	0.010	Nationwide Mutual Insurance Company	.NO.	2
.0140	Nationwide		81-3836925				NTCP 2016-A, LLC	OH	NIA	Nationwide Mutual Insurance Company	Ownership	100.000	Nationwide Mutual Insurance Company	.NO.	
.0140	Nationwide		82-2015065				NTCP 2017-A, LLC	OH	NIA	Nationwide Life Insurance Company	Ownership	100.000	Nationwide Mutual Insurance Company	.NO.	
.0140	Nationwide		84-1969518				NW Fyrebyrd, LLC	OH	NIA	NNOV8, LLC	Ownership	100.000	Nationwide Mutual Insurance Company	.NO.	
.0140	Nationwide		85-3363961				NW Next, LLC	OH	NIA	Nationwide Mutual Insurance Company	Ownership	100.000	Nationwide Mutual Insurance Company	.NO.	
.0140	Nationwide		81-0936428				NW Private Debt, LLC	OH	NIA	Nationwide Mutual Insurance Company	Ownership	100.000	Nationwide Mutual Insurance Company	.NO.	
.0140	Nationwide		26-1903919				NW REI, LLC	DE	NIA	Nationwide Mutual Insurance Company	Ownership	100.000	Nationwide Mutual Insurance Company	.NO.	
.0140	Nationwide		87-1087011				NW-Asheville, LLC	OH	NIA	Nationwide Mutual Insurance Company	Ownership	100.000	Nationwide Mutual Insurance Company	.NO.	
													Nationwide Mutual Fire Insurance		
.0140	Nationwide		84-3942108				NW-Beloit, LLC	OH	NIA	Nationwide Mutual Fire Insurance Company	Ownership	100.000	Company	.NO.	
.0140	Nationwide		87-0847675				NW-Broadway at Surf, LLC	OH	NIA	Nationwide Mutual Insurance Company	Ownership	100.000	Nationwide Mutual Insurance Company	.NO.	
													Nationwide Mutual Fire Insurance		
.0140	Nationwide		83-4513883				NW-Carothers, LLC	OH	NIA	Nationwide Mutual Fire Insurance Company	Ownership	100.000	Company	.NO.	
.0140	Nationwide		87-3648595				NW-Corazon, LLC	OH	NIA	Nationwide Life Insurance Company	Ownership	100.000	Nationwide Mutual Insurance Company	.NO.	
.0140	Nationwide		84-2920247				NW-Cranberry, LLC	OH	NIA	Nationwide Life Insurance Company	Ownership	100.000	Nationwide Mutual Insurance Company	.NO.	
.0140	Nationwide		86-3529884				NW-Englewood, LLC	OH	NIA	Nationwide Life Insurance Company	Ownership	100.000	Nationwide Mutual Insurance Company	.NO.	
.0140	Nationwide		84-4388876				NW-Escalante, LLC	OH	NIA	Nationwide Mutual Insurance Company	Ownership	100.000	Nationwide Mutual Insurance Company	.NO.	
.0140	Nationwide		86-1538532				NW-Escalante II, LLC	OH	NIA	Nationwide Mutual Insurance Company	Ownership	100.000	Nationwide Mutual Insurance Company	.NO.	
.0140	Nationwide		31-1580283				NWD 205 Vine, LLC	OH	NIA	NID Investments, LLC	Ownership	100.000	Nationwide Mutual Insurance Company	.NO.	
.0140	Nationwide		31-1580283				NWD 225 Nationwide, LLC	OH	NIA	NID Investments, LLC	Ownership	100.000	Nationwide Mutual Insurance Company	.NO.	
.0140	Nationwide		31-1580283				NWD 230 West, LLC	OH	NIA	NID Investments, LLC	Ownership	100.000	Nationwide Mutual Insurance Company	.NO.	
.0140	Nationwide		31-1580283				NWD 240 Nationwide, LLC	OH	NIA	NID Investments, LLC	Ownership	100.000	Nationwide Mutual Insurance Company	.NO.	
.0140	Nationwide		31-1580283				NWD 250 Brodbelt, LLC	OH	NIA	NID Investments, LLC	Ownership	100.000	Nationwide Mutual Insurance Company	.NO.	
.0140	Nationwide		31-1580283				NWD 250 West, LLC	OH	NIA	NID Investments, LLC	Ownership	100.000	Nationwide Mutual Insurance Company	.NO.	
.0140	Nationwide		31-1580283				NWD 265 Neil, LLC	OH	NIA	NID Investments, LLC	Ownership	100.000	Nationwide Mutual Insurance Company	.NO.	
.0140	Nationwide		31-1580283				NWD 275 Marconi, LLC	OH	NIA	NID Investments, LLC	Ownership	100.000	Nationwide Mutual Insurance Company	.NO.	
.0140	Nationwide		31-1580283				NWD 300 Neil, LLC	OH	NIA	NID Investments, LLC	Ownership	100.000	Nationwide Mutual Insurance Company	.NO.	
.0140	Nationwide		31-1580283				NWD 300 Spring, LLC	OH	NIA	NID Investments, LLC	Ownership	100.000	Nationwide Mutual Insurance Company	.NO.	
.0140	Nationwide		31-1580283				NWD 355 McConnell, LLC	OH	NIA	NID Investments, LLC	Ownership	100.000	Nationwide Mutual Insurance Company	.NO.	
.0140	Nationwide		31-1580283				NWD 425 Nationwide, LLC	OH	NIA	NID Investments, LLC	Ownership	100.000	Nationwide Mutual Insurance Company	.NO.	
.0140	Nationwide		31-1580283				NWD 500 Nationwide, LLC	OH	NIA	NID Investments, LLC	Ownership	100.000	Nationwide Mutual Insurance Company	.NO.	
.0140	Nationwide		31-1580283				NWD Arena Crossing, LLC	OH	NIA	NID Investments, LLC	Ownership	100.000	Nationwide Mutual Insurance Company	.NO.	
.0140	Nationwide		31-1580283				NWD Arena District I, LLC	OH	NIA	NID Investments, LLC	Ownership	100.000	Nationwide Mutual Insurance Company	.NO.	
.0140	Nationwide		31-1580283				NWD Arena District II, LLC	OH	NIA	NID Investments, LLC	Ownership	100.000	Nationwide Mutual Insurance Company	.NO.	
.0140	Nationwide		31-1580283				NWD Arena District MM, LLC	OH	NIA	NID Investments, LLC	Ownership	100.000	Nationwide Mutual Insurance Company	.NO.	
.0140	Nationwide		31-1580283				NWD Arena District PW, LLC	OH	NIA	NID Investments, LLC	Ownership	100.000	Nationwide Mutual Insurance Company	.NO.	
.0140	Nationwide		31-1580283				NWD Arena District V, LLC	OH	NIA	NID Investments, LLC	Ownership	100.000	Nationwide Mutual Insurance Company	.NO.	

STATEMENT AS OF MARCH 31, 2022 OF THE ALLIED INSURANCE COMPANY OF AMERICA

SCHEDULE Y  
PART 1A - DETAIL OF INSURANCE HOLDING COMPANY SYSTEM

1	2	3	4	5	6	7	8	9	10	11	12	13	14	15	16
Group Code	Group Name	NAIC Company Code	ID Number	Federal RSSD	CIK	Name of Securities Exchange if Publicly Traded (U.S. or International)	Names of Parent, Subsidiaries Or Affiliates	Domi-ciliary Location	Relation-ship to Reporting Entity	Directly Controlled by (Name of Entity/Person)	Type of Control (Ownership, Board, Management, Attorney-in-Fact, Influence, Other)	If Control is Ownership Provide Per-centage	Ultimate Controlling Entity(ies)/Person(s)	Is an SCA Filing Re-quired? (Yes/No)	*
.0140	Nationwide		31-1580283				NWD Athletic Club, LLC	OH	NIA	NWD Investments, LLC	Ownership	100.000	Nationwide Mutual Insurance Company	NO	
.0140	Nationwide		31-1580283				NWD Brodbelt, LLC	OH	NIA	NWD Investments, LLC	Ownership	100.000	Nationwide Mutual Insurance Company	NO	
.0140	Nationwide		30-0876022				NWD Franklinton, LLC	OH	NIA	Nationwide Realty Investors, Ltd.	Ownership	80.000	Nationwide Mutual Insurance Company	NO	1
.0140	Nationwide		31-4118665				NWD HP, LLC	OH	NIA	NWD Investments, LLC	Ownership	75.000	Nationwide Mutual Insurance Company	NO	1
.0140	Nationwide		31-1580283				NWD Investments, LLC	OH	NIA	Nationwide Realty Investors, Ltd.	Ownership	80.000	Nationwide Mutual Insurance Company	NO	1
.0140	Nationwide		31-1486309				NWGH, LLC	OH	NIA	Nationwide Realty Investors, Ltd.	Ownership	75.000	Nationwide Mutual Insurance Company	NO	1
.0140	Nationwide		87-3124154				NW-Gallatin, LLC	OH	NIA	Nationwide Life Insurance Company	Ownership	100.000	Nationwide Mutual Insurance Company	NO	
.0140	Nationwide		85-1262262				NW-Gator Walk, LLC	OH	NIA	Nationwide Mutual Insurance Company	Ownership	100.000	Nationwide Mutual Insurance Company	NO	
.0140	Nationwide		86-2431839				NW-Hub13, LLC	OH	NIA	Nationwide Mutual Insurance Company	Ownership	100.000	Nationwide Mutual Insurance Company	NO	
.0140	Nationwide		47-2482818				NW-Jasper WAG, LLC	OH	NIA	NW REI, LLC	Ownership	100.000	Nationwide Mutual Insurance Company	NO	
.0140	Nationwide		87-3767006				NW-Kingsbury, LLC	OH	NIA	Nationwide Life Insurance Company	Ownership	100.000	Nationwide Mutual Insurance Company	NO	
.0140	Nationwide		81-5146596				NW-Logan, LLC	OH	NIA	NW REI, LLC	Ownership	100.000	Nationwide Mutual Insurance Company	NO	
.0140	Nationwide		87-1565013				NW-Midtown, LLC	OH	NIA	NW REI, LLC	Ownership	100.000	Nationwide Mutual Insurance Company	NO	
.0140	Nationwide		85-1246853				NW-Oakbrook, LLC	OH	NIA	Nationwide Life and Annuity Insurance Company	Ownership	100.000	Nationwide Mutual Insurance Company	NO	
.0140	Nationwide		83-2260477				NW-ORBDP, LLC	OH	NIA	NW REI (NMFC), LLC	Ownership	100.000	Nationwide Mutual Insurance Company	NO	
.0140	Nationwide		46-2469044				NW-Portales, LLC	OH	NIA	NW REI, LLC	Ownership	100.000	Nationwide Mutual Insurance Company	NO	
.0140	Nationwide		47-2449044				NW-Promenade at Madison, LLC	OH	NIA	NW REI, LLC	Ownership	100.000	Nationwide Mutual Insurance Company	NO	
.0140	Nationwide		83-2173918				NW-Radius, LLC	OH	NIA	NW REI (NLIC), LLC	Ownership	100.000	Nationwide Mutual Insurance Company	NO	
.0140	Nationwide		87-1367836				NW-Rancho, LLC	OH	NIA	Nationwide Life Insurance Company	Ownership	100.000	Nationwide Mutual Insurance Company	NO	
.0140	Nationwide		88-1405151				NW-Riverchase, LLC	OH	NIA	Nationwide Life Insurance Company	Ownership	100.000	Nationwide Mutual Insurance Company	NO	
.0140	Nationwide		86-3702669				NW-RPG Cranberry, LLC	OH	NIA	Nationwide Mutual Insurance Company	Ownership	100.000	Nationwide Mutual Insurance Company	NO	
.0140	Nationwide		87-0890277				NW-Ruby, LLC	OH	NIA	Nationwide Life Insurance Company	Ownership	100.000	Nationwide Mutual Insurance Company	NO	
.0140	Nationwide		87-3273918				NW-San Marco, LLC	OH	NIA	Nationwide Life Insurance Company	Ownership	100.000	Nationwide Mutual Insurance Company	NO	
.0140	Nationwide		87-3289289				NW-San Pablo, LLC	OH	NIA	Nationwide Mutual Insurance Company	Ownership	100.000	Nationwide Mutual Insurance Company	NO	
.0140	Nationwide		84-4326171				NW-Southbank, LLC	OH	NIA	Nationwide Mutual Insurance Company	Ownership	100.000	Nationwide Mutual Insurance Company	NO	
.0140	Nationwide		81-3212025				NW-Springfield, LLC	OH	NIA	Nationwide Mutual Insurance Company	Ownership	100.000	Nationwide Mutual Insurance Company	NO	
.0140	Nationwide		85-0536537				NW-Sweetwater, LLC	OH	NIA	Nationwide Life Insurance Company	Ownership	100.000	Nationwide Mutual Insurance Company	NO	
.0140	Nationwide		81-1603024				NW REI (NLAIC), LLC	OH	NIA	Company	Ownership	100.000	Nationwide Mutual Insurance Company	NO	
.0140	Nationwide		81-1619428				NW REI (NLIC), LLC	OH	NIA	Nationwide Life Insurance Company	Ownership	100.000	Nationwide Mutual Insurance Company	NO	
.0140	Nationwide		81-1861190				NW REI (NMFC), LLC	OH	NIA	Nationwide Mutual Fire Insurance Company	Ownership	100.000	Nationwide Mutual Insurance Company	NO	
.0140	Nationwide		31-0947092				OCH Company, LLC	OH	NIA	Nationwide Realty Investors, Ltd.	Ownership	100.000	Nationwide Mutual Insurance Company	NO	
.0140	Nationwide		26-0263012				Old Track Street Owners Association, Inc.	OH	OTH	Other non-Nationwide	n/a	0.000	Other non-Nationwide	NO	2
.0140	Nationwide	13999	27-1712056				Olentangy Reinsurance, LLC	VT	IA	Nationwide Life and Annuity Insurance Company	Ownership	100.000	Nationwide Mutual Insurance Company	NO	
.0140	Nationwide		47-1923444				Nationwide Agent Risk Purchasing Group, Inc. (fka On Your Side Nationwide Insurance Agency, Inc.)	OH	NIA	THI Holdings (Delaware), Inc.	Ownership	100.000	Nationwide Mutual Insurance Company	NO	
.0140	Nationwide		31-1486309				Perimeter A, Ltd.	OH	NIA	Nationwide Realty Investors, Ltd.	Ownership	100.000	Nationwide Mutual Insurance Company	NO	
.0140	Nationwide		20-4939866				Rail Street Parking, LLC	OH	NIA	NRI Equity Land Investments, LLC	Ownership	100.000	Nationwide Mutual Insurance Company	NO	
.0140	Nationwide		75-2938844				Registered Investment Advisors Services, Inc.								
.0140	Nationwide		82-0549218				Retention Alternatives Ltd.	TX	NIA	Nationwide Financial Services, Inc.	Ownership	100.000	Nationwide Mutual Insurance Company	NO	
.0140	Nationwide		31-1486309				Rivulon Hotel I, LLC	BMJ	IA	Nationwide Mutual Fire Insurance Company	Ownership	100.000	Nationwide Mutual Insurance Company	NO	
.0140	Nationwide		31-1486309				Rivulon Hotel II, LLC	OH	NIA	NRI-Rivulon, LLC	Ownership	100.000	Nationwide Mutual Insurance Company	NO	
.0140	Nationwide	15580	31-1117969				Scottsdale Indemnity Company	OH	NIA	NRI-Rivulon, LLC	Ownership	100.000	Nationwide Mutual Insurance Company	NO	
.0140	Nationwide	41297	31-1024978				Scottsdale Insurance Company	OH	IA	Nationwide Mutual Insurance Company	Ownership	100.000	Nationwide Mutual Insurance Company	NO	
.0140	Nationwide	10672	86-0835870				Scottsdale Surplus Lines Insurance Company	AZ	IA	Scottsdale Insurance Company	Ownership	100.000	Nationwide Mutual Insurance Company	NO	
.0140	Nationwide		31-1610040				The Waterfront Partners, LLC	OH	NIA	Nationwide Realty Investors, Ltd.	Ownership	50.000	Nationwide Mutual Insurance Company	NO	1
.0140	Nationwide		52-2031677				THI Holdings (Delaware), Inc.	DE	NIA	Nationwide Mutual Insurance Company	Ownership	100.000	Nationwide Mutual Insurance Company	YES	
.0140	Nationwide	36269	86-0619597				Titan Insurance Company	MI	IA	THI Holdings (Delaware), Inc.	Ownership	100.000	Nationwide Mutual Insurance Company	NO	
.0140	Nationwide		75-1284530				Titan Insurance Services, Inc.	TX	IA	THI Holdings (Delaware), Inc.	Ownership	100.000	Nationwide Mutual Insurance Company	NO	
.0140	Nationwide		33-0160222				V.P.I. Services, Inc.	CA	IA	Veterinary Pet Insurance Company	Ownership	100.000	Nationwide Mutual Insurance Company	NO	



SCHEDULE Y  
PART 1A - DETAIL OF INSURANCE HOLDING COMPANY SYSTEM

1	2	3	4	5	6	7	8	9	10	11	12	13	14	15	16
Group Code	Group Name	NAIC Company Code	ID Number	Federal RSSD	CIK	Name of Securities Exchange if Publicly Traded (U.S. or International)	Names of Parent, Subsidiaries Or Affiliates	Domi-ciliary Loca-tion	Relation-ship to Reporting Entity	Directly Controlled by (Name of Entity/Person)	Type of Control (Ownership, Board, Management, Attorney-in-Fact, Influence, Other)	If Control is Owner-ship Provide Percen-tage	Ultimate Controlling Entity(ies)/Person(s)	Is an SCA Filing Re-quired? (Yes/No)	*
..0140 ...	Nationwide .....	..42285 .....	95-3750113 .....	.....	.....	.....	Veterinary Pet Insurance Company .....	..OH.....	..IA.....	Scottsdale Insurance Company .....	Ownership.....	..100.000 .....	Nationwide Mutual Insurance Company ....	...NO.....	.....
..0140 ...	Nationwide .....	..42889 .....	34-1394913 .....	.....	.....	.....	Victoria Fire & Casualty Company .....	..OH.....	..IA.....	THI Holdings (Delaware), Inc. ....	Ownership.....	..100.000 .....	Nationwide Mutual Insurance Company ....	...NO.....	.....
..0140 ...	Nationwide .....	..10105 .....	34-1777972 .....	.....	.....	.....	Victoria Select Insurance Company .....	..OH.....	..IA.....	Victoria Fire & Casualty Insurance Company .....	Ownership.....	..100.000 .....	Nationwide Mutual Insurance Company ....	...NO.....	.....
..0140 ...	Nationwide .....	.....	31-1486309 .....	.....	.....	.....	Wellington Park, LLC .....	..OH.....	..NIA.....	Nationwide Realty Investors, Ltd. ....	Ownership.....	..100.000 .....	Nationwide Mutual Insurance Company ....	...NO.....	.....

Asterisk	Explanation
1 .....	For the purposes of this schedule, Nationwide presumed control of these entities because they are owned by at least 10% and are not wholly-owned by a Nationwide entity. ....
2 .....	Other ownership indicates a non-ownership circumstance by a Nationwide entity. ....

PART 1 - LOSS EXPERIENCE

Line of Business		Current Year to Date			4
		1 Direct Premiums Earned	2 Direct Losses Incurred	3 Direct Loss Percentage	Prior Year to Date Direct Loss Percentage
1.	Fire .....	2,681	1,297	48.4	70.9
2.1	Allied Lines .....	5,993	1,328	22.2	(12.1)
2.2	Multiple peril crop .....				
2.3	Federal flood .....				
2.4	Private crop .....				
2.5	Private flood .....				
3.	Farmowners multiple peril .....				
4.	Homeowners multiple peril .....				
5.	Commercial multiple peril .....	37,534,017	20,128,157	53.6	110.7
6.	Mortgage guaranty .....				
8.	Ocean marine .....				
9.	Inland marine .....				
10.	Financial guaranty .....				
11.1	Medical professional liability - occurrence .....				
11.2	Medical professional liability - claims-made .....				
12.	Earthquake .....	84,586			
13.1	Comprehensive (hospital and medical) individual .....				
13.2	Comprehensive (hospital and medical) group .....				
14.	Credit accident and health .....				
15.1	Vision only .....				
15.2	Dental only .....				
15.3	Disability income .....				
15.4	Medicare supplement .....				
15.5	Medicaid Title XIX .....				
15.6	Medicare Title XVIII .....				
15.7	Long-term care .....				
15.8	Federal employees health benefits plan .....				
15.9	Other health .....				
16.	Workers' compensation .....				
17.1	Other liability - occurrence .....	32	15	46.9	5.6
17.2	Other liability - claims-made .....				
17.3	Excess workers' compensation .....				
18.1	Products liability - occurrence .....				
18.2	Products liability - claims-made .....				
19.1	Private passenger auto no-fault (personal injury protection) .....				
19.2	Other private passenger auto liability .....	1,255			
19.3	Commercial auto no-fault (personal injury protection) .....	438,034	968,011	221.0	366.8
19.4	Other commercial auto liability .....	21,521,440	13,181,383	61.2	71.2
21.1	Private passenger auto physical damage .....				
21.2	Commercial auto physical damage .....	5,579,775	4,110,668	73.7	64.2
22.	Aircraft (all perils) .....				
23.	Fidelity .....				
24.	Surety .....				
26.	Burglary and theft .....	9			20.0
27.	Boiler and machinery .....	810,750	427,919	52.8	28.6
28.	Credit .....				
29.	International .....				
30.	Warranty .....				
31.	Reinsurance - Nonproportional Assumed Property .....	XXX	XXX	XXX	XXX
32.	Reinsurance - Nonproportional Assumed Liability .....	XXX	XXX	XXX	XXX
33.	Reinsurance - Nonproportional Assumed Financial Lines .....	XXX	XXX	XXX	XXX
34.	Aggregate write-ins for other lines of business .....				
35.	Totals	65,978,572	38,818,778	58.8	95.3
DETAILS OF WRITE-INS					
3401.	.....				
3402.	.....				
3403.	.....				
3498.	Summary of remaining write-ins for Line 34 from overflow page .....				
3499.	Totals (Lines 3401 through 3403 plus 3498)(Line 34 above)				

STATEMENT AS OF MARCH 31, 2022 OF THE ALLIED INSURANCE COMPANY OF AMERICA

PART 2 - DIRECT PREMIUMS WRITTEN

Line of Business		1 Current Quarter	2 Current Year to Date	3 Prior Year Year to Date
1.	Fire .....	2,646	2,646	869
2.1	Allied Lines .....	8,617	8,617	11,668
2.2	Multiple peril crop .....			
2.3	Federal flood .....			
2.4	Private crop .....			
2.5	Private flood .....			
3.	Farmowners multiple peril .....			
4.	Homeowners multiple peril .....			
5.	Commercial multiple peril .....	19,798,331	19,798,331	46,413,463
6.	Mortgage guaranty .....			
8.	Ocean marine .....			
9.	Inland marine .....			
10.	Financial guaranty .....			
11.1	Medical professional liability - occurrence .....			
11.2	Medical professional liability - claims-made .....			
12.	Earthquake .....	36,480	36,480	107,540
13.1	Comprehensive (hospital and medical) individual .....			
13.2	Comprehensive (hospital and medical) group .....			
14.	Credit accident and health .....			
15.1	Vision only .....			
15.2	Dental only .....			
15.3	Disability income .....			
15.4	Medicare supplement .....			
15.5	Medicaid Title XIX .....			
15.6	Medicare Title XVIII .....			
15.7	Long-term care .....			
15.8	Federal employees health benefits plan .....			
15.9	Other health .....			
16.	Workers' compensation .....			
17.1	Other liability - occurrence .....	33	33	17
17.2	Other liability - claims-made .....			
17.3	Excess workers' compensation .....			
18.1	Products liability - occurrence .....			
18.2	Products liability - claims-made .....			
19.1	Private passenger auto no-fault (personal injury protection) .....			
19.2	Other private passenger auto liability .....	1,255	1,255	506
19.3	Commercial auto no-fault (personal injury protection) .....	316,612	316,612	463,873
19.4	Other commercial auto liability .....	17,026,462	17,026,462	23,826,652
21.1	Private passenger auto physical damage .....			
21.2	Commercial auto physical damage .....	4,448,508	4,448,508	6,592,019
22.	Aircraft (all perils) .....			
23.	Fidelity .....			
24.	Surety .....			
26.	Burglary and theft .....	10	10	5
27.	Boiler and machinery .....	423,202	423,202	1,056,226
28.	Credit .....			
29.	International .....			
30.	Warranty .....			
31.	Reinsurance - Nonproportional Assumed Property .....	XXX	XXX	XXX
32.	Reinsurance - Nonproportional Assumed Liability .....	XXX	XXX	XXX
33.	Reinsurance - Nonproportional Assumed Financial Lines .....	XXX	XXX	XXX
34.	Aggregate write-ins for other lines of business .....			
35.	Totals	42,062,156	42,062,156	78,472,838
DETAILS OF WRITE-INS				
3401.	.....			
3402.	.....			
3403.	.....			
3498.	Summary of remaining write-ins for Line 34 from overflow page .....			
3499.	Totals (Lines 3401 through 3403 plus 3498)(Line 34 above)			

STATEMENT AS OF MARCH 31, 2022 OF THE ALLIED INSURANCE COMPANY OF AMERICA

PART 3 (000 omitted)

LOSS AND LOSS ADJUSTMENT EXPENSE RESERVES SCHEDULE

	1	2	3	4	5	6	7	8	9	10	11	12	13
Years in Which Losses Occurred	Prior Year-End Known Case Loss and LAE Reserves	Prior Year-End IBNR Loss and LAE Reserves	Total Prior Year-End Loss and LAE Reserves (Cols. 1+2)	2022 Loss and LAE Payments on Claims Reported as of Prior Year-End	2022 Loss and LAE Payments on Claims Unreported as of Prior Year-End	Total 2022 Loss and LAE Payments (Cols. 4+5)	Q.S. Date Known Case Loss and LAE Reserves on Claims Reported and Open as of Prior Year End	Q.S. Date Known Case Loss and LAE Reserves on Claims Reported or Reopened Subsequent to Prior Year End	Q.S. Date IBNR Loss and LAE Reserves	Total Q.S. Loss and LAE Reserves (Cols.7+8+9)	Prior Year-End Known Case Loss and LAE Reserves Developed (Savings)/ Deficiency (Cols.4+7 minus Col. 1)	Prior Year-End IBNR Loss and LAE Reserves Developed (Savings)/ Deficiency (Cols. 5+8+9 minus Col. 2)	Prior Year-End Total Loss and LAE Reserve Developed (Savings)/ Deficiency (Cols. 11+12)
1. 2019 + Prior .....													
2. 2020 .....													
3. Subtotals 2020 + Prior .....													
4. 2021 .....													
5. Subtotals 2021 + Prior .....													
6. 2022 .....	XXX	XXX	XXX	XXX			XXX				XXX	XXX	XXX
7. Totals .....													
8. Prior Year-End Surplus As Regards Policyholders	16,508										Col. 11, Line 7 As % of Col. 1 Line 7	Col. 12, Line 7 As % of Col. 2 Line 7	Col. 13, Line 7 As % of Col. 3 Line 7
											1.	2.	3.
											Col. 13, Line 7 As a % of Col. 1 Line 8		
		4.											

STATEMENT AS OF MARCH 31, 2022 OF THE ALLIED INSURANCE COMPANY OF AMERICA

SUPPLEMENTAL EXHIBITS AND SCHEDULES INTERROGATORIES

The following supplemental reports are required to be filed as part of your statement filing. However, in the event that your company does not transact the type of business for which the special report must be filed, your response of NO to the specific interrogatory will be accepted in lieu of filing a "NONE" report and a bar code will be printed below. If the supplement is required of your company but is not being filed for whatever reason enter SEE EXPLANATION and provide an explanation following the interrogatory questions.

	Response
1. Will the Trusteed Surplus Statement be filed with the state of domicile and the NAIC with this statement? .....	NO
2. Will Supplement A to Schedule T (Medical Professional Liability Supplement) be filed with this statement? .....	NO
3. Will the Medicare Part D Coverage Supplement be filed with the state of domicile and the NAIC with this statement? .....	NO
4. Will the Director and Officer Insurance Coverage Supplement be filed with the state of domicile and the NAIC with this statement? .....	NO
AUGUST FILING	
5. Will the regulator-only (non-public) Communication of Internal Control Related Matters Noted in Audit be filed with the state of domicile and electronically with the NAIC (as a regulator-only non-public document) by August 1? The response for 1st and 3rd quarters should be N/A. A NO response resulting with a bar code is only appropriate in the 2nd quarter. ....	N/A

Explanations:

1.
2.
3.
4.

Bar Codes:

1. Trusteed Surplus Statement [Document Identifier 490]
2. Supplement A to Schedule T [Document Identifier 455]
3. Medicare Part D Coverage Supplement [Document Identifier 365]
4. Director and Officer Supplement [Document Identifier 505]



**NONE**

SCHEDULE A - VERIFICATION

Real Estate

	1	2
	Year to Date	Prior Year Ended December 31
1. Book/adjusted carrying value, December 31 of prior year .....		
2. Cost of acquired:		
2.1 Actual cost at time of acquisition .....		
2.2 Additional investment made after acquisition .....		
3. Current year change in encumbrances .....		
4. Total gain (loss) on disposals .....		
5. Deduct amounts received on disposals .....		
6. Total foreign exchange change in book/adjusted carrying value .....		
7. Deduct current year's other than temporary impairment recognized .....		
8. Deduct current year's depreciation .....		
9. Book/adjusted carrying value at the end of current period (Lines 1+2+3+4-5+6-7-8) .....		
10. Deduct total nonadmitted amounts .....		
11. Statement value at end of current period (Line 9 minus Line 10) .....		

SCHEDULE B - VERIFICATION

Mortgage Loans

	1	2
	Year to Date	Prior Year Ended December 31
1. Book value/recorded investment excluding accrued interest, December 31 of prior year .....		
2. Cost of acquired:		
2.1 Actual cost at time of acquisition .....		
2.2 Additional investment made after acquisition .....		
3. Capitalized deferred interest and other .....		
4. Accrual of discount .....		
5. Unrealized valuation increase (decrease) .....		
6. Total gain (loss) on disposals .....		
7. Deduct amounts received on disposals .....		
8. Deduct amortization of premium and mortgage interest paid and commitment fees .....		
9. Total foreign exchange change in book value/recorded investment excluding accrued interest .....		
10. Deduct current year's other than temporary impairment recognized .....		
11. Book value/recorded investment excluding accrued interest at end of current period (Lines 1+2+3+4+5+6-7-8+9-10) .....		
12. Total valuation allowance .....		
13. Subtotal (Line 11 plus Line 12) .....		
14. Deduct total nonadmitted amounts .....		
15. Statement value at end of current period (Line 13 minus Line 14) .....		

SCHEDULE BA - VERIFICATION

Other Long-Term Invested Assets

	1	2
	Year to Date	Prior Year Ended December 31
1. Book/adjusted carrying value, December 31 of prior year .....		
2. Cost of acquired:		
2.1 Actual cost at time of acquisition .....		
2.2 Additional investment made after acquisition .....		
3. Capitalized deferred interest and other .....		
4. Accrual of discount .....		
5. Unrealized valuation increase (decrease) .....		
6. Total gain (loss) on disposals .....		
7. Deduct amounts received on disposals .....		
8. Deduct amortization of premium and depreciation .....		
9. Total foreign exchange change in book/adjusted carrying value .....		
10. Deduct current year's other than temporary impairment recognized .....		
11. Book/adjusted carrying value at end of current period (Lines 1+2+3+4+5+6-7-8+9-10) .....		
12. Deduct total nonadmitted amounts .....		
13. Statement value at end of current period (Line 11 minus Line 12) .....		

SCHEDULE D - VERIFICATION

Bonds and Stocks

	1	2
	Year to Date	Prior Year Ended December 31
1. Book/adjusted carrying value of bonds and stocks, December 31 of prior year .....	11,173,162	11,926,733
2. Cost of bonds and stocks acquired .....	7,536,730	
3. Accrual of discount .....	17,345	63,591
4. Unrealized valuation increase (decrease) .....		
5. Total gain (loss) on disposals .....	(49)	(236)
6. Deduct consideration for bonds and stocks disposed of .....	3,075,744	817,548
7. Deduct amortization of premium .....	2,545	20,341
8. Total foreign exchange change in book/adjusted carrying value .....		
9. Deduct current year's other than temporary impairment recognized .....		
10. Total investment income recognized as a result of prepayment penalties and/or acceleration fees .....		20,963
11. Book/adjusted carrying value at end of current period (Lines 1+2+3+4+5-6-7+8-9+10) .....	15,648,899	11,173,162
12. Deduct total nonadmitted amounts .....		
13. Statement value at end of current period (Line 11 minus Line 12) .....	15,648,899	11,173,162



STATEMENT AS OF MARCH 31, 2022 OF THE ALLIED INSURANCE COMPANY OF AMERICA

**SCHEDULE D - PART 1B**

Showing the Acquisitions, Dispositions and Non-Trading Activity  
During the Current Quarter for all Bonds and Preferred Stock by NAIC Designation

NAIC Designation	1 Book/Adjusted Carrying Value Beginning of Current Quarter	2 Acquisitions During Current Quarter	3 Dispositions During Current Quarter	4 Non-Trading Activity During Current Quarter	5 Book/Adjusted Carrying Value End of First Quarter	6 Book/Adjusted Carrying Value End of Second Quarter	7 Book/Adjusted Carrying Value End of Third Quarter	8 Book/Adjusted Carrying Value December 31 Prior Year
BONDS								
1. NAIC 1 (a) .....	9,924,261	7,536,730	3,075,793	15,053	14,400,251			9,924,261
2. NAIC 2 (a) .....	1,248,898			(253)	1,248,645			1,248,898
3. NAIC 3 (a) .....								
4. NAIC 4 (a) .....								
5. NAIC 5 (a) .....								
6. NAIC 6 (a) .....								
7. Total Bonds	11,173,159	7,536,730	3,075,793	14,800	15,648,896			11,173,159
PREFERRED STOCK								
8. NAIC 1 .....								
9. NAIC 2 .....								
10. NAIC 3 .....								
11. NAIC 4 .....								
12. NAIC 5 .....								
13. NAIC 6 .....								
14. Total Preferred Stock .....								
15. Total Bonds and Preferred Stock	11,173,159	7,536,730	3,075,793	14,800	15,648,896			11,173,159

(a) Book/Adjusted Carrying Value column for the end of the current reporting period includes the following amount of short-term and cash equivalent bonds by NAIC designation:  
NAIC 1 \$ ..... ; NAIC 2 \$ ..... ; NAIC 3 \$ ..... NAIC 4 \$ ..... ; NAIC 5 \$ ..... ; NAIC 6 \$ .....

Schedule DA - Part 1 - Short-Term Investments

**N O N E**

Schedule DA - Verification - Short-Term Investments

**N O N E**

Schedule DB - Part A - Verification - Options, Caps, Floors, Collars, Swaps and Forwards

**N O N E**

Schedule DB - Part B - Verification - Futures Contracts

**N O N E**

Schedule DB - Part C - Section 1 - Replication (Synthetic Asset) Transactions (RSATs) Open

**N O N E**

Schedule DB-Part C-Section 2-Reconciliation of Replication (Synthetic Asset) Transactions Open

**N O N E**

Schedule DB - Verification - Book/Adjusted Carrying Value, Fair Value and Potential Exposure of  
Derivatives

**N O N E**

SCHEDULE E - PART 2 - VERIFICATION

(Cash Equivalents)

	1	2
	Year To Date	Prior Year Ended December 31
1. Book/adjusted carrying value, December 31 of prior year .....	5,356,772	3,187,754
2. Cost of cash equivalents acquired .....	64,423,331	304,585,351
3. Accrual of discount .....		
4. Unrealized valuation increase (decrease) .....		
5. Total gain (loss) on disposals .....		
6. Deduct consideration received on disposals .....	69,532,157	302,416,333
7. Deduct amortization of premium .....		
8. Total foreign exchange change in book/adjusted carrying value .....		
9. Deduct current year's other than temporary impairment recognized .....		
10. Book/adjusted carrying value at end of current period (Lines 1+2+3+4+5-6-7+8-9) .....	247,946	5,356,772
11. Deduct total nonadmitted amounts .....		
12. Statement value at end of current period (Line 10 minus Line 11)	247,946	5,356,772

Schedule A - Part 2 - Real Estate Acquired and Additions Made  
**N O N E**

Schedule A - Part 3 - Real Estate Disposed  
**N O N E**

Schedule B - Part 2 - Mortgage Loans Acquired and Additions Made  
**N O N E**

Schedule B - Part 3 - Mortgage Loans Disposed, Transferred or Repaid  
**N O N E**

Schedule BA - Part 2 - Other Long-Term Invested Assets Acquired and Additions Made  
**N O N E**

Schedule BA - Part 3 - Other Long-Term Invested Assets Disposed, Transferred or Repaid  
**N O N E**

STATEMENT AS OF MARCH 31, 2022 OF THE ALLIED INSURANCE COMPANY OF AMERICA

SCHEDULE D - PART 3

Show All Long-Term Bonds and Stock Acquired During the Current Quarter

1	2	3	4	5	6	7	8	9	10
CUSIP Identification	Description	Foreign	Date Acquired	Name of Vendor	Number of Shares of Stock	Actual Cost	Par Value	Paid for Accrued Interest and Dividends	NAIC Designation, NAIC Designation Modifier and SVO Administrative Symbol
91282C-DW-8 .....	US Treasury Nt 1.750% 01/31/29 .....		02/09/2022 .....	Citigroup .....		2,972,121	3,000,000	1,450	1.A FE .....
91282C-EB-3 .....	US Treasury Nt 1.875% 02/28/29 .....		03/17/2022 .....	Various .....		2,587,265	2,650,000	2,328	1.A FE .....
0109999999. Subtotal - Bonds - U.S. Governments						5,559,386	5,650,000	3,778	XXX
3132DW-C6-8 .....	FHLMC Pool #SD8193 2.000% 01/25/52 .....		01/05/2022 .....	Morgan Stanley & Co LLC .....		1,977,344	2,000,000	556	1.A .....
0909999999. Subtotal - Bonds - U.S. Special Revenues						1,977,344	2,000,000	556	XXX
2509999997. Total - Bonds - Part 3						7,536,730	7,650,000	4,334	XXX
2509999998. Total - Bonds - Part 5						XXX	XXX	XXX	XXX
2509999999. Total - Bonds						7,536,730	7,650,000	4,334	XXX
4509999997. Total - Preferred Stocks - Part 3							XXX		XXX
4509999998. Total - Preferred Stocks - Part 5						XXX	XXX	XXX	XXX
4509999999. Total - Preferred Stocks							XXX		XXX
5989999997. Total - Common Stocks - Part 3							XXX		XXX
5989999998. Total - Common Stocks - Part 5						XXX	XXX	XXX	XXX
5989999999. Total - Common Stocks							XXX		XXX
5999999999. Total - Preferred and Common Stocks							XXX		XXX
6009999999 - Totals						7,536,730	XXX	4,334	XXX

STATEMENT AS OF MARCH 31, 2022 OF THE ALLIED INSURANCE COMPANY OF AMERICA

SCHEDULE D - PART 4

Show All Long-Term Bonds and Stock Sold, Redeemed or Otherwise Disposed of During the Current Quarter

1	2	3	4	5	6	7	8	9	10	Change In Book/Adjusted Carrying Value					16	17	18	19	20	21	22
										11	12	13	14	15							
CUSIP Ident- ification	Description	For- eign	Disposal Date	Name of Purchaser	Number of Shares of Stock	Consid- eration	Par Value	Actual Cost	Prior Year Book/ Adjusted Carrying Value	Unrealized Valuation Increase/ (Decrease)	Current Year's (Amor- tization)/ Accretion	Current Year's Other Than Temporary Impairment Recogn- ized	Total Change in Book/ Adjusted Carrying Value (11 + 12 - 13)	Total Foreign Exchange Change in Book /Adjusted Carrying Value	Book/ Adjusted Carrying Value at Disposal Date	Foreign Exchange Gain (Loss) on Disposal	Realized Gain (Loss) on Disposal	Total Gain (Loss) on Disposal	Bond Interest/ Stock Dividends Received During Year	Stated Con- tractual Maturity Date	NAIC Desig- nation, NAIC Desig- nation Modifier and SVO Admini- strative Symbol
912828-W5-5	U S Treasury Nt 1.875% 02/28/22		02/28/2022	Maturity		3,000,000	3,000,000	3,001,182	3,000,045		(45)		(45)		3,000,000				28,125	02/28/2022	1.A
0109999999. Subtotal - Bonds - U.S. Governments						3,000,000	3,000,000	3,001,182	3,000,045		(45)		(45)		3,000,000				28,125	XXX	XXX
3132D-W-C6-8	FHLMC Pool #SD8193 2.000% 01/25/52		03/01/2022	Paydown		14,649	14,649	14,483			166		166		14,649				39	01/25/2052	1.A
3140KD-G4-6	FNMA Pool #BP5618 2.500% 06/25/50		03/01/2022	Paydown		35,182	35,182	36,592	36,568		(1,386)		(1,386)		35,182				141	06/25/2050	1.A
31400D-6N-9	FNMA Pool #CA6276 2.000% 07/25/50		03/01/2022	Paydown		10,850	10,850	11,095	11,091		(241)		(241)		10,850				37	07/25/2050	1.A
0909999999. Subtotal - Bonds - U.S. Special Revenues						60,681	60,681	62,170	47,659		(1,461)		(1,461)		60,681				217	XXX	XXX
46641W-AW-7	JPMBB Comm Mtg Sec Tr CMBS Ser 2014-C19 C1 ASB 3.584% 04/15/47		03/01/2022	Paydown		15,064	15,064	15,516	15,116		(3)		(3)		15,113		(49)	(49)	93	04/15/2047	1.A
1109999999. Subtotal - Bonds - Industrial and Miscellaneous (Unaffiliated)						15,064	15,064	15,516	15,116		(3)		(3)		15,113		(49)	(49)	93	XXX	XXX
2509999997. Total - Bonds - Part 3						3,075,745	3,075,745	3,078,868	3,062,820		(1,509)		(1,509)		3,075,794		(49)	(49)	28,435	XXX	XXX
2509999998. Total - Bonds - Part 5						XXX	XXX	XXX	XXX	XXX	XXX	XXX	XXX	XXX	XXX	XXX	XXX	XXX	XXX	XXX	XXX
2509999999. Total - Bonds						3,075,745	3,075,745	3,078,868	3,062,820		(1,509)		(1,509)		3,075,794		(49)	(49)	28,435	XXX	XXX
4509999997. Total - Preferred Stocks - Part 3							XXX													XXX	XXX
4509999998. Total - Preferred Stocks - Part 5						XXX	XXX	XXX	XXX	XXX	XXX	XXX	XXX	XXX	XXX	XXX	XXX	XXX	XXX	XXX	XXX
4509999999. Total - Preferred Stocks							XXX													XXX	XXX
5989999997. Total - Common Stocks - Part 3							XXX													XXX	XXX
5989999998. Total - Common Stocks - Part 5						XXX	XXX	XXX	XXX	XXX	XXX	XXX	XXX	XXX	XXX	XXX	XXX	XXX	XXX	XXX	XXX
5989999999. Total - Common Stocks							XXX													XXX	XXX
5999999999. Total - Preferred and Common Stocks							XXX													XXX	XXX
6009999999 - Totals						3,075,745	XXX	3,078,868	3,062,820		(1,509)		(1,509)		3,075,794		(49)	(49)	28,435	XXX	XXX

Schedule DB - Part A - Section 1 - Options, Caps, Floors, Collars, Swaps and Forwards Open  
**N O N E**

Schedule DB - Part B - Section 1 - Futures Contracts Open  
**N O N E**

Schedule DB - Part B - Section 1B - Brokers with whom cash deposits have been made  
**N O N E**

Schedule DB - Part D - Section 1 - Counterparty Exposure for Derivative Instruments Open  
**N O N E**

Schedule DB - Part D-Section 2 - Collateral for Derivative Instruments Open - Pledged By  
**N O N E**

Schedule DB - Part D-Section 2 - Collateral for Derivative Instruments Open - Pledged To  
**N O N E**

Schedule DB - Part E - Derivatives Hedging Variable Annuity Guarantees  
**N O N E**

Schedule DL - Part 1 - Reinvested Collateral Assets Owned  
**N O N E**

Schedule DL - Part 2 - Reinvested Collateral Assets Owned  
**N O N E**

## SCHEDULE E - PART 1 - CASH

[illegible]



## SCHEDULE E - PART 2 - CASH EQUIVALENTS

Show Investments Owned End of Current Quarter

[illegible]