

Replacement and update of .pdf attachment for Schedule Y- Part 1 - Organizational Chart and Attachments.



TITLE INSURANCE COMPANIES - ASSOCIATION EDITION

ANNUAL STATEMENT

FOR THE YEAR ENDED DECEMBER 31, 2021
OF THE CONDITION AND AFFAIRS OF THE

BG Title Guarantee, Inc.

NAIC Group Code

5016

5016

NAIC Company Code

50164

Employer's ID Number

34-0083590

(Current)

(Prior)

Organized under the Laws of

Ohio

, State of Domicile or Port of Entry

OH

Country of Domicile

United States of America

Incorporated/Organized

08/11/1911

Commenced Business

08/11/1911

Statutory Home Office

1330 6th Avenue, 28th Floor

,

New York, NY, US 10019

(Street and Number)

(City or Town, State, Country and Zip Code)

Main Administrative Office

1330 6th Avenue, 28th Floor

(Street and Number)

New York, NY, US 10019

,

212-521-6468

(City or Town, State, Country and Zip Code)

(Area Code) (Telephone Number)

Mail Address

N/A

,

US

(Street and Number or P.O. Box)

(City or Town, State, Country and Zip Code)

Primary Location of Books and Records

N/A

(Street and Number)

US

,

212-521-6468

(City or Town, State, Country and Zip Code)

(Area Code) (Telephone Number)

Internet Website Address

www.bgtitleguarantee.com

Statutory Statement Contact

Daniel Singer

,

212-521-6468

(Name)

(Area Code) (Telephone Number)

Dan.Singer@huntcompanies.com

,

(FAX Number)

(E-mail Address)

OFFICERS

Chief Executive Officer /
Executive Managing Direc
Vice President

Daniel Singer

Norman Essey

Executive Managing
Director/General
Counsel/Secret

Kara Harchuck

OTHER

Claudia Ivey, Senior Vice President

Tyler Van Gundy, Vice President

David Miller, Senior Vice President / Treasurer

Michael Wagon, Vice President

DIRECTORS OR TRUSTEES

James C Hunt

Ryan McCrory

Daniel Singer

Tyler Van Gundy

Clay Parker

State of

Ohio

SS

County of

The officers of this reporting entity being duly sworn, each depose and say that they are the described officers of said reporting entity, and that on the reporting period stated above, all of the herein described assets were the absolute property of the said reporting entity, free and clear from any liens or claims thereon, except as herein stated, and that this statement, together with related exhibits, schedules and explanations therein contained, annexed or referred to, is a full and true statement of all the assets and liabilities and of the condition and affairs of the said reporting entity as of the reporting period stated above, and of its income and deductions therefrom for the period ended, and have been completed in accordance with the NAIC Annual Statement Instructions and Accounting Practices and Procedures manual except to the extent that: (1) state law may differ; or, (2) that state rules or regulations require differences in reporting not related to accounting practices and procedures, according to the best of their information, knowledge and belief, respectively. Furthermore, the scope of this attestation by the described officers also includes the related corresponding electronic filing with the NAIC, when required, that is an exact copy (except for formatting differences due to electronic filing) of the enclosed statement. The electronic filing may be requested by various regulators in lieu of or in addition to the enclosed statement.

Daniel Singer

Chief Executive Officer / Executive Managing
Director

Norman Essey

Vice President

Kara Harchuck

Executive Managing Director/General
Counsel/Secretary

Subscribed and sworn to before me this

day of

a. Is this an original filing?

Yes [] No [X]

b. If no,

1. State the amendment number.....2

2. Date filed07/29/2022

3. Number of pages attached..... 1

ANNUAL STATEMENT FOR THE YEAR 2021 OF THE BG Title Guarantee, Inc.

ASSETS

	Current Year			Prior Year
	1 Assets	2 Nonadmitted Assets	3 Net Admitted Assets (Cols. 1 - 2)	4 Net Admitted Assets
1. Bonds (Schedule D)	0		0	0
2. Stocks (Schedule D):				
2.1 Preferred stocks	0		0	0
2.2 Common stocks	363		363	649,863
3. Mortgage loans on real estate (Schedule B):				
3.1 First liens	21,141,749		21,141,749	28,160,245
3.2 Other than first liens			0	0
4. Real estate (Schedule A):				
4.1 Properties occupied by the company (less \$0 encumbrances)			0	0
4.2 Properties held for the production of income (less \$0 encumbrances)			0	0
4.3 Properties held for sale (less \$0 encumbrances)			0	0
5. Cash (\$18,797,642 , Schedule E - Part 1), cash equivalents (\$0 , Schedule E - Part 2) and short-term investments (\$0 , Schedule DA)	18,797,642		18,797,642	14,905,600
6. Contract loans (including \$ premium notes)			0	0
7. Derivatives (Schedule DB)	0		0	0
8. Other invested assets (Schedule BA)	0		0	0
9. Receivables for securities			0	0
10. Securities lending reinvested collateral assets (Schedule DL)	0		0	0
11. Aggregate write-ins for invested assets	0	0	0	0
12. Subtotals, cash and invested assets (Lines 1 to 11)	39,939,754	0	39,939,754	43,715,708
13. Title plants less \$ charged off (for Title insurers only)	0		0	0
14. Investment income due and accrued	80,249		80,249	190,356
15. Premiums and considerations:				
15.1 Uncollected premiums and agents' balances in the course of collection			0	0
15.2 Deferred premiums and agents' balances and installments booked but deferred and not yet due (including \$ earned but unbilled premiums)			0	0
15.3 Accrued retrospective premiums (\$) and contracts subject to redetermination (\$)			0	0
16. Reinsurance:				
16.1 Amounts recoverable from reinsurers			0	0
16.2 Funds held by or deposited with reinsured companies			0	0
16.3 Other amounts receivable under reinsurance contracts			0	0
17. Amounts receivable relating to uninsured plans			0	0
18.1 Current federal and foreign income tax recoverable and interest thereon	204,021		204,021	0
18.2 Net deferred tax asset			0	0
19. Guaranty funds receivable or on deposit			0	0
20. Electronic data processing equipment and software	415,457	415,457	0	0
21. Furniture and equipment, including health care delivery assets (\$)			0	0
22. Net adjustment in assets and liabilities due to foreign exchange rates			0	0
23. Receivables from parent, subsidiaries and affiliates			0	0
24. Health care (\$) and other amounts receivable			0	0
25. Aggregate write-ins for other than invested assets	3,752	3,752	0	8,851,572
26. Total assets excluding Separate Accounts, Segregated Accounts and Protected Cell Accounts (Lines 12 to 25)	40,643,233	419,209	40,224,024	52,757,636
27. From Separate Accounts, Segregated Accounts and Protected Cell Accounts			0	0
28. Total (Lines 26 and 27)	40,643,233	419,209	40,224,024	52,757,636
DETAILS OF WRITE-INS				
1101.				
1102.				
1103.				
1198. Summary of remaining write-ins for Line 11 from overflow page	0	0	0	0
1199. Totals (Lines 1101 thru 1103 plus 1198)(Line 11 above)	0	0	0	0
2501. Prepaid Insurance	3,752	3,752	0	0
2502. Funds Segregated for others			0	8,851,572
2503.				
2598. Summary of remaining write-ins for Line 25 from overflow page	0	0	0	0
2599. Totals (Lines 2501 thru 2503 plus 2598)(Line 25 above)	3,752	3,752	0	8,851,572

LIABILITIES, SURPLUS AND OTHER FUNDS

	1 Current Year	2 Prior Year
1. Known claims reserve (Part 2B, Line 3, Col. 4)	0	0
2. Statutory premium reserve (Part 1B, Line 2.6, Col. 1)	104,970	116,373
3. Aggregate of other reserves required by law		0
4. Supplemental reserve (Part 2B, Col. 4, Line 10)	0	0
5. Commissions, brokerage and other charges due or accrued to attorneys, agents and real estate brokers		
6. Other expenses (excluding taxes, licenses and fees)	120,639	900,062
7. Taxes, licenses and fees (excluding federal and foreign income taxes)		
8.1 Current federal and foreign income taxes (including \$ on realized capital gains (losses))		0
8.2 Net deferred tax liability		
9. Borrowed money \$14,964,659 and interest thereon \$33,788	14,998,449	17,862,569
10. Dividends declared and unpaid		
11. Premiums and other consideration received in advance		
12. Unearned interest and real estate income received in advance		
13. Funds held by company under reinsurance treaties	0	0
14. Amounts withheld or retained by company for account of others		8,851,572
15. Provision for unauthorized and certified (\$0) reinsurance	0	0
16. Net adjustments in assets and liabilities due to foreign exchange rates		
17. Drafts outstanding		
18. Payable to parent, subsidiaries and affiliates		
19. Derivatives	0	0
20. Payable for securities		
21. Payable for securities lending		
22. Aggregate write-ins for other liabilities	0	125,741
23. Total liabilities (Lines 1 through 22)	15,224,058	27,856,317
24. Aggregate write-ins for special surplus funds	0	0
25. Common capital stock	631,250	631,250
26. Preferred capital stock		
27. Aggregate write-ins for other than special surplus funds	0	0
28. Surplus notes	0	0
29. Gross paid in and contributed surplus	24,270,069	24,270,069
30. Unassigned funds (surplus)	98,647	0
31. Less treasury stock, at cost:		
31.1 shares common (value included in Line 25 \$)		
31.2 shares preferred (value included in Line 26 \$)		
32. Surplus as regards policyholders (Lines 24 to 30, less 31) (Page 4, Line 32)	24,999,966	24,901,319
33. Totals (Page 2, Line 28, Col. 3)	40,224,024	52,757,636
DETAILS OF WRITE-INS		
0301.		
0302.		
0303.		
0398. Summary of remaining write-ins for Line 3 from overflow page	0	0
0399. Totals (Lines 0301 through 0303 plus 0398)(Line 3 above)	0	0
2201. Loan Escrow		59,555
2202. Allowance Risk Share & Recourse and rounding		66,186
2203.		
2298. Summary of remaining write-ins for Line 22 from overflow page	0	0
2299. Totals (Lines 2201 through 2203 plus 2298)(Line 22 above)	0	125,741
2401.		
2402.		
2403.		
2498. Summary of remaining write-ins for Line 24 from overflow page	0	0
2499. Totals (Lines 2401 through 2403 plus 2498)(Line 24 above)	0	0
2701.		
2702.		
2703.		
2798. Summary of remaining write-ins for Line 27 from overflow page	0	0
2799. Totals (Lines 2701 through 2703 plus 2798)(Line 27 above)	0	0

OPERATIONS AND INVESTMENT EXHIBIT

STATEMENT OF INCOME		1	2
		Current Year	Prior Year
OPERATING INCOME			
1. Title insurance and related income (Part 1):			
1.1 Title insurance premiums earned (Part 1B, Line 3, Col. 1)	0	4,865	
1.2 Escrow and settlement services (Part 1A, Line 2, Col. 4)	0	0	
1.3 Other title fees and service charges (Part 1A, Total of Lines 3, 4, 5 and 6, Col. 4)	0	0	
2. Other operating income (Part 4, Line 2, Col. 5)	3,276	2,188,345	
3. Total Operating Income (Lines 1 through 2)	3,276	2,193,210	
EXPENSES			
4. Losses and loss adjustment expenses incurred (Part 2A, Line 10, Col. 4)	0	0	
5. Operating expenses incurred (Part 3, Line 24, Col. 4)	1,011,183	1,742,085	
6. Other operating expenses (Part 4, Line 6, Col. 5)	(204,021)	2,435,796	
7. Total Operating Expenses	807,162	4,177,881	
8. Net operating gain or (loss) (Lines 3 minus 7)	(803,886)	(1,984,671)	
INVESTMENT INCOME			
9. Net investment income earned (Exhibit of Net Investment Income, Line 17)	772,744	1,561,361	
10. Net realized capital gains (losses) less capital gains tax of \$ (Exhibit of Capital Gains (Losses))		642,870	
11. Net investment gain (loss) (Lines 9 + 10)	772,744	2,204,231	
OTHER INCOME			
12. Aggregate write-ins for miscellaneous income or (loss) or other deductions	0	0	
13. Net income, after capital gains tax and before all other federal income taxes (Lines 8+11+12)	(31,142)	219,560	
14. Federal and foreign income taxes incurred		443,381	
15. Net income (Lines 13 minus 14)	(31,142)	(223,821)	
CAPITAL AND SURPLUS ACCOUNT			
16. Surplus as regards policyholders, December 31 prior year (Page 3, Line 32, Column 2)	24,901,319	45,206,473	
17. Net income (from Line 15)	(31,142)	(223,821)	
18. Change in net unrealized capital gains (losses) less capital gains tax of \$	(1)		
19. Change in net unrealized foreign exchange capital gain (loss)	0		
20. Change in net deferred income tax		(126,806)	
21. Change in nonadmitted assets (Exhibit of Nonadmitted Assets, Line 28, col. 3)	215,441	45,473	
22. Change in provision for unauthorized and certified reinsurance (Page 3, Line 15, Cols. 2 minus 1)	0	0	
23. Change in supplemental reserves (Page 3, Line 4, Cols. 2 minus 1)	0	0	
24. Change in surplus notes	0	0	
25. Cumulative effect of changes in accounting principles			
26. Capital changes:			
26.1 Paid in			
26.2 Transferred from surplus (Stock Dividend)			
26.3 Transferred to surplus			
27. Surplus adjustments:			
27.1 Paid in	0	0	
27.2 Transferred to capital (Stock Dividend)			
27.3 Transferred from capital			
28. Dividends to stockholders	(85,651)	(20,000,000)	
29. Change in treasury stock (Page 3, Lines (31.1) and (31.2), Cols. 2 minus 1)	0	0	
30. Aggregate write-ins for gains and losses in surplus	0	0	
31. Change in surplus as regards policyholders (Lines 17 through 30)	98,647	(20,305,154)	
32. Surplus as regards policyholders, December 31 current year (Lines 16 plus 31) (Page 3, Line 32)	24,999,966	24,901,319	
DETAILS OF WRITE-INS			
1201.			
1202.			
1203.			
1298. Summary of remaining write-ins for Line 12 from overflow page	0	0	
1299. Totals (Lines 1201 through 1203 plus 1298)(Line 12 above)	0	0	
3001. Rounding		0	
3002.			
3003.			
3098. Summary of remaining write-ins for Line 30 from overflow page	0	0	
3099. Totals (Lines 3001 through 3003 plus 3098)(Line 30 above)	0	0	

ANNUAL STATEMENT FOR THE YEAR 2021 OF THE BG Title Guarantee, Inc.

CASH FLOW

	1	2
	Current Year	Prior Year
Cash from Operations		
1. Premiums collected net of reinsurance	0	5,406
2. Net investment income	994,166	1,562,300
3. Miscellaneous income	0	2,188,345
4. Total (Lines 1 through 3)	994,166	3,756,051
5. Benefit and loss related payments	0	0
6. Net transfers to Separate Accounts, Segregated Accounts and Protected Cell Accounts		
7. Commissions, expenses paid and aggregate write-ins for deductions	1,343,301	4,084,838
8. Dividends paid to policyholders		
9. Federal and foreign income taxes paid (recovered) net of \$0 tax on capital gains (losses)	0	1,172,858
10. Total (Lines 5 through 9)	1,343,301	5,257,696
11. Net cash from operations (Line 4 minus Line 10)	(349,135)	(1,501,645)
Cash from Investments		
12. Proceeds from investments sold, matured or repaid:		
12.1 Bonds	0	0
12.2 Stocks	649,500	0
12.3 Mortgage loans	6,539,897	45,490,193
12.4 Real estate	0	0
12.5 Other invested assets	0	552,732
12.6 Net gains or (losses) on cash, cash equivalents and short-term investments	0	0
12.7 Miscellaneous proceeds	0	0
12.8 Total investment proceeds (Lines 12.1 to 12.7)	7,189,397	46,042,925
13. Cost of investments acquired (long-term only):		
13.1 Bonds	0	0
13.2 Stocks	0	0
13.3 Mortgage loans	0	43,922,600
13.4 Real estate	0	0
13.5 Other invested assets	0	318,339
13.6 Miscellaneous applications	0	0
13.7 Total investments acquired (Lines 13.1 to 13.6)	0	44,240,939
14. Net increase (decrease) in contract loans and premium notes	0	0
15. Net cash from investments (Line 12.8 minus Line 13.7 minus Line 14)	7,189,397	1,801,986
Cash from Financing and Miscellaneous Sources		
16. Cash provided (applied):		
16.1 Surplus notes, capital notes	0	0
16.2 Capital and paid in surplus, less treasury stock	0	0
16.3 Borrowed funds	(2,862,569)	0
16.4 Net deposits on deposit-type contracts and other insurance liabilities	0	0
16.5 Dividends to stockholders	85,651	20,000,000
16.6 Other cash provided (applied)	0	0
17. Net cash from financing and miscellaneous sources (Lines 16.1 to 16.4 minus Line 16.5 plus Line 16.6)	(2,948,220)	(20,000,000)
RECONCILIATION OF CASH, CASH EQUIVALENTS AND SHORT-TERM INVESTMENTS		
18. Net change in cash, cash equivalents and short-term investments (Line 11, plus Lines 15 and 17)	3,892,042	(19,699,659)
19. Cash, cash equivalents and short-term investments:		
19.1 Beginning of year	14,905,600	34,605,259
19.2 End of year (Line 18 plus Line 19.1)	18,797,642	14,905,600

Note: Supplemental disclosures of cash flow information for non-cash transactions:

--	--	--

OPERATIONS AND INVESTMENT EXHIBIT

PART 1A - SUMMARY OF TITLE INSURANCE PREMIUMS WRITTEN AND RELATED REVENUES

	1 Direct Operations	Agency Operations		4 Current Year Total (Cols. 1+2+3)	5 Prior Year Total
		2 Non-Affiliated Agency Operations	3 Affiliated Agency Operations		
1. Direct premiums written (Sch. T, Line 59, Cols. 3, 4 and 5)	0	0	0	0	5,406
2. Escrow and settlement service charges				0	0
3. Title examinations				0	0
4. Searches and abstracts				0	0
5. Surveys				0	0
6. Aggregate write-ins for service charges	0	0	0	0	0
7. Totals (Lines 1 to 6)	0	0	0	0	5,406
DETAILS OF WRITE-INS					
0601.					
0602.					
0603.					
0698. Summary of remaining write-ins for Line 6 from overflow page	0	0	0	0	0
0699. Totals (Lines 0601 thru 0603 plus 0698)(Line 6 above)	0	0	0	0	0

PART 1B - PREMIUMS EARNED EXHIBIT

	1 Current Year	2 Prior Year
1. Title premiums written:		
1.1 Direct (Part 1A, Line 1, Col. 4)	0	5,406
1.2 Assumed	0	0
1.3 Ceded	0	0
1.4 Net title premiums written (Lines 1.1+1.2-1.3)	0	5,406
4. Statutory premium reserve:		
2.1 Balance at December 31 prior year	116,373	115,832
2.2 Aggregate write-ins for book adjustments to Line 2.1	0	0
2.3 Additions during the current year		541
2.4 Withdrawals during the current year		0
2.5 Aggregate write-ins for other adjustments not effecting earned premiums	(11,403)	0
2.6 Balance at December 31 current year (Lines 2.1+2.2+2.3–2.4+2.5)	104,970	116,373
3. Net title premiums earned during year (Lines 1.4+2.1+2.5-2.6) (Sch. T, Line 59, Col. 7)	0	4,865
DETAILS OF WRITE-INS		
02.201.		
02.202.		
02.203.		
02.298. Summary of remaining write-ins for Line 2.2 from overflow page	0	0
02.299. Totals (Lines 02.201 thru 02.203 plus 02.298)(Line 2.2 above)	0	0
02.501. Change in reserve	(11,403)	
02.502.		
02.503.		
02.598. Summary of remaining write-ins for Line 2.5 from overflow page	0	0
02.599. Totals (Lines 02.501 thru 02.503 plus 02.298)(Line 2.5 above)	(11,403)	0

OPERATIONS AND INVESTMENT EXHIBIT

PART 2A - LOSSES PAID AND INCURRED

	1 Direct Operations	Agency Operations		4 Total Current Year (Cols. 1+2+3)	5 Total Prior Year
		2 Non-Affiliated Agency Operations	3 Affiliated Agency Operations		
1. Losses and allocated loss adjustment expenses paid - direct business, less salvage and subrogation (Total same as Sch. T, Line 59, Col. 8)				0	0
2. Losses and allocated loss adjustment expenses paid - reinsurance assumed, less salvage and subrogation				0	0
3. Total (Line 1 plus Line 2)	0	0	0	0	0
4. Deduct: Recovered during year from reinsurance				0	0
5. Net payments (Line 3 minus Line 4)	0	0	0	0	0
6. Known claims reserve – current year (Page 3, Line 1, Column 1)				0	0
7. Known claims reserve – prior year (Page 3, Line 1, Column 2)	0	0	0	0	0
8. Losses and allocated loss adjustment expenses incurred (Line 5 plus Line 6 minus Line 7)	0	0	0	0	0
9. Unallocated loss adjustment expenses incurred (Part 3, Line 24, Column 5)				0	0
10. Losses and loss adjustment expenses incurred (Line 8 plus Line 9)	0	0	0	0	0

OPERATIONS AND INVESTMENT EXHIBIT

PART 2B - UNPAID LOSSES PAID AND LOSS ADJUSTMENT EXPENSES

	1 Direct Operations	Agency Operations		4 Total Current Year (Cols. 1+2+3)	5 Total Prior Year
		2 Non-Affiliated Agency Operations	3 Affiliated Agency Operations		
1. Loss and allocated LAE reserve for title and other losses of which notice has been received:					
1.1 Direct (Schedule P, Part 1, Line 12, Col. 17)	0			0	0
1.2 Reinsurance assumed (Schedule P, Part 1, Line 12, Col. 18)				0	0
2. Deduct reinsurance recoverable (Schedule P, Part 1, Line 12, Col. 19)	0			0	0
3. Known claims reserve net of reinsurance (Line 1.1 plus Line 1.2 minus Line 2)	0	0	0	0	0
4. Incurred But Not Reported:					
4.1 Direct (Schedule P, Part 1, Line 12, Col. 20)	0			0	0
4.2 Reinsurance assumed (Schedule P, Part 1, Line 12, Col. 21)	0			0	0
4.3 Reinsurance ceded (Schedule P, Part 1, Line 12, Col. 22)	0			0	0
4.4 Net incurred but not reported (Line 4.1 plus Line 4.2 minus Line 4.3)	0	0	0	0	0
5. Unallocated LAE reserve (Schedule P, Part 1, Line 12, Col. 23)				0	0
6. Less discount for time value of money, if allowed (Schedule P, Part 1, Line 12, Col. 33)	XXX	XXX	XXX	0	0
7. Total Schedule P reserves (Lines 3 + 4.4 + 5 - 6) (Schedule P, Part 1, Line 12, Col. 34	XXX	XXX	XXX	0	0
8. Statutory premium reserve at year end (Part 1B, Line 2.6)	XXX	XXX	XXX	104,970	116,373
9. Aggregate of other reserves required by law (Page 3, Line 3)	XXX	XXX	XXX	0	0
10. Supplemental reserve (a) (Lines 7 - (3 + 8 + 9)	XXX	XXX	XXX	0	0

(a) If the sum of Lines 3 + 8 + 9 is greater than Line 7, place a "0" in this Line.

ANNUAL STATEMENT FOR THE YEAR 2021 OF THE BG Title Guarantee, Inc.

OPERATIONS AND INVESTMENT EXHIBIT

PART 3 - EXPENSES

		Title and Escrow Operating Expenses				5	6	7	Totals	
		1	Agency Operations		4				8	9
			2	3						
		Direct Operations	Non-affiliated Agency Operations	Affiliated Agency Operations	Total (Cols. 1+2+3)	Unallocated Loss Adjustment Expenses	Other Operations	Investment Expenses	Current Year (Cols. 4+5+6+7)	Prior Year
1.	Personnel costs:									
	1.1 Salaries		658,299		658,299				658,299	2,049,144
	1.2 Employee relations and welfare		71,113		71,113				71,113	196,712
	1.3 Payroll taxes		50,291		50,291				50,291	152,062
	1.4 Other personnel costs		19,843		19,843				19,843	3,222
	1.5 Total personnel costs	0	799,546	0	799,546	0	0	0	799,546	2,401,140
2.	Amounts paid to or retained by title agents	0	0	0	0	0	0	0	0	4,010
3.	Production services (purchased outside):									
	3.1 Searches, examinations and abstracts				0				0	0
	3.2 Surveys				0				0	0
	3.3 Other				0			0	0	(66,438)
4.	Advertising	0	0	0	0	0	0	0	0	147,921
5.	Boards, bureaus and associations	0	1,799	0	1,799	0	0	0	1,799	12,971
6.	Title plant rent and maintenance	0	0	0	0	0	0	0	0	14,071
7.	Claim adjustment services	XXX	XXX	XXX	XXX		XXX	XXX	0	0
8.	Amounts charged off, net of recoveries				0				0	(13,904)
9.	Marketing and promotional expenses				0				0	0
10.	Insurance				0				0	0
11.	Directors' fees				0				0	0
12.	Travel and travel items				0				0	(10,359)
13.	Rent and rent items	0	0	0	0	0	0	0	0	107,756
14.	Equipment		69,243		69,243				69,243	49,496
15.	Cost or depreciation of EDP equipment and software				0				0	0
16.	Printing, stationery, books and periodicals				0				0	6,696
17.	Postage, telephone, messengers and express				0				0	39,733
18.	Legal and auditing		33,074		33,074				33,074	92,017
19.	Totals (Lines 1.5 to 18)	0	903,662	0	903,662	0	0	0	903,662	2,785,110
20.	Taxes, licenses and fees:									
	20.1 State and local insurance taxes				0				0	0
	20.2 Insurance department licenses and fees				0				0	0
	20.3 Gross guaranty association assessments				0				0	0
	20.4 All other (excluding federal income and real estate)		44,714		44,714		(204,021)		(159,307)	1,136
	20.5 Total taxes, licenses and fees (Lines 20.1 + 20.2 + 20.3 + 20.4)	0	44,714	0	44,714	0	(204,021)	0	(159,307)	1,136
21.	Real estate expenses				0				0	0
22.	Real estate taxes				0				0	0
23.	Aggregate write-ins for other expenses	0	62,807	0	62,807	0	0	69,967	132,774	2,942,759
24.	Total expenses incurred (Lines 19+20.5+21+22+23)	0	1,011,183	0	1,011,183	0	(204,021)	69,967	(a) 877,129	5,729,005
25.	Less unpaid expenses - current year				0				0	0
26.	Add unpaid expenses - prior year	0	0	0	0	0	0	0	0	0
27.	TOTAL EXPENSES PAID (Lines 24 - 25 + 26)	0	1,011,183	0	1,011,183	0	(204,021)	69,967	877,129	5,729,005
DETAILS OF WRITE-INS										
2301.	Consulting				0				0	1,634,992
2302.	General & Administrative		62,807		62,807			11,083	73,890	652,503
2303.	G/fees, bank fees and other				0				0	76,612
2398.	Summary of remaining write-ins for Line 23 from overflow page	0	0	0	0	0	0	58,884	58,884	578,652
2399.	Totals (Lines 2301 thru 2303 plus 2398)(Line 23 above)	0	62,807	0	62,807	0	0	69,967	132,774	2,942,759

(a) Includes management fees of \$ to affiliates and \$ to non-affiliates.

OPERATIONS AND INVESTMENT EXHIBIT

PART 4 - NET OPERATING GAIN/LOSS EXHIBIT

		1	Agency Operations		4	5	Totals	
			2	3			6	7
		Direct Operations	Non-Affiliated Agency Operations	Affiliated Agency Operations	Total (Cols. 1+2+3)	Other Operations	Current Year (Cols. 4+5)	Prior Year
1.	Title insurance and related income (Part 1):							
1.1	Title insurance premiums earned (Part 1B, Line 3, Col. 1)				0	XXX	0	4,865
1.2	Escrow and settlement services (Part 1A, Line 2)				0	XXX	0	0
1.3	Other title fees and service charges (Part 1A, Lines 3 through 6)				0	XXX	0	0
2.	Aggregate write-ins for other operating income	XXX	XXX	XXX	XXX	3,276	3,276	2,188,345
3.	Total Operating Income (Lines 1.1 through 1.3 + 2)	0	0	0	0	3,276	3,276	2,193,210
DEDUCT:								
4.	Losses and loss adjustment expenses incurred (Part 2A, Line 10, Col. 4)				0	XXX	0	0
5.	Operating expenses incurred (Part 3, Line 24, Cols. 1 to 3 and 6)		1,011,183		1,011,183	(204,021)	807,162	4,177,881
6.	Total Operating Deductions (Lines 4 + 5)	0	1,011,183	0	1,011,183	(204,021)	807,162	4,177,881
7.	Net operating gain or (loss) (Lines 3 minus 6)	0	(1,011,183)	0	(1,011,183)	207,297	(803,886)	(1,984,671)
DETAILS OF WRITE-INS								
0201.	Mortgage operations	XXX	XXX	XXX	XXX	3,276	3,276	2,188,345
0202.		XXX	XXX	XXX	XXX			
0203.		XXX	XXX	XXX	XXX			
0298.	Summary of remaining write-ins for Line 2 from overflow page	XXX	XXX	XXX	XXX	0	0	0
0299.	Totals (Lines 0201 thru 0203 plus 0298)(Line 2 above)	XXX	XXX	XXX	XXX	3,276	3,276	2,188,345

EXHIBIT OF NET INVESTMENT INCOME

		1	2
		Collected During Year	Earned During Year
1.	U.S. Government bonds	(a)	
1.1	Bonds exempt from U.S. tax	(a)	
1.2	Other bonds (unaffiliated)	(a)	
1.3	Bonds of affiliates	(a)	
2.1	Preferred stocks (unaffiliated)	(b)	
2.11	Preferred stocks of affiliates	(b)	
2.2	Common stocks (unaffiliated)		
2.21	Common stocks of affiliates		
3.	Mortgage loans	(c)1,345,6011,313,023
4.	Real estate	(d)	
5	Contract loans		
6	Cash, cash equivalents and short-term investments	(e)	
7	Derivative instruments	(f)	
8.	Other invested assets		
9.	Aggregate write-ins for investment income00
10.	Total gross investment income1,345,6011,313,023
11.	Investment expenses		(g)69,967
12.	Investment taxes, licenses and fees, excluding federal income taxes		(g)0
13.	Interest expense		(h)470,312
14.	Depreciation on real estate and other invested assets		(i)
15.	Aggregate write-ins for deductions from investment income0
16.	Total deductions (Lines 11 through 15)540,279
17.	Net investment income (Line 10 minus Line 16)772,744
DETAILS OF WRITE-INS			
0901.		
0902.		
0903.		
0998.	Summary of remaining write-ins for Line 9 from overflow page00
0999.	Totals (Lines 0901 thru 0903 plus 0998) (Line 9, above)00
1501.		
1502.		
1503.		
1598.	Summary of remaining write-ins for Line 15 from overflow page0
1599.	Totals (Lines 1501 thru 1503 plus 1598) (Line 15, above)0

- (a) Includes \$0 accrual of discount less \$0 amortization of premium and less \$0 paid for accrued interest on purchases.
- (b) Includes \$0 accrual of discount less \$0 amortization of premium and less \$0 paid for accrued dividends on purchases.
- (c) Includes \$0 accrual of discount less \$0 amortization of premium and less \$ paid for accrued interest on purchases.
- (d) Includes \$ for company's occupancy of its own buildings; and excludes \$ interest on encumbrances.
- (e) Includes \$ accrual of discount less \$ amortization of premium and less \$ paid for accrued interest on purchases.
- (f) Includes \$ accrual of discount less \$ amortization of premium.
- (g) Includes \$ investment expenses and \$ investment taxes, licenses and fees, excluding federal income taxes, attributable to segregated and Separate Accounts.
- (h) Includes \$ interest on surplus notes and \$ interest on capital notes.
- (i) Includes \$0 depreciation on real estate and \$ depreciation on other invested assets.

EXHIBIT OF CAPITAL GAINS (LOSSES)

		1	2	3	4	5
		Realized Gain (Loss) On Sales or Maturity	Other Realized Adjustments	Total Realized Capital Gain (Loss) (Columns 1 + 2)	Change in Unrealized Capital Gain (Loss)	Change in Unrealized Foreign Exchange Capital Gain (Loss)
1.	U.S. Government bonds00000
1.1	Bonds exempt from U.S. tax0		
1.2	Other bonds (unaffiliated)00000
1.3	Bonds of affiliates00000
2.1	Preferred stocks (unaffiliated)00000
2.11	Preferred stocks of affiliates00000
2.2	Common stocks (unaffiliated)000(1)0
2.21	Common stocks of affiliates00000
3.	Mortgage loans00000
4.	Real estate000	0
5.	Contract loans0		
6.	Cash, cash equivalents and short-term investments0		
7.	Derivative instruments0		
8.	Other invested assets00000
9.	Aggregate write-ins for capital gains (losses)00000
10.	Total capital gains (losses)000(1)0
DETAILS OF WRITE-INS						
0901.					
0902.					
0903.					
0998.	Summary of remaining write-ins for Line 9 from overflow page00000
0999.	Totals (Lines 0901 thru 0903 plus 0998) (Line 9, above)00000

ANNUAL STATEMENT FOR THE YEAR 2021 OF THE BG Title Guarantee, Inc.

EXHIBIT OF NON-ADMITTED ASSETS

	1	2	3
	Current Year Total Nonadmitted Assets	Prior Year Total Nonadmitted Assets	Change in Total Nonadmitted Assets (Col. 2 - Col. 1)
1. Bonds (Schedule D)		0	0
2. Stocks (Schedule D):			
2.1 Preferred stocks		0	0
2.2 Common stocks		0	0
3. Mortgage loans on real estate (Schedule B):			
3.1 First liens		0	0
3.2 Other than first liens		0	0
4. Real estate (Schedule A):			
4.1 Properties occupied by the company		0	0
4.2 Properties held for the production of income		0	0
4.3 Properties held for sale		0	0
5. Cash (Schedule E - Part 1), cash equivalents (Schedule E - Part 2) and short-term investments (Schedule DA)		0	0
6. Contract loans		0	0
7. Derivatives (Schedule DB)		0	0
8. Other invested assets (Schedule BA)		1,422,380	1,422,380
9. Receivables for securities		0	0
10. Securities lending reinvested collateral assets (Schedule DL)		0	0
11. Aggregate write-ins for invested assets	0	(1,422,380)	(1,422,380)
12. Subtotals, cash and invested assets (Lines 1 to 11)	0	0	0
13. Title plants (for Title insurers only)		0	0
14. Investment income due and accrued		0	0
15. Premiums and considerations:			
15.1 Uncollected premiums and agents' balances in the course of collection		0	0
15.2 Deferred premiums, agents' balances and installments booked but deferred and not yet due		0	0
15.3 Accrued retrospective premiums and contracts subject to redetermination		0	0
16. Reinsurance:			
16.1 Amounts recoverable from reinsurers		0	0
16.2 Funds held by or deposited with reinsured companies		0	0
16.3 Other amounts receivable under reinsurance contracts		0	0
17. Amounts receivable relating to uninsured plans		0	0
18.1 Current federal and foreign income tax recoverable and interest thereon		0	0
18.2 Net deferred tax asset		0	0
19. Guaranty funds receivable or on deposit		0	0
20. Electronic data processing equipment and software	415,457	484,700	69,243
21. Furniture and equipment, including health care delivery assets		17,247	17,247
22. Net adjustment in assets and liabilities due to foreign exchange rates		0	0
23. Receivables from parent, subsidiaries and affiliates		0	0
24. Health care and other amounts receivable		0	0
25. Aggregate write-ins for other than invested assets	3,752	132,703	128,951
26. Total assets excluding Separate Accounts, Segregated Accounts and Protected Cell Accounts (Lines 12 to 25)	419,209	634,650	215,441
27. From Separate Accounts, Segregated Accounts and Protected Cell Accounts		0	0
28. Total (Lines 26 and 27)	419,209	634,650	215,441
DETAILS OF WRITE-INS			
1101. Transfer of nonadmitted assets		(1,422,380)	(1,422,380)
1102.			
1103.			
1198. Summary of remaining write-ins for Line 11 from overflow page	0	0	0
1199. Totals (Lines 1101 thru 1103 plus 1198)(Line 11 above)	0	(1,422,380)	(1,422,380)
2501. Misc Recievables	0	454,497	454,497
2502. Prepaid Insurance	3,752	0	(3,752)
2503. Transfer of nonadmitted assets	0	(321,794)	(321,794)
2598. Summary of remaining write-ins for Line 25 from overflow page	0	0	0
2599. Totals (Lines 2501 thru 2503 plus 2598)(Line 25 above)	3,752	132,703	128,951

NOTES TO FINANCIAL STATEMENTS

NOTE 1 Summary of Significant Accounting Policies and Going Concern

A. Accounting Practices						
The financial statements of the Company are prepared in conformity with accounting practices prescribed or permitted by the Ohio Department of Insurance ("ODI"). Prescribed statutory accounting practices include a variety of publications of the National Association of Insurance Commissioners ("NAIC"), as well as state laws, regulations and general administrative rules. Permitted statutory accounting practices encompass all accounting practices not so prescribed. The State of Ohio requires its domestic insurance companies to prepare financial statements in conformity with the NAIC Accounting Practices and Procedures Manual ("APPM"), which includes all Statements of Statutory Accounting Principles ("SSAPs"), subject to any deviations prescribed or permitted by the ODI. The Company's net income and capital and surplus did not include any accounting practices prescribed or permitted by the ODI during 2021 and 2020.						
	SSAP #	F/S Page	F/S Line #		2021	2020
NET INCOME						
(1) State basis (Page 4, Line 20, Columns 1 & 2)	XXX	XXX	XXX	\$	(31,142)	\$ (223,821)
(2) State Prescribed Practices that are an increase/ (decrease) from NAIC SAP:						
(3) State Permitted Practices that are an increase/(decrease) from NAIC SAP:						
(4) NAIC SAP (1-2-3=4)	XXX	XXX	XXX	\$	(31,142)	\$ (223,821)
SURPLUS						
(5) State basis (Page 3, Line 37, Columns 1 & 2)	XXX	XXX	XXX	\$	24,999,966	\$ 24,901,319
(6) State Prescribed Practices that are an increase/(decrease) from NAIC SAP:						
(7) State Permitted Practices that are an increase/(decrease) from NAIC SAP:						
(8) NAIC SAP (5-6-7=8)	XXX	XXX	XXX	\$	24,999,966	\$ 24,901,319
B. Use of Estimates in the Preparation of the Financial Statements						
The preparation of financial statements in conformity with the NAIC Annual Statement Instructions and APPM requires management to make estimates and assumptions that affect the reported amounts in the financial statements and related disclosure in the accompanying notes. Estimates are based on experience and current market conditions affecting the Company's business. Management actively monitors the market conditions on an ongoing basis and adjusts its estimates used, as necessary. Actual results may differ from these estimates. The most significant estimates include those used in determining measurement of any related impairment; provision for income taxes and valuation of deferred tax assets; and reserves for contingent liabilities, including reserves for losses in connection with unresolved legal matters.						
C. Accounting Policy						
Cash equivalents are reported at amortized cost. They are readily convertible into known amounts of cash and so near to their maturity that they present an insignificant risk of change in value because of changes in interest rates. Restricted cash represents cash held in a bank account to satisfy Ohio Department of Insurance requirements, of which the Company was in compliance with at December 31, 2021 and 2020.						
(1) Basis for Short-Term Investments						
Short-term investments are reported at cost or amortized cost.						
(2) Basis for Bonds and Amortization Schedule						
Bonds with an NAIC designation of 1 or 2, including loan-backed and structured securities ("LBASS"), are reported at amortized cost using the effective yield method. Bonds with an NAIC designation of 3 through 6 are reported at the lower of amortized cost or fair value, with the difference reflected in unassigned surplus as unrealized capital loss. In general, LBASS utilize a multi-step process for determining carrying value and NAIC designation in accordance with SSAP No. 43R, Loan-backed and Structured Securities.						
(3) Basis for Common Stocks						
Unaffiliated common stocks are reported at fair value. For unaffiliated common stocks, the differences between amortized cost or cost and fair value are recorded as a change in net unrealized capital gains (losses), which is a component of unassigned surplus. Restricted stock is stock from the Federal Home Loan Bank of Cincinnati ("FHLB"), which is restricted as to its marketability. Because no ready market exists for these investments and they have no quoted market value, the Bank's investment in these stocks are carried at cost.						
(4) Basis for Mortgage Loans						
Mortgage loans are reported at unpaid principal balances, net of unamortized premiums and discounts and impairments. Impaired loans are identified by management when it is considered probable that all amounts due according to the contractual terms of the loan agreement will not be collected. Interest received on impaired loans is generally either applied against the principal or reported as revenue, according to management's judgment as to the collectability of principal. Management discontinues accruing interest on impaired loans after the loans are 90 days delinquent as to principal or interest, or earlier when management has substantial doubts about collectability. Generally, a loan is restored to accrual status only after all delinquent interest and principal are brought current and, in the case of loans where interest has been interrupted for a substantial period, a regular payment performance has been established. The Company monitors the credit quality of mortgage loans to assess for losses inherent in the portfolio as of the balance sheet date. The Company assesses the credit quality of each loan by monitoring the financial condition of the borrower and the financial trends of the underlying property. Management considers the outstanding portfolio balance, delinquency status, historic loss experience, and other conditions influencing loss expectations, such as current economic conditions. The Company also considers loans collectively with similar risk characteristics when there may be no evidence of impairment on an individual loan basis.						
(5) Accounting Policies for Investments in Joint Ventures, Partnerships and Limited Liability Entities						
Investments in joint ventures, partnerships and limited liability companies are generally reported based on the underlying audited Generally Accepted Accounting Principles ("GAAP") equity of the investee, with undistributed earnings or losses reflected in unassigned surplus as a change in net unrealized capital gains and losses and, are generally recognized on a delay due to the availability of financial statements.						
D. Going Concern						
The Company has not had any condition or event that would cause doubt about its ability to continue as a going concern.						

NOTE 2 Accounting Changes and Corrections of Errors

The Company did not have material accounting changes for the years ended December 31, 2021 and 2020.

Effective December 31, 2019 with early adoption permitted, the NAIC adopted revisions to SSAP No. 1, Accounting Policies, Risks & Uncertainties, and Other Disclosures and SSAP No. 69, Statement of Cash Flow. The revisions will result in restricted cash amounts reported with cash and cash equivalents when reconciling the beginning and ending amounts in the cash flow statement. The revisions also require information on restricted cash, cash equivalents and short-term investments in the restricted asset disclosure. The Company adopted this guidance as of December 31, 2019 which did not have a material impact to the financial statements.

Effective January 1, 2020, revisions to SSAP No 22, Leases retains the operating lease concept for statutory accounting, clarifies the application of statutory accounting guidance for leases in certain areas, and identifies the types of assets allowed for lease and sale-leaseback treatment. The Company adopted this guidance as of January 1, 2020 which had no material impact to the financial statements.

NOTE 3 Business Combinations and Goodwill

- A. Statutory Purchase Method
- The Company did not have any business combinations taking the form of a statutory purchase in 2021 or 2020.

NOTES TO FINANCIAL STATEMENTS

The transaction was accounted for as a statutory purchase, and reflects the following:

1	2	3	4	5
Purchased Entity	Acquisition Date	Cost of Acquired Entity	Original Amount of Goodwill	Original Amount of Admitted Goodwill
Total	XXX	\$ -	\$ -	\$ -

1	6	7	8	9
Purchased Entity	Admitted Goodwill as of the Reporting Date	Amount of Goodwill Amortized During the Reporting Period	Book Value of SCA	Admitted Goodwill as a % of SCA BACV, Gross of Admitted Goodwill Col. 6/Col. 8
Total	\$ -	\$ -	\$ -	XXX

- B. Statutory Merger
The Company did not have any business combinations taking the form of a statutory merger in 2021 or 2020.
- C. Impairment Loss
The Company did not recognize an impairment loss on the transactions decribed above in 2021 or 2020.
- D. Subcomponents and Calculation of Adjusted Surplus and Total Admitted Goodwill

- (1) Capital & Surplus
Less:
- (2) Admitted Positive Goodwill
 - (3) Admitted EDP Equipment & Operating System Software
 - (4) Admitted Net Deferred Taxes
- (5) Adjusted Capital and Surplus (Line 1-2-3-4)
(6) Limitation on amount of goodwill (adjusted capital and surplus times 10% goodwill limitation [Line 5*10%])
(7) Current period reported Admitted Goodwill
(8) Current Period Admitted Goodwill as a % of prior period Adjusted Capital and Surplus (Line 7/Line 5)

Calculation of Limitation Using Prior Quarter Numbers	Current Reporting Period
	XXX
	XXX
	XXX
	XXX
\$ -	XXX
\$ -	XXX
XXX	
XXX	0.0%

NOTE 4 Discontinued Operations

- A. Discontinued Operation Disposed of or Classified as Held for Sale

The Company did not have any material discontinued operations during 2021 or 2020.

- (1) List of Discontinued Operations Disposed of or Classified as Held for Sale

Discontinued Operation Identifier	Description of Discontinued Operation

- (2) Description of the Facts and Circumstances Leading to the Disposal or Expected Disposal and a Description of the Expected Manner and Timing of that Disposal

- (3) Loss Recognized on Discontinued Operations

Discontinued Operation Identifier	Amount for Reporting Period	Cumulative Amount Since Classified as Held for Sale

- (4) Carrying Amount and Fair Value of Discontinued Operations and the Effect on Assets, Liabilities, Surplus and Income
- a. Carrying Amount of Discontinued Operations

Discontinued Operation Identifier	Carrying Amount Immediately Prior to Classification as Held for Sale	Current Fair Value Less Costs to Sell

- b. Effect of Discontinued Operations on Assets, Liabilities, Surplus and Income

	Discontinued Operation Identifier	Line Number	Line Description	Amount Attributable to Discontinued Operations
1. Assets				
2. Liabilities				
3. Surplus				

NOTES TO FINANCIAL STATEMENTS

4. Income

- B. Change in Plan of Sale of Discontinued Operation
The Company did not have any material discontinued operations during 2021 or 2020.
- C. Nature of Any Significant Continuing Involvement with Discontinued Operations After Disposal
The Company did not have any material discontinued operations during 2021 or 2020.
- D. Equity Interest Retained in the Discontinued Operation After Disposal
The Company did not have any material discontinued operations during 2021 or 2020.

NOTE 5 Investments

- A. Mortgage Loans, including Mezzanine Real Estate Loans
- (1) Maximum and Minimum Lending Rates
The minimum and maximum lending rates for new mortgage loans as of December 31, 2020 were: Residential mortgage loans 2.50% and 5.75%. The residential mortgage business was transferred to a related entity on January 4, 2021.
- (2) The maximum percentage of any one loan to the value of security at the time of the loan, exclusive of insured or guaranteed or purchase money mortgage was:
For loans acquired during 2020, the maximum percentage of any one loan to the value of the property at the time was 100% for residential mortgage loans. The residential mortgage business was transferred to a related entity on January 4, 2021.

	Current Year	Prior Year
(3) Taxes, assessments and any amounts advanced and not included in the mortgage loan total		\$ 2,176

- (4) Age Analysis of Mortgage Loans and Identification of Mortgage Loans in Which the Insurer is a Participant or Co-lender in a Mortgage Loan Agreement:

	Farm	Residential		Commercial		Mezzanine	Total
		Insured	All Other	Insured	All Other		
a. Current Year							
1. Recorded Investment (All)							
(a) Current					\$21,141,749		\$21,141,749
(b) 30 - 59 Days Past Due							\$ -
(c) 60 - 89 Days Past Due							\$ -
(d) 90 - 179 Days Past Due							\$ -
(e) 180+ Days Past Due							\$ -
2. Accruing Interest 90 - 179 Days Past Due							
(a) Recorded Investment							\$ -
(b) Interest Accrued							\$ -
3. Accruing Interest 180+ Days Past Due							
(a) Recorded Investment							\$ -
(b) Interest Accrued							\$ -
4. Interest Reduced							
(a) Recorded Investment							\$ -
(b) Number of Loans							\$ -
(c) Percent Reduced							
5. Participant or Co-lender in a Mortgage Loan Agreement							
(a) Recorded Investment							\$ -
b. Prior Year							
1. Recorded Investment (All)							
(a) Current	\$ -	\$ -	\$ 478,599	\$ -	\$27,681,646	\$ -	\$28,160,245
(b) 30 - 59 Days Past Due	\$ -	\$ -	\$ -	\$ -	\$ -	\$ -	\$ -
(c) 60 - 89 Days Past Due	\$ -	\$ -	\$ -	\$ -	\$ -	\$ -	\$ -
(d) 90 - 179 Days Past Due	\$ -	\$ -	\$ -	\$ -	\$ -	\$ -	\$ -
(e) 180+ Days Past Due	\$ -	\$ -	\$ -	\$ -	\$ -	\$ -	\$ -
2. Accruing Interest 90 - 179 Days Past Due							
(a) Recorded Investment	\$ -	\$ -	\$ -	\$ -	\$ -	\$ -	\$ -
(b) Interest Accrued	\$ -	\$ -	\$ -	\$ -	\$ -	\$ -	\$ -
3. Accruing Interest 180+ Days Past Due							
(a) Recorded Investment	\$ -	\$ -	\$ -	\$ -	\$ -	\$ -	\$ -
(b) Interest Accrued	\$ -	\$ -	\$ -	\$ -	\$ -	\$ -	\$ -
4. Interest Reduced							
(a) Recorded Investment	\$ -	\$ -	\$ -	\$ -	\$ -	\$ -	\$ -
(b) Number of Loans	\$ -	\$ -	\$ -	\$ -	\$ -	\$ -	\$ -
(c) Percent Reduced							
5. Participant or Co-lender in a Mortgage Loan Agreement							
(a) Recorded Investment	\$ -	\$ -	\$ -	\$ -	\$ -	\$ -	\$ -

- (5) Investment in Impaired Loans With or Without Allowance for Credit Losses and Impaired Loans Subject to a Participant or Co-lender Mortgage Loan Agreement for Which the Reporting Entity is Restricted from Unilaterally Foreclosing on the Mortgage Loan Agreement:

	Farm	Residential		Commercial		Mezzanine	Total
		Insured	All Other	Insured	All Other		
a. Current Year							
1. With Allowance for Credit Losses							\$ -
2. No Allowance for Credit Losses							\$ -
3. Total (1 + 2)	\$ -	\$ -	\$ -	\$ -	\$ -	\$ -	\$ -
4. Subject to a participant or co-lender mortgage loan agreement for which the reporting entity is restricted from unilaterally foreclosing on the mortgage loan							\$ -
b. Prior Year							
1. With Allowance for Credit Losses	\$ -	\$ -	\$ -	\$ -	\$ -	\$ -	\$ -
2. No Allowance for Credit Losses	\$ -	\$ -	\$ -	\$ -	\$ -	\$ -	\$ -
3. Total (1 + 2)	\$ -	\$ -	\$ -	\$ -	\$ -	\$ -	\$ -

NOTES TO FINANCIAL STATEMENTS

4. Subject to a participant or co-lender mortgage loan agreement for which the reporting entity is restricted from unilaterally foreclosing on the mortgage loan	\$ -	\$ -	\$ -	\$ -	\$ -	\$ -	\$ -
--	------	------	------	------	------	------	------

(6) Investment in Impaired Loans – Average Recorded Investment, Interest Income Recognized, Recorded Investment on Nonaccrual Status and Amount of Interest Income Recognized Using a Cash-Basis Method of Accounting:

	Farm	Residential		Commercial		Mezzanine	Total
		Insured	All Other	Insured	All Other		
a. Current Year							
1. Average Recorded Investment							\$ -
2. Interest Income Recognized							\$ -
3. Recorded Investments on Nonaccrual Status							\$ -
4. Amount of Interest Income Recognized Using a Cash-Basis Method of Accounting							\$ -
b. Prior Year							
1. Average Recorded Investment	\$ -	\$ -	\$ -	\$ -	\$ -	\$ -	\$ -
2. Interest Income Recognized	\$ -	\$ -	\$ -	\$ -	\$ -	\$ -	\$ -
3. Recorded Investments on Nonaccrual Status	\$ -	\$ -	\$ -	\$ -	\$ -	\$ -	\$ -
4. Amount of Interest Income Recognized Using a Cash-Basis Method of Accounting	\$ -	\$ -	\$ -	\$ -	\$ -	\$ -	\$ -

(7) Allowance for credit losses:

	Current Year	Prior Year
a) Balance at beginning of period	\$ -	
b) Additions charged to operations		
c) Direct write-downs charged against the allowances		
d) Recoveries of amounts previously charged off		
e) Balance at end of period	\$ -	\$ -

(8) Mortgage Loans Derecognized as a Result of Foreclosure:

	Current Year
a) Aggregate amount of mortgage loans derecognized	
b) Real estate collateral recognized	
c) Other collateral recognized	
d) Receivables recognized from a government guarantee of the foreclosed mortgage loan	

(9) Policy for Recognizing Interest Income on Impaired Loans

B. Debt Restructuring

The Company did not have any debt restructurings in 2021 and 2020.

	Current Year	Prior Year
(1) The total recorded investment in restructured loans, as of year end		
(2) The realized capital losses related to these loans		
(3) Total contractual commitments to extend credit to debtors owning receivables whose terms have been modified in troubled debt restructurings		
(4) Creditor's Income Recognition Policy for Interest Income on Impaired Loans		

C. Reverse Mortgages

- (1) Description of Accounting Policies and Methods
The Company did not enter into reverse mortgages in 2021 and 2020.
- (2) General Information Regarding Commitment Under the Agreement
- (3) Reverse Mortgages: Enter the reserve amount that is netted against the asset
- (4) Reverse Mortgages: Investment income or (loss) recognized in the period as a result of the re-estimated cash flows

D. Loan-Backed Securities

- (1) Description of Sources Used to Determine Prepayment Assumptions
The Company had no loan-backed securities during 2021 and 2020.

(2) OTTI recognized 1st Quarter

- a. Intent to sell
- b. Inability or lack of intent to retain the investment in the security for a period of time sufficient to recover the amortized cost basis
- c. Total 1st Quarter
OTTI recognized 2nd Quarter
- d. Intent to sell
- e. Inability or lack of intent to retain the investment in the security for a period of time sufficient to recover the amortized cost basis
- f. Total 2nd Quarter
OTTI recognized 3rd Quarter
- g. Intent to sell
- h. Inability or lack of intent to retain the investment in the security for a period of time sufficient to recover the amortized cost basis
- i. Total 3rd Quarter
OTTI recognized 4th Quarter
- j. Intent to sell
- k. Inability or lack of intent to retain the investment in the security for a period of time sufficient to recover the amortized cost basis
- l. Total 4th Quarter
- m. Annual Aggregate Total

1 Amortized Cost Basis Before Other-than-Temporary Impairment	2 Other-than-Temporary Impairment Recognized in Loss	3 Fair Value 1 - 2
		\$ -
\$ -	\$ -	\$ -
		\$ -
\$ -	\$ -	\$ -
		\$ -
\$ -	\$ -	\$ -
		\$ -
\$ -	\$ -	\$ -
		\$ -
\$ -	\$ -	\$ -
	\$ -	

NOTES TO FINANCIAL STATEMENTS

(3) Recognized OTTI Securities

1	2	3	4	5	6	7
CUSIP	Book/Adjusted Carrying Value Amortized Cost Before Current Period OTTI	Present Value of Projected Cash Flows	Recognized Other-Than-Temporary Impairment	Amortized Cost After Other-Than-Temporary Impairment	Fair Value at time of OTTI	Date of Financial Statement Where Reported
Total	XXX	XXX	\$ -	XXX	XXX	XXX

All impaired securities (fair value is less than cost or amortized cost) for which an other-than-temporary impairment has not been recognized in earnings as a realized loss (including securities with a recognized other-than-temporary impairment for non-interest related declines when a non-recognized interest related impairment remains):

- a) The aggregate amount of unrealized losses:
- 1. Less than 12 Months
 - 2. 12 Months or Longer
- b)The aggregate related fair value of securities with unrealized losses:
- 1. Less than 12 Months
 - 2. 12 Months or Longer

(5) Information Investor Considered in Reaching Conclusion that Impairments are Not Other-Than-Temporary

E. Dollar Repurchase Agreements and/or Securities Lending Transactions

- (1) Policy for Requiring Collateral or Other Security
The Company did not enter into any repurchase agreements or securities lending transactions in 2021 and 2020.
- (2) Disclose the Carrying Amount and Classification of Both Assets and Liabilities
- (3) Collateral Received
- a. Aggregate Amount Collateral Received

	Fair Value
1. Securities Lending	
(a) Open	
(b) 30 Days or Less	
(c) 31 to 60 Days	
(d) 61 to 90 Days	
(e) Greater Than 90 Days	
(f) Subtotal	\$ -
(g) Securities Received	
(h) Total Collateral Received	\$ -
2. Dollar Repurchase Agreement	
(a) Open	
(b) 30 Days or Less	
(c) 31 to 60 Days	
(d) 61 to 90 Days	
(e) Greater Than 90 Days	
(f) Subtotal	\$ -
(g) Securities Received	
(h) Total Collateral Received	\$ -
b. The fair value of that collateral and of the portion of that collateral that it has sold or repledged	
c. Information about Sources and Uses of Collateral	

(4) Aggregate Value of the Reinvested Collateral

- (5) Collateral Reinvestment
- a. Aggregate Amount Collateral Reinvested

	Amortized Cost	Fair Value
1. Securities Lending		
(a) Open		
(b) 30 Days or Less		
(c) 31 to 60 Days		
(d) 61 to 90 Days		
(e) 91 to 120 Days		
(f) 121 to 180 Days		
(g) 181 to 365 Days		
(h) 1 to 2 years		
(i) 2 to 3 years		
(j) Greater than 3 years		
(k) Subtotal	\$ -	\$ -
(l) Securities Received		
(m) Total Collateral Reinvested	\$ -	\$ -
2. Dollar Repurchase Agreement		
(a) Open		
(b) 30 Days or Less		
(c) 31 to 60 Days		
(d) 61 to 90 Days		
(e) 91 to 120 Days		
(f) 121 to 180 Days		
(g) 181 to 365 Days		
(h) 1 to 2 years		
(i) 2 to 3 years		
(j) Greater than 3 years		
(k) Subtotal	\$ -	\$ -
(l) Securities Received		
(m) Total Collateral Reinvested	\$ -	\$ -

b. Explanation of Additional Sources of Liquidity for Maturity Date Mismatches

NOTES TO FINANCIAL STATEMENTS

(6) Detail on Collateral Transactions Not Permitted by Contract or Custom to Sell or Repledge

(7) Collateral for securities lending transactions that extend beyond one year from the reporting date.

Description of Collateral	Amount
Total Collateral Extending beyond one year of the reporting date	\$ -

F. Repurchase Agreements Transactions Accounted for as Secured Borrowing

(1) Company Policies or Strategies for Repo Programs

The Company did not have any repurchase agreements transactions accounted for as secured borrowing transactions in 2021 and 2020.

REPURCHASE TRANSACTION – CASH TAKER – OVERVIEW OF SECURED BORROWING TRANSACTIONS

(2) Type of Repo Trades Used

- a. Bilateral (YES/NO)
b. Tri-Party (YES/NO)

FIRST QUARTER	SECOND QUARTER	THIRD QUARTER	FOURTH QUARTER

(3) Original (Flow) & Residual Maturity

- a. Maximum Amount
1. Open – No Maturity
2. Overnight
3. 2 Days to 1 Week
4. > 1 Week to 1 Month
5. > 1 Month to 3 Months
6. > 3 Months to 1 Year
7. > 1 Year
- b. Ending Balance
1. Open – No Maturity
2. Overnight
3. 2 Days to 1 Week
4. > 1 Week to 1 Month
5. > 1 Month to 3 Months
6. > 3 Months to 1 Year
7. > 1 Year

FIRST QUARTER	SECOND QUARTER	THIRD QUARTER	FOURTH QUARTER

(4) Fair Value Securities Sold and/or Acquired that Resulted in Default

(5) Securities "Sold" Under Repo – Secured Borrowing

- a. Maximum Amount
1. BACV
2. Nonadmitted - Subset of BACV
3. Fair Value
- b. Ending Balance
1. BACV
2. Nonadmitted - Subset of BACV
3. Fair Value

FIRST QUARTER	SECOND QUARTER	THIRD QUARTER	FOURTH QUARTER
XXX XXX	XXX XXX	XXX XXX	
XXX XXX	XXX XXX	XXX XXX	

(6) Securities Sold Under Repo – Secured Borrowing by NAIC Designation

ENDING BALANCE

- a. Bonds - BACV
b. Bonds - FV
c. LB & SS - BACV
d. LB & SS - FV
e. Preferred Stock - BACV
f. Preferred Stock - FV
g. Common Stock
h. Mortgage Loans - BACV
i. Mortgage Loans - FV
j. Real Estate - BACV
k. Real Estate - FV
l. Derivatives - BACV
m. Derivatives - FV
n. Other Invested Assets - BACV
o. Other Invested Assets - FV
p. Total Assets - BACV
q. Total Assets - FV

1 NONE	2 NAIC 1	3 NAIC 2	4 NAIC 3
\$ -	\$ -	\$ -	\$ -
\$ -	\$ -	\$ -	\$ -

ENDING BALANCE

- a. Bonds - BACV
b. Bonds - FV
c. LB & SS - BACV
d. LB & SS - FV
e. Preferred Stock - BACV
f. Preferred Stock - FV
g. Common Stock
h. Mortgage Loans - BACV

5 NAIC 4	6 NAIC 5	7 NAIC 6	8 NON- ADMITTED

NOTES TO FINANCIAL STATEMENTS

- i. Mortgage Loans - FV
- j. Real Estate - BACV
- k. Real Estate - FV
- l. Derivatives - BACV
- m. Derivatives - FV
- n. Other Invested Assets - BACV
- o. Other Invested Assets - FV
- p. Total Assets - BACV
- q. Total Assets - FV

\$	-	\$	-	\$	-	\$	-
\$	-	\$	-	\$	-	\$	-

(7) Collateral Received – Secured Borrowing

- a. Maximum Amount
 - 1. Cash
 - 2. Securities (FV)
- b. Ending Balance
 - 1. Cash
 - 2. Securities (FV)

FIRST QUARTER	SECOND QUARTER	THIRD QUARTER	FOURTH QUARTER

(8) Cash & Non-Cash Collateral Received – Secured Borrowing by NAIC Designation

ENDING BALANCE

- a. Cash
- b. Bonds - FV
- c. LB & SS - FV
- d. Preferred Stock - FV
- e. Common Stock
- f. Mortgage Loans - FV
- g. Real Estate - FV
- h. Derivatives - FV
- i. Other Invested Assets - FV
- j. Total Collateral Assets - FV (Sum of a through i)

1 NONE	2 NAIC 1	3 NAIC 2	4 NAIC 3
\$	-	\$	-

ENDING BALANCE

- a. Cash
- b. Bonds - FV
- c. LB & SS - FV
- d. Preferred Stock - FV
- e. Common Stock
- f. Mortgage Loans - FV
- g. Real Estate - FV
- h. Derivatives - FV
- i. Other Invested Assets - FV
- j. Total Collateral Assets - FV (Sum of a through i)

5	6	7	8
NAIC 4	NAIC 5	NAIC 6	DOES NOT QUALIFY AS ADMITTED

(9) Allocation of Aggregate Collateral by Remaining Contractual Maturity

- a. Overnight and Continuous
- b. 30 Days or Less
- c. 31 to 90 Days
- d. > 90 Days

FAIR VALUE

(10) Allocation of Aggregate Collateral Reinvested by Remaining Contractual Maturity

- a. 30 Days or Less
- b. 31 to 60 Days
- c. 61 to 90 Days
- d. 91 to 120 Days
- e. 121 to 180 Days
- f. 181 to 365 Days
- g. 1 to 2 years
- h. 2 to 3 years
- i. > than 3 years

AMORTIZED COST	FAIR VALUE

(11) Liability to Return Collateral – Secured Borrowing (Total)

- a. Maximum Amount
 - 1. Cash (Collateral – All)
 - 2. Securities Collateral (FV)
- b. Ending Balance
 - 1. Cash (Collateral – All)
 - 2. Securities Collateral (FV)

FIRST QUARTER	SECOND QUARTER	THIRD QUARTER	FOURTH QUARTER

G. Reverse Repurchase Agreements Transactions Accounted for as Secured Borrowing

- (1) Company Policy or Strategies for Engaging in Repo Programs
The Company did not have any repurchase agreements transactions accounted for as secured borrowing transactions in 2021 and 2020.

REPURCHASE TRANSACTION – CASH PROVIDER – OVERVIEW OF SECURED BORROWING TRANSACTIONS

- (2) Type of Repo Trades Used

NOTES TO FINANCIAL STATEMENTS

	FIRST QUARTER	SECOND QUARTER	THIRD QUARTER	FOURTH QUARTER
a. Bilateral (YES/NO) b. Tri-Party (YES/NO)				

(3) Original (Flow) & Residual Maturity

	FIRST QUARTER	SECOND QUARTER	THIRD QUARTER	FOURTH QUARTER
a. Maximum Amount 1. Open – No Maturity 2. Overnight 3. 2 Days to 1 Week 4. > 1 Week to 1 Month 5. > 1 Month to 3 Months 6. > 3 Months to 1 Year 7. > 1 Year b. Ending Balance 1. Open – No Maturity 2. Overnight 3. 2 Days to 1 Week 4. > 1 Week to 1 Month 5. > 1 Month to 3 Months 6. > 3 Months to 1 Year 7. > 1 Year				

(4) Fair Value Securities Sold and/or Acquired that Resulted in Default

(5) Fair Value of Securities Acquired Under Repo – Secured Borrowing

	FIRST QUARTER	SECOND QUARTER	THIRD QUARTER	FOURTH QUARTER
a. Maximum Amount b. Ending Balance				

(6) Securities Acquired Under Repo – Secured Borrowing by NAIC Designation

ENDING BALANCE	1 NONE	2 NAIC 1	3 NAIC 2	4 NAIC 3
a. Bonds - FV b. LB & SS - FV c. Preferred Stock - FV d. Common Stock e. Mortgage Loans - FV f. Real Estate - FV g. Derivatives - FV h. Other Invested Assets - FV i. Total Assets - FV (Sum of a through h)				
	\$ -	\$ -	\$ -	\$ -
ENDING BALANCE	5 NAIC 4	6 NAIC 5	7 NAIC 6	8 DOES NOT QUALIFY AS ADMITTED
a. Bonds - FV b. LB & SS - FV c. Preferred Stock - FV d. Common Stock e. Mortgage Loans - FV f. Real Estate - FV g. Derivatives - FV h. Other Invested Assets - FV i. Total Assets - FV (Sum of a through h)				
	\$ -	\$ -	\$ -	\$ -

(7) Collateral Provided – Secured Borrowing

	FIRST QUARTER	SECOND QUARTER	THIRD QUARTER	FOURTH QUARTER
a. Maximum Amount 1. Cash 2. Securities (FV) 3. Securities (BACV) 4. Nonadmitted Subset (BACV) b. Ending Balance 1. Cash 2. Securities (FV) 3. Securities (BACV) 4. Nonadmitted Subset (BACV)	XXX XXX	XXX XXX	XXX XXX	XXX XXX

(8) Allocation of Aggregate Collateral Pledged by Remaining Contractual Maturity

	AMORTIZED COST	FAIR VALUE
a. Overnight and Continuous b. 30 Days or Less c. 31 to 90 Days d. > 90 Days		

(9) Recognized Receivable for Return of Collateral – Secured Borrowing

NOTES TO FINANCIAL STATEMENTS

	FIRST QUARTER	SECOND QUARTER	THIRD QUARTER	FOURTH QUARTER
a. Maximum Amount				
1. Cash				
2. Securities (FV)				
b. Ending Balance				
1. Cash				
2. Securities (FV)				

(10) Recognized Liability to Return Collateral – Secured Borrowing (Total)

	FIRST QUARTER	SECOND QUARTER	THIRD QUARTER	FOURTH QUARTER
a. Maximum Amount				
1. Repo Securities Sold/Acquired with Cash Collateral				
2. Repo Securities Sold/Acquired with Securities Collateral (FV)				
b. Ending Balance				
1. Repo Securities Sold/Acquired with Cash Collateral				
2. Repo Securities Sold/Acquired with Securities Collateral (FV)				

H. Repurchase Agreements Transactions Accounted for as a Sale

(1) Company Policy or Strategies for Engaging in Repo Programs

The Company did not have any repurchase agreement transactions accounted for as sale transactions in 2021 and 2020.

REPURCHASE TRANSACTION – CASH TAKER – OVERVIEW OF SALE TRANSACTIONS

(2) Type of Repo Trades Used

	FIRST QUARTER	SECOND QUARTER	THIRD QUARTER	FOURTH QUARTER
a. Bilateral (YES/NO)				
b. Tri-Party (YES/NO)				

(3) Original (Flow) & Residual Maturity

	FIRST QUARTER	SECOND QUARTER	THIRD QUARTER	FOURTH QUARTER
a. Maximum Amount				
1. Open – No Maturity				
2. Overnight				
3. 2 Days to 1 Week				
4. > 1 Week to 1 Month				
5. > 1 Month to 3 Months				
6. > 3 Months to 1 Year				
7. > 1 Year				
b. Ending Balance				
1. Open – No Maturity				
2. Overnight				
3. 2 Days to 1 Week				
4. > 1 Week to 1 Month				
5. > 1 Month to 3 Months				
6. > 3 Months to 1 Year				
7. > 1 Year				

(4) Fair Value Securities Sold and/or Acquired that Resulted in Default

(5) Securities "Sold" Under Repo – Sale

	FIRST QUARTER	SECOND QUARTER	THIRD QUARTER	FOURTH QUARTER
a. Maximum Amount				
1. BACV	XXX	XXX	XXX	
2. Nonadmitted - Subset of BACV	XXX	XXX	XXX	
3. Fair Value				
b. Ending Balance				
1. BACV	XXX	XXX	XXX	
2. Nonadmitted - Subset of BACV	XXX	XXX	XXX	
3. Fair Value				

(6) Securities Sold Under Repo – Sale by NAIC Designation

ENDING BALANCE

	1 NONE	2 NAIC 1	3 NAIC 2	4 NAIC 3
a. Bonds - BACV				
b. Bonds - FV				
c. LB & SS - BACV				
d. LB & SS - FV				
e. Preferred Stock - BACV				
f. Preferred Stock - FV				
g. Common Stock				
h. Mortgage Loans - BACV				
i. Mortgage Loans - FV				
j. Real Estate - BACV				
k. Real Estate - FV				
l. Derivatives - BACV				
m. Derivatives - FV				
n. Other Invested Assets - BACV				
o. Other Invested Assets - FV				
p. Total Assets - BACV	\$ -	\$ -	\$ -	\$ -

NOTES TO FINANCIAL STATEMENTS

q. Total Assets - FV	\$	-	\$	-	\$	-	\$	-
----------------------	----	---	----	---	----	---	----	---

ENDING BALANCE

- a. Bonds - BACV
- b. Bonds - FV
- c. LB & SS - BACV
- d. LB & SS - FV
- e. Preferred Stock - BACV
- f. Preferred Stock - FV
- g. Common Stock
- h. Mortgage Loans - BACV
- i. Mortgage Loans - FV
- j. Real Estate - BACV
- k. Real Estate - FV
- l. Derivatives - BACV
- m. Derivatives - FV
- n. Other Invested Assets - BACV
- o. Other Invested Assets - FV
- p. Total Assets - BACV
- q. Total Assets - FV

5 NAIC 4	6 NAIC 5	7 NAIC 6	8 NON- ADMITTED
\$ -	\$ -	\$ -	\$ -
\$ -	\$ -	\$ -	\$ -

(7) Proceeds Received – Sale

- a. Maximum Amount
 - 1. Cash
 - 2. Securities (FV)
 - 3. Nonadmitted
- b. Ending Balance
 - 1. Cash
 - 2. Securities (FV)
 - 3. Nonadmitted

FIRST QUARTER	SECOND QUARTER	THIRD QUARTER	FOURTH QUARTER

(8) Cash & Non-Cash Collateral Received – Sale by NAIC Designation

ENDING BALANCE

- a. Bonds - FV
- b. LB & SS - FV
- c. Preferred Stock - FV
- d. Common Stock
- e. Mortgage Loans - FV
- f. Real Estate - FV
- g. Derivatives - FV
- h. Other Invested Assets - FV
- i. Total Collateral Assets - FV (Sum of a through h)

1 NONE	2 NAIC 1	3 NAIC 2	4 NAIC 3
\$ -	\$ -	\$ -	\$ -

ENDING BALANCE

- a. Bonds - FV
- b. LB & SS - FV
- c. Preferred Stock - FV
- d. Common Stock
- e. Mortgage Loans - FV
- f. Real Estate - FV
- g. Derivatives - FV
- h. Other Invested Assets - FV
- i. Total Collateral Assets - FV (Sum of a through h)

5 NAIC 4	6 NAIC 5	7 NAIC 6	8 NON- ADMITTED
\$ -	\$ -	\$ -	\$ -

(9) Recognized Forward Resale Commitment

- a. Maximum Amount
- b. Ending Balance

FIRST QUARTER	SECOND QUARTER	THIRD QUARTER	FOURTH QUARTER

I. Reverse Repurchase Agreements Transactions Accounted for as a Sale

- (1) Company Policy or Strategies for Engaging in Repo Programs
The Company did not have any repurchase agreements transactions accounted for as sale transactions in 2021 and 2020.

REPURCHASE TRANSACTION – CASH PROVIDER – OVERVIEW OF SALE TRANSACTIONS

(2) Type of Repo Trades Used

- a. Bilateral (YES/NO)
- b. Tri-Party (YES/NO)

FIRST QUARTER	SECOND QUARTER	THIRD QUARTER	FOURTH QUARTER

(3) Original (Flow) & Residual Maturity

- a. Maximum Amount
 - 1. Open – No Maturity
 - 2. Overnight
 - 3. 2 Days to 1 Week
 - 4. > 1 Week to 1 Month

FIRST QUARTER	SECOND QUARTER	THIRD QUARTER	FOURTH QUARTER

NOTES TO FINANCIAL STATEMENTS

a. Maximum Amount				
b. Ending Balance				

- J. Real Estate
- (1) Recognized Impairment Losses
The Company did not recognize impairment loss on real estate during 2021 or 2020.
- (2) Sold or Classified Real Estate Investments as Held for Sale
The Company did not have any real estate investments sold or classified as held for sale during 2021 or 2020.
- (3) Changes to a Plan of Sale for an Investment in Real Estate
The Company did not experience any changes to a plan of sale for an investment in real estate in 2021 or 2020.
- (4) Retail Land Sales Operations
The Company did not engage in retail land sales operations in 2021 or 2020.
- (5) Real Estate Investments with Participating Mortgage Loan Features
The Company did not hold any real estate investments with participating mortgage loan features in 2021 or 2020.

- K. Low Income Housing tax Credits (LIHTC)
- (1) Number of Remaining Years of Unexpired Tax Credits and Holding Period for LIHTC Investments
The Company did not have any low-income housing tax credits at December 31, 2021 or 2020.
- (2) Amount of LIHTC and Other Tax Benefits Recognized
- (3) Balance of Investment Recognized
- (4) Regulatory Reviews
- (5) LIHTC investments which Exceed 10% of Total Admitted Assets
- (6) Recognized Impairment
- (7) Amount and Nature of Write-Downs or Reclassifications

L. Restricted Assets

1. Restricted Assets (Including Pledged)

Restricted Asset Category	1 Total Gross (Admitted & Non- admitted) Restricted from Current Year	2 Total Gross (Admitted & Non- admitted) Restricted from Prior Year	3 Increase/ (Decrease) (1 minus 2)	4 Total Current Year Non- admitted Restricted	5 Total Current Year Admitted Restricted (1 minus 4)	6 Gross (Admitted & Non- admitted) Restricted to Total Assets (a)	7 Admitted Restricted to Total Admitted Assets (b)
a. Subject to contractual obligation for which liability is not shown		\$ -	\$ -		\$ -	0.000%	0.000%
b. Collateral held under security lending agreements		\$ -	\$ -		\$ -	0.000%	0.000%
c. Subject to repurchase agreements		\$ -	\$ -		\$ -	0.000%	0.000%
d. Subject to reverse repurchase agreements		\$ -	\$ -		\$ -	0.000%	0.000%
e. Subject to dollar repurchase agreements		\$ -	\$ -		\$ -	0.000%	0.000%
f. Subject to dollar reverse repurchase agreements		\$ -	\$ -		\$ -	0.000%	0.000%
g. Placed under option contracts		\$ -	\$ -		\$ -	0.000%	0.000%
h. Letter stock or securities restricted as to sale - excluding FHLB capital stock		\$ -	\$ -		\$ -	0.000%	0.000%
i. FHLB capital stock	\$ 363	\$ 649,800	\$ (649,437)		\$ 363	0.001%	0.001%
j. On deposit with states	\$ 140,044	\$ 140,033	\$ 11		\$ 140,044	0.345%	0.348%
k. On deposit with other regulatory bodies		\$ -	\$ -		\$ -	0.000%	0.000%
l. Pledged collateral to FHLB (including assets backing funding agreements)		\$31,481,646	\$ (31,481,646)		\$ -	0.000%	0.000%
m. Pledged as collateral not captured in other categories	\$21,141,749	\$ -	\$21,141,749		\$21,141,749	52.018%	52.560%
n. Other restricted assets		\$ -	\$ -		\$ -	0.000%	0.000%
o. Total Restricted Assets	\$21,282,156	\$32,271,479	\$ (10,989,323)	\$ -	\$21,282,156	52.363%	52.909%

- (a) Column 1 divided by Asset Page, Column 1, Line 28
- (b) Column 5 divided by Asset Page, Column 3, Line 28

2. Detail of Assets Pledged as Collateral Not Captured in Other Categories (Contracts That Share Similar Characteristics, Such as Reinsurance and Derivatives, Are Reported in the Aggregate)

Description of Assets	1 Total Gross (Admitted & Non- admitted) Restricted from Current Year	2 Total Gross (Admitted & Non- admitted) Restricted from Prior Year	3 Increase/ (Decrease) (1 minus 2)	4 Total Current Year Admitted Restricted	5 Gross (Admitted & Non- admitted) Restricted to Total Assets	6 Admitted Restricted to Total Admitted Assets
	\$21,141,749		\$21,141,749	\$21,141,749	52.018%	52.560%
Total (a)	\$21,141,749	\$ -	\$21,141,749	\$21,141,749	52.018%	52.560%

(a) Total Line for Columns 1 through 3 should equal 5L(1)m Columns 1 through 3 respectively and Total Line for Column 4 should equal 5L(1)m Column 5.

3. Detail of Other Restricted Assets (Contracts That Share Similar Characteristics, Such as Reinsurance and Derivatives, Are Reported in the Aggregate)

NOTES TO FINANCIAL STATEMENTS

	1 Total Gross (Admitted & Non- admitted) Restricted from Current Year	2 Total Gross (Admitted & Non- admitted) Restricted from Prior Year	3 Increase/ (Decrease) (1 minus 2)	4 Total Current Year Admitted Restricted	5 Gross (Admitted & Non- admitted) Restricted to Total Assets	6 Admitted Restricted to Total Admitted Assets
Description of Assets						
Total (a)	\$ -	\$ -	\$ -	\$ -	0.000%	0.000%

(a) Total Line for Columns 1 through 3 should equal 5L(1)n Columns 1 through 3 respectively and Total Line for Column 4 should equal 5L(1)n Column 5.

4. Collateral Received and Reflected as Assets Within the Reporting Entity's Financial Statements

	1 Book/Adjusted Carrying Value (BACV)	2 Fair Value	3 % of BACV to Total Assets (Admitted and Nonadmitted)*	4 % of BACV to Total Admitted Assets **
Collateral Assets				
a. Cash, Cash Equivalents and Short-Term Investments			0.000%	0.000%
b. Schedule D, Part 1			0.000%	0.000%
c. Schedule D, Part 2, Section 1			0.000%	0.000%
d. Schedule D, Part 2, Section 2			0.000%	0.000%
e. Schedule B			0.000%	0.000%
f. Schedule A			0.000%	0.000%
g. Schedule BA, Part 1			0.000%	0.000%
h. Schedule DL, Part 1			0.000%	0.000%
i. Other			0.000%	0.000%
j. Total Collateral Assets (a+b+c+d+e+f+g+h+i)	\$ -	\$ -	0.000%	0.000%

* Column 1 divided by Asset Page, Line 26 (Column 1)

** Column 1 divided by Asset Page, Line 26 (Column 3)

	1 Amount	2 % of Liability to Total Liabilities *
k. Recognized Obligation to Return Collateral Asset		0.000%
* Column 1 divided by Liability Page, Line 24 (Column 3)		

M. Working Capital Finance Investments

1. Aggregate Working Capital Finance Investments (WCFI) Book/Adjusted Carrying Value by NAIC Designation:

The Company did not hold working capital finance investments as of December 31, 2021 and 2020.

	Gross Asset CY	Non-admitted Asset CY	Net Admitted Asset CY
a. WCFI Designation 1			\$ -
b. WCFI Designation 2			\$ -
c. WCFI Designation 3			\$ -
d. WCFI Designation 4			\$ -
e. WCFI Designation 5			\$ -
f. WCFI Designation 6			\$ -
g. Total	\$ -	\$ -	\$ -

2. Aggregate Maturity Distribution on the Underlying Working Capital Finance Programs

	Book/Adjusted Carrying Value
a. Up to 180 Days	
b. 181 to 365 Days	
c. Total	\$ -

3. Any Events of Default or Working Capital Finance Investments

N. Offsetting and Netting of Assets and Liabilities

The Company did not have any applicable transactions that are offset and reported as net in accordance with SSAP No. 65.

	Gross Amount Recognized	Amount Offset*	Net Amount Presented on Financial Statements
(1) Assets			

* For derivative assets and derivative liabilities, the amount offset shall agree to Schedule DB, Part D, Section 1

	Gross Amount Recognized	Amount Offset*	Net Amount Presented on Financial Statements
(2) Liabilities			

* For derivative assets and derivative liabilities, the amount offset shall agree to Schedule DB, Part D, Section 1

O. 5GI Securities

The Company did not hold 5GI Securites as of December 31, 2021 and 2020.

Investment	Number of 5GI Securities		Aggregate BACV		Aggregate Fair Value	
	Current Year	Prior Year	Current Year	Prior Year	Current Year	Prior Year
(1) Bonds - AC						
(2) Bonds - FV						

NOTES TO FINANCIAL STATEMENTS

(3) LB&SS - AC						
(4) LB&SS - FV						
(5) Preferred Stock - AC						
(6) Preferred Stock - FV						
(7) Total (1+2+3+4+5+6)	0	0	\$ -	\$ -	\$ -	\$ -
AC - Amortized Cost FV - Fair Value						

P. Short Sales

The Company did not have any short sales as of December 31, 2021 and 2020.

(1) Unsettled Short Sale Transactions (Outstanding as of Reporting Date)

	Proceeds Received	Current Fair Value of Securities Sold Short	Unrealized Gain or Loss	Expected Settlement (# of Days)	Fair Value of Short Sales Exceeding (or expected to exceed) 3 Settlement Days	Fair Value of Short Sales Expected to be Settled by Secured Borrowing
a. Bonds						
b. Preferred Stock						
c. Common Stock						
d. Totals (a+b+c)	\$ -	\$ -	\$ -	XXX	\$ -	\$ -

(2) Settled Short Sale Transactions

	Proceeds Received	Current Fair Value of Securities Sold Short	Realized Gain or Loss on Transaction	Fair Value of Short Sales that Exceeded 3 Settlement Days	Fair Value of Short Sales Settled by Secured Borrowing
a. Bonds					
b. Preferred Stock					
c. Common Stock					
d. Totals (a+b+c)	\$ -	\$ -	\$ -	\$ -	\$ -

Q. Prepayment Penalty and Acceleration Fees

The Company did not recognize any prepayment penalty and acceleration fees during 2021 and 2020.

General Account

1. Number of CUSIPs
2. Aggregate Amount of Investment Income

R. Reporting Entity's Share of Cash Pool by Asset Type

The Company does not pool cash as of December 31, 2021 and 2020.

	Asset Type	Percent Share
(1) Cash		
(2) Cash Equivalents		
(3) Short-Term Investments		
(4) Total		

NOTE 6 Joint Ventures, Partnerships and Limited Liability Companies

- A. Investments in Joint Ventures, Partnerships and Limited Liability Companies that Exceed 10% of Ownership
The Company did not have any investments in joint ventures, partnerships or LLCs that exceeds 10% of admitted assets during 2021 and 2020.
- B. Investments in Impaired Joint Ventures, Partnerships and Limited Liability Companies
The Company did not have any investments in impaired joint ventures, partnerships or LLCs that exceeds 10% of admitted assets during 2021 and 2020.

NOTE 7 Investment Income

- A. The bases, by category of investment income, for excluding (nonadmitting) any investment income due and accrued:
Due and accrued investment income is recorded as an asset, with three exceptions. Due and accrued investment income on mortgage loans in default, where interest is more than 180 days past due, is non-admitted. Due and accrued investment income for investments other than mortgage loans, that is more than 90 days past due, is non-admitted. In addition, due and accrued investment income that is determined to be uncollectible, regardless of its age, is written off in the period that determination is made.
- B. The total amount excluded:
All due and accrued investment income was admitted as of December 31, 2021 and 2020.

NOTE 8 Derivative Instruments

The Company did not have derivative instruments as of December 31, 2021 and 2020.

A. Derivatives under SSAP No. 86—Derivatives

- (1) Market Risk, Credit Risk and Cash Requirements
- (2) Objectives for Derivative Use
- (3) Accounting Policies for Recognition and Measurement
- (4) Identification of Whether Derivative Contracts with Financing Premiums
- (5) Net Gain or Loss Recognized
- (6) Net Gain or Loss Recognized from Derivatives that no Longer Qualify for Hedge Accounting
- (7) Derivatives Accounted for as Cash Flow Hedges
- (8)

a.

NOTES TO FINANCIAL STATEMENTS

1. 2022	
2. 2023	
3. 2024	
4. 2025	
5. Thereafter	
6. Total Future Settled Premiums	\$ -

b.

	Undiscounted Future Premium Commitments	Derivative Fair Value With Premium Commitments (Reported on DB)	Derivative Fair Value Excluding Impact of Future Settled Premiums
1. Prior Year			
2. Current Year			

B. Derivatives under SSAP No. 108—Derivative Hedging Variable Annuity Guarantees
(1) Discussion of Hedged Item/Hedging Instruments and Hedging Strategy

(2) Recognition of gains/losses and deferred assets and liabilities
a. Scheduled Amortization

Amortization Year	Deferred Assets	Deferred Liabilities
1. 2022		
2. 2023		
3. 2024		
4. 2025		
5. 2026		
6. 2027		
7. 2028		
8. 2029		
9. 2030		
10. 2031		
11. Total	\$ -	\$ -

b. Total Deferred Balance *	\$ -
* Should agree to Column 19 of Schedule DB, Part E	

c. Reconciliation of Amortization:	
1. Prior Year Total Deferred Balance	\$ -
2. Current Year Amortization	
3. Current Year Deferred Recognition	
4. Ending Deferred Balance [1 - (2 + 3)]	\$ -

d. Open Derivative Removed from SSAP No. 108 and Captured in Scope of SSAP No. 86	
1. Total Derivative Fair Value Change	
2. Change in Fair Value Reflected as a Natural Offset to VM21 Liability under SSAP No. 108	
3. Change in Fair Value Reflected as a Deferred Asset / Liability Under SSAP No. 108	
4. Other Changes	
5. Unrealized Gain / Loss Recognized for Derivative Under SSAP No. 86 [1-(sum of 2 through 4)]	\$ -

e. Open Derivative Removed from SSAP No. 86 and Captured in Scope of SSAP No. 108	
1. Total Derivative Fair Value Change	
2. Unrealized Gain / Loss Recognized Prior to the Reclassification to SSAP No. 108	
3. Other Changes	
4. Fair Value Change Available for Application under SSAP No. 108 [1-(2+3)]	\$ -

(3) Hedging Strategies Identified as No Longer Highly Effective
a. Information on Determination of Ineffectiveness, Including Variations from Prior Assessments Resulting in the Change from Classification as a Highly Effective Hedge

b. Details of Hedging Strategies Identified as No Longer Highly Effective				
Unique Identifier	Date Domiciliary State Notified	Amortization (# of Years) 5 or Less	Recognized Deferred Assets	Recognized Deferred Liabilities

c. Amortization				
Amortization Year	Recognized Deferred Assets	Recognized Deferred Assets	Accelerated Amortization	Original Amortization
1. 2022				
2. 2023				
3. 2024				
4. 2025				
5. 2026				

6. Total Adjusted Amortization

d. Disclosure on Whether the Reporting Entity is Electing to Accelerate Amortization

(4) Hedging Strategies Terminated
a. Key Elements in the Reporting Entity's Decision to Terminate

b. Details of Hedging Strategies Terminated				
Unique Identifier	Date Domiciliary State Notified	Amortization (# of Years) 5 or Less	Recognized Deferred Assets	Recognized Deferred Liabilities

NOTES TO FINANCIAL STATEMENTS

--	--	--	--	--

c. Amortization

Amortization Year	Recognized Deferred Assets	Recognized Deferred Assets	Accelerated Amortization	Original Amortization
1. 2022				
2. 2023				
3. 2024				
4. 2025				
5. 2026				

6. Total Adjusted Amortization

d. Disclosure on Whether the Reporting Entity is Electing to Accelerate Amortization

NOTE 9 Income Taxes

A. The components of the net deferred tax asset/(liability) at the end of current period are as follows:

1. Effective July 1, 2015, HCI, an S-corporation, filed an election to treat the Company as a Q-Sub. Q-Subs are generally not subject to entity-level income based taxes because all items of income and deductions will be treated as that of Hunt's. On June 4, 2018, the Company's Q-Sub status terminated and the Company became a corporation subject to federal income tax. The statute of limitations is open for the tax years 2019 through 2020 and expires in 2022 and 2023, respectively.

The Company is required to assess the recoverability of deferred tax assets and if we determine that deferred tax assets may not be recoverable, we record a valuation allowance as appropriate. Significant judgment is required in assessing the future tax consequences of events that have been recognized in our financial statements or tax returns as well as the recoverability of amounts we record. In evaluating the need for a valuation allowance the Company considers many factors, such as the nature and character of the deferred tax assets and liabilities, carryback availability, projected taxable income, tax planning strategies and other factors, as applicable. Management has determined that it is more-likely-than-not that its' deferred tax assets will be realized, and therefore no valuation allowance has been established.

	As of End of Current Period			12/31/2020			Change		
	(1) Ordinary	(2) Capital	(3) (Col. 1 + 2) Total	(4) Ordinary	(5) Capital	(6) (Col. 4 + 5) Total	(7) (Col. 1 - 4) Ordinary	(8) (Col. 2 - 5) Capital	(9) (Col. 7 + 8) Total
(a) Gross Deferred Tax Assets			\$ -	\$ -	\$ -	\$ -	\$ -	\$ -	\$ -
(b) Statutory Valuation Allowance Adjustment			\$ -	\$ -	\$ -	\$ -	\$ -	\$ -	\$ -
(c) Adjusted Gross Deferred Tax Assets (1a - 1b)	\$ -	\$ -	\$ -	\$ -	\$ -	\$ -	\$ -	\$ -	\$ -
(d) Deferred Tax Assets Nonadmitted			\$ -	\$ -	\$ -	\$ -	\$ -	\$ -	\$ -
(e) Subtotal Net Admitted Deferred Tax Asset (1c - 1d)	\$ -	\$ -	\$ -	\$ -	\$ -	\$ -	\$ -	\$ -	\$ -
(f) Deferred Tax Liabilities			\$ -	\$ -	\$ -	\$ -	\$ -	\$ -	\$ -
(g) Net Admitted Deferred Tax Asset/(Net Deferred Tax Liability) (1e - 1f)	\$ -	\$ -	\$ -	\$ -	\$ -	\$ -	\$ -	\$ -	\$ -

2.

	As of End of Current Period			12/31/2020			Change		
	(1) Ordinary	(2) Capital	(3) (Col. 1 + 2) Total	(4) Ordinary	(5) Capital	(6) (Col. 4 + 5) Total	(7) (Col. 1 - 4) Ordinary	(8) (Col. 2 - 5) Capital	(9) (Col. 7 + 8) Total
Admission Calculation Components SSAP No. 101									
(a) Federal Income Taxes Paid In Prior Years Recoverable Through Loss Carrybacks			\$ -	\$ -	\$ -	\$ -	\$ -	\$ -	\$ -
(b) Adjusted Gross Deferred Tax Assets Expected To Be Realized (Excluding The Amount Of Deferred Tax Assets From 2(a) above) After Application of the Threshold Limitation. (The Lesser of 2(b)1 and 2(b)2 Below)			\$ -	\$ -	\$ -	\$ -	\$ -	\$ -	\$ -
1. Adjusted Gross Deferred Tax Assets Expected to be Realized Following the Balance Sheet Date.			\$ -	\$ -	\$ -	\$ -	\$ -	\$ -	\$ -
2. Adjusted Gross Deferred Tax Assets Allowed per Limitation Threshold.	XXX	XXX		XXX	XXX	\$ -	XXX	XXX	\$ -
(c) Adjusted Gross Deferred Tax Assets (Excluding The Amount Of Deferred Tax Assets From 2(a) and 2(b) above) Offset by Gross Deferred Tax Liabilities.			\$ -	\$ -	\$ -	\$ -	\$ -	\$ -	\$ -
(d) Deferred Tax Assets Admitted as the result of application of SSAP No. 101. Total (2(a) + 2(b) + 2(c))	\$ -	\$ -	\$ -	\$ -	\$ -	\$ -	\$ -	\$ -	\$ -

3.

2021

2020

a. Ratio Percentage Used To Determine Recovery Period And Threshold Limitation Amount.

b. Amount Of Adjusted Capital And Surplus Used To Determine Recovery Period And Threshold Limitation In 2(b)2 Above.

4.

	As of End of Current Period		12/31/2020		Change	
	(1) Ordinary	(2) Capital	(3) Ordinary	(4) Capital	(5) (Col. 1 - 3) Ordinary	(6) (Col. 2 - 4) Capital
Impact of Tax Planning Strategies:						
(a) Determination of adjusted gross deferred tax assets and net admitted deferred tax assets, by tax character as a percentage.						
1. Adjusted Gross DTAs amount from Note 9A1						
(c)	\$ -	\$ -	\$ -	\$ -	\$ -	\$ -

NOTES TO FINANCIAL STATEMENTS

2. Percentage of adjusted gross DTAs by tax character attributable to the impact of tax planning strategies				0.000%	0.000%	0.000%	0.000%
3. Net Admitted Adjusted Gross DTAs amount from Note 9A1(e)	\$ -	\$ -	\$ -	\$ -	\$ -	\$ -	\$ -
4. Percentage of net admitted adjusted gross DTAs by tax character admitted because of the impact of tax planning strategies				0.000%	0.000%	0.000%	0.000%

b. Do the Company's tax-planning strategies include the use of reinsurance? Yes [] No []

B. Deferred Tax Liabilities Not Recognized

C. Current income taxes incurred consist of the following major components:

	(1) As of End of Current Period	(2) 12/31/2020	(3) (Col. 1 - 2) Change
1. Current Income Tax			
(a) Federal	\$ (204,021)	\$ 443,381	\$ (647,402)
(b) Foreign		\$ -	\$ -
(c) Subtotal	\$ (204,021)	\$ 443,381	\$ (647,402)
(d) Federal income tax on net capital gains		\$ -	\$ -
(e) Utilization of capital loss carry-forwards		\$ -	\$ -
(f) Other		\$ -	\$ -
(g) Federal and foreign income taxes incurred	\$ (204,021)	\$ 443,381	\$ (647,402)
2. Deferred Tax Assets:			
(a) Ordinary:			
(1) Discounting of unpaid losses		\$ -	\$ -
(2) Unearned premium reserve		\$ -	\$ -
(3) Policyholder reserves		\$ -	\$ -
(4) Investments		\$ -	\$ -
(5) Deferred acquisition costs		\$ -	\$ -
(6) Policyholder dividends accrual		\$ -	\$ -
(7) Fixed Assets		\$ -	\$ -
(8) Compensation and benefits accrual		\$ -	\$ -
(9) Pension accrual		\$ -	\$ -
(10) Receivables - nonadmitted		\$ -	\$ -
(11) Net operating loss carry-forward		\$ -	\$ -
(12) Tax credit carry-forward		\$ -	\$ -
(13) Other (including items <5% of total ordinary tax assets)		\$ -	\$ -
(99) Subtotal	\$ -	\$ -	\$ -
(b) Statutory valuation allowance adjustment		\$ -	\$ -
(c) Nonadmitted		\$ -	\$ -
(d) Admitted ordinary deferred tax assets (2a99 - 2b - 2c)	\$ -	\$ -	\$ -
(e) Capital:			
(1) Investments		\$ -	\$ -
(2) Net capital loss carry-forward		\$ -	\$ -
(3) Real estate		\$ -	\$ -
(4) Other (including items <5% of total ordinary tax assets)		\$ -	\$ -
(99) Subtotal	\$ -	\$ -	\$ -
(f) Statutory valuation allowance adjustment		\$ -	\$ -
(g) Nonadmitted		\$ -	\$ -
(h) Admitted capital deferred tax assets (2e99 - 2f - 2g)	\$ -	\$ -	\$ -
(i) Admitted deferred tax assets (2d + 2h)	\$ -	\$ -	\$ -
3. Deferred Tax Liabilities:			
(a) Ordinary:			
(1) Investments		\$ -	\$ -
(2) Fixed Assets		\$ -	\$ -
(3) Deferred and uncollected premium		\$ -	\$ -
(4) Policyholder reserves		\$ -	\$ -
(5) Other (including items <5% of total ordinary tax liabilities)		\$ -	\$ -
(99) Subtotal	\$ -	\$ -	\$ -
(b) Capital:			
(1) Investments		\$ -	\$ -
(2) Real estate		\$ -	\$ -
(3) Other (including items <5% of total capital tax liabilities)		\$ -	\$ -
(99) Subtotal	\$ -	\$ -	\$ -
(c) Deferred tax liabilities (3a99 + 3b99)	\$ -	\$ -	\$ -
4. Net deferred tax assets/liabilities (2i - 3c)	\$ -	\$ -	\$ -

D. Reconciliation of Federal Income Tax Rate to Actual Effective Rate Among the more significant book to tax adjustments were the following:

E. Operating Loss Carry Forwards and Income Taxes Available for Recoupment

F. Consolidated Federal Income Tax Return
The Company's federal income tax return is consolidated with Nevada General Corporation, which owns 99% of Bankers Guarantee. Because all revenue is related to the Company's activities and the parent company holds only a small cash balance, 100% of federal income tax for all entities is allocated to the Company.

G. Federal or Foreign Federal Income Tax Loss Contingencies
The Company had no federal income tax loss contingencies as of December 31, 2021 and 2020.

H. Repatriation Transition Tax (RTT)
Not Applicable

NOTES TO FINANCIAL STATEMENTS

I. Alternative Minimum Tax (AMT) Credit
Not Applicable

	Amount
(1) Gross AMT Credit Recognized as:	
a. Current year recoverable	
b. Deferred tax asset (DTA)	
(2) Beginning Balance of AMT Credit Carryforward	\$ -
(3) Amounts Recovered	
(4) Adjustments	
(5) Ending Balance of AMT Credit Carryforward (5=2-3-4)	\$ -
(6) Reduction for Sequestration	
(7) Nonadmitted by Reporting Entity	
(8) Reporting Entity Ending Balance (8=5-6-7)	\$ -

NOTE 10 Information Concerning Parent, Subsidiaries, Affiliates and Other Related Parties

- A. Nature of the Relationship Involved
Certain expenses of the Company are paid by an affiliate. These expenses included (i) the actual costs to the Parent Company of goods, materials and services used for and obtained by the Company from unaffiliated parties, and (ii) the costs of certain personnel employed by the Parent Company and directly involved in the organization and business of the Company and for legal, accounting, administration, data processing, duplication and other miscellaneous costs or services performed by employees or officers of the Parent Company. Any amounts outstanding as of December 31, 2021 and December 31, 2020 are reflected in Other expenses on the Schedule of Liabilities, Surplus and Other Funds.
- B. Transactions
- C. Transactions with related party who are not reported on Schedule Y

(1) Detail of Material Related Party Transactions

Ref #	Date of Transaction	Name of Related Party	Nature of Relationship	Type of Transaction	Written Agree-ment (Yes/No)	Due Date	Reporting Period Date Amount Due From (To)

- Options for Type of Transaction:
- Loan
 - Exchange of Assets or Liabilities (e.g., buys, sells and secured borrowing transactions)
 - Management Services
 - Cost-Sharing Agreement
 - Other Transactions Involving Services
 - Guarantee (e.g., guarantees to related parties, on behalf of, and when beneficiary is related party)
 - Other

(2) Detail of Material Related Party Transactions Involving Services

Ref #	Name of Related Party	Overview Description	Amount Charged	Amount Based on Allocation of Costs or Market Rates	Amount Charged Modified or Waived (Yes/No)
Total			\$ -	\$ -	

(3) Detail of Material Related Party Transactions Involving Exchange of Assets and Liabilities

a. Description of Transaction

Ref #	Name of Related Party	Overview Description	Have Terms Changed from Preceding Period? (Yes/No)

b. Assets Received

Ref #	Name of Related Party	Description of Assets Received	Statement Value of Assets Received
Total			\$ -

c. Assets Transferred

Ref #	Name of Related Party	Description of Assets Transferred	Statement Value of Assets Transferred
Total			\$ -

(4) Detail of Amounts Owed To/From a Related Party

Ref #	Name of Related Party	Aggregate Reporting Period Amount Due From	Aggregate Reporting Period (Amount Due To)	Amount Offset in Financial Statement (if qualifying)	Net Amount Recoverable/ (Payable) by Related Party	Admitted Recoverable

NOTES TO FINANCIAL STATEMENTS

Total	XXX	\$ -	\$ -	\$ -	\$ -	\$ -

- D. Amounts Due From or To Related Parties
At December 31, 2021 and December 31, 2020, the Company had \$2,250 and \$11,383 due to two affiliates, respectively.
- E. Material Management or Service Contracts and Cost-Sharing Arrangements
- F. Guarantees or Undertakings
- G. Nature of the Control Relationship
- H. Amount Deducted from the Value of Upstream Intermediate Entity or Ultimate Parent Owned
- I. Investments in SCA that Exceed 10% of Admitted Assets
- J. Investments in Impaired SCAs
- K. Investment in Foreign Insurance Subsidiary
- L. Investment in Downstream Noninsurance Holding Company
- M. All SCA Investments

(1) Balance Sheet Value (Admitted and Nonadmitted) All SCAs (Except 8bi Entities)

SCA Entity	Percentage of SCA Ownership	Gross Amount	Admitted Amount	Nonadmitted Amount
a. SSAP No. 97 8a Entities				
Total SSAP No. 97 8a Entities	XXX	\$ -	\$ -	\$ -
b. SSAP No. 97 8b(ii) Entities				
Total SSAP No. 97 8b(ii) Entities	XXX	\$ -	\$ -	\$ -
c. SSAP No. 97 8b(iii) Entities				
Total SSAP No. 97 8b(iii) Entities	XXX	\$ -	\$ -	\$ -
d. SSAP No. 97 8b(iv) Entities				
Total SSAP No. 97 8b(iv) Entities	XXX	\$ -	\$ -	\$ -
e. Total SSAP No. 97 8b Entities (except 8bi entities) (b+c+d)	XXX	\$ -	\$ -	\$ -
f. Aggregate Total (a+ e)	XXX	\$ -	\$ -	\$ -

(2) NAIC Filing Response Information

SCA Entity (Should be same entities as shown in M(1) above.)	Type of NAIC Filing *	Date of Filing to the NAIC	NAIC Valuation Amount	NAIC Response Received Yes/No	NAIC Disallowed Entities Valuation Method, Resubmission Required Yes/No	Code **
a. SSAP No. 97 8a Entities						
Total SSAP No. 97 8a Entities	XXX	XXX	\$ -	XXX	XXX	XXX
b. SSAP No. 97 8b(ii) Entities						
Total SSAP No. 97 8b(ii) Entities	XXX	XXX	\$ -	XXX	XXX	XXX
c. SSAP No. 97 8b(iii) Entities						
Total SSAP No. 97 8b(iii) Entities	XXX	XXX	\$ -	XXX	XXX	XXX
d. SSAP No. 97 8b(iv) Entities						
Total SSAP No. 97 8b(iv) Entities	XXX	XXX	\$ -	XXX	XXX	XXX
e. Total SSAP No. 97 8b Entities (except 8bi entities) (b+c+d)	XXX	XXX	\$ -	XXX	XXX	XXX
f. Aggregate Total (a+e)	XXX	XXX	\$ -	XXX	XXX	XXX

* S1 - Sub-1, S2 - Sub-2 or RDF - Resubmission of Disallowed Filing
** I - Immaterial or M - Material

N. Investment in Insurance SCAs

(1) Accounting Practice that Differs from NAIC Statutory Accounting Practices and Procedures

(2) The monetary effect on net income and surplus as a result of using an accounting practice that differed from NAIC Statutory Accounting Practices and Procedures (NAIC SAP), the amount of the investment in the insurance SCA per audited statutory equity and amount of the investment if the insurance SCA had completed statutory financial statements in accordance with the AP&P Manual.

NOTES TO FINANCIAL STATEMENTS

SCA Entity (Investments in Insurance SCA Entities)	Monetary Effect on NAIC SAP		Amount of Investment	
	Net Income Increase (Decrease)	Surplus Increase (Decrease)	Per Audited Statutory Equity	If the Insurance SCA Had Completed Statutory Financial Statements *

* Per AP&P Manual (without permitted or prescribed practices)

(3) RBC Regulatory Event Because of Prescribed or Permitted Practice

O. SCA or SSAP 48 Entity Loss Tracking

1	2	3	4	5	6
Entity	Reporting Entity's Share of Net Income (Loss)	Accumulated Share of Net Income (Losses)	Reporting Entity's Share of Equity, Including Negative Equity	Guaranteed Obligation / Commitment for Financial Support (Yes/No)	Amount of the Recognized Guarantee Under SSAP No. 5R

NOTE 11 Debt

A. Debt Including Capital Notes

The Company did not have debt or capital notes outstanding as of December 31, 2021 and 2020.

B. FHLB (Federal Home Loan Bank) Agreements

The Company, a third party title insurance company since 1911, was an eligible member of the FHLB. On March 31, 2016, the Company was informed by the FHFA that for purposes of the rules governing FHLB membership, the FHFA considers the Company to be a captive insurance company. The Company was admitted as a member of the FHLB prior to September 12, 2014, and the Company's membership with the FHLB terminated effective February 19, 2021.

As of December 31, 2020, commercial loans and a money market account with a carrying value of \$31.5 million have been pledged as collateral for such advances. In connection with the advances, the Company has purchased, as required under the terms of the advances, \$649,800 of FHLB stock.

In connection with the Company's membership with the FHLB being terminated, its investment in the capital stock of the FHLB in connection with its membership was redeemed. The Company repaid its outstanding FHLB advances with proceeds from a new \$17.9 million recourse loan facility on February 16, 2021 that bears interest at a rate of one-month LIBOR plus 2.25%, with a floor of 2.50%; and, has a maturity date in February 2023, which may be extended for one year.

(1) Nature of the Agreement, Type of Borrowing and Use of Funding

(2) FHLB Capital Stock

a. Aggregate Totals

	Total
1. Current Year	
(a) Membership Stock - Class A	
(b) Membership Stock - Class B	
(c) Activity Stock	
(d) Excess Stock	
(e) Aggregate Total (a+b+c+d)	\$ -
(f) Actual or estimated Borrowing Capacity as Determined by the Insurer	
2. Prior Year-end	
(a) Membership Stock - Class A	
(b) Membership Stock - Class B	\$ 649,800
(c) Activity Stock	
(d) Excess Stock	
(e) Aggregate Total (a+b+c+d)	\$ 649,800
(f) Actual or estimated Borrowing Capacity as Determined by the Insurer	\$ 31,481,646

11B(2)a1(f) should be equal to or greater than 11B(4)a1(d)

11B(2)a2(f) should be equal to or greater than 11B(4)a2(d)

b. Membership Stock (Class A and B) Eligible and Not Eligible for Redemption

	1	2	Eligible for Redemption			
			3	4	5	6
	Current Year Total (2+3+4+5+6)	Not Eligible for Redemption	Less Than 6 Months	6 Months to Less Than 1 Year	1 to Less Than 3 Years	3 to 5 Years
Membership Stock						
1. Class A	\$ -					
2. Class B	\$ -					

11B(2)b1 Current Year Total (Column 1) should equal 11B(2)a1(a) Total (Column 1)

11B(2)b2 Current Year Total (Column 1) should equal 11B(2)a1(b) Total (Column 1)

(3) Collateral Pledged to FHLB

a. Amount Pledged as of Reporting Date

	1	2	3
	Fair Value	Carrying Value	Aggregate Total Borrowing
1. Current Year Total Collateral Pledged			
2. Prior Year-end Total Collateral Pledged	\$ 31,481,646	\$ 31,481,646	\$ 17,862,569

11B(3)a1 (Columns 1, 2 and 3) should be equal to or less than 11B(3)b1 (Columns 1, 2 and 3 respectively)

11B(3)a2 (Columns 1, 2 and 3) should be equal to or less than 11B(3)b2 (Columns 1, 2 and 3 respectively)

NOTES TO FINANCIAL STATEMENTS

11B(3)a3 (Columns 1, 2 and 3) should be equal to or less than 11B(3)b3 (Columns 1, 2 and 3 respectively)
11B(3)a4 (Columns 1, 2 and 3) should be equal to or less than 11B(3)b4 (Columns 1, 2 and 3 respectively)

b. Maximum Amount Pledged During Reporting Period

	1	2	3
			Amount Borrowed at Time of Maximum Collateral
	Fair Value	Carrying Value	
1. Current Year Total Maximum Collateral Pledged	\$ 31,481,646	\$ 31,481,646	\$ 17,862,569
2. Prior Year-end Total Maximum Collateral Pledged	\$ 31,481,646	\$ 31,481,646	\$ 17,862,569

(4) Borrowing from FHLB

a. Amount as of Reporting Date

	Total	Funding Agreements Reserves Established
1. Current Year		
(a) Debt		XXX
(b) Funding Agreements		\$ -
(c) Other		XXX
(d) Aggregate Total (a+b+c)	\$ -	\$ -
2. Prior Year end		
(a) Debt	\$ 17,862,569	XXX
(b) Funding Agreements		
(c) Other		XXX
(d) Aggregate Total (a+b+c)	\$ 17,862,569	\$ -

b. Maximum Amount During Reporting Period (Current Year)

	Total
1. Debt	\$ 17,862,569
2. Funding Agreements	
3. Other	
4. Aggregate Total (Lines 1+2+3)	\$ 17,862,569

11B(4)b4 (Columns 1, 2 and 3) should be equal to or greater than 11B(4)a1(d) (Columns 1, 2 and 3 respectively)

c. FHLB - Prepayment Obligations

Does the company have prepayment obligations under the following arrangements (YES/NO)?

1. Debt
2. Funding Agreements
3. Other

C. Other Borrowing Agreements

The Company repaid its outstanding FHLB advances with proceeds from a new \$17.9 million recourse loan facility on February 16, 2021 that bears interest at a rate of one-month LIBOR plus 2.25%, with a floor of 2.50%; and, has a maturity date in February 2023, which may be extended for one year.

(1) Nature of the Agreement, Type of Borrowing and Use of Funding

(2) Collateral Pledged

a. Amount Pledged as of Reporting Date

	1	2	3
	Fair Value	Carrying Value	Aggregate Total Borrowing
1. Current Year Total Collateral Pledged	\$ 21,141,749	\$ 21,141,749	\$ 15,000,000
2. Prior Year-end Total Collateral Pledged	\$ -	\$ -	\$ -

11B(3)a1 (Columns 1, 2 and 3) should be equal to or less than 11B(3)b1 (Columns 1, 2 and 3 respectively)

11B(3)a2 (Columns 1, 2 and 3) should be equal to or less than 11B(3)b2 (Columns 1, 2 and 3 respectively)

11B(3)a3 (Columns 1, 2 and 3) should be equal to or less than 11B(3)t 0

11B(3)a4 (Columns 1, 2 and 3) should be equal to or less than 11B(3)t 0

0

b. Maximum Amount Pledged During Reporting Period

	1	2	3
			Amount Borrowed at Time of Maximum Collateral
	Fair Value	Carrying Value	
1. Current Year Total Maximum Collateral Pledged	\$ 27,634,757	\$ 27,634,757	\$ 17,862,569
2. Prior Year-end Total Maximum Collateral Pledged	\$ -	\$ -	\$ -

(3) Borrowing

a. Amount as of Reporting Date

#	0	Funding Agreements Reserves Established
Total		

NOTES TO FINANCIAL STATEMENTS

1. Current Year				
(a) Debt	\$	15,000,000	XXX	
(b) Funding Agreements	\$	-	\$	-
(c) Other	\$	-	XXX	
(d) Aggregate Total (a+b+c)	\$	15,000,000	\$	-
2. Prior Year end				
(a) Debt	\$	-	XXX	
(b) Funding Agreements				
(c) Other			XXX	
(d) Aggregate Total (a+b+c)	\$	-	\$	-

b. Maximum Amount During Reporting Period (Current Year)

	Total
1. Debt	\$ 17,862,569
2. Funding Agreements	\$ -
3. Other	\$ -
4. Aggregate Total (Lines 1+2+3)	\$ 17,862,569

11B(4)b4 (Columns 1, 2 and 3) should be equal to or greater than 11B(4)a1(d) (Columns 1, 2 and 3 respectively)

c. Prepayment Obligations

	Does the company have prepayment obligations under the following arrangements (YES/NO)?
1. Debt	Yes
2. Funding Agreements	No
3. Other	No

NOTE 12 Retirement Plans, Deferred Compensation, Postemployment Benefits and Compensated Absences and Other Postretirement Benefit Plans

A. Defined Benefit Plan

The Company did not have retirement plans, postemployment benefits, compensated balances, or other postretirement benetift plans as of December 31, 2021 and 2020. The Company has a deferred compensation plan for certain members of management in 2021 and 2020, and the Company accrued compensation expense of \$12,875 and \$118,820 included in liabilities as of December 31, 2021 and 2020, respectively.

(1) Change in benefit obligation

a. Pension Benefits

	Overfunded		Underfunded	
	2021	2020	2021	2020
1. Benefit obligation at beginning of year	\$ -	\$ -	\$ -	\$ -
2. Service cost				
3. Interest cost				
4. Contribution by plan participants				
5. Actuarial gain (loss)				
6. Foreign currency exchange rate changes				
7. Benefits paid				
8. Plan amendments				
9. Business combinations, divestitures, curtailments, settlements and special termination benefits				
10. Benefit obligation at end of year	\$ -	\$ -	\$ -	\$ -

b. Postretirement Benefits

	Overfunded		Underfunded	
	2021	2020	2021	2020
1. Benefit obligation at beginning of year	\$ -	\$ -	\$ -	\$ -
2. Service cost				
3. Interest cost				
4. Contribution by plan participants				
5. Actuarial gain (loss)				
6. Foreign currency exchange rate changes				
7. Benefits paid				
8. Plan amendments				
9. Business combinations, divestitures, curtailments, settlements and special termination benefits				
10. Benefit obligation at end of year	\$ -	\$ -	\$ -	\$ -

c. Special or Contractual Benefits Per SSAP No. 11

	Overfunded		Underfunded	
	2021	2020	2021	2020
1. Benefit obligation at beginning of year	\$ -	\$ -	\$ -	\$ -
2. Service cost				
3. Interest cost				
4. Contribution by plan participants				
5. Actuarial gain (loss)				
6. Foreign currency exchange rate changes				
7. Benefits paid				
8. Plan amendments				
9. Business combinations, divestitures, curtailments, settlements and special termination benefits				
10. Benefit obligation at end of year	\$ -	\$ -	\$ -	\$ -

	Pension Benefits		Postretirement Benefits		Special or Contractual Benefits Per SSAP No. 11	
	2021	2020	2021	2020	2021	2020
(2) Change in plan assets						

13.22

NOTES TO FINANCIAL STATEMENTS

- (14) Substantive Comment Used to Account for Benefit Obligation
- (15) Cost of Providing Special or Contractual Termination Benefits Recognized
- (16) Reasons for Significant Gains/Losses Related to Changes in Defined Benefit Obligation and any Other Significant Change in the Benefit Obligations or
- (17) Accumulated Postretirement and Pension Benefit Obligation and Fair Value of Plan Assets for Defined Postretirement and Pension Benefit Plans
- (18) Full Transition Surplus Impact of SSAP 102

B. Investment Policies and Strategies

C. The fair value of each class of plan assets

(1) Fair Value Measurements of Plan Assets at Reporting Date

Description for each class of plan assets	(Level 1)	(Level 2)	(Level 3)	Total
Total Plan Assets	\$ -	\$ -	\$ -	\$ -

(2) Valuation Technique(s) and Inputs Used to Measure Fair Value

D. Basis Used to Determine Expected Long-Term Rate-of-Return

E. Defined Contribution Plan

F. Multiemployer Plans

G. Consolidated/Holding Company Plans

H. Postemployment Benefits and Compensated Absences

I. Impact of Medicare Modernization Act on Postretirement Benefits (INT 04-17)

NOTE 13 Capital and Surplus, Dividend Restrictions and Quasi-Reorganizations

A. Number of Share and Par or State Value of Each Class

The Company has 15,000 shares authorized, 12,625 shares issued, and 12,625 shares outstanding.

B. Dividend Rate, Liquidation Value and Redemption Schedule of Preferred Stock Issues

The Company has no preferred stock outstanding.

C. Dividend Restrictions

The ability of the Company to pay dividends is generally dependent on business conditions, income, cash requirements, and other relevant factors. More specifically, the Ohio Revised Code ("Code") provides a two-step process. First, no dividend may be declared or paid except from earned (unassigned) surplus, as distinguished from contributed surplus, nor when the payment of a dividend reduces surplus below the minimum amount required by the Code. Secondly, a determination of the ordinary versus extraordinary dividends that can be paid is formula based and considers net income and capital and surplus, as well as the timing and amounts of dividends paid in the preceding twelve months as specified by the Code. Ordinary dividends to shareholders do not require prior approval of the ODI. Dividends are not cumulative. As of December 31, 2021, the maximum ordinary dividend that can be declared and paid in 2021 by the Company is limited to \$0.

D. Dates and Amounts of Dividends Paid

The Company paid a \$20.0 million dividend on June 1, 2020 consisting of a \$2,780,325 ordinary dividend and a \$17,219,675 extraordinary dividend. The Company also paid a \$85,651 dividend on January 4, 2021 as a ordinary dividend as part of the transfer of the residential mortgage business.

E. Profits that may be Paid as Ordinary Dividends to Stockholders

Within the limitations of (3) above, there are no restrictions placed on the portion of Company profits that may be paid as ordinary dividends to stockholders.

F. Restrictions Placed on Unassigned Funds (Surplus)

There were no restrictions placed on the Company's suprlus, including for whom the surplus is being held.

G. Amount of Advances to Surplus not Repaid

The Company had no advances to surplus not repaid in 2021 or 2020.

H. Amount of Stock Held for Special Purposes

There were no amounts of stock held by the Company, including stock of affiliated companies, for special purposes.

I. Reasons for Changes in Balance of Special Surplus Funds from Prior Period

The Company had no special surplus funds in 2021 or 2020.

J. The portion of unassigned funds (surplus) represented or reduced by cumulative unrealized gains and losses is

K. The Company issued the following surplus debentures or similar obligations:

1	2	3	4	5	6	7	8
Item Number	Date Issued	Interest Rate	Original Issue Amount of Note	Is Surplus Note Holder a Related Party (Y/N)	Carrying Value of Note Prior Year	Carrying Value of Note Current Year*	Unapproved Interest And/Or Principal
Total	XXX	XXX	\$ -	XXX	\$ -	\$ -	\$ -

* Total should agree with Page 3, Line 28.

NOTES TO FINANCIAL STATEMENTS

1	9	10	11	12	13	14
Item Number	Current Year Interest Expense Recognized	Life-To-Date Interest Expense Recognized	Current Year Interest Offset Percentage (not including amounts paid to a 3rd party liquidity provider)	Current Year Principal Paid	Life-To-Date Principal Paid	Date of Maturity
Total	\$ -	\$ -	XXX	\$ -	\$ -	XXX

1	15	16	17	18	19
Item Number	Are Surplus Note Payments Contractually Linked? (Y/N)	Surplus Note Payments Subject to Administrative Offsetting Provisions? (Y/N)	Were Surplus Note Proceeds Used to Purchase an Asset Directly From the Holder of the Surplus Note? (Y/N)	Is Asset Issuer a Related Party (Y/N)	Type of Assets Received Upon Issuance
Total	XXX	XXX	XXX	XXX	XXX

1	20	21	22
Item Number	Principal Amount of Assets Received Upon Issuance	Book/Adjusted Carry Value of Assets	Is Liquidity Source a Related Party to the Surplus Note Issuer? (Y/N)
Total	\$ -	\$ -	XXX

L. The impact of any restatement due to prior quasi-reorganizations is as follows:

Change in Year Surplus	Change in Gross Paid-in and Contributed Surplus

M. Not Applicable

NOTE 14 Liabilities, Contingencies and Assessments

A. Contingent Commitments

(1) Total contingent liabilities:

(2)

(1)	(2)	(3)	(4)	(5)
Nature and circumstances of guarantee and key attributes, including date and duration of agreement	Liability recognition of guarantee. (Include amount recognized at inception. If no initial recognition, document exception allowed under SSAP No. 5R.)	Ultimate financial statement impact if action under the guarantee is required	Maximum potential amount of future payments (undiscounted) the guarantor could be required to make under the guarantee. If unable to develop an estimate, this should be specifically noted.	Current status of payment or performance risk of guarantee. Also provide additional discussion as warranted
Total	\$ -	XXX	\$ -	XXX

(3)

- Amount
- a. Aggregate Maximum Potential of Future Payments of All Guarantees (undiscounted) the guarantor could be required to make under guarantees. (Should equal total of Column 4 for (2) above.)

\$ -
- b. Current Liability Recognized in F/S:

1. Noncontingent Liabilities

NOTES TO FINANCIAL STATEMENTS

	2. Contingent Liabilities		
	c. Ultimate Financial Statement Impact if action under the guarantee is required:		
	1. Investments in SCA		
	2. Joint Venture		
	3. Dividends to Stockholders (capital contribution)		
	4. Expense		
	5. Other		
	6. Total (Should equal (3)a.)	\$	-
B.	Assessments		
	(1)		
	Nature of Any Assets That Could Have a Material Financial Effect		
	(2) a. Assets recognized from paid and accrued premium tax offsets and policy surcharges prior year-end	\$	-
	b. Decreases current year:		
	c. Increases current year:		
	d. Assets recognized from paid and accrued premium tax offsets and policy surcharges current year-end	\$	-
C.	Gain Contingencies		
	The Company did not have any gain contingencies as of December 31, 2021 and 2020.		
D.	Claims related extra contractual obligations and bad faith losses stemming from lawsuits		
		<u>Direct</u>	
	(1) The company paid the following amounts in the reporting period to settle claims related extra contractual obligations or bad faith claims stemming from lawsuits		
	(2) Number of claims where amounts were paid to settle claims related extra contractual obligations or bad faith claims resulting from lawsuits during the reporting period		
	(3) Indicate whether claim count information is disclosed per claim or per claimant		
E.	Joint and Several Liabilities		
	The Company did not have joint and several liabilities as of December 31, 2021 and 2020.		
F.	All Other Contingencies		
	The Company did not have any other contingencies as of December 31, 2021 and 2020.		

NOTE 15 Leases

A.	Lessee Operating Lease:		
	(1) Lessee's Leasing Arrangements		
	a. Rental Expense		
	Effective December 15, 2016, the Company entered into a lease for new office space. The lease is for 60 months and requires base monthly rental payment ranging from \$5,008 to \$5,278 over the term of the lease.		
	The Company recognized lease expense on a straight line basis upon the total minimum lease payments required over the term of the lease. Annual rent expenses incurred under the lease totaled \$53,873 for the year ended December 31, 2020. The lease was transferred to a related entity on January 4, 2021.		
	(2) a. At December 31, 2021, the minimum aggregate rental commitments are as follows:		Operating Leases
	1. 2022		
	2. 2023		
	3. 2024		
	4. 2025		
	5. 2026		
	6. Total		
	(3) For Sale-Leaseback Transactions		
	The Company had no non-cancelable subleases as of December 31, 2021 and 2020.		
B.	Lessor Leases		
	(1) Operating Leases		
	c. Future minimum lease payment receivables under noncancelable leasing arrangements as of the end of current period are as follows:		Operating Leases
	1. 2022		
	2. 2023		
	3. 2024		
	4. 2025		
	5. 2026		
	6. Total		
	(2) Leveraged Leases		
	a. Terms Including Pretax Income from Leveraged Leases		
	The Company has no leveraged leases as of December 31, 2021 and 2020.		
	b. The Company's investment in leveraged leases relates to equipment used primarily in the transportation industries. The component of net income from leveraged leases as of the end of current period and December 31, 2020 were as shown below:		

NOTES TO FINANCIAL STATEMENTS

	2021	2020
1. Income from leveraged leases before income tax including investment tax credit		
2. Less current income tax		
3. Net income from leverage leases	\$ -	\$ -
c. The components of the investment in leveraged leases as of the end of current period and December 31, 2020 were as shown below:		
	2021	2020
1. Lease contracts receivable (net of principal and interest on non-recourse financing)		
2. Estimated residual value of leased assets		
3. Unearned and deferred income		
4. Investment in leveraged leases		
5. Deferred income taxes related to leveraged leases		
6. Net investment in leveraged leases	\$ -	\$ -

NOTE 16 Information About Financial Instruments With Off-Balance Sheet Risk and Financial Instruments With Concentrations of Credit Risk

Commitments for the origination and subsequent sale and delivery of loans to GSEs represent those mortgage transactions where the borrower has locked an interest rate scheduled closing and the Company has entered into mandatory delivery commitment to sell the loan to the GSEs. At December 31, 2021, the Company had no such commitments. The funded loans are recorded at fair value and are included in "Mortgage loans on real estate" in the Statement of Assets.

(1) The table below summarizes the face amount of the Company's financial instruments with off-balance sheet risk.

	ASSETS		LIABILITIES	
	2021	2020	2021	2020
a. Swaps				
b. Futures				
c. Options				
d. Total	\$ -	\$ -	\$ -	\$ -

- (2) Nature and Terms of Off-Balance Sheet Risk
- (3) Amount of Loss if any Party to the Financial Instrument Failed
- (4) Collateral or Other Security Required to Support Financial Instrument

NOTE 17 Sale, Transfer and Servicing of Financial Assets and Extinguishments of Liabilities

- A. Transfers of Receivables Reported as Sales
- (1) Proceeds to the Transferor
- The Company did not have transfers of receivables reported as sales in accordance with SSAP No. 42, Sale of Premium Receivables in 2021 and 2020.
- (2) Gain or Loss Record on Sale
- B. Transfer and Servicing of Financial Assets
- (1) Description of any Loaned Securities
- The Company did not have any loaned securities as of December 31, 2021 and 2020.
- (2) Servicing Assets and Servicing Liabilities
- MSRs represent servicing rights retained by the Company for loans it originates and sells. The servicing fees are collected from the monthly payments made by the borrowers. The Company generally receives other remuneration including rights to various loan fees such as late charges, loan prepayment penalties, and other ancillary fees. In addition, the Company is also generally entitled to retain the interest earned on funds held pending remittance related to its collection of loan principal and escrow balances. As of December 31, 2020, the carrying value of MSRs at fair value was approximately \$1.4 million. As of December 31, 2020 the Company had a servicing portfolio consisting of 1,713 loans with an unpaid principal balance of \$214.7 million. The MSRs were transferred on January 4, 2021 to a related entity.
- The Company's mortgage banking activities include originating and underwriting loans for sale to third parties and subsequently servicing these loans. Loans originated and/or underwritten by the Company are primarily self-funded until subsequent sale to investors. This business was transferred on January 4, 2021 to a related entity.
- (3) When Servicing Assets and Liabilities are Measured as Fair Value
- The Company carried its MSRs at fair value as determined by a third party valuation firm. The MSRs were transferred on January 4, 2021 to a related entity.
- (4) Securitizations, Asset-Based Financing Arrangements and Similar Transfers Accounted for as Sales
- The Company did not have any such transactions in 2021 and 2020.
- (5) Disclosure Requirements for Transfers of Assets Accounted for as Secured Borrowing
- The Company had no transfers of assets accounted for as secured borrowing in 2021 and 2020.
- (6) Transfer of Receivables with Recourse
- The Company had no transfer of receivables with recourse in 2021 and 2020.
- (7) Securities Underlying Repurchase and Reverse Repurchase Agreements, Dollar Repurchase and Dollar Reverse Repurchase Agreements
- The Company had no such transactions in 2021 and 2020.

1	2	3	4	5	6	7	8
Identification of Transaction	BACV at Time of Transfer	Original Reporting Schedule of the Transferred Assets	Amount Derecognized from Sale Transaction	Amount that continues to be recognized in the statement of financial position (Col. 2 minus 4)	BACV of acquired interests in transferred assets	Reporting Schedule of Acquired Interests	Percentage of interests of a reporting entity's transferred assets acquired by affiliated entities

- C. Wash Sales
- (1) Description of the Objectives Regarding These Transactions
- The Company did not have any wash sales in 2021 and 2020.

NOTES TO FINANCIAL STATEMENTS

(2) The details by NAIC designation 3 or below, or unrated of securities sold during the year ended December 31, 2021 and reacquired within 30 days of the sale date are:

Description	NAIC Designation	Number of Transactions	Book Value of Securities Sold	Cost of Securities Repurchased	Gain/(Loss)
-------------	------------------	------------------------	-------------------------------	--------------------------------	-------------

NOTE 18 Gain or Loss to the Reporting Entity from Uninsured Plans and the Uninsured Portion of Partially Insured Plans
Not Applicable

NOTE 19 Direct Premium Written/Produced by Managing General Agents/Third Party Administrators
Not Applicable

NOTE 20 Fair Value Measurements
A.

(1) Fair Value Measurements at Reporting Date

Description for each class of asset or liability	(Level 1)	(Level 2)	(Level 3)	Net Asset Value (NAV)	Total
a. Assets at fair value					
Total assets at fair value/NAV	\$ -	\$ -	\$ -	\$ -	\$ -

Description for each class of asset or liability	(Level 1)	(Level 2)	(Level 3)	Net Asset Value (NAV)	Total
b. Liabilities at fair value					
Total liabilities at fair value	\$ -	\$ -	\$ -	\$ -	\$ -

(2) Fair Value Measurements in (Level 3) of the Fair Value hierarchy
The Company does not have Level 3 assets or liabilities reported at fair value as of December 31, 2021.

Description	Beginning Balance at 01/01/2021	Transfers into Level 3	Transfers out of Level 3	Total gains and (losses) included in Net Income	Total gains and (losses) included in Surplus	Purchases	Issuances	Sales	Settlements	Ending Balance at 12/31/2021
a. Assets										
Total Assets	\$ -	\$ -	\$ -	\$ -	\$ -	\$ -	\$ -	\$ -	\$ -	\$ -

Description	Beginning Balance at 01/01/2021	Transfers into Level 3	Transfers out of Level 3	Total gains and (losses) included in Net Income	Total gains and (losses) included in Surplus	Purchases	Issuances	Sales	Settlements	Ending Balance at 12/31/2021
b. Liabilities										
Total Liabilities	\$ -	\$ -	\$ -	\$ -	\$ -	\$ -	\$ -	\$ -	\$ -	\$ -

(3) Policies when Transfers Between Levels are Recognized
There were no transfers between level categorizations during 2021 and 2020.

(4) Description of Valuation Techniques and Inputs Used in Fair Value Measurement
The Company had no assets or liabilities carried at fair value as of December 31, 2021.

(5) Fair Value Disclosures
The Company had no derivative assets or liabilities as of December 31, 2021.

B. Fair Value Reporting under SSAP 100 and Other Accounting Pronouncements

Fair value is defined, per SSAP No. 100, Fair Value ("SSAP No. 100"), as the price that would be received to sell an asset or paid to transfer a liability in an orderly transaction between market participants at the measurement date. SSAP No. 100 identified three valuation techniques which are used, either independently or in combination, to determine fair value: (1) market approach; (2) income approach; and (3) cost approach. SSAP No. 100 also contains guidance about observable and unobservable inputs, which are assumptions that market participants would use in pricing an asset or liability. To increase consistency and comparability in fair value measurements, the fair value hierarchy prioritizes the inputs to valuation techniques into three broad levels: 1, 2 and 3. The hierarchy for inputs used in determining fair value maximizes the use of observable inputs and minimizes the use of unobservable inputs by requiring that observable inputs be used when available.

C. Aggregate fair value for all financial instruments and the level within the fair value hierarchy in which the fair value measurements in their entirety fall.

Type of Financial Instrument	Aggregate Fair Value	Admitted Assets	(Level 1)	(Level 2)	(Level 3)	Net Asset Value (NAV)	Not Practicable (Carrying Value)

D. Not Practicable to Estimate Fair Value

Type or Class of Financial Instrument	Carrying Value	Effective Interest Rate	Maturity Date	Explanation

E. NAV Practical Expedient Investments
The Company had no financial instruments measured under the NAV Practical Expedient.

NOTE 21 Other Items

A. Unusual or Infrequent Items

NOTES TO FINANCIAL STATEMENTS

The Company transferred its residential mortgage business to a related entity on January 4, 2021.

B. Troubled Debt Restructuring: Debtors

C. Other Disclosures

D. Business Interruption Insurance Recoveries

E. State Transferable and Non-transferable Tax Credits

(1) Carrying Value of Transferable and Non-transferable State Tax Credits Gross of any Related Tax Liabilities and Total Unused Transferable and Non-transferable State Tax Credits by State and in Total

Description of State Transferable and Non-transferable Tax Credits	State	Carrying Value	Unused Amount
21E1999 - Total		\$ -	\$ -

(2) Method of Estimating Utilization of Remaining Transferable and Non-Transferable State Tax Credits

(3) Impairment Loss

(4) State Tax Credits Admitted and Nonadmitted

a. Transferable	<u>Total Admitted</u>	<u>Total Nonadmitted</u>
b. Non-transferable		

F. Subprime Mortgage Related Risk Exposure

(1) Description of the Subprime-Mortgage-Related Exposure and Related Risk Management Policies

(2) Direct exposure through investments in subprime mortgage loans.

	Book/Adjusted Carrying Value (excluding interest)	Fair Value	Value of Land and Buildings	Other-Than- Temporary Impairment Losses Recognized	Default Rate
a. Mortgages in the process of foreclosure					
b. Mortgages in good standing					
c. Mortgages with restructure terms					
d. Total	\$ -	\$ -	\$ -	\$ -	XXX

(3) Direct exposure through other investments.

	Actual Cost	Book/Adjusted Carrying Value (excluding interest)	Fair Value	Other-Than- Temporary Impairment Losses Recognized
a. Residential mortgage backed securities				
b. Commercial mortgage backed securities				
c. Collateralized debt obligations				
d. Structured securities				
e. Equity investment in SCAs *				
f. Other assets				
g. Total	\$ -	\$ -	\$ -	\$ -

* These investments comprise of the companies invested assets.

(4) Underwriting exposure to subprime mortgage risk through Mortgage Guaranty or Financial Guaranty insurance coverage.

	Losses Paid in the Current Year	Losses Incurred in the Current Year	Case Reserves at End of Current Period	IBNR Reserves at End of Current Period
a. Mortgage Guaranty Coverage				
b. Financial Guaranty Coverage				

	Losses Paid in the Current Year	Losses Incurred in the Current Year	Case Reserves at End of Current Period	IBNR Reserves at End of Current Period
c. Other Lines (specify):				
d. Total	\$ -	\$ -	\$ -	\$ -

G. Insurance-Linked Securities (ILS) Contracts

	Number of Outstanding ILS Contracts	Aggregate Maximum Proceeds
Management of Risk Related To:		
(1) Directly-Written Insurance Risks		
a. ILS Contracts as Issuer		
b. ILS Contracts as Ceding Insurer		
c. ILS Contracts as Counterparty		
(2) Assumed Insurance Risks		
a. ILS Contracts as Issuer		
b. ILS Contracts as Ceding Insurer		
c. ILS Contracts as Counterparty		

H. The Amount That Could Be Realized on Life Insurance Where the Reporting Entity is Owner and Beneficiary or Has Otherwise Obtained Rights to Control the Policy

NOTES TO FINANCIAL STATEMENTS

- (1) Amount of admitted balance that could be realized from an investment vehicle
- (2) Percentage Bonds
- (3) Percentage Stocks
- (4) Percentage Mortgage Loans
- (5) Percentage Real Estate
- (6) Percentage Cash and Short-Term Investments
- (7) Percentage Derivatives
- (8) Percentage Other Invested Assets

NOTE 22 Events Subsequent

An evaluation of subsequent events was made through March 1, 2022 for the Annual Statement, issued on March 1, 2022. Management concluded that there were no subsequent events that occurred that would require disclosure in the notes to the financial statements.

NOTE 23 Reinsurance

A. Unsecured Reinsurance Recoverables

Individual Reinsurers with Unsecured Reinsurance Recoverables Exceeding 3% of Policyholder Surplus

Individual Reinsurers Who Are Not Members of a Group

FEIN	Reinsurer Name	Unsecured Amount
	detail row 1	\$ -
	detail row 2	\$ -

Individual Reinsurers Who Are Members of a Group

Group Code	FEIN	Reinsurer Name	Unsecured Amount
		detail row 1	\$ -
		detail row 2	\$ -

All Members of the Groups Shown above with Unsecured Reinsurance Recoverables

Group Code	FEIN	Reinsurer Name	Unsecured Amount
		detail row 1	XXX
		detail row 2	XXX
Total			\$ -
		detail row 1	XXX
		detail row 2	XXX
Total			\$ -
		detail row 1	XXX
		detail row 2	XXX
Total			\$ -

B. Reinsurance Recoverable in Dispute

Name of Reinsurer	Total Amount in Dispute (Including IBNR)	Notification	Arbitration	Litigation
-------------------	--	--------------	-------------	------------

C. Reinsurance Assumed and Ceded

(1)

	Assumed Reinsurance		Ceded Reinsurance		Net	
	Premium Reserve	Commission Equity	Premium Reserve	Commission Equity	Premium Reserve	Commission Equity
a. Affiliates					\$ -	\$ -
b. All Other					\$ -	\$ -
c. Total	\$ -	\$ -	\$ -	\$ -	\$ -	\$ -

d. Direct Unearned Premium Reserve

(2)

	Direct	Assumed	Ceded	Net
a. Contingent Commission				\$ -
b. Sliding Scale Adjustments				\$ -
c. Other Profit Commission Arrangements				\$ -
d. TOTAL	\$ -	\$ -	\$ -	\$ -

D. Uncollectible Reinsurance

(1) The Company has written off in the current year reinsurance balances due from the companies listed below, the amount of:

Which is reflected as:

- a. Losses incurred
- b. Loss adjustment expenses incurred
- c. Premiums earned
- d. Other

e.	Company	Amount
----	---------	--------

E. Commutation of Reinsurance Reflected in Income and Expenses.

The company has reported in its operations in the current year as a result of commutation of reinsurance with the companies listed below, amounts that are reflected as:

- (1) Losses incurred
- (2) Loss adjustment expenses incurred

NOTES TO FINANCIAL STATEMENTS

- (3) Premiums earned
(4) Other

(5)	Company	Amount
-----	---------	--------

F. Retroactive Reinsurance
(1)

	Reported Company	
	Assumed	Ceded
As:		
a. Reserves Transferred:		
1. Initial Reserves		
2. Adjustments - Prior Year (s)	\$ -	\$ -
3. Adjustments - Current Year		
4. Current Total	\$ -	\$ -
b. Consideration Paid or Received:		
1. Initial Consideration		
2. Adjustments - Prior Year (s)	\$ -	\$ -
3. Adjustments - Current Year		
4. Current Total	\$ -	\$ -
c. Paid Losses Reimbursed or Recovered:		
1. Prior Year (s)	\$ -	\$ -
2. Current Year		
3. Current Total	\$ -	\$ -
d. Special Surplus from Retroactive Reinsurance:		
1. Initial Surplus Gain or Loss		
2. Adjustments - Prior Year (s)	\$ -	\$ -
3. Adjustments - Current Year		
4. Current Year Restricted Surplus		
5. Cumulative Total Transferred to Unassigned Funds		

e. All cedents and reinsurers involved in all transactions included in summary totals above:

Company	Assumed Amount	Ceded Amount
Total	\$ -	\$ -

* Total amounts must agree with totals in a.4 above. Include the NAIC Company Code or Alien Insurer Identification Number for each insurer listed.

f. Total Paid Loss/LAE amounts recoverable (for authorized, reciprocal jurisdiction, unauthorized and certified reinsurers), any amounts more than 90 days overdue (for authorized, reciprocal jurisdiction, unauthorized and certified reinsurers), and for amounts recoverable the collateral held (for unauthorized and certified reinsurers) as respects amounts recoverable from unauthorized and certified reinsurers:

1. Authorized Reinsurers			
Company	Total Paid/Loss/LAE Recoverable	Amounts Over 90 Days Overdue	
Total*	\$ -	\$ -	
2. Unauthorized Reinsurers			
Company	Total Paid/Loss/LAE Recoverable	Amount Over 90 Days Overdue	Collateral Held
Total*	\$ -	\$ -	\$ -
3. Certified Reinsurers			
Company	Total Paid/Loss/LAE Recoverable	Amount Over 90 Days Overdue	Collateral Held
Total*	\$ -	\$ -	\$ -
4. Reciprocal Jurisdiction Reinsurers			
Company	Total Paid/Loss/LAE Recoverable	Amounts Over 90 Days Overdue	
Total	\$ -	\$ -	

G. Reinsurance Accounted for as a Deposit

Description	Interest Income	Cash Recoveries	Deposit Balance
-------------	-----------------	-----------------	-----------------

NOTES TO FINANCIAL STATEMENTS

H. Certified Reinsurer Rating Downgraded or Status Subject to Revocation

(1) Reporting Entity Ceding to Certified Reinsurer Whose Rating Was Downgraded or Status Subject to Revocation

Name of Certified Reinsurer	Relationship to Reporting Entity	Date of Action	Jurisdiction of Action	Collateral Percentage Requirement		Net Obligation Subject to Collateral	Collateral Required (but not received)
				Before	After		

(2) Reporting Entity's Certified Reinsurer Rating Downgraded or Status Subject to Revocation

Date of Action	Jurisdiction of Action	Collateral Percentage Requirement		Net Obligation Subject to Collateral	Collateral Required (but not yet funded)
		Before	After		

NOTE 24 Retrospectively Rated Contracts & Contracts Subject to Redetermination

Not Applicable

NOTE 25 Change in Incurred Claims and Claim Adjustment Expenses

The Company did not have any changes in incurred loss and loss adjustment expenses in 2021 or 2020.

NOTE 26 Intercompany Pooling Arrangements

Not Applicable

NOTE 27 Structured Settlements

The Company did not have structured settlements in 2021 or 2020.

27A. Structured Settlements

Loss Reserves Eliminated by Annuities	Unrecorded Loss Contingencies
--	-------------------------------------

27B.

Life Insurance Company
And
Location

Licensed in Company's State of Domicile Yes/No	Statement Value (i.e., Present Value) of Annuities
--	--

NOTE 28 Supplemental Reserve

The Company did not have supplemental reserves in 2021 and 2020.

GENERAL INTERROGATORIES

PART 1 - COMMON INTERROGATORIES
GENERAL

1.1

Is the reporting entity a member of an Insurance Holding Company System consisting of two or more affiliated persons, one or more of which is an insurer?
If yes, complete Schedule Y, Parts 1, 1A, 2 and 3.

Yes [X] No []

1.2

If yes, did the reporting entity register and file with its domiciliary State Insurance Commissioner, Director or Superintendent, or with such regulatory official of the state of domicile of the principal insurer in the Holding Company System, a registration statement providing disclosure substantially similar to the standards adopted by the National Association of Insurance Commissioners (NAIC) in its Model Insurance Holding Company System Regulatory Act and model regulations pertaining thereto, or is the reporting entity subject to standards and disclosure requirements substantially similar to those required by such Act and regulations?

Yes [X] No [] N/A []

1.3

State Regulating?

1.4

Is the reporting entity publicly traded or a member of a publicly traded group?

Yes [] No [X]

1.5

If the response to 1.4 is yes, provide the CIK (Central Index Key) code issued by the SEC for the entity/group.

2.1

Has any change been made during the year of this statement in the charter, by-laws, articles of incorporation, or deed of settlement of the reporting entity?

Yes [] No [X]

2.2

If yes, date of change:

3.1

State as of what date the latest financial examination of the reporting entity was made or is being made.

07/02/2019

3.2

State the as of date that the latest financial examination report became available from either the state of domicile or the reporting entity. This date should be the date of the examined balance sheet and not the date the report was completed or released.

12/31/2017

3.3

State as of what date the latest financial examination report became available to other states or the public from either the state of domicile or the reporting entity. This is the release date or completion date of the examination report and not the date of the examination (balance sheet date).

07/02/2019

3.4

By what department or departments?

3.5

Have all financial statement adjustments within the latest financial examination report been accounted for in a subsequent financial statement filed with Departments?

Yes [] No [] N/A [X]

3.6

Have all of the recommendations within the latest financial examination report been complied with?

Yes [] No [] N/A [X]

4.1

During the period covered by this statement, did any agent, broker, sales representative, non-affiliated sales/service organization or any combination thereof under common control (other than salaried employees of the reporting entity), receive credit or commissions for or control a substantial part (more than 20 percent of any major line of business measured on direct premiums) of:
4.11 sales of new business?
4.12 renewals?

Yes [] No [X]
Yes [] No [X]

4.2

During the period covered by this statement, did any sales/service organization owned in whole or in part by the reporting entity or an affiliate, receive credit or commissions for or control a substantial part (more than 20 percent of any major line of business measured on direct premiums) of:
4.21 sales of new business?
4.22 renewals?

Yes [] No [X]
Yes [] No [X]

5.1

Has the reporting entity been a party to a merger or consolidation during the period covered by this statement?
If yes, complete and file the merger history data file with the NAIC.

Yes [] No [X]

5.2

If yes, provide the name of the entity, NAIC Company Code, and state of domicile (use two letter state abbreviation) for any entity that has ceased to exist as a result of the merger or consolidation.

1 Name of Entity	2 NAIC Company Code	3 State of Domicile

6.1

Has the reporting entity had any Certificates of Authority, licenses or registrations (including corporate registration, if applicable) suspended or revoked by any governmental entity during the reporting period?

Yes [] No [X]

6.2

If yes, give full information:

7.1

Does any foreign (non-United States) person or entity directly or indirectly control 10% or more of the reporting entity?

Yes [] No [X]

7.2

If yes,
7.21 State the percentage of foreign control; %
7.22 State the nationality(s) of the foreign person(s) or entity(s) or if the entity is a mutual or reciprocal, the nationality of its manager or attorney-in-fact; and identify the type of entity(s) (e.g., individual, corporation or government, manager or attorney in fact).

1 Nationality	2 Type of Entity

GENERAL INTERROGATORIES

8.1

Is the company a subsidiary of a depository institution holding company (DIHC) or a DIHC itself, regulated by the Federal Reserve Board?

Yes [] No [X]

8.2

If the response to 8.1 is yes, please identify the name of the DIHC.

8.3

Is the company affiliated with one or more banks, thrifts or securities firms?

Yes [X] No []

8.4

If response to 8.3 is yes, please provide below the names and location (city and state of the main office) of any affiliates regulated by a federal regulatory services agency [i.e. the Federal Reserve Board (FRB), the Office of the Comptroller of the Currency (OCC), the Federal Deposit Insurance Corporation (FDIC) and the Securities Exchange Commission (SEC)] and identify the affiliate's primary federal regulator.

1	2	3	4	5	6
Affiliate Name	Location (City, State)	FRB	OCC	FDIC	SEC
Hunt Financial Securities, LLC	Chicago, IL				YES

8.5

Is the reporting entity a depository institution holding company with significant insurance operations as defined by the Board of Governors of Federal Reserve System or a subsidiary of the reporting entity?

Yes [] No [X]

8.6

If response to 8.5 is no, is the reporting entity a company or subsidiary of a company that has otherwise been made subject to the Federal Reserve Board's capital rule?

Yes [] No [X] N/A []

9.

What is the name and address of the independent certified public accountant or accounting firm retained to conduct the annual audit? SBNG, PC

10.1

Has the insurer been granted any exemptions to the prohibited non-audit services provided by the certified independent public accountant requirements as allowed in Section 7H of the Annual Financial Reporting Model Regulation (Model Audit Rule), or substantially similar state law or regulation?

Yes [] No [X]

10.2

If the response to 10.1 is yes, provide information related to this exemption:

10.3

Has the insurer been granted any exemptions related to the other requirements of the Annual Financial Reporting Model Regulation as allowed for in Section 18A of the Model Regulation, or substantially similar state law or regulation?

Yes [] No [X]

10.4

If the response to 10.3 is yes, provide information related to this exemption:

10.5

Has the reporting entity established an Audit Committee in compliance with the domiciliary state insurance laws?

Yes [] No [] N/A [X]

10.6

If the response to 10.5 is no or n/a, please explain

11.

What is the name, address and affiliation (officer/employee of the reporting entity or actuary/consultant associated with an actuarial consulting firm) of the individual providing the statement of actuarial opinion/certification?

12.1

Does the reporting entity own any securities of a real estate holding company or otherwise hold real estate indirectly?

Yes [] No [X]

12.11

Name of real estate holding company

12.12

Number of parcels involved

0

12.13

Total book/adjusted carrying value

\$ 0

12.2

If, yes provide explanation:

13.

FOR UNITED STATES BRANCHES OF ALIEN REPORTING ENTITIES ONLY:

13.1

What changes have been made during the year in the United States manager or the United States trustees of the reporting entity?

13.2

Does this statement contain all business transacted for the reporting entity through its United States Branch on risks wherever located?

Yes [] No []

13.3

Have there been any changes made to any of the trust indentures during the year?

Yes [] No []

13.4

If answer to (13.3) is yes, has the domiciliary or entry state approved the changes?

Yes [] No [] N/A []

14.1

Are the senior officers (principal executive officer, principal financial officer, principal accounting officer or controller, or persons performing similar functions) of the reporting entity subject to a code of ethics, which includes the following standards?

Yes [X] No []

a.

Honest and ethical conduct, including the ethical handling of actual or apparent conflicts of interest between personal and professional relationships;

b.

Full, fair, accurate, timely and understandable disclosure in the periodic reports required to be filed by the reporting entity;

c.

Compliance with applicable governmental laws, rules and regulations;

d.

The prompt internal reporting of violations to an appropriate person or persons identified in the code; and

e.

Accountability for adherence to the code.

14.11

If the response to 14.1 is No, please explain:

14.2

Has the code of ethics for senior managers been amended?

Yes [] No [X]

14.21

If the response to 14.2 is yes, provide information related to amendment(s).

14.3

Have any provisions of the code of ethics been waived for any of the specified officers?

Yes [] No [X]

14.31

If the response to 14.3 is yes, provide the nature of any waiver(s).

GENERAL INTERROGATORIES

- | | | | |
|--|--------------------------------------|--|-------------|
| 1
American Bankers Association (ABA) Routing Number | 2
Issuing or Confirming Bank Name | 3
Circumstances That Can Trigger the Letter of Credit | 4
Amount |
| | | | |

16.	Is the purchase or sale of all investments of the reporting entity passed upon either by the board of directors or a subordinate committee thereof?	Yes []	No [X]
17.	Does the reporting entity keep a complete permanent record of the proceedings of its board of directors and all subordinate committees thereof?	Yes [X]	No []
18.	Has the reporting entity an established procedure for disclosure to its board of directors or trustees of any material interest or affiliation on the part of any of its officers, directors, trustees or responsible employees that is in conflict with the official duties of such person?	Yes []	No [X]

Name of Third-Party	Is the Third-Party Agent a Related Party (Yes/No)

25.01 Were all the stocks, bonds and other securities owned December 31 of current year, over which the reporting entity has exclusive control, in the actual possession of the reporting entity on said date? (other than securities lending programs addressed in 25.03)..... Yes [X] No []

ANNUAL STATEMENT FOR THE YEAR 2021 OF THE BG Title Guarantee, Inc.

GENERAL INTERROGATORIES

25.02 If no, give full and complete information relating thereto

25.03 For securities lending programs, provide a description of the program including value for collateral and amount of loaned securities, and whether collateral is carried on or off-balance sheet. (an alternative is to reference Note 17 where this information is also provided)

25.04 For the reporting entity's securities lending program, report amount of collateral for conforming programs as outlined in the Risk-Based Capital Instructions. \$ 0

25.05 For the reporting entity's securities lending program, report amount of collateral for other programs. \$ 0

25.06 Does your securities lending program require 102% (domestic securities) and 105% (foreign securities) from the counterparty at the outset of the contract? Yes [] No [] N/A [X]

25.07 Does the reporting entity non-admit when the collateral received from the counterparty falls below 100%? Yes [] No [] N/A [X]

25.08 Does the reporting entity or the reporting entity 's securities lending agent utilize the Master Securities lending Agreement (MSLA) to conduct securities lending? Yes [] No [] N/A [X]

25.09 For the reporting entity's securities lending program state the amount of the following as of December 31 of the current year:

25.091 Total fair value of reinvested collateral assets reported on Schedule DL, Parts 1 and 2. \$ 0

25.092 Total book adjusted/carrying value of reinvested collateral assets reported on Schedule DL, Parts 1 and 2. \$ 0

25.093 Total payable for securities lending reported on the liability page. \$ 0

26.1 Were any of the stocks, bonds or other assets of the reporting entity owned at December 31 of the current year not exclusively under the control of the reporting entity, or has the reporting entity sold or transferred any assets subject to a put option contract that is currently in force? (Exclude securities subject to Interrogatory 21.1 and 25.03). Yes [X] No []

26.2 If yes, state the amount thereof at December 31 of the current year:

26.21 Subject to repurchase agreements \$ 0

26.22 Subject to reverse repurchase agreements \$ 0

26.23 Subject to dollar repurchase agreements \$ 0

26.24 Subject to reverse dollar repurchase agreements \$ 0

26.25 Placed under option agreements \$ 0

26.26 Letter stock or securities restricted as to sale - excluding FHLB Capital Stock \$ 0

26.27 FHLB Capital Stock \$ 363

26.28 On deposit with states \$ 140,044

26.29 On deposit with other regulatory bodies \$ 0

26.30 Pledged as collateral - excluding collateral pledged to an FHLB \$ 0

26.31 Pledged as collateral to FHLB - including assets backing funding agreements \$ 0

26.32 Other \$ 21,141,749

26.3 For category (26.26) provide the following:

1 Nature of Restriction	2 Description	3 Amount

27.1 Does the reporting entity have any hedging transactions reported on Schedule DB? Yes [] No [X]

27.2 If yes, has a comprehensive description of the hedging program been made available to the domiciliary state? Yes [] No [] N/A [X]
If no, attach a description with this statement.

LINES 27.3 through 27.5: FOR LIFE/FRATERNAL REPORTING ENTITIES ONLY:

27.3 Does the reporting entity utilize derivatives to hedge variable annuity guarantees subject to fluctuations as a result of interest rate sensitivity? Yes [] No []

27.4 If the response to 27.3 is YES, does the reporting entity utilize:

27.41 Special accounting provision of SSAP No. 108 Yes [] No []

27.42 Permitted accounting practice Yes [] No []

27.43 Other accounting guidance Yes [] No []

27.5 By responding YES to 27.41 regarding utilizing the special accounting provisions of SSAP No. 108, the reporting entity attests to the following: Yes [] No []

- The reporting entity has obtained explicit approval from the domiciliary state.
- Hedging strategy subject to the special accounting provisions is consistent with the requirements of VM-21.
- Actuarial certification has been obtained which indicates that the hedging strategy is incorporated within the establishment of VM-21 reserves and provides the impact of the hedging strategy within the Actuarial Guideline Conditional Tail Expectation Amount.
- Financial Officer Certification has been obtained which indicates that the hedging strategy meets the definition of a Clearly Defined Hedging Strategy within VM-21 and that the Clearly Defined Hedging Strategy is the hedging strategy being used by the company in its actual day-to-day risk mitigation efforts.

28.1 Were any preferred stocks or bonds owned as of December 31 of the current year mandatorily convertible into equity, or, at the option of the issuer, convertible into equity? Yes [] No [X]

28.2 If yes, state the amount thereof at December 31 of the current year. \$

29. Excluding items in Schedule E - Part 3 - Special Deposits, real estate, mortgage loans and investments held physically in the reporting entity's offices, vaults or safety deposit boxes, were all stocks, bonds and other securities, owned throughout the current year held pursuant to a custodial agreement with a qualified bank or trust company in accordance with Section 1, III - General Examination Considerations, F. Outsourcing of Critical Functions, Custodial or Safekeeping Agreements of the NAIC Financial Condition Examiners Handbook? Yes [X] No []

29.01 For agreements that comply with the requirements of the NAIC Financial Condition Examiners Handbook, complete the following:

1 Name of Custodian(s)	2 Custodian's Address
FHLB	Cincinnati, OH
Wells Fargo	Columbia, MD

GENERAL INTERROGATORIES

29.02 For all agreements that do not comply with the requirements of the NAIC Financial Condition Examiners Handbook, provide the name, location and a complete explanation:

1 Name(s)	2 Location(s)	3 Complete Explanation(s)

29.03 Have there been any changes, including name changes, in the custodian(s) identified in 29.01 during the current year?..... Yes [X] No []

29.04 If yes, give full and complete information relating thereto:

1 Old Custodian	2 New Custodian	3 Date of Change	4 Reason
FHLB	N/A - Not required	02/16/2021	
Wells Fargo	N/A - Not required	02/16/2021	

29.05 Investment management – Identify all investment advisors, investment managers, broker/dealers, including individuals that have the authority to make investment decisions on behalf of the reporting entity. For assets that are managed internally by employees of the reporting entity, note as such. ["...that have access to the investment accounts"; "...handle securities"]

1 Name of Firm or Individual	2 Affiliation

29.0597 For those firms/individuals listed in the table for Question 29.05, do any firms/individuals unaffiliated with the reporting entity (i.e. designated with a "U") manage more than 10% of the reporting entity's invested assets?..... Yes [] No [X]

29.0598 For firms/individuals unaffiliated with the reporting entity (i.e. designated with a "U") listed in the table for Question 29.05, does the total assets under management aggregate to more than 50% of the reporting entity's invested assets?..... Yes [] No [X]

29.06 For those firms or individuals listed in the table for 29.05 with an affiliation code of "A" (affiliated) or "U" (unaffiliated), provide the information for the table below.

1	2	3	4	5
Central Registration Depository Number	Name of Firm or Individual	Legal Entity Identifier (LEI)	Registered With	Investment Management Agreement (IMA) Filed

30.1 Does the reporting entity have any diversified mutual funds reported in Schedule D, Part 2 (diversified according to the Securities and Exchange Commission (SEC) in the Investment Company Act of 1940 [Section 5(b)(1)])? Yes [] No [X]

30.2 If yes, complete the following schedule:

1 CUSIP #	2 Name of Mutual Fund	3 Book/Adjusted Carrying Value
30.2999 - Total		0

30.3 For each mutual fund listed in the table above, complete the following schedule:

1	2	3	4
Name of Mutual Fund (from above table)	Name of Significant Holding of the Mutual Fund	Amount of Mutual Fund's Book/Adjusted Carrying Value Attributable to the Holding	Date of Valuation

GENERAL INTERROGATORIES

31. Provide the following information for all short-term and long-term bonds and all preferred stocks. Do not substitute amortized value or statement value for fair value.

	1	2	3
	Statement (Admitted) Value	Fair Value	Excess of Statement over Fair Value (-), or Fair Value over Statement (+)
31.1 Bonds0
31.2 Preferred stocks0	.0	.0
31.3 Totals	0	0	0

31.4 Describe the sources or methods utilized in determining the fair values:

32.1 Was the rate used to calculate fair value determined by a broker or custodian for any of the securities in Schedule D? Yes [] No [X]

32.2 If the answer to 32.1 is yes, does the reporting entity have a copy of the broker's or custodian's pricing policy (hard copy or electronic copy) for all brokers or custodians used as a pricing source? Yes [] No [X]

32.3 If the answer to 32.2 is no, describe the reporting entity's process for determining a reliable pricing source for purposes of disclosure of fair value for Schedule D:

33.1 Have all the filing requirements of the Purposes and Procedures Manual of the NAIC Investment Analysis Office been followed? Yes [X] No []

33.2 If no, list exceptions:

34. By self-designating 5GI securities, the reporting entity is certifying the following elements of each self-designated 5GI security:
a. Documentation necessary to permit a full credit analysis of the security does not exist or an NAIC CRP credit rating for an FE or PL security is not available.
b. Issuer or obligor is current on all contracted interest and principal payments.
c. The insurer has an actual expectation of ultimate payment of all contracted interest and principal.
Has the reporting entity self-designated 5GI securities? Yes [] No [X]

35. By self-designating PLGI securities, the reporting entity is certifying the following elements of each self-designated PLGI security:
a. The security was purchased prior to January 1, 2018.
b. The reporting entity is holding capital commensurate with the NAIC Designation reported for the security.
c. The NAIC Designation was derived from the credit rating assigned by an NAIC CRP in its legal capacity as a NRSRO which is shown on a current private letter rating held by the insurer and available for examination by state insurance regulators.
d. The reporting entity is not permitted to share this credit rating of the PL security with the SVO.
Has the reporting entity self-designated PLGI securities? Yes [] No [X]

36. By assigning FE to a Schedule BA non-registered private fund, the reporting entity is certifying the following elements of each self-designated FE fund:
a. The shares were purchased prior to January 1, 2019.
b. The reporting entity is holding capital commensurate with the NAIC Designation reported for the security.
c. The security had a public credit rating(s) with annual surveillance assigned by an NAIC CRP in its legal capacity as an NRSRO prior to January 1, 2019.
d. The fund only or predominantly holds bonds in its portfolio.
e. The current reported NAIC Designation was derived from the public credit rating(s) with annual surveillance assigned by an NAIC CRP in its legal capacity as an NRSRO.
f. The public credit rating(s) with annual surveillance assigned by an NAIC CRP has not lapsed.
Has the reporting entity assigned FE to Schedule BA non-registered private funds that complied with the above criteria? Yes [] No [X]

37. By rolling/renewing short-term or cash equivalent investments with continued reporting on Schedule DA, Part 1 or Schedule E Part 2 (identified through a code (%) in those investment schedules), the reporting entity is certifying to the following:
a. The investment is a liquid asset that can be terminated by the reporting entity on the current maturity date.
b. If the investment is with a nonrelated party or nonaffiliate, then it reflects an arms-length transaction with renewal completed at the discretion of all involved parties.
c. If the investment is with a related party or affiliate, then the reporting entity has completed robust re-underwriting of the transaction for which documentation is available for regulator review.
d. Short-term and cash equivalent investments that have been renewed/rolled from the prior period that do not meet the criteria in 37.a - 37.c are reported as long-term investments.
Has the reporting entity rolled/renewed short-term or cash equivalent investments in accordance with these criteria? Yes [] No [X] N/A []

GENERAL INTERROGATORIES

OTHER

38.1 Amount of payments to trade associations, service organizations and statistical or rating bureaus, if any?\$0

38.2 List the name of the organization and the amount paid if any such payment represented 25% or more of the total payments to trade associations, service organizations and statistical or rating bureaus during the period covered by this statement.

1 Name	2 Amount Paid
.....

39.1 Amount of payments for legal expenses, if any?\$21,305

39.2 List the name of the firm and the amount paid if any such payment represented 25% or more of the total payments for legal expenses during the period covered by this statement.

1 Name	2 Amount Paid
Vorys, Sater, Seymour and Pease LLP	21,305
.....

40.1 Amount of payments for expenditures in connection with matters before legislative bodies, officers or departments of government, if any?\$0

40.2 List the name of the firm and the amount paid if any such payment represented 25% or more of the total payment expenditures in connection with matters before legislative bodies, officers or departments of government during the period covered by this statement.

1 Name	2 Amount Paid
.....

GENERAL INTERROGATORIES

PART 2 - TITLE INTERROGATORIES

1.

Did any persons while an officer, director, trustee, or employee receive directly or indirectly, during the period covered by this statement, any compensation in addition to his/her regular compensation on account of the reinsurance transactions of the reporting entity?

Yes [☐] No [☒ X]

2.

Largest net aggregate amount insured in any one risk.

\$0

3.1

Has this reporting entity reinsured any risk with any other reporting entity and agreed to release such entity from liability, in whole or in part, from any loss that may occur on the risk, or portion thereof, reinsured?

Yes [☐] No [☒ X]

3.2

If yes, give full information

4.

If the reporting entity has assumed risk from another entity, there should be charged on account of such reinsurances a reserve equal to that which the original entity would have been required to charge had it retained the risks. Has this been done?

Yes [☐] No [☒ X]

5.1

Has this reporting entity guaranteed policies issued by any other entity and now in force?

Yes [☐] No [☒ X]

5.2

If yes, give full information

6.

Uncompleted building construction loans:

6.1 Amount already loaned

\$0

6.2 Balance to be advanced

\$0

6.3 Total amount to be loaned

\$0

7.1

Does the reporting entity issue bonds secured by certificates of participation in building construction loans prior to the completion of the buildings?

Yes [☐] No [☒ X]

7.2

If yes, give total amount of such bonds or certificates of participation issued and outstanding.

\$

8.

What is the aggregate amount of mortgage loans owned by the reporting entity that consist of co-ordinate interest in first liens?

\$0

9.1

Reporting entity assets listed on Page 2 include the following segregated assets of the Statutory Premium Reserve or other similar statutory reserves:

9.11 Bonds

\$0

9.12 Short-term investments

\$0

9.13 Mortgages

\$0

9.14 Cash

\$0

9.15 Other admissible invested assets

\$0

9.16 Total

\$0

9.2

List below segregate funds held for others by the reporting entity, set apart in special accounts and excluded from entity assets and liabilities. (These funds are also included in Schedule E-Part 1D and the "From Separate Accounts, Segregated Accounts and Protected Cell Accounts" line on Page 2 except for escrow funds held by Title insurers):

9.21 Custodial funds not included in this statement were held pursuant to the governing agreements of custody in the amount of:

\$0

These funds consist of:

9.22 In cash on deposit

\$0

9.23 Other forms of security

\$0

ANNUAL STATEMENT FOR THE YEAR 2021 OF THE BG Title Guarantee, Inc.

FIVE-YEAR HISTORICAL DATA

Show amounts in whole dollars only, no cents; show percentages to one decimal place, i.e. 17.6.

	1 2021	2 2020	3 2019	4 2018	5 2017
Source of Direct Title Premiums Written (Part 1A)					
1. Direct operations (Part 1A, Line 1, Col. 1)	0	0	0	0	0
2. Non-affiliated agency operations (Part 1A, Line 1, Col. 2)	0	5,406	11,425	7,290	4,242
3. Affiliated agency operations (Part 1A, Line 1, Col. 3)	0	0	0	0	0
4. Total	0	5,406	11,425	7,290	4,242
Operating Income Summary (Page 4 & Part 1)					
5. Premiums earned (Part 1B, Line 3)	0	4,865	16,220	12,713	10,000
6. Escrow and settlement service charges (Part 1A, Line 2)	0	0	0	0	0
7. Title examinations (Part 1A, Line 3)	0	0	0	0	0
8. Searches and abstracts (Part 1A, Line 4)	0	0	0	0	0
9. Surveys (Part 1A, Line 5)	0	0	0	0	0
10. Aggregate write-ins for service charges (Part 1A, Line 6)	0	0	0	0	0
11. Other operating income (Page 4, Line 2)	3,276	2,188,345	1,705,278	2,098,060	1,525,120
12. Total operating income (Page 4, Line 3)	3,276	2,193,210	1,721,498	2,110,773	1,535,120
Statement of Income (Page 4)					
13. Net operating gain (loss) (Line 8)	(803,886)	(1,984,671)	(2,696,034)	423,357	99,192
14. Net investment gain or (loss) (Line 11)	772,744	2,204,231	6,270,378	3,950,565	4,192,216
15. Total other income (Line 12)	0	0	0	0	0
16. Federal and foreign income taxes incurred (Line 14)		443,381	784,826	421,938	0
17. Net income (Line 15)	(31,142)	(223,821)	2,789,518	3,951,984	4,291,408
Balance Sheet Lines (Pages 2 and 3)					
18. Title insurance premiums and fees receivable (Page 2, Line 15, Col. 3)	0	0	0	0	0
19. Total admitted assets excluding segregated accounts (Page 2, Line 26, Col. 3)	40,224,024	52,757,636	71,663,975	73,277,432	76,911,139
20. Known claims reserve (Page 3, Line 1)	0	0	0	0	0
21. Statutory premium reserve (Page 3, Line 2)	104,970	116,373	115,832	120,627	126,050
22. Total liabilities (Page 3, Line 23)	15,224,058	27,856,317	26,457,501	26,782,236	34,484,990
23. Capital paid up (Page 3, Lines 25 + 26)	631,250	631,250	631,250	631,250	631,250
24. Surplus as regards policyholders (Page 3, Line 32)	24,999,966	24,901,319	45,206,474	46,495,196	42,426,149
Cash Flow (Page 5)					
25. Net cash from operations (Line 11)	(349,135)	(1,501,645)	1,378,652	4,059,517	4,545,997
Percentage Distribution of Cash, Cash Equivalents and Invested Assets (Page 2, Col. 3) (Item divided by Page 2, Line 12, Col. 3) x100.0					
26. Bonds (Line 1)	0.0	0.0	0.0	29.9	28.2
27. Stocks (Lines 2.1 & 2.2)	0.0	1.5	1.0	0.9	0.9
28. Mortgage loans on real estate (Lines 3.1 and 3.2)	52.9	64.4	45.2	55.4	57.4
29. Real estate (Lines 4.1, 4.2 & 4.3)	0.0	0.0	0.0	0.0	0.0
30. Cash, cash equivalents and short-term investments (Line 5)	47.1	34.1	53.8	13.0	11.6
31. Contract loans (Line 6)	0.0	0.0	0.0	0.0	0.0
32. Derivatives (Line 7)	0.0	0.0	0.0	0.0	0.0
33. Other invested assets (Line 8)	0.0	0.0	0.0	0.0	0.0
34. Receivables for securities (Line 9)	0.0	0.0	0.0	0.0	0.0
35. Securities lending reinvested collateral assets (Line 10)	0.0	0.0	0.0	0.0	0.0
36. Aggregate write-ins for invested assets (Line 11)	0.0	0.0	0.0	0.0	0.0
37. Subtotals cash, cash equivalents and invested assets (Line 12)	100.0	100.0	100.0	100.0	100.0
Investments in Parent, Subsidiaries and Affiliates					
38. Affiliated bonds (Schedule D, Summary, Line 12, Col. 1)	0	0	0	0	0
39. Affiliated preferred stocks (Schedule D, Summary, Line 18, Col. 1)	0	0	0	0	0
40. Affiliated common stocks (Schedule D, Summary, Line 24, Col. 1)	0	0	0	0	0
41. Affiliated short-term investments (subtotals included in Schedule DA Verification, Col. 5, Line 10)	0	0	0	0	0
42. Affiliated mortgage loans on real estate					
43. All other affiliated					
44. Total of above Lines 38 to 43	0	0	0	0	0
45. Total Investment in Parent included in Lines 38 to 43 above					
46. Percentage of investments in parent, subsidiaries and affiliates to surplus as regards policyholders (Line 44 above divided by Page 3, Line 32, Col. 1 x 100.0)	0.0	0.0	0.0	0.0	0.0

FIVE-YEAR HISTORICAL DATA

(Continued)

	1 2021	2 2020	3 2019	4 2018	5 2017
Capital and Surplus Accounts (Page 4)					
47. Net unrealized capital gains (losses) (Line 18)	(1)	0	0	213,557	(198,557)
48. Change in nonadmitted assets (Line 21)	215,441	45,473	(121,963)	(229,578)	43,330
49. Dividends to stockholders (Line 28)	(85,651)	(20,000,000)	(3,950,000)	0	(20,000,000)
50. Change in surplus as regards policyholders for the year (Line 31)	98,647	(20,305,154)	(1,288,722)	4,069,046	8,039,389
Losses Paid and Incurred (Part 2A)					
51. Net payments (Line 5, Col. 4)	0	0	0	0	0
52. Losses and allocated LAE incurred (Line 8, Col. 4) ..	0	0	0	0	0
53. Unallocated LAE incurred (Line 9, Col. 4)	0	0	0	0	0
54. Losses and loss adjustment expenses incurred (Line 10, Col. 4)	0	0	0	0	0
Operating Expenses to Total Operating Income (Part 3) (%) (Line item divided by Page 4, Line 3 x 100.0)					
55. Personnel costs (Part 3, Line 1.5, Col. 4)	24,406.2	67.5	84.0	0.1	0.1
56. Amounts paid to or retained by title agents (Part 3, Line 2, Col. 4)	0.0	0.2	0.2	0.4	0.2
57. All other operating expenses (Part 3, Lines 24 minus 1.5 minus 2, Col. 4)	6,460.2	11.8	45.9	0.1	0.3
58. Total (Lines 55 to 57)	30,866.4	79.5	130.0	0.6	0.7
Operating Percentages (Page 4) (Line item divided by Page 4, Line 3 x 100.0)					
59. Losses and loss adjustment expenses incurred (Line 4)	0.0	0.0	0.0	0.0	0.0
60. Operating expenses incurred (Line 5)	30,866.4	79.4	130.6	0.6	0.7
61. Other operating expenses (Line 6)	(6,227.7)	111.1	126.0	79.5	92.9
62. Total operating deductions (Line 7)	24,638.6	190.5	256.6	79.9	93.5
63. Net operating gain (loss) (Line 8)	(24,538.6)	(90.5)	(156.6)	20.1	6.5
Other Percentages (Line item divided by Part 1B, Line 1.4 x 100.0)					
64. Losses and loss expenses incurred to net premiums written (Page 4, Line 4)	0.0	0.0	0.0	0.0	0.0
65. Operating expenses incurred to net premiums written (Page 4, Line 5)	0.0	32,225.0	19,682.6	134.3	236.6
One Year Schedule P - Part 2 Development (\$000 omitted)					
66. Development in estimated losses and ALAE on policies effective before current year (Schedule P, Part 2, Line 22, Col. 11)	0	0	0	0	0
67. Percentage of such development to policyholders' surplus of prior year-end (Line 66 above divided by Page 4, Line 16, Col. 1 x 100.0)	0.0	0.0	0.0	0.0	0.0
One Year Schedule P - Part 3 Development (\$000 omitted)					
68. Development in estimated losses and ALAE for claims reported before current year (Schedule P, Part 3, Line 12, Col. 11)	0	0	0	0	0
69. Percentage of such development to policyholders' surplus of prior year-end (Line 68 above divided by Page 4, Line 16, Col. 1 x 100.0)	0.0	0.0	0.0	0.0	0.0
Two Year Schedule P - Part 2 Development (\$000 omitted)					
70. Development in estimated losses and ALAE on policies effective before prior year-end (Schedule P, Part 2, Line 22, Col. 12)	0	0	0	0	0
71. Percentage of development of losses and loss expenses incurred to reported policyholders' surplus of second prior year-end (Line 70 above divided by Page 4, Line 16, Col. 2 x 100.0)	0.0	0.0	0.0	0.0	0.0
Two Year Schedule P - Part 3 Development (\$000 omitted)					
72. Development in estimated losses and ALAE for claims reported before prior year-end (Schedule P, Part 3, Line 12, Col. 12)	0	0	0	0	0
73. Percentage of such development to policyholders' surplus of second prior year-end (Line 72 above divided by Page 4, Line 16, Col. 2 x 100.0)	0.0	0.0	0.0	0.0	0.0

NOTE: If a party to a merger, have the two most recent years of this exhibit been restated due to a merger in compliance with the disclosure requirements of SSAP No. 3, Accounting Changes and Correction of Errors? Yes [] No []

If no, please explain:

ANNUAL STATEMENT FOR THE YEAR 2021 OF THE BG Title Guarantee, Inc.

SCHEDULE P - PART 1 - SUMMARY

(\$000 OMITTED)

Years in Which Policies Were Written	1 Amount of Insurance Written in Millions	Premiums Written and Other Income					Loss and Allocated Loss Adjustment Expenses Payments					
		2 Direct Premium	3 Assumed Premium	4 Other Income	5 Ceded Premium	6 Net (Cols. 2+3+4-5)	Loss Payments			Allocated LAE Payments		
							7 Direct	8 Assumed	9 Ceded	10 Direct	11 Assumed	12 Ceded
1. Prior	XXX	62	0	0	0	62	0	0	0	0	0	0
2. 2012	0	108	0	0	0	108	0	0	0	0	0	0
3. 2013	0	157	0	0	0	157	0	0	0	0	0	0
4. 2014	0	132	0	0	0	132	0	0	0	0	0	0
5. 2015	0	76	0	0	0	76	0	0	0	0	0	0
6. 2016	0	121	0	0	0	121	0	0	0	0	0	0
7. 2017	0	4	0	0	0	4	0	0	0	0	0	0
8. 2018	0	6	0	0	0	6	0	0	0	0	0	0
9. 2019	0	11	0	0	0	11	0	0	0	0	0	0
10. 2020	0	0	0	0	0	0	0	0	0	0	0	0
11. 2021	0	0	0	0	0	0	0	0	0	0	0	0
12. Totals	XXX	677	0	0	0	677	0	0	0	0	0	0

	13 Salvage and Subrogation Received	14 Unallocated Loss Expense Payments	15 Total Net Loss and Expense Paid (Cols. 7+8 +10+11-9-12+14)	16 Number of Claims Reported (Direct)	Loss and Allocated Loss Adjustment Expenses Unpaid						23 Unallocated Loss Expense Unpaid
					Known Claim Reserves			IBNR Reserves			
					17 Direct	18 Assumed	19 Ceded	20 Direct	21 Assumed	22 Ceded	
1. Prior.....	0	0	0	0	0	0	0	0	0	0	0
2. 2012.....	0	0	0	0	0	0	0	0	0	0	0
3. 2013.....	0	0	0	0	0	0	0	0	0	0	0
4. 2014.....	0	0	0	0	0	0	0	0	0	0	0
5. 2015.....	0	0	0	0	0	0	0	0	0	0	0
6. 2016.....	0	0	0	0	0	0	0	0	0	0	0
7. 2017.....	0	0	0	0	0	0	0	0	0	0	0
8. 2018.....	0	0	0	0	0	0	0	0	0	0	0
9. 2019.....	0	0	0	0	0	0	0	0	0	0	0
10. 2020.....	0	0	0	0	0	0	0	0	0	0	0
11. 2021.....	0	0	0	0	0	0	0	0	0	0	0
12. Totals.....	0	0	0	0	0	0	0	0	0	0	0

	24 Total Net Loss and LAE Unpaid (Cols. 17+18+20 +21-19-22+23)	25 Number of Claims Outstanding (Direct)	Losses and Allocated Loss Expenses Incurred				Loss and LAE Ratio		32 Net Loss & LAE Per \$1000 of Coverage ([Cols. 29+14+23] /Col. 1)	33 Discount For Time Value of Money	34 Net Reserves After Discount (Cols. 24-33)
			26 Direct (Cols. 7+10+17 +20)	27 Assumed (Cols. 8+11+18 +21)	28 Ceded (Cols. 9+12+19 +22)	29 Net	30 Direct Basis ([Cols. 14+23+26]/ Col 2)	31 Net Basis ([Cols. 14+23+29]/ [Cols. 6-4])			
1. Prior	0	0	0	0	0	0	0.0	0.0	XXX	0	0
2. 2012	0	0	0	0	0	0	0.0	0.0	0.0	0	0
3. 2013	0	0	0	0	0	0	0.0	0.0	0.0	0	0
4. 2014	0	0	0	0	0	0	0.0	0.0	0.0	0	0
5. 2015	0	0	0	0	0	0	0.0	0.0	0.0	0	0
6. 2016	0	0	0	0	0	0	0.0	0.0	0.0	0	0
7. 2017	0	0	0	0	0	0	0.0	0.0	0.0	0	0
8. 2018	0	0	0	0	0	0	0.0	0.0	0.0	0	0
9. 2019	0	0	0	0	0	0	0.0	0.0	0.0	0	0
10. 2020	0	0	0	0	0	0	0.0	0.0	0.0	0	0
11. 2021	0	0	0	0	0	0	0.0	0.0	0.0	0	0
12. Totals	0	0	0	0	0	0	XXX	XXX	XXX	0	0

ANNUAL STATEMENT FOR THE YEAR 2021 OF THE BG Title Guarantee, Inc.

SCHEDULE T - EXHIBIT OF PREMIUMS WRITTEN

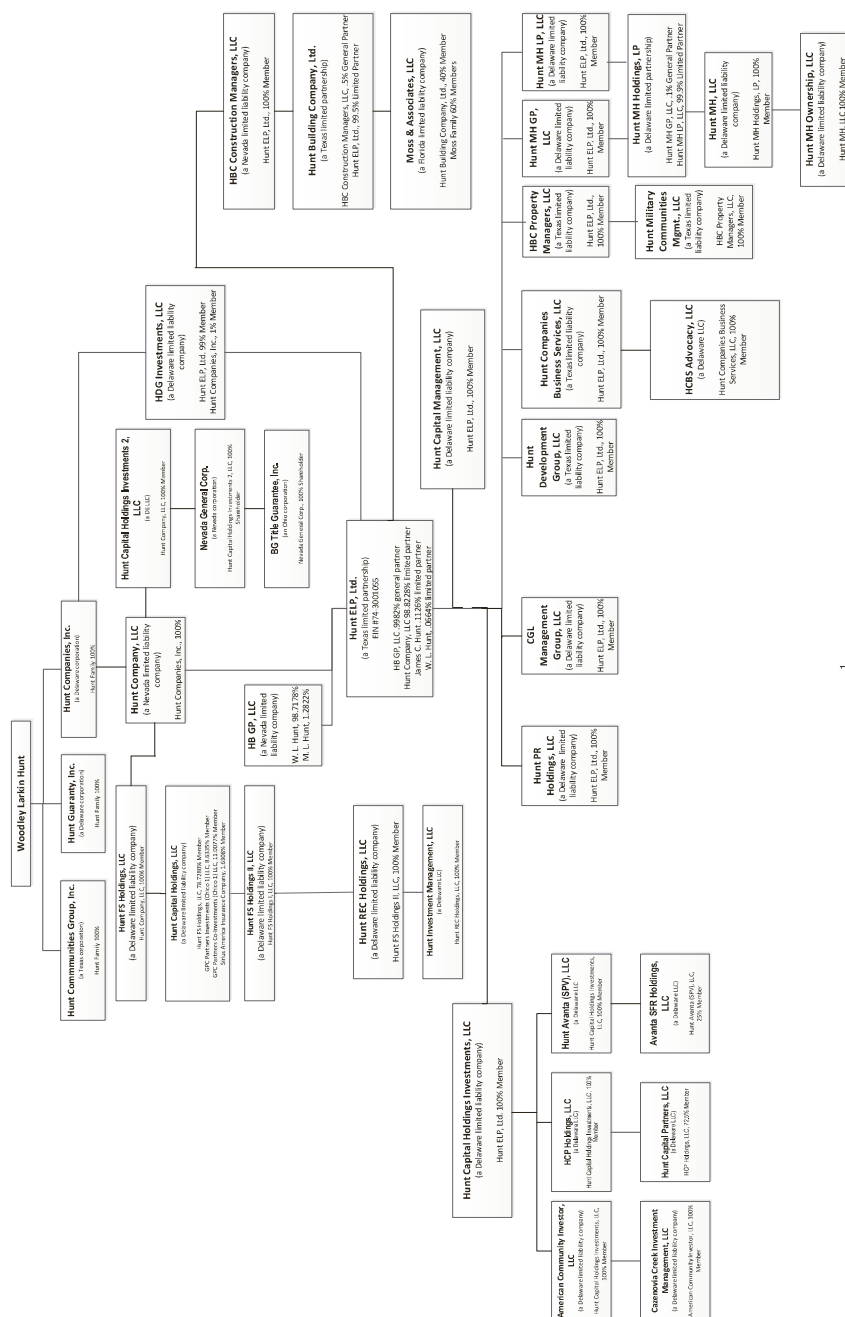
By States and Territories

States, etc.		1	2	Direct Premiums Written			6	7	8	9	10
		Active Status (a)	Premium Rate (b)	3	Agency Operations		Other Income	Net Premiums Earned	Direct Losses and Allocated Loss Adjustment Expenses Paid	Direct Losses and Allocated Loss Adjustment Expenses Incurred	Direct Known Claim Reserve
				Direct Operations	4	5					
1.	Alabama.....AL	N							.0		
2.	Alaska.....AK	N							.0		
3.	Arizona.....AZ	N							.0		
4.	Arkansas.....AR	N							.0		
5.	California.....CA	N							.0		
6.	Colorado.....CO	N							.0		
7.	Connecticut.....CT	N							.0		
8.	Delaware.....DE	N							.0		
9.	District of Columbia.....DC	N							.0		
10.	Florida.....FL	N							.0		
11.	Georgia.....GA	N							.0		
12.	Hawaii.....HI	N							.0		
13.	Idaho.....ID	N							.0		
14.	Illinois.....IL	N							.0		
15.	Indiana.....IN	L		.0	.0	.0	.0	.0	.0	.0	.0
16.	Iowa.....IA	N							.0		
17.	Kansas.....KS	N							.0		
18.	Kentucky.....KY	N							.0		
19.	Louisiana.....LA	N							.0		
20.	Maine.....ME	N							.0		
21.	Maryland.....MD	N							.0		
22.	Massachusetts.....MA	N							.0		
23.	Michigan.....MI	N							.0		
24.	Minnesota.....MN	N							.0		
25.	Mississippi.....MS	N							.0		
26.	Missouri.....MO	N							.0		
27.	Montana.....MT	N							.0		
28.	Nebraska.....NE	N							.0		
29.	Nevada.....NV	N							.0		
30.	New Hampshire.....NH	N							.0		
31.	New Jersey.....NJ	N							.0		
32.	New Mexico.....NM	N							.0		
33.	New York.....NY	N							.0		
34.	North Carolina.....NC	N							.0		
35.	North Dakota.....ND	N							.0		
36.	Ohio.....OH	L		.0	.0	.0	.0	.0	.0	.0	.0
37.	Oklahoma.....OK	N							.0		
38.	Oregon.....OR	N							.0		
39.	Pennsylvania.....PA	L		.0	.0	.0	.0	.0	.0	.0	.0
40.	Rhode Island.....RI	N							.0		
41.	South Carolina.....SC	N							.0		
42.	South Dakota.....SD	N							.0		
43.	Tennessee.....TN	L		.0	.0	.0	.0	.0	.0	.0	.0
44.	Texas.....TX	N							.0		
45.	Utah.....UT	N							.0		
46.	Vermont.....VT	N							.0		
47.	Virginia.....VA	N							.0		
48.	Washington.....WA	N							.0		
49.	West Virginia.....WV	N							.0		
50.	Wisconsin.....WI	N							.0		
51.	Wyoming.....WY	N							.0		
52.	American Samoa.....AS	N							.0		
53.	Guam.....GU	N							.0		
54.	Puerto Rico.....PR	N							.0		
55.	U.S. Virgin Islands.....VI	N							.0		
56.	Northern Mariana Islands.....MP	N							.0		
57.	Canada.....CAN	N							.0		
58.	Aggregate Other Alien OT	XXX	XXX	.0	.0	.0	.0	.0	.0	.0	.0
59.	Totals	XXX	XXX	0	0	0	0	0	0	0	0
DETAILS OF WRITE-INS											
58001.		XXX									
58002.		XXX									
58003.		XXX									
58998.	Summary of remaining write-ins for Line 58 from overflow page	XXX	XXX	.0	.0	.0	.0	.0	.0	.0	.0
58999.	Totals (Lines 58001 through 58003 plus 58998)(Line 58 above)	XXX	XXX	0	0	0	0	0	0	0	0

(a) Active Status Counts:
L - Licensed or Chartered - Licensed Insurance carrier or domiciled RRG..... 4 R - Registered - Non-domiciled RRGs..... 0
E - Eligible - Reporting entities eligible or approved to write surplus lines in the state 0 Q - Qualified - Qualified or accredited reinsurer..... 0
N - None of the above - Not allowed to write business in the state..... 53

(b) Each type of rate must be coded with a combination of the five activity codes (R, S, X, C, and/or E) listed in the instructions. Use the code combination corresponding to the state's statutory definitions of title insurance premium. If more than one combination of activities is indicated in the statutory definition, all relevant combinations must be listed. See the Schedule T instructions.

ANNUAL STATEMENT FOR THE YEAR 2021 OF THE BG Title Guarantee, Inc.



ANNUAL STATEMENT FOR THE YEAR 2021 OF THE BG Title Guarantee, Inc.

Entity	Description
American Community Investor, LLC	Holding entity for investment in tax lien investment and servicing platform
Avanta SFR Holdings, LLC	Single family rental development business
BG Title Guarantee, Inc.	Title insurance underwriter; domiciled State of Ohio (formerly known as Bankers Guarantee Title & Trust)
Cazenovia Creek Investment Management, LLC	Tax lien investment and servicing platform
CGL Management Group, LLC	Planning, design, and program management and maintenance solutions to justice facilities and other public facilities
HB GP, LLC	Hunt investment entity
HBC Construction Managers, LLC	Holding entity for construction business
HBC Property Managers, LLC	Holding entity for military housing property management business
HCBS Advocacy, LLC	Entity for internal legislative affairs business
HCP Holdings, LLC	Holding entity for investment in syndication business
HDG Investments, LLC	Investment entity
Hunt Avanta (SPV), LLC	Holding entity for investment in single family rental business
Hunt Building Company, Ltd.	Construction management services
Hunt Capital Holdings Investments 2, LLC	Holding entity

Entity	Description
Hunt Capital Holdings Investments, LLC	Holding entity
Hunt Capital Holdings, LLC	Holding entity
Hunt Capital Management, LLC	Registered investment advisor, manager of 3 rd party capital
Hunt Capital Partners, LLC	Syndicator of federal and state low-income housing, historic and solar tax credits
Hunt Communities Group, Inc.	Planner and developer of housing communities
Hunt Companies Business Services, LLC	Corporate entity
Hunt Companies, Inc.	Corporate entity
Hunt Company, LLC	Corporate entity
Hunt Development Group, LLC	Developer, investor, manager of multifamily housing
Hunt ELP, Ltd.	Holding entity
Hunt FS Holdings II, LLC	Holding entity
Hunt FS Holdings, LLC	Holding entity
Hunt Guaranty, Inc.	Provider of various project level guarantees
Hunt Investment Management, LLC	Registered investment advisor, manager of 3 rd party capital

Entity	Description
Hunt MH GP, LLC	Holding entity
Hunt MH Holdings, LP	Holding entity
Hunt MH LP, LLC	Holding entity
Hunt MH Ownership, LLC	Ownership of military housing communities
Hunt MH, LLC	Holding entity
Hunt PR Holdings, LLC	Holding entity for investment in affordable housing developer
Hunt REC Holdings, LLC	Holding entity
Moss & Associates, LLC	Construction management business
Nevada General Corp.	Holding entity for BG Title Guarantee

OVERFLOW PAGE FOR WRITE-INS

ANNUAL STATEMENT FOR THE YEAR 2021 OF THE BG Title Guarantee, Inc.

OVERFLOW PAGE FOR WRITE-INS

Additional Write-ins for Operations and Investment Exhibit Part 3 Line 23

		Title and Escrow Operating Expenses				5	6	7	Totals	
		1	Agency Operations		4				8	9
			2	3						
		Direct Operations	Non-affiliated Agency Operations	Affiliated Agency Operations	Total (Cols. 1+2+3)	Unallocated Loss Adjustment Expenses	Other Operations	Investment Expenses	Current Year (Cols. 4+5+6+7)	Prior Year
2304.	Interest				0			58,884	58,884	578,652
2397.	Summary of remaining write-ins for Line 23 from overflow page	0	0	0	0	0	0	58,884	58,884	578,652