



ANNUAL STATEMENT  
For the Year Ended December 31, 2021  
of the Condition and Affairs of the  
NATIONAL CASUALTY COMPANY

NAIC Group Code..... 0140, 0140 (Current Period) (Prior Period) NAIC Company Code..... 11991 Employer's ID Number..... 38-0865250

Organized under the Laws of OH State of Domicile or Port of Entry OH Country of Domicile US

Incorporated/Organized..... December 19, 1904 Commenced Business..... December 31, 1904

Statutory Home Office ONE WEST NATIONWIDE BLVD. .. Columbus .. OH .. US .. 43215-2220 (Street and Number) (City or Town, State, Country and Zip Code)

Main Administrative Office 18700 N. HAYDEN ROAD .. SCOTTSDALE .. AZ .. US .. 85255 (Street and Number) (City or Town, State, Country and Zip Code) 480-365-4000 (Area Code) (Telephone Number)

Mail Address ONE WEST NATIONWIDE BLVD., 1-14-301 .. COLUMBUS .. OH .. US .. 43215-2220 (Street and Number or P. O. Box) (City or Town, State, Country and Zip Code)

Primary Location of Books and Records ONE WEST NATIONWIDE BLVD., 1-14-301 .. COLUMBUS .. OH .. US .. 43215-2220 (Street and Number) (City or Town, State, Country and Zip Code) 614-249-9724 (Area Code) (Telephone Number)

Internet Web Site Address WWW.SCOTTSDALEINS.COM

Statutory Statement Contact ANDREA D IACOBONI (Name) 614-249-9724 (Area Code) (Telephone Number) (Extension) FINRPT@NATIONWIDE.COM 866-315-1430 (E-Mail Address) (Fax Number)

OFFICERS

Name	Title	Name	Title
1. RUSSELL MARK JOHNSTON	PRESIDENT	2. DENISE LYNN SKINGLE	SVP & SECRETARY
3. AMBER M. WAYNE	VP & TREASURER		

OTHER

PAMELA ANN BIESECKER SVP-HEAD OF TAXATION

DIRECTORS OR TRUSTEES

MARK ALLEN BERVEN	OSCAR GUERRERO	RUSSELL MARK JOHNSTON	THOMAS WAYNE JURGENS
DAVID NEIL NELSON	ELIZABETH MARGARET RICZKO		

State of..... OHIO  
County of..... FRANKLIN

The officers of this reporting entity being duly sworn, each depose and say that they are the described officers of said reporting entity, and that on the reporting period stated above, all of the herein described assets were the absolute property of the said reporting entity, free and clear from any liens or claims thereon, except as herein stated, and that this statement, together with related exhibits, schedules and explanations therein contained, annexed or referred to, is a full and true statement of all the assets and liabilities and of the condition and affairs of the said reporting entity as of the reporting period stated above, and of its income and deductions therefrom for the period ended, and have been completed in accordance with the NAIC Annual Statement Instructions and Accounting Practices and Procedures manual except to the extent that: (1) state law may differ; or, (2) that state rules or regulations require differences in reporting not related to accounting practices and procedures, according to the best of their information, knowledge and belief, respectively. Furthermore, the scope of this attestation by the described officers also includes the related corresponding electronic filing with the NAIC, when required, that is an exact copy (except for formatting differences due to electronic filing) of the enclosed statement. The electronic filing may be requested by various regulators in lieu of or in addition to the enclosed statement.

(Signature)	(Signature)	(Signature)
RUSSELL MARK JOHNSTON	DENISE LYNN SKINGLE	AMBER M. WAYNE
1. (Printed Name)	2. (Printed Name)	3. (Printed Name)
PRESIDENT	SVP & SECRETARY	VP & TREASURER
(Title)	(Title)	(Title)

Subscribed and sworn to before me  
This day of February 2022

a. Is this an original filing? Yes [X] No [ ]  
b. If no  
1. State the amendment number  
2. Date filed  
3. Number of pages attached



ANDREW SWARTZEL  
NOTARY PUBLIC • STATE OF OHIO  
Comm. No. 2021-RE-839107  
My Commission Expires Oct. 24, 2026

NATIONAL CASUALTY COMPANY  
ASSETS

	Current Year			Prior Year
	1	2	3	4
	Assets	Nonadmitted Assets	Net Admitted Assets (Cols. 1 - 2)	Net Admitted Assets
1. Bonds (Schedule D).....	355,171,684		355,171,684	302,270,437
2. Stocks (Schedule D):				
2.1 Preferred stocks.....			.0	
2.2 Common stocks.....			.0	
3. Mortgage loans on real estate (Schedule B):				
3.1 First liens.....			.0	
3.2 Other than first liens.....			.0	
4. Real estate (Schedule A):				
4.1 Properties occupied by the company (less \$.....0 encumbrances).....			.0	
4.2 Properties held for the production of income (less \$.....0 encumbrances).....			.0	
4.3 Properties held for sale (less \$.....0 encumbrances).....			.0	
5. Cash (\$.....1,333, Schedule E-Part 1), cash equivalents (\$.....52,138,121, Schedule E-Part 2) and short-term investments (\$.....0, Schedule DA).....	52,139,454		52,139,454	11,453,274
6. Contract loans (including \$.....0 premium notes).....			.0	
7. Derivatives (Schedule DB).....			.0	
8. Other invested assets (Schedule BA).....	1,971,232		1,971,232	2,776,960
9. Receivables for securities.....			.0	
10. Securities lending reinvested collateral assets (Schedule DL).....			.0	
11. Aggregate write-ins for invested assets.....	.0	.0	.0	.0
12. Subtotals, cash and invested assets (Lines 1 to 11).....	409,282,370	.0	409,282,370	316,500,671
13. Title plants less \$.....0 charged off (for Title insurers only).....			.0	
14. Investment income due and accrued.....	2,468,548		2,468,548	2,126,284
15. Premiums and considerations:				
15.1 Uncollected premiums and agents' balances in the course of collection.....	145,352,453	5,578,047	139,774,406	143,575,976
15.2 Deferred premiums, agents' balances and installments booked but deferred and not yet due (including \$.....0 earned but unbilled premiums).....	289,154,218	34,436	289,119,782	233,762,703
15.3 Accrued retrospective premiums (\$.....0) and contracts subject to redetermination (\$.....0).....			.0	
16. Reinsurance:				
16.1 Amounts recoverable from reinsurers.....	90,694,974		90,694,974	84,968,514
16.2 Funds held by or deposited with reinsured companies.....	1,088,622		1,088,622	511,208
16.3 Other amounts receivable under reinsurance contracts.....	693,211		693,211	
17. Amounts receivable relating to uninsured plans.....			.0	
18.1 Current federal and foreign income tax recoverable and interest thereon.....			.0	
18.2 Net deferred tax asset.....	9,913,918	1,447,545	8,466,373	7,673,232
19. Guaranty funds receivable or on deposit.....	76,538		76,538	71,960
20. Electronic data processing equipment and software.....			.0	
21. Furniture and equipment, including health care delivery assets (\$.....0).....			.0	
22. Net adjustment in assets and liabilities due to foreign exchange rates.....			.0	
23. Receivables from parent, subsidiaries and affiliates.....	31,018,362		31,018,362	22,627,613
24. Health care (\$.....0) and other amounts receivable.....			.0	
25. Aggregate write-ins for other-than-invested assets.....	3,267,860	88,133	3,179,727	2,951,486
26. Total assets excluding Separate Accounts, Segregated Accounts and Protected Cell Accounts (Lines 12 to 25).....	983,011,074	7,148,161	975,862,913	814,769,647
27. From Separate Accounts, Segregated Accounts and Protected Cell Accounts.....			.0	
28. TOTAL (Lines 26 and 27).....	983,011,074	7,148,161	975,862,913	814,769,647

DETAILS OF WRITE-INS

1101. ....			.0	
1102. ....			.0	
1103. ....			.0	
1198. Summary of remaining write-ins for Line 11 from overflow page.....	.0	.0	.0	.0
1199. Totals (Lines 1101 through 1103 plus 1198) (Line 11 above).....	.0	.0	.0	.0
2501. Miscellaneous assets.....	1,158,854		1,158,854	1,007,869
2502. Third party administrator receivable.....	393,702	79,767	313,935	209,199
2503. Deposits and prepaid assets.....			.0	
2598. Summary of remaining write-ins for Line 25 from overflow page.....	1,715,304	8,366	1,706,938	1,734,418
2599. Totals (Lines 2501 through 2503 plus 2598) (Line 25 above).....	3,267,860	88,133	3,179,727	2,951,486

NATIONAL CASUALTY COMPANY  
LIABILITIES, SURPLUS AND OTHER FUNDS

	1 Current Year	2 Prior Year
1. Losses (Part 2A, Line 35, Column 8).....	134,795,425	124,013,607
2. Reinsurance payable on paid losses and loss adjustment expenses (Schedule F, Part 1, Column 6).....	8,598,828	9,993,234
3. Loss adjustment expenses (Part 2A, Line 35, Column 9).....	31,481,983	23,910,792
4. Commissions payable, contingent commissions and other similar charges.....	4,481,991	4,425,950
5. Other expenses (excluding taxes, licenses and fees).....	2,116,887	2,476,507
6. Taxes, licenses and fees (excluding federal and foreign income taxes).....	1,000,951	767,968
7.1 Current federal and foreign income taxes (including \$.....119,227 on realized capital gains (losses)).....	85,387	775,639
7.2 Net deferred tax liability.....		
8. Borrowed money \$.....0 and interest thereon \$.....0.....		
9. Unearned premiums (Part 1A, Line 38, Column 5) (after deducting unearned premiums for ceded reinsurance of \$.....763,423,957 and including warranty reserves of \$.....100,707 and accrued accident and health experience rating refunds including \$.....0 for medical loss ratio rebate per the Public Health Service Act).....	84,472,483	79,719,062
10. Advance premium.....	1,444,182	1,294,044
11. Dividends declared and unpaid:		
11.1 Stockholders.....		
11.2 Policyholders.....	64,511	76,040
12. Ceded reinsurance premiums payable (net of ceding commissions).....	471,317,871	408,049,303
13. Funds held by company under reinsurance treaties (Schedule F, Part 3, Column 20).....	(891,257)	(770,653)
14. Amounts withheld or retained by company for account of others.....	5,489,377	2,797,560
15. Remittances and items not allocated.....		125,478
16. Provision for reinsurance (including \$.....0 certified) (Schedule F, Part 3, Column 78).....		
17. Net adjustments in assets and liabilities due to foreign exchange rates.....		
18. Drafts outstanding.....		
19. Payable to parent, subsidiaries and affiliates.....	27,703,401	20,822,572
20. Derivatives.....		
21. Payable for securities.....		
22. Payable for securities lending.....		
23. Liability for amounts held under uninsured plans.....		
24. Capital notes \$.....0 and interest thereon \$.....0.....		
25. Aggregate write-ins for liabilities.....	3,059,135	7,276,676
26. Total liabilities excluding protected cell liabilities (Lines 1 through 25).....	775,221,155	685,753,779
27. Protected cell liabilities.....		
28. Total liabilities (Lines 26 and 27).....	775,221,155	685,753,779
29. Aggregate write-ins for special surplus funds.....	0	0
30. Common capital stock.....	5,000,000	5,000,000
31. Preferred capital stock.....		
32. Aggregate write-ins for other-than-special surplus funds.....	0	0
33. Surplus notes.....		
34. Gross paid in and contributed surplus.....	91,486,670	21,486,670
35. Unassigned funds (surplus).....	104,155,088	102,529,198
36. Less treasury stock, at cost:		
36.1 .....0.000 shares common (value included in Line 30 \$.....0).....		
36.2 .....0.000 shares preferred (value included in Line 31 \$.....0).....		
37. Surplus as regards policyholders (Lines 29 to 35, less 36) (Page 4, Line 39).....	200,641,758	129,015,868
38. TOTAL (Page 2, Line 28, Col. 3).....	975,862,913	814,769,647

DETAILS OF WRITE-INS

2501. Miscellaneous liabilities.....	2,611,206	3,489,531
2502. Contingent suit liability.....	90,662	117,848
2503. Escrow liability.....	117,526	658
2598. Summary of remaining write-ins for Line 25 from overflow page.....	239,741	3,668,639
2599. Totals (Lines 2501 through 2503 plus 2598) (Line 25 above).....	3,059,135	7,276,676
2901. ....		
2902. ....		
2903. ....		
2998. Summary of remaining write-ins for Line 29 from overflow page.....	0	0
2999. Totals (Lines 2901 through 2903 plus 2998) (Line 29 above).....	0	0
3201. ....		
3202. ....		
3203. ....		
3298. Summary of remaining write-ins for Line 32 from overflow page.....	0	0
3299. Totals (Lines 3201 through 3203 plus 3298) (Line 32 above).....	0	0

NATIONAL CASUALTY COMPANY  
STATEMENT OF INCOME

UNDERWRITING INCOME			1	2
			Current Year	Prior Year
1.	Premiums earned (Part 1, Line 35, Column 4).....		183,062,464	176,794,178
DEDUCTIONS:				
2.	Losses incurred (Part 2, Line 35, Column 7).....		115,466,187	118,333,684
3.	Loss adjustment expenses incurred (Part 3, Line 25, Column 1).....		18,291,647	16,823,735
4.	Other underwriting expenses incurred (Part 3, Line 25, Column 2).....		59,955,493	72,335,241
5.	Aggregate write-ins for underwriting deductions.....		0	0
6.	Total underwriting deductions (Lines 2 through 5).....		193,713,327	207,492,660
7.	Net income of protected cells.....			
8.	Net underwriting gain (loss) (Line 1 minus Line 6 plus Line 7).....		(10,650,863)	(30,698,482)
INVESTMENT INCOME				
9.	Net investment income earned (Exhibit of Net Investment Income, Line 17).....		9,160,761	8,060,490
10.	Net realized capital gains (losses) less capital gains tax of \$.....119,227 (Exhibit of Capital Gains (Losses)).....		(247,702)	(120,840)
11.	Net investment gain (loss) (Lines 9 + 10).....		8,913,059	7,939,650
OTHER INCOME				
12.	Net gain (loss) from agents' or premium balances charged off (amount recovered \$.....(718) amount charged off \$.....529,236).....		(529,954)	(501,982)
13.	Finance and service charges not included in premiums.....		949,386	1,000,716
14.	Aggregate write-ins for miscellaneous income.....		978,727	156,760
15.	Total other income (Lines 12 through 14).....		1,398,159	655,494
16.	Net income before dividends to policyholders, after capital gains tax and before all other federal and foreign income taxes (Lines 8 + 11 + 15).....		(339,645)	(22,103,338)
17.	Dividends to policyholders.....		60,900	73,802
18.	Net income, after dividends to policyholders, after capital gains tax and before all other federal and foreign income taxes (Line 16 minus Line 17).....		(400,545)	(22,177,140)
19.	Federal and foreign income taxes incurred.....		(18,826)	809,791
20.	Net income (Line 18 minus Line 19) (to Line 22).....		(381,719)	(22,986,931)
CAPITAL AND SURPLUS ACCOUNT				
21.	Surplus as regards policyholders, December 31 prior year (Page 4, Line 39, Column 2).....		129,015,868	146,002,602
22.	Net income (from Line 20).....		(381,719)	(22,986,931)
23.	Net transfers (to) from Protected Cell accounts.....			
24.	Change in net unrealized capital gains or (losses) less capital gains tax of \$.....276,555.....		1,040,376	132,074
25.	Change in net unrealized foreign exchange capital gain (loss).....			
26.	Change in net deferred income tax.....		1,039,994	7,310,859
27.	Change in nonadmitted assets (Exhibit of Nonadmitted Assets, Line 28, Column 3).....		(2,027,938)	(893,116)
28.	Change in provision for reinsurance (Page 3, Line 16, Column 2 minus Column 1).....			
29.	Change in surplus notes.....			
30.	Surplus (contributed to) withdrawn from Protected Cells.....			
31.	Cumulative effect of changes in accounting principles.....			
32.	Capital changes:			
32.1	Paid in.....			
32.2	Transferred from surplus (Stock Dividend).....			
32.3	Transferred to surplus.....			
33.	Surplus adjustments:			
33.1	Paid in.....		70,000,000	
33.2	Transferred to capital (Stock Dividend).....			
33.3.	Transferred from capital.....			
34.	Net remittances from or (to) Home Office.....			
35.	Dividends to stockholders.....			
36.	Change in treasury stock (Page 3, Lines 36.1 and 36.2, Column 2 minus Column 1).....			
37.	Aggregate write-ins for gains and losses in surplus.....		1,955,177	(549,620)
38.	Change in surplus as regards policyholders for the year (Lines 22 through 37).....		71,625,890	(16,986,734)
39.	Surplus as regards policyholders, December 31 current year (Line 21 plus Line 38) (Page 3, Line 37).....		200,641,758	129,015,868
DETAILS OF WRITE-INS				
0501.	.....			
0502.	.....			
0503.	.....			
0598.	Summary of remaining write-ins for Line 5 from overflow page.....		0	0
0599.	Totals (Lines 0501 through 0503 plus 0598) (Line 5 above).....		0	0
1401.	Other.....		951,541	274,608
1402.	Change in contingent suit liability.....		27,186	(117,848)
1403.	.....			
1498.	Summary of remaining write-ins for Line 14 from overflow page.....		0	0
1499.	Totals (Lines 1401 through 1403 plus 1498) (Line 14 above).....		978,727	156,760
3701.	Change in surplus - pooled nonadmitted premiums in the course of collection offset.....		1,955,177	(549,620)
3702.	.....			
3703.	.....			
3798.	Summary of remaining write-ins for Line 37 from overflow page.....		0	0
3799.	Totals (Lines 3701 through 3703 plus 3798) (Line 37 above).....		1,955,177	(549,620)

NATIONAL CASUALTY COMPANY  
CASH FLOW

		1	2
		Current Year	Prior Year
CASH FROM OPERATIONS			
1.	Premiums collected net of reinsurance.....	199,657,990	171,234,034
2.	Net investment income.....	10,194,575	8,050,137
3.	Miscellaneous income.....	820,745	674,212
4.	Total (Lines 1 through 3).....	210,673,310	179,958,383
5.	Benefit and loss related payments.....	116,448,135	84,605,713
6.	Net transfers to Separate Accounts, Segregated Accounts and Protected Cell Accounts.....		
7.	Commissions, expenses paid and aggregate write-ins for deductions.....	81,805,809	64,876,516
8.	Dividends paid to policyholders.....	72,429	79,308
9.	Federal and foreign income taxes paid (recovered) net of \$ ....88,936 tax on capital gains (losses).....	790,653	1,235,628
10.	Total (Lines 5 through 9).....	199,117,026	150,797,165
11.	Net cash from operations (Line 4 minus Line 10).....	11,556,284	29,161,218
CASH FROM INVESTMENTS			
12.	Proceeds from investments sold, matured or repaid:		
12.1	Bonds.....	61,044,723	14,803,109
12.2	Stocks.....		
12.3	Mortgage loans.....		
12.4	Real estate.....		
12.5	Other invested assets.....		
12.6	Net gains or (losses) on cash, cash equivalents and short-term investments.....		
12.7	Miscellaneous proceeds.....		
12.8	Total investment proceeds (Lines 12.1 to 12.7).....	61,044,723	14,803,109
13.	Cost of investments acquired (long-term only):		
13.1	Bonds.....	101,855,236	37,881,620
13.2	Stocks.....		
13.3	Mortgage loans.....		
13.4	Real estate.....		
13.5	Other invested assets.....	538,708	1,303,563
13.6	Miscellaneous applications.....		
13.7	Total investments acquired (Lines 13.1 to 13.6).....	102,393,944	39,185,183
14.	Net increase (decrease) in contract loans and premium notes.....		
15.	Net cash from investments (Line 12.8 minus Lines 13.7 minus Line 14).....	(41,349,221)	(24,382,074)
CASH FROM FINANCING AND MISCELLANEOUS SOURCES			
16.	Cash provided (applied):		
16.1	Surplus notes, capital notes.....		
16.2	Capital and paid in surplus, less treasury stock.....	70,000,000	
16.3	Borrowed funds.....		
16.4	Net deposits on deposit-type contracts and other insurance liabilities.....		
16.5	Dividends to stockholders.....		
16.6	Other cash provided (applied).....	479,117	(600,204)
17.	Net cash from financing and miscellaneous sources (Lines 16.1 to 16.4 minus Line 16.5 plus Line 16.6).....	70,479,117	(600,204)
RECONCILIATION OF CASH, CASH EQUIVALENTS AND SHORT-TERM INVESTMENTS			
18.	Net change in cash, cash equivalents and short-term investments (Line 11, plus Lines 15 and 17).....	40,686,180	4,178,940
19.	Cash, cash equivalents and short-term investments:		
19.1	Beginning of year.....	11,453,274	7,274,334
19.2	End of year (Line 18 plus Line 19.1).....	52,139,454	11,453,274
Note: Supplemental disclosures of cash flow information for non-cash transactions:			
20.0001	Exchange of bond investment to bond investment.....	1,131,318	4,005,549
20.0002	Tax credit commitment liabilities.....	517,295	783,165
20.0003	Assets and liabilities transferred settled through investment transfer.....	11,451,214	142,524,694

NATIONAL CASUALTY COMPANY  
UNDERWRITING AND INVESTMENT EXHIBIT

PART 1 - PREMIUMS EARNED

Line of Business		1	2	3	4
		Net Premiums Written per Column 6, Part 1B	Unearned Premiums December 31 Prior Year- per Col. 3, Last Year's Part 1	Unearned Premiums December 31 Current Year- per Col. 5, Part 1A	Premiums Earned During Year (Cols. 1 + 2 - 3)
1.	Fire.....	2,394,220	1,080,561	1,331,440	2,143,341
2.	Allied lines.....	3,899,360	1,841,253	2,212,966	3,527,647
3.	Farmowners multiple peril.....	5,460,283	2,618,019	2,718,818	5,359,484
4.	Homeowners multiple peril.....	33,765,155	17,548,386	18,604,861	32,708,680
5.	Commercial multiple peril.....	24,789,097	12,022,442	12,341,440	24,470,099
6.	Mortgage guaranty.....	0		0	0
8.	Ocean marine.....	571,383	183,769	314,271	440,881
9.	Inland marine.....	11,032,454	4,686,987	5,380,611	10,338,830
10.	Financial guaranty.....	0		0	0
11.1	Medical professional liability - occurrence.....	0	(3)	4,634	(4,637)
11.2	Medical professional liability - claims-made.....	0		0	0
12.	Earthquake.....	324,040	168,985	167,616	325,409
13.	Group accident and health.....	2,776,515	5,342	17,966	2,763,891
14.	Credit accident and health (group and individual).....	0		0	0
15.	Other accident and health.....	3,364	1,062	973	3,453
16.	Workers' compensation.....	3,424,232	1,652,781	1,667,903	3,409,110
17.1	Other liability - occurrence.....	14,445,247	6,145,228	7,200,509	13,389,966
17.2	Other liability - claims-made.....	10,883,287	4,215,894	5,231,863	9,867,318
17.3	Excess workers' compensation.....	0		0	0
18.1	Products liability - occurrence.....	819,362	419,716	420,107	818,971
18.2	Products liability - claims-made.....	56,375	23,919	33,129	47,165
19.1, 19.2	Private passenger auto liability.....	31,001,952	10,543,381	9,993,337	31,551,996
19.3, 19.4	Commercial auto liability.....	12,965,397	6,244,361	6,269,291	12,940,467
21.	Auto physical damage.....	27,960,483	9,707,536	9,698,332	27,969,687
22.	Aircraft (all perils).....	0		0	0
23.	Fidelity.....	60,667	32,389	40,005	53,051
24.	Surety.....	842,938	395,725	502,988	735,675
26.	Burglary and theft.....	31,101	14,929	13,934	32,096
27.	Boiler and machinery.....	105,055	20,570	20,664	104,961
28.	Credit.....	11,157	6,516	29,883	(12,210)
29.	International.....	15		0	15
30.	Warranty.....	206,131	140,400	262,892	83,639
31.	Reinsurance - nonproportional assumed property.....	(13,285)	(165)	(6,931)	(6,519)
32.	Reinsurance - nonproportional assumed liability.....	0		0	0
33.	Reinsurance - nonproportional assumed financial lines.....	0		0	0
34.	Aggregate write-ins for other lines of business.....	0	0	0	0
35.	TOTALS.....	187,815,985	79,719,983	84,473,502	183,062,466

DETAILS OF WRITE-INS

3401.	.....	0		0	0
3402.	.....	0		0	0
3403.	.....	0		0	0
3498.	Summary of remaining write-ins for Line 34 from overflow page.....	0	0	0	0
3499.	Totals (Lines 3401 through 3403 plus 3498) (Line 34 above).....	0	0	0	0

NATIONAL CASUALTY COMPANY  
UNDERWRITING AND INVESTMENT EXHIBIT

PART 1A - RECAPITULATION OF ALL PREMIUMS

Line of Business		1	2	3	4	5
		Amount Unearned (Running One Year or Less from Date of Policy) (a)	Amount Unearned (Running More Than One Year from Date of Policy) (a)	Earned But Unbilled Premium	Reserve for Rate Credits and Retrospective Adjustments Based on Experience	Total Reserve for Unearned Premiums Cols. 1 + 2 + 3 + 4
1.	Fire.....	1,327,114	4,326			1,331,440
2.	Allied lines.....	2,146,006	66,960			2,212,966
3.	Farmowners multiple peril.....	2,718,818				2,718,818
4.	Homeowners multiple peril.....	18,491,437	113,424			18,604,861
5.	Commercial multiple peril.....	12,326,955	14,485			12,341,440
6.	Mortgage guaranty.....					0
8.	Ocean marine.....	313,002	1,269			314,271
9.	Inland marine.....	5,170,302	210,309			5,380,611
10.	Financial guaranty.....					0
11.1	Medical professional liability - occurrence.....	4,634				4,634
11.2	Medical professional liability - claims-made.....					0
12.	Earthquake.....	166,560	1,056			167,616
13.	Group accident and health.....	17,793			173	17,966
14.	Credit accident and health (group and individual).....					0
15.	Other accident and health.....	126			847	973
16.	Workers' compensation.....	1,667,898	5			1,667,903
17.1	Other liability - occurrence.....	6,870,076	330,433			7,200,509
17.2	Other liability - claims-made.....	4,683,624	548,239			5,231,863
17.3	Excess workers' compensation.....					0
18.1	Products liability - occurrence.....	385,822	34,285			420,107
18.2	Products liability - claims-made.....	31,203	1,926			33,129
19.1, 19.2	Private passenger auto liability.....	9,993,337				9,993,337
19.3, 19.4	Commercial auto liability.....	6,266,919	2,372			6,269,291
21.	Auto physical damage.....	9,698,116	216			9,698,332
22.	Aircraft (all perils).....					0
23.	Fidelity.....	32,774	7,231			40,005
24.	Surety.....	351,345	151,643			502,988
26.	Burglary and theft.....	13,926	8			13,934
27.	Boiler and machinery.....	20,537	127			20,664
28.	Credit.....	22,767	7,116			29,883
29.	International.....					0
30.	Warranty.....	8,309	254,583			262,892
31.	Reinsurance - nonproportional assumed property.....	(6,931)				(6,931)
32.	Reinsurance - nonproportional assumed liability.....					0
33.	Reinsurance - nonproportional assumed financial lines.....					0
34.	Aggregate write-ins for other lines of business.....	0	0	0	0	0
35.	TOTALS.....	82,722,469	1,750,013	0	1,020	84,473,502
36.	Accrued retrospective premiums based on experience.....					(1,020)
37.	Earned but unbilled premiums.....					0
38.	Balance (sum of Lines 35 through 37).....					84,472,482

DETAILS OF WRITE-INS

3401.	.....					0
3402.	.....					0
3403.	.....					0
3498.	Summary of remaining write-ins for Line 34 from overflow page.....	0	0	0	0	0
3499.	Totals (Lines 3401 through 3403 plus 3498) (Line 34 above).....	0	0	0	0	0

(a) State here basis of computation used in each case:

NATIONAL CASUALTY COMPANY  
UNDERWRITING AND INVESTMENT EXHIBIT

PART 1B - PREMIUMS WRITTEN

Line of Business		1 Direct Business (a)	Reinsurance Assumed		Reinsurance Ceded		6 Net Premiums Written (Cols. 1 + 2 + 3 - 4 - 5)
			2 From Affiliates	3 From Non-Affiliates	4 To Affiliates	5 To Non-Affiliates	
1.	Fire.....	4,599,579	2,394,220	16,478	4,616,057		2,394,220
2.	Allied lines.....	63,369,426	3,899,360	24,679	63,389,016	5,089	3,899,360
3.	Farmowners multiple peril.....		5,460,283				5,460,283
4.	Homeowners multiple peril.....	60,544	33,765,155	18,545	76,124	2,965	33,765,155
5.	Commercial multiple peril.....	82,830,415	24,789,097		82,830,415		24,789,097
6.	Mortgage guaranty.....						0
8.	Ocean marine.....	61,841,323	571,383		61,841,323		571,383
9.	Inland marine.....	645,484,897	11,032,454		645,316,488	168,409	11,032,454
10.	Financial guaranty.....						0
11.1	Medical professional liability - occurrence.....						0
11.2	Medical professional liability - claims-made.....						0
12.	Earthquake.....	31,542	324,040	38	31,580		324,040
13.	Group accident and health.....	10,498	2,776,515		6,744	3,754	2,776,515
14.	Credit accident and health (group and individual).....						0
15.	Other accident and health.....	139,006	3,364		73,833	65,173	3,364
16.	Workers' compensation.....	98,865,460	3,424,231	2	98,795,324	70,137	3,424,232
17.1	Other liability - occurrence.....	125,787,956	14,445,247	1,305	125,789,261		14,445,247
17.2	Other liability - claims-made.....	137,747,448	10,883,287	157,215	137,904,663		10,883,287
17.3	Excess workers' compensation.....						0
18.1	Products liability - occurrence.....	4,630,000	819,362		4,630,000		819,362
18.2	Products liability - claims-made.....	105,652	56,375		105,652		56,375
19.1, 19.2	Private passenger auto liability.....	5,409	31,001,952		5,409		31,001,952
19.3, 19.4	Commercial auto liability.....	221,960,501	12,965,397	1,752,301	223,712,802		12,965,397
21.	Auto physical damage.....	55,971,213	27,960,483	17,044	55,988,257		27,960,483
22.	Aircraft (all perils).....	484,578			484,578		0
23.	Fidelity.....	5,468,984	60,667		5,468,984		60,667
24.	Surety.....	115,549	842,938		115,549		842,938
26.	Burglary and theft.....	357,249	31,101	6	357,255		31,101
27.	Boiler and machinery.....	2,533,153	105,055		2,533,153		105,055
28.	Credit.....		11,157				11,157
29.	International.....		15				15
30.	Warranty.....	35,243,189	206,131		35,243,189		206,131
31.	Reinsurance - nonproportional assumed property.....	XXX	(13,285)				(13,285)
32.	Reinsurance - nonproportional assumed liability.....	XXX					0
33.	Reinsurance - nonproportional assumed financial lines.....	XXX					0
34.	Aggregate write-ins for other lines of business.....	0	0	0	0	0	0
35.	TOTALS.....	1,547,643,571	187,815,984	1,987,613	1,549,315,656	315,527	187,815,985

DETAILS OF WRITE-INS

3401.						0
3402.						0
3403.						0
3498.	Summary of remaining write-ins for Line 34 from overflow page.....	0	0	0	0	0
3499.	Totals (Lines 3401 through 3403 plus 3498) (Line 34 above).....	0	0	0	0	0

- (a) Does the company's direct premiums written include premiums recorded on an installment basis? Yes [ ] No [ X ]  
If yes: 1. The amount of such installment premiums \$.0.  
2. Amount at which such installment premiums would have been reported had they been recorded on an annualized basis \$.0.



UNDERWRITING AND INVESTMENT EXHIBIT

PART 2 - LOSSES PAID AND INCURRED

		Losses Paid Less Salvage				5	6	7	8
		1	2	3	4				
Line of Business		Direct Business	Reinsurance Assumed	Reinsurance Recovered	Net Payments (Cols. 1 + 2 - 3)	Net Losses Unpaid Current Year (Part 2A, Col. 8)	Net Losses Unpaid Prior Year	Losses Incurred Current Year (Cols. 4 + 5 - 6)	Percentage of Losses Incurred (Col. 7, Part 2) to Premiums Earned (Col. 4, Part 1)
1.	Fire.....	1,577,496	2,024,055	1,587,563	2,013,988	870,197	741,471	2,142,714	100.0
2.	Allied lines.....	5,608,950	2,372,542	5,641,202	2,340,290	1,705,976	1,332,271	2,713,995	76.9
3.	Farmowners multiple peril.....		3,215,087		3,215,087	1,643,433	1,701,801	3,156,719	58.9
4.	Homeowners multiple peril.....	222,874	23,305,534	233,840	23,294,568	7,793,819	8,700,649	22,387,738	68.4
5.	Commercial multiple peril.....	54,920,867	16,172,748	54,920,867	16,172,748	20,027,871	20,676,593	15,524,026	63.4
6.	Mortgage guaranty.....				.0	.0		.0	0.0
8.	Ocean marine.....	27,686,525	212,270	27,686,525	212,270	303,761	171,848	344,183	78.1
9.	Inland marine.....	434,681,841	6,729,460	434,681,841	6,729,460	1,326,542	922,232	7,133,770	69.0
10.	Financial guaranty.....				.0	(5,705)		(5,705)	0.0
11.1	Medical professional liability - occurrence.....	1,156	5,062	1,156	5,062	3,574	4,366	4,270	(92.1)
11.2	Medical professional liability - claims-made.....	695	(57)	695	(57)	18,844	18,825	(38)	0.0
12.	Earthquake.....		(86)		(86)	8,771	8,410	275	0.1
13.	Group accident and health.....	226	1,714,815	226	1,714,815	25,972	(422)	1,741,209	63.0
14.	Credit accident and health (group and individual).....				.0	.0		.0	0.0
15.	Other accident and health.....	232,426	20,885	232,426	20,885	9,294	11,035	19,144	554.4
16.	Workers' compensation.....	31,580,380	2,089,425	31,975,533	1,694,272	8,514,839	9,338,242	870,869	25.5
17.1	Other liability - occurrence.....	47,949,346	4,708,603	47,949,662	4,708,287	29,744,425	27,026,110	7,426,602	55.5
17.2	Other liability - claims-made.....	22,647,001	1,848,891	22,647,001	1,848,891	9,949,840	7,584,993	4,213,738	42.7
17.3	Excess workers' compensation.....				.0	.0		.0	0.0
18.1	Products liability - occurrence.....	126,200	(5,074,537)	126,200	(5,074,537)	7,640,557	2,057,908	508,112	62.0
18.2	Products liability - claims-made.....		64		64	157		221	0.5
19.1, 19.2	Private passenger auto liability.....	48,328	19,934,505	48,328	19,934,505	24,755,896	24,105,975	20,584,426	65.2
19.3, 19.4	Commercial auto liability.....	115,598,094	9,296,989	116,601,699	8,293,384	18,654,431	18,478,776	8,469,039	65.4
21.	Auto physical damage.....	23,103,472	17,503,368	23,112,146	17,494,694	1,423,490	933,639	17,984,545	64.3
22.	Aircraft (all perils).....		(8,165)		(8,165)	8,198		33	0.0
23.	Fidelity.....		5,659		5,659	5,914	2,398	9,175	17.3
24.	Surety.....		32,256		32,256	236,075	152,948	115,383	15.7
26.	Burglary and theft.....	18,116	3,786	18,116	3,786	2,021	2,247	3,560	11.1
27.	Boiler and machinery.....	332,205	28,824	332,205	28,824	49,958	3,439	75,343	71.8
28.	Credit.....		3,912		3,912	(42,430)	540	(39,058)	319.9
29.	International.....		(21,647)		(21,647)	33,909		12,262	81,746.7
30.	Warranty.....	51,697,917	66,147	51,697,917	66,147	22,212	15,690	72,669	86.9
31.	Reinsurance - nonproportional assumed property.....	XXX			.0	21,623	21,623	.0	0.0
32.	Reinsurance - nonproportional assumed liability.....	XXX	(44,993)		(44,993)	41,960		(3,033)	0.0
33.	Reinsurance - nonproportional assumed financial lines.....	XXX			.0	.0		.0	0.0
34.	Aggregate write-ins for other lines of business.....	.0	.0	.0	.0	.0	.0	.0	0.0
35.	TOTALS.....	818,034,115	106,145,402	819,495,148	104,684,369	134,795,424	124,013,607	115,466,186	63.1
DETAILS OF WRITE-INS									
3401.	.....				.0	.0		.0	0.0
3402.	.....				.0	.0		.0	0.0
3403.	.....				.0	.0		.0	0.0
3498.	Summary of remaining write-ins for Line 34 from overflow page.....	.0	.0	.0	.0	.0	.0	.0	XXX
3499.	Totals (Lines 3401 through 3403 plus 3498) (Line 34 above).....	.0	.0	.0	.0	.0	.0	.0	0.0

## UNDERWRITING AND INVESTMENT EXHIBIT

### PART 2A - UNPAID LOSSES AND LOSS ADJUSTMENT EXPENSES

		Reported Losses				Incurred But Not Reported			8	9
		1	2	3	4	5	6	7	Net Losses Unpaid (Cols. 4 + 5 + 6 - 7)	Net Unpaid Loss Adjustment Expenses
Line of Business		Direct	Reinsurance Assumed	Deduct Reinsurance Recoverable	Net Losses Excluding Incurred but not Reported (Cols. 1 + 2 - 3)	Direct	Reinsurance Assumed	Reinsurance Ceded		
1.	Fire.....	613,687	553,722	614,815	552,594	579,180	318,570	580,147	870,197	232,955
2.	Allied lines.....	17,434,082	1,273,744	17,434,812	1,273,014	20,935,422	434,172	20,936,632	1,705,976	237,636
3.	Farmowners multiple peril.....		1,625,419		1,625,419		18,014		1,643,433	346,313
4.	Homeowners multiple peril.....	17,902	7,368,082	22,663	7,363,321	94,241	432,571	96,314	7,793,819	1,197,002
5.	Commercial multiple peril.....	53,720,011	13,494,315	53,724,011	13,490,315	71,057,402	6,537,556	71,057,402	20,027,871	6,505,300
6.	Mortgage guaranty.....				0				0	
8.	Ocean marine.....	8,319,359	130,664	8,354,871	95,152	24,901,751	208,775	24,901,917	303,761	56,772
9.	Inland marine.....	2,476,859	173,205	2,476,859	173,205	68,226,327	1,153,337	68,226,327	1,326,542	84,155
10.	Financial guaranty.....				0		(5,705)		(5,705)	(172)
11.1	Medical professional liability - occurrence.....	(272)	4,320	(272)	4,320		(746)		3,574	291
11.2	Medical professional liability - claims-made.....	(10,147)	18,693	(10,147)	18,693	(2,960)	151	(2,960)	18,844	4,400
12.	Earthquake.....		305		305	1,074	8,466	1,074	8,771	2,889
13.	Group accident and health.....	369		369	0	55,906	25,972	55,906	(a) 25,972	1,614
14.	Credit accident and health (group and individual).....				0				0	
15.	Other accident and health.....	366,042	4,457	366,042	4,457	429,138	4,837	429,138	(a) 9,294	574
16.	Workers' compensation.....	69,194,688	7,565,004	69,950,733	6,808,959	61,128,389	1,710,115	61,132,624	8,514,839	1,135,948
17.1	Other liability - occurrence.....	136,714,863	12,146,365	136,728,098	12,133,130	274,765,508	17,615,788	274,770,001	29,744,425	6,323,079
17.2	Other liability - claims-made.....	15,682,845	1,983,639	15,682,845	1,983,639	122,454,546	8,031,142	122,519,487	9,949,840	3,755,740
17.3	Excess workers' compensation.....				0				0	
18.1	Products liability - occurrence.....	1,142,924	2,064,653	1,142,924	2,064,653	1,356,695	5,575,904	1,356,695	7,640,557	6,469,466
18.2	Products liability - claims-made.....		150		150	38,676	7	38,676	157	954
19.1, 19.2	Private passenger auto liability.....	138	17,114,654	138	17,114,654	(820)	7,641,232	(830)	24,755,896	2,798,195
19.3, 19.4	Commercial auto liability.....	150,108,733	12,386,554	152,030,151	10,465,136	167,076,499	9,074,063	167,961,267	18,654,431	1,950,057
21.	Auto physical damage.....	5,670,939	1,932,366	5,671,339	1,931,966	1,318,140	(506,352)	1,320,264	1,423,490	296,093
22.	Aircraft (all perils).....		3,424		3,424		4,774		8,198	777
23.	Fidelity.....		4,280		4,280		1,634		5,914	1,406
24.	Surety.....		44,114		44,114	182,372	191,961	182,372	236,075	67,601
26.	Burglary and theft.....	1,100	793	1,100	793	8,598	1,228	8,598	2,021	1,194
27.	Boiler and machinery.....	48,861	28,957	48,861	28,957	163,058	21,001	163,058	49,958	9,258
28.	Credit.....				0		(42,430)		(42,430)	2,436
29.	International.....		9,835		9,835		24,074		33,909	
30.	Warranty.....				0	2,444,624	22,212	2,444,624	22,212	49
31.	Reinsurance - nonproportional assumed property.....	XXX	21,623		21,623	XXX			21,623	
32.	Reinsurance - nonproportional assumed liability.....	XXX	14,882		14,882	XXX	27,078		41,960	
33.	Reinsurance - nonproportional assumed financial lines.....	XXX			0	XXX			0	
34.	Aggregate write-ins for other lines of business.....	0	0	0	0	0	0	0	0	0
35.	TOTALS.....	461,502,983	79,968,219	464,240,212	77,230,990	817,213,766	58,529,401	818,178,733	134,795,424	31,481,982
DETAILS OF WRITE-INS										
3401.	.....				0				0	
3402.	.....				0				0	
3403.	.....				0				0	
3498.	Summary of remaining write-ins for Line 34 from overflow page.....	0	0	0	0	0	0	0	0	0
3499.	Totals (Lines 3401 through 3403 plus 3498) (Line 34 above).....	0	0	0	0	0	0	0	0	0

(a) Including \$.....0 for present value of life indemnity claims.

NATIONAL CASUALTY COMPANY  
UNDERWRITING AND INVESTMENT EXHIBIT  
PART 3 - EXPENSES

	1	2	3	4
	Loss Adjustment Expenses	Other Underwriting Expenses	Investment Expenses	Total
1. Claim adjustment services:				
1.1 Direct.....	116,039,539			116,039,539
1.2 Reinsurance assumed.....	9,624,275			9,624,275
1.3 Reinsurance ceded.....	116,353,833			116,353,833
1.4 Net claim adjustment services (1.1 + 1.2 - 1.3).....	9,309,981	0	0	9,309,981
2. Commission and brokerage:				
2.1 Direct, excluding contingent.....		367,038,262		367,038,262
2.2 Reinsurance assumed, excluding contingent.....		28,480,633		28,480,633
2.3 Reinsurance ceded, excluding contingent.....		367,215,992		367,215,992
2.4 Contingent - direct.....		2,220		2,220
2.5 Contingent - reinsurance assumed.....		3,152,832		3,152,832
2.6 Contingent - reinsurance ceded.....		2,220		2,220
2.7 Policy and membership fees.....				0
2.8 Net commission and brokerage (2.1 + 2.2 - 2.3 + 2.4 + 2.5 - 2.6 + 2.7).....	0	31,455,735	0	31,455,735
3. Allowances to manager and agents.....	158	15,086		15,244
4. Advertising.....	16,047	1,638,044	1	1,654,092
5. Boards, bureaus and associations.....	23,538	209,393		232,931
6. Surveys and underwriting reports.....	51,576	928,257		979,833
7. Audit of assureds' records.....		(50)		(50)
8. Salary and related items:				
8.1 Salaries.....	5,883,079	13,395,618	23,696	19,302,393
8.2 Payroll taxes.....	145,822	1,215,518		1,361,340
9. Employee relations and welfare.....	991,478	1,188,447	5,600	2,185,525
10. Insurance.....	33,714	102,776		136,490
11. Directors' fees.....	5,072	24,969	3,187	33,228
12. Travel and travel items.....	18,371	97,753	497	116,621
13. Rent and rent items.....	446,839	1,564,395	356	2,011,590
14. Equipment.....	314,281	459,513	1,081	774,875
15. Cost or depreciation of EDP equipment and software.....	499,786	2,149,359	31	2,649,176
16. Printing and stationery.....	51,308	278,971	29	330,308
17. Postage, telephone and telegraph, exchange and express.....	111,449	750,237	54	861,740
18. Legal and auditing.....	530,415	2,631,810	916	3,163,141
19. Totals (Lines 3 to 18).....	9,122,933	26,650,096	35,448	35,808,477
20. Taxes, licenses and fees:				
20.1 State and local insurance taxes deducting guaranty association credits of \$.....0.....		3,234,040		3,234,040
20.2 Insurance department licenses and fees.....		744,619		744,619
20.3 Gross guaranty association assessments.....		29,731		29,731
20.4 All other (excluding federal and foreign income and real estate).....		460,814		460,814
20.5 Total taxes, licenses and fees (20.1 + 20.2 + 20.3 + 20.4).....	0	4,469,204	0	4,469,204
21. Real estate expenses.....				0
22. Real estate taxes.....		76,017		76,017
23. Reimbursements by uninsured plans.....				0
24. Aggregate write-ins for miscellaneous expenses.....	(141,269)	(2,695,559)	302,661	(2,534,167)
25. Total expenses incurred.....	18,291,645	59,955,493	338,109	(a).....78,585,247
26. Less unpaid expenses - current year.....	31,481,984	7,523,291		39,005,275
27. Add unpaid expenses - prior year.....	23,910,792	7,598,464		31,509,256
28. Amounts receivable relating to uninsured plans, prior year.....				0
29. Amounts receivable relating to uninsured plans, current year.....				0
30. TOTAL EXPENSES PAID (Lines 25 - 26 + 27 - 28 + 29).....	10,720,453	60,030,666	338,109	71,089,228

DETAILS OF WRITE-INS

2401. Service fees.....		(1,331,159)		(1,331,159)
2402. Other expenses.....	(30,101)	(1,571,252)	302,514	(1,298,839)
2403. Outside services and income.....	(111,168)	206,852	147	95,831
2498. Summary of remaining write-ins for Line 24 from overflow page.....	0	0	0	0
2499. Totals (Lines 2401 through 2403 plus 2498) (Line 24 above).....	(141,269)	(2,695,559)	302,661	(2,534,167)

(a) Includes management fees of \$.....0 to affiliates and \$.....0 to non-affiliates.

EXHIBIT OF NET INVESTMENT INCOME

		1	2
		Collected During Year	Earned During Year
1.	U.S. Government bonds.....	(a).....1,382,363	.....1,309,197
1.1	Bonds exempt from U.S. tax.....	(a)......612,735	......651,311
1.2	Other bonds (unaffiliated).....	(a)......7,982,606	......8,354,772
1.3	Bonds of affiliates.....	(a).....	.....
2.1	Preferred stocks (unaffiliated).....	(b).....	.....
2.11	Preferred stocks of affiliates.....	(b).....	.....
2.2	Common stocks (unaffiliated).....	.....	.....
2.21	Common stocks of affiliates.....	.....	.....
3.	Mortgage loans.....	(c).....	.....
4.	Real estate.....	(d).....	.....
5.	Contract loans.....	.....	.....
6.	Cash, cash equivalents and short-term investments.....	(e)......11,354	......11,354
7.	Derivative instruments.....	(f).....	.....
8.	Other invested assets.....	.....(827,140)	.....(827,140)
9.	Aggregate write-ins for investment income.....	.....(195)	.....(195)
10.	Total gross investment income.....	.....9,161,723	.....9,499,299
11.	Investment expenses.....		(g)......338,109
12.	Investment taxes, licenses and fees, excluding federal income taxes.....		(g).....
13.	Interest expense.....		(h).....
14.	Depreciation on real estate and other invested assets.....		(i)......0
15.	Aggregate write-ins for deductions from investment income.....		......428
16.	Total deductions (Lines 11 through 15).....		......338,537
17.	Net investment income (Line 10 minus Line 16).....		......9,160,762

DETAILS OF WRITE-INS

0901.	Misc. Income.....	.....(195)	.....(195)
0902.	.....	.....	.....
0903.	.....	.....	.....
0998.	Summary of remaining write-ins for Line 9 from overflow page.....	......0	......0
0999.	Totals (Lines 0901 through 0903 plus 0998) (Line 9 above).....	.....(195)	.....(195)
1501.	Misc. Exp.....		......428
1502.	.....		.....
1503.	.....		.....
1598.	Summary of remaining write-ins for Line 15 from overflow page.....		......0
1599.	Totals (Lines 1501 through 1503 plus 1598) (Line 15 above).....		......428
(a)	Includes \$.....360,547 accrual of discount less \$.....909,485 amortization of premium and less \$....654,570 paid for accrued interest on purchases.		
(b)	Includes \$.....0 accrual of discount less \$.....0 amortization of premium and less \$.....0 paid for accrued dividends on purchases.		
(c)	Includes \$.....0 accrual of discount less \$.....0 amortization of premium and less \$.....0 paid for accrued interest on purchases.		
(d)	Includes \$.....0 for company's occupancy of its own buildings; and excludes \$.....0 interest on encumbrances.		
(e)	Includes \$.....0 accrual of discount less \$.....0 amortization of premium and less \$.....0 paid for accrued interest on purchases.		
(f)	Includes \$.....0 accrual of discount less \$.....0 amortization of premium.		
(g)	Includes \$.....0 investment expenses and \$.....0 investment taxes, licenses and fees, excluding federal income taxes, attributable to segregated and Separate Accounts.		
(h)	Includes \$.....0 interest on surplus notes and \$.....0 interest on capital notes.		
(i)	Includes \$.....0 depreciation on real estate and \$.....0 depreciation on other invested assets.		

EXHIBIT OF CAPITAL GAINS (LOSSES)

	1	2	3	4	5
	Realized Gain (Loss) on Sales or Maturity	Other Realized Adjustments	Total Realized Capital Gain (Loss) (Columns 1 + 2)	Change in Unrealized Capital Gain (Loss)	Change in Unrealized Foreign Exchange Capital Gain (Loss)
1.	U.S. Government bonds.....	.....	......0	.....1,254,307	.....
1.1	Bonds exempt from U.S. tax.....	.....	......0	.....	.....
1.2	Other bonds (unaffiliated).....	.....(128,475)	.....(128,475)	......62,624	.....
1.3	Bonds of affiliates.....	.....	......0	.....	.....
2.1	Preferred stocks (unaffiliated).....	.....	......0	.....	.....
2.11	Preferred stocks of affiliates.....	.....	......0	.....	.....
2.2	Common stocks (unaffiliated).....	.....	......0	.....	.....
2.21	Common stocks of affiliates.....	.....	......0	.....	.....
3.	Mortgage loans.....	.....	......0	.....	.....
4.	Real estate.....	.....	......0	.....	.....
5.	Contract loans.....	.....	......0	.....	.....
6.	Cash, cash equivalents and short-term investments.....	.....	......0	.....	.....
7.	Derivative instruments.....	.....	......0	.....	.....
8.	Other invested assets.....	.....	......0	.....	.....
9.	Aggregate write-ins for capital gains (losses).....	......0	......0	......0	......0
10.	Total capital gains (losses).....	.....(128,475)	.....(128,475)	......1,316,931	......0

DETAILS OF WRITE-INS

0901.	.....	.....	......0	.....	.....
0902.	.....	.....	......0	.....	.....
0903.	.....	.....	......0	.....	.....
0998.	Summary of remaining write-ins for Line 9 from overflow page...	......0	......0	......0	......0
0999.	Totals (Lines 0901 through 0903 plus 0998) (Line 9 above).....	......0	......0	......0	......0

NATIONAL CASUALTY COMPANY  
EXHIBIT OF NONADMITTED ASSETS

	1 Current Year Total Nonadmitted Assets	2 Prior Year Total Nonadmitted Assets	3 Change in Total Nonadmitted Assets (Col. 2 - Col. 1)
1. Bonds (Schedule D).....			0
2. Stocks (Schedule D):			
2.1 Preferred stocks.....			0
2.2 Common stocks.....			0
3. Mortgage loans on real estate (Schedule B):			
3.1 First liens.....			0
3.2 Other than first liens.....			0
4. Real estate (Schedule A):			
4.1 Properties occupied by the company.....			0
4.2 Properties held for the production of income.....			0
4.3 Properties held for sale.....			0
5. Cash (Schedule E-Part 1), cash equivalents (Schedule E-Part 2) and short-term investments (Schedule DA).....			0
6. Contract loans.....			0
7. Derivatives (Schedule DB).....			0
8. Other invested assets (Schedule BA).....			0
9. Receivables for securities.....			0
10. Securities lending reinvested collateral assets (Schedule DL).....			0
11. Aggregate write-ins for invested assets.....	88,133	6,762	(81,371)
12. Subtotals, cash and invested assets (Lines 1 to 11).....	88,133	6,762	(81,371)
13. Title plants (for Title insurers only).....			0
14. Investment income due and accrued.....			0
15. Premiums and considerations:			
15.1 Uncollected premiums and agents' balances in the course of collection.....	5,578,047	3,590,307	(1,987,740)
15.2 Deferred premiums, agents' balances and installments booked but deferred and not yet due.....	34,436	45,907	11,471
15.3 Accrued retrospective premiums and contracts subject to redetermination.....			0
16. Reinsurance:			
16.1 Amounts recoverable from reinsurers.....			0
16.2 Funds held by or deposited with reinsured companies.....			0
16.3 Other amounts receivable under reinsurance contracts.....			0
17. Amounts receivable relating to uninsured plans.....			0
18.1 Current federal and foreign income tax recoverable and interest thereon.....			0
18.2 Net deferred tax asset.....	1,447,545	1,477,247	29,702
19. Guaranty funds receivable or on deposit.....			0
20. Electronic data processing equipment and software.....			0
21. Furniture and equipment, including health care delivery assets.....			0
22. Net adjustment in assets and liabilities due to foreign exchange rates.....			0
23. Receivables from parent, subsidiaries and affiliates.....			0
24. Health care and other amounts receivable.....			0
25. Aggregate write-ins for other-than-invested assets.....	0	0	0
26. Total assets excluding Separate Accounts, Segregated Accounts and Protected Cell Accounts (Lines 12 through 25).....	7,148,161	5,120,223	(2,027,938)
27. From Separate Accounts, Segregated Accounts and Protected Cell Accounts.....			0
28. TOTALS (Lines 26 and 27).....	7,148,161	5,120,223	(2,027,938)

DETAILS OF WRITE-INS

1101. Deposits and prepaids.....		3,623	3,623
1102. Other assets nonadmitted.....	672	266	(406)
1103. Deductible receivables.....	7,694	2,873	(4,821)
1198. Summary of remaining write-ins for Line 11 from overflow page.....	79,767	0	(79,767)
1199. Totals (Lines 1101 through 1103 plus 1198) (Line 11 above).....	88,133	6,762	(81,371)
2501. ....			0
2502. ....			0
2503. ....			0
2598. Summary of remaining write-ins for Line 25 from overflow page.....	0	0	0
2599. Totals (Lines 2501 through 2503 plus 2598) (Line 25 above).....	0	0	0

NOTES TO THE FINANCIAL STATEMENTS

Note 1 – Summary of Significant Accounting Policies and Going Concern

A. Accounting Practices

The accompanying statutory financial statements of National Casualty Company (the Company) have been prepared in conformity with accounting practices prescribed or permitted by the National Association of Insurance Commissioners (NAIC) and the State of Ohio.

The Ohio Department of Insurance recognizes only statutory accounting practices (SAP) prescribed or permitted by the State of Ohio for determining and reporting the financial condition and results of operations of an insurance company, as well as, determining its solvency under the Ohio Insurance law. The NAIC’s *Accounting Practices and Procedures Manual* (NAIC SAP) has been adopted as a component of prescribed or permitted practices by the State of Ohio. The Company has no statutory accounting practices that differ from NAIC SAP.

A reconciliation of the Company’s net income and capital and surplus between NAIC SAP and practices prescribed and permitted by the State of Ohio is shown below:

	SSAP #	F/S Page	F/S Line #		2021	2020
<b>Net Income</b>						
National Casualty Company state basis (Page 4, Line 20, Columns 1 & 2)	XXX	XXX	XXX	\$	(381,719)	\$ (22,986,931)
(2) State Prescribed Practices that increase/(decrease) NAIC SAP					-	-
(3) State Permitted Practices that increase/(decrease) NAIC SAP					-	-
(4) NAIC SAP (1-2-3=4)	XXX	XXX	XXX	\$	<u>(381,719)</u>	<u>\$ (22,986,931)</u>
<b>Surplus</b>						
National Casualty Company state basis (Page 3, Line 37, Columns 1 & 2)	XXX	XXX	XXX	\$	200,641,758	\$ 129,015,868
(6) State Prescribed Practices that increase/(decrease) NAIC SAP					-	-
(7) State Permitted Practices that increase/(decrease) NAIC SAP					-	-
(8) NAIC SAP (5-6-7=8)	XXX	XXX	XXX	\$	<u>200,641,758</u>	<u>\$ 129,015,868</u>

B. Use of Estimates in the Preparation of the Financial Statements

The preparation of statutory financial statements in conformity with Statutory Accounting Principles requires management to make estimates and assumptions that affect the reported amounts of assets and liabilities. It also requires disclosure of contingent assets and liabilities at the date of the financial statements and the reported amounts of revenue and expenses during the period. Actual results could differ from those estimates.

C. Accounting Policies

*Federal Income Taxes.* The Company’s parent, Nationwide Mutual Insurance Company (Mutual), files a consolidated federal income tax return, which includes all eligible U.S. subsidiaries and affiliates. In this regard, the included subsidiaries and affiliates pay to Mutual the amount which would have been payable on a separate return basis without regard to the alternative minimum tax. Mutual pays tax due on a consolidated basis.

The Company provides for federal income taxes based on amounts the Company believes it will ultimately owe. Inherent in the provision for federal income taxes are estimates regarding the deductibility of certain items and the realization of certain tax credits. In the event the ultimate deductibility of certain items or the realization of certain tax credits differs from estimates, the Company may be required to change the provision for federal income taxes recorded in the financial statements, which could be significant. Management has used best estimates to establish reserves based on current facts and circumstances regarding tax exposure items where the ultimate deductibility is open to interpretation.

In accordance with guidance specified in the NAIC SAP, the Company utilizes the asset and liability method of accounting for income taxes. Under this method, deferred tax assets (DTA), net of any non-admitted portion and statutory valuation allowance, and deferred tax liabilities are recognized for the future tax consequences attributable to differences between the financial statement carrying amounts of existing assets and liabilities and their respective tax basis. DTAs and liabilities are measured using enacted tax rates expected to apply to taxable income in the years in which those temporary differences are expected to be recovered or settled. The change in deferred taxes, excluding the impact of taxes on unrealized capital gains or losses and nonadmitted deferred taxes, is charged directly to surplus.

*Reinsurance Recoverables.* The Company cedes insurance to other companies in order to limit potential losses and diversify its exposure. Such agreements do not relieve the Company of its primary obligation to the policyholder in the event the reinsurer is unable to meet the obligations it has assumed. The Company monitors the financial condition of reinsurers on an ongoing basis and reviews its reinsurance agreements regularly in an attempt to minimize its exposure to significant losses from reinsurer insolvencies. Reinsurance recoverables include amounts billed to reinsurers on losses paid. Estimates of amounts expected to be recovered from reinsurers that have not yet been paid on losses are estimated in a manner consistent with the claim liability associated with the underlying policy. Such reinsurance recoverables and reserve deductions partially offset claim costs in the Company’s statutory statements of operations and are included as an offset to losses and loss expense reserves in the accompanying statutory statements of admitted assets, liabilities and surplus. There were no contracts using deposit accounting as of December 31, 2021 and 2020.

Statutory accounting principles require recognition of a minimum liability for certain unsecured or overdue reinsurance recoverables. As of December 31, 2021 and 2020, the Company had no provision related to conditional reinsurance recoverables.

In addition, the Company uses the following accounting policies:

- Short-term investments consist of investments with maturities of twelve months or less at acquisition and are stated at amortized cost, which approximates fair value.
- Bonds, excluding loan-backed and structured securities, are stated at amortized cost except those with an NAIC designation of “3” through “6”, which are stated at the lower of amortized cost or fair value. Amortization of premiums and discounts is calculated using the effective yield method. The Company does not hold any mandatory convertible securities or SVO-identified investments.
- Unaffiliated common stocks are reported at fair value.
- Redeemable preferred stocks are stated at amortized cost, except those with an NAIC designation of “3” through “6”, which are stated at the lower of amortized cost or fair value. Perpetual preferred stocks are stated at fair value, except those with an NAIC designation of “3” through “6”, which are stated at the lower of amortized cost or fair value.
- Mortgage loans are carried at the unpaid principal balance adjusted for premiums and discounts, less a valuation allowance. The valuation allowance for mortgage loans reflects management’s best estimate of probable credit losses.

NOTES TO THE FINANCIAL STATEMENTS

6.

Loan-backed and structured securities (collectively, loan-backed securities) are stated at amortized cost or the lower of amortized cost or fair value in accordance with the provisions of Statement of Statutory Accounting Principles (SSAP) No. 43-Revised and the Purposes and Procedures Manual of the NAIC Securities Valuation Office. The retrospective adjustment method is used to value loan-backed securities where the collection of all contractual cash flows is probable. For all other loan-backed securities, the Company uses the prospective adjustment method. Refer to Note 5(D) for a discussion of the other-than-temporary impairment policy for loan-backed securities.
7.

Not applicable – The Company does not have any subsidiaries.
8.

Other invested assets consist primarily of alternative investments in hedge funds, private equity funds, private and emerging market debt funds, tax credit funds and real estate partnerships. Except for investments in certain tax credit funds, these investments are recorded using the equity method of accounting. Changes in carrying value as a result of the equity method are reflected as net unrealized capital gains and losses as a direct adjustment to surplus. Gains and losses are generally recognized through income at the time of disposal or when operating distributions are received. Partnership interests in tax credit funds are held at amortized cost with amortization charged to investment income over the period in which the tax benefits, primarily credits, are utilized.
9.

Not applicable – The Company does not have derivatives.
10.

Insurance premiums are generally earned ratably over the policy term. The liability for unearned premiums represents the portion of premiums written relating to the unexpired terms of coverage. Such reserves are computed by pro rata methods for direct business and are based on reports received from ceding companies for reinsurance assumed. Premiums in course of collection represent agent balances and uncollected premiums from policyholders for current policies in force and policy premiums assumed from others, including amounts placed with affiliates. As of December 31, 2021 and 2020, the Company had no liabilities related to premium deficiency reserves. The Company includes anticipated investment income when calculating its premium deficiency reserves, in accordance with SSAP No. 53, Property-Casualty Contracts – Premiums.
11.

The Company establishes losses and loss expense reserves for reported claims and claims incurred but not yet reported (IBNR). Estimating the liability for losses and loss expense reserves involves significant judgment and multiple assumptions. Management considers the Company's experience with similar claims, historical trends, economic factors and judicial, legislative and regulatory changes in establishing reserves. The Company's losses and loss expense reserves are recorded net of reinsurance and amounts expected to be received from salvage (the amount recovered from property after the Company pays for a total loss) and subrogation (the right to recover payments from third parties).  
  
Assumptions and estimates for losses and loss expense reserves are updated as new information becomes available. Due to the inherent uncertainty in estimating losses and loss expense reserves, the actual cost of settling claims may differ materially from recorded amounts. Changes in losses and loss expense reserve estimates are included in results of operations in the period the estimates are revised.
12.

The Company has a written capitalization policy for prepaid expenses and purchases of items such as electronic data processing equipment, software, furniture, vehicles, other equipment and leasehold improvements. The Company has not modified its capitalization policy from the prior period.
13.

Not applicable as the Company does not write major medical insurance with prescription drug coverage.

D. Going Concern

Not applicable.

Note 2 – Accounting Changes and Corrections of Errors

In December 2020, the Company adopted revisions to SSAP No. 2R, Cash Equivalent – Cash and Liquidity Pools. The adopted revisions require internal cash pooling arrangements to meet certain criteria to be considered qualified cash pools, with investments in qualifying pools reported as cash equivalents on Page 2 within line 5. The Company's cash pool meets the criteria to be considered a qualified cash pool under SSAP No. 2R. The internal cash pooling arrangement with Nationwide Cash Management Company (NCMC) was historically classified as short-term investments, resulting in a change in classification to cash equivalents. See Note 10 for more information on the Company's relationship with NCMC.

Note 3 – Business Combinations and Goodwill

Not applicable

Note 4 – Discontinued Operations

Not applicable.

Note 5 – Investments

A. Mortgage Loans

1.

The minimum and maximum lending rates for new loans originated during 2021 were 1.93% & 3.94%.
2.

At December 31, 2021, the maximum percentage of any one loan to the value of security at the time of the loan, exclusive of insured or guaranteed or purchase money mortgage was 75%

	December 31, 2021	December 31, 2020
3. Taxes, assessments and any amounts advanced and not included in the mortgage loan total	\$ -	\$ -
4. Age analysis of mortgage loans and identification of mortgage loans in which the insurer is a participant or co-lender in a mortgage loan agreement		

Not applicable.

5.

Investments in impaired loans with or without allowance for credit losses and impaired loans subject to a participant or co-lender mortgage loan agreement for which the reporting entity is restricted from unilaterally foreclosing on the mortgage loan

Not applicable.
6.

Investment in impaired loans - Average recorded investment, interest income recognized, recorded investment in nonaccrual status and amount of interest income recognized using a cash-basis method of accounting

Not applicable.

NOTES TO THE FINANCIAL STATEMENTS

7. Allowance for Credit Losses

Not applicable.

8. Mortgage Loans Derecognized as a result of foreclosure

Not applicable.

9. The Company accrues interest income on impaired loans to the extent it is deemed collectible and the loan continues to perform under its original or restructured contractual terms. Interest received on non-accrual status mortgage loans on real estate is included in net investment income in the period received.

B. Troubled Debt Restructuring

Not applicable.

C. Reverse Mortgages

Not applicable.

D. Loan-Backed Securities

1. Prepayment assumptions are generally obtained using a model provided by a third-party vendor.

2. Not applicable

3. Not applicable.

4. All impaired securities (fair value is less than cost or amortized cost) for which an other-than-temporary impairment has not been recognized in earnings as a realized loss (including securities with a recognized other-than-temporary impairment for non-interest related declines when a non-recognized interest related impairment remains):

- a. The aggregate amount of unrealized losses:

1.	Less than 12 Months	\$	<u>(213,233)</u>
2.	12 Months or Longer	\$	<u>(5,968)</u>

- b. The aggregate related fair value of securities with unrealized losses:

1.	Less than 12 Months	\$	<u>16,091,120</u>
2.	12 Months or Longer	\$	<u>457,753</u>

5. The Company reviews all loan-backed and structured securities in which the fair value of the given security is less than the amortized cost to determine if a given security is other-than-temporarily impaired. The Company examines characteristics of the underlying collateral, such as delinquency and default rates, the quality of the underlying borrower, the type of collateral in the pool, the vintage year of the collateral, subordination levels within the structure of the collateral pool, and the quality of any credit guarantors, to determine the cash flows expected to be received for the security. If the severity and duration of the security's unrealized loss indicates a risk of an other-than-temporary impairment, then the Company will evaluate if the amortized cost basis of the security will be recovered by comparing the present value of the cash flows expected to be received for the given security with the amortized cost basis of the security. If the present value of cash flows is greater than the amortized cost basis of a security then the security is deemed not to be other-than-temporarily impaired.

E. Dollar Repurchase Agreements and/or Securities Lending Transactions

Not applicable, as the Company does not participate in a securities lending program and has no open dollar repurchase agreements as of year-end.

F. Repurchase Agreements Transactions Accounted for as Secured Borrowing

Not applicable.

G. Reverse Repurchase Agreements Transactions Accounted for as Secured Borrowing

Not applicable.

H. Repurchase Agreements Transactions Accounted for as a Sale

Not applicable.

I. Reverse Repurchase Agreements Transactions Accounted for as a Sale

Not applicable.

J. Real Estate

Not applicable.



NOTES TO THE FINANCIAL STATEMENTS

K. Low-Income Housing Tax Credits

1. For the Company's Low-Income Housing Tax Credits (LIHTC) property investments, the number of remaining years of unexpired tax credits ranged from 10 to 10 years and 11 to 11 years as of December 31, 2021 and 2020, respectively. These investments generally have a required holding period of 15 years.
2. The amounts of low-income housing tax credits and other tax benefits recognized were \$261,083 and \$437,608 as of December 31, 2021 and 2020, respectively.
3. The balance of the investment recognized in the statement of financial position was \$1,568,609 and \$1,661,446 as of December 31, 2021 and 2020, respectively.
4. The Company's investment funds hold underlying LIHTC property investments which are subject to periodic reviews by the U.S. Department of Housing and Urban Development (HUD), if applicable, and state housing agencies. Management is not aware of any open or outstanding items with regard to any of these reviews. The fund investments themselves are not currently under any regulatory review.
5. Aggregate LIHTC investments do not exceed 10 percent of the total admitted assets.
6. For the current year, impairments on LIHTC investments totaled \$0.
7. No write-downs or reclassifications were made during the year due to the forfeiture or ineligibility of LIHTC investments.

L. Restricted Assets

1. Restricted Assets (Including Pledged)

Restricted Asset Category	Gross (Admitted & Nonadmitted) Restricted						
	Current Year					6	7
	1	2	3	4	5		
	Total General Account (G/A)	G/A Supporting Protected Cell Account Activity (a)	Total Protected Cell Account Restricted Assets	Protected Cell Account Assets Supporting G/A Activity (b)	Total (1 plus 3)	Total From Prior Year	Increase/ (Decrease) (5 minus 6)
a. Subject to contractual obligation for which liability is not shown	\$-	\$-	\$-	\$-	\$-	\$-	\$-
b. Collateral held under security lending agreements	-	-	-	-	-	-	-
c. Subject to repurchase agreements	-	-	-	-	-	-	-
d. Subject to reverse repurchase agreements	-	-	-	-	-	-	-
e. Subject to dollar repurchase agreements	-	-	-	-	-	-	-
f. Subject to dollar reverse repurchase agreements	-	-	-	-	-	-	-
g. Placed under option contracts	-	-	-	-	-	-	-
h. Letter stock or securities restricted as to sale - excluding FHLB capital stock	-	-	-	-	-	-	-
i. FHLB capital stock	-	-	-	-	-	-	-
j. On deposit with states	4,889,117	-	-	-	4,889,117	4,897,479	(8,362)
k. On deposit with other regulatory bodies	518,840	-	-	-	518,840	529,895	(11,055)
l. Pledged as collateral to FHLB (including assets backing funding agreements)	-	-	-	-	-	-	-
m. Pledged as collateral not captured in other categories	-	-	-	-	-	-	-
n. Other restricted assets	-	-	-	-	-	-	-
o. Total Restricted Assets	\$5,407,957	\$-	\$-	\$-	\$5,407,957	\$5,427,374	\$(19,417)

- (a) Subset of Column 1
- (b) Subset of Column 3

NOTES TO THE FINANCIAL STATEMENTS

Restricted Asset Category	Current Year			
	8  Total Nonadmitted Restricted	9  Total Admitted Restricted (5 minus 8)	Percentage	
			10  Gross (Admitted & Nonadmitted) Restricted to Total Assets (c)	11  Admitted Restricted to Total Admitted Assets (d)
a. Subject to contractual obligation for which liability is not shown	\$-	\$-	0.00%	0.00%
b. Collateral held under security lending agreements	-	-	0.00%	0.00%
c. Subject to repurchase agreements	-	-	0.00%	0.00%
d. Subject to reverse repurchase agreements	-	-	0.00%	0.00%
e. Subject to dollar repurchase agreements	-	-	0.00%	0.00%
f. Subject to dollar reverse repurchase agreements	-	-	0.00%	0.00%
g. Placed under option contracts	-	-	0.00%	0.00%
h. Letter stock or securities restricted as to sale - excluding FHLB capital stock	-	-	0.00%	0.00%
i. FHLB capital stock	-	-	0.00%	0.00%
j. On deposit with states	-	4,889,117	0.50%	0.50%
k. On deposit with other regulatory bodies	-	518,840	0.05%	0.05%
l. Pledged as collateral to FHLB (including assets backing funding agreements)	-	-	0.00%	0.00%
m. Pledged as collateral not captured in other categories	-	-	0.00%	0.00%
n. Other restricted assets	-	-	0.00%	0.00%
o. Total Restricted Assets	\$-	\$5,407,957	0.55%	0.55%

(c) Column 5 divided by Asset Page, Column 1, Line 28  
(d) Column 9 divided by Asset Page, Column 3, Line 28

2. Detail of Assets Pledged as Collateral Not Captured in Other Categories (Contracts that Share Similar Characteristics, Such as Reinsurance and Derivatives, Are Reported in the Aggregate)

Not applicable.

3. Detail of Other Restricted Assets (Contracts that Share Similar Characteristics, Such as Reinsurance and Derivatives, Are Reported in the Aggregate)

Not applicable.

4. Collateral Received and Reflected as Assets Within the Reporting Entity's Financial Statements

Not applicable.

M. Working Capital Finance Investments

Not applicable.

N. Offsetting and Netting of Assets and Liabilities

No assets or liabilities are offset and reported net in accordance with a valid right to offset per SSAP No 64, *Offsetting and Netting of Assets and Liabilities*.

O. 5GI Securities

Not applicable.

P. Short Sales

Not applicable.

Q. Prepayment Penalty and Acceleration Fees

	General Account	Protected Cell Account
(1) Number of CUSIPs	8	-
(2) Aggregate Amount of Investment Income	\$ 896,753	\$ -

NOTES TO THE FINANCIAL STATEMENTS

R. Reporting Entity's Share of Cash Pool by Asset Type

Asset Type	Percent Share
(1) Cash	1%
(2) Cash Equivalents	85%
(3) Short-term Investments	14%
(4) Total	100%

Note 6 – Joint Ventures, Partnerships and Limited Liability Companies

A. Detail for Those Greater than 10% of Admitted Assets

The Company has no investments in Joint Ventures, Partnerships or Limited Liability Companies that exceed 10% of its total admitted assets.

B. Write-downs for Impairments

The Company did not recognize any impairments for its investments in Joint Venture, Partnerships or Limited Liability Companies in 2021.

Note 7 – Investment Income

A. Accrued Investment Income

The Company nonadmits investment income due and accrued if amounts are over 90 days past due with the exception of mortgage loans in default which are nonadmitted if amounts are over 180 days past due.

B. Amounts Nonadmitted

The total amount of investment income nonadmitted at December 31, 2021 was \$N/A.

Note 8 – Derivative Instruments

Not applicable.

Note 9 – Income Taxes

A. The Components of the deferred tax asset/(liability) at December 31, 2021 are as follows:

	December 31, 2021		
	Ordinary	Capital	Total
(1a) Gross deferred tax assets	\$ 7,910,413	\$ 2,003,505	\$ 9,913,918
(1b) Statutory valuation allowance adjustment	-	-	-
(1c) Adjusted gross deferred tax assets	\$ 7,910,413	\$ 2,003,505	\$ 9,913,918
(1d) Deferred tax assets nonadmitted	651,609	795,936	1,447,545
(1e) Subtotal net admitted deferred tax asset	\$ 7,258,804	\$ 1,207,569	\$ 8,466,373
(1f) Deferred tax liabilities	-	-	-
(1g) Net admitted deferred tax asset/(net deferred tax liability)	\$ 7,258,804	\$ 1,207,569	\$ 8,466,373

	December 31, 2020		
	Ordinary	Capital	Total
(1a) Gross deferred tax assets	\$ 7,132,187	\$ 2,018,293	\$ 9,150,480
(1b) Statutory valuation allowance adjustment	-	-	-
(1c) Adjusted gross deferred tax assets	\$ 7,132,187	\$ 2,018,293	\$ 9,150,480
(1d) Deferred tax assets nonadmitted	695,901	781,346	1,477,247
(1e) Subtotal net admitted deferred tax asset	\$ 6,436,286	\$ 1,236,947	\$ 7,673,233
(1f) Deferred tax liabilities	-	-	-
(1g) Net admitted deferred tax asset/(net deferred tax liability)	\$ 6,436,286	\$ 1,236,947	\$ 7,673,233

	Change		
	Ordinary	Capital	Total
(1a) Gross deferred tax assets	\$ 778,226	\$ (14,788)	\$ 763,438
(1b) Statutory valuation allowance adjustment	-	-	-
(1c) Adjusted gross deferred tax assets	\$ 778,226	\$ (14,788)	\$ 763,438
(1d) Deferred tax assets nonadmitted	(44,292)	14,590	(29,702)
(1e) Subtotal net admitted deferred tax asset	\$ 822,518	\$ (29,378)	\$ 793,140
(1f) Deferred tax liabilities	-	-	-
(1g) Net admitted deferred tax asset/(net deferred tax liability)	\$ 822,518	\$ (29,378)	\$ 793,140

NOTES TO THE FINANCIAL STATEMENTS

Admission Calculation Components SSAP No. 101

		December 31, 2021		
		Ordinary	Capital	Total
(2a)	Federal income taxes paid in prior years recoverable through loss carrybacks	\$ -	\$ -	\$ -
(2b)	Adjusted gross deferred tax assets expected to be realized (excluding the amount of deferred tax assets from (2a) above) after application of the threshold limitation (the less of (2b)1 and (2b)2 below)	\$ 7,258,804	\$ 1,207,569	\$ 8,466,373
	1. Adjusted gross deferred tax assets expected to be realized following the balance sheet date	\$ 7,258,804	\$ 1,207,569	\$ 8,466,373
	2. Adjusted gross deferred tax assets allowed per limit threshold	XXX	XXX	\$ 28,826,308
(2c)	Adjusted gross deferred tax assets (excluding the amount of deferred tax asset from 2(a) and 2(b) above) offset by gross deferred tax liabilities	\$ -	\$ -	\$ -
(2d)	Deferred tax assets admitted as the result of application of SSAP No. 101 Total ((2a) + (2b) + (2c))	\$ 7,258,805	\$ 1,207,569	\$ 8,466,374
		December 31, 2020		
		Ordinary	Capital	Total
(2a)	Federal income taxes paid in prior years recoverable through loss carrybacks	\$ -	\$ -	\$ -
(2b)	Adjusted gross deferred tax assets expected to be realized (excluding the amount of deferred tax assets from (2a) above) after application of the threshold limitation (the less of (2b)1 and (2b)2 below)	\$ 6,436,286	\$ 1,236,947	\$ 7,673,233
	1. Adjusted gross deferred tax assets expected to be realized following the balance sheet date	\$ 6,436,286	\$ 1,236,947	\$ 7,673,233
	2. Adjusted gross deferred tax assets allowed per limit threshold	XXX	XXX	\$ 18,201,396
(2c)	Adjusted gross deferred tax assets (excluding the amount of deferred tax asset from 2(a) and 2(b) above) offset by gross deferred tax liabilities	\$ -	\$ -	\$ -
(2d)	Deferred tax assets admitted as the result of application of SSAP No. 101 Total ((2a) + (2b) + (2c))	\$ 6,436,286	\$ 1,236,947	\$ 7,673,233
		Change		
		Ordinary	Capital	Total
(2a)	Federal income taxes paid in prior years recoverable through loss carrybacks	\$ -	\$ -	\$ -
(2b)	Adjusted gross deferred tax assets expected to be realized (excluding the amount of deferred tax assets from (2a) above) after application of the threshold limitation (the less of (2b)1 and (2b)2 below)	\$ 822,518	\$ (29,378)	\$ 793,140
	1. Adjusted gross deferred tax assets expected to be realized following the balance sheet date	\$ 822,518	\$ (29,378)	\$ 793,140
	2. Adjusted gross deferred tax assets allowed per limit threshold	XXX	XXX	\$ 10,624,912
(2c)	Adjusted gross deferred tax assets (excluding the amount of deferred tax asset from 2(a) and 2(b) above) offset by gross deferred tax liabilities	\$ -	\$ -	\$ -
(2d)	Deferred tax assets admitted as the result of application of SSAP No. 101 Total ((2a) + (2b) + (2c))	\$ 822,518	\$ (29,378)	\$ 793,140
		December 31, 2021		December 31, 2020
(3a)	Ratio percentage used to determine recovery period and threshold limitation amount	820.514%		546.455%
(3b)	Amount of adjusted capital and surplus used to determine recovery period and threshold limitation in (2b)2 above	\$ 192,175,385	\$ 121,342,636	

NOTES TO THE FINANCIAL STATEMENTS

Impact of Tax Planning Strategies

		December 31, 2021		
		Ordinary	Capital	Total
(4a)	Determination of adjusted gross deferred tax assets and net admitted deferred tax assets, by tax character as a percentage			
	(1) Adjusted Gross DTAs amount from Note 9A1(c)	\$ 7,910,413	\$ 2,003,505	\$ 9,913,918
	(2) Percentage of adjusted gross DTAs by tax character attributable to the impact of tax planning strategies	0.00%	0.00%	0.00%
	(3) Net Admitted Adjusted Gross DTAs amount from Note 9A1(e)	\$ 7,258,804	\$ 1,207,569	\$ 8,466,373
	(4) Percentage of net admitted adjusted gross DTAs by tax character admitted because of the impact of planning strategies	0.07%	0.00%	0.07%
		December 31, 2020		
		Ordinary	Capital	Total
(4a)	Determination of adjusted gross deferred tax assets and net admitted deferred tax assets, by tax character as a percentage			
	(1) Adjusted Gross DTAs amount from Note 9A1(c)	\$ 7,132,187	\$ 2,018,293	\$ 9,150,480
	(2) Percentage of adjusted gross DTAs by tax character attributable to the impact of tax planning strategies	0.00%	0.00%	0.00%
	(3) Net Admitted Adjusted Gross DTAs amount from Note 9A1(e)	\$ 6,436,286	\$ 1,236,947	\$ 7,673,233
	(4) Percentage of net admitted adjusted gross DTAs by tax character admitted because of the impact of planning strategies	0.00%	0.00%	0.00%
		Change		
		Ordinary	Capital	Total
(4a)	Determination of adjusted gross deferred tax assets and net admitted deferred tax assets, by tax character as a percentage			
	(1) Adjusted Gross DTAs amount from Note 9A1(c)	\$ 778,226	\$ (14,788)	\$ 763,438
	(2) Percentage of adjusted gross DTAs by tax character attributable to the impact of tax planning strategies	0.00%	0.00%	0.00%
	(3) Net Admitted Adjusted Gross DTAs amount from Note 9A1(e)	\$ 822,518	\$ (29,378)	\$ 793,140
	(4) Percentage of net admitted adjusted gross DTAs by tax character admitted because of the impact of planning strategies	0.07%	0.00%	0.07%
(4b)	Does this Company's tax-planning strategies include the use of reinsurance?	Yes [ ]	No [ X ]	

B. There are no temporary differences for which deferred tax liabilities are not recognized.

C. Current income taxes incurred consist of the following major components:

		December 31, 2021	December 31, 2020	Change
1.	Current Income Tax			
	(a) Federal	\$ (18,826)	\$ 809,791	\$ (828,617)
	(b) Foreign		-	-
	(c) Subtotal	\$ (18,826)	\$ 809,791	\$ (828,617)
	(d) Federal income tax on net capital gains	119,227	102,582	16,645
	(e) Utilization of capital loss carry-forwards		-	-
	(f) Other		-	-
	(g) Federal and foreign income taxes incurred	\$ 100,401	\$ 912,373	\$ (811,972)

NOTES TO THE FINANCIAL STATEMENTS

		December 31,	December 31,	
		2021	2020	Change
2.	Deferred Tax Assets			
	(a) Ordinary:			
	(1) Discounting of unpaid losses	\$ 2,289,132	\$ 2,190,614	\$ 98,518
	(2) Unearned premium reserve	3,557,291	3,358,606	198,685
	(3) Policyholder reserves	-	-	-
	(4) Investments	727,385	642,661	84,724
	(5) Deferred acquisition costs	-	-	-
	(6) Policyholder dividends accrual	-	-	-
	(7) Fixed Assets	-	-	-
	(8) Compensation benefits accrual	96,937	124,769	(27,832)
	(9) Pension accrual	-	-	-
	(10) Receivables - nonadmitted	141	56	85
	(11) Net operating loss carry-forward	-	-	-
	(12) Tax credit carry-forward	-	-	-
	(13) Other (including items <5% of total ordinary tax assets)	60,907	50,512	10,395
	(14) Nonadmitted miscellaneous	-	-	-
	(15) Intangibles	-	-	-
	(16) Capitalized R&E	-	-	-
	(17) Nonadmitted premiums and agent balance	1,178,620	764,969	413,651
	(18) Premium deficiency reserve	-	-	-
	(99) Subtotal	\$ 7,910,413	\$ 7,132,187	\$ 778,226
	(b) Statutory valuation allowance adjustment	\$ -	\$ -	\$ -
	(c) Nonadmitted	651,609	695,901	(44,292)
	(d) Admitted ordinary deferred tax assets (2a99 - 2b - 2c)	\$ 7,258,804	\$ 6,436,286	\$ 822,518
	(e) Capital:			
	(1) Investments	\$ 2,003,505	\$ 2,018,293	\$ (14,788)
	(2) Net capital loss carry-forward	-	-	-
	(3) Real estate	-	-	-
	(4) Other (including items <5% of total capital tax assets)	-	-	-
	(99) Subtotal	\$ 2,003,505	\$ 2,018,293	\$ (14,788)
	(f) Statutory valuation allowance adjustment	\$ -	\$ -	\$ -
	(g) Nonadmitted	795,936	781,346	14,590
	(h) Admitted capital deferred tax assets (2e99 - 2f - 2g)	\$ 1,207,569	\$ 1,236,947	\$ (29,378)
	(i) Admitted deferred tax assets (2d + 2h)	\$ 8,466,373	\$ 7,673,233	\$ 793,140
3.	Deferred Tax Liabilities			
	(a) Ordinary:	December 31,	December 31,	Change
		2021	2020	
	(1) Investments	\$ -	\$ -	\$ -
	(2) Fixed assets	-	-	-
	(3) Deferred and uncollected premium	-	-	-
	(4) Policyholder reserves	-	-	-
	(5) Other (including items <5% of total ordinary tax liabilities)	-	-	-
	(6) Compensation and benefit accrual	-	-	-
	(7) Guaranty assessments	-	-	-
	(8) Agent acquisitions	-	-	-
	(9) Surplus note interest accrual	-	-	-
	(10) Pension accrual	-	-	-
	(11) Other liabilities	-	-	-
	(12) Unrealized miscellaneous	-	-	-
	(13) Agent Book Purchases	-	-	-
	(14) Discount of Unpaid Losses - Tax Reform	-	-	-
	(15) Deferred acquisition costs	-	-	-
	(16) Trust Assets	-	-	-
	(99) Subtotal	\$ -	\$ -	\$ -
	(b) Capital:			
	(1) Investments	\$ -	\$ -	\$ -
	(2) Real estate	-	-	-
	(3) Other (including items <5% of total capital tax liabilities)	-	-	-
	(99) Subtotal	\$ -	\$ -	\$ -
	(c) Deferred tax liabilities (3a99 + 3b99)	\$ -	\$ -	\$ -
4.	Net deferred tax asset/(liability) (2i - 3c)	\$ 8,466,373	\$ 7,673,233	\$ 793,140

NOTES TO THE FINANCIAL STATEMENTS

5. The change in deferred income taxes is comprised of the following (this analysis is exclusive of the nonadmitted assets as the Change in Nonadmitted Assets are reported separately from the Change in Net Deferred Income Taxes in the surplus section of the Annual Statement):

	December 31, 2021	December 31, 2020	Change
(a) Adjusted gross deferred tax assets	\$ 9,913,919	\$ 9,150,479	\$ 763,440
(b) Deferred tax liabilities	-	-	-
(c) Net deferred tax assets (liabilities)	\$ 9,913,919	\$ 9,150,479	\$ 763,440
(d) Tax effect of unrealized gains (losses)			(276,555)
(e) Change in deferred income tax			\$ 1,039,995

D. The provision for federal income taxes incurred is different from that which would be obtained by applying the statutory Federal income tax rate to pre-tax income. The significant book to tax adjustments causing this difference are as follows:

	December 31, 2021	December 31, 2020
(a) Current income taxes incurred	\$ 100,401	\$ 912,373
(b) Change in deferred income tax	(1,039,994)	(7,310,859)
(c) Total income tax reported	\$ (939,593)	\$ (6,398,486)
(d) Income before taxes	\$ (281,317)	\$ (22,074,558)
(e) Federal statutory tax rate	21%	21%
(f) Expected income tax expense (benefit) at 21% statutory rate	\$ (59,077)	\$ (4,635,657)
(1) Tax-exempt income	\$ (109,276)	\$ (85,426)
(2) Dividends received deduction	-	-
(3) Nondeductible expenses	-	-
(4) Deferred tax benefit on nonadmitted assets	(432,107)	61,616
(5) Change in tax reserves	-	-
(6) Tax credits	-	(3)
(7) Other	1,057	(2,911)
(8) Extraordinary distribution	-	-
(9) COLI - change in CSV	(7,081)	(14,093)
(10) Dividends - Return of Capital	-	-
(11) Tax Attribute Expiration	-	-
(12) Impact of enacted tax law changes	-	-
(13) Investments	(333,109)	(1,722,012)
(14) Impact of CARES Act / NOL CB	-	-
(g) Total	\$ (939,593)	\$ (6,398,486)

E. Operating Loss and Tax Credit Carryforwards and Protective Tax Deposits

1. As of December 31, 2021, operating loss or tax credit carryforwards are available as follows:

	Amount	Origination	Expiration
Business credits	\$ -	2020	2040
Business credits	\$ -	2021	2041

2. The amount of Federal income taxes incurred that are available for recoupment in the event of future net losses are:

2021	\$ -
2020	\$ -

3. The Company did not have any protective tax deposits under Section 6603 of the Internal Revenue Code.

NOTES TO THE FINANCIAL STATEMENTS

F. Consolidated Federal Income Tax Return

1. The company's federal income tax return is consolidated with the following entities:

Nationwide Mutual Insurance Company	Nationwide Corporation
AGMC Reinsurance, Ltd	Nationwide Financial Assignment Company
Allied Group, Inc.	Nationwide Financial General Agency, Inc.
Allied Holding (Delaware), Inc.	Nationwide Financial Services, Inc.
Allied Insurance Company of America	Nationwide General Insurance Company
Allied Property & Casualty Insurance Company	Nationwide Indemnity Company
Allied Texas Agency, Inc.	Nationwide Insurance Company of America
AMCO Insurance Company	Nationwide Insurance Company of Florida
American Marine Underwriters	Nationwide Investment Services Corporation
Crestbrook Insurance Company	Nationwide Life and Annuity Insurance Company
Depositors Insurance Company	Nationwide Life Insurance Company
DVM Insurance Agency, Inc.	Nationwide Lloyds
Eagle Captive Reinsurance, LLC	Nationwide Property & Casualty Insurance Company
Freedom Specialty Insurance Company	Nationwide Retirement Solutions, Inc.
Harleysville Group Inc.	Nationwide Sales Solutions, Inc.
Harleysville Insurance Co. of New York	Nationwide Trust Company, FSB
Harleysville Insurance Company	NBS Insurance Agency, Inc.
Harleysville Insurance Company of New Jersey	NFS Distributors, Inc.
Harleysville Lake States Insurance Company	Registered Investment Advisors Services, Inc.
Harleysville Life Insurance Company	Retention Alternatives SAC Ltd.
Harleysville Preferred Insurance Company	Scottsdale Indemnity Company
Harleysville Worcester Insurance Company	Scottsdale Insurance Company
Jefferson National Financial Corporation	Scottsdale Surplus Lines Insurance Company
Jefferson National Securities Corporation	THI Holdings (Delaware), Inc.
Lone Star General Agency, Inc.	Titan Insurance Company
National Casualty Company	Titan Insurance Services, Inc.
Nationwide Advantage Mortgage Company	Veterinary Pet Insurance Company
Nationwide Affinity Insurance Company of America	Victoria Fire & Casualty Company
Nationwide Agent Risk Purchasing Group, Inc.	Victoria National Insurance Company
Nationwide Agribusiness Insurance Company	Victoria Select Insurance Company
Nationwide Assurance Company	VPI Services, Inc.
Nationwide Cash Management Company	

2. The method of allocation among the companies is subject to the resolution approved by the Board of Directors. Allocation is based upon separate return or sub-group aggregated separate return calculations with the company being reimbursed for the actual Federal income tax benefit of its net operating losses which are actually used to reduce the taxable income of other companies in the consolidated return.
3. Effective January 1, 2021, the Company revised its tax sharing agreement. The revised tax agreement allocates state taxes based on the entity's apportionment factors by return group versus federal taxable income. Impacts to state taxes were immaterial.

G. Federal or Foreign Federal Income Tax Loss Contingencies

The Company does not have any tax loss contingencies for which it is reasonably possible that the total liability will significantly increase within twelve months of the reporting date.

H. Repatriation Transition Tax (RTT)

Not applicable.

I. Alternative Minimum Tax (AMT)

Not applicable.

**Note 10 – Information Concerning Parent, Subsidiaries, Affiliates and Other Related Parties**

A. Nature of Relationships

All outstanding shares of the Company are owned by Mutual, domiciled in the State of Ohio.

Bonds and stocks, if any owned, acquired or disposed of in any year by the Company in any subsidiary or affiliate are set forth in Schedule D of either this statement or those of prior years. Intercompany relationships and specific holdings are detailed in the Nationwide Corporate Organizational Chart, which appears as Schedule Y of this statement.

The Company is a party to various reinsurance agreements including a quota share agreement with several affiliated companies. See Note 26.

The Company and various affiliates have entered into agreements with Nationwide Cash Management Company (NCMC) a subsidiary of Mutual, under which NCMC acts as a common agent in handling the purchases and sales of short-term investments for the respective accounts of the participants. Amounts on deposit with NCMC were \$52,138,121 and \$11,443,015 as of December 31, 2021 and 2020, respectively.

B. Detail of Transactions Greater than ½ % of Admitted Assets

On June 30, 2021, the Company received a capital contribution of \$35,000,000 from Nationwide Mutual Insurance Company.



NOTES TO THE FINANCIAL STATEMENTS

C. Transactions with Related Party who are not Reported on Schedule Y

Not applicable.

D. Amounts Due to or from Related Parties

Affiliate receivables and payables are the result of cost sharing and intercompany service agreements between the Company and its affiliates in which settlement has not yet occurred. Affiliate receivables are presented gross of affiliate payables when the Company has the right to offset. The gross amounts due from affiliates were \$31,018,362 and \$22,627,613 as of December 31, 2021 and 2020, respectively. The gross amounts due to affiliates were \$27,703,401 and \$20,822,572 as of December 31, 2021 and 2020, respectively. These arrangements are subject to written agreements which require that intercompany balances be settled within 30 days.

E. Guarantees or Undertakings for Related Parties

The Company has no guarantees or contingent commitments to affiliates other than indicated in Note 14 A.

F. Management, Service Contracts, Cost Sharing Arrangements

The Company and various affiliates share a home office, other facilities, equipment, common management and administrative services. Pursuant to a cost sharing agreement between the companies, the amounts associated with these services are subject to allocation based on standard allocation techniques and procedures acceptable under general cost accounting techniques and procedures in conformity with the NAIC SAP. Measures used to determine the allocation among companies includes individual employee estimates of time spent, special cost studies, claims counts, policies in force, direct written premium, paid losses, pro rata share of employees or their salaries and other methods agreed to by the participating companies. The Company does not believe amounts recognized under the intercompany agreement are materially different than what would have been recognized had the Company operated on a stand-alone basis.

G. Nature of Relationships that Could Affect Operations

Not applicable.

H. Amount Deducted for Investment in Upstream Company

Not applicable.

I. Detail of Investment in Affiliates Greater than 10% of Admitted Assets

The Company does not hold any investments in affiliates greater than 10% of Admitted Assets.

J. Write-down for Impairments of Investments in Subsidiary, Controlled or Affiliated Companies

Not applicable.

K. Investment in a Foreign Insurance Subsidiary

Not applicable.

L. Downstream Holding Company

The Company does not hold any investments in affiliates.

M. All SCA Investments

Not applicable.

N. Investment in Insurance SCA Entities

Not applicable.

O. SCA or SSAP Entity Loss Tracking

Not applicable.

**Note 11 – Debt**

Not applicable.

**Note 12 – Retirement Plans, Deferred Compensation, Postemployment Benefits and Compensated Absences and Other Postretirement Benefit Plans**

A. Defined Benefit Plans

Not applicable

B. Asset Allocation

Not applicable.

C. Fair Value of Plan Assets

Not applicable.

D. Long-Term Rate of Return on Assets

Not applicable.

NOTES TO THE FINANCIAL STATEMENTS

E. Defined Contribution Plans

NMIC sponsors a defined contribution retirement savings plan (401(k)) which covers substantially all employees. Employees may make salary deferral contributions of up to 80% provided this deferral does not exceed the maximum annual amount allowed by the IRS. Salary deferrals of up to 8% receive a 50% company match and salary deferrals up to 7% receive a 50% company match for the years ended December 31, 2021 and 2020, respectively, 20% of which vests each year until the participant has five years of vesting service. The Company match is funded on a biweekly basis and the expense for contributions are allocated to the Company based on employee contributions. The Company's allocated expense for contributions was \$615,769 and \$688,119 for the years ended December 31, 2021 and 2020, respectively. Individuals are subject to a dollar limit on salary deferrals per IRS Section 402(g) (\$19,500 in 2021 and 2020). Other limits also apply. The Company has no legal obligation for benefits under this plan.

F. Multiemployer Plans

Not applicable.

G. Consolidated/Holding Company Plans

The Company, together with other affiliated companies, participates in a qualified defined benefit pension plan (the Nationwide Retirement Plan or the NRP) sponsored by Mutual. The Company funds pension costs accrued for direct employees plus an allocation of pension costs accrued for employees of affiliates whose work benefits the Company. The Company also participates in a non-qualified defined benefit supplemental executive retirement plan sponsored by Mutual that covers certain executives with at least one year of service. The Company's portion of expense relating to these plans was \$(71,813) and \$250,903 for the years ended December 31, 2021 and 2020, respectively.

In addition to the defined benefit plans, the Company and certain affiliated companies participate in health care benefit plans sponsored by Mutual for qualifying retirees, which are generally available to retirees who were full time who have attained age 55 and have at least 15 years of service with the Company. The Company's portion of the expense relating to these plans was \$(1,149) and \$37,111 for the years ended December 31, 2021 and 2020, respectively.

H. Postemployment Benefits and Compensated Absences

Not applicable.

I. Impact of Medicare Modernization Act on Postretirement Benefits (INT 04-17)

Not applicable.

**Note 13 – Capital and Surplus, Shareholders' Dividend Restrictions and Quasi-Reorganizations**

A. Outstanding Shares

The Company has 100 shares of \$50,000 par value common stock authorized, 100 shares issued and 100 shares outstanding as of December 31, 2021.

B. Dividend Rate of Preferred Stock

Not applicable.

C. Dividend Restrictions

The maximum amount of dividends which can be paid to shareholders by a State of Ohio domiciled insurance company without prior approval of the Director of Insurance is limited to, together with that of other dividends or distributions made within the preceding twelve months, the greater of either 10% of surplus as regards policyholders as of the preceding December 31, or the net income for the twelve month period ending December 31 of the previous calendar year. Additionally, any dividend or distribution paid from other than earned surplus shall require prior approval of the Director of Insurance. Subject to applicable regulatory approval(s), dividends are paid as determined by the insurer's board of directors.

D. Dividends Paid

No dividends were paid by the Company during 2021 and 2020.

E. Profits Available for Ordinary Dividends

Within the limitations of (C) above, there are no restrictions placed on the portion of Company profits that may be paid as ordinary dividends to shareholders.

F. Restrictions on Surplus

There is no restriction on the use of the Company's unassigned surplus and such surplus is held for the benefit of the shareholder.

G. Advances to Surplus Not Repaid

Not applicable.

H. Stock Held by Company for Special Purposes

Not applicable.

I. Changes in Special Surplus Funds

Not applicable.

NOTES TO THE FINANCIAL STATEMENTS

J. Changes in Unassigned Funds

The portion of unassigned funds (surplus) represented by cumulative unrealized capital gains is \$2,302,038 less applicable deferred taxes of \$483,428 for a net unrealized capital gain of \$1,818,610.

K. Surplus Notes

Not applicable.

L. and M. Quasi Reorganizations

Not applicable.

**Note 14 – Contingencies**

A. Contingent Commitments

The Company has no commitments or contingent commitment to affiliates or other entities. As indicated in Note 10 E, the Company has made no guarantees on behalf of affiliates.

B. Assessments

1. The Company is subject to guaranty fund and other assessments by the states in which it writes business. Guaranty fund assessments should be accrued at the time of insolvencies. Other assessments should be accrued either at the time of assessment or in the case of premium based assessments, at the time the premiums were written. In the case of loss-based assessments, the assessments should be accrued at the time the losses are incurred.

As of December 31, 2021 and 2020, the Company accrued a liability for guaranty fund and other assessments of \$21,936 and \$24,562, respectively. These represent management's best estimates based on information received from the states in which the Company writes business and may change due to many factors including the Company's share of the ultimate cost of current insolvencies.

2.	Description	Amount
	a. Assets recognized from paid and accrued premium tax offsets and policy holder surcharges prior year-end	\$ 18,164
	b. Decreases current year:	
	Premium tax offsets applied	\$ 5,024
	c. Increases current year:	
	Change in accrued premium tax offsets	\$ (1,295)
	d. Assets recognized from paid and accrued premium tax offsets and policy holder surcharges current year-end	\$ 11,845

3. Guaranty fund liabilities and assets related to assessments from insolvencies of entities that wrote long-term care contracts

Not applicable.

C. Gain Contingencies

Not applicable.

D. Claims Related Extra Contractual Obligations and Bad Faith Losses Stemming from Lawsuits

Not applicable.

E. Product Warranties

Not applicable.

F. Joint and Several Liabilities

Not applicable.

G. All Other Contingencies

Various lawsuits arise against the Company in the normal course of the Company's business. Contingent liabilities arising from litigation were reserved net of anticipated recoveries for \$220,521 and \$321,701 at December 31, 2021 and 2020, respectively. The company is continually liable under certain structure settlement agreements (See note 27A).

**Note 15 – Leases**

The Company does not have any material lease obligations at this time.

**Note 16 – Information about Financial Instruments with Off-Balance Sheet Risk and Financial Instruments with Concentrations of Credit Risk**

Not applicable.

**Note 17 – Sale, Transfer and Servicing of Financial Assets and Extinguishments of Liabilities**

A. Transfers of Receivables Reported as Sales

Not applicable.

NOTES TO THE FINANCIAL STATEMENTS

B. Transfer and Servicing of Financial Assets

1. There was no securities lending activity during the period.
2. No servicing assets or liabilities were recognized during the period.
3. No servicing assets or liabilities were recognized during the period.
4. There were no assets securitized during the period.
5. There were no transfers of financial assets accounted for as a secured borrowing (excluding any repurchase and reverse repurchase transactions that may be disclosed under notes 5 F. through 5 I. above).
6. There were no transfers of receivables with recourse.
7. There were no dollar repurchase or reverse dollar repurchase agreements open as of December 31, 2021.

C. Wash Sales

Not applicable.

**Note 18 - Gain or Loss to the Reporting Entity from Uninsured Plans and the Uninsured Portion of Partially Insured Plans**

Not applicable.

**Note 19 – Direct Premiums Written/Produced by Managing General Agents/Third Party Administrators**

The following summarizes direct premium written in 2021 by managing general agent.

Name and Address of Managing General Agent	FEIN Number	Exclusive Contract	Business Written	Authority Granted	Direct Written Premium
AON RISK SERVICES COMPANIES INC, NEW YORK, NY	16-1067929	No	C	P	\$ 23,621,326
BURNS & WILCOX LTD, MYRTLE BEACH, SC	38-1804059	No	C	P,U,B	11,387,695
CRC INSURANCE SERVICES INC, BIRMINGHAM, AL	74-1565310	No	C	P,U,B	11,123,306
E-RISK SERVICES LLC, FLANDERS, NJ	26-3260559	No	C	P,U,B	32,247,220
EUCLID INSURANCE SERVICES INC, ITASCA, IL	36-2533337	No	C	P,U,B	10,935,042
INTERSTATE INSURANCE MANAGEMENT, JOHNSTOWN, PA	25-1213835	No	C	P,U,B	17,920,267
ISR MARINE SERVICES LLC, LYNNFIELD, MA	37-0391000	No	C	P,U,B	16,834,129
JM WILSON CORPORATION, PORTAGE, MI	38-1178100	No	C	P	11,645,408
K&K INSURANCE GROUP INC, FORT WAYNE, IN	35-1003799	No	C	P,U,B	201,561,115
MARSH USA INC, NEW YORK, NY	36-1436000	No	C	P	23,873,408
MILE HIGH MARKETS INC, GREENWOOD VILLAGE, CO	84-0974211	No	C	P,U,B	15,462,839
N2G WORLDWIDE INSURANCE, Jersey City, NJ	84-4337022	No	C	P,U,B	89,768,683
PHOENIX AMERICAN INSURANCE, MIAMI, FL	59-2786982	No	C	C,CA,B,P,U	35,243,189
RISK PLACEMENT SERVICES INC, TULSA, OK	36-3110841	No	C	P	28,238,175
RSGUM, CHICAGO, IL	27-1520113	No	C	C,CA,B,P,U	28,944,115
TRUCKERS INSURANCE ASSOCIATES, WEST DES MOINES, IA	42-0918821	No	C	U	19,618,830
W E LOVE & ASSOCIATES INC, BURLINGTON, NC	56-1318803	No	C	P,U,B	15,622,171
WILLIS OF NEW YORK INC, NEW YORK, NY	13-2695427	No	C	P,U,B	11,066,886
					\$ 605,113,804

\*Authority Codes  
C - Commercial Auto Liability  
P - Private Passenger Auto Liability and Auto Physical Damage  
U - Underwriting, Premium Collection, and Claim Payment  
B - Binding  
CA - Claims Adjustment

**Note 20 – Fair Value Measurements**

A. Fair value is defined as the price that would be received to sell an asset or paid to transfer a liability in an orderly transaction between market participants at the measurement date. Fair value measurements are based upon observable and unobservable inputs. Observable inputs reflect market data obtained from independent sources while unobservable inputs reflect the Company's view of market assumptions in the absence of observable market information. The Company utilizes valuation techniques that maximize the use of observable inputs and minimize the use of unobservable inputs. In determining fair value, the Company uses various methods including market, income and cost approaches.

The Company categorizes its financial instruments into a three-level hierarchy based on the priority of the inputs to the valuation technique. The fair value hierarchy gives the highest priority to quoted prices in active markets for identical assets or liabilities (Level 1) and the lowest priority to unobservable inputs (Level 3). If the inputs used to measure fair value fall within different levels of the hierarchy, the category level is based on the lowest priority level input that is significant to the fair value measurement of the instrument in its entirety.

The Company categorizes assets and liabilities held at fair value in the statutory statements of assets and liabilities, surplus and other funds as follows:

*Level 1.* Unadjusted quoted prices accessible in active markets for identical assets or liabilities at the measurement date and mutual funds where the value per share (unit) is determined and published daily and is the basis for current transactions.

*Level 2.* Unadjusted quoted prices for similar assets or liabilities in active markets, quoted prices for identical or similar assets or liabilities in markets that are not active or inputs (other than quoted prices) that are observable or that are derived principally from or corroborated by observable market data through correlation or other means. Primary inputs to this valuation technique may include comparative trades, bid/asks, interest rate movements, U.S. Treasury rates, London Interbank Offered Rate, prime rates, cash flows, maturity dates, call ability, estimated prepayments and/or underlying collateral values.

*Level 3.* Prices or valuation techniques that require inputs that are both unobservable and significant to the overall fair value measurement. Inputs reflect management's best estimates of the assumptions market participants would use at the measurement date in pricing the asset or liability. Consideration is given to the risk inherent in both the method of valuation and the valuation inputs. Primary inputs to this valuation technique include broker quotes and comparative trades.

NOTES TO THE FINANCIAL STATEMENTS

The Company reviews its fair value hierarchy classifications for assets and liabilities quarterly. Changes in observability of significant valuation inputs identified during these reviews may trigger reclassifications. Reclassifications are reported as transfers at the beginning of the period in which the change occurs.

Independent pricing services are most often utilized to determine the fair value of bonds and stocks for which market quotations or quotations on comparable securities are available. For these bonds and stocks, the Company obtains the pricing services' methodologies, pricing from additional sources, inputs and assumptions and classifies the investments accordingly in the fair value hierarchy.

A corporate pricing matrix is used in valuing certain corporate bonds. The corporate pricing matrix was developed using publicly available spreads for privately placed corporate securities with varying weighted average lives and credit quality ratings. The weighted average life and credit quality rating of a particular bond to be priced using the corporate pricing matrix are important inputs into the model and are used to determine a corresponding spread that is added to the appropriate U.S. Treasury yield to create an estimated market yield for that bond. The estimated market yield and other relevant factors are then used to estimate the fair value of the particular bond.

Non-binding broker quotes are also utilized to determine the fair value of certain bonds when deemed appropriate or when quotes are not available from independent pricing services or a corporate pricing matrix. These bonds are classified with the lowest priority in the fair value hierarchy as only one broker quote is ordinarily obtained, the investment is not traded on an exchange, the pricing is not available to other entities and/or the transaction volume in the same or similar investments has decreased. Inputs used in the development of prices are not provided to the Company by the brokers as the brokers often do not provide the necessary transparency into their quotes and methodologies. At least annually, the Company performs reviews and tests to ensure that quotes are a reasonable estimate of the investments' fair value. Price movements of broker quotes are subject to validation and require approval from the Company's management. Management uses its knowledge of the investment and current market conditions to determine if the price is indicative of the investment's fair value.

The Company carries short-term investments at amortized cost, which approximates fair value.

The following table summarizes assets held at fair value as of December 31, 2021:

	Level 1	Level 2	Level 3	Net Asset Value (NAV)	Total
Assets at Fair Value					
Bonds	\$ -	\$ 457,753	\$ -	\$ -	\$ 457,753
Total Assets at Fair Value/(NAV)	\$ -	\$ 457,753	\$ -	\$ -	\$ 457,753

B. & C. The following table summarizes the carrying value and fair value of the Company's assets not held at fair value as of December 31, 2021:

	Aggregate Fair Value	Admitted Assets	Level 1	Level 2	Level 3	Net Asset Value (NAV)	Not Practicable (Carrying Value)
Assets							
Bonds	\$373,351,102	\$354,713,930	\$67,409,581	\$286,869,618	\$19,071,903	\$-	\$-
Cash, Cash Equivalents and Short-term investments	52,139,454	52,139,454	1,333	52,138,121	-	-	-
Total Assets	\$425,490,556	\$406,853,384	\$67,410,914	\$339,007,739	\$19,071,903	\$-	\$-

D. Not Practicable to Estimate Fair Value

Not applicable.

E. Measured Using Net Asset Value

Not applicable.

Note 21 – Other Items

A. Unusual or Infrequent Items

On March 11, 2020, the World Health Organization declared the novel coronavirus (“COVID-19”) a pandemic. In response to the COVID-19 pandemic, governments have enacted various measures to reduce the spread of the virus. The COVID-19 pandemic conditions have created financial market volatility and uncertainty regarding whether and when certain customer behaviors will return to historical patterns, including sales of new and retention of existing policies, driving behavior and auto claim frequency, life insurance mortality and credit allowance exposure. None of the aforementioned items have had a material impact on the overall financial condition of the Company. While many of the government-imposed measures have eased in 2021, the extent to which the COVID-19 pandemic may impact the Company’s ongoing operations and financial condition will depend on future developments that are evolving and uncertain.

B. Troubled Debt Restructuring for Debtors

Not applicable.

C. Other Disclosures

As of December 31, 2021, the Company had no unfunded commitments and did not hold any derivatives

Property per risk reinsurance provides protection against individual risk losses and associated loss adjustment expenses between \$10 million and \$125 million.

Property catastrophe occurrence reinsurance provides protection against loss and loss adjustment expense for large, single-event loss occurrences countrywide. For losses between \$500 million and \$3.4 billion, the Company recovers 90% of losses, a portion of which is covered through a catastrophe bond. Following a single loss event over \$500 million, the retention would be reduced from \$500 million to \$250 million for a second loss event in the treaty year.

Property catastrophe annual aggregate reinsurance is covered through one additional catastrophe bond which provides reinsurance for aggregate losses in three layers. The bond provides reinsurance coverage against the accumulation of individual catastrophic losses during each separate annual coverage period for occurrences greater than \$50 million each and provides national coverage of up to 16% of annual aggregate losses between \$1.3 billion and \$1.5 billion, up to 47% between \$1.5 billion and \$1.7 billion, and up to 70% between \$1.7 billion and \$1.8 billion.

D. Business Interruption Insurance Recoveries

Not applicable.

NOTES TO THE FINANCIAL STATEMENTS

E. State Transferable and Non-Transferable Tax Credits

1. Description of State Transferable and Non-Transferable Tax Credits	State	Carrying Value	Unused Amount
EC Riverwalk 2 LLC	SC	-	9,199
EC Riverwalk 3 LLC	SC	172,519	51,373
Strata Fund 24 Lessee LLC	NC	-	8,630
Strata Fund 25 Lessee LLC	NC	-	10,523
Enhanced Capital Nebraska NMTC Investor II LLC	NE	-	25,127
Model Tobacco Development Group LLC	VA	230,104	68,802
General Heath Square	MA	1,066,000	18,000
EC Bottleworks	IN	-	14,427
CCP NI Master Tenant LLC	NC	-	2,762
EC King & George Street LLC	SC	-	10,865
CO Climber SBRTC	CO	-	144,500
714 Main Real Estate Holdings	TX	1,018,027	56,160
PA Coal Refuse Energy & Reclamation	PA	-	48,705
Total		\$ 2,486,650	\$ 469,073

2. The Company estimates the utilization of remaining transferable and non-transferable state tax credits by projecting future premium and taking into account policy growth, while also projecting future tax liability in the relevant jurisdiction.

3. The Company did not recognize any impairment on state credits in 2021.

4. State Tax Credits Admitted and Nonadmitted

	Total Admitted	Total Nonadmitted
a. Transferable	\$ 378,356	\$
b. Non-transferable	\$ 90,717	\$

F. Subprime Mortgage Related Risk Exposure

1. The Company evaluates many characteristics when classifying collateral as subprime, including the credit quality of the borrower as defined by Fair Isaac Credit Organization (FICO) scores, as well as other factors, such as loan-to-value ratios and type of real estate.

2. The company has no direct exposure through investments in subprime mortgage loans.

3. Direct exposure through other investments:

	Actual Cost	Book/Adjusted Carrying Value (excluding interest)	Fair Value	Other Than Temporary Impairment Losses Recognized
a. Residential mortgage backed securities	\$ 31	\$ 32	\$ 33	\$ -
b. Commercial mortgage backed securities	-	-	-	-
c. Collateralized debt obligations	-	-	-	-
d. Structured securities	-	-	-	-
e. Equity investments in SCAs	-	-	-	-
f. Other assets	-	-	-	-
g. Total	\$ 31	\$ 32	\$ 33	\$ -

4. The company has no exposure to subprime mortgage risk through Mortgage Guaranty or Financial Guaranty insurance coverage.

G. Insurance-Linked Securities (ILS) Contracts

On February 27, 2020, Nationwide Mutual Insurance Company and certain of its subsidiaries and affiliates entered into an agreement with Caelus Re VI Limited, a Cayman Islands Special Purpose Reinsurance Vehicle, for the purpose of securing collateralized, multi-year property catastrophe loss protection through the capital markets. The catastrophe bonds, Caelus Re 2020-1 and 2020-2, issued as part of this agreement provide reinsurance coverage to the Company and certain of its subsidiaries and affiliates for catastrophic events, including hurricanes, winter storms, convective storms, wildfires, meteorites, volcanic eruptions, earthquakes, the fires following earthquakes and other perils. Caelus Re Series 2020-1 provides indemnity protection on a per occurrence basis with two different classes of notes. For the 2021 risk period, the Caelus Re 2020-1 catastrophe bonds provide national coverage at 75% of \$400M excess of \$1.95 billion. The coverage is effective March 1, 2020 and expires on May 31, 2023 and May 31, 2024 for the Class A-1 Notes and Class B-1 Notes, respectively. Caelus Re Series 2020-2 provides indemnity protection on an annual aggregate basis with three different classes of notes. For the 2021 risk period, the Caelus Re 2020-2 catastrophe bonds provide national coverage at varying placements of annual aggregate losses between \$1.26 billion and \$1.80 billion. The coverage was effective June 1, 2020 and expires on May 31, 2023.

On May 10, 2017, Nationwide Mutual Insurance Company and certain of its subsidiaries and affiliates entered into an agreement with Caelus Re V Limited, a Cayman Islands Special Purpose Reinsurance Vehicle, for the purpose of securing collateralized, multi-year property catastrophe loss protection through the capital markets. The Caelus Re 2018-1 issuance was offered May 10, 2018 within Caelus Re V Limited, augmenting the existing program. The catastrophe bonds, Caelus Re 2018-1, issued as part of this agreement provide reinsurance coverage to the Company and certain of its affiliates for catastrophic events, including hurricanes, winter storms, convective storms, wildfire, meteorite, volcanic eruption, earthquakes and the fires following earthquakes. The catastrophe bonds are an indemnity trigger-based bond where the Company and certain of its affiliates recover losses in excess of specified levels of annual aggregate catastrophic claims with a franchise deductible of \$50 million for each catastrophic event. The coverage was effective June 1, 2018 and expired on May 31, 2021 according to the terms of the original agreement.



NOTES TO THE FINANCIAL STATEMENTS

	Number of Outstanding ILS Contracts	Aggregate Maximum Proceeds
Management of Risk Related To:		
(1) Directly-Written Insurance Risks		
a. ILS Contracts as Issuer	-	\$ -
b. ILS Contracts as Ceding Insurer	2	\$ 490,000,000
c. ILS Contracts as Counterparty	-	\$ -
(2) Assumed Insurance Risks		
a. ILS Contracts as Issuer	-	\$ -
b. ILS Contracts as Ceding Insurer	-	\$ -
c. ILS Contracts as Counterparty	-	\$ -

H. The Amount That Could Be Realized on Life Insurance Where the Reporting Entity is Owner and Beneficiary or Has Otherwise Obtained Rights to Control the Policy

Not applicable.

Note 22 – Events Subsequent

Type I – Recognized Subsequent Events:

Subsequent events have been considered through February 18, 2022 for the statutory statement issued on February 24, 2022.

There were no material Type I events occurring subsequent to the end of the year that merited recognition or disclosure in these statements that have not already been reflected as required.

Type II – Nonrecognized Subsequent Events:

Subsequent events have been considered through February 18, 2022 for the statutory statement issued on February 24, 2022.

There were no material Type II events occurring subsequent to the end of the year that merited disclosure in these statements that have not already been reflected as required.

Note 23 – Reinsurance

A. Unsecured Reinsurance Recoverables

The Company has unsecured aggregate reinsurance recoverable for paid and unpaid losses, including IBNR, loss adjustment expenses and unearned premiums, from an individual reinsurer that exceeds 3% of policyholders’ surplus. The amount is shown below by reinsurer in thousands.

Individual Reinsurers Who are not Members of a Group:

Not applicable.

Individual Reinsurers Who are Members of a Group:

NAIC Group	Reinsurer	FEIN #	Unsecured Reinsurance
0140	Nationwide Mutual Insurance Company	31-4177100	\$2,375,010

All Members of the Groups Shown Above with Unsecured Recoverables:

NAIC Group	Reinsurer	FEIN #	Unsecured Reinsurance
0140	Nationwide Mutual Insurance Company	31-4177100	\$2,375,010
Total			\$ 2,375,010

B. Reinsurance Recoverable in Dispute

The Company does not have reinsurance recoverables in dispute for paid losses and loss adjustment expenses that exceed 5% of policyholders’ surplus from an individual reinsurer or exceed 10% of policyholders’ surplus in aggregate.

C. Reinsurance Assumed and Ceded

1. The following table summarizes ceded and assumed unearned premiums and the related commission equity at December 31, 2021.

	Assumed Reinsurance		Ceded Reinsurance		Net	
	Premium Reserve	Commission Equity	Premium Reserve	Commission Equity	Premium Reserve	Commission Equity
a. Affiliates	\$84,472,483	\$14,294,815	\$762,479,632	\$180,700,661	\$(678,007,149)	\$(166,405,846)
b. All Others	953,347	85,247	944,325	133,633	9,022	(48,386)
c. Total	\$85,425,830	\$14,380,062	\$763,423,957	\$180,834,294	\$(677,998,127)	\$(166,454,232)
d. Direct Unearned Premium Reserve				\$762,470,610		

NOTES TO THE FINANCIAL STATEMENTS

2. Certain agency agreements and ceded reinsurance contracts provide for additional or return commissions based on the actual loss experience of the produced or reinsured business. Amounts accrued at December 31, 2021 are as follows:

Reinsurance	Direct	Assumed	Ceded	Net
a. Contingent Commissions	\$7,400	\$2,819,800	\$7,400	\$2,819,800
b. Sliding Scale Adjustments	-	-	-	-
c. Other Profit Commission Arrangements	-	-	-	-
d. Total	\$7,400	\$2,819,800	\$7,400	\$2,819,800

3. The Company does not use protected cells as an alternative to traditional reinsurance.

D. Uncollectible Reinsurance

No reinsurance recoverables were written off during 2021.

E. Commutation of Ceded Reinsurance

The Company did not enter into any commutation of reinsurance during 2021.

F. Retroactive Reinsurance

There was no retroactive reinsurance affected during 2021.

G. Reinsurance Accounted for as a Deposit

There were no reinsurance agreements that were accounted for as deposits during 2021.

H. Disclosures for the Transfer of Property and Casualty Run-Off Agreements

There was no transfer of any property and casualty run-off agreements requiring approval of regulators and qualifying under SSAP No. 62R, Property and Casualty Reinsurance, to receive property & casualty run-off accounting treatment.

I. Certified Reinsurer Rating Downgrades or Status Subject to Revocation

Not applicable.

J. Reinsurance Agreements Qualifying for Reinsurer Aggregation

Not applicable.

K. Reinsurance Credit

Not applicable.

Note 24 – Retrospectively Rated Contracts and Contracts Subject to Redetermination

A. Method Used to Estimate

The Company sells accident and health policies for which the premiums vary based on loss experience. Future premium adjustments for these retrospective policies are estimated and accrued. The Company estimates these accrued retrospective premium adjustments through the review of each individual retrospectively rated risk, comparing case basis loss development with that anticipated in the policy contracts to arrive at the best estimates of return or additional premiums.

B. Method Used to Record

The Company records retrospective premium accruals as earned by adjusting unearned premiums. These amounts are not recorded as premiums written until they are billed to the policyholders. Return premiums are recorded as liabilities and additional premiums are recorded as assets.

C. Amount and Percent of Net Retrospective Premiums

Net premiums written for the current year on retrospective accident and health policies were \$90, or 0.000% of accident and health premiums written.

D. Medical Loss Ratio Rebates

Not applicable.

E. Calculation of Nonadmitted Accrued Retrospective Premiums

Not applicable.

F. Risk-Sharing Provisions of the Affordable Care Act (ACA)

Not applicable.

Note 25 – Changes in Incurred Losses and Loss Adjustment Expenses

- A. As of December 31, 2020, loss and loss adjustment expense reserves, net of reinsurance recoveries, were \$147.9 million. On January 1, 2021, loss and loss adjustment expense reserves of \$15.0 million were transferred to the Company as a result of the pooling and quota share agreements that were effective January 1, 2021. See Note 26 for details. Payments for incurred claims and claim adjustment expenses attributable to insured events of prior years were \$56.8 million for the year ended December 31, 2021. As of December 31, 2021, remaining loss and loss adjustment expense reserves attributable to insured events of prior years were \$105.6 million. The Company experienced favorable prior-year development of \$476.2 thousand during the year ended December 31, 2021, primarily driven by reinsurance recoveries as a result of triggering catastrophe reinsurance treaties in various property and casualty product lines. This was partially offset by A&E unfavorable prior year development driven by a continued high level of emergence in asbestos and environmental claims.



NOTES TO THE FINANCIAL STATEMENTS

B. During 2021, the Company did not make any significant changes in methodologies and assumptions used in calculating the liability for unpaid losses and loss adjustment expenses.

Note 26 – Intercompany Pooling Arrangements

Nationwide Mutual Insurance Company is the lead company in the Nationwide Pool. Each pool member company contributes 100% of its underwriting results to the Nationwide Pool through the reinsurance pooling agreement.

Effective January 1, 2020, the Nationwide Pool structure was revised. Nationwide Mutual Insurance Company’s assumed pooling percentage decreased from 72% to 71%. Scottsdale Insurance Company’s retainage share changed from 4% to 0%, Nationwide Agribusiness Insurance Company’s retainage share changed from 0% to 3% and Nationwide Insurance Company of America’s retainage share changed from 0% to 1%. Furthermore, National Casualty Company terminated its 100% quota share reinsurance agreement with Nationwide Mutual and was added to the Nationwide Pool with a 1% retainage share.

As of December 31, 2021 and December 31, 2020, the companies in the Nationwide Pool assuming a proportionate share of the pool are:

	NAIC #	2021 Pool	2020 Pool
Nationwide Mutual Insurance Company	23787	71.0%	71.0%
Nationwide Mutual Fire Insurance Company	23779	23.0%	23.0%
Nationwide Agribusiness Insurance Company	28223	3.0%	3.0%
Nationwide Insurance Company of America	25453	1.0%	1.0%
National Casualty Company	11991	1.0%	1.0%
Nationwide General Insurance Company	23760	1.0%	1.0%

Effective July 1, 2021, in conjunction with the merger of Victoria National with and into Victoria Fire and Casualty on July 1, 2021, Victoria National terminated its participation in the Nationwide Pool.

Effective January 1, 2021, Nationwide Indemnity Company (NAIC #10070) entered the Nationwide Pool with 0% retrocession. Nationwide Indemnity Company ceded assets of \$32.5 million and liabilities of \$1.5 billion, primarily consisting of losses and loss expense reserves. Nationwide Indemnity Company transferred \$1.5 billion of securities and cash to the Nationwide Pool to settle this transaction.

All of the other companies in the Nationwide Pool have a 0% retrocession. The zero percent participants in the Nationwide Pool as of December 31, 2021 are: Nationwide Property and Casualty Insurance Company (NAIC # 37877), Nationwide Affinity Insurance Company of America (NAIC # 26093), Crestbrook Insurance Company (NAIC # 18961), Allied Insurance Company of America (NAIC # 10127), Nationwide Assurance Company (NAIC #10723), Nationwide Lloyds (NAIC #42110), Nationwide Insurance Company of Florida (NAIC #10948), AMCO Insurance Company (NAIC # 19100), Depositors Insurance Company (NAIC # 42587), Allied Property & Casualty Insurance Company (NAIC #42579), Victoria Fire & Casualty Company (NAIC # 42889), Harleysville Preferred Insurance Company (NAIC #35696), Harleysville Insurance Company of New Jersey (NAIC #42900), Harleysville Worcester Insurance Company (NAIC #26182), Harleysville Insurance Company of New York (NAIC #10674), Harleysville Lake States Insurance Company (NAIC #14516), Harleysville Insurance Company (NAIC #23582), Veterinary Pet Insurance Company (NAIC #42285), Nationwide Indemnity Company (NAIC #10070), and Scottsdale Insurance Company (NAIC #41297).

All lines of business are subject to the pooling agreements.

There are no discrepancies related to the pooled business between the assumed and ceded reinsurance schedules of the pool participants.

Amounts due to/from the lead entity and pool participants as of December 31, 2021:

Name of Insurer	Amounts Receivable	Amounts Payable
Nationwide Mutual Insurance Company (Lead Insurer)	\$ 5,465,544,209	\$ 2,432,677,622
Nationwide Mutual Fire Insurance Company	\$ 1,245,329,280	\$ 387,179,716
Nationwide General Insurance Company	\$ 156,407,568	\$ 525,392,787
Nationwide Property & Casualty Insurance Company	\$ 79,021,740	\$ 423,612,823
Nationwide Assurance Company	\$ 3,269,623	\$ 66,063,342
Nationwide Lloyds	\$ 498,541	\$ 1,093,980
Nationwide Insurance Company of Florida	\$ 1,375,530	\$ 18,591,398
Nationwide Affinity Insurance Company of America	\$ 29,719,494	\$ 105,197,769
Crestbrook Insurance Company	\$ 15,052,608	\$ 147,545,695
Nationwide Insurance Company of America	\$ 138,891,227	\$ 518,656,267
Allied Insurance Company of America	\$ 16,562,494	\$ 113,064,201
AMCO Insurance Company	\$ 30,286,733	\$ 354,778,704
Allied Property & Casualty Insurance Company	\$ 35,556,934	\$ 199,779,190
Depositors Insurance Company	\$ 32,860,618	\$ 204,265,183
Nationwide Agribusiness Insurance Company	\$ 250,167,439	\$ 503,293,478
Victoria Fire & Casualty Company	\$ 388,050	\$ 178
National Casualty Company	\$ 143,211,363	\$ 479,242,416
Scottsdale Insurance Company	\$ 189,470,434	\$ 1,087,476,065
Veterinary Pet Insurance Company	\$ 13,315,546	\$ 85,171,448
Nationwide Indemnity Company	\$ 11,285,387	\$ (184,721)
Harleysville Insurance Company of New York	\$ 2,625,191	\$ 20,943,875
Harleysville Lake States Insurance Company	\$ (1,085,900)	\$ 920,974
Harleysville Insurance Company of New Jersey	\$ 3,848,745	\$ 35,948,676
Harleysville Worcester Insurance Company	\$ 14,644,320	\$ 66,365,984
Harleysville Insurance Company	\$ 13,747,569	\$ 81,815,805
Harleysville Preferred Insurance Company	\$ 6,123,097	\$ 39,224,985

As of December 31, 2021, Colonial County Mutual Insurance Company and Victoria Select Insurance Company remain covered under separate 100% quota share reinsurance agreements with Nationwide Mutual Insurance Company. Nationwide Mutual Insurance Company then cedes 100% of this business to the Nationwide Pool.

NOTES TO THE FINANCIAL STATEMENTS

As of December 31, 2021, Scottsdale Surplus Lines Insurance Company, Scottsdale Indemnity Company and Freedom Specialty Insurance Company remain covered under a separate 100% quota share reinsurance agreement with Scottsdale Insurance Company. Scottsdale Insurance Company then cedes 100% of this business to the Nationwide Pool.

In connection with the above pooling structure change effective January 1, 2020, assets and liabilities were transferred between Nationwide Mutual Insurance Company, Nationwide Agribusiness, Scottsdale Insurance Company, Nationwide Insurance Company of America and the Company. The Company received assets of \$46.4 million and liabilities of \$232.1 million, primarily consisting of loss and loss expense reserves of \$141.9 million and unearned premiums of \$77.2 million.

In addition, the Company paid ceding commissions of \$135.5 million.

Furthermore, the Company paid securities of \$142.5 million and cash of \$29.6 million to settle these transactions.

Note 27 – Structured Settlements

A. Reserves Released due to Purchases of Annuities

The Company has settled certain losses with structured settlement agreements whereby the Company has purchased an annuity with the claimant as the payee. The structured settlement agreements are considered qualified assignments, and therefore the Company is not contingently liable if the annuity issuing company is unable to meet the payment obligations.

Loss Reserves Eliminated by Annuities  
\$811.6 thousand

Unrecorded Loss Contingencies  
\$0

B. Annuity Insurers with Balances due Greater than 1% of Policyholders' Surplus

There were no annuity insurers with balances due greater than 1% of policyholders' surplus in 2021.

Note 28 – Health Care Receivables

Not applicable.

Note 29 – Participating Policies

Not applicable.

Note 30 – Premium Deficiency Reserves

The Company's liability for premium deficiency reserves as of December 31, 2021 is as follows:

1. Liability carried for premium deficiency reserves
- \$0
2. Date of the most recent evaluation of this liability
- January 28, 2022
3. Was anticipated investment income utilized in the calculation?
- Yes

Note 31 – High Deductibles

A. Reserve Credit Recorded on Unpaid Claims and Amount Billed and Recoverable on Paid Claims for High Deductibles

1. Counterparty exposure recorded on unpaid claims and billed recoverables on paid claims:

Annual Statement Line of Business	Gross (of High Deductible) Loss Reserves	Reserve Credit for High Deductibles	Billed Recoverables on Paid Claims	Total High Deductibles and Billed Recoverables
16 - Worker's Comp	\$ 3,625,248	\$ 3,538,049	\$ 818,852	\$ 4,356,901

2. Unsecured amounts of high deductibles:

- a. Total high deductibles and billed recoverables on paid claims
- \$ 4,356,901
- b. Collateral on balance sheet
- \$ -
- c. Collateral off balance sheet
- \$ 4,317,652
- d. Total unsecured deductibles and billed recoverables on paid claims
- \$ 39,250
- e. Percentage unsecured
- 0.9%

3. High deductible recoverable amounts on paid claims:

- a. Amount of overdue nonadmitted (either due to aging or collateral)
- \$ 572,939
- b. Total over 90 days overdue admitted
- \$ -
- c. Total overdue (a+b)
- \$ 572,939

4. The deductible amounts for the highest ten unsecured high deductible policies:

Counterparty Ranking	Top Ten Unsecured High Deductible Amounts
Counterparty 1	\$ 39,250

NOTES TO THE FINANCIAL STATEMENTS

B. Unsecured High Deductible Recoverables for Individual Obligors Part of a Group Under the Same Management or Control Which Are Greater Than 1% of Capital and Surplus. For this purpose, a group of entities under common control shall be regarded as a single customer.

Not applicable.

Note 32 – Discounting of Liabilities for Unpaid Losses or Unpaid Loss Adjustment Expenses

The Company discounts the liabilities for unpaid losses and loss expenses for long-term accident and health claims. The Company does not discount IBNR for accident and health claims. Third party administrators service the Company's long-term accident and health unpaid disability claims and supply the reserves and tabular discount; thus, different methodologies have been utilized.

A. Tabular Discounts

Reserves for long-term accident and health claims have been discounted on a tabular basis using the 1987 Commissioner's Group Disability Table (CGDT). The rate used was the maximum interest rate permitted by law in the valuation of a single premium immediate annuity issued on the same date as the claim incurral date, reduced by one hundred basis points (rates used vary from 2.25% to 7.75%). As of December 31, 2021 and 2020, liabilities include \$4,311 and \$5,881 of such discounted reserves, respectively. During 2021, the Company recognized \$531 of interest accretion related to tabular discount, which is included within the Statement of Income on Line 2.

The table below represents the amount of tabular discount for case and IBNR reserves as of December 31, 2021:

Schedule P Lines of Business		Tabular Discount Included in Schedule P, Part 1*	
		1 Case	2 IBNR
1.	Homeowners/Farmowners	\$ -	\$ -
2.	Private Passenger Auto Liability/Medical	-	-
3.	Commercial Auto/Truck Liability/Medical	-	-
4.	Workers' Compensation	-	-
5.	Commercial Multiple Peril	-	-
6.	Medical Professional Liability - occurrence	-	-
7.	Medical Professional Liability - claims-made	-	-
8.	Special Liability	-	-
9.	Other Liability - occurrence	-	-
10.	Other Liability - claims-made	-	-
11.	Special Property	-	-
12.	Auto Physical Damage	-	-
13.	Fidelity, Surety	-	-
14.	Other (including Credit, Accident & Health)	351	-
15.	International	-	-
16.	Reinsurance Nonproportional Assumed Property	-	-
17.	Reinsurance Nonproportional Assumed Liability	-	-
18.	Reinsurance Nonproportional Assumed Financial Lines	-	-
19.	Products Liability - occurrence	-	-
20.	Products Liability - claims-made	-	-
21.	Financial Guaranty/Mortgage Guaranty	-	-
22.	Warranty	-	-
23.	Total	\$ 351	\$ -

\* Must exclude medical loss reserves and all loss adjustment expense reserves.

B. Non-Tabular Discounts

The Company does not have any non-tabular discount.

C. Changes in Discount Assumptions

None

NOTES TO THE FINANCIAL STATEMENTS

Note 33 – Asbestos/Environmental Reserves

A. The Company has exposure to asbestos and environmental claims through either the direct issuance of general liability policies or through reinsurance assumptions. The Company estimates the full impact of its asbestos and environmental exposure by establishing case reserves when sufficient information has been developed to indicate the involvement of a specific insurance policy. In addition, incurred but not reported reserves have been established to cover additional exposures on both known and unasserted claims, primarily utilizing historical information.

The Company’s asbestos and environmental related losses for calendar years 2017-2020 have been restated to reflect the pooling changes that were effective January 1, 2021. See Note 26 for details.

(1) Asbestos Claims - Direct	2017	2018	2019	2020	2021
Beginning Reserves:	\$ 549,456	\$ 486,492	\$ 418,748	\$ 408,712	\$ 365,585
Incurred Loss and Loss Adj. Expense:	\$ 13,418	\$ -	\$ 40,000	\$ -	\$ (30,000)
Calendar Year Payments:	\$ 76,382	\$ 67,744	\$ 50,036	\$ 43,127	\$ 50,260
Ending Reserve:	\$ 486,492	\$ 418,748	\$ 408,712	\$ 365,585	\$ 285,324
(2) Asbestos Claims - Assumed	2017	2018	2019	2020	2021
Beginning Reserves:	\$ 14,269,044	\$ 13,411,689	\$ 12,538,919	\$ 11,637,931	\$ 10,897,969
Incurred Loss and Loss Adj. Expense:	\$ 243,000	\$ 529,000	\$ 333,000	\$ 125,555	\$ 418,306
Calendar Year Payments:	\$ 1,100,355	\$ 1,401,770	\$ 1,233,989	\$ 865,516	\$ 1,019,203
Ending Reserve:	\$ 13,411,689	\$ 12,538,919	\$ 11,637,931	\$ 10,897,969	\$ 10,297,072
(3) Asbestos Claims - Net	2017	2018	2019	2020	2021
Beginning Reserves:	\$ 14,414,762	\$ 13,412,787	\$ 12,538,920	\$ 11,637,931	\$ 10,897,970
Incurred Loss and Loss Adj. Expense:	\$ 209,662	\$ 529,000	\$ 333,000	\$ 125,555	\$ 418,306
Calendar Year Payments:	\$ 1,211,637	\$ 1,402,867	\$ 1,233,989	\$ 865,516	\$ 1,019,203
Ending Reserve:	\$ 13,412,787	\$ 12,538,920	\$ 11,637,931	\$ 10,897,970	\$ 10,297,072
B. Bulk and IBNR Losses and LAE					
(1) Direct				\$ 312,488	\$ 241,886
(2) Assumed				\$ 8,418,005	\$ 7,770,506
(3) Net of Ceded Reinsurance				\$ 8,418,005	\$ 7,770,506
C. Case, Bulk and IBNR LAE					
(1) Direct				\$ 190,771	\$ 151,225
(2) Assumed				\$ 4,504,267	\$ 4,283,929
(3) Net of Ceded Reinsurance				\$ 4,504,267	\$ 4,283,929
D. See A above					
(1) Environmental Claims - Direct	2017	2018	2019	2020	2021
Beginning Reserves:	\$ 210,503	\$ 146,6219	\$ 66,324	\$ 69,465	\$ 64,552
Incurred Loss & Loss Adj. Expense:	\$ (18,277)	\$ (61,570)	\$ 4,822	\$ 516	\$ (17,195)
Calendar Year Payments:	\$ 45,607	\$ 18,725	\$ 1,681	\$ 5,429	\$ 6,407
Ending Reserve:	\$ 146,619	\$ 66,324	\$ 69,465	\$ 64,552	\$ 40,950
(2) Environmental Claims - Assumed	2017	2018	2019	2020	2021
Beginning Reserves:	\$ 1,912,671	\$ 1,844,683	\$ 1,781,331	\$ 1,756,418	\$ 1,786,390
Incurred Loss & Loss Adj. Expense:	\$ 316,000	\$ 159,000	\$ 188,000	\$ 153,000	\$ 104,689
Calendar Year Payments:	\$ 383,988	\$ 222,352	\$ 212,913	\$ 123,028	\$ 255,625
Ending Reserve:	\$ 1,844,683	\$ 1,781,331	\$ 1,756,418	\$ 1,786,390	\$ 1,635,454
(3) Environmental Claims - Net	2017	2018	2019	2020	2021
Beginning Reserves:	\$ 2,100,558	\$ 1,971,785	\$ 1,831,064	\$ 1,810,777	\$ 1,836,227
Incurred Loss and Loss Adj. Expense:	\$ 297,723	\$ 97,490	\$ 192,762	\$ 153,516	\$ 87,494
Calendar Year Payments:	\$ 426,496	\$ 238,211	\$ 213,049	\$ 128,066	\$ 258,221
Ending Reserve:	\$ 1,971,785	\$ 1,831,064	\$ 1,810,777	\$ 1,836,227	\$ 1,665,500
E. Bulk and IBNR Losses and LAE					
(1) Direct				\$ 49,742	\$ 35,412
(2) Assumed				\$ 1,308,251	\$ 1,178,503
(3) Net of Ceded Reinsurance				\$ 1,349,450	\$ 1,204,439
F. Case, Bulk and IBNR LAE					
(1) Direct				\$ 20,029	\$ 11,094
(2) Assumed				\$ 546,806	\$ 488,217
(3) Net of Ceded Reinsurance				\$ 560,932	\$ 493,497

NOTES TO THE FINANCIAL STATEMENTS

Note 34 – Subscriber Savings Accounts

Not applicable.

Note 35 – Multiple Peril Crop Insurance

Not applicable.

Note 36 – Financial Guaranty Insurance

Not applicable.

GENERAL INTERROGATORIES

PART 1 - COMMON INTERROGATORIES

GENERAL

- 1.1

Is the reporting entity a member of an Insurance Holding Company System consisting of two or more affiliated persons, one or more of which is an insurer?  
If yes, complete Schedule Y, Parts 1, 1A, 2 and 3.

Yes ☒ No ☐
- 1.2

If yes, did the reporting entity register and file with its domiciliary State Insurance Commissioner, Director or Superintendent or with such regulatory official of the state of domicile of the principal insurer in the Holding Company System, a registration statement providing disclosure substantially similar to the standards adopted by the National Association of Insurance Commissioners (NAIC) in its Model Insurance Holding Company System Regulatory Act and model regulations pertaining thereto, or is the reporting entity subject to standards and disclosure requirements substantially similar to those required by such Act and regulations?

Yes ☒ No ☐ N/A ☐
- 1.3

State regulating? OH
- 1.4

Is the reporting entity publicly traded or a member of publicly traded group?

Yes ☐ No ☒
- 1.5

If the response to 1.4 is yes, provide the CIK (Central Index Key) code issued by the SEC for the entity/group.
- 2.1

Has any change been made during the year of this statement in the charter, by-laws, articles of incorporation, or deed of settlement of the reporting entity?

Yes ☐ No ☒
- 2.2

If yes, date of change:
- 3.1

State as of what date the latest financial examination of the reporting entity was made or is being made.

12/31/2021
- 3.2

State the as of date that the latest financial examination report became available from either the state of domicile or the reporting entity. This date should be the date of the examined balance sheet and not the date the report was completed or released.

12/31/2016
- 3.3

State as of what date the latest financial examination report became available to other states or the public from either the state of domicile or the reporting entity. This is the release date or completion date of the examination report and not the date of the examination (balance sheet date).

05/24/2018
- 3.4

By what department or departments?  
OH
- 3.5

Have all financial statement adjustments within the latest financial examination report been accounted for in a subsequent financial statement filed with departments?

Yes ☐ No ☐ N/A ☒
- 3.6

Have all of the recommendations within the latest financial examination report been complied with?

Yes ☐ No ☐ N/A ☒
- 4.1

During the period covered by this statement, did any agent, broker, sales representative, non-affiliated sales/service organization or any combination thereof under common control (other than salaried employees of the reporting entity) receive credit or commissions for or control a substantial part (more than 20 percent of any major line of business measured on direct premiums) of:
- 4.11

sales of new business?

Yes ☐ No ☒
- 4.12

renewals?

Yes ☐ No ☒
- 4.2

During the period covered by this statement, did any sales/service organization owned in whole or in part by the reporting entity or an affiliate, receive credit or commissions for or control a substantial part (more than 20 percent of any major line of business measured on direct premiums) of:
- 4.21

sales of new business?

Yes ☐ No ☒
- 4.22

renewals?

Yes ☐ No ☒
- 5.1

Has the reporting entity been a party to a merger or consolidation during the period covered by this statement?  
If the answer is YES, complete and file the merger history data file with the NAIC.

Yes ☒ No ☐
- 5.2

If yes, provide the name of entity, NAIC company code, and state of domicile (use two letter state abbreviation) for any entity that has ceased to exist as a result of the merger or consolidation.

1	2 NAIC Company Code	3 State of Domicile
Name of Entity		
Victoria National Insurance Company	10778	OH

- 6.1

Has the reporting entity had any Certificates of Authority, licenses or registrations (including corporate registration, if applicable) suspended or revoked by any governmental entity during the reporting period?

Yes ☐ No ☒
- 6.2

If yes, give full information:

- 7.1

Does any foreign (non-United States) person or entity directly or indirectly control 10% or more of the reporting entity?

Yes ☐ No ☒
- 7.2

If yes,
- 7.21

State the percentage of foreign control

%
- 7.22

State the nationality(s) of the foreign person(s) or entity(s); or if the entity is a mutual or reciprocal, the nationality of its manager or attorney-in-fact and identify the type of entity(s) (e.g., individual, corporation, government, manager or attorney-in-fact).

1 Nationality	2 Type of Entity

- 8.1

Is the company a subsidiary of a depository institution holding company (DIHC) or a DIHC itself, regulated by the Federal Reserve Board?

Yes ☐ No ☒
- 8.2

If response to 8.1 is yes, please identify the name of the DIHC.

- 8.3

Is the company affiliated with one or more banks, thrifts or securities firms?

Yes ☒ No ☐

- 8.4

If the response to 8.3 is yes, please provide below the names and locations (city and state of the main office) of any affiliates regulated by a federal financial regulatory services agency [i.e. the Federal Reserve Board (FRB), the Office of the Comptroller of the Currency (OCC), the Federal Deposit Insurance Corporation (FDIC) and the Securities Exchange Commission (SEC)] and identify the affiliate's primary federal regulator.

1 Affiliate Name	2 Location (City, State)	3 FRB	4 OCC	5 FDIC	6 SEC
Nationwide Trust Company, FSB	Columbus, OH	No	Yes	No	No
Nationwide Investment Services Corp.	Columbus, OH	No	No	No	Yes
Nationwide Investment Advisors, LLC	Columbus, OH	No	No	No	Yes
Nationwide Securities, LLC	Columbus, OH	No	No	No	Yes
Nationwide Fund Advisors	Columbus, OH	No	No	No	Yes
Nationwide Fund Distributors, LLC	Columbus, OH	No	No	No	Yes
Nationwide Asset Management, LLC	Columbus, OH	No	No	No	Yes
Jefferson National Securities Corporation	Louisville, KY	No	No	No	Yes

GENERAL INTERROGATORIES

PART 1 - COMMON INTERROGATORIES

8.5

Is the reporting entity a depository institution holding company with significant insurance operations as defined by the Board of Governors of Federal Reserve System or a subsidiary of the reporting entity?

Yes ☐ No ☒

8.6

If response to 8.5 is no, is the reporting entity a company or subsidiary of a company that has otherwise been made subject to the Federal Reserve Board's capital rule?

Yes ☐ No ☐ N/A ☐

9.

What is the name and address of the independent certified public accountant or accounting firm retained to conduct the annual audit?  
KPMG LLP, 191 W NATIONWIDE BLVD., SUITE 500, COLUMBUS, OH 43215

10.1

Has the insurer been granted any exemptions to the prohibited non-audit services provided by the certified independent public accountant requirements as allowed in Section 7H of the Annual Financial Reporting Model Regulation (Model Audit Rule), or substantially similar state law or regulation?

Yes ☐ No ☐

10.2

If the response to 10.1 is yes, provide information related to this exemption:

10.3

Has the insurer been granted any exemptions related to other requirements of the Annual Financial Reporting Model Regulation as allowed for in Section 18A of the Model Regulation, or substantially similar state law or regulation?

Yes ☐ No ☐

10.4

If the response to 10.3 is yes, provide information related to this exemption:

10.5

Has the reporting entity established an Audit Committee in compliance with the domiciliary state insurance laws?

Yes ☒ No ☐ N/A ☐

10.6

If the response to 10.5 is no or n/a, please explain:

11.

What is the name, address and affiliation (officer/employee of the reporting entity or actuary/consultant associated with an actuarial consulting firm) of the individual providing the statement of actuarial opinion/certification?  
Richard D. Olsen, FCAS, MAAA, Nationwide Insurance, One Nationwide Blvd., Columbus, OH 43215

12.1

Does the reporting entity own any securities of a real estate holding company or otherwise hold real estate indirectly?

Yes ☒ No ☐

12.11

Name of real estate holding company

EC Riverwalk 3 LLC, Model Tobacco Development Group LLC

12.12

Number of parcels involved

2

12.13

Total book/adjusted carrying value

\$ 402,623

12.2

If yes, provide explanation  
The Company holds real estate indirectly through tax credit vehicles.

FOR UNITED STATES BRANCHES OF ALIEN REPORTING ENTITIES ONLY:

13.1

What changes have been made during the year in the United States manager or the United States trustees of the reporting entity?

13.2

Does this statement contain all business transacted for the reporting entity through its United States Branch on risks wherever located?

Yes ☐ No ☐

13.3

Have there been any changes made to any of the trust indentures during the year?

Yes ☐ No ☐

13.4

If answer to (13.3) is yes, has the domiciliary or entry state approved the changes?

Yes ☐ No ☐ N/A ☐

14.1

Are the senior officers (principal executive officer, principal financial officer, principal accounting officer or controller, or persons performing similar functions) of the reporting entity subject to a code of ethics, which includes the following standards?

Yes ☒ No ☐

(a)

Honest and ethical conduct, including the ethical handling of actual or apparent conflicts of interest between personal and professional relationships;

(b)

Full, fair, accurate, timely and understandable disclosure in the periodic reports required to be filed by the reporting entity;

(c)

Compliance with applicable governmental laws, rules and regulations;

(d)

The prompt internal reporting of violations to an appropriate person or persons identified in the code; and

(e)

Accountability for adherence to the code.

14.11

If the response to 14.1 is no, please explain:  
NA

14.2

Has the code of ethics for senior managers been amended?

Yes ☐ No ☐

14.21

If the response to 14.2 is yes, provide information related to amendment(s).  
NA

14.3

Have any provisions of the code of ethics been waived for any of the specified officers?

Yes ☐ No ☐

14.31

If the response to 14.3 is yes, provide the nature of any waiver(s).  
NA

15.1

Is the reporting entity the beneficiary of a Letter of Credit that is unrelated to reinsurance where the issuing or confirming bank is not on the SVO Bank List?

Yes ☒ No ☐

15.2

If the response to 15.1 is yes, indicate the American Bankers Association (ABA) Routing Number and the name of the issuing or confirming bank of the Letter of Credit and describe the circumstances in which the Letter of Credit is triggered.

1 American Bankers Association (ABA) Routing Number	2 Issuing or Confirming Bank Name	3 Circumstances That Can Trigger the Letter of Credit	4 Amount
056009123	Freedom Bank	LOC can be used to collect payment for any amount owed to the company	\$ 450,000

BOARD OF DIRECTORS

16.

Is the purchase or sale of all investments of the reporting entity passed upon either by the Board of Directors or a subordinator committee thereof?

Yes ☒ No ☐

17.

Does the reporting entity keep a complete permanent record of the proceedings of its Board of Directors and all subordinate committees thereof?

Yes ☒ No ☐

18.

Has the reporting entity an established procedure for disclosure to its Board of Directors or trustees of any material interest or affiliation on the part of any of its officers, directors, trustees or responsible employees that is in conflict or is likely to conflict with the official duties of such person?

Yes ☒ No ☐

FINANCIAL

19.

Has this statement been prepared using a basis of accounting other than Statutory Accounting Principles (e.g., Generally Accepted Accounting Principles)?

Yes ☐ No ☒

20.1

Total amount loaned during the year (inclusive of Separate Accounts, exclusive of policy loans):

20.11

To directors or other officers

\$ 0

20.12

To stockholders not officers

\$ 0

20.13

Trustees, supreme or grand (Fraternal only)

\$ 0

20.2

Total amount of loans outstanding at the end of year (inclusive of Separate Accounts, exclusive of policy loans):

20.21

To directors or other officers

\$ 0

20.22

To stockholders not officers

0

20.23

Trustees, supreme or grand (Fraternal only)

0

21.1

Were any assets reported in this statement subject to a contractual obligation to transfer to another party without the liability for such obligation being reporting in the statement?

Yes ☐ No ☒

GENERAL INTERROGATORIES

PART 1 - COMMON INTERROGATORIES

21.2

If yes, state the amount thereof at December 31 of the current year:

21.21

Rented from others

\$

0

21.22

Borrowed from others

\$

0

21.23

Leased from others

\$

0

21.24

Other

\$

0

22.1

Does this statement include payments for assessments as described in the *Annual Statement Instructions* other than guaranty fund or guaranty association assessments?

Yes

[ ]

No

[ X ]

22.2

If answer is yes:

22.21

Amount paid as losses or risk adjustment

\$

0

22.22

Amount paid as expenses

\$

0

22.23

Other amounts paid

\$

0

23.1

Does the reporting entity report any amounts due from parent, subsidiaries or affiliates on Page 2 of this statement?

Yes

[ X ]

No

[ ]

23.2

If yes, indicate any amounts receivable from parent included in the Page 2 amount:

\$

0

24.1

Does the insurer utilize third parties to pay agent commissions in which the amounts advanced by the third parties are not settled in full within 90 days?

Yes

[ ]

No

[ X ]

24.2

If the response to 24.1 is yes, identify the third-party that pays the agents and whether they are a related party.

Name of Third-Party	Is the Third-Party Agent a Related Party (Yes/No)

INVESTMENT

25.01

Were all the stocks, bonds and other securities owned December 31 of current year, over which the reporting entity has exclusive control, in the actual possession of the reporting entity on said date (other than securities lending programs addressed in 25.03)?

Yes

[ X ]

No

[ ]

25.02

If no, give full and complete information, relating thereto:

25.03

For securities lending programs, provide a description of the program including value for collateral and amount of loaned securities, and whether collateral is carried on or off-balance sheet (an alternative is to reference Note 17 where this information is also provided).

25.04

For the reporting entity's securities lending program, report amount of collateral for conforming programs as outlined in the Risk-Based Capital Instructions.

\$

0

25.05

For the reporting entity's securities lending program, report amount of collateral for other programs.

\$

0

25.06

Does your securities lending program require 102% (domestic securities) and 105% (foreign securities) from the counterparty at the outset of the contract?

Yes

[ ]

No

[ ]

N/A

[ X ]

25.07

Does the reporting entity non-admit when the collateral received from the counterparty falls below 100%?

Yes

[ ]

No

[ ]

N/A

[ X ]

25.08

Does the reporting entity or the reporting entity's securities lending agent utilize the Master Securities Lending Agreement (MSLA) to conduct securities lending?

Yes

[ ]

No

[ ]

N/A

[ X ]

25.09

For the reporting entity's securities lending program, state the amount of the following as of December 31 of the current year:

25.091

Total fair value of reinvested collateral assets reported on Schedule DL, Parts 1 and 2:

\$

0

25.092

Total book adjusted/carrying value of reinvested collateral assets reported on Schedule DL, Parts 1 and 2:

\$

0

25.093

Total payable for securities lending reported on the liability page:

\$

0

26.1

Were any of the stocks, bonds or other assets of the reporting entity owned at December 31 of the current year not exclusively under the control of the reporting entity or has the reporting entity sold or transferred any assets subject to a put option contract that is current in force? (Exclude securities subject to Interrogatory 21.1 and 25.03.)

Yes

[ X ]

No

[ ]

26.2

If yes, state the amount thereof at December 31 of the current year:

26.21

Subject to repurchase agreements

\$

0

26.22

Subject to reverse repurchase agreements

\$

0

26.23

Subject to dollar repurchase agreements

\$

0

26.24

Subject to reverse dollar repurchase agreements

\$

0

26.25

Placed under option agreements

\$

0

26.26

Letter stock or securities restricted as sale – excluding FHLB Capital Stock

\$

0

26.27

FHLB Capital Stock

\$

0

26.28

On deposit with states

\$

4,889,117

26.29

On deposit with other regulatory bodies

\$

518,840

26.30

Pledged as collateral – excluding collateral pledged to an FHLB

\$

0

26.31

Pledged as collateral to FHLB – including assets backing funding agreements

\$

0

26.32

Other

\$

0

26.3

For category (26.26) provide the following:

1 Nature of Restriction	2 Description	3 Amount
		\$

27.1

Does the reporting entity have any hedging transactions reported on Schedule DB?

Yes

[ ]

No

[ X ]

27.2

If yes, has a comprehensive description of the hedging program been made available to the domiciliary state?  
If no, attach a description with this statement.

Yes

[ ]

No

[ ]

N/A

[ X ]

Lines 27.3 through 27.5: FOR LIFE/FRATERNAL REPORTING ENTITIES ONLY:

27.3

Does the reporting entity utilize derivatives to hedge variable annuity guarantees subject to fluctuations as a results of interest rate sensitivity?

Yes

[ ]

No

[ ]

27.4

If the response to 27.3 is yes, does the reporting entity utilize:

27.41

Special accounting provision of SSAP No. 108

Yes

[ ]

No

[ ]

27.42

Permitted accounting practice

Yes

[ ]

No

[ ]

27.43

Other accounting guidance

Yes

[ ]

No

[ ]

27.5

By responding yes to 27.41 regarding utilizing the special accounting provisions of SSAP No. 108, the reporting entity attests to the following:

Yes

[ ]

No

[ ]

15.2







GENERAL INTERROGATORIES

PART 2 – PROPERTY & CASUALTY INTERROGATORIES

1.1

Does the reporting entity have any direct Medicare Supplement Insurance in force?

Yes ☒

No ☐

1.2

If yes, indicate premium earned on U.S. business only.

\$

5,730

1.3

What portion of Item (1.2) is not reported on the Medicare Supplement Insurance Experience Exhibit?

\$

0

1.31

Reason for excluding:

1.4

Indicate amount of earned premium attributable to Canadian and/or Other Alien not included in Item (1.2) above.

\$

0

1.5

Indicate total incurred claims on all Medicare Supplement insurance.

\$

5,195

1.6

Individual policies:

Most current three years:

1.61

Total premium earned

\$

0

1.62

Total incurred claims

\$

0

1.63

Number of covered lives

0

All years prior to most current three years:

1.64

Total premium earned

\$

5,730

1.65

Total incurred claims

\$

5,195

1.66

Number of covered lives

4

1.7

Group policies:

Most current three years:

1.71

Total premium earned

\$

0

1.72

Total incurred claims

\$

0

1.73

Number of covered lives

0

All years prior to most current three years:

1.74

Total premium earned

\$

0

1.75

Total incurred claims

\$

0

1.76

Number of covered lives

0

2.

Health Test:

1

Current Year

2

Prior Year

2.1

Premium Numerator

\$

0

\$

0

2.2

Premium Denominator

\$

183,062,464

\$

176,794,178

2.3

Premium Ratio (2.1/2.2)

0.0%

0.0%

2.4

Reserve Numerator

\$

55,373

\$

17,170

2.5

Reserve Denominator

\$

259,348,718

\$

237,636,696

2.6

Reserve Ratio (2.4/2.5)

0.0%

0.0%

3.1

Did the reporting entity issue participating policies during the calendar year?

Yes ☒

No ☐

3.2

If yes, provide the amount of premium written for participating and/or non-participating policies during the calendar year:

3.21

Participating policies

\$

5,148,644

3.22

Non-participating policies

\$

1,542,494,924

4.

FOR MUTUAL REPORTING ENTITIES AND RECIPROCAL EXCHANGES ONLY:

4.1

Does the reporting entity issue assessable policies?

Yes ☐

No ☒

4.2

Does the reporting entity issue non-assessable policies?

Yes ☐

No ☒

4.3

If assessable policies are issued, what is the extent of the contingent liability of the policyholders?

%

4.4

Total amount of assessments paid or ordered to be paid during the year on deposit notes or contingent premiums.

\$

0

5.

FOR RECIPROCAL EXCHANGES ONLY:

5.1

Does the exchange appoint local agents?

Yes ☐

No ☐

5.2

If yes, is the commission paid:

5.21

Out of Attorney's-in-fact compensation

Yes ☐

No ☐

N/A ☐

5.22

As a direct expense of the exchange

Yes ☐

No ☐

N/A ☐

5.3

What expenses of the exchange are not paid out of the compensation of the Attorney-in-fact?

5.4

Has any Attorney-in-fact compensation, contingent on fulfillment of certain conditions, been deferred?

Yes ☐

No ☐

5.5

If yes, give full information:

6.1

What provision has this reporting entity made to protect itself from an excessive loss in the event of a catastrophe under a workers' compensation contract issued without limit of loss?  
The company's net exposure arises from its participation in the Nationwide Mutual Insurance Company Pool or as a stand-alone entity. Exposure to a Workers' Compensation catastrophe is protected by a Liability Excess of Loss (Clash) treaty providing \$90M limit excess of \$10M per occurrence retention and containing a \$10M or \$15M per claimant limit depending on the reinsured layer.

6.2

Describe the method used to estimate this reporting entity's probable maximum insurance loss, and identify the type of insured exposures comprising that probable maximum loss, the locations of concentrations of those exposures and the external resources (such as consulting firms or computer software models), if any, used in the estimation process:  
The company's net exposure arises from its participation in the Nationwide Mutual Insurance Company Pool or as stand-alone entity. Catastrophic risk to the Pool arises primarily from windstorm events in the eastern United States affecting personal and commercial lines. The company's property exposures are aggregated with the other Nationwide companies and modeled using Applied Insurance Research (AIR) software.

6.3

What provision has this reporting entity made (such as catastrophic reinsurance program) to protect itself from an excessive loss arising from the types and concentrations of insured exposures comprising its probable maximum property insurance loss?  
The company's net property-catastrophe exposures, if any, are mitigated through managed coastal growth, purchase of excess of loss reinsurance, policy provisions such as higher deductibles, and enforcement of underwriting guidelines related to building construction, etc.

6.4

Does the reporting entity carry catastrophe reinsurance protection for at least one reinstatement, in an amount sufficient to cover its estimated probable maximum loss attributable to a single loss event or occurrence?

Yes ☒

No ☐

6.5

If no, describe any arrangements or mechanisms employed by the reporting entity to supplement its catastrophe reinsurance program or to hedge its exposure to unreinsured catastrophic loss:

16

GENERAL INTERROGATORIES

PART 2 – PROPERTY & CASUALTY INTERROGATORIES

	N/A		
7.1	Has the reporting entity reinsured any risk with any other entity under a quota share reinsurance contract that includes a provision that would limit the reinsurer’s losses below the stated quota share percentage (e.g., a deductible, a loss ratio corridor, a loss cap, an aggregate limit or any similar provisions)?	Yes [ <input type="checkbox"/> ]	No [ <input checked="" type="checkbox"/> X ]
7.2	If yes, indicate the number of reinsurance contracts containing such provisions.	N/A	
7.3	If yes, does the amount of reinsurance credit taken reflect the reduction in quota share coverage caused by any applicable limiting provision(s)?	Yes [ <input type="checkbox"/> ]	No [ <input type="checkbox"/> ]
8.1	Has this reporting entity reinsured any risk with any other entity and agreed to release such entity from liability, in whole or in part, from any loss that may occur on this risk, or portion thereof, reinsured?	Yes [ <input type="checkbox"/> ]	No [ <input checked="" type="checkbox"/> X ]
8.2	If yes, give full information		
	N/A		
9.1	Has the reporting entity ceded any risk under any reinsurance contract (or under multiple contracts with the same reinsurer or its affiliates) for which during the period covered by the statement: (i) it recorded a positive or negative underwriting result greater than 5% of prior year-end surplus as regards policyholders or it reported calendar year written premium ceded or year-end loss and loss expense reserves ceded greater than 5% of prior year-end surplus as regards policyholders; (ii) it accounted for that contract as reinsurance and not as a deposit; and (iii) the contract(s) contain one or more of the following features or other features that would have similar results:		
	(a) A contract term longer than two years and the contract is noncancellable by the reporting entity during the contract term;		
	(b) A limited or conditional cancellation provision under which cancellation triggers an obligation by the reporting entity, or an affiliate of the reporting entity, to enter into a new reinsurance contract with the reinsurer, or an affiliate of the reinsurer;		
	(c) Aggregate stop loss reinsurance coverage;		
	(d) A unilateral right by either party (or both parties) to commute the reinsurance contract, whether conditional or not, except for such provisions which are only triggered by a decline in the credit status of the other party;		
	(e) A provision permitting reporting of losses, or payment of losses, less frequently than on a quarterly basis (unless there is no activity during the period); or		
	(f) Payment schedule, accumulating retentions from multiple years or any features inherently designed to delay timing of the reimbursement to the ceding entity?	Yes [ <input type="checkbox"/> ]	No [ <input checked="" type="checkbox"/> X ]
9.2	Has the reporting entity during the period covered by the statement ceded any risk under any reinsurance contract (or under multiple contracts with the same reinsurer or its affiliates), for which, during the period covered by the statement, it recorded a positive or negative underwriting result greater than 5% of prior year-end surplus as regards policyholders or it reported calendar year written premium ceded or year-end loss and loss expense reserves ceded greater than 5% of prior year-end surplus as regards policyholders; excluding cessions to approved pooling arrangements or to captive insurance companies that are directly or indirectly controlling, controlled by, or under common control with (i) one or more unaffiliated policyholders of the reporting entity, or (ii) an association of which one or more unaffiliated policyholders of the reporting entity is a member where:		
	(a) The written premium ceded to the reinsurer by the reporting entity or its affiliates represents fifty percent (50%) or more of the entire direct and assumed premium written by the reinsurer based on its most recently available financial statement; or		
	(b) Twenty-five percent (25%) or more of the written premium ceded to the reinsurer has been retroceded back to the reporting entity or its affiliates in a separate reinsurance contract.	Yes [ <input type="checkbox"/> ]	No [ <input checked="" type="checkbox"/> X ]
9.3	If yes to 9.1 or 9.2, please provide the following information in the Reinsurance Summary Supplemental Filing for General Interrogatory 9:		
	(a) The aggregate financial statement impact gross of all such ceded reinsurance contracts on the balance sheet and statement of income;		
	(b) A summary of the reinsurance contract terms and indicate whether it applies to the contracts meeting the criteria in 9.1 or 9.2; and		
	(c) A brief discussion of management’s principle objectives in entering into the reinsurance contract including the economic purpose to be achieved.		
9.4	Except for transactions meeting the requirements of paragraph 36 of SSAP No. 62R, <i>Property and Casualty Reinsurance</i> , has the reporting entity ceded any risk under any reinsurance contract (or multiple contracts with the same reinsurer or its affiliates) during the period covered by the financial statement, and either:		
	(a) Accounted for that contract as reinsurance (either prospective or retroactive) under statutory accounting principles (“SAP”) and as a deposit under generally accepted accounting principles (“GAAP”); or		
	(b) Accounted for that contract as reinsurance under GAAP and as a deposit under SAP?	Yes [ <input type="checkbox"/> ]	No [ <input checked="" type="checkbox"/> X ]
9.5	If yes to 9.4, explain in the Reinsurance Summary Supplemental Filing for General Interrogatory 9 (Section D) why the contract(s) is treated differently for GAAP and SAP.		
9.6	The reporting entity is exempt from the Reinsurance Attestation Supplement under one or more of the following criteria:		
	(a) The entity does not utilize reinsurance; or,	Yes [ <input type="checkbox"/> ]	No [ <input checked="" type="checkbox"/> X ]
	(b) The entity only engages in a 100% quota share contract with an affiliate and the affiliated or lead company has filed an attestation supplement; or	Yes [ <input type="checkbox"/> ]	No [ <input checked="" type="checkbox"/> X ]
	(c) The entity has no external cessions and only participates in an intercompany pool and the affiliated or lead company has filed an attestation supplement.	Yes [ <input type="checkbox"/> ]	No [ <input checked="" type="checkbox"/> X ]
10.	If the reporting entity has assumed risks from another entity, there should be charged on account of such reinsurances a reserve equal to that which the original entity would have been required to charge had it retained the risks. Has this been done?	Yes [ <input checked="" type="checkbox"/> X ]	No [ <input type="checkbox"/> ] N/A [ <input type="checkbox"/> ]
11.1	Has the reporting entity guaranteed policies issued by any other entity and now in force?	Yes [ <input type="checkbox"/> ]	No [ <input checked="" type="checkbox"/> X ]
11.2	If yes, give full information		
12.1	If the reporting entity recorded accrued retrospective premiums on insurance contracts on Line 15.3 of the assets schedule, Page 2, state the amount of corresponding liabilities recorded for:		
	12.11 Unpaid losses	\$	0
	12.12 Unpaid underwriting expenses (including loss adjustment expenses)	\$	0
12.2	Of the amount on Line 15.3, Page 2, state the amount that is secured by letters of credit, collateral and other funds?	\$	0
12.3	If the reporting entity underwrites commercial insurance risks, such as workers’ compensation, are premium notes or promissory notes accepted from its insureds covering unpaid premiums and/or unpaid losses?	Yes [ <input type="checkbox"/> ]	No [ <input checked="" type="checkbox"/> X ] N/A [ <input type="checkbox"/> ]
12.4	If yes, provide the range of interest rates charged under such notes during the period covered by this statement:		
	12.41 From		%
	12.42 To		%
12.5	Are letters of credit or collateral and other funds received from insureds being utilized by the reporting entity to secure premium notes or promissory notes taken by a reporting entity, or to secure any of the reporting entity’s reported direct unpaid loss reserves, including unpaid losses under loss deductible features of commercial policies?	Yes [ <input checked="" type="checkbox"/> X ]	No [ <input type="checkbox"/> ]
12.6	If yes, state the amount thereof at December 31 of current year:		
	12.61 Letters of Credit	\$	7,616,533
	12.62 Collateral and other funds	\$	0
13.1	Largest net aggregate amount insured in any one risk (excluding workers’ compensation):	\$	257,969

GENERAL INTERROGATORIES

PART 2 – PROPERTY & CASUALTY INTERROGATORIES

13.2

Does any reinsurance contract considered in the calculation of this amount include an aggregate limit of recovery without also including a reinstatement provision?

Yes [ ☐ ] No [ ☒ X ]

13.3

State the number of reinsurance contracts (excluding individual facultative risk certificates, but including facultative programs, automatic facilities or facultative obligatory contracts) considered in the calculation of the amount.

3

14.1

Is the reporting entity a cedant in a multiple cedant reinsurance contract?

Yes [ ☒ X ] No [ ☐ ]

14.2

If yes, please describe the method of allocating and recording reinsurance among the cedants:  
Companies that are not part of the Nationwide Mutual Insurance Company Pooling and Quota Share Arrangements receive a fair and equitable allocation of ceded premium and loss. The terms of the Nationwide Pooling and Quota Share Agreements govern the allocation and recording of ceded premium and loss for the participating companies.

14.3

If the answer to 14.1 is yes, are the methods described in item 14.2 entirely contained in the respective multiple cedant reinsurance contracts?

Yes [ ☐ ] No [ ☒ X ]

14.4

If the answer to 14.3 is no, are all the methods described in 14.2 entirely contained in written agreements?

Yes [ ☐ ] No [ ☒ X ]

14.5

If the answer to 14.4 is no, please explain:  
Written agreements are in place for all multi-cedent reinsurance treaties that cover any company that does not participate in the Nationwide Mutual Insurance Company Pooling and Quota Share Arrangements.

15.1

Has the reporting entity guaranteed any financed premium accounts?

Yes [ ☐ ] No [ ☒ X ]

15.2

If yes, give full information

16.1

Does the reporting entity write any warranty business?

Yes [ ☒ X ] No [ ☐ ]

If yes, disclose the following information for each of the following types of warranty coverage:

		1		2		3		4		5	
		Direct Losses Incurred		Direct Losses Unpaid		Direct Written Premium		Direct Premium Unearned		Direct Premium Earned	
16.11	Home	\$	0	\$	0	\$	0	\$	0	\$	0
16.12	Products	\$	0	\$	0	\$	0	\$	0	\$	0
16.13	Automobile	\$	52,353,701	\$	2,444,624	\$	35,243,189	\$	39,928,740	\$	38,778,233
16.14	Other*	\$	0	\$	0	\$	0	\$	0	\$	0

\* Disclose type of coverage:

17.1

Does the reporting entity include amounts recoverable on unauthorized reinsurance in Schedule F-Part 3 that is exempt from the statutory provision for unauthorized reinsurance?

Yes [ ☐ ] No [ ☒ X ]

Incurred but not reported losses on contracts in force prior to July 1, 1984, and not subsequently renewed are exempt from the statutory provision for unauthorized reinsurance. Provide the following information for this exemption:

17.11	Gross amount of unauthorized reinsurance in Schedule F-Part 3 exempt from the statutory provision for unauthorized reinsurance	\$	0
17.12	Unfunded portion of Interrogatory 17.11	\$	0
17.13	Paid losses and loss adjustment expenses portion of Interrogatory 17.11	\$	0
17.14	Case reserves portion of Interrogatory 17.11	\$	0
17.15	Incurred but not reported portion of Interrogatory 17.11	\$	0
17.16	Unearned premium portion of Interrogatory 17.11	\$	0
17.17	Contingent commission portion of Interrogatory 17.11	\$	0

18.1

Do you act as a custodian for health savings accounts?

Yes [ ☐ ] No [ ☒ X ]

18.2

If yes, please provide the amount of custodial funds held as of the reporting date.

\$

0

18.3

Do you act as an administrator for health savings accounts?

Yes [ ☐ ] No [ ☒ X ]

18.4

If yes, please provide the balance of the funds administered as of the reporting date.

\$

0

19.

Is the reporting entity licensed or chartered, registered, qualified, eligible, or writing business in at least 2 states?

Yes [ ☒ X ] No [ ☐ ]

19.1

If no, does the reporting entity assume reinsurance business that covers risks residing in at least one state other than the state of domicile of the reporting entity?

Yes [ ☐ ] No [ ☐ ]

FIVE-YEAR HISTORICAL DATA

Show amounts in whole dollars only, no cents; show percentages to one decimal place, i.e. 17.6.

	1 2021	2 2020	3 2019	4 2018	5 2017
<b>Gross Premiums Written (Page 8, Part 1B, Cols. 1, 2 &amp; 3)</b>					
1. Liability lines (Lines 11.1, 11.2, 16, 17.1, 17.2, 17.3, 18.1, 18.2, 19.1, 19.2 & 19.3, 19.4).....	664,609,100	622,948,519	515,702,068	422,549,237	385,169,701
2. Property lines (Lines 1, 2, 9, 12, 21 & 26).....	815,513,809	673,697,076	528,626,631	458,092,232	399,315,413
3. Property and liability combined lines (Lines 3, 4, 5, 8, 22 & 27).....	212,459,531	227,083,283	119,875,087	115,351,246	103,790,695
4. All other lines (Lines 6, 10, 13, 14, 15, 23, 24, 28, 29, 30 & 34).....	44,878,013	47,310,407	47,270,954	42,406,678	32,134,859
5. Nonproportional reinsurance lines (Lines 31, 32 & 33).....	(13,285)	(152)			
6. Total (Line 35).....	1,737,447,168	1,571,039,133	1,211,474,740	1,038,399,393	920,410,668
<b>Net Premiums Written (Page 8, Part 1B, Col. 6)</b>					
7. Liability lines (Lines 11.1, 11.2, 16, 17.1, 17.2, 17.3, 18.1, 18.2, 19.1, 19.2 & 19.3, 19.4).....	73,595,852	99,466,532			
8. Property lines (Lines 1, 2, 9, 12, 21 & 26).....	45,641,658	60,786,553			
9. Property and liability combined lines (Lines 3, 4, 5, 8, 22 & 27).....	64,690,973	92,324,948			
10. All other lines (Lines 6, 10, 13, 14, 15, 23, 24, 28, 29, 30 & 34).....	3,900,787	3,973,984			
11. Nonproportional reinsurance lines (Lines 31, 32 & 33).....	(13,285)	(152)			
12. Total (Line 35).....	187,815,985	256,551,865	0	0	0
<b>Statement of Income (Page 4)</b>					
13. Net underwriting gain (loss) (Line 8).....	(10,650,863)	(30,698,482)			
14. Net investment gain (loss) (Line 11).....	8,913,059	7,939,650	2,460,333	2,029,006	6,719,290
15. Total other income (Line 15).....	1,398,159	655,494	47,736	45,553	
16. Dividends to policyholders (Line 17).....	60,900	73,802			
17. Federal and foreign income taxes incurred (Line 19).....	(18,826)	809,791	1,235,141	259,688	1,523,535
18. Net income (Line 20).....	(381,719)	(22,986,931)	1,272,928	1,814,871	5,195,755
<b>Balance Sheet Lines (Pages 2 and 3)</b>					
19. Total admitted assets excluding protected cell business (Page 2, Line 26, Col. 3).....	975,862,913	814,769,647	522,354,546	453,690,258	418,608,891
20. Premiums and considerations (Page 2, Col. 3):					
20.1 In course of collection (Line 15.1).....	139,774,406	143,575,976	255,355,828	93,456,089	88,325,682
20.2 Deferred and not yet due (Line 15.2).....	289,119,782	233,762,703	20,509,962	140,336,814	116,824,445
20.3 Accrued retrospective premiums (Line 15.3).....					
21. Total liabilities excluding protected cell business (Page 3, Line 26).....	775,221,155	685,753,779	376,351,944	310,715,547	277,835,081
22. Losses (Page 3, Line 1).....	134,795,425	124,013,607			
23. Loss adjustment expenses (Page 3, Line 3).....	31,481,983	23,910,792			
24. Unearned premiums (Page 3, Line 9).....	84,472,483	79,719,062			
25. Capital paid up (Page 3, Lines 30 & 31).....	5,000,000	5,000,000	5,000,000	5,000,000	5,000,000
26. Surplus as regards policyholders (Page 3, Line 37).....	200,641,758	129,015,868	146,002,602	142,974,711	140,773,810
<b>Cash Flow (Page 5)</b>					
27. Net cash from operations (Line 11).....	11,556,284	29,161,218	10,300,667	(5,322,097)	2,413,154
<b>Risk-Based Capital Analysis</b>					
28. Total adjusted capital.....	200,641,758	129,015,868	146,002,602	142,974,711	140,773,810
29. Authorized control level risk-based capital.....	23,464,956	22,205,415	918,630	818,619	936,178
<b>Percentage Distribution of Cash, Cash Equivalents and Invested Assets</b> (Page 2, Col. 3) (Item divided by Page 2, Line 12, Col. 3) x 100.0					
30. Bonds (Line 1).....	86.8	95.5	94.0	96.3	97.2
31. Stocks (Lines 2.1 & 2.2).....					
32. Mortgage loans on real estate (Lines 3.1 & 3.2).....					
33. Real estate (Lines 4.1, 4.2 & 4.3).....					
34. Cash, cash equivalents and short-term investments (Line 5).....	12.7	3.6	5.0	2.8	2.4
35. Contract loans (Line 6).....					
36. Derivatives (Line 7).....					
37. Other invested assets (Line 8).....	0.5	0.9	1.0	0.9	0.4
38. Receivables for securities (Line 9).....					
39. Securities lending reinvested collateral assets (Line 10).....					
40. Aggregate write-ins for invested assets (Line 11).....					
41. Cash, cash equivalents and invested assets (Line 12).....	100.0	100.0	100.0	100.0	100.0
<b>Investments in Parent, Subsidiaries and Affiliates</b>					
42. Affiliated bonds (Sch. D, Summary, Line 12, Col. 1).....					
43. Affiliated preferred stocks (Sch. D, Summary, Line 18, Col. 1).....					
44. Affiliated common stocks (Sch. D, Summary, Line 24, Col. 1).....					
45. Affiliated short-term investments (subtotals included in Schedule DA, Verification, Column 5, Line 10).....					
46. Affiliated mortgage loans on real estate.....					
47. All other affiliated.....					
48. Total of above lines 42 to 47.....	0	0	0	0	0
49. Total investment in parent included in Lines 42 to 47 above.....					
50. Percentage of investments in parent, subsidiaries and affiliates to surplus as regards policyholders (Line 48 above divided by Page 3, Col. 1, Line 37 x 100.0).....	0.0				

NATIONAL CASUALTY COMPANY  
FIVE-YEAR HISTORICAL DATA  
(Continued)

	1	2	3	4	5
	2021	2020	2019	2018	2017
<b>Capital and Surplus Accounts (Page 4)</b>					
51. Net unrealized capital gains (losses) (Line 24).....	.....1,040,376	.....132,074	.....272,545	.....343,027	.....(737,411)
52. Dividends to stockholders (Line 35).....					
53. Change in surplus as regards policyholders for the year (Line 38).....	.....71,625,890	.....(16,986,734)	.....3,027,891	.....2,200,901	.....2,687,330
<b>Gross Losses Paid (Page 9, Part 2, Cols. 1 &amp; 2)</b>					
54. Liability lines (Lines 11.1, 11.2, 16, 17.1, 17.2, 17.3, 18.1, 18.2, 19.1, 19.2 & 19.3, 19.4).....	.....250,760,145	.....206,528,470	.....271,718,790	.....325,713,069	.....237,330,174
55. Property lines (Lines 1, 2, 9, 12, 21 & 26).....	.....493,623,000	.....416,611,240	.....332,270,096	.....279,589,656	.....245,239,629
56. Property and liability combined lines (Lines 3, 4, 5, 8, 22 & 27).....	.....126,088,769	.....83,915,550	.....65,150,297	.....66,811,505	.....49,924,502
57. All other lines (Lines 6, 10, 13, 14, 15, 23, 24, 28, 29, 30 & 34).....	.....53,752,596	.....59,319,982	.....50,638,527	.....37,263,088	.....32,510,699
58. Nonproportional reinsurance lines (Lines 31, 32 & 33).....	.....(44,993)	.....(21,622)			
59. Total (Line 35).....	.....924,179,517	.....766,353,620	.....719,777,710	.....709,377,318	.....565,005,004
<b>Net Losses Paid (Page 9, Part 2, Col. 4)</b>					
60. Liability lines (Lines 11.1, 11.2, 16, 17.1, 17.2, 17.3, 18.1, 18.2, 19.1, 19.2 & 19.3, 19.4).....	.....31,409,871	.....(44,399,711)			
61. Property lines (Lines 1, 2, 9, 12, 21 & 26).....	.....28,582,132	.....21,374,464			
62. Property and liability combined lines (Lines 3, 4, 5, 8, 22 & 27).....	.....42,915,332	.....15,687,314			
63. All other lines (Lines 6, 10, 13, 14, 15, 23, 24, 28, 29, 30 & 34).....	.....1,822,027	.....1,679,633			
64. Nonproportional reinsurance lines (Lines 31, 32 & 33).....	.....(44,993)	.....(21,622)			
65. Total (Line 35).....	.....104,684,369	.....(5,679,922)	.....0	.....0	.....0
<b>Operating Percentages (Page 4)</b> (Item divided by Page 4, Line 1) x 100.0					
66. Premiums earned (Line 1).....	.....100.0	.....100.0	.....100.0	.....100.0	.....100.0
67. Losses incurred (Line 2).....	.....63.1	.....66.9			
68. Loss expenses incurred (Line 3).....	.....10.0	.....9.5			
69. Other underwriting expenses incurred (Line 4).....	.....32.8	.....40.9			
70. Net underwriting gain (loss) (Line 8).....	.....(5.8)	.....(17.4)			
<b>Other Percentages</b>					
71. Other underwriting expenses to net premiums written (Page 4, Lines 4 + 5 - 15 divided by Page 8, Part 1B, Col. 6, Line 35 x 100.0).....	.....31.2	.....27.9			
72. Losses and loss expenses incurred to premiums earned (Page 4, Lines 2 + 3 divided by Page 4, Line 1 x 100.0).....	.....73.1	.....76.4			
73. Net premiums written to policyholders' surplus (Page 8, Part 1B, Col. 6, Line 35, divided by Page 3, Line 37, Col. 1 x 100.0).....	.....93.6	.....198.9			
<b>One Year Loss Development (\$000 omitted)</b>					
74. Development in estimated losses and loss expenses incurred prior to current year (Schedule P, Part 2-Summary, Line 12, Col. 11).....	.....(1,240)	.....5,501		.....(0)	
75. Percent of development of losses and loss expenses incurred to policyholders' surplus of prior year-end (Line 74 above divided by Page 4, Line 21, Col. 1 x 100).....	.....(1.0)	.....3.8			
<b>Two Year Loss Development (\$000 omitted)</b>					
76. Development in estimated losses and loss expenses incurred 2 years before the current year and prior year (Schedule P, Part 2-Summary, Line 12, Col. 12).....	.....7,187	.....4,650		.....(0)	
77. Percent of development of losses and loss expenses incurred to reported policyholders' surplus of second prior-year end (Line 76 above divided by Page 4, Line 21, Col. 2 x 100.0).....	.....4.9	.....3.3			

If a party to a merger, have the two most recent years of this exhibit been restated due to a merger in compliance with the disclosure requirements of  
SSAP No. 3, Accounting Changes and Correction of Errors?

Yes[ ] No[ ]

If no, please explain:

SCHEDULE P - ANALYSIS OF LOSSES AND LOSS EXPENSES

SCHEDULE P - PART 1 - SUMMARY

(\$000 Omitted)

Years in Which Premiums Were Earned and Losses Were Incurred	Premiums Earned			Loss and Loss Expense Payments								12 Number of Claims Reported- Direct and Assumed
	1  Direct and Assumed	2  Ceded	3  Net (Cols. 1 - 2)	Loss Payments		Defense and Cost Containment Payments		Adjusting and Other Payments		10  Salvage and Subrogation Received	11  Total Net Paid (Cols. 4 - 5 + 6 - 7 + 8 - 9)	
				4 Direct and Assumed	5 Ceded	6 Direct and Assumed	7 Ceded	8 Direct and Assumed	9 Ceded			
1. Prior.....	.....XXX.....	.....XXX.....	.....XXX.....	.....1,563	.....434	.....921	.....65	.....256	.....35	.....82	.....2,206	.....XXX.....
2. 2012.....	.....177,192	.....17,925	.....159,268	.....112,934	.....14,776	.....5,684	.....530	.....12,839	.....756	.....5,953	.....115,395	.....XXX.....
3. 2013.....	.....186,532	.....18,952	.....167,580	.....105,603	.....9,145	.....5,906	.....749	.....12,480	.....703	.....6,159	.....113,391	.....XXX.....
4. 2014.....	.....196,618	.....19,265	.....177,353	.....118,107	.....9,618	.....6,392	.....671	.....12,385	.....545	.....6,777	.....126,051	.....XXX.....
5. 2015.....	.....204,855	.....20,068	.....184,787	.....119,577	.....9,923	.....6,252	.....484	.....12,433	.....551	.....7,171	.....127,304	.....XXX.....
6. 2016.....	.....208,840	.....18,698	.....190,142	.....127,253	.....10,023	.....6,611	.....615	.....12,832	.....598	.....7,577	.....135,461	.....XXX.....
7. 2017.....	.....205,398	.....16,260	.....189,138	.....136,138	.....9,012	.....6,270	.....435	.....13,482	.....565	.....11,733	.....145,879	.....XXX.....
8. 2018.....	.....200,389	.....17,110	.....183,279	.....116,197	.....8,263	.....4,681	.....327	.....12,227	.....506	.....9,130	.....124,009	.....XXX.....
9. 2019.....	.....197,048	.....19,281	.....177,766	.....104,016	.....9,084	.....3,329	.....291	.....10,770	.....400	.....6,726	.....108,340	.....XXX.....
10. 2020.....	.....199,484	.....22,689	.....176,795	.....96,476	.....9,634	.....2,264	.....260	.....9,710	.....354	.....5,451	.....98,203	.....XXX.....
11. 2021.....	.....210,462	.....27,400	.....183,062	.....71,662	.....6,522	.....714	.....44	.....7,967	.....199	.....4,191	.....73,577	.....XXX.....
12. Totals.....	.....XXX.....	.....XXX.....	.....XXX.....	..1,109,527	.....96,433	.....49,025	.....4,471	.....117,381	.....5,211	.....70,950	.....1,169,818	.....XXX.....

	Losses Unpaid				Defense and Cost Containment Unpaid				Adjusting and Other Unpaid		23  Salvage and Subrogation Anticipated	24 Total Net Losses and Expenses Unpaid	25  Number of Claims Outstanding-Direct and Assumed
	Case Basis		Bulk + IBNR		Case Basis		Bulk + IBNR		21  Direct and Assumed	22  Ceded			
	13 Direct and Assumed	14 Ceded	15 Direct and Assumed	16 Ceded	17 Direct and Assumed	18 Ceded	19 Direct and Assumed	20 Ceded					
1. Prior.....	.....17,599	.....10,799	.....9,819	.....2,178	.....1,570	.....141	.....4,330	.....178	.....1,696	.....4	.....57	.....21,713	.....XXX.....
2. 2012.....	.....1,022	.....367	.....1,140	.....603	.....103	.....56	.....112	.....6	.....25	.....0	.....15	.....1,370	.....XXX.....
3. 2013.....	.....875	.....129	.....319	.....156	.....85	.....30	.....184	.....19	.....42	.....3	.....20	.....1,167	.....XXX.....
4. 2014.....	.....2,258	.....658	.....1,390	.....909	.....132	.....34	.....305	.....35	.....85	.....5	.....63	.....2,530	.....XXX.....
5. 2015.....	.....2,645	.....584	.....745	.....136	.....154	.....29	.....469	.....44	.....116	.....6	.....51	.....3,329	.....XXX.....
6. 2016.....	.....4,544	.....631	.....1,877	.....770	.....247	.....44	.....717	.....66	.....209	.....10	.....98	.....6,073	.....XXX.....
7. 2017.....	.....6,906	.....1,115	.....2,710	.....1,770	.....379	.....77	.....1,292	.....127	.....236	.....23	.....337	.....8,411	.....XXX.....
8. 2018.....	.....9,081	.....962	.....3,295	.....899	.....493	.....90	.....2,047	.....222	.....349	.....43	.....474	.....13,048	.....XXX.....
9. 2019.....	.....11,193	.....1,086	.....7,256	.....1,499	.....591	.....137	.....3,287	.....395	.....510	.....65	.....568	.....19,655	.....XXX.....
10. 2020.....	.....14,927	.....1,623	.....15,949	.....6,021	.....691	.....117	.....4,381	.....515	.....730	.....76	.....707	.....28,324	.....XXX.....
11. 2021.....	.....26,327	.....2,193	.....36,630	.....8,624	.....538	.....113	.....7,027	.....1,104	.....2,427	.....259	.....3,361	.....60,656	.....XXX.....
12. Totals...	.....97,377	.....20,146	.....81,130	.....23,566	.....4,983	.....868	.....24,151	.....2,711	.....6,423	.....496	.....5,750	.....166,277	.....XXX.....

	Total Losses and Loss Expenses Incurred			Loss and Loss Expense Percentage (Incurred/Premiums Earned)			Nontabular Discount		34  Inter-Company Pooling Participation Percentage	Net Balance Sheet Reserves after Discount	
	26 Direct and Assumed	27 Ceded	28 Net	29 Direct and Assumed	30 Ceded	31 Net	32 Loss	33 Loss Expense		35 Losses Unpaid	36 Loss Expenses Unpaid
1. Prior..	.....XXX.....	.....XXX.....	.....XXX.....	.....XXX.....	.....XXX.....	.....XXX.....			.....XXX.....	.....14,441	.....7,272
2. 2012.	.....133,859	.....17,094	.....116,766	.....75.5	.....95.4	.....73.3			.....1.00	.....1,193	.....177
3. 2013.	.....125,493	.....10,935	.....114,559	.....67.3	.....57.7	.....68.4			.....1.00	.....909	.....258
4. 2014.	.....141,056	.....12,474	.....128,582	.....71.7	.....64.7	.....72.5			.....1.00	.....2,082	.....449
5. 2015.	.....142,390	.....11,757	.....130,633	.....69.5	.....58.6	.....70.7			.....1.00	.....2,670	.....659
6. 2016.	.....154,290	.....12,757	.....141,534	.....73.9	.....68.2	.....74.4			.....1.00	.....5,020	.....1,053
7. 2017.	.....167,415	.....13,124	.....154,290	.....81.5	.....80.7	.....81.6			.....1.00	.....6,730	.....1,681
8. 2018.	.....148,370	.....11,312	.....137,058	.....74.0	.....66.1	.....74.8			.....1.00	.....10,515	.....2,534
9. 2019.	.....140,952	.....12,957	.....127,995	.....71.5	.....67.2	.....72.0			.....1.00	.....15,864	.....3,790
10. 2020.	.....145,127	.....18,601	.....126,527	.....72.8	.....82.0	.....71.6			.....1.00	.....23,230	.....5,094
11. 2021.	.....153,292	.....19,058	.....134,234	.....72.8	.....69.6	.....73.3			.....1.00	.....52,141	.....8,516
12. Totals	.....XXX.....	.....XXX.....	.....XXX.....	.....XXX.....	.....XXX.....	.....XXX.....	.....0	.....0	.....XXX.....	.....134,795	.....31,482

Note: Parts 2 and 4 are gross of all discounting, including tabular discounting. Part 1 is gross of only nontabular discounting, which is reported in Columns 32 and 33 of Part 1. The tabular discount, if any, is reported in the Notes to Financial Statements, which will reconcile Part 1 with Parts 2 and 4.



SCHEDULE P - PART 2 - SUMMARY

Years in Which Losses Were Incurred	Incurred Net Losses and Defense and Cost Containment Expenses Reported at Year End (\$000 omitted)										DEVELOPMENT	
	1	2	3	4	5	6	7	8	9	10	11	12
	2012	2013	2014	2015	2016	2017	2018	2019	2020	2021	One Year	Two Year
1. Prior.....	.....85,208	.....85,653	.....86,717	.....87,493	.....88,731	.....89,388	.....90,216	.....90,910	.....90,871	.....91,096	.....225	.....186
2. 2012.....	.....104,056	.....103,547	.....103,994	.....104,188	.....104,399	.....104,314	.....104,406	.....104,408	.....104,618	.....104,658	.....40	.....251
3. 2013.....	.....XXX.....	.....100,629	.....101,520	.....102,135	.....103,163	.....103,181	.....103,021	.....103,108	.....102,875	.....102,743	.....(132)	.....(365)
4. 2014.....	.....XXX.....	.....XXX.....	.....112,984	.....114,507	.....115,783	.....116,104	.....116,437	.....116,609	.....116,616	.....116,662	.....46	.....52
5. 2015.....	.....XXX.....	.....XXX.....	.....XXX.....	.....117,136	.....117,788	.....117,968	.....118,451	.....118,733	.....118,643	.....118,642	.....(1)	.....(91)
6. 2016.....	.....XXX.....	.....XXX.....	.....XXX.....	.....XXX.....	.....126,513	.....127,006	.....127,432	.....128,753	.....129,042	.....129,101	.....59	.....347
7. 2017.....	.....XXX.....	.....XXX.....	.....XXX.....	.....XXX.....	.....XXX.....	.....139,557	.....139,482	.....140,160	.....140,918	.....141,160	.....241	.....1,000
8. 2018.....	.....XXX.....	.....XXX.....	.....XXX.....	.....XXX.....	.....XXX.....	.....XXX.....	.....123,739	.....122,859	.....125,075	.....125,031	.....(44)	.....2,171
9. 2019.....	.....XXX.....	.....XXX.....	.....XXX.....	.....XXX.....	.....XXX.....	.....XXX.....	.....XXX.....	.....113,544	.....116,249	.....117,180	.....931	.....3,636
10. 2020.....	.....XXX.....	.....XXX.....	.....XXX.....	.....XXX.....	.....XXX.....	.....XXX.....	.....XXX.....	.....XXX.....	.....119,121	.....116,517	.....(2,604)	.....XXX.....
11. 2021.....	.....XXX.....	.....XXX.....	.....XXX.....	.....XXX.....	.....XXX.....	.....XXX.....	.....XXX.....	.....XXX.....	.....XXX.....	.....124,299	.....XXX.....	.....XXX.....
12. Totals.....											.....(1,240)	.....7,187

SCHEDULE P - PART 3 - SUMMARY

Years in Which Losses Were Incurred	Cumulative Paid Net Losses and Defense and Cost Containment Expenses Reported at Year End (\$000 omitted)										11	12
	1	2	3	4	5	6	7	8	9	10	Number of Claims Closed With Loss Payment	Number of Claims Closed Without Loss Payment
	2012	2013	2014	2015	2016	2017	2018	2019	2020	2021		
1. Prior.....	.....000.....	.....23,134	.....38,354	.....48,399	.....54,895	.....60,023	.....64,185	.....67,183	.....69,089	.....71,074	.....XXX.....	.....XXX.....
2. 2012.....	.....59,231	.....80,527	.....89,581	.....95,640	.....99,348	.....101,090	.....102,122	.....102,680	.....103,039	.....103,312	.....XXX.....	.....XXX.....
3. 2013.....	.....XXX.....	.....55,903	.....76,974	.....86,297	.....93,286	.....97,361	.....99,395	.....100,600	.....101,212	.....101,614	.....XXX.....	.....XXX.....
4. 2014.....	.....XXX.....	.....XXX.....	.....63,624	.....86,602	.....97,605	.....104,614	.....109,392	.....111,923	.....113,443	.....114,211	.....XXX.....	.....XXX.....
5. 2015.....	.....XXX.....	.....XXX.....	.....XXX.....	.....62,986	.....87,307	.....98,483	.....106,777	.....112,110	.....114,201	.....115,422	.....XXX.....	.....XXX.....
6. 2016.....	.....XXX.....	.....XXX.....	.....XXX.....	.....XXX.....	.....68,477	.....94,776	.....107,418	.....116,263	.....120,765	.....123,227	.....XXX.....	.....XXX.....
7. 2017.....	.....XXX.....	.....XXX.....	.....XXX.....	.....XXX.....	.....XXX.....	.....77,366	.....108,202	.....120,100	.....127,281	.....132,962	.....XXX.....	.....XXX.....
8. 2018.....	.....XXX.....	.....XXX.....	.....XXX.....	.....XXX.....	.....XXX.....	.....XXX.....	.....67,758	.....93,471	.....105,071	.....112,288	.....XXX.....	.....XXX.....
9. 2019.....	.....XXX.....	.....XXX.....	.....XXX.....	.....XXX.....	.....XXX.....	.....XXX.....	.....XXX.....	.....62,867	.....87,475	.....97,970	.....XXX.....	.....XXX.....
10. 2020.....	.....XXX.....	.....XXX.....	.....XXX.....	.....XXX.....	.....XXX.....	.....XXX.....	.....XXX.....	.....XXX.....	.....65,269	.....88,847	.....XXX.....	.....XXX.....
11. 2021.....	.....XXX.....	.....XXX.....	.....XXX.....	.....XXX.....	.....XXX.....	.....XXX.....	.....XXX.....	.....XXX.....	.....XXX.....	.....65,810	.....XXX.....	.....XXX.....

SCHEDULE P - PART 4 - SUMMARY

Years in Which Losses Were Incurred	Bulk and IBNR Reserves on Net Losses and Defense and Cost Containment Expenses Reported at Year End (\$000 omitted)									
	1	2	3	4	5	6	7	8	9	10
	2012	2013	2014	2015	2016	2017	2018	2019	2020	2021
1. Prior.....	.....39,375	.....30,373	.....23,523	.....19,489	.....17,423	.....15,479	.....14,399	.....13,885	.....12,873	.....11,793
2. 2012.....	.....22,446	.....9,435	.....5,035	.....2,610	.....1,489	.....1,028	.....788	.....644	.....743	.....643
3. 2013.....	.....XXX.....	.....21,768	.....9,634	.....5,143	.....2,653	.....1,591	.....1,080	.....715	.....498	.....327
4. 2014.....	.....XXX.....	.....XXX.....	.....23,408	.....10,587	.....5,498	.....2,904	.....1,796	.....1,309	.....945	.....751
5. 2015.....	.....XXX.....	.....XXX.....	.....XXX.....	.....26,089	.....11,802	.....6,067	.....3,229	.....2,170	.....1,405	.....1,034
6. 2016.....	.....XXX.....	.....XXX.....	.....XXX.....	.....XXX.....	.....28,778	.....12,127	.....6,345	.....3,964	.....2,510	.....1,758
7. 2017.....	.....XXX.....	.....XXX.....	.....XXX.....	.....XXX.....	.....XXX.....	.....26,326	.....9,450	.....4,558	.....3,213	.....2,105
8. 2018.....	.....XXX.....	.....XXX.....	.....XXX.....	.....XXX.....	.....XXX.....	.....XXX.....	.....25,782	.....11,880	.....7,672	.....4,221
9. 2019.....	.....XXX.....	.....XXX.....	.....XXX.....	.....XXX.....	.....XXX.....	.....XXX.....	.....XXX.....	.....27,088	.....14,279	.....8,649
10. 2020.....	.....XXX.....	.....XXX.....	.....XXX.....	.....XXX.....	.....XXX.....	.....XXX.....	.....XXX.....	.....XXX.....	.....31,307	.....13,793
11. 2021.....	.....XXX.....	.....XXX.....	.....XXX.....	.....XXX.....	.....XXX.....	.....XXX.....	.....XXX.....	.....XXX.....	.....XXX.....	.....33,929

NATIONAL CASUALTY COMPANY  
SCHEDULE T - EXHIBIT OF PREMIUMS WRITTEN

Allocated by States and Territories

		1  Active Status (a)	Gross Premiums, Including Policy and Membership Fees Less Return Premiums and Premiums on Policies Not Taken		4  Dividends Paid or Credited to Policyholders on Direct Business	5  Direct Losses Paid (Deducting Salvage)	6  Direct Losses Incurred	7  Direct Losses Unpaid	8  Finance and Service Charges not Included in Premiums	9  Direct Premiums Written for Federal Purchasing Groups (Incl. in Col. 2)
			2  Direct Premiums Written	3  Direct Premiums Earned						
States, Etc.										
1.	Alabama.....AL	...L....	21,832,073	21,799,421		8,553,312	24,676,782	33,997,874	70,879	
2.	Alaska.....AK	...L....	5,343,045	5,899,714		2,701,724	2,680,291	5,381,906	35,768	
3.	Arizona.....AZ	...L....	22,947,504	21,104,298		12,678,512	13,337,459	9,217,933	268,514	
4.	Arkansas.....AR	...L....	10,136,667	9,746,254		3,100,599	5,607,401	8,041,283	25,412	
5.	California.....CA	...L....	95,911,438	91,550,402		31,543,170	63,222,366	175,022,357	98,433	156,507
6.	Colorado.....CO	...L....	40,812,145	37,142,474		26,601,196	17,338,852	28,267,282	388,154	2,513
7.	Connecticut.....CT	...L....	42,572,925	39,977,314		27,901,502	27,319,241	37,518,282	307,051	
8.	Delaware.....DE	...L....	8,214,563	6,876,212		2,977,065	3,424,235	2,221,257	62,326	
9.	District of Columbia.....DC	...L....	4,756,926	3,855,870		2,685,902	2,353,663	2,103,728	45,560	
10.	Florida.....FL	...L....	109,452,420	105,182,374		73,836,429	72,844,691	75,785,799	900,759	
11.	Georgia.....GA	...L....	34,297,816	30,782,248		18,996,417	23,367,933	20,681,554	279,277	2,166
12.	Hawaii.....HI	...L....	7,904,941	7,359,265		4,241,576	4,959,198	5,093,430	81,165	
13.	Idaho.....ID	...L....	4,859,732	4,671,378		1,910,056	2,512,653	3,567,178	33,445	
14.	Illinois.....IL	...L....	62,811,261	54,872,716		30,074,045	40,914,739	40,815,794	503,070	6,950
15.	Indiana.....IN	...L....	16,121,549	17,546,094		18,496,035	21,068,184	36,521,965	106,770	486
16.	Iowa.....IA	...L....	12,378,620	11,209,831		5,406,115	5,901,225	5,834,238	55,128	
17.	Kansas.....KS	...L....	11,907,757	12,080,172		8,917,392	7,411,864	10,858,922	49,510	
18.	Kentucky.....KY	...L....	12,885,867	13,014,884		7,548,445	8,444,389	17,027,407	58,584	8,382
19.	Louisiana.....LA	...L....	13,038,474	12,809,084		8,175,165	11,767,870	15,996,823	74,970	
20.	Maine.....ME	...L....	8,534,114	8,436,660		5,313,909	4,348,671	5,195,782	57,397	
21.	Maryland.....MD	...L....	31,835,879	28,981,458		17,589,951	18,107,620	13,809,879	335,209	7,509
22.	Massachusetts.....MA	...L....	62,538,395	53,164,257		29,066,361	36,007,532	24,411,338	626,320	
23.	Michigan.....MI	...L....	52,407,761	49,921,575		21,401,973	35,359,047	35,340,944	236,946	
24.	Minnesota.....MN	...L....	22,862,332	21,223,341		10,286,202	12,150,169	16,126,849	139,506	
25.	Mississippi.....MS	...L....	10,116,316	11,542,926		8,468,241	6,049,686	12,016,732	22,116	
26.	Missouri.....MO	...L....	19,406,254	20,160,747		9,247,450	9,847,353	17,387,979	118,586	
27.	Montana.....MT	...L....	4,558,485	4,484,085		1,912,152	4,415,050	5,022,512	22,026	
28.	Nebraska.....NE	...L....	4,796,520	4,581,285		3,026,356	2,657,574	3,032,239	32,103	
29.	Nevada.....NV	...L....	21,516,858	19,968,969		12,075,832	15,412,149	34,551,457	179,792	
30.	New Hampshire.....NH	...L....	10,713,413	10,130,351		6,172,352	6,549,271	6,488,035	94,953	
31.	New Jersey.....NJ	...L....	69,076,051	65,402,035		39,263,038	44,726,781	55,814,411	789,734	
32.	New Mexico.....NM	...L....	8,550,725	7,868,397		3,025,163	3,610,234	5,114,254	35,092	
33.	New York.....NY	...L....	181,744,169	169,648,594	669,955	75,564,140	112,376,883	193,858,556	1,129,825	
34.	North Carolina.....NC	...L....	38,451,855	37,232,497		25,172,156	26,097,602	26,747,680	344,829	
35.	North Dakota.....ND	...L....	1,876,406	1,942,488		3,085,175	851,153	2,390,338	7,881	
36.	Ohio.....OH	...L....	32,898,722	31,262,058		22,377,240	22,316,526	20,404,161	319,675	
37.	Oklahoma.....OK	...L....	15,993,566	15,404,745		4,012,901	7,208,149	11,596,207	39,295	
38.	Oregon.....OR	...L....	18,548,097	17,479,713		9,506,086	11,416,896	9,925,081	157,397	
39.	Pennsylvania.....PA	...L....	71,989,478	66,566,155		37,440,971	43,101,531	43,975,957	659,791	
40.	Rhode Island.....RI	...L....	6,718,040	6,309,783		3,837,138	4,506,490	2,707,228	82,834	
41.	South Carolina.....SC	...L....	18,352,142	18,890,429		17,225,080	15,394,072	14,068,300	151,742	
42.	South Dakota.....SD	...L....	2,547,202	1,801,351		2,528,899	1,655,640	1,651,145	8,086	
43.	Tennessee.....TN	...L....	19,567,806	18,438,943		9,256,099	11,300,689	13,569,272	128,455	17,465
44.	Texas.....TX	...L....	120,365,088	110,418,757		59,781,990	75,863,479	83,399,379	757,327	(4,427)
45.	Utah.....UT	...L....	14,889,603	14,417,403		7,713,039	9,026,549	12,252,518	75,181	
46.	Vermont.....VT	...L....	3,149,930	2,946,351		1,380,526	1,705,933	1,263,763	30,192	
47.	Virginia.....VA	...L....	46,751,985	44,378,747		25,642,088	32,970,727	24,681,919	483,287	19,230
48.	Washington.....WA	...L....	45,383,067	42,211,265		36,701,798	39,465,596	22,726,729	473,208	
49.	West Virginia.....WV	...L....	8,627,207	8,942,433		2,789,567	2,060,806	7,227,183	31,422	
50.	Wisconsin.....WI	...L....	21,441,438	19,729,259		9,121,419	9,633,016	13,107,223	123,426	
51.	Wyoming.....WY	...L....	6,934,467	4,969,984		1,698,989	3,812,824	3,507,335	10,556	
52.	American Samoa.....AS	...N....								
53.	Guam.....GU	...L....								
54.	Puerto Rico.....PR	...N....								
55.	US Virgin Islands.....VI	...L....								
56.	Northern Mariana Islands.....MP	...N....								
57.	Canada.....CAN	...N....	352,070	170,636			81,142	82,237		
58.	Aggregate Other Alien.....OT	XXX	5,962,403	2,661,172	0	5,175	1,264,856	1,307,114	60	0
59.	Totals.....	XXX	1,547,643,569	1,449,168,854	669,955	818,034,114	990,504,733	1,278,716,748	11,149,012	216,781

DETAILS OF WRITE-INS

58001.	Australia AUS.....	XXX	302,603	169,725			78,217	78,217		
58002.	Austria AUT.....	XXX	88,159	88,159			42,114	42,114		
58003.	Belgium BEL.....	XXX	101,813	4,242			2,027	2,027		
58998.	Summary of remaining write-ins for Line 58 from overflow page	XXX	5,469,828	2,399,046	0	5,175	1,142,499	1,184,756	60	0
58999.	Totals (Lines 58001 thru 58003+ Line 58998) (Line 58 above)	XXX	5,962,403	2,661,172	0	5,175	1,264,856	1,307,114	60	0

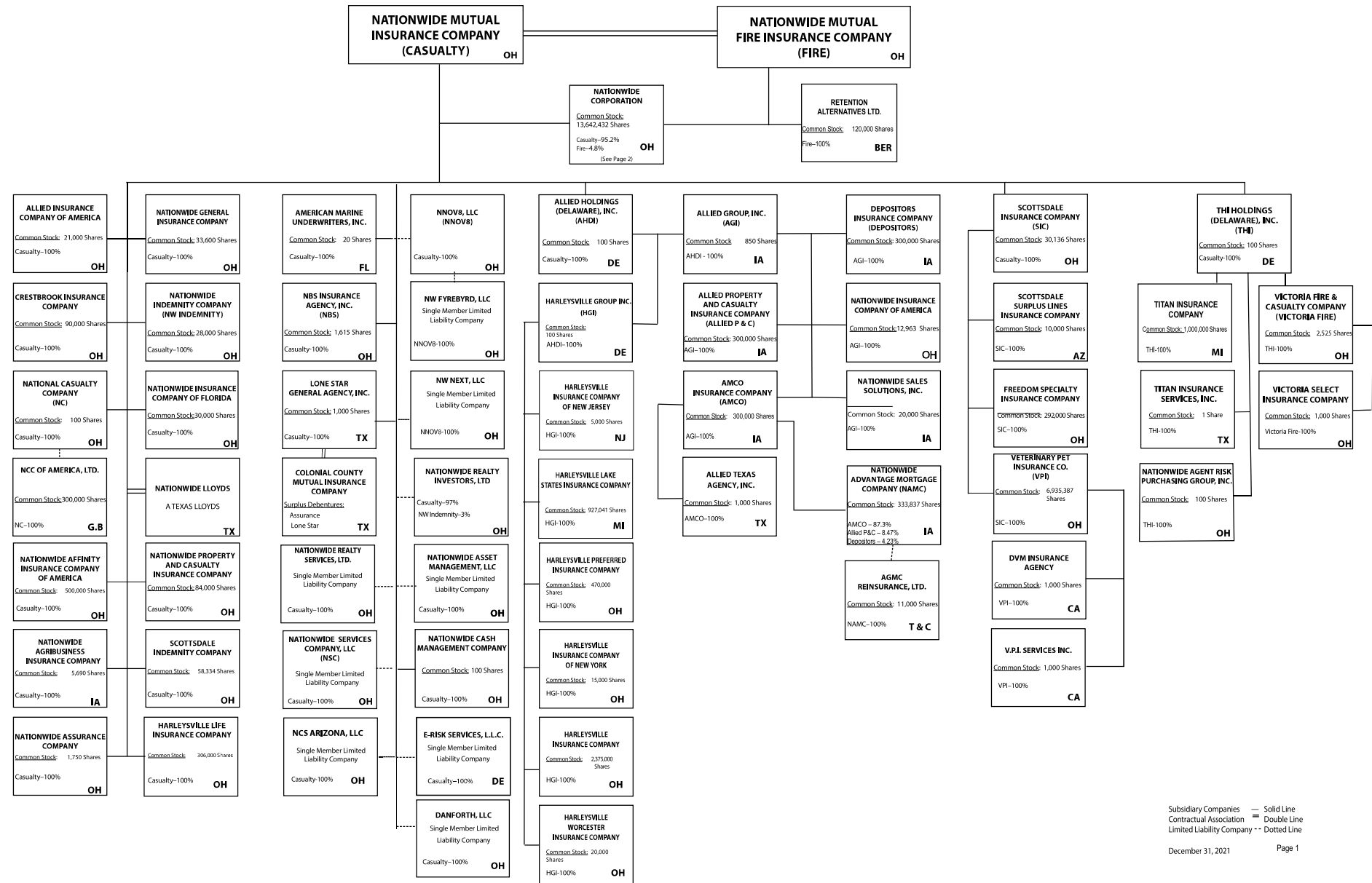
(a) Active Status Counts:

L - Licensed or Chartered - Licensed insurance carrier or domiciled RRG.....	53	R - Registered - Non-domiciled RRGs.....	0
E - Eligible - Reporting entities eligible or approved to write surplus lines in the state (other than their state of domicile - See DSLI).....	0	Q - Qualified - Qualified or accredited reinsurer.....	0
D - Domestic Surplus Lines Insurer (DSLI) - Reporting entities authorized to write surplus lines in the state of domicile.....	0	N - None of the above - Not allowed to write business in the state.....	4

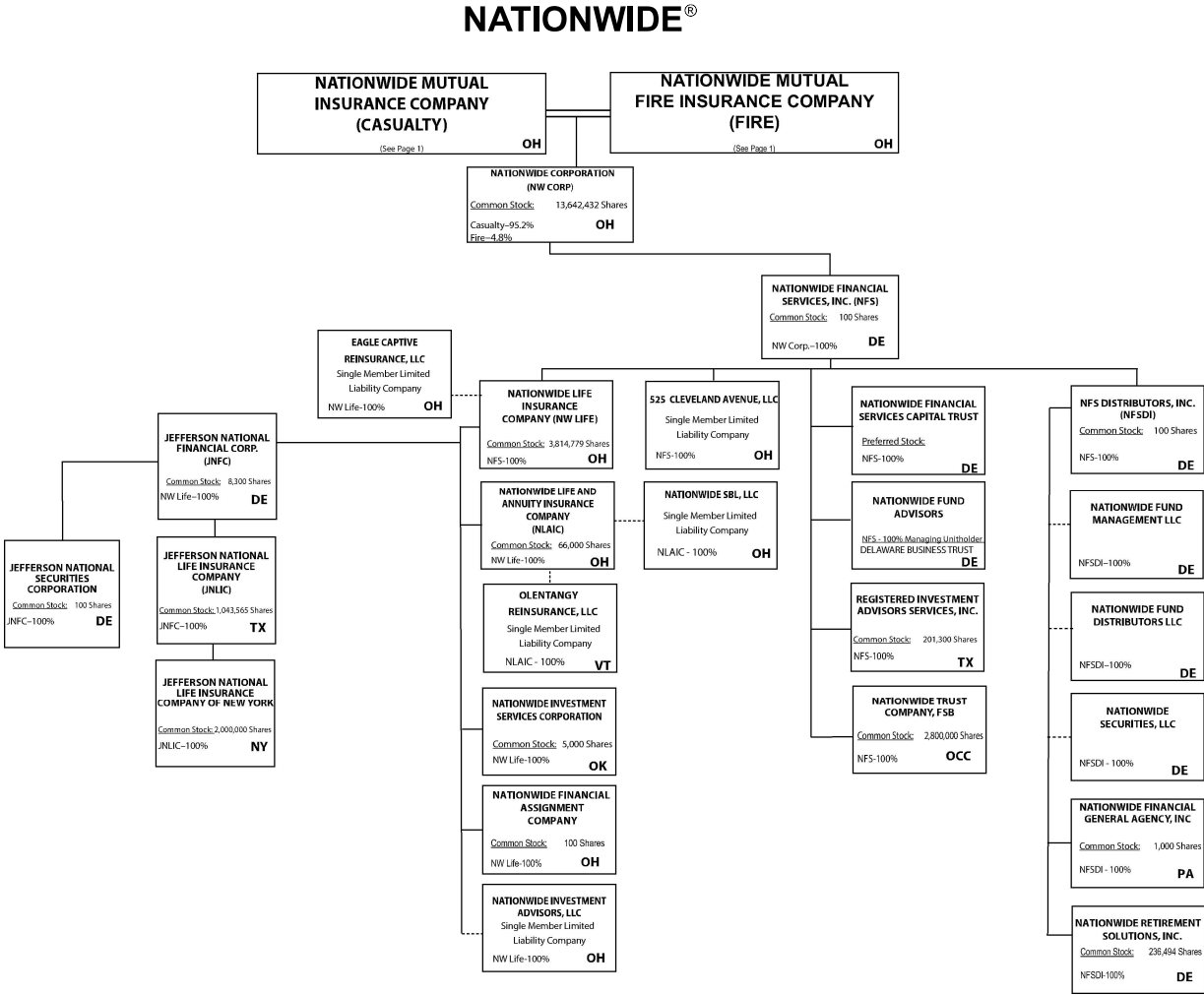
(b) Explanation of Basis of Allocation of Premiums by States, etc.

Premiums are allocated to those states where the insured risks are located: principle garage for automobile, physical address for homeowners, commercial multiple peril and other liability and place of work for workers' compensation. Allocation of premiums for individual and group health insurance is based on the situs of the contract.

**NATIONWIDE®**



(Casualty/Fire subsidiaries)



NATIONWIDE INSURANCE COMPANIES

NAIC Group Code	Group Name	NAIC Company Code	State of Domicile	Federal ID Number	Name of Company
0140	Nationwide	10127	OH	27-0114983	Allied Insurance Company of America
0140	Nationwide	42579	IA	42-1201931	Allied Property and Casualty Insurance Company
0140	Nationwide	19100	IA	42-6054959	AMCO Insurance Company
0140	Nationwide	29262	TX	74-1061659	Colonial County Mutual Insurance Company
0140	Nationwide	18961	OH	68-0066866	Crestbrook Insurance Company
0140	Nationwide	42587	IA	42-1207150	Depositors Insurance Company
0140	Nationwide	15821	OH	42-4523959	Eagle Captive Reinsurance, LLC
0140	Nationwide	22209	OH	75-6013587	Freedom Specialty Insurance Company
0140	Nationwide	23582	OH	41-0417250	Harleysville Insurance Company
0140	Nationwide	42900	NJ	23-2253669	Harleysville Insurance Company of New Jersey
0140	Nationwide	10674	OH	23-2864924	Harleysville Insurance Company of New York
0140	Nationwide	14516	MI	38-3198542	Harleysville Lake States Insurance Company
0140	Nationwide	64327	OH	23-1580983	Harleysville Life Insurance Company
0140	Nationwide	35696	OH	23-2384978	Harleysville Preferred Insurance Company
0140	Nationwide	26182	OH	04-1989660	Harleysville Worcester Insurance Company
0140	Nationwide	64017	TX	75-0300900	Jefferson National Life Insurance Company
0140	Nationwide	15727	NY	47-1180302	Jefferson National Life Insurance Company of New York
0140	Nationwide	11991	OH	38-0865250	National Casualty Company
0140	Nationwide	26093	OH	48-0470690	Nationwide Affinity Insurance Company of America
0140	Nationwide	28223	IA	42-1015537	Nationwide Agribusiness Insurance Company
0140	Nationwide	10723	OH	95-0639970	Nationwide Assurance Company
0140	Nationwide	23760	OH	31-4425763	Nationwide General Insurance Company
0140	Nationwide	10070	OH	31-1399201	Nationwide Indemnity Company
0140	Nationwide	25453	OH	95-2130882	Nationwide Insurance Company of America
0140	Nationwide	10948	OH	31-1613686	Nationwide Insurance Company of Florida
0140	Nationwide	92657	OH	31-1000740	Nationwide Life and Annuity Insurance Company
0140	Nationwide	66869	OH	31-4156830	Nationwide Life Insurance Company
0140	Nationwide	42110	TX	75-1780981	Nationwide Lloyds
0140	Nationwide	23779	OH	31-4177110	Nationwide Mutual Fire Insurance Company
0140	Nationwide	23787	OH	31-4177100	Nationwide Mutual Insurance Company
0140	Nationwide	37877	OH	31-0970750	Nationwide Property & Casualty Insurance Company
0140	Nationwide	13999	VT	27-1712056	Olentangy Reinsurance, LLC
0140	Nationwide	15580	OH	31-1117969	Scottsdale Indemnity Company
0140	Nationwide	41297	OH	31-1024978	Scottsdale Insurance Company
0140	Nationwide	10672	AZ	86-0835870	Scottsdale Surplus Lines Insurance Company
0140	Nationwide	36269	MI	86-0619597	Titan Insurance Company
0140	Nationwide	42285	OH	95-3750113	Veterinary Pet Insurance Company
0140	Nationwide	42889	OH	34-1394913	Victoria Fire & Casualty Company
0140	Nationwide	10105	OH	34-1777972	Victoria Select Insurance Company