



PROPERTY AND CASUALTY COMPANIES - ASSOCIATION EDITION

ANNUAL STATEMENT

FOR THE YEAR ENDED DECEMBER 31, 2021
OF THE CONDITION AND AFFAIRS OF THE

Infinity Auto Insurance Company

NAIC Group Code

0215

0215

(Current)(Prior)

NAIC Company Code

11738

Employer's ID Number

34-0927698

Organized under the Laws of

Ohio

State of Domicile or Port of Entry

OH

Country of Domicile

United States of America

Incorporated/Organized

03/20/1963

Commenced Business

12/01/1963

Statutory Home Office

1400 Provident Tower, One East Fourth Street

Cincinnati, OH, US 45202

(Street and Number)

(City or Town, State, Country and Zip Code)

Main Administrative Office

2201 4th Avenue North

Birmingham, AL, US 35203-3863

(Street and Number)

(City or Town, State, Country and Zip Code)

205-870-4000

(Area Code) (Telephone Number)

Mail Address

Post Office Box 830189

Birmingham, AL, US 35283-0189

(Street and Number or P.O. Box)

(City or Town, State, Country and Zip Code)

Primary Location of Books and Records

2201 4th Avenue North

Birmingham, AL, US 35203-3863

(Street and Number)

(City or Town, State, Country and Zip Code)

205-870-4000

(Area Code) (Telephone Number)

Internet Website Address

www.infinityauto.com

Statutory Statement Contact

Eugene Betz

312-661-4600

(Name)

(Area Code) (Telephone Number)

efasstatutoryreporting@kemper.com

904-245-5601

(E-mail Address)

(FAX Number)

OFFICERS

President

Matthew Joseph Varagona

Vice President & Treasurer/Controller

Timothy John Tuller #

Secretary

Patrick B. Theiler #

OTHER

DIRECTORS OR TRUSTEES

Bradley Thomas Camden

Timothy John Tuller #

Aditya NMI Mahajan

Patrick B. Theiler

Matthew Joseph Varagona

State of

Alabama

County of

Jefferson

SS

The officers of this reporting entity being duly sworn, each depose and say that they are the described officers of said reporting entity, and that on the reporting period stated above, all of the herein described assets were the absolute property of the said reporting entity, free and clear from any liens or claims thereon, except as herein stated, and that this statement, together with related exhibits, schedules and explanations therein contained, annexed or referred to, is a full and true statement of all the assets and liabilities and of the condition and affairs of the said reporting entity as of the reporting period stated above, and of its income and deductions therefrom for the period ended, and have been completed in accordance with the NAIC Annual Statement Instructions and Accounting Practices and Procedures manual except to the extent that: (1) state law may differ; or, (2) that state rules or regulations require differences in reporting not related to accounting practices and procedures, according to the best of their information, knowledge and belief, respectively. Furthermore, the scope of this attestation by the described officers also includes the related corresponding electronic filing with the NAIC, when required, that is an exact copy (except for formatting differences due to electronic filing) of the enclosed statement. The electronic filing may be requested by various regulators in lieu of or in addition to the enclosed statement.

Matthew Joseph Varagona

Patrick B Theiler

Timothy John Tuller

President

Secretary

Vice President & Treasurer/Controller

Subscribed and sworn to before me this

day of

a. Is this an original filing? Yes [] No []

b. If no,

1. State the amendment number.....

2. Date filed

3. Number of pages attached.....

ANNUAL STATEMENT FOR THE YEAR 2021 OF THE Infinity Auto Insurance Company

ASSETS

	Current Year			Prior Year
	1 Assets	2 Nonadmitted Assets	3 Net Admitted Assets (Cols. 1 - 2)	4 Net Admitted Assets
1. Bonds (Schedule D)	11,524,780		11,524,780	10,918,389
2. Stocks (Schedule D):				
2.1 Preferred stocks				
2.2 Common stocks	1,704	1,704		
3. Mortgage loans on real estate (Schedule B):				
3.1 First liens				
3.2 Other than first liens				
4. Real estate (Schedule A):				
4.1 Properties occupied by the company (less \$				
encumbrances)				
4.2 Properties held for the production of income (less				
\$				
encumbrances)				
4.3 Properties held for sale (less \$				
encumbrances)				
5. Cash (\$, Schedule E - Part 1), cash equivalents				
(\$,39,406 , Schedule E - Part 2) and short-term				
investments (\$, Schedule DA)	39,406		39,406	2,901,593
6. Contract loans (including \$ premium notes)				
7. Derivatives (Schedule DB)				
8. Other invested assets (Schedule BA)				
9. Receivable for securities				200,000
10. Securities lending reinvested collateral assets (Schedule DL)				
11. Aggregate write-ins for invested assets				
12. Subtotals, cash and invested assets (Lines 1 to 11)	11,565,890	1,704	11,564,186	14,019,982
13. Title plants less \$ charged off (for Title insurers				
only)				
14. Investment income due and accrued	155,726		155,726	133,203
15. Premiums and considerations:				
15.1 Uncollected premiums and agents' balances in the course of collection				1,986,047
15.2 Deferred premiums and agents' balances and installments booked but				
deferred and not yet due (including \$				
earned but unbilled premiums)				
15.3 Accrued retrospective premiums (\$) and				
contracts subject to redetermination (\$)				
16. Reinsurance:				
16.1 Amounts recoverable from reinsurers	526,346		526,346	10,600,542
16.2 Funds held by or deposited with reinsured companies				
16.3 Other amounts receivable under reinsurance contracts				
17. Amounts receivable relating to uninsured plans				
18.1 Current federal and foreign income tax recoverable and interest thereon	46,535		46,535	2,803
18.2 Net deferred tax asset	13,424	13,066	358	
19. Guaranty funds receivable or on deposit				
20. Electronic data processing equipment and software				
21. Furniture and equipment, including health care delivery assets				
(\$)				
22. Net adjustment in assets and liabilities due to foreign exchange rates				
23. Receivables from parent, subsidiaries and affiliates				
24. Health care (\$) and other amounts receivable				
25. Aggregate write-ins for other than invested assets	2,159		2,159	
26. Total assets excluding Separate Accounts, Segregated Accounts and				
Protected Cell Accounts (Lines 12 to 25)	12,310,081	14,770	12,295,310	26,742,576
27. From Separate Accounts, Segregated Accounts and Protected Cell				
Accounts				
28. Total (Lines 26 and 27)	12,310,081	14,770	12,295,310	26,742,576
DETAILS OF WRITE-INS				
1101.				
1102.				
1103.				
1198. Summary of remaining write-ins for Line 11 from overflow page				
1199. Totals (Lines 1101 thru 1103 plus 1198)(Line 11 above)				
2501. Other Assets	2,159		2,159	
2502.				
2503.				
2598. Summary of remaining write-ins for Line 25 from overflow page				
2599. Totals (Lines 2501 thru 2503 plus 2598)(Line 25 above)	2,159		2,159	

ANNUAL STATEMENT FOR THE YEAR 2021 OF THE Infinity Auto Insurance Company

LIABILITIES, SURPLUS AND OTHER FUNDS

	1 Current Year	2 Prior Year
1. Losses (Part 2A, Line 35, Column 8)		
2. Reinsurance payable on paid losses and loss adjustment expenses (Schedule F, Part 1, Column 6)		
3. Loss adjustment expenses (Part 2A, Line 35, Column 9)		
4. Commissions payable, contingent commissions and other similar charges		0
5. Other expenses (excluding taxes, licenses and fees)	17,129	16,574
6. Taxes, licenses and fees (excluding federal and foreign income taxes)		0
7.1 Current federal and foreign income taxes (including \$ on realized capital gains (losses))		0
7.2 Net deferred tax liability	2,474	2,605
8. Borrowed money \$ and interest thereon \$		
9. Unearned premiums (Part 1A, Line 38, Column 5) (after deducting unearned premiums for ceded reinsurance of \$349,862,734 and including warranty reserves of \$ and accrued accident and health experience rating refunds including \$ for medical loss ratio rebate per the Public Health Service Act)		
10. Advance premium	2,528,638	
11. Dividends declared and unpaid:		
11.1 Stockholders		
11.2 Policyholders		
12. Ceded reinsurance premiums payable (net of ceding commissions)		1,694,379
13. Funds held by company under reinsurance treaties (Schedule F, Part 3, Column 20)		
14. Amounts withheld or retained by company for account of others		
15. Remittances and items not allocated	318	(509)
16. Provision for reinsurance (including \$ certified) (Schedule F, Part 3, Column 78)		
17. Net adjustments in assets and liabilities due to foreign exchange rates		
18. Drafts outstanding		
19. Payable to parent, subsidiaries and affiliates	588,568	16,257,993
20. Derivatives		
21. Payable for securities		
22. Payable for securities lending		
23. Liability for amounts held under uninsured plans		
24. Capital notes \$ and interest thereon \$		
25. Aggregate write-ins for liabilities	832,921	693,603
26. Total liabilities excluding protected cell liabilities (Lines 1 through 25)	3,970,047	18,664,646
27. Protected cell liabilities		
28. Total liabilities (Lines 26 and 27)	3,970,047	18,664,646
29. Aggregate write-ins for special surplus funds		
30. Common capital stock	3,000,000	3,000,000
31. Preferred capital stock		
32. Aggregate write-ins for other than special surplus funds		
33. Surplus notes		
34. Gross paid in and contributed surplus	4,500,000	4,500,000
35. Unassigned funds (surplus)	825,263	577,931
36. Less treasury stock, at cost:		
36.1 shares common (value included in Line 30 \$)		
36.2 shares preferred (value included in Line 31 \$)		
37. Surplus as regards policyholders (Lines 29 to 35, less 36) (Page 4, Line 39)	8,325,263	8,077,931
38. TOTALS (Page 2, Line 28, Col. 3)	12,295,311	26,742,576
DETAILS OF WRITE-INS		
2501. Accounts payable and other liabilities	832,921	693,603
2502.		
2503.		
2598. Summary of remaining write-ins for Line 25 from overflow page		
2599. Totals (Lines 2501 thru 2503 plus 2598)(Line 25 above)	832,921	693,603
2901.		
2902.		
2903.		
2998. Summary of remaining write-ins for Line 29 from overflow page		
2999. Totals (Lines 2901 thru 2903 plus 2998)(Line 29 above)		
3201.		
3202.		
3203.		
3298. Summary of remaining write-ins for Line 32 from overflow page		
3299. Totals (Lines 3201 thru 3203 plus 3298)(Line 32 above)		

STATEMENT OF INCOME

	1 Current Year	2 Prior Year
UNDERWRITING INCOME		
1. Premiums earned (Part 1, Line 35, Column 4).....		
DEDUCTIONS:		
2. Losses incurred (Part 2, Line 35, Column 7)		
3. Loss adjustment expenses incurred (Part 3, Line 25, Column 1)		
4. Other underwriting expenses incurred (Part 3, Line 25, Column 2)		
5. Aggregate write-ins for underwriting deductions		
6. Total underwriting deductions (Lines 2 through 5)		
7. Net income of protected cells		
8. Net underwriting gain or (loss) (Line 1 minus Line 6 plus Line 7)		
INVESTMENT INCOME		
9. Net investment income earned (Exhibit of Net Investment Income, Line 17)	285,898	286,047
10. Net realized capital gains or (losses) less capital gains tax of \$3 (Exhibit of Capital Gains (Losses))	12	1,557
11. Net investment gain (loss) (Lines 9 + 10)	285,910	287,604
OTHER INCOME		
12. Net gain (loss) from agents' or premium balances charged off (amount recovered \$ amount charged off \$)		
13. Finance and service charges not included in premiums		
14. Aggregate write-ins for miscellaneous income		
15. Total other income (Lines 12 through 14)		
16. Net income before dividends to policyholders, after capital gains tax and before all other federal and foreign income taxes (Lines 8 + 11 + 15)	285,910	287,604
17. Dividends to policyholders		
18. Net income, after dividends to policyholders, after capital gains tax and before all other federal and foreign income taxes (Line 16 minus Line 17)	285,910	287,604
19. Federal and foreign income taxes incurred	39,066	31,094
20. Net income (Line 18 minus Line 19)(to Line 22)	246,844	256,510
CAPITAL AND SURPLUS ACCOUNT		
21. Surplus as regards policyholders, December 31 prior year (Page 4, Line 39, Column 2)	8,077,931	7,920,575
22. Net income (from Line 20)	246,844	256,510
23. Net transfers (to) from Protected Cell accounts		
24. Change in net unrealized capital gains or (losses) less capital gains tax of \$		
25. Change in net unrealized foreign exchange capital gain (loss)		
26. Change in net deferred income tax	405	1,264
27. Change in nonadmitted assets (Exhibit of Nonadmitted Assets, Line 28, Col. 3)	84	(418)
28. Change in provision for reinsurance (Page 3, Line 16, Column 2 minus Column 1)		
29. Change in surplus notes		
30. Surplus (contributed to) withdrawn from protected cells		
31. Cumulative effect of changes in accounting principles		
32. Capital changes:		
32.1 Paid in		
32.2 Transferred from surplus (Stock Dividend)		
32.3 Transferred to surplus		
33. Surplus adjustments:		
33.1 Paid in		
33.2 Transferred to capital (Stock Dividend)		
33.3 Transferred from capital		
34. Net remittances from or (to) Home Office		
35. Dividends to stockholders		(100,000)
36. Change in treasury stock (Page 3, Lines 36.1 and 36.2, Column 2 minus Column 1)		
37. Aggregate write-ins for gains and losses in surplus		
38. Change in surplus as regards policyholders for the year (Lines 22 through 37)	247,333	157,356
39. Surplus as regards policyholders, December 31 current year (Line 21 plus Line 38) (Page 3, Line 37)	8,325,263	8,077,931
DETAILS OF WRITE-INS		
0501.		
0502.		
0503.		
0598. Summary of remaining write-ins for Line 5 from overflow page		
0599. Totals (Lines 0501 thru 0503 plus 0598)(Line 5 above)		
1401.		
1402.		
1403.		
1498. Summary of remaining write-ins for Line 14 from overflow page		
1499. Totals (Lines 1401 thru 1403 plus 1498)(Line 14 above)		
3701.		
3702.		
3703.		
3798. Summary of remaining write-ins for Line 37 from overflow page		
3799. Totals (Lines 3701 thru 3703 plus 3798)(Line 37 above)		

CASH FLOW

	1	2
	Current Year	Prior Year
Cash from Operations		
1. Premiums collected net of reinsurance	2,820,306	(291,668)
2. Net investment income	309,318	290,353
3. Miscellaneous income		
4. Total (Lines 1 through 3)	3,129,624	(1,315)
5. Benefit and loss related payments	(10,074,195)	10,597,968
6. Net transfers to Separate Accounts, Segregated Accounts and Protected Cell Accounts		
7. Commissions, expenses paid and aggregate write-ins for deductions	(552)	(16,574)
8. Dividends paid to policyholders		
9. Federal and foreign income taxes paid (recovered) net of \$ tax on capital gains (losses)	82,801	15,748
10. Total (Lines 5 through 9)	(9,991,947)	10,597,142
11. Net cash from operations (Line 4 minus Line 10)	13,121,570	(10,598,457)
Cash from Investments		
12. Proceeds from investments sold, matured or repaid:		
12.1 Bonds	12,504	338,482
12.2 Stocks		
12.3 Mortgage loans		
12.4 Real estate		
12.5 Other invested assets		
12.6 Net gains or (losses) on cash, cash equivalents and short-term investments	15	157
12.7 Miscellaneous proceeds	200,000	
12.8 Total investment proceeds (Lines 12.1 to 12.7)	212,519	338,639
13. Cost of investments acquired (long-term only):		
13.1 Bonds	664,836	1,555,415
13.2 Stocks		
13.3 Mortgage loans		
13.4 Real estate		
13.5 Other invested assets		
13.6 Miscellaneous applications		200,000
13.7 Total investments acquired (Lines 13.1 to 13.6)	664,836	1,755,415
14. Net increase (decrease) in contract loans and premium notes		
15. Net cash from investments (Line 12.8 minus Line 13.7 minus Line 14)	(452,317)	(1,416,776)
Cash from Financing and Miscellaneous Sources		
16. Cash provided (applied):		
16.1 Surplus notes, capital notes		
16.2 Capital and paid in surplus, less treasury stock		
16.3 Borrowed funds		
16.4 Net deposits on deposit-type contracts and other insurance liabilities		
16.5 Dividends to stockholders		100,000
16.6 Other cash provided (applied)	(15,531,440)	14,954,431
17. Net cash from financing and miscellaneous sources (Lines 16.1 to 16.4 minus Line 16.5 plus Line 16.6)	(15,531,440)	14,854,431
RECONCILIATION OF CASH, CASH EQUIVALENTS AND SHORT-TERM INVESTMENTS		
18. Net change in cash, cash equivalents and short-term investments (Line 11, plus Lines 15 and 17)	(2,862,187)	2,839,197
19. Cash, cash equivalents and short-term investments:		
19.1 Beginning of year	2,901,593	62,396
19.2 End of period (Line 18 plus Line 19.1)	39,406	2,901,593

Note: Supplemental disclosures of cash flow information for non-cash transactions:

--	--	--

Underwriting and Investment Exhibit - Part 1 - Premiums Earned

N O N E

Underwriting and Investment Exhibit - Part 1A - Recapitulation of all Premiums

N O N E

ANNUAL STATEMENT FOR THE YEAR 2021 OF THE Infinity Auto Insurance Company

UNDERWRITING AND INVESTMENT EXHIBIT

PART 1B - PREMIUMS WRITTEN

Line of Business		1	Reinsurance Assumed		Reinsurance Ceded		6
		Direct Business (a)	2	3	4	5	Net Premiums Written Cols. 1+2+3-4-5
1.	Fire						
2.	Allied lines						
3.	Farmowners multiple peril						
4.	Homeowners multiple peril						
5.	Commercial multiple peril						
6.	Mortgage guaranty						
8.	Ocean marine						
9.	Inland marine						
10.	Financial guaranty						
11.1	Medical professional liability - occurrence						
11.2	Medical professional liability - claims-made						
12.	Earthquake						
13.	Group accident and health						
14.	Credit accident and health (group and individual)						
15.	Other accident and health						
16.	Workers' compensation						
17.1	Other liability - occurrence	99,758			99,758		
17.2	Other liability - claims-made	27,944			27,944		
17.3	Excess workers' compensation						
18.1	Products liability - occurrence						
18.2	Products liability - claims-made						
19.1, 19.2	Private passenger auto liability	354,412,231	176,987,214		531,399,445		
19.3, 19.4	Commercial auto liability	15,030,404	71,800,211		86,830,615		
21.	Auto physical damage	125,876,826	100,284,601		226,161,427		
22.	Aircraft (all perils)						
23.	Fidelity						
24.	Surety						
26.	Burglary and theft						
27.	Boiler and machinery						
28.	Credit						
29.	International						
30.	Warranty						
31.	Reinsurance - nonproportional assumed property	XXX					
32.	Reinsurance - nonproportional assumed liability	XXX					
33.	Reinsurance - nonproportional assumed financial lines	XXX					
34.	Aggregate write-ins for other lines of business						
35.	TOTALS	495,447,164	349,072,026		844,519,190		
DETAILS OF WRITE-INS							
3401.						
3402.						
3403.						
3498.	Summary of remaining write-ins for Line 34 from overflow page						
3499.	Totals (Lines 3401 thru 3403 plus 3498)(Line 34 above)						

(a) Does the company's direct premiums written include premiums recorded on an installment basis? Yes [] No [X]

If yes: 1. The amount of such installment premiums \$

 2. Amount at which such installment premiums would have been reported had they been reported on an annualized basis \$

ANNUAL STATEMENT FOR THE YEAR 2021 OF THE Infinity Auto Insurance Company

UNDERWRITING AND INVESTMENT EXHIBIT

PART 2 - LOSSES PAID AND INCURRED

Line of Business	Losses Paid Less Salvage				5	6	7	8
	1	2	3	4				
	Direct Business	Reinsurance Assumed	Reinsurance Recovered	Net Payments (Cols. 1 + 2 -3)	Net Losses Unpaid Current Year (Part 2A , Col. 8)	Net Losses Unpaid Prior Year	Losses Incurred Current Year (Cols. 4 + 5 - 6)	Percentage of Losses Incurred (Col. 7, Part 2) to Premiums Earned (Col. 4, Part 1)
1. Fire								
2. Allied lines								
3. Farmowners multiple peril								
4. Homeowners multiple peril								
5. Commercial multiple peril								
6. Mortgage guaranty								
8. Ocean marine								
9. Inland marine								
10. Financial guaranty								
11.1 Medical professional liability - occurrence								
11.2 Medical professional liability - claims-made								
12. Earthquake								
13. Group accident and health								
14. Credit accident and health (group and individual)								
15. Other accident and health								
16. Workers' compensation								
17.1 Other liability - occurrence								
17.2 Other liability - claims-made								
17.3 Excess workers' compensation								
18.1 Products liability - occurrence								
18.2 Products liability - claims-made								
19.1, 19.2 Private passenger auto liability	189,824,387	96,697,745	286,522,133					
19.3, 19.4 Commercial auto liability	8,739,099	25,738,552	34,477,651					
21. Auto physical damage	91,780,799	82,794,552	174,575,350					
22. Aircraft (all perils)								
23. Fidelity								
24. Surety								
26. Burglary and theft								
27. Boiler and machinery								
28. Credit								
29. International								
30. Warranty								
31. Reinsurance - nonproportional assumed property	XXX							
32. Reinsurance - nonproportional assumed liability	XXX							
33. Reinsurance - nonproportional assumed financial lines	XXX							
34. Aggregate write-ins for other lines of business								
35. TOTALS	290,344,285	205,230,849	495,575,134					
DETAILS OF WRITE-INS								
3401.								
3402.								
3403.								
3498. Summary of remaining write-ins for Line 34 from overflow page								
3499. Totals (Lines 3401 thru 3403 plus 3498)(Line 34 above)								

ANNUAL STATEMENT FOR THE YEAR 2021 OF THE Infinity Auto Insurance Company

UNDERWRITING AND INVESTMENT EXHIBIT

PART 2A - UNPAID LOSSES AND LOSS ADJUSTMENT EXPENSES

Line of Business	Reported Losses				Incurred But Not Reported			8	9
	1	2	3	4	5	6	7		
	Direct	Reinsurance Assumed	Deduct Reinsurance Recoverable	Net Losses Excl. Incurred But Not Reported (Cols. 1 + 2 - 3)	Direct	Reinsurance Assumed	Reinsurance Ceded	Net Losses Unpaid (Cols. 4 + 5 + 6 - 7)	Net Unpaid Loss Adjustment Expenses
1. Fire									
2. Allied lines									
3. Farmowners multiple peril									
4. Homeowners multiple peril									
5. Commercial multiple peril									
6. Mortgage guaranty									
8. Ocean marine									
9. Inland marine									
10. Financial guaranty									
11.1 Medical professional liability - occurrence									
11.2 Medical professional liability - claims-made									
12. Earthquake									
13. Group accident and health								(a)	
14. Credit accident and health (group and individual)									
15. Other accident and health								(a)	
16. Workers' compensation									
17.1 Other liability - occurrence					68,426		68,426		
17.2 Other liability - claims-made					18,346		18,346		
17.3 Excess workers' compensation									
18.1 Products liability - occurrence									
18.2 Products liability - claims-made									
19.1, 19.2 Private passenger auto liability	96,318,242	81,183,745	177,501,986		137,292,706	37,934,190	175,226,896		
19.3, 19.4 Commercial auto liability	9,652,395	24,522,554	34,174,949		5,794,185	23,199,459	28,993,644		
21. Auto physical damage	8,816,613	5,361,215	14,177,828		822,130	372,953	1,195,083		
22. Aircraft (all perils)									
23. Fidelity									
24. Surety									
26. Burglary and theft									
27. Boiler and machinery									
28. Credit									
29. International									
30. Warranty									
31. Reinsurance - nonproportional assumed property	XXX				XXX				
32. Reinsurance - nonproportional assumed liability	XXX				XXX				
33. Reinsurance - nonproportional assumed financial lines	XXX				XXX				
34. Aggregate write-ins for other lines of business									
35. TOTALS	114,787,251	111,067,513	225,854,764		143,995,794	61,506,602	205,502,396		
DETAILS OF WRITE-INS									
3401.									
3402.									
3403.									
3498. Summary of remaining write-ins for Line 34 from overflow page									
3499. Totals (Lines 3401 thru 3403 plus 3498)(Line 34 above)									

(a) Including \$ for present value of life indemnity claims.

ANNUAL STATEMENT FOR THE YEAR 2021 OF THE Infinity Auto Insurance Company

UNDERWRITING AND INVESTMENT EXHIBIT

PART 3 - EXPENSES

	1	2	3	4
	Loss Adjustment Expenses	Other Underwriting Expenses	Investment Expenses	Total
1. Claim adjustment services:				
1.1 Direct	31,069,354			31,069,354
1.2 Reinsurance assumed	10,464,833			10,464,833
1.3 Reinsurance ceded	41,534,187			41,534,187
1.4 Net claim adjustment service (1.1 + 1.2 - 1.3)				
2. Commission and brokerage:				
2.1 Direct excluding contingent		60,280,315		60,280,315
2.2 Reinsurance assumed, excluding contingent		46,895,635		46,895,635
2.3 Reinsurance ceded, excluding contingent		107,175,950		107,175,950
2.4 Contingent - direct		15,838		15,838
2.5 Contingent - reinsurance assumed				
2.6 Contingent - reinsurance ceded		15,838		15,838
2.7 Policy and membership fees				
2.8 Net commission and brokerage (2.1 + 2.2 - 2.3 + 2.4 + 2.5 - 2.6 + 2.7)				
3. Allowances to managers and agents				
4. Advertising				
5. Boards, bureaus and associations				
6. Surveys and underwriting reports				
7. Audit of assureds' records				
8. Salary and related items:				
8.1 Salaries				
8.2 Payroll taxes				
9. Employee relations and welfare				
10. Insurance				
11. Directors' fees				
12. Travel and travel items				
13. Rent and rent items				
14. Equipment				
15. Cost or depreciation of EDP equipment and software				
16. Printing and stationery				
17. Postage, telephone and telegraph, exchange and express				
18. Legal and auditing				
19. Totals (Lines 3 to 18)				
20. Taxes, licenses and fees:				
20.1 State and local insurance taxes deducting guaranty association credits of \$				
20.2 Insurance department licenses and fees				
20.3 Gross guaranty association assessments				
20.4 All other (excluding federal and foreign income and real estate)				
20.5 Total taxes, licenses and fees (20.1 + 20.2 + 20.3 + 20.4)				
21. Real estate expenses				
22. Real estate taxes				
23. Reimbursements by uninsured plans				
24. Aggregate write-ins for miscellaneous expenses			29,716	29,716
25. Total expenses incurred			29,716 (a)	29,716
26. Less unpaid expenses - current year		17,129		17,129
27. Add unpaid expenses - prior year				
28. Amounts receivable relating to uninsured plans, prior year				
29. Amounts receivable relating to uninsured plans, current year				
30. TOTAL EXPENSES PAID (Lines 25 - 26 + 27 - 28 + 29)		(17,129)	29,716	12,587
DETAILS OF WRITE-INS				
2401. Investment Expenses			29,716	29,716
2402.				
2403.				
2498. Summary of remaining write-ins for Line 24 from overflow page				
2499. Totals (Lines 2401 thru 2403 plus 2498)(Line 24 above)			29,716	29,716

(a) Includes management fees of \$ to affiliates and \$ to non-affiliates.

ANNUAL STATEMENT FOR THE YEAR 2021 OF THE Infinity Auto Insurance Company

EXHIBIT OF NET INVESTMENT INCOME

		1	2
		Collected During Year	Earned During Year
1.	U.S. Government bonds	(a) 22,319 40,601
1.1	Bonds exempt from U.S. tax	(a) 206,928 208,624
1.2	Other bonds (unaffiliated)	(a) 63,639 66,185
1.3	Bonds of affiliates	(a)
2.1	Preferred stocks (unaffiliated)	(b)
2.11	Preferred stocks of affiliates	(b)
2.2	Common stocks (unaffiliated)
2.21	Common stocks of affiliates
3.	Mortgage loans	(c)
4.	Real estate	(d)
5	Contract loans
6	Cash, cash equivalents and short-term investments	(e) 204 204
7	Derivative instruments	(f)
8.	Other invested assets
9.	Aggregate write-ins for investment income
10.	Total gross investment income	293,091	315,614
11.	Investment expenses	(g) 29,716	
12.	Investment taxes, licenses and fees, excluding federal income taxes	(g)	
13.	Interest expense	(h)	
14.	Depreciation on real estate and other invested assets	(i)	
15.	Aggregate write-ins for deductions from investment income	
16.	Total deductions (Lines 11 through 15)	29,716	
17.	Net investment income (Line 10 minus Line 16)	285,898	
DETAILS OF WRITE-INS			
0901.		
0902.		
0903.		
0998.	Summary of remaining write-ins for Line 9 from overflow page		
0999.	Totals (Lines 0901 thru 0903 plus 0998) (Line 9, above)		
1501.		
1502.		
1503.		
1598.	Summary of remaining write-ins for Line 15 from overflow page		
1599.	Totals (Lines 1501 thru 1503 plus 1598) (Line 15, above)		

- (a) Includes \$403 accrual of discount less \$46,347 amortization of premium and less \$1,072 paid for accrued interest on purchases.
- (b) Includes \$ accrual of discount less \$ amortization of premium and less \$ paid for accrued dividends on purchases.
- (c) Includes \$ accrual of discount less \$ amortization of premium and less \$ paid for accrued interest on purchases.
- (d) Includes \$ for company's occupancy of its own buildings; and excludes \$ interest on encumbrances.
- (e) Includes \$ accrual of discount less \$ amortization of premium and less \$ paid for accrued interest on purchases.
- (f) Includes \$ accrual of discount less \$ amortization of premium.
- (g) Includes \$ investment expenses and \$ investment taxes, licenses and fees, excluding federal income taxes, attributable to segregated and Separate Accounts.
- (h) Includes \$ interest on surplus notes and \$ interest on capital notes.
- (i) Includes \$ depreciation on real estate and \$ depreciation on other invested assets.

EXHIBIT OF CAPITAL GAINS (LOSSES)

		1	2	3	4	5
		Realized Gain (Loss) On Sales or Maturity	Other Realized Adjustments	Total Realized Capital Gain (Loss) (Columns 1 + 2)	Change in Unrealized Capital Gain (Loss)	Change in Unrealized Foreign Exchange Capital Gain (Loss)
1.	U.S. Government bonds
1.1	Bonds exempt from U.S. tax
1.2	Other bonds (unaffiliated)
1.3	Bonds of affiliates
2.1	Preferred stocks (unaffiliated)
2.11	Preferred stocks of affiliates
2.2	Common stocks (unaffiliated)
2.21	Common stocks of affiliates
3.	Mortgage loans
4.	Real estate
5.	Contract loans
6.	Cash, cash equivalents and short-term investments1515
7.	Derivative instruments
8.	Other invested assets
9.	Aggregate write-ins for capital gains (losses)
10.	Total capital gains (losses)1515
DETAILS OF WRITE-INS	
0901.
0902.
0903.
0998.	Summary of remaining write-ins for Line 9 from overflow page
0999.	Totals (Lines 0901 thru 0903 plus 0998) (Line 9, above)

ANNUAL STATEMENT FOR THE YEAR 2021 OF THE Infinity Auto Insurance Company

EXHIBIT OF NON-ADMITTED ASSETS

	1	2	3
	Current Year Total Nonadmitted Assets	Prior Year Total Nonadmitted Assets	Change in Total Nonadmitted Assets (Col. 2 - Col. 1)
1. Bonds (Schedule D)			
2. Stocks (Schedule D):			
2.1 Preferred stocks			
2.2 Common stocks	1,704	1,704	
3. Mortgage loans on real estate (Schedule B):			
3.1 First liens			
3.2 Other than first liens			
4. Real estate (Schedule A):			
4.1 Properties occupied by the company			
4.2 Properties held for the production of income			
4.3 Properties held for sale			
5. Cash (Schedule E - Part 1), cash equivalents (Schedule E - Part 2) and short-term investments (Schedule DA)			
6. Contract loans			
7. Derivatives (Schedule DB)			
8. Other invested assets (Schedule BA)			
9. Receivables for securities			
10. Securities lending reinvested collateral assets (Schedule DL)			
11. Aggregate write-ins for invested assets			
12. Subtotals, cash and invested assets (Lines 1 to 11)	1,704	1,704	
13. Title plants (for Title insurers only)			
14. Investment income due and accrued			
15. Premiums and considerations:			
15.1 Uncollected premiums and agents' balances in the course of collection			
15.2 Deferred premiums, agents' balances and installments booked but deferred and not yet due			
15.3 Accrued retrospective premiums and contracts subject to redetermination			
16. Reinsurance:			
16.1 Amounts recoverable from reinsurers			
16.2 Funds held by or deposited with reinsured companies			
16.3 Other amounts receivable under reinsurance contracts			
17. Amounts receivable relating to uninsured plans			
18.1 Current federal and foreign income tax recoverable and interest thereon			
18.2 Net deferred tax asset	13,066	13,150	84
19. Guaranty funds receivable or on deposit			
20. Electronic data processing equipment and software			
21. Furniture and equipment, including health care delivery assets			
22. Net adjustment in assets and liabilities due to foreign exchange rates			
23. Receivables from parent, subsidiaries and affiliates			
24. Health care and other amounts receivable			
25. Aggregate write-ins for other than invested assets			
26. Total assets excluding Separate Accounts, Segregated Accounts and Protected Cell Accounts (Lines 12 to 25)	14,770	14,854	84
27. From Separate Accounts, Segregated Accounts and Protected Cell Accounts			
28. Total (Lines 26 and 27)	14,770	14,854	84
DETAILS OF WRITE-INS			
1101.			
1102.			
1103.			
1198. Summary of remaining write-ins for Line 11 from overflow page			
1199. Totals (Lines 1101 thru 1103 plus 1198)(Line 11 above)			
2501.			
2502.			
2503.			
2598. Summary of remaining write-ins for Line 25 from overflow page			
2599. Totals (Lines 2501 thru 2503 plus 2598)(Line 25 above)			

Notes to the Financial Statements

1. Summary of Significant Accounting Policies and Going Concern

A. Accounting Practices

The accompanying financial statements of Infinity Auto Insurance Company ("Company") have been prepared in conformity with the National Association of Insurance Commissioners ("NAIC") Annual Statement Instructions and *Accounting Practices and Procedures Manual*, ("the NAIC Manual") and the laws of the State of Ohio.

The Ohio Department of Insurance recognizes only statutory accounting practices prescribed or permitted by the state of Ohio for determining and reporting the financial condition and results of operations of an insurance company, for purposes of determining its solvency under the Ohio Insurance Law. The NAIC Manual has been adopted as a component of prescribed or permitted practices by the State of Ohio. The Company has not adopted permitted accounting practices that differ from those found in the NAIC Manual and accordingly the Company has no permitted accounting practices.

	SSAP #	F/S Page	F/S Line #	2021	2020
Net Income					
(1) State basis (Page 4, Line 20, Columns 1 & 2)	XXX	XXX	XXX	\$ 246,844	\$ 256,510
(2) State prescribed practices that are an increase / (decrease) from NAIC SAP:					
(3) State permitted practices that are an increase / (decrease) from NAIC SAP:					
(4) NAIC SAP (1-2-3=4)	XXX	XXX	XXX	\$ 246,844	\$ 256,510
Surplus					
(5) State basis (Page 3, Line 37, Columns 1 & 2)	XXX	XXX	XXX	\$ 8,325,263	\$ 8,077,931
(6) State prescribed practices that are an increase / (decrease) from NAIC SAP:					
(7) State permitted practices that are an increase / (decrease) from NAIC SAP:					
(8) NAIC SAP (5-6-7=8)	XXX	XXX	XXX	\$ 8,325,263	\$ 8,077,931

B. Use of Estimates in the Preparation of the Financial Statements

The preparation of financial statements in conformity with Statutory Accounting Principles requires management to make estimates and assumptions that affect the reported amounts of assets and liabilities. It also requires disclosure of contingent assets and liabilities at the date of the financial statements and the reported amounts of revenue and expenses during the period. Actual results could differ from those estimates.

C. Accounting Policy

Premiums are earned over the terms of the related insurance policies and reinsurance contracts. Unearned premium reserves are established to cover the unexpired portion of premiums written. Such reserves are computed by pro rata methods for direct business and are based on reports received from ceding companies for reinsurance.

Expenses incurred in connection with acquiring new insurance business, including such acquisition costs as sales commissions and premium taxes, are charged to operations as incurred. Expenses incurred are reduced for ceding allowances received or receivable.

In addition, the company uses the following accounting policies:

- (1) Short-term investments are stated at amortized cost. Cash equivalents are carried at amortized cost or fair value.
- (2) Bonds with NAIC designation of 1 or 2, including loan-backed and structured securities ("LBSS") are reported at amortized cost using the effective yield method. Bonds with NAIC designation of 3 through 6 are carried at the lower of amortized cost or fair value with the difference reflected in unassigned surplus as unrealized capital loss.
- (3) Common stocks are stated at fair market value with changes in fair value recorded as a change in net unrealized capital gains (losses) in unassigned surplus, except for investments in stocks of wholly owned uncombined subsidiaries and affiliates, which the Company carries on the equity basis.
- (4) Redeemable preferred stocks are carried at amortized cost or the lower of cost or fair value, depending on the assigned NAIC designation. Perpetual preferred stocks are carried at fair value not to exceed the current effective call price.
- (5) Mortgage loans on real estate are stated at their unpaid principal balance.
- (6) The Company does not invest in loan-backed securities.
- (7) The Company has no related non-insurance companies.
- (8) Other invested assets consist of investments in joint ventures, partnerships and limited liability companies and surplus notes. The Company generally carries these interests based on the underlying audited GAAP equity of the investees.
- (9) The Company has no derivatives.
- (10) The Company anticipates investment income as a factor in the premium deficiency calculation, in accordance with SSAP NO. 53, Property-Casualty Contracts-Premiums.
- (11) Unpaid losses and loss adjustment expenses include an amount determined from individual case estimates and loss reports and an amount, based on experience, for losses incurred but not reported. Such liabilities are necessarily based on assumptions and estimates and while management believes the amount is adequate, the ultimate liability may be in excess of or less than the amount provided. The methods for making such estimates and for establishing the resulting liabilities are continually reviewed and any adjustments are reflected in the period determined.
- (12) The Company has not modified its capitalization policy from the prior period.
- (13) The Company has not recorded any pharmaceutical rebate receivables.

D. Going Concern

Management has not identified any factors that would cast substantial doubt about the Company's ability to continue as a going concern.

Notes to the Financial Statements

- 2. Accounting Changes and Corrections of Errors - Not Applicable
- 3. Business Combinations and Goodwill - Not Applicable
- 4. Discontinued Operations - Not Applicable
- 5. Investments
 - A. Mortgage Loans, including Mezzanine Real Estate Loans - Not Applicable
 - B. Debt Restructuring - Not Applicable
 - C. Reverse Mortgages - Not Applicable
 - D. Loan-Backed Securities
 - (1) Prepayment assumptions for single class and multi-class mortgage-backed/asset-backed securities were obtained from broker dealer survey values or pricing services.
 - (2) Loan-backed and structured securities with a recognized other-than-temporary impairment (OTTI) - Not Applicable
 - (3) Securities held that were other-than-temporarily impaired due to the present value of cash flows expected to be collected was less than the amortized cost of securities - Not Applicable
 - (4) All impaired securities for which an OTTI has not been recognized in earnings as a realized loss - Not Applicable
 - (5) The Company regularly reviews its investment portfolio for factors that may indicate that a decline in fair value of an investment is other than temporary. Some factors considered in evaluating whether a decline in fair value is other than temporary include:
 - 1) the Company's ability and intent to retain the investment for a period of time sufficient to allow for a recovery in value;
 - 2) the duration and extent to which the fair value has been less than cost; and
 - 3) the financial condition and prospects of the issuer. Losses arising from other than temporary declines in fair value are computed on a specific identification method and are reported in the Statement of Income in the period in which the decline was determined to be other than temporary.
 - E. Dollar Repurchase Agreements and/or Securities Lending Transactions - Not Applicable
 - F. Repurchase Agreements Transactions Accounted for as Secured Borrowing - Not Applicable
 - G. Reverse Repurchase Agreements Transactions Accounted for as Secured Borrowing - Not Applicable
 - H. Repurchase Agreements Transactions Accounted for as a Sale - Not Applicable
 - I. Reverse Repurchase Agreements Transactions Accounted for as a Sale - Not Applicable
 - J. Real Estate - Not Applicable
 - K. Low-Income Housing Tax Credits (LIHTC) - Not Applicable
 - L. Restricted Assets
 - The Company does not have any restricted assets, other than those held on deposit under state statute.

Notes to the Financial Statements

5. Investments (Continued)

(1) Restricted assets (including pledged)

Restricted Asset Category	Gross (Admitted & Nonadmitted) Restricted							Current Year			
	Current Year						Increase / (Decrease) (5 - 6)				
	(1)	(2)	(3)	(4)	(5)	(6)		(8)	(9)	(10)	(11)
	Total General Account (G/A)	G/A Supporting Protected Cell Account Activity	Total Protected Cell Account Restricted Assets	Protected Cell Account Assets Supporting G/A Activity	Total (1 + 3)	Total From Prior Year		Total Nonadmitted Restricted	Total Admitted Restricted (5-8)	Gross (Admitted & Nonadmitted) Restricted to Total Assets, %	Admitted to Total Admitted Assets, %
a. Subject to contractual obligation for which liability is not shown	\$	\$	\$	\$	\$	\$	\$	\$	\$	%	%
b. Collateral held under security lending agreements
c. Subject to repurchase agreements
d. Subject to reverse repurchase agreements
e. Subject to dollar repurchase agreements
f. Subject to dollar reverse repurchase agreements
g. Placed under option contracts
h. Letter stock or securities restricted as to sale - excluding FHLB capital stock
i. FHLB capital stock
j. On deposit with states	2,516,099	2,516,099	2,513,563	2,536	2,516,099	25.720	25.760
k. On deposit with other regulatory bodies
l. Pledged as collateral to FHLB (including assets backing funding agreements)
m. Pledged as collateral not captured in other categories
n. Other restricted assets
o. Total restricted assets	\$ 2,516,099	\$	\$	\$	\$ 2,516,099	\$ 2,513,563	\$ 2,536	\$	\$ 2,516,099	25.720 %	25.760 %

(2) Detail of assets pledged as collateral not captured in other categories (contracts that share similar characteristics, such as reinsurance and derivatives, are reported in the aggregate) - Not Applicable

(3) Detail of other restricted assets (contracts that share similar characteristics, such as reinsurance and derivatives, are reported in the aggregate) - Not Applicable

(4) Collateral received and reflected as assets within the reporting entity's financial statements - Not Applicable

M. Working Capital Finance Investments - Not Applicable

N. Offsetting and Netting of Assets and Liabilities - Not Applicable

O. 5GI Securities - Not Applicable

P. Short Sales - Not Applicable

Q. Prepayment Penalty and Acceleration Fees - Not Applicable

R. Reporting Entity's Share of Cash Pool by Asset type - Not Applicable

6. Joint Ventures, Partnerships and Limited Liability Companies - Not Applicable

7. Investment Income

A. Due and Accrued Income Excluded from Surplus

There was no investment income due and accrued excluded from surplus.

B. Total Amount Excluded - Not Applicable

8. Derivative Instruments - Not Applicable

Notes to the Financial Statements

9. Income Taxes

A. Components of the Net Deferred Tax Asset/(Liability)

(1) Change between years by tax character

	2021			2020			Change		
	(1)	(2)	(3)	(4)	(5)	(6)	(7)	(8)	(9)
	Ordinary	Capital	Total (Col 1+2)	Ordinary	Capital	Total (Col 4+5)	Ordinary (Col 1-4)	Capital (Col 2-5)	Total (Col 7+8)
(a) Gross deferred tax assets	\$ 358	\$ 13,066	\$ 13,424	\$ 13,150	\$ 13,150	\$ 13,150	\$ 358	\$ (84)	\$ 274
(b) Statutory valuation allowance adjustments									
(c) Adjusted gross deferred tax assets (1a - 1b)	358	13,066	13,424	13,150	13,150	13,150	358	(84)	274
(d) Deferred tax assets nonadmitted		13,066	13,066		13,150	13,150		(84)	(84)
(e) Subtotal net admitted deferred tax asset (1c - 1d)	\$ 358	\$ -	\$ 358	\$ -	\$ -	\$ -	\$ 358	\$ -	\$ 358
(f) Deferred tax liabilities	2,474		2,474	2,605		2,605	(131)		(131)
(g) Net admitted deferred tax asset/(net deferred tax liability) (1e - 1f)	\$ (2,116)	\$ -	\$ (2,116)	\$ (2,605)	\$ -	\$ (2,605)	\$ 489	\$ -	\$ 489

(2) Admission calculation components SSAP No. 101

	2021			2020			Change		
	(1)	(2)	(3)	(4)	(5)	(6)	(7)	(8)	(9)
	Ordinary	Capital	Total (Col 1+2)	Ordinary	Capital	Total (Col 4+5)	Ordinary (Col 1-4)	Capital (Col 2-5)	Total (Col 7+8)
(a) Federal income taxes paid in prior years recoverable through loss carrybacks	\$ 358		\$ 358				\$ 358		\$ 358
(b) Adjusted gross deferred tax assets expected to be realized (excluding the amount of deferred tax assets from 2(a) above) after application of the threshold limitation (lesser of 2(b)1 and 2(b)2 below)	-		-				-		-
1. Adjusted gross deferred tax assets expected to be realized following the balance sheet date	-		-				-		-
2. Adjusted gross deferred tax assets allowed per limitation threshold	XXX	XXX	1,248,789	XXX	XXX	1,211,690	XXX	XXX	37,099
(c) Adjusted gross deferred tax assets (excluding the amount of deferred tax assets from 2(a) and 2(b) above) offset by gross deferred tax liabilities	-		-				-		-
(d) Deferred tax assets admitted as the result of application of SSAP No. 101. Total (2(a) + 2(b) + 2(c))	\$ 358	\$	\$ 358	\$	\$	\$	\$ 358	\$	\$ 358

(3) Ratio used as basis of admissibility

	2021	2020
(a) Ratio percentage used to determine recovery period and threshold limitation amount	6,063.200 %	17,229.600 %
(b) Amount of adjusted capital and surplus used to determine recovery period and threshold limitation in 2(b)2 above	\$ 8,325,263	\$ 8,077,931

(4) Impact of tax-planning strategies

(a) Determination of adjusted gross deferred tax assets and net admitted deferred tax assets, by tax character as a percentage

	2021		2020		Change	
	(1)	(2)	(3)	(4)	(5)	(6)
	Ordinary	Capital	Ordinary	Capital	Ordinary (Col. 1-3)	Capital (Col. 2-4)
1. Adjusted gross DTAs amount from Note 9A1(c)	\$ 358	\$ 13,066	\$ 13,150	\$ 13,150	\$ 358	\$ (84)
2. Percentage of adjusted gross DTAs by tax character attributable to the impact of tax planning strategies	- %	- %	%	%	- %	- %
3. Net admitted adjusted gross DTAs amount from Note 9A1(e)	\$ 358	\$ -	\$ -	\$ -	\$ 358	\$ -
4. Percentage of net admitted adjusted gross DTAs by tax character admitted because of the impact of tax planning strategies	- %	- %	%	%	- %	- %

(b) Use of reinsurance-related tax-planning strategies

Does the company's tax-planning strategies include the use of reinsurance? NO

B. Regarding Deferred Tax Liabilities That Are Not Recognized - Not Applicable

Notes to the Financial Statements

9. Income Taxes (Continued)

C. Major Components of Current Income Taxes Incurred

	(1)	(2)	(3)
	2021	2020	Change (1-2)
Current income taxes incurred consist of the following major components:			
1. Current Income Tax			
(a) Federal	\$ 37,773	\$ 31,094	\$ 6,679
(b) Foreign			
(c) Subtotal	\$ 37,773	\$ 31,094	\$ 6,679
(d) Federal income tax on net capital gains	3	414	(411)
(e) Utilization of capital loss carry-forwards			
(f) Other	1,293		1,293
(g) Federal and foreign income taxes incurred	\$ 39,069	\$ 31,508	\$ 7,561
	(1)	(2)	(3)
	2021	2020	Change (1-2)
2. Deferred Tax Assets			
(a) Ordinary			
(1) Discounting of unpaid losses	\$	\$	\$
(2) Unearned premium reserve			
(3) Policyholder reserves			
(4) Investments			
(5) Deferred acquisition costs			
(6) Policyholder dividends accrual			
(7) Fixed assets			
(8) Compensation and benefits accrual			
(9) Pension accrual			
(10) Receivables - nonadmitted	358		358
(11) Net operating loss carry-forward			
(12) Tax credit carry-forward			
(13) Other (including items less than 5% of total ordinary tax assets)			
(99) Subtotal	\$ 358	\$	\$ 358
(b) Statutory valuation allowance adjustment			
(c) Nonadmitted			
(d) Admitted ordinary deferred tax assets (2a99 - 2b - 2c)	\$ 358	\$	\$ 358
(e) Capital			
(1) Investments	\$ 13,066	\$ 13,150	\$ (84)
(2) Net capital loss carry-forward			
(3) Real estate			
(4) Other (including items <5% of total capital tax assets)			
(99) Subtotal	\$ 13,066	\$ 13,150	\$ (84)
(f) Statutory valuation allowance adjustment			
(g) Nonadmitted	13,066	13,150	(84)
(h) Admitted capital deferred tax assets (2e99 - 2f - 2g)	—	—	—
(i) Admitted deferred tax assets (2d + 2h)	\$ 358	\$ —	\$ 358
	(1)	(2)	(3)
	2021	2020	Change (1-2)
3. Deferred Tax Liabilities			
(a) Ordinary			
(1) Investments	\$	\$	\$
(2) Fixed assets			
(3) Deferred and uncollected premium			
(4) Policyholder reserves			
(5) Other (including items <5% of total ordinary tax liabilities) [†]	2,474	2,605	(131)
(99) Subtotal	\$ 2,474	\$ 2,605	\$ (131)
(b) Capital			
(1) Investments	\$	\$	\$
(2) Real estate			
(3) Other (including items <5% of total capital tax liabilities)			
(99) Subtotal	\$	\$	\$
(c) Deferred tax liabilities (3a99 + 3b99)	\$ 2,474	\$ 2,605	\$ (131)
4. Net deferred tax assets/liabilities (2i - 3c)	\$ (2,116)	\$ (2,605)	\$ 489

Notes to the Financial Statements

9. Income Taxes (Continued)

	(1) 2021	(2) 2020	(3) Change (1-2)
† Items >5% of total ordinary tax liabilities included in Other			
Nondeductible Accruals - Other.....	\$ 1,011	\$ 1,011	\$ -
Loss Reserve Discounting Tmnsition Adjustment.....	1,464	1,952	(488)

The change in net deferred income taxes is comprised of the following (the Change in Nonadmitted Assets and Unrealized Gains are reported separately from the Change in Net Deferred Income Taxes in the surplus section of the Annual Statement):

	2021	2020	Change
Adjusted gross deferred tax assets	13,424	13,150	274
Total deferred tax liabilities	2,474	2,605	(131)
Net deferred tax assets (liabilities)	10,950	10,545	405
Tax effect of unrealized gains (losses)			0
Tax effect of equity based employee benefits			0
Change in net deferred income tax			405

D. Among the More Significant Book to Tax Adjustments

The provision for federal and foreign income taxes incurred is different from that which would be obtained by applying the statutory Federal income tax rate to income before income taxes. The significant items causing this difference are as follows:

	2021	Effective Tax Rate
Provision computed at statutory rate.....	\$ 60,042	21.000 %
(Over) under accrual of prior year tax.....	1,293	0.452 ...
Tax exempt income deduction.....	(32,855)	-11.491 ...
Change in nonadmitted assets.....	(358)	-0.125 ...
Nondeductible penalties.....	10,184	3.562 ...
Other.....	358	0.125 ...
Total.....	\$ 38,664	13.523 %

	2021	Effective Tax Rate
Federal and foreign income taxes incurred.....	\$ 39,069	13.665 %
Change in net deferred income taxes.....	(405)	-0.142 ...
Total statutory income taxes.....	\$ 38,664	13.523 %

	2020	Effective Tax Rate
Provision computed at statutory rate.....	\$ 60,484	21.000 %
(Over) under accrual of prior year tax.....	-	- ...
Tax exempt income deduction.....	(29,883)	-10.375 ...
Change in nonadmitted assets.....	-	- ...
Nondeductible penalties.....	-	- ...
Other.....	(357)	-0.124 ...
Total.....	\$ 30,244	10.501 %

	2020	Effective Tax Rate
Federal and foreign income taxes incurred.....	\$ 31,508	10.940 %
Change in net deferred income taxes.....	(1,264)	-0.439 ...
Total statutory income taxes.....	\$ 30,244	10.501 %

E. Operating Loss and Tax Credit Carryforwards

(1) Unused loss carryforwards available - None

(2) Income tax expense available for recoupment

At December 31, the Company had federal income taxes incurred that are available for recoupment in the event of future net losses as follows:

	Ordinary	Capital	Total
2019.....	\$ -	\$ -	\$ -
2020.....	32,801	-	32,801
2021.....	37,776	-	37,776

(3) Deposits admitted under IRS Code Section 6603 - Not Applicable

F. Consolidated Federal Income Tax Return

(1) The Company's results of operations for 2021 will be included in a Consolidated (Life/Non-Life) Federal Income Tax ("FIT") return with its ultimate parent, Kemper Corporation (formerly known as "Unitrin, Inc.") and the following eligible subsidiaries:

Notes to the Financial Statements

9. Income Taxes (Continued)

- Alliance United Insurance Company
- Alpha Property & Casualty Insurance Company
- American Access Casualty Company
- Casualty Underwriters, Inc.
- Charter Indemnity Company
- Cranberry Holdings, Inc.
- Direct Response Corporation
- Family Security Funerals Company
- Financial Indemnity Company
- Infinity Agency of Texas, Inc.
- Infinity Assurance Insurance Company
- Infinity Auto Insurance Company
- Infinity Casualty Insurance Company
- Infinity Group, Inc. (The)
- Infinity Indemnity Insurance Company
- Infinity Insurance Agency, Inc.
- Infinity Insurance Company
- Infinity Preferred Insurance Company
- Infinity Property and Casualty Corporation
- Infinity Property and Casualty Services, Inc.
- Infinity Safeguard Insurance Company
- Infinity Security Insurance Company
- Infinity Select Insurance Company
- Infinity Standard Insurance Company
- Kemper Corporate Services
- Kemper Direct General Agency, Inc.
- Kemper Financial Indemnity Company
- Kemper General Agency Inc.
- Leader Group, Inc.
- Leader Managing General Agency, Inc.
- Kemper Independence Insurance Company
- Merastar Insurance Company
- Mutual Savings Fire Insurance Company
- Mutual Savings Life Insurance Company
- National Association of Self-Employed Business Owners
- NCM Management Corp.
- Reserve National Insurance Company
- Response Insurance Company
- Response Worldwide Direct Auto and Insurance Company
- Response Worldwide Insurance Company
- Rural American Consumer
- Summerset Marketing Company
- The Reliable Life Insurance Company
- Trinity Universal Insurance Company
- Union National Fire Insurance Company
- Union National Life Insurance Company
- United Casualty Insurance Company of America
- United Insurance Company of America
- Unitrin Advantage Insurance Company

Notes to the Financial Statements

9. Income Taxes (Continued)

- Unitrin Auto & Home Insurance Company
- Unitrin Direct Insurance Company
- Unitrin Direct Property & Casualty Company
- Unitrin Preferred Insurance Company
- Unitrin Safeguard Insurance Company
- Valley Property & Casualty Insurance Company
- Warner Insurance Company

(2) The manner in which the Board of Directors sets forth for allocating the consolidated federal income tax:

The method of allocation among the affiliated companies is subject to a written agreement that covers all periods in which the companies are included in the consolidated FIT return filed by Kemper Corporation. The agreement states that each subsidiary agrees to pay Kemper Corporation the amount of FIT liability no greater than or less than the FIT liability would be if the subsidiary had filed a separate tax return based upon the rules provided by the Internal Revenue Code of 1986, as amended. Kemper Corporation agrees to pay each subsidiary for the tax benefit, if any, of losses that are utilized in determining the consolidated FIT return liability.

- G. Federal or Foreign Income Tax Loss Contingencies - Not Applicable
- H. Repatriation Transition Tax (RTT) - Not Applicable
- I. Alternative Minimum Tax (AMT) Credit - Not Applicable

10. Information Concerning Parent, Subsidiaries, Affiliates and Other Related Parties

A. Nature of relationships

The Company is a wholly owned subsidiary of Infinity Insurance Company, an Indiana domiciled insurance company. Infinity Insurance company is a wholly owned subsidiary of Infinity Property and Casualty Corporation, a wholly owned subsidiary of Kemper Corporation, a Delaware Corporation. Ultimately, 100% of the Company's net liability, premiums, losses and other expenses for existing, new and renewal business, net of unaffiliated reinsurance, are ceded to Trinity Universal Insurance Company.

B. Detail of transactions greater than ½ % of admitted assets

The Company and its affiliates have various transactions in the normal course of operations including policy and claim administration, charges for investment management and administration, employee benefits, rental of space, computer services, income taxes and commissions. All of these transactions are recorded at rates that approximate cost.

The Company does not own shares in an upstream intermediate or ultimate parent.

- C. Transactions With Related Party Who Are Not Reported on Schedule Y - Not Applicable
- D. Amounts due to or from related parties

The Company reported \$588,568 payable to its parent, Infinity Insurance Company.

The Company is party to an intercompany reinsurance pooling agreement (see Note 26) with Infinity Insurance Company serving as the lead. As of December 1, 2018, Infinity Insurance Company is party to a quota share reinsurance agreement with Trinity Universal Insurance Company, whereby the liability is ceded 100% to Trinity Universal Insurance Company. The uncollected premium receivable (Assets, line 15.1), loss and loss adjustment expenses due (Liabilities, line 1 and line 3), reinsurance recoverable (Assets, line 16) and reinsurance payable (Liabilities, line 2 and line 12) are balances due to or from affiliates. See Schedule F for reinsurance balances due from or to related parties.

E. Material Management or Service Contracts and Cost-Sharing Arrangements

Effective January 1, 2019 and amended April 1, 2021 Infinity Insurance Company and Merastar Insurance Company (service providers) entered into general services agreements with the affiliated companies listed below to provide general corporate services, which include accounting, financial, accounts payable, administrative, cash management, financial planning, human resources, legal, risk management, computer and information technology services. Fees for services shall be fair and reasonable in accordance with Statement of Statutory Accounting Principles (SSAP) No 25. Direct expenses shall be charged on an actual incurred basis and shared or indirect expenses shall be apportioned using generally accepted allocation methods in accordance with SSAP No. 70.

Notes to the Financial Statements

10. Information Concerning Parent, Subsidiaries, Affiliates and Other Related Parties (Continued)

Property and Casualty Insurance Affiliates	
American Access Casualty Company	Kemper Financial Indemnity Company
Alliance United Insurance Company	Kemper Independence Insurance Company
Alpha Property & Casualty Insurance Company	Merastar Insurance Company
Charter Indemnity Company	Response Insurance Company
Financial Indemnity Company	Response Worldwide Direct Auto Insurance Co
Infinity Assurance Insurance Company	Response Worldwide Insurance Company
Infinity Auto Insurance Company	Trinity Universal Insurance Company
Infinity Casualty Insurance Company	Unitrin Advantage Insurance Company
Infinity County Mutual Insurance Company	Unitrin Auto and Home Insurance Company
Infinity Indemnity Insurance Company	Unitrin County Mutual Insurance Company
Infinity Insurance Company	Unitrin Direct Insurance Company
Infinity Preferred Insurance Company	Unitrin Direct Property & Casualty Company
Infinity Safeguard Insurance Company	Unitrin Preferred Insurance Company
Infinity Security Insurance Company	Unitrin Safeguard Insurance Company
Infinity Select Insurance Company	Valley Property & Casualty Insurance Company
Infinity Standard Insurance Company	Warner Insurance Company
Life and Fire Insurance Affiliates	
Capital County Mutual Fire Insurance Company	The Reliable Life Insurance Company
Commonwealth Mutual Fire Insurance Company	Union National Fire Insurance Company
Mutual Savings Fire Insurance Company	Union National Life Insurance Company
Mutual Savings Life Insurance Company	United Casualty Insurance Company of America
Old Reliable Casualty Company	United Insurance Company of America
Reserve National Insurance Company	
Non-Insurance Affiliates	
Access Insurance Agency of Arizona, LLC	Infinity Property and Casualty Corporation
Access Insurance Agency of Indiana, LLC	KAGH, LLC
Access Insurance Agency of Nevada, LLC	Kemper Corporate Services, Inc.
Access Insurance Agency of South Carolina, LLC	Kemper Corporation
Agencia de Seguros de Acceso, LLC	Kemper General Agency, Inc.
Accelerate Insurance Network, LLC	Kemper Personal Insurance General Agency, Inc.
Alliance United Insurance Services LLC	Leader Group, Inc.
American Access Holdings, LLC	Leader Managing General Agency, Inc.
Casualty Underwriters, Inc.	Merastar Industries LLC
Cranberry Holdings, Inc.	National Association of Self-Employed Business Owners
Direct Response Corporation	NCM Management Corporation
Family Security Funerals Company	Newins Insurance Agency, LLC
Illinois Vehicle Insurance Agency, LLC	Newins Real Estate Holdings, LLC
Infinity Agency of Texas, Inc.	Security One Agency LLC
Infinity Insurance Agency, Inc.	Summerset Marketing Company

- F. Guarantees or Contingencies - Not Applicable
- G. All the shares outstanding are owned by Infinity Insurance Company, a wholly owned subsidiary of Infinity Property & Casualty Corporation. Infinity Property & Casualty Corporation is a wholly owned subsidiary of Kemper Corporation. Refer to the organization chart shown in Schedule Y - Part 1.
- H. Amount Deducted for Investment in Upstream Company - Not Applicable
- I. Detail of Investments in Affiliates Greater Than 10% of Admitted Assets - Not Applicable
- J. Write-Down for Impairments of Investments in Subsidiary Controlled or Affiliated Companies - Not Applicable
- K. Foreign Subsidiary Value Using CARVM - Not Applicable
- L. Downstream Holding Company Value Using Look-Through Method - Not Applicable
- M. All SCA Investments - Not Applicable
- N. Investment in Insurance SCAs - Not Applicable
- O. SCA and SSAP No. 48 Entity Loss Tracking - Not Applicable

11. Debt - Not Applicable

12. Retirement Plans, Deferred Compensation, Postemployment Benefits and Compensated Absences and Other Postretirement Benefit Plans

- A. Defined Benefit Plan - Not Applicable
- B. Investment Policies and Strategies of Plan Assets - Not Applicable
- C. Fair Value of Each Class of Plan Assets - Not Applicable
- D. Expected Long-Term Rate of Return for the Plan Assets - Not Applicable
- E. Defined Contribution Plans

The Company participates in a qualified defined contribution 401(k) plan sponsored by Kemper Corporation. The Company's share of net expense for the qualified defined contribution 401(k) plan was \$0 and \$0 for the years ended December 31, 2021 and 2020 respectively. The Company has no legal obligations for benefits under these plans.

Notes to the Financial Statements

12. Retirement Plans, Deferred Compensation, Postemployment Benefits and Compensated Absences and Other Postretirement Benefit Plans (Continued)

- F. Multiemployer Plans - Not Applicable
- G. Consolidated/Holding Company Plans - Not Applicable
- H. Postemployment Benefits and Compensated Absences - Not Applicable
- I. Impact of Medicare Modernization Act on Postretirement Benefits (INT 04-17) - Not Applicable

13. Capital and Surplus, Dividend Restrictions and Quasi-Reorganizations

- A. The Company has 1,000 common capital stock shares authorized, issued and outstanding. The stated value of the common capital stock as of December 31, 2021 was \$3,000 per share.
- B. Dividend Rate of Preferred Stock - Not Applicable
- C. The maximum amount of dividends or distributions which may be paid to stockholders by property/casualty insurance companies domiciled in the state of Ohio without (i) prior approval or (ii) expiration of a 30 day waiting period without disapproval of the Commissioner of Insurance, is the greater of net income or 10% of policyholders' surplus as of the preceding December 31, but only to the extent of earned surplus as of the preceding December 31.
- D. Ordinary Dividends - Not Applicable
- E. Based on the limitations noted in (C) above, the maximum amount of dividends that the Company can pay in 2022 without prior approval is \$825,263.
- F. Surplus Restrictions - Not Applicable
- G. Surplus Advances - Not Applicable
- H. Stock Held for Special Purposes - Not Applicable
- I. Changes in Special Surplus Funds - Not Applicable
- J. Unassigned Funds (Surplus) - Not Applicable
- K. Company-Issued Surplus Debentures or Similar Obligations - Not Applicable
- L. Impact of Any Restatement Due to Prior Quasi-Reorganizations - Not Applicable
- M. Effective Date(s) of Quasi-Reorganizations in the Prior 10 Years - Not Applicable

14. Liabilities, Contingencies and Assessments

- A. Contingent Commitments - Not Applicable
- B. Assessments - Not Applicable
- C. Gain Contingencies - Not Applicable
- D. Claims Related Extra Contractual Obligation and Bad Faith Losses Stemming from Lawsuits

The Company paid the following amount in the reporting period to settle claims related extra contractual obligations or bad faith claims stemming from lawsuits.

	Direct	
Claims-related ECO and bad faith losses paid during the reporting period.....	\$.....	197,836
Number of claims where amounts were paid to settle claims related extra contractual obligations or bad faith claims resulting from lawsuits during the reporting period.		

(a)	(b)	(c)	(d)	(e)
0-25 Claims	26-50 Claims	51-100 Claims	101-500 Claims	More than 500 Claims
X				

Method used to disclose claim count information:

(f) Per Claim [] (g) Per Claimant [X]

- E. Product Warranties - Not Applicable
- F. Joint and Several Liabilities - Not Applicable
- G. All Other Contingencies

The Company is involved in various legal proceedings that have arisen in the ordinary course of the Company's business. The Company believes that resolution of its pending legal proceedings will not have a material adverse effect on the Company's financial position, but may have a material adverse effect on the financial results for a given reporting period.

15. Leases - Not Applicable

16. Information About Financial Instruments With Off-Balance-Sheet Risk And Financial Instruments With Concentrations of Credit Risk - Not Applicable

17. Sale, Transfer and Servicing of Financial Assets and Extinguishments of Liabilities - Not Applicable

18. Gain or Loss to the Reporting Entity from Uninsured Plans and the Uninsured Portion of Partially Insured Plans - Not Applicable

19. Direct Premium Written/Produced by Managing General Agents/Third Party Administrators - Not Applicable

Notes to the Financial Statements

20. Fair Value Measurements

- A. Fair Value Measurement - Not Applicable
- B. Other Fair Value Disclosures - Not Applicable
- C. Fair Values for All Financial Instruments by Level 1, 2 and 3

Type of Financial Instrument	Aggregate Fair Value	Admitted Assets	Level 1	Level 2	Level 3	Net Asset Value (NAV)	Not Practicable (Carrying Value)
Bonds	\$ 12,248,354	\$ 11,524,781	\$ 2,182,862	\$ 10,065,492	\$	\$	\$
Cash Equivalents	39,406	39,406	39,406				

The Company uses third party valuation service providers which are leading, nationally recognized providers of market data and analytics and utilize proprietary models that vary by asset class and incorporate available trade, bid and other market information when developing valuation information in the form of a single fair value for individual bond or equity security. The inputs used by the valuation service providers include, but are not limited to, market prices from recently completed transactions and transactions of comparable securities, interest rate yield curves, credit spreads, liquidity spreads, sector groupings and benchmarking of like securities. Credit and liquidity spreads are typically implied from completed transactions and transactions of comparable securities. Valuation service providers also use proprietary discounted cash flow models that are widely accepted in the financial services industry and similar to those used by other market participants to value the same financial instruments. The valuation models take into account, among other things, market observable information as of the measurement date, as well as the specific attributes of the security being valued including its term, interest rate, credit rating, industry sector, and where applicable, collateral quality and other issue or issuer specific information. The Company classifies investments in US Treasury bonds, actively traded exchange traded funds, mutual funds, and public common stock as Level 1 securities. The Company classifies investments in public corporate bonds, states and political subdivisions bonds, collateralized loan obligations, mortgage-backed securities, convertible bonds, majority of preferred stocks and certain private placement bonds and common stock as Level 2 securities.

The Company classifies investments as Level 3 in the fair value hierarchy when specific inputs significant to the fair value estimation models are not market observable. Significant unobservable inputs used include credit profile, credit spread, and resulting market yield, which involve considerable judgment by management. This primarily occurs when fair value is derived using non-binding broker quotes where the inputs have not been corroborated to be market observable, or internal valuation estimates that use significant non-market observable inputs. The Company classifies investments in certain private placement bonds, private asset backed securities, and certain preferred stock are currently as Level 3 securities.

- D. Not Practicable to Estimate Fair Value - Not Applicable
- E. Nature and Risk of Investments Reported at NAV - Not Applicable

21. Other Items

- A. Unusual or Infrequent Items

The Company, as part of its response to the COVID-19 global pandemic, provided a credit to certain personal automobile policyholders having policies in force during the second quarter of 2020. These premium credits of up to 15% each month were applied to each of these policies in the following month and recognized as a reduction to earned premiums. The credits were applied directly to the policyholder's receivable. If a policyholder had paid in full, the policyholder received a refund of the credited amounts.
- B. Troubled Debt Restructuring - Not Applicable
- C. Other Disclosures - Not Applicable
- D. Business Interruption Insurance Recoveries - Not Applicable
- E. State Transferable and Non-Transferable Tax Credits - Not Applicable
- F. Subprime-Mortgage-Related Risk Exposure - Not Applicable
- G. Insurance-Linked Securities (ILS) Contracts - Not Applicable
- H. The Amount That Could Be Realized on Life Insurance Where the Reporting Entity is Owner and Beneficiary or Has Otherwise Obtained Rights to Control the Policy - Not Applicable

22. Events Subsequent

Subsequent events have been considered through February 28, 2022 for the statutory financial statements issued on February 28, 2022. The Company is not aware of any additional material events subsequent to December 31, 2021 which would require disclosure in or adjustment to these financial statements.

23. Reinsurance

- A. Unsecured Reinsurance Recoverables

The business of the Company is 100% reinsured through a quota share reinsurance agreement with Trinity Universal Insurance Company, an affiliate, and third-party reinsurance. Refer to Note 10 for additional information.

Should any individual third-party reinsurer fail to pay balances, amounts would become payable by Trinity Universal Insurance Company via the quota share reinsurance agreement.

Individual Reinsurers with Unsecured Reinsurance Recoverables Exceeding 3% of Policyholder Surplus

Individual Reinsurers Who Are Not Members of a Group

FEIN	Reinsurer Name	Unsecured Amount
..... 75-0620550	Trinity Universal Insurance Company	\$ 870,811,008 .

- B. Reinsurance Recoverable in Dispute - Not Applicable

Notes to the Financial Statements

23. Reinsurance (Continued)

- C. Reinsurance Assumed and Ceded
- (1) Maximum amount of return commission that would have been due reinsurers if all of the company's reinsurance was canceled or if the company's insurance assumed was canceled
- | | Assumed Reinsurance | | Ceded Reinsurance | | Net | |
|--|-----------------------|-------------------|-----------------------|-------------------|-------------------------|-------------------|
| | Premium Reserve | Commission Equity | Premium Reserve | Commission Equity | Premium Reserve | Commission Equity |
| a. Affiliates | \$ 133,507,894 | \$ | \$ | \$ | \$ 133,507,894 | \$ |
| b. All other | | | 349,862,734 | | (349,862,734) | |
| c. Total | <u>\$ 133,507,894</u> | <u>\$</u> | <u>\$ 349,862,734</u> | <u>\$</u> | <u>\$ (216,354,840)</u> | <u>\$</u> |
| d. Direct unearned premium reserve | | | \$ 216,354,840 | | | |
- (2) The additional or return commission, predicated on loss experience or on any other form of profit sharing arrangements in this statement as a result of existing contractual arrangements is accrued as follows: - Not Applicable
- (3) Risks attributed to each of the company's protected cells - Not Applicable
- D. Uncollectible Reinsurance - Not Applicable
- E. Commutation of Ceded Reinsurance - Not Applicable
- F. Retroactive Reinsurance - Not Applicable
- G. Reinsurance Accounted for as a Deposit - Not Applicable
- H. Disclosures for the Transfer of Property and Casualty Run-Off Agreements - Not Applicable
- I. Certified Reinsurer Rating Downgraded or Status Subject to Revocation - Not Applicable
- J. Reinsurance Agreements Qualifying for Reinsurer Aggregation - Not Applicable
- K. Reinsurance Credit - Not Applicable

24. Retrospectively Rated Contracts & Contracts Subject to Redetermination - Not Applicable

25. Changes in Incurred Losses and Loss Adjustment Expenses

- A. Reasons for Changes in the Provision for Incurred Loss and Loss Adjustment Expenses Attributable to Insured Events of Prior Years
- Property and casualty insurance reserves are estimates based on historical experience patterns and current economic trends. Actual loss experience and loss trends are likely to differ from these historical experience patterns and economic conditions. Loss experience and loss trends emerge over several years from the dates of loss inception. The Company monitors such emerging loss trends. Upon concluding, based on the data available, that an emerging loss trend will continue, the Company adjusts its property and casualty insurance reserves to reflect such trend. These changes in loss trend are reflected in the results of the period of change and included in the Company's financial statements net of reinsurance. The business to which this development relates is not retrospectively rated; therefore, they are not subject to premium adjustments. As the Company losses are ultimately ceded to its affiliate, Trinity Universal Insurance Company, net reserves as of December 31, 2021 and December 31, 2020 were \$0, and the Company experienced no reserve development.
- B. Significant Changes in Methodologies and Assumptions Used in Calculating the Liability for Unpaid Losses and Loss Adjustment Expenses - Not Applicable

26. Intercompany Pooling Arrangements

- A. The Company and certain of its insurance affiliates maintain an intercompany reinsurance pooling agreement with the Company's parent, Infinity Insurance Company. The effect is to transfer all direct insurance liabilities of the pool members to Infinity Insurance Company and to cede specified percentages of the net underwriting results of Infinity Insurance Company to the participating pool members as follows:

Lead Entity and all Affiliated Entities	NAIC Company	Pooling
Infinity Insurance Company	22268	99.1 %
Infinity Assurance Insurance Company	39497	0.1 %
Infinity Auto Insurance Company	11738	0.1 %
Infinity Casualty Insurance Company	21792	0.1 %
Infinity Indemnity Insurance Company	10061	0.1 %
Infinity Preferred Insurance Company	10195	0.1 %
Infinity Safeguard Insurance Company	16802	0.1 %
Infinity Security Insurance Company	38873	0.1 %
Infinity Select Insurance Company	20260	0.1 %
Infinity Standard Insurance Company	12599	0.1 %

- B. Lines and Types of Business Subject to Pooling Agreement - Not Applicable
- C. The Company's net underwriting results are determined after making cessions to various other non-affiliated reinsurers under terms of other reinsurance agreements. Substantially all of these cessions are made subsequent to the pooling of business from the pool members to Infinity Insurance Company.
- D. Not Applicable
- E. There are no discrepancies between entries regarding pooled business on the assumed and ceded reinsurance schedules of the lead company and the corresponding entries on the assumed and ceded reinsurance schedules of other pool participants.
- F. The Provision for Reinsurance (Schedule F, Part 7), if any, is recorded by Infinity Insurance Company and is not shared with the other pool participants.

Notes to the Financial Statements

26. Intercompany Pooling Arrangements (Continued)

G. Uncollectible reinsurance balances which are written off are subject to the terms of the pooling agreement.

27. Structured Settlements - Not Applicable

28. Health Care Receivables - Not Applicable

29. Participating Policies - Not Applicable

30. Premium Deficiency Reserves - Not Applicable

31. High Deductibles - Not Applicable

32. Discounting of Liabilities For Unpaid Losses or Unpaid Loss Adjustment Expenses - Not Applicable

33. Asbestos/Environmental Reserves - Not Applicable

34. Subscriber Savings Accounts - Not Applicable

35. Multiple Peril Crop Insurance - Not Applicable

36. Financial Guaranty Insurance - Not Applicable

GENERAL INTERROGATORIES

PART 1 - COMMON INTERROGATORIES
GENERAL

1.1

Is the reporting entity a member of an Insurance Holding Company System consisting of two or more affiliated persons, one or more of which is an insurer?
If yes, complete Schedule Y, Parts 1, 1A, 2 and 3.

Yes [X] No []

1.2

If yes, did the reporting entity register and file with its domiciliary State Insurance Commissioner, Director or Superintendent, or with such regulatory official of the state of domicile of the principal insurer in the Holding Company System, a registration statement providing disclosure substantially similar to the standards adopted by the National Association of Insurance Commissioners (NAIC) in its Model Insurance Holding Company System Regulatory Act and model regulations pertaining thereto, or is the reporting entity subject to standards and disclosure requirements substantially similar to those required by such Act and regulations?

Yes [X] No [] N/A []

1.3

State Regulating?

Ohio

1.4

Is the reporting entity publicly traded or a member of a publicly traded group?

Yes [X] No []

1.5

If the response to 1.4 is yes, provide the CIK (Central Index Key) code issued by the SEC for the entity/group.

0000860748

2.1

Has any change been made during the year of this statement in the charter, by-laws, articles of incorporation, or deed of settlement of the reporting entity?

Yes [] No [X]

2.2

If yes, date of change:

3.1

State as of what date the latest financial examination of the reporting entity was made or is being made.

12/31/2016

3.2

State the as of date that the latest financial examination report became available from either the state of domicile or the reporting entity. This date should be the date of the examined balance sheet and not the date the report was completed or released.

12/31/2016

3.3

State as of what date the latest financial examination report became available to other states or the public from either the state of domicile or the reporting entity. This is the release date or completion date of the examination report and not the date of the examination (balance sheet date).

02/13/2018

3.4

By what department or departments?
Ohio

3.5

Have all financial statement adjustments within the latest financial examination report been accounted for in a subsequent financial statement filed with Departments?

Yes [] No [] N/A [X]

3.6

Have all of the recommendations within the latest financial examination report been complied with?

Yes [X] No [] N/A []

4.1

During the period covered by this statement, did any agent, broker, sales representative, non-affiliated sales/service organization or any combination thereof under common control (other than salaried employees of the reporting entity), receive credit or commissions for or control a substantial part (more than 20 percent of any major line of business measured on direct premiums) of:
4.11 sales of new business?
4.12 renewals?

Yes [] No [X]
Yes [] No [X]

4.2

During the period covered by this statement, did any sales/service organization owned in whole or in part by the reporting entity or an affiliate, receive credit or commissions for or control a substantial part (more than 20 percent of any major line of business measured on direct premiums) of:
4.21 sales of new business?
4.22 renewals?

Yes [] No [X]
Yes [] No [X]

5.1

Has the reporting entity been a party to a merger or consolidation during the period covered by this statement?
If yes, complete and file the merger history data file with the NAIC.

Yes [] No [X]

5.2

If yes, provide the name of the entity, NAIC Company Code, and state of domicile (use two letter state abbreviation) for any entity that has ceased to exist as a result of the merger or consolidation.

1 Name of Entity	2 NAIC Company Code	3 State of Domicile

6.1

Has the reporting entity had any Certificates of Authority, licenses or registrations (including corporate registration, if applicable) suspended or revoked by any governmental entity during the reporting period?

Yes [] No [X]

6.2

If yes, give full information:

7.1

Does any foreign (non-United States) person or entity directly or indirectly control 10% or more of the reporting entity?

Yes [] No [X]

7.2

If yes,
7.21 State the percentage of foreign control; %
7.22 State the nationality(s) of the foreign person(s) or entity(s) or if the entity is a mutual or reciprocal, the nationality of its manager or attorney-in-fact; and identify the type of entity(s) (e.g., individual, corporation or government, manager or attorney in fact).

1 Nationality	2 Type of Entity

ANNUAL STATEMENT FOR THE YEAR 2021 OF THE Infinity Auto Insurance Company

GENERAL INTERROGATORIES

8.1 Is the company a subsidiary of a depository institution holding company (DIHC) or a DIHC itself, regulated by the Federal Reserve Board? Yes [] No [X]

8.2 If the response to 8.1 is yes, please identify the name of the DIHC.

8.3 Is the company affiliated with one or more banks, thrifts or securities firms? Yes [] No [X]

8.4 If response to 8.3 is yes, please provide below the names and location (city and state of the main office) of any affiliates regulated by a federal regulatory services agency [i.e. the Federal Reserve Board (FRB), the Office of the Comptroller of the Currency (OCC), the Federal Deposit Insurance Corporation (FDIC) and the Securities Exchange Commission (SEC)] and identify the affiliate's primary federal regulator.

1	2	3	4	5	6
Affiliate Name	Location (City, State)	FRB	OCC	FDIC	SEC

8.5 Is the reporting entity a depository institution holding company with significant insurance operations as defined by the Board of Governors of Federal Reserve System or a subsidiary of the reporting entity? Yes [] No [X]

8.6 If response to 8.5 is no, is the reporting entity a company or subsidiary of a company that has otherwise been made subject to the Federal Reserve Board's capital rule? Yes [] No [X] N/A []

9. What is the name and address of the independent certified public accountant or accounting firm retained to conduct the annual audit?
Deloitte & Touche LLP
111 S Wacker Drive
Chicago, IL 60606-4301

10.1 Has the insurer been granted any exemptions to the prohibited non-audit services provided by the certified independent public accountant requirements as allowed in Section 7H of the Annual Financial Reporting Model Regulation (Model Audit Rule), or substantially similar state law or regulation? Yes [] No [X]

10.2 If the response to 10.1 is yes, provide information related to this exemption:

10.3 Has the insurer been granted any exemptions related to the other requirements of the Annual Financial Reporting Model Regulation as allowed for in Section 18A of the Model Regulation, or substantially similar state law or regulation? Yes [] No [X]

10.4 If the response to 10.3 is yes, provide information related to this exemption:

10.5 Has the reporting entity established an Audit Committee in compliance with the domiciliary state insurance laws? Yes [X] No [] N/A []

10.6 If the response to 10.5 is no or n/a, please explain

11. What is the name, address and affiliation (officer/employee of the reporting entity or actuary/consultant associated with an actuarial consulting firm) of the individual providing the statement of actuarial opinion/certification?
Dwayne Rader, Actuary, 220 East Randolph Street, Suite 3300, Chicago, IL 60601

12.1 Does the reporting entity own any securities of a real estate holding company or otherwise hold real estate indirectly? Yes [] No [X]

12.11 Name of real estate holding company

12.12 Number of parcels involved

12.13 Total book/adjusted carrying value\$

12.2 If, yes provide explanation:

13. FOR UNITED STATES BRANCHES OF ALIEN REPORTING ENTITIES ONLY:

13.1 What changes have been made during the year in the United States manager or the United States trustees of the reporting entity?

13.2 Does this statement contain all business transacted for the reporting entity through its United States Branch on risks wherever located? Yes [] No []

13.3 Have there been any changes made to any of the trust indentures during the year? Yes [] No []

13.4 If answer to (13.3) is yes, has the domiciliary or entry state approved the changes? Yes [] No [] N/A []

14.1 Are the senior officers (principal executive officer, principal financial officer, principal accounting officer or controller, or persons performing similar functions) of the reporting entity subject to a code of ethics, which includes the following standards? Yes [X] No []

a. Honest and ethical conduct, including the ethical handling of actual or apparent conflicts of interest between personal and professional relationships;

b. Full, fair, accurate, timely and understandable disclosure in the periodic reports required to be filed by the reporting entity;

c. Compliance with applicable governmental laws, rules and regulations;

d. The prompt internal reporting of violations to an appropriate person or persons identified in the code; and

e. Accountability for adherence to the code.

14.11 If the response to 14.1 is No, please explain:

14.2 Has the code of ethics for senior managers been amended? Yes [] No [X]

14.21 If the response to 14.2 is yes, provide information related to amendment(s).

14.3 Have any provisions of the code of ethics been waived for any of the specified officers? Yes [] No [X]

14.31 If the response to 14.3 is yes, provide the nature of any waiver(s).

ANNUAL STATEMENT FOR THE YEAR 2021 OF THE Infinity Auto Insurance Company

GENERAL INTERROGATORIES

- 15.1

Is the reporting entity the beneficiary of a Letter of Credit that is unrelated to reinsurance where the issuing or confirming bank is not on the SVO Bank List?

Yes [] No [X]
- 15.2

If the response to 15.1 is yes, indicate the American Bankers Association (ABA) Routing Number and the name of the issuing or confirming bank of the Letter of Credit and describe the circumstances in which the Letter of Credit is triggered.

1 American Bankers Association (ABA) Routing Number	2 Issuing or Confirming Bank Name	3 Circumstances That Can Trigger the Letter of Credit	4 Amount

BOARD OF DIRECTORS

16.

Is the purchase or sale of all investments of the reporting entity passed upon either by the board of directors or a subordinate committee thereof?

Yes [X] No []
17.

Does the reporting entity keep a complete permanent record of the proceedings of its board of directors and all subordinate committees thereof?

Yes [X] No []
18.

Has the reporting entity an established procedure for disclosure to its board of directors or trustees of any material interest or affiliation on the part of any of its officers, directors, trustees or responsible employees that is in conflict with the official duties of such person?

Yes [X] No []

FINANCIAL

19.

Has this statement been prepared using a basis of accounting other than Statutory Accounting Principles (e.g., Generally Accepted Accounting Principles)?

Yes [] No [X]
- 20.1

Total amount loaned during the year (inclusive of Separate Accounts, exclusive of policy loans):

20.11 To directors or other officers

\$

20.12 To stockholders not officers

\$

20.13 Trustees, supreme or grand (Fraternal Only)

\$
- 20.2

Total amount of loans outstanding at the end of year (inclusive of Separate Accounts, exclusive of policy loans):

20.21 To directors or other officers

\$

20.22 To stockholders not officers

\$

20.23 Trustees, supreme or grand (Fraternal Only)

\$
- 21.1

Were any assets reported in this statement subject to a contractual obligation to transfer to another party without the liability for such obligation being reported in the statement?

Yes [] No [X]
- 21.2

If yes, state the amount thereof at December 31 of the current year:

21.21 Rented from others

\$

21.22 Borrowed from others

\$

21.23 Leased from others

\$

21.24 Other

\$
- 22.1

Does this statement include payments for assessments as described in the Annual Statement Instructions other than guaranty fund or guaranty association assessments?

Yes [] No [X]
- 22.2

If answer is yes:

22.21 Amount paid as losses or risk adjustment

\$

22.22 Amount paid as expenses

\$

22.23 Other amounts paid

\$
- 23.1

Does the reporting entity report any amounts due from parent, subsidiaries or affiliates on Page 2 of this statement?

Yes [] No [X]
- 23.2

If yes, indicate any amounts receivable from parent included in the Page 2 amount:

\$
- 24.1

Does the insurer utilize third parties to pay agent commissions in which the amounts advanced by the third parties are not settled in full within 90 days?

Yes [] No [X]
- 24.2

If the response to 24.1 is yes, identify the third-party that pays the agents and whether they are a related party.

Name of Third-Party	Is the Third-Party Agent a Related Party (Yes/No)

INVESTMENT

- 25.01

Were all the stocks, bonds and other securities owned December 31 of current year, over which the reporting entity has exclusive control, in the actual possession of the reporting entity on said date? (other than securities lending programs addressed in 25.03)

Yes [X] No []

ANNUAL STATEMENT FOR THE YEAR 2021 OF THE Infinity Auto Insurance Company

GENERAL INTERROGATORIES

25.02 If no, give full and complete information relating thereto

25.03 For securities lending programs, provide a description of the program including value for collateral and amount of loaned securities, and whether collateral is carried on or off-balance sheet. (an alternative is to reference Note 17 where this information is also provided)

25.04 For the reporting entity's securities lending program, report amount of collateral for conforming programs as outlined in the Risk-Based Capital Instructions. \$

25.05 For the reporting entity's securities lending program, report amount of collateral for other programs. \$

25.06 Does your securities lending program require 102% (domestic securities) and 105% (foreign securities) from the counterparty at the outset of the contract? Yes [] No [] N/A [X]

25.07 Does the reporting entity non-admit when the collateral received from the counterparty falls below 100%? Yes [] No [] N/A [X]

25.08 Does the reporting entity or the reporting entity 's securities lending agent utilize the Master Securities lending Agreement (MSLA) to conduct securities lending? Yes [] No [] N/A [X]

25.09 For the reporting entity's securities lending program state the amount of the following as of December 31 of the current year:

25.091 Total fair value of reinvested collateral assets reported on Schedule DL, Parts 1 and 2. \$

25.092 Total book adjusted/carrying value of reinvested collateral assets reported on Schedule DL, Parts 1 and 2. \$

25.093 Total payable for securities lending reported on the liability page. \$

26.1 Were any of the stocks, bonds or other assets of the reporting entity owned at December 31 of the current year not exclusively under the control of the reporting entity, or has the reporting entity sold or transferred any assets subject to a put option contract that is currently in force? (Exclude securities subject to Interrogatory 21.1 and 25.03). Yes [X] No []

26.2 If yes, state the amount thereof at December 31 of the current year:

26.21 Subject to repurchase agreements \$

26.22 Subject to reverse repurchase agreements \$

26.23 Subject to dollar repurchase agreements \$

26.24 Subject to reverse dollar repurchase agreements \$

26.25 Placed under option agreements \$

26.26 Letter stock or securities restricted as to sale - excluding FHLB Capital Stock \$

26.27 FHLB Capital Stock \$

26.28 On deposit with states \$2,516,098

26.29 On deposit with other regulatory bodies \$

26.30 Pledged as collateral - excluding collateral pledged to an FHLB \$

26.31 Pledged as collateral to FHLB - including assets backing funding agreements \$

26.32 Other \$

26.3 For category (26.26) provide the following:

1 Nature of Restriction	2 Description	3 Amount

27.1 Does the reporting entity have any hedging transactions reported on Schedule DB? Yes [] No [X]

27.2 If yes, has a comprehensive description of the hedging program been made available to the domiciliary state? Yes [] No [] N/A [X]
If no, attach a description with this statement.

LINES 27.3 through 27.5: FOR LIFE/FRATERNAL REPORTING ENTITIES ONLY:

27.3 Does the reporting entity utilize derivatives to hedge variable annuity guarantees subject to fluctuations as a result of interest rate sensitivity? Yes [] No []

27.4 If the response to 27.3 is YES, does the reporting entity utilize:

27.41 Special accounting provision of SSAP No. 108 Yes [] No []

27.42 Permitted accounting practice Yes [] No []

27.43 Other accounting guidance Yes [] No []

27.5 By responding YES to 27.41 regarding utilizing the special accounting provisions of SSAP No. 108, the reporting entity attests to the following: Yes [] No []

- The reporting entity has obtained explicit approval from the domiciliary state.
- Hedging strategy subject to the special accounting provisions is consistent with the requirements of VM-21.
- Actuarial certification has been obtained which indicates that the hedging strategy is incorporated within the establishment of VM-21 reserves and provides the impact of the hedging strategy within the Actuarial Guideline Conditional Tail Expectation Amount.
- Financial Officer Certification has been obtained which indicates that the hedging strategy meets the definition of a Clearly Defined Hedging Strategy within VM-21 and that the Clearly Defined Hedging Strategy is the hedging strategy being used by the company in its actual day-to-day risk mitigation efforts.

28.1 Were any preferred stocks or bonds owned as of December 31 of the current year mandatorily convertible into equity, or, at the option of the issuer, convertible into equity? Yes [] No [X]

28.2 If yes, state the amount thereof at December 31 of the current year. \$

29. Excluding items in Schedule E - Part 3 - Special Deposits, real estate, mortgage loans and investments held physically in the reporting entity's offices, vaults or safety deposit boxes, were all stocks, bonds and other securities, owned throughout the current year held pursuant to a custodial agreement with a qualified bank or trust company in accordance with Section 1, III - General Examination Considerations, F. Outsourcing of Critical Functions, Custodial or Safekeeping Agreements of the NAIC Financial Condition Examiners Handbook? Yes [X] No []

29.01 For agreements that comply with the requirements of the NAIC Financial Condition Examiners Handbook, complete the following:

1 Name of Custodian(s)	2 Custodian's Address
The Northern Trust Company	333 S. Wabash Avenue, Chicago, Illinois 60604

ANNUAL STATEMENT FOR THE YEAR 2021 OF THE Infinity Auto Insurance Company

GENERAL INTERROGATORIES

29.02 For all agreements that do not comply with the requirements of the NAIC Financial Condition Examiners Handbook, provide the name, location and a complete explanation:

1 Name(s)	2 Location(s)	3 Complete Explanation(s)

29.03 Have there been any changes, including name changes, in the custodian(s) identified in 29.01 during the current year?..... Yes [] No [X]

29.04 If yes, give full and complete information relating thereto:

1 Old Custodian	2 New Custodian	3 Date of Change	4 Reason

29.05 Investment management – Identify all investment advisors, investment managers, broker/dealers, including individuals that have the authority to make investment decisions on behalf of the reporting entity. For assets that are managed internally by employees of the reporting entity, note as such. ["...that have access to the investment accounts"; "...handle securities"]

1 Name of Firm or Individual	2 Affiliation
Merastar Insurance Company	A.....

29.0597 For those firms/individuals listed in the table for Question 29.05, do any firms/individuals unaffiliated with the reporting entity (i.e. designated with a "U") manage more than 10% of the reporting entity's invested assets?..... Yes [] No [X]

29.0598 For firms/individuals unaffiliated with the reporting entity (i.e. designated with a "U") listed in the table for Question 29.05, does the total assets under management aggregate to more than 50% of the reporting entity's invested assets?..... Yes [] No [X]

29.06 For those firms or individuals listed in the table for 29.05 with an affiliation code of "A" (affiliated) or "U" (unaffiliated), provide the information for the table below.

1 Central Registration Depository Number	2 Name of Firm or Individual	3 Legal Entity Identifier (LEI)	4 Registered With	5 Investment Management Agreement (IMA) Filed
N/A	Merastar Insurance Company	N/A	N/A	NO.....

30.1 Does the reporting entity have any diversified mutual funds reported in Schedule D, Part 2 (diversified according to the Securities and Exchange Commission (SEC) in the Investment Company Act of 1940 [Section 5(b)(1)])? Yes [] No [X]

30.2 If yes, complete the following schedule:

1 CUSIP #	2 Name of Mutual Fund	3 Book/Adjusted Carrying Value
30.2999 - Total		

30.3 For each mutual fund listed in the table above, complete the following schedule:

1 Name of Mutual Fund (from above table)	2 Name of Significant Holding of the Mutual Fund	3 Amount of Mutual Fund's Book/Adjusted Carrying Value Attributable to the Holding	4 Date of Valuation

ANNUAL STATEMENT FOR THE YEAR 2021 OF THE Infinity Auto Insurance Company

GENERAL INTERROGATORIES

31. Provide the following information for all short-term and long-term bonds and all preferred stocks. Do not substitute amortized value or statement value for fair value.

	1	2	3
	Statement (Admitted) Value	Fair Value	Excess of Statement over Fair Value (-), or Fair Value over Statement (+)
31.1 Bonds	11,524,780	12,248,357	723,577
31.2 Preferred stocks			
31.3 Totals	11,524,780	12,248,357	723,577

31.4 Describe the sources or methods utilized in determining the fair values:
The Company sources pricing data from recognized data vendors specializing in providing market pricing data. Pricing data for private non-market securities is provided by third party investment advisors and managers or developed internally by the Company's ultimate parent.

32.1 Was the rate used to calculate fair value determined by a broker or custodian for any of the securities in Schedule D? Yes [] No [X]

32.2 If the answer to 32.1 is yes, does the reporting entity have a copy of the broker's or custodian's pricing policy (hard copy or electronic copy) for all brokers or custodians used as a pricing source? Yes [] No []

32.3 If the answer to 32.2 is no, describe the reporting entity's process for determining a reliable pricing source for purposes of disclosure of fair value for Schedule D:
.....

33.1 Have all the filing requirements of the Purposes and Procedures Manual of the NAIC Investment Analysis Office been followed? Yes [X] No []

33.2 If no, list exceptions:
.....

34. By self-designating 5GI securities, the reporting entity is certifying the following elements of each self-designated 5GI security:
a. Documentation necessary to permit a full credit analysis of the security does not exist or an NAIC CRP credit rating for an FE or PL security is not available.
b. Issuer or obligor is current on all contracted interest and principal payments.
c. The insurer has an actual expectation of ultimate payment of all contracted interest and principal.
Has the reporting entity self-designated 5GI securities? Yes [] No [X]

35. By self-designating PLGI securities, the reporting entity is certifying the following elements of each self-designated PLGI security:
a. The security was purchased prior to January 1, 2018.
b. The reporting entity is holding capital commensurate with the NAIC Designation reported for the security.
c. The NAIC Designation was derived from the credit rating assigned by an NAIC CRP in its legal capacity as a NRSRO which is shown on a current private letter rating held by the insurer and available for examination by state insurance regulators.
d. The reporting entity is not permitted to share this credit rating of the PL security with the SVO.
Has the reporting entity self-designated PLGI securities? Yes [] No [X]

36. By assigning FE to a Schedule BA non-registered private fund, the reporting entity is certifying the following elements of each self-designated FE fund:
a. The shares were purchased prior to January 1, 2019.
b. The reporting entity is holding capital commensurate with the NAIC Designation reported for the security.
c. The security had a public credit rating(s) with annual surveillance assigned by an NAIC CRP in its legal capacity as an NRSRO prior to January 1, 2019.
d. The fund only or predominantly holds bonds in its portfolio.
e. The current reported NAIC Designation was derived from the public credit rating(s) with annual surveillance assigned by an NAIC CRP in its legal capacity as an NRSRO.
f. The public credit rating(s) with annual surveillance assigned by an NAIC CRP has not lapsed.
Has the reporting entity assigned FE to Schedule BA non-registered private funds that complied with the above criteria? Yes [] No [X]

37. By rolling/renewing short-term or cash equivalent investments with continued reporting on Schedule DA, Part 1 or Schedule E Part 2 (identified through a code (%) in those investment schedules), the reporting entity is certifying to the following:
a. The investment is a liquid asset that can be terminated by the reporting entity on the current maturity date.
b. If the investment is with a nonrelated party or nonaffiliate, then it reflects an arms-length transaction with renewal completed at the discretion of all involved parties.
c. If the investment is with a related party or affiliate, then the reporting entity has completed robust re-underwriting of the transaction for which documentation is available for regulator review.
d. Short-term and cash equivalent investments that have been renewed/rolled from the prior period that do not meet the criteria in 37.a - 37.c are reported as long-term investments.
Has the reporting entity rolled/renewed short-term or cash equivalent investments in accordance with these criteria? Yes [] No [X] N/A []

ANNUAL STATEMENT FOR THE YEAR 2021 OF THE Infinity Auto Insurance Company

GENERAL INTERROGATORIES

OTHER

38.1 Amount of payments to trade associations, service organizations and statistical or rating bureaus, if any?\$102,184

38.2 List the name of the organization and the amount paid if any such payment represented 25% or more of the total payments to trade associations, service organizations and statistical or rating bureaus during the period covered by this statement.

1 Name	2 Amount Paid
Insurance Institute for Highway Safety	42,339
Treasurer – State of Ohio	29,000
.....	

39.1 Amount of payments for legal expenses, if any?\$299,076

39.2 List the name of the firm and the amount paid if any such payment represented 25% or more of the total payments for legal expenses during the period covered by this statement.

1 Name	2 Amount Paid
Credit Collection Services	224,043
.....	

40.1 Amount of payments for expenditures in connection with matters before legislative bodies, officers or departments of government, if any?\$

40.2 List the name of the firm and the amount paid if any such payment represented 25% or more of the total payment expenditures in connection with matters before legislative bodies, officers or departments of government during the period covered by this statement.

1 Name	2 Amount Paid
.....	

ANNUAL STATEMENT FOR THE YEAR 2021 OF THE Infinity Auto Insurance Company

GENERAL INTERROGATORIES

PART 2 - PROPERTY AND CASUALTY INTERROGATORIES

1.1

Does the reporting entity have any direct Medicare Supplement Insurance in force?

Yes [] No [X]

1.2

If yes, indicate premium earned on U. S. business only.

\$

1.3

What portion of Item (1.2) is not reported on the Medicare Supplement Insurance Experience Exhibit?

\$

1.31

Reason for excluding

.....

1.4

Indicate amount of earned premium attributable to Canadian and/or Other Alien not included in Item (1.2) above.

\$

1.5

Indicate total incurred claims on all Medicare Supplement Insurance.

\$

1.6

Individual policies:

Most current three years:

1.61 Total premium earned

\$

1.62 Total incurred claims

\$

1.63 Number of covered lives

.....

All years prior to most current three years

1.64 Total premium earned

\$

1.65 Total incurred claims

\$

1.66 Number of covered lives

.....

1.7

Group policies:

Most current three years:

1.71 Total premium earned

\$

1.72 Total incurred claims

\$

1.73 Number of covered lives

.....

All years prior to most current three years

1.74 Total premium earned

\$

1.75 Total incurred claims

\$

1.76 Number of covered lives

.....

2.

Health Test:

1

Current Year

2

Prior Year

2.1 Premium Numerator

.....

2.2 Premium Denominator

.....

2.3 Premium Ratio (2.1/2.2)

0.000

.....

0.000

2.4 Reserve Numerator

.....

2.5 Reserve Denominator

.....

2.6 Reserve Ratio (2.4/2.5)

0.000

.....

0.000

3.1

Did the reporting entity issue participating policies during the calendar year?

Yes [] No [X]

3.2

If yes, provide the amount of premium written for participating and/or non-participating policies during the calendar year:

3.21 Participating policies

\$

3.22 Non-participating policies

\$

4.

For mutual reporting Entities and Reciprocal Exchanges Only:

4.1 Does the reporting entity issue assessable policies?

Yes [] No []

4.2 Does the reporting entity issue non-assessable policies?

Yes [] No []

4.3 If assessable policies are issued, what is the extent of the contingent liability of the policyholders?

%

4.4 Total amount of assessments paid or ordered to be paid during the year on deposit notes or contingent premiums.

\$

5.

For Reciprocal Exchanges Only:

5.1 Does the Exchange appoint local agents?

Yes [] No []

5.2 If yes, is the commission paid:

5.21 Out of Attorney's-in-fact compensation.....

Yes [] No [] N/A []

5.22 As a direct expense of the exchange.....

Yes [] No [] N/A []

5.3

What expenses of the Exchange are not paid out of the compensation of the Attorney-in-fact?

.....

5.4

Has any Attorney-in-fact compensation, contingent on fulfillment of certain conditions, been deferred?

Yes [] No []

5.5

If yes, give full information

.....

16

GENERAL INTERROGATORIES

PART 2 - PROPERTY AND CASUALTY INTERROGATORIES

6.1

What provision has this reporting entity made to protect itself from an excessive loss in the event of a catastrophe under a workers' compensation contract issued without limit of loss?
The Company does not write workers compensation insurance.

6.2

Describe the method used to estimate this reporting entity's probable maximum insurance loss, and identify the type of insured exposures comprising that probable maximum loss, the locations of concentrations of those exposures and the external resources (such as consulting firms or computer software models), if any, used in the estimation process.
All policies are ceded to Infinity Insurance Company as part of the intercompany pooling agreement (see Note 26) and, ultimately, reinsured by Trinity Universal Insurance Company, as part of a 100% quota share agreement between Infinity Insurance Company and Trinity Universal Insurance Company.

6.3

What provision has this reporting entity made (such as a catastrophic reinsurance program) to protect itself from an excessive loss arising from the types and concentrations of insured exposures comprising its probable maximum property insurance loss?
All policies are ceded to Infinity Insurance Company as part of the intercompany pooling agreement (see Note 26) and, ultimately, reinsured by Trinity Universal Insurance Company, as part of a 100% quota share agreement between Infinity Insurance Company and Trinity Universal Insurance Company.

6.4

Does the reporting entity carry catastrophe reinsurance protection for at least one reinstatement, in an amount sufficient to cover its estimated probable maximum loss attributable to a single loss event or occurrence?

Yes [☐] No [☒]

6.5

If no, describe any arrangements or mechanisms employed by the reporting entity to supplement its catastrophe reinsurance program or to hedge its exposure to unreinsured catastrophic loss.
All policies are ceded to Infinity Insurance Company as part of the intercompany pooling agreement (see Note 26) and, ultimately, reinsured by Trinity Universal Insurance Company, as part of a 100% quota share agreement between Infinity Insurance Company and Trinity Universal Insurance Company.

7.1

Has this reporting entity reinsured any risk with any other entity under a quota share reinsurance contract that includes a provision that would limit the reinsurer's losses below the stated quota share percentage (e.g., a deductible, a loss ratio corridor, a loss ratio cap, an aggregate limit or any similar provisions)?.....

Yes [☐] No [☒]

7.2

If yes, indicate the number of reinsurance contracts containing such provisions:

7.3

If yes, does the amount of reinsurance credit taken reflect the reduction in quota share coverage caused by any applicable limiting provision(s)?.....

Yes [☐] No [☐]

8.1

Has this reporting entity reinsured any risk with any other entity and agreed to release such entity from liability, in whole or in part, from any loss that may occur on this risk, or portion thereof, reinsured?

Yes [☐] No [☒]

8.2

If yes, give full information
.....

9.1

Has the reporting entity ceded any risk under any reinsurance contract (or under multiple contracts with the same reinsurer or its affiliates) for which during the period covered by the statement: (i) it recorded a positive or negative underwriting result greater than 5% of prior year-end surplus as regards policyholders or it reported calendar year written premium ceded or year-end loss and loss expense reserves ceded greater than 5% of prior year-end surplus as regards policyholders; (ii) it accounted for that contract as reinsurance and not as a deposit; and (iii) the contract(s) contain one or more of the following features or other features that would have similar results:
(a) A contract term longer than two years and the contract is noncancellable by the reporting entity during the contract term;
(b) A limited or conditional cancellation provision under which cancellation triggers an obligation by the reporting entity, or an affiliate of the reporting entity, to enter into a new reinsurance contract with the reinsurer, or an affiliate of the reinsurer;
(c) Aggregate stop loss reinsurance coverage;
(d) A unilateral right by either party (or both parties) to commute the reinsurance contract, whether conditional or not, except for such provisions which are only triggered by a decline in the credit status of the other party;
(e) A provision permitting reporting of losses, or payment of losses, less frequently than on a quarterly basis (unless there is no activity during the period); or
(f) Payment schedule, accumulating retentions from multiple years or any features inherently designed to delay timing of the reimbursement to the ceding entity.

Yes [☐] No [☒]

9.2

Has the reporting entity during the period covered by the statement ceded any risk under any reinsurance contract (or under multiple contracts with the same reinsurer or its affiliates), for which, during the period covered by the statement, it recorded a positive or negative underwriting result greater than 5% of prior year-end surplus as regards policyholders or it reported calendar year written premium ceded or year-end loss and loss expense reserves ceded greater than 5% of prior year-end surplus as regards policyholders; excluding cessions to approved pooling arrangements or to captive insurance companies that are directly or indirectly controlling, controlled by, or under common control with (i) one or more unaffiliated policyholders of the reporting entity, or (ii) an association of which one or more unaffiliated policyholders of the reporting entity is a member where:
(a) The written premium ceded to the reinsurer by the reporting entity or its affiliates represents fifty percent (50%) or more of the entire direct and assumed premium written by the reinsurer based on its most recently available financial statement; or
(b) Twenty-five percent (25%) or more of the written premium ceded to the reinsurer has been retroceded back to the reporting entity or its affiliates in a separate reinsurance contract.

Yes [☐] No [☒]

9.3

If yes to 9.1 or 9.2, please provide the following information in the Reinsurance Summary Supplemental Filing for General Interrogatory 9:
(a) The aggregate financial statement impact gross of all such ceded reinsurance contracts on the balance sheet and statement of income;
(b) A summary of the reinsurance contract terms and indicate whether it applies to the contracts meeting the criteria in 9.1 or 9.2; and
(c) A brief discussion of management's principle objectives in entering into the reinsurance contract including the economic purpose to be achieved.

9.4

Except for transactions meeting the requirements of paragraph 36 of SSAP No. 62R, Property and Casualty Reinsurance, has the reporting entity ceded any risk under any reinsurance contract (or multiple contracts with the same reinsurer or its affiliates) during the period covered by the financial statement, and either:
(a) Accounted for that contract as reinsurance (either prospective or retroactive) under statutory accounting principles ("SAP") and as a deposit under generally accepted accounting principles ("GAAP"); or
(b) Accounted for that contract as reinsurance under GAAP and as a deposit under SAP?

Yes [☐] No [☒]

9.5

If yes to 9.4, explain in the Reinsurance Summary Supplemental Filing for General Interrogatory 9 (Section D) why the contract(s) is treated differently for GAAP and SAP.

9.6

The reporting entity is exempt from the Reinsurance Attestation Supplement under one or more of the following criteria:
(a) The entity does not utilize reinsurance; or,
(b) The entity only engages in a 100% quota share contract with an affiliate and the affiliated or lead company has filed an attestation supplement; or
(c) The entity has no external cessions and only participates in an intercompany pool and the affiliated or lead company has filed an attestation supplement.

Yes [☐] No [☒]
Yes [☒] No [☐]
Yes [☐] No [☒]

10.

If the reporting entity has assumed risks from another entity, there should be charged on account of such reinsurances a reserve equal to that which the original entity would have been required to charge had it retained the risks. Has this been done?

Yes [☐] No [☐] N/A [☒]

ANNUAL STATEMENT FOR THE YEAR 2021 OF THE Infinity Auto Insurance Company

GENERAL INTERROGATORIES

PART 2 - PROPERTY AND CASUALTY INTERROGATORIES

11.1 Has the reporting entity guaranteed policies issued by any other entity and now in force? Yes [] No [X]

11.2 If yes, give full information
.....

12.1 If the reporting entity recorded accrued retrospective premiums on insurance contracts on Line 15.3 of the asset schedule, Page 2, state the amount of corresponding liabilities recorded for:

12.11 Unpaid losses\$

12.12 Unpaid underwriting expenses (including loss adjustment expenses)\$

12.2 Of the amount on Line 15.3, Page 2, state the amount which is secured by letters of credit, collateral, and other funds\$

12.3 If the reporting entity underwrites commercial insurance risks, such as workers' compensation, are premium notes or promissory notes accepted from its insureds covering unpaid premiums and/or unpaid losses? Yes [] No [] N/A [X]

12.4 If yes, provide the range of interest rates charged under such notes during the period covered by this statement:

12.41 From %

12.42 To %

12.5 Are letters of credit or collateral and other funds received from insureds being utilized by the reporting entity to secure premium notes or promissory notes taken by a reporting entity, or to secure any of the reporting entity's reported direct unpaid loss reserves , including unpaid losses under loss deductible features of commercial policies? Yes [] No [X]

12.6 If yes, state the amount thereof at December 31 of the current year:

12.61 Letters of credit\$

12.62 Collateral and other funds.....\$

13.1 Largest net aggregate amount insured in any one risk (excluding workers' compensation):\$

13.2 Does any reinsurance contract considered in the calculation of this amount include an aggregate limit of recovery without also including a reinstatement provision? Yes [] No [X]

13.3 State the number of reinsurance contracts (excluding individual facultative risk certificates, but including facultative programs, automatic facilities or facultative obligatory contracts) considered in the calculation of the amount.1

14.1 Is the company a cedant in a multiple cedant reinsurance contract? Yes [] No [X]

14.2 If yes, please describe the method of allocating and recording reinsurance among the cedants:
.....

14.3 If the answer to 14.1 is yes, are the methods described in item 14.2 entirely contained in the respective multiple cedant reinsurance contracts? Yes [] No []

14.4 If the answer to 14.3 is no, are all the methods described in 14.2 entirely contained in written agreements? Yes [] No []

14.5 If the answer to 14.4 is no, please explain:
.....

15.1 Has the reporting entity guaranteed any financed premium accounts? Yes [] No [X]

15.2 If yes, give full information
.....

16.1 Does the reporting entity write any warranty business? Yes [] No [X]
If yes, disclose the following information for each of the following types of warranty coverage:

	1 Direct Losses Incurred	2 Direct Losses Unpaid	3 Direct Written Premium	4 Direct Premium Unearned	5 Direct Premium Earned
16.11 Home					
16.12 Products					
16.13 Automobile					
16.14 Other*					

* Disclose type of coverage:

.....

ANNUAL STATEMENT FOR THE YEAR 2021 OF THE Infinity Auto Insurance Company

GENERAL INTERROGATORIES

PART 2 - PROPERTY AND CASUALTY INTERROGATORIES

17.1

Does the reporting entity include amounts recoverable on unauthorized reinsurance in Schedule F - Part 3 that is exempt from the statutory provision for unauthorized reinsurance?

Yes [☐] No [☒]

Incurred but not reported losses on contracts in force prior to July 1, 1984, and not subsequently renewed are exempt from the statutory provision for unauthorized reinsurance. Provide the following information for this exemption:

17.11

Gross amount of unauthorized reinsurance in Schedule F - Part 3 exempt from the statutory provision for unauthorized reinsurance

\$

17.12

Unfunded portion of Interrogatory 17.11

\$

17.13

Paid losses and loss adjustment expenses portion of Interrogatory 17.11.....

\$

17.14

Case reserves portion of Interrogatory 17.11

\$

17.15

Incurred but not reported portion of Interrogatory 17.11

\$

17.16

Unearned premium portion of Interrogatory 17.11

\$

17.17

Contingent commission portion of Interrogatory 17.11

\$

18.1

Do you act as a custodian for health savings accounts?

Yes [☐] No [☒]

18.2

If yes, please provide the amount of custodial funds held as of the reporting date.

\$

18.3

Do you act as an administrator for health savings accounts?

Yes [☐] No [☒]

18.4

If yes, please provide the balance of funds administered as of the reporting date.

\$

19.

Is the reporting entity licensed or chartered, registered, qualified, eligible or writing business in at least two states?

Yes [☒] No [☐]

19.1

If no, does the reporting entity assume reinsurance business that covers risks residing in at least one state other than the state of domicile of the reporting entity?

Yes [☐] No [☐]

ANNUAL STATEMENT FOR THE YEAR 2021 OF THE Infinity Auto Insurance Company

FIVE-YEAR HISTORICAL DATA

Show amounts in whole dollars only, no cents; show percentages to one decimal place, i.e. 17.6.

	1 2021	2 2020	3 2019	4 2018	5 2017
Gross Premiums Written (Page 8, Part 1B Cols. 1, 2 & 3)					
1. Liability lines (Lines 11.1, 11.2, 16, 17.1, 17.2, 17.3, 18.1, 18.2, 19.1, 19.2 & 19.3, 19.4)	618,357,762	490,233,072	423,068,559	349,054,433	327,776,833
2. Property lines (Lines 1, 2, 9, 12, 21 & 26)	226,161,427	170,404,571	150,938,264	136,245,015	143,767,142
3. Property and liability combined lines (Lines 3, 4, 5, 8, 22 & 27)					
4. All other lines (Lines 6, 10, 13, 14, 15, 23, 24, 28, 29, 30 & 34)					
5. Nonproportional reinsurance lines (Lines 31, 32 & 33)					
6. Total (Line 35)	844,519,190	660,637,643	574,006,823	485,299,448	471,543,975
Net Premiums Written (Page 8, Part 1B, Col. 6)					
7. Liability lines (Lines 11.1, 11.2, 16, 17.1, 17.2, 17.3, 18.1, 18.2, 19.1, 19.2 & 19.3, 19.4)				487,369	934,899
8. Property lines (Lines 1, 2, 9, 12, 21 & 26)				221,800	451,954
9. Property and liability combined lines (Lines 3, 4, 5, 8, 22 & 27)					
10. All other lines (Lines 6, 10, 13, 14, 15, 23, 24, 28, 29, 30 & 34)					
11. Nonproportional reinsurance lines (Lines 31, 32 & 33)					
12. Total (Line 35)				709,169	1,386,853
Statement of Income (Page 4)					
13. Net underwriting gain (loss) (Line 8)				35,027	(6,845)
14. Net investment gain or (loss) (Line 11)	285,910	287,604	262,262	86,559	134,778
15. Total other income (Line 15)				66,702	74,959
16. Dividends to policyholders (Line 17)					
17. Federal and foreign income taxes incurred (Line 19)	39,066	31,094	50,068	4,043	63,716
18. Net income (Line 20)	246,844	256,510	212,194	184,245	139,176
Balance Sheet Lines (Pages 2 and 3)					
19. Total admitted assets excluding protected cell business (Page 2, Line 26, Col. 3)	12,295,310	26,742,576	10,523,629	9,635,263	11,623,301
20. Premiums and considerations (Page 2, Col. 3)					
20.1 In course of collection (Line 15.1)		1,986,047	(275,756)	(29,578)	780,062
20.2 Deferred and not yet due (Line 15.2)					
20.3 Accrued retrospective premiums (Line 15.3)					
21. Total liabilities excluding protected cell business (Page 3, Line 26)	3,970,047	18,664,646	2,603,054	1,933,987	4,065,774
22. Losses (Page 3, Line 1)					545,364
23. Loss adjustment expenses (Page 3, Line 3)					137,757
24. Unearned premiums (Page 3, Line 9)					627,575
25. Capital paid up (Page 3, Lines 30 & 31)	3,000,000	3,000,000	3,000,000	3,000,000	3,000,000
26. Surplus as regards policyholders (Page 3, Line 37)	8,325,263	8,077,931	7,920,575	7,701,276	7,557,527
Cash Flow (Page 5)					
27. Net cash from operations (Line 11)	13,121,570	(10,598,457)	304,273	360,982	(489,570)
Risk-Based Capital Analysis					
28. Total adjusted capital	8,325,263	8,077,931	7,920,575	7,701,277	7,557,527
29. Authorized control level risk-based capital	137,307	46,884	49,571	122,233	78,066
Percentage Distribution of Cash, Cash Equivalents and Invested Assets (Page 2, Col. 3) (Line divided by Page 2, Line 12, Col. 3) x100.0					
30. Bonds (Line 1)	99.7	77.9	99.4	91.0	99.4
31. Stocks (Lines 2.1 & 2.2)					
32. Mortgage loans on real estate (Lines 3.1 and 3.2)					
33. Real estate (Lines 4.1, 4.2 & 4.3)					
34. Cash, cash equivalents and short-term investments (Line 5)	0.3	20.7	0.6	9.0	0.6
35. Contract loans (Line 6)					
36. Derivatives (Line 7)					
37. Other invested assets (Line 8)					
38. Receivables for securities (Line 9)		1.4			
39. Securities lending reinvested collateral assets (Line 10)					
40. Aggregate write-ins for invested assets (Line 11)					
41. Cash, cash equivalents and invested assets (Line 12)	100.0	100.0	100.0	100.0	100.0
Investments in Parent, Subsidiaries and Affiliates					
42. Affiliated bonds (Schedule D, Summary, Line 12, Col. 1)					
43. Affiliated preferred stocks (Schedule D, Summary, Line 18, Col. 1)					
44. Affiliated common stocks (Schedule D, Summary, Line 24, Col. 1)	1,704	1,704	1,704	1,704	1,704
45. Affiliated short-term investments (subtotals included in Schedule DA Verification, Col. 5, Line 10)					
46. Affiliated mortgage loans on real estate					
47. All other affiliated					
48. Total of above Lines 42 to 47	1,704	1,704	1,704	1,704	1,704
49. Total Investment in Parent included in Lines 42 to 47 above					
50. Percentage of investments in parent, subsidiaries and affiliates to surplus as regards policyholders (Line 48 above divided by Page 3, Col. 1, Line 37 x 100.0)	0.0	0.0	0.0	0.0	0.0

FIVE-YEAR HISTORICAL DATA

(Continued)

	1 2021	2 2020	3 2019	4 2018	5 2017
Capital and Surplus Accounts (Page 4)					
51. Net unrealized capital gains (losses) (Line 24)					
52. Dividends to stockholders (Line 35)		(100,000)			(190,000)
53. Change in surplus as regards policyholders for the year (Line 38)	247,333	157,356	219,299	143,749	(72,443)
Gross Losses Paid (Page 9, Part 2, Cols. 1 & 2)					
54. Liability lines (Lines 11.1, 11.2, 16, 17.1, 17.2, 17.3, 18.1, 18.2, 19.1, 19.2 & 19.3, 19.4)	320,999,784	158,407,309	203,122,108	205,319,905	216,027,624
55. Property lines (Lines 1, 2, 9, 12, 21 & 26)	174,575,350	49,662,504	70,748,920	66,860,651	96,469,946
56. Property and liability combined lines (Lines 3, 4, 5, 8, 22 & 27)				2,351	151
57. All other lines (Lines 6, 10, 13, 14, 15, 23, 24, 28, 29, 30 & 34)					
58. Nonproportional reinsurance lines (Lines 31, 32 & 33)					
59. Total (Line 35)	495,575,134	208,069,813	273,871,028	272,182,907	312,497,721
Net Losses Paid (Page 9, Part 2, Col. 4)					
60. Liability lines (Lines 11.1, 11.2, 16, 17.1, 17.2, 17.3, 18.1, 18.2, 19.1, 19.2 & 19.3, 19.4)				1,110,267	595,976
61. Property lines (Lines 1, 2, 9, 12, 21 & 26)				249,521	281,045
62. Property and liability combined lines (Lines 3, 4, 5, 8, 22 & 27)				2,351	151
63. All other lines (Lines 6, 10, 13, 14, 15, 23, 24, 28, 29, 30 & 34)					
64. Nonproportional reinsurance lines (Lines 31, 32 & 33)					
65. Total (Line 35)				1,362,139	877,172
Operating Percentages (Page 4) (Line divided by Page 4, Line 1) x 100.0					
66. Premiums earned (Line 1)	100.0	100.0	100.0	100.0	100.0
67. Losses incurred (Line 2)				61.1	65.2
68. Loss expenses incurred (Line 3)				11.4	11.8
69. Other underwriting expenses incurred (Line 4)				24.9	23.4
70. Net underwriting gain (loss) (Line 8)				2.6	(0.5)
Other Percentages					
71. Other underwriting expenses to net premiums written (Page 4, Lines 4 + 5 - 15 divided by Page 8, Part 1B, Col. 6, Line 35 x 100.0)				37.6	17.8
72. Losses and loss expenses incurred to premiums earned (Page 4, Lines 2 + 3 divided by Page 4, Line 1 x 100.0)				72.5	77.1
73. Net premiums written to policyholders' surplus (Page 8, Part 1B, Col. 6, Line 35 divided by Page 3, Line 37, Col. 1 x 100.0)				9.2	18.4
One Year Loss Development (\$000 omitted)					
74. Development in estimated losses and loss expenses incurred prior to current year (Schedule P - Part 2 - Summary, Line 12, Col. 11)				(14)	(16)
75. Percent of development of losses and loss expenses incurred to policyholders' surplus of prior year end (Line 74 above divided by Page 4, Line 21, Col. 1 x 100.0).....				(0.2)	(0.2)
Two Year Loss Development (\$000 omitted)					
76. Development in estimated losses and loss expenses incurred two years before the current year and prior year (Schedule P, Part 2 - Summary, Line 12, Col. 12)			(14)	(22)	(16)
77. Percent of development of losses and loss expenses incurred to reported policyholders' surplus of second prior year end (Line 76 above divided by Page 4, Line 21, Col. 2 x 100.0)			(0.2)	(0.3)	(0.2)

NOTE: If a party to a merger, have the two most recent years of this exhibit been restated due to a merger in compliance with the disclosure requirements of SSAP No. 3, Accounting Changes and Correction of Errors?

Yes [] No []

If no, please explain:

ANNUAL STATEMENT FOR THE YEAR 2021 OF THE Infinity Auto Insurance Company

SCHEDULE P - ANALYSIS OF LOSSES AND LOSS EXPENSES

SCHEDULE P - PART 1 - SUMMARY

(\$000 OMITTED)

Years in Which Premiums Were Earned and Losses Were Incurred	Premiums Earned			Loss and Loss Expense Payments								12
	1 Direct and Assumed	2 Ceded	3 Net (1 - 2)	Loss Payments		Defense and Cost Containment Payments		Adjusting and Other Payments		10 Salvage and Subrogation Received	11 Total Net Paid Cols (4 - 5 + 6 - 7 + 8 - 9)	Number of Claims Reported Direct and Assumed
				4 Direct and Assumed	5 Ceded	6 Direct and Assumed	7 Ceded	8 Direct and Assumed	9 Ceded			
1. Prior.....	XXX	XXX	XXX	1	1							XXX
2. 2012.....	1,189	8	1,181	775	1	27		127	1	65	927	XXX
3. 2013.....	1,310	10	1,300	816	2	27	1	137	2	74	975	XXX
4. 2014.....	1,337	12	1,325	844	10	25	2	136	1	80	992	XXX
5. 2015.....	1,361	14	1,347	920	7	24	(1)	134	(2)	91	1,074	XXX
6. 2016.....	1,404	12	1,392	942	6	21	(1)	137	(4)	95	1,099	XXX
7. 2017.....	1,384	13	1,371	897	(7)	16	(6)	133	(8)	92	1,067	XXX
8. 2018.....	1,495	159	1,336	860	35	12	(11)	127	(8)	43	983	XXX
9. 2019.....	1,677	1,677		971	971	9	9	163	163			XXX
10. 2020.....	2,075	2,075		966	966	4	4	138	138			XXX
11. 2021.....	2,263	2,263		907	907	1	1					XXX
12. Totals	XXX	XXX	XXX	8,899	2,899	167	(1)	1,230	281	540	7,117	XXX

	Losses Unpaid				Defense and Cost Containment Unpaid				Adjusting and Other Unpaid		23	24	25
	Case Basis		Bulk + IBNR		Case Basis		Bulk + IBNR						
	13	14	15	16	17	18	19	20	21	22			
	Direct and Assumed	Ceded	Direct and Assumed	Ceded	Direct and Assumed	Ceded	Direct and Assumed	Ceded	Direct and Assumed	Ceded			
1. Prior.....	6	6											XXX
2. 2012.....	5	5											XXX
3. 2013.....	2	2	1	1									XXX
4. 2014.....	1	1	3	3									XXX
5. 2015.....			3	3			1	1	1	1			XXX
6. 2016.....	4	4	(2)	(2)			2	2	2	2			XXX
7. 2017.....	7	7	2	2			4	4	(1)	(1)			XXX
8. 2018.....	21	21	7	7	2	2	5	5	4	4			XXX
9. 2019.....	67	67	34	34			13	13	17	17			XXX
10. 2020.....	124	124	59	59	1	1	20	20	23	23			XXX
11. 2021.....	396	396	370	370	10	10	30	30	81	81			XXX
12. Totals	633	633	477	477	13	13	75	75	127	127			XXX

	Total Losses and Loss Expenses Incurred			Loss and Loss Expense Percentage (Incurred /Premiums Earned)			Nontabular Discount		34 Inter-Company Pooling Participation Percentage	Net Balance Sheet Reserves After Discount	
	26	27	28	29	30	31	32	33		35	36
	Direct and Assumed	Ceded	Net	Direct and Assumed	Ceded	Net	Loss	Loss Expense		Losses Unpaid	Loss Expenses Unpaid
1. Prior.....	XXX	XXX	XXX	XXX	XXX	XXX			XXX		
2. 2012.....	934	7	927	78.6	88.3	78.5			0.1		
3. 2013.....	983	8	975	75.0	77.0	75.0			0.1		
4. 2014.....	1,008	16	992	75.4	137.3	74.9			0.1		
5. 2015.....	1,083	9	1,074	79.6	63.6	79.7			0.1		
6. 2016.....	1,106	7	1,099	78.8	57.1	79.0			0.1		
7. 2017.....	1,058	(9)	1,067	76.4	(72.2)	77.8			0.1		
8. 2018.....	1,038	55	983	69.5	34.8	73.6			0.1		
9. 2019.....	1,274	1,274		76.0	76.0				0.1		
10. 2020.....	1,334	1,334		64.3	64.3				0.1		
11. 2021.....	1,795	1,795		79.3	79.3				0.1		
12. Totals	XXX	XXX	XXX	XXX	XXX	XXX			XXX		

Note: Parts 2 and 4 are gross of all discounting, including tabular discounting. Part 1 is gross of only nontabular discounting, which is reported in Columns 32 and 33 of Part 1. The tabular discount, if any, is reported in the Notes to Financial Statements which will reconcile Part 1 with Parts 2 and 4.

ANNUAL STATEMENT FOR THE YEAR 2021 OF THE Infinity Auto Insurance Company

SCHEDULE P - PART 2 - SUMMARY

Years in Which Losses Were Incurred	INCURRED NET LOSSES AND DEFENSE AND COST CONTAINMENT EXPENSES REPORTED AT YEAR END (\$000 OMITTED)										DEVELOPMENT	
	1 2012	2 2013	3 2014	4 2015	5 2016	6 2017	7 2018	8 2019	9 2020	10 2021	11 One Year	12 Two Year
1. Prior.....	155	157	150	152	148	151	151	151	151	151		
2. 2012.....	800	806	807	807	803	800	801	801	801	801		
3. 2013.....	XXX	875	865	849	842	842	840	840	840	840		
4. 2014.....	XXX	XXX	882	868	859	861	857	857	857	857		
5. 2015.....	XXX	XXX	XXX	930	935	938	938	938	938	938		
6. 2016.....	XXX	XXX	XXX	XXX	980	959	958	958	958	958		
7. 2017.....	XXX	XXX	XXX	XXX	XXX	934	926	926	926	926		
8. 2018.....	XXX	XXX	XXX	XXX	XXX	XXX	848	848	848	848		
9. 2019.....	XXX	XXX	XXX	XXX	XXX	XXX	XXX					
10. 2020.....	XXX	XXX	XXX	XXX	XXX	XXX	XXX	XXX				XXX
11. 2021.....	XXX	XXX	XXX	XXX	XXX	XXX	XXX	XXX	XXX		XXX	XXX
12. Totals												

SCHEDULE P - PART 3 - SUMMARY

Years in Which Losses Were Incurred	CUMULATIVE PAID NET LOSSES AND DEFENSE AND COST CONTAINMENT EXPENSES REPORTED AT YEAR END (\$000 OMITTED)										11 Number of Claims Closed With Loss Payment	12 Number of Claims Closed Without Loss Payment
	1 2012	2 2013	3 2014	4 2015	5 2016	6 2017	7 2018	8 2019	9 2020	10 2021		
1. Prior.....	000	82	116	133	140	144	151	151	151	151	XXX	XXX
2. 2012.....	479	699	762	784	793	797	801	801	801	801	XXX	XXX
3. 2013.....	XXX	510	739	797	818	828	840	840	840	840	XXX	XXX
4. 2014.....	XXX	XXX	520	750	808	832	857	857	857	857	XXX	XXX
5. 2015.....	XXX	XXX	XXX	575	821	880	938	938	938	938	XXX	XXX
6. 2016.....	XXX	XXX	XXX	XXX	604	833	958	958	958	958	XXX	XXX
7. 2017.....	XXX	XXX	XXX	XXX	XXX	571	926	926	926	926	XXX	XXX
8. 2018.....	XXX	XXX	XXX	XXX	XXX	XXX	848	848	848	848	XXX	XXX
9. 2019.....	XXX	XXX	XXX	XXX	XXX	XXX	XXX				XXX	XXX
10. 2020.....	XXX	XXX	XXX	XXX	XXX	XXX	XXX	XXX			XXX	XXX
11. 2021.....	XXX	XXX	XXX	XXX	XXX	XXX	XXX	XXX	XXX		XXX	XXX

SCHEDULE P - PART 4 - SUMMARY

Years in Which Losses Were Incurred	BULK AND IBNR RESERVES ON NET LOSSES AND DEFENSE AND COST CONTAINMENT EXPENSES REPORTED AT YEAR END (\$000 OMITTED)									
	1 2012	2 2013	3 2014	4 2015	5 2016	6 2017	7 2018	8 2019	9 2020	10 2021
1. Prior.....	65	31	12	8	3	3				
2. 2012.....	181	44	18	11	6	1				
3. 2013.....	XXX	222	60	25	13	6				
4. 2014.....	XXX	XXX	219	53	24	17				
5. 2015.....	XXX	XXX	XXX	218	45	27				
6. 2016.....	XXX	XXX	XXX	XXX	237	54				
7. 2017.....	XXX	XXX	XXX	XXX	XXX	226				
8. 2018.....	XXX	XXX	XXX	XXX	XXX	XXX				
9. 2019.....	XXX	XXX	XXX	XXX	XXX	XXX	XXX			
10. 2020.....	XXX	XXX	XXX	XXX	XXX	XXX	XXX	XXX		
11. 2021.....	XXX	XXX	XXX	XXX	XXX	XXX	XXX	XXX	XXX	

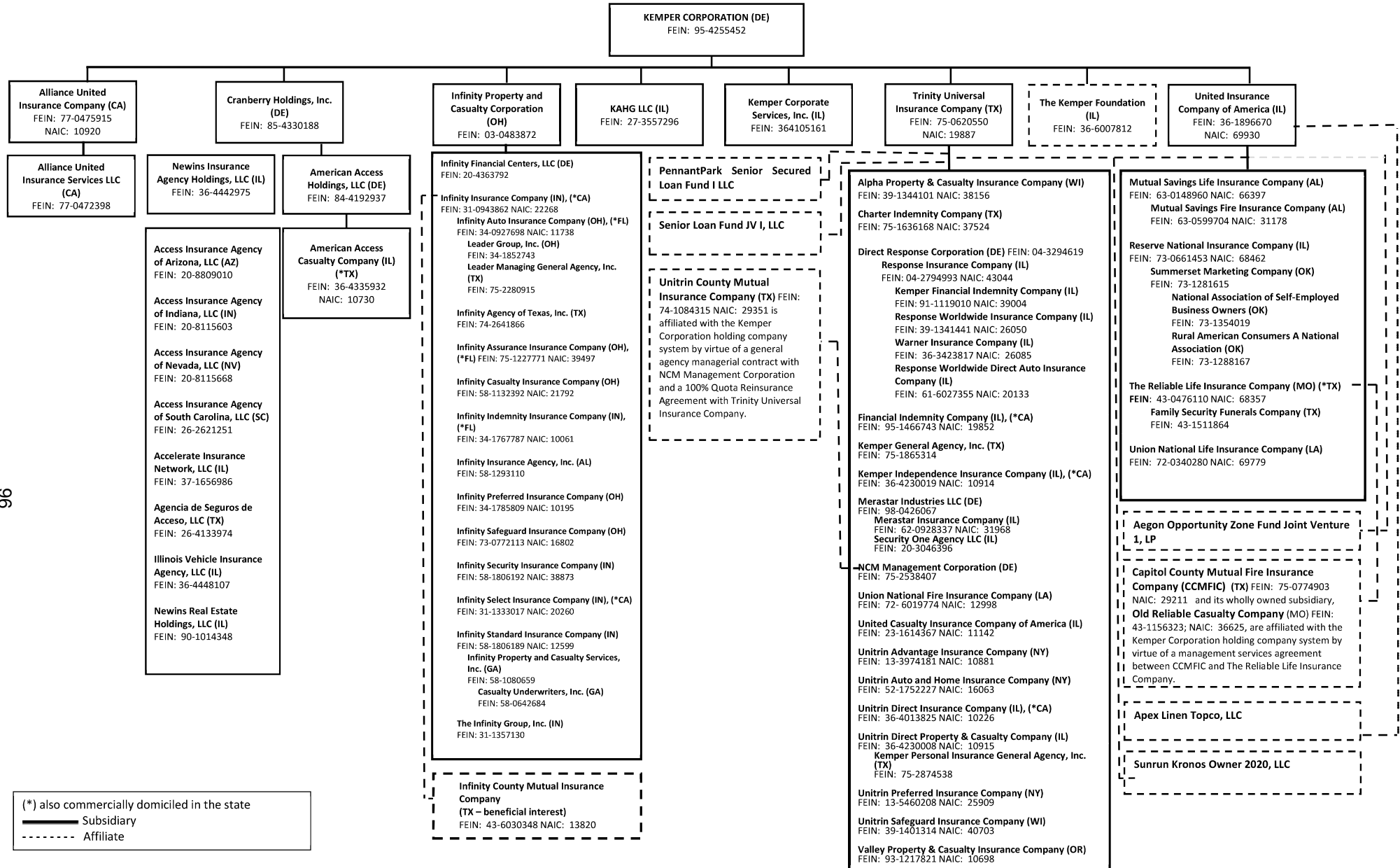
SCHEDULE T - EXHIBIT OF PREMIUMS WRITTEN

Allocated by States and Territories									
States, Etc.	1 Active Status (a)	Gross Premiums, Including Policy and Membership Fees, Less Return Premiums and Premiums on Policies Not Taken		4 Dividends Paid or Credited to Policyholders on Direct Business	5 Direct Losses Paid (Deducting Salvage)	6 Direct Losses Incurred	7 Direct Losses Unpaid	8 Finance and Service Charges Not Included in Premiums	9 Direct Premiums Written for Federal Purchasing Groups (Included in Column 2)
		2 Direct Premiums Written	3 Direct Premiums Earned						
1. Alabama	AL	L	351,955	367,370		220,785	76,649	115,053	9,066
2. Alaska	AK	N				(1,427)	(1,427)		
3. Arizona	AZ	L	10,719,581	9,163,563		3,173,290	2,349,020	3,662,641	921,230
4. Arkansas	AR	N							
5. California	CA	N				8,108	10,266	30,382	21,975
6. Colorado	CO	N							
7. Connecticut	CT	N							1,200
8. Delaware	DE	N							
9. District of Columbia	DC	N							
10. Florida	FL	L	436,359,314	410,764,852		267,593,541	367,949,454	236,589,564	27,153,916
11. Georgia	GA	L	33,688,153	30,743,176		17,226,187	17,995,814	14,442,025	1,895,692
12. Hawaii	HI	N							
13. Idaho	ID	N							
14. Illinois	IL	L	3	3			(920)	(262)	35
15. Indiana	IN	N							
16. Iowa	IA	N							
17. Kansas	KS	N							
18. Kentucky	KY	N							
19. Louisiana	LA	N							
20. Maine	ME	N							
21. Maryland	MD	N							
22. Massachusetts	MA	N							
23. Michigan	MI	L				49,969		372,738	
24. Minnesota	MN	N							
25. Mississippi	MS	N							
26. Missouri	MO	L					11	0	
27. Montana	MT	N							
28. Nebraska	NE	N							
29. Nevada	NV	L				12,339	(222,808)	28,095	60
30. New Hampshire	NH	N							
31. New Jersey	NJ	N							
32. New Mexico	NM	N							
33. New York	NY	L	27,620	29,907		84,102	94,277	21,839	280
34. North Carolina	NC	N							
35. North Dakota	ND	N							
36. Ohio	OH	L				(38)	(38)	0	
37. Oklahoma	OK	N							
38. Oregon	OR	N					14		
39. Pennsylvania	PA	L	14,300,538	6,713,349		1,983,202	5,369,947	3,521,129	1,059,322
40. Rhode Island	RI	N							
41. South Carolina	SC	L				(1,533)	(2,296)	(108)	
42. South Dakota	SD	N							
43. Tennessee	TN	L				(4,240)	(4,062)	(53)	
44. Texas	TX	L							
45. Utah	UT	N							
46. Vermont	VT	N							
47. Virginia	VA	N							
48. Washington	WA	N							
49. West Virginia	WV	N							
50. Wisconsin	WI	N							
51. Wyoming	WY	N							
52. American Samoa	AS	N							
53. Guam	GU	N							
54. Puerto Rico	PR	N							
55. U.S. Virgin Islands	VI	N							
56. Northern Mariana Islands	MP	N							
57. Canada	CAN	N							
58. Aggregate other alien	OT	XXX							
59. Totals	XXX	495,447,164	457,782,221		290,344,285	393,613,902	258,783,045	31,062,776	
DETAILS OF WRITE-INS									
58001.	XXX								
58002.	XXX								
58003.	XXX								
58998. Summary of remaining write-ins for Line 58 from overflow page	XXX								
58999. Totals (Lines 58001 through 58003 plus 58998)(Line 58 above)	XXX								

(a) Active Status Counts:
L - Licensed or Chartered - Licensed insurance carrier or domiciled RRG.....14
E - Eligible - Reporting entities eligible or approved to write surplus lines in the state (other than their state of domicile - see DSLI).....
D - Domestic Surplus Lines Insurer (DSLI) - Reporting entities authorized to write surplus lines in the state of domicile.....
R - Registered - Non-domiciled RRGs.....
Q - Qualified - Qualified or accredited reinsurer.
N - None of the above - Not allowed to write business in the state43

(b) Explanation of basis of allocation of premiums by states, etc.

ANNUAL STATEMENT FOR THE YEAR 2021 OF THE Infinity Auto Insurance Company



OVERFLOW PAGE FOR WRITE-INS