



QUARTERLY STATEMENT

As of September 30, 2021
of the Condition and Affairs of the

NATIONWIDE INSURANCE COMPANY OF AMERICA

NAIC Group Code.....140, 140 (Current Period) (Prior Period)	NAIC Company Code..... 25453	Employer's ID Number..... 95-2130882
Organized under the Laws of OH	State of Domicile or Port of Entry OH	Country of Domicile US
Incorporated/Organized..... June 30, 1960	Commenced Business..... August 31, 1960	
Statutory Home Office	ONE WEST NATIONWIDE BLVD. .. COLUMBUS .. OH .. US .. 43215-2220 (Street and Number) (City or Town, State, Country and Zip Code)	
Main Administrative Office	ONE WEST NATIONWIDE BLVD. .. COLUMBUS .. OH .. US .. 43215-2220 (Street and Number) (City or Town, State, Country and Zip Code)	614-249-7111 (Area Code) (Telephone Number)
Mail Address	ONE WEST NATIONWIDE BLVD., 1-14-301 .. COLUMBUS .. OH .. US .. 43215-2220 (Street and Number or P. O. Box) (City or Town, State, Country and Zip Code)	
Primary Location of Books and Records	ONE WEST NATIONWIDE BLVD., 1-14-301 .. COLUMBUS .. OH .. US .. 43215-2220 (Street and Number) (City or Town, State, Country and Zip Code)	614-249-1545 (Area Code) (Telephone Number)
Internet Web Site Address	WWW.ALLIEDINSURANCE.COM	
Statutory Statement Contact	ANDREA D IACOBONI (Name) FINRPT@NATIONWIDE.COM (E-Mail Address)	614-249-1545 (Area Code) (Telephone Number) (Extension) 866-315-1430 (Fax Number)

OFFICERS

Name	Title	Name	Title
1. MARK ALLEN BERVEN	PRESIDENT & COO	2. DENISE LYNN SKINGLE	SVP & SECRETARY
3. ELIZABETH HUAN SONG KITTO	VP & TREASURER		

OTHER

PAMELA ANN BIESECKER SVP-HEAD OF TAXATION

DIRECTORS OR TRUSTEES

MARK ALLEN BERVEN GARY ANTHONY DOUGLAS OSCAR GUERRERO # ELIZABETH MARGARET RICZKO
ERIC EUGENE SMITH

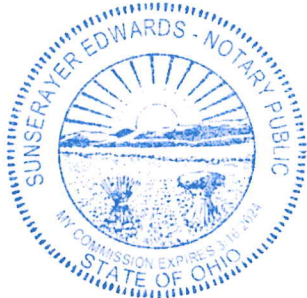
State of..... OHIO
County of..... FRANKLIN

The officers of this reporting entity being duly sworn, each depose and say that they are the described officers of said reporting entity, and that on the reporting period stated above, all of the herein described assets were the absolute property of the said reporting entity, free and clear from any liens or claims thereon, except as herein stated, and that this statement, together with related exhibits, schedules and explanations therein contained, annexed or referred to, is a full and true statement of all the assets and liabilities and of the condition and affairs of the said reporting entity as of the reporting period stated above, and of its income and deductions therefrom for the period ended, and have been completed in accordance with the NAIC Annual Statement Instructions and Accounting Practices and Procedures manual except to the extent that: (1) state law may differ; or, (2) that state rules or regulations require differences in reporting not related to accounting practices and procedures, according to the best of their information, knowledge and belief, respectively. Furthermore, the scope of this attestation by the described officers also includes the related corresponding electronic filing with the NAIC, when required, that is an exact copy (except for formatting differences due to electronic filing) of the enclosed statement. The electronic filing may be requested by various regulators in lieu of or in addition to the enclosed statement.

 (Signature)	 (Signature)	 (Signature)
MARK ALLEN BERVEN	DENISE LYNN SKINGLE	ELIZABETH HUAN SONG KITTO
1. (Printed Name)	2. (Printed Name)	3. (Printed Name)
PRESIDENT & COO	SVP & SECRETARY	VP & TREASURER
(Title)	(Title)	(Title)

Subscribed and sworn to before me
This 3rd day of November

a. Is this an original filing? Yes [X] No []
b. If no: 1. State the amendment number
2. Date filed
3. Number of pages attached



NATIONWIDE INSURANCE COMPANY OF AMERICA
ASSETS

	Current Statement Date			4
	1	2	3	
	Assets	Nonadmitted Assets	Net Admitted Assets (Cols. 1 - 2)	December 31 Prior Year Net Admitted Assets
1. Bonds.....	352,695,420		352,695,420	314,949,498
2. Stocks:				
2.1 Preferred stocks.....			0	
2.2 Common stocks.....			0	
3. Mortgage loans on real estate:				
3.1 First liens.....			0	
3.2 Other than first liens.....			0	
4. Real estate:				
4.1 Properties occupied by the company (less \$.....0 encumbrances).....			0	
4.2 Properties held for the production of income (less \$.....0 encumbrances).....			0	
4.3 Properties held for sale (less \$.....0 encumbrances).....			0	
5. Cash (\$.....152,471), cash equivalents (\$.....39,822,829) and short-term investments (\$.....0).....	39,975,300		39,975,300	16,196,783
6. Contract loans (including \$.....0 premium notes).....			0	
7. Derivatives.....			0	
8. Other invested assets.....	4,417,548		4,417,548	3,252,401
9. Receivables for securities.....			0	
10. Securities lending reinvested collateral assets.....			0	
11. Aggregate write-ins for invested assets.....	0	0	0	0
12. Subtotals, cash and invested assets (Lines 1 to 11).....	397,088,268	0	397,088,268	334,398,682
13. Title plants less \$.....0 charged off (for Title insurers only).....			0	
14. Investment income due and accrued.....	2,381,772		2,381,772	1,866,032
15. Premiums and considerations:				
15.1 Uncollected premiums and agents' balances in the course of collection.....	89,831,227	513,648	89,317,579	88,696,450
15.2 Deferred premiums, agents' balances and installments booked but deferred and not yet due (including \$.....0 earned but unbilled premiums).....	371,969,791	250,535	371,719,256	347,755,926
15.3 Accrued retrospective premiums (\$.....0) and contracts subject to redetermination (\$.....0).....			0	
16. Reinsurance:				
16.1 Amounts recoverable from reinsurers.....	94,238,331		94,238,331	70,210,758
16.2 Funds held by or deposited with reinsured companies.....	591,015		591,015	211,039
16.3 Other amounts receivable under reinsurance contracts.....	24,912,339		24,912,339	29,156,193
17. Amounts receivable relating to uninsured plans.....			0	
18.1 Current federal and foreign income tax recoverable and interest thereon.....	229,444		229,444	
18.2 Net deferred tax asset.....	9,964,854	1,749,493	8,215,361	7,867,004
19. Guaranty funds receivable or on deposit.....	208,402		208,402	71,960
20. Electronic data processing equipment and software.....			0	
21. Furniture and equipment, including health care delivery assets (\$.....0).....			0	
22. Net adjustment in assets and liabilities due to foreign exchange rates.....			0	
23. Receivables from parent, subsidiaries and affiliates.....	6,145,869		6,145,869	14,445,295
24. Health care (\$.....0) and other amounts receivable.....			0	
25. Aggregate write-ins for other than invested assets.....	2,825,967	103,763	2,722,204	2,951,486
26. Total assets excluding Separate Accounts, Segregated Accounts and Protected Cell Accounts (Lines 12 through 25).....	1,000,387,279	2,617,439	997,769,840	897,630,825
27. From Separate Accounts, Segregated Accounts and Protected Cell Accounts.....			0	
28. Total (Lines 26 and 27).....	1,000,387,279	2,617,439	997,769,840	897,630,825

DETAILS OF WRITE-INS				
1101.			0	
1102.			0	
1103.			0	
1198. Summary of remaining write-ins for Line 11 from overflow page.....	0	0	0	0
1199. Totals (Lines 1101 thru 1103 plus 1198) (Line 11 above).....	0	0	0	0
2501. Miscellaneous.....	776,838		776,838	1,007,869
2502. Third party administrator receivable.....	457,389	95,460	361,929	209,199
2503. Other assets nonadmitted.....	419	419	0	
2598. Summary of remaining write-ins for Line 25 from overflow page.....	1,591,321	7,884	1,583,437	1,734,418
2599. Totals (Lines 2501 thru 2503 plus 2598) (Line 25 above).....	2,825,967	103,763	2,722,204	2,951,486

NATIONWIDE INSURANCE COMPANY OF AMERICA
LIABILITIES, SURPLUS AND OTHER FUNDS

	1 Current Statement Date	2 December 31 Prior Year
1. Losses (current accident year \$.....42,655,458).....133,962,651124,013,607
2. Reinsurance payable on paid losses and loss adjustment expenses.....8,686,2439,978,745
3. Loss adjustment expenses.....31,870,16723,910,792
4. Commissions payable, contingent commissions and other similar charges.....3,595,6214,425,950
5. Other expenses (excluding taxes, licenses and fees).....1,492,3172,476,507
6. Taxes, licenses and fees (excluding federal and foreign income taxes).....619,156767,968
7.1 Current federal and foreign income taxes (including \$.....(126,126) on realized capital gains (losses)).....	582,071
7.2 Net deferred tax liability.....		
8. Borrowed money \$.....0 and interest thereon \$.....0.....		
9. Unearned premiums (after deducting unearned premiums for ceded reinsurance of \$.....704,089,992 and including warranty reserves of \$.....100,357 and accrued accident and health experience rating refunds including \$.....0 for medical loss ratio rebate per the Public Health Service Act).....85,645,66279,719,062
10. Advance premium.....1,702,4961,294,044
11. Dividends declared and unpaid:		
11.1 Stockholders.....		
11.2 Policyholders.....80,87876,040
12. Ceded reinsurance premiums payable (net of ceding commissions).....525,294,238497,394,684
13. Funds held by company under reinsurance treaties.....7,9727,651
14. Amounts withheld or retained by company for account of others.....4,202,7522,797,560
15. Remittances and items not allocated.....36,254124,662
16. Provision for reinsurance (including \$.....0 certified).....		
17. Net adjustments in assets and liabilities due to foreign exchange rates.....		
18. Drafts outstanding.....		
19. Payable to parent, subsidiaries and affiliates.....9,682,867765,571
20. Derivatives.....		
21. Payable for securities.....		
22. Payable for securities lending.....		
23. Liability for amounts held under uninsured plans.....		
24. Capital notes \$.....0 and interest thereon \$.....0.....		
25. Aggregate write-ins for liabilities.....4,329,6226,601,879
26. Total liabilities excluding protected cell liabilities (Lines 1 through 25).....811,208,896754,936,793
27. Protected cell liabilities.....		
28. Total liabilities (Lines 26 and 27).....811,208,896754,936,793
29. Aggregate write-ins for special surplus funds.....00
30. Common capital stock.....3,500,0103,500,010
31. Preferred capital stock.....		
32. Aggregate write-ins for other than special surplus funds.....00
33. Surplus notes.....		
34. Gross paid in and contributed surplus.....153,591,382109,591,382
35. Unassigned funds (surplus).....29,469,55229,602,640
36. Less treasury stock, at cost:		
36.10.000 shares common (value included in Line 30 \$.....0).....		
36.20.000 shares preferred (value included in Line 31 \$.....0).....		
37. Surplus as regards policyholders (Lines 29 to 35, less 36).....186,560,944142,694,032
38. Totals (Page 2, Line 28, Col. 3).....997,769,840897,630,825

DETAILS OF WRITE-INS

2501. Miscellaneous liabilities.....3,978,2806,360,746
2502. Contingent suit liability.....88,069117,848
2503. Escrow Liability.....58658
2598. Summary of remaining write-ins for Line 25 from overflow page.....263,215122,627
2599. Totals (Lines 2501 thru 2503 plus 2598) (Line 25 above).....4,329,6226,601,879
2901.		
2902.		
2903.		
2998. Summary of remaining write-ins for Line 29 from overflow page.....00
2999. Totals (Lines 2901 thru 2903 plus 2998) (Line 29 above).....00
3201.		
3202.		
3203.		
3298. Summary of remaining write-ins for Line 32 from overflow page.....00
3299. Totals (Lines 3201 thru 3203 plus 3298) (Line 32 above).....00

NATIONWIDE INSURANCE COMPANY OF AMERICA
STATEMENT OF INCOME

	1 Current Year to Date	2 Prior Year to Date	3 Prior Year Ended December 31
UNDERWRITING INCOME			
1. Premiums earned:			
1.1 Direct..... (written \$.....1,227,753,983).....	1,170,739,832	1,015,159,319	1,389,991,510
1.2 Assumed..... (written \$.....150,373,494).....	143,523,589	135,584,994	181,417,274
1.3 Ceded..... (written \$.....1,235,475,918).....	1,177,538,238	1,018,781,391	1,394,614,606
1.4 Net..... (written \$.....142,651,559).....	136,725,183	131,962,922	176,794,178
DEDUCTIONS:			
2. Losses incurred (current accident year \$.....87,679,153):			
2.1 Direct.....	771,090,182	600,585,898	826,926,327
2.2 Assumed.....	44,289,219	91,083,656	121,789,179
2.3 Ceded.....	729,740,341	603,081,975	830,381,822
2.4 Net.....	85,639,060	88,587,579	118,333,684
3. Loss adjustment expenses incurred.....	14,082,828	13,484,129	16,823,735
4. Other underwriting expenses incurred.....	45,348,595	56,873,333	72,335,241
5. Aggregate write-ins for underwriting deductions.....	0	0	0
6. Total underwriting deductions (Lines 2 through 5).....	145,070,483	158,945,041	207,492,660
7. Net income of protected cells.....			
8. Net underwriting gain (loss) (Line 1 minus Line 6 + Line 7).....	(8,345,300)	(26,982,119)	(30,698,482)
INVESTMENT INCOME			
9. Net investment income earned.....	6,125,928	5,947,982	4,370,396
10. Net realized capital gains (losses) less capital gains tax of \$.....(126,126).....	(127,818)	5,757,587	5,773,499
11. Net investment gain (loss) (Lines 9 + 10).....	5,998,110	11,705,569	10,143,895
OTHER INCOME			
12. Net gain or (loss) from agents' or premium balances charged off (amount recovered \$.....(660) amount charged off \$.....430,376).....	(431,036)	(387,003)	(501,982)
13. Finance and service charges not included in premiums.....	713,471	756,355	1,000,716
14. Aggregate write-ins for miscellaneous income.....	587,336	539,727	382,539
15. Total other income (Lines 12 through 14).....	869,771	909,079	881,273
16. Net income before dividends to policyholders, after capital gains tax and before all other federal and foreign income taxes (Lines 8 + 11 + 15).....	(1,477,419)	(14,367,471)	(19,673,314)
17. Dividends to policyholders.....	62,112	72,420	73,802
18. Net income, after dividends to policyholders, after capital gains tax and before all other federal and foreign income taxes (Line 16 minus Line 17).....	(1,539,531)	(14,439,891)	(19,747,116)
19. Federal and foreign income taxes incurred.....	(103,319)	1,311,143	801,782
20. Net income (Line 18 minus Line 19) (to Line 22).....	(1,436,212)	(15,751,034)	(20,548,898)
CAPITAL AND SURPLUS ACCOUNT			
21. Surplus as regards policyholders, December 31 prior year.....	142,694,032	162,261,946	162,261,946
22. Net income (from Line 20).....	(1,436,212)	(15,751,034)	(20,548,898)
23. Net transfers (to) from Protected Cell accounts.....			
24. Change in net unrealized capital gains or (losses) less capital gains tax of \$.....202,511.....	761,827	(4,394,456)	(4,315,648)
25. Change in net unrealized foreign exchange capital gain (loss).....			
26. Change in net deferred income tax.....	633,416	5,744,267	6,298,313
27. Change in nonadmitted assets.....	(232,839)	(1,353,546)	(1,289,862)
28. Change in provision for reinsurance.....			
29. Change in surplus notes.....			
30. Surplus (contributed to) withdrawn from protected cells.....			
31. Cumulative effect of changes in accounting principles.....			
32. Capital changes:			
32.1 Paid in.....			
32.2 Transferred from surplus (Stock Dividend).....			
32.3 Transferred to surplus.....			
33. Surplus adjustments:			
33.1 Paid in.....	44,000,000		
33.2 Transferred to capital (Stock Dividend).....			
33.3 Transferred from capital.....			
34. Net remittances from or (to) Home Office.....			
35. Dividends to stockholders.....			
36. Change in treasury stock.....			
37. Aggregate write-ins for gains and losses in surplus.....	140,720	359,410	288,181
38. Change in surplus as regards policyholders (Lines 22 through 37).....	43,866,912	(15,395,359)	(19,567,914)
39. Surplus as regards policyholders, as of statement date (Lines 21 plus 38).....	186,560,944	146,866,587	142,694,032

DETAILS OF WRITE-INS			
0501.			
0502.			
0503.			
0598. Summary of remaining write-ins for Line 5 from overflow page.....	0	0	0
0599. Totals (Lines 0501 thru 0503 plus 0598) (Line 5 above).....	0	0	0
1401. Other.....	557,557	631,368	500,387
1402. Change in contingent suit liability.....	29,779	(91,641)	(117,848)
1403.			
1498. Summary of remaining write-ins for Line 14 from overflow page.....	0	0	0
1499. Totals (Lines 1401 thru 1403 plus 1498) (Line 14 above).....	587,336	539,727	382,539
3701. Change in surplus - pooled nonadmitted premiums in the course of collection offset.....	140,720	359,410	288,181
3702.			
3703.			
3798. Summary of remaining write-ins for Line 37 from overflow page.....	0	0	0
3799. Totals (Lines 3701 thru 3703 plus 3798) (Line 37 above).....	140,720	359,410	288,181

NATIONWIDE INSURANCE COMPANY OF AMERICA
CASH FLOW

	1 Current Year to Date	2 Prior Year To Date	3 Prior Year Ended December 31
CASH FROM OPERATIONS			
1. Premiums collected net of reinsurance.....	146,462,760	133,627,009	179,941,267
2. Net investment income.....	7,080,127	5,448,879	7,957,857
3. Miscellaneous income.....	489,795	785,024	676,683
4. Total (Lines 1 through 3).....	154,032,682	139,860,912	188,575,807
5. Benefit and loss related payments.....	107,343,098	56,367,489	88,959,604
6. Net transfers to Separate Accounts, Segregated Accounts and Protected Cell Accounts.....			
7. Commissions, expenses paid and aggregate write-ins for deductions.....	56,143,431	53,894,684	80,978,293
8. Dividends paid to policyholders.....	57,274	66,867	79,308
9. Federal and foreign income taxes paid (recovered) net of \$(126,126) tax on capital gains (losses).....	582,070	872,572	868,380
10. Total (Lines 5 through 9).....	164,125,873	111,201,612	170,885,585
11. Net cash from operations (Line 4 minus Line 10).....	(10,093,191)	28,659,300	17,690,222
CASH FROM INVESTMENTS			
12. Proceeds from investments sold, matured or repaid:			
12.1 Bonds.....	40,470,270	58,089,388	67,703,851
12.2 Stocks.....			
12.3 Mortgage loans.....			
12.4 Real estate.....			
12.5 Other invested assets.....			
12.6 Net gains or (losses) on cash, cash equivalents and short-term investments.....			
12.7 Miscellaneous proceeds.....			
12.8 Total investment proceeds (Lines 12.1 to 12.7).....	40,470,270	58,089,388	67,703,851
13. Cost of investments acquired (long-term only):			
13.1 Bonds.....	65,298,141	76,045,749	78,712,319
13.2 Stocks.....			
13.3 Mortgage loans.....			
13.4 Real estate.....			
13.5 Other invested assets.....	3,710,929	780,994	1,073,986
13.6 Miscellaneous applications.....			
13.7 Total investments acquired (Lines 13.1 to 13.6).....	69,009,070	76,826,743	79,786,305
14. Net increase or (decrease) in contract loans and premium notes.....			
15. Net cash from investments (Line 12.8 minus Line 13.7 and Line 14).....	(28,538,800)	(18,737,355)	(12,082,454)
CASH FROM FINANCING AND MISCELLANEOUS SOURCES			
16. Cash provided (applied):			
16.1 Surplus notes, capital notes.....			
16.2 Capital and paid in surplus, less treasury stock.....	44,000,000		
16.3 Borrowed funds.....			
16.4 Net deposits on deposit-type contracts and other insurance liabilities.....			
16.5 Dividends to stockholders.....			
16.6 Other cash provided (applied).....	18,410,508	(4,957,251)	3,699,001
17. Net cash from financing and miscellaneous sources (Lines 16.1 through 16.4 minus Line 16.5 plus Line 16.6).....	62,410,508	(4,957,251)	3,699,001
RECONCILIATION OF CASH, CASH EQUIVALENTS AND SHORT-TERM INVESTMENTS			
18. Net change in cash, cash equivalents and short-term investments (Line 11 plus Line 15 plus Line 17).....	23,778,517	4,964,694	9,306,769
19. Cash, cash equivalents and short-term investments:			
19.1 Beginning of year.....	16,196,783	6,890,014	6,890,014
19.2 End of period (Line 18 plus Line 19.1).....	39,975,300	11,854,708	16,196,783

Note: Supplemental disclosures of cash flow information for non-cash transactions:

20.0001	Tax credit commitment liabilities.....	2,011,380	769,383	3,965,213
20.0002	Exchange of bond investment to bond Investment.....	655,393	1,003,046	3,005,849
20.0003	Assets and liabilities transferred settled through transfer of bonds.....	13,143,195	149,289,719	149,289,719

NOTES TO THE FINANCIAL STATEMENTS

Note 1 – Summary of Significant Accounting Policies and Going Concern

A. Accounting Practices

The accompanying statutory financial statements of Nationwide Insurance Company of America (the Company) have been prepared in conformity with accounting practices prescribed or permitted by the National Association of Insurance Commissioners (NAIC) and the State of Ohio.

The Ohio Department of Insurance (Department) recognizes only statutory accounting practices (SAP) prescribed or permitted by the State of Ohio for determining and reporting the financial condition and results of operations of an insurance company, as well as, determining its solvency under the Ohio Insurance law. The NAIC’s *Accounting Practices and Procedures Manual* (NAIC SAP) has been adopted as a component of prescribed or permitted practices by the State of Ohio. The Company has no statutory accounting practices that differ from the NAIC SAP.

A reconciliation of the Company’s net income and capital and surplus between NAIC SAP and practices prescribed and permitted by the State of Ohio is shown below:

	SSAP #	F/S Page	F/S Line #	2021	2020
<u>Net Income</u>					
Nationwide Insurance Company of America state basis (Page 4, Line 20, Columns 1 & 3)	XXX	XXX	XXX	\$ (1,436,212)	\$ (20,548,898)
(2) State Prescribed Practice that is an increase/(decrease) from NAIC SAP				-	-
(3) State Permitted Practice that is an increase/(decrease) from NAIC SAP				-	-
(4) NAIC SAP (1-2-3=4)	XXX	XXX	XXX	<u>\$ (1,436,212)</u>	<u>\$ (20,548,898)</u>
<u>Surplus</u>					
Nationwide Insurance Company of America state basis (Page 3, Line 37, Columns 1 & 2)	XXX	XXX	XXX	\$ 186,560,944	\$ 142,694,032
(6) State Prescribed Practice that is an increase/(decrease) from NAIC SAP				-	-
(7) State Permitted Practice that is an increase/(decrease) from NAIC SAP				-	-
(8) NAIC SAP (5-6-7=8)	XXX	XXX	XXX	<u>\$ 186,560,944</u>	<u>\$ 142,694,032</u>

B. Use of Estimates in the Preparation of the Financial Statements

There were no changes that were considered significant to the Company from prior year end.

C. Accounting Policies

1. There were no changes that were considered significant to the Company from prior year end.
2. Bonds, excluding loan-backed and structured securities, are stated at amortized cost except those with a NAIC designation of “3” through “6” which are stated at the lower of amortized cost or fair value. Amortization of premiums and discounts is calculated using the effective yield method. The Company does not hold any mandatory convertible securities or SVO-identified investments.
- 3-5. There were no changes that were considered significant to the Company from prior year end.
6. Loan-backed and structured securities (collectively, loan-backed securities) are stated at amortized cost or the lower of amortized cost or fair value in accordance with the provisions of Statement of Statutory Accounting Principles No. 43-Revised and the Purposes and Procedures Manual of the NAIC Securities Valuation Office. The retrospective adjustment method is used to value loan-backed securities where the collection of all contractual cash flows is probable. For all other loan-backed securities, the Company uses the prospective adjustment method.
- 7-13. There were no changes that were considered significant to the Company from prior year end.

D. Going Concern

Not applicable.

Note 2 – Accounting Changes and Corrections of Errors

There were no changes that were considered significant to the Company from prior year end.

Note 3 - Business Combinations and Goodwill

Not applicable.

Note 4 – Discontinued Operations

Not applicable.

Note 5 – Investments

A. Mortgage Loans

Not applicable.

B. Troubled Debt Restructuring

Not applicable.

C. Reverse Mortgages

Not applicable.

D. Loan-Backed Securities

1. Prepayment assumptions are generally obtained using a model provided by a third-party vendor.
2. Not applicable.
3. Not applicable.

NOTES TO THE FINANCIAL STATEMENTS

4. All impaired securities (fair value is less than cost or amortized cost) for which an other-than-temporary impairment has not been recognized in earnings as a realized loss (including securities with a recognized other-than-temporary impairment for non-interest related declines when a non-recognized interest related impairment remains):

a. The aggregate amount of unrealized losses:

1. Less than 12 Months	\$ (298,789)
2. 12 Months or Longer	\$ -

b. The aggregate related fair value of securities with unrealized losses:

1. Less than 12 Months	\$ 39,345,793
2. 12 Months or Longer	\$ -

5. The Company reviews all loan-backed and structured securities in which the fair value of the given security is less than the amortized cost to determine if a given security is other-than-temporarily impaired. The Company examines characteristics of the underlying collateral, such as delinquency and default rates, the quality of the underlying borrower, the type of collateral in the pool, the vintage year of the collateral, subordination levels within the structure of the collateral pool, and the quality of any credit guarantors, to determine the cash flows expected to be received for the security.

If the severity and duration of the security's unrealized loss indicates a risk of an other-than-temporary impairment, then the Company will evaluate if the amortized cost basis of the security will be recovered by comparing the present value of the cash flows expected to be received for the given security with the amortized cost basis of the security. If the present value of cash flows is greater than the amortized cost basis of a security, then the security is deemed not to be other-than-temporarily impaired.

E. Dollar Repurchase Agreements and/or Securities Lending Transactions

1-7. Not applicable, as the Company does not participate in a securities lending program and has no open dollar repurchase agreements.

F. Repurchase Agreements Transactions Accounted for as Secured Borrowing

1. To manage short-term liquidity needs within the Nationwide insurance subsidiaries', the Company has agreements to enter into repurchase or reverse repurchase agreements with several authorized affiliated insurance companies. The collateral required meets minimum state specific requirements or statutory requirements if state of domicile does not specify.

As these transactions are with affiliated insurance companies within the Nationwide family and are short-term in nature, the risk of changes in the fair value of the collateral are considered negligible.

2-11. Not applicable.

G. Reverse Repurchase Agreements Transactions Accounted for as Secured Borrowing

1. To manage short-term liquidity needs within the Nationwide insurance subsidiaries', the Company has agreements to enter into repurchase or reverse repurchase agreements with several authorized affiliated insurance companies. The collateral required meets minimum state specific requirements or statutory requirements if state of domicile does not specify.

As these transactions are with affiliated insurance companies within the Nationwide family and are short-term in nature, the risk of changes in the fair value of the collateral are considered negligible.

2-10. Not applicable.

H. Repurchase Agreements Transactions Accounted for as a Sale

Not applicable.

I. Reverse Repurchase Agreements Transactions Accounted for as a Sale

Not applicable.

J. Real Estate

Not applicable.

K. Low-Income Housing Tax Credits

There were no changes that were considered significant to the Company from prior year end.

L. Restricted Assets

There were no changes that were considered significant to the Company from prior year end.

M. Working Capital Finance Investments

Not applicable.

N. Offsetting and Netting of Assets and Liabilities

No assets or liabilities are offset and reported net in accordance with a valid right to offset per SSAP No 64, Offsetting and Netting of Assets and Liabilities.

O. 5GI Securities

There were no changes that were considered significant to the Company from prior year end.

P. Short Sales

Not applicable.

Q. Prepayment Penalty and Acceleration Fees

There were no changes that were considered significant to the Company from prior year end.

NOTES TO THE FINANCIAL STATEMENTS

R. Reporting Entity's Share of Cash Pool by Asset Type

Asset Type	Percent Share
(1) Cash	1%
(2) Cash equivalents	76%
(3) Short-term investments	23%
(4) Total	100%

Note 6 - Joint Ventures, Partnerships and Limited Liability Companies

There were no changes that were considered significant to the Company from prior year end.

Note 7 - Investment Income

There were no changes that were considered significant to the Company from prior year end.

Note 8 - Derivative Instruments

Not applicable.

Note 9 - Income Taxes

There were no changes that were considered significant to the Company from prior year end.

Note 10 – Information concerning parent, subs, and affiliates

A. Nature of Relationships

There were no changes that were considered significant to the Company from prior year end.

B. Detail of Transactions Greater than ½ % of Admitted Assets

On June 30, 2021, the Company received a capital contribution of \$44,000,000 from Mutual.

C-N. There were no changes that were considered significant to the Company from prior year end.

Note 11 - Debt

A. All Other Debt

Not applicable.

B. Funding Agreements with Federal Home Loan Bank (FHLB)

Not applicable.

Note 12 - Retirement Plans, Deferred Compensation, Postemployment Benefits and Compensated Absences and Other Postretirement Benefit Plans

Not applicable.

Note 13 – Capital and Surplus, Dividend Restrictions and Quasi-Reorganizations

There were no changes that were considered significant to the Company from prior year end.

Note 14 – Contingencies

There were no changes that were considered significant to the Company from prior year end.

Note 15 – Leases

Not applicable.

Note 16 - Information About Financial Instruments With Off-Balance Sheet Risk And Financial Instruments With Concentrations of Credit Risk

Not applicable.

Note 17 – Sale, Transfer and Servicing of Financial Assets and Extinguishments of Liabilities

A. Transfers of Receivables Reported as Sales

Not applicable.

B. Transfers and Servicing of Financial Assets

Not applicable.

C. Wash Sales

Not applicable.

Note 18 - Gain or Loss to the Reporting Entity from Uninsured Plans and the Uninsured Portion of Partially Insured Plans

Not applicable.

Note 19 - Direct Premium Written/Produced by Managing General Agents/Third Party Administrators

Not applicable.

NOTES TO THE FINANCIAL STATEMENTS

Note 20 – Fair Value Measurements

A. Fair value is defined as the price that would be received to sell an asset or paid to transfer a liability in an orderly transaction between market participants at the measurement date. Fair value measurements are based upon observable and unobservable inputs. Observable inputs reflect market data obtained from independent sources while unobservable inputs reflect the Company’s view of market assumptions in the absence of observable market information. The Company utilizes valuation techniques that maximize the use of observable inputs and minimize the use of unobservable inputs. In determining fair value, the Company uses various methods including market, income and cost approaches.

The Company categorizes its financial instruments into a three-level hierarchy based on the priority of the inputs to the valuation technique. The fair value hierarchy gives the highest priority to quoted prices in active markets for identical assets or liabilities (Level 1) and the lowest priority to unobservable inputs (Level 3). If the inputs used to measure fair value fall within different levels of the hierarchy, the category level is based on the lowest priority level input that is significant to the fair value measurement of the instrument in its entirety.

The Company categorizes assets and liabilities held at fair value in the statutory statements of assets and liabilities, surplus and other funds as follows:

Level 1. Unadjusted quoted prices accessible in active markets for identical assets or liabilities at the measurement date and mutual funds where the value per share (unit) is determined and published daily and is the basis for current transactions.

Level 2. Unadjusted quoted prices for similar assets or liabilities in active markets or inputs (other than quoted prices) that are observable or that are derived principally from or corroborated by observable market data through correlation or other means. Primary inputs to this valuation technique may include comparative trades, bid/asks, interest rate movements, U.S. Treasury rates, London Interbank Offered Rate, prime rates, cash flows, maturity dates, call ability, estimated prepayments and/or underlying collateral values.

Level 3. Prices or valuation techniques that require inputs that are both unobservable and significant to the overall fair value measurement. Inputs reflect management’s best estimates of the assumptions market participants would use at the measurement date in pricing the asset or liability. Consideration is given to the risk inherent in both the method of valuation and the valuation inputs. Primary inputs to this valuation technique include broker quotes and comparative trades.

The Company reviews its fair value hierarchy classifications for assets and liabilities quarterly. Changes in observability of significant valuation inputs identified during these reviews may trigger reclassifications. Reclassifications are reported as transfers at the beginning of the period in which the change occurs.

Independent pricing services are most often utilized to determine the fair value of bonds and stocks for which market quotations or quotations on comparable securities are available. For these bonds and stocks, the Company obtains the pricing services’ methodologies, pricing from additional sources, inputs and assumptions and classifies the investments accordingly in the fair value hierarchy.

A corporate pricing matrix is used in valuing certain corporate bonds. The corporate pricing matrix was developed using publicly available spreads for privately placed corporate securities with varying weighted average lives and credit quality ratings. The weighted average life and credit quality rating of a particular bond to be priced using the corporate pricing matrix are important inputs into the model and are used to determine a corresponding spread that is added to the appropriate U.S. Treasury yield to create an estimated market yield for that bond. The estimated market yield and other relevant factors are then used to estimate the fair value of the particular bond.

Non-binding broker quotes are also utilized to determine the fair value of certain bonds when deemed appropriate or when quotes are not available from independent pricing services or a corporate pricing matrix. These bonds are classified with the lowest priority in the fair value hierarchy as only one broker quote is ordinarily obtained, the investment is not traded on an exchange, the pricing is not available to other entities and/or the transaction volume in the same or similar investments has decreased. Inputs used in the development of prices are not provided to the Company by the brokers as the brokers often do not provide the necessary transparency into their quotes and methodologies. At least annually, the Company performs reviews and tests to ensure that quotes are a reasonable estimate of the investments’ fair value. Price movements of broker quotes are subject to validation and require approval from the Company’s management. Management uses its knowledge of the investment and current market conditions to determine if the price is indicative of the investment’s fair value.

The Company carries short-term investments at amortized cost, which approximates fair value.

The following table summarizes assets held at fair value as of September 30, 2021:

	Level 1			Level 2			Level 3			Net Asset Value (NAV)		Total
Assets at Fair Value												
Bonds	\$	-	\$	1,864,404	\$	-	\$	-	\$	-	\$	1,864,404
Total Assets at Fair Value/(NAV)	\$	-	\$	1,864,404	\$	-	\$	-	\$	-	\$	1,864,404

B. & C. The following table summarizes the carrying value and fair value of the Company's assets not held at fair value as of September 30, 2021:

	Aggregate Fair Value	Admitted Assets	Level 1	Level 2	Level 3	Net Asset Value (NAV)	Not Practicable (Carrying Value)
Assets							
Bonds	\$368,992,467	\$350,831,016	\$140,722,774	\$228,269,693		\$-	\$-
Cash, cash equivalents and short-term investments	39,975,300	39,975,300	152,471	39,822,829		-	-
Total Assets	\$408,967,767	\$390,806,316	\$140,875,245	\$268,092,522		\$-	\$-

D. Not Practicable to Estimate Fair Value

Not applicable.

E. Measured using net asset value

Not applicable.

Note 21 - Other Items

A. Unusual or Infrequent Items

Not applicable.

B. Troubled Debt Restructuring for Debtors

Not applicable.

NOTES TO THE FINANCIAL STATEMENTS

C. Other Disclosures

Effective June 1, 2021, the Company renewed the Property Catastrophe Program as follows: National Tower with varying placements totaling \$2.61 billion for losses per event between \$500.0 million and \$3.40 billion. This includes the catastrophe bond, Caelus Re 2020-1, issued in 2020 providing national coverage at 75% of \$400.0 million excess of \$1.95 billion. The national tower includes a 'Top & Drop' layer which 'drops' following a loss event over \$500.0 million. The layer would drop from \$250.0 million excess \$3.15 billion to \$250.0 million excess \$250.0 million. For the 2021 risk period, the Caelus Re 2020-2 aggregate catastrophe bond also provides national coverage. See Note 21G for additional information regarding the Caelus Re catastrophe bonds.

Effective July 1, 2021, the Company renewed its Property per Risk program on an enterprise-wide basis covering risks underwritten by the Company. The structure remains unchanged at \$115.0 million excess of \$10.0 million.

D. Business Interruption Insurance Recoveries

Not applicable.

E. State Transferable and Non-Transferable Tax Credits

There were no changes that were considered significant to the Company from prior year end.

F. Subprime Mortgage Related Risk Exposure

There were no changes that were considered significant to the Company from prior year end.

G. Insurance-Linked Securities

For the 2021 risk period, the Caelus Re 2020-2 catastrophe bond provides national coverage at varying placements of annual aggregate losses between \$1.26 billion and \$1.80 billion. The coverage was effective June 1, 2020 and expires on May 31, 2023.

On May 31, 2021, the Caelus Re 2018-1 catastrophe bonds expired according to the terms of the original agreement.

H. The Amount That Could Be Realized on Life Insurance Where the Reporting Entity is Owner and Beneficiary or Has Otherwise Obtained Rights to Control the Policy

Not applicable.

Note 22 - Events Subsequent

Type I – Recognized Subsequent Events:

Subsequent events have been considered through November 9, 2021 for the statutory statement issued on November 11, 2021.

There were no material Type I events occurring subsequent to the end of the period that merited recognition or disclosure in these statements that have not already been reflected as required.

Type II – Nonrecognized Subsequent Events:

Subsequent events have been considered through November 9, 2021 for the statutory statement issued on November 11, 2021.

There were no material Type II events occurring subsequent to the end of the period that merited recognition or disclosure in these statements that have not already been reflected as required.

Note 23 - Reinsurance

There were no changes that were considered significant to the Company from prior year end.

Note 24 - Retrospectively Rated Contracts and Contracts Subject to Redetermination

Not applicable.

Note 25 - Changes in Incurred Losses and Loss Adjustment Expenses

- A. As of December 31, 2020, loss and loss adjustment expense reserves, net of reinsurance recoveries, were \$147.9 million. On January 1, 2021, loss and loss adjustment expense reserves of \$15.0 million were transferred to the Company as a result of the pooling and quota share agreements, effective January 1, 2021. See Note 26 for details. Payments for incurred claims and claim adjustment expenses attributable to insured events of prior years were \$46.0 million for the nine months ended September 30, 2021. As of September 30, 2021, remaining loss and loss adjustment expense reserves attributable to insured events of prior years were \$116.5 million. The Company experienced favorable prior-year development of \$0.5 million during the nine months ended September 30, 2021, primarily driven by ceded reinsurance recoveries on prior accident years as a result of triggering CAT reinsurance treaties.
- B. During 2021, the Company did not make any significant changes in methodologies and assumptions used in calculating the liability for unpaid losses and loss adjustment expenses.

Note 26 - Intercompany Pooling Arrangements

There were no changes that were considered significant to the Company from prior year end, except for the following.

Effective January 1, 2021, Nationwide Indemnity entered the Nationwide Pool with 0% retrocession. Nationwide Indemnity ceded assets of \$32.5 million and liabilities of \$1.5 billion, primarily consisting of losses and loss expense reserves. Nationwide Indemnity transferred \$1.5 billion of securities and cash to the Nationwide Pool to settle this transaction.

Effective July 1, 2021, in conjunction with the merger of Victoria National with and into Victoria Fire and Casualty on July 1, 2021, Victoria National terminated its participation in the Nationwide Pool.

Note 27 - Structured Settlements

Not applicable.

NOTES TO THE FINANCIAL STATEMENTS

Note 28 - Health Care Receivables

Not applicable.

Note 29 – Participating Policies

Not applicable.

Note 30 – Premium Deficiency Reserves

There were no changes that were considered significant to the Company from prior year end.

Note 31 – High Deductibles

Not applicable.

Note 32 - Discounting of Liabilities for Unpaid Losses or Unpaid Loss Adjustment Expenses

Not applicable.

Note 33 - Asbestos/Environmental Reserves

Not applicable.

Note 34 – Subscriber Savings Accounts

Not applicable.

Note 35 – Multiple Peril Crop Insurance

Not applicable.

Note 36 – Financial Guaranty Insurance

Not applicable.

NATIONWIDE INSURANCE COMPANY OF AMERICA
GENERAL INTERROGATORIES

PART 1 - COMMON INTERROGATORIES

GENERAL

1.1

Did the reporting entity experience any material transactions requiring the filing of Disclosure of Material Transactions with the State of Domicile, as required by the Model Act?

Yes [☐] No [☒ X]

1.2

If yes, has the report been filed with the domiciliary state?

Yes [☐] No [☐]

2.1

Has any change been made during the year of this statement in the charter, by-laws, articles of incorporation, or deed of settlement of the reporting entity?

Yes [☐] No [☒ X]

2.2

If yes, date of change:

3.1

Is the reporting entity a member of an Insurance Holding Company System consisting of two or more affiliated persons, one or more of which is an insurer?
If yes, complete Schedule Y, Parts 1 and 1A.

Yes [☒ X] No [☐]

3.2

Have there been any substantial changes in the organizational chart since the prior quarter end?

Yes [☒ X] No [☐]

3.3

If the response to 3.2 is yes, provide a brief description of those changes.
Victoria National Insurance Company was removed due to its elimination by merger in July 2021

3.4

Is the reporting entity publicly traded or a member of a publicly traded group?

Yes [☐] No [☒ X]

3.5

If the response to 3.4 is yes, provide the CIK (Central Index Key) code issued by the SEC for the entity/group.

4.1

Has the reporting entity been a party to a merger or consolidation during the period covered by this statement?
If yes, complete and file the merger history data file with the NAIC for the annual filing corresponding to this period.

Yes [☐] No [☒ X]

4.2

If yes, provide name of entity, NAIC Company Code, and state of domicile (use two letter state abbreviation) for any entity that has ceased to exist as a result of the merger or consolidation.

1	2	3
Name of Entity	NAIC Company Code	State of Domicile

5.

If the reporting entity is subject to a management agreement, including third-party administrator(s), managing general agent(s), attorney-in-fact, or similar agreement, have there been any significant changes regarding the terms of the agreement or principals involved?
If yes, attach an explanation.

Yes [☐] No [☒ X] N/A [☐]

6.1

State as of what date the latest financial examination of the reporting entity was made or is being made.

12/31/2021

6.2

State the as of date that the latest financial examination report became available from either the state of domicile or the reporting entity. This date should be the date of the examined balance sheet and not the date the report was completed or released.

12/31/2016

6.3

State as of what date the latest financial examination report became available to other states or the public from either the state of domicile or the reporting entity. This is the release date or completion date of the examination report and not the date of the examination (balance sheet date).

05/24/2018

6.4

By what department or departments?
OH

6.5

Have all financial statement adjustments within the latest financial examination report been accounted for in a subsequent financial statement filed with Departments?

Yes [☐] No [☐] N/A [☒ X]

6.6

Have all of the recommendations within the latest financial examination report been complied with?

Yes [☐] No [☐] N/A [☒ X]

7.1

Has this reporting entity had any Certificates of Authority, licenses or registrations (including corporate registration, if applicable) suspended or revoked by any governmental entity during the reporting period?

Yes [☐] No [☒ X]

7.2

If yes, give full information:

8.1

Is the company a subsidiary of a bank holding company regulated with the Federal Reserve Board?

Yes [☐] No [☒ X]

8.2

If response to 8.1 is yes, please identify the name of the bank holding company.

8.3

Is the company affiliated with one or more banks, thrifts or securities firms?

Yes [☒ X] No [☐]

8.4

If the response to 8.3 is yes, please provide below the names and location (city and state of the main office) of any affiliates regulated by a federal regulatory services agency [i.e. the Federal Reserve Board (FRB), the Office of the Comptroller of the Currency (OCC), the Federal Deposit Insurance Corporation (FDIC) and the Securities Exchange Commission (SEC)] and identify the affiliate's primary federal regulator].

1	2	3	4	5	6
Affiliate Name	Location (City, State)	FRB	OCC	FDIC	SEC
Nationwide Trust Company, FSB	Columbus, OH	No	Yes	No	No
Nationwide Investment Services Corp.	Columbus, OH	No	No	No	Yes
Nationwide Investment Advisors, LLC	Columbus, OH	No	No	No	Yes
Nationwide Securities, LLC	Columbus, OH	No	No	No	Yes
Nationwide Fund Advisors	Columbus, OH	No	No	No	Yes
Nationwide Fund Distributors, LLC	Columbus, OH	No	No	No	Yes
Nationwide Asset Management, LLC	Columbus, OH	No	No	No	Yes
Jefferson National Securities Corporation	Louisville, KY	No	No	No	Yes

9.1

Are the senior officers (principal executive officer, principal financial officer, principal accounting officer or controller, or persons performing similar functions) of the reporting entity subject to a code of ethics, which includes the following standards?
(a) Honest and ethical conduct, including the ethical handling of actual or apparent conflicts of interest between personal and professional relationships;
(b) Full, fair, accurate, timely and understandable disclosure in the periodic reports required to be filed by the reporting entity;
(c) Compliance with applicable governmental laws, rules and regulations;
(d) The prompt internal reporting of violations to an appropriate person or persons identified in the code; and
(e) Accountability for adherence to the code.

Yes [☒ X] No [☐]

9.11

If the response to 9.1 is No, please explain:

Statement for September 30, 2021 of the

NATIONWIDE INSURANCE COMPANY OF AMERICA

GENERAL INTERROGATORIES

PART 1 - COMMON INTERROGATORIES

- 9.2

Has the code of ethics for senior managers been amended?

Yes ☐ No ☒
- 9.21

If the response to 9.2 is Yes, provide information related to amendment(s).
- 9.3

Have any provisions of the code of ethics been waived for any of the specified officers?

Yes ☐ No ☒
- 9.31

If the response to 9.3 is Yes, provide the nature of any waiver(s).

FINANCIAL

- 10.1

Does the reporting entity report any amounts due from parent, subsidiaries or affiliates on Page 2 of this statement?

Yes ☒ No ☐
- 10.2

If yes, indicate any amounts receivable from parent included in the Page 2 amount:

\$0

INVESTMENT

- 11.1

Were any of the stocks, bonds, or other assets of the reporting entity loaned, placed under option agreement, or otherwise made available for use by another person? (Exclude securities under securities lending agreements.)

Yes ☐ No ☒
- 11.2

If yes, give full and complete information relating thereto:

12.

Amount of real estate and mortgages held in other invested assets in Schedule BA:

\$4,417,547
13.

Amount of real estate and mortgages held in short-term investments:

\$0
- 14.1

Does the reporting entity have any investments in parent, subsidiaries and affiliates?

Yes ☐ No ☒

14.2 If yes, please complete the following:

	1 Prior Year End Book/Adjusted Carrying Value	2 Current Quarter Book/Adjusted Carrying Value
14.21 Bonds	\$0	\$0
14.22 Preferred Stock	0	0
14.23 Common Stock	0	0
14.24 Short-Term Investments	0	0
14.25 Mortgage Loans on Real Estate	0	0
14.26 All Other	0	0
14.27 Total Investment in Parent, Subsidiaries and Affiliates (Subtotal Lines 14.21 to 14.26)	\$0	\$0
14.28 Total Investment in Parent included in Lines 14.21 to 14.26 above	\$0	\$0

- 15.1

Has the reporting entity entered into any hedging transactions reported on Schedule DB?

Yes ☐ No ☒
- 15.2

If yes, has a comprehensive description of the hedging program been made available to the domiciliary state?

Yes ☐ No ☐ N/A ☒

If no, attach a description with this statement.

16.

For the reporting entity's security lending program, state the amount of the following as of current statement date:
- 16.1

Total fair value of reinvested collateral assets reported on Schedule DL, Parts 1 and 2:

\$0
- 16.2

Total book adjusted/carrying value of reinvested collateral assets reported on Schedule DL, Parts 1 and 2:

\$0
- 16.3

Total payable for securities lending reported on the liability page:

\$0
17.

Excluding items in Schedule E-Part 3-Special Deposits, real estate, mortgage loans and investments held physically in the reporting entity's offices, vaults or safety deposit boxes, were all stocks, bonds and other securities, owned throughout the current year held pursuant to a custodial agreement with a qualified bank or trust company in accordance with Section 1, III - General Examination Considerations, F. Outsourcing of Critical Functions, Custodial or Safekeeping Agreements of the NAIC *Financial Condition Examiners Handbook*?

Yes ☒ No ☐

17.1 For all agreements that comply with the requirements of the NAIC *Financial Condition Examiners Handbook*, complete the following:

1 Name of Custodian(s)	2 Custodian Address
The Bank of New York Mellon	1 Wall Street, New York, NY 10286

17.2 For all agreements that do not comply with the requirements of the NAIC *Financial Condition Examiners Handbook*, provide the name, location and a complete explanation:

1 Name(s)	2 Location(s)	3 Complete Explanation(s)

- 17.3

Have there been any changes, including name changes, in the custodian(s) identified in 17.1 during the current quarter?

Yes ☐ No ☒

17.4 If yes, give full and complete information relating thereto:

1 Old Custodian	2 New Custodian	3 Date of Change	4 Reason

17.5 Investment management – Identify all investment advisors, investment managers, broker/dealers, including individuals that have the authority to make investment decisions on behalf of the reporting entity. For assets that are managed internally by employees of the reporting entity, note as such ["...that have access to the investment accounts", "handle securities"].

1 Name of Firm or Individual	2 Affiliation
Members of the investment staff designated by the Chief Investment Officer as detailed in the Corporate Resolution	I

- 17.5097

For those firms/individuals listed in the table for Question 17.5, do any firms/individuals unaffiliated with the reporting entity (i.e., designated with a "U") manage more than 10% of the reporting entity's invested assets?

Yes ☐ No ☒

- 17.5098

For firms/individuals unaffiliated with the reporting entity (i.e., designated with a "U") listed in the table for Question 17.5, does the total assets under management aggregate to more than 50% of the reporting entity's invested assets?

Yes ☐ No ☒

17.6 For those firms or individuals listed in the table for 17.5 with an affiliation code of "A" (affiliated) or "U" (unaffiliated), provide the information for the table below.

1 Central Registration Depository	2 Name of Firm or Individual	3 Legal Entity Identifier (LEI)	4 Registered With	5 Investment

GENERAL INTERROGATORIES

PART 1 - COMMON INTERROGATORIES

Number				Management Agreement (IMA) Filed

18.1

Have all the filing requirements of the *Purposes and Procedures Manual of the NAIC Investment Analysis Office* been followed?

Yes [X] No []

18.2

If no, list exceptions:

19.

By self-designating 5GI securities, the reporting entity is certifying the following elements for each self-designated 5GI security:

a.

Documentation necessary to permit a full credit analysis of the security does not exist or an NAIC CRP credit rating for an FE or PL security is not available.

b.

Issuer or obligor is current on all contracted interest and principal payments.

c.

The insurer has an actual expectation of ultimate payment of all contracted interest and principal.

Has the reporting entity self-designated 5GI securities?

Yes [] No [X]

20.

By self-designating PLGI securities, the reporting entity is certifying the following elements for each self-designated PLGI security:

a.

The security was purchased prior to January 1, 2018.

b.

The reporting entity is holding capital commensurate with the NAIC Designation reported for the security.

c.

The NAIC Designation was derived from the credit rating assigned by an NAIC CRP in its legal capacity as a NRSRO which is shown on a current private letter rating held by the insurer and available for examination by state insurance regulators.

d.

The reporting entity is not permitted to share this credit rating of the PL security with the SVO.

Has the reporting entity self-designated PLGI securities?

Yes [] No [X]

21.

By assigning FE to a Schedule BA non-registered private fund, the reporting entity is certifying the following elements of each self-designated FE fund:

a.

The security was purchased prior to January 1, 2019.

b.

The reporting entity is holding capital commensurate with the NAIC Designation reported for the security.

c.

The security had a public credit rating(s) with annual surveillance assigned by an NAIC CRP in its legal capacity as an NRSRO prior to January 1, 2019.

d.

The fund only or predominantly holds bonds in its portfolio.

e.

The current reporting NAIC designation was derived from the public credit rating(s) with annual surveillance assigned by an NAIC CRP in its legal capacity as an NRSRO.

f.

The public credit rating(s) with annual surveillance assigned by an NAIC CRP has not lapsed.

Has the reporting entity assigned FE to Schedule BA non-registered private funds that complied with the above criteria?

Yes [] No [X]

NATIONWIDE INSURANCE COMPANY OF AMERICA
GENERAL INTERROGATORIES (continued)

PART 2 – PROPERTY & CASUALTY INTERROGATORIES

1.

If the reporting entity is a member of a pooling arrangement, did the agreement or the reporting entity's participation change?

If yes, attach an explanation.

Effective 1/1/2021, Nationwide indemnity Company was added to the NW pool with 0% retrocession.

Yes [X] No [] N/A []

2.

Has the reporting entity reinsured any risk with any other reporting entity and agreed to release such entity from liability, in whole or in part, from any loss that may occur on the risk, or portion thereof, reinsured?

If yes, attach an explanation.

Yes [] No [X]

3.1

Have any of the reporting entity's primary reinsurance contracts been canceled?

Yes [] No [X]

3.2

If yes, give full and complete information thereto:

4.1

Are any of the liabilities for unpaid losses and loss adjustment expenses other than certain workers' compensation tabular reserves (see *Annual Statement Instructions* pertaining to disclosure of discounting for definition of "tabular reserves,") discounted at a rate of interest greater than zero?

Yes [] No [X]

4.2

If yes, complete the following schedule:

1 Line of Business	2 Maximum Interest	3 Disc. Rate	Total Discount				Discount Taken During Period			
			4 Unpaid Losses	5 Unpaid LAE	6 IBNR	7 Total	8 Unpaid Losses	9 Unpaid LAE	10 IBNR	11 Total
	0.000	0.000	0	0	0	0	0	0	0	0
Total	XXX	XXX	0	0	0	0	0	0	0	0

5.

Operating Percentages:

5.1 A&H loss percent

5.2 A&H cost containment percent

5.3 A&H expense percent excluding cost containment expenses

0.000%

0.000%

0.000%

6.1

Do you act as a custodian for health savings accounts?

Yes [] No [X]

6.2

If yes, please provide the amount of custodial funds held as of the reporting date.

\$ 0

6.3

Do you act as an administrator for health savings accounts?

Yes [] No [X]

6.4

If yes, please provide the amount of funds administered as of the reporting date.

\$ 0

7.

Is the reporting entity licensed or chartered, registered, qualified, eligible or writing business in at least two states?

Yes [X] No []

7.1

If no, does the reporting entity assume reinsurance business that covers risks residing in at least one state other than the state of domicile of the reporting entity?

Yes [] No []

NATIONWIDE INSURANCE COMPANY OF AMERICA
SCHEDULE F - CEDED REINSURANCE

Showing All New Reinsurers - Current Year to Date

1	2	3	4	5	6	7
NAIC Company Code	ID Number	Name of Reinsurer	Domiciliary Jurisdiction	Type of Reinsurer	Certified Reinsurer Rating (1 through 6)	Effective Date of Certified Reinsurer Rating

NONE

NATIONWIDE INSURANCE COMPANY OF AMERICA
SCHEDULE T - EXHIBIT OF PREMIUMS WRITTEN

Current Year to Date - Allocated by States and Territories

States, Etc.		1 Active Status (a)	Direct Premiums Written		Direct Losses Paid (Deducting Salvage)		Direct Losses Unpaid	
			2 Current Year to Date	3 Prior Year to Date	4 Current Year to Date	5 Prior Year to Date	6 Current Year to Date	7 Prior Year to Date
1.	Alabama.....AL	...L...981,716	49,933	102,425	
2.	Alaska.....AK	...L...						
3.	Arizona.....AZ	...L...18,402,33413,512,66913,314,8878,288,7069,616,8255,322,865
4.	Arkansas.....AR	...L...67,2133,845		3,403367
5.	California.....CA	...L...385,225,116405,135,254210,318,858186,923,929229,200,670178,975,848
6.	Colorado.....CO	...L...11,782,09012,603,7595,230,1617,466,2883,893,5053,465,155
7.	Connecticut.....CT	...L...25,907,40321,632,80113,357,6848,001,30115,020,7098,818,042
8.	Delaware.....DE	...L...4,087681		73	
9.	District of Columbia.....DC	...L...2,102(656)323,117968,906139,225685,656
10.	Florida.....FL	...L...45,895,61447,128,40120,790,11526,720,70840,041,33341,201,968
11.	Georgia.....GA	...L...14,1078,419(360)(592)3,737377
12.	Hawaii.....HI	...N...						
13.	Idaho.....ID	...L...4,606,9443,933,0491,962,4822,545,3731,870,4551,688,474
14.	Illinois.....IL	...L...26,811,54822,403,05519,559,28615,078,4947,834,1805,734,922
15.	Indiana.....IN	...L...19,391,20617,073,24319,127,60212,380,6765,757,7903,884,721
16.	Iowa.....IA	...L...656,900552,4801,072,0872,558,411815,3931,736,068
17.	Kansas.....KS	...L...21,357,4087,676,0549,453,3813,624,5854,956,4101,718,022
18.	Kentucky.....KY	...L...5,719,9463,978,8122,995,436985,1231,779,493805,003
19.	Louisiana.....LA	...N...						
20.	Maine.....ME	...L...3,527			82	
21.	Maryland.....MD	...L...26,142,55219,511,91618,301,92210,341,2717,326,2925,766,586
22.	Massachusetts.....MA	...L...						
23.	Michigan.....MI	...L...5,246	4,816,9815,220,056130,822,571155,076,811
24.	Minnesota.....MN	...L...9,249,42610,387,3236,144,1897,860,8653,343,9434,155,806
25.	Mississippi.....MS	...L...10,522,4891,165,9713,218,98137,3771,603,15470,771
26.	Missouri.....MO	...L...13,704,62116,320,3638,783,00013,640,7896,924,9468,546,554
27.	Montana.....MT	...L...2,005,7371,118,960659,869107,432546,720120,316
28.	Nebraska.....NE	...L...33,035,87020,472,04813,440,3102,481,5756,737,5623,201,150
29.	Nevada.....NV	...L...5,586,0134,906,5862,245,0912,059,0573,350,8292,385,762
30.	New Hampshire.....NH	...L...10,378			59	
31.	New Jersey.....NJ	...L...						
32.	New Mexico.....NM	...L...1,962,0591,838,8051,197,779684,8571,266,967693,149
33.	New York.....NY	...L...18,292,86821,606,02212,845,34812,887,79517,952,15118,748,402
34.	North Carolina.....NC	...L...102,023,44168,232,44555,892,47626,389,18132,986,75417,101,340
35.	North Dakota.....ND	...L...19,62616,6708,313755,116709
36.	Ohio.....OH	...L...48,954,87744,281,76327,816,37627,457,26613,406,31212,361,931
37.	Oklahoma.....OK	...L...364,302435,042111,58097,981187,86758,934
38.	Oregon.....OR	...L...3,632,8013,862,4633,149,3143,390,9412,525,7007,572,820
39.	Pennsylvania.....PA	...L...50,193,51135,385,39726,285,64411,606,43713,218,9966,624,117
40.	Rhode Island.....RI	...L...288,859296,25097,083137,78572,46974,918
41.	South Carolina.....SC	...L...64,240,15273,953,05434,363,84026,781,30523,281,51017,065,112
42.	South Dakota.....SD	...L...59,60955,10020,46565,28213,5006,368
43.	Tennessee.....TN	...L...55,839,62645,191,99031,295,41230,602,84917,345,80112,219,909
44.	Texas.....TX	...L...16,314,20217,526,96115,363,9637,900,1385,065,6994,711,065
45.	Utah.....UT	...L...4,336,4294,995,0792,502,5453,216,4671,733,3362,527,473
46.	Vermont.....VT	...L...957			24	
47.	Virginia.....VA	...L...116,686,13187,279,27164,533,99440,100,48940,446,37024,183,460
48.	Washington.....WA	...L...16,101,93817,657,2666,829,1599,724,7989,013,7788,931,412
49.	West Virginia.....WV	...L...48,545,06346,585,46330,075,95527,954,34618,677,17716,346,719
50.	Wisconsin.....WI	...L...7,637,4959,339,4795,549,1346,229,3684,581,4174,302,298
51.	Wyoming.....WY	...L...5,168,4453,251,5962,086,836509,8051,077,488141,087
52.	American Samoa.....AS	...N...						
53.	Guam.....GU	...N...						
54.	Puerto Rico.....PR	...N...						
55.	US Virgin Islands.....VI	...N...						
56.	Northern Mariana Islands.....MP	...N...						
57.	Canada.....CAN	...N...						
58.	Aggregate Other Alien.....OT	...XXX...000000
59.	Totals.....	...XXX...1,227,753,9841,111,315,149695,190,228553,027,495684,550,216587,032,467

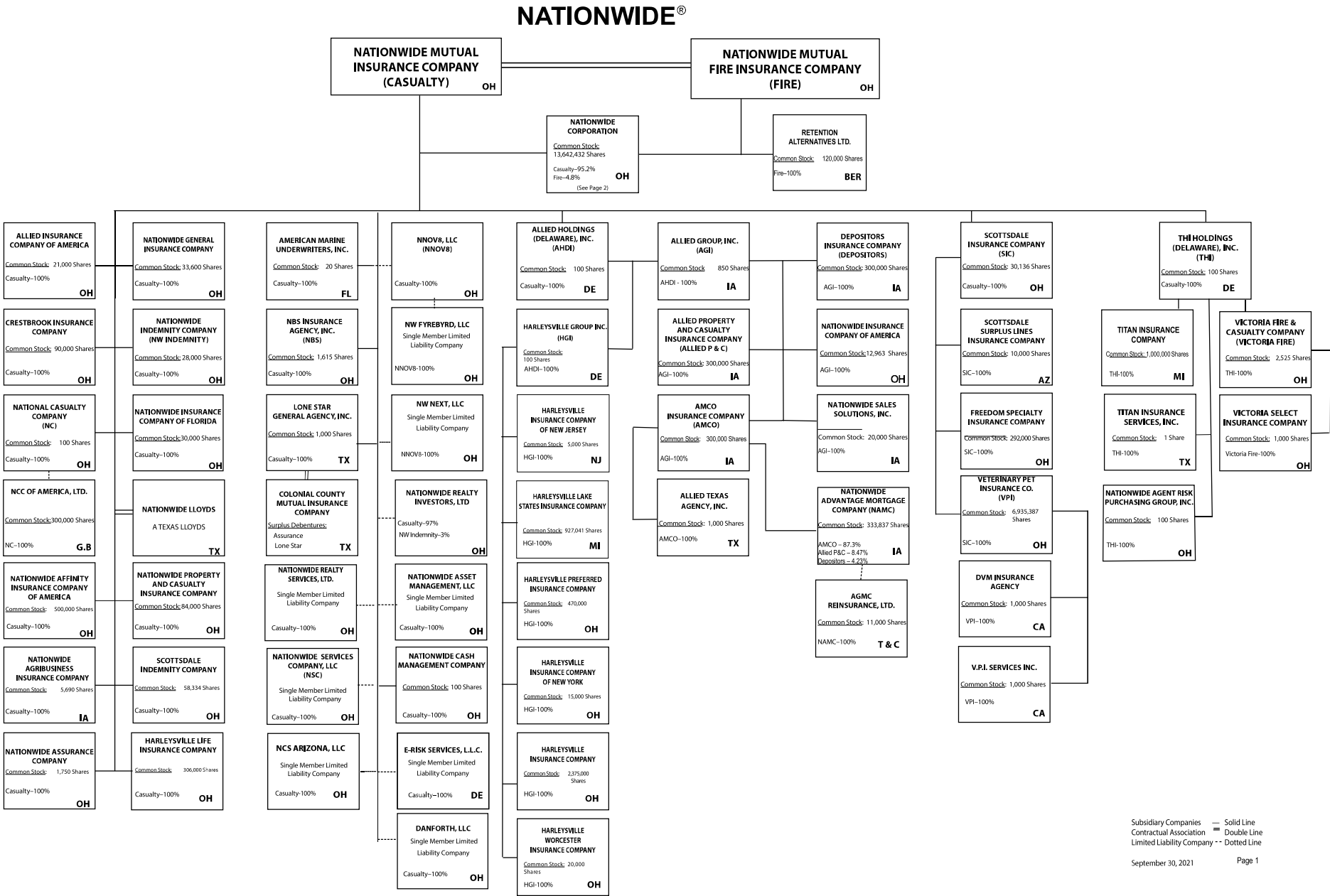
DETAILS OF WRITE-INS

58001.XXX...						
58002.XXX...						
58003.XXX...						
58998.	Summary of remaining write-ins for Line 58 from overflow page....XXX...00000
58999.	Totals (Lines 58001 thru 58003+ Line 58998) (Line 58 above).....XXX...00000

(a) Active Status Count

L - Licensed or Chartered - Licensed insurance carrier or domiciled RRG.....	49	R - Registered - Non-domiciled RRGs.....	0
E - Eligible - Reporting entities eligible or approved to write surplus lines in the state (other than their state of domicile - See DSLI).....	0	Q - Qualified - Qualified or accredited reinsurer.....	0
D - Domestic Surplus Lines Insurer (DSLI) - Reporting entities authorized to write surplus lines in the state of domicile.....	0	N - None of the above - Not allowed to write business in the state.....	8

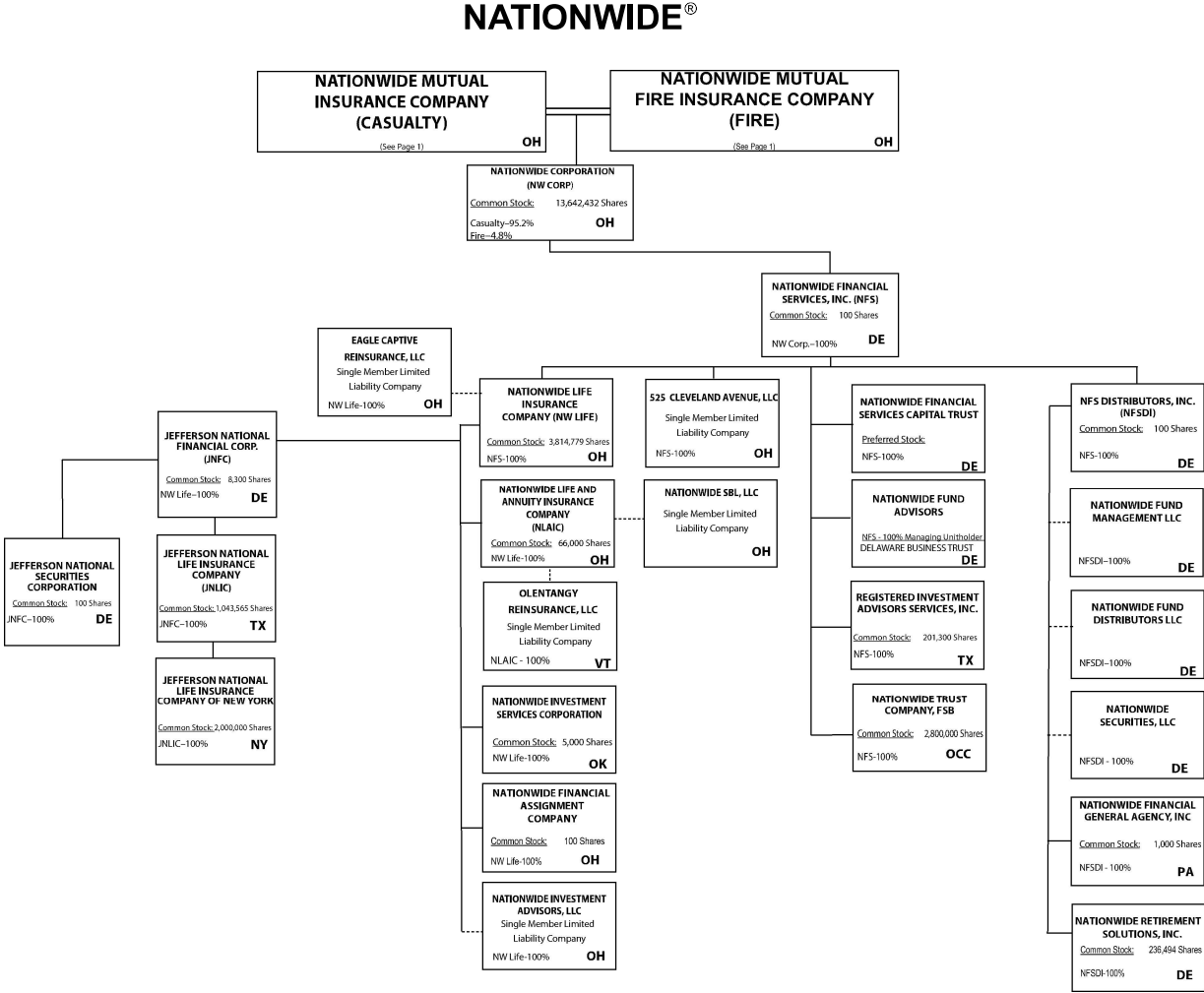
Q11



Subsidiary Companies — Solid Line
Contractual Association — Double Line
Limited Liability Company - - Dotted Line

(Casualty/Fire subsidiaries)

Q11.1



Q11.2

NATIONWIDE INSURANCE COMPANIES

NAIC Group Code	Group Name	NAIC Company Code	State of Domicile	Federal ID Number	Name of Company
0140	Nationwide	10127	OH	27-0114983	Allied Insurance Company of America
0140	Nationwide	42579	IA	42-1201931	Allied Property and Casualty Insurance Company
0140	Nationwide	19100	IA	42-6054959	AMCO Insurance Company
0140	Nationwide	29262	TX	74-1061659	Colonial County Mutual Insurance Company
0140	Nationwide	18961	OH	68-0066866	Crestbrook Insurance Company
0140	Nationwide	42587	IA	42-1207150	Depositors Insurance Company
0140	Nationwide	15821	OH	42-4523959	Eagle Captive Reinsurance, LLC
0140	Nationwide	22209	OH	75-6013587	Freedom Specialty Insurance Company
0140	Nationwide	23582	OH	41-0417250	Harleysville Insurance Company
0140	Nationwide	42900	NJ	23-2253669	Harleysville Insurance Company of New Jersey
0140	Nationwide	10674	OH	23-2864924	Harleysville Insurance Company of New York
0140	Nationwide	14516	MI	38-3198542	Harleysville Lake States Insurance Company
0140	Nationwide	64327	OH	23-1580983	Harleysville Life Insurance Company
0140	Nationwide	35696	OH	23-2384978	Harleysville Preferred Insurance Company
0140	Nationwide	26182	OH	04-1989660	Harleysville Worcester Insurance Company
0140	Nationwide	64017	TX	75-0300900	Jefferson National Life Insurance Company
0140	Nationwide	15727	NY	47-1180302	Jefferson National Life Insurance Company of New York
0140	Nationwide	11991	OH	38-0865250	National Casualty Company
0140	Nationwide	26093	OH	48-0470690	Nationwide Affinity Insurance Company of America
0140	Nationwide	28223	IA	42-1015537	Nationwide Agribusiness Insurance Company
0140	Nationwide	10723	OH	95-0639970	Nationwide Assurance Company
0140	Nationwide	23760	OH	31-4425763	Nationwide General Insurance Company
0140	Nationwide	10070	OH	31-1399201	Nationwide Indemnity Company
0140	Nationwide	25453	OH	95-2130882	Nationwide Insurance Company of America
0140	Nationwide	10948	OH	31-1613686	Nationwide Insurance Company of Florida
0140	Nationwide	92657	OH	31-1000740	Nationwide Life and Annuity Insurance Company
0140	Nationwide	66869	OH	31-4156830	Nationwide Life Insurance Company
0140	Nationwide	42110	TX	75-1780981	Nationwide Lloyds
0140	Nationwide	23779	OH	31-4177110	Nationwide Mutual Fire Insurance Company
0140	Nationwide	23787	OH	31-4177100	Nationwide Mutual Insurance Company
0140	Nationwide	37877	OH	31-0970750	Nationwide Property & Casualty Insurance Company
0140	Nationwide	13999	VT	27-1712056	Olentangy Reinsurance, LLC
0140	Nationwide	15580	OH	31-1117969	Scottsdale Indemnity Company
0140	Nationwide	41297	OH	31-1024978	Scottsdale Insurance Company
0140	Nationwide	10672	AZ	86-0835870	Scottsdale Surplus Lines Insurance Company
0140	Nationwide	36269	MI	86-0619597	Titan Insurance Company
0140	Nationwide	42285	OH	95-3750113	Veterinary Pet Insurance Company
0140	Nationwide	42889	OH	34-1394913	Victoria Fire & Casualty Company
0140	Nationwide	10105	OH	34-1777972	Victoria Select Insurance Company

SCHEDULE Y

PART 1A - DETAIL OF INSURANCE HOLDING COMPANY SYSTEM

1	2	3	4	5	6	7	8	9	10	11	12	13	14	15	16
Group Code	Group Name	NAIC Company Code	ID Number	Federal RSSD	CIK	Name of Securities Exchange if Publicly Traded (U.S. or International)	Names of Parent, Subsidiaries or Affiliates	Domiciliary Location	Relationship to Reporting Entity	Directly Controlled by (Name of Entity/Person)	Type of Control (Ownership Board, Management, Attorney-in-Fact, Influence, Other)	If Control is Ownership Provide Percentage	Ultimate Controlling Entity(ies)/Person(s)	Is an SCA Filing Required? (Y/N)	*
Members															
0140	Nationwide.....	31-1486309..	n/a.....	10 W. Nationwide, LLC.....	OH.....	NIA.....	Nationwide Realty Investors, Ltd.....	ownership.....	...100.000	Nationwide Mutual Insurance Company.....	...N.....
0140	Nationwide.....	31-1486309..	n/a.....	1000 Yard Street, LLC.....	OH.....	NIA.....	Nationwide Realty Investors, Ltd.....	ownership.....	...100.000	Nationwide Mutual Insurance Company.....	...N.....
0140	Nationwide.....	31-1486309..	n/a.....	1015 Long Street, LLC.....	OH.....	NIA.....	Nationwide Realty Investors, Ltd.....	ownership.....	...100.000	Nationwide Mutual Insurance Company.....	...N.....
0140	Nationwide.....	31-1486309..	n/a.....	1050 Yard Street, LLC.....	OH.....	NIA.....	Nationwide Realty Investors, Ltd.....	ownership.....	...100.000	Nationwide Mutual Insurance Company.....	...N.....
0140	Nationwide.....	31-1486309..	n/a.....	1125 Rail Street, LLC.....	OH.....	NIA.....	Nationwide Realty Investors, Ltd.....	ownership.....	...100.000	Nationwide Mutual Insurance Company.....	...N.....
0140	Nationwide.....	31-1733036..	n/a.....	120 Acre Partners, LLC.....	DE.....	NIA.....	Nationwide Realty Investors, Ltd.....	ownership.....	...95.000	Nationwide Mutual Insurance Company.....	...N.....	1.....
0140	Nationwide.....	20-4939866..	n/a.....	1125 Yard Street, LLC.....	OH.....	NIA.....	NRI Equity Land Investments, LLC.....	ownership.....	...100.000	Nationwide Mutual Insurance Company.....	...N.....
0140	Nationwide.....	20-4939867..	n/a.....	1175 Bobcat, LLC.....	OH.....	NIA.....	NRI Equity Land Investments, LLC.....	ownership.....	...100.000	Nationwide Mutual Insurance Company.....	...N.....
0140	Nationwide.....	26-2451988..	n/a.....	1492 Capital, LLC.....	OH.....	NIA.....	Nationwide Mutual Insurance Company.....	ownership.....	...100.000	Nationwide Mutual Insurance Company.....	...N.....
0140	Nationwide.....	31-1486309..	n/a.....	111 Rivulon Boulevard, LLC.....	OH.....	NIA.....	NRI-Rivulon, LLC.....	ownership.....	...100.000	Nationwide Mutual Insurance Company.....	...N.....
0140	Nationwide.....	31-1486309..	n/a.....	155 Rivulon Boulevard, LLC.....	OH.....	NIA.....	NRI-Rivulon, LLC.....	ownership.....	...100.000	Nationwide Mutual Insurance Company.....	...N.....
0140	Nationwide.....	31-1486309..	n/a.....	161 Rivulon Boulevard, LLC.....	OH.....	NIA.....	NRI-Rivulon, LLC.....	ownership.....	...100.000	Nationwide Mutual Insurance Company.....	...N.....
0140	Nationwide.....	31-1580283..	n/a.....	170 Marconi, LLC.....	OH.....	NIA.....	NWD Investments, LLC.....	ownership.....	...100.000	Nationwide Mutual Insurance Company.....	...N.....
0140	Nationwide.....	31-1580283..	n/a.....	245 Parks Edge Place, LLC.....	OH.....	NIA.....	NWD Investments, LLC.....	ownership.....	...100.000	Nationwide Mutual Insurance Company.....	...N.....
0140	Nationwide.....	31-1486309..	n/a.....	275 Rivulon Boulevard, LLC.....	OH.....	NIA.....	NRI-Rivulon, LLC.....	ownership.....	...100.000	Nationwide Mutual Insurance Company.....	...N.....
0140	Nationwide.....	31-1486309..	n/a.....	300 Rivulon Boulevard, LLC.....	OH.....	NIA.....	NRI-Rivulon, LLC.....	ownership.....	...100.000	Nationwide Mutual Insurance Company.....	...N.....
0140	Nationwide.....	31-1486309..	n/a.....	310 Rivulon Boulevard, LLC.....	OH.....	NIA.....	NRI-Rivulon, LLC.....	ownership.....	...100.000	Nationwide Mutual Insurance Company.....	...N.....
0140	Nationwide.....	31-1486309..	n/a.....	343 N. Front, LLC.....	OH.....	NIA.....	Nationwide Realty Investors, Ltd.....	ownership.....	...100.000	Nationwide Mutual Insurance Company.....	...N.....
0140	Nationwide.....	31-1486309..	n/a.....	400 Rivulon Boulevard, LLC.....	OH.....	NIA.....	NRI-Rivulon, LLC.....	ownership.....	...100.000	Nationwide Mutual Insurance Company.....	...N.....
0140	Nationwide.....	31-1580283..	n/a.....	400 West Nationwide Boulevard, LLC.....	OH.....	NIA.....	NWD Investments, LLC.....	ownership.....	...100.000	Nationwide Mutual Insurance Company.....	...N.....
0140	Nationwide.....	31-1486309..	n/a.....	410 Rivulon Boulevard, LLC.....	OH.....	NIA.....	NRI-Rivulon, LLC.....	ownership.....	...100.000	Nationwide Mutual Insurance Company.....	...N.....
0140	Nationwide.....	31-1580283..	n/a.....	425 West Nationwide Boulevard, LLC.....	OH.....	NIA.....	NWD Investments, LLC.....	ownership.....	...100.000	Nationwide Mutual Insurance Company.....	...N.....
0140	Nationwide.....	31-1486309..	n/a.....	44 Chestnut, LLC.....	OH.....	NIA.....	Nationwide Realty Investors, Ltd.....	ownership.....	...100.000	Nationwide Mutual Insurance Company.....	...N.....
0140	Nationwide.....	38-4118665..	n/a.....	500 Neil Avenue, LLC.....	OH.....	NIA.....	NWD HP, LLC.....	ownership.....	...100.000	Nationwide Mutual Insurance Company.....	...N.....
0140	Nationwide.....	38-4118665..	n/a.....	515 Kilbourne Street, LLC.....	OH.....	NIA.....	NWD HP, LLC.....	ownership.....	...100.000	Nationwide Mutual Insurance Company.....	...N.....
0140	Nationwide.....	87-1954007..	n/a.....	525 Cleveland Avenue, LLC.....	OH.....	NIA.....	Nationwide Financial Services, Inc.....	ownership.....	...100.000	Nationwide Mutual Insurance Company.....	...N.....
0140	Nationwide.....	20-4939866..	n/a.....	735 Bobcat Avenue, LLC.....	OH.....	NIA.....	GVY Residential, LLC.....	ownership.....	...100.000	Nationwide Mutual Insurance Company.....	...N.....
0140	Nationwide.....	31-1486309..	n/a.....	75 Rivulon Boulevard, LLC.....	OH.....	NIA.....	NRI-Rivulon, LLC.....	ownership.....	...100.000	Nationwide Mutual Insurance Company.....	...N.....
0140	Nationwide.....	20-4939866..	n/a.....	775 Yard Street, LLC.....	OH.....	NIA.....	NRI Equity Land Investments, LLC.....	ownership.....	...100.000	Nationwide Mutual Insurance Company.....	...N.....
0140	Nationwide.....	20-4939866..	n/a.....	777 Swan Street, LLC.....	OH.....	NIA.....	NRI Equity Land Investments, LLC.....	ownership.....	...100.000	Nationwide Mutual Insurance Company.....	...N.....
0140	Nationwide.....	20-4939866..	n/a.....	780 Yard Street, LLC.....	OH.....	NIA.....	NRI Equity Land Investments, LLC.....	ownership.....	...100.000	Nationwide Mutual Insurance Company.....	...N.....
0140	Nationwide.....	20-4939866..	n/a.....	795 Rail Street, LLC.....	OH.....	NIA.....	NRI Equity Land Investments, LLC.....	ownership.....	...100.000	Nationwide Mutual Insurance Company.....	...N.....
0140	Nationwide.....	20-4939866..	n/a.....	800 Bobcat Avenue, LLC.....	OH.....	NIA.....	NRI Equity Land Investments, LLC.....	ownership.....	...100.000	Nationwide Mutual Insurance Company.....	...N.....
0140	Nationwide.....	20-4939866..	n/a.....	800 Goodale Boulevard, LLC.....	OH.....	NIA.....	NRI Equity Land Investments, LLC.....	ownership.....	...100.000	Nationwide Mutual Insurance Company.....	...N.....
0140	Nationwide.....	20-4939866..	n/a.....	800 Yard Street, LLC.....	OH.....	NIA.....	NRI Equity Land Investments, LLC.....	ownership.....	...100.000	Nationwide Mutual Insurance Company.....	...N.....
0140	Nationwide.....	20-4939866..	n/a.....	805 Bobcat Avenue, LLC.....	OH.....	NIA.....	GVY Residential, LLC.....	ownership.....	...100.000	Nationwide Mutual Insurance Company.....	...N.....

SCHEDULE Y

PART 1A - DETAIL OF INSURANCE HOLDING COMPANY SYSTEM

Q12.1

1	2	3	4	5	6	7	8	9	10	11	12	13	14	15	16
Group Code	Group Name	NAIC Company Code	ID Number	Federal RSSD	CIK	Name of Securities Exchange if Publicly Traded (U.S. or International)	Names of Parent, Subsidiaries or Affiliates	Domiciliary Location	Relationship to Reporting Entity	Directly Controlled by (Name of Entity/Person)	Type of Control (Ownership Board, Management, Attorney-in-Fact, Influence, Other)	If Control is Ownership Provide Percentage	Ultimate Controlling Entity(ies)/Person(s)	Is an SCA Filing Required? (Y/N)	*
0140	Nationwide.....	20-4939866..	n/a.....	808 Yard Street, LLC.....	OH.....	NIA.....	GVY Residential, LLC.....	ownership.....	...100.000	Nationwide Mutual Insurance Company.....N.....
0140	Nationwide.....	20-4939866..	n/a.....	820 Goodale Boulevard, LLC.....	OH.....	NIA.....	NRI Equity Land Investments, LLC.....	ownership.....	...100.000	Nationwide Mutual Insurance Company.....N.....
0140	Nationwide.....	20-4939866..	n/a.....	825 Junction Way, LLC.....	OH.....	NIA.....	GVY Residential, LLC.....	ownership.....	...100.000	Nationwide Mutual Insurance Company.....N.....
0140	Nationwide.....	20-4939866..	n/a.....	828 Bobcat Avenue, LLC.....	OH.....	NIA.....	NRI Equity Land Investments, LLC.....	ownership.....	...100.000	Nationwide Mutual Insurance Company.....N.....
0140	Nationwide.....	20-4939866..	n/a.....	840 Third Avenue, LLC.....	OH.....	NIA.....	NRI Equity Land Investments, LLC.....	ownership.....	...100.000	Nationwide Mutual Insurance Company.....N.....
0140	Nationwide.....	20-4939866..	n/a.....	840 Yard Street, LLC.....	OH.....	NIA.....	GVY Residential, LLC.....	ownership.....	...100.000	Nationwide Mutual Insurance Company.....N.....
0140	Nationwide.....	20-4939866..	n/a.....	845 Yard Street, LLC.....	OH.....	NIA.....	GVY Residential, LLC.....	ownership.....	...100.000	Nationwide Mutual Insurance Company.....N.....
0140	Nationwide.....	20-4939866..	n/a.....	860 Third Avenue, LLC.....	OH.....	NIA.....	NRI Equity Land Investments, LLC.....	ownership.....	...100.000	Nationwide Mutual Insurance Company.....N.....
0140	Nationwide.....	20-4939866..	n/a.....	880 Third Avenue, LLC.....	OH.....	NIA.....	NRI Equity Land Investments, LLC.....	ownership.....	...100.000	Nationwide Mutual Insurance Company.....N.....
0140	Nationwide.....	20-4939866..	n/a.....	880 Yard Street, LLC.....	OH.....	NIA.....	GVY Residential, LLC.....	ownership.....	...100.000	Nationwide Mutual Insurance Company.....N.....
0140	Nationwide.....	20-4939866..	n/a.....	895 W. Third Avenue, LLC.....	OH.....	NIA.....	NRI Equity Land Investments, LLC.....	ownership.....	...100.000	Nationwide Mutual Insurance Company.....N.....
0140	Nationwide.....	20-4939866..	n/a.....	950 Dorchester Way, LLC.....	OH.....	NIA.....	GVY Residential, LLC.....	ownership.....	...100.000	Nationwide Mutual Insurance Company.....N.....
0140	Nationwide.....	20-4939866..	n/a.....	950 Goodale Boulevard, LLC.....	OH.....	NIA.....	NRI Equity Land Investments, LLC.....	ownership.....	...100.000	Nationwide Mutual Insurance Company.....N.....
0140	Nationwide.....	31-1486309..	n/a.....	960 Bobcat Avenue, LLC.....	OH.....	NIA.....	Nationwide Realty Investors, Ltd.....	ownership.....	...100.000	Nationwide Mutual Insurance Company.....N.....
0140	Nationwide.....	31-1486309..	n/a.....	975 Rail Street, LLC.....	OH.....	NIA.....	Nationwide Realty Investors, Ltd.....	ownership.....	...100.000	Nationwide Mutual Insurance Company.....N.....
0140	Nationwide.....	31-1486309..	n/a.....	995 Yard Street, LLC.....	OH.....	NIA.....	Nationwide Realty Investors, Ltd.....	ownership.....	...100.000	Nationwide Mutual Insurance Company.....N.....
0140	Nationwide.....	31-1486309..	n/a.....	18615 Claret Drive, LLC.....	OH.....	NIA.....	NRI Cavasson, LLC.....	ownership.....	...100.000	Nationwide Mutual Insurance Company.....N.....
0140	Nationwide.....	31-1486309..	n/a.....	18700 Hayden Road, LLC.....	OH.....	NIA.....	NRI Cavasson, LLC.....	ownership.....	...100.000	Nationwide Mutual Insurance Company.....N.....
0140	Nationwide.....	31-1580283..	n/a.....	AD DORA, LLC.....	OH.....	NIA.....	NWD Investments, LLC.....	ownership.....	...100.000	Nationwide Mutual Insurance Company.....N.....
0140	Nationwide.....	31-1580283..	n/a.....	ADTV, LLC.....	OH.....	NIA.....	NWD Investments, LLC.....	ownership.....	...100.000	Nationwide Mutual Insurance Company.....N.....
0140	Nationwide.....	52-2227314..	n/a.....	AGMC Reinsurance, Ltd.....	TCA.....	NIA.....	Nationwide Advantage Mortgage Company.....	ownership.....	...100.000	Nationwide Mutual Insurance Company.....N.....
0140	Nationwide.....	42-0958655..	n/a.....	ALLIED Group, Inc.....	IA.....	UDP.....	Allied Holdings (Delaware), Inc.....	ownership.....	...100.000	Nationwide Mutual Insurance Company.....N.....
0140	Nationwide.....	46-4628790..	n/a.....	Allied Holdings (Delaware), Inc.....	DE.....	IA.....	Nationwide Mutual Insurance Company.....	ownership.....	...100.000	Nationwide Mutual Insurance Company.....Y.....
0140	Nationwide.....	10127..	27-0114983..	n/a.....	ALLIED Insurance Company of America.....	OH.....	IA.....	Nationwide Mutual Insurance Company.....	ownership.....	...100.000	Nationwide Mutual Insurance Company.....N.....
0140	Nationwide.....	42579..	42-1201931..	n/a.....	ALLIED Property and Casualty Insurance Company.....	IA.....	IA.....	ALLIED Group, Inc.....	ownership.....	...100.000	Nationwide Mutual Insurance Company.....N.....
0140	Nationwide.....	42-1527863..	n/a.....	ALLIED Texas Agency, Inc.....	TX.....	IA.....	AMCO Insurance Company.....	ownership.....	...100.000	Nationwide Mutual Insurance Company.....N.....
0140	Nationwide.....	19100..	42-6054959..	n/a.....	AMCO Insurance Company.....	IA.....	IA.....	ALLIED Group, Inc.....	ownership.....	...100.000	Nationwide Mutual Insurance Company.....N.....
0140	Nationwide.....	59-1031596..	n/a.....	American Marine Underwriters, Inc.....	FL.....	NIA.....	Nationwide Mutual Insurance Company.....	ownership.....	...100.000	Nationwide Mutual Insurance Company.....N.....
0140	Nationwide.....	81-4532504..	n/a.....	American Tax Credit Fund 2017-A, LLC.....	OH.....	NIA.....	Nationwide Life Insurance Company.....	ownership.....	...100.000	Nationwide Mutual Insurance Company.....N.....
0140	Nationwide.....	82-2001573..	n/a.....	American Tax Credit Fund 2017-B, LLC.....	OH.....	NIA.....	Nationwide Life Insurance Company.....	ownership.....	...100.000	Nationwide Mutual Insurance Company.....N.....
0140	Nationwide.....	82-4591498..	n/a.....	American Tax Credit Fund 2018-A, LLC.....	OH.....	NIA.....	Nationwide Life Insurance Company.....	ownership.....	...100.000	Nationwide Mutual Insurance Company.....N.....
0140	Nationwide.....	83-0606592..	n/a.....	American Tax Credit Fund 2018-B, LLC.....	OH.....	NIA.....	Nationwide Life Insurance Company.....	ownership.....	...100.000	Nationwide Mutual Insurance Company.....N.....
0140	Nationwide.....	83-0620232..	n/a.....	American Tax Credit Fund 2018-C, LLC.....	OH.....	NIA.....	Nationwide Life Insurance Company.....	ownership.....	...100.000	Nationwide Mutual Insurance Company.....N.....
0140	Nationwide.....	83-3900932..	n/a.....	American Tax Credit Fund 2019-A, LLC.....	OH.....	NIA.....	Nationwide Life Insurance Company.....	ownership.....	...100.000	Nationwide Mutual Insurance Company.....N.....
0140	Nationwide.....	83-3953721..	n/a.....	American Tax Credit Fund 2019-B, LLC.....	OH.....	NIA.....	Nationwide Life Insurance Company.....	ownership.....	...100.000	Nationwide Mutual Insurance Company.....N.....

SCHEDULE Y

PART 1A - DETAIL OF INSURANCE HOLDING COMPANY SYSTEM

Q12.2

1	2	3	4	5	6	7	8	9	10	11	12	13	14	15	16
Group Code	Group Name	NAIC Company Code	ID Number	Federal RSSD	CIK	Name of Securities Exchange if Publicly Traded (U.S. or International)	Names of Parent, Subsidiaries or Affiliates	Domiciliary Location	Relationship to Reporting Entity	Directly Controlled by (Name of Entity/Person)	Type of Control (Ownership Board, Management, Attorney-in-Fact, Influence, Other)	If Control is Ownership Provide Percentage	Ultimate Controlling Entity(ies)/Person(s)	Is an SCA Filing Required? (Y/N)	*
0140	Nationwide.....	84-3443067..	n/a.....	American Tax Credit Fund 2020-A, LLC.....	OH.....	NIA.....	Nationwide Life Insurance Company.....	ownership.....	...100.000	Nationwide Mutual Insurance Company.....N.....
0140	Nationwide.....	85-2359702..	n/a.....	American Tax Credit Fund 2020-B, LLC.....	OH.....	NIA.....	Nationwide Life Insurance Company.....	ownership.....	...100.000	Nationwide Mutual Insurance Company.....N.....
0140	Nationwide.....	85-2649655..	n/a.....	American Tax Credit Fund 2021-A, LLC (fka American Tax Credit Fund 2020-C, LLC)	OH.....	NIA.....	Nationwide Life Insurance Company.....	ownership.....	...100.000	Nationwide Mutual Insurance Company.....N.....
0140	Nationwide.....	86-2502912..	n/a.....	American Tax Credit Fund 2021-B, LLC.....	OH.....	NIA.....	Nationwide Life Insurance Company.....	ownership.....	...100.000	Nationwide Mutual Insurance Company.....N.....
0140	Nationwide.....	87-1349942..	n/a.....	American Tax Credit Fund 2021-C, LLC.....	OH.....	NIA.....	Nationwide Life Insurance Company.....	ownership.....	...100.000	Nationwide Mutual Insurance Company.....N.....
0140	Nationwide.....	31-1580283..	n/a.....	Arena District CA I, LLC.....	OH.....	NIA.....	NWD Investments, LLC.....	ownership.....	...100.000	Nationwide Mutual Insurance Company.....N.....
.....	90-0280710..	n/a.....	Arena District Owners Association.....	OH.....	OTH.....	Other non-Nationwide.....	n/a.....	Other non-Nationwide.....N.....	2.....
0140	Nationwide.....	31-1486309..	n/a.....	Ballantrae Woods, LLC.....	OH.....	NIA.....	Nationwide Realty Investors, Ltd.....	ownership.....	...100.000	Nationwide Mutual Insurance Company.....N.....
0140	Nationwide.....	31-1486309..	n/a.....	Cavasson Hotel, LLC.....	OH.....	NIA.....	Cavasson Hotel Holdings, LLC.....	ownership.....	...100.000	Nationwide Mutual Insurance Company.....N.....
0140	Nationwide.....	31-1486309..	n/a.....	Cavasson Hotel Holdings, LLC.....	OH.....	NIA.....	NRI Cavasson, LLC.....	ownership.....	...100.000	Nationwide Mutual Insurance Company.....N.....
0140	Nationwide.....	20-1618232..	n/a.....	CNRI-Cannonsport Condominium, LLC.....	OH.....	NIA.....	CNRI-Cannonsport, LLC.....	ownership.....	...100.000	Nationwide Mutual Insurance Company.....N.....
0140	Nationwide.....	20-1618232..	n/a.....	CNRI-Cannonsport, LLC.....	OH.....	NIA.....	Nationwide Realty Investors, Ltd.....	ownership.....	...100.000	Nationwide Mutual Insurance Company.....N.....
0140	Nationwide.....	29262..	74-1061659..	n/a.....	Colonial County Mutual Insurance Company.....	TX.....	IA.....	Other non-Nationwide.....	contract.....	Other non-Nationwide.....N.....	2.....
0140	Nationwide.....	31-1486309..	n/a.....	Cottages at Hyatts LLC.....	OH.....	NIA.....	Nationwide Realty Investors, Ltd.....	ownership.....	...100.000	Nationwide Mutual Insurance Company.....N.....
0140	Nationwide.....	18961..	68-0066866..	n/a.....	Crestbrook Insurance Company.....	OH.....	IA.....	Nationwide Mutual Insurance Company.....	ownership.....	...100.000	Nationwide Mutual Insurance Company.....N.....
0140	Nationwide.....	31-1486309..	n/a.....	Crewville, Ltd.....	OH.....	NIA.....	Nationwide Realty Investors, Ltd.....	ownership.....	...100.000	Nationwide Mutual Insurance Company.....N.....
0140	Nationwide.....	84-5052608..	n/a.....	Danforth, LLC.....	OH.....	NIA.....	Nationwide Mutual Insurance Company.....	ownership.....	...100.000	Nationwide Mutual Insurance Company.....N.....
0140	Nationwide.....	42587..	42-1207150..	n/a.....	Depositors Insurance Company.....	IA.....	IA.....	ALLIED Group, Inc.....	ownership.....	...100.000	Nationwide Mutual Insurance Company.....N.....
.....	46-4104813..	n/a.....	Discover Affordable Housing Investment Fund I LLC	OH.....	OTH.....	Other non-Nationwide.....	n/a.....	Other non-Nationwide.....N.....	2.....
0140	Nationwide.....	33-0096671..	n/a.....	DVM Insurance Agency.....	CA.....	NIA.....	Veterinary Pet Insurance Company.....	ownership.....	...100.000	Nationwide Mutual Insurance Company.....N.....
0140	Nationwide.....	15821..	47-4523959..	n/a.....	Eagle Captive Reinsurance, LLC.....	OH.....	IA.....	Nationwide Life Insurance Company.....	ownership.....	...100.000	Nationwide Mutual Insurance Company.....N.....
0140	Nationwide.....	20-1945276..	n/a.....	East of Madison, LLC.....	DE.....	NIA.....	120 Acre Partners, Ltd.....	ownership.....	...24.910	Nationwide Mutual Insurance Company.....N.....	1.....
0140	Nationwide.....	20-1945276..	n/a.....	East of Madison, LLC.....	DE.....	NIA.....	ND La Quinta Partners, LLC.....	ownership.....	...75.090	Nationwide Mutual Insurance Company.....N.....	1.....
0140	Nationwide.....	26-3260559..	n/a.....	E-Risk Services, L.L.C.....	DE.....	NIA.....	Nationwide Mutual Insurance Company.....	ownership.....	...100.000	Nationwide Mutual Insurance Company.....N.....
0140	Nationwide.....	22209..	75-6013587..	n/a.....	Freedom Specialty Insurance Company.....	OH.....	IA.....	Scottsdale Insurance Company.....	ownership.....	...100.000	Nationwide Mutual Insurance Company.....N.....
0140	Nationwide.....	20-4939866..	n/a.....	Grandview Yard Hotel Holdings, LLC.....	OH.....	NIA.....	NRI Equity Land Investments, LLC.....	ownership.....	...100.000	Nationwide Mutual Insurance Company.....N.....
0140	Nationwide.....	20-4939866..	n/a.....	Grandview Yard Hotel, LLC.....	OH.....	NIA.....	Grandview Yard Hotel Holdings, LLC.....	ownership.....	...100.000	Nationwide Mutual Insurance Company.....N.....
0140	Nationwide.....	20-4939866..	n/a.....	GVY Residential, LLC.....	OH.....	NIA.....	NRI Equity Land Investments, LLC.....	ownership.....	...100.000	Nationwide Mutual Insurance Company.....N.....
0140	Nationwide.....	31-1486309..	n/a.....	Harlem Road Developers, LLC.....	OH.....	NIA.....	Nationwide Realty Investors, Ltd.....	ownership.....	...100.000	Nationwide Mutual Insurance Company.....N.....
0140	Nationwide.....	51-0241172..	n/a.....	Harleysville Group Inc.....	DE.....	NIA.....	Allied Holdings (Delaware), Inc.....	ownership.....	...100.000	Nationwide Mutual Insurance Company.....N.....
0140	Nationwide.....	23582..	41-0417250..	n/a.....	Harleysville Insurance Company.....	OH.....	IA.....	Harleysville Group, Inc.....	ownership.....	...100.000	Nationwide Mutual Insurance Company.....N.....
0140	Nationwide.....	42900..	23-2253669..	n/a.....	Harleysville Insurance Company of New Jersey	NJ.....	IA.....	Harleysville Group, Inc.....	ownership.....	...100.000	Nationwide Mutual Insurance Company.....N.....
0140	Nationwide.....	10674..	23-2864924..	n/a.....	Harleysville Insurance Company of New York...	OH.....	IA.....	Harleysville Group, Inc.....	ownership.....	...100.000	Nationwide Mutual Insurance Company.....N.....

SCHEDULE Y

PART 1A - DETAIL OF INSURANCE HOLDING COMPANY SYSTEM

1	2	3	4	5	6	7	8	9	10	11	12	13	14	15	16
Group Code	Group Name	NAIC Company Code	ID Number	Federal RSSD	CIK	Name of Securities Exchange if Publicly Traded (U.S. or International)	Names of Parent, Subsidiaries or Affiliates	Domiciliary Location	Relationship to Reporting Entity	Directly Controlled by (Name of Entity/Person)	Type of Control (Ownership Board, Management, Attorney-in-Fact, Influence, Other)	If Control is Ownership Provide Percentage	Ultimate Controlling Entity(ies)/Person(s)	Is an SCA Filing Required? (Y/N)	*
0140	Nationwide.....	14516...	38-3198542..	n/a.....	Harleysville Lake States Insurance Company.....	MI.....	IA.....	Harleysville Group, Inc.....	ownership.....	...100.000	Nationwide Mutual Insurance Company.....N.....
0140	Nationwide.....	64327...	23-1580983..	n/a.....	Harleysville Life Insurance Company.....	OH.....	IA.....	Nationwide Mutual Insurance Company.....	ownership.....	...100.000	Nationwide Mutual Insurance Company.....N.....
0140	Nationwide.....	35696...	23-2384978..	n/a.....	Harleysville Preferred Insurance Company.....	OH.....	IA.....	Harleysville Group, Inc.....	ownership.....	...100.000	Nationwide Mutual Insurance Company.....N.....
0140	Nationwide.....	26182...	04-1989660..	n/a.....	Harleysville Worcester Insurance Company.....	OH.....	IA.....	Harleysville Group, Inc.....	ownership.....	...100.000	Nationwide Mutual Insurance Company.....N.....
0140	Nationwide.....	32-0051216..	n/a.....	Hideaway Properties Corporation.....	CA.....	NIA.....	Nationwide Realty Investors, Ltd.....	ownership.....	...50.000	Nationwide Mutual Insurance Company.....N.....	1.....
0140	Nationwide.....	20-3289512..	n/a.....	Jefferson National Financial Corp.....	DE.....	NIA.....	Nationwide Life Insurance Company.....	ownership.....	...100.000	Nationwide Mutual Insurance Company.....Y.....
0140	Nationwide.....	64017...	75-0300900..	n/a.....	Jefferson National Life Insurance Company.....	TX.....	IA.....	Jefferson National Financial Corporation.....	ownership.....	...100.000	Nationwide Mutual Insurance Company.....N.....
0140	Nationwide.....	15727...	47-1180302..	n/a.....	Jefferson National Life Insurance Company of New York	NY.....	IA.....	Jefferson National Life Insurance Company.....	ownership.....	...100.000	Nationwide Mutual Insurance Company.....N.....
0140	Nationwide.....	61-1340595..	n/a.....	Jefferson National Securities Corporation.....	DE.....	NIA.....	Jefferson National Financial Corporation.....	ownership.....	...100.000	Nationwide Mutual Insurance Company.....N.....
0140	Nationwide.....	31-1486309..	n/a.....	Jerome Village Company, LLC.....	OH.....	NIA.....	Nationwide Realty Investors, Ltd.....	ownership.....	...100.000	Nationwide Mutual Insurance Company.....N.....
0140	Nationwide.....	31-1486309..	n/a.....	JV Developers, LLC.....	OH.....	NIA.....	Nationwide Realty Investors, Ltd.....	ownership.....	...100.000	Nationwide Mutual Insurance Company.....N.....
0140	Nationwide.....	74-1395229..	n/a.....	Lone Star General Agency, Inc.....	TX.....	IA.....	Nationwide Mutual Insurance Company.....	ownership.....	...100.000	Nationwide Mutual Insurance Company.....N.....
0140	Nationwide.....	11991...	38-0865250..	n/a.....	National Casualty Company.....	OH.....	IA.....	Nationwide Mutual Insurance Company.....	ownership.....	...100.000	Nationwide Mutual Insurance Company.....N.....
0140	Nationwide.....	AC000920...	n/a.....	National Casualty Company of America, Ltd.....	GBR.....	IA.....	National Casualty Company.....	ownership.....	...100.000	Nationwide Mutual Insurance Company.....N.....
0140	Nationwide.....	42-1154244..	n/a.....	Nationwide Advantage Mortgage Company.....	IA.....	NIA.....	AMCO Insurance Company.....	ownership.....	...87.300	Nationwide Mutual Insurance Company.....Y.....	1.....
0140	Nationwide.....	42-1154244..	n/a.....	Nationwide Advantage Mortgage Company.....	IA.....	NIA.....	ALLIED Property & Casualty Insurance Company	ownership.....	...8.470	Nationwide Mutual Insurance Company.....Y.....	1.....
0140	Nationwide.....	42-1154244..	n/a.....	Nationwide Advantage Mortgage Company.....	IA.....	NIA.....	Depositors Insurance Company.....	ownership.....	...4.230	Nationwide Mutual Insurance Company.....Y.....	1.....
0140	Nationwide.....	26093...	48-0470690..	n/a.....	Nationwide Affinity Insurance Company of America	OH.....	IA.....	Nationwide Mutual Insurance Company.....	ownership.....	...100.000	Nationwide Mutual Insurance Company.....N.....
0140	Nationwide.....	28223...	42-1015537..	n/a.....	Nationwide Agribusiness Insurance Company.....	IA.....	IA.....	Nationwide Mutual Insurance Company.....	ownership.....	...100.000	Nationwide Mutual Insurance Company.....N.....
0140	Nationwide.....	31-1578869..	n/a.....	Nationwide Arena, LLC.....	OH.....	NIA.....	NRI Arena, LLC.....	ownership.....	...90.000	Nationwide Mutual Insurance Company.....N.....	1.....
0140	Nationwide.....	20-8670712..	n/a.....	Nationwide Asset Management, LLC.....	OH.....	NIA.....	Nationwide Mutual Insurance Company.....	ownership.....	...100.000	Nationwide Mutual Insurance Company.....N.....
0140	Nationwide.....	10723...	95-0639970..	n/a.....	Nationwide Assurance Company.....	OH.....	IA.....	Nationwide Mutual Insurance Company.....	ownership.....	...100.000	Nationwide Mutual Insurance Company.....N.....
0140	Nationwide.....	31-1036287..	n/a.....	Nationwide Cash Management Company.....	OH.....	NIA.....	Nationwide Mutual Insurance Company.....	ownership.....	...100.000	Nationwide Mutual Insurance Company.....N.....
0140	Nationwide.....	31-4416546..	n/a.....	Nationwide Corporation.....	OH.....	NIA.....	Nationwide Mutual Insurance Company.....	ownership.....	...95.200	Nationwide Mutual Insurance Company.....Y.....	1.....
0140	Nationwide.....	31-4416546..	n/a.....	Nationwide Corporation.....	OH.....	NIA.....	Nationwide Mutual Fire Insurance Company...	ownership.....	...4.800	Nationwide Mutual Insurance Company.....Y.....	1.....
0140	Nationwide.....	31-1667326..	n/a.....	Nationwide Financial Assignment Company.....	OH.....	NIA.....	Nationwide Life Insurance Company.....	ownership.....	...100.000	Nationwide Mutual Insurance Company.....N.....
0140	Nationwide.....	23-2412039..	n/a.....	Nationwide Financial General Agency, Inc.....	PA.....	NIA.....	NFS Distributors, Inc.....	ownership.....	...100.000	Nationwide Mutual Insurance Company.....N.....
0140	Nationwide.....	31-6554353..	n/a.....	Nationwide Financial Services Capital Trust.....	DE.....	NIA.....	Nationwide Financial Services, Inc.....	ownership.....	...100.000	Nationwide Mutual Insurance Company.....N.....
0140	Nationwide.....	31-1486870..	n/a.....	Nationwide Financial Services, Inc.....	DE.....	NIA.....	Nationwide Corporation.....	ownership.....	...100.000	Nationwide Mutual Insurance Company.....N.....
0140	Nationwide.....	52-6969857..	n/a.....	Nationwide Fund Advisors.....	DE.....	NIA.....	Nationwide Financial Services, Inc.....	ownership.....	...100.000	Nationwide Mutual Insurance Company.....N.....
0140	Nationwide.....	31-1748721..	n/a.....	Nationwide Fund Distributors LLC.....	DE.....	NIA.....	NFS Distributors, Inc.....	ownership.....	...100.000	Nationwide Mutual Insurance Company.....N.....
0140	Nationwide.....	31-0900518..	n/a.....	Nationwide Fund Management LLC.....	DE.....	NIA.....	NFS Distributors, Inc.....	ownership.....	...100.000	Nationwide Mutual Insurance Company.....N.....
0140	Nationwide.....	23760...	31-4425763..	n/a.....	Nationwide General Insurance Company.....	OH.....	IA.....	Nationwide Mutual Insurance Company.....	ownership.....	...100.000	Nationwide Mutual Insurance Company.....N.....
0140	Nationwide.....	10070...	31-1399201..	n/a.....	Nationwide Indemnity Company.....	OH.....	IA.....	Nationwide Mutual Insurance Company.....	ownership.....	...100.000	Nationwide Mutual Insurance Company.....N.....

SCHEDULE Y

PART 1A - DETAIL OF INSURANCE HOLDING COMPANY SYSTEM

Q12.4

1	2	3	4	5	6	7	8	9	10	11	12	13	14	15	16
Group Code	Group Name	NAIC Company Code	ID Number	Federal RSSD	CIK	Name of Securities Exchange if Publicly Traded (U.S. or International)	Names of Parent, Subsidiaries or Affiliates	Domiciliary Location	Relationship to Reporting Entity	Directly Controlled by (Name of Entity/Person)	Type of Control (Ownership Board, Management, Attorney-in-Fact, Influence, Other)	If Control is Ownership Provide Percentage	Ultimate Controlling Entity(ies)/Person(s)	Is an SCA Filing Required? (Y/N)	*
0140	Nationwide.....	25453..	95-2130882..	n/a.....	Nationwide Insurance Company of America.....	OH.....	RE.....	ALLIED Group, Inc.....	ownership.....	...100.000	Nationwide Mutual Insurance Company.....N.....
0140	Nationwide.....	10948..	31-1613686..	n/a.....	Nationwide Insurance Company of Florida.....	OH.....	IA.....	Nationwide Mutual Insurance Company.....	ownership.....	...100.000	Nationwide Mutual Insurance Company.....N.....
0140	Nationwide.....	41-2206199..	n/a.....	Nationwide Investment Advisors, LLC.....	OH.....	NIA.....	Nationwide Life Insurance Company.....	ownership.....	...100.000	Nationwide Mutual Insurance Company.....N.....
0140	Nationwide.....	73-0988442..	n/a.....	Nationwide Investment Services Corporation.....	OK.....	NIA.....	Nationwide Life Insurance Company.....	ownership.....	...100.000	Nationwide Mutual Insurance Company.....Y.....
0140	Nationwide.....	92657..	31-1000740..	n/a.....	Nationwide Life and Annuity Insurance Company	OH.....	IA.....	Nationwide Life Insurance Company.....	ownership.....	...100.000	Nationwide Mutual Insurance Company.....N.....
0140	Nationwide.....	66869..	31-4156830..	n/a.....	Nationwide Life Insurance Company.....	OH.....	IA.....	Nationwide Financial Services, Inc.....	ownership.....	...100.000	Nationwide Mutual Insurance Company.....N.....
0140	Nationwide.....	13-4212969..	n/a.....	Nationwide Life Tax Credit Partners 2002-A, LLC	OH.....	NIA.....	Nationwide Life Insurance Company.....	other.....0.010	Nationwide Mutual Insurance Company.....N.....	1.....
0140	Nationwide.....	01-0749754..	n/a.....	Nationwide Life Tax Credit Partners 2002-B, LLC	OH.....	NIA.....	Nationwide Life Insurance Company.....	other.....0.010	Nationwide Mutual Insurance Company.....N.....	1.....
0140	Nationwide.....	54-2113175..	n/a.....	Nationwide Life Tax Credit Partners 2003-A, LLC	OH.....	NIA.....	Nationwide Life Insurance Company.....	other.....0.010	Nationwide Mutual Insurance Company.....N.....	1.....
0140	Nationwide.....	58-2672725..	n/a.....	Nationwide Life Tax Credit Partners 2003-B, LLC	OH.....	NIA.....	Nationwide Life Insurance Company.....	other.....0.010	Nationwide Mutual Insurance Company.....N.....	1.....
0140	Nationwide.....	20-0382144..	n/a.....	Nationwide Life Tax Credit Partners 2004-A, LLC	OH.....	NIA.....	Nationwide Life Insurance Company.....	other.....0.010	Nationwide Mutual Insurance Company.....N.....	1.....
0140	Nationwide.....	20-0745965..	n/a.....	Nationwide Life Tax Credit Partners 2004-C, LLC	OH.....	NIA.....	Nationwide Life Insurance Company.....	other.....0.010	Nationwide Mutual Insurance Company.....N.....	1.....
0140	Nationwide.....	20-1918935..	n/a.....	Nationwide Life Tax Credit Partners 2004-F, LLC	OH.....	NIA.....	Nationwide Life Insurance Company.....	other.....0.010	Nationwide Mutual Insurance Company.....N.....	1.....
0140	Nationwide.....	20-2303694..	n/a.....	Nationwide Life Tax Credit Partners 2005-A, LLC	OH.....	NIA.....	Nationwide Life Insurance Company.....	other.....0.010	Nationwide Mutual Insurance Company.....N.....	1.....
0140	Nationwide.....	20-2303602..	n/a.....	Nationwide Life Tax Credit Partners 2005-B, LLC	OH.....	NIA.....	Nationwide Life Insurance Company.....	other.....0.010	Nationwide Mutual Insurance Company.....N.....	1.....
0140	Nationwide.....	20-2450960..	n/a.....	Nationwide Life Tax Credit Partners 2005-C, LLC	OH.....	NIA.....	Nationwide Life Insurance Company.....	other.....0.010	Nationwide Mutual Insurance Company.....N.....	1.....
0140	Nationwide.....	20-2774223..	n/a.....	Nationwide Life Tax Credit Partners 2005-E, LLC	OH.....	NIA.....	Nationwide Life Insurance Company.....	other.....0.010	Nationwide Mutual Insurance Company.....N.....	1.....
0140	Nationwide.....	21-1288836..	n/a.....	Nationwide Life Tax Credit Partners 2007-A, LLC	OH.....	NIA.....	Nationwide Life Insurance Company.....	other.....0.010	Nationwide Mutual Insurance Company.....N.....	1.....
0140	Nationwide.....	26-3427479..	n/a.....	Nationwide Life Tax Credit Partners 2009-C, LLC	OH.....	NIA.....	Nationwide Life Insurance Company.....	other.....0.010	Nationwide Mutual Insurance Company.....N.....	1.....
0140	Nationwide.....	26-3427525..	n/a.....	Nationwide Life Tax Credit Partners 2009-D, LLC	OH.....	NIA.....	Nationwide Life Insurance Company.....	other.....0.010	Nationwide Mutual Insurance Company.....N.....	1.....
0140	Nationwide.....	27-1362364..	n/a.....	Nationwide Life Tax Credit Partners 2009-I, LLC	OH.....	NIA.....	Nationwide Life Insurance Company.....	other.....0.010	Nationwide Mutual Insurance Company.....N.....	1.....

SCHEDULE Y

PART 1A - DETAIL OF INSURANCE HOLDING COMPANY SYSTEM

Q12.5

1	2	3	4	5	6	7	8	9	10	11	12	13	14	15	16
Group Code	Group Name	NAIC Company Code	ID Number	Federal RSSD	CIK	Name of Securities Exchange if Publicly Traded (U.S. or International)	Names of Parent, Subsidiaries or Affiliates	Domiciliary Location	Relationship to Reporting Entity	Directly Controlled by (Name of Entity/Person)	Type of Control (Ownership Board, Management, Attorney-in-Fact, Influence, Other)	If Control is Ownership Provide Percentage	Ultimate Controlling Entity(ies)/Person(s)	Is an SCA Filing Required? (Y/N)	*
0140	Nationwide.....		45-0469525..	n/a.....			Nationwide Life Tax Credit Partners No. 1, LLC	OH.....	NIA.....	Nationwide Life Insurance Company.....	other.....0.010	Nationwide Mutual Insurance Company.....N.....	1.....
0140	Nationwide.....	42110..	75-1780981..	n/a.....			Nationwide Lloyds.....	TX.....	IA.....	n/a.....	contract.....		Nationwide Mutual Insurance Company.....N.....	2.....
0140	Nationwide.....		42-1373380..	n/a.....			Nationwide Sales Solutions, Inc. (fka Nationwide Member Solutions Agency Inc.)	IA.....	NIA.....	ALLIED Group, Inc.....	ownership.....100.000	Nationwide Mutual Insurance Company.....N.....	
0140	Nationwide.....		75-3191025..	n/a.....			Nationwide Mutual Capital, LLC.....	OH.....	NIA.....	Nationwide Mutual Insurance Company.....	ownership.....100.000	Nationwide Mutual Insurance Company.....N.....	
0140	Nationwide.....	23779..	31-4177110..	n/a.....			Nationwide Mutual Fire Insurance Company....	OH.....	IA.....	Other non-Nationwide.....	n/a.....		Other non-Nationwide.....N.....	2.....
0140	Nationwide.....	23787..	31-4177100..	n/a.....			Nationwide Mutual Insurance Company.....	OH.....	UIP.....	Other non-Nationwide.....	n/a.....		Other non-Nationwide.....N.....	2.....
0140	Nationwide.....		34-2012765..	n/a.....			Nationwide Private Equity Fund, LLC.....	OH.....	NIA.....	Nationwide Mutual Insurance Company.....	ownership.....100.000	Nationwide Mutual Insurance Company.....N.....	
0140	Nationwide.....	37877..	31-0970750..	n/a.....			Nationwide Property and Casualty Insurance Company	OH.....	IA.....	Nationwide Mutual Insurance Company.....	ownership.....100.000	Nationwide Mutual Insurance Company.....N.....	
0140	Nationwide.....		31-1486309..	n/a.....			Nationwide Realty Investors, Ltd.....	OH.....	NIA.....	Nationwide Mutual Insurance Company.....	ownership.....97.000	Nationwide Mutual Insurance Company.....N.....	1.....
0140	Nationwide.....		31-1486309..	n/a.....			Nationwide Realty Investors, Ltd.....	OH.....	NIA.....	Nationwide Indemnity Company.....	ownership.....3.000	Nationwide Mutual Insurance Company.....N.....	1.....
0140	Nationwide.....		31-1486309..	n/a.....			Nationwide Realty Management, LLC.....	OH.....	NIA.....	Nationwide Realty Investors, Ltd.....	ownership.....100.000	Nationwide Mutual Insurance Company.....N.....	
0140	Nationwide.....		n/a.....	n/a.....			Nationwide Realty Services, Ltd.....	OH.....	NIA.....	Nationwide Mutual Insurance Company.....	ownership.....100.000	Nationwide Mutual Insurance Company.....N.....	
0140	Nationwide.....		73-0948330..	n/a.....			Nationwide Retirement Solutions, Inc.....	DE.....	NIA.....	NFS Distributors, Inc.....	ownership.....100.000	Nationwide Mutual Insurance Company.....N.....	
0140	Nationwide.....		83-2250056..	n/a.....			Nationwide SBL, LLC.....	OH.....	NIA.....	Nationwide Life and Annuity Insurance Company	ownership.....100.000	Nationwide Mutual Insurance Company.....N.....	
0140	Nationwide.....		36-2434406..	n/a.....			Nationwide Securities, LLC.....	OH.....	NIA.....	NFS Distributors, Inc.....	ownership.....100.000	Nationwide Mutual Insurance Company.....N.....	
0140	Nationwide.....		31-4177100..	n/a.....			Nationwide Services Company, LLC.....	OH.....	NIA.....	Nationwide Mutual Insurance Company.....	ownership.....100.000	Nationwide Mutual Insurance Company.....N.....	
0140	Nationwide.....		46-1952215..	n/a.....			Nationwide Tax Credit Partners 2013-A, LLC....	OH.....	NIA.....	Nationwide Life Insurance Company.....	other.....0.010	Nationwide Mutual Insurance Company.....N.....	1.....
0140	Nationwide.....		46-1971926..	n/a.....			Nationwide Tax Credit Partners 2013-B, LLC....	OH.....	NIA.....	Nationwide Life Insurance Company.....	other.....0.010	Nationwide Mutual Insurance Company.....N.....	1.....
0140	Nationwide.....		31-1592130..2729677			Nationwide Trust Company, FSB.....	USA.....	OTH.....	Nationwide Financial Services, Inc.....	ownership.....100.000	Nationwide Mutual Insurance Company.....N.....	2.....
0140	Nationwide.....		20-5976272..	n/a.....			Nationwide Ventures, LLC.....	OH.....	NIA.....	Nationwide Mutual Insurance Company.....	ownership.....100.000	Nationwide Mutual Insurance Company.....N.....	
0140	Nationwide.....		31-0871532..	n/a.....			NBS Insurance Agency, Inc.....	OH.....	IA.....	Nationwide Mutual Insurance Company.....	ownership.....100.000	Nationwide Mutual Insurance Company.....N.....	
0140	Nationwide.....		85-4193218..	n/a.....			NCS Arizona, LLC.....	OH.....	NIA.....	Nationwide Mutual Insurance Company.....	ownership.....100.000	Nationwide Mutual Insurance Company.....N.....	
0140	Nationwide.....		11-3651828..	n/a.....			ND La Quinta Partners, LLC.....	DE.....	NIA.....	Nationwide Realty Investors, Ltd.....	ownership.....95.000	Nationwide Mutual Insurance Company.....N.....	1.....
0140	Nationwide.....		31-1630871..	n/a.....			NFS Distributors, Inc.....	DE.....	NIA.....	Nationwide Financial Services, Inc.....	ownership.....100.000	Nationwide Mutual Insurance Company.....N.....	
0140	Nationwide.....		82-5195340..	n/a.....			NLIC REO Holdings, LLC.....	OH.....	NIA.....	Nationwide Life Insurance Company.....	ownership.....100.000	Nationwide Mutual Insurance Company.....N.....	
0140	Nationwide.....		82-5194959..	n/a.....			NMIC REO Holdings, LLC.....	OH.....	NIA.....	Nationwide Mutual Insurance Company.....	ownership.....100.000	Nationwide Mutual Insurance Company.....N.....	
0140	Nationwide.....		46-3762545..	n/a.....			NNOV8, LLC.....	OH.....	NIA.....	Nationwide Mutual Insurance Company.....	ownership.....100.000	Nationwide Mutual Insurance Company.....N.....	
0140	Nationwide.....		20-4939866..	n/a.....			North of Third, LLC.....	OH.....	NIA.....	NRI Equity Land Investments, LLC.....	ownership.....100.000	Nationwide Mutual Insurance Company.....N.....	
0140	Nationwide.....		31-1486309..	n/a.....			NRI Arena, LLC.....	OH.....	NIA.....	Nationwide Realty Investors, Ltd.....	ownership.....100.000	Nationwide Mutual Insurance Company.....N.....	
0140	Nationwide.....		31-1486309..	n/a.....			NRI Brooksidege, LLC.....	OH.....	NIA.....	Nationwide Realty Investors, Ltd.....	ownership.....100.000	Nationwide Mutual Insurance Company.....N.....	
0140	Nationwide.....		31-1486309..	n/a.....			NRI Builders, LLC.....	OH.....	NIA.....	Nationwide Realty Investors, Ltd.....	ownership.....100.000	Nationwide Mutual Insurance Company.....N.....	
0140	Nationwide.....		31-1486309..	n/a.....			NRI Cavasson, LLC.....	OH.....	NIA.....	Nationwide Realty Investors, Ltd.....	ownership.....100.000	Nationwide Mutual Insurance Company.....N.....	

SCHEDULE Y

PART 1A - DETAIL OF INSURANCE HOLDING COMPANY SYSTEM

Q12.6

1	2	3	4	5	6	7	8	9	10	11	12	13	14	15	16
Group Code	Group Name	NAIC Company Code	ID Number	Federal RSSD	CIK	Name of Securities Exchange if Publicly Traded (U.S. or International)	Names of Parent, Subsidiaries or Affiliates	Domiciliary Location	Relationship to Reporting Entity	Directly Controlled by (Name of Entity/Person)	Type of Control (Ownership Board, Management, Attorney-in-Fact, Influence, Other)	If Control is Ownership Provide Percentage	Ultimate Controlling Entity(ies)/Person(s)	Is an SCA Filing Required? (Y/N)	*
0140	Nationwide.....		31-1486309..	n/a.....			NRI Communities/Harris Blvd., LLC.....	OH.....	NIA.....	Nationwide Realty Investors, Ltd.....	ownership.....	...100.000	Nationwide Mutual Insurance Company.....N.....	
0140	Nationwide.....		31-1486309..	n/a.....			NRI Corporate Housing, LLC.....	OH.....	NIA.....	Nationwide Realty Investors, Ltd.....	ownership.....	...100.000	Nationwide Mutual Insurance Company.....N.....	
0140	Nationwide.....		31-1486309..	n/a.....			NRI Cramer Creek, LLC.....	OH.....	NIA.....	Nationwide Realty Investors, Ltd.....	ownership.....	...100.000	Nationwide Mutual Insurance Company.....N.....	
0140	Nationwide.....		20-4939866..	n/a.....			NRI Equity Land Investments, LLC.....	OH.....	NIA.....	Nationwide Realty Investors, Ltd.....	ownership.....80.000	Nationwide Mutual Insurance Company.....N.....	1.....
0140	Nationwide.....		26-0212217..	n/a.....			NRI Equity Tampa, LLC.....	OH.....	NIA.....	Nationwide Realty Investors, Ltd.....	ownership.....	...100.000	Nationwide Mutual Insurance Company.....N.....	
0140	Nationwide.....		31-1486309..	n/a.....			NRI Office Ventures, Ltd.....	OH.....	NIA.....	Nationwide Realty Investors, Ltd.....	ownership.....	...100.000	Nationwide Mutual Insurance Company.....N.....	
0140	Nationwide.....		31-1580283..	n/a.....			NRI Telecom, LLC.....	OH.....	NIA.....	NWD Investments, LLC.....	ownership.....	...100.000	Nationwide Mutual Insurance Company.....N.....	
0140	Nationwide.....		31-1486309..	n/a.....			NRI-Rivulon, LLC.....	OH.....	NIA.....	Nationwide Realty Investors, Ltd.....	ownership.....	...100.000	Nationwide Mutual Insurance Company.....N.....	
0140	Nationwide.....		90-0729552..	n/a.....			NTCIF-2011, LLC.....	OH.....	NIA.....	Nationwide Mutual Insurance Company.....	ownership.....50.000	Nationwide Mutual Insurance Company.....N.....	1.....
0140	Nationwide.....		90-0729552..	n/a.....			NTCIF-2011, LLC.....	OH.....	NIA.....	Nationwide Mutual Fire Insurance Company...	ownership.....50.000	Nationwide Mutual Insurance Company.....N.....	1.....
0140	Nationwide.....		27-4700627..	n/a.....			NTCP 2011-A, LLC.....	OH.....	OTH.....	Nationwide Life Insurance Company.....	other.....0.010	Nationwide Mutual Insurance Company.....N.....	2.....
0140	Nationwide.....		46-0741029..	n/a.....			NTCP 2012-A, LLC.....	OH.....	OTH.....	Nationwide Life Insurance Company.....	other.....0.010	Nationwide Mutual Insurance Company.....N.....	2.....
0140	Nationwide.....		46-3309896..	n/a.....			NTCP 2013-C, LLC.....	OH.....	OTH.....	Nationwide Life Insurance Company.....	other.....0.010	Nationwide Mutual Insurance Company.....N.....	2.....
0140	Nationwide.....		46-4111078..	n/a.....			NTCP 2014-A, LLC.....	OH.....	OTH.....	Nationwide Life Insurance Company.....	other.....0.010	Nationwide Mutual Insurance Company.....N.....	2.....
0140	Nationwide.....		47-1404116..	n/a.....			NTCP 2014-B, LLC.....	OH.....	OTH.....	Nationwide Life Insurance Company.....	other.....0.010	Nationwide Mutual Insurance Company.....N.....	2.....
0140	Nationwide.....		47-1413242..	n/a.....			NTCP 2014-C, LLC.....	OH.....	OTH.....	Nationwide Life Insurance Company.....	other.....0.010	Nationwide Mutual Insurance Company.....N.....	2.....
0140	Nationwide.....		47-3909345..	n/a.....			NTCP 2015-A, LLC.....	OH.....	OTH.....	Nationwide Life Insurance Company.....	other.....0.010	Nationwide Mutual Insurance Company.....N.....	2.....
0140	Nationwide.....		47-4148470..	n/a.....			NTCP 2015-B, LLC.....	OH.....	OTH.....	Nationwide Life Insurance Company.....	other.....0.010	Nationwide Mutual Insurance Company.....N.....	2.....
0140	Nationwide.....		81-3836925..	n/a.....			NTCP 2016-A, LLC.....	OH.....	NIA.....	Nationwide Life Insurance Company.....	ownership.....	...100.000	Nationwide Mutual Insurance Company.....N.....	
0140	Nationwide.....		82--2015065.	n/a.....			NTCP 2017-A, LLC.....	OH.....	NIA.....	Nationwide Life Insurance Company.....	ownership.....	...100.000	Nationwide Mutual Insurance Company.....N.....	
0140	Nationwide.....		84-1969518..	n/a.....			NW Fyrebyrd, LLC.....	OH.....	NIA.....	NNOV8, LLC.....	ownership.....	...100.000	Nationwide Mutual Insurance Company.....N.....	
0140	Nationwide.....		85-3363961..	n/a.....			NW Next, LLC.....	OH.....	NIA.....	Nationwide Mutual Insurance Company.....	ownership.....	...100.000	Nationwide Mutual Insurance Company.....N.....	
0140	Nationwide.....		81-0936428..	n/a.....			NW Private Debt, LLC.....	OH.....	NIA.....	Nationwide Mutual Insurance Company.....	ownership.....	...100.000	Nationwide Mutual Insurance Company.....N.....	
0140	Nationwide.....		26-1903919..	n/a.....			NW REI, LLC.....	DE.....	NIA.....	Nationwide Mutual Insurance Company.....	ownership.....	...100.000	Nationwide Mutual Insurance Company.....N.....	
0140	Nationwide.....		46-3654078..	n/a.....			NW-Amesbury, LLC.....	OH.....	NIA.....	NW-REI, LLC.....	ownership.....	...100.000	Nationwide Mutual Insurance Company.....N.....	
0140	Nationwide.....		81-1263284..	n/a.....			NW-Amesbury II, LLC.....	OH.....	NIA.....	Nationwide Mutual Insurance Company.....	ownership.....	...100.000	Nationwide Mutual Insurance Company.....N.....	
0140	Nationwide.....		84-2078643..	n/a.....			NW-Amesbury III, LLC.....	OH.....	NIA.....	Nationwide Mutual Insurance Company.....	ownership.....	...100.000	Nationwide Mutual Insurance Company.....N.....	
0140	Nationwide.....		87-0899685..	n/a.....			NW-Antioch, LLC.....	OH.....	NIA.....	Nationwide Life and Annuity Insurance Company	ownership.....	...100.000	Nationwide Mutual Insurance Company.....N.....	
0140	Nationwide.....		87-1087011..	n/a.....			NW-Asheville, LLC.....	OH.....	NIA.....	Nationwide Mutual Insurance Company.....	ownership.....	...100.000	Nationwide Mutual Insurance Company.....N.....	
0140	Nationwide.....		84-3727023..	n/a.....			NW-Ashland, LLC.....	OH.....	NIA.....	Nationwide Mutual Fire Insurance Company...	ownership.....	...100.000	Nationwide Mutual Insurance Company.....N.....	
0140	Nationwide.....		83-2056769..	n/a.....			NW-Athens Way, LLC.....	OH.....	NIA.....	Nationwide Life Insurance Company.....	ownership.....	...100.000	Nationwide Mutual Insurance Company.....N.....	
0140	Nationwide.....		84-3942108..	n/a.....			NW-Beloit, LLC.....	OH.....	NIA.....	Nationwide Mutual Fire Insurance Company...	ownership.....	...100.000	Nationwide Mutual Fire Insurance Company...N.....	
0140	Nationwide.....		87-0847675..	n/a.....			NW-Broadway at Surf, LLC.....	OH.....	NIA.....	Nationwide Mutual Insurance Company.....	ownership.....	...100.000	Nationwide Mutual Insurance Company.....N.....	
0140	Nationwide.....		83-1613456..	n/a.....			NW-Cameron Village, LLC.....	OH.....	NIA.....	Nationwide Life Insurance Company.....	ownership.....	...100.000	Nationwide Mutual Insurance Company.....N.....	
0140	Nationwide.....		83-4513883..	n/a.....			NW-Carothers, LLC.....	OH.....	NIA.....	Nationwide Mutual Fire Insurance Company...	ownership.....	...100.000	Nationwide Mutual Fire Insurance Company...N.....	
0140	Nationwide.....		84-2920247..	n/a.....			NW-Cranberry, LLC.....	OH.....	NIA.....	Nationwide Life Insurance Company.....	ownership.....	...100.000	Nationwide Mutual Insurance Company.....N.....	

SCHEDULE Y

PART 1A - DETAIL OF INSURANCE HOLDING COMPANY SYSTEM

Q12.7

1	2	3	4	5	6	7	8	9	10	11	12	13	14	15	16
Group Code	Group Name	NAIC Company Code	ID Number	Federal RSSD	CIK	Name of Securities Exchange if Publicly Traded (U.S. or International)	Names of Parent, Subsidiaries or Affiliates	Domiciliary Location	Relationship to Reporting Entity	Directly Controlled by (Name of Entity/Person)	Type of Control (Ownership Board, Management, Attorney-in-Fact, Influence, Other)	If Control is Ownership Provide Percentage	Ultimate Controlling Entity(ies)/Person(s)	Is an SCA Filing Required? (Y/N)	*
0140	Nationwide.....	86-3529884..	n/a.....	NW-Englewood, LLC.....	OH.....	NIA.....	Nationwide Life Insurance Company.....	ownership.....	...100.000	Nationwide Mutual Insurance Company.....N.....
0140	Nationwide.....	84-4388876..	n/a.....	NW-Escalante, LLC.....	OH.....	NIA.....	Nationwide Mutual Insurance Company.....	ownership.....	...100.000	Nationwide Mutual Insurance Company.....N.....
0140	Nationwide.....	86-1538532..	n/a.....	NW-Escalante II, LLC.....	OH.....	NIA.....	Nationwide Mutual Insurance Company.....	ownership.....	...100.000	Nationwide Mutual Insurance Company.....N.....
0140	Nationwide.....	31-1580283..	n/a.....	NWD 205 Vine, LLC.....	OH.....	NIA.....	NWD Investments, LLC.....	ownership.....	...100.000	Nationwide Mutual Insurance Company.....N.....
0140	Nationwide.....	31-1580283..	n/a.....	NWD 225 Nationwide, LLC.....	OH.....	NIA.....	NWD Investments, LLC.....	ownership.....	...100.000	Nationwide Mutual Insurance Company.....N.....
0140	Nationwide.....	31-1580283..	n/a.....	NWD 230 West, LLC.....	OH.....	NIA.....	NWD Investments, LLC.....	ownership.....	...100.000	Nationwide Mutual Insurance Company.....N.....
0140	Nationwide.....	31-1580283..	n/a.....	NWD 240 Nationwide, LLC.....	OH.....	NIA.....	NWD Investments, LLC.....	ownership.....	...100.000	Nationwide Mutual Insurance Company.....N.....
0140	Nationwide.....	31-1580283..	n/a.....	NWD 250 Brodbelt, LLC.....	OH.....	NIA.....	NWD Investments, LLC.....	ownership.....	...100.000	Nationwide Mutual Insurance Company.....N.....
0140	Nationwide.....	31-1580283..	n/a.....	NWD 250 West, LLC.....	OH.....	NIA.....	NWD Investments, LLC.....	ownership.....	...100.000	Nationwide Mutual Insurance Company.....N.....
0140	Nationwide.....	31-1580283..	n/a.....	NWD 265 Neil, LLC.....	OH.....	NIA.....	NWD Investments, LLC.....	ownership.....	...100.000	Nationwide Mutual Insurance Company.....N.....
0140	Nationwide.....	31-1580283..	n/a.....	NWD 275 Marconi, LLC.....	OH.....	NIA.....	NWD Investments, LLC.....	ownership.....	...100.000	Nationwide Mutual Insurance Company.....N.....
0140	Nationwide.....	31-1580283..	n/a.....	NWD 300 Neil, LLC.....	OH.....	NIA.....	NWD Investments, LLC.....	ownership.....	...100.000	Nationwide Mutual Insurance Company.....N.....
0140	Nationwide.....	31-1580283..	n/a.....	NWD 300 Spring, LLC.....	OH.....	NIA.....	NWD Investments, LLC.....	ownership.....	...100.000	Nationwide Mutual Insurance Company.....N.....
0140	Nationwide.....	31-1580283..	n/a.....	NWD 355 McConnell, LLC.....	OH.....	NIA.....	NWD Investments, LLC.....	ownership.....	...100.000	Nationwide Mutual Insurance Company.....N.....
0140	Nationwide.....	31-1580283..	n/a.....	NWD 425 Nationwide, LLC.....	OH.....	NIA.....	NWD Investments, LLC.....	ownership.....	...100.000	Nationwide Mutual Insurance Company.....N.....
0140	Nationwide.....	31-1580283..	n/a.....	NWD 500 Nationwide, LLC.....	OH.....	NIA.....	NWD Investments, LLC.....	ownership.....	...100.000	Nationwide Mutual Insurance Company.....N.....
0140	Nationwide.....	31-1580283..	n/a.....	NWD Arena Crossing, LLC.....	OH.....	NIA.....	NWD Investments, LLC.....	ownership.....	...100.000	Nationwide Mutual Insurance Company.....N.....
0140	Nationwide.....	31-1580283..	n/a.....	NWD Arena District I, LLC.....	OH.....	NIA.....	NWD Investments, LLC.....	ownership.....	...100.000	Nationwide Mutual Insurance Company.....N.....
0140	Nationwide.....	31-1580283..	n/a.....	NWD Arena District II, LLC.....	OH.....	NIA.....	NWD Investments, LLC.....	ownership.....	...100.000	Nationwide Mutual Insurance Company.....N.....
0140	Nationwide.....	31-1580283..	n/a.....	NWD Arena District MM, LLC.....	OH.....	NIA.....	NWD Investments, LLC.....	ownership.....	...100.000	Nationwide Mutual Insurance Company.....N.....
0140	Nationwide.....	31-1580283..	n/a.....	NWD Arena District PW, LLC.....	OH.....	NIA.....	NWD Investments, LLC.....	ownership.....	...100.000	Nationwide Mutual Insurance Company.....N.....
0140	Nationwide.....	31-1580283..	n/a.....	NWD Arena District V, LLC.....	OH.....	NIA.....	NWD Investments, LLC.....	ownership.....	...100.000	Nationwide Mutual Insurance Company.....N.....
0140	Nationwide.....	31-1580283..	n/a.....	NWD Athletic Club, LLC.....	OH.....	NIA.....	NWD Investments, LLC.....	ownership.....	...100.000	Nationwide Mutual Insurance Company.....N.....
0140	Nationwide.....	31-1580283..	n/a.....	NWD Brodbelt, LLC.....	OH.....	NIA.....	NWD Investments, LLC.....	ownership.....	...100.000	Nationwide Mutual Insurance Company.....N.....
0140	Nationwide.....	30-0876022..	n/a.....	NWD Franklinton, LLC.....	OH.....	NIA.....	Nationwide Realty Investors, Ltd.....	ownership.....	...80.000	Nationwide Mutual Insurance Company.....N.....	1.....
0140	Nationwide.....	31-4118665..	n/a.....	NWD HP, LLC.....	OH.....	NIA.....	NWD Investments, LLC.....	ownership.....	...75.000	Nationwide Mutual Insurance Company.....N.....	1.....
0140	Nationwide.....	31-1580283..	n/a.....	NWD Investments, LLC.....	OH.....	NIA.....	Nationwide Realty Investors, Ltd.....	ownership.....	...80.000	Nationwide Mutual Insurance Company.....N.....	1.....
0140	Nationwide.....	35-2642005..	n/a.....	NWGH, LLC.....	OH.....	NIA.....	Nationwide Realty Investors, Ltd.....	ownership.....	...75.000	Nationwide Mutual Insurance Company.....N.....	1.....
0140	Nationwide.....	85-1262262..	n/a.....	NW-Gator Walk, LLC.....	OH.....	NIA.....	Nationwide Mutual Insurance Company.....	ownership.....	...100.000	Nationwide Mutual Insurance Company.....N.....
0140	Nationwide.....	85-0524968..	NW-Groves, LLC.....	OH.....	NIA.....	Nationwide Mutual Fire Insurance Company...	ownership.....	...100.000	Nationwide Mutual Insurance Company.....N.....
0140	Nationwide.....	86-2431839..	n/a.....	NW-Hub13, LLC.....	OH.....	NIA.....	Nationwide Mutual Insurance Company.....	ownership.....	...100.000	Nationwide Mutual Insurance Company.....N.....
0140	Nationwide.....	47-2482818..	n/a.....	NW-Jasper WAG, LLC.....	OH.....	NIA.....	NW REI, LLC.....	ownership.....	...100.000	Nationwide Mutual Insurance Company.....N.....
0140	Nationwide.....	81-5146596..	n/a.....	NW-Logan, LLC.....	OH.....	NIA.....	NW REI, LLC.....	ownership.....	...100.000	Nationwide Mutual Insurance Company.....N.....
0140	Nationwide.....	87-1565013..	n/a.....	NW-Midtown, LLC.....	OH.....	NIA.....	NW REI, LLC.....	ownership.....	...100.000	Nationwide Mutual Insurance Company.....N.....
0140	Nationwide.....	84-2937171..	n/a.....	NW-Naples, LLC.....	OH.....	NIA.....	Nationwide Mutual Fire Insurance Company...	ownership.....	...100.000	Nationwide Mutual Insurance Company.....N.....
0140	Nationwide.....	85-1246853..	n/a.....	NW-Oakbrook, LLC.....	OH.....	NIA.....	Nationwide Life and Annuity Insurance Company	ownership.....	...100.000	Nationwide Mutual Insurance Company.....N.....

SCHEDULE Y

PART 1A - DETAIL OF INSURANCE HOLDING COMPANY SYSTEM

Q12.8

1	2	3	4	5	6	7	8	9	10	11	12	13	14	15	16
Group Code	Group Name	NAIC Company Code	ID Number	Federal RSSD	CIK	Name of Securities Exchange if Publicly Traded (U.S. or International)	Names of Parent, Subsidiaries or Affiliates	Domiciliary Location	Relationship to Reporting Entity	Directly Controlled by (Name of Entity/Person)	Type of Control (Ownership Board, Management, Attorney-in-Fact, Influence, Other)	If Control is Ownership Provide Percentage	Ultimate Controlling Entity(ies)/Person(s)	Is an SCA Filing Required? (Y/N)	*
0140	Nationwide.....		83-2260477..	n/a.....			NW-ORBPD, LLC.....	OH.....	NIA.....	NW REI (NMFIC), LLC.....	ownership.....	...100.000	Nationwide Mutual Insurance Company.....	...N.....	
0140	Nationwide.....		83-0849392..	n/a.....			NW-Park Place, LLC.....	OH.....	NIA.....	Nationwide Life Insurance Company.....	ownership.....	...100.000	Nationwide Mutual Insurance Company.....	...N.....	
0140	Nationwide.....		47-1740812..	n/a.....			NW-Peachtree, LLC.....	OH.....	NIA.....	NW REI, LLC.....	ownership.....	...100.000	Nationwide Mutual Insurance Company.....	...N.....	
0140	Nationwide.....		46-2469044..	n/a.....			NW-Portales, LLC.....	OH.....	NIA.....	NW REI, LLC.....	ownership.....	...100.000	Nationwide Mutual Insurance Company.....	...N.....	
0140	Nationwide.....		47-2449044..	n/a.....			NW-Promenade at Madison, LLC.....	OH.....	NIA.....	NW REI, LLC.....	ownership.....	...100.000	Nationwide Mutual Insurance Company.....	...N.....	
0140	Nationwide.....		83-2173918..	n/a.....			NW-Radius, LLC.....	OH.....	NIA.....	NW REI (NLIC), LLC.....	ownership.....	...100.000	Nationwide Mutual Insurance Company.....	...N.....	
0140	Nationwide.....		87-1367836..	n/a.....			NW-Rancho, LLC.....	OH.....	NIA.....	Nationwide Life Insurance Company.....	ownership.....	...100.000	Nationwide Mutual Insurance Company.....	...N.....	
0140	Nationwide.....		86-3702669..	n/a.....			NW-RPG Cranberry, LLC.....	OH.....	NIA.....	Nationwide Mutual Insurance Company.....	ownership.....	...100.000	Nationwide Mutual Insurance Company.....	...N.....	
0140	Nationwide.....		87-0890277..	n/a.....			NW-Ruby, LLC.....	OH.....	NIA.....	Nationwide Life Insurance Company.....	ownership.....	...100.000	Nationwide Mutual Insurance Company.....	...N.....	
0140	Nationwide.....		84-4326171..	n/a.....			NW-Southbank, LLC.....	OH.....	NIA.....	Nationwide Mutual Insurance Company.....	ownership.....	...100.000	Nationwide Mutual Insurance Company.....	...N.....	
0140	Nationwide.....		81-3212025..	n/a.....			NW-Springfield, LLC.....	OH.....	NIA.....	Nationwide Mutual Insurance Company.....	ownership.....	...100.000	Nationwide Mutual Insurance Company.....	...N.....	
0140	Nationwide.....		85-0536537..	n/a.....			NW-Sweetwater, LLC.....	OH.....	NIA.....	Nationwide Life Insurance Company.....	ownership.....	...100.000	Nationwide Mutual Insurance Company.....	...N.....	
0140	Nationwide.....		46-5764783..	n/a.....			NW-Tyson, LLC.....	OH.....	NIA.....	NW REI, LLC.....	ownership.....	...100.000	Nationwide Mutual Insurance Company.....	...N.....	
0140	Nationwide.....		81-1603024..	n/a.....			NW REI (NLAIC), LLC.....	OH.....	NIA.....	Nationwide Life and Annuity Insurance Company.....	ownership.....	...100.000	Nationwide Mutual Insurance Company.....	...N.....	
0140	Nationwide.....		81-1619428..	n/a.....			NW REI (NLIC), LLC.....	OH.....	NIA.....	Nationwide Life Insurance Company.....	ownership.....	...100.000	Nationwide Mutual Insurance Company.....	...N.....	
0140	Nationwide.....		81-1861190..	n/a.....			NW REI (NMFIC), LLC.....	OH.....	NIA.....	Nationwide Mutual Fire Insurance Company.....	ownership.....	...100.000	Nationwide Mutual Insurance Company.....	...N.....	
0140	Nationwide.....		31-0947092..	n/a.....			OCH Company, LLC.....	OH.....	NIA.....	Nationwide Realty Investors, Ltd.....	ownership.....	...100.000	Nationwide Mutual Insurance Company.....	...N.....	
			26-0263012..	n/a.....			Old Track Street Owners Association, Inc.....	OH.....	OTH.....	Other non-Nationwide.....	n/a.....		Other non-Nationwide.....	...N.....	2.....
0140	Nationwide.....	13999..	27-1712056..	n/a.....			Olentangy Reinsurance, LLC.....	VT.....	IA.....	Nationwide Life and Annuity Insurance Company.....	ownership.....	...100.000	Nationwide Mutual Insurance Company.....	...N.....	
0140	Nationwide.....		47-1923444..	n/a.....			Nationwide Agent Risk Purchasing Group, Inc. (fka On Your Side Nationwide Insurance Agency, Inc.).....	OH.....	NIA.....	THI Holdings (Delaware), Inc.....	ownership.....	...100.000	Nationwide Mutual Insurance Company.....	...N.....	
0140	Nationwide.....		31-1486309..	n/a.....			Perimeter A, Ltd.....	OH.....	NIA.....	Nationwide Realty Investors, Ltd.....	ownership.....	...100.000	Nationwide Mutual Insurance Company.....	...N.....	
0140	Nationwide.....		20-4939866..	n/a.....			Rail Street Parking, LLC.....	OH.....	NIA.....	NRI Equity Land Investments, LLC.....	ownership.....	...100.000	Nationwide Mutual Insurance Company.....	...N.....	
0140	Nationwide.....		75-2938844..	n/a.....			Registered Investment Advisors Services, Inc.....	TX.....	NIA.....	Nationwide Financial Services, Inc.....	ownership.....	...100.000	Nationwide Mutual Insurance Company.....	...N.....	
0140	Nationwide.....		82-0549218..	n/a.....			Retention Alternatives Ltd.....	BMU.....	IA.....	Nationwide Mutual Fire Insurance Company.....	ownership.....	...100.000	Nationwide Mutual Insurance Company.....	...N.....	
0140	Nationwide.....		31-1486309..	n/a.....			Rivulon Hotel I, LLC.....	OH.....	NIA.....	NRI-Rivulon, LLC.....	ownership.....	...100.000	Nationwide Mutual Insurance Company.....	...N.....	
0140	Nationwide.....		31-1486309..	n/a.....			Rivulon Hotel II, LLC.....	OH.....	NIA.....	NRI-Rivulon, LLC.....	ownership.....	...100.000	Nationwide Mutual Insurance Company.....	...N.....	
0140	Nationwide.....	15580..	31-1117969..	n/a.....			Scottsdale Indemnity Company.....	OH.....	IA.....	Nationwide Mutual Insurance Company.....	ownership.....	...100.000	Nationwide Mutual Insurance Company.....	...N.....	
0140	Nationwide.....	41297..	31-1024978..	n/a.....			Scottsdale Insurance Company.....	OH.....	IA.....	Nationwide Mutual Insurance Company.....	ownership.....	...100.000	Nationwide Mutual Insurance Company.....	...N.....	
0140	Nationwide.....	10672..	86-0835870..	n/a.....			Scottsdale Surplus Lines Insurance Company.....	AZ.....	IA.....	Scottsdale Insurance Company.....	ownership.....	...100.000	Nationwide Mutual Insurance Company.....	...N.....	
			20-3541511..	n/a.....			The Madison Club.....	CA.....	OTH.....	Other non-Nationwide.....	n/a.....		Other non-Nationwide.....	...N.....	2.....
0140	Nationwide.....		31-1610040..	n/a.....			The Waterfront Partners, LLC.....	OH.....	NIA.....	Nationwide Realty Investors, Ltd.....	ownership.....	...50.000	Nationwide Mutual Insurance Company.....	...N.....	1.....

SCHEDULE Y

PART 1A - DETAIL OF INSURANCE HOLDING COMPANY SYSTEM

1	2	3	4	5	6	7	8	9	10	11	12	13	14	15	16
Group Code	Group Name	NAIC Company Code	ID Number	Federal RSSD	CIK	Name of Securities Exchange if Publicly Traded (U.S. or International)	Names of Parent, Subsidiaries or Affiliates	Domiciliary Location	Relationship to Reporting Entity	Directly Controlled by (Name of Entity/Person)	Type of Control (Ownership Board, Management, Attorney-in-Fact, Influence, Other)	If Control is Ownership Provide Percentage	Ultimate Controlling Entity(ies)/Person(s)	Is an SCA Filing Required? (Y/N)	*
0140	Nationwide.....	52-2031677..	n/a.....	THI Holdings (Delaware), Inc.....	DE.....	NIA.....	Nationwide Mutual Insurance Company.....	ownership.....100.000	Nationwide Mutual Insurance Company.....Y.....
0140	Nationwide.....	36269...	86-0619597..	n/a.....	Titan Insurance Company.....	MI.....	IA.....	THI Holdings (Delaware), Inc.....	ownership.....100.000	Nationwide Mutual Insurance Company.....N.....
0140	Nationwide.....	75-1284530..	n/a.....	Titan Insurance Services, Inc.....	TX.....	IA.....	THI Holdings (Delaware), Inc.....	ownership.....100.000	Nationwide Mutual Insurance Company.....N.....
0140	Nationwide.....	33-0160222..	n/a.....	V.P.I. Services, Inc.....	CA.....	IA.....	Veterinary Pet Insurance Company.....	ownership.....100.000	Nationwide Mutual Insurance Company.....N.....
0140	Nationwide.....	42285...	95-3750113..	n/a.....	Veterinary Pet Insurance Company.....	OH.....	IA.....	Scottsdale Insurance Company.....	ownership.....100.000	Nationwide Mutual Insurance Company.....N.....
0140	Nationwide.....	42889...	34-1394913..	n/a.....	Victoria Fire & Casualty Company.....	OH.....	IA.....	THI Holdings (Delaware), Inc.....	ownership.....100.000	Nationwide Mutual Insurance Company.....N.....
0140	Nationwide.....	10105...	34-1777972..	n/a.....	Victoria Select Insurance Company.....	OH.....	IA.....	Victoria Fire & Casualty Insurance Company...	ownership.....100.000	Nationwide Mutual Insurance Company.....N.....
0140	Nationwide.....	31-1486309..	n/a.....	Wellington Park, LLC.....	OH.....	NIA.....	Nationwide Realty Investors, Ltd.....	ownership.....100.000	Nationwide Mutual Insurance Company.....N.....

Aster	Explanation
1	For the purposes of this schedule, Nationwide presumed control of these entities because they are owned by at least 10% and are not wholly-owned by a Nationwide entity.
2	Other ownership indicates a non-ownership circumstance by a Nationwide entity.

NATIONWIDE INSURANCE COMPANY OF AMERICA
PART 1 - LOSS EXPERIENCE

Lines of Business	Current Year to Date			Prior Year to Date Direct Loss Percentage
	1 Direct Premiums Earned	2 Direct Losses Incurred	3 Direct Loss Percentage	
1. Fire.....	4,532,824	3,877,474	85.542	79.972
2. Allied lines.....	4,635,810	4,540,216	97.938	94.085
3. Farmowners multiple peril.....		2,148	0.000	
4. Homeowners multiple peril.....	259,150,203	211,220,728	81.505	87.947
5. Commercial multiple peril.....	28,327,848	13,979,419	49.349	49.722
6. Mortgage guaranty.....			0.000	
8. Ocean marine.....			0.000	
9. Inland marine.....	2,536,840	1,744,330	68.760	53.856
10. Financial guaranty.....			0.000	
11.1. Medical professional liability - occurrence.....			0.000	
11.2. Medical professional liability - claims-made.....			0.000	
12. Earthquake.....	1,371,061	23,282	1.698	32.072
13. Group accident and health.....			0.000	
14. Credit accident and health.....			0.000	
15. Other accident and health.....			0.000	
16. Workers' compensation.....	464,010	44,684	9.630	44.489
17.1. Other liability-occurrence.....	8,824,571	4,570,938	51.798	17.940
17.2. Other liability-claims made.....	59,642	26,777	44.896	
17.3. Excess workers' compensation.....			0.000	
18.1. Products liability-occurrence.....	1,442,049	145,282	10.075	9.595
18.2. Products liability-claims made.....			0.000	
19.1, 19.2. Private passenger auto liability.....	472,220,211	287,928,264	60.973	53.119
19.3, 19.4. Commercial auto liability.....	14,800,058	11,652,498	78.733	59.700
21. Auto physical damage.....	370,902,626	230,991,622	62.278	52.951
22. Aircraft (all perils).....			0.000	
23. Fidelity.....			0.000	
24. Surety.....			0.000	
26. Burglary and theft.....		(283)	0.000	1,595.652
27. Boiler and machinery.....	1,472,082	342,804	23.287	101.227
28. Credit.....			0.000	
29. International.....			0.000	
30. Warranty.....			0.000	
31. Reinsurance-nonproportional assumed property.....	XXX	XXX	XXX	XXX
32. Reinsurance-nonproportional assumed liability.....	XXX	XXX	XXX	XXX
33. Reinsurance-nonproportional assumed financial lines.....	XXX	XXX	XXX	XXX
34. Aggregate write-ins for other lines of business.....	0	0	0.000	
35. Totals.....	1,170,739,835	771,090,183	65.863	59.162
DETAILS OF WRITE-INS				
3401.			0.000	
3402.			0.000	
3403.			0.000	
3498. Sum. of remaining write-ins for Line 34 from overflow page.....	0	0	0.000	XXX
3499. Totals (Lines 3401 thru 3403 plus 3498) (Line 34).....	0	0	0.000	

PART 2 - DIRECT PREMIUMS WRITTEN

Lines of Business	1 Current Quarter	2 Current Year to Date	3 Prior Year Year to Date
1. Fire.....	1,451,494	4,628,507	4,952,732
2. Allied lines.....	1,531,916	4,744,130	4,554,978
3. Farmowners multiple peril.....			
4. Homeowners multiple peril.....	118,666,342	299,347,371	222,230,394
5. Commercial multiple peril.....	9,625,980	29,647,578	28,660,940
6. Mortgage guaranty.....			
8. Ocean marine.....			
9. Inland marine.....	3,507,092	7,608,081	4,926,195
10. Financial guaranty.....			
11.1. Medical professional liability - occurrence.....			
11.2. Medical professional liability - claims made.....			
12. Earthquake.....	549,998	1,466,153	1,292,463
13. Group accident and health.....			
14. Credit accident and health.....			
15. Other accident and health.....			
16. Workers' compensation.....	524,258	1,069,414	134,138
17.1. Other liability-occurrence.....	3,302,295	9,595,325	8,116,266
17.2. Other liability-claims made.....	42,909	138,105	
17.3. Excess workers' compensation.....			
18.1. Products liability-occurrence.....	558,495	1,621,981	1,420,102
18.2. Products liability-claims made.....			
19.1 19.2. Private passenger auto liability.....	163,008,886	471,452,332	463,667,430
19.3 19.4. Commercial auto liability.....	6,460,256	15,454,566	13,986,411
21. Auto physical damage.....	133,189,473	379,372,122	356,012,086
22. Aircraft (all perils).....			
23. Fidelity.....			
24. Surety.....			
26. Burglary and theft.....			(280)
27. Boiler and machinery.....	581,864	1,608,318	1,361,293
28. Credit.....			
29. International.....			
30. Warranty.....			
31. Reinsurance-nonproportional assumed property.....	XXX	XXX	XXX
32. Reinsurance-nonproportional assumed liability.....	XXX	XXX	XXX
33. Reinsurance-nonproportional assumed financial lines.....	XXX	XXX	XXX
34. Aggregate write-ins for other lines of business.....	0	0	0
35. Totals.....	443,001,258	1,227,753,983	1,111,315,148
DETAILS OF WRITE-INS			
3401.			
3402.			
3403.			
3498. Sum. of remaining write-ins for Line 34 from overflow page.....	0	0	0
3499. Totals (Lines 3401 thru 3403 plus 3498) (Line 34).....	0	0	0

NATIONWIDE INSURANCE COMPANY OF AMERICA

SUPPLEMENTAL EXHIBITS AND SCHEDULES INTERROGATORIES

The following supplemental reports are required to be filed as part of your statement filing. However, in the event that your company does not transact the type of business for which the special report must be filed, your response of NO to the specific interrogatory will be accepted in lieu of filing a "NONE" report and a bar code will be printed below. If the supplement is required of your company but is not being filed for whatever reason, enter SEE EXPLANATION and provide an explanation following the interrogatory questions.

	Response
1. Will the Trusteed Surplus Statement be filed with the state of domicile and the NAIC with this statement?	<div>NO</div>
2. Will Supplement A to Schedule T (Medical Professional Liability Supplement) be filed with this statement?	<div>NO</div>
3. Will the Medicare Part D Coverage Supplement be filed with the state of domicile and the NAIC with this statement?	<div>NO</div>
4. Will the Director and Officer Insurance Coverage Supplement be filed with the state of domicile and the NAIC with this statement?	<div>NO</div>

Explanation:

1.

The data for this supplement is not required to be filed.
2.

The data for this supplement is not required to be filed.
3.

The data for this supplement is not required to be filed.
4.

The data for this supplement is not required to be filed.

Bar Code:



NATIONWIDE INSURANCE COMPANY OF AMERICA
Overflow Page for Write-Ins

Additional Write-ins for Assets:

	Current Statement Date			4 December 31, Prior Year Net Admitted Assets
	1 Assets	2 Nonadmitted Assets	3 Net Admitted Assets (Cols. 1 - 2)	
2504. Recoupment receivable.....	251,165	251,165	304,159
2505. Funds Held Equity Pools & Associations.....	1,306,225	1,306,225	1,404,078
2506. Deductible Receivables.....	33,931	7,884	26,047	26,181
2597. Summary of remaining write-ins for Line 25.....	1,591,321	7,884	1,583,437	1,734,418

Additional Write-ins for Liabilities:

	1 Current Statement Date	2 December 31, Prior Year
2504. State surcharge/recoupment payable.....	105,967	122,627
2505. Assumed reinsurance balances payable.....	157,248
2597. Summary of remaining write-ins for Line 25.....	263,215	122,627

NATIONWIDE INSURANCE COMPANY OF AMERICA
SCHEDULE A - VERIFICATION

Real Estate

	1	2
	Year to Date	Prior Year Ended December 31
1. Book/adjusted carrying value, December 31 of prior year.....	0	
2. Cost of acquired:		
2.1 Actual cost at time of acquisition.....		
2.2 Additional investment made after acquisition.....		
3. Current year change in encumbrances.....		
4. Total gain (loss) on disposals.....		
5. Deduct amounts received on disposals.....		
6. Total foreign exchange change in book/adjusted carrying value.....		
7. Deduct current year's other-than-temporary impairment recognized.....		
8. Deduct current year's depreciation.....		
9. Book/adjusted carrying value at end of current period (Lines 1+2+3+4-5+6-7-8).....	0	0
10. Deduct total nonadmitted amounts.....		
11. Statement value at end of current period (Line 9 minus Line 10).....	0	0

NONE

SCHEDULE B - VERIFICATION

Mortgage Loans

	1	2
	Year to Date	Prior Year Ended December 31
1. Book value/recorded investment excluding accrued interest, December 31 of prior year.....	0	
2. Cost of acquired:		
2.1 Actual cost at time of acquisition.....		
2.2 Additional investment made after acquisition.....		
3. Capitalized deferred interest and other.....		
4. Accrual of discount.....		
5. Unrealized valuation increase (decrease).....		
6. Total gain (loss) on disposals.....		
7. Deduct amounts received on disposals.....		
8. Deduct amortization of premium and mortgage interest points and commitment fees.....		
9. Total foreign exchange change in book value/recorded investment excluding accrued interest.....		
10. Deduct current year's other-than-temporary impairment recognized.....		
11. Book value/recorded investment excluding accrued interest at end of current period (Lines 1+2+3+4+5+6-7-8-9-10).....	0	0
12. Total valuation allowance.....		
13. Subtotal (Line 11 plus Line 12).....	0	0
14. Deduct total nonadmitted amounts.....		
15. Statement value at end of current period (Line 13 minus Line 14).....	0	0

NONE

SCHEDULE BA - VERIFICATION

Other Long-Term Invested Assets

	1	2
	Year to Date	Prior Year Ended December 31
1. Book/adjusted carrying value, December 31 of prior year.....	3,252,400	1,777,384
2. Cost of acquired:		
2.1 Actual cost at time of acquisition.....		2,881,283
2.2 Additional investment made after acquisition.....	1,699,548	2,157,916
3. Capitalized deferred interest and other.....		
4. Accrual of discount.....		
5. Unrealized valuation increase (decrease).....		
6. Total gain (loss) on disposals.....		
7. Deduct amounts received on disposals.....		
8. Deduct amortization of premium and depreciation.....	534,401	3,564,183
9. Total foreign exchange change in book/adjusted carrying value.....		
10. Deduct current year's other-than-temporary impairment recognized.....		
11. Book/adjusted carrying value at end of current period (Lines 1+2+3+4+5+6-7-8-9-10).....	4,417,547	3,252,400
12. Deduct total nonadmitted amounts.....		
13. Statement value at end of current period (Line 11 minus Line 12).....	4,417,547	3,252,400

SCHEDULE D - VERIFICATION

Bonds and Stocks

	1	2
	Year to Date	Prior Year Ended December 31
1. Book/adjusted carrying value of bonds and stocks, December 31 of prior year.....	314,949,500	155,605,648
2. Cost of bonds and stocks acquired.....	79,096,730	231,007,887
3. Accrual of discount.....	201,074	198,722
4. Unrealized valuation increase (decrease).....	964,338	(5,462,846)
5. Total gain (loss) on disposals.....	(253,944)	5,549,598
6. Deduct consideration for bonds and stocks disposed of.....	41,880,499	70,833,320
7. Deduct amortization of premium.....	1,136,612	1,239,809
8. Total foreign exchange change in book/adjusted carrying value.....		
9. Deduct current year's other-than-temporary impairment recognized.....		
10. Total investment income recognized as a result of prepayment penalties and/or acceleration fees.....	754,836	123,620
11. Book/adjusted carrying value at end of current period (Lines 1+2+3+4+5-6-7+8-9+10).....	352,695,423	314,949,500
12. Deduct total nonadmitted amounts.....		
13. Statement value at end of current period (Line 11 minus Line 12).....	352,695,423	314,949,500

SCHEDULE D - PART 1B

Showing the Acquisitions, Dispositions and Non-Trading Activity
During the Current Quarter for all Bonds and Preferred Stock by NAIC Designation

QSI02

NAIC Designation	1 Book/Adjusted Carrying Value Beginning of Current Quarter	2 Acquisitions During Current Quarter	3 Dispositions During Current Quarter	4 Non-Trading Activity During Current Quarter	5 Book/Adjusted Carrying Value End of First Quarter	6 Book/Adjusted Carrying Value End of Second Quarter	7 Book/Adjusted Carrying Value End of Third Quarter	8 Book/Adjusted Carrying Value December 31 Prior Year
BONDS								
1. NAIC 1 (a).....	259,500,970	7,630,388	7,078,550	467,622	251,824,552	259,500,970	260,520,430	256,542,489
2. NAIC 2 (a).....	77,792,829	16,290,915	3,458,979	(314,176)	66,077,860	77,792,829	90,310,589	57,407,255
3. NAIC 3 (a).....	994,500	878,763		(8,859)	968,598	994,500	1,864,404	999,756
4. NAIC 4 (a).....							0	
5. NAIC 5 (a).....							0	
6. NAIC 6 (a).....							0	
7. Total Bonds.....	338,288,299	24,800,066	10,537,529	144,587	318,871,010	338,288,299	352,695,423	314,949,500
PREFERRED STOCK								
8. NAIC 1.....							0	
9. NAIC 2.....							0	
10. NAIC 3.....							0	
11. NAIC 4.....							0	
12. NAIC 5.....							0	
13. NAIC 6.....							0	
14. Total Preferred Stock.....	0	0	0	0	0	0	0	0
15. Total Bonds and Preferred Stock.....	338,288,299	24,800,066	10,537,529	144,587	318,871,010	338,288,299	352,695,423	314,949,500

(a) Book/Adjusted Carrying Value column for the end of the current reporting period includes the following amount of short-term and cash equivalent bonds by NAIC designation:

NAIC 1 \$.....0; NAIC 2 \$.....0; NAIC 3 \$.....0; NAIC 4 \$.....0; NAIC 5 \$.....0; NAIC 6 \$.....0.

NATIONWIDE INSURANCE COMPANY OF AMERICA
SCHEDULE DA - PART 1

Short-Term Investments					
	1 Book/Adjusted Carrying Value	2 Par Value	3 Actual Cost	4 Interest Collected Year To Date	5 Paid for Accrued Interest Year To Date
9199999.....		X			

NONE

SCHEDULE DA - VERIFICATION

Short-Term Investments		
	1 Year To Date	2 Prior Year Ended December 31
1. Book/adjusted carrying value, December 31 of prior year.....06,784,833
2. Cost of short-term investments acquired.....		
3. Accrual of discount.....		
4. Unrealized valuation increase (decrease).....		
5. Total gain (loss) on disposals.....		
6. Deduct consideration received on disposals.....	6,784,833
7. Deduct amortization of premium.....		
8. Total foreign exchange change in book/adjusted carrying value.....		
9. Deduct current year's other-than-temporary impairment recognized.....		
10. Book/adjusted carrying value at end of current period (Lines 1+2+3+4+5-6-7+8-9).....00
11. Deduct total nonadmitted amounts.....		
12. Statement value at end of current period (Line 10 minus Line 11).....00

Sch. DB - Pt. A - Verification
NONE

Sch. DB - Pt. B - Verification
NONE

Sch. DB - Pt. C - Sn. 1
NONE

Sch. DB - Pt. C - Sn. 2
NONE

Sch. DB - Verification
NONE

NATIONWIDE INSURANCE COMPANY OF AMERICA
SCHEDULE E - PART 2 - VERIFICATION

Cash Equivalents

	1	2
	Year To Date	Prior Year Ended December 31
1. Book/adjusted carrying value, December 31 of prior year.....	15,843,905	
2. Cost of cash equivalents acquired.....	140,474,585	178,475,737
3. Accrual of discount.....		
4. Unrealized valuation increase (decrease).....		
5. Total gain (loss) on disposals.....		
6. Deduct consideration received on disposals.....	116,495,661	162,631,832
7. Deduct amortization of premium.....		
8. Total foreign exchange change in book/ adjusted carrying value.....		
9. Deduct current year's other-than-temporary impairment recognized.....		
10. Book/adjusted carrying value at end of current period (Lines 1+2+3+4+5-6-7+8-9).....	39,822,829	15,843,905
11. Deduct total nonadmitted amounts.....		
12. Statement value at end of current period (Line 10 minus Line 11).....	39,822,829	15,843,905

Sch. A Pt. 2
NONE

Sch. A Pt. 3
NONE

Sch. B - Pt. 2
NONE

Sch. B - Pt. 3
NONE

Sch. BA - Pt. 2
NONE

Sch. BA - Pt. 3
NONE

SCHEDULE D - PART 3

Showing all Long-Term Bonds and Stocks ACQUIRED During Current Quarter

1		2			3	4	5			6	7	8	9		10
CUSIP Identification		Description			Foreign	Date Acquired	Name of Vendor			Number of Shares of Stock	Actual Cost	Par Value	Paid for Accrued Interest and Dividends		NAIC Designation, NAIC Designation Modifier and SVO Administrative Symbol
Bonds - Industrial and Miscellaneous															
00206R	LJ	9	AT&T Inc Sr Nt	3.550%	09/15/55.....		09/09/2021.....	Tax Free Exchange.....			405,415	430,000	7,378	2.B FE.....	
015271	AT	6	Alexandria Real Estate Equity Sr Nt	2.....			07/14/2021.....	Suntrust Robinson Humprey Inc.....			205,454	195,000	462	2.A FE.....	
045054	AL	7	Ashtead Capital Inc Sr Sec Nt	4.250%	1.....		09/15/2021.....	Morgan Stanley & Co LLC.....			885,440	800,000	12,844	2.C FE.....	
045054	AP	8	Ashtead Capital Inc Sr Nt	2.450%	08/12.....		08/03/2021.....	JP Morgan Securities LLC.....			488,751	490,000		2.C FE.....	
07274N	AL	7	Bayer US Finance II LLC Sr Nt	4.375%	1.....		09/15/2021.....	Various.....			575,941	500,000	4,181	2.B FE.....	
084659	AV	3	Berkshire Hathaway Energy Sr Nt	3.700%.....			09/15/2021.....	Jefferies & Company Inc.....			571,395	500,000	3,186	1.G FE.....	
25179M	AX	1	Devon Energy Corp Sr Nt	5.250%	09/15/2.....		09/02/2021.....	Various.....			555,785	500,000	12,542	2.C FE.....	
25278X	AN	9	Diamondback Energy Inc Sr Nt	3.500%	12.....		09/15/2021.....	Barclays Capital Inc.....			542,635	500,000	5,153	2.C FE.....	
25746U	DG	1	Dominion Resources Inc Sr Nt Ser C	3.3.....			07/15/2021.....	Citigroup.....			329,988	300,000	3,038	2.B FE.....	
29364W	BA	5	Entergy Louisiana LLC Sec Nt	4.000%	03.....		07/15/2021.....	Bank of America BISD Dealer.....			236,972	200,000	2,756	1.F FE.....	
30034W	AB	2	Evergy Inc Sr Nt	2.900%	09/15/29.....		07/16/2021.....	Deutsche Bank Capital.....			639,792	600,000	6,042	2.B FE.....	
30231G	BK	7	Exxon Mobil Corp Sr Nt	3.482%	03/19/30.....		09/15/2021.....	Various.....			902,447	800,000	10,775	1.D FE.....	
33834D	AA	2	Five Corners Funding Trust Sr Nt	2.850.....			09/15/2021.....	Wells Fargo Securities LLC.....			320,082	300,000	2,898	1.G FE.....	
37045X	CY	0	General Motors Co Sr Nt	3.600%	06/21/3.....		07/15/2021.....	Goldman Sachs & Company.....			545,665	500,000	1,400	2.C FE.....	
37331N	AK	7	Georgia-Pacific LLC Sr Nt	2.300%	04/30.....		07/15/2021.....	Morgan Stanley & Co LLC.....			309,984	300,000	1,514	1.G FE.....	
38141G	YJ	7	Goldman Sachs Group Inc Sr Nt Fix to Flo			07/14/2021.....	Goldman Sachs & Company.....			500,000	500,000		1.F FE.....	
40434L	AG	0	HP Inc Sr Nt	2.650%	06/17/31.....		07/16/2021.....	Morgan Stanley & Co LLC.....			502,165	500,000	1,251	2.B FE.....	
44891A	BK	2	Hyundia Capital America Sr Nt	5.875%	0.....		09/02/2021.....	Various.....			1,152,511	1,000,000	24,479	2.A FE.....	
459200	KA	8	International Bus Machs Corp Sr Nt	3.5.....			09/16/2021.....	Goldman Sachs & Company.....			335,778	300,000	3,646	1.G FE.....	
50077L	BF	2	Kraft Heinz Foods Co Sr Nt	4.250%	03/0.....		07/19/2021.....	JP Morgan Securities LLC.....			878,763	770,000	12,726	3.A FE.....	
50540R	AQ	5	Laboratory Corp of America Sr Nt	3.600.....			09/02/2021.....	Various.....			478,248	443,350	1,596	2.B FE.....	
53227J	AC	8	Life Storage LP Sr Nt	2.200%	10/15/30.....		07/14/2021.....	Various.....			400,902	403,000	2,219	2.B FE.....	
573284	AV	8	Martin Marietta Materials Inc Sr Nt	2.....			07/14/2021.....	Citigroup.....			204,988	200,000	1,681	2.B FE.....	
62912X	AF	1	NGPL Pipeco LLC Sr Nt	4.875%	08/15/27.....		09/15/2021.....	Barclays Capital Inc.....			152,552	133,000	576	2.C FE.....	
637417	AL	0	National Retail Properties Inc Sr Nt	4.....			09/20/2021.....	Various.....			411,262	358,000	6,559	2.A FE.....	
65480C	AC	9	Nissan Motor Acc Co Sr Nt	1.850%	09/16.....		09/13/2021.....	Citigroup.....			499,880	500,000		2.C FE.....	
65480C	AD	7	Nissan Motor Acc Co Sr Nt	2.450%	09/15.....		09/13/2021.....	Citigroup.....			268,898	269,000		2.C FE.....	
682680	AW	3	ONEOK Inc Sr Nt	4.350%	03/15/29.....		07/14/2021.....	Goldman Sachs & Company.....			454,636	400,000	5,848	2.C FE.....	
89788K	AA	4	Truist Bank Sub Nt	2.250%	03/11/30.....		07/15/2021.....	Suntrust Robinson Humprey Inc.....			512,110	500,000	4,000	1.F FE.....	
91913Y	AW	0	Valero Energy Corp Sr Nt	4.000%	04/01/.....		09/17/2021.....	Various.....			1,156,101	1,040,000	19,308	2.B FE.....	
91914J	AB	8	Valero Energy Corp Sr Nt	4.500%	03/15/.....		09/16/2021.....	Suntrust Robinson Humprey Inc.....			221,369	195,000	79	2.B FE.....	
92277G	AU	1	Ventas Realty LP Sr Nt	3.000%	01/15/30.....		09/15/2021.....	Barclays Capital Inc.....			528,465	500,000	2,583	2.A FE.....	
92340L	AG	4	Vereit Operating Partner Sr Nt	2.850%.....			07/14/2021.....	Citigroup.....			529,780	500,000	1,227	2.B FE.....	
92840V	AE	2	Vistra Operations Co LLC 1st Lien	4.30.....			09/15/2021.....	JP Morgan Securities LLC.....			540,420	500,000	3,703	2.C FE.....	
92936U	AF	6	WP Carey Inc Sr Nt	3.850%	07/15/29.....		09/16/2021.....	MarketAxess.....			84,147	75,000	521	2.B FE.....	
92936U	AG	4	WP Carey Inc Sr Nt	2.400%	02/01/31.....		07/15/2021.....	Citigroup.....			506,175	500,000	5,600	2.B FE.....	
96950F	AQ	7	Williams Partners LP Sr Nt	3.900%	01/1.....		09/02/2021.....	Various.....			814,863	750,000	4,225	2.B FE.....	
00973R	AF	0	Aker BP ASA Nt	3.750%	01/15/30.....	D.....	09/15/2021.....	JP Morgan Securities LLC.....			326,085	300,000	1,938	2.C FE.....	
05578Q	AE	3	BPCE SA Sub Nt	4.875%	04/01/26.....	D.....	09/15/2021.....	Bank of America BISD Dealer.....			739,720	650,000	14,611	2.B FE.....	
11042C	AA	8	British Airways PTC Ser 2021-1 A PPT	2.....		C.....	07/21/2021.....	Various.....			1,440,700	1,435,000		1.F FE.....	
225313	AK	1	Credit Agricole SA Sub Nt	4.000%	01/10.....	D.....	07/14/2021.....	JP Morgan Securities LLC.....			328,038	300,000	200	2.A FE.....	
22535W	AH	0	Credit Agricole Sr Nt	1.247%	01/26/27.....	D.....	09/15/2021.....	Credit Agricole USA was Calyon.....			495,975	500,000	883	1.G FE.....	
225433	AC	5	Credit Suisse Group Fdg Ltd Sr Nt	3.75.....		D.....	09/02/2021.....	Credit Suisse Securities LLC.....			814,845	750,000	12,578	2.A FE.....	
456837	AV	5	ING Groep NV Sr Nt	1.726%	04/01/27.....	D.....	09/15/2021.....	Goldman Sachs & Company.....			507,075	500,000	3,979	1.G FE.....	

QE04

SCHEDULE D - PART 3

Showing all Long-Term Bonds and Stocks ACQUIRED During Current Quarter

1	2	3	4	5	6	7	8	9	10
CUSIP Identification	Description	Foreign	Date Acquired	Name of Vendor	Number of Shares of Stock	Actual Cost	Par Value	Paid for Accrued Interest and Dividends	NAIC Designation, NAIC Designation Modifier and SVO Administrative Symbol
83051G AS 7	Skandinaviska Enskilda Sr Nt 0.650% 09.....	D.....	08/31/2021.....	Morgan Stanley & Co LLC.....		1,497,870	1,500,000		1.E FE.....
3899999	Total - Bonds - Industrial and Miscellaneous.....					24,800,067	23,186,350	210,185	XXX
8399997	Total - Bonds - Part 3.....					24,800,067	23,186,350	210,185	XXX
8399999	Total - Bonds.....					24,800,067	23,186,350	210,185	XXX
9999999	Total - Bonds, Preferred and Common Stocks.....					24,800,067	XXX	210,185	XXX

SCHEDULE D - PART 4

Showing all Long-Term Bonds and Stocks SOLD, REDEEMED or Otherwise DISPOSED OF During Current Quarter

1	2		3	4	5	6	7	8	9	10	Change in Book/Adjusted Carrying Value					16	17	18	19	20	21	22
											11	12	13	14	15							
CUSIP Identification	Description		F o r e i g n	Disposal Date	Name of Purchaser	Number of Shares of Stock	Consideration	Par Value	Actual Cost	Prior Year Book/Adjusted Carrying Value	Unrealized Valuation Increase (Decrease)	Current Year's (Amortization) / Accretion	Current Year's Other-Than-Temporary Impairment Recognized	Total Change in B./A.C.V. (11+12-13)	Total Foreign Exchange Change in B./A.C.V.	Book/Adjusted Carrying Value at Disposal Date	Foreign Exchange Gain (Loss) on Disposal	Realized Gain (Loss) on Disposal	Total Gain (Loss) on Disposal	Bond Interest / Stock Dividends Received During Year	Stated Contractual Maturity Date	NAIC Designation, NAIC Designation Modifier and SVO Administrative Symbol

Bonds - U.S. Government

911760	LQ	7	Vendee Mtg Tr RMBS REMIC Ser 1998-2 Cl 1	09/01/2021.	Paydown		1,549	1,549	1,627	1,577		(28)		(28)		1,549			0	71	06/15/2028.	1.A
0599999.	Total - Bonds - U.S. Government.....						1,549	1,549	1,627	1,577	0	(28)	0	(28)	0	1,549	0	0	0	71	XXX	XXX

Bonds - U.S. Special Revenue and Special Assessment

3132CW	AU	8	FHLMC Pool #B0019 3.500% 06/25/34	09/01/2021.	Paydown		144,632	144,632	150,010	149,866		(5,235)		(5,235)		144,632			0	3,400	06/25/2034.	1.A
3132D5	6D	9	FHLMC Pool #SB8068 1.500% 10/25/35	09/01/2021.	Paydown		732,243	732,243	748,862	748,509		(16,266)		(16,266)		732,243			0	7,562	10/25/2035.	1.A
3132DW	BC	6	FHLMC Pool #SD8135 2.500% 03/25/51	09/01/2021.	Paydown		125,620	125,620	130,814			(5,194)		(5,194)		125,620			0	1,360	03/25/2051.	1.A
3133TC	6P	8	FHLMC Structured Ser 2008 M 7.000% 11/	09/01/2021.	Paydown		315	315	327	320		(5)		(5)		315			0	15	11/20/2027.	1.A
3138AE	J8	7	FNMA Pool #A1186 4.000% 04/25/41	09/01/2021.	Paydown		307,013	307,013	309,244	308,937		(1,923)		(1,923)		307,013			0	8,332	04/25/2041.	1.A
3140E8	FP	8	FNMA Pool #BA3773 3.000% 11/25/45	09/01/2021.	Paydown		630,428	630,428	641,904	641,201		(10,773)		(10,773)		630,428			0	12,344	11/25/2045.	1.A
3140KD	G4	6	FNMA Pool #BP5618 2.500% 06/25/50	09/01/2021.	Paydown		365,260	365,260	379,899	379,714		(14,454)		(14,454)		365,260			0	6,032	06/25/2050.	1.A
3140QD	6N	9	FNMA Pool #CA6276 2.000% 07/25/50	09/01/2021.	Paydown		238,574	238,574	243,980	243,906		(5,332)		(5,332)		238,574			0	3,188	07/25/2050.	1.A
3140X9	6Y	6	FNMA Pool #FM6286 2.500% 01/25/51	09/01/2021.	Paydown		35,431	35,431	36,951			(1,520)		(1,520)		35,431			0	363	01/25/2051.	1.A
31418C	7F	5	FNMA Pool #MA3593 4.500% 02/25/49	09/01/2021.	Paydown		68,487	68,487	71,361	71,258		(2,771)		(2,771)		68,487			0	2,038	02/25/2049.	1.A
31418D	2L	5	FNMA Pool #MA4378 2.000% 07/25/51	09/01/2021.	Paydown		149,445	149,445	150,472			(1,027)		(1,027)		149,445			0	566	07/25/2051.	1.A
31418D	CB	6	FNMA Pool #MA3665 4.500% 05/25/49	09/01/2021.	Paydown		134,927	134,927	141,189	141,053		(6,126)		(6,126)		134,927			0	3,914	05/25/2049.	1.A
31418D	XJ	6	FNMA Pool #MA4280 1.500% 03/25/51	09/01/2021.	Paydown		14,247	14,247	14,060			187		187		14,247			0	90	03/25/2051.	1.A
31418D	XL	1	FNMA Pool #MA4282 2.500% 03/25/51	09/01/2021.	Paydown		51,396	51,396	53,504			(2,108)		(2,108)		51,396			0	562	03/25/2051.	1.A
31419B	CT	0	FNMA Pool #AE0981 3.500% 03/25/41	09/01/2021.	Paydown		70,632	70,632	72,828	72,579		(1,947)		(1,947)		70,632			0	1,639	03/25/2041.	1.A
31419L	3D	3	FNMA Pool #AE9795 3.500% 11/25/40	09/01/2021.	Paydown		262,649	262,649	276,972	275,609		(12,959)		(12,959)		262,649			0	5,943	11/25/2040.	1.A
3199999.	Total - Bonds - U.S. Special Revenue and Special Assessments.....						3,331,299	3,331,299	3,422,377	3,032,952	0	(87,453)	0	(87,453)	0	3,331,299	0	0	0	57,348	XXX	XXX

Bonds - Industrial and Miscellaneous

00206R	MD	1	AT&T Inc Sr Nt 3.550% 09/15/55	09/09/2021.	Tax Free Exchange		405,415	430,000	405,297			119		119		405,415			0	7,378	09/15/2055.	2.B FE
06054M	AC	7	Banc of America Comm Mtg Tr CMBS Ser 201	09/01/2021.	Paydown		101,612	101,612	104,655	102,731		(1,119)		(1,119)		101,612			0	2,038	06/15/2049.	1.A FM
07332H	AA	4	Bayview Opport Mast Fund Trust RMBS Ser	09/28/2021.	Paydown		720,892	720,892	743,056	728,781		(7,889)		(7,889)		720,892			0	19,155	04/28/2055.	1.A FM
12593Y	BC	6	Comm Mortgage Trust CMBS Ser 2016-CR28 C	09/01/2021.	Paydown		230,806	230,806	237,724	233,172		(2,366)		(2,366)		230,806			0	5,407	02/10/2049.	1.A FM
126650	BP	4	CVS Health Corp LBASS PTC Nt 6.036% 12	07/10/2021.	Redemption 100.0000		13,228	13,228	15,458	14,379		(1,152)		(1,152)		13,228			0	466	12/10/2028.	2.B
126650	BP	4	CVS Health Corp LBASS PTC Nt 6.036% 12	09/10/2021.	Redemption 100.0000		26,655	26,655	31,151	28,976		(2,321)		(2,321)		26,655			0	1,140	12/10/2028.	2.B FE
20048E	AW	1	Comm Mortgage Trust CMBS Ser 2013-LC6 Cl	09/01/2021.	Paydown		928,043	928,043	923,512	926,937		1,106		1,106		928,043			0	18,803	01/10/2046.	1.A FM
233331	AV	9	DTE Energy Co Sr Nt 3.300% 06/15/22	07/07/2021.	Call 102.3300		3,069,900	3,000,000	3,081,586	3,021,009		(7,327)		(7,327)		3,013,681		(13,681)	(13,681)	125,450	06/15/2022.	2.B FE
41983P	AA	7	Hawaiian Airlines PTC Ser 2020-1A 7.37	09/15/2021.	Redemption 100.0000		67,430	67,430	76,617			(9,187)		(9,187)		67,430			0	2,486	09/15/2027.	1.G FE
61761Q	AC	7	Morgan Stanley BAML Tr CMBS Ser 2013-C8	09/01/2021.	Paydown		555,661	555,661	572,317	557,393		(1,732)		(1,732)		555,661			0	15,067	12/15/2048.	1.A FM

QE05

SCHEDULE D - PART 4

Showing all Long-Term Bonds and Stocks SOLD, REDEEMED or Otherwise DISPOSED OF During Current Quarter

1	2			3	4	5	6	7	8	9	10	Change in Book/Adjusted Carrying Value					16	17	18	19	20	21	22
												11	12	13	14	15							
CUSIP Identification	Description			F o r e i g n	Disposal Date	Name of Purchaser	Number of Shares of Stock	Consideration	Par Value	Actual Cost	Prior Year Book/Adjusted Carrying Value	Unrealized Valuation Increase (Decrease)	Current Year's (Amortization) / Accretion	Current Year's Other-Than-Temporary Impairment Recognized	Total Change in B./A.C.V. (11+12-13)	Total Foreign Exchange Change in B./A.C.V.	Book/Adjusted Carrying Value at Disposal Date	Foreign Exchange Gain (Loss) on Disposal	Realized Gain (Loss) on Disposal	Total Gain (Loss) on Disposal	Bond Interest / Stock Dividends Received During Year	Stated Contractual Maturity Date	NAIC Designation, NAIC Designation Modifier and SVO Administrative Symbol
842400 GF 4	Southern CA Edison Co 1st Mtg Bd 1.845			..	08/01/2021.	Paydown.....	714,286714,286714,286714,2860714,286013,179	02/01/2022.	1.G FE.....
89177B AA 3	Towd Point Mortgage Tr RMBS Ser 2019-1 C			..	09/01/2021.	Paydown.....	45,78445,78445,50545,53824624645,78401,147	03/25/2058.	1.A FM.....
90270R BF 0	UBS-Barclays Comm Mort Tr CMBS Ser 2012-			..	09/01/2021.	Paydown.....	220,224220,224218,349219,894330330220,22404,078	12/10/2045.	1.A FM.....
94989E AF 4	Wells Fargo Comm Mtg Tr CMBS Ser 2015-LC			..	09/01/2021.	Paydown.....	160,962160,962161,798161,111(149)(149)160,96203,187	04/15/2050.	1.A FM.....
38999999.	Total - Bonds - Industrial and Miscellaneous.....						7,260,8987,215,5837,331,3116,754,2070(31,441)0(31,441)07,204,6790(13,681)(13,681)218,981	XXX	XXX
83999997.	Total - Bonds - Part 4.....						10,593,74610,548,43110,755,3159,788,7360(118,922)0(118,922)010,537,5270(13,681)(13,681)276,400	XXX	XXX
83999999.	Total - Bonds.....						10,593,74610,548,43110,755,3159,788,7360(118,922)0(118,922)010,537,5270(13,681)(13,681)276,400	XXX	XXX
99999999.	Total - Bonds, Preferred and Common Stocks.....						10,593,746	XXX10,755,3159,788,7360(118,922)0(118,922)010,537,5270(13,681)(13,681)276,400	XXX	XXX

Sch. DB - Pt. A - Sn. 1
NONE

Sch. DB - Pt. B - Sn. 1
NONE

Sch. DB - Pt. D - Sn. 1
NONE

Sch. DB - Pt. D - Sn. 2
NONE

Sch. DB - Pt. E
NONE

Sch. DL - Pt. 1
NONE

Sch. DL - Pt. 2
NONE

NATIONWIDE INSURANCE COMPANY OF AMERICA
SCHEDULE E - PART 1 - CASH

Month End Depository Balances

1	2	3	4	5	Book Balance at End of Each Month During Current Quarter			9
					6	7	8	
Depository	Code	Rate of Interest	Amount of Interest Received During Current Quarter	Amount or interest Accrued at Current Statement Date	First Month	Second Month	Third Month	*
Open Depositories								
Bank of New York Mellon..... New York, NY126,725351,905152,471	XXX
0199999. Total Open Depositories.....	XXX	XXX00126,725351,905152,471	XXX
0399999. Total Cash on Deposit.....	XXX	XXX00126,725351,905152,471	XXX
0599999. Total Cash.....	XXX	XXX00126,725351,905152,471	XXX

SCHEDULE E - PART 2 - CASH EQUIVALENTS

Show Investments Owned End of Current Quarter

1	2	3	4	5	6	7	8	9
CUSIP	Description	Code	Date Acquired	Rate of Interest	Maturity Date	Book/Adjusted Carrying Value	Amount of Interest Due & Accrued	Amount Received During Year
Qualified Cash Pools Under SSAP No. 2R								
	Nationwide Cash Management Co.....		09/30/2021.....0.037	39,822,829	2,314
87999999	Total - Qualified Cash Pools Under SSAP No. 2R.....				39,822,82902,314
99999999	Total - Cash Equivalents				39,822,82902,314