



QUARTERLY STATEMENT
AS OF JUNE 30, 2021
OF THE CONDITION AND AFFAIRS OF THE
AultCare Insurance Company

NAIC Group Code	4805 (Current Period)	4805 (Prior Period)	NAIC Company Code	77216	Employer's ID Number	341624818
Organized under the Laws of	Ohio		State of Domicile or Port of Entry	OH		
Country of Domicile	United States of America					
Licensed as business type:	Life, Accident & Health[X] Dental Service Corporation[] Other[]		Property/Casualty[] Vision Service Corporation[] Is HMO Federally Qualified? Yes[X] No[] N/A[]		Hospital, Medical & Dental Service or Indemnity[] Health Maintenance Organization[]	
Incorporated/Organized	08/15/1989		Commenced Business	11/01/1989		
Statutory Home Office	2600 Sixth Street SW (Street and Number)		Canton, OH, 44710 (City or Town, State, Country and Zip Code)			
Main Administrative Office			2600 Sixth Street SW (Street and Number)			
	Canton, OH, 44710 (City or Town, State, Country and Zip Code)				(330)363-4057 (Area Code) (Telephone Number)	
Mail Address	2600 Sixth Street SW (Street and Number or P.O. Box)		Canton, OH, 44710 (City or Town, State, Country and Zip Code)			
Primary Location of Books and Records			2600 Sixth Street SW (Street and Number)			
	Canton, OH, 44710 (City or Town, State, Country and Zip Code)				(330)363-4057 (Area Code) (Telephone Number)	
Internet Web Site Address	www.aultcare.com					
Statutory Statement Contact	Jeffrey Alan Scheatzle (Name)		(330)363-4057 (Area Code)(Telephone Number)(Extension)			
	jscheatzle@aultcare.com (E-Mail Address)		(330)363-5012 (Fax Number)			

OFFICERS

Name	Title
Rick L. Haines	President
Joseph J. Feltes	Secretary
Mark D. Wright	Treasurer
Edward J. Roth III	Executive Vice President

OTHERS

DIRECTORS OR TRUSTEES

Michael E. Hanke
Edward J. Roth III
Michael A. Rich M.D.
John B. Humphrey Jr., M.D.
Allen Rovner M.D.
Mark N. Rose M.D.

Gregory A. Haban M.D.
Rick L. Haines
Mark D. Wright
Darryl J. Dillenback
Joseph J. Feltes Esq.
Barbara Hammontree-Bennett

State of Ohio
County of Stark ss

The officers of this reporting entity being duly sworn, each depose and say that they are the described officers of said reporting entity, and that on the reporting period stated above, all of the herein described assets were the absolute property of the said reporting entity, free and clear from any liens or claims thereon, except as herein stated, and that this statement, together with related exhibits, schedules and explanations therein contained, annexed or referred to, is a full and true statement of all the assets and liabilities and of the condition and affairs of the said reporting entity as of the reporting period stated above, and of its income and deductions therefrom for the period ended, and have been completed in accordance with the NAIC Annual Statement Instructions and Accounting Practices and Procedures manual except to the extent that: (1) state law may differ; or, (2) that state rules or regulations require differences in reporting not related to accounting practices and procedures, according to the best of their information, knowledge and belief, respectively. Furthermore, the scope of this attestation by the described officers also includes the related corresponding electronic filing with the NAIC, when required, that is an exact copy (except for formatting differences due to electronic filing) of the enclosed statement. The electronic filing may be requested by various regulators in lieu of or in addition to the enclosed statement.

(Signature)	(Signature)	(Signature)
Rick L. Haines	Joseph J. Feltes	Mark D. Wright
(Printed Name)	(Printed Name)	(Printed Name)
1.	2.	3.
President	Secretary	Treasurer
(Title)	(Title)	(Title)
Subscribed and sworn to before me this	a. Is this an original filing?	Yes[X] No[]
day of , 2021	b. If no,	
	1. State the amendment number	
	2. Date filed	
	3. Number of pages attached	

(Notary Public Signature)

DIRECTORS OR TRUSTEES (continued)

Todd Hawke
Richard V. Maggiore

John Westerbeck M.D.

ASSETS

		Current Statement Date			4
		1	2	3	
		Assets	Nonadmitted Assets	Net Admitted Assets (Cols. 1 - 2)	December 31 Prior Year Net Admitted Assets
1.	Bonds	36,523,008		36,523,008	35,101,081
2.	Stocks:				
2.1	Preferred stocks				
2.2	Common stocks	16,047,736		16,047,736	15,631,120
3.	Mortgage loans on real estate:				
3.1	First liens				
3.2	Other than first liens				
4.	Real estate:				
4.1	Properties occupied by the company (less \$.....0 encumbrances)				
4.2	Properties held for the production of income (less \$.....0 encumbrances)				
4.3	Properties held for sale (less \$.....0 encumbrances)				
5.	Cash (\$.....15,756,707), cash equivalents (\$.....0) and short-term investments (\$.....90,076)	15,846,782		15,846,782	14,818,026
6.	Contract loans (including \$.....0 premium notes)				
7.	Derivatives				
8.	Other invested assets	22,189,198		22,189,198	17,931,910
9.	Receivables for securities				
10.	Securities lending reinvested collateral assets				
11.	Aggregate write-ins for invested assets				
12.	Subtotals, cash and invested assets (Lines 1 to 11)	90,606,724		90,606,724	83,482,138
13.	Title plants less \$.....0 charged off (for Title insurers only)				
14.	Investment income due and accrued	220,262		220,262	217,656
15.	Premiums and considerations:				
15.1	Uncollected premiums and agents' balances in the course of collection	8,726,784		8,726,784	8,086,311
15.2	Deferred premiums, agents' balances and installments booked but deferred and not yet due (including \$.....0 earned but unbilled premiums)				
15.3	Accrued retrospective premiums (\$.....0) and contracts subject to redetermination (\$.....0)				
16.	Reinsurance:				
16.1	Amounts recoverable from reinsurers	(143,838)		(143,838)	4,152,538
16.2	Funds held by or deposited with reinsured companies				
16.3	Other amounts receivable under reinsurance contracts				
17.	Amounts receivable relating to uninsured plans				
18.1	Current federal and foreign income tax recoverable and interest thereon				
18.2	Net deferred tax asset				
19.	Guaranty funds receivable or on deposit				
20.	Electronic data processing equipment and software	655,021		655,021	66,588
21.	Furniture and equipment, including health care delivery assets (\$.....0)				
22.	Net adjustments in assets and liabilities due to foreign exchange rates				
23.	Receivables from parent, subsidiaries and affiliates				
24.	Health care (\$.....3,367,261) and other amounts receivable	6,335,499	2,968,238	3,367,261	4,630,705
25.	Aggregate write-ins for other-than-invested assets				
26.	TOTAL assets excluding Separate Accounts, Segregated Accounts and Protected Cell Accounts (Lines 12 to 25)	106,400,452	2,968,238	103,432,214	100,635,938
27.	From Separate Accounts, Segregated Accounts and Protected Cell Accounts				
28.	TOTAL (Lines 26 and 27)	106,400,452	2,968,238	103,432,214	100,635,938
DETAILS OF WRITE-INS					
1101.				
1102.				
1103.				
1198.	Summary of remaining write-ins for Line 11 from overflow page				
1199.	TOTALS (Lines 1101 through 1103 plus 1198) (Line 11 above)				
2501.				
2502.				
2503.				
2598.	Summary of remaining write-ins for Line 25 from overflow page				
2599.	TOTALS (Lines 2501 through 2503 plus 2598) (Line 25 above)				

LIABILITIES, CAPITAL AND SURPLUS

		Current Period			Prior Year
		1 Covered	2 Uncovered	3 Total	4 Total
1.	Claims unpaid (less \$.986,400 reinsurance ceded)	19,464,121		19,464,121	25,014,121
2.	Accrued medical incentive pool and bonus amounts	147,355		147,355	228,863
3.	Unpaid claims adjustment expenses	242,600		242,600	242,600
4.	Aggregate health policy reserves, including the liability of \$.0 for medical loss ratio rebate per the Public Health Service Act				
5.	Aggregate life policy reserves				
6.	Property/casualty unearned premium reserve				
7.	Aggregate health claim reserves				
8.	Premiums received in advance	8,003,069		8,003,069	3,932,271
9.	General expenses due or accrued	9,142,248		9,142,248	5,252,260
10.1	Current federal and foreign income tax payable and interest thereon (including \$.0 on realized gains (losses))	2,049,532		2,049,532	1,853,674
10.2	Net deferred tax liability	655,310		655,310	655,310
11.	Ceded reinsurance premiums payable	4,192,451		4,192,451	5,433,578
12.	Amounts withheld or retained for the account of others				
13.	Remittances and items not allocated				
14.	Borrowed money (including \$.0 current) and interest thereon \$.0 (including \$.0 current)				
15.	Amounts due to parent, subsidiaries and affiliates	1,672,837		1,672,837	1,518,956
16.	Derivatives				
17.	Payable for securities				
18.	Payable for securities lending				
19.	Funds held under reinsurance treaties with (\$.0 authorized reinsurers, \$.0 unauthorized reinsurers and \$.0 certified reinsurers)				
20.	Reinsurance in unauthorized and certified (\$.0) companies				
21.	Net adjustments in assets and liabilities due to foreign exchange rates				
22.	Liability for amounts held under uninsured plans				
23.	Aggregate write-ins for other liabilities (including \$.0 current)				
24.	Total liabilities (Lines 1 to 23)	45,569,523		45,569,523	44,131,633
25.	Aggregate write-ins for special surplus funds	X X X	X X X		
26.	Common capital stock	X X X	X X X	1,000,000	1,000,000
27.	Preferred capital stock	X X X	X X X		
28.	Gross paid in and contributed surplus	X X X	X X X	18,387,534	18,387,534
29.	Surplus notes	X X X	X X X		
30.	Aggregate write-ins for other-than-special surplus funds	X X X	X X X		
31.	Unassigned funds (surplus)	X X X	X X X	38,475,158	37,116,772
32.	Less treasury stock, at cost:				
32.1	.0 shares common (value included in Line 26 \$.0)	X X X	X X X		
32.2	.0 shares preferred (value included in Line 27 \$.0)	X X X	X X X		
33.	Total capital and surplus (Lines 25 to 31 minus Line 32)	X X X	X X X	57,862,692	56,504,305
34.	Total Liabilities, capital and surplus (Lines 24 and 33)	X X X	X X X	103,432,214	100,635,938
DETAILS OF WRITE-INS					
2301.					
2302.					
2303.					
2398.	Summary of remaining write-ins for Line 23 from overflow page				
2399.	TOTALS (Lines 2301 through 2303 plus 2398) (Line 23 above)				
2501.	Health Insurance Tax	X X X	X X X		
2502.		X X X	X X X		
2503.		X X X	X X X		
2598.	Summary of remaining write-ins for Line 25 from overflow page	X X X	X X X		
2599.	TOTALS (Lines 2501 through 2503 plus 2598) (Line 25 above)	X X X	X X X		
3001.		X X X	X X X		
3002.		X X X	X X X		
3003.		X X X	X X X		
3098.	Summary of remaining write-ins for Line 30 from overflow page	X X X	X X X		
3099.	TOTALS (Lines 3001 through 3003 plus 3098) (Line 30 above)	X X X	X X X		

STATEMENT OF REVENUE AND EXPENSES

		Current Year To Date		Prior Year To Date	Prior Year Ended December 31
		1 Uncovered	2 Total	3 Total	4 Total
1.	Member Months	X X X	518,530	532,796	1,055,082
2.	Net premium income (including \$.....0 non-health premium income)	X X X	124,822,776	130,200,438	259,386,323
3.	Change in unearned premium reserves and reserves for rate credits	X X X			
4.	Fee-for-service (net of \$.....0 medical expenses)	X X X			
5.	Risk revenue	X X X			
6.	Aggregate write-ins for other health care related revenues	X X X			
7.	Aggregate write-ins for other non-health revenues	X X X			
8.	Total revenues (Lines 2 to 7)	X X X	124,822,776	130,200,438	259,386,323
Hospital and Medical:					
9.	Hospital/medical benefits		55,744,173	58,968,093	118,990,052
10.	Other professional services				
11.	Outside referrals		13,352,245	13,507,906	23,355,120
12.	Emergency room and out-of-area		1,928,943	2,031,032	4,053,730
13.	Prescription drugs		19,397,949	18,760,527	39,924,223
14.	Aggregate write-ins for other hospital and medical		19,820,335	20,686,585	39,422,951
15.	Incentive pool, withhold adjustments and bonus amounts		150,522	149,294	297,528
16.	Subtotal (Lines 9 to 15)		110,394,167	114,103,437	226,043,603
Less:					
17.	Net reinsurance recoveries		6,772,994	7,544,870	12,907,347
18.	Total hospital and medical (Lines 16 minus 17)		103,621,172	106,558,567	213,136,256
19.	Non-health claims (net)				
20.	Claims adjustment expenses, including \$.....3,324,431 cost containment expenses		4,231,015	4,309,175	8,101,648
21.	General administrative expenses		17,533,773	20,557,906	37,657,844
22.	Increase in reserves for life and accident and health contracts (including \$.....0 increase in reserves for life only)				
23.	Total underwriting deductions (Lines 18 through 22)		125,385,960	131,425,648	258,895,748
24.	Net underwriting gain or (loss) (Lines 8 minus 23)	X X X	(563,183)	(1,225,210)	490,575
25.	Net investment income earned		590,736	507,302	988,841
26.	Net realized capital gains (losses) less capital gains tax of \$.....126,925		507,700	2,978,298	3,022,234
27.	Net investment gains or (losses) (Lines 25 plus 26)		1,098,436	3,485,600	4,011,075
28.	Net gain or (loss) from agents' or premium balances charged off [(amount recovered \$.....0) (amount charged off \$.....0)]				
29.	Aggregate write-ins for other income or expenses				
30.	Net income or (loss) after capital gains tax and before all other federal income taxes (Lines 24 plus 27 plus 28 plus 29)	X X X	535,253	2,260,390	4,501,650
31.	Federal and foreign income taxes incurred	X X X	68,933	808,702	1,098,115
32.	Net income (loss) (Lines 30 minus 31)	X X X	466,320	1,451,688	3,403,535
DETAILS OF WRITE-INS					
0601.	X X X			
0602.	X X X			
0603.	X X X			
0698.	Summary of remaining write-ins for Line 6 from overflow page	X X X			
0699.	TOTALS (Lines 0601 through 0603 plus 0698) (Line 6 above)	X X X			
0701.	X X X			
0702.	X X X			
0703.	X X X			
0798.	Summary of remaining write-ins for Line 7 from overflow page	X X X			
0799.	TOTALS (Lines 0701 through 0703 plus 0798) (Line 7 above)	X X X			
1401.	Reinsurance Claims		19,820,335	20,686,585	39,422,951
1402.				
1403.				
1498.	Summary of remaining write-ins for Line 14 from overflow page				
1499.	TOTALS (Lines 1401 through 1403 plus 1498) (Line 14 above)		19,820,335	20,686,585	39,422,951
2901.				
2902.				
2903.				
2998.	Summary of remaining write-ins for Line 29 from overflow page				
2999.	TOTALS (Lines 2901 through 2903 plus 2998) (Line 29 above)				

STATEMENT OF REVENUE AND EXPENSES (Continued)

		1	2	3
		Current Year To Date	Prior Year To Date	Prior Year Ended December 31
CAPITAL & SURPLUS ACCOUNT				
33.	Capital and surplus prior reporting year	56,504,305	54,944,174	54,944,174
34.	Net income or (loss) from Line 32	466,320	1,451,688	3,403,535
35.	Change in valuation basis of aggregate policy and claim reserves			
36.	Change in net unrealized capital gains (losses) less capital gains tax of \$.....144,482	652,927	(2,751,503)	(1,254,767)
37.	Change in net unrealized foreign exchange capital gain or (loss)			
38.	Change in net deferred income tax	144,482	(912,876)	(876,288)
39.	Change in nonadmitted assets	94,658	1,283,239	287,652
40.	Change in unauthorized and certified reinsurance			
41.	Change in treasury stock			
42.	Change in surplus notes			
43.	Cumulative effect of changes in accounting principles			
44.	Capital Changes:			
44.1	Paid in			
44.2	Transferred from surplus (Stock Dividend)			
44.3	Transferred to surplus			
45.	Surplus adjustments:			
45.1	Paid in			
45.2	Transferred to capital (Stock Dividend)			
45.3	Transferred from capital			
46.	Dividends to stockholders			
47.	Aggregate write-ins for gains or (losses) in surplus			
48.	Net change in capital and surplus (Lines 34 to 47)	1,358,386	(929,452)	1,560,131
49.	Capital and surplus end of reporting period (Line 33 plus 48)	57,862,692	54,014,722	56,504,305
DETAILS OF WRITE-INS				
4701.	0			
4702.	0			
4703.			
4798.	Summary of remaining write-ins for Line 47 from overflow page			
4799.	TOTALS (Lines 4701 through 4703 plus 4798) (Line 47 above)			

CASH FLOW

		1	2	3
		Current	Prior	Prior
		Year	Year	Year Ended
		To Date	To Date	December 31
Cash from Operations				
1.	Premiums collected net of reinsurance	127,011,976	129,256,679	259,256,858
2.	Net investment income	710,462	567,311	1,109,081
3.	Miscellaneous income			
4.	TOTAL (Lines 1 to 3)	127,722,437	129,823,990	260,365,939
5.	Benefit and loss related payments	103,598,202	103,124,745	213,919,451
6.	Net transfers to Separate Accounts, Segregated Accounts and Protected Cell Accounts			
7.	Commissions, expenses paid and aggregate write-ins for deductions	17,874,799	22,697,908	46,000,592
8.	Dividends paid to policyholders			
9.	Federal and foreign income taxes paid (recovered) net of \$.....0 tax on capital gains (losses)		(181,454)	(181,453)
10.	TOTAL (Lines 5 through 9)	121,473,001	125,641,199	259,738,589
11.	Net cash from operations (Line 4 minus Line 10)	6,249,436	4,182,791	627,350
Cash from Investments				
12.	Proceeds from investments sold, matured or repaid:			
12.1	Bonds	3,342,195	3,000,556	8,914,838
12.2	Stocks	1,000,000	5,953,208	5,953,208
12.3	Mortgage loans			
12.4	Real estate			
12.5	Other invested assets		1,743,531	3,544,518
12.6	Net gains or (losses) on cash, cash equivalents and short-term investments			
12.7	Miscellaneous proceeds	377,280		740,113
12.8	TOTAL investment proceeds (Lines 12.1 to 12.7)	4,719,475	10,697,296	19,152,677
13.	Cost of investments acquired (long-term only):			
13.1	Bonds	4,847,482	3,341,125	12,172,703
13.2	Stocks	263,025	6,367,026	8,455,148
13.3	Mortgage loans			
13.4	Real estate			
13.5	Other invested assets	4,017,808		500,000
13.6	Miscellaneous applications	377,287	347	327
13.7	TOTAL investments acquired (Lines 13.1 to 13.6)	9,505,603	9,708,498	21,128,178
14.	Net increase (or decrease) in contract loans and premium notes			
15.	Net cash from investments (Line 12.8 minus Line 13.7 and Line 14)	(4,786,128)	988,798	(1,975,501)
Cash from Financing and Miscellaneous Sources				
16.	Cash provided (applied):			
16.1	Surplus notes, capital notes			
16.2	Capital and paid in surplus, less treasury stock			
16.3	Borrowed funds			
16.4	Net deposits on deposit-type contracts and other insurance liabilities			
16.5	Dividends to stockholders			
16.6	Other cash provided (applied)	(434,552)	489,860	1,274,117
17.	Net cash from financing and miscellaneous sources (Line 16.1 through 16.4 minus Line 16.5 plus Line 16.6)	(434,552)	489,860	1,274,117
RECONCILIATION OF CASH, CASH EQUIVALENTS AND SHORT-TERM INVESTMENTS				
18.	Net change in cash, cash equivalents and short-term investments (Line 11, plus Lines 15 and 17)	1,028,756	5,661,449	(74,035)
19.	Cash, cash equivalents and short-term investments:			
19.1	Beginning of year	14,818,026	14,892,061	14,892,061
19.2	End of period (Line 18 plus Line 19.1)	15,846,782	20,553,510	14,818,026
Note: Supplemental Disclosures of Cash Flow Information for Non-Cash Transactions:				
20.0001	Cumulative effect of changes in accounting principles			

EXHIBIT OF PREMIUMS, ENROLLMENT AND UTILIZATION

	1	Comprehensive (Hospital & Medical)		4	5	6	7	8	9	10
		2	3							
	Total	Individual	Group	Medicare Supplement	Vision Only	Dental Only	Federal Employees Health Benefits Plan	Title XVIII Medicare	Title XIX Medicaid	Other
Total Members at end of:										
1. Prior Year	85,886	5,330	29,180	1,120		8,181	1,354			40,721
2. First Quarter	85,879	5,277	28,460	1,148		8,070	1,269			41,655
3. Second Quarter	87,132	5,320	28,396	1,165		8,051	1,255			42,945
4. Third Quarter										
5. Current Year										
6. Current Year Member Months	518,530	31,825	170,261	6,907		48,389	7,651			253,497
Total Member Ambulatory Encounters for Period:										
7. Physician	71,605	11,892	55,025				4,688			
8. Non-Physician	139,386	24,250	105,189				9,947			
9. Total	210,991	36,142	160,214				14,635			
10. Hospital Patient Days Incurred	4,980	976	3,316				688			
11. Number of Inpatient Admissions	924	145	716				63			
12. Health Premiums Written (a)	132,037,156	19,345,432	79,288,588	1,212,966		1,235,932	6,578,612			24,375,626
13. Life Premiums Direct										
14. Property/Casualty Premiums Written										
15. Health Premiums Earned	132,037,156	19,345,432	79,288,588	1,212,966		1,235,932	6,578,612			24,375,626
16. Property/Casualty Premiums Earned										
17. Amount Paid for Provision of Health Care Services	109,252,680	16,137,626	67,391,493	970,002		930,958	6,562,762			17,259,840
18. Amount Incurred for Provision of Health Care Services	110,394,167	17,430,529	64,443,872	970,002		930,958	6,798,472			19,820,335

(a) For health premiums written: amount of Medicare Title XVIII exempt from state taxes or fees \$.0.

CLAIMS UNPAID AND INCENTIVE POOL, WITHHOLD AND BONUS (Reported and Unreported)

Aging Analysis of Unpaid Claims						
1	2	3	4	5	6	7
Account	1 - 30 Days	31 - 60 Days	61 - 90 Days	91 - 120 days	Over 120 Days	Total
0199999 Individually Listed Claims Unpaid						
0299999 Aggregate Accounts Not Individually Listed - Uncovered						
0399999 Aggregate Accounts Not Individually Listed - Covered						
0499999 Subtotals						
0599999 Unreported claims and other claim reserves						20,450,521
0699999 Total Amounts Withheld						
0799999 Total Claims Unpaid						20,450,521
0899999 Accrued Medical Incentive Pool And Bonus Amounts						147,355

UNDERWRITING AND INVESTMENT EXHIBIT

ANALYSIS OF CLAIMS UNPAID-PRIOR YEAR-NET OF REINSURANCE

Line of Business		Claims Paid Year to Date		Liability End of Current Quarter		5	6
		1	2	3	4	Claims Incurred in Prior Years (Columns 1+3)	Estimated Claim Reserve and Claim Liability Dec 31 of Prior Year
		On Claims Incurred Prior to January 1 of Current Year	On Claims Incurred During the Year	On Claims Unpaid Dec 31 of Prior Year	On Claims Incurred During the Year		
1.	Comprehensive (hospital & medical)	16,662,255	66,465,410	2,017,203	10,185,548	18,679,458	17,877,125
2.	Medicare Supplement		970,002				
3.	Dental only	128,579	802,379	18,573	128,579	147,152	147,152
4.	Vision only						
5.	Federal Employees Health Benefits Plan	1,312,057	5,250,705	284,236	1,059,981	1,596,293	1,319,844
6.	Title XVIII - Medicare						
7.	Title XIX - Medicaid						
8.	Other health	4,682,900	12,576,940	987,100	4,782,900	5,670,000	5,670,000
9.	Health subtotal (Lines 1 to 8)	22,785,790	86,065,437	3,307,112	16,157,008	26,092,903	25,014,121
10.	Healthcare receivables (a)	59,440				59,440	
11.	Other non-health						
12.	Medical incentive pools and bonus amounts	232,030			147,355	232,030	228,863
13.	Totals (Lines 9 - 10 + 11 + 12)	22,958,381	86,065,437	3,307,112	16,304,364	26,265,493	25,242,984

(a) Excludes \$.00 loans or advances to providers not yet expensed.

Notes to Financial Statement

CoSECTION A

1. SUMMARY OF SIGNIFICANT ACCOUNTING POLICIES

A. Accounting Practices

The accompanying financial statements of AultCare Insurance Company are presented on the basis of accounting practices prescribed or permitted by the Ohio Department of Insurance.

The Ohio Department of Insurance recognizes only statutory accounting prescribed or permitted by the State of Ohio for determining and reporting the financial condition and results of operations of an insurance company, for determining its solvency under the Ohio Insurance Law. The National Association of Insurance Commissioners’ (NAIC) Accounting Practices and Procedures manual, (NAIC SAP) has been adopted as a component of prescribed or permitted practices by the state of Ohio.

Note 1A	SSAP #	F/S Page #	F/S Line #	2021	2020
Net Income					
(1) Company state basis (Page 4, Line 32, Columns 2 & 4)	xxx	xxx	xxx	\$466,320	\$3,403,535
(2) State prescribed practices that increase/(decrease) NAIC SAP Not Applicable				\$ -	\$ -
(3) State permitted practices that increase/(decrease) NAIC SAP Not Applicable				\$ -	\$ -
(4) NAIC SAP (1-2-3=4)	xxx	xxx	xxx	\$466,320	\$3,403,535
Capital and Surplus					
(5) Company state basis (Page3, Line 33, Columns 3 &4)	xxx	xxx	xxx	\$59,092,522	\$56,504,305
(6) State prescribed practices that increase/(decrease) NAIC SAP Not Applicable				\$ -	\$ -
(7) State permitted practices that increase/(decrease) NAIC SAP Not Applicable				\$ -	\$ -
(8) NAIC SAP (5-6-7=8)	xxx	xxx	xxx	\$59,092,522	\$56,504,305

B. Use of Estimates in the Preparation of the Statutory Basis Financial Statements

The preparation of financial statement in conformity with Statutory Accounting Principles requires management to make estimates and assumptions that affect the reported amounts of assets and liabilities. It also requires disclosure of contingent assets and liabilities at the date of the financial statements and the reported amounts of revenue and expenses during the period. Actual results could differ from those estimates.

C. Accounting Policy

- (1) Short-term investments are stated at amortized cost.
- (2) Bonds were stated at amortized cost using the straight-line method.
- (3) Common stock is stated at market value.
- (4) The Company had no preferred stock during the periods reported.
- (5) The Company had no mortgage loans during the periods reported.
- (6) The Company had no loan backed securities during the periods reported.
- (7) The Company has investments in subsidiaries and affiliates with a book adjusted carrying value totaling \$19,189,198. Of this amount, \$58,731 is invested in McKinley Life Agency, Ltd, which is carried at GAAP equity value. In addition, \$8,596,862 is invested in AultCare Corporation, which is carried at statutory value. The remaining \$10,533,604 invested in West Tuscarawas Property Management, carried at GAAP equity.
- (8) The Company had no investments in joint ventures, partnerships, or limited liability companies during the periods reported.
- (9) The Company had no derivatives during the periods reported.
- (10) The Company does not utilize anticipated investment income as a factor in the premium deficiency calculation.
- (11) Claims unpaid and claim adjustment expenses include an amount based on individual case estimates and loss reports and an amount based on past experience for losses incurred but not reported (IBNR). Such liabilities are necessarily based on assumptions and estimates. While management believes the amounts to be adequate, the ultimate liabilities may be in excess of or less than the amounts provided. The methods for making such estimates and for establishing the resulting liabilities are continually

Notes to Financial Statement

- reviewed and any adjustments are reflected in the period determined. The Company obtains an estimate of the liabilities for unpaid losses from its independent actuary calculations quarterly.
- (12) The Company has not modified its capitalization policy from the prior period.
- (13) The Company uses current year received pharmacy rebates as a percentage of current year claim expense to estimate current rebate receivable off of the most recent quarter's pharmacy claim expense in accordance with SSAP. 84

D. Going Concern

Management has concluded that there is no substantial doubt of the Company's ability to continue as a going concern.

2. ACCOUNTING CHANGES AND CORRECTIONS OF ERRORS

- A. The Company had no change in accounting principles and/or correction of errors during the periods reported.

3. BUSINESS COMBINATIONS AND GOODWILL

- A. The Company had no business combinations accounted for under the statutory purchase method during the periods reported.
- B. The Company was not part of any merger during the periods reported.
- C. The Company had no assumption of reinsurance during the periods reported.
- D. An impairment loss was not recognized during the periods reported.

4. DISCONTINUED OPERATIONS

- A-D. The Company did not discontinue any operations during the periods reported.

5. INVESTMENTS

- A. The Company had no investment in Mortgage Loan during the periods reported.
- B. The Company had no investments in Restructured Loans during the periods reported.
- C. The Company had no investments in Reverse Mortgages during the periods reported.
- D. The Company had no investments in Loan-Backed Securities during the periods reported.
- E. The Company had no investments in Repurchase Agreements during the periods reported.
- F. The Company had no repurchase agreements accounted for a secured borrowing.
- G. The Company had no reverse repurchase agreements accounted for a secured borrowing.
- H. The Company had no repurchase agreements accounted for as sales.
- I. The Company had no reverse repurchase agreements accounted for as sales
- J. The Company owns \$10,533,604 worth of shares in West Tuscarawas Property Management, an affiliate company that hold certain real estate properties for the production of income.
- K. The Company has no investments in Low-Income Housing Tax Credits.
- L. The Company had no restricted assets.
- M. The Company had no Working Capital Finance Investments during the periods reported.
- N. The Company was not involved in any Offsetting and Netting of Assets and Liabilities during the periods reported.
- O. The Company had no 5*Securities during the periods reported.
- P. The Company had no short sale securities.
- Q. The Company had no prepayment penalty or acceleration fees.

6. JOINT VENTURES, PARTNERSHIPS AND LIMITED LIABILITY COMPANIES

- A. The Company had no investments in joint ventures, partnerships or limited liability companies during the periods reported.
- B. The Company had no impaired investments in joint ventures, partnerships or limited liability companies during the periods reported.

7. INVESTMENT INCOME

- A-B. The Company did not exclude any investment income due and accrued during the periods reported.

8. DERIVATIVE INSTRUMENTS

- A-B. The Company did not own derivative financial instruments during the periods reported.

9. INCOME TAXES

- A. The components of the net deferred tax asset/ (liability) at June 30, 2021 are as follows:

1. (reported in thousands)		6/30/2021			6/30/2020			Change		
		(1)	(2)	(3)	(4)	(5)	(6)	(7)	(8)	(9)
		Ordinary	Capital	Col 1+2 Total	Ordinary	Capital	Col 4+5 Total	Col 1-4 Ordinary	Col 2-5 Capital	Col 7+8 Total
(a)	Gross Deferred Tax Assets	\$ 641	\$ -	\$ 641	\$ 672	\$ -	\$ 672	\$ (31)	\$ -	\$ (31)
(b)	Statutory Valuation Allowance Adjustment	\$ -	\$ -	\$ -	\$ -	\$ -	\$ -	\$ -	\$ -	\$ -
(c)	Adjusted Gross Deferred Tax Assets(1a-1b)	\$ 641	\$ -	\$ 641	\$ 672	\$ -	\$ 672	\$ (31)	\$ -	\$ (31)
(d)	Deferred Tax Assets Nonadmitted	\$ -	\$ -	\$ -	\$ -	\$ -	\$ -	\$ -	\$ -	\$ -
(e)	Subtotal (Net Deferred Tax Assets) (1c-1d)	\$ 641	\$ -	\$ 641	\$ 672	\$ -	\$ 672	\$ (31)	\$ -	\$ (31)
(f)	Deferred Tax Liabilities	\$ 6	\$1,290	\$ 1,296	\$ 27	\$ 752	\$ 779	\$ (21)	\$ 538	\$ 517
(g)	Net Admitted Deferred Tax Asset/(Net Deferred Tax Liability) (1e-1f)	\$ 635	\$(1,290)	\$ (655)	\$ 645	\$(752)	\$ 107	\$ (10)	\$(538)	\$ (548)
2. (reported in thousands)		6/30/2021			6/30/2020			Change		
Admission Calculation Components		(1)	(2)	(3)	(4)	(5)	(6)	(7)	(8)	(9)

Notes to Financial Statement

SSAP No. 101		Ordinary	Capital	Col 1+2 Total	Ordinary	Capital	Col 4+5 Total	Col 1-4 Ordinary	Col 2-5 Capital	Col 7+8 Total
(a)	Federal Income Taxes Paid in Prior Years Recoverable Through Loss Carrybacks	\$ -	\$ -	\$ -	\$ -	\$ -	\$ -	\$ -	\$ -	\$ -
(b)	Adjusted Gross Deferred Tax Assets Expected to be Realized (Excluding the Amount of Deferred Tax Assets from 2(a) above) After Application of the Threshold Limitation. (The lessor of 2(b)1 and 2(b)2 Below)	\$ 641	\$ -	\$ 641	\$ 672	\$ -	\$ 672	\$ (31)	\$ -	\$ (31)

Cont. Note 9 A 2

	1	Adjusted Gross Deferred Tax Assets Expected to be Realized Following the Balance Sheet Date	\$ 641	\$ -	\$ 641	\$ 672	\$ -	\$ 672	\$ (31)	\$ -	\$ (31)
	2	Adjusted Gross Deferred Tax Assets Allowed per Limitation Threshold	\$ 8,476	XXX	\$8,476	\$8,242	XXX	\$8,242	\$ 234	XXX	\$234
(c)		Adjusted Gross Deferred Tax Assets (Excluding The Amount of Deferred Tax Assets from 2(a) and 2(b) above) Offset by Gross Deferred Tax Liabilities	\$ (6)	\$(1,290)	\$(1,296)	\$ (27)	\$(752)	\$(779)	\$ 21	\$(538)	\$(517)
(d)		Deferred Tax Assets Admitted as the Result of Application of SSAP No. 101 Total (2(a) + 2(b) + 2(c))	\$ (635)	\$(1,290)	\$ (655)	\$ 645	\$(752)	\$ (107)	\$ (10)	\$(538)	\$ (548)
3. (reported in thousands)			2021		2020						
(a)		Ratio Percentage Used to Determine Recovery Period and Threshold Limitation Amount	430%		430%						
(b)		Amount of Adjusted Capital and Surplus Used to Determine Recovery Period and Threshold Limitation in 2(b)2 Above	\$59,093		\$56,504						
4. (reported in thousands)			6/30/2021			6/30/2020			Change		
Impact of Tax Planning Strategies			(1)	(2)	(3)	(4)	(5)	(6)	(7)	(8)	(9)
			Ordinary	Capital	Col 1+2 Total	Ordinary	Capital	Col 4+5 Total	Col 1-4 Ordinary	Col 2-5 Capital	Col 7+8 Total
(a)		Adjusted Gross DTA's (% of total adjusted gross DTA's)	\$ 641	\$ -	\$ 641	\$ 672	\$ -	\$ 672	\$ (31)	\$ -	\$ (31)
(b)		Net Admitted Adjusted Gross DTA's (% of total net admitted adjusted gross DTA's)	\$ 641	\$ -	\$ 641	\$ -	\$ -	\$ 641	\$ -	\$ -	\$ 641
(c)		Does the Company's Tax Planning Strategies Include the Use of Reinsurance?	Yes	No X							

B. Not Applicable

C. Current Income Taxes Incurred consist of the following major components:

		(1) 6/30/2021	(2) 6/30/2020	(3) (Col 1-2) Change
1.	Current Income Tax			
(a)	Federal	\$ 1,853,674	\$970,458	\$ 1,085,318
(b)	Foreign	\$ -	\$ -	\$ -
(c)	Subtotal	\$ 1,853,674	\$970,458	\$ 1,085,318
(d)	Federal Income Tax on Net Capital Gains	\$ -	\$ -	\$ -
(e)	Utilization of Capital Loss Carry-Forwards	\$ -	\$ -	\$ -
(f)	Other	\$ -	\$ -	\$ -
(g)	Federal and Foreign Income Taxes Incurred	\$ 1,853,674	\$970,458	\$ 1,085,318
2.	Deferred Tax Assets			
(a)	Ordinary			
(1)	Discounting of Unpaid Losses	\$ 49,686	\$ 49,686	\$ -
(2)	Unearned Premium Reserve	\$ 165,156	\$ 260,531	\$ (95,375)
(3)	Policyholder Reserves	\$ 79,667	\$ 80,883	\$ (1,216)
(4)	Investments	\$ 346,349	\$ 281,249	\$ 65,100
(5)	Deferred Acquisition Costs	\$ -	\$ -	\$ -
(6)	Policyholder Dividends Accrual	\$ -	\$ -	\$ -
(7)	Fixed Assets	\$ -	\$ -	\$ -
(8)	Compensation and Benefits Accrual	\$ -	\$ -	\$ -
(9)	Pension Accrual	\$ -	\$ -	\$ -
(10)	Receivables – Allowance	\$ -	\$ -	\$ -
(11)	Net Operating Loss Carry-Forward	\$ -	\$ -	\$ -
(12)	Tax Credit Carry-Forward	\$ -	\$ -	\$ -
(13)	Other (including items <5% of total ordinary tax assets)	\$ 640,858	\$ 672,349	\$ (31,491)

Cont. Note 9 C 2

(14)	Subtotal	\$ 640,858	\$ 672,349	\$ (31,491)
(b)	Statutory valuation allowance adjustment	\$ -	\$ -	\$ -
(c)	Nonadmitted	\$ -	\$ -	\$ -
(d)	Admitted ordinary deferred tax assets (2a14- 2b-2c)	\$ 640,858	\$ 672,349	\$ (31,491)
(e)	Capital			
(1)	Net Capital Loss Carry-Forward	\$ -	\$ -	\$ -

Notes to Financial Statement

(2)	Subtotal	\$ -	\$ -	\$ -
(f)	Statutory valuation allowance adjustment	\$ -	\$ -	\$ -
(g)	Nonadmitted	\$ -	\$ -	\$ -
(h)	Admitted capital deferred tax assets (2e2 - 2f - 2g)	\$ -	\$ -	\$ -
(i)	Admitted deferred tax assets (2d + 2h)	\$ 640,858	\$ 672,349	\$ (31,491)
3.	Deferred Tax Liabilities			
(a)	Ordinary			
(1)	Investments	\$ 5,913	\$ 27,760	\$ (21,847))
(2)	Subtotal	\$ 5,913	\$ 27,760	\$ (21,847))
(b)	Capital	\$ -	\$ -	\$ -
(1)	Investments	\$ 1,290,255	\$ 751,577	\$ 538,678
(2)	Subtotal	\$ 1,290,255	\$ 751,577	\$ 538,678
(c)	Deferred tax liabilities (3a2 + 3b2)	\$ 1,296,168	\$ 779,337	\$ 516,831
4.	Net deferred tax assets/liabilities (2i - 3c)	\$ (655,310)	\$ (106,988)	\$ (548.322)

D. Among the more significant book to tax adjustments were the following:

	6/30/2021	Effective Tax Rate
Provision computed at statutory rate	\$ 1,104,014	24.5%
Change in nonadmitted assets	\$ -	0.0%
Tax exempt income, net of proration	\$ -	0.0%
Dividends received deduction, net of proration	\$ -	0.0%
Nondeductible expenses	\$ 881,427	19.6%
Elimination of IMR Amortization	\$ -	0.0%
Small Life Insurance Company Deduction	\$ -	0.0%
Prior year under (over) accrual	\$ 26,900	0.6%
Other	\$ (149,023)	-3.3%
Total statutory income tax expense (benefit)	\$ 1,863,318	41.4%
	3/31/2021	Effective Tax Rate
Federal and foreign income taxes incurred	\$ 1,885,165	41.9%
Realized capital gains (losses) tax	\$ -	0.0%
Change in net deferred income taxes	\$ (31,491)	-0.7%
Total statutory income tax expense (benefit)	\$ 1,853,674	41.2%

- E. Operating Loss and Tax Credit Carry forwards and Protective Tax Deposits
- (1) At June 30, 2021, the Company had no net operating loss carry forwards available to offset against future taxable income.
 - (2) The following are income taxes incurred in the current and prior years that will be available for recoupment in the event of future net losses:
 - (a) 2018 \$0
 - (b) 2019 \$0
 - (c) 2020 \$0
 - (3) The Company did not have any deposits admitted under Section 6603 of the Internal Revenue Service Code.
- F. The Company is included in a consolidated federal income tax return with the following affiliates: Aultra Administrative Group; North Central Medical Resources; Aultman Medical Group, Inc.; AultPlan LLC; and MainSite Solutions ASO, LLC.

The Company has a written agreement, approved by the Company’s Board of Directors, which sets forth the manner in which the total combined federal income tax is allocated to each entity in which is a party to the consolidation. In the event any federal Tax Benefit Item of the AultCare Companies for any taxable period after they cease being Members of the Consolidated Group is eligible to be carried back to a taxable period while the AultCare Companies were Members of the Consolidated Group, the AultCare Companies shall, where possible, elect to carry such amounts forward to subsequent taxable periods. If the AultCare Companies are required by law to carry back any such federal Tax Benefit Item, the AultCare Companies shall be entitled to a payment at the time and to the extent that such Tax Benefit Item reduces the federal income Tax liability of the Consolidated Group. For purposes of computing the amount of the payment described in this section, one or more federal Tax Benefit Items shall be considered to have reduced the Consolidated Group’s federal income Tax liability in a given taxable period by an amount equal to the difference, if any, between (i) the amount of the Consolidated Group’s federal income Tax liability for the taxable period computed without regard to such federal Tax Benefit Item or Items and (ii) the amount of the Consolidated Group’s federal income Tax liability for the taxable period computed with regard to such federal Tax Benefit Item or Items. For the avoidance of doubt, if the AultCare Companies are required to carry back a federal Tax Benefit Item, such federal Tax Benefit Item shall reduce the Consolidated Group’s federal income Tax liability only after all federal Tax Benefit Items of AultCare Holdings have been applied to reduce the Consolidated Group’s federal income Tax liability in such taxable period. Appropriate reconciliation payments shall be made in the event that it is subsequently determined that a Tax Benefit Item did not reduce the Consolidated Group’s federal income Tax liabilities,

Notes to Financial Statement

including by reason of any such Tax Benefit Item being subsequently disallowed in whole or in part or by reason of other Tax benefits becoming available.

10. INFORMATION CONCERNING PARENT, SUBSIDIARIES AND AFFILIATES

A, B, C, The Company had the following transactions with affiliates.
The Company is a party to a Master Services Agreement with Aultman Health Foundation, the ultimate controlling person, under which AHF provides the Company with certain professional management, administration, billing, purchasing, physical plant, and staffing services and support. The Company paid Aultman Health Foundation \$149,560 and \$270,303, respectively, for services provided under the Master Services Agreement as of June 30, 2021 and 2020, respectively.

The Company has a capitation arrangement with Aultman Hospital and has paid \$12,854,032 and \$14,394,280 in capitated claims for its commercial enrollees as of June 30, 2021 and 2020, respectively. The company paid claims to affiliated companies in the amount of \$6,415,474 as of June 30, 2021.

The Company also is a party to a Management and Administrative Services Agreement with AultCare Corporation under which AultCare Corporation provides the Company with certain specified services, including (among others) management and administrative services, provider networking services, marketing and sales services, and office facilities. The Company paid AultCare Corporation \$12,854,129 and \$11,863,427, respectively, for services provided under the Management and Administrative Services Agreement as of June 30, 2021 and 2020, respectively.

D. The Company has an intercompany revolving credit facility in place with the parent company, AultCare Health Insuring Corporation; The Company reported \$1,615,753 and \$1,261,463 as due to the parent company, as of June 30, 2021 and 2020, respectively.

The Company has an intercompany revolving credit facility in place with Mckinley Life Agency, Ltd. The company reported 57,084 and 37,590 as due to the subsidiary as of June 30, 2021 and 2020, respectively.

The Company has an intercompany revolving credit facility in place with AultCare Corporation, an affiliate that allows AultCare to borrow and repay operating funds. AultCare owed \$8,596,862 and \$6,380,041 as of June 30, 2021 and 2020, respectively, under the terms of the agreement.

The Company also has a capitation arrangement with Aultman Hospital for anticipation of future services. As of June 30, 2021, the Company has paid \$2,217,599 Aultman Hospital for these future services.

- E. The Company did not make any guarantees or undertakings, written or otherwise, for the benefit of an affiliate or related party which resulted in a material contingent exposure of the Company's assets to any liabilities during the periods reported.
- F. Both Aultman Health Foundation, the ultimate controlling entity, and AultCare Corporation, an affiliate, provided various administrative, marketing, and claims processing services for the Company.
- G. All outstanding shares of the Company were owned by the Company's parent, AultCare Health Insuring Corporation, a not-for-profit corporation domiciled in the State of Ohio.
- H. The Company did not own any shares, directly or indirectly, of an upstream intermediate entity or ultimate parent during the periods reported.
- I. The Company did not have an investment in an SCA entity that exceeds 10% of admitted assets of the insurer.
- J. The Company did not realize any impairment write down for its investments in Subsidiary, Controlled or Affiliated Companies during the statement period.
- K. The Company does not have an investment in a foreign insurance subsidiary.
- L. The Company did not hold an investment in a downstream non insurance holding company during the periods reported.
- M. The Company did not hold any other SCA Investments.
- N. The Company did not hold any insurance SCA investments that departed from NAIC statutory accounting practices and procedures during the periods reported.
- O. The company did not have any SCA losses.

11. DEBT

A-B. The Company did not have any debt including capital notes.

12. RETIREMENT PLANS, DEFERRED COMPENSATION, POSTEMPLOYMENT BENEFITS AND COMPENSATED ABSENCES AND OTHER POSTRETIREMENT BENEFIT PLANS

- A-D. The Company had no defined benefit plans.
- E. The Company participates in a defined contribution plan sponsored by Aultman Health Foundation. Contributions of 3% of each employee's compensation are made each year to the plan. The Company's contributions for the defined contribution plan were \$246,668 and \$136,205 as of June 30, 2021 and 2020 respectively.
- F-I. The Company had no multiemployer plans, consolidated company plans, post-employment plans, compensated absences, or postretirement benefit plans during the periods reported.

13. CAPITAL AND SURPLUS, SHAREHOLDERS' DIVIDEND RESTRICTIONS AND QUASI-REORGANIZATIONS

Notes to Financial Statement

- (1)

The Company has \$1,000,000 in common stock outstanding, which is owned by its direct parent, AultCare Health Insuring Corporation.
- (2)

The Company had no preferred stock outstanding.
- (3)

Without prior approval of its domiciliary commissioner, dividends to shareholders are limited by the laws of the Company's state of incorporation, Ohio, to an amount that is based on restrictions relating to statutory surplus and net income.
- (4)

The Company paid \$0 dividends in 2021 to AultCare Health Insurance Company.
- (5)

There were no restrictions placed on the Company’s profits that may be paid as ordinary dividends to stock holders.
- (6)

There were no restrictions placed on the Company's surplus.
- (7)

The Total Amount of advances to surplus not repaid is \$0.
- (8)

The Amounts of stock held by the Company, including stock of affiliated companies, for special purposes was:
For conversion of preferred stock: 0 shares.
A. For employee stock options: 0 shares.
B. For stock purchase warrants: 0 shares.
- (9)

The Company did not have changes in the balances of any special surplus funds.
- (10)

The Company did not have any surplus funds represented that were reduced
- (11)

The Company had no outstanding surplus debentures or similar obligations during the periods reported.
- (12)

The Company had no restatements due to quasi-reorganizations during the periods reported.
- (13)

The Company was not involved in a quasi-reorganization during the periods reported.

14. CONTINGENCIES

- A.
- The Company is not aware of any material contingent commitments.
- B.
- The Company is subject to the Ohio Life and Health Insurance Guaranty and does not know of any assessments that could have a material financial effect.
- C.
- The Company had no Gain Contingencies.
- D-F.
- Contingent liabilities arising from litigation, income taxes and other matters were not considered material in relation to the financial position of the Company.

15. LEASES

- A.
- Lessee Operating Lease
(1) The Company has no operating leases. Corporate office facilities expense is covered through the management service agreement with AultCare Corporation in Note 10 above.

(2) At January 1, 2021, the minimum aggregate rental commitments are as follows:

	Year Ending December 31	Operating Leases
1.	2021	\$280,841
2.	2022	\$280,841
3.	2023	\$280,841
4.	2024	\$280,841
5.	2025	\$23,403

- B.
- Leasing is not a significant part of the lessor’s business activities in terms of revenue, net income, or assets.

16. INFORMATION ABOUT FINANCIAL INSTRUMENTS WITH OFF-BALANCE SHEET RISK AND FINANCIAL INSTRUMENTS WITH CONCENTRATIONS OF CREDIT RISK

- A.
- The Company had no financial instruments with off-balance sheet risk during the periods reported.

17. SALE, TRANSFER AND SERVICING OF FINANCIAL ASSETS AND EXTINGUISHMENTS OF LIABILITIES

- A.
- The Company had no transfers of receivables reported as sales.
- B.
- The Company had no transfers of financial assets.
- C.
- The Company had no wash sales.

18. GAIN OR LOSS TO THE REPORTING ENTITY FROM UNINSURED PLANS AND THE UNINSURED PORTION OF PARTIALLY INSURED PLANS

- A-C.
- The Company had no Uninsured A&H Plans or Uninsured Portion of Partially Insured Plans during the periods reported.

19. DIRECT PREMIUM WRITTEN/PRODUCED BY MANAGING GENERAL AGENTS/THIRD PARTY ADMINISTRATORS

- A.
- The Company had no direct premium written or produced by managing general agents or third party administrators during the periods reported.

20. FAIR VALUE MEASUREMENT

- A.
- The Company has assets that are measured at fair value on a recurring basis.

Fair Value Measurements at Reporting Date				
(1) Description	(2) (Level 1)	(3) (Level 2)	(4) (Level 3)	(5) Total
a. Assets at fair value				

Notes to Financial Statement

(1)	Common Stock	\$ 16,047,736	\$ -	\$ -	\$ 16,047,736
	Total assets at fair value	\$ 16,047,736	\$ -	\$ -	\$ 16,047,736

- (2) The Company had no assets with fair value measurements using significant unobservable inputs.
(3) The Company uses the valuation technique that is based on the quoted prices in the active markets.
(4) The Company has no Level 2 or Level 3 assets.
(5) The Company does not have any derivative assets or liabilities.

B. The Company does not have any other fair value assets to disclose.

C. Fair Value Measurement

Type of Financial Instrument	Aggregate Fair Value	Admitted Assets	(Level 1)	(Level 2)	(Level 3)	Not Practicable (Carrying Value)
Bonds	\$19,633,554	\$19,110,349		\$19,633,554		
Industrial and Misc.	\$17,631,630	\$17,412,659		\$17,631,630		
Common Stock	\$16,047,736	\$16,047,736	\$16,047,736			

D. The Company had no fair value instruments or classes of financial instruments where it was not practible to estimate the fair value at either June 30, 2021, or 2020.

E. The Company had no fair value instruments or classes of financial instruments where it was not practible to estimate the fair value at either June 30, 2021, or 2020.

21. OTHER ITEMS

- A. The Company did not experience an unusual or infrequent item that resulted in a gain or loss.
B. The Company had no troubled debt to restructure.
C. There are no other applicable disclosures.
D. The Company did not have any Business Interruption Insurance Recoveries.
E. The Company did not have any State Transferable Tax Credits.
F. The Company had no Subprime Mortgage Related Risk Exposure.
G. The Company had no retained assets.
H. The Company has no Insurance Linked Securities.

22. EVENTS SUBSEQUENT

- A. As of August 15, 2021, there have been no Type I events subsequent to June 30, 2021, which would have a material effect on the financial condition of the Company or on the financial statement issued August 15, 2021.
B. As of August 15, 2021, there have been no Type II events subsequent to June 30, 2021, which would have a material effect on the financial condition of the Company or on the financial statement issued August 15, 2021.

23. REINSURANCE

A. Ceded Reinsurance Report

Section 1 – General Interrogatories

- (1) Are any of the reinsurers, listed in Schedule S as non-affiliated, owned in excess of 10% or controlled, either directly or indirectly, by the Company or by any representative, officer, trustee, or director of the company?
Yes () No (X)

(2) Have any policies issued by the company been reinsured with a company chartered in a country other than the United States (excluding U.S. branches of such companies) that is owned in excess of 10% or controlled directly or indirectly by an insured, a beneficiary, a creditor or any other person not primarily engaged in the insurance business?
Yes () No (X)

Section 2 – Ceded Reinsurance Report – Part A

- (1) Does the Company have any reinsurance agreements in effect under which the reinsurer may unilaterally cancel any reinsurance for reasons other than for nonpayment of premium or other similar credits?
Yes () No (X)

(2) Does the company have any reinsurance agreements in effect such that the amount of losses paid or accrued through the statement date may result in a payment to the reinsurer of amounts which, in aggregate and allowing for offset of mutual credits from other reinsurance agreements with the same reinsurers exceed the total direct premium collected under the reinsured policies?
Yes () No (X)

Section 3 – Ceded Reinsurance Report – part B

- (1) What is the estimated amount of the aggregate reduction in surplus, (for agreements other than those under which the reinsurer may unilaterally cancel other than for nonpayment of premium or other similar credits that are reflected in Section 2 above) of termination of all reinsurance agreements, by either party, as of the date of this statement? Where necessary, the company may consider the current or anticipated experience of the business reinsured in making this estimate.
\$0

(2) Have any new agreements been executed or existing agreements amended, since January 1 of the year this statement, to included policies or contracts that were in force or which had existing reserves established by the company as of the effective date of the agreement?
Yes () No (X)

B. The Company did not write off any uncollectible reinsurance during the periods reported.

C. The Company did not have any commutation of ceded reinsurance during the periods reported.

Notes to Financial Statement

D. The Company did not have a Reinsurer Rating Downgrade or Status Subject to Revocation during the periods reported.

24. RETROSPECTIVELY RATED CONTRACTS & CONTRACTS SUBJECT TO REDETERMINATION (N/A –TITLE

- A. The Company has a contract with CMS that is subject to redetermination upon audits performed by the Inspector General. CMS adjusts its payments to the Company based on how actual benefit cost varied from estimated benefit costs included in the bid.
- B. The Company records accrued retrospective premiums as an adjustment to earned premiums.
- C. The Company has accrued \$0 of net premiums written as of June 30, 2021 for the group health plan. No other net premiums written by the Company are subject to retrospective rating features.
- D. Not Applicable
- E. Risk Sharing Provisions of the Affordable Care Act
1. Did the reporting entity write accident and health insurance premium which is subject to the Affordable Care Act risk sharing provisions (YES/NO)? ___ YES _____
2. Impact of Risk-Sharing Provisions of the Affordable Care Act on Admitted Assets, Liabilities and Revenue for the Current Year

Description		Amount
a. Permanent ACA Risk Adjustment Program		
Assets		
1. Premium adjustments receivable due to ACA Risk Adjustment		\$3,590,473
Liabilities		
2. Risk adjustment user fees payable for ACA Risk Adjustment		\$0
3. Premium adjustments payable due to ACA Risk Adjustment		\$0
Operations (Revenue & Expense)		
4. Reported as revenue in premium for accident and health contracts (written/collected) due to ACA Risk Adjustment		\$(114,891)
5. Reported in expenses as ACA risk adjustment user fees (incurred/paid)		\$0
b. Transitional ACA Reinsurance Program		
Assets		
1. Amounts recoverable for claims paid due to ACA Reinsurance		\$0
2. Amounts recoverable for claims unpaid due to ACA Reinsurance (Contra Liability)		\$0
3. Amounts receivable relating to uninsured plans for contributions for ACA Reinsurance		\$0
Liabilities		
4. Liabilities for contributions payable due to ACA Reinsurance – not reported as ceded premium		\$0
5. Ceded reinsurance premiums payable due to ACA Reinsurance		\$0
6. Liabilities for amounts held under uninsured plans contributions for ACA Reinsurance		\$0
Operations (Revenue & Expense)		
7. Ceded reinsurance premiums due to ACA Reinsurance		\$0
8. Reinsurance recoveries (income statement) due to ACA Reinsurance payments or expected payments		\$0
9. ACA Reinsurance contributions – not reported as ceded premium		\$0
c. Temporary ACA Risk Corridors Program		
Assets		
1. Accrued retrospective premium due to ACA Risk Corridors		\$0
Liabilities		
2. Reserve for rate credits or policy experience rating refunds due to ACA Risk Corridors		\$0
Operations (Revenue & Expense)		
3. Effect of ACA Risk Corridors on net premium income (paid/received)		\$0
4. Effect of ACA Risk Corridors on change in reserves for rate credits		\$0

3. Roll-forward of prior year ACA risk sharing provisions for the following asset (gross of any nonadmission) and liability balances, along with the reasons for adjustments to prior year balance.

	Acrued During the Prior Year on Business Written Before December 31 of the Prior Year		Received or Paid as of the Current Year on Business Written Before December 31 of the Prior Year		Differences		Adjustments		Ref	Unsettled Balances as of the Reporting Date	
					Prior Year Accrued Less Payments (Col 1 - 3)	Prior Year Accrued Less Payments (Col 2 - 4)	To Prior Year Balances	To Prior Year Balances		Cumulative Balance from Prior Years (Col 1 – 3 +7)	Cumulative Balance from Prior Years (Col 2 – 4 +8)
	1	2	3	4	5	6	7	8		9	10
	Receivable	(Payable)	Receivable	(Payable)	Receivable	(Payable)	Receivable	(Payable)		Receivable	(Payable)
a. Permanent ACA Risk Adjustment Program											
1. Premium adjustments receivable	\$3,590,473	\$ -	\$ -	\$ 114,891	\$3,590,473	\$ (114,891)	\$ -	\$ -	A	\$3,590,473	\$ (114,891)
2. Premium adjustments (payable)	\$ -	\$ -	\$ -	\$ -	\$ -	\$ -	\$ -	\$ -	B	\$ -	\$ -
3. Subtotal ACA Permanent Risk Adjustment Program	\$3,590,473	\$ -	\$ -	\$ 114,891	\$3,590,473	\$ (114,891)	\$ -	\$ -		\$3,590,473	\$ (114,891)
b. Transitional ACA Reinsurance Program											
1. Amounts recoverable for claims paid	\$ -	\$ -	\$ -	\$ -	\$ -	\$ -	\$ -	\$ -	C	\$ -	\$ -
2. Amounts recoverable for claims unpaid (contra liability)	\$ -	\$ -	\$ -	\$ -	\$ -	\$ -	\$ -	\$ -	D	\$ -	\$ -
3. Amounts receivable relating to	\$ -	\$ -	\$ -	\$ -	\$ -	\$ -	\$ -	\$ -	E	\$ -	\$ -

Notes to Financial Statement

uninsured plans											
4. Liabilities for contributions payable due to ACA Reinsurance – not reported as ceded premium	\$ -	\$ -	\$ -	\$ -	\$ -	\$ -	\$ -	\$ -	F	\$ -	\$ -
5. Ceded reinsurance premiums payable	\$ -	\$ -	\$ -	\$ -	\$ -	\$ -	\$ -	\$ -	G	\$ -	\$ -
6. Liability for amounts held under uninsured plans	\$ -	\$ -	\$ -	\$ -	\$ -	\$ -	\$ -	\$ -	H	\$ -	\$ -
7. Subtotal ACA Transitional Reinsurance Program	\$ -	\$ -	\$ -	\$ -	\$ -	\$ -	\$ -	\$ -		\$ -	\$ -
c. Temporary ACA Risk Corridors Program											
1. Accrued retrospective premium	\$ -	\$ -	\$ -	\$ -	\$ -	\$ -	\$ -	\$ -	I	\$ -	\$ -
2. Reserve for rate credits or policy experience rating refunds	\$ -	\$ -	\$ -	\$ -	\$ -	\$ -	\$ -	\$ -	J	\$ -	\$ -
3. Subtotal ACA Risk Corridors Program	\$ -	\$ -	\$ -	\$ -	\$ -	\$ -	\$ -	\$ -		\$ -	\$ -
d. Total for ACA Risk Sharing Provisions	\$3,590,473	\$ -	\$ -	\$ 114,891	\$3,590,473	\$ (114,891)	\$ -	\$ -		\$3,590,473	\$ (114,891)

Explanation of Adjustments

A.
B.
C.
D.
E.
F.
G.
H.
I.
J.

4.

Risk Corridors Program Year	Accrued During the Prior Year on Business Written Before December 31 of the Prior Year		Received or Paid as of the Current Year on Business Written Before December 31 of the Prior Year		Differences		Adjustments		Unsettled Balances as of the Reporting Date		
					Prior Year Accrued Less Payments (Col 1 - 3)	Prior Year Accrued Less Payments (Col 2 - 4)	To Prior Year Balances	To Prior Year Balances	Cumulative Balance from Prior Years (Col 1 – 3 +7)	Cumulative Balance from Prior Years (Col 2 – 4 +8)	
	1	2	3	4	5	6	7	8	9	10	
	Receivable	(Payable)	Receivable	(Payable)	Receivable	(Payable)	Receivable	(Payable)	Ref	Receivable	(Payable)
a. 2014											
1. Accrued retrospective premium	\$ -	\$ -	\$ -	\$ -	\$ -	\$ -	\$ -	\$ -	A	\$ -	\$ -
2. Reserve for rate credits or policy experience rating refunds	\$ -	\$ -	\$ -	\$ -	\$ -	\$ -	\$ -	\$ -	B	\$ -	\$ -
b. 2015											
1. Accrued retrospective premium	\$ -	\$ -	\$ -	\$ -	\$ -	\$ -	\$ -	\$ -	C	\$ -	\$ -
2. Reserve for rate credits or policy experience rating refunds	\$ -	\$ -	\$ -	\$ -	\$ -	\$ -	\$ -	\$ -	D	\$ -	\$ -
c. 2016											
1. Accrued retrospective premium	\$ -	\$ -	\$ -	\$ -	\$ -	\$ -	\$ -	\$ -	E	\$ -	\$ -
2. Reserve for rate credits or policy experience rating refunds	\$ -	\$ -	\$ -	\$ -	\$ -	\$ -	\$ -	\$ -	F	\$ -	\$ -
d. Total for risk corridors	\$ -	\$ -	\$ -	\$ -	\$ -	\$ -	\$ -	\$ -		\$ -	\$ -

Explanation of Adjustments

A.
B.
C.
D.
E.
F.

5.

Risk Corridors Program Year		(1) Estimated Amount to be Filed or Final Amount Filed with CMS	(2) Non-Accrued Amounts for Impairment or Other Reasons	(3) Amounts received from CMS	(4) Asset Balance (Gross of Non-admissions) (1-2-3)	(5) Non-admitted Amount	(6) Net Admitted Asset (4-5)
a.	2015	\$129,608	\$139,327	\$ (9,719)	\$ -	\$ -	\$ -
b.	2016	\$ -	\$ -	\$ -	\$ -	\$ -	\$ -
c.	2017	\$ -	\$ -	\$ -	\$ -	\$ -	\$ -
d.	Total (a+b+c)	\$129,608	\$139,327	\$ (9,719)	\$ -	\$ -	\$ -

25. CHANGE IN INCURRED CLAIMS AND CLAIMS ADJUSTMENT EXPENSES

A-B. Reserves as of December 31, 2020 were \$25,014,121. As of June 30, 2021, \$20,785,790 had been paid for incurred claims and claim adjustment expenses attributable to insured events of prior years. Reserves remaining for prior years are now \$3,307,112. Therefore, there has been a negative development of \$1,078,782 since December 31, 2020. Original estimates are increased or decreased as additional information becomes known regarding individual claims.

26. INTERCOMPANY POOLING ARRANGEMENTS

A-G. The Company had no intercompany pooling arrangements.

27. STRUCTURED SETTLEMENTS

A. The Company had no structured settlements.

Notes to Financial Statement

28. HEALTH CARE RECEIVABLES

A. The Company follows the guidance of Statement of Statutory Accounting Principles (SSAP) No. 84 for its pharmacy rebates receivable. Pharmacy rebates receivable consist of estimated amounts and billed amounts. Estimated amounts are related to prescriptions filled during the three months immediately following quarter-end. Billed amounts represent those that have been accepted in writing, but not collected at the time of the reporting date. Being that the company does not confirm billed amounts within two months of the reporting date, only estimated amounts are admitted at the time of quarter-end.

Pharmacy rebates receivable are estimated based on pharmacy claims eligible for rebates reported during the period multiplied by agreed-upon rates. Pharmacy rebates as of the end of each quarter for the years ended June 30, 2021, 2020, and 2019 are as follows:

Quarter	Estimated Pharmacy Rebates as Reported on Financial Statements	Pharmacy Rebates as Billed or Otherwise Confirmed	Actual Rebates Received within 90 Days of Billing	Actual Rebates Received within 91 to 180 Days of Billing	Actual Rebates Received More Than 180 Days After Billing
6/30/2021	\$1,090,222	\$2,711,985	\$ -	\$ -	\$ -
3/31/2021	\$1,883,022	\$2,233,860	\$ 134.83	\$ -	\$ -
12/31/2020	\$2,344,874	\$2,320,053	\$2,642,210	\$ -	\$ -
9/30/2020	\$1,505,289	\$2,349,527	\$2,519,359	\$ -	\$ -
6/30/2020	\$1,563,070	\$2,331,239	\$3,012,300	\$ -	\$ -
3/31/2020	\$2,049,672	\$2,078,152	\$2,276,587	\$ -	\$ -
12/31/2019	\$2,399,224	\$2,096,895	\$2,579,010	\$ -	\$ -
9/30/2019	\$3,818,865	\$2,120,006	\$ 2,273,795	\$ -	\$ -
6/30/2019	\$3,393,084	\$2,110,168	\$ 2,303,746	\$ -	\$ -
3/31/2019	\$3,965,027	\$ 1,873,182	\$ 1,912,219	\$ -	\$ -
9/30/2018	\$5,010,343	\$ 2,232,431	\$ -	\$ 2,970,543	\$ -

B. The Company did not have any risk sharing receivables during the periods reported.

29. PARTICIPATING POLICIES

A. The Company does not have participating policies or policyholder dividends.

30. PREMIUM DEFICIENCY RESERVES

A. The Company does not have Premium Deficiency Reserves.

1. Liability carried for premium deficiency reserves

\$0

2. Date of the most recent evaluation of this liability

12/31/2020

3. Was anticipated investment income utilized in the calculation? (Yes / No)

No

31. ANTICIPATED SALVAGE AND SUBROGATION

A. The Company did not have anticipated salvage and subrogation included as a reduction of loss reserves.

GENERAL INTERROGATORIES

PART 1 - COMMON INTERROGATORIES
GENERAL

- 1.1 Did the reporting entity experience any material transactions requiring the filing of Disclosure of Material Transactions with the State of Domicile, as required by the Model Act?

Yes[] No[X]
- 1.2 If yes, has the report been filed with the domiciliary state?

Yes[] No[] N/A[X]
- 2.1 Has any change been made during the year of this statement in the charter, by-laws, articles of incorporation, or deed of settlement of the reporting entity?

Yes[] No[X]
- 2.2 If yes, date of change:

.....
- 3.1 Is the reporting entity a member of an Insurance Holding Company System consisting of two or more affiliated persons, one or more of which is an insurer?

Yes[X] No[]
- If yes, complete Schedule Y, Parts 1 and 1A.
- 3.2 Have there been any substantial changes in the organizational chart since the prior quarter end?

Yes[] No[X]
- 3.3 If the response to 3.2 is yes, provide a brief description of those changes:
- 3.4 Is the reporting entity publicly traded or a member of a publicly traded group?

Yes[] No[X]
- 3.5 If the response to 3.4 is yes, provide the CIK (Central Index Key) code issued by the SEC for the entity/group.
- 4.1 Has the reporting entity been a party to a merger or consolidation during the period covered by this statement?

Yes[] No[X]
- If yes, complete and file the merger history data file with the NAIC.
- 4.2 If yes, provide the name of entity, NAIC Company Code, and state of domicile (use two letter state abbreviation) for any entity that has ceased to exist as a result of the merger or consolidation.

1	2	3
Name of Entity	NAIC Company Code	State of Domicile
.....

5. If the reporting entity is subject to a management agreement, including third-party administrator(s), managing general agent(s), attorney-in-fact, or similar agreement, have there been any significant changes regarding the terms of the agreement or principals involved?

Yes[] No[] N/A[X]
- 6.1 State as of what date the latest financial examination of the reporting entity was made or is being made.

..... 12/31/2020
- 6.2 State the as of date that the latest financial examination report became available from either the state of domicile or the reporting entity. This date should be the date of the examined balance sheet and not the date the report was completed or released.

..... 12/31/2015
- 6.3 State as of what date the latest financial examination report became available to other states or the public from either the state of domicile or the reporting entity. This is the release date or completion date of the examination report and not the date of the examination (balance sheet date).

..... 04/28/2017
- 6.4 By what department or departments?

Ohio Department of Insurance
- 6.5 Have all financial statement adjustments within the latest financial examination report been accounted for in a subsequent financial statement filed with Departments?

Yes[] No[] N/A[X]
- 6.6 Have all of the recommendations within the latest financial examination report been complied with?

Yes[] No[] N/A[X]
- 7.1 Has this reporting entity had any Certificates of Authority, licenses or registrations (including corporate registration, if applicable) suspended or revoked by any governmental entity during the reporting period?

Yes[] No[X]
- 7.2 If yes, give full information
- 8.1 Is the company a subsidiary of a bank holding company regulated by the Federal Reserve Board?

Yes[] No[X]
- 8.2 If response to 8.1 is yes, please identify the name of the bank holding company.
- 8.3 Is the company affiliated with one or more banks, thrifts or securities firms?

Yes[] No[X]
- 8.4 If response to 8.3 is yes, please provide below the names and location (city and state of the main office) of any affiliates regulated by a federal regulatory services agency [i.e. the Federal Reserve Board (FRB), the Office of the Comptroller of the Currency (OCC), the Federal Deposit Insurance Corporation (FDIC) and the Securities Exchange Commission (SEC)] and identify the affiliate's primary federal regulator.]

1	2	3	4	5	6
Affiliate Name	Location (City, State)	FRB	OCC	FDIC	SEC
..... No No No No

- 9.1 Are the senior officers (principal executive officer, principal financial officer, principal accounting officer or controller, or persons performing similar functions) of the reporting entity subject to a code of ethics, which includes the following standards?

Yes[X] No[]
- (a) Honest and ethical conduct, including the ethical handling of actual or apparent conflicts of interest between personal and professional relationships;
- (b) Full, fair, accurate, timely and understandable disclosure in the periodic reports required to be filed by the reporting entity;
- (c) Compliance with applicable governmental laws, rules and regulations;
- (d) The prompt internal reporting of violations to an appropriate person or persons identified in the code; and
- (e) Accountability for adherence to the code.
- 9.11 If the response to 9.1 is No, please explain:
- 9.2 Has the code of ethics for senior managers been amended?

Yes[] No[X]
- 9.21 If the response to 9.2 is Yes, provide information related to amendment(s).
- 9.3 Have any provisions of the code of ethics been waived for any of the specified officers?

Yes[] No[X]
- 9.31 If the response to 9.3 is Yes, provide the nature of any waiver(s).

FINANCIAL

- 10.1 Does the reporting entity report any amounts due from parent, subsidiaries or affiliates on Page 2 of this statement?

Yes[] No[X]
- 10.2 If yes, indicate any amounts receivable from parent included in the Page 2 amount:

\$ 0

INVESTMENT

- 11.1 Were any of the stocks, bonds, or other assets of the reporting entity loaned, placed under option agreement, or otherwise made available for use by another person? (Exclude securities under securities lending agreements.)

Yes[] No[X]
- 11.2 If yes, give full and complete information relating thereto:
12. Amount of real estate and mortgages held in other invested assets in Schedule BA:

\$ 0
13. Amount of real estate and mortgages held in short-term investments:

\$ 0
- 14.1 Does the reporting entity have any investments in parent, subsidiaries and affiliates?

Yes[X] No[]

GENERAL INTERROGATORIES (Continued)

INVESTMENT

14.2 If yes, please complete the following:

	1 Prior Year-End Book/Adjusted Carrying Value	2 Current Quarter Book/Adjusted Carrying Value
14.21 Bonds		
14.22 Preferred Stock		
14.23 Common Stock		
14.24 Short-Term Investments		
14.25 Mortgages Loans on Real Estate		
14.26 All Other	17,931,910	22,189,198
14.27 Total Investment in Parent, Subsidiaries and Affiliates (Subtotal Lines 14.21 to 14.26)	17,931,910	22,189,198
14.28 Total Investment in Parent included in Lines 14.21 to 14.26 above		

15.1 Has the reporting entity entered into any hedging transactions reported on Schedule DB?

Yes[] No[X]

15.2 If yes, has a comprehensive description of the hedging program been made available to the domiciliary state?

Yes[] No[] N/A[X]

If no, attach a description with this statement.

16. For the reporting entity's security lending program, state the amount of the following as of the current statement date:

16.1 Total fair value of reinvested collateral assets reported on Schedule DL, Parts 1 and 2

\$ 0

16.2 Total book adjusted/carrying value of reinvested collateral assets reported on Schedule DL, Parts 1 and 2

\$ 0

16.3 Total payable for securities lending reported on the liability page

\$ 0

17. Excluding items in Schedule E - Part 3 - Special Deposits, real estate, mortgage loans and investments held physically in the reporting entity's offices, vaults or safety deposit boxes, were all stocks, bonds and other securities, owned throughout the current year held pursuant to a custodial agreement with a qualified bank or trust company in accordance with Section 1, III - General Examination Considerations, F. Outsourcing of Critical Functions, Custodial or Safekeeping Agreements of the NAIC Financial Condition Examiners Handbook?

Yes[X] No[]

17.1 For all agreements that comply with the requirements of the NAIC Financial Condition Examiners Handbook, complete the following:

1 Name of Custodian(s)	2 Custodian Address
Huntington National Bank	220 Market Avenue South, Canton, Oh 44702
The Vanguard Group	P.O. Box 2600 Valley Forge, PA 19482

17.2 For all agreements that do not comply with the requirements of the NAIC Financial Condition Examiners Handbook, provide the name, location and a complete explanation:

1 Name(s)	2 Location(s)	3 Complete Explanation(s)
.....

17.3 Have there been any changes, including name changes, in the custodian(s) identified in 17.1 during the current quarter?

Yes[] No[X]

17.4 If yes, give full and complete information relating thereto:

1 Old Custodian	2 New Custodian	3 Date of Change	4 Reason
.....

17.5 Investment management - Identify all investment advisors, investment managers, broker/dealers, including individuals that have the authority to make investment decisions on behalf of the reporting entity. For assets that are managed internally by employees of the reporting entity, note as such. ["...that have access to the investment accounts"; "...handle securities"]

1 Name of Firm or Individual	2 Affiliation
Clearstead Advisors LLC - Invesment Advisor U
Huntington Bank - Custodial U
AultCare Investment Committee A

17.5097 For those firms/individuals listed in the table for Question 17.5, do any firms/individuals unaffiliated with the reporting entity (i.e. designated with a "U") manage more than 10% of the reporting entity's invested assets?

Yes[] No[X]

17.5098 For firms/individuals unaffiliated with the reporting entity (i.e. designated with a "U") listed in the table for Question 17.5, does the total assets under management aggregate to more than 50% of the reporting entity's invested assets?

Yes[] No[X]

17.6 For those firms or individuals listed in the table for 17.5 with an affiliation code of "A" (affiliated) or "U" (unaffiliated), provide the information for the table below.

1 Central Registration Depository Number	2 Name of Firm or Individual	3 Legal Entity Identifier (LEI)	4 Registered With	5 Investment Management Agreement (IMA) Filed
105674	Clearstead Advisors LLC ..	34-1597728	SEC-801-33554 NO

18.1 Have all the filing requirements of the Purposes and Procedures Manual of the NAIC Investment Analysis Office been followed?

Yes[X] No[]

18.2 If no, list exceptions:

19. By self-designating 5GI securities, the reporting entity is certifying the following elements for each self-designated 5GI security:

a. Documentation necessary to permit a full credit analysis of the security does not exist or an NAIC CRP credit rating for an FE or PL security is not available.

b. Issuer or obligor is current on all contracted interest and principal payments.

c. The insurer has an actual expectation of ultimate payment of all contracted interest and principal.

Has the reporting entity self-designated 5GI securities?

Yes[] No[X]

GENERAL INTERROGATORIES (Continued)

20. By self-designating PLGI securities, the reporting entity is certifying the following elements of each self-designated PLGI security:

a. The security was purchased prior to January 1, 2018.

b. The reporting entity is holding capital commensurate with the NAIC Designation reported for the security.

c. The NAIC Designation was derived from the credit rating assigned by an NAIC CRP in its legal capacity as a NRSRO which is shown on a current private letter rating held by the insurer and available for examination by state insurance regulators.

d. The reporting entity is not permitted to share this credit rating of the PL security with the SVO.

Has the reporting entity self-designated PLGI securities?

Yes[] No[X]
21. By assigning FE to a Schedule BA non-registered private fund, the reporting entity is certifying the following elements of each self-designated FE fund:

a. The shares were purchased prior to January 1, 2019.

b. The reporting entity is holding capital commensurate with the NAIC Designation reported for the security

c. The security had a public credit rating(s) with annual surveillance assigned by an NAIC CRP in its legal capacity as an NRSRO prior to January 1, 2019.

d. The fund only or predominantly holds bonds in its portfolio.

e. The current reported NAIC Designation was derived from the public credit rating(s) with annual surveillance assigned by an NAIC CRP in its legal capacity as an NRSRO.

f. The public credit rating(s) with annual surveillance assigned by an NAIC CRP has not lapsed.

Has the reporting entity assigned FE to Schedule BA non-registered private funds that complied with the above criteria?

Yes[] No[X]

GENERAL INTERROGATORIES

PART 2 - HEALTH

1. Operating Percentages:	
1.1 A&H loss percent 85.260%
1.2 A&H cost containment percent 2.520%
1.3 A&H expense percent excluding cost containment expenses 13.280%
2.1 Do you act as a custodian for health savings accounts?	Yes[] No[X]
2.2 If yes, please provide the amount of custodial funds held as of the reporting date.	\$..... 0
2.3 Do you act as an administrator for health savings accounts?	Yes[] No[X]
2.4 If yes, please provide the balance of the funds administered as of the reporting date.	\$..... 0
3. Is the reporting entity licensed or chartered, registered, qualified, eligible or writing business in at least two states?	Yes[] No[X]
3.1 If no, does the reporting entity assume reinsurance business that covers risks residing in at least one state other than the state of domicile of the reporting entity?	Yes[] No[X]

SCHEDULE S - CEDED REINSURANCE
Showing All New Reinsurance Treaties - Current Year to Date

1 NAIC Company Code	2 ID Number	3 Effective Date	4 Name of Reinsurer	5 Domiciliary Jurisdiction	6 Type of Reinsurance Ceded	7 Type of Business Ceded	8 Type of Reinsurer	9 Certified Reinsurer Rating (1 through 6)	10 Effective Date of Certified Reinsurer Rating
			NONE						

SCHEDULE T - PREMIUMS AND OTHER CONSIDERATIONS
Current Year to Date - Allocated by States and Territories

		Direct Business Only									
		1	2	3	4	5	6	7	8	9	10
State, Etc.		Active Status (a)	Accident and Health Premiums	Medicare Title XVIII	Medicaid Title XIX	CHIP Title XXI	Federal Employees Health Benefits Program Premiums	Life and Annuity Premiums and Other Considerations	Property/ Casualty Premiums	Total Columns 2 Through 8	Deposit -Type Contracts
1.	Alabama (AL)	N ..									
2.	Alaska (AK)	N ..									
3.	Arizona (AZ)	N ..									
4.	Arkansas (AR)	N ..									
5.	California (CA)	N ..									
6.	Colorado (CO)	N ..									
7.	Connecticut (CT)	N ..									
8.	Delaware (DE)	N ..									
9.	District of Columbia (DC)	N ..									
10.	Florida (FL)	N ..									
11.	Georgia (GA)	N ..									
12.	Hawaii (HI)	N ..									
13.	Idaho (ID)	N ..									
14.	Illinois (IL)	N ..									
15.	Indiana (IN)	N ..									
16.	Iowa (IA)	N ..									
17.	Kansas (KS)	N ..									
18.	Kentucky (KY)	N ..									
19.	Louisiana (LA)	N ..									
20.	Maine (ME)	N ..									
21.	Maryland (MD)	N ..									
22.	Massachusetts (MA)	N ..									
23.	Michigan (MI)	N ..									
24.	Minnesota (MN)	N ..									
25.	Mississippi (MS)	N ..									
26.	Missouri (MO)	N ..									
27.	Montana (MT)	N ..									
28.	Nebraska (NE)	N ..									
29.	Nevada (NV)	N ..									
30.	New Hampshire (NH)	N ..									
31.	New Jersey (NJ)	N ..									
32.	New Mexico (NM)	N ..									
33.	New York (NY)	N ..									
34.	North Carolina (NC)	N ..									
35.	North Dakota (ND)	N ..									
36.	Ohio (OH)	L ..	125,458,545				6,578,612			132,037,156	
37.	Oklahoma (OK)	N ..									
38.	Oregon (OR)	N ..									
39.	Pennsylvania (PA)	N ..									
40.	Rhode Island (RI)	N ..									
41.	South Carolina (SC)	N ..									
42.	South Dakota (SD)	N ..									
43.	Tennessee (TN)	N ..									
44.	Texas (TX)	N ..									
45.	Utah (UT)	N ..									
46.	Vermont (VT)	N ..									
47.	Virginia (VA)	N ..									
48.	Washington (WA)	N ..									
49.	West Virginia (WV)	N ..									
50.	Wisconsin (WI)	N ..									
51.	Wyoming (WY)	N ..									
52.	American Samoa (AS)	N ..									
53.	Guam (GU)	N ..									
54.	Puerto Rico (PR)	N ..									
55.	U.S. Virgin Islands (VI)	N ..									
56.	Northern Mariana Islands (MP)	N ..									
57.	Canada (CAN)	N ..									
58.	Aggregate other alien (OT)	X X X									
59.	Subtotal	X X X	125,458,545				6,578,612			132,037,156	
60.	Reporting entity contributions for Employee Benefit Plans	X X X									
61.	Total (Direct Business)	X X X	125,458,545				6,578,612			132,037,156	
DETAILS OF WRITE-INS											
58001.	X X X									
58002.	X X X									
58003.	X X X									
58998.	Summary of remaining write-ins for Line 58 from overflow page	X X X									
58999.	TOTALS (Lines 58001 through 58003 plus 58998) (Line 58 above)	X X X									

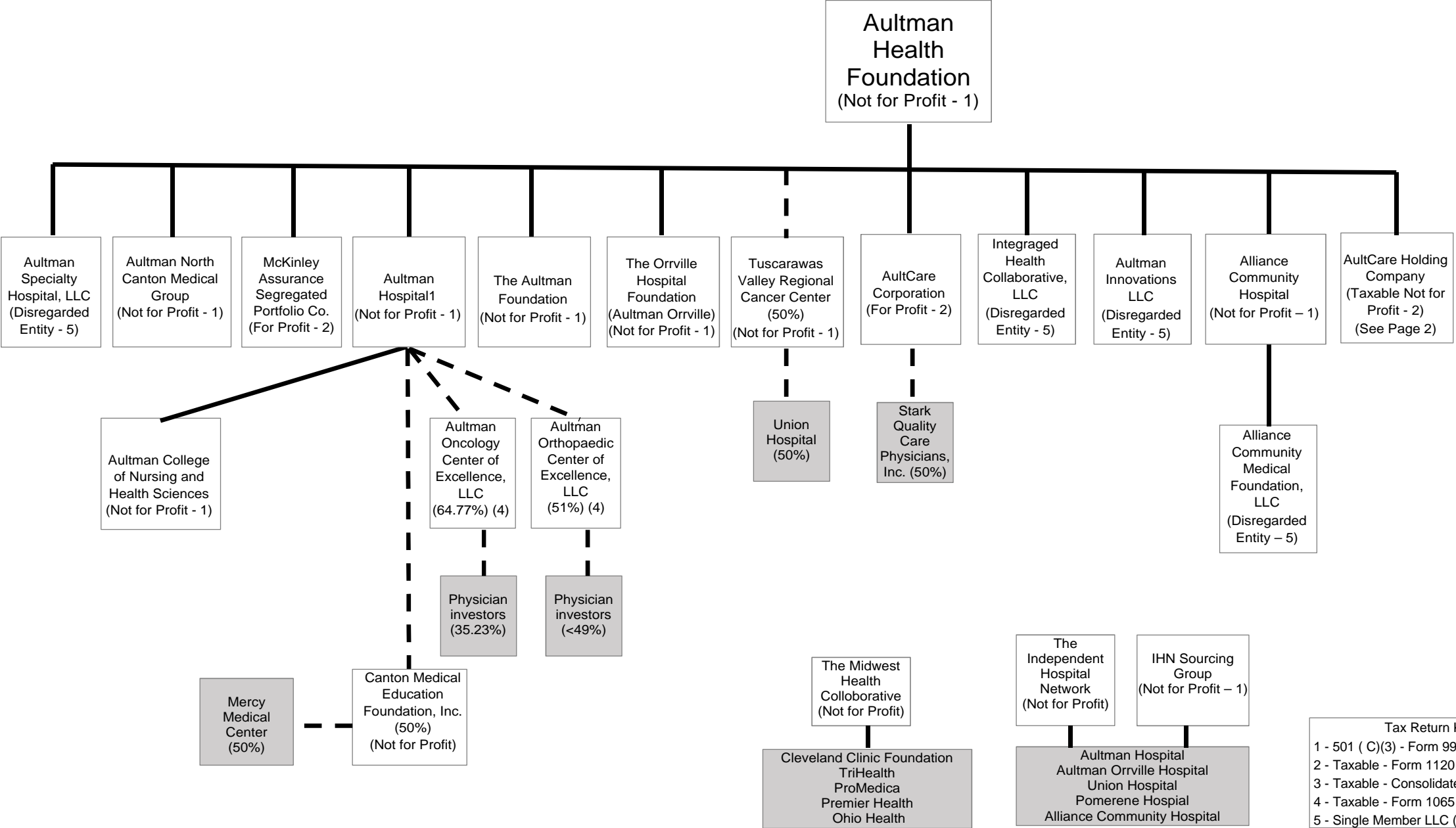
(a) Active Status Counts:

L – Licensed or Chartered - Licensed insurance carrier or domiciled RRG
E – Eligible - Reporting entities eligible or approved to write surplus lines in the state
N – None of the above – Not allowed to write business in the state

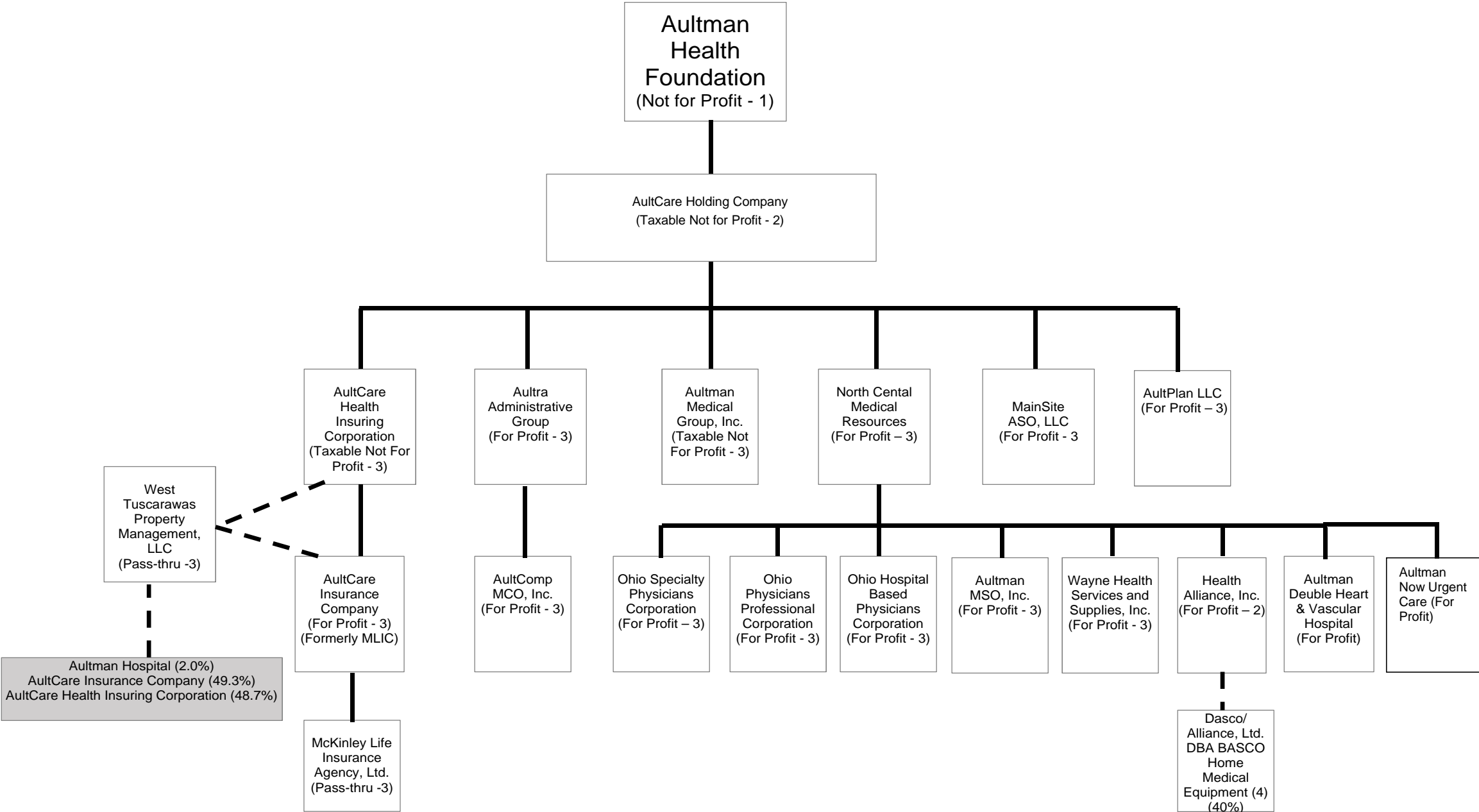
1
56
R – Registered - Non-domiciled RRGs
Q – Qualified - Qualified or accredited reinsurer

SCHEDULE Y - INFORMATION CONCERNING ACTIVITIES OF INSURER
MEMBERS OF A HOLDING COMPANY GROUP
PART 1 - ORGANIZATIONAL CHART

Q15



SCHEDULE Y - INFORMATION CONCERNING ACTIVITIES OF INSURER
MEMBERS OF A HOLDING COMPANY GROUP
PART 1 - ORGANIZATIONAL CHART



SCHEDULE Y
PART 1A - DETAIL OF INSURANCE HOLDING COMPANY SYSTEM

1	2	3	4	5	6	7	8	9	10	11	12	13	14	15	16
Group Code	Group Name	NAIC Comp- any Code	ID Number	FEDERAL RSSD	CIK	Name of Securities Exchange if Publicly Traded (U.S. or International)	Names of Parent, Subsidiaries or Affiliates	Domic- iliary Loca- tion	Rela- tion- ship to Report- ing Entity	Directly Controlled by (Name of Entity / Person)	Type of Control (Ownership, Board, Management, Attorney-in-Fact, Influence, Other)	If Control is Ownership Provide Percentage	Ultimate Controlling Entity(ies) / Person(s)	Is an SCA Filing Required? (Y/N)	*
Q16	4805	00000	34-1445390				Aultman Health Foundation	US	UIP	Self	Board of Directors		Aultman Health Foundation	N	
		00000	34-0714538				Aultman Hospital	US	NIA	Aultman Health Foundation	Ownership	100.0	Aultman Health Foundation	N	
		77216	34-1624818				AultCare Insurance Company	US	RE	AultCare Health Insuring Corporation	Ownership	100.0	Aultman Health Foundation	N	
		00000	34-1488123				AultCare Corporation	US	IA	Aultman Health Foundation & Stark County Care Physicians, Inc	Other		Aultman Health Foundation	N	0000001
		00000	20-0090246				West Tuscarawas Property Management, LLC	US	DS	AultCare Insurance Company & AultCare Health Insurance Corp & Aultman Hospital	Ownership	94.0	Aultman Health Foundation	N	
		00000	34-1795772				McKinley Life Insurance Agency, Ltd.	US	DS	AultCare Insurance Company	Ownership	100.0	Aultman Health Foundation	N	
		00000	20-4951704				Aultra Administrative Group	US	IA	AultCare Holding Company	Management		Aultman Health Foundation	N	
		00000	27-4379962				AultComp MCO, Inc.	US	NIA	Aultra Administrative Group	Ownership	100.0	Aultman Health Foundation	N	
		00000	34-1853300				Ohio Specialty Physician's Corporation	US	NIA	North Central Medical Resources	Ownership	100.0	Aultman Health Foundation	N	
		00000	98-0468384				McKinley Assurance Segregated Portfolio Company (SPC)	CYM	NIA	Aultman Health Foundation	Ownership	100.0	Aultman Health Foundation	N	
		00000	20-1359433				Aultman College of Nursing and Health Sciences	US	NIA	Aultman Hospital	Ownership	100.0	Aultman Hospital	N	
		00000	31-1509904				Aultman MSO, Inc.	US	NIA	North Central Medical Resources	Ownership	100.0	Aultman Health Foundation	N	
		00000	20-8090459				The Aultman Foundation	US	NIA	Aultman Health Foundation	Ownership	100.0	Aultman Health Foundation	N	
		00000	31-1509897				Ohio Physicians Professional Corporation	US	NIA	North Central Medical Resources	Ownership	100.0	Aultman Health Foundation	N	
		00000	34-1610344				North Central Medical Resources	US	NIA	AultCare Holding Company	Ownership	100.0	Aultman Health Foundation	N	
		00000	34-1871647				Ohio Hospital Based Physician Corporation	US	NIA	North Central Medical Resources	Ownership	100.0	Aultman Health Foundation	N	
		00000	31-1689698				Tuscarawas Valley Regional Cancer Center	US	NIA	Other	Ownership, Board of Directors	50.0	Aultman Health Foundation	N	0000002
		00000	13-4246188				Aultman Specialty Hospital, LLC	US	NIA	Aultman Health Foundation	Ownership	100.0	Aultman Health Foundation	N	
		00000	34-1243260				Canton Medical Education Foundation	US	NIA	Other	Ownership, Board of Directors	50.0	Aultman Hospital	N	0000003
		15461	46-3305099				AultCare Health Insuring Corporation	US	UDP	AultCare Holding Company	Ownership	100.0	Aultman Health Foundation	N	
		00000	34-1088530				Aultman North Canton Medical	US	NIA	Aultman Health Foundation	Ownership, Board of Directors	100.0	Aultman Health Foundation	N	
		00000	34-0733138				The Orville Hospital Foundation	US	NIA	Aultman Health Foundation	Ownership	100.0	Aultman Health Foundation	N	
		00000	45-3166014				Aultman Medical Group, Inc	US	NIA	AultCare Holding Company	Ownership	100.0	Aultman Health Foundation	N	
		00000	47-1165287				AultCare Holding Company	US	UIP	Aultman Health Foundation	Ownership	100.0	Aultman Health Foundation	N	
		00000	47-3587655				MainSite ASO, LLC	US	NIA	AultCare Holding Company	Ownership	100.0	Aultman Health Foundation	N	
		00000	34-1501390				Wayne Health Service and Supplies, Inc	US	NIA	North Central Medical Resources	Ownership	100.0	Aultman Health Foundation	N	
		00000	46-4625320				Integrated Health Collaborative	US	NIA	Aultman Health Foundation	Ownership	100.0	Aultman Health Foundation	N	
		00000	45-4215510				Aultman Oncology Center of Excellence	US	NIA	Other	Ownership, Other		Aultman Health Foundation	N	
		00000	46-2540184				Aultman Orthopedic Center of Excellence	US	NIA	Other	Ownership, Other		Aultman Health Foundation	N	
		00000	81-1342957				The Midwest Health Collaborative	US	NIA	Other	Other		Aultman Health Foundation	N	0000004
		00000	45-1731318				IHN Sourcing Group	US	NIA	Other	Other		AULTman Health Foundation	N	
		00000	81-0847842				Aultman Innovations, LLC	US	NIA	Aultman Health Foundation	Ownership	100.0	Aultman Health Foundation	N	
		00000	34-0714581				Alliance Community Hospital	US	NIA	Aultman Health Foundation	Ownership	100.0	Aultman Health Foundation	N	
		00000	26-3646817				Alliance Community Medical Foundation	US	NIA	Alliance Community Hospital	Ownership	100.0	Aultman Health Foundation	N	
		00000	34-1531993				Health Alliance, Inc	US	NIA	North Central Medical Resources	Ownership	100.0	Aultman Health Foundation	N	
		00000	91-1889215				Alliance Medical Associates	US	NIA	Other	Ownership	100.0	Alliance Community Hospital	N	0000005
		00000	34-1609338				Dasco/Alliance, Ltd DBA DASCO Home Medical	US	NIA	Health Alliance, Inc.	Ownership	100.0	Aultman Health Foundation	N	
		00000	85-1242075				AultPlan LLC	US	NIA	AultCare Holding Company	Ownership	100.0	Aultman Health Foundation	N	
		00000	84-4874605				Aultman Now Urgent Care	US	NIA	North Central Medical Resources	Ownership	100.0	Aultman Health Foundation	N	

Asterisk	Explanation
0000001	AultCare Corporation's governance is controlled by Aultman Health Foundation 50% and Stark Quality Care Physicians, Inc 50%, 100% of equity owned by Aultman Health Foundation
0000002	Tuscarawas Valley Regional Cancer Center is controlled by Aultman Health Foundation 50% and a non-insurance affiliate entity Union Hospital 50%
0000003	Canton Medical Education Foundation is controlled by Aultman Hospital 50% and a non-insurance affiliate entity Mercy Medical Center 50%
0000004	The Midwest Health Collaborative is comprised of Cleveland Clinic Foundation, Tri-Health, ProMedica, Premier Health and Aultman Health Foundation working together to build quality network and pooling of resources.
0000005	Alliance Medical Associates is controlled by Alliance Community Hospital via Share Control Agreement

SUPPLEMENTAL EXHIBITS AND SCHEDULES INTERROGATORIES

The following supplemental reports are required to be filed as part of your statement filing. However, in the event that your company does not transact the type of business for which the special report must be filed, your response of NO to the specific interrogatory will be accepted in lieu of filing a "NONE" report and a bar code will be printed below. If the supplement is required of your company but is not being filed for whatever reason enter SEE EXPLANATION and provide an explanation following the interrogatory questions.

1. Will the Medicare Part D Coverage Supplement be filed with the state of domicile and the NAIC with this statement?

RESPONSE
No

Explanations:

Bar Codes:

Medicare Part D Coverage Supplement



77216202136500002

2021

Document Code: 365

OVERFLOW PAGE FOR WRITE-INS

STATEMENT AS OF **June 30, 2021** OF THE **AultCare Insurance Company**

SCHEDULE A - VERIFICATION

Real Estate		
	1	2
	Year To Date	Prior Year Ended December 31
1. Book/adjusted carrying value, December 31 of prior year		
2. Cost of acquired:		
2.1 Actual cost at time of acquisition		
2.2 Additional investment made after acquisition		
3. Current year change in encumbrances		
4. Total gain (loss) on disposals		
5. Deduct amounts received on disposals		
6. Total foreign exchange change in book/adjusted carrying value		
7. Deduct current year's other-than-temporary impairment recognized		
8. Deduct current year's depreciation		
9. Book/adjusted carrying value at the end of current period (Lines 1 + 2 + 3 + 4 - 5 + 6 - 7 - 8)		
10. Deduct total nonadmitted amounts		
11. Statement value at end of current period (Line 9 minus Line 10)		

SCHEDULE B - VERIFICATION

Mortgage Loans

	1	2
	Year To Date	Prior Year Ended December 31
1. Book value/recorded investment excluding accrued interest, December 31 of prior year		
2. Cost of acquired:		
2.1 Actual cost at time of acquisition		
2.2 Additional investment made after acquisition		
3. Capitalized deferred interest and other		
4. Accrual of discount		
5. Unrealized valuation increase (decrease)		
6. Total gain (loss) on disposals		
7. Deduct amounts received on disposals		
8. Deduct amortization of premium and mortgage interest points		
9. Total foreign exchange change in book value/recorded investment		
10. Deduct current year's other-than-temporary impairment recognized		
11. Book value/recorded investment excluding accrued interest at end of current period (Lines 1 + 2 + 3 + 4 + 5 + 6 - 7 - 8 + 9 - 10)		
12. Total valuation allowance		
13. Subtotal (Line 11 plus Line 12)		
14. Deduct total nonadmitted amounts		
15. Statement value at end of current period (Line 13 minus Line 14)		

SCHEDULE BA - VERIFICATION

Other Long-Term Invested Assets

	1	2
	Year To Date	Prior Year Ended December 31
1. Book/adjusted carrying value, December 31 of prior year	17,931,910	21,219,248
2. Cost of acquired:		
2.1 Actual cost at time of acquisition		
2.2 Additional investment made after acquisition	4,017,808	500,000
3. Capitalized deferred interest and other		
4. Accrual of discount		
5. Unrealized valuation increase (decrease)	239,479	(242,820)
6. Total gain (loss) on disposals		
7. Deduct amounts received on disposals		3,544,518
8. Deduct amortization of premium and depreciation		
9. Total foreign exchange change in book/adjusted carrying value		
10. Deduct current year's other-than-temporary impairment recognized		
11. Book/adjusted carrying value at end of current period (Lines 1 + 2 + 3 + 4 + 5 + 6 - 7 - 8 + 9 - 10)	22,189,198	17,931,910
12. Deduct total nonadmitted amounts		
13. Statement value at end of current period (Line 11 minus Line 12)	22,189,198	17,931,910

SCHEDULE D - VERIFICATION

Bonds and Stocks

	1	2
	Year To Date	Prior Year Ended December 31
1. Book/adjusted carrying value of bonds and stocks, December 31 of prior year	50,732,202	43,403,069
2. Cost of bonds and stocks acquired	5,110,508	20,627,851
3. Accrual of discount	15,651	33,441
4. Unrealized valuation increase (decrease)	935,216	(2,080,027)
5. Total gain (loss) on disposals	257,345	3,778,120
6. Deduct consideration for bonds and stocks disposed of	4,342,195	14,868,046
7. Deduct amortization of premium	137,983	162,205
8. Total foreign exchange change in book/adjusted carrying value		
9. Deduct current year's other-than-temporary impairment recognized		
10. Total investment income recognized as a result of prepayment penalties and/or acceleration fees		
11. Book/adjusted carrying value at end of current period (Lines 1 + 2 + 3 + 4 + 5 - 6 - 7 + 8 - 9 + 10)	52,570,744	50,732,202
12. Deduct total nonadmitted amounts		
13. Statement value at end of current period (Line 11 minus Line 12)	52,570,744	50,732,202

QSI02

SCHEDULE D - PART 1B
Showing the Acquisitions, Dispositions and Non-Trading Activity
During the Current Quarter for all Bonds and Preferred Stock by NAIC Designation

NAIC Designation	1 Book/Adjusted Carrying Value Beginning of Current Quarter	2 Acquisitions During Current Quarter	3 Dispositions During Current Quarter	4 Non-Trading Activity During Current Quarter	5 Book/Adjusted Carrying Value End of First Quarter	6 Book/Adjusted Carrying Value End of Second Quarter	7 Book/Adjusted Carrying Value End of Third Quarter	8 Book/Adjusted Carrying Value December 31 Prior Year
BONDS								
1. NAIC 1 (a)	30,493,218	1,785,671	649,269	(162,156)	30,493,218	31,467,464		31,027,879
2. NAIC 2 (a)	4,640,739	1,291,129	884,338	98,090	4,640,739	5,145,620		4,365,311
3. NAIC 3 (a)								
4. NAIC 4 (a)								
5. NAIC 5 (a)								
6. NAIC 6 (a)								
7. Total Bonds	35,133,957	3,076,800	1,533,607	(64,066)	35,133,957	36,613,084		35,393,190
PREFERRED STOCK								
8. NAIC 1								
9. NAIC 2								
10. NAIC 3								
11. NAIC 4								
12. NAIC 5								
13. NAIC 6								
14. Total Preferred Stock								
15. Total Bonds & Preferred Stock	35,133,957	3,076,800	1,533,607	(64,066)	35,133,957	36,613,084		35,393,190

(a) Book/Adjusted Carrying Value column for the end of the current reporting period includes the following amount of short-term and cash equivalent bonds by NAIC designation: NAIC 1 \$.....90,076; NAIC 2 \$.....0; NAIC 3 \$.....0; NAIC 4 \$.....0; NAIC 5 \$.....0; NAIC 6 \$.....0

SCHEDULE DA - PART 1

Short - Term Investments

	1 Book/Adjusted Carrying Value	2 Par Value	3 Actual Cost	4 Interest Collected Year To Date	5 Paid for Accrued Interest Year To Date
9199999. Totals	90,076	X X X	91,015	1,744	

SCHEDULE DA - Verification

Short-Term Investments

		1 Year To Date	2 Prior Year Ended December 31
1.	Book/adjusted carrying value, December 31 of prior year	292,108	
2.	Cost of short-term investments acquired		292,231
3.	Accrual of discount		
4.	Unrealized valuation increase (decrease)		
5.	Total gain (loss) on disposals	(6)	
6.	Deduct consideration received on disposals	200,011	
7.	Deduct amortization of premium	2,016	123
8.	Total foreign exchange change in book/adjusted carrying value		
9.	Deduct current year's other-than-temporary impairment recognized		
10.	Book/adjusted carrying value at end of current period (Lines 1 + 2 + 3 + 4 + 5 - 6 - 7 + 8 - 9)	90,076	292,108
11.	Deduct total nonadmitted amounts		
12.	Statement value at end of current period (Line 10 minus Line 11)	90,076	292,108

SI04 Schedule DB - Part A Verification NONE

SI04 Schedule DB - Part B Verification NONE

SI05 Schedule DB Part C Section 1 NONE

SI06 Schedule DB Part C Section 2 NONE

SI07 Schedule DB - Verification NONE

SI08 Schedule E - Verification (Cash Equivalents) NONE

E01 Schedule A Part 2 NONE

E01 Schedule A Part 3 NONE

E02 Schedule B Part 2 NONE

E02 Schedule B Part 3 NONE

SCHEDULE BA - PART 2

Showing Other Long-Term Invested Assets ACQUIRED AND ADDITIONS MADE During the Current Quarter

1	2	Location		5	6	7	8	9	10	11	12	13
		3	4									
CUSIP Identification	Name or Description	City	State	Name of Vendor or General Partner	NAIC Designation, NAIC Designation Modifier and SVO Administrative Symbol	Date Originally Acquired	Type and Strategy	Actual Cost at Time of Acquisition	Additional Investment Made After Acquisition	Amount of Encumbrances	Commitment for Additional Investment	Percentage of Ownership
Non-collateral Loans - Affiliated												
	AultCare - Affiliated	Canton	OH	AultCare Insurance Company		01/01/2009			3,517,808			100,000
3299999 Subtotal - Non-collateral Loans - Affiliated									3,517,808			X X X
Any Other Class of Assets - Unaffiliated												
	RX Next, LLC	Canton	OH	AultCare Insurance Company		07/01/2019			500,000			40
4699999 Subtotal - Any Other Class of Assets - Unaffiliated									500,000			X X X
4899999 Total - Unaffiliated									500,000			X X X
4999999 Total - Affiliated									3,517,808			X X X
5099999 TOTALS									4,017,808			X X X

SCHEDULE BA - PART 3

Showing Other Long-Term Invested Assets DISPOSED, Transferred or Repaid During the Current Quarter

1 CUSIP Identification	2 Name or Description	Location		5 Name of Purchaser or Nature of Disposal	6 Date Originally Acquired	7 Disposal Date	8 Book/Adjusted Carrying Value Less Encumbrances, Prior Year	Change in Book/Adjusted Carrying Value						15 Book/Adjusted Carrying Value Less Encumbrances on Disposal	16 Consideration	17 Foreign Exchange Gain (Loss) on Disposal	18 Realized Gain (Loss) on Disposal	19 Total Gain (Loss) on Disposal	20 Investment Income
		3 City	4 State					9 Unrealized Valuation Increase (Decrease)	10 Current Year's (Depreciation) or (Amortization)/ Accretion	11 Current Year's Other Than Temporary Impairment Recognized	12 Capitalized Deferred Interest and Other	13 Total Change in B./A.C.V. (9 + 10 - 11 + 12)	14 Total Foreign Exchange Change in B./A.C.V.						
								N O N E											
5099999 TOTALS

QE03

SCHEDULE D - PART 3

Show All Long-Term Bonds and Stock Acquired During the Current Quarter

1	2	3	4	5	6	7	8	9	10
CUSIP Identification	Description	Foreign	Date Acquired	Name of Vendor	Number of Shares of Stock	Actual Cost	Par Value	Paid for Accrued Interest and Dividends	NAIC Designation, NAIC Designation Modifier and SVO Administrative Symbol
Bonds - U.S. Governments									
38149MVN0	GOLDMAN SACHS BANK .3% 04/15/2024		04/01/2021	HUNTINGTON BANK	X X X	175,000	175,000		1.A
0599999	Subtotal - Bonds - U.S. Governments				X X X	175,000	175,000		X X X
Bonds - Industrial and Miscellaneous (Unaffiliated)									
001055AM4	AFLAC INC 3.625% 11/15/2024		06/04/2021	HUNTINGTON BANK	X X X	132,180	120,000	278	1.G
010392FN3	ALABAMA POWER CO 2.8% 04/01/2025		06/02/2021	HUNTINGTON BANK	X X X	106,477	100,000	490	1.F
023135BX3	AMAZON.COM INC 1% 05/12/2026		05/20/2021	HUNTINGTON BANK	X X X	74,852	75,000	25	1.D
039482AA2	ARCHER-DANIELS-MIDLAND 2.75% 03/27/2025		06/02/2021	HUNTINGTON BANK	X X X	69,716	65,000	333	1.F
05348EAU3	AVALONBAY COMM INC 3.5% 11/15/2024		04/19/2021	HUNTINGTON BANK	X X X	136,129	125,000	1,896	1.G
06051GFB0	BANK OF AMERICA CORP 4.125% 01/22/2024		06/04/2021	HUNTINGTON BANK	X X X	98,612	90,000	1,403	1.G
06051GHT9	BANK OF AMERICA CORP 3.559% 04/23/2027		06/02/2021	HUNTINGTON BANK	X X X	121,008	110,000	446	1.G
14040HBF1	CAPITAL ONE FIN CORP 3.75% 04/24/2024		06/04/2021	HUNTINGTON BANK	X X X	59,885	55,000	252	2.B
172967AM3	CITIGROUP INC 6.875% 06/01/2025		06/02/2021	HUNTINGTON BANK	X X X	67,226	55,000	32	2.A
20030NCS8	COMCAST CORP 3.95% 10/15/2025		06/02/2021	HUNTINGTON BANK	X X X	78,686	70,000	376	1.G
126650CU2	CVS HEALTH CORP 2.875% 06/01/2026		05/07/2021	HUNTINGTON BANK	X X X	118,313	110,000	1,406	2.B
29379VBE2	ENTERPRISE PROD OPER 3.75% 02/15/2025		06/02/2021	HUNTINGTON BANK	X X X	65,765	60,000	681	2.A
33651JAC5	FIRST ST B&TC CD .25% 04/26/2024		04/12/2021	HUNTINGTON BANK	X X X	150,000	150,000		1.A
337738AT5	FISERV INC 3.2% 07/01/2026		06/09/2021	HUNTINGTON BANK	X X X	125,364	115,000	1,636	2.B
337738AQ1	FISERV INC 3.8% 10/01/2023		04/13/2021	HUNTINGTON BANK	X X X	53,869	50,000	74	2.A
38141GWB6	GOLDMAN SACHS GRP INC 3.85% 01/26/2027		06/02/2021	HUNTINGTON BANK	X X X	122,438	110,000	1,506	2.A
38141GVM3	GOLDMAN SACHS GRP INC 4.0% 03/03/2024		06/04/2021	HUNTINGTON BANK	X X X	54,667	50,000	528	2.A
39573LBD9	GREENSTATE CRDT UNION CD .45% 04/16/24		04/01/2021	HUNTINGTON BANK	X X X	175,000	175,000		1.A
410493FG0	HANMI BANK CD .2% 06/17/2024		06/02/2021	HUNTINGTON BANK	X X X	125,000	125,000		1.A
461070AL8	INTERSTATE P&I 3.25% 12/01/2024		06/08/2021	HUNTINGTON BANK	X X X	107,948	100,000	81	1.G
24422EUE7	JOHN DEERE CAPITAL CRP 3.45% 03/13/2025		04/19/2021	HUNTINGTON BANK	X X X	137,413	125,000	455	1.F
609207AU9	MONDELEZ INTERN'L INC 1.5% 05/04/2025		06/02/2021	HUNTINGTON BANK	X X X	40,924	40,000	50	2.B
67077MAC2	NUTRIEN LTD 3.625% 03/15/2024		06/25/2021	HUNTINGTON BANK	X X X	53,432	50,000	524	2.B
70109HAL9	PARKER-HANNIFIN 3.3% 11/21/2024		05/04/2021	HUNTINGTON BANK	X X X	162,068	150,000	2,269	2.A
718546AZ7	PHILLIPS 66 1.3% 02/15/2026		05/11/2021	HUNTINGTON BANK	X X X	100,185	100,000	318	2.A
871829BG1	SYSCO CORP 3.55% 03/15/2025		06/02/2021	HUNTINGTON BANK	X X X	81,965	75,000	584	2.C
893939AE8	TRAVELERS PPTY 7.75% 04/15/2026		04/26/2021	HUNTINGTON BANK	X X X	97,652	75,000	242	1.A
913017DB2	UNITED TECHNOLOGIES CRP 3.65% 08/16/2023		04/08/2021	HUNTINGTON BANK	X X X	53,540	50,000	284	2.A
91913YAS9	VALERO ENERGY CORP 3.65% 03/15/2025		06/02/2021	HUNTINGTON BANK	X X X	81,803	75,000	601	2.B
94974BGP9	WELLS FARGO & CO 3.55% 09/29/2025		06/04/2021	HUNTINGTON BANK	X X X	49,688	45,000	306	2.A
3899999	Subtotal - Bonds - Industrial and Miscellaneous (Unaffiliated)				X X X	2,901,800	2,695,000	17,073	X X X
8399997	Subtotal - Bonds - Part 3				X X X	3,076,800	2,870,000	17,073	X X X
8399998	Summary Item from Part 5 for Bonds (N/A to Quarterly)				X X X	X X X	X X X	X X X	X X X
8399999	Subtotal - Bonds				X X X	3,076,800	2,870,000	17,073	X X X
8999998	Summary Item from Part 5 for Preferred Stocks (N/A to Quarterly)				X X X	X X X	X X X	X X X	X X X
8999999	Subtotal - Preferred Stocks				X X X		X X X		X X X
Common Stocks - Mutual Funds									
31428Q739	FEDERATED TOTAL BOND RETURN		04/01/2021	HUNTINGTON BANK	1,272.678	14,305	X X X		1.A
31428Q739	FEDERATED TOTAL BOND RETURN		05/03/2021	HUNTINGTON BANK	1,367.022	15,461	X X X		1.A
31428Q739	FEDERATED TOTAL BOND RETURN		06/01/2021	HUNTINGTON BANK	1,481.253	16,783	X X X		1.A
922908801	VANGUARD TOTAL MKT IDX INST FUND		06/23/2021	VANGUARD	218.952	23,467	X X X		1.A
9499999	Subtotal - Common Stocks - Mutual Funds				X X X	70,016	X X X		X X X
9799997	Subtotal - Common Stocks - Part 3				X X X	70,016	X X X		X X X
9799998	Summary Item from Part 5 for Common Stocks (N/A to Quarterly)				X X X	X X X	X X X	X X X	X X X
9799999	Subtotal - Common Stocks				X X X	70,016	X X X		X X X

QE04

SCHEDULE D - PART 3

Show All Long-Term Bonds and Stock Acquired During the Current Quarter

1	2	3	4	5	6	7	8	9	10
CUSIP Identification	Description	Foreign	Date Acquired	Name of Vendor	Number of Shares of Stock	Actual Cost	Par Value	Paid for Accrued Interest and Dividends	NAIC Designation, NAIC Designation Modifier and SVO Administrative Symbol
9899999	Subtotal - Preferred and Common Stocks X X X 70,016 X X X X X X
9999999	Total - Bonds, Preferred and Common Stocks X X X 3,146,816 X X X 17,073 X X X

QE05

SCHEDULE D - PART 4

Show All Long-Term Bonds and Stocks Sold, Redeemed or Otherwise Disposed of
During the Current Quarter

1	2	3 F o r e i g n	4	5	6	7	8	9	10	Change in Book/Adjusted Carrying Value					16	17	18	19	20	21	22 NAIC Designation, NAIC Designation Modifier and SVO Admini- strative Symbol
										11	12	13	14	15							
CUSIP Identification	Description		Disposal Date	Name of Purchaser	Number of Shares of Stock	Consideration	Par Value	Actual Cost	Prior Year Book/ Adjusted Carrying Value	Unrealized Valuation Increase/ (Decrease)	Current Year's (Amortization)/ Accretion	Current Year's Temporary Impairment Recognized	Total Change in B./A.C.V. (11 + 12 - 13)	Total Foreign Exchange Change in B./A.C.V.	Book/ Adjusted Carrying Value at Disposal Date	Foreign Exchange Gain (Loss) on Disposal	Realized Gain (Loss) on Disposal	Total Gain (Loss) on Disposal	Bond Interest/ Stock Dividends Received During Year	Stated Contractual Maturity Date	
Bonds - Industrial and Miscellaneous (Unaffiliated)																					
06051GFB0	BANK OF AMERICA CORP 4.125% 01/22/2024		06/02/2021	HUNTINGTON BANK	X X X	82,201	75,000	75,491	75,304		(41)		(41)		75,263		6,938	6,938	2,681	01/22/2024	1.G
06051GFB0	BANK OF AMERICA CORP 4.125% 01/22/2024		06/02/2021	HUNTINGTON BANK	X X X	38,360	35,000	38,627	38,573		(485)		(485)		38,087		273	273	1,251	01/22/2024	1.G
06416CAC2	Bank of Nova Scotia 1.875% 4/26/2021		04/26/2021	HUNTINGTON BANK	X X X	65,000	65,000	64,191	64,938		62		62		65,000				609	04/26/2021	1.A
134429AG4	CAMPBELL SOUP 8.88% 5/1/2021		05/01/2021	HUNTINGTON BANK	X X X	10,000	10,000	12,731	10,152		(152)		(152)		10,000				444	05/01/2021	2.A
134429AG4	CAMPBELL SOUP 8.88% 5/1/2021		05/01/2021	HUNTINGTON BANK	X X X	50,000	50,000	61,865	51,095		(1,095)		(1,095)		50,000				2,219	05/01/2021	2.A
17312QJ59	CITIBANK NA CD 2/8% 04/26/2021		04/26/2021	HUNTINGTON BANK	X X X	125,000	125,000	125,000	125,000						125,000				1,764	04/26/2021	1.A
126650CV0	CVS HEALTH CORP 3.7% 03/9/2023		05/07/2021	HUNTINGTON BANK	X X X	52,898	50,000	51,945	51,211		(189)		(189)		51,022		1,876	1,876	1,244	03/09/2023	2.A
126650CV0	CVS HEALTH CORP 3.7% 03/9/2023		05/07/2021	HUNTINGTON BANK	X X X	52,898	50,000	53,900	53,301		(525)		(525)		52,776		122	122	1,244	03/09/2023	2.A
31428XAS5	FEDEX CORP 2.625% 08/01/2022		05/20/2021	HUNTINGTON BANK	X X X	87,373	85,000	82,788	84,144		204		204		84,347		3,026	3,026	1,791	08/01/2022	2.A
31428XBY1	FEDEX CORP 3.8% 05/15/2025		04/30/2021	HUNTINGTON BANK	X X X	66,857	60,000	67,943	67,308		(542)		(542)		66,766		91	91	1,045	05/15/2025	2.B
31428XBY1	FEDEX CORP 3.8% 05/15/2025		04/30/2021	HUNTINGTON BANK	X X X	27,857	25,000	28,133	28,095		(230)		(230)		27,865		(8)	(8)	435	05/15/2025	2.B
337738AQ1	FISERV INC 3.8% 10/01/2023		06/09/2021	HUNTINGTON BANK	X X X	53,712	50,000	53,869	53,869		(234)		(234)		53,635		77	77	369	10/01/2023	2.A
337738AQ1	FISERV INC 3.8% 10/01/2023		06/09/2021	HUNTINGTON BANK	X X X	107,424	100,000	105,796	103,921		(610)		(610)		103,312		4,112	4,112	2,639	10/01/2023	2.A
38141GVM3	GOLDMAN SACHS GRP INC 4% 03/03/2024		06/02/2021	HUNTINGTON BANK	X X X	76,537	70,000	74,309	73,220		(412)		(412)		72,809		3,729	3,729	2,108	03/03/2024	2.A
38141GVM3	GOLDMAN SACHS GRP INC 4.0% 03/03/2024		06/02/2021	HUNTINGTON BANK	X X X	43,736	40,000	44,021	43,963		(518)		(518)		43,445		291	291	1,204	03/03/2024	2.A
594918BH6	MICROSOFT CORP 2.65% 11/03/2022		04/26/2021	HUNTINGTON BANK	X X X	36,195	35,000	36,083	35,637		(109)		(109)		35,528		667	667	451	11/03/2022	1.A
718546AC8	PHILLIPS 66 - 4.300% 4/01/2022		05/11/2021	HUNTINGTON BANK	X X X	51,751	50,000	53,916	50,986		(281)		(281)		50,704		1,047	1,047	1,326	04/01/2022	2.A
743315AN3	PROGRESSIVE CORP 3.750% 8/23/2021		04/19/2021	HUNTINGTON BANK	X X X	20,235	20,000	21,901	20,251		(117)		(117)		20,134		101	101	496	08/23/2021	1.A
743315AN3	PROGRESSIVE CORP 3.750% 8/23/2021		04/19/2021	HUNTINGTON BANK	X X X	25,294	25,000	27,227	25,302		(140)		(140)		25,162		132	132	620	08/23/2021	1.A
743315AN3	PROGRESSIVE CORP 3.750% 8/23/2021		04/19/2021	HUNTINGTON BANK	X X X	80,941	80,000	81,603	80,320		(150)		(150)		80,171		770	770	1,983	08/23/2021	1.A
875127AZ5	TAMPA ELECTRIC 5.40% 5/15/2021		05/15/2021	HUNTINGTON BANK	X X X	50,000	50,000	57,985	50,519		(519)		(519)		50,000				1,350	05/15/2021	2.A
92343VBJ2	VERIZON COMMUNICATIONS 2.45% 11/01/2022		05/28/2021	HUNTINGTON BANK	X X X	103,168	100,000	103,745	103,415		(758)		(758)		102,658		510	510	1,409	11/01/2022	2.A
976656CD8	WI ELEC POWER 2.950% 9/15/2021		06/16/2021	HUNTINGTON BANK	X X X	25,000	25,000	25,702	25,112		(73)		(73)		25,039		(39)	(39)	555	09/15/2021	1.A
976656CD8	WI ELEC POWER 2.950% 9/15/2021		06/16/2021	HUNTINGTON BANK	X X X	100,000	100,000	98,763	99,679		206		206		99,885		115	115	2,221	09/15/2021	1.A
3899999	Subtotal - Bonds - Industrial and Miscellaneous (Unaffiliated)				X X X	1,432,437	1,375,000	1,447,533	1,415,316		(6,709)		(6,709)		1,408,607		23,830	23,830	31,458	X X X	X X X
8399997	Subtotal - Bonds - Part 4				X X X	1,432,437	1,375,000	1,447,533	1,415,316		(6,709)		(6,709)		1,408,607		23,830	23,830	31,458	X X X	X X X
8399998	Summary Item from Part 5 for Bonds (N/A to Quarterly)				X X X	X X X	X X X	X X X	X X X	X X X	X X X	X X X	X X X	X X X	X X X	X X X	X X X	X X X	X X X	X X X	X X X
8399999	Subtotal - Bonds				X X X	1,432,437	1,375,000	1,447,533	1,415,316		(6,709)		(6,709)		1,408,607		23,830	23,830	31,458	X X X	X X X
8999998	Summary Item from Part 5 for Preferred Stocks (N/A to Quarterly)				X X X	X X X	X X X	X X X	X X X	X X X	X X X	X X X	X X X	X X X	X X X	X X X	X X X	X X X	X X X	X X X	X X X
8999999	Subtotal - Preferred Stocks				X X X		X X X													X X X	X X X
Common Stocks - Mutual Funds																					
922908801	VANGUARD TOTAL MKT IDX INST FUND		05/25/2021	Vanguard		9,490,367	1,000,000		781,627		899,212		(117,586)		781,627		218,373	218,373	3,103	X X X	1.A
9499999	Subtotal - Common Stocks - Mutual Funds				X X X	1,000,000		781,627	899,212		(117,586)		(117,586)		781,627		218,373	218,373	3,103	X X X	X X X
9799997	Subtotal - Common Stocks - Part 4				X X X	1,000,000		781,627	899,212		(117,586)		(117,586)		781,627		218,373	218,373	3,103	X X X	X X X
9799998	Summary Item from Part 5 for Common Stocks (N/A to Quarterly)				X X X	X X X	X X X	X X X	X X X	X X X	X X X	X X X	X X X	X X X	X X X	X X X	X X X	X X X	X X X	X X X	X X X
9799998	Subtotal - Common Stocks				X X X	1,000,000		781,627	899,212		(117,586)		(117,586)		781,627		218,373	218,373	3,103	X X X	X X X
9899999	Subtotal - Preferred and Common Stocks				X X X	1,000,000		781,627	899,212		(117,586)		(117,586)		781,627		218,373	218,373	3,103	X X X	X X X
9999999	Total - Bonds, Preferred and Common Stocks				X X X	2,432,437		2,229,160	2,314,528		(117,586)		(117,586)		2,190,234		242,203	242,203	34,562	X X X	X X X

E06 Schedule DB Part A Section 1 NONE

E07 Schedule DB Part B Section 1 NONE

E08 Schedule DB Part D Section 1 NONE

E09 Schedule DB Part D Section 2 - Collateral Pledged By Reporting Entity NONE

E09 Schedule DB Part D Section 2 - Collateral Pledged To Reporting Entity NONE

E10 Schedule DB Part E NONE

E11 Schedule DL - Part 1 - Securities Lending Collateral Assets NONE

E12 Schedule DL - Part 2 - Securities Lending Collateral Assets NONE

SCHEDULE E - PART 1 - CASH

Month End Depository Balances

1			2	3	4	5	Book Balance at End of Each Month			9
Depository			Code	Rate of Interest	Amount of Interest Received During Current Quarter	Amount of Interest Accrued at Current Statement Date	During Current Quarter			*
							6	7	8	
							First Month	Second Month	Third Month	
open depositories										
Huntington Bank - Trust	Canton, Ohio			0.020	8		145,020	218,272	226,931	X X X
Huntington Bank - Brokered CDs	Canton, Ohio			0.020	10		141,826	145,801	24,432	X X X
Huntington National Bank	Canton, Ohio						22,998,208	14,455,806	15,224,393	X X X
Huntington Bank - Mutual Funds Cash	Canton, Ohio						707	707	707	X X X
Huntington Bank - Richmond Capital	Canton, Ohio			0.020	9		198,519	1,250,329	280,243	X X X
0199998 Deposits in0 depositories that do not exceed the allowable limit in any one depository (see Instructions) - open depositories			X X X	X X X						X X X
0199999 Totals - Open Depositories			X X X	X X X	27		23,484,280	16,070,915	15,756,707	X X X
0299998 Deposits in0 depositories that do not exceed the allowable limit in any one depository (see Instructions) - suspended depositories			X X X	X X X						X X X
0299999 Totals - Suspended Depositories			X X X	X X X						X X X
0399999 Total Cash On Deposit			X X X	X X X	27		23,484,280	16,070,915	15,756,707	X X X
0499999 Cash in Company's Office			X X X	X X X	X X X	X X X				X X X
0599999 Total Cash			X X X	X X X	27		23,484,280	16,070,915	15,756,707	X X X

SCHEDULE E - PART 2 - CASH EQUIVALENTS

Show Investments Owned End of Current Quarter

1	2	3	4	5	6	7	8	9
CUSIP	Description	Code	Date Acquired	Rate of Interest	Maturity Date	Book/Adjusted Carrying Value	Amount of Interest Due & Accrued	Amount Received During Year
<div>NONE</div>								
9999999 Total Cash Equivalents