



PROPERTY AND CASUALTY COMPANIES - ASSOCIATION EDITION

QUARTERLY STATEMENT

AS OF JUNE 30, 2021

OF THE CONDITION AND AFFAIRS OF THE

OHIO BAR LIAB INS CO

NAIC Group Code00000000NAIC Company Code37176Employer's ID Number31-0947214

(Current)(Prior)

Organized under the Laws ofOhio, State of Domicile or Port of EntryOH

Country of DomicileUnited States of America

Incorporated/Organized12/05/1978Commenced Business09/01/1979

Statutory Home Office1650 Lake Shore DriveColumbus, OH, US 43204

(Street and Number)(City or Town, State, Country and Zip Code)

Main Administrative Office1650 Lake Shore DriveColumbus, OH, US 43204614-488-7924

(Street and Number)(City or Town, State, Country and Zip Code)(Area Code) (Telephone Number)

Mail AddressPO Box 2708Columbus, OH, US 43216-2708

(Street and Number or P.O. Box)(City or Town, State, Country and Zip Code)

Primary Location of Books and Records1650 Lake Shore DriveColumbus, OH, US 43204614-488-7924

(Street and Number)(City or Town, State, Country and Zip Code)(Area Code) (Telephone Number)

Internet Website Addresswww.oblic.com

Statutory Statement ContactRodney K. McGough614-488-7924

(Name)(Area Code) (Telephone Number)

rmcgough@oblic.com614-488-7936

(E-mail Address)(FAX Number)

OFFICERS

President & CEOSteven Craig CouchTreasurerDemetries Jo Neely

SecretaryFrederick Hunker

OTHER

John Stephen Stith, Chair of the Board

DIRECTORS OR TRUSTEES

Mary Amos Augsburger	E. Ann Gabriel	Michael Edward Flowers
Andrean Renee Horton	Barbara Jean Howard	Ronald Sinclair Kopp
David Hershel Lefton	Mark Kenneth McCown	Demetries Jo Neely
Nancy Michong Pyon	Carmen Vincent Roberto	Douglas Craig Robinette
Heather Gay Sowald	John Stephen Stith	Kathy Ann Stoneman
Robin Geoffrey Weaver	Linde Hurst Webb	

State ofOhioSS:

County ofFranklin

The officers of this reporting entity being duly sworn, each depose and say that they are the described officers of said reporting entity, and that on the reporting period stated above, all of the herein described assets were the absolute property of the said reporting entity, free and clear from any liens or claims thereon, except as herein stated, and that this statement, together with related exhibits, schedules and explanations therein contained, annexed or referred to, is a full and true statement of all the assets and liabilities and of the condition and affairs of the said reporting entity as of the reporting period stated above, and of its income and deductions therefrom for the period ended, and have been completed in accordance with the NAIC Annual Statement Instructions and Accounting Practices and Procedures manual except to the extent that: (1) state law may differ; or, (2) that state rules or regulations require differences in reporting not related to accounting practices and procedures, according to the best of their information, knowledge and belief, respectively. Furthermore, the scope of this attestation by the described officers also includes the related corresponding electronic filing with the NAIC, when required, that is an exact copy (except for formatting differences due to electronic filing) of the enclosed statement. The electronic filing may be requested by various regulators in lieu of or in addition to the enclosed statement.

Steven C. CouchFrederick HunkerDemetries Jo Neely

President & CEOSecretaryTreasurer

Subscribed and sworn to before me thisa. Is this an original filing? Yes [X] No []

day ofb. If no,1. State the amendment number.....

2. Date filed

3. Number of pages attached.....

ASSETS

	Current Statement Date			4 December 31 Prior Year Net Admitted Assets
	1 Assets	2 Nonadmitted Assets	3 Net Admitted Assets (Cols. 1 - 2)	
1. Bonds	31,267,390		31,267,390	30,348,362
2. Stocks:				
2.1 Preferred stocks			0	0
2.2 Common stocks	11,048,083		11,048,083	9,832,426
3. Mortgage loans on real estate:				
3.1 First liens			0	0
3.2 Other than first liens.....			0	0
4. Real estate:				
4.1 Properties occupied by the company (less \$ encumbrances)			0	0
4.2 Properties held for the production of income (less \$ encumbrances)			0	0
4.3 Properties held for sale (less \$ encumbrances)			0	0
5. Cash (\$2,682,600), cash equivalents (\$1,176,101) and short-term investments (\$)	3,858,701		3,858,701	3,221,893
6. Contract loans (including \$ premium notes)			0	0
7. Derivatives			0	0
8. Other invested assets	206,946		206,946	106,727
9. Receivables for securities			0	0
10. Securities lending reinvested collateral assets			0	0
11. Aggregate write-ins for invested assets	0	0	0	0
12. Subtotals, cash and invested assets (Lines 1 to 11)	46,381,120	0	46,381,120	43,509,408
13. Title plants less \$ charged off (for Title insurers only)			0	0
14. Investment income due and accrued	202,504		202,504	205,692
15. Premiums and considerations:				
15.1 Uncollected premiums and agents' balances in the course of collection	1,932,329		1,932,329	1,677,781
15.2 Deferred premiums, agents' balances and installments booked but deferred and not yet due (including \$ earned but unbilled premiums)			0	0
15.3 Accrued retrospective premiums (\$) and contracts subject to redetermination (\$)			0	0
16. Reinsurance:				
16.1 Amounts recoverable from reinsurers	124,706	7,558	117,148	0
16.2 Funds held by or deposited with reinsured companies			0	0
16.3 Other amounts receivable under reinsurance contracts			0	0
17. Amounts receivable relating to uninsured plans			0	0
18.1 Current federal and foreign income tax recoverable and interest thereon	172,024		172,024	175,385
18.2 Net deferred tax asset			0	0
19. Guaranty funds receivable or on deposit			0	0
20. Electronic data processing equipment and software	167,255		167,255	167,255
21. Furniture and equipment, including health care delivery assets (\$)	162,009	162,009	0	0
22. Net adjustment in assets and liabilities due to foreign exchange rates			0	0
23. Receivables from parent, subsidiaries and affiliates	58,816		58,816	126,265
24. Health care (\$) and other amounts receivable			0	0
25. Aggregate write-ins for other than invested assets	73,765	6,369	67,396	24,920
26. Total assets excluding Separate Accounts, Segregated Accounts and Protected Cell Accounts (Lines 12 to 25)	49,274,528	175,936	49,098,592	45,886,706
27. From Separate Accounts, Segregated Accounts and Protected Cell Accounts			0	0
28. Total (Lines 26 and 27)	49,274,528	175,936	49,098,592	45,886,706
DETAILS OF WRITE-INS				
1101.				
1102.				
1103.				
1198. Summary of remaining write-ins for Line 11 from overflow page	0	0	0	0
1199. Totals (Lines 1101 through 1103 plus 1198)(Line 11 above)	0	0	0	0
2501. Prepaid Postage	636		636	720
2502. Deductible Receivable	73,129	6,369	66,760	24,200
2503.				
2598. Summary of remaining write-ins for Line 25 from overflow page	0	0	0	0
2599. Totals (Lines 2501 through 2503 plus 2598)(Line 25 above)	73,765	6,369	67,396	24,920

STATEMENT AS OF JUNE 30, 2021 OF THE OHIO BAR LIAB INS CO

LIABILITIES, SURPLUS AND OTHER FUNDS

	1 Current Statement Date	2 December 31, Prior Year
1. Losses (current accident year \$)	5,912,132	5,327,770
2. Reinsurance payable on paid losses and loss adjustment expenses		0
3. Loss adjustment expenses	2,733,222	2,626,530
4. Commissions payable, contingent commissions and other similar charges	25,541	
5. Other expenses (excluding taxes, licenses and fees)	74,374	80,676
6. Taxes, licenses and fees (excluding federal and foreign income taxes)	3,838	5,080
7.1 Current federal and foreign income taxes (including \$ on realized capital gains (losses))		0
7.2 Net deferred tax liability	740,691	527,276
8. Borrowed money \$ and interest thereon \$		
9. Unearned premiums (after deducting unearned premiums for ceded reinsurance of \$ and including warranty reserves of \$ and accrued accident and health experience rating refunds including \$ for medical loss ratio rebate per the Public Health Service Act)	3,902,579	3,440,730
10. Advance premium	69,152	330,337
11. Dividends declared and unpaid:		
11.1 Stockholders	1,409,491	
11.2 Policyholders		
12. Ceded reinsurance premiums payable (net of ceding commissions)	1,290,089	220,096
13. Funds held by company under reinsurance treaties		0
14. Amounts withheld or retained by company for account of others	317,323	290,232
15. Remittances and items not allocated		
16. Provision for reinsurance (including \$ certified)		0
17. Net adjustments in assets and liabilities due to foreign exchange rates		
18. Drafts outstanding		
19. Payable to parent, subsidiaries and affiliates	69,494	5,536
20. Derivatives	0	0
21. Payable for securities		
22. Payable for securities lending		
23. Liability for amounts held under uninsured plans		
24. Capital notes \$ and interest thereon \$		
25. Aggregate write-ins for liabilities	0	0
26. Total liabilities excluding protected cell liabilities (Lines 1 through 25)	16,547,926	12,854,263
27. Protected cell liabilities		
28. Total liabilities (Lines 26 and 27)	16,547,926	12,854,263
29. Aggregate write-ins for special surplus funds	0	0
30. Common capital stock	1,000,000	1,000,000
31. Preferred capital stock		
32. Aggregate write-ins for other than special surplus funds	0	0
33. Surplus notes		0
34. Gross paid in and contributed surplus	1,000,000	1,000,000
35. Unassigned funds (surplus)	30,550,666	31,032,443
36. Less treasury stock, at cost:		
36.1 shares common (value included in Line 30 \$)		
36.2 shares preferred (value included in Line 31 \$)		
37. Surplus as regards policyholders (Lines 29 to 35, less 36)	32,550,666	33,032,443
38. Totals (Page 2, Line 28, Col. 3)	49,098,592	45,886,706
DETAILS OF WRITE-INS		
2501.		
2502.		
2503.		
2598. Summary of remaining write-ins for Line 25 from overflow page	0	0
2599. Totals (Lines 2501 through 2503 plus 2598)(Line 25 above)	0	0
2901.		
2902.		
2903.		
2998. Summary of remaining write-ins for Line 29 from overflow page	0	0
2999. Totals (Lines 2901 through 2903 plus 2998)(Line 29 above)	0	0
3201.		
3202.		
3203.		
3298. Summary of remaining write-ins for Line 32 from overflow page	0	0
3299. Totals (Lines 3201 through 3203 plus 3298)(Line 32 above)	0	0

STATEMENT OF INCOME

	1 Current Year to Date	2 Prior Year to Date	3 Prior Year Ended December 31
UNDERWRITING INCOME			
1. Premiums earned:			
1.1 Direct (written \$ 6,507,197)	5,675,115	5,338,441	10,716,551
1.2 Assumed (written \$)			0
1.3 Ceded (written \$ 2,105,054)	1,734,821	1,479,412	2,970,737
1.4 Net (written \$ 4,402,143)	3,940,294	3,859,029	7,745,814
DEDUCTIONS:			
2. Losses incurred (current accident year \$):			
2.1 Direct	1,716,979	772,484	1,611,827
2.2 Assumed			0
2.3 Ceded	77,996	198,399	225,142
2.4 Net	1,638,983	574,085	1,386,685
3. Loss adjustment expenses incurred	1,320,993	1,151,659	2,184,864
4. Other underwriting expenses incurred	1,285,182	1,096,263	2,315,615
5. Aggregate write-ins for underwriting deductions	0	0	0
6. Total underwriting deductions (Lines 2 through 5)	4,245,158	2,822,007	5,887,164
7. Net income of protected cells			
8. Net underwriting gain or (loss) (Line 1 minus Line 6 + Line 7)	(304,864)	1,037,022	1,858,650
INVESTMENT INCOME			
9. Net investment income earned	191,721	356,317	714,916
10. Net realized capital gains (losses) less capital gains tax of \$ 2,451	9,219	1,700	(7,559)
11. Net investment gain (loss) (Lines 9 + 10)	200,940	358,017	707,357
OTHER INCOME			
12. Net gain or (loss) from agents' or premium balances charged off (amount recovered \$ amount charged off \$)	0	0	0
13. Finance and service charges not included in premiums	12,825	18,020	30,582
14. Aggregate write-ins for miscellaneous income	0	0	(725)
15. Total other income (Lines 12 through 14)	12,825	18,020	29,857
16. Net income before dividends to policyholders, after capital gains tax and before all other federal and foreign income taxes (Lines 8 + 11 + 15)	(91,099)	1,413,059	2,595,864
17. Dividends to policyholders			
18. Net income, after dividends to policyholders, after capital gains tax and before all other federal and foreign income taxes (Line 16 minus Line 17)	(91,099)	1,413,059	2,595,864
19. Federal and foreign income taxes incurred	908	288,433	576,883
20. Net income (Line 18 minus Line 19)(to Line 22)	(92,007)	1,124,626	2,018,981
CAPITAL AND SURPLUS ACCOUNT			
21. Surplus as regards policyholders, December 31 prior year	33,032,443	31,062,966	31,062,966
22. Net income (from Line 20)	(92,007)	1,124,626	2,018,981
23. Net transfers (to) from Protected Cell accounts			
24. Change in net unrealized capital gains (losses) less capital gains tax of \$ 247,646	1,031,736	(678,177)	692,253
25. Change in net unrealized foreign exchange capital gain (loss)			
26. Change in net deferred income tax	34,229	725	46,621
27. Change in nonadmitted assets	(46,244)	45,563	41,622
28. Change in provision for reinsurance			0
29. Change in surplus notes			
30. Surplus (contributed to) withdrawn from protected cells			
31. Cumulative effect of changes in accounting principles			
32. Capital changes:			
32.1 Paid in			
32.2 Transferred from surplus (Stock Dividend)			
32.3 Transferred to surplus			
33. Surplus adjustments:			
33.1 Paid in	0	0	0
33.2 Transferred to capital (Stock Dividend)			
33.3 Transferred from capital			
34. Net remittances from or (to) Home Office			
35. Dividends to stockholders	(1,409,491)	(415,000)	(830,000)
36. Change in treasury stock			0
37. Aggregate write-ins for gains and losses in surplus	0	0	0
38. Change in surplus as regards policyholders (Lines 22 through 37)	(481,777)	77,737	1,969,477
39. Surplus as regards policyholders, as of statement date (Lines 21 plus 38)	32,550,666	31,140,703	33,032,443
DETAILS OF WRITE-INS			
0501.			
0502.			
0503.			
0598. Summary of remaining write-ins for Line 5 from overflow page	0	0	0
0599. Totals (Lines 0501 through 0503 plus 0598)(Line 5 above)	0	0	0
1401. Miscellaneous Write off			(725)
1402.			
1403.			
1498. Summary of remaining write-ins for Line 14 from overflow page	0	0	0
1499. Totals (Lines 1401 through 1403 plus 1498)(Line 14 above)	0	0	(725)
3701.			
3702.			
3703.			
3798. Summary of remaining write-ins for Line 37 from overflow page	0	0	0
3799. Totals (Lines 3701 through 3703 plus 3798)(Line 37 above)	0	0	0

STATEMENT AS OF JUNE 30, 2021 OF THE OHIO BAR LIAB INS CO

CASH FLOW

	1 Current Year To Date	2 Prior Year To Date	3 Prior Year Ended December 31
Cash from Operations			
1. Premiums collected net of reinsurance	4,956,403	3,900,954	8,067,034
2. Net investment income	330,240	475,822	905,366
3. Miscellaneous income	12,825	18,020	29,857
4. Total (Lines 1 to 3)	5,299,468	4,394,796	9,002,257
5. Benefit and loss related payments	1,248,591	645,476	1,041,630
6. Net transfers to Separate Accounts, Segregated Accounts and Protected Cell Accounts	0	0	0
7. Commissions, expenses paid and aggregate write-ins for deductions	2,382,410	2,223,790	4,379,289
8. Dividends paid to policyholders	0	0	0
9. Federal and foreign income taxes paid (recovered) net of \$ 2,451 tax on capital gains (losses)	0	(6,268)	1,017,392
10. Total (Lines 5 through 9)	3,631,001	2,862,998	6,438,311
11. Net cash from operations (Line 4 minus Line 10)	1,668,467	1,531,798	2,563,946
Cash from Investments			
12. Proceeds from investments sold, matured or repaid:			
12.1 Bonds	4,531,358	5,722,578	12,392,237
12.2 Stocks	536	1,451	4,233
12.3 Mortgage loans	0	0	0
12.4 Real estate	0	0	0
12.5 Other invested assets	0	0	0
12.6 Net gains or (losses) on cash, cash equivalents and short-term investments	0	0	0
12.7 Miscellaneous proceeds	0	424,329	16,729
12.8 Total investment proceeds (Lines 12.1 to 12.7)	4,531,893	6,148,358	12,413,199
13. Cost of investments acquired (long-term only):			
13.1 Bonds	5,574,681	5,115,640	12,969,652
13.2 Stocks	36,394	48,972	162,817
13.3 Mortgage loans	0	0	0
13.4 Real estate	0	0	0
13.5 Other invested assets	0	0	0
13.6 Miscellaneous applications	0	0	0
13.7 Total investments acquired (Lines 13.1 to 13.6)	5,611,075	5,164,612	13,132,469
14. Net increase (or decrease) in contract loans and premium notes	0	0	0
15. Net cash from investments (Line 12.8 minus Line 13.7 and Line 14)	(1,079,182)	983,746	(719,271)
Cash from Financing and Miscellaneous Sources			
16. Cash provided (applied):			
16.1 Surplus notes, capital notes	0	0	0
16.2 Capital and paid in surplus, less treasury stock	0	0	0
16.3 Borrowed funds	0	0	0
16.4 Net deposits on deposit-type contracts and other insurance liabilities	0	0	0
16.5 Dividends to stockholders	0	0	830,000
16.6 Other cash provided (applied)	47,522	(59,001)	8,558
17. Net cash from financing and miscellaneous sources (Line 16.1 through Line 16.4 minus Line 16.5 plus Line 16.6)	47,522	(59,001)	(821,442)
RECONCILIATION OF CASH, CASH EQUIVALENTS AND SHORT-TERM INVESTMENTS			
18. Net change in cash, cash equivalents and short-term investments (Line 11, plus Lines 15 and 17)	636,807	2,456,543	1,023,233
19. Cash, cash equivalents and short-term investments:			
19.1 Beginning of year	3,221,894	2,198,660	2,198,661
19.2 End of period (Line 18 plus Line 19.1)	3,858,701	4,655,203	3,221,894

Note: Supplemental disclosures of cash flow information for non-cash transactions:

--	--	--	--

STATEMENT AS OF JUNE 30, 2021 OF THE OHIO BAR LIAB INS CO

(1) Summary of Significant Accounting Policies

A. Accounting Practices

The accompanying statutory financial statements of Ohio Bar Liability Insurance Company (Company) have been prepared in conformity with accounting practices prescribed or permitted by the National Association of Insurance Commissioners’ (NAIC) and the State of Ohio.

The Ohio Department of Insurance (Department) recognizes only statutory accounting practices (SAP) prescribed or permitted by the Department for determining and reporting the financial condition and results of operations of an insurance company, as well as, determining its solvency under the Ohio Insurance Law. The National Association of Insurance Commissioners’ *Accounting Practices and Procedures* manual (NAIC SAP) has been adopted as a component of prescribed or permitted practices by the State of Ohio. The Company has no statutory accounting practices that differ from NAIC SAP.

	SSAP #	F/S Page	F/S Line #	2021	2020
NET INCOME					
(1) OHIO BAR LIAB INS CO state basis (Page 4, Line 20, Columns 1 & 2)	XXX	XXX	XXX	\$ (92,007)	\$ 2,018,980
(2) State Prescribed Practices that increase/decrease NAIC SAP					
(3) State Permitted Practices that increase/decrease NAIC SAP					
(4) NAIC SAP (1 – 2 – 3 = 4)	XXX	XXX	XXX	\$ (92,007)	\$ 2,018,980
SURPLUS					
(5) OHIO BAR LIAB INS CO state basis (Page 3, line 37, Columns 1 & 2)	XXX	XXX	XXX	\$ 32,550,666	\$ 33,032,443
(6) State Prescribed Practices that increase/decrease NAIC SAP					
(7) State Permitted Practices that increase/decrease NAIC SAP					
(8) NAIC SAP (5 – 6 – 7 = 8)	XXX	XXX	XXX	\$ 32,550,666	\$ 33,032,443

B. Use of Estimates in Preparation of the Financial Statements - No significant changes.

C. Accounting Policies - No significant changes.

D. Going concern - No significant changes.

(2) Accounting Changes and Corrections of Errors – No significant changes.

(3) Business Combinations and Goodwill - Not applicable.

(4) Discontinued Operations - Not applicable.

(5) Investments

(A - D) - Not applicable.

(E) Dollar Repurchase Agreements and/or Securities Lending Transactions

(3) Collateral Received – Not applicable

(F - Q) - Not applicable.

(R) - Reporting Entity’s Share of Cash Pool by Asset type

Asset Type	Percent Share
(1) Cash	69.52%
(2) Cash Equivalent	30.48%
(3) Short-Term Investments	0.00%
(4) Total	100.00%

(6) Joint Ventures, Partnerships, and Limited Liability Companies - Not applicable.

(7) Investment Income - No significant changes.

(8) Derivative Instruments - Not applicable.

(9) Income Taxes - No significant changes.

(10) Information Concerning Parent, Subsidiaries, Affiliates and Other Related Parties – No significant changes.

(11) Debt

A. Debt, Including Capital Notes - Not applicable.

B. FHLB (Federal Home Loan Bank) Agreements

(1) Nature of FHLB Agreement

OBLIC is a member stockholder of the FHLB Cincinnati, for June 30, 2021, OBLIC does not have any collateral pledged to the FHLB and therefore our borrowing capacity is \$0.

(2) FHLB Capital Stock

Aggregate Totals

1	Current Year to Date	1	2	3
		Total	General	Protected Cell
		2 + 3	Account	Accounts
	(a) Membership Stock - Class A	\$ -	\$ -	\$ -
	(b) Membership Stock - Class B	67,270	67,270	-
	(c) Activity Stock	-	-	-
	(d) Excess Stock	30	30	-
	(e) Aggregate Total (a+b+c+d)	\$ 67,300	\$ 67,300	\$ -
	(f) Actual or estimated borrowing capacity as determined by the insurer	\$ -	XXX	XXX

2	Prior Year-end	1	2	3
		Total	General	Protected Cell
		2 + 3	Account	Accounts
	(a) Membership Stock - Class A	\$ -	\$ -	\$ -
	(b) Membership Stock - Class B	67,270	67,270	-
	(c) Activity Stock	-	-	-
	(d) Excess Stock	30	30	-
	(e) Aggregate Total (a+b+c+d)	\$ 67,300	\$ 67,300	\$ -
	(f) Actual or estimated borrowing capacity as determined by the insurer	\$ -	XXX	XXX

b.	Membership Stock (Class A and B) Eligible and Not Eligible for Redemption	Eligible For Redemption			
	1	2	3	4	5
	Current Year Total (2+3+4+5)	Not Eligible For Redemption	6 Months To Less Than 1 Year	1 To Less Than 3 Years	3 to 5 Years
11B(2)b.	Membership Stock				
1.	Class A	\$ -	\$ -	\$ -	\$ -
2.	Class B	\$ 67,300	\$ 67,300	\$ -	\$ -

11B(2)b1 Current Year to Date Total (Column 1) should equal 11B(2)a1(a) Total (Column 1)

11B(2)b2 Current Year to Date Total (Column 1) should equal 11B(2)a1(b) Total (Column 1)

(12) Retirement Plans, Deferred Compensation, Post-employment Benefits, Compensated Absences and Other Post-Retirement Benefit Plans

A. Defined Benefit Plan - Not applicable.

(B – D) Not applicable.

E. Define Contribution Plans

The Company participates in a qualified defined contribution plan sponsored by the Company. The qualified plan covers all employees of the Company who have completed six months of service. Plan assets are invested with Ascensus Retirement. The investments selected are at the discretion of the employee. The Company funds pension costs at 10% of the employee’s annual compensation. The Company’s expense contributions were \$82,569 and \$144,691 for the years ended June 30, 2021 and December 31, 2020. The Company participates in a non-qualified deferred compensation plan for highly compensated employees. The assets associated in funding this obligation is being held in a Rabbi Trust. The liability for the years ended June 30, 2021 and December 31, 2020 were \$317,323 and \$290,231.

(13) Capital and Surplus, Shareholders’ Dividend Restrictions and Quasi-Reorganizations

(1) The Company has 10,000 shares of \$200 par value common stock authorized and 5000 shares issued and outstanding. The Company has no preferred stock authorized, issued or outstanding.

(2) – (9) - Not applicable

(10) Changes in Unassigned Funds

a. Net loss of (\$92,007).

(11-13) - Not applicable.

(14) Contingencies

(A) Contingent Commitments

The Company has no commitments or contingent commitments to affiliates or other entities.

(B) Assessments

The Company is subject to guaranty fund and other assessments by the state in which it writes business.

(C- F) - Not applicable.

(D) All Other Contingencies

Various lawsuits have arisen in the ordinary course of the Company’s business. The Company believes that its defenses are meritorious and the eventual outcome of those lawsuits will not have a material effect on the Company’s financial position. Contingent liabilities arising from litigation, income taxes and other matters are not considered material in relation to the financial position of the Company.

STATEMENT AS OF JUNE 30, 2021 OF THE OHIO BAR LIAB INS CO

- (15) Leases
- (1) The Company leases office space.
- (2) The Company is not involved in non-cancelable lease terms.
- (3) The Company has not entered into any sales and leaseback arrangements.
- (16) Information about Financial Instruments with Off Balance Sheet Risk and Financial Instruments with Concentrations of Credit Risk
- Not applicable.
- (17) Sale, Transfer, and Servicing of Financial Assets and Extinguishment of Liabilities
- (A – B) Not applicable
- (C) Wash Sales - Not applicable.
- (18) Gain or Loss to the Reporting Entity from Uninsured Plans and the Uninsured Portion of Partially Insured Plans - Not applicable.
- (19) Direct Premium Written/Produced by Managing General Agents/Third Party Administrators - Not applicable.
- (20) Fair Value Measurements

Fair value is defined as the price that would be received to sell an asset or paid to transfer a liability in an orderly transaction between market participants at the measurement date. Fair value measurements are based upon observable and unobservable inputs. Observable inputs reflect market data obtained from independent sources while unobservable inputs reflect the Company’s view of market assumptions in the absence of observable market information. The Company utilizes valuation techniques that maximize the use of observable inputs and minimize the use of unobservable inputs. In determining fair value, the Company uses various methods including market, income and cost approaches.

The Company categorizes its assets and liabilities reported at fair value in the quarterly statement into a three-level hierarchy based on the priority of the inputs to the valuation technique. The fair value hierarchy gives the highest priority to quoted prices in active markets for identical assets or liabilities (Level 1) and the lowest priority to unobservable inputs (Level 3). If the inputs used to measure fair value fall within different levels of the hierarchy, the category level is based on the lowest priority level input that is significant to the fair value measurement of the instrument in its entirety.

The fair value hierarchy levels are as follows:

Level 1. Unadjusted quoted prices accessible in active markets for identical assets or liabilities at the measurement date and mutual funds where the value per share (unit) is determined and published daily and is the basis for current transactions.

Level 2. Unadjusted quoted prices for similar assets or liabilities in active markets or inputs (other than quoted prices) that are observable or that are derived principally from or corroborated by observable market data through correlation or other means.

Level 3. Prices or valuation techniques that require inputs that are both unobservable and significant to the overall fair value measurement. Inputs reflect management’s best estimate about the assumptions market participants would use at the measurement date in pricing the asset or liability. Consideration is given to the risk inherent in both the method of valuation and the valuation inputs.

The Company periodically reviews its fair value hierarchy classifications for financial assets and liabilities. Changes in observability of significant valuation inputs identified during these reviews may trigger reclassifications. Reclassifications into/out of the fair value hierarchy levels are reported as transfers at the beginning of the period in which the change occurs.

To determine the fair value of bonds and stocks for which market quotations are available, independent pricing services are most often utilized. For these bonds and stocks, the Company obtains the pricing services’ methodologies, inputs and assumptions and classifies the investments accordingly in the fair value hierarchy.

The following table represents assets and liabilities measured and reported at fair value:

	As of June 30, 2021			
	Level 1	Level 2	Level 3	Total
Assets at fair value				
Assets at fair value:				
Common Stocks, unaffiliated	\$ 9,504,042	\$ -	\$ -	\$ 9,504,042
Total assets at fair value	<u>\$ 9,504,042</u>	<u>\$ -</u>	<u>\$ -</u>	<u>\$ 9,504,042</u>
Liabilities at fair value				
Non Qualified Deferred Comp	\$ 317,323	\$ -	\$ -	\$ 317,323
Total liabilities at fair value	<u>\$ 317,323</u>	<u>\$ -</u>	<u>\$ -</u>	<u>\$ 317,323</u>

Transfers: Level 3 - Not applicable.

- (21) Other Items - Not applicable.
- (22) Events Subsequent - Subsequent events have been considered through June 30, 2021 for these statutory financial statements which are to be issued on August 15, 2021. There were no events occurring subsequent to the end of the quarter that merited recognition or disclosure in these statements.
- (23) Reinsurance
- (A - B) - Not applicable
- (C) Reinsurance Assumed and Ceded

STATEMENT AS OF JUNE 30, 2021 OF THE OHIO BAR LIAB INS CO

1. The following table summarizes ceded and assumed premiums and the related commission equity on June 30, 2021.

(000's) Description	Assumed		Ceded		Assumed Less Ceded	
	Unearned Premiums	Commissio n Equity	Unearned Premiums	Commission Equity	Unearned Premiums	Commission Equity
A. Affiliates	\$ -	\$ -	\$ -	\$ -	\$ -	\$ -
B. All Others	-	-	1,805,006	415,151	(1,805,006)	(415,151)
C. Totals	\$ -	\$ -	\$ 1,805,006	\$ 415,151	\$ (1,805,006)	\$ (415,151)
D.. Direct Unearned Premium Reserve	\$5,707,585					

(D - J) - Not applicable.

(24) Retrospectively Rated Contracts & Contracts Subject to Redetermination - Not applicable.

(25) Change in Incurred Losses and Loss Adjustment Expenses

A. Change in Incurred Losses and Loss Adjustment Expenses

We continue to see ebbs and flows throughout the legal professional liability lines of insurance. The provisions in the incurred losses and loss adjustment expenses are always challenging to estimate based upon the type of claim and jurisdiction. OBLIC continues to report favorable developments over the years in part due to our claim’s attorney years of experience. There have not been any additional reserves accrued for prior year-effects.

B. Information about Significant Changes in Methodologies and Assumptions

OBLIC continues to use the same methodology for reserving its claims or incidents when reported. There has not been any change in methodologies.

(26) Intercompany Pooling Arrangements - Not applicable.

(27) Structured Settlements - Not applicable.

(28) Health Care Receivables - Not applicable.

(29) Participating Policies - Not applicable.

(30) Premium Deficiency Reserves - No significant changes.

(31) High Deductibles - Not applicable.

(32) Discounting of Liabilities for Unpaid Losses or Unpaid Loss Adjustment Expenses - Not applicable.

(33) Asbestos/Environmental Reserves - Not applicable.

(34) Subscriber Savings Accounts - Not applicable.

(35) Multiple Peril Crop Insurance - Not applicable.

(36) Financial Guaranty Insurance - Not applicable.

STATEMENT AS OF JUNE 30, 2021 OF THE OHIO BAR LIAB INS CO

GENERAL INTERROGATORIES

PART 1 - COMMON INTERROGATORIES

GENERAL

- 1.1

Did the reporting entity experience any material transactions requiring the filing of Disclosure of Material Transactions with the State of Domicile, as required by the Model Act?

Yes [☐] No [☒]
- 1.2

If yes, has the report been filed with the domiciliary state?

Yes [☐] No [☐]
- 2.1

Has any change been made during the year of this statement in the charter, by-laws, articles of incorporation, or deed of settlement of the reporting entity?

Yes [☐] No [☒]
- 2.2

If yes, date of change:
- 3.1

Is the reporting entity a member of an Insurance Holding Company System consisting of two or more affiliated persons, one or more of which is an insurer?

If yes, complete Schedule Y, Parts 1 and 1A.

Yes [☒] No [☐]
- 3.2

Have there been any substantial changes in the organizational chart since the prior quarter end?

Yes [☐] No [☒]
- 3.3

If the response to 3.2 is yes, provide a brief description of those changes.
- 3.4

Is the reporting entity publicly traded or a member of a publicly traded group?

Yes [☐] No [☒]
- 3.5

If the response to 3.4 is yes, provide the CIK (Central Index Key) code issued by the SEC for the entity/group.
- 4.1

Has the reporting entity been a party to a merger or consolidation during the period covered by this statement?

If yes, complete and file the merger history data file with the NAIC.

Yes [☐] No [☒]
- 4.2

If yes, provide the name of the entity, NAIC Company Code, and state of domicile (use two letter state abbreviation) for any entity that has ceased to exist as a result of the merger or consolidation.
- | | | |
|----------------|-------------------|-------------------|
| 1 | 2 | 3 |
| Name of Entity | NAIC Company Code | State of Domicile |
| | | |
5.

If the reporting entity is subject to a management agreement, including third-party administrator(s), managing general agent(s), attorney-in-fact, or similar agreement, have there been any significant changes regarding the terms of the agreement or principals involved?

If yes, attach an explanation.

Yes [☐] No [☐] N/A [☒]
- 6.1

State as of what date the latest financial examination of the reporting entity was made or is being made.

12/31/2018
- 6.2

State the as of date that the latest financial examination report became available from either the state of domicile or the reporting entity. This date should be the date of the examined balance sheet and not the date the report was completed or released.

12/31/2018
- 6.3

State as of what date the latest financial examination report became available to other states or the public from either the state of domicile or the reporting entity. This is the release date or completion date of the examination report and not the date of the examination (balance sheet date).

04/30/2020
- 6.4

By what department or departments?
- 6.5

Have all financial statement adjustments within the latest financial examination report been accounted for in a subsequent financial statement filed with Departments?

Yes [☐] No [☐] N/A [☒]
- 6.6

Have all of the recommendations within the latest financial examination report been complied with?

Yes [☒] No [☐] N/A [☐]
- 7.1

Has this reporting entity had any Certificates of Authority, licenses or registrations (including corporate registration, if applicable) suspended or revoked by any governmental entity during the reporting period?

Yes [☐] No [☒]
- 7.2

If yes, give full information:
- 8.1

Is the company a subsidiary of a bank holding company regulated by the Federal Reserve Board?

Yes [☐] No [☒]
- 8.2

If response to 8.1 is yes, please identify the name of the bank holding company.
- 8.3

Is the company affiliated with one or more banks, thrifts or securities firms?

Yes [☐] No [☒]
- 8.4

If response to 8.3 is yes, please provide below the names and location (city and state of the main office) of any affiliates regulated by a federal regulatory services agency [i.e. the Federal Reserve Board (FRB), the Office of the Comptroller of the Currency (OCC), the Federal Deposit Insurance Corporation (FDIC) and the Securities Exchange Commission (SEC)] and identify the affiliate's primary federal regulator.

1	2	3	4	5	6
Affiliate Name	Location (City, State)	FRB	OCC	FDIC	SEC

STATEMENT AS OF JUNE 30, 2021 OF THE OHIO BAR LIAB INS CO

GENERAL INTERROGATORIES

- 9.1

Are the senior officers (principal executive officer, principal financial officer, principal accounting officer or controller, or persons performing similar functions) of the reporting entity subject to a code of ethics, which includes the following standards?
(a) Honest and ethical conduct, including the ethical handling of actual or apparent conflicts of interest between personal and professional relationships;
(b) Full, fair, accurate, timely and understandable disclosure in the periodic reports required to be filed by the reporting entity;
(c) Compliance with applicable governmental laws, rules and regulations;
(d) The prompt internal reporting of violations to an appropriate person or persons identified in the code; and
(e) Accountability for adherence to the code.

Yes [X] No []
- 9.11

If the response to 9.1 is No, please explain:
- 9.2

Has the code of ethics for senior managers been amended?

Yes [] No [X]
- 9.21

If the response to 9.2 is Yes, provide information related to amendment(s).
- 9.3

Have any provisions of the code of ethics been waived for any of the specified officers?

Yes [] No [X]
- 9.31

If the response to 9.3 is Yes, provide the nature of any waiver(s).

FINANCIAL

- 10.1

Does the reporting entity report any amounts due from parent, subsidiaries or affiliates on Page 2 of this statement?

Yes [X] No []
- 10.2

If yes, indicate any amounts receivable from parent included in the Page 2 amount:

\$

INVESTMENT

- 11.1

Were any of the stocks, bonds, or other assets of the reporting entity loaned, placed under option agreement, or otherwise made available for use by another person? (Exclude securities under securities lending agreements.)

Yes [] No [X]
- 11.2

If yes, give full and complete information relating thereto:
12.

Amount of real estate and mortgages held in other invested assets in Schedule BA:

\$
13.

Amount of real estate and mortgages held in short-term investments:

\$
- 14.1

Does the reporting entity have any investments in parent, subsidiaries and affiliates?

Yes [X] No []
- 14.2

If yes, please complete the following:
- | | 1 | 2 |
|---|---|--|
| | Prior Year-End
Book/Adjusted
Carrying Value | Current Quarter
Book/Adjusted
Carrying Value |
| 14.21 Bonds | \$0 | \$ |
| 14.22 Preferred Stock | \$0 | \$ |
| 14.23 Common Stock | \$1,544,041 | \$1,357,336 |
| 14.24 Short-Term Investments | \$0 | \$ |
| 14.25 Mortgage Loans on Real Estate | \$0 | \$ |
| 14.26 All Other | \$0 | \$106,727 |
| 14.27 Total Investment in Parent, Subsidiaries and Affiliates (Subtotal Lines 14.21 to 14.26) | \$1,544,041 | \$1,464,063 |
| 14.28 Total Investment in Parent included in Lines 14.21 to 14.26 above | \$ | \$ |
- 15.1

Has the reporting entity entered into any hedging transactions reported on Schedule DB?

Yes [] No [X]
- 15.2

If yes, has a comprehensive description of the hedging program been made available to the domiciliary state?
If no, attach a description with this statement.

Yes [] No [] N/A []
16.

For the reporting entity's security lending program, state the amount of the following as of the current statement date:
- 16.1

Total fair value of reinvested collateral assets reported on Schedule DL, Parts 1 and 2.

\$0
- 16.2

Total book adjusted/carrying value of reinvested collateral assets reported on Schedule DL, Parts 1 and 2

\$0
- 16.3

Total payable for securities lending reported on the liability page.

\$0

STATEMENT AS OF JUNE 30, 2021 OF THE OHIO BAR LIAB INS CO

GENERAL INTERROGATORIES

17. Excluding items in Schedule E - Part 3 - Special Deposits, real estate, mortgage loans and investments held physically in the reporting entity's offices, vaults or safety deposit boxes, were all stocks, bonds and other securities, owned throughout the current year held pursuant to a custodial agreement with a qualified bank or trust company in accordance with Section 1, III - General Examination Considerations, F. Outsourcing of Critical Functions, Custodial or Safekeeping Agreements of the NAIC Financial Condition Examiners Handbook? Yes [] No [X]
- 17.1 For all agreements that comply with the requirements of the NAIC Financial Condition Examiners Handbook, complete the following:

1 Name of Custodian(s)	2 Custodian Address
US Bank	425 Walnut St. Cincinnati, Ohio 45202
FHLB of Cincinnati	221 E. Fourth St. Cincinnati, Ohio 45202

- 17.2 For all agreements that do not comply with the requirements of the NAIC Financial Condition Examiners Handbook, provide the name, location and a complete explanation:

1 Name(s)	2 Location(s)	3 Complete Explanation(s)

- 17.3 Have there been any changes, including name changes, in the custodian(s) identified in 17.1 during the current quarter? Yes [] No [X]
- 17.4 If yes, give full information relating thereto:

1 Old Custodian	2 New Custodian	3 Date of Change	4 Reason

- 17.5 Investment management – Identify all investment advisors, investment managers, broker/dealers, including individuals that have the authority to make investment decisions on behalf of the reporting entity. For assets that are managed internally by employees of the reporting entity, note as such. ["...that have access to the investment accounts"; "...handle securities"]

1 Name of Firm or Individual	2 Affiliation
Madison Investment Advisors, LLC	U.....

17.5097 For those firms/individuals listed in the table for Question 17.5, do any firms/individuals unaffiliated with the reporting entity (i.e. designated with a "U") manage more than 10% of the reporting entity's invested assets?..... Yes [X] No []

17.5098 For firms/individuals unaffiliated with the reporting entity (i.e. designated with a "U") listed in the table for Question 17.5, does the total assets under management aggregate to more than 50% of the reporting entity's invested assets?..... Yes [X] No []

- 17.6 For those firms or individuals listed in the table for 17.5 with an affiliation code of "A" (affiliated) or "U" (unaffiliated), provide the information for the table below.

1	2	3	4	5
Central Registration Depository Number	Name of Firm or Individual	Legal Entity Identifier (LEI)	Registered With	Investment Management Agreement (IMA) Filed
110297	Madison Investment Advisors, LLC	254900V4G6P208GA3B11	SEC	NO.....

- 18.1 Have all the filing requirements of the Purposes and Procedures Manual of the NAIC Investment Analysis Office been followed? Yes [X] No []
- 18.2 If no, list exceptions:

19. By self-designating 5GI securities, the reporting entity is certifying the following elements for each self-designated 5GI security:
- a. Documentation necessary to permit a full credit analysis of the security does not exist or an NAIC CRP credit rating for an FE or PL security is not available.
 - b. Issuer or obligor is current on all contracted interest and principal payments.
 - c. The insurer has an actual expectation of ultimate payment of all contracted interest and principal.
- Has the reporting entity self-designated 5GI securities? Yes [] No [X]

20. By self-designating PLGI securities, the reporting entity is certifying the following elements of each self-designated PLGI security:
- a. The security was purchased prior to January 1, 2018.
 - b. The reporting entity is holding capital commensurate with the NAIC Designation reported for the security.
 - c. The NAIC Designation was derived from the credit rating assigned by an NAIC CRP in its legal capacity as a NRSRO which is shown on a current private letter rating held by the insurer and available for examination by state insurance regulators.
 - d. The reporting entity is not permitted to share this credit rating of the PL security with the SVO.
- Has the reporting entity self-designated PLGI securities? Yes [] No [X]

21. By assigning FE to a Schedule BA non-registered private fund, the reporting entity is certifying the following elements of each self-designated FE fund:
- a. The shares were purchased prior to January 1, 2019.
 - b. The reporting entity is holding capital commensurate with the NAIC Designation reported for the security.
 - c. The security had a public credit rating(s) with annual surveillance assigned by an NAIC CRP in its legal capacity as an NRSRO prior to January 1, 2019.
 - d. The fund only or predominantly holds bonds in its portfolio.
 - e. The current reported NAIC Designation was derived from the public credit rating(s) with annual surveillance assigned by an NAIC CRP in its legal capacity as an NRSRO.
 - f. The public credit rating(s) with annual surveillance assigned by an NAIC CRP has not lapsed.
- Has the reporting entity assigned FE to Schedule BA non-registered private funds that complied with the above criteria? Yes [] No [X]

STATEMENT AS OF JUNE 30, 2021 OF THE OHIO BAR LIAB INS CO

GENERAL INTERROGATORIES

PART 2 - PROPERTY & CASUALTY INTERROGATORIES

1.

If the reporting entity is a member of a pooling arrangement, did the agreement or the reporting entity's participation change?
If yes, attach an explanation.

Yes [] No [X] N/A []
2.

Has the reporting entity reinsured any risk with any other reporting entity and agreed to release such entity from liability, in whole or in part, from any loss that may occur on the risk, or portion thereof, reinsured?
If yes, attach an explanation.

Yes [] No [X]
- 3.1

Have any of the reporting entity's primary reinsurance contracts been canceled?

Yes [] No [X]
- 3.2

If yes, give full and complete information thereto.
- 4.1

Are any of the liabilities for unpaid losses and loss adjustment expenses other than certain workers' compensation tabular reserves (see Annual Statement Instructions pertaining to disclosure of discounting for definition of " tabular reserves") discounted at a rate of interest greater than zero?

Yes [] No [X]
- 4.2

If yes, complete the following schedule:

			TOTAL DISCOUNT				DISCOUNT TAKEN DURING PERIOD			
1	2	3	4	5	6	7	8	9	10	11
Line of Business	Maximum Interest	Discount Rate	Unpaid Losses	Unpaid LAE	IBNR	TOTAL	Unpaid Losses	Unpaid LAE	IBNR	TOTAL
TOTAL			0	0	0	0	0	0	0	0

5.

Operating Percentages:

5.1 A&H loss percent %

5.2 A&H cost containment percent %

5.3 A&H expense percent excluding cost containment expenses %
- 6.1

Do you act as a custodian for health savings accounts?

Yes [] No [X]
- 6.2

If yes, please provide the amount of custodial funds held as of the reporting date\$.....
- 6.3

Do you act as an administrator for health savings accounts?

Yes [] No [X]
- 6.4

If yes, please provide the balance of the funds administered as of the reporting date\$.....
7.

Is the reporting entity licensed or chartered, registered, qualified, eligible or writing business in at least two states?

Yes [] No [X]
- 7.1

If no, does the reporting entity assume reinsurance business that covers risks residing in at least one state other than the state of domicile of the reporting entity?

Yes [] No [X]

STATEMENT AS OF JUNE 30, 2021 OF THE OHIO BAR LIAB INS CO

SCHEDULE F - CEDED REINSURANCE

Showing All New Reinsurers - Current Year to Date

[illegible]

STATEMENT AS OF JUNE 30, 2021 OF THE OHIO BAR LIAB INS CO

SCHEDULE T - EXHIBIT OF PREMIUMS WRITTEN

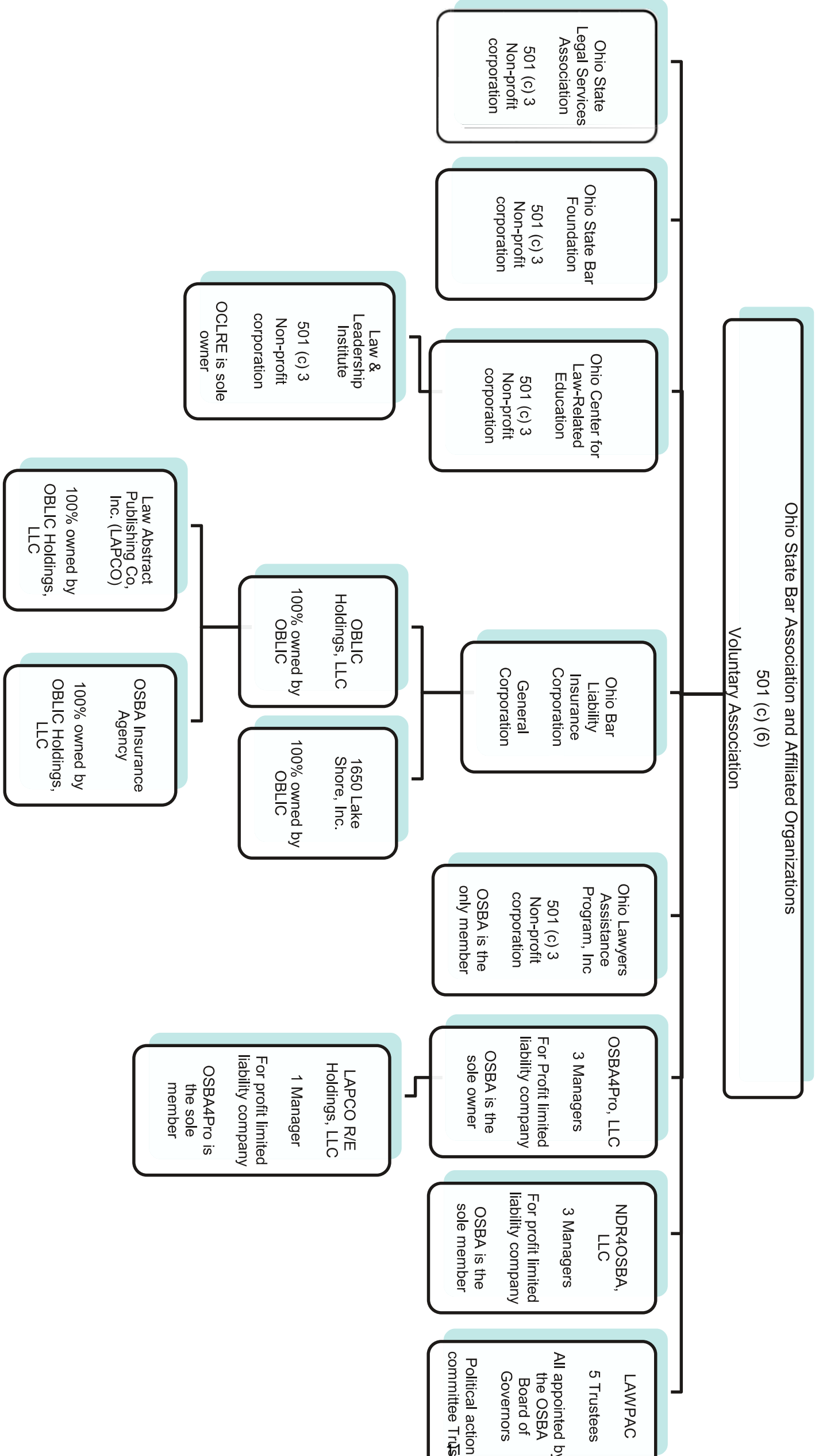
Current Year to Date - Allocated by States and Territories							
States, etc.	1 Active Status (a)	Direct Premiums Written		Direct Losses Paid (Deducting Salvage)		Direct Losses Unpaid	
		2 Current Year To Date	3 Prior Year To Date	4 Current Year To Date	5 Prior Year To Date	6 Current Year To Date	7 Prior Year To Date
1. Alabama.....AL	N		0		0		0
2. Alaska.....AK	N		0		0		0
3. Arizona.....AZ	N		0		0		0
4. Arkansas.....AR	N		0		0		0
5. California.....CA	N		0		0		0
6. Colorado.....CO	N		0		0		0
7. Connecticut.....CT	N		0		0		0
8. Delaware.....DE	N		0		0		0
9. District of Columbia.....DC	N		0		0		0
10. Florida.....FL	N		0		0		0
11. Georgia.....GA	N		0		0		0
12. Hawaii.....HI	N		0		0		0
13. Idaho.....ID	N		0		0		0
14. Illinois.....IL	N		0		0		0
15. Indiana.....IN	N		0		0		0
16. Iowa.....IA	N		0		0		0
17. Kansas.....KS	N		0		0		0
18. Kentucky.....KY	N		0		0		0
19. Louisiana.....LA	N		0		0		0
20. Maine.....ME	N		0		0		0
21. Maryland.....MD	N		0		0		0
22. Massachusetts.....MA	N		0		0		0
23. Michigan.....MI	N		0		0		0
24. Minnesota.....MN	N		0		0		0
25. Mississippi.....MS	N		0		0		0
26. Missouri.....MO	N		0		0		0
27. Montana.....MT	N		0		0		0
28. Nebraska.....NE	N		0		0		0
29. Nevada.....NV	N		0		0		0
30. New Hampshire.....NH	N		0		0		0
31. New Jersey.....NJ	N		0		0		0
32. New Mexico.....NM	N		0		0		0
33. New York.....NY	N		0		0		0
34. North Carolina.....NC	N		0		0		0
35. North Dakota.....ND	N		0		0		0
36. Ohio.....OH	L	6,507,197	6,047,146	1,402,786	794,908	5,912,132	5,779,571
37. Oklahoma.....OK	N		0		0		0
38. Oregon.....OR	N		0		0		0
39. Pennsylvania.....PA	N		0		0		0
40. Rhode Island.....RI	N		0		0		0
41. South Carolina.....SC	N		0		0		0
42. South Dakota.....SD	N		0		0		0
43. Tennessee.....TN	N		0		0		0
44. Texas.....TX	N		0		0		0
45. Utah.....UT	N		0		0		0
46. Vermont.....VT	N		0		0		0
47. Virginia.....VA	N		0		0		0
48. Washington.....WA	N		0		0		0
49. West Virginia.....WV	N		0		0		0
50. Wisconsin.....WI	N		0		0		0
51. Wyoming.....WY	N		0		0		0
52. American Samoa.....AS	N		0		0		0
53. Guam.....GU	N		0		0		0
54. Puerto Rico.....PR	N		0		0		0
55. U.S. Virgin Islands.....VI	N		0		0		0
56. Northern Mariana Islands.....MP	N		0		0		0
57. Canada.....CAN	N		0		0		0
58. Aggregate Other Alien OT	XXX	0	0	0	0	0	0
59. Totals	XXX	6,507,197	6,047,146	1,402,786	794,908	5,912,132	5,779,571
DETAILS OF WRITE-INS							
58001.....	XXX						
58002.....	XXX						
58003.....	XXX						
58998. Summary of remaining write-ins for Line 58 from overflow page	XXX	0	0	0	0	0	0
58999. Totals (Lines 58001 through 58003 plus 58998)(Line 58 above)	XXX	0	0	0	0	0	0

(a) Active Status Counts:

L - Licensed or Chartered - Licensed Insurance carrier or domiciled RRG.....	1	R - Registered - Non-domiciled RRGs.....	0
E - Eligible - Reporting entities eligible or approved to write surplus lines in the state (other than their state of domicile - see DSLI).....	0	Q - Qualified - Qualified or accredited reinsurer.....	0
D - Domestic Surplus Lines Insurer (DSLI) - Reporting entities authorized to write surplus lines in the state of domicile.....	0	N - None of the above - Not allowed to write business in the state.....	56

SCHEDULE Y – INFORMATION CONCERNING ACTIVITIES OF INSURERS OF A HOLDING COMPANY GROUP

PART 1 – ORGANIZATIONAL CHART



PART 1A - DETAIL OF INSURANCE HOLDING COMPANY SYSTEM

Asterisk	Explanation

PART 1 - LOSS EXPERIENCE

Line of Business		Current Year to Date			4 Prior Year to Date Direct Loss Percentage
		1 Direct Premiums Earned	2 Direct Losses Incurred	3 Direct Loss Percentage	
1.	Fire			0.0	0.0
2.	Allied Lines			0.0	0.0
3.	Farmowners multiple peril			0.0	0.0
4.	Homeowners multiple peril			0.0	0.0
5.	Commercial multiple peril			0.0	0.0
6.	Mortgage guaranty			0.0	0.0
8.	Ocean marine			0.0	0.0
9.	Inland marine			0.0	0.0
10.	Financial guaranty			0.0	0.0
11.1	Medical professional liability - occurrence			0.0	0.0
11.2	Medical professional liability - claims-made			0.0	0.0
12.	Earthquake			0.0	0.0
13.	Group accident and health			0.0	0.0
14.	Credit accident and health			0.0	0.0
15.	Other accident and health			0.0	0.0
16.	Workers' compensation			0.0	0.0
17.1	Other liability - occurrence	107,578		0.0	17.1
17.2	Other liability - claims-made	5,567,537	1,716,979	30.8	14.4
17.3	Excess workers' compensation			0.0	0.0
18.1	Products liability - occurrence			0.0	0.0
18.2	Products liability - claims-made			0.0	0.0
19.1,19.2	Private passenger auto liability			0.0	0.0
19.3,19.4	Commercial auto liability			0.0	0.0
21.	Auto physical damage			0.0	0.0
22.	Aircraft (all perils)			0.0	0.0
23.	Fidelity			0.0	0.0
24.	Surety			0.0	0.0
26.	Burglary and theft			0.0	0.0
27.	Boiler and machinery			0.0	0.0
28.	Credit			0.0	0.0
29.	International			0.0	0.0
30.	Warranty			0.0	0.0
31.	Reinsurance - Nonproportional Assumed Property	XXX	XXX	XXX	XXX
32.	Reinsurance - Nonproportional Assumed Liability	XXX	XXX	XXX	XXX
33.	Reinsurance - Nonproportional Assumed Financial Lines	XXX	XXX	XXX	XXX
34.	Aggregate write-ins for other lines of business	0	0	0.0	0.0
35.	Totals	5,675,115	1,716,979	30.3	14.5
DETAILS OF WRITE-INS					
3401.				
3402.				
3403.				
3498.	Summary of remaining write-ins for Line 34 from overflow page	0	0	0.0	0.0
3499.	Totals (Lines 3401 through 3403 plus 3498)(Line 34 above)	0	0	0.0	0.0

PART 2 - DIRECT PREMIUMS WRITTEN

Line of Business		1	2	3
		Current Quarter	Current Year to Date	Prior Year Year to Date
1.	Fire	0		0
2.	Allied Lines	0		0
3.	Farmowners multiple peril	0		0
4.	Homeowners multiple peril	0		0
5.	Commercial multiple peril	0		0
6.	Mortgage guaranty	0		0
8.	Ocean marine	0		0
9.	Inland marine	0		0
10.	Financial guaranty	0		0
11.1	Medical professional liability - occurrence	0		0
11.2	Medical professional liability - claims-made	0		0
12.	Earthquake	0		0
13.	Group accident and health	0		0
14.	Credit accident and health	0		0
15.	Other accident and health	0		0
16.	Workers' compensation	0		0
17.1	Other liability - occurrence	39,807	107,578	115,728
17.2	Other liability - claims-made	2,763,985	6,399,619	5,931,418
17.3	Excess workers' compensation	0		0
18.1	Products liability - occurrence	0		0
18.2	Products liability - claims-made	0		0
19.1,19.2	Private passenger auto liability	0		0
19.3,19.4	Commercial auto liability	0		0
21.	Auto physical damage	0		0
22.	Aircraft (all perils)	0		0
23.	Fidelity	0		0
24.	Surety	0		0
26.	Burglary and theft	0		0
27.	Boiler and machinery	0		0
28.	Credit	0		0
29.	International	0		0
30.	Warranty	0		0
31.	Reinsurance - Nonproportional Assumed Property	XXX	XXX	XXX
32.	Reinsurance - Nonproportional Assumed Liability	XXX	XXX	XXX
33.	Reinsurance - Nonproportional Assumed Financial Lines	XXX	XXX	XXX
34.	Aggregate write-ins for other lines of business	0	0	0
35.	Totals	2,803,792	6,507,197	6,047,146
DETAILS OF WRITE-INS				
3401.			
3402.			
3403.			
3498.	Summary of remaining write-ins for Line 34 from overflow page	0	0	0
3499.	Totals (Lines 3401 through 3403 plus 3498)(Line 34 above)	0	0	0

STATEMENT AS OF JUNE 30, 2021 OF THE OHIO BAR LIAB INS CO

PART 3 (000 omitted)

LOSS AND LOSS ADJUSTMENT EXPENSE RESERVES SCHEDULE

	1	2	3	4	5	6	7	8	9	10	11	12	13
Years in Which Losses Occurred	Prior Year-End Known Case Loss and LAE Reserves	Prior Year-End IBNR Loss and LAE Reserves	Total Prior Year-End Loss and LAE Reserves (Cols. 1+2)	2021 Loss and LAE Payments on Claims Reported as of Prior Year-End	2021 Loss and LAE Payments on Claims Unreported as of Prior Year-End	Total 2021 Loss and LAE Payments (Cols. 4+5)	Q.S. Date Known Case Loss and LAE Reserves on Claims Reported and Open as of Prior Year End	Q.S. Date Known Case Loss and LAE Reserves on Claims Reported or Reopened Subsequent to Prior Year End	Q.S. Date IBNR Loss and LAE Reserves	Total Q.S. Loss and LAE Reserves (Cols.7+8+9)	Prior Year-End Known Case Loss and LAE Reserves Developed (Savings)/ Deficiency (Cols.4+7 minus Col. 1)	Prior Year-End IBNR Loss and LAE Reserves Developed (Savings)/ Deficiency (Cols. 5+8+9 minus Col. 2)	Prior Year-End Total Loss and LAE Reserve Developed (Savings)/ Deficiency (Cols. 11+12)
1. 2018 + Prior	2,687	57	2,744	986		986	2,077		42	2,119	376	(15)	361
2. 2019	1,787	138	1,925	286		286	1,766		93	1,859	265	(45)	220
3. Subtotals 2019 + Prior	4,474	195	4,669	1,272	0	1,272	3,843	0	135	3,978	641	(60)	581
4. 2020	2,950	335	3,285	869		869	2,297		275	2,572	216	(60)	156
5. Subtotals 2020 + Prior	7,424	530	7,954	2,141	0	2,141	6,140	0	410	6,550	857	(120)	737
6. 2021	XXX	XXX	XXX	XXX	128	128	XXX	1,872	223	2,095	XXX	XXX	XXX
7. Totals	7,424	530	7,954	2,141	128	2,269	6,140	1,872	633	8,645	857	(120)	737
8. Prior Year-End Surplus As Regards Policyholders	33,032										Col. 11, Line 7 As % of Col. 1 Line 7	Col. 12, Line 7 As % of Col. 2 Line 7	Col. 13, Line 7 As % of Col. 3 Line 7
											1. 11.5	2. (22.6)	3. 9.3
											Col. 13, Line 7 As a % of Col. 1 Line 8 4. 2.2		

SUPPLEMENTAL EXHIBITS AND SCHEDULES INTERROGATORIES

The following supplemental reports are required to be filed as part of your statement filing. However, in the event that your company does not transact the type of business for which the special report must be filed, your response of NO to the specific interrogatory will be accepted in lieu of filing a "NONE" report and a bar code will be printed below. If the supplement is required of your company but is not being filed for whatever reason enter SEE EXPLANATION and provide an explanation following the interrogatory questions.

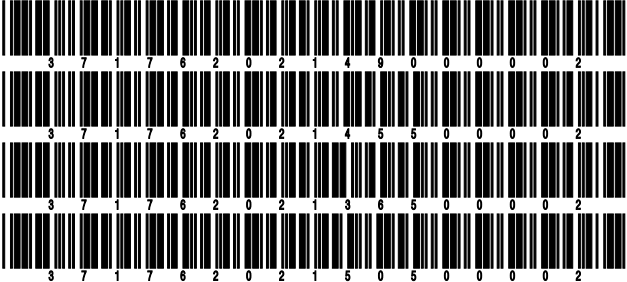
	Response
1. Will the Trusteed Surplus Statement be filed with the state of domicile and the NAIC with this statement?	NO
2. Will Supplement A to Schedule T (Medical Professional Liability Supplement) be filed with this statement?	NO
3. Will the Medicare Part D Coverage Supplement be filed with the state of domicile and the NAIC with this statement?	NO
4. Will the Director and Officer Insurance Coverage Supplement be filed with the state of domicile and the NAIC with this statement?	NO

Explanations:

- 1.
- 2.
- 3.
- 4.

Bar Codes:

- 1. Trusteed Surplus Statement [Document Identifier 490]
- 2. Supplement A to Schedule T [Document Identifier 455]
- 3. Medicare Part D Coverage Supplement [Document Identifier 365]
- 4. Director and Officer Supplement [Document Identifier 505]



STATEMENT AS OF JUNE 30, 2021 OF THE OHIO BAR LIAB INS CO

OVERFLOW PAGE FOR WRITE-INS

SCHEDULE A - VERIFICATION

Real Estate

	1	2
	Year to Date	Prior Year Ended December 31
1. Book/adjusted carrying value, December 31 of prior year		
2. Cost of acquired:		
2.1 Actual cost at time of acquisition		
2.2 Additional investment made after acquisition		
3. Current year change in encumbrances		
4. Total gain (loss) on disposals		
5. Deduct amounts received on disposals		
6. Total foreign exchange change in book/adjusted carrying value		
7. Deduct current year's other than temporary impairment recognized		
8. Deduct current year's depreciation		
9. Book/adjusted carrying value at the end of current period (Lines 1+2+3+4-5+6-7-8)		
10. Deduct total nonadmitted amounts		
11. Statement value at end of current period (Line 9 minus Line 10)		

SCHEDULE B - VERIFICATION

Mortgage Loans

	1	2
	Year to Date	Prior Year Ended December 31
1. Book value/recorded investment excluding accrued interest, December 31 of prior year		
2. Cost of acquired:		
2.1 Actual cost at time of acquisition		
2.2 Additional investment made after acquisition		
3. Capitalized deferred interest and other		
4. Accrual of discount		
5. Unrealized valuation increase (decrease)		
6. Total gain (loss) on disposals		
7. Deduct amounts received on disposals		
8. Deduct amortization of premium and mortgage interest paid and commitment fees		
9. Total foreign exchange change in book value/recorded investment excluding accrued interest		
10. Deduct current year's other than temporary impairment recognized		
11. Book value/recorded investment excluding accrued interest at end of current period (Lines 1+2+3+4+5+6-7-8+9-10)		
12. Total valuation allowance		
13. Subtotal (Line 11 plus Line 12)		
14. Deduct total nonadmitted amounts		
15. Statement value at end of current period (Line 13 minus Line 14)		

SCHEDULE BA - VERIFICATION

Other Long-Term Invested Assets

	1	2
	Year to Date	Prior Year Ended December 31
1. Book/adjusted carrying value, December 31 of prior year	106,727	99,944
2. Cost of acquired:		
2.1 Actual cost at time of acquisition		
2.2 Additional investment made after acquisition		
3. Capitalized deferred interest and other		
4. Accrual of discount		
5. Unrealized valuation increase (decrease)	100,219	6,783
6. Total gain (loss) on disposals		
7. Deduct amounts received on disposals		
8. Deduct amortization of premium and depreciation		
9. Total foreign exchange change in book/adjusted carrying value		
10. Deduct current year's other than temporary impairment recognized		
11. Book/adjusted carrying value at end of current period (Lines 1+2+3+4+5+6-7-8+9-10)	206,946	106,727
12. Deduct total nonadmitted amounts		
13. Statement value at end of current period (Line 11 minus Line 12)	206,946	106,727

SCHEDULE D - VERIFICATION

Bonds and Stocks

	1	2
	Year to Date	Prior Year Ended December 31
1. Book/adjusted carrying value of bonds and stocks, December 31 of prior year	40,180,788	38,676,653
2. Cost of bonds and stocks acquired	5,611,075	13,132,469
3. Accrual of discount	(7,119)	37,348
4. Unrealized valuation increase (decrease)	1,179,163	937,085
5. Total gain (loss) on disposals	11,671	(9,568)
6. Deduct consideration for bonds and stocks disposed of	4,531,893	12,416,745
7. Deduct amortization of premium	128,212	196,730
8. Total foreign exchange change in book/adjusted carrying value		
9. Deduct current year's other than temporary impairment recognized		
10. Total investment income recognized as a result of prepayment penalties and/or acceleration fees		20,275
11. Book/adjusted carrying value at end of current period (Lines 1+2+3+4+5-6-7+8-9+10)	42,315,473	40,180,788
12. Deduct total nonadmitted amounts		
13. Statement value at end of current period (Line 11 minus Line 12)	42,315,473	40,180,788

STATEMENT AS OF JUNE 30, 2021 OF THE OHIO BAR LIAB INS CO

SCHEDULE D - PART 1B

Showing the Acquisitions, Dispositions and Non-Trading Activity
During the Current Quarter for all Bonds and Preferred Stock by NAIC Designation

NAIC Designation	1 Book/Adjusted Carrying Value Beginning of Current Quarter	2 Acquisitions During Current Quarter	3 Dispositions During Current Quarter	4 Non-Trading Activity During Current Quarter	5 Book/Adjusted Carrying Value End of First Quarter	6 Book/Adjusted Carrying Value End of Second Quarter	7 Book/Adjusted Carrying Value End of Third Quarter	8 Book/Adjusted Carrying Value December 31 Prior Year
BONDS								
1. NAIC 1 (a)	28,919,552	2,298,789	1,895,509	(39,697)	28,919,552	29,283,135	0	29,473,520
2. NAIC 2 (a)	2,385,241	0	400,000	(986)	2,385,241	1,984,255	0	1,974,789
3. NAIC 3 (a)	0				0	0		
4. NAIC 4 (a)	0				0	0		
5. NAIC 5 (a)	0				0	0		
6. NAIC 6 (a)	0				0	0		
7. Total Bonds	31,304,793	2,298,789	2,295,509	(40,684)	31,304,793	31,267,390	0	31,448,309
PREFERRED STOCK								
8. NAIC 1	0				0	0		0
9. NAIC 2	0				0	0		0
10. NAIC 3	0				0	0		0
11. NAIC 4	0				0	0		0
12. NAIC 5	0				0	0		0
13. NAIC 6	0				0	0		0
14. Total Preferred Stock	0	0	0	0	0	0	0	0
15. Total Bonds and Preferred Stock	31,304,793	2,298,789	2,295,509	(40,684)	31,304,793	31,267,390	0	31,448,309

(a) Book/Adjusted Carrying Value column for the end of the current reporting period includes the following amount of short-term and cash equivalent bonds by NAIC designation:
NAIC 1 \$; NAIC 2 \$; NAIC 3 \$ NAIC 4 \$; NAIC 5 \$; NAIC 6 \$

SCHEDULE DA - PART 1

Short-Term Investments

	1	2	3	4	5
	Book/Adjusted Carrying Value	Prior Year Value	Actual Cost	Interest Collected Year-to-Date	Paid for Accrued Interest Year-to-Date
9199999 Totals		XX			

NONE

SCHEDULE DA - VERIFICATION

Short-Term Investments

	1	2
	Year To Date	Prior Year Ended December 31
1. Book/adjusted carrying value, December 31 of prior year	0	
2. Cost of short-term investments acquired		405,924
3. Accrual of discount		
4. Unrealized valuation increase (decrease)		
5. Total gain (loss) on disposals		
6. Deduct consideration received on disposals		400,000
7. Deduct amortization of premium		5,924
8. Total foreign exchange change in book/adjusted carrying value		
9. Deduct current year's other than temporary impairment recognized		
10. Book/adjusted carrying value at end of current period (Lines 1+2+3+4+5-6-7+8-9)	0	0
11. Deduct total nonadmitted amounts		
12. Statement value at end of current period (Line 10 minus Line 11)	0	0

Schedule DB - Part A - Verification - Options, Caps, Floors, Collars, Swaps and Forwards

N O N E

Schedule DB - Part B - Verification - Futures Contracts

N O N E

Schedule DB - Part C - Section 1 - Replication (Synthetic Asset) Transactions (RSATs) Open

N O N E

Schedule DB-Part C-Section 2-Reconciliation of Replication (Synthetic Asset) Transactions Open

N O N E

Schedule DB - Verification - Book/Adjusted Carrying Value, Fair Value and Potential Exposure of
Derivatives

N O N E

STATEMENT AS OF JUNE 30, 2021 OF THE OHIO BAR LIAB INS CO

SCHEDULE E - PART 2 - VERIFICATION

(Cash Equivalents)

	1	2
	Year To Date	Prior Year Ended December 31
1. Book/adjusted carrying value, December 31 of prior year	1,766,489	737,162
2. Cost of cash equivalents acquired	5,637,683	17,160,414
3. Accrual of discount	53	8
4. Unrealized valuation increase (decrease)		
5. Total gain (loss) on disposals		
6. Deduct consideration received on disposals	6,228,125	16,131,095
7. Deduct amortization of premium		
8. Total foreign exchange change in book/adjusted carrying value		
9. Deduct current year's other than temporary impairment recognized		
10. Book/adjusted carrying value at end of current period (Lines 1+2+3+4+5-6-7+8-9)	1,176,101	1,766,489
11. Deduct total nonadmitted amounts		
12. Statement value at end of current period (Line 10 minus Line 11)	1,176,101	1,766,489

Schedule A - Part 2 - Real Estate Acquired and Additions Made

N O N E

Schedule A - Part 3 - Real Estate Disposed

N O N E

Schedule B - Part 2 - Mortgage Loans Acquired and Additions Made

N O N E

Schedule B - Part 3 - Mortgage Loans Disposed, Transferred or Repaid

N O N E

Schedule BA - Part 2 - Other Long-Term Invested Assets Acquired and Additions Made

N O N E

Schedule BA - Part 3 - Other Long-Term Invested Assets Disposed, Transferred or Repaid

N O N E

STATEMENT AS OF JUNE 30, 2021 OF THE OHIO BAR LIAB INS CO

SCHEDULE D - PART 3

Show All Long-Term Bonds and Stock Acquired During the Current Quarter

1	2	3	4	5	6	7	8	9	10
CUSIP Identification	Description	Foreign	Date Acquired	Name of Vendor	Number of Shares of Stock	Actual Cost	Par Value	Paid for Accrued Interest and Dividends	NAIC Designation, NAIC Designation Modifier and SVO Administrative Symbol
3133EM-WH-1	FEDERAL FARM CREDIT BANKS FUNDING CORP04/23/2021	Cantor Fitzgerald & Co.		400,000	400,000	.39	1. A
3136BH-EN-5	FNR 2021-26 YB - CMO/RMBS06/23/2021	RBC CAPITAL MARKETS, LLC		592,305	588,535	.662	1. A
3199999. Subtotal - Bonds - U.S. Special Revenues						992,305	988,535	702	XXX
0604BW-L9-9	BANK OF AMERICA CORP05/12/2021	Cantor Fitzgerald & Co.		250,000	250,000	.0	1. G FE
38150A-G8-2	GOLDMAN SACHS GROUP INC06/14/2021	Cantor Fitzgerald & Co.		550,000	550,000	.0	1. F FE
48128G-3T-5	JPMORGAN CHASE FINANCIAL COMPANY LLC05/26/2021	Cantor Fitzgerald & Co.		500,000	500,000	.0	1. F FE
3899999. Subtotal - Bonds - Industrial and Miscellaneous (Unaffiliated)						1,300,000	1,300,000	0	XXX
921937-81-9	VANGUARD INT-T B ETF06/09/2021	Charles Schwab & Co Inc		6,484	0	.0	1. Z
8099999. Subtotal - Bonds - SVO Identified Funds						6,484	0	0	XXX
8399997. Total - Bonds - Part 3						2,298,789	2,288,535	702	XXX
8399998. Total - Bonds - Part 5						XXX	XXX	XXX	XXX
8399999. Total - Bonds						2,298,789	2,288,535	702	XXX
8999997. Total - Preferred Stocks - Part 3						0	XXX	0	XXX
8999998. Total - Preferred Stocks - Part 5						XXX	XXX	XXX	XXX
8999999. Total - Preferred Stocks						0	XXX	0	XXX
808509-75-6	SCHWAB CAP:TOT STK MKT06/09/2021	Charles Schwab & Co Inc	22.776	1,700		.0	
921931-20-0	VANGUARD BAL IDX ADM06/23/2021	Charles Schwab & Co Inc	10.504	.494		.0	
921937-68-6	VANGUARD SC V I ADM06/24/2021	US BANK	55.288	4,105		.0	
921937-69-4	VANGUARD MC V I ADM06/24/2021	US BANK	74.252	5,371		.0	
921937-71-0	VANGUARD SC G ID ADM06/24/2021	US BANK	14.411	1,453		.0	
921937-72-8	VANGUARD MC G I ADM06/24/2021	US BANK	10.792	1,083		.0	
922908-72-8	VANGUARD TSM IDX ADM06/24/2021	US BANK	41.440	4,441		.0	
9499999. Subtotal - Common Stocks - Mutual Funds						18,647	XXX	0	XXX
9799997. Total - Common Stocks - Part 3						18,647	XXX	0	XXX
9799998. Total - Common Stocks - Part 5						XXX	XXX	XXX	XXX
9799999. Total - Common Stocks						18,647	XXX	0	XXX
9899999. Total - Preferred and Common Stocks						18,647	XXX	0	XXX
9999999 - Totals						2,317,436	XXX	702	XXX

STATEMENT AS OF JUNE 30, 2021 OF THE OHIO BAR LIAB INS CO

SCHEDULE D - PART 4

Show All Long-Term Bonds and Stock Sold, Redeemed or Otherwise Disposed of During the Current Quarter

1	2	3	4	5	6	7	8	9	10	Change In Book/Adjusted Carrying Value					16	17	18	19	20	21	22
										11	12	13	14	15							
CUSIP Identification	Description	For- eign	Disposal Date	Name of Purchaser	Number of Shares of Stock	Consid- eration	Par Value	Actual Cost	Prior Year Book/ Adjusted Carrying Value	Unrealized Valuation Increase/ (Decrease)	Current Year's (Amor- tization)/ Accretion	Current Year's Other Than Temporary Impairment Recogn- ized	Total Change in Book/ Adjusted Carrying Value (11 + 12 - 13)	Total Foreign Exchange Change in Book /Adjusted Carrying Value	Book/ Adjusted Carrying Value at Disposal Date	Foreign Exchange Gain (Loss) on Disposal	Realized Gain (Loss) on Disposal	Total Gain (Loss) on Disposal	Bond Interest/ Stock Dividends Received During Year	Stated Con- tractual Maturity Date	NAIC Desig- nation, NAIC Desig- nation Modifier and SVO Admini- strative Symbol
3620BS-DQ-2	GN 459211 - RMBS		06/01/2021	Paydown		350	350	348	349	.0	.2	.0	.2	.0	350	.0	.0	.0	.10	07/15/2029	1.A
36209R-CG-6	GN 478971 - RMBS		06/01/2021	Paydown		4	4	4	4	.0	.0	.0	.0	.0	4	.0	.0	.0	.0	12/15/2029	1.A
36217V-AY-0	GN 204423 - RMBS		06/01/2021	Paydown		33	33	33	33	.0	.0	.0	.0	.0	33	.0	.0	.0	.1	01/15/2030	1.A
38376G-SM-3	GNR 2010-096 C - CMBS		06/01/2021	Paydown		7,301	7,301	7,494	7,350	.0	(49)	.0	(49)	.0	7,301	.0	.0	.0	.130	07/16/2044	1.A
38378B-4E-6	GNR 2013-007 AB - CMBS		06/01/2021	Paydown		24,330	24,330	24,125	24,132	.0	.199	.0	.199	.0	24,330	.0	.0	.0	.225	01/16/2053	1.A
38378B-Y5-3	GNR 2012-132 AE - CMBS		06/01/2021	Paydown		3,761	3,761	3,716	3,728	.0	.34	.0	.34	.0	3,761	.0	.0	.0	.31	06/16/2053	1.A
38378N-EL-3	GNR 2013-156 AE - CMBS		06/01/2021	Paydown		199,995	199,995	203,558	202,132	.0	(2,136)	.0	(2,136)	.0	199,995	.0	.0	.0	2,700	10/16/2041	1.A
38380M-M8-1	GNR 2019-019 AC - CMBS		06/01/2021	Paydown		58,589	58,589	57,984	58,073	.0	.516	.0	.516	.0	58,589	.0	.0	.0	.735	02/16/2051	1.A
38380M-UZ-2	GNR 2018-162 AB - CMBS		06/01/2021	Paydown		58,872	58,872	58,063	58,373	.0	.499	.0	.499	.0	58,872	.0	.0	.0	.711	08/16/2045	1.A
83162C-TE-3	SBAP 1020D A - ABS		04/01/2021	Paydown		22,592	22,592	23,400	23,397	.0	(805)	.0	(805)	.0	22,592	.0	.0	.0	.493	04/01/2030	1.A
83164M-PZ-6	SBA 510340 - RMBS		06/01/2021	Paydown		10,094	14,093	14,322	14,710	.0	(617)	.0	(617)	.0	14,093	.0	(3,999)	(3,999)	.66	12/25/2043	1.A
0599999. Subtotal - Bonds - U.S. Governments						385,923	389,921	393,048	392,280	0	(2,359)	0	(2,359)	0	389,921	0	(3,999)	(3,999)	5.101	XXX	XXX
34153P-L2-2	FLORIDA ST BRD ED PUB ED		06/01/2021	Call @ 100.00		250,000	250,000	278,340	251,457	.0	(1,457)	.0	(1,457)	.0	250,000	.0	.0	.0	6,250	06/01/2031	1.A FE
68608U-CJ-3	OREGON ST		05/01/2021	Maturity @ 100.00		325,000	325,000	388,193	328,168	.0	(3,168)	.0	(3,168)	.0	325,000	.0	.0	.0	8,125	05/01/2021	1.B FE
2499999. Subtotal - Bonds - U.S. Political Subdivisions of States, Territories and Possessions						575,000	575,000	666,533	579,625	0	(4,625)	0	(4,625)	0	575,000	0	0	0	14,375	XXX	XXX
3132YO-RT-9	FH 056797 - RMBS		06/01/2021	Paydown		27,887	27,887	28,885	29,118	.0	(1,231)	.0	(1,231)	.0	27,887	.0	.0	.0	.458	06/01/2048	1.A
3133KY-SK-6	FH RB5022 - RMBS		06/01/2021	Paydown		37,844	37,844	38,749	38,812	.0	(968)	.0	(968)	.0	37,844	.0	.0	.0	.453	11/01/2039	1.A
3133KY-US-6	FH RB5104 - RMBS		06/01/2021	Paydown		8,950	8,950	9,124	9,124	.0	(173)	.0	(173)	.0	8,950	.0	.0	.0	.34	03/01/2041	1.A
3136A8-T4-2	FNR 2012-113 MA - CMO/RMBS		06/01/2021	Paydown		29,855	29,855	29,962	29,889	.0	(34)	.0	(34)	.0	29,855	.0	.0	.0	.365	08/25/2041	1.A
3136A9-4F-2	FNR 2012-118 PC - CMO/RMBS		06/01/2021	Paydown		27,784	27,784	25,153	25,828	.0	1,956	.0	1,956	.0	27,784	.0	.0	.0	.186	06/25/2042	1.A
3136AP-QC-9	FNR 2015-46 MD - CMO/RMBS		06/01/2021	Paydown		37,649	37,649	38,019	37,748	.0	(100)	.0	(100)	.0	37,649	.0	.0	.0	.461	05/25/2043	1.A
3136AT-LD-4	FNR 2016-48 QP - CMO/RMBS		06/01/2021	Paydown		57,470	57,470	58,422	58,002	.0	(531)	.0	(531)	.0	57,470	.0	.0	.0	.735	01/25/2045	1.A
3136AV-V9-7	FNR 2017-22 BE - CMO/RMBS		06/01/2021	Paydown		27,211	27,211	28,232	27,554	.0	(343)	.0	(343)	.0	27,211	.0	.0	.0	.377	08/25/2040	1.A
3136B3-XH-8	FNR 2018-94 VE - CMO/RMBS		06/01/2021	Paydown		9,923	9,923	10,307	10,127	.0	(205)	.0	(205)	.0	9,923	.0	.0	.0	.145	04/25/2030	1.A
3136BA-Z4-9	FNR 2020-45 BA - CMO/RMBS		06/01/2021	Paydown		32,245	32,245	32,941	32,960	.0	(714)	.0	(714)	.0	32,245	.0	.0	.0	.256	02/25/2044	1.A
3136BB-4K-5	FNR 2020-68 A - CMO/RMBS		06/01/2021	Paydown		41,601	41,601	42,843	42,836	.0	(1,235)	.0	(1,235)	.0	41,601	.0	.0	.0	.331	09/25/2044	1.A
3136BC-K4-1	FNR 2020-92 NB - CMO/RMBS		06/01/2021	Paydown		9,933	9,933	9,976	9,976	.0	(43)	.0	(43)	.0	9,933	.0	.0	.0	.42	05/25/2050	1.A
3136BC-SC-5	FNR 2020-78 CA - CMO/RMBS		06/01/2021	Paydown		26,113	26,113	26,737	26,723	.0	(610)	.0	(610)	.0	26,113	.0	.0	.0	.214	10/25/2044	1.A
3137A2-VV-0	FHR 3752 LW - CMO/RMBS		06/01/2021	Paydown		29,411	29,411	29,502	29,432	.0	(21)	.0	(21)	.0	29,411	.0	.0	.0	.363	06/15/2039	1.A
3137BB-A9-1	FHR 4337 BA - CMO/RMBS		06/01/2021	Paydown		37,025	37,025	36,961	36,968	.0	.57	.0	.57	.0	37,025	.0	.0	.0	.450	02/15/2046	1.A
3137BM-2S-4	FHR 4526 PJ - CMO/RMBS		06/01/2021	Paydown		39,862	39,862	40,367	40,046	.0	(183)	.0	(183)	.0	39,862	.0	.0	.0	.469	01/15/2042	1.A
3137BM-H6-6	FHR 4535 JP - CMO/RMBS		06/01/2021	Paydown		42,715	42,715	43,329	43,192	.0	(477)	.0	(477)	.0	42,715	.0	.0	.0	.523	11/15/2043	1.A
3137BY-6U-9	FHR 4680 KG - CMO/RMBS		06/01/2021	Paydown		10,752	10,752	11,009	10,805	.0	(53)	.0	(53)	.0	10,752	.0	.0	.0	.129	09/15/2042	1.A
3137F4-VG-4	FHR 4774 KA - CMO/RMBS		06/01/2021	Paydown		37,939	37,939	39,575	39,114	.0	(1,175)	.0	(1,175)	.0	37,939	.0	.0	.0	.684	12/15/2045	1.A
3137FD-F9-8	FHR 4757 CA - CMO/RMBS		06/01/2021	Paydown		27,930	27,930	28,271	28,043	.0	(112)	.0	(112)	.0	27,930	.0	.0	.0	.393	07/15/2045	1.A
3137FF-6G-7	FHR 5078 WB - CMO/RMBS		06/01/2021	Paydown		104,853	57,503	58,365	58,365	.0	(1,573)	.0	(1,573)	.0	104,853	.0	.0	.0	.362	02/15/2047	1.A
3137FK-VF-0	FHR 4860 CA - CMO/RMBS		06/01/2021	Paydown		1,479	1,479	1,486	1,486	.0	(7)	.0	(7)	.0	1,479	.0	.0	.0	.22	08/15/2047	1.A
3137FQ-RJ-9	FHR 4941 CA - CMO/RMBS		06/01/2021	Paydown		44,862	44,862	45,675	45,404	.0	(542)	.0	(542)	.0	44,862	.0	.0	.0	.537	10/25/2042	1.A
60416Q-HH-7	MINNESOTA ST HSG FIN AGY HOMEOWNERSHIP F		06/01/2021	Call @ 100.00		26,617	26,617	26,617	26,617	.0	.0	.0	.0	.0	26,617	.0	.0	.0	.253	06/01/2050	1.A FE
60416Q-HY-3	MINNESOTA ST HSG FIN AGY HOMEOWNERSHIP F		06/01/2021	Call @ 100.00		11,022	11,022	11,022	11,022	.0	.0	.0	.0	.0	11,022	.0	.0	.0	.89	09/01/2050	1.A FE
60637B-ZB-9	MISSOURI ST HSG DEV COMMN SINGLE FAMILY		05/01/2021	Call @ 100.00		5,000	5,000	5,079	5,076	.0	(3)	.0	(3)	.0	5,073	.0	(73)	(73)	.60	11/01/2045	1.B FE
658207-C9-4	NORTH CAROLINA HSG FIN AGY HOMEOWNERSHIP		06/01/2021	Call @ 100.00		5,000	5,000	5,000	5,000	.0	.0	.0	.0	.0	5,000	.0	.0	.0	.24	07/01/2040	1.B FE
3199999. Subtotal - Bonds - U.S. Special Revenues						798,932	751,582	761,608	691,777	0	(8,321)	0	(8,321)	0	799,004	0	(73)	(73)	8,413	XXX	XXX
126650-CT-5	CVS HEALTH CORP		06/01/2021	Maturity @ 100.00		400,000	400,000	386,344	397,808	.0	2,192	.0	2,192	.0	400,000	.0	.0	.0	4,250	06/01/2021	2.B FE
428400-CU-1	HERTZ 2017-1 A - ABS		06/30/2021	Paydown		59,124	59,124	58,413	59,124	.0	.0	.0	.0	.0	59,124	.0	.0	.0	.830	10/25/2021	1.F FE
63939D-AC-9	NAVSL 2014-8 A3 - ABS		06/25/2021	Paydown		8,809	8,809	8,685	8,687	.0	.122	.0	.122	.0	8,809	.0	.0	.0	.26	05/27/2031	1.A FE
64032X-AA-3	NSLT 2012-3 A - ABS		06/25/2021	Paydown		8,755	8,755	8,745	8,655	.0	.100	.0	.100	.0	8,755	.0	.0	.0	.29	03/26/2040	1.A FE
83404K-AC-7	SOFI 2017-E A2B - ABS		06/25/2021	Paydown		54,896	54,896	53,755	54,138	.0	.758	.0	.758	.0	54,896	.0	.0	.0	.597	11/26/2040	1.A FE
3899999. Subtotal - Bonds - Industrial and Miscellaneous (Unaffiliated)						531,583	531,583	515,942	528,412	0	3,172	0	3,172	0	531,583	0	0	0	5,732	XXX	XXX
921937-81-9	VANGUARD INT-T B ETF		04/07/2021	Unknown	0.000	52	0	0	0	0	0	0	0	0	0	0	52	52	0	XXX	XXX
8099999. Subtotal - Bonds - SVO Identified Funds						52	0	0	0	0	0	0	0	0	0	0	52	52	0	XXX	XXX
8399997. Total - Bonds - Part 4						2,291,489	2,248,086	2,337,131	2,192,093	0	(12,133)	0	(12,133)	0	2,295,509	0	(4,020)	(4,020)	33,622	XXX	XXX

STATEMENT AS OF JUNE 30, 2021 OF THE OHIO BAR LIAB INS CO

SCHEDULE D - PART 4

Show All Long-Term Bonds and Stock Sold, Redeemed or Otherwise Disposed of During the Current Quarter

1	2	3	4	5	6	7	8	9	10	Change In Book/Adjusted Carrying Value					16	17	18	19	20	21	22
										11	12	13	14	15							
CUSIP Ident- ification	Description	For- eign	Disposal Date	Name of Purchaser	Number of Shares of Stock	Consid- eration	Par Value	Actual Cost	Prior Year Book/ Adjusted Carrying Value	Unrealized Valuation Increase/ (Decrease)	Current Year's (Amor- tization)/ Accretion	Current Year's Other Than Temporary Impairment Recog- nized	Total Change in Book/ Adjusted Carrying Value (11 + 12 - 13)	Total Foreign Exchange Change in Book /Adjusted Carrying Value	Book/ Adjusted Carrying Value at Disposal Date	Foreign Exchange Gain (Loss) on Disposal	Realized Gain (Loss) on Disposal	Total Gain (Loss) on Disposal	Bond Interest/ Stock Dividends Received During Year	Stated Con- tractual Maturity Date	NAIC Desig- nation, NAIC Desig- nation Modifier and SVO Admini- strative Symbol
8399998. Total - Bonds - Part 5						XXX	XXX	XXX	XXX	XXX	XXX	XXX	XXX	XXX	XXX	XXX	XXX	XXX	XXX	XXX	XXX
8399999. Total - Bonds						2,291,489	2,248,086	2,337,131	2,192,093	0	(12,133)	0	(12,133)	0	2,295,509	0	(4,020)	(4,020)	33,622	XXX	XXX
8999997. Total - Preferred Stocks - Part 4						0	XXX	0	0	0	0	0	0	0	0	0	0	0	0	XXX	XXX
8999998. Total - Preferred Stocks - Part 5						XXX	XXX	XXX	XXX	XXX	XXX	XXX	XXX	XXX	XXX	XXX	XXX	XXX	XXX	XXX	XXX
8999999. Total - Preferred Stocks						0	XXX	0	0	0	0	0	0	0	0	0	0	0	0	XXX	XXX
9799997. Total - Common Stocks - Part 4						0	XXX	0	0	0	0	0	0	0	0	0	0	0	0	XXX	XXX
9799998. Total - Common Stocks - Part 5						XXX	XXX	XXX	XXX	XXX	XXX	XXX	XXX	XXX	XXX	XXX	XXX	XXX	XXX	XXX	XXX
9799999. Total - Common Stocks						0	XXX	0	0	0	0	0	0	0	0	0	0	0	0	XXX	XXX
9899999. Total - Preferred and Common Stocks						0	XXX	0	0	0	0	0	0	0	0	0	0	0	0	XXX	XXX
9999999 - Totals						2,291,489	XXX	2,337,131	2,192,093	0	(12,133)	0	(12,133)	0	2,295,509	0	(4,020)	(4,020)	33,622	XXX	XXX

Schedule DB - Part A - Section 1 - Options, Caps, Floors, Collars, Swaps and Forwards Open
N O N E

Schedule DB - Part B - Section 1 - Futures Contracts Open
N O N E

Schedule DB - Part B - Section 1B - Brokers with whom cash deposits have been made
N O N E

Schedule DB - Part D - Section 1 - Counterparty Exposure for Derivative Instruments Open
N O N E

Schedule DB - Part D-Section 2 - Collateral for Derivative Instruments Open - Pledged By
N O N E

Schedule DB - Part D-Section 2 - Collateral for Derivative Instruments Open - Pledged To
N O N E

Schedule DB - Part E - Derivatives Hedging Variable Annuity Guarantees
N O N E

Schedule DL - Part 1 - Reinvested Collateral Assets Owned
N O N E

Schedule DL - Part 2 - Reinvested Collateral Assets Owned
N O N E

SCHEDULE E - PART 1 - CASH

[illegible]

STATEMENT AS OF JUNE 30, 2021 OF THE OHIO BAR LIAB INS CO

SCHEDULE E - PART 2 - CASH EQUIVALENTS

Show Investments Owned End of Current Quarter

[illegible]