



LIFE, ACCIDENT AND HEALTH COMPANIES/FRATERNAL BENEFIT SOCIETIES - ASSOCIATION EDITION

QUARTERLY STATEMENT

AS OF MARCH 31, 2021

OF THE CONDITION AND AFFAIRS OF THE

Family Heritage Life Insurance Company of America

NAIC Group Code02900290NAIC Company Code77968Employer's ID Number34-1626521

(Current)(Prior)

Organized under the Laws ofOHIO, State of Domicile or Port of EntryOH

Country of DomicileUnited States of America

Licensed as business type:Life, Accident and Health [ X ] Fraternal Benefit Societies [ ]

Incorporated/Organized08/22/1989Commenced Business11/17/1989

Statutory Home Office6001 East Royalton Road, Suite 200Cleveland, OH, US 44147-3529

(Street and Number)(City or Town, State, Country and Zip Code)

Main Administrative Office6001 East Royalton Road, Suite 200Cleveland, OH, US 44147-3529440-922-5200

(Street and Number)(City or Town, State, Country and Zip Code)(Area Code) (Telephone Number)

Mail AddressP.O. Box 470608Cleveland, OH, US 44147-3529

(Street and Number or P.O. Box)(City or Town, State, Country and Zip Code)

Primary Location of Books and Records3700 South Stonebridge DriveMcKinney, TX, US 75070-8080469-617-4407

(Street and Number)(City or Town, State, Country and Zip Code)(Area Code) (Telephone Number)

Internet Website Addresswww.FamilyHeritageLife.com

Statutory Statement ContactBrett Turner469-617-4407

(Name)(Area Code) (Telephone Number)

bturner@globe.life972-569-3734

(E-mail Address)(FAX Number)

OFFICERS

PresidentJames Eric "Bo" McPartlandSecretaryJoel Patrick Scarborough

TreasurerMichael Shane HenrieAppointed ActuaryBarbara Sue Emig

OTHER

David Kendall Carlson, Divisional Senior Vice PresidentDavid Robert Cochrane, Divisional Senior Vice PresidentSeamus Fitzpatrick, Division Senior Vice President

Tony Michael Martella, Division Senior Vice PresidentJeffrey Scott Morris, Divisional Senior Vice PresidentWilliam Michael Pressley, Divisional Vice President

DIRECTORS OR TRUSTEES

James Eric "Bo" McPartlandMichael Shane HenrieJoel Patrick Scarborough

Thomas Peter KalmbachJeffrey Scott MorrisMaria Rose Burnett

State ofTexasSS:

County ofCollin

The officers of this reporting entity being duly sworn, each depose and say that they are the described officers of said reporting entity, and that on the reporting period stated above, all of the herein described assets were the absolute property of the said reporting entity, free and clear from any liens or claims thereon, except as herein stated, and that this statement, together with related exhibits, schedules and explanations therein contained, annexed or referred to, is a full and true statement of all the assets and liabilities and of the condition and affairs of the said reporting entity as of the reporting period stated above, and of its income and deductions therefrom for the period ended, and have been completed in accordance with the NAIC Annual Statement Instructions and Accounting Practices and Procedures manual except to the extent that: (1) state law may differ; or, (2) that state rules or regulations require differences in reporting not related to accounting practices and procedures, according to the best of their information, knowledge and belief, respectively. Furthermore, the scope of this attestation by the described officers also includes the related corresponding electronic filing with the NAIC, when required, that is an exact copy (except for formatting differences due to electronic filing) of the enclosed statement. The electronic filing may be requested by various regulators in lieu of or in addition to the enclosed statement.

James Eric "Bo" McPartlandMichael Shane HenrieJoel Patrick Scarborough

PresidentTreasurerSecretary

Subscribed and sworn to before me this7thday ofMay, 2021

a. Is this an original filing? Yes [ X ] No [ ]

b. If no,1. State the amendment number.....

2. Date filed .....

3. Number of pages attached.....

Michelle Batiste  
Notary Public  
January 12, 2024

STATEMENT AS OF MARCH 31, 2021 OF THE Family Heritage Life Insurance Company of America

ASSETS

	Current Statement Date			4 December 31 Prior Year Net Admitted Assets
	1 Assets	2 Nonadmitted Assets	3 Net Admitted Assets (Cols. 1 - 2)	
1. Bonds .....	1,323,850,890		1,323,850,890	1,281,666,537
2. Stocks:				
2.1 Preferred stocks .....			0	0
2.2 Common stocks .....			0	0
3. Mortgage loans on real estate:				
3.1 First liens .....	16,300,028		16,300,028	15,958,231
3.2 Other than first liens .....			0	0
4. Real estate:				
4.1 Properties occupied by the company (less \$ encumbrances) .....			0	0
4.2 Properties held for the production of income (less \$ ..... encumbrances) .....			0	0
4.3 Properties held for sale (less \$ encumbrances) .....			0	0
5. Cash (\$ .....(11,561,837) ), cash equivalents (\$ .....10,427,480 ) and short-term investments (\$ ..... ) .....	(1,134,357)		(1,134,357)	7,823,928
6. Contract loans (including \$ ..... premium notes) .....	197,346		197,346	176,107
7. Derivatives .....			0	0
8. Other invested assets .....	81,927,493		81,927,493	71,543,928
9. Receivables for securities .....			0	0
10. Securities lending reinvested collateral assets .....			0	0
11. Aggregate write-ins for invested assets .....	0	0	0	0
12. Subtotals, cash and invested assets (Lines 1 to 11) .....	1,421,141,400	0	1,421,141,400	1,377,168,731
13. Title plants less \$ ..... charged off (for Title insurers only) .....			0	0
14. Investment income due and accrued .....	14,091,523		14,091,523	13,392,891
15. Premiums and considerations:				
15.1 Uncollected premiums and agents' balances in the course of collection .....	9,967,596		9,967,596	10,227,252
15.2 Deferred premiums, agents' balances and installments booked but deferred and not yet due (including \$ ..... earned but unbilled premiums) .....	1,097,099		1,097,099	1,148,998
15.3 Accrued retrospective premiums (\$ ..... ) and contracts subject to redetermination (\$ ..... ) .....			0	0
16. Reinsurance:				
16.1 Amounts recoverable from reinsurers .....			0	0
16.2 Funds held by or deposited with reinsured companies .....			0	0
16.3 Other amounts receivable under reinsurance contracts .....			0	0
17. Amounts receivable relating to uninsured plans .....			0	0
18.1 Current federal and foreign income tax recoverable and interest thereon .....	0		0	0
18.2 Net deferred tax asset .....	49,659,000	33,158,000	16,501,000	17,634,000
19. Guaranty funds receivable or on deposit .....	820,330		820,330	770,256
20. Electronic data processing equipment and software .....	5,454,109	5,031,601	422,508	447,110
21. Furniture and equipment, including health care delivery assets (\$ ..... ) .....	58,045	58,045	0	0
22. Net adjustment in assets and liabilities due to foreign exchange rates .....			0	0
23. Receivables from parent, subsidiaries and affiliates .....			0	15,000,000
24. Health care (\$ ..... ) and other amounts receivable .....			0	0
25. Aggregate write-ins for other than invested assets .....	16,464,643	16,464,643	0	0
26. Total assets excluding Separate Accounts, Segregated Accounts and Protected Cell Accounts (Lines 12 to 25) .....	1,518,753,745	54,712,289	1,464,041,456	1,435,789,238
27. From Separate Accounts, Segregated Accounts and Protected Cell Accounts .....			0	0
28. Total (Lines 26 and 27)	1,518,753,745	54,712,289	1,464,041,456	1,435,789,238
DETAILS OF WRITE-INS				
1101. ....				
1102. ....				
1103. ....				
1198. Summary of remaining write-ins for Line 11 from overflow page .....	0	0	0	0
1199. Totals (Lines 1101 through 1103 plus 1198)(Line 11 above)	0	0	0	0
2501. Agent Balances .....	15,036,762	15,036,762	0	0
2502. Prepaid Expenses .....	1,387,384	1,387,384	0	0
2503. Other Assets Nonadmitted .....	40,497	40,497	0	0
2598. Summary of remaining write-ins for Line 25 from overflow page .....	0	0	0	0
2599. Totals (Lines 2501 through 2503 plus 2598)(Line 25 above)	16,464,643	16,464,643	0	0

STATEMENT AS OF MARCH 31, 2021 OF THE Family Heritage Life Insurance Company of America

LIABILITIES, SURPLUS AND OTHER FUNDS

	1 Current Statement Date	2 December 31 Prior Year
1. Aggregate reserve for life contracts \$ ..... 12,461,427 less \$ ..... included in Line 6.3 (including \$ ..... Modco Reserve) .....	12,461,427	12,003,643
2. Aggregate reserve for accident and health contracts (including \$ ..... Modco Reserve) .....	1,266,308,181	1,235,511,279
3. Liability for deposit-type contracts (including \$ ..... Modco Reserve) .....		
4. Contract claims:		
4.1 Life .....	1,624,000	1,648,000
4.2 Accident and health .....	27,894,726	26,464,281
5. Policyholders' dividends/refunds to members \$ ..... and coupons \$ ..... due and unpaid .....		0
6. Provision for policyholders' dividends, refunds to members and coupons payable in following calendar year - estimated amounts:		
6.1 Policyholders' dividends and refunds to members apportioned for payment (including \$ ..... Modco) .....		
6.2 Policyholders' dividends and refunds to members not yet apportioned (including \$ ..... Modco) .....		
6.3 Coupons and similar benefits (including \$ ..... Modco) .....		
7. Amount provisionally held for deferred dividend policies not included in Line 6 .....		
8. Premiums and annuity considerations for life and accident and health contracts received in advance less \$ ..... discount; including \$ ..... accident and health premiums .....		0
9. Contract liabilities not included elsewhere:		
9.1 Surrender values on canceled contracts .....		
9.2 Provision for experience rating refunds, including the liability of \$ ..... accident and health experience rating refunds of which \$ ..... 0 is for medical loss ratio rebate per the Public Health Service Act .....		
9.3 Other amounts payable on reinsurance, including \$ ..... assumed and \$ ..... 137,817 ceded .....	137,817	147,880
9.4 Interest Maintenance Reserve .....	2,715,343	1,874,269
10. Commissions to agents due or accrued-life and annuity contracts \$ ..... 24,042 , accident and health \$ ..... 2,193,998 and deposit-type contract funds \$ ..... .....	2,218,040	2,373,597
11. Commissions and expense allowances payable on reinsurance assumed .....		
12. General expenses due or accrued .....	4,334,420	4,330,173
13. Transfers to Separate Accounts due or accrued (net) (including \$ ..... accrued for expense allowances recognized in reserves, net of reinsured allowances) .....		
14. Taxes, licenses and fees due or accrued, excluding federal income taxes .....	1,124,801	1,147,490
15.1 Current federal and foreign income taxes, including \$ ..... on realized capital gains (losses) .....	1,866,189	836,508
15.2 Net deferred tax liability .....		
16. Unearned investment income .....		
17. Amounts withheld or retained by reporting entity as agent or trustee .....	844	835
18. Amounts held for agents' account, including \$ ..... agents' credit balances .....		
19. Remittances and items not allocated .....	488,937	523,127
20. Net adjustment in assets and liabilities due to foreign exchange rates .....		
21. Liability for benefits for employees and agents if not included above .....		994,338
22. Borrowed money \$ ..... and interest thereon \$ ..... .....		
23. Dividends to stockholders declared and unpaid .....	4,000,000	
24. Miscellaneous liabilities:		
24.01 Asset valuation reserve .....	10,512,703	9,942,930
24.02 Reinsurance in unauthorized and certified (\$ ..... ) companies .....		0
24.03 Funds held under reinsurance treaties with unauthorized and certified (\$ ..... ) reinsurers .....		
24.04 Payable to parent, subsidiaries and affiliates .....		
24.05 Drafts outstanding .....		
24.06 Liability for amounts held under uninsured plans .....		
24.07 Funds held under coinsurance .....		
24.08 Derivatives .....	0	0
24.09 Payable for securities .....		354,732
24.10 Payable for securities lending .....		
24.11 Capital notes \$ ..... and interest thereon \$ ..... .....		
25. Aggregate write-ins for liabilities .....	1,681,266	1,706,007
26. Total liabilities excluding Separate Accounts business (Lines 1 to 25) .....	1,337,368,694	1,299,859,089
27. From Separate Accounts Statement .....		
28. Total liabilities (Lines 26 and 27) .....	1,337,368,694	1,299,859,089
29. Common capital stock .....	2,556,000	2,556,000
30. Preferred capital stock .....		
31. Aggregate write-ins for other than special surplus funds .....	0	0
32. Surplus notes .....	30,000,000	30,000,000
33. Gross paid in and contributed surplus .....	67,647,000	67,647,000
34. Aggregate write-ins for special surplus funds .....	0	0
35. Unassigned funds (surplus) .....	26,469,762	35,727,149
36. Less treasury stock, at cost:		
36.1 ..... shares common (value included in Line 29 \$ ..... ) .....		
36.2 ..... shares preferred (value included in Line 30 \$ ..... ) .....		
37. Surplus (Total Lines 31+32+33+34+35-36) (including \$ ..... in Separate Accounts Statement) .....	124,116,762	133,374,149
38. Totals of Lines 29, 30 and 37 .....	126,672,762	135,930,149
39. Totals of Lines 28 and 38 (Page 2, Line 28, Col. 3)	1,464,041,456	1,435,789,238
<b>DETAILS OF WRITE-INS</b>		
2501. Unclaimed Property .....	1,681,266	1,706,007
2502. ....		
2503. ....		
2598. Summary of remaining write-ins for Line 25 from overflow page .....	0	0
2599. Totals (Lines 2501 through 2503 plus 2598)(Line 25 above) .....	1,681,266	1,706,007
3101. ....		
3102. ....		
3103. ....		
3198. Summary of remaining write-ins for Line 31 from overflow page .....	0	0
3199. Totals (Lines 3101 through 3103 plus 3198)(Line 31 above) .....	0	0
3401. ....		
3402. ....		
3403. ....		
3498. Summary of remaining write-ins for Line 34 from overflow page .....	0	0
3499. Totals (Lines 3401 through 3403 plus 3498)(Line 34 above) .....	0	0

STATEMENT AS OF MARCH 31, 2021 OF THE Family Heritage Life Insurance Company of America

SUMMARY OF OPERATIONS

	1	2	3
	Current Year To Date	Prior Year To Date	Prior Year Ended December 31
1. Premiums and annuity considerations for life and accident and health contracts .....	85,087,791	78,274,676	321,840,335
2. Considerations for supplementary contracts with life contingencies .....			0
3. Net investment income .....	14,526,636	13,330,424	55,661,020
4. Amortization of Interest Maintenance Reserve (IMR) .....	54,281	50,974	216,047
5. Separate Accounts net gain from operations excluding unrealized gains or losses .....			0
6. Commissions and expense allowances on reinsurance ceded .....	237,261	247,395	988,356
7. Reserve adjustments on reinsurance ceded .....			0
8. Miscellaneous Income:			
8.1 Income from fees associated with investment management, administration and contract guarantees from Separate Accounts .....			0
8.2 Charges and fees for deposit-type contracts .....			0
8.3 Aggregate write-ins for miscellaneous income .....	0	0	0
9. Totals (Lines 1 to 8.3) .....	99,905,969	91,903,469	378,705,758
10. Death benefits .....	153,736	107,955	434,260
11. Matured endowments (excluding guaranteed annual pure endowments) .....			0
12. Annuity benefits .....			0
13. Disability benefits and benefits under accident and health contracts .....	25,892,553	26,199,108	103,456,049
14. Coupons, guaranteed annual pure endowments and similar benefits .....			0
15. Surrender benefits and withdrawals for life contracts .....	77,012	67,433	299,327
16. Group conversions .....			0
17. Interest and adjustments on contract or deposit-type contract funds .....	37		853
18. Payments on supplementary contracts with life contingencies .....			0
19. Increase in aggregate reserves for life and accident and health contracts .....	31,254,687	26,300,941	115,810,949
20. Totals (Lines 10 to 19) .....	57,378,025	52,675,437	220,001,438
21. Commissions on premiums, annuity considerations, and deposit-type contract funds (direct business only) .....	18,496,438	17,650,071	72,118,328
22. Commissions and expense allowances on reinsurance assumed .....			
23. General insurance expenses and fraternal expenses .....	8,575,019	8,335,340	34,000,717
24. Insurance taxes, licenses and fees, excluding federal income taxes .....	1,964,668	1,866,619	7,050,010
25. Increase in loading on deferred and uncollected premiums .....	(16,038)	(17,760)	(1,530)
26. Net transfers to or (from) Separate Accounts net of reinsurance .....			0
27. Aggregate write-ins for deductions .....	0	0	0
28. Totals (Lines 20 to 27) .....	86,398,112	80,509,707	333,168,963
29. Net gain from operations before dividends to policyholders and federal income taxes (Line 9 minus Line 28) .....	13,507,857	11,393,762	45,536,795
30. Dividends to policyholders and refunds to members .....			0
31. Net gain from operations after dividends to policyholders, refunds to members and before federal income taxes (Line 29 minus Line 30) .....	13,507,857	11,393,762	45,536,795
32. Federal and foreign income taxes incurred (excluding tax on capital gains) .....	2,248,613	1,746,842	9,330,355
33. Net gain from operations after dividends to policyholders, refunds to members and federal income taxes and before realized capital gains or (losses) (Line 31 minus Line 32) .....	11,259,244	9,646,920	36,206,440
34. Net realized capital gains (losses) (excluding gains (losses) transferred to the IMR) less capital gains tax of \$ .....13,950 (excluding taxes of \$ .....292,118 transferred to the IMR) .....	(13,949)	141,648	25,600
35. Net income (Line 33 plus Line 34) .....	11,245,295	9,788,568	36,232,040
CAPITAL AND SURPLUS ACCOUNT			
36. Capital and surplus, December 31, prior year .....	135,930,149	109,740,825	109,740,825
37. Net income (Line 35) .....	11,245,295	9,788,568	36,232,040
38. Change in net unrealized capital gains (losses) less capital gains tax of \$ .....7,000	28,610	(690)	33,286
39. Change in net unrealized foreign exchange capital gain (loss) .....			
40. Change in net deferred income tax .....	1,141,000	648,000	1,393,000
41. Change in nonadmitted assets .....	(4,613,751)	(2,357,286)	7,446,594
42. Change in liability for reinsurance in unauthorized and certified companies .....			
43. Change in reserve on account of change in valuation basis, (increase) or decrease .....			0
44. Change in asset valuation reserve .....	(569,773)	(474,947)	(1,632,138)
45. Change in treasury stock .....			0
46. Surplus (contributed to) withdrawn from Separate Accounts during period .....			
47. Other changes in surplus in Separate Accounts Statement .....			
48. Change in surplus notes .....			
49. Cumulative effect of changes in accounting principles .....			
50. Capital changes:			
50.1 Paid in .....			
50.2 Transferred from surplus (Stock Dividend) .....			
50.3 Transferred to surplus .....			
51. Surplus adjustment:			
51.1 Paid in .....	0	0	15,000,000
51.2 Transferred to capital (Stock Dividend) .....			
51.3 Transferred from capital .....			
51.4 Change in surplus as a result of reinsurance .....			
52. Dividends to stockholders .....	(17,237,819)	(13,029,779)	(32,024,000)
53. Aggregate write-ins for gains and losses in surplus .....	749,051	2,777	(259,458)
54. Net change in capital and surplus for the year (Lines 37 through 53) .....	(9,257,387)	(5,423,357)	26,189,324
55. Capital and surplus, as of statement date (Lines 36 + 54) .....	126,672,762	104,317,468	135,930,149
DETAILS OF WRITE-INS			
08.301. ....			
08.302. ....			
08.303. ....			
08.398. Summary of remaining write-ins for Line 8.3 from overflow page .....	0	0	0
08.399. Totals (Lines 08.301 through 08.303 plus 08.398) (Line 8.3 above) .....	0	0	0
2701. ....			
2702. ....			
2703. ....			
2798. Summary of remaining write-ins for Line 27 from overflow page .....	0	0	0
2799. Totals (Lines 2701 through 2703 plus 2798)(Line 27 above) .....	0	0	0
5301. Change in Executive Benefit Plans .....	860,051	2,777	(329,458)
5302. Change in Executive Benefit Plans - Deferred FIT .....	(111,000)	0	70,000
5303. ....			
5398. Summary of remaining write-ins for Line 53 from overflow page .....	0	0	0
5399. Totals (Lines 5301 through 5303 plus 5398)(Line 53 above) .....	749,051	2,777	(259,458)

STATEMENT AS OF MARCH 31, 2021 OF THE Family Heritage Life Insurance Company of America

CASH FLOW

	1 Current Year To Date	2 Prior Year To Date	3 Prior Year Ended December 31
<b>Cash from Operations</b>			
1. Premiums collected net of reinsurance .....	85,405,321	78,213,266	320,797,270
2. Net investment income .....	12,567,141	11,864,469	48,245,178
3. Miscellaneous income .....	237,261	247,395	988,356
4. Total (Lines 1 to 3) .....	98,209,723	90,325,130	370,030,804
5. Benefit and loss related payments .....	24,716,894	26,305,172	103,527,916
6. Net transfers to Separate Accounts, Segregated Accounts and Protected Cell Accounts .....	0	0	0
7. Commissions, expenses paid and aggregate write-ins for deductions .....	29,448,135	27,839,089	111,588,349
8. Dividends paid to policyholders .....	0	0	0
9. Federal and foreign income taxes paid (recovered) net of \$ ..... tax on capital gains (losses) .....	1,525,000	0	6,225,801
10. Total (Lines 5 through 9) .....	55,690,029	54,144,261	221,342,066
11. Net cash from operations (Line 4 minus Line 10) .....	42,519,694	36,180,869	148,688,738
<b>Cash from Investments</b>			
12. Proceeds from investments sold, matured or repaid:			
12.1 Bonds .....	10,571,737	4,017,706	37,053,292
12.2 Stocks .....	0	0	0
12.3 Mortgage loans .....	0	0	4,568,771
12.4 Real estate .....	0	0	0
12.5 Other invested assets .....	0	0	2,535,633
12.6 Net gains or (losses) on cash, cash equivalents and short-term investments .....	0	0	0
12.7 Miscellaneous proceeds .....	0	(494,069)	0
12.8 Total investment proceeds (Lines 12.1 to 12.7) .....	10,571,737	3,523,637	44,157,696
13. Cost of investments acquired (long-term only):			
13.1 Bonds .....	49,220,997	23,142,998	118,464,024
13.2 Stocks .....	0	0	0
13.3 Mortgage loans .....	341,797	1,924,941	7,287,197
13.4 Real estate .....	0	0	0
13.5 Other invested assets .....	11,434,712	3,737,677	29,777,536
13.6 Miscellaneous applications .....	354,732	0	494,069
13.7 Total investments acquired (Lines 13.1 to 13.6) .....	61,352,238	28,805,616	156,022,826
14. Net increase (or decrease) in contract loans and premium notes .....	21,239	16,462	22,208
15. Net cash from investments (Line 12.8 minus Line 13.7 and Line 14) .....	(50,801,740)	(25,298,441)	(111,887,338)
<b>Cash from Financing and Miscellaneous Sources</b>			
16. Cash provided (applied):			
16.1 Surplus notes, capital notes .....	0	0	0
16.2 Capital and paid in surplus, less treasury stock .....	15,000,000	0	0
16.3 Borrowed funds .....	0	0	0
16.4 Net deposits on deposit-type contracts and other insurance liabilities .....	0	0	0
16.5 Dividends to stockholders .....	13,237,819	9,029,779	32,024,000
16.6 Other cash provided (applied) .....	(2,438,420)	(786,986)	6,999,421
17. Net cash from financing and miscellaneous sources (Line 16.1 through Line 16.4 minus Line 16.5 plus Line 16.6) .....	(676,239)	(9,816,765)	(25,024,579)
<b>RECONCILIATION OF CASH, CASH EQUIVALENTS AND SHORT-TERM INVESTMENTS</b>			
18. Net change in cash, cash equivalents and short-term investments (Line 11, plus Lines 15 and 17) .....	(8,958,285)	1,065,663	11,776,821
19. Cash, cash equivalents and short-term investments:			
19.1 Beginning of year .....	7,823,928	(3,952,893)	(3,952,893)
19.2 End of period (Line 18 plus Line 19.1) .....	(1,134,357)	(2,887,230)	7,823,928

Note: Supplemental disclosures of cash flow information for non-cash transactions:

20.0001. Bond for bond exchanges excluded from investments sold and investments acquired .....	4,145,580	0	26,844,148
20.0002. Unsettled bond purchases excluded from investments acquired and miscellaneous proceeds .....	0	0	354,732
20.0003. Non-cash capitalized Interest excluded from investments acquired and net investment income .....	42,493	0	106,708

EXHIBIT 1

DIRECT PREMIUMS AND DEPOSIT-TYPE CONTRACTS			
	1 Current Year To Date	2 Prior Year To Date	3 Prior Year Ended December 31
1. Industrial life .....			0
2. Ordinary life insurance .....	1,088,514	961,376	4,259,679
3. Ordinary individual annuities .....			0
4. Credit life (group and individual) .....			0
5. Group life insurance .....			0
6. Group annuities .....			0
7. A & H - group .....	4,237,187	3,903,268	15,527,768
8. A & H - credit (group and individual) .....			0
9. A & H - other .....	80,506,549	74,162,097	305,057,232
10. Aggregate of all other lines of business .....	0	0	0
11. Subtotal (Lines 1 through 10) .....	85,832,250	79,026,741	324,844,679
12. Fraternal (Fraternal Benefit Societies Only) .....			0
13. Subtotal (Lines 11 through 12) .....	85,832,250	79,026,741	324,844,679
14. Deposit-type contracts .....	0	0	0
15. Total (Lines 13 and 14)	85,832,250	79,026,741	324,844,679
DETAILS OF WRITE-INS			
1001. ....			
1002. ....			
1003. ....			
1098. Summary of remaining write-ins for Line 10 from overflow page .....	0	0	0
1099. Totals (Lines 1001 through 1003 plus 1098)(Line 10 above)	0	0	0

NOTES TO FINANCIAL STATEMENTS

NOTE 1 Summary of Significant Accounting Policies and Going Concern

A. Accounting Practices						
The accompanying financial statements have been completed in conformity with the accounting practices and procedures permitted by the NAIC's Accounting Practices and Procedures manual and the State of Ohio.						
	SSAP #	F/S Page	F/S Line #		2021	2020
NET INCOME						
(1) State basis (Page 4, Line 35, Columns 1 & 3)	XXX	XXX	XXX	\$	11,245,295	\$ 36,232,040
(2) State Prescribed Practices that are an increase/ (decrease) from NAIC SAP:						
(3) State Permitted Practices that are an increase/(decrease) from NAIC SAP:						
(4) NAIC SAP (1-2-3=4)						
	XXX	XXX	XXX	\$	11,245,295	\$ 36,232,040
SURPLUS						
(5) State basis (Page 3, Line 38, Columns 1 & 2)	XXX	XXX	XXX	\$	126,672,762	\$ 135,930,149
(6) State Prescribed Practices that are an increase/(decrease) from NAIC SAP:						
(7) State Permitted Practices that are an increase/(decrease) from NAIC SAP:						
(8) NAIC SAP (5-6-7=8)						
	XXX	XXX	XXX	\$	126,672,762	\$ 135,930,149
B. Use of Estimates in the Preparation of the Financial Statements						
The preparation of financial statements in conformity with the Annual Statement Instructions and Accounting Practices and Procedures annual requires the use of management's estimates.						
C. Accounting Policy						
1. Short-terms investments are stated at cost or amortized cost.						
2. Bonds not backed by other loans are valued at amortized cost using the scientific method.						
3. Common stocks are carried at market.						
4. Preferred stocks are carried at cost or amortized cost.						
5. Mortgage loans are reported at unpaid principal balances, net of any unamortized discount or premium and allowance for loan losses. The loans are secured by the underlying real estate.						
6. Loan-backed and other structured securities are stated at amortized cost or the lower of amortized cost or fair value. Anticipated prepayments are used at the time of purchase to determine the effective yield. Changes in the timing of expected cash flows after original acquisition are accounted for using the retrospective method. Securities that are determined to be other-than-temporarily impaired are accounted for using the prospective method.						
7. Common stocks of unconsolidated subsidiaries and affiliates in which the Company has an interest of 20% or more are carried on the equity basis.						
8. Investments in joint ventures, partnerships and limited liability companies are accounted for using the equity basis.						
9. The Company does not have any derivatives.						
10. The Company anticipates investment income as a factor in the premium deficiency calculation, in accordance with SSAP No. 54, for Individual and Group Accident and Health Contracts.						
11. The Company uses both a developmental lag method (for short-tailed lines of business) and a tabular reserve method (for long-tailed lines of business) in calculating claim liabilities for accident and health contracts. Loss adjustment expenses are calculated as a percentage of paid claims based on historical experience.						
12. The Company has not modified its capitalization policy from the prior period.						
13. The Company does not have any pharmaceutical rebates receivable so no estimates are made for these.						
D. Going Concern						
After evaluating the Company's ability to continue as a going concern, management was not aware of any conditions or events which raises substantial doubts concerning the Company's ability to continue as a going concern as of the date of the filing of this statement.						

NOTE 2 Accounting Changes and Corrections of Errors

There were no material changes in accounting principles or corrections of error in 2021.

NOTE 3 Business Combinations and Goodwill Not applicable

NOTE 4 Discontinued Operations Not applicable

NOTE 5 Investments

A.	Mortgage Loans, including Mezzanine Real Estate Loans	No significant change
B.	Debt Restructuring	Not applicable
C.	Reverse Mortgages	Not applicable
D. Loan-Backed Securities		
The Company does not own any residential or commercial mortgage-backed securities. Investments in other structured securities Include whole business securitizations, and other asset-back securities.		
(1)	Prepayment assumptions for loan-backed securities were obtained from Hub Data. Call, redemption and sinking fund information for other structured securities were obtained from Bloomberg and bond prospectuses.	
(2)	Recognized OTTI, intent to sell or inability to hold	None
(3)	Recognized OTTI securities, present value of cash flows less than amortized cost	None
(4)	a) The aggregate amount of unrealized losses:	
	1. Less than 12 Months	\$ (473,084)
	2. 12 Months or Longer	\$ (459,818)
	b) The aggregate related fair value of securities with unrealized losses:	
	1. Less than 12 Months	\$ 4,145,973
	2. 12 Months or Longer	\$ 2,315,183

NOTES TO FINANCIAL STATEMENTS

(5) Several sources of information are considered when determining if impairments are, or are not, other-than-temporary. These include, but are not limited to, the following: Credit rating agency information related to the security is reviewed, in addition to direct discussions with the rating analyst as needed. Reports from third party research providers and sell-side research analysts are reviewed. Market and trading information on the securities and other like-securities is monitored to assess trends impacting the securities. Market liquidity is analyzed to gauge how much it is impacting prices versus actual credit quality changes. Some sources of information will not be available for all securities. Where applicable, additional information is gathered for collateralized investments. This includes analysis of the individual underlying collateral and estimates of potential future collateral performance. Multiple cash flow scenarios are calculated based on various loss rate assumptions and used to assess the likelihood of future possible impairment.

E.	Dollar Repurchase Agreements and/or Securities Lending Transactions	Not applicable
F.	Repurchase Agreements Transactions Accounted for as Secured Borrowing	Not applicable
H.	Repurchase Agreements Transactions Accounted for as a Sale	Not applicable
I.	Reverse Repurchase Agreements Transactions Accounted for as a Sale	Not applicable
J.	Real Estate	Not applicable
K.	Low Income Housing tax Credits (LIHTC)	No significant change
L.	Restricted Assets	No significant change
M.	Working Capital Finance Investments	Not applicable
N.	Offsetting and Netting of Assets and Liabilities	Not applicable
O.	5GI Securities	Not applicable
P.	Short Sales	Not applicable
Q.	Prepayment Penalty and Acceleration Fees	

	General Account	Separate Account
1. Number of CUSIPs		17
2. Aggregate Amount of Investment Income	\$	182,810

R.	Reporting Entity's Share of Cash Pool by Asset Type	Not applicable
----	---	----------------

NOTE 6 Joint Ventures, Partnerships and Limited Liability Companies Not Applicable

NOTE 7 Investment Income No significant changes

NOTE 8 Derivative Instruments Not applicable

NOTE 9 Income Taxes

A. The components of the net deferred tax asset/(liability) at the end of current period are as follows:

1.

	As of End of Current Period			12/31/2020			Change		
	(1) Ordinary	(2) Capital	(3) (Col. 1 + 2) Total	(4) Ordinary	(5) Capital	(6) (Col. 4 + 5) Total	(7) (Col. 1 - 4) Ordinary	(8) (Col. 2 - 5) Capital	(9) (Col. 7 + 8) Total
(a) Gross Deferred Tax Assets	\$48,913,000	\$ 8,309,000	\$57,222,000	\$47,911,000	\$ 8,433,000	\$56,344,000	\$ 1,002,000	\$ (124,000)	\$ 878,000
(b) Statutory Valuation Allowance Adjustment			\$ -	\$ -	\$ -	\$ -	\$ -	\$ -	\$ -
(c) Adjusted Gross Deferred Tax Assets (1a - 1b)	\$48,913,000	\$ 8,309,000	\$57,222,000	\$47,911,000	\$ 8,433,000	\$56,344,000	\$ 1,002,000	\$ (124,000)	\$ 878,000
(d) Deferred Tax Assets Nonadmitted	\$25,990,000	\$ 7,168,000	\$33,158,000	\$23,574,000	\$ 7,428,000	\$31,002,000	\$ 2,416,000	\$ (260,000)	\$ 2,156,000
(e) Subtotal Net Admitted Deferred Tax Asset (1c - 1d)	\$22,923,000	\$ 1,141,000	\$24,064,000	\$24,337,000	\$ 1,005,000	\$25,342,000	\$(1,414,000)	\$ 136,000	\$(1,278,000)
(f) Deferred Tax Liabilities	\$ 6,422,000	\$ 1,141,000	\$ 7,563,000	\$ 6,703,000	\$ 1,005,000	\$ 7,708,000	\$ (281,000)	\$ 136,000	\$ (145,000)
(g) Net Admitted Deferred Tax Asset/(Net Deferred Tax Liability) (1e - 1f)	\$16,501,000	\$ -	\$16,501,000	\$17,634,000	\$ -	\$17,634,000	\$(1,133,000)	\$ -	\$(1,133,000)

The company has not established a statutory valuation allowance in determining its adjusted gross deferred tax assets as management believes that it is more likely than not that all of its gross deferred tax assets will be realized.

2. The amount of admitted adjusted gross deferred tax assets under each component of SSAP No 101 are presented below.

	As of End of Current Period			12/31/2020			Change		
	(1) Ordinary	(2) Capital	(3) (Col. 1 + 2) Total	(4) Ordinary	(5) Capital	(6) (Col. 4 + 5) Total	(7) (Col. 1 - 4) Ordinary	(8) (Col. 2 - 5) Capital	(9) (Col. 7 + 8) Total
Admission Calculation Components SSAP No. 101									
(a) Federal Income Taxes Paid In Prior Years Recoverable Through Loss Carrybacks	\$ -	\$ -	\$ -	\$ -	\$ -	\$ -	\$ -	\$ -	\$ -
(b) Adjusted Gross Deferred Tax Assets Expected To Be Realized (Excluding The Amount Of Deferred Tax Assets From 2(a) above) After Application of the Threshold Limitation. (The Lesser of 2(b)1 and 2(b)2 Below)	\$16,501,000	\$ -	\$16,501,000	\$17,634,000	\$ -	\$17,634,000	\$(1,133,000)	\$ -	\$(1,133,000)
1. Adjusted Gross Deferred Tax Assets Expected to be Realized Following the Balance Sheet Date.	\$21,012,000	\$ 1,787,000	\$22,799,000	\$20,704,000	\$ 1,787,000	\$22,491,000	\$ 308,000	\$ -	\$ 308,000
2. Adjusted Gross Deferred Tax Assets Allowed per Limitation Threshold.	XXX	XXX	\$16,501,000	XXX	XXX	\$17,631,000	XXX	XXX	\$(1,130,000)
(c) Adjusted Gross Deferred Tax Assets (Excluding The Amount Of Deferred Tax Assets From 2(a) and 2(b) above) Offset by Gross Deferred Tax Liabilities.	\$ 6,422,000	\$ 1,141,000	\$ 7,563,000	\$ 6,703,000	\$ 1,005,000	\$ 7,708,000	\$ (281,000)	\$ 136,000	\$ (145,000)
(d) Deferred Tax Assets Admitted as the result of application of SSAP No. 101. Total (2(a) + 2(b) + 2(c))	\$22,923,000	\$ 1,141,000	\$24,064,000	\$24,337,000	\$ 1,005,000	\$25,342,000	\$(1,414,000)	\$ 136,000	\$(1,278,000)



NOTES TO FINANCIAL STATEMENTS

3.

	2021	2020
a. Ratio Percentage Used To Determine Recovery Period And Threshold Limitation Amount.	1073.000%	1135.000%
b. Amount Of Adjusted Capital And Surplus Used To Determine Recovery Period And Threshold Limitation In 2(b)2 Above.	\$ 121,238,909	\$ 128,239,079

4.

	As of End of Current Period		12/31/2020		Change	
	(1) Ordinary	(2) Capital	(3) Ordinary	(4) Capital	(5) (Col. 1 - 3) Ordinary	(6) (Col. 2 - 4) Capital
Impact of Tax Planning Strategies:						
(a) Determination of adjusted gross deferred tax assets and net admitted deferred tax assets, by tax character as a percentage.						
1. Adjusted Gross DTAs amount from Note 9A1(c)	\$ 48,913,000	\$ 8,309,000	\$ 47,911,000	\$ 8,433,000	\$ 1,002,000	\$ (124,000)
2. Percentage of adjusted gross DTAs by tax character attributable to the impact of tax planning strategies	0.000%	0.000%	0.000%	0.000%	0.000%	0.000%
3. Net Admitted Adjusted Gross DTAs amount from Note 9A1(e)	\$ 22,923,000	\$ 1,141,000	\$ 24,337,000	\$ 1,005,000	\$ (1,414,000)	\$ 136,000
4. Percentage of net admitted adjusted gross DTAs by tax character admitted because of the impact of tax planning strategies	12.000%	0.000%	19.000%	0.000%	-7.000%	0.000%

b. Do the Company's tax-planning strategies include the use of reinsurance? Yes [X] No [ ]

B. There are no temporary differences for which deferred tax liabilities are not recognized. The change in deferred income taxes reported in surplus before consideration of non-admitted assets is comprised of the following components:

	As of End of Current Period			12/31/2020			Change		
	(1) Ordinary	(2) Capital	(3) (Col. 1 + 2) Total	(4) Ordinary	(5) Capital	(6) (Col. 4 + 5) Total	(7) (Col. 1 - 4) Ordinary	(8) (Col. 2 - 5) Capital	(9) (Col. 7 + 8) Total
Net Deferred Tax Asset (Liability)	\$ 42,491,000	\$ 7,168,000	\$ 49,659,000	\$ 41,208,000	\$ 7,428,000	\$ 48,636,000	\$ 1,283,000	\$ (260,000)	\$ 1,023,000
- Tax-effect of unrealized gains and losses	\$ -	\$ (32,000)	\$ (32,000)	\$ -	\$ (25,000)	\$ (25,000)	\$ -	\$ (7,000)	\$ (7,000)
- Tax-effect of other surplus gains and losses	\$ 429	\$ -	\$ 429	\$ 111,429	\$ -	\$ 111,429	\$ (111,000)	\$ -	\$ (111,000)
Prior Period Adjustment - unrealized gains and losses	\$ -	\$ -	\$ -	\$ -	\$ -	\$ -			\$ -
Net tax-effect without unrealized gains and losses and prior period adjustments	\$ 42,490,571	\$ 7,200,000	\$ 49,690,571	\$ 41,096,571	\$ 7,453,000	\$ 48,549,571	\$ 1,394,000	\$ (253,000)	\$ 1,141,000

C. Current income taxes incurred consist of the following major components:

	(1) As of End of Current Period	(2) 12/31/2020	(3) (Col. 1 - 2) Change
1. Current Income Tax			
(a) Federal	\$ 2,248,613	\$ 9,330,355	\$ (7,081,742)
(b) Foreign	\$ -	\$ -	\$ -
(c) Subtotal	\$ 2,248,613	\$ 9,330,355	\$ (7,081,742)
(d) Federal income tax on net capital gains	\$ 306,068	\$ (180,394)	\$ 486,462
(e) Utilization of capital loss carry-forwards	\$ -	\$ -	\$ -
(f) Other	\$ -	\$ -	\$ -
(g) Federal and foreign income taxes incurred	\$ 2,554,681	\$ 9,149,961	\$ (6,595,280)
2. Deferred Tax Assets:			
(a) Ordinary:			
(1) Discounting of unpaid losses	\$ -	\$ -	\$ -
(2) Unearned premium reserve	\$ -	\$ -	\$ -
(3) Policyholder reserves	\$ 19,208,000	\$ 18,754,000	\$ 454,000
(4) Investments	\$ -	\$ -	\$ -
(5) Deferred acquisition costs	\$ 22,482,000	\$ 22,139,000	\$ 343,000
(6) Policyholder dividends accrual	\$ -	\$ -	\$ -
(7) Fixed Assets	\$ -	\$ -	\$ -
(8) Compensation and benefits accrual	\$ -	\$ 209,000	\$ (209,000)
(9) Pension accrual	\$ -	\$ -	\$ -
(10) Receivables - nonadmitted	\$ -	\$ -	\$ -
(11) Net operating loss carry-forward	\$ -	\$ -	\$ -
(12) Tax credit carry-forward	\$ -	\$ -	\$ -
(13) Other (including items <5% of total ordinary tax assets)	\$ 7,223,000	\$ 6,809,000	\$ 414,000
(99) Subtotal	\$ 48,913,000	\$ 47,911,000	\$ 1,002,000
(b) Statutory valuation allowance adjustment	\$ -	\$ -	\$ -
(c) Nonadmitted	\$ 25,990,000	\$ 23,574,000	\$ 2,416,000
(d) Admitted ordinary deferred tax assets (2a99 - 2b - 2c)	\$ 22,923,000	\$ 24,337,000	\$ (1,414,000)
(e) Capital:			
(1) Investments	\$ 7,209,000	\$ 7,337,000	\$ (128,000)
(2) Net capital loss carry-forward	\$ -	\$ -	\$ -
(3) Real estate	\$ -	\$ -	\$ -
(4) Other (including items <5% of total ordinary tax assets)	\$ 1,100,000	\$ 1,096,000	\$ 4,000
(99) Subtotal	\$ 8,309,000	\$ 8,433,000	\$ (124,000)
(f) Statutory valuation allowance adjustment	\$ -	\$ -	\$ -
(g) Nonadmitted	\$ 7,168,000	\$ 7,428,000	\$ (260,000)
(h) Admitted capital deferred tax assets (2e99 - 2f - 2g)	\$ 1,141,000	\$ 1,005,000	\$ 136,000
(i) Admitted deferred tax assets (2d + 2h)	\$ 24,064,000	\$ 25,342,000	\$ (1,278,000)
3. Deferred Tax Liabilities:			
(a) Ordinary:			

NOTES TO FINANCIAL STATEMENTS

(1) Investments	\$	-	\$	-	\$	-
(2) Fixed Assets	\$	601,000	\$	583,000	\$	18,000
(3) Deferred and uncollected premium	\$	245,000	\$	257,000	\$	(12,000)
(4) Policyholder reserves	\$	5,464,000	\$	5,751,000	\$	(287,000)
(5) Other (including items <5% of total ordinary tax liabilities)	\$	112,000	\$	112,000	\$	-
(99) Subtotal	\$	6,422,000	\$	6,703,000	\$	(281,000)
(b) Capital:						
(1) Investments	\$	-	\$	-	\$	-
(2) Real estate	\$	-	\$	-	\$	-
(3) Other (including items <5% of total capital tax liabilities)	\$	1,141,000	\$	1,005,000	\$	136,000
(99) Subtotal	\$	1,141,000	\$	1,005,000	\$	136,000
(c) Deferred tax liabilities (3a99 + 3b99)	\$	7,563,000	\$	7,708,000	\$	(145,000)
4. Net deferred tax assets/liabilities (2i - 3c)	\$	16,501,000	\$	17,634,000	\$	(1,133,000)

D. Among the more significant book to tax adjustments were the following:

	As of End of Current Period	12/31/2020	Change
(1) Current income taxes incurred	\$ 2,554,681	\$ 9,149,961	\$ (6,595,280)
(2) Change in deferred income tax (without tax on unrealized gains and losses or foreign exchange gains and losses	\$ (1,141,000)	\$ (1,393,000)	\$ 252,000
(3) Total income tax reported	\$ 1,413,681	\$ 7,756,961	\$ (6,343,280)
(4) Net gain from operations before federal income tax an realized gains	\$ 13,507,857	\$ 45,536,794	\$ (32,028,937)
(5) Realized Capital gains (losses) before federal income tax, after transfer to IMR	\$ 292,118	\$ (154,793)	\$ 446,911
(6) Income before taxes	\$ 13,799,975	\$ 45,382,001	\$ (31,582,026)
	21%	21%	
Expected Income tax expense (benefit) at the statutory rate	\$ 2,897,995	\$ 9,530,220	\$ (6,632,225)
(7) Increase (decrease) in actual tax reported resulting from			
a. Tax Adjustment for IMR	\$ -	\$ -	\$ -
b. Deferred tax benefit on nonadmitted assets	\$ (516,000)	\$ 1,161,000	\$ (1,677,000)
c. Change in Deferred Taxes due to Tax Reform	\$ -	\$ -	\$ -
d. Prior year adjustments	\$ -	\$ -	\$ -
e. Nondeductible expenses	\$ -	\$ -	\$ -
f. Tax-Exempt Interest	\$ -	\$ -	\$ -
g. Tax credits	\$ (987,000)	\$ (2,301,000)	\$ 1,314,000
h. Stock based compensation	\$ -	\$ -	\$ -
i. Other	\$ 18,686	\$ (633,259)	\$ 651,945
(8) Total income tax reported	\$ 1,413,681	\$ 7,756,961	\$ (6,343,280)

- E. (1) As of 3/31/2021, the Company has no net operating loss or tax credit carryforwards.
- (2) The amount of Federal income taxes incurred that are available for recoupment in the event of future net losses are
- |    |         |               |
|----|---------|---------------|
| \$ | 344,000 | for 2021      |
| \$ | -       | for 2020, and |
| \$ | 407,000 | for 2019      |
- (3) The aggregate amount of deposits admitted under Section 6603 of the Internal Revenue Code = None

F. (1) The Company's federal income tax return is consolidated with its ultimate parent, Globe Life Inc. (formerly Torchmark Corporation), as well as its affiliated subsidiaries including Liberty National Life Insurance Company, American Income Life Insurance Company, United American Insurance Company, National Income Life Insurance Company, Globe Life And Accident Insurance Company, TMK Buildings Corporation, Brown Service Funeral Homes Company, Inc., Torchmark Insurance Agency, Inc., Specialized Advertising Group, Inc., Globe Marketing Services, Inc., AILIC Receivables Corporation, American Income Marketing Services, Inc., Liberty National Auto Club, Inc., Globe Life Insurance Agency, Inc., Globe Life Insurance Company of New York (formerly First United American Insurance Company), TMK Re, Ltd., and American Life and Health Group, Inc.

(2) Each Company pays a share of the total tax liability determined as if computed separately. Companies that would report a loss are reimbursed to the extent that their losses are utilized by affiliates with taxable income. The calculation is made pursuant to Federal Income Tax Regulation 1.1552-1(a)(2) and 1.1502-33(d)(3)(i).

- G. Federal or foreign income tax loss contingencies None
- H. Repatriation Transition Tax (RTT)  
The Company doesn't owe RTT for the year
- I. Alternative Minimum Tax (AMT) Credit  
The Company had no AMT credit carryforwards as of the beginning of the year. As a result, no AMT credits were recovered during the year or exists as of the end of the year.

NOTE 10 Information Concerning Parent, Subsidiaries, Affiliates and Other Related Parties

- A. Common stock ownership of the Company and affiliates is shown in the chart on Schedule Y. All companies are 100% owned except where indicated otherwise.
- B. The Company declared common stock dividends to Globe Life And Accident Insurance Company in the amounts of \$13,237,819, \$4,000,000, and \$3,495,000 on March 18, March 25 and April 15, 2021, respectively
- C. Not Applicable
- D. The Company has the following inter-Company Receivable - None
- E. Guarantees of undertaking - None
- F. Management and service contracts No significant changes
- G. Nature of relationships that could affect operations - None
- H. The Company does not own shares of stock of an upstream or ultimate parent
- I. Investment in affiliates greater than 10% of admitted assets - None
- J. Write-downs for impairments of investments in affiliates - None
- K. Foreign insurance subsidiary valued using CARVM - Not applicable
- L. Downstream holding company valued using look-through method - Not applicable
- M. All SCA Investments Not applicable
- N. Investment in Insurance SCAs Not applicable

NOTES TO FINANCIAL STATEMENTS

O. SCA or SSAP 48 Entity Loss Tracking Not applicable

NOTE 11 Debt

A. The Company does not have any unaffiliated debt.

B. FHLB (Federal Home Loan Bank) Agreements Not applicable

NOTE 12 Retirement Plans, Deferred Compensation, Postemployment Benefits and Compensated Absences and Other Postretirement Benefit Plans

A. Defined Benefit Plan Not applicable

B-I No significant changes

NOTE 13 Capital and Surplus, Dividend Restrictions and Quasi-Reorganizations No significant changes

NOTE 14 Liabilities, Contingencies and Assessments

A. Contingent Commitments

(1) As of March 31, 2021, the Company has commitments for Non-Guaranteed Federal Low Income Housing Tax Credits of \$21,268,148 and Joint Venture Interests of \$42,187,801.

Total commitments: \$63,455,949

B-F No significant changes

NOTE 15 Leases No significant changes

NOTE 16 Information About Financial Instruments With Off-Balance Sheet Risk and Financial Instruments With Concentrations of Credit Risk

None

NOTE 17 Sale, Transfer and Servicing of Financial Assets and Extinguishments of Liabilities None

NOTE 18 Gain or Loss to the Reporting Entity from Uninsured Plans and the Uninsured Portion of Partially Insured Plans None

NOTE 19 Direct Premium Written/Produced by Managing General Agents/Third Party Administrators None

NOTE 20 Fair Value Measurements

A.

Fair values for securities are based on quoted market prices when available and otherwise are based on quoted market prices of comparable instruments in active markets, quotes in inactive markets, or other observable criteria.

(1) Fair Value Measurements at Reporting Date

Description for each class of asset or liability	(Level 1)	(Level 2)	(Level 3)	Net Asset Value (NAV)	Total
a. Assets at fair value					
Cash equivalents - money market mutual funds				\$ 10,427,480	\$ 10,427,480
Total assets at fair value/NAV	\$ -	\$ -	\$ -	\$ 10,427,480	\$ 10,427,480

(2) Fair Value Measurements in (Level 3) of the Fair Value hierarchy

As of quarter-end, the Company did not have securities categorized as Level 3 that are measured and reported at fair value on the statement of financial position.

(3) During the quarter, the Company did not have any transfers into or out of Level 3 for assets measured and reported at fair value on the statement of financial position.

(4) The majority of the Company's securities are not actively traded and direct quotes are not generally available. Management therefore determines the fair values of securities after consideration of data provided by third-party pricing services, independent broker/dealers, and other resources. Prices provided by third-party pricing services are not binding offers but are estimated exit values. They are based on observable market data inputs which can vary by security type. Such inputs include benchmark yields, available trades, broker/dealer quotes, issuer spreads, benchmark securities, bids, offers and other inputs that are corroborated in the market. All fair value measurements based on prices determined with observable market data are reported as Level 1 or Level 2 measurements. When third-party vendor prices are not available, the Company attempts to obtain valuations from other sources, including but not limited to broker/dealers, broker quotes, and prices on comparable securities.

When valuations have been obtained for all securities in the portfolio, management reviews and analyzes the prices to insure their reasonableness, taking into account available observable information. When two or more valuations are available for a security and the variance between the valuations is 10% or less, the close correlation suggests similar observable inputs were used in deriving the prices, and the average of the prices is used. Securities valued in this manner are classified as level 2. When the variance exceeds 10%, further review is performed on the available valuations to determine if they can be corroborated within reasonable tolerance to any other observable evidence. If one of the valuations or the average of the available valuations can be corroborated with other observable evidence, then the corroborated value is used and reported as level 2. The Company uses information and analytical techniques deemed appropriate for determining the point within the range of reasonable fair value estimates that is most representative of fair value under current market conditions. Valuations that cannot be corroborated with a reasonable tolerance are classified as Level 3.

(5) Fair Value Measurements of derivative assets and liabilities None

B. Fair Value combination disclosure None

C. Aggregate fair value for all financial instruments and the level within the fair value hierarchy in which the fair value measurements in their entirety fall.

Type of Financial Instrument	Aggregate Fair Value	Admitted Assets	(Level 1)	(Level 2)	(Level 3)	Net Asset Value (NAV)	Not Practicable (Carrying Value)
Bonds	\$ 1,491,709,143	\$ 1,323,850,890		\$ 1,430,397,462	\$ 61,311,681		
Mortgage loans ***	\$ 16,300,028	\$ 16,300,028			\$ 16,300,028		
Other invested assets - surplus notes	\$ 43,625,655	\$ 39,085,306		\$ 43,625,655			
Cash, cash equivalents & short term investments	\$ (1,134,357)	\$ (1,134,357)	\$ (11,561,837)			\$ 10,427,480	

NOTES TO FINANCIAL STATEMENTS

Other invested assets - non guaranteed LIHTC	\$ 19,802,593	\$ 18,726,278			\$ 19,802,593		
Policy Loans	\$ 197,346	\$ 197,346					\$ 197,346

\*\*\* The Company invests in mortgage loans with 1 month floating rates. For this reason, the fair value approximates book value.

D. Not Practicable to Estimate Fair Value

Type or Class of Financial Instrument	Carrying Value	Effective Interest Rate	Maturity Date	Explanation
Policy Loans	\$ 197,346	0.000%		There is no reliable market for these type of instruments.

E. Investments reported at Net Asset Value (NAV) consist entirely of Money Market Mutual Funds. These assets are permitted to be valued at NAV under SSAP 2R, Cash, Cash Equivalents, Drafts and Short-Term Investments.

NOTE 21 Other Items No significant changes

NOTE 22 Events Subsequent  
Type I - Recognized Subsequent Events:  
Subsequent events have been considered through 05/07/2021 for the statutory statement issued on 05/07/2021  
  
Type II - Nonrecognized Subsequent Events:  
No change

NOTE 23 Reinsurance No significant changes

NOTE 24 Retrospectively Rated Contracts & Contracts Subject to Redetermination  
A-D Not applicable

E. Risk Sharing Provisions of the Affordable Care Act  
(1) Did the reporting entity write accident and health insurance premium which is subject to the Affordable Care Act risk sharing provisions (YES/NO)? Yes [ ] No [X]  
  
(2) Impact of Risk Sharing Provisions of the Affordable Care Act on Admitted Assets, Liabilities and Revenue for the Current Year Not applicable  
  
(3) Roll forward of prior year ACA risk sharing provisions for the following asset (gross of any nonadmission) and liability balances along with the reasons for adjustments to prior year balance Not applicable  
  
(4) Roll-Forward of Risk Corridors Asset and Liability Balances by Program Benefit Year Not applicable  
  
(5) ACA Risk Corridors Receivable as of Reporting Date Not applicable

NOTE 25 Change in Incurred Losses and Loss Adjustment Expenses  
A. Reserves on accident and health contracts for incurred losses and loss adjustment expenses attributable to insured events or prior years developed as anticipated during the current year. Original estimates are increased or decreased as additional information becomes available regardig individual claims. However, no significant trends or unanticipated events were noted during the current year. None of the Company's accident and health contracts are subject to retrospective rating or experience refunds.  
B. No change

NOTE 26 Intercompany Pooling Arrangements None

NOTE 27 Structured Settlements None

NOTE 28 Health Care Receivables Not applicable

NOTE 29 Participating Policies Not applicable

NOTE 30 Premium Deficiency Reserves No significant changes

NOTE 31 Reserves for Life Contracts and Annuity Contracts No significant changes

NOTE 32 Analysis of Annuity Actuarial Reserves and Deposit Type Contract Liabilities by Withdrawal Characteristics No significant changes

NOTE 33 Analysis of Life Actuarial Reserves by Withdrawal Characteristics No significant changes

NOTE 34 Premium & Annuity Considerations Deferred and Uncollected No significant changes

NOTE 35 Separate Accounts  
A. Separate Account Activity Not applicable

NOTE 36 Loss/Claim Adjustment Expenses No significant changes

STATEMENT AS OF MARCH 31, 2021 OF THE Family Heritage Life Insurance Company of America

GENERAL INTERROGATORIES

PART 1 - COMMON INTERROGATORIES

GENERAL

1.1

Did the reporting entity experience any material transactions requiring the filing of Disclosure of Material Transactions with the State of Domicile, as required by the Model Act? .....

Yes [ ] No [ X ]

1.2

If yes, has the report been filed with the domiciliary state? .....

Yes [ ] No [ ]

2.1

Has any change been made during the year of this statement in the charter, by-laws, articles of incorporation, or deed of settlement of the reporting entity? .....

Yes [ ] No [ X ]

2.2

If yes, date of change: .....

3.1

Is the reporting entity a member of an Insurance Holding Company System consisting of two or more affiliated persons, one or more of which is an insurer? .....

If yes, complete Schedule Y, Parts 1 and 1A.

Yes [ X ] No [ ]

3.2

Have there been any substantial changes in the organizational chart since the prior quarter end? .....

Yes [ ] No [ X ]

3.3

If the response to 3.2 is yes, provide a brief description of those changes.

3.4

Is the reporting entity publicly traded or a member of a publicly traded group? .....

Yes [ X ] No [ ]

3.5

If the response to 3.4 is yes, provide the CIK (Central Index Key) code issued by the SEC for the entity/group. ....

320335

4.1

Has the reporting entity been a party to a merger or consolidation during the period covered by this statement? .....

If yes, complete and file the merger history data file with the NAIC.

Yes [ ] No [ X ]

4.2

If yes, provide the name of the entity, NAIC Company Code, and state of domicile (use two letter state abbreviation) for any entity that has ceased to exist as a result of the merger or consolidation.

1	2	3
Name of Entity	NAIC Company Code	State of Domicile

5.

If the reporting entity is subject to a management agreement, including third-party administrator(s), managing general agent(s), attorney-in-fact, or similar agreement, have there been any significant changes regarding the terms of the agreement or principals involved? .....

If yes, attach an explanation.

Yes [ ] No [ X ] N/A [ ]

6.1

State as of what date the latest financial examination of the reporting entity was made or is being made. ....

12/31/2019

6.2

State the as of date that the latest financial examination report became available from either the state of domicile or the reporting entity. This date should be the date of the examined balance sheet and not the date the report was completed or released. ....

12/31/2015

6.3

State as of what date the latest financial examination report became available to other states or the public from either the state of domicile or the reporting entity. This is the release date or completion date of the examination report and not the date of the examination (balance sheet date). ....

02/28/2017

6.4

By what department or departments?  
Ohio

6.5

Have all financial statement adjustments within the latest financial examination report been accounted for in a subsequent financial statement filed with Departments? .....

Yes [ ] No [ ] N/A [ X ]

6.6

Have all of the recommendations within the latest financial examination report been complied with? .....

Yes [ ] No [ ] N/A [ X ]

7.1

Has this reporting entity had any Certificates of Authority, licenses or registrations (including corporate registration, if applicable) suspended or revoked by any governmental entity during the reporting period? .....

Yes [ ] No [ X ]

7.2

If yes, give full information:

8.1

Is the company a subsidiary of a bank holding company regulated by the Federal Reserve Board? .....

Yes [ ] No [ X ]

8.2

If response to 8.1 is yes, please identify the name of the bank holding company.

8.3

Is the company affiliated with one or more banks, thrifts or securities firms? .....

Yes [ ] No [ X ]

8.4

If response to 8.3 is yes, please provide below the names and location (city and state of the main office) of any affiliates regulated by a federal regulatory services agency [i.e. the Federal Reserve Board (FRB), the Office of the Comptroller of the Currency (OCC), the Federal Deposit Insurance Corporation (FDIC) and the Securities Exchange Commission (SEC)] and identify the affiliate's primary federal regulator.

1	2	3	4	5	6
Affiliate Name	Location (City, State)	FRB	OCC	FDIC	SEC

STATEMENT AS OF MARCH 31, 2021 OF THE Family Heritage Life Insurance Company of America

GENERAL INTERROGATORIES

- 9.1

Are the senior officers (principal executive officer, principal financial officer, principal accounting officer or controller, or persons performing similar functions) of the reporting entity subject to a code of ethics, which includes the following standards? .....  
(a) Honest and ethical conduct, including the ethical handling of actual or apparent conflicts of interest between personal and professional relationships;  
(b) Full, fair, accurate, timely and understandable disclosure in the periodic reports required to be filed by the reporting entity;  
(c) Compliance with applicable governmental laws, rules and regulations;  
(d) The prompt internal reporting of violations to an appropriate person or persons identified in the code; and  
(e) Accountability for adherence to the code.

Yes [ X ] No [ ]
- 9.11

If the response to 9.1 is No, please explain:
- 9.2

Has the code of ethics for senior managers been amended? .....

Yes [ ] No [ X ]
- 9.21

If the response to 9.2 is Yes, provide information related to amendment(s).
- 9.3

Have any provisions of the code of ethics been waived for any of the specified officers? .....

Yes [ ] No [ X ]
- 9.31

If the response to 9.3 is Yes, provide the nature of any waiver(s).

FINANCIAL

- 10.1

Does the reporting entity report any amounts due from parent, subsidiaries or affiliates on Page 2 of this statement? .....

Yes [ ] No [ X ]
- 10.2

If yes, indicate any amounts receivable from parent included in the Page 2 amount: .....

\$ .....

INVESTMENT

- 11.1

Were any of the stocks, bonds, or other assets of the reporting entity loaned, placed under option agreement, or otherwise made available for use by another person? (Exclude securities under securities lending agreements.) .....

Yes [ ] No [ X ]
- 11.2

If yes, give full and complete information relating thereto:
12.

Amount of real estate and mortgages held in other invested assets in Schedule BA: .....

\$ .....

22,199,565
13.

Amount of real estate and mortgages held in short-term investments: .....

\$ .....
- 14.1

Does the reporting entity have any investments in parent, subsidiaries and affiliates? .....

Yes [ ] No [ X ]
- 14.2

If yes, please complete the following:
- |   | 1   | 2  |
|---|---|--|
|   | Prior Year-End<br>Book/Adjusted<br>Carrying Value | Current Quarter<br>Book/Adjusted<br>Carrying Value |
| 14.21 Bonds .....   | \$ .....0   | \$ .....0  |
| 14.22 Preferred Stock .....   | \$ .....0   | \$ .....0  |
| 14.23 Common Stock .....  | \$ .....0   | \$ .....0  |
| 14.24 Short-Term Investments .....  | \$ .....0   | \$ .....0  |
| 14.25 Mortgage Loans on Real Estate .....   | \$ .....0   | \$ .....0  |
| 14.26 All Other .....   | \$ .....0   | \$ .....0  |
| 14.27 Total Investment in Parent, Subsidiaries and Affiliates (Subtotal Lines 14.21 to 14.26) ..... | \$ .....0   | \$ .....0  |
| 14.28 Total Investment in Parent included in Lines 14.21 to 14.26 above .....                       | \$ .....  | \$ .....   |
- 15.1

Has the reporting entity entered into any hedging transactions reported on Schedule DB? .....

Yes [ ] No [ X ]
- 15.2

If yes, has a comprehensive description of the hedging program been made available to the domiciliary state? .....  
If no, attach a description with this statement.

Yes [ ] No [ ] N/A [ ]
16.

For the reporting entity's security lending program, state the amount of the following as of the current statement date:
- 16.1

Total fair value of reinvested collateral assets reported on Schedule DL, Parts 1 and 2. ....

\$ .....0
- 16.2

Total book adjusted/carrying value of reinvested collateral assets reported on Schedule DL, Parts 1 and 2 .....

\$ .....0
- 16.3

Total payable for securities lending reported on the liability page. ....

\$ .....0

STATEMENT AS OF MARCH 31, 2021 OF THE Family Heritage Life Insurance Company of America

GENERAL INTERROGATORIES

17. Excluding items in Schedule E - Part 3 - Special Deposits, real estate, mortgage loans and investments held physically in the reporting entity's offices, vaults or safety deposit boxes, were all stocks, bonds and other securities, owned throughout the current year held pursuant to a custodial agreement with a qualified bank or trust company in accordance with Section 1, III - General Examination Considerations, F. Outsourcing of Critical Functions, Custodial or Safekeeping Agreements of the NAIC Financial Condition Examiners Handbook? ..... Yes [ X ] No [ ]
- 17.1 For all agreements that comply with the requirements of the NAIC Financial Condition Examiners Handbook, complete the following:

1 Name of Custodian(s)	2 Custodian Address
The Northern Trust Company .....	50 South LaSalle Street, Chicago, IL 60603 .....

- 17.2 For all agreements that do not comply with the requirements of the NAIC Financial Condition Examiners Handbook, provide the name, location and a complete explanation:

1 Name(s)	2 Location(s)	3 Complete Explanation(s)

- 17.3 Have there been any changes, including name changes, in the custodian(s) identified in 17.1 during the current quarter? ..... Yes [ ] No [ X ]
- 17.4 If yes, give full information relating thereto:

1 Old Custodian	2 New Custodian	3 Date of Change	4 Reason

- 17.5 Investment management – Identify all investment advisors, investment managers, broker/dealers, including individuals that have the authority to make investment decisions on behalf of the reporting entity. For assets that are managed internally by employees of the reporting entity, note as such. ["...that have access to the investment accounts"; "...handle securities"]

1 Name of Firm or Individual	2 Affiliation
Globe Life Inc. ....	A.....
Prudential Private Placement Investors, LP .....	U.....
Blackrock Investment Management, LLC .....	U.....
Alliance Bernstein, LP .....	U.....

- 17.5097 For those firms/individuals listed in the table for Question 17.5, do any firms/individuals unaffiliated with the reporting entity (i.e. designated with a "U") manage more than 10% of the reporting entity's invested assets?..... Yes [ ] No [ X ]
- 17.5098 For firms/individuals unaffiliated with the reporting entity (i.e. designated with a "U") listed in the table for Question 17.5, does the total assets under management aggregate to more than 50% of the reporting entity's invested assets?..... Yes [ ] No [ X ]

- 17.6 For those firms or individuals listed in the table for 17.5 with an affiliation code of "A" (affiliated) or "U" (unaffiliated), provide the information for the table below.

1 Central Registration Depository Number	2 Name of Firm or Individual	3 Legal Entity Identifier (LEI)	4 Registered With	5 Investment Management Agreement (IMA) Filed
.....	Globe Life Inc. ....	5493001JFHK00PP6XA71 .....	Not Registered .....	DS.....
106442 .....	Prudential Private Placement Investors, LP .....	.....	U.S. Securities & Exchange Commission .....	NO.....
108928 .....	Blackrock Investment Management, LLC .....	.....	U.S. Securities & Exchange Commission .....	NO.....
108477 .....	Alliance Bernstein, LP .....	0JK55UGWSIINF3X7KLQ85 .....	U.S. Securities & Exchange Commission .....	NO.....

- 18.1 Have all the filing requirements of the Purposes and Procedures Manual of the NAIC Investment Analysis Office been followed? ..... Yes [ X ] No [ ]
- 18.2 If no, list exceptions:

19. By self-designating 5GI securities, the reporting entity is certifying the following elements for each self-designated 5GI security:
- a. Documentation necessary to permit a full credit analysis of the security does not exist or an NAIC CRP credit rating for an FE or PL security is not available.
  - b. Issuer or obligor is current on all contracted interest and principal payments.
  - c. The insurer has an actual expectation of ultimate payment of all contracted interest and principal.
- Has the reporting entity self-designated 5GI securities? ..... Yes [ ] No [ X ]

20. By self-designating PLGI securities, the reporting entity is certifying the following elements of each self-designated PLGI security:
- a. The security was purchased prior to January 1, 2018.
  - b. The reporting entity is holding capital commensurate with the NAIC Designation reported for the security.
  - c. The NAIC Designation was derived from the credit rating assigned by an NAIC CRP in its legal capacity as a NRSRO which is shown on a current private letter rating held by the insurer and available for examination by state insurance regulators.
  - d. The reporting entity is not permitted to share this credit rating of the PL security with the SVO.
- Has the reporting entity self-designated PLGI securities? ..... Yes [ ] No [ X ]

21. By assigning FE to a Schedule BA non-registered private fund, the reporting entity is certifying the following elements of each self-designated FE fund:
- a. The shares were purchased prior to January 1, 2019.
  - b. The reporting entity is holding capital commensurate with the NAIC Designation reported for the security.
  - c. The security had a public credit rating(s) with annual surveillance assigned by an NAIC CRP in its legal capacity as an NRSRO prior to January 1, 2019.
  - d. The fund only or predominantly holds bonds in its portfolio.
  - e. The current reported NAIC Designation was derived from the public credit rating(s) with annual surveillance assigned by an NAIC CRP in its legal capacity as an NRSRO.
  - f. The public credit rating(s) with annual surveillance assigned by an NAIC CRP has not lapsed.
- Has the reporting entity assigned FE to Schedule BA non-registered private funds that complied with the above criteria? ..... Yes [ ] No [ X ]

STATEMENT AS OF MARCH 31, 2021 OF THE Family Heritage Life Insurance Company of America

GENERAL INTERROGATORIES

PART 2 - LIFE AND ACCIDENT AND HEALTH COMPANIES/FRATERNAL BENEFIT SOCIETIES

Life and Accident Health Companies/Fraternal Benefit Societies:

1.

Report the statement value of mortgage loans at the end of this reporting period for the following categories:

1

Amount

1.1

Long-Term Mortgages In Good Standing

1.11

Farm Mortgages

\$

1.12

Residential Mortgages

\$

1.13

Commercial Mortgages

\$

16,300,028

1.14

Total Mortgages in Good Standing

\$

16,300,028

1.2

Long-Term Mortgages In Good Standing with Restructured Terms

1.21

Total Mortgages in Good Standing with Restructured Terms

\$

1.3

Long-Term Mortgage Loans Upon which Interest is Overdue more than Three Months

1.31

Farm Mortgages

\$

1.32

Residential Mortgages

\$

1.33

Commercial Mortgages

\$

1.34

Total Mortgages with Interest Overdue more than Three Months

\$

0

1.4

Long-Term Mortgage Loans in Process of Foreclosure

1.41

Farm Mortgages

\$

1.42

Residential Mortgages

\$

1.43

Commercial Mortgages

\$

1.44

Total Mortgages in Process of Foreclosure

\$

0

1.5

Total Mortgage Loans (Lines 1.14 + 1.21 + 1.34 + 1.44) (Page 2, Column 3, Lines 3.1 + 3.2)

\$

16,300,028

1.6

Long-Term Mortgages Foreclosed, Properties Transferred to Real Estate in Current Quarter

1.61

Farm Mortgages

\$

1.62

Residential Mortgages

\$

1.63

Commercial Mortgages

\$

1.64

Total Mortgages Foreclosed and Transferred to Real Estate

\$

0

2.

Operating Percentages:

2.1

A&H loss percent

67.204

%

2.2

A&H cost containment percent

%

2.3

A&H expense percent excluding cost containment expenses

33.982

%

3.1

Do you act as a custodian for health savings accounts?

Yes

[ ]

No

[ X ]

3.2

If yes, please provide the amount of custodial funds held as of the reporting date

\$

3.3

Do you act as an administrator for health savings accounts?

Yes

[ ]

No

[ X ]

3.4

If yes, please provide the balance of the funds administered as of the reporting date

\$

4.

Is the reporting entity licensed or chartered, registered, qualified, eligible or writing business in at least two states?

Yes

[ X ]

No

[ ]

4.1

If no, does the reporting entity assume reinsurance business that covers risks residing in at least one state other than the state of domicile of the reporting entity?

Yes

[ ]

No

[ ]

Fraternal Benefit Societies Only:

5.1

In all cases where the reporting entity has assumed accident and health risks from another company, provisions should be made in this statement on account of such reinsurances for reserve equal to that which the original company would have been required to establish had it retained the risks. Has this been done?

Yes

[ ]

No

[ ]

N/A

[ ]

5.2

If no, explain:

6.1

Does the reporting entity have outstanding assessments in the form of liens against policy benefits that have increased surplus?

Yes

[ ]

No

[ X ]

6.2

If yes, what is the date(s) of the original lien and the total outstanding balance of liens that remain in surplus?

Date	Outstanding Lien Amount



SCHEDULE S - CEDED REINSURANCE

Showing All New Reinsurance Treaties - Current Year to Date

1	2	3	4	5	6	7	8	9	10
NAIC Company Code	ID Number	Effective Date	Name of Reinsurer	Domiciliary Jurisdiction	Type of Reinsurance Ceded	Type of Business Ceded	Type of Reinsurer	Certified Reinsurer Rating (1 through 6)	Effective Date of Certified Reinsurer Rating
NONE									

STATEMENT AS OF MARCH 31, 2021 OF THE Family Heritage Life Insurance Company of America

**SCHEDULE T - PREMIUMS AND ANNUITY CONSIDERATIONS**

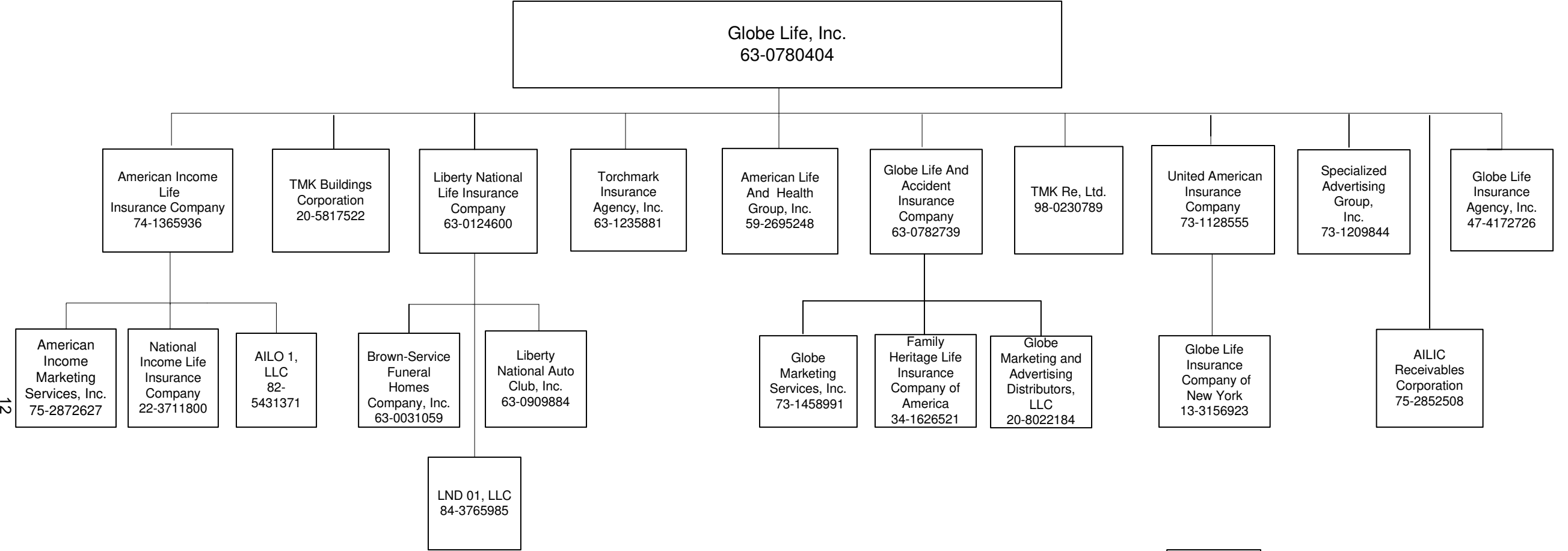
Current Year To Date - Allocated by States and Territories

States, Etc.			1	Direct Business Only					
				Life Contracts		4	5	6	7
				2	3				
			Active Status (a)	Life Insurance Premiums	Annuity Considerations	Accident and Health Insurance Premiums, Including Policy, Membership and Other Fees	Other Considerations	Total Columns 2 Through 5	Deposit-Type Contracts
1.	Alabama .....	AL	L	13,168		777,001		790,169	
2.	Alaska .....	AK	L	0		13,970		13,970	
3.	Arizona .....	AZ	L	24,533		1,456,838		1,481,371	
4.	Arkansas .....	AR	L	77,230		2,341,737		2,418,967	
5.	California .....	CA	L	17,103		1,977,630		1,994,733	
6.	Colorado .....	CO	L	20,115		2,389,078		2,409,193	
7.	Connecticut .....	CT	L	21		5,451		5,472	
8.	Delaware .....	DE	L	461		133,492		133,953	
9.	District of Columbia .....	DC	L	0		5,808		5,808	
10.	Florida .....	FL	L	23,782		3,293,175		3,316,957	
11.	Georgia .....	GA	L	46,889		2,983,739		3,030,628	
12.	Hawaii .....	HI	L	245		19,155		19,400	
13.	Idaho .....	ID	L	981		409,799		410,780	
14.	Illinois .....	IL	L	24,453		3,296,710		3,321,163	
15.	Indiana .....	IN	L	5,357		2,680,227		2,685,584	
16.	Iowa .....	IA	L	13,680		2,199,195		2,212,875	
17.	Kansas .....	KS	L	36,165		2,886,757		2,922,922	
18.	Kentucky .....	KY	L	45,893		2,201,678		2,247,571	
19.	Louisiana .....	LA	L	9,973		2,103,262		2,113,235	
20.	Maine .....	ME	L	75		151,793		151,868	
21.	Maryland .....	MD	L	1,616		451,416		453,032	
22.	Massachusetts .....	MA	L	313		7,511		7,824	
23.	Michigan .....	MI	L	1,141		579,992		581,133	
24.	Minnesota .....	MN	L	13,766		4,601,153		4,614,919	
25.	Mississippi .....	MS	L	3,890		309,609		313,499	
26.	Missouri .....	MO	L	28,531		2,555,981		2,584,512	
27.	Montana .....	MT	L	3,359		889,091		892,450	
28.	Nebraska .....	NE	L	6,733		2,682,447		2,689,180	
29.	Nevada .....	NV	L	2,783		345,679		348,462	
30.	New Hampshire .....	NH	L	2,532		121,409		123,941	
31.	New Jersey .....	NJ	L	368		33,224		33,592	
32.	New Mexico .....	NM	L	4,360		470,634		474,994	
33.	New York .....	NY	N	0		0		0	
34.	North Carolina .....	NC	L	34,885		3,056,283		3,091,168	
35.	North Dakota .....	ND	L	1,699		604,861		606,560	
36.	Ohio .....	OH	L	24,388		5,752,330		5,776,718	
37.	Oklahoma .....	OK	L	23,052		1,224,836		1,247,888	
38.	Oregon .....	OR	L	987		470,088		471,075	
39.	Pennsylvania .....	PA	L	5,362		739,075		744,437	
40.	Rhode Island .....	RI	L	0		13,037		13,037	
41.	South Carolina .....	SC	L	23,179		924,577		947,756	
42.	South Dakota .....	SD	L	2,909		1,739,805		1,742,714	
43.	Tennessee .....	TN	L	37,233		1,722,118		1,759,351	
44.	Texas .....	TX	L	502,996		17,106,624		17,609,620	
45.	Utah .....	UT	L	995		1,243,518		1,244,513	
46.	Vermont .....	VT	L	320		9,340		9,660	
47.	Virginia .....	VA	L	20,635		1,373,230		1,393,865	
48.	Washington .....	WA	L	23,432		1,033,633		1,057,065	
49.	West Virginia .....	WV	L	18,483		1,030,436		1,048,919	
50.	Wisconsin .....	WI	L	5,270		1,821,144		1,826,414	
51.	Wyoming .....	WY	L	4,722		751,588		756,310	
52.	American Samoa .....	AS	N	0		0		0	
53.	Guam .....	GU	N	0		0		0	
54.	Puerto Rico .....	PR	L	0		9,182		9,182	
55.	U.S. Virgin Islands .....	VI	N	0		0		0	
56.	Northern Mariana Islands .....	MP	N	0		0		0	
57.	Canada .....	CAN	N	0		0		0	
58.	Aggregate Other Aliens .....	OT	XXX	0	0	0	0	0	0
59.	Subtotal .....	XXX		1,160,063	0	85,000,346	0	86,160,409	0
90.	Reporting entity contributions for employee benefits plans .....	XXX						0	
91.	Dividends or refunds applied to purchase paid-up additions and annuities .....	XXX						0	
92.	Dividends or refunds applied to shorten endowment or premium paying period .....	XXX						0	
93.	Premium or annuity considerations waived under disability or other contract provisions .....	XXX						0	
94.	Aggregate or other amounts not allocable by State .....	XXX		0	0	0	0	0	0
95.	Totals (Direct Business) .....	XXX		1,160,063	0	85,000,346	0	86,160,409	0
96.	Plus Reinsurance Assumed .....	XXX						0	
97.	Totals (All Business) .....	XXX		1,160,063	0	85,000,346	0	86,160,409	0
98.	Less Reinsurance Ceded .....	XXX		22,408		722,615		745,023	
99.	Totals (All Business) less Reinsurance Ceded .....	XXX		1,137,655	0	84,277,731	0	85,415,386	0
DETAILS OF WRITE-INS									
58001.	.....	XXX							
58002.	.....	XXX							
58003.	.....	XXX							
58998.	Summary of remaining write-ins for Line 58 from overflow page .....	XXX		0	0	0	0	0	0
58999.	Totals (Lines 58001 through 58003 plus 58998)(Line 58 above) .....	XXX		0	0	0	0	0	0
9401.	.....	XXX							
9402.	.....	XXX							
9403.	.....	XXX							
9498.	Summary of remaining write-ins for Line 94 from overflow page .....	XXX		0	0	0	0	0	0
9499.	Totals (Lines 9401 through 9403 plus 9498)(Line 94 above) .....	XXX		0	0	0	0	0	0

(a) Active Status Counts:

L - Licensed or Chartered - Licensed Insurance carrier or domiciled RRG .....	51	R - Registered - Non-domiciled RRGs .....	0
E - Eligible - Reporting entities eligible or approved to write surplus lines in the state .....	0	Q - Qualified - Qualified or accredited reinsurer .....	0
N - None of the above - Not allowed to write business in the state .....	6		

STATEMENT AS OF MARCH 31, 2021 OF THE Family Heritage Life Insurance Company of America



Company	State of Domicile
AILIC Receivables Corporation (ARC)	Delaware
American Income Life Insurance Company (AIL)	Indiana
American Income Marketing Services, Inc. (AIMS)	Texas
American Life and Health Group, Inc.	Florida
Brown-Service Funeral Homes Company, Inc. (Brown Service)	Alabama
Family Heritage Life Insurance Company of America	Ohio
Globe Life Inc.	Delaware
Globe Life Insurance Company of New York	New York
Globe Life And Accident Insurance Company (Globe)	Nebraska
Globe Life Insurance Agency Inc.	Texas
Globe Marketing Services, Inc. (Globe Marketing)	Oklahoma
Liberty National Auto Club, Inc. (Auto Club)	Alabama
Liberty National Life Insurance Company (LNL)	Nebraska
National Income Life Insurance Company (NILICO)	New York
Specialized Advertising Group, Inc.	Texas
TMK Buildings Corporation (TBC)	Texas
TMK Re, Ltd. (TMK Re)	Bermuda
Torchmark Insurance Agency, Inc. (TIA)	Alabama
United American Insurance Company (UA)	Nebraska

**SCHEDULE Y**

**PART 1A - DETAIL OF INSURANCE HOLDING COMPANY SYSTEM**

Asterisk	Explanation

STATEMENT AS OF MARCH 31, 2021 OF THE Family Heritage Life Insurance Company of America

SUPPLEMENTAL EXHIBITS AND SCHEDULES INTERROGATORIES

The following supplemental reports are required to be filed as part of your statement filing. However, in the event that your company does not transact the type of business for which the special report must be filed, your response of NO to the specific interrogatory will be accepted in lieu of filing a "NONE" report and a bar code will be printed below. If the supplement is required of your company but is not being filed for whatever reason enter SEE EXPLANATION and provide an explanation following the interrogatory questions.

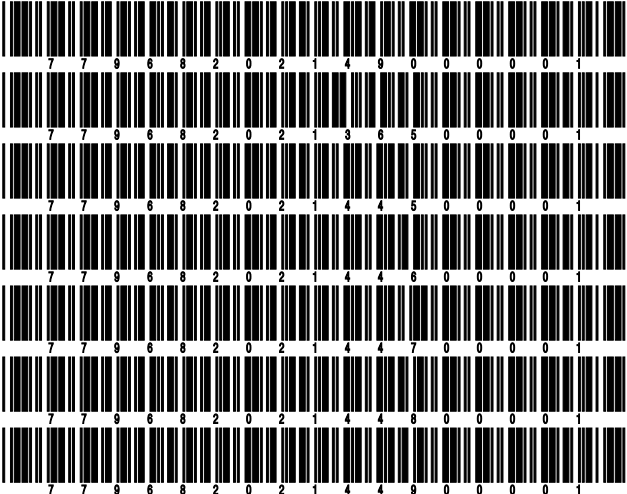
	Response
1. Will the Trusteed Surplus Statement be filed with the state of domicile and the NAIC with this statement? .....	NO
2. Will the Medicare Part D Coverage Supplement be filed with the state of domicile and the NAIC with this statement? .....	NO
3. Will the Reasonableness of Assumptions Certification required by Actuarial Guideline XXXV be filed with the state of domicile and electronically with the NAIC? .....	NO
4. Will the Reasonableness and Consistency of Assumptions Certification required by Actuarial Guideline XXXV be filed with the state of domicile and electronically with the NAIC? .....	NO
5. Will the Reasonableness of Assumptions Certification for Implied Guaranteed Rate Method required by Actuarial Guideline XXXVI be filed with the state of domicile and electronically with the NAIC? .....	NO
6. Will the Reasonableness and Consistency of Assumptions Certification required by Actuarial Guideline XXXVI (Updated Average Market Value) be filed with the state of domicile and electronically with the NAIC? .....	NO
7. Will the Reasonableness and Consistency of Assumptions Certification required by Actuarial Guideline XXXVI (Updated Market Value) be filed with the state of domicile and electronically with the NAIC? .....	NO
8. Will the Life PBR Statement of Exemption be filed with the state of domicile by July 1st and electronically with the NAIC with the second quarterly filing per the Valuation Manual (by August 15)? (2nd Quarter Only) The response for 1st and 3rd quarters should be N/A. A NO response resulting with a bar code is only appropriate in the 2nd quarter. ....	N/A

Explanation:

1. This supplement is not required to be filed by the Company
2. This supplement is not required to be filed by the Company
3. This supplement is not required to be filed by the Company
4. This supplement is not required to be filed by the Company
5. This supplement is not required to be filed by the Company
6. This supplement is not required to be filed by the Company
7. This supplement is not required to be filed by the Company

Bar Code:

1. Trusteed Surplus Statement [Document Identifier 490]
2. Medicare Part D Coverage Supplement [Document Identifier 365]
3. Reasonableness of Assumptions Certification required by Actuarial Guideline XXXV [Document Identifier 445]
4. Reasonableness and Consistency of Assumptions Certification required by Actuarial Guideline XXXV [Document Identifier 446]
5. Reasonableness of Assumptions Certification for Implied Guaranteed Rate Method required by Actuarial Guideline XXXVI [Document Identifier 447]
6. Reasonableness and Consistency of Assumptions Certification required by Actuarial Guideline XXXVI [Document Identifier 448]
7. Reasonableness and Consistency of Assumptions Certification required by Actuarial Guideline XXXVI (Updated Market Value) [Document Identifier 449]



**NONE**

SCHEDULE A - VERIFICATION

Real Estate

	1	2
	Year to Date	Prior Year Ended December 31
1. Book/adjusted carrying value, December 31 of prior year .....		
2. Cost of acquired:		
2.1 Actual cost at time of acquisition .....		
2.2 Additional investment made after acquisition .....		
3. Current year change in encumbrances .....		
4. Total gain (loss) on disposals .....		
5. Deduct amounts received on disposals .....		
6. Total foreign exchange change in book/adjusted carrying value .....		
7. Deduct current year's other than temporary impairment recognized .....		
8. Deduct current year's depreciation .....		
9. Book/adjusted carrying value at the end of current period (Lines 1+2+3+4-5+6-7-8) .....		
10. Deduct total nonadmitted amounts .....		
11. Statement value at end of current period (Line 9 minus Line 10) .....		

SCHEDULE B - VERIFICATION

Mortgage Loans

	1	2
	Year to Date	Prior Year Ended December 31
1. Book value/recorded investment excluding accrued interest, December 31 of prior year .....	15,958,231	13,147,492
2. Cost of acquired:		
2.1 Actual cost at time of acquisition .....		0
2.2 Additional investment made after acquisition .....	341,797	7,287,197
3. Capitalized deferred interest and other .....		0
4. Accrual of discount .....		92,313
5. Unrealized valuation increase (decrease) .....		0
6. Total gain (loss) on disposals .....		0
7. Deduct amounts received on disposals .....		4,568,771
8. Deduct amortization of premium and mortgage interest points and commitment fees .....		0
9. Total foreign exchange change in book value/recorded investment excluding accrued interest .....		0
10. Deduct current year's other than temporary impairment recognized .....		0
11. Book value/recorded investment excluding accrued interest at end of current period (Lines 1+2+3+4+5+6-7-8+9-10) .....	16,300,028	15,958,231
12. Total valuation allowance .....		
13. Subtotal (Line 11 plus Line 12) .....	16,300,028	15,958,231
14. Deduct total nonadmitted amounts .....		0
15. Statement value at end of current period (Line 13 minus Line 14) .....	16,300,028	15,958,231

SCHEDULE BA - VERIFICATION

Other Long-Term Invested Assets

	1	2
	Year to Date	Prior Year Ended December 31
1. Book/adjusted carrying value, December 31 of prior year .....	71,543,928	47,134,340
2. Cost of acquired:		
2.1 Actual cost at time of acquisition .....		4,788,917
2.2 Additional investment made after acquisition .....	11,434,712	24,988,619
3. Capitalized deferred interest and other .....		0
4. Accrual of discount .....	1,186	4,612
5. Unrealized valuation increase (decrease) .....	35,610	42,286
6. Total gain (loss) on disposals .....		(393,190)
7. Deduct amounts received on disposals .....		2,535,633
8. Deduct amortization of premium and depreciation .....	1,087,943	2,486,023
9. Total foreign exchange change in book/adjusted carrying value .....		0
10. Deduct current year's other than temporary impairment recognized .....		0
11. Book/adjusted carrying value at end of current period (Lines 1+2+3+4+5+6-7-8+9-10) .....	81,927,493	71,543,928
12. Deduct total nonadmitted amounts .....		
13. Statement value at end of current period (Line 11 minus Line 12) .....	81,927,493	71,543,928

SCHEDULE D - VERIFICATION

Bonds and Stocks

	1	2
	Year to Date	Prior Year Ended December 31
1. Book/adjusted carrying value of bonds and stocks, December 31 of prior year .....	1,281,666,537	1,189,940,040
2. Cost of bonds and stocks acquired .....	53,409,070	145,769,612
3. Accrual of discount .....	2,826,893	11,004,411
4. Unrealized valuation increase (decrease) .....		0
5. Total gain (loss) on disposals .....	1,187,473	830,939
6. Deduct consideration for bonds and stocks disposed of .....	14,900,127	64,055,153
7. Deduct amortization of premium .....	521,766	1,981,025
8. Total foreign exchange change in book/adjusted carrying value .....		0
9. Deduct current year's other than temporary impairment recognized .....		0
10. Total investment income recognized as a result of prepayment penalties and/or acceleration fees .....	182,810	157,713
11. Book/adjusted carrying value at end of current period (Lines 1+2+3+4+5-6-7+8-9+10) .....	1,323,850,890	1,281,666,537
12. Deduct total nonadmitted amounts .....		0
13. Statement value at end of current period (Line 11 minus Line 12) .....	1,323,850,890	1,281,666,537

STATEMENT AS OF MARCH 31, 2021 OF THE Family Heritage Life Insurance Company of America

SCHEDULE D - PART 1B

Showing the Acquisitions, Dispositions and Non-Trading Activity  
During the Current Quarter for all Bonds and Preferred Stock by NAIC Designation

NAIC Designation	1 Book/Adjusted Carrying Value Beginning of Current Quarter	2 Acquisitions During Current Quarter	3 Dispositions During Current Quarter	4 Non-Trading Activity During Current Quarter	5 Book/Adjusted Carrying Value End of First Quarter	6 Book/Adjusted Carrying Value End of Second Quarter	7 Book/Adjusted Carrying Value End of Third Quarter	8 Book/Adjusted Carrying Value December 31 Prior Year
BONDS								
1. NAIC 1 (a) .....	589,294,301	20,177,618	2,872,653	(7,495,272)	599,103,994			589,294,301
2. NAIC 2 (a) .....	631,260,248	33,231,452	10,642,191	13,812,731	667,662,240			631,260,248
3. NAIC 3 (a) .....	55,111,078			(6,973,465)	48,137,613			55,111,078
4. NAIC 4 (a) .....	6,000,910		15,000	2,961,133	8,947,043			6,000,910
5. NAIC 5 (a) .....	0				0			0
6. NAIC 6 (a) .....	0				0			0
7. Total Bonds	1,281,666,537	53,409,070	13,529,844	2,305,127	1,323,850,890	0	0	1,281,666,537
PREFERRED STOCK								
8. NAIC 1 .....	0				0			
9. NAIC 2 .....	0				0			
10. NAIC 3 .....	0				0			
11. NAIC 4 .....	0				0			
12. NAIC 5 .....	0				0			
13. NAIC 6 .....	0				0			
14. Total Preferred Stock .....	0	0	0	0	0	0	0	0
15. Total Bonds and Preferred Stock	1,281,666,537	53,409,070	13,529,844	2,305,127	1,323,850,890	0	0	1,281,666,537

(a) Book/Adjusted Carrying Value column for the end of the current reporting period includes the following amount of short-term and cash equivalent bonds by NAIC designation:  
NAIC 1 \$ ..... ; NAIC 2 \$ ..... ; NAIC 3 \$ ..... NAIC 4 \$ ..... ; NAIC 5 \$ ..... ; NAIC 6 \$ .....



Schedule DA - Part 1 - Short-Term Investments

**N O N E**

Schedule DA - Verification - Short-Term Investments

**N O N E**

Schedule DB - Part A - Verification - Options, Caps, Floors, Collars, Swaps and Forwards

**N O N E**

Schedule DB - Part B - Verification - Futures Contracts

**N O N E**

Schedule DB - Part C - Section 1 - Replication (Synthetic Asset) Transactions (RSATs) Open

**N O N E**

Schedule DB-Part C-Section 2-Reconciliation of Replication (Synthetic Asset) Transactions Open

**N O N E**

Schedule DB - Verification - Book/Adjusted Carrying Value, Fair Value and Potential Exposure of  
Derivatives

**N O N E**

SCHEDULE E - PART 2 - VERIFICATION

(Cash Equivalents)

	1	2
	Year To Date	Prior Year Ended December 31
1. Book/adjusted carrying value, December 31 of prior year .....	17,622,743	4,003,320
2. Cost of cash equivalents acquired .....		15,619,423
3. Accrual of discount .....		0
4. Unrealized valuation increase (decrease) .....		0
5. Total gain (loss) on disposals .....		0
6. Deduct consideration received on disposals .....	7,195,263	2,000,000
7. Deduct amortization of premium .....		0
8. Total foreign exchange change in book/adjusted carrying value .....		0
9. Deduct current year's other than temporary impairment recognized .....		0
10. Book/adjusted carrying value at end of current period (Lines 1+2+3+4+5-6-7+8-9) .....	10,427,480	17,622,743
11. Deduct total nonadmitted amounts .....		0
12. Statement value at end of current period (Line 10 minus Line 11)	10,427,480	17,622,743

Schedule A - Part 2 - Real Estate Acquired and Additions Made

**N O N E**

Schedule A - Part 3 - Real Estate Disposed

**N O N E**

## SCHEDULE B - PART 2

[illegible]

## SCHEDULE B - PART 3

[illegible]

## SCHEDULE BA - PART 2

1	2	3 Location		5	6 NAIC Designation, NAIC Designation Modifier and SVO Admini- strative Symbol	7	8	9	10	11	12	13	
		3	4										
CUSIP Identification	Name or Description	City	State	Name of Vendor or General Partner		Date Originally Acquired	Type and Strategy	Actual Cost at Time of Acquisition	Additional Investment Made After Acquisition	Amount of Encumbrances	Commitment for Additional Investment	Percentage of Ownership	
	Global Infrastructure Partners IV-A/B, L.P.	Wilmington	DE	Global Infrastructure GP IV, L.P.		09/10/2019			713,134		9,312,170	0.050	
	Petershill IV LLC	Wilmington	DE	PH IV ADVISORS LLC		12/02/2020		1,118,367			13,838,133	0.750	
1999999. Joint Venture Interests - Common Stock - Unaffiliated													
	MetLife Commercial Mortgage Income Fund, LP	Wilmington	DE	MetLife Commercial Mortgage Income Fund GP, LLC		07/01/2020		0	1,831,501	0	23,150,303	XXX	
									4,000,000		8,000,000	0.470	
2399999. Joint Venture Interests - Mortgage Loans - Unaffiliated									0		0	8,000,000	XXX
	Red Stone Equity Fund 75 LP			Red Stone Equity Partners		12/18/2019			3,039,857		17,520,535	19.200	
	WNC Institutional Tax Credit Fund 45 L.P.			WNC Managing Partners 45, LLC		08/15/2018			2,563,354		3,747,613	13.340	
3799999. Non-Guaranteed Federal Low Income Housing Tax Credit - Unaffiliated									0	5,603,211	0	21,268,148	XXX
4899999. Total - Unaffiliated									0	11,434,712	0	52,418,451	XXX
4999999. Total - Affiliated									0	0	0	0	XXX
5099999 - Totals									0	11,434,712	0	52,418,451	XXX

Showing Other Long-Term Invested Assets DISPOSED, Transferred or Repaid During the Current Quarter

[illegible]

STATEMENT AS OF MARCH 31, 2021 OF THE Family Heritage Life Insurance Company of America

SCHEDULE D - PART 3

Show All Long-Term Bonds and Stock Acquired During the Current Quarter

1	2	3	4	5	6	7	8	9	10
CUSIP Identification	Description	Foreign	Date Acquired	Name of Vendor	Number of Shares of Stock	Actual Cost	Par Value	Paid for Accrued Interest and Dividends	NAIC Designation, NAIC Designation Modifier and SVO Administrative Symbol
515390-NZ-1 .....	LANE CNTY OR SCH DIST SER A GO UNLTD .....	.....	.02/22/2021 .....	SAMUEL A RAMIREZ & COMPANY INC .....	.....	2,056,770 .....	4,500,000 .....	.0 .....	1.B FE .....
693735-BC-5 .....	PACHECO CA UNION SCH DST SER C1 GO UNLTD .....	.....	.01/13/2021 .....	STIFEL NICOLAUS & CO .....	.....	299,213 .....	520,000 .....	.0 .....	1.C FE .....
904107-BN-8 .....	UMATILLA CNTY OR SCH DIST SER A GO UNLTD .....	.....	.03/08/2021 .....	PIPER SANDLER .....	.....	2,248,365 .....	4,750,000 .....	.0 .....	1.B FE .....
984657-HZ-2 .....	YAMHILL CNTY OR SCH DIST SER A GO UNLTD .....	.....	.02/19/2021 .....	PIPER SANDLER .....	.....	1,770,360 .....	4,000,000 .....	.0 .....	1.B FE .....
2499999. Subtotal - Bonds - U.S. Political Subdivisions of States, Territories and Possessions						6,374,708	13,770,000	0	XXX
015271-AX-7 .....	ALEXANDRIA REAL ESTATE SR UNSCD .....	.....	.02/03/2021 .....	AMHERST PIERPONT SECURITIES LLC .....	.....	2,493,150 .....	2,500,000 .....	.0 .....	2.A FE .....
025932-AL-8 .....	AMERICAN FINANCIAL GROUP CORP SR UNSCD .....	.....	.01/05/2021 .....	KEYBANC CAPITAL MARKETS INC .....	.....	2,176,703 .....	1,776,000 .....	4,884 .....	2.A FE .....
037833-EG-1 .....	APPLE INC SR UNSCD .....	.....	.03/04/2021 .....	VARIOUS .....	.....	8,732,040 .....	9,500,000 .....	15,983 .....	1.B FE .....
084423-B7-0 .....	BERKLEY (WR) CORPORATION SUBORD PFD .....	.....	.02/03/2021 .....	MORGAN STANLEY & CO LLC .....	.....	1,250,000 .....	1,250,000 .....	.0 .....	2.C FE .....
14310F-AA-0 .....	CARLYLE HOLDINGS I I FIN SR UNSCD 144A .....	.....	.02/19/2021 .....	HILLTOP SECURITIES INC .....	.....	601,497 .....	476,000 .....	10,338 .....	2.A FE .....
166756-AU-0 .....	CHEVRON USA INC SR UNSCD .....	.....	.01/06/2021 .....	EXCHANGE .....	.....	4,145,580 .....	3,000,000 .....	22,313 .....	1.D FE .....
31428X-BD-7 .....	FEDEX CORP SR UNSCD .....	.....	.02/18/2021 .....	HILLTOP SECURITIES INC .....	.....	416,464 .....	369,000 .....	969 .....	2.B FE .....
41810*-AB-0 .....	HANNON ARMSTRONG SUS YLD 15-1B SUBRD- P .....	.....	.01/20/2021 .....	CAPITALIZED INTEREST .....	.....	42,493 .....	42,493 .....	.0 .....	2.B FE .....
58013M-FH-2 .....	MCDONALDS CORP SER MTN SR UNSCD .....	.....	.03/05/2021 .....	BARCLAYS CAPITAL INC .....	.....	1,459,839 .....	1,250,000 .....	1,236 .....	2.A FE .....
58013M-FH-0 .....	MCDONALD'S CORP SER MTN SR UNSCD .....	.....	.03/01/2021 .....	CREDIT SUISSE SECURITIES LLC .....	.....	1,165,270 .....	1,000,000 .....	17,733 .....	2.A FE .....
594918-CD-4 .....	MICROSOFT CORP SR UNSCD .....	.....	.02/23/2021 .....	WELLS FARGO SECURITIES LLC .....	.....	925,290 .....	1,000,000 .....	6,242 .....	1.A FE .....
68389X-BY-0 .....	ORACLE CORP SR UNSCD .....	.....	.03/04/2021 .....	VARIOUS .....	.....	6,891,805 .....	6,500,000 .....	106,088 .....	2.A FE .....
68389X-CB-9 .....	ORACLE CORP SR UNSCD .....	.....	.03/22/2021 .....	WELLS FARGO SECURITIES LLC .....	.....	1,497,060 .....	1,500,000 .....	.0 .....	2.A FE .....
87264A-BQ-7 .....	T-MOBILE USA INC SR SCD 144A .....	.....	.01/14/2021 .....	VARIOUS .....	.....	4,999,200 .....	5,000,000 .....	36,500 .....	2.C FE .....
552081-AM-3 .....	LYONDELLBASELL IND NV SR UNSCD .....	D.....	.01/29/2021 .....	BARCLAYS CAPITAL INC .....	.....	6,931,701 .....	5,730,000 .....	112,443 .....	2.C FE .....
853254-AK-6 .....	STANDARD CHARTERED PLC SUBORD 144A .....	D.....	.02/25/2021 .....	GOLDMAN SACHS & CO .....	.....	604,010 .....	500,000 .....	3,386 .....	2.B FE .....
853254-AN-0 .....	STANDARD CHARTERED BK SUBORD 144A .....	D.....	.01/15/2021 .....	DEUTSCHE BANK SECURITIES INC .....	.....	2,702,260 .....	2,000,000 .....	34,517 .....	2.B FE .....
3899999. Subtotal - Bonds - Industrial and Miscellaneous (Unaffiliated)						47,034,362	43,393,493	372,632	XXX
8399997. Total - Bonds - Part 3						53,409,070	57,163,493	372,632	XXX
8399998. Total - Bonds - Part 5						XXX	XXX	XXX	XXX
8399999. Total - Bonds						53,409,070	57,163,493	372,632	XXX
8999997. Total - Preferred Stocks - Part 3						0	XXX	0	XXX
8999998. Total - Preferred Stocks - Part 5						XXX	XXX	XXX	XXX
8999999. Total - Preferred Stocks						0	XXX	0	XXX
9799997. Total - Common Stocks - Part 3						0	XXX	0	XXX
9799998. Total - Common Stocks - Part 5						XXX	XXX	XXX	XXX
9799999. Total - Common Stocks						0	XXX	0	XXX
9899999. Total - Preferred and Common Stocks						0	XXX	0	XXX
9999999 - Totals						53,409,070	XXX	372,632	XXX

STATEMENT AS OF MARCH 31, 2021 OF THE Family Heritage Life Insurance Company of America

SCHEDULE D - PART 4

Show All Long-Term Bonds and Stock Sold, Redeemed or Otherwise Disposed of During the Current Quarter

1	2	3	4	5	6	7	8	9	10	Change In Book/Adjusted Carrying Value					16	17	18	19	20	21	22
										11	12	13	14	15							
CUSIP Identification	Description	For- eign	Disposal Date	Name of Purchaser	Number of Shares of Stock	Consid- eration	Par Value	Actual Cost	Prior Year Book/ Adjusted Carrying Value	Unrealized Valuation Increase/ (Decrease)	Current Year's (Amor- tization)/ Accretion	Current Year's Other Than Temporary Impairment Recogn- ized	Total Change in Book/ Adjusted Carrying Value (11 + 12 - 13)	Total Foreign Exchange Change in Book /Adjusted Carrying Value	Book/ Adjusted Carrying Value at Disposal Date	Foreign Exchange Gain (Loss) on Disposal	Realized Gain (Loss) on Disposal	Total Gain (Loss) on Disposal	Bond Interest/ Stock Dividends Received During Year	Stated Con- tractual Maturity Date	NAIC Desig- nation, NAIC Desig- nation Modifier and SVO Admini- strative Symbol
483854-FT-7	KANE COOK & DUPAGE ILLINOIS (TAXABLE)		02/22/2021	CALL at 100.000		500,000	500,000	519,825	500,000	.0	.0	.0	.0	.0	500,000	.0	.0	.0	5,304	12/15/2033	1.A FE
483854-FU-4	KANE COOK & DUPAGE ILLINOIS (TAXABLE)		02/22/2021	CALL at 100.000		500,000	500,000	512,035	500,000	.0	.0	.0	.0	.0	500,000	.0	.0	.0	5,304	12/15/2034	1.A FE
562333-FY-5	MANCHESTER NEW HAMPSHIRE (TAXABLE)		01/01/2021	CALL at 100.000		500,000	500,000	501,825	500,000	.0	.0	.0	.0	.0	500,000	.0	.0	.0	13,750	07/01/2030	1.C FE
771588-RV-4	ROCHESTER MINNESOTA (TAXABLE)		02/01/2021	CALL at 100.000		500,000	500,000	500,000	500,000	.0	.0	.0	.0	.0	500,000	.0	.0	.0	12,500	02/01/2033	1.A FE
24999999	Subtotal - Bonds - U.S. Political Subdivisions of States, Territories and Possessions					2,000,000	2,000,000	2,033,685	2,000,000	0	0	0	0	0	2,000,000	0	0	0	36,858	XXX	XXX
34074M-TK-7	FLORIDA ST HSG FIN CORP SER 1 REV		01/01/2021	CALL at 100.000		20,000	20,000	20,423	20,373	.0	.0	.0	.0	.0	20,373	.0	(373)	(373)	330	07/01/2049	1.A FE
37353P-DD-8	GEORGIA ST HSG & FIN AUTH SER A REV		03/01/2021	CALL at 100.000		5,000	5,000	5,398	5,358	.0	(7)	.0	(7)	.0	5,351	.0	(351)	(351)	46	06/01/2049	1.A FE
57419R-5L-5	MARYLAND ST CMNTY DEV ADMIN SER A REV		03/01/2021	CALL at 100.000		100,000	100,000	100,000	100,000	.0	.0	.0	.0	.0	100,000	.0	.0	.0	1,875	09/01/2039	1.C FE
60416S-4D-9	MINNESOTA ST HSG FIN AGY SER B REV		03/01/2021	CALL at 100.000		30,000	30,000	30,000	30,000	.0	.0	.0	.0	.0	30,000	.0	.0	.0	490	01/01/2044	1.B FE
60636Y-HM-6	MISSOURI HSG DEV COMMN (TAXABLE)		01/27/2021	CALL at 100.000		15,000	15,000	15,015	15,000	.0	.0	.0	.0	.0	15,000	.0	.0	.0	357	07/01/2033	1.B FE
60637B-TW-0	MISSOURI ST HSG DEV COM SER A REV		03/01/2021	CALL at 100.000		20,000	20,000	20,000	20,000	.0	.0	.0	.0	.0	20,000	.0	.0	.0	209	11/01/2044	1.B FE
658207-PA-7	NORTH CAROLINA HOUSING FIN AGY (TAXABLE)		01/01/2021	CALL at 100.000		5,000	5,000	5,005	5,000	.0	.0	.0	.0	.0	5,000	.0	.0	.0	108	01/01/2029	1.B FE
67756Q-ZV-2	OHIO ST HSG FIN AGY RSDL MITGER SER B REV		03/01/2021	CALL at 100.000		20,000	20,000	20,459	20,407	.0	(8)	.0	(8)	.0	20,399	.0	(399)	(399)	335	09/01/2049	1.A FE
83756C-XU-4	SOUTH DAKOTA HSG DEV AUTH SER A REV		02/11/2021	CALL at 100.000		305,000	305,000	305,000	305,000	.0	.0	.0	.0	.0	305,000	.0	.0	.0	3,304	05/01/2042	1.A FE
882750-PL-0	TEXAS ST DEPT OF HSG & CMNTY SER A REV		03/01/2021	CALL at 100.000		15,000	15,000	15,000	15,000	.0	.0	.0	.0	.0	15,000	.0	.0	.0	346	01/01/2050	1.B FE
93978T-ZF-9	WASHINGTON ST HSG FIN COMMISSION REV		03/01/2021	CALL at 100.000		335,000	335,000	315,513	316,482	.0	.78	.0	.78	.0	316,561	.0	18,439	18,439	3,183	12/01/2045	1.A FE
97689Q-LX-2	WISCONSIN ST HSG & ECON DEV SER C REV		03/01/2021	CALL at 100.000		20,000	20,000	19,967	19,968	.0	.0	.0	.0	.0	19,969	.0	31	31	295	03/01/2042	1.C FE
31999999	Subtotal - Bonds - U.S. Special Revenues					890,000	890,000	871,780	872,588	0	63	0	63	0	872,653	0	17,347	17,347	10,878	XXX	XXX
12803P-AB-4	CAJUN GLOBAL LLC SER 2017-1A CLS A2 144A		02/20/2021	SINKING FUND REDEMPTION		22,500	22,500	22,326	22,419	.0	.81	.0	.81	.0	22,500	.0	.0	.0	366	08/20/2047	2.C FE
19260M-AA-4	COINSTAR FUNDING LLC SER 2017-1A A2 144A		01/25/2021	VARIOUS		5,000	5,000	5,000	5,000	.0	.0	.0	.0	.0	5,000	.0	.0	.0	65	04/25/2047	2.B FE
233046-AF-8	DB MASTER FIN LLC 2017-1A CLS A211 SR SC		02/20/2021	SINKING FUND REDEMPTION		2,500	2,500	2,500	2,500	.0	.0	.0	.0	.0	2,500	.0	.0	.0	25	11/20/2047	2.B FE
26860#-AA-8	EIF PIO PICO LLC SR SCD -P		12/31/2020	VARIOUS		61,534	61,533	61,533	61,534	.0	.0	.0	.0	.0	61,533	.0	.0	.0	1,282	12/31/2041	2.A PL
34417M-AB-3	FOCUS BRANDS FDG SER 2017-1A A211 144A		01/30/2021	VARIOUS		2,500	2,500	2,500	2,500	.0	.0	.0	.0	.0	2,500	.0	.0	.0	32	04/30/2047	2.B FE
411707-AH-5	OKE RESTAURANT HLDING SER 20-1A 144A		03/20/2021	SINKING FUND REDEMPTION		625	625	625	625	.0	.0	.0	.0	.0	625	.0	.0	.0	6	12/20/2050	2.B FE
47760Q-AB-9	JIMMY JOHNS FDG LLC SER2017-1A CLS A211		01/30/2021	VARIOUS		5,000	5,000	5,000	5,000	.0	.0	.0	.0	.0	5,000	.0	.0	.0	60	07/30/2047	2.B FE
637417-AF-3	NATIONAL RETAIL PROPERTIES INC		03/12/2021	CALL at 106.094		3,182,810	3,000,000	2,977,770	2,994,236	.0	479	.0	479	.0	2,994,715	.0	5,285	5,285	223,235	04/15/2023	2.A FE
655044-AG-0	NOBLE ENERGY INC SR UNSCD		01/06/2021	EXCHANGE		4,145,580	3,000,000	2,982,900	2,984,975	.0	.5	.0	.5	.0	2,984,980	.0	1,160,600	1,160,600	22,313	11/15/2043	2.C FE
724060-AA-6	PIPELINE FDG CO LLC SR SCD 144A		01/15/2021	SINKING FUND REDEMPTION		41,003	41,003	50,806	41,003	.0	.0	.0	.0	.0	41,003	.0	.0	.0	1,538	01/15/2030	2.B FE
87244B-AA-6	TGIF FDG SER 17-1A CL A2 SR SEC0 144A		01/30/2021	VARIOUS		15,000	15,000	15,000	15,000	.0	.0	.0	.0	.0	15,000	.0	.0	.0	233	04/30/2047	4.B FE
87342R-AC-8	TACO BELL 2016-1A CL A23 SR SEC0 144A		02/25/2021	VARIOUS		7,500	7,500	7,500	7,500	.0	.0	.0	.0	.0	7,500	.0	.0	.0	93	05/25/2046	2.B FE
91529Y-AP-1	UNUM GROUP SR UNSCD		02/24/2021	DEUTSCHE BANK SECURITIES		644,935	625,000	521,723	522,556	.0	195	.0	195	.0	522,751	.0	122,184	122,184	5,359	12/15/2049	2.C FE
15135U-AK-5	CENOVUS ENERGY INC SR UNSCD	A	03/04/2021	BARCLAYS CAPITAL INC		3,873,640	4,000,000	3,989,840	3,991,547	.0	.38	.0	.38	.0	3,991,584	.0	(117,943)	(117,943)	99,956	09/15/2043	2.C FE
38999999	Subtotal - Bonds - Industrial and Miscellaneous (Unaffiliated)					12,010,127	10,788,161	10,645,023	10,656,395	0	798	0	798	0	10,657,191	0	1,170,126	1,170,126	354,563	XXX	XXX
83999977	Total - Bonds - Part 4					14,900,127	13,678,161	13,550,488	13,528,983	0	861	0	861	0	13,529,844	0	1,187,473	1,187,473	402,299	XXX	XXX
83999988	Total - Bonds - Part 5					XXX	XXX	XXX	XXX	XXX	XXX	XXX	XXX	XXX	XXX	XXX	XXX	XXX	XXX	XXX	XXX
83999999	Total - Bonds					14,900,127	13,678,161	13,550,488	13,528,983	0	861	0	861	0	13,529,844	0	1,187,473	1,187,473	402,299	XXX	XXX
89999977	Total - Preferred Stocks - Part 4					0	XXX	0	0	0	0	0	0	0	0	0	0	0	0	XXX	XXX
89999988	Total - Preferred Stocks - Part 5					XXX	XXX	XXX	XXX	XXX	XXX	XXX	XXX	XXX	XXX	XXX	XXX	XXX	XXX	XXX	XXX
89999999	Total - Preferred Stocks					0	XXX	0	0	0	0	0	0	0	0	0	0	0	0	XXX	XXX
97999977	Total - Common Stocks - Part 4					0	XXX	0	0	0	0	0	0	0	0	0	0	0	0	XXX	XXX
97999988	Total - Common Stocks - Part 5					XXX	XXX	XXX	XXX	XXX	XXX	XXX	XXX	XXX	XXX	XXX	XXX	XXX	XXX	XXX	XXX
97999999	Total - Common Stocks					0	XXX	0	0	0	0	0	0	0	0	0	0	0	0	XXX	XXX
98999999	Total - Preferred and Common Stocks					0	XXX	0	0	0	0	0	0	0	0	0	0	0	0	XXX	XXX
99999999	Totals					14,900,127	XXX	13,550,488	13,528,983	0	861	0	861	0	13,529,844	0	1,187,473	1,187,473	402,299	XXX	XXX

Schedule DB - Part A - Section 1 - Options, Caps, Floors, Collars, Swaps and Forwards Open  
**N O N E**

Schedule DB - Part B - Section 1 - Futures Contracts Open  
**N O N E**

Schedule DB - Part B - Section 1B - Brokers with whom cash deposits have been made  
**N O N E**

Schedule DB - Part D - Section 1 - Counterparty Exposure for Derivative Instruments Open  
**N O N E**

Schedule DB - Part D-Section 2 - Collateral for Derivative Instruments Open - Pledged By  
**N O N E**

Schedule DB - Part D-Section 2 - Collateral for Derivative Instruments Open - Pledged To  
**N O N E**

Schedule DB - Part E - Derivatives Hedging Variable Annuity Guarantees  
**N O N E**

Schedule DL - Part 1 - Reinvested Collateral Assets Owned  
**N O N E**

Schedule DL - Part 2 - Reinvested Collateral Assets Owned  
**N O N E**



SCHEDULE E - PART 1 - CASH

Month End Depository Balances

1	2	3	4	5	Book Balance at End of Each Month During Current Quarter			9
					6	7	8	
Depository	Code	Rate of Interest	Amount of Interest Received During Current Quarter	Amount of Interest Accrued at Current Statement Date	First Month	Second Month	Third Month	*
City National Bank – Checking								
Frankfort, KY					172,507	202,175	202,619	XXX
PNC – Checking					506,456	49,800	232,634	XXX
Cleveland, OH								
Wells Fargo, N.A. – DDA & Cont. Disb.					(7,991,609)	(11,039,382)	(11,999,590)	XXX
Cleveland, OH								
0199998. Deposits in ... depositories that do not exceed the allowable limit in any one depository (See instructions) - Open Depositories	XXX	XXX						XXX
0199999. Totals - Open Depositories	XXX	XXX	0	0	(7,312,646)	(10,787,407)	(11,564,337)	XXX
0299998. Deposits in ... depositories that do not exceed the allowable limit in any one depository (See instructions) - Suspended Depositories	XXX	XXX						XXX
0299999. Totals - Suspended Depositories	XXX	XXX	0	0	0	0	0	XXX
0399999. Total Cash on Deposit	XXX	XXX	0	0	(7,312,646)	(10,787,407)	(11,564,337)	XXX
0499999. Cash in Company's Office	XXX	XXX	XXX	XXX	2,500	2,500	2,500	XXX
0599999. Total - Cash	XXX	XXX	0	0	(7,310,146)	(10,784,907)	(11,561,837)	XXX

## SCHEDULE E - PART 2 - CASH EQUIVALENTS

[illegible]