



LIFE, ACCIDENT AND HEALTH COMPANIES/FRATERNAL BENEFIT SOCIETIES - ASSOCIATION EDITION

QUARTERLY STATEMENT

AS OF MARCH 31, 2021

OF THE CONDITION AND AFFAIRS OF THE

MedMutual Life Insurance Company

NAIC Group Code 0730 0730 NAIC Company Code 62375 Employer's ID Number 21-0706531  
(Current) (Prior)

Organized under the Laws of Ohio, State of Domicile or Port of Entry OH

Country of Domicile United States of America

Licensed as business type: Life, Accident and Health [ X ] Fraternal Benefit Societies [ ]

Incorporated/Organized 10/03/1955 Commenced Business 10/03/1955

Statutory Home Office 2060 East Ninth Street, Cleveland, OH, US 44115-1355  
(Street and Number) (City or Town, State, Country and Zip Code)

Main Administrative Office 2060 East Ninth Street, Cleveland, OH, US 44115-1355, 216-687-7000  
(Street and Number) (City or Town, State, Country and Zip Code) (Area Code) (Telephone Number)

Mail Address 2060 East Ninth Street, Cleveland, OH, US 44115-1355  
(Street and Number or P.O. Box) (City or Town, State, Country and Zip Code)

Primary Location of Books and Records 2060 East Ninth Street, Cleveland, OH, US 44115-1355, 216-687-7000  
(Street and Number) (City or Town, State, Country and Zip Code) (Area Code) (Telephone Number)

Internet Website Address www.medmutuallife.com

Statutory Statement Contact Kevin Spruch, 216-687-2759  
(Name) (Area Code) (Telephone Number)  
Kevin.Spruch@medmutual.com, 216-360-4073  
(E-mail Address) (FAX Number)

OFFICERS

President & CEO Richard Alan Chiricosta

Treasurer Raymond Karl Mueller

Secretary Patricia Bunn Decensi

OTHER

DIRECTORS OR TRUSTEES

James Charles Cellura

Richard Alan Chiricosta

Andrea Marie Hogben

Steffany Matticola Larkins

Raymond Karl Mueller

State of Ohio

County of Cuyahoga

SS:

The officers of this reporting entity being duly sworn, each depose and say that they are the described officers of said reporting entity, and that on the reporting period stated above, all of the herein described assets were the absolute property of the said reporting entity, free and clear from any liens or claims thereon, except as herein stated, and that this statement, together with related exhibits, schedules and explanations therein contained, annexed or referred to, is a full and true statement of all the assets and liabilities and of the condition and affairs of the said reporting entity as of the reporting period stated above, and of its income and deductions therefrom for the period ended, and have been completed in accordance with the NAIC Annual Statement Instructions and Accounting Practices and Procedures manual except to the extent that: (1) state law may differ; or, (2) that state rules or regulations require differences in reporting not related to accounting practices and procedures, according to the best of their information, knowledge and belief, respectively. Furthermore, the scope of this attestation by the described officers also includes the related corresponding electronic filing with the NAIC, when required, that is an exact copy (except for formatting differences due to electronic filing) of the enclosed statement. The electronic filing may be requested by various regulators in lieu of or in addition to the enclosed statement.

Richard Alan Chiricosta  
President & CEO

Patricia Bunn Decensi  
Secretary

Raymond Karl Mueller  
Treasurer

Subscribed and sworn to before me this day of

a. Is this an original filing? Yes [ X ] No [ ]

b. If no,

1. State the amendment number.....

2. Date filed .....

3. Number of pages attached.....

STATEMENT AS OF MARCH 31, 2021 OF THE MedMutual Life Insurance Company

ASSETS

	Current Statement Date			4 December 31 Prior Year Net Admitted Assets
	1 Assets	2 Nonadmitted Assets	3 Net Admitted Assets (Cols. 1 - 2)	
1. Bonds .....	30,171,403		30,171,403	29,865,372
2. Stocks:				
2.1 Preferred stocks .....			0	0
2.2 Common stocks .....			0	0
3. Mortgage loans on real estate:				
3.1 First liens .....			0	0
3.2 Other than first liens.....			0	0
4. Real estate:				
4.1 Properties occupied by the company (less \$ encumbrances) .....			0	0
4.2 Properties held for the production of income (less \$ ..... encumbrances) .....			0	0
4.3 Properties held for sale (less \$ ..... encumbrances) .....			0	0
5. Cash (\$ .....2,006,384 ), cash equivalents (\$ .....6,620,840 ) and short-term investments (\$ ..... ) .....	8,627,225		8,627,225	8,452,966
6. Contract loans (including \$ ..... premium notes) .....			0	0
7. Derivatives .....			0	0
8. Other invested assets .....			0	0
9. Receivables for securities .....			0	0
10. Securities lending reinvested collateral assets .....			0	0
11. Aggregate write-ins for invested assets .....	0	0	0	0
12. Subtotals, cash and invested assets (Lines 1 to 11) .....	38,798,628	0	38,798,628	38,318,338
13. Title plants less \$ ..... charged off (for Title insurers only) .....			0	0
14. Investment income due and accrued .....	115,010		115,010	106,748
15. Premiums and considerations:				
15.1 Uncollected premiums and agents' balances in the course of collection .....	2,052,522		2,052,522	1,440,515
15.2 Deferred premiums, agents' balances and installments booked but deferred and not yet due (including \$ ..... earned but unbilled premiums) .....			0	0
15.3 Accrued retrospective premiums (\$ ..... ) and contracts subject to redetermination (\$ ..... ) .....			0	0
16. Reinsurance:				
16.1 Amounts recoverable from reinsurers .....	559,077		559,077	292,210
16.2 Funds held by or deposited with reinsured companies .....			0	0
16.3 Other amounts receivable under reinsurance contracts .....			0	0
17. Amounts receivable relating to uninsured plans .....	133,165		133,165	197,440
18.1 Current federal and foreign income tax recoverable and interest thereon .....	1,276,835		1,276,835	643,387
18.2 Net deferred tax asset .....	46,871		46,871	46,872
19. Guaranty funds receivable or on deposit .....	4,556		4,556	6,072
20. Electronic data processing equipment and software .....			0	0
21. Furniture and equipment, including health care delivery assets (\$ ..... ) .....			0	0
22. Net adjustment in assets and liabilities due to foreign exchange rates .....			0	0
23. Receivables from parent, subsidiaries and affiliates .....	3,692,323		3,692,323	4,871,762
24. Health care (\$ ..... ) and other amounts receivable .....	3,600	3,600	0	0
25. Aggregate write-ins for other than invested assets .....	272,654	28,902	243,752	19,507
26. Total assets excluding Separate Accounts, Segregated Accounts and Protected Cell Accounts (Lines 12 to 25) .....	46,955,241	32,502	46,922,739	45,942,851
27. From Separate Accounts, Segregated Accounts and Protected Cell Accounts .....			0	0
28. Total (Lines 26 and 27)	46,955,241	32,502	46,922,739	45,942,851
DETAILS OF WRITE-INS				
1101. ....				
1102. ....				
1103. ....				
1198. Summary of remaining write-ins for Line 11 from overflow page .....	0	0	0	0
1199. Totals (Lines 1101 through 1103 plus 1198)(Line 11 above)	0	0	0	0
2501. Prepaid Assets .....	15,225	15,225	0	0
2502. Prepaid Ceded Premium .....	229,800	0	229,800	0
2503. Other Receivables .....	13,677	13,677	0	0
2598. Summary of remaining write-ins for Line 25 from overflow page .....	13,952	0	13,952	19,507
2599. Totals (Lines 2501 through 2503 plus 2598)(Line 25 above)	272,654	28,902	243,752	19,507

STATEMENT AS OF MARCH 31, 2021 OF THE MedMutual Life Insurance Company

LIABILITIES, SURPLUS AND OTHER FUNDS

	1 Current Statement Date	2 December 31 Prior Year
1. Aggregate reserve for life contracts \$ .....988,000 less \$ ..... included in Line 6.3 (including \$ ..... Modco Reserve) .....	988,000	979,000
2. Aggregate reserve for accident and health contracts (including \$ ..... Modco Reserve) .....	958,264	834,092
3. Liability for deposit-type contracts (including \$ ..... Modco Reserve) .....		0
4. Contract claims:		
4.1 Life .....	9,210,236	7,038,848
4.2 Accident and health .....	47,500	36,250
5. Policyholders' dividends/refunds to members \$ ..... and coupons \$ ..... due and unpaid .....		0
6. Provision for policyholders' dividends, refunds to members and coupons payable in following calendar year - estimated amounts:		
6.1 Policyholders' dividends and refunds to members apportioned for payment (including \$ ..... Modco) .....		
6.2 Policyholders' dividends and refunds to members not yet apportioned (including \$ ..... Modco) .....		
6.3 Coupons and similar benefits (including \$ ..... Modco) .....		
7. Amount provisionally held for deferred dividend policies not included in Line 6 .....		
8. Premiums and annuity considerations for life and accident and health contracts received in advance less \$ ..... discount; including \$ .....126,519 accident and health premiums .....	526,281	318,368
9. Contract liabilities not included elsewhere:		
9.1 Surrender values on canceled contracts .....		
9.2 Provision for experience rating refunds, including the liability of \$ .....14,183 accident and health experience rating refunds of which \$ .....0 is for medical loss ratio rebate per the Public Health Service Act .....	14,183	0
9.3 Other amounts payable on reinsurance, including \$ ..... assumed and \$ .....1,356,187 ceded .....	1,356,187	559,100
9.4 Interest Maintenance Reserve .....	15,394	17,432
10. Commissions to agents due or accrued-life and annuity contracts \$ .....173,282 , accident and health \$ .....44,218 and deposit-type contract funds \$ ..... .....	217,500	237,700
11. Commissions and expense allowances payable on reinsurance assumed .....		
12. General expenses due or accrued .....	705,414	578,119
13. Transfers to Separate Accounts due or accrued (net) (including \$ ..... accrued for expense allowances recognized in reserves, net of reinsured allowances) .....		
14. Taxes, licenses and fees due or accrued, excluding federal income taxes .....	755,743	605,241
15.1 Current federal and foreign income taxes, including \$ ..... on realized capital gains (losses) .....		0
15.2 Net deferred tax liability .....		
16. Unearned investment income .....		
17. Amounts withheld or retained by reporting entity as agent or trustee .....		
18. Amounts held for agents' account, including \$ ..... agents' credit balances .....		
19. Remittances and items not allocated .....		
20. Net adjustment in assets and liabilities due to foreign exchange rates .....		
21. Liability for benefits for employees and agents if not included above .....		
22. Borrowed money \$ ..... and interest thereon \$ ..... .....		
23. Dividends to stockholders declared and unpaid .....		
24. Miscellaneous liabilities:		
24.01 Asset valuation reserve .....	60,719	53,324
24.02 Reinsurance in unauthorized and certified (\$ ..... ) companies .....		0
24.03 Funds held under reinsurance treaties with unauthorized and certified (\$ ..... ) reinsurers .....		
24.04 Payable to parent, subsidiaries and affiliates .....		
24.05 Drafts outstanding .....		
24.06 Liability for amounts held under uninsured plans .....	18,900	18,900
24.07 Funds held under coinsurance .....		
24.08 Derivatives .....	0	0
24.09 Payable for securities .....		
24.10 Payable for securities lending .....		
24.11 Capital notes \$ ..... and interest thereon \$ ..... .....		
25. Aggregate write-ins for liabilities .....	72,322	74,890
26. Total liabilities excluding Separate Accounts business (Lines 1 to 25) .....	14,946,643	11,351,264
27. From Separate Accounts Statement .....		
28. Total liabilities (Lines 26 and 27) .....	14,946,643	11,351,264
29. Common capital stock .....	1,600,000	1,600,000
30. Preferred capital stock .....		
31. Aggregate write-ins for other than special surplus funds .....	0	0
32. Surplus notes .....		0
33. Gross paid in and contributed surplus .....	36,633,368	36,633,368
34. Aggregate write-ins for special surplus funds .....	0	0
35. Unassigned funds (surplus) .....	(6,257,272)	(3,641,781)
36. Less treasury stock, at cost:		
36.1 ..... shares common (value included in Line 29 \$ ..... ) .....		
36.2 ..... shares preferred (value included in Line 30 \$ ..... ) .....		
37. Surplus (Total Lines 31+32+33+34+35-36) (including \$ ..... in Separate Accounts Statement) .....	30,376,096	32,991,587
38. Totals of Lines 29, 30 and 37 .....	31,976,096	34,591,587
39. Totals of Lines 28 and 38 (Page 2, Line 28, Col. 3)	46,922,739	45,942,851
<b>DETAILS OF WRITE-INS</b>		
2501. Unclaimed Funds and Other Liabilities .....	72,322	74,890
2502. ....		
2503. ....		
2598. Summary of remaining write-ins for Line 25 from overflow page .....	0	0
2599. Totals (Lines 2501 through 2503 plus 2598)(Line 25 above) .....	72,322	74,890
3101. ....		
3102. ....		
3103. ....		
3198. Summary of remaining write-ins for Line 31 from overflow page .....	0	0
3199. Totals (Lines 3101 through 3103 plus 3198)(Line 31 above) .....	0	0
3401. ....		
3402. ....		
3403. ....		
3498. Summary of remaining write-ins for Line 34 from overflow page .....	0	0
3499. Totals (Lines 3401 through 3403 plus 3498)(Line 34 above) .....	0	0

STATEMENT AS OF MARCH 31, 2021 OF THE MedMutual Life Insurance Company

SUMMARY OF OPERATIONS

	1	2	3
	Current Year To Date	Prior Year To Date	Prior Year Ended December 31
1. Premiums and annuity considerations for life and accident and health contracts .....	10,042,129	7,926,835	31,187,044
2. Considerations for supplementary contracts with life contingencies .....			0
3. Net investment income .....	92,220	161,677	474,330
4. Amortization of Interest Maintenance Reserve (IMR) .....	2,038	1,645	6,932
5. Separate Accounts net gain from operations excluding unrealized gains or losses .....			0
6. Commissions and expense allowances on reinsurance ceded .....			0
7. Reserve adjustments on reinsurance ceded .....			0
8. Miscellaneous Income:			
8.1 Income from fees associated with investment management, administration and contract guarantees from Separate Accounts .....			0
8.2 Charges and fees for deposit-type contracts .....			0
8.3 Aggregate write-ins for miscellaneous income .....	0	0	0
9. Totals (Lines 1 to 8.3) .....	10,136,387	8,090,157	31,668,306
10. Death benefits .....	10,067,560	4,405,963	21,798,580
11. Matured endowments (excluding guaranteed annual pure endowments) .....			0
12. Annuity benefits .....			0
13. Disability benefits and benefits under accident and health contracts .....	1,126,708	737,641	2,504,929
14. Coupons, guaranteed annual pure endowments and similar benefits .....			0
15. Surrender benefits and withdrawals for life contracts .....			0
16. Group conversions .....			0
17. Interest and adjustments on contract or deposit-type contract funds .....			0
18. Payments on supplementary contracts with life contingencies .....			0
19. Increase in aggregate reserves for life and accident and health contracts .....	133,172	(8,880)	277,939
20. Totals (Lines 10 to 19) .....	11,327,440	5,134,724	24,581,448
21. Commissions on premiums, annuity considerations, and deposit-type contract funds (direct business only) .....	690,276	691,283	2,654,356
22. Commissions and expense allowances on reinsurance assumed .....			0
23. General insurance expenses and fraternal expenses .....	1,256,423	1,528,050	3,284,729
24. Insurance taxes, licenses and fees, excluding federal income taxes .....	255,344	199,514	756,798
25. Increase in loading on deferred and uncollected premiums .....			0
26. Net transfers to or (from) Separate Accounts net of reinsurance .....			0
27. Aggregate write-ins for deductions .....	(132,053)	21,708	47,807
28. Totals (Lines 20 to 27) .....	13,397,428	7,575,279	31,325,138
29. Net gain from operations before dividends to policyholders and federal income taxes (Line 9 minus Line 28) .....	(3,261,041)	514,878	343,168
30. Dividends to policyholders and refunds to members .....			0
31. Net gain from operations after dividends to policyholders, refunds to members and before federal income taxes (Line 29 minus Line 30) .....	(3,261,041)	514,878	343,168
32. Federal and foreign income taxes incurred (excluding tax on capital gains) .....	(633,448)	157,762	(681,187)
33. Net gain from operations after dividends to policyholders, refunds to members and federal income taxes and before realized capital gains or (losses) (Line 31 minus Line 32) .....	(2,627,593)	357,116	1,024,355
34. Net realized capital gains (losses) (excluding gains (losses) transferred to the IMR) less capital gains tax of \$ ..... (excluding taxes of \$ ..... transferred to the IMR) .....			(3,564)
35. Net income (Line 33 plus Line 34) .....	(2,627,593)	357,116	1,020,791
CAPITAL AND SURPLUS ACCOUNT			
36. Capital and surplus, December 31, prior year .....	34,591,587	34,673,016	34,673,016
37. Net income (Line 35) .....	(2,627,593)	357,116	1,020,791
38. Change in net unrealized capital gains (losses) less capital gains tax of \$ .....			
39. Change in net unrealized foreign exchange capital gain (loss) .....			
40. Change in net deferred income tax .....	(1)	(176,140)	(1,110,373)
41. Change in nonadmitted assets .....	19,498	(245)	11,150
42. Change in liability for reinsurance in unauthorized and certified companies .....			
43. Change in reserve on account of change in valuation basis, (increase) or decrease .....			0
44. Change in asset valuation reserve .....	(7,395)	9,591	(2,997)
45. Change in treasury stock .....			0
46. Surplus (contributed to) withdrawn from Separate Accounts during period .....			
47. Other changes in surplus in Separate Accounts Statement .....			
48. Change in surplus notes .....			
49. Cumulative effect of changes in accounting principles .....			
50. Capital changes:			
50.1 Paid in .....			
50.2 Transferred from surplus (Stock Dividend) .....			
50.3 Transferred to surplus .....			
51. Surplus adjustment:			
51.1 Paid in .....	0	0	0
51.2 Transferred to capital (Stock Dividend) .....			
51.3 Transferred from capital .....	0		
51.4 Change in surplus as a result of reinsurance .....			
52. Dividends to stockholders .....			
53. Aggregate write-ins for gains and losses in surplus .....	0	0	0
54. Net change in capital and surplus for the year (Lines 37 through 53) .....	(2,615,491)	190,322	(81,429)
55. Capital and surplus, as of statement date (Lines 36 + 54) .....	31,976,096	34,863,338	34,591,587
DETAILS OF WRITE-INS			
08.301. ....			
08.302. ....			
08.303. ....			
08.398. Summary of remaining write-ins for Line 8.3 from overflow page .....	0	0	0
08.399. Totals (Lines 08.301 through 08.303 plus 08.398) (Line 8.3 above) .....	0	0	0
2701. Other Expense .....	(132,053)	21,708	47,807
2702. ....			
2703. ....			
2798. Summary of remaining write-ins for Line 27 from overflow page .....	0	0	0
2799. Totals (Lines 2701 through 2703 plus 2798)(Line 27 above) .....	(132,053)	21,708	47,807
5301. ....			
5302. ....			
5303. ....			
5398. Summary of remaining write-ins for Line 53 from overflow page .....	0	0	0
5399. Totals (Lines 5301 through 5303 plus 5398)(Line 53 above) .....	0	0	0

STATEMENT AS OF MARCH 31, 2021 OF THE MedMutual Life Insurance Company

CASH FLOW

	1 Current Year To Date	2 Prior Year To Date	3 Prior Year Ended December 31
<b>Cash from Operations</b>			
1. Premiums collected net of reinsurance .....	10,449,305	7,765,540	27,172,065
2. Net investment income .....	111,182	216,962	577,124
3. Miscellaneous income .....	0	0	0
4. Total (Lines 1 to 3) .....	10,560,486	7,982,502	27,749,189
5. Benefit and loss related payments .....	9,277,597	5,166,912	22,624,731
6. Net transfers to Separate Accounts, Segregated Accounts and Protected Cell Accounts .....	0	0	0
7. Commissions, expenses paid and aggregate write-ins for deductions .....	1,746,600	2,286,611	6,419,064
8. Dividends paid to policyholders .....	0	0	0
9. Federal and foreign income taxes paid (recovered) net of \$ ..... tax on capital gains (losses) .....	0	0	0
10. Total (Lines 5 through 9) .....	11,024,197	7,453,523	29,043,795
11. Net cash from operations (Line 4 minus Line 10) .....	(463,711)	528,979	(1,294,606)
<b>Cash from Investments</b>			
12. Proceeds from investments sold, matured or repaid:			
12.1 Bonds .....	2,500,000	5,500,000	11,800,000
12.2 Stocks .....	0	0	0
12.3 Mortgage loans .....	0	0	0
12.4 Real estate .....	0	0	0
12.5 Other invested assets .....	0	0	0
12.6 Net gains or (losses) on cash, cash equivalents and short-term investments .....	0	0	0
12.7 Miscellaneous proceeds .....	0	0	0
12.8 Total investment proceeds (Lines 12.1 to 12.7) .....	2,500,000	5,500,000	11,800,000
13. Cost of investments acquired (long-term only):			
13.1 Bonds .....	2,833,255	0	12,133,880
13.2 Stocks .....	0	0	0
13.3 Mortgage loans .....	0	0	0
13.4 Real estate .....	0	0	0
13.5 Other invested assets .....	0	0	0
13.6 Miscellaneous applications .....	0	0	0
13.7 Total investments acquired (Lines 13.1 to 13.6) .....	2,833,255	0	12,133,880
14. Net increase (or decrease) in contract loans and premium notes .....	0	0	0
15. Net cash from investments (Line 12.8 minus Line 13.7 and Line 14) .....	(333,255)	5,500,000	(333,880)
<b>Cash from Financing and Miscellaneous Sources</b>			
16. Cash provided (applied):			
16.1 Surplus notes, capital notes .....	0	0	0
16.2 Capital and paid in surplus, less treasury stock .....	0	0	0
16.3 Borrowed funds .....	0	0	0
16.4 Net deposits on deposit-type contracts and other insurance liabilities .....	0	0	0
16.5 Dividends to stockholders .....	0	0	0
16.6 Other cash provided (applied) .....	971,224	652,455	(3,462,388)
17. Net cash from financing and miscellaneous sources (Line 16.1 through Line 16.4 minus Line 16.5 plus Line 16.6) .....	971,224	652,455	(3,462,388)
<b>RECONCILIATION OF CASH, CASH EQUIVALENTS AND SHORT-TERM INVESTMENTS</b>			
18. Net change in cash, cash equivalents and short-term investments (Line 11, plus Lines 15 and 17) ..	174,259	6,681,434	(5,090,874)
19. Cash, cash equivalents and short-term investments:			
19.1 Beginning of year .....	8,452,966	13,543,840	13,543,840
19.2 End of period (Line 18 plus Line 19.1) .....	8,627,225	20,225,274	8,452,966

Note: Supplemental disclosures of cash flow information for non-cash transactions:

--	--	--	--

EXHIBIT 1

DIRECT PREMIUMS AND DEPOSIT-TYPE CONTRACTS			
	1 Current Year To Date	2 Prior Year To Date	3 Prior Year Ended December 31
1. Industrial life .....			0
2. Ordinary life insurance .....	53,852	47,209	216,566
3. Ordinary individual annuities .....			0
4. Credit life (group and individual) .....			0
5. Group life insurance .....	9,535,796	7,306,036	29,442,863
6. Group annuities .....			0
7. A & H - group .....	2,348,549	1,876,252	7,170,308
8. A & H - credit (group and individual) .....			0
9. A & H - other .....	248,276	214,144	884,340
10. Aggregate of all other lines of business .....	0	0	0
11. Subtotal (Lines 1 through 10) .....	12,186,472	9,443,641	37,714,077
12. Fraternal (Fraternal Benefit Societies Only) .....			0
13. Subtotal (Lines 11 through 12) .....	12,186,472	9,443,641	37,714,077
14. Deposit-type contracts .....	0	0	0
15. Total (Lines 13 and 14)	12,186,472	9,443,641	37,714,077
DETAILS OF WRITE-INS			
1001. ....			
1002. ....			
1003. ....			
1098. Summary of remaining write-ins for Line 10 from overflow page .....	0	0	0
1099. Totals (Lines 1001 through 1003 plus 1098)(Line 10 above)	0	0	0

NOTES TO FINANCIAL STATEMENTS

NOTE 1 Summary of Significant Accounting Policies and Going Concern

A. Accounting Practices

The accompanying statutory financial statements of MedMutual Life Insurance Company (the Company or MMLIC) have been prepared in conformity with the National Association of Insurance Commissioners' (NAIC) Accounting Practices and Procedures Manual (NAIC SAP), as prescribed by the Ohio Department of Insurance (ODI). No accounting practices were employed by the Company in 2021 or 2020 that departed from NAIC SAP.

	SSAP #	F/S Page	F/S Line #	2021	2020
NET INCOME					
(1) State basis (Page 4, Line 35, Columns 1 & 3)	XXX	XXX	XXX	\$ (2,627,593)	\$ 1,020,791
(2) State Prescribed Practices that are an increase/ (decrease) from NAIC SAP:					
(3) State Permitted Practices that are an increase/(decrease) from NAIC SAP:					
(4) NAIC SAP (1-2-3=4)	XXX	XXX	XXX	\$ (2,627,593)	\$ 1,020,791
SURPLUS					
(5) State basis (Page 3, Line 38, Columns 1 & 2)	XXX	XXX	XXX	\$ 31,976,096	\$ 34,591,587
(6) State Prescribed Practices that are an increase/(decrease) from NAIC SAP:					
(7) State Permitted Practices that are an increase/(decrease) from NAIC SAP:					
(8) NAIC SAP (5-6-7=8)	XXX	XXX	XXX	\$ 31,976,096	\$ 34,591,587

B. Use of Estimates in the Preparation of the Financial Statements

No significant change.

C. Accounting Policy

(1) Basis for Short-Term Investments

No significant change.

(2) Basis for Bonds, Mandatory Convertible Securities, SVO-Identified Investments and Amortization Method

No significant change.

(3) Basis for Common Stocks

No significant change.

(4) Basis for Preferred Stocks

No significant change.

(5) Basis for Mortgage Loans

No significant change.

(6) Basis for Loan-Backed Securities and Adjustment Methodology

No significant change.

(7) Accounting Policies for Investments in Subsidiaries, Controlled and Affiliated Entities

No significant change.

(8) Accounting Policies for Investments in Joint Ventures, Partnerships and Limited Liability Entities

No significant change.

(9) Accounting Policies for Derivatives

No significant change.

(10) Anticipated Investment Income Used in Premium Deficiency Calculation

No significant change.

(11) Management's Policies and Methodologies for Estimating Liabilities for Losses and Loss/Claim Adjustment Expenses

No significant change.

(12) Changes in the Capitalization Policy and Predefined Thresholds from Prior Period

No significant change.

(13) Method Used to Estimate Pharmaceutical Rebate Receivables

NOTES TO FINANCIAL STATEMENTS

No significant change.

D. Going Concern

No significant change.

NOTE 2 Accounting Changes and Corrections of Errors

No significant change.

NOTE 3 Business Combinations and Goodwill

No significant change.

NOTE 4 Discontinued Operations

No significant change.

NOTE 5 Investments

A. Mortgage Loans, including Mezzanine Real Estate Loans

Not applicable.

B. Debt Restructuring

Not applicable.

C. Reverse Mortgages

Not applicable.

D. Loan-Backed Securities

Not applicable.

E. Dollar Repurchase Agreements and/or Securities Lending Transactions

Not applicable.

F. Repurchase Agreements Transactions Accounted for as Secured Borrowing

Not applicable.

G. Reverse Repurchase Agreements Transactions Accounted for as Secured Borrowing

Not applicable.

H. Repurchase Agreements Transactions Accounted for as a Sale

Not applicable.

I. Reverse Repurchase Agreements Transactions Accounted for as a Sale

Not applicable.

J. Real Estate

Not applicable.

K. Low Income Housing tax Credits (LIHTC)

Not applicable.

L. Restricted Assets

1. Restricted Assets (Including Pledged)

Restricted Asset Category	Gross (Admitted & Nonadmitted) Restricted						
	Current Year					6	7
	1	2	3	4	5		
	Total General Account (G/A)	G/A Supporting S/A Activity (a)	Total Separate Account (S/A) Restricted Assets	S/A Assets Supporting G/A Activity (b)	Total (1 plus 3)	Total From Prior Year	Increase/ (Decrease) (5 minus 6)
a. Subject to contractual obligation for which liability is not shown					\$ -		\$ -
b. Collateral held under security lending agreements					\$ -		\$ -
c. Subject to repurchase agreements					\$ -		\$ -
d. Subject to reverse repurchase agreements					\$ -		\$ -
e. Subject to dollar repurchase agreements					\$ -		\$ -
f. Subject to dollar reverse repurchase agreements					\$ -		\$ -
g. Placed under option contracts					\$ -		\$ -
h. Letter stock or securities restricted as to sale - excluding FHLB capital stock					\$ -		\$ -
i. FHLB capital stock					\$ -		\$ -
j. On deposit with states					\$ -		\$ -
k. On deposit with other regulatory bodies	\$ 2,372,264				\$ 2,372,264	\$ 2,009,521	\$ 362,743
l. Pledged collateral to FHLB (including assets backing funding agreements)					\$ -		\$ -
m. Pledged as collateral not captured in other categories					\$ -		\$ -
n. Other restricted assets					\$ -		\$ -
o. Total Restricted Assets	\$ 2,372,264	\$ -	\$ -	\$ -	\$ 2,372,264	\$ 2,009,521	\$ 362,743

(a) Subset of Column 1

(b) Subset of Column 3



NOTES TO FINANCIAL STATEMENTS

Restricted Asset Category	Current Year			
	8	9	Percentage	
			10	11
	Total Non-admitted Restricted	Total Admitted Restricted (5 minus 8)	Gross (Admitted & Non-admitted) Restricted to Total Assets (c)	Admitted Restricted to Total Admitted Assets (d)
a. Subject to contractual obligation for which liability is not shown		\$ -	0.000%	0.000%
b. Collateral held under security lending agreements		\$ -	0.000%	0.000%
c. Subject to repurchase agreements		\$ -	0.000%	0.000%
d. Subject to reverse repurchase agreements		\$ -	0.000%	0.000%
e. Subject to dollar repurchase agreements		\$ -	0.000%	0.000%
f. Subject to dollar reverse repurchase agreements		\$ -	0.000%	0.000%
g. Placed under option contracts		\$ -	0.000%	0.000%
h. Letter stock or securities restricted as to sale - excluding FHLB capital stock		\$ -	0.000%	0.000%
i. FHLB capital stock		\$ -	0.000%	0.000%
j. On deposit with states		\$ -	0.000%	0.000%
k. On deposit with other regulatory bodies		\$ 2,372,264	5.052%	5.056%
l. Pledged collateral to FHLB (including assets backing funding agreements)		\$ -	0.000%	0.000%
m. Pledged as collateral not captured in other categories		\$ -	0.000%	0.000%
n. Other restricted assets		\$ -	0.000%	0.000%
o. Total Restricted Assets	\$ -	\$ 2,372,264	5.052%	5.056%

(c) Column 5 divided by Asset Page, Column 1, Line 28  
(d) Column 9 divided by Asset Page, Column 3, Line 28

2. Detail of Assets Pledged as Collateral Not Captured in Other Categories (Contracts That Share Similar Characteristics, Such as Reinsurance and Derivatives, Are Reported in the Aggregate)  
  
Not applicable.
3. Detail of Other Restricted Assets (Contracts That Share Similar Characteristics, Such as Reinsurance and Derivatives, Are Reported in the Aggregate)  
  
Not applicable.
4. Collateral Received and Reflected as Assets Within the Reporting Entity's Financial Statements  
  
Not applicable.

- M. Working Capital Finance Investments  
  
Not applicable.
- N. Offsetting and Netting of Assets and Liabilities  
  
Not applicable.
- O. 5GI Securities  
  
Not applicable.
- P. Short Sales  
  
Not applicable.
- Q. Prepayment Penalty and Acceleration Fees

General Account      Separate Account

1. Number of CUSIPs
2. Aggregate Amount of Investment Income

- R. Reporting Entity's Share of Cash Pool by Asset Type  
  
Not applicalbe.

NOTE 6 Joint Ventures, Partnerships and Limited Liability Companies  
  
No significant change.

NOTE 7 Investment Income  
  
No significant change.

NOTE 8 Derivative Instruments  
  
Not applicable.

NOTE 9 Income Taxes  
  
No significant change.

NOTE 10 Information Concerning Parent, Subsidiaries, Affiliates and Other Related Parties  
  
No significant change.

NOTES TO FINANCIAL STATEMENTS

NOTE 11 Debt

A. Debt Including Capital Notes

No significant change

B. FHLB (Federal Home Loan Bank) Agreements

Not applicable.

NOTE 12 Retirement Plans, Deferred Compensation, Postemployment Benefits and Compensated Absences and Other Postretirement Benefit Plans

A. Defined Benefit Plan

A-I Not applicable.

NOTE 13 Capital and Surplus, Dividend Restrictions and Quasi-Reorganizations

No significant change.

NOTE 14 Liabilities, Contingencies and Assessments

No significant change.

NOTE 15 Leases

No significant change.

NOTE 16 Information About Financial Instruments With Off-Balance Sheet Risk and Financial Instruments With Concentrations of Credit Risk

No significant change.

NOTE 17 Sale, Transfer and Servicing of Financial Assets and Extinguishments of Liabilities

A. Transfers of Receivables Reported as Sales

Not applicable.

B. Transfer and Servicing of Financial Assets

Not applicable.

C. Wash Sales

Not applicable.

NOTE 18 Gain or Loss to the Reporting Entity from Uninsured Plans and the Uninsured Portion of Partially Insured Plans

No significant change.

NOTE 19 Direct Premium Written/Produced by Managing General Agents/Third Party Administrators

No significant change.

NOTE 20 Fair Value Measurements

A.

(1) Fair Value Measurements at Reporting Date

Not applicable.

(2) Fair Value Measurements in (Level 3) of the Fair Value hierarchy

Not applicable.

(3) Policies when Transfers Between Levels are Recognized

Not applicable.

(4) Description of Valuation Techniques and Inputs Used in Fair Value Measurement

Not applicable.

(5) Fair Value Disclosures for Derivative Assets and Liabilities

Not applicable.

B. Fair Value Reporting under SSAP 100 and Other Accounting Pronouncements

Not applicable.

C. Aggregate fair value for all financial instruments and the level within the fair value hierarchy in which the fair value measurements in their entirety fall.

Type of Financial Instrument	Aggregate Fair Value	Admitted Assets	(Level 1)	(Level 2)	(Level 3)	Net Asset Value (NAV)	Not Practicable (Carrying Value)
BONDS	\$ 30,367,481	\$ 30,171,403		\$ 30,367,481			

D. Not Practicable to Estimate Fair Value

Not applicable.

E. NAV Practical Expedient Investments

Not applicable.

NOTE 21 Other Items

No significant change.

NOTE 22 Events Subsequent

NOTES TO FINANCIAL STATEMENTS

No significant change.

NOTE 23 Reinsurance

No significant change.

NOTE 24 Retrospectively Rated Contracts & Contracts Subject to Redetermination

A. Method Used by the Reporting Entity to Estimate Accrued Retrospective Premium Adjustments

Not applicable.

B. Disclose Whether Accrued Retrospective Premums are Recorded Through Written Premium of as an Adjustment to Earned Premium

Not applicable.

C. Disclose the Amount of Net Premiums Written Subject to Retrospective Rating Features

Not applicable.

D. Medical loss ratio rebates required pursuant to the Public Health Service Act.

Not applicable.

E. Risk Sharing Provisions of the Affordable Care Act

(1) Did the reporting entity write accident and health insurance premium which is subject to the Affordable Care Act risk sharing provisions (YES/NO)? Yes [ ] No [X]

(2) Impact of Risk Sharing Provisions of the Affordable Care Act on Admitted Assets, Liabilities and Revenue for the Current Year Amount

a. Permanent ACA Risk Adjustment Program

Assets

1. Premium adjustments receivable due to ACA Risk Adjustment (including high risk pool payments)

Liabilities

2. Risk adjustment user fees payable for ACA Risk Adjustment

3. Premium adjustments payable due to ACA Risk Adjustment (including high risk pool premium)

Operations (Revenue & Expense)

4. Reported as revenue in premium for accident and health contracts (written/collected) due to ACA Risk Adjustment

5. Reported in expenses as ACA risk adjustment user fees (incurred/paid)

b. Transitional ACA Reinsurance Program

Assets

1. Amounts recoverable for claims paid due to ACA Reinsurance

2. Amounts recoverable for claims unpaid due to ACA Reinsurance (Contra Liability)

3. Amounts receivable relating to uninsured plans for contributions for ACA Reinsurance

Liabilities

4. Liabilities for contributions payable due to ACA Reinsurance – not reported as ceded premium

5. Ceded reinsurance premiums payable due to ACA Reinsurance

6. Liabilities for amounts held under uninsured plans contributions for ACA Reinsurance

Operations (Revenue & Expense)

7. Ceded reinsurance premiums due to ACA Reinsurance

8. Reinsurance recoveries (income statement) due to ACA Reinsurance payments or expected payments

9. ACA Reinsurance contributions – not reported as ceded premium

c. Temporary ACA Risk Corridors Program

Assets

1. Accrued retrospective premium due to ACA Risk Corridors

Liabilities

2. Reserve for rate credits or policy experience rating refunds due to ACA Risk Corridors

Operations (Revenue & Expense)

3. Effect of ACA Risk Corridors on net premium income (paid/received)

4. Effect of ACA Risk Corridors on change in reserves for rate credits

(3) Roll forward of prior year ACA risk sharing provisions for the following asset (gross of any nonadmission) and liability balances along with the reasons for adjustments to prior year balance.

	Accrued During the Prior Year on Business Written Before December 31 of the Prior Year		Received or Paid as of the Current Year on Business Written Before December 31 of the Prior Year		Differences		Adjustments			Unsettled Balances as of the Reporting Date	
					Prior Year Accrued Less Payments (Col 1 - 3)	Prior Year Accrued Less Payments (Col 2 - 4)	To Prior Year Balances	To Prior Year Balances		Cumulative Balance from Prior Years (Col 1-3+7)	Cumulative Balance from Prior Years (Col 2-4+8)
	1	2	3	4	5	6	7	8		9	10
	Receivable	Payable	Receivable	Payable	Receivable	Payable	Receivable	Payable	Ref	Receivable	Payable
a. Permanent ACA Risk Adjustment Program											
1. Premium adjustments receivable (including high risk pool payments)					\$ -	\$ -			A	\$ -	\$ -
2. Premium adjustments (payable) (including high risk pool premium)					\$ -	\$ -			B	\$ -	\$ -
3. Subtotal ACA Permanent Risk Adjustment Program	\$ -	\$ -	\$ -	\$ -	\$ -	\$ -	\$ -	\$ -		\$ -	\$ -
b. Transitional ACA Reinsurance Program											
1. Amounts recoverable for claims paid					\$ -	\$ -			C	\$ -	\$ -
2. Amounts recoverable for claims unpaid (contra liability)					\$ -	\$ -			D	\$ -	\$ -
3. Amounts receivable relating to uninsured plans					\$ -	\$ -			E	\$ -	\$ -

NOTES TO FINANCIAL STATEMENTS

4. Liabilities for contributions payable due to ACA Reinsurance - not reported as ceded premium					\$ -	\$ -				F	\$ -	\$ -
5. Ceded reinsurance premiums payable					\$ -	\$ -				G	\$ -	\$ -
6. Liability for amounts held under uninsured plans					\$ -	\$ -				H	\$ -	\$ -
7. Subtotal ACA Transitional Reinsurance Program	\$ -	\$ -	\$ -	\$ -	\$ -	\$ -	\$ -	\$ -	\$ -		\$ -	\$ -
c. Temporary ACA Risk Corridors Program												
1. Accrued retrospective premium					\$ -	\$ -				I	\$ -	\$ -
2. Reserve for rate credits or policy experience rating refunds					\$ -	\$ -				J	\$ -	\$ -
3. Subtotal ACA Risk Corridors Program	\$ -	\$ -	\$ -	\$ -	\$ -	\$ -	\$ -	\$ -	\$ -		\$ -	\$ -
d. Total for ACA Risk Sharing Provisions	\$ -	\$ -	\$ -	\$ -	\$ -	\$ -	\$ -	\$ -	\$ -		\$ -	\$ -

Explanations of Adjustments

- A. N/A  
B. N/A  
C. N/A  
D. N/A  
E. N/A  
F. N/A  
G. N/A  
H. N/A  
I. N/A  
J. N/A

(4) Roll-Forward of Risk Corridors Asset and Liability Balances by Program Benefit Year

	Accrued During the Prior Year on Business Written Before December 31 of the Prior Year		Received or Paid as of the Current Year on Business Written Before December 31 of the Prior Year		Differences		Adjustments			Unsettled Balances as of the Reporting Date	
					Prior Year Accrued Less Payments (Col 1 - 3)	Prior Year Accrued Less Payments (Col 2 - 4)	To Prior Year Balances	To Prior Year Balances		Cumulative Balance from Prior Years (Col 1-3+7)	Cumulative Balance from Prior Years (Col 2-4+8)
	1	2	3	4	5	6	7	8		9	10
	Receivable	Payable	Receivable	Payable	Receivable	Payable	Receivable	Payable	Ref	Receivable	Payable
a. 2014											
1. Accrued retrospective premium					\$ -	\$ -			A	\$ -	\$ -
2. Reserve for rate credits or policy experience rating refunds					\$ -	\$ -			B	\$ -	\$ -
b. 2015											
1. Accrued retrospective premium					\$ -	\$ -			C	\$ -	\$ -
2. Reserve for rate credits or policy experience rating refunds					\$ -	\$ -			D	\$ -	\$ -
c. 2016											
1. Accrued retrospective premium					\$ -	\$ -			E	\$ -	\$ -
2. Reserve for rate credits or policy experience rating refunds					\$ -	\$ -			F	\$ -	\$ -
d. Total for Risk Corridors	\$ -	\$ -	\$ -	\$ -	\$ -	\$ -	\$ -	\$ -		\$ -	\$ -

Explanations of Adjustments

- A. N/A  
B. N/A  
C. N/A  
D. N/A  
E. N/A  
F. N/A

24E(4)d (Columns 1 through 10) should equal 24E(3)c3 (Column 1 through 10 respectively)

(5) ACA Risk Corridors Receivable as of Reporting Date

	1	2	3	4	5	6
Risk Corridors Program Year	Estimated Amount to be Filed or Final Amount Filed with CMS	Non-Accrued Amounts for Impairment or Other Reasons	Amounts received from CMS	Asset Balance (Gross of Non-admissions) (1-2-3)	Non-admitted Amount	Net Admitted Asset (4 - 5)
a. 2014	\$ -	\$ -	\$ -	\$ -	\$ -	\$ -
b. 2015	\$ -	\$ -	\$ -	\$ -	\$ -	\$ -
c. 2016	\$ -	\$ -	\$ -	\$ -	\$ -	\$ -
d. Total (a + b + c)	\$ -	\$ -	\$ -	\$ -	\$ -	\$ -

24E(5)d (Column 4) should equal 24E(3)c1 (Column 9)

24E(5)d (Column 6) should equal 24E(2)c1

NOTES TO FINANCIAL STATEMENTS

NOTE 25 Change in Incurred Losses and Loss Adjustment Expenses

A. Change in Incurred Losses and Loss Adjustment Expenses

Reserves for unpaid claims and claims adjustment expenses, net of reinsurance and recoveries, as of December 31, 2020 were \$7.0 million. As of March 31, 2021 \$4.0 million has been paid for incurred claims and claims adjustment expenses attributable to insured events of prior years. Reserves available for prior years are \$2.8 million based on an estimate of unpaid claims and claims adjustment expenses as of March 31, 2021. Therefore, there has been a \$0.2 million favorable development since December 31, 2020. The redundancy that emerged results from the differences in claims severity utilization as compared to expectations.

B. Information about Significant Changes in Methodologies and Assumptions

No significant change.

NOTE 26 Intercompany Pooling Arrangements

No significant change.

NOTE 27 Structured Settlements

No significant change.

NOTE 28 Health Care Receivables

A. Pharmaceutical Rebate Receivables

	Estimated Pharmacy Rebates as Reported on Financial Statements	Pharmacy Rebates as Billed or Otherwise Confirmed	Actual Rebates Received Within 90 Days of Billing	Actual Rebates Received Within 91 to 180 Days of Billing	Actual Rebates Received More Than 180 Days After Billing
Date					
03/31/2021	\$ -	\$ -	\$ -	\$ -	\$ -
12/31/2020	\$ -	\$ -	\$ -	\$ -	\$ -
09/30/2020	\$ -	\$ -	\$ 653	\$ -	\$ -
06/30/2020	\$ -	\$ -	\$ 1,922	\$ -	\$ -
03/31/2020	\$ -	\$ -	\$ 3,484	\$ -	\$ -
12/31/2019	\$ -	\$ -	\$ 2,843	\$ -	\$ -
09/30/2019	\$ -	\$ -	\$ 1,723	\$ -	\$ -
06/30/2019	\$ -	\$ -	\$ 1,677	\$ -	\$ -
03/31/2019	\$ -	\$ -	\$ 1,390	\$ -	\$ -

B. Risk-Sharing Receivables

Calendar Year	Evaluation Period Year Ending	Risk Sharing Receivable as Estimated in the Prior Year	Risk Sharing Receivable as Estimated in the Current Year	Risk Sharing Receivable Billed	Risk Sharing Receivable Not Yet Billed	Actual Risk Sharing Amounts Received in Year Billed	Actual Risk Sharing Amounts Received First Year Subsequent	Actual Risk Sharing Amounts Received Second Year Subsequent	Actual Risk Sharing Amounts Received - All Other

NOTE 29 Participating Policies

No significant change.

NOTE 30 Premium Deficiency Reserves

No significant change.

NOTE 31 Reserves for Life Contracts and Annuity Contracts

No significant change.

NOTE 32 Analysis of Annuity Actuarial Reserves and Deposit Type Contract Liabilities by Withdrawal Characteristics

No significant change.

NOTE 33 Analysis of Life Actuarial Reserves by Withdrawal Characteristics

No significant change.

NOTE 34 Premium & Annuity Considerations Deferred and Uncollected

No significant change.

NOTE 35 Separate Accounts

No significant change.

NOTE 36 Loss/Claim Adjustment Expenses

No significant change.

STATEMENT AS OF MARCH 31, 2021 OF THE MedMutual Life Insurance Company

GENERAL INTERROGATORIES

PART 1 - COMMON INTERROGATORIES

GENERAL

- 1.1

Did the reporting entity experience any material transactions requiring the filing of Disclosure of Material Transactions with the State of Domicile, as required by the Model Act? .....

Yes [ ] No [ X ]
- 1.2

If yes, has the report been filed with the domiciliary state? .....

Yes [ ] No [ ]
- 2.1

Has any change been made during the year of this statement in the charter, by-laws, articles of incorporation, or deed of settlement of the reporting entity? .....

Yes [ ] No [ X ]
- 2.2

If yes, date of change: .....
- 3.1

Is the reporting entity a member of an Insurance Holding Company System consisting of two or more affiliated persons, one or more of which is an insurer? .....

If yes, complete Schedule Y, Parts 1 and 1A.

Yes [ X ] No [ ]
- 3.2

Have there been any substantial changes in the organizational chart since the prior quarter end? .....

Yes [ X ] No [ ]
- 3.3

If the response to 3.2 is yes, provide a brief description of those changes.  
Medical Mutual of Ohio purchased Employee Services LLC effective 3/1/21
- 3.4

Is the reporting entity publicly traded or a member of a publicly traded group? .....

Yes [ ] No [ X ]
- 3.5

If the response to 3.4 is yes, provide the CIK (Central Index Key) code issued by the SEC for the entity/group. ....
- 4.1

Has the reporting entity been a party to a merger or consolidation during the period covered by this statement? .....

If yes, complete and file the merger history data file with the NAIC.

Yes [ ] No [ X ]
- 4.2

If yes, provide the name of the entity, NAIC Company Code, and state of domicile (use two letter state abbreviation) for any entity that has ceased to exist as a result of the merger or consolidation.

1 Name of Entity	2 NAIC Company Code	3 State of Domicile
.....	.....	.....
.....	.....	.....
5.

If the reporting entity is subject to a management agreement, including third-party administrator(s), managing general agent(s), attorney-in-fact, or similar agreement, have there been any significant changes regarding the terms of the agreement or principals involved? .....

If yes, attach an explanation.

Yes [ ] No [ ] N/A [ X ]
- 6.1

State as of what date the latest financial examination of the reporting entity was made or is being made. ....

12/31/2019
- 6.2

State the as of date that the latest financial examination report became available from either the state of domicile or the reporting entity. This date should be the date of the examined balance sheet and not the date the report was completed or released. ....

12/31/2019
- 6.3

State as of what date the latest financial examination report became available to other states or the public from either the state of domicile or the reporting entity. This is the release date or completion date of the examination report and not the date of the examination (balance sheet date). ....

10/27/2020
- 6.4

By what department or departments?  
Ohio Department of Insurance
- 6.5

Have all financial statement adjustments within the latest financial examination report been accounted for in a subsequent financial statement filed with Departments? .....

Yes [ ] No [ ] N/A [ X ]
- 6.6

Have all of the recommendations within the latest financial examination report been complied with? .....

Yes [ ] No [ ] N/A [ X ]
- 7.1

Has this reporting entity had any Certificates of Authority, licenses or registrations (including corporate registration, if applicable) suspended or revoked by any governmental entity during the reporting period? .....

Yes [ ] No [ X ]
- 7.2

If yes, give full information:
- 8.1

Is the company a subsidiary of a bank holding company regulated by the Federal Reserve Board? .....

Yes [ ] No [ X ]
- 8.2

If response to 8.1 is yes, please identify the name of the bank holding company.
- 8.3

Is the company affiliated with one or more banks, thrifts or securities firms? .....

Yes [ ] No [ X ]
- 8.4

If response to 8.3 is yes, please provide below the names and location (city and state of the main office) of any affiliates regulated by a federal regulatory services agency [i.e. the Federal Reserve Board (FRB), the Office of the Comptroller of the Currency (OCC), the Federal Deposit Insurance Corporation (FDIC) and the Securities Exchange Commission (SEC)] and identify the affiliate's primary federal regulator.

1 Affiliate Name	2 Location (City, State)	3 FRB	4 OCC	5 FDIC	6 SEC
.....	.....	.....	.....	.....	.....
.....	.....	.....	.....	.....	.....

STATEMENT AS OF MARCH 31, 2021 OF THE MedMutual Life Insurance Company

GENERAL INTERROGATORIES

- 9.1

Are the senior officers (principal executive officer, principal financial officer, principal accounting officer or controller, or persons performing similar functions) of the reporting entity subject to a code of ethics, which includes the following standards? .....  
(a) Honest and ethical conduct, including the ethical handling of actual or apparent conflicts of interest between personal and professional relationships;  
(b) Full, fair, accurate, timely and understandable disclosure in the periodic reports required to be filed by the reporting entity;  
(c) Compliance with applicable governmental laws, rules and regulations;  
(d) The prompt internal reporting of violations to an appropriate person or persons identified in the code; and  
(e) Accountability for adherence to the code.

Yes [ X ] No [ ]
- 9.11

If the response to 9.1 is No, please explain:
- 9.2

Has the code of ethics for senior managers been amended? .....

Yes [ ] No [ X ]
- 9.21

If the response to 9.2 is Yes, provide information related to amendment(s).
- 9.3

Have any provisions of the code of ethics been waived for any of the specified officers? .....

Yes [ ] No [ X ]
- 9.31

If the response to 9.3 is Yes, provide the nature of any waiver(s).

FINANCIAL

- 10.1

Does the reporting entity report any amounts due from parent, subsidiaries or affiliates on Page 2 of this statement? .....

Yes [ X ] No [ ]
- 10.2

If yes, indicate any amounts receivable from parent included in the Page 2 amount: .....

\$ 3,696,385

INVESTMENT

- 11.1

Were any of the stocks, bonds, or other assets of the reporting entity loaned, placed under option agreement, or otherwise made available for use by another person? (Exclude securities under securities lending agreements.) .....

Yes [ ] No [ X ]
- 11.2

If yes, give full and complete information relating thereto:
12.

Amount of real estate and mortgages held in other invested assets in Schedule BA: .....

\$
13.

Amount of real estate and mortgages held in short-term investments: .....

\$
- 14.1

Does the reporting entity have any investments in parent, subsidiaries and affiliates? .....

Yes [ ] No [ X ]
- 14.2

If yes, please complete the following:
- |   | 1   | 2  |
|---|---|--|
|   | Prior Year-End Book/Adjusted Carrying Value | Current Quarter Book/Adjusted Carrying Value |
| 14.21 Bonds .....   | \$ 0  | \$   |
| 14.22 Preferred Stock .....   | \$ 0  | \$   |
| 14.23 Common Stock .....  | \$ 0  | \$   |
| 14.24 Short-Term Investments .....  | \$ 0  | \$   |
| 14.25 Mortgage Loans on Real Estate .....   | \$ 0  | \$   |
| 14.26 All Other .....   | \$ 0  | \$   |
| 14.27 Total Investment in Parent, Subsidiaries and Affiliates (Subtotal Lines 14.21 to 14.26) ..... | \$ 0  | \$ 0   |
| 14.28 Total Investment in Parent included in Lines 14.21 to 14.26 above .....                       | \$  | \$   |
- 15.1

Has the reporting entity entered into any hedging transactions reported on Schedule DB? .....

Yes [ ] No [ X ]
- 15.2

If yes, has a comprehensive description of the hedging program been made available to the domiciliary state? .....  
If no, attach a description with this statement.

Yes [ ] No [ ] N/A [ X ]
16.

For the reporting entity's security lending program, state the amount of the following as of the current statement date:
- 16.1

Total fair value of reinvested collateral assets reported on Schedule DL, Parts 1 and 2. ....

\$ 0
- 16.2

Total book adjusted/carrying value of reinvested collateral assets reported on Schedule DL, Parts 1 and 2 .....

\$ 0
- 16.3

Total payable for securities lending reported on the liability page. ....

\$ 0

STATEMENT AS OF MARCH 31, 2021 OF THE MedMutual Life Insurance Company

GENERAL INTERROGATORIES

17. Excluding items in Schedule E - Part 3 - Special Deposits, real estate, mortgage loans and investments held physically in the reporting entity's offices, vaults or safety deposit boxes, were all stocks, bonds and other securities, owned throughout the current year held pursuant to a custodial agreement with a qualified bank or trust company in accordance with Section 1, III - General Examination Considerations, F. Outsourcing of Critical Functions, Custodial or Safekeeping Agreements of the NAIC Financial Condition Examiners Handbook? ..... Yes [ X ] No [ ]
- 17.1 For all agreements that comply with the requirements of the NAIC Financial Condition Examiners Handbook, complete the following:

1 Name of Custodian(s)	2 Custodian Address
FIFTH THIRD BANK .....	5050 KINGSLEY DRIVE, CINCINNATI, OHIO 45263 .....
.....	.....

- 17.2 For all agreements that do not comply with the requirements of the NAIC Financial Condition Examiners Handbook, provide the name, location and a complete explanation:

1 Name(s)	2 Location(s)	3 Complete Explanation(s)
.....	.....	.....
.....	.....	.....

- 17.3 Have there been any changes, including name changes, in the custodian(s) identified in 17.1 during the current quarter? ..... Yes [ ] No [ X ]

- 17.4 If yes, give full information relating thereto:

1 Old Custodian	2 New Custodian	3 Date of Change	4 Reason
.....	.....	.....	.....
.....	.....	.....	.....

- 17.5 Investment management – Identify all investment advisors, investment managers, broker/dealers, including individuals that have the authority to make investment decisions on behalf of the reporting entity. For assets that are managed internally by employees of the reporting entity, note as such. ["...that have access to the investment accounts"; "...handle securities"]

1 Name of Firm or Individual	2 Affiliation
JAMES CELLURA .....	I.....
.....	.....
.....	.....

- 17.5097 For those firms/individuals listed in the table for Question 17.5, do any firms/individuals unaffiliated with the reporting entity (i.e. designated with a "U") manage more than 10% of the reporting entity's invested assets?..... Yes [ ] No [ X ]

- 17.5098 For firms/individuals unaffiliated with the reporting entity (i.e. designated with a "U") listed in the table for Question 17.5, does the total assets under management aggregate to more than 50% of the reporting entity's invested assets?..... Yes [ ] No [ X ]

- 17.6 For those firms or individuals listed in the table for 17.5 with an affiliation code of "A" (affiliated) or "U" (unaffiliated), provide the information for the table below.

1 Central Registration Depository Number	2 Name of Firm or Individual	3 Legal Entity Identifier (LEI)	4 Registered With	5 Investment Management Agreement (IMA) Filed
.....	.....	.....	.....	.....
.....	.....	.....	.....	.....

- 18.1 Have all the filing requirements of the Purposes and Procedures Manual of the NAIC Investment Analysis Office been followed? ..... Yes [ X ] No [ ]

- 18.2 If no, list exceptions:

19. By self-designating 5GI securities, the reporting entity is certifying the following elements for each self-designated 5GI security:
- a. Documentation necessary to permit a full credit analysis of the security does not exist or an NAIC CRP credit rating for an FE or PL security is not available.
  - b. Issuer or obligor is current on all contracted interest and principal payments.
  - c. The insurer has an actual expectation of ultimate payment of all contracted interest and principal.
- Has the reporting entity self-designated 5GI securities? ..... Yes [ ] No [ X ]

20. By self-designating PLGI securities, the reporting entity is certifying the following elements of each self-designated PLGI security:
- a. The security was purchased prior to January 1, 2018.
  - b. The reporting entity is holding capital commensurate with the NAIC Designation reported for the security.
  - c. The NAIC Designation was derived from the credit rating assigned by an NAIC CRP in its legal capacity as a NRSRO which is shown on a current private letter rating held by the insurer and available for examination by state insurance regulators.
  - d. The reporting entity is not permitted to share this credit rating of the PL security with the SVO.
- Has the reporting entity self-designated PLGI securities? ..... Yes [ ] No [ X ]

21. By assigning FE to a Schedule BA non-registered private fund, the reporting entity is certifying the following elements of each self-designated FE fund:
- a. The shares were purchased prior to January 1, 2019.
  - b. The reporting entity is holding capital commensurate with the NAIC Designation reported for the security.
  - c. The security had a public credit rating(s) with annual surveillance assigned by an NAIC CRP in its legal capacity as an NRSRO prior to January 1, 2019.
  - d. The fund only or predominantly holds bonds in its portfolio.
  - e. The current reported NAIC Designation was derived from the public credit rating(s) with annual surveillance assigned by an NAIC CRP in its legal capacity as an NRSRO.
  - f. The public credit rating(s) with annual surveillance assigned by an NAIC CRP has not lapsed.
- Has the reporting entity assigned FE to Schedule BA non-registered private funds that complied with the above criteria? ..... Yes [ ] No [ X ]



STATEMENT AS OF MARCH 31, 2021 OF THE MedMutual Life Insurance Company

GENERAL INTERROGATORIES

PART 2 - LIFE AND ACCIDENT AND HEALTH COMPANIES/FRATERNAL BENEFIT SOCIETIES

Life and Accident Health Companies/Fraternal Benefit Societies:

1.

Report the statement value of mortgage loans at the end of this reporting period for the following categories:

1

Amount

1.1

Long-Term Mortgages In Good Standing

1.11

Farm Mortgages

\$

1.12

Residential Mortgages

\$

1.13

Commercial Mortgages

\$

1.14

Total Mortgages in Good Standing

\$

0

1.2

Long-Term Mortgages In Good Standing with Restructured Terms

1.21

Total Mortgages in Good Standing with Restructured Terms

\$

1.3

Long-Term Mortgage Loans Upon which Interest is Overdue more than Three Months

1.31

Farm Mortgages

\$

1.32

Residential Mortgages

\$

1.33

Commercial Mortgages

\$

1.34

Total Mortgages with Interest Overdue more than Three Months

\$

0

1.4

Long-Term Mortgage Loans in Process of Foreclosure

1.41

Farm Mortgages

\$

1.42

Residential Mortgages

\$

1.43

Commercial Mortgages

\$

1.44

Total Mortgages in Process of Foreclosure

\$

0

1.5

Total Mortgage Loans (Lines 1.14 + 1.21 + 1.34 + 1.44) (Page 2, Column 3, Lines 3.1 + 3.2)

\$

0

1.6

Long-Term Mortgages Foreclosed, Properties Transferred to Real Estate in Current Quarter

1.61

Farm Mortgages

\$

1.62

Residential Mortgages

\$

1.63

Commercial Mortgages

\$

1.64

Total Mortgages Foreclosed and Transferred to Real Estate

\$

0

2.

Operating Percentages:

2.1

A&H loss percent

.69.420 %

2.2

A&H cost containment percent

0.040 %

2.3

A&H expense percent excluding cost containment expenses

22.830 %

3.1

Do you act as a custodian for health savings accounts?

Yes [ ] No [ X ]

3.2

If yes, please provide the amount of custodial funds held as of the reporting date

\$

3.3

Do you act as an administrator for health savings accounts?

Yes [ ] No [ X ]

3.4

If yes, please provide the balance of the funds administered as of the reporting date

\$

4.

Is the reporting entity licensed or chartered, registered, qualified, eligible or writing business in at least two states?

Yes [ X ] No [ ]

4.1

If no, does the reporting entity assume reinsurance business that covers risks residing in at least one state other than the state of domicile of the reporting entity?

Yes [ ] No [ ]

Fraternal Benefit Societies Only:

5.1

In all cases where the reporting entity has assumed accident and health risks from another company, provisions should be made in this statement on account of such reinsurances for reserve equal to that which the original company would have been required to establish had it retained the risks. Has this been done?

Yes [ ] No [ ] N/A [ X ]

5.2

If no, explain:

6.1

Does the reporting entity have outstanding assessments in the form of liens against policy benefits that have increased surplus?

Yes [ ] No [ ]

6.2

If yes, what is the date(s) of the original lien and the total outstanding balance of liens that remain in surplus?

Date	Outstanding Lien Amount

## SCHEDULE S - CEDED REINSURANCE

[illegible]

STATEMENT AS OF MARCH 31, 2021 OF THE MedMutual Life Insurance Company

**SCHEDULE T - PREMIUMS AND ANNUITY CONSIDERATIONS**

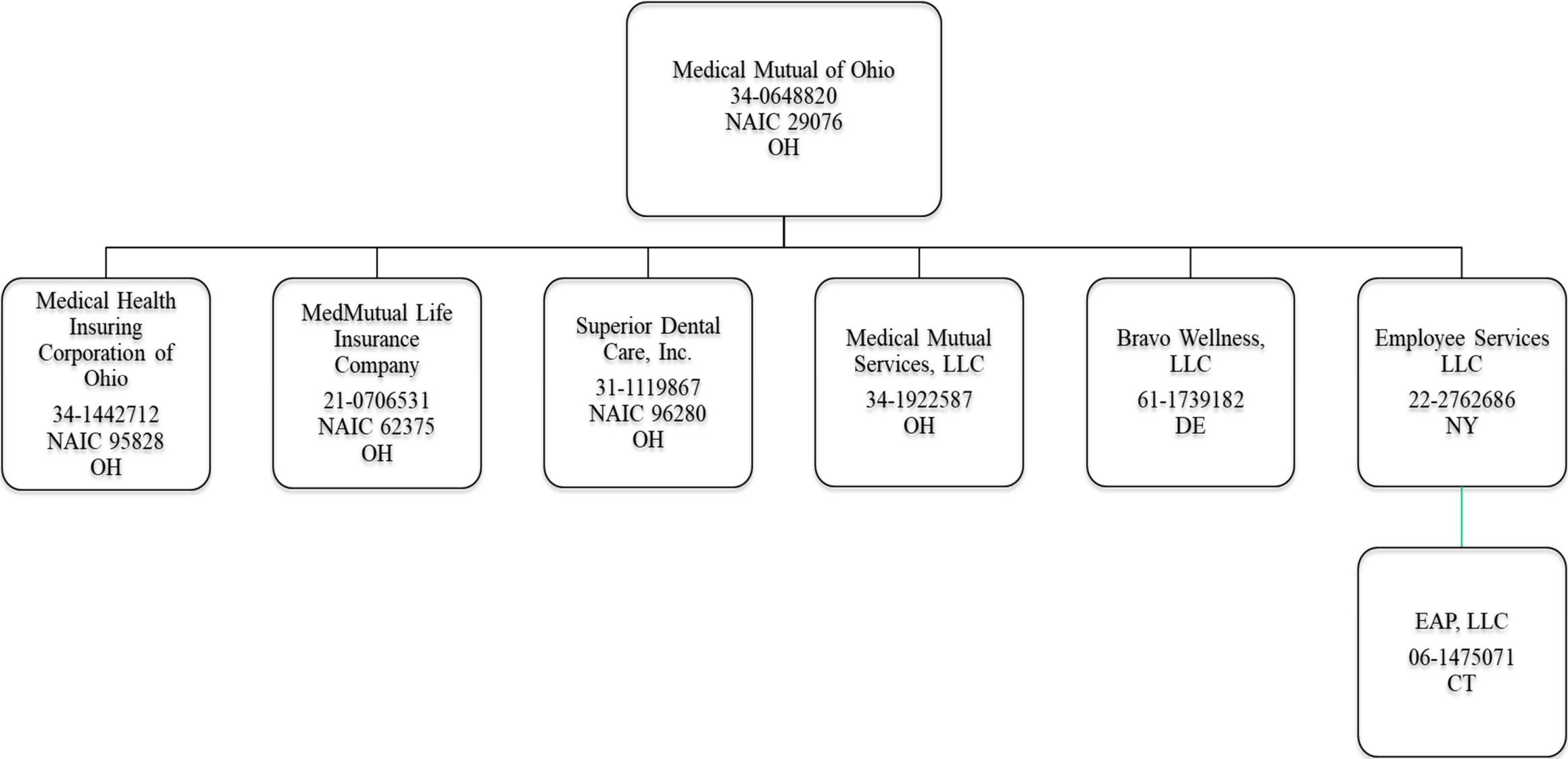
Current Year To Date - Allocated by States and Territories

			1	Direct Business Only					
				Life Contracts		4	5	6	7
				2	3				
			Active Status (a)	Life Insurance Premiums	Annuity Considerations	Accident and Health Insurance Premiums, Including Policy, Membership and Other Fees	Other Considerations	Total Columns 2 Through 5	Deposit-Type Contracts
States, Etc.									
1.	Alabama .....	AL	N					.0	
2.	Alaska .....	AK	N					.0	
3.	Arizona .....	AZ	L					.0	
4.	Arkansas .....	AR	L					.0	
5.	California .....	CA	N					.0	
6.	Colorado .....	CO	L					.0	
7.	Connecticut .....	CT	N					.0	
8.	Delaware .....	DE	L					.0	
9.	District of Columbia .....	DC	L					.0	
10.	Florida .....	FL	N					.0	
11.	Georgia .....	GA	L	5,483		684		6,166	
12.	Hawaii .....	HI	N					.0	
13.	Idaho .....	ID	N					.0	
14.	Illinois .....	IL	L					.0	
15.	Indiana .....	IN	L	4,866		2,433		7,299	
16.	Iowa .....	IA	L					.0	
17.	Kansas .....	KS	L					.0	
18.	Kentucky .....	KY	L					.0	
19.	Louisiana .....	LA	L					.0	
20.	Maine .....	ME	N					.0	
21.	Maryland .....	MD	L					.0	
22.	Massachusetts .....	MA	N					.0	
23.	Michigan .....	MI	L	95,195		10,726		105,922	
24.	Minnesota .....	MN	L					.0	
25.	Mississippi .....	MS	L					.0	
26.	Missouri .....	MO	L					.0	
27.	Montana .....	MT	L					.0	
28.	Nebraska .....	NE	L					.0	
29.	Nevada .....	NV	L					.0	
30.	New Hampshire .....	NH	N					.0	
31.	New Jersey .....	NJ	L					.0	
32.	New Mexico .....	NM	L					.0	
33.	New York .....	NY	N					.0	
34.	North Carolina .....	NC	N					.0	
35.	North Dakota .....	ND	L					.0	
36.	Ohio .....	OH	L	9,476,475		2,582,888		12,059,364	
37.	Oklahoma .....	OK	L					.0	
38.	Oregon .....	OR	L					.0	
39.	Pennsylvania .....	PA	L	96		93		189	
40.	Rhode Island .....	RI	N					.0	
41.	South Carolina .....	SC	L	7,287				7,287	
42.	South Dakota .....	SD	L					.0	
43.	Tennessee .....	TN	N					.0	
44.	Texas .....	TX	L					.0	
45.	Utah .....	UT	L					.0	
46.	Vermont .....	VT	N					.0	
47.	Virginia .....	VA	L					.0	
48.	Washington .....	WA	N					.0	
49.	West Virginia .....	WV	L	246				246	
50.	Wisconsin .....	WI	L					.0	
51.	Wyoming .....	WY	L					.0	
52.	American Samoa .....	AS	N					.0	
53.	Guam .....	GU	N					.0	
54.	Puerto Rico .....	PR	N					.0	
55.	U.S. Virgin Islands .....	VI	N					.0	
56.	Northern Mariana Islands .....	MP	N					.0	
57.	Canada .....	CAN	N					.0	
58.	Aggregate Other Aliens .....	OT	XXX	0	0	0	0	0	0
59.	Subtotal .....	XXX		9,589,648	0	2,596,824	0	12,186,472	0
90.	Reporting entity contributions for employee benefits plans .....	XXX						.0	
91.	Dividends or refunds applied to purchase paid-up additions and annuities .....	XXX						.0	
92.	Dividends or refunds applied to shorten endowment or premium paying period .....	XXX						.0	
93.	Premium or annuity considerations waived under disability or other contract provisions .....	XXX						.0	
94.	Aggregate or other amounts not allocable by State .....	XXX		0	0	0	0	0	0
95.	Totals (Direct Business) .....	XXX		9,589,648	0	2,596,824	0	12,186,472	0
96.	Plus Reinsurance Assumed .....	XXX						.0	
97.	Totals (All Business) .....	XXX		9,589,648	0	2,596,824	0	12,186,472	0
98.	Less Reinsurance Ceded .....	XXX		1,350,484		793,860		2,144,343	
99.	Totals (All Business) less Reinsurance Ceded .....	XXX		8,239,164	0	1,802,965	0	10,042,129	0
DETAILS OF WRITE-INS									
58001.	.....	XXX							
58002.	.....	XXX							
58003.	.....	XXX							
58998.	Summary of remaining write-ins for Line 58 from overflow page .....	XXX		0	0	0	0	0	0
58999.	Totals (Lines 58001 through 58003 plus 58998)(Line 58 above) .....	XXX		0	0	0	0	0	0
9401.	.....	XXX							
9402.	.....	XXX							
9403.	.....	XXX							
9498.	Summary of remaining write-ins for Line 94 from overflow page .....	XXX		0	0	0	0	0	0
9499.	Totals (Lines 9401 through 9403 plus 9498)(Line 94 above) .....	XXX		0	0	0	0	0	0

(a) Active Status Counts:

L - Licensed or Chartered - Licensed Insurance carrier or domiciled RRG .....	35	R - Registered - Non-domiciled RRGs .....	0
E - Eligible - Reporting entities eligible or approved to write surplus lines in the state .....	0	Q - Qualified - Qualified or accredited reinsurer. ....	0
N - None of the above - Not allowed to write business in the state .....	22		

12



## STATEMENT AS OF MARCH 31, 2021 OF THE MedMutual Life Insurance Company

## SCHEDULE Y

## PART 1A - DETAIL OF INSURANCE HOLDING COMPANY SYSTEM

[illegible]

# NONE

Asterisk
NONE

STATEMENT AS OF MARCH 31, 2021 OF THE MedMutual Life Insurance Company

SUPPLEMENTAL EXHIBITS AND SCHEDULES INTERROGATORIES

The following supplemental reports are required to be filed as part of your statement filing. However, in the event that your company does not transact the type of business for which the special report must be filed, your response of NO to the specific interrogatory will be accepted in lieu of filing a "NONE" report and a bar code will be printed below. If the supplement is required of your company but is not being filed for whatever reason enter SEE EXPLANATION and provide an explanation following the interrogatory questions.

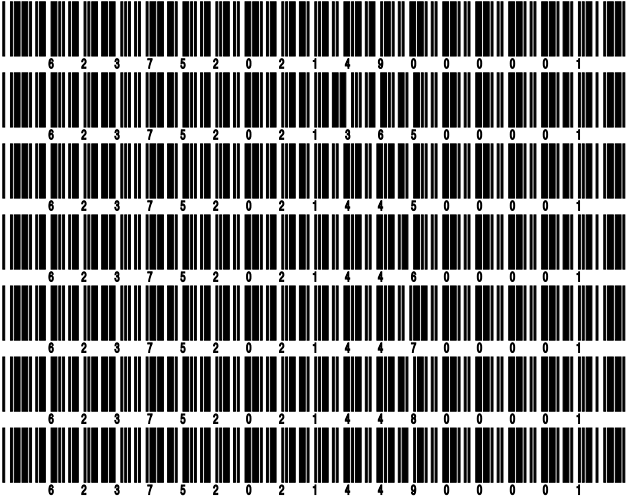
	Response
1. Will the Trusteed Surplus Statement be filed with the state of domicile and the NAIC with this statement? .....	NO
2. Will the Medicare Part D Coverage Supplement be filed with the state of domicile and the NAIC with this statement? .....	NO
3. Will the Reasonableness of Assumptions Certification required by Actuarial Guideline XXXV be filed with the state of domicile and electronically with the NAIC? .....	NO
4. Will the Reasonableness and Consistency of Assumptions Certification required by Actuarial Guideline XXXV be filed with the state of domicile and electronically with the NAIC? .....	NO
5. Will the Reasonableness of Assumptions Certification for Implied Guaranteed Rate Method required by Actuarial Guideline XXXVI be filed with the state of domicile and electronically with the NAIC? .....	NO
6. Will the Reasonableness and Consistency of Assumptions Certification required by Actuarial Guideline XXXVI (Updated Average Market Value) be filed with the state of domicile and electronically with the NAIC? .....	NO
7. Will the Reasonableness and Consistency of Assumptions Certification required by Actuarial Guideline XXXVI (Updated Market Value) be filed with the state of domicile and electronically with the NAIC? .....	NO
8. Will the Life PBR Statement of Exemption be filed with the state of domicile by July 1st and electronically with the NAIC with the second quarterly filing per the Valuation Manual (by August 15)? (2nd Quarter Only) The response for 1st and 3rd quarters should be N/A. A NO response resulting with a bar code is only appropriate in the 2nd quarter. ....	N/A

Explanation:

1. The data for this supplement is not required to be filed
2. The data for this supplement is not required to be filed
3. The data for this supplement is not required to be filed
4. The data for this supplement is not required to be filed
5. The data for this supplement is not required to be filed
6. The data for this supplement is not required to be filed
7. The data for this supplement is not required to be filed

Bar Code:

1. Trusteed Surplus Statement [Document Identifier 490]
2. Medicare Part D Coverage Supplement [Document Identifier 365]
3. Reasonableness of Assumptions Certification required by Actuarial Guideline XXXV [Document Identifier 445]
4. Reasonableness and Consistency of Assumptions Certification required by Actuarial Guideline XXXV [Document Identifier 446]
5. Reasonableness of Assumptions Certification for Implied Guaranteed Rate Method required by Actuarial Guideline XXXVI [Document Identifier 447]
6. Reasonableness and Consistency of Assumptions Certification required by Actuarial Guideline XXXVI [Document Identifier 448]
7. Reasonableness and Consistency of Assumptions Certification required by Actuarial Guideline XXXVI (Updated Market Value) [Document Identifier 449]



STATEMENT AS OF MARCH 31, 2021 OF THE MedMutual Life Insurance Company

OVERFLOW PAGE FOR WRITE-INS

Additional Write-ins for Assets Line 25

		Current Statement Date			4 December 31 Prior Year Net Admitted Assets
		1 Assets	2 Nonadmitted Assets	3 Net Admitted Assets (Cols. 1 - 2)	
2504.	Other Assets .....	13,952		13,952	19,507
2597.	Summary of remaining write-ins for Line 25 from overflow page	13,952	0	13,952	19,507

SCHEDULE A - VERIFICATION

Real Estate

	1	2
	Year to Date	Prior Year Ended December 31
1. Book/adjusted carrying value, December 31 of prior year .....		
2. Cost of acquired:		
2.1 Actual cost at time of acquisition .....		
2.2 Additional investment made after acquisition .....		
3. Current year change in encumbrances .....		
4. Total gain (loss) on disposals .....		
5. Deduct amounts received on disposals .....		
6. Total foreign exchange change in book/adjusted carrying value .....		
7. Deduct current year's other than temporary impairment recognized .....		
8. Deduct current year's depreciation .....		
9. Book/adjusted carrying value at the end of current period (Lines 1+2+3+4-5+6-7-8) .....		
10. Deduct total nonadmitted amounts .....		
11. Statement value at end of current period (Line 9 minus Line 10) .....		

SCHEDULE B - VERIFICATION

Mortgage Loans

	1	2
	Year to Date	Prior Year Ended December 31
1. Book value/recorded investment excluding accrued interest, December 31 of prior year .....		
2. Cost of acquired:		
2.1 Actual cost at time of acquisition .....		
2.2 Additional investment made after acquisition .....		
3. Capitalized deferred interest and other .....		
4. Accrual of discount .....		
5. Unrealized valuation increase (decrease) .....		
6. Total gain (loss) on disposals .....		
7. Deduct amounts received on disposals .....		
8. Deduct amortization of premium and mortgage interest paid and commitment fees .....		
9. Total foreign exchange change in book value/recorded investment excluding accrued interest .....		
10. Deduct current year's other than temporary impairment recognized .....		
11. Book value/recorded investment excluding accrued interest at end of current period (Lines 1+2+3+4+5+6-7-8+9-10) .....		
12. Total valuation allowance .....		
13. Subtotal (Line 11 plus Line 12) .....		
14. Deduct total nonadmitted amounts .....		
15. Statement value at end of current period (Line 13 minus Line 14) .....		

SCHEDULE BA - VERIFICATION

Other Long-Term Invested Assets

	1	2
	Year to Date	Prior Year Ended December 31
1. Book/adjusted carrying value, December 31 of prior year .....		
2. Cost of acquired:		
2.1 Actual cost at time of acquisition .....		
2.2 Additional investment made after acquisition .....		
3. Capitalized deferred interest and other .....		
4. Accrual of discount .....		
5. Unrealized valuation increase (decrease) .....		
6. Total gain (loss) on disposals .....		
7. Deduct amounts received on disposals .....		
8. Deduct amortization of premium and depreciation .....		
9. Total foreign exchange change in book/adjusted carrying value .....		
10. Deduct current year's other than temporary impairment recognized .....		
11. Book/adjusted carrying value at end of current period (Lines 1+2+3+4+5+6-7-8+9-10) .....		
12. Deduct total nonadmitted amounts .....		
13. Statement value at end of current period (Line 11 minus Line 12) .....		

SCHEDULE D - VERIFICATION

Bonds and Stocks

	1	2
	Year to Date	Prior Year Ended December 31
1. Book/adjusted carrying value of bonds and stocks, December 31 of prior year .....	29,865,372	29,577,088
2. Cost of bonds and stocks acquired .....	2,833,255	12,133,880
3. Accrual of discount .....	2,799	17,972
4. Unrealized valuation increase (decrease) .....	0	0
5. Total gain (loss) on disposals .....	0	16,970
6. Deduct consideration for bonds and stocks disposed of .....	2,500,000	11,800,000
7. Deduct amortization of premium .....	30,023	80,538
8. Total foreign exchange change in book/adjusted carrying value .....	0	0
9. Deduct current year's other than temporary impairment recognized .....	0	0
10. Total investment income recognized as a result of prepayment penalties and/or acceleration fees .....	0	0
11. Book/adjusted carrying value at end of current period (Lines 1+2+3+4+5-6-7+8-9+10) .....	30,171,403	29,865,372
12. Deduct total nonadmitted amounts .....	0	0
13. Statement value at end of current period (Line 11 minus Line 12) .....	30,171,403	29,865,372



SCHEDULE D - PART 1B

Showing the Acquisitions, Dispositions and Non-Trading Activity  
During the Current Quarter for all Bonds and Preferred Stock by NAIC Designation

NAIC Designation	1 Book/Adjusted Carrying Value Beginning of Current Quarter	2 Acquisitions During Current Quarter	3 Dispositions During Current Quarter	4 Non-Trading Activity During Current Quarter	5 Book/Adjusted Carrying Value End of First Quarter	6 Book/Adjusted Carrying Value End of Second Quarter	7 Book/Adjusted Carrying Value End of Third Quarter	8 Book/Adjusted Carrying Value December 31 Prior Year
BONDS								
1. NAIC 1 (a) .....	29,865,372	2,833,255	2,500,000	(27,224)	30,171,403	0	0	29,865,372
2. NAIC 2 (a) .....	0	0	0	0	0	0	0	0
3. NAIC 3 (a) .....	0	0	0	0	0	0	0	0
4. NAIC 4 (a) .....	0	0	0	0	0	0	0	0
5. NAIC 5 (a) .....	0	0	0	0	0	0	0	0
6. NAIC 6 (a) .....	0	0	0	0	0	0	0	0
7. Total Bonds	29,865,372	2,833,255	2,500,000	(27,224)	30,171,403	0	0	29,865,372
PREFERRED STOCK								
8. NAIC 1 .....	0	0	0	0	0	0	0	0
9. NAIC 2 .....	0	0	0	0	0	0	0	0
10. NAIC 3 .....	0	0	0	0	0	0	0	0
11. NAIC 4 .....	0	0	0	0	0	0	0	0
12. NAIC 5 .....	0	0	0	0	0	0	0	0
13. NAIC 6 .....	0	0	0	0	0	0	0	0
14. Total Preferred Stock .....	0	0	0	0	0	0	0	0
15. Total Bonds and Preferred Stock	29,865,372	2,833,255	2,500,000	(27,224)	30,171,403	0	0	29,865,372

(a) Book/Adjusted Carrying Value column for the end of the current reporting period includes the following amount of short-term and cash equivalent bonds by NAIC designation:  
NAIC 1 \$ ..... ; NAIC 2 \$ ..... ; NAIC 3 \$ ..... NAIC 4 \$ ..... ; NAIC 5 \$ ..... ; NAIC 6 \$ .....

Schedule DA - Part 1 - Short-Term Investments

**N O N E**

Schedule DA - Verification - Short-Term Investments

**N O N E**

Schedule DB - Part A - Verification - Options, Caps, Floors, Collars, Swaps and Forwards

**N O N E**

Schedule DB - Part B - Verification - Futures Contracts

**N O N E**

Schedule DB - Part C - Section 1 - Replication (Synthetic Asset) Transactions (RSATs) Open

**N O N E**

Schedule DB-Part C-Section 2-Reconciliation of Replication (Synthetic Asset) Transactions Open

**N O N E**

Schedule DB - Verification - Book/Adjusted Carrying Value, Fair Value and Potential Exposure of  
Derivatives

**N O N E**

SCHEDULE E - PART 2 - VERIFICATION

(Cash Equivalents)

	1	2
	Year To Date	Prior Year Ended December 31
1. Book/adjusted carrying value, December 31 of prior year .....	9,125,841	12,679,189
2. Cost of cash equivalents acquired .....		6,175,028
3. Accrual of discount .....		0
4. Unrealized valuation increase (decrease) .....		0
5. Total gain (loss) on disposals .....		0
6. Deduct consideration received on disposals .....	2,505,001	9,728,376
7. Deduct amortization of premium .....		0
8. Total foreign exchange change in book/adjusted carrying value .....		0
9. Deduct current year's other than temporary impairment recognized .....		0
10. Book/adjusted carrying value at end of current period (Lines 1+2+3+4+5-6-7+8-9) .....	6,620,840	9,125,841
11. Deduct total nonadmitted amounts .....		0
12. Statement value at end of current period (Line 10 minus Line 11)	6,620,840	9,125,841

Schedule A - Part 2 - Real Estate Acquired and Additions Made

**N O N E**

Schedule A - Part 3 - Real Estate Disposed

**N O N E**

Schedule B - Part 2 - Mortgage Loans Acquired and Additions Made

**N O N E**

Schedule B - Part 3 - Mortgage Loans Disposed, Transferred or Repaid

**N O N E**

Schedule BA - Part 2 - Other Long-Term Invested Assets Acquired and Additions Made

**N O N E**

Schedule BA - Part 3 - Other Long-Term Invested Assets Disposed, Transferred or Repaid

**N O N E**

## STATEMENT AS OF MARCH 31, 2021 OF THE MedMutual Life Insurance Company

## SCHEDULE D - PART 3

Show All Long-Term Bonds and Stock Acquired During the Current Quarter

[illegible]

STATEMENT AS OF MARCH 31, 2021 OF THE MedMutual Life Insurance Company

## SCHEDULE D - PART 4

Show All Long-Term Bonds and Stock Sold, Redeemed or Otherwise Disposed of During the Current Quarter

1	2	3	4	5	6	7	8	9	10	Change In Book/Adjusted Carrying Value					16	17	18	19	20	21	22
										11	12	13	14	15							
CUSIP Identification	Description	Foreign	Disposal Date	Name of Purchaser	Number of Shares of Stock	Consideration	Par Value	Actual Cost	Prior Year Book/ Adjusted Carrying Value	Unrealized Valuation Increase/(Decrease)	Current Year's (Amortization)/ Accretion	Current Year's Other Than Temporary Impairment Recognized	Total Change in Book/ Adjusted Carrying Value (11 + 12 - 13)	Total Foreign Exchange Change in Book /Adjusted Carrying Value	Book/ Adjusted Carrying Value at Disposal Date	Foreign Exchange Gain (Loss) on Disposal	Realized Gain (Loss) on Disposal	Total Gain (Loss) on Disposal	Bond Interest/ Stock Dividends Received During Year	Stated Contractual Maturity Date	NAIC Designation, NAIC Designation Modifier and SVO Administrative Symbol
.912828-30-1	US TREASURY NOTES		.01/15/2021	MATURITY		2,500,000	2,500,000	2,482,031	2,499,760	0	240	0	240	0	2,500,000	0	0	0	25,000	.01/15/2021	1.A
05999999.	Subtotal - Bonds - U.S. Governments					2,500,000	2,500,000	2,482,031	2,499,760	0	240	0	240	0	2,500,000	0	0	0	25,000	XXX	XXX
83999997.	Total - Bonds - Part 4					2,500,000	2,500,000	2,482,031	2,499,760	0	240	0	240	0	2,500,000	0	0	0	25,000	XXX	XXX
83999998.	Total - Bonds - Part 5					XXX	XXX	XXX	XXX	XXX	XXX	XXX	XXX	XXX	XXX	XXX	XXX	XXX	XXX	XXX	XXX
83999999.	Total - Bonds					2,500,000	2,500,000	2,482,031	2,499,760	0	240	0	240	0	2,500,000	0	0	0	25,000	XXX	XXX
89999997.	Total - Preferred Stocks - Part 4					0	XXX	0	0	0	0	0	0	0	0	0	0	0	0	XXX	XXX
89999998.	Total - Preferred Stocks - Part 5					XXX	XXX	XXX	XXX	XXX	XXX	XXX	XXX	XXX	XXX	XXX	XXX	XXX	XXX	XXX	XXX
89999999.	Total - Preferred Stocks					0	XXX	0	0	0	0	0	0	0	0	0	0	0	0	XXX	XXX
97999997.	Total - Common Stocks - Part 4					0	XXX	0	0	0	0	0	0	0	0	0	0	0	0	XXX	XXX
97999998.	Total - Common Stocks - Part 5					XXX	XXX	XXX	XXX	XXX	XXX	XXX	XXX	XXX	XXX	XXX	XXX	XXX	XXX	XXX	XXX
97999999.	Total - Common Stocks					0	XXX	0	0	0	0	0	0	0	0	0	0	0	0	XXX	XXX
98999999.	Total - Preferred and Common Stocks					0	XXX	0	0	0	0	0	0	0	0	0	0	0	0	XXX	XXX
99999999.	Totals					2,500,000	XXX	2,482,031	2,499,760	0	240	0	240	0	2,500,000	0	0	0	25,000	XXX	XXX

Schedule DB - Part A - Section 1 - Options, Caps, Floors, Collars, Swaps and Forwards Open

**N O N E**

Schedule DB - Part B - Section 1 - Futures Contracts Open

**N O N E**

Schedule DB - Part B - Section 1B - Brokers with whom cash deposits have been made

**N O N E**

Schedule DB - Part D - Section 1 - Counterparty Exposure for Derivative Instruments Open

**N O N E**

Schedule DB - Part D-Section 2 - Collateral for Derivative Instruments Open - Pledged By

**N O N E**

Schedule DB - Part D-Section 2 - Collateral for Derivative Instruments Open - Pledged To

**N O N E**

Schedule DB - Part E - Derivatives Hedging Variable Annuity Guarantees

**N O N E**

Schedule DL - Part 1 - Reinvested Collateral Assets Owned

**N O N E**

Schedule DL - Part 2 - Reinvested Collateral Assets Owned

**N O N E**

SCHEDULE E - PART 1 - CASH

Month End Depository Balances

1	2	3	4	5	Book Balance at End of Each Month During Current Quarter			9
					6	7	8	
					First Month	Second Month	Third Month	
Depository	Code	Rate of Interest	Amount of Interest Received During Current Quarter	Amount of Interest Accrued at Current Statement Date				*
FIFTH THIRD BANK ..... CINCINNATI, OHIO .....					(832,829)	(379,795)	1,506,233	XXX
HUNTINGTON BANK ..... CLEVELAND, OHIO .....					486,814	492,321	500,151	XXX
0199998. Deposits in ... depositories that do not exceed the allowable limit in any one depository (See instructions) - Open Depositories	XXX	XXX						XXX
0199999. Totals - Open Depositories	XXX	XXX	0	0	(346,015)	112,526	2,006,384	XXX
0299998. Deposits in ... depositories that do not exceed the allowable limit in any one depository (See instructions) - Suspended Depositories	XXX	XXX						XXX
0299999. Totals - Suspended Depositories	XXX	XXX	0	0	0	0	0	XXX
0399999. Total Cash on Deposit	XXX	XXX	0	0	(346,015)	112,526	2,006,384	XXX
0499999. Cash in Company's Office	XXX	XXX	XXX	XXX				XXX
0599999. Total - Cash	XXX	XXX	0	0	(346,015)	112,526	2,006,384	XXX



## SCHEDULE E - PART 2 - CASH EQUIVALENTS

[illegible]