



PROPERTY AND CASUALTY COMPANIES - ASSOCIATION EDITION

QUARTERLY STATEMENT

AS OF MARCH 31, 2021

OF THE CONDITION AND AFFAIRS OF THE

OHIO BAR LIAB INS CO

NAIC Group Code00000000NAIC Company Code37176Employer's ID Number31-0947214

(Current)(Prior)

Organized under the Laws ofOhio, State of Domicile or Port of EntryOH

Country of DomicileUnited States of America

Incorporated/Organized12/05/1978Commenced Business09/01/1979

Statutory Home Office1650 Lake Shore DriveColumbus, OH, US 43204

(Street and Number)(City or Town, State, Country and Zip Code)

Main Administrative Office1650 Lake Shore DriveColumbus, OH, US 43204614-488-7924

(Street and Number)(City or Town, State, Country and Zip Code)(Area Code) (Telephone Number)

Mail AddressPO Box 2708Columbus, OH, US 43216-2708

(Street and Number or P.O. Box)(City or Town, State, Country and Zip Code)

Primary Location of Books and Records1650 Lake Shore DriveColumbus, OH, US 43204614-488-7924

(Street and Number)(City or Town, State, Country and Zip Code)(Area Code) (Telephone Number)

Internet Website Addresswww.oblic.com

Statutory Statement ContactRodney K. McGough614-488-7924

(Name)(Area Code) (Telephone Number)

rmcgough@oblic.com614-488-7936

(E-mail Address)(FAX Number)

OFFICERS

President & CEOSteven Craig CouchTreasurerDemetries Jo Neely

SecretaryFrederick Hunker

OTHER

John Stephen Stith, Chair of the BoardHeather Gay Sowald, Vice Chair of the Board

DIRECTORS OR TRUSTEES

Mary Amos Augsburger	Michael Edward Flowerss	E. Ann Gabriel
Andrean Renee Horton	Barbara Jean Howard	Ronald Sinclair Kopp
David Hershel Lefton	Mark Kenneth McCown	Demetries Jo Neely
Nancy Michong Pyon	Carmen Vincent Roberto	Douglas Craig Robinette
Heather Gay Sowald	John Stephen Stith	Kathy Ann Stoneman
Robin Geoffrey Weaver	Linde Hurst Webb	

State ofOhioSS:

County of

The officers of this reporting entity being duly sworn, each depose and say that they are the described officers of said reporting entity, and that on the reporting period stated above, all of the herein described assets were the absolute property of the said reporting entity, free and clear from any liens or claims thereon, except as herein stated, and that this statement, together with related exhibits, schedules and explanations therein contained, annexed or referred to, is a full and true statement of all the assets and liabilities and of the condition and affairs of the said reporting entity as of the reporting period stated above, and of its income and deductions therefrom for the period ended, and have been completed in accordance with the NAIC Annual Statement Instructions and Accounting Practices and Procedures manual except to the extent that: (1) state law may differ; or, (2) that state rules or regulations require differences in reporting not related to accounting practices and procedures, according to the best of their information, knowledge and belief, respectively. Furthermore, the scope of this attestation by the described officers also includes the related corresponding electronic filing with the NAIC, when required, that is an exact copy (except for formatting differences due to electronic filing) of the enclosed statement. The electronic filing may be requested by various regulators in lieu of or in addition to the enclosed statement.

Subscribed and sworn to before me this

day of

- a. Is this an original filing? Yes [X] No []
- b. If no,
1. State the amendment number.....
2. Date filed05/17/2021
3. Number of pages attached.....

STATEMENT AS OF MARCH 31, 2021 OF THE OHIO BAR LIAB INS CO

ASSETS

	Current Statement Date			4 December 31 Prior Year Net Admitted Assets
	1 Assets	2 Nonadmitted Assets	3 Net Admitted Assets (Cols. 1 - 2)	
1. Bonds	31,304,793		31,304,793	30,348,362
2. Stocks:				
2.1 Preferred stocks				
2.2 Common stocks	10,417,209		10,417,209	9,832,426
3. Mortgage loans on real estate:				
3.1 First liens				
3.2 Other than first liens				
4. Real estate:				
4.1 Properties occupied by the company (less \$ encumbrances)				
4.2 Properties held for the production of income (less \$ encumbrances)				
4.3 Properties held for sale (less \$ encumbrances)				
5. Cash (\$1,431,232), cash equivalents (\$1,434,175) and short-term investments (\$)	2,865,407		2,865,407	3,221,893
6. Contract loans (including \$ premium notes)				
7. Derivatives				
8. Other invested assets	106,727		106,727	106,727
9. Receivables for securities				
10. Securities lending reinvested collateral assets				
11. Aggregate write-ins for invested assets				
12. Subtotals, cash and invested assets (Lines 1 to 11)	44,694,137		44,694,137	43,509,408
13. Title plants less \$ charged off (for Title insurers only)				
14. Investment income due and accrued	191,423		191,423	205,692
15. Premiums and considerations:				
15.1 Uncollected premiums and agents' balances in the course of collection	2,129,393		2,129,393	1,677,781
15.2 Deferred premiums, agents' balances and installments booked but deferred and not yet due (including \$ earned but unbilled premiums)				
15.3 Accrued retrospective premiums (\$) and contracts subject to redetermination (\$)				
16. Reinsurance:				
16.1 Amounts recoverable from reinsurers	287,673	7,557	280,116	
16.2 Funds held by or deposited with reinsured companies				
16.3 Other amounts receivable under reinsurance contracts				
17. Amounts receivable relating to uninsured plans				
18.1 Current federal and foreign income tax recoverable and interest thereon				175,385
18.2 Net deferred tax asset	124,708		124,708	
19. Guaranty funds receivable or on deposit				
20. Electronic data processing equipment and software	167,255		167,255	167,255
21. Furniture and equipment, including health care delivery assets (\$)	91,968	91,968		
22. Net adjustment in assets and liabilities due to foreign exchange rates				
23. Receivables from parent, subsidiaries and affiliates	132,886		132,886	126,265
24. Health care (\$) and other amounts receivable				
25. Aggregate write-ins for other than invested assets	55,125	6,579	48,546	24,920
26. Total assets excluding Separate Accounts, Segregated Accounts and Protected Cell Accounts (Lines 12 to 25)	47,874,568	106,104	47,768,464	45,886,706
27. From Separate Accounts, Segregated Accounts and Protected Cell Accounts				
28. Total (Lines 26 and 27)	47,874,568	106,104	47,768,464	45,886,706
DETAILS OF WRITE-INS				
1101.				
1102.				
1103.				
1198. Summary of remaining write-ins for Line 11 from overflow page				
1199. Totals (Lines 1101 through 1103 plus 1198)(Line 11 above)				
2501. Prepaid Postage	719		719	720
2502. Deductible Receivable	54,406	6,579	47,827	24,200
2503.				
2598. Summary of remaining write-ins for Line 25 from overflow page				
2599. Totals (Lines 2501 through 2503 plus 2598)(Line 25 above)	55,125	6,579	48,546	24,920

STATEMENT AS OF MARCH 31, 2021 OF THE OHIO BAR LIAB INS CO

LIABILITIES, SURPLUS AND OTHER FUNDS

	1 Current Statement Date	2 December 31, Prior Year
1. Losses (current accident year \$)	5,264,919	5,327,770
2. Reinsurance payable on paid losses and loss adjustment expenses		
3. Loss adjustment expenses	2,727,282	2,626,530
4. Commissions payable, contingent commissions and other similar charges		
5. Other expenses (excluding taxes, licenses and fees)	47,838	80,676
6. Taxes, licenses and fees (excluding federal and foreign income taxes)	2,593	5,080
7.1 Current federal and foreign income taxes (including \$ on realized capital gains (losses))		
7.2 Net deferred tax liability	635,816	527,276
8. Borrowed money \$ and interest thereon \$		
9. Unearned premiums (after deducting unearned premiums for ceded reinsurance of \$ and including warranty reserves of \$ and accrued accident and health experience rating refunds including \$ for medical loss ratio rebate per the Public Health Service Act)	4,006,933	3,440,730
10. Advance premium	179,274	330,337
11. Dividends declared and unpaid:		
11.1 Stockholders		
11.2 Policyholders		
12. Ceded reinsurance premiums payable (net of ceding commissions)	465,799	220,096
13. Funds held by company under reinsurance treaties		
14. Amounts withheld or retained by company for account of others	309,823	290,232
15. Remittances and items not allocated		
16. Provision for reinsurance (including \$ certified)		
17. Net adjustments in assets and liabilities due to foreign exchange rates		
18. Drafts outstanding		
19. Payable to parent, subsidiaries and affiliates	71,609	5,536
20. Derivatives		
21. Payable for securities	414,046	
22. Payable for securities lending		
23. Liability for amounts held under uninsured plans		
24. Capital notes \$ and interest thereon \$		
25. Aggregate write-ins for liabilities		
26. Total liabilities excluding protected cell liabilities (Lines 1 through 25)	14,125,932	12,854,263
27. Protected cell liabilities		
28. Total liabilities (Lines 26 and 27)	14,125,932	12,854,263
29. Aggregate write-ins for special surplus funds		
30. Common capital stock	1,000,000	1,000,000
31. Preferred capital stock		
32. Aggregate write-ins for other than special surplus funds		
33. Surplus notes		
34. Gross paid in and contributed surplus	1,000,000	1,000,000
35. Unassigned funds (surplus)	31,642,532	31,032,443
36. Less treasury stock, at cost:		
36.1 shares common (value included in Line 30 \$)		
36.2 shares preferred (value included in Line 31 \$)		
37. Surplus as regards policyholders (Lines 29 to 35, less 36)	33,642,532	33,032,443
38. Totals (Page 2, Line 28, Col. 3)	47,768,464	45,886,706
DETAILS OF WRITE-INS		
2501.		
2502.		
2503.		
2598. Summary of remaining write-ins for Line 25 from overflow page		
2599. Totals (Lines 2501 through 2503 plus 2598)(Line 25 above)		
2901.		
2902.		
2903.		
2998. Summary of remaining write-ins for Line 29 from overflow page		
2999. Totals (Lines 2901 through 2903 plus 2998)(Line 29 above)		
3201.		
3202.		
3203.		
3298. Summary of remaining write-ins for Line 32 from overflow page		
3299. Totals (Lines 3201 through 3203 plus 3298)(Line 32 above)		

STATEMENT OF INCOME

	1	2	3
	Current Year to Date	Prior Year to Date	Prior Year Ended December 31
UNDERWRITING INCOME			
1. Premiums earned:			
1.1 Direct (written \$ 3,703,405)	2,804,601	2,594,554	10,716,551
1.2 Assumed (written \$)			
1.3 Ceded (written \$ 1,179,868)	847,267	714,617	2,970,737
1.4 Net (written \$ 2,523,537)	1,957,334	1,879,937	7,745,814
DEDUCTIONS:			
2. Losses incurred (current accident year \$)::			
2.1 Direct	572,774	251,797	1,611,827
2.2 Assumed			
2.3 Ceded	(152,664)	(20,343)	225,142
2.4 Net	725,438	272,140	1,386,685
3. Loss adjustment expenses incurred	676,081	707,394	2,184,864
4. Other underwriting expenses incurred	525,143	524,082	2,315,615
5. Aggregate write-ins for underwriting deductions			
6. Total underwriting deductions (Lines 2 through 5)	1,926,662	1,503,616	5,887,164
7. Net income of protected cells			
8. Net underwriting gain or (loss) (Line 1 minus Line 6 + Line 7)	30,672	376,321	1,858,650
INVESTMENT INCOME			
9. Net investment income earned	125,861	227,422	714,916
10. Net realized capital gains (losses) less capital gains tax of \$ 3,295	12,396	1,264	(7,559)
11. Net investment gain (loss) (Lines 9 + 10)	138,257	228,686	707,357
OTHER INCOME			
12. Net gain or (loss) from agents' or premium balances charged off (amount recovered \$ amount charged off \$)			
13. Finance and service charges not included in premiums	6,800	11,645	30,582
14. Aggregate write-ins for miscellaneous income			(725)
15. Total other income (Lines 12 through 14)	6,800	11,645	29,857
16. Net income before dividends to policyholders, after capital gains tax and before all other federal and foreign income taxes (Lines 8 + 11 + 15)	175,729	616,652	2,595,864
17. Dividends to policyholders			
18. Net income, after dividends to policyholders, after capital gains tax and before all other federal and foreign income taxes (Line 16 minus Line 17)	175,729	616,652	2,595,864
19. Federal and foreign income taxes incurred	47,382	124,702	576,883
20. Net income (Line 18 minus Line 19)(to Line 22)	128,347	491,950	2,018,981
CAPITAL AND SURPLUS ACCOUNT			
21. Surplus as regards policyholders, December 31 prior year	33,032,443	31,062,966	31,062,966
22. Net income (from Line 20)	128,347	491,950	2,018,981
23. Net transfers (to) from Protected Cell accounts			
24. Change in net unrealized capital gains (losses) less capital gains tax of \$ 122,804	443,890	(1,474,938)	692,253
25. Change in net unrealized foreign exchange capital gain (loss)			
26. Change in net deferred income tax	14,264	2,011	46,621
27. Change in nonadmitted assets	23,588	32,711	41,622
28. Change in provision for reinsurance			
29. Change in surplus notes			
30. Surplus (contributed to) withdrawn from protected cells			
31. Cumulative effect of changes in accounting principles			
32. Capital changes:			
32.1 Paid in			
32.2 Transferred from surplus (Stock Dividend)			
32.3 Transferred to surplus			
33. Surplus adjustments:			
33.1 Paid in			
33.2 Transferred to capital (Stock Dividend)			
33.3 Transferred from capital			
34. Net remittances from or (to) Home Office			
35. Dividends to stockholders			(830,000)
36. Change in treasury stock			
37. Aggregate write-ins for gains and losses in surplus			
38. Change in surplus as regards policyholders (Lines 22 through 37)	610,089	(948,266)	1,969,477
39. Surplus as regards policyholders, as of statement date (Lines 21 plus 38)	33,642,532	30,114,700	33,032,443
DETAILS OF WRITE-INS			
0501.			
0502.			
0503.			
0598. Summary of remaining write-ins for Line 5 from overflow page			
0599. Totals (Lines 0501 through 0503 plus 0598)(Line 5 above)			
1401. Miscellaneous Write off			(725)
1402.			
1403.			
1498. Summary of remaining write-ins for Line 14 from overflow page			
1499. Totals (Lines 1401 through 1403 plus 1498)(Line 14 above)			(725)
3701.			
3702.			
3703.			
3798. Summary of remaining write-ins for Line 37 from overflow page			
3799. Totals (Lines 3701 through 3703 plus 3798)(Line 37 above)			

STATEMENT AS OF MARCH 31, 2021 OF THE OHIO BAR LIAB INS CO

CASH FLOW

	1 Current Year To Date	2 Prior Year To Date	3 Prior Year Ended December 31
Cash from Operations			
1. Premiums collected net of reinsurance	2,166,565	1,891,825	8,067,034
2. Net investment income	234,537	279,178	905,366
3. Miscellaneous income	6,800	11,645	29,857
4. Total (Lines 1 to 3)	2,407,902	2,182,648	9,002,257
5. Benefit and loss related payments	1,072,097	545,216	1,041,630
6. Net transfers to Separate Accounts, Segregated Accounts and Protected Cell Accounts			
7. Commissions, expenses paid and aggregate write-ins for deductions	1,102,959	1,181,425	4,379,289
8. Dividends paid to policyholders			
9. Federal and foreign income taxes paid (recovered) net of \$ 3,295 tax on capital gains (losses)			1,017,392
10. Total (Lines 5 through 9)	2,175,056	1,726,641	6,438,311
11. Net cash from operations (Line 4 minus Line 10)	232,846	456,007	2,563,946
Cash from Investments			
12. Proceeds from investments sold, matured or repaid:			
12.1 Bonds	2,239,868	3,037,820	12,392,237
12.2 Stocks	536	1,451	4,233
12.3 Mortgage loans			
12.4 Real estate			
12.5 Other invested assets			
12.6 Net gains or (losses) on cash, cash equivalents and short-term investments		(1,056)	
12.7 Miscellaneous proceeds	414,046	15,353	16,729
12.8 Total investment proceeds (Lines 12.1 to 12.7)	2,654,450	3,053,568	12,413,199
13. Cost of investments acquired (long-term only):			
13.1 Bonds	3,275,892	2,299,496	12,969,652
13.2 Stocks	17,748	24,547	162,817
13.3 Mortgage loans			
13.4 Real estate			
13.5 Other invested assets			
13.6 Miscellaneous applications			
13.7 Total investments acquired (Lines 13.1 to 13.6)	3,293,639	2,324,043	13,132,469
14. Net increase (or decrease) in contract loans and premium notes			
15. Net cash from investments (Line 12.8 minus Line 13.7 and Line 14)	(639,189)	729,525	(719,271)
Cash from Financing and Miscellaneous Sources			
16. Cash provided (applied):			
16.1 Surplus notes, capital notes			
16.2 Capital and paid in surplus, less treasury stock			
16.3 Borrowed funds			
16.4 Net deposits on deposit-type contracts and other insurance liabilities			
16.5 Dividends to stockholders			830,000
16.6 Other cash provided (applied)	49,856	(47,931)	8,558
17. Net cash from financing and miscellaneous sources (Line 16.1 through Line 16.4 minus Line 16.5 plus Line 16.6)	49,856	(47,931)	(821,442)
RECONCILIATION OF CASH, CASH EQUIVALENTS AND SHORT-TERM INVESTMENTS			
18. Net change in cash, cash equivalents and short-term investments (Line 11, plus Lines 15 and 17)	(356,488)	1,137,601	1,023,233
19. Cash, cash equivalents and short-term investments:			
19.1 Beginning of year	3,221,894	2,198,660	2,198,661
19.2 End of period (Line 18 plus Line 19.1)	2,865,407	3,336,261	3,221,894

Note: Supplemental disclosures of cash flow information for non-cash transactions:

--	--	--	--

STATEMENT AS OF MARCH 31, 2021 OF THE OHIO BAR LIAB INS CO

(1) Summary of Significant Accounting Policies

A. Accounting Practices

The accompanying statutory financial statements of Ohio Bar Liability Insurance Company (Company) have been prepared in conformity with accounting practices prescribed or permitted by the National Association of Insurance Commissioners’ (NAIC) and the State of Ohio.

The Ohio Department of Insurance (Department) recognizes only statutory accounting practices (SAP) prescribed or permitted by the Department for determining and reporting the financial condition and results of operations of an insurance company, as well as, determining its solvency under the Ohio Insurance Law. The National Association of Insurance Commissioners’ *Accounting Practices and Procedures* manual (NAIC SAP) has been adopted as a component of prescribed or permitted practices by the State of Ohio. The Company has no statutory accounting practices that differ from NAIC SAP.

	SSAP #	F/S Page	F/S Line #	2021	2020
NET INCOME					
(1) OHIO BAR LIAB INS CO state basis (Page 4, Line 20, Columns 1 & 2)	XXX	XXX	XXX	\$ 128,350	\$ 2,018,980
(2) State Prescribed Practices that increase/decrease NAIC SAP					
(3) State Permitted Practices that increase/decrease NAIC SAP					
(4) NAIC SAP (1 – 2 – 3 = 4)	XXX	XXX	XXX	\$ 128,350	\$ 2,018,980
SURPLUS					
(5) OHIO BAR LIAB INS CO state basis (Page 3, line 37, Columns 1 & 2)	XXX	XXX	XXX	\$ 33,642,532	\$ 33,032,443
(6) State Prescribed Practices that increase/decrease NAIC SAP					
(7) State Permitted Practices that increase/decrease NAIC SAP					
(8) NAIC SAP (5 – 6 – 7 = 8)	XXX	XXX	XXX	\$ 33,642,532	\$ 33,032,443

B. Use of Estimates in Preparation of the Financial Statements - No significant changes.

C. Accounting Policies - No significant changes.

D. Going concern - No significant changes.

(2) Accounting Changes and Corrections of Errors – No significant changes.

(3) Business Combinations and Goodwill - Not applicable.

(4) Discontinued Operations - Not applicable.

(5) Investments

(A - D) - Not applicable.

(E) Dollar Repurchase Agreements and/or Securities Lending Transactions

(3) Collateral Received – Not applicable

(F - Q) - Not applicable.

(R) - Reporting Entity’s Share of Cash Pool by Asset type

Asset Type	Percent Share
(1) Cash	49.95%
(2) Cash Equivalent	50.05%
(3) Short-Term Investments	0.00%
(4) Total	100.00%

(6) Joint Ventures, Partnerships, and Limited Liability Companies - Not applicable.

(7) Investment Income - No significant changes.

(8) Derivative Instruments - Not applicable.

(9) Income Taxes - No significant changes.

(10) Information Concerning Parent, Subsidiaries, Affiliates and Other Related Parties

(11) Debt

A. Debt, Including Capital Notes - Not applicable.

B. FHLB (Federal Home Loan Bank) Agreements

(1) Nature of FHLB Agreement

OBLIC is a member stockholder of the FHLB Cincinnati, for March 31, 2021, OBLIC does not have any collateral pledged to the FHLB and therefore our borrowing capacity is \$0.

(2) FHLB Capital Stock

Aggregate Totals

1	Current Year to Date	1	2	3
		Total	General	Protected Cell
		2 + 3	Account	Accounts
	(a) Membership Stock - Class A	\$ -	\$ -	\$ -
	(b) Membership Stock - Class B	67,270	67,270	-
	(c) Activity Stock	-	-	-
	(d) Excess Stock	30	30	-
	(e) Aggregate Total (a+b+c+d)	\$ 67,300	\$ 67,300	\$ -
	(f) Actual or estimated borrowing capacity as determined by the insurer	\$ -	XXX	XXX

2	Prior Year-end	1	2	3
		Total	General	Protected Cell
		2 + 3	Account	Accounts
	(a) Membership Stock - Class A	\$ -	\$ -	\$ -
	(b) Membership Stock - Class B	67,270	67,270	-
	(c) Activity Stock	-	-	-
	(d) Excess Stock	30	30	-
	(e) Aggregate Total (a+b+c+d)	\$ 67,300	\$ 67,300	\$ -
	(f) Actual or estimated borrowing capacity as determined by the insurer	\$ -	XXX	XXX

b.	Membership Stock (Class A and B) Eligible and Not Eligible for Redemption			Eligible For Redemption		
		1	2	3	4	5
(2)b.		Current Year	Not Eligible For	6 Months To Less	1 To Less Than 3	
	Membership Stock	Total (2+3+4+5)	Redemption	Than 1 Year	Years	3 to 5 Years
	1. Class A	\$ -	\$ -	\$ -	\$ -	\$ -
	2. Class B	\$ 67,300	\$ 67,300	\$ -	\$ -	\$ -

11B(2)b1 Current Year to Date Total (Column 1) should equal 11B(2)a1(a) Total (Column 1)

11B(2)b2 Current Year to Date Total (Column 1) should equal 11B(2)a1(b) Total (Column 1)

(12) Retirement Plans, Deferred Compensation, Post-employment Benefits, Compensated Absences and Other Post-Retirement Benefit Plans

A. Defined Benefit Plan - Not applicable.

(B – D) Not applicable.

E. Define Contribution Plans

The Company participates in a qualified defined contribution plan sponsored by the Company. The qualified plan covers all employees of the Company who have completed six months of service. Plan assets are invested with Ascensus Retirement. The investments selected are at the discretion of the employee. The Company funds pension costs at 10% of the employee’s annual compensation. The Company’s expense contributions were \$42,487 and \$144,691 for the years ended March 31, 2021 and December 31, 2020. The Company participates in a non-qualified deferred compensation plan for highly compensated employees. The assets associated in funding this obligation is being held in a Rabbi Trust. The liability for the years ended March 31, 2021 and December 31, 2020 were \$309,823 and \$290,231.

(13) Capital and Surplus, Shareholders’ Dividend Restrictions and Quasi-Reorganizations

(1) The Company has 10,000 shares of \$200 par value common stock authorized and 5000 shares issued and outstanding. The Company has no preferred stock authorized, issued or outstanding.

(2) – (9) - Not applicable

(10) Changes in Unassigned Funds

a. Net income of \$128,348.

(11-13) - Not applicable.

(14) Contingencies

(A) Contingent Commitments

The Company has no commitments or contingent commitments to affiliates or other entities.

(B) Assessments

The Company is subject to guaranty fund and other assessments by the state in which it writes business.

(C- F) - Not applicable.

(D) All Other Contingencies

Various lawsuits have arisen in the ordinary course of the Company’s business. The Company believes that its defenses are meritorious and the eventual outcome of those lawsuits will not have a material effect on the Company’s financial position. Contingent liabilities arising from litigation, income taxes and other matters are not considered material in relation to the financial position of the Company.

- (15) Leases
- (1) The Company leases office space.
- (2) The Company is not involved in non-cancelable lease terms.
- (3) The Company has not entered into any sales and leaseback arrangements.
- (16) Information about Financial Instruments with Off Balance Sheet Risk and Financial Instruments with Concentrations of Credit Risk
- Not applicable.
- (17) Sale, Transfer, and Servicing of Financial Assets and Extinguishment of Liabilities
- (A – B) Not applicable
- (C) Wash Sales - Not applicable.
- (18) Gain or Loss to the Reporting Entity from Uninsured Plans and the Uninsured Portion of Partially Insured Plans - Not applicable.
- (19) Direct Premium Written/Produced by Managing General Agents/Third Party Administrators - Not applicable.
- (20) Fair Value Measurements

Fair value is defined as the price that would be received to sell an asset or paid to transfer a liability in an orderly transaction between market participants at the measurement date. Fair value measurements are based upon observable and unobservable inputs. Observable inputs reflect market data obtained from independent sources while unobservable inputs reflect the Company’s view of market assumptions in the absence of observable market information. The Company utilizes valuation techniques that maximize the use of observable inputs and minimize the use of unobservable inputs. In determining fair value, the Company uses various methods including market, income and cost approaches.

The Company categorizes its assets and liabilities reported at fair value in the quarterly statement into a three-level hierarchy based on the priority of the inputs to the valuation technique. The fair value hierarchy gives the highest priority to quoted prices in active markets for identical assets or liabilities (Level 1) and the lowest priority to unobservable inputs (Level 3). If the inputs used to measure fair value fall within different levels of the hierarchy, the category level is based on the lowest priority level input that is significant to the fair value measurement of the instrument in its entirety.

The fair value hierarchy levels are as follows:

Level 1. Unadjusted quoted prices accessible in active markets for identical assets or liabilities at the measurement date and mutual funds where the value per share (unit) is determined and published daily and is the basis for current transactions.

Level 2. Unadjusted quoted prices for similar assets or liabilities in active markets or inputs (other than quoted prices) that are observable or that are derived principally from or corroborated by observable market data through correlation or other means.

Level 3. Prices or valuation techniques that require inputs that are both unobservable and significant to the overall fair value measurement. Inputs reflect management’s best estimate about the assumptions market participants would use at the measurement date in pricing the asset or liability. Consideration is given to the risk inherent in both the method of valuation and the valuation inputs.

The Company periodically reviews its fair value hierarchy classifications for financial assets and liabilities. Changes in observability of significant valuation inputs identified during these reviews may trigger reclassifications. Reclassifications into/out of the fair value hierarchy levels are reported as transfers at the beginning of the period in which the change occurs.

To determine the fair value of bonds and stocks for which market quotations are available, independent pricing services are most often utilized. For these bonds and stocks, the Company obtains the pricing services’ methodologies, inputs and assumptions and classifies the investments accordingly in the fair value hierarchy.

The following table represents assets and liabilities measured and reported at fair value:

	As of March 31, 2021			
	Level 1	Level 2	Level 3	Total
Assets at fair value				
Assets at fair value:				
Common Stocks, unaffiliated	\$ 8,873,168	\$ -	\$ -	\$ 8,873,168
Total assets at fair value	<u>\$ 8,873,168</u>	<u>\$ -</u>	<u>\$ -</u>	<u>\$ 8,873,168</u>
Liabilities at fair value				
Non Qualified Deferred Comp	\$ 309,823	\$ -	\$ -	\$ 309,823
Total liabilities at fair value	<u>\$ 309,823</u>	<u>\$ -</u>	<u>\$ -</u>	<u>\$ 309,823</u>

Transfers: Level 3 - Not applicable.

- (21) Other Items - Not applicable.
- (22) Events Subsequent - Subsequent events have been considered through March 31, 2021 for these statutory financial statements which are to be issued on May 15, 2021. There were no events occurring subsequent to the end of the quarter that merited recognition or disclosure in these statements.
- (23) Reinsurance
- (A - B) - Not applicable
- (C) Reinsurance Assumed and Ceded

STATEMENT AS OF MARCH 31, 2021 OF THE OHIO BAR LIAB INS CO

1. The following table summarizes ceded and assumed premiums and the related commission equity on March 31, 2021.

(000's) Description	Assumed		Ceded		Assumed Less Ceded	
	Unearned Premiums	Commission Equity	Unearned Premiums	Commission Equity	Unearned Premiums	Commission Equity
A. Affiliates	\$ -	\$ -	\$ -	\$ -	\$ -	\$ -
B. All Others	-	-	1,767,374	256,738	(1,767,374)	(256,738)
C. Totals	\$ -	\$ -	\$ 1,767,374	\$ 256,738	\$ (1,767,374)	\$ (256,738)
D.. Direct Unearned Premium Reserve	\$5,774,307					

(D - J) - Not applicable.

(24) Retrospectively Rated Contracts & Contracts Subject to Redetermination - Not applicable.

(25) Change in Incurred Losses and Loss Adjustment Expenses

A. Change in Incurred Losses and Loss Adjustment Expenses

We continue to see ebbs and flows throughout the legal professional liability lines of insurance. The provisions in the incurred losses and loss adjustment expenses are always challenging to estimate based upon the type of claim and jurisdiction. OBLIC continues to report favorable developments over the years in part due to our claim’s attorney years of experience. There have not been any additional reserves accrued for prior year-effects.

B. Information about Significant Changes in Methodologies and Assumptions

OBLIC continues to use the same methodology for reserving its claims or incidents when reported. There has not been any change in methodologies.

(26) Intercompany Pooling Arrangements - Not applicable.

(27) Structured Settlements - Not applicable.

(28) Health Care Receivables - Not applicable.

(29) Participating Policies - Not applicable.

(30) Premium Deficiency Reserves - No significant changes.

(31) High Deductibles - Not applicable.

(32) Discounting of Liabilities for Unpaid Losses or Unpaid Loss Adjustment Expenses - Not applicable.

(33) Asbestos/Environmental Reserves - Not applicable.

(34) Subscriber Savings Accounts - Not applicable.

(35) Multiple Peril Crop Insurance - Not applicable.

(36) Financial Guaranty Insurance - Not applicable.

STATEMENT AS OF MARCH 31, 2021 OF THE OHIO BAR LIAB INS CO

GENERAL INTERROGATORIES

PART 1 - COMMON INTERROGATORIES

GENERAL

- 1.1

Did the reporting entity experience any material transactions requiring the filing of Disclosure of Material Transactions with the State of Domicile, as required by the Model Act?

Yes [] No [X]
- 1.2

If yes, has the report been filed with the domiciliary state?

Yes [] No []
- 2.1

Has any change been made during the year of this statement in the charter, by-laws, articles of incorporation, or deed of settlement of the reporting entity?

Yes [] No [X]
- 2.2

If yes, date of change:
- 3.1

Is the reporting entity a member of an Insurance Holding Company System consisting of two or more affiliated persons, one or more of which is an insurer?

If yes, complete Schedule Y, Parts 1 and 1A.

Yes [X] No []
- 3.2

Have there been any substantial changes in the organizational chart since the prior quarter end?

Yes [] No [X]
- 3.3

If the response to 3.2 is yes, provide a brief description of those changes.
- 3.4

Is the reporting entity publicly traded or a member of a publicly traded group?

Yes [] No [X]
- 3.5

If the response to 3.4 is yes, provide the CIK (Central Index Key) code issued by the SEC for the entity/group.
- 4.1

Has the reporting entity been a party to a merger or consolidation during the period covered by this statement?

If yes, complete and file the merger history data file with the NAIC.

Yes [] No [X]
- 4.2

If yes, provide the name of the entity, NAIC Company Code, and state of domicile (use two letter state abbreviation) for any entity that has ceased to exist as a result of the merger or consolidation.
- | | | |
|----------------|-------------------|-------------------|
| 1 | 2 | 3 |
| Name of Entity | NAIC Company Code | State of Domicile |
| | | |
5.

If the reporting entity is subject to a management agreement, including third-party administrator(s), managing general agent(s), attorney-in-fact, or similar agreement, have there been any significant changes regarding the terms of the agreement or principals involved?

If yes, attach an explanation.

Yes [] No [] N/A [X]
- 6.1

State as of what date the latest financial examination of the reporting entity was made or is being made.

12/31/2018
- 6.2

State the as of date that the latest financial examination report became available from either the state of domicile or the reporting entity. This date should be the date of the examined balance sheet and not the date the report was completed or released.

12/31/2018
- 6.3

State as of what date the latest financial examination report became available to other states or the public from either the state of domicile or the reporting entity. This is the release date or completion date of the examination report and not the date of the examination (balance sheet date).

04/30/2020
- 6.4

By what department or departments?
The Ohio Department of Insurance
- 6.5

Have all financial statement adjustments within the latest financial examination report been accounted for in a subsequent financial statement filed with Departments?

Yes [] No [] N/A [X]
- 6.6

Have all of the recommendations within the latest financial examination report been complied with?

Yes [X] No [] N/A []
- 7.1

Has this reporting entity had any Certificates of Authority, licenses or registrations (including corporate registration, if applicable) suspended or revoked by any governmental entity during the reporting period?

Yes [] No [X]
- 7.2

If yes, give full information:
- 8.1

Is the company a subsidiary of a bank holding company regulated by the Federal Reserve Board?

Yes [] No [X]
- 8.2

If response to 8.1 is yes, please identify the name of the bank holding company.
- 8.3

Is the company affiliated with one or more banks, thrifts or securities firms?

Yes [] No [X]
- 8.4

If response to 8.3 is yes, please provide below the names and location (city and state of the main office) of any affiliates regulated by a federal regulatory services agency [i.e. the Federal Reserve Board (FRB), the Office of the Comptroller of the Currency (OCC), the Federal Deposit Insurance Corporation (FDIC) and the Securities Exchange Commission (SEC)] and identify the affiliate's primary federal regulator.

1	2	3	4	5	6
Affiliate Name	Location (City, State)	FRB	OCC	FDIC	SEC

STATEMENT AS OF MARCH 31, 2021 OF THE OHIO BAR LIAB INS CO

GENERAL INTERROGATORIES

- 9.1

Are the senior officers (principal executive officer, principal financial officer, principal accounting officer or controller, or persons performing similar functions) of the reporting entity subject to a code of ethics, which includes the following standards?
(a) Honest and ethical conduct, including the ethical handling of actual or apparent conflicts of interest between personal and professional relationships;
(b) Full, fair, accurate, timely and understandable disclosure in the periodic reports required to be filed by the reporting entity;
(c) Compliance with applicable governmental laws, rules and regulations;
(d) The prompt internal reporting of violations to an appropriate person or persons identified in the code; and
(e) Accountability for adherence to the code.

Yes [X] No []
- 9.11

If the response to 9.1 is No, please explain:
- 9.2

Has the code of ethics for senior managers been amended?

Yes [] No [X]
- 9.21

If the response to 9.2 is Yes, provide information related to amendment(s).
- 9.3

Have any provisions of the code of ethics been waived for any of the specified officers?

Yes [] No [X]
- 9.31

If the response to 9.3 is Yes, provide the nature of any waiver(s).

FINANCIAL

- 10.1

Does the reporting entity report any amounts due from parent, subsidiaries or affiliates on Page 2 of this statement?

Yes [X] No []
- 10.2

If yes, indicate any amounts receivable from parent included in the Page 2 amount:

\$

INVESTMENT

- 11.1

Were any of the stocks, bonds, or other assets of the reporting entity loaned, placed under option agreement, or otherwise made available for use by another person? (Exclude securities under securities lending agreements.)

Yes [] No [X]
- 11.2

If yes, give full and complete information relating thereto:
12.

Amount of real estate and mortgages held in other invested assets in Schedule BA:

\$
13.

Amount of real estate and mortgages held in short-term investments:

\$
- 14.1

Does the reporting entity have any investments in parent, subsidiaries and affiliates?

Yes [X] No []
- 14.2

If yes, please complete the following:
- | | 1 | 2 |
|---|---|--|
| | Prior Year-End
Book/Adjusted
Carrying Value | Current Quarter
Book/Adjusted
Carrying Value |
| 14.21 Bonds | \$ | \$ |
| 14.22 Preferred Stock | \$ | \$ |
| 14.23 Common Stock | \$ 1,544,041 | \$ 1,544,041 |
| 14.24 Short-Term Investments | \$ | \$ |
| 14.25 Mortgage Loans on Real Estate | \$ | \$ |
| 14.26 All Other | \$ | \$ |
| 14.27 Total Investment in Parent, Subsidiaries and Affiliates (Subtotal Lines 14.21 to 14.26) | \$ 1,544,041 | \$ 1,544,041 |
| 14.28 Total Investment in Parent included in Lines 14.21 to 14.26 above | \$ | \$ |
- 15.1

Has the reporting entity entered into any hedging transactions reported on Schedule DB?

Yes [] No [X]
- 15.2

If yes, has a comprehensive description of the hedging program been made available to the domiciliary state?
If no, attach a description with this statement.

Yes [] No [] N/A []
16.

For the reporting entity's security lending program, state the amount of the following as of the current statement date:
- 16.1

Total fair value of reinvested collateral assets reported on Schedule DL, Parts 1 and 2.

\$
- 16.2

Total book adjusted/carrying value of reinvested collateral assets reported on Schedule DL, Parts 1 and 2

\$
- 16.3

Total payable for securities lending reported on the liability page.

\$

STATEMENT AS OF MARCH 31, 2021 OF THE OHIO BAR LIAB INS CO

GENERAL INTERROGATORIES

17. Excluding items in Schedule E - Part 3 - Special Deposits, real estate, mortgage loans and investments held physically in the reporting entity's offices, vaults or safety deposit boxes, were all stocks, bonds and other securities, owned throughout the current year held pursuant to a custodial agreement with a qualified bank or trust company in accordance with Section 1, III - General Examination Considerations, F. Outsourcing of Critical Functions, Custodial or Safekeeping Agreements of the NAIC Financial Condition Examiners Handbook? Yes [] No [X]
- 17.1 For all agreements that comply with the requirements of the NAIC Financial Condition Examiners Handbook, complete the following:

1 Name of Custodian(s)	2 Custodian Address
US Bank	425 Walnut St., Cincinnati, Ohio 45202
FHLB Cincinnati	221 E. Fourth St., Cincinnati, Ohio 45202

- 17.2 For all agreements that do not comply with the requirements of the NAIC Financial Condition Examiners Handbook, provide the name, location and a complete explanation:

1 Name(s)	2 Location(s)	3 Complete Explanation(s)

- 17.3 Have there been any changes, including name changes, in the custodian(s) identified in 17.1 during the current quarter? Yes [] No [X]
- 17.4 If yes, give full information relating thereto:

1 Old Custodian	2 New Custodian	3 Date of Change	4 Reason

- 17.5 Investment management – Identify all investment advisors, investment managers, broker/dealers, including individuals that have the authority to make investment decisions on behalf of the reporting entity. For assets that are managed internally by employees of the reporting entity, note as such. ["...that have access to the investment accounts"; "...handle securities"]

1 Name of Firm or Individual	2 Affiliation
Madison Investment Advisors, LLC	U.....

17.5097 For those firms/individuals listed in the table for Question 17.5, do any firms/individuals unaffiliated with the reporting entity (i.e. designated with a "U") manage more than 10% of the reporting entity's invested assets?..... Yes [X] No []

17.5098 For firms/individuals unaffiliated with the reporting entity (i.e. designated with a "U") listed in the table for Question 17.5, does the total assets under management aggregate to more than 50% of the reporting entity's invested assets?..... Yes [X] No []

- 17.6 For those firms or individuals listed in the table for 17.5 with an affiliation code of "A" (affiliated) or "U" (unaffiliated), provide the information for the table below.

1	2	3	4	5 Investment Management Agreement (IMA) Filed
Central Registration Depository Number	Name of Firm or Individual	Legal Entity Identifier (LEI)	Registered With	
110297	Madison Investment Advisors, LLS	254900V4G6P208GA3B11	SEC	NO.....

- 18.1 Have all the filing requirements of the Purposes and Procedures Manual of the NAIC Investment Analysis Office been followed? Yes [X] No []
- 18.2 If no, list exceptions:

19. By self-designating 5GI securities, the reporting entity is certifying the following elements for each self-designated 5GI security:
- a. Documentation necessary to permit a full credit analysis of the security does not exist or an NAIC CRP credit rating for an FE or PL security is not available.
 - b. Issuer or obligor is current on all contracted interest and principal payments.
 - c. The insurer has an actual expectation of ultimate payment of all contracted interest and principal.
- Has the reporting entity self-designated 5GI securities? Yes [] No [X]
20. By self-designating PLGI securities, the reporting entity is certifying the following elements of each self-designated PLGI security:
- a. The security was purchased prior to January 1, 2018.
 - b. The reporting entity is holding capital commensurate with the NAIC Designation reported for the security.
 - c. The NAIC Designation was derived from the credit rating assigned by an NAIC CRP in its legal capacity as a NRSRO which is shown on a current private letter rating held by the insurer and available for examination by state insurance regulators.
 - d. The reporting entity is not permitted to share this credit rating of the PL security with the SVO.
- Has the reporting entity self-designated PLGI securities? Yes [] No [X]
21. By assigning FE to a Schedule BA non-registered private fund, the reporting entity is certifying the following elements of each self-designated FE fund:
- a. The shares were purchased prior to January 1, 2019.
 - b. The reporting entity is holding capital commensurate with the NAIC Designation reported for the security.
 - c. The security had a public credit rating(s) with annual surveillance assigned by an NAIC CRP in its legal capacity as an NRSRO prior to January 1, 2019.
 - d. The fund only or predominantly holds bonds in its portfolio.
 - e. The current reported NAIC Designation was derived from the public credit rating(s) with annual surveillance assigned by an NAIC CRP in its legal capacity as an NRSRO.
 - f. The public credit rating(s) with annual surveillance assigned by an NAIC CRP has not lapsed.
- Has the reporting entity assigned FE to Schedule BA non-registered private funds that complied with the above criteria? Yes [] No [X]

STATEMENT AS OF MARCH 31, 2021 OF THE OHIO BAR LIAB INS CO

GENERAL INTERROGATORIES

PART 2 - PROPERTY & CASUALTY INTERROGATORIES

1.

If the reporting entity is a member of a pooling arrangement, did the agreement or the reporting entity's participation change?
If yes, attach an explanation.

Yes [] No [] N/A [X]
2.

Has the reporting entity reinsured any risk with any other reporting entity and agreed to release such entity from liability, in whole or in part, from any loss that may occur on the risk, or portion thereof, reinsured?
If yes, attach an explanation.

Yes [] No [X]
- 3.1

Have any of the reporting entity's primary reinsurance contracts been canceled?

Yes [] No [X]
- 3.2

If yes, give full and complete information thereto.
- 4.1

Are any of the liabilities for unpaid losses and loss adjustment expenses other than certain workers' compensation tabular reserves (see Annual Statement Instructions pertaining to disclosure of discounting for definition of " tabular reserves") discounted at a rate of interest greater than zero?

Yes [] No [X]
- 4.2

If yes, complete the following schedule:

			TOTAL DISCOUNT				DISCOUNT TAKEN DURING PERIOD			
1	2	3	4	5	6	7	8	9	10	11
Line of Business	Maximum Interest	Discount Rate	Unpaid Losses	Unpaid LAE	IBNR	TOTAL	Unpaid Losses	Unpaid LAE	IBNR	TOTAL
TOTAL										

5.

Operating Percentages:
- 5.1

A&H loss percent

%
- 5.2

A&H cost containment percent

%
- 5.3

A&H expense percent excluding cost containment expenses

%
- 6.1

Do you act as a custodian for health savings accounts?

Yes [] No [X]
- 6.2

If yes, please provide the amount of custodial funds held as of the reporting date\$.....
- 6.3

Do you act as an administrator for health savings accounts?

Yes [] No [X]
- 6.4

If yes, please provide the balance of the funds administered as of the reporting date\$.....
7.

Is the reporting entity licensed or chartered, registered, qualified, eligible or writing business in at least two states?

Yes [] No [X]
- 7.1

If no, does the reporting entity assume reinsurance business that covers risks residing in at least one state other than the state of domicile of the reporting entity?

Yes [] No [X]

STATEMENT AS OF MARCH 31, 2021 OF THE OHIO BAR LIAB INS CO

SCHEDULE F - CEDED REINSURANCE

Showing All New Reinsurers - Current Year to Date

[illegible]

STATEMENT AS OF MARCH 31, 2021 OF THE OHIO BAR LIAB INS CO

SCHEDULE T - EXHIBIT OF PREMIUMS WRITTEN

Current Year to Date - Allocated by States and Territories							
States, etc.	1 Active Status (a)	Direct Premiums Written		Direct Losses Paid (Deducting Salvage)		Direct Losses Unpaid	
		2 Current Year To Date	3 Prior Year To Date	4 Current Year To Date	5 Prior Year To Date	6 Current Year To Date	7 Prior Year To Date
1. Alabama.....AL	N						
2. Alaska.....AK	N						
3. Arizona.....AZ	N						
4. Arkansas.....AR	N						
5. California.....CA	N						
6. Colorado.....CO	N						
7. Connecticut.....CT	N						
8. Delaware.....DE	N						
9. District of Columbia.....DC	N						
10. Florida.....FL	N						
11. Georgia.....GA	N						
12. Hawaii.....HI	N						
13. Idaho.....ID	N						
14. Illinois.....IL	N						
15. Indiana.....IN	N						
16. Iowa.....IA	N						
17. Kansas.....KS	N						
18. Kentucky.....KY	N						
19. Louisiana.....LA	N						
20. Maine.....ME	N						
21. Maryland.....MD	N						
22. Massachusetts.....MA	N						
23. Michigan.....MI	N						
24. Minnesota.....MN	N						
25. Mississippi.....MS	N						
26. Missouri.....MO	N						
27. Montana.....MT	N						
28. Nebraska.....NE	N						
29. Nevada.....NV	N						
30. New Hampshire.....NH	N						
31. New Jersey.....NJ	N						
32. New Mexico.....NM	N						
33. New York.....NY	N						
34. North Carolina.....NC	N						
35. North Dakota.....ND	N						
36. Ohio.....OH	L	3,703,405	3,329,163	1,047,680	680,949	5,264,919	5,362,117
37. Oklahoma.....OK	N						
38. Oregon.....OR	N						
39. Pennsylvania.....PA	N						
40. Rhode Island.....RI	N						
41. South Carolina.....SC	N						
42. South Dakota.....SD	N						
43. Tennessee.....TN	N						
44. Texas.....TX	N						
45. Utah.....UT	N						
46. Vermont.....VT	N						
47. Virginia.....VA	N						
48. Washington.....WA	N						
49. West Virginia.....WV	N						
50. Wisconsin.....WI	N						
51. Wyoming.....WY	N						
52. American Samoa.....AS	N						
53. Guam.....GU	N						
54. Puerto Rico.....PR	N						
55. U.S. Virgin Islands.....VI	N						
56. Northern Mariana Islands.....MP	N						
57. Canada.....CAN	N						
58. Aggregate Other Alien OT	XXX						
59. Totals	XXX	3,703,405	3,329,163	1,047,680	680,949	5,264,919	5,362,117
DETAILS OF WRITE-INS							
58001.	XXX						
58002.	XXX						
58003.	XXX						
58998. Summary of remaining write-ins for Line 58 from overflow page	XXX						
58999. Totals (Lines 58001 through 58003 plus 58998)(Line 58 above)	XXX						

(a) Active Status Counts:

L - Licensed or Chartered - Licensed Insurance carrier or domiciled RRG.....1

E - Eligible - Reporting entities eligible or approved to write surplus lines in the state (other than their state of domicile - see DSLI).....

D - Domestic Surplus Lines Insurer (DSLI) - Reporting entities authorized to write surplus lines in the state of domicile.....

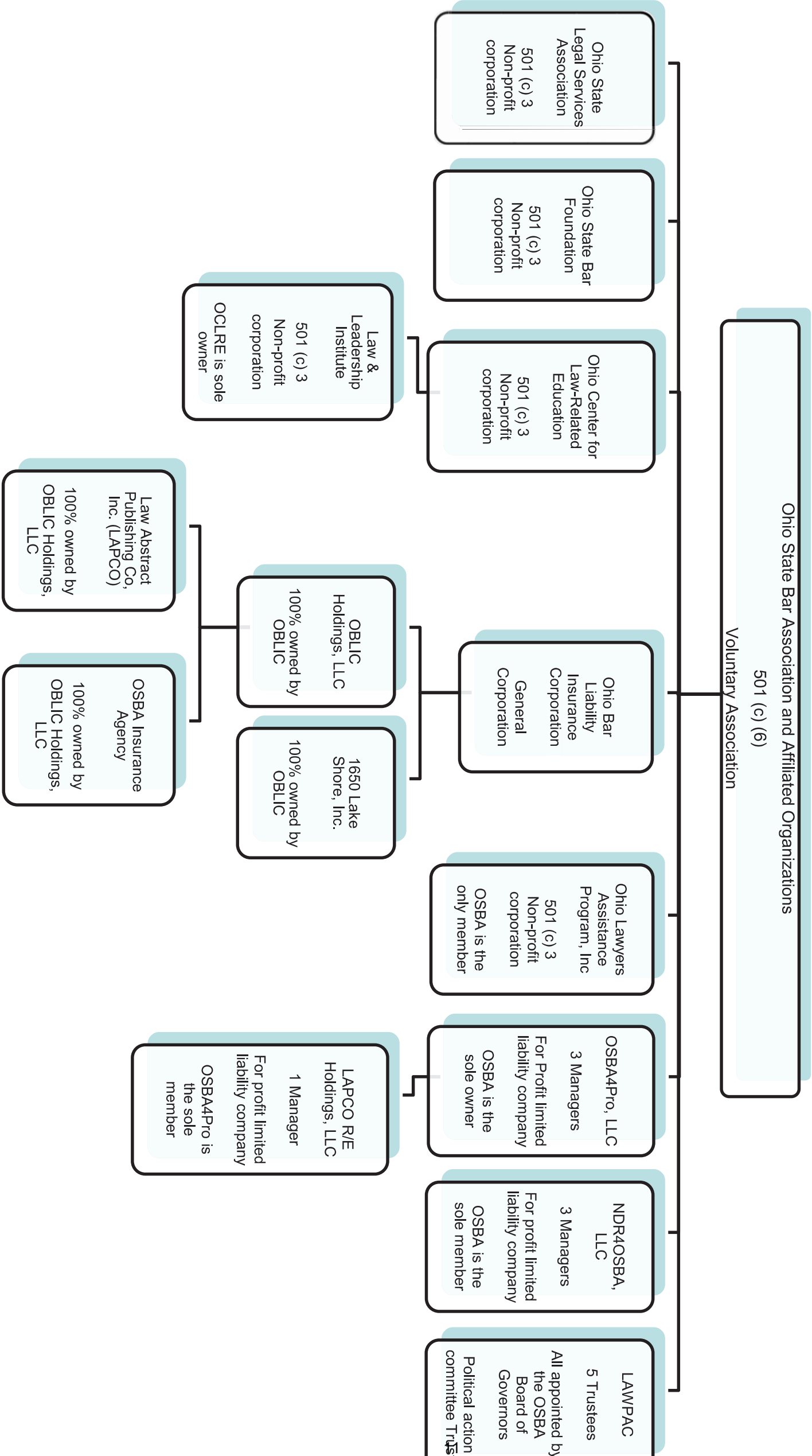
R - Registered - Non-domiciled RRGs.....

Q - Qualified - Qualified or accredited reinsurer.....

N - None of the above - Not allowed to write business in the state.....56

SCHEDULE Y – INFORMATION CONCERNING ACTIVITIES OF INSURERS OF A HOLDING COMPANY GROUP

PART 1 – ORGANIZATIONAL CHART



STATEMENT AS OF MARCH 31, 2021 OF THE OHIO BAR LIAB INS CO

SCHEDULE Y

PART 1A - DETAIL OF INSURANCE HOLDING COMPANY SYSTEM

[illegible]

NONE

Asterisk	

PART 1 - LOSS EXPERIENCE

Line of Business		Current Year to Date			4
		1 Direct Premiums Earned	2 Direct Losses Incurred	3 Direct Loss Percentage	Prior Year to Date Direct Loss Percentage
1.	Fire				
2.	Allied Lines				
3.	Farmowners multiple peril				
4.	Homeowners multiple peril				
5.	Commercial multiple peril				
6.	Mortgage guaranty				
8.	Ocean marine				
9.	Inland marine				
10.	Financial guaranty				
11.1	Medical professional liability - occurrence				
11.2	Medical professional liability - claims-made				
12.	Earthquake				
13.	Group accident and health				
14.	Credit accident and health				
15.	Other accident and health				
16.	Workers' compensation				
17.1	Other liability - occurrence	67,771			17.0
17.2	Other liability - claims-made	2,736,830	572,774	20.9	9.5
17.3	Excess workers' compensation				
18.1	Products liability - occurrence				
18.2	Products liability - claims-made				
19.1,19.2	Private passenger auto liability				
19.3,19.4	Commercial auto liability				
21.	Auto physical damage				
22.	Aircraft (all perils)				
23.	Fidelity				
24.	Surety				
26.	Burglary and theft				
27.	Boiler and machinery				
28.	Credit				
29.	International				
30.	Warranty				
31.	Reinsurance - Nonproportional Assumed Property	XXX	XXX	XXX	XXX
32.	Reinsurance - Nonproportional Assumed Liability	XXX	XXX	XXX	XXX
33.	Reinsurance - Nonproportional Assumed Financial Lines	XXX	XXX	XXX	XXX
34.	Aggregate write-ins for other lines of business				
35.	Totals	2,804,601	572,774	20.4	9.7
DETAILS OF WRITE-INS					
3401.				
3402.				
3403.				
3498.	Summary of remaining write-ins for Line 34 from overflow page				
3499.	Totals (Lines 3401 through 3403 plus 3498)(Line 34 above)				

PART 2 - DIRECT PREMIUMS WRITTEN

Line of Business		1	2	3
		Current Quarter	Current Year to Date	Prior Year Year to Date
1.	Fire			
2.	Allied Lines			
3.	Farmowners multiple peril			
4.	Homeowners multiple peril			
5.	Commercial multiple peril			
6.	Mortgage guaranty			
8.	Ocean marine			
9.	Inland marine			
10.	Financial guaranty			
11.1	Medical professional liability - occurrence			
11.2	Medical professional liability - claims-made			
12.	Earthquake			
13.	Group accident and health			
14.	Credit accident and health			
15.	Other accident and health			
16.	Workers' compensation			
17.1	Other liability - occurrence	67,771	67,771	82,810
17.2	Other liability - claims-made	3,635,634	3,635,634	3,246,353
17.3	Excess workers' compensation			
18.1	Products liability - occurrence			
18.2	Products liability - claims-made			
19.1,19.2	Private passenger auto liability			
19.3,19.4	Commercial auto liability			
21.	Auto physical damage			
22.	Aircraft (all perils)			
23.	Fidelity			
24.	Surety			
26.	Burglary and theft			
27.	Boiler and machinery			
28.	Credit			
29.	International			
30.	Warranty			
31.	Reinsurance - Nonproportional Assumed Property	XXX	XXX	XXX
32.	Reinsurance - Nonproportional Assumed Liability	XXX	XXX	XXX
33.	Reinsurance - Nonproportional Assumed Financial Lines	XXX	XXX	XXX
34.	Aggregate write-ins for other lines of business			
35.	Totals	3,703,405	3,703,405	3,329,163
DETAILS OF WRITE-INS				
3401.			
3402.			
3403.			
3498.	Summary of remaining write-ins for Line 34 from overflow page			
3499.	Totals (Lines 3401 through 3403 plus 3498)(Line 34 above)			

STATEMENT AS OF MARCH 31, 2021 OF THE OHIO BAR LIAB INS CO

PART 3 (000 omitted)

LOSS AND LOSS ADJUSTMENT EXPENSE RESERVES SCHEDULE

	1	2	3	4	5	6	7	8	9	10	11	12	13	
Years in Which Losses Occurred	Prior Year-End Known Case Loss and LAE Reserves	Prior Year-End IBNR Loss and LAE Reserves	Total Prior Year-End Loss and LAE Reserves (Cols. 1+2)	2021 Loss and LAE Payments on Claims Reported as of Prior Year-End	2021 Loss and LAE Payments on Claims Unreported as of Prior Year-End	Total 2021 Loss and LAE Payments (Cols. 4+5)	Q.S. Date Known Case Loss and LAE Reserves on Claims Reported and Open as of Prior Year End	Q.S. Date Known Case Loss and LAE Reserves on Claims Reported or Reopened Subsequent to Prior Year End	Q.S. Date IBNR Loss and LAE Reserves	Total Q.S. Loss and LAE Reserves (Cols.7+8+9)	Prior Year-End Known Case Loss and LAE Reserves Developed (Savings)/ Deficiency (Cols.4+7 minus Col. 1)	Prior Year-End IBNR Loss and LAE Reserves Developed (Savings)/ Deficiency (Cols. 5+8+9 minus Col. 2)	Prior Year-End Total Loss and LAE Reserve Developed (Savings)/ Deficiency (Cols. 11+12)	
1. 2018 + Prior	2,687	57	2,744	358		358	2,435		57	2,492	106		106	
2. 2019	1,787	138	1,925	137		137	1,612		108	1,720	(38)	(30)	(68)	
3. Subtotals 2019 + Prior	4,474	195	4,669	495		495	4,047		165	4,212	68	(30)	38	
4. 2020	2,950	335	3,285	645		645	2,444		333	2,777	139	(2)	137	
5. Subtotals 2020 + Prior	7,424	530	7,954	1,140		1,140	6,491		498	6,989	207	(32)	175	
6. 2021	XXX	XXX	XXX	XXX	224	224	XXX	893	110	1,003	XXX	XXX	XXX	
7. Totals	7,424	530	7,954	1,140	224	1,364	6,491	893	608	7,992	207	(32)	175	
8. Prior Year-End Surplus As Regards Policyholders	33,032											Col. 11, Line 7 As % of Col. 1 Line 7	Col. 12, Line 7 As % of Col. 2 Line 7	Col. 13, Line 7 As % of Col. 3 Line 7
												1. 2.8	2. (6.0)	3. 2.2
												Col. 13, Line 7 As a % of Col. 1 Line 8 4. 0.5		

SUPPLEMENTAL EXHIBITS AND SCHEDULES INTERROGATORIES

The following supplemental reports are required to be filed as part of your statement filing. However, in the event that your company does not transact the type of business for which the special report must be filed, your response of NO to the specific interrogatory will be accepted in lieu of filing a "NONE" report and a bar code will be printed below. If the supplement is required of your company but is not being filed for whatever reason enter SEE EXPLANATION and provide an explanation following the interrogatory questions.

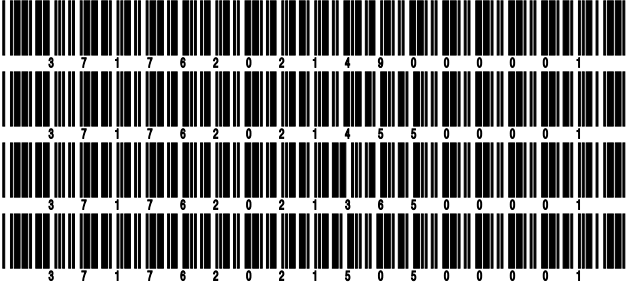
	Response
1. Will the Trusteed Surplus Statement be filed with the state of domicile and the NAIC with this statement?	NO
2. Will Supplement A to Schedule T (Medical Professional Liability Supplement) be filed with this statement?	NO
3. Will the Medicare Part D Coverage Supplement be filed with the state of domicile and the NAIC with this statement?	NO
4. Will the Director and Officer Insurance Coverage Supplement be filed with the state of domicile and the NAIC with this statement?	NO

Explanations:

- 1.
- 2.
- 3.
- 4.

Bar Codes:

- 1. Trusteed Surplus Statement [Document Identifier 490]
- 2. Supplement A to Schedule T [Document Identifier 455]
- 3. Medicare Part D Coverage Supplement [Document Identifier 365]
- 4. Director and Officer Supplement [Document Identifier 505]



STATEMENT AS OF MARCH 31, 2021 OF THE OHIO BAR LIAB INS CO
OVERFLOW PAGE FOR WRITE-INS

NONE

SCHEDULE A - VERIFICATION

Real Estate

	1	2
	Year to Date	Prior Year Ended December 31
1. Book/adjusted carrying value, December 31 of prior year		
2. Cost of acquired:		
2.1 Actual cost at time of acquisition		
2.2 Additional investment made after acquisition		
3. Current year change in encumbrances		
4. Total gain (loss) on disposals		
5. Deduct amounts received on disposals		
6. Total foreign exchange change in book/adjusted carrying value		
7. Deduct current year's other than temporary impairment recognized		
8. Deduct current year's depreciation		
9. Book/adjusted carrying value at the end of current period (Lines 1+2+3+4-5+6-7-8)		
10. Deduct total nonadmitted amounts		
11. Statement value at end of current period (Line 9 minus Line 10)		

SCHEDULE B - VERIFICATION

Mortgage Loans

	1	2
	Year to Date	Prior Year Ended December 31
1. Book value/recorded investment excluding accrued interest, December 31 of prior year		
2. Cost of acquired:		
2.1 Actual cost at time of acquisition		
2.2 Additional investment made after acquisition		
3. Capitalized deferred interest and other		
4. Accrual of discount		
5. Unrealized valuation increase (decrease)		
6. Total gain (loss) on disposals		
7. Deduct amounts received on disposals		
8. Deduct amortization of premium and mortgage interest paid and commitment fees		
9. Total foreign exchange change in book value/recorded investment excluding accrued interest		
10. Deduct current year's other than temporary impairment recognized		
11. Book value/recorded investment excluding accrued interest at end of current period (Lines 1+2+3+4+5+6-7-8+9-10)		
12. Total valuation allowance		
13. Subtotal (Line 11 plus Line 12)		
14. Deduct total nonadmitted amounts		
15. Statement value at end of current period (Line 13 minus Line 14)		

SCHEDULE BA - VERIFICATION

Other Long-Term Invested Assets

	1	2
	Year to Date	Prior Year Ended December 31
1. Book/adjusted carrying value, December 31 of prior year	106,727	99,944
2. Cost of acquired:		
2.1 Actual cost at time of acquisition		
2.2 Additional investment made after acquisition		
3. Capitalized deferred interest and other		
4. Accrual of discount		
5. Unrealized valuation increase (decrease)		6,783
6. Total gain (loss) on disposals		
7. Deduct amounts received on disposals		
8. Deduct amortization of premium and depreciation		
9. Total foreign exchange change in book/adjusted carrying value		
10. Deduct current year's other than temporary impairment recognized		
11. Book/adjusted carrying value at end of current period (Lines 1+2+3+4+5+6-7-8+9-10)	106,727	106,727
12. Deduct total nonadmitted amounts		
13. Statement value at end of current period (Line 11 minus Line 12)	106,727	106,727

SCHEDULE D - VERIFICATION

Bonds and Stocks

	1	2
	Year to Date	Prior Year Ended December 31
1. Book/adjusted carrying value of bonds and stocks, December 31 of prior year	40,180,788	38,676,653
2. Cost of bonds and stocks acquired	3,293,639	13,132,469
3. Accrual of discount	11,543	37,348
4. Unrealized valuation increase (decrease)	566,694	937,085
5. Total gain (loss) on disposals	15,691	(9,568)
6. Deduct consideration for bonds and stocks disposed of	2,240,404	12,416,745
7. Deduct amortization of premium	105,950	196,730
8. Total foreign exchange change in book/adjusted carrying value		
9. Deduct current year's other than temporary impairment recognized		
10. Total investment income recognized as a result of prepayment penalties and/or acceleration fees		20,275
11. Book/adjusted carrying value at end of current period (Lines 1+2+3+4+5-6-7+8-9+10)	41,722,002	40,180,788
12. Deduct total nonadmitted amounts		
13. Statement value at end of current period (Line 11 minus Line 12)	41,722,002	40,180,788

STATEMENT AS OF MARCH 31, 2021 OF THE OHIO BAR LIAB INS CO

SCHEDULE D - PART 1B

Showing the Acquisitions, Dispositions and Non-Trading Activity
During the Current Quarter for all Bonds and Preferred Stock by NAIC Designation

NAIC Designation	1 Book/Adjusted Carrying Value Beginning of Current Quarter	2 Acquisitions During Current Quarter	3 Dispositions During Current Quarter	4 Non-Trading Activity During Current Quarter	5 Book/Adjusted Carrying Value End of First Quarter	6 Book/Adjusted Carrying Value End of Second Quarter	7 Book/Adjusted Carrying Value End of Third Quarter	8 Book/Adjusted Carrying Value December 31 Prior Year
BONDS								
1. NAIC 1 (a)	29,473,520	2,866,485	3,324,713	(95,740)	28,919,552			29,473,520
2. NAIC 2 (a)	1,974,789	409,406		1,045	2,385,241			1,974,789
3. NAIC 3 (a)								
4. NAIC 4 (a)								
5. NAIC 5 (a)								
6. NAIC 6 (a)								
7. Total Bonds	31,448,309	3,275,892	3,324,713	(94,694)	31,304,793			31,448,309
PREFERRED STOCK								
8. NAIC 1								
9. NAIC 2								
10. NAIC 3								
11. NAIC 4								
12. NAIC 5								
13. NAIC 6								
14. Total Preferred Stock								
15. Total Bonds and Preferred Stock	31,448,309	3,275,892	3,324,713	(94,694)	31,304,793			31,448,309

(a) Book/Adjusted Carrying Value column for the end of the current reporting period includes the following amount of short-term and cash equivalent bonds by NAIC designation:
NAIC 1 \$; NAIC 2 \$; NAIC 3 \$ NAIC 4 \$; NAIC 5 \$; NAIC 6 \$

SCHEDULE DA - PART 1

Short-Term Investments

	1	2	3	4	5
	Book/Adjusted Carrying Value	Prior Year Value	Actual Cost	Interest Collected Year-to-Date	Paid for Accrued Interest Year-to-Date
9199999 Totals		XX			

NONE

SCHEDULE DA - VERIFICATION

Short-Term Investments

	1	2
	Year To Date	Prior Year Ended December 31
1. Book/adjusted carrying value, December 31 of prior year		
2. Cost of short-term investments acquired		405,924
3. Accrual of discount		
4. Unrealized valuation increase (decrease)		
5. Total gain (loss) on disposals		
6. Deduct consideration received on disposals		400,000
7. Deduct amortization of premium		5,924
8. Total foreign exchange change in book/adjusted carrying value		
9. Deduct current year's other than temporary impairment recognized		
10. Book/adjusted carrying value at end of current period (Lines 1+2+3+4+5-6-7+8-9)		
11. Deduct total nonadmitted amounts		
12. Statement value at end of current period (Line 10 minus Line 11)		

Schedule DB - Part A - Verification - Options, Caps, Floors, Collars, Swaps and Forwards

N O N E

Schedule DB - Part B - Verification - Futures Contracts

N O N E

Schedule DB - Part C - Section 1 - Replication (Synthetic Asset) Transactions (RSATs) Open

N O N E

Schedule DB-Part C-Section 2-Reconciliation of Replication (Synthetic Asset) Transactions Open

N O N E

Schedule DB - Verification - Book/Adjusted Carrying Value, Fair Value and Potential Exposure of
Derivatives

N O N E

STATEMENT AS OF MARCH 31, 2021 OF THE OHIO BAR LIAB INS CO

SCHEDULE E - PART 2 - VERIFICATION

(Cash Equivalents)

	1	2
	Year To Date	Prior Year Ended December 31
1. Book/adjusted carrying value, December 31 of prior year	1,766,489	737,162
2. Cost of cash equivalents acquired	3,645,756	17,160,414
3. Accrual of discount	53	8
4. Unrealized valuation increase (decrease)		
5. Total gain (loss) on disposals		
6. Deduct consideration received on disposals	3,978,123	16,131,095
7. Deduct amortization of premium		
8. Total foreign exchange change in book/adjusted carrying value		
9. Deduct current year's other than temporary impairment recognized		
10. Book/adjusted carrying value at end of current period (Lines 1+2+3+4+5-6-7+8-9)	1,434,175	1,766,489
11. Deduct total nonadmitted amounts		
12. Statement value at end of current period (Line 10 minus Line 11)	1,434,175	1,766,489

Schedule A - Part 2 - Real Estate Acquired and Additions Made

N O N E

Schedule A - Part 3 - Real Estate Disposed

N O N E

Schedule B - Part 2 - Mortgage Loans Acquired and Additions Made

N O N E

Schedule B - Part 3 - Mortgage Loans Disposed, Transferred or Repaid

N O N E

Schedule BA - Part 2 - Other Long-Term Invested Assets Acquired and Additions Made

N O N E

Schedule BA - Part 3 - Other Long-Term Invested Assets Disposed, Transferred or Repaid

N O N E

STATEMENT AS OF MARCH 31, 2021 OF THE OHIO BAR LIAB INS CO

SCHEDULE D - PART 3

Show All Long-Term Bonds and Stock Acquired During the Current Quarter

1	2	3	4	5	6	7	8	9	10
CUSIP Identification	Description	Foreign	Date Acquired	Name of Vendor	Number of Shares of Stock	Actual Cost	Par Value	Paid for Accrued Interest and Dividends	NAIC Designation, NAIC Designation Modifier and SVO Administrative Symbol
3130AK-X9-2	FEDERAL HOME LOAN BANKS01/29/2021	CIBC OPPENHEIMER	500,000	500,000	1.A
3130AL-Q3-1	FEDERAL HOME LOAN BANKS03/11/2021	Cantor Fitzgerald & Co.	500,000	500,000	1.A
3133KY-US-6	FH RBS104 - RMBS02/04/2021	Cantor Fitzgerald & Co.	611,625	600,000	250	1.A
3137FF-66-7	FHR 5078 W/B - CMO/RMBS01/15/2021	PERSHING LLC	609,000	685	1.A
516391-DT-3	LANSING MICH BRD WTR & LT UTIL SYS REV03/15/2021	Cantor Fitzgerald & Co.	323,988	300,000	2,052	1.D FE
3199999. Subtotal - Bonds - U.S. Special Revenues						2,544,613	1,900,000	2,987	XXX
49327V-2A-1	KEYBANK NA03/30/2021	RBC CAPITAL MARKETS, LLC	409,406	375,000	4,640	2.A FE
95001D-6T-2	WELLS FARGO & CO02/16/2021	Piper Jaffray	313,929	300,000	3,467	1.F FE
3899999. Subtotal - Bonds - Industrial and Miscellaneous (Unaffiliated)						723,335	675,000	8,106	XXX
921937-81-9	VANGUARD INT-T B ETF03/26/2021	Charles Schwab & Co Inc	7,943	1. Z
8099999. Subtotal - Bonds - SVO Identified Funds						7,943	XXX
8399997. Total - Bonds - Part 3						3,275,892	2,575,000	11,093	XXX
8399998. Total - Bonds - Part 5						XXX	XXX	XXX	XXX
8399999. Total - Bonds						3,275,892	2,575,000	11,093	XXX
8999997. Total - Preferred Stocks - Part 3						XXX	XXX
8999998. Total - Preferred Stocks - Part 5						XXX	XXX	XXX	XXX
8999999. Total - Preferred Stocks						XXX	XXX
808509-75-6	SCHWAB CAP:TOT STK MKT03/26/2021	Charles Schwab & Co Inc	28.277	2,000
921931-20-0	VANGUARD BAL IDX ADM03/24/2021	Charles Schwab & Co Inc	23.029	1,024
921937-68-6	VANGUARD SC V I ADM03/25/2021	US BANK	58.358	3,998
921937-69-4	VANGUARD MC V I ADM03/25/2021	US BANK	62.595	4,285
921937-71-0	VANGUARD SC G ID ADM03/25/2021	US BANK	9.815	914
921937-72-8	VANGUARD MC G I ADM03/25/2021	US BANK	12.438	1,121
922908-72-8	VANGUARD TSM IDX ADM03/25/2021	US BANK	44.855	4,404
9499999. Subtotal - Common Stocks - Mutual Funds						17,748	XXX	XXX
9799997. Total - Common Stocks - Part 3						17,748	XXX	XXX
9799998. Total - Common Stocks - Part 5						XXX	XXX	XXX	XXX
9799999. Total - Common Stocks						17,748	XXX	XXX
9899999. Total - Preferred and Common Stocks						17,748	XXX	XXX
9999999 - Totals						3,293,639	XXX	11,093	XXX

STATEMENT AS OF MARCH 31, 2021 OF THE OHIO BAR LIAB INS CO

SCHEDULE D - PART 4

Show All Long-Term Bonds and Stock Sold, Redeemed or Otherwise Disposed of During the Current Quarter

1	2	3	4	5	6	7	8	9	10	Change In Book/Adjusted Carrying Value					16	17	18	19	20	21	22	
										11	12	13	14	15								
CUSIP Identification	Description	For- eign	Disposal Date	Name of Purchaser	Number of Shares of Stock	Consid- eration	Par Value	Actual Cost	Prior Year Book/ Adjusted Carrying Value	Unrealized Valuation Increase/ (Decrease)	Current Year's (Amor- tization)/ Accretion	Current Year's Other Than Temporary Impairment Recogn- ized	Total Change in Book/ Adjusted Carrying Value (11 + 12 - 13)	Total Foreign Exchange Change in Book /Adjusted Carrying Value	Book/ Adjusted Carrying Value at Disposal Date	Foreign Exchange Gain (Loss) on Disposal	Realized Gain (Loss) on Disposal	Total Gain (Loss) on Disposal	Bond Interest/ Stock Dividends Received During Year	Stated Con- tractual Maturity Date	NAIC Desig- nation, NAIC Desig- nation Modifier and SVO Admini- strative Symbol	
3620BS-DQ-2	GN 459211 - RMBS		03/01/2021	Paydown		346	346	344	344		2		2		346				4	07/15/2029	1.A	
36209R-CG-6	GN 478971 - RMBS		03/01/2021	Paydown		4	4	4	4					4					12/15/2029	1.A		
36217V-AY-0	GN 204423 - RMBS		03/01/2021	Paydown		32	32	32	32					32					01/15/2030	1.A		
38376G-SM-3	GNR 2010-096 C - CMBS		03/01/2021	Paydown		7,220	7,220	7,411	7,268		(48)		(48)	7,220					07/16/2044	1.A		
38378B-4E-6	GNR 2013-007 AB - CMBS		03/01/2021	Paydown		18,168	18,168	18,015	18,020		148		148	18,168					01/16/2053	1.A		
38378B-Y5-3	GNR 2012-132 AE - CMBS		03/01/2021	Paydown		15,124	15,124	14,945	14,990		135		135	15,124					06/16/2053	1.A		
38380M-M8-1	GNR 2019-019 AC - CMBS		03/01/2021	Paydown		43,849	43,849	43,397	43,464		386		386	43,849					02/16/2051	1.A		
38380M-UZ-2	GNR 2018-162 AB - CMBS		03/01/2021	Paydown		82,481	82,481	81,347	81,782		699		699	82,481					08/16/2045	1.A		
83162C-TD-5	SBAP 2010-20 C A - ABS		03/01/2021	Paydown		19,481	19,481	20,143	20,147		(666)		(666)	19,481					03/01/2030	1.A		
83162C-YH-0	SBAP 2017-20B B - ABS		02/01/2021	Paydown		20,532	20,532	21,075	21,089		(557)		(557)	20,532					02/01/2037	1.A		
83164M-PZ-6	SBA 510340 - RMBS		03/01/2021	Paydown		23,125	9,122	9,270	9,521		(400)		(400)	9,122			14,003	14,003	34	12/25/2043	1.A	
0599999. Subtotal - Bonds - U.S. Governments						230,363	216,360	215,984	216,661		(301)		(301)	216,360			14,003	14,003	1,601	XXX	XXX	
187154-AK-5	CLIFTON TEX HIGHER ED FIN CORP REV		03/01/2021	Call @ 100.00		400,000	400,000	442,382	400,826		(826)		(826)	400,000					10,000	03/01/2021	1.E FE	
3132Y0-RT-9	FH 056797 - RMBS		03/01/2021	Paydown		35,571	35,571	36,843	37,140		(1,570)		(1,570)	35,571					243	06/01/2048	1.A	
3133KY-SK-6	FH RB5022 - RMBS		03/01/2021	Paydown		45,138	45,138	46,217	46,293		(1,155)		(1,155)	45,138					224	11/01/2039	1.A	
3133KY-U5-6	FH RB5104 - RMBS		03/01/2021	Paydown		2,218	2,218	2,261			(43)		(43)	2,218					3	03/01/2041	1.A	
3136A8-T4-2	FNR 2012-113 MA - CMO/RMBS		03/01/2021	Paydown		40,854	40,854	41,001	40,901		(47)		(47)	40,854					211	08/25/2041	1.A	
3136A9-4F-2	FNR 2012-118 PC - CMO/RMBS		03/01/2021	Paydown		20,462	20,462	18,524	19,021		1,441		1,441	20,462					54	06/25/2042	1.A	
3136AP-QC-9	FNR 2015-46 MD - CMO/RMBS		03/01/2021	Paydown		36,351	36,351	36,709	36,447		(96)		(96)	36,351					195	05/25/2043	1.A	
3136AT-LD-4	FNR 2016-48 QP - CMO/RMBS		03/01/2021	Paydown		37,372	37,372	37,991	37,718		(345)		(345)	37,372					176	01/25/2045	1.A	
3136AV-V9-7	FNR 2017-22 BE - CMO/RMBS		03/01/2021	Paydown		40,571	40,571	42,093	41,082		(511)		(511)	40,571					224	08/25/2040	1.A	
3136B3-XH-8	FNR 2018-94 VE - CMO/RMBS		03/01/2021	Paydown		9,836	9,836	10,217	10,039		(203)		(203)	9,836					57	04/25/2030	1.A	
3136BA-Z4-9	FNR 2020-45 BA - CMO/RMBS		03/01/2021	Paydown		48,715	48,715	49,765	49,794		(1,079)		(1,079)	48,715					160	02/25/2044	1.A	
3136BB-4K-5	FNR 2020-68 A - CMO/RMBS		03/01/2021	Paydown		46,948	46,948	48,349	48,342		(1,394)		(1,394)	46,948					175	09/25/2044	1.A	
3136BC-K4-1	FNR 2020-92 NB - CMO/RMBS		03/01/2021	Paydown		8,220	8,220	8,256	8,255		(35)		(35)	8,220					14	05/25/2050	1.A	
3136BC-SC-5	FNR 2020-79 CA - CMO/RMBS		03/01/2021	Paydown		17,816	17,816	18,242	18,232		(416)		(416)	17,816					66	10/25/2044	1.A	
3137A2-VV-0	FHR 3752 LIW - CMO/RMBS		03/01/2021	Paydown		25,449	25,449	25,528	25,468		(18)		(18)	25,449					114	06/15/2039	1.A	
3137BB-A9-1	FHR 4337 BA - CMO/RMBS		03/01/2021	Paydown		17,655	17,655	17,625	17,628		27		27	17,655					96	02/15/2046	1.A	
3137BH-FC-6	FHR 4467 DA - CMO/RMBS		03/15/2021	Paydown		19,597	19,597	20,011	19,610		(12)		(12)	19,597					64	11/15/2041	1.A	
3137BM-2S-4	FHR 4526 PJ - CMO/RMBS		03/01/2021	Paydown		40,340	40,340	40,851	40,526		(186)		(186)	40,340					194	01/15/2042	1.A	
3137BM-H6-6	FHR 4535 JP - CMO/RMBS		03/01/2021	Paydown		44,289	44,289	44,926	44,784		(495)		(495)	44,289					208	11/15/2043	1.A	
3137BY-6U-9	FHR 4680 KG - CMO/RMBS		03/01/2021	Paydown		11,485	11,485	11,759	11,542		(57)		(57)	11,485					56	09/15/2042	1.A	
3137F4-VG-4	FHR 4774 KA - CMO/RMBS		03/01/2021	Paydown		36,513	36,513	38,088	37,644		(1,131)		(1,131)	36,513					258	12/15/2045	1.A	
3137FD-F9-8	FHR 4757 CA - CMO/RMBS		03/01/2021	Paydown		30,060	30,060	30,427	30,181		(121)		(121)	30,060					168	07/15/2045	1.A	
3137FK-VF-0	FHR 4860 CA - CMO/RMBS		03/01/2021	Paydown		16,278	16,278	16,364	16,354		(77)		(77)	16,278					114	08/15/2047	1.A	
3137FQ-RU-9	FHR 4941 CA - CMO/RMBS		03/01/2021	Paydown		56,576	56,576	57,602	57,260		(683)		(683)	56,576					290	10/25/2042	1.A	
60416Q-HW-7	MINNESOTA ST HSG FIN AGY HOMEOWNERSHIP F		03/01/2021	Call @ 100.00		20,296	20,296	20,296	20,296					20,296					80	06/01/2050	1.A FE	
60416Q-HY-3	MINNESOTA ST HSG FIN AGY HOMEOWNERSHIP F		03/01/2021	Call @ 100.00		8,462	8,462	8,462	8,462					8,462					28	09/01/2050	1.A FE	
3199999. Subtotal - Bonds - U.S. Special Revenues						1,117,074	1,117,074	1,170,789	1,123,845		(9,033)		(9,033)	1,117,074					13,471	XXX	XXX	
064159-SA-5	BANK OF NOVA SCOTIA	C	01/29/2021	Call @ 100.00		400,000	400,000	398,980	399,104		10		10	399,114			886	886	5,000	01/29/2027	1.F FE	
38141G-VU-5	GOLDMAN SACHS GROUP INC		03/25/2021	Call @ 100.00		400,000	400,000	392,212	399,022		712		712	399,734			266	266	4,375	04/25/2021	1.F FE	
428040-CU-1	HERTZ 2017-1 A - ABS		03/25/2021	Paydown		26,399	26,399	26,081	26,399					26,399					135	10/25/2021	1.F FE	
63939D-AC-9	NAVSL 2014-8 A3 - ABS		03/25/2021	Paydown		7,399	7,399	7,295	7,399		103		103	7,399					8	05/27/2031	1.A FE	
64032X-AA-3	NSLT 2012-3 A - ABS		03/25/2021	Paydown		7,007	7,007	7,000	6,928		80		80	7,007					10	03/26/2040	1.A FE	
83404K-AC-7	SOFI 2017-E A2B - ABS		03/25/2021	Paydown		51,626	51,626	50,553	50,913		713		713	51,626					234	11/26/2040	1.A FE	
3899999. Subtotal - Bonds - Industrial and Miscellaneous (Unaffiliated)						892,431	892,431	882,121	889,662		1,618		1,618	891,280			1,152	1,152	9,761	XXX	XXX	
8399997. Total - Bonds - Part 4						2,239,868	2,225,865	2,268,894	2,230,169		(7,716)		(7,716)	2,224,713			15,155	15,155	24,834	XXX	XXX	
8399998. Total - Bonds - Part 5						XXX	XXX	XXX	XXX	XXX	XXX	XXX	XXX	XXX	XXX	XXX	XXX	XXX	XXX	XXX	XXX	XXX
8399999. Total - Bonds						2,239,868	2,225,865	2,268,894	2,230,169		(7,716)		(7,716)	2,224,713			15,155	15,155	24,834	XXX	XXX	
8999997. Total - Preferred Stocks - Part 4							XXX													XXX	XXX	
8999998. Total - Preferred Stocks - Part 5						XXX	XXX	XXX	XXX	XXX	XXX	XXX	XXX	XXX	XXX	XXX	XXX	XXX	XXX	XXX	XXX	XXX
8999999. Total - Preferred Stocks							XXX													XXX	XXX	

STATEMENT AS OF MARCH 31, 2021 OF THE OHIO BAR LIAB INS CO

SCHEDULE D - PART 4

Show All Long-Term Bonds and Stock Sold, Redeemed or Otherwise Disposed of During the Current Quarter

1	2	3	4	5	6	7	8	9	10	Change In Book/Adjusted Carrying Value					16	17	18	19	20	21	22
										11	12	13	14	15							
CUSIP Ident- ification	Description	For- eign	Disposal Date	Name of Purchaser	Number of Shares of Stock	Consid- eration	Par Value	Actual Cost	Prior Year Book/ Adjusted Carrying Value	Unrealized Valuation Increase/ (Decrease)	Current Year's (Amor- tization)/ Accretion	Current Year's Other Than Temporary Impairment Recog- nized	Total Change in Book/ Adjusted Carrying Value (11 + 12 - 13)	Total Foreign Exchange Change in Book /Adjusted Carrying Value	Book/ Adjusted Carrying Value at Disposal Date	Foreign Exchange Gain (Loss) on Disposal	Realized Gain (Loss) on Disposal	Total Gain (Loss) on Disposal	Bond Interest/ Stock Dividends Received During Year	Stated Con- tractual Maturity Date	NAIC Desig- nation, NAIC Desig- nation Modifier and SVO Admini- strative Symbol
000000-00-0	OBLC HOLDINGS, LLC		01/01/2021	Adjustment	0.000	(194,790)		(18,664)		(88,063)			(88,063)		(194,790)						
000000-00-0	OBLC HOLDINGS, LLC		01/01/2021	Adjustment	0.000	194,790		18,664		88,063			88,063		194,790						
9399999. Subtotal - Common Stocks - Parent, Subsidiaries and Affiliates Other							XXX													XXX	XXX
921931-20-0	VANGUARD BAL IDX ADM		03/24/2021	Unknown	0.000	536											536	536			
9499999. Subtotal - Common Stocks - Mutual Funds						536	XXX										536	536		XXX	XXX
9799997. Total - Common Stocks - Part 4						536	XXX										536	536		XXX	XXX
9799998. Total - Common Stocks - Part 5						XXX	XXX	XXX	XXX	XXX	XXX	XXX	XXX	XXX	XXX	XXX	XXX	XXX	XXX	XXX	XXX
9799999. Total - Common Stocks						536	XXX										536	536		XXX	XXX
9899999. Total - Preferred and Common Stocks						536	XXX										536	536		XXX	XXX
9999999 - Totals						2,240,404	XXX	2,268,894	2,230,169		(7,716)		(7,716)		2,224,713		15,691	15,691	24,834	XXX	XXX

Schedule DB - Part A - Section 1 - Options, Caps, Floors, Collars, Swaps and Forwards Open
N O N E

Schedule DB - Part B - Section 1 - Futures Contracts Open
N O N E

Schedule DB - Part B - Section 1B - Brokers with whom cash deposits have been made
N O N E

Schedule DB - Part D - Section 1 - Counterparty Exposure for Derivative Instruments Open
N O N E

Schedule DB - Part D-Section 2 - Collateral for Derivative Instruments Open - Pledged By
N O N E

Schedule DB - Part D-Section 2 - Collateral for Derivative Instruments Open - Pledged To
N O N E

Schedule DB - Part E - Derivatives Hedging Variable Annuity Guarantees
N O N E

Schedule DL - Part 1 - Reinvested Collateral Assets Owned
N O N E

Schedule DL - Part 2 - Reinvested Collateral Assets Owned
N O N E

SCHEDULE E - PART 1 - CASH

Month End Depository Balances

1 Depository	2 Code	3 Rate of Interest	4 Amount of Interest Received During Current Quarter	5 Amount of Interest Accrued at Current Statement Date	Book Balance at End of Each Month During Current Quarter			9 *
					6	7	8	
					First Month	Second Month	Third Month	
Key Bank		.0.000			1,522,912	1,732,383	1,430,442	XXX
0199998. Deposits in ... depositories that do not exceed the allowable limit in any one depository (See instructions) - Open Depositories	XXX	XXX						XXX
0199999. Totals - Open Depositories	XXX	XXX			1,522,912	1,732,383	1,430,442	XXX
Federal Home Loan Bank Cincinnati, Ohio					352	352	690	
0299998. Deposits in ... 1 depositories that do not exceed the allowable limit in any one depository (See instructions) - Suspended Depositories	XXX	XXX						XXX
0299999. Totals - Suspended Depositories	XXX	XXX			352	352	690	XXX
0399999. Total Cash on Deposit	XXX	XXX			1,523,264	1,732,735	1,431,132	XXX
0499999. Cash in Company's Office	XXX	XXX	XXX	XXX	100	100	100	XXX
0599999. Total - Cash	XXX	XXX			1,523,364	1,732,835	1,431,232	XXX

STATEMENT AS OF MARCH 31, 2021 OF THE OHIO BAR LIAB INS CO

SCHEDULE E - PART 2 - CASH EQUIVALENTS

Show Investments Owned End of Current Quarter

[illegible]