



PROPERTY AND CASUALTY COMPANIES - ASSOCIATION EDITION

ANNUAL STATEMENT

FOR THE YEAR ENDED DECEMBER 31, 2020  
OF THE CONDITION AND AFFAIRS OF THE

Cincinnati Equitable Insurance Company

NAIC Group Code0838(Current)NAIC Company Code16721Employer's ID Number31-0239840

Organized under the Laws ofOhio, State of Domicile or Port of EntryOH  
Country of DomicileUnited States of America

Incorporated/Organized01/24/1827Commenced Business07/17/1826

Statutory Home Office525 Vine Street, Suite 1925Cincinnati, OH, US 45202  
(Street and Number)(City or Town, State, Country and Zip Code)

Main Administrative Office525 Vine Street, Suite 1925Cincinnati, OH, US 45202  
(Street and Number)(City or Town, State, Country and Zip Code)  
513-621-1826  
(Area Code) (Telephone Number)

Mail Address525 Vine Street, Suite 1925Cincinnati, OH, US 45202  
(Street and Number or P.O. Box)(City or Town, State, Country and Zip Code)

Primary Location of Books and Records525 Vine Street, Suite 1925Cincinnati, OH, US 45202  
(Street and Number)(City or Town, State, Country and Zip Code)  
513-621-1826  
(Area Code) (Telephone Number)

Internet Website Addresswww.cineqlife.com

Statutory Statement ContactGregory A. Baker513-621-1826  
(Name)(Area Code) (Telephone Number)  
gbaker@cineqlife.com513-621-4531  
(E-mail Address)(FAX Number)

OFFICERS

PresidentCarl Joseph Bednarski #SecretaryAndrew James Kok

Executive Vice PresidentDonald Eugene Simon #TreasurerDavid Duane Baker

OTHER

Thomas Alan Schrote #, Chief Operating OfficerGregory Allen Baker, Chief Financial Officer

DIRECTORS OR TRUSTEES

David Howard Bahrman	Carl Joseph Bednarski	Douglas Elgin Darling
Michael Allen DeRuitter	Travis Edward Fahley	Michael Charles Fusilier
Andrew Kent Hagenow	Jeffery Blair Sandborn	Benjamin Jeffery LaCross
Brigette Louise Leach	Jennifer Lynn Lewis	Patrick William McGuire
Michael Richard Mulders	Stephanie Lee Schafer	Leona Mary Daniels
Larry Martin Shaw #		

State ofMichiganSS:  
County ofEaton

The officers of this reporting entity being duly sworn, each depose and say that they are the described officers of said reporting entity, and that on the reporting period stated above, all of the herein described assets were the absolute property of the said reporting entity, free and clear from any liens or claims thereon, except as herein stated, and that this statement, together with related exhibits, schedules and explanations therein contained, annexed or referred to, is a full and true statement of all the assets and liabilities and of the condition and affairs of the said reporting entity as of the reporting period stated above, and of its income and deductions therefrom for the period ended, and have been completed in accordance with the NAIC Annual Statement Instructions and Accounting Practices and Procedures manual except to the extent that: (1) state law may differ; or, (2) that state rules or regulations require differences in reporting not related to accounting practices and procedures, according to the best of their information, knowledge and belief, respectively. Furthermore, the scope of this attestation by the described officers also includes the related corresponding electronic filing with the NAIC, when required, that is an exact copy (except for formatting differences due to electronic filing) of the enclosed statement. The electronic filing may be requested by various regulators in lieu of or in addition to the enclosed statement.

Thomas Alan Schrote  
Chief Operating Officer

Andrew James Kok  
Secretary

David Duane Baker  
Treasurer

Subscribed and sworn to before me this day of

a. Is this an original filing? ..... Yes [ X ] No [ ]  
b. If no,  
1. State the amendment number.....  
2. Date filed .....  
3. Number of pages attached.....

ASSETS

	Current Year			Prior Year
	1 Assets	2 Nonadmitted Assets	3 Net Admitted Assets (Cols. 1 - 2)	4 Net Admitted Assets
1. Bonds (Schedule D) .....	3,136,842		3,136,842	2,886,674
2. Stocks (Schedule D):				
2.1 Preferred stocks .....			0	0
2.2 Common stocks .....			0	147,512
3. Mortgage loans on real estate (Schedule B):				
3.1 First liens .....			0	0
3.2 Other than first liens .....			0	0
4. Real estate (Schedule A):				
4.1 Properties occupied by the company (less \$ encumbrances) .....			0	0
4.2 Properties held for the production of income (less \$ ..... encumbrances) .....			0	0
4.3 Properties held for sale (less \$ ..... encumbrances) .....			0	0
5. Cash (\$ .....3,977, Schedule E - Part 1), cash equivalents (\$ .....135,756, Schedule E - Part 2) and short-term investments (\$ ..... , Schedule DA) .....	139,733		139,733	220,106
6. Contract loans (including \$ ..... premium notes) .....			0	0
7. Derivatives (Schedule DB) .....			0	0
8. Other invested assets (Schedule BA) .....			0	0
9. Receivable for securities .....			0	0
10. Securities lending reinvested collateral assets (Schedule DL) .....			0	0
11. Aggregate write-ins for invested assets .....	0	0	0	0
12. Subtotals, cash and invested assets (Lines 1 to 11) .....	3,276,575	0	3,276,575	3,254,293
13. Title plants less \$ ..... charged off (for Title insurers only) .....			0	0
14. Investment income due and accrued .....	41,133		41,133	39,778
15. Premiums and considerations:				
15.1 Uncollected premiums and agents' balances in the course of collection .....			0	0
15.2 Deferred premiums and agents' balances and installments booked but deferred and not yet due (including \$ ..... earned but unbilled premiums) .....			0	0
15.3 Accrued retrospective premiums (\$ ..... ) and contracts subject to redetermination (\$ ..... ) .....			0	0
16. Reinsurance:				
16.1 Amounts recoverable from reinsurers .....			0	0
16.2 Funds held by or deposited with reinsured companies .....			0	0
16.3 Other amounts receivable under reinsurance contracts .....			0	0
17. Amounts receivable relating to uninsured plans .....			0	0
18.1 Current federal and foreign income tax recoverable and interest thereon .....			0	0
18.2 Net deferred tax asset .....			0	10,495
19. Guaranty funds receivable or on deposit .....			0	0
20. Electronic data processing equipment and software .....			0	5,883
21. Furniture and equipment, including health care delivery assets (\$ ..... ) .....			0	0
22. Net adjustment in assets and liabilities due to foreign exchange rates .....			0	0
23. Receivables from parent, subsidiaries and affiliates .....			0	0
24. Health care (\$ ..... ) and other amounts receivable .....			0	0
25. Aggregate write-ins for other than invested assets .....	0	0	0	0
26. Total assets excluding Separate Accounts, Segregated Accounts and Protected Cell Accounts (Lines 12 to 25) .....	3,317,708	0	3,317,708	3,310,449
27. From Separate Accounts, Segregated Accounts and Protected Cell Accounts .....			0	0
28. Total (Lines 26 and 27) .....	3,317,708	0	3,317,708	3,310,449
DETAILS OF WRITE-INS				
1101. ....			0	0
1102. ....				
1103. ....				
1198. Summary of remaining write-ins for Line 11 from overflow page .....	0	0	0	0
1199. Totals (Lines 1101 thru 1103 plus 1198)(Line 11 above) .....	0	0	0	0
2501. ....			0	0
2502. ....				
2503. ....				
2598. Summary of remaining write-ins for Line 25 from overflow page .....	0	0	0	0
2599. Totals (Lines 2501 thru 2503 plus 2598)(Line 25 above) .....	0	0	0	0

LIABILITIES, SURPLUS AND OTHER FUNDS

	1 Current Year	2 Prior Year
1. Losses (Part 2A, Line 35, Column 8) .....	10,000	10,000
2. Reinsurance payable on paid losses and loss adjustment expenses (Schedule F, Part 1, Column 6) .....	0	0
3. Loss adjustment expenses (Part 2A, Line 35, Column 9) .....	3,509	3,509
4. Commissions payable, contingent commissions and other similar charges .....		
5. Other expenses (excluding taxes, licenses and fees) .....	500	49,579
6. Taxes, licenses and fees (excluding federal and foreign income taxes) .....		
7.1 Current federal and foreign income taxes (including \$ ..... on realized capital gains (losses)) .....	14,072	
7.2 Net deferred tax liability .....	1,022	
8. Borrowed money \$ ..... and interest thereon \$ .....		
9. Unearned premiums (Part 1A, Line 38, Column 5) (after deducting unearned premiums for ceded reinsurance of \$ .....0 and including warranty reserves of \$ ..... and accrued accident and health experience rating refunds including \$ .....0 for medical loss ratio rebate per the Public Health Service Act) .....		
10. Advance premium .....		
11. Dividends declared and unpaid:		
11.1 Stockholders .....		
11.2 Policyholders .....		
12. Ceded reinsurance premiums payable (net of ceding commissions) .....	0	0
13. Funds held by company under reinsurance treaties (Schedule F, Part 3, Column 20) .....	0	0
14. Amounts withheld or retained by company for account of others .....		
15. Remittances and items not allocated .....		
16. Provision for reinsurance (including \$ .....0 certified) (Schedule F, Part 3, Column 78) .....	0	0
17. Net adjustments in assets and liabilities due to foreign exchange rates .....		
18. Drafts outstanding .....		
19. Payable to parent, subsidiaries and affiliates .....		386
20. Derivatives .....	0	0
21. Payable for securities .....		
22. Payable for securities lending .....		
23. Liability for amounts held under uninsured plans .....		
24. Capital notes \$ ..... and interest thereon \$ .....		
25. Aggregate write-ins for liabilities .....	0	0
26. Total liabilities excluding protected cell liabilities (Lines 1 through 25) .....	29,103	63,474
27. Protected cell liabilities .....		
28. Total liabilities (Lines 26 and 27) .....	29,103	63,474
29. Aggregate write-ins for special surplus funds .....	0	0
30. Common capital stock .....	1,000,000	1,000,000
31. Preferred capital stock .....		
32. Aggregate write-ins for other than special surplus funds .....	0	0
33. Surplus notes .....	0	
34. Gross paid in and contributed surplus .....	1,949,915	1,949,915
35. Unassigned funds (surplus) .....	338,690	297,060
36. Less treasury stock, at cost:		
36.1 ..... shares common (value included in Line 30 \$ ..... ) .....		
36.2 ..... shares preferred (value included in Line 31 \$ ..... ) .....		
37. Surplus as regards policyholders (Lines 29 to 35, less 36) (Page 4, Line 39) .....	3,288,605	3,246,975
38. TOTALS (Page 2, Line 28, Col. 3) .....	3,317,708	3,310,449
DETAILS OF WRITE-INS		
2501. ....		
2502. ....		
2503. ....		
2598. Summary of remaining write-ins for Line 25 from overflow page .....	0	0
2599. Totals (Lines 2501 thru 2503 plus 2598)(Line 25 above) .....	0	0
2901. ....		
2902. ....		
2903. ....		
2998. Summary of remaining write-ins for Line 29 from overflow page .....	0	0
2999. Totals (Lines 2901 thru 2903 plus 2998)(Line 29 above) .....	0	0
3201. ....		
3202. ....		
3203. ....		
3298. Summary of remaining write-ins for Line 32 from overflow page .....	0	0
3299. Totals (Lines 3201 thru 3203 plus 3298)(Line 32 above) .....	0	0

STATEMENT OF INCOME

	1 Current Year	2 Prior Year
UNDERWRITING INCOME		
1. Premiums earned (Part 1, Line 35, Column 4).....		
DEDUCTIONS:		
2. Losses incurred (Part 2, Line 35, Column 7) .....	(2,063)	(7,000)
3. Loss adjustment expenses incurred (Part 3, Line 25, Column 1) .....	1,753	2,529
4. Other underwriting expenses incurred (Part 3, Line 25, Column 2) .....	28,475	40,762
5. Aggregate write-ins for underwriting deductions .....	0	0
6. Total underwriting deductions (Lines 2 through 5) .....	28,165	36,291
7. Net income of protected cells .....		
8. Net underwriting gain or (loss) (Line 1 minus Line 6 plus Line 7) .....	(28,165)	(36,291)
INVESTMENT INCOME		
9. Net investment income earned (Exhibit of Net Investment Income, Line 17) .....	119,979	118,296
10. Net realized capital gains or (losses) less capital gains tax of \$ .....5,252 (Exhibit of Capital Gains (Losses) ) .....	19,757	
11. Net investment gain (loss) (Lines 9 + 10) .....	139,736	118,296
OTHER INCOME		
12. Net gain (loss) from agents' or premium balances charged off (amount recovered \$ ..... amount charged off \$ ..... ) .....	0	0
13. Finance and service charges not included in premiums .....		
14. Aggregate write-ins for miscellaneous income .....	0	0
15. Total other income (Lines 12 through 14) .....	0	0
16. Net income before dividends to policyholders, after capital gains tax and before all other federal and foreign income taxes (Lines 8 + 11 + 15) .....	111,571	82,005
17. Dividends to policyholders .....		
18. Net income, after dividends to policyholders, after capital gains tax and before all other federal and foreign income taxes (Line 16 minus Line 17) .....	111,571	82,005
19. Federal and foreign income taxes incurred .....	14,363	31,819
20. Net income (Line 18 minus Line 19)(to Line 22) .....	97,208	50,186
CAPITAL AND SURPLUS ACCOUNT		
21. Surplus as regards policyholders, December 31 prior year (Page 4, Line 39, Column 2) .....	3,246,975	3,155,826
22. Net income (from Line 20) .....	97,208	50,186
23. Net transfers (to) from Protected Cell accounts .....		
24. Change in net unrealized capital gains or (losses) less capital gains tax of \$ .....(9,785) .....	(36,810)	24,068
25. Change in net unrealized foreign exchange capital gain (loss) .....		
26. Change in net deferred income tax .....	(46,646)	(19,761)
27. Change in nonadmitted assets (Exhibit of Nonadmitted Assets, Line 28, Col. 3) .....	27,877	36,656
28. Change in provision for reinsurance (Page 3, Line 16, Column 2 minus Column 1) .....	0	0
29. Change in surplus notes .....		
30. Surplus (contributed to) withdrawn from protected cells .....		
31. Cumulative effect of changes in accounting principles .....		
32. Capital changes:		
32.1 Paid in .....		
32.2 Transferred from surplus (Stock Dividend) .....		
32.3 Transferred to surplus .....		
33. Surplus adjustments:		
33.1 Paid in .....	0	0
33.2 Transferred to capital (Stock Dividend) .....		
33.3 Transferred from capital .....		
34. Net remittances from or (to) Home Office .....		
35. Dividends to stockholders .....		
36. Change in treasury stock (Page 3, Lines 36.1 and 36.2, Column 2 minus Column 1) .....	0	0
37. Aggregate write-ins for gains and losses in surplus .....	0	0
38. Change in surplus as regards policyholders for the year (Lines 22 through 37) .....	41,629	91,149
39. Surplus as regards policyholders, December 31 current year (Line 21 plus Line 38) (Page 3, Line 37) .....	3,288,605	3,246,975
DETAILS OF WRITE-INS		
0501. ....		
0502. ....		
0503. ....		
0598. Summary of remaining write-ins for Line 5 from overflow page .....	0	0
0599. Totals (Lines 0501 thru 0503 plus 0598)(Line 5 above) .....	0	0
1401. ....		
1402. ....		
1403. ....		
1498. Summary of remaining write-ins for Line 14 from overflow page .....	0	0
1499. Totals (Lines 1401 thru 1403 plus 1498)(Line 14 above) .....	0	0
3701. ....		
3702. ....		
3703. ....		
3798. Summary of remaining write-ins for Line 37 from overflow page .....	0	0
3799. Totals (Lines 3701 thru 3703 plus 3798)(Line 37 above) .....	0	0

CASH FLOW

	1	2
	Current Year	Prior Year
Cash from Operations		
1. Premiums collected net of reinsurance .....	0	0
2. Net investment income .....	117,818	122,162
3. Miscellaneous income .....	0	0
4. Total (Lines 1 through 3) .....	117,818	122,162
5. Benefit and loss related payments .....	(2,063)	(7,000)
6. Net transfers to Separate Accounts, Segregated Accounts and Protected Cell Accounts .....	0	0
7. Commissions, expenses paid and aggregate write-ins for deductions .....	71,891	57,887
8. Dividends paid to policyholders .....	0	0
9. Federal and foreign income taxes paid (recovered) net of \$ ..... tax on capital gains (losses) .....	5,543	0
10. Total (Lines 5 through 9) .....	75,371	50,887
11. Net cash from operations (Line 4 minus Line 10) .....	42,447	71,275
Cash from Investments		
12. Proceeds from investments sold, matured or repaid:		
12.1 Bonds .....	100,000	0
12.2 Stocks .....	134,045	0
12.3 Mortgage loans .....	0	0
12.4 Real estate .....	0	0
12.5 Other invested assets .....	0	0
12.6 Net gains or (losses) on cash, cash equivalents and short-term investments .....	(8,418)	0
12.7 Miscellaneous proceeds .....	0	0
12.8 Total investment proceeds (Lines 12.1 to 12.7) .....	225,627	0
13. Cost of investments acquired (long-term only):		
13.1 Bonds .....	356,478	0
13.2 Stocks .....	0	0
13.3 Mortgage loans .....	0	0
13.4 Real estate .....	0	0
13.5 Other invested assets .....	0	0
13.6 Miscellaneous applications .....	0	0
13.7 Total investments acquired (Lines 13.1 to 13.6) .....	356,478	0
14. Net increase (decrease) in contract loans and premium notes .....	0	0
15. Net cash from investments (Line 12.8 minus Line 13.7 minus Line 14) .....	(130,850)	0
Cash from Financing and Miscellaneous Sources		
16. Cash provided (applied):		
16.1 Surplus notes, capital notes .....	0	0
16.2 Capital and paid in surplus, less treasury stock .....	0	0
16.3 Borrowed funds .....	0	0
16.4 Net deposits on deposit-type contracts and other insurance liabilities .....	0	0
16.5 Dividends to stockholders .....	0	0
16.6 Other cash provided (applied) .....	8,030	(2,341)
17. Net cash from financing and miscellaneous sources (Lines 16.1 to 16.4 minus Line 16.5 plus Line 16.6) .....	8,030	(2,341)
RECONCILIATION OF CASH, CASH EQUIVALENTS AND SHORT-TERM INVESTMENTS		
18. Net change in cash, cash equivalents and short-term investments (Line 11, plus Lines 15 and 17) .....	(80,373)	68,934
19. Cash, cash equivalents and short-term investments:		
19.1 Beginning of year .....	220,106	151,173
19.2 End of period (Line 18 plus Line 19.1) .....	139,733	220,106

Note: Supplemental disclosures of cash flow information for non-cash transactions:

--	--	--

Underwriting and Investment Exhibit - Part 1 - Premiums Earned

**N O N E**

Underwriting and Investment Exhibit - Part 1A - Recapitulation of all Premiums

**N O N E**

Underwriting and Investment Exhibit - Part 1B - Premiums Written

**N O N E**

ANNUAL STATEMENT FOR THE YEAR 2020 OF THE Cincinnati Equitable Insurance Company

**UNDERWRITING AND INVESTMENT EXHIBIT**

PART 2 - LOSSES PAID AND INCURRED

Line of Business		Losses Paid Less Salvage				5	6	7	8
		1	2	3	4				
		Direct Business	Reinsurance Assumed	Reinsurance Recovered	Net Payments (Cols. 1 + 2 - 3 )	Net Losses Unpaid Current Year (Part 2A , Col. 8)	Net Losses Unpaid Prior Year	Losses Incurred Current Year (Cols. 4 + 5 - 6)	Percentage of Losses Incurred (Col. 7, Part 2) to Premiums Earned (Col. 4, Part 1)
1.	Fire .....	0			0	0	0	0	0.0
2.	Allied lines .....	0			0	0	0	0	0.0
3.	Farmowners multiple peril .....	0			0	0	0	0	0.0
4.	Homeowners multiple peril .....	(1,274)	0		(1,274)	0	0	(1,274)	0.0
5.	Commercial multiple peril .....	0			0	0	0	0	0.0
6.	Mortgage guaranty .....	0			0	0	0	0	0.0
8.	Ocean marine .....	0			0	0	0	0	0.0
9.	Inland marine .....	0			0	0	0	0	0.0
10.	Financial guaranty .....	0			0	0	0	0	0.0
11.1	Medical professional liability - occurrence .....				0	0	0	0	0.0
11.2	Medical professional liability - claims-made .....				0	0	0	0	0.0
12.	Earthquake .....	0			0	0	0	0	0.0
13.	Group accident and health .....	0			0	0	0	0	0.0
14.	Credit accident and health (group and individual) .....	0			0	0	0	0	0.0
15.	Other accident and health .....	0			0	0	0	0	0.0
16.	Workers' compensation .....	0			0	0	0	0	0.0
17.1	Other liability - occurrence .....	0			0	0	0	0	0.0
17.2	Other liability - claims-made .....	0			0	0	0	0	0.0
17.3	Excess workers' compensation .....	0			0	0	0	0	0.0
18.1	Products liability - occurrence .....				0	0	0	0	0.0
18.2	Products liability - claims-made .....				0	0	0	0	0.0
19.1, 19.2	Private passenger auto liability .....	(789)			(789)	10,000	10,000	(789)	0.0
19.3, 19.4	Commercial auto liability .....	0			0	0	0	0	0.0
21.	Auto physical damage .....	0			0	0	0	0	0.0
22.	Aircraft (all perils) .....	0			0	0	0	0	0.0
23.	Fidelity .....	0			0	0	0	0	0.0
24.	Surety .....	0			0	0	0	0	0.0
26.	Burglary and theft .....	0			0	0	0	0	0.0
27.	Boiler and machinery .....	0			0	0	0	0	0.0
28.	Credit .....	0			0	0	0	0	0.0
29.	International .....	0			0	0	0	0	0.0
30.	Warranty .....	0			0	0	0	0	0.0
31.	Reinsurance - nonproportional assumed property .....	XXX			0	0	0	0	0.0
32.	Reinsurance - nonproportional assumed liability .....	XXX			0	0	0	0	0.0
33.	Reinsurance - nonproportional assumed financial lines .....	XXX			0	0	0	0	0.0
34.	Aggregate write-ins for other lines of business .....	0	0	0	0	0	0	0	0.0
35.	TOTALS .....	(2,063)	0	0	(2,063)	10,000	10,000	(2,063)	0.0
DETAILS OF WRITE-INS									
3401.	.....								
3402.	.....								
3403.	.....								
3498.	Summary of remaining write-ins for Line 34 from overflow page .....	0	0	0	0	0	0	0	
3499.	Totals (Lines 3401 thru 3403 plus 3498)(Line 34 above) .....	0	0	0	0	0	0	0	0.0

ANNUAL STATEMENT FOR THE YEAR 2020 OF THE Cincinnati Equitable Insurance Company

UNDERWRITING AND INVESTMENT EXHIBIT

PART 2A - UNPAID LOSSES AND LOSS ADJUSTMENT EXPENSES

		Reported Losses				Incurred But Not Reported			8	9
		1	2	3	4	5	6	7		
Line of Business		Direct	Reinsurance Assumed	Deduct Reinsurance Recoverable	Net Losses Excl. Incurred But Not Reported (Cols. 1 + 2 - 3)	Direct	Reinsurance Assumed	Reinsurance Ceded	Net Losses Unpaid (Cols. 4 + 5 + 6 - 7)	Net Unpaid Loss Adjustment Expenses
1.	Fire .....				0				0	
2.	Allied lines .....				0				0	
3.	Farmowners multiple peril .....				0				0	
4.	Homeowners multiple peril .....				0				0	
5.	Commercial multiple peril .....				0				0	
6.	Mortgage guaranty .....				0				0	
8.	Ocean marine .....				0				0	
9.	Inland marine .....				0				0	
10.	Financial guaranty .....				0				0	
11.1	Medical professional liability - occurrence .....				0				0	
11.2	Medical professional liability - claims-made .....				0				0	
12.	Earthquake .....				0				0	
13.	Group accident and health .....				0				(a) 0	
14.	Credit accident and health (group and individual) .....				0				0	
15.	Other accident and health .....				0				(a) 0	
16.	Workers' compensation .....				0				0	
17.1	Other liability - occurrence .....				0				0	
17.2	Other liability - claims-made .....				0				0	
17.3	Excess workers' compensation .....				0				0	
18.1	Products liability - occurrence .....				0				0	
18.2	Products liability - claims-made .....				0				0	
19.1, 19.2	Private passenger auto liability .....	10,000			10,000				10,000	3,509
19.3, 19.4	Commercial auto liability .....				0				0	
21.	Auto physical damage .....				0				0	
22.	Aircraft (all perils) .....				0				0	
23.	Fidelity .....				0				0	
24.	Surety .....				0				0	
26.	Burglary and theft .....				0				0	
27.	Boiler and machinery .....				0				0	
28.	Credit .....				0				0	
29.	International .....				0				0	
30.	Warranty .....				0				0	
31.	Reinsurance - nonproportional assumed property .....	XXX			0	XXX			0	
32.	Reinsurance - nonproportional assumed liability .....	XXX			0	XXX			0	
33.	Reinsurance - nonproportional assumed financial lines .....	XXX			0	XXX			0	
34.	Aggregate write-ins for other lines of business .....	0	0	0	0	0	0	0	0	0
35.	TOTALS .....	10,000	0	0	10,000	0	0	0	10,000	3,509
DETAILS OF WRITE-INS										
3401.	.....									
3402.	.....									
3403.	.....									
3498.	Summary of remaining write-ins for Line 34 from overflow page .....	0	0	0	0	0	0	0	0	0
3499.	Totals (Lines 3401 thru 3403 plus 3498)(Line 34 above) .....	0	0	0	0	0	0	0	0	0

(a) Including \$ ..... for present value of life indemnity claims.



UNDERWRITING AND INVESTMENT EXHIBIT

PART 3 - EXPENSES

	1	2	3	4
	Loss Adjustment Expenses	Other Underwriting Expenses	Investment Expenses	Total
1. Claim adjustment services:				
1.1 Direct .....				0
1.2 Reinsurance assumed .....				0
1.3 Reinsurance ceded .....				0
1.4 Net claim adjustment service (1.1 + 1.2 - 1.3) .....	0	0	0	0
2. Commission and brokerage:				
2.1 Direct excluding contingent .....				0
2.2 Reinsurance assumed, excluding contingent .....				0
2.3 Reinsurance ceded, excluding contingent .....				0
2.4 Contingent - direct .....				0
2.5 Contingent - reinsurance assumed .....				0
2.6 Contingent - reinsurance ceded .....				0
2.7 Policy and membership fees .....				0
2.8 Net commission and brokerage (2.1 + 2.2 - 2.3 + 2.4 + 2.5 - 2.6 + 2.7) .....	0	0	0	0
3. Allowances to managers and agents .....				0
4. Advertising .....				0
5. Boards, bureaus and associations .....	13	200	37	250
6. Surveys and underwriting reports .....				0
7. Audit of assureds' records .....	598	9,560	1,793	11,951
8. Salary and related items:				
8.1 Salaries .....	714	11,422	2,142	14,278
8.2 Payroll taxes .....	55	885	166	1,106
9. Employee relations and welfare .....				0
10. Insurance .....				0
11. Directors' fees .....				0
12. Travel and travel items .....				0
13. Rent and rent items .....				0
14. Equipment .....	286			286
15. Cost or depreciation of EDP equipment and software .....		4,576	858	5,434
16. Printing and stationery .....				0
17. Postage, telephone and telegraph, exchange and express .....				0
18. Legal and auditing .....	34	549	1,075	1,658
19. Totals (Lines 3 to 18) .....	1,700	27,192	6,071	34,963
20. Taxes, licenses and fees:				
20.1 State and local insurance taxes deducting guaranty association credits of \$ .....		438		438
20.2 Insurance department licenses and fees .....	85	1,365	256	1,706
20.3 Gross guaranty association assessments .....	(32)	(520)	(98)	(650)
20.4 All other (excluding federal and foreign income and real estate) .....				0
20.5 Total taxes, licenses and fees (20.1 + 20.2 + 20.3 + 20.4) .....	53	1,283	158	1,494
21. Real estate expenses .....				0
22. Real estate taxes .....				0
23. Reimbursements by uninsured plans .....				0
24. Aggregate write-ins for miscellaneous expenses .....	0	0	0	0
25. Total expenses incurred .....	1,753	28,475	6,229 (a)	36,457
26. Less unpaid expenses - current year .....	3,509	500		4,009
27. Add unpaid expenses - prior year .....	3,509	42,163	7,416	53,088
28. Amounts receivable relating to uninsured plans, prior year .....				0
29. Amounts receivable relating to uninsured plans, current year .....				0
30. TOTAL EXPENSES PAID (Lines 25 - 26 + 27 - 28 + 29)	1,753	70,138	13,645	85,536
DETAILS OF WRITE-INS				
2401. ....				
2402. ....				
2403. ....				
2498. Summary of remaining write-ins for Line 24 from overflow page .....	0	0	0	0
2499. Totals (Lines 2401 thru 2403 plus 2498)(Line 24 above)	0	0	0	0

(a) Includes management fees of \$ ..... to affiliates and \$ ..... to non-affiliates.

EXHIBIT OF NET INVESTMENT INCOME

		1	2
		Collected During Year	Earned During Year
1.	U.S. Government bonds .....	(a) .....	.....
1.1	Bonds exempt from U.S. tax .....	(a) .....	.....
1.2	Other bonds (unaffiliated) .....	(a) 121,936	123,547
1.3	Bonds of affiliates .....	(a) .....	.....
2.1	Preferred stocks (unaffiliated) .....	(b) .....	.....
2.11	Preferred stocks of affiliates .....	(b) .....	.....
2.2	Common stocks (unaffiliated) .....	1,765	1,765
2.21	Common stocks of affiliates .....	.....	.....
3.	Mortgage loans .....	(c) .....	.....
4.	Real estate .....	(d) .....	.....
5	Contract loans .....	.....	.....
6	Cash, cash equivalents and short-term investments .....	(e) 1,085	829
7	Derivative instruments .....	(f) .....	.....
8.	Other invested assets .....	.....	.....
9.	Aggregate write-ins for investment income .....	.67	.67
10.	Total gross investment income .....	124,854	126,208
11.	Investment expenses .....	.....	(g) 6,071
12.	Investment taxes, licenses and fees, excluding federal income taxes .....	.....	(g) 158
13.	Interest expense .....	.....	(h) .....
14.	Depreciation on real estate and other invested assets .....	.....	(i) .....
15.	Aggregate write-ins for deductions from investment income .....	.....	0
16.	Total deductions (Lines 11 through 15) .....	.....	6,229
17.	Net investment income (Line 10 minus Line 16) .....	.....	119,979
DETAILS OF WRITE-INS			
0901.	Misc. Inv Income .....	.67	.67
0902.	.....	.....	.....
0903.	.....	.....	.....
0998.	Summary of remaining write-ins for Line 9 from overflow page .....	0	0
0999.	Totals (Lines 0901 thru 0903 plus 0998) (Line 9, above) .....	67	67
1501.	.....	.....	.....
1502.	.....	.....	.....
1503.	.....	.....	.....
1598.	Summary of remaining write-ins for Line 15 from overflow page .....	.....	0
1599.	Totals (Lines 1501 thru 1503 plus 1598) (Line 15, above) .....	.....	0

- (a) Includes \$ 3,277 accrual of discount less \$ 9,886 amortization of premium and less \$ 403 paid for accrued interest on purchases.
- (b) Includes \$ accrual of discount less \$ amortization of premium and less \$ paid for accrued dividends on purchases.
- (c) Includes \$ accrual of discount less \$ amortization of premium and less \$ paid for accrued interest on purchases.
- (d) Includes \$ for company's occupancy of its own buildings; and excludes \$ interest on encumbrances.
- (e) Includes \$ accrual of discount less \$ amortization of premium and less \$ paid for accrued interest on purchases.
- (f) Includes \$ accrual of discount less \$ amortization of premium.
- (g) Includes \$ investment expenses and \$ investment taxes, licenses and fees, excluding federal income taxes, attributable to segregated and Separate Accounts.
- (h) Includes \$ interest on surplus notes and \$ interest on capital notes.
- (i) Includes \$ depreciation on real estate and \$ depreciation on other invested assets.

EXHIBIT OF CAPITAL GAINS (LOSSES)

		1	2	3	4	5
		Realized Gain (Loss) On Sales or Maturity	Other Realized Adjustments	Total Realized Capital Gain (Loss) (Columns 1 + 2)	Change in Unrealized Capital Gain (Loss)	Change in Unrealized Foreign Exchange Capital Gain (Loss)
1.	U.S. Government bonds .....	0	0	0	0	0
1.1	Bonds exempt from U.S. tax .....	.....	.....	0	.....	.....
1.2	Other bonds (unaffiliated) .....	(550)	0	(550)	848	0
1.3	Bonds of affiliates .....	0	0	0	0	0
2.1	Preferred stocks (unaffiliated) .....	0	0	0	0	0
2.11	Preferred stocks of affiliates .....	0	0	0	0	0
2.2	Common stocks (unaffiliated) .....	33,975	0	33,975	(47,442)	0
2.21	Common stocks of affiliates .....	0	0	0	0	0
3.	Mortgage loans .....	.....	0	0	0	0
4.	Real estate .....	.....	0	0	.....	0
5.	Contract loans .....	.....	.....	0	.....	.....
6.	Cash, cash equivalents and short-term investments .....	.....	.....	0	.....	.....
7.	Derivative instruments .....	.....	.....	0	.....	.....
8.	Other invested assets .....	.....	0	0	0	0
9.	Aggregate write-ins for capital gains (losses) .....	0	(8,416)	(8,416)	0	0
10.	Total capital gains (losses) .....	33,425	(8,416)	25,009	(46,594)	0
DETAILS OF WRITE-INS						
0901.	Loss On Fixed Asset Disposal .....	.....	(8,416)	(8,416)	.....	.....
0902.	.....	.....	.....	.....	.....	.....
0903.	.....	.....	.....	.....	.....	.....
0998.	Summary of remaining write-ins for Line 9 from overflow page .....	0	0	0	0	0
0999.	Totals (Lines 0901 thru 0903 plus 0998) (Line 9, above) .....	0	(8,416)	(8,416)	0	0

EXHIBIT OF NON-ADMITTED ASSETS

	1	2	3
	Current Year Total Nonadmitted Assets	Prior Year Total Nonadmitted Assets	Change in Total Nonadmitted Assets (Col. 2 - Col. 1)
1. Bonds (Schedule D) .....			0
2. Stocks (Schedule D):			
2.1 Preferred stocks .....			0
2.2 Common stocks .....			0
3. Mortgage loans on real estate (Schedule B):			
3.1 First liens .....			0
3.2 Other than first liens .....			0
4. Real estate (Schedule A):			
4.1 Properties occupied by the company .....			0
4.2 Properties held for the production of income .....			0
4.3 Properties held for sale .....			0
5. Cash (Schedule E - Part 1), cash equivalents (Schedule E - Part 2) and short-term investments (Schedule DA) .....			0
6. Contract loans .....			0
7. Derivatives (Schedule DB) .....			0
8. Other invested assets (Schedule BA) .....			0
9. Receivables for securities .....			0
10. Securities lending reinvested collateral assets (Schedule DL) .....			0
11. Aggregate write-ins for invested assets .....	0	0	0
12. Subtotals, cash and invested assets (Lines 1 to 11) .....	0	0	0
13. Title plants (for Title insurers only) .....			0
14. Investment income due and accrued .....			0
15. Premiums and considerations:			
15.1 Uncollected premiums and agents' balances in the course of collection .....			0
15.2 Deferred premiums, agents' balances and installments booked but deferred and not yet due .....			0
15.3 Accrued retrospective premiums and contracts subject to redetermination .....			0
16. Reinsurance:			
16.1 Amounts recoverable from reinsurers .....			0
16.2 Funds held by or deposited with reinsured companies .....			0
16.3 Other amounts receivable under reinsurance contracts .....			0
17. Amounts receivable relating to uninsured plans .....			0
18.1 Current federal and foreign income tax recoverable and interest thereon .....			0
18.2 Net deferred tax asset .....		25,344	25,344
19. Guaranty funds receivable or on deposit .....			0
20. Electronic data processing equipment and software .....			0
21. Furniture and equipment, including health care delivery assets .....		2,533	2,533
22. Net adjustment in assets and liabilities due to foreign exchange rates .....			0
23. Receivables from parent, subsidiaries and affiliates .....			0
24. Health care and other amounts receivable .....			0
25. Aggregate write-ins for other than invested assets .....	0	0	0
26. Total assets excluding Separate Accounts, Segregated Accounts and Protected Cell Accounts (Lines 12 to 25) .....	0	27,877	27,877
27. From Separate Accounts, Segregated Accounts and Protected Cell Accounts .....			0
28. Total (Lines 26 and 27) .....	0	27,877	27,877
<b>DETAILS OF WRITE-INS</b>			
1101. ....			
1102. ....			
1103. ....			
1198. Summary of remaining write-ins for Line 11 from overflow page .....	0	0	0
1199. Totals (Lines 1101 thru 1103 plus 1198)(Line 11 above) .....	0	0	0
2501. ....			
2502. ....			
2503. ....			
2598. Summary of remaining write-ins for Line 25 from overflow page .....	0	0	0
2599. Totals (Lines 2501 thru 2503 plus 2598)(Line 25 above) .....	0	0	0

Notes to the Financial Statements

1. Summary of Significant Accounting Policies and Going Concern

A. Accounting Practices

The financial statements of Cincinnati Equitable Insurance Company are presented on the basis of accounting practices prescribed or permitted by the Ohio Insurance Department.

The Ohio Insurance Department recognizes only statutory accounting practices prescribed or permitted by the State of Ohio for determining and reporting the financial condition and results of operations of an insurance company, for determining its solvency under the Ohio Insurance Law. The National Association of Insurance Commissioners' (NAIC) Accounting Practices and Procedures manual, version effective January 1, 2020, (NAIC SAP) has been adopted as a component of prescribed or permitted practices by the State of Ohio. The State of Ohio has not adopted and prescribed or permitted practices that differ from NAIC SAP.

	SSAP #	F/S Page	F/S Line #	2020	2019
Net Income					
(1) State basis (Page 4, Line 20, Columns 1 & 2)	XXX	XXX	XXX	\$ 97,208	\$ 50,186
(2) State prescribed practices that are an increase / (decrease) from NAIC SAP:					
(3) State permitted practices that are an increase / (decrease) from NAIC SAP:					
(4) NAIC SAP (1-2-3=4)	XXX	XXX	XXX	\$ 97,208	\$ 50,186
Surplus					
(5) State basis (Page 3, Line 37, Columns 1 & 2)	XXX	XXX	XXX	\$ 3,288,605	\$ 3,246,975
(6) State prescribed practices that are an increase / (decrease) from NAIC SAP:					
(7) State permitted practices that are an increase / (decrease) from NAIC SAP:					
(8) NAIC SAP (5-6-7=8)	XXX	XXX	XXX	\$ 3,288,605	\$ 3,246,975

B. Use of Estimates in the Preparation of the Financial Statements

The preparation of financial statements in conformity with Statutory Accounting Principles requires management to make certain estimates and assumptions that affect the reported amounts of assets and liabilities. It also requires disclosure of contingent assets and liabilities at the date of the financial statements and the reported amounts of revenue and expenses during the period. Actual results could differ from those estimates.

C. Accounting Policy

Premiums are earned over the terms of the related insurance policies and reinsurance contracts. Unearned premium reserves are established to cover the unexpired portion of premiums written. Such reserves are computed by pro rata methods for direct business and are based on reports received from ceding companies for reinsurance.

Expenses incurred in connection with acquiring new insurance business, including such acquisition costs as sales commissions, are charged to operations as incurred. Expenses incurred are reduced for ceding allowances received or receivable.

In addition, the company uses the following accounting policies:

- (1) Short-term investments are stated at amortized cost.

(2) Bonds not backed by other loans are stated at amortized cost using the interest method.

The Company does not hold any SVO Identified Bond ETFs on Schedule D-1.

(3) Common Stocks at market except that investments in stocks of uncombined subsidiaries and affiliates in which the Company has an interest of 20% or more are carried on the equity basis.

(4) Preferred stocks are stated in accordance with the guidance provided in SSAP No. 32.

(5) Mortgage loans on real estate are stated at the aggregate carrying value less accrued interest.

(6) Loan-backed securities are stated at either amortized cost or the lower of amortized cost or fair market value. The retrospective adjustment method is used to value all securities except for interest only securities or securities where the yield had become negative, these are valued using the prospective method.

(7) The Company owns no subsidiaries.

(8) The Company has no interest in Joint Ventures.

(9) All derivatives, if any, are stated at fair value.

(10) The Company does not anticipate investment income as a factor in the premium deficiency calculation.

(11) Unpaid losses and loss adjustment expenses include an amount determined from individual case estimates and loss reports and an amount, based on past experience, for losses incurred but not reported. Such liabilities are necessarily based on assumptions and estimates and while management believes the amount is adequate, the ultimate liability may be in excess of or less than the amount provided. The methods for making such estimates and for establishing the resulting liability is continually reviewed and any adjustments are reflected in the period determined.

(12) The Company has not modified its capitalization policy from the prior period.

(13) Pharmaceutical rebate receivables - None

D. Going Concern

The Company has no Going Concern issues.

2. Accounting Changes and Corrections of Errors - None

## Notes to the Financial Statements

**3. Business Combinations and Goodwill** - None

**4. Discontinued Operations** - None

**5. Investments**

- A. Mortgage Loans, including Mezzanine Real Estate Loans - None
- B. Debt Restructuring - None
- C. Reverse Mortgages - None
- D. Loan-Backed Securities
  - (1) Prepayment assumptions for single class and multi-class mortgage-backed/asset-backed securities were obtained from broker dealer survey values or NAIC RMBS/ CMBS modeling.
  - (2) Loan-backed and structured securities with a recognized other-than-temporary impairment (OTTI) - None
  - (3) Securities held that were other-than-temporarily impaired due to the present value of cash flows expected to be collected was less than the amortized cost of securities - None
  - (4) All impaired securities for which an OTTI has not been recognized in earnings as a realized loss - None
  - (5) Support for concluding impairments are not other-than-temporary - None
- E. Dollar Repurchase Agreements and/or Securities Lending Transactions - None
- F. Repurchase Agreements Transactions Accounted for as Secured Borrowing - None
- G. Reverse Repurchase Agreements Transactions Accounted for as Secured Borrowing - None
- H. Repurchase Agreements Transactions Accounted for as a Sale - None
- I. Reverse Repurchase Agreements Transactions Accounted for as a Sale - None
- J. Real Estate - None
- K. Low-Income Housing Tax Credits (LIHTC) - None

Notes to the Financial Statements

5. Investments (Continued)

L. Restricted Assets

(1) Restricted assets (including pledged)

Gross (Admitted & Nonadmitted) Restricted											
Current Year							Current Year				
	(1)	(2)	(3)	(4)	(5)	(6)	(7)	(8)	(9)	(10)	(11)
Restricted Asset Category	Total General Account (G/A)	G/A Supporting Protected Cell Account Activity	Total Protected Cell Account Restricted Assets	Protected Cell Account Assets Supporting G/A Activity	Total (1 + 3)	Total From Prior Year	Increase / (Decrease) (5 - 6)	Total Nonadmitted Restricted	Total Admitted Restricted (5-8)	Gross (Admitted & Nonadmitted) Restricted to Total Assets, %	Admitted to Total Admitted Assets, %
a. Subject to contractual obligation for which liability is not shown	\$ .....	\$ .....	\$ .....	\$ .....	\$ .....	\$ .....	\$ .....	\$ .....	\$ .....	% .....	% .....
b. Collateral held under security lending agreements	.....	.....	.....	.....	.....	.....	.....	.....	.....	.....	.....
c. Subject to repurchase agreements	.....	.....	.....	.....	.....	.....	.....	.....	.....	.....	.....
d. Subject to reverse repurchase agreements	.....	.....	.....	.....	.....	.....	.....	.....	.....	.....	.....
e. Subject to dollar repurchase agreements	.....	.....	.....	.....	.....	.....	.....	.....	.....	.....	.....
f. Subject to dollar reverse repurchase agreements	.....	.....	.....	.....	.....	.....	.....	.....	.....	.....	.....
g. Placed under option contracts	.....	.....	.....	.....	.....	.....	.....	.....	.....	.....	.....
h. Letter stock or securities restricted as to sale - excluding FHLB capital stock	.....	.....	.....	.....	.....	.....	.....	.....	.....	.....	.....
i. FHLB capital stock	.....	.....	.....	.....	.....	.....	.....	.....	.....	.....	.....
j. On deposit with states	1,537,688	.....	.....	.....	1,537,688	1,538,602	(914)	.....	1,537,688	.....	.....
k. On deposit with other regulatory bodies	.....	.....	.....	.....	.....	.....	.....	.....	.....	.....	.....
l. Pledged as collateral to FHLB (including assets backing funding agreements)	.....	.....	.....	.....	.....	.....	.....	.....	.....	.....	.....
m. Pledged as collateral not captured in other categories	.....	.....	.....	.....	.....	.....	.....	.....	.....	.....	.....
n. Other restricted assets	.....	.....	.....	.....	.....	.....	.....	.....	.....	.....	.....
o. Total restricted assets	\$ 1,537,688	\$ .....	\$ .....	\$ .....	\$ 1,537,688	\$ 1,538,602	\$ (914)	\$ .....	\$ 1,537,688	% .....	% .....

(2) Detail of assets pledged as collateral not captured in other categories (contracts that share similar characteristics, such as reinsurance and derivatives, are reported in the aggregate) - None

(3) Detail of other restricted assets (contracts that share similar characteristics, such as reinsurance and derivatives, are reported in the aggregate) - None

(4) Collateral received and reflected as assets within the reporting entity's financial statements - None

M. Working Capital Finance Investments - None

N. Offsetting and Netting of Assets and Liabilities - None

O. 5GI Securities - None

P. Short Sales - None

Q. Prepayment Penalty and Acceleration Fees - None

6. Joint Ventures, Partnerships and Limited Liability Companies - None

7. Investment Income - None

8. Derivative Instruments - None

Notes to the Financial Statements

9. Income Taxes

A. Components of the Net Deferred Tax Asset/(Liability)

(1) Change between years by tax character

	2020			2019			Change		
	(1)	(2)	(3)	(4)	(5)	(6)	(7)	(8)	(9)
	Ordinary	Capital	Total (Col 1+2)	Ordinary	Capital	Total (Col 4+5)	Ordinary (Col 1-4)	Capital (Col 2-5)	Total (Col 7+8)
(a) Gross deferred tax assets	\$ 146	\$ 142	\$ 288	\$ 48,000	\$	\$ 48,000	\$ (47,854)	\$ 142	\$ (47,712)
(b) Statutory valuation allowance adjustments									
(c) Adjusted gross deferred tax assets (1a - 1b)	146	142	288	48,000		48,000	(47,854)	142	(47,712)
(d) Deferred tax assets nonadmitted				25,000		25,000	(25,000)		(25,000)
(e) Subtotal net admitted deferred tax asset (1c - 1d)	\$ 146	\$ 142	\$ 288	\$ 23,000	\$	\$ 23,000	\$ (22,854)	\$ 142	\$ (22,712)
(f) Deferred tax liabilities		1,310	1,310	1,000	11,000	12,000	(1,000)	(9,690)	(10,690)
(g) Net admitted deferred tax asset/(net deferred tax liability) (1e - 1f)	\$ 146	\$ (1,168)	\$ (1,022)	\$ 22,000	\$ (11,000)	\$ 11,000	\$ (21,854)	\$ 9,832	\$ (12,022)

(2) Admission calculation components SSAP No. 101

	2020			2019			Change		
	(1)	(2)	(3)	(4)	(5)	(6)	(7)	(8)	(9)
	Ordinary	Capital	Total (Col 1+2)	Ordinary	Capital	Total (Col 4+5)	Ordinary (Col 1-4)	Capital (Col 2-5)	Total (Col 7+8)
(a) Federal income taxes paid in prior years recoverable through loss carrybacks	\$	\$	\$	\$	\$	\$	\$	\$	\$
(b) Adjusted gross deferred tax assets expected to be realized (excluding the amount of deferred tax assets from 2(a) above) after application of the threshold limitation (lesser of 2(b)1 and 2(b)2 below)	146	142	288	11,000		11,000	(10,854)	142	(10,712)
1. Adjusted gross deferred tax assets expected to be realized following the balance sheet date	145		145	11,000		11,000	(10,855)		(10,855)
2. Adjusted gross deferred tax assets allowed per limitation threshold	XXX	XXX		XXX	XXX	487,000	XXX	XXX	(487,000)
(c) Adjusted gross deferred tax assets (excluding the amount of deferred tax assets from 2(a) and 2(b) above) offset by gross deferred tax liabilities	(1,310)		(1,310)	12,000		12,000	(13,310)		(13,310)
(d) Deferred tax assets admitted as the result of application of SSAP No. 101.									
Total (2(a) + 2(b) + 2(c))	\$ (1,164)	\$ 142	\$ (1,022)	\$ 23,000	\$	\$ 23,000	\$ (24,164)	\$ 142	\$ (24,022)

(3) Ratio used as basis of admissibility

	2020	2019
(a) Ratio percentage used to determine recovery period and threshold limitation amount	7,140.140 %	6,703.840 %
(b) Amount of adjusted capital and surplus used to determine recovery period and threshold limitation in 2(b)2 above	\$ 3,288,605	\$ 3,236,480

(4) Impact of tax-planning strategies

(a) Determination of adjusted gross deferred tax assets and net admitted deferred tax assets, by tax character as a percentage

	2020		2019		Change	
	(1)	(2)	(3)	(4)	(5)	(6)
	Ordinary	Capital	Ordinary	Capital	Ordinary (Col. 1-3)	Capital (Col. 2-4)
1. Adjusted gross DTAs amount from Note 9A1(c)	\$ 146	\$ 142	\$ 48,000	\$	\$ (47,854)	\$ 142
2. Percentage of adjusted gross DTAs by tax character attributable to the impact of tax planning strategies	100.000 %	100.000 %	100.000 %		— %	100.000 %
3. Net admitted adjusted gross DTAs amount from Note 9A1(e)	\$ 146	\$ 142	\$ 23,000	\$	\$ (22,854)	\$ 142
4. Percentage of net admitted adjusted gross DTAs by tax character admitted because of the impact of tax planning strategies	100.000 %	100.000 %	100.000 %		— %	100.000 %

(b) Use of reinsurance-related tax-planning strategies

Does the company's tax-planning strategies include the use of reinsurance? No

B. Regarding Deferred Tax Liabilities That Are Not Recognized - None

Notes to the Financial Statements

9. Income Taxes (Continued)

C. Major Components of Current Income Taxes Incurred

Current income taxes incurred consist of the following major components:			
	(1) 2020	(2) 2019	(3) Change (1-2)
1. Current Income Tax			
(a) Federal	\$ 14,363	\$ 31,819	\$ (17,456)
(b) Foreign			
(c) Subtotal	\$ 14,363	\$ 31,819	\$ (17,456)
(d) Federal income tax on net capital gains	5,252		5,252
(e) Utilization of capital loss carry-forwards			
(f) Other			
(g) Federal and foreign income taxes incurred	\$ 19,615	\$ 31,819	\$ (12,204)
	(1) 2020	(2) 2019	(3) Change (1-2)
2. Deferred Tax Assets			
(a) Ordinary			
(1) Discounting of unpaid losses	\$ 41	\$	\$ 41
(2) Unearned premium reserve			
(3) Policyholder reserves			
(4) Investments			
(5) Deferred acquisition costs			
(6) Policyholder dividends accrual			
(7) Fixed assets			
(8) Compensation and benefits accrual			
(9) Pension accrual			
(10) Receivables - nonadmitted			
(11) Net operating loss carry-forward		37,000	(37,000)
(12) Tax credit carry-forward			
(13) Other (including items less than 5% of total ordinary tax assets)	105	11,000	(10,895)
(99) Subtotal	\$ 146	\$ 48,000	\$ (47,854)
(b) Statutory valuation allowance adjustment			
(c) Nonadmitted		25,000	(25,000)
(d) Admitted ordinary deferred tax assets (2a99 - 2b - 2c)	\$ 146	\$ 23,000	\$ (22,854)
(e) Capital			
(1) Investments	\$ 142	\$	\$ 142
(2) Net capital loss carry-forward			
(3) Real estate			
(4) Other (including items <5% of total capital tax assets)			
(99) Subtotal	\$ 142	\$	\$ 142
(f) Statutory valuation allowance adjustment			
(g) Nonadmitted			
(h) Admitted capital deferred tax assets (2e99 - 2f - 2g)	142		142
(i) Admitted deferred tax assets (2d + 2h)	\$ 288	\$ 23,000	\$ (22,712)
	(1) 2020	(2) 2019	(3) Change (1-2)
3. Deferred Tax Liabilities			
(a) Ordinary			
(1) Investments	\$	\$	\$
(2) Fixed assets		1,000	(1,000)
(3) Deferred and uncollected premium			
(4) Policyholder reserves			
(5) Other (including items <5% of total ordinary tax liabilities)			
(99) Subtotal	\$	\$ 1,000	\$ (1,000)
(b) Capital			
(1) Investments	\$ 1,310	\$ 11,000	\$ (9,690)
(2) Real estate			
(3) Other (including items <5% of total capital tax liabilities)			
(99) Subtotal	\$ 1,310	\$ 11,000	\$ (9,690)
(c) Deferred tax liabilities (3a99 + 3b99)	\$ 1,310	\$ 12,000	\$ (10,690)
4. Net deferred tax assets/liabilities (2i - 3c)	\$ (1,022)	\$ 11,000	\$ (12,022)



Notes to the Financial Statements

9. Income Taxes (Continued)

D. Among the More Significant Book to Tax Adjustments

	2020	Effective Tax Rate
Income before taxes .....	\$ 24,533	21.000 %
Accrued Expenses .....	(10,307)	-8.823
Discounting of Unpaid Losses .....	(45)	-0.039
Dividends Received Deduction .....	(124)	-0.106
Accrual of Discount .....	14	0.012
Total statutory income taxes .....	<u>\$ 14,071</u>	<u>12.045 %</u>

E. Operating Loss and Tax Credit Carryforwards

- (1) At December 31, 2020, the Company did not have any net operating or capital loss carryforwards.
- (2) Income tax expense available for recoupment - None
- (3) Deposits admitted under IRC Section 6603 - None

F. Consolidated Federal Income Tax Return

- (1) The Company's Federal Income Tax return is consolidated with the following entities:
- Michigan Farm Bureau Financial Corporation (parent)
  - Farm Bureau Life Insurance Company of Michigan
  - Community Service Acceptance Company
  - LIC Corporation
  - Broker Centric Alliance Inc.
  - MFB Inc.
  - FBL Real Estate Holdings LLC
  - FB Equity Sales Corporation
  - Cincinnati Equitable Companies Inc.
- (2) The consolidated federal income tax liability is allocated to each Company based on the Companies' separate return tax liabilities in accordance with Section 1152(a)(3) of the Internal Revenue Code.

G. Federal or Foreign Income Tax Loss Contingencies - None

H. Repatriation Transition Tax (RTT) - None

I. Alternative Minimum Tax (AMT) Credit - None

10. Information Concerning Parent, Subsidiaries, Affiliates and Other Related Parties

- A. Effective September 30, 2019 Cincinnati Equitable Companies, Inc was acquired by Michigan Farm Bureau Financial Corporation. Cincinnati Equitable Insurance Company remains a wholly owned subsidiary of Cincinnati Equitable Life Insurance Company, however, the ultimate parent company is now Michigan Farm Bureau Financial Corporation.
- B. Cincinnati Equitable Insurance Company pays expenses under a management agreement for the general management of the company. These expenses are generally allocated to the company based on time spent working for each company. As of September 30, 2019, the companies were acquired by Michigan Farm Bureau Financial Corporation. A cost sharing agreement has been executed with the new ultimate parent company where by certain functions may be performed for the company. The charges for these services will be calculated using current methods.
- C. Transactions With Related Party Who Are Not Reported on Schedule Y - None
- D. Amounts Due To or From Related Parties - None
- E. Farm Bureau Financial Corporation has agreed to provide Management and certain processing functions to Cincinnati Equitable Life insurance Company, Cincinnati Equitable Insurance Company (see 10.A. above). In 2020 and 2019 these allocated expenses were \$0 and \$0 respectively.
- F. Guarantees or Contingencies - None
- G. All outstanding stock of Cincinnati Equitable Insurance Company is owned by Cincinnati Equitable Life Insurance Company (see Schedule Y of this statement).
- H. Amount Deducted for Investment in Upstream Company - None
- I. Detail of Investments in Affiliates Greater Than 10% of Admitted Assets - None
- J. Write-Down for Impairments of Investments in Subsidiary Controlled or Affiliated Companies - None
- K. Foreign Subsidiary Value Using CARVM - None
- L. Downstream Holding Company Value Using Look-Through Method - None
- M. All SCA Investments - None
- N. Investment in Insurance SCAs - None
- O. SCA and SSAP No. 48 Entity Loss Tracking - None

Notes to the Financial Statements

11. Debt - None

12. Retirement Plans, Deferred Compensation, Postemployment Benefits and Compensated Absences and Other Postretirement Benefit Plans

- A. Defined Benefit Plan - None
- B. Investment Policies and Strategies of Plan Assets - None
- C. Fair Value of Each Class of Plan Assets - None
- D. Expected Long-Term Rate of Return for the Plan Assets - None
- E. Defined Contribution Plans - None
- F. Multiemployer Plans - None
- G. Consolidated/Holding Company Plans

The Company participates in a qualified, noncontributory defined contribution (401(k)) plan sponsored by Cincinnati Equitable Companies, Inc., our ultimate parent company. The Company provides no other postretirement benefits to retired employees through a plan sponsored by Cincinnati Equitable Companies, Inc. The Company has no legal obligation for benefits under these plans. Cincinnati Equitable Companies, Inc. allocates amounts to the Company based on salary ratios. The Company's share of net expense for the qualified pension plan was \$0 and \$700 for 2020 and 2019, respectively and for other postretirement benefit plans was \$0 and \$0 for 2020 and 2019, respectively.

- H. Postemployment Benefits and Compensated Absences

The Company does not provide for post-retirement benefits. However, the Company does compensate for unused absences.

- I. Impact of Medicare Modernization Act on Postretirement Benefits (INT 04-17) - None

13. Capital and Surplus, Dividend Restrictions and Quasi-Reorganizations

- A. The Company has 1,000,000 shares authorized, 1,000,000 shares issued and 1,000,000 shares outstanding.
- B. Dividend Rate of Preferred Stock - None
- C. Without the approval of the domiciliary commissioner, dividends to the shareholders are limited by the laws of the Company's state of incorporation, Ohio, to \$0, an amount that is based on restrictions related to statutory surplus.
- D. Ordinary Dividends - None
- E. Within the limits of (3) above, there are no restrictions placed on the portion of Company profits that may be paid as ordinary dividends to stockholders.
- F. There are no restrictions placed on the Company's surplus, including for whom the surplus is being held, other than the minimum surplus requirements of the state of Ohio.
- G. Surplus Advances - None
- H. Stock Held for Special Purposes - None
- I. Changes in Special Surplus Funds - None
- J. Unassigned Funds (Surplus)  
The portion of unassigned funds (surplus) represented or reduced by unrealized gains and losses is (\$36,810).
- K. Company-Issued Surplus Debentures or Similar Obligations - None
- L. Impact of Any Restatement Due to Prior Quasi-Reorganizations - None
- M. Effective Date(s) of Quasi-Reorganizations in the Prior 10 Years - None

14. Liabilities, Contingencies and Assessments

- A. Contingent Commitments - None
- B. Assessments
  - (1) The Company has been notified of several insolvencies. The actual amount of these insolvencies will not be known until some time in the future. However, the Company has enough information to establish a reasonable estimate of future Guarantee Fund Assessments. The Company has established a liability of \$0 for future Guarantee Fund Assessments.
  - (2) Assets (Liabilities) recognized from paid and accrued premium tax offsets and policy surcharges - None
  - (3) Guaranty fund liabilities and assets related to long-term care insolvencies - None
- C. Gain Contingencies - None
- D. Claims Related Extra Contractual Obligation and Bad Faith Losses Stemming from Lawsuits - None
- E. Product Warranties - None
- F. Joint and Several Liabilities - None
- G. All Other Contingencies - None

15. Leases

- A. Lessee Operating Lease  
The Company has no material lease obligations.
  - (1) Leasing arrangements
    - (a) Rental expense for 2020, and 2019 were approximately \$0 and \$3,461.

Notes to the Financial Statements

15. Leases (Continued)

- (b) Rental payment contingencies - None
- (c) Terms of renewal or purchase options and escalation clauses - None
- (d) Restrictions imposed by lease agreements - None
- (e) Early termination of lease agreements - None
- (2) For leases having initial or remaining noncancelable lease terms in excess of one year - None
- (3) For sale-leaseback transactions - None

B. Lessor Leases - None

16. Information About Financial Instruments With Off-Balance-Sheet Risk And Financial Instruments With Concentrations of Credit Risk - None

17. Sale, Transfer and Servicing of Financial Assets and Extinguishments of Liabilities - None

18. Gain or Loss to the Reporting Entity from Uninsured Plans and the Uninsured Portion of Partially Insured Plans - None

19. Direct Premium Written/Produced by Managing General Agents/Third Party Administrators - None

20. Fair Value Measurements

A. Fair Value Measurement

- (1) Fair value measurements at reporting date

Description for each class of asset or liability	Level 1	Level 2	Level 3	Net Asset Value (NAV)	Total
a. Assets at fair value					
Bonds - Industrial & Misc .....	\$ .....	\$ ..... 3,366,970	\$ .....	\$ .....	\$ ..... 3,366,970
Common Stock - Mutual Funds .....	—				—
Total assets at fair value/NAV .....	<u>\$ —</u>	<u>\$ 3,366,970</u>	<u>\$</u>	<u>\$</u>	<u>\$ 3,366,970</u>
b. Liabilities at fair value					
Total liabilities at fair value .....	<u>\$</u>	<u>\$</u>	<u>\$</u>	<u>\$</u>	<u>\$</u>

- (2) Fair value measurements in Level 3 of the fair value hierarchy - None
- (3) Policy on transfers into and out of Level 3 - None
- (4) Inputs and techniques used for Level 2 and Level 3 fair values - None
- (5) Derivatives - None

B. Other Fair Value Disclosures - None

C. Fair Values for All Financial Instruments by Level 1, 2 and 3

Type of Financial Instrument	Aggregate Fair Value	Admitted Assets	Level 1	Level 2	Level 3	Net Asset Value (NAV)	Not Practicable (Carrying Value)
Bonds - Industrial .....	\$ ..... 3,366,970	\$ ..... 3,136,842	\$ .....	\$ ..... 3,366,970	\$ .....	\$ .....	\$ .....
Common Stocks - Mutual Funds .....	—	—	—				

- D. Not Practicable to Estimate Fair Value - None
- E. Nature and Risk of Investments Reported at NAV - None

21. Other Items - None

22. Events Subsequent - None

23. Reinsurance - None

24. Retrospectively Rated Contracts & Contracts Subject to Redetermination

The Company has no retrospectively rated contracts or contracts subject to redetermination.

- A. Method Used to Estimate - None
- B. Method Used to Record - None
- C. Amount and Percent of Net Retrospective Premiums - None
- D. Medical Loss Ratio Rebates Required Pursuant to the Public Health Service Act - None
- E. Calculation of Nonadmitted Retrospective Premium - None
- F. Risk-Sharing Provisions of the Affordable Care Act (ACA)

The Company does not write health insurance.

- (1) Accident and health insurance premium subject to the Affordable Care Act risk-sharing provisions - None
- (2) Impact of Risk-Sharing Provisions of the Affordable Care Act on admitted assets, liabilities and revenue for the current year - None
- (3) Roll-forward of prior year ACA risk-sharing provisions for the following asset (gross of any nonadmission) and liability balances, along with the reasons for adjustments to prior year balance - None

Notes to the Financial Statements

24. Retrospectively Rated Contracts & Contracts Subject to Redetermination (Continued)

- (4) Roll-forward of risk corridors asset and liability balances by program benefit year - None
- (5) ACA risk corridors receivable as of reporting date - None

25. Changes in Incurred Losses and Loss Adjustment Expenses

Current year changes in estimates of the costs of prior year losses and loss adjustment expenses (LAE) affect the current year Statement of Income. Increases in these estimates increase current expense and are referred to as unfavorable development or prior year reserve shortages. Decreases in those estimates decrease current expense and are referred to as favorable development or prior year reserve redundancies.

Current year losses and LAE reflected on the Statement of Income of (\$310) were lower by \$310 due to favorable development of prior year estimates. The favorable development was approximately 2% of prior year reserves for unpaid losses and LAE reflected on the Balance Sheet of \$13,509.

- A. Reasons for Changes in the Provision for Incurred Loss and Loss Adjustment Expenses Attributable to Insured Events of Prior Years  
There have been no significant changes in the Loss and Loss Adjustment Expense reserves for losses incurred in prior accident years.
- B. Significant Changes in Methodologies and Assumptions Used in Calculating the Liability for Unpaid Losses and Loss Adjustment Expenses - None

26. Intercompany Pooling Arrangements - None

27. Structured Settlements - None

28. Health Care Receivables - None

29. Participating Policies - None

30. Premium Deficiency Reserves

As of December 31, 2020 the Company had liabilities of \$0 related to premium deficiency reserves. The Company does not consider anticipated investment income when calculating its premium deficiency reserves.

- 1. Liability carried for premium deficiency reserves: \$
- 2. Date of the most recent evaluation of this liability:
- 3. Was anticipated investment income utilized in the calculation?

31. High Deductibles - None

32. Discounting of Liabilities For Unpaid Losses or Unpaid Loss Adjustment Expenses - None

33. Asbestos/Environmental Reserves - None

34. Subscriber Savings Accounts - None

35. Multiple Peril Crop Insurance - None

36. Financial Guaranty Insurance - None

GENERAL INTERROGATORIES

PART 1 - COMMON INTERROGATORIES  
GENERAL

1.1

Is the reporting entity a member of an Insurance Holding Company System consisting of two or more affiliated persons, one or more of which is an insurer?  
If yes, complete Schedule Y, Parts 1, 1A and 2

Yes ☒ No ☐

1.2

If yes, did the reporting entity register and file with its domiciliary State Insurance Commissioner, Director or Superintendent, or with such regulatory official of the state of domicile of the principal insurer in the Holding Company System, a registration statement providing disclosure substantially similar to the standards adopted by the National Association of Insurance Commissioners (NAIC) in its Model Insurance Holding Company System Regulatory Act and model regulations pertaining thereto, or is the reporting entity subject to standards and disclosure requirements substantially similar to those required by such Act and regulations?

Yes ☒ No ☐ N/A ☐

1.3

State Regulating?

Michigan

1.4

Is the reporting entity publicly traded or a member of a publicly traded group?

Yes ☐ No ☒

1.5

If the response to 1.4 is yes, provide the CIK (Central Index Key) code issued by the SEC for the entity/group.

2.1

Has any change been made during the year of this statement in the charter, by-laws, articles of incorporation, or deed of settlement of the reporting entity?

Yes ☐ No ☐

2.2

If yes, date of change:

12/31/2018

3.1

State as of what date the latest financial examination of the reporting entity was made or is being made.

12/31/2018

3.2

State the as of date that the latest financial examination report became available from either the state of domicile or the reporting entity. This date should be the date of the examined balance sheet and not the date the report was completed or released.

12/31/2018

3.3

State as of what date the latest financial examination report became available to other states or the public from either the state of domicile or the reporting entity. This is the release date or completion date of the examination report and not the date of the examination (balance sheet date).

05/28/2020

3.4

By what department or departments?  
Ohio

3.5

Have all financial statement adjustments within the latest financial examination report been accounted for in a subsequent financial statement filed with Departments?

Yes ☐ No ☐ N/A ☒

3.6

Have all of the recommendations within the latest financial examination report been complied with?

Yes ☒ No ☐ N/A ☐

4.1

During the period covered by this statement, did any agent, broker, sales representative, non-affiliated sales/service organization or any combination thereof under common control (other than salaried employees of the reporting entity), receive credit or commissions for or control a substantial part (more than 20 percent of any major line of business measured on direct premiums) of:  
4.11 sales of new business?  
4.12 renewals?

Yes ☐ No ☒  
Yes ☐ No ☒

4.2

During the period covered by this statement, did any sales/service organization owned in whole or in part by the reporting entity or an affiliate, receive credit or commissions for or control a substantial part (more than 20 percent of any major line of business measured on direct premiums) of:  
4.21 sales of new business?  
4.22 renewals?

Yes ☐ No ☒  
Yes ☐ No ☒

5.1

Has the reporting entity been a party to a merger or consolidation during the period covered by this statement?  
If yes, complete and file the merger history data file with the NAIC.

Yes ☐ No ☒

5.2

If yes, provide the name of the entity, NAIC Company Code, and state of domicile (use two letter state abbreviation) for any entity that has ceased to exist as a result of the merger or consolidation.

1 Name of Entity	2 NAIC Company Code	3 State of Domicile

6.1

Has the reporting entity had any Certificates of Authority, licenses or registrations (including corporate registration, if applicable) suspended or revoked by any governmental entity during the reporting period?

Yes ☐ No ☒

6.2

If yes, give full information:

7.1

Does any foreign (non-United States) person or entity directly or indirectly control 10% or more of the reporting entity?

Yes ☐ No ☒

7.2

If yes,  
7.21 State the percentage of foreign control;  
7.22 State the nationality(s) of the foreign person(s) or entity(s) or if the entity is a mutual or reciprocal, the nationality of its manager or attorney-in-fact; and identify the type of entity(s) (e.g., individual, corporation or government, manager or attorney in fact).

1 Nationality	2 Type of Entity

ANNUAL STATEMENT FOR THE YEAR 2020 OF THE Cincinnati Equitable Insurance Company

GENERAL INTERROGATORIES

8.1

Is the company a subsidiary of a bank holding company regulated by the Federal Reserve Board?

Yes [ ] No [ X ]

8.2

If response to 8.1 is yes, please identify the name of the bank holding company.

8.3

Is the company affiliated with one or more banks, thrifts or securities firms?

Yes [ ] No [ X ]

8.4

If response to 8.3 is yes, please provide below the names and location (city and state of the main office) of any affiliates regulated by a federal regulatory services agency [i.e. the Federal Reserve Board (FRB), the Office of the Comptroller of the Currency (OCC), the Federal Deposit Insurance Corporation (FDIC) and the Securities Exchange Commission (SEC)] and identify the affiliate's primary federal regulator.

1	2	3	4	5	6
Affiliate Name	Location (City, State)	FRB	OCC	FDIC	SEC

9.

What is the name and address of the independent certified public accountant or accounting firm retained to conduct the annual audit?

10.1

Has the insurer been granted any exemptions to the prohibited non-audit services provided by the certified independent public accountant requirements as allowed in Section 7H of the Annual Financial Reporting Model Regulation (Model Audit Rule), or substantially similar state law or regulation?

Yes [ ] No [ X ]

10.2

If the response to 10.1 is yes, provide information related to this exemption:

10.3

Has the insurer been granted any exemptions related to the other requirements of the Annual Financial Reporting Model Regulation as allowed for in Section 18A of the Model Regulation, or substantially similar state law or regulation?

Yes [ X ] No [ ]

10.4

If the response to 10.3 is yes, provide information related to this exemption:  
Waiver from filing an Actuatial Opinion

10.5

Has the reporting entity established an Audit Committee in compliance with the domiciliary state insurance laws?

Yes [ X ] No [ ] N/A [ ]

10.6

If the response to 10.5 is no or n/a, please explain

11.

What is the name, address and affiliation (officer/employee of the reporting entity or actuary/consultant associated with an actuarial consulting firm) of the individual providing the statement of actuarial opinion/certification?

12.1

Does the reporting entity own any securities of a real estate holding company or otherwise hold real estate indirectly?

Yes [ ] No [ X ]

12.11

Name of real estate holding company

12.12

Number of parcels involved

12.13

Total book/adjusted carrying value

\$

12.2

If, yes provide explanation:

13.

FOR UNITED STATES BRANCHES OF ALIEN REPORTING ENTITIES ONLY:

13.1

What changes have been made during the year in the United States manager or the United States trustees of the reporting entity?

13.2

Does this statement contain all business transacted for the reporting entity through its United States Branch on risks wherever located?

Yes [ X ] No [ ]

13.3

Have there been any changes made to any of the trust indentures during the year?

Yes [ ] No [ X ]

13.4

If answer to (13.3) is yes, has the domiciliary or entry state approved the changes?

Yes [ ] No [ ] N/A [ X ]

14.1

Are the senior officers (principal executive officer, principal financial officer, principal accounting officer or controller, or persons performing similar functions) of the reporting entity subject to a code of ethics, which includes the following standards?

Yes [ X ] No [ ]

a.

Honest and ethical conduct, including the ethical handling of actual or apparent conflicts of interest between personal and professional relationships;

b.

Full, fair, accurate, timely and understandable disclosure in the periodic reports required to be filed by the reporting entity;

c.

Compliance with applicable governmental laws, rules and regulations;

d.

The prompt internal reporting of violations to an appropriate person or persons identified in the code; and

e.

Accountability for adherence to the code.

14.11

If the response to 14.1 is No, please explain:

14.2

Has the code of ethics for senior managers been amended?

Yes [ ] No [ X ]

14.21

If the response to 14.2 is yes, provide information related to amendment(s).

14.3

Have any provisions of the code of ethics been waived for any of the specified officers?

Yes [ ] No [ X ]

14.31

If the response to 14.3 is yes, provide the nature of any waiver(s).

ANNUAL STATEMENT FOR THE YEAR 2020 OF THE Cincinnati Equitable Insurance Company

GENERAL INTERROGATORIES

- 15.1 Is the reporting entity the beneficiary of a Letter of Credit that is unrelated to reinsurance where the issuing or confirming bank is not on the SVO Bank List? Yes [ ] No [ X ]
- 15.2 If the response to 15.1 is yes, indicate the American Bankers Association (ABA) Routing Number and the name of the issuing or confirming bank of the Letter of Credit and describe the circumstances in which the Letter of Credit is triggered.

1 American Bankers Association (ABA) Routing Number	2  Issuing or Confirming Bank Name	3  Circumstances That Can Trigger the Letter of Credit	4  Amount

BOARD OF DIRECTORS

16. Is the purchase or sale of all investments of the reporting entity passed upon either by the board of directors or a subordinate committee thereof? Yes [ X ] No [ ]
17. Does the reporting entity keep a complete permanent record of the proceedings of its board of directors and all subordinate committees thereof? Yes [ X ] No [ ]
18. Has the reporting entity an established procedure for disclosure to its board of directors or trustees of any material interest or affiliation on the part of any of its officers, directors, trustees or responsible employees that is in conflict with the official duties of such person? Yes [ X ] No [ ]

FINANCIAL

19. Has this statement been prepared using a basis of accounting other than Statutory Accounting Principles (e.g., Generally Accepted Accounting Principles)? Yes [ ] No [ X ]
- 20.1 Total amount loaned during the year (inclusive of Separate Accounts, exclusive of policy loans):

20.11 To directors or other officers\$

20.12 To stockholders not officers\$

20.13 Trustees, supreme or grand (Fraternal Only)\$
- 20.2 Total amount of loans outstanding at the end of year (inclusive of Separate Accounts, exclusive of policy loans):

20.21 To directors or other officers\$

20.22 To stockholders not officers\$

20.23 Trustees, supreme or grand (Fraternal Only)\$
- 21.1 Were any assets reported in this statement subject to a contractual obligation to transfer to another party without the liability for such obligation being reported in the statement? Yes [ ] No [ X ]
- 21.2 If yes, state the amount thereof at December 31 of the current year:

21.21 Rented from others\$

21.22 Borrowed from others\$

21.23 Leased from others\$

21.24 Other\$
- 22.1 Does this statement include payments for assessments as described in the Annual Statement Instructions other than guaranty fund or guaranty association assessments? Yes [ ] No [ X ]
- 22.2 If answer is yes:

22.21 Amount paid as losses or risk adjustment\$

22.22 Amount paid as expenses\$

22.23 Other amounts paid\$
- 23.1 Does the reporting entity report any amounts due from parent, subsidiaries or affiliates on Page 2 of this statement? Yes [ ] No [ X ]
- 23.2 If yes, indicate any amounts receivable from parent included in the Page 2 amount:\$

INVESTMENT

- 24.01 Were all the stocks, bonds and other securities owned December 31 of current year, over which the reporting entity has exclusive control, in the actual possession of the reporting entity on said date? (other than securities lending programs addressed in 24.03). Yes [ X ] No [ ]
- 24.02 If no, give full and complete information relating thereto
- 24.03 For securities lending programs, provide a description of the program including value for collateral and amount of loaned securities, and whether collateral is carried on or off-balance sheet. (an alternative is to reference Note 17 where this information is also provided)
- 24.04 For the reporting entity's securities lending program, report amount of collateral for conforming programs as outlined in the Risk-Based Capital Instructions. \$
- 24.05 For the reporting entity's securities lending program, report amount of collateral for other programs. \$
- 24.06 Does your securities lending program require 102% (domestic securities) and 105% (foreign securities) from the counterparty at the outset of the contract? Yes [ ] No [ ] N/A [ X ]
- 24.07 Does the reporting entity non-admit when the collateral received from the counterparty falls below 100%? Yes [ ] No [ ] N/A [ X ]
- 24.08 Does the reporting entity or the reporting entity 's securities lending agent utilize the Master Securities lending Agreement (MSLA) to conduct securities lending? Yes [ ] No [ ] N/A [ X ]

ANNUAL STATEMENT FOR THE YEAR 2020 OF THE Cincinnati Equitable Insurance Company

GENERAL INTERROGATORIES

24.09 For the reporting entity’s securities lending program state the amount of the following as of December 31 of the current year:

24.091	Total fair value of reinvested collateral assets reported on Schedule DL, Parts 1 and 2 .....	\$ .....	0
24.092	Total book adjusted/carrying value of reinvested collateral assets reported on Schedule DL, Parts 1 and 2 .....	\$ .....	0
24.093	Total payable for securities lending reported on the liability page. ....	\$ .....	0

25.1 Were any of the stocks, bonds or other assets of the reporting entity owned at December 31 of the current year not exclusively under the control of the reporting entity, or has the reporting entity sold or transferred any assets subject to a put option contract that is currently in force? (Exclude securities subject to Interrogatory 21.1 and 24.03). ..... Yes [ X ] No [ ]

25.2	If yes, state the amount thereof at December 31 of the current year:	25.21 Subject to repurchase agreements .....	\$ .....
		25.22 Subject to reverse repurchase agreements .....	\$ .....
		25.23 Subject to dollar repurchase agreements .....	\$ .....
		25.24 Subject to reverse dollar repurchase agreements .....	\$ .....
		25.25 Placed under option agreements .....	\$ .....
		25.26 Letter stock or securities restricted as to sale - excluding FHLB Capital Stock .....	\$ .....
		25.27 FHLB Capital Stock .....	\$ .....
		25.28 On deposit with states .....	\$ 1,537,688
		25.29 On deposit with other regulatory bodies .....	\$ .....
		25.30 Pledged as collateral - excluding collateral pledged to an FHLB .....	\$ .....
		25.31 Pledged as collateral to FHLB - including assets backing funding agreements .....	\$ .....
		25.32 Other .....	\$ .....

25.3 For category (25.26) provide the following:

1 Nature of Restriction	2 Description	3 Amount
.....	.....	.....

26.1 Does the reporting entity have any hedging transactions reported on Schedule DB? ..... Yes [ ] No [ X ]

26.2 If yes, has a comprehensive description of the hedging program been made available to the domiciliary state? ..... Yes [ ] No [ ] N/A [ X ]  
If no, attach a description with this statement.

LINES 26.3 through 26.5: FOR LIFE/FRATERNAL REPORTING ENTITIES ONLY:

26.3 Does the reporting entity utilize derivatives to hedge variable annuity guarantees subject to fluctuations as a result of interest rate sensitivity? .. Yes [ ] No [ X ]

26.4 If the response to 26.3 is YES, does the reporting entity utilize:

26.41 Special accounting provision of SSAP No. 108 .....	Yes [ ] No [ ]
26.42 Permitted accounting practice .....	Yes [ ] No [ ]
26.43 Other accounting guidance .....	Yes [ ] No [ ]

26.5 By responding YES to 26.41 regarding utilizing the special accounting provisions of SSAP No. 108, the reporting entity attests to the following: ..... Yes [ ] No [ ]

- The reporting entity has obtained explicit approval from the domiciliary state.
- Hedging strategy subject to the special accounting provisions is consistent with the requirements of VM-21.
- Actuarial certification has been obtained which indicates that the hedging strategy is incorporated within the establishment of VM-21 reserves and provides the impact of the hedging strategy within the Actuarial Guideline Conditional Tail Expectation Amount.
- Financial Officer Certification has been obtained which indicates that the hedging strategy meets the definition of a Clearly Defined Hedging Strategy within VM-21 and that the Clearly Defined Hedging Strategy is the hedging strategy being used by the company in its actual day-to-day risk mitigation efforts.

27.1 Were any preferred stocks or bonds owned as of December 31 of the current year mandatorily convertible into equity, or, at the option of the issuer, convertible into equity? ..... Yes [ ] No [ X ]

27.2 If yes, state the amount thereof at December 31 of the current year. .... \$ .....

28. Excluding items in Schedule E - Part 3 - Special Deposits, real estate, mortgage loans and investments held physically in the reporting entity's offices, vaults or safety deposit boxes, were all stocks, bonds and other securities, owned throughout the current year held pursuant to a custodial agreement with a qualified bank or trust company in accordance with Section 1, III - General Examination Considerations, F. Outsourcing of Critical Functions, Custodial or Safekeeping Agreements of the NAIC Financial Condition Examiners Handbook?..... Yes [ X ] No [ ]

28.01 For agreements that comply with the requirements of the NAIC Financial Condition Examiners Handbook, complete the following:

1 Name of Custodian(s)	2 Custodian's Address
Fifth Third Bank .....	38 Fountain Square Plaza, Cincinnati, OH 45263 .....



ANNUAL STATEMENT FOR THE YEAR 2020 OF THE Cincinnati Equitable Insurance Company

GENERAL INTERROGATORIES

28.02 For all agreements that do not comply with the requirements of the NAIC Financial Condition Examiners Handbook, provide the name, location and a complete explanation:

1 Name(s)	2 Location(s)	3 Complete Explanation(s)

28.03 Have there been any changes, including name changes, in the custodian(s) identified in 28.01 during the current year?..... Yes [ ] No [ X ]

28.04 If yes, give full and complete information relating thereto:

1 Old Custodian	2 New Custodian	3 Date of Change	4 Reason

28.05 Investment management – Identify all investment advisors, investment managers, broker/dealers, including individuals that have the authority to make investment decisions on behalf of the reporting entity. For assets that are managed internally by employees of the reporting entity, note as such. ["...that have access to the investment accounts"; "...handle securities"]

1 Name of Firm or Individual	2 Affiliation
David D. Baker .....	I.....

28.0597 For those firms/individuals listed in the table for Question 28.05, do any firms/individuals unaffiliated with the reporting entity (i.e. designated with a "U") manage more than 10% of the reporting entity's invested assets?..... Yes [ ] No [ X ]

28.0598 For firms/individuals unaffiliated with the reporting entity (i.e. designated with a "U") listed in the table for Question 28.05, does the total assets under management aggregate to more than 50% of the reporting entity's invested assets?..... Yes [ ] No [ X ]

28.06 For those firms or individuals listed in the table for 28.05 with an affiliation code of "A" (affiliated) or "U" (unaffiliated), provide the information for the table below.

1 Central Registration Depository Number	2 Name of Firm or Individual	3 Legal Entity Identifier (LEI)	4 Registered With	5 Investment Management Agreement (IMA) Filed

29.1 Does the reporting entity have any diversified mutual funds reported in Schedule D, Part 2 (diversified according to the Securities and Exchange Commission (SEC) in the Investment Company Act of 1940 [Section 5(b)(1)])? ..... Yes [ ] No [ X ]

29.2 If yes, complete the following schedule:

1 CUSIP #	2 Name of Mutual Fund	3 Book/Adjusted Carrying Value
29.2999 - Total		0

29.3 For each mutual fund listed in the table above, complete the following schedule:

1 Name of Mutual Fund (from above table)	2 Name of Significant Holding of the Mutual Fund	3 Amount of Mutual Fund's Book/Adjusted Carrying Value Attributable to the Holding	4 Date of Valuation

ANNUAL STATEMENT FOR THE YEAR 2020 OF THE Cincinnati Equitable Insurance Company

GENERAL INTERROGATORIES

30. Provide the following information for all short-term and long-term bonds and all preferred stocks. Do not substitute amortized value or statement value for fair value.

	1	2	3
	Statement (Admitted) Value	Fair Value	Excess of Statement over Fair Value (-), or Fair Value over Statement (+)
30.1 Bonds .....	3,136,842	3,366,970	230,128
30.2 Preferred stocks .....	0		0
30.3 Totals	3,136,842	3,366,970	230,128

30.4 Describe the sources or methods utilized in determining the fair values:

31.1 Was the rate used to calculate fair value determined by a broker or custodian for any of the securities in Schedule D? Yes [ X ] No [ ]

31.2 If the answer to 31.1 is yes, does the reporting entity have a copy of the broker's or custodian's pricing policy (hard copy or electronic copy) for all brokers or custodians used as a pricing source? Yes [ X ] No [ ]

31.3 If the answer to 31.2 is no, describe the reporting entity's process for determining a reliable pricing source for purposes of disclosure of fair value for Schedule D:

32.1 Have all the filing requirements of the Purposes and Procedures Manual of the NAIC Investment Analysis Office been followed? Yes [ X ] No [ ]

32.2 If no, list exceptions:

33. By self-designating 5GI securities, the reporting entity is certifying the following elements of each self-designated 5GI security:

- a. Documentation necessary to permit a full credit analysis of the security does not exist or an NAIC CRP credit rating for an FE or PL security is not available.
- b. Issuer or obligor is current on all contracted interest and principal payments.
- c. The insurer has an actual expectation of ultimate payment of all contracted interest and principal.

Has the reporting entity self-designated 5GI securities? Yes [ ] No [ X ]

34. By self-designating PLGI securities, the reporting entity is certifying the following elements of each self-designated PLGI security:

- a. The security was purchased prior to January 1, 2018.
- b. The reporting entity is holding capital commensurate with the NAIC Designation reported for the security.
- c. The NAIC Designation was derived from the credit rating assigned by an NAIC CRP in its legal capacity as a NRSRO which is shown on a current private letter rating held by the insurer and available for examination by state insurance regulators.
- d. The reporting entity is not permitted to share this credit rating of the PL security with the SVO.

Has the reporting entity self-designated PLGI securities? Yes [ ] No [ X ]

35. By assigning FE to a Schedule BA non-registered private fund, the reporting entity is certifying the following elements of each self-designated FE fund:

- a. The shares were purchased prior to January 1, 2019.
- b. The reporting entity is holding capital commensurate with the NAIC Designation reported for the security.
- c. The security had a public credit rating(s) with annual surveillance assigned by an NAIC CRP in its legal capacity as an NRSRO prior to January 1, 2019.
- d. The fund only or predominantly holds bonds in its portfolio.
- e. The current reported NAIC Designation was derived from the public credit rating(s) with annual surveillance assigned by an NAIC CRP in its legal capacity as an NRSRO.
- f. The public credit rating(s) with annual surveillance assigned by an NAIC CRP has not lapsed.

Has the reporting entity assigned FE to Schedule BA non-registered private funds that complied with the above criteria? Yes [ ] No [ X ]

36. By rolling/renewing short-term or cash equivalent investments with continued reporting on Schedule DA, Part 1 or Schedule E Part 2 (identified through a code (%) in those investment schedules), the reporting entity is certifying to the following:

- a. The investment is a liquid asset that can be terminated by the reporting entity on the current maturity date.
- b. If the investment is with a nonrelated party or nonaffiliate, then it reflects an arms-length transaction with renewal completed at the discretion of all involved parties.
- c. If the investment is with a related party or affiliate, then the reporting entity has completed robust re-underwriting of the transaction for which documentation is available for regulator review.
- d. Short-term and cash equivalent investments that have been renewed/rolled from the prior period that do not meet the criteria in 36.a - 36.c are reported as long-term investments.

Has the reporting entity rolled/renewed short-term or cash equivalent investments in accordance with these criteria? Yes [ ] No [ ] N/A [ X ]

ANNUAL STATEMENT FOR THE YEAR 2020 OF THE Cincinnati Equitable Insurance Company

GENERAL INTERROGATORIES

OTHER

37.1 Amount of payments to trade associations, service organizations and statistical or rating bureaus, if any? .....\$ .....0

37.2 List the name of the organization and the amount paid if any such payment represented 25% or more of the total payments to trade associations, service organizations and statistical or rating bureaus during the period covered by this statement.

1 Name	2 Amount Paid

38.1 Amount of payments for legal expenses, if any? .....\$ .....686

38.2 List the name of the firm and the amount paid if any such payment represented 25% or more of the total payments for legal expenses during the period covered by this statement.

1 Name	2 Amount Paid
CT Corporation .....	.....686

39.1 Amount of payments for expenditures in connection with matters before legislative bodies, officers or departments of government, if any? .....\$ .....0

39.2 List the name of the firm and the amount paid if any such payment represented 25% or more of the total payment expenditures in connection with matters before legislative bodies, officers or departments of government during the period covered by this statement.

1 Name	2 Amount Paid

GENERAL INTERROGATORIES

PART 2 - PROPERTY AND CASUALTY INTERROGATORIES

1.1

Does the reporting entity have any direct Medicare Supplement Insurance in force?

Yes [ ] No [ X ]

1.2

If yes, indicate premium earned on U. S. business only.

\$

1.3

What portion of Item (1.2) is not reported on the Medicare Supplement Insurance Experience Exhibit?

\$

1.31

Reason for excluding

1.4

Indicate amount of earned premium attributable to Canadian and/or Other Alien not included in Item (1.2) above.

\$

1.5

Indicate total incurred claims on all Medicare Supplement Insurance.

\$

0

1.6

Individual policies:

Most current three years:

1.61 Total premium earned

\$

0

1.62 Total incurred claims

\$

0

1.63 Number of covered lives

0

All years prior to most current three years

1.64 Total premium earned

\$

0

1.65 Total incurred claims

\$

0

1.66 Number of covered lives

0

1.7

Group policies:

Most current three years:

1.71 Total premium earned

\$

0

1.72 Total incurred claims

\$

0

1.73 Number of covered lives

0

All years prior to most current three years

1.74 Total premium earned

\$

0

1.75 Total incurred claims

\$

0

1.76 Number of covered lives

0

2.

Health Test:

1

Current Year

2

Prior Year

2.1 Premium Numerator

0

2.2 Premium Denominator

2.3 Premium Ratio (2.1/2.2)

0.000

0.000

2.4 Reserve Numerator

0

0

2.5 Reserve Denominator

13,509

13,509

2.6 Reserve Ratio (2.4/2.5)

0.000

0.000

3.1

Did the reporting entity issue participating policies during the calendar year?

Yes [ ] No [ X ]

3.2

If yes, provide the amount of premium written for participating and/or non-participating policies during the calendar year:

3.21 Participating policies

\$

3.22 Non-participating policies

\$

4.

For mutual reporting Entities and Reciprocal Exchanges Only:

4.1 Does the reporting entity issue assessable policies?

Yes [ ] No [ X ]

4.2 Does the reporting entity issue non-assessable policies?

Yes [ ] No [ X ]

4.3 If assessable policies are issued, what is the extent of the contingent liability of the policyholders?

%

4.4 Total amount of assessments paid or ordered to be paid during the year on deposit notes or contingent premiums.

\$

5.

For Reciprocal Exchanges Only:

5.1 Does the Exchange appoint local agents?

Yes [ ] No [ X ]

5.2 If yes, is the commission paid:

5.21 Out of Attorney's-in-fact compensation

Yes [ ] No [ ] N/A [ X ]

5.22 As a direct expense of the exchange

Yes [ ] No [ ] N/A [ X ]

5.3

What expenses of the Exchange are not paid out of the compensation of the Attorney-in-fact?

5.4

Has any Attorney-in-fact compensation, contingent on fulfillment of certain conditions, been deferred?

Yes [ ] No [ X ]

5.5

If yes, give full information

16

ANNUAL STATEMENT FOR THE YEAR 2020 OF THE Cincinnati Equitable Insurance Company

GENERAL INTERROGATORIES

PART 2 - PROPERTY AND CASUALTY INTERROGATORIES

6.1

What provision has this reporting entity made to protect itself from an excessive loss in the event of a catastrophe under a workers' compensation contract issued without limit of loss?

6.2

Describe the method used to estimate this reporting entity's probable maximum insurance loss, and identify the type of insured exposures comprising that probable maximum loss, the locations of concentrations of those exposures and the external resources (such as consulting firms or computer software models), if any, used in the estimation process.

6.3

What provision has this reporting entity made (such as a catastrophic reinsurance program) to protect itself from an excessive loss arising from the types and concentrations of insured exposures comprising its probable maximum property insurance loss?

6.4

Does the reporting entity carry catastrophe reinsurance protection for at least one reinstatement, in an amount sufficient to cover its estimated probable maximum loss attributable to a single loss event or occurrence?

Yes [ ] No [ X ]

6.5

If no, describe any arrangements or mechanisms employed by the reporting entity to supplement its catastrophe reinsurance program or to hedge its exposure to unreinsured catastrophic loss.  
We have not written business since 2007. When writing we did carry Cat Coverage

7.1

Has this reporting entity reinsured any risk with any other entity under a quota share reinsurance contract that includes a provision that would limit the reinsurer's losses below the stated quota share percentage (e.g., a deductible, a loss ratio corridor, a loss ratio cap, an aggregate limit or any similar provisions)?

Yes [ ] No [ X ]

7.2

If yes, indicate the number of reinsurance contracts containing such provisions:

7.3

If yes, does the amount of reinsurance credit taken reflect the reduction in quota share coverage caused by any applicable limiting provision(s)?

Yes [ ] No [ X ]

8.1

Has this reporting entity reinsured any risk with any other entity and agreed to release such entity from liability, in whole or in part, from any loss that may occur on this risk, or portion thereof, reinsured?

Yes [ ] No [ X ]

8.2

If yes, give full information

9.1

Has the reporting entity ceded any risk under any reinsurance contract (or under multiple contracts with the same reinsurer or its affiliates) for which during the period covered by the statement: (i) it recorded a positive or negative underwriting result greater than 5% of prior year-end surplus as regards policyholders or it reported calendar year written premium ceded or year-end loss and loss expense reserves ceded greater than 5% of prior year-end surplus as regards policyholders; (ii) it accounted for that contract as reinsurance and not as a deposit; and (iii) the contract(s) contain one or more of the following features or other features that would have similar results:  
(a) A contract term longer than two years and the contract is noncancellable by the reporting entity during the contract term;  
(b) A limited or conditional cancellation provision under which cancellation triggers an obligation by the reporting entity, or an affiliate of the reporting entity, to enter into a new reinsurance contract with the reinsurer, or an affiliate of the reinsurer;  
(c) Aggregate stop loss reinsurance coverage;  
(d) A unilateral right by either party (or both parties) to commute the reinsurance contract, whether conditional or not, except for such provisions which are only triggered by a decline in the credit status of the other party;  
(e) A provision permitting reporting of losses, or payment of losses, less frequently than on a quarterly basis (unless there is no activity during the period); or  
(f) Payment schedule, accumulating retentions from multiple years or any features inherently designed to delay timing of the reimbursement to the ceding entity.

Yes [ ] No [ X ]

9.2

Has the reporting entity during the period covered by the statement ceded any risk under any reinsurance contract (or under multiple contracts with the same reinsurer or its affiliates), for which, during the period covered by the statement, it recorded a positive or negative underwriting result greater than 5% of prior year-end surplus as regards policyholders or it reported calendar year written premium ceded or year-end loss and loss expense reserves ceded greater than 5% of prior year-end surplus as regards policyholders; excluding cessions to approved pooling arrangements or to captive insurance companies that are directly or indirectly controlling, controlled by, or under common control with (i) one or more unaffiliated policyholders of the reporting entity, or (ii) an association of which one or more unaffiliated policyholders of the reporting entity is a member where:  
(a) The written premium ceded to the reinsurer by the reporting entity or its affiliates represents fifty percent (50%) or more of the entire direct and assumed premium written by the reinsurer based on its most recently available financial statement; or  
(b) Twenty-five percent (25%) or more of the written premium ceded to the reinsurer has been retroceded back to the reporting entity or its affiliates in a separate reinsurance contract.

Yes [ ] No [ X ]

9.3

If yes to 9.1 or 9.2, please provide the following information in the Reinsurance Summary Supplemental Filing for General Interrogatory 9:  
(a) The aggregate financial statement impact gross of all such ceded reinsurance contracts on the balance sheet and statement of income;  
(b) A summary of the reinsurance contract terms and indicate whether it applies to the contracts meeting the criteria in 9.1 or 9.2; and  
(c) A brief discussion of management's principle objectives in entering into the reinsurance contract including the economic purpose to be achieved.

9.4

Except for transactions meeting the requirements of paragraph 36 of SSAP No. 62R, Property and Casualty Reinsurance, has the reporting entity ceded any risk under any reinsurance contract (or multiple contracts with the same reinsurer or its affiliates) during the period covered by the financial statement, and either:  
(a) Accounted for that contract as reinsurance (either prospective or retroactive) under statutory accounting principles ("SAP") and as a deposit under generally accepted accounting principles ("GAAP"); or  
(b) Accounted for that contract as reinsurance under GAAP and as a deposit under SAP?

Yes [ ] No [ X ]

9.5

If yes to 9.4, explain in the Reinsurance Summary Supplemental Filing for General Interrogatory 9 (Section D) why the contract(s) is treated differently for GAAP and SAP.

9.6

The reporting entity is exempt from the Reinsurance Attestation Supplement under one or more of the following criteria:  
(a) The entity does not utilize reinsurance; or,  
(b) The entity only engages in a 100% quota share contract with an affiliate and the affiliated or lead company has filed an attestation supplement; or  
(c) The entity has no external cessions and only participates in an intercompany pool and the affiliated or lead company has filed an attestation supplement.

Yes [ ] No [ X ]  
Yes [ ] No [ X ]  
Yes [ ] No [ X ]

10.

If the reporting entity has assumed risks from another entity, there should be charged on account of such reinsurances a reserve equal to that which the original entity would have been required to charge had it retained the risks. Has this been done?

Yes [ ] No [ ] N/A [ X ]

GENERAL INTERROGATORIES

PART 2 - PROPERTY AND CASUALTY INTERROGATORIES

11.1

Has the reporting entity guaranteed policies issued by any other entity and now in force?

Yes [ ] No [ X ]

11.2

If yes, give full information

12.1

If the reporting entity recorded accrued retrospective premiums on insurance contracts on Line 15.3 of the asset schedule, Page 2, state the amount of corresponding liabilities recorded for:

12.11 Unpaid losses

\$

12.12 Unpaid underwriting expenses (including loss adjustment expenses)

\$

12.2

Of the amount on Line 15.3, Page 2, state the amount which is secured by letters of credit, collateral, and other funds

\$

12.3

If the reporting entity underwrites commercial insurance risks, such as workers' compensation, are premium notes or promissory notes accepted from its insureds covering unpaid premiums and/or unpaid losses?

Yes [ ] No [ ] N/A [ X ]

12.4

If yes, provide the range of interest rates charged under such notes during the period covered by this statement:

12.41 From

%

12.42 To

%

12.5

Are letters of credit or collateral and other funds received from insureds being utilized by the reporting entity to secure premium notes or promissory notes taken by a reporting entity, or to secure any of the reporting entity's reported direct unpaid loss reserves , including unpaid losses under loss deductible features of commercial policies?

Yes [ ] No [ X ]

12.6

If yes, state the amount thereof at December 31 of the current year:

12.61 Letters of credit

\$

12.62 Collateral and other funds

\$

13.1

Largest net aggregate amount insured in any one risk (excluding workers' compensation):

\$

13.2

Does any reinsurance contract considered in the calculation of this amount include an aggregate limit of recovery without also including a reinstatement provision?

Yes [ ] No [ X ]

13.3

State the number of reinsurance contracts (excluding individual facultative risk certificates, but including facultative programs, automatic facilities or facultative obligatory contracts) considered in the calculation of the amount.

14.1

Is the company a cedant in a multiple cedant reinsurance contract?

Yes [ ] No [ X ]

14.2

If yes, please describe the method of allocating and recording reinsurance among the cedants:

14.3

If the answer to 14.1 is yes, are the methods described in item 14.2 entirely contained in the respective multiple cedant reinsurance contracts?

Yes [ ] No [ X ]

14.4

If the answer to 14.3 is no, are all the methods described in 14.2 entirely contained in written agreements?

Yes [ ] No [ X ]

14.5

If the answer to 14.4 is no, please explain:

15.1

Has the reporting entity guaranteed any financed premium accounts?

Yes [ ] No [ X ]

15.2

If yes, give full information

16.1

Does the reporting entity write any warranty business?

Yes [ ] No [ X ]

If yes, disclose the following information for each of the following types of warranty coverage:

	1 Direct Losses Incurred	2 Direct Losses Unpaid	3 Direct Written Premium	4 Direct Premium Unearned	5 Direct Premium Earned
16.11 Home					
16.12 Products					
16.13 Automobile					
16.14 Other*					

\* Disclose type of coverage:

ANNUAL STATEMENT FOR THE YEAR 2020 OF THE Cincinnati Equitable Insurance Company

GENERAL INTERROGATORIES

PART 2 - PROPERTY AND CASUALTY INTERROGATORIES

17.1

Does the reporting entity include amounts recoverable on unauthorized reinsurance in Schedule F - Part 3 that is exempt from the statutory provision for unauthorized reinsurance? .....

Yes [ ☐ ] No [ ☒ ]

Incurred but not reported losses on contracts in force prior to July 1, 1984, and not subsequently renewed are exempt from the statutory provision for unauthorized reinsurance. Provide the following information for this exemption:

17.11

Gross amount of unauthorized reinsurance in Schedule F - Part 3 exempt from the statutory provision for unauthorized reinsurance .....

\$ .....

17.12

Unfunded portion of Interrogatory 17.11 .....

\$ .....

17.13

Paid losses and loss adjustment expenses portion of Interrogatory 17.11.....

\$ .....

17.14

Case reserves portion of Interrogatory 17.11 .....

\$ .....

17.15

Incurred but not reported portion of Interrogatory 17.11 .....

\$ .....

17.16

Unearned premium portion of Interrogatory 17.11 .....

\$ .....

17.17

Contingent commission portion of Interrogatory 17.11 .....

\$ .....

18.1

Do you act as a custodian for health savings accounts? .....

Yes [ ☐ ] No [ ☒ ]

18.2

If yes, please provide the amount of custodial funds held as of the reporting date. ....

\$ .....

18.3

Do you act as an administrator for health savings accounts? .....

Yes [ ☐ ] No [ ☒ ]

18.4

If yes, please provide the balance of funds administered as of the reporting date. ....

\$ .....

19.

Is the reporting entity licensed or chartered, registered, qualified, eligible or writing business in at least two states? .....

Yes [ ☒ ] No [ ☐ ]

19.1

If no, does the reporting entity assume reinsurance business that covers risks residing in at least one state other than the state of domicile of the reporting entity? .....

Yes [ ☐ ] No [ ☒ ]

FIVE-YEAR HISTORICAL DATA

Show amounts in whole dollars only, no cents; show percentages to one decimal place, i.e. 17.6.

	1 2020	2 2019	3 2018	4 2017	5 2016
<b>Gross Premiums Written (Page 8, Part 1B Cols. 1, 2 &amp; 3)</b>					
1. Liability lines (Lines 11.1, 11.2, 16, 17.1, 17.2, 17.3, 18.1, 18.2, 19.1, 19.2 & 19.3, 19.4)	0	0	0	0	0
2. Property lines (Lines 1, 2, 9, 12, 21 & 26)	0	0	0	0	0
3. Property and liability combined lines (Lines 3, 4, 5, 8, 22 & 27)	0	0	0	0	0
4. All other lines (Lines 6, 10, 13, 14, 15, 23, 24, 28, 29, 30 & 34)	0	0	0	0	0
5. Nonproportional reinsurance lines (Lines 31, 32 & 33)	0	0	0	0	0
6. Total (Line 35)	0	0	0	0	0
<b>Net Premiums Written (Page 8, Part 1B, Col. 6)</b>					
7. Liability lines (Lines 11.1, 11.2, 16, 17.1, 17.2, 17.3, 18.1, 18.2, 19.1, 19.2 & 19.3, 19.4)	0	0	0	0	0
8. Property lines (Lines 1, 2, 9, 12, 21 & 26)	0	0	0	0	0
9. Property and liability combined lines (Lines 3, 4, 5, 8, 22 & 27)	0	0	0	0	0
10. All other lines (Lines 6, 10, 13, 14, 15, 23, 24, 28, 29, 30 & 34)	0	0	0	0	0
11. Nonproportional reinsurance lines (Lines 31, 32 & 33)	0	0	0	0	0
12. Total (Line 35)	0	0	0	0	0
<b>Statement of Income (Page 4)</b>					
13. Net underwriting gain (loss) (Line 8)	(28,165)	(36,291)	(82,304)	(75,464)	(108,798)
14. Net investment gain or (loss) (Line 11)	139,736	118,296	108,591	109,465	(23,280)
15. Total other income (Line 15)	0	0	0	0	0
16. Dividends to policyholders (Line 17)					
17. Federal and foreign income taxes incurred (Line 19)	14,363	31,819	(60,819)	44,000	(34,919)
18. Net income (Line 20)	97,208	50,186	87,106	(9,999)	(97,159)
<b>Balance Sheet Lines (Pages 2 and 3)</b>					
19. Total admitted assets excluding protected cell business (Page 2, Line 26, Col. 3)	3,317,708	3,310,449	3,238,667	3,175,696	3,145,895
20. Premiums and considerations (Page 2, Col. 3)					
20.1 In course of collection (Line 15.1)	0	0	0	0	0
20.2 Deferred and not yet due (Line 15.2)	0	0	0	0	0
20.3 Accrued retrospective premiums (Line 15.3)	0	0	0	0	0
21. Total liabilities excluding protected cell business (Page 3, Line 26)	29,103	63,474	82,841	96,180	75,971
22. Losses (Page 3, Line 1)	10,000	10,000	10,000	10,000	10,000
23. Loss adjustment expenses (Page 3, Line 3)	3,509	3,509	3,509	3,509	3,509
24. Unearned premiums (Page 3, Line 9)					
25. Capital paid up (Page 3, Lines 30 & 31)	1,000,000	1,000,000	1,000,000	1,000,000	1,000,000
26. Surplus as regards policyholders (Page 3, Line 37)	3,288,605	3,246,975	3,155,826	3,079,516	3,069,924
<b>Cash Flow (Page 5)</b>					
27. Net cash from operations (Line 11)	42,447	71,275	47,734	46,579	11,435
<b>Risk-Based Capital Analysis</b>					
28. Total adjusted capital	3,288,605	3,246,975	3,155,826	3,079,516	3,069,924
29. Authorized control level risk-based capital	46,060	48,335	45,045	44,488	41,914
<b>Percentage Distribution of Cash, Cash Equivalents and Invested Assets (Page 2, Col. 3) (Line divided by Page 2, Line 12, Col. 3) x100.0</b>					
30. Bonds (Line 1)	95.7	88.7	91.4	92.7	94.7
31. Stocks (Lines 2.1 & 2.2)	0.0	4.5	3.8	4.0	3.6
32. Mortgage loans on real estate (Lines 3.1 and 3.2)	0.0	0.0	0.0	0.0	0.0
33. Real estate (Lines 4.1, 4.2 & 4.3)	0.0	0.0	0.0	0.0	0.0
34. Cash, cash equivalents and short-term investments (Line 5)	4.3	6.8	4.8	3.3	1.7
35. Contract loans (Line 6)	0.0	0.0	0.0	0.0	0.0
36. Derivatives (Line 7)	0.0	0.0	0.0	0.0	0.0
37. Other invested assets (Line 8)	0.0	0.0	0.0	0.0	0.0
38. Receivables for securities (Line 9)	0.0	0.0	0.0	0.0	0.0
39. Securities lending reinvested collateral assets (Line 10)	0.0	0.0	0.0	0.0	0.0
40. Aggregate write-ins for invested assets (Line 11)	0.0	0.0	0.0	0.0	0.0
41. Cash, cash equivalents and invested assets (Line 12)	100.0	100.0	100.0	100.0	100.0
<b>Investments in Parent, Subsidiaries and Affiliates</b>					
42. Affiliated bonds (Schedule D, Summary, Line 12, Col. 1)	0			0	
43. Affiliated preferred stocks (Schedule D, Summary, Line 18, Col. 1)	0	0		0	
44. Affiliated common stocks (Schedule D, Summary, Line 24, Col. 1)	0	0		0	
45. Affiliated short-term investments (subtotals included in Schedule DA Verification, Col. 5, Line 10)				0	0
46. Affiliated mortgage loans on real estate					
47. All other affiliated					
48. Total of above Lines 42 to 47	0	0	0	0	0
49. Total Investment in Parent included in Lines 42 to 47 above					
50. Percentage of investments in parent, subsidiaries and affiliates to surplus as regards policyholders (Line 48 above divided by Page 3, Col. 1, Line 37 x 100.0)	0.0	0.0	0.0	0.0	0.0



FIVE-YEAR HISTORICAL DATA

(Continued)

	1 2020	2 2019	3 2018	4 2017	5 2016
<b>Capital and Surplus Accounts (Page 4)</b>					
51. Net unrealized capital gains (losses) (Line 24) .....	(36,810)	24,068	(10,796)	11,300	84,887
52. Dividends to stockholders (Line 35) .....					
53. Change in surplus as regards policyholders for the year (Line 38) .....	41,629	91,149	76,310	9,592	(268,180)
<b>Gross Losses Paid (Page 9, Part 2, Cols. 1 &amp; 2)</b>					
54. Liability lines (Lines 11.1, 11.2, 16, 17.1, 17.2, 17.3, 18.1, 18.2, 19.1, 19.2 & 19.3, 19.4) .....	(789)	(6,369)	(2,469)	(2,186)	(6,448)
55. Property lines (Lines 1, 2, 9, 12, 21 & 26) .....	0	0	0	0	0
56. Property and liability combined lines (Lines 3, 4, 5, 8, 22 & 27) .....	(1,274)	(631)	(827)	(1,224)	(1,178)
57. All other lines (Lines 6, 10, 13, 14, 15, 23, 24, 28, 29, 30 & 34) .....	0	0	0	0	0
58. Nonproportional reinsurance lines (Lines 31, 32 & 33) .....	0	0	0	0	0
59. Total (Line 35) .....	(2,063)	(7,000)	(3,296)	(3,410)	(7,626)
<b>Net Losses Paid (Page 9, Part 2, Col. 4)</b>					
60. Liability lines (Lines 11.1, 11.2, 16, 17.1, 17.2, 17.3, 18.1, 18.2, 19.1, 19.2 & 19.3, 19.4) .....	(789)	(6,369)	(2,469)	(2,186)	(6,448)
61. Property lines (Lines 1, 2, 9, 12, 21 & 26) .....	0	0	0	0	0
62. Property and liability combined lines (Lines 3, 4, 5, 8, 22 & 27) .....	(1,274)	(631)	(827)	(1,224)	(1,178)
63. All other lines (Lines 6, 10, 13, 14, 15, 23, 24, 28, 29, 30 & 34) .....	0	0	0	0	0
64. Nonproportional reinsurance lines (Lines 31, 32 & 33) .....	0	0	0	0	0
65. Total (Line 35) .....	(2,063)	(7,000)	(3,296)	(3,410)	(7,626)
<b>Operating Percentages (Page 4) (Line divided by Page 4, Line 1) x 100.0</b>					
66. Premiums earned (Line 1) .....	100.0	100.0	100.0	100.0	100.0
67. Losses incurred (Line 2) .....	0.0	0.0	0.0	0.0	0.0
68. Loss expenses incurred (Line 3) .....	0.0	0.0	0.0	0.0	0.0
69. Other underwriting expenses incurred (Line 4) .....	0.0	0.0	0.0	0.0	0.0
70. Net underwriting gain (loss) (Line 8) .....	0.0	0.0	0.0	0.0	0.0
<b>Other Percentages</b>					
71. Other underwriting expenses to net premiums written (Page 4, Lines 4 + 5 - 15 divided by Page 8, Part 1B, Col. 6, Line 35 x 100.0) .....	0.0	0.0	0.0	0.0	0.0
72. Losses and loss expenses incurred to premiums earned (Page 4, Lines 2 + 3 divided by Page 4, Line 1 x 100.0) .....	0.0	0.0	0.0	0.0	0.0
73. Net premiums written to policyholders' surplus (Page 8, Part 1B, Col. 6, Line 35 divided by Page 3, Line 37, Col. 1 x 100.0) .....	0.0	0.0	0.0	0.0	0.0
<b>One Year Loss Development (\$000 omitted)</b>					
74. Development in estimated losses and loss expenses incurred prior to current year (Schedule P - Part 2 - Summary, Line 12, Col. 11) .....	(2)	(7)	(4)	1	(7)
75. Percent of development of losses and loss expenses incurred to policyholders' surplus of prior year end (Line 74 above divided by Page 4, Line 21, Col. 1 x 100.0).....	(0.1)	(0.2)	(0.1)	0.0	(0.2)
<b>Two Year Loss Development (\$000 omitted)</b>					
76. Development in estimated losses and loss expenses incurred two years before the current year and prior year (Schedule P, Part 2 - Summary, Line 12, Col. 12) .....	(9)	(11)	(3)	(6)	(38)
77. Percent of development of losses and loss expenses incurred to reported policyholders' surplus of second prior year end (Line 76 above divided by Page 4, Line 21, Col. 2 x 100.0) .....	(0.3)	(0.4)	(0.1)	(0.2)	(1.0)

NOTE: If a party to a merger, have the two most recent years of this exhibit been restated due to a merger in compliance with the disclosure requirements of SSAP No. 3, Accounting Changes and Correction of Errors? ..... Yes [     ] No [     ]  
If no, please explain: .....

ANNUAL STATEMENT FOR THE YEAR 2020 OF THE Cincinnati Equitable Insurance Company

**SCHEDULE P - ANALYSIS OF LOSSES AND LOSS EXPENSES**

**SCHEDULE P - PART 1 - SUMMARY**

(\$000 OMITTED)

Years in Which Premiums Were Earned and Losses Were Incurred	Premiums Earned			Loss and Loss Expense Payments								12
	1  Direct and Assumed	2  Ceded	3  Net (1 - 2)	Loss Payments		Defense and Cost Containment Payments		Adjusting and Other Payments		10  Salvage and Subrogation Received	11  Total Net Paid Cols (4 - 5 + 6 - 7 + 8 - 9)	Number of Claims Reported Direct and Assumed
				4  Direct and Assumed	5  Ceded	6  Direct and Assumed	7  Ceded	8  Direct and Assumed	9  Ceded			
1. Prior.....	XXX	XXX	XXX	(2)	0	0	0	0	0	2	(2)	XXX
2. 2011.....	0	0	0	0	0	0	0	0	0	0	0	XXX
3. 2012.....	0	0	0	0	0	0	0	0	0	0	0	XXX
4. 2013.....	0	0	0	0	0	0	0	0	0	0	0	XXX
5. 2014.....	0	0	0	0	0	0	0	0	0	0	0	XXX
6. 2015.....	0	0	0	0	0	0	0	0	0	0	0	XXX
7. 2016.....	0	0	0	0	0	0	0	0	0	0	0	XXX
8. 2017.....	0	0	0	0	0	0	0	0	0	0	0	XXX
9. 2018.....	0	0	0	0	0	0	0	0	0	0	0	XXX
10. 2019.....	0	0	0	0	0	0	0	0	0	0	0	XXX
11. 2020.....	0	0	0	0	0	0	0	0	0	0	0	XXX
12. Totals	XXX	XXX	XXX	(2)	0	0	0	0	0	2	(2)	XXX

	Losses Unpaid				Defense and Cost Containment Unpaid				Adjusting and Other Unpaid		23	24	25
	Case Basis		Bulk + IBNR		Case Basis		Bulk + IBNR						
	13	14	15	16	17	18	19	20	21	22	Salvage and Subrogation Anticipated	Total Net Losses and Expenses Unpaid	Number of Claims Outstanding Direct and Assumed
	Direct and Assumed	Ceded	Direct and Assumed	Ceded	Direct and Assumed	Ceded	Direct and Assumed	Ceded	Direct and Assumed	Ceded			
1. Prior.....	10	0	0	0	3	0	0	0	0	0	0	13	XXX
2. 2011.....	0	0	0	0	0	0	0	0	0	0	0	0	XXX
3. 2012.....	0	0	0	0	0	0	0	0	0	0	0	0	XXX
4. 2013.....	0	0	0	0	0	0	0	0	0	0	0	0	XXX
5. 2014.....	0	0	0	0	0	0	0	0	0	0	0	0	XXX
6. 2015.....	0	0	0	0	0	0	0	0	0	0	0	0	XXX
7. 2016.....	0	0	0	0	0	0	0	0	0	0	0	0	XXX
8. 2017.....	0	0	0	0	0	0	0	0	0	0	0	0	XXX
9. 2018.....	0	0	0	0	0	0	0	0	0	0	0	0	XXX
10. 2019.....	0	0	0	0	0	0	0	0	0	0	0	0	XXX
11. 2020.....	0	0	0	0	0	0	0	0	0	0	0	0	XXX
12. Totals	10	0	0	0	3	0	0	0	0	0	0	13	XXX

	Total Losses and Loss Expenses Incurred			Loss and Loss Expense Percentage (Incurred /Premiums Earned)			Nontabular Discount		34	Net Balance Sheet Reserves After Discount	
	26	27	28	29	30	31	32	33	Inter- Company Pooling Participation Percentage	35	36
	Direct and Assumed	Ceded	Net	Direct and Assumed	Ceded	Net	Loss	Loss Expense		Losses Unpaid	Loss Expenses Unpaid
1. Prior.....	XXX	XXX	XXX	XXX	XXX	XXX	0	0	XXX	10	3
2. 2011.....	0	0	0	0.0	0.0	0.0	0	0		0	0
3. 2012.....	0	0	0	0.0	0.0	0.0	0	0		0	0
4. 2013.....	0	0	0	0.0	0.0	0.0	0	0		0	0
5. 2014.....	0	0	0	0.0	0.0	0.0	0	0		0	0
6. 2015.....	0	0	0	0.0	0.0	0.0	0	0		0	0
7. 2016.....	0	0	0	0.0	0.0	0.0	0	0		0	0
8. 2017.....	0	0	0	0.0	0.0	0.0	0	0		0	0
9. 2018.....	0	0	0	0.0	0.0	0.0	0	0		0	0
10. 2019.....	0	0	0	0.0	0.0	0.0	0	0		0	0
11. 2020.....	0	0	0	0.0	0.0	0.0	0	0		0	0
12. Totals	XXX	XXX	XXX	XXX	XXX	XXX	0	0	XXX	10	3

Note: Parts 2 and 4 are gross of all discounting, including tabular discounting. Part 1 is gross of only nontabular discounting, which is reported in Columns 32 and 33 of Part 1. The tabular discount, if any, is reported in the Notes to Financial Statements which will reconcile Part 1 with Parts 2 and 4.

SCHEDULE P - PART 2 - SUMMARY

Years in Which Losses Were Incurred	INCURRED NET LOSSES AND DEFENSE AND COST CONTAINMENT EXPENSES REPORTED AT YEAR END (\$000 OMITTED)										DEVELOPMENT	
	1 2011	2 2012	3 2013	4 2014	5 2015	6 2016	7 2017	8 2018	9 2019	10 2020	11 One Year	12 Two Year
1. Prior.....	33	20	16	36	5	(2)	(1)	(5)	(12)	(14)	(2)	(9)
2. 2011.....	0	0	0	0	0	0	0	0	0	0	0	0
3. 2012.....	XXX	0	0	0	0	0	0	0	0	0	0	0
4. 2013.....	XXX	XXX	0	0	0	0	0	0	0	0	0	0
5. 2014.....	XXX	XXX	XXX	0	0	0	0	0	0	0	0	0
6. 2015.....	XXX	XXX	XXX	XXX	0	0	0	0	0	0	0	0
7. 2016.....	XXX	XXX	XXX	XXX	XXX	0	0	0	0	0	0	0
8. 2017.....	XXX	XXX	XXX	XXX	XXX	XXX	0	0	0	0	0	0
9. 2018.....	XXX	XXX	XXX	XXX	XXX	XXX	XXX	0	0	0	0	0
10. 2019.....	XXX	XXX	XXX	XXX	XXX	XXX	XXX	XXX	0	0	0	XXX
11. 2020.....	XXX	XXX	XXX	XXX	XXX	XXX	XXX	XXX	XXX	0	XXX	XXX
12. Totals											(2)	(9)

SCHEDULE P - PART 3 - SUMMARY

Years in Which Losses Were Incurred	CUMULATIVE PAID NET LOSSES AND DEFENSE AND COST CONTAINMENT EXPENSES REPORTED AT YEAR END (\$000 OMITTED)										11 Number of Claims Closed With Loss Payment	12 Number of Claims Closed Without Loss Payment
	1 2011	2 2012	3 2013	4 2014	5 2015	6 2016	7 2017	8 2018	9 2019	10 2020		
1. Prior.....	000	9	5	(2)	(5)	(12)	(15)	(18)	(25)	(27)	XXX	XXX
2. 2011.....	0	0	0	0	0	0	0	0	0	0	XXX	XXX
3. 2012.....	XXX	0	0	0	0	0	0	0	0	0	XXX	XXX
4. 2013.....	XXX	XXX	0	0	0	0	0	0	0	0	XXX	XXX
5. 2014.....	XXX	XXX	XXX	0	0	0	0	0	0	0	XXX	XXX
6. 2015.....	XXX	XXX	XXX	XXX	0	0	0	0	0	0	XXX	XXX
7. 2016.....	XXX	XXX	XXX	XXX	XXX	0	0	0	0	0	XXX	XXX
8. 2017.....	XXX	XXX	XXX	XXX	XXX	XXX	0	0	0	0	XXX	XXX
9. 2018.....	XXX	XXX	XXX	XXX	XXX	XXX	XXX	0	0	0	XXX	XXX
10. 2019.....	XXX	XXX	XXX	XXX	XXX	XXX	XXX	XXX	0	0	XXX	XXX
11. 2020.....	XXX	XXX	XXX	XXX	XXX	XXX	XXX	XXX	XXX	0	XXX	XXX

SCHEDULE P - PART 4 - SUMMARY

Years in Which Losses Were Incurred	BULK AND IBNR RESERVES ON NET LOSSES AND DEFENSE AND COST CONTAINMENT EXPENSES REPORTED AT YEAR END (\$000 OMITTED)									
	1 2011	2 2012	3 2013	4 2014	5 2015	6 2016	7 2017	8 2018	9 2019	10 2020
1. Prior.....	3	1	1	0	0	0	0	0	0	0
2. 2011.....	0	0	0	0	0	0	0	0	0	0
3. 2012.....	XXX	0	0	0	0	0	0	0	0	0
4. 2013.....	XXX	XXX	0	0	0	0	0	0	0	0
5. 2014.....	XXX	XXX	XXX	0	0	0	0	0	0	0
6. 2015.....	XXX	XXX	XXX	XXX	0	0	0	0	0	0
7. 2016.....	XXX	XXX	XXX	XXX	XXX	0	0	0	0	0
8. 2017.....	XXX	XXX	XXX	XXX	XXX	XXX	0	0	0	0
9. 2018.....	XXX	XXX	XXX	XXX	XXX	XXX	XXX	0	0	0
10. 2019.....	XXX	XXX	XXX	XXX	XXX	XXX	XXX	XXX	0	0
11. 2020.....	XXX	XXX	XXX	XXX	XXX	XXX	XXX	XXX	XXX	0

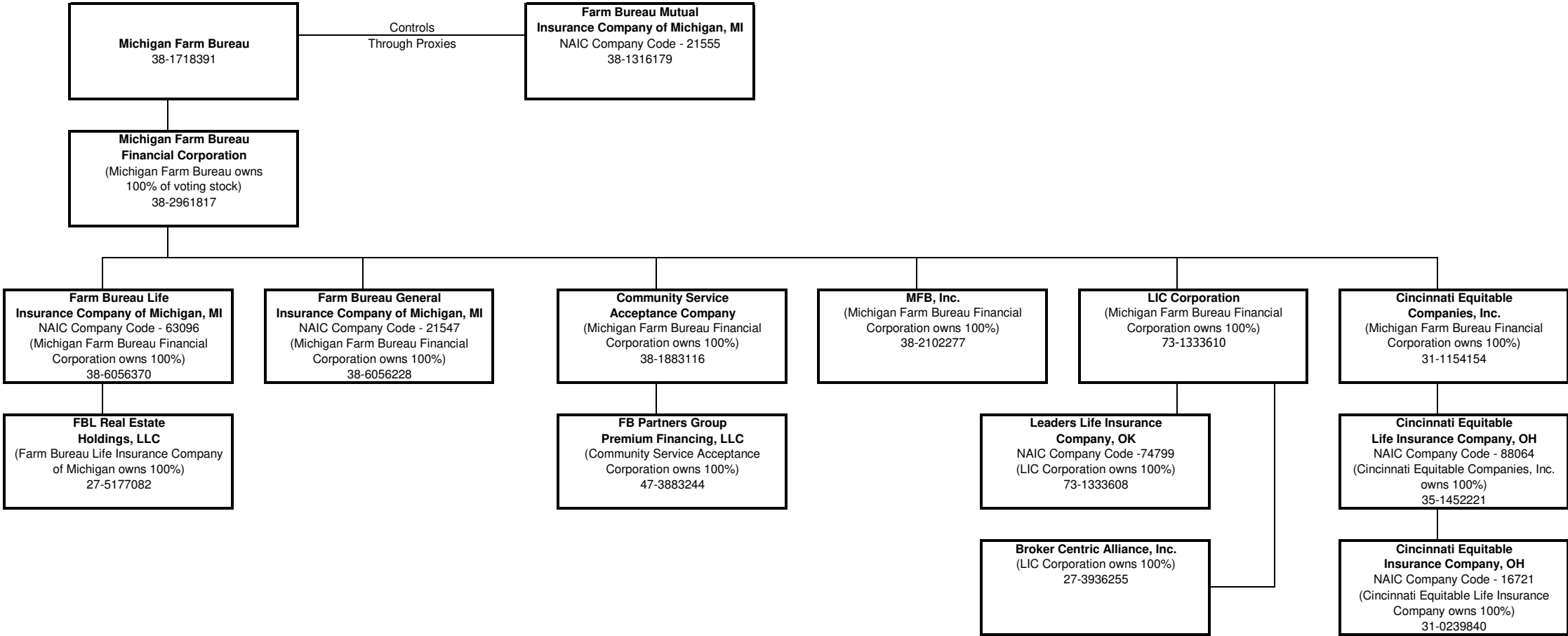
SCHEDULE T - EXHIBIT OF PREMIUMS WRITTEN

Allocated by States and Territories									
States, Etc.	1	Gross Premiums, Including Policy and Membership Fees, Less Return Premiums and Premiums on Policies Not Taken		4	5	6	7	8	9
		2	3						
	Active Status (a)	Direct Premiums Written	Direct Premiums Earned	Dividends Paid or Credited to Policyholders on Direct Business	Direct Losses Paid (Deducting Salvage)	Direct Losses Incurred	Direct Losses Unpaid	Finance and Service Charges Not Included in Premiums	Direct Premiums Written for Federal Purchasing Groups (Included in Column 2)
1. Alabama	AL	N							
2. Alaska	AK	N							
3. Arizona	AZ	N							
4. Arkansas	AR	N							
5. California	CA	N							
6. Colorado	CO	N							
7. Connecticut	CT	N							
8. Delaware	DE	N							
9. District of Columbia	DC	N							
10. Florida	FL	N							
11. Georgia	GA	N							
12. Hawaii	HI	N							
13. Idaho	ID	N							
14. Illinois	IL	L							
15. Indiana	IN	L							
16. Iowa	IA	N							
17. Kansas	KS	N							
18. Kentucky	KY	L							
19. Louisiana	LA	N							
20. Maine	ME	N							
21. Maryland	MD	N							
22. Massachusetts	MA	N							
23. Michigan	MI	N							
24. Minnesota	MN	N							
25. Mississippi	MS	N							
26. Missouri	MO	N							
27. Montana	MT	N							
28. Nebraska	NE	N							
29. Nevada	NV	N							
30. New Hampshire	NH	N							
31. New Jersey	NJ	N							
32. New Mexico	NM	N							
33. New York	NY	N							
34. North Carolina	NC	N							
35. North Dakota	ND	N							
36. Ohio	OH	L							
37. Oklahoma	OK	N							
38. Oregon	OR	N							
39. Pennsylvania	PA	L	0	0	(2,063)	(2,063)	10,000		
40. Rhode Island	RI	N							
41. South Carolina	SC	N							
42. South Dakota	SD	N							
43. Tennessee	TN	N							
44. Texas	TX	N							
45. Utah	UT	N							
46. Vermont	VT	N							
47. Virginia	VA	N							
48. Washington	WA	N							
49. West Virginia	WV	N							
50. Wisconsin	WI	N							
51. Wyoming	WY	N							
52. American Samoa	AS	N							
53. Guam	GU	N							
54. Puerto Rico	PR	N							
55. U.S. Virgin Islands	VI	N							
56. Northern Mariana Islands	MP	N							
57. Canada	CAN	N							
58. Aggregate other alien	OT	XXX	0	0	0	0	0	0	0
59. Totals	XXX	0	0	0	(2,063)	(2,063)	10,000	0	0
DETAILS OF WRITE-INS									
58001.	XXX								
58002.	XXX								
58003.	XXX								
58998. Summary of remaining write-ins for Line 58 from overflow page	XXX	0	0	0	0	0	0	0	0
58999. Totals (Lines 58001 through 58003 plus 58998)(Line 58 above)	XXX	0	0	0	0	0	0	0	0

(a) Active Status Counts:  
L - Licensed or Chartered - Licensed insurance carrier or domiciled RRG.....5 R - Registered - Non-domiciled RRGs.....0  
E - Eligible - Reporting entities eligible or approved to write surplus lines in the state (other than their state of domicile - see DSLI).....0 Q - Qualified - Qualified or accredited reinsurer.....0  
D - Domestic Surplus Lines Insurer (DSLI) - Reporting entities authorized to write surplus business in the state .....52  
lines in the state of domicile.....0  
N - None of the above - Not allowed to write

(b) Explanation of basis of allocation of premiums by states, etc.  
Direct Writings

SCHEDULE Y - INFORMATION CONCERNING ACTIVITIES OF INSURER MEMBERS OF A HOLDING COMPANY GROUP  
PART 1 - ORGANIZATIONAL CHART



**OVERFLOW PAGE FOR WRITE-INS**