



HEALTH QUARTERLY STATEMENT

AS OF SEPTEMBER 30, 2020
OF THE CONDITION AND AFFAIRS OF THE

Humana Health Plan of Ohio, Inc.

NAIC Group Code 0119 0119 NAIC Company Code 95348 Employer's ID Number 31-1154200
(Current) (Prior)

Organized under the Laws of Ohio, State of Domicile or Port of Entry OH

Country of Domicile United States of America

Licensed as business type: Health Maintenance Organization

Is HMO Federally Qualified? Yes [X] No []

Incorporated/Organized 08/19/1985 Commenced Business 01/01/1986

Statutory Home Office 111 Merchant Street, Cincinnati, OH, US 45246
(Street and Number) (City or Town, State, Country and Zip Code)

Main Administrative Office 111 Merchant Street
(Street and Number)
Cincinnati, OH, US 45246, 513-784-5320
(City or Town, State, Country and Zip Code) (Area Code) (Telephone Number)

Mail Address P.O. Box 740036, Louisville, KY, US 40201-7436
(Street and Number or P.O. Box) (City or Town, State, Country and Zip Code)

Primary Location of Books and Records 500 West Main Street
(Street and Number)
Louisville, KY, US 40202, 513-784-5320
(City or Town, State, Country and Zip Code) (Area Code) (Telephone Number)

Internet Website Address www.humana.com

Statutory Statement Contact Stephenie Warren, 502-580-2050
(Name) (Area Code) (Telephone Number)
DOIINQUIRIES@humana.com, 502-580-2099
(E-mail Address) (FAX Number)

OFFICERS

President & CEO Bruce Dale Broussard Chief Financial Officer Brian Andrew Kane
Associate VP, Asst Gen Counsel & Corporate Secretary Joseph Matthew Ruschell SVP, Chief Actuary Vanessa Marie Olson

OTHER

Alan James Bailey, VP & Treasurer Andrew Joseph Besendorf III, Appointed Actuary Courtney Danielle Durall, Assistant Corporate Secretary and Legal Advisor
Douglas Allen Edwards, Senior Vice President, Workplace Experience Christopher Howal Hunter, Segment President, Group & Military Business Steven Edward McCulley, SVP, Medicare
Sean Joseph O'Reilly, SVP, Enterprise Compliance & Chief Compliance Officer William Mark Preston, VP, Investments Richard Donald Remmers, SVP, Employer Group Sales
George Renaudin II, SVP, Medicare East & Provider Donald Hank Robinson, SVP, Tax Richard Andrew Vollmer Jr., SVP, Medicare Divisional Leader
Timothy Alan Wheatley, Segment President, Retail Ralph Martin Wilson, Vice President Cynthia Hillebrand Zipperle, SVP, Chief Accounting Officer & Controller

DIRECTORS OR TRUSTEES

Bruce Dale Broussard Brian Andrew Kane Timothy Alan Wheatley

State of Kentucky SS:
County of Jefferson

The officers of this reporting entity being duly sworn, each depose and say that they are the described officers of said reporting entity, and that on the reporting period stated above, all of the herein described assets were the absolute property of the said reporting entity, free and clear from any liens or claims thereon, except as herein stated, and that this statement, together with related exhibits, schedules and explanations therein contained, annexed or referred to, is a full and true statement of all the assets and liabilities and of the condition and affairs of the said reporting entity as of the reporting period stated above, and of its income and deductions therefrom for the period ended, and have been completed in accordance with the NAIC Annual Statement Instructions and Accounting Practices and Procedures manual except to the extent that: (1) state law may differ; or, (2) that state rules or regulations require differences in reporting not related to accounting practices and procedures, according to the best of their information, knowledge and belief, respectively. Furthermore, the scope of this attestation by the described officers also includes the related corresponding electronic filing with the NAIC, when required, that is an exact copy (except for formatting differences due to electronic filing) of the enclosed statement. The electronic filing may be requested by various regulators in lieu of or in addition to the enclosed statement.

Bruce Dale Broussard
President & CEO

Joseph Matthew Ruschell
Assoc. VP, Asst. General Counsel & Corporate Secretary

Alan James Bailey
VP & Treasurer

Subscribed and sworn to before me this 4th day of November, 2020

- a. Is this an original filing? Yes [X] No []
b. If no,
1. State the amendment number.....
2. Date filed.....
3. Number of pages attached.....

Julia Wentworth
Notary Public
January 10, 2021

STATEMENT AS OF SEPTEMBER 30, 2020 OF THE Humana Health Plan of Ohio Inc.

ASSETS

	Current Statement Date			4 December 31 Prior Year Net Admitted Assets
	1 Assets	2 Nonadmitted Assets	3 Net Admitted Assets (Cols. 1 - 2)	
1. Bonds	32,961,108	0	32,961,108	32,363,863
2. Stocks:				
2.1 Preferred stocks	0	0	0	0
2.2 Common stocks	0	0	0	0
3. Mortgage loans on real estate:				
3.1 First liens	0	0	0	0
3.2 Other than first liens	0	0	0	0
4. Real estate:				
4.1 Properties occupied by the company (less \$0 encumbrances)	0	0	0	0
4.2 Properties held for the production of income (less \$0 encumbrances)	0	0	0	0
4.3 Properties held for sale (less \$0 encumbrances)	0	0	0	0
5. Cash (\$6,297,600), cash equivalents (\$23,241,198) and short-term investments (\$0)	29,538,798	0	29,538,798	6,071,174
6. Contract loans (including \$0 premium notes)	0	0	0	0
7. Derivatives	0	0	0	0
8. Other invested assets	304,479	0	304,479	304,479
9. Receivables for securities	0	0	0	0
10. Securities lending reinvested collateral assets	0	0	0	0
11. Aggregate write-ins for invested assets	0	0	0	0
12. Subtotals, cash and invested assets (Lines 1 to 11)	62,804,385	0	62,804,385	38,739,517
13. Title plants less \$0 charged off (for Title insurers only)	0	0	0	0
14. Investment income due and accrued	119,741	0	119,741	179,963
15. Premiums and considerations:				
15.1 Uncollected premiums and agents' balances in the course of collection	675,870	87,223	588,647	221,440
15.2 Deferred premiums, agents' balances and installments booked but deferred and not yet due (including \$0 earned but unbilled premiums)	0	0	0	0
15.3 Accrued retrospective premiums (\$426,470) and contracts subject to redetermination (\$1,465,185)	1,891,655	0	1,891,655	549,366
16. Reinsurance:				
16.1 Amounts recoverable from reinsurers	0	0	0	0
16.2 Funds held by or deposited with reinsured companies	0	0	0	0
16.3 Other amounts receivable under reinsurance contracts	0	0	0	0
17. Amounts receivable relating to uninsured plans	1,044,725	0	1,044,725	679,400
18.1 Current federal and foreign income tax recoverable and interest thereon	0	0	0	2,840,765
18.2 Net deferred tax asset	533,103	0	533,103	533,103
19. Guaranty funds receivable or on deposit	0	0	0	0
20. Electronic data processing equipment and software	0	0	0	0
21. Furniture and equipment, including health care delivery assets (\$0)	426,573	426,573	0	0
22. Net adjustment in assets and liabilities due to foreign exchange rates	0	0	0	0
23. Receivables from parent, subsidiaries and affiliates	15,006,663	0	15,006,663	18,926,433
24. Health care (\$4,231,587) and other amounts receivable	4,364,383	114,553	4,249,830	2,764,312
25. Aggregate write-ins for other than invested assets	874,549	854,848	19,701	58,280
26. Total assets excluding Separate Accounts, Segregated Accounts and Protected Cell Accounts (Lines 12 to 25)	87,741,646	1,483,196	86,258,450	65,492,580
27. From Separate Accounts, Segregated Accounts and Protected Cell Accounts	0	0	0	0
28. Total (Lines 26 and 27)	87,741,646	1,483,196	86,258,450	65,492,580
DETAILS OF WRITE-INS				
1101.				
1102.				
1103.				
1198. Summary of remaining write-ins for Line 11 from overflow page	0	0	0	0
1199. Totals (Lines 1101 through 1103 plus 1198)(Line 11 above)	0	0	0	0
2501. Deposits	449,206	449,206	0	0
2502. Prepaid Commissions	395,585	395,585	0	0
2503. Prepaid Expenses	10,056	10,056	0	0
2598. Summary of remaining write-ins for Line 25 from overflow page	19,701	0	19,701	58,280
2599. Totals (Lines 2501 through 2503 plus 2598)(Line 25 above)	874,549	854,848	19,701	58,280

LIABILITIES, CAPITAL AND SURPLUS

	Current Period			Prior Year
	1 Covered	2 Uncovered	3 Total	4 Total
1. Claims unpaid (less \$0 reinsurance ceded)	24,547,651	403,374	24,951,025	19,016,142
2. Accrued medical incentive pool and bonus amounts	3,295,489	0	3,295,489	350,095
3. Unpaid claims adjustment expenses	170,143	0	170,143	141,475
4. Aggregate health policy reserves, including the liability of \$0 for medical loss ratio rebate per the Public Health Service Act	4,831,080	0	4,831,080	7,226,126
5. Aggregate life policy reserves	0	0	0	0
6. Property/casualty unearned premium reserve	0	0	0	0
7. Aggregate health claim reserves	87,000	0	87,000	87,000
8. Premiums received in advance	3,338,227	0	3,338,227	2,365,685
9. General expenses due or accrued	2,693,076	0	2,693,076	3,028,052
10.1 Current federal and foreign income tax payable and interest thereon (including \$0 on realized gains (losses))	565,047	0	565,047	0
10.2 Net deferred tax liability	0	0	0	0
11. Ceded reinsurance premiums payable	0	0	0	0
12. Amounts withheld or retained for the account of others	0	0	0	0
13. Remittances and items not allocated	356,695	0	356,695	66,382
14. Borrowed money (including \$0 current) and interest thereon \$0 (including \$0 current)	0	0	0	0
15. Amounts due to parent, subsidiaries and affiliates	0	0	0	0
16. Derivatives	0	0	0	0
17. Payable for securities	0	0	0	0
18. Payable for securities lending	0	0	0	0
19. Funds held under reinsurance treaties (with \$0 authorized reinsurers, \$0 unauthorized reinsurers and \$0 certified reinsurers)	0	0	0	0
20. Reinsurance in unauthorized and certified (\$0) companies	0	0	0	0
21. Net adjustments in assets and liabilities due to foreign exchange rates	0	0	0	0
22. Liability for amounts held under uninsured plans	948,534	0	948,534	321,063
23. Aggregate write-ins for other liabilities (including \$17,508 current)	93,303	0	93,303	91,446
24. Total liabilities (Lines 1 to 23)	40,926,245	403,374	41,329,619	32,693,466
25. Aggregate write-ins for special surplus funds	XXX	XXX	0	4,172,844
26. Common capital stock	XXX	XXX	1,000	1,000
27. Preferred capital stock	XXX	XXX	0	0
28. Gross paid in and contributed surplus	XXX	XXX	70,223,747	65,223,747
29. Surplus notes	XXX	XXX	0	0
30. Aggregate write-ins for other than special surplus funds	XXX	XXX	0	0
31. Unassigned funds (surplus)	XXX	XXX	(25,295,916)	(36,598,477)
32. Less treasury stock, at cost:				
32.10 shares common (value included in Line 26 \$0)	XXX	XXX	0	0
32.20 shares preferred (value included in Line 27 \$0)	XXX	XXX	0	0
33. Total capital and surplus (Lines 25 to 31 minus Line 32)	XXX	XXX	44,928,831	32,799,114
34. Total liabilities, capital and surplus (Lines 24 and 33)	XXX	XXX	86,258,450	65,492,580
DETAILS OF WRITE-INS				
2301. Unclaimed Property	67,280	0	67,280	65,423
2302. Premium Payable	26,023	0	26,023	26,023
2303.				
2398. Summary of remaining write-ins for Line 23 from overflow page	0	0	0	0
2399. Totals (Lines 2301 through 2303 plus 2398)(Line 23 above)	93,303	0	93,303	91,446
2501. Special Surplus - Projected HCRL Assessment for the Upcoming Year	XXX	XXX	0	4,172,844
2502.	XXX	XXX		
2503.	XXX	XXX		
2598. Summary of remaining write-ins for Line 25 from overflow page	XXX	XXX	0	0
2599. Totals (Lines 2501 through 2503 plus 2598)(Line 25 above)	XXX	XXX	0	4,172,844
3001.	XXX	XXX		
3002.	XXX	XXX		
3003.	XXX	XXX		
3098. Summary of remaining write-ins for Line 30 from overflow page	XXX	XXX	0	0
3099. Totals (Lines 3001 through 3003 plus 3098)(Line 30 above)	XXX	XXX	0	0

STATEMENT OF REVENUE AND EXPENSES

	Current Year To Date		Prior Year To Date	Prior Year Ended December 31
	1 Uncovered	2 Total	3 Total	4 Total
1. Member Months	XXX	318,772	346,647	458,657
2. Net premium income (including \$ 0 non-health premium income)	XXX	184,134,747	161,989,421	210,411,135
3. Change in unearned premium reserves and reserve for rate credits	XXX	490,685	0	(490,685)
4. Fee-for-service (net of \$ 0 medical expenses)	XXX	0	0	0
5. Risk revenue	XXX	0	0	0
6. Aggregate write-ins for other health care related revenues	XXX	0	0	0
7. Aggregate write-ins for other non-health revenues	XXX	0	0	0
8. Total revenues (Lines 2 to 7)	XXX	184,625,432	161,989,421	209,920,451
Hospital and Medical:				
9. Hospital/medical benefits	1,838,642	113,730,652	112,108,248	152,593,938
10. Other professional services	11,039	682,806	387,317	689,178
11. Outside referrals	0	0	0	0
12. Emergency room and out-of-area	64,231	3,973,078	4,325,609	5,906,280
13. Prescription drugs	401,927	24,861,485	23,316,332	32,831,038
14. Aggregate write-ins for other hospital and medical	0	0	0	0
15. Incentive pool, withhold adjustments and bonus amounts	0	3,354,541	338,888	428,180
16. Subtotal (Lines 9 to 15)	2,315,839	146,602,561	140,476,394	192,448,613
Less:				
17. Net reinsurance recoveries	0	0	14,545	14,545
18. Total hospital and medical (Lines 16 minus 17)	2,315,839	146,602,561	140,461,849	192,434,068
19. Non-health claims (net)	0	0	0	0
20. Claims adjustment expenses, including \$ 4,649,748 cost containment expenses	0	5,541,528	5,309,106	7,078,754
21. General administrative expenses	0	23,156,233	19,190,022	26,439,141
22. Increase in reserves for life and accident and health contracts (including \$ 0 increase in reserves for life only)	0	0	0	(256,000)
23. Total underwriting deductions (Lines 18 through 22)	2,315,839	175,300,321	164,960,977	225,695,963
24. Net underwriting gain or (loss) (Lines 8 minus 23)	XXX	9,325,110	(2,971,556)	(15,775,512)
25. Net investment income earned	0	462,100	1,217,231	1,502,199
26. Net realized capital gains (losses) less capital gains tax of \$ 83,658	0	314,714	(258,593)	(195,462)
27. Net investment gains (losses) (Lines 25 plus 26)	0	776,813	958,638	1,306,737
28. Net gain or (loss) from agents' or premium balances charged off [(amount recovered \$ 0) (amount charged off \$ 0)]	0	0	0	0
29. Aggregate write-ins for other income or expenses	0	0	(10,869)	(10,869)
30. Net income or (loss) after capital gains tax and before all other federal income taxes (Lines 24 plus 27 plus 28 plus 29)	XXX	10,101,924	(2,023,787)	(14,479,644)
31. Federal and foreign income taxes incurred	XXX	2,966,443	28,648	(2,716,827)
32. Net income (loss) (Lines 30 minus 31)	XXX	7,135,481	(2,052,435)	(11,762,817)
DETAILS OF WRITE-INS				
0601.	XXX			
0602.	XXX			
0603.	XXX			
0698. Summary of remaining write-ins for Line 6 from overflow page	XXX	0	0	0
0699. Totals (Lines 0601 through 0603 plus 0698)(Line 6 above)	XXX	0	0	0
0701.	XXX			
0702.	XXX			
0703.	XXX			
0798. Summary of remaining write-ins for Line 7 from overflow page	XXX	0	0	0
0799. Totals (Lines 0701 through 0703 plus 0798)(Line 7 above)	XXX	0	0	0
1401.				
1402.				
1403.				
1498. Summary of remaining write-ins for Line 14 from overflow page	0	0	0	0
1499. Totals (Lines 1401 through 1403 plus 1498)(Line 14 above)	0	0	0	0
2901. Loss on Disposal	0	0	(10,869)	(10,869)
2902.				
2903.				
2998. Summary of remaining write-ins for Line 29 from overflow page	0	0	0	0
2999. Totals (Lines 2901 through 2903 plus 2998)(Line 29 above)	0	0	(10,869)	(10,869)

STATEMENT OF REVENUE AND EXPENSES (Continued)

	1 Current Year to Date	2 Prior Year to Date	3 Prior Year Ended December 31
CAPITAL AND SURPLUS ACCOUNT			
33. Capital and surplus prior reporting year.....	32,799,114	61,786,123	61,786,123
34. Net income or (loss) from Line 32.....	7,135,481	(2,052,435)	(11,762,817)
35. Change in valuation basis of aggregate policy and claim reserves.....	0	0	0
36. Change in net unrealized capital gains (losses) less capital gains tax of \$ 0	0	0	0
37. Change in net unrealized foreign exchange capital gain or (loss).....	0	0	0
38. Change in net deferred income tax.....	0	0	358,662
39. Change in nonadmitted assets.....	(5,763)	(313,884)	(204,708)
40. Change in unauthorized and certified reinsurance.....	0	0	0
41. Change in treasury stock.....	0	0	0
42. Change in surplus notes.....	0	0	0
43. Cumulative effect of changes in accounting principles.....	0	0	0
44. Capital Changes:			
44.1 Paid in.....	0	0	0
44.2 Transferred from surplus (Stock Dividend).....	0	0	0
44.3 Transferred to surplus.....	0	0	0
45. Surplus adjustments:			
45.1 Paid in.....	5,000,000	(17,500,000)	(17,378,146)
45.2 Transferred to capital (Stock Dividend).....	0	0	0
45.3 Transferred from capital.....	0	0	0
46. Dividends to stockholders.....	0	0	0
47. Aggregate write-ins for gains or (losses) in surplus.....	0	0	0
48. Net change in capital & surplus (Lines 34 to 47).....	12,129,717	(19,866,319)	(28,987,009)
49. Capital and surplus end of reporting period (Line 33 plus 48)	44,928,831	41,919,804	32,799,114
DETAILS OF WRITE-INS			
4701.			
4702.			
4703.			
4798. Summary of remaining write-ins for Line 47 from overflow page.....	0	0	0
4799. Totals (Lines 4701 through 4703 plus 4798)(Line 47 above)	0	0	0

STATEMENT AS OF SEPTEMBER 30, 2020 OF THE Humana Health Plan of Ohio Inc.

CASH FLOW

	1 Current Year To Date	2 Prior Year To Date	3 Prior Year Ended December 31
Cash from Operations			
1. Premiums collected net of reinsurance	181,451,154	171,402,243	221,534,229
2. Net investment income	720,038	1,652,934	1,950,763
3. Miscellaneous income	0	0	0
4. Total (Lines 1 to 3)	182,171,192	173,055,177	223,484,992
5. Benefit and loss related payments	139,252,940	137,771,060	189,415,844
6. Net transfers to Separate Accounts, Segregated Accounts and Protected Cell Accounts	0	0	0
7. Commissions, expenses paid and aggregate write-ins for deductions	28,923,831	22,774,201	32,260,126
8. Dividends paid to policyholders	0	0	0
9. Federal and foreign income taxes paid (recovered) net of \$ 100,440 tax on capital gains (losses)	(355,711)	(1,235,895)	(1,335,153)
10. Total (Lines 5 through 9)	167,821,060	159,309,366	220,340,817
11. Net cash from operations (Line 4 minus Line 10)	14,350,132	13,745,811	3,144,175
Cash from Investments			
12. Proceeds from investments sold, matured or repaid:			
12.1 Bonds	16,167,877	27,264,120	32,206,304
12.2 Stocks	0	0	0
12.3 Mortgage loans	0	0	0
12.4 Real estate	0	0	0
12.5 Other invested assets	0	0	0
12.6 Net gains or (losses) on cash, cash equivalents and short-term investments	0	0	0
12.7 Miscellaneous proceeds	0	19,000	0
12.8 Total investment proceeds (Lines 12.1 to 12.7)	16,167,877	27,283,120	32,206,304
13. Cost of investments acquired (long-term only):			
13.1 Bonds	16,564,466	830,289	7,610,815
13.2 Stocks	0	0	0
13.3 Mortgage loans	0	0	0
13.4 Real estate	0	0	0
13.5 Other invested assets	0	0	0
13.6 Miscellaneous applications	0	0	0
13.7 Total investments acquired (Lines 13.1 to 13.6)	16,564,466	830,289	7,610,815
14. Net increase (or decrease) in contract loans and premium notes	0	0	0
15. Net cash from investments (Line 12.8 minus Line 13.7 and Line 14)	(396,588)	26,452,831	24,595,489
Cash from Financing and Miscellaneous Sources			
16. Cash provided (applied):			
16.1 Surplus notes, capital notes	0	0	0
16.2 Capital and paid in surplus, less treasury stock	5,000,000	(17,500,000)	(17,500,000)
16.3 Borrowed funds	0	0	0
16.4 Net deposits on deposit-type contracts and other insurance liabilities	0	0	0
16.5 Dividends to stockholders	0	0	0
16.6 Other cash provided (applied)	4,514,080	(1,246,161)	(11,007,895)
17. Net cash from financing and miscellaneous sources (Line 16.1 through Line 16.4 minus Line 16.5 plus Line 16.6)	9,514,080	(18,746,161)	(28,507,895)
RECONCILIATION OF CASH, CASH EQUIVALENTS AND SHORT-TERM INVESTMENTS			
18. Net change in cash, cash equivalents and short-term investments (Line 11, plus Lines 15 and 17)	23,467,624	21,452,481	(768,231)
19. Cash, cash equivalents and short-term investments:			
19.1 Beginning of year	6,071,174	6,839,406	6,839,406
19.2 End of period (Line 18 plus Line 19.1)	29,538,798	28,291,886	6,071,174

Note: Supplemental disclosures of cash flow information for non-cash transactions:

STATEMENT AS OF SEPTEMBER 30, 2020 OF THE Humana Health Plan of Ohio Inc.

EXHIBIT OF PREMIUMS, ENROLLMENT AND UTILIZATION

	1 Total	Comprehensive (Hospital & Medical)		4 Medicare Supplement	5 Vision Only	6 Dental Only	7 Federal Employees Health Benefit Plan	8 Title XVIII Medicare	9 Title XIX Medicaid	10 Other
		2 Individual	3 Group							
Total Members at end of:										
1. Prior Year	37,353	0	32,187	0	0	0	323	4,843	0	0
2. First Quarter	36,228	0	29,132	0	0	0	234	6,862	0	0
3. Second Quarter	35,118	0	27,869	0	0	0	235	7,014	0	0
4. Third Quarter	34,170	0	26,697	0	0	0	227	7,246	0	0
5. Current Year	0	0	0	0	0	0	0	0	0	0
6. Current Year Member Months	318,772	0	253,965	0	0	0	2,087	62,720	0	0
Total Member Ambulatory Encounters for Period:										
7. Physician	244,487	0	133,398	0	0	0	1,402	109,687	0	0
8. Non-Physician	106,939	0	46,798	0	0	0	651	59,490	0	0
9. Total	351,426	0	180,196	0	0	0	2,053	169,177	0	0
10. Hospital Patient Days Incurred	19,019	0	5,260	0	0	0	60	13,699	0	0
11. Number of Inpatient Admissions	2,412	0	820	0	0	0	3	1,589	0	0
12. Health Premiums Written (a)	184,134,747	8,672,086	106,789,439	0	0	0	1,494,134	67,179,088	0	0
13. Life Premiums Direct	0	0	0	0	0	0	0	0	0	0
14. Property/Casualty Premiums Written	0	0	0	0	0	0	0	0	0	0
15. Health Premiums Earned	184,625,432	8,672,086	107,280,123	0	0	0	1,494,134	67,179,088	0	0
16. Property/Casualty Premiums Earned	0	0	0	0	0	0	0	0	0	0
17. Amount Paid for Provision of Health Care Services.....	139,252,892	(85,105)	84,473,088	0	0	0	1,229,530	53,635,379	0	0
18. Amount Incurred for Provision of Health Care Services	146,602,561	(89,108)	84,883,123	0	0	0	1,009,424	60,799,122	0	0

(a) For health premiums written: amount of Medicare Title XVIII exempt from state taxes or fees \$67,179,088

UNDERWRITING AND INVESTMENT EXHIBIT

ANALYSIS OF CLAIMS UNPAID - PRIOR YEAR - NET OF REINSURANCE

Line of Business	Claims Paid Year to Date		Liability End of Current Quarter		5 Claims Incurred in Prior Years (Columns 1 + 3)	6 Estimated Claim Reserve and Claim Liability December 31 of Prior Year
	1 On Claims Incurred Prior to January 1 of Current Year	2 On Claims Incurred During the Year	3 On Claims Unpaid Dec. 31 of Prior Year	4 On Claims Incurred During the Year		
1. Comprehensive (hospital and medical)	10,322,233	74,065,750	577,917	15,395,471	10,900,150	14,898,476
2. Medicare Supplement	0	0	0	0	0	0
3. Dental Only	0	0	0	0	0	0
4. Vision Only	0	0	0	0	0	0
5. Federal Employees Health Benefits Plan	277,485	952,044	12,147	133,632	289,632	305,975
6. Title XVIII - Medicare	2,344,362	50,881,870	31,885	8,886,973	2,376,247	3,898,690
7. Title XIX - Medicaid	0	0	0	0	0	0
8. Other health	0	0	0	0	0	0
9. Health subtotal (Lines 1 to 8)	12,944,081	125,899,665	621,949	24,416,076	13,566,030	19,103,142
10. Healthcare receivables (a)	0	4,346,140	0	0	0	2,815,532
11. Other non-health	0	0	0	0	0	0
12. Medical incentive pools and bonus amounts	326,756	82,390	0	3,295,489	326,756	350,095
13. Totals (Lines 9-10+11+12)	13,270,837	121,635,914	621,949	27,711,565	13,892,786	16,637,705

(a) Excludes \$0 loans or advances to providers not yet expensed.

STATEMENT AS OF September 30, 2020 OF Humana Health Plan of Ohio, Inc.

NOTES TO THE FINANCIAL STATEMENTS

1. Summary of Significant Accounting Policies and Going Concern

A. Accounting Practices

The financial statements of the Company are presented on the basis of accounting practices prescribed or permitted by the Ohio Department of Insurance.

The Ohio Department of Insurance (the Department) recognizes only statutory accounting practices prescribed or permitted by the State of Ohio for determining and reporting the financial condition and results of operations of an insurance company, for determining its solvency under the Ohio Insurance Law. The National Association of Insurance Commissioners' (NAIC) Accounting Practices and Procedures manual (NAIC SSAP) has been adopted as a component of prescribed or permitted practices by the State of Ohio. The Commissioner of Insurance has the right to permit other specific practices that deviate from prescribed practices. No deviations from the Codification currently exist.

A reconciliation of the Company's net income and capital and surplus between NAIC SSAP and practices prescribed and permitted by the State of Ohio is shown below:

	SSAP #	F/S Page	F/S Line #	<u>2020</u>	<u>2019</u>
Net Income/(Loss)					
1. Humana Health Plan of Ohio, Inc. Ohio basis	xxx	xxx	xxx	\$ 7,135,481	\$ (11,762,817)
2. State Prescribed Practices that is an increase/(decrease) NAIC SSAP				-	-
3. State Permitted Practices that is an increase/(decrease) NAIC SSAP				-	-
4. NAIC SSAP	xxx	xxx	xxx	<u>\$ 7,135,481</u>	<u>\$ (11,762,817)</u>
Surplus					
5. Humana Health Plan of Ohio, Inc. Ohio basis	xxx	xxx	xxx	\$ 44,928,831	\$ 32,799,114
6. State Prescribed Practices that is an increase/(decrease) NAIC SSAP				-	-
7. State Permitted Practices that is an increase/(decrease) NAIC SSAP				-	-
8. NAIC SSAP	xxx	xxx	xxx	<u>\$ 44,928,831</u>	<u>\$ 32,799,114</u>

B. Use of Estimates in the Preparation of the Financial Statements

The preparation of financial statements in conformity with Statutory Accounting Principles requires management to make estimates and assumptions that affect the reported amounts of assets and liabilities. It also requires disclosure of contingent assets and liabilities at the date of the financial statements and the reported amounts of revenue and expenses during the period. These estimates are based on knowledge of current events and anticipated future events, and accordingly, actual results could differ from those estimates.

C. Accounting Policy

Premiums are reported as earned in the period in which members are entitled to receive services, and are net of retroactive membership adjustments. Retroactive membership adjustments result from enrollment changes not yet processed, or not yet reported by an employer group or the government. Premiums received prior to such period are recorded as advance premiums.

Benefits incurred and loss adjustment expenses include claim payments, capitation payments, pharmacy costs net of rebates, allocations of certain centralized expenses, legal and administrative costs to settle claims, and various other costs incurred to provide health insurance coverage to members, as well as estimates of future payments to hospitals and others for medical care provided prior to the date of the statements of admitted assets, liabilities and surplus. Capitation payments represent monthly contractual fees disbursed to participating primary care physicians, and other providers who are responsible for providing medical care to members. Pharmacy costs represent payments for members' prescription drug benefits, net of rebates from drug manufacturers.

In addition, the Company uses the following accounting policies:

- (1) Short-term investments include investments mainly in U.S. Government obligations with a maturity of twelve months or less from the date of purchase. Short-term investments are recorded at amortized cost. The carrying value of short-term investments approximates fair value due to the short-term maturities of the investments.
- (2-4) Investments are valued and classified in accordance with methods prescribed by the NAIC. Bonds with an NAIC rating of 1 or 2 are carried at amortized cost, with all other bonds being recorded at the lower of amortized cost or fair value; redeemable preferred stocks are carried at amortized cost; and non-redeemable preferred stocks are carried at fair value. Common stocks are carried at fair value.

The Company regularly evaluates investment securities for impairment. For all securities other than loan-backed and structured securities, the Company considers factors affecting the investee, factors affecting the industry the investee operates within, and general debt and equity market trends. The Company also considers the length of time an investment's fair value has been below carrying value, the near term prospects for recovery to carrying value, and the Company's intent and ability to hold the investment until maturity or market recovery is realized. If and when a determination is made that a decline in fair value below the cost basis is other-than-temporary, the related investment is written down to its estimated fair value through earnings.

Amortization of bond premium or discount is computed using the scientific interest method.

STATEMENT AS OF September 30, 2020 OF Humana Health Plan of Ohio, Inc.

NOTES TO THE FINANCIAL STATEMENTS

Income from investments is recorded on an accrual basis. For the purpose of determining realized gains and losses, the cost of securities sold is based upon specific identification. Investment income due and accrued over 90 days past due is nonadmitted.

- (5) Not Applicable.
- (6) For loan backed and structured securities where the securities fair value is less than the amortized cost, the Company considers several factors to determine if the security's impairment is other-than-temporary. If the Company has the intent to sell the security or if the Company does not have the intent and ability to retain the security until recovery of its fair value, the related investment is written down to its estimated fair value through earnings. If, however, the Company has the intent and ability to retain the security until recovery of its fair value, the Company considers factors affecting the investee, factors affecting the industry the investee operates within, and general debt and equity market trends. The Company also considers the length of time an investment's fair value has been below carrying value and the near term prospects for recovery to carrying value. If the determination is made, based on these factors, that the Company does expect to recover the entire amortized cost of the security, then an other-than-temporary impairment has not occurred. If, however, the determination is made that the Company does not expect to recover the entire amortized cost of the security based on the factors noted above, the Company recognizes a realized loss in earnings for the non-interest related decline. No loss is recognized for the interest impairment.
- (7) Not Applicable.
- (8) Not Applicable.
- (9) Not Applicable.
- (10-11) The estimates of future medical benefit payments are developed using actuarial methods and assumptions based upon claim payment patterns, medical cost inflation, historical development such as claim inventory levels and claim receipt patterns, and other relevant factors. Corresponding administrative costs to process outstanding claims are estimated and accrued. Estimates of future payments relating to services incurred in the current and prior periods are continually reviewed by management and adjusted as necessary.

The Company assesses the profitability of its contracts for providing health insurance coverage to its members when current operating results or forecasts indicate probable future losses. The Company records a premium deficiency liability in current operations to the extent that the sum of expected future medical costs, claim adjustment expenses and maintenance costs exceed related future premiums. Investment income is not contemplated in the calculation of the premium deficiency liability.

Management believes the Company's benefits payable and loss adjustment expense are adequate to cover future claims and loss adjustment expense payments required, however, such estimates are based on knowledge of current events and anticipated future events and, therefore, the actual liability could differ from the amounts provided.

- (12) The Company has not modified its capitalization policy from the prior period.

Equipment is stated at cost less accumulated depreciation. Depreciation expense is computed using the straight-line method over estimated useful lives generally ranging from three to five years. Improvements to leased facilities are depreciated over the shorter of the remaining lease term or the anticipated life of the improvement.

The Company recognizes an asset or liability for the deferred tax consequences of temporary differences between the tax basis of assets or liabilities and their reported amounts in the financial statements. The temporary differences will result in taxable or deductible amounts in future years when the reported amounts of the assets or liabilities are recovered or settled.

- (13) The Company estimates anticipated Pharmacy Rebate Receivables using the analysis of historical recovery patterns.
- (14) Not Applicable.
- (15) Not Applicable.

D. Going Concern

Management of the Company has evaluated the Company's ability to continue as a going concern under SSAP No. 1, *Accounting Policies, Risks & Uncertainties, and Other Disclosures* (SSAP No. 1). Based on this evaluation, Management has determined that there is no substantial doubt about the Company's ability to continue as a going concern.

2. Accounting Changes and Corrections of Errors

Not Applicable.

3. Business Combinations and Goodwill

A. Statutory Purchase Method

Not Applicable.

B. Statutory Merger

Not Applicable.

NOTES TO THE FINANCIAL STATEMENTS

C. Assumption Reinsurance

Not Applicable.

D. Impairment Loss

Not Applicable.

4. Discontinued Operations

Not Applicable.

5. Investments

A. Mortgage Loans, Including Mezzanine Real Estate Loans

Not Applicable.

B. Debt Restructuring

Not Applicable.

C. Reverse Mortgages

Not Applicable.

D. Loan-Backed Securities

(1) Prepayment assumptions for mortgage-backed/loan-backed and structured securities were obtained from industry market sources.

(2) Not Applicable.

(3) Not Applicable.

(4) The Company does not have any investments in an other-than-temporary impairment position at September 30, 2020.

Gross unrealized losses and related fair value of temporarily impaired securities that have been in a continuous unrealized loss position were as follows at September 30, 2020:

(a) The aggregate amount of unrealized losses:

1. Less than Twelve Months	\$	(1,601)
2. Twelve Months or Longer	\$	(1,022)

(b) The aggregate related fair value of securities with unrealized losses:

1. Less than Twelve Months	\$	983,682
2. Twelve Months or Longer	\$	117,978

(5) Unrealized losses are primarily due to increases in market interest rates and tighter liquidity conditions in the current markets than when the securities were purchased. All issuers of securities trading at an unrealized loss remain current on all contractual payments and the Company believes it is probable that all amounts due according to the contractual terms of the debt securities are collectible. After taking into account these and other factors, including the severity of the decline and the Company's ability and intent to hold these securities until recovery or maturity, the Company determined the unrealized losses on these investment securities were temporary and, as such, no impairment was required.

E. Dollar Repurchase Agreements and/or Securities Lending Transactions

(1) The Company has no repurchase agreements or securities lending transactions.

(2) The Company has not pledged any of its assets as collateral.

(3-7) Not Applicable.

F. Repurchase Agreements Transactions Accounted for as Secured Borrowing

Not Applicable.

G. Reverse Repurchase Agreements Transactions Accounted for as Secured Borrowing

Not Applicable.

H. Repurchase Agreements Transactions Accounted for as a Sale

Not Applicable.

STATEMENT AS OF September 30, 2020 OF Humana Health Plan of Ohio, Inc.

NOTES TO THE FINANCIAL STATEMENTS

I. Reverse Repurchase Agreements Transactions Accounted for as a Sale

Not Applicable.

J. Real Estate

Not Applicable.

K. Low-Income Housing Tax Credits (LIHTC)

Not Applicable.

L. Restricted Assets

(1) Restricted Assets (Including Pledged)

Restricted Asset Category	1	2	3	4	5	6	7
	Total Gross (Admitted & Nonadmitted) Restricted from Current Year	Total Gross (Admitted & Nonadmitted) Restricted from Prior Year	Increase/ (Decrease) (1 minus 2)	Total Current Year Nonadmitted Restricted	Total Current Year Admitted Restricted (1 minus 4)	Percentage Gross (Admitted & Nonadmitted) Restricted to Total Assets (a)	Percentage Admitted Restricted to Total Admitted Assets (b)
a. Subject to contractual obligation for which liability is not shown	\$ -	\$ -	\$ -	\$ -	\$ -	-%	-%
b. Collateral held under security lending agreements	-	-	-	-	-	-	-
c. Subject to repurchase agreements	-	-	-	-	-	-	-
d. Subject to reverse repurchase agreements	-	-	-	-	-	-	-
e. Subject to dollar repurchase agreements	-	-	-	-	-	-	-
f. Subject to dollar reverse repurchase agreements	-	-	-	-	-	-	-
g. Placed under option contracts	-	-	-	-	-	-	-
h. Letter stock or securities restricted to sale – excluding FHLB capital stock	-	-	-	-	-	-	-
i. FHLB capital stock	-	-	-	-	-	-	-
j. On deposit with states	752,633	1,009,940	(257,307)	-	752,633	0.86%	0.87%
k. On deposit with other regulatory bodies	-	-	-	-	-	-	-
l. Pledged collateral to FHLB (including assets backing funding agreements)	-	-	-	-	-	-	-
m. Pledged as collateral not captured in other categories	-	-	-	-	-	-	-
n. Other restricted assets	-	-	-	-	-	-	-
o. Total Restricted Assets	\$ 752,633	\$ 1,009,940	\$ (257,307)	-	\$ 752,633	0.86%	0.87%

(2) Detail of Assets Pledged as Collateral Not Captured in Other Categories (Contracts that Share Similar Characteristics, Such as Reinsurance and Derivatives, Are Reported in the Aggregate)

Not Applicable.

(3) Detail of Other Restricted Assets Categories (Contracts that Share Similar Characteristics, Such as Reinsurance and Derivatives, Are Reported in the Aggregate)

Not Applicable.

(4) Collateral Received and Reflected as Assets Within the Reporting Entity's Financial Statements

Not Applicable.

M. Working Capital Finance Investments

Not Applicable.

N. Offsetting and Netting of Assets and Liabilities

Not Applicable.

O. 5GI Securities

Not Applicable.

NOTES TO THE FINANCIAL STATEMENTS

- P. Short Sales
Not Applicable.
- Q. Prepayment Penalty and Acceleration Fees
Not Applicable.
6. Joint Ventures, Partnerships and Limited Liability Companies
- A. The Company has no investments in Joint Ventures, Partnerships or Limited Liability Companies that exceed 10.0 percent of its admitted assets.
- B. The Company did not recognize any impairment write down for its investments in Joint Ventures, Partnerships and Limited Liability Companies during the statement periods.
7. Investment Income
- A. Due and accrued income was excluded from surplus on the following basis:

All investment income due and accrued with amounts that are over 90 days past due with the exception of mortgage loans in default.
- B. The total amount excluded was \$0.
8. Derivative Instruments
Not Applicable.
9. Income Taxes
No material change since year-end December 31, 2019.
10. Information Concerning Parent, Subsidiaries and Affiliates
- A.-F. The Company has several management contracts with Humana Inc. and other related parties whereby the Company is provided with medical and executive management, information systems, claims processing, billing and enrollment, and telemarketing and other services as required by the Company. Management fees charged to operations for the years ended December 31, 2019 and 2018 were \$16,328,974 and \$19,474,461, respectively. As a part of this agreement, Humana Inc. makes cash disbursements on behalf of the Company which includes, but is not limited to, medical related items, general and administrative expenses, commissions and payroll. The Company continues to be primarily liable for any outstanding payments made on behalf of the Company, should Humana Inc. not be able to fulfill its obligations.
- The Company has various related party agreements with no material change since year-end December 31, 2019.
- No dividends or returns of capital were paid by the Company as of September 30, 2020.
- The Company received a \$5,000,000 capital contribution from Humana, Inc. on March 31, 2020.
- At September 30, 2020, the Company reported \$15,006,663 due from Humana Inc. Amounts due to or from parent are generally settled within 90 days.
- G. All outstanding shares of the Company are owned by the Parent Company.
- H. Not Applicable.
- I. Not Applicable.
- J. Not Applicable.
- K. Not Applicable.
- L. Not Applicable.
- M. All SCA Investments
Not Applicable.
- N. Investment in Insurance SCA
Not Applicable.
- O. SCA Loss Tracking
Not Applicable.

NOTES TO THE FINANCIAL STATEMENTS

11. Debt

A. Debt Including Capital Notes

The Company has no debentures outstanding.

The Company has no capital notes outstanding.

The Company does not have any reverse repurchase agreements.

B. Federal Home Loan Bank (FHLB) Agreements

The Company does not have any FHLB agreements.

12. Retirement Plans, Deferred Compensation, Postemployment Benefits and Compensated Absences and Other Postretirement Benefit Plans

A.-D. Defined Benefit Plans

Not Applicable.

E. Defined Contribution Plans

Not Applicable.

F. Multiemployer Plans

Not Applicable.

G. Consolidated/Holding Company Plans

No material change since year-end December 31, 2019.

H. Postemployment Benefits and Compensated Absences

Not Applicable.

I. Impact of Medicare Modernization Act on Postretirement Benefits (INT 04-17)

Not Applicable.

13. Capital and Surplus, Shareholders' Dividend Restrictions and Quasi-Reorganizations

(1) The Company has \$0 par value common stock with 1,000 shares authorized and 200 shares issued and 200 outstanding. All shares are common stock shares.

(2) The Company has no preferred stock outstanding.

(3-5) Dividends and returns of capital to shareholders are noncumulative and are paid as determined by the Board of Directors. In accordance with the Department statutes, the maximum amount which can be paid by the Company to shareholders without prior approval by the Department is the greater of 10% of total surplus or net income from the prior year. All ordinary dividends are limited to available and accumulated surplus funds. Based on these restrictions, no dividend is available without prior approval.

Within the limitations above, there are no restrictions placed on the portion of Company profits that may be paid as ordinary dividends to stockholders.

No dividends or returns of capital were paid by the Company as of September 30, 2020.

(6) There were no restrictions placed on the Company's surplus, including for whom the surplus is being held.

(7) Not Applicable.

(8) Not Applicable.

(9) Changes in balances of special surplus funds from the prior year is due to the health insurance industry fee having been permanently repealed beginning calendar year 2021.

(10) The portion of unassigned funds (surplus) represented or reduced by cumulative unrealized gains and losses is \$0.

(11) Not Applicable.

(12) Not Applicable.

(13) Not Applicable.

14. Liabilities, Contingencies and Assessments

A. Contingent Commitments

Not Applicable.

NOTES TO THE FINANCIAL STATEMENTS

B. Assessments

Not Applicable.

C. Gain Contingencies

Not Applicable.

D. Claims related extra contractual obligation and bad faith losses stemming from lawsuits

Not Applicable.

E. Joint and Several Liabilities

Not Applicable.

F. All Other Contingencies

During the ordinary course of business, the Company is subject to pending and threatened legal actions. Management of the Company does not believe that any of these actions will have a material adverse effect on the Company's surplus, results of operations or cash flows. However, the likelihood or outcome of current or future legal proceedings cannot be accurately predicted, and they could adversely affect the Company's surplus, results of operations and cash flows.

The Company is not aware of any other material contingent liabilities as of September 30, 2020.

15. Leases

No material change since year-end December 31, 2019.

16. Information about Financial Instruments With Off-Balance Sheet Risk and Financial Instruments With Concentrations of Credit Risk

The Company has no investment in Financial Instruments with Off-Balance Sheet Risk or Concentrations of Credit Risk.

17. Sale, Transfer and Servicing of Financial Assets and Extinguishments of Liabilities

A. Transfers of Receivables Reported as Sales

Not Applicable.

B. Transfer and Servicing of Financial Assets

Not Applicable.

C. Wash Sales

Not Applicable.

18. Gain or Loss to the Reporting Entity from Uninsured Plans and the Uninsured Portion of Partially Insured Plans

A. ASO Plans

Not Applicable.

B. ASC Plans

Not Applicable.

C. Medicare or Other Similarly Structured Cost Based Reimbursement Contract

(1) The Company records no revenue explicitly attributable to the cost share and reinsurance components of its Medicare or other similarly structured cost based reimbursement contracts.

(2) As of September 30, 2020, the Company has recorded a receivable from CMS of \$1,044,725 related to the cost share and reinsurance components of administered Medicare products. The Company does not have any receivables greater than 10% of the Company's accounts receivable from uninsured accident and health plans or \$10,000.

(3) As no revenue is recorded in connection with the cost share and reinsurance components of the Company's Medicare or other similarly structured cost based reimbursement contracts, the Company has recorded no allowances and reserves for adjustment of recorded revenues and receivables.

(4) The Company has made no adjustment to revenue resulting from audit of receivables related to revenues recorded in the prior period.

19. Direct Premium Written/Produced by Managing General Agents/Third Party Administrators

Not Applicable.

STATEMENT AS OF September 30, 2020 OF Humana Health Plan of Ohio, Inc.

NOTES TO THE FINANCIAL STATEMENTS

20. Fair Value Measurements

- A. (1) The Company did not have any financial assets carried at fair value at September 30, 2020.

The Company reports transfers between Level 1 and Level 2 of the fair value hierarchy levels at the end of the reporting period. There were no transfers between Level 1 and Level 2 of the fair value hierarchy between December 31, 2019 and September 30, 2020.

- (2) Fair Value Measurements in (Level 3) of the Fair Value Hierarchy

Not Applicable.

- (3) The Company reports transfers into or out of Level 3 of the fair value hierarchy levels at the end of the reporting period. There were no transfers into or out of Level 3 of the fair value hierarchy levels between December 31, 2019 and September 30, 2020.

- (4) Fair value of actively traded debt securities are based on quoted market prices. Fair value of other debt securities are based on quoted market prices of identical or similar securities or based on observable inputs like interest rates generally using a market valuation approach, or, less frequently, an income valuation approach and are generally classified as Level 2. The Company generally obtains one quoted price for each security from a third party pricing service. These prices are generally derived from recently reported trades for identical or similar securities, including adjustments through the reporting date based upon observable market information. When quoted prices are not available, the third party pricing service may use quoted market prices of comparable securities or discounted cash flow analyses, incorporating inputs that are currently observable in the markets for similar securities. Inputs that are often used in the valuation methodologies include benchmark yields, reported trades, credit spreads, broker quotes, default rates and prepayment speeds. The Company is responsible for the determination of fair value and as such, the Company performs analysis on the prices received from the third party pricing service to determine whether the prices are reasonable estimates of fair value. The Company's analysis includes a review of monthly price fluctuations as well as a quarterly comparison of the prices received from the pricing service to prices reported by the Company's third party investment advisor. Based on the Company's internal price verification procedures and review of fair value methodology documentation provided by the third party pricing service, there were no material adjustments to the prices obtained from the third party pricing service during the quarter ended September 30, 2020.

- (5) Derivative Fair Values

Not Applicable.

- B. Other Fair Value Disclosures

Not Applicable.

- C. Fair Values for All Financial Instruments by Levels 1, 2 and 3

Type of Financial Instrument	Aggregate Fair Value	Admitted Assets	Level 1	Level 2	Level 3	Net Asset Value (NAV)	Not Practicable (Carrying Value)
Bonds and cash equivalents	\$ 57,403,231	\$ 56,202,306	\$ 23,241,198	\$ 34,162,033	\$ -	\$ -	\$ -

- D. Financial Instruments for which Not Practicable to Estimate Fair Values

Not Applicable.

21. Other Items

- A. Extraordinary Items

The temporary deferral of non-essential care resulting from stay-at-home and physical distancing orders and other restrictions on movement and economic activity implemented throughout the country beginning in the second half of March 2020 to reduce the spread of the novel coronavirus, or COVID-19 has impacted the Company's business. Hospital admissions and utilization were significantly depressed in April and increased throughout May and June. Utilization continued to rebound throughout the third quarter of 2020. The impact of the deferral of non-essential care was partially offset by COVID-19 testing and treatment costs, as well as Humana's ongoing pandemic relief efforts.

- B. Troubled Debt Restructuring: Debtors

Not Applicable.

- C. Other Disclosures and Unusual Items

Not Applicable.

- D. Business Interruption Insurance Recoveries

Not Applicable.

- E. State Transferable and Non-transferable Tax Credits

Not Applicable.

STATEMENT AS OF September 30, 2020 OF Humana Health Plan of Ohio, Inc.

NOTES TO THE FINANCIAL STATEMENTS

F. Subprime Mortgage Related Risk Exposure

(1) The Company consults with its external investment managers to assess its subprime mortgage related risk exposure. Certain characteristics are utilized to determine if a mortgage-backed security has subprime exposure. The main characteristics reviewed when determining this are the collateral and structure of the security, the loan purpose, loan documentation, occupancy, geographical location, loan size and type. Subprime mortgage borrowers typically have lower credit scores, lower loan balances and higher loan-to-values than other conforming loans. Management's practices include reviewing quantitative and qualitative credit models that analyze loan-level collateral composition, historical underwriter performance trends, the impact of macroeconomic factors, and issuer risks; as well as reviewing the estimation of security cash flows and monthly model calibrations.

(2) Direct exposure through investments in sub-prime mortgage loans.

The Company has no direct exposure through investment to sub-prime mortgage loans.

(3) Direct exposure through other investments:

- a. Residential mortgage backed securities – No substantial exposure noted.
- b. Commercial mortgage backed securities – No substantial exposure noted.
- c. Collateralized debt obligations – No substantial exposure noted.
- d. Structured securities – No substantial exposure noted.
- e. Equity investment in SCAs – No substantial exposure noted.
- f. Other assets – No substantial exposure noted.
- g. Total – No substantial exposure noted.

(4) Underwriting exposure to sub-prime mortgage risk through Mortgage Guaranty coverage, Financial Guaranty coverage, Directors and Officers liability coverage, or Errors and Omissions liability coverage.

The Company does not have sub-prime mortgage risk.

Classification of mortgage related securities is primarily based on information from outside data services, including rating agency actions. When considering our exposure, the Company evaluated the percentage of full documentation loans, percent of owner occupied properties, FICO scores, average margin for ARM loans, percent of loans with prepayment penalties, the existence of non-traditional underwriting standards, among other factors.

G. Retained Assets

Not Applicable.

H. Insurance Linked Securities

Not Applicable.

22. Events Subsequent

The Company is not aware of any events or transactions occurring subsequent to the close of the books for this statement which may have a material effect on its financial condition. Subsequent events have been considered through November 10, 2020 for the Statutory Statement issued on November 10, 2020.

23. Reinsurance

A. Ceded Reinsurance Report

Section 1 – General Interrogatories

(1) Are any of the reinsurers, listed in Schedule S as non-affiliated, owned in excess of 10.0 percent or controlled, either directly or indirectly, by the company or by any representative, officer, trustee, or director of the company?

Yes () No (X)

(2) Have any policies issued by the company been reinsured with a company chartered in a country other than the United States (excluding U.S. Branches of such companies) that is owned in excess of 10.0 percent or controlled directly or indirectly by an insured, a beneficiary, a creditor or an insured or any other person not primarily engaged in the insurance business?

Yes () No (X)

Section 2 – Ceded Reinsurance Report – Part A

(1) Does the company have any reinsurance agreements in effect under which the reinsurer may unilaterally cancel any reinsurance for reasons other than for nonpayment of premium or other similar credits?

Yes () No (X)

(2) Does the reporting entity have any reinsurance agreements in effect such that the amount of losses paid or accrued through the statement date may result in a payment to the reinsurer of amounts that, in aggregate and allowing for offset of mutual credits from other reinsurance agreements with the same reinsurer, exceed the total direct premium collected under the reinsured policies?

Yes () No (X)

STATEMENT AS OF September 30, 2020 OF Humana Health Plan of Ohio, Inc.

NOTES TO THE FINANCIAL STATEMENTS

Section 3 – Ceded Reinsurance Report – Part B

- (1) What is the estimated amount of the aggregate reduction in surplus, (for agreements other than those under which the reinsurer may unilaterally cancel for reasons other than for nonpayment of premium or other similar credits that are reflected in Section 2 above) of termination of ALL reinsurance agreements, by either party, as of the date of this statement? Where necessary, the company may consider the current or anticipated experience of the business reinsured in making this estimate. \$0
- (2) Have any new agreements been executed or existing agreements amended, since January 1 of the year of this statement, to include policies or contracts that were in force or which had existing reserves established by the company as of the effective date of the agreement?

Yes () No (X)

B. Uncollectible Reinsurance

Not Applicable.

C. Commutation of Ceded Reinsurance

Not Applicable.

D. Certified Reinsurer Rating Downgraded or Status Subject to Revocation

Not Applicable.

24. Retrospectively Rated Contracts and Contracts Subject to Redetermination

- A. The Company estimates accrued retrospective premium adjustments for its Medicare business through a mathematical approach using an algorithm based upon settlement procedures defined by contracts with CMS.

The Company estimates accrued retrospective premium adjustments for its Commercial business based on experience to date, knowledge of the marketplace, and the terms of the risk corridors program with HHS.

- B. The Company records accrued retrospective premium as an adjustment to earned premiums.
- C. The amount of net premiums written by the Company at September 30, 2020 that are subject to retrospective rating features was \$184,134,747, or 100.00% of the total net premiums written. No other net premiums written by the Company are subject to retrospective rating features.
- D. Medical loss ratio rebates required pursuant to the Public Health Service Act

	Individual	Small Group Employer	Large Group Employer	Other Categories with rebates	Total
Prior Reporting Year:					
Medical loss ratio rebates incurred	\$ -	\$ -	\$ 490,685	\$ -	\$ 490,685
Medical loss ratio rebates paid	-	-	-	-	-
Medical loss rebates unpaid	-	-	490,685	-	490,685
Plus reinsurance assumed amounts	XXX	XXX	XXX	XXX	-
Less reinsurance ceded amounts	XXX	XXX	XXX	XXX	-
Rebates unpaid net of reinsurance	XXX	XXX	XXX	XXX	\$ 490,685
Current Reporting Year-to-date:					
Medical loss ratio rebates incurred	\$ -	\$ -	\$ (490,685)	\$ -	\$ (490,685)
Medical loss ratio rebates paid	-	-	-	-	-
Medical loss rebates unpaid	-	-	-	-	-
Plus reinsurance assumed amounts	XXX	XXX	XXX	XXX	-
Less reinsurance ceded amounts	XXX	XXX	XXX	XXX	-
Rebates unpaid net of reinsurance	XXX	XXX	XXX	XXX	\$ -

E. Risk Sharing Provisions of the Affordable Care Act

- (1) Did the reporting entity write accident and health insurance premium that is subject to the Affordable Care Act risk-sharing provisions (YES/NO) Yes (X) No ()

STATEMENT AS OF September 30, 2020 OF Humana Health Plan of Ohio, Inc.

NOTES TO THE FINANCIAL STATEMENTS

(2)	Impact of Risk Sharing Provisions of the Affordable Care Act on Admitted Assets, Liabilities, and Revenue for the Current Year		
a.	Permanent ACA Risk Adjustment Program		
	Assets		
	1. Premium adjustments receivable due to ACA Risk Adjustment (including high risk pool payments)	\$	698,433
	Liabilities		
	2. Risk adjustment user fees payable for ACA Risk Adjustment	\$	4,484
	3. Premium adjustments payable due to ACA Risk Adjustment (including high risk pool premium)	\$	(3,094,704)
	Operations (Revenue & Expenses)		
	4. Reported as revenue in premium for accident and health contracts (written/collected) due to ACA Risk Adjustment	\$	69,790
	5. Reported in expenses as ACA risk adjustment user fees (incurred/paid)	\$	8,306
b.	Transitional ACA Reinsurance Program		
	Assets		
	1. Amounts recoverable for claims paid due to ACA Reinsurance	\$	-
	2. Amounts recoverable for claims unpaid due to ACA Reinsurance (Contra Liability)	\$	-
	3. Amounts receivable relating to uninsured plans for contributions for ACA Reinsurance	\$	-
	Liabilities		
	4. Liabilities for contributions payable due to ACA Reinsurance – not reported as ceded premium	\$	-
	5. Ceded reinsurance premiums payable due to ACA Reinsurance	\$	-
	6. Liabilities for amounts held under uninsured plans contributions for ACA Reinsurance	\$	-
	Operations (Revenues & Expenses)		
	7. Ceded reinsurance premiums due to ACA Reinsurance	\$	-
	8. Reinsurance recoveries (income statement) due to ACA Reinsurance payments or expected payments	\$	-
	9. ACA Reinsurance contributions – not reported as ceded premiums	\$	-
c.	Temporary ACA Risk Corridors Program		
	Assets		
	1. Accrued retrospective premium due to ACA Risk Corridors	\$	-
	Liabilities		
	2. Reserve for rate credits or policy experience rating refunds due to ACA Risk Corridors	\$	-
	Operations (Revenue & Expenses)		
	3. Effect of ACA Risk Corridors on net premium income	\$	8,672,326
	4. Effect of ACA Risk Corridors on change in reserves for rate credits	\$	-

STATEMENT AS OF September 30, 2020 OF Humana Health Plan of Ohio, Inc.

NOTES TO THE FINANCIAL STATEMENTS

(3) Roll-forward of Prior Year ACA Risk-sharing Provisions for the Following Asset (Gross of Any Nonadmission) and Liability Balances, Along with the Reasons for Adjustments to Prior Year Balance.

	Accrued During the Prior Year on Business Written Before December 31 of the Prior Year		Received or Paid as of the Current Year on Business Written Before December 31 of the Prior Year		Differences		Adjustments			Unsettled Balances as of the Reporting Date	
					Prior Year Accrued Less Payments (Col 1-3)	Prior Year Accrued Less Payments (Col 2-4)	To Prior Year Balances	To Prior Year Balances		Cumulative Balance from Prior Years (Col 1-3+7)	Cumulative Balance from Prior Years (Col 2-4+8)
					5	6	7	8	Ref	9	10
1	2	3	4	5	6	7	8	Ref	9	10	
Receivable	(Payable)	Receivable	(Payable)	Receivable	(Payable)	Receivable	(Payable)	Ref	Receivable	(Payable)	
a. Permanent ACA Risk Adjustment Program											
1. Premium adjustments receivable (including high risk pool payments)	2,296		-		2,296		696,137		A.	698,433	
2. Premium adjustments (payables) (including high risk pool premium)		(5,134,730)		(2,666,374)		(2,468,356)		(626,348)	B.		(3,094,704)
3. Subtotal ACA Permanent Risk Adjustment Program	2,296	(5,134,730)	-	(2,666,374)	2,296	(2,468,356)	696,137	(626,348)		698,433	(3,094,704)
b. Transitional ACA Reinsurance Program											
1. Amounts recoverable for claims paid	-		-		-		-			-	
2. Amounts recoverable for claims unpaid (contra liability)	-		-		-		-			-	
3. Amounts receivable relating to uninsured plans	-		-		-		-			-	
4. Liabilities for contributions payable due to ACA Reinsurance- not reported as ceded premium		-		-		-		-			-
5. Ceded reinsurance premiums payable		-		-		-		-			-
6. Liability for amounts held under uninsured plans		-		-		-		-			-
7. Subtotal ACA Transitional Reinsurance Program	-	-	-	-	-	-	-	-		-	-
c. Temporary ACA Risk Corridors Program											
1. Accrued retrospective premium	-		8,672,326		(8,672,326)		8,672,326		C.	-	
2. Reserve for rate credits or policy experience rating refunds		-		-		-		-			-
3. Subtotal ACA Risk Corridors Program	-	-	8,672,326	-	(8,672,326)	-	8,672,326	-		-	-
d. Total for ACA Risk Sharing Provisions	2,296	(5,134,730)	8,672,326	(2,666,374)	(8,670,030)	(2,468,356)	9,368,463	(626,348)		698,433	(3,094,704)

Explanations of adjustments

A. Adjustments related to updates received from CMS associated with 2019 benefit year and the latest data from Wakely Consulting.

B. Small Group estimate changes for unfinalized years, based on latest data from Wakely Consulting.

C. Adjustment recorded for additional risk corridor payments received in 2020 that had been previously written off.

STATEMENT AS OF September 30, 2020 OF Humana Health Plan of Ohio, Inc.

NOTES TO THE FINANCIAL STATEMENTS

(4) Roll-Forward of Risk Corridors Asset and Liability Balances by Program Benefit Year

Risk Corridors Program Year	Accrued During the Prior Year on Business Written Before Dec 31 of the Prior Year		Received or Paid as of the Current Year on Business Written Before Dec 31 of the Prior Year		Differences		Adjustments			Unsettled Balances as of the Reporting Date	
	1	2	3	4	Prior Year Accrued Less Payments (Col 1 -3)	Prior Year Accrued Less Payments (Col 2 -4)	To Prior Year Balances	To Prior Year Balances		Cumulative Balance from Prior Years (Col 1-3+7)	Cumulative Balance from Prior Years (Col 2-4+8)
	Receivable	(Payable)	Receivable	(Payable)	Receivable	(Payable)	Receivable	(Payable)	Ref	Receivable	(Payable)
a. 2014											
1. Accrued retrospective premium	-		7,712,510		(7,712,510)		7,712,510		A.	-	
2. Reserve for rate credits or policy experience rating refunds		-		-		-		-			-
b. 2015											
1. Accrued retrospective premium	-		959,816		(959,816)		959,816		A.	-	
2. Reserve for rate credits or policy experience rating refunds		-		-		-		-			-
c. 2016											
1. Accrued retrospective premium	-		-		-		-			-	
2. Reserve for rate credits or policy experience rating refunds		-		-		-		-			-
d. Total for Risk Corridors	-	-	8,672,326	-	(8,672,326)	-	8,672,326	-		-	-

Explanations of adjustments

A. Adjustment recorded for additional risk corridor payments received in 2020 that had been previously written off.

(5) ACA Risk Corridors Receivable as of Reporting Date

Risk Corridors Program Year	1	2	3	4	5	6
	Estimated Amount to be Filed or Final Amount Filed with CMS	Non-Accrued Amounts for Impairment or Other Reasons	Amounts received from CMS	Assets Balance (Gross of Non-admissions) (1-2-3)	Non-admitted Amount	Net Admitted Asset (4-5)
a. 2014	\$ 9,264,546	\$ -	\$ 9,264,546	\$ -	\$ -	\$ -
b. 2015	959,816	-	959,816	-	-	-
c. 2016	-	-	-	-	-	-
d. Total (a+b+c)	\$ 10,224,362	\$ -	\$ 10,224,362	\$ -	\$ -	\$ -

On April 27, 2020, the U.S. Supreme Court ruled that the government is obligated to pay the losses under this risk corridor program, and that Congress did not impliedly repeal the obligation under its appropriations riders. In September 2020, the Company received \$8,672,326 from the U.S Government pursuant to the judgement issued by the Court of Federal Claims on July 7, 2020. The \$8,672,326 payment received from the U.S Government and \$433,485 in related fees and expenses are reflected in net premium income and general administrative expenses, respectively.

25. Change in Incurred Claims and Claim Adjustment Expenses

Benefits and loss adjustment expenses payable, net of health care receivables, as of December 31, 2019 were \$16,779,180. As of September 30, 2020, \$13,408,085 has been paid for incurred claims and claim adjustment expenses attributable to insured events of prior years. Reserves remaining for prior years are now \$626,176 as a result of re-estimation of unpaid claims and claim adjustment expenses. Therefore, there has been a \$2,744,919 favorable prior-year development since December 31, 2019. The decrease is generally the result of ongoing analysis of recent loss development trends. Original estimates are increased or decreased as additional information becomes known regarding individual claims. Included in this decrease, the Company experienced \$2,744,919 of favorable prior year claim development on retrospectively rated policies. However, the business to which it relates is subject to premium adjustments.

26. Intercompany Pooling Arrangements

Not Applicable.

27. Structured Settlements

The Company has no structured settlements.

STATEMENT AS OF September 30, 2020 OF Humana Health Plan of Ohio, Inc.

NOTES TO THE FINANCIAL STATEMENTS

28. Health Care Receivables

A. Pharmaceutical Rebate Receivables

Quarter	Estimate Pharmacy Rebates as Reported on Financial Statements	Pharmacy Rebates as Billed or Otherwise Confirmed	Actual Rebates Received Within 90 Days of Billing	Actual Rebates Received Within 91 to 180 Days of Billing	Actual Rebates Received More than 181 Days after Billing
12/31/2020	\$ -	\$ -	\$ -	\$ -	\$ -
9/30/2020	4,335,837	4,335,837	-	-	-
6/30/2020	4,970,616	4,970,616	4,944,424	-	-
3/31/2020	3,727,324	3,727,324	3,672,563	21,621	-
12/31/2019	2,658,492	2,658,492	2,627,019	-	3,713
9/30/2019	2,785,680	2,785,680	2,751,865	10,874	22,941
6/30/2019	5,041,359	5,041,359	4,972,628	23,712	23,251
3/31/2019	3,533,690	3,533,690	3,474,242	-	59,448
12/31/2018	2,446,746	2,446,746	2,373,085	50,963	17,005
9/30/2018	3,119,103	3,119,103	3,089,869	29,234	-
6/30/2018	3,973,311	3,973,311	3,927,986	45,325	-
3/31/2018	3,457,196	3,457,196	3,457,196	-	-

B. Risk Sharing Receivables

Not Applicable.

29. Participating Policies

The Company has no participating policies.

30. Premium Deficiency Reserves

Not Applicable.

31. Anticipated Salvage and Subrogation

Not Applicable.

GENERAL INTERROGATORIES

PART 1 - COMMON INTERROGATORIES

GENERAL

- 1.1 Did the reporting entity experience any material transactions requiring the filing of Disclosure of Material Transactions with the State of Domicile, as required by the Model Act? Yes [] No [X]
- 1.2 If yes, has the report been filed with the domiciliary state? Yes [] No []
- 2.1 Has any change been made during the year of this statement in the charter, by-laws, articles of incorporation, or deed of settlement of the reporting entity? Yes [] No [X]
- 2.2 If yes, date of change:
- 3.1 Is the reporting entity a member of an Insurance Holding Company System consisting of two or more affiliated persons, one or more of which is an insurer? Yes [X] No []
If yes, complete Schedule Y, Parts 1 and 1A.
- 3.2 Have there been any substantial changes in the organizational chart since the prior quarter end? Yes [] No [X]
- 3.3 If the response to 3.2 is yes, provide a brief description of those changes.
- 3.4 Is the reporting entity publicly traded or a member of a publicly traded group? Yes [X] No []
- 3.5 If the response to 3.4 is yes, provide the CIK (Central Index Key) code issued by the SEC for the entity/group. 0000049071
- 4.1 Has the reporting entity been a party to a merger or consolidation during the period covered by this statement? Yes [] No [X]
If yes, complete and file the merger history data file with the NAIC.
- 4.2 If yes, provide the name of the entity, NAIC Company Code, and state of domicile (use two letter state abbreviation) for any entity that has ceased to exist as a result of the merger or consolidation.

1 Name of Entity	2 NAIC Company Code	3 State of Domicile
NA		

5. If the reporting entity is subject to a management agreement, including third-party administrator(s), managing general agent(s), attorney-in-fact, or similar agreement, have there been any significant changes regarding the terms of the agreement or principals involved? Yes [] No [X] N/A []
If yes, attach an explanation.
- 6.1 State as of what date the latest financial examination of the reporting entity was made or is being made. 12/31/2015
- 6.2 State the as of date that the latest financial examination report became available from either the state of domicile or the reporting entity. This date should be the date of the examined balance sheet and not the date the report was completed or released. 12/31/2015
- 6.3 State as of what date the latest financial examination report became available to other states or the public from either the state of domicile or the reporting entity. This is the release date or completion date of the examination report and not the date of the examination (balance sheet date). 05/25/2017
- 6.4 By what department or departments?
Ohio Department of Insurance
- 6.5 Have all financial statement adjustments within the latest financial examination report been accounted for in a subsequent financial statement filed with Departments? Yes [X] No [] N/A []
- 6.6 Have all of the recommendations within the latest financial examination report been complied with? Yes [X] No [] N/A []
- 7.1 Has this reporting entity had any Certificates of Authority, licenses or registrations (including corporate registration, if applicable) suspended or revoked by any governmental entity during the reporting period? Yes [] No [X]
- 7.2 If yes, give full information:
- 8.1 Is the company a subsidiary of a bank holding company regulated by the Federal Reserve Board? Yes [] No [X]
- 8.2 If response to 8.1 is yes, please identify the name of the bank holding company.
- 8.3 Is the company affiliated with one or more banks, thrifts or securities firms? Yes [] No [X]
- 8.4 If response to 8.3 is yes, please provide below the names and location (city and state of the main office) of any affiliates regulated by a federal regulatory services agency [i.e. the Federal Reserve Board (FRB), the Office of the Comptroller of the Currency (OCC), the Federal Deposit Insurance Corporation (FDIC) and the Securities Exchange Commission (SEC)] and identify the affiliate's primary federal regulator.

1 Affiliate Name	2 Location (City, State)	3 FRB	4 OCC	5 FDIC	6 SEC

GENERAL INTERROGATORIES

- 9.1 Are the senior officers (principal executive officer, principal financial officer, principal accounting officer or controller, or persons performing similar functions) of the reporting entity subject to a code of ethics, which includes the following standards? Yes No
 (a) Honest and ethical conduct, including the ethical handling of actual or apparent conflicts of interest between personal and professional relationships;
 (b) Full, fair, accurate, timely and understandable disclosure in the periodic reports required to be filed by the reporting entity;
 (c) Compliance with applicable governmental laws, rules and regulations;
 (d) The prompt internal reporting of violations to an appropriate person or persons identified in the code; and
 (e) Accountability for adherence to the code.
- 9.11 If the response to 9.1 is No, please explain:
- 9.2 Has the code of ethics for senior managers been amended? Yes No
- 9.21 If the response to 9.2 is Yes, provide information related to amendment(s).
- 9.3 Have any provisions of the code of ethics been waived for any of the specified officers? Yes No
- 9.31 If the response to 9.3 is Yes, provide the nature of any waiver(s).

FINANCIAL

- 10.1 Does the reporting entity report any amounts due from parent, subsidiaries or affiliates on Page 2 of this statement? Yes No
- 10.2 If yes, indicate any amounts receivable from parent included in the Page 2 amount: \$ 15,006,663

INVESTMENT

- 11.1 Were any of the stocks, bonds, or other assets of the reporting entity loaned, placed under option agreement, or otherwise made available for use by another person? (Exclude securities under securities lending agreements.) Yes No
- 11.2 If yes, give full and complete information relating thereto:
12. Amount of real estate and mortgages held in other invested assets in Schedule BA: \$ 304,479
13. Amount of real estate and mortgages held in short-term investments: \$ 0
- 14.1 Does the reporting entity have any investments in parent, subsidiaries and affiliates? Yes No
- 14.2 If yes, please complete the following:
- | | 1
Prior Year-End
Book/Adjusted
Carrying Value | 2
Current Quarter
Book/Adjusted
Carrying Value |
|---|--|---|
| 14.21 Bonds | \$ 0 | \$ 0 |
| 14.22 Preferred Stock | \$ 0 | \$ 0 |
| 14.23 Common Stock | \$ 0 | \$ 0 |
| 14.24 Short-Term Investments | \$ 0 | \$ 0 |
| 14.25 Mortgage Loans on Real Estate | \$ 0 | \$ 0 |
| 14.26 All Other | \$ 0 | \$ 0 |
| 14.27 Total Investment in Parent, Subsidiaries and Affiliates (Subtotal Lines 14.21 to 14.26) | \$ 0 | \$ 0 |
| 14.28 Total Investment in Parent included in Lines 14.21 to 14.26 above | \$ 0 | \$ 0 |
- 15.1 Has the reporting entity entered into any hedging transactions reported on Schedule DB? Yes No
- 15.2 If yes, has a comprehensive description of the hedging program been made available to the domiciliary state? Yes No N/A
 If no, attach a description with this statement.
16. For the reporting entity's security lending program, state the amount of the following as of the current statement date:
- 16.1 Total fair value of reinvested collateral assets reported on Schedule DL, Parts 1 and 2. \$ 0
- 16.2 Total book adjusted/carrying value of reinvested collateral assets reported on Schedule DL, Parts 1 and 2 \$ 0
- 16.3 Total payable for securities lending reported on the liability page. \$ 0

GENERAL INTERROGATORIES

17. Excluding items in Schedule E - Part 3 - Special Deposits, real estate, mortgage loans and investments held physically in the reporting entity's offices, vaults or safety deposit boxes, were all stocks, bonds and other securities, owned throughout the current year held pursuant to a custodial agreement with a qualified bank or trust company in accordance with Section 1, III - General Examination Considerations, F. Outsourcing of Critical Functions, Custodial or Safekeeping Agreements of the NAIC Financial Condition Examiners Handbook? Yes [X] No []
- 17.1 For all agreements that comply with the requirements of the NAIC Financial Condition Examiners Handbook, complete the following:

1 Name of Custodian(s)	2 Custodian Address
JP Morgan Chase	4 Metro Tech Center, 6th Floor, Mail Code: NY1-C512, Brooklyn, NY 11245, Attn: Charline Ottley

- 17.2 For all agreements that do not comply with the requirements of the NAIC Financial Condition Examiners Handbook, provide the name, location and a complete explanation:

1 Name(s)	2 Location(s)	3 Complete Explanation(s)

- 17.3 Have there been any changes, including name changes, in the custodian(s) identified in 17.1 during the current quarter? Yes [] No [X]
- 17.4 If yes, give full information relating thereto:

1 Old Custodian	2 New Custodian	3 Date of Change	4 Reason

- 17.5 Investment management – Identify all investment advisors, investment managers, broker/dealers, including individuals that have the authority to make investment decisions on behalf of the reporting entity. For assets that are managed internally by employees of the reporting entity, note as such. ["...that have access to the investment accounts"; "...handle securities"]

1 Name of Firm or Individual	2 Affiliation
BLACKROCK FINANCIAL MANAGEMENT, INC	U.....
W. Mark Preston	I.....

- 17.5097 For those firms/individuals listed in the table for Question 17.5, do any firms/individuals unaffiliated with the reporting entity (i.e. designated with a "U") manage more than 10% of the reporting entity's invested assets?..... Yes [X] No []

- 17.5098 For firms/individuals unaffiliated with the reporting entity (i.e. designated with a "U") listed in the table for Question 17.5, does the total assets under management aggregate to more than 50% of the reporting entity's invested assets?..... Yes [X] No []

- 17.6 For those firms or individuals listed in the table for 17.5 with an affiliation code of "A" (affiliated) or "U" (unaffiliated), provide the information for the table below.

1	2	3	4	5
Central Registration Depository Number	Name of Firm or Individual	Legal Entity Identifier (LEI)	Registered With	Investment Management Agreement (IMA) Filed
107105	BLACKROCK FINANCIAL MANAGEMENT, INC	549300LVXY1VJKE13M84	The SEC	DS.....

- 18.1 Have all the filing requirements of the Purposes and Procedures Manual of the NAIC Investment Analysis Office been followed? Yes [X] No []
- 18.2 If no, list exceptions:

19. By self-designating 5GI securities, the reporting entity is certifying the following elements for each self-designated 5GI security:
- a. Documentation necessary to permit a full credit analysis of the security does not exist or an NAIC CRP credit rating for an FE or PL security is not available.
 - b. Issuer or obligor is current on all contracted interest and principal payments.
 - c. The insurer has an actual expectation of ultimate payment of all contracted interest and principal.
- Has the reporting entity self-designated 5GI securities? Yes [] No [X]

20. By self-designating PLGI securities, the reporting entity is certifying the following elements of each self-designated PLGI security:
- a. The security was purchased prior to January 1, 2018.
 - b. The reporting entity is holding capital commensurate with the NAIC Designation reported for the security.
 - c. The NAIC Designation was derived from the credit rating assigned by an NAIC CRP in its legal capacity as a NRSRO which is shown on a current private letter rating held by the insurer and available for examination by state insurance regulators.
 - d. The reporting entity is not permitted to share this credit rating of the PL security with the SVO.
- Has the reporting entity self-designated PLGI securities? Yes [] No [X]

21. By assigning FE to a Schedule BA non-registered private fund, the reporting entity is certifying the following elements of each self-designated FE fund:
- a. The shares were purchased prior to January 1, 2019.
 - b. The reporting entity is holding capital commensurate with the NAIC Designation reported for the security.
 - c. The security had a public credit rating(s) with annual surveillance assigned by an NAIC CRP in its legal capacity as an NRSRO prior to January 1, 2019.
 - d. The fund only or predominantly holds bonds in its portfolio.
 - e. The current reported NAIC Designation was derived from the public credit rating(s) with annual surveillance assigned by an NAIC CRP in its legal capacity as an NRSRO.
 - f. The public credit rating(s) with annual surveillance assigned by an NAIC CRP has not lapsed.
- Has the reporting entity assigned FE to Schedule BA non-registered private funds that complied with the above criteria? Yes [] No [X]

GENERAL INTERROGATORIES

PART 2 - HEALTH

1. Operating Percentages:
- 1.1 A&H loss percent81.9 %
 - 1.2 A&H cost containment percent2.5 %
 - 1.3 A&H expense percent excluding cost containment expenses13.0 %
- 2.1 Do you act as a custodian for health savings accounts? Yes [] No [X]
- 2.2 If yes, please provide the amount of custodial funds held as of the reporting date\$0
- 2.3 Do you act as an administrator for health savings accounts? Yes [] No [X]
- 2.4 If yes, please provide the balance of the funds administered as of the reporting date\$0
3. Is the reporting entity licensed or chartered, registered, qualified, eligible or writing business in at least two states? Yes [X] No []
- 3.1 If no, does the reporting entity assume reinsurance business that covers risks residing in at least one state other than the state of domicile of the reporting entity? Yes [] No []

SCHEDULE S - CEDED REINSURANCE

Showing All New Reinsurance Treaties - Current Year to Date

1 NAIC Company Code	2 ID Number	3 Effective Date	4 Name of Reinsurer	5 Domiciliary Jurisdiction	6 Type of Reinsurance Ceded	7 Type of Business Ceded	8 Type of Reinsurer	9 Certified Reinsurer Rating (1 through 6)	10 Effective Date of Certified Reinsurer Rating
NONE									

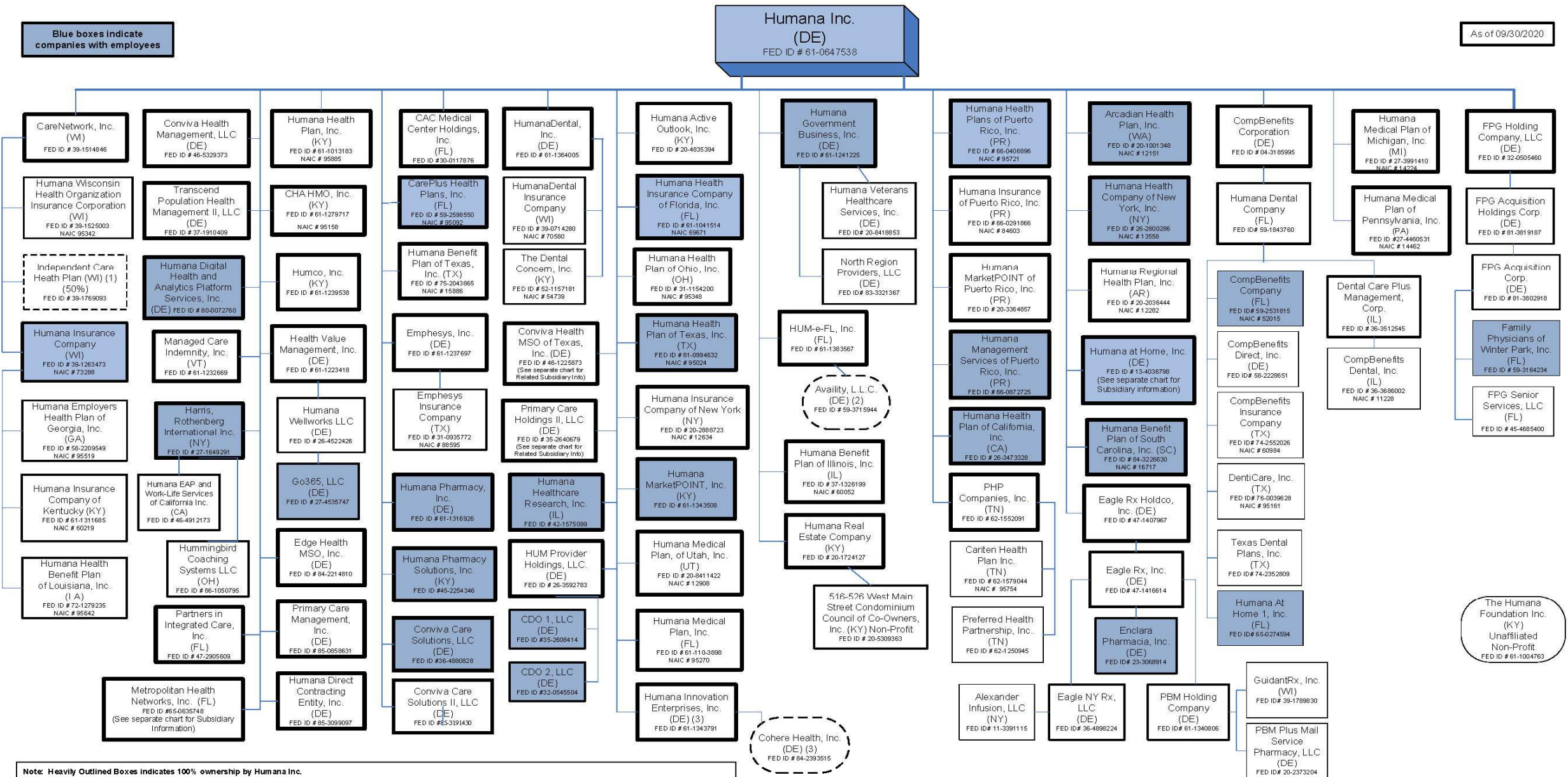
SCHEDULE T - PREMIUMS AND OTHER CONSIDERATIONS

Current Year to Date - Allocated by States and Territories

States, etc.	1 Active Status (a)	Direct Business Only							9 Deposit-Type Contracts	
		2 Accident and Health Premiums	3 Medicare Title XVIII	4 Medicaid Title XIX	5 Federal Employees Health Benefits Program Premiums	6 Life and Annuity Premiums & Other Considerations	7 Property/Casualty Premiums	8 Total Columns 2 Through 7		
1. Alabama AL	N	0	0	0	0	0	0	0	0	
2. Alaska AK	N	0	0	0	0	0	0	0	0	
3. Arizona AZ	N	0	0	0	0	0	0	0	0	
4. Arkansas AR	N	0	0	0	0	0	0	0	0	
5. California CA	N	0	0	0	0	0	0	0	0	
6. Colorado CO	N	0	0	0	0	0	0	0	0	
7. Connecticut CT	N	0	0	0	0	0	0	0	0	
8. Delaware DE	N	0	0	0	0	0	0	0	0	
9. District of Columbia DC	N	0	0	0	0	0	0	0	0	
10. Florida FL	N	0	0	0	0	0	0	0	0	
11. Georgia GA	N	0	0	0	0	0	0	0	0	
12. Hawaii HI	N	0	0	0	0	0	0	0	0	
13. Idaho ID	N	0	0	0	0	0	0	0	0	
14. Illinois IL	N	0	0	0	0	0	0	0	0	
15. Indiana IN	L	0	0	0	0	0	0	0	0	
16. Iowa IA	N	0	0	0	0	0	0	0	0	
17. Kansas KS	N	0	0	0	0	0	0	0	0	
18. Kentucky KY	L	0	67,301,882	0	0	0	0	67,301,882	0	
19. Louisiana LA	N	0	0	0	0	0	0	0	0	
20. Maine ME	N	0	0	0	0	0	0	0	0	
21. Maryland MD	N	0	0	0	0	0	0	0	0	
22. Massachusetts MA	N	0	0	0	0	0	0	0	0	
23. Michigan MI	N	0	0	0	0	0	0	0	0	
24. Minnesota MN	N	0	0	0	0	0	0	0	0	
25. Mississippi MS	N	0	0	0	0	0	0	0	0	
26. Missouri MO	N	0	0	0	0	0	0	0	0	
27. Montana MT	N	0	0	0	0	0	0	0	0	
28. Nebraska NE	N	0	0	0	0	0	0	0	0	
29. Nevada NV	N	0	0	0	0	0	0	0	0	
30. New Hampshire NH	N	0	0	0	0	0	0	0	0	
31. New Jersey NJ	N	0	0	0	0	0	0	0	0	
32. New Mexico NM	N	0	0	0	0	0	0	0	0	
33. New York NY	N	0	0	0	0	0	0	0	0	
34. North Carolina NC	N	0	0	0	0	0	0	0	0	
35. North Dakota ND	N	0	0	0	0	0	0	0	0	
36. Ohio OH	L	106,719,408	(122,794)	0	1,494,134	0	108,090,748	0	0	
37. Oklahoma OK	N	0	0	0	0	0	0	0	0	
38. Oregon OR	N	0	0	0	0	0	0	0	0	
39. Pennsylvania PA	N	0	0	0	0	0	0	0	0	
40. Rhode Island RI	N	0	0	0	0	0	0	0	0	
41. South Carolina SC	N	0	0	0	0	0	0	0	0	
42. South Dakota SD	N	0	0	0	0	0	0	0	0	
43. Tennessee TN	N	0	0	0	0	0	0	0	0	
44. Texas TX	N	0	0	0	0	0	0	0	0	
45. Utah UT	N	0	0	0	0	0	0	0	0	
46. Vermont VT	N	0	0	0	0	0	0	0	0	
47. Virginia VA	N	0	0	0	0	0	0	0	0	
48. Washington WA	N	0	0	0	0	0	0	0	0	
49. West Virginia WV	N	0	0	0	0	0	0	0	0	
50. Wisconsin WI	N	0	0	0	0	0	0	0	0	
51. Wyoming WY	N	0	0	0	0	0	0	0	0	
52. American Samoa AS	N	0	0	0	0	0	0	0	0	
53. Guam GU	N	0	0	0	0	0	0	0	0	
54. Puerto Rico PR	N	0	0	0	0	0	0	0	0	
55. U.S. Virgin Islands VI	N	0	0	0	0	0	0	0	0	
56. Northern Mariana Islands MP	N	0	0	0	0	0	0	0	0	
57. Canada CAN	N	0	0	0	0	0	0	0	0	
58. Aggregate Other Aliens OT	XXX	8,742,117	0	0	0	0	8,742,117	0	0	
59. Subtotal	XXX	115,461,525	67,179,088	0	1,494,134	0	184,134,747	0	0	
60. Reporting Entity Contributions for Employee Benefit Plans	XXX	0	0	0	0	0	0	0	0	
61. Totals (Direct Business)	XXX	115,461,525	67,179,088	0	1,494,134	0	184,134,747	0	0	
DETAILS OF WRITE-INS										
58001. ACA Support Programs	XXX	8,742,117	0	0	0	0	8,742,117	0	0	
58002.	XXX									
58003.	XXX									
58998. Summary of remaining write-ins for Line 58 from overflow page	XXX	0	0	0	0	0	0	0	0	
58999. Totals (Lines 58001 through 58003 plus 58998)(Line 58 above)	XXX	8,742,117	0	0	0	0	8,742,117	0	0	

(a) Active Status Counts:
 L - Licensed or Chartered - Licensed Insurance carrier or domiciled RRG..... 3 R - Registered - Non-domiciled RRGs..... 0
 E - Eligible - Reporting entities eligible or approved to write surplus lines in the state..... 0 Q - Qualified - Qualified or accredited reinsurer..... 0
 N - None of the above - Not allowed to write business in the state..... 54

STATEMENT AS OF SEPTEMBER 30, 2020 OF THE Humana Health Plan of Ohio Inc.



15

The Humana Foundation Inc. (KY)
Unaffiliated Non-Profit
FED ID # 61-1004763

STATEMENT AS OF SEPTEMBER 30, 2020 OF THE Humana Health Plan of Ohio Inc.

Companies with Employees

Licensed Companies

As of 09/30/2019

Humana Inc.
(Delaware)
61-0647538

Humana at Home, Inc.
(f/k/a SeniorBridge Family Companies, Inc.)
13-4036798 (01/21/2000 - DE)
Acq. 07/06/2012

SeniorBridge Family Companies (FL), Inc.
65-1096853
(03/28/2001 - FL)

SeniorBridge Family Companies (IN), Inc.
20-0301155
(09/22/2003 - IN)

SeniorBridge Family Companies (NY), Inc.
38-4484443
(11/29/2001 - NY)

Humana at Home (San Antonio), Inc. (f/k/a SeniorBridge Family Companies (TX), Inc.)
01-0766084
(01/31/2003 - TX)

ROHC, L.L.C.
75-2844854
(10/18/1999 - TX)

Care Partners Home Care, LLC
26-0815856
(06/26/2009 - FL)

SeniorBridge-Florida, LLC
59-2518701
(08/1/2008 - FL)

Naples Health Care Specialists, LLC
65-0992582
(12/08/2008 - FL)

Nursing Solutions, LLC
65-0688221
(04/30/2009 - FL)

Complex Clinical Management, Inc.
45-3713941
(10/26/2011 - FL)

Management Service Agreement
NO OWNERSHIP INTEREST

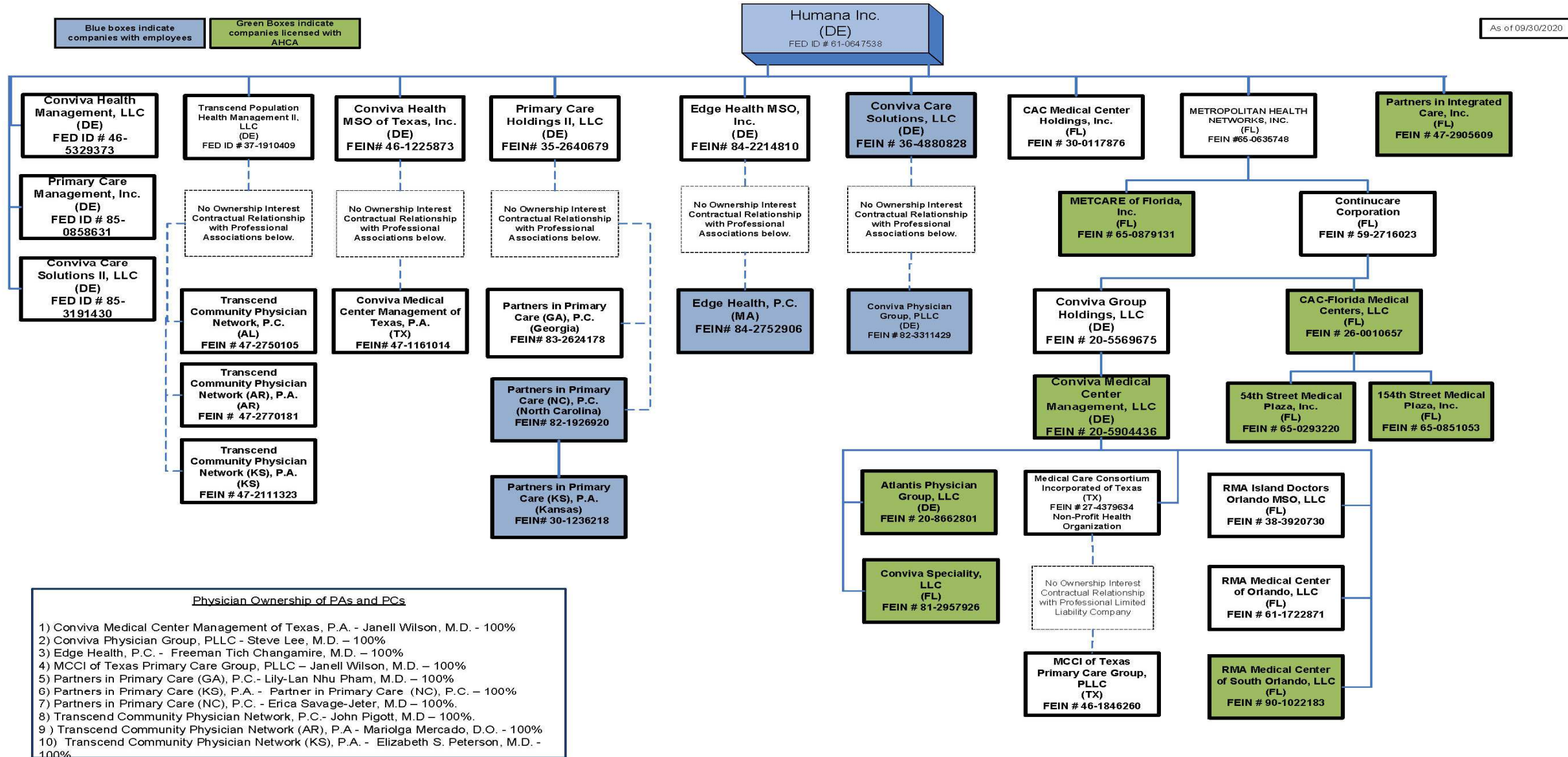
Humana At Home (Dallas), Inc.
75-2739333
(12/22/1997 - TX)

Humana At Home (Houston), Inc.
76-0537878
(05/20/1997 - TX)

Humana At Home (TLC), Inc.
75-2600512
(06/12/1995 - TX)

Humana Home Advantage (TX), P.A.
FEIN# 81-0789608
Created for Chronic Care Nurse Practitioner Program.
Incorporated in Texas on 12/04/2015.
Worthe S. Holt, M.D. and Paul Mikulecky, M.D. are the shareholders.
Contractual relationship between Humana Home Advantage (TX), P.A. and Complex Clinical Management, Inc.

STATEMENT AS OF SEPTEMBER 30, 2020 OF THE Humana Health Plan of Ohio Inc.



15.2

STATEMENT AS OF SEPTEMBER 30, 2020 OF THE Humana Health Plan of Ohio Inc.

SCHEDULE Y
PART 1A - DETAIL OF INSURANCE HOLDING COMPANY SYSTEM

1	2	3	4	5	6	7	8	9	10	11	12	13	14	15	16
Group Code	Group Name	NAIC Company Code	ID Number	Federal RSSD	CIK	Name of Securities Exchange if Publicly Traded (U.S. or International)	Names of Parent, Subsidiaries Or Affiliates	Domiciliary Location	Relationship to Reporting Entity	Directly Controlled by (Name of Entity/Person)	Type of Control (Ownership, Board, Management, Attorney-in-Fact, Influence, Other)	If Control is Ownership Provide Percentage	Ultimate Controlling Entity(ies)/Person(s)	Is an SCA Filing Required? (Y/N)	*
.0119	Humana Inc.	.00000	65-0851053				154th Street Medical Plaza, Inc.	FL	NIA	CAC-Florida Medical Centers, LLC	Ownership	100.000	Humana Inc.		.0
.0119	Humana Inc.	.00000	20-5309363				516-526 West Main Street Condomium Council of Co-Owners, Inc.	KY	NIA	Humana Real Estate Company	Ownership	100.000	Humana Inc.		.0
.0119	Humana Inc.	.00000	65-0293220				54th Street Medical Plaza, Inc.	FL	NIA	CAC-Florida Medical Centers, LLC	Ownership	100.000	Humana Inc.		.0
.0119	Humana Inc.	.12151	20-1001348				Arcadian Health Plan, Inc.	WA	IA	Humana Inc.	Ownership	100.000	Humana Inc.		.0
.0119	Humana Inc.	.00000	20-8662801				Atlantis Physician Group, LLC	DE	NIA	Conviva Medical Center Management, LLC	Ownership	100.000	Humana Inc.		.0
.0119	Humana Inc.	.00000	30-0117876				CAC Medical Center Holdings, Inc.	FL	NIA	Humana Inc.	Ownership	100.000	Humana Inc.		.0
.0119	Humana Inc.	.00000	26-0010657				CAC-Florida Medical Centers, LLC	FL	NIA	Continucare Corporation	Ownership	100.000	Humana Inc.		.0
.0119	Humana Inc.	.00000	26-0815856				Care Partners Home Care, LLC	FL	NIA	SeniorBridge Family Companies (FL), Inc.	Ownership	100.000	Humana Inc.		.0
.0119	Humana Inc.	.00000	39-1514846				CareNetwork, Inc.	WI	NIA	Humana Inc.	Ownership	100.000	Humana Inc.		.0
.0119	Humana Inc.	.95092	59-2598550				CarePlus Health Plans, Inc.	FL	IA	Humana Inc.	Ownership	100.000	Humana Inc.		.0
.0119	Humana Inc.	.95754	62-1579044				Cariten Health Plan Inc.	TN	IA	PHP Companies, Inc.	Ownership	100.000	Humana Inc.		.0
.0119	Humana Inc.	.00000	35-2608414				CDO 1, LLC	DE	NIA	HJM Provider Holdings, LLC	Ownership	100.000	Humana Inc.		.0
.0119	Humana Inc.	.00000	32-0545504				CDO 2, LLC	DE	NIA	HJM Provider Holdings, LLC	Ownership	100.000	Humana Inc.		.0
.0119	Humana Inc.	.95158	61-1279717				CHA HMO, Inc.	KY	IA	Humana Inc.	Ownership	100.000	Humana Inc.		.0
.0119	Humana Inc.	.52015	59-2531815				CompBenefits Company	FL	IA	Humana Dental Company	Ownership	100.000	Humana Inc.		.0
.0119	Humana Inc.	.00000	04-3185995				CompBenefits Corporation	DE	NIA	Humana Inc.	Ownership	100.000	Humana Inc.		.0
.0119	Humana Inc.	.11228	36-3686002				CompBenefits Dental, Inc.	IL	IA	Dental Care Plus Management, Corp.	Ownership	100.000	Humana Inc.		.0
.0119	Humana Inc.	.00000	58-2228851				CompBenefits Direct, Inc.	DE	NIA	Humana Dental Company	Ownership	100.000	Humana Inc.		.0
.0119	Humana Inc.	.60984	74-2552026				CompBenefits Insurance Company	TX	IA	Humana Dental Company	Ownership	100.000	Humana Inc.		.0
.0119	Humana Inc.	.00000	45-3713941				Complex Clinical Management, Inc.	FL	NIA	SeniorBridge Family Companies (FL), Inc.	Ownership	100.000	Humana Inc.		.0
.0119	Humana Inc.	.00000	42-1575099				Humana Healthcare Research, Inc.	IL	NIA	Humana Inc.	Ownership	100.000	Humana Inc.		.0
.0119	Humana Inc.	.00000	59-2716023				Continucare Corporation	FL	NIA	Metropolitan Health Networks, Inc.	Ownership	100.000	Humana Inc.		.0
.0119	Humana Inc.	.00000	36-4880828				Conviva Care Solutions, LLC	DE	NIA	Humana Inc.	Ownership	100.000	Humana Inc.		.0
.0119	Humana Inc.	.15886	75-2043865				Humana Benefit Plan of Texas, Inc.	TX	IA	Humana Inc.	Ownership	100.000	Humana Inc.		.0
.0119	Humana Inc.	.00000	36-3512545				Dental Care Plus Management, Corp.	IL	NIA	Humana Dental Company	Ownership	100.000	Humana Inc.		.0
.0119	Humana Inc.	.95161	76-0039628				DentiCare, Inc.	TX	IA	Humana Dental Company	Ownership	100.000	Humana Inc.		.0
.0119	Humana Inc.	.88595	31-0935772				Empheys Insurance Company	TX	IA	Empheys, Inc.	Ownership	100.000	Humana Inc.		.0
.0119	Humana Inc.	.00000	61-1237697				Empheys, Inc.	DE	NIA	Humana Inc.	Ownership	100.000	Humana Inc.		.0
.0119	Humana Inc.	.00000	59-3164234				Family Physicians of Winter Park, Inc.	FL	NIA	FPG Acquisition Corp.	Ownership	100.000	Humana Inc.		.0
.0119	Humana Inc.	.00000	81-3802918				FPG Acquisition Corp.	DE	NIA	FPG Acquisition Holdings Corp.	Ownership	100.000	Humana Inc.		.0
.0119	Humana Inc.	.00000	81-3819187				FPG Acquisition Holdings Corp.	DE	NIA	FPG Holding Company, LLC	Ownership	100.000	Humana Inc.		.0
.0119	Humana Inc.	.00000	32-0505460				FPG Holding Company, LLC	DE	NIA	Humana Inc.	Ownership	100.000	Humana Inc.		.0
.0119	Humana Inc.	.00000	45-4685400				FPG Senior Services, LLC	FL	NIA	FPG Acquisition Corp.	Ownership	100.000	Humana Inc.		.0
.0119	Humana Inc.	.00000	27-1649291				Harris, Rothenberg International Inc.	NY	NIA	Humana Inc.	Ownership	100.000	Humana Inc.		.0
.0119	Humana Inc.	.00000	61-1223418				Health Value Management, Inc.	DE	NIA	Humana Inc.	Ownership	100.000	Humana Inc.		.0
.0119	Humana Inc.	.00000	46-4912173				Humana EAP and Work-Life Services of California, Inc.	CA	IA	Harris, Rothenberg International Inc.	Ownership	100.000	Humana Inc.		.0
.0119	Humana Inc.	.00000	26-3592783				HJM Provider Holdings, LLC	DE	NIA	Humana Inc.	Ownership	100.000	Humana Inc.		.0
.0119	Humana Inc.	.00000	20-4835394				Humana Active Outlook, Inc.	KY	NIA	Humana Inc.	Ownership	100.000	Humana Inc.		.0
.0119	Humana Inc.	.00000	75-2739333				Humana At Home (Dallas), Inc.	TX	NIA	ROHC, L.L.C.	Ownership	100.000	Humana Inc.		.0
.0119	Humana Inc.	.00000	76-0537878				Humana At Home (Houston), Inc.	TX	NIA	ROHC, L.L.C.	Ownership	100.000	Humana Inc.		.0
.0119	Humana Inc.	.00000	65-0274594				Humana At Home 1, Inc.	FL	NIA	Humana Dental Company	Ownership	100.000	Humana Inc.		.0
.0119	Humana Inc.	.00000	13-4036798				Humana at Home, Inc.	DE	NIA	Humana Inc.	Ownership	100.000	Humana Inc.		.0
.0119	Humana Inc.	.60052	37-1326199				Humana Benefit Plan of Illinois, Inc.	IL	IA	Humana Inc.	Ownership	100.000	Humana Inc.		.0
.0119	Humana Inc.	.00000	59-1843760				Humana Dental Company	FL	NIA	CompBenefits Corporation	Ownership	100.000	Humana Inc.		.0
.0119	Humana Inc.	.95519	58-2209549				Humana Employers Health Plan of Georgia, Inc.	GA	IA	Humana Insurance Company	Ownership	100.000	Humana Inc.		.0
.0119	Humana Inc.	.00000	61-1241225				Humana Government Business, Inc.	DE	NIA	Humana Inc.	Ownership	100.000	Humana Inc.		.0
.0119	Humana Inc.	.95642	72-1279235				Humana Health Benefit Plan of Louisiana, Inc.	LA	IA	Humana Insurance Company	Ownership	100.000	Humana Inc.		.0
.0119	Humana Inc.	.13558	26-2800286				Humana Health Company of New York, Inc.	NY	IA	Humana Inc.	Ownership	100.000	Humana Inc.		.0
.0119	Humana Inc.	.69671	61-1041514				Humana Health Insurance Company of Florida, Inc.	FL	IA	Humana Inc.	Ownership	100.000	Humana Inc.		.0

STATEMENT AS OF SEPTEMBER 30, 2020 OF THE Humana Health Plan of Ohio Inc.

SCHEDULE Y
PART 1A - DETAIL OF INSURANCE HOLDING COMPANY SYSTEM

1	2	3	4	5	6	7	8	9	10	11	12	13	14	15	16
Group Code	Group Name	NAIC Company Code	ID Number	Federal RSSD	CIK	Name of Securities Exchange if Publicly Traded (U.S. or International)	Names of Parent, Subsidiaries Or Affiliates	Domiciliary Location	Relationship to Reporting Entity	Directly Controlled by (Name of Entity/Person)	Type of Control (Ownership, Board, Management, Attorney-in-Fact, Influence, Other)	If Control is Ownership Provide Percentage	Ultimate Controlling Entity(ies)/Person(s)	Is an SCA Filing Required? (Y/N)	*
.0119	Humana Inc.	.00000	26-3473328				Humana Health Plan of California, Inc.	CA	IA	Humana Inc.	Ownership	100.000	Humana Inc.		0
.0119	Humana Inc.	.95348	31-1154200				Humana Health Plan of Ohio, Inc.	OH	RE	Humana Inc.	Ownership	100.000	Humana Inc.		0
.0119	Humana Inc.	.95024	61-0994632				Humana Health Plan of Texas, Inc.	TX	IA	Humana Inc.	Ownership	100.000	Humana Inc.		0
.0119	Humana Inc.	.95885	61-1013183				Humana Health Plan, Inc.	KY	IA	Humana Inc.	Ownership	100.000	Humana Inc.		0
.0119	Humana Inc.	.95721	66-0406896				Humana Health Plans of Puerto Rico, Inc.	PR	IA	Humana Inc.	Ownership	100.000	Humana Inc.		0
.0119	Humana Inc.	.00000	61-0647538		0000049071	NYSE	Humana Inc.	DE	UDP	See Footnote 1	Other	0.000	See Footnote 1		1
.0119	Humana Inc.	.00000	61-1343791				Humana Innovation Enterprises, Inc.	DE	NIA	Humana Inc.	Ownership	100.000	Humana Inc.		0
.0119	Humana Inc.	.73288	39-1263473				Humana Insurance Company	WI	IA	CareNetwork, Inc.	Ownership	100.000	Humana Inc.		0
.0119	Humana Inc.	.60219	61-1311685				Humana Insurance Company of Kentucky	KY	IA	Humana Insurance Company	Ownership	100.000	Humana Inc.		0
.0119	Humana Inc.	.12634	20-2888723				Humana Insurance Company of New York	NY	IA	Humana Inc.	Ownership	100.000	Humana Inc.		0
.0119	Humana Inc.	.84603	66-0291866				Humana Insurance of Puerto Rico, Inc.	PR	IA	Humana Inc.	Ownership	100.000	Humana Inc.		0
.0119	Humana Inc.	.00000	20-3364857				Humana MarketPOINT of Puerto Rico, Inc.	PR	NIA	Humana Inc.	Ownership	100.000	Humana Inc.		0
.0119	Humana Inc.	.00000	61-1343508				Humana MarketPOINT, Inc.	KY	NIA	Humana Inc.	Ownership	100.000	Humana Inc.		0
.0119	Humana Inc.	.14224	27-3991410				Humana Medical Plan of Michigan, Inc.	MI	IA	Humana Inc.	Ownership	100.000	Humana Inc.		0
.0119	Humana Inc.	.14462	27-4660531				Humana Medical Plan of Pennsylvania, Inc.	PA	IA	Humana Inc.	Ownership	100.000	Humana Inc.		0
.0119	Humana Inc.	.12908	20-8411422				Humana Medical Plan of Utah, Inc.	UT	IA	Humana Inc.	Ownership	100.000	Humana Inc.		0
.0119	Humana Inc.	.95270	61-1103898				Humana Medical Plan, Inc.	FL	IA	Humana Inc.	Ownership	100.000	Humana Inc.		0
.0119	Humana Inc.	.00000	45-2254346				Humana Pharmacy Solutions, Inc.	KY	NIA	Humana Inc.	Ownership	100.000	Humana Inc.		0
.0119	Humana Inc.	.00000	61-1316926				Humana Pharmacy, Inc.	DE	NIA	Humana Inc.	Ownership	100.000	Humana Inc.		0
.0119	Humana Inc.	.12282	20-2036444				Humana Regional Health Plan, Inc.	AR	IA	Humana Inc.	Ownership	100.000	Humana Inc.		0
.0119	Humana Inc.	.00000	20-8418853				Humana Veterans Healthcare Services, Inc.	DE	NIA	Humana Government Business, Inc.	Ownership	100.000	Humana Inc.		0
.0119	Humana Inc.	.00000	26-4522426				Humana WellWorks LLC	DE	NIA	Health Value Management, Inc.	Ownership	100.000	Humana Inc.		0
.0119	Humana Inc.	.95342	39-1525003				Humana Wisconsin Health Organization Insurance Corporation	WI	IA	CareNetwork, Inc.	Ownership	100.000	Humana Inc.		0
.0119	Humana Inc.	.70580	39-0714280				HumanaDental Insurance Company	WI	IA	HumanaDental, Inc.	Ownership	100.000	Humana Inc.		0
.0119	Humana Inc.	.00000	61-1364005				HumanaDental, Inc.	DE	NIA	Humana Inc.	Ownership	100.000	Humana Inc.		0
.0119	Humana Inc.	.00000	27-4535747				Go365, LLC	DE	NIA	HumanaWellworks LLC	Ownership	100.000	Humana Inc.		0
.0119	Humana Inc.	.00000	61-1239538				Humco, Inc.	KY	NIA	Humana Inc.	Ownership	100.000	Humana Inc.		0
.0119	Humana Inc.	.00000	61-1383567				HUM-e-FL, Inc.	FL	NIA	Humana Inc.	Ownership	100.000	Humana Inc.		0
.0119	Humana Inc.	.00000	86-1050795				Hummingbird Coaching Systems LLC	OH	NIA	Harris, Rothenberg International Inc.	Ownership	100.000	Humana Inc.		0
.0119	Humana Inc.	.00000	39-1769093				Independent Care Health Plan	WI	OTH	See Footnote 2	Other	50.000	Humana Inc.		2
.0119	Humana Inc.	.00000	61-1232669				Managed Care Indemnity, Inc.	VT	IA	Humana Inc.	Ownership	100.000	Humana Inc.		0
.0119	Humana Inc.	.00000	20-5569675				Conviva Group Holdings, LLC	DE	NIA	Continuicare Corporation	Ownership	100.000	Humana Inc.		0
.0119	Humana Inc.	.00000	20-5904436				Conviva Medical Center Management, LLC	DE	NIA	Conviva Group Holdings, LLC	Ownership	100.000	Humana Inc.		0
.0119	Humana Inc.	.00000	81-2957926				Conviva Speciality, LLC	FL	NIA	Conviva Medical Center Management, LLC	Ownership	100.000	Humana Inc.		0
.0119	Humana Inc.	.00000	27-4379634				Medical Care Consortium Incorporated of Texas	TX	NIA	Conviva Medical Center Management, LLC	Ownership	100.000	Humana Inc.		0
.0119	Humana Inc.	.00000	65-0879131				METCARE of Florida, Inc.	FL	NIA	Metropolitan Health Networks, Inc.	Ownership	100.000	Humana Inc.		0
.0119	Humana Inc.	.00000	65-0635728				Metropolitan Health Networks, Inc.	FL	NIA	Humana Inc.	Ownership	100.000	Humana Inc.		0
.0119	Humana Inc.	.00000	65-0992582				Naples Health Care Specialists, LLC	FL	NIA	SeniorBridge Family Companies (FL), Inc.	Ownership	100.000	Humana Inc.		0
.0119	Humana Inc.	.00000	65-0688221				Nursing Solutions, LLC	FL	NIA	SeniorBridge Family Companies (FL), Inc.	Ownership	100.000	Humana Inc.		0
.0119	Humana Inc.	.00000	62-1552091				PHP Companies, Inc.	TN	NIA	Humana Inc.	Ownership	100.000	Humana Inc.		0
.0119	Humana Inc.	.00000	62-1250945				Preferred Health Partnership, Inc.	TN	NIA	PHP Companies, Inc.	Ownership	100.000	Humana Inc.		0
.0119	Humana Inc.	.00000	20-1724127				Humana Real Estate Company	KY	NIA	Humana Inc.	Ownership	100.000	Humana Inc.		0
.0119	Humana Inc.	.00000	46-1225873				Conviva Health MSO of Texas, Inc.	DE	NIA	Humana Inc.	Ownership	100.000	Humana Inc.		0
.0119	Humana Inc.	.00000	38-3920730				RMA Island Doctors Orlando MSO, LLC	FL	NIA	Conviva Medical Center Management, LLC	Ownership	100.000	Humana Inc.		0
.0119	Humana Inc.	.00000	90-1022183				RMA Medical Center of South Orlando, LLC	FL	NIA	Conviva Medical Center Management, LLC	Ownership	100.000	Humana Inc.		0
.0119	Humana Inc.	.00000	61-1722871				RMA Medical Center of Orlando, LLC	FL	NIA	Conviva Medical Center Management, LLC	Ownership	100.000	Humana Inc.		0
.0119	Humana Inc.	.00000	75-2844854				ROHC, L.L.C.	TX	NIA	Humana at Home, Inc.	Ownership	100.000	Humana Inc.		0
.0119	Humana Inc.	.00000	65-1096853				SeniorBridge Family Companies (FL), Inc.	FL	NIA	Humana at Home, Inc.	Ownership	100.000	Humana Inc.		0
.0119	Humana Inc.	.00000	20-0301155				SeniorBridge Family Companies (IN), Inc.	IN	NIA	Humana at Home, Inc.	Ownership	100.000	Humana Inc.		0
.0119	Humana Inc.	.00000	36-4484443				SeniorBridge Family Companies (NY), Inc.	NY	NIA	Humana at Home, Inc.	Ownership	100.000	Humana Inc.		0
.0119	Humana Inc.	.00000	01-0766084				Humana At Home (San Antonio), Inc.	TX	NIA	Humana at Home, Inc.	Ownership	100.000	Humana Inc.		0
.0119	Humana Inc.	.00000	59-2518701				SeniorBridge-Florida, LLC	FL	NIA	SeniorBridge Family Companies (FL), Inc.	Ownership	100.000	Humana Inc.		0

STATEMENT AS OF SEPTEMBER 30, 2020 OF THE Humana Health Plan of Ohio Inc.

SCHEDULE Y
PART 1A - DETAIL OF INSURANCE HOLDING COMPANY SYSTEM

1	2	3	4	5	6	7	8	9	10	11	12	13	14	15	16
Group Code	Group Name	NAIC Company Code	ID Number	Federal RSSD	CIK	Name of Securities Exchange if Publicly Traded (U.S. or International)	Names of Parent, Subsidiaries Or Affiliates	Domiciliary Location	Relationship to Reporting Entity	Directly Controlled by (Name of Entity/Person)	Type of Control (Ownership, Board, Management, Attorney-in-Fact, Influence, Other)	If Control is Ownership Provide Percentage	Ultimate Controlling Entity(ies)/Person(s)	Is an SCA Filing Required? (Y/N)	*
.0119	Humana Inc.	.00000	74-2352809				Texas Dental Plans, Inc.	TX	NIA	Humana Dental Company	Ownership	100.000	Humana Inc.		.0
.0119	Humana Inc.	.54739	52-1157181				The Dental Concern, Inc.	KY	IA	HumanaDental, Inc.	Ownership	100.000	Humana Inc.		.0
.0119	Humana Inc.	.00000	75-2600512				Humana At Home (TLC), Inc.	TX	NIA	ROHC, L.L.C.	Ownership	100.000	Humana Inc.		.0
.0119	Humana Inc.	.00000	80-0072760				Humana Digital Health and Analytics Platform Services, Inc.	DE	NIA	Humana Inc.	Ownership	100.000	Humana Inc.		.0
.0119	Humana Inc.	.00000	46-5329373				Conviva Health Management, LLC	DE	NIA	Humana Inc.	Ownership	100.000	Humana Inc.		.0
.0119	Humana Inc.	.00000	66-0872725				Humana Management Services of Puerto Rico, Inc.	PR	NIA	Humana Inc.	Ownership	100.000	Humana Inc.		.0
.0119	Humana Inc.	.00000	83-3321367				North Region Providers, LLC	DE	NIA	Humana Government Business, Inc.	Ownership	100.000	Humana Inc.		.0
.0119	Humana Inc.	.00000	35-2640679				Primary Care Holdings II, LLC	DE	NIA	Humana Inc.	Ownership	100.000	Humana Inc.		.0
.0119	Humana Inc.	.00000	37-1910409				Transcend Population Health Management II, LLC	DE	NIA	Humana Inc.	Ownership	100.000	Humana Inc.		.0
.0119	Humana Inc.	.00000	84-2214810				Edge Health MSO, Inc.	DE	NIA	Humana Inc.	Ownership	100.000	Humana Inc.		.0
.0119	Humana Inc.	.00000	47-2905609				Partners in Integrated Care, Inc.	FL	NIA	Humana Inc.	Ownership	100.000	Humana Inc.		.0
.0119	Humana Inc.	.00000	84-3226630				Humana Benefit Plan of South Carolina, Inc.	SC	IA	Humana Inc.	Ownership	100.000	Humana Inc.		.0
.0119	Humana Inc.	.00000	11-3391115				Alexander Infusion, LLC	NY	NIA	Eagle NY Rx, LLC	Ownership	100.000	Humana Inc.		.0
.0119	Humana Inc.	.00000	36-4898224				Eagle NY Rx, LLC	DE	NIA	Eagle Rx, Inc.	Ownership	100.000	Humana Inc.		.0
.0119	Humana Inc.	.00000	47-1407967				Eagle Rx Holdco, Inc.	DE	NIA	Humana Inc.	Ownership	100.000	Humana Inc.		.0
.0119	Humana Inc.	.00000	47-1416614				Eagle Rx, Inc.	DE	NIA	Eagle Rx Holdco, Inc.	Ownership	100.000	Humana Inc.		.0
.0119	Humana Inc.	.00000	23-3068914				Enclara Pharmacia, Inc.	DE	NIA	Eagle Rx, Inc.	Ownership	100.000	Humana Inc.		.0
.0119	Humana Inc.	.00000	39-1789830				GuidantRx, Inc.	WI	NIA	PBM Holding Company	Ownership	100.000	Humana Inc.		.0
.0119	Humana Inc.	.00000	61-1340806				PBM Holding Company	DE	NIA	Eagle Rx, Inc.	Ownership	100.000	Humana Inc.		.0
.0119	Humana Inc.	.00000	20-2373204				PBM Plus Mail Service Pharmacy, LLC	DE	NIA	PBM Holding Company	Ownership	100.000	Humana Inc.		.0
.0119	Humana Inc.	.00000	85-3191430				Conviva Care Solutions II, LLC	DE	NIA	Humana Inc.	Ownership	100.000	Humana Inc.		.0
.0119	Humana Inc.	.00000	85-3099097				Humana Direct Contracting Entity, Inc.	DE	NIA	Humana Inc.	Ownership	100.000	Humana Inc.		.0
.0119	Humana Inc.	.00000	85-0858631				Primary Care Management, Inc.	DE	NIA	Humana Inc.	Ownership	100.000	Humana Inc.		.0

Asterisk	Explanation
0000001	Humana Inc., a Delaware corporation and ultimate parent company in the holding company system, is a publicly traded company on the New York Stock Exchange and ownership fluctuates daily.
0000002	Independent Care Health Plan, a Wisconsin corporation licensed as an HMO, operates an integrated, coordinated medical and social service managed care program for chronically disabled Medicaid recipients in Milwaukee, Wisconsin. CareNetwork, Inc. owns 50% of the company's stock. Centers For Independence, Inc. owns the other 50%.

SUPPLEMENTAL EXHIBITS AND SCHEDULES INTERROGATORIES

The following supplemental reports are required to be filed as part of your statement filing. However, in the event that your company does not transact the type of business for which the special report must be filed, your response of NO to the specific interrogatory will be accepted in lieu of filing a "NONE" report and a bar code will be printed below. If the supplement is required of your company but is not being filed for whatever reason enter SEE EXPLANATION and provide an explanation following the interrogatory questions.

	Response
1. Will the Medicare Part D Coverage Supplement be filed with the state of domicile and the NAIC with this statement?	NO

Explanation:

1. This type of business is not written.

Bar Code:

1. Medicare Part D Coverage Supplement [Document Identifier 365]



OVERFLOW PAGE FOR WRITE-INS

Additional Write-ins for Assets Line 25

	Current Statement Date			4 Prior Year Net Admitted Assets
	1 Assets	2 Nonadmitted Assets	3 Net Admitted Assets (Cols: 1 - 2)	
2504. Federal Contingency Reserves	19,701	0	19,701	58,280
2597. Summary of remaining write-ins for Line 25 from overflow page	19,701	0	19,701	58,280

STATEMENT AS OF SEPTEMBER 30, 2020 OF THE Humana Health Plan of Ohio Inc.

SCHEDULE A - VERIFICATION

Real Estate

	1 Year to Date	2 Prior Year Ended December 31
1. Book/adjusted carrying value, December 31 of prior year		
2. Cost of acquired:		
2.1 Actual cost at time of acquisition		
2.2 Additional investment made after acquisition		
3. Current year change in encumbrances		
4. Total gain (loss) on disposals		
5. Deduct amounts received on disposals		
6. Total foreign exchange change in book/adjusted carrying value		
7. Deduct current year's other than temporary impairment recognized		
8. Deduct current year's depreciation		
9. Book/adjusted carrying value at the end of current period (Lines 1+2+3+4-5+6-7-8)		
10. Deduct total nonadmitted amounts		
11. Statement value at end of current period (Line 9 minus Line 10)		

NONE

SCHEDULE B - VERIFICATION

Mortgage Loans

	1 Year to Date	2 Prior Year Ended December 31
1. Book value/recorded investment excluding accrued interest, December 31 of prior year		
2. Cost of acquired:		
2.1 Actual cost at time of acquisition		
2.2 Additional investment made after acquisition		
3. Capitalized deferred interest and other		
4. Accrual of discount		
5. Unrealized valuation increase (decrease)		
6. Total gain (loss) on disposals		
7. Deduct amounts received on disposals		
8. Deduct amortization of premium and mortgage interest paid and commitment fees		
9. Total foreign exchange change in book value/recorded investment excluding accrued interest		
10. Deduct current year's other than temporary impairment recognized		
11. Book value/recorded investment excluding accrued interest at end of current period (Lines 1+2+3+4+5+6-7-8+9-10)		
12. Total valuation allowance		
13. Subtotal (Line 11 plus Line 12)		
14. Deduct total nonadmitted amounts		
15. Statement value at end of current period (Line 13 minus Line 14)		

NONE

SCHEDULE BA - VERIFICATION

Other Long-Term Invested Assets

	1 Year to Date	2 Prior Year Ended December 31
1. Book/adjusted carrying value, December 31 of prior year	304,479	304,479
2. Cost of acquired:		
2.1 Actual cost at time of acquisition	0	0
2.2 Additional investment made after acquisition	0	0
3. Capitalized deferred interest and other	0	0
4. Accrual of discount	0	0
5. Unrealized valuation increase (decrease)	0	0
6. Total gain (loss) on disposals	0	0
7. Deduct amounts received on disposals	0	0
8. Deduct amortization of premium and depreciation	0	0
9. Total foreign exchange change in book/adjusted carrying value	0	0
10. Deduct current year's other than temporary impairment recognized	0	0
11. Book/adjusted carrying value at end of current period (Lines 1+2+3+4+5+6-7-8+9-10)	304,479	304,479
12. Deduct total nonadmitted amounts	0	0
13. Statement value at end of current period (Line 11 minus Line 12)	304,479	304,479

SCHEDULE D - VERIFICATION

Bonds and Stocks

	1 Year to Date	2 Prior Year Ended December 31
1. Book/adjusted carrying value of bonds and stocks, December 31 of prior year	32,363,864	57,487,643
2. Cost of bonds and stocks acquired	16,564,466	7,610,815
3. Accrual of discount	(5,141)	(3)
4. Unrealized valuation increase (decrease)	0	0
5. Total gain (loss) on disposals	398,372	(247,420)
6. Deduct consideration for bonds and stocks disposed of	16,167,877	32,206,304
7. Deduct amortization of premium	192,575	280,867
8. Total foreign exchange change in book/adjusted carrying value	0	0
9. Deduct current year's other than temporary impairment recognized	0	0
10. Total investment income recognized as a result of prepayment penalties and/or acceleration fees	0	0
11. Book/adjusted carrying value at end of current period (Lines 1+2+3+4+5-6-7+8-9+10)	32,961,108	32,363,864
12. Deduct total nonadmitted amounts	0	0
13. Statement value at end of current period (Line 11 minus Line 12)	32,961,108	32,363,864

STATEMENT AS OF SEPTEMBER 30, 2020 OF THE Humana Health Plan of Ohio Inc.

SCHEDULE D - PART 1B

Showing the Acquisitions, Dispositions and Non-Trading Activity
During the Current Quarter for all Bonds and Preferred Stock by NAIC Designation

NAIC Designation	1 Book/Adjusted Carrying Value Beginning of Current Quarter	2 Acquisitions During Current Quarter	3 Dispositions During Current Quarter	4 Non-Trading Activity During Current Quarter	5 Book/Adjusted Carrying Value End of First Quarter	6 Book/Adjusted Carrying Value End of Second Quarter	7 Book/Adjusted Carrying Value End of Third Quarter	8 Book/Adjusted Carrying Value December 31 Prior Year
BONDS								
1. NAIC 1 (a)	43,920,043	79,610,001	74,646,719	(79,142)	24,911,684	43,920,043	48,804,183	32,836,861
2. NAIC 2 (a)	1,148,310	0	0	8,087	1,152,285	1,148,310	1,156,397	1,090,966
3. NAIC 3 (a)	0	0	0	0	0	0	0	0
4. NAIC 4 (a)	0	0	0	0	0	0	0	0
5. NAIC 5 (a)	0	0	0	0	0	0	0	0
6. NAIC 6 (a)	0	0	0	0	0	0	0	0
7. Total Bonds	45,068,353	79,610,001	74,646,719	(71,055)	26,063,969	45,068,353	49,960,580	33,927,827
PREFERRED STOCK								
8. NAIC 1	0	0	0	0	0	0	0	0
9. NAIC 2	0	0	0	0	0	0	0	0
10. NAIC 3	0	0	0	0	0	0	0	0
11. NAIC 4	0	0	0	0	0	0	0	0
12. NAIC 5	0	0	0	0	0	0	0	0
13. NAIC 6	0	0	0	0	0	0	0	0
14. Total Preferred Stock	0	0	0	0	0	0	0	0
15. Total Bonds and Preferred Stock	45,068,353	79,610,001	74,646,719	(71,055)	26,063,969	45,068,353	49,960,580	33,927,827

(a) Book/Adjusted Carrying Value column for the end of the current reporting period includes the following amount of short-term and cash equivalent bonds by NAIC designation:

NAIC 1 \$16,999,473 ; NAIC 2 \$0 ; NAIC 3 \$0 NAIC 4 \$0 ; NAIC 5 \$0 ; NAIC 6 \$0

S102

Schedule DA - Part 1 - Short-Term Investments

N O N E

Schedule DA - Verification - Short-Term Investments

N O N E

Schedule DB - Part A - Verification - Options, Caps, Floors, Collars, Swaps and Forwards

N O N E

Schedule DB - Part B - Verification - Futures Contracts

N O N E

Schedule DB - Part C - Section 1 - Replication (Synthetic Asset) Transactions (RSATs) Open

N O N E

Schedule DB-Part C-Section 2-Reconciliation of Replication (Synthetic Asset) Transactions Open

N O N E

Schedule DB - Verification - Book/Adjusted Carrying Value, Fair Value and Potential Exposure of
Derivatives

N O N E

SCHEDULE E - PART 2 - VERIFICATION

(Cash Equivalents)

	1	2
	Year To Date	Prior Year Ended December 31
1. Book/adjusted carrying value, December 31 of prior year	3,808,034	6,467,173
2. Cost of cash equivalents acquired	356,961,491	1,597,958,131
3. Accrual of discount	11,673	370,762
4. Unrealized valuation increase (decrease)	0	0
5. Total gain (loss) on disposals	0	0
6. Deduct consideration received on disposals	337,540,000	1,600,988,032
7. Deduct amortization of premium	0	0
8. Total foreign exchange change in book/adjusted carrying value	0	0
9. Deduct current year's other than temporary impairment recognized	0	0
10. Book/adjusted carrying value at end of current period (Lines 1+2+3+4+5-6-7+8-9)	23,241,198	3,808,034
11. Deduct total nonadmitted amounts	0	0
12. Statement value at end of current period (Line 10 minus Line 11)	23,241,198	3,808,034

Schedule A - Part 2 - Real Estate Acquired and Additions Made

N O N E

Schedule A - Part 3 - Real Estate Disposed

N O N E

Schedule B - Part 2 - Mortgage Loans Acquired and Additions Made

N O N E

Schedule B - Part 3 - Mortgage Loans Disposed, Transferred or Repaid

N O N E

Schedule BA - Part 2 - Other Long-Term Invested Assets Acquired and Additions Made

N O N E

Schedule BA - Part 3 - Other Long-Term Invested Assets Disposed, Transferred or Repaid

N O N E

STATEMENT AS OF SEPTEMBER 30, 2020 OF THE Humana Health Plan of Ohio Inc.

SCHEDULE D - PART 3

Show All Long-Term Bonds and Stock Acquired During the Current Quarter

1 CUSIP Identification	2 Description	3 Foreign	4 Date Acquired	5 Name of Vendor	6 Number of Shares of Stock	7 Actual Cost	8 Par Value	9 Paid for Accrued Interest and Dividends	10 NAIC Designation and Admini- strative Symbol
912828-ZA-1	UNITED STATES TREASURY		.08/11/2020	Barclays Capital		258,875	255,000	1,286	1
0599999. Subtotal - Bonds - U.S. Governments									
3132DV-LA-1	FH S07521 - RMBS		.07/30/2020	NOMURA SECURITIES/FIXED INCOME		366,188	342,107	.285	1
3132DV-LC-7	FH S07523 - RMBS		.07/31/2020	Various		208,256	195,230	.163	1
3140Y6-PC-9	FN FM3118 - RMBS		.07/31/2020	JP MORGAN SECS INC. - FIXED INCOME		192,333	178,862	.179	1
31418D-TQ-5	FN MA4158 - RMBS		.09/21/2020	NOMURA SECURITIES/FIXED INCOME		384,569	373,000	.456	1
3199999. Subtotal - Bonds - U.S. Special Revenues									
482530-AA-3	KIND 2020-AIP A - CMBS		.09/17/2020	CREDIT SUISSE SECURITIES (USA)		98,168	98,030	.19	1Z
55358P-AA-4	MSCCG 18SELF A - CMBS		.09/17/2020	MORGAN STANLEY CO		355,111	355,000	.62	1FE
64133C-AA-7	NEUB 35 A1 - CDO	C	.08/28/2020	JP MORGAN SECS INC. - FIXED INCOME		249,875	250,000	.481	1FE
3899999. Subtotal - Bonds - Industrial and Miscellaneous (Unaffiliated)									
8399997. Total - Bonds - Part 3						2,113,374	2,047,230	2,932	XXX
8399998. Total - Bonds - Part 5						XXX	XXX	XXX	XXX
8399999. Total - Bonds						2,113,374	2,047,230	2,932	XXX
8999997. Total - Preferred Stocks - Part 3						0	XXX	0	XXX
8999998. Total - Preferred Stocks - Part 5						XXX	XXX	XXX	XXX
8999999. Total - Preferred Stocks						0	XXX	0	XXX
9799997. Total - Common Stocks - Part 3						0	XXX	0	XXX
9799998. Total - Common Stocks - Part 5						XXX	XXX	XXX	XXX
9799999. Total - Common Stocks						0	XXX	0	XXX
9899999. Total - Preferred and Common Stocks						0	XXX	0	XXX
9999999 - Totals						2,113,374	XXX	2,932	XXX

STATEMENT AS OF SEPTEMBER 30, 2020 OF THE Humana Health Plan of Ohio Inc.

SCHEDULE D - PART 4

Show All Long-Term Bonds and Stock Sold, Redeemed or Otherwise Disposed of During the Current Quarter

1	2	3	4	5	6	7	8	9	10	Change In Book/Adjusted Carrying Value					16	17	18	19	20	21	22
										11	12	13	14	15							
CUSIP Identification	Description	Foreign	Disposal Date	Name of Purchaser	Number of Shares of Stock	Consideration	Par Value	Actual Cost	Prior Year Book/Adjusted Carrying Value	Unrealized Valuation Increase/(Decrease)	Current Year's (Amortization)/Accretion	Current Year's Other Than Temporary Impairment Recognized	Total Change in Book/Adjusted Carrying Value (11 + 12 - 13)	Total Foreign Exchange Change in Book/Adjusted Carrying Value	Book/Adjusted Carrying Value at Disposal Date	Foreign Exchange Gain (Loss) on Disposal	Realized Gain (Loss) on Disposal	Total Gain (Loss) on Disposal	Bond Interest/Stock Dividends Received During Year	Stated Contractual Maturity Date	NAIC Designation and Administrative Symbol
912828-NT-3	UNITED STATES TREASURY		08/15/2020	Maturity @ 100.00		255,000	255,000	255,209	255,084	0	(84)	0	(84)	0	255,000	0	0	0	6,694	08/15/2020	1
0599999	Subtotal - Bonds - U.S. Governments					255,000	255,000	255,209	255,084	0	(84)	0	(84)	0	255,000	0	0	0	6,694	XXX	XXX
302987-AE-2	FRESB 2020-SB70 A1H - CMBS		09/01/2020	Paydown		109	109	109	0	0	(1)	0	(1)	0	109	0	0	0	2	10/25/2039	1
3128MJ-Y2-0	FH G08728 - RMBS		09/01/2020	Paydown		11,054	11,054	11,823	11,780	0	(726)	0	(726)	0	11,054	0	0	0	293	10/01/2046	1
3128MJ-Y8-7	FH G08734 - RMBS		09/01/2020	Paydown		13,522	13,522	14,473	14,432	0	(910)	0	(910)	0	13,522	0	0	0	355	11/01/2046	1
31329N-J7-4	FH Z44786 - RMBS		09/01/2020	Paydown		8,062	8,062	8,300	8,303	0	(240)	0	(240)	0	8,062	0	0	0	163	12/01/2046	1
3132A9-R7-4	FH ZS8610 - RMBS		09/01/2020	Paydown		1,447	1,447	1,514	0	0	(67)	0	(67)	0	1,447	0	0	0	15	05/01/2031	1
3132D5-4K-5	FH SB8026 - RMBS		09/01/2020	Paydown		14,076	14,076	14,182	14,182	0	(105)	0	(105)	0	14,076	0	0	0	234	01/01/2035	1
3132D5-4Q-2	FH SB8031 - RMBS		09/01/2020	Paydown		21,131	21,131	21,399	0	0	(268)	0	(268)	0	21,131	0	0	0	271	02/01/2035	1
3132D5-5F-5	FH SB8046 - RMBS		09/01/2020	Paydown		9,489	9,489	10,018	0	0	(529)	0	(529)	0	9,489	0	0	0	81	05/01/2035	1
3132DV-3V-5	FH SD8012 - RMBS		09/01/2020	Paydown		28,843	28,843	30,082	0	0	(1,239)	0	(1,239)	0	28,843	0	0	0	570	09/01/2049	1
3132DV-KU-8	FH SD7507 - RMBS		09/01/2020	Paydown		4,999	4,999	5,134	5,134	0	(135)	0	(135)	0	4,999	0	0	0	101	11/01/2049	1
3132DV-KV-6	FH SD7508 - RMBS		09/01/2020	Paydown		3,158	3,158	3,317	3,317	0	(159)	0	(159)	0	3,158	0	0	0	74	10/01/2049	1
3132DV-KW-4	FH SD7509 - RMBS		09/01/2020	Paydown		28,730	28,730	29,469	29,466	0	(736)	0	(736)	0	28,730	0	0	0	582	11/01/2049	1
3132DV-LA-1	FH SD7521 - RMBS		09/01/2020	Paydown		2,037	2,037	2,181	0	0	(143)	0	(143)	0	2,037	0	0	0	4	07/01/2050	1
3132DV-LC-7	FH SD7523 - RMBS		09/01/2020	Paydown		1,003	1,003	1,070	0	0	(67)	0	(67)	0	1,003	0	0	0	2	08/01/2050	1
3132WG-TS-6	FH Q43260 - RMBS		09/01/2020	Paydown		22,807	22,807	24,411	24,178	0	(1,371)	0	(1,371)	0	22,807	0	0	0	619	09/01/2046	1
3133G8-C9-0	FH QN1896 - RMBS		09/01/2020	Paydown		1,478	1,478	1,564	0	0	(86)	0	(86)	0	1,478	0	0	0	12	03/01/2035	1
3133G8-DD-0	FH QN1900 - RMBS		09/01/2020	Paydown		1,312	1,312	1,390	0	0	(78)	0	(78)	0	1,312	0	0	0	11	04/01/2035	1
31346Y-XB-4	FH QAS174 - RMBS		09/01/2020	Paydown		12,261	12,261	13,026	0	0	(764)	0	(764)	0	12,261	0	0	0	94	12/01/2049	1
3137BP-DW-6	FHR 4583 UP - CMO/RMBS		09/01/2020	Paydown		50,841	50,841	53,220	52,907	0	(2,066)	0	(2,066)	0	50,841	0	0	0	1,041	07/15/2045	1
3137BS-ZE-6	FHR 4631 GP - CMO/RMBS		09/01/2020	Paydown		34,030	34,030	36,444	36,140	0	(2,110)	0	(2,110)	0	34,030	0	0	0	830	03/15/2046	1
3138EJ-ZR-2	FN AL2551 - RMBS		09/01/2020	Paydown		10,304	10,304	10,982	10,927	0	(623)	0	(623)	0	10,304	0	0	0	244	10/01/2042	1
3138EQ-HY-1	FN AL7446 - RMBS		09/01/2020	Paydown		11,174	11,174	11,918	11,861	0	(687)	0	(687)	0	11,174	0	0	0	297	09/01/2045	1
3138EQ-ZF-2	FN AL7941 - RMBS		09/01/2020	Paydown		34,437	34,437	37,536	37,278	0	(2,842)	0	(2,842)	0	34,437	0	0	0	920	12/01/2045	1
3138ET-TP-1	FN AL8657 - RMBS		09/01/2020	Paydown		32,782	32,782	35,988	35,675	0	(2,893)	0	(2,893)	0	32,782	0	0	0	864	06/01/2046	1
3138LV-CV-3	FN A04583 - RMBS		09/01/2020	Paydown		3,285	3,285	3,502	3,489	0	(204)	0	(204)	0	3,285	0	0	0	76	06/01/2042	1
3138MO-SE-1	FN A08616 - RMBS		09/01/2020	Paydown		3,004	3,004	3,203	3,189	0	(185)	0	(185)	0	3,004	0	0	0	65	07/01/2042	1
3138WE-AJ-8	FN AS4508 - RMBS		09/01/2020	Paydown		4,161	4,161	4,366	4,308	0	(146)	0	(146)	0	4,161	0	0	0	83	02/01/2030	1
3140FL-PL-6	FN BE1326 - RMBS		09/01/2020	Paydown		1,106	1,106	1,139	0	0	(32)	0	(32)	0	1,106	0	0	0	12	09/01/2031	1
3140FT-PP-1	FN BE7373 - RMBS		09/01/2020	Paydown		1,557	1,557	1,603	0	0	(46)	0	(46)	0	1,557	0	0	0	16	12/01/2031	1
3140HD-7A-6	FN BK0888 - RMBS		09/01/2020	Paydown		30,351	30,351	32,779	0	0	(2,428)	0	(2,428)	0	30,351	0	0	0	293	07/01/2048	1
3140J7-K4-6	FN BM3014 - RMBS		09/01/2020	Paydown		11,761	11,761	12,188	12,147	0	(387)	0	(387)	0	11,761	0	0	0	275	02/01/2045	1
3140JG-LQ-6	FN BN0334 - RMBS		09/01/2020	Paydown		4,161	4,161	4,343	0	0	(183)	0	(183)	0	4,161	0	0	0	96	12/01/2048	1
3140QC-PW-0	FN CA4936 - RMBS		09/01/2020	Paydown		11,441	11,441	11,767	0	0	(326)	0	(326)	0	11,441	0	0	0	199	01/01/2050	1
3140X3-AX-6	FN FMO021 - RMBS		09/01/2020	Paydown		46,829	46,829	48,886	0	0	(2,056)	0	(2,056)	0	46,829	0	0	0	1,071	03/01/2049	1
3140X3-BA-5	FN FMO032 - RMBS		09/01/2020	Paydown		8,013	8,013	8,473	8,478	0	(466)	0	(466)	0	8,013	0	0	0	183	09/01/2048	1
3140X4-H9-0	FN FM1155 - RMBS		09/01/2020	Paydown		21,402	21,402	22,064	0	0	(662)	0	(662)	0	21,402	0	0	0	227	06/01/2032	1
3140X5-H3-0	FN FM2049 - RMBS		09/01/2020	Paydown		9,248	9,248	9,433	9,433	0	(185)	0	(185)	0	9,248	0	0	0	178	12/01/2049	1
3140X5-J3-8	FN FM2081 - RMBS		09/01/2020	Paydown		994	994	1,024	1,024	0	(30)	0	(30)	0	994	0	0	0	19	12/01/2049	1
3140X5-JX-2	FN FM2077 - RMBS		09/01/2020	Paydown		5,941	5,941	6,111	6,111	0	(170)	0	(170)	0	5,941	0	0	0	120	12/01/2049	1
3140X5-JZ-7	FN FM2079 - RMBS		09/01/2020	Paydown		5,148	5,148	5,272	5,272	0	(124)	0	(124)	0	5,148	0	0	0	105	12/01/2049	1
3140X5-KF-9	FN FM2093 - RMBS		09/01/2020	Paydown		4,914	4,914	5,211	5,214	0	(300)	0	(300)	0	4,914	0	0	0	120	07/01/2048	1
3140X6-PC-9	FN FM3118 - RMBS		09/01/2020	Paydown		1,800	1,800	1,936	0	0	(136)	0	(136)	0	1,800	0	0	0	5	05/01/2050	1
31418C-MG-6	FN MA3058 - RMBS		09/01/2020	Paydown		16,811	16,811	18,020	0	0	(1,208)	0	(1,208)	0	16,811	0	0	0	164	07/01/2047	1
31418D-ET-5	FN MA3745 - RMBS		09/01/2020	Paydown		54,020	54,020	55,681	0	0	(1,661)	0	(1,661)	0	54,020	0	0	0	1,092	08/01/2049	1
31418D-EU-2	FN MA3746 - RMBS		09/01/2020	Paydown		29,360	29,360	30,612	0	0	(1,252)	0	(1,252)	0	29,360	0	0	0	616	08/01/2049	1
31418D-HD-7	FN MA3827 - RMBS		09/01/2020	Paydown		14,348	14,348	14,481	14,481	0	(133)	0	(133)	0	14,348	0	0	0	239	11/01/2034	1
31418D-JJ-2	FN MA3864 - RMBS		09/01/2020	Paydown		10,728	10,728	10,818	10,818	0	(90)	0	(90)	0	10,728	0	0	0	179	12/01/2034	1
31418D-MD-1	FN MA3955 - RMBS		09/01/2020	Paydown		49,945	49,945	52,146	0	0	(2,201)	0	(2,201)	0	49,945	0	0	0	344	03/01/2035	1
31418D-N7-3	FN MA4013 - RMBS		09/01/2020	Paydown		6,808	6,808	7,108	0	0	(300)	0	(300)	0	6,808	0	0	0	46	05/01/2035	1
31418D-N8-1	FN MA4014 - RMBS		09/01/2020	Paydown		8,916	8,916	9,415	0	0	(499)	0	(499)	0	8,916	0	0	0	73	05/01/2035	1
35563P-LH-0	SCRT 2019-3 MA - CMO		09/01/2020	Paydown		6,706	6,706	7,009	7,024	0	(318)	0	(318)	0	6,706	0	0	0	158	10/25/2058	1

STATEMENT AS OF SEPTEMBER 30, 2020 OF THE Humana Health Plan of Ohio Inc.

SCHEDULE D - PART 4

Show All Long-Term Bonds and Stock Sold, Redeemed or Otherwise Disposed of During the Current Quarter

1	2	3	4	5	6	7	8	9	10	Change In Book/Adjusted Carrying Value					16	17	18	19	20	21	22		
										11	12	13	14	15									
CUSIP Identification	Description	For-foreign	Disposal Date	Name of Purchaser	Number of Shares of Stock	Consideration	Par Value	Actual Cost	Prior Year Book/Adjusted Carrying Value	Unrealized Valuation Increase/(Decrease)	Current Year's (Amortization)/Accretion	Current Year's Other Than Temporary Impairment Recognized	Total Change in Book/Adjusted Carrying Value (11 + 12 - 13)	Total Foreign Exchange Change in Book /Adjusted Carrying Value	Book/Adjusted Carrying Value at Disposal Date	Foreign Exchange Gain (Loss) on Disposal	Realized Gain (Loss) on Disposal	Total Gain (Loss) on Disposal	Bond Interest/Stock Dividends Received During Year	Stated Contractual Maturity Date	NAIC Designation and Administrative Symbol		
056070-AA-6	BX 2020-BXLP A - CMBS		07/15/2020	Paydown		91	91	91	0	0	0	0	0	0	91	0	0	0	1	12/15/2036	1FE		
05946X-BV-4	BAFC 2003-1 A1 - CMO/RMBS		09/01/2020	Paydown		14	14	15	14	0	0	0	0	0	14	0	0	0	1	05/20/2033	1FE		
48253Q-AA-3	KIND 2020-AIP A - CMBS		07/15/2020	Paydown		1,320	1,320	1,279	0	0	41	0	41	0	1,320	0	0	0	6	03/16/2037	1FE		
63941K-AA-3	NAVSL 2020-C A1 - ABS		09/15/2020	Paydown		24,364	24,364	24,364	0	0	0	0	0	0	24,364	0	0	0	121	11/15/2068	1FE		
78449F-AC-5	SMB 2016-A A2B - ABS		09/15/2020	Paydown		10,149	10,149	10,184	0	0	(35)	0	(35)	0	10,149	0	0	0	44	05/15/2031	1FE		
78449V-AA-4	SMB 2020-PT-A A1 - ABS		09/15/2020	Paydown		106,131	106,131	105,515	0	0	616	0	616	0	106,131	0	0	0	91	09/15/2054	1FE		
3899999. Subtotal - Bonds - Industrial and Miscellaneous (Unaffiliated)						143,241	143,241	142,619	1,186	0	623	0	623	0	143,241	0	0	0	276	XXX	XXX		
8399997. Total - Bonds - Part 4						1,146,719	1,146,719	1,183,141	646,823	0	(34,610)	0	(34,610)	0	1,146,719	0	0	0	20,942	XXX	XXX		
8399998. Total - Bonds - Part 5						XXX	XXX	XXX	XXX	XXX	XXX	XXX	XXX	XXX	XXX	XXX	XXX	XXX	XXX	XXX	XXX	XXX	
8399999. Total - Bonds						1,146,719	1,146,719	1,183,141	646,823	0	(34,610)	0	(34,610)	0	1,146,719	0	0	0	20,942	XXX	XXX		
8999997. Total - Preferred Stocks - Part 4						0	XXX	0	0	0	0	0	0	0	0	0	0	0	0	0	0	XXX	XXX
8999998. Total - Preferred Stocks - Part 5						XXX	XXX	XXX	XXX	XXX	XXX	XXX	XXX	XXX	XXX	XXX	XXX	XXX	XXX	XXX	XXX	XXX	XXX
8999999. Total - Preferred Stocks						0	XXX	0	0	0	0	0	0	0	0	0	0	0	0	0	0	XXX	XXX
9799997. Total - Common Stocks - Part 4						0	XXX	0	0	0	0	0	0	0	0	0	0	0	0	0	0	XXX	XXX
9799998. Total - Common Stocks - Part 5						XXX	XXX	XXX	XXX	XXX	XXX	XXX	XXX	XXX	XXX	XXX	XXX	XXX	XXX	XXX	XXX	XXX	XXX
9799999. Total - Common Stocks						0	XXX	0	0	0	0	0	0	0	0	0	0	0	0	0	0	XXX	XXX
9899999. Total - Preferred and Common Stocks						0	XXX	0	0	0	0	0	0	0	0	0	0	0	0	0	0	XXX	XXX
9999999 - Totals						1,146,719	XXX	1,183,141	646,823	0	(34,610)	0	(34,610)	0	1,146,719	0	0	0	20,942	XXX	XXX		

E05.1

Schedule DB - Part A - Section 1 - Options, Caps, Floors, Collars, Swaps and Forwards Open

N O N E

Schedule DB - Part B - Section 1 - Futures Contracts Open

N O N E

Schedule DB - Part B - Section 1B - Brokers with whom cash deposits have been made

N O N E

Schedule DB - Part D - Section 1 - Counterparty Exposure for Derivative Instruments Open

N O N E

Schedule DB - Part D-Section 2 - Collateral for Derivative Instruments Open - Pledged By

N O N E

Schedule DB - Part D-Section 2 - Collateral for Derivative Instruments Open - Pledged To

N O N E

Schedule DB - Part E - Derivatives Hedging Variable Annuity Guarantees

N O N E

Schedule DL - Part 1 - Reinvested Collateral Assets Owned

N O N E

Schedule DL - Part 2 - Reinvested Collateral Assets Owned

N O N E

