



QUARTERLY STATEMENT

As of September 30, 2020
of the Condition and Affairs of the

SCOTTSDALE INSURANCE COMPANY

NAIC Group Code.....140, 140 (Current Period) (Prior Period)	NAIC Company Code..... 41297	Employer's ID Number..... 31-1024978
Organized under the Laws of OH	State of Domicile or Port of Entry OH	Country of Domicile US
Incorporated/Organized..... January 4, 1982	Commenced Business..... July 1, 1982	
Statutory Home Office	ONE WEST NATIONWIDE BLVD. .. COLUMBUS .. OH .. US .. 43215-2220 <i>(Street and Number) (City or Town, State, Country and Zip Code)</i>	
Main Administrative Office	8877 N. GAINNEY CENTER DRIVE .. SCOTTSDALE .. AZ .. US .. 85258-2108 <i>(Street and Number) (City or Town, State, Country and Zip Code)</i>	480-365-4000 <i>(Area Code) (Telephone Number)</i>
Mail Address	ONE WEST NATIONWIDE BLVD., FRAP SOLUTIONS .. COLUMBUS .. OH .. US .. 43215-2220 <i>(Street and Number or P. O. Box) (City or Town, State, Country and Zip Code)</i>	
Primary Location of Books and Records	ONE WEST NATIONWIDE BLVD., 1-14-301 .. COLUMBUS .. OH .. US .. 43215-2220 <i>(Street and Number) (City or Town, State, Country and Zip Code)</i>	614-249-1545 <i>(Area Code) (Telephone Number)</i>
Internet Web Site Address	WWW.SCOTTSDALEINS.COM	
Statutory Statement Contact	CHERYL M DENNIS <i>(Name)</i> FINRPT@NATIONWIDE.COM <i>(E-Mail Address)</i>	614-249-1545 <i>(Area Code) (Telephone Number) (Extension)</i> 866-315-1430 <i>(Fax Number)</i>

OFFICERS

Name	Title	Name	Title
1. THOMAS EDWARD CLARK	PRESIDENT	2. DENISE LYNN SKINGLE	SVP & SECRETARY
3. AMBER M. WAYNE	VP & TREASURER		

OTHER

PAMELA ANN BIESECKER SVP-HEAD OF TAXATION

DIRECTORS OR TRUSTEES

MARK ALLEN BERVEN	THOMAS EDWARD CLARK	THOMAS WAYNE JURGENS	DAVID NEIL NELSON
ELIZABETH MARGARET RICZKO			

State of..... OHIO
County of..... FRANKLIN

The officers of this reporting entity being duly sworn, each depose and say that they are the described officers of said reporting entity, and that on the reporting period stated above, all of the herein described assets were the absolute property of the said reporting entity, free and clear from any liens or claims thereon, except as herein stated, and that this statement, together with related exhibits, schedules and explanations therein contained, annexed or referred to, is a full and true statement of all the assets and liabilities and of the condition and affairs of the said reporting entity as of the reporting period stated above, and of its income and deductions therefrom for the period ended, and have been completed in accordance with the NAIC *Annual Statement Instructions and Accounting Practices and Procedures* manual except to the extent that: (1) state law may differ; or, (2) that state rules or regulations require differences in reporting not related to accounting practices and procedures, according to the best of their information, knowledge and belief, respectively. Furthermore, the scope of this attestation by the described officers also includes the related corresponding electronic filing with the NAIC, when required, that is an exact copy (except for formatting differences due to electronic filing) of the enclosed statement. The electronic filing may be requested by various regulators in lieu of or in addition to the enclosed statement.

(Signature)	(Signature)	(Signature)
THOMAS EDWARD CLARK	DENISE LYNN SKINGLE	AMBER M. WAYNE
1. (Printed Name)	2. (Printed Name)	3. (Printed Name)
PRESIDENT	SVP & SECRETARY	VP & TREASURER
(Title)	(Title)	(Title)

Subscribed and sworn to before me
This 27th day of October 2020

a. Is this an original filing? Yes [X] No []
b. If no: 1. State the amendment number _____
2. Date filed _____
3. Number of pages attached _____



ASSETS

	Current Statement Date			4 December 31 Prior Year Net Admitted Assets
	1 Assets	2 Nonadmitted Assets	3 Net Admitted Assets (Cols. 1 - 2)	
1. Bonds.....	121,971,810		121,971,810	1,232,072,698
2. Stocks:				
2.1 Preferred stocks.....			0	
2.2 Common stocks.....	61,120,877		61,120,877	61,341,962
3. Mortgage loans on real estate:				
3.1 First liens.....			0	
3.2 Other than first liens.....			0	
4. Real estate:				
4.1 Properties occupied by the company (less \$.....0 encumbrances).....			0	
4.2 Properties held for the production of income (less \$.....0 encumbrances).....			0	
4.3 Properties held for sale (less \$.....0 encumbrances).....			0	
5. Cash (\$.....(81,926,763)), cash equivalents (\$.....0) and short-term investments (\$.....67,251,956).....	(14,674,807)		(14,674,807)	(19,218,724)
6. Contract loans (including \$.....0 premium notes).....			0	
7. Derivatives.....			0	
8. Other invested assets.....			0	
9. Receivables for securities.....			0	
10. Securities lending reinvested collateral assets.....	32,509		32,509	1,090,978
11. Aggregate write-ins for invested assets.....	0	0	0	0
12. Subtotals, cash and invested assets (Lines 1 to 11).....	168,450,389	0	168,450,389	1,275,286,914
13. Title plants less \$.....0 charged off (for Title insurers only).....			0	
14. Investment income due and accrued.....	809,282		809,282	8,587,015
15. Premiums and considerations:				
15.1 Uncollected premiums and agents' balances in the course of collection.....	589,651,388	32,568,996	557,082,392	626,204,308
15.2 Deferred premiums, agents' balances and installments booked but deferred and not yet due (including \$.....0 earned but unbilled premiums).....	188,082,578		188,082,578	279,145,041
15.3 Accrued retrospective premiums (\$.....0) and contracts subject to redetermination (\$.....0).....			0	
16. Reinsurance:				
16.1 Amounts recoverable from reinsurers.....	183,821,995		183,821,995	202,463,506
16.2 Funds held by or deposited with reinsured companies.....	646,453		646,453	736,316
16.3 Other amounts receivable under reinsurance contracts.....	21,878,463		21,878,463	2,940,247
17. Amounts receivable relating to uninsured plans.....			0	
18.1 Current federal and foreign income tax recoverable and interest thereon.....	1,348,644		1,348,644	
18.2 Net deferred tax asset.....	8,660,677		8,660,677	35,190,364
19. Guaranty funds receivable or on deposit.....			0	266,391
20. Electronic data processing equipment and software.....			0	
21. Furniture and equipment, including health care delivery assets (\$.....0).....			0	
22. Net adjustment in assets and liabilities due to foreign exchange rates.....	1,300		1,300	561
23. Receivables from parent, subsidiaries and affiliates.....	70,637,320	256	70,637,064	13,374,734
24. Health care (\$.....0) and other amounts receivable.....			0	
25. Aggregate write-ins for other than invested assets.....	1,139,750	1,127,250	12,500	12,852,788
26. Total assets excluding Separate Accounts, Segregated Accounts and Protected Cell Accounts (Lines 12 through 25).....	1,235,128,239	33,696,502	1,201,431,737	2,457,048,185
27. From Separate Accounts, Segregated Accounts and Protected Cell Accounts.....			0	
28. Total (Lines 26 and 27).....	1,235,128,239	33,696,502	1,201,431,737	2,457,048,185

DETAILS OF WRITE-INS

1101.....			0	
1102.....			0	
1103.....			0	
1198. Summary of remaining write-ins for Line 11 from overflow page.....	0	0	0	0
1199. Totals (Lines 1101 thru 1103 plus 1198) (Line 11 above).....	0	0	0	0
2501. Funds held equity pools & associations.....			0	6,342,986
2502. Miscellaneous assets.....	12,500		12,500	3,453,059
2503. Other assets nonadmitted.....	1,127,250	1,127,250	0	
2598. Summary of remaining write-ins for Line 25 from overflow page.....	0	0	0	3,056,743
2599. Totals (Lines 2501 thru 2503 plus 2598) (Line 25 above).....	1,139,750	1,127,250	12,500	12,852,788

LIABILITIES, SURPLUS AND OTHER FUNDS

	1 Current Statement Date	2 December 31 Prior Year
1. Losses (current accident year \$.....0).....		471,177,336
2. Reinsurance payable on paid losses and loss adjustment expenses.....	98,909,512	135,134,433
3. Loss adjustment expenses.....		96,393,439
4. Commissions payable, contingent commissions and other similar charges.....		13,681,360
5. Other expenses (excluding taxes, licenses and fees).....	267,003	9,523,821
6. Taxes, licenses and fees (excluding federal and foreign income taxes).....		3,546,960
7.1 Current federal and foreign income taxes (including \$...35,928 on realized capital gains (losses)).....		1,837,751
7.2 Net deferred tax liability.....		
8. Borrowed money \$.....0 and interest thereon \$.....0.....		
9. Unearned premiums (after deducting unearned premiums for ceded reinsurance of \$...2,010,182,145 and including warranty reserves of \$.....0 and accrued accident and health experience rating refunds including \$.....0 for medical loss ratio rebate per the Public Health Service Act).....		308,712,320
10. Advance premium.....		5,280,053
11. Dividends declared and unpaid:		
11.1 Stockholders.....		
11.2 Policyholders.....		326,182
12. Ceded reinsurance premiums payable (net of ceding commissions).....	928,663,784	786,225,652
13. Funds held by company under reinsurance treaties.....	705,723	685,064
14. Amounts withheld or retained by company for account of others.....	1,586,877	17,719,213
15. Remittances and items not allocated.....	198,108	398,390
16. Provision for reinsurance (including \$.....0 certified).....	9,859,000	9,859,000
17. Net adjustments in assets and liabilities due to foreign exchange rates.....		
18. Drafts outstanding.....		
19. Payable to parent, subsidiaries and affiliates.....	6,566,549	21,518,147
20. Derivatives.....		
21. Payable for securities.....		9,997,300
22. Payable for securities lending.....		1,126,550
23. Liability for amounts held under uninsured plans.....		
24. Capital notes \$.....0 and interest thereon \$.....0.....		
25. Aggregate write-ins for liabilities.....	9,073,533	9,997,034
26. Total liabilities excluding protected cell liabilities (Lines 1 through 25).....	1,055,830,089	1,903,140,005
27. Protected cell liabilities.....		
28. Total liabilities (Lines 26 and 27).....	1,055,830,089	1,903,140,005
29. Aggregate write-ins for special surplus funds.....	0	0
30. Common capital stock.....	6,027,200	6,027,200
31. Preferred capital stock.....		
32. Aggregate write-ins for other than special surplus funds.....	0	0
33. Surplus notes.....		
34. Gross paid in and contributed surplus.....	110,036,570	173,973,300
35. Unassigned funds (surplus).....	29,537,878	373,907,680
36. Less treasury stock, at cost:		
36.10.000 shares common (value included in Line 30 \$.....0).....		
36.20.000 shares preferred (value included in Line 31 \$.....0).....		
37. Surplus as regards policyholders (Lines 29 to 35, less 36).....	145,601,648	553,908,180
38. Totals (Page 2, Line 28, Col. 3).....	1,201,431,737	2,457,048,185

DETAILS OF WRITE-INS

2501. Contingent suit liability.....		242,629
2502. Escrow liability.....		103,614
2503. Miscellaneous liabilities.....		47,162
2598. Summary of remaining write-ins for Line 25 from overflow page.....	9,073,533	9,603,629
2599. Totals (Lines 2501 thru 2503 plus 2598) (Line 25 above).....	9,073,533	9,997,034
2901.		
2902.		
2903.		
2998. Summary of remaining write-ins for Line 29 from overflow page.....	0	0
2999. Totals (Lines 2901 thru 2903 plus 2998) (Line 29 above).....	0	0
3201.		
3202.		
3203.		
3298. Summary of remaining write-ins for Line 32 from overflow page.....	0	0
3299. Totals (Lines 3201 thru 3203 plus 3298) (Line 32 above).....	0	0

STATEMENT OF INCOME

	1 Current Year to Date	2 Prior Year to Date	3 Prior Year Ended December 31
UNDERWRITING INCOME			
1. Premiums earned:			
1.1 Direct..... (written \$....1,628,771,636).....	1,540,605,567	1,341,630,325	1,826,931,773
1.2 Assumed..... (written \$....1,084,926,485).....	1,304,529,427	1,685,229,408	2,282,756,116
1.3 Ceded..... (written \$....3,021,245,301).....	2,845,134,994	2,493,988,397	3,398,621,395
1.4 Net..... (written \$....(307,547,180)).....	0	532,871,336	711,066,494
DEDUCTIONS:			
2. Losses incurred (current accident year \$....(703,000)):			
2.1 Direct.....	936,711,983	973,626,276	1,317,891,512
2.2 Assumed.....	952,170,236	1,108,033,333	1,492,936,814
2.3 Ceded.....	1,888,882,219	1,757,553,888	2,379,499,057
2.4 Net.....	0	324,105,721	431,329,269
3. Loss adjustment expenses incurred.....	55,263,998	55,263,998	74,107,490
4. Other underwriting expenses incurred.....	(54,089,611)	178,012,680	235,095,521
5. Aggregate write-ins for underwriting deductions.....	0	0	0
6. Total underwriting deductions (Lines 2 through 5).....	(54,089,611)	557,382,399	740,532,280
7. Net income of protected cells.....			
8. Net underwriting gain (loss) (Line 1 minus Line 6 + Line 7).....	54,089,611	(24,511,063)	(29,465,786)
INVESTMENT INCOME			
9. Net investment income earned.....	10,286,757	30,178,788	40,773,817
10. Net realized capital gains (losses) less capital gains tax of \$....35,928.....	42,569,610	9,241,479	9,199,345
11. Net investment gain (loss) (Lines 9 + 10).....	52,856,367	39,420,267	49,973,162
OTHER INCOME			
12. Net gain or (loss) from agents' or premium balances charged off (amount recovered \$.....0 amount charged off \$.....0).....	0	(1,565,662)	(2,131,492)
13. Finance and service charges not included in premiums.....		3,166,520	4,202,075
14. Aggregate write-ins for miscellaneous income.....	12,463	2,380,451	3,402,342
15. Total other income (Lines 12 through 14).....	12,463	3,981,309	5,472,925
16. Net income before dividends to policyholders, after capital gains tax and before all other federal and foreign income taxes (Lines 8 + 11 + 15).....	106,958,441	18,890,513	25,980,301
17. Dividends to policyholders.....		220,541	276,438
18. Net income, after dividends to policyholders, after capital gains tax and before all other federal and foreign income taxes (Line 16 minus Line 17).....	106,958,441	18,669,972	25,703,863
19. Federal and foreign income taxes incurred.....	(1,274,938)	2,656,191	2,463,917
20. Net income (Line 18 minus Line 19) (to Line 22).....	108,233,379	16,013,781	23,239,946
CAPITAL AND SURPLUS ACCOUNT			
21. Surplus as regards policyholders, December 31 prior year.....	553,908,180	526,242,764	526,242,763
22. Net income (from Line 20).....	108,233,379	16,013,781	23,239,946
23. Net transfers (to) from Protected Cell accounts.....			
24. Change in net unrealized capital gains or (losses) less capital gains tax of \$....(3,508,348).....	(14,363,789)	119,985	2,180,737
25. Change in net unrealized foreign exchange capital gain (loss).....	944,633	438,143	717,877
26. Change in net deferred income tax.....	(30,038,035)	283,108	(1,357,139)
27. Change in nonadmitted assets.....	(5,793,259)	(1,499,160)	(697,920)
28. Change in provision for reinsurance.....			1,150,800
29. Change in surplus notes.....			
30. Surplus (contributed to) withdrawn from protected cells.....			
31. Cumulative effect of changes in accounting principles.....			
32. Capital changes:			
32.1 Paid in.....			
32.2 Transferred from surplus (Stock Dividend).....			
32.3 Transferred to surplus.....			
33. Surplus adjustments:			
33.1 Paid in.....	(63,936,730)		
33.2 Transferred to capital (Stock Dividend).....			
33.3 Transferred from capital.....			
34. Net remittances from or (to) Home Office.....			
35. Dividends to stockholders.....	(411,063,270)		
36. Change in treasury stock.....			
37. Aggregate write-ins for gains and losses in surplus.....	7,710,539	2,826,623	2,431,116
38. Change in surplus as regards policyholders (Lines 22 through 37).....	(408,306,532)	18,182,480	27,665,417
39. Surplus as regards policyholders, as of statement date (Lines 21 plus 38).....	145,601,648	544,425,244	553,908,180

DETAILS OF WRITE-INS

0501.			
0502.			
0503.			
0598. Summary of remaining write-ins for Line 5 from overflow page.....	0	0	0
0599. Totals (Lines 0501 thru 0503 plus 0598) (Line 5 above).....	0	0	0
1401. Change in contingent suit liability.....	242,629	2,086,851	300,526
1402. Other income/(expense).....	(230,166)	293,600	3,101,816
1403.			
1498. Summary of remaining write-ins for Line 14 from overflow page.....	0	0	0
1499. Totals (Lines 1401 thru 1403 plus 1498) (Line 14 above).....	12,463	2,380,451	3,402,342
3701. Change in surplus miscellaneous.....	7,710,539	2,826,623	2,431,116
3702.			
3703.			
3798. Summary of remaining write-ins for Line 37 from overflow page.....	0	0	0
3799. Totals (Lines 3701 thru 3703 plus 3798) (Line 37 above).....	7,710,539	2,826,623	2,431,116

Statement for September 30, 2020 of the **SCOTTSDALE INSURANCE COMPANY**
CASH FLOW

	1 Current Year to Date	2 Prior Year To Date	3 Prior Year Ended December 31
CASH FROM OPERATIONS			
1. Premiums collected net of reinsurance.....	144,164,776	564,882,104	696,166,818
2. Net investment income.....	19,376,705	35,538,430	46,469,294
3. Miscellaneous income.....	102,326	3,967,641	5,465,063
4. Total (Lines 1 through 3).....	163,643,807	604,388,175	748,101,175
5. Benefit and loss related payments.....	82,787,618	393,805,913	520,562,326
6. Net transfers to Separate Accounts, Segregated Accounts and Protected Cell Accounts.....			
7. Commissions, expenses paid and aggregate write-ins for deductions.....	18,848,607	181,049,381	254,546,296
8. Dividends paid to policyholders.....		239,238	325,958
9. Federal and foreign income taxes paid (recovered) net of \$....48,924 tax on capital gains (losses).....	1,947,385	(2,101,116)	(1,437,404)
10. Total (Lines 5 through 9).....	103,583,610	572,993,416	773,997,176
11. Net cash from operations (Line 4 minus Line 10).....	60,060,197	31,394,759	(25,896,001)
CASH FROM INVESTMENTS			
12. Proceeds from investments sold, matured or repaid:			
12.1 Bonds.....	54,140,891	181,835,227	265,872,841
12.2 Stocks.....			
12.3 Mortgage loans.....			
12.4 Real estate.....			
12.5 Other invested assets.....			
12.6 Net gains or (losses) on cash, cash equivalents and short-term investments.....	15,419	4,976	5,286
12.7 Miscellaneous proceeds.....	1,058,433	2,741,029	11,733,961
12.8 Total investment proceeds (Lines 12.1 to 12.7).....	55,214,743	184,581,232	277,612,088
13. Cost of investments acquired (long-term only):			
13.1 Bonds.....	22,318,201	176,709,135	245,406,799
13.2 Stocks.....			
13.3 Mortgage loans.....			
13.4 Real estate.....			
13.5 Other invested assets.....			
13.6 Miscellaneous applications.....	9,997,300		
13.7 Total investments acquired (Lines 13.1 to 13.6).....	32,315,501	176,709,135	245,406,799
14. Net increase or (decrease) in contract loans and premium notes.....			
15. Net cash from investments (Line 12.8 minus Line 13.7 and Line 14).....	22,899,242	7,872,097	32,205,289
CASH FROM FINANCING AND MISCELLANEOUS SOURCES			
16. Cash provided (applied):			
16.1 Surplus notes, capital notes.....			
16.2 Capital and paid in surplus, less treasury stock.....			
16.3 Borrowed funds.....			
16.4 Net deposits on deposit-type contracts and other insurance liabilities.....			
16.5 Dividends to stockholders.....	3,322,343		
16.6 Other cash provided (applied).....	(75,093,179)	(1,893,120)	25,816,611
17. Net cash from financing and miscellaneous sources (Lines 16.1 through 16.4 minus Line 16.5 plus Line 16.6).....	(78,415,522)	(1,893,120)	25,816,611
RECONCILIATION OF CASH, CASH EQUIVALENTS AND SHORT-TERM INVESTMENTS			
18. Net change in cash, cash equivalents and short-term investments (Line 11 plus Line 15 plus Line 17).....	4,543,917	37,373,736	32,125,899
19. Cash, cash equivalents and short-term investments:			
19.1 Beginning of year.....	(19,218,724)	(51,344,623)	(51,344,623)
19.2 End of period (Line 18 plus Line 19.1).....	(14,674,807)	(13,970,887)	(19,218,724)
Note: Supplemental disclosures of cash flow information for non-cash transactions:			
20.0001 Exchange of bond investment to bond investment.....	12,719,648	997,584	5,552,294
20.0002 Capitalized interest on bonds.....		3	3
20.0003 Assets and liabilities transferred settled through transfer of bonds.....	631,688,079		
20.0004 Intercompany transfer of securities out.....	471,160,900		

NOTES TO THE FINANCIAL STATEMENTS**Note 1 – Summary of Significant Accounting Policies and Going Concern**

A. Accounting Practices

The accompanying statutory financial statements of Scottsdale Insurance Company (the Company) have been prepared in conformity with accounting practices prescribed or permitted by the National Association of Insurance Commissioners (NAIC) and the State of Ohio.

The Ohio Department of Insurance (Department) recognizes only statutory accounting practices (SAP) prescribed or permitted by the State of Ohio for determining and reporting the financial condition and results of operations of an insurance company, as well as, determining its solvency under the Ohio Insurance law. The NAIC's *Accounting Practices and Procedures Manual* (NAIC SAP) has been adopted as a component of prescribed or permitted practices by the State of Ohio. The Company has no statutory accounting practices that differ from NAIC SAP.

A reconciliation of the Company's net income and capital and surplus between NAIC SAP and practices prescribed and permitted by the State of Ohio is shown below:

	SSAP #	F/S Page	F/S Line #	2020	2019
Net Income					
Scottsdale Insurance Company state basis (Page 4, Line 20, Columns 1 & 3)					
(1)	XXX	XXX	XXX	\$ 108,233,379	\$ 23,239,946
(2) State Prescribed Practice that is an increase/(decrease) from NAIC SAP				-	-
(3) State Permitted Practice that is an increase/(decrease) from NAIC SAP				-	-
(4) NAIC SAP (1-2-3=4)	XXX	XXX	XXX	<u>\$ 108,233,379</u>	<u>\$ 23,239,946</u>
Surplus					
Scottsdale Insurance Company state basis (Page 3, Line 37, Columns 1 & 2)					
(5)	XXX	XXX	XXX	\$ 145,601,648	\$ 553,908,180
(6) State Prescribed Practice that is an increase/(decrease) from NAIC SAP				-	-
(7) State Permitted Practice that is an increase/(decrease) from NAIC SAP				-	-
(8) NAIC SAP (5-6-7=8)	XXX	XXX	XXX	<u>\$ 145,601,648</u>	<u>\$ 553,908,180</u>

B. Use of Estimates in the Preparation of the Financial Statements

There were no changes that were considered significant to the Company from prior year end.

C. Accounting Policies

1. There were no changes that were considered significant to the Company from prior year end.

2. Bonds, excluding loan-backed and structured securities, are stated at amortized cost except those with a NAIC designation of "3" through "6" which are stated at the lower of amortized cost or fair value. Amortization of premiums and discounts is calculated using the effective yield method. The Company does not hold any mandatory convertible securities or SVO-identified investments.

3-5. There were no changes that were considered significant to the Company from prior year end.

6. Loan-backed and structured securities (collectively, loan-backed securities) are stated at amortized cost or the lower of amortized cost or fair value in accordance with the provisions of Statement of Statutory Accounting Principles No. 43-Revised and the Purposes and Procedures Manual of the NAIC Securities Valuation Office. The retrospective adjustment method is used to value loan-backed securities where the collection of all contractual cash flows is probable. For all other loan-backed securities, the Company uses the prospective adjustment method.

7-13. There were no changes that were considered significant to the Company from prior year end.

D. Going Concern

Not applicable.

Note 2 – Accounting Changes and Corrections of Errors

There were no changes that were considered significant to the Company from prior year end.

Note 3 - Business Combinations and Goodwill

There were no changes that were considered significant to the Company from prior year end.

Note 4 – Discontinued Operations

Not applicable.

Note 5 – Investments

A. Mortgage Loans

There were no changes that were considered significant to the Company from prior year end.

B. Troubled Debt Restructuring

Not applicable.

C. Reverse Mortgages

Not applicable.

D. Loan-Backed Securities

1. Prepayment assumptions are generally obtained using a model provided by a third-party vendor.

2. Not applicable.

NOTES TO THE FINANCIAL STATEMENTS

3. Not applicable.

4. All impaired securities (fair value is less than cost or amortized cost) for which an other-than-temporary impairment has not been recognized in earnings as a realized loss (including securities with a recognized other-than-temporary impairment for non-interest related declines when a non-recognized interest related impairment remains):

a. The aggregate amount of unrealized losses:

1. Less than 12 Months	\$	<u>(425,515)</u>
2. 12 Months or Longer	\$	<u>(4,875)</u>

b. The aggregate related fair value of securities with unrealized losses:

1. Less than 12 Months	\$	<u>2,172,273</u>
2. 12 Months or Longer	\$	<u>59,026</u>

5. The Company reviews all loan-backed and structured securities in which the fair value of the given security is less than the amortized cost to determine if a given security is other-than-temporarily impaired. The Company examines characteristics of the underlying collateral, such as delinquency and default rates, the quality of the underlying borrower, the type of collateral in the pool, the vintage year of the collateral, subordination levels within the structure of the collateral pool, and the quality of any credit guarantors, to determine the cash flows expected to be received for the security.

If the severity and duration of the security's unrealized loss indicates a risk of an other-than-temporary impairment, then the Company will evaluate if the amortized cost basis of the security will be recovered by comparing the present value of the cash flows expected to be received for the given security with the amortized cost basis of the security. If the present value of cash flows is greater than the amortized cost basis of a security, then the security is deemed not to be other-than-temporarily impaired.

E. Dollar Repurchase Agreements and/or Securities Lending Transactions

1-2. There were no changes that were considered significant to the Company from prior year end.

3. Collateral Received

a. There were no changes that were considered significant to the Company from prior year end.

b. Not applicable.

c. There were no changes that were considered significant to the Company from prior year end.

4-7. There were no changes that were considered significant to the Company from prior year end.

F. Repurchase Agreements Transactions Accounted for as Secured Borrowing

1. To manage short-term liquidity needs within the Nationwide insurance subsidiaries', the Company has agreements to enter into repurchase or reverse repurchase agreements with several authorized affiliated insurance companies. The collateral required meets minimum state specific requirements or statutory requirements if state of domicile does not specify.

As these transactions are with affiliated insurance companies within the Nationwide family and are short-term in nature, the risk of changes in the fair value of the collateral are considered negligible.

2-11. Not applicable.

G. Reverse Repurchase Agreements Transactions Accounted for as Secured Borrowing

1. To manage short-term liquidity needs within the Nationwide insurance subsidiaries', the Company has agreements to enter into repurchase or reverse repurchase agreements with several authorized affiliated insurance companies. The collateral required meets minimum state specific requirements or statutory requirements if state of domicile does not specify.

As these transactions are with affiliated insurance companies within the Nationwide family and are short-term in nature, the risk of changes in the fair value of the collateral are considered negligible.

For yield enhancement, the company has agreements to enter into repurchase agreements through its securities lending program with collateral consisting of U.S. Government/Agency securities with investment grade counterparties. The collateral, which is marked to market daily, must represent 102% of the amount loaned and is monitored by the plan's manager in Bank of New York Mellon for changes in fair value.

2. Type of Repo Trades Used

	1	2	3	4
	First Quarter	Second Quarter	Third Quarter	Fourth Quarter
a. Bilateral (YES/NO)	NO	NO	NO	
b. Tri-Party (YES/NO)	YES	YES	YES	

NOTES TO THE FINANCIAL STATEMENTS

3. Original (Flow) & Residual Maturity

	FIRST QUARTER	SECOND QUARTER	THIRD QUARTER	FOURTH QUARTER
a. Maximum Amount				
1. Open - No Maturity	-	-	-	-
2. Overnight	1,594,560	2,107,151	208,981	-
3. 2 Days to 1 Week	-	-	-	-
4. > 1 Week to 1 Month	-	-	-	-
5. > 1 Month to 3 Months	-	-	-	-
6. > 3 Months to 1 Year	-	-	-	-
7. > 1 Year	-	-	-	-
b. Ending Balance				
1. Open - No Maturity	-	-	-	-
2. Overnight	450,613	-	-	-
3. 2 Days to 1 Week	-	-	-	-
4. > 1 Week to 1 Month	-	-	-	-
5. > 1 Month to 3 Months	-	-	-	-
6. > 3 Months to 1 Year	-	-	-	-
7. > 1 Year	-	-	-	-

4. Not applicable.

5. Fair Value of Securities Acquired Under Repo - Secured Borrowing

	1	2	3	4
	First Quarter	Second Quarter	Third Quarter	Fourth Quarter
a. Maximum Amount	\$1,626,451	\$2,149,294	\$213,161	\$-
b. Ending Balance	459,625	-	-	-

6. Securities Acquired Under Repo - Secured Borrowing by NAIC Designation

ENDING BALANCE

	1	2	3	4	5	6	7	8
	None	NAIC 1	NAIC 2	NAIC 3	NAIC 4	NAIC 5	NAIC 6	Does Not Qualify as Admitted
a. Bonds - FV	\$-	\$-	\$-	\$-	\$-	\$-	\$-	\$-
b. LB & SS - FV	-	-	-	-	-	-	-	-
c. Preferred Stock - FV	-	-	-	-	-	-	-	-
d. Common Stock	-	-	-	-	-	-	-	-
e. Mortgage Loans - FV	-	-	-	-	-	-	-	-
f. Real Estate - FV	-	-	-	-	-	-	-	-
g. Derivatives - FV	-	-	-	-	-	-	-	-
h. Other Invested Assets - FV	-	-	-	-	-	-	-	-
i. Total Assets - FV	\$-	\$-	\$-	\$-	\$-	\$-	\$-	\$-

7. Collateral Provided - Secured Borrowing

	1	2	3	4
	First Quarter	Second Quarter	Third Quarter	Fourth Quarter
a. Maximum Amount				
1. Cash		\$1,594,560	\$2,107,151	\$208,981
2. Securities (FV)		\$-	\$-	\$-
3. Securities (BACV)		\$-	\$-	\$-
4. Nonadmitted Subset (BACV)		\$-	\$-	\$-
b. Ending Balance				
1. Cash		\$450,613	\$-	\$-
2. Securities (FV)		\$-	\$-	\$-
3. Securities (BACV)		\$-	\$-	\$-
4. Nonadmitted Subset (BACV)		\$-	\$-	\$-

8-10. Not applicable.

H. Repurchase Agreements Transactions Accounted for as a Sale

Not applicable.

I. Reverse Repurchase Agreements Transactions Accounted for as a Sale

Not applicable.

J. Real Estate

Not applicable.

K. Low-Income Housing Tax Credits

There were no changes that were considered significant to the Company from prior year end.

NOTES TO THE FINANCIAL STATEMENTS

L. Restricted Assets

There were no changes that were considered significant to the Company from prior year end.

M. Working Capital Finance Investments

Not applicable.

N. Offsetting and Netting of Assets and Liabilities

No assets or liabilities are offset and reported net in accordance with a valid right to offset per SSAP No 64, Offsetting and Netting of Assets and Liabilities.

O. 5GI Securities

There were no changes that were considered significant to the Company from prior year end.

P. Short Sales

Not applicable.

Q. Prepayment Penalty and Acceleration Fees

There were no changes that were considered significant to the Company from prior year end.

Note 6 - Joint Ventures, Partnerships and Limited Liability Companies

Not applicable.

Note 7 - Investment Income

There were no changes that were considered significant to the Company from prior year end.

Note 8 - Derivative Instruments

Not applicable.

Note 9 - Income Taxes

There were no changes that were considered significant to the Company from prior year end.

Note 10 – Information concerning parent, subs. and affiliates

There were no changes that were considered significant to the Company from prior year end except for the following:

On June 29, 2020, the Company paid an extraordinary dividend of \$475.0 million to Nationwide Mutual, consisting of securities of \$474.0 million and cash of \$1.0 million.

Note 11 - Debt

A. All Other Debt

Not applicable.

B. Funding Agreements with Federal Home Loan Bank (FHLB)

Not applicable.

Note 12 - Retirement Plans, Deferred Compensation, Postemployment Benefits and Compensated Absences and Other Postretirement Benefit Plans

There were no changes that were considered significant to the Company from prior year end.

Note 13 – Capital and Surplus, Dividend Restrictions and Quasi-Reorganizations

On June 29, 2020, the Company paid an extraordinary dividend of \$475.0 million to Nationwide Mutual, consisting of securities of \$474.0 million and cash of \$1.0 million.

Note 14 – Contingencies

There were no changes that were considered significant to the Company from prior year end.

Note 15 – Leases

Not applicable.

Note 16 - Information About Financial Instruments With Off-Balance Sheet Risk And Financial Instruments With Concentrations of Credit Risk

Not applicable.

Note 17 – Sale, Transfer and Servicing of Financial Assets and Extinguishments of Liabilities

A. Transfers of Receivables Reported as Sales

Not applicable.

B. Transfers and Servicing of Financial Assets

There were no changes that were considered significant to the Company from prior year end.

NOTES TO THE FINANCIAL STATEMENTS

C. Wash Sales

Not applicable.

Note 18 - Gain or Loss to the Reporting Entity from Uninsured Plans and the Uninsured Portion of Partially Insured Plans

Not applicable.

Note 19 - Direct Premiums Written/Produced by Managing General Agents/Third Party Administrators

Not applicable.

Note 20 – Fair Value Measurements

A. Fair value is defined as the price that would be received to sell an asset or paid to transfer a liability in an orderly transaction between market participants at the measurement date. Fair value measurements are based upon observable and unobservable inputs. Observable inputs reflect market data obtained from independent sources while unobservable inputs reflect the Company's view of market assumptions in the absence of observable market information. The Company utilizes valuation techniques that maximize the use of observable inputs and minimize the use of unobservable inputs. In determining fair value, the Company uses various methods including market, income and cost approaches.

The Company categorizes its financial instruments into a three-level hierarchy based on the priority of the inputs to the valuation technique. The fair value hierarchy gives the highest priority to quoted prices in active markets for identical assets or liabilities (Level 1) and the lowest priority to unobservable inputs (Level 3). If the inputs used to measure fair value fall within different levels of the hierarchy, the category level is based on the lowest priority level input that is significant to the fair value measurement of the instrument in its entirety.

The Company categorizes assets and liabilities held at fair value in the statutory statements of assets and liabilities, surplus and other funds as follows:

Level 1. Unadjusted quoted prices accessible in active markets for identical assets or liabilities at the measurement date and mutual funds where the value per share (unit) is determined and published daily and is the basis for current transactions.

Level 2. Unadjusted quoted prices for similar assets or liabilities in active markets or inputs (other than quoted prices) that are observable or that are derived principally from or corroborated by observable market data through correlation or other means. Primary inputs to this valuation technique may include comparative trades, bid/asks, interest rate movements, U.S. Treasury rates, London Interbank Offered Rate, prime rates, cash flows, maturity dates, call ability, estimated prepayments and/or underlying collateral values.

Level 3. Prices or valuation techniques that require inputs that are both unobservable and significant to the overall fair value measurement. Inputs reflect management's best estimates of the assumptions market participants would use at the measurement date in pricing the asset or liability. Consideration is given to the risk inherent in both the method of valuation and the valuation inputs. Primary inputs to this valuation technique include broker quotes and comparative trades.

The Company reviews its fair value hierarchy classifications for assets and liabilities quarterly. Changes in observability of significant valuation inputs identified during these reviews may trigger reclassifications. Reclassifications are reported as transfers at the beginning of the period in which the change occurs.

Independent pricing services are most often utilized to determine the fair value of bonds and stocks for which market quotations or quotations on comparable securities are available. For these bonds and stocks, the Company obtains the pricing services' methodologies, pricing from additional sources, inputs and assumptions and classifies the investments accordingly in the fair value hierarchy.

A corporate pricing matrix is used in valuing certain corporate bonds. The corporate pricing matrix was developed using publicly available spreads for privately placed corporate securities with varying weighted average lives and credit quality ratings. The weighted average life and credit quality rating of a particular bond to be priced using the corporate pricing matrix are important inputs into the model and are used to determine a corresponding spread that is added to the appropriate U.S. Treasury yield to create an estimated market yield for that bond. The estimated market yield and other relevant factors are then used to estimate the fair value of the particular bond.

Non-binding broker quotes are also utilized to determine the fair value of certain bonds when deemed appropriate or when quotes are not available from independent pricing services or a corporate pricing matrix. These bonds are classified with the lowest priority in the fair value hierarchy as only one broker quote is ordinarily obtained, the investment is not traded on an exchange, the pricing is not available to other entities and/or the transaction volume in the same or similar investments has decreased. Inputs used in the development of prices are not provided to the Company by the brokers as the brokers often do not provide the necessary transparency into their quotes and methodologies. At least annually, the Company performs reviews and tests to ensure that quotes are a reasonable estimate of the investments' fair value. Price movements of broker quotes are subject to validation and require approval from the Company's management. Management uses its knowledge of the investment and current market conditions to determine if the price is indicative of the investment's fair value.

The Company carries short-term investments at amortized cost, which approximates fair value.

The following table summarizes assets held at fair value as of September 30, 2020:

	Level 1	Level 2	Level 3	Net Asset Value (NAV)	Total
Assets at Fair Value					
Industrial and miscellaneous	\$ -	\$ 9,919,367	\$ -	\$ -	\$ 9,919,367
Total Bonds	\$ -	\$ 9,919,367	\$ -	\$ -	\$ 9,919,367
Securities lending collateral assets	-	4,430	-	-	4,430
Total Assets at Fair Value (NAV)	\$ -	\$ 9,923,797	\$ -	\$ -	\$ 9,923,797

B. & C. The following table summarizes the carrying value and fair value of the Company's assets not held at fair value as of September 30, 2020:

	Aggregate Fair Value	Admitted Assets	Level 1	Level 2	Level 3	Net Asset Value (NAV)	Not Practicable (Carrying Value)
Assets							
Bonds	\$123,488,124	\$112,052,443	\$68,742,786	\$54,167,074	\$578,264	\$-	\$-
Short-term investments	67,251,956	67,251,956	-	67,251,956	-	-	-
Securities lending collateral assets	50,584	28,079	-	50,584	-	-	-
Total Assets	\$190,790,664	\$179,332,478	\$68,742,786	\$121,469,614	\$578,264	\$-	\$-

NOTES TO THE FINANCIAL STATEMENTS

D. Not Practicable to Estimate Fair Value

Not applicable.

E. Measured using net asset value

Not applicable.

Note 21 - Other Items

A. Unusual or Infrequent Items

On March 11, 2020, the World Health Organization declared COVID-19 a pandemic. The conditions as a result of the pandemic have and may continue to impact the Company's operations and financial condition. The extent to which the COVID-19 pandemic may impact the Company's operations and financial condition will depend on future developments which are evolving and uncertain.

B. Troubled Debt Restructuring for Debtors

Not applicable.

C. Other Disclosures

Not applicable.

D. Business Interruption Insurance Recoveries

Not applicable.

E. State Transferable and Non-Transferable Tax Credits

There were no changes that were considered significant to the Company from prior year end.

F. Subprime Mortgage Related Risk Exposure

There were no changes that were considered significant to the Company from prior year end.

G. Insurance-Linked Securities

There were no changes that were considered significant to the Company from prior year end.

H. The Amount That Could Be Realized on Life Insurance Where the Reporting Entity is Owner and Beneficiary or Has Otherwise Obtained Rights to Control the Policy

Not applicable.

Note 22 - Events Subsequent

Type I – Recognized Subsequent Events:

Subsequent events have been considered through November 5, 2020 for the statutory statement issued on November 6, 2020.

There were no material Type I events occurring subsequent to the end of the period that merited recognition or disclosure in these statements that have not already been reflected as required.

Type II – Nonrecognized Subsequent Events:

Subsequent events have been considered through November 5, 2020 for the statutory statement issued on November 6, 2020.

There were no material Type II events occurring subsequent to the end of the period that merited recognition or disclosure in these statements that have not already been reflected as required.

Note 23 - Reinsurance

There were no changes that were considered significant to the Company from prior year end.

Note 24 - Retrospectively Rated Contracts and Contracts Subject to Redetermination

There were no changes that were considered significant to the Company from prior year end.

Note 25 - Changes in Incurred Losses and Loss Adjustment Expenses

As of December 31, 2019, loss and loss adjustment expense reserves, net of reinsurance recoveries, were \$567.5. On January 1, 2020, the Company was removed as a Nationwide Pool recipient and loss and loss adjustment expense reserves of \$567.5 million were transferred from the Company as a result of the pooling and quota share agreements, effective January 1, 2020. See Note 26 for details.

Note 26 - Intercompany Pooling Arrangements

Nationwide Mutual Insurance Company is the lead company in the Nationwide Pool. Each pool member company contributes 100% of its underwriting results to the Nationwide Pool through the reinsurance pooling agreement.

Effective January 1, 2020, the Nationwide Pool structure was revised. Nationwide Mutual Insurance Company's assumed pooling percentage decreased from 72% to 71%. Scottsdale Insurance Company was removed as a Nationwide Pool recipient. National Casualty Company terminated its 100% quota share reinsurance agreement with Nationwide Mutual. Nationwide Agribusiness Insurance Company, Nationwide Insurance Company of America, and National Casualty Company were added as a Nationwide Pool recipient and changed from a 0% to 3%, 0% to 1%, and 0% to 1% retrocessionaire, respectively.

NOTES TO THE FINANCIAL STATEMENTS

As of September 30, 2020 and December 31, 2019, the companies in the Nationwide Pool assuming a proportionate share of the pool are:

	NAIC #	September 30, 2020 Pool	December 31, 2019 Pool
Nationwide Mutual Insurance Company	23787	71.0%	72.0%
Nationwide Mutual Fire Insurance Company	23779	23.0%	23.0%
Nationwide Agribusiness Insurance Company	28223	3.0%	0.0%
Nationwide Insurance Company of America	25453	1.0%	0.0%
National Casualty Company	11991	1.0%	0.0%
Nationwide General Insurance Company	23760	1.0%	1.0%
Scottsdale Insurance Company	41297	0.0%	4.0%

All of the other companies in the Nationwide Pool have a 0% retrocession. The zero percent participants in the Nationwide Pool as of September 30, 2020 are: Nationwide Property and Casualty Insurance Company (NAIC # 37877), Nationwide Affinity Insurance Company of America (NAIC # 26093), Crestbrook Insurance Company (NAIC # 18961), Allied Insurance Company of America (NAIC # 10127), Nationwide Assurance Company (NAIC #10723), Nationwide Lloyds (NAIC #42110), Nationwide Insurance Company of Florida (NAIC #10948), AMCO Insurance Company (NAIC # 19100), Depositors Insurance Company (NAIC # 42587), Allied Property & Casualty Insurance Company (NAIC #42579), Victoria Fire & Casualty Company (NAIC # 42889), Victoria National Insurance Company (NAIC # 10778), Harleysville Preferred Insurance Company (NAIC #35696), Harleysville Insurance Company of New Jersey (NAIC #42900), Harleysville Worcester Insurance Company (NAIC #26182), Harleysville Insurance Company of New York (NAIC #10674), Harleysville Lake States Insurance Company (NAIC #14516), Harleysville Insurance Company (NAIC #23582), Veterinary Pet Insurance Company (NAIC #42285), and Scottsdale Insurance Company (NAIC #41297).

All lines of business are subject to the pooling agreements.

There are no discrepancies related to the pooled business between the assumed and ceded reinsurance schedules of the pool participants.

As of September 30, 2020, the following companies remain covered under a separate 100% quota share reinsurance agreement with Scottsdale Insurance Company: Scottsdale Surplus Lines Insurance Company, Scottsdale Indemnity Company and Freedom Specialty Insurance Company. Scottsdale Insurance Company then cedes 100% of this business to the Nationwide Pool.

In connection with the above pooling structure change effective January 1, 2020, assets and liabilities were transferred between Nationwide Mutual Insurance Company, Nationwide Agribusiness, Nationwide Insurance Company of America, National Casualty Company and the Company. The Company transferred assets of \$185.8 million and liabilities of \$928.3 million, primarily consisting of loss and loss expense reserves of \$567.5 million and unearned premiums of \$308.7 million.

In addition, the Company transferred ceding commissions of \$54.0 million.

Furthermore, the Company transferred securities of \$631.7 million and cash of \$56.9 million to settle these transactions.

Note 27 - Structured Settlements

There were no changes that were considered significant to the Company from prior year end.

Note 28 - Health Care Receivables

Not applicable.

Note 29 – Participating Policies

Not applicable.

Note 30 – Premium Deficiency Reserves

There were no changes that were considered significant to the Company from prior year end.

Note 31 – High Deductibles

Not applicable.

Note 32 - Discounting of Liabilities for Unpaid Losses or Unpaid Loss Adjustment Expenses

There were no changes that were considered significant to the Company from prior year end.

Note 33 - Asbestos/Environmental Reserves

There were no changes that were considered significant to the Company from prior year end.

Note 34 – Subscriber Savings Accounts

Not applicable.

Note 35 – Multiple Peril Crop Insurance

Not applicable.

Note 36 – Financial Guaranty Insurance

Not applicable.

GENERAL INTERROGATORIES

PART 1 - COMMON INTERROGATORIES

GENERAL

- 1.1 Did the reporting entity experience any material transactions requiring the filing of Disclosure of Material Transactions with the State of Domicile, as required by the Model Act? Yes [] No [X]
- 1.2 If yes, has the report been filed with the domiciliary state? Yes [] No []
- 2.1 Has any change been made during the year of this statement in the charter, by-laws, articles of incorporation, or deed of settlement of the reporting entity? Yes [] No [X]
- 2.2 If yes, date of change: _____
- 3.1 Is the reporting entity a member of an Insurance Holding Company System consisting of two or more affiliated persons, one or more of which is an insurer? Yes [X] No []
If yes, complete Schedule Y, Parts 1 and 1A.
- 3.2 Have there been any substantial changes in the organizational chart since the prior quarter end? Yes [] No [X]
- 3.3 If the response to 3.2 is yes, provide a brief description of those changes.
- 3.4 Is the reporting entity publicly traded or a member of a publicly traded group? Yes [] No [X]
- 3.5 If the response to 3.4 is yes, provide the CIK (Central Index Key) code issued by the SEC for the entity/group.
- 4.1 Has the reporting entity been a party to a merger or consolidation during the period covered by this statement? Yes [] No [X]
If yes, complete and file the merger history data file with the NAIC for the annual filing corresponding to this period.
- 4.2 If yes, provide name of entity, NAIC Company Code, and state of domicile (use two letter state abbreviation) for any entity that has ceased to exist as a result of the merger or consolidation.

1 Name of Entity	2 NAIC Company Code	3 State of Domicile

- 5. If the reporting entity is subject to a management agreement, including third-party administrator(s), managing general agent(s), attorney-in-fact, or similar agreement, have there been any significant changes regarding the terms of the agreement or principals involved? Yes [] No [X] N/A []
If yes, attach an explanation.
- 6.1 State as of what date the latest financial examination of the reporting entity was made or is being made. 12/31/2016
- 6.2 State the as of date that the latest financial examination report became available from either the state of domicile or the reporting entity. This date should be the date of the examined balance sheet and not the date the report was completed or released. 12/31/2016
- 6.3 State as of what date the latest financial examination report became available to other states or the public from either the state of domicile or the reporting entity. This is the release date or completion date of the examination report and not the date of the examination (balance sheet date). 05/24/2018
- 6.4 By what department or departments?
OH
- 6.5 Have all financial statement adjustments within the latest financial examination report been accounted for in a subsequent financial statement filed with Departments? Yes [] No [] N/A [X]
- 6.6 Have all of the recommendations within the latest financial examination report been complied with? Yes [] No [] N/A [X]
- 7.1 Has this reporting entity had any Certificates of Authority, licenses or registrations (including corporate registration, if applicable) suspended or revoked by any governmental entity during the reporting period? Yes [] No [X]
- 7.2 If yes, give full information:
- 8.1 Is the company a subsidiary of a bank holding company regulated with the Federal Reserve Board? Yes [] No [X]
- 8.2 If response to 8.1 is yes, please identify the name of the bank holding company.

- 8.3 Is the company affiliated with one or more banks, thrifts or securities firms? Yes [X] No []
- 8.4 If the response to 8.3 is yes, please provide below the names and location (city and state of the main office) of any affiliates regulated by a federal regulatory services agency [i.e. the Federal Reserve Board (FRB), the Office of the Comptroller of the Currency (OCC), the Federal Deposit Insurance Corporation (FDIC) and the Securities Exchange Commission (SEC)] and identify the affiliate's primary federal regulator].

1 Affiliate Name	2 Location (City, State)	3 FRB	4 OCC	5 FDIC	6 SEC
Nationwide Trust Company, FSB	Columbus, OH	No	Yes	No	No
Nationwide Investment Services Corp.	Columbus, OH	No	No	No	Yes
Nationwide Investment Advisors, LLC	Columbus, OH	No	No	No	Yes
Nationwide Securities, LLC	Columbus, OH	No	No	No	Yes
Nationwide Fund Advisors	Columbus, OH	No	No	No	Yes
Nationwide Fund Distributors, LLC	Columbus, OH	No	No	No	Yes
Nationwide Asset Management, LLC	Columbus, OH	No	No	No	Yes
Jefferson National Securities Corporation	Louisville, KY	No	No	No	Yes

- 9.1 Are the senior officers (principal executive officer, principal financial officer, principal accounting officer or controller, or persons performing similar functions) of the reporting entity subject to a code of ethics, which includes the following standards? Yes [X] No []
 - (a) Honest and ethical conduct, including the ethical handling of actual or apparent conflicts of interest between personal and professional relationships;
 - (b) Full, fair, accurate, timely and understandable disclosure in the periodic reports required to be filed by the reporting entity;
 - (c) Compliance with applicable governmental laws, rules and regulations;
 - (d) The prompt internal reporting of violations to an appropriate person or persons identified in the code; and
 - (e) Accountability for adherence to the code.
- 9.11 If the response to 9.1 is No, please explain:

GENERAL INTERROGATORIES

PART 1 - COMMON INTERROGATORIES

- 9.2 Has the code of ethics for senior managers been amended? Yes No
- 9.21 If the response to 9.2 is Yes, provide information related to amendment(s).
The Code of Conduct was updated effective 4/30/2020. We updated our gift policy, increasing the gift value from \$50 to \$100.
- 9.3 Have any provisions of the code of ethics been waived for any of the specified officers? Yes No
- 9.31 If the response to 9.3 is Yes, provide the nature of any waiver(s).

FINANCIAL

- 10.1 Does the reporting entity report any amounts due from parent, subsidiaries or affiliates on Page 2 of this statement? Yes No
- 10.2 If yes, indicate any amounts receivable from parent included in the Page 2 amount: \$ 62,317,690

INVESTMENT

- 11.1 Were any of the stocks, bonds, or other assets of the reporting entity loaned, placed under option agreement, or otherwise made available for use by another person? (Exclude securities under securities lending agreements.) Yes No
- 11.2 If yes, give full and complete information relating thereto:
N/A
12. Amount of real estate and mortgages held in other invested assets in Schedule BA: \$ 0
13. Amount of real estate and mortgages held in short-term investments: \$ 0
- 14.1 Does the reporting entity have any investments in parent, subsidiaries and affiliates? Yes No
- 14.2 If yes, please complete the following:

	1 Prior Year End Book/Adjusted Carrying Value	2 Current Quarter Book/Adjusted Carrying Value
14.21 Bonds	\$ 0	\$ 0
14.22 Preferred Stock	0	0
14.23 Common Stock	61,341,962	61,120,878
14.24 Short-Term Investments	0	0
14.25 Mortgage Loans on Real Estate	0	0
14.26 All Other	0	0
14.27 Total Investment in Parent, Subsidiaries and Affiliates (Subtotal Lines 14.21 to 14.26)	\$ 61,341,962	\$ 61,120,878
14.28 Total Investment in Parent included in Lines 14.21 to 14.26 above	\$ 0	\$ 0

- 15.1 Has the reporting entity entered into any hedging transactions reported on Schedule DB? Yes No
- 15.2 If yes, has a comprehensive description of the hedging program been made available to the domiciliary state? Yes No N/A
 If no, attach a description with this statement.

16. For the reporting entity's security lending program, state the amount of the following as of current statement date:
- 16.1 Total fair value of reinvested collateral assets reported on Schedule DL, Parts 1 and 2: \$ 55,014
- 16.2 Total book adjusted/carrying value of reinvested collateral assets reported on Schedule DL, Parts 1 and 2: \$ 32,509
- 16.3 Total payable for securities lending reported on the liability page: \$ 0
17. Excluding items in Schedule E-Part 3-Special Deposits, real estate, mortgage loans and investments held physically in the reporting entity's offices, vaults or safety deposit boxes, were all stocks, bonds and other securities, owned throughout the current year held pursuant to a custodial agreement with a qualified bank or trust company in accordance with Section 1, III - General Examination Considerations, F. Outsourcing of Critical Functions, Custodial or Safekeeping Agreements of the NAIC *Financial Condition Examiners Handbook*? Yes No

17.1 For all agreements that comply with the requirements of the NAIC *Financial Condition Examiners Handbook*, complete the following:

1 Name of Custodian(s)	2 Custodian Address
The Bank of New York Mellon	1 Wall Street, New York, NY 10286
BNY Trust of Canada	320 Bay St., 11th Floor, Toronto, ON M5H 4A6

17.2 For all agreements that do not comply with the requirements of the NAIC *Financial Condition Examiners Handbook*, provide the name, location and a complete explanation:

1 Name(s)	2 Location(s)	3 Complete Explanation(s)

- 17.3 Have there been any changes, including name changes, in the custodian(s) identified in 17.1 during the current quarter? Yes No
- 17.4 If yes, give full and complete information relating thereto:

1 Old Custodian	2 New Custodian	3 Date of Change	4 Reason

- 17.5 Investment management – Identify all investment advisors, investment managers, broker/dealers, including individuals that have the authority to make investment decisions on behalf of the reporting entity. For assets that are managed internally by employees of the reporting entity, note as such ["...that have access to the investment accounts", "handle securities"].

1 Name of Firm or Individual	2 Affiliation
Members of the investment staff designated by the Chief Investment Officer as detailed in the Corporate Resolution	I

- 17.5097 For those firms/individuals listed in the table for Question 17.5, do any firms/individuals unaffiliated with the reporting entity (i.e., designated with a "U") manage more than 10% of the reporting entity's invested assets? Yes No
- 17.5098 For firms/individuals unaffiliated with the reporting entity (i.e., designated with a "U") listed in the table for Question 17.5, does the total assets under management aggregate to more than 50% of the reporting entity's invested assets? Yes No

- 17.6 For those firms or individuals listed in the table for 17.5 with an affiliation code of "A" (affiliated) or "U" (unaffiliated), provide the information for the table below.
- | 1 | 2 | 3 | 4 | 5 |
|---|---|---|---|---|
| | | | | |

GENERAL INTERROGATORIES

PART 1 - COMMON INTERROGATORIES

Central Registration Depository Number	Name of Firm or Individual	Legal Entity Identifier (LEI)	Registered With	Investment Management Agreement (IMA) Filed
--	----------------------------	-------------------------------	-----------------	---

18.1 Have all the filing requirements of the *Purposes and Procedures Manual of the NAIC Investment Analysis Office* been followed? Yes [X] No []

18.2 If no, list exceptions:

19. By self-designating 5GI securities, the reporting entity is certifying the following elements for each self-designated 5GI security:

- a. Documentation necessary to permit a full credit analysis of the security does not exist or an NAIC CRP credit rating for an FE or PL security is not available.
- b. Issuer or obligor is current on all contracted interest and principal payments.
- c. The insurer has an actual expectation of ultimate payment of all contracted interest and principal.

Has the reporting entity self-designated 5GI securities? Yes [] No [X]

20. By self-designating PLGI securities, the reporting entity is certifying the following elements for each self-designated PLGI security:

- a. The security was purchased prior to January 1, 2018.
- b. The reporting entity is holding capital commensurate with the NAIC Designation reported for the security.
- c. The NAIC Designation was derived from the credit rating assigned by an NAIC CRP in its legal capacity as a NRSRO which is shown on a current private letter rating held by the insurer and available for examination by state insurance regulators.
- d. The reporting entity is not permitted to share this credit rating of the PL security with the SVO.

Has the reporting entity self-designated PLGI securities? Yes [] No [X]

21. By assigning FE to a Schedule BA non-registered private fund, the reporting entity is certifying the following elements of each self-designated FE fund:

- a. The security was purchased prior to January 1, 2019.
- b. The reporting entity is holding capital commensurate with the NAIC Designation reported for the security.
- c. The security had a public credit rating(s) with annual surveillance assigned by an NAIC CRP in its legal capacity as an NRSRO prior to January 1, 2019.
- d. The fund only or predominantly holds bonds in its portfolio.
- e. The current reporting NAIC designation was derived from the public credit rating(s) with annual surveillance assigned by an NAIC CRP in its legal capacity as an NRSRO.
- f. The public credit rating(s) with annual surveillance assigned by an NAIC CRP has not lapsed.

Has the reporting entity assigned FE to Schedule BA non-registered private funds that complied with the above criteria? Yes [] No [X]

GENERAL INTERROGATORIES (continued)

PART 2 – PROPERTY & CASUALTY INTERROGATORIES

1. If the reporting entity is a member of a pooling arrangement, did the agreement or the reporting entity's participation change? Yes No N/A
 If yes, attach an explanation.
Effective 1/1/2020, the Company became a 0% retrocessionaire in the Nationwide intercompany pooling arrangement. Prior to this date, the Company received 4% of the pooling results.

2. Has the reporting entity reinsured any risk with any other reporting entity and agreed to release such entity from liability, in whole or in part, from any loss that may occur on the risk, or portion thereof, reinsured? Yes No
 If yes, attach an explanation.

- 3.1 Have any of the reporting entity's primary reinsurance contracts been canceled? Yes No
 3.2 If yes, give full and complete information thereto:

- 4.1 Are any of the liabilities for unpaid losses and loss adjustment expenses other than certain workers' compensation tabular reserves (see *Annual Statement Instructions* pertaining to disclosure of discounting for definition of "tabular reserves,") discounted at a rate of interest greater than zero? Yes No
 4.2 If yes, complete the following schedule:

1 Line of Business	2 Maximum Interest	3 Disc. Rate	Total Discount				Discount Taken During Period			
			4 Unpaid Losses	5 Unpaid LAE	6 IBNR	7 Total	8 Unpaid Losses	9 Unpaid LAE	10 IBNR	11 Total
	0.000	0.000	0	0	0	0	0	0	0	0
Total	XXX	XXX	0	0	0	0	0	0	0	0

5. Operating Percentages:
- 5.1 A&H loss percent 0.000%
- 5.2 A&H cost containment percent 0.000%
- 5.3 A&H expense percent excluding cost containment expenses 0.000%
- 6.1 Do you act as a custodian for health savings accounts? Yes No
 6.2 If yes, please provide the amount of custodial funds held as of the reporting date. \$ 0
- 6.3 Do you act as an administrator for health savings accounts? Yes No
 6.4 If yes, please provide the amount of funds administered as of the reporting date. \$ 0
7. Is the reporting entity licensed or chartered, registered, qualified, eligible or writing business in at least two states? Yes No
 7.1 If no, does the reporting entity assume reinsurance business that covers risks residing in at least one state other than the state of domicile of the reporting entity? Yes No

SCHEDULE F - CEDED REINSURANCE

Showing All New Reinsurers - Current Year to Date

1 NAIC Company Code	2 ID Number	3 Name of Reinsurer	4 Domiciliary Jurisdiction	5 Type of Reinsurer	6 Certified Reinsurer Rating (1 through 6)	7 Effective Date of Certified Reinsurer Rating
------------------------------	----------------	------------------------	----------------------------------	---------------------------	---	--

NONE

SCHEDULE T - EXHIBIT OF PREMIUMS WRITTEN

Current Year to Date - Allocated by States and Territories

States, Etc.	1 Active Status (a)	Direct Premiums Written		Direct Losses Paid (Deducting Salvage)		Direct Losses Unpaid	
		2 Current Year to Date	3 Prior Year to Date	4 Current Year to Date	5 Prior Year to Date	6 Current Year to Date	7 Prior Year to Date
1. Alabama.....AL	E	25,634,267	23,353,461	8,845,652	11,442,156	49,655,738	24,623,392
2. Alaska.....AK	E	3,574,189	2,932,940	1,352,924	4,121,204	3,426,481	4,078,534
3. Arizona.....AZ	L	9,673,587	9,328,776	2,751,261	4,660,199	8,009,694	6,755,219
4. Arkansas.....AR	E	9,876,222	10,914,541	9,829,375	6,595,968	11,825,935	9,401,388
5. California.....CA	E	361,891,269	310,851,473	110,335,242	124,820,780	513,138,076	432,283,172
6. Colorado.....CO	E	31,603,927	29,691,320	14,514,430	18,970,224	40,867,388	44,446,221
7. Connecticut.....CT	E	10,136,882	8,441,967	4,357,678	5,680,020	18,108,702	17,811,144
8. Delaware.....DE	L	2,671,151	2,103,959	858,907	746,150	1,524,142	1,361,027
9. District of Columbia.....DC	E	13,142,892	12,047,654	2,002,533	3,518,902	5,665,060	6,279,661
10. Florida.....FL	E	191,016,648	182,734,515	106,040,108	120,070,779	254,805,369	270,490,871
11. Georgia.....GA	E	41,701,864	35,403,232	13,075,303	19,648,723	50,541,455	37,549,357
12. Hawaii.....HI	E	9,951,983	8,691,009	2,193,299	4,247,161	15,131,352	11,092,011
13. Idaho.....ID	E	5,420,140	4,599,743	2,249,866	2,103,161	6,181,817	6,552,827
14. Illinois.....IL	E	42,999,091	36,243,391	12,040,768	19,309,010	59,583,542	53,801,262
15. Indiana.....IN	E	24,550,609	32,470,920	12,975,900	10,866,855	36,787,844	36,695,891
16. Iowa.....IA	E	6,593,768	6,250,289	1,946,411	1,364,814	8,505,994	6,751,084
17. Kansas.....KS	E	8,251,380	7,664,445	3,201,540	4,945,034	16,014,645	7,274,685
18. Kentucky.....KY	E	11,099,152	10,760,925	6,789,223	4,881,583	11,692,301	12,182,845
19. Louisiana.....LA	E	84,589,652	76,988,332	45,695,842	28,424,507	214,626,419	95,782,724
20. Maine.....ME	E	2,879,365	2,544,782	487,120	1,435,299	2,292,777	2,097,554
21. Maryland.....MD	E	17,260,385	17,288,302	10,137,375	9,566,286	30,023,774	32,008,210
22. Massachusetts.....MA	E	25,979,473	17,737,430	15,755,916	23,551,738	45,059,699	29,394,781
23. Michigan.....MI	E	14,001,628	14,809,111	3,183,966	3,942,805	26,752,250	22,475,698
24. Minnesota.....MN	E	13,753,896	11,014,327	3,382,816	4,648,207	15,978,833	16,535,876
25. Mississippi.....MS	E	17,887,558	21,081,696	17,274,173	7,052,396	13,435,806	16,898,776
26. Missouri.....MO	E	18,615,892	17,224,002	8,133,186	6,323,212	32,707,616	19,645,351
27. Montana.....MT	E	8,762,598	8,314,091	5,340,526	4,949,180	10,456,067	10,589,933
28. Nebraska.....NE	E	6,901,168	6,051,512	1,487,629	1,391,220	10,050,537	10,616,014
29. Nevada.....NV	E	9,755,614	8,587,127	2,778,122	5,690,372	18,293,645	13,905,870
30. New Hampshire.....NH	E	2,086,917	1,683,090	192,602	166,403	2,218,447	1,937,477
31. New Jersey.....NJ	E	67,342,883	55,412,429	42,831,618	25,482,258	96,106,763	102,039,161
32. New Mexico.....NM	E	8,739,744	8,205,916	2,764,994	3,116,857	11,619,630	11,903,097
33. New York.....NY	E	89,266,416	81,500,076	105,365,609	115,191,922	635,889,663	747,970,630
34. North Carolina.....NC	E	26,715,562	24,690,395	9,817,159	10,054,805	28,601,290	27,037,855
35. North Dakota.....ND	E	4,029,351	3,988,177	838,259	388,915	4,946,806	3,683,496
36. Ohio.....OH	L	3,068,947	3,421,427	1,722,970	2,685,600	6,554,299	7,787,734
37. Oklahoma.....OK	E	19,309,289	19,417,756	6,465,587	8,290,157	25,181,918	19,687,762
38. Oregon.....OR	E	14,167,695	13,415,705	23,479,332	8,246,162	21,386,708	41,991,727
39. Pennsylvania.....PA	E	32,464,414	28,377,123	20,341,948	11,387,591	46,370,589	52,321,900
40. Rhode Island.....RI	E	4,015,525	3,659,818	466,038	441,168	6,363,541	4,389,451
41. South Carolina.....SC	E	24,542,016	22,104,239	12,048,738	11,300,729	31,324,804	30,118,822
42. South Dakota.....SD	E	2,338,985	1,950,611	1,401,770	738,831	2,681,270	2,631,210
43. Tennessee.....TN	E	19,127,286	16,910,401	11,470,225	4,951,071	24,049,742	17,281,201
44. Texas.....TX	E	184,861,020	164,264,549	81,025,755	87,075,127	298,139,133	251,275,273
45. Utah.....UT	E	11,280,497	7,860,260	3,999,235	3,171,415	13,563,764	11,834,212
46. Vermont.....VT	E	3,245,184	1,781,802	456,000	65,596	2,448,698	2,066,737
47. Virginia.....VA	E	25,005,871	25,226,881	8,802,749	5,353,501	27,889,050	32,168,836
48. Washington.....WA	E	33,352,388	29,843,345	13,878,886	9,556,896	47,403,587	44,964,545
49. West Virginia.....WV	E	7,149,084	7,150,397	3,736,648	2,015,021	9,299,745	6,670,206
50. Wisconsin.....WI	E	9,277,739	9,429,495	2,785,925	1,416,033	9,886,840	8,593,808
51. Wyoming.....WY	E	4,990,237	4,464,230	694,902	1,530,271	4,347,195	4,530,707
52. American Samoa.....AS	N						
53. Guam.....GU	N						
54. Puerto Rico.....PR	E	166,879	152,056	195,000	757,500	1,885,196	2,167,093
55. US Virgin Islands.....VI	E	28,606				228,446	201,190
56. Northern Mariana Islands.....MP	N						
57. Canada.....CAN	E	1,318,337				84,058	21,713
58. Aggregate Other Alien.....OT	XXX	704,517	1,749,564	0	0	1,639,347	914,845
59. Totals.....	XXX	1,628,771,639	1,472,785,014	783,799,040	778,351,774	2,891,253,487	2,695,572,066

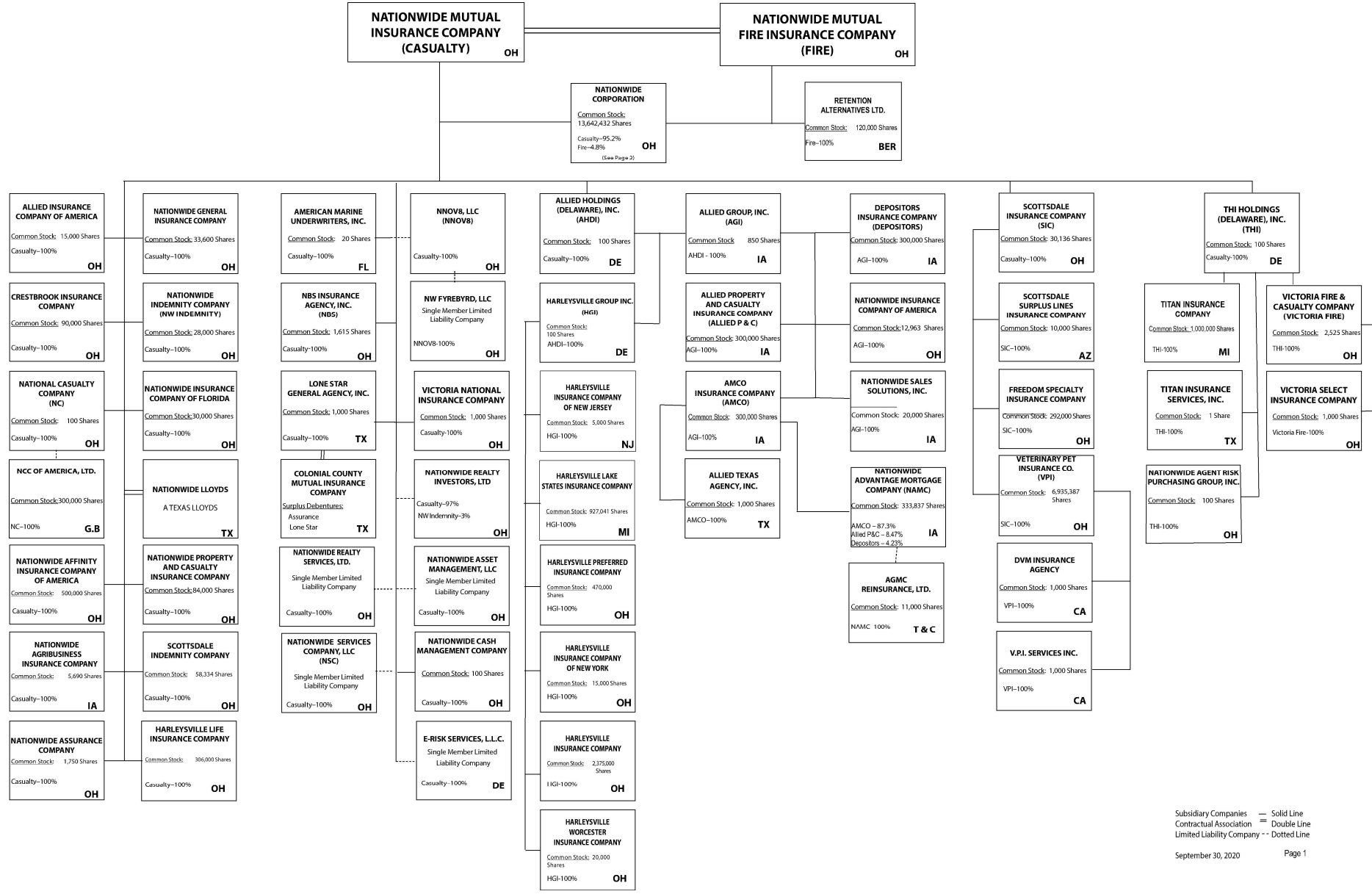
DETAILS OF WRITE-INS

58001. Bermuda BMU.....	XXX	704,517	1,749,564			1,639,347	914,845
58002.	XXX						
58003.	XXX						
58998. Summary of remaining write-ins for Line 58 from overflow page.....	XXX	0	0	0	0	0	0
58999. Totals (Lines 58001 thru 58003+ Line 58998) (Line 58 above).....	XXX	704,517	1,749,564	0	0	1,639,347	914,845

(a) Active Status Count

L - Licensed or Chartered - Licensed insurance carrier or domiciled RRG.....	3	R - Registered - Non-domiciled RRGs.....	0
E - Eligible - Reporting entities eligible or approved to write surplus lines in the state (other than their state of domicile - See DSLI).....	51	Q - Qualified - Qualified or accredited reinsurer.....	0
D - Domestic Surplus Lines Insurer (DSLI) - Reporting entities authorized to write surplus lines in the state of domicile.....	0	N - None of the above - Not allowed to write business in the state.....	3

NATIONWIDE®

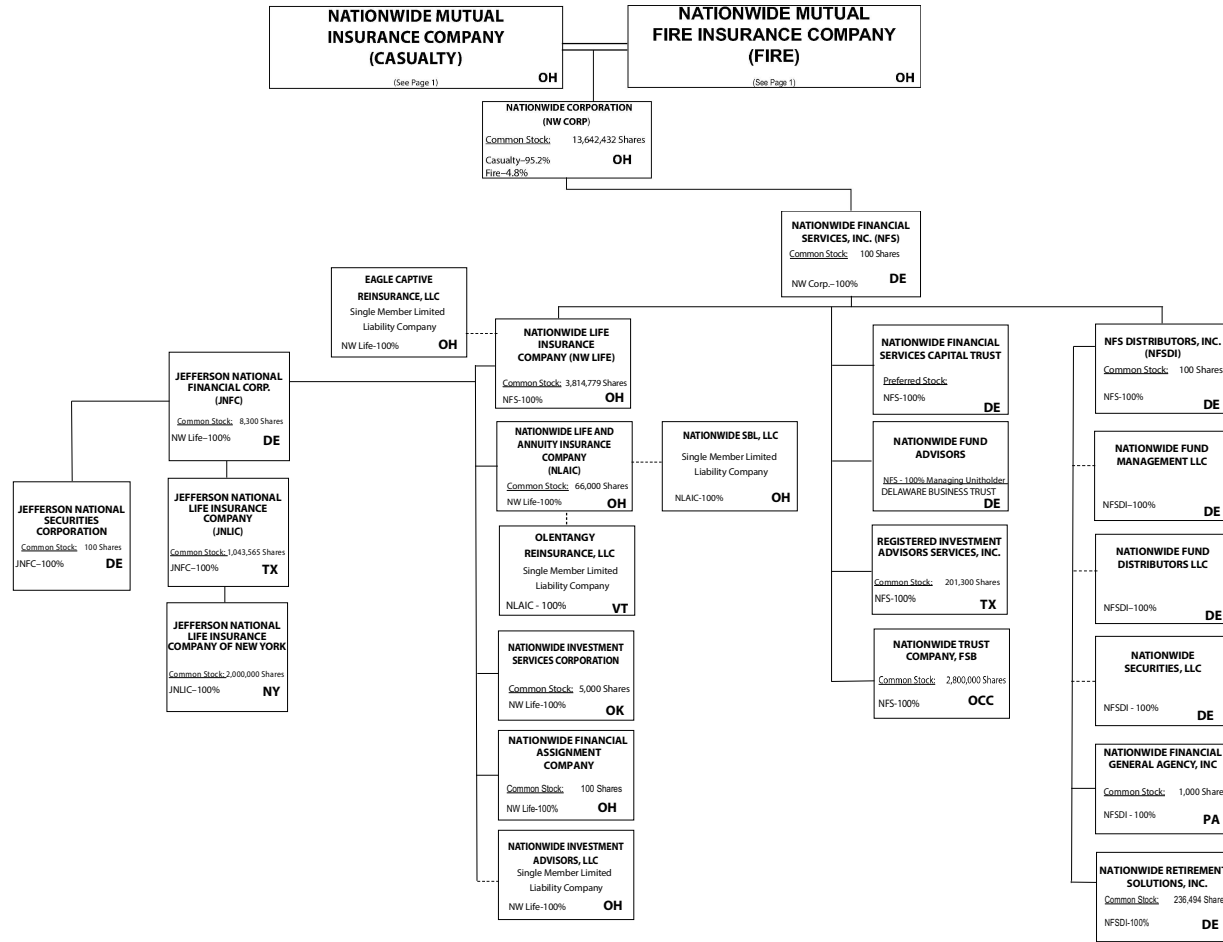


Q11

(Casualty/Fire subsidiaries)

Subsidiary Companies — Solid Line
 Contractual Association = Double Line
 Limited Liability Company - - Dotted Line
 September 30, 2020 Page 1

NATIONWIDE®



Q11.1

Subsidiary Companies — Solid Line
 Contractual Association = Double Line
 Limited Liability Company - - Dotted Line
 September 30, 2020 Page 2

(Nationwide Corp. subsidiaries)

NATIONWIDE INSURANCE COMPANIES

NAIC Group Code	Group Name	NAIC Company Code	State of Domicile	Federal ID Number	Name of Company
0140	Nationwide	10127	OH	27-0114983	Allied Insurance Company of America
0140	Nationwide	42579	IA	42-1201931	Allied Property and Casualty Insurance Company
0140	Nationwide	19100	IA	42-6054959	AMCO Insurance Company
0140	Nationwide	29262	TX	74-1061659	Colonial County Mutual Insurance Company
0140	Nationwide	18961	OH	68-0066866	Crestbrook Insurance Company
0140	Nationwide	42587	IA	42-1207150	Depositors Insurance Company
0140	Nationwide	15821	OH	42-4523959	Eagle Captive Reinsurance, LLC
0140	Nationwide	22209	OH	75-6013587	Freedom Specialty Insurance Company
0140	Nationwide	23582	OH	41-0417250	Harleysville Insurance Company
0140	Nationwide	42900	NJ	23-2253669	Harleysville Insurance Company of New Jersey
0140	Nationwide	10674	OH	23-2864924	Harleysville Insurance Company of New York
0140	Nationwide	14516	MI	38-3198542	Harleysville Lake States Insurance Company
0140	Nationwide	64327	OH	23-1580983	Harleysville Life Insurance Company
0140	Nationwide	35696	OH	23-2384978	Harleysville Preferred Insurance Company
0140	Nationwide	26182	OH	04-1989660	Harleysville Worcester Insurance Company
0140	Nationwide	64017	TX	75-0300900	Jefferson National Life Insurance Company
0140	Nationwide	15727	NY	47-1180302	Jefferson National Life Insurance Company of New York
0140	Nationwide	11991	OH	38-0865250	National Casualty Company
0140	Nationwide	26093	OH	48-0470690	Nationwide Affinity Insurance Company of America
0140	Nationwide	28223	IA	42-1015537	Nationwide Agribusiness Insurance Company
0140	Nationwide	10723	OH	95-0639970	Nationwide Assurance Company
0140	Nationwide	23760	OH	31-4425763	Nationwide General Insurance Company
0140	Nationwide	10070	OH	31-1399201	Nationwide Indemnity Company
0140	Nationwide	25453	OH	95-2130882	Nationwide Insurance Company of America
0140	Nationwide	10948	OH	31-1613686	Nationwide Insurance Company of Florida
0140	Nationwide	92657	OH	31-1000740	Nationwide Life and Annuity Insurance Company
0140	Nationwide	66869	OH	31-4156830	Nationwide Life Insurance Company
0140	Nationwide	42110	TX	75-1780981	Nationwide Lloyds
0140	Nationwide	23779	OH	31-4177110	Nationwide Mutual Fire Insurance Company
0140	Nationwide	23787	OH	31-4177100	Nationwide Mutual Insurance Company
0140	Nationwide	37877	OH	31-0970750	Nationwide Property & Casualty Insurance Company
0140	Nationwide	13999	VT	27-1712056	Olentangy Reinsurance, LLC
0140	Nationwide	15580	OH	31-1117969	Scottsdale Indemnity Company
0140	Nationwide	41297	OH	31-1024978	Scottsdale Insurance Company
0140	Nationwide	10672	AZ	86-0835870	Scottsdale Surplus Lines Insurance Company
0140	Nationwide	36269	MI	86-0619597	Titan Insurance Company
0140	Nationwide	42285	OH	95-3750113	Veterinary Pet Insurance Company
0140	Nationwide	42889	OH	34-1394913	Victoria Fire & Casualty Company
0140	Nationwide	10778	OH	34-1842604	Victoria National Insurance Company
0140	Nationwide	10105	OH	34-1777972	Victoria Select Insurance Company

SCHEDULE Y

PART 1A - DETAIL OF INSURANCE HOLDING COMPANY SYSTEM

1	2	3	4	5	6	7	8	9	10	11	12	13	14	15	16
Group Code	Group Name	NAIC Company Code	ID Number	Federal RSSD	CIK	Name of Securities Exchange if Publicly Traded (U.S. or International)	Names of Parent, Subsidiaries or Affiliates	Domiciliary Location	Relationship to Reporting Entity	Directly Controlled by (Name of Entity/Person)	Type of Control (Ownership Board, Management, Attorney-in-Fact, Influence, Other)	If Control is Ownership Provide Percentage	Ultimate Controlling Entity(ies)/Person(s)	Is an SCA Filing Required? (Y/N)	*
Members															
0140	Nationwide.....		31-1486309..	n/a.....			10 W. Nationwide, LLC.....	OH.....	NIA.....	Nationwide Realty Investors, Ltd.....	ownership.....	100.000	Nationwide Mutual Insurance Company.....	..N.....	
0140	Nationwide.....		31-1486309..	n/a.....			1000 Yard Street, LLC.....	OH.....	NIA.....	Nationwide Realty Investors, Ltd.....	ownership.....	100.000	Nationwide Mutual Insurance Company.....	..N.....	
0140	Nationwide.....		31-1486309..	n/a.....			1015 Long Street, LLC.....	OH.....	NIA.....	Nationwide Realty Investors, Ltd.....	ownership.....	100.000	Nationwide Mutual Insurance Company.....	..N.....	
0140	Nationwide.....		31-1486309..	n/a.....			1050 Yard Street, LLC.....	OH.....	NIA.....	Nationwide Realty Investors, Ltd.....	ownership.....	100.000	Nationwide Mutual Insurance Company.....	..N.....	
0140	Nationwide.....		31-1486309..	n/a.....			1125 Rail Street, LLC.....	OH.....	NIA.....	Nationwide Realty Investors, Ltd.....	ownership.....	100.000	Nationwide Mutual Insurance Company.....	..N.....	
0140	Nationwide.....		31-1733036..	n/a.....			120 Acre Partners, LLC.....	DE.....	NIA.....	Nationwide Realty Investors, Ltd.....	ownership.....	95.000	Nationwide Mutual Insurance Company.....	..N.....	1.....
0140	Nationwide.....		20-4939866..	n/a.....			1125 Yard Street, LLC.....	OH.....	NIA.....	NRI Equity Land Investments, LLC.....	ownership.....	100.000	Nationwide Mutual Insurance Company.....	..N.....	
0140	Nationwide.....		20-4939867..	n/a.....			1175 Bobcat, LLC.....	OH.....	NIA.....	NRI Equity Land Investments, LLC.....	ownership.....	100.000	Nationwide Mutual Insurance Company.....	..N.....	
0140	Nationwide.....		26-2451988..	n/a.....			1492 Capital, LLC.....	OH.....	NIA.....	Nationwide Mutual Insurance Company.....	ownership.....	100.000	Nationwide Mutual Insurance Company.....	..N.....	
0140	Nationwide.....		31-1486309..	n/a.....			111 Rivulon Boulevard, LLC.....	OH.....	NIA.....	NRI-Rivulon, LLC.....	ownership.....	100.000	Nationwide Mutual Insurance Company.....	..N.....	
0140	Nationwide.....		31-1486309..	n/a.....			155 Rivulon Boulevard, LLC.....	OH.....	NIA.....	NRI-Rivulon, LLC.....	ownership.....	100.000	Nationwide Mutual Insurance Company.....	..N.....	
0140	Nationwide.....		31-1486309..	n/a.....			161 Rivulon Boulevard, LLC.....	OH.....	NIA.....	NRI-Rivulon, LLC.....	ownership.....	100.000	Nationwide Mutual Insurance Company.....	..N.....	
0140	Nationwide.....		31-1580283..	n/a.....			170 Marconi, LLC.....	OH.....	NIA.....	NWD Investments, LLC.....	ownership.....	100.000	Nationwide Mutual Insurance Company.....	..N.....	
0140	Nationwide.....		31-1580283..	n/a.....			245 Parks Edge Place, LLC.....	OH.....	NIA.....	NWD Investments, LLC.....	ownership.....	100.000	Nationwide Mutual Insurance Company.....	..N.....	
0140	Nationwide.....		31-1486309..	n/a.....			275 Rivulon Boulevard, LLC.....	OH.....	NIA.....	NRI-Rivulon, LLC.....	ownership.....	100.000	Nationwide Mutual Insurance Company.....	..N.....	
0140	Nationwide.....		31-1486309..	n/a.....			300 Rivulon Boulevard, LLC.....	OH.....	NIA.....	NRI-Rivulon, LLC.....	ownership.....	100.000	Nationwide Mutual Insurance Company.....	..N.....	
0140	Nationwide.....		31-1486309..	n/a.....			310 Rivulon Boulevard, LLC.....	OH.....	NIA.....	NRI-Rivulon, LLC.....	ownership.....	100.000	Nationwide Mutual Insurance Company.....	..N.....	
0140	Nationwide.....		31-1486309..	n/a.....			343 N. Front, LLC.....	OH.....	NIA.....	Nationwide Realty Investors, Ltd.....	ownership.....	100.000	Nationwide Mutual Insurance Company.....	..N.....	
0140	Nationwide.....		31-1486309..	n/a.....			400 Rivulon Boulevard, LLC.....	OH.....	NIA.....	NRI-Rivulon, LLC.....	ownership.....	100.000	Nationwide Mutual Insurance Company.....	..N.....	
0140	Nationwide.....		31-1580283..	n/a.....			400 West Nationwide Boulevard, LLC.....	OH.....	NIA.....	NWD Investments, LLC.....	ownership.....	100.000	Nationwide Mutual Insurance Company.....	..N.....	
0140	Nationwide.....		31-1486309..	n/a.....			410 Rivulon Boulevard, LLC.....	OH.....	NIA.....	NRI-Rivulon, LLC.....	ownership.....	100.000	Nationwide Mutual Insurance Company.....	..N.....	
0140	Nationwide.....		31-1580283..	n/a.....			425 West Nationwide Boulevard, LLC.....	OH.....	NIA.....	NWD Investments, LLC.....	ownership.....	100.000	Nationwide Mutual Insurance Company.....	..N.....	
0140	Nationwide.....		31-1486309..	n/a.....			44 Chestnut, LLC.....	OH.....	NIA.....	Nationwide Realty Investors, Ltd.....	ownership.....	100.000	Nationwide Mutual Insurance Company.....	..N.....	
0140	Nationwide.....		38-4118665..	n/a.....			500 Neil Avenue, LLC.....	OH.....	NIA.....	NWD HP, LLC.....	ownership.....	100.000	Nationwide Mutual Insurance Company.....	..N.....	
0140	Nationwide.....		38-4118665..	n/a.....			515 Kilbourne Street, LLC.....	OH.....	NIA.....	NWD HP, LLC.....	ownership.....	100.000	Nationwide Mutual Insurance Company.....	..N.....	
0140	Nationwide.....		20-4939866..	n/a.....			735 Bobcat Avenue, LLC.....	OH.....	NIA.....	GVY Residential, LLC.....	ownership.....	100.000	Nationwide Mutual Insurance Company.....	..N.....	
0140	Nationwide.....		31-1486309..	n/a.....			75 Rivulon Boulevard, LLC.....	OH.....	NIA.....	NRI-Rivulon, LLC.....	ownership.....	100.000	Nationwide Mutual Insurance Company.....	..N.....	
0140	Nationwide.....		20-4939866..	n/a.....			775 Yard Street, LLC.....	OH.....	NIA.....	NRI Equity Land Investments, LLC.....	ownership.....	100.000	Nationwide Mutual Insurance Company.....	..N.....	
0140	Nationwide.....		20-4939866..	n/a.....			777 Swan Street, LLC.....	OH.....	NIA.....	NRI Equity Land Investments, LLC.....	ownership.....	100.000	Nationwide Mutual Insurance Company.....	..N.....	
0140	Nationwide.....		20-4939866..	n/a.....			780 Yard Street, LLC.....	OH.....	NIA.....	NRI Equity Land Investments, LLC.....	ownership.....	100.000	Nationwide Mutual Insurance Company.....	..N.....	
0140	Nationwide.....		20-4939866..	n/a.....			795 Rail Street, LLC.....	OH.....	NIA.....	NRI Equity Land Investments, LLC.....	ownership.....	100.000	Nationwide Mutual Insurance Company.....	..N.....	
0140	Nationwide.....		20-4939866..	n/a.....			800 Bobcat Avenue, LLC.....	OH.....	NIA.....	NRI Equity Land Investments, LLC.....	ownership.....	100.000	Nationwide Mutual Insurance Company.....	..N.....	
0140	Nationwide.....		20-4939866..	n/a.....			800 Goodale Boulevard, LLC.....	OH.....	NIA.....	NRI Equity Land Investments, LLC.....	ownership.....	100.000	Nationwide Mutual Insurance Company.....	..N.....	
0140	Nationwide.....		20-4939866..	n/a.....			800 Yard Street, LLC.....	OH.....	NIA.....	NRI Equity Land Investments, LLC.....	ownership.....	100.000	Nationwide Mutual Insurance Company.....	..N.....	
0140	Nationwide.....		20-4939866..	n/a.....			805 Bobcat Avenue, LLC.....	OH.....	NIA.....	GVY Residential, LLC.....	ownership.....	100.000	Nationwide Mutual Insurance Company.....	..N.....	
0140	Nationwide.....		20-4939866..	n/a.....			808 Yard Street, LLC.....	OH.....	NIA.....	GVY Residential, LLC.....	ownership.....	100.000	Nationwide Mutual Insurance Company.....	..N.....	

Q12

SCHEDULE Y

PART 1A - DETAIL OF INSURANCE HOLDING COMPANY SYSTEM

1	2	3	4	5	6	7	8	9	10	11	12	13	14	15	16
Group Code	Group Name	NAIC Company Code	ID Number	Federal RSSD	CIK	Name of Securities Exchange if Publicly Traded (U.S. or International)	Names of Parent, Subsidiaries or Affiliates	Domiciliary Location	Relationship to Reporting Entity	Directly Controlled by (Name of Entity/Person)	Type of Control (Ownership Board, Management, Attorney-in-Fact, Influence, Other)	If Control is Ownership Provide Percentage	Ultimate Controlling Entity(ies)/Person(s)	Is an SCA Filing Required? (Y/N)	*
0140	Nationwide		20-4939866	n/a			820 Goodale Boulevard, LLC	OH	NIA	NRI Equity Land Investments, LLC	ownership	100.000	Nationwide Mutual Insurance Company	N	
0140	Nationwide		20-4939866	n/a			825 Junction Way, LLC	OH	NIA	GVY Residential, LLC	ownership	100.000	Nationwide Mutual Insurance Company	N	
			37-1865892	n/a			828 at the Yard Condominiums Home Owners Association	OH	OTH	Other non-Nationwide	n/a		Other non-Nationwide	N	2
0140	Nationwide		20-4939866	n/a			828 Bobcat Avenue, LLC	OH	NIA	NRI Equity Land Investments, LLC	ownership	100.000	Nationwide Mutual Insurance Company	N	
0140	Nationwide		20-4939866	n/a			840 Third Avenue, LLC	OH	NIA	NRI Equity Land Investments, LLC	ownership	100.000	Nationwide Mutual Insurance Company	N	
0140	Nationwide		20-4939866	n/a			840 Yard Street, LLC	OH	NIA	GVY Residential, LLC	ownership	100.000	Nationwide Mutual Insurance Company	N	
0140	Nationwide		20-4939866	n/a			845 Yard Street, LLC	OH	NIA	GVY Residential, LLC	ownership	100.000	Nationwide Mutual Insurance Company	N	
0140	Nationwide		20-4939866	n/a			860 Third Avenue, LLC	OH	NIA	NRI Equity Land Investments, LLC	ownership	100.000	Nationwide Mutual Insurance Company	N	
0140	Nationwide		20-4939866	n/a			880 Third Avenue, LLC	OH	NIA	NRI Equity Land Investments, LLC	ownership	100.000	Nationwide Mutual Insurance Company	N	
0140	Nationwide		20-4939866	n/a			880 Yard Street, LLC	OH	NIA	GVY Residential, LLC	ownership	100.000	Nationwide Mutual Insurance Company	N	
0140	Nationwide		20-4939866	n/a			895 W. Third Avenue, LLC	OH	NIA	NRI Equity Land Investments, LLC	ownership	100.000	Nationwide Mutual Insurance Company	N	
0140	Nationwide		20-4939866	n/a			950 Dorchester Way, LLC	OH	NIA	GVY Residential, LLC	ownership	100.000	Nationwide Mutual Insurance Company	N	
0140	Nationwide		20-4939866	n/a			950 Goodale Boulevard, LLC	OH	NIA	NRI Equity Land Investments, LLC	ownership	100.000	Nationwide Mutual Insurance Company	N	
0140	Nationwide		31-1486309	n/a			960 Bobcat Avenue, LLC	OH	NIA	Nationwide Realty Investors, Ltd.	ownership	100.000	Nationwide Mutual Insurance Company	N	
0140	Nationwide		31-1486309	n/a			975 Rail Street, LLC	OH	NIA	Nationwide Realty Investors, Ltd.	ownership	100.000	Nationwide Mutual Insurance Company	N	
0140	Nationwide		31-1486309	n/a			995 Yard Street, LLC	OH	NIA	Nationwide Realty Investors, Ltd.	ownership	100.000	Nationwide Mutual Insurance Company	N	
0140	Nationwide		31-1486309	n/a			18700 Hayden Road, LLC	OH	NIA	NRI Cavasson, LLC	ownership	100.000	Nationwide Mutual Insurance Company	N	
0140	Nationwide		31-1680808	n/a			AD Investments, LLC	OH	NIA	Nationwide Realty Investors, Ltd.	ownership	60.000	Nationwide Mutual Insurance Company	N	1
0140	Nationwide		31-1580283	n/a			ADTV, LLC	OH	NIA	NWD Investments, LLC	ownership	100.000	Nationwide Mutual Insurance Company	N	
0140	Nationwide		52-2227314	n/a			AGMC Reinsurance, Ltd.	TCA	NIA	Nationwide Advantage Mortgage Company	ownership	100.000	Nationwide Mutual Insurance Company	N	
0140	Nationwide		42-0958655	n/a			ALLIED Group, Inc.	IA	IA	Allied Holdings (Delaware), Inc.	ownership	100.000	Nationwide Mutual Insurance Company	N	
0140	Nationwide		46-4628790	n/a			Allied Holdings (Delaware), Inc.	DE	IA	Nationwide Mutual Insurance Company	ownership	100.000	Nationwide Mutual Insurance Company	Y	
0140	Nationwide	10127	27-0114983	n/a			ALLIED Insurance Company of America	OH	IA	Nationwide Mutual Insurance Company	ownership	100.000	Nationwide Mutual Insurance Company	N	
0140	Nationwide	42579	42-1201931	n/a			ALLIED Property and Casualty Insurance Company	IA	IA	ALLIED Group, Inc.	ownership	100.000	Nationwide Mutual Insurance Company	N	
0140	Nationwide		42-1527863	n/a			ALLIED Texas Agency, Inc.	TX	IA	AMCO Insurance Company	ownership	100.000	Nationwide Mutual Insurance Company	N	
0140	Nationwide	19100	42-6054959	n/a			AMCO Insurance Company	IA	IA	ALLIED Group, Inc.	ownership	100.000	Nationwide Mutual Insurance Company	N	
0140	Nationwide		59-1031596	n/a			American Marine Underwriters, Inc.	FL	NIA	Nationwide Mutual Insurance Company	ownership	100.000	Nationwide Mutual Insurance Company	N	
0140	Nationwide		81-4532504	n/a			American Tax Credit Fund 2017-A, LLC	OH	NIA	Nationwide Life Insurance Company	ownership	100.000	Nationwide Mutual Insurance Company	N	
0140	Nationwide		82-2001573	n/a			American Tax Credit Fund 2017-B, LLC	OH	NIA	Nationwide Life Insurance Company	ownership	100.000	Nationwide Mutual Insurance Company	N	
0140	Nationwide		82-4591498	n/a			American Tax Credit Fund 2018-A, LLC	OH	NIA	Nationwide Life Insurance Company	ownership	100.000	Nationwide Mutual Insurance Company	N	
0140	Nationwide		83-0606592	n/a			American Tax Credit Fund 2018-B, LLC	OH	NIA	Nationwide Life Insurance Company	ownership	100.000	Nationwide Mutual Insurance Company	N	
0140	Nationwide		83-0620232	n/a			American Tax Credit Fund 2018-C, LLC	OH	NIA	Nationwide Life Insurance Company	ownership	100.000	Nationwide Mutual Insurance Company	N	
0140	Nationwide		83-3900932	n/a			American Tax Credit Fund 2019-A, LLC	OH	NIA	Nationwide Life Insurance Company	ownership	100.000	Nationwide Mutual Insurance Company	N	
0140	Nationwide		83-3953721	n/a			American Tax Credit Fund 2019-B, LLC	OH	NIA	Nationwide Life Insurance Company	ownership	100.000	Nationwide Mutual Insurance Company	N	

Q12.1

SCHEDULE Y

PART 1A - DETAIL OF INSURANCE HOLDING COMPANY SYSTEM

1	2	3	4	5	6	7	8	9	10	11	12	13	14	15	16
Group Code	Group Name	NAIC Company Code	ID Number	Federal RSSD	CIK	Name of Securities Exchange if Publicly Traded (U.S. or International)	Names of Parent, Subsidiaries or Affiliates	Domiciliary Location	Relationship to Reporting Entity	Directly Controlled by (Name of Entity/Person)	Type of Control (Ownership Board, Management, Attorney-in-Fact, Influence, Other)	If Control is Ownership Provide Percentage	Ultimate Controlling Entity(ies)/Person(s)	Is an SCA Filing Required? (Y/N)	*
0140	Nationwide		84-3443067	n/a			American Tax Credit Fund 2020-A, LLC	OH	NIA	Nationwide Life Insurance Company	ownership	100.000	Nationwide Mutual Insurance Company	N	
0140	Nationwide		85-2359702	n/a			American Tax Credit Fund 2020-B, LLC	OH	NIA	Nationwide Life Insurance Company	ownership	100.000	Nationwide Mutual Insurance Company	N	
0140	Nationwide		85-2649655	n/a			American Tax Credit Fund 2020-C, LLC	OH	NIA	Nationwide Life Insurance Company	ownership	100.000	Nationwide Mutual Insurance Company	N	
0140	Nationwide		31-1580283	n/a			Arena District CA I, LLC	OH	NIA	NWD Investments, LLC	ownership	100.000	Nationwide Mutual Insurance Company	N	
			36-4857239	n/a			Arena District Garage Condominium Association	OH	OTH	Other non-Nationwide	n/a		Other non-Nationwide	N	2
			90-0280710	n/a			Arena District Owners Association	OH	OTH	Other non-Nationwide	n/a		Other non-Nationwide	N	2
			35-2582728	n/a			Arena District Swim Club Association	OH	OTH	Other non-Nationwide	n/a		Other non-Nationwide	N	2
0140	Nationwide		31-1486309	n/a			Ballantrae Woods, LLC	OH	NIA	Nationwide Realty Investors, Ltd.	ownership	100.000	Nationwide Mutual Insurance Company	N	
0140	Nationwide		26-4083207	n/a			Berkshire Crossing Development, LLC	DE	NIA	NorthStar Commercial Development, LLC	ownership	100.000	Nationwide Mutual Insurance Company	N	
0140	Nationwide		31-1555487	n/a			Broad Street Retail, LLC	DE	NIA	Nationwide Realty Investors, Ltd.	ownership	60.000	Nationwide Mutual Insurance Company	N	1
0140	Nationwide		20-3624379	n/a			Brooke School Investment Fund, LLC	DE	NIA	Nationwide Mutual Insurance Company	ownership	100.000	Nationwide Mutual Insurance Company	N	
0140	Nationwide		31-1486309	n/a			Cavasson Hotel, LLC	OH	NIA	Cavasson Hotel Holdings, LLC	ownership	100.000	Nationwide Mutual Insurance Company	N	
0140	Nationwide		31-1486309	n/a			Cavasson Hotel Holdings, LLC	OH	NIA	NRI Cavasson, LLC	ownership	100.000	Nationwide Mutual Insurance Company	N	
0140	Nationwide		26-0899413	n/a			CHP New Markets Investment Fund, LLC	OH	OTH	Nationwide Mutual Insurance Company	Limited partner /no control	50.000	other non-Nationwide	N	2
0140	Nationwide		20-1618232	n/a			CNRI-Cannonsport Condominium, LLC	OH	NIA	CNRI-Cannonsport, LLC	ownership	100.000	Nationwide Mutual Insurance Company	N	
0140	Nationwide		20-1618232	n/a			CNRI-Cannonsport, LLC	OH	NIA	Nationwide Realty Investors, Ltd.	ownership	100.000	Nationwide Mutual Insurance Company	N	
			n/a	n/a			Co-Investment Fund, LLC	DE	OTH	Other non-Nationwide	n/a		Other non-Nationwide	N	2
0140	Nationwide		31-1579973	n/a			COLHOC Limited Partnership	OH	NIA	NRI Arena, LLC	ownership	30.760	Other non-Nationwide	N	1
0140	Nationwide	29262	74-1061659	n/a			Colonial County Mutual Insurance Company	TX	IA	Other non-Nationwide	contract		Other non-Nationwide	N	2
			45-4901238	n/a			Columbus Arena Management, LLC	OH	OTH	Other non-Nationwide	n/a		Other non-Nationwide	N	2
0140	Nationwide		31-1486309	n/a			Cottages at Hyatts LLC	OH	NIA	Nationwide Realty Investors, Ltd.	ownership	100.000	Nationwide Mutual Insurance Company	N	
0140	Nationwide	18961	68-0066866	n/a			Crestbrook Insurance Company	OH	IA	Nationwide Mutual Insurance Company	ownership	100.000	Nationwide Mutual Insurance Company	N	
0140	Nationwide		31-1486309	n/a			Crewville, Ltd	OH	NIA	Nationwide Realty Investors, Ltd.	ownership	100.000	Nationwide Mutual Insurance Company	N	
0140	Nationwide		84-5052608	n/a			Danforth, LLC	OH	NIA	Nationwide Mutual Insurance Company	ownership	100.000	Nationwide Mutual Insurance Company	N	
0140	Nationwide	42587	42-1207150	n/a			Depositors Insurance Company	IA	IA	ALLIED Group, Inc	ownership	100.000	Nationwide Mutual Insurance Company	N	
			46-4104813	n/a			Discover Affordable Housing Investment Fund I LLC	OH	OTH	Other non-Nationwide	n/a		Other non-Nationwide	N	2
0140	Nationwide		33-0096671	n/a			DVM Insurance Agency	CA	NIA	Veterinary Pet Insurance Company	ownership	100.000	Nationwide Mutual Insurance Company	N	
0140	Nationwide	15821	47-4523959	n/a			Eagle Captive Reinsurance, LLC	OH	IA	Nationwide Life Insurance Company	ownership	100.000	Nationwide Mutual Insurance Company	N	
0140	Nationwide		20-1945276	n/a			East of Madison, LLC	DE	NIA	120 Acre Partners, Ltd	ownership	24.910	Nationwide Mutual Insurance Company	N	1
0140	Nationwide		20-1945276	n/a			East of Madison, LLC	DE	NIA	ND La Quinta Partners, LLC	ownership	75.090	Nationwide Mutual Insurance Company	N	1
0140	Nationwide		26-3260559	n/a			E-Risk Services, L.L.C.	DE	NIA	Nationwide Mutual Insurance Company	ownership	100.000	Nationwide Mutual Insurance Company	N	
			30-0951639	n/a			ERN-4 Property Owners Association, Inc	OH	OTH	Other non-Nationwide	n/a		Other non-Nationwide	N	2
0140	Nationwide	22209	75-6013587	n/a			Freedom Specialty Insurance Company	OH	IA	Scottsdale Insurance Company	ownership	100.000	Nationwide Mutual Insurance Company	N	
			46-4736379	n/a			GPN-1 Property Owners Association, Inc	OH	OTH	Other non-Nationwide	n/a		other non-Nationwide	N	2

Q12.2

SCHEDULE Y

PART 1A - DETAIL OF INSURANCE HOLDING COMPANY SYSTEM

1	2	3	4	5	6	7	8	9	10	11	12	13	14	15	16
Group Code	Group Name	NAIC Company Code	ID Number	Federal RSSD	CIK	Name of Securities Exchange if Publicly Traded (U.S. or International)	Names of Parent, Subsidiaries or Affiliates	Domiciliary Location	Relationship to Reporting Entity	Directly Controlled by (Name of Entity/Person)	Type of Control (Ownership Board, Management, Attorney-in-Fact, Influence, Other)	If Control is Ownership Provide Percentage	Ultimate Controlling Entity(ies)/Person(s)	Is an SCA Filing Required? (Y/N)	*
0140	Nationwide		20-4939866	n/a			Grandview Yard Hotel Holdings, LLC	OH	NIA	NRI Equity Land Investments, LLC	ownership	100.000	Nationwide Mutual Insurance Company	N	
0140	Nationwide		20-4939866	n/a			Grandview Yard Hotel, LLC	OH	NIA	Grandview Yard Hotel Holdings, LLC	ownership	100.000	Nationwide Mutual Insurance Company	N	
0140	Nationwide		20-4939866	n/a			GVY Residential, LLC	OH	NIA	NRI Equity Land Investments, LLC	ownership	100.000	Nationwide Mutual Insurance Company	N	
0140	Nationwide		31-1486309	n/a			Harlem Road Developers, LLC	OH	NIA	Nationwide Realty Investors, Ltd.	ownership	100.000	Nationwide Mutual Insurance Company	N	
0140	Nationwide		51-0241172	n/a			Harleysville Group Inc	DE	NIA	Allied Holdings (Delaware), Inc.	ownership	100.000	Nationwide Mutual Insurance Company	N	
0140	Nationwide	23582	41-0417250	n/a			Harleysville Insurance Company	OH	IA	Harleysville Group, Inc.	ownership	100.000	Nationwide Mutual Insurance Company	N	
0140	Nationwide	42900	23-2253669	n/a			Harleysville Insurance Company of New Jersey	NJ	IA	Harleysville Group, Inc.	ownership	100.000	Nationwide Mutual Insurance Company	N	
0140	Nationwide	10674	23-2864924	n/a			Harleysville Insurance Company of New York	OH	IA	Harleysville Group, Inc.	ownership	100.000	Nationwide Mutual Insurance Company	N	
0140	Nationwide	14516	38-3198542	n/a			Harleysville Lake States Insurance Company	MI	IA	Harleysville Group, Inc.	ownership	100.000	Nationwide Mutual Insurance Company	N	
0140	Nationwide	64327	23-1580983	n/a			Harleysville Life Insurance Company	OH	IA	Nationwide Mutual Insurance Company	ownership	100.000	Nationwide Mutual Insurance Company	N	
0140	Nationwide	35696	23-2384978	n/a			Harleysville Preferred Insurance Company	OH	IA	Harleysville Group, Inc.	ownership	100.000	Nationwide Mutual Insurance Company	N	
0140	Nationwide	26182	04-1989660	n/a			Harleysville Worcester Insurance Company	OH	IA	Harleysville Group, Inc.	ownership	100.000	Nationwide Mutual Insurance Company	N	
0140	Nationwide		32-0051216	n/a			Hideaway Properties Corporation	CA	NIA	Nationwide Realty Investors, Ltd.	ownership	50.000	Nationwide Mutual Insurance Company	N	1
0140	Nationwide		20-3289512	n/a			Jefferson National Financial Corp	DE	NIA	Nationwide Life Insurance Company	ownership	100.000	Nationwide Mutual Insurance Company	Y	
0140	Nationwide		64017	75-0300900	n/a		Jefferson National Life Insurance Company	TX	IA	Jefferson National Financial Corporation	ownership	100.000	Nationwide Mutual Insurance Company	N	
0140	Nationwide	15727	47-1180302	n/a			Jefferson National Life Insurance Company of New York	NY	IA	Jefferson National Life Insurance Company	ownership	100.000	Nationwide Mutual Insurance Company	N	
0140	Nationwide		61-1340595	n/a			Jefferson National Securities Corporation	DE	NIA	Jefferson National Financial Corporation	ownership	100.000	Nationwide Mutual Insurance Company	N	
0140	Nationwide		31-1486309	n/a			Jerome Village Company, LLC	OH	NIA	Nationwide Realty Investors, Ltd.	ownership	100.000	Nationwide Mutual Insurance Company	N	
			46-2974590	n/a			Jerome Village Master Property Owners Association, Inc.	OH	OTH	Other non-Nationwide	n/a		Other non-Nationwide	N	2
			46-2956640	n/a			Jerome Village Residential Property Owners Association, Inc.	OH	OTH	Other non-Nationwide	n/a		Other non-Nationwide	N	2
0140	Nationwide		31-1486309	n/a			JV Developers, LLC	OH	NIA	Nationwide Realty Investors, Ltd.	ownership	100.000	Nationwide Mutual Insurance Company	N	
0140	Nationwide		74-1395229	n/a			Lone Star General Agency, Inc.	TX	IA	Nationwide Mutual Insurance Company	ownership	100.000	Nationwide Mutual Insurance Company	N	
0140	Nationwide	11991	38-0865250	n/a			National Casualty Company	OH	IA	Nationwide Mutual Insurance Company	ownership	100.000	Nationwide Mutual Insurance Company	N	
0140	Nationwide		AC000920	n/a			National Casualty Company of America, Ltd.	GBR	IA	National Casualty Company	ownership	100.000	Nationwide Mutual Insurance Company	N	
0140	Nationwide		42-1154244	n/a			Nationwide Advantage Mortgage Company	IA	NIA	AMCO Insurance Company	ownership	87.300	Nationwide Mutual Insurance Company	Y	1
0140	Nationwide		42-1154244	n/a			Nationwide Advantage Mortgage Company	IA	NIA	ALLIED Property & Casualty Insurance Company	ownership	8.470	Nationwide Mutual Insurance Company	Y	1
0140	Nationwide		42-1154244	n/a			Nationwide Advantage Mortgage Company	IA	NIA	Depositors Insurance Company	ownership	4.230	Nationwide Mutual Insurance Company	Y	1
0140	Nationwide	26093	48-0470690	n/a			Nationwide Affinity Insurance Company of America	OH	IA	Nationwide Mutual Insurance Company	ownership	100.000	Nationwide Mutual Insurance Company	N	
0140	Nationwide	28223	42-1015537	n/a			Nationwide Agribusiness Insurance Company	IA	IA	Nationwide Mutual Insurance Company	ownership	100.000	Nationwide Mutual Insurance Company	N	
0140	Nationwide		31-1578869	n/a			Nationwide Arena, LLC	OH	NIA	NRI Arena, LLC	ownership	90.000	Nationwide Mutual Insurance Company	N	1

Q12.3

SCHEDULE Y

PART 1A - DETAIL OF INSURANCE HOLDING COMPANY SYSTEM

1	2	3	4	5	6	7	8	9	10	11	12	13	14	15	16
Group Code	Group Name	NAIC Company Code	ID Number	Federal RSSD	CIK	Name of Securities Exchange if Publicly Traded (U.S. or International)	Names of Parent, Subsidiaries or Affiliates	Domiciliary Location	Relationship to Reporting Entity	Directly Controlled by (Name of Entity/Person)	Type of Control (Ownership Board, Management, Attorney-in-Fact, Influence, Other)	If Control is Ownership Provide Percentage	Ultimate Controlling Entity(ies)/Person(s)	Is an SCA Filing Required? (Y/N)	*
0140	Nationwide		20-8670712	n/a			Nationwide Asset Management, LLC	OH	NIA	Nationwide Mutual Insurance Company	ownership	100.000	Nationwide Mutual Insurance Company	N	
0140	Nationwide	10723	95-0639970	n/a			Nationwide Assurance Company	OH	IA	Nationwide Mutual Insurance Company	ownership	100.000	Nationwide Mutual Insurance Company	N	
0140	Nationwide		31-1036287	n/a			Nationwide Cash Management Company	OH	NIA	Nationwide Mutual Insurance Company	ownership	100.000	Nationwide Mutual Insurance Company	N	
0140	Nationwide		31-4416546	n/a			Nationwide Corporation	OH	NIA	Nationwide Mutual Insurance Company	ownership	95.200	Nationwide Mutual Insurance Company	Y	1
0140	Nationwide		31-4416546	n/a			Nationwide Corporation	OH	NIA	Nationwide Mutual Fire Insurance Company	ownership	4.800	Nationwide Mutual Insurance Company	Y	1
0140	Nationwide		31-1667326	n/a			Nationwide Financial Assignment Company	OH	NIA	Nationwide Life Insurance Company	ownership	100.000	Nationwide Mutual Insurance Company	N	
0140	Nationwide		23-2412039	n/a			Nationwide Financial General Agency, Inc.	PA	NIA	NFS Distributors, Inc.	ownership	100.000	Nationwide Mutual Insurance Company	N	
0140	Nationwide		31-6554353	n/a			Nationwide Financial Services Capital Trust	DE	NIA	Nationwide Financial Services, Inc.	ownership	100.000	Nationwide Mutual Insurance Company	N	
0140	Nationwide		31-1486870	n/a			Nationwide Financial Services, Inc.	DE	NIA	Nationwide Corporation	ownership	100.000	Nationwide Mutual Insurance Company	N	
0140	Nationwide		52-6969857	n/a			Nationwide Fund Advisors	DE	NIA	Nationwide Financial Services, Inc.	ownership	100.000	Nationwide Mutual Insurance Company	N	
0140	Nationwide		31-1748721	n/a			Nationwide Fund Distributors LLC	DE	NIA	NFS Distributors, Inc.	ownership	100.000	Nationwide Mutual Insurance Company	N	
0140	Nationwide		31-0900518	n/a			Nationwide Fund Management LLC	DE	NIA	NFS Distributors, Inc.	ownership	100.000	Nationwide Mutual Insurance Company	N	
0140	Nationwide	23760	31-4425763	n/a			Nationwide General Insurance Company	OH	IA	Nationwide Mutual Insurance Company	ownership	100.000	Nationwide Mutual Insurance Company	N	
0140	Nationwide	10070	31-1399201	n/a			Nationwide Indemnity Company	OH	IA	Nationwide Mutual Insurance Company	ownership	100.000	Nationwide Mutual Insurance Company	N	
0140	Nationwide	25453	95-2130882	n/a			Nationwide Insurance Company of America	OH	IA	ALLIED Group, Inc.	ownership	100.000	Nationwide Mutual Insurance Company	N	
0140	Nationwide	10948	31-1613686	n/a			Nationwide Insurance Company of Florida	OH	IA	Nationwide Mutual Insurance Company	ownership	100.000	Nationwide Mutual Insurance Company	N	
0140	Nationwide		41-2206199	n/a			Nationwide Investment Advisors, LLC	OH	NIA	Nationwide Life Insurance Company	ownership	100.000	Nationwide Mutual Insurance Company	N	
0140	Nationwide		73-0988442	n/a			Nationwide Investment Services Corporation	OK	NIA	Nationwide Life Insurance Company	ownership	100.000	Nationwide Mutual Insurance Company	Y	
0140	Nationwide	92657	31-1000740	n/a			Nationwide Life and Annuity Insurance Company	OH	IA	Nationwide Life Insurance Company	ownership	100.000	Nationwide Mutual Insurance Company	N	
0140	Nationwide	66869	31-4156830	n/a			Nationwide Life Insurance Company	OH	IA	Nationwide Financial Services, Inc.	ownership	100.000	Nationwide Mutual Insurance Company	N	
0140	Nationwide		13-4212969	n/a			Nationwide Life Tax Credit Partners 2002-A, LLC	OH	NIA	Nationwide Life Insurance Company	other	0.010	Nationwide Mutual Insurance Company	N	1
0140	Nationwide		01-0749754	n/a			Nationwide Life Tax Credit Partners 2002-B, LLC	OH	NIA	Nationwide Life Insurance Company	other	0.010	Nationwide Mutual Insurance Company	N	1
0140	Nationwide		54-2113175	n/a			Nationwide Life Tax Credit Partners 2003-A, LLC	OH	NIA	Nationwide Life Insurance Company	other	0.010	Nationwide Mutual Insurance Company	N	1
0140	Nationwide		58-2672725	n/a			Nationwide Life Tax Credit Partners 2003-B, LLC	OH	NIA	Nationwide Life Insurance Company	other	0.010	Nationwide Mutual Insurance Company	N	1
0140	Nationwide		20-0382144	n/a			Nationwide Life Tax Credit Partners 2004-A, LLC	OH	NIA	Nationwide Life Insurance Company	other	0.010	Nationwide Mutual Insurance Company	N	1
0140	Nationwide		20-0745965	n/a			Nationwide Life Tax Credit Partners 2004-C, LLC	OH	NIA	Nationwide Life Insurance Company	other	0.010	Nationwide Mutual Insurance Company	N	1
0140	Nationwide		20-1918935	n/a			Nationwide Life Tax Credit Partners 2004-F, LLC	OH	NIA	Nationwide Life Insurance Company	other	0.010	Nationwide Mutual Insurance Company	N	1
0140	Nationwide		20-2303694	n/a			Nationwide Life Tax Credit Partners 2005-A, LLC	OH	NIA	Nationwide Life Insurance Company	other	0.010	Nationwide Mutual Insurance Company	N	1

Q12.4

SCHEDULE Y

PART 1A - DETAIL OF INSURANCE HOLDING COMPANY SYSTEM

1	2	3	4	5	6	7	8	9	10	11	12	13	14	15	16
Group Code	Group Name	NAIC Company Code	ID Number	Federal RSSD	CIK	Name of Securities Exchange if Publicly Traded (U.S. or International)	Names of Parent, Subsidiaries or Affiliates	Domiciliary Location	Relationship to Reporting Entity	Directly Controlled by (Name of Entity/Person)	Type of Control (Ownership Board, Management, Attorney-in-Fact, Influence, Other)	If Control is Ownership Provide Percentage	Ultimate Controlling Entity(ies)/Person(s)	Is an SCA Filing Required? (Y/N)	*
0140	Nationwide.....		20-2303602..	n/a.....			Nationwide Life Tax Credit Partners 2005-B, LLC	OH.....	NIA.....	Nationwide Life Insurance Company.....	other.....0.010	Nationwide Mutual Insurance Company.....N.....	1.....
0140	Nationwide.....		20-2450960..	n/a.....			Nationwide Life Tax Credit Partners 2005-C, LLC	OH.....	NIA.....	Nationwide Life Insurance Company.....	other.....0.010	Nationwide Mutual Insurance Company.....N.....	1.....
0140	Nationwide.....		20-2774223..	n/a.....			Nationwide Life Tax Credit Partners 2005-E, LLC	OH.....	NIA.....	Nationwide Life Insurance Company.....	other.....0.010	Nationwide Mutual Insurance Company.....N.....	1.....
0140	Nationwide.....		21-1288836..	n/a.....			Nationwide Life Tax Credit Partners 2007-A, LLC	OH.....	NIA.....	Nationwide Life Insurance Company.....	other.....0.010	Nationwide Mutual Insurance Company.....N.....	1.....
0140	Nationwide.....		26-3427373..	n/a.....			Nationwide Life Tax Credit Partners 2009-A, LLC	OH.....	NIA.....	Nationwide Life Insurance Company.....	other.....0.010	Nationwide Mutual Insurance Company.....N.....	1.....
0140	Nationwide.....		26-3427479..	n/a.....			Nationwide Life Tax Credit Partners 2009-C, LLC	OH.....	NIA.....	Nationwide Life Insurance Company.....	other.....0.010	Nationwide Mutual Insurance Company.....N.....	1.....
0140	Nationwide.....		26-3427525..	n/a.....			Nationwide Life Tax Credit Partners 2009-D, LLC	OH.....	NIA.....	Nationwide Life Insurance Company.....	other.....0.010	Nationwide Mutual Insurance Company.....N.....	1.....
0140	Nationwide.....		26-4737055..	n/a.....			Nationwide Life Tax Credit Partners 2009-E, LLC	OH.....	NIA.....	Nationwide Life Insurance Company.....	ownership.....100.000	Nationwide Mutual Insurance Company.....N.....	
0140	Nationwide.....		26-4737157..	n/a.....			Nationwide Life Tax Credit Partners 2009-F, LLC	OH.....	NIA.....	Nationwide Life Insurance Company.....	ownership.....100.000	Nationwide Mutual Insurance Company.....N.....	
0140	Nationwide.....		27-1362364..	n/a.....			Nationwide Life Tax Credit Partners 2009-I, LLC	OH.....	NIA.....	Nationwide Life Insurance Company.....	other.....0.010	Nationwide Mutual Insurance Company.....N.....	1.....
0140	Nationwide.....		45-0469525..	n/a.....			Nationwide Life Tax Credit Partners No. 1, LLC	OH.....	NIA.....	Nationwide Life Insurance Company.....	other.....0.010	Nationwide Mutual Insurance Company.....N.....	1.....
0140	Nationwide.....	42110..	75-1780981..	n/a.....			Nationwide Lloyds.....	TX.....	IA.....	n/a.....	contract.....		Nationwide Mutual Insurance Company.....N.....	2.....
0140	Nationwide.....		42-1373380..	n/a.....			Nationwide Sales Solutions, Inc. (fka Nationwide Member Solutions Agency Inc.)	IA.....	NIA.....	ALLIED Group, Inc.....	ownership.....100.000	Nationwide Mutual Insurance Company.....N.....	
0140	Nationwide.....		75-3191025..	n/a.....			Nationwide Mutual Capital I, LLC.....	DE.....	NIA.....	Nationwide Mutual Capital, LLC.....	ownership.....100.000	Nationwide Mutual Insurance Company.....N.....	
0140	Nationwide.....		75-3191025..	n/a.....			Nationwide Mutual Capital, LLC.....	OH.....	NIA.....	Nationwide Mutual Insurance Company.....	ownership.....100.000	Nationwide Mutual Insurance Company.....N.....	
0140	Nationwide.....	23779..	31-4177110..	n/a.....			Nationwide Mutual Fire Insurance Company.....	OH.....	OTH.....	Other non-Nationwide.....	n/a.....		Other non-Nationwide.....N.....	2.....
0140	Nationwide.....	23787..	31-4177100..	n/a.....			Nationwide Mutual Insurance Company.....	OH.....	UDP.....	Other non-Nationwide.....	n/a.....		Other non-Nationwide.....N.....	2.....
0140	Nationwide.....		34-2012765..	n/a.....			Nationwide Private Equity Fund, LLC.....	OH.....	NIA.....	Nationwide Mutual Insurance Company.....	ownership.....100.000	Nationwide Mutual Insurance Company.....N.....	
0140	Nationwide.....	37877..	31-0970750..	n/a.....			Nationwide Property and Casualty Insurance Company	OH.....	IA.....	Nationwide Mutual Insurance Company.....	ownership.....100.000	Nationwide Mutual Insurance Company.....N.....	
0140	Nationwide.....		31-1486309..	n/a.....			Nationwide Realty Investors, Ltd.....	OH.....	NIA.....	Nationwide Mutual Insurance Company.....	ownership.....97.000	Nationwide Mutual Insurance Company.....N.....	1.....
0140	Nationwide.....		31-1486309..	n/a.....			Nationwide Realty Investors, Ltd.....	OH.....	NIA.....	Nationwide Indemnity Company.....	ownership.....3.000	Nationwide Mutual Insurance Company.....N.....	1.....
0140	Nationwide.....		31-1486309..	n/a.....			Nationwide Realty Management, LLC.....	OH.....	NIA.....	Nationwide Realty Investors, Ltd.....	ownership.....100.000	Nationwide Mutual Insurance Company.....N.....	
0140	Nationwide.....		n/a.....	n/a.....			Nationwide Realty Services, Ltd.....	OH.....	NIA.....	Nationwide Mutual Insurance Company.....	ownership.....100.000	Nationwide Mutual Insurance Company.....N.....	
0140	Nationwide.....		73-0948330..	n/a.....			Nationwide Retirement Solutions, Inc.....	DE.....	NIA.....	NFS Distributors, Inc.....	ownership.....100.000	Nationwide Mutual Insurance Company.....N.....	

Q12.5

SCHEDULE Y

PART 1A - DETAIL OF INSURANCE HOLDING COMPANY SYSTEM

1	2	3	4	5	6	7	8	9	10	11	12	13	14	15	16
Group Code	Group Name	NAIC Company Code	ID Number	Federal RSSD	CIK	Name of Securities Exchange if Publicly Traded (U.S. or International)	Names of Parent, Subsidiaries or Affiliates	Domiciliary Location	Relationship to Reporting Entity	Directly Controlled by (Name of Entity/Person)	Type of Control (Ownership Board, Management, Attorney-in-Fact, Influence, Other)	If Control is Ownership Provide Percentage	Ultimate Controlling Entity(ies)/Person(s)	Is an SCA Filing Required? (Y/N)	*
0140	Nationwide.....		83-2250056..	n/a.....			Nationwide SBL, LLC.....	OH.....	NIA.....	Nationwide Life and Annuity Insurance Company	ownership.....	100.000	Nationwide Mutual Insurance Company.....	N.....	
0140	Nationwide.....		36-2434406..	n/a.....			Nationwide Securities, LLC.....	OH.....	NIA.....	NFS Distributors, Inc.....	ownership.....	100.000	Nationwide Mutual Insurance Company.....	N.....	
0140	Nationwide.....		31-4177100..	n/a.....			Nationwide Services Company, LLC.....	OH.....	NIA.....	Nationwide Mutual Insurance Company.....	ownership.....	100.000	Nationwide Mutual Insurance Company.....	N.....	
0140	Nationwide.....		27-0768791..	n/a.....			Nationwide Tax Credit Partners 2009-H, LLC...	OH.....	NIA.....	Nationwide Mutual Insurance Company.....	ownership.....	100.000	Nationwide Mutual Insurance Company.....	N.....	
0140	Nationwide.....		46-1952215..	n/a.....			Nationwide Tax Credit Partners 2013-A, LLC...	OH.....	NIA.....	Nationwide Life Insurance Company.....	other.....	0.010	Nationwide Mutual Insurance Company.....	N.....	1.....
0140	Nationwide.....		46-1971926..	n/a.....			Nationwide Tax Credit Partners 2013-B, LLC...	OH.....	NIA.....	Nationwide Life Insurance Company.....	other.....	0.010	Nationwide Mutual Insurance Company.....	N.....	1.....
0140	Nationwide.....		31-1592130..	2729677			Nationwide Trust Company, FSB.....	USA.....	OTH.....	Nationwide Financial Services, Inc.....	ownership.....	100.000	Nationwide Mutual Insurance Company.....	N.....	2.....
0140	Nationwide.....		20-5976272..	n/a.....			Nationwide Ventures, LLC.....	OH.....	NIA.....	Nationwide Mutual Insurance Company.....	ownership.....	100.000	Nationwide Mutual Insurance Company.....	N.....	
0140	Nationwide.....		31-0871532..	n/a.....			NBS Insurance Agency, Inc.....	OH.....	IA.....	Nationwide Mutual Insurance Company.....	ownership.....	100.000	Nationwide Mutual Insurance Company.....	N.....	
0140	Nationwide.....		11-3651828..	n/a.....			ND La Quinta Partners, LLC.....	DE.....	NIA.....	Nationwide Realty Investors, Ltd.....	ownership.....	95.000	Nationwide Mutual Insurance Company.....	N.....	1.....
0140	Nationwide.....		31-1630871..	n/a.....			NFS Distributors, Inc.....	DE.....	NIA.....	Nationwide Financial Services, Inc.....	ownership.....	100.000	Nationwide Mutual Insurance Company.....	N.....	
0140	Nationwide.....		82-5195340..	n/a.....			NLIC REO Holdings, LLC.....	OH.....	NIA.....	Nationwide Life Insurance Company.....	ownership.....	100.000	Nationwide Mutual Insurance Company.....	N.....	
0140	Nationwide.....		82-5194959..	n/a.....			NMIC REO Holdings, LLC.....	OH.....	NIA.....	Nationwide Mutual Insurance Company.....	ownership.....	100.000	Nationwide Mutual Insurance Company.....	N.....	
0140	Nationwide.....		46-3762545..	n/a.....			NNOV8, LLC.....	OH.....	NIA.....	Nationwide Mutual Insurance Company.....	ownership.....	100.000	Nationwide Mutual Insurance Company.....	N.....	
0140	Nationwide.....		20-4939866..	n/a.....			North of Third, LLC.....	OH.....	NIA.....	NRI Equity Land Investments, LLC.....	ownership.....	100.000	Nationwide Mutual Insurance Company.....	N.....	
			61-1753500..	n/a.....			Northstar Master Property Owners Association, Inc.	OH.....	OTH.....	Other non-Nationwide.....	n/a.....		Other non-Nationwide.....	N.....	2.....
0140	Nationwide.....		26-4083354..	n/a.....			Northstar Residential Development, LLC.....	OH.....	NIA.....	Nationwide Realty Investors, Ltd.....	ownership.....	50.000	Nationwide Mutual Insurance Company.....	N.....	1.....
0140	Nationwide.....		31-1486309..	n/a.....			NRI Arena, LLC.....	OH.....	NIA.....	Nationwide Realty Investors, Ltd.....	ownership.....	100.000	Nationwide Mutual Insurance Company.....	N.....	
0140	Nationwide.....		31-1486309..	n/a.....			NRI Brookside, LLC.....	OH.....	NIA.....	Nationwide Realty Investors, Ltd.....	ownership.....	100.000	Nationwide Mutual Insurance Company.....	N.....	
0140	Nationwide.....		31-1486309..	n/a.....			NRI Builders, LLC.....	OH.....	NIA.....	Nationwide Realty Investors, Ltd.....	ownership.....	100.000	Nationwide Mutual Insurance Company.....	N.....	
0140	Nationwide.....		31-1486309..	n/a.....			NRI Cavasson, LLC.....	OH.....	NIA.....	Nationwide Realty Investors, Ltd.....	ownership.....	100.000	Nationwide Mutual Insurance Company.....	N.....	
0140	Nationwide.....		31-1486309..	n/a.....			NRI Communities/Harris Blvd., LLC.....	OH.....	NIA.....	Nationwide Realty Investors, Ltd.....	ownership.....	100.000	Nationwide Mutual Insurance Company.....	N.....	
0140	Nationwide.....		31-1486309..	n/a.....			NRI Corporate Housing, LLC.....	OH.....	NIA.....	Nationwide Realty Investors, Ltd.....	ownership.....	100.000	Nationwide Mutual Insurance Company.....	N.....	
0140	Nationwide.....		31-1486309..	n/a.....			NRI Cramer Creek, LLC.....	OH.....	NIA.....	Nationwide Realty Investors, Ltd.....	ownership.....	100.000	Nationwide Mutual Insurance Company.....	N.....	
0140	Nationwide.....		20-4939866..	n/a.....			NRI Equity Land Investments, LLC.....	OH.....	NIA.....	Nationwide Realty Investors, Ltd.....	ownership.....	80.000	Nationwide Mutual Insurance Company.....	N.....	1.....
0140	Nationwide.....		26-0212217..	n/a.....			NRI Equity Tampa, LLC.....	OH.....	NIA.....	Nationwide Realty Investors, Ltd.....	ownership.....	100.000	Nationwide Mutual Insurance Company.....	N.....	
0140	Nationwide.....		31-1486309..	n/a.....			NRI Office Ventures, Ltd.....	OH.....	NIA.....	Nationwide Realty Investors, Ltd.....	ownership.....	100.000	Nationwide Mutual Insurance Company.....	N.....	
0140	Nationwide.....		31-1580283..	n/a.....			NRI Telecom, LLC.....	OH.....	NIA.....	NWD Investments, LLC.....	ownership.....	100.000	Nationwide Mutual Insurance Company.....	N.....	
0140	Nationwide.....		31-1486309..	n/a.....			NRI-Rivulon, LLC.....	OH.....	NIA.....	Nationwide Realty Investors, Ltd.....	ownership.....	100.000	Nationwide Mutual Insurance Company.....	N.....	
0140	Nationwide.....		26-4083354..	n/a.....			NS Developers, LLC.....	OH.....	NIA.....	Northstar Residential Development, LLC.....	ownership.....	100.000	Nationwide Mutual Insurance Company.....	N.....	
0140	Nationwide.....		45-3123274..	n/a.....			NTCIF-2011 Georgia State Investor, LLC.....	OH.....	NIA.....	Nationwide Property and Casualty Company..	ownership.....	100.000	Nationwide Mutual Insurance Company.....	N.....	
0140	Nationwide.....		90-0729552..	n/a.....			NTCIF-2011, LLC.....	OH.....	NIA.....	Nationwide Mutual Insurance Company.....	ownership.....	50.000	Nationwide Mutual Insurance Company.....	N.....	1.....
0140	Nationwide.....		90-0729552..	n/a.....			NTCIF-2011, LLC.....	OH.....	NIA.....	Nationwide Mutual Fire Insurance Company...	ownership.....	50.000	Nationwide Mutual Insurance Company.....	N.....	1.....
0140	Nationwide.....		27-4700627..	n/a.....			NTCP 2011-A, LLC.....	OH.....	OTH.....	Nationwide Life Insurance Company.....	other.....	0.010	Nationwide Mutual Insurance Company.....	N.....	2.....

Q12.6

SCHEDULE Y

PART 1A - DETAIL OF INSURANCE HOLDING COMPANY SYSTEM

1	2	3	4	5	6	7	8	9	10	11	12	13	14	15	16
Group Code	Group Name	NAIC Company Code	ID Number	Federal RSSD	CIK	Name of Securities Exchange if Publicly Traded (U.S. or International)	Names of Parent, Subsidiaries or Affiliates	Domiciliary Location	Relationship to Reporting Entity	Directly Controlled by (Name of Entity/Person)	Type of Control (Ownership Board, Management, Attorney-in-Fact, Influence, Other)	If Control is Ownership Provide Percentage	Ultimate Controlling Entity(ies)/Person(s)	Is an SCA Filing Required? (Y/N)	*
0140	Nationwide		46-0741029	n/a			NTCP 2012-A, LLC	OH	OTH	Nationwide Life Insurance Company	other	0.010	Nationwide Mutual Insurance Company	N	2
0140	Nationwide		46-3309896	n/a			NTCP 2013-C, LLC	OH	OTH	Nationwide Life Insurance Company	other	0.010	Nationwide Mutual Insurance Company	N	2
0140	Nationwide		46-4111078	n/a			NTCP 2014-A, LLC	OH	OTH	Nationwide Life Insurance Company	other	0.010	Nationwide Mutual Insurance Company	N	2
0140	Nationwide		47-1404116	n/a			NTCP 2014-B, LLC	OH	OTH	Nationwide Life Insurance Company	other	0.010	Nationwide Mutual Insurance Company	N	2
0140	Nationwide		47-1413242	n/a			NTCP 2014-C, LLC	OH	OTH	Nationwide Life Insurance Company	other	0.010	Nationwide Mutual Insurance Company	N	2
0140	Nationwide		47-3909345	n/a			NTCP 2015-A, LLC	OH	OTH	Nationwide Life Insurance Company	other	0.010	Nationwide Mutual Insurance Company	N	2
0140	Nationwide		47-4148470	n/a			NTCP 2015-B, LLC	OH	OTH	Nationwide Life Insurance Company	other	0.010	Nationwide Mutual Insurance Company	N	2
0140	Nationwide		81-3836925	n/a			NTCP 2016-A, LLC	OH	NIA	Nationwide Life Insurance Company	ownership	100.000	Nationwide Mutual Insurance Company	N	
0140	Nationwide		82-2015065	n/a			NTCP 2017-A, LLC	OH	NIA	Nationwide Life Insurance Company	ownership	100.000	Nationwide Mutual Insurance Company	N	
0140	Nationwide		84-1969518	n/a			NW Fyrebyrd, LLC	OH	NIA	NNOV8, LLC	ownership	100.000	Nationwide Mutual Insurance Company	N	
0140	Nationwide		81-0936428	n/a			NW Private Debt, LLC	OH	NIA	Nationwide Mutual Insurance Company	ownership	100.000	Nationwide Mutual Insurance Company	N	
0140	Nationwide		26-1903919	n/a			NW REI, LLC	DE	NIA	Nationwide Mutual Insurance Company	ownership	100.000	Nationwide Mutual Insurance Company	N	
0140	Nationwide		81-2326191	n/a			NW-442 Ocean, LLC	OH	NIA	NW REI (NLIC), LLC	ownership	100.000	Nationwide Mutual Insurance Company	N	
0140	Nationwide		46-3654078	n/a			NW-Amesbury, LLC	OH	NIA	NW-REI, LLC	ownership	100.000	Nationwide Mutual Insurance Company	N	
0140	Nationwide		81-1263284	n/a			NW-Amesbury II, LLC	OH	NIA	Nationwide Mutual Insurance Company	ownership	100.000	Nationwide Mutual Insurance Company	N	
0140	Nationwide		84-2078643	n/a			NW-Amesbury III, LLC	OH	NIA	Nationwide Mutual Insurance Company	ownership	100.000	Nationwide Mutual Insurance Company	N	
0140	Nationwide		84-3727023	n/a			NW-Ashland, LLC	OH	NIA	Nationwide Mutual Fire Insurance Company	ownership	100.000	Nationwide Mutual Insurance Company	N	
0140	Nationwide		83-2056769	n/a			NW-Athens Way, LLC	OH	NIA	Nationwide Life Insurance Company	ownership	100.000	Nationwide Mutual Insurance Company	N	
0140	Nationwide		81-1246932	n/a			NW-Baseline, LLC	OH	NIA	Nationwide Mutual Insurance Company	ownership	100.000	Nationwide Mutual Insurance Company	N	
0140	Nationwide		81-1869861	n/a			NW-Beech, LLC	OH	NIA	NW REI, (NMFIC), LLC	ownership	100.000	Nationwide Mutual Insurance Company	N	
0140	Nationwide		84-3942108	n/a			NW-Beloit, LLC	OH	NIA	Nationwide Mutual Fire Insurance Company	ownership	100.000	Nationwide Mutual Fire Insurance Company	N	
0140	Nationwide		83-0553339	n/a			NW-Buena Vista, LLC	OH	NIA	Nationwide Mutual Fire Insurance Company	ownership	100.000	Nationwide Mutual Fire Insurance Company	N	
0140	Nationwide		83-1613456	n/a			NW-Cameron Village, LLC	OH	NIA	Nationwide Life Insurance Company	ownership	100.000	Nationwide Mutual Insurance Company	N	
0140	Nationwide		83-4513883	n/a			NW-Carothers, LLC	OH	NIA	Nationwide Mutual Fire Insurance Company	ownership	100.000	Nationwide Mutual Fire Insurance Company	N	
0140	Nationwide		81-1211881	n/a			NW-Castle Rock, LLC	OH	NIA	Nationwide Mutual Insurance Company	ownership	100.000	Nationwide Mutual Insurance Company	N	
0140	Nationwide		82-2957977	n/a			NW-Civita, LLC	OH	NIA	Nationwide Life Insurance Company	ownership	100.000	Nationwide Mutual Insurance Company	N	
0140	Nationwide		82-2958440	n/a			NW-Civita NLAIC, LLC	OH	NIA	Nationwide Life and Annuity Insurance Company	ownership	100.000	Nationwide Mutual Insurance Company	N	
0140	Nationwide		84-2920247	n/a			NW-Cranberry, LLC	OH	NIA	Nationwide Life Insurance Company	ownership	100.000	Nationwide Mutual Insurance Company	N	
0140	Nationwide		84-4388876	n/a			NW-Escalante, LLC	OH	NIA	Nationwide Mutual Insurance Company	ownership	100.000	Nationwide Mutual Insurance Company	N	
0140	Nationwide		31-1580283	n/a			NWD 205 Vine, LLC	OH	NIA	NWD Investments, LLC	ownership	100.000	Nationwide Mutual Insurance Company	N	
0140	Nationwide		31-1580283	n/a			NWD 225 Nationwide, LLC	OH	NIA	NWD Investments, LLC	ownership	100.000	Nationwide Mutual Insurance Company	N	
0140	Nationwide		31-1580283	n/a			NWD 230 West, LLC	OH	NIA	NWD Investments, LLC	ownership	100.000	Nationwide Mutual Insurance Company	N	
0140	Nationwide		31-1580283	n/a			NWD 240 Nationwide, LLC	OH	NIA	NWD Investments, LLC	ownership	100.000	Nationwide Mutual Insurance Company	N	
0140	Nationwide		31-1580283	n/a			NWD 250 Brodbelt, LLC	OH	NIA	NWD Investments, LLC	ownership	100.000	Nationwide Mutual Insurance Company	N	
0140	Nationwide		31-1580283	n/a			NWD 250 West, LLC	OH	NIA	NWD Investments, LLC	ownership	100.000	Nationwide Mutual Insurance Company	N	

Q12.7

SCHEDULE Y

PART 1A - DETAIL OF INSURANCE HOLDING COMPANY SYSTEM

1	2	3	4	5	6	7	8	9	10	11	12	13	14	15	16
Group Code	Group Name	NAIC Company Code	ID Number	Federal RSSD	CIK	Name of Securities Exchange if Publicly Traded (U.S. or International)	Names of Parent, Subsidiaries or Affiliates	Domiciliary Location	Relationship to Reporting Entity	Directly Controlled by (Name of Entity/Person)	Type of Control (Ownership Board, Management, Attorney-in-Fact, Influence, Other)	If Control is Ownership Provide Percentage	Ultimate Controlling Entity(ies)/Person(s)	Is an SCA Filing Required? (Y/N)	*
0140	Nationwide		31-1580283	n/a			NWD 265 Neil, LLC	OH	NIA	NWD Investments, LLC	ownership	100.000	Nationwide Mutual Insurance Company	N	
0140	Nationwide		31-1580283	n/a			NWD 275 Marconi, LLC	OH	NIA	NWD Investments, LLC	ownership	100.000	Nationwide Mutual Insurance Company	N	
0140	Nationwide		31-1580283	n/a			NWD 300 Neil, LLC	OH	NIA	NWD Investments, LLC	ownership	100.000	Nationwide Mutual Insurance Company	N	
0140	Nationwide		31-1580283	n/a			NWD 300 Spring, LLC	OH	NIA	NWD Investments, LLC	ownership	100.000	Nationwide Mutual Insurance Company	N	
0140	Nationwide		31-1580283	n/a			NWD 355 McConnell, LLC	OH	NIA	NWD Investments, LLC	ownership	100.000	Nationwide Mutual Insurance Company	N	
0140	Nationwide		31-1580283	n/a			NWD 425 Nationwide, LLC	OH	NIA	NWD Investments, LLC	ownership	100.000	Nationwide Mutual Insurance Company	N	
0140	Nationwide		31-1580283	n/a			NWD 500 Nationwide, LLC	OH	NIA	NWD Investments, LLC	ownership	100.000	Nationwide Mutual Insurance Company	N	
0140	Nationwide		31-1580283	n/a			NWD Arena Crossing, LLC	OH	NIA	NWD Investments, LLC	ownership	100.000	Nationwide Mutual Insurance Company	N	
0140	Nationwide		31-1580283	n/a			NWD Arena District I, LLC	OH	NIA	NWD Investments, LLC	ownership	100.000	Nationwide Mutual Insurance Company	N	
0140	Nationwide		31-1580283	n/a			NWD Arena District II, LLC	OH	NIA	NWD Investments, LLC	ownership	100.000	Nationwide Mutual Insurance Company	N	
0140	Nationwide		31-1580283	n/a			NWD Arena District MM, LLC	OH	NIA	NWD Investments, LLC	ownership	100.000	Nationwide Mutual Insurance Company	N	
0140	Nationwide		31-1580283	n/a			NWD Arena District PW, LLC	OH	NIA	NWD Investments, LLC	ownership	100.000	Nationwide Mutual Insurance Company	N	
0140	Nationwide		31-1580283	n/a			NWD Arena District V, LLC	OH	NIA	NWD Investments, LLC	ownership	100.000	Nationwide Mutual Insurance Company	N	
0140	Nationwide		31-1580283	n/a			NWD Athletic Club, LLC	OH	NIA	NWD Investments, LLC	ownership	100.000	Nationwide Mutual Insurance Company	N	
0140	Nationwide		31-1580283	n/a			NWD Brodbelt, LLC	OH	NIA	NWD Investments, LLC	ownership	100.000	Nationwide Mutual Insurance Company	N	
0140	Nationwide		30-0876022	n/a			NWD Franklinton, LLC	DE	NIA	Nationwide Realty Investors, Ltd.	ownership	80.000	Nationwide Mutual Insurance Company	N	1
0140	Nationwide		31-4118665	n/a			NWD HP, LLC	OH	NIA	NWD Investments, LLC	ownership	75.000	Nationwide Mutual Insurance Company	N	1
0140	Nationwide		31-1580283	n/a			NWD Investments, LLC	OH	NIA	Nationwide Realty Investors, Ltd.	ownership	80.000	Nationwide Mutual Insurance Company	N	
0140	Nationwide		35-2642005	n/a			NWGH, LLC	DE	NIA	Nationwide Realty Investors, Ltd.	ownership	75.000	Nationwide Mutual Insurance Company	N	1
0140	Nationwide		85-1262262	n/a			NW-Gator Walk, LLC	OH	NIA	Nationwide Mutual Insurance Company	ownership	100.000	Nationwide Mutual Insurance Company	N	
0140	Nationwide		81-4401901	n/a			NW-Grapevine Bluffs, LLC	OH	NIA	Nationwide Mutual Insurance Company	ownership	100.000	Nationwide Mutual Insurance Company	N	
0140	Nationwide		85-0524968	n/a			NW-Groves, LLC	OH	NIA	Nationwide Mutual Fire Insurance Company	ownership	100.000	Nationwide Mutual Insurance Company	N	
0140	Nationwide		82-1881115	n/a			NW-Ironhorse, LLC	OH	NIA	Nationwide Mutual Insurance Company	ownership	100.000	Nationwide Mutual Insurance Company	N	
0140	Nationwide		47-2482818	n/a			NW-Jasper WAG, LLC	OH	NIA	NW REI, LLC	ownership	100.000	Nationwide Mutual Insurance Company	N	
0140	Nationwide		81-1232565	n/a			NW-Lenexa, LLC	OH	NIA	NW REI (NLAIC), LLC	ownership	100.000	Nationwide Mutual Insurance Company	N	
0140	Nationwide		81-1671648	n/a			NW-Lenexa II, LLC	OH	NIA	NW REI (NLAIC), LLC	ownership	100.000	Nationwide Mutual Insurance Company	N	
0140	Nationwide		81-5146596	n/a			NW-Logan, LLC	OH	NIA	NW REI, LLC	ownership	100.000	Nationwide Mutual Insurance Company	N	
0140	Nationwide		81-1361460	n/a			NW-Marketplace, LLC	OH	NIA	Nationwide Mutual Insurance Company	ownership	100.000	Nationwide Mutual Insurance Company	N	
0140	Nationwide		82-4777464	n/a			NW-Mayo, LLC	OH	NIA	NW REI, LLC	ownership	100.000	Nationwide Mutual Insurance Company	N	
0140	Nationwide		81-5146266	n/a			NW-Millenia, LLC	OH	NIA	NW REI, LLC	ownership	100.000	Nationwide Mutual Insurance Company	N	
0140	Nationwide		84-2937171	n/a			NW-Naples, LLC	OH	NIA	Nationwide Mutual Fire Insurance Company	ownership	100.000	Nationwide Mutual Insurance Company	N	
0140	Nationwide		85-1246853	n/a			NW-Oakbrook, LLC	OH	NIA	Nationwide Life and Annuity Insurance Company	ownership	100.000	Nationwide Mutual Insurance Company	N	
0140	Nationwide		83-2260477	n/a			NW-ORBPD, LLC	OH	NIA	NW REI (NMFIC), LLC	ownership	100.000	Nationwide Mutual Insurance Company	N	
0140	Nationwide		83-0849392	n/a			NW-Park Place, LLC	OH	NIA	Nationwide Life Insurance Company	ownership	100.000	Nationwide Mutual Insurance Company	N	
0140	Nationwide		47-1740812	n/a			NW-Peachtree, LLC	OH	NIA	NW REI, LLC	ownership	100.000	Nationwide Mutual Insurance Company	N	

Q12.8

SCHEDULE Y

PART 1A - DETAIL OF INSURANCE HOLDING COMPANY SYSTEM

1	2	3	4	5	6	7	8	9	10	11	12	13	14	15	16
Group Code	Group Name	NAIC Company Code	ID Number	Federal RSSD	CIK	Name of Securities Exchange if Publicly Traded (U.S. or International)	Names of Parent, Subsidiaries or Affiliates	Domiciliary Location	Relationship to Reporting Entity	Directly Controlled by (Name of Entity/Person)	Type of Control (Ownership Board, Management, Attorney-in-Fact, Influence, Other)	If Control is Ownership Provide Percentage	Ultimate Controlling Entity(ies)/Person(s)	Is an SCA Filing Required? (Y/N)	*
0140	Nationwide		46-2469044	n/a			NW-Portales, LLC	OH	NIA	NW REI, LLC	ownership	100.000	Nationwide Mutual Insurance Company	N	
0140	Nationwide		47-2449044	n/a			NW-Promenade at Madison, LLC	OH	NIA	NW REI, LLC	ownership	100.000	Nationwide Mutual Insurance Company	N	
0140	Nationwide		83-2173918	n/a			NW-Radius, LLC	OH	NIA	NW REI (NLIC), LLC	ownership	100.000	Nationwide Mutual Insurance Company	N	
0140	Nationwide		84-4326171	n/a			NW-Southbank, LLC	OH	NIA	Nationwide Mutual Insurance Company	ownership	100.000	Nationwide Mutual Insurance Company	N	
0140	Nationwide		81-3212025	n/a			NW-Springfield, LLC	OH	NIA	Nationwide Mutual Insurance Company	ownership	100.000	Nationwide Mutual Insurance Company	N	
0140	Nationwide		85-0536537	n/a			NW-Sweetwater, LLC	OH	NIA	Nationwide Life Insurance Company	ownership	100.000	Nationwide Mutual Insurance Company	N	
0140	Nationwide		82-5083560	n/a			NW-Twin Lakes, LLC	OH	NIA	NW REI (NMFIC), LLC	ownership	100.000	Nationwide Mutual Insurance Company	N	
0140	Nationwide		46-5764783	n/a			NW-Tyson, LLC	OH	NIA	NW REI, LLC	ownership	100.000	Nationwide Mutual Insurance Company	N	
0140	Nationwide		81-1603024	n/a			NW REI (NLAIC), LLC	OH	NIA	Nationwide Life and Annuity Insurance Company	ownership	100.000	Nationwide Mutual Insurance Company	N	
0140	Nationwide		81-1619428	n/a			NW REI (NLIC), LLC	OH	NIA	Nationwide Life Insurance Company	ownership	100.000	Nationwide Mutual Insurance Company	N	
0140	Nationwide		81-1861190	n/a			NW REI (NMFIC), LLC	OH	NIA	Nationwide Mutual Fire Insurance Company	ownership	100.000	Nationwide Mutual Insurance Company	N	
0140	Nationwide		82-4876417	n/a			NW Village Park, LLC	OH	NIA	NW REI, LLC	ownership	100.000	Nationwide Mutual Insurance Company	N	
0140	Nationwide		31-0947092	n/a			OCH Company, LLC	OH	NIA	Nationwide Realty Investors, Ltd.	ownership	100.000	Nationwide Mutual Insurance Company	N	
0140	Nationwide		31-0947092	n/a			Ohio Center Hotel Company Limited	OH	NIA	Nationwide Realty Investors, Ltd.	ownership	55.250	Nationwide Mutual Insurance Company	N	1
0140	Nationwide		31-0947092	n/a			Ohio Center Hotel Company Limited	OH	NIA	OCH Company, LLC	ownership	1.000	Nationwide Mutual Insurance Company	N	1
0140	Nationwide		26-0263012	n/a			Old Track Street Owners Association, Inc.	OH	OTH	Other non-Nationwide	n/a		Other non-Nationwide	N	2
0140	Nationwide	13999	27-1712056	n/a			Olentangy Reinsurance, LLC	VT	IA	Nationwide Life and Annuity Insurance Company	ownership	100.000	Nationwide Mutual Insurance Company	N	
0140	Nationwide		47-1923444	n/a			Nationwide Agent Risk Purchasing Group, Inc. (fka On Your Side Nationwide Insurance Agency, Inc.)	OH	NIA	THI Holdings (Delaware), Inc.	ownership	100.000	Nationwide Mutual Insurance Company	N	
0140	Nationwide		n/a	n/a			OYS Fund LLC	DE	NIA	Nationwide Mutual Insurance Company	ownership	100.000	Nationwide Mutual Insurance Company	N	
0140	Nationwide		32-0516252	n/a			Parks Edge Condominium Home Owners Association	OH	OTH	Other non-Nationwide	n/a		Other non-Nationwide	N	2
0140	Nationwide		31-1486309	n/a			Perimeter A, Ltd.	OH	NIA	Nationwide Realty Investors, Ltd.	ownership	100.000	Nationwide Mutual Insurance Company	N	
0140	Nationwide		20-1169305	n/a			Polyphony Fund LLC	DE	NIA	Nationwide Mutual Insurance Company	ownership	100.000	Nationwide Mutual Insurance Company	N	
0140	Nationwide		20-4939866	n/a			Rail Street Parking, LLC	OH	NIA	NRI Equity Land Investments, LLC	ownership	100.000	Nationwide Mutual Insurance Company	N	
0140	Nationwide		75-2938844	n/a			Registered Investment Advisors Services, Inc.	TX	NIA	Nationwide Financial Services, Inc.	ownership	100.000	Nationwide Mutual Insurance Company	N	
0140	Nationwide		82-0549218	n/a			Retention Alternatives Ltd.	BMU	IA	Nationwide Mutual Fire Insurance Company	ownership	100.000	Nationwide Mutual Insurance Company	N	
0140	Nationwide		20-2726014	n/a			Riverview Diversified Opportunities, LLC	DE	OTH	Nationwide Mutual Insurance Company	ownership		Nationwide Mutual Insurance Company	N	2
0140	Nationwide		20-2726014	n/a			Riverview Diversified Opportunities, LLC	DE	OTH	Nationwide Mutual Fire Insurance Company	ownership		Nationwide Mutual Insurance Company	N	2
0140	Nationwide		20-2726014	n/a			Riverview Diversified Opportunities, LLC	DE	OTH	Nationwide Life Insurance Company	ownership		Nationwide Mutual Insurance Company	N	2
0140	Nationwide		26-0384865	n/a			Riverview Multi Series Fund, LL - Class Event	DE	NIA	Nationwide Mutual Insurance Company	ownership	100.000	Nationwide Mutual Insurance Company	N	
0140	Nationwide		20-8027258	n/a			Riverview Multi Series Fund, LL - Class N	DE	NIA	Nationwide Mutual Insurance Company	ownership	100.000	Nationwide Mutual Insurance Company	N	
0140	Nationwide		31-1486309	n/a			Rivulon Hotel I, LLC	OH	NIA	NRI-Rivulon, LLC	ownership	100.000	Nationwide Mutual Insurance Company	N	

Q12.9

SCHEDULE Y

PART 1A - DETAIL OF INSURANCE HOLDING COMPANY SYSTEM

1	2	3	4	5	6	7	8	9	10	11	12	13	14	15	16
Group Code	Group Name	NAIC Company Code	ID Number	Federal RSSD	CIK	Name of Securities Exchange if Publicly Traded (U.S. or International)	Names of Parent, Subsidiaries or Affiliates	Domiciliary Location	Relationship to Reporting Entity	Directly Controlled by (Name of Entity/Person)	Type of Control (Ownership Board, Management, Attorney-in-Fact, Influence, Other)	If Control is Ownership Provide Percentage	Ultimate Controlling Entity(ies)/Person(s)	Is an SCA Filing Required? (Y/N)	*
0140	Nationwide		31-1486309	n/a			Rivulon Hotel II, LLC	OH	NIA	NRI-Rivulon, LLC	ownership	100.000	Nationwide Mutual Insurance Company	N	
0140	Nationwide	15580	31-1117969	n/a			Scottsdale Indemnity Company	OH	IA	Nationwide Mutual Insurance Company	ownership	100.000	Nationwide Mutual Insurance Company	N	
0140	Nationwide	41297	31-1024978	n/a			Scottsdale Insurance Company	OH	RE	Nationwide Mutual Insurance Company	ownership	100.000	Nationwide Mutual Insurance Company	N	
0140	Nationwide	10672	86-0835870	n/a			Scottsdale Surplus Lines Insurance Company	AZ	IA	Scottsdale Insurance Company	ownership	100.000	Nationwide Mutual Insurance Company	N	
0140	Nationwide		83-3547854	n/a			ST GA Fund NW 2018, LLC	GA	NIA	Nationwide Life and Annuity Insurance Company	ownership	3.300	Nationwide Mutual Insurance Company	N	1
0140	Nationwide		83-3547854	n/a			ST GA Fund NW 2018, LLC	GA	NIA	National Casualty Company	ownership	12.000	Nationwide Mutual Insurance Company	N	1
0140	Nationwide		83-3547854	n/a			ST GA Fund NW 2018, LLC	GA	NIA	Nationwide Affinity Insurance Company of America	ownership	41.700	Nationwide Mutual Insurance Company	N	1
0140	Nationwide		83-3547854	n/a			ST GA Fund NW 2018, LLC	GA	NIA	AMCO Insurance Company	ownership	6.700	Nationwide Mutual Insurance Company	N	1
0140	Nationwide		83-3547854	n/a			ST GA Fund NW 2018, LLC	GA	NIA	Allied Property and Casualty Insurance Company	ownership	20.000	Nationwide Mutual Insurance Company	N	1
0140	Nationwide		83-3547854	n/a			ST GA Fund NW 2018, LLC	GA	NIA	Depositors Insurance Company	ownership	16.300	Nationwide Mutual Insurance Company	N	1
0140	Nationwide		91-2158214	n/a			The Hideaway Club	CA	OTH	Other non-Nationwide	n/a		Other non-Nationwide	N	2
0140	Nationwide		20-3541511	n/a			The Madison Club	CA	OTH	Other non-Nationwide	n/a		Other non-Nationwide	N	2
0140	Nationwide		31-1610040	n/a			The Waterfront Partners, LLC	OH	NIA	Nationwide Realty Investors, Ltd.	ownership	50.000	Nationwide Mutual Insurance Company	N	1
0140	Nationwide		52-2031677	n/a			THI Holdings (Delaware), Inc.	DE	NIA	Nationwide Mutual Insurance Company	ownership	100.000	Nationwide Mutual Insurance Company	Y	
0140	Nationwide	36269	86-0619597	n/a			Titan Insurance Company	MI	IA	THI Holdings (Delaware), Inc.	ownership	100.000	Nationwide Mutual Insurance Company	N	
0140	Nationwide		75-1284530	n/a			Titan Insurance Services, Inc.	TX	IA	THI Holdings (Delaware), Inc.	ownership	100.000	Nationwide Mutual Insurance Company	N	
0140	Nationwide		81-1456923	n/a			US Regional Logistics Program, L.P.	DE	NIA	Nationwide Mutual Insurance Company	ownership	23.330	Nationwide Mutual Insurance Company	N	1
0140	Nationwide		81-1456923	n/a			US Regional Logistics Program, L.P.	DE	NIA	Nationwide Life Insurance Company	ownership	13.330	Nationwide Mutual Insurance Company	N	1
0140	Nationwide		81-1456923	n/a			US Regional Logistics Program, L.P.	DE	NIA	Nationwide Life and Annuity Insurance Company	ownership	6.660	Nationwide Mutual Insurance Company	N	1
0140	Nationwide		81-1456923	n/a			US Regional Logistics Program, L.P.	DE	NIA	Nationwide Mutual Fire Insurance Company	ownership	6.660	Nationwide Mutual Insurance Company	N	1
0140	Nationwide		33-0160222	n/a			V.P.I. Services, Inc.	CA	IA	Veterinary Pet Insurance Company	ownership	100.000	Nationwide Mutual Insurance Company	N	
0140	Nationwide	42285	95-3750113	n/a			Veterinary Pet Insurance Company	OH	IA	Scottsdale Insurance Company	ownership	100.000	Nationwide Mutual Insurance Company	N	
0140	Nationwide	42889	34-1394913	n/a			Victoria Fire & Casualty Company	OH	IA	THI Holdings (Delaware), Inc.	ownership	100.000	Nationwide Mutual Insurance Company	N	
0140	Nationwide	10778	34-1842604	n/a			Victoria National Insurance Company	OH	IA	Nationwide Mutual Insurance Company	ownership	100.000	Nationwide Mutual Insurance Company	N	
0140	Nationwide	10105	34-1777972	n/a			Victoria Select Insurance Company	OH	IA	Victoria Fire & Casualty Insurance Company	ownership	100.000	Nationwide Mutual Insurance Company	N	
0140	Nationwide		31-1486309	n/a			Wellington Park, LLC	OH	NIA	Nationwide Realty Investors, Ltd.	ownership	100.000	Nationwide Mutual Insurance Company	N	
0140	Nationwide		n/a	n/a			Zais Zephyr A4, LLC	DE	OTH	Nationwide Life Insurance Company	limited member / no control	60.000	other non-Nationwide	N	2

Q12.10

Asteri Explanation

1	For the purposes of this schedule, Nationwide presumed control of these entities because they are owned by at least 10% and are not wholly-owned by a Nationwide entity.
2	Other ownership indicates a non-ownership circumstance by a Nationwide entity.

SCOTTSDALE INSURANCE COMPANY

PART 1 - LOSS EXPERIENCE

Lines of Business	Current Year to Date			4 Prior Year to Date Direct Loss Percentage
	1 Direct Premiums Earned	2 Direct Losses Incurred	3 Direct Loss Percentage	
1. Fire.....	50,897,762	76,234,621	149.780	74.000
2. Allied lines.....	132,591,086	64,236,503	48.447	15.000
3. Farmowners multiple peril.....	2,336,177	515,556	22.068	31.000
4. Homeowners multiple peril.....	110,797,851	76,292,450	68.857	54.000
5. Commercial multiple peril.....	311,914,361	254,585,526	81.620	62.000
6. Mortgage guaranty.....			0.000	
8. Ocean marine.....	874,380	410,674	46.967	
9. Inland marine.....	20,442,218	12,989,230	63.541	66.000
10. Financial guaranty.....			0.000	
11.1. Medical professional liability - occurrence.....			0.000	
11.2. Medical professional liability - claims-made.....		(68,193)	0.000	
12. Earthquake.....	107,751	(11,696)	(10.855)	1.000
13. Group accident and health.....			0.000	
14. Credit accident and health.....			0.000	
15. Other accident and health.....			0.000	
16. Workers' compensation.....			0.000	
17.1 Other liability-occurrence.....	434,504,118	201,686,600	46.418	117.000
17.2 Other liability-claims made.....	336,687,267	125,492,916	37.273	33.000
17.3 Excess workers' compensation.....			0.000	
18.1 Products liability-occurrence.....	15,385,648	22,309,132	145.000	135.000
18.2 Products liability-claims made.....	625,582		0.000	
19.1, 19.2 Private passenger auto liability.....			0.000	
19.3, 19.4 Commercial auto liability.....	82,887,030	74,611,567	90.016	115.000
21. Auto physical damage.....	12,864,457	5,440,782	42.293	49.000
22. Aircraft (all perils).....			0.000	
23. Fidelity.....	23,868		0.000	
24. Surety.....			0.000	
26. Burglary and theft.....	85,675	339,323	396.058	(86.000)
27. Boiler and machinery.....	2,926,290	926,339	31.656	64.000
28. Credit.....	24,507,088	20,718,079	84.539	109.000
29. International.....			0.000	
30. Warranty.....	146,955	2,574	1.752	
31. Reinsurance-nonproportional assumed property.....	XXX	XXX	XXX	XXX
32. Reinsurance-nonproportional assumed liability.....	XXX	XXX	XXX	XXX
33. Reinsurance-nonproportional assumed financial lines.....	XXX	XXX	XXX	XXX
34. Aggregate write-ins for other lines of business.....	0	0	0.000	
35. Totals.....	1,540,605,564	936,711,983	60.802	72.570

DETAILS OF WRITE-INS

3401.....			0.000	
3402.....			0.000	
3403.....			0.000	
3498 Sum. of remaining write-ins for Line 34 from overflow page.....	0	0	0.000	XXX
3499 Totals (Lines 3401 thru 3403 plus 3498) (Line 34).....	0	0	0.000	

PART 2 - DIRECT PREMIUMS WRITTEN

Lines of Business	1	2	3
	Current Quarter	Current Year to Date	Prior Year Year to Date
1. Fire.....	18,033,171	51,676,234	52,614,712
2. Allied lines.....	42,700,275	145,683,815	117,280,574
3. Farmowners multiple peril.....	980,967	2,648,800	2,267,565
4. Homeowners multiple peril.....	41,366,860	111,465,800	101,764,502
5. Commercial multiple peril.....	104,235,436	320,052,684	305,924,203
6. Mortgage guaranty.....			
8. Ocean marine.....	3,092,924	3,092,924	
9. Inland marine.....	10,367,477	28,760,112	16,587,093
10. Financial guaranty.....			
11.1 Medical professional liability - occurrence.....			
11.2 Medical professional liability - claims made.....			
12. Earthquake.....	20,491	67,272	54,851
13. Group accident and health.....			
14. Credit accident and health.....			
15. Other accident and health.....			
16. Workers' compensation.....			
17.1 Other liability-occurrence.....	145,728,334	443,207,938	421,279,665
17.2 Other liability-claims made.....	144,257,085	360,703,876	293,382,428
17.3 Excess workers' compensation.....			
18.1 Products liability-occurrence.....	4,622,163	15,202,925	12,206,240
18.2 Products liability-claims made.....	2,131,262	2,509,816	115,418
19.1 19.2 Private passenger auto liability.....			
19.3 19.4 Commercial auto liability.....	35,826,906	91,932,894	90,547,939
21. Auto physical damage.....	4,400,454	12,412,658	15,282,887
22. Aircraft (all perils).....			
23. Fidelity.....	150	65,313	150
24. Surety.....			
26. Burglary and theft.....	44,092	100,519	78,012
27. Boiler and machinery.....	966,567	2,954,135	2,921,297
28. Credit.....	13,228,957	36,086,965	40,477,479
29. International.....			
30. Warranty.....	146,955	146,955	
31. Reinsurance-nonproportional assumed property.....	XXX	XXX	XXX
32. Reinsurance-nonproportional assumed liability.....	XXX	XXX	XXX
33. Reinsurance-nonproportional assumed financial lines.....	XXX	XXX	XXX
34. Aggregate write-ins for other lines of business.....	0	0	0
35. Totals.....	572,150,526	1,628,771,635	1,472,785,015

DETAILS OF WRITE-INS

3401.....			
3402.....			
3403.....			
3498 Sum. of remaining write-ins for Line 34 from overflow page.....	0	0	0
3499 Totals (Lines 3401 thru 3403 plus 3498) (Line 34).....	0	0	0

PART 3 (000 omitted)

LOSS AND LOSS ADJUSTMENT EXPENSE RESERVES SCHEDULE

	1	2	3	4	5	6	7	8	9	10	11	12	13
Years in Which Losses Occurred	Prior Year-End Known Case Loss and LAE Reserves	Prior Year-End IBNR Loss and LAE Reserves	Total Prior Year-End Loss and LAE Reserves (Cols. 1 + 2)	2020 Loss and LAE Payments on Claims Reported as of Prior Year-End	2020 Loss and LAE Payments on Claims Unreported as of Prior Year-End	Total 2020 Loss and LAE Payments (Cols. 4 + 5)	Q.S. Date Known Case Loss and LAE Reserves on Claims Reported and Open as of Prior Year-End	Q.S. Date Known Case Loss and LAE Reserves on Claims Reported or Reopened Subsequent to Prior Year-End	Q.S. Date IBNR Loss and LAE Reserves	Total Q.S. Loss and LAE Reserves (Cols. 7 + 8 + 9)	Prior Year-End Known Case Loss and LAE Reserves Developed (Savings)/Deficiency (Cols. 4 + 7 minus Col. 1)	Prior Year-End IBNR Loss and LAE Reserves Developed (Savings)/Deficiency (Cols. 5 + 8 + 9 minus Col. 2)	Prior Year-End Total Loss and LAE Reserve Developed (Savings)/Deficiency (Cols. 11 + 12)
1. 2017 + Prior.....		0		0			0000
2. 2018.....		0		0			0000
3. Subtotals 2018 + Prior.....0000000000000
4. 2019.....		0		0			0000
5. Subtotals 2019 + Prior.....0000000000000
6. 2020.....XXXXXXXXXXXX	0XXX		0XXXXXXXXX
7. Totals.....0000000000000
8. Prior Year-End's Surplus As Regards Policyholders553,908												
											Col. 11, Line 7 As % of Col. 1, Line 7	Col. 12, Line 7 As % of Col. 2, Line 7	Col. 13, Line 7 As % of Col. 3, Line 7
											1.0.0 %	2.0.0 %	3.0.0 %
													Col. 13, Line 7 Line 8
													4.0.0 %

Q14

SUPPLEMENTAL EXHIBITS AND SCHEDULES INTERROGATORIES

The following supplemental reports are required to be filed as part of your statement filing. However, in the event that your company does not transact the type of business for which the special report must be filed, your response of NO to the specific interrogatory will be accepted in lieu of filing a "NONE" report and a bar code will be printed below. If the supplement is required of your company but is not being filed for whatever reason, enter SEE EXPLANATION and provide an explanation following the interrogatory questions.

	Response
1. Will the Trusteed Surplus Statement be filed with the state of domicile and the NAIC with this statement?	NO _____
2. Will Supplement A to Schedule T (Medical Professional Liability Supplement) be filed with this statement?	YES _____
3. Will the Medicare Part D Coverage Supplement be filed with the state of domicile and the NAIC with this statement?	NO _____
4. Will the Director and Officer Insurance Coverage Supplement be filed with the state of domicile and the NAIC with this statement?	YES _____

Explanation:

1. The data for this supplement is not required to be filed.
- 2.
3. The data for this supplement is not required to be filed.
- 4.

Bar Code:



Overflow Page for Write-Ins

Additional Write-ins for Assets:

	Current Statement Date			4 December 31, Prior Year Net Admitted Assets
	1 Assets	2 Nonadmitted Assets	3 Net Admitted Assets (Cols. 1 - 2)	
2504. Recoupment receivable.....			0	1,831,990
2505. Deductible receivables.....			0	129,440
2506. Third party administrator receivable.....			0	1,095,313
2597. Summary of remaining write-ins for Line 25.....	0	0	0	3,056,743

Additional Write-ins for Liabilities:

	1 Current Statement Date	2 December 31, Prior Year
2504. Reserve for state escheat payment.....	9,073,533	9,202,122
2505. State surcharge/recoupment payable.....		401,507
2597. Summary of remaining write-ins for Line 25.....	9,073,533	9,603,629

SCOTTSDALE INSURANCE COMPANY SCHEDULE A - VERIFICATION

Real Estate

	1 Year to Date	2 Prior Year Ended December 31
1. Book/adjusted carrying value, December 31 of prior year.....	0	
2. Cost of acquired:		
2.1 Actual cost at time of acquisition.....		
2.2 Additional investment made after acquisition.....		
3. Current year change in encumbrances.....		
4. Total gain (loss) on disposals.....		
5. Deduct amounts received on disposals.....		
6. Total foreign exchange change in book/adjusted carrying value.....		
7. Deduct current year's other-than-temporary impairment recognized.....		
8. Deduct current year's depreciation.....		
9. Book/adjusted carrying value at end of current period (Lines 1+2+3+4-5+6-7-8).....	0	0
10. Deduct total nonadmitted amounts.....		
11. Statement value at end of current period (Line 9 minus Line 10).....	0	0

NONE

SCHEDULE B - VERIFICATION

Mortgage Loans

	1 Year to Date	2 Prior Year Ended December 31
1. Book value/recorded investment excluding accrued interest, December 31 of prior year.....	0	
2. Cost of acquired:		
2.1 Actual cost at time of acquisition.....		
2.2 Additional investment made after acquisition.....		
3. Capitalized deferred interest and other.....		
4. Accrual of discount.....		
5. Unrealized valuation increase (decrease).....		
6. Total gain (loss) on disposals.....		
7. Deduct amounts received on disposals.....		
8. Deduct amortization of premium and mortgage interest points and commitment fees.....		
9. Total foreign exchange change in book value/recorded investment excluding accrued interest.....		
10. Deduct current year's other-than-temporary impairment recognized.....		
11. Book value/recorded investment excluding accrued interest at end of current period (Lines 1+2+3+4+5+6-7-8+9-10).....	0	0
12. Total valuation allowance.....		
13. Subtotal (Line 11 plus Line 12).....	0	0
14. Deduct total nonadmitted amounts.....		
15. Statement value at end of current period (Line 13 minus Line 14).....	0	0

NONE

SCHEDULE BA - VERIFICATION

Other Long-Term Invested Assets

	1 Year to Date	2 Prior Year Ended December 31
1. Book/adjusted carrying value, December 31 of prior year.....	0	
2. Cost of acquired:		
2.1 Actual cost at time of acquisition.....		
2.2 Additional investment made after acquisition.....		
3. Capitalized deferred interest and other.....		
4. Accrual of discount.....		
5. Unrealized valuation increase (decrease).....		
6. Total gain (loss) on disposals.....		
7. Deduct amounts received on disposals.....		
8. Deduct amortization of premium and depreciation.....		
9. Total foreign exchange change in book/adjusted carrying value.....		
10. Deduct current year's other-than-temporary impairment recognized.....		
11. Book/adjusted carrying value at end of current period (Lines 1+2+3+4+5+6-7-8+9-10).....	0	0
12. Deduct total nonadmitted amounts.....		
13. Statement value at end of current period (Line 11 minus Line 12).....	0	0

NONE

SCHEDULE D - VERIFICATION

Bonds and Stocks

	1 Year to Date	2 Prior Year Ended December 31
1. Book/adjusted carrying value of bonds and stocks, December 31 of prior year.....	1,293,414,661	1,306,632,064
2. Cost of bonds and stocks acquired.....	35,037,849	250,959,094
3. Accrual of discount.....	489,740	1,473,894
4. Unrealized valuation increase (decrease).....	(17,872,101)	1,409,191
5. Total gain (loss) on disposals.....	42,590,119	9,231,605
6. Deduct consideration for bonds and stocks disposed of.....	1,170,240,324	271,334,275
7. Deduct amortization of premium.....	1,802,694	5,583,927
8. Total foreign exchange change in book/adjusted carrying value.....	944,633	717,876
9. Deduct current year's other-than-temporary impairment recognized.....		
10. Total investment income recognized as a result of prepayment penalties and/or acceleration fees.....	530,805	(90,861)
11. Book/adjusted carrying value at end of current period (Lines 1+2+3+4+5+6-7+8-9+10).....	183,092,688	1,293,414,661
12. Deduct total nonadmitted amounts.....		
13. Statement value at end of current period (Line 11 minus Line 12).....	183,092,688	1,293,414,661

SCHEDULE D - PART 1B

Showing the Acquisitions, Dispositions and Non-Trading Activity
During the Current Quarter for all Bonds and Preferred Stock by NAIC Designation

NAIC Designation	1 Book/Adjusted Carrying Value Beginning of Current Quarter	2 Acquisitions During Current Quarter	3 Dispositions During Current Quarter	4 Non-Trading Activity During Current Quarter	5 Book/Adjusted Carrying Value End of First Quarter	6 Book/Adjusted Carrying Value End of Second Quarter	7 Book/Adjusted Carrying Value End of Third Quarter	8 Book/Adjusted Carrying Value December 31 Prior Year
BONDS								
1. NAIC 1 (a).....	91,712,635		2,883,421	458,554	396,620,933	91,712,635	89,287,768	872,388,436
2. NAIC 2 (a).....	21,893,489		206,623	(14,222)	171,687,906	21,893,489	21,672,644	330,922,015
3. NAIC 3 (a).....	5,277,577			11,204	5,800,364	5,277,577	5,288,781	10,896,778
4. NAIC 4 (a).....	4,507,740		12,500	135,346	4,217,400	4,507,740	4,630,586	4,785,816
5. NAIC 5 (a).....	1				6,702,692	1	1	11,978,934
6. NAIC 6 (a).....	1,094,971			(2,938)	1,097,861	1,094,971	1,092,033	1,100,721
7. Total Bonds.....	124,486,413	0	3,102,544	587,944	586,127,156	124,486,413	121,971,813	1,232,072,700
PREFERRED STOCK								
8. NAIC 1.....							0	
9. NAIC 2.....							0	
10. NAIC 3.....							0	
11. NAIC 4.....							0	
12. NAIC 5.....							0	
13. NAIC 6.....							0	
14. Total Preferred Stock.....	0	0	0	0	0	0	0	0
15. Total Bonds and Preferred Stock.....	124,486,413	0	3,102,544	587,944	586,127,156	124,486,413	121,971,813	1,232,072,700

QSI02

(a) Book/Adjusted Carrying Value column for the end of the current reporting period includes the following amount of short-term and cash equivalent bonds by NAIC designation:

NAIC 1 \$.....0; NAIC 2 \$.....0; NAIC 3 \$.....0; NAIC 4 \$.....0; NAIC 5 \$.....0; NAIC 6 \$.....0.

SCHEDULE DA - PART 1

Short-Term Investments

	1 Book/Adjusted Carrying Value	2 Par Value	3 Actual Cost	4 Interest Collected Year To Date	5 Paid for Accrued Interest Year To Date
9199999.....	67,251,956	XXX.....	67,251,956	1,297	

SCHEDULE DA - VERIFICATION

Short-Term Investments

	1 Year To Date	2 Prior Year Ended December 31
1. Book/adjusted carrying value, December 31 of prior year.....	85,304,368	36,888,977
2. Cost of short-term investments acquired.....	3,651,403,664	5,041,779,424
3. Accrual of discount.....		
4. Unrealized valuation increase (decrease).....		
5. Total gain (loss) on disposals.....		
6. Deduct consideration received on disposals.....	3,669,456,076	4,993,364,033
7. Deduct amortization of premium.....		
8. Total foreign exchange change in book/adjusted carrying value.....		
9. Deduct current year's other-than-temporary impairment recognized.....		
10. Book/adjusted carrying value at end of current period (Lines 1+2+3+4+5-6-7+8-9).....	67,251,956	85,304,368
11. Deduct total nonadmitted amounts.....		
12. Statement value at end of current period (Line 10 minus Line 11).....	67,251,956	85,304,368

**Sch. DB - Pt. A - Verification
NONE**

**Sch. DB - Pt. B - Verification
NONE**

**Sch. DB - Pt. C - Sn. 1
NONE**

**Sch. DB - Pt. C - Sn. 2
NONE**

**Sch. DB - Verification
NONE**

**Sch. E - Pt. 2 Verification
NONE**

**Sch. A Pt. 2
NONE**

**Sch. A Pt. 3
NONE**

**Sch. B - Pt. 2
NONE**

**Sch. B - Pt. 3
NONE**

**Sch. BA - Pt. 2
NONE**

**Sch. BA - Pt. 3
NONE**

**Sch. D - Pt. 3
NONE**

SCHEDULE D - PART 4

Showing all Long-Term Bonds and Stocks SOLD, REDEEMED or Otherwise DISPOSED OF During Current Quarter

1	2	3	4	5	6	7	8	9	10	Change in Book/Adjusted Carrying Value					16	17	18	19	20	21	22	
										11	12	13	14	15								
CUSIP Identification	Description	F o r e i g n	Disposal Date	Name of Purchaser	Number of Shares of Stock	Consideration	Par Value	Actual Cost	Prior Year Book/Adjusted Carrying Value	Unrealized Valuation Increase (Decrease)	Current Year's (Amortization) / Accretion	Current Year's Other-Than-Temporary Impairment Recognized	Total Change in B./A.C.V. (11+12-13)	Total Foreign Exchange Change in B./A.C.V.	Book/Adjusted Carrying Value at Disposal Date	Foreign Exchange Gain (Loss) on Disposal	Realized Gain (Loss) on Disposal	Total Gain (Loss) on Disposal	Bond Interest / Stock Dividends Received During Year	Stated Contractual Maturity Date	NAIC Designation and Administrative Symbol	
Bonds - U.S. Government																						
911760	GT 7		09/01/2020	Paydown		21,494	21,494	22,093	21,498		(4)		(4)		21,494			0	1,052	09/15/2025	1	
911760	HH 2		09/01/2020	Paydown		23,734	23,734	23,616	23,655		79		79		23,734			0	1,071	06/15/2026	1	
911760	LQ 7		09/01/2020	Paydown		2,259	2,259	2,372	2,267		(8)		(8)		2,259			0	103	06/15/2028	1	
0599999	Total - Bonds - U.S. Government						47,487	47,487	48,081	47,420	0	67	0	67	0	47,487	0	0	0	2,226	XXX	XXX
Bonds - U.S. Special Revenue and Special Assessment																						
312905	YJ 5		09/01/2020	Paydown		2,172	2,172	2,201	2,168		4		4		2,172			0	130	05/15/2021	1	
3133T3	Q2 7		09/01/2020	Paydown		2,164	2,164	2,239	2,185		(21)		(21)		2,164			0	97	02/15/2024	1	
3133TC	6P 8		09/01/2020	Paydown		3,968	3,968	4,118	4,035		(67)		(67)		3,968			0	181	11/20/2027	1	
3133TC	AU 2		09/01/2020	Paydown		17	17	16	17				0		17			0	1	03/25/2029	1	
31358E	XG 2		07/01/2020	Paydown		13	13	13	13				0		13			0	1	07/25/2020	1	
31358G	X4 4		08/01/2020	Paydown		1,122	1,122	1,124	1,116		6		6		1,122			0	57	06/25/2021	1	
31358L	VM 5		09/01/2020	Paydown		898	898	912	897		1		1		898			0	42	02/25/2022	1	
31358N	5B 4		09/01/2020	Paydown		5,170	5,170	5,319	5,187		(18)		(18)		5,170			0	242	07/25/2022	1	
31358N	RT 1		09/01/2020	Paydown		545	545	554	546		(1)		(1)		545			0	24	06/25/2022	1	
31358T	L8 0		09/01/2020	Paydown		487	487	506	492		(5)		(5)		487			0	24	03/25/2023	1	
31359U	TL 9		09/01/2020	Paydown		266	266	267	267				0		266			0	11	09/18/2028	1	
31359U	YS 8		09/01/2020	Paydown		889	889	866	876		13		13		889			0	35	10/25/2028	1	
31359V	BH 5		09/01/2020	Paydown		739	739	758	749		(10)		(10)		739			0	31	10/17/2038	1	
31368H	Z9 7		09/01/2020	Paydown		25	25	24	24				0		25			0	1	09/25/2023	1	
31392T	WT 0		09/01/2020	Paydown		2,718	2,718	2,831	2,734		(15)		(15)		2,718			0	108	08/15/2022	1	
31396N	EM 4		09/01/2020	Paydown		6,689	6,689	6,649	6,656		33		33		6,689			0	268	03/15/2036	1	
31419B	BF 1		09/01/2020	Paydown		35,855	35,855	36,191	36,147		(292)		(292)		35,855			0	846	02/25/2041	1	
60636U	AC 3		07/01/2020	Maturity		175,000	175,000	181,700	175,800		(800)		(800)		175,000			0	9,188	07/01/2020	1	
60636U	AF 6		07/01/2020	Maturity		2,060,000	2,060,000	2,146,102	2,070,263		(10,263)		(10,263)		2,060,000			0	108,150	07/01/2020	1FE	
3199999	Total - Bonds - U.S. Special Revenue and Special Assessments						2,298,737	2,298,737	2,392,390	2,310,172	0	(11,435)	0	(11,435)	0	2,298,737	0	0	0	119,437	XXX	XXX

QE05

SCHEDULE D - PART 4

Showing all Long-Term Bonds and Stocks SOLD, REDEEMED or Otherwise DISPOSED OF During Current Quarter

1	2	3	4	5	6	7	8	9	10	Change in Book/Adjusted Carrying Value					16	17	18	19	20	21	22
										11	12	13	14	15							
CUSIP Identification	Description	F o r e i g n	Disposal Date	Name of Purchaser	Number of Shares of Stock	Consideration	Par Value	Actual Cost	Prior Year Book/Adjusted Carrying Value	Unrealized Valuation Increase (Decrease)	Current Year's (Amortization) / Accretion	Current Year's Other-Than-Temporary Impairment Recognized	Total Change in B./A.C.V. (11+12-13)	Total Foreign Exchange Change in B./A.C.V.	Book/Adjusted Carrying Value at Disposal Date	Foreign Exchange Gain (Loss) on Disposal	Realized Gain (Loss) on Disposal	Total Gain (Loss) on Disposal	Bond Interest / Stock Dividends Received During Year	Stated Contractual Maturity Date	NAIC Designation and Administrative Symbol
Bonds - Industrial and Miscellaneous																					
01082# AA 3	Alameda Cnty CA CTL Ser 2002-A 7.500%		09/15/2020	Redemption	100.0000	35,331	35,331	37,451	35,624	(293)			(293)		35,331			0	1,768	06/15/2021	1
03464R AA 1	Angel Oak Mortgage Trust RMBS Series 202		09/01/2020	Paydown		67,792	67,792	67,791		1			1		67,792			0	969	12/25/2059	1FE
07332B AA 7	Bayview Opport Mast Fund Trust RMBS Ser		09/28/2020	Paydown		65,561	65,561	66,005	65,939	(377)			(377)		65,561			0	1,316	03/28/2057	1FM
117017 AC 7	Brunswick & Glynn Co Dev Auth CTL Rev Le		07/15/2020	Redemption	100.0000	65,827	65,827	65,827	65,827				0		65,827			0	3,936	01/15/2024	1
126650 BP 4	CVS Health Corp LBASS PTC Nt 6.036% 12		09/10/2020	Redemption	100.0000	5,242	5,242	6,089	5,744	(502)			(502)		5,242			0	237	12/10/2028	2
126650 BP 4	CVS Health Corp LBASS PTC Nt 6.036% 12		08/10/2020	Redemption	100.0000	10,405	10,405	12,086	11,402	(997)			(997)		10,405			0	393	12/10/2028	2FE
38218G AA 0	Goodgreen Trust LBASS Ser 2018-1A Cl A		09/15/2020	Paydown		25,339	25,339	26,598	26,584	(1,245)			(1,245)		25,339			0	515	10/15/2053	1FE
46185H AA 0	Invitation Homes Tr RMBS Ser 2018-SFR2 C		07/17/2020	Paydown									0					0	408	06/17/2037	1FE
46185H AA 0	Invitation Homes Tr RMBS Ser 2018-SFR2 C		07/17/2020	Nationwide Mutual									0					0	77,696	06/17/2037	1FE
50026* AA 3	Kohls Corp CTL Shelby MI 7.600% 12/15/		09/15/2020	Redemption	100.0000	40,342	40,342	42,620	40,756	(414)			(414)		40,342			0	2,044	12/15/2022	2
52465# BP 9	Legg Mason Mtg Cap Corp LBASS Ser 2003-C		09/01/2020	Redemption	100.0000	30,916	30,916	30,916	30,916				0		30,916			0	989	03/01/2023	1
64352V KU 4	New Century Home Equity Ln Tr RMBS Ser 2		07/25/2020	Paydown		92,809	92,809	86,950	91,405	1,404			1,404		92,809			0	911	06/25/2035	1FM
64508Q AA 3	New Haven Fed Office Bldg Ls CTL GSA Gtd		09/12/2020	Redemption	100.0000	(3,792)	(3,792)	(3,792)	(3,792)				0		(3,792)			0		01/15/2021	1
653240 AA 9	Newtown CTL Ser 2002 6.082% 05/15/23		09/15/2020	Redemption	100.0000	67,749	67,749	67,746	67,748	1			1		67,749			0	2,748	05/15/2023	1
67020B AA 8	NRRC-D Facilities Corp CTL GSA Rev Bd Ls		09/07/2020	Redemption	100.0000	36,044	36,044	36,044	36,044				0		36,044			0	1,563	11/07/2023	1
92837D AB 3	Visio RMBS Ser 2019-2 Cl A2 9.294% 11/		09/01/2020	Paydown		18,586	18,586	18,585	18,585	1			1		18,586			0	375	11/25/2054	1FM
92851@ AA 3	Vivendi SPC Tr CTL 6.630% 04/15/22		09/15/2020	Redemption	100.0000	20,464	20,464	20,464	20,464				0		20,464			0	905	04/15/2022	2
94978# AT 4	Wells Fargo Bank Northwest NA CTL Ser 20		09/01/2020	Redemption	100.0000	12,840	12,840	12,840	12,840				0		12,840			0	570	08/01/2027	2
94978# AU 1	Wells Fargo Bank Northwest NA CTL MWRA L		09/15/2020	Redemption	100.0000	17,386	17,386	18,203	17,815	(429)			(429)		17,386			0	856	05/15/2032	1
94978# AX 5	Wells Fargo Bank Northwest NA CTL CVS Co		09/10/2020	Redemption	100.0000	51,500	51,500	51,500	51,500				0		51,500			0	5,239	10/10/2024	2
98881@ AA 4	ZC Specialty Ins Co CTL Ser 2002-31 7...		07/25/2020	Redemption	100.0000	41,018	41,018	41,018	41,018				0		41,018			0	3,010	12/23/2022	2
11042T AA 1	British Airways Plc EETC 3.800% 09/20/...		09/20/2020	Redemption	100.0000	17,649	17,649	17,649	17,649				0		17,649			0	503	06/20/2031	1FE
3899999	Total - Bonds - Industrial and Miscellaneous					719,008	719,008	722,590	654,068	0	(2,850)	0	(2,850)	0	719,008	0	0	0	106,951	XXX	XXX
Bonds - Unaffiliated Bank Loans																					
000000 00 0	Messer Industries Initial Term B-1 Loan		09/30/2020	Redemption	100.0000	12,500	12,500	12,563	12,557	(57)			(57)		12,500			0	377	03/01/2026	4FE
91136E AJ 4	United Rentals North America Term Ln Nt.		09/30/2020	Redemption	100.0000	24,813	24,813	24,951	24,933	(121)			(121)		24,813			0	479	10/05/2025	2FE

QE05.1

SCHEDULE D - PART 4

Showing all Long-Term Bonds and Stocks SOLD, REDEEMED or Otherwise DISPOSED OF During Current Quarter

1	2	3	4	5	6	7	8	9	10	Change in Book/Adjusted Carrying Value					16	17	18	19	20	21	22
										11	12	13	14	15							
CUSIP Identification	Description	F o r e i g n	Disposal Date	Name of Purchaser	Number of Shares of Stock	Consideration	Par Value	Actual Cost	Prior Year Book/Adjusted Carrying Value	Unrealized Valuation Increase (Decrease)	Current Year's (Amortization) / Accretion	Current Year's Other-Than-Temporary Impairment Recognized	Total Change in B./A.C.V. (11+12-13)	Total Foreign Exchange Change in B./A.C.V.	Book/Adjusted Carrying Value at Disposal Date	Foreign Exchange Gain (Loss) on Disposal	Realized Gain (Loss) on Disposal	Total Gain (Loss) on Disposal	Bond Interest / Stock Dividends Received During Year	Stated Contractual Maturity Date	NAIC Designation and Administrative Symbol
8299999.	Total - Bonds - Unaffiliated Bank Loans.....					37,313	37,313	37,514	37,490	0	(178)	0	(178)	0	37,313	0	0	0	856	XXX	XXX
8399997.	Total - Bonds - Part 4.....					3,102,545	3,102,545	3,200,575	3,049,150	0	(14,396)	0	(14,396)	0	3,102,545	0	0	0	229,470	XXX	XXX
8399999.	Total - Bonds.....					3,102,545	3,102,545	3,200,575	3,049,150	0	(14,396)	0	(14,396)	0	3,102,545	0	0	0	229,470	XXX	XXX
9999999.	Total - Bonds, Preferred and Common Stocks.....					3,102,545	XXX	3,200,575	3,049,150	0	(14,396)	0	(14,396)	0	3,102,545	0	0	0	229,470	XXX	XXX

QE05.2

Sch. DB - Pt. A - Sn. 1
NONE

Sch. DB - Pt. B - Sn. 1
NONE

Sch. DB - Pt. D - Sn. 1
NONE

Sch. DB - Pt. D - Sn. 2
NONE

Sch. DB - Pt. E
NONE

**SCHEDULE DL - PART 1
SECURITIES LENDING COLLATERAL ASSETS**

Reinvested Collateral Assets Owned Current Statement Date

(Securities lending collateral assets reported in aggregate on one Line 10 of the Assets page and not included on Schedules A, B, BA, D, DB and E.)

1	2	3	4	5	6	7
CUSIP Identification	Description	Code	NAIC Designation and Administrative Symbol	Fair Value	Book/Adjusted Carrying Value	Maturity Date
Industrial & Miscellaneous (Unaffiliated) - Residential Mortgage-Backed Securities						
362334 BQ 6	GSAA Home Equity Tr RMBS Ser 2006-3 Cl A		1FM	4,430	4,430	03/25/2036
81376G AC 4	Securitized AB Receivables LLC RMBS Ser		6FM	50,584	28,079	09/25/2036
3399999	Industrial & Miscellaneous (Unaffiliated) - Residential Mortgage-Backed Securities			55,014	32,509	XXX
3899999	Total - Industrial & Miscellaneous (Unaffiliated)			55,014	32,509	XXX
Totals						
6499999	Total - Residential Mortgage-Backed Securities			55,014	32,509	XXX
7099999	Subtotal - Bonds			55,014	32,509	XXX
9999999	Totals			55,014	32,509	XXX

General Interrogatories:

- The activity for the year: Fair Value \$.....(1,056,698) Book/Adjusted Carrying Value \$.....(1,058,469)
- Average balance for the year: Fair Value \$.....606,666 Book/Adjusted Carrying Value \$.....587,839
- Reinvested securities lending collateral assets book/adjusted carrying value included in this schedule by NAIC designation:
 NAIC 1: \$.....4,430 NAIC 2: \$.....0 NAIC 3: \$.....0 NAIC 4: \$.....0 NAIC 5: \$.....0 NAIC 6: \$.....28,079

**SCHEDULE DL - PART 2
SECURITIES LENDING COLLATERAL ASSETS**

Reinvested Collateral Assets Owned Current Statement Date

(Securities lending collateral assets included on Schedules A, B, BA, D, DB and E and not reported in aggregate on Line 10 of the Assets page)

1	2	3	4	5	6	7
CUSIP Identification	Description	Code	NAIC Designation and Administrative Symbol	Fair Value	Book/Adjusted Carrying Value	Maturity Date

General Interrogatories:

1. The activity for the year: Fair Value \$.....0 Book/Adjusted Carrying Value \$.....0
2. Average balance for the year: Fair Value \$.....0 Book/Adjusted Carrying Value \$.....0

NONE

SCHEDULE E - PART 1 - CASH

Month End Depository Balances

1 Depository	2 Code	3 Rate of Interest	4 Amount of Interest Received During Current Quarter	5 Amount or interest Accrued at Current Statement Date	Book Balance at End of Each Month During Current Quarter			9 *
					6 First Month	7 Second Month	8 Third Month	
Open Depositories								
Bank of New York Mellon..... New York, NY.....				41,86737,05163,030	XXX
Chase Bank..... Columbus, OH.....				(83,236,774)(87,276,517)(81,989,792)	XXX
0199999. Total Open Depositories.....	XXX	XXX00(83,194,907)(87,239,466)(81,926,763)	XXX
0399999. Total Cash on Deposit.....	XXX	XXX00(83,194,907)(87,239,466)(81,926,763)	XXX
0599999. Total Cash.....	XXX	XXX00(83,194,907)(87,239,466)(81,926,763)	XXX

SCHEDULE E - PART 2 - CASH EQUIVALENTS

Show Investments Owned End of Current Quarter

1 CUSIP	2 Description	3 Code	4 Date Acquired	5 Rate of Interest	6 Maturity Date	7 Book/Adjusted Carrying Value	8 Amount of Interest Due & Accrued	9 Amount Received During Year
------------	------------------	-----------	--------------------	-----------------------	--------------------	-----------------------------------	---------------------------------------	----------------------------------

NONE

QE14



SUPPLEMENT "A" TO SCHEDULE T

**EXHIBIT OF MEDICAL PROFESSIONAL LIABILITY PREMIUMS WRITTEN
ALLOCATED BY STATES AND TERRITORIES**

Designate the type of health care providers reported on this page.

Physicians - Including Surgeons and Osteopaths

States, Etc.	1 Direct Premiums Written	2 Direct Premiums Earned	Direct Losses Paid		5 Direct Losses Incurred	Direct Losses Unpaid		8 Direct Losses Incurred But Not Reported
			3 Amount	4 Number of Claims		6 Amount Reported	7 Number of Claims	
1. Alabama.....AL	-	-	-	-	-	-	-	-
2. Alaska.....AK	-	-	-	-	-	-	-	-
3. Arizona.....AZ	-	-	-	-	-	-	-	-
4. Arkansas.....AR	-	-	-	-	-	-	-	-
5. California.....CA	-	-	-	-	(21,097)	-	-	26,346
6. Colorado.....CO	-	-	-	-	-	-	-	-
7. Connecticut.....CT	-	-	-	-	(18,182)	-	-	22,528
8. Delaware.....DE	-	-	-	-	-	-	-	-
9. District of Columbia.....DC	-	-	-	-	-	-	-	-
10. Florida.....FL	-	-	-	-	(1,817)	-	-	2,463
11. Georgia.....GA	-	-	-	-	(420)	-	-	401
12. Hawaii.....HI	-	-	-	-	-	-	-	-
13. Idaho.....ID	-	-	-	-	-	-	-	-
14. Illinois.....IL	-	-	-	-	-	-	-	-
15. Indiana.....IN	-	-	-	-	-	(60,000)	1	(59,593)
16. Iowa.....IA	-	-	-	-	-	-	-	-
17. Kansas.....KS	-	-	-	-	-	-	-	-
18. Kentucky.....KY	-	-	-	-	-	-	-	-
19. Louisiana.....LA	-	-	-	-	(643)	-	-	816
20. Maine.....ME	-	-	-	-	-	-	-	-
21. Maryland.....MD	-	-	-	-	(1,619)	-	-	2,178
22. Massachusetts.....MA	-	-	-	-	-	-	-	-
23. Michigan.....MI	-	-	-	-	(53)	-	-	25
24. Minnesota.....MN	-	-	-	-	-	-	-	-
25. Mississippi.....MS	-	-	-	-	-	-	-	-
26. Missouri.....MO	-	-	-	-	-	-	-	-
27. Montana.....MT	-	-	-	-	-	-	-	-
28. Nebraska.....NE	-	-	-	-	-	-	-	-
29. Nevada.....NV	-	-	-	-	-	-	-	-
30. New Hampshire.....NH	-	-	-	-	-	-	-	-
31. New Jersey.....NJ	-	-	-	-	(24,362)	500,000	1	31,957
32. New Mexico.....NM	-	-	-	-	-	-	-	(3,842)
33. New York.....NY	-	-	-	-	-	-	-	-
34. North Carolina.....NC	-	-	-	-	-	-	-	-
35. North Dakota.....ND	-	-	-	-	-	-	-	-
36. Ohio.....OH	-	-	-	-	-	-	-	-
37. Oklahoma.....OK	-	-	-	-	-	-	-	-
38. Oregon.....OR	-	-	-	-	-	-	-	-
39. Pennsylvania.....PA	-	-	-	-	-	-	-	-
40. Rhode Island.....RI	-	-	-	-	-	-	-	-
41. South Carolina.....SC	-	-	-	-	-	-	-	-
42. South Dakota.....SD	-	-	-	-	-	-	-	-
43. Tennessee.....TN	-	-	-	-	-	-	-	-
44. Texas.....TX	-	-	-	-	-	-	-	-
45. Utah.....UT	-	-	-	-	-	-	-	-
46. Vermont.....VT	-	-	-	-	-	-	-	-
47. Virginia.....VA	-	-	-	-	-	-	-	-
48. Washington.....WA	-	-	-	-	-	-	-	-
49. West Virginia.....WV	-	-	-	-	-	-	-	-
50. Wisconsin.....WI	-	-	-	-	-	-	-	-
51. Wyoming.....WY	-	-	-	-	-	-	-	-
52. American Samoa.....AS	-	-	-	-	-	-	-	-
53. Guam.....GU	-	-	-	-	-	-	-	-
54. Puerto Rico.....PR	-	-	-	-	-	-	-	-
55. US Virgin Islands.....VI	-	-	-	-	-	-	-	-
56. Northern Mariana Islands.....MP	-	-	-	-	-	-	-	-
57. Canada.....CAN	-	-	-	-	-	-	-	-
58. Aggregate Other Alien.....OT	0	0	0	0	0	0	0	0
59. Totals.....	0	0	0	0	(68,193)	440,000	2	23,279

DETAILS OF WRITE-INS

58001.	-	-	-	-	-	-	-	-
58002.	-	-	-	-	-	-	-	-
58003.	-	-	-	-	-	-	-	-
58998. Summary of remaining write-ins for Line 58 from overflow page.	0	0	0	0	0	0	0	0
58999. Totals (Lines 58001 thru 58003 + 58998) (Line 58 above)	0	0	0	0	0	0	0	0

**Supp. A to Sch. T
NONE**

**Supp. A to Sch. T
NONE**

**Supp. A to Sch. T
NONE**

**Overflow Page
NONE**



DIRECTOR AND OFFICER INSURANCE COVERAGE SUPPLEMENT

Year To Date For the Period Ended September 30, 2020

NAIC Group Code.....140

NAIC Company Code.....41297

Company Name: SCOTTSDALE INSURANCE COMPANY

If the reporting entity writes any director and officer (D&O) business, please provide the following:

1. Monoline Policies

1 Direct Written Premiums	2 Direct Earned Premiums	3 Direct Losses Incurred
.....6,762,6744,552,787373,404

2. Commercial Multiple Peril (CMP) Packaged Policies

- 2.1 Does the reporting entity provide D&O liability coverage as part of a CMP packaged policy? Yes [] No [X]
- 2.2 Can the direct premium earned for D&O liability coverage provided as part of a CMP packaged policy be quantified or estimated? Yes [] No [X]
- 2.3 If the answer to question 2.2 is yes, provide the quantified or estimated direct premium earned amount for D&O liability coverage in CMP packaged policies:
 - 2.31 Amount quantified: _____
 - 2.32 Amount estimated using reasonable assumptions: _____
- 2.4 If the answer to question 2.1 is yes, provide direct losses incurred (losses paid plus change in case reserves) for the D&O liability coverages provided in CMP packaged policies: _____