



QUARTERLY STATEMENT

As of September 30, 2020
of the Condition and Affairs of the

PROGRESSIVE AMERICAN INSURANCE COMPANY

NAIC Group Code.....155, 155 (Current Period) (Prior Period)	NAIC Company Code..... 24252	Employer's ID Number..... 34-1094197
Organized under the Laws of OH	State of Domicile or Port of Entry OH	Country of Domicile US
Incorporated/Organized..... August 25, 1971	Commenced Business..... April 2, 1979	
Statutory Home Office	6300 WILSON MILLS ROAD, W33 .. CLEVELAND .. OH .. US .. 44143-2182 <i>(Street and Number) (City or Town, State, Country and Zip Code)</i>	
Main Administrative Office	6300 WILSON MILLS ROAD, W33 .. CLEVELAND .. OH .. US .. 44143-2182 <i>(Street and Number) (City or Town, State, Country and Zip Code)</i>	
Mail Address	P.O. BOX 89490 .. CLEVELAND .. OH .. US .. 44101-6490 <i>(Street and Number or P. O. Box) (City or Town, State, Country and Zip Code)</i>	
Primary Location of Books and Records	6300 WILSON MILLS ROAD, W33 .. CLEVELAND .. OH .. US .. 44143-2182 <i>(Street and Number) (City or Town, State, Country and Zip Code)</i>	
Internet Web Site Address	PROGRESSIVE.COM	
Statutory Statement Contact	MARY BETH ANDREANO <i>(Name)</i>	440-395-4460 <i>(Area Code) (Telephone Number)</i>
	FINANCIAL_REPORTING@PROGRESSIVE.COM <i>(E-Mail Address)</i>	440-603-5500 <i>(Fax Number)</i>

POLICYHOLDER SERVICES AND CLAIMS REPORTING -- 1-800-PROGRESSIVE (1-800-776-4737)

OFFICERS

Name	Title	Name	Title
GEOFFREY THOMAS SOUSER	PRESIDENT	PETER JAMES ALBERT	SECRETARY
PATRICK SEAN BRENNAN	TREASURER		

OTHER

MARY BETH ANDREANO	(VICE PRESIDENT)	CHRISTINA LYNN CREWS	(ASST. SECRETARY)
HEATHER ELIZABETH DAY	(VICE PRESIDENT)	JAMES LEE KUSMER	(ASST. TREASURER)
HEATHER MARIE MURRAY	(VICE PRESIDENT)		

DIRECTORS OR TRUSTEES

CHARLES ERNEST CONOVER	RICHARD RUSSELL CRAWLEY	HEATHER ELIZABETH DAY	KATHRYN MARGARET LEMIEUX
GEOFFREY THOMAS SOUSER			

State of..... OHIO
County of..... CUYAHOGA

The officers of this reporting entity being duly sworn, each depose and say that they are the described officers of said reporting entity, and that on the reporting period stated above, all of the herein described assets were the absolute property of the said reporting entity, free and clear from any liens or claims thereon, except as herein stated, and that this statement, together with related exhibits, schedules and explanations therein contained, annexed or referred to, is a full and true statement of all the assets and liabilities and of the condition and affairs of the said reporting entity as of the reporting period stated above, and of its income and deductions therefrom for the period ended, and have been completed in accordance with the NAIC *Annual Statement Instructions and Accounting Practices and Procedures* manual except to the extent that: (1) state law may differ; or, (2) that state rules or regulations require differences in reporting not related to accounting practices and procedures, according to the best of their information, knowledge and belief, respectively. Furthermore, the scope of this attestation by the described officers also includes the related corresponding electronic filing with the NAIC, when required, that is an exact copy (except for formatting differences due to electronic filing) of the enclosed statement. The electronic filing may be requested by various regulators in lieu of or in addition to the enclosed statement.

_____ (Signature) GEOFFREY THOMAS SOUSER 1. (Printed Name) PRESIDENT _____ (Title)	_____ (Signature) CHRISTINA LYNN CREWS 2. (Printed Name) ASSISTANT SECRETARY _____ (Title)	_____ (Signature) PATRICK SEAN BRENNAN 3. (Printed Name) TREASURER _____ (Title)
--	--	--

Subscribed and sworn to before me
This 6TH day of NOVEMBER, 2020

a. Is this an original filing? Yes [X] No []
b. If no: 1. State the amendment number _____
2. Date filed _____
3. Number of pages attached _____

ASSETS

	Current Statement Date			4 December 31 Prior Year Net Admitted Assets
	1 Assets	2 Nonadmitted Assets	3 Net Admitted Assets (Cols. 1 - 2)	
1. Bonds.....	372,575,214		372,575,214	342,304,327
2. Stocks:				
2.1 Preferred stocks.....			0	
2.2 Common stocks.....			0	
3. Mortgage loans on real estate:				
3.1 First liens.....			0	
3.2 Other than first liens.....			0	
4. Real estate:				
4.1 Properties occupied by the company (less \$.....0 encumbrances).....			0	
4.2 Properties held for the production of income (less \$.....0 encumbrances).....			0	
4.3 Properties held for sale (less \$.....0 encumbrances).....			0	
5. Cash (\$.....0), cash equivalents (\$.....0) and short-term investments (\$.....0).....			0	5,012,830
6. Contract loans (including \$.....0 premium notes).....			0	
7. Derivatives.....			0	
8. Other invested assets.....			0	
9. Receivables for securities.....			0	
10. Securities lending reinvested collateral assets.....			0	
11. Aggregate write-ins for invested assets.....	0	0	0	0
12. Subtotals, cash and invested assets (Lines 1 to 11).....	372,575,214	0	372,575,214	347,317,157
13. Title plants less \$.....0 charged off (for Title insurers only).....			0	
14. Investment income due and accrued.....	1,658,102		1,658,102	1,948,202
15. Premiums and considerations:				
15.1 Uncollected premiums and agents' balances in the course of collection.....	49,923,127	8,018,847	41,904,280	41,441,585
15.2 Deferred premiums, agents' balances and installments booked but deferred and not yet due (including \$.....0 earned but unbilled premiums).....	302,652,933		302,652,933	278,730,225
15.3 Accrued retrospective premiums (\$.....0) and contracts subject to redetermination (\$.....0).....			0	
16. Reinsurance:				
16.1 Amounts recoverable from reinsurers.....	12,856,340		12,856,340	9,098,249
16.2 Funds held by or deposited with reinsured companies.....			0	
16.3 Other amounts receivable under reinsurance contracts.....			0	
17. Amounts receivable relating to uninsured plans.....			0	
18.1 Current federal and foreign income tax recoverable and interest thereon.....			0	
18.2 Net deferred tax asset.....	9,431,114	1,718	9,429,396	8,083,909
19. Guaranty funds receivable or on deposit.....			0	
20. Electronic data processing equipment and software.....			0	
21. Furniture and equipment, including health care delivery assets (\$.....0).....			0	
22. Net adjustment in assets and liabilities due to foreign exchange rates.....			0	
23. Receivables from parent, subsidiaries and affiliates.....	144,568,557		144,568,557	120,701,699
24. Health care (\$.....0) and other amounts receivable.....			0	
25. Aggregate write-ins for other than invested assets.....	1,407,241	1,351,801	55,440	89,102
26. Total assets excluding Separate Accounts, Segregated Accounts and Protected Cell Accounts (Lines 12 through 25).....	895,072,628	9,372,366	885,700,262	807,410,128
27. From Separate Accounts, Segregated Accounts and Protected Cell Accounts.....			0	
28. Total (Lines 26 and 27).....	895,072,628	9,372,366	885,700,262	807,410,128

DETAILS OF WRITE-INS

1101.....			0	
1102.....			0	
1103.....			0	
1198. Summary of remaining write-ins for Line 11 from overflow page.....	0	0	0	0
1199. Totals (Lines 1101 thru 1103 plus 1198) (Line 11 above).....	0	0	0	0
2501. STATE TAX CREDITS.....	55,440		55,440	87,820
2502. PREPAID EXPENSES.....	1,326,462	1,326,462	0	
2503. MISCELLANEOUS OTHER ASSETS.....	25,339	25,339	0	1,282
2598. Summary of remaining write-ins for Line 25 from overflow page.....	0	0	0	0
2599. Totals (Lines 2501 thru 2503 plus 2598) (Line 25 above).....	1,407,241	1,351,801	55,440	89,102

PROGRESSIVE AMERICAN INSURANCE COMPANY
LIABILITIES, SURPLUS AND OTHER FUNDS

	1 Current Statement Date	2 December 31 Prior Year
1. Losses (current accident year \$.....59,631,487).....	124,504,256	119,698,642
2. Reinsurance payable on paid losses and loss adjustment expenses.....	1,804,310	344,422
3. Loss adjustment expenses.....	28,131,954	26,039,290
4. Commissions payable, contingent commissions and other similar charges.....	1,177,470	1,161,286
5. Other expenses (excluding taxes, licenses and fees).....	22,850,920	16,219,819
6. Taxes, licenses and fees (excluding federal and foreign income taxes).....	2,345,165	2,714,517
7.1 Current federal and foreign income taxes (including \$.....290,463 on realized capital gains (losses)).....	17,067,084	2,476,445
7.2 Net deferred tax liability.....		
8. Borrowed money \$.....0 and interest thereon \$.....0.....		
9. Unearned premiums (after deducting unearned premiums for ceded reinsurance of \$.....698,948,924 and including warranty reserves of \$.....0 and accrued accident and health experience rating refunds including \$.....0 for medical loss ratio rebate per the Public Health Service Act).....	130,018,153	112,088,416
10. Advance premium.....	23,167,878	20,141,604
11. Dividends declared and unpaid:		
11.1 Stockholders.....		
11.2 Policyholders.....		
12. Ceded reinsurance premiums payable (net of ceding commissions).....	14,471,681	22,585,951
13. Funds held by company under reinsurance treaties.....		
14. Amounts withheld or retained by company for account of others.....		
15. Remittances and items not allocated.....		
16. Provision for reinsurance (including \$.....0 certified).....	60,781	61,828
17. Net adjustments in assets and liabilities due to foreign exchange rates.....		
18. Drafts outstanding.....	129,040,654	132,799,984
19. Payable to parent, subsidiaries and affiliates.....		
20. Derivatives.....		
21. Payable for securities.....		
22. Payable for securities lending.....		
23. Liability for amounts held under uninsured plans.....		
24. Capital notes \$.....0 and interest thereon \$.....0.....		
25. Aggregate write-ins for liabilities.....	606,995	1,160,318
26. Total liabilities excluding protected cell liabilities (Lines 1 through 25).....	495,247,301	457,492,522
27. Protected cell liabilities.....		
28. Total liabilities (Lines 26 and 27).....	495,247,301	457,492,522
29. Aggregate write-ins for special surplus funds.....	0	0
30. Common capital stock.....	2,500,000	2,500,000
31. Preferred capital stock.....		
32. Aggregate write-ins for other than special surplus funds.....	0	0
33. Surplus notes.....		
34. Gross paid in and contributed surplus.....	150,654,816	150,654,816
35. Unassigned funds (surplus).....	237,298,145	196,762,790
36. Less treasury stock, at cost:		
36.10.000 shares common (value included in Line 30 \$.....0).....		
36.20.000 shares preferred (value included in Line 31 \$.....0).....		
37. Surplus as regards policyholders (Lines 29 to 35, less 36).....	390,452,961	349,917,606
38. Totals (Page 2, Line 28, Col. 3).....	885,700,262	807,410,128

DETAILS OF WRITE-INS

2501. STATE PLAN LIABILITY.....	472,460	437,171
2502. OTHER LIABILITIES.....	78,694	593,826
2503. ESCHEATABLE PROPERTY.....	55,841	129,321
2598. Summary of remaining write-ins for Line 25 from overflow page.....	0	0
2599. Totals (Lines 2501 thru 2503 plus 2598) (Line 25 above).....	606,995	1,160,318
2901.		
2902.		
2903.		
2998. Summary of remaining write-ins for Line 29 from overflow page.....	0	0
2999. Totals (Lines 2901 thru 2903 plus 2998) (Line 29 above).....	0	0
3201.		
3202.		
3203.		
3298. Summary of remaining write-ins for Line 32 from overflow page.....	0	0
3299. Totals (Lines 3201 thru 3203 plus 3298) (Line 32 above).....	0	0

STATEMENT OF INCOME

	1 Current Year to Date	2 Prior Year to Date	3 Prior Year Ended December 31
UNDERWRITING INCOME			
1. Premiums earned:			
1.1 Direct..... (written \$.....1,892,823,407).....	1,828,039,354	1,737,513,311	2,375,507,441
1.2 Assumed..... (written \$.....297,097,998).....	279,168,261	256,273,254	352,484,914
1.3 Ceded..... (written \$.....1,892,823,407).....	1,828,039,354	1,737,513,311	2,375,507,441
1.4 Net..... (written \$.....297,097,998).....	279,168,261	256,273,254	352,484,914
DEDUCTIONS:			
2. Losses incurred (current accident year \$.....145,362,133):			
2.1 Direct.....	1,004,429,859	1,053,044,094	1,467,634,359
2.2 Assumed.....	145,739,679	152,269,993	211,175,998
2.3 Ceded.....	1,004,429,859	1,053,044,094	1,467,634,359
2.4 Net.....	145,739,679	152,269,993	211,175,998
3. Loss adjustment expenses incurred.....	25,619,858	24,164,574	33,245,113
4. Other underwriting expenses incurred.....	69,863,517	53,232,092	71,705,627
5. Aggregate write-ins for underwriting deductions.....	0	0	0
6. Total underwriting deductions (Lines 2 through 5).....	241,223,054	229,666,659	316,126,738
7. Net income of protected cells.....			
8. Net underwriting gain (loss) (Line 1 minus Line 6 + Line 7).....	37,945,207	26,606,595	36,358,176
INVESTMENT INCOME			
9. Net investment income earned.....	5,714,579	6,277,003	8,569,891
10. Net realized capital gains (losses) less capital gains tax of \$.....2,046,707.....	7,699,522	845,658	1,162,352
11. Net investment gain (loss) (Lines 9 + 10).....	13,414,101	7,122,661	9,732,243
OTHER INCOME			
12. Net gain or (loss) from agents' or premium balances charged off (amount recovered \$.....1,492,833 amount charged off \$.....16,207,987).....	(14,715,154)	(13,306,789)	(17,923,354)
13. Finance and service charges not included in premiums.....	11,809,825	11,525,634	15,869,844
14. Aggregate write-ins for miscellaneous income.....	765,395	2,347,942	3,078,377
15. Total other income (Lines 12 through 14).....	(2,139,934)	566,787	1,024,867
16. Net income before dividends to policyholders, after capital gains tax and before all other federal and foreign income taxes (Lines 8 + 11 + 15).....	49,219,374	34,296,043	47,115,286
17. Dividends to policyholders.....			
18. Net income, after dividends to policyholders, after capital gains tax and before all other federal and foreign income taxes (Line 16 minus Line 17).....	49,219,374	34,296,043	47,115,286
19. Federal and foreign income taxes incurred.....	9,532,267	7,252,541	9,644,799
20. Net income (Line 18 minus Line 19) (to Line 22).....	39,687,107	27,043,502	37,470,487
CAPITAL AND SURPLUS ACCOUNT			
21. Surplus as regards policyholders, December 31 prior year.....	349,917,606	312,067,959	312,067,959
22. Net income (from Line 20).....	39,687,107	27,043,502	37,470,487
23. Net transfers (to) from Protected Cell accounts.....			
24. Change in net unrealized capital gains or (losses) less capital gains tax of \$.....(1,396).....	(5,252)	521,369	521,369
25. Change in net unrealized foreign exchange capital gain (loss).....			
26. Change in net deferred income tax.....	1,345,809	591,876	551,630
27. Change in nonadmitted assets.....	(493,356)	238,501	(686,011)
28. Change in provision for reinsurance.....	1,047	(7,828)	(7,828)
29. Change in surplus notes.....			
30. Surplus (contributed to) withdrawn from protected cells.....			
31. Cumulative effect of changes in accounting principles.....			
32. Capital changes:			
32.1 Paid in.....			
32.2 Transferred from surplus (Stock Dividend).....			
32.3 Transferred to surplus.....			
33. Surplus adjustments:			
33.1 Paid in.....			
33.2 Transferred to capital (Stock Dividend).....			
33.3 Transferred from capital.....			
34. Net remittances from or (to) Home Office.....			
35. Dividends to stockholders.....			
36. Change in treasury stock.....			
37. Aggregate write-ins for gains and losses in surplus.....	0	0	0
38. Change in surplus as regards policyholders (Lines 22 through 37).....	40,535,355	28,387,420	37,849,647
39. Surplus as regards policyholders, as of statement date (Lines 21 plus 38).....	390,452,961	340,455,379	349,917,606

DETAILS OF WRITE-INS

0501.			
0502.			
0503.			
0598. Summary of remaining write-ins for Line 5 from overflow page.....	0	0	0
0599. Totals (Lines 0501 thru 0503 plus 0598) (Line 5 above).....	0	0	0
1401. INTEREST INCOME ON INTERCOMPANY BALANCES.....	389,853	2,112,386	2,661,800
1402. MISCELLANEOUS INCOME.....	374,314	233,682	414,225
1403. SERVICE BUSINESS REVENUE.....	1,228	1,874	2,352
1498. Summary of remaining write-ins for Line 14 from overflow page.....	0	0	0
1499. Totals (Lines 1401 thru 1403 plus 1498) (Line 14 above).....	765,395	2,347,942	3,078,377
3701.			
3702.			
3703.			
3798. Summary of remaining write-ins for Line 37 from overflow page.....	0	0	0
3799. Totals (Lines 3701 thru 3703 plus 3798) (Line 37 above).....	0	0	0

CASH FLOW

	1 Current Year to Date	2 Prior Year To Date	3 Prior Year Ended December 31
CASH FROM OPERATIONS			
1. Premiums collected net of reinsurance.....	269,590,277	235,816,541	352,788,887
2. Net investment income.....	6,711,049	6,209,554	8,578,160
3. Miscellaneous income.....	(3,273,893)	795,600	1,467,936
4. Total (Lines 1 through 3).....	273,027,433	242,821,695	362,834,983
5. Benefit and loss related payments.....	143,232,268	159,315,741	210,264,352
6. Net transfers to Separate Accounts, Segregated Accounts and Protected Cell Accounts.....			
7. Commissions, expenses paid and aggregate write-ins for deductions.....	87,112,778	67,421,826	99,083,968
8. Dividends paid to policyholders.....			
9. Federal and foreign income taxes paid (recovered) net of \$..... 1,840,431 tax on capital gains (losses).....	(3,011,665)	7,366,859	9,468,933
10. Total (Lines 5 through 9).....	227,333,381	234,104,426	318,817,253
11. Net cash from operations (Line 4 minus Line 10).....	45,694,052	8,717,269	44,017,730
CASH FROM INVESTMENTS			
12. Proceeds from investments sold, matured or repaid:			
12.1 Bonds.....	286,172,712	111,233,899	177,418,441
12.2 Stocks.....			
12.3 Mortgage loans.....			
12.4 Real estate.....			
12.5 Other invested assets.....			
12.6 Net gains or (losses) on cash, cash equivalents and short-term investments.....			
12.7 Miscellaneous proceeds.....			
12.8 Total investment proceeds (Lines 12.1 to 12.7).....	286,172,712	111,233,899	177,418,441
13. Cost of investments acquired (long-term only):			
13.1 Bonds.....	307,410,389	121,780,446	217,847,118
13.2 Stocks.....			
13.3 Mortgage loans.....			
13.4 Real estate.....			
13.5 Other invested assets.....			
13.6 Miscellaneous applications.....			
13.7 Total investments acquired (Lines 13.1 to 13.6).....	307,410,389	121,780,446	217,847,118
14. Net increase or (decrease) in contract loans and premium notes.....			
15. Net cash from investments (Line 12.8 minus Line 13.7 and Line 14).....	(21,237,677)	(10,546,547)	(40,428,677)
CASH FROM FINANCING AND MISCELLANEOUS SOURCES			
16. Cash provided (applied):			
16.1 Surplus notes, capital notes.....			
16.2 Capital and paid in surplus, less treasury stock.....			
16.3 Borrowed funds.....			
16.4 Net deposits on deposit-type contracts and other insurance liabilities.....			
16.5 Dividends to stockholders.....			
16.6 Other cash provided (applied).....	(29,469,205)	(4,433,936)	(4,839,437)
17. Net cash from financing and miscellaneous sources (Lines 16.1 through 16.4 minus Line 16.5 plus Line 16.6).....	(29,469,205)	(4,433,936)	(4,839,437)
RECONCILIATION OF CASH, CASH EQUIVALENTS AND SHORT-TERM INVESTMENTS			
18. Net change in cash, cash equivalents and short-term investments (Line 11 plus Line 15 plus Line 17).....	(5,012,830)	(6,263,214)	(1,250,384)
19. Cash, cash equivalents and short-term investments:			
19.1 Beginning of year.....	5,012,830	6,263,214	6,263,214
19.2 End of period (Line 18 plus Line 19.1).....	(0)	(0)	5,012,830

Note: Supplemental disclosures of cash flow information for non-cash transactions:

20.0001			
---------------	--	--	--

NOTES TO FINANCIAL STATEMENTS

Note 1 – Summary of Significant Accounting Policies and Going Concern

A. Accounting Practices

The accompanying statutory-basis financial statements of Progressive American Insurance Company (the "Company") were prepared on the basis of accounting practices prescribed or permitted by the Ohio Department of Insurance ("DOI").

The DOI requires insurance companies domiciled in the state of Ohio to prepare their statutory-basis financial statements in accordance with the National Association of Insurance Commissioners' ("NAIC") *Accounting Practices and Procedures Manual* subject to any deviations prescribed or permitted by the DOI. No deviations from NAIC statutory accounting practices ("NAIC SAP") were used in preparing these statutory-basis financial statements, except for the NAIC's limited-time exception allowing the classification of policyholder credits related to COVID-19 as an underwriting expense instead of a reduction of premium. The NAIC issued INT 20-08 providing a limited-time exception to NAIC SAP which allows the Company to recognize policyholder credits related to COVID-19 as an underwriting expense (Page 4, Line 4) rather than a reduction of premium (Page 4, Line 1) when a policy endorsement allowing for discretionary payments to policyholders due to COVID-19 related issues was filed, if required by the state, prior to June 15, 2020. This limited-time exception will expire on January 1, 2021.

As of September 30, 2020, the Company reported \$10,317,755 in policyholder credits to personal auto policyholders in response to the expected reduction in auto accident frequency and the financial hardships imposed by the impact of COVID-19 social distancing and shelter-in-place restrictions ("COVID-19 restrictions"). In accordance with INT 20-08, the Company has included these policyholder credits in underwriting expense (Page 4, Line 4) rather than a reduction of premium (Page 4, Line 1) due to the Company filing policy endorsements, if required by the state, prior to June 15, 2020. The table below illustrates that there were no other deviations from NAIC SAP and that the permitted practice described above has no net impact on either Net Income or Surplus.

	SSAP #	F/S Page	F/S Line #	2020	2019
NET INCOME					
(1) PROGRESSIVE AMERICAN INSURANCE COMPANY state basis (Page 4, Line 20, Columns 1 & 2)	XXX	XXX	XXX	\$ 39,687,107	\$ 37,470,487
(2) State Prescribed Practices that increase/decrease NAIC SAP					
(3) State Permitted Practices that increase/decrease NAIC SAP					
(4) NAIC SAP (1 – 2 – 3 = 4)	XXX	XXX	XXX	\$ 39,687,107	\$ 37,470,487
SURPLUS					
(5) PROGRESSIVE AMERICAN INSURANCE COMPANY state basis (Page 3, line 37, Columns 1 & 2)	XXX	XXX	XXX	\$ 390,452,961	\$ 349,917,606
(6) State Prescribed Practices that increase/decrease NAIC SAP					
(7) State Permitted Practices that increase/decrease NAIC SAP					
(8) NAIC SAP (5 – 6 – 7 = 8)	XXX	XXX	XXX	\$ 390,452,961	\$ 349,917,606

The following table illustrates the impact of reporting the policyholder credits related to COVID-19 restrictions as an underwriting expense rather than a reduction of premium on the operating percentages and other percentages reported in the Five-Year Historical Data Exhibit:

	Policyholder Credits as an Underwriting Expense	Policyholder Credits as a Reduction of Premium
Operating Percentages:		
Premiums earned	100.0	100.0
Losses incurred	52.2	54.2
Loss expenses incurred	9.2	9.5
Other underwriting expenses incurred	25.0	22.1
Net underwriting gain/loss	13.6	14.1
Other Percentages:		
Other underwriting expenses to net premiums written	24.2	21.5
Losses and loss expenses incurred to premiums earned	61.4	63.7
Net premiums written to policyholders' surplus	76.1	73.4

B. Use of Estimates in the Preparation of the Financial Statement

No significant changes

C. Accounting Policy

2. Basis for Bonds, Mandatory Convertible Securities, SVO-Identified Investments and Amortization Method

Not Applicable

6. Loan-backed securities

Loan-backed and structured securities are accounted for as prescribed by Statement of Statutory Accounting Principles No. 43R, Loan-backed and Structured Securities. These securities are generally stated at amortized cost as determined by the estimated value of future cash flows. Prepayment assumptions for loan-backed and structured debt securities are obtained from available market data, broker/dealers, and/or internal estimates, and are consistent with current interest rate and economic trends. See Note 5.D.

D. Going Concern

Management continuously monitors the Company's financial results and compliance with regulatory requirements and found no reason to expect the Company to not continue as a going concern.

NOTES TO FINANCIAL STATEMENTS**Note 2 – Accounting Changes and Corrections of Errors**

Not Applicable

Note 3 – Business Combinations and Goodwill

No significant changes

Note 4 – Discontinued Operations

Not Applicable

Note 5 – Investments

A - C Not Applicable

D. Loan-Backed Securities

1. The sources used to determine prepayment assumptions are derived from updated cash flows from widely utilized reputable industry sources. The Company's portfolio managers review the available cash flow data and prepayment assumptions and make adjustments based on current performance indicators on the underlying assets (e.g., delinquency rates, foreclosure rates, and default rates), credit support (via current levels of subordination), and historical credit ratings.
2. Intent to Sell or Inability to Hold Securities with a Recognized Other-Than-Temporary Impairment
Not Applicable
3. The Company has not recorded an other-than-temporary impairment for loan-backed and structured debt securities during the current year.
4. At the end of the reporting period, the composition of fair value and gross unrealized losses on loan-backed and structured debt securities by the length of time that individual securities have been in a continuous unrealized loss position is as follows:

a. The aggregate amount of unrealized losses:	1. Less than 12 Months	\$ 1,049,208
	2. 12 Months or Longer	\$
b. The aggregate related fair value of securities with unrealized losses:	1. Less than 12 Months	\$ 24,592,754
	2. 12 Months or Longer	\$

5. Additional information

Under SSAP No. 43R, the Company analyzes its structured debt securities to determine if the Company intends to sell, or if it is more likely than not that the Company will be required to sell, the security prior to recovery and, if so, the Company writes down the security to its current fair market value with the entire amount of the write-down recorded as a realized loss. To the extent that it is more likely than not that the Company will hold the debt security until recovery (which could be maturity), the Company determines if any of the decline in value is due to a credit loss (i.e., where the present value of cash flows expected to be collected is lower than the amortized cost basis of the security) and, if so, the Company recognizes that portion of the impairment as a realized loss.

E. Dollar Repurchase Agreements and/or Securities Lending Transactions

Not Applicable

F. Repurchase Agreements Transactions Accounted for as Secured Borrowing

Not Applicable

G. Reverse Repurchase Agreements Transactions Accounted for as Secured Borrowing

Not Applicable

H. Repurchase Agreements Transactions Accounted for as a Sale

Not Applicable

I. Reverse Repurchase Agreements Transactions Accounted for as a Sale

Not Applicable

J -L No significant changes

M. Working Capital Finance Investments

Not Applicable

N. Offsetting and Netting of Assets and Liabilities

Not Applicable

O-R No significant changes

Note 6 – Joint Ventures, Partnerships and Limited Liability Companies

Not Applicable

Note 7 – Investment Income

No significant changes

Note 8 – Derivative Instruments

Not Applicable

NOTES TO FINANCIAL STATEMENTS

Note 9 – Income Taxes

No significant changes

Note 10 – Information Concerning Parent, Subsidiaries, Affiliates and Other Related Parties

A - E No significant changes

F. Management, Service Contracts, Cost Sharing Arrangements

Effective July 1, 2020, the Company terminated the program administrator agreement with ASI Underwriters Corp. ("ASIU"). Under the terms of the agreement, ASIU charged a fee for designing, implementing, and administering the Company's renters insurance program. Costs related to the renters insurance program are now being allocated under the Company's existing joint services agreement.

G - O No significant changes

Note 11 – Debt

Not Applicable

Note 12 – Retirement Plans, Deferred Compensation, Postemployment Benefits and Compensated Absences and Other Postretirement Benefit Plans

Not Applicable

Note 13 – Capital and Surplus, Shareholder's Dividend Restrictions and Quasi-Reorganizations

No significant changes

Note 14 – Liabilities, Contingencies and Assessments

A - C No significant changes

D. Claims Related Extra Contractual Obligation and Bad Faith Losses Stemming from Lawsuits

PROGRESSIVE AMERICAN INSURANCE COMPANY paid the following amounts in the reporting period to settle claims related extra contractual obligations or bad faith claims stemming from lawsuits:

	Direct
Claims related ECO and bad faith losses paid during the reporting period	\$ 241,333

Number of claims where amounts were paid to settle claims related extra contractual obligations or bad faith claims resulting from lawsuits during the reporting period:

(a) 0-25 Claims	(b) 26-50 Claims	(c) 51-100 Claims	(d) 101-500 Claims	(e) More than 500 Claims
X				

Indicate whether claim count information is disclosed per claim or per claimant:

(f) Per Claim []

(g) Per Claimant [X]

E-F No significant changes

G. All Other Contingencies

The Company routinely assesses the collectability of premiums and agents' balances receivable and records a bad debt reserve for amounts exceeding the nonadmitted balance that the Company believes are uncollectible.

The Company is named as defendant in various lawsuits arising out of its insurance operations. All legal actions relating to claims made under insurance policies are considered by the Company in establishing its loss and LAE reserves. The Company also has, on a net basis, potential exposure relating to lawsuits due to its participation in a 100% pooling reinsurance agreement for which it is allocated litigation expenses.

The following is a discussion of potentially significant pending cases at the reporting date. Unless specifically noted, the Company does not consider a loss from these cases to be probable and is unable to estimate a range of loss, if any, at this time.

There were four putative class action lawsuits challenging the Company's practice in Florida of adjusting personal injury protection and first-party medical payments.

There was a putative class action lawsuit alleging the Company undervalues total loss claims through the use of certain valuation tools.

There was a putative class action lawsuit alleging the Company fails to pay the required amount of tag and title transfer fees, and taxes, following a total loss.

There was a putative class action lawsuit challenging the Company's reimbursement to Medicare Advantage Plans on first-party medical claims and settlements with insureds.

There were two individual action lawsuits alleging the Company misinterprets the appraisal and limitation of liability clauses in its policy in adjusting glass claims.

There was one individual lawsuit challenging the Company's Medicaid reimbursement or, in the alternative, requesting a pure bill of discovery.

Note 15 – Leases

Not Applicable

Note 16 – Information about Financial Instruments with Off-Balance Sheet Risk and Financial Instruments with Concentrations of Credit Risk

Not Applicable

Note 17 – Sale, Transfer and Servicing of Financial Assets and Extinguishments of Liabilities

Not Applicable

Note 18 – Gain or Loss to the Reporting Entity from Uninsured Plans and the Portion of Partially Insured Plans

Not Applicable

NOTES TO FINANCIAL STATEMENTS**Note 19 – Direct Premium Written/Produced by Managing General Agents/Third Party Administrators**

No significant changes

Note 20 – Fair Value Measurements**A. Inputs Used for Assets and Liabilities Measured at Fair Value****1. Fair Value Measurements by Levels 1, 2 and 3**

The Company categorizes its financial instruments, based on the degree of subjectivity inherent in the method by which they are valued, into a fair value hierarchy of three levels, as follows:

Level 1 - Inputs are unadjusted, quoted prices in active markets for identical instruments at the measurement date (e.g., U.S. government obligations, which are continually priced on a daily basis, active exchange-traded equity securities, and certain short-term securities).

Level 2 - Inputs (other than quoted prices included within Level 1) that are observable for the instrument either directly or indirectly (e.g., certain corporate and municipal bonds and certain preferred stocks). This includes: (i) quoted prices for similar instruments in active markets, (ii) quoted prices for identical or similar instruments in markets that are not active, (iii) inputs other than quoted prices that are observable for the instruments, and (iv) inputs that are derived principally from or corroborated by observable market data by correlation or other means.

Level 3 - Inputs that are unobservable. Unobservable inputs reflect our subjective evaluation about the assumptions market participants would use in pricing the financial instrument (e.g., certain structured securities and privately held investments).

Determining the fair value of the investment portfolio is the responsibility of management. As part of the responsibility, management evaluates whether a market is distressed or inactive in determining the fair value for our portfolio. Management reviews certain market level inputs to evaluate whether sufficient activity, volume, and new issuances exist to create an active market. Based on this evaluation, management concluded that there was sufficient activity related to the sectors and securities for which we obtained valuations.

The valuations classified as either Level 1 or Level 2 in the table below are priced exclusively by external sources, including: pricing vendors, dealers/market makers, and exchange-quoted prices. The Company did not have any transfers between Level 1 and Level 2. At the end of each reporting period, the Company evaluates whether or not any event has occurred or circumstances have changed that would cause an instrument to be transferred into or out of Level 3.

Fair Value Measurements at the reporting date:

Description for Each Type of Asset or Liability	Level 1	Level 2	Level 3	Net Asset Value (NAV)	Total
Assets at Fair Value					
Bonds industrial & miscellaneous	\$	\$ 12,001,535	\$	\$	\$ 12,001,535
Common stock industrial & miscellaneous	\$	\$	\$	\$	\$
Preferred stock industrial & miscellaneous	\$	\$	\$	\$	\$
Total	\$	\$ 12,001,535	\$	\$	\$ 12,001,535
Liabilities at Fair Value					
	\$	\$	\$	\$	\$
Total	\$	\$	\$	\$	\$

The Company does not have any liabilities measured at fair value on the balance sheet.

2. Rollforward of Level 3 Items

Not Applicable

3. Policy on Transfers Into and Out of Level 3

At the end of each reporting period, the Company evaluates whether or not any event has occurred or circumstances have changed that would cause an instrument to be transferred into or out of Level 3.

4. Inputs and Techniques Used for Level 2 and Level 3 Fair Values

See Note 20.A.1 above.

5. Derivative Fair Values

Not Applicable

B. Other Fair Value Disclosures

Not Applicable

C. Fair Values for all Financial Instruments by Levels 1, 2, and 3

The table below represents the fair value of all financial instruments at the reporting date, however, not all financial instruments are reported at fair value in the Company's financial statements.

Type of Financial Instrument	Aggregate Fair Value	Admitted Assets	(Level 1)	(Level 2)	(Level 3)	Net Asset Value (NAV)	Not Practicable (Carrying Value)
Bonds	\$ 382,260,711	\$ 372,575,214	\$ 181,273,139	\$ 200,987,572	\$	\$	\$
Cash equivalents	\$	\$	\$	\$	\$	\$	\$
Common stock	\$	\$	\$	\$	\$	\$	\$
Preferred stock	\$	\$	\$	\$	\$	\$	\$
Short-term investments	\$	\$	\$	\$	\$	\$	\$

D. Not Practicable to Estimate Fair Value

Not Applicable

E. NAV Practical Expedient Investments

Not Applicable

NOTES TO FINANCIAL STATEMENTS**Note 21 – Other Items**

A. Unusual or Infrequent Items

The Company issued policyholder credits to personal auto policyholders in response to the expected reduction in auto accident frequency and the financial hardships imposed by the impact of COVID-19 restrictions. In accordance with INT 20-08, the Company included these policyholder credits in underwriting expense on Page 4, Line 4 (See Note 1A).

The Company's expense ratio was adversely impacted by the policyholder credits described above as well as additional bad debt expense related to our billing leniency efforts, such as suspending cancellations and non-renewals for non-payment and pausing collection activities. These practices were put in place to help policyholders who were experiencing financial hardships as a result of COVID-19 restrictions and the impact it has had on the economy.

B. Not Applicable

C. Other Disclosures

Agents' Balances Certification, Florida Statute 625.012 (5):

For the reporting period, the Company reported net admitted premiums and agents' balances in the course of collection of \$41,904,280. Of this amount there were no premiums due from a controlled or controlling person as defined in Florida statute 625.012 (5).

D - G No significant changes

Note 22 – Events Subsequent

The Company was not impacted by any material subsequent events. Subsequent events have been considered through November 9, 2020 for the statutory statement that was available for issuance by November 16, 2020.

A. Did the reporting entity write accident and health insurance premium that is subject to Section 9010 of the Federal Affordable Care Act (YES/NO)?

Yes [] No [X]

B - H Not Applicable

Note 23 – Reinsurance

No significant changes

Note 24 – Retrospectively Rated Contracts and Contracts Subject to Redetermination

A - E Not Applicable

F. Risk Sharing Provisions of the Affordable Care Act

1. Did the reporting entity write accident and health insurance premium which is subject to the Affordable Care Act risk sharing provisions?

Yes [] No [X]

2-5 Not Applicable

Note 25 – Change in Incurred Losses and Loss Adjustment Expenses

A. Change in Incurred Losses and Loss Adjustment Expenses

Incurred losses and LAE attributable to insured events of prior accident years increased by \$657,768 in 2020, which is less than 1.0% of the total prior year net unpaid losses and LAE of \$145,737,932. The unfavorable development is primarily due to adjusting and other expense reserves strengthening during the first quarter of 2020. This is to account for lower than anticipated productivity in claims due to COVID -19 social distancing and shelter-in-place restrictions, and lower than originally anticipated existing claims inventory. In addition, December 2019 claims reported in January 2020 were higher than originally anticipated.

B. Information about Significant Changes in Methodologies and Assumptions

Not Applicable

Note 26 – Intercompany Pooling Arrangements

No significant changes

Note 27 – Structured Settlements

Not Applicable

Note 28 – Health Care Receivables

Not Applicable

Note 29 – Participating Policies

Not Applicable

Note 30 – Premium Deficiency Reserves

No significant changes

Note 31 – High Deductibles

Not Applicable

Note 32 – Discounting of Liabilities for Unpaid Losses or Unpaid Loss Adjustment Expenses

Not Applicable

NOTES TO FINANCIAL STATEMENTS

Note 33 – Asbestos/Environmental Reserves

No significant changes

Note 34 – Subscriber Savings Accounts

Not Applicable

Note 35 – Multiple Peril Crop Insurance

Not Applicable

Note 36 – Financial Guaranty Insurance

Not Applicable

GENERAL INTERROGATORIES

PART 1 - COMMON INTERROGATORIES

GENERAL

- 1.1 Did the reporting entity experience any material transactions requiring the filing of Disclosure of Material Transactions with the State of Domicile, as required by the Model Act? Yes [] No [X]
- 1.2 If yes, has the report been filed with the domiciliary state? Yes [] No []
- 2.1 Has any change been made during the year of this statement in the charter, by-laws, articles of incorporation, or deed of settlement of the reporting entity? Yes [] No [X]
- 2.2 If yes, date of change: _____
- 3.1 Is the reporting entity a member of an Insurance Holding Company System consisting of two or more affiliated persons, one or more of which is an insurer? Yes [X] No []
If yes, complete Schedule Y, Parts 1 and 1A.
- 3.2 Have there been any substantial changes in the organizational chart since the prior quarter end? Yes [] No [X]
- 3.3 If the response to 3.2 is yes, provide a brief description of those changes.

- 3.4 Is the reporting entity publicly traded or a member of a publicly traded group? Yes [X] No []
- 3.5 If the response to 3.4 is yes, provide the CIK (Central Index Key) code issued by the SEC for the entity/group. 0000080661

- 4.1 Has the reporting entity been a party to a merger or consolidation during the period covered by this statement? Yes [] No [X]
If yes, complete and file the merger history data file with the NAIC for the annual filing corresponding to this period.
- 4.2 If yes, provide name of entity, NAIC Company Code, and state of domicile (use two letter state abbreviation) for any entity that has ceased to exist as a result of the merger or consolidation.

1 Name of Entity	2 NAIC Company Code	3 State of Domicile

- 5. If the reporting entity is subject to a management agreement, including third-party administrator(s), managing general agent(s), attorney-in-fact, or similar agreement, have there been any significant changes regarding the terms of the agreement or principals involved? Yes [X] No [] N/A []
If yes, attach an explanation.

Effective July 1, 2020, the Company terminated the program administrator agreement with ASI Underwriters Corp. ("ASIU"). Under the terms of the agreement, ASIU charged a fee for designing, implementing, and administering the Company's renters insurance program. Costs related to the renters insurance program are now being allocated under the Company's existing joint services agreement.

- 6.1 State as of what date the latest financial examination of the reporting entity was made or is being made. 12/31/2017
- 6.2 State the as of date that the latest financial examination report became available from either the state of domicile or the reporting entity. This date should be the date of the examined balance sheet and not the date the report was completed or released. 12/31/2017
- 6.3 State as of what date the latest financial examination report became available to other states or the public from either the state of domicile or the reporting entity. This is the release date or completion date of the examination report and not the date of the examination (balance sheet date). 05/08/2019

- 6.4 By what department or departments?
OHIO
- 6.5 Have all financial statement adjustments within the latest financial examination report been accounted for in a subsequent financial statement filed with Departments? Yes [] No [] N/A [X]
- 6.6 Have all of the recommendations within the latest financial examination report been complied with? Yes [X] No [] N/A []
- 7.1 Has this reporting entity had any Certificates of Authority, licenses or registrations (including corporate registration, if applicable) suspended or revoked by any governmental entity during the reporting period? Yes [] No [X]
- 7.2 If yes, give full information:

- 8.1 Is the company a subsidiary of a bank holding company regulated with the Federal Reserve Board? Yes [] No [X]
- 8.2 If response to 8.1 is yes, please identify the name of the bank holding company.

- 8.3 Is the company affiliated with one or more banks, thrifts or securities firms? Yes [] No [X]
- 8.4 If the response to 8.3 is yes, please provide below the names and location (city and state of the main office) of any affiliates regulated by a federal regulatory services agency [i.e. the Federal Reserve Board (FRB), the Office of the Comptroller of the Currency (OCC), the Federal Deposit Insurance Corporation (FDIC) and the Securities Exchange Commission (SEC)] and identify the affiliate's primary federal regulator.

1 Affiliate Name	2 Location (City, State)	3 FRB	4 OCC	5 FDIC	6 SEC

- 9.1 Are the senior officers (principal executive officer, principal financial officer, principal accounting officer or controller, or persons performing similar functions) of the reporting entity subject to a code of ethics, which includes the following standards? Yes [X] No []
 - (a) Honest and ethical conduct, including the ethical handling of actual or apparent conflicts of interest between personal and professional relationships;
 - (b) Full, fair, accurate, timely and understandable disclosure in the periodic reports required to be filed by the reporting entity;
 - (c) Compliance with applicable governmental laws, rules and regulations;
 - (d) The prompt internal reporting of violations to an appropriate person or persons identified in the code; and
 - (e) Accountability for adherence to the code.

- 9.11 If the response to 9.1 is No, please explain:
- 9.2 Has the code of ethics for senior managers been amended? Yes [] No [X]
- 9.21 If the response to 9.2 is Yes, provide information related to amendment(s).

GENERAL INTERROGATORIES

PART 1 - COMMON INTERROGATORIES

- 9.3 Have any provisions of the code of ethics been waived for any of the specified officers? Yes [] No [X]
- 9.31 If the response to 9.3 is Yes, provide the nature of any waiver(s).

FINANCIAL

- 10.1 Does the reporting entity report any amounts due from parent, subsidiaries or affiliates on Page 2 of this statement? Yes [X] No []
- 10.2 If yes, indicate any amounts receivable from parent included in the Page 2 amount: \$ 0

INVESTMENT

- 11.1 Were any of the stocks, bonds, or other assets of the reporting entity loaned, placed under option agreement, or otherwise made available for use by another person? (Exclude securities under securities lending agreements.) Yes [] No [X]
- 11.2 If yes, give full and complete information relating thereto:

12. Amount of real estate and mortgages held in other invested assets in Schedule BA: \$ 0
13. Amount of real estate and mortgages held in short-term investments: \$ 0

- 14.1 Does the reporting entity have any investments in parent, subsidiaries and affiliates? Yes [] No [X]

14.2 If yes, please complete the following:

	1 Prior Year End Book/Adjusted Carrying Value	2 Current Quarter Book/Adjusted Carrying Value
14.21 Bonds	\$ 0	\$ 0
14.22 Preferred Stock	0	0
14.23 Common Stock	0	0
14.24 Short-Term Investments	0	0
14.25 Mortgage Loans on Real Estate	0	0
14.26 All Other	0	0
14.27 Total Investment in Parent, Subsidiaries and Affiliates (Subtotal Lines 14.21 to 14.26)	\$ 0	\$ 0
14.28 Total Investment in Parent included in Lines 14.21 to 14.26 above	\$ 0	\$ 0

- 15.1 Has the reporting entity entered into any hedging transactions reported on Schedule DB? Yes [] No [X]

- 15.2 If yes, has a comprehensive description of the hedging program been made available to the domiciliary state? Yes [] No [] N/A [X]
- If no, attach a description with this statement.

16. For the reporting entity's security lending program, state the amount of the following as of current statement date:

- 16.1 Total fair value of reinvested collateral assets reported on Schedule DL, Parts 1 and 2: \$ 0
- 16.2 Total book adjusted/carrying value of reinvested collateral assets reported on Schedule DL, Parts 1 and 2: \$ 0
- 16.3 Total payable for securities lending reported on the liability page: \$ 0

17. Excluding items in Schedule E-Part 3-Special Deposits, real estate, mortgage loans and investments held physically in the reporting entity's offices, vaults or safety deposit boxes, were all stocks, bonds and other securities, owned throughout the current year held pursuant to a custodial agreement with a qualified bank or trust company in accordance with Section 1, III - General Examination Considerations, F. Outsourcing of Critical Functions, Custodial or Safekeeping Agreements of the NAIC *Financial Condition Examiners Handbook*? Yes [X] No []

17.1 For all agreements that comply with the requirements of the NAIC *Financial Condition Examiners Handbook*, complete the following:

1 Name of Custodian(s)	2 Custodian Address
CITIBANK, N.A.	338 GREENWICH STREET NEW YORK, NY 10013

17.2 For all agreements that do not comply with the requirements of the NAIC *Financial Condition Examiners Handbook*, provide the name, location and a complete explanation:

1 Name(s)	2 Location(s)	3 Complete Explanation(s)

- 17.3 Have there been any changes, including name changes, in the custodian(s) identified in 17.1 during the current quarter? Yes [] No [X]

17.4 If yes, give full and complete information relating thereto:

1 Old Custodian	2 New Custodian	3 Date of Change	4 Reason

17.5 Investment management – Identify all investment advisors, investment managers, broker/dealers, including individuals that have the authority to make investment decisions on behalf of the reporting entity. For assets that are managed internally by employees of the reporting entity, note as such "[...]that have access to the investment accounts", "handle securities"].

1 Name of Firm or Individual	2 Affiliation
PROGRESSIVE CAPITAL MANAGEMENT CORP.	A

17.5097 For those firms/individuals listed in the table for Question 17.5, do any firms/individuals unaffiliated with the reporting entity (i.e., designated with a "U") manage more than 10% of the reporting entity's invested assets? Yes [] No [X]

17.5098 For firms/individuals unaffiliated with the reporting entity (i.e., designated with a "U") listed in the table for Question 17.5, does the total assets under management aggregate to more than 50% of the reporting entity's invested assets? Yes [] No [X]

17.6 For those firms or individuals listed in the table for 17.5 with an affiliation code of "A" (affiliated) or "U" (unaffiliated), provide the information for the table below.

1 Central Registration Depository Number	2 Name of Firm or Individual	3 Legal Entity Identifier (LEI)	4 Registered With	5 Investment Management Agreement (IMA) Filed
N/A	PROGRESSIVE CAPITAL MANAGEMENT CORP		N/A	DS

GENERAL INTERROGATORIES**PART 1 - COMMON INTERROGATORIES**

- 18.1 Have all the filing requirements of the *Purposes and Procedures Manual of the NAIC Investment Analysis Office* been followed? Yes No
- 18.2 If no, list exceptions:
19. By self-designating 5GI securities, the reporting entity is certifying the following elements for each self-designated 5GI security:
- Documentation necessary to permit a full credit analysis of the security does not exist or an NAIC CRP credit rating for an FE or PL security is not available.
 - Issuer or obligor is current on all contracted interest and principal payments.
 - The insurer has an actual expectation of ultimate payment of all contracted interest and principal.
- Has the reporting entity self-designated 5GI securities? Yes No
20. By self-designating PLGI securities, the reporting entity is certifying the following elements for each self-designated PLGI security:
- The security was purchased prior to January 1, 2018.
 - The reporting entity is holding capital commensurate with the NAIC Designation reported for the security.
 - The NAIC Designation was derived from the credit rating assigned by an NAIC CRP in its legal capacity as a NRSRO which is shown on a current private letter rating held by the insurer and available for examination by state insurance regulators.
 - The reporting entity is not permitted to share this credit rating of the PL security with the SVO.
- Has the reporting entity self-designated PLGI securities? Yes No
21. By assigning FE to a Schedule BA non-registered private fund, the reporting entity is certifying the following elements of each self-designated FE fund:
- The security was purchased prior to January 1, 2019.
 - The reporting entity is holding capital commensurate with the NAIC Designation reported for the security.
 - The security had a public credit rating(s) with annual surveillance assigned by an NAIC CRP in its legal capacity as an NRSRO prior to January 1, 2019.
 - The fund only or predominantly holds bonds in its portfolio.
 - The current reporting NAIC designation was derived from the public credit rating(s) with annual surveillance assigned by an NAIC CRP in its legal capacity as an NRSRO.
 - The public credit rating(s) with annual surveillance assigned by an NAIC CRP has not lapsed.
- Has the reporting entity assigned FE to Schedule BA non-registered private funds that complied with the above criteria? Yes No

GENERAL INTERROGATORIES (continued)

PART 2 – PROPERTY & CASUALTY INTERROGATORIES

1. If the reporting entity is a member of a pooling arrangement, did the agreement or the reporting entity's participation change? Yes [] No [X] N/A []
If yes, attach an explanation.

2. Has the reporting entity reinsured any risk with any other reporting entity and agreed to release such entity from liability, in whole or in part, from any loss that may occur on the risk, or portion thereof, reinsured? Yes [] No [X]
If yes, attach an explanation.

- 3.1 Have any of the reporting entity's primary reinsurance contracts been canceled? Yes [] No [X]

- 3.2 If yes, give full and complete information thereto:

- 4.1 Are any of the liabilities for unpaid losses and loss adjustment expenses other than certain workers' compensation tabular reserves (see *Annual Statement Instructions* pertaining to disclosure of discounting for definition of "tabular reserves,") discounted at a rate of interest greater than zero? Yes [] No [X]

- 4.2 If yes, complete the following schedule:

1 Line of Business	2 Maximum Interest	3 Disc. Rate	Total Discount				Discount Taken During Period			
			4 Unpaid Losses	5 Unpaid LAE	6 IBNR	7 Total	8 Unpaid Losses	9 Unpaid LAE	10 IBNR	11 Total
	0.000	0.000	0	0	0	0	0	0	0	0
Total	XXX	XXX	0	0	0	0	0	0	0	0

5. Operating Percentages:

5.1 A&H loss percent 0.000%

5.2 A&H cost containment percent 0.000%

5.3 A&H expense percent excluding cost containment expenses 0.000%

- 6.1 Do you act as a custodian for health savings accounts? Yes [] No [X]

6.2 If yes, please provide the amount of custodial funds held as of the reporting date. \$ 0

- 6.3 Do you act as an administrator for health savings accounts? Yes [] No [X]

6.4 If yes, please provide the amount of funds administered as of the reporting date. \$ 0

7. Is the reporting entity licensed or chartered, registered, qualified, eligible or writing business in at least two states? Yes [X] No []

- 7.1 If no, does the reporting entity assume reinsurance business that covers risks residing in at least one state other than the state of domicile of the reporting entity? Yes [] No []

PROGRESSIVE AMERICAN INSURANCE COMPANY
SCHEDULE F - CEDED REINSURANCE

Showing All New Reinsurers - Current Year to Date

1	2	3	4	5	6	7
NAIC Company Code	ID Number	Name of Reinsurer	Domiciliary Jurisdiction	Type of Reinsurer	Certified Reinsurer Rating (1 through 6)	Effective Date of Certified Reinsurer Rating

NONE

PROGRESSIVE AMERICAN INSURANCE COMPANY

SCHEDULE T - EXHIBIT OF PREMIUMS WRITTEN

Current Year to Date - Allocated by States and Territories

States, Etc.	1 Active Status (a)	Direct Premiums Written		Direct Losses Paid (Deducting Salvage)		Direct Losses Unpaid	
		2 Current Year to Date	3 Prior Year to Date	4 Current Year to Date	5 Prior Year to Date	6 Current Year to Date	7 Prior Year to Date
1. Alabama.....AL	N						
2. Alaska.....AK	N						
3. Arizona.....AZ	N						
4. Arkansas.....AR	E						
5. California.....CA	N						
6. Colorado.....CO	L						
7. Connecticut.....CT	N						
8. Delaware.....DE	N						
9. District of Columbia.....DC	N						
10. Florida.....FL	L	1,884,459,021	1,787,667,362	978,157,979	1,008,894,816	810,617,574	739,156,437
11. Georgia.....GA	L	6,148,883	6,765,423	3,168,491	4,171,961	2,995,515	2,826,090
12. Hawaii.....HI	L						
13. Idaho.....ID	N						
14. Illinois.....IL	L			(350)	(350)		
15. Indiana.....IN	L				(18)		
16. Iowa.....IA	N						
17. Kansas.....KS	N						
18. Kentucky.....KY	L						
19. Louisiana.....LA	N						
20. Maine.....ME	E						
21. Maryland.....MD	L	953,920	1,061,520	398,885	683,298	460,714	814,551
22. Massachusetts.....MA	E						
23. Michigan.....MI	L						
24. Minnesota.....MN	N						
25. Mississippi.....MS	L						
26. Missouri.....MO	E						
27. Montana.....MT	E						
28. Nebraska.....NE	N						
29. Nevada.....NV	N						
30. New Hampshire.....NH	N						
31. New Jersey.....NJ	N						
32. New Mexico.....NM	E						
33. New York.....NY	Q					3,500,000	3,500,000
34. North Carolina.....NC	L			283	(1,147)		4
35. North Dakota.....ND	E						
36. Ohio.....OH	L						
37. Oklahoma.....OK	L						
38. Oregon.....OR	N						
39. Pennsylvania.....PA	N						
40. Rhode Island.....RI	N						
41. South Carolina.....SC	N						
42. South Dakota.....SD	N						
43. Tennessee.....TN	N						
44. Texas.....TX	N						
45. Utah.....UT	E						
46. Vermont.....VT	N						
47. Virginia.....VA	L	1,070,711	1,125,439	579,260	349,851	516,895	358,494
48. Washington.....WA	L	190,872	201,695	34,223	31,977	130,917	264,107
49. West Virginia.....WV	N						
50. Wisconsin.....WI	E						
51. Wyoming.....WY	N						
52. American Samoa.....AS	N						
53. Guam.....GU	N						
54. Puerto Rico.....PR	N						
55. US Virgin Islands.....VI	N						
56. Northern Mariana Islands.....MP	N						
57. Canada.....CAN	N						
58. Aggregate Other Alien.....OT	XXX	0	0	0	0	0	0
59. Totals.....	XXX	1,892,823,407	1,796,821,439	982,338,772	1,014,130,388	818,221,615	746,919,682

DETAILS OF WRITE-INS

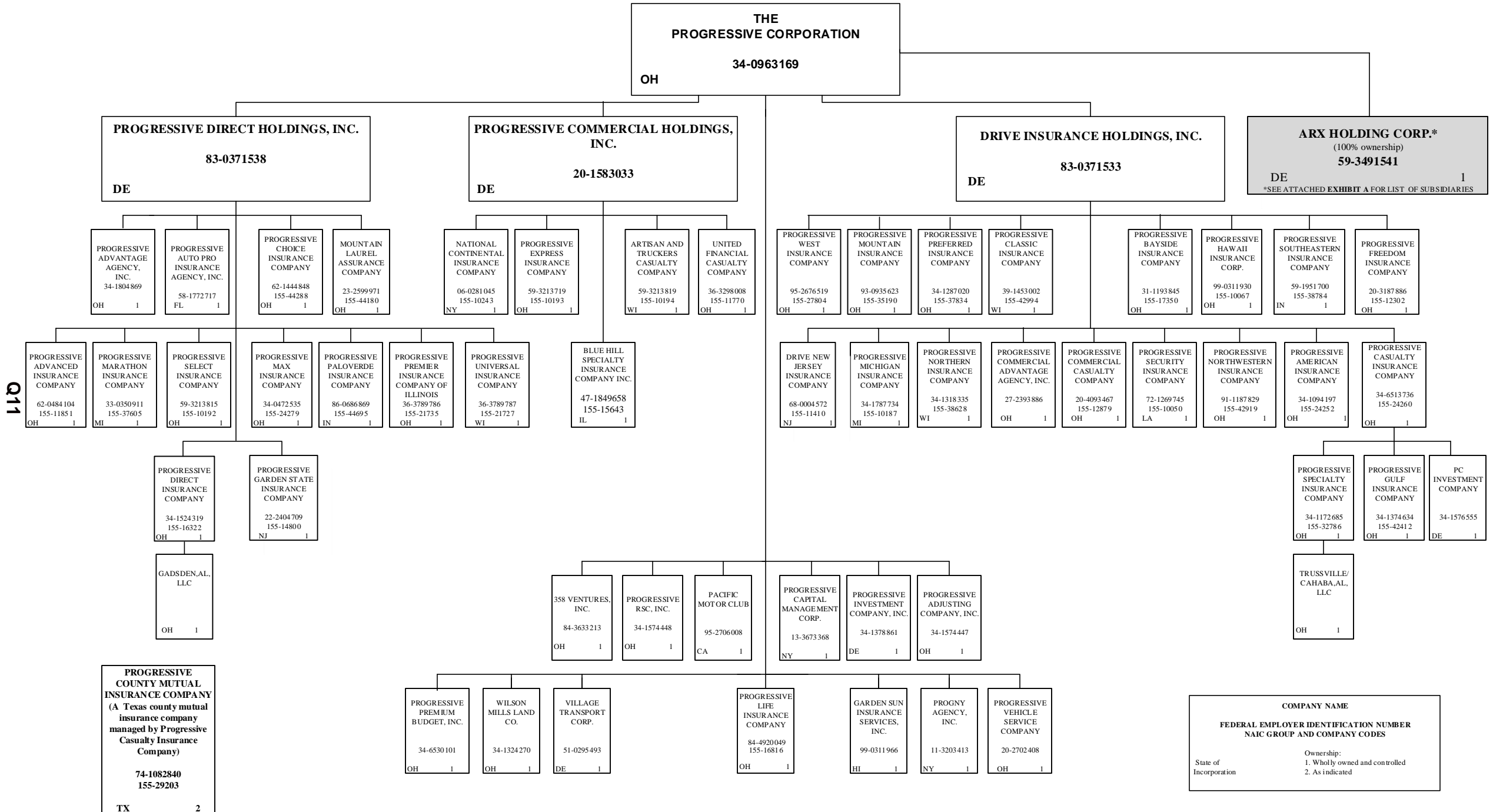
58001.....	XXX						
58002.....	XXX						
58003.....	XXX						
58998. Summary of remaining write-ins for Line 58 from overflow page....	XXX	0	0	0	0	0	0
58999. Totals (Lines 58001 thru 58003+ Line 58998) (Line 58 above).....	XXX	0	0	0	0	0	0

(a) Active Status Count

L - Licensed or Chartered - Licensed insurance carrier or domiciled RRG.....	15	R - Registered - Non-domiciled RRGs.....	0
E - Eligible - Reporting entities eligible or approved to write surplus lines in the state (other than their state of domicile - See DSLI).....	9	Q - Qualified - Qualified or accredited reinsurer.....	1
D - Domestic Surplus Lines Insurer (DSLI) - Reporting entities authorized to write surplus lines in the state of domicile.....	0	N - None of the above - Not allowed to write business in the state.....	32

PROGRESSIVE AMERICAN INSURANCE COMPANY

SCHEDULE Y – INFORMATION CONCERNING ACTIVITIES OF INSURER MEMBERS OF A HOLDING COMPANY GROUP -- PART 1 – ORGANIZATIONAL CHART



COMPANY NAME	FEDERAL EMPLOYER IDENTIFICATION NUMBER	NAIC GROUP AND COMPANY CODES
State of Incorporation	Ownership:	
	1. Wholly owned and controlled	
	2. As indicated	

SCHEDULE Y – INFORMATION CONCERNING ACTIVITIES OF INSURER MEMBERS OF A HOLDING COMPANY GROUP -- PART 1 – ORGANIZATIONAL CHART

Q11.1

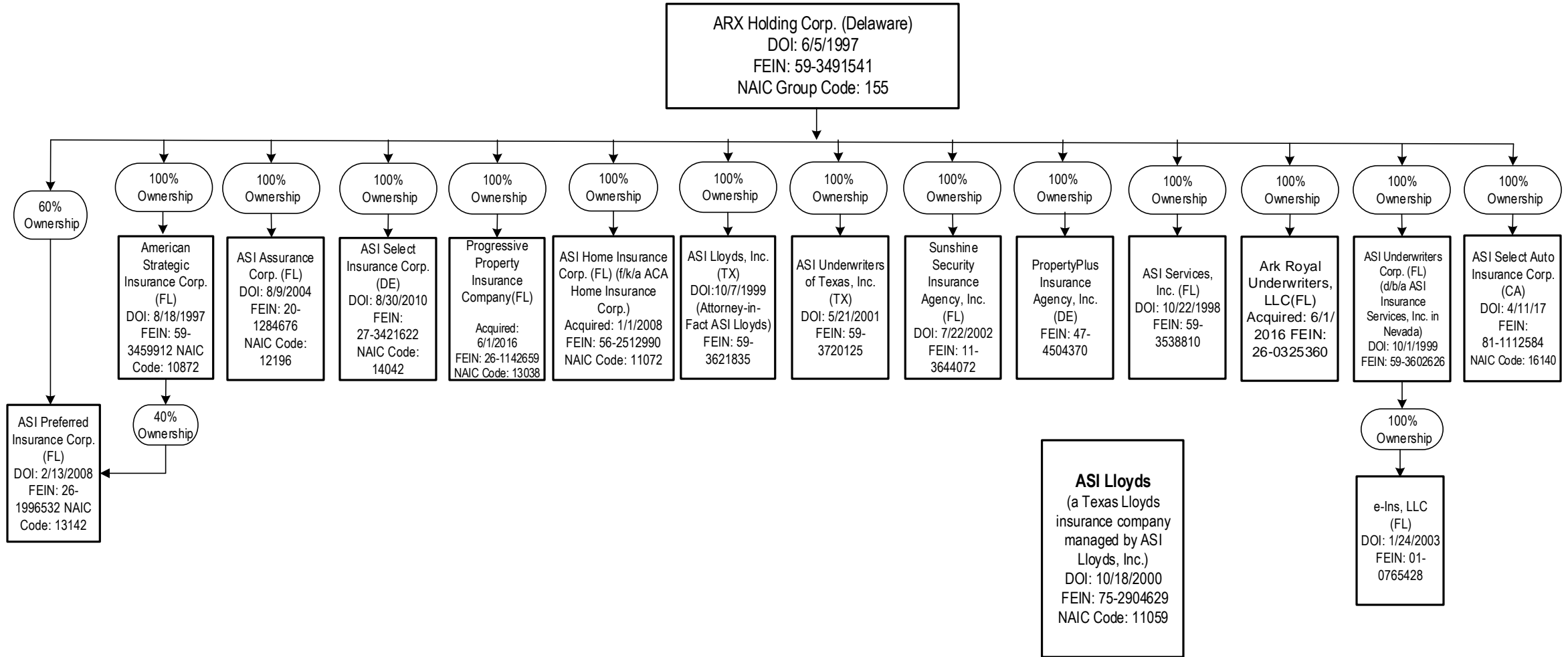


EXHIBIT A

SCHEDULE Y

PART 1A - DETAIL OF INSURANCE HOLDING COMPANY SYSTEM

1	2	3	4	5	6	7	8	9	10	11	12	13	14	15	16
Group Code	Group Name	NAIC Company Code	ID Number	Federal RSSD	CIK	Name of Securities Exchange if Publicly Traded (U.S. or International)	Names of Parent, Subsidiaries or Affiliates	Domiciliary Location	Relationship to Reporting Entity	Directly Controlled by (Name of Entity/Person)	Type of Control (Ownership Board, Management, Attorney-in-Fact, Influence, Other)	If Control is Ownership Provide Percentage	Ultimate Controlling Entity(ies)/Person(s)	Is an SCA Filing Required? (Y/N)	*
Members															
		00000..	34-0963169..		0000080661	NYSE.....	The Progressive Corporation.....	OH.....	UIP.....	Board, Management.....	Board.....		The Progressive Corporation.....N.....	1, 3.....
		00000..	83-0371533..				Drive Insurance Holdings, Inc.....	DE.....	UDP.....	The Progressive Corporation.....	Ownership.....	100.000	The Progressive Corporation.....N.....	1, 3.....
0155	Progressive Insurance Group.	11410..	68-0004572..				Drive New Jersey Insurance Company.....	NJ.....	IA.....	Drive Insurance Holdings, Inc.....	Ownership.....	100.000	The Progressive Corporation.....N.....	1, 3.....
0155	Progressive Insurance Group.	12879..	20-4093467..				Progressive Commercial Casualty Company.....	OH.....	IA.....	Drive Insurance Holdings, Inc.....	Ownership.....	100.000	The Progressive Corporation.....N.....	1, 3.....
0155	Progressive Insurance Group.	24252..	34-1094197..				Progressive American Insurance Company.....	OH.....	RE.....	Drive Insurance Holdings, Inc.....	Ownership.....	100.000	The Progressive Corporation.....N.....	1, 3.....
0155	Progressive Insurance Group.	17350..	31-1193845..				Progressive Bayside Insurance Company.....	OH.....	IA.....	Drive Insurance Holdings, Inc.....	Ownership.....	100.000	The Progressive Corporation.....N.....	1, 3.....
0155	Progressive Insurance Group.	24260..	34-6513736..				Progressive Casualty Insurance Company.....	OH.....	IA.....	Drive Insurance Holdings, Inc.....	Ownership.....	100.000	The Progressive Corporation.....N.....	1, 3.....
		00000..	34-1576555..				PC Investment Company.....	DE.....	NIA.....	Progressive Casualty Insurance Company.....	Ownership.....	100.000	The Progressive Corporation.....Y.....	1, 3.....
0155	Progressive Insurance Group.	29203..	74-1082840..				Progressive County Mutual Insurance Company.....	TX.....	IA.....	Progressive Casualty Insurance Company.....	Management.....		The Progressive Corporation.....N.....	2, 3.....
0155	Progressive Insurance Group.	42412..	34-1374634..				Progressive Gulf Insurance Company.....	OH.....	IA.....	Progressive Casualty Insurance Company.....	Ownership.....	100.000	The Progressive Corporation.....Y.....	1, 3.....
0155	Progressive Insurance Group.	32786..	34-1172685..				Progressive Specialty Insurance Company.....	OH.....	IA.....	Progressive Casualty Insurance Company.....	Ownership.....	100.000	The Progressive Corporation.....Y.....	1, 3.....
		00000..					Trussville/Cahaba, AL , LLC.....	OH.....	NIA.....	Progressive Specialty Insurance Company.....	Ownership.....	100.000	The Progressive Corporation.....N.....	1, 3.....
0155	Progressive Insurance Group.	42994..	39-1453002..				Progressive Classic Insurance Company.....	WI.....	IA.....	Drive Insurance Holdings, Inc.....	Ownership.....	100.000	The Progressive Corporation.....N.....	1, 3.....
0155	Progressive Insurance Group.	10067..	99-0311930..				Progressive Hawaii Insurance Corp.....	OH.....	IA.....	Drive Insurance Holdings, Inc.....	Ownership.....	100.000	The Progressive Corporation.....N.....	1, 3.....
0155	Progressive Insurance Group.	10187..	34-1787734..				Progressive Michigan Insurance Company.....	MI.....	IA.....	Drive Insurance Holdings, Inc.....	Ownership.....	100.000	The Progressive Corporation.....N.....	1, 3.....
0155	Progressive Insurance Group.	35190..	93-0935623..				Progressive Mountain Insurance Company.....	OH.....	IA.....	Drive Insurance Holdings, Inc.....	Ownership.....	100.000	The Progressive Corporation.....N.....	1, 3.....
0155	Progressive Insurance Group.	38628..	34-1318335..				Progressive Northern Insurance Company.....	WI.....	IA.....	Drive Insurance Holdings, Inc.....	Ownership.....	100.000	The Progressive Corporation.....N.....	1, 3.....
0155	Progressive Insurance Group.	42919..	91-1187829..				Progressive Northwestern Insurance Company.....	OH.....	IA.....	Drive Insurance Holdings, Inc.....	Ownership.....	100.000	The Progressive Corporation.....N.....	1, 3.....
0155	Progressive Insurance Group.	37834..	34-1287020..				Progressive Preferred Insurance Company.....	OH.....	IA.....	Drive Insurance Holdings, Inc.....	Ownership.....	100.000	The Progressive Corporation.....N.....	1, 3.....
0155	Progressive Insurance Group.	10050..	72-1269745..				Progressive Security Insurance Company.....	LA.....	IA.....	Drive Insurance Holdings, Inc.....	Ownership.....	100.000	The Progressive Corporation.....N.....	1, 3.....
0155	Progressive Insurance Group.	38784..	59-1951700..				Progressive Southeastern Insurance Company.....	IN.....	IA.....	Drive Insurance Holdings, Inc.....	Ownership.....	100.000	The Progressive Corporation.....N.....	1, 3.....
0155	Progressive Insurance Group.	27804..	95-2676519..				Progressive West Insurance Company.....	OH.....	IA.....	Drive Insurance Holdings, Inc.....	Ownership.....	100.000	The Progressive Corporation.....N.....	1, 3.....
0155	Progressive Insurance Group.	12302..	20-3187886..				Progressive Freedom Insurance Company.....	OH.....	IA.....	Drive Insurance Holdings, Inc.....	Ownership.....	100.000	The Progressive Corporation.....N.....	1, 3.....
		00000..	27-2393886..				Progressive Commercial Advantage Agency, Inc.....	OH.....	NIA.....	Drive Insurance Holdings, Inc.....	Ownership.....	100.000	The Progressive Corporation.....N.....	1, 3.....
		00000..	20-1583033..				Progressive Commercial Holdings, Inc.....	DE.....	NIA.....	The Progressive Corporation.....	Ownership.....	100.000	The Progressive Corporation.....N.....	1, 3.....
0155	Progressive Insurance Group.	10194..	59-3213819..				Artisan and Truckers Casualty Company.....	WI.....	IA.....	Progressive Commercial Holdings, Inc.....	Ownership.....	100.000	The Progressive Corporation.....N.....	1, 3.....
0155	Progressive Insurance Group.	10243..	06-0281045..				National Continental Insurance Company.....	NY.....	IA.....	Progressive Commercial Holdings, Inc.....	Ownership.....	100.000	The Progressive Corporation.....N.....	1, 3.....
0155	Progressive Insurance Group.	10193..	59-3213719..				Progressive Express Insurance Company.....	OH.....	IA.....	Progressive Commercial Holdings, Inc.....	Ownership.....	100.000	The Progressive Corporation.....N.....	1, 3.....
0155	Progressive Insurance Group.	11770..	36-3298008..				United Financial Casualty Company.....	OH.....	IA.....	Progressive Commercial Holdings, Inc.....	Ownership.....	100.000	The Progressive Corporation.....N.....	1, 3.....
0155	Progressive Insurance Group.	15643..	47-1849658..				Blue Hill Specialty Insurance Company, Inc.....	IL.....	IA.....	Progressive Commercial Holdings, Inc.....	Ownership.....	100.000	The Progressive Corporation.....N.....	1, 3.....
		00000..	83-0371538..				Progressive Direct Holdings, Inc.....	DE.....	NIA.....	The Progressive Corporation.....	Ownership.....	100.000	The Progressive Corporation.....N.....	1, 3.....
0155	Progressive Insurance Group.	44180..	23-2599971..				Mountain Laurel Assurance Company.....	OH.....	IA.....	Progressive Direct Holdings, Inc.....	Ownership.....	100.000	The Progressive Corporation.....N.....	1, 3.....
0155	Progressive Insurance Group.	11851..	62-0484104..				Progressive Advanced Insurance Company.....	OH.....	IA.....	Progressive Direct Holdings, Inc.....	Ownership.....	100.000	The Progressive Corporation.....N.....	1, 3.....
		00000..	58-1772717..				Progressive Auto Pro Insurance Agency, Inc.....	FL.....	NIA.....	Progressive Direct Holdings, Inc.....	Ownership.....	100.000	The Progressive Corporation.....N.....	1, 3.....
0155	Progressive Insurance Group.	44288..	62-1444848..				Progressive Choice Insurance Company.....	OH.....	IA.....	Progressive Direct Holdings, Inc.....	Ownership.....	100.000	The Progressive Corporation.....N.....	1, 3.....
0155	Progressive Insurance Group.	16322..	34-1524319..				Progressive Direct Insurance Company.....	OH.....	IA.....	Progressive Direct Holdings, Inc.....	Ownership.....	100.000	The Progressive Corporation.....N.....	1, 3.....

Q12

SCHEDULE Y

PART 1A - DETAIL OF INSURANCE HOLDING COMPANY SYSTEM

1	2	3	4	5	6	7	8	9	10	11	12	13	14	15	16
Group Code	Group Name	NAIC Company Code	ID Number	Federal RSSD	CIK	Name of Securities Exchange if Publicly Traded (U.S. or International)	Names of Parent, Subsidiaries or Affiliates	Domiciliary Location	Relationship to Reporting Entity	Directly Controlled by (Name of Entity/Person)	Type of Control (Ownership Board, Management, Attorney-in-Fact, Influence, Other)	If Control is Ownership Provide Percentage	Ultimate Controlling Entity(ies)/Person(s)	Is an SCA Filing Required? (Y/N)	*
		00000..					Gadsden, AL, LLC.....	OH.....	NIA.....	Progressive Direct Insurance Company.....	Ownership.....	100.000	The Progressive Corporation.....	N.....	1, 3.....
0155	Progressive Insurance Group.	14800..	22-2404709..				Progressive Garden State Insurance Company.....	NJ.....	IA.....	Progressive Direct Holdings, Inc.....	Ownership.....	100.000	The Progressive Corporation.....	N.....	1, 3.....
0155	Progressive Insurance Group.	37605..	33-0350911..				Progressive Marathon Insurance Company.....	MI.....	IA.....	Progressive Direct Holdings, Inc.....	Ownership.....	100.000	The Progressive Corporation.....	N.....	1, 3.....
0155	Progressive Insurance Group.	24279..	34-0472535..				Progressive Max Insurance Company.....	OH.....	IA.....	Progressive Direct Holdings, Inc.....	Ownership.....	100.000	The Progressive Corporation.....	N.....	1, 3.....
0155	Progressive Insurance Group.	44695..	86-0686869..				Progressive Paloverde Insurance Company.....	IN.....	IA.....	Progressive Direct Holdings, Inc.....	Ownership.....	100.000	The Progressive Corporation.....	N.....	1, 3.....
0155	Progressive Insurance Group.	21735..	36-3789786..				Progressive Premier Insurance Company of Illinois.....	OH.....	IA.....	Progressive Direct Holdings, Inc.....	Ownership.....	100.000	The Progressive Corporation.....	N.....	1, 3.....
0155	Progressive Insurance Group.	10192..	59-3213815..				Progressive Select Insurance Company.....	OH.....	IA.....	Progressive Direct Holdings, Inc.....	Ownership.....	100.000	The Progressive Corporation.....	N.....	1, 3.....
		00000..	34-1804869..				Progressive Advantage Agency, Inc.....	OH.....	NIA.....	Progressive Direct Holdings, Inc.....	Ownership.....	100.000	The Progressive Corporation.....	N.....	1, 3.....
0155	Progressive Insurance Group.	21727..	36-3789787..				Progressive Universal Insurance Company.....	WI.....	IA.....	Progressive Direct Holdings, Inc.....	Ownership.....	100.000	The Progressive Corporation.....	N.....	1, 3.....
0155	Progressive Insurance Group.	16816..	84-4920049..				Progressive Life Insurance Company.....	OH.....	IA.....	The Progressive Corporation.....	Ownership.....	100.000	The Progressive Corporation.....	N.....	1, 3.....
		00000..	99-0311966..				Garden Sun Insurance Services, LLC.....	HI.....	NIA.....	The Progressive Corporation.....	Ownership.....	100.000	The Progressive Corporation.....	N.....	1, 3.....
		00000..	95-2706008..				Pacific Motor Club.....	CA.....	NIA.....	The Progressive Corporation.....	Ownership.....	100.000	The Progressive Corporation.....	N.....	1, 3.....
		00000..	11-3203413..				PROGNY Agency, Inc.....	NY.....	NIA.....	The Progressive Corporation.....	Ownership.....	100.000	The Progressive Corporation.....	N.....	1, 3.....
		00000..	34-1574447..				Progressive Adjusting Company, Inc.....	OH.....	NIA.....	The Progressive Corporation.....	Ownership.....	100.000	The Progressive Corporation.....	N.....	1, 3.....
		00000..	13-3673368..				Progressive Capital Management Corp.....	NY.....	NIA.....	The Progressive Corporation.....	Ownership.....	100.000	The Progressive Corporation.....	N.....	1, 3.....
		00000..	34-1378861..				Progressive Investment Company, Inc.....	DE.....	NIA.....	The Progressive Corporation.....	Ownership.....	100.000	The Progressive Corporation.....	N.....	1, 3.....
		00000..	34-6530101..				Progressive Premium Budget, Inc.....	OH.....	NIA.....	The Progressive Corporation.....	Ownership.....	100.000	The Progressive Corporation.....	N.....	1, 3.....
		00000..	34-1574448..				Progressive RSC, Inc.....	OH.....	NIA.....	The Progressive Corporation.....	Ownership.....	100.000	The Progressive Corporation.....	N.....	1, 3.....
		00000..	84-3633213..				358 Ventures, Inc.....	OH.....	NIA.....	The Progressive Corporation.....	Ownership.....	100.000	The Progressive Corporation.....	N.....	1, 3.....
		00000..	20-2702408..				Progressive Vehicle Service Company.....	OH.....	NIA.....	The Progressive Corporation.....	Ownership.....	100.000	The Progressive Corporation.....	N.....	1, 3.....
		00000..	51-0295493..				Village Transport Corp.....	DE.....	NIA.....	The Progressive Corporation.....	Ownership.....	100.000	The Progressive Corporation.....	N.....	1, 3.....
		00000..	34-1324270..				Wilson Mills Land Co.....	OH.....	NIA.....	The Progressive Corporation.....	Ownership.....	100.000	The Progressive Corporation.....	N.....	1, 3.....
		00000..	59-3491541..				ARX Holding Corp.....	DE.....	NIA.....	The Progressive Corporation.....	Ownership.....	100.000	The Progressive Corporation.....	N.....	1, 3, 4.....
0155	Progressive Insurance Group.	11072..	56-2512990..				ASI Home Insurance Corp.....	FL.....	IA.....	ARX Holding Corp.....	Ownership.....	100.000	The Progressive Corporation.....	N.....	1, 3, 4.....
0155	Progressive Insurance Group.	13142..	26-1996532..				ASI Preferred Insurance Corp.....	FL.....	IA.....	American Strategic Insurance Corp.....	Ownership.....	40.000	The Progressive Corporation.....	N.....	1, 3, 4.....
0155	Progressive Insurance Group.	13142..	26-1996532..				ASI Preferred Insurance Corp.....	FL.....	IA.....	ARX Holding Corp.....	Ownership.....	60.000	The Progressive Corporation.....	N.....	1, 3, 4.....
0155	Progressive Insurance Group.	10872..	59-3459912..				American Strategic Insurance Corp.....	FL.....	IA.....	ARX Holding Corp.....	Ownership.....	100.000	The Progressive Corporation.....	N.....	1, 3, 4.....
0155	Progressive Insurance Group.	11059..	75-2904629..				ASI Lloyds.....	TX.....	IA.....	ASI Lloyds, Inc.....	Management.....		The Progressive Corporation.....	N.....	1, 3, 4, 5.....
0155	Progressive Insurance Group.	12196..	20-1284676..				ASI Assurance Corp.....	FL.....	IA.....	ARX Holding Corp.....	Ownership.....	100.000	The Progressive Corporation.....	N.....	1, 3, 4.....
0155	Progressive Insurance Group.	14042..	27-3421622..				ASI Select Insurance Corp.....	DE.....	IA.....	ARX Holding Corp.....	Ownership.....	100.000	The Progressive Corporation.....	N.....	1, 3, 4.....
		00000..	59-3538810..				ASI Services Inc.....	FL.....	NIA.....	ARX Holding Corp.....	Ownership.....	100.000	The Progressive Corporation.....	N.....	1, 3, 4.....
		00000..	59-3621835..				ASI Lloyds, Inc.....	TX.....	NIA.....	ARX Holding Corp.....	Ownership.....	100.000	The Progressive Corporation.....	N.....	1, 3, 4.....
		00000..	59-3720125..				ASI Underwriters of Texas, Inc.....	TX.....	NIA.....	ARX Holding Corp.....	Ownership.....	100.000	The Progressive Corporation.....	N.....	1, 3, 4.....
		00000..	11-3644072..				Sunshine Security Insurance Agency, Inc.....	FL.....	NIA.....	ARX Holding Corp.....	Ownership.....	100.000	The Progressive Corporation.....	N.....	1, 3, 4.....
		00000..	59-3602626..				ASI Underwriters Corp.....	FL.....	NIA.....	ARX Holding Corp.....	Ownership.....	100.000	The Progressive Corporation.....	N.....	1, 3, 4.....
		00000..	01-0765428..				e-Ins, LLC.....	FL.....	NIA.....	ASI Underwriters Corp.....	Ownership.....	100.000	The Progressive Corporation.....	N.....	1, 3, 4.....

Q12.1

SCHEDULE Y

PART 1A - DETAIL OF INSURANCE HOLDING COMPANY SYSTEM

1	2	3	4	5	6	7	8	9	10	11	12	13	14	15	16
Group Code	Group Name	NAIC Company Code	ID Number	Federal RSSD	CIK	Name of Securities Exchange if Publicly Traded (U.S. or International)	Names of Parent, Subsidiaries or Affiliates	Domiciliary Location	Relationship to Reporting Entity	Directly Controlled by (Name of Entity/Person)	Type of Control (Ownership Board, Management, Attorney-in-Fact, Influence, Other)	If Control is Ownership Provide Percentage	Ultimate Controlling Entity(ies)/Person(s)	Is an SCA Filing Required? (Y/N)	*
0155	Progressive Insurance Group.	13038...	26-1142659..	Progressive Property Insurance Company.....	FL.....	IA.....	ARX Holding Corp.....	Ownership.....	...100.000	The Progressive Corporation.....N.....	1, 3, 4....
0155	Progressive Insurance Group.	16140...	81-1112584..	ASI Select Auto Insurance Corp.....	CA.....	IA.....	ARX Holding Corp.....	Ownership.....	...100.000	The Progressive Corporation.....N.....	1, 3, 4....
		00000...	26-0325360..	Ark Royal Underwriters, LLC.....	FL.....	NIA.....	ARX Holding Corp.....	Ownership.....	...100.000	The Progressive Corporation.....N.....	1, 3, 4....
		00000...	47-4504370..	PropertyPlus Insurance Agency, Inc.....	DE.....	NIA.....	ARX Holding Corp.....	Ownership.....	...100.000	The Progressive Corporation.....N.....	1, 3, 4....

Aster	Explanation
1	Schedule Y Part 1A is a common schedule for all companies of The Progressive Corporation, however column 10 requires specific relationship information relative to the reporting entity.
2	Progressive County Mutual Insurance Company is a Texas county mutual insurance company that is managed, but not owned by Progressive Casualty Insurance Company.
3	None of the companies that are part of The Progressive Corporation are Federally chartered or insured institutions and therefore, do not have Federal RSSD numbers.
4	Effective April 1, 2020, The Progressive Corporation purchased 100% ownership in the ARX Holding Corp.
5	ASI Lloyds is a Texas Lloyds insurance company that is managed, but not owned by ASI Lloyds, Inc.

PROGRESSIVE AMERICAN INSURANCE COMPANY PART 1 - LOSS EXPERIENCE

Lines of Business	Current Year to Date			4 Prior Year to Date Direct Loss Percentage
	1 Direct Premiums Earned	2 Direct Losses Incurred	3 Direct Loss Percentage	
1. Fire.....			0.000	
2. Allied lines.....			0.000	
3. Farmowners multiple peril.....			0.000	
4. Homeowners multiple peril.....	707,134	103,446	14.629	23.384
5. Commercial multiple peril.....			0.000	
6. Mortgage guaranty.....			0.000	
8. Ocean marine.....			0.000	
9. Inland marine.....	32,409,766	17,288,169	53.342	39.089
10. Financial guaranty.....			0.000	
11.1. Medical professional liability - occurrence.....			0.000	
11.2. Medical professional liability - claims-made.....			0.000	
12. Earthquake.....			0.000	
13. Group accident and health.....			0.000	
14. Credit accident and health.....			0.000	
15. Other accident and health.....			0.000	
16. Workers' compensation.....			0.000	
17.1. Other liability-occurrence.....	11,206,067	5,913,716	52.772	17.986
17.2. Other liability-claims made.....			0.000	
17.3. Excess workers' compensation.....			0.000	
18.1. Products liability-occurrence.....			0.000	
18.2. Products liability-claims made.....			0.000	
19.1, 19.2. Private passenger auto liability.....	1,264,859,052	713,161,254	56.383	62.670
19.3, 19.4. Commercial auto liability.....	528,337	310,211	58.715	49.688
21. Auto physical damage.....	518,328,999	267,653,063	51.638	57.682
22. Aircraft (all perils).....			0.000	
23. Fidelity.....			0.000	
24. Surety.....			0.000	
26. Burglary and theft.....			0.000	
27. Boiler and machinery.....			0.000	
28. Credit.....			0.000	
29. International.....			0.000	
30. Warranty.....			0.000	
31. Reinsurance-nonproportional assumed property.....	XXX	XXX	XXX	XXX
32. Reinsurance-nonproportional assumed liability.....	XXX	XXX	XXX	XXX
33. Reinsurance-nonproportional assumed financial lines.....	XXX	XXX	XXX	XXX
34. Aggregate write-ins for other lines of business.....	0	0	0.000	
35. Totals.....	1,828,039,354	1,004,429,859	54.946	60.606
DETAILS OF WRITE-INS				
3401.....			0.000	
3402.....			0.000	
3403.....			0.000	
3498. Sum. of remaining write-ins for Line 34 from overflow page.....	0	0	0.000	XXX
3499. Totals (Lines 3401 thru 3403 plus 3498) (Line 34).....	0	0	0.000	

PART 2 - DIRECT PREMIUMS WRITTEN

Lines of Business	1	2	3
	Current Quarter	Current Year to Date	Prior Year Year to Date
1. Fire.....			
2. Allied lines.....			
3. Farmowners multiple peril.....			
4. Homeowners multiple peril.....		457,953	1,032,786
5. Commercial multiple peril.....			579,946
6. Mortgage guaranty.....			
8. Ocean marine.....			
9. Inland marine.....		12,140,667	38,743,158
10. Financial guaranty.....			33,787,456
11.1. Medical professional liability - occurrence.....			
11.2. Medical professional liability - claims made.....			
12. Earthquake.....			
13. Group accident and health.....			
14. Credit accident and health.....			
15. Other accident and health.....			
16. Workers' compensation.....			
17.1. Other liability-occurrence.....		3,809,559	12,656,140
17.2. Other liability-claims made.....			
17.3. Excess workers' compensation.....			
18.1. Products liability-occurrence.....			
18.2. Products liability-claims made.....			
19.1 19.2. Private passenger auto liability.....	451,713,643	1,307,926,890	1,246,236,436
19.3 19.4. Commercial auto liability.....	132,144	583,669	587,263
21. Auto physical damage.....	177,193,651	531,880,764	504,417,334
22. Aircraft (all perils).....			
23. Fidelity.....			
24. Surety.....			
26. Burglary and theft.....			
27. Boiler and machinery.....			
28. Credit.....			
29. International.....			
30. Warranty.....			
31. Reinsurance-nonproportional assumed property.....	XXX	XXX	XXX
32. Reinsurance-nonproportional assumed liability.....	XXX	XXX	XXX
33. Reinsurance-nonproportional assumed financial lines.....	XXX	XXX	XXX
34. Aggregate write-ins for other lines of business.....	0	0	0
35. Totals.....	645,447,617	1,892,823,407	1,796,821,439
DETAILS OF WRITE-INS			
3401.....			
3402.....			
3403.....			
3498. Sum. of remaining write-ins for Line 34 from overflow page.....	0	0	0
3499. Totals (Lines 3401 thru 3403 plus 3498) (Line 34).....	0	0	0

PART 3 (000 omitted)

LOSS AND LOSS ADJUSTMENT EXPENSE RESERVES SCHEDULE

	1	2	3	4	5	6	7	8	9	10	11	12	13
Years in Which Losses Occurred	Prior Year-End Known Case Loss and LAE Reserves	Prior Year-End IBNR Loss and LAE Reserves	Total Prior Year-End Loss and LAE Reserves (Cols. 1 + 2)	2020 Loss and LAE Payments on Claims Reported as of Prior Year-End	2020 Loss and LAE Payments on Claims Unreported as of Prior Year-End	Total 2020 Loss and LAE Payments (Cols. 4 + 5)	Q.S. Date Known Case Loss and LAE Reserves on Claims Reported and Open as of Prior Year-End	Q.S. Date Known Case Loss and LAE Reserves on Claims Reported or Reopened Subsequent to Prior Year-End	Q.S. Date IBNR Loss and LAE Reserves	Total Q.S. Loss and LAE Reserves (Cols. 7 + 8 + 9)	Prior Year-End Known Case Loss and LAE Reserves Developed (Savings)/Deficiency (Cols. 4 + 7 minus Col. 1)	Prior Year-End IBNR Loss and LAE Reserves Developed (Savings)/Deficiency (Cols. 5 + 8 + 9 minus Col. 2)	Prior Year-End Total Loss and LAE Reserve Developed (Savings)/Deficiency (Cols. 11 + 12)
1. 2017 + Prior.....	19,790	3,607	23,397	8,616	550	9,166	11,339	804	2,321	14,464	165	68	233
2. 2018.....	26,985	5,884	32,869	12,520	1,181	13,701	14,895	2,094	2,952	19,940	430	342	773
3. Subtotals 2018 + Prior.....	46,774	9,492	56,266	21,136	1,732	22,868	26,234	2,897	5,273	34,404	595	410	1,006
4. 2019.....	69,852	19,620	89,472	36,845	4,747	41,592	32,127	6,673	8,732	47,532	(880)	532	(348)
5. Subtotals 2019 + Prior.....	116,626	29,112	145,738	57,981	6,479	64,459	58,361	9,571	14,004	81,937	(284)	942	658
6. 2020.....	XXX	XXX	XXX	XXX	100,002	100,002	XXX	52,693	18,007	70,700	XXX	XXX	XXX
7. Totals.....	116,626	29,112	145,738	57,981	106,481	164,461	58,361	62,264	32,011	152,636	(284)	942	658
8. Prior Year-End's Surplus As Regards Policyholders	349,918										Col. 11, Line 7 As % of Col. 1, Line 7	Col. 12, Line 7 As % of Col. 2, Line 7	Col. 13, Line 7 As % of Col. 3, Line 7
											1.(0.2)%	2.3.2 %	3.0.5 %
													Col. 13, Line 7 Line 8
													4.0.2 %

Q14

SUPPLEMENTAL EXHIBITS AND SCHEDULES INTERROGATORIES

The following supplemental reports are required to be filed as part of your statement filing. However, in the event that your company does not transact the type of business for which the special report must be filed, your response of NO to the specific interrogatory will be accepted in lieu of filing a "NONE" report and a bar code will be printed below. If the supplement is required of your company but is not being filed for whatever reason, enter SEE EXPLANATION and provide an explanation following the interrogatory questions.

	Response
1. Will the Trusteed Surplus Statement be filed with the state of domicile and the NAIC with this statement?	NO
2. Will Supplement A to Schedule T (Medical Professional Liability Supplement) be filed with this statement?	NO
3. Will the Medicare Part D Coverage Supplement be filed with the state of domicile and the NAIC with this statement?	NO
4. Will the Director and Officer Insurance Coverage Supplement be filed with the state of domicile and the NAIC with this statement?	NO

Explanation:

1. The data for this supplement is not required to be filed.
2. The data for this supplement is not required to be filed.
3. The data for this supplement is not required to be filed.
4. The data for this supplement is not required to be filed.

Bar Code:



NONE

**PROGRESSIVE AMERICAN INSURANCE COMPANY
SCHEDULE A - VERIFICATION**

Real Estate

	1 Year to Date	2 Prior Year Ended December 31
1. Book/adjusted carrying value, December 31 of prior year.....	0	
2. Cost of acquired:		
2.1 Actual cost at time of acquisition.....		
2.2 Additional investment made after acquisition.....		
3. Current year change in encumbrances.....		
4. Total gain (loss) on disposals.....		
5. Deduct amounts received on disposals.....		
6. Total foreign exchange change in book/adjusted carrying value.....		
7. Deduct current year's other-than-temporary impairment recognized.....		
8. Deduct current year's depreciation.....		
9. Book/adjusted carrying value at end of current period (Lines 1+2+3+4-5+6-7-8).....	0	0
10. Deduct total nonadmitted amounts.....		
11. Statement value at end of current period (Line 9 minus Line 10).....	0	0

NONE

SCHEDULE B - VERIFICATION

Mortgage Loans

	1 Year to Date	2 Prior Year Ended December 31
1. Book value/recorded investment excluding accrued interest, December 31 of prior year.....	0	
2. Cost of acquired:		
2.1 Actual cost at time of acquisition.....		
2.2 Additional investment made after acquisition.....		
3. Capitalized deferred interest and other.....		
4. Accrual of discount.....		
5. Unrealized valuation increase (decrease).....		
6. Total gain (loss) on disposals.....		
7. Deduct amounts received on disposals.....		
8. Deduct amortization of premium and mortgage interest points and commitment fees.....		
9. Total foreign exchange change in book value/recorded investment excluding accrued interest.....		
10. Deduct current year's other-than-temporary impairment recognized.....		
11. Book value/recorded investment excluding accrued interest at end of current period (Lines 1+2+3+4+5+6-7-8+9-10).....	0	0
12. Total valuation allowance.....		
13. Subtotal (Line 11 plus Line 12).....	0	0
14. Deduct total nonadmitted amounts.....		
15. Statement value at end of current period (Line 13 minus Line 14).....	0	0

NONE

SCHEDULE BA - VERIFICATION

Other Long-Term Invested Assets

	1 Year to Date	2 Prior Year Ended December 31
1. Book/adjusted carrying value, December 31 of prior year.....	0	
2. Cost of acquired:		
2.1 Actual cost at time of acquisition.....		
2.2 Additional investment made after acquisition.....		
3. Capitalized deferred interest and other.....		
4. Accrual of discount.....		
5. Unrealized valuation increase (decrease).....		
6. Total gain (loss) on disposals.....		
7. Deduct amounts received on disposals.....		
8. Deduct amortization of premium and depreciation.....		
9. Total foreign exchange change in book/adjusted carrying value.....		
10. Deduct current year's other-than-temporary impairment recognized.....		
11. Book/adjusted carrying value at end of current period (Lines 1+2+3+4+5+6-7-8+9-10).....	0	0
12. Deduct total nonadmitted amounts.....		
13. Statement value at end of current period (Line 11 minus Line 12).....	0	0

NONE

SCHEDULE D - VERIFICATION

Bonds and Stocks

	1 Year to Date	2 Prior Year Ended December 31
1. Book/adjusted carrying value of bonds and stocks, December 31 of prior year.....	342,304,327	299,798,432
2. Cost of bonds and stocks acquired.....	307,410,388	217,847,118
3. Accrual of discount.....	230,847	539,068
4. Unrealized valuation increase (decrease).....	(6,648)	659,961
5. Total gain (loss) on disposals.....	9,746,229	1,471,343
6. Deduct consideration for bonds and stocks disposed of.....	286,172,712	177,418,441
7. Deduct amortization of premium.....	937,217	593,154
8. Total foreign exchange change in book/adjusted carrying value.....		
9. Deduct current year's other-than-temporary impairment recognized.....		
10. Total investment income recognized as a result of prepayment penalties and/or acceleration fees.....		
11. Book/adjusted carrying value at end of current period (Lines 1+2+3+4+5-6-7+8-9+10).....	372,575,214	342,304,327
12. Deduct total nonadmitted amounts.....		
13. Statement value at end of current period (Line 11 minus Line 12).....	372,575,214	342,304,327

SCHEDULE D - PART 1B

Showing the Acquisitions, Dispositions and Non-Trading Activity

During the Current Quarter for all Bonds and Preferred Stock by NAIC Designation

NAIC Designation	1 Book/Adjusted Carrying Value Beginning of Current Quarter	2 Acquisitions During Current Quarter	3 Dispositions During Current Quarter	4 Non-Trading Activity During Current Quarter	5 Book/Adjusted Carrying Value End of First Quarter	6 Book/Adjusted Carrying Value End of Second Quarter	7 Book/Adjusted Carrying Value End of Third Quarter	8 Book/Adjusted Carrying Value December 31 Prior Year
BONDS								
1. NAIC 1 (a).....	190,404,945	138,635,244	56,915,039	(136,575)	290,818,246	190,404,945	271,988,575	272,931,611
2. NAIC 2 (a).....	82,198,965	10,000,000	3,507,836	(106,025)	76,577,065	82,198,965	88,585,104	71,484,992
3. NAIC 3 (a).....				.0			.0	2,900,554
4. NAIC 4 (a).....		12,040,722		(39,187)			12,001,535	
5. NAIC 5 (a).....							.0	
6. NAIC 6 (a).....							.0	
7. Total Bonds.....	272,603,910	160,675,966	60,422,875	(281,787)	367,395,311	272,603,910	372,575,214	347,317,157
PREFERRED STOCK								
8. NAIC 1.....							.0	
9. NAIC 2.....							.0	
10. NAIC 3.....							.0	
11. NAIC 4.....							.0	
12. NAIC 5.....							.0	
13. NAIC 6.....							.0	
14. Total Preferred Stock.....	.0	.0	.0	.0	.0	.0	.0	.0
15. Total Bonds and Preferred Stock.....	272,603,910	160,675,966	60,422,875	(281,787)	367,395,311	272,603,910	372,575,214	347,317,157

QS102

(a) Book/Adjusted Carrying Value column for the end of the current reporting period includes the following amount of short-term and cash equivalent bonds by NAIC designation:

NAIC 1 \$.....0; NAIC 2 \$.....0; NAIC 3 \$.....0; NAIC 4 \$.....0; NAIC 5 \$.....0; NAIC 6 \$.....0.

SCHEDULE DA - PART 1

Short-Term Investments

	1 Book/Adjusted Carrying Value	2 Par Value	3 Actual Cost	4 Interest Collected Year To Date	5 Paid for Accrued Interest Year To Date
9199999.....		X			

NONE

SCHEDULE DA - VERIFICATION

Short-Term Investments

	1 Year To Date	2 Prior Year Ended December 31
1. Book/adjusted carrying value, December 31 of prior year.....	5,012,830	6,263,214
2. Cost of short-term investments acquired.....		5,019,900
3. Accrual of discount.....		
4. Unrealized valuation increase (decrease).....		
5. Total gain (loss) on disposals.....		
6. Deduct consideration received on disposals.....	5,000,000	6,260,000
7. Deduct amortization of premium.....	12,830	10,284
8. Total foreign exchange change in book/adjusted carrying value.....		
9. Deduct current year's other-than-temporary impairment recognized.....		
10. Book/adjusted carrying value at end of current period (Lines 1+2+3+4+5-6-7+8-9).....	0	5,012,830
11. Deduct total nonadmitted amounts.....		
12. Statement value at end of current period (Line 10 minus Line 11).....	0	5,012,830

**Sch. DB - Pt. A - Verification
NONE**

**Sch. DB - Pt. B - Verification
NONE**

**Sch. DB - Pt. C - Sn. 1
NONE**

**Sch. DB - Pt. C - Sn. 2
NONE**

**Sch. DB - Verification
NONE**

PROGRESSIVE AMERICAN INSURANCE COMPANY
SCHEDULE E - PART 2 - VERIFICATION

Cash Equivalents

	1 Year To Date	2 Prior Year Ended December 31
1. Book/adjusted carrying value, December 31 of prior year.....	0	
2. Cost of cash equivalents acquired.....	1,199,358	
3. Accrual of discount.....	642	
4. Unrealized valuation increase (decrease).....		
5. Total gain (loss) on disposals.....		
6. Deduct consideration received on disposals.....	1,200,000	
7. Deduct amortization of premium.....		
8. Total foreign exchange change in book/ adjusted carrying value.....		
9. Deduct current year's other-than-temporary impairment recognized.....		
10. Book/adjusted carrying value at end of current period (Lines 1+2+3+4+5-6-7+8-9).....	0	0
11. Deduct total nonadmitted amounts.....		
12. Statement value at end of current period (Line 10 minus Line 11).....	0	0

**Sch. A Pt. 2
NONE**

**Sch. A Pt. 3
NONE**

**Sch. B - Pt. 2
NONE**

**Sch. B - Pt. 3
NONE**

**Sch. BA - Pt. 2
NONE**

**Sch. BA - Pt. 3
NONE**

SCHEDULE D - PART 3

Showing all Long-Term Bonds and Stocks ACQUIRED During Current Quarter

1	2	3	4	5	6	7	8	9	10
CUSIP Identification	Description	Foreign	Date Acquired	Name of Vendor	Number of Shares of Stock	Actual Cost	Par Value	Paid for Accrued Interest and Dividends	NAIC Designation and Administrative Symbol
Bonds - U.S. Government									
912828 ZU 7	US TREASURY NOTE 0.250% 06/15/23		07/07/2020	Barclays Capital		10,017,969	10,000,000	1,571	1
912828 ZV 5	US TREASURY NOTE 0.500% 06/30/27		07/28/2020	Goldman Sachs		20,067,578	20,000,000	6,658	1
912828 ZX 1	US TREASURY NOTE 0.125% 06/30/22		07/21/2020	Goldman Sachs		19,992,969	20,000,000	1,495	1
91282C AB 7	US TREASURY N/B NOTE 0.250% 07/31/25		08/10/2020	Credit Suisse		10,012,500	10,000,000	747	1
91282C AC 5	US TREASURY N/B NOTE 0.125% 07/31/22		08/14/2020	Goldman Sachs		9,994,531	10,000,000	577	1
91282C AD 3	US TREASURY N/B NOTE 0.375% 07/31/27		08/18/2020	Various		31,908,984	32,000,000	4,056	1
91282C AG 6	US TREASURY N/B NOTE 0.125% 08/31/22		09/28/2020	JP Morgan Securities Inc.		10,399,188	10,400,000	1,041	1
91282C AJ 0	US TREASURY N/B NOTE 0.250% 08/31/25		08/31/2020	JP Morgan Securities Inc.		4,995,508	5,000,000	35	1
91282C AK 7	US TREASURY N/B NOTE 0.125% 09/15/23		09/14/2020	Credit Suisse		8,992,617	9,000,000		1
0599999	Total - Bonds - U.S. Government					126,381,844	126,400,000	16,180	XXX
Bonds - U.S. States, Territories and Possessions									
574193 TT 5	MARYLAND ST 1.090% 08/01/27		07/23/2020	JP Morgan Securities Inc.		3,105,000	3,105,000		1FE
1799999	Total - Bonds - U.S. States, Territories & Possessions					3,105,000	3,105,000	0	XXX
Bonds - U.S. Special Revenue and Special Assessment									
875291 AX 4	TAMPA FL WTR & WSTWTR SYS REVE 1.141%		07/17/2020	Bank of America Corp.		800,000	800,000		1FE
875291 AY 2	TAMPA FL WTR & WSTWTR SYS REVE 1.288%		07/17/2020	Bank of America Corp.		785,000	785,000		1FE
875291 AZ 9	TAMPA FL WTR & WSTWTR SYS REVE 1.348%		07/17/2020	Bank of America Corp.		2,565,000	2,565,000		1FE
3199999	Total - Bonds - U.S. Special Revenue and Special Assessments					4,150,000	4,150,000	0	XXX
Bonds - Industrial and Miscellaneous									
02665W DK 4	AMERICAN HONDA FINANCE 0.875% 07/07/23		07/06/2020	BNP Paribas Securities Corp.		4,998,400	5,000,000		1FE
45866F AR 5	INTERCONTINENTALEXCHANGE GROUP 0.920%		08/17/2020	Wells Fargo Bank		10,000,000	10,000,000		2FE
61763Q AW 1	MSC 2014-CPT G 3.560% 07/13/29		08/11/2020	Bank of America Corp.		12,040,722	11,830,000	14,040	4FM
3899999	Total - Bonds - Industrial and Miscellaneous					27,039,122	26,830,000	14,040	XXX
8399997	Total - Bonds - Part 3					160,675,966	160,485,000	30,220	XXX
8399999	Total - Bonds					160,675,966	160,485,000	30,220	XXX
9999999	Total - Bonds, Preferred and Common Stocks					160,675,966	XXX	30,220	XXX

QE04

SCHEDULE D - PART 4

Showing all Long-Term Bonds and Stocks SOLD, REDEEMED or Otherwise DISPOSED OF During Current Quarter

1	2	3	4	5	6	7	8	9	10	Change in Book/Adjusted Carrying Value					16	17	18	19	20	21	22
										11	12	13	14	15							
CUSIP Identification	Description	F o r e i g n	Disposal Date	Name of Purchaser	Number of Shares of Stock	Consideration	Par Value	Actual Cost	Prior Year Book/Adjusted Carrying Value	Unrealized Valuation Increase (Decrease)	Current Year's (Amortization) / Accretion	Current Year's Other-Than-Temporary Impairment Recognized	Total Change in B./A.C.V. (11+12-13)	Total Foreign Exchange Change in B./A.C.V.	Book/Adjusted Carrying Value at Disposal Date	Foreign Exchange Gain (Loss) on Disposal	Realized Gain (Loss) on Disposal	Total Gain (Loss) on Disposal	Bond Interest / Stock Dividends Received During Year	Stated Contractual Maturity Date	NAIC Designation and Administrative Symbol
Bonds - U.S. Government																					
912828	ZL 7		07/15/2020	JP Morgan Securities Inc.....		8,539,180	8,500,000	8,509,961			(391)		(391)		8,509,570		29,609	29,609	6,670	04/30/2025	1.....
912828	ZV 5		09/24/2020	Morgan Stanley.....		15,061,328	15,000,000	15,048,828			(1,139)		(1,139)		15,047,689		13,639	13,639	16,984	06/30/2027	1.....
91282C	AC 5		09/10/2020	JP Morgan Securities Inc.....		4,997,852	5,000,000	4,997,266			95		95		4,997,360		491	491	713	07/31/2022	1.....
0599999	Total - Bonds - U.S. Government.....					28,598,360	28,500,000	28,556,055	0	0	(1,435)	0	(1,435)	0	28,554,619	0	43,739	43,739	24,367	XXX	XXX
Bonds - U.S. Special Revenue and Special Assessment																					
64972G	WP 5		08/07/2020	Bank of America Corp.....		8,499,600	6,000,000	7,814,400			(64,766)		(64,766)		7,749,634		749,966	749,966	119,167	06/15/2030	1FE.....
3199999	Total - Bonds - U.S. Special Revenue and Special Assessments.....					8,499,600	6,000,000	7,814,400	0	0	(64,766)	0	(64,766)	0	7,749,634	0	749,966	749,966	119,167	XXX	XXX
Bonds - Industrial and Miscellaneous																					
03066K	AD 2		09/18/2020	Paydown.....		1,146,153	1,146,153	1,146,153	1,145,007		1,146		1,146		1,146,153			0	8,905	09/19/2022	1FE.....
05588C	AB 8		09/25/2020	Paydown.....		1,400,671	1,400,671	1,400,642	1,400,650		21		21		1,400,671			0	19,261	05/25/2022	1FE.....
126650	CW 8		08/25/2020	Citigroup.....		4,075,113	3,547,000	3,495,001	3,502,756		5,080		5,080		3,507,836		567,277	567,277	134,116	03/25/2025	2FE.....
233864	AC 1		09/15/2020	Paydown.....		682,990	682,990	684,804	684,327		(1,337)		(1,337)		682,990			0	12,719	07/15/2021	1FE.....
29373F	AB 0		09/20/2020	Paydown.....		248,930	248,930	250,514	250,044		(1,114)		(1,114)		248,930			0	5,185	02/20/2024	1FE.....
29373G	AB 8		09/20/2020	Paydown.....		687,130	687,130	687,774	687,458		(328)		(328)		687,130			0	15,355	05/20/2024	1FE.....
78403D	AK 6		07/15/2020	Call 100.0000.....		2,400,000	2,400,000	2,343,696	2,366,010		11,809		11,809		2,377,819		22,181	22,181	40,086	07/09/2021	1FE.....
92348N	AC 1		07/20/2020	Paydown.....		8,725,000	8,725,000	8,753,629	8,747,006		(22,006)		(22,006)		8,725,000			0	134,874	09/20/2021	1FE.....
13646A	AB 6		07/19/2020	Paydown.....		342,093	342,093	343,002	342,734		(641)		(641)		342,093			0	5,987	06/21/2021	1FE.....
3899999	Total - Bonds - Industrial and Miscellaneous.....					19,708,080	19,179,967	19,105,215	19,125,992	0	(7,370)	0	(7,370)	0	19,118,622	0	589,458	589,458	376,488	XXX	XXX
8399997	Total - Bonds - Part 4.....					56,806,040	53,679,967	55,475,670	19,125,992	0	(73,571)	0	(73,571)	0	55,422,875	0	1,383,163	1,383,163	520,022	XXX	XXX
8399999	Total - Bonds.....					56,806,040	53,679,967	55,475,670	19,125,992	0	(73,571)	0	(73,571)	0	55,422,875	0	1,383,163	1,383,163	520,022	XXX	XXX
9999999	Total - Bonds, Preferred and Common Stocks.....					56,806,040	XXX	55,475,670	19,125,992	0	(73,571)	0	(73,571)	0	55,422,875	0	1,383,163	1,383,163	520,022	XXX	XXX

QE05

Sch. DB - Pt. A - Sn. 1
NONE

Sch. DB - Pt. B - Sn. 1
NONE

Sch. DB - Pt. D - Sn. 1
NONE

Sch. DB - Pt. D - Sn. 2
NONE

Sch. DB - Pt. E
NONE

Sch. DL - Pt. 1
NONE

Sch. DL - Pt. 2
NONE

PROGRESSIVE AMERICAN INSURANCE COMPANY
SCHEDULE E - PART 1 - CASH

Month End Depository Balances

1 Depository	2 Code	3 Rate of Interest	4 Amount of Interest Received During Current Quarter	5 Amount or interest Accrued at Current Statement Date	Book Balance at End of Each Month During Current Quarter			9 *
					6 First Month	7 Second Month	8 Third Month	
Open Depositories								
CITIBANK..... NEW YORK, NY.....	0.0503	3			XXX
0199999. Total Open Depositories.....	XXX	XXX30300	XXX
0399999. Total Cash on Deposit.....	XXX	XXX30300	XXX
0599999. Total Cash.....	XXX	XXX30300	XXX

SCHEDULE E - PART 2 - CASH EQUIVALENTS

Show Investments Owned End of Current Quarter

1 CUSIP	2 Description	3 Code	4 Date Acquired	5 Rate of Interest	6 Maturity Date	7 Book/Adjusted Carrying Value	8 Amount of Interest Due & Accrued	9 Amount Received During Year
------------	------------------	-----------	--------------------	-----------------------	--------------------	-----------------------------------	---------------------------------------	----------------------------------

NONE