



QUARTERLY STATEMENT

As of September 30, 2020
of the Condition and Affairs of the

NATIONWIDE GENERAL INSURANCE COMPANY

NAIC Group Code.....140, 140 (Current Period) (Prior Period)	NAIC Company Code..... 23760	Employer's ID Number..... 31-4425763
Organized under the Laws of OH	State of Domicile or Port of Entry OH	Country of Domicile US
Incorporated/Organized..... August 22, 1957	Commenced Business..... September 3, 1958	
Statutory Home Office	ONE WEST NATIONWIDE BLVD. .. COLUMBUS .. OH .. US .. 43215-2220 <i>(Street and Number) (City or Town, State, Country and Zip Code)</i>	
Main Administrative Office	ONE WEST NATIONWIDE BLVD. .. COLUMBUS .. OH .. US .. 43215-2220 <i>(Street and Number) (City or Town, State, Country and Zip Code)</i>	614-249-7111 <i>(Area Code) (Telephone Number)</i>
Mail Address	ONE WEST NATIONWIDE BLVD., FRAP SOLUTIONS .. COLUMBUS .. OH .. US .. 43215-2220 <i>(Street and Number or P. O. Box) (City or Town, State, Country and Zip Code)</i>	
Primary Location of Books and Records	ONE WEST NATIONWIDE BLVD., 1-14-301 .. COLUMBUS .. OH .. US .. 43215-2220 <i>(Street and Number) (City or Town, State, Country and Zip Code)</i>	614-249-1545 <i>(Area Code) (Telephone Number)</i>
Internet Web Site Address	WWW.NATIONWIDE.COM	
Statutory Statement Contact	CHERYL M DENNIS <i>(Name)</i> FINRPT@NATIONWIDE.COM <i>(E-Mail Address)</i>	614-249-1545 <i>(Area Code) (Telephone Number) (Extension)</i> 866-315-1430 <i>(Fax Number)</i>

OFFICERS

Name	Title	Name	Title
1. MARK ALLEN BERVEN	PRESIDENT & COO	2. DENISE LYNN SKINGLE	SVP & SECRETARY
3. ELIZABETH HUAN SONG KITTO	VP & TREASURER		
OTHER			
PAMELA ANN BIESECKER	SVP-HEAD OF TAXATION	JENNIFER BOYD MACKENZIE	SVP-ENTERPRISE BRAND MARKT

DIRECTORS OR TRUSTEES

MARK ALLEN BERVEN	GARY ANTHONY DOUGLAS	ELIZABETH MARGARET RICZKO	ERIC EUGENE SMITH
SHELLEY BRAZEAU TEMPLE	MARK RAYMOND THRESHER		

State of..... OHIO
County of..... FRANKLIN

The officers of this reporting entity being duly sworn, each depose and say that they are the described officers of said reporting entity, and that on the reporting period stated above, all of the herein described assets were the absolute property of the said reporting entity, free and clear from any liens or claims thereon, except as herein stated, and that this statement, together with related exhibits, schedules and explanations therein contained, annexed or referred to, is a full and true statement of all the assets and liabilities and of the condition and affairs of the said reporting entity as of the reporting period stated above, and of its income and deductions therefrom for the period ended, and have been completed in accordance with the NAIC *Annual Statement Instructions and Accounting Practices and Procedures* manual except to the extent that: (1) state law may differ; or, (2) that state rules or regulations require differences in reporting not related to accounting practices and procedures, according to the best of their information, knowledge and belief, respectively. Furthermore, the scope of this attestation by the described officers also includes the related corresponding electronic filing with the NAIC, when required, that is an exact copy (except for formatting differences due to electronic filing) of the enclosed statement. The electronic filing may be requested by various regulators in lieu of or in addition to the enclosed statement.

<u>Mark Berven</u> (Signature)	<u>[Signature]</u> (Signature)	<u>Elizabeth Huan Song Kitto</u> (Signature)
MARK ALLEN BERVEN	DENISE LYNN SKINGLE	ELIZABETH HUAN SONG KITTO
1. (Printed Name)	2. (Printed Name)	3. (Printed Name)
PRESIDENT & COO	SVP & SECRETARY	VP & TREASURER
(Title)	(Title)	(Title)

Subscribed and sworn to before me
This 26th day of October, 2020
[Signature]

a. Is this an original filing? Yes [X] No []
b. If no: 1. State the amendment number _____
2. Date filed _____
3. Number of pages attached _____



ASSETS

	Current Statement Date			4 December 31 Prior Year Net Admitted Assets
	1 Assets	2 Nonadmitted Assets	3 Net Admitted Assets (Cols. 1 - 2)	
1. Bonds.....	360,261,471		360,261,471	398,290,842
2. Stocks:				
2.1 Preferred stocks.....			0	
2.2 Common stocks.....			0	
3. Mortgage loans on real estate:				
3.1 First liens.....			0	
3.2 Other than first liens.....			0	
4. Real estate:				
4.1 Properties occupied by the company (less \$.....0 encumbrances).....			0	
4.2 Properties held for the production of income (less \$.....0 encumbrances).....			0	
4.3 Properties held for sale (less \$.....0 encumbrances).....			0	
5. Cash (\$.....17,140), cash equivalents (\$.....0) and short-term investments (\$.....51,059,996).....	51,077,136		51,077,136	12,295,766
6. Contract loans (including \$.....0 premium notes).....			0	
7. Derivatives.....			0	
8. Other invested assets.....	1,361,203		1,361,203	2,635,026
9. Receivables for securities.....			0	
10. Securities lending reinvested collateral assets.....			0	
11. Aggregate write-ins for invested assets.....	0	0	0	0
12. Subtotals, cash and invested assets (Lines 1 to 11).....	412,699,810	0	412,699,810	413,221,634
13. Title plants less \$.....0 charged off (for Title insurers only).....			0	
14. Investment income due and accrued.....	2,232,155	3,569	2,228,586	2,995,823
15. Premiums and considerations:				
15.1 Uncollected premiums and agents' balances in the course of collection.....	85,197,680	549,983	84,647,697	83,064,600
15.2 Deferred premiums, agents' balances and installments booked but deferred and not yet due (including \$.....0 earned but unbilled premiums).....	306,546,409	195,742	306,350,667	268,244,759
15.3 Accrued retrospective premiums (\$.....0) and contracts subject to redetermination (\$.....0).....			0	
16. Reinsurance:				
16.1 Amounts recoverable from reinsurers.....	103,699,107		103,699,107	80,785,921
16.2 Funds held by or deposited with reinsured companies.....	123,913		123,913	28,199
16.3 Other amounts receivable under reinsurance contracts.....	21,155,404		21,155,404	26,341,828
17. Amounts receivable relating to uninsured plans.....			0	
18.1 Current federal and foreign income tax recoverable and interest thereon.....	380,404		380,404	
18.2 Net deferred tax asset.....	8,671,940	683,143	7,988,797	6,872,565
19. Guaranty funds receivable or on deposit.....	76,876		76,876	66,598
20. Electronic data processing equipment and software.....			0	
21. Furniture and equipment, including health care delivery assets (\$.....0).....			0	
22. Net adjustment in assets and liabilities due to foreign exchange rates.....			0	
23. Receivables from parent, subsidiaries and affiliates.....	11,609,920	858	11,609,062	17,095,182
24. Health care (\$.....0) and other amounts receivable.....			0	
25. Aggregate write-ins for other than invested assets.....	2,941,740	261,577	2,680,163	3,252,124
26. Total assets excluding Separate Accounts, Segregated Accounts and Protected Cell Accounts (Lines 12 through 25).....	955,335,358	1,694,872	953,640,486	901,969,233
27. From Separate Accounts, Segregated Accounts and Protected Cell Accounts.....			0	
28. Total (Lines 26 and 27).....	955,335,358	1,694,872	953,640,486	901,969,233

DETAILS OF WRITE-INS

1101.....			0	
1102.....			0	
1103.....			0	
1198. Summary of remaining write-ins for Line 11 from overflow page.....	0	0	0	0
1199. Totals (Lines 1101 thru 1103 plus 1198) (Line 11 above).....	0	0	0	0
2501. Miscellaneous assets.....	917,385	77,950	839,435	902,190
2502. Third party administrator receivable.....	201,268		201,268	273,828
2503. Deposits and prepaid assets.....	180,665	180,665	0	
2598. Summary of remaining write-ins for Line 25 from overflow page.....	1,642,422	2,962	1,639,460	2,076,106
2599. Totals (Lines 2501 thru 2503 plus 2598) (Line 25 above).....	2,941,740	261,577	2,680,163	3,252,124

LIABILITIES, SURPLUS AND OTHER FUNDS

	1 Current Statement Date	2 December 31 Prior Year
1. Losses (current accident year \$....41,587,230).....	124,447,570	117,794,333
2. Reinsurance payable on paid losses and loss adjustment expenses.....	10,796,573	7,683,623
3. Loss adjustment expenses.....	24,971,908	24,098,341
4. Commissions payable, contingent commissions and other similar charges.....	3,784,387	3,420,343
5. Other expenses (excluding taxes, licenses and fees).....	1,297,224	2,314,204
6. Taxes, licenses and fees (excluding federal and foreign income taxes).....	499,457	886,744
7.1 Current federal and foreign income taxes (including \$.....0 on realized capital gains (losses)).....		4,600,797
7.2 Net deferred tax liability.....		
8. Borrowed money \$.....0 and interest thereon \$.....0.....		
9. Unearned premiums (after deducting unearned premiums for ceded reinsurance of \$....701,496,577 and including warranty reserves of \$....111,145 and accrued accident and health experience rating refunds including \$.....0 for medical loss ratio rebate per the Public Health Service Act).....	80,172,599	77,178,080
10. Advance premium.....	1,681,232	1,320,013
11. Dividends declared and unpaid:		
11.1 Stockholders.....		
11.2 Policyholders.....	87,099	81,546
12. Ceded reinsurance premiums payable (net of ceding commissions).....	462,595,619	422,517,084
13. Funds held by company under reinsurance treaties.....	780	566
14. Amounts withheld or retained by company for account of others.....	2,483,952	4,033,084
15. Remittances and items not allocated.....	503,744	88,913
16. Provision for reinsurance (including \$.....0 certified).....		
17. Net adjustments in assets and liabilities due to foreign exchange rates.....		
18. Drafts outstanding.....		
19. Payable to parent, subsidiaries and affiliates.....	12,531,934	2,090,452
20. Derivatives.....		
21. Payable for securities.....		
22. Payable for securities lending.....		
23. Liability for amounts held under uninsured plans.....		
24. Capital notes \$.....0 and interest thereon \$.....0.....		
25. Aggregate write-ins for liabilities.....	2,364,791	3,960,602
26. Total liabilities excluding protected cell liabilities (Lines 1 through 25).....	728,218,869	672,068,725
27. Protected cell liabilities.....		
28. Total liabilities (Lines 26 and 27).....	728,218,869	672,068,725
29. Aggregate write-ins for special surplus funds.....	0	0
30. Common capital stock.....	4,200,000	4,200,000
31. Preferred capital stock.....		
32. Aggregate write-ins for other than special surplus funds.....	0	0
33. Surplus notes.....		
34. Gross paid in and contributed surplus.....	217,660,974	217,660,973
35. Unassigned funds (surplus).....	3,560,643	8,039,535
36. Less treasury stock, at cost:		
36.10.000 shares common (value included in Line 30 \$.....0).....		
36.20.000 shares preferred (value included in Line 31 \$.....0).....		
37. Surplus as regards policyholders (Lines 29 to 35, less 36).....	225,421,617	229,900,508
38. Totals (Page 2, Line 28, Col. 3).....	953,640,486	901,969,233

DETAILS OF WRITE-INS

2501. Miscellaneous liabilities.....	2,091,448	3,773,658
2502. Escrow Liability.....	56,134	25,903
2503. State surcharge/recoupment payable.....	125,568	100,384
2598. Summary of remaining write-ins for Line 25 from overflow page.....	91,641	60,657
2599. Totals (Lines 2501 thru 2503 plus 2598) (Line 25 above).....	2,364,791	3,960,602
2901.		
2902.		
2903.		
2998. Summary of remaining write-ins for Line 29 from overflow page.....	0	0
2999. Totals (Lines 2901 thru 2903 plus 2998) (Line 29 above).....	0	0
3201.		
3202.		
3203.		
3298. Summary of remaining write-ins for Line 32 from overflow page.....	0	0
3299. Totals (Lines 3201 thru 3203 plus 3298) (Line 32 above).....	0	0

**NATIONWIDE GENERAL INSURANCE COMPANY
STATEMENT OF INCOME**

	1 Current Year to Date	2 Prior Year to Date	3 Prior Year Ended December 31
UNDERWRITING INCOME			
1. Premiums earned:			
1.1 Direct..... (written \$....1,235,702,293).....	1,163,817,546	1,085,473,480	1,455,035,231
1.2 Assumed..... (written \$....176,853,942).....	172,969,161	195,022,582	252,421,423
1.3 Ceded..... (written \$....1,277,598,152).....	1,204,823,785	1,147,278,228	1,529,690,030
1.4 Net..... (written \$....134,958,083).....	131,962,922	133,217,834	177,766,624
DEDUCTIONS:			
2. Losses incurred (current accident year \$....84,904,275):			
2.1 Direct.....	837,381,266	713,591,344	954,224,577
2.2 Assumed.....	117,436,334	121,834,840	156,776,811
2.3 Ceded.....	866,230,021	754,399,756	1,003,169,073
2.4 Net.....	88,587,579	81,026,428	107,832,315
3. Loss adjustment expenses incurred.....	13,484,129	13,816,011	18,526,888
4. Other underwriting expenses incurred.....	43,346,550	57,210,011	71,480,744
5. Aggregate write-ins for underwriting deductions.....	0	0	0
6. Total underwriting deductions (Lines 2 through 5).....	145,418,258	152,052,450	197,839,947
7. Net income of protected cells.....			
8. Net underwriting gain (loss) (Line 1 minus Line 6 + Line 7).....	(13,455,336)	(18,834,616)	(20,073,323)
INVESTMENT INCOME			
9. Net investment income earned.....	8,398,272	10,371,016	11,268,552
10. Net realized capital gains (losses) less capital gains tax of \$....(488,558).....	(2,624,114)	(320,164)	(229,058)
11. Net investment gain (loss) (Lines 9 + 10).....	5,774,158	10,050,852	11,039,494
OTHER INCOME			
12. Net gain or (loss) from agents' or premium balances charged off (amount recovered \$....11,130 amount charged off \$....398,133).....	(387,003)	(391,416)	(532,874)
13. Finance and service charges not included in premiums.....	756,355	791,631	1,050,519
14. Aggregate write-ins for miscellaneous income.....	1,216,370	787,751	1,039,608
15. Total other income (Lines 12 through 14).....	1,585,722	1,187,966	1,557,253
16. Net income before dividends to policyholders, after capital gains tax and before all other federal and foreign income taxes (Lines 8 + 11 + 15).....	(6,095,456)	(7,595,798)	(7,476,576)
17. Dividends to policyholders.....	72,420	55,135	69,110
18. Net income, after dividends to policyholders, after capital gains tax and before all other federal and foreign income taxes (Line 16 minus Line 17).....	(6,167,876)	(7,650,933)	(7,545,686)
19. Federal and foreign income taxes incurred.....	108,154	4,270,589	5,089,613
20. Net income (Line 18 minus Line 19) (to Line 22).....	(6,276,030)	(11,921,522)	(12,635,299)
CAPITAL AND SURPLUS ACCOUNT			
21. Surplus as regards policyholders, December 31 prior year.....	229,900,508	235,016,222	235,016,222
22. Net income (from Line 20).....	(6,276,030)	(11,921,522)	(12,635,299)
23. Net transfers (to) from Protected Cell accounts.....			
24. Change in net unrealized capital gains or (losses) less capital gains tax of \$....146,105.....	549,635	(97,578)	(154,276)
25. Change in net unrealized foreign exchange capital gain (loss).....			
26. Change in net deferred income tax.....	1,177,614	5,585,473	6,436,932
27. Change in nonadmitted assets.....	(47,574)	(377,449)	(901,391)
28. Change in provision for reinsurance.....			
29. Change in surplus notes.....			
30. Surplus (contributed to) withdrawn from protected cells.....			
31. Cumulative effect of changes in accounting principles.....			
32. Capital changes:			
32.1 Paid in.....		1,700,000	1,700,000
32.2 Transferred from surplus (Stock Dividend).....			
32.3 Transferred to surplus.....			
33. Surplus adjustments:			
33.1 Paid in.....			
33.2 Transferred to capital (Stock Dividend).....			
33.3 Transferred from capital.....			
34. Net remittances from or (to) Home Office.....			
35. Dividends to stockholders.....			
36. Change in treasury stock.....			
37. Aggregate write-ins for gains and losses in surplus.....	117,464	72,951	438,320
38. Change in surplus as regards policyholders (Lines 22 through 37).....	(4,478,891)	(5,038,125)	(5,115,714)
39. Surplus as regards policyholders, as of statement date (Lines 21 plus 38).....	225,421,617	229,978,097	229,900,508

DETAILS OF WRITE-INS

0501.			
0502.			
0503.			
0598. Summary of remaining write-ins for Line 5 from overflow page.....	0	0	0
0599. Totals (Lines 0501 thru 0503 plus 0598) (Line 5 above).....	0	0	0
1401. Other (expenses)/income.....	1,247,354	714,351	964,476
1402. Change in contingent suit liability.....	(30,984)	73,400	75,132
1403.			
1498. Summary of remaining write-ins for Line 14 from overflow page.....	0	0	0
1499. Totals (Lines 1401 thru 1403 plus 1498) (Line 14 above).....	1,216,370	787,751	1,039,608
3701. Change in surplus - miscellaneous.....	117,464	72,951	438,320
3702.			
3703.			
3798. Summary of remaining write-ins for Line 37 from overflow page.....	0	0	0
3799. Totals (Lines 3701 thru 3703 plus 3798) (Line 37 above).....	117,464	72,951	438,320

CASH FLOW

	1 Current Year to Date	2 Prior Year To Date	3 Prior Year Ended December 31
CASH FROM OPERATIONS			
1. Premiums collected net of reinsurance.....	135,504,592	126,663,037	184,973,925
2. Net investment income.....	11,078,628	10,458,420	14,058,799
3. Miscellaneous income.....	1,490,008	1,160,175	1,529,554
4. Total (Lines 1 through 3).....	148,073,228	138,281,632	200,562,278
5. Benefit and loss related payments.....	101,728,435	87,773,015	110,820,006
6. Net transfers to Separate Accounts, Segregated Accounts and Protected Cell Accounts.....			
7. Commissions, expenses paid and aggregate write-ins for deductions.....	51,821,189	52,244,556	71,438,574
8. Dividends paid to policyholders.....	66,867	59,810	81,490
9. Federal and foreign income taxes paid (recovered) net of \$....(111,239) tax on capital gains (losses).....	4,600,797	200,858	811,568
10. Total (Lines 5 through 9).....	158,217,288	140,278,239	183,151,638
11. Net cash from operations (Line 4 minus Line 10).....	(10,144,060)	(1,996,607)	17,410,640
CASH FROM INVESTMENTS			
12. Proceeds from investments sold, matured or repaid:			
12.1 Bonds.....	61,637,712	36,710,738	52,789,593
12.2 Stocks.....			
12.3 Mortgage loans.....			
12.4 Real estate.....			
12.5 Other invested assets.....			144,599
12.6 Net gains or (losses) on cash, cash equivalents and short-term investments.....			
12.7 Miscellaneous proceeds.....			
12.8 Total investment proceeds (Lines 12.1 to 12.7).....	61,637,712	36,710,738	52,934,192
13. Cost of investments acquired (long-term only):			
13.1 Bonds.....	26,777,015	36,223,688	49,150,771
13.2 Stocks.....			
13.3 Mortgage loans.....			
13.4 Real estate.....			
13.5 Other invested assets.....	1,620,014	1,918,471	3,543,695
13.6 Miscellaneous applications.....			
13.7 Total investments acquired (Lines 13.1 to 13.6).....	28,397,029	38,142,159	52,694,466
14. Net increase or (decrease) in contract loans and premium notes.....			
15. Net cash from investments (Line 12.8 minus Line 13.7 and Line 14).....	33,240,683	(1,431,421)	239,726
CASH FROM FINANCING AND MISCELLANEOUS SOURCES			
16. Cash provided (applied):			
16.1 Surplus notes, capital notes.....			
16.2 Capital and paid in surplus, less treasury stock.....		1,700,000	1,700,000
16.3 Borrowed funds.....			
16.4 Net deposits on deposit-type contracts and other insurance liabilities.....			
16.5 Dividends to stockholders.....			
16.6 Other cash provided (applied).....	15,684,747	5,253,962	(13,965,029)
17. Net cash from financing and miscellaneous sources (Lines 16.1 through 16.4 minus Line 16.5 plus Line 16.6).....	15,684,747	6,953,962	(12,265,029)
RECONCILIATION OF CASH, CASH EQUIVALENTS AND SHORT-TERM INVESTMENTS			
18. Net change in cash, cash equivalents and short-term investments (Line 11 plus Line 15 plus Line 17).....	38,781,370	3,525,934	5,385,337
19. Cash, cash equivalents and short-term investments:			
19.1 Beginning of year.....	12,295,766	6,910,429	6,910,429
19.2 End of period (Line 18 plus Line 19.1).....	51,077,136	10,436,363	12,295,766
Note: Supplemental disclosures of cash flow information for non-cash transactions:			
20.0001 Intercompany transfer of securities in		176,243,064	176,243,064
20.0002 Tax credit commitment liabilities	1,732,459	1,850,567	427,540
20.0003 Exchange of bond investment to bond investment	7,257,373		3,039,124

NOTES TO THE FINANCIAL STATEMENTS**Note 1 – Summary of Significant Accounting Policies and Going Concern**

A. Accounting Practices

The accompanying statutory financial statements of Nationwide General Insurance Company (the Company) have been prepared in conformity with accounting practices prescribed or permitted by the National Association of Insurance Commissioners (NAIC) and the State of Ohio.

The Ohio Department of Insurance (Department) recognizes only statutory accounting practices (SAP) prescribed or permitted by the State of Ohio for determining and reporting the financial condition and results of operations of an insurance company, as well as, determining its solvency under the Ohio Insurance law. The NAIC's *Accounting Practices and Procedures Manual* (NAIC SAP) has been adopted as a component of prescribed or permitted practices by the State of Ohio. The Company has no statutory accounting practices that differ from the NAIC SAP.

A reconciliation of the Company's net income and capital and surplus between NAIC SAP and practices prescribed and permitted by the State of Ohio is shown below:

	SSAP #	F/S Page	F/S Line #	2020	2019
Net Income					
(1) Nationwide General Insurance Company state basis (Page 4, Line 20, Columns 1 & 3)	XXX	XXX	XXX	\$ (6,276,030)	\$ (12,635,299)
(2) State Prescribed Practice that is an increase/(decrease) from NAIC SAP				-	-
(3) State Permitted Practice that is an increase/(decrease) from NAIC SAP				-	-
(4) NAIC SAP (1-2-3=4)	XXX	XXX	XXX	<u>\$ (6,276,030)</u>	<u>\$ (12,635,299)</u>
Surplus					
(5) Nationwide General Insurance Company state basis (Page 3, Line 37, Columns 1 & 2)	XXX	XXX	XXX	\$ 225,421,617	\$ 229,900,508
(6) State Prescribed Practice that is an increase/(decrease) from NAIC SAP				-	-
(7) State Permitted Practice that is an increase/(decrease) from NAIC SAP				-	-
(8) NAIC SAP (5-6-7=8)	XXX	XXX	XXX	<u>\$ 225,421,617</u>	<u>\$ 229,900,508</u>

B. Use of Estimates in the Preparation of the Financial Statements

There were no changes that were considered significant to the Company from prior year end.

C. Accounting Policies

1. There were no changes that were considered significant to the Company from prior year end.

2. Bonds, excluding loan-backed and structured securities, are stated at amortized cost except those with a NAIC designation of "3" through "6" which are stated at the lower of amortized cost or fair value. Amortization of premiums and discounts is calculated using the effective yield method. The Company does not hold any mandatory convertible securities or SVO-identified investments.

3-5. There were no changes that were considered significant to the Company from prior year end.

6. Loan-backed and structured securities (collectively, loan-backed securities) are stated at amortized cost or the lower of amortized cost or fair value in accordance with the provisions of Statement of Statutory Accounting Principles No. 43-Revised and the Purposes and Procedures Manual of the NAIC Securities Valuation Office. The retrospective adjustment method is used to value loan-backed securities where the collection of all contractual cash flows is probable. For all other loan-backed securities, the Company uses the prospective adjustment method.

7-13. There were no changes that were considered significant to the Company from prior year end.

D. Going Concern

Not applicable.

Note 2 – Accounting Changes and Corrections of Errors

There were no changes that were considered significant to the Company from prior year end.

Note 3 - Business Combinations and Goodwill

Not applicable.

Note 4 – Discontinued Operations

Not applicable.

Note 5 – Investments

A. Mortgage Loans

Not applicable.

B. Troubled Debt Restructuring

Not applicable.

C. Reverse Mortgages

Not applicable.

D. Loan-Backed Securities

1. Prepayment assumptions are generally obtained using a model provided by a third-party vendor.

2. Not applicable.

NOTES TO THE FINANCIAL STATEMENTS

3. Not applicable.

4. All impaired securities (fair value is less than cost or amortized cost) for which an other-than-temporary impairment has not been recognized in earnings as a realized loss (including securities with a recognized other-than-temporary impairment for non-interest related declines when a non-recognized interest related impairment remains):

a. The aggregate amount of unrealized losses:

1. Less than 12 Months	\$	<u>(872,996)</u>
2. 12 Months or Longer	\$	<u>(157,071)</u>

b. The aggregate related fair value of securities with unrealized losses:

1. Less than 12 Months	\$	<u>26,769,736</u>
2. 12 Months or Longer	\$	<u>1,005,166</u>

5. The Company reviews all loan-backed and structured securities in which the fair value of the given security is less than the amortized cost to determine if a given security is other-than-temporarily impaired. The Company examines characteristics of the underlying collateral, such as delinquency and default rates, the quality of the underlying borrower, the type of collateral in the pool, the vintage year of the collateral, subordination levels within the structure of the collateral pool, and the quality of any credit guarantors, to determine the cash flows expected to be received for the security.

If the severity and duration of the security's unrealized loss indicates a risk of an other-than-temporary impairment, then the Company will evaluate if the amortized cost basis of the security will be recovered by comparing the present value of the cash flows expected to be received for the given security with the amortized cost basis of the security. If the present value of cash flows is greater than the amortized cost basis of a security, then the security is deemed not to be other-than-temporarily impaired.

E. Dollar Repurchase Agreements and/or Securities Lending Transactions

1-7. Not applicable, as the Company does not participate in a securities lending program and has no open dollar repurchase agreements.

F. Repurchase Agreements Transactions Accounted for as Secured Borrowing

1. To manage short-term liquidity needs within the Nationwide insurance subsidiaries', the Company has agreements to enter into repurchase or reverse repurchase agreements with several authorized affiliated insurance companies. The collateral required meets minimum state specific requirements or statutory requirements if state of domicile does not specify.

As these transactions are with affiliated insurance companies within the Nationwide family and are short-term in nature, the risk of changes in the fair value of the collateral are considered negligible.

2-11. Not applicable.

G. Reverse Repurchase Agreements Transactions Accounted for as Secured Borrowing

1. To manage short-term liquidity needs within the Nationwide insurance subsidiaries', the Company has agreements to enter into repurchase or reverse repurchase agreements with several authorized affiliated insurance companies. The collateral required meets minimum state specific requirements or statutory requirements if state of domicile does not specify.

As these transactions are with affiliated insurance companies within the Nationwide family and are short-term in nature, the risk of changes in the fair value of the collateral are considered negligible.

2-10. Not applicable.

H. Repurchase Agreements Transactions Accounted for as a Sale

Not applicable.

I. Reverse Repurchase Agreements Transactions Accounted for as a Sale

Not applicable.

J. Real Estate

Not applicable.

K. Low-Income Housing Tax Credits

There were no changes that were considered significant to the Company from prior year end.

L. Restricted Assets

There were no changes that were considered significant to the Company from prior year end.

M. Working Capital Finance Investments

Not applicable.

N. Offsetting and Netting of Assets and Liabilities

No assets or liabilities are offset and reported net in accordance with a valid right to offset per SSAP No 64, Offsetting and Netting of Assets and Liabilities.

O. 5GI Securities

There were no changes that were considered significant to the Company from prior year end.

P. Short Sales

Not applicable.

Q. Prepayment Penalty and Acceleration Fees

There were no changes that were considered significant to the Company from prior year end.

NOTES TO THE FINANCIAL STATEMENTS

Note 6 - Joint Ventures, Partnerships and Limited Liability Companies

There were no changes that were considered significant to the Company from prior year end.

Note 7 - Investment Income

There were no changes that were considered significant to the Company from prior year end.

Note 8 - Derivative Instruments

Not applicable.

Note 9 - Income Taxes

There were no changes that were considered significant to the Company from prior year end.

Note 10 – Information concerning parent, subs, and affiliates

There were no changes that were considered significant to the Company from prior year end.

Note 11 - Debt

A. All Other Debt

Not applicable.

B. Funding Agreements with Federal Home Loan Bank (FHLB)

Not applicable.

Note 12 - Retirement Plans, Deferred Compensation, Postemployment Benefits and Compensated Absences and Other Postretirement Benefit Plans

Not applicable.

Note 13 – Capital and Surplus, Dividend Restrictions and Quasi-Reorganizations

There were no changes that were considered significant to the Company from prior year end.

Note 14 – Contingencies

There were no changes that were considered significant to the Company from prior year end.

Note 15 – Leases

Not applicable.

Note 16 - Information About Financial Instruments With Off-Balance Sheet Risk And Financial Instruments With Concentrations of Credit Risk

Not applicable.

Note 17 – Sale, Transfer and Servicing of Financial Assets and Extinguishments of Liabilities

A. Transfers of Receivables Reported as Sales

Not applicable.

B. Transfers and Servicing of Financial Assets

Not applicable.

C. Wash Sales

Not applicable.

Note 18 - Gain or Loss to the Reporting Entity from Uninsured Plans and the Uninsured Portion of Partially Insured Plans

Not applicable.

Note 19 - Direct Premiums Written/Produced by Managing General Agents/Third Party Administrators

Not applicable.

Note 20 – Fair Value Measurements

A. Fair value is defined as the price that would be received to sell an asset or paid to transfer a liability in an orderly transaction between market participants at the measurement date. Fair value measurements are based upon observable and unobservable inputs. Observable inputs reflect market data obtained from independent sources while unobservable inputs reflect the Company's view of market assumptions in the absence of observable market information. The Company utilizes valuation techniques that maximize the use of observable inputs and minimize the use of unobservable inputs. In determining fair value, the Company uses various methods including market, income and cost approaches.

NOTES TO THE FINANCIAL STATEMENTS

The Company categorizes its financial instruments into a three-level hierarchy based on the priority of the inputs to the valuation technique. The fair value hierarchy gives the highest priority to quoted prices in active markets for identical assets or liabilities (Level 1) and the lowest priority to unobservable inputs (Level 3). If the inputs used to measure fair value fall within different levels of the hierarchy, the category level is based on the lowest priority level input that is significant to the fair value measurement of the instrument in its entirety.

The Company categorizes assets and liabilities held at fair value in the statutory statements of assets and liabilities, surplus and other funds as follows:

Level 1. Unadjusted quoted prices accessible in active markets for identical assets or liabilities at the measurement date and mutual funds where the value per share (unit) is determined and published daily and is the basis for current transactions.

Level 2. Unadjusted quoted prices for similar assets or liabilities in active markets or inputs (other than quoted prices) that are observable or that are derived principally from or corroborated by observable market data through correlation or other means. Primary inputs to this valuation technique may include comparative trades, bid/asks, interest rate movements, U.S. Treasury rates, London Interbank Offered Rate, prime rates, cash flows, maturity dates, call ability, estimated prepayments and/or underlying collateral values.

Level 3. Prices or valuation techniques that require inputs that are both unobservable and significant to the overall fair value measurement. Inputs reflect management's best estimates of the assumptions market participants would use at the measurement date in pricing the asset or liability. Consideration is given to the risk inherent in both the method of valuation and the valuation inputs. Primary inputs to this valuation technique include broker quotes and comparative trades.

The Company reviews its fair value hierarchy classifications for assets and liabilities quarterly. Changes in observability of significant valuation inputs identified during these reviews may trigger reclassifications. Reclassifications are reported as transfers at the beginning of the period in which the change occurs.

Independent pricing services are most often utilized to determine the fair value of bonds and stocks for which market quotations or quotations on comparable securities are available. For these bonds and stocks, the Company obtains the pricing services' methodologies, pricing from additional sources, inputs and assumptions and classifies the investments accordingly in the fair value hierarchy.

A corporate pricing matrix is used in valuing certain corporate bonds. The corporate pricing matrix was developed using publicly available spreads for privately placed corporate securities with varying weighted average lives and credit quality ratings. The weighted average life and credit quality rating of a particular bond to be priced using the corporate pricing matrix are important inputs into the model and are used to determine a corresponding spread that is added to the appropriate U.S. Treasury yield to create an estimated market yield for that bond. The estimated market yield and other relevant factors are then used to estimate the fair value of the particular bond.

Non-binding broker quotes are also utilized to determine the fair value of certain bonds when deemed appropriate or when quotes are not available from independent pricing services or a corporate pricing matrix. These bonds are classified with the lowest priority in the fair value hierarchy as only one broker quote is ordinarily obtained, the investment is not traded on an exchange, the pricing is not available to other entities and/or the transaction volume in the same or similar investments has decreased. Inputs used in the development of prices are not provided to the Company by the brokers as the brokers often do not provide the necessary transparency into their quotes and methodologies. At least annually, the Company performs reviews and tests to ensure that quotes are a reasonable estimate of the investments' fair value. Price movements of broker quotes are subject to validation and require approval from the Company's management. Management uses its knowledge of the investment and current market conditions to determine if the price is indicative of the investment's fair value.

The Company carries short-term investments at amortized cost, which approximates fair value.

The following table summarizes assets held at fair value as of September 30, 2020:

	Level 1	Level 2	Level 3	Net Asset Value (NAV)	Total
Assets at Fair Value					
Industrial and miscellaneous	\$ -	\$ 4,898,425	\$ -	\$ -	\$ 4,898,425
Total Bonds	\$ -	\$ 4,898,425	\$ -	\$ -	\$ 4,898,425
Total Assets at Fair Value (NAV)	\$ -	\$ 4,898,425	\$ -	\$ -	\$ 4,898,425

B. & C. The following table summarizes the carrying value and fair value of the Company's assets not held at fair value as of September 30, 2020:

	Aggregate Fair Value	Admitted Assets	Level 1	Level 2	Level 3	Net Asset Value (NAV)	Not Practicable (Carrying Value)
Assets							
Bonds	\$383,254,623	\$355,363,046	\$110,226,283	\$272,023,174	\$1,005,166	\$-	\$-
Short-term investments	51,059,996	51,059,996	-	51,059,996	-	-	-
Total Assets	\$434,314,619	\$406,423,042	\$110,226,283	\$323,083,170	\$1,005,166	\$-	\$-

D. Not Practicable to Estimate Fair Value

Not applicable.

E. Measured using net asset value

Not applicable.

Note 21 - Other Items

A. Unusual or Infrequent Items

On April 9, 2020, the Company announced a premium refund of \$50 per policy that provided relief to policyholders from the COVID-19 pandemic. The refund was applied to personal auto policies active as of March 31, 2020 and resulted in a one-time premium reduction of \$1.4 million in the second quarter of 2020.

On March 11, 2020, the World Health Organization declared COVID-19 a pandemic. The conditions as a result of the pandemic have and may continue to impact the Company's operations and financial condition. The extent to which the COVID-19 pandemic may impact the Company's operations and financial condition will depend on future developments which are evolving and uncertain.

B. Troubled Debt Restructuring for Debtors

Not applicable.

NOTES TO THE FINANCIAL STATEMENTS**C. Other Disclosures**

Effective June 1, 2020, the Company renewed the Property Catastrophe Program as follows: National Tower with varying placements totaling \$2.499 billion for losses per event between \$500 million and \$3.40 billion. This includes the catastrophe bond, Caelus Re 2020-1, issued in 2020 providing national coverage at 75% of \$400.0 million excess of \$1.95 billion. The national tower includes a 'Top & Drop' layer which 'drops' following a loss event over \$500 million. The layer would drop from \$250 million excess \$3.15 billion to \$250 million excess \$250 million. For the 2020 risk period, the Caelus Re 2018-1 and 2020-2 aggregate catastrophe bonds also provide national coverage. See Note 21G for additional information regarding the Caelus Re catastrophe bonds.

Effective July 1, 2020, the Company renewed its Property per Risk program on an enterprise-wide basis covering risks underwritten by the Company. The structure remains unchanged at \$115.0 million excess of \$10.0 million. See Note 21G for more details.

D. Business Interruption Insurance Recoveries

Not applicable.

E. State Transferable and Non-Transferable Tax Credits

There were no changes that were considered significant to the Company from prior year end.

F. Subprime Mortgage Related Risk Exposure

There were no changes that were considered significant to the Company from prior year end.

G. Insurance-Linked Securities

On February 27, 2020, the Company and certain of its subsidiaries and affiliates entered into an agreement with Caelus Re VI Limited, a Cayman Islands Special Purpose Reinsurance Vehicle, for the purpose of securing collateralized, multi-year property catastrophe loss protection through the capital markets. The catastrophe bonds, Caelus Re 2020-1 and 2020-2, issued as part of this agreement provide reinsurance coverage to the Company and certain of its subsidiaries and affiliates for catastrophic events, including hurricanes, winter storms, convective storms, wildfires, meteorites, volcanic eruptions, earthquakes, the fires following earthquakes and other perils. Caelus Re Series 2020-1 provides indemnity protection on a per occurrence basis with an initial attachment point of \$1.95 billion. There are two different classes of notes within Caelus Re Series 2020-1. The coverage is effective March 1, 2020 and expires on May 31, 2023 and May 31, 2024 for the Class A-1 Notes and Class B-1 Notes, respectively. Caelus Re Series 2020-2 provides indemnity protection on an annual aggregate basis with three different classes of notes. The initial attachment points are \$1.775 billion, \$1.575 billion and \$1.280 billion for the Class A-2 Notes, Class B-2 Notes and Class C-2 Notes, respectively. The coverage is effective June 1, 2020 and expires on May 31, 2023.

For the 2020 risk period, the Caelus Re 2018-1 catastrophe bond provides national coverage at varying placements of annual aggregate losses between \$1.197 billion and \$2.047 billion. The coverage was effective June 1, 2018 and expires on May 31, 2021.

For the 2020 risk period, the Caelus Re 2020-2 catastrophe bond provides national coverage at varying placements of annual aggregate losses between \$1.280 billion and \$1.880 billion. The coverage was effective June 1, 2020 and expires on May 31, 2023.

On February 29, 2020, the Caelus Re 2016-1 catastrophe bond expired according to the terms of the original agreement.

On May 31, 2020, the Caelus Re 2017-1 catastrophe bonds expired according to the terms of the original agreement.

H. The Amount That Could Be Realized on Life Insurance Where the Reporting Entity is Owner and Beneficiary or Has Otherwise Obtained Rights to Control the Policy

Not applicable.

Note 22 - Events SubsequentType I – Recognized Subsequent Events:

Subsequent events have been considered through November 9, 2020 for the statutory statement issued on November 10, 2020.

There were no material Type I events occurring subsequent to the end of the period that merited recognition or disclosure in these statements that have not already been reflected as required.

Type II – Nonrecognized Subsequent Events:

Subsequent events have been considered through November 9, 2020 for the statutory statement issued on November 10, 2020.

There were no material Type II events occurring subsequent to the end of the period that merited recognition or disclosure in these statements that have not already been reflected as required.

Note 23 - Reinsurance

There were no changes that were considered significant to the Company from prior year end.

Note 24 - Retrospectively Rated Contracts and Contracts Subject to Redetermination

Not applicable.

Note 25 - Changes in Incurred Losses and Loss Adjustment Expenses

A. As of December 31, 2019, loss and loss adjustment expense reserves, net of reinsurance recoveries, were \$141.9 million. Payments for incurred claims and claim adjustment expenses attributable to insured events of prior years were \$45.4 million for the nine months ended September 30, 2020. As of September 30, 2020, remaining loss and loss adjustment expense reserves attributable to insured events of prior years were \$101.7 million. The Company experienced unfavorable prior-year development of \$5.2 million during the nine months ended September 30, 2020, primarily driven by slower development and reporting patterns and increased severity in the standard auto personal lines, excess and surplus unfavorable development across various liability products, and higher than expected prior year claim emergence in agribusiness.

B. During 2020, the Company did not make any significant changes in methodologies and assumptions used in calculating the liability for unpaid losses and loss adjustment expenses.

NOTES TO THE FINANCIAL STATEMENTS**Note 26 - Intercompany Pooling Arrangements**

Nationwide Mutual Insurance Company is the lead company in the Nationwide Pool. Each pool member company contributes 100% of its underwriting results to the Nationwide Pool through the reinsurance pooling agreement.

Effective January 1, 2020, the Nationwide Pool structure was revised. Nationwide Mutual Insurance Company's assumed pooling percentage decreased from 72% to 71%. Scottsdale Insurance Company was removed as a Nationwide Pool recipient. National Casualty Company terminated its 100% quota share reinsurance agreement with Nationwide Mutual. Nationwide Agribusiness Insurance Company, Nationwide Insurance Company of America, and National Casualty Company were added as a Nationwide Pool recipient and changed from a 0% to 3%, 0% to 1%, and 0% to 1% retrocessionaire, respectively.

As of September 30, 2020 and December 31, 2019, the companies in the Nationwide Pool assuming a proportionate share of the pool are:

	NAIC #	September 30, 2020 Pool	December 31, 2019 Pool
Nationwide Mutual Insurance Company	23787	71.0%	72.0%
Nationwide Mutual Fire Insurance Company	23779	23.0%	23.0%
Nationwide Agribusiness Insurance Company	28223	3.0%	0.0%
Nationwide Insurance Company of America	25453	1.0%	0.0%
National Casualty Company	11991	1.0%	0.0%
Nationwide General Insurance Company	23760	1.0%	1.0%
Scottsdale Insurance Company	41297	0.0%	4.0%

All of the other companies in the Nationwide Pool have a 0% retrocession. The zero percent participants in the Nationwide Pool as of September 30, 2020 are: Nationwide Property and Casualty Insurance Company (NAIC # 37877), Nationwide Affinity Insurance Company of America (NAIC # 26093), Crestbrook Insurance Company (NAIC # 18961), Allied Insurance Company of America (NAIC # 10127), Nationwide Assurance Company (NAIC #10723), Nationwide Lloyds (NAIC #42110), Nationwide Insurance Company of Florida (NAIC #10948), AMCO Insurance Company (NAIC # 19100), Depositors Insurance Company (NAIC # 42587), Allied Property & Casualty Insurance Company (NAIC #42579), Victoria Fire & Casualty Company (NAIC # 42889), Victoria National Insurance Company (NAIC # 10778), Harleysville Preferred Insurance Company (NAIC #35696), Harleysville Insurance Company of New Jersey (NAIC #42900), Harleysville Worcester Insurance Company (NAIC #26182), Harleysville Insurance Company of New York (NAIC #10674), Harleysville Lake States Insurance Company (NAIC #14516), Harleysville Insurance Company (NAIC #23582), Veterinary Pet Insurance Company (NAIC #42285), and Scottsdale Insurance Company (NAIC #41297).

All lines of business are subject to the pooling agreements.

There are no discrepancies related to the pooled business between the assumed and ceded reinsurance schedules of the pool participants.

Note 27 - Structured Settlements

Not applicable.

Note 28 - Health Care Receivables

Not applicable.

Note 29 – Participating Policies

Not applicable.

Note 30 – Premium Deficiency Reserves

There were no changes that were considered significant to the Company from prior year end.

Note 31 – High Deductibles

Not applicable.

Note 32 - Discounting of Liabilities for Unpaid Losses or Unpaid Loss Adjustment Expenses

Not applicable.

Note 33 - Asbestos/Environmental Reserves

There were no changes that were considered significant to the Company from prior year end.

Note 34 – Subscriber Savings Accounts

Not applicable.

Note 35 – Multiple Peril Crop Insurance

Not applicable.

Note 36 – Financial Guaranty Insurance

Not applicable.

GENERAL INTERROGATORIES

PART 1 - COMMON INTERROGATORIES

GENERAL

- 1.1 Did the reporting entity experience any material transactions requiring the filing of Disclosure of Material Transactions with the State of Domicile, as required by the Model Act? Yes [] No [X]
- 1.2 If yes, has the report been filed with the domiciliary state? Yes [] No []
- 2.1 Has any change been made during the year of this statement in the charter, by-laws, articles of incorporation, or deed of settlement of the reporting entity? Yes [] No [X]
- 2.2 If yes, date of change: _____
- 3.1 Is the reporting entity a member of an Insurance Holding Company System consisting of two or more affiliated persons, one or more of which is an insurer? Yes [X] No []
If yes, complete Schedule Y, Parts 1 and 1A.
- 3.2 Have there been any substantial changes in the organizational chart since the prior quarter end? Yes [] No [X]
- 3.3 If the response to 3.2 is yes, provide a brief description of those changes.
- 3.4 Is the reporting entity publicly traded or a member of a publicly traded group? Yes [] No [X]
- 3.5 If the response to 3.4 is yes, provide the CIK (Central Index Key) code issued by the SEC for the entity/group.
- 4.1 Has the reporting entity been a party to a merger or consolidation during the period covered by this statement? Yes [] No [X]
If yes, complete and file the merger history data file with the NAIC for the annual filing corresponding to this period.
- 4.2 If yes, provide name of entity, NAIC Company Code, and state of domicile (use two letter state abbreviation) for any entity that has ceased to exist as a result of the merger or consolidation.

1 Name of Entity	2 NAIC Company Code	3 State of Domicile

- 5. If the reporting entity is subject to a management agreement, including third-party administrator(s), managing general agent(s), attorney-in-fact, or similar agreement, have there been any significant changes regarding the terms of the agreement or principals involved? Yes [] No [X] N/A []
If yes, attach an explanation.

- 6.1 State as of what date the latest financial examination of the reporting entity was made or is being made. 12/31/2016
- 6.2 State the as of date that the latest financial examination report became available from either the state of domicile or the reporting entity. This date should be the date of the examined balance sheet and not the date the report was completed or released. 12/31/2016
- 6.3 State as of what date the latest financial examination report became available to other states or the public from either the state of domicile or the reporting entity. This is the release date or completion date of the examination report and not the date of the examination (balance sheet date). 05/24/2018

- 6.4 By what department or departments?

OH

- 6.5 Have all financial statement adjustments within the latest financial examination report been accounted for in a subsequent financial statement filed with Departments? Yes [] No [] N/A [X]
- 6.6 Have all of the recommendations within the latest financial examination report been complied with? Yes [] No [] N/A [X]
- 7.1 Has this reporting entity had any Certificates of Authority, licenses or registrations (including corporate registration, if applicable) suspended or revoked by any governmental entity during the reporting period? Yes [] No [X]
- 7.2 If yes, give full information:

- 8.1 Is the company a subsidiary of a bank holding company regulated with the Federal Reserve Board? Yes [] No [X]
- 8.2 If response to 8.1 is yes, please identify the name of the bank holding company.

- 8.3 Is the company affiliated with one or more banks, thrifts or securities firms? Yes [X] No []

- 8.4 If the response to 8.3 is yes, please provide below the names and location (city and state of the main office) of any affiliates regulated by a federal regulatory services agency [i.e. the Federal Reserve Board (FRB), the Office of the Comptroller of the Currency (OCC), the Federal Deposit Insurance Corporation (FDIC) and the Securities Exchange Commission (SEC)] and identify the affiliate's primary federal regulator].

1 Affiliate Name	2 Location (City, State)	3 FRB	4 OCC	5 FDIC	6 SEC
Nationwide Trust Company, FSB	Columbus, OH	No	Yes	No	No
Nationwide Investment Services Corp.	Columbus, OH	No	No	No	Yes
Nationwide Investment Advisors, LLC	Columbus, OH	No	No	No	Yes
Nationwide Securities, LLC	Columbus, OH	No	No	No	Yes
Nationwide Fund Advisors	Columbus, OH	No	No	No	Yes
Nationwide Fund Distributors, LLC	Columbus, OH	No	No	No	Yes
Nationwide Asset Management, LLC	Columbus, OH	No	No	No	Yes
Jefferson National Securities Corporation	Louisville, KY	No	No	No	Yes

- 9.1 Are the senior officers (principal executive officer, principal financial officer, principal accounting officer or controller, or persons performing similar functions) of the reporting entity subject to a code of ethics, which includes the following standards? Yes [X] No []
 - (a) Honest and ethical conduct, including the ethical handling of actual or apparent conflicts of interest between personal and professional relationships;
 - (b) Full, fair, accurate, timely and understandable disclosure in the periodic reports required to be filed by the reporting entity;
 - (c) Compliance with applicable governmental laws, rules and regulations;
 - (d) The prompt internal reporting of violations to an appropriate person or persons identified in the code; and
 - (e) Accountability for adherence to the code.
- 9.11 If the response to 9.1 is No, please explain:

GENERAL INTERROGATORIES

PART 1 - COMMON INTERROGATORIES

- 9.2 Has the code of ethics for senior managers been amended? Yes No
- 9.21 If the response to 9.2 is Yes, provide information related to amendment(s).
The Code of Conduct was updated effective 4/30/2020. We updated our gift policy, increasing the gift value from \$50 to \$100.
- 9.3 Have any provisions of the code of ethics been waived for any of the specified officers? Yes No
- 9.31 If the response to 9.3 is Yes, provide the nature of any waiver(s).

FINANCIAL

- 10.1 Does the reporting entity report any amounts due from parent, subsidiaries or affiliates on Page 2 of this statement? Yes No
- 10.2 If yes, indicate any amounts receivable from parent included in the Page 2 amount: \$ 0

INVESTMENT

- 11.1 Were any of the stocks, bonds, or other assets of the reporting entity loaned, placed under option agreement, or otherwise made available for use by another person? (Exclude securities under securities lending agreements.) Yes No
- 11.2 If yes, give full and complete information relating thereto:
N/A
12. Amount of real estate and mortgages held in other invested assets in Schedule BA: \$ 1,094,456
13. Amount of real estate and mortgages held in short-term investments: \$ 0
- 14.1 Does the reporting entity have any investments in parent, subsidiaries and affiliates? Yes No
- 14.2 If yes, please complete the following:

- 14.21 Bonds
- 14.22 Preferred Stock
- 14.23 Common Stock
- 14.24 Short-Term Investments
- 14.25 Mortgage Loans on Real Estate
- 14.26 All Other
- 14.27 Total Investment in Parent, Subsidiaries and Affiliates (Subtotal Lines 14.21 to 14.26)
- 14.28 Total Investment in Parent included in Lines 14.21 to 14.26 above

	1 Prior Year End Book/Adjusted Carrying Value	2 Current Quarter Book/Adjusted Carrying Value
\$	0	0
	0	0
	0	0
	0	0
	0	0
\$	0	0
\$	0	0

- 15.1 Has the reporting entity entered into any hedging transactions reported on Schedule DB? Yes No
- 15.2 If yes, has a comprehensive description of the hedging program been made available to the domiciliary state? Yes No N/A
 If no, attach a description with this statement.

16. For the reporting entity's security lending program, state the amount of the following as of current statement date:
- 16.1 Total fair value of reinvested collateral assets reported on Schedule DL, Parts 1 and 2: \$ 0
- 16.2 Total book adjusted/carrying value of reinvested collateral assets reported on Schedule DL, Parts 1 and 2: \$ 0
- 16.3 Total payable for securities lending reported on the liability page: \$ 0
17. Excluding items in Schedule E-Part 3-Special Deposits, real estate, mortgage loans and investments held physically in the reporting entity's offices, vaults or safety deposit boxes, were all stocks, bonds and other securities, owned throughout the current year held pursuant to a custodial agreement with a qualified bank or trust company in accordance with Section 1, III - General Examination Considerations, F. Outsourcing of Critical Functions, Custodial or Safekeeping Agreements of the NAIC *Financial Condition Examiners Handbook*? Yes No

17.1 For all agreements that comply with the requirements of the NAIC *Financial Condition Examiners Handbook*, complete the following:

1 Name of Custodian(s)	2 Custodian Address
The Bank of New York Mellon	1 Wall Street, New York, NY 10286

17.2 For all agreements that do not comply with the requirements of the NAIC *Financial Condition Examiners Handbook*, provide the name, location and a complete explanation:

1 Name(s)	2 Location(s)	3 Complete Explanation(s)

- 17.3 Have there been any changes, including name changes, in the custodian(s) identified in 17.1 during the current quarter? Yes No
- 17.4 If yes, give full and complete information relating thereto:

1 Old Custodian	2 New Custodian	3 Date of Change	4 Reason

17.5 Investment management – Identify all investment advisors, investment managers, broker/dealers, including individuals that have the authority to make investment decisions on behalf of the reporting entity. For assets that are managed internally by employees of the reporting entity, note as such ["...that have access to the investment accounts", "handle securities"].

1 Name of Firm or Individual	2 Affiliation
Members of the investment staff designated by the Chief Investment Officer as detailed in the Corporate Resolution	I

- 17.5097 For those firms/individuals listed in the table for Question 17.5, do any firms/individuals unaffiliated with the reporting entity (i.e., designated with a "U") manage more than 10% of the reporting entity's invested assets? Yes No
- 17.5098 For firms/individuals unaffiliated with the reporting entity (i.e., designated with a "U") listed in the table for Question 17.5, does the total assets under management aggregate to more than 50% of the reporting entity's invested assets? Yes No

17.6 For those firms or individuals listed in the table for 17.5 with an affiliation code of "A" (affiliated) or "U" (unaffiliated), provide the information for the table below.

1 Central Registration Depository	2 Name of Firm or Individual	3 Legal Entity Identifier (LEI)	4 Registered With	5 Investment

GENERAL INTERROGATORIES

PART 1 - COMMON INTERROGATORIES

Number			Management Agreement (IMA) Filed
18.1	Have all the filing requirements of the <i>Purposes and Procedures Manual of the NAIC Investment Analysis Office</i> been followed?		Yes [X] No []
18.2	If no, list exceptions:		
19.	By self-designating 5GI securities, the reporting entity is certifying the following elements for each self-designated 5GI security:		
a.	Documentation necessary to permit a full credit analysis of the security does not exist or an NAIC CRP credit rating for an FE or PL security is not available.		
b.	Issuer or obligor is current on all contracted interest and principal payments.		
c.	The insurer has an actual expectation of ultimate payment of all contracted interest and principal.		
	Has the reporting entity self-designated 5GI securities?		Yes [] No [X]
20.	By self-designating PLGI securities, the reporting entity is certifying the following elements for each self-designated PLGI security:		
a.	The security was purchased prior to January 1, 2018.		
b.	The reporting entity is holding capital commensurate with the NAIC Designation reported for the security.		
c.	The NAIC Designation was derived from the credit rating assigned by an NAIC CRP in its legal capacity as a NRSRO which is shown on a current private letter rating held by the insurer and available for examination by state insurance regulators.		
d.	The reporting entity is not permitted to share this credit rating of the PL security with the SVO.		
	Has the reporting entity self-designated PLGI securities?		Yes [] No [X]
21.	By assigning FE to a Schedule BA non-registered private fund, the reporting entity is certifying the following elements of each self-designated FE fund:		
a.	The security was purchased prior to January 1, 2019.		
b.	The reporting entity is holding capital commensurate with the NAIC Designation reported for the security.		
c.	The security had a public credit rating(s) with annual surveillance assigned by an NAIC CRP in its legal capacity as an NRSRO prior to January 1, 2019.		
d.	The fund only or predominantly holds bonds in its portfolio.		
e.	The current reporting NAIC designation was derived from the public credit rating(s) with annual surveillance assigned by an NAIC CRP in its legal capacity as an NRSRO.		
f.	The public credit rating(s) with annual surveillance assigned by an NAIC CRP has not lapsed.		
	Has the reporting entity assigned FE to Schedule BA non-registered private funds that complied with the above criteria?		Yes [] No [X]

GENERAL INTERROGATORIES (continued)

PART 2 – PROPERTY & CASUALTY INTERROGATORIES

1. If the reporting entity is a member of a pooling arrangement, did the agreement or the reporting entity's participation change? Yes No N/A

If yes, attach an explanation.

Effective January, 2020, the Nationwide Pool structure was revised. Nationwide Mutual Insurance Company's assumed pooling percentage decreased from 72% to 71%. Scottsdale Insurance Company was removed as a Nationwide Pool recipient. National Casualty Company terminated its 100% quota share reinsurance agreement with Nationwide Mutual. Nationwide Agribusiness Insurance Company, Nationwide Insurance Company of America, and National Casualty Company were added as Nationwide Pool recipient and changed from a 0% to 3%, 0% to 1%, and 0% to 1% retrocessionaire, respectively.

2. Has the reporting entity reinsured any risk with any other reporting entity and agreed to release such entity from liability, in whole or in part, from any loss that may occur on the risk, or portion thereof, reinsured? Yes No

If yes, attach an explanation.

- 3.1 Have any of the reporting entity's primary reinsurance contracts been canceled? Yes No

- 3.2 If yes, give full and complete information thereto:

- 4.1 Are any of the liabilities for unpaid losses and loss adjustment expenses other than certain workers' compensation tabular reserves (see *Annual Statement Instructions* pertaining to disclosure of discounting for definition of "tabular reserves,") discounted at a rate of interest greater than zero? Yes No

- 4.2 If yes, complete the following schedule:

1 Line of Business	2 Maximum Interest	3 Disc. Rate	Total Discount				Discount Taken During Period			
			4 Unpaid Losses	5 Unpaid LAE	6 IBNR	7 Total	8 Unpaid Losses	9 Unpaid LAE	10 IBNR	11 Total
	0.000	0.000	0	0	0	0	0	0	0	0
Total	XXX	XXX	0	0	0	0	0	0	0	0

5. Operating Percentages:

- 5.1 A&H loss percent 0.000%
- 5.2 A&H cost containment percent 0.000%
- 5.3 A&H expense percent excluding cost containment expenses 0.000%

- 6.1 Do you act as a custodian for health savings accounts? Yes No

- 6.2 If yes, please provide the amount of custodial funds held as of the reporting date. \$ 0

- 6.3 Do you act as an administrator for health savings accounts? Yes No

- 6.4 If yes, please provide the amount of funds administered as of the reporting date. \$ 0

7. Is the reporting entity licensed or chartered, registered, qualified, eligible or writing business in at least two states? Yes No

- 7.1 If no, does the reporting entity assume reinsurance business that covers risks residing in at least one state other than the state of domicile of the reporting entity? Yes No

NATIONWIDE GENERAL INSURANCE COMPANY
SCHEDULE F - CEDED REINSURANCE

Showing All New Reinsurers - Current Year to Date

1	2	3	4	5	6	7
NAIC Company Code	ID Number	Name of Reinsurer	Domiciliary Jurisdiction	Type of Reinsurer	Certified Reinsurer Rating (1 through 6)	Effective Date of Certified Reinsurer Rating

NONE

SCHEDULE T - EXHIBIT OF PREMIUMS WRITTEN

Current Year to Date - Allocated by States and Territories

States, Etc.	1 Active Status (a)	Direct Premiums Written		Direct Losses Paid (Deducting Salvage)		Direct Losses Unpaid	
		2 Current Year to Date	3 Prior Year to Date	4 Current Year to Date	5 Prior Year to Date	6 Current Year to Date	7 Prior Year to Date
1. Alabama.....AL	L	26,832,747	27,283,716	15,993,721	14,512,768	12,628,883	9,633,444
2. Alaska.....AK	L						
3. Arizona.....AZ	L	9,129,226	4,375,322	3,922,559	1,928,164	1,334,731	626,188
4. Arkansas.....AR	L	10,777,282	10,396,304	10,584,397	5,565,079	4,918,916	2,521,513
5. California.....CA	L						
6. Colorado.....CO	L	2,329,963	364,399	313,563	6,464	266,457	15,875
7. Connecticut.....CT	L	47,696,465	51,913,805	35,752,534	39,918,050	43,160,495	44,123,087
8. Delaware.....DE	L	7,653,423	9,081,108	8,280,255	4,974,883	3,707,971	4,410,626
9. District of Columbia.....DC	L	1,953,930	2,244,252	753,846	789,461	352,058	290,660
10. Florida.....FL	L	9,278,964	1,104,700	537,243	(4,429)	2,186,156	11,917
11. Georgia.....GA	L	72,970,735	60,147,656	51,390,116	35,382,873	32,606,991	23,409,703
12. Hawaii.....HI	N						
13. Idaho.....ID	L	817,679	23,704	122,039	9,970	188,029	213
14. Illinois.....IL	L	25,619,091	19,076,522	16,470,118	13,496,324	9,031,636	5,510,917
15. Indiana.....IN	L	1,625,762	652,676	406,744	2,482,647	740,420	1,189,790
16. Iowa.....IA	L	541,223	70,765	710,675		265,245	1,033
17. Kansas.....KS	L	1,531,236	236,328	255,984		188,013	2,993
18. Kentucky.....KY	L	20,333,980	23,101,866	9,759,196	11,587,016	7,530,431	8,386,263
19. Louisiana.....LA	L						
20. Maine.....ME	L	431,123	1,150,165	635,664	1,088,023	307,321	701,409
21. Maryland.....MD	L	48,118,856	59,002,022	43,470,503	46,854,898	25,228,280	25,732,493
22. Massachusetts.....MA	L	78,074				3,184	(2)
23. Michigan.....MI	L	9,664,535	2,433,516	3,496,932	986,489	2,733,740	1,070,164
24. Minnesota.....MN	L	291,481		79,896		59,136	
25. Mississippi.....MS	L	66,116,991	27,090,256	36,839,284	12,693,456	15,015,658	6,082,598
26. Missouri.....MO	L	13,094,086	1,725,235	3,648,099	35,518	2,453,212	115,275
27. Montana.....MT	L	44,403				154	
28. Nebraska.....NE	L	6,195,203		279,014		630,249	
29. Nevada.....NV	L	3,780,920	(809)	575,632		773,020	(71)
30. New Hampshire.....NH	L	1,926,782	1,704,910	1,862,221	675,598	1,636,399	907,146
31. New Jersey.....NJ	L						
32. New Mexico.....NM	L	247,437	17,415	55,263		18,740	82
33. New York.....NY	L	98,657,723	58,856,580	52,491,712	25,221,395	63,723,056	38,156,417
34. North Carolina.....NC	L	256,917,123	295,162,415	151,736,361	176,523,831	80,553,828	87,855,231
35. North Dakota.....ND	L	480,131		13,046		60,249	
36. Ohio.....OH	L	98,712,866	124,709,579	81,498,201	98,186,438	38,410,746	50,080,836
37. Oklahoma.....OK	L						
38. Oregon.....OR	L	13,995,793	9,620,090	6,523,662	3,700,620	12,613,041	2,796,725
39. Pennsylvania.....PA	L	120,081,857	76,977,529	62,067,265	44,207,712	37,075,887	25,670,864
40. Rhode Island.....RI	L	22,987,699	14,739,102	8,890,178	7,998,144	7,509,321	5,454,433
41. South Carolina.....SC	L	50,852,926	44,636,179	33,380,682	19,718,768	17,183,907	11,205,332
42. South Dakota.....SD	L	1,473,876		53,069		74,743	
43. Tennessee.....TN	L	37,728,256	44,397,008	31,943,893	26,495,724	15,554,620	12,989,115
44. Texas.....TX	L	70,040,219	81,771,197	52,305,628	66,410,733	25,827,867	25,454,113
45. Utah.....UT	L	7,230,602		454,859		1,237,138	
46. Vermont.....VT	L	1,206,634	1,090,530	575,194	247,656	896,982	522,729
47. Virginia.....VA	L	40,710,879	49,673,746	36,256,981	36,459,252	15,094,794	21,116,911
48. Washington.....WA	L	13,241,929	8,356,440	5,272,760	3,330,629	3,288,074	1,469,528
49. West Virginia.....WV	L	8,221,275	8,934,317	6,245,052	4,817,146	2,528,109	2,171,820
50. Wisconsin.....WI	L	4,014,977		844,382		466,486	
51. Wyoming.....WY	L	65,935				200	
52. American Samoa.....AS	N						
53. Guam.....GU	N						
54. Puerto Rico.....PR	N						
55. US Virgin Islands.....VI	N						
56. Northern Mariana Islands.....MP	N						
57. Canada.....CAN	N						
58. Aggregate Other Alien.....OT	XXX	0	0	0	0	0	0
59. Totals.....	XXX	1,235,702,297	1,122,120,545	776,748,423	706,301,300	490,064,573	419,687,370

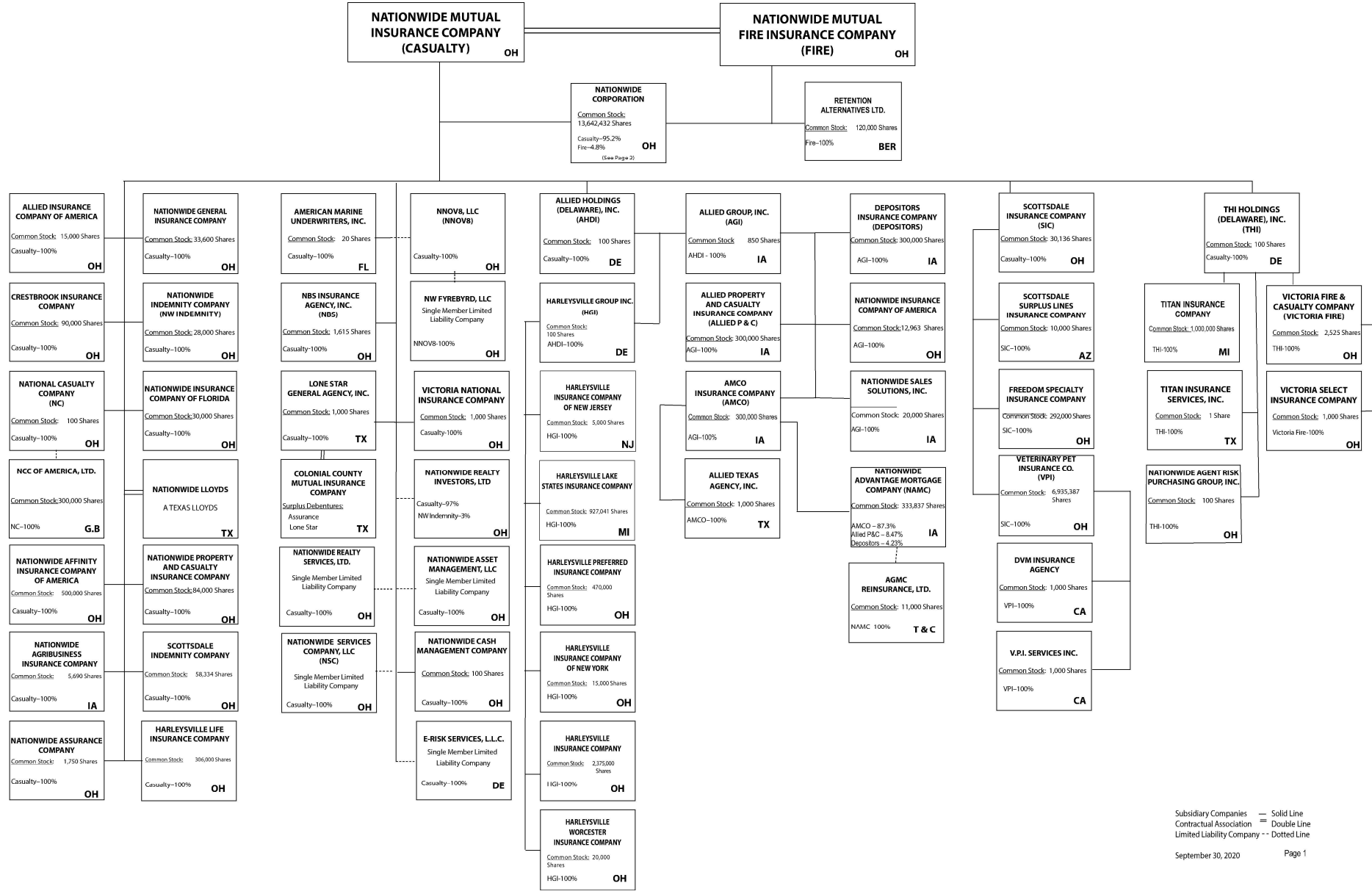
DETAILS OF WRITE-INS

58001.....	XXX						
58002.....	XXX						
58003.....	XXX						
58998. Summary of remaining write-ins for Line 58 from overflow page.....	XXX	0	0	0	0	0	0
58999. Totals (Lines 58001 thru 58003+ Line 58998) (Line 58 above).....	XXX	0	0	0	0	0	0

(a) Active Status Count

L - Licensed or Chartered - Licensed insurance carrier or domiciled RRG.....	50	R - Registered - Non-domiciled RRGs.....	0
E - Eligible - Reporting entities eligible or approved to write surplus lines in the state (other than their state of domicile - See DSLI).....	0	Q - Qualified - Qualified or accredited reinsurer.....	0
D - Domestic Surplus Lines Insurer (DSLI) - Reporting entities authorized to write surplus lines in the state of domicile.....	0	N - None of the above - Not allowed to write business in the state.....	7

NATIONWIDE®

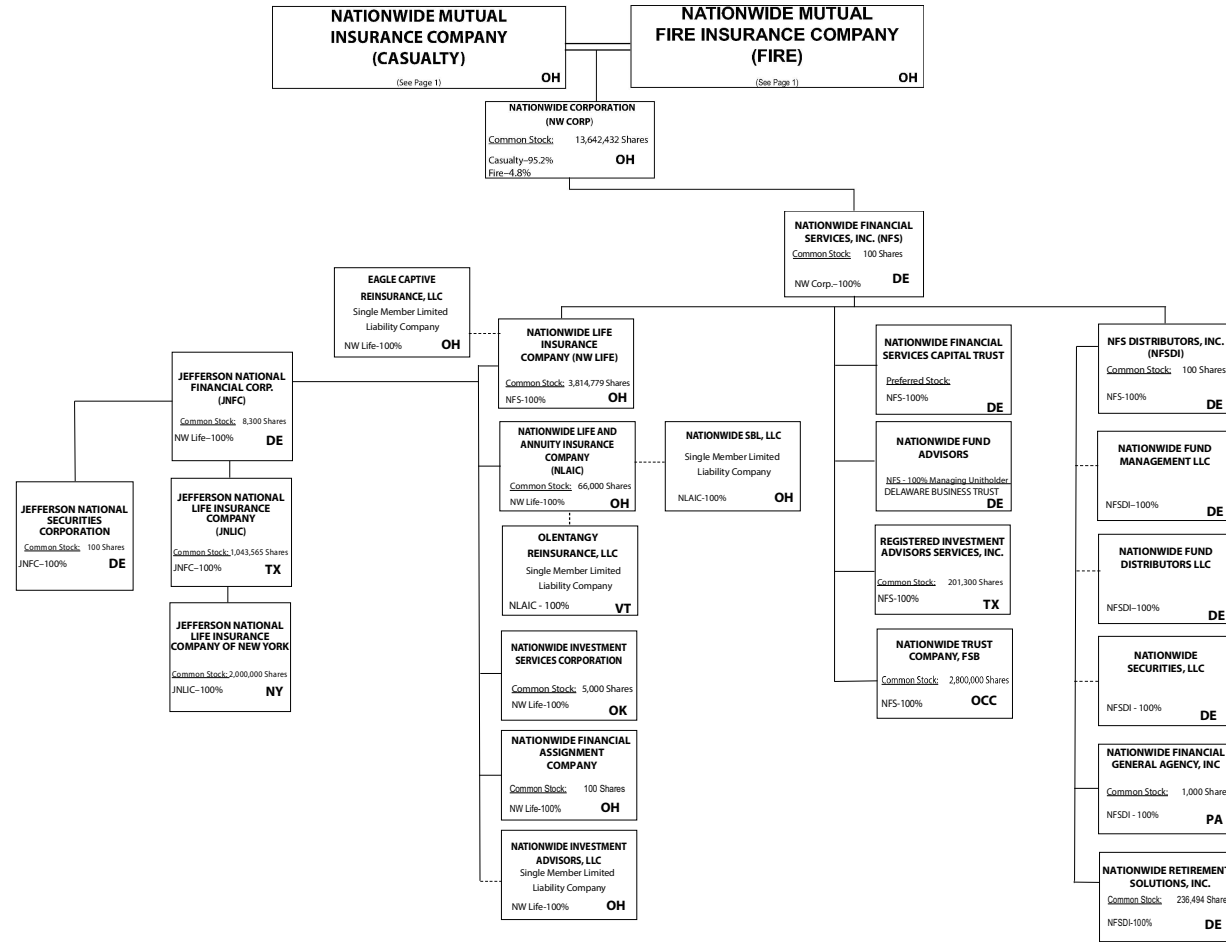


Q11

(Casualty/Fire subsidiaries)

Subsidiary Companies — Solid Line
 Contractual Association = Double Line
 Limited Liability Company - - Dotted Line
 September 30, 2020 Page 1

NATIONWIDE®



Q11.1

Subsidiary Companies — Solid Line
 Contractual Association = Double Line
 Limited Liability Company - - Dotted Line
 September 30, 2020 Page 2

(Nationwide Corp. subsidiaries)

NATIONWIDE INSURANCE COMPANIES

NAIC Group Code	Group Name	NAIC Company Code	State of Domicile	Federal ID Number	Name of Company
0140	Nationwide	10127	OH	27-0114983	Allied Insurance Company of America
0140	Nationwide	42579	IA	42-1201931	Allied Property and Casualty Insurance Company
0140	Nationwide	19100	IA	42-6054959	AMCO Insurance Company
0140	Nationwide	29262	TX	74-1061659	Colonial County Mutual Insurance Company
0140	Nationwide	18961	OH	68-0066866	Crestbrook Insurance Company
0140	Nationwide	42587	IA	42-1207150	Depositors Insurance Company
0140	Nationwide	15821	OH	42-4523959	Eagle Captive Reinsurance, LLC
0140	Nationwide	22209	OH	75-6013587	Freedom Specialty Insurance Company
0140	Nationwide	23582	OH	41-0417250	Harleysville Insurance Company
0140	Nationwide	42900	NJ	23-2253669	Harleysville Insurance Company of New Jersey
0140	Nationwide	10674	OH	23-2864924	Harleysville Insurance Company of New York
0140	Nationwide	14516	MI	38-3198542	Harleysville Lake States Insurance Company
0140	Nationwide	64327	OH	23-1580983	Harleysville Life Insurance Company
0140	Nationwide	35696	OH	23-2384978	Harleysville Preferred Insurance Company
0140	Nationwide	26182	OH	04-1989660	Harleysville Worcester Insurance Company
0140	Nationwide	64017	TX	75-0300900	Jefferson National Life Insurance Company
0140	Nationwide	15727	NY	47-1180302	Jefferson National Life Insurance Company of New York
0140	Nationwide	11991	OH	38-0865250	National Casualty Company
0140	Nationwide	26093	OH	48-0470690	Nationwide Affinity Insurance Company of America
0140	Nationwide	28223	IA	42-1015537	Nationwide Agribusiness Insurance Company
0140	Nationwide	10723	OH	95-0639970	Nationwide Assurance Company
0140	Nationwide	23760	OH	31-4425763	Nationwide General Insurance Company
0140	Nationwide	10070	OH	31-1399201	Nationwide Indemnity Company
0140	Nationwide	25453	OH	95-2130882	Nationwide Insurance Company of America
0140	Nationwide	10948	OH	31-1613686	Nationwide Insurance Company of Florida
0140	Nationwide	92657	OH	31-1000740	Nationwide Life and Annuity Insurance Company
0140	Nationwide	66869	OH	31-4156830	Nationwide Life Insurance Company
0140	Nationwide	42110	TX	75-1780981	Nationwide Lloyds
0140	Nationwide	23779	OH	31-4177110	Nationwide Mutual Fire Insurance Company
0140	Nationwide	23787	OH	31-4177100	Nationwide Mutual Insurance Company
0140	Nationwide	37877	OH	31-0970750	Nationwide Property & Casualty Insurance Company
0140	Nationwide	13999	VT	27-1712056	Olentangy Reinsurance, LLC
0140	Nationwide	15580	OH	31-1117969	Scottsdale Indemnity Company
0140	Nationwide	41297	OH	31-1024978	Scottsdale Insurance Company
0140	Nationwide	10672	AZ	86-0835870	Scottsdale Surplus Lines Insurance Company
0140	Nationwide	36269	MI	86-0619597	Titan Insurance Company
0140	Nationwide	42285	OH	95-3750113	Veterinary Pet Insurance Company
0140	Nationwide	42889	OH	34-1394913	Victoria Fire & Casualty Company
0140	Nationwide	10778	OH	34-1842604	Victoria National Insurance Company
0140	Nationwide	10105	OH	34-1777972	Victoria Select Insurance Company

SCHEDULE Y

PART 1A - DETAIL OF INSURANCE HOLDING COMPANY SYSTEM

1	2	3	4	5	6	7	8	9	10	11	12	13	14	15	16
Group Code	Group Name	NAIC Company Code	ID Number	Federal RSSD	CIK	Name of Securities Exchange if Publicly Traded (U.S. or International)	Names of Parent, Subsidiaries or Affiliates	Domiciliary Location	Relationship to Reporting Entity	Directly Controlled by (Name of Entity/Person)	Type of Control (Ownership Board, Management, Attorney-in-Fact, Influence, Other)	If Control is Ownership Provide Percentage	Ultimate Controlling Entity(ies)/Person(s)	Is an SCA Filing Required? (Y/N)	*
Members															
0140	Nationwide.....		31-1486309..	n/a.....			10 W. Nationwide, LLC.....	OH.....	NIA.....	Nationwide Realty Investors, Ltd.....	ownership.....	100.000	Nationwide Mutual Insurance Company.....	..N.....	
0140	Nationwide.....		31-1486309..	n/a.....			1000 Yard Street, LLC.....	OH.....	NIA.....	Nationwide Realty Investors, Ltd.....	ownership.....	100.000	Nationwide Mutual Insurance Company.....	..N.....	
0140	Nationwide.....		31-1486309..	n/a.....			1015 Long Street, LLC.....	OH.....	NIA.....	Nationwide Realty Investors, Ltd.....	ownership.....	100.000	Nationwide Mutual Insurance Company.....	..N.....	
0140	Nationwide.....		31-1486309..	n/a.....			1050 Yard Street, LLC.....	OH.....	NIA.....	Nationwide Realty Investors, Ltd.....	ownership.....	100.000	Nationwide Mutual Insurance Company.....	..N.....	
0140	Nationwide.....		31-1486309..	n/a.....			1125 Rail Street, LLC.....	OH.....	NIA.....	Nationwide Realty Investors, Ltd.....	ownership.....	100.000	Nationwide Mutual Insurance Company.....	..N.....	
0140	Nationwide.....		31-1733036..	n/a.....			120 Acre Partners, LLC.....	DE.....	NIA.....	Nationwide Realty Investors, Ltd.....	ownership.....	95.000	Nationwide Mutual Insurance Company.....	..N.....	1.....
0140	Nationwide.....		20-4939866..	n/a.....			1125 Yard Street, LLC.....	OH.....	NIA.....	NRI Equity Land Investments, LLC.....	ownership.....	100.000	Nationwide Mutual Insurance Company.....	..N.....	
0140	Nationwide.....		20-4939867..	n/a.....			1175 Bobcat, LLC.....	OH.....	NIA.....	NRI Equity Land Investments, LLC.....	ownership.....	100.000	Nationwide Mutual Insurance Company.....	..N.....	
0140	Nationwide.....		26-2451988..	n/a.....			1492 Capital, LLC.....	OH.....	NIA.....	Nationwide Mutual Insurance Company.....	ownership.....	100.000	Nationwide Mutual Insurance Company.....	..N.....	
0140	Nationwide.....		31-1486309..	n/a.....			111 Rivulon Boulevard, LLC.....	OH.....	NIA.....	NRI-Rivulon, LLC.....	ownership.....	100.000	Nationwide Mutual Insurance Company.....	..N.....	
0140	Nationwide.....		31-1486309..	n/a.....			155 Rivulon Boulevard, LLC.....	OH.....	NIA.....	NRI-Rivulon, LLC.....	ownership.....	100.000	Nationwide Mutual Insurance Company.....	..N.....	
0140	Nationwide.....		31-1486309..	n/a.....			161 Rivulon Boulevard, LLC.....	OH.....	NIA.....	NRI-Rivulon, LLC.....	ownership.....	100.000	Nationwide Mutual Insurance Company.....	..N.....	
0140	Nationwide.....		31-1580283..	n/a.....			170 Marconi, LLC.....	OH.....	NIA.....	NWD Investments, LLC.....	ownership.....	100.000	Nationwide Mutual Insurance Company.....	..N.....	
0140	Nationwide.....		31-1580283..	n/a.....			245 Parks Edge Place, LLC.....	OH.....	NIA.....	NWD Investments, LLC.....	ownership.....	100.000	Nationwide Mutual Insurance Company.....	..N.....	
0140	Nationwide.....		31-1486309..	n/a.....			275 Rivulon Boulevard, LLC.....	OH.....	NIA.....	NRI-Rivulon, LLC.....	ownership.....	100.000	Nationwide Mutual Insurance Company.....	..N.....	
0140	Nationwide.....		31-1486309..	n/a.....			300 Rivulon Boulevard, LLC.....	OH.....	NIA.....	NRI-Rivulon, LLC.....	ownership.....	100.000	Nationwide Mutual Insurance Company.....	..N.....	
0140	Nationwide.....		31-1486309..	n/a.....			310 Rivulon Boulevard, LLC.....	OH.....	NIA.....	NRI-Rivulon, LLC.....	ownership.....	100.000	Nationwide Mutual Insurance Company.....	..N.....	
0140	Nationwide.....		31-1486309..	n/a.....			343 N. Front, LLC.....	OH.....	NIA.....	Nationwide Realty Investors, Ltd.....	ownership.....	100.000	Nationwide Mutual Insurance Company.....	..N.....	
0140	Nationwide.....		31-1486309..	n/a.....			400 Rivulon Boulevard, LLC.....	OH.....	NIA.....	NRI-Rivulon, LLC.....	ownership.....	100.000	Nationwide Mutual Insurance Company.....	..N.....	
0140	Nationwide.....		31-1580283..	n/a.....			400 West Nationwide Boulevard, LLC.....	OH.....	NIA.....	NWD Investments, LLC.....	ownership.....	100.000	Nationwide Mutual Insurance Company.....	..N.....	
0140	Nationwide.....		31-1486309..	n/a.....			410 Rivulon Boulevard, LLC.....	OH.....	NIA.....	NRI-Rivulon, LLC.....	ownership.....	100.000	Nationwide Mutual Insurance Company.....	..N.....	
0140	Nationwide.....		31-1580283..	n/a.....			425 West Nationwide Boulevard, LLC.....	OH.....	NIA.....	NWD Investments, LLC.....	ownership.....	100.000	Nationwide Mutual Insurance Company.....	..N.....	
0140	Nationwide.....		31-1486309..	n/a.....			44 Chestnut, LLC.....	OH.....	NIA.....	Nationwide Realty Investors, Ltd.....	ownership.....	100.000	Nationwide Mutual Insurance Company.....	..N.....	
0140	Nationwide.....		38-4118665..	n/a.....			500 Neil Avenue, LLC.....	OH.....	NIA.....	NWD HP, LLC.....	ownership.....	100.000	Nationwide Mutual Insurance Company.....	..N.....	
0140	Nationwide.....		38-4118665..	n/a.....			515 Kilbourne Street, LLC.....	OH.....	NIA.....	NWD HP, LLC.....	ownership.....	100.000	Nationwide Mutual Insurance Company.....	..N.....	
0140	Nationwide.....		20-4939866..	n/a.....			735 Bobcat Avenue, LLC.....	OH.....	NIA.....	GVY Residential, LLC.....	ownership.....	100.000	Nationwide Mutual Insurance Company.....	..N.....	
0140	Nationwide.....		31-1486309..	n/a.....			75 Rivulon Boulevard, LLC.....	OH.....	NIA.....	NRI-Rivulon, LLC.....	ownership.....	100.000	Nationwide Mutual Insurance Company.....	..N.....	
0140	Nationwide.....		20-4939866..	n/a.....			775 Yard Street, LLC.....	OH.....	NIA.....	NRI Equity Land Investments, LLC.....	ownership.....	100.000	Nationwide Mutual Insurance Company.....	..N.....	
0140	Nationwide.....		20-4939866..	n/a.....			777 Swan Street, LLC.....	OH.....	NIA.....	NRI Equity Land Investments, LLC.....	ownership.....	100.000	Nationwide Mutual Insurance Company.....	..N.....	
0140	Nationwide.....		20-4939866..	n/a.....			780 Yard Street, LLC.....	OH.....	NIA.....	NRI Equity Land Investments, LLC.....	ownership.....	100.000	Nationwide Mutual Insurance Company.....	..N.....	
0140	Nationwide.....		20-4939866..	n/a.....			795 Rail Street, LLC.....	OH.....	NIA.....	NRI Equity Land Investments, LLC.....	ownership.....	100.000	Nationwide Mutual Insurance Company.....	..N.....	
0140	Nationwide.....		20-4939866..	n/a.....			800 Bobcat Avenue, LLC.....	OH.....	NIA.....	NRI Equity Land Investments, LLC.....	ownership.....	100.000	Nationwide Mutual Insurance Company.....	..N.....	
0140	Nationwide.....		20-4939866..	n/a.....			800 Goodale Boulevard, LLC.....	OH.....	NIA.....	NRI Equity Land Investments, LLC.....	ownership.....	100.000	Nationwide Mutual Insurance Company.....	..N.....	
0140	Nationwide.....		20-4939866..	n/a.....			800 Yard Street, LLC.....	OH.....	NIA.....	NRI Equity Land Investments, LLC.....	ownership.....	100.000	Nationwide Mutual Insurance Company.....	..N.....	
0140	Nationwide.....		20-4939866..	n/a.....			805 Bobcat Avenue, LLC.....	OH.....	NIA.....	GVY Residential, LLC.....	ownership.....	100.000	Nationwide Mutual Insurance Company.....	..N.....	
0140	Nationwide.....		20-4939866..	n/a.....			808 Yard Street, LLC.....	OH.....	NIA.....	GVY Residential, LLC.....	ownership.....	100.000	Nationwide Mutual Insurance Company.....	..N.....	

Q12

SCHEDULE Y

PART 1A - DETAIL OF INSURANCE HOLDING COMPANY SYSTEM

1	2	3	4	5	6	7	8	9	10	11	12	13	14	15	16
Group Code	Group Name	NAIC Company Code	ID Number	Federal RSSD	CIK	Name of Securities Exchange if Publicly Traded (U.S. or International)	Names of Parent, Subsidiaries or Affiliates	Domiciliary Location	Relationship to Reporting Entity	Directly Controlled by (Name of Entity/Person)	Type of Control (Ownership Board, Management, Attorney-in-Fact, Influence, Other)	If Control is Ownership Provide Percentage	Ultimate Controlling Entity(ies)/Person(s)	Is an SCA Filing Required? (Y/N)	*
0140	Nationwide		20-4939866	n/a			820 Goodale Boulevard, LLC	OH	NIA	NRI Equity Land Investments, LLC	ownership	100.000	Nationwide Mutual Insurance Company	N	
0140	Nationwide		20-4939866	n/a			825 Junction Way, LLC	OH	NIA	GVY Residential, LLC	ownership	100.000	Nationwide Mutual Insurance Company	N	
			37-1865892	n/a			828 at the Yard Condominiums Home Owners Association	OH	OTH	Other non-Nationwide	n/a		Other non-Nationwide	N	2
0140	Nationwide		20-4939866	n/a			828 Bobcat Avenue, LLC	OH	NIA	NRI Equity Land Investments, LLC	ownership	100.000	Nationwide Mutual Insurance Company	N	
0140	Nationwide		20-4939866	n/a			840 Third Avenue, LLC	OH	NIA	NRI Equity Land Investments, LLC	ownership	100.000	Nationwide Mutual Insurance Company	N	
0140	Nationwide		20-4939866	n/a			840 Yard Street, LLC	OH	NIA	GVY Residential, LLC	ownership	100.000	Nationwide Mutual Insurance Company	N	
0140	Nationwide		20-4939866	n/a			845 Yard Street, LLC	OH	NIA	GVY Residential, LLC	ownership	100.000	Nationwide Mutual Insurance Company	N	
0140	Nationwide		20-4939866	n/a			860 Third Avenue, LLC	OH	NIA	NRI Equity Land Investments, LLC	ownership	100.000	Nationwide Mutual Insurance Company	N	
0140	Nationwide		20-4939866	n/a			880 Third Avenue, LLC	OH	NIA	NRI Equity Land Investments, LLC	ownership	100.000	Nationwide Mutual Insurance Company	N	
0140	Nationwide		20-4939866	n/a			880 Yard Street, LLC	OH	NIA	GVY Residential, LLC	ownership	100.000	Nationwide Mutual Insurance Company	N	
0140	Nationwide		20-4939866	n/a			895 W. Third Avenue, LLC	OH	NIA	NRI Equity Land Investments, LLC	ownership	100.000	Nationwide Mutual Insurance Company	N	
0140	Nationwide		20-4939866	n/a			950 Dorchester Way, LLC	OH	NIA	GVY Residential, LLC	ownership	100.000	Nationwide Mutual Insurance Company	N	
0140	Nationwide		20-4939866	n/a			950 Goodale Boulevard, LLC	OH	NIA	NRI Equity Land Investments, LLC	ownership	100.000	Nationwide Mutual Insurance Company	N	
0140	Nationwide		31-1486309	n/a			960 Bobcat Avenue, LLC	OH	NIA	Nationwide Realty Investors, Ltd.	ownership	100.000	Nationwide Mutual Insurance Company	N	
0140	Nationwide		31-1486309	n/a			975 Rail Street, LLC	OH	NIA	Nationwide Realty Investors, Ltd.	ownership	100.000	Nationwide Mutual Insurance Company	N	
0140	Nationwide		31-1486309	n/a			995 Yard Street, LLC	OH	NIA	Nationwide Realty Investors, Ltd.	ownership	100.000	Nationwide Mutual Insurance Company	N	
0140	Nationwide		31-1486309	n/a			18700 Hayden Road, LLC	OH	NIA	NRI Cavasson, LLC	ownership	100.000	Nationwide Mutual Insurance Company	N	
0140	Nationwide		31-1680808	n/a			AD Investments, LLC	OH	NIA	Nationwide Realty Investors, Ltd.	ownership	60.000	Nationwide Mutual Insurance Company	N	1
0140	Nationwide		31-1580283	n/a			ADTV, LLC	OH	NIA	NWD Investments, LLC	ownership	100.000	Nationwide Mutual Insurance Company	N	
0140	Nationwide		52-2227314	n/a			AGMC Reinsurance, Ltd.	TCA	NIA	Nationwide Advantage Mortgage Company	ownership	100.000	Nationwide Mutual Insurance Company	N	
0140	Nationwide		42-0958655	n/a			ALLIED Group, Inc.	IA	IA	Allied Holdings (Delaware), Inc.	ownership	100.000	Nationwide Mutual Insurance Company	N	
0140	Nationwide		46-4628790	n/a			Allied Holdings (Delaware), Inc.	DE	IA	Nationwide Mutual Insurance Company	ownership	100.000	Nationwide Mutual Insurance Company	Y	
0140	Nationwide	10127	27-0114983	n/a			ALLIED Insurance Company of America	OH	IA	Nationwide Mutual Insurance Company	ownership	100.000	Nationwide Mutual Insurance Company	N	
0140	Nationwide	42579	42-1201931	n/a			ALLIED Property and Casualty Insurance Company	IA	IA	ALLIED Group, Inc.	ownership	100.000	Nationwide Mutual Insurance Company	N	
0140	Nationwide		42-1527863	n/a			ALLIED Texas Agency, Inc.	TX	IA	AMCO Insurance Company	ownership	100.000	Nationwide Mutual Insurance Company	N	
0140	Nationwide	19100	42-6054959	n/a			AMCO Insurance Company	IA	IA	ALLIED Group, Inc.	ownership	100.000	Nationwide Mutual Insurance Company	N	
0140	Nationwide		59-1031596	n/a			American Marine Underwriters, Inc.	FL	NIA	Nationwide Mutual Insurance Company	ownership	100.000	Nationwide Mutual Insurance Company	N	
0140	Nationwide		81-4532504	n/a			American Tax Credit Fund 2017-A, LLC	OH	NIA	Nationwide Life Insurance Company	ownership	100.000	Nationwide Mutual Insurance Company	N	
0140	Nationwide		82-2001573	n/a			American Tax Credit Fund 2017-B, LLC	OH	NIA	Nationwide Life Insurance Company	ownership	100.000	Nationwide Mutual Insurance Company	N	
0140	Nationwide		82-4591498	n/a			American Tax Credit Fund 2018-A, LLC	OH	NIA	Nationwide Life Insurance Company	ownership	100.000	Nationwide Mutual Insurance Company	N	
0140	Nationwide		83-0606592	n/a			American Tax Credit Fund 2018-B, LLC	OH	NIA	Nationwide Life Insurance Company	ownership	100.000	Nationwide Mutual Insurance Company	N	
0140	Nationwide		83-0620232	n/a			American Tax Credit Fund 2018-C, LLC	OH	NIA	Nationwide Life Insurance Company	ownership	100.000	Nationwide Mutual Insurance Company	N	
0140	Nationwide		83-3900932	n/a			American Tax Credit Fund 2019-A, LLC	OH	NIA	Nationwide Life Insurance Company	ownership	100.000	Nationwide Mutual Insurance Company	N	
0140	Nationwide		83-3953721	n/a			American Tax Credit Fund 2019-B, LLC	OH	NIA	Nationwide Life Insurance Company	ownership	100.000	Nationwide Mutual Insurance Company	N	

Q12.1

SCHEDULE Y

PART 1A - DETAIL OF INSURANCE HOLDING COMPANY SYSTEM

1	2	3	4	5	6	7	8	9	10	11	12	13	14	15	16
Group Code	Group Name	NAIC Company Code	ID Number	Federal RSSD	CIK	Name of Securities Exchange if Publicly Traded (U.S. or International)	Names of Parent, Subsidiaries or Affiliates	Domiciliary Location	Relationship to Reporting Entity	Directly Controlled by (Name of Entity/Person)	Type of Control (Ownership Board, Management, Attorney-in-Fact, Influence, Other)	If Control is Ownership Provide Percentage	Ultimate Controlling Entity(ies)/Person(s)	Is an SCA Filing Required? (Y/N)	*
0140	Nationwide		84-3443067	n/a			American Tax Credit Fund 2020-A, LLC	OH	NIA	Nationwide Life Insurance Company	ownership	100.000	Nationwide Mutual Insurance Company	N	
0140	Nationwide		85-2359702	n/a			American Tax Credit Fund 2020-B, LLC	OH	NIA	Nationwide Life Insurance Company	ownership	100.000	Nationwide Mutual Insurance Company	N	
0140	Nationwide		85-2649655	n/a			American Tax Credit Fund 2020-C, LLC	OH	NIA	Nationwide Life Insurance Company	ownership	100.000	Nationwide Mutual Insurance Company	N	
0140	Nationwide		31-1580283	n/a			Arena District CA I, LLC	OH	NIA	NWD Investments, LLC	ownership	100.000	Nationwide Mutual Insurance Company	N	
			36-4857239	n/a			Arena District Garage Condominium Association	OH	OTH	Other non-Nationwide	n/a		Other non-Nationwide	N	2
			90-0280710	n/a			Arena District Owners Association	OH	OTH	Other non-Nationwide	n/a		Other non-Nationwide	N	2
			35-2582728	n/a			Arena District Swim Club Association	OH	OTH	Other non-Nationwide	n/a		Other non-Nationwide	N	2
0140	Nationwide		31-1486309	n/a			Ballantrae Woods, LLC	OH	NIA	Nationwide Realty Investors, Ltd.	ownership	100.000	Nationwide Mutual Insurance Company	N	
0140	Nationwide		26-4083207	n/a			Berkshire Crossing Development, LLC	DE	NIA	NorthStar Commercial Development, LLC	ownership	100.000	Nationwide Mutual Insurance Company	N	
0140	Nationwide		31-1555487	n/a			Broad Street Retail, LLC	DE	NIA	Nationwide Realty Investors, Ltd.	ownership	60.000	Nationwide Mutual Insurance Company	N	1
0140	Nationwide		20-3624379	n/a			Brooke School Investment Fund, LLC	DE	NIA	Nationwide Mutual Insurance Company	ownership	100.000	Nationwide Mutual Insurance Company	N	
0140	Nationwide		31-1486309	n/a			Cavasson Hotel, LLC	OH	NIA	Cavasson Hotel Holdings, LLC	ownership	100.000	Nationwide Mutual Insurance Company	N	
0140	Nationwide		31-1486309	n/a			Cavasson Hotel Holdings, LLC	OH	NIA	NRI Cavasson, LLC	ownership	100.000	Nationwide Mutual Insurance Company	N	
0140	Nationwide		26-0899413	n/a			CHP New Markets Investment Fund, LLC	OH	OTH	Nationwide Mutual Insurance Company	Limited partner /no control	50.000	Other non-Nationwide	N	2
0140	Nationwide		20-1618232	n/a			CNRI-Cannonsport Condominium, LLC	OH	NIA	CNRI-Cannonsport, LLC	ownership	100.000	Nationwide Mutual Insurance Company	N	
0140	Nationwide		20-1618232	n/a			CNRI-Cannonsport, LLC	OH	NIA	Nationwide Realty Investors, Ltd.	ownership	100.000	Nationwide Mutual Insurance Company	N	
			n/a	n/a			Co-Investment Fund, LLC	DE	OTH	Other non-Nationwide	n/a		Other non-Nationwide	N	2
0140	Nationwide		31-1579973	n/a			COLHOC Limited Partnership	OH	NIA	NRI Arena, LLC	ownership	30.760	Other non-Nationwide	N	1
0140	Nationwide	29262	74-1061659	n/a			Colonial County Mutual Insurance Company	TX	IA	Other non-Nationwide	contract		Other non-Nationwide	N	2
			45-4901238	n/a			Columbus Arena Management, LLC	OH	OTH	Other non-Nationwide	n/a		Other non-Nationwide	N	2
0140	Nationwide		31-1486309	n/a			Cottages at Hyatts LLC	OH	NIA	Nationwide Realty Investors, Ltd.	ownership	100.000	Nationwide Mutual Insurance Company	N	
0140	Nationwide	18961	68-0066866	n/a			Crestbrook Insurance Company	OH	IA	Nationwide Mutual Insurance Company	ownership	100.000	Nationwide Mutual Insurance Company	N	
0140	Nationwide		31-1486309	n/a			Crewville, Ltd	OH	NIA	Nationwide Realty Investors, Ltd.	ownership	100.000	Nationwide Mutual Insurance Company	N	
0140	Nationwide		84-5052608	n/a			Danforth, LLC	OH	NIA	Nationwide Mutual Insurance Company	ownership	100.000	Nationwide Mutual Insurance Company	N	
0140	Nationwide	42587	42-1207150	n/a			Depositors Insurance Company	IA	IA	ALLIED Group, Inc	ownership	100.000	Nationwide Mutual Insurance Company	N	
			46-4104813	n/a			Discover Affordable Housing Investment Fund I LLC	OH	OTH	Other non-Nationwide	n/a		Other non-Nationwide	N	2
0140	Nationwide		33-0096671	n/a			DVM Insurance Agency	CA	NIA	Veterinary Pet Insurance Company	ownership	100.000	Nationwide Mutual Insurance Company	N	
0140	Nationwide	15821	47-4523959	n/a			Eagle Captive Reinsurance, LLC	OH	IA	Nationwide Life Insurance Company	ownership	100.000	Nationwide Mutual Insurance Company	N	
0140	Nationwide		20-1945276	n/a			East of Madison, LLC	DE	NIA	120 Acre Partners, Ltd	ownership	24.910	Nationwide Mutual Insurance Company	N	1
0140	Nationwide		20-1945276	n/a			East of Madison, LLC	DE	NIA	ND La Quinta Partners, LLC	ownership	75.090	Nationwide Mutual Insurance Company	N	1
0140	Nationwide		26-3260559	n/a			E-Risk Services, L.L.C.	DE	NIA	Nationwide Mutual Insurance Company	ownership	100.000	Nationwide Mutual Insurance Company	N	
			30-0951639	n/a			ERN-4 Property Owners Association, Inc	OH	OTH	Other non-Nationwide	n/a		Other non-Nationwide	N	2
0140	Nationwide	22209	75-6013587	n/a			Freedom Specialty Insurance Company	OH	IA	Scottsdale Insurance Company	ownership	100.000	Nationwide Mutual Insurance Company	N	
			46-4736379	n/a			GPN-1 Property Owners Association, Inc	OH	OTH	Other non-Nationwide	n/a		Other non-Nationwide	N	2

Q12.2

SCHEDULE Y

PART 1A - DETAIL OF INSURANCE HOLDING COMPANY SYSTEM

1	2	3	4	5	6	7	8	9	10	11	12	13	14	15	16
Group Code	Group Name	NAIC Company Code	ID Number	Federal RSSD	CIK	Name of Securities Exchange if Publicly Traded (U.S. or International)	Names of Parent, Subsidiaries or Affiliates	Domiciliary Location	Relationship to Reporting Entity	Directly Controlled by (Name of Entity/Person)	Type of Control (Ownership Board, Management, Attorney-in-Fact, Influence, Other)	If Control is Ownership Provide Percentage	Ultimate Controlling Entity(ies)/Person(s)	Is an SCA Filing Required? (Y/N)	*
0140	Nationwide		20-4939866	n/a			Grandview Yard Hotel Holdings, LLC	OH	NIA	NRI Equity Land Investments, LLC	ownership	100.000	Nationwide Mutual Insurance Company	N	
0140	Nationwide		20-4939866	n/a			Grandview Yard Hotel, LLC	OH	NIA	Grandview Yard Hotel Holdings, LLC	ownership	100.000	Nationwide Mutual Insurance Company	N	
0140	Nationwide		20-4939866	n/a			GVY Residential, LLC	OH	NIA	NRI Equity Land Investments, LLC	ownership	100.000	Nationwide Mutual Insurance Company	N	
0140	Nationwide		31-1486309	n/a			Harlem Road Developers, LLC	OH	NIA	Nationwide Realty Investors, Ltd.	ownership	100.000	Nationwide Mutual Insurance Company	N	
0140	Nationwide		51-0241172	n/a			Harleysville Group Inc	DE	NIA	Allied Holdings (Delaware), Inc.	ownership	100.000	Nationwide Mutual Insurance Company	N	
0140	Nationwide	23582	41-0417250	n/a			Harleysville Insurance Company	OH	IA	Harleysville Group, Inc.	ownership	100.000	Nationwide Mutual Insurance Company	N	
0140	Nationwide	42900	23-2253669	n/a			Harleysville Insurance Company of New Jersey	NJ	IA	Harleysville Group, Inc.	ownership	100.000	Nationwide Mutual Insurance Company	N	
0140	Nationwide	10674	23-2864924	n/a			Harleysville Insurance Company of New York	OH	IA	Harleysville Group, Inc.	ownership	100.000	Nationwide Mutual Insurance Company	N	
0140	Nationwide	14516	38-3198542	n/a			Harleysville Lake States Insurance Company	MI	IA	Harleysville Group, Inc.	ownership	100.000	Nationwide Mutual Insurance Company	N	
0140	Nationwide	64327	23-1580983	n/a			Harleysville Life Insurance Company	OH	IA	Nationwide Mutual Insurance Company	ownership	100.000	Nationwide Mutual Insurance Company	N	
0140	Nationwide	35696	23-2384978	n/a			Harleysville Preferred Insurance Company	OH	IA	Harleysville Group, Inc.	ownership	100.000	Nationwide Mutual Insurance Company	N	
0140	Nationwide	26182	04-1989660	n/a			Harleysville Worcester Insurance Company	OH	IA	Harleysville Group, Inc.	ownership	100.000	Nationwide Mutual Insurance Company	N	
0140	Nationwide		32-0051216	n/a			Hideaway Properties Corporation	CA	NIA	Nationwide Realty Investors, Ltd.	ownership	50.000	Nationwide Mutual Insurance Company	N	1
0140	Nationwide		20-3289512	n/a			Jefferson National Financial Corp	DE	NIA	Nationwide Life Insurance Company	ownership	100.000	Nationwide Mutual Insurance Company	Y	
0140	Nationwide	64017	75-0300900	n/a			Jefferson National Life Insurance Company	TX	IA	Jefferson National Financial Corporation	ownership	100.000	Nationwide Mutual Insurance Company	N	
0140	Nationwide	15727	47-1180302	n/a			Jefferson National Life Insurance Company of New York	NY	IA	Jefferson National Life Insurance Company	ownership	100.000	Nationwide Mutual Insurance Company	N	
0140	Nationwide		61-1340595	n/a			Jefferson National Securities Corporation	DE	NIA	Jefferson National Financial Corporation	ownership	100.000	Nationwide Mutual Insurance Company	N	
0140	Nationwide		31-1486309	n/a			Jerome Village Company, LLC	OH	NIA	Nationwide Realty Investors, Ltd.	ownership	100.000	Nationwide Mutual Insurance Company	N	
			46-2974590	n/a			Jerome Village Master Property Owners Association, Inc.	OH	OTH	Other non-Nationwide	n/a		Other non-Nationwide	N	2
			46-2956640	n/a			Jerome Village Residential Property Owners Association, Inc.	OH	OTH	Other non-Nationwide	n/a		Other non-Nationwide	N	2
0140	Nationwide		31-1486309	n/a			JV Developers, LLC	OH	NIA	Nationwide Realty Investors, Ltd.	ownership	100.000	Nationwide Mutual Insurance Company	N	
0140	Nationwide		74-1395229	n/a			Lone Star General Agency, Inc.	TX	IA	Nationwide Mutual Insurance Company	ownership	100.000	Nationwide Mutual Insurance Company	N	
0140	Nationwide	11991	38-0865250	n/a			National Casualty Company	OH	IA	Nationwide Mutual Insurance Company	ownership	100.000	Nationwide Mutual Insurance Company	N	
0140	Nationwide		AC000920	n/a			National Casualty Company of America, Ltd.	GBR	IA	National Casualty Company	ownership	100.000	Nationwide Mutual Insurance Company	N	
0140	Nationwide		42-1154244	n/a			Nationwide Advantage Mortgage Company	IA	NIA	AMCO Insurance Company	ownership	87.300	Nationwide Mutual Insurance Company	Y	1
0140	Nationwide		42-1154244	n/a			Nationwide Advantage Mortgage Company	IA	NIA	ALLIED Property & Casualty Insurance Company	ownership	8.470	Nationwide Mutual Insurance Company	Y	1
0140	Nationwide		42-1154244	n/a			Nationwide Advantage Mortgage Company	IA	NIA	Depositors Insurance Company	ownership	4.230	Nationwide Mutual Insurance Company	Y	1
0140	Nationwide	26093	48-0470690	n/a			Nationwide Affinity Insurance Company of America	OH	IA	Nationwide Mutual Insurance Company	ownership	100.000	Nationwide Mutual Insurance Company	N	
0140	Nationwide	28223	42-1015537	n/a			Nationwide Agribusiness Insurance Company	IA	IA	Nationwide Mutual Insurance Company	ownership	100.000	Nationwide Mutual Insurance Company	N	
0140	Nationwide		31-1578869	n/a			Nationwide Arena, LLC	OH	NIA	NRI Arena, LLC	ownership	90.000	Nationwide Mutual Insurance Company	N	1

Q12.3

SCHEDULE Y

PART 1A - DETAIL OF INSURANCE HOLDING COMPANY SYSTEM

1	2	3	4	5	6	7	8	9	10	11	12	13	14	15	16
Group Code	Group Name	NAIC Company Code	ID Number	Federal RSSD	CIK	Name of Securities Exchange if Publicly Traded (U.S. or International)	Names of Parent, Subsidiaries or Affiliates	Domiciliary Location	Relationship to Reporting Entity	Directly Controlled by (Name of Entity/Person)	Type of Control (Ownership Board, Management, Attorney-in-Fact, Influence, Other)	If Control is Ownership Provide Percentage	Ultimate Controlling Entity(ies)/Person(s)	Is an SCA Filing Required? (Y/N)	*
0140	Nationwide		20-8670712	n/a			Nationwide Asset Management, LLC	OH	NIA	Nationwide Mutual Insurance Company	ownership	100.000	Nationwide Mutual Insurance Company	N	
0140	Nationwide	10723	95-0639970	n/a			Nationwide Assurance Company	OH	IA	Nationwide Mutual Insurance Company	ownership	100.000	Nationwide Mutual Insurance Company	N	
0140	Nationwide		31-1036287	n/a			Nationwide Cash Management Company	OH	NIA	Nationwide Mutual Insurance Company	ownership	100.000	Nationwide Mutual Insurance Company	N	
0140	Nationwide		31-4416546	n/a			Nationwide Corporation	OH	NIA	Nationwide Mutual Insurance Company	ownership	95.200	Nationwide Mutual Insurance Company	Y	1
0140	Nationwide		31-4416546	n/a			Nationwide Corporation	OH	NIA	Nationwide Mutual Fire Insurance Company	ownership	4.800	Nationwide Mutual Insurance Company	Y	1
0140	Nationwide		31-1667326	n/a			Nationwide Financial Assignment Company	OH	NIA	Nationwide Life Insurance Company	ownership	100.000	Nationwide Mutual Insurance Company	N	
0140	Nationwide		23-2412039	n/a			Nationwide Financial General Agency, Inc.	PA	NIA	NFS Distributors, Inc.	ownership	100.000	Nationwide Mutual Insurance Company	N	
0140	Nationwide		31-6554353	n/a			Nationwide Financial Services Capital Trust	DE	NIA	Nationwide Financial Services, Inc.	ownership	100.000	Nationwide Mutual Insurance Company	N	
0140	Nationwide		31-1486870	n/a			Nationwide Financial Services, Inc.	DE	NIA	Nationwide Corporation	ownership	100.000	Nationwide Mutual Insurance Company	N	
0140	Nationwide		52-6969857	n/a			Nationwide Fund Advisors	DE	NIA	Nationwide Financial Services, Inc.	ownership	100.000	Nationwide Mutual Insurance Company	N	
0140	Nationwide		31-1748721	n/a			Nationwide Fund Distributors LLC	DE	NIA	NFS Distributors, Inc.	ownership	100.000	Nationwide Mutual Insurance Company	N	
0140	Nationwide		31-0900518	n/a			Nationwide Fund Management LLC	DE	NIA	NFS Distributors, Inc.	ownership	100.000	Nationwide Mutual Insurance Company	N	
0140	Nationwide	23760	31-4425763	n/a			Nationwide General Insurance Company	OH	RE	Nationwide Mutual Insurance Company	ownership	100.000	Nationwide Mutual Insurance Company	N	
0140	Nationwide	10070	31-1399201	n/a			Nationwide Indemnity Company	OH	IA	Nationwide Mutual Insurance Company	ownership	100.000	Nationwide Mutual Insurance Company	N	
0140	Nationwide	25453	95-2130882	n/a			Nationwide Insurance Company of America	OH	IA	ALLIED Group, Inc.	ownership	100.000	Nationwide Mutual Insurance Company	N	
0140	Nationwide	10948	31-1613686	n/a			Nationwide Insurance Company of Florida	OH	IA	Nationwide Mutual Insurance Company	ownership	100.000	Nationwide Mutual Insurance Company	N	
0140	Nationwide		41-2206199	n/a			Nationwide Investment Advisors, LLC	OH	NIA	Nationwide Life Insurance Company	ownership	100.000	Nationwide Mutual Insurance Company	N	
0140	Nationwide		73-0988442	n/a			Nationwide Investment Services Corporation	OK	NIA	Nationwide Life Insurance Company	ownership	100.000	Nationwide Mutual Insurance Company	Y	
0140	Nationwide	92657	31-1000740	n/a			Nationwide Life and Annuity Insurance Company	OH	IA	Nationwide Life Insurance Company	ownership	100.000	Nationwide Mutual Insurance Company	N	
0140	Nationwide	66869	31-4156830	n/a			Nationwide Life Insurance Company	OH	IA	Nationwide Financial Services, Inc.	ownership	100.000	Nationwide Mutual Insurance Company	N	
0140	Nationwide		13-4212969	n/a			Nationwide Life Tax Credit Partners 2002-A, LLC	OH	NIA	Nationwide Life Insurance Company	other	0.010	Nationwide Mutual Insurance Company	N	1
0140	Nationwide		01-0749754	n/a			Nationwide Life Tax Credit Partners 2002-B, LLC	OH	NIA	Nationwide Life Insurance Company	other	0.010	Nationwide Mutual Insurance Company	N	1
0140	Nationwide		54-2113175	n/a			Nationwide Life Tax Credit Partners 2003-A, LLC	OH	NIA	Nationwide Life Insurance Company	other	0.010	Nationwide Mutual Insurance Company	N	1
0140	Nationwide		58-2672725	n/a			Nationwide Life Tax Credit Partners 2003-B, LLC	OH	NIA	Nationwide Life Insurance Company	other	0.010	Nationwide Mutual Insurance Company	N	1
0140	Nationwide		20-0382144	n/a			Nationwide Life Tax Credit Partners 2004-A, LLC	OH	NIA	Nationwide Life Insurance Company	other	0.010	Nationwide Mutual Insurance Company	N	1
0140	Nationwide		20-0745965	n/a			Nationwide Life Tax Credit Partners 2004-C, LLC	OH	NIA	Nationwide Life Insurance Company	other	0.010	Nationwide Mutual Insurance Company	N	1
0140	Nationwide		20-1918935	n/a			Nationwide Life Tax Credit Partners 2004-F, LLC	OH	NIA	Nationwide Life Insurance Company	other	0.010	Nationwide Mutual Insurance Company	N	1
0140	Nationwide		20-2303694	n/a			Nationwide Life Tax Credit Partners 2005-A, LLC	OH	NIA	Nationwide Life Insurance Company	other	0.010	Nationwide Mutual Insurance Company	N	1

Q12.4

SCHEDULE Y

PART 1A - DETAIL OF INSURANCE HOLDING COMPANY SYSTEM

1	2	3	4	5	6	7	8	9	10	11	12	13	14	15	16
Group Code	Group Name	NAIC Company Code	ID Number	Federal RSSD	CIK	Name of Securities Exchange if Publicly Traded (U.S. or International)	Names of Parent, Subsidiaries or Affiliates	Domiciliary Location	Relationship to Reporting Entity	Directly Controlled by (Name of Entity/Person)	Type of Control (Ownership Board, Management, Attorney-in-Fact, Influence, Other)	If Control is Ownership Provide Percentage	Ultimate Controlling Entity(ies)/Person(s)	Is an SCA Filing Required? (Y/N)	*
0140	Nationwide.....		20-2303602..	n/a.....			Nationwide Life Tax Credit Partners 2005-B, LLC	OH.....	NIA.....	Nationwide Life Insurance Company.....	other.....0.010	Nationwide Mutual Insurance Company.....N.....	1.....
0140	Nationwide.....		20-2450960..	n/a.....			Nationwide Life Tax Credit Partners 2005-C, LLC	OH.....	NIA.....	Nationwide Life Insurance Company.....	other.....0.010	Nationwide Mutual Insurance Company.....N.....	1.....
0140	Nationwide.....		20-2774223..	n/a.....			Nationwide Life Tax Credit Partners 2005-E, LLC	OH.....	NIA.....	Nationwide Life Insurance Company.....	other.....0.010	Nationwide Mutual Insurance Company.....N.....	1.....
0140	Nationwide.....		21-1288836..	n/a.....			Nationwide Life Tax Credit Partners 2007-A, LLC	OH.....	NIA.....	Nationwide Life Insurance Company.....	other.....0.010	Nationwide Mutual Insurance Company.....N.....	1.....
0140	Nationwide.....		26-3427373..	n/a.....			Nationwide Life Tax Credit Partners 2009-A, LLC	OH.....	NIA.....	Nationwide Life Insurance Company.....	other.....0.010	Nationwide Mutual Insurance Company.....N.....	1.....
0140	Nationwide.....		26-3427479..	n/a.....			Nationwide Life Tax Credit Partners 2009-C, LLC	OH.....	NIA.....	Nationwide Life Insurance Company.....	other.....0.010	Nationwide Mutual Insurance Company.....N.....	1.....
0140	Nationwide.....		26-3427525..	n/a.....			Nationwide Life Tax Credit Partners 2009-D, LLC	OH.....	NIA.....	Nationwide Life Insurance Company.....	other.....0.010	Nationwide Mutual Insurance Company.....N.....	1.....
0140	Nationwide.....		26-4737055..	n/a.....			Nationwide Life Tax Credit Partners 2009-E, LLC	OH.....	NIA.....	Nationwide Life Insurance Company.....	ownership.....100.000	Nationwide Mutual Insurance Company.....N.....	
0140	Nationwide.....		26-4737157..	n/a.....			Nationwide Life Tax Credit Partners 2009-F, LLC	OH.....	NIA.....	Nationwide Life Insurance Company.....	ownership.....100.000	Nationwide Mutual Insurance Company.....N.....	
0140	Nationwide.....		27-1362364..	n/a.....			Nationwide Life Tax Credit Partners 2009-I, LLC	OH.....	NIA.....	Nationwide Life Insurance Company.....	other.....0.010	Nationwide Mutual Insurance Company.....N.....	1.....
0140	Nationwide.....		45-0469525..	n/a.....			Nationwide Life Tax Credit Partners No. 1, LLC	OH.....	NIA.....	Nationwide Life Insurance Company.....	other.....0.010	Nationwide Mutual Insurance Company.....N.....	1.....
0140	Nationwide.....	42110..	75-1780981..	n/a.....			Nationwide Lloyds.....	TX.....	IA.....	n/a.....	contract.....		Nationwide Mutual Insurance Company.....N.....	2.....
0140	Nationwide.....		42-1373380..	n/a.....			Nationwide Sales Solutions, Inc. (fka Nationwide Member Solutions Agency Inc.)	IA.....	NIA.....	ALLIED Group, Inc.....	ownership.....100.000	Nationwide Mutual Insurance Company.....N.....	
0140	Nationwide.....		75-3191025..	n/a.....			Nationwide Mutual Capital I, LLC.....	DE.....	NIA.....	Nationwide Mutual Capital, LLC.....	ownership.....100.000	Nationwide Mutual Insurance Company.....N.....	
0140	Nationwide.....		75-3191025..	n/a.....			Nationwide Mutual Capital, LLC.....	OH.....	NIA.....	Nationwide Mutual Insurance Company.....	ownership.....100.000	Nationwide Mutual Insurance Company.....N.....	
0140	Nationwide.....	23779..	31-4177110..	n/a.....			Nationwide Mutual Fire Insurance Company.....	OH.....	OTH.....	Other non-Nationwide.....	n/a.....		Other non-Nationwide.....N.....	2.....
0140	Nationwide.....	23787..	31-4177100..	n/a.....			Nationwide Mutual Insurance Company.....	OH.....	UDP.....	Other non-Nationwide.....	n/a.....		Other non-Nationwide.....N.....	2.....
0140	Nationwide.....		34-2012765..	n/a.....			Nationwide Private Equity Fund, LLC.....	OH.....	NIA.....	Nationwide Mutual Insurance Company.....	ownership.....100.000	Nationwide Mutual Insurance Company.....N.....	
0140	Nationwide.....	37877..	31-0970750..	n/a.....			Nationwide Property and Casualty Insurance Company	OH.....	IA.....	Nationwide Mutual Insurance Company.....	ownership.....100.000	Nationwide Mutual Insurance Company.....N.....	
0140	Nationwide.....		31-1486309..	n/a.....			Nationwide Realty Investors, Ltd.....	OH.....	NIA.....	Nationwide Mutual Insurance Company.....	ownership.....97.000	Nationwide Mutual Insurance Company.....N.....	1.....
0140	Nationwide.....		31-1486309..	n/a.....			Nationwide Realty Investors, Ltd.....	OH.....	NIA.....	Nationwide Indemnity Company.....	ownership.....3.000	Nationwide Mutual Insurance Company.....N.....	1.....
0140	Nationwide.....		31-1486309..	n/a.....			Nationwide Realty Management, LLC.....	OH.....	NIA.....	Nationwide Realty Investors, Ltd.....	ownership.....100.000	Nationwide Mutual Insurance Company.....N.....	
0140	Nationwide.....		n/a.....	n/a.....			Nationwide Realty Services, Ltd.....	OH.....	NIA.....	Nationwide Mutual Insurance Company.....	ownership.....100.000	Nationwide Mutual Insurance Company.....N.....	
0140	Nationwide.....		73-0948330..	n/a.....			Nationwide Retirement Solutions, Inc.....	DE.....	NIA.....	NFS Distributors, Inc.....	ownership.....100.000	Nationwide Mutual Insurance Company.....N.....	

Q12.5

SCHEDULE Y

PART 1A - DETAIL OF INSURANCE HOLDING COMPANY SYSTEM

1	2	3	4	5	6	7	8	9	10	11	12	13	14	15	16
Group Code	Group Name	NAIC Company Code	ID Number	Federal RSSD	CIK	Name of Securities Exchange if Publicly Traded (U.S. or International)	Names of Parent, Subsidiaries or Affiliates	Domiciliary Location	Relationship to Reporting Entity	Directly Controlled by (Name of Entity/Person)	Type of Control (Ownership Board, Management, Attorney-in-Fact, Influence, Other)	If Control is Ownership Provide Percentage	Ultimate Controlling Entity(ies)/Person(s)	Is an SCA Filing Required? (Y/N)	*
0140	Nationwide		83-2250056	n/a			Nationwide SBL, LLC	OH	NIA	Nationwide Life and Annuity Insurance Company	ownership	100.000	Nationwide Mutual Insurance Company	N	
0140	Nationwide		36-2434406	n/a			Nationwide Securities, LLC	OH	NIA	NFS Distributors, Inc	ownership	100.000	Nationwide Mutual Insurance Company	N	
0140	Nationwide		31-4177100	n/a			Nationwide Services Company, LLC	OH	NIA	Nationwide Mutual Insurance Company	ownership	100.000	Nationwide Mutual Insurance Company	N	
0140	Nationwide		27-0768791	n/a			Nationwide Tax Credit Partners 2009-H, LLC	OH	NIA	Nationwide Mutual Insurance Company	ownership	100.000	Nationwide Mutual Insurance Company	N	
0140	Nationwide		46-1952215	n/a			Nationwide Tax Credit Partners 2013-A, LLC	OH	NIA	Nationwide Life Insurance Company	other	0.010	Nationwide Mutual Insurance Company	N	1
0140	Nationwide		46-1971926	n/a			Nationwide Tax Credit Partners 2013-B, LLC	OH	NIA	Nationwide Life Insurance Company	other	0.010	Nationwide Mutual Insurance Company	N	1
0140	Nationwide		31-1592130	2729677			Nationwide Trust Company, FSB	USA	OTH	Nationwide Financial Services, Inc	ownership	100.000	Nationwide Mutual Insurance Company	N	2
0140	Nationwide		20-5976272	n/a			Nationwide Ventures, LLC	OH	NIA	Nationwide Mutual Insurance Company	ownership	100.000	Nationwide Mutual Insurance Company	N	
0140	Nationwide		31-0871532	n/a			NBS Insurance Agency, Inc	OH	IA	Nationwide Mutual Insurance Company	ownership	100.000	Nationwide Mutual Insurance Company	N	
0140	Nationwide		11-3651828	n/a			ND La Quinta Partners, LLC	DE	NIA	Nationwide Realty Investors, Ltd	ownership	95.000	Nationwide Mutual Insurance Company	N	1
0140	Nationwide		31-1630871	n/a			NFS Distributors, Inc	DE	NIA	Nationwide Financial Services, Inc	ownership	100.000	Nationwide Mutual Insurance Company	N	
0140	Nationwide		82-5195340	n/a			NLIC REO Holdings, LLC	OH	NIA	Nationwide Life Insurance Company	ownership	100.000	Nationwide Mutual Insurance Company	N	
0140	Nationwide		82-5194959	n/a			NMIC REO Holdings, LLC	OH	NIA	Nationwide Mutual Insurance Company	ownership	100.000	Nationwide Mutual Insurance Company	N	
0140	Nationwide		46-3762545	n/a			NNOV8, LLC	OH	NIA	Nationwide Mutual Insurance Company	ownership	100.000	Nationwide Mutual Insurance Company	N	
0140	Nationwide		20-4939866	n/a			North of Third, LLC	OH	NIA	NRI Equity Land Investments, LLC	ownership	100.000	Nationwide Mutual Insurance Company	N	
			61-1753500	n/a			Northstar Master Property Owners Association, Inc.	OH	OTH	Other non-Nationwide	n/a		Other non-Nationwide	N	2
0140	Nationwide		26-4083354	n/a			Northstar Residential Development, LLC	OH	NIA	Nationwide Realty Investors, Ltd	ownership	50.000	Nationwide Mutual Insurance Company	N	1
0140	Nationwide		31-1486309	n/a			NRI Arena, LLC	OH	NIA	Nationwide Realty Investors, Ltd	ownership	100.000	Nationwide Mutual Insurance Company	N	
0140	Nationwide		31-1486309	n/a			NRI Brookside, LLC	OH	NIA	Nationwide Realty Investors, Ltd	ownership	100.000	Nationwide Mutual Insurance Company	N	
0140	Nationwide		31-1486309	n/a			NRI Builders, LLC	OH	NIA	Nationwide Realty Investors, Ltd	ownership	100.000	Nationwide Mutual Insurance Company	N	
0140	Nationwide		31-1486309	n/a			NRI Cavasson, LLC	OH	NIA	Nationwide Realty Investors, Ltd	ownership	100.000	Nationwide Mutual Insurance Company	N	
0140	Nationwide		31-1486309	n/a			NRI Communities/Harris Blvd., LLC	OH	NIA	Nationwide Realty Investors, Ltd	ownership	100.000	Nationwide Mutual Insurance Company	N	
0140	Nationwide		31-1486309	n/a			NRI Corporate Housing, LLC	OH	NIA	Nationwide Realty Investors, Ltd	ownership	100.000	Nationwide Mutual Insurance Company	N	
0140	Nationwide		31-1486309	n/a			NRI Cramer Creek, LLC	OH	NIA	Nationwide Realty Investors, Ltd	ownership	100.000	Nationwide Mutual Insurance Company	N	
0140	Nationwide		20-4939866	n/a			NRI Equity Land Investments, LLC	OH	NIA	Nationwide Realty Investors, Ltd	ownership	80.000	Nationwide Mutual Insurance Company	N	1
0140	Nationwide		26-0212217	n/a			NRI Equity Tampa, LLC	OH	NIA	Nationwide Realty Investors, Ltd	ownership	100.000	Nationwide Mutual Insurance Company	N	
0140	Nationwide		31-1486309	n/a			NRI Office Ventures, Ltd	OH	NIA	Nationwide Realty Investors, Ltd	ownership	100.000	Nationwide Mutual Insurance Company	N	
0140	Nationwide		31-1580283	n/a			NRI Telecom, LLC	OH	NIA	NWD Investments, LLC	ownership	100.000	Nationwide Mutual Insurance Company	N	
0140	Nationwide		31-1486309	n/a			NRI-Rivulon, LLC	OH	NIA	Nationwide Realty Investors, Ltd	ownership	100.000	Nationwide Mutual Insurance Company	N	
0140	Nationwide		26-4083354	n/a			NS Developers, LLC	OH	NIA	Northstar Residential Development, LLC	ownership	100.000	Nationwide Mutual Insurance Company	N	
0140	Nationwide		45-3123274	n/a			NTCIF-2011 Georgia State Investor, LLC	OH	NIA	Nationwide Property and Casualty Company	ownership	100.000	Nationwide Mutual Insurance Company	N	
0140	Nationwide		90-0729552	n/a			NTCIF-2011, LLC	OH	NIA	Nationwide Mutual Insurance Company	ownership	50.000	Nationwide Mutual Insurance Company	N	1
0140	Nationwide		90-0729552	n/a			NTCIF-2011, LLC	OH	NIA	Nationwide Mutual Fire Insurance Company	ownership	50.000	Nationwide Mutual Insurance Company	N	1
0140	Nationwide		27-4700627	n/a			NTCP 2011-A, LLC	OH	OTH	Nationwide Life Insurance Company	other	0.010	Nationwide Mutual Insurance Company	N	2

Q12.6

SCHEDULE Y

PART 1A - DETAIL OF INSURANCE HOLDING COMPANY SYSTEM

1	2	3	4	5	6	7	8	9	10	11	12	13	14	15	16
Group Code	Group Name	NAIC Company Code	ID Number	Federal RSSD	CIK	Name of Securities Exchange if Publicly Traded (U.S. or International)	Names of Parent, Subsidiaries or Affiliates	Domiciliary Location	Relationship to Reporting Entity	Directly Controlled by (Name of Entity/Person)	Type of Control (Ownership Board, Management, Attorney-in-Fact, Influence, Other)	If Control is Ownership Provide Percentage	Ultimate Controlling Entity(ies)/Person(s)	Is an SCA Filing Required? (Y/N)	*
0140	Nationwide		46-0741029	n/a			NTCP 2012-A, LLC	OH	OTH	Nationwide Life Insurance Company	other	0.010	Nationwide Mutual Insurance Company	N	2
0140	Nationwide		46-3309896	n/a			NTCP 2013-C, LLC	OH	OTH	Nationwide Life Insurance Company	other	0.010	Nationwide Mutual Insurance Company	N	2
0140	Nationwide		46-4111078	n/a			NTCP 2014-A, LLC	OH	OTH	Nationwide Life Insurance Company	other	0.010	Nationwide Mutual Insurance Company	N	2
0140	Nationwide		47-1404116	n/a			NTCP 2014-B, LLC	OH	OTH	Nationwide Life Insurance Company	other	0.010	Nationwide Mutual Insurance Company	N	2
0140	Nationwide		47-1413242	n/a			NTCP 2014-C, LLC	OH	OTH	Nationwide Life Insurance Company	other	0.010	Nationwide Mutual Insurance Company	N	2
0140	Nationwide		47-3909345	n/a			NTCP 2015-A, LLC	OH	OTH	Nationwide Life Insurance Company	other	0.010	Nationwide Mutual Insurance Company	N	2
0140	Nationwide		47-4148470	n/a			NTCP 2015-B, LLC	OH	OTH	Nationwide Life Insurance Company	other	0.010	Nationwide Mutual Insurance Company	N	2
0140	Nationwide		81-3836925	n/a			NTCP 2016-A, LLC	OH	NIA	Nationwide Life Insurance Company	ownership	100.000	Nationwide Mutual Insurance Company	N	
0140	Nationwide		82-2015065	n/a			NTCP 2017-A, LLC	OH	NIA	Nationwide Life Insurance Company	ownership	100.000	Nationwide Mutual Insurance Company	N	
0140	Nationwide		84-1969518	n/a			NW Fyrebyrd, LLC	OH	NIA	NNOV8, LLC	ownership	100.000	Nationwide Mutual Insurance Company	N	
0140	Nationwide		81-0936428	n/a			NW Private Debt, LLC	OH	NIA	Nationwide Mutual Insurance Company	ownership	100.000	Nationwide Mutual Insurance Company	N	
0140	Nationwide		26-1903919	n/a			NW REI, LLC	DE	NIA	Nationwide Mutual Insurance Company	ownership	100.000	Nationwide Mutual Insurance Company	N	
0140	Nationwide		81-2326191	n/a			NW-442 Ocean, LLC	OH	NIA	NW REI (NLIC), LLC	ownership	100.000	Nationwide Mutual Insurance Company	N	
0140	Nationwide		46-3654078	n/a			NW-Amesbury, LLC	OH	NIA	NW-REI, LLC	ownership	100.000	Nationwide Mutual Insurance Company	N	
0140	Nationwide		81-1263284	n/a			NW-Amesbury II, LLC	OH	NIA	Nationwide Mutual Insurance Company	ownership	100.000	Nationwide Mutual Insurance Company	N	
0140	Nationwide		84-2078643	n/a			NW-Amesbury III, LLC	OH	NIA	Nationwide Mutual Insurance Company	ownership	100.000	Nationwide Mutual Insurance Company	N	
0140	Nationwide		84-3727023	n/a			NW-Ashland, LLC	OH	NIA	Nationwide Mutual Fire Insurance Company	ownership	100.000	Nationwide Mutual Insurance Company	N	
0140	Nationwide		83-2056769	n/a			NW-Athens Way, LLC	OH	NIA	Nationwide Life Insurance Company	ownership	100.000	Nationwide Mutual Insurance Company	N	
0140	Nationwide		81-1246932	n/a			NW-Baseline, LLC	OH	NIA	Nationwide Mutual Insurance Company	ownership	100.000	Nationwide Mutual Insurance Company	N	
0140	Nationwide		81-1869861	n/a			NW-Beech, LLC	OH	NIA	NW REI, (NMFIC), LLC	ownership	100.000	Nationwide Mutual Insurance Company	N	
0140	Nationwide		84-3942108	n/a			NW-Beloit, LLC	OH	NIA	Nationwide Mutual Fire Insurance Company	ownership	100.000	Nationwide Mutual Fire Insurance Company	N	
0140	Nationwide		83-0553339	n/a			NW-Buena Vista, LLC	OH	NIA	Nationwide Mutual Fire Insurance Company	ownership	100.000	Nationwide Mutual Fire Insurance Company	N	
0140	Nationwide		83-1613456	n/a			NW-Cameron Village, LLC	OH	NIA	Nationwide Life Insurance Company	ownership	100.000	Nationwide Mutual Insurance Company	N	
0140	Nationwide		83-4513883	n/a			NW-Carothers, LLC	OH	NIA	Nationwide Mutual Fire Insurance Company	ownership	100.000	Nationwide Mutual Fire Insurance Company	N	
0140	Nationwide		81-1211881	n/a			NW-Castle Rock, LLC	OH	NIA	Nationwide Mutual Insurance Company	ownership	100.000	Nationwide Mutual Insurance Company	N	
0140	Nationwide		82-2957977	n/a			NW-Civita, LLC	OH	NIA	Nationwide Life Insurance Company	ownership	100.000	Nationwide Mutual Insurance Company	N	
0140	Nationwide		82-2958440	n/a			NW-Civita NLAIC, LLC	OH	NIA	Nationwide Life and Annuity Insurance Company	ownership	100.000	Nationwide Mutual Insurance Company	N	
0140	Nationwide		84-2920247	n/a			NW-Cranberry, LLC	OH	NIA	Nationwide Life Insurance Company	ownership	100.000	Nationwide Mutual Insurance Company	N	
0140	Nationwide		84-4388876	n/a			NW-Escalante, LLC	OH	NIA	Nationwide Mutual Insurance Company	ownership	100.000	Nationwide Mutual Insurance Company	N	
0140	Nationwide		31-1580283	n/a			NWD 205 Vine, LLC	OH	NIA	NWD Investments, LLC	ownership	100.000	Nationwide Mutual Insurance Company	N	
0140	Nationwide		31-1580283	n/a			NWD 225 Nationwide, LLC	OH	NIA	NWD Investments, LLC	ownership	100.000	Nationwide Mutual Insurance Company	N	
0140	Nationwide		31-1580283	n/a			NWD 230 West, LLC	OH	NIA	NWD Investments, LLC	ownership	100.000	Nationwide Mutual Insurance Company	N	
0140	Nationwide		31-1580283	n/a			NWD 240 Nationwide, LLC	OH	NIA	NWD Investments, LLC	ownership	100.000	Nationwide Mutual Insurance Company	N	
0140	Nationwide		31-1580283	n/a			NWD 250 Brodbelt, LLC	OH	NIA	NWD Investments, LLC	ownership	100.000	Nationwide Mutual Insurance Company	N	
0140	Nationwide		31-1580283	n/a			NWD 250 West, LLC	OH	NIA	NWD Investments, LLC	ownership	100.000	Nationwide Mutual Insurance Company	N	

Q12.7

SCHEDULE Y

PART 1A - DETAIL OF INSURANCE HOLDING COMPANY SYSTEM

1	2	3	4	5	6	7	8	9	10	11	12	13	14	15	16
Group Code	Group Name	NAIC Company Code	ID Number	Federal RSSD	CIK	Name of Securities Exchange if Publicly Traded (U.S. or International)	Names of Parent, Subsidiaries or Affiliates	Domiciliary Location	Relationship to Reporting Entity	Directly Controlled by (Name of Entity/Person)	Type of Control (Ownership Board, Management, Attorney-in-Fact, Influence, Other)	If Control is Ownership Provide Percentage	Ultimate Controlling Entity(ies)/Person(s)	Is an SCA Filing Required? (Y/N)	*
0140	Nationwide		31-1580283	n/a			NWD 265 Neil, LLC	OH	NIA	NWD Investments, LLC	ownership	100.000	Nationwide Mutual Insurance Company	N	
0140	Nationwide		31-1580283	n/a			NWD 275 Marconi, LLC	OH	NIA	NWD Investments, LLC	ownership	100.000	Nationwide Mutual Insurance Company	N	
0140	Nationwide		31-1580283	n/a			NWD 300 Neil, LLC	OH	NIA	NWD Investments, LLC	ownership	100.000	Nationwide Mutual Insurance Company	N	
0140	Nationwide		31-1580283	n/a			NWD 300 Spring, LLC	OH	NIA	NWD Investments, LLC	ownership	100.000	Nationwide Mutual Insurance Company	N	
0140	Nationwide		31-1580283	n/a			NWD 355 McConnell, LLC	OH	NIA	NWD Investments, LLC	ownership	100.000	Nationwide Mutual Insurance Company	N	
0140	Nationwide		31-1580283	n/a			NWD 425 Nationwide, LLC	OH	NIA	NWD Investments, LLC	ownership	100.000	Nationwide Mutual Insurance Company	N	
0140	Nationwide		31-1580283	n/a			NWD 500 Nationwide, LLC	OH	NIA	NWD Investments, LLC	ownership	100.000	Nationwide Mutual Insurance Company	N	
0140	Nationwide		31-1580283	n/a			NWD Arena Crossing, LLC	OH	NIA	NWD Investments, LLC	ownership	100.000	Nationwide Mutual Insurance Company	N	
0140	Nationwide		31-1580283	n/a			NWD Arena District I, LLC	OH	NIA	NWD Investments, LLC	ownership	100.000	Nationwide Mutual Insurance Company	N	
0140	Nationwide		31-1580283	n/a			NWD Arena District II, LLC	OH	NIA	NWD Investments, LLC	ownership	100.000	Nationwide Mutual Insurance Company	N	
0140	Nationwide		31-1580283	n/a			NWD Arena District MM, LLC	OH	NIA	NWD Investments, LLC	ownership	100.000	Nationwide Mutual Insurance Company	N	
0140	Nationwide		31-1580283	n/a			NWD Arena District PW, LLC	OH	NIA	NWD Investments, LLC	ownership	100.000	Nationwide Mutual Insurance Company	N	
0140	Nationwide		31-1580283	n/a			NWD Arena District V, LLC	OH	NIA	NWD Investments, LLC	ownership	100.000	Nationwide Mutual Insurance Company	N	
0140	Nationwide		31-1580283	n/a			NWD Athletic Club, LLC	OH	NIA	NWD Investments, LLC	ownership	100.000	Nationwide Mutual Insurance Company	N	
0140	Nationwide		31-1580283	n/a			NWD Brodbelt, LLC	OH	NIA	NWD Investments, LLC	ownership	100.000	Nationwide Mutual Insurance Company	N	
0140	Nationwide		30-0876022	n/a			NWD Franklinton, LLC	DE	NIA	Nationwide Realty Investors, Ltd.	ownership	80.000	Nationwide Mutual Insurance Company	N	1
0140	Nationwide		31-4118665	n/a			NWD HP, LLC	OH	NIA	NWD Investments, LLC	ownership	75.000	Nationwide Mutual Insurance Company	N	1
0140	Nationwide		31-1580283	n/a			NWD Investments, LLC	OH	NIA	Nationwide Realty Investors, Ltd.	ownership	80.000	Nationwide Mutual Insurance Company	N	
0140	Nationwide		35-2642005	n/a			NWGH, LLC	DE	NIA	Nationwide Realty Investors, Ltd.	ownership	75.000	Nationwide Mutual Insurance Company	N	1
0140	Nationwide		85-1262262	n/a			NW-Gator Walk, LLC	OH	NIA	Nationwide Mutual Insurance Company	ownership	100.000	Nationwide Mutual Insurance Company	N	
0140	Nationwide		81-4401901	n/a			NW-Grapevine Bluffs, LLC	OH	NIA	Nationwide Mutual Insurance Company	ownership	100.000	Nationwide Mutual Insurance Company	N	
0140	Nationwide		85-0524968	n/a			NW-Groves, LLC	OH	NIA	Nationwide Mutual Fire Insurance Company	ownership	100.000	Nationwide Mutual Insurance Company	N	
0140	Nationwide		82-1881115	n/a			NW-Ironhorse, LLC	OH	NIA	Nationwide Mutual Insurance Company	ownership	100.000	Nationwide Mutual Insurance Company	N	
0140	Nationwide		47-2482818	n/a			NW-Jasper WAG, LLC	OH	NIA	NW REI, LLC	ownership	100.000	Nationwide Mutual Insurance Company	N	
0140	Nationwide		81-1232565	n/a			NW-Lenexa, LLC	OH	NIA	NW REI (NLAIC), LLC	ownership	100.000	Nationwide Mutual Insurance Company	N	
0140	Nationwide		81-1671648	n/a			NW-Lenexa II, LLC	OH	NIA	NW REI (NLAIC), LLC	ownership	100.000	Nationwide Mutual Insurance Company	N	
0140	Nationwide		81-5146596	n/a			NW-Logan, LLC	OH	NIA	NW REI, LLC	ownership	100.000	Nationwide Mutual Insurance Company	N	
0140	Nationwide		81-1361460	n/a			NW-Marketplace, LLC	OH	NIA	Nationwide Mutual Insurance Company	ownership	100.000	Nationwide Mutual Insurance Company	N	
0140	Nationwide		82-4777464	n/a			NW-Mayo, LLC	OH	NIA	NW REI, LLC	ownership	100.000	Nationwide Mutual Insurance Company	N	
0140	Nationwide		81-5146266	n/a			NW-Millenia, LLC	OH	NIA	NW REI, LLC	ownership	100.000	Nationwide Mutual Insurance Company	N	
0140	Nationwide		84-2937171	n/a			NW-Naples, LLC	OH	NIA	Nationwide Mutual Fire Insurance Company	ownership	100.000	Nationwide Mutual Insurance Company	N	
0140	Nationwide		85-1246853	n/a			NW-Oakbrook, LLC	OH	NIA	Nationwide Life and Annuity Insurance Company	ownership	100.000	Nationwide Mutual Insurance Company	N	
0140	Nationwide		83-2260477	n/a			NW-ORBPD, LLC	OH	NIA	NW REI (NMFIC), LLC	ownership	100.000	Nationwide Mutual Insurance Company	N	
0140	Nationwide		83-0849392	n/a			NW-Park Place, LLC	OH	NIA	Nationwide Life Insurance Company	ownership	100.000	Nationwide Mutual Insurance Company	N	
0140	Nationwide		47-1740812	n/a			NW-Peachtree, LLC	OH	NIA	NW REI, LLC	ownership	100.000	Nationwide Mutual Insurance Company	N	

Q12.8

SCHEDULE Y

PART 1A - DETAIL OF INSURANCE HOLDING COMPANY SYSTEM

1	2	3	4	5	6	7	8	9	10	11	12	13	14	15	16
Group Code	Group Name	NAIC Company Code	ID Number	Federal RSSD	CIK	Name of Securities Exchange if Publicly Traded (U.S. or International)	Names of Parent, Subsidiaries or Affiliates	Domiciliary Location	Relationship to Reporting Entity	Directly Controlled by (Name of Entity/Person)	Type of Control (Ownership Board, Management, Attorney-in-Fact, Influence, Other)	If Control is Ownership Provide Percentage	Ultimate Controlling Entity(ies)/Person(s)	Is an SCA Filing Required? (Y/N)	*
0140	Nationwide		46-2469044	n/a			NW-Portales, LLC	OH	NIA	NW REI, LLC	ownership	100.000	Nationwide Mutual Insurance Company	N	
0140	Nationwide		47-2449044	n/a			NW-Promenade at Madison, LLC	OH	NIA	NW REI, LLC	ownership	100.000	Nationwide Mutual Insurance Company	N	
0140	Nationwide		83-2173918	n/a			NW-Radius, LLC	OH	NIA	NW REI (NLIC), LLC	ownership	100.000	Nationwide Mutual Insurance Company	N	
0140	Nationwide		84-4326171	n/a			NW-Southbank, LLC	OH	NIA	Nationwide Mutual Insurance Company	ownership	100.000	Nationwide Mutual Insurance Company	N	
0140	Nationwide		81-3212025	n/a			NW-Springfield, LLC	OH	NIA	Nationwide Mutual Insurance Company	ownership	100.000	Nationwide Mutual Insurance Company	N	
0140	Nationwide		85-0536537	n/a			NW-Sweetwater, LLC	OH	NIA	Nationwide Life Insurance Company	ownership	100.000	Nationwide Mutual Insurance Company	N	
0140	Nationwide		82-5083560	n/a			NW-Twin Lakes, LLC	OH	NIA	NW REI (NMFIC), LLC	ownership	100.000	Nationwide Mutual Insurance Company	N	
0140	Nationwide		46-5764783	n/a			NW-Tyson, LLC	OH	NIA	NW REI, LLC	ownership	100.000	Nationwide Mutual Insurance Company	N	
0140	Nationwide		81-1603024	n/a			NW REI (NLAIC), LLC	OH	NIA	Nationwide Life and Annuity Insurance Company	ownership	100.000	Nationwide Mutual Insurance Company	N	
0140	Nationwide		81-1619428	n/a			NW REI (NLIC), LLC	OH	NIA	Nationwide Life Insurance Company	ownership	100.000	Nationwide Mutual Insurance Company	N	
0140	Nationwide		81-1861190	n/a			NW REI (NMFIC), LLC	OH	NIA	Nationwide Mutual Fire Insurance Company	ownership	100.000	Nationwide Mutual Insurance Company	N	
0140	Nationwide		82-4876417	n/a			NW Village Park, LLC	OH	NIA	NW REI, LLC	ownership	100.000	Nationwide Mutual Insurance Company	N	
0140	Nationwide		31-0947092	n/a			OCH Company, LLC	OH	NIA	Nationwide Realty Investors, Ltd.	ownership	100.000	Nationwide Mutual Insurance Company	N	
0140	Nationwide		31-0947092	n/a			Ohio Center Hotel Company Limited	OH	NIA	Nationwide Realty Investors, Ltd.	ownership	55.250	Nationwide Mutual Insurance Company	N	1
0140	Nationwide		31-0947092	n/a			Ohio Center Hotel Company Limited	OH	NIA	OCH Company, LLC	ownership	1.000	Nationwide Mutual Insurance Company	N	1
0140	Nationwide		26-0263012	n/a			Old Track Street Owners Association, Inc.	OH	OTH	Other non-Nationwide	n/a		Other non-Nationwide	N	2
0140	Nationwide	13999	27-1712056	n/a			Olentangy Reinsurance, LLC	VT	IA	Nationwide Life and Annuity Insurance Company	ownership	100.000	Nationwide Mutual Insurance Company	N	
0140	Nationwide		47-1923444	n/a			Nationwide Agent Risk Purchasing Group, Inc. (fka On Your Side Nationwide Insurance Agency, Inc.)	OH	NIA	THI Holdings (Delaware), Inc.	ownership	100.000	Nationwide Mutual Insurance Company	N	
0140	Nationwide		n/a	n/a			OYS Fund LLC	DE	NIA	Nationwide Mutual Insurance Company	ownership	100.000	Nationwide Mutual Insurance Company	N	
			32-0516252	n/a			Parks Edge Condominium Home Owners Association	OH	OTH	Other non-Nationwide	n/a		Other non-Nationwide	N	2
0140	Nationwide		31-1486309	n/a			Perimeter A, Ltd.	OH	NIA	Nationwide Realty Investors, Ltd.	ownership	100.000	Nationwide Mutual Insurance Company	N	
0140	Nationwide		20-1169305	n/a			Polyphony Fund LLC	DE	NIA	Nationwide Mutual Insurance Company	ownership	100.000	Nationwide Mutual Insurance Company	N	
0140	Nationwide		20-4939866	n/a			Rail Street Parking, LLC	OH	NIA	NRI Equity Land Investments, LLC	ownership	100.000	Nationwide Mutual Insurance Company	N	
0140	Nationwide		75-2938844	n/a			Registered Investment Advisors Services, Inc.	TX	NIA	Nationwide Financial Services, Inc.	ownership	100.000	Nationwide Mutual Insurance Company	N	
0140	Nationwide		82-0549218	n/a			Retention Alternatives Ltd.	BMU	IA	Nationwide Mutual Fire Insurance Company	ownership	100.000	Nationwide Mutual Insurance Company	N	
0140	Nationwide		20-2726014	n/a			Riverview Diversified Opportunities, LLC	DE	OTH	Nationwide Mutual Insurance Company	ownership		Nationwide Mutual Insurance Company	N	2
0140	Nationwide		20-2726014	n/a			Riverview Diversified Opportunities, LLC	DE	OTH	Nationwide Mutual Fire Insurance Company	ownership		Nationwide Mutual Insurance Company	N	2
0140	Nationwide		20-2726014	n/a			Riverview Diversified Opportunities, LLC	DE	OTH	Nationwide Life Insurance Company	ownership		Nationwide Mutual Insurance Company	N	2
0140	Nationwide		26-0384865	n/a			Riverview Multi Series Fund, LL - Class Event	DE	NIA	Nationwide Mutual Insurance Company	ownership	100.000	Nationwide Mutual Insurance Company	N	
0140	Nationwide		20-8027258	n/a			Riverview Multi Series Fund, LL - Class N	DE	NIA	Nationwide Mutual Insurance Company	ownership	100.000	Nationwide Mutual Insurance Company	N	
0140	Nationwide		31-1486309	n/a			Rivulon Hotel I, LLC	OH	NIA	NRI-Rivulon, LLC	ownership	100.000	Nationwide Mutual Insurance Company	N	

Q12.9

SCHEDULE Y

PART 1A - DETAIL OF INSURANCE HOLDING COMPANY SYSTEM

1	2	3	4	5	6	7	8	9	10	11	12	13	14	15	16
Group Code	Group Name	NAIC Company Code	ID Number	Federal RSSD	CIK	Name of Securities Exchange if Publicly Traded (U.S. or International)	Names of Parent, Subsidiaries or Affiliates	Domiciliary Location	Relationship to Reporting Entity	Directly Controlled by (Name of Entity/Person)	Type of Control (Ownership Board, Management, Attorney-in-Fact, Influence, Other)	If Control is Ownership Provide Percentage	Ultimate Controlling Entity(ies)/Person(s)	Is an SCA Filing Required? (Y/N)	*
0140	Nationwide		31-1486309	n/a			Rivulon Hotel II, LLC	OH	NIA	NRI-Rivulon, LLC	ownership	100.000	Nationwide Mutual Insurance Company	N	
0140	Nationwide	15580	31-1117969	n/a			Scottsdale Indemnity Company	OH	IA	Nationwide Mutual Insurance Company	ownership	100.000	Nationwide Mutual Insurance Company	N	
0140	Nationwide	41297	31-1024978	n/a			Scottsdale Insurance Company	OH	IA	Nationwide Mutual Insurance Company	ownership	100.000	Nationwide Mutual Insurance Company	N	
0140	Nationwide	10672	86-0835870	n/a			Scottsdale Surplus Lines Insurance Company	AZ	IA	Scottsdale Insurance Company	ownership	100.000	Nationwide Mutual Insurance Company	N	
0140	Nationwide		83-3547854	n/a			ST GA Fund NW 2018, LLC	GA	NIA	Nationwide Life and Annuity Insurance Company	ownership	3.300	Nationwide Mutual Insurance Company	N	1
0140	Nationwide		83-3547854	n/a			ST GA Fund NW 2018, LLC	GA	NIA	National Casualty Company	ownership	12.000	Nationwide Mutual Insurance Company	N	1
0140	Nationwide		83-3547854	n/a			ST GA Fund NW 2018, LLC	GA	NIA	Nationwide Affinity Insurance Company of America	ownership	41.700	Nationwide Mutual Insurance Company	N	1
0140	Nationwide		83-3547854	n/a			ST GA Fund NW 2018, LLC	GA	NIA	AMCO Insurance Company	ownership	6.700	Nationwide Mutual Insurance Company	N	1
0140	Nationwide		83-3547854	n/a			ST GA Fund NW 2018, LLC	GA	NIA	Allied Property and Casualty Insurance Company	ownership	20.000	Nationwide Mutual Insurance Company	N	1
0140	Nationwide		83-3547854	n/a			ST GA Fund NW 2018, LLC	GA	NIA	Depositors Insurance Company	ownership	16.300	Nationwide Mutual Insurance Company	N	1
0140	Nationwide		91-2158214	n/a			The Hideaway Club	CA	OTH	Other non-Nationwide	n/a		Other non-Nationwide	N	2
0140	Nationwide		20-3541511	n/a			The Madison Club	CA	OTH	Other non-Nationwide	n/a		Other non-Nationwide	N	2
0140	Nationwide		31-1610040	n/a			The Waterfront Partners, LLC	OH	NIA	Nationwide Realty Investors, Ltd.	ownership	50.000	Nationwide Mutual Insurance Company	N	1
0140	Nationwide		52-2031677	n/a			THI Holdings (Delaware), Inc.	DE	NIA	Nationwide Mutual Insurance Company	ownership	100.000	Nationwide Mutual Insurance Company	Y	
0140	Nationwide	36269	86-0619597	n/a			Titan Insurance Company	MI	IA	THI Holdings (Delaware), Inc.	ownership	100.000	Nationwide Mutual Insurance Company	N	
0140	Nationwide		75-1284530	n/a			Titan Insurance Services, Inc.	TX	IA	THI Holdings (Delaware), Inc.	ownership	100.000	Nationwide Mutual Insurance Company	N	
0140	Nationwide		81-1456923	n/a			US Regional Logistics Program, L.P.	DE	NIA	Nationwide Mutual Insurance Company	ownership	23.330	Nationwide Mutual Insurance Company	N	1
0140	Nationwide		81-1456923	n/a			US Regional Logistics Program, L.P.	DE	NIA	Nationwide Life Insurance Company	ownership	13.330	Nationwide Mutual Insurance Company	N	1
0140	Nationwide		81-1456923	n/a			US Regional Logistics Program, L.P.	DE	NIA	Nationwide Life and Annuity Insurance Company	ownership	6.660	Nationwide Mutual Insurance Company	N	1
0140	Nationwide		81-1456923	n/a			US Regional Logistics Program, L.P.	DE	NIA	Nationwide Mutual Fire Insurance Company	ownership	6.660	Nationwide Mutual Insurance Company	N	1
0140	Nationwide		33-0160222	n/a			V.P.I. Services, Inc.	CA	IA	Veterinary Pet Insurance Company	ownership	100.000	Nationwide Mutual Insurance Company	N	
0140	Nationwide	42285	95-3750113	n/a			Veterinary Pet Insurance Company	OH	IA	Scottsdale Insurance Company	ownership	100.000	Nationwide Mutual Insurance Company	N	
0140	Nationwide	42889	34-1394913	n/a			Victoria Fire & Casualty Company	OH	IA	THI Holdings (Delaware), Inc.	ownership	100.000	Nationwide Mutual Insurance Company	N	
0140	Nationwide	10778	34-1842604	n/a			Victoria National Insurance Company	OH	IA	Nationwide Mutual Insurance Company	ownership	100.000	Nationwide Mutual Insurance Company	N	
0140	Nationwide	10105	34-1777972	n/a			Victoria Select Insurance Company	OH	IA	Victoria Fire & Casualty Insurance Company	ownership	100.000	Nationwide Mutual Insurance Company	N	
0140	Nationwide		31-1486309	n/a			Wellington Park, LLC	OH	NIA	Nationwide Realty Investors, Ltd.	ownership	100.000	Nationwide Mutual Insurance Company	N	
0140	Nationwide		n/a	n/a			Zais Zephyr A4, LLC	DE	OTH	Nationwide Life Insurance Company	limited member / no control	60.000	other non-Nationwide	N	2

Q12.10

Asteri Explanation

1	For the purposes of this schedule, Nationwide presumed control of these entities because they are owned by at least 10% and are not wholly-owned by a Nationwide entity.
2	Other ownership indicates a non-ownership circumstance by a Nationwide entity.

NATIONWIDE GENERAL INSURANCE COMPANY PART 1 - LOSS EXPERIENCE

Lines of Business	Current Year to Date			4 Prior Year to Date Direct Loss Percentage
	1 Direct Premiums Earned	2 Direct Losses Incurred	3 Direct Loss Percentage	
1. Fire.....	153,915	137,813	89.538	95.000
2. Allied lines.....	178,106	44,704	25.100	20.000
3. Farmowners multiple peril.....			0.000	
4. Homeowners multiple peril.....	479,464,446	390,880,393	81.524	71.000
5. Commercial multiple peril.....	78,220,633	61,100,394	78.113	76.000
6. Mortgage guaranty.....			0.000	
8. Ocean marine.....			0.000	
9. Inland marine.....	7,848,522	2,196,848	27.991	22.000
10. Financial guaranty.....			0.000	
11.1. Medical professional liability - occurrence.....			0.000	
11.2. Medical professional liability - claims-made.....			0.000	
12. Earthquake.....	3,410,251	1,047,995	30.731	1.000
13. Group accident and health.....			0.000	
14. Credit accident and health.....			0.000	
15. Other accident and health.....			0.000	
16. Workers' compensation.....	75,042	9,556	12.734	4.000
17.1 Other liability-occurrence.....	6,513,275	71,673	1.100	
17.2 Other liability-claims made.....			0.000	
17.3 Excess workers' compensation.....			0.000	
18.1 Products liability-occurrence.....			0.000	
18.2 Products liability-claims made.....			0.000	
19.1, 19.2 Private passenger auto liability.....	302,943,653	210,803,049	69.585	66.000
19.3, 19.4 Commercial auto liability.....	28,508,851	26,886,239	94.308	82.000
21. Auto physical damage.....	254,432,178	143,259,843	56.306	52.000
22. Aircraft (all perils).....			0.000	
23. Fidelity.....			0.000	
24. Surety.....			0.000	
26. Burglary and theft.....	2,566	222	8.652	11.000
27. Boiler and machinery.....	2,066,108	942,538	45.619	35.000
28. Credit.....			0.000	
29. International.....			0.000	
30. Warranty.....			0.000	
31. Reinsurance-nonproportional assumed property.....	XXX	XXX	XXX	XXX
32. Reinsurance-nonproportional assumed liability.....	XXX	XXX	XXX	XXX
33. Reinsurance-nonproportional assumed financial lines.....	XXX	XXX	XXX	XXX
34. Aggregate write-ins for other lines of business.....	0	0	0.000	
35. Totals.....	1,163,817,546	837,381,267	71.951	65.740

DETAILS OF WRITE-INS

3401.....			0.000	
3402.....			0.000	
3403.....			0.000	
3498 Sum. of remaining write-ins for Line 34 from overflow page.....	0	0	0.000	XXX
3499 Totals (Lines 3401 thru 3403 plus 3498) (Line 34).....	0	0	0.000	

PART 2 - DIRECT PREMIUMS WRITTEN

Lines of Business	1	2	3
	Current Quarter	Current Year to Date	Prior Year Year to Date
1. Fire.....	36,374	160,994	114,953
2. Allied lines.....	55,507	168,666	122,165
3. Farmowners multiple peril.....			
4. Homeowners multiple peril.....	179,533,939	507,477,347	488,912,488
5. Commercial multiple peril.....	21,937,653	70,348,994	77,986,303
6. Mortgage guaranty.....			
8. Ocean marine.....			
9. Inland marine.....	3,299,637	9,180,928	7,047,799
10. Financial guaranty.....			
11.1 Medical professional liability - occurrence.....			
11.2 Medical professional liability - claims made.....			
12. Earthquake.....	1,210,770	3,907,745	2,722,410
13. Group accident and health.....			
14. Credit accident and health.....			
15. Other accident and health.....			
16. Workers' compensation.....	115,122	178,710	20,145
17.1 Other liability-occurrence.....	2,959,810	7,674,936	6,398,003
17.2 Other liability-claims made.....			
17.3 Excess workers' compensation.....			
18.1 Products liability-occurrence.....			
18.2 Products liability-claims made.....			
19.1 19.2 Private passenger auto liability.....	128,024,868	340,765,778	263,923,481
19.3 19.4 Commercial auto liability.....	4,267,536	17,280,259	36,400,120
21. Auto physical damage.....	100,898,575	276,548,309	236,434,373
22. Aircraft (all perils).....			
23. Fidelity.....			
24. Surety.....			
26. Burglary and theft.....	837	2,411	1,698
27. Boiler and machinery.....	680,727	2,007,215	2,036,606
28. Credit.....			
29. International.....			
30. Warranty.....			
31. Reinsurance-nonproportional assumed property.....	XXX	XXX	XXX
32. Reinsurance-nonproportional assumed liability.....	XXX	XXX	XXX
33. Reinsurance-nonproportional assumed financial lines.....	XXX	XXX	XXX
34. Aggregate write-ins for other lines of business.....	0	0	0
35. Totals.....	443,021,355	1,235,702,292	1,122,120,544

DETAILS OF WRITE-INS

3401.....			
3402.....			
3403.....			
3498 Sum. of remaining write-ins for Line 34 from overflow page.....	0	0	0
3499 Totals (Lines 3401 thru 3403 plus 3498) (Line 34).....	0	0	0

PART 3 (000 omitted)

LOSS AND LOSS ADJUSTMENT EXPENSE RESERVES SCHEDULE

	1	2	3	4	5	6	7	8	9	10	11	12	13
Years in Which Losses Occurred	Prior Year-End Known Case Loss and LAE Reserves	Prior Year-End IBNR Loss and LAE Reserves	Total Prior Year-End Loss and LAE Reserves (Cols. 1 + 2)	2020 Loss and LAE Payments on Claims Reported as of Prior Year-End	2020 Loss and LAE Payments on Claims Unreported as of Prior Year-End	Total 2020 Loss and LAE Payments (Cols. 4 + 5)	Q.S. Date Known Case Loss and LAE Reserves on Claims Reported and Open as of Prior Year-End	Q.S. Date Known Case Loss and LAE Reserves on Claims Reported or Reopened Subsequent to Prior Year-End	Q.S. Date IBNR Loss and LAE Reserves	Total Q.S. Loss and LAE Reserves (Cols. 7 + 8 + 9)	Prior Year-End Known Case Loss and LAE Reserves Developed (Savings)/Deficiency (Cols. 4 + 7 minus Col. 1)	Prior Year-End IBNR Loss and LAE Reserves Developed (Savings)/Deficiency (Cols. 5 + 8 + 9 minus Col. 2)	Prior Year-End Total Loss and LAE Reserve Developed (Savings)/Deficiency (Cols. 11 + 12)
1. 2017 + Prior.....	41,401	17,671	59,072	13,149	612	13,761	30,580	719	14,391	45,690	2,328	(1,949)	379
2. 2018.....	17,585	12,572	30,157	8,928	431	9,359	12,627	638	9,346	22,611	3,970	(2,157)	1,813
3. Subtotals 2018 + Prior.....	58,986	30,243	89,229	22,077	1,043	23,120	43,207	1,357	23,737	68,301	6,298	(4,106)	2,192
4. 2019.....	23,674	28,989	52,663	19,251	3,025	22,276	13,746	2,152	17,509	33,407	9,323	(6,303)	3,020
5. Subtotals 2019 + Prior.....	82,660	59,232	141,892	41,328	4,068	45,396	56,953	3,509	41,246	101,708	15,621	(10,409)	5,212
6. 2020.....	XXX	XXX	XXX	XXX	49,147	49,147	XXX	17,327	30,384	47,711	XXX	XXX	XXX
7. Totals.....	82,660	59,232	141,892	41,328	53,215	94,543	56,953	20,836	71,630	149,419	15,621	(10,409)	5,212
8. Prior Year-End's Surplus As Regards Policyholders	229,901												
											Col. 11, Line 7 As % of Col. 1, Line 7	Col. 12, Line 7 As % of Col. 2, Line 7	Col. 13, Line 7 As % of Col. 3, Line 7
											1.18.9 %	2.(17.6)%	3.3.7 %
													Col. 13, Line 7 Line 8
													4.2.3 %

Q14

SUPPLEMENTAL EXHIBITS AND SCHEDULES INTERROGATORIES

The following supplemental reports are required to be filed as part of your statement filing. However, in the event that your company does not transact the type of business for which the special report must be filed, your response of NO to the specific interrogatory will be accepted in lieu of filing a "NONE" report and a bar code will be printed below. If the supplement is required of your company but is not being filed for whatever reason, enter SEE EXPLANATION and provide an explanation following the interrogatory questions.

	Response
1. Will the Trusteed Surplus Statement be filed with the state of domicile and the NAIC with this statement?	NO _____
2. Will Supplement A to Schedule T (Medical Professional Liability Supplement) be filed with this statement?	NO _____
3. Will the Medicare Part D Coverage Supplement be filed with the state of domicile and the NAIC with this statement?	NO _____
4. Will the Director and Officer Insurance Coverage Supplement be filed with the state of domicile and the NAIC with this statement?	NO _____

Explanation:

1. The data for this supplement is not required to be filed.
2. The data for this supplement is not required to be filed.
3. The data for this supplement is not required to be filed.
4. The data for this supplement is not required to be filed.

Bar Code:



NATIONWIDE GENERAL INSURANCE COMPANY
Overflow Page for Write-Ins

Additional Write-ins for Assets:

	Current Statement Date			4 December 31, Prior Year Net Admitted Assets
	1 Assets	2 Nonadmitted Assets	3 Net Admitted Assets (Cols. 1 - 2)	
2504. Recoupment receivable.....	235,235		235,235	457,998
2505. Funds held equity pools & associations.....	1,377,129		1,377,129	1,585,747
2506. Deductible receivables.....	29,925	2,829	27,096	32,361
2507. Other assets nonadmitted.....	133	133	0	
2597. Summary of remaining write-ins for Line 25.....	1,642,422	2,962	1,639,460	2,076,106

Additional Write-ins for Liabilities:

	1 Current Statement Date	2 December 31, Prior Year
2504. Contingent suit liability.....	91,641	60,657
2597. Summary of remaining write-ins for Line 25.....	91,641	60,657

**NATIONWIDE GENERAL INSURANCE COMPANY
SCHEDULE A - VERIFICATION**

Real Estate

	1 Year to Date	2 Prior Year Ended December 31
1. Book/adjusted carrying value, December 31 of prior year.....	0	
2. Cost of acquired:		
2.1 Actual cost at time of acquisition.....		
2.2 Additional investment made after acquisition.....		
3. Current year change in encumbrances.....		
4. Total gain (loss) on disposals.....		
5. Deduct amounts received on disposals.....		
6. Total foreign exchange change in book/adjusted carrying value.....		
7. Deduct current year's other-than-temporary impairment recognized.....		
8. Deduct current year's depreciation.....		
9. Book/adjusted carrying value at end of current period (Lines 1+2+3+4-5+6-7-8).....	0	0
10. Deduct total nonadmitted amounts.....		
11. Statement value at end of current period (Line 9 minus Line 10).....	0	0

NONE

SCHEDULE B - VERIFICATION

Mortgage Loans

	1 Year to Date	2 Prior Year Ended December 31
1. Book value/recorded investment excluding accrued interest, December 31 of prior year.....	0	
2. Cost of acquired:		
2.1 Actual cost at time of acquisition.....		
2.2 Additional investment made after acquisition.....		
3. Capitalized deferred interest and other.....		
4. Accrual of discount.....		
5. Unrealized valuation increase (decrease).....		
6. Total gain (loss) on disposals.....		
7. Deduct amounts received on disposals.....		
8. Deduct amortization of premium and mortgage interest points and commitment fees.....		
9. Total foreign exchange change in book value/recorded investment excluding accrued interest.....		
10. Deduct current year's other-than-temporary impairment recognized.....		
11. Book value/recorded investment excluding accrued interest at end of current period (Lines 1+2+3+4+5+6-7-8+9-10).....	0	0
12. Total valuation allowance.....		
13. Subtotal (Line 11 plus Line 12).....	0	0
14. Deduct total nonadmitted amounts.....		
15. Statement value at end of current period (Line 13 minus Line 14).....	0	0

NONE

SCHEDULE BA - VERIFICATION

Other Long-Term Invested Assets

	1 Year to Date	2 Prior Year Ended December 31
1. Book/adjusted carrying value, December 31 of prior year.....	2,635,028	1,486,256
2. Cost of acquired:		
2.1 Actual cost at time of acquisition.....		2,367,341
2.2 Additional investment made after acquisition.....	(112,446)	1,603,894
3. Capitalized deferred interest and other.....		
4. Accrual of discount.....		
5. Unrealized valuation increase (decrease).....		
6. Total gain (loss) on disposals.....		
7. Deduct amounts received on disposals.....		144,599
8. Deduct amortization of premium and depreciation.....	1,161,377	2,677,864
9. Total foreign exchange change in book/adjusted carrying value.....		
10. Deduct current year's other-than-temporary impairment recognized.....		
11. Book/adjusted carrying value at end of current period (Lines 1+2+3+4+5+6-7-8+9-10).....	1,361,205	2,635,028
12. Deduct total nonadmitted amounts.....		
13. Statement value at end of current period (Line 11 minus Line 12).....	1,361,205	2,635,028

SCHEDULE D - VERIFICATION

Bonds and Stocks

	1 Year to Date	2 Prior Year Ended December 31
1. Book/adjusted carrying value of bonds and stocks, December 31 of prior year.....	398,290,838	227,001,768
2. Cost of bonds and stocks acquired.....	34,034,388	228,432,955
3. Accrual of discount.....	588,206	871,165
4. Unrealized valuation increase (decrease).....	695,740	(195,286)
5. Total gain (loss) on disposals.....	(246,540)	(107,165)
6. Deduct consideration for bonds and stocks disposed of.....	69,104,647	55,829,833
7. Deduct amortization of premium.....	1,339,948	1,883,882
8. Total foreign exchange change in book/adjusted carrying value.....		
9. Deduct current year's other-than-temporary impairment recognized.....	2,866,132	
10. Total investment income recognized as a result of prepayment penalties and/or acceleration fees.....	209,562	1,116
11. Book/adjusted carrying value at end of current period (Lines 1+2+3+4+5-6-7+8-9+10).....	360,261,467	398,290,838
12. Deduct total nonadmitted amounts.....		
13. Statement value at end of current period (Line 11 minus Line 12).....	360,261,467	398,290,838

SCHEDULE D - PART 1B

Showing the Acquisitions, Dispositions and Non-Trading Activity
During the Current Quarter for all Bonds and Preferred Stock by NAIC Designation

NAIC Designation	1 Book/Adjusted Carrying Value Beginning of Current Quarter	2 Acquisitions During Current Quarter	3 Dispositions During Current Quarter	4 Non-Trading Activity During Current Quarter	5 Book/Adjusted Carrying Value End of First Quarter	6 Book/Adjusted Carrying Value End of Second Quarter	7 Book/Adjusted Carrying Value End of Third Quarter	8 Book/Adjusted Carrying Value December 31 Prior Year
BONDS								
1. NAIC 1 (a).....	244,585,534	9,164,734	19,457,008	(224,923)	246,535,951	244,585,534	234,068,337	258,818,011
2. NAIC 2 (a).....	118,194,301		11,265,147	10,562	114,607,076	118,194,301	106,939,716	110,583,392
3. NAIC 3 (a).....	17,711,944		1,784,744	76,216	16,489,593	17,711,944	16,003,416	22,938,438
4. NAIC 4 (a).....					2,959,125		0	3,250,000
5. NAIC 5 (a).....	3,494,500		499,500	255,000	786,250	3,494,500	3,250,000	2,701,000
6. NAIC 6 (a).....							0	
7. Total Bonds.....	383,986,279	9,164,734	33,006,399	116,855	381,377,995	383,986,279	360,261,469	398,290,841
PREFERRED STOCK								
8. NAIC 1.....							0	
9. NAIC 2.....							0	
10. NAIC 3.....							0	
11. NAIC 4.....							0	
12. NAIC 5.....							0	
13. NAIC 6.....							0	
14. Total Preferred Stock.....	0	0	0	0	0	0	0	0
15. Total Bonds and Preferred Stock.....	383,986,279	9,164,734	33,006,399	116,855	381,377,995	383,986,279	360,261,469	398,290,841

QS102

(a) Book/Adjusted Carrying Value column for the end of the current reporting period includes the following amount of short-term and cash equivalent bonds by NAIC designation:

NAIC 1 \$.....0; NAIC 2 \$.....0; NAIC 3 \$.....0; NAIC 4 \$.....0; NAIC 5 \$.....0; NAIC 6 \$.....0.

SCHEDULE DA - PART 1

Short-Term Investments

	1 Book/Adjusted Carrying Value	2 Par Value	3 Actual Cost	4 Interest Collected Year To Date	5 Paid for Accrued Interest Year To Date
9199999.....51,059,997XXX.....51,059,9972,739

SCHEDULE DA - VERIFICATION

Short-Term Investments

	1 Year To Date	2 Prior Year Ended December 31
1. Book/adjusted carrying value, December 31 of prior year.....12,066,1606,706,543
2. Cost of short-term investments acquired.....193,622,506239,777,220
3. Accrual of discount.....
4. Unrealized valuation increase (decrease).....
5. Total gain (loss) on disposals.....
6. Deduct consideration received on disposals.....154,628,670234,417,603
7. Deduct amortization of premium.....
8. Total foreign exchange change in book/adjusted carrying value.....
9. Deduct current year's other-than-temporary impairment recognized.....
10. Book/adjusted carrying value at end of current period (Lines 1+2+3+4+5-6-7+8-9).....51,059,99612,066,160
11. Deduct total nonadmitted amounts.....
12. Statement value at end of current period (Line 10 minus Line 11).....51,059,99612,066,160

**Sch. DB - Pt. A - Verification
NONE**

**Sch. DB - Pt. B - Verification
NONE**

**Sch. DB - Pt. C - Sn. 1
NONE**

**Sch. DB - Pt. C - Sn. 2
NONE**

**Sch. DB - Verification
NONE**

**Sch. E - Pt. 2 Verification
NONE**

**Sch. A Pt. 2
NONE**

**Sch. A Pt. 3
NONE**

**Sch. B - Pt. 2
NONE**

**Sch. B - Pt. 3
NONE**

SCHEDULE BA - PART 2

Showing Other Long-Term Invested Assets ACQUIRED AND ADDITIONS MADE During the Current Quarter

1 CUSIP Identification	2 Name or Description	Location		5 Name of Vendor or General Partner	6 NAIC Designation and Administrative Symbol/Market Indicator	7 Date Originally Acquired	8 Type and Strategy	9 Actual Cost at Time of Acquisition	10 Additional Investment Made after Acquisition	11 Amount of Encumbrances	12 Commitment for Additional Investment	13 Percentage of Ownership	
		3 City	4 State										
Joint Venture or Partnership Interests That Have Underlying Characteristics of Real Estate - Unaffiliated													
	Liberty Heights SP LLC.....	Norfolk.....	VA....	Liberty Heights SP MM LLC.....		12/27/2018....			43,614		8,658	13.270	
2199999. Total - Joint Venture or Partnership Interests That Have Underlying Characteristics of Real Estate - Unaffiliated.....									0	43,614	0	8,658	XXX.....
4899999. Subtotal - Unaffiliated.....									0	43,614	0	8,658	XXX.....
5099999. Totals.....									0	43,614	0	8,658	XXX.....

QE03

SCHEDULE BA - PART 3

Showing Other Long-Term Invested Assets DISPOSED, Transferred or Repaid During the Current Quarter

1 CUSIP Identification	2 Name or Description	Location		5 Name of Purchaser or Nature of Disposal	6 Date Originally Acquired	7 Disposal Date	8 Book/Adjusted Carrying Value Less Encumbrances, Prior Year	Changes in Book/Adjusted Carrying Value						15 Book/Adjusted Carrying Value Less Encumbrances on Disposal	16 Consideration	17 Foreign Exchange Gain (Loss) on Disposal	18 Realized Gain (Loss) on Disposal	19 Total Gain (Loss) on Disposal	20 Investment Income
		3 City	4 State					9 Unrealized Valuation Increase (Decrease)	10 Current Year's (Depreciation) or (Amortization) / Accretion	11 Current Year's Other-Than-Temporary Impairment Recognized	12 Capitalized Deferred Interest and Other	13 Total Change in B./A.C.V. (9+10-11+12)	14 Total Foreign Exchange Change in B./A.C.V.						
NONE																			

SCHEDULE D - PART 3

Showing all Long-Term Bonds and Stocks ACQUIRED During Current Quarter

1	2	3	4	5	6	7	8	9	10
CUSIP Identification	Description	Foreign	Date Acquired	Name of Vendor	Number of Shares of Stock	Actual Cost	Par Value	Paid for Accrued Interest and Dividends	NAIC Designation and Administrative Symbol
Bonds - U.S. Special Revenue and Special Assessment									
3132D5 6D 9	FHLMC Pool #SB8068 1.500% 10/25/35		08/19/2020	Wells Fargo Securities LLC		7,158,867	7,000,000	4,667	1
3199999	Total - Bonds - U.S. Special Revenue and Special Assessments					7,158,867	7,000,000	4,667	XXX
Bonds - Industrial and Miscellaneous									
110122 CT 3	Bristol-Myers Squibb Co Sr Nt 3.950% 1		07/17/2020	Tax Free Exchange		2,005,867	2,000,000	20,189	1FE
3899999	Total - Bonds - Industrial and Miscellaneous					2,005,867	2,000,000	20,189	XXX
8399997	Total - Bonds - Part 3					9,164,734	9,000,000	24,856	XXX
8399999	Total - Bonds					9,164,734	9,000,000	24,856	XXX
9999999	Total - Bonds, Preferred and Common Stocks					9,164,734	XXX	24,856	XXX

QE04

SCHEDULE D - PART 4

Showing all Long-Term Bonds and Stocks SOLD, REDEEMED or Otherwise DISPOSED OF During Current Quarter

1	2	3	4	5	6	7	8	9	10	Change in Book/Adjusted Carrying Value					16	17	18	19	20	21	22
										11	12	13	14	15							
CUSIP Identification	Description	Foreign	Disposal Date	Name of Purchaser	Number of Shares of Stock	Consideration	Par Value	Actual Cost	Prior Year Book/Adjusted Carrying Value	Unrealized Valuation Increase (Decrease)	Current Year's (Amortization) / Accretion	Current Year's Other-Than-Temporary Impairment Recognized	Total Change in B./A.C.V. (11+12-13)	Total Foreign Exchange Change in B./A.C.V.	Book/Adjusted Carrying Value at Disposal Date	Foreign Exchange Gain (Loss) on Disposal	Realized Gain (Loss) on Disposal	Total Gain (Loss) on Disposal	Bond Interest / Stock Dividends Received During Year	Stated Contractual Maturity Date	NAIC Designation and Administrative Symbol
Bonds - U.S. Government																					
911760	EJ 1		09/01/2020	Vendee Mtg Tr RMBS REMIC Ser 1994-2 3ZB		71,873	71,873	75,060	73,429		(1,556)		(1,556)		71,873			0	3,110	06/15/2024	1
912828	2J 8		07/15/2020	U S Treasury Nt 1.500% 07/15/20		1,975,000	1,975,000	1,975,084	1,975,016		(16)		(16)		1,975,000			0	29,625	07/15/2020	1
0599999	Total - Bonds - U.S. Government					2,046,873	2,046,873	2,050,144	2,048,445	0	(1,572)	0	(1,572)	0	2,046,873	0	0	0	32,735	XXX	XXX
Bonds - U.S. Special Revenue and Special Assessment																					
3132CW	AU 8		09/01/2020	FHLMC Pool #B0019 3.500% 06/25/34		737,080	737,080	764,490	764,232		(27,151)		(27,151)		737,080			0	17,135	06/25/2034	1
3138M4	D8 2		09/01/2020	FNMA Pool #AP1026 3.000% 07/25/42		101,710	101,710	97,832	97,912		3,798		3,798		101,710			0	1,950	07/25/2042	1
3138W9	LM 0		09/01/2020	FNMA Pool #AS0331 3.000% 08/25/43		220,750	220,750	212,068	212,250		8,500		8,500		220,750			0	4,468	08/25/2043	1
3138X0	Y2 8		09/01/2020	FNMA Pool #AU1628 3.000% 07/25/43		253,142	253,142	243,164	243,364		9,777		9,777		253,142			0	5,183	07/25/2043	1
3138YY	DT 7		09/01/2020	FNMA Pool #AZ6413 3.000% 11/25/45		255,276	255,276	243,787	243,993		11,283		11,283		255,276			0	4,993	11/25/2045	1
3140KD	GA 6		09/01/2020	FNMA Pool #BP5618 2.500% 06/25/50		59,679	59,679	62,071			(2,392)		(2,392)		59,679			0	247	06/25/2050	1
3140QD	6N 9		09/01/2020	FNMA Pool #CA6276 2.000% 07/25/50		28,805	28,805	29,457			(653)		(653)		28,805			0	100	07/25/2050	1
31416X	YZ 7		09/01/2020	FNMA Pool #AB2527 4.000% 03/25/41		500,449	500,449	504,086	503,647		(3,198)		(3,198)		500,449			0	13,202	03/25/2041	1
31418B	TJ 5		09/01/2020	FNMA Pool #MA2352 3.500% 08/01/45		687,551	687,551	713,603	712,135		(24,584)		(24,584)		687,551			0	16,110	08/01/2045	1
31418D	CA 8		09/01/2020	FNMA Pool #MA3664 4.000% 05/25/49		1,811,273	1,811,273	1,876,931	1,875,973		(64,700)		(64,700)		1,811,273			0	47,472	05/25/2049	1
31418D	CB 6		09/01/2020	FNMA Pool #MA3665 4.500% 05/25/49		462,244	462,244	483,695	483,447		(21,204)		(21,204)		462,244			0	13,589	05/25/2049	1
31419B	CT 0		09/01/2020	FNMA Pool #AE0981 3.500% 03/25/41		222,842	222,842	229,771	229,037		(6,196)		(6,196)		222,842			0	5,205	03/25/2041	1
31419L	3D 3		09/01/2020	FNMA Pool #AE9795 3.500% 11/25/40		60,487	60,487	63,785	63,520		(3,033)		(3,033)		60,487			0	1,451	11/25/2040	1
915137	J9 5		08/15/2020	University TX Rev Fin Sys Ser C 5.000%		7,000,000	7,000,000	7,670,880	7,041,462		(41,462)		(41,462)		7,000,000			0	350,000	08/15/2020	1FE
3199999	Total - Bonds - U.S. Special Revenue and Special Assessments					12,401,288	12,401,288	13,195,620	12,470,972	0	(161,215)	0	(161,215)	0	12,401,288	0	0	0	481,105	XXX	XXX
Bonds - Industrial and Miscellaneous																					
02376T	AC 2		07/15/2020	American Airlines Inc LBASS EETC Ser 201	100.0000	1,784,744	1,784,744	1,802,592	1,793,100		(8,356)		(8,356)		1,784,744			0	99,915	07/15/2020	3FE
03464R	AA 1		09/01/2020	Angel Oak Mortgage Trust RMBS Series 202		18,751	18,751	18,751					0	18,751			0	268	12/25/2059	1FE	
07331Y	AA 8		09/28/2020	Bayview Opport Mast Fund Trust RMBS Ser		138,397	138,397	137,349	137,470		927		927	138,397			0	3,314	01/25/2055	1FM	
110122	BD 9		07/17/2020	Bristol-Myers Squibb Co Sr Nt 3.950% 1		2,005,867	2,000,000	2,021,249	2,018,678		(12,811)		(12,811)	2,005,867			0	59,689	10/15/2020	1FE	
14041N	FN 6		09/15/2020	Capital One Multi Asset ExecTr LBASS Ser		902,857	902,857	884,711	895,600		7,257		7,257	902,857			0	13,475	07/17/2023	1FE	
46641W	AW 7		09/01/2020	JPMBB Comm Mtg Sec Tr CMBS Ser 2014-C19		47,853	47,853	49,289	47,208		973		973	48,181		(328)	(328)	1,283	04/15/2047	1FM	
50540R	AJ 1		08/17/2020	Laboratory Corp of America Sr Nt 4.625	100.0000	5,000,000	5,000,000	5,460,750	5,054,950		(39,410)		(39,410)	5,015,540		(15,540)	(15,540)	174,722	11/15/2020	2FE	
542514	GW 8		09/25/2020	Long Beach Mtg Loan Tr RMBS Ser 2004-5 C		229,692	229,692	229,616	229,627		65		65	229,692			0	1,880	09/25/2034	1FM	
61748H	LC 3		09/01/2020	Morgan Stanley Mtg Tr RMBS Ser 2005-5AR		147,451	147,451	135,267	135,267				0	135,267		12,184	12,184	3,431	09/25/2035	1FM	
61761Q	AC 7		09/01/2020	Morgan Stanley BAML Tr CMBS Ser 2013-C8		173,360	173,360	171,651	172,073		1,288		1,288	173,360			0	3,114	12/15/2048	1FM	
61765L	AS 9		09/01/2020	Morgan Stanley BAML Tr CMBS Ser 2015-C24		157,211	157,211	161,919	159,092		(1,882)		(1,882)	157,211			0	3,856	08/15/2047	1FM	
64830B	AA 5		09/01/2020	New Residential Mtg Ln Tr RMBS Ser 2017-		162,684	162,684	168,172	167,763		(5,079)		(5,079)	162,684			0	4,432	08/27/2057	1FM	

QE05

SCHEDULE D - PART 4

Showing all Long-Term Bonds and Stocks SOLD, REDEEMED or Otherwise DISPOSED OF During Current Quarter

1	2	3	4	5	6	7	8	9	10	Change in Book/Adjusted Carrying Value					16	17	18	19	20	21	22
										11	12	13	14	15							
CUSIP Identification	Description	F o r e i g n	Disposal Date	Name of Purchaser	Number of Shares of Stock	Consideration	Par Value	Actual Cost	Prior Year Book/Adjusted Carrying Value	Unrealized Valuation Increase (Decrease)	Current Year's (Amortization) / Accretion	Current Year's Other-Than-Temporary Impairment Recognized	Total Change in B./A.C.V. (11+12-13)	Total Foreign Exchange Change in B./A.C.V.	Book/Adjusted Carrying Value at Disposal Date	Foreign Exchange Gain (Loss) on Disposal	Realized Gain (Loss) on Disposal	Total Gain (Loss) on Disposal	Bond Interest / Stock Dividends Received During Year	Stated Contractual Maturity Date	NAIC Designation and Administrative Symbol
75973F AA 9	Renew LBASS Ser 2018-1 Cl A 3.950% 09/		09/20/2020	Paydown.....		259,292	259,292	258,723	258,739		553		553		259,292			0	7,205	09/20/2053	1FE.....
871829 AX 5	Sysco Corp Sr Nt 2.600% 10/01/20.....		09/01/2020	Call 100.0000.....		6,000,000	6,000,000	5,909,172	5,962,445		33,420		33,420		5,995,865		4,135	4,135	143,000	10/01/2020	2FE.....
88031R AA 6	Tenaska Alabama II Partners LP Sr Sec Nt		09/30/2020	Redemption 100.0000.....		100,006	100,006	103,439	102,734		(2,728)		(2,728)		100,006			0	4,594	03/30/2023	2FE.....
89177B AA 3	Towd Point Mortgage Tr RMBS Ser 2019-1 C		09/01/2020	Paydown.....		198,136	198,136	196,929	196,970		1,166		1,166		198,136			0	4,888	03/25/2058	1FM.....
90270R AC 8	UBS-Barclays Comm Mort Tr CMBS Ser 2012-		09/01/2020	Paydown.....				12,104	8,538		(8,538)		(8,538)					0	2,780	12/10/2045	1FE.....
9497EU AJ 6	Wells Fargo Home Eq Tr RMBS Ser 2006-1 C		09/25/2020	Paydown.....		569,737	569,737	564,485	566,340		3,396		3,396		569,737			0	4,981	05/25/2036	1FM.....
G7222G AA 2	Preferred Term Secs XVII LBASS Sec Nt...		09/23/2020	Paydown.....		9,414	9,414	9,100	7,921		1,493		1,493		9,414			0	162	06/23/2035	1FE.....
009090 AB 7	Air Canada LBASS EETC Ser 2015-1B 3.87	A	09/15/2020	Redemption 100.0000.....		153,736	153,736	150,088	150,857		2,878		2,878		153,736			0	5,957	03/15/2023	2FE.....
G9420R AA 4	Valaris Plc Sr Nt 4.875% 06/01/22.....	D	09/23/2020	Jefferies & Company Inc.....		296,000	3,700,000	499,500			13,209	2,866,132	(2,852,923)		499,500		(203,500)	(203,500)		06/01/2022	5FE.....
3899999.	Total - Bonds - Industrial and Miscellaneous.....					18,355,188	21,753,321	18,944,856	18,065,372	0	(12,179)	2,866,132	(2,878,311)	0	18,558,237	0	(203,049)	(203,049)	542,946	XXX	XXX
8399997.	Total - Bonds - Part 4.....					32,803,349	36,201,482	34,190,620	32,584,789	0	(174,966)	2,866,132	(3,041,098)	0	33,006,398	0	(203,049)	(203,049)	1,056,786	XXX	XXX
8399999.	Total - Bonds.....					32,803,349	36,201,482	34,190,620	32,584,789	0	(174,966)	2,866,132	(3,041,098)	0	33,006,398	0	(203,049)	(203,049)	1,056,786	XXX	XXX
9999999.	Total - Bonds, Preferred and Common Stocks.....					32,803,349	XXX	34,190,620	32,584,789	0	(174,966)	2,866,132	(3,041,098)	0	33,006,398	0	(203,049)	(203,049)	1,056,786	XXX	XXX

QE05.1

**Sch. DB - Pt. A - Sn. 1
NONE**

**Sch. DB - Pt. B - Sn. 1
NONE**

**Sch. DB - Pt. D - Sn. 1
NONE**

**Sch. DB - Pt. D - Sn. 2
NONE**

**Sch. DB - Pt. E
NONE**

**Sch. DL - Pt. 1
NONE**

**Sch. DL - Pt. 2
NONE**

NATIONWIDE GENERAL INSURANCE COMPANY

SCHEDULE E - PART 1 - CASH

Month End Depository Balances

1 Depository	2 Code	3 Rate of Interest	4 Amount of Interest Received During Current Quarter	5 Amount or interest Accrued at Current Statement Date	Book Balance at End of Each Month During Current Quarter			9 *
					6 First Month	7 Second Month	8 Third Month	
Open Depositories								
Bank of New York Mellon..... New York, NY.....				96,352157,05317,140	XXX
0199999. Total Open Depositories.....	XXX	XXX0096,352157,05317,140	XXX
0399999. Total Cash on Deposit.....	XXX	XXX0096,352157,05317,140	XXX
0599999. Total Cash.....	XXX	XXX0096,352157,05317,140	XXX

SCHEDULE E - PART 2 - CASH EQUIVALENTS

Show Investments Owned End of Current Quarter

1 CUSIP	2 Description	3 Code	4 Date Acquired	5 Rate of Interest	6 Maturity Date	7 Book/Adjusted Carrying Value	8 Amount of Interest Due & Accrued	9 Amount Received During Year
------------	------------------	-----------	--------------------	-----------------------	--------------------	-----------------------------------	--	----------------------------------

NONE

QE14