



PROPERTY AND CASUALTY COMPANIES - ASSOCIATION EDITION

QUARTERLY STATEMENT

AS OF SEPTEMBER 30, 2020

OF THE CONDITION AND AFFAIRS OF THE

Safe Auto Choice Insurance Company

NAIC Group Code 4940 4940 NAIC Company Code 16502 Employer's ID Number 83-2241547
(Current) (Prior)

Organized under the Laws of Ohio, State of Domicile or Port of Entry OH

Country of Domicile United States of America

Incorporated/Organized 10/15/2018 Commenced Business 09/03/2020

Statutory Home Office 4 Easton Oval, Columbus, OH, US 43219
(Street and Number) (City or Town, State, Country and Zip Code)

Main Administrative Office 4 Easton Oval
(Street and Number)
Columbus, OH, US 43219, 614-944-7315
(City or Town, State, Country and Zip Code) (Area Code) (Telephone Number)

Mail Address 4 Easton Oval, Columbus, OH, US 43219
(Street and Number or P.O. Box) (City or Town, State, Country and Zip Code)

Primary Location of Books and Records 4 Easton Oval
(Street and Number)
Columbus, OH, US 43219, 614-944-7085
(City or Town, State, Country and Zip Code) (Area Code) (Telephone Number)

Internet Website Address N/A

Statutory Statement Contact Thomas J Happensack, 614-944-7680
(Name) (Area Code) (Telephone Number)
thomas.happensack@safeauto.com, 614-559-5357
(E-mail Address) (FAX Number)

OFFICERS

Chief Executive Officer & President Ronald H Davies Chief Financial Officer & Treasurer Gregory A Sutton
Chief Legal Officer & Secretary Kelly A Armstrong Controller Thomas J Happensack

OTHER

Evan McKee, Claims and Product Leader

DIRECTORS OR TRUSTEES

Ronald H Davies Ari Deshe Elie Deshe
Jon P Diamond Gabriel Gliksberg William Graves
Oded Gur-Arie Karen Morrison

State of Ohio SS:
County of Franklin

The officers of this reporting entity being duly sworn, each depose and say that they are the described officers of said reporting entity, and that on the reporting period stated above, all of the herein described assets were the absolute property of the said reporting entity, free and clear from any liens or claims thereon, except as herein stated, and that this statement, together with related exhibits, schedules and explanations therein contained, annexed or referred to, is a full and true statement of all the assets and liabilities and of the condition and affairs of the said reporting entity as of the reporting period stated above, and of its income and deductions therefrom for the period ended, and have been completed in accordance with the NAIC Annual Statement Instructions and Accounting Practices and Procedures manual except to the extent that: (1) state law may differ; or, (2) that state rules or regulations require differences in reporting not related to accounting practices and procedures, according to the best of their information, knowledge and belief, respectively. Furthermore, the scope of this attestation by the described officers also includes the related corresponding electronic filing with the NAIC, when required, that is an exact copy (except for formatting differences due to electronic filing) of the enclosed statement. The electronic filing may be requested by various regulators in lieu of or in addition to the enclosed statement.

Ronald H Davies
Chief Executive Officer & President

Kelly A Armstrong
Chief Legal Officer & Secretary

Gregory A Sutton
Chief Financial Officer & Treasurer

Subscribed and sworn to before me this _____ day of _____

- a. Is this an original filing? Yes [X] No []
b. If no,
1. State the amendment number.....
2. Date filed.....
3. Number of pages attached.....

STATEMENT AS OF SEPTEMBER 30, 2020 OF THE Safe Auto Choice Insurance Company

ASSETS

	Current Statement Date			4 December 31 Prior Year Net Admitted Assets
	1 Assets	2 Nonadmitted Assets	3 Net Admitted Assets (Cols. 1 - 2)	
1. Bonds	5,230,854		5,230,854	5,589,323
2. Stocks:				
2.1 Preferred stocks			0	0
2.2 Common stocks			0	0
3. Mortgage loans on real estate:				
3.1 First liens			0	0
3.2 Other than first liens			0	0
4. Real estate:				
4.1 Properties occupied by the company (less \$ encumbrances)			0	0
4.2 Properties held for the production of income (less \$ encumbrances)			0	0
4.3 Properties held for sale (less \$ encumbrances)			0	0
5. Cash (\$74,174), cash equivalents (\$583,902) and short-term investments (\$)	658,076		658,076	213,250
6. Contract loans (including \$ premium notes)			0	0
7. Derivatives			0	0
8. Other invested assets			0	0
9. Receivables for securities			0	0
10. Securities lending reinvested collateral assets			0	0
11. Aggregate write-ins for invested assets	0	0	0	0
12. Subtotals, cash and invested assets (Lines 1 to 11)	5,888,930	0	5,888,930	5,802,573
13. Title plants less \$ charged off (for Title insurers only)			0	0
14. Investment income due and accrued	28,013		28,013	33,122
15. Premiums and considerations:				
15.1 Uncollected premiums and agents' balances in the course of collection	53,572		53,572	0
15.2 Deferred premiums, agents' balances and installments booked but deferred and not yet due (including \$ earned but unbilled premiums)	143,853		143,853	0
15.3 Accrued retrospective premiums (\$) and contracts subject to redetermination (\$)			0	0
16. Reinsurance:				
16.1 Amounts recoverable from reinsurers			0	0
16.2 Funds held by or deposited with reinsured companies			0	0
16.3 Other amounts receivable under reinsurance contracts			0	0
17. Amounts receivable relating to uninsured plans			0	0
18.1 Current federal and foreign income tax recoverable and interest thereon			0	0
18.2 Net deferred tax asset	14,428		14,428	1
19. Guaranty funds receivable or on deposit			0	0
20. Electronic data processing equipment and software			0	0
21. Furniture and equipment, including health care delivery assets (\$)			0	0
22. Net adjustment in assets and liabilities due to foreign exchange rates			0	0
23. Receivables from parent, subsidiaries and affiliates	399,693		399,693	350,000
24. Health care (\$) and other amounts receivable			0	0
25. Aggregate write-ins for other than invested assets	0	0	0	0
26. Total assets excluding Separate Accounts, Segregated Accounts and Protected Cell Accounts (Lines 12 to 25)	6,528,489	0	6,528,489	6,185,696
27. From Separate Accounts, Segregated Accounts and Protected Cell Accounts			0	0
28. Total (Lines 26 and 27)	6,528,489	0	6,528,489	6,185,696
DETAILS OF WRITE-INS				
1101.				
1102.				
1103.				
1198. Summary of remaining write-ins for Line 11 from overflow page	0	0	0	0
1199. Totals (Lines 1101 through 1103 plus 1198)(Line 11 above)	0	0	0	0
2501.				
2502.				
2503.				
2598. Summary of remaining write-ins for Line 25 from overflow page	0	0	0	0
2599. Totals (Lines 2501 through 2503 plus 2598)(Line 25 above)	0	0	0	0

STATEMENT AS OF SEPTEMBER 30, 2020 OF THE Safe Auto Choice Insurance Company

LIABILITIES, SURPLUS AND OTHER FUNDS

	1 Current Statement Date	2 December 31, Prior Year
1. Losses (current accident year \$ 26,976)	26,976	0
2. Reinsurance payable on paid losses and loss adjustment expenses		0
3. Loss adjustment expenses	2,681	0
4. Commissions payable, contingent commissions and other similar charges		
5. Other expenses (excluding taxes, licenses and fees)	6,250	
6. Taxes, licenses and fees (excluding federal and foreign income taxes)	5,560	
7.1 Current federal and foreign income taxes (including \$ on realized capital gains (losses))		
7.2 Net deferred tax liability		809
8. Borrowed money \$ and interest thereon \$		
9. Unearned premiums (after deducting unearned premiums for ceded reinsurance of \$ and including warranty reserves of \$ and accrued accident and health experience rating refunds including \$0 for medical loss ratio rebate per the Public Health Service Act)	221,817	0
10. Advance premium		
11. Dividends declared and unpaid:		
11.1 Stockholders		
11.2 Policyholders		
12. Ceded reinsurance premiums payable (net of ceding commissions)		0
13. Funds held by company under reinsurance treaties		0
14. Amounts withheld or retained by company for account of others		
15. Remittances and items not allocated		
16. Provision for reinsurance (including \$ certified)		0
17. Net adjustments in assets and liabilities due to foreign exchange rates		
18. Drafts outstanding		
19. Payable to parent, subsidiaries and affiliates	73,328	39,514
20. Derivatives		0
21. Payable for securities		
22. Payable for securities lending		
23. Liability for amounts held under uninsured plans		
24. Capital notes \$ and interest thereon \$		
25. Aggregate write-ins for liabilities	0	0
26. Total liabilities excluding protected cell liabilities (Lines 1 through 25)	336,612	40,323
27. Protected cell liabilities		
28. Total liabilities (Lines 26 and 27)	336,612	40,323
29. Aggregate write-ins for special surplus funds	0	0
30. Common capital stock	2,500,000	2,500,000
31. Preferred capital stock		
32. Aggregate write-ins for other than special surplus funds	0	0
33. Surplus notes		0
34. Gross paid in and contributed surplus	3,500,000	3,500,000
35. Unassigned funds (surplus)	191,877	145,373
36. Less treasury stock, at cost:		
36.1 shares common (value included in Line 30 \$)		
36.2 shares preferred (value included in Line 31 \$)		
37. Surplus as regards policyholders (Lines 29 to 35, less 36)	6,191,877	6,145,373
38. Totals (Page 2, Line 28, Col. 3)	6,528,489	6,185,696
DETAILS OF WRITE-INS		
2501.		
2502.		
2503.		
2598. Summary of remaining write-ins for Line 25 from overflow page	0	0
2599. Totals (Lines 2501 through 2503 plus 2598)(Line 25 above)	0	0
2901.		
2902.		
2903.		
2998. Summary of remaining write-ins for Line 29 from overflow page	0	0
2999. Totals (Lines 2901 through 2903 plus 2998)(Line 29 above)	0	0
3201.		
3202.		
3203.		
3298. Summary of remaining write-ins for Line 32 from overflow page	0	0
3299. Totals (Lines 3201 through 3203 plus 3298)(Line 32 above)	0	0

STATEMENT OF INCOME

	1 Current Year to Date	2 Prior Year to Date	3 Prior Year Ended December 31
UNDERWRITING INCOME			
1. Premiums earned:			
1.1 Direct (written \$ 242,503)	20,686	0	0
1.2 Assumed (written \$)			0
1.3 Ceded (written \$)			0
1.4 Net (written \$ 242,503)	20,686	0	0
DEDUCTIONS:			
2. Losses incurred (current accident year \$ 26,976):			
2.1 Direct	26,976	0	0
2.2 Assumed			0
2.3 Ceded			0
2.4 Net	26,976	0	0
3. Loss adjustment expenses incurred	2,681		0
4. Other underwriting expenses incurred	84,186	1,633	1,633
5. Aggregate write-ins for underwriting deductions	0	0	0
6. Total underwriting deductions (Lines 2 through 5)	113,843	1,633	1,633
7. Net income of protected cells			
8. Net underwriting gain or (loss) (Line 1 minus Line 6 + Line 7)	(93,157)	(1,633)	(1,633)
INVESTMENT INCOME			
9. Net investment income earned	123,158	136,753	182,019
10. Net realized capital gains (losses) less capital gains tax of \$ 5,090	19,147	2,339	2,822
11. Net investment gain (loss) (Lines 9 + 10)	142,305	139,092	184,841
OTHER INCOME			
12. Net gain or (loss) from agents' or premium balances charged off (amount recovered \$ amount charged off \$)	0	0	0
13. Finance and service charges not included in premiums	4,628		
14. Aggregate write-ins for miscellaneous income	0	0	0
15. Total other income (Lines 12 through 14)	4,628	0	0
16. Net income before dividends to policyholders, after capital gains tax and before all other federal and foreign income taxes (Lines 8 + 11 + 15)	53,776	137,459	183,208
17. Dividends to policyholders			
18. Net income, after dividends to policyholders, after capital gains tax and before all other federal and foreign income taxes (Line 16 minus Line 17)	53,776	137,459	183,208
19. Federal and foreign income taxes incurred	22,508	28,685	37,182
20. Net income (Line 18 minus Line 19)(to Line 22)	31,268	108,774	146,026
CAPITAL AND SURPLUS ACCOUNT			
21. Surplus as regards policyholders, December 31 prior year	6,145,373	6,000,156	6,000,156
22. Net income (from Line 20)	31,268	108,774	146,026
23. Net transfers (to) from Protected Cell accounts			
24. Change in net unrealized capital gains (losses) less capital gains tax of \$			
25. Change in net unrealized foreign exchange capital gain (loss)			
26. Change in net deferred income tax	15,236		(809)
27. Change in nonadmitted assets			0
28. Change in provision for reinsurance			0
29. Change in surplus notes			
30. Surplus (contributed to) withdrawn from protected cells			
31. Cumulative effect of changes in accounting principles			
32. Capital changes:			
32.1 Paid in		0	0
32.2 Transferred from surplus (Stock Dividend)			
32.3 Transferred to surplus			
33. Surplus adjustments:			
33.1 Paid in	0	0	0
33.2 Transferred to capital (Stock Dividend)			
33.3 Transferred from capital			
34. Net remittances from or (to) Home Office			
35. Dividends to stockholders			
36. Change in treasury stock			0
37. Aggregate write-ins for gains and losses in surplus	0	0	0
38. Change in surplus as regards policyholders (Lines 22 through 37)	46,504	108,774	145,217
39. Surplus as regards policyholders, as of statement date (Lines 21 plus 38)	6,191,877	6,108,930	6,145,373
DETAILS OF WRITE-INS			
0501.			
0502.			
0503.			
0598. Summary of remaining write-ins for Line 5 from overflow page	0	0	0
0599. Totals (Lines 0501 through 0503 plus 0598)(Line 5 above)	0	0	0
1401.			
1402.			
1403.			
1498. Summary of remaining write-ins for Line 14 from overflow page	0	0	0
1499. Totals (Lines 1401 through 1403 plus 1498)(Line 14 above)	0	0	0
3701.			
3702.			
3703.			
3798. Summary of remaining write-ins for Line 37 from overflow page	0	0	0
3799. Totals (Lines 3701 through 3703 plus 3798)(Line 37 above)	0	0	0

STATEMENT AS OF SEPTEMBER 30, 2020 OF THE Safe Auto Choice Insurance Company

CASH FLOW

	1 Current Year To Date	2 Prior Year To Date	3 Prior Year Ended December 31
Cash from Operations			
1. Premiums collected net of reinsurance	45,078	0	0
2. Net investment income	133,545	102,478	148,541
3. Miscellaneous income	4,628	0	0
4. Total (Lines 1 to 3)	183,251	102,478	148,541
5. Benefit and loss related payments	0	0	0
6. Net transfers to Separate Accounts, Segregated Accounts and Protected Cell Accounts	0	0	0
7. Commissions, expenses paid and aggregate write-ins for deductions	72,376	1,633	1,633
8. Dividends paid to policyholders	0	0	0
9. Federal and foreign income taxes paid (recovered) net of \$ 5,090 tax on capital gains (losses)	27,598	28,685	37,835
10. Total (Lines 5 through 9)	99,974	30,318	39,468
11. Net cash from operations (Line 4 minus Line 10)	83,277	72,160	109,073
Cash from Investments			
12. Proceeds from investments sold, matured or repaid:			
12.1 Bonds	905,855	411,062	555,367
12.2 Stocks	0	0	0
12.3 Mortgage loans	0	0	0
12.4 Real estate	0	0	0
12.5 Other invested assets	0	0	0
12.6 Net gains or (losses) on cash, cash equivalents and short-term investments	0	364	364
12.7 Miscellaneous proceeds	0	0	0
12.8 Total investment proceeds (Lines 12.1 to 12.7)	905,855	411,426	555,731
13. Cost of investments acquired (long-term only):			
13.1 Bonds	528,427	5,695,154	5,945,154
13.2 Stocks	0	0	0
13.3 Mortgage loans	0	0	0
13.4 Real estate	0	0	0
13.5 Other invested assets	0	0	0
13.6 Miscellaneous applications	0	0	0
13.7 Total investments acquired (Lines 13.1 to 13.6)	528,427	5,695,154	5,945,154
14. Net increase (or decrease) in contract loans and premium notes	0	0	0
15. Net cash from investments (Line 12.8 minus Line 13.7 and Line 14)	377,428	(5,283,728)	(5,389,423)
Cash from Financing and Miscellaneous Sources			
16. Cash provided (applied):			
16.1 Surplus notes, capital notes	0	0	0
16.2 Capital and paid in surplus, less treasury stock	0	0	0
16.3 Borrowed funds	0	0	0
16.4 Net deposits on deposit-type contracts and other insurance liabilities	0	0	0
16.5 Dividends to stockholders	0	0	0
16.6 Other cash provided (applied)	(15,879)	28,685	(310,476)
17. Net cash from financing and miscellaneous sources (Line 16.1 through Line 16.4 minus Line 16.5 plus Line 16.6)	(15,879)	28,685	(310,476)
RECONCILIATION OF CASH, CASH EQUIVALENTS AND SHORT-TERM INVESTMENTS			
18. Net change in cash, cash equivalents and short-term investments (Line 11, plus Lines 15 and 17)	444,826	(5,182,883)	(5,590,826)
19. Cash, cash equivalents and short-term investments:			
19.1 Beginning of year	213,250	5,804,076	5,804,076
19.2 End of period (Line 18 plus Line 19.1)	658,076	621,193	213,250

Note: Supplemental disclosures of cash flow information for non-cash transactions:

Notes to the Financial Statements

1. Summary of Significant Accounting Policies and Going Concern

A. Accounting Practices

The accompanying financial statements of Safe Auto Choice Insurance Company ("the Company") have been prepared on the basis of accounting practices prescribed or permitted by the Insurance Department of the State of Ohio. The Insurance Department of the State of Ohio recognizes only statutory accounting practices prescribed or permitted by the State of Ohio for determining and reporting the financial condition and results of operations of an insurance company, and for determining its solvency under the Ohio Insurance Law. The National Association of Insurance Commissioners' (NAIC) Accounting Practices and Procedures manual (NAIC SAP) has been adopted as a component of prescribed or permitted practices by the State of Ohio.

A reconciliation of the Company's net income and capital and surplus between NAIC SAP and practices prescribed and permitted by the state of Ohio is shown below.

	SSAP #	F/S Page	F/S Line #	09/30/2020	12/31/2019
Net Income					
(1) State basis (Page 4, Line 20, Columns 1 & 3)	XXX	XXX	XXX	\$ 31,268	\$ 146,026
(2) State prescribed practices that are an increase / (decrease) from NAIC SAP:					
(3) State permitted practices that are an increase / (decrease) from NAIC SAP:					
(4) NAIC SAP (1-2-3=4)	XXX	XXX	XXX	<u>\$ 31,268</u>	<u>\$ 146,026</u>
Surplus					
(5) State basis (Page 3, Line 37, Columns 1 & 2)	XXX	XXX	XXX	\$ 6,191,877	\$ 6,145,373
(6) State prescribed practices that are an increase / (decrease) from NAIC SAP:					
(7) State permitted practices that are an increase / (decrease) from NAIC SAP:					
(8) NAIC SAP (5-6-7=8)	XXX	XXX	XXX	<u>\$ 6,191,877</u>	<u>\$ 6,145,373</u>

B. Use of Estimates in the Preparation of the Financial Statements

The preparation of financial statements in conformity with Statutory Accounting Principles requires management to make estimates and assumptions that affect the reported amounts in these financial statements and notes. It also requires disclosure of contingent assets and liabilities at the date of the financial statements and the reported amounts of revenue and expenses during the period. Actual results could differ from those estimates.

C. Accounting Policy

Premiums written are deferred and earned pro rata over the terms of the related insurance policies. Depending on the state, policy fees are either recognized in premiums earned on the effective date of the respective insurance policy or over the term of the policy.

Unearned premium reserves represent the portion of premiums written that are applicable to the unexpired terms of the policies in-force, and are determined on a daily pro rata basis.

Expenses incurred in connection with acquiring new insurance business, including such acquisition costs as advertising, premium taxes and sales commissions, are charged to operations as incurred. The Company has not modified its capitalization policy from the prior period.

Net investment income earned consists primarily of interest, dividends and rental income less investment related expenses. Interest is recognized on an accrual basis and dividends are recognized on an ex-dividend basis. Rental income includes an imputed rent for the Company's occupancy of its own buildings. Net realized capital gains (losses) are recognized on a specific identification basis when securities are sold, redeemed or otherwise disposed, and include write-downs for impairments considered to be other-than-temporary.

In addition, the company uses the following accounting policies:

- (1) Short-term investments - No Significant Changes
- (2) Bonds not backed by other loans that are designated highest-quality and high-quality (NAIC designations 1 and 2, respectively) are reported at amortized cost, using the interest method. All other bonds (NAIC designations 3 to 6) are reported at the lower of amortized cost or fair value.
- (3) Unaffiliated common stocks are stated at fair value.
- (4) Preferred stocks - None
- (5) Mortgage loans - None
- (6) Loan-backed securities are reported at either amortized cost using the interest method or, if non-investment grade, at the lower of amortized cost, fair value or at the present value of future cash flows. The retrospective adjustment method is used to value all securities, except for interest only securities, where the yield had become negative, that are valued using the prospective method.
- (7) Investments in subsidiaries, controlled and affiliated entities - None
- (8) Investments in joint ventures, partnerships and limited liability companies - None
- (9) Derivatives - None
- (10) The Company does utilize anticipated investment income as a factor in the premium deficiency calculation.
- (11) Unpaid losses and loss adjustment expenses ("LAE") include an amount determined from individual case estimates and loss reports and an amount, based on past experience, for losses incurred but not reported. Such liabilities are necessarily based on assumptions and estimates and while management believes the amount is adequate, the ultimate liability may be in excess of or less than the amount provided. The methods for making such estimates and for establishing the resulting liability are continually reviewed and any adjustments are reflected in the period determined.
- (12) Changes in capitalization policy - None

Notes to the Financial Statements

1. Summary of Significant Accounting Policies and Going Concern (Continued)

(13) Pharmaceutical rebate receivables - None

D. Going Concern - Not Applicable

2. Accounting Changes and Corrections of Errors - No Significant Changes

3. Business Combinations and Goodwill - None

4. Discontinued Operations - None

5. Investments

A. Mortgage Loans, including Mezzanine Real Estate Loans - None

B. Debt Restructuring - None

C. Reverse Mortgages - None

D. Loan-Backed Securities

(1) Prepayment assumptions for Agency Mortgage-Backed Securities and Collateralized Mortgage Obligations were generated using a third party prepayment model. The multi-factor model captures house price change trends, housing turnover, borrower default, and refinance incentive, among other factors. On an ongoing basis, we monitor the rate of prepayment and calibrate the model to reflect actual experience, market factors, and viewpoint.

(2) Loan-backed and structured securities with a recognized other-than-temporary impairment (OTTI) - None

(3) Securities held that were other-than-temporarily impaired due to the present value of cash flows expected to be collected was less than the amortized cost of securities - None

(4) All impaired securities for which an OTTI has not been recognized in earnings as a realized loss - None

(5) Recommendations for potential impairments are based on periodic analytical reviews and/or Company specified OTTI requirements. Analysis relies on actual collateral performance measurements including, but not limited to prepayment rates, default rates, delinquencies and loss severity sourced through third party data providers.

E. Dollar Repurchase Agreements and/or Securities Lending Transactions - None

F. Repurchase Agreements Transactions Accounted for as Secured Borrowing - None

G. Reverse Repurchase Agreements Transactions Accounted for as Secured Borrowing - None

H. Repurchase Agreements Transactions Accounted for as a Sale - None

I. Reverse Repurchase Agreements Transactions Accounted for as a Sale - None

J. Real Estate - None

K. Low-Income Housing Tax Credits (LIHTC) - None

L. Restricted Assets - No Significant Changes

M. Working Capital Finance Investments - None

N. Offsetting and Netting of Assets and Liabilities - None

O. 5GI Securities - None

P. Short Sales - None

Q. Prepayment Penalty and Acceleration Fees

	<u>General Account</u>	<u>Protected Cell</u>
(1) Number of CUSIPs		
(2) Aggregate Amount of Investment Income	\$	\$

6. Joint Ventures, Partnerships and Limited Liability Companies - None

7. Investment Income - No Significant Changes

8. Derivative Instruments - None

9. Income Taxes

A. Components of the Net Deferred Tax Asset/(Liability) - No Significant Changes

B. Regarding Deferred Tax Liabilities That Are Not Recognized - Not Applicable

C. Major Components of Current Income Taxes Incurred - No Significant Changes

D. Among the More Significant Book to Tax Adjustments - No Significant Changes

E. Operating Loss and Tax Credit Carryforwards - No Significant Changes

F. Consolidated Federal Income Tax Return - No Significant Changes

G. Federal or Foreign Income Tax Loss Contingencies - None

H. Repatriation Transition Tax (RTT) - None

I. Alternative Minimum Tax (AMT) Credit - Not Applicable

Notes to the Financial Statements

10. Information Concerning Parent, Subsidiaries, Affiliates and Other Related Parties

A. Nature of Relationships

The Company is a wholly owned subsidiary of Safe Auto Insurance Group, Inc. (Parent), a privately held company incorporated in Ohio.

B. Detail of Transactions Greater Than 0.5% of Admitted Assets - No Significant Changes

C. Amount of Transactions & Effects of Change in Terms of Intercompany Arrangements - None

D. Amounts Due To or From Related Parties - No Significant Changes

E. Guarantees or Contingencies - None

F. Management Service Contracts and Cost Sharing Agreements

1. Safe Auto Choice Insurance Company and Safe Auto Group Agency are parties of an agency contract. Safe Auto Group Agency provides agency services for Safe Auto Choice Insurance Company by employing certain agents, customer service, and related management personnel while also exclusively providing all advertising and marketing efforts.
2. On April 1, 2019, the Company and its parent entered into an updated agreement (the "Management and Operations" agreement) for services provided between the Company, its parent, and the parent's subsidiaries. This agreement was approved by the Ohio Department of Insurance in April 2019.
3. All such management, service contracts, and cost sharing agreements mentioned are transacted at cost and provide no profit provision to the service provider.

G. Nature of Relationships that Could Affect Operations - None

H. Amount Deducted for Investment in Upstream Company - None

I. Detail of Investments in Affiliates Greater Than 10% of Admitted Assets - None

J. Write-Down for Impairments of Investments in Subsidiary Controlled or Affiliated Companies - None

K. Foreign Subsidiary Value Using CARVM - None

L. Downstream Holding Company Value Using Look-Through Method - None

M. All SCA Investments - None

N. Investment in Insurance SCAs - None

O. SCA and SSAP No. 48 Entity Loss Tracking - None

11. Debt - None

12. Retirement Plans, Deferred Compensation, Postemployment Benefits and Compensated Absences and Other Postretirement Benefit Plans - None

13. Capital and Surplus, Dividend Restrictions and Quasi-Reorganizations

1. The Company has 100 shares of \$25,000 par value common stock authorized and 100 outstanding. The Company has no preferred stock authorized, issued or outstanding.
2. Dividend Rate of Preferred Stock - None
3. Dividend Restrictions - None
4. There were no dividends declared or paid in 2020 or 2019.
5. Within the limitations noted in note 13.3 above, there are no other restrictions placed on the portion of Company profits that may be paid as ordinary dividends to stockholders.
6. There were no restrictions placed on the Company's surplus, including for whom the surplus is being held.
7. Surplus Advances - None
8. Stock Held for Special Purposes - None
9. Changes in Special Surplus Funds - None
10. Unassigned funds (surplus)
The portion of unassigned funds (surplus) represented by an increase in cumulative unrealized gains is \$177,449.42
11. Company-Issued Surplus Debentures or Similar Obligations - None
12. Impact of Any Restatement Due to Prior Quasi-Reorganizations - None
13. Effective Date(s) of Quasi-Reorganizations in the Prior 10 Years - None

14. Liabilities, Contingencies and Assessments

A. Contingent Commitments - None

B. Assessments - None

C. Gain Contingencies - None

D. Claims Related Extra Contractual Obligation and Bad Faith Losses Stemming from Lawsuits - None

E. Product Warranties - None

F. Joint and Several Liabilities - None

Notes to the Financial Statements

14. Liabilities, Contingencies and Assessments (Continued)

G. All Other Contingencies - None

15. Leases - None

16. Information About Financial Instruments With Off-Balance-Sheet Risk And Financial Instruments With Concentrations of Credit Risk - None

17. Sale, Transfer and Servicing of Financial Assets and Extinguishments of Liabilities - None

18. Gain or Loss to the Reporting Entity from Uninsured Plans and the Uninsured Portion of Partially Insured Plans - None

19. Direct Premium Written/Produced by Managing General Agents/Third Party Administrators - None

20. Fair Value Measurements

A. Fair Value Measurement

Inputs Used for Assets and Liabilities Measured at Fair Value

The Company's financial assets carried at fair value have been classified, for disclosure purposes, based on a hierarchy defined by ASC 820 Fair Value Measurements and Disclosures. The hierarchy gives the highest ranking to fair values determined using unadjusted quoted prices in active markets for identical assets and liabilities (Level 1) and the lowest ranking to fair values determined using methodologies and models with unobservable inputs (Level 3). An asset's or a liability's classification is based on the lowest level input that is significant to its measurement. For example, a Level 3 fair value measurement may include inputs that are both observable (Levels 1 and 2) and unobservable (Level 3). The levels of the fair value hierarchy are defined as follows:

- Level 1 – Values are unadjusted quoted prices for identical assets and liabilities in active markets accessible at the measurement date.
- Level 2 – Inputs include quoted prices for similar assets or liabilities in active markets, quoted prices from those willing to trade in markets that are not active, or other inputs that are observable or can be corroborated by market data for the term of the instrument. Such inputs include market interest rates and volatilities, spreads and yield curves.
- Level 3 – Certain inputs are unobservable (supported by little or no market activity) and significant to the fair value measurement. Unobservable inputs reflect the Company's best estimate of what hypothetical market participants would use to determine a transaction price for the asset or liability at the reporting date.
- Level NAV (net asset value): Under certain conditions, as described in the NAIC SSAP No. 100R (Fair Value Measurement), NAV may be utilized as an expedient to fair value.

(1) Fair value measurements at reporting date

Assets recorded on the financial statements at fair value measurements by accounting hierarchy levels 1, 2, 3 and level NAV. The Company has categorized its assets that are measured at fair value into the three-level fair value hierarchy as reflected in the following table. The Company had no liabilities recorded at fair value.

Description for each class of asset or liability	Level 1	Level 2	Level 3	Net Asset Value (NAV)	Total
a. Assets at fair value					
Cash Equivalent-Exempt Money Market Mutual Funds	\$	\$	\$	\$ 583,902	\$ 583,902
Total assets at fair value/NAV	<u>\$</u>	<u>\$</u>	<u>\$</u>	<u>\$ 583,902</u>	<u>\$ 583,902</u>
b. Liabilities at fair value					
Total liabilities at fair value	<u>\$</u>	<u>\$</u>	<u>\$</u>	<u>\$</u>	<u>\$</u>

(2) Fair value measurements in Level 3 of the fair value hierarchy - None

(3) At the end of each reporting period, the Company evaluates whether or not any event has occurred or circumstances have changed that would cause an instrument to be transferred into or out of Level 3. During the current quarter, no transfers into or out of Level 3 were required.

(4) Fair value measurements for fixed income and equity securities are based on values either published by the NAIC's Security Valuation Office (SVO) or from an independent pricing service vendor. Under certain circumstances, if neither an SVO price nor a Vendor price is available, a price may be obtained from a broker. Short term securities and cash equivalents are valued at amortized cost.

When published prices from the SVO are not available, the Company relies predominately on independent pricing service vendors that have been evaluated and approved by our investment management company's internal pricing policy committee. Generally, pricing service vendors use a pricing methodology involving the market approach, including pricing models, which use prices and relevant market information regarding a particular security or securities with similar characteristics to establish a valuation.

Certain investments are carried at fair value, while others may periodically be carried at fair value based on certain factors such as the NAIC's lower of cost or market rule or an impairment. Assets recorded at fair value are categorized based on an evaluation of the various inputs used to measure the fair value. Supporting documentation received from pricing vendors detailing the inputs, models and processes used in the vendor's evaluation process is used by the Company to determine the appropriate fair value hierarchy. Documentation from each pricing vendor is reviewed and monitored periodically to ensure they are consistent with the Company's pricing policy. Market Information obtained from brokers with respect to security valuations is also considered in the pricing hierarchy.

(5) Derivatives - None

B. Other Fair Value Disclosures - None

C. Fair Values for All Financial Instruments by Level 1, 2 and 3

The table below reflects the fair values and admitted values of all admitted assets and liabilities that are financial instruments, excluding those accounted for under the equity method (subsidiaries, limited liability companies, etc.). The fair values are also categorized into the three-level hierarchy as described above in Note 20A.

Notes to the Financial Statements

20. Fair Value Measurements (Continued)

Type of Financial Instrument	Aggregate Fair Value	Admitted Assets	Level 1	Level 2	Level 3	Net Asset Value (NAV)	Not Practicable (Carrying Value)
Bonds	\$ 5,677,210	\$ 5,230,854	\$ 766,125	\$ 4,911,085			
Cash, cash equivalents and short-term investments	658,076	658,076	74,174			583,902	

D. Not Practicable to Estimate Fair Value - None

E. Nature and Risk of Investments Reported at NAV

The Company holds a \$583,902 position in the First American Treasury Obligation Class Z money market fund. The Fund seeks to achieve maximum current income consistent with the preservation of capital and maintenance of liquidity. The Fund invests exclusively in short-term U.S. Treasury obligations and repurchase agreements secured by U.S. Treasury obligations. There are no restrictions on the sale of the Funds by the Company and all sales would be at the then NAV value.

21. Other Items

A. Unusual or Infrequent Items

COVID-19 had no impact on the Company's customers.

B. Troubled Debt Restructuring - None

C. Other Disclosures - None

D. Business Interruption Insurance Recoveries - None

E. State Transferable and Non-Transferable Tax Credits - None

F. Subprime-Mortgage-Related Risk Exposure - None

G. Insurance-Linked Securities (ILS) Contracts - None

H. The Amount That Could Be Realized on Life Insurance Where the Reporting Entity is Owner and Beneficiary or Has Otherwise Obtained Rights to Control the Policy - None

22. Events Subsequent

On October 1, 2020, the Company entered into a Pooling Agreement with Safe Auto Insurance Company and Safe Auto Value Insurance Company. This agreement was approved by the Ohio Department of Insurance on November 4, 2020. The Pooling Agreement will be implemented for December 31, 2020 reporting.

There were no other material subsequent events that occurred after September 30, 2020 and before the release of the financial statements.

The Company did not write accident and health insurance premium that is subject to Section 9010 of the Federal Affordable Care Act.

	Current Year	Prior Year
A. Did the reporting entity write accident and health insurance premium that is subject to Section 9010 of the Federal Affordable Care Act?	NO	
B. ACA fee assessment payable for the upcoming year	\$	\$
C. ACA fee assessment paid	\$	\$
D. Premium written subject to ACA 9010 assessment	\$	\$
E. Total adjusted capital before surplus adjustment	\$	
F. Total adjusted capital after surplus adjustment	\$	
G. Authorized control level	\$	
H. Would reporting the ACA assessment as of Dec 31 have triggered an RBC action level?		

23. Reinsurance

A. Unsecured Reinsurance Recoverables - None

B. Reinsurance Recoverable in Dispute - None

C. Reinsurance Assumed and Ceded

(1) Maximum amount of return commission that would have been due reinsurers if all of the company's reinsurance was canceled or if the company's insurance assumed was canceled

The Company is party in a prospective personal automobile physical damage catastrophe agreement of reinsurance with General Reinsurance Corporation. This reinsurance agreement covers a portion of aggregated losses arising from catastrophic events that exceed a specified retention stated in the agreement. Ceded premiums are calculated primarily based on a percentage of comprehensive premiums earned. The Company has no ceded premiums for 2020 or 2019.

(2) The additional or return commission, predicated on loss experience or on any other form of profit sharing arrangements in this statement as a result of existing contractual arrangements is accrued as follows: - None

(3) Risks attributed to each of the company's protected cells - None

D. Uncollectible Reinsurance - None

E. Commutation of Ceded Reinsurance - None

F. Retroactive Reinsurance - None

G. Reinsurance Accounted for as a Deposit - None

H. Disclosures for the Transfer of Property and Casualty Run-Off Agreements - None

Notes to the Financial Statements

23. Reinsurance (Continued)

- I. Certified Reinsurer Rating Downgraded or Status Subject to Revocation - None
- J. Reinsurance Agreements Qualifying for Reinsurer Aggregation - None

24. Retrospectively Rated Contracts & Contracts Subject to Redetermination

- A. Method Used to Estimate - None
- B. Method Used to Record - None
- C. Amount and Percent of Net Retrospective Premiums - None
- D. Medical Loss Ratio Rebates Required Pursuant to the Public Health Service Act - None
- E. Calculation of Nonadmitted Retrospective Premium - None
- F. Risk-Sharing Provisions of the Affordable Care Act (ACA)

- (1) Accident and health insurance premium subject to the Affordable Care Act risk-sharing provisions

Did the reporting entity write accident and health insurance premium which is subject to the Affordable Care Act risk sharing provisions?
NO

- (2) Impact of Risk-Sharing Provisions of the Affordable Care Act on admitted assets, liabilities and revenue for the current year - None
- (3) Roll-forward of prior year ACA risk-sharing provisions for the following asset (gross of any nonadmission) and liability balances, along with the reasons for adjustments to prior year balance - None
- (4) Roll-forward of risk corridors asset and liability balances by program benefit year - None
- (5) ACA risk corridors receivable as of reporting date - None

25. Changes in Incurred Losses and Loss Adjustment Expenses

The Company began writing policies on September 4, 2020. No significant loss or loss adjustment expenses incurred to report on. All recorded losses and loss adjustment expenses occurred in the current accident year.

- A. Reasons for Changes in the Provision for Incurred Loss and Loss Adjustment Expenses Attributable to Insured Events of Prior Years - Not Applicable
- B. Significant Changes in Methodologies and Assumptions Used in Calculating the Liability for Unpaid Losses and Loss Adjustment Expenses - Not Applicable

26. Intercompany Pooling Arrangements - None

27. Structured Settlements - None

28. Health Care Receivables - None

29. Participating Policies - None

30. Premium Deficiency Reserves - None

31. High Deductibles - None

32. Discounting of Liabilities by Withdrawal Characteristics For Unpaid Losses or Unpaid Loss Adjustment Expenses - None

33. Asbestos/Environmental Reserves - None

34. Subscriber Savings Accounts - None

35. Multiple Peril Crop Insurance - None

36. Financial Guaranty Insurance - None

GENERAL INTERROGATORIES

PART 1 - COMMON INTERROGATORIES

GENERAL

- 1.1 Did the reporting entity experience any material transactions requiring the filing of Disclosure of Material Transactions with the State of Domicile, as required by the Model Act? Yes [] No [X]
- 1.2 If yes, has the report been filed with the domiciliary state? Yes [] No []
- 2.1 Has any change been made during the year of this statement in the charter, by-laws, articles of incorporation, or deed of settlement of the reporting entity? Yes [] No [X]
- 2.2 If yes, date of change:
- 3.1 Is the reporting entity a member of an Insurance Holding Company System consisting of two or more affiliated persons, one or more of which is an insurer? Yes [X] No []
If yes, complete Schedule Y, Parts 1 and 1A.
- 3.2 Have there been any substantial changes in the organizational chart since the prior quarter end? Yes [] No [X]
- 3.3 If the response to 3.2 is yes, provide a brief description of those changes.
- 3.4 Is the reporting entity publicly traded or a member of a publicly traded group? Yes [] No [X]
- 3.5 If the response to 3.4 is yes, provide the CIK (Central Index Key) code issued by the SEC for the entity/group.
- 4.1 Has the reporting entity been a party to a merger or consolidation during the period covered by this statement? Yes [] No [X]
If yes, complete and file the merger history data file with the NAIC.
- 4.2 If yes, provide the name of the entity, NAIC Company Code, and state of domicile (use two letter state abbreviation) for any entity that has ceased to exist as a result of the merger or consolidation.

1 Name of Entity	2 NAIC Company Code	3 State of Domicile

5. If the reporting entity is subject to a management agreement, including third-party administrator(s), managing general agent(s), attorney-in-fact, or similar agreement, have there been any significant changes regarding the terms of the agreement or principals involved? Yes [] No [] N/A [X]
If yes, attach an explanation.
- 6.1 State as of what date the latest financial examination of the reporting entity was made or is being made.
- 6.2 State the as of date that the latest financial examination report became available from either the state of domicile or the reporting entity. This date should be the date of the examined balance sheet and not the date the report was completed or released.
- 6.3 State as of what date the latest financial examination report became available to other states or the public from either the state of domicile or the reporting entity. This is the release date or completion date of the examination report and not the date of the examination (balance sheet date).
- 6.4 By what department or departments?
- 6.5 Have all financial statement adjustments within the latest financial examination report been accounted for in a subsequent financial statement filed with Departments? Yes [] No [] N/A [X]
- 6.6 Have all of the recommendations within the latest financial examination report been complied with? Yes [] No [] N/A [X]
- 7.1 Has this reporting entity had any Certificates of Authority, licenses or registrations (including corporate registration, if applicable) suspended or revoked by any governmental entity during the reporting period? Yes [] No [X]
- 7.2 If yes, give full information:
- 8.1 Is the company a subsidiary of a bank holding company regulated by the Federal Reserve Board? Yes [] No [X]
- 8.2 If response to 8.1 is yes, please identify the name of the bank holding company.
- 8.3 Is the company affiliated with one or more banks, thrifts or securities firms? Yes [] No [X]
- 8.4 If response to 8.3 is yes, please provide below the names and location (city and state of the main office) of any affiliates regulated by a federal regulatory services agency [i.e. the Federal Reserve Board (FRB), the Office of the Comptroller of the Currency (OCC), the Federal Deposit Insurance Corporation (FDIC) and the Securities Exchange Commission (SEC)] and identify the affiliate's primary federal regulator.

1 Affiliate Name	2 Location (City, State)	3 FRB	4 OCC	5 FDIC	6 SEC

GENERAL INTERROGATORIES

- 9.1 Are the senior officers (principal executive officer, principal financial officer, principal accounting officer or controller, or persons performing similar functions) of the reporting entity subject to a code of ethics, which includes the following standards? Yes No
 (a) Honest and ethical conduct, including the ethical handling of actual or apparent conflicts of interest between personal and professional relationships;
 (b) Full, fair, accurate, timely and understandable disclosure in the periodic reports required to be filed by the reporting entity;
 (c) Compliance with applicable governmental laws, rules and regulations;
 (d) The prompt internal reporting of violations to an appropriate person or persons identified in the code; and
 (e) Accountability for adherence to the code.
- 9.11 If the response to 9.1 is No, please explain:
- 9.2 Has the code of ethics for senior managers been amended? Yes No
- 9.21 If the response to 9.2 is Yes, provide information related to amendment(s).
- 9.3 Have any provisions of the code of ethics been waived for any of the specified officers? Yes No
- 9.31 If the response to 9.3 is Yes, provide the nature of any waiver(s).

FINANCIAL

- 10.1 Does the reporting entity report any amounts due from parent, subsidiaries or affiliates on Page 2 of this statement? Yes No
- 10.2 If yes, indicate any amounts receivable from parent included in the Page 2 amount: \$0

INVESTMENT

- 11.1 Were any of the stocks, bonds, or other assets of the reporting entity loaned, placed under option agreement, or otherwise made available for use by another person? (Exclude securities under securities lending agreements.) Yes No
- 11.2 If yes, give full and complete information relating thereto:
12. Amount of real estate and mortgages held in other invested assets in Schedule BA: \$
13. Amount of real estate and mortgages held in short-term investments: \$
- 14.1 Does the reporting entity have any investments in parent, subsidiaries and affiliates? Yes No
- 14.2 If yes, please complete the following:
- | | 1
Prior Year-End
Book/Adjusted
Carrying Value | 2
Current Quarter
Book/Adjusted
Carrying Value |
|---|--|---|
| 14.21 Bonds | \$0 | \$0 |
| 14.22 Preferred Stock | \$0 | \$0 |
| 14.23 Common Stock | \$0 | \$0 |
| 14.24 Short-Term Investments | \$0 | \$0 |
| 14.25 Mortgage Loans on Real Estate | \$0 | \$0 |
| 14.26 All Other | \$0 | \$0 |
| 14.27 Total Investment in Parent, Subsidiaries and Affiliates (Subtotal Lines 14.21 to 14.26) | \$0 | \$0 |
| 14.28 Total Investment in Parent included in Lines 14.21 to 14.26 above | \$ | \$ |
- 15.1 Has the reporting entity entered into any hedging transactions reported on Schedule DB? Yes No
- 15.2 If yes, has a comprehensive description of the hedging program been made available to the domiciliary state? Yes No N/A
 If no, attach a description with this statement.
16. For the reporting entity's security lending program, state the amount of the following as of the current statement date:
- 16.1 Total fair value of reinvested collateral assets reported on Schedule DL, Parts 1 and 2 \$0
- 16.2 Total book adjusted/carrying value of reinvested collateral assets reported on Schedule DL, Parts 1 and 2 \$0
- 16.3 Total payable for securities lending reported on the liability page. \$0

GENERAL INTERROGATORIES

17. Excluding items in Schedule E - Part 3 - Special Deposits, real estate, mortgage loans and investments held physically in the reporting entity's offices, vaults or safety deposit boxes, were all stocks, bonds and other securities, owned throughout the current year held pursuant to a custodial agreement with a qualified bank or trust company in accordance with Section 1, III - General Examination Considerations, F. Outsourcing of Critical Functions, Custodial or Safekeeping Agreements of the NAIC Financial Condition Examiners Handbook? Yes [X] No []
- 17.1 For all agreements that comply with the requirements of the NAIC Financial Condition Examiners Handbook, complete the following:

1 Name of Custodian(s)	2 Custodian Address
USBank	425 Walnut Street, 6th Floor, Cincinnati, OH 45202

- 17.2 For all agreements that do not comply with the requirements of the NAIC Financial Condition Examiners Handbook, provide the name, location and a complete explanation:

1 Name(s)	2 Location(s)	3 Complete Explanation(s)

- 17.3 Have there been any changes, including name changes, in the custodian(s) identified in 17.1 during the current quarter? Yes [] No [X]

- 17.4 If yes, give full information relating thereto:

1 Old Custodian	2 New Custodian	3 Date of Change	4 Reason

- 17.5 Investment management – Identify all investment advisors, investment managers, broker/dealers, including individuals that have the authority to make investment decisions on behalf of the reporting entity. For assets that are managed internally by employees of the reporting entity, note as such. ["...that have access to the investment accounts"; "...handle securities"]

1 Name of Firm or Individual	2 Affiliation
New England Asset Management	U.....
Greg Sutton, CFO, has access to the investment accts	A.....
Ron Davies, CEO, has access to the investment accts	A.....

- 17.5097 For those firms/individuals listed in the table for Question 17.5, do any firms/individuals unaffiliated with the reporting entity (i.e. designated with a "U") manage more than 10% of the reporting entity's invested assets? Yes [X] No []

- 17.5098 For firms/individuals unaffiliated with the reporting entity (i.e. designated with a "U") listed in the table for Question 17.5, does the total assets under management aggregate to more than 50% of the reporting entity's invested assets? Yes [X] No []

- 17.6 For those firms or individuals listed in the table for 17.5 with an affiliation code of "A" (affiliated) or "U" (unaffiliated), provide the information for the table below.

1	2	3	4	5
Central Registration Depository Number	Name of Firm or Individual	Legal Entity Identifier (LEI)	Registered With	Investment Management Agreement (IMA) Filed
105900	New England Asset Management	KUR85E5PS4GQFZTFC130	SEC	NO.....

- 18.1 Have all the filing requirements of the Purposes and Procedures Manual of the NAIC Investment Analysis Office been followed? Yes [X] No []

- 18.2 If no, list exceptions:

19. By self-designating 5GI securities, the reporting entity is certifying the following elements for each self-designated 5GI security:
- a. Documentation necessary to permit a full credit analysis of the security does not exist or an NAIC CRP credit rating for an FE or PL security is not available.
 - b. Issuer or obligor is current on all contracted interest and principal payments.
 - c. The insurer has an actual expectation of ultimate payment of all contracted interest and principal.
- Has the reporting entity self-designated 5GI securities? Yes [] No [X]

20. By self-designating PLGI securities, the reporting entity is certifying the following elements of each self-designated PLGI security:
- a. The security was purchased prior to January 1, 2018.
 - b. The reporting entity is holding capital commensurate with the NAIC Designation reported for the security.
 - c. The NAIC Designation was derived from the credit rating assigned by an NAIC CRP in its legal capacity as a NRSRO which is shown on a current private letter rating held by the insurer and available for examination by state insurance regulators.
 - d. The reporting entity is not permitted to share this credit rating of the PL security with the SVO.
- Has the reporting entity self-designated PLGI securities? Yes [] No [X]

21. By assigning FE to a Schedule BA non-registered private fund, the reporting entity is certifying the following elements of each self-designated FE fund:
- a. The shares were purchased prior to January 1, 2019.
 - b. The reporting entity is holding capital commensurate with the NAIC Designation reported for the security.
 - c. The security had a public credit rating(s) with annual surveillance assigned by an NAIC CRP in its legal capacity as an NRSRO prior to January 1, 2019.
 - d. The fund only or predominantly holds bonds in its portfolio.
 - e. The current reported NAIC Designation was derived from the public credit rating(s) with annual surveillance assigned by an NAIC CRP in its legal capacity as an NRSRO.
 - f. The public credit rating(s) with annual surveillance assigned by an NAIC CRP has not lapsed.
- Has the reporting entity assigned FE to Schedule BA non-registered private funds that complied with the above criteria? Yes [] No [X]

GENERAL INTERROGATORIES

PART 2 - PROPERTY & CASUALTY INTERROGATORIES

1. If the reporting entity is a member of a pooling arrangement, did the agreement or the reporting entity's participation change? Yes [] No [] N/A [X]
If yes, attach an explanation.

2. Has the reporting entity reinsured any risk with any other reporting entity and agreed to release such entity from liability, in whole or in part, from any loss that may occur on the risk, or portion thereof, reinsured? Yes [] No [X]
If yes, attach an explanation.

3.1 Have any of the reporting entity's primary reinsurance contracts been canceled? Yes [] No [X]

3.2 If yes, give full and complete information thereto.

4.1 Are any of the liabilities for unpaid losses and loss adjustment expenses other than certain workers' compensation tabular reserves (see Annual Statement Instructions pertaining to disclosure of discounting for definition of "tabular reserves") discounted at a rate of interest greater than zero? Yes [] No [X]

4.2 If yes, complete the following schedule:

			TOTAL DISCOUNT				DISCOUNT TAKEN DURING PERIOD			
1	2	3	4	5	6	7	8	9	10	11
Line of Business	Maximum Interest	Discount Rate	Unpaid Losses	Unpaid LAE	IBNR	TOTAL	Unpaid Losses	Unpaid LAE	IBNR	TOTAL
TOTAL			0	0	0	0	0	0	0	0

5. Operating Percentages:

5.1 A&H loss percent %

5.2 A&H cost containment percent %

5.3 A&H expense percent excluding cost containment expenses %

6.1 Do you act as a custodian for health savings accounts? Yes [] No [X]

6.2 If yes, please provide the amount of custodial funds held as of the reporting date \$.

6.3 Do you act as an administrator for health savings accounts? Yes [] No [X]

6.4 If yes, please provide the balance of the funds administered as of the reporting date \$.

7. Is the reporting entity licensed or chartered, registered, qualified, eligible or writing business in at least two states? Yes [X] No []

7.1 If no, does the reporting entity assume reinsurance business that covers risks residing in at least one state other than the state of domicile of the reporting entity? Yes [] No []

SCHEDULE F - CEDED REINSURANCE

Showing All New Reinsurers - Current Year to Date

1 NAIC Company Code	2 ID Number	3 Name of Reinsurer	4 Domiciliary Jurisdiction	5 Type of Reinsurer	6 Certified Reinsurer Rating (1 through 6)	7 Effective Date of Certified Reinsurer Rating
NONE						

STATEMENT AS OF SEPTEMBER 30, 2020 OF THE Safe Auto Choice Insurance Company

SCHEDULE T - EXHIBIT OF PREMIUMS WRITTEN

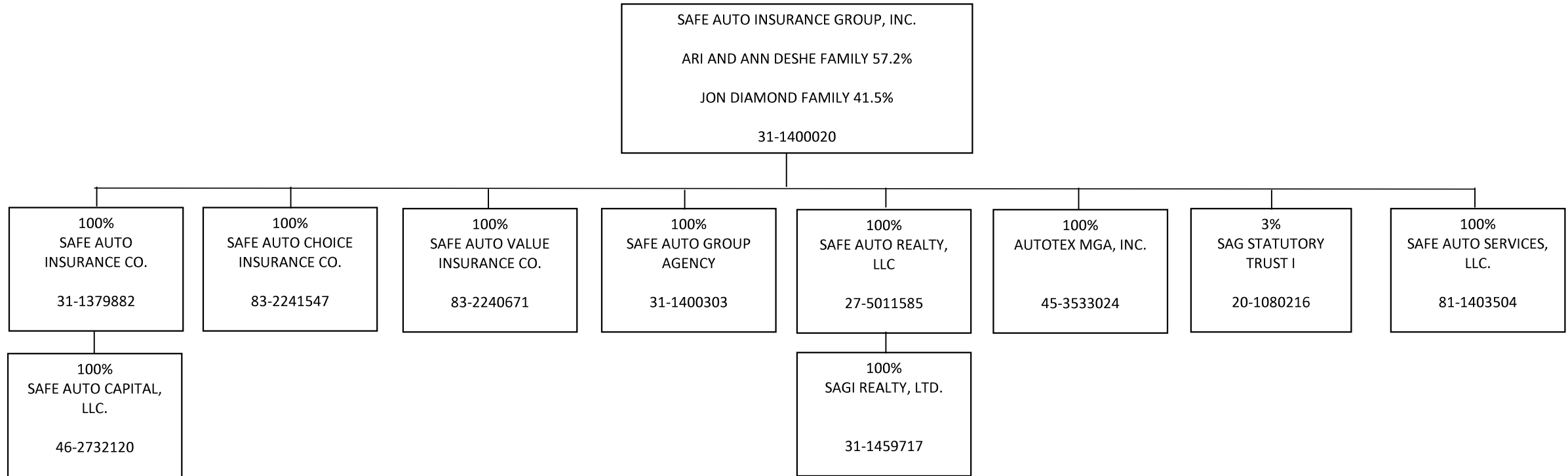
Current Year to Date - Allocated by States and Territories

States, etc.	1 Active Status (a)	Direct Premiums Written		Direct Losses Paid (Deducting Salvage)		Direct Losses Unpaid	
		2 Current Year To Date	3 Prior Year To Date	4 Current Year To Date	5 Prior Year To Date	6 Current Year To Date	7 Prior Year To Date
1. Alabama AL	N		0		0		0
2. Alaska AK	N		0		0		0
3. Arizona AZ	N		0		0		0
4. Arkansas AR	N		0		0		0
5. California CA	N		0		0		0
6. Colorado CO	N		0		0		0
7. Connecticut CT	N		0		0		0
8. Delaware DE	N		0		0		0
9. District of Columbia DC	N		0		0		0
10. Florida FL	N		0		0		0
11. Georgia GA	N		0		0		0
12. Hawaii HI	N		0		0		0
13. Idaho ID	N		0		0		0
14. Illinois IL	N		0		0		0
15. Indiana IN	L		0		0		0
16. Iowa IA	N		0		0		0
17. Kansas KS	N		0		0		0
18. Kentucky KY	N		0		0		0
19. Louisiana LA	N		0		0		0
20. Maine ME	N		0		0		0
21. Maryland MD	N		0		0		0
22. Massachusetts MA	N		0		0		0
23. Michigan MI	N		0		0		0
24. Minnesota MN	N		0		0		0
25. Mississippi MS	N		0		0		0
26. Missouri MO	N		0		0		0
27. Montana MT	N		0		0		0
28. Nebraska NE	N		0		0		0
29. Nevada NV	N		0		0		0
30. New Hampshire NH	N		0		0		0
31. New Jersey NJ	N		0		0		0
32. New Mexico NM	N		0		0		0
33. New York NY	N		0		0		0
34. North Carolina NC	N		0		0		0
35. North Dakota ND	N		0		0		0
36. Ohio OH	L		0		0		0
37. Oklahoma OK	N		0		0		0
38. Oregon OR	N		0		0		0
39. Pennsylvania PA	L		0		0		0
40. Rhode Island RI	N		0		0		0
41. South Carolina SC	N		0		0		0
42. South Dakota SD	N		0		0		0
43. Tennessee TN	N		0		0		0
44. Texas TX	N		0		0		0
45. Utah UT	N		0		0		0
46. Vermont VT	N		0		0		0
47. Virginia VA	L	242,503	0	0	0	26,976	0
48. Washington WA	N		0		0		0
49. West Virginia WV	N		0		0		0
50. Wisconsin WI	N		0		0		0
51. Wyoming WY	N		0		0		0
52. American Samoa AS	N		0		0		0
53. Guam GU	N		0		0		0
54. Puerto Rico PR	N		0		0		0
55. U.S. Virgin Islands VI	N		0		0		0
56. Northern Mariana Islands MP	N		0		0		0
57. Canada CAN	N		0		0		0
58. Aggregate Other Alien OT	XXX	0	0	0	0	0	0
59. Totals	XXX	242,503	0	0	0	26,976	0
DETAILS OF WRITE-INS							
58001.	XXX						
58002.	XXX						
58003.	XXX						
58998. Summary of remaining write-ins for Line 58 from overflow page	XXX	0	0	0	0	0	0
58999. Totals (Lines 58001 through 58003 plus 58998)(Line 58 above)	XXX	0	0	0	0	0	0

(a) Active Status Counts:

L - Licensed or Chartered - Licensed Insurance carrier or domiciled RRG	4	R - Registered - Non-domiciled RRGs	0
E - Eligible - Reporting entities eligible or approved to write surplus lines in the state (other than their state of domicile - see DSLI)	0	Q - Qualified - Qualified or accredited reinsurer	0
D - Domestic Surplus Lines Insurer (DSLII) - Reporting entities authorized to write surplus lines in the state of domicile	0	N - None of the above - Not allowed to write business in the state	53

STATEMENT AS OF SEPTEMBER 30, 2020 OF THE Safe Auto Choice Insurance Company



STATEMENT AS OF SEPTEMBER 30, 2020 OF THE Safe Auto Choice Insurance Company

SCHEDULE Y

PART 1A - DETAIL OF INSURANCE HOLDING COMPANY SYSTEM

1	2	3	4	5	6	7	8	9	10	11	12	13	14	15	16
Group Code	Group Name	NAIC Company Code	ID Number	Federal RSSD	CIK	Name of Securities Exchange if Publicly Traded (U.S. or International)	Names of Parent, Subsidiaries Or Affiliates	Domi-ciliary Loca-tion	Relation-ship to Reporting Entity	Directly Controlled by (Name of Entity/Person)	Type of Control (Ownership, Board, Management, Attorney-in-Fact, Influence, Other)	If Control is Ownership Provide Percen-tage	Ultimate Controlling Entity(ies)/Person(s)	Is an SCA Filing Re-quired? (Y/N)	*
.4940	Safe Auto Insurance Group, Inc.	25405	31-1400020	0	0		Safe Auto Insurance Group, Inc.	OH	UDP	Deshe and Diamond Families	Ownership	0.000	Deshe Family	N	0
	Safe Auto Insurance Group, Inc.		31-1379882	0	0		Safe Auto Insurance Company	OH	IA	Safe Auto Insurance Group, Inc	Ownership	100.000	Safe Auto Insurance Group, Inc	Y	0
	Safe Auto Insurance Group, Inc.		31-1400303	0	0		Safe Auto Group Agency	OH	NIA	Safe Auto Insurance Group, Inc	Ownership	100.000	Safe Auto Insurance Group, Inc	N	0
	Safe Auto Insurance Group, Inc.		27-5011585	0	0		Safe Auto Realty, LLC	OH	NIA	Safe Auto Insurance Group, Inc	Ownership	100.000	Safe Auto Insurance Group, Inc	N	0
	Safe Auto Insurance Group, Inc.		31-1459717	0	0		SAGI Realty, LTD	OH	NIA	Safe Auto Realty, LLC	Ownership	100.000	Safe Auto Insurance Group, Inc	N	0
	Safe Auto Insurance Group, Inc.		46-2732120	0	0		SafeAuto Capital, LLC	OH	NIA	Safe Auto Insurance Company	Ownership	100.000	Safe Auto Insurance Group, Inc	N	0
	Safe Auto Insurance Group, Inc.		45-3533024	0	0		AutoTex MGA, Inc	OH	IA	Safe Auto Insurance Group, Inc	Ownership	100.000	Safe Auto Insurance Group, Inc	N	0
	Safe Auto Insurance Group, Inc.		81-1403504	0	0		Safe Auto Services, LLC	OH	NIA	Safe Auto Insurance Group, Inc	Ownership	100.000	Safe Auto Insurance Group, Inc	N	0
.4940	Safe Auto Insurance Group, Inc.	.16502	83-2241547	0	0		Safe Auto Choice Insurance Company	OH	RE	Safe Auto Insurance Group, Inc	Ownership	100.000	Safe Auto Insurance Group, Inc	N	0
.4940	Safe Auto Insurance Group, Inc.	.16503	83-2240671	0	0		Safe Auto Value Insurance Company	OH	IA	Safe Auto Insurance Group, Inc	Ownership	100.000	Safe Auto Insurance Group, Inc	N	0

Asterisk	Explanation

PART 1 - LOSS EXPERIENCE

Line of Business	Current Year to Date			4 Prior Year to Date Direct Loss Percentage
	1 Direct Premiums Earned	2 Direct Losses Incurred	3 Direct Loss Percentage	
1. Fire			0.0	0.0
2. Allied Lines			0.0	0.0
3. Farmowners multiple peril			0.0	0.0
4. Homeowners multiple peril			0.0	0.0
5. Commercial multiple peril			0.0	0.0
6. Mortgage guaranty			0.0	0.0
8. Ocean marine			0.0	0.0
9. Inland marine			0.0	0.0
10. Financial guaranty			0.0	0.0
11.1 Medical professional liability - occurrence			0.0	0.0
11.2 Medical professional liability - claims-made			0.0	0.0
12. Earthquake			0.0	0.0
13. Group accident and health			0.0	0.0
14. Credit accident and health			0.0	0.0
15. Other accident and health			0.0	0.0
16. Workers' compensation			0.0	0.0
17.1 Other liability - occurrence			0.0	0.0
17.2 Other liability - claims-made			0.0	0.0
17.3 Excess workers' compensation			0.0	0.0
18.1 Products liability - occurrence			0.0	0.0
18.2 Products liability - claims-made			0.0	0.0
19.1,19.2 Private passenger auto liability	16,264	16,558	101.8	0.0
19.3,19.4 Commercial auto liability			0.0	0.0
21. Auto physical damage	4,422	10,418	235.6	0.0
22. Aircraft (all perils)			0.0	0.0
23. Fidelity			0.0	0.0
24. Surety			0.0	0.0
26. Burglary and theft			0.0	0.0
27. Boiler and machinery			0.0	0.0
28. Credit			0.0	0.0
29. International			0.0	0.0
30. Warranty			0.0	0.0
31. Reinsurance - Nonproportional Assumed Property	XXX	XXX	XXX	XXX
32. Reinsurance - Nonproportional Assumed Liability	XXX	XXX	XXX	XXX
33. Reinsurance - Nonproportional Assumed Financial Lines	XXX	XXX	XXX	XXX
34. Aggregate write-ins for other lines of business	0	0	0.0	0.0
35. Totals	20,686	26,976	130.4	0.0
DETAILS OF WRITE-INS				
3401.				
3402.				
3403.				
3498. Summary of remaining write-ins for Line 34 from overflow page	0	0	0.0	
3499. Totals (Lines 3401 through 3403 plus 3498)(Line 34 above)	0	0	0.0	0.0

PART 2 - DIRECT PREMIUMS WRITTEN

Line of Business	1	2	3
	Current Quarter	Current Year to Date	Prior Year Year to Date
1. Fire	0		0
2. Allied Lines	0		0
3. Farmowners multiple peril	0		0
4. Homeowners multiple peril	0		0
5. Commercial multiple peril	0		0
6. Mortgage guaranty	0		0
8. Ocean marine	0		0
9. Inland marine	0		0
10. Financial guaranty	0		0
11.1 Medical professional liability - occurrence	0		0
11.2 Medical professional liability - claims-made	0		0
12. Earthquake	0		0
13. Group accident and health	0		0
14. Credit accident and health	0		0
15. Other accident and health	0		0
16. Workers' compensation	0		0
17.1 Other liability - occurrence	0		0
17.2 Other liability - claims-made	0		0
17.3 Excess workers' compensation	0		0
18.1 Products liability - occurrence	0		0
18.2 Products liability - claims-made	0		0
19.1,19.2 Private passenger auto liability	190,982	190,982	0
19.3,19.4 Commercial auto liability	0		0
21. Auto physical damage	51,521	51,521	0
22. Aircraft (all perils)	0		0
23. Fidelity	0		0
24. Surety	0		0
26. Burglary and theft	0		0
27. Boiler and machinery	0		0
28. Credit	0		0
29. International	0		0
30. Warranty	0		0
31. Reinsurance - Nonproportional Assumed Property	XXX	XXX	XXX
32. Reinsurance - Nonproportional Assumed Liability	XXX	XXX	XXX
33. Reinsurance - Nonproportional Assumed Financial Lines	XXX	XXX	XXX
34. Aggregate write-ins for other lines of business	0	0	0
35. Totals	242,503	242,503	0
DETAILS OF WRITE-INS			
3401.			
3402.			
3403.			
3498. Summary of remaining write-ins for Line 34 from overflow page	0	0	0
3499. Totals (Lines 3401 through 3403 plus 3498)(Line 34 above)	0	0	0

STATEMENT AS OF SEPTEMBER 30, 2020 OF THE Safe Auto Choice Insurance Company

PART 3 (000 omitted)

LOSS AND LOSS ADJUSTMENT EXPENSE RESERVES SCHEDULE

	1	2	3	4	5	6	7	8	9	10	11	12	13
Years in Which Losses Occurred	Prior Year-End Known Case Loss and LAE Reserves	Prior Year-End IBNR Loss and LAE Reserves	Total Prior Year-End Loss and LAE Reserves (Cols. 1+2)	2020 Loss and LAE Payments on Claims Reported as of Prior Year-End	2020 Loss and LAE Payments on Claims Unreported as of Prior Year-End	Total 2020 Loss and LAE Payments (Cols. 4+5)	Q.S. Date Known Case Loss and LAE Reserves on Claims Reported and Open as of Prior Year End	Q.S. Date Known Case Loss and LAE Reserves on Claims Reported or Reopened Subsequent to Prior Year End	Q.S. Date IBNR Loss and LAE Reserves	Total Q.S. Loss and LAE Reserves (Cols.7+8+9)	Prior Year-End Known Case Loss and LAE Reserves Developed (Savings)/ Deficiency (Cols.4+7 minus Col. 1)	Prior Year-End IBNR Loss and LAE Reserves Developed (Savings)/ Deficiency (Cols. 5+8+9 minus Col. 2)	Prior Year-End Total Loss and LAE Reserve Developed (Savings)/ Deficiency (Cols. 11+12)
1. 2017 + Prior			0			0				0	0	0	0
2. 2018			0			0				0	0	0	0
3. Subtotals 2018 + Prior	0	0	0	0	0	0	0	0	0	0	0	0	0
4. 2019			0			0				0	0	0	0
5. Subtotals 2019 + Prior	0	0	0	0	0	0	0	0	0	0	0	0	0
6. 2020	XXX	XXX	XXX	XXX	0	0	XXX	23	7	30	XXX	XXX	XXX
7. Totals	0	0	0	0	0	0	0	23	7	30	0	0	0
8. Prior Year-End Surplus As Regards Policyholders	6,145										Col. 11, Line 7 As % of Col. 1 Line 7	Col. 12, Line 7 As % of Col. 2 Line 7	Col. 13, Line 7 As % of Col. 3 Line 7
											1. 0.0	2. 0.0	3. 0.0
													Col. 13, Line 7 As a % of Col. 1 Line 8
													4. 0.0

SUPPLEMENTAL EXHIBITS AND SCHEDULES INTERROGATORIES

The following supplemental reports are required to be filed as part of your statement filing. However, in the event that your company does not transact the type of business for which the special report must be filed, your response of NO to the specific interrogatory will be accepted in lieu of filing a "NONE" report and a bar code will be printed below. If the supplement is required of your company but is not being filed for whatever reason enter SEE EXPLANATION and provide an explanation following the interrogatory questions.

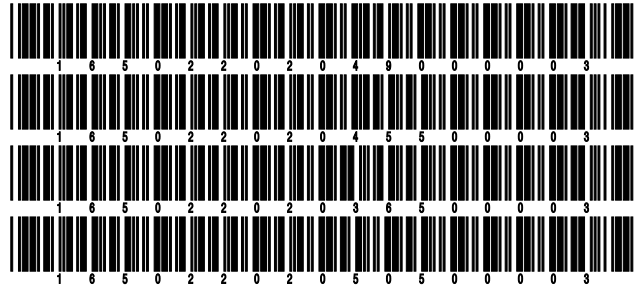
	Response
1. Will the Trusteed Surplus Statement be filed with the state of domicile and the NAIC with this statement?	NO
2. Will Supplement A to Schedule T (Medical Professional Liability Supplement) be filed with this statement?	NO
3. Will the Medicare Part D Coverage Supplement be filed with the state of domicile and the NAIC with this statement?	NO
4. Will the Director and Officer Insurance Coverage Supplement be filed with the state of domicile and the NAIC with this statement?	NO

Explanations:

1. The data for this supplement is not required to be filed.
2. The data for this supplement is not required to be filed.
3. The data for this supplement is not required to be filed.
4. The data for this supplement is filed separately.

Bar Codes:

1. Trusteed Surplus Statement [Document Identifier 490]
2. Supplement A to Schedule T [Document Identifier 455]
3. Medicare Part D Coverage Supplement [Document Identifier 365]
4. Director and Officer Supplement [Document Identifier 505]



OVERFLOW PAGE FOR WRITE-INS

STATEMENT AS OF SEPTEMBER 30, 2020 OF THE Safe Auto Choice Insurance Company

SCHEDULE A - VERIFICATION

Real Estate

	1 Year to Date	2 Prior Year Ended December 31
1. Book/adjusted carrying value, December 31 of prior year		
2. Cost of acquired:		
2.1 Actual cost at time of acquisition		
2.2 Additional investment made after acquisition		
3. Current year change in encumbrances		
4. Total gain (loss) on disposals		
5. Deduct amounts received on disposals		
6. Total foreign exchange change in book/adjusted carrying value		
7. Deduct current year's other than temporary impairment recognized		
8. Deduct current year's depreciation		
9. Book/adjusted carrying value at the end of current period (Lines 1+2+3+4-5+6-7-8)		
10. Deduct total nonadmitted amounts		
11. Statement value at end of current period (Line 9 minus Line 10)		

NONE

SCHEDULE B - VERIFICATION

Mortgage Loans

	1 Year to Date	2 Prior Year Ended December 31
1. Book value/recorded investment excluding accrued interest, December 31 of prior year		
2. Cost of acquired:		
2.1 Actual cost at time of acquisition		
2.2 Additional investment made after acquisition		
3. Capitalized deferred interest and other		
4. Accrual of discount		
5. Unrealized valuation increase (decrease)		
6. Total gain (loss) on disposals		
7. Deduct amounts received on disposals		
8. Deduct amortization of premium and mortgage interest points and commitment fees		
9. Total foreign exchange change in book value/recorded investment excluding accrued interest		
10. Deduct current year's other than temporary impairment recognized		
11. Book value/recorded investment excluding accrued interest at end of current period (Lines 1+2+3+4+5+6-7-8+9-10)		
12. Total valuation allowance		
13. Subtotal (Line 11 plus Line 12)		
14. Deduct total nonadmitted amounts		
15. Statement value at end of current period (Line 13 minus Line 14)		

NONE

SCHEDULE BA - VERIFICATION

Other Long-Term Invested Assets

	1 Year to Date	2 Prior Year Ended December 31
1. Book/adjusted carrying value, December 31 of prior year		
2. Cost of acquired:		
2.1 Actual cost at time of acquisition		
2.2 Additional investment made after acquisition		
3. Capitalized deferred interest and other		
4. Accrual of discount		
5. Unrealized valuation increase (decrease)		
6. Total gain (loss) on disposals		
7. Deduct amounts received on disposals		
8. Deduct amortization of premium and depreciation		
9. Total foreign exchange change in book/adjusted carrying value		
10. Deduct current year's other than temporary impairment recognized		
11. Book/adjusted carrying value at end of current period (Lines 1+2+3+4+5+6-7-8+9-10)		
12. Deduct total nonadmitted amounts		
13. Statement value at end of current period (Line 11 minus Line 12)		

NONE

SCHEDULE D - VERIFICATION

Bonds and Stocks

	1 Year to Date	2 Prior Year Ended December 31
1. Book/adjusted carrying value of bonds and stocks, December 31 of prior year	5,589,321	196,068
2. Cost of bonds and stocks acquired	528,427	5,945,151
3. Accrual of discount	2,737	3,852
4. Unrealized valuation increase (decrease)		0
5. Total gain (loss) on disposals	19,716	3,111
6. Deduct consideration for bonds and stocks disposed of	910,376	555,367
7. Deduct amortization of premium	3,493	3,494
8. Total foreign exchange change in book/adjusted carrying value		0
9. Deduct current year's other than temporary impairment recognized		0
10. Total investment income recognized as a result of prepayment penalties and/or acceleration fees	4,521	0
11. Book/adjusted carrying value at end of current period (Lines 1+2+3+4+5-6-7+8-9+10)	5,230,853	5,589,321
12. Deduct total nonadmitted amounts		0
13. Statement value at end of current period (Line 11 minus Line 12)	5,230,853	5,589,321

STATEMENT AS OF SEPTEMBER 30, 2020 OF THE Safe Auto Choice Insurance Company

SCHEDULE D - PART 1B

Showing the Acquisitions, Dispositions and Non-Trading Activity
During the Current Quarter for all Bonds and Preferred Stock by NAIC Designation

NAIC Designation	1 Book/Adjusted Carrying Value Beginning of Current Quarter	2 Acquisitions During Current Quarter	3 Dispositions During Current Quarter	4 Non-Trading Activity During Current Quarter	5 Book/Adjusted Carrying Value End of First Quarter	6 Book/Adjusted Carrying Value End of Second Quarter	7 Book/Adjusted Carrying Value End of Third Quarter	8 Book/Adjusted Carrying Value December 31 Prior Year
BONDS								
1. NAIC 1 (a)	4,812,994	0	76,800	(272)	4,869,065	4,812,994	4,735,922	5,094,809
2. NAIC 2 (a)	494,791	0	0	141	494,651	494,791	494,932	494,513
3. NAIC 3 (a)	0				0	0	0	0
4. NAIC 4 (a)	0				0	0	0	0
5. NAIC 5 (a)	0				0	0	0	0
6. NAIC 6 (a)	0				0	0	0	0
7. Total Bonds	5,307,785	0	76,800	(131)	5,363,716	5,307,785	5,230,854	5,589,322
PREFERRED STOCK								
8. NAIC 1	0				0	0	0	0
9. NAIC 2	0				0	0	0	0
10. NAIC 3	0				0	0	0	0
11. NAIC 4	0				0	0	0	0
12. NAIC 5	0				0	0	0	0
13. NAIC 6	0				0	0	0	0
14. Total Preferred Stock	0	0	0	0	0	0	0	0
15. Total Bonds and Preferred Stock	5,307,785	0	76,800	(131)	5,363,716	5,307,785	5,230,854	5,589,322

(a) Book/Adjusted Carrying Value column for the end of the current reporting period includes the following amount of short-term and cash equivalent bonds by NAIC designation:

NAIC 1 \$; NAIC 2 \$; NAIC 3 \$ NAIC 4 \$; NAIC 5 \$; NAIC 6 \$

S102

Schedule DA - Part 1 - Short-Term Investments

N O N E

Schedule DA - Verification - Short-Term Investments

N O N E

Schedule DB - Part A - Verification - Options, Caps, Floors, Collars, Swaps and Forwards

N O N E

Schedule DB - Part B - Verification - Futures Contracts

N O N E

Schedule DB - Part C - Section 1 - Replication (Synthetic Asset) Transactions (RSATs) Open

N O N E

Schedule DB-Part C-Section 2-Reconciliation of Replication (Synthetic Asset) Transactions Open

N O N E

Schedule DB - Verification - Book/Adjusted Carrying Value, Fair Value and Potential Exposure of
Derivatives

N O N E

SCHEDULE E - PART 2 - VERIFICATION

(Cash Equivalents)

	1	2
	Year To Date	Prior Year Ended December 31
1. Book/adjusted carrying value, December 31 of prior year	67,011	5,304,076
2. Cost of cash equivalents acquired	3,385,070	1,180,318
3. Accrual of discount		0
4. Unrealized valuation increase (decrease)		0
5. Total gain (loss) on disposals		364
6. Deduct consideration received on disposals	2,868,179	6,417,747
7. Deduct amortization of premium		0
8. Total foreign exchange change in book/adjusted carrying value		0
9. Deduct current year's other than temporary impairment recognized		0
10. Book/adjusted carrying value at end of current period (Lines 1+2+3+4+5-6-7+8-9)	583,902	67,011
11. Deduct total nonadmitted amounts		0
12. Statement value at end of current period (Line 10 minus Line 11)	583,902	67,011

Schedule A - Part 2 - Real Estate Acquired and Additions Made

N O N E

Schedule A - Part 3 - Real Estate Disposed

N O N E

Schedule B - Part 2 - Mortgage Loans Acquired and Additions Made

N O N E

Schedule B - Part 3 - Mortgage Loans Disposed, Transferred or Repaid

N O N E

Schedule BA - Part 2 - Other Long-Term Invested Assets Acquired and Additions Made

N O N E

Schedule BA - Part 3 - Other Long-Term Invested Assets Disposed, Transferred or Repaid

N O N E

Schedule D - Part 3 - Long-Term Bonds and Stocks Acquired

N O N E

STATEMENT AS OF SEPTEMBER 30, 2020 OF THE Safe Auto Choice Insurance Company

SCHEDULE D - PART 4

Show All Long-Term Bonds and Stock Sold, Redeemed or Otherwise Disposed of During the Current Quarter

1	2	3	4	5	6	7	8	9	10	Change In Book/Adjusted Carrying Value					16	17	18	19	20	21	22		
										11	12	13	14	15									
CUSIP Identification	Description	For-foreign	Disposal Date	Name of Purchaser	Number of Shares of Stock	Consideration	Par Value	Actual Cost	Prior Year Book/Adjusted Carrying Value	Unrealized Valuation Increase/(Decrease)	Current Year's (Amortization)/Accretion	Current Year's Other Than Temporary Impairment Recognized	Total Change in Book/Adjusted Carrying Value (11 + 12 - 13)	Total Foreign Exchange Change in Book /Adjusted Carrying Value	Book/Adjusted Carrying Value at Disposal Date	Foreign Exchange Gain (Loss) on Disposal	Realized Gain (Loss) on Disposal	Total Gain (Loss) on Disposal	Bond Interest/Stock Dividends Received During Year	Stated Contractual Maturity Date	NAIC Designation and Administrative Symbol		
3131XV-QA-6	UMBS - POOL ZM2249		09/01/2020	PAYDOWN		7,433	7,433	7,448	7,435	0	(2)	0	(2)	0	7,433	0	0	0	176	12/01/2046	IFE		
3132AC-PV-6	UMBS - POOL ZT0436		09/01/2020	PAYDOWN		8,220	8,220	8,261	8,223	0	(3)	0	(3)	0	8,220	0	0	0	187	01/01/2047	IFE		
3138WE-KE-8	UMBS - POOL AS4792		09/01/2020	PAYDOWN		20,937	20,937	21,060	20,956	0	(18)	0	(18)	0	20,937	0	0	0	488	04/01/2045	IFE		
3140J8-A7-8	UMBS - POOL BM3629		09/01/2020	PAYDOWN		16,716	16,716	16,753	16,722	0	(5)	0	(5)	0	16,716	0	0	0	395	03/01/2048	IFE		
31418C-G9-9	UMBS - POOL MA2923		09/01/2020	PAYDOWN		23,493	23,493	23,754	23,547	0	(53)	0	(53)	0	23,493	0	0	0	553	03/01/2037	IFE		
3199999. Subtotal - Bonds - U.S. Special Revenues						76,799	76,799	77,276	76,883	0	(81)	0	(81)	0	76,799	0	0	0	1,799	XXX	XXX		
8399997. Total - Bonds - Part 4						76,799	76,799	77,276	76,883	0	(81)	0	(81)	0	76,799	0	0	0	1,799	XXX	XXX		
8399998. Total - Bonds - Part 5						XXX	XXX	XXX	XXX	XXX	XXX	XXX	XXX	XXX	XXX	XXX	XXX	XXX	XXX	XXX	XXX	XXX	
8399999. Total - Bonds						76,799	76,799	77,276	76,883	0	(81)	0	(81)	0	76,799	0	0	0	1,799	XXX	XXX		
8999997. Total - Preferred Stocks - Part 4						0	XXX	0	0	0	0	0	0	0	0	0	0	0	0	0	0	XXX	XXX
8999998. Total - Preferred Stocks - Part 5						XXX	XXX	XXX	XXX	XXX	XXX	XXX	XXX	XXX	XXX	XXX	XXX	XXX	XXX	XXX	XXX	XXX	XXX
8999999. Total - Preferred Stocks						0	XXX	0	0	0	0	0	0	0	0	0	0	0	0	0	0	XXX	XXX
9799997. Total - Common Stocks - Part 4						0	XXX	0	0	0	0	0	0	0	0	0	0	0	0	0	0	XXX	XXX
9799998. Total - Common Stocks - Part 5						XXX	XXX	XXX	XXX	XXX	XXX	XXX	XXX	XXX	XXX	XXX	XXX	XXX	XXX	XXX	XXX	XXX	XXX
9799999. Total - Common Stocks						0	XXX	0	0	0	0	0	0	0	0	0	0	0	0	0	0	XXX	XXX
9899999. Total - Preferred and Common Stocks						0	XXX	0	0	0	0	0	0	0	0	0	0	0	0	0	0	XXX	XXX
9999999 - Totals						76,799	XXX	77,276	76,883	0	(81)	0	(81)	0	76,799	0	0	0	0	1,799	XXX	XXX	

E05

Schedule DB - Part A - Section 1 - Options, Caps, Floors, Collars, Swaps and Forwards Open

N O N E

Schedule DB - Part B - Section 1 - Futures Contracts Open

N O N E

Schedule DB - Part B - Section 1B - Brokers with whom cash deposits have been made

N O N E

Schedule DB - Part D - Section 1 - Counterparty Exposure for Derivative Instruments Open

N O N E

Schedule DB - Part D-Section 2 - Collateral for Derivative Instruments Open - Pledged By

N O N E

Schedule DB - Part D-Section 2 - Collateral for Derivative Instruments Open - Pledged To

N O N E

Schedule DB - Part E - Derivatives Hedging Variable Annuity Guarantees

N O N E

Schedule DL - Part 1 - Reinvested Collateral Assets Owned

N O N E

Schedule DL - Part 2 - Reinvested Collateral Assets Owned

N O N E

