



PROPERTY AND CASUALTY COMPANIES - ASSOCIATION EDITION

ANNUAL STATEMENT

FOR THE YEAR ENDED DECEMBER 31, 2019
OF THE CONDITION AND AFFAIRS OF THE

Plans' Liability Insurance Company

NAIC Group Code	0000 (Current)	0023 (Prior)	NAIC Company Code	26794	Employer's ID Number	36-3503382
Organized under the Laws of	Ohio			State of Domicile or Port of Entry		OH
Country of Domicile	United States of America					
Incorporated/Organized	05/15/1986			Commenced Business		06/17/1986
Statutory Home Office	6740 North High Street (Street and Number)			Worthington, OH, US 43085 (City or Town, State, Country and Zip Code)		
Main Administrative Office	80 South Main Street (Street and Number)					
	Hanover, NH, US 03755 (City or Town, State, Country and Zip Code)			603-640-2200 (Area Code) (Telephone Number)		
Mail Address	80 South Main Street (Street and Number or P.O. Box)			Hanover, NH, US 03755 (City or Town, State, Country and Zip Code)		
Primary Location of Books and Records	80 South Main Street (Street and Number)					
	Hanover, NH, US 03755 (City or Town, State, Country and Zip Code)			603-640-2200 (Area Code) (Telephone Number)		
Internet Website Address	N/A					
Statutory Statement Contact	John Sinkus (Name)			603-640-2225 (Area Code) (Telephone Number)		
	jsinkus@whitemountains.com (E-mail Address)			603-643-4562 (FAX Number)		

OFFICERS

President	Todd Clinton Pozefsky #	Secretary	Wesley Conger Bell #
Treasurer	David Grant Staples #		

OTHER

DIRECTORS OR TRUSTEES

Todd Clinton Pozefsky #	David Grant Staples #	Wesley Conger Bell #
Brendon Douglas Luby #	Reid Tarlton Campbell #	

State of	New Hampshire	SS:
County of	Grafton	

The officers of this reporting entity being duly sworn, each depose and say that they are the described officers of said reporting entity, and that on the reporting period stated above, all of the herein described assets were the absolute property of the said reporting entity, free and clear from any liens or claims thereon, except as herein stated, and that this statement, together with related exhibits, schedules and explanations therein contained, annexed or referred to, is a full and true statement of all the assets and liabilities and of the condition and affairs of the said reporting entity as of the reporting period stated above, and of its income and deductions therefrom for the period ended, and have been completed in accordance with the NAIC Annual Statement Instructions and Accounting Practices and Procedures manual except to the extent that: (1) state law may differ; or, (2) that state rules or regulations require differences in reporting not related to accounting practices and procedures, according to the best of their information, knowledge and belief, respectively. Furthermore, the scope of this attestation by the described officers also includes the related corresponding electronic filing with the NAIC, when required, that is an exact copy (except for formatting differences due to electronic filing) of the enclosed statement. The electronic filing may be requested by various regulators in lieu of or in addition to the enclosed statement.

Todd Clinton Pozefsky President	David Grant Staples Treasurer	Wesley Conger Bell Secretary
Subscribed and sworn to before me this		a. Is this an original filing?
day of		b. If no,
		1. State the amendment number.....
		2. Date filed
		3. Number of pages attached.....

ANNUAL STATEMENT FOR THE YEAR 2019 OF THE Plans' Liability Insurance Company

ASSETS

	Current Year			Prior Year
	1 Assets	2 Nonadmitted Assets	3 Net Admitted Assets (Cols. 1 - 2)	4 Net Admitted Assets
1. Bonds (Schedule D)	1,026,539		1,026,539	4,604,038
2. Stocks (Schedule D):				
2.1 Preferred stocks				
2.2 Common stocks	44,100		44,100	128,100
3. Mortgage loans on real estate (Schedule B):				
3.1 First liens				
3.2 Other than first liens				
4. Real estate (Schedule A):				
4.1 Properties occupied by the company (less \$				
encumbrances)				
4.2 Properties held for the production of income (less				
\$				
encumbrances)				
4.3 Properties held for sale (less \$				
encumbrances)				
5. Cash (\$	1,184,531			
Schedule E - Part 1), cash equivalents				
(\$	5,016			
Schedule E - Part 2) and short-term				
investments (\$	3,787,837			
Schedule DA)	4,977,383		4,977,383	22,733,285
6. Contract loans (including \$				
premium notes)				
7. Derivatives (Schedule DB)				
8. Other invested assets (Schedule BA)				
9. Receivable for securities				733
10. Securities lending reinvested collateral assets (Schedule DL)				
11. Aggregate write-ins for invested assets				
12. Subtotals, cash and invested assets (Lines 1 to 11)	6,048,023		6,048,023	27,466,156
13. Title plants less \$				
charged off (for Title insurers				
only)				
14. Investment income due and accrued	15,633		15,633	59,163
15. Premiums and considerations:				
15.1 Uncollected premiums and agents' balances in the course of collection				68
15.2 Deferred premiums and agents' balances and installments booked but				
deferred and not yet due (including \$				
earned but unbilled premiums)				
15.3 Accrued retrospective premiums (\$				
) and				
contracts subject to redetermination (\$				
)				
16. Reinsurance:				
16.1 Amounts recoverable from reinsurers				
16.2 Funds held by or deposited with reinsured companies				
16.3 Other amounts receivable under reinsurance contracts				
17. Amounts receivable relating to uninsured plans				
18.1 Current federal and foreign income tax recoverable and interest thereon				
18.2 Net deferred tax asset	4,396	4,396		
19. Guaranty funds receivable or on deposit				
20. Electronic data processing equipment and software				
21. Furniture and equipment, including health care delivery assets				
(\$				
)				
22. Net adjustment in assets and liabilities due to foreign exchange rates				
23. Receivables from parent, subsidiaries and affiliates				
24. Health care (\$				
) and other amounts receivable				
25. Aggregate write-ins for other than invested assets				
26. Total assets excluding Separate Accounts, Segregated Accounts and				
Protected Cell Accounts (Lines 12 to 25)	6,068,052	4,396	6,063,656	27,525,387
27. From Separate Accounts, Segregated Accounts and Protected Cell				
Accounts				
28. Total (Lines 26 and 27)	6,068,052	4,396	6,063,656	27,525,387
DETAILS OF WRITE-INS				
1101.				
1102.				
1103.				
1198. Summary of remaining write-ins for Line 11 from overflow page				
1199. Totals (Lines 1101 thru 1103 plus 1198)(Line 11 above)				
2501.				
2502.				
2503.				
2598. Summary of remaining write-ins for Line 25 from overflow page				
2599. Totals (Lines 2501 thru 2503 plus 2598)(Line 25 above)				

LIABILITIES, SURPLUS AND OTHER FUNDS

	1 Current Year	2 Prior Year
1. Losses (Part 2A, Line 35, Column 8)		
2. Reinsurance payable on paid losses and loss adjustment expenses (Schedule F, Part 1, Column 6)		
3. Loss adjustment expenses (Part 2A, Line 35, Column 9)		
4. Commissions payable, contingent commissions and other similar charges		
5. Other expenses (excluding taxes, licenses and fees)		160
6. Taxes, licenses and fees (excluding federal and foreign income taxes)		
7.1 Current federal and foreign income taxes (including \$ on realized capital gains (losses))		
7.2 Net deferred tax liability		
8. Borrowed money \$ and interest thereon \$		
9. Unearned premiums (Part 1A, Line 38, Column 5) (after deducting unearned premiums for ceded reinsurance of \$ and including warranty reserves of \$ and accrued accident and health experience rating refunds including \$ for medical loss ratio rebate per the Public Health Service Act)		7,921
10. Advance premium		
11. Dividends declared and unpaid:		
11.1 Stockholders		
11.2 Policyholders		
12. Ceded reinsurance premiums payable (net of ceding commissions)		
13. Funds held by company under reinsurance treaties (Schedule F, Part 3, Column 20)		
14. Amounts withheld or retained by company for account of others		
15. Remittances and items not allocated		
16. Provision for reinsurance (including \$ certified) (Schedule F, Part 3, Column 78)		
17. Net adjustments in assets and liabilities due to foreign exchange rates		
18. Drafts outstanding		
19. Payable to parent, subsidiaries and affiliates	28,290	36,078
20. Derivatives		
21. Payable for securities		
22. Payable for securities lending		
23. Liability for amounts held under uninsured plans		
24. Capital notes \$ and interest thereon \$		
25. Aggregate write-ins for liabilities		
26. Total liabilities excluding protected cell liabilities (Lines 1 through 25)	28,290	44,159
27. Protected cell liabilities		
28. Total liabilities (Lines 26 and 27)	28,290	44,159
29. Aggregate write-ins for special surplus funds		
30. Common capital stock	2,942,436	2,942,436
31. Preferred capital stock		
32. Aggregate write-ins for other than special surplus funds		
33. Surplus notes		22,000,000
34. Gross paid in and contributed surplus	25,180,772	23,180,772
35. Unassigned funds (surplus)	(22,087,842)	(20,641,980)
36. Less treasury stock, at cost:		
36.1 shares common (value included in Line 30 \$)		
36.2 shares preferred (value included in Line 31 \$)		
37. Surplus as regards policyholders (Lines 29 to 35, less 36) (Page 4, Line 39)	6,035,366	27,481,228
38. TOTALS (Page 2, Line 28, Col. 3)	6,063,656	27,525,387
DETAILS OF WRITE-INS		
2501.		
2502.		
2503.		
2598. Summary of remaining write-ins for Line 25 from overflow page		
2599. Totals (Lines 2501 thru 2503 plus 2598)(Line 25 above)		
2901.		
2902.		
2903.		
2998. Summary of remaining write-ins for Line 29 from overflow page		
2999. Totals (Lines 2901 thru 2903 plus 2998)(Line 29 above)		
3201.		
3202.		
3203.		
3298. Summary of remaining write-ins for Line 32 from overflow page		
3299. Totals (Lines 3201 thru 3203 plus 3298)(Line 32 above)		

STATEMENT OF INCOME

	1 Current Year	2 Prior Year
UNDERWRITING INCOME		
1. Premiums earned (Part 1, Line 35, Column 4)	7,921	(58,883,427)
DEDUCTIONS:		
2. Losses incurred (Part 2, Line 35, Column 7)		(47,793,609)
3. Loss adjustment expenses incurred (Part 3, Line 25, Column 1)		(3,414,761)
4. Other underwriting expenses incurred (Part 3, Line 25, Column 2)	122,931	562,634
5. Aggregate write-ins for underwriting deductions		(242,000)
6. Total underwriting deductions (Lines 2 through 5)	122,931	(50,887,736)
7. Net income of protected cells		
8. Net underwriting gain or (loss) (Line 1 minus Line 6 plus Line 7)	(115,010)	(7,995,691)
INVESTMENT INCOME		
9. Net investment income earned (Exhibit of Net Investment Income, Line 17)	(1,337,713)	1,244,595
10. Net realized capital gains or (losses) less capital gains tax of \$ (Exhibit of Capital Gains (Losses))	2,317	1,102,087
11. Net investment gain (loss) (Lines 9 + 10)	(1,335,396)	2,346,682
OTHER INCOME		
12. Net gain (loss) from agents' or premium balances charged off (amount recovered \$ amount charged off \$)		
13. Finance and service charges not included in premiums		
14. Aggregate write-ins for miscellaneous income	968	407,411
15. Total other income (Lines 12 through 14)	968	407,411
16. Net income before dividends to policyholders, after capital gains tax and before all other federal and foreign income taxes (Lines 8 + 11 + 15)	(1,449,438)	(5,241,598)
17. Dividends to policyholders		
18. Net income, after dividends to policyholders, after capital gains tax and before all other federal and foreign income taxes (Line 16 minus Line 17)	(1,449,438)	(5,241,598)
19. Federal and foreign income taxes incurred		(275,585)
20. Net income (Line 18 minus Line 19)(to Line 22)	(1,449,438)	(4,966,013)
CAPITAL AND SURPLUS ACCOUNT		
21. Surplus as regards policyholders, December 31 prior year (Page 4, Line 39, Column 2)	27,481,228	48,396,984
22. Net income (from Line 20)	(1,449,438)	(4,966,013)
23. Net transfers (to) from Protected Cell accounts		
24. Change in net unrealized capital gains or (losses) less capital gains tax of \$	3,576	(750,297)
25. Change in net unrealized foreign exchange capital gain (loss)		
26. Change in net deferred income tax	4,396	(199,446)
27. Change in nonadmitted assets (Exhibit of Nonadmitted Assets, Line 28, Col. 3)	(4,396)	
28. Change in provision for reinsurance (Page 3, Line 16, Column 2 minus Column 1)		
29. Change in surplus notes	(22,000,000)	(15,000,000)
30. Surplus (contributed to) withdrawn from protected cells		
31. Cumulative effect of changes in accounting principles		
32. Capital changes:		
32.1 Paid in		
32.2 Transferred from surplus (Stock Dividend)		
32.3 Transferred to surplus		
33. Surplus adjustments:		
33.1 Paid in	2,000,000	
33.2 Transferred to capital (Stock Dividend)		
33.3 Transferred from capital		
34. Net remittances from or (to) Home Office		
35. Dividends to stockholders		
36. Change in treasury stock (Page 3, Lines 36.1 and 36.2, Column 2 minus Column 1)		
37. Aggregate write-ins for gains and losses in surplus		
38. Change in surplus as regards policyholders for the year (Lines 22 through 37)	(21,445,862)	(20,915,756)
39. Surplus as regards policyholders, December 31 current year (Line 21 plus Line 38) (Page 3, Line 37)	6,035,366	27,481,228
DETAILS OF WRITE-INS		
0501. Premium Deficiency Reserve		(242,000)
0502.		
0503.		
0598. Summary of remaining write-ins for Line 5 from overflow page		
0599. Totals (Lines 0501 thru 0503 plus 0598)(Line 5 above)		(242,000)
1401. Continuity Credit Assumed		427,572
1402. Miscellaneous Revenue (Expense)	968	(20,161)
1403.		
1498. Summary of remaining write-ins for Line 14 from overflow page		
1499. Totals (Lines 1401 thru 1403 plus 1498)(Line 14 above)	968	407,411
3701.		
3702.		
3703.		
3798. Summary of remaining write-ins for Line 37 from overflow page		
3799. Totals (Lines 3701 thru 3703 plus 3798)(Line 37 above)		

CASH FLOW

	1	2
	Current Year	Prior Year
Cash from Operations		
1. Premiums collected net of reinsurance	68	(59,372,112)
2. Net investment income	(1,285,672)	1,653,654
3. Miscellaneous income	968	888,922
4. Total (Lines 1 through 3)	(1,284,636)	(56,829,536)
5. Benefit and loss related payments		711,542
6. Net transfers to Separate Accounts, Segregated Accounts and Protected Cell Accounts		
7. Commissions, expenses paid and aggregate write-ins for deductions	123,091	1,367,927
8. Dividends paid to policyholders		
9. Federal and foreign income taxes paid (recovered) net of \$ tax on capital gains (losses)		(24,814)
10. Total (Lines 5 through 9)	123,091	2,054,655
11. Net cash from operations (Line 4 minus Line 10)	(1,407,727)	(58,884,191)
Cash from Investments		
12. Proceeds from investments sold, matured or repaid:		
12.1 Bonds	3,575,000	56,373,654
12.2 Stocks	84,000	3,321,866
12.3 Mortgage loans		
12.4 Real estate		
12.5 Other invested assets		3,979,685
12.6 Net gains or (losses) on cash, cash equivalents and short-term investments		(4,139)
12.7 Miscellaneous proceeds	733	9,965
12.8 Total investment proceeds (Lines 12.1 to 12.7)	3,659,733	63,681,031
13. Cost of investments acquired (long-term only):		
13.1 Bonds	120	2,959,694
13.2 Stocks		40,100
13.3 Mortgage loans		
13.4 Real estate		
13.5 Other invested assets		
13.6 Miscellaneous applications		1
13.7 Total investments acquired (Lines 13.1 to 13.6)	120	2,999,795
14. Net increase (decrease) in contract loans and premium notes		
15. Net cash from investments (Line 12.8 minus Line 13.7 minus Line 14)	3,659,613	60,681,236
Cash from Financing and Miscellaneous Sources		
16. Cash provided (applied):		
16.1 Surplus notes, capital notes	(22,000,000)	(15,000,000)
16.2 Capital and paid in surplus, less treasury stock	2,000,000	
16.3 Borrowed funds		(3,807,617)
16.4 Net deposits on deposit-type contracts and other insurance liabilities		
16.5 Dividends to stockholders		
16.6 Other cash provided (applied)	(7,788)	35,518,368
17. Net cash from financing and miscellaneous sources (Lines 16.1 to 16.4 minus Line 16.5 plus Line 16.6)	(20,007,788)	16,710,751
RECONCILIATION OF CASH, CASH EQUIVALENTS AND SHORT-TERM INVESTMENTS		
18. Net change in cash, cash equivalents and short-term investments (Line 11, plus Lines 15 and 17)	(17,755,902)	18,507,796
19. Cash, cash equivalents and short-term investments:		
19.1 Beginning of year	22,733,285	4,225,489
19.2 End of period (Line 18 plus Line 19.1)	4,977,383	22,733,285

Note: Supplemental disclosures of cash flow information for non-cash transactions:

--	--	--

UNDERWRITING AND INVESTMENT EXHIBIT

PART 1 - PREMIUMS EARNED

Line of Business		1 Net Premiums Written per Column 6, Part 1B	2 Unearned Premiums Dec. 31 Prior Year - per Col. 3, Last Year's Part 1	3 Unearned Premiums Dec. 31 Current Year - per Col. 5 Part 1A	4 Premiums Earned During Year (Cols. 1 + 2 - 3)
1.	Fire				
2.	Allied lines				
3.	Farmowners multiple peril				
4.	Homeowners multiple peril				
5.	Commercial multiple peril				
6.	Mortgage guaranty				
8.	Ocean marine				
9.	Inland marine				
10.	Financial guaranty				
11.1	Medical professional liability - occurrence				
11.2	Medical professional liability - claims-made				
12.	Earthquake				
13.	Group accident and health				
14.	Credit accident and health (group and individual)				
15.	Other accident and health				
16.	Workers' compensation				
17.1	Other liability - occurrence				
17.2	Other liability - claims-made		7,921		7,921
17.3	Excess workers' compensation				
18.1	Products liability - occurrence				
18.2	Products liability - claims-made				
19.1, 19.2	Private passenger auto liability				
19.3, 19.4	Commercial auto liability				
21.	Auto physical damage				
22.	Aircraft (all perils)				
23.	Fidelity				
24.	Surety				
26.	Burglary and theft				
27.	Boiler and machinery				
28.	Credit				
29.	International				
30.	Warranty				
31.	Reinsurance - nonproportional assumed property				
32.	Reinsurance - nonproportional assumed liability				
33.	Reinsurance - nonproportional assumed financial lines				
34.	Aggregate write-ins for other lines of business				
35.	TOTALS		7,921		7,921
DETAILS OF WRITE-INS					
3401.				
3402.				
3403.				
3498.	Summary of remaining write-ins for Line 34 from overflow page				
3499.	Totals (Lines 3401 thru 3403 plus 3498)(Line 34 above)				

Underwriting and Investment Exhibit - Part 1A - Recapitulation of all Premiums

N O N E

Underwriting and Investment Exhibit - Part 1B - Premiums Written

N O N E

Underwriting and Investment Exhibit - Part 2 - Losses Paid and Incurred

N O N E

Underwriting and Investment Exhibit - Part 2A - Unpaid Losses and Loss Adjustment Expenses

N O N E

UNDERWRITING AND INVESTMENT EXHIBIT

PART 3 - EXPENSES

	1	2	3	4
	Loss Adjustment Expenses	Other Underwriting Expenses	Investment Expenses	Total
1. Claim adjustment services:				
1.1 Direct				
1.2 Reinsurance assumed				
1.3 Reinsurance ceded				
1.4 Net claim adjustment service (1.1 + 1.2 - 1.3)				
2. Commission and brokerage:				
2.1 Direct excluding contingent				
2.2 Reinsurance assumed, excluding contingent				
2.3 Reinsurance ceded, excluding contingent				
2.4 Contingent - direct				
2.5 Contingent - reinsurance assumed				
2.6 Contingent - reinsurance ceded				
2.7 Policy and membership fees				
2.8 Net commission and brokerage (2.1 + 2.2 - 2.3 + 2.4 + 2.5 - 2.6 + 2.7)				
3. Allowances to managers and agents				
4. Advertising				
5. Boards, bureaus and associations		2,159		2,159
6. Surveys and underwriting reports				
7. Audit of assureds' records				
8. Salary and related items:				
8.1 Salaries				
8.2 Payroll taxes				
9. Employee relations and welfare				
10. Insurance				
11. Directors' fees				
12. Travel and travel items		11,462		11,462
13. Rent and rent items				
14. Equipment				
15. Cost or depreciation of EDP equipment and software				
16. Printing and stationery				
17. Postage, telephone and telegraph, exchange and express				
18. Legal and auditing				
19. Totals (Lines 3 to 18)		13,621		13,621
20. Taxes, licenses and fees:				
20.1 State and local insurance taxes deducting guaranty association credits of \$		21,320		21,320
20.2 Insurance department licenses and fees		84,586		84,586
20.3 Gross guaranty association assessments		1,300		1,300
20.4 All other (excluding federal and foreign income and real estate)		2,104		2,104
20.5 Total taxes, licenses and fees (20.1 + 20.2 + 20.3 + 20.4)		109,310		109,310
21. Real estate expenses				
22. Real estate taxes				
23. Reimbursements by uninsured plans				
24. Aggregate write-ins for miscellaneous expenses			23,151	23,151
25. Total expenses incurred		122,931	23,151	(a) 146,082
26. Less unpaid expenses - current year				
27. Add unpaid expenses - prior year		160		160
28. Amounts receivable relating to uninsured plans, prior year				
29. Amounts receivable relating to uninsured plans, current year				
30. TOTAL EXPENSES PAID (Lines 25 - 26 + 27 - 28 + 29)		123,091	23,151	146,242
DETAILS OF WRITE-INS				
2401. Bank and investment fees			23,151	23,151
2402.				
2403.				
2498. Summary of remaining write-ins for Line 24 from overflow page				
2499. Totals (Lines 2401 thru 2403 plus 2498)(Line 24 above)			23,151	23,151

(a) Includes management fees of \$ to affiliates and \$ to non-affiliates.

EXHIBIT OF NET INVESTMENT INCOME

		1	2
		Collected During Year	Earned During Year
1.	U.S. Government bonds	(a)38,86031,074
1.1	Bonds exempt from U.S. tax	(a)
1.2	Other bonds (unaffiliated)	(a)5959
1.3	Bonds of affiliates	(a)
2.1	Preferred stocks (unaffiliated)	(b)
2.11	Preferred stocks of affiliates	(b)
2.2	Common stocks (unaffiliated)6,9436,943
2.21	Common stocks of affiliates
3.	Mortgage loans	(c)
4.	Real estate	(d)
5	Contract loans
6	Cash, cash equivalents and short-term investments	(e)201,363166,583
7	Derivative instruments	(f)
8.	Other invested assets
9.	Aggregate write-ins for investment income
10.	Total gross investment income	247,226	204,659
11.	Investment expenses		(g)23,151
12.	Investment taxes, licenses and fees, excluding federal income taxes		(g)
13.	Interest expense		(h)1,519,221
14.	Depreciation on real estate and other invested assets		(i)
15.	Aggregate write-ins for deductions from investment income
16.	Total deductions (Lines 11 through 15)1,542,372
17.	Net investment income (Line 10 minus Line 16)		(1,337,713)
DETAILS OF WRITE-INS			
0901.		
0902.		
0903.		
0998.	Summary of remaining write-ins for Line 9 from overflow page		
0999.	Totals (Lines 0901 thru 0903 plus 0998) (Line 9, above)		
1501.		
1502.		
1503.		
1598.	Summary of remaining write-ins for Line 15 from overflow page		
1599.	Totals (Lines 1501 thru 1503 plus 1598) (Line 15, above)		

- (a) Includes \$2,560 accrual of discount less \$5,124 amortization of premium and less \$(120) paid for accrued interest on purchases.
- (b) Includes \$ accrual of discount less \$ amortization of premium and less \$ paid for accrued dividends on purchases.
- (c) Includes \$ accrual of discount less \$ amortization of premium and less \$ paid for accrued interest on purchases.
- (d) Includes \$ for company's occupancy of its own buildings; and excludes \$ interest on encumbrances.
- (e) Includes \$5,628 accrual of discount less \$4,315 amortization of premium and less \$740 paid for accrued interest on purchases.
- (f) Includes \$ accrual of discount less \$ amortization of premium.
- (g) Includes \$ investment expenses and \$ investment taxes, licenses and fees, excluding federal income taxes, attributable to segregated and Separate Accounts.
- (h) Includes \$1,519,194 interest on surplus notes and \$ interest on capital notes.
- (i) Includes \$ depreciation on real estate and \$ depreciation on other invested assets.

EXHIBIT OF CAPITAL GAINS (LOSSES)

		1	2	3	4	5
		Realized Gain (Loss) On Sales or Maturity	Other Realized Adjustments	Total Realized Capital Gain (Loss) (Columns 1 + 2)	Change in Unrealized Capital Gain (Loss)	Change in Unrealized Foreign Exchange Capital Gain (Loss)
1.	U.S. Government bonds					
1.1	Bonds exempt from U.S. tax					
1.2	Other bonds (unaffiliated)	(59)		(59)		
1.3	Bonds of affiliates					
2.1	Preferred stocks (unaffiliated)					
2.11	Preferred stocks of affiliates					
2.2	Common stocks (unaffiliated)					
2.21	Common stocks of affiliates					
3.	Mortgage loans					
4.	Real estate					
5.	Contract loans					
6.	Cash, cash equivalents and short-term investments	2,376		2,376	3,576	
7.	Derivative instruments					
8.	Other invested assets					
9.	Aggregate write-ins for capital gains (losses)					
10.	Total capital gains (losses)	2,317		2,317	3,576	
DETAILS OF WRITE-INS						
0901.					
0902.					
0903.					
0998.	Summary of remaining write-ins for Line 9 from overflow page					
0999.	Totals (Lines 0901 thru 0903 plus 0998) (Line 9, above)					

EXHIBIT OF NON-ADMITTED ASSETS

	1	2	3
	Current Year Total Nonadmitted Assets	Prior Year Total Nonadmitted Assets	Change in Total Nonadmitted Assets (Col. 2 - Col. 1)
1. Bonds (Schedule D)			
2. Stocks (Schedule D):			
2.1 Preferred stocks			
2.2 Common stocks			
3. Mortgage loans on real estate (Schedule B):			
3.1 First liens			
3.2 Other than first liens.....			
4. Real estate (Schedule A):			
4.1 Properties occupied by the company			
4.2 Properties held for the production of income.....			
4.3 Properties held for sale			
5. Cash (Schedule E - Part 1), cash equivalents (Schedule E - Part 2) and short-term investments (Schedule DA)			
6. Contract loans			
7. Derivatives (Schedule DB)			
8. Other invested assets (Schedule BA)			
9. Receivables for securities			
10. Securities lending reinvested collateral assets (Schedule DL)			
11. Aggregate write-ins for invested assets			
12. Subtotals, cash and invested assets (Lines 1 to 11)			
13. Title plants (for Title insurers only)			
14. Investment income due and accrued			
15. Premiums and considerations:			
15.1 Uncollected premiums and agents' balances in the course of collection			
15.2 Deferred premiums, agents' balances and installments booked but deferred and not yet due			
15.3 Accrued retrospective premiums and contracts subject to redetermination			
16. Reinsurance:			
16.1 Amounts recoverable from reinsurers			
16.2 Funds held by or deposited with reinsured companies			
16.3 Other amounts receivable under reinsurance contracts			
17. Amounts receivable relating to uninsured plans			
18.1 Current federal and foreign income tax recoverable and interest thereon			
18.2 Net deferred tax asset	4,396		(4,396)
19. Guaranty funds receivable or on deposit			
20. Electronic data processing equipment and software			
21. Furniture and equipment, including health care delivery assets			
22. Net adjustment in assets and liabilities due to foreign exchange rates			
23. Receivables from parent, subsidiaries and affiliates			
24. Health care and other amounts receivable			
25. Aggregate write-ins for other than invested assets			
26. Total assets excluding Separate Accounts, Segregated Accounts and Protected Cell Accounts (Lines 12 to 25)	4,396		(4,396)
27. From Separate Accounts, Segregated Accounts and Protected Cell Accounts			
28. Total (Lines 26 and 27)	4,396		(4,396)
DETAILS OF WRITE-INS			
1101.			
1102.			
1103.			
1198. Summary of remaining write-ins for Line 11 from overflow page			
1199. Totals (Lines 1101 thru 1103 plus 1198)(Line 11 above)			
2501.			
2502.			
2503.			
2598. Summary of remaining write-ins for Line 25 from overflow page			
2599. Totals (Lines 2501 thru 2503 plus 2598)(Line 25 above)			

NOTES TO FINANCIAL STATEMENTS

1. Summary of Significant Accounting Policies and Going Concern

A. Accounting Practices

The financial statements of Plans' Liability Insurance Company (the Company) are presented on the basis of accounting practices prescribed or permitted by the Ohio Insurance Department.

The state of Ohio requires insurance companies domiciled in the state of Ohio to prepare their statutory financial statements in accordance with the National Association of Insurance Commissioners' (NAIC) *Accounting Practices and Procedures Manual* (NAIC SAP) subject to any deviations prescribed or permitted by the Ohio Insurance Department.

	SSAP #	F/S Page	F/S Line #	2019	2018
NET INCOME					
(1) State basis (Page 4, Line 20, Columns 1& 2)	XXX	XXX	XXX	\$ (1449,438)	\$ (4,966,013)
(2) State Prescribed Practices that are an increase/(decrease) from NAIC SAP				-	-
(3) State Permitted Practices that are an increase/(decrease) from NAIC SAP				-	-
(4) NAIC SAP (1-2-3=4)	XXX	XXX	XXX	<u>\$ (1449,438)</u>	<u>\$ (4,966,013)</u>
SURPLUS					
(5) State basis (Page 3, Line 37, Columns 1& 2)	XXX	XXX	XXX	\$ 6,035,366	\$ 27,481,228
(6) State Prescribed Practices that are an increase/(decrease) from NAIC SAP				-	-
(7) State Permitted Practices that are an increase/(decrease) from NAIC SAP				-	-
(8) NAIC SAP (5-6-7=8)	XXX	XXX	XXX	<u>\$ 6,035,366</u>	<u>\$ 27,481,228</u>

B. Use of Estimates in the Preparation of the Financial Statements

The preparation of financial statements in conformity with Statutory Accounting Principles requires management to make estimates and assumptions that affect the reported amounts of assets and liabilities. It also requires disclosure of contingent assets and liabilities at the date of the financial statements and the reported amounts of revenue and expenses during the period. Actual results could differ from those estimates.

C. Accounting Policy

Direct and ceded premiums are earned over the terms of the related policies and reinsurance contracts. Unearned premium reserves are established to cover the unexpired portion of premiums written. Such reserves are computed by pro rata methods. An estimate of earned but unbilled premiums is recorded as an asset/liability and is a component of unearned premiums.

Expenses incurred in connection with acquiring new insurance business are charged to operations as incurred. Expenses incurred are reduced for ceding allowances received or receivable.

Net investment income earned consists of interest less investment related expenses. Interest is recognized on an accrual basis. Net realized capital gains (losses) are recognized on a specific identification basis when securities are sold, redeemed or otherwise disposed. Realized capital losses include write-downs for impairments considered to be other than temporary.

In addition, the Company uses the following accounting policies:

- Short-term Investments are stated at amortized cost using the interest method. Non-investment grade short-term investments are stated at the lower of amortized value or fair value.
- Investment grade bonds not backed by other loans are stated at amortized cost using the interest method. Non-investment grade bonds with NAIC designations of 3 through 6 would be stated at the lower of amortized cost or fair value. The Company does not currently have any of these non-investment grade bonds. The Company's bond portfolio is reviewed quarterly and as a result the carrying value of a bond may be reduced to reflect changes in valuation resulting from asset impairment. The Company does not hold any mandatory convertible securities or SVO-Identified investments identified in SSAP No. 26R.
- Common Stock is stated at fair value. The value is based on the underlying book value of Federal Home Loan Bank of Cincinnati.
- Preferred Stocks
Not applicable
- Mortgage Loans
Not applicable
- Loan-backed Securities
Not applicable
- Subsidiaries, Controlled and Affiliated Companies
Not applicable
- Joint ventures, Partnerships and Limited Liability Companies
Not applicable

NOTES TO FINANCIAL STATEMENTS

- 9. Derivatives
Not applicable
- 10. Anticipated Investment Income
Not applicable
- 11. Unpaid losses and loss adjustment expenses
Not applicable
- 12. Capitalization Policy
Not applicable
- 13. Pharmaceutical Rebate Receivables
Not applicable

D. Going Concern
Not Applicable

2. Accounting Changes and Corrections of Errors
None

3. Business Combinations and Goodwill
- A. Statutory Purchase Method
None
 - B. Statutory Merger
None
 - C. Impairment Loss
None

4. Discontinued Operations
Not Applicable

5. Investments
- A. Mortgage Loans, including Mezzanine Real Estate Loans
None
 - B. Debt Restructuring
None
 - C. Reverse Mortgages
None
 - D. Loan-Backed Securities
None
 - E. Dollar Repurchase Agreements and/or Securities Lending Transactions
None
 - F. Repurchase Agreements Transactions Accounted for as Secured Borrowing
None
 - G. Reverse Repurchase Agreements Transactions Accounted for as Secured Borrowing
None
 - H. Repurchase Agreements Transactions Accounted for as a Sale
None

NOTES TO FINANCIAL STATEMENTS

I. Reverse Repurchase Agreements Transactions Accounted for as a Sale

None

J. Real Estate

None

K. Low Income Housing Tax Credits (LIHTC)

None

L. Restricted Assets

1. Restricted Assets (Including Pledged)

Restricted Asset Category	Gross (Admitted & Nonadmitted) Restricted							Current Year			
	Current Year					6	7	Current Year			
	1	2	3	4	5	Total From Prior Year	Increase/ (Decrease) (5 minus 6)	8	9	Percentage	
	Total General Account (G/A)	G/A Supporting Protected Cell Account Activity	Total Protected Cell Account Restricted Assets	Protected Cell Account Assets Supporting G/A Activity	Total (1plus 3)					10	11
								Total Non-admitted Restricted	Total Admitted Restricted (5 minus 8)	Gross (Admitted & Non-admitted)	Admitted Restricted
a. Subject to contractual obligation for which liability is not shown											
b. Collateral held under security lending agreements											
c. Subject to repurchase agreements											
d. Subject to reverse repurchase											
e. Subject to dollar repurchase agreements											
f. Subject to dollar reverse repurchase											
g. Placed under option contracts											
h. Letter stock or securities restricted as to sale - excluding FHLB capital stock											
i. FHLB capital stock	\$ 44,100	\$ -	\$ -	\$ -	\$ 44,100	\$ 128,100	\$ (84,000)	\$ -	\$ 44,100	0.693%	0.727%
j. On deposit with states	\$ 4,814,376	\$ -	\$ -	\$ -	\$ 4,814,376	\$ 4,813,237	\$ 1,139	\$ -	\$ 4,814,376	75.602%	79.397%
k. On deposit with other regulatory bodies											
l. Pledged collateral to FHLB (including assets backing funding agreements)											
m. Pledged as collateral not captured in other categories											
n. Other restricted assets											
o. Total Restricted Assets	\$4,858,476	\$ -	\$ -	\$ -	\$4,858,476	\$ 4,941,337	\$ (82,861)	\$ -	\$4,858,476	76.295%	80.125%
(a) Subset of Column 1											
(b) Subset of Column 3											
(c) Column 5 divided by Asset Page, Column 1, Line 28											
(d) Column 9 divided by Asset Page, Column 3, Line 28											

2. Detail of Assets Pledged as Collateral Not Captured in Other Categories

None

3. Detail of Other Restricted Assets

None

4. Collateral Received and Reflected as Assets Within the Reporting Entity's Financial Statements

None

M. Working Capital Finance Investments

1. Aggregate Working Capital Finance Investments (WCFI) Book/Adjusted Carrying Value by NAIC designation

None

2. Aggregate Maturity Distribution the Underlying Working Capital Finance Programs

None

3. Events of Default of Working Capital Finance Investments During the Reporting Period

None

N. Offsetting and Netting of Assets and Liabilities

None

O. 5GI Securities

None

P. Short Sales

None

Q. Prepayment Penalty and Acceleration Fees

None

NOTES TO FINANCIAL STATEMENTS

6. Joint Ventures, Partnerships and Limited Liability Companies

A. Detail for Those Greater than 10% of Admitted Assets

Not Applicable

B. Write-downs for Impairments

Not Applicable

7. Investment Income

A. Accrued Investment Income

The Company does not admit investment income due and accrued if amounts are over 90 days past due.

B. Amounts Non-admitted

Not Applicable

8. Derivative Instruments

Not Applicable

9. Income Taxes

A. The components of the net deferred tax asset/(liability) at December 31 are as follows:

1.

	As of End of Current Period			12/31/2018			Change		
	(1)	(2)	(3)	(4)	(5)	(6)	(7)	(8)	(9)
	Ordinary	Capital	(Col. 1+2) Total	Ordinary	Capital	(Col. 4 + 5) Total	(Col. 1- 4) Ordinary	(Col. 2 - 5) Capital	(Col. 7 + 8) Total
(a) Gross Deferred Tax Assets	4,396	-	4,396	\$ 10,681,770	-	\$ 10,681,770	\$ (10,677,374)	-	\$ (10,677,374)
(b) Statutory Valuation Allowance	-	-	-	\$ 10,663,041	-	\$ 10,663,041	\$ (10,663,041)	-	\$ (10,663,041)
(c) Adjusted Gross Deferred Tax Assets (1a - 1b)	4,396	-	4,396	\$ 18,729	-	\$ 18,729	\$ (14,333)	-	\$ (14,333)
(d) Deferred Tax Assets Nonadmitted	4,396	-	4,396	\$ -	-	\$ -	\$ 4,396	-	\$ 4,396
(e) Subtotal Net Admitted Deferred Tax Asset (1c - 1d)	-	-	-	\$ 18,729	-	\$ 18,729	\$ (18,729)	-	\$ (18,729)
(f) Deferred Tax Liabilities	-	-	-	\$ -	-	\$ -	\$ -	-	\$ -
(g) Net Admitted Deferred Tax Asset/(Net Deferred Tax Liability) (1e - 1f)	-	-	-	\$ 18,729	-	\$ 18,729	\$ (18,729)	-	\$ (18,729)

2.

	As of End of Current Period			12/31/2018			Change		
	(1)	(2)	(3)	(4)	(5)	(6)	(7)	(8)	(9)
	Ordinary	Capital	(Col. 1+2) Total	Ordinary	Capital	(Col. 4 + 5) Total	(Col. 1- 4) Ordinary	(Col. 2 - 5) Capital	(Col. 7 + 8) Total
Admission Calculation Components SSAP No. 101									
(a) Federal Income Taxes Paid In Prior Years Recoverable Through Loss Carrybacks	-	-	-	-	-	-	-	-	-
(b) Adjusted Gross Deferred Tax Assets Expected To Be Realized (Excluding The Amount Of Deferred Tax Assets From 2(a) above) After Application of the Threshold Limitation. (The Lesser of 2(b)1 and 2(b)2 Below)	-	-	-	-	-	-	-	-	-
1. Adjusted Gross Deferred Tax Assets Expected to be Realized Following the Balance Sheet Date.	-	-	-	-	-	-	-	-	-
2. Adjusted Gross Deferred Tax Assets Allowed per Limitation Threshold.	XXX	XXX	\$ 905,305	XXX	XXX	\$ 4,122,184	XXX	XXX	\$ (3,216,879)
(c) Adjusted Gross Deferred Tax Assets (Excluding The Amount Of Deferred Tax Assets From 2(a) and 2(b) above)									
Offset by Gross Deferred Tax Liabilities.	-	-	-	\$ 18,729	-	\$ 18,729	\$ (18,729)	-	\$ (18,729)
(d) Deferred Tax Assets Admitted as the result of application of SSAP No. 101. Total 2(a) + 2(b) + 2(c))	-	-	-	\$ 18,729	-	\$ 18,729	\$ (18,729)	-	\$ (18,729)

3.

	2019	2018
a. Ratio Percentage Used To Determine Recovery Period And Threshold Limitation Amount.	85523%	41964%
b. Amount Of Adjusted Capital And Surplus Used To Determine Recovery Period And Threshold Limitation In 2(b)2 Above.	\$ 6,035,366	\$ 27,481,228

NOTES TO FINANCIAL STATEMENTS

4.

	As of End of Current Period		12/31/2018		Change	
	(1)	(2)	(3)	(4)	(5)	(6)
	Ordinary	Capital	Ordinary	Capital	(Col. 1- 3) Ordinary	(Col. 2 - 4) Capital
Impact of Tax-Planning Strategies						
(a) Determination of adjusted gross deferred tax assets and net admitted deferred tax assets, by tax character as a percentage.						
1. Adjusted Gross DTAs amount from Note 9A 1(c)	4,396	-	\$ 18,729	-	\$ (14,333)	-
2. Percentage of adjusted gross DTAs by tax character attributable to the impact of tax planning strategies	0.000%	0.000%	0.000%	-	0.000%	-
3. Net Admitted Adjusted Gross DTAs amount from Note 9A 1(e)	-	-	\$ 18,729	-	\$ (18,729)	-
4. Percentage of net admitted adjusted gross DTAs by tax character admitted because of the impact of tax planning strategies	0.000%	-	0.000%	-	0.000%	-

B. Unrecognized Deferred Tax Liabilities

Not Applicable

C. Current income taxes incurred consist of the following major components:

	(1) As of End of Current Period	(2) 12/31/2018	(3) (Col. 1- 2) Change
1. Current Income Tax			
(a) Federal	-	\$ (275,585)	\$ 275,585
(b) Foreign	-	-	-
(c) Subtotal	-	(275,585)	275,585
(d) Federal income tax on net capital gains	-	275,585	(275,585)
(e) Utilization of capital loss carry-forwards	-	-	-
(f) Other	-	-	-
(g) Federal and foreign income taxes incurred	-	-	-
2. Deferred Tax Assets:			
(a) Ordinary:			
(1) Discounting of unpaid losses	\$ -	\$ -	\$ -
(2) Unearned premium reserve	\$ -	333	(333)
(3) Policyholder reserves	\$ -	-	-
(4) Investments	\$ -	-	-
(5) Deferred acquisition costs	\$ -	-	-
(6) Policyholder dividends accrual	\$ -	-	-
(7) Fixed Assets	\$ -	-	-
(8) Compensation and benefits accrual	\$ -	-	-
(9) Pension accrual	\$ -	-	-
(10) Receivables - nonadmitted	\$ -	-	-
(11) Net operating loss carry-forward	\$ 4,396	10,681,395	(10,676,999)
(12) Tax credit carry-forward	\$ -	-	-
(13) Other (including items <5% of total ordinary tax assets)	\$ -	42	(42)
(99) Subtotal	\$ 4,396	10,681,770	(10,677,374)
(b) Statutory valuation allowance adjustment	\$ -	10,663,041	(10,663,041)
(c) Nonadmitted	\$ 4,396	-	4,396
(d) Admitted ordinary deferred tax assets (2a99 - 2b - 2c)	\$ -	18,729	(18,729)
(e) Capital:			
(1) Investments	\$ -	-	-
(2) Net capital loss carry-forward	\$ -	-	-
(3) Real estate	\$ -	-	-
(4) Other (including items <5% of total ordinary tax assets)	\$ -	-	-
(99) Subtotal	\$ -	-	-
(f) Statutory valuation allowance adjustment	\$ -	-	-
(g) Nonadmitted	\$ -	-	-
(h) Admitted capital deferred tax assets (2e99 - 2f - 2g)	\$ -	-	-
(i) Admitted deferred tax assets (2d + 2h)	\$ -	\$ 18,729	\$ (18,729)
3. Deferred Tax Liabilities:			
(a) Ordinary:			
(1) Investments	\$ -	\$ -	\$ -
(2) Fixed Assets	\$ -	-	-
(3) Deferred and uncollected premium	\$ -	-	-
(4) Policyholder reserves	\$ -	-	-
(5) Other (including items <5% of total ordinary tax liabilities)	\$ -	-	-
(99) Subtotal	\$ -	-	-
(b) Capital:			
(1) Investments	-	18,729	(18,729)
(2) Real estate	-	-	-
(3) Other (including items <5% of total capital tax liabilities)	-	-	-
(99) Subtotal	-	18,729	(18,729)
(c) Deferred tax liabilities (3a99 + 3b99)	-	18,729	(18,729)
4. Net deferred tax assets/liabilities (2i - 3c)	\$ -	\$ -	\$ -

NOTES TO FINANCIAL STATEMENTS

D. Among the more significant book to tax adjustments

None

E. Operating Loss and Tax Credit Carryforwards and Protective Tax Deposits

At December 31, 2019, the Company had net operating loss carryforwards of \$20,934. The Company does not have any AMT Credit or Capital Loss carryforwards.

F. Consolidated Federal Income Tax Return

A tax sharing agreement is currently being drafted to include the Company in the consolidated tax return of Guilford Holdings, Inc.

G. Federal or Foreign Federal Income Tax Loss Contingencies

Not Applicable

H. Repatriation Transition Tax (RTT)

Not Applicable

I. Alternative Minimum Tax (AMT) Credit

Not Applicable

10. Information Concerning Parent, Subsidiaries, Affiliates, and Other Related Parties

A. Nature of Relationships

At December 31, 2018, outstanding stock of the Company was distributed among forty-nine corporate shareholders. At that time, the Company reinsured directors' and officers' professional liability insurance and fidelity insurance on a claims-made basis for certain Blue Cross Blue Shield Plans (Plans) and their affiliates written through BCS Insurance Company (BCSIC). The Plans purchasing liability insurance through BCSIC were required to purchase a proportionate share of the Company's common stock. The Company was under common management with BCSIC and BCSIC's parent, BCS Financial Corporation (BCSF).

On December 9, 2019, the Company became a part of the White Mountains Insurance Group, Ltd. (WMIG) when White Mountains Capital, Inc. purchased 100% of the issued and outstanding capital stock shares of the Company from BCSF. WMIG elected to treat it as a Section 338(h)(10) purchase.

WMIG intends to hold the Company for future use as a potential separate platform within WMIG and its subsidiaries for the expansion of direct U.S. insurance operations. Until such time as a detailed business plan has been finalized and such plan has been filed with, and approved by, the Ohio Department of Insurance, no new business will be written by the Company, and WMIG will continue to manage the Company consistent with its current shell status.

B. Detail of Transactions Greater than ½% of 1% of Admitted Assets

None

C. Amounts of Transactions

Not Applicable

D. Amounts Due to or from Related Parties

At December 31, 2019, the Company reported \$28,290 payable to WMIG.

E. Guarantees or Contingencies for Related Parties

None

F. Management or Service Contracts and Cost Sharing Arrangements

None

G. Nature of Control Relationship

Not Applicable

H. Amount Deducted for Investment in Upstream Company

Not Applicable

I. Detail of Investments in SCA Entities That Exceed 10% of Admitted Assets

Not Applicable

J. Write-downs for Impaired SCA Entities

Not Applicable

NOTES TO FINANCIAL STATEMENTS

K. Foreign Insurance Subsidiary

Not Applicable

L. Investment in Downstream Noninsurance Holding Company

Not Applicable

M. All SCA Investments

Not Applicable

N. Investment in Insurance SCAs with statutory departure

Not Applicable

O. SCA and SSAP No. 48 Entity Loss Tracking

Not Applicable

11. Debt

A. Debt

Not Applicable

B. Federal Home Loan Bank (FHLB) Agreements

1. The Company is a member of Federal Home Loan Bank (FHLB) of Cincinnati. Through its membership, the Company can conduct business activity (borrowings) with the FHLB. It is part of the Company’s strategy to utilize these funds for general operations.

2. FHLB Capital Stock

a. Aggregate Totals

	1	2	3
	Total 2+3	General Account	Protected Cell Accounts
1. Current Year			
(a) Membership Stock - Class A	\$ -	\$ -	\$ -
(b) Membership Stock - Class B	44,041	44,041	-
(c) Activity Stock	59	59	-
(d) Excess Stock	-	-	-
(e) Aggregate Total (a+b+c+d)	44,100	44,100	-
(f) Actual or estimated Borrowing Capacity as Determined by the Insurer	-	XXX	XXX
2. Prior Year-end			
(a) Membership Stock - Class A	\$ -	\$ -	\$ -
(b) Membership Stock - Class B	128,099	128,099	-
(c) Activity Stock	1	1	-
(d) Excess Stock	-	-	-
(e) Aggregate Total (a+b+c+d)	128,100	128,100	-
(f) Actual or estimated Borrowing Capacity as Determined by the Insurer	-	XXX	XXX

1B(2)a1(f) should be equal to or greater than 1B(4)a1(d)
1B(2)a2(f) should be equal to or greater than 1B(4)a2(d)

b. Membership Stock (Class A and B) Eligible for Redemption

	1	2	Eligible for Redemption			
	Current Year Total (2+3+4+5+6)	Not Eligible for Redemption	3	4	5	6
			Less Than 6 Months	6 Months to Less Than 1Year	1to Less Than 3 Years	3 to 5 Years
Membership Stock						
1. Class A	\$ -	\$ -	\$ -	\$ -	\$ -	\$ -
2. Class B	\$ 44,041	\$ 44,041	\$ -	\$ -	\$ -	\$ -

1B(2)b1 Current Year Total (Column 1) should equal 1B(2)a1(a) Total (Column 1)
1B(2)b2 Current Year Total (Column 1) should equal 1B(2)a1(b) Total (Column 1)

3. Collateral Pledged to FHLB

a. Amount Pledged as of Reporting Date

None

NOTES TO FINANCIAL STATEMENTS

b. Maximum Amount of Collateral Pledged During Reporting Period

	1	2	3
	Fair Value	Carrying Value	Amount Borrowed at Time of Maximum Collateral
1. Current Year Total General and Protected Cell Account Maximum Collateral Pledged (Lines 2+3)	\$ -	\$ -	\$ -
2. Current Year General Account Maximum Collateral Pledged		\$ -	\$ -
3. Current Year Protected Cell Account Maximum Collateral	\$ -	\$ -	\$ -
4. Prior Year-end Total General and Protected Cell Account Maximum Collateral Pledged	\$ 4,262,817	\$ 4,296,716	\$ 3,800,000

4. Borrowing from FHLB

None

12. Retirement Plans, Deferred Compensation, Postemployment Benefits and Compensated Absences and Other Postretirement Benefit Plans

A. Defined Benefit Plan

None

B. Investment Policies & Strategies

None

C. Fair Value of Each Class of Plan Assets

None

D. Basis Used to Determine the Overall Expected Long-Term Rate-of-Return-on-Assets

None

E. Defined Contribution Plans

None

F. Multiemployer Plans

None

G. Consolidated/Holding Company Plans

None

H. Postemployment Benefits and Compensated Absences

None

I. Impact of Medicare Modernization Act on Postretirement Benefits

Not Applicable

13. Capital and Surplus, Shareholders' Dividend Restrictions, and Quasi-Reorganizations

1. Issued and Outstanding Shares

The Company has 1,000 shares of \$6,000 par value common stock authorized and 490.4 shares issued and outstanding. The Company has no preferred stock authorized, issued or outstanding.

2. Dividend Rate of Preferred Stock

Not Applicable

3. , 4, & 5. Dividend Restrictions

All dividends require notification to the Director of the Ohio Department of Insurance. The amount of dividends that can be paid by insurance companies domiciled in Ohio without prior approval of the Director of the Ohio Department of Insurance is subject to restriction and cannot exceed the greater of ten percent of the prior year end surplus or the prior year's net income. The Company did not declare or pay dividends during 2019.

6. Restrictions on Unassigned Funds

None

7. Mutual Surplus Advances

None

NOTES TO FINANCIAL STATEMENTS

8. Company Stock Held for Special Purposes

None

9. Changes in Special Surplus Funds

None

10. Cumulative Unrealized Gains (Losses)

The portion of unassigned funds (surplus) represented by cumulative unrealized gains and losses is \$0 at December 31, 2019.

11. Surplus Notes

A surplus note was issued as of December 31, 2017 to BCS Insurance Company for the principal sum of \$22,000,000 borrowed and approved by the Insurance Director of Ohio (Director) for the purpose of providing additional surplus funds in cash. Interest was to be paid semi-annually in arrears on June 15 and December 15 in each year commencing June 15, 2018 at an annual rate of 6.50%. No payments of principal or interest on this note were to be repaid without the prior approval of the Director. The surplus note was settled in cash in the first quarter of 2018. If the Director were to have approved it, there would have been \$1,235,361 of accrued interest on this note as of December 31, 2018.

On February 28, 2019 the Company repaid \$20,000,000 principal as well as interest of \$1,469,722 after receiving approval from the Director. On July 15, 2019, the Company received approval from the Director to repay the remaining \$2,000,000 principal as well as interest of \$49,472.

12.& 13. Quasi Reorganizations

None

14. Liabilities, Contingencies and Assessments

A. Contingent Commitments

None

B. Assessments

None

C. Gain Contingencies

None

D. Claims Related to Extra Contractual Obligation and Bad Faith Losses Stemming from Lawsuits

None

E. Product Warranties

None

F. Joint and Several Liabilities

None

G. All Other Contingencies

None

15. Leases

None

16. Information About Financial Instruments with Off-Balance Sheet Risk and Financial Instruments with Concentrations of Credit Risk

None

17. Sale, Transfer and Servicing of Financial Assets and Extinguishment of Liabilities

A. Transfer of Receivables Reported as Sales

Not Applicable

B. Transfer and Servicing of Financial Assets

Not Applicable

C. Wash Sales

Not Applicable

NOTES TO FINANCIAL STATEMENTS

18. Gain or Loss to the Reporting Entity from Uninsured Plans and the Uninsured Portion of Partially Insured Plans

A. Administrative Services Only (ASO) Plans

Not Applicable

B. Administrative Services Contract (ASC) Plans

Not Applicable

C. Medicare or Similarly Structured Cost Based Reimbursement Contracts

Not Applicable

19. Direct Premium Written/Produced by Managing General Agents/Third Party Administrators

None

20. Fair Value Measurements

SSAP 100, Fair Value Measurements, establishes a framework for measuring fair value. That framework provides a fair value hierarchy that prioritizes the inputs to valuation techniques used to measure fair value. The three levels of the fair value hierarchy are described as follows:

Level 1 – Inputs to the valuation methodology are unadjusted quoted prices for identical assets or liabilities in active markets that the Company has the ability to access.

Level 2 – Inputs to the valuation methodology include quoted prices for similar assets or liabilities in active markets; quoted prices for identical or similar assets or liabilities in inactive markets; inputs other than quoted prices that are observable; or inputs that are derived principally from or corroborated by observable market data by correlation or other means.

Level 3 – Inputs to the valuation methodology are unobservable and significant to the fair value measurement.

The fair value measurement level within the fair value hierarchy is based on the lowest level of any input that is significant to the fair value measurement. The Company believes its valuation methods are appropriate and consistent with other market participants. The use of different methodologies or assumptions to determine the fair value of certain financial instruments could result in a different fair value measurement at the reporting date.

A. Inputs used for assets measured and reported at Fair Value

1. Fair Value Measurements at Reporting Date

Description for each class of asset or liability	(Level 1)	(Level 2)	(Level 3)	Net Asset Value (NAV)	Total
a. Assets at fair value					
Common Stock					
Federal Home Loan Bank	\$ -	\$ 44,100	\$ -	\$ -	\$ 44,100
Total assets at fair value/NAV	\$ -	\$ 44,100	\$ -	\$ -	\$ 44,100

2. Fair Value Measurements in Level 3 of the Fair Value Hierarchy

None

3. Policy for Determining Transfers Between Levels

At the end of each reporting period, the Company evaluates whether or not any event has occurred or circumstances have changed that would cause an instrument to be transferred into or out of Level 3. During the current year, no transfers into or out of Level 3 were required.

4. Inputs and valuation techniques used for level 2 and level 3

Bonds carried at fair value categorized as Level 2 were valued using a market approach. These valuations were determined to be Level 2 valuations as quoted markets prices for similar instruments in an active market were utilized.

The Company has no assets or liabilities measured at fair value in the Level 3 category.

5. Derivative Fair Values

Not applicable

B. Other Fair Value Disclosures

Not applicable

C. Fair Value for all financial instruments

Type of Financial Instrument	Aggregate Fair Value	Admitted Assets	(Level 1)	(Level 2)	(Level 3)	Net Asset Value (NAV)	Not Practicable (Carrying Value)
Bonds	\$ 4,814,880	\$ 4,814,376	\$ 4,814,880	\$ -	\$ -	\$ -	\$ -
Stocks	\$ 44,100	\$ 44,100	\$ -	\$ 44,100	\$ -	\$ -	\$ -

NOTES TO FINANCIAL STATEMENTS

D. Financial instruments for which not practicable to Estimate Fair Value

Not applicable

E. Instruments Measured at Net Asset Value (NAV)

Not applicable

21. Other Items

A. Unusual or Infrequent Items

None

B. Troubled Debt Restructuring for Debtors

None

C. Other Disclosures

None

D. Business Interruption Insurance Recoveries

None

E. State Transferable and Non-transferrable Tax Credits

None

F. Subprime-Mortgage-Related Risk Exposure

Not Applicable

G. Insurance-Linked Securities (ILS) Contracts

None

22. Events Subsequent

Type I – Recognized Subsequent Events:

Subsequent events have been considered through February 25, 2020 for the statutory statement issued on February 28, 2020.

In February 2020, after receiving approval from the Ohio Department of Insurance, the Company accepted a capital contribution of \$2,000,000 from its immediate parent, White Mountains Capital, Inc., in order to increase its capital and surplus to maintain the minimum requirements of all the jurisdictions that the Company is licensed in.

Type II – Non-recognized Subsequent Events:

Subsequent events have been considered through February 25, 2020 for the statutory statement issued on February 28, 2020.

A. Did the reporting entity write accident or health insurance premium that is subject to Section 9010 of the federal Affordable Care Act?

No

B. -H. Not Applicable

23. Reinsurance

A. Unsecured Reinsurance Recoverable

None

B. Reinsurance Recoverable in Dispute

None

C. Reinsurance Assumed and Ceded

1. Maximum return commission

None

2. Additional or return commission

None

3. Risks attributed to protected cells

None

NOTES TO FINANCIAL STATEMENTS

- D. Uncollectible Reinsurance
- None
- E. Commutation of Ceded Reinsurance
- None
- F. Retroactive Reinsurance
- None
- G. Reinsurance Accounted for as a Deposit
- Not Applicable
- H. Disclosure for the Transfer of Property and Casualty Run-off Agreements
- Not Applicable
- I. Certified Reinsurer Rating Downgraded or Status Subject to Revocation
- Not Applicable
- J. Reinsurance Agreements Qualifying for Reinsurance Aggregation
- Not Applicable
24. Retrospectively Rated Contracts and Contracts Subject to Redetermination
- A. Methods Used to Estimate
- Not Applicable
- B. Method Used to Record
- Not Applicable
- C. Amount and Percent of Net Retrospective Premiums
- None
- D. Medical Loss Ratio Rebates Required Pursuant to the Public Health Service Act
- None
- E. Calculation of Non-admitted Accrued Retrospective Premium
- None
- F. Risk-Sharing Provisions of the Affordable Care Act (ACA)
1. Did the reporting entity write accident and health insurance premium that is subject to the Affordable Care Act risk-sharing provisions (YES/NO)?
- No
2. Impact of Risk-Sharing Provisions of the Affordable Care Act on Admitted Assets, Liabilities and Revenue for the Current Year
- Not Applicable
3. Roll-Forward of Prior Year ACA Risk-Sharing Provisions
- Not Applicable
4. Roll-Forward of Risk Corridors Asset and Liability Balances by Program Benefit Year
- Not Applicable
5. ACA Risk Corridors Receivable as of Reporting Date
- Not Applicable
25. Changes in Incurred Losses and Loss Adjustment Expenses
- Due to the July 1, 2018 Reinsurance Assumption and Novation Agreement between the Company, BCSIC and BCS Re, all of the Company’s loss and LAE liabilities were novated and transferred to BCS Re. This was reflected as a reversal of incurred losses of \$58,562,115. That amount was partially reduced by loss and LAE development related to prior years of \$7,353,745 that occurred in the first half of 2018.
26. Intercompany Pooling Arrangements

NOTES TO FINANCIAL STATEMENTS

Not Applicable

27. Structured Settlements

A. Reserves Released Due to Purchase of Annuities

Not Applicable

B. Annuity Insurers with Balances Due

Not Applicable

28. Health Care Receivables

A. Pharmaceutical Rebate Receivables

None

B. Risk Sharing Receivables

None

29. Participating Policies

Not Applicable

30. Premium Deficiency Reserves

1. Liability carried for premium deficiency reserves	\$	-
2. Date of the most recent evaluation of this liability	02/28/2020	
3. Was anticipated investment income utilized in the calculation?	Yes [] No [X]	

31. High Deductibles

Not Applicable

32. Discounting of Liabilities for Unpaid Losses or Unpaid Loss Adjustment Expenses

A. Tabular Basis

Not Applicable

B. Non-Tabular Basis

Not Applicable

C. Changes in Discount Assumptions

Not Applicable

33. Asbestos/ Environmental Reserves

Not Applicable

34. Subscriber Savings Accounts

Not Applicable

35. Multiple Peril Crop Insurance

Not Applicable

36. Financial Guaranty Insurance

Not Applicable

GENERAL INTERROGATORIES

PART 1 - COMMON INTERROGATORIES
GENERAL

1.1

Is the reporting entity a member of an Insurance Holding Company System consisting of two or more affiliated persons, one or more of which is an insurer?
If yes, complete Schedule Y, Parts 1, 1A and 2

Yes [X] No []

1.2

If yes, did the reporting entity register and file with its domiciliary State Insurance Commissioner, Director or Superintendent, or with such regulatory official of the state of domicile of the principal insurer in the Holding Company System, a registration statement providing disclosure substantially similar to the standards adopted by the National Association of Insurance Commissioners (NAIC) in its Model Insurance Holding Company System Regulatory Act and model regulations pertaining thereto, or is the reporting entity subject to standards and disclosure requirements substantially similar to those required by such Act and regulations?

Yes [X] No [] N/A []

1.3

State Regulating?

Ohio

1.4

Is the reporting entity publicly traded or a member of a publicly traded group?

Yes [] No [X]

1.5

If the response to 1.4 is yes, provide the CIK (Central Index Key) code issued by the SEC for the entity/group.

2.1

Has any change been made during the year of this statement in the charter, by-laws, articles of incorporation, or deed of settlement of the reporting entity?

Yes [] No [X]

2.2

If yes, date of change:

3.1

State as of what date the latest financial examination of the reporting entity was made or is being made.

12/31/2018

3.2

State the as of date that the latest financial examination report became available from either the state of domicile or the reporting entity. This date should be the date of the examined balance sheet and not the date the report was completed or released.

12/31/2013

3.3

State as of what date the latest financial examination report became available to other states or the public from either the state of domicile or the reporting entity. This is the release date or completion date of the examination report and not the date of the examination (balance sheet date).

10/31/2014

3.4

By what department or departments?
Ohio

3.5

Have all financial statement adjustments within the latest financial examination report been accounted for in a subsequent financial statement filed with Departments?

Yes [] No [] N/A [X]

3.6

Have all of the recommendations within the latest financial examination report been complied with?

Yes [X] No [] N/A []

4.1

During the period covered by this statement, did any agent, broker, sales representative, non-affiliated sales/service organization or any combination thereof under common control (other than salaried employees of the reporting entity), receive credit or commissions for or control a substantial part (more than 20 percent of any major line of business measured on direct premiums) of:
4.11 sales of new business?
4.12 renewals?

Yes [] No [X]
Yes [] No [X]

4.2

During the period covered by this statement, did any sales/service organization owned in whole or in part by the reporting entity or an affiliate, receive credit or commissions for or control a substantial part (more than 20 percent of any major line of business measured on direct premiums) of:
4.21 sales of new business?
4.22 renewals?

Yes [] No [X]
Yes [] No [X]

5.1

Has the reporting entity been a party to a merger or consolidation during the period covered by this statement?
If yes, complete and file the merger history data file with the NAIC.

Yes [] No [X]

5.2

If yes, provide the name of the entity, NAIC Company Code, and state of domicile (use two letter state abbreviation) for any entity that has ceased to exist as a result of the merger or consolidation.

1 Name of Entity	2 NAIC Company Code	3 State of Domicile

6.1

Has the reporting entity had any Certificates of Authority, licenses or registrations (including corporate registration, if applicable) suspended or revoked by any governmental entity during the reporting period?

Yes [] No [X]

6.2

If yes, give full information:

7.1

Does any foreign (non-United States) person or entity directly or indirectly control 10% or more of the reporting entity?

Yes [] No [X]

7.2

If yes,
7.21 State the percentage of foreign control; %
7.22 State the nationality(s) of the foreign person(s) or entity(s) or if the entity is a mutual or reciprocal, the nationality of its manager or attorney-in-fact; and identify the type of entity(s) (e.g., individual, corporation or government, manager or attorney in fact).

1 Nationality	2 Type of Entity

ANNUAL STATEMENT FOR THE YEAR 2019 OF THE Plans' Liability Insurance Company

GENERAL INTERROGATORIES

8.1

Is the company a subsidiary of a bank holding company regulated by the Federal Reserve Board?

Yes [] No [X]

8.2

If response to 8.1 is yes, please identify the name of the bank holding company.

8.3

Is the company affiliated with one or more banks, thrifts or securities firms?

Yes [] No [X]

8.4

If response to 8.3 is yes, please provide below the names and location (city and state of the main office) of any affiliates regulated by a federal regulatory services agency [i.e. the Federal Reserve Board (FRB), the Office of the Comptroller of the Currency (OCC), the Federal Deposit Insurance Corporation (FDIC) and the Securities Exchange Commission (SEC)] and identify the affiliate's primary federal regulator.

1	2	3	4	5	6
Affiliate Name	Location (City, State)	FRB	OCC	FDIC	SEC

9.

What is the name and address of the independent certified public accountant or accounting firm retained to conduct the annual audit?

Exempt from audit under Ohio 3901-1-50(c) - having less than \$1 million direct written premiums and less than one thousand policyholders nationwide at the end of the year

10.1

Has the insurer been granted any exemptions to the prohibited non-audit services provided by the certified independent public accountant requirements as allowed in Section 7H of the Annual Financial Reporting Model Regulation (Model Audit Rule), or substantially similar state law or regulation?

Yes [] No [X]

10.2

If the response to 10.1 is yes, provide information related to this exemption:

10.3

Has the insurer been granted any exemptions related to the other requirements of the Annual Financial Reporting Model Regulation as allowed for in Section 18A of the Model Regulation, or substantially similar state law or regulation?

Yes [] No [X]

10.4

If the response to 10.3 is yes, provide information related to this exemption:

10.5

Has the reporting entity established an Audit Committee in compliance with the domiciliary state insurance laws?

Yes [] No [] N/A [X]

10.6

If the response to 10.5 is no or n/a, please explain

Full board acts as the audit committee

11.

What is the name, address and affiliation (officer/employee of the reporting entity or actuary/consultant associated with an actuarial consulting firm) of the individual providing the statement of actuarial opinion/certification?

Charles C. Emma, EVP Advisors Inc., 115 Campbell Street, Suite 100C Geneva, IL 60134

12.1

Does the reporting entity own any securities of a real estate holding company or otherwise hold real estate indirectly?

Yes [] No [X]

12.11

Name of real estate holding company

12.12

Number of parcels involved

12.13

Total book/adjusted carrying value

\$

12.2

If, yes provide explanation:

13.

FOR UNITED STATES BRANCHES OF ALIEN REPORTING ENTITIES ONLY:

13.1

What changes have been made during the year in the United States manager or the United States trustees of the reporting entity?

13.2

Does this statement contain all business transacted for the reporting entity through its United States Branch on risks wherever located?

Yes [] No []

13.3

Have there been any changes made to any of the trust indentures during the year?

Yes [] No []

13.4

If answer to (13.3) is yes, has the domiciliary or entry state approved the changes?

Yes [] No [] N/A [X]

14.1

Are the senior officers (principal executive officer, principal financial officer, principal accounting officer or controller, or persons performing similar functions) of the reporting entity subject to a code of ethics, which includes the following standards?

Yes [X] No []

a.

Honest and ethical conduct, including the ethical handling of actual or apparent conflicts of interest between personal and professional relationships;

b.

Full, fair, accurate, timely and understandable disclosure in the periodic reports required to be filed by the reporting entity;

c.

Compliance with applicable governmental laws, rules and regulations;

d.

The prompt internal reporting of violations to an appropriate person or persons identified in the code; and

e.

Accountability for adherence to the code.

14.11

If the response to 14.1 is No, please explain:

14.2

Has the code of ethics for senior managers been amended?

Yes [] No [X]

14.21

If the response to 14.2 is yes, provide information related to amendment(s).

14.3

Have any provisions of the code of ethics been waived for any of the specified officers?

Yes [] No [X]

14.31

If the response to 14.3 is yes, provide the nature of any waiver(s).

ANNUAL STATEMENT FOR THE YEAR 2019 OF THE Plans' Liability Insurance Company

GENERAL INTERROGATORIES

- 15.1 Is the reporting entity the beneficiary of a Letter of Credit that is unrelated to reinsurance where the issuing or confirming bank is not on the SVO Bank List?
- 15.2 If the response to 15.1 is yes, indicate the American Bankers Association (ABA) Routing Number and the name of the issuing or confirming bank of the Letter of Credit and describe the circumstances in which the Letter of Credit is triggered.
- Yes [] No [X]

1 American Bankers Association (ABA) Routing Number	2 Issuing or Confirming Bank Name	3 Circumstances That Can Trigger the Letter of Credit	4 Amount

BOARD OF DIRECTORS

16. Is the purchase or sale of all investments of the reporting entity passed upon either by the board of directors or a subordinate committee thereof?
17. Does the reporting entity keep a complete permanent record of the proceedings of its board of directors and all subordinate committees thereof?
18. Has the reporting entity an established procedure for disclosure to its board of directors or trustees of any material interest or affiliation on the part of any of its officers, directors, trustees or responsible employees that is in conflict with the official duties of such person?
- Yes [X] No []
- Yes [X] No []
- Yes [X] No []

FINANCIAL

19. Has this statement been prepared using a basis of accounting other than Statutory Accounting Principles (e.g., Generally Accepted Accounting Principles)?
- 20.1 Total amount loaned during the year (inclusive of Separate Accounts, exclusive of policy loans):
- 20.11 To directors or other officers
- 20.12 To stockholders not officers
- 20.13 Trustees, supreme or grand (Fraternal Only)
- 20.2 Total amount of loans outstanding at the end of year (inclusive of Separate Accounts, exclusive of policy loans):
- 20.21 To directors or other officers
- 20.22 To stockholders not officers
- 20.23 Trustees, supreme or grand (Fraternal Only)
- 21.1 Were any assets reported in this statement subject to a contractual obligation to transfer to another party without the liability for such obligation being reported in the statement?
- 21.2 If yes, state the amount thereof at December 31 of the current year:
- 21.21 Rented from others
- 21.22 Borrowed from others
- 21.23 Leased from others
- 21.24 Other
- 22.1 Does this statement include payments for assessments as described in the Annual Statement Instructions other than guaranty fund or guaranty association assessments?
- 22.2 If answer is yes:
- 22.21 Amount paid as losses or risk adjustment
- 22.22 Amount paid as expenses
- 22.23 Other amounts paid
- 23.1 Does the reporting entity report any amounts due from parent, subsidiaries or affiliates on Page 2 of this statement?
- 23.2 If yes, indicate any amounts receivable from parent included in the Page 2 amount:
- Yes [] No [X]
- \$
- \$
- \$
- \$
- \$
- \$
- \$
- \$
- \$
- \$
- \$
- Yes [] No [X]
- \$
- \$
- \$
- \$
- Yes [] No [X]
- \$

INVESTMENT

- 24.01 Were all the stocks, bonds and other securities owned December 31 of current year, over which the reporting entity has exclusive control, in the actual possession of the reporting entity on said date? (other than securities lending programs addressed in 24.03)
- 24.02 If no, give full and complete information relating thereto
- 24.03 For security lending programs, provide a description of the program including value for collateral and amount of loaned securities, and whether collateral is carried on or off-balance sheet. (an alternative is to reference Note 17 where this information is also provided)
- 24.04 Does the Company's security lending program meet the requirements for a conforming program as outlined in the Risk-Based Capital Instructions?
- 24.05 If answer to 24.04 is yes, report amount of collateral for conforming programs.
- 24.06 If answer to 24.04 is no, report amount of collateral for other programs.
- 24.07 Does your securities lending program require 102% (domestic securities) and 105% (foreign securities) from the counterparty at the outset of the contract?
- 24.08 Does the reporting entity non-admit when the collateral received from the counterparty falls below 100%?
- 24.09 Does the reporting entity or the reporting entity 's securities lending agent utilize the Master Securities lending Agreement (MSLA) to conduct securities lending?
- Yes [X] No []
-
-
- Yes [] No [] N/A [X]
- \$
- \$
- Yes [] No [] N/A [X]
- Yes [] No [] N/A [X]
- Yes [] No [] N/A [X]

ANNUAL STATEMENT FOR THE YEAR 2019 OF THE Plans' Liability Insurance Company

GENERAL INTERROGATORIES

24.10 For the reporting entity's security lending program state the amount of the following as December 31 of the current year:

24.101	Total fair value of reinvested collateral assets reported on Schedule DL, Parts 1 and 2.	\$	
24.102	Total book adjusted/carrying value of reinvested collateral assets reported on Schedule DL, Parts 1 and 2.	\$	
24.103	Total payable for securities lending reported on the liability page.	\$	

25.1 Were any of the stocks, bonds or other assets of the reporting entity owned at December 31 of the current year not exclusively under the control of the reporting entity, or has the reporting entity sold or transferred any assets subject to a put option contract that is currently in force? (Exclude securities subject to Interrogatory 21.1 and 24.03).

Yes ☒ No ☐

25.2	If yes, state the amount thereof at December 31 of the current year:	25.21 Subject to repurchase agreements	\$	
		25.22 Subject to reverse repurchase agreements	\$	
		25.23 Subject to dollar repurchase agreements	\$	
		25.24 Subject to reverse dollar repurchase agreements	\$	
		25.25 Placed under option agreements	\$	
		25.26 Letter stock or securities restricted as to sale - excluding FHLB Capital Stock	\$	
		25.27 FHLB Capital Stock	\$	44,100
		25.28 On deposit with states	\$	4,814,376
		25.29 On deposit with other regulatory bodies	\$	
		25.30 Pledged as collateral - excluding collateral pledged to an FHLB	\$	
		25.31 Pledged as collateral to FHLB - including assets backing funding agreements	\$	
		25.32 Other	\$	

25.3 For category (25.26) provide the following:

1 Nature of Restriction	2 Description	3 Amount

26.1 Does the reporting entity have any hedging transactions reported on Schedule DB? Yes ☐ No ☒

26.2 If yes, has a comprehensive description of the hedging program been made available to the domiciliary state? Yes ☐ No ☐ N/A ☒
If no, attach a description with this statement.

LINES 26.3 through 26.5: FOR LIFE/FRATERNAL REPORTING ENTITIES ONLY:

26.3 Does the reporting entity utilize derivatives to hedge variable annuity guarantees subject to fluctuations as a result of interest rate sensitivity? Yes ☐ No ☐

26.4 If the response to 26.3 is YES, does the reporting entity utilize:

26.41 Special accounting provision of SSAP No. 108	Yes <input type="checkbox"/> No <input type="checkbox"/>
26.42 Permitted accounting practice	Yes <input type="checkbox"/> No <input type="checkbox"/>
26.43 Other accounting guidance	Yes <input type="checkbox"/> No <input type="checkbox"/>

26.5 By responding YES to 26.41 regarding utilizing the special accounting provisions of SSAP No. 108, the reporting entity attests to the following:

- The reporting entity has obtained explicit approval from the domiciliary state.
- Hedging strategy subject to the special accounting provisions is consistent with the requirements of VM-21.
- Actuarial certification has been obtained which indicates that the hedging strategy is incorporated within the establishment of VM-21 reserves and provides the impact of the hedging strategy within the Actuarial Guideline Conditional Tail Expectation Amount.
- Financial Officer Certification has been obtained which indicates that the hedging strategy meets the definition of a Clearly Defined Hedging Strategy within VM-21 and that the Clearly Defined Hedging Strategy is the hedging strategy being used by the company in its actual day-to-day risk mitigation efforts.

27.1 Were any preferred stocks or bonds owned as of December 31 of the current year mandatorily convertible into equity, or, at the option of the issuer, convertible into equity? Yes ☐ No ☒

27.2 If yes, state the amount thereof at December 31 of the current year. \$

28. Excluding items in Schedule E - Part 3 - Special Deposits, real estate, mortgage loans and investments held physically in the reporting entity's offices, vaults or safety deposit boxes, were all stocks, bonds and other securities, owned throughout the current year held pursuant to a custodial agreement with a qualified bank or trust company in accordance with Section 1, III - General Examination Considerations, F. Outsourcing of Critical Functions, Custodial or Safekeeping Agreements of the NAIC Financial Condition Examiners Handbook? Yes ☒ No ☐

28.01 For agreements that comply with the requirements of the NAIC Financial Condition Examiners Handbook, complete the following:

1 Name of Custodian(s)	2 Custodian's Address
Federal Home Loan Bank of Cincinnati	221 East Fourth Street, Suite 600 Cincinnati, OH 45202
State Street Bank & Trust Company Boston	1 Lincoln Street, Boston, MA 02111

ANNUAL STATEMENT FOR THE YEAR 2019 OF THE Plans' Liability Insurance Company

GENERAL INTERROGATORIES

28.02 For all agreements that do not comply with the requirements of the NAIC Financial Condition Examiners Handbook, provide the name, location and a complete explanation:

1 Name(s)	2 Location(s)	3 Complete Explanation(s)

28.03 Have there been any changes, including name changes, in the custodian(s) identified in 28.01 during the current year?..... Yes [] No [X]

28.04 If yes, give full and complete information relating thereto:

1 Old Custodian	2 New Custodian	3 Date of Change	4 Reason

28.05 Investment management – Identify all investment advisors, investment managers, broker/dealers, including individuals that have the authority to make investment decisions on behalf of the reporting entity. For assets that are managed internally by employees of the reporting entity, note as such. ["...that have access to the investment accounts"; "...handle securities"]

1 Name of Firm or Individual	2 Affiliation

28.0597 For those firms/individuals listed in the table for Question 28.05, do any firms/individuals unaffiliated with the reporting entity (i.e. designated with a "U") manage more than 10% of the reporting entity's invested assets?..... Yes [] No [X]

28.0598 For firms/individuals unaffiliated with the reporting entity (i.e. designated with a "U") listed in the table for Question 28.05, does the total assets under management aggregate to more than 50% of the reporting entity's invested assets?..... Yes [] No [X]

28.06 For those firms or individuals listed in the table for 28.05 with an affiliation code of "A" (affiliated) or "U" (unaffiliated), provide the information for the table below.

1 Central Registration Depository Number	2 Name of Firm or Individual	3 Legal Entity Identifier (LEI)	4 Registered With	5 Investment Management Agreement (IMA) Filed

29.1 Does the reporting entity have any diversified mutual funds reported in Schedule D, Part 2 (diversified according to the Securities and Exchange Commission (SEC) in the Investment Company Act of 1940 [Section 5(b)(1)])? Yes [] No [X]

29.2 If yes, complete the following schedule:

1 CUSIP #	2 Name of Mutual Fund	3 Book/Adjusted Carrying Value
29.2999 - Total		

29.3 For each mutual fund listed in the table above, complete the following schedule:

1 Name of Mutual Fund (from above table)	2 Name of Significant Holding of the Mutual Fund	3 Amount of Mutual Fund's Book/Adjusted Carrying Value Attributable to the Holding	4 Date of Valuation

ANNUAL STATEMENT FOR THE YEAR 2019 OF THE Plans' Liability Insurance Company

GENERAL INTERROGATORIES

30. Provide the following information for all short-term and long-term bonds and all preferred stocks. Do not substitute amortized value or statement value for fair value.

	1	2	3
	Statement (Admitted) Value	Fair Value	Excess of Statement over Fair Value (-), or Fair Value over Statement (+)
30.1 Bonds	4,814,376	4,814,880	504
30.2 Preferred stocks			
30.3 Totals	4,814,376	4,814,880	504

30.4 Describe the sources or methods utilized in determining the fair values:
Custodian

31.1 Was the rate used to calculate fair value determined by a broker or custodian for any of the securities in Schedule D? Yes [X] No []

31.2 If the answer to 31.1 is yes, does the reporting entity have a copy of the broker's or custodian's pricing policy (hard copy or electronic copy) for all brokers or custodians used as a pricing source? Yes [X] No []

31.3 If the answer to 31.2 is no, describe the reporting entity's process for determining a reliable pricing source for purposes of disclosure of fair value for Schedule D:
.....

32.1 Have all the filing requirements of the Purposes and Procedures Manual of the NAIC Investment Analysis Office been followed? Yes [X] No []

32.2 If no, list exceptions:
.....

33. By self-designating 5GI securities, the reporting entity is certifying the following elements of each self-designated 5GI security:
a. Documentation necessary to permit a full credit analysis of the security does not exist or an NAIC CRP credit rating for an FE or PL security is not available.
b. Issuer or obligor is current on all contracted interest and principal payments.
c. The insurer has an actual expectation of ultimate payment of all contracted interest and principal.
Has the reporting entity self-designated 5GI securities? Yes [] No [X]

34. By self-designating PLGI securities, the reporting entity is certifying the following elements of each self-designated PLGI security:
a. The security was purchased prior to January 1, 2018.
b. The reporting entity is holding capital commensurate with the NAIC Designation reported for the security.
c. The NAIC Designation was derived from the credit rating assigned by an NAIC CRP in its legal capacity as a NRSRO which is shown on a current private letter rating held by the insurer and available for examination by state insurance regulators.
d. The reporting entity is not permitted to share this credit rating of the PL security with the SVO.
Has the reporting entity self-designated PLGI securities? Yes [] No [X]

35. By assigning FE to a Schedule BA non-registered private fund, the reporting entity is certifying the following elements of each self-designated FE fund:
a. The shares were purchased prior to January 1, 2019.
b. The reporting entity is holding capital commensurate with the NAIC Designation reported for the security.
c. The security had a public credit rating(s) with annual surveillance assigned by an NAIC CRP in its legal capacity as an NRSRO prior to January 1, 2019.
d. The fund only or predominantly holds bonds in its portfolio.
e. The current reported NAIC Designation was derived from the public credit rating(s) with annual surveillance assigned by an NAIC CRP in its legal capacity as an NRSRO.
f. The public credit rating(s) with annual surveillance assigned by an NAIC CRP has not lapsed.
Has the reporting entity assigned FE to Schedule BA non-registered private funds that complied with the above criteria? Yes [] No [X]

OTHER

36.1 Amount of payments to trade associations, service organizations and statistical or rating bureaus, if any?\$

36.2 List the name of the organization and the amount paid if any such payment represented 25% or more of the total payments to trade associations, service organizations and statistical or rating bureaus during the period covered by this statement.

1	2
Name	Amount Paid
.....	

ANNUAL STATEMENT FOR THE YEAR 2019 OF THE Plans' Liability Insurance Company

GENERAL INTERROGATORIES

37.1 Amount of payments for legal expenses, if any?\$

37.2 List the name of the firm and the amount paid if any such payment represented 25% or more of the total payments for legal expenses during the period covered by this statement.

1 Name	2 Amount Paid
.....

38.1 Amount of payments for expenditures in connection with matters before legislative bodies, officers or departments of government, if any?\$

38.2 List the name of the firm and the amount paid if any such payment represented 25% or more of the total payment expenditures in connection with matters before legislative bodies, officers or departments of government during the period covered by this statement.

1 Name	2 Amount Paid
.....

GENERAL INTERROGATORIES

PART 2 - PROPERTY AND CASUALTY INTERROGATORIES

1.1

Does the reporting entity have any direct Medicare Supplement Insurance in force?

Yes [] No [X]

1.2

If yes, indicate premium earned on U. S. business only.

\$ _____

1.3

What portion of Item (1.2) is not reported on the Medicare Supplement Insurance Experience Exhibit?

\$ _____

1.31

Reason for excluding

.....

1.4

Indicate amount of earned premium attributable to Canadian and/or Other Alien not included in Item (1.2) above.

\$ _____

1.5

Indicate total incurred claims on all Medicare Supplement Insurance.

\$ _____

1.6

Individual policies:

Most current three years:

1.61

Total premium earned

\$ _____

1.62

Total incurred claims

\$ _____

1.63

Number of covered lives

.....

All years prior to most current three years

1.64

Total premium earned

\$ _____

1.65

Total incurred claims

\$ _____

1.66

Number of covered lives

.....

1.7

Group policies:

Most current three years:

1.71

Total premium earned

\$ _____

1.72

Total incurred claims

\$ _____

1.73

Number of covered lives

.....

All years prior to most current three years

1.74

Total premium earned

\$ _____

1.75

Total incurred claims

\$ _____

1.76

Number of covered lives

.....

2.

Health Test:

1

Current Year

2

Prior Year

2.1

Premium Numerator

.....

.....

2.2

Premium Denominator

7,921

(58,883,427)

2.3

Premium Ratio (2.1/2.2)

0.000

0.000

2.4

Reserve Numerator

.....

.....

2.5

Reserve Denominator

.....

7,921

2.6

Reserve Ratio (2.4/2.5)

0.000

0.000

3.1

Does the reporting entity issue both participating and non-participating policies?

Yes [] No [X]

3.2

If yes, state the amount of calendar year premiums written on:

3.21

Participating policies

\$ _____

3.22

Non-participating policies

\$ _____

4.

For mutual reporting Entities and Reciprocal Exchanges Only:

4.1

Does the reporting entity issue assessable policies?

Yes [] No []

4.2

Does the reporting entity issue non-assessable policies?

Yes [] No []

4.3

If assessable policies are issued, what is the extent of the contingent liability of the policyholders?

%

4.4

Total amount of assessments paid or ordered to be paid during the year on deposit notes or contingent premiums.

\$ _____

5.

For Reciprocal Exchanges Only:

5.1

Does the Exchange appoint local agents?

Yes [] No []

5.2

If yes, is the commission paid:

5.21

Out of Attorney's-in-fact compensation.....

Yes [] No [] N/A [X]

5.22

As a direct expense of the exchange.....

Yes [] No [] N/A [X]

5.3

What expenses of the Exchange are not paid out of the compensation of the Attorney-in-fact?

.....

5.4

Has any Attorney-in-fact compensation, contingent on fulfillment of certain conditions, been deferred?

Yes [] No []

5.5

If yes, give full information

.....

GENERAL INTERROGATORIES

PART 2 - PROPERTY AND CASUALTY INTERROGATORIES

6.1

What provision has this reporting entity made to protect itself from an excessive loss in the event of a catastrophe under a workers' compensation contract issued without limit of loss?
No workers' compensation contracts were written

6.2

Describe the method used to estimate this reporting entity's probable maximum insurance loss, and identify the type of insured exposures comprising that probable maximum loss, the locations of concentrations of those exposures and the external resources (such as consulting firms or computer software models), if any, used in the estimation process.
N/A

6.3

What provision has this reporting entity made (such as a catastrophic reinsurance program) to protect itself from an excessive loss arising from the types and concentrations of insured exposures comprising its probable maximum property insurance loss?
N/A

6.4

Does the reporting entity carry catastrophe reinsurance protection for at least one reinstatement, in an amount sufficient to cover its estimated probable maximum loss attributable to a single loss event or occurrence?

Yes [] No [X]

6.5

If no, describe any arrangements or mechanisms employed by the reporting entity to supplement its catastrophe reinsurance program or to hedge its exposure to uninsured catastrophic loss.
Effective July 1, 2018, PLIC entered into a Reinsurance Assumption and Novation Agreement whereby all of its liabilities were transferred to another entity and such catastrophic reinsurance protection is not necessary

7.1

Has this reporting entity reinsured any risk with any other entity under a quota share reinsurance contract that includes a provision that would limit the reinsurer's losses below the stated quota share percentage (e.g., a deductible, a loss ratio corridor, a loss ratio cap, an aggregate limit or any similar provisions)?

Yes [] No [X]

7.2

If yes, indicate the number of reinsurance contracts containing such provisions:

7.3

If yes, does the amount of reinsurance credit taken reflect the reduction in quota share coverage caused by any applicable limiting provision(s)?

Yes [] No []

8.1

Has this reporting entity reinsured any risk with any other entity and agreed to release such entity from liability, in whole or in part, from any loss that may occur on this risk, or portion thereof, reinsured?

Yes [] No [X]

8.2

If yes, give full information

9.1

Has the reporting entity ceded any risk under any reinsurance contract (or under multiple contracts with the same reinsurer or its affiliates) for which during the period covered by the statement: (i) it recorded a positive or negative underwriting result greater than 5% of prior year-end surplus as regards policyholders or it reported calendar year written premium ceded or year-end loss and loss expense reserves ceded greater than 5% of prior year-end surplus as regards policyholders; (ii) it accounted for that contract as reinsurance and not as a deposit; and (iii) the contract(s) contain one or more of the following features or other features that would have similar results:
(a) A contract term longer than two years and the contract is noncancellable by the reporting entity during the contract term;
(b) A limited or conditional cancellation provision under which cancellation triggers an obligation by the reporting entity, or an affiliate of the reporting entity, to enter into a new reinsurance contract with the reinsurer, or an affiliate of the reinsurer;
(c) Aggregate stop loss reinsurance coverage;
(d) A unilateral right by either party (or both parties) to commute the reinsurance contract, whether conditional or not, except for such provisions which are only triggered by a decline in the credit status of the other party;
(e) A provision permitting reporting of losses, or payment of losses, less frequently than on a quarterly basis (unless there is no activity during the period); or
(f) Payment schedule, accumulating retentions from multiple years or any features inherently designed to delay timing of the reimbursement to the ceding entity.

Yes [] No [X]

9.2

Has the reporting entity during the period covered by the statement ceded any risk under any reinsurance contract (or under multiple contracts with the same reinsurer or its affiliates), for which, during the period covered by the statement, it recorded a positive or negative underwriting result greater than 5% of prior year-end surplus as regards policyholders or it reported calendar year written premium ceded or year-end loss and loss expense reserves ceded greater than 5% of prior year-end surplus as regards policyholders; excluding cessions to approved pooling arrangements or to captive insurance companies that are directly or indirectly controlling, controlled by, or under common control with (i) one or more unaffiliated policyholders of the reporting entity, or (ii) an association of which one or more unaffiliated policyholders of the reporting entity is a member where:
(a) The written premium ceded to the reinsurer by the reporting entity or its affiliates represents fifty percent (50%) or more of the entire direct and assumed premium written by the reinsurer based on its most recently available financial statement; or
(b) Twenty-five percent (25%) or more of the written premium ceded to the reinsurer has been retroceded back to the reporting entity or its affiliates in a separate reinsurance contract.

Yes [] No [X]

9.3

If yes to 9.1 or 9.2, please provide the following information in the Reinsurance Summary Supplemental Filing for General Interrogatory 9:
(a) The aggregate financial statement impact gross of all such ceded reinsurance contracts on the balance sheet and statement of income;
(b) A summary of the reinsurance contract terms and indicate whether it applies to the contracts meeting the criteria in 9.1 or 9.2; and
(c) A brief discussion of management's principle objectives in entering into the reinsurance contract including the economic purpose to be achieved.

9.4

Except for transactions meeting the requirements of paragraph 37 of SSAP No. 62R, Property and Casualty Reinsurance, has the reporting entity ceded any risk under any reinsurance contract (or multiple contracts with the same reinsurer or its affiliates) during the period covered by the financial statement, and either:
(a) Accounted for that contract as reinsurance (either prospective or retroactive) under statutory accounting principles ("SAP") and as a deposit under generally accepted accounting principles ("GAAP"); or
(b) Accounted for that contract as reinsurance under GAAP and as a deposit under SAP?

Yes [] No [X]

9.5

If yes to 9.4, explain in the Reinsurance Summary Supplemental Filing for General Interrogatory 9 (Section D) why the contract(s) is treated differently for GAAP and SAP.

9.6

The reporting entity is exempt from the Reinsurance Attestation Supplement under one or more of the following criteria:
(a) The entity does not utilize reinsurance; or,
(b) The entity only engages in a 100% quota share contract with an affiliate and the affiliated or lead company has filed an attestation supplement; or
(c) The entity has no external cessions and only participates in an intercompany pool and the affiliated or lead company has filed an attestation supplement.

Yes [X] No []

Yes [] No [X]

Yes [] No [X]

10.

If the reporting entity has assumed risks from another entity, there should be charged on account of such reinsurances a reserve equal to that which the original entity would have been required to charge had it retained the risks. Has this been done?

Yes [] No [] N/A [X]

GENERAL INTERROGATORIES

PART 2 - PROPERTY AND CASUALTY INTERROGATORIES

11.1Has the reporting entity guaranteed policies issued by any other entity and now in force?Yes [] No [X]

11.2If yes, give full information
.....

12.1If the reporting entity recorded accrued retrospective premiums on insurance contracts on Line 15.3 of the asset schedule, Page 2, state the amount of corresponding liabilities recorded for:

12.11Unpaid losses\$

12.12Unpaid underwriting expenses (including loss adjustment expenses)\$

12.2Of the amount on Line 15.3, Page 2, state the amount which is secured by letters of credit, collateral, and other funds\$

12.3If the reporting entity underwrites commercial insurance risks, such as workers' compensation, are premium notes or promissory notes accepted from its insureds covering unpaid premiums and/or unpaid losses?Yes [] No [] N/A [X]

12.4If yes, provide the range of interest rates charged under such notes during the period covered by this statement:

12.41From%

12.42To.....%

12.5Are letters of credit or collateral and other funds received from insureds being utilized by the reporting entity to secure premium notes or promissory notes taken by a reporting entity, or to secure any of the reporting entity's reported direct unpaid loss reserves , including unpaid losses under loss deductible features of commercial policies?Yes [] No [X]

12.6If yes, state the amount thereof at December 31 of the current year:

12.61Letters of credit\$

12.62Collateral and other funds.....\$

13.1Largest net aggregate amount insured in any one risk (excluding workers' compensation):\$

13.2Does any reinsurance contract considered in the calculation of this amount include an aggregate limit of recovery without also including a reinstatement provision?Yes [] No [X]

13.3State the number of reinsurance contracts (excluding individual facultative risk certificates, but including facultative programs, automatic facilities or facultative obligatory contracts) considered in the calculation of the amount.

14.1Is the company a cedant in a multiple cedant reinsurance contract?Yes [] No [X]

14.2If yes, please describe the method of allocating and recording reinsurance among the cedants:
.....

14.3If the answer to 14.1 is yes, are the methods described in item 14.2 entirely contained in the respective multiple cedant reinsurance contracts?Yes [] No []

14.4If the answer to 14.3 is no, are all the methods described in 14.2 entirely contained in written agreements?Yes [] No []

14.5If the answer to 14.4 is no, please explain:
.....

15.1Has the reporting entity guaranteed any financed premium accounts?Yes [] No [X]

15.2If yes, give full information
.....

16.1Does the reporting entity write any warranty business?Yes [] No [X]
If yes, disclose the following information for each of the following types of warranty coverage:

	1 Direct Losses Incurred	2 Direct Losses Unpaid	3 Direct Written Premium	4 Direct Premium Unearned	5 Direct Premium Earned
16.11 Home					
16.12 Products					
16.13 Automobile					
16.14 Other*					

* Disclose type of coverage:
.....

GENERAL INTERROGATORIES

PART 2 - PROPERTY AND CASUALTY INTERROGATORIES

17.1

Does the reporting entity include amounts recoverable on unauthorized reinsurance in Schedule F - Part 3 that is exempt from the statutory provision for unauthorized reinsurance?

Yes [☐] No [☒]

Incurred but not reported losses on contracts in force prior to July 1, 1984, and not subsequently renewed are exempt from the statutory provision for unauthorized reinsurance. Provide the following information for this exemption:

17.11

Gross amount of unauthorized reinsurance in Schedule F - Part 3 exempt from the statutory provision for unauthorized reinsurance

\$

17.12

Unfunded portion of Interrogatory 17.11

\$

17.13

Paid losses and loss adjustment expenses portion of Interrogatory 17.11.....

\$

17.14

Case reserves portion of Interrogatory 17.11

\$

17.15

Incurred but not reported portion of Interrogatory 17.11

\$

17.16

Unearned premium portion of Interrogatory 17.11

\$

17.17

Contingent commission portion of Interrogatory 17.11

\$

18.1

Do you act as a custodian for health savings accounts?

Yes [☐] No [☒]

18.2

If yes, please provide the amount of custodial funds held as of the reporting date.

\$

18.3

Do you act as an administrator for health savings accounts?

Yes [☐] No [☒]

18.4

If yes, please provide the balance of funds administered as of the reporting date.

\$

19.

Is the reporting entity licensed or chartered, registered, qualified, eligible or writing business in at least two states?

Yes [☒] No [☐]

19.1

If no, does the reporting entity assume reinsurance business that covers risks residing in at least one state other than the state of domicile of the reporting entity?

Yes [☐] No [☐]

ANNUAL STATEMENT FOR THE YEAR 2019 OF THE Plans' Liability Insurance Company

FIVE-YEAR HISTORICAL DATA

Show amounts in whole dollars only, no cents; show percentages to one decimal place, i.e. 17.6.

	1 2019	2 2018	3 2017	4 2016	5 2015
Gross Premiums Written (Page 8, Part 1B Cols. 1, 2 & 3)					
1. Liability lines (Lines 11.1, 11.2, 16, 17.1, 17.2, 17.3, 18.1, 18.2, 19.1, 19.2 & 19.3, 19.4)		(59,384,575)	1,314,633	3,031,356	3,954,937
2. Property lines (Lines 1, 2, 9, 12, 21 & 26)					
3. Property and liability combined lines (Lines 3, 4, 5, 8, 22 & 27)					
4. All other lines (Lines 6, 10, 13, 14, 15, 23, 24, 28, 29, 30 & 34)		(12, 102)	445	18,209	17,008
5. Nonproportional reinsurance lines (Lines 31, 32 & 33)					
6. Total (Line 35)		(59,396,677)	1,315,078	3,049,565	3,971,945
Net Premiums Written (Page 8, Part 1B, Col. 6)					
7. Liability lines (Lines 11.1, 11.2, 16, 17.1, 17.2, 17.3, 18.1, 18.2, 19.1, 19.2 & 19.3, 19.4)		(59,384,575)	1,314,633	3,031,356	3,954,937
8. Property lines (Lines 1, 2, 9, 12, 21 & 26)					
9. Property and liability combined lines (Lines 3, 4, 5, 8, 22 & 27)					
10. All other lines (Lines 6, 10, 13, 14, 15, 23, 24, 28, 29, 30 & 34)		(12, 102)	445	18,209	17,008
11. Nonproportional reinsurance lines (Lines 31, 32 & 33)					
12. Total (Line 35)		(59,396,677)	1,315,078	3,049,565	3,971,945
Statement of Income (Page 4)					
13. Net underwriting gain (loss) (Line 8)	(115,010)	(7,995,691)	(24,617,007)	(4,444,386)	(6,697,382)
14. Net investment gain or (loss) (Line 11)	(1,335,396)	2,346,682	2,480,031	2,732,165	2,617,132
15. Total other income (Line 15)	968	407,411	468,404	108,791	386,821
16. Dividends to policyholders (Line 17)					
17. Federal and foreign income taxes incurred (Line 19)		(275,585)	(276,268)	(258,524)	(31,366)
18. Net income (Line 20)	(1,449,438)	(4,966,013)	(21,392,304)	(1,344,906)	(3,662,063)
Balance Sheet Lines (Pages 2 and 3)					
19. Total admitted assets excluding protected cell business (Page 2, Line 26, Col. 3)	6,063,656	27,525,387	106,749,968	73,334,587	77,929,062
20. Premiums and considerations (Page 2, Col. 3)					
20.1 In course of collection (Line 15.1)		68	24,633		55,359
20.2 Deferred and not yet due (Line 15.2)					
20.3 Accrued retrospective premiums (Line 15.3)					
21. Total liabilities excluding protected cell business (Page 3, Line 26)	28,290	44,159	58,352,984	40,768,328	44,355,166
22. Losses (Page 3, Line 1)			48,320,710	30,866,432	32,354,600
23. Loss adjustment expenses (Page 3, Line 3)			4,309,519	3,223,369	3,289,442
24. Unearned premiums (Page 3, Line 9)		7,921	521,171	760,540	656,827
25. Capital paid up (Page 3, Lines 30 & 31)	2,942,436	2,942,436	2,942,436	2,942,436	2,942,436
26. Surplus as regards policyholders (Page 3, Line 37)	6,035,366	27,481,228	48,396,984	32,566,259	33,573,896
Cash Flow (Page 5)					
27. Net cash from operations (Line 11)	(1,407,727)	(58,884,192)	(3,340,498)	(4,341,634)	(1,877,504)
Risk-Based Capital Analysis					
28. Total adjusted capital	6,035,366	27,481,228	48,396,984	32,566,259	33,573,896
29. Authorized control level risk-based capital	32,078	65,488	15,895,188	7,379,126	7,527,621
Percentage Distribution of Cash, Cash Equivalents and Invested Assets (Page 2, Col. 3) (Line divided by Page 2, Line 12, Col. 3) x100.0					
30. Bonds (Line 1)	17.0	16.8	83.4	84.8	85.6
31. Stocks (Lines 2.1 & 2.2)	0.7	0.5	4.8	5.9	6.8
32. Mortgage loans on real estate (Lines 3.1 and 3.2)					
33. Real estate (Lines 4.1, 4.2 & 4.3)					
34. Cash, cash equivalents and short-term investments (Line 5)	82.3	82.8	6.1	3.8	2.6
35. Contract loans (Line 6)					
36. Derivatives (Line 7)					
37. Other invested assets (Line 8)			5.7	5.4	4.9
38. Receivables for securities (Line 9)		0.0	0.0	0.0	
39. Securities lending reinvested collateral assets (Line 10)					
40. Aggregate write-ins for invested assets (Line 11)					
41. Cash, cash equivalents and invested assets (Line 12)	100.0	100.0	100.0	100.0	100.0
Investments in Parent, Subsidiaries and Affiliates					
42. Affiliated bonds (Schedule D, Summary, Line 12, Col. 1).....					
43. Affiliated preferred stocks (Schedule D, Summary, Line 18, Col. 1)					
44. Affiliated common stocks (Schedule D, Summary, Line 24, Col. 1)					
45. Affiliated short-term investments (subtotals included in Schedule DA Verification, Col. 5, Line 10)					
46. Affiliated mortgage loans on real estate					
47. All other affiliated					
48. Total of above Lines 42 to 47					
49. Total Investment in Parent included in Lines 42 to 47 above					
50. Percentage of investments in parent, subsidiaries and affiliates to surplus as regards policyholders (Line 48 above divided by Page 3, Col. 1, Line 37 x 100.0)					

FIVE-YEAR HISTORICAL DATA

(Continued)

	1 2019	2 2018	3 2017	4 2016	5 2015
Capital and Surplus Accounts (Page 4)					
51. Net unrealized capital gains (losses) (Line 24)	3,576	(750,297)	270,201	(16,069)	(234,118)
52. Dividends to stockholders (Line 35)					
53. Change in surplus as regards policyholders for the year (Line 38)	(21,445,862)	(20,915,756)	15,830,725	(1,007,637)	(4,016,787)
Gross Losses Paid (Page 9, Part 2, Cols. 1 & 2)					
54. Liability lines (Lines 11.1, 11.2, 16, 17.1, 17.2, 17.3, 18.1, 18.2, 19.1, 19.2 & 19.3, 19.4)		527,101	3,341,859	4,191,246	3,447,713
55. Property lines (Lines 1, 2, 9, 12, 21 & 26)					
56. Property and liability combined lines (Lines 3, 4, 5, 8, 22 & 27)					
57. All other lines (Lines 6, 10, 13, 14, 15, 23, 24, 28, 29, 30 & 34)					
58. Nonproportional reinsurance lines (Lines 31, 32 & 33)					
59. Total (Line 35)		527,101	3,341,859	4,191,246	3,447,713
Net Losses Paid (Page 9, Part 2, Col. 4)					
60. Liability lines (Lines 11.1, 11.2, 16, 17.1, 17.2, 17.3, 18.1, 18.2, 19.1, 19.2 & 19.3, 19.4)		527,101	3,341,859	4,191,246	3,447,713
61. Property lines (Lines 1, 2, 9, 12, 21 & 26)					
62. Property and liability combined lines (Lines 3, 4, 5, 8, 22 & 27)					
63. All other lines (Lines 6, 10, 13, 14, 15, 23, 24, 28, 29, 30 & 34)					
64. Nonproportional reinsurance lines (Lines 31, 32 & 33)					
65. Total (Line 35)		527,101	3,341,859	4,191,246	3,447,713
Operating Percentages (Page 4) (Line divided by Page 4, Line 1) x 100.0					
66. Premiums earned (Line 1)	100.0	100.0	100.0	100.0	100.0
67. Losses incurred (Line 2)		81.2	1,337.8	91.8	115.1
68. Loss expenses incurred (Line 3)		5.8	179.6	65.1	71.7
69. Other underwriting expenses incurred (Line 4)	1,552.0	(1.0)	154.0	97.6	81.4
70. Net underwriting gain (loss) (Line 8)	(1,452.0)	13.6	(1,583.7)	(150.9)	(169.9)
Other Percentages					
71. Other underwriting expenses to net premiums written (Page 4, Lines 4 + 5 - 15 divided by Page 8, Part 1B, Col. 6, Line 35 x 100.0)		0.1	160.8	87.3	72.7
72. Losses and loss expenses incurred to premiums earned (Page 4, Lines 2 + 3 divided by Page 4, Line 1 x 100.0)		87.0	1,517.5	156.8	186.8
73. Net premiums written to policyholders' surplus (Page 8, Part 1B, Col. 6, Line 35 divided by Page 3, Line 37, Col. 1 x 100.0)		(216.1)	2.7	9.4	11.8
One Year Loss Development (\$000 omitted)					
74. Development in estimated losses and loss expenses incurred prior to current year (Schedule P - Part 2 - Summary, Line 12, Col. 11)		(50,297)	21,048	(68)	2,135
75. Percent of development of losses and loss expenses incurred to policyholders' surplus of prior year end (Line 74 above divided by Page 4, Line 21, Col. 1 x 100.0).....		(103.9)	64.6	(0.2)	5.7
Two Year Loss Development (\$000 omitted)					
76. Development in estimated losses and loss expenses incurred two years before the current year and prior year (Schedule P, Part 2 - Summary, Line 12, Col. 12)	(50,297)	(27,401)	21,027	(41)	1,095
77. Percent of development of losses and loss expenses incurred to reported policyholders' surplus of second prior year end (Line 76 above divided by Page 4, Line 21, Col. 2 x 100.0)	(103.9)	(84.1)	62.6	(0.1)	2.7

NOTE: If a party to a merger, have the two most recent years of this exhibit been restated due to a merger in compliance with the disclosure requirements of SSAP No. 3, Accounting Changes and Correction of Errors?

Yes [] No []

If no, please explain:

ANNUAL STATEMENT FOR THE YEAR 2019 OF THE Plans' Liability Insurance Company

SCHEDULE P - ANALYSIS OF LOSSES AND LOSS EXPENSES

SCHEDULE P - PART 1 - SUMMARY

(\$000 OMITTED)

Years in Which Premiums Were Earned and Losses Were Incurred	Premiums Earned			Loss and Loss Expense Payments								12
	1 Direct and Assumed	2 Ceded	3 Net (1 - 2)	Loss Payments		Defense and Cost Containment Payments		Adjusting and Other Payments		10 Salvage and Subrogation Received	11 Total Net Paid Cols (4 - 5 + 6 - 7 + 8 - 9)	Number of Claims Reported Direct and Assumed
				4	5	6	7	8	9			
				Direct and Assumed	Ceded	Direct and Assumed	Ceded	Direct and Assumed	Ceded			
1. Prior.....	XXX	XXX	XXX									XXX
2. 2010.....	4,830		4,830	971		247		966			2,184	XXX
3. 2011.....	2,924		2,924			179		838			1,017	XXX
4. 2012.....	2,014		2,014	6,560		3,246		997			10,803	XXX
5. 2013.....	2,294		2,294			157		973			1,130	XXX
6. 2014.....	2,653		2,653	2,249		335		967			3,551	XXX
7. 2015.....	3,926		3,926	1,618		820		506			2,944	XXX
8. 2016.....	2,928		2,928			60		646			706	XXX
9. 2017.....	1,555		1,555			93		260			353	XXX
10. 2018.....	(58,883)		(58,883)					52			52	XXX
11. 2019.....	8		8									XXX
12. Totals	XXX	XXX	XXX	11,398		5,137		6,205			22,740	XXX

	Losses Unpaid				Defense and Cost Containment Unpaid				Adjusting and Other Unpaid		23	24	25
	Case Basis		Bulk + IBNR		Case Basis		Bulk + IBNR						
	13	14	15	16	17	18	19	20	21	22	Salvage and Subrogation Anticipated	Total Net Losses and Expenses Unpaid	Number of Claims Outstanding Direct and Assumed
	Direct and Assumed	Ceded	Direct and Assumed	Ceded	Direct and Assumed	Ceded	Direct and Assumed	Ceded	Direct and Assumed	Ceded			
1. Prior.....													
2. 2010.....													XXX
3. 2011.....													XXX
4. 2012.....													XXX
5. 2013.....													XXX
6. 2014.....													XXX
7. 2015.....													XXX
8. 2016.....													XXX
9. 2017.....													XXX
10. 2018.....													XXX
11. 2019.....													XXX
12. Totals													XXX

	Total Losses and Loss Expenses Incurred			Loss and Loss Expense Percentage (Incurred /Premiums Earned)			Nontabular Discount		34 Inter-Company Pooling Participation Percentage	Net Balance Sheet Reserves After Discount	
	26	27	28	29	30	31	32	33		35	36
	Direct and Assumed	Ceded	Net	Direct and Assumed	Ceded	Net	Loss	Loss Expense		Losses Unpaid	Loss Expenses Unpaid
1. Prior.....	XXX	XXX	XXX	XXX	XXX	XXX			XXX		
2. 2010.....	2,184		2,184	45.2		45.2					
3. 2011.....	1,017		1,017	34.8		34.8					
4. 2012.....	10,803		10,803	536.4		536.4					
5. 2013.....	1,130		1,130	49.3		49.3					
6. 2014.....	3,551		3,551	133.8		133.8					
7. 2015.....	2,944		2,944	75.0		75.0					
8. 2016.....	706		706	24.1		24.1					
9. 2017.....	353		353	22.7		22.7					
10. 2018.....	52		52	(0.1)		(0.1)					
11. 2019.....											
12. Totals	XXX	XXX	XXX	XXX	XXX	XXX			XXX		

Note: Parts 2 and 4 are gross of all discounting, including tabular discounting. Part 1 is gross of only nontabular discounting, which is reported in Columns 32 and 33 of Part 1. The tabular discount, if any, is reported in the Notes to Financial Statements which will reconcile Part 1 with Parts 2 and 4.

SCHEDULE P - PART 2 - SUMMARY

Years in Which Losses Were Incurred	INCURRED NET LOSSES AND DEFENSE AND COST CONTAINMENT EXPENSES REPORTED AT YEAR END (\$000 OMITTED)										DEVELOPMENT	
	1 2010	2 2011	3 2012	4 2013	5 2014	6 2015	7 2016	8 2017	9 2018	10 2019	11 One Year	12 Two Year
1. Prior.....	23,504	22,123	19,017	18,431	19,089	18,138	15,408	15,366	11,940	11,940		(3,426)
2. 2010.....	2,841	3,193	3,167	2,891	2,817	2,903	2,247	2,311	1,218	1,218		(1,093)
3. 2011.....	XXX	2,513	2,362	2,667	2,644	1,882	1,982	2,107	179	179		(1,928)
4. 2012.....	XXX	XXX	4,800	13,435	14,777	15,668	17,241	36,386	9,806	9,806		(26,580)
5. 2013.....	XXX	XXX	XXX	3,834	3,879	3,762	3,444	3,503	157	157		(3,346)
6. 2014.....	XXX	XXX	XXX	XXX	2,257	5,245	5,100	4,977	2,584	2,584		(2,393)
7. 2015.....	XXX	XXX	XXX	XXX	XXX	4,393	6,501	8,368	2,438	2,438		(5,930)
8. 2016.....	XXX	XXX	XXX	XXX	XXX	XXX	3,860	3,813	60	60		(3,753)
9. 2017.....	XXX	XXX	XXX	XXX	XXX	XXX	XXX	1,941	93	93		(1,848)
10. 2018.....	XXX	XXX	XXX	XXX	XXX	XXX	XXX	XXX				XXX
11. 2019.....	XXX	XXX	XXX	XXX	XXX	XXX	XXX	XXX	XXX		XXX	XXX
12. Totals												(50,297)

SCHEDULE P - PART 3 - SUMMARY

Years in Which Losses Were Incurred	CUMULATIVE PAID NET LOSSES AND DEFENSE AND COST CONTAINMENT EXPENSES REPORTED AT YEAR END (\$000 OMITTED)										11 Number of Claims Closed With Loss Payment	12 Number of Claims Closed Without Loss Payment
	1	2	3	4	5	6	7	8	9	10		
	2010	2011	2012	2013	2014	2015	2016	2017	2018	2019		
1. Prior.....	.000	4,639	7,086	8,671	9,853	10,621	11,615	11,710	11,940	11,940	XXX	XXX
2. 2010.....		115	241	1,212	1,212	1,212	1,212	1,217	1,218	1,218	XXX	XXX
3. 2011.....	XXX	4	33	52	52	52	95	179	179	179	XXX	XXX
4. 2012.....	XXX	XXX	115	425	1,586	3,231	6,975	9,420	9,806	9,806	XXX	XXX
5. 2013.....	XXX	XXX	XXX		13	49	53	142	157	157	XXX	XXX
6. 2014.....	XXX	XXX	XXX	XXX		2,287	2,518	2,582	2,584	2,584	XXX	XXX
7. 2015.....	XXX	XXX	XXX	XXX	XXX	95	384	1,983	2,438	2,438	XXX	XXX
8. 2016.....	XXX	XXX	XXX	XXX	XXX	XXX	42	51	60	60	XXX	XXX
9. 2017.....	XXX	XXX	XXX	XXX	XXX	XXX	XXX	58	93	93	XXX	XXX
10. 2018.....	XXX	XXX	XXX	XXX	XXX	XXX	XXX	XXX			XXX	XXX
11. 2019.....	XXX	XXX	XXX	XXX	XXX	XXX	XXX	XXX	XXX		XXX	XXX

SCHEDULE P - PART 4 - SUMMARY

Years in Which Losses Were Incurred	BULK AND IBNR RESERVES ON NET LOSSES AND DEFENSE AND COST CONTAINMENT EXPENSES REPORTED AT YEAR END (\$000 OMITTED)									
	1	2	3	4	5	6	7	8	9	10
	2010	2011	2012	2013	2014	2015	2016	2017	2018	2019
1. Prior.....	1,725	2,700	2,350	2,596	3,019	2,947	1,717	1,821		
2. 2010.....	1,883	1,039	1,147	947	1,025	1,167	791	1,074		
3. 2011.....	XXX	1,627	1,240	1,589	1,703	1,006	1,173	1,928		
4. 2012.....	XXX	XXX	897	1,161	1,547	1,532	3,022	2,831		
5. 2013.....	XXX	XXX	XXX	854	622	1,277	1,271	1,337		
6. 2014.....	XXX	XXX	XXX	XXX	401	654	795	875		
7. 2015.....	XXX	XXX	XXX	XXX	XXX	1,109	828	866		
8. 2016.....	XXX	XXX	XXX	XXX	XXX	XXX	2,614	2,682		
9. 2017.....	XXX	XXX	XXX	XXX	XXX	XXX	XXX	1,523		
10. 2018.....	XXX	XXX	XXX	XXX	XXX	XXX	XXX	XXX		
11. 2019.....	XXX	XXX	XXX	XXX	XXX	XXX	XXX	XXX	XXX	

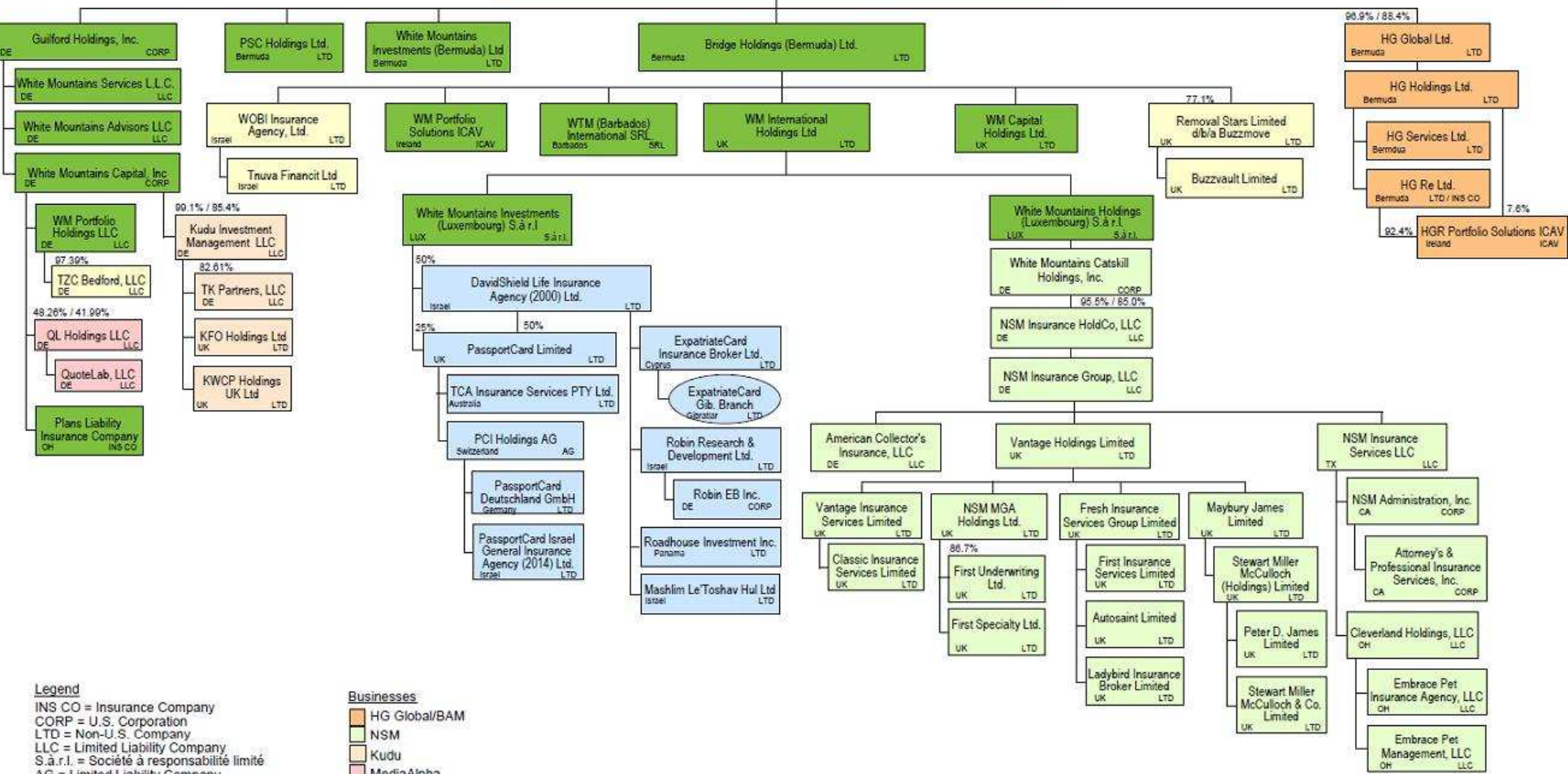
SCHEDULE T - EXHIBIT OF PREMIUMS WRITTEN

Allocated by States and Territories									
States, Etc.	1	Gross Premiums, Including Policy and Membership Fees, Less Return Premiums and Premiums on Policies Not Taken		4	5	6	7	8	9
		2	3						
	Active Status (a)	Direct Premiums Written	Direct Premiums Earned	Dividends Paid or Credited to Policyholders on Direct Business	Direct Losses Paid (Deducting Salvage)	Direct Losses Incurred	Direct Losses Unpaid	Finance and Service Charges Not Included in Premiums	Direct Premiums Written for Federal Purchasing Groups (Included in Column 2)
1. Alabama	AL	L							
2. Alaska	AK	L							
3. Arizona	AZ	L							
4. Arkansas	AR	L							
5. California	CA	N							
6. Colorado	CO	L							
7. Connecticut	CT	L							
8. Delaware	DE	L							
9. District of Columbia	DC	L							
10. Florida	FL	L							
11. Georgia	GA	L							
12. Hawaii	HI	N							
13. Idaho	ID	L							
14. Illinois	IL	L							
15. Indiana	IN	L							
16. Iowa	IA	L							
17. Kansas	KS	L							
18. Kentucky	KY	L							
19. Louisiana	LA	L							
20. Maine	ME	L							
21. Maryland	MD	L							
22. Massachusetts	MA	L							
23. Michigan	MI	L							
24. Minnesota	MN	L							
25. Mississippi	MS	L							
26. Missouri	MO	L							
27. Montana	MT	L							
28. Nebraska	NE	L							
29. Nevada	NV	L							
30. New Hampshire	NH	L							
31. New Jersey	NJ	L							
32. New Mexico	NM	L							
33. New York	NY	L							
34. North Carolina	NC	L							
35. North Dakota	ND	L							
36. Ohio	OH	L							
37. Oklahoma	OK	L							
38. Oregon	OR	L							
39. Pennsylvania	PA	L							
40. Rhode Island	RI	L							
41. South Carolina	SC	L							
42. South Dakota	SD	L							
43. Tennessee	TN	L							
44. Texas	TX	L							
45. Utah	UT	L							
46. Vermont	VT	L							
47. Virginia	VA	L							
48. Washington	WA	L							
49. West Virginia	WV	L							
50. Wisconsin	WI	L							
51. Wyoming	WY	L							
52. American Samoa	AS	N							
53. Guam	GU	N							
54. Puerto Rico	PR	N							
55. U.S. Virgin Islands	VI	N							
56. Northern Mariana Islands	MP	N							
57. Canada	CAN	N							
58. Aggregate other alien	OT	XXX							
59. Totals	XXX								
DETAILS OF WRITE-INS									
58001.	XXX								
58002.	XXX								
58003.	XXX								
58998. Summary of remaining write-ins for Line 58 from overflow page	XXX								
58999. Totals (Lines 58001 through 58003 plus 58998)(Line 58 above)	XXX								

(a) Active Status Counts:
L - Licensed or Chartered - Licensed insurance carrier or domiciled RRG.....49 R - Registered - Non-domiciled RRGs.....
E - Eligible - Reporting entities eligible or approved to write surplus lines in the state (other than their state of domicile - see DSLI)..... Q - Qualified - Qualified or accredited reinsurer.
D - Domestic Surplus Lines Insurer (DSLI) - Reporting entities authorized to write surplus lines in the state of domicile..... N - None of the above - Not allowed to write business in the state8

(b) Explanation of basis of allocation of premiums by states, etc.
N/A

WHITE MOUNTAINS INSURANCE GROUP, LTD.
ORGANIZATION CHART
December 9, 2019



ANNUAL STATEMENT FOR THE YEAR 2019 OF THE Plans' Liability Insurance Company

OVERFLOW PAGE FOR WRITE-INS

Additional Write-ins for Liabilities Line 25

	1 Current Year	2 Prior Year
2504.		
2597. Summary of remaining write-ins for Line 25 from overflow page		

Additional Write-ins for Underwriting and Investment Exhibit Part 1 Line 34

	1 Net Premiums Written per Column 6, Part 1B	2 Unearned Premiums Dec. 31 Prior Year - per Col. 3, Last Year's Part 1	3 Unearned Premiums Dec. 31 Current Year - per Col. 5 Part 1A	4 Premiums Earned During Year (Cols. 1 + 2 - 3)
3404.				
3405.				
3406.				
3497. Summary of remaining write-ins for Line 34 from overflow page				

NONE

ALPHABETICAL INDEX

ANNUAL STATEMENT BLANK

Assets	2
Cash Flow	5
Exhibit of Capital Gains (Losses)	12
Exhibit of Net Investment Income	12
Exhibit of Nonadmitted Assets	13
Exhibit of Premiums and Losses (State Page)	19
Five-Year Historical Data	17
General Interrogatories	15
Jurat Page	1
Liabilities, Surplus and Other Funds	3
Notes To Financial Statements	14
Overflow Page For Write-ins	100
Schedule A - Part 1	E01
Schedule A - Part 2	E02
Schedule A - Part 3	E03
Schedule A - Verification Between Years	SI02
Schedule B - Part 1	E04
Schedule B - Part 2	E05
Schedule B - Part 3	E06
Schedule B - Verification Between Years	SI02
Schedule BA - Part 1	E07
Schedule BA - Part 2	E08
Schedule BA - Part 3	E09
Schedule BA - Verification Between Years	SI03
Schedule D - Part 1	E10
Schedule D - Part 1A - Section 1	SI05
Schedule D - Part 1A - Section 2	SI08
Schedule D - Part 2 - Section 1	E11
Schedule D - Part 2 - Section 2	E12
Schedule D - Part 3	E13
Schedule D - Part 4	E14
Schedule D - Part 5	E15
Schedule D - Part 6 - Section 1	E16
Schedule D - Part 6 - Section 2	E16
Schedule D - Summary By Country	SI04
Schedule D - Verification Between Years	SI03
Schedule DA - Part 1	E17
Schedule DA - Verification Between Years	SI10
Schedule DB - Part A - Section 1	E18
Schedule DB - Part A - Section 2	E19
Schedule DB - Part A - Verification Between Years	SI11
Schedule DB - Part B - Section 1	E20
Schedule DB - Part B - Section 2	E21
Schedule DB - Part B - Verification Between Years	SI11
Schedule DB - Part C - Section 1	SI12
Schedule DB - Part C - Section 2	SI13
Schedule DB - Part D - Section 1	E22
Schedule DB - Part D - Section 2	E23
Schedule DB - Part E	E24
Schedule DB - Verification	SI14
Schedule DL - Part 1	E25
Schedule DL - Part 2	E26
Schedule E - Part 1 - Cash	E27
Schedule E - Part 2 - Cash Equivalents	E28
Schedule E - Part 2 - Verification Between Years	SI15
Schedule E - Part 3 - Special Deposits	E29
Schedule F - Part 1	20
Schedule F - Part 2	21
Schedule F - Part 3	22
Schedule F - Part 4	27
Schedule F - Part 5	28
Schedule F - Part 6	29
Schedule H - Accident and Health Exhibit - Part 1	30
Schedule H - Part 2, Part 3 and 4	31
Schedule H - Part 5 - Health Claims	32

ANNUAL STATEMENT BLANK (Continued)

Schedule P - Part 1 - Summary	33
Schedule P - Part 1A - Homeowners/Farmowners	35
Schedule P - Part 1B - Private Passenger Auto Liability/Medical	36
Schedule P - Part 1C - Commercial Auto/Truck Liability/Medical	37
Schedule P - Part 1D - Workers' Compensation (Excluding Excess Workers' Compensation)	38
Schedule P - Part 1E - Commercial Multiple Peril	39
Schedule P - Part 1F - Section 1 - Medical Professional Liability - Occurrence	40
Schedule P - Part 1F - Section 2 - Medical Professional Liability - Claims-Made	41
Schedule P - Part 1G - Special Liability (Ocean, Marine, Aircraft (All Perils), Boiler and Machinery)	42
Schedule P - Part 1H - Section 1 - Other Liability-Occurrence	43
Schedule P - Part 1H - Section 2 - Other Liability - Claims-Made	44
Schedule P - Part 1I - Special Property (Fire, Allied Lines, Inland Marine, Earthquake, Burglary & Theft)	45
Schedule P - Part 1J - Auto Physical Damage	46
Schedule P - Part 1K - Fidelity/Surety	47
Schedule P - Part 1L - Other (Including Credit, Accident and Health)	48
Schedule P - Part 1M - International	49
Schedule P - Part 1N - Reinsurance - Nonproportional Assumed Property	50
Schedule P - Part 1O - Reinsurance - Nonproportional Assumed Liability	51
Schedule P - Part 1P - Reinsurance - Nonproportional Assumed Financial Lines	52
Schedule P - Part 1R - Section 1 - Products Liability - Occurrence	53
Schedule P - Part 1R - Section 2 - Products Liability - Claims-Made	54
Schedule P - Part 1S - Financial Guaranty/Mortgage Guaranty	55
Schedule P - Part 1T - Warranty	56
Schedule P - Part 2, Part 3 and Part 4 - Summary	34
Schedule P - Part 2A - Homeowners/Farmowners	57
Schedule P - Part 2B - Private Passenger Auto Liability/Medical	57
Schedule P - Part 2C - Commercial Auto/Truck Liability/Medical	57
Schedule P - Part 2D - Workers' Compensation (Excluding Excess Workers' Compensation)	57
Schedule P - Part 2E - Commercial Multiple Peril	57
Schedule P - Part 2F - Section 1 - Medical Professional Liability - Occurrence	58
Schedule P - Part 2F - Section 2 - Medical Professional Liability - Claims-Made	58
Schedule P - Part 2G - Special Liability (Ocean Marine, Aircraft (All Perils), Boiler and Machinery)	58
Schedule P - Part 2H - Section 1 - Other Liability - Occurrence	58
Schedule P - Part 2H - Section 2 - Other Liability - Claims-Made	58
Schedule P - Part 2I - Special Property (Fire, Allied Lines, Inland Marine, Earthquake, Burglary, and Theft)	59
Schedule P - Part 2J - Auto Physical Damage	59
Schedule P - Part 2K - Fidelity, Surety	59
Schedule P - Part 2L - Other (Including Credit, Accident and Health)	59
Schedule P - Part 2M - International	59
Schedule P - Part 2N - Reinsurance - Nonproportional Assumed Property	60
Schedule P - Part 2O - Reinsurance - Nonproportional Assumed Liability	60
Schedule P - Part 2P - Reinsurance - Nonproportional Assumed Financial Lines	60
Schedule P - Part 2R - Section 1 - Products Liability - Occurrence	61
Schedule P - Part 2R - Section 2 - Products Liability - Claims-Made	61
Schedule P - Part 2S - Financial Guaranty/Mortgage Guaranty	61
Schedule P - Part 2T - Warranty	61
Schedule P - Part 3A - Homeowners/Farmowners	62
Schedule P - Part 3B - Private Passenger Auto Liability/Medical	62
Schedule P - Part 3C - Commercial Auto/Truck Liability/Medical	62
Schedule P - Part 3D - Workers' Compensation (Excluding Excess Workers' Compensation)	62
Schedule P - Part 3E - Commercial Multiple Peril	62
Schedule P - Part 3F - Section 1 - Medical Professional Liability - Occurrence	63
Schedule P - Part 3F - Section 2 - Medical Professional Liability - Claims-Made	63
Schedule P - Part 3G - Special Liability (Ocean Marine, Aircraft (All Perils), Boiler and Machinery)	63
Schedule P - Part 3H - Section 1 - Other Liability - Occurrence	63
Schedule P - Part 3H - Section 2 - Other Liability - Claims-Made	63
Schedule P - Part 3I - Special Property (Fire, Allied Lines, Inland Marine, Earthquake, Burglary, and Theft)	64
Schedule P - Part 3J - Auto Physical Damage	64
Schedule P - Part 3K - Fidelity/Surety	64
Schedule P - Part 3L - Other (Including Credit, Accident and Health)	64
Schedule P - Part 3M - International	64
Schedule P - Part 3N - Reinsurance - Nonproportional Assumed Property	65
Schedule P - Part 3O - Reinsurance - Nonproportional Assumed Liability	65
Schedule P - Part 3P - Reinsurance - Nonproportional Assumed Financial Lines	65
Schedule P - Part 3R - Section 1 - Products Liability - Occurrence	66
Schedule P - Part 3R - Section 2 - Products Liability - Claims-Made	66
Schedule P - Part 3S - Financial Guaranty/Mortgage Guaranty	66
Schedule P - Part 3T - Warranty	66

ANNUAL STATEMENT BLANK (Continued)

Schedule P - Part 4A - Homeowners/Farmowners	67
Schedule P - Part 4B - Private Passenger Auto Liability/Medical	67
Schedule P - Part 4C - Commercial Auto/Truck Liability/Medical	67
Schedule P - Part 4D - Workers' Compensation (Excluding Excess Workers' Compensation)	67
Schedule P - Part 4E - Commercial Multiple Peril	67
Schedule P - Part 4F - Section 1 - Medical Professional Liability - Occurrence	68
Schedule P - Part 4F - Section 2 - Medical Professional Liability - Claims-Made	68
Schedule P - Part 4G - Special Liability (Ocean Marine, Aircraft (All Perils), Boiler and Machinery)	68
Schedule P - Part 4H - Section 1 - Other Liability - Occurrence	68
Schedule P - Part 4H - Section 2 - Other Liability - Claims-Made	68
Schedule P - Part 4I - Special Property (Fire, Allied Lines, Inland Marine, Earthquake, Burglary and Theft)	69
Schedule P - Part 4J - Auto Physical Damage	69
Schedule P - Part 4K - Fidelity/Surety	69
Schedule P - Part 4L - Other (Including Credit, Accident and Health)	69
Schedule P - Part 4M - International	69
Schedule P - Part 4N - Reinsurance - Nonproportional Assumed Property	70
Schedule P - Part 4O - Reinsurance - Nonproportional Assumed Liability	70
Schedule P - Part 4P - Reinsurance - Nonproportional Assumed Financial Lines	70
Schedule P - Part 4R - Section 1 - Products Liability - Occurrence	71
Schedule P - Part 4R - Section 2 - Products Liability - Claims-Made	71
Schedule P - Part 4S - Financial Guaranty/Mortgage Guaranty	71
Schedule P - Part 4T - Warranty	71
Schedule P - Part 5A - Homeowners/Farmowners	72
Schedule P - Part 5B - Private Passenger Auto Liability/Medical	73
Schedule P - Part 5C - Commercial Auto/Truck Liability/Medical	74
Schedule P - Part 5D - Workers' Compensation (Excluding Excess Workers' Compensation)	75
Schedule P - Part 5E - Commercial Multiple Peril	76
Schedule P - Part 5F - Medical Professional Liability - Claims-Made	78
Schedule P - Part 5F - Medical Professional Liability - Occurrence	77
Schedule P - Part 5H - Other Liability - Claims-Made	80
Schedule P - Part 5H - Other Liability - Occurrence	79
Schedule P - Part 5R - Products Liability - Claims-Made	82
Schedule P - Part 5R - Products Liability - Occurrence	81
Schedule P - Part 5T - Warranty	83
Schedule P - Part 6C - Commercial Auto/Truck Liability/Medical	84
Schedule P - Part 6D - Workers' Compensation (Excluding Excess Workers' Compensation)	84
Schedule P - Part 6E - Commercial Multiple Peril	85
Schedule P - Part 6H - Other Liability - Claims-Made	86
Schedule P - Part 6H - Other Liability - Occurrence	85
Schedule P - Part 6M - International	86
Schedule P - Part 6N - Reinsurance - Nonproportional Assumed Property	87
Schedule P - Part 6O - Reinsurance - Nonproportional Assumed Liability	87
Schedule P - Part 6R - Products Liability - Claims-Made	88
Schedule P - Part 6R - Products Liability - Occurrence	88
Schedule P - Part 7A - Primary Loss Sensitive Contracts	89
Schedule P - Part 7B - Reinsurance Loss Sensitive Contracts	91
Schedule P Interrogatories	93
Schedule T - Exhibit of Premiums Written	94
Schedule T - Part 2 - Interstate Compact	95
Schedule Y - Information Concerning Activities of Insurer Members of a Holding Company Group	96
Schedule Y - Part 1A - Detail of Insurance Holding Company System	97
Schedule Y - Part 2 - Summary of Insurer's Transactions With Any Affiliates	98
Statement of Income	4
Summary Investment Schedule	SI01
Supplemental Exhibits and Schedules Interrogatories	99
Underwriting and Investment Exhibit Part 1	6
Underwriting and Investment Exhibit Part 1A	7
Underwriting and Investment Exhibit Part 1B	8
Underwriting and Investment Exhibit Part 2	9
Underwriting and Investment Exhibit Part 2A	10
Underwriting and Investment Exhibit Part 3	11