



ANNUAL STATEMENT

For the Year Ended December 31, 2019
of the Condition and Affairs of the

Safe Auto Value Insurance Company

NAIC Group Code..... 4940, 4940
(Current Period) (Prior Period)

NAIC Company Code..... 16503

Employer's ID Number..... 83-2240671

Organized under the Laws of OH

State of Domicile or Port of Entry OH

Country of Domicile US

Incorporated/Organized..... October 15, 2018

Commenced Business.....

Statutory Home Office 4 Easton Oval .. Columbus .. OH 43219
(Street and Number) (City or Town, State, Country and Zip Code)

Main Administrative Office 4 Easton Oval .. Columbus .. OH 43219
(Street and Number) (City or Town, State, Country and Zip Code)

614-231-0200
(Area Code) (Telephone Number)

Mail Address 4 Easton Oval .. Columbus .. OH 43219
(Street and Number or P. O. Box) (City or Town, State, Country and Zip Code)

Primary Location of Books and Records 4 Easton Oval .. Columbus .. OH 43219
(Street and Number) (City or Town, State, Country and Zip Code)

614-231-0200
(Area Code) (Telephone Number)

Internet Web Site Address	N/A
---------------------------	-----

Statutory Statement Contact	Thomas J Happensack (Name)
	thomas.happensack@9 (E-Mail Address)

614-944-7680
(Area Code) (Telephone Number) (Extension)
614-559-5357
(Fax Number)

OFFICERS

Name	Title	Name	Title
1. Ronald H Davies #	Chief Executive Officer & President	2. Kelly A Armstrong #	Chief Legal Officer & Secretary
3. Gregory A Sutton #	Chief Financial Officer & Treasurer	4. Thomas J Happensack #	Controller

OTHER


Evan McKee #	Product Leader	Charles Kordes #	Chief Information Leader
--------------	----------------	------------------	--------------------------

DIRECTORS OR TRUSTEES


Ronald H Davies #	Ari Deshe #	Elie Deshe #	Jon P Diamond #
Gabriel Gliksberg #	William Graves #	Oded Gur-Arie #	Karen Morrison #

State of..... Ohio
County of..... Franklin

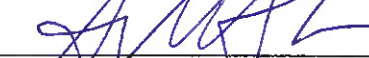
The officers of this reporting entity being duly sworn, each depose and say that they are the described officers of said reporting entity, and that on the reporting period stated above, all of the herein described assets were the absolute property of the said reporting entity, free and clear from any liens or claims thereon, except as herein stated, and that this statement, together with related exhibits, schedules and explanations therein contained, annexed or referred to, is a full and true statement of all the assets and liabilities and of the condition and affairs of the said reporting entity as of the reporting period stated above, and of its income and deductions therefrom for the period ended, and have been completed in accordance with the NAIC *Annual Statement Instructions and Accounting Practices and Procedures* manual except to the extent that: (1) state law may differ; or, (2) that state rules or regulations require differences in reporting not related to accounting practices and procedures, according to the best of their information, knowledge and belief, respectively. Furthermore, the scope of this attestation by the described officers also includes the related corresponding electronic filing with the NAIC, when required, that is an exact copy (except for formatting differences due to electronic filing) of the enclosed statement. The electronic filing may be requested by various regulators in lieu of or in addition to the enclosed statement.


(Signature)
Ronald H Davies
1. (Printed Name)
Chief Executive Officer & President
(Title)

ed by various regulators in lieu of or in addition to the


(Signature)
Kelly A. Armstrong
2. (Printed Name)
Chief Legal Officer & Secretary
(Title)

closed statement.



(Signature)
Gregory A Sutton

3. (Printed Name)
Chief Financial Officer & Treasurer

(Title)

Subscribed and sworn to before me
This 24th day of February 2020

a. Is this an original filing? Yes [X] No []

b. If no

1. State the amendment number _____

2. Date filed _____

3. Number of pages attached _____

Kathryn Maran



ASSETS

	Current Year			Prior Year
	1	2	3	4
	Assets	Nonadmitted Assets	Net Admitted Assets (Cols. 1 - 2)	Net Admitted Assets
1. Bonds (Schedule D).....	5,564,253		5,564,253	196,068
2. Stocks (Schedule D):				
2.1 Preferred stocks.....			.0	
2.2 Common stocks.....			.0	
3. Mortgage loans on real estate (Schedule B):				
3.1 First liens.....			.0	
3.2 Other than first liens.....			.0	
4. Real estate (Schedule A):				
4.1 Properties occupied by the company (less \$.....0 encumbrances).....			.0	
4.2 Properties held for the production of income (less \$.....0 encumbrances).....			.0	
4.3 Properties held for sale (less \$.....0 encumbrances).....			.0	
5. Cash (\$....146,238, Schedule E-Part 1), cash equivalents (\$....93,651, Schedule E-Part 2) and short-term investments (\$.....0, Schedule DA).....	239,889		239,889	5,804,076
6. Contract loans (including \$.....0 premium notes).....			.0	
7. Derivatives (Schedule DB).....			.0	
8. Other invested assets (Schedule BA).....			.0	
9. Receivables for securities.....			.0	
10. Securities lending reinvested collateral assets (Schedule DL).....			.0	
11. Aggregate write-ins for invested assets.....	.0	.0	.0	.0
12. Subtotals, cash and invested assets (Lines 1 to 11).....	5,804,142	.0	5,804,142	6,000,144
13. Title plants less \$.....0 charged off (for Title insurers only).....			.0	
14. Investment income due and accrued.....	33,680		33,680	12
15. Premiums and considerations:				
15.1 Uncollected premiums and agents' balances in the course of collection.....			.0	
15.2 Deferred premiums, agents' balances and installments booked but deferred and not yet due (including \$.....0 earned but unbilled premiums).....			.0	
15.3 Accrued retrospective premiums (\$.....0) and contracts subject to redetermination (\$.....0).....			.0	
16. Reinsurance:				
16.1 Amounts recoverable from reinsurers.....			.0	
16.2 Funds held by or deposited with reinsured companies.....			.0	
16.3 Other amounts receivable under reinsurance contracts.....			.0	
17. Amounts receivable relating to uninsured plans.....			.0	
18.1 Current federal and foreign income tax recoverable and interest thereon.....			.0	
18.2 Net deferred tax asset.....			.0	
19. Guaranty funds receivable or on deposit.....			.0	
20. Electronic data processing equipment and software.....			.0	
21. Furniture and equipment, including health care delivery assets (\$.....0).....			.0	
22. Net adjustment in assets and liabilities due to foreign exchange rates.....			.0	
23. Receivables from parent, subsidiaries and affiliates.....	350,000		350,000	
24. Health care (\$.....0) and other amounts receivable.....			.0	
25. Aggregate write-ins for other-than-invested assets.....	.0	.0	.0	.0
26. Total assets excluding Separate Accounts, Segregated Accounts and Protected Cell Accounts (Lines 12 to 25).....	6,187,822	.0	6,187,822	6,000,156
27. From Separate Accounts, Segregated Accounts and Protected Cell Accounts.....			.0	
28. TOTAL (Lines 26 and 27).....	6,187,822	.0	6,187,822	6,000,156

DETAILS OF WRITE-INS

1101.0	
1102.0	
1103.0	
1198. Summary of remaining write-ins for Line 11 from overflow page.....	.0	.0	.0	.0
1199. Totals (Lines 1101 through 1103 plus 1198) (Line 11 above).....	.0	.0	.0	.0
2501.0	
2502.0	
2503.0	
2598. Summary of remaining write-ins for Line 25 from overflow page.....	.0	.0	.0	.0
2599. Totals (Lines 2501 through 2503 plus 2598) (Line 25 above).....	.0	.0	.0	.0

LIABILITIES, SURPLUS AND OTHER FUNDS

	1 Current Year	2 Prior Year
1. Losses (Part 2A, Line 35, Column 8).....		
2. Reinsurance payable on paid losses and loss adjustment expenses (Schedule F, Part 1, Column 6).....		
3. Loss adjustment expenses (Part 2A, Line 35, Column 9).....		
4. Commissions payable, contingent commissions and other similar charges.....		
5. Other expenses (excluding taxes, licenses and fees).....		
6. Taxes, licenses and fees (excluding federal and foreign income taxes).....		
7.1 Current federal and foreign income taxes (including \$.....0 on realized capital gains (losses)).....		
7.2 Net deferred tax liability.....	811	
8. Borrowed money \$.....0 and interest thereon \$.....0.....		
9. Unearned premiums (Part 1A, Line 38, Column 5) (after deducting unearned premiums for ceded reinsurance of \$.....0 and including warranty reserves of \$.....0 and accrued accident and health experience rating refunds including \$.....0 for medical loss ratio rebate per the Public Health Service Act).....		
10. Advance premium.....		
11. Dividends declared and unpaid:		
11.1 Stockholders.....		
11.2 Policyholders.....		
12. Ceded reinsurance premiums payable (net of ceding commissions).....		
13. Funds held by company under reinsurance treaties (Schedule F, Part 3, Column 20).....		
14. Amounts withheld or retained by company for account of others.....		
15. Remittances and items not allocated.....		
16. Provision for reinsurance (including \$.....0 certified) (Schedule F, Part 3, Column 78).....		
17. Net adjustments in assets and liabilities due to foreign exchange rates.....		
18. Drafts outstanding.....		
19. Payable to parent, subsidiaries and affiliates.....	39,958	
20. Derivatives.....		
21. Payable for securities.....		
22. Payable for securities lending.....		
23. Liability for amounts held under uninsured plans.....		
24. Capital notes \$.....0 and interest thereon \$.....0.....		
25. Aggregate write-ins for liabilities.....	0	0
26. Total liabilities excluding protected cell liabilities (Lines 1 through 25).....	40,769	0
27. Protected cell liabilities.....		
28. Total liabilities (Lines 26 and 27).....	40,769	0
29. Aggregate write-ins for special surplus funds.....	0	0
30. Common capital stock.....	2,500,000	2,500,000
31. Preferred capital stock.....		
32. Aggregate write-ins for other-than-special surplus funds.....	0	0
33. Surplus notes.....		
34. Gross paid in and contributed surplus.....	3,500,000	3,500,000
35. Unassigned funds (surplus).....	147,053	156
36. Less treasury stock, at cost:		
36.10.000 shares common (value included in Line 30 \$.....0).....		
36.20.000 shares preferred (value included in Line 31 \$.....0).....		
37. Surplus as regards policyholders (Lines 29 to 35, less 36) (Page 4, Line 39).....	6,147,053	6,000,156
38. TOTAL (Page 2, Line 28, Col. 3).....	6,187,822	6,000,156

DETAILS OF WRITE-INS

2501.		
2502.		
2503.		
2598. Summary of remaining write-ins for Line 25 from overflow page.....	0	0
2599. Totals (Lines 2501 through 2503 plus 2598) (Line 25 above).....	0	0
2901.		
2902.		
2903.		
2998. Summary of remaining write-ins for Line 29 from overflow page.....	0	0
2999. Totals (Lines 2901 through 2903 plus 2998) (Line 29 above).....	0	0
3201.		
3202.		
3203.		
3298. Summary of remaining write-ins for Line 32 from overflow page.....	0	0
3299. Totals (Lines 3201 through 3203 plus 3298) (Line 32 above).....	0	0

Safe Auto Value Insurance Company
STATEMENT OF INCOME

UNDERWRITING INCOME			1	2
			Current Year	Prior Year
1.	Premiums earned (Part 1, Line 35, Column 4).....			
DEDUCTIONS:				
2.	Losses incurred (Part 2, Line 35, Column 7).....			
3.	Loss adjustment expenses incurred (Part 3, Line 25, Column 1).....			
4.	Other underwriting expenses incurred (Part 3, Line 25, Column 2).....	1,633		
5.	Aggregate write-ins for underwriting deductions.....	0	0	
6.	Total underwriting deductions (Lines 2 through 5).....	1,633	0	
7.	Net income of protected cells.....			
8.	Net underwriting gain (loss) (Line 1 minus Line 6 plus Line 7).....	(1,633)	0	
INVESTMENT INCOME				
9.	Net investment income earned (Exhibit of Net Investment Income, Line 17).....	183,079	156	
10.	Net realized capital gains (losses) less capital gains tax of \$.....877 (Exhibit of Capital Gains (Losses)).....	3,664		
11.	Net investment gain (loss) (Lines 9 + 10).....	186,743	156	
OTHER INCOME				
12.	Net gain (loss) from agents' or premium balances charged off (amount recovered \$.....0 amount charged off \$.....0).....	0		
13.	Finance and service charges not included in premiums.....			
14.	Aggregate write-ins for miscellaneous income.....	0	0	
15.	Total other income (Lines 12 through 14).....	0	0	
16.	Net income before dividends to policyholders, after capital gains tax and before all other federal and foreign income taxes (Lines 8 + 11 + 15).....	185,110	156	
17.	Dividends to policyholders.....			
18.	Net income, after dividends to policyholders, after capital gains tax and before all other federal and foreign income taxes (Line 16 minus Line 17).....	185,110	156	
19.	Federal and foreign income taxes incurred.....	37,402		
20.	Net income (Line 18 minus Line 19) (to Line 22).....	147,708	156	
CAPITAL AND SURPLUS ACCOUNT				
21.	Surplus as regards policyholders, December 31 prior year (Page 4, Line 39, Column 2).....	6,000,156		
22.	Net income (from Line 20).....	147,708	156	
23.	Net transfers (to) from Protected Cell accounts.....			
24.	Change in net unrealized capital gains or (losses) less capital gains tax of \$.....0.....			
25.	Change in net unrealized foreign exchange capital gain (loss).....			
26.	Change in net deferred income tax.....	(811)		
27.	Change in nonadmitted assets (Exhibit of Nonadmitted Assets, Line 28, Column 3).....			
28.	Change in provision for reinsurance (Page 3, Line 16, Column 2 minus Column 1).....			
29.	Change in surplus notes.....			
30.	Surplus (contributed to) withdrawn from Protected Cells.....			
31.	Cumulative effect of changes in accounting principles.....			
32.	Capital changes:			
32.1	Paid in.....		6,000,000	
32.2	Transferred from surplus (Stock Dividend).....			
32.3	Transferred to surplus.....			
33.	Surplus adjustments:			
33.1	Paid in.....			
33.2	Transferred to capital (Stock Dividend).....			
33.3.	Transferred from capital.....			
34.	Net remittances from or (to) Home Office.....			
35.	Dividends to stockholders.....			
36.	Change in treasury stock (Page 3, Lines 36.1 and 36.2, Column 2 minus Column 1).....			
37.	Aggregate write-ins for gains and losses in surplus.....	0	0	
38.	Change in surplus as regards policyholders for the year (Lines 22 through 37).....	146,897	6,000,156	
39.	Surplus as regards policyholders, December 31 current year (Line 21 plus Line 38) (Page 3, Line 37).....	6,147,053	6,000,156	
DETAILS OF WRITE-INS				
0501.			
0502.			
0503.			
0598.	Summary of remaining write-ins for Line 5 from overflow page.....	0	0	
0599.	Totals (Lines 0501 through 0503 plus 0598) (Line 5 above).....	0	0	
1401.			
1402.			
1403.			
1498.	Summary of remaining write-ins for Line 14 from overflow page.....	0	0	
1499.	Totals (Lines 1401 through 1403 plus 1498) (Line 14 above).....	0	0	
3701.			
3702.			
3703.			
3798.	Summary of remaining write-ins for Line 37 from overflow page.....	0	0	
3799.	Totals (Lines 3701 through 3703 plus 3798) (Line 37 above).....	0	0	

CASH FLOW

	1 Current Year	2 Prior Year
CASH FROM OPERATIONS		
1. Premiums collected net of reinsurance.....		156
2. Net investment income.....	149,039	
3. Miscellaneous income.....		
4. Total (Lines 1 through 3).....	149,039	156
5. Benefit and loss related payments.....		
6. Net transfers to Separate Accounts, Segregated Accounts and Protected Cell Accounts.....		
7. Commissions, expenses paid and aggregate write-ins for deductions.....	1,633	
8. Dividends paid to policyholders.....		
9. Federal and foreign income taxes paid (recovered) net of \$.....(877) tax on capital gains (losses).....	38,279	
10. Total (Lines 5 through 9).....	39,912	0
11. Net cash from operations (Line 4 minus Line 10).....	109,127	156
CASH FROM INVESTMENTS		
12. Proceeds from investments sold, matured or repaid:		
12.1 Bonds.....	656,411	
12.2 Stocks.....		
12.3 Mortgage loans.....		
12.4 Real estate.....		
12.5 Other invested assets.....		
12.6 Net gains or (losses) on cash, cash equivalents and short-term investments.....	364	
12.7 Miscellaneous proceeds.....		
12.8 Total investment proceeds (Lines 12.1 to 12.7).....	656,775	0
13. Cost of investments acquired (long-term only):		
13.1 Bonds.....	6,020,057	196,080
13.2 Stocks.....		
13.3 Mortgage loans.....		
13.4 Real estate.....		
13.5 Other invested assets.....		
13.6 Miscellaneous applications.....		
13.7 Total investments acquired (Lines 13.1 to 13.6).....	6,020,057	196,080
14. Net increase (decrease) in contract loans and premium notes.....		
15. Net cash from investments (Line 12.8 minus Lines 13.7 minus Line 14).....	(5,363,282)	(196,080)
CASH FROM FINANCING AND MISCELLANEOUS SOURCES		
16. Cash provided (applied):		
16.1 Surplus notes, capital notes.....		
16.2 Capital and paid in surplus, less treasury stock.....		6,000,000
16.3 Borrowed funds.....		
16.4 Net deposits on deposit-type contracts and other insurance liabilities.....		
16.5 Dividends to stockholders.....		
16.6 Other cash provided (applied).....	(310,032)	
17. Net cash from financing and miscellaneous sources (Lines 16.1 to 16.4 minus Line 16.5 plus Line 16.6).....	(310,032)	6,000,000
RECONCILIATION OF CASH, CASH EQUIVALENTS AND SHORT-TERM INVESTMENTS		
18. Net change in cash, cash equivalents and short-term investments (Line 11, plus Lines 15 and 17).....	(5,564,187)	5,804,076
19. Cash, cash equivalents and short-term investments:		
19.1 Beginning of year.....	5,804,076	
19.2 End of year (Line 18 plus Line 19.1).....	239,889	5,804,076
Note: Supplemental disclosures of cash flow information for non-cash transactions:		
20.0001		

UNDERWRITING AND INVESTMENT EXHIBIT

PART 1 - PREMIUMS EARNED

Line of Business		1 Net Premiums Written per Column 6, Part 1B	2 Unearned Premiums December 31 Prior Year- per Col. 3, Last Year's Part 1	3 Unearned Premiums December 31 Current Year- per Col. 5, Part 1A	4 Premiums Earned During Year (Cols. 1 + 2 - 3)
1.	Fire.....	0		0	0
2.	Allied lines.....	0		0	0
3.	Farmowners multiple peril.....	0		0	0
4.	Homeowners multiple peril.....	0		0	0
5.	Commercial multiple peril.....	0		0	0
6.	Mortgage guaranty.....	0		0	0
8.	Ocean marine.....	0		0	0
9.	Inland marine.....	0		0	0
10.	Financial guaranty.....	0		0	0
11.1	Medical professional liability - occurrence.....	0		0	0
11.2	Medical professional liability - claims-made.....	0		0	0
12.	Earthquake.....	0		0	0
13.	Group accident and health.....	0		0	0
14.	Credit accident and health (group and individual).....	0		0	0
15.	Other accident and health.....	0		0	0
16.	Workers' compensation.....	0		0	0
17.1	Other liability - occurrence.....	0		0	0
17.2	Other liability - claims-made.....	0		0	0
17.3	Excess workers' compensation.....	0		0	0
18.1	Products liability - occurrence.....	0		0	0
18.2	Products liability - claims-made.....	0		0	0
19.1, 19.2	Private passenger auto liability.....	0		0	0
19.3, 19.4	Commercial auto liability.....	0		0	0
21.	Auto physical damage.....	0		0	0
22.	Aircraft (all perils).....	0		0	0
23.	Fidelity.....	0		0	0
24.	Surety.....	0		0	0
26.	Burglary and theft.....	0		0	0
27.	Boiler and machinery.....	0		0	0
28.	Credit.....	0		0	0
29.	International.....	0		0	0
30.	Warranty.....	0		0	0
31.	Reinsurance - nonproportional assumed property.....	0		0	0
32.	Reinsurance - nonproportional assumed liability.....	0		0	0
33.	Reinsurance - nonproportional assumed financial lines.....	0		0	0
34.	Aggregate write-ins for other lines of business.....	0	0	0	0
35.	TOTALS.....	0	0	0	0

NONE

DETAILS OF WRITE-INS

3401.	0		0	0
3402.	0		0	0
3403.	0		0	0
3498.	Summary of remaining write-ins for Line 34 from overflow page.....	0	0	0	0
3499.	Totals (Lines 3401 through 3403 plus 3498) (Line 34 above).....	0	0	0	0

UNDERWRITING AND INVESTMENT EXHIBIT

PART 1A - RECAPITULATION OF ALL PREMIUMS

Line of Business		1	2	3	4	5
		Amount Unearned (Running One Year or Less from Date of Policy) (a)	Amount Unearned (Running More Than One Year from Date of Policy) (a)	Earned But Unbilled Premium	Reserve for Rate Credits and Retrospective Adjustments Based on Experience	Total Reserve for Unearned Premiums Cols. 1 + 2 + 3 + 4
1.	Fire.....0
2.	Allied lines.....0
3.	Farmowners multiple peril.....0
4.	Homeowners multiple peril.....0
5.	Commercial multiple peril.....0
6.	Mortgage guaranty.....0
8.	Ocean marine.....0
9.	Inland marine.....0
10.	Financial guaranty.....0
11.1	Medical professional liability - occurrence.....0
11.2	Medical professional liability - claims-made.....0
12.	Earthquake.....0
13.	Group accident and health.....0
14.	Credit accident and health (group and individual).....0
15.	Other accident and health.....0
16.	Workers' compensation.....0
17.1	Other liability - occurrence.....0
17.2	Other liability - claims-made.....0
17.3	Excess workers' compensation.....0
18.1	Products liability - occurrence.....0
18.2	Products liability - claims-made.....0
19.1, 19.2	Private passenger auto liability.....0
19.3, 19.4	Commercial auto liability.....0
21.	Auto physical damage.....0
22.	Aircraft (all perils).....0
23.	Fidelity.....0
24.	Surety.....0
26.	Burglary and theft.....0
27.	Boiler and machinery.....0
28.	Credit.....0
29.	International.....0
30.	Warranty.....0
31.	Reinsurance - nonproportional assumed property.....0
32.	Reinsurance - nonproportional assumed liability.....0
33.	Reinsurance - nonproportional assumed financial lines.....0
34.	Aggregate write-ins for other lines of business.....00000
35.	TOTALS.....00000
36.	Accrued retrospective premiums based on experience.....				
37.	Earned but unbilled premiums.....				0
38.	Balance (sum of Lines 35 through 37).....				0

DETAILS OF WRITE-INS

3401.0
3402.0
3403.0
3498.	Summary of remaining write-ins for Line 34 from overflow page.....0000
3499.	Totals (Lines 3401 through 3403 plus 3498) (Line 34 above).....0000

(a) State here basis of computation used in each case: NONE

UNDERWRITING AND INVESTMENT EXHIBIT

PART 1B - PREMIUMS WRITTEN

Line of Business		1 Direct Business (a)	Reinsurance Assumed		Reinsurance Ceded		6 Net Premiums Written (Cols. 1 + 2 + 3 - 4 - 5)
			2 From Affiliates	3 From Non-Affiliates	4 To Affiliates	5 To Non-Affiliates	
1.	Fire.....					0
2.	Allied lines.....					0
3.	Farmowners multiple peril.....					0
4.	Homeowners multiple peril.....					0
5.	Commercial multiple peril.....					0
6.	Mortgage guaranty.....					0
8.	Ocean marine.....					0
9.	Inland marine.....					0
10.	Financial guaranty.....					0
11.1	Medical professional liability - occurrence.....					0
11.2	Medical professional liability - claims-made.....					0
12.	Earthquake.....					0
13.	Group accident and health.....					0
14.	Credit accident and health (group and individual).....					0
15.	Other accident and health.....					0
16.	Workers' compensation.....					0
17.1	Other liability - occurrence.....					0
17.2	Other liability - claims-made.....					0
17.3	Excess workers' compensation.....					0
18.1	Products liability - occurrence.....					0
18.2	Products liability - claims-made.....					0
19.1, 19.2	Private passenger auto liability.....					0
19.3, 19.4	Commercial auto liability.....					0
21.	Auto physical damage.....					0
22.	Aircraft (all perils).....					0
23.	Fidelity.....					0
24.	Surety.....					0
26.	Burglary and theft.....					0
27.	Boiler and machinery.....					0
28.	Credit.....					0
29.	International.....					0
30.	Warranty.....					0
31.	Reinsurance - nonproportional assumed property.....XXX.....				0
32.	Reinsurance - nonproportional assumed liability.....XXX.....				0
33.	Reinsurance - nonproportional assumed financial lines.....XXX.....				0
34.	Aggregate write-ins for other lines of business.....000000
35.	TOTALS.....000000

DETAILS OF WRITE-INS

3401.0
3402.0
3403.0
3498.	Summary of remaining write-ins for Line 34 from overflow page.....000000
3499.	Totals (Lines 3401 through 3403 plus 3498) (Line 34 above).....000000

(a) Does the company's direct premiums written include premiums recorded on an installment basis? Yes [] No [X]

If yes: 1. The amount of such installment premiums \$.....0.

2. Amount at which such installment premiums would have been reported had they been recorded on an annualized basis \$.....0.

Underwriting and Investment Ex. - Pt. 2 - Losses Paid and Incurred
NONE

Underwriting and Investment Ex. - Pt. 2A - Unpaid Losses and Loss Adjustment Expenses
NONE

Safe Auto Value Insurance Company
UNDERWRITING AND INVESTMENT EXHIBIT

PART 3 - EXPENSES

	1	2	3	4
	Loss Adjustment Expenses	Other Underwriting Expenses	Investment Expenses	Total
1. Claim adjustment services:				
1.1 Direct.....			0
1.2 Reinsurance assumed.....			0
1.3 Reinsurance ceded.....			0
1.4 Net claim adjustment services (1.1 + 1.2 - 1.3).....0000
2. Commission and brokerage:				
2.1 Direct, excluding contingent.....			0
2.2 Reinsurance assumed, excluding contingent.....			0
2.3 Reinsurance ceded, excluding contingent.....			0
2.4 Contingent - direct.....			0
2.5 Contingent - reinsurance assumed.....			0
2.6 Contingent - reinsurance ceded.....			0
2.7 Policy and membership fees.....			0
2.8 Net commission and brokerage (2.1 + 2.2 - 2.3 + 2.4 + 2.5 - 2.6 + 2.7).....0000
3. Allowances to manager and agents.....			0
4. Advertising.....			0
5. Boards, bureaus and associations.....			0
6. Surveys and underwriting reports.....			0
7. Audit of assureds' records.....			0
8. Salary and related items:				
8.1 Salaries.....			0
8.2 Payroll taxes.....			0
9. Employee relations and welfare.....			0
10. Insurance.....			0
11. Directors' fees.....			0
12. Travel and travel items.....			0
13. Rent and rent items.....			0
14. Equipment.....			0
15. Cost or depreciation of EDP equipment and software.....			0
16. Printing and stationery.....			0
17. Postage, telephone and telegraph, exchange and express.....			0
18. Legal and auditing.....	2504,6184,868
19. Totals (Lines 3 to 18).....02504,6184,868
20. Taxes, licenses and fees:				
20.1 State and local insurance taxes deducting guaranty association credits of \$.....0.....			0
20.2 Insurance department licenses and fees.....	175	175
20.3 Gross guaranty association assessments.....			0
20.4 All other (excluding federal and foreign income and real estate).....			0
20.5 Total taxes, licenses and fees (20.1 + 20.2 + 20.3 + 20.4).....01750175
21. Real estate expenses.....			0
22. Real estate taxes.....			0
23. Reimbursements by uninsured plans.....			0
24. Aggregate write-ins for miscellaneous expenses.....01,20801,208
25. Total expenses incurred.....01,6334,618	(a).....6,251
26. Less unpaid expenses - current year.....			0
27. Add unpaid expenses - prior year.....			0
28. Amounts receivable relating to uninsured plans, prior year.....			0
29. Amounts receivable relating to uninsured plans, current year.....			0
30. TOTAL EXPENSES PAID (Lines 25 - 26 + 27 - 28 + 29).....01,6334,6186,251

DETAILS OF WRITE-INS

2401. Software licenses.....	1,208	1,208
2402.0
2403.0
2498. Summary of remaining write-ins for Line 24 from overflow page.....0000
2499. Totals (Lines 2401 through 2403 plus 2498) (Line 24 above).....01,20801,208

(a) Includes management fees of \$.....0 to affiliates and \$.....0 to non-affiliates.

EXHIBIT OF NET INVESTMENT INCOME

		1	2
		Collected During Year	Earned During Year
1.	U.S. government bonds.....	(a).....7,9287,929
1.1	Bonds exempt from U.S. tax.....	(a).....
1.2	Other bonds (unaffiliated).....	(a).....130,585164,251
1.3	Bonds of affiliates.....	(a).....
2.1	Preferred stocks (unaffiliated).....	(b).....
2.11	Preferred stocks of affiliates.....	(b).....
2.2	Common stocks (unaffiliated).....
2.21	Common stocks of affiliates.....
3.	Mortgage loans.....	(c).....
4.	Real estate.....	(d).....
5.	Contract loans.....
6.	Cash, cash equivalents and short-term investments.....	(e).....15,51715,517
7.	Derivative instruments.....	(f).....
8.	Other invested assets.....
9.	Aggregate write-ins for investment income.....00
10.	Total gross investment income.....154,029187,697
11.	Investment expenses.....		(g).....4,618
12.	Investment taxes, licenses and fees, excluding federal income taxes.....		(g).....
13.	Interest expense.....		(h).....
14.	Depreciation on real estate and other invested assets.....		(i).....0
15.	Aggregate write-ins for deductions from investment income.....	0
16.	Total deductions (Lines 11 through 15).....	4,618
17.	Net investment income (Line 10 minus Line 16).....	183,079

DETAILS OF WRITE-INS

0901.
0902.
0903.
0998.	Summary of remaining write-ins for Line 9 from overflow page.....00
0999.	Totals (Lines 0901 through 0903 plus 0998) (Line 9 above).....00
1501.
1502.
1503.
1598.	Summary of remaining write-ins for Line 15 from overflow page.....	0
1599.	Totals (Lines 1501 through 1503 plus 1598) (Line 15 above).....	0

- (a) Includes \$.....3,855 accrual of discount less \$.....3,495 amortization of premium and less \$.....13,833 paid for accrued interest on purchases.
- (b) Includes \$.....0 accrual of discount less \$.....0 amortization of premium and less \$.....0 paid for accrued dividends on purchases.
- (c) Includes \$.....0 accrual of discount less \$.....0 amortization of premium and less \$.....0 paid for accrued interest on purchases.
- (d) Includes \$.....0 for company's occupancy of its own buildings; and excludes \$.....0 interest on encumbrances.
- (e) Includes \$.....0 accrual of discount less \$.....0 amortization of premium and less \$.....0 paid for accrued interest on purchases.
- (f) Includes \$.....0 accrual of discount less \$.....0 amortization of premium.
- (g) Includes \$.....0 investment expenses and \$.....0 investment taxes, licenses and fees, excluding federal income taxes, attributable to segregated and Separate Accounts.
- (h) Includes \$.....0 interest on surplus notes and \$.....0 interest on capital notes.
- (i) Includes \$.....0 depreciation on real estate and \$.....0 depreciation on other invested assets.

EXHIBIT OF CAPITAL GAINS (LOSSES)

		1	2	3	4	5
		Realized Gain (Loss) on Sales or Maturity	Other Realized Adjustments	Total Realized Capital Gain (Loss) (Columns 1 + 2)	Change in Unrealized Capital Gain (Loss)	Change in Unrealized Foreign Exchange Capital Gain (Loss)
1.	U.S. government bonds.....2,4442,444
1.1	Bonds exempt from U.S. tax.....0
1.2	Other bonds (unaffiliated).....1,7341,734
1.3	Bonds of affiliates.....0
2.1	Preferred stocks (unaffiliated).....0
2.11	Preferred stocks of affiliates.....0
2.2	Common stocks (unaffiliated).....0
2.21	Common stocks of affiliates.....0
3.	Mortgage loans.....0
4.	Real estate.....0
5.	Contract loans.....0
6.	Cash, cash equivalents and short-term investments.....364364
7.	Derivative instruments.....0
8.	Other invested assets.....0
9.	Aggregate write-ins for capital gains (losses).....00000
10.	Total capital gains (losses).....4,54104,54100

DETAILS OF WRITE-INS

0901.0
0902.0
0903.0
0998.	Summary of remaining write-ins for Line 9 from overflow page...0000
0999.	Totals (Lines 0901 through 0903 plus 0998) (Line 9 above).....0000

EXHIBIT OF NONADMITTED ASSETS

	1 Current Year Total Nonadmitted Assets	2 Prior Year Total Nonadmitted Assets	3 Change in Total Nonadmitted Assets (Col. 2 - Col. 1)
1. Bonds (Schedule D).....			0
2. Stocks (Schedule D):			
2.1 Preferred stocks.....			0
2.2 Common stocks.....			0
3. Mortgage loans on real estate (Schedule B):			
3.1 First liens.....			0
3.2 Other than first liens.....			0
4. Real estate (Schedule A):			
4.1 Properties occupied by the company.....			0
4.2 Properties held for the production of income.....			0
4.3 Properties held for sale.....			0
5. Cash (Schedule E-Part 1), cash equivalents (Schedule E-Part 2) and short-term investments (Schedule DA).....			0
6. Contract loans.....			0
7. Derivatives (Schedule DB).....			0
8. Other invested assets (Schedule BA).....			0
9. Receivables for securities.....			0
10. Securities lending reinvested collateral assets (Schedule DL).....			0
11. Aggregate write-ins for invested assets.....	0	0	0
12. Subtotals, cash and invested assets (Lines 1 to 11).....	0	0	0
13. Title plants (for Title insurers only).....			0
14. Investment income due and accrued.....			0
15. Premiums and considerations:			
15.1 Uncollected premiums and agents' balances in the course of collection.....			0
15.2 Deferred premiums, agents' balances and installments booked but deferred and not yet due.....			0
15.3 Accrued retrospective premiums and contracts subject to redetermination.....			0
16. Reinsurance:			
16.1 Amounts recoverable from reinsurers.....			0
16.2 Funds held by or deposited with reinsured companies.....			0
16.3 Other amounts receivable under reinsurance contracts.....			0
17. Amounts receivable relating to uninsured plans.....			0
18.1 Current federal and foreign income tax recoverable and interest thereon.....			0
18.2 Net deferred tax asset.....			0
19. Guaranty funds receivable or on deposit.....			0
20. Electronic data processing equipment and software.....			0
21. Furniture and equipment, including health care delivery assets.....			0
22. Net adjustment in assets and liabilities due to foreign exchange rates.....			0
23. Receivables from parent, subsidiaries and affiliates.....			0
24. Health care and other amounts receivable.....			0
25. Aggregate write-ins for other-than-invested assets.....	0	0	0
26. Total assets excluding Separate Accounts, Segregated Accounts and Protected Cell Accounts (Lines 12 through 25).....	0	0	0
27. From Separate Accounts, Segregated Accounts and Protected Cell Accounts.....			0
28. TOTALS (Lines 26 and 27).....	0	0	0

DETAILS OF WRITE-INS

1101.			0
1102.			0
1103.			0
1198. Summary of remaining write-ins for Line 11 from overflow page.....	0	0	0
1199. Totals (Lines 1101 through 1103 plus 1198) (Line 11 above).....	0	0	0
2501.			0
2502.			0
2503.			0
2598. Summary of remaining write-ins for Line 25 from overflow page.....	0	0	0
2599. Totals (Lines 2501 through 2503 plus 2598) (Line 25 above).....	0	0	0

Notes to the Financial Statements

1. Summary of Significant Accounting Policies and Going Concern

Safe Auto Value Insurance Company was organized on October 15, 2018. It was not licensed as an insurance company until February 6, 2019. As of December 31, 2019, the Company has not pursued or written any policies. The December 31, 2019 financial statements consist of cash, investments and investment income. Financial data for 2019 is presented for informational and roll-forward purposes.

A. Accounting Practices

	SSAP #	F/S Page	F/S Line #	2019	2018
Net Income					
(1) State basis (Page 4, Line 20, Columns 1 & 2)	XXX	XXX	XXX	\$ 147,708	\$ 156
(2) State prescribed practices that are an increase / (decrease) from NAIC SAP:					
(3) State permitted practices that are an increase / (decrease) from NAIC SAP:					
(4) NAIC SAP (1-2-3=4)	XXX	XXX	XXX	\$ 147,708	\$ 156
Surplus					
(5) State basis (Page 3, Line 37, Columns 1 & 2)	XXX	XXX	XXX	\$ 6,147,053	\$ 6,000,156
(6) State prescribed practices that are an increase / (decrease) from NAIC SAP:					
(7) State permitted practices that are an increase / (decrease) from NAIC SAP:					
(8) NAIC SAP (5-6-7=8)	XXX	XXX	XXX	\$ 6,147,053	\$ 6,000,156

B. Use of Estimates in the Preparation of the Financial Statements

The preparation of financial statements in conformity with Statutory Accounting Principles requires management to make estimates and assumptions that affect the reported amounts in these financial statements and notes. It also requires disclosure of contingent assets and liabilities at the date of the financial statements and the reported amounts of revenue and expenses during the period. Actual results could differ from those estimates.

C. Accounting Policy

Premiums written are deferred and earned pro rata over the terms of the related insurance policies. Depending on the state, policy fees are either recognized in premiums earned on the effective date of the respective insurance policy or over the term of the policy.

Unearned premium reserves represent the portion of premiums written that are applicable to the unexpired terms of the policies in-force, and are determined on a daily pro rata basis.

Expenses incurred in connection with acquiring new insurance business, including such acquisition costs as advertising, premium taxes and sales commissions, are charged to operations as incurred. The Company has not modified its capitalization policy from the prior period.

Net investment income earned consists primarily of interest, dividends and rental income less investment related expenses. Interest is recognized on an accrual basis and dividends are recognized on an ex-dividend basis. Rental income includes an imputed rent for the Company's occupancy of its own buildings. Net realized capital gains (losses) are recognized on a specific identification basis when securities are sold, redeemed or otherwise disposed, and include write-downs for impairments considered to be other-than-temporary.

In addition, the company uses the following accounting policies:

- (1) Short-term investments are reported at amortized cost.
- (2) Bonds not backed by other loans that are designated highest-quality and high-quality (NAIC designations 1 and 2, respectively) are reported at amortized cost, using the interest method. All other bonds (NAIC designations 3 to 6) are reported at the lower of amortized cost or fair value.
- (3) Unaffiliated common stocks are stated at fair value.
- (4) Preferred stocks - None
- (5) Mortgage loans - None
- (6) Loan-backed securities are reported at either amortized cost using the interest method or, if non-investment grade, at the lower of amortized cost, fair value or at the present value of future cash flows. The retrospective adjustment method is used to value all securities, except for interest only securities, where the yield had become negative, that are valued using the prospective method.
- (7) Investments in subsidiaries, controlled and affiliated entities - None
- (8) Investments in joint ventures, partnerships and limited liability companies - None
- (9) Derivatives - None
- (10) The Company does utilize anticipated investment income as a factor in the premium deficiency calculation.
- (11) Unpaid losses and loss adjustment expenses ("LAE") include an amount determined from individual case estimates and loss reports and an amount, based on past experience, for losses incurred but not reported. Such liabilities are necessarily based on assumptions and estimates and while management believes the amount is adequate, the ultimate liability may be in excess of or less than the amount provided. The methods for making such estimates and for establishing the resulting liability are continually reviewed and any adjustments are reflected in the period determined.
- (12) Changes in capitalization policy - None
- (13) Pharmaceutical rebate receivables - None

D. Going Concern - Not Applicable

2. Accounting Changes and Corrections of Errors

The Company did not have any material changes in accounting principles and/or corrections of errors in 2019 or 2018.

Safe Auto Value Insurance Company

Notes to the Financial Statements

3. Business Combinations and Goodwill - None

4. Discontinued Operations - None

5. Investments

A. Mortgage Loans, including Mezzanine Real Estate Loans - None

B. Debt Restructuring - None

C. Reverse Mortgages - None

D. Loan-Backed Securities

(1) Prepayment assumptions for Agency Mortgage-Backed Securities and Collateralized Mortgage Obligations were generated using a third-party prepayment model. The multi-factor model captures house price change trends, housing turnover, borrower default, and refinance incentive, among other factors. On an ongoing basis, we monitor the rate of prepayment and calibrate the model to reflect actual experience, market factors, and viewpoint.

(2) Loan-backed and structured securities with a recognized other-than-temporary impairment (OTTI) - None

(3) Securities held that were other-than-temporarily impaired due to the present value of cash flows expected to be collected was less than the amortized cost of securities - None

(4) All impaired securities for which an OTTI has not been recognized in earnings as a realized loss - None

(5) Recommendations for potential impairments are based on periodic analytical reviews and/or Company specified OTTI requirements. Analysis relies on actual collateral performance measurements including, but not limited to prepayment rates, default rates, delinquencies and loss severity sourced through third party data providers.

E. Dollar Repurchase Agreements and/or Securities Lending Transactions - None

F. Repurchase Agreements Transactions Accounted for as Secured Borrowing - None

G. Reverse Repurchase Agreements Transactions Accounted for as Secured Borrowing - None

H. Repurchase Agreements Transactions Accounted for as a Sale - None

I. Reverse Repurchase Agreements Transactions Accounted for as a Sale - None

J. Real Estate - None

K. Low-Income Housing Tax Credits (LIHTC) - None

L. Restricted Assets

(1) Restricted assets (including pledged)

The Company’s restricted assets are displayed in the table below.

Notes to the Financial Statements

5. Investments (Continued)

Gross (Admitted & Nonadmitted) Restricted											
Current Year							Current Year				
(1)	(2)	(3)	(4)	(5)	(6)	(7)	(8)	(9)	(10)	(11)	
Restricted Asset Category	Total General Account (G/A)	G/A Supporting Protected Cell Account Activity	Total Protected Cell Account Restricted Assets	Protected Cell Account Assets Supporting G/A Activity	Total (1 + 3)	Total From Prior Year	Increase / (Decrease) (5 - 6)	Total Nonadmitted Restricted	Total Admitted Restricted (5-8)	Gross (Admitted & Nonadmitted) Restricted to Total Assets, %	Admitted to Total Admitted Assets, %
a. Subject to contractual obligation for which liability is not shown	\$.....	\$.....	\$.....	\$.....	\$.....	\$.....	-	\$.....	\$.....%%
b. Collateral held under security lending agreements	-	-
c. Subject to repurchase agreements	-	-
d. Subject to reverse repurchase agreements	-	-
e. Subject to dollar repurchase agreements	-	-
f. Subject to dollar reverse repurchase agreements	-	-
g. Placed under option contracts	-	-
h. Letter stock or securities restricted as to sale - excluding FHLB capital stock	-	-
i. FHLB capital stock	-	-
j. On deposit with states	221,756	221,756	196,068	25,688	221,756	3.584	3.584
k. On deposit with other regulatory bodies	-	-
l. Pledged as collateral to FHLB (including assets backing funding agreements)	-	-
m. Pledged as collateral not captured in other categories
n. Other restricted assets
o. Total restricted assets	\$ 221,756	\$.....	\$.....	\$.....	\$ 221,756	\$ 196,068	\$ 25,688	\$.....	\$ 221,756	3.584%	3.584%

(2) Detail of assets pledged as collateral not captured in other categories (contracts that share similar characteristics, such as reinsurance and derivatives, are reported in the aggregate) - None

(3) Detail of other restricted assets (contracts that share similar characteristics, such as reinsurance and derivatives, are reported in the aggregate) - None

(4) Collateral received and reflected as assets within the reporting entity's financial statements - None

M. Working Capital Finance Investments - None

N. Offsetting and Netting of Assets and Liabilities - None

O. 5GI Securities - None

P. Short Sales - None

Q. Prepayment Penalty and Acceleration Fees - None

6. Joint Ventures, Partnerships and Limited Liability Companies - None

7. Investment Income

A. Due and Accrued Income Excluded from Surplus

The Company does not admit investment income due and accrued if amounts are over 90 days past due.

B. Total Amount Excluded

None

8. Derivative Instruments - None

Notes to the Financial Statements

9. Income Taxes

A. Components of the Net Deferred Tax Asset/(Liability)

(1) Change between years by tax character

	2019			2018			Change		
	(1)	(2)	(3)	(4)	(5)	(6)	(7)	(8)	(9)
	Ordinary	Capital	Total (Col 1+2)	Ordinary	Capital	Total (Col 4+5)	Ordinary (Col 1-4)	Capital (Col 2-5)	Total (Col 7+8)
(a) Gross deferred tax assets	\$	\$	\$	\$	\$	\$	\$	\$	\$
(b) Statutory valuation allowance adjustments									
(c) Adjusted gross deferred tax assets (1a - 1b)									
(d) Deferred tax assets nonadmitted									
(e) Subtotal net admitted deferred tax asset (1c - 1d)	\$	\$	\$	\$	\$	\$	\$	\$	\$
(f) Deferred tax liabilities	811		811				811		811
(g) Net admitted deferred tax asset/(net deferred tax liability) (1e - 1f)	<u>\$ (811)</u>	<u>\$</u>	<u>\$ (811)</u>	<u>\$</u>	<u>\$</u>	<u>\$</u>	<u>\$ (811)</u>	<u>\$</u>	<u>\$ (811)</u>

(2) Admission calculation components SSAP No. 101

	2019			2018			Change		
	(1)	(2)	(3)	(4)	(5)	(6)	(7)	(8)	(9)
	Ordinary	Capital	Total (Col 1+2)	Ordinary	Capital	Total (Col 4+5)	Ordinary (Col 1-4)	Capital (Col 2-5)	Total (Col 7+8)
(a) Federal income taxes paid in prior years recoverable through loss carrybacks	\$	\$	\$	\$	\$	\$	\$	\$	\$
(b) Adjusted gross deferred tax assets expected to be realized (excluding the amount of deferred tax assets from 2(a) above) after application of the threshold limitation (lesser of 2(b)1 and 2(b)2 below)									
1. Adjusted gross deferred tax assets expected to be realized following the balance sheet date									
2. Adjusted gross deferred tax assets allowed per limitation threshold	XXX	XXX		XXX	XXX		XXX	XXX	
(c) Adjusted gross deferred tax assets (excluding the amount of deferred tax assets from 2(a) and 2(b) above) offset by gross deferred tax liabilities									
(d) Deferred tax assets admitted as the result of application of SSAP No. 101.									
Total (2(a) + 2(b) + 2(c))	<u>\$</u>	<u>\$</u>	<u>\$</u>	<u>\$</u>	<u>\$</u>	<u>\$</u>	<u>\$</u>	<u>\$</u>	<u>\$</u>

(3) Ratio used as basis of admissibility

	2019	2018
(a) Ratio percentage used to determine recovery period and threshold limitation amount	20,166.000%	%
(b) Amount of adjusted capital and surplus used to determine recovery period and threshold limitation in 2(b)2 above	\$ 6,147,053	\$

(4) Impact of tax-planning strategies

(a) Determination of adjusted gross deferred tax assets and net admitted deferred tax assets, by tax character as a percentage

	2019		2018		Change	
	(1)	(2)	(3)	(4)	(5)	(6)
	Ordinary	Capital	Ordinary	Capital	Ordinary (Col. 1-3)	Capital (Col. 2-4)
1. Adjusted gross DTAs amount from Note 9A1(c)	\$	\$	\$	\$	\$	\$
2. Percentage of adjusted gross DTAs by tax character attributable to the impact of tax planning strategies	—%	—%	%	%	—%	—%
3. Net admitted adjusted gross DTAs amount from Note 9A1(e)	\$	\$	\$	\$	\$	\$
4. Percentage of net admitted adjusted gross DTAs by tax character admitted because of the impact of tax planning strategies	—%	—%	%	%	—%	—%

(b) Use of reinsurance-related tax-planning strategies

Does the company's tax-planning strategies include the use of reinsurance? NO

B. Regarding Deferred Tax Liabilities That Are Not Recognized - Not Applicable

Notes to the Financial Statements

9. Income Taxes (Continued)

C. Major Components of Current Income Taxes Incurred

	(1)	(2)	(3)
	2019	2018	Change (1-2)
Current income taxes incurred consist of the following major components:			
1. Current Income Tax			
(a) Federal	\$ 37,369	\$	\$ 37,369
(b) Foreign			
(c) Subtotal	\$ 37,369	\$	\$ 37,369
(d) Federal income tax on net capital gains	877		877
(e) Utilization of capital loss carry-forwards			
(f) Other	33		33
(g) Federal and foreign income taxes incurred	\$ 38,279	\$	\$ 38,279

	(1)	(2)	(3)
	2019	2018	Change (1-2)
Current income taxes incurred consist of the following major components:			
2. Deferred Tax Assets			
(a) Ordinary			
(1) Discounting of unpaid losses	\$	\$	\$
(2) Unearned premium reserve			
(3) Policyholder reserves			
(4) Investments			
(5) Deferred acquisition costs			
(6) Policyholder dividends accrual			
(7) Fixed assets			
(8) Compensation and benefits accrual			
(9) Pension accrual			
(10) Receivables - nonadmitted			
(11) Net operating loss carry-forward			
(12) Tax credit carry-forward			
(13) Other (including items less than 5% of total ordinary tax assets)			
(99) Subtotal	\$	\$	\$
(b) Statutory valuation allowance adjustment			
(c) Nonadmitted			
(d) Admitted ordinary deferred tax assets (2a99 - 2b - 2c)	\$	\$	\$
(e) Capital			
(1) Investments	\$	\$	\$
(2) Net capital loss carry-forward			
(3) Real estate			
(4) Other (including items <5% of total capital tax assets)			
(99) Subtotal	\$	\$	\$
(f) Statutory valuation allowance adjustment			
(g) Nonadmitted			
(h) Admitted capital deferred tax assets (2e99 - 2f - 2g)			
(i) Admitted deferred tax assets (2d + 2h)	\$	\$	\$

	(1)	(2)	(3)
	2019	2018	Change (1-2)
Current income taxes incurred consist of the following major components:			
3. Deferred Tax Liabilities			
(a) Ordinary			
(1) Investments	\$ 811	\$	\$ 811
(2) Fixed assets			
(3) Deferred and uncollected premium			
(4) Policyholder reserves			
(5) Other (including items <5% of total ordinary tax liabilities)			
(99) Subtotal	\$ 811	\$	\$ 811
(b) Capital			
(1) Investments	\$	\$	\$
(2) Real estate			
(3) Other (including items <5% of total capital tax liabilities)			
(99) Subtotal	\$	\$	\$
(c) Deferred tax liabilities (3a99 + 3b99)	\$ 811	\$	\$ 811
4. Net deferred tax assets/liabilities (2i - 3c)	\$ (811)	\$	\$ (811)

The change in net deferred income taxes is comprised of the following (this analysis is exclusive of non-admitted assets as the Change in Non-admitted Assets is reported separately from the Change in Net Deferred Income Taxes in the surplus section of the Annual Statement):

Safe Auto Value Insurance Company

Notes to the Financial Statements

9. Income Taxes (Continued)

	December 31, 2019	December 31, 2018	Change
Current income tax expense	\$38,279	\$0	
Total deferred tax assets	-	-	-
Total deferred tax liabilities	811	-	811
Net deferred tax assets/(liabilities)	(811)	-	(811)
Statutory valuation allowance adjustment	-	-	-
Net deferred tax assets/(liabilities) after SVA	(811)	-	(811)
Tax effect of unrealized gains/(losses)	-	-	-
Deferred tax assets/(liabilities, excluding taxes on unrealized	(\$811)	\$0	(811)
Prior period deferred tax true-up adjustment			-
Change in net deferred income tax [(charge)/benefit]			(\$811)

D. Among the More Significant Book to Tax Adjustments

	2019	Effective Tax Rate
Provision computed at statutory rate	\$ 39,057	21.000%
Other	33	0.018
Total	\$ 39,090	21.017%

	2019	Effective Tax Rate
Federal income tax incurred [expense/(benefit)]	\$ 37,402	20.110%
Tax on capital gains/(losses)	877	0.472
Change in net deferred income tax [charge/(benefit)]	811	0.436
Total statutory income taxes	\$ 39,090	21.017%

E. Operating Loss and Tax Credit Carryforwards

- (1) As of the end of 2019 and 2018, the Company had no operating loss carryforwards, capital loss carryforwards or AMT credit carryforwards available.
- (2) Income tax expense available for recoupment

	Ordinary	Capital	Total
2017	\$ -	\$ -	\$ -
2018	33		33
2019	38,246		38,246

- (3) Deposits admitted under IRC Section 6603 - None

F. Consolidated Federal Income Tax Return

- (1) The Company's federal income tax return is consolidated with the following entities: Safe Auto Insurance Group, Inc., Safe Auto Group Agency, Inc., Safe Auto Capital, LLC, SafeAuto Realty, LLC, AutoTex MGA, Inc., SafeAuto Services, LLC, Safe Auto Choice Insurance Company and Safe Auto Insurance Company.
- (2) The Company has a tax sharing agreement with its parent whereby federal income tax expense is determined as if the Company filed a separate federal income tax return and payments for this liability are made to the parent and included with balances reported as Payable to parent, subsidiaries and affiliates.

- G. Federal or Foreign Income Tax Loss Contingencies - None
- H. Repatriation Transition Tax (RTT) - Not Applicable
- I. Alternative Minimum Tax (AMT) Credit - Not Applicable

10. Information Concerning Parent, Subsidiaries, Affiliates and Other Related Parties

A. Nature of Relationships

The Company is a wholly owned subsidiary of Safe Auto Insurance Group, Inc. (Parent), a privately held company incorporated in Ohio.

B. Detail of Transactions Greater Than 0.5% of Admitted Assets

1. On October 2, 2019, the Company transferred \$350,000 in excess cash to Safe Auto Insurance Company, pursuant to the Management and Operations agreement described below.
2. No other transactions exceeding the 1/2% limit occurred in 2019 or 2018.

C. Amount of Transactions & Effects of Change in Terms of Intercompany Arrangements - None

D. Amounts Due To or From Related Parties

1. The Company had receivables from Safe Auto Insurance Company of \$350,000 and \$0 as of December 31, 2019 and 2018, respectively. The Company also had payables to Safe Auto Insurance Company of \$1,679 and \$0 as of December 31, 2019 and 2018, respectively.
2. The Company had payables to Safe Auto Insurance Group of \$38,279 and \$0 as of December 31, 2019 and 2018, respectively.

Safe Auto Value Insurance Company

Notes to the Financial Statements

10. Information Concerning Parent, Subsidiaries, Affiliates and Other Related Parties (Continued)

- E. Guarantees or Contingencies - None
- F. Management Service Contracts and Cost Sharing Agreements

1. Safe Auto Value Insurance Company and Safe Auto Group Agency are parties of an agency contract. Safe Auto Group Agency provides agency services for Safe Auto Value Insurance Company by employing certain agents, customer service, and related management personnel while also exclusively providing all advertising and marketing efforts.

2. On April 1, 2019, the Company and its parent entered into an updated agreement (the "Management and Operations" agreement) for services provided between the Company, its parent, and the parent's subsidiaries. This agreement was approved by the Ohio Department of Insurance in April 2019.

3. All such management, service contracts, and cost sharing agreements mentioned are transacted at cost and provide no profit provision to the service provider.
- G. Nature of Relationships that Could Affect Operations - None
- H. Amount Deducted for Investment in Upstream Company - None
- I. Detail of Investments in Affiliates Greater Than 10% of Admitted Assets - None
- J. Write-Down for Impairments of Investments in Subsidiary Controlled or Affiliated Companies - None
- K. Foreign Subsidiary Value Using CARVM - None
- L. Downstream Holding Company Value Using Look-Through Method - None
- M. All SCA Investments - None
- N. Investment in Insurance SCAs - None
- O. SCA and SSAP No. 48 Entity Loss Tracking - None

11. Debt - None

12. Retirement Plans, Deferred Compensation, Postemployment Benefits and Compensated Absences and Other Postretirement Benefit Plans - None

13. Capital and Surplus, Dividend Restrictions and Quasi-Reorganizations

1. The Company has 100 shares of \$25,000 par value common stock authorized and 100 outstanding. The Company has no preferred stock authorized, issued or outstanding.
2. Dividend Rate of Preferred Stock - None
3. Under the insurance regulations of Ohio, the maximum amount of ordinary dividends that the Company may pay to shareholders in a 12 month period is limited to the greater of 10% of the most recent year-end policy holders' surplus or the net income for that same year-end. Accordingly, the maximum amount of ordinary dividends that the Company may pain in 2019 \$614,705. Dividends above this amount would be deemed extraordinary and may not be paid unless:

1. not disapproved by the Commissioner of Insurance of Ohio within 30 days of receiving notice of the declaration thereof or

2. approved with that 30 day period.
4. Ordinary Dividends - None
5. Within the limitations noted in note 13.3 above, there are no other restrictions placed on the portion of Company profits that may be paid as ordinary dividends to stockholders.
6. There were no restrictions placed on the Company's surplus, including for whom the surplus is being held.
7. Surplus Advances - None
8. Stock Held for Special Purposes - None
9. Changes in Special Surplus Funds - None
10. Unassigned funds (surplus)

There is no portion of unassigned funds (surplus) represented by an increase or decrease in cumulative unrealized gains.
11. Company-Issued Surplus Debentures or Similar Obligations - None
12. Impact of Any Restatement Due to Prior Quasi-Reorganizations - None
13. Effective Date(s) of Quasi-Reorganizations in the Prior 10 Years - None

14. Liabilities, Contingencies and Assessments

- A. Contingent Commitments - None
- B. Assessments - None
- C. Gain Contingencies - None
- D. Claims Related Extra Contractual Obligation and Bad Faith Losses Stemming from Lawsuits

None

Direct

Claims-related ECO and bad faith losses paid during the reporting period..... \$..... –

Notes to the Financial Statements

14. Liabilities, Contingencies and Assessments (Continued)

Number of claims where amounts were paid to settle claims related extra contractual obligations or bad faith claims resulting from lawsuits during the reporting period.

(a)	(b)	(c)	(d)	(e)
0-25 Claims	26-50 Claims	51-100 Claims	101-500 Claims	More than 500 Claims
X				

Method used to disclose claim count information:

(f) Per Claim [X] (g) Per Claimant []

- E. Product Warranties - None
- F. Joint and Several Liabilities - None
- G. All Other Contingencies - None

15. Leases - None

16. Information About Financial Instruments With Off-Balance-Sheet Risk And Financial Instruments With Concentrations of Credit Risk - None

17. Sale, Transfer and Servicing of Financial Assets and Extinguishments of Liabilities - None

18. Gain or Loss to the Reporting Entity from Uninsured Plans and the Uninsured Portion of Partially Insured Plans - None

19. Direct Premium Written/Produced by Managing General Agents/Third Party Administrators - None

20. Fair Value Measurements

A. Fair Value Measurement

Inputs Used for Assets and Liabilities Measured at Fair Value

The Company financial assets carried at fair value have been classified, for disclosure purposes, based on a hierarchy defined by ASC 820 Fair Value Measurements and Disclosures. The hierarchy gives the highest ranking to fair values determined using unadjusted quoted prices in active markets for identical assets and liabilities (Level 1) and the lowest ranking to fair values determined using methodologies and models with unobservable inputs (Level 3). An asset or a liability classification is based on the lowest level input that is significant to its measurement. For example, a Level 3 fair value measurement may include inputs that are both observable (Levels 1 and 2) and unobservable (Level 3). The levels of the fair value hierarchy are defined as follows:

- Level 1 Values are unadjusted quoted prices for identical assets and liabilities in active markets accessible at the measurement date.
- Level 2 Inputs include quoted prices for similar assets or liabilities in active markets, quoted prices from those willing to trade in markets that are not active, or other inputs that are observable or can be corroborated by market data for the term of the instrument. Such inputs include market interest rates and volatilities, spreads and yield curves.
- Level 3 Certain inputs are unobservable (supported by little or no market activity) and significant to the fair value measurement. Unobservable inputs reflect the Company's best estimate of what hypothetical market participants would use to determine a transaction price for the asset or liability at the reporting date.

(1) Fair value measurements at reporting date

Assets recorded on the financial statements at fair value measurements by accounting hierarchy levels 1, 2 and 3. The Company has categorized its assets that are measured at fair value into the three-level fair value hierarchy as reflected in the following table. The Company had no liabilities recorded at fair value.

Description for each class of asset or liability	Level 1	Level 2	Level 3	Net Asset Value (NAV)	Total
a. Assets at fair value					
Cash Equivalent-Money Market Mutual Funds.....	\$ 93,651	\$	\$	\$	\$ 93,651
Total assets at fair value/NAV	<u>\$ 93,651</u>	<u>\$</u>	<u>\$</u>	<u>\$</u>	<u>\$ 93,651</u>
b. Liabilities at fair value					
Total liabilities at fair value	<u>\$</u>	<u>\$</u>	<u>\$</u>	<u>\$</u>	<u>\$</u>

(2) Fair value measurements in Level 3 of the fair value hierarchy - None

- (3) At the end of each reporting period, the Company evaluates whether or not any event has occurred or circumstances have changed that would cause an instrument to be transferred into or out of Level 3. During the current year, no transfers into or out of Level 3 were required.
- (4) Fair value measurements for fixed income and equity securities are based on values either published by the NAIC’s Security Valuation Office (SVO) or from an independent pricing service vendor. Under certain circumstances, if neither an SVO price nor a Vendor price is available, a price may be obtained from a broker. Short term securities and cash equivalents are valued at amortized cost.

When published prices from the SVO are not available, the Company relies predominately on independent pricing service vendors that have been evaluated and approved by our investment management company’s internal pricing policy committee. Generally, pricing service vendors use a pricing methodology involving the market approach, including pricing models, which use prices and relevant market information regarding a particular security or securities with similar characteristics to establish a valuation.

Certain investments are carried at fair value, while others may periodically be carried at fair value based on certain factors such as the NAIC’s lower of cost or market rule or an impairment. Assets recorded at fair value are categorized based on an evaluation of the various inputs used to measure the fair value. Supporting documentation received from pricing vendors detailing the inputs, models and processes used in the vendor’s evaluation process is used by the Company to determine the appropriate fair value hierarchy. Documentation from each pricing vendor is reviewed and monitored periodically to ensure they are consistent with the Company’s pricing policy. Market Information obtained from brokers with respect to security valuations is also considered in the pricing hierarchy.

(5) Derivatives - None

Notes to the Financial Statements

20. Fair Value Measurements (Continued)

- B. Other Fair Value Disclosures - None
- C. Fair Values for All Financial Instruments by Level 1, 2 and 3

The table below reflects the fair values and admitted values of all admitted assets and liabilities that are financial instruments, excluding those accounted for under the equity method (subsidiaries, limited liability companies, etc.). The fair values are also categorized into the three-level hierarchy as described above in Note 20A.

Type of Financial Instrument	Aggregate Fair Value	Admitted Assets	Level 1	Level 2	Level 3	Net Asset Value (NAV)	Not Practicable (Carrying Value)
Bonds	\$ 5,820,286	\$ 5,564,253	\$ 228,410	\$ 5,591,876			
Cash, cash equivalents and short-term investments	239,889	239,889	239,889				

- D. Not Practicable to Estimate Fair Value - None
- E. Nature and Risk of Investments Reported at NAV - None

21. Other Items

- A. Unusual or Infrequent Items - None
- B. Troubled Debt Restructuring - None
- C. Other Disclosures - None
- D. Business Interruption Insurance Recoveries - None
- E. State Transferable and Non-Transferable Tax Credits - None
- F. Subprime-Mortgage-Related Risk Exposure - None
- G. Insurance-Linked Securities (ILS) Contracts - None
- H. The Amount That Could Be Realized on Life Insurance Where the Reporting Entity is Owner and Beneficiary or Has Otherwise Obtained Rights to Control the Policy - None

22. Events Subsequent

There were no material subsequent events that occurred after December 31, 2019 and before the release of the financial statements.

The Company did not write accident and health insurance premium that is subject to Section 9010 of the Federal Affordable Care Act.

	Current Year	Prior Year
A. Did the reporting entity write accident and health insurance premium that is subject to Section 9010 of the Federal Affordable Care Act?	NO	
B. ACA fee assessment payable for the upcoming year	\$	\$
C. ACA fee assessment paid	\$	\$
D. Premium written subject to ACA 9010 assessment	\$	\$
E. Total adjusted capital before surplus adjustment	\$	
F. Total adjusted capital after surplus adjustment	\$	
G. Authorized control level	\$	
H. Would reporting the ACA assessment as of Dec 31 have triggered an RBC action level?		

23. Reinsurance

- A. Unsecured Reinsurance Recoverables - None
- B. Reinsurance Recoverable in Dispute - None
- C. Reinsurance Assumed and Ceded
 - (1) Maximum amount of return commission that would have been due reinsurers if all of the company's reinsurance was canceled or if the company's insurance assumed was canceled

The Company is party in a prospective personal automobile physical damage catastrophe agreement of reinsurance with General Reinsurance Corporation. This reinsurance agreement covers a portion of aggregated losses arising from catastrophic events that exceed a specified retention stated in the agreement. Ceded premiums are calculated primarily based on a percentage of comprehensive premiums earned. The Company has no ceded premiums for 2019 or 2018.

- (2) The additional or return commission, predicated on loss experience or on any other form of profit sharing arrangements in this statement as a result of existing contractual arrangements is accrued as follows: - None
- (3) Risks attributed to each of the company's protected cells - None

- D. Uncollectible Reinsurance - None
- E. Commutation of Ceded Reinsurance - None
- F. Retroactive Reinsurance - None
- G. Reinsurance Accounted for as a Deposit - None
- H. Disclosures for the Transfer of Property and Casualty Run-Off Agreements - None
- I. Certified Reinsurer Rating Downgraded or Status Subject to Revocation - None

Safe Auto Value Insurance Company

Notes to the Financial Statements

23. Reinsurance (Continued)

J. Reinsurance Agreements Qualifying for Reinsurer Aggregation - None

24. Retrospectively Rated Contracts & Contracts Subject to Redetermination

- A. Method Used to Estimate - None
- B. Method Used to Record - None
- C. Amount and Percent of Net Retrospective Premiums - None
- D. Medical Loss Ratio Rebates Required Pursuant to the Public Health Service Act - None
- E. Calculation of Nonadmitted Retrospective Premium - None
- F. Risk-Sharing Provisions of the Affordable Care Act (ACA)
 - (1) Accident and health insurance premium subject to the Affordable Care Act risk-sharing provisions

Did the reporting entity write accident and health insurance premium which is subject to the Affordable Care Act risk sharing provisions? NO

- (2) Impact of Risk-Sharing Provisions of the Affordable Care Act on admitted assets, liabilities and revenue for the current year - None
- (3) Roll-forward of prior year ACA risk-sharing provisions for the following asset (gross of any nonadmission) and liability balances, along with the reasons for adjustments to prior year balance - None
- (4) Roll-forward of risk corridors asset and liability balances by program benefit year - None
- (5) ACA risk corridors receivable as of reporting date - None

25. Changes in Incurred Losses and Loss Adjustment Expenses - None

26. Intercompany Pooling Arrangements - None

27. Structured Settlements - None

28. Health Care Receivables - None

29. Participating Policies - None

30. Premium Deficiency Reserves - None

31. High Deductibles - None

32. Discounting of Liabilities by Withdrawal Characteristics For Unpaid Losses or Unpaid Loss Adjustment Expenses - None

33. Asbestos/Environmental Reserves - None

34. Subscriber Savings Accounts - None

35. Multiple Peril Crop Insurance - None

36. Financial Guaranty Insurance - None

GENERAL INTERROGATORIES

PART 1 - COMMON INTERROGATORIES

GENERAL

1.1

Is the reporting entity a member of an Insurance Holding Company System consisting of two or more affiliated persons, one or more of which is an insurer?
If yes, complete Schedule Y, Parts 1, 1A and 2.

Yes [X]No []

1.2

If yes, did the reporting entity register and file with its domiciliary State Insurance Commissioner, Director or Superintendent or with such regulatory official of the state of domicile of the principal insurer in the Holding Company System, a registration statement providing disclosure substantially similar to the standards adopted by the National Association of Insurance Commissioners (NAIC) in its Model Insurance Holding Company System Regulatory Act and model regulations pertaining thereto, or is the reporting entity subject to standards and disclosure requirements substantially similar to those required by such Act and regulations?

Yes [X]No []N/A []

1.3

State regulating?

OHIQ

1.4

Is the reporting entity publicly traded or a member of publicly traded group?

Yes []No [X]

1.5

If the response to 1.4 is yes, provide the CIK (Central Index Key) code issued by the SEC for the entity/group.

2.1

Has any change been made during the year of this statement in the charter, by-laws, articles of incorporation, or deed of settlement of the reporting entity?

Yes []No [X]

2.2

If yes, date of change:

3.1

State as of what date the latest financial examination of the reporting entity was made or is being made.

3.2

State the as of date that the latest financial examination report became available from either the state of domicile or the reporting entity.
This date should be the date of the examined balance sheet and not the date the report was completed or released.

3.3

State as of what date the latest financial examination report became available to other states or the public from either the state of domicile or the reporting entity. This is the release date or completion date of the examination report and not the date of the examination (balance sheet date).

3.4

By what department or departments?

3.5

Have all financial statement adjustments within the latest financial examination report been accounted for in a subsequent financial statement filed with departments?

Yes []No []N/A [X]

3.6

Have all of the recommendations within the latest financial examination report been complied with?

Yes []No []N/A [X]

4.1

During the period covered by this statement, did any agent, broker, sales representative, non-affiliated sales/service organization or any combination thereof under common control (other than salaried employees of the reporting entity) receive credit or commissions for or control a substantial part (more than 20 percent of any major line of business measured on direct premiums) of:

4.11

sales of new business?

Yes []No [X]

4.12

renewals?

Yes []No [X]

4.2

During the period covered by this statement, did any sales/service organization owned in whole or in part by the reporting entity or an affiliate, receive credit or commissions for or control a substantial part (more than 20 percent of any major line of business measured on direct premiums) of:

4.21

sales of new business?

Yes []No [X]

4.22

renewals?

Yes []No [X]

5.1

Has the reporting entity been a party to a merger or consolidation during the period covered by this statement?
If the answer is YES, complete and file the merger history data file with the NAIC.

Yes []No [X]

5.2

If yes, provide the name of entity, NAIC company code, and state of domicile (use two letter state abbreviation) for any entity that has ceased to exist as a result of the merger or consolidation.

1	2	3
Name of Entity	NAIC Company Code	State of Domicile

6.1

Has the reporting entity had any Certificates of Authority, licenses or registrations (including corporate registration, if applicable) suspended or revoked by any governmental entity during the reporting period?

Yes []No [X]

6.2

If yes, give full information:

7.1

Does any foreign (non-United States) person or entity directly or indirectly control 10% or more of the reporting entity?

Yes []No [X]

7.2

If yes,

7.21

State the percentage of foreign control

%

7.22

State the nationality(s) of the foreign person(s) or entity(s); or if the entity is a mutual or reciprocal, the nationality of its manager or attorney-in-fact and identify the type of entity(s) (e.g., individual, corporation, government, manager or attorney-in-fact).

1	2
Nationality	Type of Entity

8.1

Is the company a subsidiary of a bank holding company regulated with the Federal Reserve Board?

Yes []No [X]

8.2

If response to 8.1 is yes, please identify the name of the bank holding company.

8.3

Is the company affiliated with one or more banks, thrifts or securities firms?

Yes []No [X]

8.4

If the response to 8.3 is yes, please provide below the names and locations (city and state of the main office) of any affiliates regulated by a federal financial regulatory services agency [i.e. the Federal Reserve Board (FRB), the Office of the Comptroller of the Currency (OCC), the Federal Deposit Insurance Corporation (FDIC) and the Securities Exchange Commission (SEC)] and identify the affiliate's primary federal regulator.

1	2	3	4	5	6
Affiliate Name	Location (City, State)	FRB	OCC	FDIC	SEC

9.

What is the name and address of the independent certified public accountant or accounting firm retained to conduct the annual audit?
Deloitte & Touche LLP, 180 East Broad Street, Suite 1400, Columbus, OH 43215-4315

10.1

Has the insurer been granted any exemptions to the prohibited non-audit services provided by the certified independent public accountant requirements as allowed in Section 7H of the Annual Financial Reporting Model Regulation (Model Audit Rule), or substantially similar state law or regulation?

Yes []No [X]

10.2

If the response to 10.1 is yes, provide information related to this exemption:

10.3

Has the insurer been granted any exemptions related to other requirements of the Annual Financial Reporting Model Regulation as allowed for in Section 18A of the Model Regulation, or substantially similar state law or regulation?

Yes [X]No []

10.4

If the response to 10.3 is yes, provide information related to this exemption:

GENERAL INTERROGATORIES

PART 1 - COMMON INTERROGATORIES

23.1	Does the reporting entity report any amounts due from parent, subsidiaries or affiliates on Page 2 of this statement?	Yes [X]	No []
23.2	If yes, indicate any amounts receivable from parent included in the Page 2 amount:	\$	0

INVESTMENT

24.01	Were all the stocks, bonds and other securities owned December 31 of current year, over which the reporting entity has exclusive control, in the actual possession of the reporting entity on said date (other than securities lending programs addressed in 24.03)?	Yes [X]	No []									
24.02	If no, give full and complete information, relating thereto:											
24.03	For security lending programs, provide a description of the program including value for collateral and amount of loaned securities, and whether collateral is carried on or off-balance sheet (an alternative is to reference Note 17 where this information is also provided).											
24.04	Does the company's security lending program meet the requirements for a conforming program as outlined in the <i>Risk-Based Capital Instructions</i> ?	Yes []	No [] N/A [X]									
24.05	If answer to 24.04 is yes, report amount of collateral for conforming programs.	\$	0									
24.06	If answer to 24.04 is no, report amount of collateral for other programs	\$	0									
24.07	Does your securities lending program require 102% (domestic securities) and 105% (foreign securities) from the counterparty at the outset of the contract?	Yes []	No [] N/A [X]									
24.08	Does the reporting entity non-admit when the collateral received from the counterparty falls below 100%?	Yes []	No [] N/A [X]									
24.09.	Does the reporting entity or the reporting entity's securities lending agent utilize the Master Securities Lending Agreement (MSLA) to conduct securities lending?	Yes []	No [] N/A [X]									
24.10	For the reporting entity's security lending program, state the amount of the following as of December 31 of the current year:											
24.101	Total fair value of reinvested collateral assets reported on Schedule DL, Parts 1 and 2:	\$	0									
24.102	Total book adjusted/carrying value of reinvested collateral assets reported on Schedule DL, Parts 1 and 2:	\$	0									
24.103	Total payable for securities lending reported on the liability page:	\$	0									
25.1	Were any of the stocks, bonds or other assets of the reporting entity owned at December 31 of the current year not exclusively under the control of the reporting entity or has the reporting entity sold or transferred any assets subject to a put option contract that is current in force? (Exclude securities subject to Interrogatory 21.1 and 24.03.)	Yes [X]	No []									
25.2	If yes, state the amount thereof at December 31 of the current year:											
25.21	Subject to repurchase agreements	\$	0									
25.22	Subject to reverse repurchase agreements	\$	0									
25.23	Subject to dollar repurchase agreements	\$	0									
25.24	Subject to reverse dollar repurchase agreements	\$	0									
25.25	Placed under option agreements	\$	0									
25.26	Letter stock or securities restricted as sale – excluding FHLB Capital Stock	\$	0									
25.27	FHLB Capital Stock	\$	0									
25.28	On deposit with states	\$	221,756									
25.29	On deposit with other regulatory bodies	\$	0									
25.30	Pledged as collateral – excluding collateral pledged to an FHLB	\$	0									
25.31	Pledged as collateral to FHLB – including assets backing funding agreements	\$	0									
25.32	Other	\$	0									
25.3	For category (25.26) provide the following:											
	<table><tr><td>1</td><td>2</td><td>3</td></tr><tr><td>Nature of Restriction</td><td>Description</td><td>Amount</td></tr><tr><td></td><td></td><td>\$</td></tr></table>	1	2	3	Nature of Restriction	Description	Amount			\$		
1	2	3										
Nature of Restriction	Description	Amount										
		\$										

26.1	Does the reporting entity have any hedging transactions reported on Schedule DB?	Yes []	No [X]
26.2	If yes, has a comprehensive description of the hedging program been made available to the domiciliary state? If no, attach a description with this statement.	Yes []	No [] N/A [X]

Lines 26.3 through 26.5: FOR LIFE/FRATERNAL REPORTING ENTITIES ONLY:

26.3

Does the reporting entity utilize derivatives to hedge variable annuity guarantees subject to fluctuations as a results of interest rate sensitivity?

Yes ☐

No ☐

26.4

If the response to 26.3 is yes, does the reporting entity utilize:

26.41

Special accounting provision of SSAP No. 108

Yes ☐

No ☐

26.42

Permitted accounting practice

Yes ☐

No ☐

26.43

Other accounting guidance

Yes ☐

No ☐

26.5

By responding yes to 26.41 regarding utilizing the special accounting provisions of SSAP No. 108, the reporting entity attests to the following:

Yes ☐

No ☐

•

The reporting entity has obtained explicit approval from the domiciliary state.

•

Hedging strategy subject to the special accounting provisions is consistent with the requirements of VM-21.

•

Actuarial certification has been obtained which indicates that the hedging strategy is incorporated within the establishment of VM-21 reserves and provides the impact of the hedging strategy within the Actuarial Guidance Conditional Tail Expectation Amount.

•

Financial Officer Certification has been obtained which indicates that the hedging strategy meets the definition of a Clearly Defined Hedging Strategy within VM-21 and the Clearly Defined Hedging Strategy is the hedging strategy being used by the company in its actual day-to-day risk mitigation efforts.

27.1

Were any preferred stocks or bonds owned as of December 31 of the current year mandatorily convertible into equity, or, at the option of the issuer, convertible into equity?

Yes ☐

No ☒

27.2

If yes, state the amount thereof at December 31 of the current year:

\$

0

28.

Excluding items in Schedule E-Part 3-Special Deposits, real estate, mortgage loans and investments held physically in the reporting entity's offices, vaults or safety deposit boxes, were all stocks, bonds and other securities, owned throughout the current year held pursuant to a custodial agreement with a qualified bank or trust company in accordance with Section 1, III - General Examination Considerations, F. Outsourcing of Critical Functions, Custodial or Safekeeping Agreements of the NAIC *Financial Condition Examiners Handbook*?

Yes ☒

No ☐

28.01

For agreements that comply with the requirements of the NAIC *Financial Condition Examiners Handbook*, complete the following:

1	2
Name of Custodian(s)	Custodian's Address
USBank	425 Walnut Street, 6th Floor, Cincinnati, OH 45202

GENERAL INTERROGATORIES

PART 1 - COMMON INTERROGATORIES

28.02

For all agreements that do not comply with the requirements of the NAIC *Financial Condition Examiners Handbook*, provide the name, location and a complete explanation

1 Name(s)	2 Location(s)	3 Complete Explanation(s)

28.03

Have there been any changes, including name changes, in the custodian(s) identified in 28.01 during the current year?

Yes [] No [X]

28.04

If yes, give full and complete information relating thereto:

1 Old Custodian	2 New Custodian	3 Date of Change	4 Reason

28.05

Investment management – Identify all investment advisors, investment managers, broker/dealers, including individuals that have the authority to make investment decisions on behalf of the reporting entity. For assets that are managed internally by employees of the reporting entity, note as such. ["...that have access to the investment accounts", "... handle securities"].

1 Name of Firm or Individual	2 Affiliation
New England Asset Management	U

28.0597

For those firms/individuals listed in the table for Question 28.05, do any firms/individuals unaffiliated with the reporting entity (i.e. designated with a "U") manage more than 10% of the reporting entity's invested assets?

Yes [X] No []

28.0598

For firms/individuals unaffiliated with the reporting entity (i.e. designated with a "U") listed in the table for Question 28.05, does the total assets under management aggregate to more than 50% of the reporting entity's invested assets?

Yes [X] No []

28.06

For those firms or individuals listed in the table for 28.05 with an affiliation code of "A" (affiliated) or "U" (unaffiliated), provide the information for the table below.

1	2	3	4	5
Central Registration Depository Number	Name of Firm or Individual	Legal Entity Identifier (LEI)	Registered With	Investment Management Agreement (IMA) Filed
105900	New England Asset Management	KUR85E5PS4GQFZTFC130	SEC	NO

29.1

Does the reporting entity have any diversified mutual funds reported in Schedule D-Part 2 (diversified according to the Securities and Exchange Commission (SEC) in the Investment Company Act of 1940 [Section 5 (b) (1)])?

Yes [] No [X]

29.2

If yes, complete the following schedule:

1 CUSIP	2 Name of Mutual Fund	3 Book/Adjusted Carrying Value
		\$
29.2999 TOTAL		\$

29.3

For each mutual fund listed in the table above, complete the following schedule:

1	2	3	4
Name of Mutual Fund (from above table)	Name of Significant Holding of the Mutual Fund	Amount of Mutual Fund's Book/Adjusted Carrying Value Attributable to the Holding	Date of Valuation
		\$	

30.

Provide the following information for all short-term and long-term bonds and all preferred stocks. Do not substitute amortized value or statement value for fair value.

		1	2	3
		Statement (Admitted) Value	Fair Value	Excess of Statement over Fair Value (-), or Fair Value over Statement (+)
30.1	Bonds	\$ 5,564,253	\$ 5,820,286	\$ 256,033
30.2	Preferred Stocks	\$ 0	\$ 0	\$ 0
30.3	Totals	\$ 5,564,253	\$ 5,820,286	\$ 256,033

30.4

Describe the sources or methods utilized in determining the fair values:

Fair values are based on end of period prices provided by independent pricing services (vendor price) such as: Refinitiv, ICE Data Services, Bloomberg, IHS Markit, IHS Markit iBoxx, or Pricing Direct. Under certain circumstances, if a vendor price is unavailable, a price may be obtained from a broker. Short term securities are valued at amortized cost. Cash equivalents, excluding money market mutual funds, are valued at amortized cost. Government money market mutual funds are valued using a stable Net Asset Value (NAV). Non-Government (Prime) money market mutual funds are valued using a floating Net Asset Value (NAV).

31.1

Was the rate used to calculate fair value determined by a broker or custodian for any of the securities in Schedule D?

Yes [] No [X]

31.2

If the answer to 31.1 is yes, does the reporting entity have a copy of the broker's or custodian's pricing policy (hard copy or electronic copy) for all brokers or custodians used as a pricing source?

Yes [] No []

31.3

If the answer to 31.2 is no, describe the reporting entity's process for determining a reliable pricing source for purposes of disclosure of fair value for Schedule D:

Not applicable

32.1

Have all the filing requirements of the *Purposes and Procedures Manual of the NAIC Investment Analysis Office* been followed?

Yes [X] No []

32.2

If no, list exceptions:

33.

By self-designating 5GI securities, the reporting entity is certifying the following elements for each self-designation 5GI security:

a.

Documentation necessary to permit a full credit analysis of the security does not exist or an NAIC CRP credit rating for an FE or PL security is not available.

b.

Issuer or obligor is current on all contracted interest and principal payments.

c.

The insurer has an actual expectation of ultimate payment of all contracted interest and principal.

Has the reporting entity self-designated 5GI securities?

Yes [] No [X]

34.

By self-designating PLGI securities, the reporting entity is certifying the following elements of each self-designated PLGI security:

a.

The security was purchased prior to January 1, 2018.

b.

The reporting entity is holding capital commensurate with the NAIC Designation reported for the security.

GENERAL INTERROGATORIES

PART 2 – PROPERTY & CASUALTY INTERROGATORIES

1.1	Does the reporting entity have any direct Medicare Supplement Insurance in force?		Yes []	No [X]	
1.2	If yes, indicate premium earned on U.S. business only.	\$		0	
1.3	What portion of Item (1.2) is not reported on the Medicare Supplement Insurance Experience Exhibit?	\$		0	
1.31	Reason for excluding:				
1.4	Indicate amount of earned premium attributable to Canadian and/or Other Alien not included in Item (1.2) above.	\$		0	
1.5	Indicate total incurred claims on all Medicare Supplement insurance.	\$		0	
1.6	Individual policies:				
	Most current three years:				
1.61	Total premium earned	\$		0	
1.62	Total incurred claims	\$		0	
1.63	Number of covered lives			0	
	All years prior to most current three years:				
1.64	Total premium earned	\$		0	
1.65	Total incurred claims	\$		0	
1.66	Number of covered lives			0	
1.7	Group policies:				
	Most current three years:				
1.71	Total premium earned	\$		0	
1.72	Total incurred claims	\$		0	
1.73	Number of covered lives			0	
	All years prior to most current three years:				
1.74	Total premium earned	\$		0	
1.75	Total incurred claims	\$		0	
1.76	Number of covered lives			0	
2.	Health Test:				
		1	2		
		Current Year	Prior Year		
2.1	Premium Numerator	\$	0	\$	0
2.2	Premium Denominator	\$	0	\$	0
2.3	Premium Ratio (2.1/2.2)		0.0%		0.0%
2.4	Reserve Numerator	\$	0	\$	0
2.5	Reserve Denominator	\$	0	\$	0
2.6	Reserve Ratio (2.4/2.5)		0.0%		0.0%
3.1	Does the reporting entity issue both participating and non-participating policies?		Yes []	No [X]	
3.2	If yes, state the amount of calendar year premiums written on:				
3.21	Participating policies	\$		0	
3.22	Non-participating policies	\$		0	
4.	FOR MUTUAL REPORTING ENTITIES AND RECIPROCAL EXCHANGES ONLY:				
4.1	Does the reporting entity issue assessable policies?		Yes []	No []	
4.2	Does the reporting entity issue non-assessable policies?		Yes []	No []	
4.3	If assessable policies are issued, what is the extent of the contingent liability of the policyholders?			%	
4.4	Total amount of assessments paid or ordered to be paid during the year on deposit notes or contingent premiums.	\$		0	
5.	FOR RECIPROCAL EXCHANGES ONLY:				
5.1	Does the exchange appoint local agents?		Yes []	No []	
5.2	If yes, is the commission paid:				
5.21	Out of Attorney's-in-fact compensation		Yes []	No []	N/A []
5.22	As a direct expense of the exchange		Yes []	No []	N/A []
5.3	What expenses of the exchange are not paid out of the compensation of the Attorney-in-fact?				
5.4	Has any Attorney-in-fact compensation, contingent on fulfillment of certain conditions, been deferred?		Yes []	No []	
5.5	If yes, give full information:				
6.1	What provision has this reporting entity made to protect itself from an excessive loss in the event of a catastrophe under a workers' compensation contract issued without limit of loss?				
	<u>Not applicable</u>				
6.2	Describe the method used to estimate this reporting entity's probable maximum insurance loss, and identify the type of insured exposures comprising that probable maximum loss, the locations of concentrations of those exposures and the external resources (such as consulting firms or computer software models), if any, used in the estimation process:				
	<u>Not applicable</u>				
6.3	What provision has this reporting entity made (such as catastrophic reinsurance program) to protect itself from an excessive loss arising from the types and concentrations of insured exposures comprising its probable maximum property insurance loss?				
	<u>The Company participates in a catastrophic reinsurance program. However, it had no direct written premium in 2019.</u>				
6.4	Does the reporting entity carry catastrophe reinsurance protection for at least one reinstatement, in an amount sufficient to cover its estimated probable maximum loss attributable to a single loss event or occurrence?		Yes [X]	No []	
6.5	If no, describe any arrangements or mechanisms employed by the reporting entity to supplement its catastrophe reinsurance program or to hedge its exposure to uninsured catastrophic loss:				
7.1	Has the reporting entity reinsured any risk with any other entity under a quota share reinsurance contract that includes a provision that would limit the reinsurer's losses below the stated quota share percentage (e.g., a deductible, a loss ratio corridor, a loss cap, an aggregate limit or any similar provisions)?		Yes []	No [X]	

GENERAL INTERROGATORIES

PART 2 – PROPERTY & CASUALTY INTERROGATORIES

7.2	If yes, indicate the number of reinsurance contracts containing such provisions.	0
7.3	If yes, does the amount of reinsurance credit taken reflect the reduction in quota share coverage caused by any applicable limiting provision(s)?	Yes [] No []
8.1	Has this reporting entity reinsured any risk with any other entity and agreed to release such entity from liability, in whole or in part, from any loss that may occur on this risk, or portion thereof, reinsured?	Yes [] No [X]
8.2	If yes, give full information	
9.1	Has the reporting entity ceded any risk under any reinsurance contract (or under multiple contracts with the same reinsurer or its affiliates) for which during the period covered by the statement: (i) it recorded a positive or negative underwriting result greater than 5% of prior year-end surplus as regards policyholders or it reported calendar year written premium ceded or year-end loss and loss expense reserves ceded greater than 5% of prior year-end surplus as regards policyholders; (ii) it accounted for that contract as reinsurance and not as a deposit; and (iii) the contract(s) contain one or more of the following features or other features that would have similar results: (a) A contract term longer than two years and the contract is noncancellable by the reporting entity during the contract term; (b) A limited or conditional cancellation provision under which cancellation triggers an obligation by the reporting entity, or an affiliate of the reporting entity, to enter into a new reinsurance contract with the reinsurer, or an affiliate of the reinsurer; (c) Aggregate stop loss reinsurance coverage; (d) A unilateral right by either party (or both parties) to commute the reinsurance contract, whether conditional or not, except for such provisions which are only triggered by a decline in the credit status of the other party; (e) A provision permitting reporting of losses, or payment of losses, less frequently than on a quarterly basis (unless there is no activity during the period); or (f) Payment schedule, accumulating retentions from multiple years or any features inherently designed to delay timing of the reimbursement to the ceding entity?	Yes [] No [X]
9.2	Has the reporting entity during the period covered by the statement ceded any risk under any reinsurance contract (or under multiple contracts with the same reinsurer or its affiliates), for which, during the period covered by the statement, it recorded a positive or negative underwriting result greater than 5% of prior year-end surplus as regards policyholders or it reported calendar year written premium ceded or year-end loss and loss expense reserves ceded greater than 5% of prior year-end surplus as regards policyholders; excluding cessions to approved pooling arrangements or to captive insurance companies that are directly or indirectly controlling, controlled by, or under common control with (i) one or more unaffiliated policyholders of the reporting entity, or (ii) an association of which one or more unaffiliated policyholders of the reporting entity is a member where: (a) The written premium ceded to the reinsurer by the reporting entity or its affiliates represents fifty percent (50%) or more of the entire direct and assumed premium written by the reinsurer based on its most recently available financial statement; or (b) Twenty-five percent (25%) or more of the written premium ceded to the reinsurer has been retroceded back to the reporting entity or its affiliates in a separate reinsurance contract.	Yes [] No [X]
9.3	If yes to 9.1 or 9.2, please provide the following information in the Reinsurance Summary Supplemental Filing for General Interrogatory 9: (a) The aggregate financial statement impact gross of all such ceded reinsurance contracts on the balance sheet and statement of income; (b) A summary of the reinsurance contract terms and indicate whether it applies to the contracts meeting the criteria in 9.1 or 9.2; and (c) A brief discussion of management's principle objectives in entering into the reinsurance contract including the economic purpose to be achieved.	
9.4	Except for transactions meeting the requirements of paragraph 37 of SSAP No. 62R, <i>Property and Casualty Reinsurance</i> , has the reporting entity ceded any risk under any reinsurance contract (or multiple contracts with the same reinsurer or its affiliates) during the period covered by the financial statement, and either: (a) Accounted for that contract as reinsurance (either prospective or retroactive) under statutory accounting principles ("SAP") and as a deposit under generally accepted accounting principles ("GAAP"); or (b) Accounted for that contract as reinsurance under GAAP and as a deposit under SAP?	Yes [] No [X]
9.5	If yes to 9.4, explain in the Reinsurance Summary Supplemental Filing for General Interrogatory 9 (Section D) why the contract(s) is treated differently for GAAP and SAP.	
9.6	The reporting entity is exempt from the Reinsurance Attestation Supplement under one or more of the following criteria: (a) The entity does not utilize reinsurance; or, (b) The entity only engages in a 100% quota share contract with an affiliate and the affiliated or lead company has filed an attestation supplement; or (c) The entity has no external cessions and only participates in an intercompany pool and the affiliated or lead company has filed an attestation supplement.	Yes [] No [X] Yes [] No [X] Yes [] No [X]
10.	If the reporting entity has assumed risks from another entity, there should be charged on account of such reinsurances a reserve equal to that which the original entity would have been required to charge had it retained the risks. Has this been done?	Yes [] No [] N/A [X]
11.1	Has the reporting entity guaranteed policies issued by any other entity and now in force?	Yes [] No [X]
11.2	If yes, give full information	
12.1	If the reporting entity recorded accrued retrospective premiums on insurance contracts on Line 15.3 of the assets schedule, Page 2, state the amount of corresponding liabilities recorded for: 12.11 Unpaid losses 12.12 Unpaid underwriting expenses (including loss adjustment expenses)	\$ 0 \$ 0
12.2	Of the amount on Line 15.3, Page 2, state the amount that is secured by letters of credit, collateral and other funds?	\$ 0
12.3	If the reporting entity underwrites commercial insurance risks, such as workers' compensation, are premium notes or promissory notes accepted from its insureds covering unpaid premiums and/or unpaid losses?	Yes [] No [] N/A [X]
12.4	If yes, provide the range of interest rates charged under such notes during the period covered by this statement: 12.41 From 12.42 To	% %
12.5	Are letters of credit or collateral and other funds received from insureds being utilized by the reporting entity to secure premium notes or promissory notes taken by a reporting entity, or to secure any of the reporting entity's reported direct unpaid loss reserves, including unpaid losses under loss deductible features of commercial policies?	Yes [] No [X]
12.6	If yes, state the amount thereof at December 31 of current year: 12.61 Letters of Credit 12.62 Collateral and other funds	\$ 0 \$ 0
13.1	Largest net aggregate amount insured in any one risk (excluding workers' compensation):	\$ 0
13.2	Does any reinsurance contract considered in the calculation of this amount include an aggregate limit of recovery without also including a reinstatement provision?	Yes [] No [X]
13.3	State the number of reinsurance contracts (excluding individual facultative risk certificates, but including facultative programs, automatic facilities or facultative obligatory contracts) considered in the calculation of the amount.	0

GENERAL INTERROGATORIES

PART 2 – PROPERTY & CASUALTY INTERROGATORIES

14.1

Is the reporting entity a cedant in a multiple cedant reinsurance contract?

Yes [☐] No [☒]

14.2

If yes, please describe the method of allocating and recording reinsurance among the cedants:

14.3

If the answer to 14.1 is yes, are the methods described in item 14.2 entirely contained in the respective multiple cedant reinsurance contracts?

Yes [☐] No [☐]

14.4

If the answer to 14.3 is no, are all the methods described in 14.2 entirely contained in written agreements?

Yes [☐] No [☐]

14.5

If the answer to 14.4 is no, please explain:

15.1

Has the reporting entity guaranteed any financed premium accounts?

Yes [☐] No [☒]

15.2

If yes, give full information

16.1

Does the reporting entity write any warranty business?

Yes [☐] No [☒]

If yes, disclose the following information for each of the following types of warranty coverage:

		1		2		3		4		5	
		Direct Losses		Direct Losses		Direct Written		Direct Premium		Direct Premium	
		Incurred		Unpaid		Premium		Unearned		Earned	
16.11	Home	\$	0	\$	0	\$	0	\$	0	\$	0
16.12	Products	\$	0	\$	0	\$	0	\$	0	\$	0
16.13	Automobile	\$	0	\$	0	\$	0	\$	0	\$	0
16.14	Other*	\$	0	\$	0	\$	0	\$	0	\$	0

* Disclose type of coverage:

17.1

Does the reporting entity include amounts recoverable on unauthorized reinsurance in Schedule F-Part 3 that is exempt from the statutory provision for unauthorized reinsurance?

Yes [☐] No [☒]

Incurred but not reported losses on contracts in force prior to July 1, 1984, and not subsequently renewed are exempt from the statutory provision for unauthorized reinsurance. Provide the following information for this exemption:

17.11	Gross amount of unauthorized reinsurance in Schedule F-Part 3 exempt from the statutory provision for unauthorized reinsurance	\$	0
17.12	Unfunded portion of Interrogatory 17.11	\$	0
17.13	Paid losses and loss adjustment expenses portion of Interrogatory 17.11	\$	0
17.14	Case reserves portion of Interrogatory 17.11	\$	0
17.15	Incurred but not reported portion of Interrogatory 17.11	\$	0
17.16	Unearned premium portion of Interrogatory 17.11	\$	0
17.17	Contingent commission portion of Interrogatory 17.11	\$	0

18.1

Do you act as a custodian for health savings accounts?

Yes [☐] No [☒]

18.2

If yes, please provide the amount of custodial funds held as of the reporting date.

\$

0

18.3

Do you act as an administrator for health savings accounts?

Yes [☐] No [☒]

18.4

If yes, please provide the balance of the funds administered as of the reporting date.

\$

0

19.

Is the reporting entity licensed or chartered, registered, qualified, eligible, or writing business in at least 2 states?

Yes [☐] No [☒]

19.1

If no, does the reporting entity assume reinsurance business that covers risks residing in at least one state other than the state of domicile of the reporting entity?

Yes [☐] No [☒]

FIVE-YEAR HISTORICAL DATA

Show amounts in whole dollars only, no cents; show percentages to one decimal place, i.e. 17.6.

	1 2019	2 2018	3 2017	4 2016	5 2015
Gross Premiums Written (Page 8, Part 1B, Cols. 1, 2 & 3)					
1. Liability lines (Lines 11.1, 11.2, 16, 17.1, 17.2, 17.3, 18.1, 18.2, 19.1, 19.2 & 19.3, 19.4).....					
2. Property lines (Lines 1, 2, 9, 12, 21 & 26).....					
3. Property and liability combined lines (Lines 3, 4, 5, 8, 22 & 27).....					
4. All other lines (Lines 6, 10, 13, 14, 15, 23, 24, 28, 29, 30 & 34).....					
5. Nonproportional reinsurance lines (Lines 31, 32 & 33).....					
6. Total (Line 35).....	0	0	0	0	0
Net Premiums Written (Page 8, Part 1B, Col. 6)					
7. Liability lines (Lines 11.1, 11.2, 16, 17.1, 17.2, 17.3, 18.1, 18.2, 19.1, 19.2 & 19.3, 19.4).....					
8. Property lines (Lines 1, 2, 9, 12, 21 & 26).....					
9. Property and liability combined lines (Lines 3, 4, 5, 8, 22 & 27).....					
10. All other lines (Lines 6, 10, 13, 14, 15, 23, 24, 28, 29, 30 & 34).....					
11. Nonproportional reinsurance lines (Lines 31, 32 & 33).....					
12. Total (Line 35).....	0	0	0	0	0
Statement of Income (Page 4)					
13. Net underwriting gain (loss) (Line 8).....	(1,633)				
14. Net investment gain (loss) (Line 11).....	186,743				
15. Total other income (Line 15).....					
16. Dividends to policyholders (Line 17).....					
17. Federal and foreign income taxes incurred (Line 19).....	37,402				
18. Net income (Line 20).....	147,708	0	0	0	0
Balance Sheet Lines (Pages 2 and 3)					
19. Total admitted assets excluding protected cell business (Page 2, Line 26, Col. 3).....	6,187,822				
20. Premiums and considerations (Page 2, Col. 3):					
20.1 In course of collection (Line 15.1).....					
20.2 Deferred and not yet due (Line 15.2).....					
20.3 Accrued retrospective premiums (Line 15.3).....					
21. Total liabilities excluding protected cell business (Page 3, Line 26).....	40,769				
22. Losses (Page 3, Line 1).....					
23. Loss adjustment expenses (Page 3, Line 3).....					
24. Unearned premiums (Page 3, Line 9).....					
25. Capital paid up (Page 3, Lines 30 & 31).....	2,500,000				
26. Surplus as regards policyholders (Page 3, Line 37).....	6,147,053				
Cash Flow (Page 5)					
27. Net cash from operations (Line 11).....	109,127				
Risk-Based Capital Analysis					
28. Total adjusted capital.....	6,147,053				
29. Authorized control level risk-based capital.....	30,483				
Percentage Distribution of Cash, Cash Equivalents and Invested Assets (Page 2, Col. 3) (Item divided by Page 2, Line 12, Col. 3) x 100.0					
30. Bonds (Line 1).....	95.9				
31. Stocks (Lines 2.1 & 2.2).....					
32. Mortgage loans on real estate (Lines 3.1 & 3.2).....					
33. Real estate (Lines 4.1, 4.2 & 4.3).....					
34. Cash, cash equivalents and short-term investments (Line 5).....	4.1				
35. Contract loans (Line 6).....					
36. Derivatives (Line 7).....					
37. Other invested assets (Line 8).....					
38. Receivables for securities (Line 9).....					
39. Securities lending reinvested collateral assets (Line 10).....					
40. Aggregate write-ins for invested assets (Line 11).....					
41. Cash, cash equivalents and invested assets (Line 12).....	100.0	0.0	0.0	0.0	0.0
Investments in Parent, Subsidiaries and Affiliates					
42. Affiliated bonds (Sch. D, Summary, Line 12, Col. 1).....					
43. Affiliated preferred stocks (Sch. D, Summary, Line 18, Col. 1).....					
44. Affiliated common stocks (Sch. D, Summary, Line 24, Col. 1).....					
45. Affiliated short-term investments (subtotals included in Schedule DA, Verification, Column 5, Line 10).....					
46. Affiliated mortgage loans on real estate.....					
47. All other affiliated.....					
48. Total of above lines 42 to 47.....	0	0	0	0	0
49. Total investment in parent included in Lines 42 to 47 above.....					
50. Percentage of investments in parent, subsidiaries and affiliates to surplus as regards policyholders (Line 48 above divided by Page 3, Col. 1, Line 37 x 100.0).....	0.0				

FIVE-YEAR HISTORICAL DATA

(Continued)

	1	2	3	4	5
	2019	2018	2017	2016	2015
Capital and Surplus Accounts (Page 4)					
51. Net unrealized capital gains (losses) (Line 24).....					
52. Dividends to stockholders (Line 35).....					
53. Change in surplus as regards policyholders for the year (Line 38).....	146,897				
Gross Losses Paid (Page 9, Part 2, Cols. 1 & 2)					
54. Liability lines (Lines 11.1, 11.2, 16, 17.1, 17.2, 17.3, 18.1, 18.2, 19.1, 19.2 & 19.3, 19.4).....					
55. Property lines (Lines 1, 2, 9, 12, 21 & 26).....					
56. Property and liability combined lines (Lines 3, 4, 5, 8, 22 & 27).....					
57. All other lines (Lines 6, 10, 13, 14, 15, 23, 24, 28, 29, 30 & 34).....					
58. Nonproportional reinsurance lines (Lines 31, 32 & 33).....					
59. Total (Line 35).....	.0	.0	.0	.0	.0
Net Losses Paid (Page 9, Part 2, Col. 4)					
60. Liability lines (Lines 11.1, 11.2, 16, 17.1, 17.2, 17.3, 18.1, 18.2, 19.1, 19.2 & 19.3, 19.4).....					
61. Property lines (Lines 1, 2, 9, 12, 21 & 26).....					
62. Property and liability combined lines (Lines 3, 4, 5, 8, 22 & 27).....					
63. All other lines (Lines 6, 10, 13, 14, 15, 23, 24, 28, 29, 30 & 34).....					
64. Nonproportional reinsurance lines (Lines 31, 32 & 33).....					
65. Total (Line 35).....	.0	.0	.0	.0	.0
Operating Percentages (Page 4) (Item divided by Page 4, Line 1) x 100.0					
66. Premiums earned (Line 1).....	100.0	100.0	100.0	100.0	100.0
67. Losses incurred (Line 2).....					
68. Loss expenses incurred (Line 3).....					
69. Other underwriting expenses incurred (Line 4).....					
70. Net underwriting gain (loss) (Line 8).....					
Other Percentages					
71. Other underwriting expenses to net premiums written (Page 4, Lines 4 + 5 - 15 divided by Page 8, Part 1B, Col. 6, Line 35 x 100.0).....					
72. Losses and loss expenses incurred to premiums earned (Page 4, Lines 2 + 3 divided by Page 4, Line 1 x 100.0).....					
73. Net premiums written to policyholders' surplus (Page 8, Part 1B, Col. 6, Line 35, divided by Page 3, Line 37, Col. 1 x 100.0).....					
One Year Loss Development (\$000 omitted)					
74. Development in estimated losses and loss expenses incurred prior to current year (Schedule P, Part 2-Summary, Line 12, Col. 11).....					
75. Percent of development of losses and loss expenses incurred to policyholders' surplus of prior year-end (Line 74 above divided by Page 4, Line 21, Col. 1 x 100).....					
Two Year Loss Development (\$000 omitted)					
76. Development in estimated losses and loss expenses incurred 2 years before the current year and prior year (Schedule P, Part 2-Summary, Line 12, Col. 12).....					
77. Percent of development of losses and loss expenses incurred to reported policyholders' surplus of second prior-year end (Line 76 above divided by Page 4, Line 21, Col. 2 x 100.0).....					

If a party to a merger, have the two most recent years of this exhibit been restated due to a merger in compliance with the disclosure requirements of SSAP No. 3, *Accounting Changes and Correction of Errors*?

Yes[] No[]

If no, please explain:

Sch. P - Pt. 1

NONE

Sch. P - Pt. 2

NONE

Sch. P - Pt. 3

NONE

Sch. P - Pt. 4

NONE

Safe Auto Value Insurance Company
SCHEDULE T - EXHIBIT OF PREMIUMS WRITTEN

Allocated by States and Territories

States, Etc.		1 Active Status (a)	Gross Premiums, Including Policy and Membership Fees Less Return Premiums and Premiums on Policies Not Taken		4 Dividends Paid or Credited to Policyholders on Direct Business	5 Direct Losses Paid (Deducting Salvage)	6 Direct Losses Incurred	7 Direct Losses Unpaid	8 Finance and Service Charges not Included in Premiums	9 Direct Premiums Written for Federal Purchasing Groups (Incl. in Col. 2)
			2 Direct Premiums Written	3 Direct Premiums Earned						
1.	Alabama.....AL	N								
2.	Alaska.....AK	N								
3.	Arizona.....AZ	N								
4.	Arkansas.....AR	N								
5.	California.....CA	N								
6.	Colorado.....CO	N								
7.	Connecticut.....CT	N								
8.	Delaware.....DE	N								
9.	District of Columbia.....DC	N								
10.	Florida.....FL	N								
11.	Georgia.....GA	N								
12.	Hawaii.....HI	N								
13.	Idaho.....ID	N								
14.	Illinois.....IL	N								
15.	Indiana.....IN	N								
16.	Iowa.....IA	N								
17.	Kansas.....KS	N								
18.	Kentucky.....KY	N								
19.	Louisiana.....LA	N								
20.	Maine.....ME	N								
21.	Maryland.....MD	N								
22.	Massachusetts.....MA	N								
23.	Michigan.....MI	N								
24.	Minnesota.....MN	N								
25.	Mississippi.....MS	N								
26.	Missouri.....MO	N								
27.	Montana.....MT	N								
28.	Nebraska.....NE	N								
29.	Nevada.....NV	N								
30.	New Hampshire.....NH	N								
31.	New Jersey.....NJ	N								
32.	New Mexico.....NM	N								
33.	New York.....NY	N								
34.	North Carolina.....NC	N								
35.	North Dakota.....ND	N								
36.	Ohio.....OH	L								
37.	Oklahoma.....OK	N								
38.	Oregon.....OR	N								
39.	Pennsylvania.....PA	N								
40.	Rhode Island.....RI	N								
41.	South Carolina.....SC	N								
42.	South Dakota.....SD	N								
43.	Tennessee.....TN	N								
44.	Texas.....TX	N								
45.	Utah.....UT	N								
46.	Vermont.....VT	N								
47.	Virginia.....VA	N								
48.	Washington.....WA	N								
49.	West Virginia.....WV	N								
50.	Wisconsin.....WI	N								
51.	Wyoming.....WY	N								
52.	American Samoa.....AS	N								
53.	Guam.....GU	N								
54.	Puerto Rico.....PR	N								
55.	US Virgin Islands.....VI	N								
56.	Northern Mariana Islands.....MP	N								
57.	Canada.....CAN	N								
58.	Aggregate Other Alien.....OT	XXX	0	0	0	0	0	0	0	0
59.	Totals.....	XXX	0	0	0	0	0	0	0	0

DETAILS OF WRITE-INS

58001.	XXX								
58002.	XXX								
58003.	XXX								
58998. Summary of remaining write-ins for Line 58 from overflow page	XXX	0	0	0	0	0	0	0	0
58999. Totals (Lines 58001 thru 58003+ Line 58998) (Line 58 above)	XXX	0	0	0	0	0	0	0	0

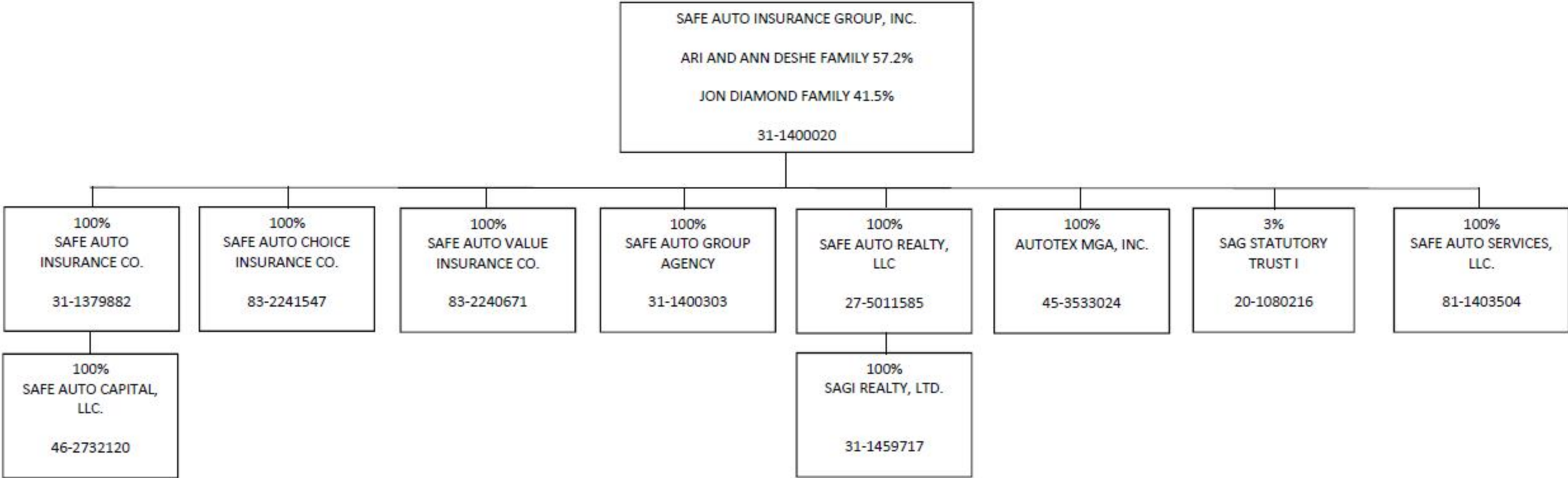
(a) Active Status Counts:

L - Licensed or Chartered - Licensed insurance carrier or domiciled RRG.....	1
E - Eligible - Reporting entities eligible or approved to write surplus lines in the state (other than their state of domicile - See DSLI).....	0
D - Domestic Surplus Lines Insurer (DSLI) - Reporting entities authorized to write surplus lines in the state of domicile.....	0

(b) Explanation of Basis of Allocation of Premiums by States, etc.
No premiums written

R - Registered - Non-domiciled RRGs.....	0
Q - Qualified - Qualified or accredited reinsurer.....	0
N - None of the above - Not allowed to write business in the state.....	56

SCHEDULE Y – INFORMATION CONCERNING ACTIVITIES OF INSURER MEMBERS OF A HOLDING COMPANY GROUP
PART 1 – ORGANIZATIONAL CHART



2019 ALPHABETICAL INDEX -- PROPERTY & CASUALTY ANNUAL STATEMENT BLANK

Assets	2	Schedule P-Part 2H-Section 1-Other Liability-Occurrence	58
Cash Flow	5	Schedule P-Part 2H-Section 2-Other Liability-Claims-Made	58
Exhibit of Capital Gains (Losses)	12	Schedule P-Part 2I-Spec. Prop. (Fire, Allied Lines, Inland Marine, Earthquake, Burglary, Theft)	59
Exhibit of Net Investment Income	12	Schedule P-Part 2J-Auto Physical Damage	59
Exhibit of Nonadmitted Assets	13	Schedule P-Part 2K-Fidelity, Surety	59
Exhibit of Premiums and Losses (State Page)	19	Schedule P-Part 2L-Other (Including Credit, Accident and Health)	59
Five-Year Historical Data	17	Schedule P-Part 2M-International	59
General Interrogatories	15	Schedule P-Part 2N-Reinsurance – Nonproportional Assumed Property	60
Jurat Page	1	Schedule P-Part 2O-Reinsurance – Nonproportional Assumed Liability	60
Liabilities, Surplus and Other Funds	3	Schedule P-Part 2P-Reinsurance – Nonproportional Assumed Financial Lines	60
Notes To Financial Statements	14	Schedule P-Part 2R-Section 1-Products Liability-Occurrence	61
Overflow Page For Write-ins	100	Schedule P-Part 2R-Section 2-Products Liability-Claims-Made	61
Schedule A-Part 1	E01	Schedule P-Part 2S-Financial Guaranty/Mortgage Guaranty	61
Schedule A-Part 2	E02	Schedule P-Part 2T-Warranty	61
Schedule A-Part 3	E03	Schedule P-Part 3A-Homeowners/Farmowners	62
Schedule A-Verification Between Years	SI02	Schedule P-Part 3B-Private Passenger Auto Liability/Medical	62
Schedule B-Part 1	E04	Schedule P-Part 3C-Commercial Auto/Truck Liability/Medical	62
Schedule B-Part 2	E05	Schedule P-Part 3D-Workers' Compensation (Excluding Excess Workers Compensation)	62
Schedule B-Part 3	E06	Schedule P-Part 3E-Commercial Multiple Peril	62
Schedule B-Verification Between Years	SI02	Schedule P-Part 3F-Section 1 –Medical Professional Liability-Occurrence	63
Schedule BA-Part 1	E07	Schedule P-Part 3F-Section 2-Medical Professional Liability-Claims-Made	63
Schedule BA-Part 2	E08	Schedule P-Part 3G-Special Liability (Ocean Marine, Aircraft (All Perils), Boiler & Machinery)	63
Schedule BA-Part 3	E09	Schedule P-Part 3H-Section 1-Other Liability-Occurrence	63
Schedule BA-Verification Between Years	SI03	Schedule P-Part 3H-Section 2-Other Liability-Claims-Made	63
Schedule D-Part 1	E10	Schedule P-Part 3I-Spec. Prop. (Fire, Allied Lines, Inland Marine, Earthquake, Burglary, Theft)	64
Schedule D-Part 1A-Section 1	SI05	Schedule P-Part 3J-Auto Physical Damage	64
Schedule D-Part 1A-Section 2	SI08	Schedule P-Part 3K-Fidelity/Surety	64
Schedule D-Part 2-Section 1	E11	Schedule P-Part 3L-Other (Including Credit, Accident and Health)	64
Schedule D-Part 2-Section 2	E12	Schedule P-Part 3M-International	64
Schedule D-Part 3	E13	Schedule P-Part 3N-Reinsurance – Nonproportional Assumed Property	65
Schedule D-Part 4	E14	Schedule P-Part 3O-Reinsurance – Nonproportional Assumed Liability	65
Schedule D-Part 5	E15	Schedule P-Part 3P-Reinsurance – Nonproportional Assumed Financial Lines	65
Schedule D-Part 6-Section 1	E16	Schedule P-Part 3R-Section 1-Products Liability-Occurrence	66
Schedule D-Part 6-Section 2	E16	Schedule P-Part 3R-Section 2-Products Liability-Claims-Made	66
Schedule D-Summary By Country	SI04	Schedule P-Part 3S-Financial Guaranty/Mortgage Guaranty	66
Schedule D-Verification Between Years	SI03	Schedule P-Part 3T-Warranty	66
Schedule DA-Part 1	E17	Schedule P-Part 4A-Homeowners/Farmowners	67
Schedule DA-Verification Between Years	SI10	Schedule P-Part 4B-Private Passenger Auto Liability/Medical	67
Schedule DB-Part A-Section 1	E18	Schedule P-Part 4C-Commercial Auto/Truck Liability/Medical	67
Schedule DB-Part A-Section 2	E19	Schedule P-Part 4D-Workers' Compensation (Excluding Excess Workers Compensation)	67
Schedule DB-Part A-Verification Between Years	SI11	Schedule P-Part 4E-Commercial Multiple Peril	67
Schedule DB-Part B-Section 1	E20	Schedule P-Part 4F-Section 1-Medical Professional Liability-Occurrence	68
Schedule DB-Part B-Section 2	E21	Schedule P-Part 4F-Section 2-Medical Professional Liability-Claims-Made	68
Schedule DB-Part B-Verification Between Years	SI11	Schedule P-Part 4G-Special Liability (Ocean Marine, Aircraft (All Perils), Boiler & Machinery)	68
Schedule DB-Part C-Section 1	SI12	Schedule P-Part 4H-Section 1-Other Liability-Occurrence	68
Schedule DB-Part C-Section 2	SI13	Schedule P-Part 4H-Section 2-Other Liability-Claims-Made	68
Schedule DB-Part D-Section 1	E22	Schedule P-Part 4I-Spec. Prop. (Fire, Allied Lines, Inland Marine, Earthquake, Burglary & Theft)	69
Schedule DB-Part D-Section 2	E23	Schedule P-Part 4J-Auto Physical Damage	69
Schedule DB-Part E	E24	Schedule P-Part 4K-Fidelity/Surety	69
Schedule DB-Verification	SI14	Schedule P-Part 4L-Other (Including Credit, Accident and Health)	69
Schedule DL-Part 1	E25	Schedule P-Part 4M-International	69
Schedule DL-Part 2	E26	Schedule P-Part 4N-Reinsurance – Nonproportional Assumed Property	70
Schedule E-Part 1-Cash	E27	Schedule P-Part 4O-Reinsurance – Nonproportional Assumed Liability	70
Schedule E-Part 2-Cash Equivalents	E28	Schedule P-Part 4P-Reinsurance – Nonproportional Assumed Financial Lines	70
Schedule E-Verification Between Years	SI15	Schedule P-Part 4R-Section 1-Products Liability-Occurrence	71
Schedule E-Part 3-Special Deposits	E29	Schedule P-Part 4R-Section 2-Products Liability-Claims-Made	71
Schedule F-Part 1	20	Schedule P-Part 4S-Financial Guaranty/Mortgage Guaranty	71
Schedule F-Part 2	21	Schedule P-Part 4T-Warranty	71
Schedule F-Part 3	22	Schedule P-Part 5A-Homeowners/Farmowners	72
Schedule F-Part 4	27	Schedule P-Part 5B-Private Passenger Auto Liability/Medical	73
Schedule F-Part 5	28	Schedule P-Part 5C-Commercial Auto/Truck Liability/Medical	74
Schedule F-Part 6	29	Schedule P-Part 5D-Workers' Compensation (Excluding Excess Workers Compensation)	75
Schedule H-Accident and Health Exhibit-Part 1	30	Schedule P-Part 5E-Commercial Multiple Peril	76
Schedule H-Part 2, Part 3 and Part 4	31	Schedule P-Part 5F-Medical Professional Liability-Claims-Made	78
Schedule H-Part 5-Health Claims	32	Schedule P-Part 5F-Medical Professional Liability-Occurrence	77
Schedule P-Part 1-Summary	33	Schedule P-Part 5H-Other Liability-Claims-Made	80
Schedule P-Part 1A-Homeowners/Farmowners	35	Schedule P-Part 5H-Other Liability-Occurrence	79
Schedule P-Part 1B-Private Passenger Auto Liability/Medical	36	Schedule P-Part 5R-Products Liability-Claims-Made	82
Schedule P-Part 1C-Commercial Auto/Truck Liability/Medical	37	Schedule P-Part 5R-Products Liability-Occurrence	81
Schedule P-Part 1D-Workers' Compensation (Excluding Excess Workers Compensation)	38	Schedule P-Part 5T-Warranty	83
Schedule P-Part 1E-Commercial Multiple Peril	39	Schedule P-Part 6C-Commercial Auto/Truck Liability/Medical	84
Schedule P-Part 1F-Section 1-Medical Professional Liability-Occurrence	40	Schedule P-Part 6D-Workers' Compensation (Excluding Excess Workers Compensation)	84
Schedule P-Part 1F-Section 2-Medical Professional Liability-Claims-Made	41	Schedule P-Part 6E-Commercial Multiple Peril	85
Schedule P-Part 1G-Special Liability (Ocean, Marine, Aircraft (All Perils), Boiler & Machinery)	42	Schedule P-Part 6H-Other Liability-Claims-Made	86
Schedule P-Part 1H-Section 1-Other Liability-Occurrence	43	Schedule P-Part 6H-Other Liability-Occurrence	85
Schedule P-Part 1H-Section 2-Other Liability-Claims-Made	44	Schedule P-Part 6M-International	86
Schedule P-Part 1I-Spec. Prop. (Fire, Allied Lines, Inland Marine, Earthquake, Burglary & Theft)	45	Schedule P-Part 6N-Reinsurance – Nonproportional Assumed Property	87
Schedule P-Part 1J-Auto Physical Damage	46	Schedule P-Part 6O-Reinsurance – Nonproportional Assumed Liability	87
Schedule P-Part 1K-Fidelity/Surety	47	Schedule P-Part 6R-Products Liability-Claims-Made	88
Schedule P-Part 1L-Other (Including Credit, Accident and Health)	48	Schedule P-Part 6R-Products Liability-Occurrence	88
Schedule P-Part 1M-International	49	Schedule P-Part 7A-Primary Loss Sensitive Contracts	89
Schedule P-Part 1N-Reinsurance – Nonproportional Assumed Property	50	Schedule P-Part 7B-Reinsurance Loss Sensitive Contracts	91
Schedule P-Part 1O-Reinsurance – Nonproportional Assumed Liability	51	Schedule P Interrogatories	93
Schedule P-Part 1P-Reinsurance – Nonproportional Assumed Financial Lines	52	Schedule T-Exhibit of Premiums Written	94
Schedule P-Part 1R-Section 1-Products Liability-Occurrence	53	Schedule T-Part 2-Interstate Compact	95
Schedule P-Part 1R-Section 2-Products Liability-Claims-Made	54	Schedule Y-Information Concerning Activities of Insurer Members of a Holding Company Group	96
Schedule P-Part 1S-Financial Guaranty/Mortgage Guaranty	55	Schedule Y-Detail of Insurance Holding Company System	97
Schedule P-Part 1T-Warranty	56	Schedule Y-Part 2-Summary of Insurer's Transactions With Any Affiliates	98
Schedule P-Part 2, Part 3 and Part 4 - Summary	34	Statement of Income	4
Schedule P-Part 2A-Homeowners/Farmowners	57	Summary Investment Schedule	SI01
Schedule P-Part 2B-Private Passenger Auto Liability/Medical	57	Supplemental Exhibits and Schedules Interrogatories	99
Schedule P-Part 2C-Commercial Auto/Truck Liability/Medical	57	Underwriting and Investment Exhibit Part 1	6
Schedule P-Part 2D-Workers' Compensation (Excluding Excess Workers Compensation)	57	Underwriting and Investment Exhibit Part 1A	7
Schedule P-Part 2E-Commercial Multiple Peril	57	Underwriting and Investment Exhibit Part 1B	8
Schedule P-Part 2F-Section 1-Medical Professional Liability-Occurrence	58	Underwriting and Investment Exhibit Part 2	9
Schedule P-Part 2F-Section 2-Medical Professional Liability-Claims-Made	58	Underwriting and Investment Exhibit Part 2A	10
Schedule P-Part 2G-Special Liability (Ocean Marine, Aircraft (All Perils), Boiler & Machinery)	58	Underwriting and Investment Exhibit Part 3	11