



ANNUAL STATEMENT
For the Year Ended December 31, 2019
of the Condition and Affairs of the
NATIONAL CASUALTY COMPANY

NAIC Group Code.....	140, 140	NAIC Company Code.....	11991	Employer's ID Number.....	38-0865250
	(Current Period) (Prior Period)				
Organized under the Laws of OH		State of Domicile or Port of Entry OH		Country of Domicile	US
Incorporated/Organized.....	December 19, 1904	Commenced Business.....	December 31, 1904		
Statutory Home Office	ONE WEST NATIONWIDE BLVD. .. Columbus .. OH .. US .. 43215-2220 (Street and Number) (City or Town, State, Country and Zip Code)				
Main Administrative Office	8877 N. GAINES CENTER DRIVE .. SCOTTSDALE .. AZ .. US .. 85258-2108 (Street and Number) (City or Town, State, Country and Zip Code)				
Mail Address	ONE WEST NATIONWIDE BLVD, FSSC-RR .. COLUMBUS .. OH .. US .. 43215-2220 (Street and Number or P. O. Box) (City or Town, State, Country and Zip Code)				
Primary Location of Books and Records	ONE WEST NATIONWIDE BLVD, 1-04-701 .. COLUMBUS .. OH .. US .. 43215-2220 (Street and Number) (City or Town, State, Country and Zip Code)				
Internet Web Site Address	WWW.SCOTTSDALEINS.COM				
Statutory Statement Contact	CHERYL M DENNIS (Name)				
	FINRPT@NATIONWIDE.COM (E-Mail Address)				

OFFICERS

Name	Title	Name	Title
1. THOMAS EDWARD CLARK	PRESIDENT	2. DENISE LYNN SKINGLE	SVP & SECRETARY
3. AMBER M. WAYNE #	VP & TREASURER		

OTHER

PAMELA ANN BIESECKER	SVP-HEAD OF TAXATION	JENNIFER BOYD MACKENZIE	SVP-ENTERPRISE BRAND MARKT
----------------------	----------------------	-------------------------	----------------------------

DIRECTORS OR TRUSTEES

MARK ALLEN BERVEN	THOMAS EDWARD CLARK	THOMAS WAYNE JURGENS	DAVID NELSON NELSON
ELIZABETH MARGARET RICZKO #			

State of..... OHIO
County of..... FRANKLIN

The officers of this reporting entity being duly sworn, each depose and say that they are the described officers of said reporting entity, and that on the reporting period stated above, all of the herein described assets were the absolute property of the said reporting entity, free and clear from any liens or claims thereon, except as herein stated, and that this statement, together with related exhibits, schedules and explanations therein contained, annexed or referred to, is a full and true statement of all the assets and liabilities and of the condition and affairs of the said reporting entity as of the reporting period stated above, and of its income and deductions therefrom for the period ended, and have been completed in accordance with the NAIC Annual Statement Instructions and Accounting Practices and Procedures manual except to the extent that: (1) state law may differ; or, (2) that state rules or regulations require differences in reporting not related to accounting practices and procedures, according to the best of their information, knowledge, and belief, respectively. Furthermore, the scope of this attestation by the described officers also includes the related corresponding electronic filing with the NAIC, when required, that is an exact copy (except for formatting differences due to electronic filing) of the enclosed statement. The electronic filing may be requested by various regulators in lieu of or in addition to the enclosed statement.

(Signature)	(Signature)	(Signature)
THOMAS EDWARD CLARK	DENISE LYNN SKINGLE	AMBER M. WAYNE
1. (Printed Name)	2. (Printed Name)	3. (Printed Name)
PRESIDENT	SVP & SECRETARY	VP & TREASURER
(Title)	(Title)	(Title)

Subscribed and sworn to before me
This 3 day of FEBRUARY 2020
Jeffrey Boyd

a. Is this an original filing? Yes [X] No []
b. If no
1. State the amendment number
2. Date filed
3. Number of pages attached



JEFFREY BOYD
Notary Public, State of Ohio
My Commission Expires 08-22-2021

NATIONAL CASUALTY COMPANY
ASSETS

	Current Year			Prior Year
	1	2	3	4
	Assets	Nonadmitted Assets	Net Admitted Assets (Cols. 1 - 2)	Net Admitted Assets
1. Bonds (Schedule D).....	136,780,836		136,780,836	137,901,231
2. Stocks (Schedule D):				
2.1 Preferred stocks.....			0	
2.2 Common stocks.....			0	
3. Mortgage loans on real estate (Schedule B):				
3.1 First liens.....			0	
3.2 Other than first liens.....			0	
4. Real estate (Schedule A):				
4.1 Properties occupied by the company (less \$.....0 encumbrances).....			0	
4.2 Properties held for the production of income (less \$.....0 encumbrances).....			0	
4.3 Properties held for sale (less \$.....0 encumbrances).....			0	
5. Cash (\$....24,778, Schedule E-Part 1), cash equivalents (\$.....0, Schedule E-Part 2) and short-term investments (\$.....7,249,556, Schedule DA).....	7,274,334		7,274,334	4,005,549
6. Contract loans (including \$.....0 premium notes).....			0	
7. Derivatives (Schedule DB).....			0	
8. Other invested assets (Schedule BA).....	1,411,882		1,411,882	1,295,066
9. Receivables for securities.....			0	
10. Securities lending reinvested collateral assets (Schedule DL).....			0	
11. Aggregate write-ins for invested assets.....	0	0	0	0
12. Subtotals, cash and invested assets (Lines 1 to 11).....	145,467,052	0	145,467,052	143,201,846
13. Title plants less \$.....0 charged off (for Title insurers only).....			0	
14. Investment income due and accrued.....	1,131,751		1,131,751	1,201,858
15. Premiums and considerations:				
15.1 Uncollected premiums and agents' balances in the course of collection.....	259,292,195	3,936,367	255,355,828	93,456,089
15.2 Deferred premiums, agents' balances and installments booked but deferred and not yet due (including \$.....0 earned but unbilled premiums).....	20,509,962		20,509,962	140,336,814
15.3 Accrued retrospective premiums (\$.....0) and contracts subject to redetermination (\$.....0).....			0	
16. Reinsurance:				
16.1 Amounts recoverable from reinsurers.....	70,787,997		70,787,997	57,495,755
16.2 Funds held by or deposited with reinsured companies.....	529,926		529,926	529,058
16.3 Other amounts receivable under reinsurance contracts.....	6,380,294		6,380,294	3,779,570
17. Amounts receivable relating to uninsured plans.....			0	
18.1 Current federal and foreign income tax recoverable and interest thereon.....			0	
18.2 Net deferred tax asset.....	1,874,730	290,740	1,583,990	192,820
19. Guaranty funds receivable or on deposit.....			0	
20. Electronic data processing equipment and software.....			0	
21. Furniture and equipment, including health care delivery assets (\$.....0).....			0	
22. Net adjustment in assets and liabilities due to foreign exchange rates.....			0	
23. Receivables from parent, subsidiaries and affiliates.....	20,607,746		20,607,746	13,496,448
24. Health care (\$.....0) and other amounts receivable.....			0	
25. Aggregate write-ins for other-than-invested assets.....	0	0	0	0
26. Total assets excluding Separate Accounts, Segregated Accounts and Protected Cell Accounts (Lines 12 to 25).....	526,581,653	4,227,107	522,354,546	453,690,258
27. From Separate Accounts, Segregated Accounts and Protected Cell Accounts.....			0	
28. TOTAL (Lines 26 and 27).....	526,581,653	4,227,107	522,354,546	453,690,258

DETAILS OF WRITE-INS

1101.			0	
1102.			0	
1103.			0	
1198. Summary of remaining write-ins for Line 11 from overflow page.....	0	0	0	0
1199. Totals (Lines 1101 through 1103 plus 1198) (Line 11 above).....	0	0	0	0
2501.			0	
2502.			0	
2503.			0	
2598. Summary of remaining write-ins for Line 25 from overflow page.....	0	0	0	0
2599. Totals (Lines 2501 through 2503 plus 2598) (Line 25 above).....	0	0	0	0

LIABILITIES, SURPLUS AND OTHER FUNDS

	1 Current Year	2 Prior Year
1. Losses (Part 2A, Line 35, Column 8).....		
2. Reinsurance payable on paid losses and loss adjustment expenses (Schedule F, Part 1, Column 6).....	10,580	15,757
3. Loss adjustment expenses (Part 2A, Line 35, Column 9).....		
4. Commissions payable, contingent commissions and other similar charges.....		
5. Other expenses (excluding taxes, licenses and fees).....		
6. Taxes, licenses and fees (excluding federal and foreign income taxes).....		
7.1 Current federal and foreign income taxes (including \$.....16,649 on realized capital gains (losses)).....	1,098,894	320,907
7.2 Net deferred tax liability.....		
8. Borrowed money \$.....0 and interest thereon \$.....0.....		
9. Unearned premiums (Part 1A, Line 38, Column 5) (after deducting unearned premiums for ceded reinsurance of \$.....592,582,386 and including warranty reserves of \$.....0 and accrued accident and health experience rating refunds including \$.....0 for medical loss ratio rebate per the Public Health Service Act).....		
10. Advance premium.....		
11. Dividends declared and unpaid:		
11.1 Stockholders.....		
11.2 Policyholders.....		
12. Ceded reinsurance premiums payable (net of ceding commissions).....	354,015,605	288,632,107
13. Funds held by company under reinsurance treaties (Schedule F, Part 3, Column 20).....	(455,015)	(454,980)
14. Amounts withheld or retained by company for account of others.....		
15. Remittances and items not allocated.....		471
16. Provision for reinsurance (including \$.....0 certified) (Schedule F, Part 3, Column 78).....		18,800
17. Net adjustments in assets and liabilities due to foreign exchange rates.....		
18. Drafts outstanding.....		
19. Payable to parent, subsidiaries and affiliates.....	19,405,706	20,420,814
20. Derivatives.....		
21. Payable for securities.....		
22. Payable for securities lending.....		
23. Liability for amounts held under uninsured plans.....		
24. Capital notes \$.....0 and interest thereon \$.....0.....		
25. Aggregate write-ins for liabilities.....	2,276,174	1,761,671
26. Total liabilities excluding protected cell liabilities (Lines 1 through 25).....	376,351,944	310,715,547
27. Protected cell liabilities.....		
28. Total liabilities (Lines 26 and 27).....	376,351,944	310,715,547
29. Aggregate write-ins for special surplus funds.....	0	0
30. Common capital stock.....	5,000,000	5,000,000
31. Preferred capital stock.....		
32. Aggregate write-ins for other-than-special surplus funds.....	0	0
33. Surplus notes.....		
34. Gross paid in and contributed surplus.....	21,486,670	21,486,670
35. Unassigned funds (surplus).....	119,515,932	116,488,041
36. Less treasury stock, at cost:		
36.10.000 shares common (value included in Line 30 \$.....0).....		
36.20.000 shares preferred (value included in Line 31 \$.....0).....		
37. Surplus as regards policyholders (Lines 29 to 35, less 36) (Page 4, Line 39).....	146,002,602	142,974,711
38. TOTAL (Page 2, Line 28, Col. 3).....	522,354,546	453,690,258

DETAILS OF WRITE-INS

2501. Miscellaneous liabilities.....	2,276,174	1,761,671
2502.		
2503.		
2598. Summary of remaining write-ins for Line 25 from overflow page.....	0	0
2599. Totals (Lines 2501 through 2503 plus 2598) (Line 25 above).....	2,276,174	1,761,671
2901.		
2902.		
2903.		
2998. Summary of remaining write-ins for Line 29 from overflow page.....	0	0
2999. Totals (Lines 2901 through 2903 plus 2998) (Line 29 above).....	0	0
3201.		
3202.		
3203.		
3298. Summary of remaining write-ins for Line 32 from overflow page.....	0	0
3299. Totals (Lines 3201 through 3203 plus 3298) (Line 32 above).....	0	0

NATIONAL CASUALTY COMPANY
STATEMENT OF INCOME

UNDERWRITING INCOME			1	2
			Current Year	Prior Year
1.	Premiums earned (Part 1, Line 35, Column 4).....			
DEDUCTIONS:				
2.	Losses incurred (Part 2, Line 35, Column 7).....			
3.	Loss adjustment expenses incurred (Part 3, Line 25, Column 1).....			
4.	Other underwriting expenses incurred (Part 3, Line 25, Column 2).....			
5.	Aggregate write-ins for underwriting deductions.....		0	0
6.	Total underwriting deductions (Lines 2 through 5).....		0	0
7.	Net income of protected cells.....			
8.	Net underwriting gain (loss) (Line 1 minus Line 6 plus Line 7).....		0	0
INVESTMENT INCOME				
9.	Net investment income earned (Exhibit of Net Investment Income, Line 17).....		2,404,159	2,090,672
10.	Net realized capital gains (losses) less capital gains tax of \$.....16,649 (Exhibit of Capital Gains (Losses)).....		56,174	(61,666)
11.	Net investment gain (loss) (Lines 9 + 10).....		2,460,333	2,029,006
OTHER INCOME				
12.	Net gain (loss) from agents' or premium balances charged off (amount recovered \$.....0 amount charged off \$.....0).....		0	
13.	Finance and service charges not included in premiums.....			
14.	Aggregate write-ins for miscellaneous income.....		47,736	45,553
15.	Total other income (Lines 12 through 14).....		47,736	45,553
16.	Net income before dividends to policyholders, after capital gains tax and before all other federal and foreign income taxes (Lines 8 + 11 + 15).....		2,508,069	2,074,559
17.	Dividends to policyholders.....			
18.	Net income, after dividends to policyholders, after capital gains tax and before all other federal and foreign income taxes (Line 16 minus Line 17).....		2,508,069	2,074,559
19.	Federal and foreign income taxes incurred.....		1,235,141	259,688
20.	Net income (Line 18 minus Line 19) (to Line 22).....		1,272,928	1,814,871
CAPITAL AND SURPLUS ACCOUNT				
21.	Surplus as regards policyholders, December 31 prior year (Page 4, Line 39, Column 2).....		142,974,711	140,773,810
22.	Net income (from Line 20).....		1,272,928	1,814,871
23.	Net transfers (to) from Protected Cell accounts.....			
24.	Change in net unrealized capital gains or (losses) less capital gains tax of \$.....72,449.....		272,545	343,027
25.	Change in net unrealized foreign exchange capital gain (loss).....			
26.	Change in net deferred income tax.....		1,684,917	20,618
27.	Change in nonadmitted assets (Exhibit of Nonadmitted Assets, Line 28, Column 3).....		(4,157,666)	41,185
28.	Change in provision for reinsurance (Page 3, Line 16, Column 2 minus Column 1).....		18,800	(18,800)
29.	Change in surplus notes.....			
30.	Surplus (contributed to) withdrawn from Protected Cells.....			
31.	Cumulative effect of changes in accounting principles.....			
32.	Capital changes:			
32.1	Paid in.....			
32.2	Transferred from surplus (Stock Dividend).....			
32.3	Transferred to surplus.....			
33.	Surplus adjustments:			
33.1	Paid in.....			
33.2	Transferred to capital (Stock Dividend).....			
33.3.	Transferred from capital.....			
34.	Net remittances from or (to) Home Office.....			
35.	Dividends to stockholders.....			
36.	Change in treasury stock (Page 3, Lines 36.1 and 36.2, Column 2 minus Column 1).....			
37.	Aggregate write-ins for gains and losses in surplus.....		3,936,367	0
38.	Change in surplus as regards policyholders for the year (Lines 22 through 37).....		3,027,891	2,200,901
39.	Surplus as regards policyholders, December 31 current year (Line 21 plus Line 38) (Page 3, Line 37).....		146,002,602	142,974,711
DETAILS OF WRITE-INS				
0501.			
0502.			
0503.			
0598.	Summary of remaining write-ins for Line 5 from overflow page.....		0	0
0599.	Totals (Lines 0501 through 0503 plus 0598) (Line 5 above).....		0	0
1401.	Other.....		47,736	45,553
1402.			
1403.			
1498.	Summary of remaining write-ins for Line 14 from overflow page.....		0	0
1499.	Totals (Lines 1401 through 1403 plus 1498) (Line 14 above).....		47,736	45,553
3701.	Change in surplus - miscellaneous.....		3,936,367	
3702.			
3703.			
3798.	Summary of remaining write-ins for Line 37 from overflow page.....		0	0
3799.	Totals (Lines 3701 through 3703 plus 3798) (Line 37 above).....		3,936,367	0

NATIONAL CASUALTY COMPANY
CASH FLOW

		1	2
		Current Year	Prior Year
CASH FROM OPERATIONS			
1.	Premiums collected net of reinsurance.....	22,039,168	(1,320,668)
2.	Net investment income.....	4,586,578	4,821,733
3.	Miscellaneous income.....	46,868	14,752
4.	Total (Lines 1 through 3).....	26,672,614	3,515,817
5.	Benefit and loss related payments.....	13,297,419	6,689,091
6.	Net transfers to Separate Accounts, Segregated Accounts and Protected Cell Accounts.....		
7.	Commissions, expenses paid and aggregate write-ins for deductions.....	2,600,724	(545,146)
8.	Dividends paid to policyholders.....		
9.	Federal and foreign income taxes paid (recovered) net of \$.....(61,220) tax on capital gains (losses).....	473,803	2,693,969
10.	Total (Lines 5 through 9).....	16,371,946	8,837,914
11.	Net cash from operations (Line 4 minus Line 10).....	10,300,668	(5,322,097)
CASH FROM INVESTMENTS			
12.	Proceeds from investments sold, matured or repaid:		
12.1	Bonds.....	13,749,055	16,513,396
12.2	Stocks.....		
12.3	Mortgage loans.....		
12.4	Real estate.....		
12.5	Other invested assets.....	53,020	
12.6	Net gains or (losses) on cash, cash equivalents and short-term investments.....		
12.7	Miscellaneous proceeds.....		601
12.8	Total investment proceeds (Lines 12.1 to 12.7).....	13,802,075	16,513,997
13.	Cost of investments acquired (long-term only):		
13.1	Bonds.....	12,650,771	15,666,628
13.2	Stocks.....		
13.3	Mortgage loans.....		
13.4	Real estate.....		
13.5	Other invested assets.....	1,327,718	2,069,238
13.6	Miscellaneous applications.....		
13.7	Total investments acquired (Lines 13.1 to 13.6).....	13,978,489	17,735,866
14.	Net increase (decrease) in contract loans and premium notes.....		
15.	Net cash from investments (Line 12.8 minus Lines 13.7 minus Line 14).....	(176,414)	(1,221,869)
CASH FROM FINANCING AND MISCELLANEOUS SOURCES			
16.	Cash provided (applied):		
16.1	Surplus notes, capital notes.....		
16.2	Capital and paid in surplus, less treasury stock.....		
16.3	Borrowed funds.....		
16.4	Net deposits on deposit-type contracts and other insurance liabilities.....		
16.5	Dividends to stockholders.....		
16.6	Other cash provided (applied).....	(6,855,469)	7,082,856
17.	Net cash from financing and miscellaneous sources (Lines 16.1 to 16.4 minus Line 16.5 plus Line 16.6).....	(6,855,469)	7,082,856
RECONCILIATION OF CASH, CASH EQUIVALENTS AND SHORT-TERM INVESTMENTS			
18.	Net change in cash, cash equivalents and short-term investments (Line 11, plus Lines 15 and 17).....	3,268,785	538,890
19.	Cash, cash equivalents and short-term investments:		
19.1	Beginning of year.....	4,005,549	3,466,659
19.2	End of year (Line 18 plus Line 19.1).....	7,274,334	4,005,549
Note: Supplemental disclosures of cash flow information for non-cash transactions:			
20.0001	Exchange of bond investment to bond investment.....	2,021,621	1,868,143
20.0002	Intercompany transfer of alternative investment.....		738,926
20.0003	Tax credit commitment liabilities.....	514,503	49,215

Underwriting and Investment Ex. - Pt. 1 - Ex. of Premiums Earned
NONE

Underwriting and Investment Ex. - Pt. 1A - Recapitulation of All Premiums
NONE

NATIONAL CASUALTY COMPANY
UNDERWRITING AND INVESTMENT EXHIBIT

PART 1B - PREMIUMS WRITTEN

Line of Business		1 Direct Business (a)	Reinsurance Assumed		Reinsurance Ceded		6 Net Premiums Written (Cols. 1 + 2 + 3 - 4 - 5)
			2 From Affiliates	3 From Non-Affiliates	4 To Affiliates	5 To Non-Affiliates	
1.	Fire.....	4,332,417		20,723	4,353,140		0
2.	Allied lines.....	3,828,397		1,373,437	5,201,834		0
3.	Farmowners multiple peril.....						0
4.	Homeowners multiple peril.....	448,469		17,085	465,554		0
5.	Commercial multiple peril.....	106,004,955			106,004,955		0
6.	Mortgage guaranty.....						0
8.	Ocean marine.....	10,812,973			10,812,973		0
9.	Inland marine.....	452,725,697			452,302,434	423,263	0
10.	Financial guaranty.....						0
11.1	Medical professional liability - occurrence.....						0
11.2	Medical professional liability - claims-made.....						0
12.	Earthquake.....	(35,037)		54,376	19,339		0
13.	Group accident and health.....	1,232,618			1,227,595	5,023	0
14.	Credit accident and health (group and individual).....						0
15.	Other accident and health.....	209,084			123,166	85,918	0
16.	Workers' compensation.....	103,496,952		133	103,490,366	6,719	0
17.1	Other liability - occurrence.....	104,286,032		47,210	104,333,242		0
17.2	Other liability - claims-made.....	82,284,848			82,284,848		0
17.3	Excess workers' compensation.....						0
18.1	Products liability - occurrence.....	8,029			8,029		0
18.2	Products liability - claims-made.....						0
19.1, 19.2	Private passenger auto liability.....	10,209			10,209		0
19.3, 19.4	Commercial auto liability.....	224,117,760		1,450,895	225,568,655		0
21.	Auto physical damage.....	65,903,568		13,541	65,917,109		0
22.	Aircraft (all perils).....						0
23.	Fidelity.....	2,345,559			2,345,559		0
24.	Surety.....	687,830			687,830		0
26.	Burglary and theft.....	409,502		10	409,512		0
27.	Boiler and machinery.....	2,577,355		14,250	2,591,605		0
28.	Credit.....						0
29.	International.....						0
30.	Warranty.....	42,795,863			42,795,863		0
31.	Reinsurance - nonproportional assumed property.....	XXX					0
32.	Reinsurance - nonproportional assumed liability.....	XXX					0
33.	Reinsurance - nonproportional assumed financial lines.....	XXX					0
34.	Aggregate write-ins for other lines of business.....	0	0	0	0	0	0
35.	TOTALS.....	1,208,483,080	0	2,991,660	1,210,953,817	520,923	0

DETAILS OF WRITE-INS

3401.						0
3402.						0
3403.						0
3498.	Summary of remaining write-ins for Line 34 from overflow page.....	0	0	0	0	0	0
3499.	Totals (Lines 3401 through 3403 plus 3498) (Line 34 above).....	0	0	0	0	0	0

(a) Does the company's direct premiums written include premiums recorded on an installment basis? Yes [] No [X]
If yes: 1. The amount of such installment premiums \$.....0.
2. Amount at which such installment premiums would have been reported had they been recorded on an annualized basis \$.....0.

UNDERWRITING AND INVESTMENT EXHIBIT

PART 2 - LOSSES PAID AND INCURRED

Line of Business		Losses Paid Less Salvage				5	6	7	8
		1	2	3	4				
		Direct Business	Reinsurance Assumed	Reinsurance Recovered	Net Payments (Cols. 1 + 2 - 3)	Net Losses Unpaid Current Year (Part 2A, Col. 8)	Net Losses Unpaid Prior Year	Losses Incurred Current Year (Cols. 4 + 5 - 6)	Percentage of Losses Incurred (Col. 7, Part 2) to Premiums Earned (Col. 4, Part 1)
1.	Fire.....	2,574,042	9,540	2,583,582	0	0	0	0	0.0
2.	Allied lines.....	1,351,146	8,940	1,360,086	0	0	0	0	0.0
3.	Farmowners multiple peril.....				0	0	0	0	0.0
4.	Homeowners multiple peril.....	811,687	11,831	823,518	0	0	0	0	0.0
5.	Commercial multiple peril.....	55,223,348		55,223,348	0	0	0	0	0.0
6.	Mortgage guaranty.....				0	0	0	0	0.0
8.	Ocean marine.....	8,641,636	(981)	8,640,655	0	0	0	0	0.0
9.	Inland marine.....	299,899,493		299,899,493	0	0	0	0	0.0
10.	Financial guaranty.....				0	0	0	0	0.0
11.1	Medical professional liability - occurrence.....	9,020		9,020	0	0	0	0	0.0
11.2	Medical professional liability - claims-made.....	1,246		1,246	0	0	0	0	0.0
12.	Earthquake.....				0	0	0	0	0.0
13.	Group accident and health.....	402,608		402,608	0	0	0	0	0.0
14.	Credit accident and health (group and individual).....				0	0	0	0	0.0
15.	Other accident and health.....	482,330		482,330	0	0	0	0	0.0
16.	Workers' compensation.....	25,709,990	234,986	25,944,976	0	0	0	0	0.0
17.1	Other liability - occurrence.....	68,763,582	579	68,764,161	0	0	0	0	0.0
17.2	Other liability - claims-made.....	5,330,100	6,250	5,336,350	0	0	0	0	0.0
17.3	Excess workers' compensation.....				0	0	0	0	0.0
18.1	Products liability - occurrence.....	44,982		44,982	0	0	0	0	0.0
18.2	Products liability - claims-made.....				0	0	0	0	0.0
19.1, 19.2	Private passenger auto liability.....	717		717	0	0	0	0	0.0
19.3, 19.4	Commercial auto liability.....	170,563,267	1,054,071	171,617,338	0	0	0	0	0.0
21.	Auto physical damage.....	28,285,240	9,072	28,294,312	0	0	0	0	0.0
22.	Aircraft (all perils).....				0	0	0	0	0.0
23.	Fidelity.....				0	0	0	0	0.0
24.	Surety.....				0	0	0	0	0.0
26.	Burglary and theft.....	132,623		132,623	0	0	0	0	0.0
27.	Boiler and machinery.....	462,776		462,776	0	0	0	0	0.0
28.	Credit.....				0	0	0	0	0.0
29.	International.....				0	0	0	0	0.0
30.	Warranty.....	49,753,589		49,753,589	0	0	0	0	0.0
31.	Reinsurance - nonproportional assumed property.....	XXX			0	0	0	0	0.0
32.	Reinsurance - nonproportional assumed liability.....	XXX			0	0	0	0	0.0
33.	Reinsurance - nonproportional assumed financial lines.....	XXX			0	0	0	0	0.0
34.	Aggregate write-ins for other lines of business.....	0	0	0	0	0	0	0	0.0
35.	TOTALS.....	718,443,422	1,334,288	719,777,710	0	0	0	0	0.0
DETAILS OF WRITE-INS									
3401.				0	0		0	0.0
3402.				0	0		0	0.0
3403.				0	0		0	0.0
3498.	Summary of remaining write-ins for Line 34 from overflow page.....	0	0	0	0	0	0	0	XXX
3499.	Totals (Lines 3401 through 3403 plus 3498) (Line 34 above).....	0	0	0	0	0	0	0	0.0

UNDERWRITING AND INVESTMENT EXHIBIT
PART 2A - UNPAID LOSSES AND LOSS ADJUSTMENT EXPENSES

Line of Business		Reported Losses				Incurred But Not Reported			8	9
		1	2	3	4	5	6	7	Net Losses Unpaid (Cols. 4 + 5 + 6 - 7)	Net Unpaid Loss Adjustment Expenses
		Direct	Reinsurance Assumed	Deduct Reinsurance Recoverable	Net Losses Excluding Incurred but not Reported (Cols. 1 + 2 - 3)	Direct	Reinsurance Assumed	Reinsurance Ceded		
1.	Fire.....	164,808	1,841	166,649	0	945,963	1,226	947,189	0	
2.	Allied lines.....	1,577,281	572	1,577,853	0	1,752,532	1,856	1,754,388	0	
3.	Farmowners multiple peril.....				0				0	
4.	Homeowners multiple peril.....	182,360	3,409	185,769	0	188,754	3,084	191,838	0	
5.	Commercial multiple peril.....	57,806,961	8,000	57,814,961	0	52,273,751		52,273,751	0	
6.	Mortgage guaranty.....				0				0	
8.	Ocean marine.....	5,037,687	50,108	5,087,795	0	5,203,647		5,203,647	0	
9.	Inland marine.....	3,441,026		3,441,026	0	40,444,536		40,444,536	0	
10.	Financial guaranty.....				0				0	
11.1	Medical professional liability - occurrence.....	53,952		53,952	0				0	
11.2	Medical professional liability - claims-made.....	3,584		3,584	0	(1,202)		(1,202)	0	
12.	Earthquake.....				0	4,198		4,198	0	
13.	Group accident and health.....	195		195	0	104,586		104,586	(a) 0	
14.	Credit accident and health (group and individual).....				0				0	
15.	Other accident and health.....	357,646		357,646	0	400,792		400,792	(a) 0	
16.	Workers' compensation.....	55,226,518	988,873	56,215,391	0	46,322,175	7,933	46,330,108	0	
17.1	Other liability - occurrence.....	127,374,322	13,973	127,388,295	0	144,818,477	10,322	144,828,799	0	
17.2	Other liability - claims-made.....	9,326,822	102	9,326,924	0	28,820,245		28,820,245	0	
17.3	Excess workers' compensation.....				0				0	
18.1	Products liability - occurrence.....	1,276,000		1,276,000	0	129,223		129,223	0	
18.2	Products liability - claims-made.....				0				0	
19.1, 19.2	Private passenger auto liability.....				0	1,853	(14)	1,839	0	
19.3, 19.4	Commercial auto liability.....	173,755,352	1,597,846	175,353,198	0	115,929,848	621,775	116,551,623	0	
21.	Auto physical damage.....	5,976,393	1,477	5,977,870	0	728,634	233	728,867	0	
22.	Aircraft (all perils).....				0				0	
23.	Fidelity.....				0				0	
24.	Surety.....				0	444,236		444,236	0	
26.	Burglary and theft.....	36,070		36,070	0	12,080		12,080	0	
27.	Boiler and machinery.....	23,001		23,001	0	14,745		14,745	0	
28.	Credit.....				0				0	
29.	International.....				0				0	
30.	Warranty.....				0	801,324		801,324	0	
31.	Reinsurance - nonproportional assumed property.....	XXX			0	XXX			0	
32.	Reinsurance - nonproportional assumed liability.....	XXX			0	XXX			0	
33.	Reinsurance - nonproportional assumed financial lines.....	XXX			0	XXX			0	
34.	Aggregate write-ins for other lines of business.....	0	0	0	0	0	0	0	0	0
35.	TOTALS.....	441,619,978	2,666,201	444,286,179	0	439,340,397	646,415	439,986,812	0	0
DETAILS OF WRITE-INS										
3401.	Miscellaneous.....				0				0	
3402.				0				0	
3403.				0				0	
3498.	Summary of remaining write-ins for Line 34 from overflow page.....	0	0	0	0	0	0	0	0	0
3499.	Totals (Lines 3401 through 3403 plus 3498) (Line 34 above).....	0	0	0	0	0	0	0	0	0

(a) Including \$.....0 for present value of life indemnity claims.

NATIONAL CASUALTY COMPANY
UNDERWRITING AND INVESTMENT EXHIBIT
PART 3 - EXPENSES

	1	2	3	4
	Loss Adjustment Expenses	Other Underwriting Expenses	Investment Expenses	Total
1. Claim adjustment services:				
1.1 Direct.....	81,482,410			81,482,410
1.2 Reinsurance assumed.....	180,758			180,758
1.3 Reinsurance ceded.....	81,663,168			81,663,168
1.4 Net claim adjustment services (1.1 + 1.2 - 1.3).....	0	0	0	0
2. Commission and brokerage:				
2.1 Direct, excluding contingent.....		287,992,240		287,992,240
2.2 Reinsurance assumed, excluding contingent.....		666,510		666,510
2.3 Reinsurance ceded, excluding contingent.....		288,658,750		288,658,750
2.4 Contingent - direct.....		(187)		(187)
2.5 Contingent - reinsurance assumed.....				0
2.6 Contingent - reinsurance ceded.....		(187)		(187)
2.7 Policy and membership fees.....				0
2.8 Net commission and brokerage (2.1 + 2.2 - 2.3 + 2.4 + 2.5 - 2.6 + 2.7).....	0	0	0	0
3. Allowances to manager and agents.....				0
4. Advertising.....				0
5. Boards, bureaus and associations.....				0
6. Surveys and underwriting reports.....				0
7. Audit of assureds' records.....				0
8. Salary and related items:				
8.1 Salaries.....			4,520	4,520
8.2 Payroll taxes.....			-	0
9. Employee relations and welfare.....			1,097	1,097
10. Insurance.....			-	0
11. Directors' fees.....			612	612
12. Travel and travel items.....			211	211
13. Rent and rent items.....			92	92
14. Equipment.....			203	203
15. Cost or depreciation of EDP equipment and software.....			28	28
16. Printing and stationery.....			3	3
17. Postage, telephone and telegraph, exchange and express.....			10	10
18. Legal and auditing.....			256	256
19. Totals (Lines 3 to 18).....	0	0	7,032	7,032
20. Taxes, licenses and fees:				
20.1 State and local insurance taxes deducting guaranty association credits of \$.....0.....				0
20.2 Insurance department licenses and fees.....				0
20.3 Gross guaranty association assessments.....				0
20.4 All other (excluding federal and foreign income and real estate).....				0
20.5 Total taxes, licenses and fees (20.1 + 20.2 + 20.3 + 20.4).....	0	0	0	0
21. Real estate expenses.....				0
22. Real estate taxes.....				0
23. Reimbursements by uninsured plans.....				0
24. Aggregate write-ins for miscellaneous expenses.....	0	0	77,851	77,851
25. Total expenses incurred.....	0	0	84,883	(a) 84,883
26. Less unpaid expenses - current year.....				0
27. Add unpaid expenses - prior year.....				0
28. Amounts receivable relating to uninsured plans, prior year.....				0
29. Amounts receivable relating to uninsured plans, current year.....				0
30. TOTAL EXPENSES PAID (Lines 25 - 26 + 27 - 28 + 29).....	0	0	84,883	84,883

DETAILS OF WRITE-INS				
2401. Other expenses.....			77,796	77,796
2402. Outside services and income.....			55	55
2403.				0
2498. Summary of remaining write-ins for Line 24 from overflow page.....	0	0	0	0
2499. Totals (Lines 2401 through 2403 plus 2498) (Line 24 above).....	0	0	77,851	77,851

(a) Includes management fees of \$.....0 to affiliates and \$.....0 to non-affiliates.

EXHIBIT OF NET INVESTMENT INCOME

	1 Collected During Year	2 Earned During Year
1. U.S. government bonds.....	(a).....786,077786,882
1.1 Bonds exempt from U.S. tax.....	(a).....571,741555,335
1.2 Other bonds (unaffiliated).....	(a).....2,796,1582,741,651
1.3 Bonds of affiliates.....	(a).....
2.1 Preferred stocks (unaffiliated).....	(b).....
2.11 Preferred stocks of affiliates.....	(b).....
2.2 Common stocks (unaffiliated).....
2.21 Common stocks of affiliates.....
3. Mortgage loans.....	(c).....
4. Real estate.....	(d).....
5. Contract loans.....
6. Cash, cash equivalents and short-term investments.....	(e).....90,61390,613
7. Derivative instruments.....	(f).....
8. Other invested assets.....(1,672,384)(1,672,384)
9. Aggregate write-ins for investment income.....(131)(131)
10. Total gross investment income.....2,572,0742,501,966
11. Investment expenses.....	(g).....84,883
12. Investment taxes, licenses and fees, excluding federal income taxes.....	(g).....
13. Interest expense.....	(h).....
14. Depreciation on real estate and other invested assets.....	(i).....0
15. Aggregate write-ins for deductions from investment income.....12,924
16. Total deductions (Lines 11 through 15).....97,807
17. Net investment income (Line 10 minus Line 16).....2,404,159

DETAILS OF WRITE-INS

0901. Misc. Income.....(131)(131)
0902.
0903.
0998. Summary of remaining write-ins for Line 9 from overflow page.....00
0999. Totals (Lines 0901 through 0903 plus 0998) (Line 9 above).....(131)(131)
1501. Misc. Exp.....12,924
1502.
1503.
1598. Summary of remaining write-ins for Line 15 from overflow page.....0
1599. Totals (Lines 1501 through 1503 plus 1598) (Line 15 above).....12,924

- (a) Includes \$.....146,228 accrual of discount less \$.....586,155 amortization of premium and less \$.....28,180 paid for accrued interest on purchases.
- (b) Includes \$.....0 accrual of discount less \$.....0 amortization of premium and less \$.....0 paid for accrued dividends on purchases.
- (c) Includes \$.....0 accrual of discount less \$.....0 amortization of premium and less \$.....0 paid for accrued interest on purchases.
- (d) Includes \$.....0 for company's occupancy of its own buildings; and excludes \$.....0 interest on encumbrances.
- (e) Includes \$.....0 accrual of discount less \$.....0 amortization of premium and less \$.....0 paid for accrued interest on purchases.
- (f) Includes \$.....0 accrual of discount less \$.....0 amortization of premium.
- (g) Includes \$.....0 investment expenses and \$.....0 investment taxes, licenses and fees, excluding federal income taxes, attributable to segregated and Separate Accounts.
- (h) Includes \$.....0 interest on surplus notes and \$.....0 interest on capital notes.
- (i) Includes \$.....0 depreciation on real estate and \$.....0 depreciation on other invested assets.

EXHIBIT OF CAPITAL GAINS (LOSSES)

	1 Realized Gain (Loss) on Sales or Maturity	2 Other Realized Adjustments	3 Total Realized Capital Gain (Loss) (Columns 1 + 2)	4 Change in Unrealized Capital Gain (Loss)	5 Change in Unrealized Foreign Exchange Capital Gain (Loss)
1. U.S. government bonds.....0344,994
1.1 Bonds exempt from U.S. tax.....0
1.2 Other bonds (unaffiliated).....72,82372,823
1.3 Bonds of affiliates.....0
2.1 Preferred stocks (unaffiliated).....0
2.11 Preferred stocks of affiliates.....0
2.2 Common stocks (unaffiliated).....0
2.21 Common stocks of affiliates.....0
3. Mortgage loans.....0
4. Real estate.....0
5. Contract loans.....0
6. Cash, cash equivalents and short-term investments.....0
7. Derivative instruments.....0
8. Other invested assets.....0
9. Aggregate write-ins for capital gains (losses).....00000
10. Total capital gains (losses).....72,823072,823344,9940

DETAILS OF WRITE-INS

0901.0
0902.0
0903.0
0998. Summary of remaining write-ins for Line 9 from overflow page...00000
0999. Totals (Lines 0901 through 0903 plus 0998) (Line 9 above).....00000

EXHIBIT OF NONADMITTED ASSETS

	1 Current Year Total Nonadmitted Assets	2 Prior Year Total Nonadmitted Assets	3 Change in Total Nonadmitted Assets (Col. 2 - Col. 1)
1. Bonds (Schedule D).....			0
2. Stocks (Schedule D):			
2.1 Preferred stocks.....			0
2.2 Common stocks.....			0
3. Mortgage loans on real estate (Schedule B):			
3.1 First liens.....			0
3.2 Other than first liens.....			0
4. Real estate (Schedule A):			
4.1 Properties occupied by the company.....			0
4.2 Properties held for the production of income.....			0
4.3 Properties held for sale.....			0
5. Cash (Schedule E-Part 1), cash equivalents (Schedule E-Part 2) and short-term investments (Schedule DA).....			0
6. Contract loans.....			0
7. Derivatives (Schedule DB).....			0
8. Other invested assets (Schedule BA).....			0
9. Receivables for securities.....			0
10. Securities lending reinvested collateral assets (Schedule DL).....			0
11. Aggregate write-ins for invested assets.....	0	0	0
12. Subtotals, cash and invested assets (Lines 1 to 11).....	0	0	0
13. Title plants (for Title insurers only).....			0
14. Investment income due and accrued.....			0
15. Premiums and considerations:			
15.1 Uncollected premiums and agents' balances in the course of collection.....	3,936,367		(3,936,367)
15.2 Deferred premiums, agents' balances and installments booked but deferred and not yet due.....			0
15.3 Accrued retrospective premiums and contracts subject to redetermination.....			0
16. Reinsurance:			
16.1 Amounts recoverable from reinsurers.....			0
16.2 Funds held by or deposited with reinsured companies.....			0
16.3 Other amounts receivable under reinsurance contracts.....			0
17. Amounts receivable relating to uninsured plans.....			0
18.1 Current federal and foreign income tax recoverable and interest thereon.....			0
18.2 Net deferred tax asset.....	290,740	69,441	(221,299)
19. Guaranty funds receivable or on deposit.....			0
20. Electronic data processing equipment and software.....			0
21. Furniture and equipment, including health care delivery assets.....			0
22. Net adjustment in assets and liabilities due to foreign exchange rates.....			0
23. Receivables from parent, subsidiaries and affiliates.....			0
24. Health care and other amounts receivable.....			0
25. Aggregate write-ins for other-than-invested assets.....	0	0	0
26. Total assets excluding Separate Accounts, Segregated Accounts and Protected Cell Accounts (Lines 12 through 25).....	4,227,107	69,441	(4,157,666)
27. From Separate Accounts, Segregated Accounts and Protected Cell Accounts.....			0
28. TOTALS (Lines 26 and 27).....	4,227,107	69,441	(4,157,666)

DETAILS OF WRITE-INS

1101.			0
1102.			0
1103.			0
1198. Summary of remaining write-ins for Line 11 from overflow page.....	0	0	0
1199. Totals (Lines 1101 through 1103 plus 1198) (Line 11 above).....	0	0	0
2501.			0
2502.			0
2503.			0
2598. Summary of remaining write-ins for Line 25 from overflow page.....	0	0	0
2599. Totals (Lines 2501 through 2503 plus 2598) (Line 25 above).....	0	0	0

NOTES TO THE FINANCIAL STATEMENTS

Note 1 – Summary of Significant Accounting Policies and Going Concern

A. Accounting Practices

The accompanying statutory financial statements of National Casualty Company (the Company) have been prepared in conformity with accounting practices prescribed or permitted by the National Association of Insurance Commissioners (NAIC) and the State of Ohio.

The Ohio Department of Insurance recognizes only statutory accounting practices (SAP) prescribed or permitted by the State of Ohio for determining and reporting the financial condition and results of operations of an insurance company, as well as, determining its solvency under the Ohio Insurance law. The NAIC’s *Accounting Practices and Procedures Manual* (NAIC SAP) has been adopted as a component of prescribed or permitted practices by the State of Ohio. The Company has no statutory accounting practices that differ from NAIC SAP.

A reconciliation of the Company’s net income and capital and surplus between NAIC SAP and practices prescribed and permitted by the State of Ohio is shown below:

	SSAP #	F/S Page	F/S Line #	2019	2018
Net Income					
National Casualty Company state basis (Page 4, Line 20, Columns 1 & 2)					
(1) 2)	XXX	XXX	XXX	\$ 1,272,928	\$ 1,814,871
(2) State Prescribed Practices that increase/(decrease) NAIC SAP				-	-
(3) State Permitted Practices that increase/(decrease) NAIC SAP				-	-
(4) NAIC SAP (1-2-3=4)	XXX	XXX	XXX	\$ 1,272,928	\$ 1,814,871
Surplus					
National Casualty Company state basis (Page 3, Line 37, Columns 1 & 2)					
(5) 2)	XXX	XXX	XXX	\$ 146,002,602	\$ 142,974,711
(6) State Prescribed Practices that increase/(decrease) NAIC SAP				-	-
(7) State Permitted Practices that increase/(decrease) NAIC SAP				-	-
(8) NAIC SAP (5-6-7=8)	XXX	XXX	XXX	\$ 146,002,602	\$ 142,974,711

B. Use of Estimates in the Preparation of the Financial Statements

The preparation of statutory financial statements in conformity with Statutory Accounting Principles requires management to make estimates and assumptions that affect the reported amounts of assets and liabilities. It also requires disclosure of contingent assets and liabilities at the date of the financial statements and the reported amounts of revenue and expenses during the period. Actual results could differ from those estimates.

C. Accounting Policies

Federal Income Taxes. The Company’s parent, Nationwide Mutual Insurance Company (Mutual), files a consolidated federal income tax return, which includes all eligible U.S. subsidiaries and affiliates. In this regard, the included subsidiaries and affiliates pay to Mutual the amount which would have been payable on a separate return basis without regard to the alternative minimum tax. Mutual pays tax due on a consolidated basis.

The Company provides for federal income taxes based on amounts the Company believes it will ultimately owe. Inherent in the provision for federal income taxes are estimates regarding the deductibility of certain items and the realization of certain tax credits. In the event the ultimate deductibility of certain items or the realization of certain tax credits differs from estimates, the Company may be required to change the provision for federal income taxes recorded in the financial statements which could be significant. Management has used best estimates to establish reserves based on current facts and circumstances regarding tax exposure items where the ultimate deductibility is open to interpretation.

In accordance with guidance specified in the NAIC SAP, the Company utilizes the asset and liability method of accounting for income taxes. Under this method, deferred tax assets (DTA), net of any non-admitted portion and statutory valuation allowance, and deferred tax liabilities are recognized for the future tax consequences attributable to differences between the financial statement carrying amounts of existing assets and liabilities and their respective tax basis. DTAs and liabilities are measured using enacted tax rates expected to apply to taxable income in the years in which those temporary differences are expected to be recovered or settled. The change in deferred taxes, excluding the impact of taxes on unrealized capital gains or losses and nonadmitted deferred taxes, is charged directly to surplus.

Reinsurance Recoverables. The Company cedes insurance to other companies in order to limit potential losses and diversify its exposure. Such agreements do not relieve the Company of its primary obligation to the policyholder in the event the reinsurer is unable to meet the obligations it has assumed. The Company monitors the financial condition of reinsurers on an ongoing basis and reviews its reinsurance agreements regularly in an attempt to minimize its exposure to significant losses from reinsurer insolvencies. Reinsurance recoverables include amounts billed to reinsurers on losses paid. Estimates of amounts expected to be recovered from reinsurers that have not yet been paid on losses are estimated in a manner consistent with the claim liability associated with the underlying policy. Such reinsurance recoverables and reserved deductions partially offset claim costs in the Company’s statutory statements of operations and are included as an offset to losses and loss expense reserves in the accompanying statutory statements of admitted assets, liabilities and surplus. There were no contracts using deposit accounting as of December 31, 2019 and 2018.

Statutory accounting principles require recognition of a minimum liability for certain unsecured or overdue reinsurance recoverables. As of December 31, 2019 and 2018, the Company had provision related to conditional reinsurance recoverable of \$0 and \$18,800, respectively.

In addition, the Company uses the following accounting policies:

- Short-term investments consist of investments with maturities of twelve months or less at acquisition and are stated at amortized cost, which approximates fair value.
- Bonds, excluding loan-backed and structured securities, are stated at amortized cost except those with a NAIC designation of “3” through “6” which are stated at the lower of amortized cost or fair value. Amortization of premiums and discounts is calculated using the effective yield method. The Company does not hold any mandatory convertible securities or SVO-identified investments.
- Unaffiliated common stocks are reported at fair value.
- Redeemable preferred stocks are stated at amortized cost except those with an NAIC designation of “3” through “6” which are stated at the lower of amortized cost or fair value. Perpetual preferred stocks are stated at fair value except those with an NAIC designation of “3” through “6” which are stated at the lower of amortized cost or fair value.
- Mortgage loans are carried at the unpaid principal balance adjusted for premiums, discounts, less a valuation allowance. The valuation allowance for mortgage loans reflects management’s best estimate of probable credit losses.

NOTES TO THE FINANCIAL STATEMENTS

6.

Loan-backed and structured securities (collectively, loan-backed securities) are stated at amortized cost or the lower of amortized cost or fair value in accordance with the provisions of Statement of Statutory Accounting Principles No. 43-Revised and the Purposes and Procedures Manual of the NAIC Securities Valuation Office. The retrospective adjustment method is used to value loan-backed securities where the collection of all contractual cash flows is probable. For all other loan-backed securities, the Company uses the prospective adjustment method.
7.

Investments in subsidiary and affiliated companies are stated as follows:

Not applicable.
8.

Other invested assets consist primarily of alternative investments in hedge funds, private equity funds, private and emerging market debt funds, tax credit funds and real estate partnerships. Except for investments in certain tax credit funds, these investments are recorded using the equity method of accounting. Changes in carrying value as a result of the equity method are reflected as net unrealized capital gains and losses as a direct adjustment to surplus. Gains and losses are generally recognized through income at the time of disposal or when operating distributions are received. Partnership interests in tax credit funds are held at amortized cost with amortization charged to investment income over the period in which the tax benefits, primarily credits, are utilized.
9.

Accounting for derivatives

Not applicable.
10.

Insurance premiums are generally earned ratably over the policy term. The liability for unearned premiums represents the portion of premiums written relating to the unexpired terms of coverage. Such reserves are computed by pro rata methods for direct business and are based on reports received from ceding companies for reinsurance assumed. Premiums in course of collection represent agent balances and uncollected premiums from policyholders for current policies in force and policy premiums assumed from others, including amounts placed with affiliates. As of December 31, 2019 and 2018, the Company had no liabilities related to premium deficiency reserves. The Company includes anticipated investment income when calculating its premium deficiency reserves, in accordance with SSAP No. 53, Property-Casualty Contracts - Premiums.
11.

The Company establishes losses and loss expense reserves for reported claims and claims incurred but not yet reported (IBNR). Estimating the liability for losses and loss expense reserves involves significant judgment and multiple assumptions. Management considers the Company's experience with similar claims, historical trends, economic factors and judicial, legislative and regulatory changes in establishing reserves. The Company's losses and loss expense reserves are recorded net of reinsurance and amounts expected to be received from salvage (the amount recovered from property after the Company pays for a total loss) and subrogation (the right to recover payments from third parties).

Assumptions and estimates for losses and loss expense reserves are updated as new information becomes available. Due to the inherent uncertainty in estimating losses and loss expense reserves, the actual cost of settling claims may differ materially from recorded amounts. Changes in losses and loss expense reserve estimates are included in results of operations in the period the estimates are revised.
12.

The Company has a written capitalization policy for prepaid expenses and purchases of items such as electronic data processing equipment, software, furniture, vehicles, other equipment and leasehold improvements. The Company has not modified its capitalization policy from the prior period.
13.

Not applicable as the Company does not write major medical insurance with prescription drug coverage.

- D. Going Concern

Not applicable.

Note 2 - Accounting Changes and Corrections of Errors

Not applicable.

Note 3 - Business Combinations and Goodwill

Not applicable.

Note 4 – Discontinued Operations

Not applicable.

Note 5 – Investments

- A.

Mortgage Loans

Not applicable.
- B.

Troubled Debt Restructuring

Not applicable.
- C.

Reverse Mortgages

Not applicable.
- D.

Loan-Backed Securities

1. Prepayment assumptions are generally obtained using a model provided by a third-party vendor.

2. Not applicable.

3. Not applicable.

NOTES TO THE FINANCIAL STATEMENTS

4. All impaired securities (fair value is less than cost or amortized cost) for which an other-than-temporary impairment has not been recognized in earnings as a realized loss (including securities with a recognized other-than-temporary impairment for non-interest related declines when a non-recognized interest related impairment remains):

a. The aggregate amount of unrealized losses:

1.	Less than 12 Months	\$	(622)
2.	12 Months or Longer	\$	-

b. The aggregate related fair value of securities with unrealized losses:

1.	Less than 12 Months	\$	5,347,959
2.	12 Months or Longer	\$	-

5. The Company reviews all loan-backed and structured securities in which the fair value of the given security is less than the amortized cost to determine if a given security is other-than-temporarily impaired. The Company examines characteristics of the underlying collateral, such as delinquency and default rates, the quality of the underlying borrower, the type of collateral in the pool, the vintage year of the collateral, subordination levels within the structure of the collateral pool, and the quality of any credit guarantors, to determine the cash flows expected to be received for the security.

If the severity and duration of the security's unrealized loss indicates a risk of an other-than-temporary impairment, then the Company will evaluate if the amortized cost basis of the security will be recovered by comparing the present value of the cash flows expected to be received for the given security with the amortized cost basis of the security. If the present value of cash flows is greater than the amortized cost basis of a security then the security is deemed not to be other-than-temporarily impaired.

E. Dollar Repurchase Agreements and/or Securities Lending Transactions

Not applicable, as the Company does not participate in a securities lending program and has no open dollar repurchase agreements as of year-end.

F. Repurchase Agreements Transactions Accounted for as Secured Borrowing

Not applicable.

G. Reverse Repurchase Agreements Transactions Accounted for as Secured Borrowing

Not applicable.

H. Repurchase Agreements Transactions Accounted for as a Sale

Not applicable.

I. Reverse Repurchase Agreements Transactions Accounted for as a Sale

Not applicable.

J. Real Estate

Not applicable.

K. Low-Income Housing Tax Credits

- For the Company's Low-Income Housing Tax Credits (LIHTC) property investments, the number of remaining years of unexpired tax credits ranged from 1 to 12 years and 0 to 0 years as of December 31, 2019 and 2018, respectively. These investments generally have a required holding period of 15 years.
- The amounts of low-income housing tax credits and other tax benefits recognized were \$360,000 and \$0, as of December 31, 2019 and 2018, respectively.
- The balance of the investment recognized in the statement of financial position was \$423,608 and \$0 as of December 31, 2019 and 2018, respectively.
- The Company's investment funds hold underlying LIHTC property investments which are subject to periodic reviews by the U.S. Department of Housing and Urban Development (HUD), if applicable, and state housing agencies. Management is not aware of any open or outstanding items with regard to any of these reviews. The fund investments themselves are not currently under any regulatory review.
- Aggregate LIHTC investments do not exceed 10 percent of the total admitted assets.
- For the current year, there were no impairments on LIHTC investments.
- No write-downs or reclassifications were made during the year due to the known forfeiture or ineligibility of LIHTC investments.

NOTES TO THE FINANCIAL STATEMENTS

L. Restricted Assets

1. Restricted Assets (Including Pledged)

Restricted Asset Category	Gross (Admitted & Nonadmitted) Restricted						
	Current Year					6	7
	1	2	3	4	5		
	Total General Account (G/A)	G/A Supporting Protected Cell Account Activity (a)	Total Protected Cell Account Restricted Assets	Protected Cell Account Assets Supporting G/A Activity (b)	Total (1 plus 3)	Total From Prior Year	Increase/ (Decrease) (5 minus 6)
a. Subject to contractual obligation for which liability is not shown	\$-	\$-	\$-	\$-	\$-	\$-	\$-
b. Collateral held under security lending agreements	-	-	-	-	-	-	-
c. Subject to repurchase agreements	-	-	-	-	-	-	-
d. Subject to reverse repurchase agreements	-	-	-	-	-	-	-
e. Subject to dollar repurchase agreements	-	-	-	-	-	-	-
f. Subject to dollar reverse repurchase agreements	-	-	-	-	-	-	-
g. Placed under option contracts	-	-	-	-	-	-	-
h. Letter stock or securities restricted as to sale - excluding FHLB capital stock	-	-	-	-	-	-	-
i. FHLB capital stock	-	-	-	-	-	-	-
j. On deposit with states	4,910,441	-	-	-	4,910,441	4,950,054	(39,613)
k. On deposit with other regulatory bodies	540,539	-	-	-	540,539	550,785	(10,246)
l. Pledged as collateral to FHLB (including assets backing funding agreements)	-	-	-	-	-	-	-
m. Pledged as collateral not captured in other categories	-	-	-	-	-	-	-
n. Other restricted assets	-	-	-	-	-	-	-
o. Total Restricted Assets	\$5,450,980	\$-	\$-	\$-	\$5,450,980	\$5,500,839	\$(49,859)

- (a) Subset of Column 1
- (b) Subset of Column 3

NOTES TO THE FINANCIAL STATEMENTS

Restricted Asset Category	Current Year			
	8	9	Percentage	
			10	11
	Total Nonadmitted Restricted	Total Admitted Restricted (5 minus 8)	Gross (Admitted & Nonadmitted) Restricted to Total Assets (c)	Admitted Restricted to Total Admitted Assets (d)
a. Subject to contractual obligation for which liability is not shown	\$-	\$-	0.00%	0.00%
b. Collateral held under security lending agreements	-	-	0.00%	0.00%
c. Subject to repurchase agreements	-	-	0.00%	0.00%
d. Subject to reverse repurchase agreements	-	-	0.00%	0.00%
e. Subject to dollar repurchase agreements	-	-	0.00%	0.00%
f. Subject to dollar reverse repurchase agreements	-	-	0.00%	0.00%
g. Placed under option contracts	-	-	0.00%	0.00%
h. Letter stock or securities restricted as to sale - excluding FHLB capital stock	-	-	0.00%	0.00%
i. FHLB capital stock	-	-	0.00%	0.00%
j. On deposit with states	-	4,910,441	0.93%	0.94%
k. On deposit with other regulatory bodies	-	540,539	0.10%	0.10%
l. Pledged as collateral to FHLB (including assets backing funding agreements)	-	-	0.00%	0.00%
m. Pledged as collateral not captured in other categories	-	-	0.00%	0.00%
n. Other restricted assets	-	-	0.00%	0.00%
o. Total Restricted Assets	\$-	\$5,450,980	1.04%	1.04%

(c) Column 5 divided by Asset Page, Column 1, Line 28
(d) Column 9 divided by Asset Page, Column 3, Line 28

2. Detail of Assets Pledged as Collateral Not Captured in Other Categories (Contracts that Share Similar Characteristics, Such as Reinsurance and Derivatives, Are Reported in the Aggregate)

Not applicable.

3. Detail of Other Restricted Assets (Contracts that Share Similar Characteristics, Such as Reinsurance and Derivatives, Are Reported in the Aggregate)

Not applicable.

4. Collateral Received and Reflected as Assets Within the Reporting Entity's Financial Statements

Not applicable.

M. Working Capital Finance Investments

Not applicable.

N. Offsetting and Netting of Assets and Liabilities

No assets or liabilities are offset and reported net in accordance with a valid right to offset per SSAP No 64, Offsetting and Netting of Assets and Liabilities.

O. 5GI Securities

Not applicable.

P. Short Sales

Not applicable.

Q. Prepayment Penalty and Acceleration Fees

Not applicable.

NOTES TO THE FINANCIAL STATEMENTS

Note 6 - Joint Ventures, Partnerships and Limited Liability Companies

A. Detail for Those Greater than 10% of Admitted Assets

The Company has no investments in Joint Ventures, Partnerships or Limited Liability Companies that exceed 10% of its total admitted assets.

B. Write-downs for Impairments

The Company did not recognize any impairment write down for its investments in Joint Ventures, Partnerships or Limited Liability Companies during 2019.

Note 7 - Investment Income

A. Accrued Investment Income

The Company nonadmits investment income due and accrued if amounts are over 90 days past due with the exception of mortgage loans in default which are nonadmitted if amounts are over 180 days past due.

B. Amounts Nonadmitted

The total amount of investment income nonadmitted at December 31, 2019 was \$0.

Note 8 - Derivative Instruments

Not applicable.

Note 9 - Income Taxes

A. The components of the deferred tax asset/(liability) at December 31 are as follows:

		December 31, 2019		
		Ordinary	Capital	Total
(1a)	Gross deferred tax assets	\$ 1,349,261	\$ 525,469	\$ 1,874,730
(1b)	Statutory valuation allowance adjustment	-	-	-
(1c)	Adjusted gross deferred tax assets	\$ 1,349,261	\$ 525,469	\$ 1,874,730
(1d)	Deferred tax assets nonadmitted	144,767	145,973	290,740
(1e)	Subtotal net admitted deferred tax asset	\$ 1,204,494	\$ 379,496	\$ 1,583,990
(1f)	Deferred tax liabilities	-	-	-
(1g)	Net admitted deferred tax asset/(net deferred tax liability)	\$ 1,204,494	\$ 379,496	\$ 1,583,990
		December 31, 2018		
		Ordinary	Capital	Total
(1a)	Gross deferred tax assets	\$ 125,569	\$ 136,693	\$ 262,262
(1b)	Statutory valuation allowance adjustment	-	-	-
(1c)	Adjusted gross deferred tax assets	\$ 125,569	\$ 136,693	\$ 262,262
(1d)	Deferred tax assets nonadmitted	32,145	37,297	69,442
(1e)	Subtotal net admitted deferred tax asset	\$ 93,424	\$ 99,396	\$ 192,820
(1f)	Deferred tax liabilities	-	-	-
(1g)	Net admitted deferred tax asset/(net deferred tax liability)	\$ 93,424	\$ 99,396	\$ 192,820
		Change		
		Ordinary	Capital	Total
(1a)	Gross deferred tax assets	\$ 1,223,692	\$ 388,776	\$ 1,612,468
(1b)	Statutory valuation allowance adjustment	-	-	-
(1c)	Adjusted gross deferred tax assets	\$ 1,223,692	\$ 388,776	\$ 1,612,468
(1d)	Deferred tax assets nonadmitted	112,622	108,676	221,298
(1e)	Subtotal net admitted deferred tax asset	\$ 1,111,070	\$ 280,100	\$ 1,391,170
(1f)	Deferred tax liabilities	-	-	-
(1g)	Net admitted deferred tax asset/(net deferred tax liability)	\$ 1,111,070	\$ 280,100	\$ 1,391,170

NOTES TO THE FINANCIAL STATEMENTS

Admission Calculation Components SSAP No. 101

		December 31, 2019		
		Ordinary	Capital	Total
(2a)	Federal income taxes paid in prior years recoverable through loss carrybacks	\$ -	\$ -	\$ -
(2b)	Adjusted gross deferred tax assets expected to be realized (excluding the amount of deferred tax assets from (2a) above) after application of the threshold limitation (the less of (2b)1 and (2b)2 below)	\$ 1,204,494	\$ 379,496	\$ 1,583,990
	1. Adjusted gross deferred tax assets expected to be realized following the balance sheet date	\$ 1,204,494	\$ 379,496	\$ 1,583,990
	2. Adjusted gross deferred tax assets allowed per limit threshold	XXX	XXX	\$ 21,662,792
(2c)	Adjusted gross deferred tax assets (excluding the amount of deferred tax asset from 2(a) and 2(b) above) offset by gross deferred tax liabilities	\$ -	\$ -	\$ -
(2d)	Deferred tax assets admitted as the result of application of SSAP No. 101 Total ((2a) + (2b) + (2c))	\$ 1,204,494	\$ 379,496	\$ 1,583,990
		December 31, 2018		
		Ordinary	Capital	Total
(2a)	Federal income taxes paid in prior years recoverable through loss carrybacks	\$ -	\$ -	\$ -
(2b)	Adjusted gross deferred tax assets expected to be realized (excluding the amount of deferred tax assets from (2a) above) after application of the threshold limitation (the less of (2b)1 and (2b)2 below)	\$ 93,424	\$ 99,396	\$ 192,820
	1. Adjusted gross deferred tax assets expected to be realized following the balance sheet date	\$ 93,424	\$ 99,396	\$ 192,820
	2. Adjusted gross deferred tax assets allowed per limit threshold	XXX	XXX	\$ 21,417,284
(2c)	Adjusted gross deferred tax assets (excluding the amount of deferred tax asset from 2(a) and 2(b) above) offset by gross deferred tax liabilities	\$ -	\$ -	\$ -
(2d)	Deferred tax assets admitted as the result of application of SSAP No. 101 Total ((2a) + (2b) + (2c))	\$ 93,424	\$ 99,396	\$ 192,820
		Change		
		Ordinary	Capital	Total
(2a)	Federal income taxes paid in prior years recoverable through loss carrybacks	\$ -	\$ -	\$ -
(2b)	Adjusted gross deferred tax assets expected to be realized (excluding the amount of deferred tax assets from (2a) above) after application of the threshold limitation (the less of (2b)1 and (2b)2 below)	\$ 1,111,070	\$ 280,100	\$ 1,391,170
	1. Adjusted gross deferred tax assets expected to be realized following the balance sheet date	\$ 1,111,070	\$ 280,100	\$ 1,391,170
	2. Adjusted gross deferred tax assets allowed per limit threshold	XXX	XXX	\$ 245,508
(2c)	Adjusted gross deferred tax assets (excluding the amount of deferred tax asset from 2(a) and 2(b) above) offset by gross deferred tax liabilities	\$ -	\$ -	\$ -
(2d)	Deferred tax assets admitted as the result of application of SSAP No. 101 Total ((2a) + (2b) + (2c))	\$ 1,111,070	\$ 280,100	\$ 1,391,170
		December 31, 2019		December 31, 2018
(3a)	Ratio percentage used to determine recovery period and threshold limitation amount	15721.086%		17441.800%
(3b)	Amount of adjusted capital and surplus used to determine recovery period and threshold limitation in (2b)2 above	\$	144,418,612	\$ 142,781,892

NOTES TO THE FINANCIAL STATEMENTS

Impact of Tax Planning Strategies

		December 31, 2019		
		Ordinary	Capital	Total
(4a)	Determination of adjusted gross deferred tax assets and net admitted deferred tax assets, by tax character as a percentage			
	(1) Adjusted Gross DTAs amount from Note 9A1(c)	\$ 1,349,261	\$ 525,469	\$ 1,874,730
	(2) Percentage of adjusted gross DTAs by tax character attributable to the impact of tax planning strategies	0.00%	0.00%	0.00%
	(3) Net Admitted Adjusted Gross DTAs amount from Note 9A1(e)	\$ 1,204,494	\$ 379,496	\$ 1,583,990
	(4) Percentage of net admitted adjusted gross DTAs by tax character admitted because of the impact of planning strategies	0.00%	23.96%	23.96%
		December 31, 2018		
		Ordinary	Capital	Total
(4a)	Determination of adjusted gross deferred tax assets and net admitted deferred tax assets, by tax character as a percentage			
	(1) Adjusted Gross DTAs amount from Note 9A1(c)	\$ 125,569	\$ 136,693	\$ 262,262
	(2) Percentage of adjusted gross DTAs by tax character attributable to the impact of tax planning strategies	0.00%	0.00%	0.00%
	(3) Net Admitted Adjusted Gross DTAs amount from Note 9A1(e)	\$ 93,424	\$ 99,396	\$ 192,820
	(4) Percentage of net admitted adjusted gross DTAs by tax character admitted because of the impact of planning strategies	0.00%	51.55%	51.55%
		Change		
		Ordinary	Capital	Total
(4a)	Determination of adjusted gross deferred tax assets and net admitted deferred tax assets, by tax character as a percentage			
	(1) Adjusted Gross DTAs amount from Note 9A1(c)	\$ 1,223,692	\$ 388,776	\$ 1,612,468
	(2) Percentage of adjusted gross DTAs by tax character attributable to the impact of tax planning strategies	0.00%	0.00%	0.00%
	(3) Net Admitted Adjusted Gross DTAs amount from Note 9A1(e)	\$ 1,111,070	\$ 280,100	\$ 1,391,170
	(4) Percentage of net admitted adjusted gross DTAs by tax character admitted because of the impact of planning strategies	0.00%	-27.59%	-27.59%
(4b)	Does this Company's tax-planning strategies include the use of reinsurance?	Yes []	No [X]	

B. There are no temporary differences for which deferred tax liabilities are not recognized.

C. Current income taxes incurred consist of the following major components:

	December 31, 2019	December 31, 2018	Change
1. Current Income Tax			
(a) Federal	\$ 1,235,141	\$ 259,688	\$ 975,453
(b) Foreign	-	-	-
(c) Subtotal	\$ 1,235,141	\$ 259,688	\$ 975,453
(d) Federal income tax on net capital gains	16,649	61,220	(44,571)
(e) Utilization of capital loss carry-forwards	-	-	-
(f) Other	-	-	-
(g) Federal and foreign income taxes incurred	\$ 1,251,790	\$ 320,908	\$ 930,882

NOTES TO THE FINANCIAL STATEMENTS

		December 31,	December 31,	
		2019	2018	Change
2.	Deferred Tax Assets			
	(a) Ordinary:			
	(1) Discounting of unpaid losses	\$ -	\$ -	\$ -
	(2) Unearned premium reserve	-	-	-
	(3) Policyholder reserves	-	-	-
	(4) Investments	522,624	125,569	397,055
	(5) Deferred acquisition costs	-	-	-
	(6) Policyholder dividends accrual	-	-	-
	(7) Fixed Assets	-	-	-
	(8) Compensation benefits accrual	-	-	-
	(9) Pension accrual	-	-	-
	(10) Receivables - nonadmitted	-	-	-
	(11) Net operating loss carry-forward	-	-	-
	(12) Tax credit carry-forward	-	-	-
	(13) Other (including items <5% of total ordinary tax assets)	-	-	-
	(14) Nonadmitted miscellaneous	-	-	-
	(15) Intangibles	-	-	-
	(16) Capitalized R&E	-	-	-
	(17) Nonadmitted premiums and agent bal	826,637	-	826,637
	(18) Premium deficiency reserve	-	-	-
	(99) Subtotal	\$ 1,349,261	\$ 125,569	\$ 1,223,692
	(b) Statutory valuation allowance adjustment	\$ -	\$ -	\$ -
	(c) Nonadmitted	144,767	32,145	112,622
	(d) Admitted ordinary deferred tax assets (2a99 - 2b - 2c)	\$ 1,204,494	\$ 93,424	\$ 1,111,070
	(e) Capital:			
	(1) Investments	\$ 525,469	\$ 136,693	\$ 388,776
	(2) Net capital loss carry-forward	-	-	-
	(3) Real estate	-	-	-
	(4) Other (including items <5% of total capital tax assets)	-	-	-
	(99) Subtotal	\$ 525,469	\$ 136,693	\$ 388,776
	(f) Statutory valuation allowance adjustment	\$ -	\$ -	\$ -
	(g) Nonadmitted	145,973	37,297	108,676
	(h) Admitted capital deferred tax assets (2e99 - 2f - 2g)	\$ 379,496	\$ 99,396	\$ 280,100
	(i) Admitted deferred tax assets (2d + 2h)	\$ 1,583,990	\$ 192,820	\$ 1,391,170
3.	Deferred Tax Liabilities			
	(a) Ordinary:			
	(1) Investments	\$ -	\$ -	\$ -
	(2) Fixed assets	-	-	-
	(3) Deferred and uncollected premium	-	-	-
	(4) Policyholder reserves	-	-	-
	(5) Other (including items <5% of total ordinary tax liabilities)	-	-	-
	(6) Compensation and benefit accrual	-	-	-
	(7) Guaranty assessments	-	-	-
	(8) Agent acquisitions	-	-	-
	(9) Surplus note interest accrual	-	-	-
	(10) Pension accrual	-	-	-
	(11) Other liabilities	-	-	-
	(12) Unrealized miscellaneous	-	-	-
	(99) Subtotal	\$ -	\$ -	\$ -
	(b) Capital:			
	(1) Investments	\$ -	\$ -	\$ -
	(2) Real estate	-	-	-
	(3) Other (including items <5% of total capital tax liabilities)	-	-	-
	(99) Subtotal	\$ -	\$ -	\$ -
	(c) Deferred tax liabilities (3a99 + 3b99)	\$ -	\$ -	\$ -
4.	Net deferred tax asset/(liability) (2i - 3c)	\$ 1,583,990	\$ 192,820	\$ 1,391,170
5.	The change in deferred income taxes is comprised of the following (this analysis is exclusive of the nonadmitted assets as the Change in Nonadmitted Assets are reported separately from the Change in Net Deferred Income Taxes in the surplus section of the Annual Statement):			
		December 31, 2019	December 31, 2018	Change
	(a) Adjusted gross deferred tax assets	\$ 1,874,730	\$ 262,262	\$ 1,612,468
	(b) Deferred tax liabilities	-	-	-
	(c) Net deferred tax assets (liabilities)	\$ 1,874,730	\$ 262,262	\$ 1,612,468
	(d) Tax effect of unrealized gains (losses)			(72,449)
	(e) Tax effect of unrealized postretirement benefits			-
	(f) Change in deferred income tax			\$ 1,684,917

NOTES TO THE FINANCIAL STATEMENTS

D. The provision for federal income taxes incurred is different from that which would be obtained by applying the statutory Federal income tax rate to pre-tax income. The significant book to tax adjustments causing this difference are as follows:

	December 31, 2019	December 31, 2018
(a) Current income taxes incurred	\$ 1,251,790	\$ 320,908
(b) Change in deferred income tax	(1,684,917)	(20,619)
(c) Total income tax reported	\$ (433,127)	\$ 300,289
(d) Income before taxes	\$ 2,524,718	\$ 2,135,780
(e) Federal statutory tax rate	21%	21%
(f) Expected income tax expense (benefit) at 21% statutory rate	\$ 530,191	\$ 448,514
(1) Tax-exempt income	\$ (95,450)	\$ (149,434)
(2) Dividends received deduction	-	-
(3) Nondeductible expenses	-	-
(4) Deferred tax benefit on nonadmitted assets	(826,637)	890
(5) Change in tax reserves	-	-
(6) Tax credits	(41,548)	-
(7) Other	317	319
(8) Extraordinary distribution	-	-
(9) COLI - change in CSV	-	-
(10) Dividends - Return of Capital	-	-
(11) Tax Attribute Expiration	-	-
(12) Impact of enacted tax law changes	-	-
(g) Total	(433,127)	300,289

E. Operating Loss and Tax Credit Carryforwards and Protective Tax Deposits

1. As of December 31, operating loss or tax credit carryforwards are available as follows:

	Amount	Origination	Expiration
Business credits	\$ -	2019	2039

2. The amount of Federal income taxes incurred that are available for recoupment in the event of future net losses are:

2019	\$ -
2018	\$ -

3. The Company did not have any protective tax deposits under Section 6603 of the Internal Revenue Code.

F. Consolidated Federal Income Tax Return

1. The company's federal income tax return is consolidated with the following entities:

Nationwide Mutual Insurance Company	Nationwide Financial General Agency, Inc.
AGMC Reinsurance, Ltd	Nationwide Financial Services, Inc.
Allied General Agency Company	Nationwide General Insurance Company
Allied Group, Inc.	Nationwide Global Holdings, Inc.
Allied Holding (Delaware), Inc.	Nationwide Indemnity Company
Allied Insurance Company of America	Nationwide Insurance Company of America
Allied Property & Casualty Insurance Company	Nationwide Insurance Company of Florida
Allied Texas Agency, Inc.	Nationwide Investment Services Corporation
AMCO Insurance Company	Nationwide Life and Annuity Insurance Company
American Marine Underwriters	Nationwide Life Insurance Company
Crestbrook Insurance Company	Nationwide Lloyds
Depositors Insurance Company	Nationwide Member Solutions Agency, Inc.
DVM Insurance Agency, Inc.	Nationwide Property & Casualty Insurance Company
Eagle Captive Reinsurance, LLC	Nationwide Retirement Solutions, Inc.
Freedom Specialty Insurance Company	Nationwide Trust, FSB
Harleysville Group Inc.	NBS Insurance Agency, Inc.
Harleysville Insurance Co. of New York	NWD Investment Management, Inc.
Harleysville Insurance Company	On Your Side Nationwide Insurance Agency, Inc.
Harleysville Insurance Company of New Jersey	Premier Agency, Inc.
Harleysville Life Insurance Company	Registered Investment Advisors Services, Inc.
Harleysville Lake States Insurance Company	Riverview International Group, Inc.
Harleysville Preferred Insurance Company	Scottsdale Indemnity Company
Harleysville Worcester Insurance Company	Scottsdale Insurance Company
Jefferson National Financial Corporation	Scottsdale Surplus Lines Insurance Company
Jefferson National Securities Corporation	THI Holdings (Delaware), Inc.
JNF Advisors, Inc.	Titan Auto Insurance of New Mexico, Inc.
Lone Star General Agency, Inc.	Titan Indemnity Company
National Casualty Company	Titan Insurance Company
Nationwide Advantage Mortgage Company	Titan Insurance Services, Inc.
Nationwide Affinity Insurance Company of America	Veterinary Pet Insurance Company
Nationwide Agribusiness Insurance Company	Victoria Fire & Casualty Company
Nationwide Assurance Company	Victoria National Insurance Company
Nationwide Cash Management Company	Victoria Select Insurance Company
Nationwide Corporation	VPI Services, Inc.
Nationwide Financial Assignment Company	

NOTES TO THE FINANCIAL STATEMENTS

2. The method of allocation among the companies is subject to the resolution approved by the Board of Directors. Allocation is based upon separate return or sub-group aggregated separate return calculations with the company being reimbursed for the actual Federal income tax benefit of its net operating losses which are actually used to reduce the taxable income of other companies in the consolidated return.

G. Federal or Foreign Federal Income Tax Loss Contingencies

The Company does not have any tax loss contingencies for which it is reasonably possible that the total liability will significantly increase within twelve months of the reporting date.

H. Repatriation Transition Tax (RTT)

Not applicable.

I. Alternative Minimum Tax (AMT)

Not applicable.

Note 10 - Information Concerning Parent, Subsidiaries, Affiliates and Other Related Parties

A. Nature of Relationships

All outstanding shares of the Company are owned by Mutual, domiciled in the State of Ohio.

Bonds and stocks, if any owned, acquired or disposed of in any year by the Company in any subsidiary or affiliate are set forth in Schedule D of either this statement or those of prior years. Intercompany relationships and specific holdings are detailed in the Nationwide Corporate Organizational Chart, which appears as Schedule Y of this statement.

The Company is a party to various reinsurance agreements including a quota share agreement with several affiliated companies. See Note 26.

The Company and various affiliates have entered into agreements with Nationwide Cash Management Company (NCMC) a subsidiary of Mutual, under which NCMC acts as a common agent in handling the purchases and sales of short-term investments for the respective accounts of the participants. Amounts on deposit with NCMC were \$7,249,556 and \$3,995,122 as of December 31, 2019 and 2018, respectively.

B. Detail of Transactions Greater than ½ % of Admitted Assets

Not applicable.

C. Change in Terms of Intercompany Arrangements

See Note 26 for details.

D. Amounts Due to or from Related Parties

Affiliate receivables and payables are the result of cost sharing and intercompany service agreements between the Company and its affiliates in which settlement has not yet occurred. Affiliate receivables are presented gross of affiliate payables when the Company has the right to offset. The gross amounts due from affiliates were \$20,607,746 and \$13,496,448 as of December 31, 2019 and 2018, respectively. The gross amounts due to affiliates were \$19,405,706 and \$20,420,814 as of December 31, 2019 and 2018, respectively. These arrangements are subject to written agreements which require that intercompany balances be settled within 30 days.

E. Guarantees or Undertakings for Related Parties

The Company has no guarantees or contingent commitments to affiliates.

F. Management, Service Contracts, Cost Sharing Arrangements

The Company and various affiliates share a home office, other facilities, equipment, common management and administrative services. Pursuant to a cost sharing agreement between the companies, the amounts associated with these services are subject to allocation based on standard allocation techniques and procedures acceptable under general cost accounting techniques and procedures in conformity with the NAIC SAP. Measures used to determine the allocation among companies includes individual employee estimates of time spent, special cost studies, claims counts, policies in force, direct written premium, paid losses, pro rata share of employees or their salaries, and other methods agreed to by the participating companies. The Company does not believe amounts recognized under the intercompany agreement are materially different than what would have been recognized had the Company operated on a stand-alone basis.

G. Nature of Relationships that Could Affect Operations

Not applicable.

H. Amount Deducted for Investment in Upstream Company

Not applicable.

I. Detail of Investment in Affiliates Greater than 10% of Admitted Assets

The Company does not hold any investments in affiliates.

J. Write-down for Impairments of Investments in Subsidiary, Controlled or Affiliated Companies

Not applicable.

K. Investment in a foreign insurance subsidiary

Not applicable.

L. Downstream Holding Company

The Company does not hold any investments in affiliates.

M. Investments in non-insurance SCA entities

Not applicable.

NOTES TO THE FINANCIAL STATEMENTS

N. Investments in insurance SCA entities

Not applicable.

O. SCA or SSAP 48 Entity Loss Tracking

Not applicable.

Note 11 - Debt

Not applicable.

Note 12 - Retirement Plans, Deferred Compensation, Postemployment Benefits and Compensated Absences and Other Postretirement Benefit Plans

Not applicable.

Note 13 - Capital and Surplus, Shareholders' Dividend Restrictions and Quasi-Reorganizations

1. Outstanding Shares

The Company has 100 shares of \$50,000 par value common stock authorized, 100 shares issued, and 100 shares outstanding as of December 31, 2019.

2. Dividend Rate of Preferred Stock

Not applicable.

3. Dividend Restrictions

The maximum amount of dividends which can be paid to shareholders by a State of Ohio domiciled insurance company without prior approval of the Director of Insurance is limited to, together with that of other dividends or distributions made within the preceding twelve months, the greater of either 10% of surplus as regards policyholders as of the preceding December 31, or the net income for the twelve month period ending December 31 of the previous calendar year. Additionally, any dividend or distribution paid from other than earned surplus shall require prior approval of the Director of Insurance. Subject to applicable regulatory approval(s), dividends are paid as determined by the insurer's board of directors.

4. Dividends Paid

No dividends were paid by the company during 2019 and 2018.

5. Profits Available for Ordinary Dividends

Within the limitations of (C) above, there are no restrictions placed on the portion of Company profits that may be paid as ordinary dividends to shareholders.

6. Restrictions on Surplus

There is no restriction on the use of the Company's unassigned surplus and such surplus is held for the benefit of the shareholder.

7. Advances to Surplus Not Repaid

Not applicable.

8. Stock Held by Company for Special Purposes

Not applicable.

9. Changes in Special Surplus Funds

Not applicable.

10. Changes in Unassigned Funds

The portion of unassigned funds (surplus) represented by cumulative unrealized capital gains is \$817,926 less applicable deferred taxes of \$171,764 for a net unrealized capital gain of \$646,162.

11. Surplus Notes

Not applicable.

12. and 13. Quasi Reorganizations

Not applicable.

NOTES TO THE FINANCIAL STATEMENTS

Note 14 – Contingencies

A. Contingent Commitments

At December 31, 2019, the Company has unfunded commitments of \$2,599,566 related to its investments in limited partnerships and limited liability companies.

B. Assessments

The Company is subject to guaranty fund and other assessments by the states in which it writes business. Guaranty fund assessments should be accrued at the time of insolvencies. Other assessments should be accrued either at the time of assessments or in the case of premium based assessments, at the time the premiums were written. In the case of loss-based assessments, the assessments should be accrued at the time the losses are incurred.

As outlined in Note 26, the Company participated in a 100% quota share reinsurance agreement with Mutual. Therefore, the accrued liability for guaranty fund and other assessments and the related premium tax benefit have been ceded to Mutual.

C. Gain Contingencies

Not applicable.

D. Claims Related Extra Contractual Obligations and Bad Faith Losses Stemming From Lawsuits

The Company paid the following amounts in the reporting period to settle claims related extra contractual obligations or bad faith claims stemming from lawsuits.

Claims related ECO and bad faith losses paid during the reporting period: \$1,000,752

Number of claims where amounts were paid to settle claims related extra contractual obligations or bad faith claims resulting from lawsuits during the reporting period.

(a) 0 - 25 claims	(b) 26 - 50 claims	(c) 51 - 100 claims	(d) 101 - 500 claims	(e) More than 500 claims
X				

(f) Per Claim [X] Per Claimant []

E. Product Warranties

Not applicable.

F. Joint and Several Liabilities

Not applicable.

G. All Other Contingencies

Various lawsuits arise against the Company in the normal course of the Company's business. Contingent liabilities arising from litigation and other matters are not considered material in relation to the financial position of the Company.

Note 15 – Leases

Not applicable.

Note 16 - Information about Financial Instruments with Off-Balance Sheet Risk and Financial Instruments with Concentrations of Credit Risk

Not applicable.

Note 17 - Sale, Transfer and Servicing of Financial Assets and Extinguishments of Liabilities

A. Transfers of Receivables Reported as Sales

Not applicable.

B. Transfer and Servicing of Financial Assets

1. There was no securities lending activity during the period.
2. No servicing assets or liabilities were recognized during the period.
3. No servicing assets or liabilities were recognized during the period.
4. There were no assets securitized during the period.
5. There were no transfers of financial assets accounted for as a secured borrowing (excluding any repurchase and reverse repurchase transactions that may be disclosed under notes 5 F. through 5 I. above).
6. There were no transfers of receivables with recourse.
7. There were no dollar repurchase or reverse dollar repurchase agreements open as of December 31, 2019.

NOTES TO THE FINANCIAL STATEMENTS

C. Wash Sales

Not applicable.

Note 18 - Gain or Loss to the Reporting Entity from Uninsured Plans and the Uninsured Portion of Partially Insured Plans

Not applicable.

Note 19 - Direct Premiums Written/Produced by Managing General Agents/Third Party Administrators

The following summarizes direct premium written in 2019 by managing general agent.

Name and Address of Managing General Agent	FEIN Number	Exclusive Contract	Business Written	Authority Granted	Direct Written Premium
AM WINS TRANSPORTATION, TAMPA, FL	56-2051233	No	C	P	\$ 3,447,302
AON FINANCIAL SERVICE, CHICAGO, IL	75-1317377	No	C	P	12,872,366
BJORNSON SENTINEL -E&L, FARGO, ND	41-1388409	No	C	P	13,151,048
BURNS & WILCOX LTD, METARIE, LA	38-1804059	No	C	P,U,B	13,448,433
CRC INSURANCE SERVICES INC, SANTA ANA, CA	95-3076597	No	C	P	7,690,127
CREATIVE UNDERWRITERS CORP, CARMEL, IN	35-1687643	No	C	P,U,B	10,143,833
E-RISK SERVICES LLC, FLANDERS, NJ	26-3260559	No	C	P,U,B	17,391,593
INTERSTATE INSURANCE, TIMONIUM, MD	25-1213835	No	C	P	10,979,386
ISR MARINE SERVICES LLC, LYNNFIELD, MA	37-0391000	No	C	P,U,B	10,824,408
JM WILSON CORPORATION, PORTAGE, MI	38-1178100	No	C	P	15,187,810
K&K INSURANCE GROUP INC , FORT WAYNE, IN	35-1003799	No	C	P,U,B	232,647,708
MARSH USA INC, NEW YORK, NY	36-1436000	No	C	P	17,114,023
MILE HIGH MARKETS INC (DBA), GREENWOOD VILLAGE, CO	84-0974211	No	C	P,U,B	29,642,330
PHOENIX AMERICAN INSURANCE, MIAMI, FL	59-2786982	No	C	C,CA,B,P,U	42,767,243
PROSURANCE GROUP INC DBA, MOUNTAIN VIEW, CA	77-0362530	No	C	P,U,B	8,863,622
RISK PLACEMENT SERVICES INC, SCOTTSDALE, AZ	36-3110841	No	C	P	50,018,190
SWETT & CRAWFORD, MERIDIAN, ID	74-1565310	No	C	P,U,B	13,736,688
TRUCKERS INSURANCE ASSOCIATES, WEST DES MOINES, IA	42-0918821	No	C	P,U,B	19,615,249
W E LOVE & ASSOCIATES INC, BURLINGTON, NC	56-1318803	No	C	P,U,B	25,968,143
					\$ 555,509,502

C - Commercial Lines
P - Personal Lines

Note 20 – Fair Value Measurements

A. Fair value is defined as the price that would be received to sell an asset or paid to transfer a liability in an orderly transaction between market participants at the measurement date. Fair value measurements are based upon observable and unobservable inputs. Observable inputs reflect market data obtained from independent sources while unobservable inputs reflect the Company's view of market assumptions in the absence of observable market information. The Company utilizes valuation techniques that maximize the use of observable inputs and minimize the use of unobservable inputs. In determining fair value, the Company uses various methods including market, income and cost approaches.

The Company categorizes its financial instruments into a three-level hierarchy based on the priority of the inputs to the valuation technique. The fair value hierarchy gives the highest priority to quoted prices in active markets for identical assets or liabilities (Level 1) and the lowest priority to unobservable inputs (Level 3). If the inputs used to measure fair value fall within different levels of the hierarchy, the category level is based on the lowest priority level input that is significant to the fair value measurement of the instrument in its entirety.

The Company categorizes assets and liabilities held at fair value in the statutory statements of assets and liabilities, surplus and other funds as follows:

Level 1. Unadjusted quoted prices accessible in active markets for identical assets or liabilities at the measurement date and mutual funds where the value per share (unit) is determined and published daily and is the basis for current transactions.

Level 2. Unadjusted quoted prices for similar assets or liabilities in active markets or inputs (other than quoted prices) that are observable or that are derived principally from or corroborated by observable market data through correlation or other means. Primary inputs to this valuation technique may include comparative trades, bid/asks, interest rate movements, U.S. Treasury rates, London Interbank Offered Rate, prime rates, cash flows, maturity dates, call ability, estimated prepayments and/or underlying collateral values.

Level 3. Prices or valuation techniques that require inputs that are both unobservable and significant to the overall fair value measurement. Inputs reflect management's best estimates of the assumptions market participants would use at the measurement date in pricing the asset or liability. Consideration is given to the risk inherent in both the method of valuation and the valuation inputs. Primary inputs to this valuation technique include broker quotes and comparative trades.

The Company reviews its fair value hierarchy classifications for assets and liabilities quarterly. Changes in observability of significant valuation inputs identified during these reviews may trigger reclassifications. Reclassifications are reported as transfers at the beginning of the period in which the change occurs.

Independent pricing services are most often utilized to determine the fair value of bonds and stocks for which market quotations or quotations on comparable securities are available. For these bonds and stocks, the Company obtains the pricing services' methodologies, pricing from additional sources, inputs and assumptions and classifies the investments accordingly in the fair value hierarchy.

A corporate pricing matrix is used in valuing certain corporate bonds. The corporate pricing matrix was developed using publicly available spreads for privately placed corporate securities with varying weighted average lives and credit quality ratings. The weighted average life and credit quality rating of a particular bond to be priced using the corporate pricing matrix are important inputs into the model and are used to determine a corresponding spread that is added to the appropriate U.S. Treasury yield to create an estimated market yield for that bond. The estimated market yield and other relevant factors are then used to estimate the fair value of the particular bond.

NOTES TO THE FINANCIAL STATEMENTS

Non-binding broker quotes are also utilized to determine the fair value of certain bonds when deemed appropriate or when quotes are not available from independent pricing services or a corporate pricing matrix. These bonds are classified with the lowest priority in the fair value hierarchy as only one broker quote is ordinarily obtained, the investment is not traded on an exchange, the pricing is not available to other entities and/or the transaction volume in the same or similar investments has decreased. Inputs used in the development of prices are not provided to the Company by the brokers as the brokers often do not provide the necessary transparency into their quotes and methodologies. At least annually, the Company performs reviews and tests to ensure that quotes are a reasonable estimate of the investments' fair value. Price movements of broker quotes are subject to validation and require approval from the Company's management. Management uses its knowledge of the investment and current market conditions to determine if the price is indicative of the investment's fair value.

The Company carries short-term investments at amortized cost, which approximates fair value.

No assets or liabilities were held at fair value as of December 31, 2019.

B. & C. The following table summarizes the carrying value and fair value of the Company's assets not held at fair value as of December 31, 2019:

	Aggregate Fair Value	Admitted Assets	Level 1	Level 2	Level 3	Net Asset Value (NAV)	Not Practicable (Carrying Value)
Assets							
Bonds	\$143,062,678	\$136,780,836	\$63,072,451	\$79,990,227	\$-	\$-	\$-
Short-term investments	7,249,556	7,249,556	-	7,249,556	-	-	-
Total Assets	\$150,312,234	\$144,030,392	\$63,072,451	\$87,239,783	\$-	\$-	\$-

D. Not Practicable to Estimate Fair Value

Not applicable.

E. Measured using net asset value

Not Applicable.

Note 21 - Other Items

A. Unusual or Infrequent Items

Not applicable.

B. Troubled Debt Restructuring for Debtors

Not applicable.

C. Other Disclosures

The Company re-domesticated from Wisconsin to Ohio effective October 1, 2016.

D. Business Interruption Insurance Recoveries

Not applicable.

E. State Transferable and Non-Transferable Tax Credits

1. Carrying Value of Transferable and Non-transferable State Tax Credits Gross of any Related Tax Liabilities and Total Unused Transferable and Non-transferable State Tax Credits by State and in Total

Description of State Transferable and Non-Transferable Tax Credits	State	Carrying Value	Unused Amount
EC Bottleworks LLC	IN	\$ 487,275	\$ -
EC Riverwalk 3 LLC	SC	500,999	-
Total	\$	988,274	\$ -

2. The Company estimates the utilization of remaining transferable and non-transferable state tax credits by projecting future premium and taking into account policy growth, while also projecting future tax liability in the relevant jurisdiction.

3. The Company did not recognize any impairment on state tax credits in 2019.

4. State Tax Credits Admitted and Nonadmitted

	Total Admitted	Total Nonadmitted
a. Transferable	\$ -	\$ -
b. Non-transferable	\$ -	\$ -

F. Subprime Mortgage Related Risk Exposure

1. The Company evaluates many characteristics when classifying collateral as subprime, including the credit quality of the borrower as defined by Fair Isaac Credit Organization (FICO) scores, as well as other factors, such as loan-to-value ratios and type of real estate.
2. The company has no direct exposure through investments in subprime mortgage loans.

NOTES TO THE FINANCIAL STATEMENTS

3. Direct exposure through other investments:

	Actual Cost		Book/Adjusted Carrying Value (excluding interest)		Fair Value		Other Than Temporary Impairment Losses Recognized
a. Residential mortgage backed securities	\$	123	\$	128	\$	135	\$ -
b. Commercial mortgage backed securities		-		-		-	-
c. Collateralized debt obligations		-		-		-	-
d. Structured securities		-		-		-	-
e. Equity investments in SCAs		-		-		-	-
f. Other assets		-		-		-	-
g. Total	\$	123	\$	128	\$	135	\$ -

4. The company has no exposure to subprime mortgage risk through Mortgage Guaranty or Financial Guaranty insurance coverage.

G. Insurance Linked Securities

Not applicable.

H. The Amount That Could Be Realized on Life Insurance Where the Reporting Entity is Owner and Beneficiary or Has Otherwise Obtained Rights to Control the Policy

Not applicable.

Note 22 - Events Subsequent

Type I – Recognized Subsequent Events:

Subsequent events have been considered through February 20, 2020 for the statutory statement issued on February 21, 2020.

There were no material Type I events occurring subsequent to the end of the year that merited recognition or disclosure in these statements that have not already been reflected as required.

Type II – Nonrecognized Subsequent Events:

Subsequent events have been considered through February 20, 2020 for the statutory statement issued on February 21, 2020.

There were no material Type II events occurring subsequent to the end of the year that merited disclosure in these statements that have not already been reflected as required.

Note 23 – Reinsurance

A. Unsecured Reinsurance Recoverables

The Company has unsecured aggregate reinsurance recoverable for paid and unpaid losses, including IBNR, loss adjustment expenses and unearned premiums, from an individual reinsurer that exceeds 3% of policyholders' surplus. The amount is shown below by reinsurer.

NAIC Group	Reinsurer	FEIN #	Unsecured Reinsurance (in thousands)
0140	Nationwide Mutual Insurance Company	31-4177100	\$1,730,293

B. Reinsurance Recoverable in Dispute

The Company does not have reinsurance recoverables in dispute for paid losses and loss adjustment expenses that exceed 5% of policyholders' surplus from an individual reinsurer or exceed 10% of policyholders' surplus in aggregate.

C. Reinsurance Assumed and Ceded

1. The following table summarizes ceded and assumed unearned premiums and the related commission equity at December 31, 2019.

(in thousands)	Assumed Reinsurance		Ceded Reinsurance		Net	
	Premium Reserve	Commission Equity	Premium Reserve	Commission Equity	Premium Reserve	Commission Equity
a. Affiliates	\$-	\$-	\$591,418	\$140,959	\$(591,418)	\$(140,959)
b. All Others	914	204	1,165	93	(251)	111
c. Total	\$914	\$204	\$592,583	\$141,052	\$(591,669)	\$(140,848)

d. Direct Unearned Premium Reserve \$591,669

2. Certain agency agreements and ceded reinsurance contracts provide for additional or return commissions based on the actual loss experience of the produced or reinsured business. Amounts accrued at December 31, 2019 are as follows:

(in thousands)	Direct	Assumed	Ceded	Net
Reinsurance				
a. Contingent Commissions	\$7	\$-	\$7	\$-
b. Sliding Scale Adjustments	-	-	-	-
c. Other Profit Commission Arrangements	-	-	-	-
d. Total	\$7	\$-	\$7	\$-

3. The Company does not use protected cells as an alternative to traditional reinsurance.

NOTES TO THE FINANCIAL STATEMENTS

D. Uncollectible Reinsurance

No reinsurance recoverables were written off during 2019.

E. Commutation of Ceded Reinsurance

The Company did not enter into any commutation of reinsurance during 2019.

F. Retroactive Reinsurance

There was no retroactive reinsurance affected during 2019.

G. Reinsurance Accounted for as a Deposit

There were no reinsurance agreements that were accounted for as deposits during 2019.

H. Disclosures for the Transfer of Property and Casualty Run-Off Agreements

There was no transfer of any property and casualty run-off agreements requiring approval of regulators and qualifying under SSAP No. 62R, Property and Casualty Reinsurance, to receive property & casualty run-off accounting treatment.

I. Certified Reinsurer Rating Downgrades or Status Subject to Revocation

Not applicable.

J. Reinsurance Agreements Qualifying for Reinsurer Aggregation

Not applicable.

Note 24 - Retrospectively Rated Contracts and Contracts Subject to Redetermination

Not applicable.

Note 25 - Changes in Incurred Losses and Loss Adjustment Expenses

The Company is a participant in a 100% quote share reinsurance agreement with Mutual (as disclosed in Note 26), and as such has zero net incurred losses and loss adjustment expenses.

Note 26 - Intercompany Pooling Arrangements

Nationwide Mutual Insurance Company is the lead company in the Nationwide Pool. Each pool member company contributes 100% of its underwriting results to the Nationwide Pool though the reinsurance pooling agreement.

Effective January 1, 2019, Nationwide General Insurance Company was added as a Nationwide Pool recipient and changed from a 0% to 1% retrocessionaire.

As of December 31, 2019 and December 31, 2018, the companies in the Nationwide Pool assuming a proportionate share of the pool are:

	NAIC #	2019 Pool	2018 Pool
Nationwide Mutual Insurance Company	23787	72.0%	73.0%
Nationwide Mutual Fire Insurance Company	23779	23.0%	23.0%
Scottsdale Insurance Company	41297	4.0%	4.0%
Nationwide General Insurance Company	23760	1.0%	0.0%

Effective January 1, 2020, the Nationwide Pool structure was revised. Nationwide Mutual Insurance Company's assumed pooling percentage decreased from 72% to 71%. Scottsdale Insurance Company's was removed as a Nationwide Pool recipient. Nationwide Agribusiness Insurance Company, Nationwide Insurance Company of America and National Casualty Company were each added as a Nationwide Pool recipient with a 3%, 1% and 1% assumed pooling percentage, respectively. Furthermore, National Casualty Company terminated its 100% quota share reinsurance agreement with Nationwide Mutual and was added to the Nationwide Pool with a 1% retainage share.

Effective January 1, 2019, Victoria Select Insurance Company was removed from the Nationwide Pool and entered into a 100% quota share reinsurance agreement with Nationwide Mutual Insurance Company. Nationwide Mutual Insurance Company then cedes 100% of the business to the Nationwide Pool.

Effective January 1, 2019, in conjunction with the merger of Titan Indemnity Company with and into Titan Insurance Company on January 1, 2019, Titan Indemnity Company terminated its participation in the Nationwide Pool and the assets and liabilities were commuted back to Titan Indemnity Company.

All of the other companies in the Nationwide Pool have a 0% retrocession. The zero percent participants in the Nationwide Pool as of December 31, 2019 are: Nationwide Property and Casualty Insurance Company (NAIC #37877), Nationwide Affinity Insurance Company of America (NAIC #26093), Crestbrook Insurance Company (NAIC #18961), Allied Insurance Company of America (NAIC #10127), Nationwide Assurance Company (NAIC #10723), Nationwide Lloyds (NAIC #42110), Nationwide Insurance Company of Florida (NAIC #10948), AMCO Insurance Company (NAIC #19100), Allied Property and Casualty Insurance Company (NAIC #42579), Depositors Insurance Company (NAIC #42587), Nationwide Agribusiness Insurance Company (NAIC #28223), Nationwide Insurance Company of America (NAIC #25453), Victoria Fire & Casualty Company (NAIC #42889), Victoria National Insurance Company (NAIC #10778), Harleysville Preferred Insurance Company (NAIC #35696), Harleysville Insurance Company of New Jersey (NAIC #42900), Harleysville Worcester Insurance Company (NAIC #26182), Harleysville Insurance Company of New York (NAIC #10674), Harleysville Lake States Insurance Company (NAIC #14516), Harleysville Insurance Company (NAIC #23582) and Veterinary Pet Insurance Company (NAIC #42285).

All lines of business are subject to the pooling agreements.

There are no discrepancies related to the pooled business between the assumed and ceded reinsurance schedules of the pool participants.

NOTES TO THE FINANCIAL STATEMENTS

Amounts due to/from the lead entity and pool participants as of December 31, 2019:

Name of Insurer	Amounts Receivable	Amounts Payable
Nationwide Mutual Insurance Company (Lead Insurer)	\$ 246,611,254	\$ 182,870,305
Nationwide Mutual Fire Insurance Company	\$ 20,171,254	\$ 6,335
Scottsdale Insurance Company	\$ 13,374,734	\$ 2,809,498
Nationwide General Insurance Company	\$ 17,095,182	\$ 12,133
Nationwide Property & Casualty Insurance Company	\$ 17,934,650	\$ 186,688
Nationwide Affinity Insurance Company of America	\$ 5,079,134	\$ 1,159,238
Crestbrook Insurance Company	\$ 2,049,417	\$ 5,427,413
Allied Insurance Company of America	\$ 17,009,232	\$ 14,190,466
AMCO Insurance Company	\$ 132,407,895	\$ 107,924,191
Allied Property & Casualty Insurance Company	\$ 9,730,938	\$ 11,963,058
Depositors Insurance Company	\$ 18,058,273	\$ 16,920,790
Nationwide Agribusiness Insurance Company	\$ 36,127,203	\$ 39,151,644
Victoria Fire & Casualty Company	\$ 16,075	\$ 626,812
Victoria Select Insurance Company	\$ -	\$ 85,359
Victoria National Insurance Company	\$ -	\$ 527
Harleysville Worcester Insurance Company	\$ 1,871	\$ 7,004,946
Harleysville Insurance Company of New Jersey	\$ 271	\$ 1,510,419
Harleysville Preferred Insurance Company	\$ 674	\$ 2,663,806
Harleysville Lake States Insurance Company	\$ 399	\$ 1,219,064
Harleysville Insurance Company	\$ 869,208	\$ 134,089
Harleysville Insurance Company of New York	\$ 261	\$ 2,160,653
Nationwide Assurance Company	\$ 50,527,908	\$ 49,878,834
Nationwide Lloyds	\$ 305	\$ 916,249
Nationwide Insurance Company of Florida	\$ 3,387	\$ 1,021,288
Nationwide Insurance Company of America	\$ 19,284,753	\$ 18,208
Veterinary Pet Insurance Company	\$ 1,933	\$ 17,312,845

As of December 31, 2019, National Casualty Company and Colonial County Mutual Insurance Company remain covered under separate 100% quota share reinsurance agreements with Nationwide Mutual Insurance Company. Nationwide Mutual Insurance Company then cedes 100% of this business to the Nationwide Pool.

As of December 31, 2019, Scottsdale Surplus Lines Insurance Company, Scottsdale Indemnity Company and Freedom Specialty Insurance Company remain covered under a separate 100% quota share reinsurance agreement with Scottsdale Insurance Company. Scottsdale Insurance Company then cedes 100% of this business to the Nationwide Pool.

In connection with the above pooling structure change effective January 1, 2020, assets and liabilities were transferred between Nationwide Mutual Insurance Company, Nationwide Agribusiness, Scottsdale Insurance Company, Nationwide Insurance Company of America and the Company. The Company received assets of \$46.4 million and liabilities of \$232.1 million, primarily consisting of loss and loss expense reserves of \$141.9 million and unearned premiums of \$77.2 million.

In addition, the Company received ceding commissions of \$13.5 million.

Furthermore, the Company received securities of \$143.5 million and cash of \$28.7 million to settle these transactions.

Note 27 - Structured Settlements

Not applicable.

Note 28 - Health Care Receivables

Not applicable.

Note 29 – Participating Policies

Not applicable.

Note 30 - Premium Deficiency Reserves

The Company’s liability for premium deficiency reserves as of December 31, 2019 is as follows:

- | | |
|---|------------------|
| 1. Liability carried for premium deficiency reserves | \$0 |
| 2. Date of the most recent evaluation of this liability | January 24, 2020 |
| 3. Was anticipated investment income utilized in the calculation? | Yes |

NOTES TO THE FINANCIAL STATEMENTS

Note 31 – High Deductibles

A. Reserve Credit Recorded on Unpaid Claims and Amount Billed and Recoverable on Paid Claims for High Deductibles

1. Counterparty exposure recorded on unpaid claims and billed recoverables on paid claims:

Annual Statement Line of Business (ASL)		3	4	5	6
1 ASL #	2 ASL Description	Gross (of High Deductible) Loss Reserves	Reserve Credit for High Deductibles	Billed Recoverables on Paid Claims	Total High Deductibles and Billed Recoverables (Col. 4 + Col. 5)
16	Workers Compensation	\$ 2991391	\$ 2905624	\$ 11642	\$ 2917267

2. Unsecured amounts of high deductibles:

a.	Total high deductibles and billed recoverables on paid claims	\$ 2,917,267
b.	Collateral on balance sheet	\$ -
c.	Collateral off balance sheet	\$ 2,917,267
d.	Total unsecured deductibles and billed recoverables on paid claims	\$ -
e.	Percentage unsecured	0%

3. High deductible recoverable amounts on paid claims:

a.	Amount of overdue nonadmitted (either due to aging or collateral)	\$ -
b.	Total over 90 days overdue admitted	\$ -
c.	Total overdue (a+b)	\$ -

4. The deductible amounts for the highest ten unsecured high deductible policies:

Counterparty Ranking	Top Ten Unsecured High Deductible Amounts
Counterparty 1	\$ -

B. Unsecured High Deductible Recoverables for Individual Obligor Part of a Group Under the Same Management or Control Which Are Greater Than 1% of Capital and Surplus. For this purpose, a group of entities under common control shall be regarded as a single customer.

Not applicable.

Note 32 - Discounting of Liabilities for Unpaid Losses or Unpaid Loss Adjustment Expenses

Not applicable.

Note 33 - Asbestos/Environmental Reserves

Not applicable.

Note 34 – Subscriber Savings Accounts

Not applicable.

Note 35 – Multiple Peril Crop Insurance

Not applicable.

Note 36 – Financial Guaranty Insurance

Not applicable.

GENERAL INTERROGATORIES

PART 1 - COMMON INTERROGATORIES

GENERAL

- 1.1

Is the reporting entity a member of an Insurance Holding Company System consisting of two or more affiliated persons, one or more of which is an insurer?
If yes, complete Schedule Y, Parts 1, 1A and 2.

Yes [X] No []
- 1.2

If yes, did the reporting entity register and file with its domiciliary State Insurance Commissioner, Director or Superintendent or with such regulatory official of the state of domicile of the principal insurer in the Holding Company System, a registration statement providing disclosure substantially similar to the standards adopted by the National Association of Insurance Commissioners (NAIC) in its Model Insurance Holding Company System Regulatory Act and model regulations pertaining thereto, or is the reporting entity subject to standards and disclosure requirements substantially similar to those required by such Act and regulations?

Yes [X] No [] N/A []
- 1.3

State regulating? OH
- 1.4

Is the reporting entity publicly traded or a member of publicly traded group?

Yes [] No [X]
- 1.5

If the response to 1.4 is yes, provide the CIK (Central Index Key) code issued by the SEC for the entity/group.
- 2.1

Has any change been made during the year of this statement in the charter, by-laws, articles of incorporation, or deed of settlement of the reporting entity?

Yes [] No [X]
- 2.2

If yes, date of change:
- 3.1

State as of what date the latest financial examination of the reporting entity was made or is being made.

12/31/2016
- 3.2

State the as of date that the latest financial examination report became available from either the state of domicile or the reporting entity. This date should be the date of the examined balance sheet and not the date the report was completed or released.

12/31/2016
- 3.3

State as of what date the latest financial examination report became available to other states or the public from either the state of domicile or the reporting entity. This is the release date or completion date of the examination report and not the date of the examination (balance sheet date).

05/24/2018
- 3.4

By what department or departments?
OH
- 3.5

Have all financial statement adjustments within the latest financial examination report been accounted for in a subsequent financial statement filed with departments?

Yes [] No [] N/A [X]
- 3.6

Have all of the recommendations within the latest financial examination report been complied with?

Yes [] No [] N/A [X]
- 4.1

During the period covered by this statement, did any agent, broker, sales representative, non-affiliated sales/service organization or any combination thereof under common control (other than salaried employees of the reporting entity) receive credit or commissions for or control a substantial part (more than 20 percent of any major line of business measured on direct premiums) of:
- 4.11

sales of new business?

Yes [] No [X]
- 4.12

renewals?

Yes [] No [X]
- 4.2

During the period covered by this statement, did any sales/service organization owned in whole or in part by the reporting entity or an affiliate, receive credit or commissions for or control a substantial part (more than 20 percent of any major line of business measured on direct premiums) of:
- 4.21

sales of new business?

Yes [] No [X]
- 4.22

renewals?

Yes [] No [X]
- 5.1

Has the reporting entity been a party to a merger or consolidation during the period covered by this statement?
If the answer is YES, complete and file the merger history data file with the NAIC.

Yes [] No [X]
- 5.2

If yes, provide the name of entity, NAIC company code, and state of domicile (use two letter state abbreviation) for any entity that has ceased to exist as a result of the merger or consolidation.

1	2 NAIC Company Code	3 State of Domicile
Name of Entity		

- 6.1

Has the reporting entity had any Certificates of Authority, licenses or registrations (including corporate registration, if applicable) suspended or revoked by any governmental entity during the reporting period?

Yes [] No [X]
- 6.2

If yes, give full information:

- 7.1

Does any foreign (non-United States) person or entity directly or indirectly control 10% or more of the reporting entity?

Yes [] No [X]
- 7.2

If yes,
- 7.21

State the percentage of foreign control

%
- 7.22

State the nationality(s) of the foreign person(s) or entity(s); or if the entity is a mutual or reciprocal, the nationality of its manager or attorney-in-fact and identify the type of entity(s) (e.g., individual, corporation, government, manager or attorney-in-fact).

1 Nationality	2 Type of Entity

- 8.1

Is the company a subsidiary of a bank holding company regulated with the Federal Reserve Board?

Yes [] No [X]
- 8.2

If response to 8.1 is yes, please identify the name of the bank holding company.

- 8.3

Is the company affiliated with one or more banks, thrifts or securities firms?

Yes [X] No []
- 8.4

If the response to 8.3 is yes, please provide below the names and locations (city and state of the main office) of any affiliates regulated by a federal financial regulatory services agency [i.e. the Federal Reserve Board (FRB), the Office of the Comptroller of the Currency (OCC), the Federal Deposit Insurance Corporation (FDIC) and the Securities Exchange Commission (SEC)] and identify the affiliate's primary federal regulator.

1 Affiliate Name	2 Location (City, State)	3 FRB	4 OCC	5 FDIC	6 SEC
Nationwide Trust Company, FSB	Columbus, OH	No	Yes	No	No
Nationwide Investment Services Corp.	Columbus, OH	No	No	No	Yes
Nationwide Investment Advisors, LLC	Columbus, OH	No	No	No	Yes
Nationwide Securities, LLC	Columbus, OH	No	No	No	Yes
Nationwide Fund Advisors	Columbus, OH	No	No	No	Yes
Nationwide Fund Distributors, LLC	Columbus, OH	No	No	No	Yes
Nationwide Asset Management, LLC	Columbus, OH	No	No	No	Yes
Jefferson National Securities Corporation	Louisville, KY	No	No	No	Yes
JNF Advisors, Inc.	Louisville, KY	No	No	No	Yes

GENERAL INTERROGATORIES

PART 1 - COMMON INTERROGATORIES

9.

What is the name and address of the independent certified public accountant or accounting firm retained to conduct the annual audit?
KPMG LLP, 191 W NATIONWIDE BLVD., SUITE 500, COLUMBUS, OH 43215

10.1

Has the insurer been granted any exemptions to the prohibited non-audit services provided by the certified independent public accountant requirements as allowed in Section 7H of the Annual Financial Reporting Model Regulation (Model Audit Rule), or substantially similar state law or regulation?

Yes [☐] No [☒]

10.2

If the response to 10.1 is yes, provide information related to this exemption:

10.3

Has the insurer been granted any exemptions related to other requirements of the Annual Financial Reporting Model Regulation as allowed for in Section 18A of the Model Regulation, or substantially similar state law or regulation?

Yes [☐] No [☐]

10.4

If the response to 10.3 is yes, provide information related to this exemption:

10.5

Has the reporting entity established an Audit Committee in compliance with the domiciliary state insurance laws?

Yes [☒] No [☐] N/A [☐]

10.6

If the response to 10.5 is no or n/a, please explain:

11.

What is the name, address and affiliation (officer/employee of the reporting entity or actuary/consultant associated with an actuarial consulting firm) of the individual providing the statement of actuarial opinion/certification?
Melissa Tomita, FCAS, MAAA, Nationwide Insurance, 8877 N. Gainey Center Drive, Scottsdale, AZ 85258

12.1

Does the reporting entity own any securities of a real estate holding company or otherwise hold real estate indirectly?

Yes [☒] No [☐]

12.11

Name of real estate holding company

EC Bottleworks LLC, EC Riverwalk 3 LLC

12.12

Number of parcels involved

2

12.13

Total book/adjusted carrying value

\$ 988,274

12.2

If yes, provide explanation
The Company holds real estate indirectly through tax credit vehicles.

13.

FOR UNITED STATES BRANCHES OF ALIEN REPORTING ENTITIES ONLY:

13.1

What changes have been made during the year in the United States manager or the United States trustees of the reporting entity?

13.2

Does this statement contain all business transacted for the reporting entity through its United States Branch on risks wherever located?

Yes [☐] No [☐]

13.3

Have there been any changes made to any of the trust indentures during the year?

Yes [☐] No [☐]

13.4

If answer to (13.3) is yes, has the domiciliary or entry state approved the changes?

Yes [☐] No [☐] N/A [☐]

14.1

Are the senior officers (principal executive officer, principal financial officer, principal accounting officer or controller, or persons performing similar functions) of the reporting entity subject to a code of ethics, which includes the following standards?

Yes [☒] No [☐]

(a)

Honest and ethical conduct, including the ethical handling of actual or apparent conflicts of interest between personal and professional relationships;

(b)

Full, fair, accurate, timely and understandable disclosure in the periodic reports required to be filed by the reporting entity;

(c)

Compliance with applicable governmental laws, rules and regulations;

(d)

The prompt internal reporting of violations to an appropriate person or persons identified in the code; and

(e)

Accountability for adherence to the code.

14.11

If the response to 14.1 is no, please explain:
NA

14.2

Has the code of ethics for senior managers been amended?

Yes [☐] No [☒]

14.21

If the response to 14.2 is yes, provide information related to amendment(s).
NA

14.3

Have any provisions of the code of ethics been waived for any of the specified officers?

Yes [☐] No [☒]

14.31

If the response to 14.3 is yes, provide the nature of any waiver(s).
NA

15.1

Is the reporting entity the beneficiary of a Letter of Credit that is unrelated to reinsurance where the issuing or confirming bank is not on the SVO Bank List?

Yes [☐] No [☒]

15.2

If the response to 15.1 is yes, indicate the American Bankers Association (ABA) Routing Number and the name of the issuing or confirming bank of the Letter of Credit and describe the circumstances in which the Letter of Credit is triggered.

1	2	3	4
American Bankers Association (ABA) Routing Number	Issuing or Confirming Bank Name	Circumstances That Can Trigger the Letter of Credit	Amount
			\$

BOARD OF DIRECTORS

16.

Is the purchase or sale of all investments of the reporting entity passed upon either by the Board of Directors or a subordinator committee thereof?

Yes [☒] No [☐]

17.

Does the reporting entity keep a complete permanent record of the proceedings of its Board of Directors and all subordinate committees thereof?

Yes [☒] No [☐]

18.

Has the reporting entity an established procedure for disclosure to its Board of Directors or trustees of any material interest or affiliation on the part of any of its officers, directors, trustees or responsible employees that is in conflict or is likely to conflict with the official duties of such person?

Yes [☒] No [☐]

FINANCIAL

19.

Has this statement been prepared using a basis of accounting other than Statutory Accounting Principles (e.g., Generally Accepted Accounting Principles)?

Yes [☐] No [☒]

20.1

Total amount loaned during the year (inclusive of Separate Accounts, exclusive of policy loans):

20.11

To directors or other officers

\$ 0

20.12

To stockholders not officers

\$ 0

20.13

Trustees, supreme or grand (Fraternal only)

\$ 0

20.2

Total amount of loans outstanding at the end of year (inclusive of Separate Accounts, exclusive of policy loans):

20.21

To directors or other officers

\$ 0

20.22

To stockholders not officers

0

20.23

Trustees, supreme or grand (Fraternal only)

0

21.1

Were any assets reported in this statement subject to a contractual obligation to transfer to another party without the liability for such obligation being reporting in the statement?

Yes [☐] No [☒]

21.2

If yes, state the amount thereof at December 31 of the current year:

21.21

Rented from others

\$ 0

21.22

Borrowed from others

\$ 0

21.23

Leased from others

\$ 0

15.1

GENERAL INTERROGATORIES

PART 1 - COMMON INTERROGATORIES

	21.24	Other		
			\$	0
22.1		Does this statement include payments for assessments as described in the <i>Annual Statement Instructions</i> other than guaranty fund or guaranty association assessments?		Yes [] No [X]
22.2		If answer is yes:		
	22.21	Amount paid as losses or risk adjustment	\$	0
	22.22	Amount paid as expenses	\$	0
	22.23	Other amounts paid	\$	0
23.1		Does the reporting entity report any amounts due from parent, subsidiaries or affiliates on Page 2 of this statement?		Yes [X] No []
23.2		If yes, indicate any amounts receivable from parent included in the Page 2 amount:	\$	0

INVESTMENT

24.01	Were all the stocks, bonds and other securities owned December 31 of current year, over which the reporting entity has exclusive control, in the actual possession of the reporting entity on said date (other than securities lending programs addressed in 24.03)?	Yes [X]	No []									
24.02	If no, give full and complete information, relating thereto:											
24.03	For security lending programs, provide a description of the program including value for collateral and amount of loaned securities, and whether collateral is carried on or off-balance sheet (an alternative is to reference Note 17 where this information is also provided).											
24.04	Does the company's security lending program meet the requirements for a conforming program as outlined in the <i>Risk-Based Capital Instructions</i> ?	Yes []	No [] N/A [X]									
24.05	If answer to 24.04 is yes, report amount of collateral for conforming programs.	\$	0									
24.06	If answer to 24.04 is no, report amount of collateral for other programs	\$	0									
24.07	Does your securities lending program require 102% (domestic securities) and 105% (foreign securities) from the counterparty at the outset of the contract?	Yes []	No [] N/A [X]									
24.08	Does the reporting entity non-admit when the collateral received from the counterparty falls below 100%?	Yes []	No [] N/A [X]									
24.09.	Does the reporting entity or the reporting entity's securities lending agent utilize the Master Securities Lending Agreement (MSLA) to conduct securities lending?	Yes []	No [] N/A [X]									
24.10	For the reporting entity's security lending program, state the amount of the following as of December 31 of the current year:											
24.101	Total fair value of reinvested collateral assets reported on Schedule DL, Parts 1 and 2:	\$	0									
24.102	Total book adjusted/carrying value of reinvested collateral assets reported on Schedule DL, Parts 1 and 2:	\$	0									
24.103	Total payable for securities lending reported on the liability page:	\$	0									
25.1	Were any of the stocks, bonds or other assets of the reporting entity owned at December 31 of the current year not exclusively under the control of the reporting entity or has the reporting entity sold or transferred any assets subject to a put option contract that is current in force? (Exclude securities subject to Interrogatory 21.1 and 24.03.)	Yes [X]	No []									
25.2	If yes, state the amount thereof at December 31 of the current year:											
25.21	Subject to repurchase agreements	\$	0									
25.22	Subject to reverse repurchase agreements	\$	0									
25.23	Subject to dollar repurchase agreements	\$	0									
25.24	Subject to reverse dollar repurchase agreements	\$	0									
25.25	Placed under option agreements	\$	0									
25.26	Letter stock or securities restricted as sale – excluding FHLB Capital Stock	\$	0									
25.27	FHLB Capital Stock	\$	0									
25.28	On deposit with states	\$	4,910,441									
25.29	On deposit with other regulatory bodies	\$	540,539									
25.30	Pledged as collateral – excluding collateral pledged to an FHLB	\$	0									
25.31	Pledged as collateral to FHLB – including assets backing funding agreements	\$	0									
25.32	Other	\$	0									
25.3	For category (25.26) provide the following:											
	<table><tr><td>1</td><td>2</td><td>3</td></tr><tr><td>Nature of Restriction</td><td>Description</td><td>Amount</td></tr><tr><td></td><td></td><td>\$</td></tr></table>	1	2	3	Nature of Restriction	Description	Amount			\$		
1	2	3										
Nature of Restriction	Description	Amount										
		\$										
26.1	Does the reporting entity have any hedging transactions reported on Schedule DB?	Yes []	No [X]									
26.2	If yes, has a comprehensive description of the hedging program been made available to the domiciliary state?	Yes []	No [] N/A [X]									
	If no, attach a description with this statement.											

Lines 26.3 through 26.5: FOR LIFE/FRATERNAL REPORTING ENTITIES ONLY:

26.3		Does the reporting entity utilize derivatives to hedge variable annuity guarantees subject to fluctuations as a results of interest rate sensitivity?		Yes []	No []
26.4		If the response to 26.3 is yes, does the reporting entity utilize:			
	26.41	Special accounting provision of SSAP No. 108		Yes []	No []
	26.42	Permitted accounting practice		Yes []	No []
	26.43	Other accounting guidance		Yes []	No []
26.5		By responding yes to 26.41 regarding utilizing the special accounting provisions of SSAP No. 108, the reporting entity attests to the following:		Yes []	No []
		<ul style="list-style-type: none">The reporting entity has obtained explicit approval from the domiciliary state.Hedging strategy subject to the special accounting provisions is consistent with the requirements of VM-21.Actuarial certification has been obtained which indicates that the hedging strategy is incorporated within the establishment of VM-21 reserves and provides the impact of the hedging strategy within the Actuarial Guidance Conditional Tail Expectation Amount.Financial Officer Certification has been obtained which indicates that the hedging strategy meets the definition of a Clearly Defined Hedging Strategy within VM-21 and the Clearly Defined Hedging Strategy is the hedging strategy being used by the company in its actual day-to-day risk mitigation efforts.			
27.1		Were any preferred stocks or bonds owned as of December 31 of the current year mandatorily convertible into equity, or, at the option of the issuer, convertible into equity?		Yes []	No [X]
27.2		If yes, state the amount thereof at December 31 of the current year:	\$		0

GENERAL INTERROGATORIES

PART 1 - COMMON INTERROGATORIES

28. Excluding items in Schedule E-Part 3-Special Deposits, real estate, mortgage loans and investments held physically in the reporting entity's offices, vaults or safety deposit boxes, were all stocks, bonds and other securities, owned throughout the current year held pursuant to a custodial agreement with a qualified bank or trust company in accordance with Section 1, III - General Examination Considerations, F. Outsourcing of Critical Functions, Custodial or Safekeeping Agreements of the NAIC *Financial Condition Examiners Handbook*? Yes [X] No []

28.01 For agreements that comply with the requirements of the NAIC *Financial Condition Examiners Handbook*, complete the following:

1 Name of Custodian(s)	2 Custodian's Address
The Bank of New York Mellon	1 Wall Street, New York, NY 10286

28.02 For all agreements that do not comply with the requirements of the NAIC *Financial Condition Examiners Handbook*, provide the name, location and a complete explanation

1 Name(s)	2 Location(s)	3 Complete Explanation(s)

28.03 Have there been any changes, including name changes, in the custodian(s) identified in 28.01 during the current year? Yes [] No [X]

28.04 If yes, give full and complete information relating thereto:

1 Old Custodian	2 New Custodian	3 Date of Change	4 Reason

28.05 Investment management – Identify all investment advisors, investment managers, broker/dealers, including individuals that have the authority to make investment decisions on behalf of the reporting entity. For assets that are managed internally by employees of the reporting entity, note as such. ["...that have access to the investment accounts", "... handle securities"].

1 Name of Firm or Individual	2 Affiliation
Members of the investment staff designated by the Chief Investment Officer as detailed in the Corporate Resolution	I

28.0597 For those firms/individuals listed in the table for Question 28.05, do any firms/individuals unaffiliated with the reporting entity (i.e. designated with a "U") manage more than 10% of the reporting entity's invested assets? Yes [] No [X]

28.0598 For firms/individuals unaffiliated with the reporting entity (i.e. designated with a "U") listed in the table for Question 28.05, does the total assets under management aggregate to more than 50% of the reporting entity's invested assets? Yes [] No [X]

28.06 For those firms or individuals listed in the table for 28.05 with an affiliation code of "A" (affiliated) or "U" (unaffiliated), provide the information for the table below.

1	2	3	4	5
Central Registration Depository Number	Name of Firm or Individual	Legal Entity Identifier (LEI)	Registered With	Investment Management Agreement (IMA) Filed

29.1 Does the reporting entity have any diversified mutual funds reported in Schedule D-Part 2 (diversified according to the Securities and Exchange Commission (SEC) in the Investment Company Act of 1940 [Section 5 (b) (1)])? Yes [] No [X]

29.2 If yes, complete the following schedule:

1 CUSIP	2 Name of Mutual Fund	3 Book/Adjusted Carrying Value
		\$
29.2999 TOTAL		\$

29.3 For each mutual fund listed in the table above, complete the following schedule:

1 Name of Mutual Fund (from above table)	2 Name of Significant Holding of the Mutual Fund	3 Amount of Mutual Fund's Book/Adjusted Carrying Value Attributable to the Holding	4 Date of Valuation
		\$	

30. Provide the following information for all short-term and long-term bonds and all preferred stocks. Do not substitute amortized value or statement value for fair value.

		1 Statement (Admitted) Value	2 Fair Value	3 Excess of Statement over Fair Value (-), or Fair Value over Statement (+)
30.1	Bonds	\$ 136,780,836	\$ 143,062,678	\$ 6,281,842
30.2	Preferred Stocks	\$ 0	\$ 0	\$ 0
30.3	Totals	\$ 136,780,836	\$ 143,062,678	\$ 6,281,842

30.4 Describe the sources or methods utilized in determining the fair values:
For fixed maturity and marketable equity securities for which market quotations generally are available, Nationwide generally uses independent pricing services to assist in determining the fair value measurement. For certain fixed maturity securities not priced by independent services (generally p
For fixed maturity and marketable equity securities for which market quotations generally are available, Nationwide generally uses independent pricing services to assist in determining the fair value measurement. For certain fixed maturity securities not priced by independent services (generally private placement securities without quoted market prices), an internally developed pricing model or "corporate pricing matrix" is most often used. The corporate pricing matrix is developed by obtaining private spreads versus the U.S. Treasury yield for corporate securities with varying weighted average lives and bond ratings. The weighted average life and bond rating of a particular fixed maturity security to be priced using the corporate matrix are important inputs into the model and are used to determine a corresponding spread that is added to the U.S. Treasury yield to create an estimated market yield for that bond. The estimated market yield and other relevant factors are then used to estimate the fair value of the particular fixed maturity security. Nationwide also utilized broker quotes to assist in pricing securities or to validate modeled prices.

31.1 Was the rate used to calculate fair value determined by a broker or custodian for any of the securities in Schedule D? Yes [X] No []

31.2 If the answer to 31.1 is yes, does the reporting entity have a copy of the broker's or custodian's pricing policy (hard copy or electronic copy) for all brokers or custodians used as a pricing source? Yes [] No [X]

31.3 If the answer to 31.2 is no, describe the reporting entity's process for determining a reliable pricing source for purposes of disclosure of fair value for Schedule D:

GENERAL INTERROGATORIES

PART 1 - COMMON INTERROGATORIES

Nationwide relies on broker valuations only when an approved third party vendor evaluation is not available. Any exceptions are approved by Risk Management and the Middle Office and reviewed by the Investments Pricing Committee. The brokers used to value securities are deemed to be main market makers for each individual security and therefore have in depth knowledge of the particular issue.

32.1

Have all the filing requirements of the *Purposes and Procedures Manual of the NAIC Investment Analysis Office* been followed?

Yes [X] No []

32.2

If no, list exceptions:

33.

By self-designating 5GI securities, the reporting entity is certifying the following elements for each self-designation 5GI security:

a.

Documentation necessary to permit a full credit analysis of the security does not exist or an NAIC CRP credit rating for an FE or PL security is not available.

b.

Issuer or obligor is current on all contracted interest and principal payments.

c.

The insurer has an actual expectation of ultimate payment of all contracted interest and principal.

Has the reporting entity self-designated 5GI securities?

Yes [] No [X]

34.

By self-designating PLGI securities, the reporting entity is certifying the following elements of each self-designated PLGI security:

a.

The security was purchased prior to January 1, 2018.

b.

The reporting entity is holding capital commensurate with the NAIC Designation reported for the security.

c.

The NAIC Designation was derived from the credit rating assigned by an NAIC CRP in its legal capacity as an NRSRO which is shown on a current private letter rating held by the insurer and available for examination by state insurance regulators.

d.

The reporting entity is not permitted to share this credit rating of the PL security with the SVO.

Has the reporting entity self-designated PLGI securities?

Yes [] No [X]

35.

By assigning FE to a Schedule BA non-registered private fund, the reporting entity is certifying the following elements of each self-designated FE fund:

a.

The shares were purchased prior to January 1, 2019.

b.

The reporting entity is holding capital commensurate with the NAIC Designation reported for the security.

c.

The security had a public credit rating(s) with annual surveillance assigned by an NAIC CRP in its legal capacity as an NRSRO prior to January 1, 2019.

d.

The fund only or predominantly holds bonds in its portfolio.

e.

The current reported NAIC Designation was derived from the public credit rating(s) with annual surveillance assigned by an NAIC CRP in its legal capacity as an NRSRO.

f.

The public credit rating(s) with annual surveillance assigned by an NAIC CRP has not lapsed.

Has the reporting entity assigned FE to Schedule BA non-registered private funds that complied with the above criteria?

Yes [] No [X]

OTHER

36.1

Amount of payments to trade associations, service organizations and statistical or rating bureaus, if any?

\$ 0

36.2

List the name of the organization and the amount paid if any such payment represented 25% or more of the total payments to trade associations, service organizations and statistical or rating bureaus during the period covered by this statement.

1 Name	2 Amount Paid
	\$

37.1

Amount of payments for legal expenses, if any?

\$ 0

37.2

List the name of the firm and the amount paid if any such payment represented 25% or more of the total payments for legal expenses during the period covered by this statement.

1 Name	2 Amount Paid
	\$

38.1

Amount of payments for expenditures in connection with matters before legislative bodies, officers or departments of government, if any?

\$ 0

38.2

List the name of the firm and the amount paid if any such payment represented 25% or more of the total payment expenditures in connection with matters before legislative bodies, officers or departments of government during the period covered by this statement.

1 Name	2 Amount Paid
	\$

15.4

GENERAL INTERROGATORIES

PART 2 – PROPERTY & CASUALTY INTERROGATORIES

1.1	Does the reporting entity have any direct Medicare Supplement Insurance in force?		Yes [X]	No []
1.2	If yes, indicate premium earned on U.S. business only.	\$	2,246	
1.3	What portion of Item (1.2) is not reported on the Medicare Supplement Insurance Experience Exhibit?	\$	0	
1.31	Reason for excluding:			
1.4	Indicate amount of earned premium attributable to Canadian and/or Other Alien not included in Item (1.2) above.	\$	0	
1.5	Indicate total incurred claims on all Medicare Supplement insurance.	\$	4,852	
1.6	Individual policies:			
	Most current three years:			
1.61	Total premium earned	\$	0	
1.62	Total incurred claims	\$	0	
1.63	Number of covered lives		0	
	All years prior to most current three years:			
1.64	Total premium earned	\$	2,246	
1.65	Total incurred claims	\$	4,852	
1.66	Number of covered lives		5	
1.7	Group policies:			
	Most current three years:			
1.71	Total premium earned	\$	0	
1.72	Total incurred claims	\$	0	
1.73	Number of covered lives		0	
	All years prior to most current three years:			
1.74	Total premium earned	\$	0	
1.75	Total incurred claims	\$	0	
1.76	Number of covered lives		0	
2.	Health Test:			
		1	2	
		Current Year	Prior Year	
2.1	Premium Numerator	\$ 0	\$ 0	
2.2	Premium Denominator	\$ 0	\$ 0	
2.3	Premium Ratio (2.1/2.2)	0.0%	0.0%	
2.4	Reserve Numerator	\$ 0	\$ 0	
2.5	Reserve Denominator	\$ 10,580	\$ 15,757	
2.6	Reserve Ratio (2.4/2.5)	0.0%	0.0%	
3.1	Does the reporting entity issue both participating and non-participating policies?		Yes [X]	No []
3.2	If yes, state the amount of calendar year premiums written on:			
3.21	Participating policies		\$ 5,211,249	
3.22	Non-participating policies		\$ 1,203,271,832	
4.	FOR MUTUAL REPORTING ENTITIES AND RECIPROCAL EXCHANGES ONLY:			
4.1	Does the reporting entity issue assessable policies?		Yes []	No [X]
4.2	Does the reporting entity issue non-assessable policies?		Yes []	No [X]
4.3	If assessable policies are issued, what is the extent of the contingent liability of the policyholders?			%
4.4	Total amount of assessments paid or ordered to be paid during the year on deposit notes or contingent premiums.		\$ 0	
5.	FOR RECIPROCAL EXCHANGES ONLY:			
5.1	Does the exchange appoint local agents?		Yes []	No []
5.2	If yes, is the commission paid:			
5.21	Out of Attorney's-in-fact compensation		Yes []	No []
5.22	As a direct expense of the exchange		N/A []	
5.3	What expenses of the exchange are not paid out of the compensation of the Attorney-in-fact?		Yes []	No []
5.4	Has any Attorney-in-fact compensation, contingent on fulfillment of certain conditions, been deferred?		Yes []	No []
5.5	If yes, give full information:			
6.1	What provision has this reporting entity made to protect itself from an excessive loss in the event of a catastrophe under a workers' compensation contract issued without limit of loss? The company's net exposure if any ultimately is 100% ceded to the Nationwide Mutual Insurance Company Pool under a quota share reinsurance agreement. No retained exposure.			
6.2	Describe the method used to estimate this reporting entity's probable maximum insurance loss, and identify the type of insured exposures comprising that probable maximum loss, the locations of concentrations of those exposures and the external resources (such as consulting firms or computer software models), if any, used in the estimation process: The company's net exposure if any ultimately is 100% ceded to the Nationwide Mutual Insurance Company Pool under a quota share reinsurance agreement. The company's property exposures are aggregated with the other Nationwide companies and modeled using Applied Insurance Research (AIR) software.			
6.3	What provision has this reporting entity made (such as catastrophic reinsurance program) to protect itself from an excessive loss arising from the types and concentrations of insured exposures comprising its probable maximum property insurance loss? The company's net property-catastrophe exposures, if any, are mitigated through managed coastal growth, purchase of excess of loss reinsurance, policy provisions such as higher deductibles, and enforcement of underwriting guidelines related to building construction, etc.			
6.4	Does the reporting entity carry catastrophe reinsurance protection for at least one reinstatement, in an amount sufficient to cover its estimated probable maximum loss attributable to a single loss event or occurrence?		Yes [X]	No []
6.5	If no, describe any arrangements or mechanisms employed by the reporting entity to supplement its catastrophe reinsurance program or to hedge its exposure to uninsured catastrophic loss:			

GENERAL INTERROGATORIES

PART 2 – PROPERTY & CASUALTY INTERROGATORIES

7.1	Has the reporting entity reinsured any risk with any other entity under a quota share reinsurance contract that includes a provision that would limit the reinsurer's losses below the stated quota share percentage (e.g., a deductible, a loss ratio corridor, a loss cap, an aggregate limit or any similar provisions)?	Yes [<input type="checkbox"/>]	No [<input checked="" type="checkbox"/> X]
7.2	If yes, indicate the number of reinsurance contracts containing such provisions.	<div><div>0</div></div>	
7.3	If yes, does the amount of reinsurance credit taken reflect the reduction in quota share coverage caused by any applicable limiting provision(s)?	Yes [<input type="checkbox"/>]	No [<input type="checkbox"/>]
8.1	Has this reporting entity reinsured any risk with any other entity and agreed to release such entity from liability, in whole or in part, from any loss that may occur on this risk, or portion thereof, reinsured?	Yes [<input type="checkbox"/>]	No [<input checked="" type="checkbox"/> X]
8.2	If yes, give full information		
9.1	Has the reporting entity ceded any risk under any reinsurance contract (or under multiple contracts with the same reinsurer or its affiliates) for which during the period covered by the statement: (i) it recorded a positive or negative underwriting result greater than 5% of prior year-end surplus as regards policyholders or it reported calendar year written premium ceded or year-end loss and loss expense reserves ceded greater than 5% of prior year-end surplus as regards policyholders; (ii) it accounted for that contract as reinsurance and not as a deposit; and (iii) the contract(s) contain one or more of the following features or other features that would have similar results: (a) A contract term longer than two years and the contract is noncancellable by the reporting entity during the contract term; (b) A limited or conditional cancellation provision under which cancellation triggers an obligation by the reporting entity, or an affiliate of the reporting entity, to enter into a new reinsurance contract with the reinsurer, or an affiliate of the reinsurer; (c) Aggregate stop loss reinsurance coverage; (d) A unilateral right by either party (or both parties) to commute the reinsurance contract, whether conditional or not, except for such provisions which are only triggered by a decline in the credit status of the other party; (e) A provision permitting reporting of losses, or payment of losses, less frequently than on a quarterly basis (unless there is no activity during the period); or (f) Payment schedule, accumulating retentions from multiple years or any features inherently designed to delay timing of the reimbursement to the ceding entity?	Yes [<input type="checkbox"/>]	No [<input checked="" type="checkbox"/> X]
9.2	Has the reporting entity during the period covered by the statement ceded any risk under any reinsurance contract (or under multiple contracts with the same reinsurer or its affiliates), for which, during the period covered by the statement, it recorded a positive or negative underwriting result greater than 5% of prior year-end surplus as regards policyholders or it reported calendar year written premium ceded or year-end loss and loss expense reserves ceded greater than 5% of prior year-end surplus as regards policyholders; excluding cessions to approved pooling arrangements or to captive insurance companies that are directly or indirectly controlling, controlled by, or under common control with (i) one or more unaffiliated policyholders of the reporting entity, or (ii) an association of which one or more unaffiliated policyholders of the reporting entity is a member where: (a) The written premium ceded to the reinsurer by the reporting entity or its affiliates represents fifty percent (50%) or more of the entire direct and assumed premium written by the reinsurer based on its most recently available financial statement; or (b) Twenty-five percent (25%) or more of the written premium ceded to the reinsurer has been retroceded back to the reporting entity or its affiliates in a separate reinsurance contract.	Yes [<input type="checkbox"/>]	No [<input checked="" type="checkbox"/> X]
9.3	If yes to 9.1 or 9.2, please provide the following information in the Reinsurance Summary Supplemental Filing for General Interrogatory 9: (a) The aggregate financial statement impact gross of all such ceded reinsurance contracts on the balance sheet and statement of income; (b) A summary of the reinsurance contract terms and indicate whether it applies to the contracts meeting the criteria in 9.1 or 9.2; and (c) A brief discussion of management's principle objectives in entering into the reinsurance contract including the economic purpose to be achieved.		
9.4	Except for transactions meeting the requirements of paragraph 37 of SSAP No. 62R, <i>Property and Casualty Reinsurance</i> , has the reporting entity ceded any risk under any reinsurance contract (or multiple contracts with the same reinsurer or its affiliates) during the period covered by the financial statement, and either: (a) Accounted for that contract as reinsurance (either prospective or retroactive) under statutory accounting principles ("SAP") and as a deposit under generally accepted accounting principles ("GAAP"); or (b) Accounted for that contract as reinsurance under GAAP and as a deposit under SAP?	Yes [<input type="checkbox"/>]	No [<input checked="" type="checkbox"/> X]
9.5	If yes to 9.4, explain in the Reinsurance Summary Supplemental Filing for General Interrogatory 9 (Section D) why the contract(s) is treated differently for GAAP and SAP.		
9.6	The reporting entity is exempt from the Reinsurance Attestation Supplement under one or more of the following criteria: (a) The entity does not utilize reinsurance; or (b) The entity only engages in a 100% quota share contract with an affiliate and the affiliated or lead company has filed an attestation supplement; or (c) The entity has no external cessions and only participates in an intercompany pool and the affiliated or lead company has filed an attestation supplement.	Yes [<input type="checkbox"/>]	No [<input checked="" type="checkbox"/> X]
10.	If the reporting entity has assumed risks from another entity, there should be charged on account of such reinsurances a reserve equal to that which the original entity would have been required to charge had it retained the risks. Has this been done?	Yes [<input type="checkbox"/>]	No [<input type="checkbox"/>] N/A [<input checked="" type="checkbox"/> X]
11.1	Has the reporting entity guaranteed policies issued by any other entity and now in force?	Yes [<input type="checkbox"/>]	No [<input checked="" type="checkbox"/> X]
11.2	If yes, give full information		
12.1	If the reporting entity recorded accrued retrospective premiums on insurance contracts on Line 15.3 of the assets schedule, Page 2, state the amount of corresponding liabilities recorded for: 12.11 Unpaid losses 12.12 Unpaid underwriting expenses (including loss adjustment expenses)	\$	0
12.2	Of the amount on Line 15.3, Page 2, state the amount that is secured by letters of credit, collateral and other funds?	\$	0
12.3	If the reporting entity underwrites commercial insurance risks, such as workers' compensation, are premium notes or promissory notes accepted from its insureds covering unpaid premiums and/or unpaid losses?	Yes [<input type="checkbox"/>]	No [<input checked="" type="checkbox"/> X] N/A [<input type="checkbox"/>]
12.4	If yes, provide the range of interest rates charged under such notes during the period covered by this statement: 12.41 From 12.42 To	<div><div>%</div><div>%</div></div>	
12.5	Are letters of credit or collateral and other funds received from insureds being utilized by the reporting entity to secure premium notes or promissory notes taken by a reporting entity, or to secure any of the reporting entity's reported direct unpaid loss reserves, including unpaid losses under loss deductible features of commercial policies?	Yes [<input type="checkbox"/>]	No [<input checked="" type="checkbox"/> X]
12.6	If yes, state the amount thereof at December 31 of current year: 12.61 Letters of Credit 12.62 Collateral and other funds	\$	8,403,533
13.1	Largest net aggregate amount insured in any one risk (excluding workers' compensation):	\$	0
13.2	Does any reinsurance contract considered in the calculation of this amount include an aggregate limit of recovery without also including a reinstatement provision?	Yes [<input type="checkbox"/>]	No [<input checked="" type="checkbox"/> X]

GENERAL INTERROGATORIES

PART 2 – PROPERTY & CASUALTY INTERROGATORIES

13.3

State the number of reinsurance contracts (excluding individual facultative risk certificates, but including facultative programs, automatic facilities or facultative obligatory contracts) considered in the calculation of the amount.

1

14.1

Is the reporting entity a cedant in a multiple cedant reinsurance contract?

Yes [X]No []

14.2

If yes, please describe the method of allocating and recording reinsurance among the cedants:
Companies that are not part of the Nationwide Mutual Insurance Company Pooling and Quota Share Arrangements receive a fair and equitable allocation of ceded premium and loss. The terms of the Nationwide Pooling and Quota Share Agreements govern the allocation and recording of ceded premium and loss for the participating companies.

14.3

If the answer to 14.1 is yes, are the methods described in item 14.2 entirely contained in the respective multiple cedant reinsurance contracts?

Yes []No [X]

14.4

If the answer to 14.3 is no, are all the methods described in 14.2 entirely contained in written agreements?

Yes []No [X]

14.5

If the answer to 14.4 is no, please explain:
Written agreements are in place for all multi-cedent reinsurance treaties that cover any company that does not participate in the Nationwide Mutual Insurance Company Pooling and Quota Share Arrangements.

15.1

Has the reporting entity guaranteed any financed premium accounts?

Yes []No [X]

15.2

If yes, give full information

16.1

Does the reporting entity write any warranty business?

Yes [X]No []

If yes, disclose the following information for each of the following types of warranty coverage:

	1	2	3	4	5
	Direct Losses Incurred	Direct Losses Unpaid	Direct Written Premium	Direct Premium Unearned	Direct Premium Earned
16.11Home	\$0	\$0	\$0	\$0	\$0
16.12Products	\$0	\$0	\$0	\$0	\$0
16.13Automobile	\$49,950,412	\$801,324	\$42,795,863	\$56,777,394	\$38,387,826
16.14Other*	\$0	\$0	\$0	\$0	\$0

* Disclose type of coverage:

17.1

Does the reporting entity include amounts recoverable on unauthorized reinsurance in Schedule F-Part 3 that is exempt from the statutory provision for unauthorized reinsurance?

Yes []No [X]

Incurred but not reported losses on contracts in force prior to July 1, 1984, and not subsequently renewed are exempt from the statutory provision for unauthorized reinsurance. Provide the following information for this exemption:

17.11	Gross amount of unauthorized reinsurance in Schedule F-Part 3 exempt from the statutory provision for unauthorized reinsurance	\$0
17.12	Unfunded portion of Interrogatory 17.11	\$0
17.13	Paid losses and loss adjustment expenses portion of Interrogatory 17.11	\$0
17.14	Case reserves portion of Interrogatory 17.11	\$0
17.15	Incurred but not reported portion of Interrogatory 17.11	\$0
17.16	Unearned premium portion of Interrogatory 17.11	\$0
17.17	Contingent commission portion of Interrogatory 17.11	\$0

18.1

Do you act as a custodian for health savings accounts?

Yes []No [X]

18.2

If yes, please provide the amount of custodial funds held as of the reporting date.

\$0

18.3

Do you act as an administrator for health savings accounts?

Yes []No [X]

18.4

If yes, please provide the balance of the funds administered as of the reporting date.

\$0

19.

Is the reporting entity licensed or chartered, registered, qualified, eligible, or writing business in at least 2 states?

Yes [X]No []

19.1

If no, does the reporting entity assume reinsurance business that covers risks residing in at least one state other than the state of domicile of the reporting entity?

Yes []No []

FIVE-YEAR HISTORICAL DATA

Show amounts in whole dollars only, no cents; show percentages to one decimal place, i.e. 17.6.

	1 2019	2 2018	3 2017	4 2016	5 2015
Gross Premiums Written (Page 8, Part 1B, Cols. 1, 2 & 3)					
1. Liability lines (Lines 11.1, 11.2, 16, 17.1, 17.2, 17.3, 18.1, 18.2, 19.1, 19.2 & 19.3, 19.4).....	515,702,068	422,549,237	385,169,701	387,790,344	420,688,362
2. Property lines (Lines 1, 2, 9, 12, 21 & 26).....	528,626,631	458,092,232	399,315,413	358,218,171	340,593,024
3. Property and liability combined lines (Lines 3, 4, 5, 8, 22 & 27).....	119,875,087	115,351,246	103,790,695	96,361,882	92,658,313
4. All other lines (Lines 6, 10, 13, 14, 15, 23, 24, 28, 29, 30 & 34).....	47,270,954	42,406,678	32,134,859	30,338,950	30,612,611
5. Nonproportional reinsurance lines (Lines 31, 32 & 33).....					
6. Total (Line 35).....	1,211,474,740	1,038,399,393	920,410,668	872,709,347	884,552,310
Net Premiums Written (Page 8, Part 1B, Col. 6)					
7. Liability lines (Lines 11.1, 11.2, 16, 17.1, 17.2, 17.3, 18.1, 18.2, 19.1, 19.2 & 19.3, 19.4).....					
8. Property lines (Lines 1, 2, 9, 12, 21 & 26).....					
9. Property and liability combined lines (Lines 3, 4, 5, 8, 22 & 27).....					
10. All other lines (Lines 6, 10, 13, 14, 15, 23, 24, 28, 29, 30 & 34).....					
11. Nonproportional reinsurance lines (Lines 31, 32 & 33).....					
12. Total (Line 35).....	0	0	0	0	0
Statement of Income (Page 4)					
13. Net underwriting gain (loss) (Line 8).....					
14. Net investment gain (loss) (Line 11).....	2,460,333	2,029,006	6,719,290	4,457,887	6,726,425
15. Total other income (Line 15).....	47,736	45,553			61
16. Dividends to policyholders (Line 17).....					
17. Federal and foreign income taxes incurred (Line 19).....	1,235,141	259,688	1,523,535	1,278,220	1,180,521
18. Net income (Line 20).....	1,272,928	1,814,871	5,195,755	3,179,667	5,545,965
Balance Sheet Lines (Pages 2 and 3)					
19. Total admitted assets excluding protected cell business (Page 2, Line 26, Col. 3).....	522,354,546	453,690,258	418,608,891	487,070,932	288,523,143
20. Premiums and considerations (Page 2, Col. 3):					
20.1 In course of collection (Line 15.1).....	255,355,828	93,456,089	88,325,682	89,527,925	87,156,495
20.2 Deferred and not yet due (Line 15.2).....	20,509,962	140,336,814	116,824,445	99,680,145	
20.3 Accrued retrospective premiums (Line 15.3).....					
21. Total liabilities excluding protected cell business (Page 3, Line 26).....	376,351,944	310,715,547	277,835,081	348,984,452	154,445,656
22. Losses (Page 3, Line 1).....					
23. Loss adjustment expenses (Page 3, Line 3).....					
24. Unearned premiums (Page 3, Line 9).....					
25. Capital paid up (Page 3, Lines 30 & 31).....	5,000,000	5,000,000	5,000,000	5,000,000	5,000,000
26. Surplus as regards policyholders (Page 3, Line 37).....	146,002,602	142,974,711	140,773,810	138,086,480	134,077,487
Cash Flow (Page 5)					
27. Net cash from operations (Line 11).....	10,300,667	(5,322,097)	2,413,154	17,030,594	(1,977,111)
Risk-Based Capital Analysis					
28. Total adjusted capital.....	146,002,602	142,974,711	140,773,810	138,086,480	134,077,487
29. Authorized control level risk-based capital.....	918,630	818,619	936,178	2,778,027	817,797
Percentage Distribution of Cash, Cash Equivalents and Invested Assets (Page 2, Col. 3) (Item divided by Page 2, Line 12, Col. 3) x 100.0					
30. Bonds (Line 1).....	94.0	96.3	97.2	94.5	96.7
31. Stocks (Lines 2.1 & 2.2).....					
32. Mortgage loans on real estate (Lines 3.1 & 3.2).....					
33. Real estate (Lines 4.1, 4.2 & 4.3).....					
34. Cash, cash equivalents and short-term investments (Line 5).....	5.0	2.8	2.4	5.5	3.3
35. Contract loans (Line 6).....					
36. Derivatives (Line 7).....					
37. Other invested assets (Line 8).....	1.0	0.9	0.4		
38. Receivables for securities (Line 9).....					
39. Securities lending reinvested collateral assets (Line 10).....					
40. Aggregate write-ins for invested assets (Line 11).....					
41. Cash, cash equivalents and invested assets (Line 12).....	100.0	100.0	100.0	100.0	100.0
Investments in Parent, Subsidiaries and Affiliates					
42. Affiliated bonds (Sch. D, Summary, Line 12, Col. 1).....					
43. Affiliated preferred stocks (Sch. D, Summary, Line 18, Col. 1).....					
44. Affiliated common stocks (Sch. D, Summary, Line 24, Col. 1).....					
45. Affiliated short-term investments (subtotals included in Schedule DA, Verification, Column 5, Line 10).....					
46. Affiliated mortgage loans on real estate.....					
47. All other affiliated.....					
48. Total of above lines 42 to 47.....	0	0	0	0	0
49. Total investment in parent included in Lines 42 to 47 above.....					
50. Percentage of investments in parent, subsidiaries and affiliates to surplus as regards policyholders (Line 48 above divided by Page 3, Col. 1, Line 37 x 100.0).....	0.0				

NATIONAL CASUALTY COMPANY
FIVE-YEAR HISTORICAL DATA
(Continued)

	1	2	3	4	5
	2019	2018	2017	2016	2015
Capital and Surplus Accounts (Page 4)					
51. Net unrealized capital gains (losses) (Line 24).....	272,545	343,027	(737,411)	161,896	(1,206,401)
52. Dividends to stockholders (Line 35).....					
53. Change in surplus as regards policyholders for the year (Line 38).....	3,027,891	2,200,901	2,687,330	4,008,993	3,936,497
Gross Losses Paid (Page 9, Part 2, Cols. 1 & 2)					
54. Liability lines (Lines 11.1, 11.2, 16, 17.1, 17.2, 17.3, 18.1, 18.2, 19.1, 19.2 & 19.3, 19.4).....	271,718,790	325,713,069	237,330,174	282,798,083	272,246,892
55. Property lines (Lines 1, 2, 9, 12, 21 & 26).....	332,270,096	279,589,656	245,239,629	211,466,927	209,761,121
56. Property and liability combined lines (Lines 3, 4, 5, 8, 22 & 27).....	65,150,297	66,811,505	49,924,502	49,176,548	32,895,807
57. All other lines (Lines 6, 10, 13, 14, 15, 23, 24, 28, 29, 30 & 34).....	50,638,527	37,263,088	32,510,699	32,030,545	34,494,842
58. Nonproportional reinsurance lines (Lines 31, 32 & 33).....					
59. Total (Line 35).....	719,777,710	709,377,318	565,005,004	575,472,103	549,398,662
Net Losses Paid (Page 9, Part 2, Col. 4)					
60. Liability lines (Lines 11.1, 11.2, 16, 17.1, 17.2, 17.3, 18.1, 18.2, 19.1, 19.2 & 19.3, 19.4).....					
61. Property lines (Lines 1, 2, 9, 12, 21 & 26).....					
62. Property and liability combined lines (Lines 3, 4, 5, 8, 22 & 27).....					
63. All other lines (Lines 6, 10, 13, 14, 15, 23, 24, 28, 29, 30 & 34).....					
64. Nonproportional reinsurance lines (Lines 31, 32 & 33).....					
65. Total (Line 35).....	0	0	0	0	0
Operating Percentages (Page 4) (Item divided by Page 4, Line 1) x 100.0					
66. Premiums earned (Line 1).....	100.0	100.0	100.0	100.0	100.0
67. Losses incurred (Line 2).....					
68. Loss expenses incurred (Line 3).....					
69. Other underwriting expenses incurred (Line 4).....					
70. Net underwriting gain (loss) (Line 8).....					
Other Percentages					
71. Other underwriting expenses to net premiums written (Page 4, Lines 4 + 5 - 15 divided by Page 8, Part 1B, Col. 6, Line 35 x 100.0).....					
72. Losses and loss expenses incurred to premiums earned (Page 4, Lines 2 + 3 divided by Page 4, Line 1 x 100.0).....					
73. Net premiums written to policyholders' surplus (Page 8, Part 1B, Col. 6, Line 35, divided by Page 3, Line 37, Col. 1 x 100.0).....					
One Year Loss Development (\$000 omitted)					
74. Development in estimated losses and loss expenses incurred prior to current year (Schedule P, Part 2-Summary, Line 12, Col. 11).....		(0)			
75. Percent of development of losses and loss expenses incurred to policyholders' surplus of prior year-end (Line 74 above divided by Page 4, Line 21, Col. 1 x 100).....					
Two Year Loss Development (\$000 omitted)					
76. Development in estimated losses and loss expenses incurred 2 years before the current year and prior year (Schedule P, Part 2-Summary, Line 12, Col. 12).....		(0)			
77. Percent of development of losses and loss expenses incurred to reported policyholders' surplus of second prior-year end (Line 76 above divided by Page 4, Line 21, Col. 2 x 100.0).....					

If a party to a merger, have the two most recent years of this exhibit been restated due to a merger in compliance with the disclosure requirements of
SSAP No. 3, *Accounting Changes and Correction of Errors*?
If no, please explain:

Yes[] No[]

SCHEDULE P - ANALYSIS OF LOSSES AND LOSS EXPENSES

SCHEDULE P - PART 1 - SUMMARY

(\$000 Omitted)

Years in Which Premiums Were Earned and Losses Were Incurred	Premiums Earned			Loss and Loss Expense Payments								12 Number of Claims Reported- Direct and Assumed
	1 Direct and Assumed	2 Ceded	3 Net (Cols. 1 - 2)	Loss Payments		Defense and Cost Containment Payments		Adjusting and Other Payments		10 Salvage and Subrogation Received	11 Total Net Paid (Cols. 4 - 5 + 6 - 7 + 8 - 9)	
				4 Direct and Assumed	5 Ceded	6 Direct and Assumed	7 Ceded	8 Direct and Assumed	9 Ceded			
1. Prior.....XXX.....XXX.....XXX.....1,4051,4051,6401,6405,2835,2830XXX.....
2. 2010.....559,452559,4520363,032363,03227,63827,63825,75425,7540XXX.....
3. 2011.....651,364651,3640471,313471,31339,85439,85432,46632,4660XXX.....
4. 2012.....718,171718,1710510,609510,60934,22834,22833,50933,5090XXX.....
5. 2013.....781,522781,5220497,963497,96333,82533,82545,34245,3420XXX.....
6. 2014.....828,321828,3210540,939540,93939,94239,94235,91635,9160XXX.....
7. 2015.....869,005869,0050528,822528,82225,49225,49234,04534,0450XXX.....
8. 2016.....878,288878,2880508,064508,06428,61928,61932,22032,2200XXX.....
9. 2017.....885,199885,1990465,459465,45913,99913,99932,24432,2440XXX.....
10. 2018.....980,943980,9430478,689478,6897,5197,51929,29529,2950XXX.....
11. 2019.....1,099,9231,099,9230380,641380,6412,4532,45316,57316,5730XXX.....
12. Totals.....XXX.....XXX.....XXX.....4,746,9364,746,936255,210255,210322,647322,64700XXX.....

	Losses Unpaid				Defense and Cost Containment Unpaid				Adjusting and Other Unpaid		23 Salvage and Subrogation Anticipated	24 Total Net Losses and Expenses Unpaid	25 Number of Claims Outstanding-Direct and Assumed
	Case Basis		Bulk + IBNR		Case Basis		Bulk + IBNR		21	22			
	13 Direct and Assumed	14 Ceded	15 Direct and Assumed	16 Ceded	17 Direct and Assumed	18 Ceded	19 Direct and Assumed	20 Ceded					
1. Prior.....10,13510,1356,8536,8534,4994,4992,2902,29023230XXX.....
2. 2010.....5,9675,9672,0762,07657057043043027270XXX.....
3. 2011.....13,77813,7783,4783,4789559557007001591590XXX.....
4. 2012.....17,13617,1364,1584,1589359359869862322320XXX.....
5. 2013.....13,33713,3377,1067,1062,8792,8791,5511,5516326320XXX.....
6. 2014.....37,27737,27734,33234,3321,7741,7742,7862,7866436430XXX.....
7. 2015.....28,59628,5964,3464,3462,4152,4154,4184,4181,5011,5010XXX.....
8. 2016.....37,99937,99933,01533,0156,8346,8348,9178,9172,5752,5750XXX.....
9. 2017.....81,72181,72143,60743,6078,0918,09115,03715,0373,4693,4690XXX.....
10. 2018.....96,96496,96478,03178,0318,7738,77328,25828,2586,4136,4130XXX.....
11. 2019.....101,380101,380222,989222,9897,4807,48043,82843,82814,45014,4500XXX.....
12. Totals...444,290444,290439,991439,99145,20545,205109,201109,20130,12430,12400XXX.....

	Total Losses and Loss Expenses Incurred			Loss and Loss Expense Percentage (Incurred/Premiums Earned)			Nontabular Discount		34 Inter-Company Pooling Participation Percentage	Net Balance Sheet Reserves after Discount	
	26 Direct and Assumed	27 Ceded	28 Net	29 Direct and Assumed	30 Ceded	31 Net	32 Loss	33 Loss Expense		35 Losses Unpaid	36 Loss Expenses Unpaid
1. Prior..XXX.....XXX.....XXX.....XXX.....XXX.....XXX.....		XXX.....00
2. 2010.425,494425,494076.176.10.0			00
3. 2011.562,702562,702086.486.40.0			00
4. 2012.601,793601,793083.883.80.0			00
5. 2013.602,636602,636077.177.10.0			00
6. 2014.693,609693,609083.783.70.0			00
7. 2015.629,635629,635072.572.50.0			00
8. 2016.658,244658,244074.974.90.0			00
9. 2017.663,627663,627075.075.00.0			00
10. 2018.733,942733,942074.874.80.0			00
11. 2019.789,794789,794071.871.80.0			00
12. TotalsXXX.....XXX.....XXX.....XXX.....XXX.....XXX.....00XXX.....00

Note: Parts 2 and 4 are gross of all discounting, including tabular discounting. Part 1 is gross of only nontabular discounting, which is reported in Columns 32 and 33 of Part 1. The tabular discount, if any, is reported in the Notes to Financial Statements, which will reconcile Part 1 with Parts 2 and 4.

SCHEDULE P - PART 2 - SUMMARY

Years in Which Losses Were Incurred	Incurred Net Losses and Defense and Cost Containment Expenses Reported at Year End (\$000 omitted)										DEVELOPMENT	
	1	2	3	4	5	6	7	8	9	10	11	12
	2010	2011	2012	2013	2014	2015	2016	2017	2018	2019	One Year	Two Year
1. Prior.....										00
2. 2010.....										00
3. 2011.....	XXX									00
4. 2012.....	XXX	XXX								00
5. 2013.....	XXX	XXX	XXX							00
6. 2014.....	XXX	XXX	XXX	XXX						00
7. 2015.....	XXX	XXX	XXX	XXX	XXX					00
8. 2016.....	XXX	XXX	XXX	XXX	XXX	XXX				00
9. 2017.....	XXX	XXX	XXX	XXX	XXX	XXX	XXX			00
10. 2018.....	XXX	XXX	XXX	XXX	XXX	XXX	XXX	XXX		0	XXX
11. 2019.....	XXX	XXX	XXX	XXX	XXX	XXX	XXX	XXX	XXX		XXX	XXX
12. Totals.....										00

SCHEDULE P - PART 3 - SUMMARY

Years in Which Losses Were Incurred	Cumulative Paid Net Losses and Defense and Cost Containment Expenses Reported at Year End (\$000 omitted)										11	12
	1	2	3	4	5	6	7	8	9	10	Number of Claims Closed With Loss Payment	Number of Claims Closed Without Loss Payment
	2010	2011	2012	2013	2014	2015	2016	2017	2018	2019		
1. Prior.....	000										XXX	XXX
2. 2010.....											XXX	XXX
3. 2011.....	XXX										XXX	XXX
4. 2012.....	XXX	XXX									XXX	XXX
5. 2013.....	XXX	XXX	XXX								XXX	XXX
6. 2014.....	XXX	XXX	XXX	XXX							XXX	XXX
7. 2015.....	XXX	XXX	XXX	XXX	XXX						XXX	XXX
8. 2016.....	XXX	XXX	XXX	XXX	XXX	XXX					XXX	XXX
9. 2017.....	XXX	XXX	XXX	XXX	XXX	XXX	XXX				XXX	XXX
10. 2018.....	XXX	XXX	XXX	XXX	XXX	XXX	XXX	XXX			XXX	XXX
11. 2019.....	XXX	XXX	XXX	XXX	XXX	XXX	XXX	XXX	XXX		XXX	XXX

SCHEDULE P - PART 4 - SUMMARY

Years in Which Losses Were Incurred	Bulk and IBNR Reserves on Net Losses and Defense and Cost Containment Expenses Reported at Year End (\$000 omitted)									
	1	2	3	4	5	6	7	8	9	10
	2010	2011	2012	2013	2014	2015	2016	2017	2018	2019
1. Prior.....										
2. 2010.....										
3. 2011.....	XXX									
4. 2012.....	XXX	XXX								
5. 2013.....	XXX	XXX	XXX							
6. 2014.....	XXX	XXX	XXX	XXX						
7. 2015.....	XXX	XXX	XXX	XXX	XXX					
8. 2016.....	XXX	XXX	XXX	XXX	XXX	XXX				
9. 2017.....	XXX	XXX	XXX	XXX	XXX	XXX	XXX			
10. 2018.....	XXX	XXX	XXX	XXX	XXX	XXX	XXX	XXX		
11. 2019.....	XXX	XXX	XXX	XXX	XXX	XXX	XXX	XXX	XXX	

NATIONAL CASUALTY COMPANY
SCHEDULE T - EXHIBIT OF PREMIUMS WRITTEN

Allocated by States and Territories

		1 Active Status (a)	Gross Premiums, Including Policy and Membership Fees Less Return Premiums and Premiums on Policies Not Taken		4 Dividends Paid or Credited to Policyholders on Direct Business	5	6	7	8	9
			2 Direct Premiums Written	3 Direct Premiums Earned		Direct Losses Paid (Deducting Salvage)	Direct Losses Incurred	Direct Losses Unpaid	Finance and Service Charges not Included in Premiums	Direct Premiums Written for Federal Pur- chasing Groups (Incl. in Col. 2)
States, Etc.										
1.	Alabama.....AL	..L.....	17,537,396	14,704,236		6,358,786	9,906,138	12,106,136	56,981	179,420
2.	Alaska.....AK	..L.....	6,816,441	6,576,934		3,524,702	3,408,574	5,368,090	31,128	237,817
3.	Arizona.....AZ	..L.....	17,793,715	16,377,711		10,774,751	9,118,136	6,943,104	218,525	440,234
4.	Arkansas.....AR	..L.....	7,569,602	7,215,594		4,727,818	3,688,276	7,157,835	19,780	14,028
5.	California.....CA	..L.....	80,284,858	69,155,847		47,719,909	64,885,515	101,584,603	1,075	3,154,694
6.	Colorado.....CO	..L.....	32,847,723	30,968,561		21,372,999	17,636,818	33,583,403	284,987	375,577
7.	Connecticut.....CT	..L.....	31,761,857	29,334,640		13,219,415	15,424,583	20,350,978	255,757	92,116
8.	Delaware.....DE	..L.....	4,636,087	3,827,336		2,183,770	2,158,196	1,648,289	51,157	8,060
9.	District of Columbia.....DC	..L.....	4,821,111	4,336,134		1,680,048	1,876,550	2,163,485	37,228	15,000
10.	Florida.....FL	..L.....	90,777,855	87,217,345		61,532,141	67,481,868	70,766,352	731,948	247,227
11.	Georgia.....GA	..L.....	22,117,915	21,029,717		20,861,356	20,212,407	14,921,651	215,280	281,568
12.	Hawaii.....HI	..L.....	8,785,722	7,932,026		2,811,483	3,470,277	3,301,746	71,023	513,616
13.	Idaho.....ID	..L.....	5,866,977	5,316,493		1,905,739	2,095,554	2,175,891	24,917	106,884
14.	Illinois.....IL	..L.....	37,264,574	34,150,159		24,885,896	22,543,909	22,311,882	410,039	243,705
15.	Indiana.....IN	..L.....	18,172,095	16,244,664		18,680,484	18,762,781	28,577,677	80,456	143,412
16.	Iowa.....IA	..L.....	6,750,670	5,314,356		3,233,298	3,546,629	5,452,171	36,980	21,834
17.	Kansas.....KS	..L.....	12,851,570	11,906,549		8,244,217	12,366,275	14,053,373	41,976	27,660
18.	Kentucky.....KY	..L.....	14,875,955	14,817,846		10,689,984	11,962,745	14,046,540	89,635	136,330
19.	Louisiana.....LA	..L.....	12,514,916	11,199,411		5,223,738	5,726,097	7,201,130	59,500	459,227
20.	Maine.....ME	..L.....	8,256,238	7,310,836		3,410,289	2,809,232	4,726,186	45,796	57,977
21.	Maryland.....MD	..L.....	26,124,791	25,171,940		14,223,194	14,464,720	11,939,771	278,659	254,995
22.	Massachusetts.....MA	..L.....	37,564,912	34,363,184		19,257,673	18,806,839	12,068,764	501,204	320,227
23.	Michigan.....MI	..L.....	32,800,510	30,045,985		19,383,806	20,362,785	16,968,935	187,494	96,716
24.	Minnesota.....MN	..L.....	21,089,634	19,633,237		15,186,425	13,213,312	12,534,875	114,801	241,117
25.	Mississippi.....MS	..L.....	14,454,002	12,787,975		7,694,606	9,633,598	8,695,523	17,507	35,041
26.	Missouri.....MO	..L.....	18,116,805	16,828,134		13,869,439	16,796,367	14,327,575	94,927	105,313
27.	Montana.....MT	..L.....	4,652,401	4,595,226		3,577,726	3,813,945	3,707,275	17,689	97,784
28.	Nebraska.....NE	..L.....	4,724,487	4,569,053		2,867,481	1,750,337	2,922,570	25,926	29,077
29.	Nevada.....NV	..L.....	17,910,408	17,175,108		10,486,503	10,768,880	24,235,699	135,316	63,241
30.	New Hampshire.....NH	..L.....	9,423,901	9,067,571		4,567,460	4,841,656	4,829,342	82,222	131,375
31.	New Jersey.....NJ	..L.....	51,566,343	47,720,729		29,231,097	39,582,084	44,082,401	639,962	429,347
32.	New Mexico.....NM	..L.....	6,040,438	5,605,573		2,193,554	2,330,081	2,987,075	29,435	23,295
33.	New York.....NY	..L.....	129,029,738	98,720,049	452,951	66,823,533	49,349,615	100,216,642	946,505	1,079,335
34.	North Carolina.....NC	..L.....	33,912,194	30,574,738		23,013,791	25,413,624	24,349,212	270,625	256,707
35.	North Dakota.....ND	..L.....	6,260,566	5,277,281		2,966,520	2,719,008	3,926,357	7,367	13,305
36.	Ohio.....OH	..L.....	30,983,521	28,740,381		24,122,470	22,097,761	20,740,029	248,750	37,310
37.	Oklahoma.....OK	..L.....	13,221,531	11,489,085		5,909,897	5,324,845	8,361,757	31,713	13,429
38.	Oregon.....OR	..L.....	12,352,554	12,564,076		6,190,095	6,674,716	7,380,076	117,334	132,272
39.	Pennsylvania.....PA	..L.....	56,794,579	53,535,069		39,932,040	34,804,582	37,322,727	547,314	294,063
40.	Rhode Island.....RI	..L.....	4,737,403	4,278,857		2,531,802	2,764,267	2,166,286	68,594	2,018
41.	South Carolina.....SC	..L.....	22,860,216	21,595,871		16,317,934	18,166,958	13,463,182	142,077	23,613
42.	South Dakota.....SD	..L.....	1,796,355	1,890,606		640,354	1,370,176	2,247,710	7,065	16,481
43.	Tennessee.....TN	..L.....	14,470,744	14,028,969		8,341,294	8,015,433	10,107,395	97,671	395,441
44.	Texas.....TX	..L.....	79,234,957	73,158,512		45,347,081	47,268,306	54,373,311	592,962	1,151,074
45.	Utah.....UT	..L.....	14,400,259	12,985,364		8,258,055	6,584,452	10,252,868	49,016	972,987
46.	Vermont.....VT	..L.....	2,154,526	2,233,236		1,282,297	1,194,200	887,735	26,183	23,075
47.	Virginia.....VA	..L.....	35,858,816	32,848,620		17,951,341	18,413,276	12,190,552	412,983	989,427
48.	Washington.....WA	..L.....	34,471,617	32,416,055		18,461,307	8,031,611	14,779,297	340,205	342,312
49.	West Virginia.....WV	..L.....	11,335,281	11,274,799		5,069,848	3,905,995	8,614,818	27,640	229,264
50.	Wisconsin.....WI	..L.....	15,328,896	13,581,312		7,662,673	10,402,781	10,633,041	107,886	67,327
51.	Wyoming.....WY	..L.....	2,457,469	2,474,305		2,041,304	1,189,427	1,192,333	9,993	70,743
52.	American Samoa.....AS	..N.....								
53.	Guam.....GU	..L.....								
54.	Puerto Rico.....PR	..N.....								
55.	US Virgin Islands.....VI	..N.....								
56.	Northern Mariana Islands...MP	..N.....								
57.	Canada.....CAN	..N.....					550	891		
58.	Aggregate Other Alien.....OT	XXX	49,950	27,056	0	0	13,827	13,827	0	0
59.	Totals.....	XXX	1,208,483,081	1,096,194,350	452,951	718,443,423	729,150,575	880,960,374	8,941,193	14,694,093

DETAILS OF WRITE-INS

58001.	Bermuda BMU.....	XXX	49,950	27,056			13,827	13,827		
58002.		XXX								
58003.		XXX								
58998.	Summary of remaining write-ins for Line 58 from overflow page	XXX	0	0	0	0	0	0	0	0
58999.	Totals (Lines 58001 thru 58003+ Line 58998) (Line 58 above)	XXX	49,950	27,056	0	0	13,827	13,827	0	0

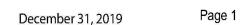
(a) Active Status Counts:

L - Licensed or Chartered - Licensed insurance carrier or domiciled RRG.....	52
E - Eligible - Reporting entities eligible or approved to write surplus lines in the state (other than their state of domicile - See DSLI).....	0
D - Domestic Surplus Lines Insurer (DSLI) - Reporting entities authorized to write surplus lines in the state of domicile.....	0

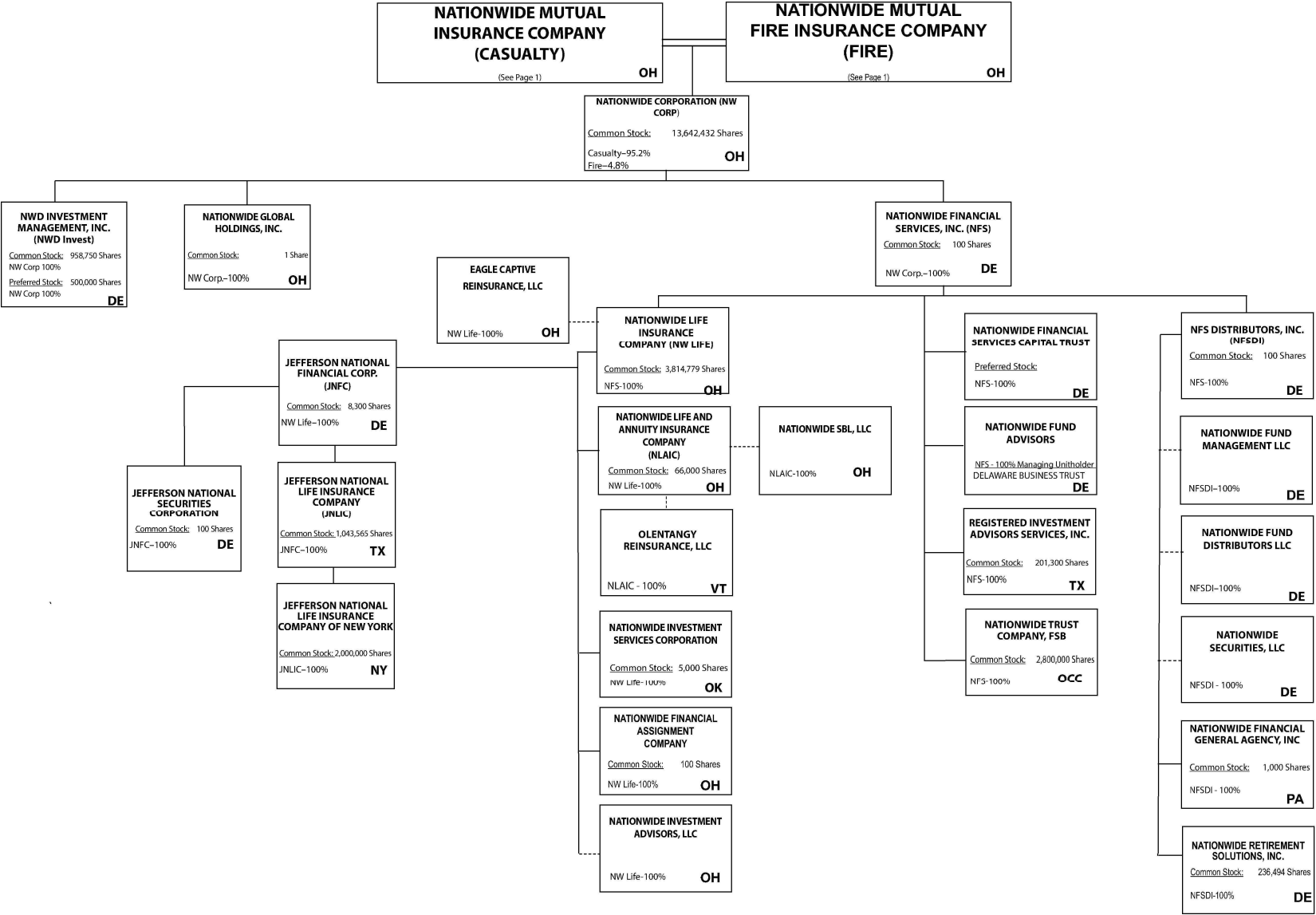
R - Registered - Non-domiciled RRGs.....	0
Q - Qualified - Qualified or accredited reinsurer.....	0
N - None of the above - Not allowed to write business in the state.....	5

(b) Explanation of Basis of Allocation of Premiums by States, etc.

Premiums are allocated to those states where the insured risks are located: principle garage for automobile, physical address for homeowners, commercial multiple peril and other liability and place of work for workers' compensation. Allocation of premiums for individual and group health insurance is based on the situs of the contract.



NATIONWIDE®



96.1

(Nationwide Corp. subsidiaries)

Subsidiary Companies — Solid Line
Contractual Association = Double Line
Limited Liability Company - - Dotted Line

NATIONWIDE INSURANCE COMPANIES

NAIC Group Code	Group Name	NAIC Company Code	State of Domicile	Federal ID Number	Name of Company
0140	Nationwide	10127	OH	27-0114983	Allied Insurance Company of America
0140	Nationwide	42579	IA	42-1201931	Allied Property and Casualty Insurance Company
0140	Nationwide	19100	IA	42-6054959	AMCO Insurance Company
0140	Nationwide	29262	TX	74-1061659	Colonial County Mutual Insurance Company
0140	Nationwide	18961	OH	68-0066866	Crestbrook Insurance Company
0140	Nationwide	42587	IA	42-1207150	Depositors Insurance Company
0140	Nationwide	15821	OH	42-4523959	Eagle Captive Reinsurance, LLC
0140	Nationwide	22209	OH	75-6013587	Freedom Specialty Insurance Company
0140	Nationwide	23582	OH	41-0417250	Harleysville Insurance Company
0140	Nationwide	42900	NJ	23-2253669	Harleysville Insurance Company of New Jersey
0140	Nationwide	10674	OH	23-2864924	Harleysville Insurance Company of New York
0140	Nationwide	14516	MI	38-3198542	Harleysville Lake States Insurance Company
0140	Nationwide	64327	OH	23-1580983	Harleysville Life Insurance Company
0140	Nationwide	35696	OH	23-2384978	Harleysville Preferred Insurance Company
0140	Nationwide	26182	OH	04-1989660	Harleysville Worcester Insurance Company
0140	Nationwide	64017	TX	75-0300900	Jefferson National Life Insurance Company
0140	Nationwide	15727	NY	47-1180302	Jefferson National Life Insurance Company of New York
0140	Nationwide	11991	OH	38-0865250	National Casualty Company
0140	Nationwide	26093	OH	48-0470690	Nationwide Affinity Insurance Company of America
0140	Nationwide	28223	IA	42-1015537	Nationwide Agribusiness Insurance Company
0140	Nationwide	10723	OH	95-0639970	Nationwide Assurance Company
0140	Nationwide	23760	OH	31-4425763	Nationwide General Insurance Company
0140	Nationwide	10070	OH	31-1399201	Nationwide Indemnity Company
0140	Nationwide	25453	OH	95-2130882	Nationwide Insurance Company of America
0140	Nationwide	10948	OH	31-1613686	Nationwide Insurance Company of Florida
0140	Nationwide	92657	OH	31-1000740	Nationwide Life and Annuity Insurance Company
0140	Nationwide	66869	OH	31-4156830	Nationwide Life Insurance Company
0140	Nationwide	42110	TX	75-1780981	Nationwide Lloyds
0140	Nationwide	23779	OH	31-4177110	Nationwide Mutual Fire Insurance Company
0140	Nationwide	23787	OH	31-4177100	Nationwide Mutual Insurance Company
0140	Nationwide	37877	OH	31-0970750	Nationwide Property & Casualty Insurance Company
0140	Nationwide	13999	VT	27-1712056	Olentangy Reinsurance, LLC
0140	Nationwide	15580	OH	31-1117969	Scottsdale Indemnity Company
0140	Nationwide	41297	OH	31-1024978	Scottsdale Insurance Company
0140	Nationwide	10672	AZ	86-0835870	Scottsdale Surplus Lines Insurance Company
0140	Nationwide	36269	MI	86-0619597	Titan Insurance Company
0140	Nationwide	42285	OH	95-3750113	Veterinary Pet Insurance Company
0140	Nationwide	42889	OH	34-1394913	Victoria Fire & Casualty Company
0140	Nationwide	10778	OH	34-1842604	Victoria National Insurance Company
0140	Nationwide	10105	OH	34-1777972	Victoria Select Insurance Company

2019 ALPHABETICAL INDEX -- PROPERTY & CASUALTY ANNUAL STATEMENT BLANK

Assets	2	Schedule P-Part 2H-Section 1-Other Liability-Occurrence	58
Cash Flow	5	Schedule P-Part 2H-Section 2-Other Liability-Claims-Made	58
Exhibit of Capital Gains (Losses)	12	Schedule P-Part 2I-Spec. Prop. (Fire, Allied Lines, Inland Marine, Earthquake, Burglary, Theft)	59
Exhibit of Net Investment Income	12	Schedule P-Part 2J-Auto Physical Damage	59
Exhibit of Nonadmitted Assets	13	Schedule P-Part 2K-Fidelity, Surety	59
Exhibit of Premiums and Losses (State Page)	19	Schedule P-Part 2L-Other (Including Credit, Accident and Health)	59
Five-Year Historical Data	17	Schedule P-Part 2M-International	59
General Interrogatories	15	Schedule P-Part 2N-Reinsurance – Nonproportional Assumed Property	60
Jurat Page	1	Schedule P-Part 2O-Reinsurance – Nonproportional Assumed Liability	60
Liabilities, Surplus and Other Funds	3	Schedule P-Part 2P-Reinsurance – Nonproportional Assumed Financial Lines	60
Notes To Financial Statements	14	Schedule P-Part 2R-Section 1-Products Liability-Occurrence	61
Overflow Page For Write-ins	100	Schedule P-Part 2R-Section 2-Products Liability-Claims-Made	61
Schedule A-Part 1	E01	Schedule P-Part 2S-Financial Guaranty/Mortgage Guaranty	61
Schedule A-Part 2	E02	Schedule P-Part 2T-Warranty	61
Schedule A-Part 3	E03	Schedule P-Part 3A-Homeowners/Farmowners	62
Schedule A-Verification Between Years	SI02	Schedule P-Part 3B-Private Passenger Auto Liability/Medical	62
Schedule B-Part 1	E04	Schedule P-Part 3C-Commercial Auto/Truck Liability/Medical	62
Schedule B-Part 2	E05	Schedule P-Part 3D-Workers' Compensation (Excluding Excess Workers Compensation)	62
Schedule B-Part 3	E06	Schedule P-Part 3E-Commercial Multiple Peril	62
Schedule B-Verification Between Years	SI02	Schedule P-Part 3F-Section 1 –Medical Professional Liability-Occurrence	63
Schedule BA-Part 1	E07	Schedule P-Part 3F-Section 2-Medical Professional Liability-Claims-Made	63
Schedule BA-Part 2	E08	Schedule P-Part 3G-Special Liability (Ocean Marine, Aircraft (All Perils), Boiler & Machinery)	63
Schedule BA-Part 3	E09	Schedule P-Part 3H-Section 1-Other Liability-Occurrence	63
Schedule BA-Verification Between Years	SI03	Schedule P-Part 3H-Section 2-Other Liability-Claims-Made	63
Schedule D-Part 1	E10	Schedule P-Part 3I-Spec. Prop. (Fire, Allied Lines, Inland Marine, Earthquake, Burglary, Theft)	64
Schedule D-Part 1A-Section 1	SI05	Schedule P-Part 3J-Auto Physical Damage	64
Schedule D-Part 1A-Section 2	SI08	Schedule P-Part 3K-Fidelity/Surety	64
Schedule D-Part 2-Section 1	E11	Schedule P-Part 3L-Other (Including Credit, Accident and Health)	64
Schedule D-Part 2-Section 2	E12	Schedule P-Part 3M-International	64
Schedule D-Part 3	E13	Schedule P-Part 3N-Reinsurance – Nonproportional Assumed Property	65
Schedule D-Part 4	E14	Schedule P-Part 3O-Reinsurance – Nonproportional Assumed Liability	65
Schedule D-Part 5	E15	Schedule P-Part 3P-Reinsurance – Nonproportional Assumed Financial Lines	65
Schedule D-Part 6-Section 1	E16	Schedule P-Part 3R-Section 1-Products Liability-Occurrence	66
Schedule D-Part 6-Section 2	E16	Schedule P-Part 3R-Section 2-Products Liability-Claims-Made	66
Schedule D-Summary By Country	SI04	Schedule P-Part 3S-Financial Guaranty/Mortgage Guaranty	66
Schedule D-Verification Between Years	SI03	Schedule P-Part 3T-Warranty	66
Schedule DA-Part 1	E17	Schedule P-Part 4A-Homeowners/Farmowners	67
Schedule DA-Verification Between Years	SI10	Schedule P-Part 4B-Private Passenger Auto Liability/Medical	67
Schedule DB-Part A-Section 1	E18	Schedule P-Part 4C-Commercial Auto/Truck Liability/Medical	67
Schedule DB-Part A-Section 2	E19	Schedule P-Part 4D-Workers' Compensation (Excluding Excess Workers Compensation)	67
Schedule DB-Part A-Verification Between Years	SI11	Schedule P-Part 4E-Commercial Multiple Peril	67
Schedule DB-Part B-Section 1	E20	Schedule P-Part 4F-Section 1-Medical Professional Liability-Occurrence	68
Schedule DB-Part B-Section 2	E21	Schedule P-Part 4F-Section 2-Medical Professional Liability-Claims-Made	68
Schedule DB-Part B-Verification Between Years	SI11	Schedule P-Part 4G-Special Liability (Ocean Marine, Aircraft (All Perils), Boiler & Machinery)	68
Schedule DB-Part C-Section 1	SI12	Schedule P-Part 4H-Section 1-Other Liability-Occurrence	68
Schedule DB-Part C-Section 2	SI13	Schedule P-Part 4H-Section 2-Other Liability-Claims-Made	68
Schedule DB-Part D-Section 1	E22	Schedule P-Part 4I-Spec. Prop. (Fire, Allied Lines, Inland Marine, Earthquake, Burglary & Theft)	69
Schedule DB-Part D-Section 2	E23	Schedule P-Part 4J-Auto Physical Damage	69
Schedule DB-Part E	E24	Schedule P-Part 4K-Fidelity/Surety	69
Schedule DB-Verification	SI14	Schedule P-Part 4L-Other (Including Credit, Accident and Health)	69
Schedule DL-Part 1	E25	Schedule P-Part 4M-International	69
Schedule DL-Part 2	E26	Schedule P-Part 4N-Reinsurance – Nonproportional Assumed Property	70
Schedule E-Part 1-Cash	E27	Schedule P-Part 4O-Reinsurance – Nonproportional Assumed Liability	70
Schedule E-Part 2-Cash Equivalents	E28	Schedule P-Part 4P-Reinsurance – Nonproportional Assumed Financial Lines	70
Schedule E-Verification Between Years	SI15	Schedule P-Part 4R-Section 1-Products Liability-Occurrence	71
Schedule E-Part 3-Special Deposits	E29	Schedule P-Part 4R-Section 2-Products Liability-Claims-Made	71
Schedule F-Part 1	20	Schedule P-Part 4S-Financial Guaranty/Mortgage Guaranty	71
Schedule F-Part 2	21	Schedule P-Part 4T-Warranty	71
Schedule F-Part 3	22	Schedule P-Part 5A-Homeowners/Farmowners	72
Schedule F-Part 4	27	Schedule P-Part 5B-Private Passenger Auto Liability/Medical	73
Schedule F-Part 5	28	Schedule P-Part 5C-Commercial Auto/Truck Liability/Medical	74
Schedule F-Part 6	29	Schedule P-Part 5D-Workers' Compensation (Excluding Excess Workers Compensation)	75
Schedule H-Accident and Health Exhibit-Part 1	30	Schedule P-Part 5E-Commercial Multiple Peril	76
Schedule H-Part 2, Part 3 and Part 4	31	Schedule P-Part 5F-Medical Professional Liability-Claims-Made	78
Schedule H-Part 5-Health Claims	32	Schedule P-Part 5F-Medical Professional Liability-Occurrence	77
Schedule P-Part 1-Summary	33	Schedule P-Part 5H-Other Liability-Claims-Made	80
Schedule P-Part 1A-Homeowners/Farmowners	35	Schedule P-Part 5H-Other Liability-Occurrence	79
Schedule P-Part 1B-Private Passenger Auto Liability/Medical	36	Schedule P-Part 5R-Products Liability-Claims-Made	82
Schedule P-Part 1C-Commercial Auto/Truck Liability/Medical	37	Schedule P-Part 5R-Products Liability-Occurrence	81
Schedule P-Part 1D-Workers' Compensation (Excluding Excess Workers Compensation)	38	Schedule P-Part 5T-Warranty	83
Schedule P-Part 1E-Commercial Multiple Peril	39	Schedule P-Part 6C-Commercial Auto/Truck Liability/Medical	84
Schedule P-Part 1F-Section 1-Medical Professional Liability-Occurrence	40	Schedule P-Part 6D-Workers' Compensation (Excluding Excess Workers Compensation)	84
Schedule P-Part 1F-Section 2-Medical Professional Liability-Claims-Made	41	Schedule P-Part 6E-Commercial Multiple Peril	85
Schedule P-Part 1G-Special Liability (Ocean, Marine, Aircraft (All Perils), Boiler & Machinery)	42	Schedule P-Part 6H-Other Liability-Claims-Made	86
Schedule P-Part 1H-Section 1-Other Liability-Occurrence	43	Schedule P-Part 6H-Other Liability-Occurrence	85
Schedule P-Part 1H-Section 2-Other Liability-Claims-Made	44	Schedule P-Part 6M-International	86
Schedule P-Part 1I-Spec. Prop. (Fire, Allied Lines, Inland Marine, Earthquake, Burglary & Theft)	45	Schedule P-Part 6N-Reinsurance – Nonproportional Assumed Property	87
Schedule P-Part 1J-Auto Physical Damage	46	Schedule P-Part 6O-Reinsurance – Nonproportional Assumed Liability	87
Schedule P-Part 1K-Fidelity/Surety	47	Schedule P-Part 6R-Products Liability-Claims-Made	88
Schedule P-Part 1L-Other (Including Credit, Accident and Health)	48	Schedule P-Part 6R-Products Liability-Occurrence	88
Schedule P-Part 1M-International	49	Schedule P-Part 7A-Primary Loss Sensitive Contracts	89
Schedule P-Part 1N-Reinsurance – Nonproportional Assumed Property	50	Schedule P-Part 7B-Reinsurance Loss Sensitive Contracts	91
Schedule P-Part 1O-Reinsurance – Nonproportional Assumed Liability	51	Schedule P Interrogatories	93
Schedule P-Part 1P-Reinsurance – Nonproportional Assumed Financial Lines	52	Schedule T-Exhibit of Premiums Written	94
Schedule P-Part 1R-Section 1-Products Liability-Occurrence	53	Schedule T-Part 2-Interstate Compact	95
Schedule P-Part 1R-Section 2-Products Liability-Claims-Made	54	Schedule Y-Information Concerning Activities of Insurer Members of a Holding Company Group	96
Schedule P-Part 1S-Financial Guaranty/Mortgage Guaranty	55	Schedule Y-Detail of Insurance Holding Company System	97
Schedule P-Part 1T-Warranty	56	Schedule Y-Part 2-Summary of Insurer's Transactions With Any Affiliates	98
Schedule P-Part 2, Part 3 and Part 4 - Summary	34	Statement of Income	4
Schedule P-Part 2A-Homeowners/Farmowners	57	Summary Investment Schedule	SI01
Schedule P-Part 2B-Private Passenger Auto Liability/Medical	57	Supplemental Exhibits and Schedules Interrogatories	99
Schedule P-Part 2C-Commercial Auto/Truck Liability/Medical	57	Underwriting and Investment Exhibit Part 1	6
Schedule P-Part 2D-Workers' Compensation (Excluding Excess Workers Compensation)	57	Underwriting and Investment Exhibit Part 1A	7
Schedule P-Part 2E-Commercial Multiple Peril	57	Underwriting and Investment Exhibit Part 1B	8
Schedule P-Part 2F-Section 1-Medical Professional Liability-Occurrence	58	Underwriting and Investment Exhibit Part 2	9
Schedule P-Part 2F-Section 2-Medical Professional Liability-Claims-Made	58	Underwriting and Investment Exhibit Part 2A	10
Schedule P-Part 2G-Special Liability (Ocean Marine, Aircraft (All Perils), Boiler & Machinery)	58	Underwriting and Investment Exhibit Part 3	11