



QUARTERLY STATEMENT  
AS OF SEPTEMBER 30, 2019  
OF THE CONDITION AND AFFAIRS OF THE  
SummaCare, Inc.

NAIC Group Code	3259 (Current Period)	3259 (Prior Period)	NAIC Company Code	95202	Employer's ID Number	34-1726655
Organized under the Laws of	Ohio		State of Domicile or Port of Entry	OH		
Country of Domicile	United States of America					
Licensed as business type:	Life, Accident & Health[ ] Dental Service Corporation[ ] Other[ ]		Property/Casualty[ ] Vision Service Corporation[ ] Is HMO Federally Qualified? Yes[ ] No[ ] N/A[X]		Hospital, Medical & Dental Service or Indemnity[ ] Health Maintenance Organization[X]	
Incorporated/Organized	10/23/1992		Commenced Business	03/01/1993		
Statutory Home Office	1200 East Market St. Suite 400 (Street and Number)		Akron, OH, 44305 (City or Town, State, Country and Zip Code)			
Main Administrative Office	1200 East Market St. Suite 400 (Street and Number)		Akron, OH, 44305 (City or Town, State, Country and Zip Code)			
Mail Address	P.O. Box 3620 (Street and Number or P.O. Box)		Akron, OH, 44309-3620 (City or Town, State, Country and Zip Code)			
Primary Location of Books and Records	1200 East Market St. Suite 400 (Street and Number)		Akron, OH, 44305 (City or Town, State, Country and Zip Code)			
Internet Web Site Address	SummmaCare.com		(330)996-8410 (Area Code) (Telephone Number)			
Statutory Statement Contact	Mike Dennis Weals (Name)		(330)996-5112 (Area Code)(Telephone Number)(Extension)			
	wealsm@summahealth.org (E-Mail Address)		(Fax Number)			

OFFICERS

Name	Title
Henry Leigh Gerstenberger	Chair
Robert Andrew Gerberry	Secretary
Dennis Dale Pijor	President
Michael Anthony O'Neill	Assistant Treasurer
Keith Thomas Coleman	Treasurer

OTHERS

Anne Armao, VP - Marketing & Medicare  
Stephen Adamson, VP, Chief Operations Officer  
Kevin Cavalier, VP - Sales  
Charles Zonfa M.D., Chief Medical Officer

DIRECTORS OR TRUSTEES

Lydia Alexander Cook M.D.  
Rajiv Vishnu Taliwal M.D.  
Henry Leigh Gerstenberger  
Caroline Fisher Pearson  
Dennis Dale Pijor  
Anthony Lockhart  
Frank Anthony Carrino #  
Benjamin Paul Sutton  
Russell Floyd Mohawk  
Thomas Clifford Deveny M.D.  
Robert Jeffrey Copeland  
Mark Joseph Sims

State of Ohio  
County of Summit ss

The officers of this reporting entity being duly sworn, each depose and say that they are the described officers of said reporting entity, and that on the reporting period stated above, all of the herein described assets were the absolute property of the said reporting entity, free and clear from any liens or claims thereon, except as herein stated, and that this statement, together with related exhibits, schedules and explanations therein contained, annexed or referred to, is a full and true statement of all the assets and liabilities and of the condition and affairs of the said reporting entity as of the reporting period stated above, and of its income and deductions therefrom for the period ended, and have been completed in accordance with the NAIC Annual Statement Instructions and Accounting Practices and Procedures manual except to the extent that: (1) state law may differ; or, (2) that state rules or regulations require differences in reporting not related to accounting practices and procedures, according to the best of their information, knowledge and belief, respectively. Furthermore, the scope of this attestation by the described officers also includes the related corresponding electronic filing with the NAIC, when required, that is an exact copy (except for formatting differences due to electronic filing) of the enclosed statement. The electronic filing may be requested by various regulators in lieu of or in addition to the enclosed statement.

(Signature) Dennis Dale Pijor (Printed Name) 1. President (Title)	(Signature) Keith Thomas Coleman (Printed Name) 2. Treasurer (Title)	(Signature) Stephen Michael Adamson (Printed Name) 3. Vice President, Chief Operations Officer (Title)
--	---	---

Subscribed and sworn to before me this 15th day of November, 2019  
a. Is this an original filing? Yes[X] No[ ]  
b. If no, 1. State the amendment number  
2. Date filed  
3. Number of pages attached

(Notary Public Signature)

ASSETS

		Current Statement Date			4
		1	2	3	
		Assets	Nonadmitted Assets	Net Admitted Assets (Cols. 1 - 2)	December 31 Prior Year Net Admitted Assets
1.	Bonds .....	31,794,831		31,794,831	28,796,118
2.	Stocks:				
2.1	Preferred stocks .....				
2.2	Common stocks .....	25,287,258		25,287,258	23,972,094
3.	Mortgage loans on real estate:				
3.1	First liens .....				
3.2	Other than first liens .....				
4.	Real estate:				
4.1	Properties occupied by the company (less \$.....0 encumbrances) .....				
4.2	Properties held for the production of income (less \$.....0 encumbrances) .....				
4.3	Properties held for sale (less \$.....0 encumbrances) .....				
5.	Cash (\$.....21,480,880), cash equivalents (\$.....0) and short-term investments (\$.....1,966,365) .....	23,447,245		23,447,245	13,136,235
6.	Contract loans (including \$.....0 premium notes) .....				
7.	Derivatives .....				
8.	Other invested assets .....				
9.	Receivables for securities .....				
10.	Securities lending reinvested collateral assets .....				
11.	Aggregate write-ins for invested assets .....				
12.	Subtotals, cash and invested assets (Lines 1 to 11) .....	80,529,334		80,529,334	65,904,447
13.	Title plants less \$.....0 charged off (for Title insurers only) .....				
14.	Investment income due and accrued .....	151,299		151,299	118,351
15.	Premiums and considerations:				
15.1	Uncollected premiums and agents' balances in the course of collection .....	5,074,598	31,863	5,042,735	7,496,317
15.2	Deferred premiums, agents' balances and installments booked but deferred and not yet due (including \$.....0 earned but unbilled premiums) .....				
15.3	Accrued retrospective premiums (\$.....0) and contracts subject to redetermination (\$.....0) .....				
16.	Reinsurance:				
16.1	Amounts recoverable from reinsurers .....				
16.2	Funds held by or deposited with reinsured companies .....				
16.3	Other amounts receivable under reinsurance contracts .....				
17.	Amounts receivable relating to uninsured plans .....				
18.1	Current federal and foreign income tax recoverable and interest thereon .....	536,109		536,109	448,144
18.2	Net deferred tax asset .....	42,111		42,111	84,222
19.	Guaranty funds receivable or on deposit .....				
20.	Electronic data processing equipment and software .....				
21.	Furniture and equipment, including health care delivery assets (\$.....0) .....	1,217,933	1,217,933		
22.	Net adjustments in assets and liabilities due to foreign exchange rates .....				
23.	Receivables from parent, subsidiaries and affiliates .....	223,692		223,692	20
24.	Health care (\$.....3,452,517) and other amounts receivable .....	5,580,697	2,128,180	3,452,517	4,148,281
25.	Aggregate write-ins for other-than-invested assets .....	1,071,890	1,071,890		
26.	TOTAL assets excluding Separate Accounts, Segregated Accounts and Protected Cell Accounts (Lines 12 to 25) .....	94,427,663	4,449,866	89,977,797	78,199,782
27.	From Separate Accounts, Segregated Accounts and Protected Cell Accounts .....				
28.	TOTAL (Lines 26 and 27) .....	94,427,663	4,449,866	89,977,797	78,199,782
DETAILS OF WRITE-INS					
1101.	.....				
1102.	.....				
1103.	.....				
1198.	Summary of remaining write-ins for Line 11 from overflow page .....				
1199.	TOTALS (Lines 1101 through 1103 plus 1198) (Line 11 above) .....				
2501.	Prepaid assets .....	1,071,890	1,071,890		
2502.	Deposits .....				
2503.	Pharmacy Rebates .....				
2598.	Summary of remaining write-ins for Line 25 from overflow page .....				
2599.	TOTALS (Lines 2501 through 2503 plus 2598) (Line 25 above) .....	1,071,890	1,071,890		

**LIABILITIES, CAPITAL AND SURPLUS**

		Current Period			Prior Year
		1 Covered	2 Uncovered	3 Total	4 Total
1.	Claims unpaid (less \$.....0 reinsurance ceded) .....	25,567,107		25,567,107	20,996,910
2.	Accrued medical incentive pool and bonus amounts .....	3,139,835		3,139,835	1,949,380
3.	Unpaid claims adjustment expenses .....	624,602		624,602	624,602
4.	Aggregate health policy reserves, including the liability of \$.....0 for medical loss ratio rebate per the Public Health Service Act .....	3,545,000		3,545,000	3,813,300
5.	Aggregate life policy reserves .....				
6.	Property/casualty unearned premium reserve .....				
7.	Aggregate health claim reserves .....				
8.	Premiums received in advance .....	382,182		382,182	409,901
9.	General expenses due or accrued .....	5,793,172		5,793,172	6,372,515
10.1	Current federal and foreign income tax payable and interest thereon (including \$.....0 on realized gains (losses)) .....				
10.2	Net deferred tax liability .....				
11.	Ceded reinsurance premiums payable .....				
12.	Amounts withheld or retained for the account of others .....				
13.	Remittances and items not allocated .....	84,128		84,128	169,394
14.	Borrowed money (including \$.....0 current) and interest thereon \$.....0 (including \$.....0 current) .....				
15.	Amounts due to parent, subsidiaries and affiliates .....	6,493,057		6,493,057	3,816,158
16.	Derivatives .....				
17.	Payable for securities .....				
18.	Payable for securities lending .....				
19.	Funds held under reinsurance treaties with (\$.....0 authorized reinsurers, \$.....0 unauthorized reinsurers and \$.....0 certified reinsurers) .....				
20.	Reinsurance in unauthorized and certified (\$.....0) companies .....				
21.	Net adjustments in assets and liabilities due to foreign exchange rates .....				
22.	Liability for amounts held under uninsured plans .....				
23.	Aggregate write-ins for other liabilities (including \$.....0 current) .....				
24.	Total liabilities (Lines 1 to 23) .....	45,629,083		45,629,083	38,152,160
25.	Aggregate write-ins for special surplus funds .....	X X X	X X X		
26.	Common capital stock .....	X X X	X X X		
27.	Preferred capital stock .....	X X X	X X X		
28.	Gross paid in and contributed surplus .....	X X X	X X X	67,084,767	67,084,767
29.	Surplus notes .....	X X X	X X X		
30.	Aggregate write-ins for other-than-special surplus funds .....	X X X	X X X		
31.	Unassigned funds (surplus) .....	X X X	X X X	(22,736,053)	(27,037,145)
32.	Less treasury stock, at cost:				
32.1	.....0 shares common (value included in Line 26 \$.....0) .....	X X X	X X X		
32.2	.....0 shares preferred (value included in Line 27 \$.....0) .....	X X X	X X X		
33.	Total capital and surplus (Lines 25 to 31 minus Line 32) .....	X X X	X X X	44,348,714	40,047,622
34.	Total Liabilities, capital and surplus (Lines 24 and 33) .....	X X X	X X X	89,977,797	78,199,782
DETAILS OF WRITE-INS					
2301.	Payroll liability .....				
2302.	Other accrued liabilities .....				
2303.	Medicaid Pharmacy Reserve .....				
2398.	Summary of remaining write-ins for Line 23 from overflow page .....				
2399.	TOTALS (Lines 2301 through 2303 plus 2398) (Line 23 above) .....				
2501.	.....	X X X	X X X		
2502.	.....	X X X	X X X		
2503.	.....	X X X	X X X		
2598.	Summary of remaining write-ins for Line 25 from overflow page .....	X X X	X X X		
2599.	TOTALS (Lines 2501 through 2503 plus 2598) (Line 25 above) .....	X X X	X X X		
3001.	.....	X X X	X X X		
3002.	.....	X X X	X X X		
3003.	.....	X X X	X X X		
3098.	Summary of remaining write-ins for Line 30 from overflow page .....	X X X	X X X		
3099.	TOTALS (Lines 3001 through 3003 plus 3098) (Line 30 above) .....	X X X	X X X		

**STATEMENT OF REVENUE AND EXPENSES**

		Current Year To Date		Prior Year To Date	Prior Year Ended December 31
		1 Uncovered	2 Total	3 Total	4 Total
1.	Member Months .....	X X X .....	206,126	213,718	283,737
2.	Net premium income (including \$.....0 non-health premium income) .....	X X X .....	200,319,488	194,792,494	258,759,274
3.	Change in unearned premium reserves and reserves for rate credits .....	X X X .....			
4.	Fee-for-service (net of \$.....0 medical expenses) .....	X X X .....			
5.	Risk revenue .....	X X X .....			
6.	Aggregate write-ins for other health care related revenues .....	X X X .....		58,009	76,741
7.	Aggregate write-ins for other non-health revenues .....	X X X .....		35,081	
8.	Total revenues (Lines 2 to 7) .....	X X X .....	200,319,488	194,885,584	258,836,015
<b>Hospital and Medical:</b>					
9.	Hospital/medical benefits .....		152,468,909	144,491,454	199,139,267
10.	Other professional services .....				
11.	Outside referrals .....				
12.	Emergency room and out-of-area .....				
13.	Prescription drugs .....		16,914,455	17,061,767	24,003,062
14.	Aggregate write-ins for other hospital and medical .....				
15.	Incentive pool, withhold adjustments and bonus amounts .....		3,272,195	1,982,609	2,625,519
16.	Subtotal (Lines 9 to 15) .....		172,655,559	163,535,830	225,767,848
<b>Less:</b>					
17.	Net reinsurance recoveries .....			3,448	3,257
18.	Total hospital and medical (Lines 16 minus 17) .....		172,655,559	163,532,382	225,764,591
19.	Non-health claims (net) .....				
20.	Claims adjustment expenses, including \$.....682,240 cost containment expenses .....		2,604,673	3,282,133	4,408,952
21.	General administrative expenses .....		23,424,462	20,520,333	29,620,517
22.	Increase in reserves for life and accident and health contracts (including \$.....0 increase in reserves for life only) .....				
23.	Total underwriting deductions (Lines 18 through 22) .....		198,684,694	187,334,848	259,794,060
24.	Net underwriting gain or (loss) (Lines 8 minus 23) .....	X X X .....	1,634,794	7,550,736	(958,045)
25.	Net investment income earned .....		736,979	390,541	540,684
26.	Net realized capital gains (losses) less capital gains tax of \$.....0 .....				
27.	Net investment gains or (losses) (Lines 25 plus 26) .....		736,979	390,541	540,684
28.	Net gain or (loss) from agents' or premium balances charged off [(amount recovered \$.....0) (amount charged off \$.....0)] .....				
29.	Aggregate write-ins for other income or expenses .....		857		35,283
30.	Net income or (loss) after capital gains tax and before all other federal income taxes (Lines 24 plus 27 plus 28 plus 29) .....	X X X .....	2,372,630	7,941,277	(382,078)
31.	Federal and foreign income taxes incurred .....	X X X .....	(87,964)	676,426	(101,534)
32.	Net income (loss) (Lines 30 minus 31) .....	X X X .....	2,460,594	7,264,851	(280,544)
<b>DETAILS OF WRITE-INS</b>					
0601.	Administrative Services Revenue .....	X X X .....		58,009	76,741
0602.	Misc income received from prior year taxes .....	X X X .....			
0603.	Gain/loss on disposal of asset .....	X X X .....			
0698.	Summary of remaining write-ins for Line 6 from overflow page .....	X X X .....			
0699.	TOTALS (Lines 0601 through 0603 plus 0698) (Line 6 above) .....	X X X .....		58,009	76,741
0701.	Proceeds from the Sale of the Medicaid Product Line .....	X X X .....			
0702.	Miscellaneous Income .....	X X X .....		35,081	
0703.	Miscellaneous Revenue .....	X X X .....			
0798.	Summary of remaining write-ins for Line 7 from overflow page .....	X X X .....			
0799.	TOTALS (Lines 0701 through 0703 plus 0798) (Line 7 above) .....	X X X .....		35,081	
1401.	.....				
1402.	.....				
1403.	.....				
1498.	Summary of remaining write-ins for Line 14 from overflow page .....				
1499.	TOTALS (Lines 1401 through 1403 plus 1498) (Line 14 above) .....				
2901.	Medimpact Performance Guarantee .....				
2902.	Miscellaneous Income .....		857		35,283
2903.	Gain on disposal of asset .....				
2998.	Summary of remaining write-ins for Line 29 from overflow page .....				
2999.	TOTALS (Lines 2901 through 2903 plus 2998) (Line 29 above) .....		857		35,283

**STATEMENT OF REVENUE AND EXPENSES (Continued)**

		1	2	3
		Current Year To Date	Prior Year To Date	Prior Year Ended December 31
<b>CAPITAL &amp; SURPLUS ACCOUNT</b>				
33.	Capital and surplus prior reporting year .....	40,047,622	36,380,066	36,380,066
34.	Net income or (loss) from Line 32 .....	2,460,594	7,264,851	(280,544)
35.	Change in valuation basis of aggregate policy and claim reserves .....			
36.	Change in net unrealized capital gains (losses) less capital gains tax of \$.....0 .....	1,315,164	(7,019,511)	(12,388,116)
37.	Change in net unrealized foreign exchange capital gain or (loss) .....			
38.	Change in net deferred income tax .....	(42,111)	(84,223)	(84,223)
39.	Change in nonadmitted assets .....	567,445	236,314	(579,561)
40.	Change in unauthorized and certified reinsurance .....			
41.	Change in treasury stock .....			
42.	Change in surplus notes .....			
43.	Cumulative effect of changes in accounting principles .....			
44.	Capital Changes:			
44.1	Paid in .....			
44.2	Transferred from surplus (Stock Dividend) .....			
44.3	Transferred to surplus .....			
45.	Surplus adjustments:			
45.1	Paid in .....		3,000,000	17,000,000
45.2	Transferred to capital (Stock Dividend) .....			
45.3	Transferred from capital .....			
46.	Dividends to stockholders .....			
47.	Aggregate write-ins for gains or (losses) in surplus .....		3	
48.	Net change in capital and surplus (Lines 34 to 47) .....	4,301,092	3,397,434	3,667,556
49.	Capital and surplus end of reporting period (Line 33 plus 48) .....	44,348,714	39,777,500	40,047,622
<b>DETAILS OF WRITE-INS</b>				
4701.	Change in Minimum Pension Liability - Unrestricted Funds .....			
4702.	Federal income tax adjustment .....			
4703.	Gain on sale of bonds .....			
4798.	Summary of remaining write-ins for Line 47 from overflow page .....		3	
4799.	TOTALS (Lines 4701 through 4703 plus 4798) (Line 47 above) .....		3	

CASH FLOW

		1	2	3
		Current	Prior	Prior
		Year	Year	Year Ended
		To Date	To Date	December 31
Cash from Operations				
1.	Premiums collected net of reinsurance .....	202,477,052	195,988,891	249,728,286
2.	Net investment income .....	705,318	375,474	558,203
3.	Miscellaneous income .....	856	93,090	112,024
4.	TOTAL (Lines 1 to 3) .....	203,183,226	196,457,455	250,398,513
5.	Benefit and loss related payments .....	166,894,907	166,065,502	225,831,608
6.	Net transfers to Separate Accounts, Segregated Accounts and Protected Cell Accounts .....			
7.	Commissions, expenses paid and aggregate write-ins for deductions .....	26,608,479	22,716,685	31,530,126
8.	Dividends paid to policyholders .....			
9.	Federal and foreign income taxes paid (recovered) net of \$.....0 tax on capital gains (losses) .....		(324,510)	(477,739)
10.	TOTAL (Lines 5 through 9) .....	193,503,386	188,457,677	256,883,995
11.	Net cash from operations (Line 4 minus Line 10) .....	9,679,840	7,999,778	(6,485,482)
Cash from Investments				
12.	Proceeds from investments sold, matured or repaid:			
12.1	Bonds .....	2,400,000	1,500,000	4,000,000
12.2	Stocks .....			
12.3	Mortgage loans .....			
12.4	Real estate .....			
12.5	Other invested assets .....			
12.6	Net gains or (losses) on cash, cash equivalents and short-term investments .....			
12.7	Miscellaneous proceeds .....			
12.8	TOTAL investment proceeds (Lines 12.1 to 12.7) .....	2,400,000	1,500,000	4,000,000
13.	Cost of investments acquired (long-term only):			
13.1	Bonds .....	5,400,000		15,000,000
13.2	Stocks .....		5,000,000	
13.3	Mortgage loans .....			
13.4	Real estate .....			
13.5	Other invested assets .....			
13.6	Miscellaneous applications .....			
13.7	TOTAL investments acquired (Lines 13.1 to 13.6) .....	5,400,000	5,000,000	15,000,000
14.	Net increase (or decrease) in contract loans and premium notes .....			
15.	Net cash from investments (Line 12.8 minus Line 13.7 and Line 14) .....	(3,000,000)	(3,500,000)	(11,000,000)
Cash from Financing and Miscellaneous Sources				
16.	Cash provided (applied):			
16.1	Surplus notes, capital notes .....			
16.2	Capital and paid in surplus, less treasury stock .....		3,000,000	17,000,000
16.3	Borrowed funds .....			
16.4	Net deposits on deposit-type contracts and other insurance liabilities .....			
16.5	Dividends to stockholders .....			
16.6	Other cash provided (applied) .....	3,631,170	2,035,307	1,536,895
17.	Net cash from financing and miscellaneous sources (Line 16.1 through 16.4 minus Line 16.5 plus Line 16.6) .....	3,631,170	5,035,307	18,536,895
RECONCILIATION OF CASH, CASH EQUIVALENTS AND SHORT-TERM INVESTMENTS				
18.	Net change in cash, cash equivalents and short-term investments (Line 11, plus Lines 15 and 17) .....	10,311,010	9,535,085	1,051,413
19.	Cash, cash equivalents and short-term investments:			
19.1	Beginning of year .....	13,136,235	12,084,822	12,084,822
19.2	End of period (Line 18 plus Line 19.1) .....	23,447,245	21,619,907	13,136,235

Note: Supplemental Disclosures of Cash Flow Information for Non-Cash Transactions:

20.0001				
---------	--	--	--	--

**EXHIBIT OF PREMIUMS, ENROLLMENT AND UTILIZATION**

	1  Total	Comprehensive (Hospital & Medical)		4  Medicare Supplement	5  Vision Only	6  Dental Only	7  Federal Employees Health Benefit Plan	8  Title XVIII Medicare	9  Title XIX Medicaid	10  Other
		2  Individual	3  Group							
Total Members at end of:										
1. Prior Year .....	23,293							23,293		
2. First Quarter .....	23,022							23,022		
3. Second Quarter .....	22,824							22,824		
4. Third Quarter .....	22,865							22,865		
5. Current Year .....										
6. Current Year Member Months .....	206,126							206,126		
Total Member Ambulatory Encounters for Period:										
7. Physician .....	74,315							74,315		
8. Non-Physician .....	36,388							36,388		
9. Total .....	110,703							110,703		
10. Hospital Patient Days Incurred .....	39,808							39,808		
11. Number of Inpatient Admissions .....	5,558							5,558		
12. Health Premiums Written (a) .....	201,223,943							201,223,943		
13. Life Premiums Direct .....										
14. Property/Casualty Premiums Written .....										
15. Health Premiums Earned .....	201,223,943							201,223,943		
16. Property/Casualty Premiums Earned .....										
17. Amount Paid for Provision of Health Care Services .....	166,894,907							166,894,907		
18. Amount Incurred for Provision of Health Care Services .....	172,655,559							172,655,559		

(a) For health premiums written: amount of Medicare Title XVIII exempt from state taxes or fees \$.....201,223,943.

**CLAIMS UNPAID AND INCENTIVE POOL, WITHHOLD AND BONUS (Reported and Unreported)**

Aging Analysis of Unpaid Claims						
1 Account	2 1 - 30 Days	3 31 - 60 Days	4 61 - 90 Days	5 91 - 120 days	6 Over 120 Days	7 Total
0199999 Individually Listed Claims Unpaid .....						
0299999 Aggregate Accounts Not Individually Listed - Uncovered .....						
0399999 Aggregate Accounts Not Individually Listed - Covered .....	18,216,107	4,292,000	1,609,000	667,000	783,000	25,567,107
0499999 Subtotals .....	18,216,107	4,292,000	1,609,000	667,000	783,000	25,567,107
0599999 Unreported claims and other claim reserves .....						
0699999 Total Amounts Withheld .....						
0799999 Total Claims Unpaid .....						25,567,107
0899999 Accrued Medical Incentive Pool And Bonus Amounts .....						3,139,835



**UNDERWRITING AND INVESTMENT EXHIBIT**

**ANALYSIS OF CLAIMS UNPAID-PRIOR YEAR-NET OF REINSURANCE**

Line of Business		Claims Paid Year to Date		Liability End of Current Quarter		5	6
		1	2	3	4	Claims Incurred in Prior Years (Columns 1+3)	Estimated Claim Reserve and Claim Liability Dec 31 of Prior Year
		On Claims Incurred Prior to January 1 of Current Year	On Claims Incurred During the Year	On Claims Unpaid Dec 31 of Prior Year	On Claims Incurred During the Year		
1.	Comprehensive (hospital & medical) .....						
2.	Medicare Supplement .....						
3.	Dental only .....						
4.	Vision only .....						
5.	Federal Employees Health Benefits Plan .....						
6.	Title XVIII - Medicare .....	19,451,000	145,362,167	45,000	25,522,107	19,496,000	20,996,910
7.	Title XIX - Medicaid .....						
8.	Other health .....						
9.	Health subtotal (Lines 1 to 8) .....	19,451,000	145,362,167	45,000	25,522,107	19,496,000	20,996,910
10.	Healthcare receivables (a) .....						
11.	Other non-health .....						
12.	Medical incentive pools and bonus amounts .....	919,726	1,162,014	1,029,654	2,110,181	1,949,380	1,949,380
13.	Totals (Lines 9 - 10 + 11 + 12) .....	20,370,726	146,524,181	1,074,654	27,632,288	21,445,380	22,946,290

(a) Excludes \$.00 loans or advances to providers not yet expensed.

Notes to Financial Statement

1. Summary of Significant Accounting Policies and Going Concern

A. Accounting Practices

SummaCare, Inc.’s (the Company or SC) statutory financial statements are presented on the basis of accounting practices prescribed or permitted by the Ohio Department of Insurance (ODI) and in accordance with the Accounting Practices and Procedures Manual.

The ODI recognizes only statutory accounting practices prescribed or permitted by the State of Ohio (the State) for determining its solvency under Ohio Insurance Law. NAIC SAP has been adopted as a component of the prescribed or permitted practices by the State with some modifications. These modifications include a five-year life on Electronic Data Processing (EDP) equipment and a 90-day limitation on collection of affiliate balances. Accordingly, the admitted assets, liabilities, capital and surplus of the Company as of September 30, 2019 and December 31, 2018 and the results of its operations and its cash flow for the years then ended have been determined in accordance with accounting principles prescribed or permitted by the ODI. Management believes the monetary effect on net income and statutory surplus between NAIC SAP and accounting principles prescribed or permitted by the ODI is not material. Additionally, the Company’s risk based capital would not have triggered a regulatory event had it not used a prescribed or permitted practice.

	SSAP #	F/S Page	F/S Line	2019	2018
<b><u>Net Income</u></b>					
1) SummaCare state basis (Page 4, Line 32, Columns 2 & 3)	XXX	XXX	XXX	2,460,594	(280,544)
2) State Prescribed Practices that increase / (decrease) NAIC SAP:	-	-	-	-	-
3) State Permitted Practices that increase / (decrease) NAIC SAP:	-	-	-	-	-
4) NAIC SAP	XXX	XXX	XXX	<u>2,460,594</u>	<u>(280,544)</u>
<b><u>Surplus</u></b>					
5) SummaCare state basis (Page 3, Line 33, Columns 3 & 4)	XXX	XXX	XXX	44,348,714	40,047,622
6) State Prescribed Practices that increase / (decrease) NAIC SAP:	-	-	-	-	-
7) State Permitted Practices that increase / (decrease) NAIC SAP:	-	-	-	-	-
8) NAIC SAP	XXX	XXX	XXX	<u>44,348,714</u>	<u>40,047,622</u>

B. Use of Estimates

The preparation of financial statements in conformity with *Accounting Practices and Procedures Manual*, the NAIC Annual Statement Instructions and other accounting practices prescribed or permitted by the ODI requires management to make estimates and assumptions that affect the reported amounts of assets and liabilities and disclosure of contingent assets and liabilities at the date of the financial statements and the reported amounts of revenues and expenses during the reporting period. Actual results could differ significantly from those estimates.

C. Accounting Policy

The Company uses the following accounting policies:

- 1) Cash and Short-Term Investments
- Cash and short-term investments include cash on hand, cash held in bank accounts (including overdrafts), interest bearing deposits, and money market instruments purchased with an original maturity of one year or less. Short-term investments are stated at amortized cost.
- 2) Mandatory convertible securities and SVO-Identified investments – None.
- 3) Common stocks – See number seven, investments in subsidiaries, controlled and affiliated entities.
- 4) Preferred stocks – None.
- 5) Mortgage loans on real estate – None.
- 6) Loan backed securities – None.
- 7) SC carries its investment in its subsidiary, Summa Insurance Company (SIC), at audited statutory equity in accordance with SSAP No. 97, Investments in Subsidiary, Controlled and Affiliated Entities. The Company’s investment in SIC is classified as common stock on the Assets page.
- 8) Investments in joint ventures, partnerships and limited liability companies – None.
- 9) Accounting policy for derivatives – The Company does not invest in derivative instruments.
- 10) The Company anticipates investment income as a factor in premium deficiency calculation, in accordance with SSAP No. 54, Individual Group Accident and Health Contracts.
- 11) The cost of health care services is recognized in the period in which services are provided. Health care expenses also include an estimate of the cost of services provided to the Company’s members by third-party providers, which have been incurred but not reported to the Company. The estimate for incurred but not reported claims is based on actuarial projections of costs using historical paid claims data. Estimates are

# Notes to Financial Statement

continually monitored and reviewed and, as settlements are made or estimates are adjusted, differences are reflected in current operations. Such estimates are subject to the impact of changes in the regulatory environment and economic conditions. Given the inherent variability of such estimates, the actual liability could differ significantly from the amounts provided. While the ultimate amount of claims paid is dependent on future developments, management is of the opinion that the reserves for claims and the cost to process claims make a reasonable and appropriate provision to cover such claims.

- 12) The Company’s capitalization policy and predefined thresholds have not changed from the prior period.
- 13) Pharmaceutical rebates are reported as a reduction of prescription drug expense. Receivables related to pharmaceutical rebates are recorded in accordance with SSAP No. 84, Certain Health Care Receivables and Receivables Under Government Insured Plans. Pharmacy rebates receivable are estimated by multiplying the most recent rebate received by two (two quarters).

**D. Going Concern** – Not applicable.

**2. Accounting Changes and Corrections of Errors**

- A. Accounting Changes** – None.
- B. Corrections of Errors** – None

**3. Business Combinations and Goodwill**

- A. Statutory Purchase Method** – None.
- B. Statutory Merger** – None.
- C. Assumption Reinsurance** – None.
- D. Impairment Loss** – None.

**4. Discontinued Operations** – None.

**5. Investments**

- A.** Mortgage Loans – None.
- B.** Debt Restructuring – None.
- C.** Reverse Mortgages – None.
- D.** Loan backed securities – None.
- E.** Dollar Repurchase Agreements and/or Securities Lending Transactions – None.
- F.** Repurchase Agreements Transactions Accounted for as Secured Borrowings – None.
- G.** Reverse Repurchase Agreements Transactions Accounted for a Secured Borrowings – None.
- H.** Repurchase Agreements Transactions Accounted for as a Sale – None.
- I.** Reverse Repurchase Agreements Transactions Accounted for as a Sale – None.
- J.** Real Estate – None.
- K.** Low Income Housing Tax Credits – None.
- L.** Restricted Assets

Notes to Financial Statement

	1	2	3	4	5	6
	Total Gross Restricted from Current Year	Total Gross Restricted from Prior Year	Increase / (Decrease) (1 minus 2)	Total Current Year Admitted Restricted	Percentage Gross Restricted to Total Assets	Percentage Admitted to Total Admitted Assets
a. Subject to contractual obligation for which liability is not shown	\$0	\$0	\$0	\$0	\$0	\$0
b. Collateral held under security lending agreement:	\$0	\$0	\$0	\$0	\$0	\$0
c. Subject to repurchase agreements	\$0	\$0	\$0	\$0	0.000	0.000
d. Subject to reverse repurchase agreements	\$0	\$0	\$0	\$0	0.000	0.000
e. Subject to dollar repurchase agreements	\$0	\$0	\$0	\$0	0.000	0.000
f. Subject to dollar reverse repurchase agreements	\$0	\$0	\$0	\$0	0.000	0.000
g. Placed under option contracts	\$0	\$0	\$0	\$0	0.000	0.000
h. Letter stock or securities restricted as to sale	\$0	\$0	\$0	\$0	0.000	0.000
i. FHLB capital stock	\$0	\$0	\$0	\$0	0.000	0.000
j. On deposit with states	\$420,715	\$441,330	(\$20,615)	\$420,715	0.446	0.000
k. On deposit with other regulatory bodies	\$0	\$0	\$0	\$0	0.000	0.000
l. Pledged as collateral to FHLB	\$0	\$0	\$0	\$0	0.000	0.000
m. Pledged as collateral not captured in other categories	\$0	\$0	\$0	\$0	0.000	0.000
n. Other restricted assets						
o. Total restricted assets	\$420,715	\$441,330	(\$20,615)	\$420,715	0.446	0.000

- M. Working Capital Finance Investments – None.
- N. Offsetting and Netting of Assets and Liabilities – None.
- O. Structured Notes – None.
- P. 5\* Securities – None.
- Q. Q. Short Sales – None.
- R. Prepayment Penalty and Acceleration Fees – None.

6. Joint Ventures, Partnerships and Limited Liability Companies

- A. For investments in joint ventures, partnerships and limited liability companies that exceed 10% of the admitted assets of the insurer – None.
- B. Impaired investments in joint ventures, partnerships and limited liability companies – None.

7. Investment Income

- A. The basis, by category of investment income, for excluding (nonadmitting) any investment income due and accrued - All accrued investment income was admitted for the period.
- B. Total amount excluded - None

8. Derivative Instruments – None.

9. Income Taxes

- A. The components of deferred tax asset as of September 30, 2019 and December 31, 2018 are:

Notes to Financial Statement

1.
- (a) Gross Deferred Tax Assets

(b) Statutory Valuation Allowance Adjustments

(c) Adjusted Gross DTA's (1a-1b)

(d) DTA's Nonadmitted

(e) Subtotal Net DTA's (1c-1d)

(f) Deferred Tax Liabilities

(g) Net Admitted DTA / Net DTL (1e-1f)
2.
- Admission Calculation Components SSAP No. 101

(a) Federal Income Taxes Paid In Prior Years Recoverable Through Loss Carrybacks.

(b) Adjusted Gross DTA's Expected to be Realized ( Excluding The Amount of DTA's From 2(a) above) After Application of the Threshold Limitation. (The Lesser of 2 (b) 1 and 2 (b) 2 Below)

1. Adjusted Gross DTA's Expected to be Realized Following the Balance Sheet Date.

2. Adjusted Gross DTA's Allowed Per Limitation Threshold.

(c) Adjusted Gross DTA's (Excluding The Amount of DTA's from 2 (a) and 2 (b) above) Offset by Gross DTL's.

(d) DTA's Admitted as the result of application of SSAP No. 101. Total (2(a)+2(b)+2(c))
3.
- (a) Ratio Percentage used To Determine Recovery Period And Threshold Limitation Amount.

(b) Amount Of Adjusted Capital And Surplus Used To Determine Recovery Period And Threshold Limitation In 2 (b) 2 Above.
4.
- Impact of Tax-Planning Strategies

(a) Determination of Adjusted Gross DTA's and Net Admitted DTA's By Tax Character as a percentage.

1. Adjusted Gross DTA's

2. Percentage of Adjusted Gross DTA's

3. Net Admitted DTA's

4. Percentage of Net Admitted Gross DTA's because of tax planning.

(b) Does the Company's tax planning strategies include reinsurance?

9/30/2019			12/31/2018			Change		
Ordinary	Capital	Total	Ordinary	Capital	Total	Ordinary	Capital	Total
\$4,627,283	\$0	\$4,627,283	\$5,264,209	\$0	\$5,264,209	(\$636,925)	\$0	(\$636,925)
\$3,389,966	\$0	\$3,389,966	\$3,932,897	\$0	\$3,932,897	(\$542,931)	\$0	(\$542,931)
\$1,237,317	\$0	\$1,237,317	\$1,331,311	\$0	\$1,331,311	(\$93,994)	\$0	(\$93,994)
\$0	\$0	\$0	\$0	\$0	\$0	\$0	\$0	\$0
\$1,237,317	\$0	\$1,237,317	\$1,331,311	\$0	\$1,331,311	(\$93,994)	\$0	(\$93,994)
\$1,195,206	\$0	\$1,195,206	\$1,247,089	\$0	\$1,247,089	(\$51,883)	\$0	(\$51,883)
\$42,111	\$0	\$42,111	\$84,222	\$0	\$84,222	(\$42,111)	\$0	(\$42,111)
\$0	\$0	\$0	\$0	\$0	\$0	\$0	\$0	\$0
\$42,111	\$0	\$42,111	\$84,222	\$0	\$84,222	(\$42,111)	\$0	(\$42,111)
\$42,111	\$0	\$42,111	\$84,222	\$0	\$84,222	(\$42,111)	\$0	(\$42,111)
XXX	XXX	\$6,652,307	XXX	XXX	\$6,007,143	XXX	XXX	\$645,164
\$1,195,206	\$0	\$1,195,206	\$1,247,089	\$0	\$1,247,089	(\$51,883)	\$0	(\$51,883)
\$1,237,317	\$0	\$1,237,317	\$1,331,311	\$0	\$1,331,311	(\$93,994)	\$0	(\$93,994)
2019	2018							
355%	309%							
\$44,348,714	\$40,047,622							
9/30/2019			12/31/2018					
Ordinary	Capital	Total	Ordinary	Capital	Total			
\$1,237,317	\$0	\$1,237,317	\$1,331,311	\$0	\$1,331,311			
\$0	\$0	\$0	\$0	\$0	\$0			
\$1,237,317	\$0	\$1,237,317	\$1,331,311	\$0	\$1,331,311			
\$0	\$0	\$0	\$0	\$0	\$0			
Yes	No	X						

B. Regarding deferred tax liabilities not recognized – None.

C. Current income taxes incurred consist of the following components:

Notes to Financial Statement

	9/30/2019	12/31/2018	Change
1. Current Income Tax			
(a) Federal	(\$87,964)	(\$101,534)	\$13,569
(b) Foreign	\$0	\$0	\$0
(c) Subtotal	(\$87,964)	(\$101,534)	\$13,569
(d) Federal Income Tax on Net Capital Gains	\$0	\$0	\$0
(e) Utilization of Capital Loss Carry Forwards	\$0	\$0	\$0
(f) Other	\$0	\$0	\$0
(g) Federal and Foreign Income Taxes Incurred	(\$87,964)	(\$101,534)	\$13,569
2. Deferred Tax Assets:			
(a) Ordinary			
(1) Unpaid Losses	\$75,926	\$61,917	\$14,009
(2) Unearned Premium Reserve	\$34,215	\$38,936	(\$4,721)
(3) Policyholder Reserves	\$78,279	\$78,279	\$0
(4) Investments	\$53,697	\$53,697	\$0
(5) Deferred Acquisition Costs	\$0	\$0	\$0
(6) Policyholder Dividends Accrual	\$0	\$0	\$0
(7) Fixed Assets	\$0	\$0	\$0
(8) Compensation and Benefits Accrual	\$0	\$0	\$0
(9) Pension Accrual	\$0	\$0	\$0
(10) Receivables - Nonadmitted	\$1,060,537	\$1,053,635	\$6,902
(11) Net Operating Loss Carry-Forward	\$2,723,498	\$3,382,207	(\$658,709)
(12) Tax Credits	\$0	\$0	\$0
(13) Other	\$601,131	\$595,537	\$5,594
Subtotal	\$4,627,283	\$5,264,208	(\$636,924)
(b) Statutory Valuation Allowance (Ordinary)	\$3,389,966	\$3,932,897	(\$542,931)
(c) Nonadmitted	\$0	\$0	\$0
(d) Admitted Ordinary Deferred Tax Assets	\$1,237,317	\$1,331,311	(\$93,994)
(e) Capital			
(1) Investments	\$0	\$0	\$0
(2) Net Capital Loss Carry-Forward	\$0	\$0	\$0
(3) Unrealized Gains/Losses	\$0	\$0	\$0
(4) Other	\$0	\$0	\$0
Subtotal	\$0	\$0	\$0
(f) Statutory Valuation Allowance Adjustment	\$0	\$0	\$0
(g) Nonadmitted	\$0	\$0	\$0
(h) Admitted Capital Deferred Tax Assets	\$0	\$0	\$0
(i) Admitted Deferred Tax Assets	\$1,237,317	\$1,331,311	(\$93,994)
3. Deferred Tax Liabilities:			
(a) Ordinary			
(1) Investments	\$0	\$0	\$0
(2) Fixed Assets	\$217,874	\$285,880	(\$68,006)
(3) Deferred and Uncollected Premium	\$744,450	\$728,327	\$16,123
(4) Policyholder Reserves	\$0	\$0	\$0
(5) Other	\$232,882	\$232,882	(\$0)
Subtotal	\$1,195,206	\$1,247,089	(\$51,883)
(b) Capital			
(1) Investments	\$0	\$0	\$0
(2) Real Estate	\$0	\$0	\$0
(3) Other	\$0	\$0	\$0
Subtotal	\$0	\$0	\$0
(c) Deferred Tax Liabilities	\$1,195,206	\$1,247,089	(\$51,883)
4. Net Deferred Tax Assets / Liabilities	\$42,111	\$84,222	(\$42,110)

D. The provision for federal income taxes incurred is different than that which would be obtained by applying the statutory federal income tax rate to income before taxes. The significant items causing this difference are as follows as of September 30, 2019:

Description	Amount	Tax Effect	Effective Tax Rate
Income (loss) before taxes	2,372,629	498,252	21.0%
Meals & entertainment	27,273	5,727	0.2%
Change in valuation allowance	(2,585,384)	(542,931)	-22.9%
Change in nonadmitted assets	(32,866)	(6,902)	-0.3%
	<u>(218,348)</u>	<u>(45,853)</u>	<u>-1.9%</u>
Federal income taxes incurred			(87,964)
Change in net deferred income taxes			<u>42,111</u>
Total statutory income taxes			<u>(45,853)</u>

E. Amounts of operating loss and tax credit carry-forwards available for tax purposes

Notes to Financial Statement

- 1. The company has a net operating loss carry-forward of \$12,969,037 as of September 30, 2019.
- 2. There are no income taxes available for recoupment in the event of future net losses.
- 3. The Company has no protective tax deposits reported as admitted assets under Section 6603 of the internal Revenue Service Code as of September 30, 2019 and December 31, 2018.

F. Consolidation of Federal Income Tax Return

Summa Health System Corporation files a consolidated federal income tax which includes the following entities: SummaCare, Inc., Summa Insurance Company, Summa Integrated Services Organization, Apex Benefits Services, LLC, Summa Insurance Agency, LLC, Wadsworth-Rittman Professional Services Corporation, Ohio Health Choice, Summa Management Services Organization, Health Care Center Physicians and Cornerstone Medical Services. Allocation of federal income taxes is based upon separate income tax return calculations with credit for net losses that can be used on a consolidated basis.

G. Federal and foreign loss contingencies as determined in accordance with SSAP 5R – None.

10. Information Concerning Parent, Subsidiaries, and Affiliates

A. Nature of the Relationships

SummaCare, Inc. is a wholly owned subsidiary of Summa Health System Corporation (SHSC). Summa Insurance Company (SIC) is a wholly-owned subsidiary of SummaCare, Inc.

Affiliated and subsidiary organizations of SC include Summa Health System Community; HealthSpan Partners; Summa Health: Summa Health System, Inc. (SHS); Summa Insurance Company (SIC); Summa Health Network LLC (SHN); Apex Benefits Services, LLC (Apex); Summa Insurance Agency, LLC (SIA); Wadsworth-Rittman Professional Services Corporation; Summa Physicians, Inc. (SPI); Summa Foundation; Health Care Center Physicians Inc. (HCCP); Middlebury Assurance Corp. (MAC); Summa Rehabilitation Hospital, LLC; Ohio Health Choice, Inc. (OHC); Cornerstone Medical Services (Cornerstone); ARIS Teleradiology LLC (ARIS); Summa Accountable Care Organization (ACO); Summa Integrated Services Organization (SISO); Summa Management Services Organization (SMSO); and Medina-Summit ASC, LLC.

The Company is licensed in Ohio as a health-insuring corporation (HIC) under Chapter 1751 of the Ohio Revised Code. SC contracts with providers to provide comprehensive health care services to a defined enrolled population (members) for a predetermined monthly fee. The population from which the Company draws its membership is predominately located in Northeast Ohio. The Company is subject to competition from other health insuring companies as well as to the regulations of certain state and federal agencies. The Company is also subject to periodic financial examinations by those regulatory authorities.

B. & C. Transactions with Affiliated Organizations

SC members receive various medical services from SHS, and other SHS subsidiaries. Certain members of the Board of Directors of the Company are members of the Board of Trustees of SHS and SHS’s subsidiary and affiliated organizations.

The operating activities with affiliated entities as of September 30, 2019 and December 31, 2018 are as follows:

	2019	2018
Claims expense related to affiliated entities:		
SHS	\$ 35,056,658	57,861,116
SPI	6,583,546	8,696,134
ACO	718,119	1,036,362
Directors' and officers insurance paid to MAC	11,443	20,171
Management fees charged to SHN	—	76,741
Management fees charged from SMSO	12,419,569	14,672,365
Management fees charged from Apex	416,664	1,609,328
Corporate expense allocation paid to SHS	1,507,998	1,749,429

Notes to Financial Statement

D. The balances outstanding with affiliated entities as of September 30, 2019 and December 31, 2018 are as follows:

	Due from		Due to	
	2019	2018	2019	2018
SIA	\$ —	20	—	—
SIC	—	—	540,417	2,261,775
SHS	—	—	4,646,422	117,619
APEX	223,692	—	—	137,221
SMSO	—	—	1,299,940	1,299,543
SHMG	—	—	6,278	—
	\$ 223,692	20	6,493,057	3,816,158

E. Guarantees or undertakings – None.

F. In 2019 and 2018, the Company contracted with SMSO for general administrative services, which include but are not limited to claims processing, customer service, eligibility, human resources, computer support, programming, finance, and other general administrative services. Fees are based on actual expenses allocated from SMSO to the Company. The Company recognized expense of \$12,419,569 and \$14,672,365 in 2019 and 2018, respectively.

G. The Company’s common membership is held by its parent, Summa Health System Corporation.

H. Investments in upstream intermediate entities or ultimate parent – None.

I. Investments in SCA Entities

As of September 30, 2019, the Company owned 100% of the common stock of SIC, whose carrying value is exceeds 10% of the admitted assets of SC. The Company carries SIC at audited statutory equity. Assets, liabilities and net losses of SIC as of September 30, 2019 were:

Assets - \$47,256,345  
Liabilities - \$21,969,087  
Net Gain – \$707,680

J. Investments in impaired SCA entities – None.

K. Investments in foreign insurance subsidiaries – None.

L. Investment in downstream noninsurance holding company – None.

M. All SCA investment – None.

N. Investments in insurance SCA’s – None.

11. Debt

SC has no debt as of September 30, 2019.

12. Retirement Plans

- A. Defined Benefit Plan - None.
- B. A narrative description of investment policy and strategies – Not applicable.
- C. The fair value of each class of plan asset – Not applicable.
- D. A narrative description of the basis used to determine the long-term rate of return – Not applicable.
- E. Defined Contribution Plan – None.
- F. Multiemployer Plan – None.



# Notes to Financial Statement

- G. Consolidated / Holding Company Plan – None.
- H. Postemployment Benefits and Compensated Absences – None.
- I. Impact of Medicare Modernization Act on Postretirement Benefits – None.

**13. Capital and Surplus, Shareholders’ Dividend Restrictions and Quasi-Reorganizations**

- 1.) SC is a nonprofit corporation under Ohio law. As such, ownership of the Company is designated as common membership. The sole common member of the Company as of September 30, 2019 and December 31, 2018 is SHSC.
- 2.) Dividends rate, liquidation value – Not applicable.
- 3.) Dividend Restrictions – Not applicable.
- 4.) Date and amounts of dividends paid – Not applicable.
- 5.) Portion of reporting entity’s profits that can be paid as ordinary dividends – Not applicable.
- 6.) Restrictions on unassigned funds – None.
- 7.) Mutual Reciprocals - None.
- 8.) Stock held by the Company for special purposes – None.
- 9.) Special surplus funds – None.
- 10.) The portion of unassigned funds represented or reduced by :
  - Nonadmitted Asset Values – \$4,449,866
  - Unrealized Gains (Losses) – \$239,466
- 11.) Surplus notes – None.
- 12.) Restatement in a quasi-reorganization – Not applicable
- 13.) Quasi-reorganization – Not applicable.

**14. Liabilities, Contingencies and Assessments**

- A. Contingent commitments – None.
- B. Assessments – None
- C. Gain contingencies – None.
- D. Claims related extra contractual obligation and bad faith losses stemming from lawsuits – None.
- E. Joint and Several Liabilities – None.
- F. All other contingencies – None.

**15. Leases**

- A. Lessee Leasing Arrangements.
  - 1.) The company leases its facility under a noncancelable operating lease which expires during 2021. Rent expense was \$633,148 as of September 30, 2019 and was \$689,841 for year ending December 31, 2018.
  - 2.) Future minimum payments under noncancelable operating leases are as follows:

Notes to Financial Statement

Year ended December 31:	
2020	1,365,375
2021	546,633
Total minimum future commitment	\$ <u><u>1,912,008</u></u>

3.) The Company has not entered into any sale-leaseback transactions.

B. Lessor Leasing Arrangements - None

16. Information Regarding Off-Balance Sheet Risk – Not Applicable.

17. Sale, Transfer and Servicing of Financial Assets and Extinguishments of Liability – Not Applicable.

.

18. Gains or Loss to the Reporting Entity from Uninsured Plans – Not Applicable.

19. Direct Premium Written / Produced by Managing General Agents / Third Party Administrators – Not Applicable.

20. Fair Value Measurement

A. Assets and liabilities measured and reported at fair value.

1) Fair value measurements at the reporting date.

Notes to Financial Statement

Description for each class of asset or liability	Level 1	Level 2	Level 3	Total
a. Assets at fair value				
Cash and short-term investments	\$23,447,245	\$0	\$0	\$23,447,245
Perpetual referred stock				
Industrial and misc	\$0	\$0	\$0	\$0
Parent, subsidiaries and affiliates	\$0	\$0	\$0	\$0
Total perpetual and preferred stock	\$0	\$0	\$0	\$0
Bonds				
U.S. Governments	\$0	\$0	\$0	\$0
Industrial and misc	\$0	\$0	\$0	\$0
Hybrid securities	\$0	\$0	\$0	\$0
Parent, subsidiaries and affiliates	\$0	\$0	\$0	\$0
Total Bonds	\$0	\$0	\$0	\$0
Common stock				
Industrial and misc	\$0	\$0	\$0	\$0
Parent, subsidiaries and affiliates	\$0	\$0	\$0	\$0
Total common stock	\$0	\$0	\$0	\$0
Derivative assets				
Interest rate contracts				
Foreign exchange contracts	\$0	\$0	\$0	\$0
Credit contracts	\$0	\$0	\$0	\$0
Commodity futures contracts	\$0	\$0	\$0	\$0
Commodity forwards contracts	\$0	\$0	\$0	\$0
Total derivatives	\$0	\$0	\$0	\$0
Separate account assets	\$0	\$0	\$0	\$0
Total assets at fair value	\$23,447,245	\$0	\$0	\$23,447,245
b. Liabilities at fair value				
Derivative liabilities	\$0	\$0	\$0	\$0
Total liabilities at fair value	\$0	\$0	\$0	\$0

- 2) Fair value measurement in (Level 3) of the Fair Value Hierarchy – None.
- 3) Policy for determining when transfers between levels are recognized – Not applicable.
- 4) For fair value measurements categorized within level 2 and level 3 of the fair value hierarchy – The fair values of the Company’s investment in U.S. Treasury and U.S. government agency bond securities are based on quoted prices or dealer quotes. For bonds not actively traded, fair values are estimated using values obtained from independent pricing services, or in the case of private placements, are estimated by discounting the expected future cash flows using current market rates applicable to the yield, credit and maturity of the investment.
- 5) Derivative assets and liabilities – None.

- B. The carrying amounts reported in the statutory statements of admitted assets, liabilities, and capital and surplus for cash and short-term investments, uncollected premiums, reinsurance recoverable, investment income due and accrued, other receivables, federal income tax receivable, receivables from and payables to parent, affiliates and subsidiary, claims unpaid, unpaid claims adjustment expenses, accrued medical incentive pool, premiums received in advance, general expenses due or accrued, and other liabilities approximate fair value because of the short-term nature of these items. A financial instrument’s categorization within the valuation hierarchy is based upon the lowest level of input that is significant to the fair value measurement.
- C. The following table summarizes the Company’s fair value measurements for financial instruments where fair value is a financial statement disclosure item only.

Notes to Financial Statement

September 30, 2019								
Financial Instrument	Aggregate Fair Value	Admitted Assets	Level 1	Level 2	Level 3	Not Practicable (Carrying Value)		
U.S. Treasury securities	\$ 32,034,297	\$ 31,794,830	\$ 32,034,297	\$ -	\$ -	\$ -	\$ -	\$ -
U.S. government agency securities	\$ -	\$ -	\$ -	\$ -	\$ -	\$ -	\$ -	\$ -
Short-term investments	\$ 1,966,365	\$ 1,966,365	\$ 1,966,365	\$ -	\$ -	\$ -	\$ -	\$ -

December 31, 2018								
Financial Instrument	Aggregate Fair Value	Admitted Assets	Level 1	Level 2	Level 3	Not Practicable (Carrying Value)		
U.S. Treasury securities	\$ 28,351,758	\$ 28,796,117	\$ 28,351,758	\$ -	\$ -	\$ -	\$ -	\$ -
U.S. government agency securities	\$ -	\$ -	\$ -	\$ -	\$ -	\$ -	\$ -	\$ -
Short-term investments	\$ 4,512,575	\$ 4,512,575	\$ 4,512,575	\$ -	\$ -	\$ -	\$ -	\$ -

D. Not practicable to estimate fair value – Not applicable.

21. Other Items

- A. Unusual or Infrequent Items – None.
- B. Troubled Debt Restructuring – None.
- C. Other Disclosures and Unusual Items – None.
- D. Business Interruption Insurance Recoveries – None.
- E. State Transferable and Non-transferable Tax Credits – None.
- F. Subprime Mortgage Related Exposure – None.
- G. Retained Assets – None.

22. Events Subsequent

- Type I – Recognized Subsequent Events – None.
- Type II – Nonrecognized Subsequent Events – None.

23. Reinsurance

A. Ceded Reinsurance Report

Section 1 – General Interrogatories

- (1) Are any of the reinsurers, listed in Schedule S as non-affiliated, owned in excess of 10% or controlled, either directly or indirectly, by the company or by any representative, officer, trustee, or director of the company?  
Yes ( ) No (X)  
  
If yes, give full details.
- (2) Have any policies issued by the company been reinsured with a company chartered in a country other than the United States (excluding U.S. Branches of such companies) that is owned in excess of 10% or controlled directly or indirectly by an insured, a beneficiary, a creditor or any other person not primarily engaged in the insurance business?  
  
Yes ( ) No (X)  
  
If yes, give full details.

Section 2 – Ceded Reinsurance Report – Part A

Notes to Financial Statement

- (1) Does the company have any reinsurance agreements in effect under which the reinsurer may unilaterally cancel any reinsurance for reasons other than for nonpayment of premium or other similar credit?  
Yes ( ) No (X)
- a. If yes, what is the estimated amount of the aggregate reduction in surplus of a unilateral cancellation by the reinsurer as of the date of this statement, for those agreements in which cancellation results in a net obligation of the reporting entity to the reinsurer, and for which such obligation is not presently accrued? Where necessary, the reporting entity may consider the current or anticipated experience of the business reinsured in making this estimate. \$\_\_\_\_\_
- b. What is the total amount of reinsurance credits taken, whether as an asset or as a reduction of liability for these agreements in this statement? \$\_\_\_\_\_
- (2) Does the reporting entity have any reinsurance agreements in effect such that the amount of losses paid or accrued through the statement date may result in a payment to the reinsurer of amounts that, in aggregate and allowing for offset of mutual credits from other reinsurance agreements with the same reinsurer, exceed the total direct premium collected under reinsurance policies?

Yes ( ) No (X)

If yes, give full details.

Section 3 – Ceded Reinsurance Report – Part B

- (1) What is the estimated amount of the aggregate reduction in surplus, (for agreements other than those under which the reinsurer may unilaterally cancel for reasons other than for nonpayment of premium or other similar credits reflected in Section 2 above) of termination of all reinsurance agreements, by either party, as of the date of this statement? Where necessary, the company may consider the current or anticipated experience of the business reinsured in making this estimate. \$0
- (2) Have any new agreements been executed or existing agreements amended, since January 1 of the year of this statement, to include policies or contracts that were in force or which had existing reserves established by the company as of the effective date of the agreement?  
Yes ( ) No (X)

If yes, what is the amount of the reinsurance credits, whether an asset or a reduction of a liability, taken for such new agreements or amendments? \$\_\_\_\_\_

B. Uncollectible Reinsurance – None.

C. Commutation of Ceded Reinsurance – None.

D. Certified Reinsurer Rating Downgraded or Status Subject to Revocation – None.

24. Retrospectively Rated Contracts & Contracts Subject to Redetermination – None.

25. Changes in Incurred Claims and Claims Adjustment Expenses

Activity in claims unpaid is summarized as follows:

	2019	2018
Balance at January 1	20,996,910	22,085,407
Incurred related to:		
Current year	170,884,274	226,365,539
Prior Year	(1,500,910)	(3,226,467)
Total	169,383,364	223,139,072
Paid related to:		
Current year	145,362,167	205,378,629
Prior Year	19,451,000	18,848,940
Total	164,813,167	224,227,569
Balance at end of period	25,567,107	20,996,910

- A. Reserves as of December 31, 2018 were \$20,996,910. As of September 30, 2019, \$19,451,000 has been paid for incurred claims attributable to insured events of prior years. There is \$45,000 in reserves remaining for prior years as of September 30, 2019. Therefore, there has been \$1,500,910 in favorable development since December 31, 2018 to September 30, 2019. This favorable development is generally the result of ongoing analysis of recent loss development trends. Original estimates are increased or decreased as additional information becomes known regarding individual claims.

Notes to Financial Statement

B. There were no significant changes in methodologies and assumptions used in calculating the liability for unpaid losses and loss adjustment expenses from the previous year.

26. Intercompany Pooling Arrangements – None.

27. Structured Settlements – None.

28. Healthcare Receivables

A. The company receives pharmacy rebates on a quarterly basis. As of September 30, 2019, a receivable was recorded equal to two quarters of rebates. For quarter ending September 30, 2019, pharmacy rebates receivable were estimated by projection amounts from the pharmacy department. Pharmacy rebates receivable are recorded as nonadmitted assets in accordance with SSAP No. 84.

Quarter	Pharmacy Rebates as Reported on Financial Statements	Pharmacy Rebates as Billed or Otherwise Confirmed	Rebates Received Within 90 Days of Billing	Rebates Received Within 91 to 180 Days of Billing	Actual Rebates Received More Than 180 Days After Billing
9/30/2019	3,494,828	0	0	0	0
6/30/2019	4,770,913	2,148,392	0	0	2,148,392
3/31/2019	3,629,681	3,626,964	0	0	3,626,964
12/31/2018	3,247,831	3,009,040	0	0	3,009,040
9/30/2018	3,726,953	3,120,909	0	0	3,120,909
6/30/2018	3,348,848	3,180,996	0	0	3,180,996
3/31/2018	2,751,408	2,852,830	0	0	2,852,830
12/31/2017	2,088,596	2,628,235	0	0	2,628,235
9/30/2017	663,530	2,795,703	0	0	2,795,703
6/30/2017	530,520	2,914,478	0	0	2,914,478
3/31/2017	465,548	2,703,038	0	0	2,703,038
12/31/2016	498,800	2,505,098	0	0	2,505,098
9/30/2016	453,128	2,614,362	0	0	2,614,362
6/30/2016	632,603	2,638,585	0	0	2,638,585
3/31/2016	640,862	2,528,903	0	0	2,528,903

B. Method used by the Company to estimate its risk sharing receivables – The Company has no risk sharing receivables.

29. Participating Policies – None.

30. Premium Deficiency Reserves

Premium deficiency losses are recognized when it is probable that expected claim expenses will exceed future premiums on existing health contracts. For purposes of premium deficiency losses, contracts are grouped in a manner consistent with the Company’s method of acquiring, servicing and measuring the profitability of such contracts. There were no premium deficiency reserves recorded as of September 30, 2019 and December 31, 2018, respectively.

1. Liability carried for premium deficiency reserves: \$0
2. Date of the most recent evaluation of this liability: December 31, 2018
3. Was anticipated investment income utilized in the calculation: Yes

31. Anticipated Salvage Value and Subrogation – None

**GENERAL INTERROGATORIES**

**PART 1 - COMMON INTERROGATORIES**  
**GENERAL**

- 1.1 Did the reporting entity experience any material transactions requiring the filing of Disclosure of Material Transactions with the State of Domicile, as required by the Model Act?

Yes[ ] No[X]
- 1.2 If yes, has the report been filed with the domiciliary state?

Yes[ ] No[ ] N/A[X]
- 2.1 Has any change been made during the year of this statement in the charter, by-laws, articles of incorporation, or deed of settlement of the reporting entity?

Yes[ ] No[X]
- 2.2 If yes, date of change:

.....
- 3.1 Is the reporting entity a member of an Insurance Holding Company System consisting of two or more affiliated persons, one or more of which is an insurer?

Yes[X] No[ ]
- If yes, complete Schedule Y, Parts 1 and 1A.
- 3.2 Have there been any substantial changes in the organizational chart since the prior quarter end?

Yes[ ] No[X]
- 3.3 If the response to 3.2 is yes, provide a brief description of those changes:
- 3.4 Is the reporting entity publicly traded or a member of a publicly traded group?

Yes[ ] No[X]
- 3.5 If the response to 3.4 is yes, provide the CIK (Central Index Key) code issued by the SEC for the entity/group.
- 4.1 Has the reporting entity been a party to a merger or consolidation during the period covered by this statement?

Yes[ ] No[X]
- If yes, complete and file the merger history data file with the NAIC for the annual filing corresponding to this period.
- 4.2 If yes, provide the name of entity, NAIC Company Code, and state of domicile (use two letter state abbreviation) for any entity that has ceased to exist as a result of the merger or consolidation.

1	2	3
Name of Entity	NAIC Company Code	State of Domicile
.....	.....	.....

5. If the reporting entity is subject to a management agreement, including third-party administrator(s), managing general agent(s), attorney-in-fact, or similar agreement, have there been any significant changes regarding the terms of the agreement or principals involved?

If yes, attach an explanation.

Yes[ ] No[ ] N/A[X]
- 6.1 State as of what date the latest financial examination of the reporting entity was made or is being made.

..... 12/31/2017 .....
- 6.2 State the as of date that the latest financial examination report became available from either the state of domicile or the reporting entity. This date should be the date of the examined balance sheet and not the date the report was completed or released.

..... 12/31/2017 .....
- 6.3 State as of what date the latest financial examination report became available to other states or the public from either the state of domicile or the reporting entity. This is the release date or completion date of the examination report and not the date of the examination (balance sheet date).

..... 11/07/2018 .....
- 6.4 By what department or departments?
- 6.5 Have all financial statement adjustments within the latest financial examination report been accounted for in a subsequent financial statement filed with Departments?

Yes[ ] No[ ] N/A[X]
- 6.6 Have all of the recommendations within the latest financial examination report been complied with?

Yes[ ] No[ ] N/A[X]
- 7.1 Has this reporting entity had any Certificates of Authority, licenses or registrations (including corporate registration, if applicable) suspended or revoked by any governmental entity during the reporting period?

Yes[ ] No[X]
- 7.2 If yes, give full information
- 8.1 Is the company a subsidiary of a bank holding company regulated by the Federal Reserve Board?

Yes[ ] No[X]
- 8.2 If response to 8.1 is yes, please identify the name of the bank holding company.
- 8.3 Is the company affiliated with one or more banks, thrifts or securities firms?

Yes[ ] No[X]
- 8.4 If response to 8.3 is yes, please provide below the names and location (city and state of the main office) of any affiliates regulated by a federal regulatory services agency [i.e. the Federal Reserve Board (FRB), the Office of the Comptroller of the Currency (OCC), the Federal Deposit Insurance Corporation (FDIC) and the Securities Exchange Commission (SEC)] and identify the affiliate's primary federal regulator.]

1	2	3	4	5	6
Affiliate Name	Location (City, State)	FRB	OCC	FDIC	SEC
.....	.....	..... No .....	..... No .....	..... No .....	..... No .....

- 9.1 Are the senior officers (principal executive officer, principal financial officer, principal accounting officer or controller, or persons performing similar functions) of the reporting entity subject to a code of ethics, which includes the following standards?

(a) Honest and ethical conduct, including the ethical handling of actual or apparent conflicts of interest between personal and professional relationships;

(b) Full, fair, accurate, timely and understandable disclosure in the periodic reports required to be filed by the reporting entity;

(c) Compliance with applicable governmental laws, rules and regulations;

(d) The prompt internal reporting of violations to an appropriate person or persons identified in the code; and

(e) Accountability for adherence to the code.

9.11 If the response to 9.1 is No, please explain:
- 9.2 Has the code of ethics for senior managers been amended?

Yes[ ] No[X]
- 9.21 If the response to 9.2 is Yes, provide information related to amendment(s).
- 9.3 Have any provisions of the code of ethics been waived for any of the specified officers?

Yes[ ] No[X]
- 9.31 If the response to 9.3 is Yes, provide the nature of any waiver(s).

**FINANCIAL**

- 10.1 Does the reporting entity report any amounts due from parent, subsidiaries or affiliates on Page 2 of this statement?

Yes[X] No[ ]
- 10.2 If yes, indicate any amounts receivable from parent included in the Page 2 amount:

\$ ..... 223,692

**INVESTMENT**

- 11.1 Were any of the stocks, bonds, or other assets of the reporting entity loaned, placed under option agreement, or otherwise made available for use by another person? (Exclude securities under securities lending agreements.)

Yes[ ] No[X]
- 11.2 If yes, give full and complete information relating thereto:
12. Amount of real estate and mortgages held in other invested assets in Schedule BA:

\$ ..... 0
13. Amount of real estate and mortgages held in short-term investments:

\$ ..... 0
- 14.1 Does the reporting entity have any investments in parent, subsidiaries and affiliates?

Yes[X] No[ ]
- 14.2 If yes, please complete the following:

**GENERAL INTERROGATORIES (Continued)**

		1	2
		Prior Year-End Book/Adjusted Carrying Value	Current Quarter Book/Adjusted Carrying Value
14.21	Bonds .....		
14.22	Preferred Stock .....		
14.23	Common Stock .....	23,972,094	25,287,258
14.24	Short-Term Investments .....		
14.25	Mortgages Loans on Real Estate .....		
14.26	All Other .....		
14.27	Total Investment in Parent, Subsidiaries and Affiliates (Subtotal Lines 14.21 to 14.26) .....	23,972,094	25,287,258
14.28	Total Investment in Parent included in Lines 14.21 to 14.26 above .....		

15.1 Has the reporting entity entered into any hedging transactions reported on Schedule DB?

15.2 If yes, has a comprehensive description of the hedging program been made available to the domiciliary state?  
If no, attach a description with this statement.

Yes[ ] No[X]  
Yes[ ] No[ ] N/A[X]

16. For the reporting entity's security lending program, state the amount of the following as of the current statement date:

16.1 Total fair value of reinvested collateral assets reported on Schedule DL, Parts 1 and 2

16.2 Total book adjusted/carrying value of reinvested collateral assets reported on Schedule DL, Parts 1 and 2

16.3 Total payable for securities lending reported on the liability page

\$ ..... 0  
\$ ..... 0  
\$ ..... 0

17. Excluding items in Schedule E - Part 3 - Special Deposits, real estate, mortgage loans and investments held physically in the reporting entity's offices, vaults or safety deposit boxes, were all stocks, bonds and other securities, owned throughout the current year held pursuant to a custodial agreement with a qualified bank or trust company in accordance with Section 1, III - General Examination Considerations, F. Outsourcing of Critical Functions, Custodial or Safekeeping Agreements of the NAIC Financial Condition Examiners Handbook?

17.1 For all agreements that comply with the requirements of the NAIC Financial Condition Examiners Handbook, complete the following:

Yes[X] No[ ]

1	2
Name of Custodian(s)	Custodian Address
Huntington Bank .....	106 South Main Street, Akron, OH 44308 .....

17.2 For all agreements that do not comply with the requirements of the NAIC Financial Condition Examiners Handbook, provide the name, location and a complete explanation:

1	2	3
Name(s)	Location(s)	Complete Explanation(s)
.....	.....	.....

17.3 Have there been any changes, including name changes, in the custodian(s) identified in 17.1 during the current quarter?

17.4 If yes, give full and complete information relating thereto:

Yes[ ] No[X]

1	2	3	4
Old Custodian	New Custodian	Date of Change	Reason
.....	.....	.....	.....

17.5 Investment management - Identify all investment advisors, investment managers, broker/dealers, including individuals that have the authority to make investment decisions on behalf of the reporting entity. For assets that are managed internally by employees of the reporting entity, note as such. [ " that have access to the investment accounts"; " handle securities"]

1	2
Name of Firm or Individual	Affiliation
Chris Keller - Huntington Bank .....	..... U .....

17.5097 For those firms/individuals listed in the table for Question 17.5, do any firms/individuals unaffiliated with the reporting entity (i.e. designated with a "U") manage more than 10% of the reporting entity's assets?

17.5098 For firms/individuals unaffiliated with the reporting entity (i.e. designated with a "U") listed in the table for Question 17.5, does the total assets under management aggregate to more than 50% of the reporting entity's assets?

17.6 For those firms or individuals listed in the table for 17.5 with an affiliation code of "A" (affiliated) or "U" (unaffiliated), provide the information for the table below.

Yes[X] No[ ]  
Yes[ ] No[X]

1	2	3	4	5
Central Registration Depository Number	Name of Firm or Individual	Legal Entity Identifier (LEI)	Registered With	Investment Management Agreement (IMA) Filed
.....	.....	.....	.....	.....

18.1 Have all the filing requirements of the Purposes and Procedures Manual of the NAIC Investment Analysis Office been followed?

18.2 If no, list exceptions:

Yes[X] No[ ]

19. By self-designating 5GI securities, the reporting entity is certifying the following elements for each self-designated 5GI security:

a. Documentation necessary to permit a full credit analysis of the security does not exist or an NAIC CRP credit rating for an FE or PL security is not available.

b. Issuer or obligor is current on all contracted interest and principal payments.

c. The insurer has an actual expectation of ultimate payment of all contracted interest and principal.

Has the reporting entity self-designated 5GI securities?

Yes[ ] No[X]

20. By self-designating PLGI securities, the reporting entity is certifying the following elements for each self-designated PLGI security:

a. The security was purchased prior to January 1, 2018 .

b. The reporting entity is holding capital commensurate with the NAIC Designation reported for the security.

c. The NAIC Designation was derived from the credit rating assigned by an NAIC CRP in its legal capacity as a NRSRO which is shown on a current private letter rating held by the insurer and available for examination by state insurance regulators.

d. The reporting entity is not permitted to share this credit rating of the PL security with the SVO.

Has the reporting entity self-designated PLGI securities?

Yes[ ] No[X]



**GENERAL INTERROGATORIES**

**PART 2 - HEALTH**

1. Operating Percentages:	
1.1 A&H loss percent	86.531%
1.2 A&H cost containment percent	0.341%
1.3 A&H expense percent excluding cost containment expenses	12.653%
2.1 Do you act as a custodian for health savings accounts?	Yes[ ] No[X]
2.2 If yes, please provide the amount of custodial funds held as of the reporting date.	\$..... 0
2.3 Do you act as an administrator for health savings accounts?	Yes[ ] No[X]
2.4 If yes, please provide the balance of the funds administered as of the reporting date.	\$..... 0
3. Is the reporting entity licensed or chartered, registered, qualified, eligible or writing business in at least two states?	Yes[ ] No[X]
3.1 If no, does the reporting entity assume reinsurance business that covers risks residing in at least one state other than the state of domicile of the reporting entity?	Yes[ ] No[X]

**SCHEDULE S - CEDED REINSURANCE**  
**Showing All New Reinsurance Treaties - Current Year to Date**

1 NAIC Company Code	2 ID Number	3 Effective Date	4 Name of Reinsurer	5 Domiciliary Jurisdiction	6 Type of Reinsurance Ceded	7 Type of Reinsurer	8 Certified Reinsurer Rating (1 through 6)	9 Effective Date of Certified Reinsurer Rating
<b>Accident and Health - Non-affiliates</b>								
93440 .....	06-1041332 .....	..... 01/01/2019 .....	HM LIFE INS CO .....	PA .....	..... SSL/A/I .....	Authorized .....	.....	.....

**SCHEDULE T - PREMIUMS AND OTHER CONSIDERATIONS**  
**Current Year to Date - Allocated by States and Territories**

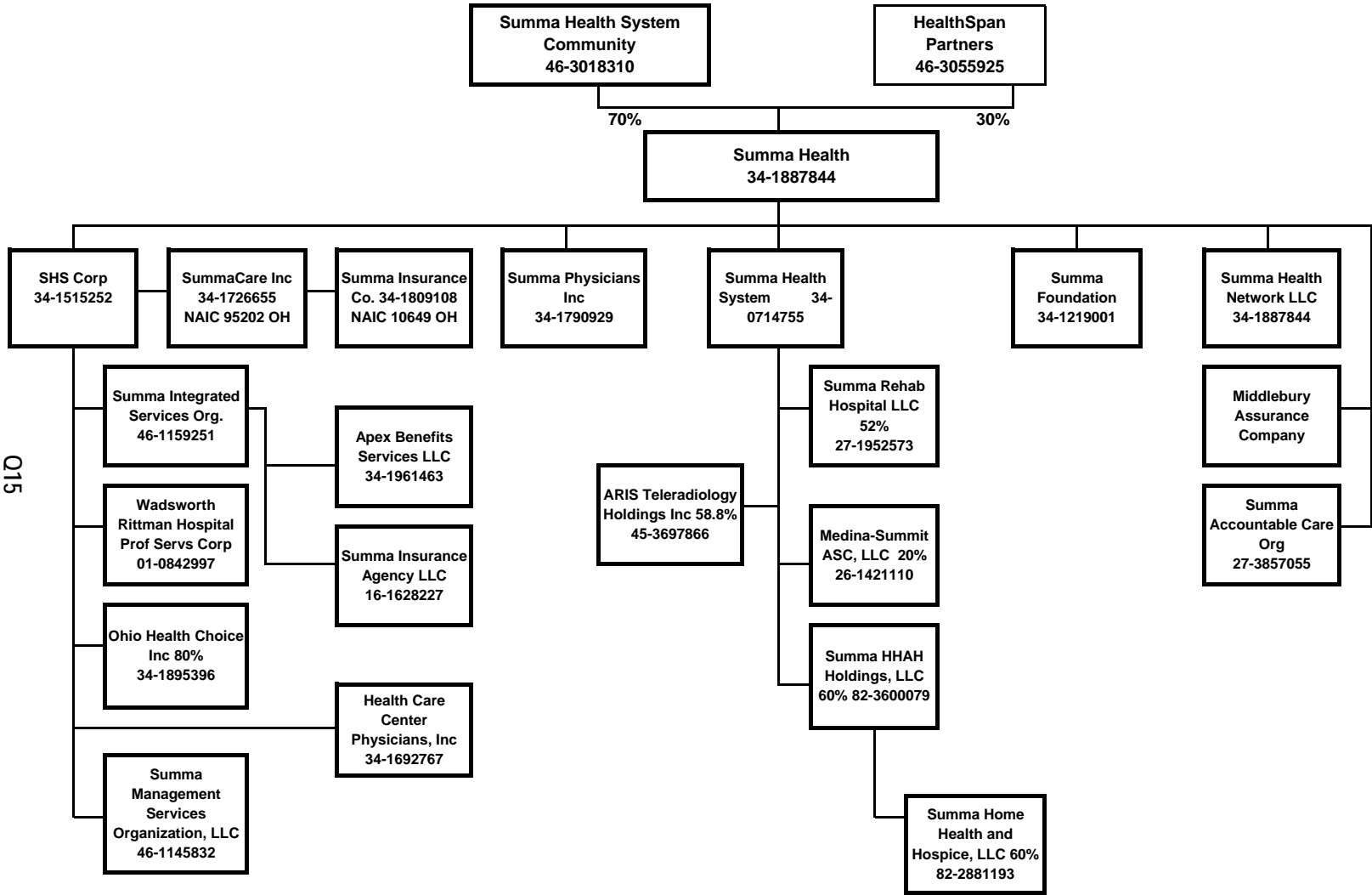
		1	Direct Business Only							
			2	3	4	5	6	7	8	9
State, Etc.		Active Status (a)	Accident and Health Premiums	Medicare Title XVIII	Medicaid Title XIX	Federal Employees Health Benefits Program Premiums	Life and Annuity Premiums and Other Considerations	Property/ Casualty Premiums	Total Columns 2 Through 7	Deposit-Type Contracts
1.	Alabama (AL) .....	N								
2.	Alaska (AK) .....	N								
3.	Arizona (AZ) .....	N								
4.	Arkansas (AR) .....	N								
5.	California (CA) .....	N								
6.	Colorado (CO) .....	N								
7.	Connecticut (CT) .....	N								
8.	Delaware (DE) .....	N								
9.	District of Columbia (DC) .....	N								
10.	Florida (FL) .....	N								
11.	Georgia (GA) .....	N								
12.	Hawaii (HI) .....	N								
13.	Idaho (ID) .....	N								
14.	Illinois (IL) .....	N								
15.	Indiana (IN) .....	N								
16.	Iowa (IA) .....	N								
17.	Kansas (KS) .....	N								
18.	Kentucky (KY) .....	N								
19.	Louisiana (LA) .....	N								
20.	Maine (ME) .....	N								
21.	Maryland (MD) .....	N								
22.	Massachusetts (MA) .....	N								
23.	Michigan (MI) .....	N								
24.	Minnesota (MN) .....	N								
25.	Mississippi (MS) .....	N								
26.	Missouri (MO) .....	N								
27.	Montana (MT) .....	N								
28.	Nebraska (NE) .....	N								
29.	Nevada (NV) .....	N								
30.	New Hampshire (NH) .....	N								
31.	New Jersey (NJ) .....	N								
32.	New Mexico (NM) .....	N								
33.	New York (NY) .....	N								
34.	North Carolina (NC) .....	N								
35.	North Dakota (ND) .....	N								
36.	Ohio (OH) .....	L		201,223,943					201,223,943	
37.	Oklahoma (OK) .....	N								
38.	Oregon (OR) .....	N								
39.	Pennsylvania (PA) .....	N								
40.	Rhode Island (RI) .....	N								
41.	South Carolina (SC) .....	N								
42.	South Dakota (SD) .....	N								
43.	Tennessee (TN) .....	N								
44.	Texas (TX) .....	N								
45.	Utah (UT) .....	N								
46.	Vermont (VT) .....	N								
47.	Virginia (VA) .....	N								
48.	Washington (WA) .....	N								
49.	West Virginia (WV) .....	N								
50.	Wisconsin (WI) .....	N								
51.	Wyoming (WY) .....	N								
52.	American Samoa (AS) .....	N								
53.	Guam (GU) .....	N								
54.	Puerto Rico (PR) .....	N								
55.	U.S. Virgin Islands (VI) .....	N								
56.	Northern Mariana Islands (MP) .....	N								
57.	Canada (CAN) .....	N								
58.	Aggregate other alien (OT) .....	X X X								
59.	Subtotal .....	X X X		201,223,943					201,223,943	
60.	Reporting entity contributions for Employee Benefit Plans .....	X X X								
61.	Total (Direct Business) .....	X X X		201,223,943					201,223,943	
DETAILS OF WRITE-INS										
58001.	.....	X X X								
58002.	.....	X X X								
58003.	.....	X X X								
58998.	Summary of remaining write-ins for Line 58 from overflow page .....	X X X								
58999.	TOTALS (Lines 58001 through 58003 plus 58998) (Line 58 above) .....	X X X								

(a) Active Status Counts:

- L Licensed or Chartered - Licensed insurance carrier or domiciled RRG
- E Eligible - Reporting entities eligible or approved to write surplus lines in the state
- N None of the above Not allowed to write business in the state

- R Registered - Non-domiciled RRGs
- Q Qualified - Qualified or accredited reinsurer

SCHEDULE Y - INFORMATION CONCERNING ACTIVITIES OF INSURER  
MEMBERS OF A HOLDING COMPANY GROUP  
PART 1 - ORGANIZATIONAL CHART



Q15

**SCHEDULE Y**

**PART 1A - DETAIL OF INSURANCE HOLDING COMPANY SYSTEM**

1	2	3	4	5	6	7	8	9	10	11	12	13	14	15	16
Group Code	Group Name	NAIC Comp- any Code	ID Number	FEDERAL RSSD	CIK	Name of Securities Exchange if Publicly Traded (U.S. or International)	Names of Parent, Subsidiaries or Affiliates	Domic- iliary Loca- tion	Rela- tion- ship to Report- ing Entity	Directly Controlled by (Name of Entity / Person)	Type of Control (Ownership, Board, Management, Attorney-in-Fact, Influence, Other)	If Control is Ownership Provide Percentage	Ultimate Controlling Entity(ies) / Person(s)	Is an SCA Filing Required? (Y/N)	*
016	SUMMA INSURANCE COMPANY	00000	34-1887844				SUMMA HEALTH	OH	UIP	SUMMA HEALTH SYSTEM COMMUNITY / HEALTHSPAN PARTNERS	Ownership		SUMMA HEALTH SYSTEM COMMUNITY / HEALTHSPAN PARTNERS	N	
		00000	34-1515252				SUMMA HEALTH SYSTEM CORPORATION	OH	UDP	SUMMA HEALTH	Ownership	100.0	SUMMA HEALTH SYSTEM COMMUNITY / HEALTHSPAN PARTNERS	N	
		10649	34-1809108				SUMMA INSURANCE COMPANY	OH	DS	SUMMACARE INC.	Ownership	100.0	SUMMA HEALTH SYSTEM COMMUNITY / HEALTHSPAN PARTNERS	N	
		95202	34-1726655				SUMMACARE INC.	OH	RE	SUMMA HEALTH SYSTEM CORP	Ownership	100.0	SUMMA HEALTH SYSTEM COMMUNITY / HEALTHSPAN PARTNERS	N	
		00000	16-1628227				SUMMA INSURANCE AGENCY LLC	OH	NIA	SUMMA INTEGRATED SERVICES ORGANIZATION	Ownership	100.0	SUMMA HEALTH SYSTEM COMMUNITY / HEALTHSPAN PARTNERS	N	
		00000	34-1961463				APEX BENEFITS SERVICES LLC	OH	NIA	SUMMA INTEGRATED SERVICES ORGANIZATION	Ownership	100.0	SUMMA HEALTH SYSTEM COMMUNITY / HEALTHSPAN PARTNERS	N	
		00000	01-0842997				WADSWORTH-RITTMAN PROFESSIONAL SERVICES CORPORATION	OH	NIA	SUMMA HEALTH SYSTEM CORPORATION	Ownership	100.0	HEALTHSPAN PARTNERS SUMMA HEALTH SYSTEM COMMUNITY /	N	
		00000	34-1895396				OHIO HEALTH CHOICE INC	OH	NIA	SUMMA HEALTH SYSTEM CORPORATION	Ownership	80.0	HEALTHSPAN PARTNERS SUMMA HEALTH SYSTEM COMMUNITY /	N	
		00000	34-2020978				CONERSTONE MEDICAL SERVICES	OH	NIA	SUMMA HEALTH SYSTEM CORPORATION	Ownership	50.0	HEALTHSPAN PARTNERS SUMMA HEALTH SYSTEM COMMUNITY /	N	
		00000	34-1692767				HEALTH CARE CENTER PHYSICIANS INC	OH	NIA	SUMMA HEALTH SYSTEM CORPORATION	Ownership	100.0	HEALTHSPAN PARTNERS SUMMA HEALTH SYSTEM COMMUNITY /	N	
		00000	34-1790929				SUMMA PHYSICIANS INC	OH	NIA	SUMMA HEALTH	Ownership	100.0	HEALTHSPAN PARTNERS SUMMA HEALTH SYSTEM COMMUNITY /	N	
		00000	34-1219001				SUMMA FOUNDATION	OH	NIA	SUMMA HEALTH	Ownership	100.0	HEALTHSPAN PARTNERS SUMMA HEALTH SYSTEM COMMUNITY /	N	
		00000	45-3697866				ARIS TELERADIOLOGY LLC	OH	NIA	SUMMA HEALTH SYSTEM	Ownership	58.8	SUMMA HEALTH SYSTEM COMMUNITY / HEALTHSPAN PARTNERS	N	
		00000	26-1421110				MEDINA-SUMMIT ASC LLC	OH	NIA	SUMMA HEALTH SYSTEM	Ownership	20.0	HEALTHSPAN PARTNERS SUMMA HEALTH SYSTEM COMMUNITY /	N	
		00000	34-1887844				SUMMA HEALTH NETWORK LLC	OH	NIA	SUMMA HEALTH	Ownership	100.0	HEALTHSPAN PARTNERS SUMMA HEALTH SYSTEM COMMUNITY /	N	
		00000	27-3857055				SUMMA ACCOUNTABLE CARE ORGANIZATION	OH	NIA	SUMMA HEALTH	Ownership	100.0	HEALTHSPAN PARTNERS SUMMA HEALTH SYSTEM COMMUNITY /	N	
		00000					MIDDLEBURY ASSURANCE COMPANY	CYM	IA	SUMMA HEALTH	Ownership	100.0	SUMMA HEALTH SYSTEM COMMUNITY / HEALTHSPAN PARTNERS	N	0000001

**SCHEDULE Y**  
**PART 1A - DETAIL OF INSURANCE HOLDING COMPANY SYSTEM**

Q16.1

1	2	3	4	5	6	7	8	9	10	11	12	13	14	15	16
Group Code	Group Name	NAIC Comp-any Code	ID Number	FEDERAL RSSD	CIK	Name of Securities Exchange if Publicly Traded (U.S. or International)	Names of Parent, Subsidiaries or Affiliates	Domic-iliary Loca-tion	Relation-ship to Report-ing Entity	Directly Controlled by (Name of Entity / Person)	Type of Control (Ownership, Board, Management, Attorney-in-Fact, Influence, Other)	If Control is Ownership Provide Percentage	Ultimate Controlling Entity(ies) / Person(s)	Is an SCA Filing Required? (Y/N)	*
.....	.....	00000	46-1145832	.....	.....	.....	SUMMA MANAGEMENT SERVICES ORGANIZATION, LLC	OH	NIA	SUMMA HEALTH SYSTEM CORPORATION	Ownership	100.0	SUMMA HEALTH SYSTEM COMMUNITY / HEALTHSPAN PARTNERS	N	.....
.....	.....	00000	46-1159251	.....	.....	.....	SUMMA INTEGRATED SERVICES ORGANIZATION	OH	NIA	SUMMA HEALTH SYSTEM CORPORATION	Ownership	100.0	SUMMA HEALTH SYSTEM COMMUNITY / HEALTHSPAN PARTNERS	N	.....
.....	.....	00000	46-3018310	.....	.....	.....	SUMMA HEALTH SYSTEM COMMUNITY	OH	UIP	.....	.....	.....	.....	N	0000002
.....	.....	00000	46-3055925	.....	.....	.....	HEALTHSPAN PARTNERS	OH	UIP	.....	.....	.....	.....	N	0000003
.....	.....	00000	34-0714755	.....	.....	.....	SUMMA HEALTH SYSTEM	OH	NIA	SUMMA HEALTH	Ownership	100.0	SUMMA HEALTH SYSTEM / HEALTHSPAN PARTNERS	N	.....
.....	.....	00000	27-1952573	.....	.....	.....	SUMMA REHAB HOSPITAL	OH	NIA	SUMMA HEALTH SYSTEM	Ownership	100.0	SUMMA HEALTH SYSTEM COMMUNITY / HEALTHSPAN PARTNERS	N	.....
.....	.....	00000	82-3600079	.....	.....	.....	SUMMA HHAH HOLDINGS, LLC	OH	NIA	SUMMA HEALTH SYSTEM	Ownership	60.0	SUMMA HEALTH SYSTEM COMMUNITY / HEALTHSPAN PARTNERS	N	.....
.....	.....	00000	82-2881193	.....	.....	.....	SUMMA HOME HEALTH AND HOSPICE	OH	NIA	SUMMA HHAH HOLDINGS, LLC	Ownership	60.0	SUMMA HEALTH SYSTEM COMMUNITY / HEALTHSPAN PARTNERS	N	.....

Asterisk	Explanation
0000001	Middlebury Assurance Company is located in the Cayman Islands.
0000002	Summa Health System Community is the ultimate controlling entity with 70% ownership in Summa Health
0000003	HealthSpan Partners is the ultimate controlling entity with 30% ownership in Summa Health System.

# SUPPLEMENTAL EXHIBITS AND SCHEDULES INTERROGATORIES

The following supplemental reports are required to be filed as part of your statement filing. However, in the event that your company does not transact the type of business for which the special report must be filed, your response of NO to the specific interrogatory will be accepted in lieu of filing a "NONE" report and a bar code will be printed below. If the supplement is required of your company but is not being filed for whatever reason enter SEE EXPLANATION and provide an explanation following the interrogatory questions.

1. Will the Medicare Part D Coverage Supplement be filed with the state of domicile and the NAIC with this statement?

RESPONSE
No

Explanations:

Bar Codes:

Medicare Part D Coverage Supplement



95202201936500003

2019

Document Code: 365

OVERFLOW PAGE FOR WRITE-INS

ASSETS

	Current Statement Date			4  December 31 Prior Year Net Admitted Assets
	1  Assets	2  Nonadmitted Assets	3  Net Admitted Assets (Cols. 1 - 2)	
1197. Summary of remaining write-ins for Line 11 (Lines 1104 through 1196) .....				
2504. Premium Tax Recoverable .....				
2597. Summary of remaining write-ins for Line 25 (Lines 2504 through 2596) .....				

STATEMENT OF REVENUE AND EXPENSES

	Current Year To Date		Prior Year To Date	Prior Year Ended December 31
	1 Uncovered	2 Total	3 Total	4 Total
0697. Summary of remaining write-ins for Line 6 (Lines 0604 through 0696) .....	X X X .....			
0704. Proceeds from the Sale of the Medicaid Product Line .....	X X X .....			
0797. Summary of remaining write-ins for Line 7 (Lines 0704 through 0796) .....	X X X .....			
1497. Summary of remaining write-ins for Line 14 (Lines 1404 through 1496) .....				
2904. Rental Revenue .....				
2905. City Income Taxes .....				
2906. Minority Interest Income (Expense) .....				
2907. City Taxes .....				
2908. Network Access Fees - Providers .....				
2909. Minority Interest Expense .....				
2910. Write off of tax receivable .....				
2997. Summary of remaining write-ins for Line 29 (Lines 2904 through 2996) .....				

STATEMENT OF REVENUE AND EXPENSES (Continued)

	1  Current Year To Date	2  Prior Year To Date	3  Prior Year Ended December 31
4704. 2014 CMS Revenue Reconciliation .....			
4705. Correction of an error - 2006 Premium Taxes .....			
4706. Misc. Adjustment .....		3	
4707. Increase par value of common stock .....			
4708. Adjustments to 2008 financial statements .....			
4709. True up adjustment related to Deferred Tax .....			
4710. Miscellaneous .....			
4711. Capital contribution made to Summa Insurance Company .....			
4797. Summary of remaining write-ins for Line 47 (Lines 4704 through 4796) .....		3	



STATEMENT AS OF **September 30, 2019** OF THE **SummaCare, Inc.**

SCHEDULE A - VERIFICATION

Real Estate		
	1	2
	Year To Date	Prior Year Ended December 31
1. Book/adjusted carrying value, December 31 of prior year .....		
2. Cost of acquired:		
2.1 Actual cost at time of acquisition .....		
2.2 Additional investment made after acquisition .....		
3. Current year change in encumbrances .....		
4. Total gain (loss) on disposals .....		
5. Deduct amounts received on disposals .....		
6. Total foreign exchange change in book/adjusted carrying value .....		
7. Deduct current year's other-than-temporary impairment recognized .....		
8. Deduct current year's depreciation .....		
9. Book/adjusted carrying value at the end of current period (Lines 1 + 2 + 3 + 4 - 5 + 6 - 7 - 8 ) .....		
10. Deduct total nonadmitted amounts .....		
11. Statement value at end of current period (Line 9 minus Line 10) .....		

SCHEDULE B - VERIFICATION

Mortgage Loans

	1	2
	Year To Date	Prior Year Ended December 31
1. Book value/recorded investment excluding accrued interest, December 31 of prior year .....		
2. Cost of acquired:		
2.1 Actual cost at time of acquisition .....		
2.2 Additional investment made after acquisition .....		
3. Capitalized deferred interest and other .....		
4. Accrual of discount .....		
5. Unrealized valuation increase (decrease) .....		
6. Total gain (loss) on disposals .....		
7. Deduct amounts received on disposals .....		
8. Deduct amortization of premium and mortgage interest points .....		
9. Total foreign exchange change in book value/recorded investment .....		
10. Deduct current year's other-than-temporary impairment recognized .....		
11. Book value/recorded investment excluding accrued interest at end of current period (Lines 1 + 2 + 3 + 4 + 5 + 6 - 7 - 8 + 9 - 10) .....		
12. Total valuation allowance .....		
13. Subtotal (Line 11 plus Line 12) .....		
14. Deduct total nonadmitted amounts .....		
15. Statement value at end of current period (Line 13 minus Line 14) .....		

SCHEDULE BA - VERIFICATION

Other Long-Term Invested Assets

	1	2
	Year To Date	Prior Year Ended December 31
1. Book/adjusted carrying value, December 31 of prior year .....		
2. Cost of acquired:		
2.1 Actual cost at time of acquisition .....		
2.2 Additional investment made after acquisition .....		
3. Capitalized deferred interest and other .....		
4. Accrual of discount .....		
5. Unrealized valuation increase (decrease) .....		
6. Total gain (loss) on disposals .....		
7. Deduct amounts received on disposals .....		
8. Deduct amortization of premium and depreciation .....		
9. Total foreign exchange change in book/adjusted carrying value .....		
10. Deduct current year's other-than-temporary impairment recognized .....		
11. Book/adjusted carrying value at end of current period (Lines 1 + 2 + 3 + 4 + 5 + 6 - 7 - 8 + 9 - 10) .....		
12. Deduct total nonadmitted amounts .....		
13. Statement value at end of current period (Line 11 minus Line 12) .....		

SCHEDULE D - VERIFICATION

Bonds and Stocks

	1	2
	Year To Date	Prior Year Ended December 31
1. Book/adjusted carrying value of bonds and stocks, December 31 of prior year .....	52,768,212	54,167,965
2. Cost of bonds and stocks acquired .....	5,400,000	15,000,000
3. Accrual of discount .....	19,724	24,114
4. Unrealized valuation increase (decrease) .....	1,312,505	(12,388,116)
5. Total gain (loss) on disposals .....		
6. Deduct consideration for bonds and stocks disposed of .....	2,400,000	4,000,000
7. Deduct amortization of premium .....	18,352	35,751
8. Total foreign exchange change in book/adjusted carrying value .....		
9. Deduct current year's other-than-temporary impairment recognized .....		
10. Total investment income recognized as a result of prepayment penalties and/or acceleration fees .....		
11. Book/adjusted carrying value at end of current period (Lines 1 + 2 + 3 + 4 + 5 - 6 - 7 + 8 - 9 + 10) .....	57,082,089	52,768,212
12. Deduct total nonadmitted amounts .....		
13. Statement value at end of current period (Line 11 minus Line 12) .....	57,082,089	52,768,212

**SCHEDULE D - PART 1B**  
**Showing the Acquisitions, Dispositions and Non-Trading Activity**  
**During the Current Quarter for all Bonds and Preferred Stock by NAIC Designation**

NAIC Designation		1 Book/Adjusted Carrying Value Beginning of Current Quarter	2 Acquisitions During Current Quarter	3 Dispositions During Current Quarter	4 Non-Trading Activity During Current Quarter	5 Book/Adjusted Carrying Value End of First Quarter	6 Book/Adjusted Carrying Value End of Second Quarter	7 Book/Adjusted Carrying Value End of Third Quarter	8 Book/Adjusted Carrying Value December 31 Prior Year
<b>BONDS</b>									
1.	NAIC 1 (a) .....	33,611,001			150,195	33,018,526	33,611,001	33,761,196	33,308,693
2.	NAIC 2 (a) .....								
3.	NAIC 3 (a) .....								
4.	NAIC 4 (a) .....								
5.	NAIC 5 (a) .....								
6.	NAIC 6 (a) .....								
7.	Total Bonds .....	33,611,001			150,195	33,018,526	33,611,001	33,761,196	33,308,693
<b>PREFERRED STOCK</b>									
8.	NAIC 1 .....								
9.	NAIC 2 .....								
10.	NAIC 3 .....								
11.	NAIC 4 .....								
12.	NAIC 5 .....								
13.	NAIC 6 .....								
14.	Total Preferred Stock .....								
15.	Total Bonds & Preferred Stock .....	33,611,001			150,195	33,018,526	33,611,001	33,761,196	33,308,693

(a) Book/Adjusted Carrying Value column for the end of the current reporting period includes the following amount of short-term and cash equivalent bonds by NAIC designation: NAIC 1 \$.....1,966,365; NAIC 2 \$.....0; NAIC 3 \$.....0; NAIC 4 \$.....0; NAIC 5 \$.....0; NAIC 6 \$.....0

**SCHEDULE DA - PART 1**

**Short - Term Investments**

	1 Book/Adjusted Carrying Value	2  Par Value	3  Actual Cost	4  Interest Collected Year To Date	5  Paid for Accrued Interest Year To Date
9199999. Totals .....	1,966,365	X X X	1,966,365	62,019	

**SCHEDULE DA - Verification**

**Short-Term Investments**

		1  Year To Date	2  Prior Year Ended December 31
1.	Book/adjusted carrying value, December 31 of prior year .....	4,512,575	5,777,890
2.	Cost of short-term investments acquired .....	(2,546,210)	(1,265,315)
3.	Accrual of discount .....		
4.	Unrealized valuation increase (decrease) .....		
5.	Total gain (loss) on disposals .....		
6.	Deduct consideration received on disposals .....		
7.	Deduct amortization of premium .....		
8.	Total foreign exchange change in book/adjusted carrying value .....		
9.	Deduct current year's other-than-temporary impairment recognized .....		
10.	Book/adjusted carrying value at end of current period (Lines 1 + 2 + 3 + 4 + 5 - 6 - 7 + 8 - 9) .....	1,966,365	4,512,575
11.	Deduct total nonadmitted amounts .....		
12.	Statement value at end of current period (Line 10 minus Line 11) .....	1,966,365	4,512,575

**SI04   Schedule DB - Part A Verification   ..... NONE**

**SI04   Schedule DB - Part B Verification   ..... NONE**

**SI05   Schedule DB Part C Section 1   ..... NONE**

**SI06   Schedule DB Part C Section 2   ..... NONE**

**SI07   Schedule DB - Verification   ..... NONE**

**SI08   Schedule E - Verification (Cash Equivalents)   ..... NONE**

<b>E01</b>	<b>Schedule A Part 2</b>	<b>NONE</b>
<b>E01</b>	<b>Schedule A Part 3</b>	<b>NONE</b>
<b>E02</b>	<b>Schedule B Part 2</b>	<b>NONE</b>
<b>E02</b>	<b>Schedule B Part 3</b>	<b>NONE</b>
<b>E03</b>	<b>Schedule BA Part 2</b>	<b>NONE</b>
<b>E03</b>	<b>Schedule BA Part 3</b>	<b>NONE</b>
<b>E04</b>	<b>Schedule D Part 3</b>	<b>NONE</b>
<b>E05</b>	<b>Schedule D Part 4</b>	<b>NONE</b>
<b>E06</b>	<b>Schedule DB Part A Section 1</b>	<b>NONE</b>
<b>E07</b>	<b>Schedule DB Part B Section 1</b>	<b>NONE</b>
<b>E08</b>	<b>Schedule DB Part D Section 1</b>	<b>NONE</b>
<b>E09</b>	<b>Schedule DB Part D Section 2 - Collateral Pledged By Reporting Entity</b>	<b>NONE</b>
<b>E09</b>	<b>Schedule DB Part D Section 2 - Collateral Pledged To Reporting Entity</b>	<b>NONE</b>
<b>E10</b>	<b>Schedule DL - Part 1 - Securities Lending Collateral Assets</b>	<b>NONE</b>
<b>E11</b>	<b>Schedule DL - Part 2 - Securities Lending Collateral Assets</b>	<b>NONE</b>



**SCHEDULE E - PART 2 - CASH EQUIVALENTS**

Show Investments Owned End of Current Quarter

1	2	3	4	5	6	7	8	9
Cusip	Description	Code	Date Acquired	Rate of Interest	Maturity Date	Book/Adjusted Carrying Value	Amount of Interest Due & Accrued	Amount Received During Year
N O N E								
8899999 Total - Cash Equivalents .....						.....	.....	.....

**INDEX TO HEALTH  
QUARTERLY STATEMENT**

Accounting Changes and Corrections of Errors; Q10, Note 2; Q11

Accounting Practices and Policies; Q5; Q10, Note 1

Admitted Assets; Q2

Bonds; Q2; Q6; Q11.1; Q11.2; QE04; QE05

Bonuses; Q3; Q4; Q8; Q9

Borrowed Funds; Q3; Q6

Business Combinations and Goodwill; Q10, Note 3

Capital Gains (Losses)

    Realized; Q4

    Unrealized; Q4; Q5

Capital Stock; Q3; Q10, Note 13

Capital Notes; Q6; Q10, Note 11

Caps; QE06; QSI04

Cash; Q2; Q6; QE12

Cash Equivalents; Q2; Q6; QE13

Claims; Q3; Q4; Q8; Q9

Collars; QE06; QSI04

Commissions; Q6

Common Stock; Q2; Q3; Q6; Q11.1; Q11.2

Cost Containment Expenses; Q4

Contingencies; Q10, Note 14

Counterparty Exposure; Q10, Note 8; QE06; QE08

Debt; Q10, Note 11

Deferred Compensation; Q10, Note 12

Derivative Instruments; Q10, Note 8; QSI04; QSI05; QSI06; QSI07; QE06; QE07; QE08

Discontinued Operations; Q10, Note 4

Electronic Data Processing Equipment; Q2

Encumbrances; Q2; QSI01; QE01

Emergency Room; Q4

Expenses; Q3; Q4; Q6

Extinguishment of Liabilities; Q10, Note 17

Extraordinary Item; Q10, Note 21

Fair Value; Q7, Note 20

Fee for Service; Q4

Foreign Exchange; Q2; Q3; Q5; QSI01; QSI03; QE01; QE02; QE03; QE05

Forwards; QE06; QSI04

Furniture, Equipment and Supplies; Q2

Guaranty Fund; Q2

Health Care Receivables; Q2; Q9; Q10, Note 28

Holding Company; Q16

Hospital/Medical Benefits; Q4

Incentive Pools; Q3; Q4; Q8; Q9

Income; Q4; Q5; Q6

Income Taxes; Q2; Q3; Q4; Q5; Q10, Note 9

Incurred Claims and Claim Adjustment Expenses; Q10, Note 25

Intercompany Pooling; Q10, Note 26

Investment Income; Q10, Note 7

    Accrued; Q2

    Earned; Q2; QSI03

    Received; Q6

Investments; Q10, Note 5; Q11.1; Q11.2; QE08

Joint Venture; Q10, Note 6

Leases; Q10, Note 15

Limited Liability Company (LLC); Q10, Note 6

Limited Partnership; Q10, Note 6

Long-Term Invested Assets; Q2; QE03

Managing General Agents; Q10, Note 19

Medicare Part D Coverage; QSupp1

Member Months; Q4; Q7

Mortgage Loans; Q2; Q6; Q11.1; QSI01; QE02

Nonadmitted Assets; Q2; Q5; QSI01; QSI03

Off-Balance Sheet Risk; Q10, Note 16

Options; QE06; QSI04

Organizational Chart; Q11; Q14

Out-of-Area; Q4

Outside Referrals; Q4

Parent, Subsidiaries and Affiliates; Q2; Q3; Q10, Note 10; Q11.1

Participating Policies; Q10, Note 29

Pharmaceutical Rebates; Q10, Note 28

Policyholder Dividends; Q5; Q6

Postemployment Benefits; Q10, Note 12

Postretirement Benefits; Q10, Note 12

Preferred Stock; Q2; Q3; Q6; Q11.1; Q11.2



**INDEX TO HEALTH  
QUARTERLY STATEMENT**

Premium Deficiency Reserves; Q10, Note 30

Premiums and Considerations

    Advance; Q3

    Collected; Q6

    Deferred; Q2

    Direct; Q7; Q13

    Earned; Q7

    Retrospective; Q2

    Uncollected; Q2

    Unearned; Q4

    Written; Q4; Q7

Prescription Drugs; Q4

Quasi Reorganizations; Q10, Note 13

Real Estate; Q2; Q6; QE01; QSI01

Redetermination, Contracts Subject to; Q10, Note 24

Reinsurance; Q9; Q10, Note 23

    Ceded; Q3; Q12

    Funds Held; Q2

    Payable; Q3

    Premiums; Q3

    Receivable; Q2; Q4

    Unauthorized; Q3; Q5

Reserves

    Accident and Health; Q3; Q4

    Claim; Q3; Q5; Q8

    Life; Q3

Retirement Plans; Q10, Note 12

Retrospectively Rated Policies; Q10, Note 24

Risk Revenue; Q4

Salvage and Subrogation; Q10, Note 31

Securities Lending; Q2; Q3; QE09; QE11

Servicing of Financial Assets; Q10, Note 17

Short-Term Investments; Q2; Q6; Q11.1; QSI03

Stockholder Dividends; Q5; Q6

Subsequent Events; Q10, Note 22

Surplus; Q3; Q5; Q6

Surplus Notes; Q3; Q5; Q6

Swaps; QE07; QSI04

Synthetic Assets; QSI04; QSI05

Third Party Administrator; Q10, Note 19

Treasury Stock; Q3; Q5

Uninsured Accident and Health; Q2; Q3; Q10, Note 18

Valuation Allowance; QSI01

Wash Sales; Q10, Note 17

Withholds; Q4; Q8