



LIFE AND ACCIDENT AND HEALTH COMPANIES/FRATERNAL BENEFIT SOCIETIES - ASSOCIATION EDITION

QUARTERLY STATEMENT

AS OF SEPTEMBER 30, 2019

OF THE CONDITION AND AFFAIRS OF THE

Cincinnati Equitable Life Insurance Company

NAIC Group Code 0838 (Current) (Prior) NAIC Company Code 88064 Employer's ID Number 35-1452221

Organized under the Laws of Ohio, State of Domicile or Port of Entry OH

Country of Domicile United States of America

Licensed as business type: Life, Accident & Health [X] Fraternal Benefit Societies []

Incorporated/Organized 10/19/1977 Commenced Business 07/11/1978

Statutory Home Office 525 Vine Street, Suite 1925 (Street and Number) Cincinnati, OH, US 45202 (City or Town, State, Country and Zip Code)

Main Administrative Office 525 Vine Street, Suite 1925 (Street and Number) Cincinnati, OH, US 45202 (City or Town, State, Country and Zip Code) 513-621-1826 (Area Code) (Telephone Number)

Mail Address P.O. BOX 3428 (Street and Number or P.O. Box) Cincinnati, OH, US 45202-3428 (City or Town, State, Country and Zip Code)

Primary Location of Books and Records 525 Vine Street, Suite 1925 (Street and Number) Cincinnati, OH, US 45202 (City or Town, State, Country and Zip Code) 513-621-1826 (Area Code) (Telephone Number)

Internet Website Address www.cineqlife.com

Statutory Statement Contact Gregory Allen Baker (Name) 513-621-1826 (Area Code) (Telephone Number) gbaker@1826.com (E-mail Address) 513-621-4531 (FAX Number)

OFFICERS

President Gregory Allen Baker Treasurer David Duane Baker #

Secretary Andrew James Kok # Vice President of Sales & Marketing Tonya Gail Crawford

OTHER

DIRECTORS OR TRUSTEES

David Howard Bahrman #	Carl Joseph Bednarski #	Douglas Elgin Darling #
Michael Allen DeRuiter #	Travis Edward Fahley #	Michael Charles Fusilier #
Andrew Kent Hagenow #	Jeffery Blair Sandborn #	Benjamin Jeffery LaCross #
Brigitte Louise Leach #	Jennifer Lynn Lewis #	Patrick William McGuire #
Michael Richard Mulders #	Stephanie Lee Schafer #	Larry Allen Walton #

State of Michigan SS:

County of Eaton

The officers of this reporting entity being duly sworn, each depose and say that they are the described officers of said reporting entity, and that on the reporting period stated above, all of the herein described assets were the absolute property of the said reporting entity, free and clear from any liens or claims thereon, except as herein stated, and that this statement, together with related exhibits, schedules and explanations therein contained, annexed or referred to, is a full and true statement of all the assets and liabilities and of the condition and affairs of the said reporting entity as of the reporting period stated above, and of its income and deductions therefrom for the period ended, and have been completed in accordance with the NAIC Annual Statement Instructions and Accounting Practices and Procedures manual except to the extent that: (1) state law may differ; or, (2) that state rules or regulations require differences in reporting not related to accounting practices and procedures, according to the best of their information, knowledge and belief, respectively. Furthermore, the scope of this attestation by the described officers also includes the related corresponding electronic filing with the NAIC, when required, that is an exact copy (except for formatting differences due to electronic filing) of the enclosed statement. The electronic filing may be requested by various regulators in lieu of or in addition to the enclosed statement.

Gregory Allen Baker President Andrew James Kok Secretary David Duane Baker Treasurer

Subscribed and sworn to before me this day of

a. Is this an original filing? Yes [X] No []

b. If no, 1. State the amendment number..... 2. Date filed 3. Number of pages attached.....

STATEMENT AS OF SEPTEMBER 30, 2019 OF THE Cincinnati Equitable Life Insurance Company

ASSETS

	Current Statement Date			4 December 31 Prior Year Net Admitted Assets
	1 Assets	2 Nonadmitted Assets	3 Net Admitted Assets (Cols. 1 - 2)	
1. Bonds	151,587,328		151,587,328	138,423,262
2. Stocks:				
2.1 Preferred stocks	908,459		908,459	1,422,359
2.2 Common stocks	3,214,963		3,214,963	3,753,568
3. Mortgage loans on real estate:				
3.1 First liens			0	0
3.2 Other than first liens.....			0	0
4. Real estate:				
4.1 Properties occupied by the company (less \$ encumbrances)			0	0
4.2 Properties held for the production of income (less \$ encumbrances)			0	0
4.3 Properties held for sale (less \$ encumbrances)			0	0
5. Cash (\$1,726,837), cash equivalents (\$1,642,287) and short-term investments (\$3,291,044)	6,660,168		6,660,168	8,237,983
6. Contract loans (including \$ premium notes)	200,556		200,556	172,910
7. Derivatives			0	0
8. Other invested assets	242,756		242,756	244,155
9. Receivables for securities			0	0
10. Securities lending reinvested collateral assets			0	0
11. Aggregate write-ins for invested assets	0	0	0	0
12. Subtotals, cash and invested assets (Lines 1 to 11)	162,814,230	0	162,814,230	152,254,238
13. Title plants less \$ charged off (for Title insurers only)			0	0
14. Investment income due and accrued	1,381,769		1,381,769	1,253,591
15. Premiums and considerations:				
15.1 Uncollected premiums and agents' balances in the course of collection	168		168	90
15.2 Deferred premiums, agents' balances and installments booked but deferred and not yet due (including \$ earned but unbilled premiums)	1,253,731		1,253,731	1,096,875
15.3 Accrued retrospective premiums (\$) and contracts subject to redetermination (\$)			0	0
16. Reinsurance:				
16.1 Amounts recoverable from reinsurers			0	0
16.2 Funds held by or deposited with reinsured companies			0	0
16.3 Other amounts receivable under reinsurance contracts			0	0
17. Amounts receivable relating to uninsured plans			0	0
18.1 Current federal and foreign income tax recoverable and interest thereon	72,208		72,208	0
18.2 Net deferred tax asset	2,345,927	1,088,401	1,257,526	1,630,000
19. Guaranty funds receivable or on deposit			0	0
20. Electronic data processing equipment and software	907		907	907
21. Furniture and equipment, including health care delivery assets (\$)	690	690	0	0
22. Net adjustment in assets and liabilities due to foreign exchange rates			0	0
23. Receivables from parent, subsidiaries and affiliates	5,893		5,893	6,071
24. Health care (\$) and other amounts receivable			0	0
25. Aggregate write-ins for other than invested assets	1,930,371	51,526	1,878,845	2,088,847
26. Total assets excluding Separate Accounts, Segregated Accounts and Protected Cell Accounts (Lines 12 to 25)	169,805,894	1,140,617	168,665,277	158,330,619
27. From Separate Accounts, Segregated Accounts and Protected Cell Accounts			0	0
28. Total (Lines 26 and 27)	169,805,894	1,140,617	168,665,277	158,330,619
DETAILS OF WRITE-INS				
1101.				
1102.				
1103.				
1198. Summary of remaining write-ins for Line 11 from overflow page	0	0	0	0
1199. Totals (Lines 1101 through 1103 plus 1198)(Line 11 above)	0	0	0	0
2501. Assignments Receivable	1,745,327		1,745,327	1,943,233
2502. Premium Receivable	133,518		133,518	145,614
2503. Prepaid Expenses	51,526	51,526	0	0
2598. Summary of remaining write-ins for Line 25 from overflow page	0	0	0	0
2599. Totals (Lines 2501 through 2503 plus 2598)(Line 25 above)	1,930,371	51,526	1,878,845	2,088,847

LIABILITIES, SURPLUS AND OTHER FUNDS

	1 Current Statement Date	2 December 31 Prior Year
1. Aggregate reserve for life contracts \$ less \$ included in Line 6.3 (including \$ Modco Reserve)	156,576,340	144,471,844
2. Aggregate reserve for accident and health contracts (including \$ Modco Reserve)	2,645	2,645
3. Liability for deposit-type contracts (including \$ Modco Reserve)	191,243	207,151
4. Contract claims:		
4.1 Life	304,462	376,272
4.2 Accident and health	6,441	6,441
5. Policyholders' dividends/refunds to members \$ and coupons \$ due and unpaid		0
6. Provision for policyholders' dividends, refunds to members and coupons payable in following calendar year - estimated amounts:		
6.1 Policyholders' dividends and refunds to members apportioned for payment (including \$ Modco)	350	587
6.2 Policyholders' dividends and refunds to members not yet apportioned (including \$ Modco)		
6.3 Coupons and similar benefits (including \$ Modco)	1,750	2,468
7. Amount provisionally held for deferred dividend policies not included in Line 6		
8. Premiums and annuity considerations for life and accident and health contracts received in advance less \$ discount; including \$ accident and health premiums	449,323	486,107
9. Contract liabilities not included elsewhere:		
9.1 Surrender values on canceled contracts		
9.2 Provision for experience rating refunds, including the liability of \$ accident and health experience rating refunds of which \$ 0 is for medical loss ratio rebate per the Public Health Service Act		
9.3 Other amounts payable on reinsurance, including \$ assumed and \$ ceded	0	0
9.4 Interest Maintenance Reserve	763,882	786,462
10. Commissions to agents due or accrued-life and annuity contracts \$, accident and health \$ and deposit-type contract funds \$	165,812	159,766
11. Commissions and expense allowances payable on reinsurance assumed		
12. General expenses due or accrued	344,500	380,323
13. Transfers to Separate Accounts due or accrued (net) (including \$ accrued for expense allowances recognized in reserves, net of reinsured allowances)		
14. Taxes, licenses and fees due or accrued, excluding federal income taxes	47,690	104,386
15.1 Current federal and foreign income taxes, including \$ on realized capital gains (losses)		57,638
15.2 Net deferred tax liability		
16. Unearned investment income	5,062	3,725
17. Amounts withheld or retained by reporting entity as agent or trustee		
18. Amounts held for agents' account, including \$ agents' credit balances		
19. Remittances and items not allocated		
20. Net adjustment in assets and liabilities due to foreign exchange rates		
21. Liability for benefits for employees and agents if not included above		
22. Borrowed money \$ and interest thereon \$		
23. Dividends to stockholders declared and unpaid		
24. Miscellaneous liabilities:		
24.01 Asset valuation reserve	1,436,112	1,464,893
24.02 Reinsurance in unauthorized and certified (\$) companies		0
24.03 Funds held under reinsurance treaties with unauthorized and certified (\$) reinsurers		
24.04 Payable to parent, subsidiaries and affiliates		
24.05 Drafts outstanding		
24.06 Liability for amounts held under uninsured plans		
24.07 Funds held under coinsurance		
24.08 Derivatives	0	0
24.09 Payable for securities		483,000
24.10 Payable for securities lending		
24.11 Capital notes \$ and interest thereon \$		
25. Aggregate write-ins for liabilities	0	0
26. Total liabilities excluding Separate Accounts business (Lines 1 to 25)	160,295,612	148,993,707
27. From Separate Accounts Statement		
28. Total liabilities (Lines 26 and 27)	160,295,612	148,993,707
29. Common capital stock	1,000,000	1,000,000
30. Preferred capital stock		
31. Aggregate write-ins for other than special surplus funds	0	0
32. Surplus notes		
33. Gross paid in and contributed surplus	9,780,231	9,780,231
34. Aggregate write-ins for special surplus funds	0	0
35. Unassigned funds (surplus)	(2,410,566)	(1,443,319)
36. Less treasury stock, at cost:		
36.1 shares common (value included in Line 29 \$)		
36.2 shares preferred (value included in Line 30 \$)		
37. Surplus (Total Lines 31+32+33+34+35-36) (including \$ in Separate Accounts Statement)	7,369,665	8,336,912
38. Totals of Lines 29, 30 and 37	8,369,665	9,336,912
39. Totals of Lines 28 and 38 (Page 2, Line 28, Col. 3)	168,665,277	158,330,619
DETAILS OF WRITE-INS		
2501.		
2502.		
2503.		
2598. Summary of remaining write-ins for Line 25 from overflow page	0	0
2599. Totals (Lines 2501 through 2503 plus 2598)(Line 25 above)	0	0
3101.		
3102.		
3103.		
3198. Summary of remaining write-ins for Line 31 from overflow page	0	0
3199. Totals (Lines 3101 through 3103 plus 3198)(Line 31 above)	0	0
3401.		
3402.		
3403.		
3498. Summary of remaining write-ins for Line 34 from overflow page	0	0
3499. Totals (Lines 3401 through 3403 plus 3498)(Line 34 above)	0	0

SUMMARY OF OPERATIONS

	1 Current Year To Date	2 Prior Year To Date	3 Prior Year Ended December 31
1. Premiums and annuity considerations for life and accident and health contracts	28,550,332	29,118,200	37,956,916
2. Considerations for supplementary contracts with life contingencies			
3. Net investment income	3,951,530	3,466,602	4,696,006
4. Amortization of Interest Maintenance Reserve (IMR)	94,716	125,942	160,047
5. Separate Accounts net gain from operations excluding unrealized gains or losses			
6. Commissions and expense allowances on reinsurance ceded			
7. Reserve adjustments on reinsurance ceded			
8. Miscellaneous Income:			
8.1 Income from fees associated with investment management, administration and contract guarantees from Separate Accounts			
8.2 Charges and fees for deposit-type contracts			
8.3 Aggregate write-ins for miscellaneous income	370,402	360,179	462,564
9. Totals (Lines 1 to 8.3)	32,966,980	33,070,923	43,275,533
10. Death benefits	15,671,131	14,363,687	19,441,774
11. Matured endowments (excluding guaranteed annual pure endowments)			0
12. Annuity benefits	166,748	177,925	186,981
13. Disability benefits and benefits under accident and health contracts	5,645	9,545	12,279
14. Coupons, guaranteed annual pure endowments and similar benefits	1,778	1,958	2,393
15. Surrender benefits and withdrawals for life contracts	64,028	56,014	69,368
16. Group conversions			
17. Interest and adjustments on contract or deposit-type contract funds	187	167	228
18. Payments on supplementary contracts with life contingencies			
19. Increase in aggregate reserves for life and accident and health contracts	12,104,496	13,590,385	17,297,120
20. Totals (Lines 10 to 19)	28,014,013	28,199,681	37,010,143
21. Commissions on premiums, annuity considerations, and deposit-type contract funds (direct business only)	3,329,037	3,268,711	4,198,457
22. Commissions and expense allowances on reinsurance assumed			
23. General insurance expenses and fraternal expenses	1,767,678	1,705,149	2,333,063
24. Insurance taxes, licenses and fees, excluding federal income taxes	528,985	453,359	658,308
25. Increase in loading on deferred and uncollected premiums	153,846	107,291	(12,371)
26. Net transfers to or (from) Separate Accounts net of reinsurance			
27. Aggregate write-ins for deductions	6,290	4,756	6,897
28. Totals (Lines 20 to 27)	33,799,849	33,738,947	44,194,497
29. Net gain from operations before dividends to policyholders and federal income taxes (Line 9 minus Line 28)	(832,869)	(668,024)	(918,964)
30. Dividends to policyholders and refunds to members	430	467	568
31. Net gain from operations after dividends to policyholders, refunds to members and before federal income taxes (Line 29 minus Line 30)	(833,299)	(668,491)	(919,532)
32. Federal and foreign income taxes incurred (excluding tax on capital gains)	(115,668)	(4,828)	189,625
33. Net gain from operations after dividends to policyholders, refunds to members and federal income taxes and before realized capital gains or (losses) (Line 31 minus Line 32)	(717,631)	(663,663)	(1,109,157)
34. Net realized capital gains (losses) (excluding gains (losses) transferred to the IMR) less capital gains tax of \$(6,293) (excluding taxes of \$72,138			
transferred to the IMR)	(23,673)	(25)	760,604
35. Net income (Line 33 plus Line 34)	(741,304)	(663,688)	(348,553)
CAPITAL AND SURPLUS ACCOUNT			
36. Capital and surplus, December 31, prior year	9,336,912	9,809,080	9,809,080
37. Net income (Line 35)	(741,304)	(663,688)	(348,553)
38. Change in net unrealized capital gains (losses) less capital gains tax of \$23,000	87,332	284,662	(829,796)
39. Change in net unrealized foreign exchange capital gain (loss)			
40. Change in net deferred income tax	188,927	690,000	1,051,000
41. Change in nonadmitted assets	(530,982)	(309,688)	(505,168)
42. Change in liability for reinsurance in unauthorized and certified companies			
43. Change in reserve on account of change in valuation basis, (increase) or decrease			0
44. Change in asset valuation reserve	28,780	(354,957)	240,349
45. Change in treasury stock			0
46. Surplus (contributed to) withdrawn from Separate Accounts during period			
47. Other changes in surplus in Separate Accounts Statement			
48. Change in surplus notes			
49. Cumulative effect of changes in accounting principles			
50. Capital changes:			
50.1 Paid in			
50.2 Transferred from surplus (Stock Dividend)			
50.3 Transferred to surplus			
51. Surplus adjustment:			
51.1 Paid in	0	0	0
51.2 Transferred to capital (Stock Dividend)			
51.3 Transferred from capital			
51.4 Change in surplus as a result of reinsurance			
52. Dividends to stockholders			
53. Aggregate write-ins for gains and losses in surplus	0	0	(80,000)
54. Net change in capital and surplus for the year (Lines 37 through 53)	(967,247)	(353,671)	(472,168)
55. Capital and surplus, as of statement date (Lines 36 + 54)	8,369,665	9,455,409	9,336,912
DETAILS OF WRITE-INS			
08.301. Advanced Funding Fees	370,402	360,179	462,564
08.302.			
08.303.			
08.398. Summary of remaining write-ins for Line 8.3 from overflow page	0	0	0
08.399. Totals (Lines 08.301 through 08.303 plus 08.398) (Line 8.3 above)	370,402	360,179	462,564
2701. Change in Dividend & Coupon Reserves	6,290	4,756	6,897
2702.			0
2703.			
2798. Summary of remaining write-ins for Line 27 from overflow page	0	0	0
2799. Totals (Lines 2701 through 2703 plus 2798)(Line 27 above)	6,290	4,756	6,897
5301. AMT Loss Carry Forward Sperated from DTA			(80,000)
5302.			
5303.			
5398. Summary of remaining write-ins for Line 53 from overflow page	0	0	0
5399. Totals (Lines 5301 through 5303 plus 5398)(Line 53 above)	0	0	(80,000)

CASH FLOW

	1 Current Year To Date	2 Prior Year To Date	3 Prior Year Ended December 31
Cash from Operations			
1. Premiums collected net of reinsurance	28,202,768	28,867,028	37,928,685
2. Net investment income	4,008,934	3,429,353	4,825,684
3. Miscellaneous income	370,402	360,179	462,564
4. Total (Lines 1 to 3)	32,582,104	32,656,560	43,216,933
5. Benefit and loss related payments	15,982,045	14,842,909	19,995,783
6. Net transfers to Separate Accounts, Segregated Accounts and Protected Cell Accounts	0	0	0
7. Commissions, expenses paid and aggregate write-ins for deductions	5,692,262	5,538,194	7,194,034
8. Dividends paid to policyholders	667	905	619
9. Federal and foreign income taxes paid (recovered) net of \$ tax on capital gains (losses)	27,062	80,001	140,011
10. Total (Lines 5 through 9)	21,702,036	20,462,009	27,330,447
11. Net cash from operations (Line 4 minus Line 10)	10,880,068	12,194,551	15,886,486
Cash from Investments			
12. Proceeds from investments sold, matured or repaid:			
12.1 Bonds	9,797,055	8,480,393	13,259,065
12.2 Stocks	1,136,977	656,216	7,894,856
12.3 Mortgage loans	0	0	0
12.4 Real estate	0	0	0
12.5 Other invested assets	0	0	0
12.6 Net gains or (losses) on cash, cash equivalents and short-term investments	0	0	0
12.7 Miscellaneous proceeds	0	0	483,000
12.8 Total investment proceeds (Lines 12.1 to 12.7)	10,934,032	9,136,609	21,636,921
13. Cost of investments acquired (long-term only):			
13.1 Bonds	23,082,960	24,300,362	32,538,179
13.2 Stocks	0	0	871,190
13.3 Mortgage loans	0	0	0
13.4 Real estate	0	0	0
13.5 Other invested assets	0	0	0
13.6 Miscellaneous applications	483,000	0	0
13.7 Total investments acquired (Lines 13.1 to 13.6)	23,565,960	24,300,362	33,409,369
14. Net increase (or decrease) in contract loans and premium notes	27,646	10,560	18,221
15. Net cash from investments (Line 12.8 minus Line 13.7 and Line 14)	(12,659,573)	(15,174,312)	(11,790,669)
Cash from Financing and Miscellaneous Sources			
16. Cash provided (applied):			
16.1 Surplus notes, capital notes	0	0	0
16.2 Capital and paid in surplus, less treasury stock	0	0	0
16.3 Borrowed funds	0	0	0
16.4 Net deposits on deposit-type contracts and other insurance liabilities	(15,908)	1,717	1,815
16.5 Dividends to stockholders	0	0	0
16.6 Other cash provided (applied)	217,599	2,799,246	2,590,533
17. Net cash from financing and miscellaneous sources (Line 16.1 through Line 16.4 minus Line 16.5 plus Line 16.6)	201,691	2,800,963	2,592,348
RECONCILIATION OF CASH, CASH EQUIVALENTS AND SHORT-TERM INVESTMENTS			
18. Net change in cash, cash equivalents and short-term investments (Line 11, plus Lines 15 and 17)	(1,577,815)	(178,798)	6,688,165
19. Cash, cash equivalents and short-term investments:			
19.1 Beginning of year	8,237,983	1,549,818	1,549,818
19.2 End of period (Line 18 plus Line 19.1)	6,660,168	1,371,019	8,237,983

Note: Supplemental disclosures of cash flow information for non-cash transactions:

--	--	--	--

EXHIBIT 1

DIRECT PREMIUMS AND DEPOSIT-TYPE CONTRACTS			
	1 Current Year To Date	2 Prior Year To Date	3 Prior Year Ended December 31
1. Industrial life			0
2. Ordinary life insurance	28,086,150	28,713,846	37,792,635
3. Ordinary individual annuities	103,653	135,317	139,613
4. Credit life (group and individual)			0
5. Group life insurance			0
6. Group annuities			0
7. A & H - group			0
8. A & H - credit (group and individual)			0
9. A & H - other	18,065	22,731	29,533
10. Aggregate of all other lines of business	0	0	0
11. Subtotal (Lines 1 through 10)	28,207,868	28,871,894	37,961,781
12. Fraternal (Fraternal Benefit Societies Only)			
13. Subtotal (Lines 11 through 12)	28,207,868	28,871,894	37,961,781
14. Deposit-type contracts	0		0
15. Total (Lines 13 and 14)	28,207,868	28,871,894	37,961,781
DETAILS OF WRITE-INS			
1001.			
1002.			
1003.			
1098. Summary of remaining write-ins for Line 10 from overflow page	0	0	0
1099. Totals (Lines 1001 through 1003 plus 1098)(Line 10 above)	0	0	0

STATEMENT AS OF SEPTEMBER 30, 2019 OF THE Cincinnati Equitable Life Insurance Company

Quarterly Statement as of September 30, 2019 of the Cincinnati Equitable Life Insurance Company

Notes to the Financial Statements

1. Summary of Significant Accounting Policies and Going Concern

A. Accounting Practices

The financial statements of Cincinnati Equitable Life Insurance Company are presented on the basis of accounting practices prescribed or permitted by the Ohio Insurance Department.

The Ohio Insurance Department recognizes only statutory accounting practices prescribed or permitted by the State of Ohio for determining and reporting the financial condition and results of operations of an insurance company, for determining its solvency under the Ohio Insurance Law. The National Association of Insurance Commissioners' (NAIC) Accounting Practices and Procedures manual, version effective January 1, 2019, (NAIC SAP) has been adopted as a component of prescribed or permitted practices by the State of Ohio. The State of Ohio has not adopted any prescribed or permitted practices that differ from NAIC SAP.

	SSAP #	F/S Page	F/S Line #	09/30/2019	12/31/2018
Net Income					
(1) State basis (Page 4, Line 35, Columns 1 & 3)	XXX	XXX	XXX	\$ (741,304)	\$ (348,553)
(2) State prescribed practices that are an increase / (decrease) from NAIC SAP:					
(3) State permitted practices that are an increase / (decrease) from NAIC SAP:					
(4) NAIC SAP (1-2-3=4)	XXX	XXX	XXX	<u>\$ (741,304)</u>	<u>\$ (348,553)</u>
Surplus					
(5) State basis (Page 3, Line 38, Columns 1 & 2)	XXX	XXX	XXX	\$ 8,369,665	\$ 9,336,912
(6) State prescribed practices that are an increase / (decrease) from NAIC SAP:					
(7) State permitted practices that are an increase / (decrease) from NAIC SAP:					
(8) NAIC SAP (5-6-7=8)	XXX	XXX	XXX	<u>\$ 8,369,665</u>	<u>\$ 9,336,912</u>

B. Use of Estimates in the Preparation of the Financial Statements - No Significant Changes

C. Accounting Policy

- (1) Short-term investments - No Significant Changes
- (2) Bonds not backed by other loans are stated at amortized cost using the interest method.

The Company does not hold any SVO Identified Bond ETFs on Schedule D-1.

- (3) Common stocks - No Significant Changes
- (4) Preferred stocks - No Significant Changes
- (5) Mortgage loans - No Significant Changes
- (6) Loan-backed securities are stated at either amortized cost or the lower of amortized cost or fair market value. The retrospective adjustment method is used to value all securities except for interest only securities or securities where the yield had become negative; these are valued using the prospective method.
- (7) Investments in subsidiaries, controlled and affiliated entities - No Significant Changes
- (8) Investments in joint ventures, partnerships and limited liability entities - No Significant Changes
- (9) Derivatives - No Significant Changes
- (10) Investment income as a factor in the premium deficiency calculation - No Significant Changes
- (11) Liabilities for losses and loss/claim adjustment expenses - No Significant Changes
- (12) Changes in capitalization policy - No Significant Changes
- (13) Pharmaceutical rebate receivables - None

D. Going Concern

The Company has no Going Concern issues.

2. Accounting Changes and Corrections of Errors - None

3. Business Combinations and Goodwill - None

4. Discontinued Operations - None

5. Investments

- A. Mortgage Loans, including Mezzanine Real Estate Loans - None
- B. Debt Restructuring - None
- C. Reverse Mortgages - None
- D. Loan-Backed Securities

- (1) Prepayment assumptions for single class and multi-class mortgage-backed/asset-backed securities were obtained from broker dealer survey values or NAIC RMBS/ CMBS modeling.

STATEMENT AS OF SEPTEMBER 30, 2019 OF THE Cincinnati Equitable Life Insurance Company

Quarterly Statement as of September 30, 2019 of the Cincinnati Equitable Life Insurance Company

Notes to the Financial Statements

5. Investments (Continued)

- (2) Loan-backed and structured securities with a recognized other-than-temporary impairment (OTTI) - None
- (3) Securities held that were other-than-temporarily impaired due to the present value of cash flows expected to be collected was less than the amortized cost of securities - None
- (4) All impaired securities for which an other-than-temporary impairment has not been recognized in earnings as a realized loss

	Amount
a. The aggregate amount of unrealized losses:	
1. Less than 12 months	\$ 970
2. 12 months or longer	\$ -
b. The aggregate related fair value of securities with unrealized losses:	
1. Less than 12 months	\$ 213,402
2. 12 months or longer	\$ -

- (5) We used market values obtained from broker dealers and money managers to determine that these securities are not Other-than-temporary impairments.

- E. Dollar Repurchase Agreements and/or Securities Lending Transactions - None
- F. Repurchase Agreements Transactions Accounted for as Secured Borrowing - None
- G. Reverse Repurchase Agreements Transactions Accounted for as Secured Borrowing - None
- H. Repurchase Agreements Transactions Accounted for as a Sale - None
- I. Reverse Repurchase Agreements Transactions Accounted for as a Sale - None
- J. Real Estate - None
- K. Low-Income Housing Tax Credits (LIHTC) - None
- L. Restricted Assets - No Significant Changes
- M. Working Capital Finance Investments - None
- N. Offsetting and Netting of Assets and Liabilities - None
- O. Structured Notes - None
- P. 5GI Securities - No Significant Changes
- Q. Short Sales - None
- R. Prepayment Penalty and Acceleration Fees - No Significant Changes

6. Joint Ventures, Partnerships and Limited Liability Companies - None

7. Investment Income - None

8. Derivative Instruments - None

9. Income Taxes - No Significant Changes

10. Information Concerning Parent, Subsidiaries, Affiliates and Other Related Parties

- A. Effective September 30, 2019 Cincinnati Equitable Life Insurance Company became a wholly owned subsidiary of Michigan Farm Bureau Financial Corporation. Certain processing functions are shared between the companies, such as actuarial, investment management and accounting and federal income tax preparation.
- B. Detail of Transactions Greater Than 0.5% of Admitted Assets - None
- C. Cincinnati Equitable Life Insurance Company pays expenses under a management agreement for the general management of the company. These expenses are generally allocated to the company based on time spent working for each company. As of September 30, 2019, the company was acquired by Michigan Farm Bureau Financial Corporation. A cost sharing agreement has been executed with the new parent company where by certain functions will be performed for the company. The charges for these services will be calculated using current methods.
- D. Amounts Due To or From Related Parties - No Significant Changes
- E. The Company has made no guarantees on behalf of the Parent Company.
- F. Michigan Farm Bureau Financial Corporation has agreed to provide Management and certain processing functions to Cincinnati Equitable Life Insurance Company (see 10.A. above). In 2019 the expense for these services was \$0.
- G. Nature of Relationships that Could Affect Operations - No Significant Changes
- H. Amount Deducted for Investment in Upstream Company - None
- I. The Company owns 100% of the outstanding stock of Cincinnati Equitable Insurance Company, an Ohio domiciled Property Casualty Company, whose value is less than 10% of the admitted assets of the Company. Cincinnati Equitable Insurance Company is valued at Statutory Surplus. No goodwill is associated with this asset.
- J. Write-Down for Impairments of Investments in Subsidiary Controlled or Affiliated Companies - None

STATEMENT AS OF SEPTEMBER 30, 2019 OF THE Cincinnati Equitable Life Insurance Company

Quarterly Statement as of September 30, 2019 of the Cincinnati Equitable Life Insurance Company

Notes to the Financial Statements

10. Information Concerning Parent, Subsidiaries, Affiliates and Other Related Parties (Continued)

- K. Foreign Subsidiary Value Using CARVM - None
- L. Downstream Holding Company Value Using Look-Through Method - None
- M. All SCA Investments - None
- N. Investment in Insurance SCAs - None
- O. SCA Loss Tracking - None

11. Debt - None

12. Retirement Plans, Deferred Compensation, Postemployment Benefits and Compensated Absences and Other Postretirement Benefit Plans

- A. Defined Benefit Plan - None
- B. Investment Policies and Strategies of Plan Assets - None
- C. Fair Value of Each Class of Plan Assets - None
- D. Expected Long-Term Rate of Return for the Plan Assets - None
- E. Defined Contribution Plans - None
- F. Multiemployer Plans - None
- G. Consolidated/Holding Company Plans - No Significant Changes
- H. Postemployment Benefits and Compensated Absences - No Significant Changes
- I. Impact of Medicare Modernization Act on Postretirement Benefits (INT 04-17) - None

13. Capital and Surplus, Shareholders' Dividend Restrictions and Quasi-Reorganizations - No Significant Changes

14. Liabilities, Contingencies and Assessments - No Significant Changes

15. Leases - No Significant Changes

16. Information About Financial Instruments With Off-Balance-Sheet Risk And Financial Instruments With Concentrations of Credit Risk - None

17. Sale, Transfer and Servicing of Financial Assets and Extinguishments of Liabilities - None

18. Gain or Loss to the Reporting Entity from Uninsured Plans and the Uninsured Portion of Partially Insured Plans - None

19. Direct Premium Written/Produced by Managing General Agents/Third Party Administrators - No Significant Changes

20. Fair Value Measurements

A. Fair Value Measurement

(1) Fair value measurements at reporting date

Description for each class of asset or liability	Level 1	Level 2	Level 3	Net Asset Value (NAV)	Total
a. Assets at fair value					
Preferred Stocks	\$ 930,095	\$	\$	\$	\$ 930,095
Bonds - Government	868,862				868,862
Bonds - Other		159,605,233			159,605,233
Other Invested Assets		270,671			270,671
Common Stock - Affiliated		3,214,963			3,214,963
Total assets measured at fair value	<u>\$ 1,798,957</u>	<u>\$ 163,090,867</u>	<u>\$</u>	<u>\$</u>	<u>\$ 164,889,824</u>
b. Liabilities at fair value					
Total liabilities measured at fair value	<u>\$</u>	<u>\$</u>	<u>\$</u>	<u>\$</u>	<u>\$</u>

(2) Fair value measurements in Level 3 of the fair value hierarchy - None

(3) Policy on transfers into and out of Level 3 - None

(4) Inputs and techniques used for Level 2 and Level 3 fair values - None

(5) Derivatives - None

B. Other Fair Value Disclosures - None

C. Fair Values for All Financial Instruments by Level 1, 2 and 3

Aggregate fair value for all financial instruments and the level within the fair value hierarchy in which the fair value measurements in their entirety fall.

Type of Financial Instrument	Aggregate Fair Value	Admitted Assets	Level 1	Level 2	Level 3	Net Asset Value (NAV)	Not Practicable (Carrying Value)
Bonds	\$... 160,474,095	\$... 151,587,328	\$ 868,862	\$... 159,605,233	\$	\$	\$
Preferred Stocks	930,095	908,459	930,095				
Common Stock	3,214,963	3,214,963		3,214,963			
Other Invested Assets	270,671	242,756		270,671			

STATEMENT AS OF SEPTEMBER 30, 2019 OF THE Cincinnati Equitable Life Insurance Company

Quarterly Statement as of September 30, 2019 of the Cincinnati Equitable Life Insurance Company

Notes to the Financial Statements

20. Fair Value Measurements (Continued)

- D. Not Practicable to Estimate Fair Value - None
- E. Nature and Risk of Investments Reported at NAV - None

21. Other Items - None

22. Events Subsequent

The Company sale to Michigan Farm Bureau Financial Corporation closed on September 30, 2019.

23. Reinsurance - None

24. Retrospectively Rated Contracts & Contracts Subject to Redetermination - None

25. Change in Incurred Losses and Loss Adjustment Expenses - Not Applicable

26. Intercompany Pooling Arrangements - None

27. Structured Settlements - None

28. Health Care Receivables - None

29. Participating Policies - No Significant Changes

30. Premium Deficiency Reserves - No Significant Changes

31. Reserves for Life Contracts and Annuity Contracts - No Significant Changes

32. Analysis of Annuity Actuarial Reserves and Deposit Type Liabilities by Withdrawal Characteristics - No Significant Changes

33. Premiums and Annuity Considerations Deferred and Uncollected - No Significant Changes

34. Separate Accounts - None

35. Loss/Claim Adjustment Expenses - No Significant Changes

STATEMENT AS OF SEPTEMBER 30, 2019 OF THE Cincinnati Equitable Life Insurance Company

GENERAL INTERROGATORIES

PART 1 - COMMON INTERROGATORIES

GENERAL

- 1.1

Did the reporting entity experience any material transactions requiring the filing of Disclosure of Material Transactions with the State of Domicile, as required by the Model Act?

Yes [☐] No [☒]
- 1.2

If yes, has the report been filed with the domiciliary state?

Yes [☐] No [☐]
- 2.1

Has any change been made during the year of this statement in the charter, by-laws, articles of incorporation, or deed of settlement of the reporting entity?

Yes [☐] No [☒]
- 2.2

If yes, date of change:
- 3.1

Is the reporting entity a member of an Insurance Holding Company System consisting of two or more affiliated persons, one or more of which is an insurer?

If yes, complete Schedule Y, Parts 1 and 1A.

Yes [☒] No [☐]
- 3.2

Have there been any substantial changes in the organizational chart since the prior quarter end?

Yes [☒] No [☐]
- 3.3

If the response to 3.2 is yes, provide a brief description of those changes.
The Company was acquired by Michigan Farm Bureau Financial Corporation on 9/30/19
- 3.4

Is the reporting entity publicly traded or a member of a publicly traded group?

Yes [☐] No [☒]
- 3.5

If the response to 3.4 is yes, provide the CIK (Central Index Key) code issued by the SEC for the entity/group.
- 4.1

Has the reporting entity been a party to a merger or consolidation during the period covered by this statement?

If yes, complete and file the merger history data file with the NAIC for the annual filing corresponding to this period.

Yes [☐] No [☒]
- 4.2

If yes, provide the name of the entity, NAIC Company Code, and state of domicile (use two letter state abbreviation) for any entity that has ceased to exist as a result of the merger or consolidation.
- | 1 | 2 | 3 |
|----------------|-------------------|-------------------|
| Name of Entity | NAIC Company Code | State of Domicile |
| | | |
5.

If the reporting entity is subject to a management agreement, including third-party administrator(s), managing general agent(s), attorney-in-fact, or similar agreement, have there been any significant changes regarding the terms of the agreement or principals involved?

If yes, attach an explanation.

Yes [☒] No [☐] N/A [☐]
- 6.1

State as of what date the latest financial examination of the reporting entity was made or is being made.

12/31/2013
- 6.2

State the as of date that the latest financial examination report became available from either the state of domicile or the reporting entity. This date should be the date of the examined balance sheet and not the date the report was completed or released.

12/31/2013
- 6.3

State as of what date the latest financial examination report became available to other states or the public from either the state of domicile or the reporting entity. This is the release date or completion date of the examination report and not the date of the examination (balance sheet date).

11/16/2014
- 6.4

By what department or departments?
Ohio
- 6.5

Have all financial statement adjustments within the latest financial examination report been accounted for in a subsequent financial statement filed with Departments?

Yes [☐] No [☐] N/A [☒]
- 6.6

Have all of the recommendations within the latest financial examination report been complied with?

Yes [☒] No [☐] N/A [☐]
- 7.1

Has this reporting entity had any Certificates of Authority, licenses or registrations (including corporate registration, if applicable) suspended or revoked by any governmental entity during the reporting period?

Yes [☐] No [☒]
- 7.2

If yes, give full information:
- 8.1

Is the company a subsidiary of a bank holding company regulated by the Federal Reserve Board?

Yes [☐] No [☒]
- 8.2

If response to 8.1 is yes, please identify the name of the bank holding company.
- 8.3

Is the company affiliated with one or more banks, thrifts or securities firms?

Yes [☒] No [☐]
- 8.4

If response to 8.3 is yes, please provide below the names and location (city and state of the main office) of any affiliates regulated by a federal regulatory services agency [i.e. the Federal Reserve Board (FRB), the Office of the Comptroller of the Currency (OCC), the Federal Deposit Insurance Corporation (FDIC) and the Securities Exchange Commission (SEC)] and identify the affiliate's primary federal regulator.

1	2	3	4	5	6
Affiliate Name	Location (City, State)	FRB	OCC	FDIC	SEC
FB Equity Sale Corporation of Michigan	Lansing, Michigan				YES

GENERAL INTERROGATORIES

- 9.1

Are the senior officers (principal executive officer, principal financial officer, principal accounting officer or controller, or persons performing similar functions) of the reporting entity subject to a code of ethics, which includes the following standards? (a) Honest and ethical conduct, including the ethical handling of actual or apparent conflicts of interest between personal and professional relationships; (b) Full, fair, accurate, timely and understandable disclosure in the periodic reports required to be filed by the reporting entity; (c) Compliance with applicable governmental laws, rules and regulations; (d) The prompt internal reporting of violations to an appropriate person or persons identified in the code; and (e) Accountability for adherence to the code.

Yes [X] No []
- 9.11

If the response to 9.1 is No, please explain:
- 9.2

Has the code of ethics for senior managers been amended?

Yes [] No [X]
- 9.21

If the response to 9.2 is Yes, provide information related to amendment(s).
- 9.3

Have any provisions of the code of ethics been waived for any of the specified officers?

Yes [] No [X]
- 9.31

If the response to 9.3 is Yes, provide the nature of any waiver(s).

FINANCIAL

- 10.1

Does the reporting entity report any amounts due from parent, subsidiaries or affiliates on Page 2 of this statement?

Yes [X] No []
- 10.2

If yes, indicate any amounts receivable from parent included in the Page 2 amount:

\$ 5,893

INVESTMENT

- 11.1

Were any of the stocks, bonds, or other assets of the reporting entity loaned, placed under option agreement, or otherwise made available for use by another person? (Exclude securities under securities lending agreements.)

Yes [] No [X]
- 11.2

If yes, give full and complete information relating thereto:
12.

Amount of real estate and mortgages held in other invested assets in Schedule BA:

\$ 0
13.

Amount of real estate and mortgages held in short-term investments:

\$ 0
- 14.1

Does the reporting entity have any investments in parent, subsidiaries and affiliates?

Yes [X] No []
- 14.2

If yes, please complete the following:

	1 Prior Year-End Book/Adjusted Carrying Value	2 Current Quarter Book/Adjusted Carrying Value
14.21 Bonds	\$ 0	\$
14.22 Preferred Stock	\$ 0	\$
14.23 Common Stock	\$ 3,155,826	\$ 3,214,963
14.24 Short-Term Investments	\$ 0	\$
14.25 Mortgage Loans on Real Estate	\$ 0	\$
14.26 All Other	\$ 0	\$
14.27 Total Investment in Parent, Subsidiaries and Affiliates (Subtotal Lines 14.21 to 14.26)	\$ 3,155,826	\$ 3,214,963
14.28 Total Investment in Parent included in Lines 14.21 to 14.26 above	\$	\$
- 15.1

Has the reporting entity entered into any hedging transactions reported on Schedule DB?

Yes [] No [X]
- 15.2

If yes, has a comprehensive description of the hedging program been made available to the domiciliary state? If no, attach a description with this statement.

Yes [] No [X]
16.

For the reporting entity's security lending program, state the amount of the following as of the current statement date:

16.1

Total fair value of reinvested collateral assets reported on Schedule DL, Parts 1 and 2.

\$ 0

16.2

Total book adjusted/carrying value of reinvested collateral assets reported on Schedule DL, Parts 1 and 2

\$ 0

16.3

Total payable for securities lending reported on the liability page.

\$ 0

STATEMENT AS OF SEPTEMBER 30, 2019 OF THE Cincinnati Equitable Life Insurance Company

GENERAL INTERROGATORIES

17. Excluding items in Schedule E - Part 3 - Special Deposits, real estate, mortgage loans and investments held physically in the reporting entity's offices, vaults or safety deposit boxes, were all stocks, bonds and other securities, owned throughout the current year held pursuant to a custodial agreement with a qualified bank or trust company in accordance with Section 1, III - General Examination Considerations, F. Outsourcing of Critical Functions, Custodial or Safekeeping Agreements of the NAIC Financial Condition Examiners Handbook? Yes [X] No []
- 17.1 For all agreements that comply with the requirements of the NAIC Financial Condition Examiners Handbook, complete the following:

1 Name of Custodian(s)	2 Custodian Address
Fifth Third Bank	38 Fountain Square Plaza, Cincinnati, Ohio 45263
U.S. Bank	225 Water Street, Suite 7, Jacksonville, FL 32202

- 17.2 For all agreements that do not comply with the requirements of the NAIC Financial Condition Examiners Handbook, provide the name, location and a complete explanation:

1 Name(s)	2 Location(s)	3 Complete Explanation(s)

- 17.3 Have there been any changes, including name changes, in the custodian(s) identified in 17.1 during the current quarter? Yes [] No [X]
- 17.4 If yes, give full information relating thereto:

1 Old Custodian	2 New Custodian	3 Date of Change	4 Reason

- 17.5 Investment management – Identify all investment advisors, investment managers, broker/dealers, including individuals that have the authority to make investment decisions on behalf of the reporting entity. For assets that are managed internally by employees of the reporting entity, note as such. ["...that have access to the investment accounts"; "...handle securities"]

1 Name of Firm or Individual	2 Affiliation
David D. Baker	I

- 17.5097 For those firms/individuals listed in the table for Question 17.5, do any firms/individuals unaffiliated with the reporting entity (i.e. designated with a "U") manage more than 10% of the reporting entity's assets? Yes [] No []
- 17.5098 For firms/individuals unaffiliated with the reporting entity (i.e. designated with a "U") listed in the table for Question 17.5, does the total assets under management aggregate to more than 50% of the reporting entity's assets? Yes [] No []
- 17.6 For those firms or individuals listed in the table for 17.5 with an affiliation code of "A" (affiliated) or "U" (unaffiliated), provide the information for the table below.

1	2	3	4	5
Central Registration Depository Number	Name of Firm or Individual	Legal Entity Identifier (LEI)	Registered With	Investment Management Agreement (IMA) Filed

- 18.1 Have all the filing requirements of the Purposes and Procedures Manual of the NAIC Investment Analysis Office been followed? Yes [X] No []
- 18.2 If no, list exceptions:
19. By self-designating 5GI securities, the reporting entity is certifying the following elements for each self-designated 5GI security:

a. Documentation necessary to permit a full credit analysis of the security does not exist or an NAIC CRP credit rating for an FE or PL security is not available.

b. Issuer or obligor is current on all contracted interest and principal payments.

c. The insurer has an actual expectation of ultimate payment of all contracted interest and principal.

Has the reporting entity self-designated 5GI securities? Yes [X] No []
20. By self-designating PLGI securities, the reporting entity is certifying the following elements of each self-designated PLGI security:

a. The security was purchased prior to January 1, 2018.

b. The reporting entity is holding capital commensurate with the NAIC Designation reported for the security.

c. The NAIC Designation was derived from the credit rating assigned by an NAIC CRP in its legal capacity as a NRSRO which is shown on a current private letter rating held by the insurer and available for examination by state insurance regulators.

d. The reporting entity is not permitted to share this credit rating of the PL security with the SVO.

Has the reporting entity self-designated PLGI securities? Yes [] No [X]

STATEMENT AS OF SEPTEMBER 30, 2019 OF THE Cincinnati Equitable Life Insurance Company

GENERAL INTERROGATORIES

PART 2 - LIFE AND ACCIDENT AND HEALTH COMPANIES/FRATERNAL BENEFIT SOCIETIES

Life and Accident Health Companies/Fraternal Benefit Societies:

1.

Report the statement value of mortgage loans at the end of this reporting period for the following categories:

1

Amount

1.1

Long-Term Mortgages In Good Standing

1.11

Farm Mortgages

\$

1.12

Residential Mortgages

\$

1.13

Commercial Mortgages

\$

1.14

Total Mortgages in Good Standing

\$

0

1.2

Long-Term Mortgages In Good Standing with Restructured Terms

1.21

Total Mortgages in Good Standing with Restructured Terms

\$

1.3

Long-Term Mortgage Loans Upon which Interest is Overdue more than Three Months

1.31

Farm Mortgages

\$

1.32

Residential Mortgages

\$

1.33

Commercial Mortgages

\$

1.34

Total Mortgages with Interest Overdue more than Three Months

\$

0

1.4

Long-Term Mortgage Loans in Process of Foreclosure

1.41

Farm Mortgages

\$

1.42

Residential Mortgages

\$

1.43

Commercial Mortgages

\$

1.44

Total Mortgages in Process of Foreclosure

\$

0

1.5

Total Mortgage Loans (Lines 1.14 + 1.21 + 1.34 + 1.44) (Page 2, Column 3, Lines 3.1 + 3.2)

\$

0

1.6

Long-Term Mortgages Foreclosed, Properties Transferred to Real Estate in Current Quarter

1.61

Farm Mortgages

\$

1.62

Residential Mortgages

\$

1.63

Commercial Mortgages

\$

1.64

Total Mortgages Foreclosed and Transferred to Real Estate

\$

0

2.

Operating Percentages:

2.1

A&H loss percent

%

2.2

A&H cost containment percent

%

2.3

A&H expense percent excluding cost containment expenses

%

3.1

Do you act as a custodian for health savings accounts?

Yes

[]

No

[X]

3.2

If yes, please provide the amount of custodial funds held as of the reporting date

\$

3.3

Do you act as an administrator for health savings accounts?

Yes

[]

No

[X]

3.4

If yes, please provide the balance of the funds administered as of the reporting date

\$

4.

Is the reporting entity licensed or chartered, registered, qualified, eligible or writing business in at least two states?

Yes

[X]

No

[]

4.1

If no, does the reporting entity assume reinsurance business that covers risks residing in at least one state other than the state of domicile of the reporting entity?

Yes

[]

No

[X]

Fraternal Benefit Societies Only:

5.1

In all cases where the reporting entity has assumed accident and health risks from another company, provisions should be made in this statement on account of such reinsurances for reserve equal to that which the original company would have been required to establish had it retained the risks. Has this been done?

Yes

[]

No

[]

N/A

[X]

5.2

If no, explain:

6.1

Does the reporting entity have outstanding assessments in the form of liens against policy benefits that have increased surplus?

Yes

[]

No

[X]

6.2

If yes, what is the date(s) of the original lien and the total outstanding balance of liens that remain in surplus?

Date	Outstanding Lien Amount

STATEMENT AS OF SEPTEMBER 30, 2019 OF THE Cincinnati Equitable Life Insurance Company

SCHEDULE S - CEDED REINSURANCE

Showing All New Reinsurance Treaties - Current Year to Date

[illegible]

STATEMENT AS OF SEPTEMBER 30, 2019 OF THE Cincinnati Equitable Life Insurance Company

SCHEDULE T - PREMIUMS AND ANNUITY CONSIDERATIONS

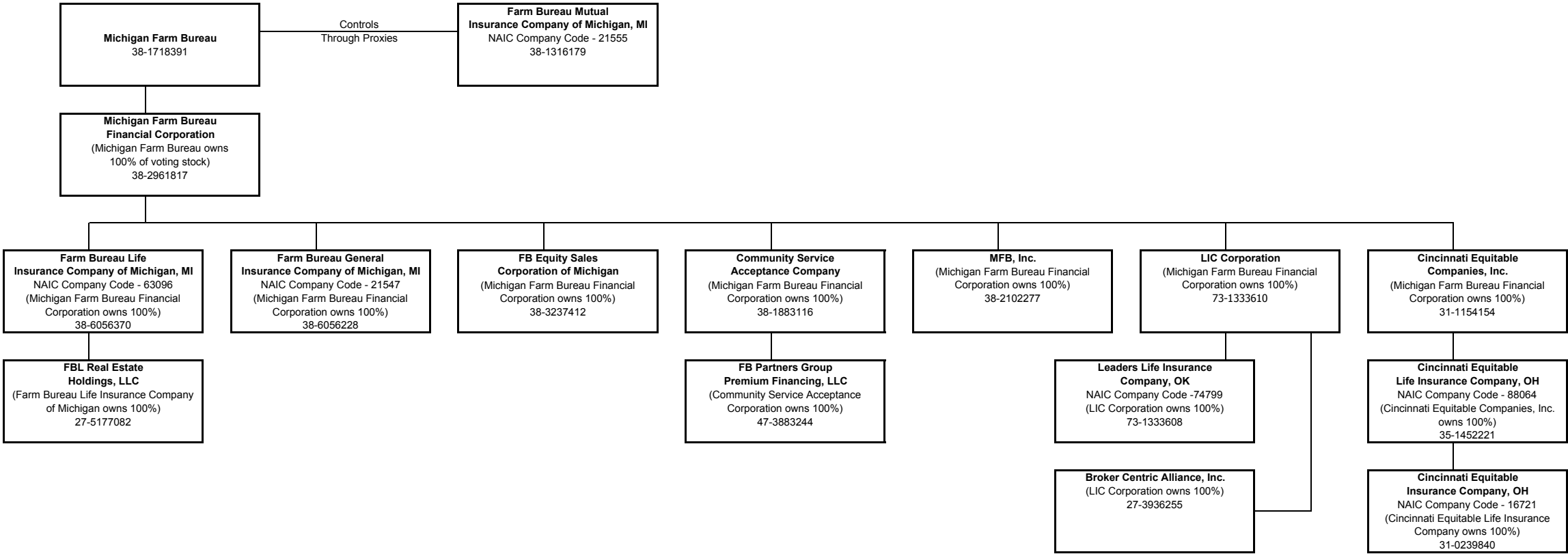
Current Year To Date - Allocated by States and Territories

States, Etc.			1	Life Contracts		4	Direct Business Only		6	7
				2	3		5			
								Accident and Health Insurance Premiums, Including Policy, Membership and Other Fees		
			Active Status (a)	Life Insurance Premiums	Annuity Considerations			Total Columns 2 Through 5	Deposit-Type Contracts	
1.	Alabama	AL	N					.0		
2.	Alaska	AK	N					.0		
3.	Arizona	AZ	N					.0		
4.	Arkansas	AR	N					.0		
5.	California	CA	N					.0		
6.	Colorado	CO	N					.0		
7.	Connecticut	CT	N					.0		
8.	Delaware	DE	N					.0		
9.	District of Columbia	DC	N					.0		
10.	Florida	FL	N					.0		
11.	Georgia	GA	L	6,688,747	12,396			6,701,143		
12.	Hawaii	HI	N					.0		
13.	Idaho	ID	N					.0		
14.	Illinois	IL	N					.0		
15.	Indiana	IN	L	9,086,215	78,682			9,164,897		
16.	Iowa	IA	N					.0		
17.	Kansas	KS	N					.0		
18.	Kentucky	KY	L	4,989,304	11,125			5,000,429		
19.	Louisiana	LA	N					.0		
20.	Maine	ME	N					.0		
21.	Maryland	MD	N					.0		
22.	Massachusetts	MA	N					.0		
23.	Michigan	MI	N					.0		
24.	Minnesota	MN	N					.0		
25.	Mississippi	MS	L	354,858	0			354,858		
26.	Missouri	MO	N					.0		
27.	Montana	MT	N					.0		
28.	Nebraska	NE	N					.0		
29.	Nevada	NV	N					.0		
30.	New Hampshire	NH	N					.0		
31.	New Jersey	NJ	N					.0		
32.	New Mexico	NM	N					.0		
33.	New York	NY	N					.0		
34.	North Carolina	NC	N					.0		
35.	North Dakota	ND	N					.0		
36.	Ohio	OH	L	6,651,227	1,450	18,065		6,670,742		
37.	Oklahoma	OK	N					.0		
38.	Oregon	OR	N					.0		
39.	Pennsylvania	PA	N					.0		
40.	Rhode Island	RI	N					.0		
41.	South Carolina	SC	N					.0		
42.	South Dakota	SD	N					.0		
43.	Tennessee	TN	L	315,799	0			315,799		
44.	Texas	TX	N					.0		
45.	Utah	UT	N					.0		
46.	Vermont	VT	N					.0		
47.	Virginia	VA	N					.0		
48.	Washington	WA	N					.0		
49.	West Virginia	WV	N					.0		
50.	Wisconsin	WI	N					.0		
51.	Wyoming	WY	N					.0		
52.	American Samoa	AS	N					.0		
53.	Guam	GU	N					.0		
54.	Puerto Rico	PR	N					.0		
55.	U.S. Virgin Islands	VI	N					.0		
56.	Northern Mariana Islands	MP	N					.0		
57.	Canada	CAN	N					.0		
58.	Aggregate Other Aliens	OT	XXX	0	0	0	0	0	0	
59.	Subtotal	XXX		28,086,150	103,653	18,065	0	28,207,868	0	
90.	Reporting entity contributions for employee benefits plans	XXX						0		
91.	Dividends or refunds applied to purchase paid-up additions and annuities.....	XXX						0		
92.	Dividends or refunds applied to shorten endowment or premium paying period.....	XXX						0		
93.	Premium or annuity considerations waived under disability or other contract provisions.....	XXX						0		
94.	Aggregate or other amounts not allocable by State.....	XXX		0	0	0	0	0	0	
95.	Totals (Direct Business).....	XXX		28,086,150	103,653	18,065	0	28,207,868	0	
96.	Plus Reinsurance Assumed.....	XXX						0		
97.	Totals (All Business).....	XXX		28,086,150	103,653	18,065	0	28,207,868	0	
98.	Less Reinsurance Ceded.....	XXX		5,100				5,100		
99.	Totals (All Business) less Reinsurance Ceded.....	XXX		28,081,050	103,653	18,065	0	28,202,768	0	
DETAILS OF WRITE-INS										
58001.	XXX								
58002.	XXX								
58003.	XXX								
58998.	Summary of remaining write-ins for Line 58 from overflow page	XXX		0	0	0	0	0	0	
58999.	Totals (Lines 58001 through 58003 plus 58998)(Line 58 above).....	XXX		0	0	0	0	0	0	
9401.	XXX								
9402.	XXX								
9403.	XXX								
9498.	Summary of remaining write-ins for Line 94 from overflow page	XXX		0	0	0	0	0	0	
9499.	Totals (Lines 9401 through 9403 plus 9498)(Line 94 above).....	XXX		0	0	0	0	0	0	

(a) Active Status Counts:

L - Licensed or Chartered - Licensed Insurance carrier or domiciled RRG.....	6	R - Registered - Non-domiciled RRGs.....	0
E - Eligible - Reporting entities eligible or approved to write surplus lines in the state.....	0	Q - Qualified - Qualified or accredited reinsurer.....	0
N - None of the above - Not allowed to write business in the state.....	51		

SCHEDULE Y - INFORMATION CONCERNING ACTIVITIES OF INSURER MEMBERS OF A HOLDING COMPANY GROUP
PART 1 - ORGANIZATIONAL CHART



SCHEDULE Y

PART 1A - DETAIL OF INSURANCE HOLDING COMPANY SYSTEM

Asterisk	Explanation
0000001	Michigan Farm Bureau holds sufficient policyholder proxies to constitute control

STATEMENT AS OF SEPTEMBER 30, 2019 OF THE Cincinnati Equitable Life Insurance Company

SUPPLEMENTAL EXHIBITS AND SCHEDULES INTERROGATORIES

The following supplemental reports are required to be filed as part of your statement filing. However, in the event that your company does not transact the type of business for which the special report must be filed, your response of NO to the specific interrogatory will be accepted in lieu of filing a "NONE" report and a bar code will be printed below. If the supplement is required of your company but is not being filed for whatever reason enter SEE EXPLANATION and provide an explanation following the interrogatory questions.

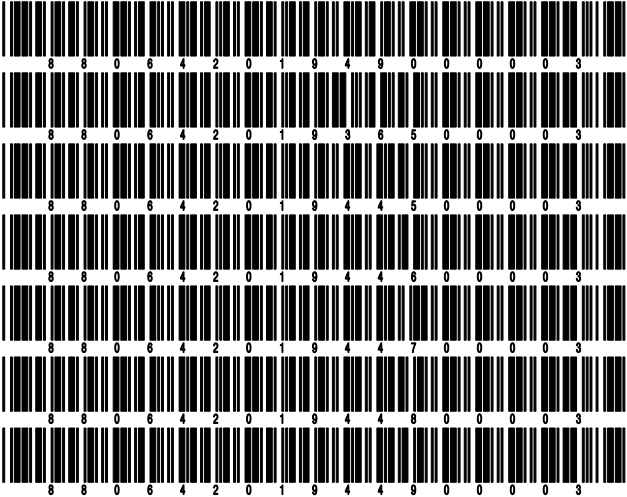
	Response
1. Will the Trusteed Surplus Statement be filed with the state of domicile and the NAIC with this statement?	NO
2. Will the Medicare Part D Coverage Supplement be filed with the state of domicile and the NAIC with this statement?	NO
3. Will the Reasonableness of Assumptions Certification required by Actuarial Guideline XXXV be filed with the state of domicile and electronically with the NAIC?	NO
4. Will the Reasonableness and Consistency of Assumptions Certification required by Actuarial Guideline XXXV be filed with the state of domicile and electronically with the NAIC?	NO
5. Will the Reasonableness of Assumptions Certification for Implied Guaranteed Rate Method required by Actuarial Guideline XXXVI be filed with the state of domicile and electronically with the NAIC?	NO
6. Will the Reasonableness and Consistency of Assumptions Certification required by Actuarial Guideline XXXVI (Updated Average Market Value) be filed with the state of domicile and electronically with the NAIC?	NO
7. Will the Reasonableness and Consistency of Assumptions Certification required by Actuarial Guideline XXXVI (Updated Market Value) be filed with the state of domicile and electronically with the NAIC?	NO
8. Will the Life PBR Statement of Exemption be filed with the state of domicile by July 1st and electronically with the NAIC with the second quarterly filing per the Valuation Manual (by August 15)? (2nd Quarter Only) The response for 1st and 3rd quarters should be N/A. A NO response resulting with a bar code is only appropriate in the 2nd quarter.	N/A

Explanation:

1. N/A
2. N/A
3. N/A
4. N/A
5. N/A
6. N/A
7. N/A

Bar Code:

1. Trusteed Surplus Statement [Document Identifier 490]
2. Medicare Part D Coverage Supplement [Document Identifier 365]
3. Reasonableness of Assumptions Certification required by Actuarial Guideline XXXV [Document Identifier 445]
4. Reasonableness and Consistency of Assumptions Certification required by Actuarial Guideline XXXV [Document Identifier 446]
5. Reasonableness of Assumptions Certification for Implied Guaranteed Rate Method required by Actuarial Guideline XXXVI [Document Identifier 447]
6. Reasonableness and Consistency of Assumptions Certification required by Actuarial Guideline XXXVI [Document Identifier 448]
7. Reasonableness and Consistency of Assumptions Certification required by Actuarial Guideline XXXVI (Updated Market Value) [Document Identifier 449]



OVERFLOW PAGE FOR WRITE-INS

Additional Write-ins for Assets Line 25

	Current Statement Date			4 December 31 Prior Year Net Admitted Assets
	1 Assets	2 Nonadmitted Assets	3 Net Admitted Assets (Cols. 1 - 2)	
2504. FIT Receivable for AMT Loss Carry Forward			0	0
2597. Summary of remaining write-ins for Line 25 from overflow page	0	0	0	0

SCHEDULE A - VERIFICATION

Real Estate

	1	2
	Year to Date	Prior Year Ended December 31
1. Book/adjusted carrying value, December 31 of prior year		
2. Cost of acquired:		
2.1 Actual cost at time of acquisition		
2.2 Additional investment made after acquisition		
3. Current year change in encumbrances		
4. Total gain (loss) on disposals		
5. Deduct amounts received on disposals		
6. Total foreign exchange change in book/adjusted carrying value		
7. Deduct current year's other than temporary impairment recognized		
8. Deduct current year's depreciation		
9. Book/adjusted carrying value at the end of current period (Lines 1+2+3+4-5+6-7-8)		
10. Deduct total nonadmitted amounts		
11. Statement value at end of current period (Line 9 minus Line 10)		

SCHEDULE B - VERIFICATION

Mortgage Loans

	1	2
	Year to Date	Prior Year Ended December 31
1. Book value/recorded investment excluding accrued interest, December 31 of prior year		
2. Cost of acquired:		
2.1 Actual cost at time of acquisition		
2.2 Additional investment made after acquisition		
3. Capitalized deferred interest and other		
4. Accrual of discount		
5. Unrealized valuation increase (decrease)		
6. Total gain (loss) on disposals		
7. Deduct amounts received on disposals		
8. Deduct amortization of premium and mortgage investment and commitment fees		
9. Total foreign exchange change in book value/recorded investment including accrued interest		
10. Deduct current year's other than temporary impairment recognized		
11. Book value/recorded investment excluding accrued interest at end of current period (Lines 1+2+3+4+5+6-7-8+9-10)		
12. Total valuation allowance		
13. Subtotal (Line 11 plus Line 12)		
14. Deduct total nonadmitted amounts		
15. Statement value at end of current period (Line 13 minus Line 14)		

SCHEDULE BA - VERIFICATION

Other Long-Term Invested Assets

	1	2
	Year to Date	Prior Year Ended December 31
1. Book/adjusted carrying value, December 31 of prior year	244,155	245,958
2. Cost of acquired:		
2.1 Actual cost at time of acquisition		
2.2 Additional investment made after acquisition		
3. Capitalized deferred interest and other		0
4. Accrual of discount		
5. Unrealized valuation increase (decrease)		0
6. Total gain (loss) on disposals		
7. Deduct amounts received on disposals		
8. Deduct amortization of premium and depreciation	1,399	1,802
9. Total foreign exchange change in book/adjusted carrying value		0
10. Deduct current year's other than temporary impairment recognized		0
11. Book/adjusted carrying value at end of current period (Lines 1+2+3+4+5+6-7-8+9-10)	242,756	244,155
12. Deduct total nonadmitted amounts		
13. Statement value at end of current period (Line 11 minus Line 12)	242,756	244,155

SCHEDULE D - VERIFICATION

Bonds and Stocks

	1	2
	Year to Date	Prior Year Ended December 31
1. Book/adjusted carrying value of bonds and stocks, December 31 of prior year	143,599,189	131,781,893
2. Cost of bonds and stocks acquired	23,082,960	33,409,369
3. Accrual of discount	93,875	115,990
4. Unrealized valuation increase (decrease)	110,332	(1,049,797)
5. Total gain (loss) on disposals	61,348	888,913
6. Deduct consideration for bonds and stocks disposed of	10,934,032	21,168,618
7. Deduct amortization of premium	302,922	393,258
8. Total foreign exchange change in book/adjusted carrying value		
9. Deduct current year's other than temporary impairment recognized		
10. Total investment income recognized as a result of prepayment penalties and/or acceleration fees		14,697
11. Book/adjusted carrying value at end of current period (Lines 1+2+3+4+5-6-7+8-9+10)	155,710,750	143,599,189
12. Deduct total nonadmitted amounts		
13. Statement value at end of current period (Line 11 minus Line 12)	155,710,750	143,599,189

STATEMENT AS OF SEPTEMBER 30, 2019 OF THE Cincinnati Equitable Life Insurance Company

SCHEDULE D - PART 1B

Showing the Acquisitions, Dispositions and Non-Trading Activity
During the Current Quarter for all Bonds and Preferred Stock by NAIC Designation

NAIC Designation	1 Book/Adjusted Carrying Value Beginning of Current Quarter	2 Acquisitions During Current Quarter	3 Dispositions During Current Quarter	4 Non-Trading Activity During Current Quarter	5 Book/Adjusted Carrying Value End of First Quarter	6 Book/Adjusted Carrying Value End of Second Quarter	7 Book/Adjusted Carrying Value End of Third Quarter	8 Book/Adjusted Carrying Value December 31 Prior Year
BONDS								
1. NAIC 1 (a)	99,657,228	6,046,889	3,514,942	(259,497)	95,778,219	99,657,228	101,929,678	87,180,626
2. NAIC 2 (a)	49,401,977	3,127,915	2,110,175	(140,447)	47,708,761	49,401,977	50,279,269	47,512,580
3. NAIC 3 (a)	1,762,563	0	1,008	350,946	1,909,956	1,762,563	2,112,501	3,294,632
4. NAIC 4 (a)	146,122	0	20,000	(48)	146,169	146,122	126,075	146,215
5. NAIC 5 (a)	279,248	0	0	101	448,639	279,248	279,349	289,209
6. NAIC 6 (a)	142,125	0	0	9,375	0	142,125	151,500	0
7. Total Bonds	151,389,263	9,174,803	5,646,125	(39,570)	145,991,745	151,389,263	154,878,372	138,423,262
PREFERRED STOCK								
8. NAIC 1	0				0	0	0	
9. NAIC 2	103,920				103,920	103,920	103,920	612,764
10. NAIC 3	809,515	0	0	(4,976)	809,555	809,515	804,539	809,594
11. NAIC 4	0				0	0	0	
12. NAIC 5	0				0	0	0	
13. NAIC 6	0				0	0	0	
14. Total Preferred Stock	913,435	0	0	(4,976)	913,475	913,435	908,459	1,422,359
15. Total Bonds and Preferred Stock	152,302,698	9,174,803	5,646,125	(44,546)	146,905,220	152,302,698	155,786,830	139,845,621

(a) Book/Adjusted Carrying Value column for the end of the current reporting period includes the following amount of short-term and cash equivalent bonds by NAIC designation:

NAIC 1 \$ 3,291,044 ; NAIC 2 \$ 0 ; NAIC 3 \$ 0 NAIC 4 \$ 0 ; NAIC 5 \$ 0 ; NAIC 6 \$ 0

SCHEDULE DA - PART 1

Short-Term Investments

	1	2	3	4	5
	Book/Adjusted Carrying Value	Par Value	Actual Cost	Interest Collected Year-to-Date	Paid for Accrued Interest Year-to-Date
9199999 Totals	3,291,044	xxx	3,233,796	0	0

SCHEDULE DA - VERIFICATION

Short-Term Investments

	1	2
	Year To Date	Prior Year Ended December 31
1. Book/adjusted carrying value, December 31 of prior year	0	
2. Cost of short-term investments acquired	3,233,796	
3. Accrual of discount	57,248	
4. Unrealized valuation increase (decrease)		
5. Total gain (loss) on disposals		
6. Deduct consideration received on disposals		
7. Deduct amortization of premium		
8. Total foreign exchange change in book/adjusted carrying value		
9. Deduct current year's other than temporary impairment recognized		
10. Book/adjusted carrying value at end of current period (Lines 1+2+3+4+5-6-7+8-9)	3,291,044	0
11. Deduct total nonadmitted amounts		
12. Statement value at end of current period (Line 10 minus Line 11)	3,291,044	0

Schedule DB - Part A - Verification - Options, Caps, Floors, Collars, Swaps and Forwards

N O N E

Schedule DB - Part B - Verification - Futures Contracts

N O N E

Schedule DB - Part C - Section 1 - Replication (Synthetic Asset) Transactions (RSATs) Open

N O N E

Schedule DB-Part C-Section 2-Reconciliation of Replication (Synthetic Asset) Transactions Open

N O N E

Schedule DB - Verification - Book/Adjusted Carrying Value, Fair Value and Potential Exposure of
Derivatives

N O N E

SCHEDULE E - PART 2 - VERIFICATION

(Cash Equivalents)

	1	2
	Year To Date	Prior Year Ended December 31
1. Book/adjusted carrying value, December 31 of prior year	6,456,868	1,207,253
2. Cost of cash equivalents acquired	19,787,709	33,057,786
3. Accrual of discount		
4. Unrealized valuation increase (decrease)		
5. Total gain (loss) on disposals		
6. Deduct consideration received on disposals	24,602,290	27,808,171
7. Deduct amortization of premium		
8. Total foreign exchange change in book/adjusted carrying value		
9. Deduct current year's other than temporary impairment recognized		
10. Book/adjusted carrying value at end of current period (Lines 1+2+3+4+5-6-7+8-9)	1,642,287	6,456,868
11. Deduct total nonadmitted amounts		
12. Statement value at end of current period (Line 10 minus Line 11)	1,642,287	6,456,868

Schedule A - Part 2 - Real Estate Acquired and Additions Made

N O N E

Schedule A - Part 3 - Real Estate Disposed

N O N E

Schedule B - Part 2 - Mortgage Loans Acquired and Additions Made

N O N E

Schedule B - Part 3 - Mortgage Loans Disposed, Transferred or Repaid

N O N E

Schedule BA - Part 2 - Other Long-Term Invested Assets Acquired and Additions Made

N O N E

Schedule BA - Part 3 - Other Long-Term Invested Assets Disposed, Transferred or Repaid

N O N E

STATEMENT AS OF SEPTEMBER 30, 2019 OF THE Cincinnati Equitable Life Insurance Company

SCHEDULE D - PART 3

Show All Long-Term Bonds and Stock Acquired During the Current Quarter

1	2	3	4	5	6	7	8	9	10
CUSIP Identification	Description	Foreign	Date Acquired	Name of Vendor	Number of Shares of Stock	Actual Cost	Par Value	Paid for Accrued Interest and Dividends	NAIC Designation and Administrative Symbol/Market Indicator (a)
912828-6T-2	UNITED STATES TREASURY		.08/14/2019	BANC / AMERICA SECUR. LLC, MONT.		.479,640	.448,000	.2,689	1
912828-Y8-7	UNITED STATES TREASURY		.08/08/2019	MORGAN STANLEY & CO INC, NY		.254,520	.252,000	.144	1
0599999. Subtotal - Bonds - U.S. Governments						734,160	700,000	2,833	XXX
110122-CD-8	BRISTOL-MYERS SQUIBB CO		.07/18/2019	BARCLAYS CAPITAL INC		.761,761	.700,000	.5,454	1FE
11043X-AA-1	IAGLN 191 AA - ABS		.07/15/2019	CITIGROUP GLOBAL MARKETS INC		.300,000	.300,000	.0	1FE
20030N-BK-6	COMCAST CORP		.07/17/2019	WELLS FARGO SECURITIES LLC		.690,384	.600,000	.10,925	1FE
22822V-AH-4	CROWN CASTLE INTERNATIONAL CORP		.08/15/2019	BANC / AMERICA SECUR. LLC, MONT.		.844,352	.800,000	.13,627	2FE
233851-DT-8	DAIMLER FINANCE NORTH AMERICA LLC	C	.07/01/2019	JP MORGAN SECURITIES LLC		.438,416	.400,000	.6,259	1FE
254687-FK-7	WALT DISNEY CO		.09/03/2019	JP MORGAN SECURITIES LLC		.248,980	.250,000	.0	1FE
254687-FL-5	WALT DISNEY CO		.09/06/2019	MORGAN STANLEY & CO INC, NY		.732,608	.750,000	.167	1FE
268317-AU-8	ELECTRICITE DE FRANCE SA	C	.07/02/2019	BARCLAYS CAPITAL INC		.122,647	.111,000	.1,443	1FE
42225U-AG-9	HEALTHCARE TRUST OF AMERICA HOLDINGS LP		.09/06/2019	MERRILL LYNCH PROFESSIONAL CLRG, PURCHAS		.499,170	.500,000	.0	2FE
682680-AY-9	ONEOK INC		.09/06/2019	CIBC WORLD MARKETS CORP.		.753,893	.750,000	.1,771	2FE
776743-AG-1	ROPER TECHNOLOGIES INC		.08/19/2019	BANC / AMERICA SECUR. LLC, MONT.		.498,915	.500,000	.0	2FE
828807-DF-1	SIMON PROPERTY GROUP LP		.09/04/2019	BANC / AMERICA SECUR. LLC, MONT.		.395,720	.400,000	.0	1FE
88579Y-BJ-9	3M CO		.08/19/2019	BANC / AMERICA SECUR. LLC, MONT.		.741,885	.750,000	.0	1FE
911312-BQ-8	UNITED PARCEL SERVICE INC		.07/17/2019	MARKETAXESS CORPORATION		.880,328	.800,000	.11,711	1FE
980236-AQ-6	WOODSIDE FINANCE LTD	C	.07/18/2019	JANE STREET EXECUTION SERVICES LLC		.531,585	.500,000	.8,625	2FE
3899999. Subtotal - Bonds - Industrial and Miscellaneous (Unaffiliated)						8,440,643	8,111,000	59,981	XXX
8399997. Total - Bonds - Part 3						9,174,803	8,811,000	62,814	XXX
8399998. Total - Bonds - Part 5						XXX	XXX	XXX	XXX
8399999. Total - Bonds						9,174,803	8,811,000	62,814	XXX
8999997. Total - Preferred Stocks - Part 3						0	XXX	0	XXX
8999998. Total - Preferred Stocks - Part 5						XXX	XXX	XXX	XXX
8999999. Total - Preferred Stocks						0	XXX	0	XXX
9799997. Total - Common Stocks - Part 3						0	XXX	0	XXX
9799998. Total - Common Stocks - Part 5						XXX	XXX	XXX	XXX
9799999. Total - Common Stocks						0	XXX	0	XXX
9899999. Total - Preferred and Common Stocks						0	XXX	0	XXX
9999999 - Totals						9,174,803	XXX	62,814	XXX

(a) For all common stock bearing the NAIC market indicator "U" provide: the number of such issues

STATEMENT AS OF SEPTEMBER 30, 2019 OF THE Cincinnati Equitable Life Insurance Company

SCHEDULE D - PART 4

Show All Long-Term Bonds and Stock Sold, Redeemed or Otherwise Disposed of During the Current Quarter

1	2	3	4	5	6	7	8	9	10	Change In Book/Adjusted Carrying Value					16	17	18	19	20	21	22
										11	12	13	14	15							
CUSIP Ident- ification	Description	For- eign	Disposal Date	Name of Purchaser	Number of Shares of Stock	Consid- eration	Par Value	Actual Cost	Prior Year Book/ Adjusted Carrying Value	Unrealized Valuation Increase/ (Decrease)	Current Year's (Amor- tization)/ Accretion	Current Year's Temporary Impairment Recog- nized	Total Change in Book/ Adjusted Carrying Value (11 + 12 - 13)	Total Foreign Exchange Change in Book /Adjusted Carrying Value	Book/ Adjusted Carrying Value at Disposal Date	Foreign Exchange Gain (Loss) on Disposal	Realized Gain (Loss) on Disposal	Total Gain (Loss) on Disposal	Bond Interest/ Stock Dividends Received During Year	Stated Con- tractual Maturity Date	NAIC Desig- nation and Admini- strative Symbol /Market Indicator (a)
36200N-KA-8	GN 605189 - RMBS		09/01/2019	Paydown		132	132	134	133	.0	(1)	.0	(1)	.0	132	.0	.0	.0	.5	04/15/2034	1
36202E-JH-3	G2 003864 - RMBS		09/01/2019	Paydown		118	118	118	118	.0	.1	.0	.1	.0	118	.0	.0	.0	.4	06/20/2036	1
36202E-MA-4	G2 003953 - RMBS		09/01/2019	Paydown		78	78	78	78	.0	.0	.0	.0	.0	78	.0	.0	.0	.3	02/20/2037	1
36202E-NP-0	G2 003998 - RMBS		09/01/2019	Paydown		170	170	168	168	.0	.2	.0	.2	.0	170	.0	.0	.0	.6	06/20/2037	1
36202E-QL-6	G2 004059 - RMBS		09/01/2019	Paydown		154	154	153	153	.0	.1	.0	.1	.0	154	.0	.0	.0	.5	12/20/2037	1
36202E-RS-0	G2 004097 - RMBS		09/01/2019	Paydown		128	128	127	127	.0	.1	.0	.1	.0	128	.0	.0	.0	.4	03/20/2038	1
36202E-SB-6	G2 004114 - RMBS		09/01/2019	Paydown		182	182	183	183	.0	(1)	.0	(1)	.0	182	.0	.0	.0	.6	04/20/2038	1
36202F-DW-3	G2 004617 - RMBS		09/01/2019	Paydown		732	732	741	741	.0	(9)	.0	(9)	.0	732	.0	.0	.0	.20	01/20/2040	1
36207J-LY-7	GN 433343 - RMBS		09/01/2019	Paydown		11	11	11	11	.0	.0	.0	.0	.0	11	.0	.0	.0	.1	12/15/2026	1
36208W-TL-7	GN 463255 - RMBS		09/01/2019	Paydown		14	14	14	14	.0	.0	.0	.0	.0	14	.0	.0	.0	.0	02/15/2037	1
36210N-MM-8	GN 497264 - RMBS		09/01/2019	Paydown		59	59	59	59	.0	.0	.0	.0	.0	59	.0	.0	.0	.2	12/15/2038	1
38375Q-EY-1	GNR 0833A PB - CMO/RMBS		09/01/2019	Paydown		1,959	1,959	2,190	2,217	.0	(257)	.0	(257)	.0	1,959	.0	.0	.0	.65	04/20/2038	1
38378B-HQ-8	GNR 1283A AB - CMB		09/01/2019	Paydown		614	614	598	604	.0	.10	.0	.10	.0	614	.0	.0	.0	.8	05/16/2045	1
912828-BT-2	UNITED STATES TREASURY		08/19/2019	SECURITIES, INC.		479,271	448,000	479,640	.0	.0	(32)	.0	(32)	.0	479,608	.0	(337)	(337)	2,805	05/15/2029	1
912828-Y8-7	UNITED STATES TREASURY		08/19/2019	BARCLAYS CAPITAL INC		255,297	252,000	254,520	.0	.0	(11)	.0	(11)	.0	254,509	.0	.787	.787	240	07/31/2024	1
0599999	Subtotal - Bonds - U.S. Governments					738,917	704,350	738,734	4,603	0	(296)	0	(296)	0	738,467	0	451	451	3,173	XXX	XXX
71654Q-BB-7	PETROLEOS MEXICANOS	C	09/25/2019	BNP PARIBAS SECURITIES BOND		363,125	350,000	364,350	356,133	.0	(1,410)	.0	(1,410)	.0	354,723	.0	8,402	8,402	20,048	01/24/2022	2FE
1099999	Subtotal - Bonds - All Other Governments					363,125	350,000	364,350	356,133	0	(1,410)	0	(1,410)	0	354,723	0	8,402	8,402	20,048	XXX	XXX
341426-G2-4	FLORIDA ST BRD ED CAP OUTLAY		08/14/2019	Call @ 100.00		40,000	40,000	44,217	40,419	.0	(419)	.0	(419)	.0	40,000	.0	.0	.0	1,630	06/01/2039	1FE
702282-LN-2	PASADENA CALIF UNI SCH DIST		08/01/2019	Call @ 100.00		30,000	30,000	33,912	30,490	.0	(490)	.0	(490)	.0	30,000	.0	.0	.0	1,823	08/01/2023	1FE
766651-NN-9	RILEY CNTY KANS UNI SCH DIST NO 383		09/03/2019	Call @ 100.00		40,000	40,000	46,797	41,354	.0	(1,354)	.0	(1,354)	.0	40,000	.0	.0	.0	2,660	09/01/2030	1FE
2499999	Subtotal - Bonds - U.S. Political Subdivisions of States, Territories and Possessions					110,000	110,000	124,926	112,263	0	(2,263)	0	(2,263)	0	110,000	0	0	0	6,113	XXX	XXX
181000-LQ-1	CLARK CNTY NEV HWY IMPT REV		07/01/2019	Call @ 100.00		100,000	100,000	114,129	101,626	.0	(1,626)	.0	(1,626)	.0	100,000	.0	.0	.0	6,350	07/01/2029	1FE
254777P-NF-8	DISTRICT COLUMBIA HSG FIN AGY MULTIFAMIL		09/16/2019	Call @ 100.00		1,084	1,084	1,084	1,084	.0	.0	.0	.0	.0	1,084	.0	.0	.0	.28	06/15/2045	1FE
3128LX-J7-6	FH G02086 - RMBS		09/01/2019	Paydown		120	120	118	118	.0	.2	.0	.2	.0	120	.0	.0	.0	.4	02/01/2036	1
3128LX-QC-7	FH G02251 - RMBS		09/01/2019	Paydown		335	335	360	363	.0	(28)	.0	(28)	.0	335	.0	.0	.0	.11	08/01/2036	1
3128PR-LS-6	FH J12137 - RMBS		09/01/2019	Paydown		381	381	396	396	.0	(9)	.0	(9)	.0	381	.0	.0	.0	.19	05/01/2025	1
312931-4A-3	FH A85317 - RMBS		09/01/2019	Paydown		435	435	437	438	.0	(3)	.0	(3)	.0	435	.0	.0	.0	.17	04/01/2039	1
3136A7-DE-9	FNR 1268E NA - CMO/RMBS		09/01/2019	Paydown		1,548	1,548	1,527	1,530	.0	.18	.0	.18	.0	1,548	.0	.0	.0	.19	03/25/2042	1
3136AD-FZ-7	FNR 1331D NT - CMO/RMBS		09/01/2019	Paydown		1,101	1,101	1,079	1,084	.0	.17	.0	.17	.0	1,101	.0	.0	.0	.21	04/25/2043	1
3136AF-TP-9	FNR 1373E PL - CMO/RMBS		09/01/2019	Paydown		1,217	1,217	1,287	1,266	.0	(48)	.0	(48)	.0	1,217	.0	.0	.0	.26	06/25/2042	1
31371N-V4-4	FN 257235 - RMBS		09/01/2019	Paydown		534	534	570	552	.0	(18)	.0	(18)	.0	534	.0	.0	.0	.20	06/01/2023	1
3137AP-H6-0	FHR 4032A AD - CMO/RMBS		09/01/2019	Paydown		416	416	406	408	.0	.8	.0	.8	.0	416	.0	.0	.0	.5	10/15/2041	1
3137B0-M6-8	FHR 4181E TB - CMO/RMBS		09/01/2019	Paydown		1,600	1,600	1,591	1,591	.0	.8	.0	.8	.0	1,600	.0	.0	.0	.25	10/15/2042	1
31393R-FB-1	FHR 2613A LL - CMO/RMBS		09/16/2019	Call @ 100.00		6,000	6,000	6,750	6,510	.0	(59)	.0	(59)	.0	6,451	.0	(451)	(451)	.204	05/15/2033	1
31402D-JS-0	FN 725773 - RMBS		09/01/2019	Paydown		635	635	636	635	.0	.0	.0	.0	.0	635	.0	.0	.0	.24	09/01/2034	1
31403C-YH-8	FN 745112 - RMBS		09/01/2019	Paydown		216	216	224	223	.0	(6)	.0	(6)	.0	216	.0	.0	.0	.11	10/01/2035	1
31403D-P9-4	FN 745748 - RMBS		09/01/2019	Paydown		343	343	336	335	.0	.9	.0	.9	.0	343	.0	.0	.0	.14	07/01/2036	1
31404N-FW-1	FN 77381 - RMBS		09/01/2019	Paydown		209	209	196	194	.0	.15	.0	.15	.0	209	.0	.0	.0	.7	05/01/2034	1
31406V-R2-4	FN 821405 - RMBS		09/01/2019	Paydown		104	104	105	105	.0	(1)	.0	(1)	.0	104	.0	.0	.0	.4	05/01/2035	1
31408A-E4-8	FN 845355 - RMBS		09/01/2019	Paydown		605	605	618	617	.0	(12)	.0	(12)	.0	605	.0	.0	.0	.11	01/01/2036	1
31408D-OG-2	FN 848355 - RMBS		09/01/2019	Paydown		617	617	609	609	.0	.8	.0	.8	.0	617	.0	.0	.0	.14	08/01/2035	1
31408G-VU-8	FN 851227 - RMBS		09/01/2019	Paydown		2,327	2,327	2,384	2,393	.0	(66)	.0	(66)	.0	2,327	.0	.0	.0	.93	05/01/2036	1
31408J-D9-9	FN 852528 - RMBS		09/01/2019	Paydown		11	11	10	10	.0	.1	.0	.1	.0	11	.0	.0	.0	.0	05/01/2036	1
31409G-JX-5	FN 870678 - RMBS		09/01/2019	Paydown		1,439	1,439	1,530	1,462	.0	(23)	.0	(23)	.0	1,439	.0	.0	.0	.40	12/01/2021	1
31410F-AZ-5	FN 888340 - RMBS		09/01/2019	Paydown		352	352	363	363	.0	(11)	.0	(11)	.0	352	.0	.0	.0	.13	08/01/2036	1
31410G-BC-6	FN 888435 - RMBS		09/01/2019	Paydown		202	202	204	202	.0	.0	.0	.0	.0	202	.0	.0	.0	.7	06/01/2022	1
31410G-W9-0	FN 889072 - RMBS		09/01/2019	Paydown		237	237	244	246	.0	(9)	.0	(9)	.0	237	.0	.0	.0	.10	12/01/2037	1
31410K-XR-0	FN 889988 - RMBS		09/01/2019	Paydown		625	625	648	648	.0	(23)	.0	(23)	.0	625	.0	.0	.0	.21	08/01/2038	1
31410T-WZ-4	FN 897164 - RMBS		09/01/2019	Paydown		496	496	506	504	.0	(8)	.0	(8)	.0	496	.0	.0	.0	.19	08/01/2036	1
31412S-LR-4	FN 933336 - RMBS		09/01/2019	Paydown		33	33	32	32	.0	.1	.0	.1	.0	33	.0	.0	.0	.1	01/01/2038	1
31414D-U2-0	FN 963301 - RMBS		09/01/2019	Paydown		1,096	1,096	1,078	1,086	.0	.10	.0	.10	.0	1,096	.0	.0	.0	.37	05/01/2023	1
31414L-3U-0	FN 969811 - RMBS		09/01/2019	Paydown		26	26	26	26	.0	.0	.0	.0	.0	26	.0	.0	.0	.1	02/01/2023	1
31416H-UM-5	FN AA0587 - RMBS		09/01/2019	Paydown		336	336	343	343	.0	(7)	.0	(7)	.0	336	.0	.0	.0	.10	02/01/2039	1

STATEMENT AS OF SEPTEMBER 30, 2019 OF THE Cincinnati Equitable Life Insurance Company

SCHEDULE D - PART 4

Show All Long-Term Bonds and Stock Sold, Redeemed or Otherwise Disposed of During the Current Quarter

CUSIP Ident- ification	Description	For- eign	Disposal Date	Name of Purchaser	Number of Shares of Stock	Consid- eration	Par Value	Actual Cost	Prior Year Book/ Adjusted Carrying Value	Change In Book/Adjusted Carrying Value					16	17	18	19	20	21	22
										11	12	13	14	15							
										Unrealized Valuation Increase/ (Decrease)	Current Year's (Amor- tization)/ Accretion	Current Year's Other Than Temporary Impairment Recogn- ized	Total Change in Book/ Adjusted Carrying Value (11 + 12 - 13)	Total Foreign Exchange Change in Book /Adjusted Carrying Value	Book/ Adjusted Carrying Value at Disposal Date	Foreign Exchange Gain (Loss) on Disposal	Realized Gain (Loss) on Disposal	Total Gain (Loss) on Disposal	Bond Interest/ Stock Dividends Received During Year	Stated Con- tractual Maturity Date	NAIC Design- ation and Admini- strative Symbol /Market Indicator (a)
31417V-RS-4	FN AC8596 - RMBS		09/01/2019	Paydown		717	717	723	719	0	(2)	0	(2)	0	717	0	0	0	22	01/01/2025	1FE
31418M-UM-2	FN AD0587 - RMBS		09/01/2019	Paydown		2,119	2,119	2,165	2,164	0	(45)	0	(45)	0	2,119	0	0	0	64	12/01/2039	1FE
343136-L7-0	FLORIDA ST TPK AUTH TPK REV		07/01/2019	Call @ 100.00		100,000	100,000	114,517	102,376	0	(2,376)	0	(2,376)	0	100,000	0	0	0	6,800	07/01/2039	1FE
517705-AN-9	LAS VEGAS NEV CTFS PARTN		09/03/2019	Call @ 100.00		100,000	100,000	118,585	103,496	0	(3,496)	0	(3,496)	0	100,000	0	0	0	7,750	09/01/2029	1FE
67732P-CN-6	OHIO ONTY W VA ONTY COMMN SPL DIST EXCIS		09/30/2019	Call @ 100.00		50,000	50,000	50,000	50,000	0	0	0	0	0	50,000	0	0	0	2,890	03/01/2029	2FE
713580-AY-4	PERALTA CALIF CMNTY COLLEGE DIST LTD OBL		09/01/2019	Call @ 100.00		15,000	15,000	16,224	15,757	0	(58)	0	(58)	0	15,699	0	(699)	(699)	0	08/05/2025	2FE
76827Q-CX-9	RIVER ISLANDS PUB FING AUTH CALIF SPL TA		09/01/2019	Call @ 100.00		20,000	20,000	20,000	20,000	0	0	0	0	0	20,000	0	0	0	500	09/01/2020	4Z
31999999	Subtotal - Bonds - U.S. Special Revenues					412,516	412,516	462,041	421,504	0	(7,839)	0	(7,839)	0	413,666	0	(1,150)	(1,150)	26,050	XXX	XXX
009090-AA-9	AIR CANADA 2015-1 PASS THROUGH TRUST - A	C.	09/15/2019	Paydown		18,093	18,093	18,108	18,107	0	(13)	0	(13)	0	18,093	0	0	0	604	09/15/2028	1FE
023764-AA-1	AMERICAN AIRLINES 2016-2 PASS THROUGH TR		07/01/2019	Paydown		0	0	0	0	0	0	0	0	0	0	0	0	0	19	12/15/2029	1FE
025816-BM-0	AMERICAN EXPRESS CO		07/18/2019	SUMRIDGE PARTNERS LLC		501,925	500,000	500,880	500,639	0	(97)	0	(97)	0	500,542	0	1,383	1,383	12,188	08/01/2022	1FE
02665X-AA-7	AH4R 145FR3 A - ABS		09/01/2019	Paydown		2,322	2,322	2,322	2,319	0	3	0	3	0	2,322	0	0	0	57	12/18/2036	1FE
03879Q-AF-1	VEREIT OPERATING PARTNERSHIP LP		08/08/2019	NY		313,107	291,000	298,909	297,839	0	(792)	0	(792)	0	297,047	0	16,060	16,060	13,609	02/06/2024	2FE
04364T-AD-0	ACER 161 B - ABS		08/12/2019	Paydown		159,243	159,243	159,242	159,242	0	1	0	1	0	159,243	0	0	0	2,886	07/10/2020	1FE
11042T-AA-1	BRITISH AIRWAYS PASS THRU TRUST 2018-1AA	C.	09/20/2019	Paydown		8,497	8,497	8,603	8,598	0	(101)	0	(101)	0	8,497	0	0	0	242	03/20/2033	1FE
12653T-AA-9	CSMC 2018-J1 TRUST - CMO		09/01/2019	Paydown		36,029	36,029	35,252	35,304	0	713	0	713	0	36,029	0	0	0	817	02/25/2048	1FML
20030N-BJ-9	COMCAST CORP		07/17/2019			500,142	475,000	480,025	477,904	0	(283)	0	(283)	0	477,621	0	22,521	22,521	15,105	03/01/2024	1FE

STATEMENT AS OF SEPTEMBER 30, 2019 OF THE Cincinnati Equitable Life Insurance Company

SCHEDULE D - PART 4

Show All Long-Term Bonds and Stock Sold, Redeemed or Otherwise Disposed of During the Current Quarter

1	2	3	4	5	6	7	8	9	10	Change In Book/Adjusted Carrying Value					16	17	18	19	20	21	22
										11	12	13	14	15							
CUSIP Ident- ification	Description	For- eign	Disposal Date	Name of Purchaser	Number of Shares of Stock	Consid- eration	Par Value	Actual Cost	Prior Year Book/ Adjusted Carrying Value	Unrealized Valuation Increase/ (Decrease)	Current Year's (Amor- tization)/ Accretion	Current Year's Other Than Temporary Impairment Recog- nized	Total Change in Book/ Adjusted Carrying Value (11 + 12 - 13)	Total Foreign Exchange Change in Book /Adjusted Carrying Value	Book/ Adjusted Value at Disposal Date	Foreign Exchange Gain (Loss) on Disposal	Realized Gain (Loss) on Disposal	Total Gain (Loss) on Disposal	Bond Interest/ Stock Dividends Received During Year	Stated Con- tractual Maturity Date	NAIC Desig- nation and Admini- strative Symbol /Market Indicator (a)
9799997. Total - Common Stocks - Part 4						0	XXX	0	0	0	0	0	0	0	0	0	0	0	0	XXX	XXX
9799998. Total - Common Stocks - Part 5						XXX	XXX	XXX	XXX	XXX	XXX	XXX	XXX	XXX	XXX	XXX	XXX	XXX	XXX	XXX	XXX
9799999. Total - Common Stocks						0	XXX	0	0	0	0	0	0	0	0	0	0	0	0	XXX	XXX
9899999. Total - Preferred and Common Stocks						0	XXX	0	0	0	0	0	0	0	0	0	0	0	0	XXX	XXX
9999999 - Totals						5,761,803	XXX	5,728,538	4,368,488	0	(13,869)	0	(13,869)	0	5,646,125	0	115,678	115,678	171,225	XXX	XXX

(a) For all common stock bearing the NAIC market indicator "U" provide: the number of such issues.....

Schedule DB - Part A - Section 1 - Options, Caps, Floors, Collars, Swaps and Forwards Open
N O N E

Schedule DB - Part B - Section 1 - Futures Contracts Open
N O N E

Schedule DB - Part B - Section 1B - Brokers with whom cash deposits have been made
N O N E

Schedule DB - Part D - Section 1 - Counterparty Exposure for Derivative Instruments Open
N O N E

Schedule DB - Part D-Section 2 - Collateral for Derivative Instruments Open - Pledged By
N O N E

Schedule DB - Part D-Section 2 - Collateral for Derivative Instruments Open - Pledged To
N O N E

Schedule DL - Part 1 - Reinvested Collateral Assets Owned
N O N E

Schedule DL - Part 2 - Reinvested Collateral Assets Owned
N O N E

SCHEDULE E - PART 1 - CASH

Month End Depository Balances

1	2	3	4	5	Book Balance at End of Each Month During Current Quarter			9
					6	7	8	
					First Month	Second Month	Third Month	
Depository	Code	Rate of Interest	Amount of Interest Received During Current Quarter	Amount of Interest Accrued at Current Statement Date				*
Bank OZK 11/04/2019		1.910	1,592	467	243,000	243,000	243,000	XXX.
Zions Bancorporation, National Association 10/04/2		1.924	0	4,616	240,000	240,000	240,000	XXX.
Investors Bank 10/18/2019		1.887	0	4,346	243,000	243,000	243,000	XXX.
The Bank of New York Mellon 10/15/2019		1.906	0	4,242	244,000	244,000	244,000	XXX.
Bank of America, National Association 10/10/2019		1.905	0	4,324	244,000	244,000	244,000	XXX.
0199998. Deposits in ... depositories that do not exceed the allowable limit in any one depository (See instructions) - Open Depositories	XXX	XXX	0	0	617,042	1,896,292	512,837	XXX
0199999. Totals - Open Depositories	XXX	XXX	1,592	17,995	1,831,042	3,110,292	1,726,837	XXX
0299998. Deposits in ... depositories that do not exceed the allowable limit in any one depository (See instructions) - Suspended Depositories	XXX	XXX						XXX
0299999. Totals - Suspended Depositories	XXX	XXX	0	0	0	0	0	XXX
0399999. Total Cash on Deposit	XXX	XXX	1,592	17,995	1,831,042	3,110,292	1,726,837	XXX
0499999. Cash in Company's Office	XXX	XXX	XXX	XXX				XXX
.....								
.....								
.....								
.....								
.....								
.....								
.....								
0599999. Total - Cash	XXX	XXX	1,592	17,995	1,831,042	3,110,292	1,726,837	XXX

STATEMENT AS OF SEPTEMBER 30, 2019 OF THE Cincinnati Equitable Life Insurance Company

SCHEDULE E - PART 2 - CASH EQUIVALENTS

Show Investments Owned End of Current Quarter

[illegible]