



QUARTERLY STATEMENT

AS OF JUNE 30, 2019  
OF THE CONDITION AND AFFAIRS OF THE

HealthSpan Inc

NAIC Group Code	04831	04831	NAIC Company Code	15284	Employer's ID Number	31-1431434
	(Current Period)	(Prior Period)				
Organized under the Laws of	Ohio			State of Domicile or Port of Entry	Ohio	
Country of Domicile	United States					
Licensed as business type:	Life, Accident & Health [ X ]		Property/Casualty [ ]	Hospital, Medical & Dental Service or Indemnity [ ]		
	Dental Service Corporation [ ]		Vision Service Corporation [ ]	Health Maintenance Organization [ ]		
	Other [ ]			Is HMO Federally Qualified? Yes [ ] No [ ]		
Incorporated/Organized	07/30/2013		Commenced Business	07/30/2013		
Statutory Home Office	1701 Mercy Health Place			Cincinnati, OH, US 45237		
	(Street and Number)			(City or Town, State, Country and Zip Code)		
Main Administrative Office	1701 Mercy Health Place		Cincinnati, OH, US 45237	216-319-1618		
	(Street and Number)		(City or Town, State, Country and Zip Code)	(Area Code) (Telephone Number)		
Mail Address	1701 Mercy Health Place		Cincinnati, OH, US 45237			
	(Street and Number or P.O. Box)		(City or Town, State, Country and Zip Code)			
Primary Location of Books and Records	1701 Mercy Health Place		Cincinnati, OH, US 45237	216-319-1618		
	(Street and Number)		(City or Town, State, Country and Zip Code)	(Area Code) (Telephone Number)		
Internet Web Site Address				N/A		
Statutory Statement Contact	Felicia Browning			216-319-1618		
	(Name)			(Area Code) (Telephone Number) (Extension)		
	felicia.browning@mercy.com			513-671-3721		
	(E-Mail Address)			(FAX Number)		

OFFICERS

Name	Title	Name	Title
Jeffery Copeland	President & CEO	David Nowiski	Treasurer

OTHER OFFICERS

--	--	--	--

DIRECTORS OR TRUSTEES

Jeffery Copeland	David Nowiski	Allan Calonge	
------------------	---------------	---------------	--

State of .....  
County of ..... SS

The officers of this reporting entity being duly sworn, each depose and say that they are the described officers of said reporting entity, and that on the reporting period stated above, all of the herein described assets were the absolute property of the said reporting entity, free and clear from any liens or claims thereon, except as herein stated, and that this statement, together with related exhibits, schedules and explanations therein contained, annexed or referred to, is a full and true statement of all the assets and liabilities and of the condition and affairs of the said reporting entity as of the reporting period stated above, and of its income and deductions therefrom for the period ended, and have been completed in accordance with the NAIC *Annual Statement Instructions and Accounting Practices and Procedures* manual except to the extent that: (1) state law may differ; or, (2) that state rules or regulations require differences in reporting not related to accounting practices and procedures, according to the best of their information, knowledge and belief, respectively. Furthermore, the scope of this attestation by the described officers also includes the related corresponding electronic filing with the NAIC, when required, that is an exact copy (except for formatting differences due to electronic filing) of the enclosed statement. The electronic filing may be requested by various regulators in lieu of or in addition to the enclosed statement.

Jeffery Copeland President & CEO	David Nowiski Treasurer	a. Is this an original filing? Yes [ X ] No [ ]
Subscribed and sworn to before me this day of ,		b. If no: 1. State the amendment number 2. Date filed 3. Number of pages attached

ASSETS

	Current Statement Date			4  December 31 Prior Year Net Admitted Assets
	1  Assets	2  Nonadmitted Assets	3  Net Admitted Assets (Cols. 1 - 2)	
1. Bonds .....	400,000		400,000	399,882
2. Stocks:				
2.1 Preferred stocks .....			0	0
2.2 Common stocks .....			0	0
3. Mortgage loans on real estate:				
3.1 First liens .....			0	0
3.2 Other than first liens .....			0	0
4. Real estate:				
4.1 Properties occupied by the company (less \$ ..... encumbrances) .....			0	0
4.2 Properties held for the production of income (less \$ ..... encumbrances) .....			0	0
4.3 Properties held for sale (less \$ ..... encumbrances) .....			0	0
5. Cash (\$ .....316,447 ), cash equivalents (\$ .....2,769,768 ) and short-term investments (\$ .....0 ) .....	3,086,215		3,086,215	12,524,378
6. Contract loans (including \$ .....premium notes) .....			0	0
7. Derivatives .....	0		0	0
8. Other invested assets .....	0		0	0
9. Receivables for securities .....			0	0
10. Securities lending reinvested collateral assets .....			0	0
11. Aggregate write-ins for invested assets .....	0	0	0	0
12. Subtotals, cash and invested assets (Lines 1 to 11) .....	3,486,215	0	3,486,215	12,924,260
13. Title plants less \$ .....charged off (for Title insurers only) .....			0	0
14. Investment income due and accrued .....			0	0
15. Premiums and considerations:				
15.1 Uncollected premiums and agents' balances in the course of collection .....			0	0
15.2 Deferred premiums, agents' balances and installments booked but deferred and not yet due (including \$ .....earned but unbilled premiums) .....			0	0
15.3 Accrued retrospective premiums (\$ ..... ) and contracts subject to redetermination (\$ ..... ) .....			0	0
16. Reinsurance:				
16.1 Amounts recoverable from reinsurers .....			0	0
16.2 Funds held by or deposited with reinsured companies .....			0	0
16.3 Other amounts receivable under reinsurance contracts .....			0	0
17. Amounts receivable relating to uninsured plans .....			0	0
18.1 Current federal and foreign income tax recoverable and interest thereon .....			0	0
18.2 Net deferred tax asset .....			0	0
19. Guaranty funds receivable or on deposit .....			0	0
20. Electronic data processing equipment and software .....			0	0
21. Furniture and equipment, including health care delivery assets (\$ ..... ) .....			0	0
22. Net adjustment in assets and liabilities due to foreign exchange rates .....			0	0
23. Receivables from parent, subsidiaries and affiliates .....			0	0
24. Health care (\$ ..... ) and other amounts receivable .....			0	0
25. Aggregate write-ins for other-than-invested assets .....	22,580	22,580	0	0
26. Total assets excluding Separate Accounts, Segregated Accounts and Protected Cell Accounts (Lines 12 to 25) .....	3,508,795	22,580	3,486,215	12,924,260
27. From Separate Accounts, Segregated Accounts and Protected Cell Accounts .....			0	0
28. Total (Lines 26 and 27) .....	3,508,795	22,580	3,486,215	12,924,260
DETAILS OF WRITE-INS				
1101. ....				
1102. ....				
1103. ....				
1198. Summary of remaining write-ins for Line 11 from overflow page .....	0	0	0	0
1199. Totals (Lines 1101 through 1103 plus 1198) (Line 11 above) .....	0	0	0	0
2501. Payment Innovation Receivable .....			0	0
2502. Prepaid Assets .....	22,580	22,580	0	0
2503. Other Assets .....			0	0
2598. Summary of remaining write-ins for Line 25 from overflow page .....	0	0	0	0
2599. Totals (Lines 2501 through 2503 plus 2598) (Line 25 above) .....	22,580	22,580	0	0

LIABILITIES, CAPITAL AND SURPLUS

	Current Period			Prior Year
	1 Covered	2 Uncovered	3 Total	4 Total
1. Claims unpaid (less \$ ..... reinsurance ceded).....			0	0
2. Accrued medical incentive pool and bonus amounts .....			0	0
3. Unpaid claims adjustment expenses .....			0	0
4. Aggregate health policy reserves including the liability of \$ ..... for medical loss ratio rebate per the Public Health Service Act.....			0	0
5. Aggregate life policy reserves .....			0	0
6. Property/casualty unearned premium reserve .....			0	0
7. Aggregate health claim reserves .....			0	0
8. Premiums received in advance .....			0	0
9. General expenses due or accrued .....	12,449		12,449	0
10.1 Current federal and foreign income tax payable and interest thereon (including \$ ..... on realized gains (losses)) .....			0	0
10.2 Net deferred tax liability.....			0	0
11. Ceded reinsurance premiums payable .....			0	0
12. Amounts withheld or retained for the account of others .....			0	0
13. Remittances and items not allocated .....			0	0
14. Borrowed money (including \$ ..... current) and interest thereon \$ ..... (including \$ ..... current) .....			0	0
15. Amounts due to parent, subsidiaries and affiliates .....			0	0
16. Derivatives.....			0	0
17. Payable for securities .....			0	0
18. Payable for securities lending .....			0	0
19. Funds held under reinsurance treaties (with \$ ..... authorized reinsurers, \$ ..... unauthorized reinsurers and \$ ..... certified reinsurers) .....			0	0
20. Reinsurance in unauthorized and certified (\$ ..... ) companies .....			0	0
21. Net adjustments in assets and liabilities due to foreign exchange rates .....			0	0
22. Liability for amounts held under uninsured plans .....			0	0
23. Aggregate write-ins for other liabilities (including \$ ..... current) .....	0	0	0	0
24. Total liabilities (Lines 1 to 23).....	12,449	0	12,449	0
25. Aggregate write-ins for special surplus funds .....	XXX	XXX	0	0
26. Common capital stock .....	XXX	XXX	2,000,000	2,000,000
27. Preferred capital stock .....	XXX	XXX		0
28. Gross paid in and contributed surplus .....	XXX	XXX	34,650,000	44,150,000
29. Surplus notes .....	XXX	XXX		0
30. Aggregate write-ins for other-than-special surplus funds .....	XXX	XXX	0	0
31. Unassigned funds (surplus) .....	XXX	XXX	(33,176,234)	(33,225,740)
32. Less treasury stock, at cost:				
32.1 ..... shares common (value included in Line 26 \$ ..... ) .....	XXX	XXX		0
32.2 ..... shares preferred (value included in Line 27 \$ ..... ) .....	XXX	XXX		0
33. Total capital and surplus (Lines 25 to 31 minus Line 32) .....	XXX	XXX	3,473,766	12,924,260
34. Total liabilities, capital and surplus (Lines 24 and 33)	XXX	XXX	3,486,215	12,924,260
DETAILS OF WRITE-INS				
2301. Payment Innovations Accrued Claims.....			0	0
2302. Salaries, Wages and Related Liabilites.....			0	0
2303. Other Current Liabilities.....			0	0
2398. Summary of remaining write-ins for Line 23 from overflow page .....	0	0	0	0
2399. Totals (Lines 2301 through 2303 plus 2398) (Line 23 above)	0	0	0	0
2501. Special Surplus ACA Fee.....	XXX	XXX		0
2502. ....	XXX	XXX		
2503. ....	XXX	XXX		
2598. Summary of remaining write-ins for Line 25 from overflow page .....	XXX	XXX	0	0
2599. Totals (Lines 2501 through 2503 plus 2598) (Line 25 above)	XXX	XXX	0	0
3001. Prior Year Net Income.....	XXX	XXX		0
3002. ....	XXX	XXX		
3003. ....	XXX	XXX		
3098. Summary of remaining write-ins for Line 30 from overflow page .....	XXX	XXX	0	0
3099. Totals (Lines 3001 through 3003 plus 3098) (Line 30 above)	XXX	XXX	0	0

STATEMENT OF REVENUE AND EXPENSES

	Current Year To Date		Prior Year To Date	Prior Year Ended December 31
	1 Uncovered	2 Total	3 Total	4 Total
1. Member Months.....	XXX		.0	.0
2. Net premium income (including \$ non-health premium income).....	XXX	1,347	56,292	47,235
3. Change in unearned premium reserves and reserve for rate credits .....	XXX		.0	.0
4. Fee-for-service (net of \$ medical expenses) .....	XXX		.0	.0
5. Risk revenue .....	XXX		.0	.0
6. Aggregate write-ins for other health care related revenues .....	XXX	.0	480	480
7. Aggregate write-ins for other non-health revenues .....	XXX	.0	.0	.0
8. Total revenues (Lines 2 to 7) .....	XXX	1,347	56,772	47,715
<b>Hospital and Medical:</b>				
9. Hospital/medical benefits .....		(38,868)	(187,856)	(260,050)
10. Other professional services .....			.0	.0
11. Outside referrals .....			.0	.0
12. Emergency room and out-of-area .....			.0	.0
13. Prescription drugs .....			.0	.0
14. Aggregate write-ins for other hospital and medical.....	.0	.0	.0	.0
15. Incentive pool, withhold adjustments and bonus amounts.....			.0	.0
16. Subtotal (Lines 9 to 15) .....	.0	(38,868)	(187,856)	(260,050)
<b>Less:</b>				
17. Net reinsurance recoveries .....			.0	(898)
18. Total hospital and medical (Lines 16 minus 17) .....	.0	(38,868)	(187,856)	(259,152)
19. Non-health claims (net).....			.0	.0
20. Claims adjustment expenses, including \$ cost containment expenses.....			.0	.0
21. General administrative expenses.....		21,515	(14,298)	43,755
22. Increase in reserves for life and accident and health contracts (including \$ increase in reserves for life only).....			.0	.0
23. Total underwriting deductions (Lines 18 through 22) .....	.0	(17,353)	(202,154)	(215,397)
24. Net underwriting gain or (loss) (Lines 8 minus 23) .....	XXX	18,700	258,926	263,112
25. Net investment income earned .....		46,145	.0	85,357
26. Net realized capital gains (losses) less capital gains tax of \$ .....			.0	.0
27. Net investment gains (losses) (Lines 25 plus 26) .....	.0	46,145	.0	85,357
28. Net gain or (loss) from agents' or premium balances charged off [(amount recovered \$ ) (amount charged off \$ )] .....			.0	.0
29. Aggregate write-ins for other income or expenses .....	.0	.0	33,334	.0
30. Net income or (loss) after capital gains tax and before all other federal income taxes (Lines 24 plus 27 plus 28 plus 29) .....	XXX	64,845	292,260	348,470
31. Federal and foreign income taxes incurred .....	XXX		.0	.0
32. Net income (loss) (Lines 30 minus 31) .....	XXX	64,845	292,260	348,470
<b>DETAILS OF WRITE-INS</b>				
0601. PPO Access Fee Revenue.....	XXX		.0	.0
0602. Payment Innovation Revenue.....	XXX		.0	.0
0603. Taxable Sales - LMS.....	XXX		480	480
0698. Summary of remaining write-ins for Line 6 from overflow page .....	XXX	.0	.0	.0
0699. Totals (Lines 0601 through 0603 plus 0698) (Line 6 above) .....	XXX	0	480	480
0701. ....	XXX		.0	.0
0702. ....	XXX		.0	.0
0703. ....	XXX		.0	.0
0798. Summary of remaining write-ins for Line 7 from overflow page .....	XXX	.0	.0	.0
0799. Totals (Lines 0701 through 0703 plus 0798) (Line 7 above) .....	XXX	0	0	0
1401. ....			.0	.0
1402. ....			.0	.0
1403. ....			.0	.0
1498. Summary of remaining write-ins for Line 14 from overflow page .....	.0	.0	.0	.0
1499. Totals (Lines 1401 through 1403 plus 1498) (Line 14 above) .....	0	0	0	0
2901. ....			.0	.0
2902. Gain in Sale of Insurance Business.....			.0	.0
2903. Other Expenses.....			.0	.0
2998. Summary of remaining write-ins for Line 29 from overflow page .....	.0	.0	33,334	.0
2999. Totals (Lines 2901 through 2903 plus 2998) (Line 29 above) .....	0	0	33,334	0

STATEMENT OF REVENUE AND EXPENSES (Continued)

	1	2	3
	Current Year To Date	Prior Year To Date	Prior Year Ended December 31
<b>CAPITAL &amp; SURPLUS ACCOUNT</b>			
33. Capital and surplus prior reporting year.....	12,924,260	12,570,141	12,570,141
34. Net income or (loss) from Line 32 .....	64,845	292,260	348,470
35. Change in valuation basis of aggregate policy and claim reserves .....		0	0
36. Change in net unrealized capital gains (losses) less capital gains tax of \$ .....		0	0
37. Change in net unrealized foreign exchange capital gain or (loss) .....		0	0
38. Change in net deferred income tax .....		0	0
39. Change in nonadmitted assets .....	(15,339)	(13,411)	5,649
40. Change in unauthorized and certified reinsurance .....	0	0	0
41. Change in treasury stock .....	0	0	0
42. Change in surplus notes .....	0	0	0
43. Cumulative effect of changes in accounting principles .....		0	0
44. Capital Changes:			
44.1 Paid in .....	0	0	0
44.2 Transferred from surplus (Stock Dividend) .....		0	0
44.3 Transferred to surplus .....		0	0
45. Surplus adjustments:			
45.1 Paid in .....	(9,500,000)	0	0
45.2 Transferred to capital (Stock Dividend) .....	0	0	0
45.3 Transferred from capital .....		0	0
46. Dividends to stockholders .....		0	0
47. Aggregate write-ins for gains or (losses) in surplus .....	0	0	0
48. Net change in capital and surplus (Lines 34 to 47) .....	(9,450,494)	278,849	354,119
49. Capital and surplus end of reporting period (Line 33 plus 48)	3,473,766	12,848,990	12,924,260
<b>DETAILS OF WRITE-INS</b>			
4701. ....		0	0
4702. ....		0	0
4703. ....		0	0
4798. Summary of remaining write-ins for Line 47 from overflow page .....	0	0	0
4799. Totals (Lines 4701 through 4703 plus 4798) (Line 47 above)	0	0	0

CASH FLOW

	1 Current Year To Date	2 Prior Year To Date	3 Prior Year Ended December 31
<b>Cash from Operations</b>			
1. Premiums collected net of reinsurance.....	1,347	56,292	47,235
2. Net investment income .....	46,027	0	85,357
3. Miscellaneous income .....	0	480	480
4. Total (Lines 1 to 3) .....	47,374	56,772	133,072
5. Benefit and loss related payments .....	(38,868)	(342,575)	(372,261)
6. Net transfers to Separate Accounts, Segregated Accounts and Protected Cell Accounts .....		0	0
7. Commissions, expenses paid and aggregate write-ins for deductions .....	9,066	(31,813)	60,632
8. Dividends paid to policyholders .....		0	0
9. Federal and foreign income taxes paid (recovered) net of \$ ..... tax on capital gains (losses).....	0	0	0
10. Total (Lines 5 through 9) .....	(29,802)	(374,388)	(311,629)
11. Net cash from operations (Line 4 minus Line 10) .....	77,176	431,160	444,702
<b>Cash from Investments</b>			
12. Proceeds from investments sold, matured or repaid:			
12.1 Bonds .....	0	0	0
12.2 Stocks .....	0	0	0
12.3 Mortgage loans .....	0	0	0
12.4 Real estate .....	0	0	0
12.5 Other invested assets .....	0	0	0
12.6 Net gains or (losses) on cash, cash equivalents and short-term investments .....	0	0	0
12.7 Miscellaneous proceeds .....	0	0	0
12.8 Total investment proceeds (Lines 12.1 to 12.7) .....	0	0	0
13. Cost of investments acquired (long-term only):			
13.1 Bonds .....	0	0	0
13.2 Stocks .....	0	0	0
13.3 Mortgage loans .....	0	0	0
13.4 Real estate .....	0	0	0
13.5 Other invested assets .....	0	0	0
13.6 Miscellaneous applications .....	0	62	0
13.7 Total investments acquired (Lines 13.1 to 13.6) .....	0	62	0
14. Net increase (or decrease) in contract loans and premium notes .....	0	0	0
15. Net cash from investments (Line 12.8 minus Line 13.7 and Line 14) .....	0	(62)	0
<b>Cash from Financing and Miscellaneous Sources</b>			
16. Cash provided (applied):			
16.1 Surplus notes, capital notes .....	0	0	0
16.2 Capital and paid in surplus, less treasury stock.....	(9,500,000)	0	0
16.3 Borrowed funds .....	0	0	0
16.4 Net deposits on deposit-type contracts and other insurance liabilities .....		0	0
16.5 Dividends to stockholders .....	0	0	0
16.6 Other cash provided (applied).....	(15,339)	(227,875)	(140,912)
17. Net cash from financing and miscellaneous sources (Line 16.1 through Line 16.4 minus Line 16.5 plus Line 16.6).....	(9,515,339)	(227,875)	(140,912)
<b>RECONCILIATION OF CASH, CASH EQUIVALENTS AND SHORT-TERM INVESTMENTS</b>			
18. Net change in cash, cash equivalents and short-term investments (Line 11, plus Lines 15 and 17) .....	(9,438,163)	203,223	303,790
19. Cash, cash equivalents and short-term investments:			
19.1 Beginning of year.....	12,524,378	12,220,588	12,220,588
19.2 End of period (Line 18 plus Line 19.1) .....	3,086,215	12,423,811	12,524,378

STATEMENT AS OF JUNE 30, 2019 OF THE HealthSpan Inc

EXHIBIT OF PREMIUMS, ENROLLMENT AND UTILIZATION

	1	Comprehensive (Hospital & Medical)		4	5	6	7	8	9	10
		2	3							
	Total	Individual	Group	Medicare Supplement	Vision Only	Dental Only	Federal Employees Health Benefits Plan	Title XVIII Medicare	Title XIX Medicaid	Other
Total Members at end of:										
1. Prior Year .....	.0	.0	.0	.0	.0	.0	.0	.0	.0	.0
2. First Quarter .....	.0	.0	.0	.0	.0	.0	.0	.0	.0	.0
3. Second Quarter .....	.0	.0	.0	.0	.0	.0	.0	.0	.0	.0
4. Third Quarter .....	.0									
5. Current Year	0									
6. Current Year Member Months	0									
Total Member Ambulatory Encounters for Period:										
7. Physician .....	.0									
8. Non-Physician .....	0									
9. Total	0	0	0	0	0	0	0	0	0	0
10. Hospital Patient Days Incurred	0									
11. Number of Inpatient Admissions	0									
12. Health Premiums Written (a).....	.0									
13. Life Premiums Direct.....	.0									
14. Property/Casualty Premiums Written .....	.0									
15. Health Premiums Earned .....	.0									
16. Property/Casualty Premiums Earned .....	.0									
17. Amount Paid for Provision of Health Care Services .....	.0									
18. Amount Incurred for Provision of Health Care Services	(38,868)	(38,868)								

(a) For health premiums written: amount of Medicare Title XVIII exempt from state taxes or fees \$

## CLAIMS UNPAID AND INCENTIVE POOL, WITHHOLD AND BONUS (Reported and Unreported)

[illegible]



UNDERWRITING AND INVESTMENT EXHIBIT  
ANALYSIS OF CLAIMS UNPAID-PRIOR YEAR-NET OF REINSURANCE

Line of Business	Claims Paid Year to Date		Liability End of Current Quarter		5  Claims Incurred in Prior Years (Columns 1 + 3)	6  Estimated Claim Reserve and Claim Liability Dec. 31 of Prior Year
	1  On Claims Incurred Prior to January 1 of Current Year	2  On Claims Incurred During the Year	3  On Claims Unpaid Dec. 31 of Prior Year	4  On Claims Incurred During the Year		
1. Comprehensive (hospital and medical) .....	(38,868)				(38,868)	.0
2. Medicare Supplement .....					.0	.0
3. Dental only .....					.0	.0
4. Vision only .....					.0	.0
5. Federal Employees Health Benefits Plan .....					.0	.0
6. Title XVIII - Medicare .....					.0	.0
7. Title XIX - Medicaid .....					.0	.0
8. Other health .....					.0	.0
9. Health subtotal (Lines 1 to 8).....	(38,868)	0	0	0	(38,868)	.0
10. Health care receivables (a) .....					.0	.0
11. Other non-health .....					.0	.0
12. Medical incentive pools and bonus amounts .....					.0	.0
13. Totals (Lines 9-10+11+12)	(38,868)	0	0	0	(38,868)	0

(a) Excludes \$ ..... loans or advances to providers not yet expensed.

NOTES TO FINANCIAL STATEMENTS

GENERAL INTERROGATORIES

PART 1 - COMMON INTERROGATORIES  
GENERAL

- 1.1

Did the reporting entity experience any material transactions requiring the filing of Disclosure of Material Transactions with the State of Domicile, as required by the Model Act?

Yes ☐ No ☒
- 1.2

If yes, has the report been filed with the domiciliary state?

Yes ☐ No ☐
- 2.1

Has any change been made during the year of this statement in the charter, by-laws, articles of incorporation, or deed of settlement of the reporting entity?

Yes ☐ No ☒
- 2.2

If yes, date of change:
- 3.1

Is the reporting entity a member of an Insurance Holding Company System consisting of two or more affiliated persons, one or more of which is an insurer?

Yes ☒ No ☐

If yes, complete Schedule Y, Parts 1 and 1A.
- 3.2

Have there been any substantial changes in the organizational chart since the prior quarter end?

Yes ☐ No ☒
- 3.3

If the response to 3.2 is yes, provide a brief description of those changes.
- 3.4

Is the reporting entity publicly traded or a member of a publicly traded group?

Yes ☐ No ☒
- 3.5

If the response to 3.4 is yes, provide the CIK (Central Index Key) code issued by the SEC for the entity/group.
- 4.1

Has the reporting entity been a party to a merger or consolidation during the period covered by this statement?

Yes ☐ No ☒

If yes, complete and file the merger history data file with the NAIC for the annual filing corresponding to this period.
- 4.2

If yes, provide the name of entity, NAIC Company Code, and state of domicile (use two letter state abbreviation) for any entity that has ceased to exist as a result of the merger or consolidation.

1	2	3
Name of Entity	NAIC Company Code	State of Domicile

5.

If the reporting entity is subject to a management agreement, including third-party administrator(s), managing general agent(s), attorney-in-fact, or similar agreement, have there been any significant changes regarding the terms of the agreement or principals involved?

Yes ☐ No ☒ NA ☐

If yes, attach an explanation.
- 6.1

State as of what date the latest financial examination of the reporting entity was made or is being made.

12/31/2015
- 6.2

State the as of date that the latest financial examination report became available from either the state of domicile or the reporting entity. This date should be the date of the examined balance sheet and not the date the report was completed or released.

12/31/2015
- 6.3

State as of what date the latest financial examination report became available to other states or the public from either the state of domicile or the reporting entity. This is the release date or completion date of the examination report and not the date of the examination (balance sheet date).

01/30/2017
- 6.4

By what department or departments?

Ohio Department of Insurance.
- 6.5

Have all financial statement adjustments within the latest financial examination report been accounted for in a subsequent financial statement filed with Departments?

Yes ☐ No ☐ NA ☒
- 6.6

Have all of the recommendations within the latest financial examination report been complied with?

Yes ☐ No ☐ NA ☒
- 7.1

Has this reporting entity had any Certificates of Authority, licenses or registrations (including corporate registration, if applicable) suspended or revoked by any governmental entity during the reporting period?

Yes ☐ No ☒
- 7.2

If yes, give full information:
- 8.1

Is the company a subsidiary of a bank holding company regulated by the Federal Reserve Board?

Yes ☐ No ☒
- 8.2

If response to 8.1 is yes, please identify the name of the bank holding company.
- 8.3

Is the company affiliated with one or more banks, thrifts or securities firms?

Yes ☐ No ☒
- 8.4

If response to 8.3 is yes, please provide below the names and location (city and state of the main office) of any affiliates regulated by a federal regulatory services agency [i.e. the Federal Reserve Board (FRB), the Office of the Comptroller of the Currency (OCC), the Federal Deposit Insurance Corporation (FDIC) and the Securities Exchange Commission (SEC)] and identify the affiliate's primary federal regulator.]

1	2	3	4	5	6
Affiliate Name	Location (City, State)	FRB	OCC	FDIC	SEC

GENERAL INTERROGATORIES

- 9.1

Are the senior officers (principal executive officer, principal financial officer, principal accounting officer or controller, or persons performing similar functions) of the reporting entity subject to a code of ethics, which includes the following standards? .....  
(a) Honest and ethical conduct, including the ethical handling of actual or apparent conflicts of interest between personal and professional relationships;  
(b) Full, fair, accurate, timely and understandable disclosure in the periodic reports required to be filed by the reporting entity;  
(c) Compliance with applicable governmental laws, rules and regulations;  
(d) The prompt internal reporting of violations to an appropriate person or persons identified in the code; and  
(e) Accountability for adherence to the code.

Yes ☒ No ☐
- 9.11

If the response to 9.1 is No, please explain:  
.....
- 9.2

Has the code of ethics for senior managers been amended? .....

Yes ☐ No ☒
- 9.21

If the response to 9.2 is Yes, provide information related to amendment(s).  
.....
- 9.3

Have any provisions of the code of ethics been waived for any of the specified officers? .....

Yes ☐ No ☒
- 9.31

If the response to 9.3 is Yes, provide the nature of any waiver(s).  
.....

FINANCIAL

- 10.1

Does the reporting entity report any amounts due from parent, subsidiaries or affiliates on Page 2 of this statement?.....

Yes ☐ No ☒
- 10.2

If yes, indicate any amounts receivable from parent included in the Page 2 amount:.....\$ .....

INVESTMENT

- 11.1

Were any of the stocks, bonds, or other assets of the reporting entity loaned, placed under option agreement, or otherwise made available for use by another person? (Exclude securities under securities lending agreements.) .....

Yes ☐ No ☒
- 11.2

If yes, give full and complete information relating thereto:  
.....
12.

Amount of real estate and mortgages held in other invested assets in Schedule BA: .....\$ .....0
13.

Amount of real estate and mortgages held in short-term investments: .....\$ .....0
- 14.1

Does the reporting entity have any investments in parent, subsidiaries and affiliates? .....

Yes ☐ No ☒
- 14.2

If yes, please complete the following:

	1	2
	Prior Year-End Book/Adjusted Carrying Value	Current Quarter Book/Adjusted Carrying Value
14.21 Bonds .....	\$ .....0	\$ .....
14.22 Preferred Stock .....	\$ .....0	\$ .....
14.23 Common Stock .....	\$ .....0	\$ .....
14.24 Short-Term Investments .....	\$ .....0	\$ .....
14.25 Mortgage Loans on Real Estate .....	\$ .....	\$ .....
14.26 All Other .....	\$ .....	\$ .....
14.27 Total Investment in Parent, Subsidiaries and Affiliates (Subtotal Lines 14.21 to 14.26).....	\$ .....0	\$ .....0
14.28 Total Investment in Parent included in Lines 14.21 to 14.26 above .....	\$ .....	\$ .....

- 15.1

Has the reporting entity entered into any hedging transactions reported on Schedule DB? .....

Yes ☐ No ☒
- 15.2

If yes, has a comprehensive description of the hedging program been made available to the domiciliary state? .....

Yes ☐ No ☐

If no, attach a description with this statement.
- 16

For the reporting entity's security lending program, state the amount of the following as of the current statement date:
- 16.1

Total fair value of reinvested collateral assets reported on Schedule DL, Parts 1 and 2

\$ .....0
- 16.2

Total book adjusted/carrying value of reinvested collateral assets reported on Schedule DL, Parts 1 and 2

\$ .....0
- 16.3

Total payable for securities lending reported on the liability page

\$ .....0

GENERAL INTERROGATORIES

17. Excluding items in Schedule E – Part 3 – Special Deposits, real estate, mortgage loans and investments held physically in the reporting entity’s offices, vaults or safety deposit boxes, were all stocks, bonds and other securities, owned throughout the current year held pursuant to a custodial agreement with a qualified bank or trust company in accordance with Section 1, III – General Examination Considerations, F. Outsourcing of Critical Functions, Custodial or Safekeeping Agreements of the NAIC *Financial Condition Examiners Handbook*? .....

Yes [X] No [ ]

17.1 For all agreements that comply with the requirements of the NAIC *Financial Condition Examiners Handbook*, complete the following:

<div>1</div> <div>Name of Custodian(s)</div>	<div>2</div> <div>Custodian Address</div>

17.2 For all agreements that do not comply with the requirements of the NAIC *Financial Condition Examiners Handbook*, provide the name, location and a complete explanation:

<div>1</div> <div>Name(s)</div>	<div>2</div> <div>Location(s)</div>	<div>3</div> <div>Complete Explanation(s)</div>
Fifth Third Securities.....	Cincinnati, OH.....	

17.3 Have there been any changes, including name changes, in the custodian(s) identified in 17.1 during the current quarter? .....

Yes [ ] No [X]

17.4 If yes, give full and complete information relating thereto:

<div>1</div> <div>Old Custodian</div>	<div>2</div> <div>New Custodian</div>	<div>3</div> <div>Date of Change</div>	<div>4</div> <div>Reason</div>

17.5 Investment management – Identify all investment advisors, investment managers, broker/dealers, including individuals that have the authority to make investment decisions on behalf of the reporting entity. For assets that are managed internally by employees of the reporting entity, note as such. [“...that have access to the investment accounts”; “...handle securities”]

<div>1</div> <div>Name of Firm or Individual</div>	<div>2</div> <div>Affiliation</div>

17.5097 For those firms/individuals listed in the table for Question 17.5, do any firms/individuals unaffiliated with the reporting entity (i.e., designated with a “U”) manage more than 10% of the reporting entity’s assets? .....

Yes [ ] No [ X ]

17.5098 For firms/individuals unaffiliated with the reporting entity (i.e., designated with a “U”) listed in the table for Question 17.5, does the total assets under management aggregate to more than 50% of the reporting entity’s assets? .....

Yes [ ] No [ X ]

17.6 For those firms or individuals listed in the table for 17.5 with an affiliation code of “A” (affiliated) or “U” (unaffiliated), provide the information for the table below.

<div>1</div> <div>Central Registration Depository Number</div>	<div>2</div> <div>Name of Firm or Individual</div>	<div>3</div> <div>Legal Entity Identifier (LEI)</div>	<div>4</div> <div>Registered With</div>	<div>5</div> <div>Investment Management Agreement (IMA) Filed</div>

18.1 Have all the filing requirements of the *Purposes and Procedures Manual of the NAIC Investment Analysis Office* been followed? .....

Yes [X] No [ ]

18.2 If no, list exceptions: .....

19. By self-designating 5GI securities, the reporting entity is certifying the following elements for each self-designated 5GI security:  
Documentation necessary to permit a full credit analysis of the security does not exist or an NAIC CRP credit rating for an FE or  
a. PL security is not available.  
b. Issuer or obligor is current on all contracted interest and principal payments.  
c. The insurer has an actual expectation of ultimate payment of all contracted interest and principal.  
Has the reporting entity self-designated 5GI securities?.....

Yes [ ] No [ ]

20. By self-designating PLGI securities, the reporting entity is certifying the following elements of each self-designated PLGI security:  
a. The security was purchased prior to January 1, 2018.  
b. The reporting entity is holding capital commensurate with the NAIC Designation reported for the security.  
The NAIC Designation was derived from the credit rating assigned by an NAIC CRP in its legal capacity as a NRSRO which is shown on a current private letter rating held by the insurer and available for examination by state insurance regulators.  
c. The reporting entity is not permitted to share this credit rating of the PL security with the SVO.  
Has the reporting entity self-designated PLGI securities?.....

Yes [ ] No [ ]

GENERAL INTERROGATORIES  
PART 2 - HEALTH

1.

Operating Percentages:

1.1 A&H loss percent

(2,885.5) %

1.2 A&H cost containment percent

0.0 %

1.3 A&H expense percent excluding cost containment expenses

%

2.1 Do you act as a custodian for health savings accounts?

Yes ☐ No ☒

2.2 If yes, please provide the amount of custodial funds held as of the reporting date

\$

2.3 Do you act as an administrator for health savings accounts?

Yes ☐ No ☒

2.4 If yes, please provide the balance of the funds administered as of the reporting date

\$

3.

Is the reporting entity licensed or chartered, registered, qualified, eligible or writing business in at least two states?

Yes ☐ No ☒

3.1 If no, does the reporting entity assume reinsurance business that covers risks residing in at least one state other than the state of domicile of the reporting entity?

Yes ☐ No ☒

## SCHEDULE S - CEDED REINSURANCE

[illegible]

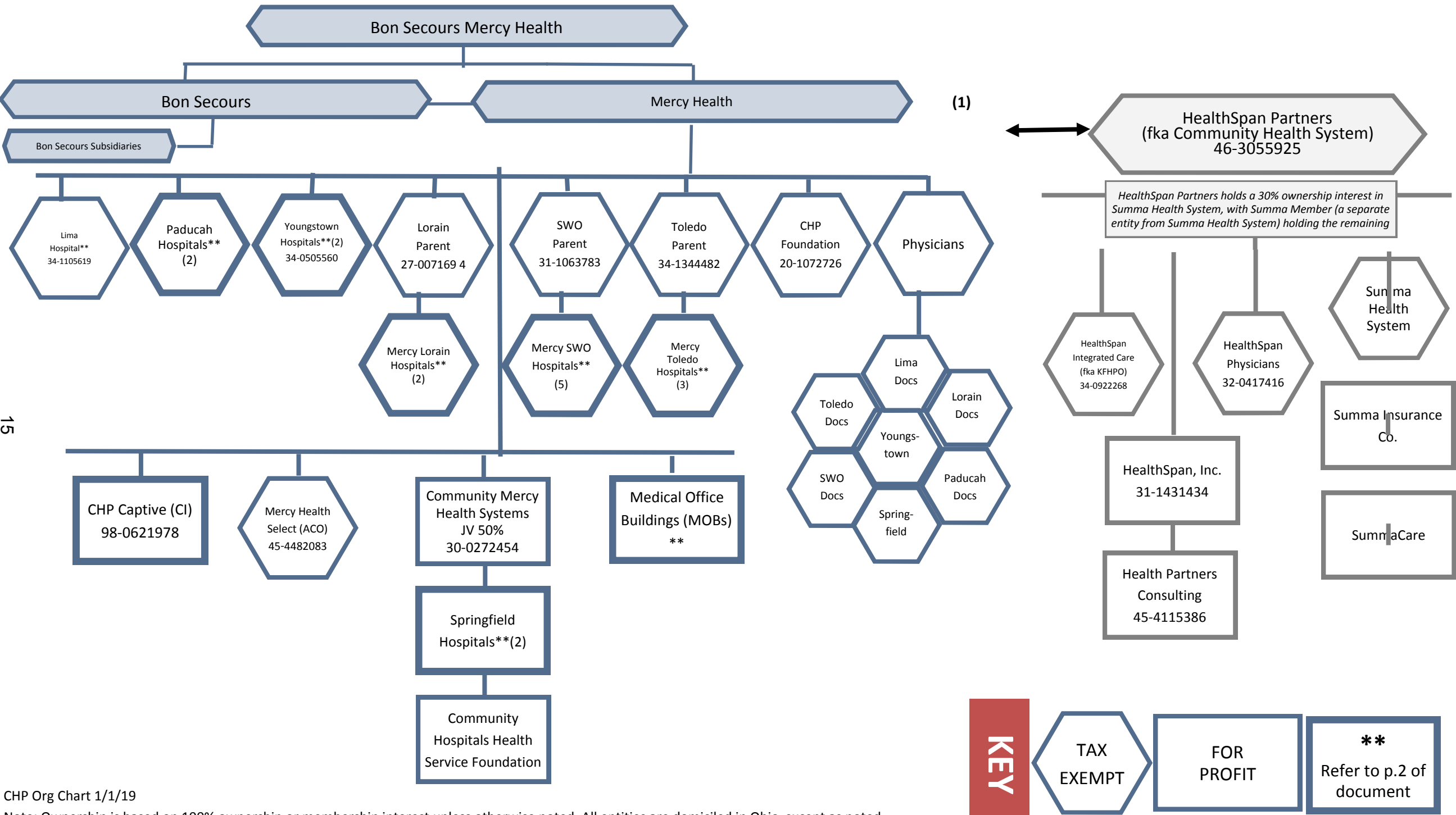
SCHEDULE T - PREMIUMS AND OTHER CONSIDERATIONS

Current Year to Date - Allocated by States and Territories										
States, Etc.	1  Active Status (a)	Direct Business Only								
		2  Accident & Health Premiums	3  Medicare Title XVIII	4  Medicaid Title XIX	5  Federal Employees Health Benefits Program Premiums	6  Life & Annuity Premiums & Other Considerations	7  Property/ Casualty Premiums	8  Total Columns 2 Through 7	9  Deposit-Type Contracts	
1. Alabama .....	AL	N						0		
2. Alaska .....	AK	N						0		
3. Arizona .....	AZ	N						0		
4. Arkansas .....	AR	N						0		
5. California .....	CA	N						0		
6. Colorado .....	CO	N						0		
7. Connecticut .....	CT	N						0		
8. Delaware .....	DE	N						0		
9. Dist. Columbia .....	DC	N						0		
10. Florida .....	FL	N						0		
11. Georgia .....	GA	N						0		
12. Hawaii .....	HI	N						0		
13. Idaho .....	ID	N						0		
14. Illinois .....	IL	N						0		
15. Indiana .....	IN	N						0		
16. Iowa .....	IA	N						0		
17. Kansas .....	KS	N						0		
18. Kentucky .....	KY	N						0		
19. Louisiana .....	LA	N						0		
20. Maine .....	ME	N						0		
21. Maryland .....	MD	N						0		
22. Massachusetts .....	MA	N						0		
23. Michigan .....	MI	N						0		
24. Minnesota .....	MN	N						0		
25. Mississippi .....	MS	N						0		
26. Missouri .....	MO	N						0		
27. Montana .....	MT	N						0		
28. Nebraska .....	NE	N						0		
29. Nevada .....	NV	N						0		
30. New Hampshire .....	NH	N						0		
31. New Jersey .....	NJ	N						0		
32. New Mexico .....	NM	N						0		
33. New York .....	NY	N						0		
34. North Carolina .....	NC	N						0		
35. North Dakota .....	ND	N						0		
36. Ohio .....	OH	N						0		
37. Oklahoma .....	OK	N						0		
38. Oregon .....	OR	N						0		
39. Pennsylvania .....	PA	N						0		
40. Rhode Island .....	RI	N						0		
41. South Carolina .....	SC	N						0		
42. South Dakota .....	SD	N						0		
43. Tennessee .....	TN	N						0		
44. Texas .....	TX	N						0		
45. Utah .....	UT	N						0		
46. Vermont .....	VT	N						0		
47. Virginia .....	VA	N						0		
48. Washington .....	WA	N						0		
49. West Virginia .....	WV	N						0		
50. Wisconsin .....	WI	N						0		
51. Wyoming .....	WY	N						0		
52. American Samoa .....	AS	N						0		
53. Guam .....	GU	N						0		
54. Puerto Rico .....	PR	N						0		
55. U.S. Virgin Islands .....	VI	N						0		
56. Northern Mariana Islands .....	MP	N						0		
57. Canada .....	CAN	N						0		
58. Aggregate other alien .....	OT	XXX	0	0	0	0	0	0	0	0
59. Subtotal .....	XXX	0	0	0	0	0	0	0	0	0
60. Reporting entity contributions for Employee Benefit Plans .....	XXX							0		
61. Total (Direct Business) .....	XXX	0	0	0	0	0	0	0	0	0
DETAILS OF WRITE-INS										
58001. ....	XXX									
58002. ....	XXX									
58003. ....	XXX									
58998. Summary of remaining write-ins for Line 58 from overflow page .....	XXX	0	0	0	0	0	0	0	0	0
58999. Totals (Lines 58001 through 58003 plus 58998) (Line 58 above) .....	XXX	0	0	0	0	0	0	0	0	0

(a) Active Status Counts

L – Licensed or Chartered – Licensed insurance carrier or domiciled RRG .....1 R – Registered – Non-domiciled RRGs .....0  
E – Eligible – Reporting entities eligible or approved to write surplus lines in the state .....0 Q – Qualified – Qualified or accredited reinsurer .....0  
N – None of the above – Not allowed to write business in the state .....56





၁၈

၁၈

၁၈

၁၈

၁၈

SUPPLEMENTAL EXHIBITS AND SCHEDULES INTERROGATORIES

The following supplemental reports are required to be filed as part of your statement filing. However, in the event that your company does not transact the type of business for which the special report must be filed, your response of **NO** to the specific interrogatory will be accepted in lieu of filing a "NONE" report and a bar code will be printed below. If the supplement is required of your company but is not being filed for whatever reason enter **SEE EXPLANATION** and provide an explanation following the interrogatory questions.

RESPONSE

1. Will the Medicare Part D Coverage Supplement be filed with the state of domicile and the NAIC with this statement?

.....NO.....

Explanation:

Bar Code:

1.



1 5 2 8 4 2 0 1 9 3 6 5 0 0 0 0 2

OVERFLOW PAGE FOR WRITE-INS

MQ004 Additional Aggregate Lines for Page 04 Line 29.  
\*REVEX1

	1 Current Year To Date Uncovered	2 Current Year To Date Total	3 Prior Year To Date Total	4 Prior Year Ended December 31 Total
2904. Mercy Settlement.....			0	0
2905. Other Income.....			33,334	0
2997. Summary of remaining write-ins for Line 29 from Page 04	0	0	33,334	0

SCHEDULE A – VERIFICATION

Real Estate

	1	2
	Year To Date	Prior Year Ended December 31
1. Book/adjusted carrying value, December 31 of prior year .....	0	0
2. Cost of acquired:		
2.1 Actual cost at time of acquisition .....		0
2.2 Additional investment made after acquisition .....		0
3. Current year change in encumbrances .....		0
4. Total gain (loss) on disposals .....		0
5. Deduct amounts received on disposals .....		0
6. Total foreign exchange change in book/adjusted carrying value .....		0
7. Deduct current year's other-than-temporary impairment recognized .....		0
8. Deduct current year's depreciation .....		0
9. Book/adjusted carrying value at the end of current period (Lines 1+2+3+4-5+6-7-8) .....	0	0
10. Deduct total nonadmitted amounts .....	0	0
11. Statement value at end of current period (Line 9 minus Line 10) .....	0	0

SCHEDULE B – VERIFICATION

Mortgage Loans

	1	2
	Year To Date	Prior Year Ended December 31
1. Book value/recorded investment excluding accrued interest, December 31 of prior year .....	0	0
2. Cost of acquired:		
2.1 Actual cost at time of acquisition .....		0
2.2 Additional investment made after acquisition .....		0
3. Capitalized deferred interest and other .....		0
4. Accrual of discount .....		0
5. Unrealized valuation increase (decrease) .....		0
6. Total gain (loss) on disposals .....		0
7. Deduct amounts received on disposals .....		0
8. Deduct amortization of premium and mortgage interest points and commitment fees .....		0
9. Total foreign exchange change in book value/recorded investment excluding accrued interest .....		0
10. Deduct current year's other-than-temporary impairment recognized .....		0
11. Book value/recorded investment excluding accrued interest at end of current period (Lines 1+2+3+4+5+6-7-8+9-10) .....	0	0
12. Total valuation allowance .....		0
13. Subtotal (Line 11 plus Line 12) .....	0	0
14. Deduct total nonadmitted amounts .....	0	0
15. Statement value at end of current period (Line 13 minus Line 14) .....	0	0

SCHEDULE BA – VERIFICATION

Other Long-Term Invested Assets

	1	2
	Year To Date	Prior Year Ended December 31
1. Book/adjusted carrying value, December 31 of prior year .....	0	0
2. Cost of acquired:		
2.1 Actual cost at time of acquisition .....		0
2.2 Additional investment made after acquisition .....		0
3. Capitalized deferred interest and other .....		0
4. Accrual of discount .....		0
5. Unrealized valuation increase (decrease) .....		0
6. Total gain (loss) on disposals .....		0
7. Deduct amounts received on disposals .....		0
8. Deduct amortization of premium and depreciation .....		0
9. Total foreign exchange change in book/adjusted carrying value .....		0
10. Deduct current year's other-than-temporary impairment recognized .....		0
11. Book/adjusted carrying value at end of current period (Lines 1+2+3+4+5+6-7-8+9-10) .....	0	0
12. Deduct total nonadmitted amounts .....	0	0
13. Statement value at end of current period (Line 11 minus Line 12) .....	0	0

SCHEDULE D – VERIFICATION

Bonds and Stocks

	1	2
	Year To Date	Prior Year Ended December 31
1. Book/adjusted carrying value of bonds and stocks, December 31 of prior year .....	399,938	399,938
2. Cost of bonds and stocks acquired .....		0
3. Accrual of discount .....	62	0
4. Unrealized valuation increase (decrease) .....		0
5. Total gain (loss) on disposals .....		0
6. Deduct consideration for bonds and stocks disposed of .....		0
7. Deduct amortization of premium .....		0
8. Total foreign exchange change in book/adjusted carrying value .....		0
9. Deduct current year's other-than-temporary impairment recognized .....		0
10. Total investment income recognized as a result of prepayment penalties and/or acceleration fees .....		0
11. Book/adjusted carrying value at end of current period (Lines 1+2+3+4+5-6-7+8-9+10) .....	400,000	399,938
12. Deduct total nonadmitted amounts .....	0	0
13. Statement value at end of current period (Line 11 minus Line 12) .....	400,000	399,938

SCHEDULE D - PART 1B

Showing the Acquisitions, Dispositions and Non-Trading Activity  
During the Current Quarter for all Bonds and Preferred Stock by NAIC Designation

NAIC Designation	1 Book/Adjusted Carrying Value Beginning of Current Quarter	2 Acquisitions During Current Quarter	3 Dispositions During Current Quarter	4 Non-Trading Activity During Current Quarter	5 Book/Adjusted Carrying Value End of First Quarter	6 Book/Adjusted Carrying Value End of Second Quarter	7 Book/Adjusted Carrying Value End of Third Quarter	8 Book/Adjusted Carrying Value December 31 Prior Year
<b>BONDS</b>								
1. NAIC 1 (a).....	399,883			117	399,883	400,000	.0	399,882
2. NAIC 2 (a).....	.0				.0	.0	.0	.0
3. NAIC 3 (a).....	.0				.0	.0	.0	.0
4. NAIC 4 (a).....	.0				.0	.0	.0	.0
5. NAIC 5 (a).....	.0				.0	.0	.0	.0
6. NAIC 6 (a).....	0				0	0	0	0
7. Total Bonds	399,883	0	0	117	399,883	400,000	0	399,882
<b>PREFERRED STOCK</b>								
8. NAIC 1 .....	.0				.0	.0	.0	.0
9. NAIC 2 .....	.0				.0	.0	.0	.0
10. NAIC 3 .....	.0				.0	.0	.0	.0
11. NAIC 4 .....	.0				.0	.0	.0	.0
12. NAIC 5 .....	.0				.0	.0	.0	.0
13. NAIC 6 .....	0				0	0	0	0
14. Total Preferred Stock.....	0	0	0	0	0	0	0	0
15. Total Bonds & Preferred Stock	399,883	0	0	117	399,883	400,000	0	399,882

(a) Book/Adjusted Carrying Value column for the end of the current reporting period includes the following amount of short-term and cash equivalent bonds by NAIC designation: NAIC 1 \$ ..... ; NAIC 2 \$ ..... ;

NAIC 3 \$ ..... ; NAIC 4 \$ ..... ; NAIC 5 \$ ..... ; NAIC 6 \$ .....

Schedule DA - Part 1

NONE

Schedule DA - Verification

NONE

Schedule DB - Part A - Verification

NONE

Schedule DB - Part B - Verification

NONE

Schedule DB - Part C - Section 1

NONE

Schedule DB - Part C - Section 2

NONE

Schedule DB - Verification

NONE

SCHEDULE E – PART 2 – VERIFICATION  
(Cash Equivalents)

	1 Year To Date	2 Prior Year Ended December 31
1. Book/adjusted carrying value, December 31 of prior year.....	4,724,951	4,639,632
2. Cost of cash equivalents acquired .....	44,817	85,319
3. Accrual of discount .....		0
4. Unrealized valuation increase (decrease) .....		0
5. Total gain (loss) on disposals.....		0
6. Deduct consideration received on disposals .....	2,000,000	0
7. Deduct amortization of premium .....		0
8. Total foreign exchange change in book/adjusted carrying value .....		0
9. Deduct current year's other than temporary impairment recognized .....		0
10. Book/adjusted carrying value at end of current period (Lines 1+2+3+4+5-6-7+8-9) .....	2,769,768	4,724,951
11. Deduct total nonadmitted amounts .....		0
12. Statement value at end of current period (Line 10 minus Line 11)	2,769,768	4,724,951



## EO1

## EO1

EO1

EO1

## EO1

EO1

EO1

## EO2

## EO2

EO2

EO2

## EO2

EO2

EO2

**STATEMENT AS OF JUNE 30, 2019 OF THE HealthSpan Inc**

## SCHEDULE BA - PART 2

**Showing Other Long-Term Invested Assets ACQUIRED AND ADDITIONS MADE During the Current Quarter**

[illegible]

## SCHEDULE BA - PART 3

**Showing Other Long-Term Invested Assets DISPOSED, Transferred or Repaid During the Current Quarter**

[illegible]

**STATEMENT AS OF JUNE 30, 2019 OF THE HealthSpan Inc**

## SCHEDULE D - PART 3

### Show All Long-Term Bonds and Stock Acquired During the Current Quarter

[illegible]

(a) For all common stock bearing the NAIC market indicator "U" provide: the number of such issues .....

E04

**STATEMENT AS OF JUNE 30, 2019 OF THE HealthSpan Inc**

## SCHEDULE D - PART 4

**Show All Long-Term Bonds and Stock Sold, Redeemed or Otherwise Disposed of During the Current Quarter**

[illegible]

(a) For all common stock bearing the NAIC market indicator "U" provide: the number of such issues .....

## E06

## E06

E06

E06E06E06

## SCHEDULE DB - PART B - SECTION 1

E07

(a)	Code	Description of Hedged Risk(s)

(b)	Code	Financial or Economic Impact of the Hedge at the End of the Reporting Period

## SCHEDULE DB - PART D - SECTION 1

[illegible]



## Collateral for Derivative Instruments Open as of the Current Statement Date

[illegible]

1 Exchange, Counterparty or Central Clearinghouse	2  Type of Asset Pledged	3  CUSIP Identification	4  Description	5  Fair Value	6  Par Value	7  Book/Adjusted Carrying Value	8  Maturity Date	9  Type of Margin (I, V or IV)
						XXX		
						XXX		
						XXX		
						XXX		
						XXX		
						XXX		
						XXX		
						XXX		
						XXX		
						XXX		
						XXX		
						XXX		
<b>0299999999 Total</b>				<b>0</b>	<b>0</b>	<b>XXX</b>	<b>XXX</b>	<b>XXX</b>





**STATEMENT AS OF JUNE 30, 2019 OF THE HealthSpan Inc**

## SCHEDULE E - PART 1 - CASH

[illegible]

## SCHEDULE E - PART 2 - CASH EQUIVALENTS

[illegible]