



QUARTERLY STATEMENT

As of March 31, 2019
of the Condition and Affairs of the

HARLEYSVILLE LIFE INSURANCE COMPANY

NAIC Group Code.....0140, 0140
(Current Period) (Prior Period)

NAIC Company Code..... 64327

Employer's ID Number..... 23-1580983

Organized under the Laws of OH

State of Domicile or Port of Entry OH

Country of Domicile US

Licensed as Business Type: Life, Accident & Health

Incorporated/Organized..... November 29, 1960

Commenced Business..... June 12, 1961

Statutory Home Office ONE WEST NATIONWIDE BLVD. .. COLUMBUS .. OH .. US .. 43215-2220
(Street and Number) (City or Town, State, Country and Zip Code)

Main Administrative Office 355 MAPLE AVENUE .. HARLEYSVILLE .. PA .. US .. 19438-2297 215-256-5000
(Street and Number) (City or Town, State, Country and Zip Code) (Area Code) (Telephone Number)

Mail Address ONE WEST NATIONWIDE BLVD., 1-04-701 .. COLUMBUS .. OH .. US .. 43215-2220
(Street and Number or P. O. Box) (City or Town, State, Country and Zip Code)

Primary Location of Books and Records ONE WEST NATIONWIDE BLVD., 1-04-701 .. COLUMBUS .. OH .. US .. 43215-2220 614-249-1545
(Street and Number) (City or Town, State, Country and Zip Code) (Area Code) (Telephone Number)

Internet Web Site Address WWW.HARLEYSVILLEGROUP.COM

Statutory Statement Contact KELLY M. VANHOOSE 614-249-1545
(Name) (Area Code) (Telephone Number)

STACCT@NATIONWIDE.COM 877-669-5908
(E-Mail Address) (Fax Number)

OFFICERS

Name	Title	Name	Title
1. ERIC SHAWN HENDERSON	PRESIDENT	2. DENISE LYNN SKINGLE #	SVP & SECRETARY
3. HOLLY RENEE SNYDER	VP & TREASURER		

OTHER

PAMELA ANN BIESECKER	SVP-HEAD OF TAXATION	HARRY HANSEN HALLOWELL	SVP-CIO
JENNIFER BOYD MACKENZIE	SVP-ENTERPRISE BRAND MARKT	JOSEPH D. SPRAGUE	SVP-NW FIN NETWORK

DIRECTORS OR TRUSTEES

MARK ALLEN BERVEN	JOHN LAUGHLIN CARTER	TIMOTHY GERARD FROMMEYER	STEVEN ANDREW GINNAN
ERIC SHAWN HENDERSON	STEVEN CHARLES POWER	JOSEPH D SPRAGUE	APRIL LEE VANDERVORT
KIRT ALAN WALKER			

State of..... OHIO
County of..... FRANKLIN

The officers of this reporting entity being duly sworn, each depose and say that they are the described officers of said reporting entity, and that on the reporting period stated above, all of the herein described assets were the absolute property of the said reporting entity, free and clear from any liens or claims thereon, except as herein stated, and that this statement, together with related exhibits, schedules and explanations therein contained, annexed or referred to, is a full and true statement of all the assets and liabilities and of the condition and affairs of the said reporting entity as of the reporting period stated above, and of its income and deductions therefrom for the period ended, and have been completed in accordance with the NAIC Annual Statement Instructions and Accounting Practices and Procedures manual except to the extent that: (1) state law may differ; or, (2) that state rules or regulations require differences in reporting not related to accounting practices and procedures, according to the best of their information, knowledge and belief, respectively. Furthermore, the scope of this attestation by the described officers also includes the related corresponding electronic filing with the NAIC, when required, that is an exact copy (except for formatting differences due to electronic filing) of the enclosed statement. The electronic filing may be requested by various regulators in lieu of or in addition to the enclosed statement.

(Signature)	(Signature)	(Signature)
ERIC SHAWN HENDERSON	DENISE LYNN SKINGLE	HOLLY RENEE SNYDER
1. (Printed Name)	2. (Printed Name)	3. (Printed Name)
PRESIDENT	SVP & SECRETARY	VP & TREASURER
(Title)	(Title)	(Title)

Subscribed and sworn to before me
This 3 day of May 2019

a. Is this an original filing? Yes [X] No []
b. If no: 1. State the amendment number
2. Date filed
3. Number of pages attached



Norma J. Perkins
Notary Public, State of Ohio
My Commission Expires
April 22, 2020

HARLEYSVILLE LIFE INSURANCE COMPANY
ASSETS

	Current Statement Date			4
	1	2	3	December 31 Prior Year Net Admitted Assets
	Assets	Nonadmitted Assets	Net Admitted Assets (Cols. 1 - 2)	
1. Bonds.....	366,124,182		366,124,182	363,893,990
2. Stocks:				
2.1 Preferred stocks.....			0	
2.2 Common stocks.....			0	
3. Mortgage loans on real estate:				
3.1 First liens.....			0	
3.2 Other than first liens.....			0	
4. Real estate:				
4.1 Properties occupied by the company (less \$.....0 encumbrances).....			0	
4.2 Properties held for the production of income (less \$.....0 encumbrances).....			0	
4.3 Properties held for sale (less \$.....0 encumbrances).....			0	
5. Cash (\$.....(4,620,692)), cash equivalents (\$.....0) and short-term investments (\$.....14,987,323).....	10,366,631		10,366,631	17,732,539
6. Contract loans (including \$.....0 premium notes).....	5,275,243	28,597	5,246,646	5,564,622
7. Derivatives.....			0	
8. Other invested assets.....			0	
9. Receivables for securities.....			0	
10. Securities lending reinvested collateral assets.....			0	
11. Aggregate write-ins for invested assets.....	0	0	0	0
12. Subtotals, cash and invested assets (Lines 1 to 11).....	381,766,056	28,597	381,737,459	387,191,151
13. Title plants less \$.....0 charged off (for Title insurers only).....			0	
14. Investment income due and accrued.....	4,037,259		4,037,259	3,899,307
15. Premiums and considerations:				
15.1 Uncollected premiums and agents' balances in the course of collection.....	309,667	9,605	300,062	429,239
15.2 Deferred premiums, agents' balances and installments booked but deferred and not yet due (including \$.....0 earned but unbilled premiums).....	5,278,393		5,278,393	5,824,114
15.3 Accrued retrospective premiums (\$.....0) and contracts subject to redetermination (\$.....0).....			0	
16. Reinsurance:				
16.1 Amounts recoverable from reinsurers.....	4,158,471		4,158,471	311,685
16.2 Funds held by or deposited with reinsured companies.....			0	
16.3 Other amounts receivable under reinsurance contracts.....			0	
17. Amounts receivable relating to uninsured plans.....			0	
18.1 Current federal and foreign income tax recoverable and interest thereon.....			0	
18.2 Net deferred tax asset.....	6,284,935	4,632,856	1,652,079	1,664,021
19. Guaranty funds receivable or on deposit.....			0	
20. Electronic data processing equipment and software.....			0	
21. Furniture and equipment, including health care delivery assets (\$.....0).....			0	
22. Net adjustment in assets and liabilities due to foreign exchange rates.....			0	
23. Receivables from parent, subsidiaries and affiliates.....	1,327,007		1,327,007	1,415,031
24. Health care (\$.....0) and other amounts receivable.....			0	
25. Aggregate write-ins for other than invested assets.....	43,993	37,307	6,686	107,282
26. Total assets excluding Separate Accounts, Segregated Accounts and Protected Cell Accounts (Lines 12 through 25).....	403,205,781	4,708,365	398,497,416	400,841,830
27. From Separate Accounts, Segregated Accounts and Protected Cell Accounts.....			0	
28. Total (Lines 26 and 27).....	403,205,781	4,708,365	398,497,416	400,841,830

DETAILS OF WRITE-INS				
1101.			0	
1102.			0	
1103.			0	
1198. Summary of remaining write-ins for Line 11 from overflow page.....	0	0	0	0
1199. Totals (Lines 1101 thru 1103 plus 1198) (Line 11 above).....	0	0	0	0
2501. Other assets.....	26,739	20,053	6,686	107,282
2502. Disallowed interest maintenance reserve.....	17,254	17,254	0	
2503.			0	
2598. Summary of remaining write-ins for Line 25 from overflow page.....	0	0	0	0
2599. Totals (Lines 2501 thru 2503 plus 2598) (Line 25 above).....	43,993	37,307	6,686	107,282

HARLEYSVILLE LIFE INSURANCE COMPANY
LIABILITIES, SURPLUS AND OTHER FUNDS

	1 Current Statement Date	2 December 31 Prior Year
1. Aggregate reserve for life contracts \$.....334,856,739 less \$.....0 included in Line 6.3 (including \$.....0 Modco Reserve).....334,856,739337,842,519
2. Aggregate reserve for accident and health contracts (including \$.....0 Modco Reserve).....3,783,4863,969,307
3. Liability for deposit-type contracts (including \$.....0 Modco Reserve).....259,616324,307
4. Contract claims:		
4.1 Life.....1,987,5141,633,593
4.2 Accident and health.....		
5. Policyholders' dividends/refunds to members \$.....0 and coupons \$.....0 due and unpaid.....		
6. Provision for policyholders' dividends/refunds to members and coupons payable in following calendar year - estimated amounts:		
6.1 Policyholder's dividends/refunds to members apportioned for payment (including \$.....0 Modco).....		
6.2 Policyholder's dividends/refunds to members not yet apportioned (including \$.....0 Modco).....		
6.3 Coupons and similar benefits (including \$.....0 Modco).....		
7. Amount provisionally held for deferred dividend policies not included in Line 6.....		
8. Premiums and annuity considerations for life and accident and health contracts received in advance less \$.....0 discount; including \$.....0 accident and health premiums.....234,901181,790
9. Contract liabilities not included elsewhere:		
9.1 Surrender values on canceled contracts.....		
9.2 Provision for experience rating refunds, including the liability of \$.....0 accident and health experience rating refunds of which \$.....0 is for medical loss ratio rebate per the Public Health Service Act.....		
9.3 Other amounts payable on reinsurance, including \$.....0 assumed and \$....1,068,717 ceded.....1,068,7171,705,698
9.4 Interest Maintenance Reserve.....		
10. Commissions to agents due or accrued - life and annuity contracts \$....13,900, accident and health \$.....0 and deposit-type contract funds \$.....0.....13,90012,430
11. Commissions and expense allowances payable on reinsurance assumed.....		
12. General expenses due or accrued.....		
13. Transfers to Separate Accounts due or accrued (net) (including \$.....0 accrued for expense allowances recognized in reserves, net of reinsured allowances).....		
14. Taxes, licenses and fees due or accrued, excluding federal income taxes.....343,448326,793
15.1 Current federal and foreign income taxes, including \$....32,774 on realized capital gains (losses).....1,725,6251,310,627
15.2 Net deferred tax liability.....		
16. Unearned investment income.....		
17. Amounts withheld or retained by reporting entity as agent or trustee.....		
18. Amounts held for agents' account, including \$.....0 agents' credit balances.....		
19. Remittances and items not allocated.....163,32787,601
20. Net adjustment in assets and liabilities due to foreign exchange rates.....		
21. Liability for benefits for employees and agents if not included above.....		
22. Borrowed money \$.....0 and interest thereon \$.....0.....		
23. Dividends to stockholders declared and unpaid.....		
24. Miscellaneous liabilities:		
24.01 Asset valuation reserve.....2,350,6082,270,000
24.02 Reinsurance in unauthorized and certified (\$.....0) companies.....		
24.03 Funds held under reinsurance treaties with unauthorized and certified (\$.....0) reinsurers.....		
24.04 Payable to parent, subsidiaries and affiliates.....17	
24.05 Drafts outstanding.....		
24.06 Liability for amounts held under uninsured plans.....		
24.07 Funds held under coinsurance.....		
24.08 Derivatives.....		
24.09 Payable for securities.....		
24.10 Payable for securities lending.....		
24.11 Capital notes \$.....0 and interest thereon \$.....0.....		
25. Aggregate write-ins for liabilities.....117,921123,269
26. Total liabilities excluding Separate Accounts business (Lines 1 to 25).....346,905,819349,787,934
27. From Separate Accounts statement.....		
28. Total liabilities (Lines 26 and 27).....346,905,819349,787,934
29. Common capital stock.....1,530,0001,530,000
30. Preferred capital stock.....		
31. Aggregate write-ins for other-than-special surplus funds.....00
32. Surplus notes.....		
33. Gross paid in and contributed surplus.....26,842,05626,842,056
34. Aggregate write-ins for special surplus funds.....00
35. Unassigned funds (surplus).....23,219,54122,681,840
36. Less treasury stock, at cost:		
36.10.000 shares common (value included in Line 29 \$.....0).....		
36.20.000 shares preferred (value included in Line 30 \$.....0).....		
37. Surplus (Total Lines 31 + 32 + 33 + 34 + 35 - 36) (including \$.....0 in Separate Accounts Statement).....50,061,59749,523,896
38. Totals of Lines 29, 30 and 37.....51,591,59751,053,896
39. Totals of Lines 28 and 38 (Page 2, Line 28, Col. 3).....398,497,416400,841,830

DETAILS OF WRITE-INS

2501. Liability for premium and other deposit funds.....1,5761,576
2502. Reserve for escheat funds.....116,345121,693
2503.		
2598. Summary of remaining write-ins for Line 25 from overflow page.....00
2599. Totals (Lines 2501 thru 2503 plus 2598) (Line 25 above).....117,921123,269
3101.		
3102.		
3103.		
3198. Summary of remaining write-ins for Line 31 from overflow page.....00
3199. Totals (Lines 3101 thru 3103 plus 3198) (Line 31 above).....00
3401.		
3402.		
3403.		
3498. Summary of remaining write-ins for Line 34 from overflow page.....00
3499. Totals (Lines 3401 thru 3403 plus 3498) (Line 34 above).....00

SUMMARY OF OPERATIONS

	1 Current Year to Date	2 Prior Year to Date	3 Prior Year Ended December 31
1. Premiums and annuity considerations for life and accident and health contracts.....	3,805,795	3,606,684	14,695,159
2. Considerations for supplementary contracts with life contingencies.....			
3. Net investment income.....	3,612,920	3,683,126	14,680,639
4. Amortization of Interest Maintenance Reserve (IMR).....	(1,460)	(4,340)	(15,212)
5. Separate Accounts net gain from operations excluding unrealized gains or losses.....			
6. Commissions and expense allowances on reinsurance ceded.....	274,091	305,744	1,353,383
7. Reserve adjustments on reinsurance ceded.....			
8. Miscellaneous Income:			
8.1 Income from fees associated with investment management, administration and contract guarantees from Separate Accounts.....			
8.2 Charges and fees for deposit-type contracts.....			
8.3 Aggregate write-ins for miscellaneous income.....	0	0	0
9. Totals (Lines 1 to 8.3).....	7,691,346	7,591,214	30,713,969
10. Death benefits.....	2,835,959	2,524,384	8,619,169
11. Matured endowments (excluding guaranteed annual pure endowments).....			
12. Annuity benefits.....	885,291	622,812	3,653,185
13. Disability benefits and benefits under accident and health contracts.....	288,476	258,159	1,000,276
14. Coupons, guaranteed annual pure endowments and similar benefits.....			
15. Surrender benefits and withdrawals for life contracts.....	5,128,775	4,822,264	18,634,043
16. Group conversions.....			
17. Interest and adjustments on contract or deposit-type contract funds.....	3,300	5,115	18,350
18. Payments on supplementary contracts with life contingencies.....			
19. Increase in aggregate reserves for life and accident and health contracts.....	(3,171,601)	(2,754,651)	(9,916,993)
20. Totals (Lines 10 to 19).....	5,970,200	5,478,083	22,008,030
21. Commissions on premiums, annuity considerations and deposit-type contract funds (direct business only).....	127,497	142,468	541,332
22. Commissions and expense allowances on reinsurance assumed.....			
23. General insurance expenses and fraternal expenses.....	378,890	414,222	1,538,974
24. Insurance taxes, licenses and fees, excluding federal income taxes.....	176,787	186,226	486,208
25. Increase in loading on deferred and uncollected premiums.....			
26. Net transfers to or (from) Separate Accounts net of reinsurance.....			
27. Aggregate write-ins for deductions.....	0	0	0
28. Totals (Lines 20 to 27).....	6,653,374	6,220,999	24,574,544
29. Net gain from operations before dividends to policyholders and federal income taxes (Line 9 minus Line 28).....	1,037,972	1,370,215	6,139,425
30. Dividends to policyholders and refunds to members.....			
31. Net gain from operations after dividends to policyholders, refunds to members and before federal income taxes (Line 29 minus Line 30).....	1,037,972	1,370,215	6,139,425
32. Federal and foreign income taxes incurred (excluding tax on capital gains).....	411,918	(351,073)	1,283,193
33. Net gain from operations after dividends to policyholders, refunds to members and federal income taxes and before realized capital gains or (losses) (Line 31 minus Line 32).....	626,054	1,721,288	4,856,232
34. Net realized capital gains (losses) (excluding gains (losses) transferred to the IMR) less capital gains tax of \$.....2,654 (excluding taxes of \$.....426 transferred to the IMR).....	(2,654)	(23,824)	(28,314)
35. Net income (Line 33 plus Line 34).....	623,400	1,697,464	4,827,918
CAPITAL AND SURPLUS ACCOUNT			
36. Capital and surplus, December 31, prior year.....	51,053,896	46,671,188	46,671,188
37. Net income (Line 35).....	623,400	1,697,464	4,827,918
38. Change in net unrealized capital gains (losses) less capital gains tax of \$.....0.....			
39. Change in net unrealized foreign exchange capital gain (loss).....			
40. Change in net deferred income tax.....	195,495	(616,242)	19,844
41. Change in nonadmitted assets.....	(200,586)	559,924	(305,231)
42. Change in liability for reinsurance in unauthorized and certified companies.....			
43. Change in reserve on account of change in valuation basis, (increase) or decrease.....			
44. Change in asset valuation reserve.....	(80,608)	(74,446)	(159,823)
45. Change in treasury stock.....			
46. Surplus (contributed to) withdrawn from Separate Accounts during period.....			
47. Other changes in surplus in Separate Accounts Statement.....			
48. Change in surplus notes.....			
49. Cumulative effect of changes in accounting principles.....			
50. Capital changes:			
50.1 Paid in.....			
50.2 Transferred from surplus (Stock Dividend).....			
50.3 Transferred to surplus.....			
51. Surplus adjustment:			
51.1 Paid in.....			
51.2 Transferred to capital (Stock Dividend).....			
51.3 Transferred from capital.....			
51.4 Change in surplus as a result of reinsurance.....			
52. Dividends to stockholders.....			
53. Aggregate write-ins for gains and losses in surplus.....	0	0	0
54. Net change in capital and surplus (Lines 37 through 53).....	537,701	1,566,700	4,382,708
55. Capital and surplus as of statement date (Lines 36 + 54).....	51,591,597	48,237,888	51,053,896
DETAILS OF WRITE-INS			
08.301.			
08.302.			
08.303.			
08.398. Summary of remaining write-ins for Line 8.3 from overflow page.....	0	0	0
08.399. Totals (Lines 08.301 thru 08.303 plus 08.398) (Line 8.3 above).....	0	0	0
2701.			
2702.			
2703.			
2798. Summary of remaining write-ins for Line 27 from overflow page.....	0	0	0
2799. Totals (Lines 2701 thru 2703 plus 2798) (Line 27 above).....	0	0	0
5301.			
5302.			
5303.			
5398. Summary of remaining write-ins for Line 53 from overflow page.....	0	0	0
5399. Totals (Lines 5301 thru 5303 plus 5398) (Line 53 above).....	0	0	0

HARLEYSVILLE LIFE INSURANCE COMPANY
CASH FLOW

	1 Current Year to Date	2 Prior Year To Date	3 Prior Year Ended December 31
CASH FROM OPERATIONS			
1. Premiums collected net of reinsurance.....	4,533,526	4,260,063	14,761,829
2. Net investment income.....	3,562,326	3,678,508	15,183,398
3. Miscellaneous income.....	274,091	305,744	1,353,383
4. Total (Lines 1 through 3).....	8,369,943	8,244,315	31,298,610
5. Benefit and loss related payments.....	13,271,647	9,329,985	32,613,231
6. Net transfers to Separate Accounts, Segregated Accounts and Protected Cell Accounts.....			
7. Commissions, expenses paid and aggregate write-ins for deductions.....	665,049	900,145	2,741,168
8. Dividends paid to policyholders.....			
9. Federal and foreign income taxes paid (recovered) net of \$.....0 tax on capital gains (losses).....			(145,227)
10. Total (Lines 5 through 9).....	13,936,696	10,230,130	35,209,172
11. Net cash from operations (Line 4 minus Line 10).....	(5,566,753)	(1,985,815)	(3,910,562)
CASH FROM INVESTMENTS			
12. Proceeds from investments sold, matured or repaid:			
12.1 Bonds.....	7,994,596	12,338,517	33,566,549
12.2 Stocks.....			
12.3 Mortgage loans.....			
12.4 Real estate.....			
12.5 Other invested assets.....			
12.6 Net gains or (losses) on cash, cash equivalents and short-term investments.....			
12.7 Miscellaneous proceeds.....		979,166	
12.8 Total investment proceeds (Lines 12.1 to 12.7).....	7,994,596	13,317,683	33,566,549
13. Cost of investments acquired (long-term only):			
13.1 Bonds.....	10,310,117	11,972,394	28,221,295
13.2 Stocks.....			
13.3 Mortgage loans.....			
13.4 Real estate.....			
13.5 Other invested assets.....			
13.6 Miscellaneous applications.....			
13.7 Total investments acquired (Lines 13.1 to 13.6).....	10,310,117	11,972,394	28,221,295
14. Net increase or (decrease) in contract loans and premium notes.....	(318,153)	7,945	(139,297)
15. Net cash from investments (Line 12.8 minus Line 13.7 and Line 14).....	(1,997,368)	1,337,344	5,484,551
CASH FROM FINANCING AND MISCELLANEOUS SOURCES			
16. Cash provided (applied):			
16.1 Surplus notes, capital notes.....			
16.2 Capital and paid in surplus, less treasury stock.....			
16.3 Borrowed funds.....			
16.4 Net deposits on deposit-type contracts and other insurance liabilities.....	(64,691)	(27,973)	(114,624)
16.5 Dividends to stockholders.....			
16.6 Other cash provided (applied).....	262,904	353,705	848,832
17. Net cash from financing and miscellaneous sources (Lines 16.1 through 16.4 minus Line 16.5 plus Line 16.6).....	198,213	325,732	734,208
RECONCILIATION OF CASH, CASH EQUIVALENTS AND SHORT-TERM INVESTMENTS			
18. Net change in cash, cash equivalents and short-term investments (Line 11 plus Line 15 plus Line 17).....	(7,365,908)	(322,739)	2,308,197
19. Cash, cash equivalents and short-term investments:			
19.1 Beginning of year.....	17,732,539	15,424,342	15,424,342
19.2 End of period (Line 18 plus Line 19.1).....	10,366,631	15,101,603	17,732,539

Note: Supplemental disclosures of cash flow information for non-cash transactions:

20.0001	Exchange of bond investment to bond investment.....		4,996,152	12,887,987
---------	---	--	-----------	------------

HARLEYSVILLE LIFE INSURANCE COMPANY
EXHIBIT 1

DIRECT PREMIUMS AND DEPOSIT-TYPE CONTRACTS

	1 Current Year To Date	2 Prior Year To Date	3 Prior Year Ended December 31
1. Industrial life.....			
2. Ordinary life insurance.....	5,667,474	6,226,608	26,951,320
3. Ordinary individual annuities.....	1,075,441	641,979	2,352,134
4. Credit life (group and individual).....			
5. Group life insurance.....	12,531	12,984	51,399
6. Group annuities.....			
7. A&H - group.....			
8. A&H - credit (group and individual).....			
9. A&H - other.....	2,660	3,643	15,450
10. Aggregate of all other lines of business.....	0	0	0
11. Subtotal (Lines 1 through 10).....	6,758,106	6,885,214	29,370,303
12. Fraternal (Fraternal Benefit Societies Only).....			
13. Subtotal (Lines 11 through 12).....	6,758,106	6,885,214	29,370,303
14. Deposit-type contracts.....			
15. Total (Lines 13 and 14).....	6,758,106	6,885,214	29,370,303

DETAILS OF WRITE-INS

1001.			
1002.			
1003.			
1098. Summary of remaining write-ins for Line 10 from overflow page.....	0	0	0
1099. Total (Lines 1001 thru 1003 plus 1098) (Line 10 above).....	0	0	0

NOTES TO THE FINANCIAL STATEMENTS

Note 1 – Summary of Significant Accounting Policies and Going Concern

A. Accounting Practices

The accompanying statutory financial statements of Harleysville Life Insurance Company (the Company) have been prepared in conformity with accounting practices prescribed or permitted by the National Association of Insurance Commissioners (NAIC) and the State of Ohio.

The Ohio Department of Insurance (Department) recognizes only statutory accounting practices (SAP) prescribed or permitted by the Department for determining and reporting the financial condition and results of operations of an insurance company, as well as, determining its solvency under the Ohio Insurance Law. The NAIC’s *Accounting Practices and Procedures* manual (NAIC SAP) has been adopted as a component of prescribed or permitted practices by the State of Ohio. The Commissioner of Insurance has the right to permit other specific practices that deviate from prescribed practices. The Company has no statutory accounting practices that differ from NAIC SAP.

A reconciliation of the Company’s net income and capital and surplus between NAIC SAP and practices prescribed and permitted by the State of Ohio is shown below:

	SSAP #	F/S Page	F/S Line #	2019	2018
Net Income					
Harleysville Life Insurance Company state basis (Page 4, Line 35,					
(1) Columns 1 & 3)	XXX	XXX	XXX	\$ 623,400	\$ 4,827,918
(2) State Prescribed Practice that is an increase/(decrease) from NAIC SAP				-	-
(3) State Permitted Practice that is an increase/(decrease) from NAIC SAP				-	-
(4) NAIC SAP (1-2-3=4)	XXX	XXX	XXX	\$ 623,400	\$ 4,827,918
Surplus					
Harleysville Life Insurance Company state basis (Page 3, Line 38,					
(5) Columns 1 & 2)	XXX	XXX	XXX	\$ 51,591,597	\$ 51,053,896
(6) State Prescribed Practice that is an increase/(decrease) from NAIC SAP				-	-
(7) State Permitted Practice that is an increase/(decrease) from NAIC SAP				-	-
(8) NAIC SAP (5-6-7=8)	XXX	XXX	XXX	\$ 51,591,597	\$ 51,053,896

B. Use of Estimates in the Preparation of the Financial Statements

No significant changes from prior year end.

C. Accounting Policies

No significant changes from prior year end.

(2) Bonds, excluding loan-backed and structured securities, are stated at amortized cost, except those with an NAIC designation of “6”, which are stated at the lower of amortized cost or fair value. Amortization of premiums and discounts is calculated using the effective yield method. The Company does not hold any mandatory convertible securities or SVO-identified investments.

(6) Loan-backed and structured securities (collectively, loan-backed securities) are stated at amortized cost or the lower of amortized cost or fair value in accordance with the provisions of Statement of Statutory Accounting Principles (SSAP) No. 43-Revised and the *Purposes and Procedures Manual* of the NAIC Securities Valuation Office. The retrospective adjustment method is used to value loan-backed securities where the collection of all contractual cash flows is probable. For all other loan-backed securities, the Company uses the prospective adjustment method. Refer to Note 5(D) for a discussion of the other-than-temporary impairment policy for loan-backed securities.

D. Going Concern

Not applicable.

Note 2 - Accounting Changes and Corrections of Errors

Not applicable.

Note 3 - Business Combinations and Goodwill

Not applicable.

Note 4 – Discontinued Operations

Not applicable.

Note 5 – Investments

A. Mortgage Loans

Not applicable.

B. Troubled Debt Restructuring

Not applicable.

C. Reverse Mortgages

Not applicable.

D. Loan-Backed Securities

- 1. Prepayment assumptions are generally obtained using a model provided by a third-party vendor.
- 2. Not applicable.
- 3. Not applicable.

NOTES TO THE FINANCIAL STATEMENTS

4. All impaired securities (fair value is less than cost or amortized cost) for which an other-than-temporary impairment has not been recognized in earnings as a realized loss (including securities with a recognized other-than-temporary impairment for non-interest related declines when a non-recognized interest related impairment remains):

a. The aggregate amount of unrealized losses:

1.	Less than 12 Months	\$	-
2.	12 Months or Longer	\$	(118,616)

b. The aggregate related fair value of securities with unrealized losses:

1.	Less than 12 Months	\$	-
2.	12 Months or Longer	\$	6,280,755

5. The Company reviews all loan-backed and structured securities in which the fair value of the given security is less than the amortized cost to determine if a given security is other-than-temporarily impaired. The Company examines characteristics of the underlying collateral, such as delinquency and default rates, the quality of the underlying borrower, the type of collateral in the pool, the vintage year of the collateral, subordination levels within the structure of the collateral pool, and the quality of any credit guarantors, to determine the cash flows expected to be received for the security.

If the severity and duration of the security's unrealized loss indicates a risk of an other-than-temporary impairment, then the Company will evaluate if the amortized cost basis of the security will be recovered by comparing the present value of the cash flows expected to be received for the given security with the amortized cost basis of the security. If the present value of cash flows is greater than the amortized cost basis of a security then the security is deemed not to be other-than-temporarily impaired.

E. Dollar Repurchase Agreements and/or Securities Lending Transactions

Not applicable.

3. Collateral Received

b. Not applicable.

F. Repurchase Agreements Transactions Accounted for as Secured Borrowing

Not applicable.

G. Reverse Repurchase Agreements Transactions Accounted for as Secured Borrowing

Not applicable.

H. Repurchase Agreements Transactions Accounted for as a Sale

Not applicable.

I. Reverse Repurchase Agreements Transactions Accounted for as a Sale

Not applicable.

J. Real Estate

Not applicable.

K. Low-Income Housing Tax Credits

Not applicable.

L. Restricted Assets

No significant changes from prior year end.

M. Working Capital Finance Investments

Not applicable.

N. Offsetting and Netting of Assets and Liabilities

No assets or liabilities are offset and reported net in accordance with a valid right to offset per SSAP No 64, *Offsetting and Netting of Assets and Liabilities*.

O. Structured Notes

Not applicable.

P. 5* Securities

Not applicable.

Q. Short Sales

Not applicable.

R. Prepayment Penalty and Acceleration Fees

No significant changes from prior year end.

Note 6 - Joint Ventures, Partnerships and Limited Liability Companies

Not applicable.

Note 7 - Investment Income

No significant changes from prior year end.

NOTES TO THE FINANCIAL STATEMENTS

Note 8 - Derivative Instruments

Not applicable.

Note 9 - Income Taxes

No significant changes from prior year end.

Note 10 - Information Concerning Parent, Subsidiaries, Affiliates and Other Related Parties

No significant changes from prior year end.

Note 11 - Debt

Not applicable.

Note 12 - Retirement Plans, Deferred Compensation, Postemployment Benefits and Compensated Absences and Other Postretirement Benefit Plans

Not applicable.

Note 13 - Capital and Surplus, Shareholders' Dividend Restrictions and Quasi-Reorganizations

No significant changes from prior year end.

Note 14 – Liabilities, Contingencies and Assessments

No significant changes from prior year end.

Note 15 – Leases

Not applicable.

Note 16 - Information About Financial Instruments With Off-Balance Sheet Risk And Financial Instruments With Concentrations of Credit Risk

Not applicable.

Note 17 - Sale, Transfer and Servicing of Financial Assets and Extinguishments of Liabilities

A. Transfers of Receivables Reported as Sales

Not applicable.

B. Transfers and Servicing of Financial Assets

Not applicable.

C. Wash Sales

Not applicable.

Note 18 - Gain or Loss to the Reporting Entity from Uninsured Plans and the Uninsured Portion of Partially Insured Plans

Not applicable.

Note 19 - Direct Premium Written/Produced by Managing General Agents/Third Party Administrators

Not applicable.

Note 20 – Fair Value Measurements

A. Fair value is defined as the price that would be received to sell an asset or paid to transfer a liability in an orderly transaction between market participants at the measurement date. Fair value measurements are based upon observable and unobservable inputs. Observable inputs reflect market data obtained from independent sources while unobservable inputs reflect the Company's view of market assumptions in the absence of observable market information. The Company utilizes valuation techniques that maximize the use of observable inputs and minimize the use of unobservable inputs. In determining fair value, the Company uses various methods including market, income and cost approaches.

The Company categorizes its financial instruments into a three-level hierarchy based on the priority of the inputs to the valuation technique. The fair value hierarchy gives the highest priority to quoted prices in active markets for identical assets or liabilities (Level 1) and the lowest priority to unobservable inputs (Level 3). If the inputs used to measure fair value fall within different levels of the hierarchy, the category level is based on the lowest priority level input that is significant to the fair value measurement of the instrument in its entirety.

The Company categorizes assets and liabilities held at fair value in the statutory statements of assets and liabilities, surplus and other funds as follows:

Level 1. Unadjusted quoted prices accessible in active markets for identical assets or liabilities at the measurement date and mutual funds where the value per share (unit) is determined and published daily and is the basis for current transactions.

Level 2. Unadjusted quoted prices for similar assets or liabilities in active markets or inputs (other than quoted prices) that are observable or that are derived principally from or corroborated by observable market data through correlation or other means. Primary inputs to this valuation technique may include comparative trades, bid/asks, interest rate movements, U.S. Treasury rates, London Interbank Offered Rate, prime rates, cash flows, maturity dates, call ability, estimated prepayments and/or underlying collateral values.

NOTES TO THE FINANCIAL STATEMENTS

Level/ 3. Prices or valuation techniques that require inputs that are both unobservable and significant to the overall fair value measurement. Inputs reflect management's best estimates of the assumptions market participants would use at the measurement date in pricing the asset or liability. Consideration is given to the risk inherent in both the method of valuation and the valuation inputs. Primary inputs to this valuation technique include broker quotes and comparative trades.

The Company reviews its fair value hierarchy classifications for assets and liabilities quarterly. Changes in observability of significant valuation inputs identified during these reviews may trigger reclassifications. Reclassifications are reported as transfers at the beginning of the period in which the change occurs.

Independent pricing services are most often utilized to determine the fair value of bonds and stocks for which market quotations or quotations on comparable securities are available. For these bonds and stocks, the Company obtains the pricing services' methodologies, pricing from additional sources, inputs and assumptions and classifies the investments accordingly in the fair value hierarchy.

A corporate pricing matrix is used in valuing certain corporate bonds. The corporate pricing matrix was developed using publicly available spreads for privately placed corporate securities with varying weighted average lives and credit quality ratings. The weighted average life and credit quality rating of a particular bond to be priced using the corporate pricing matrix are important inputs into the model and are used to determine a corresponding spread that is added to the appropriate U.S. Treasury yield to create an estimated market yield for that bond. The estimated market yield and other relevant factors are then used to estimate the fair value of the particular bond.

Non-binding broker quotes are also utilized to determine the fair value of certain bonds when deemed appropriate or when quotes are not available from independent pricing services or a corporate pricing matrix. These bonds are classified with the lowest priority in the fair value hierarchy as only one broker quote is ordinarily obtained, the investment is not traded on an exchange, the pricing is not available to other entities and/or the transaction volume in the same or similar investments has decreased. Inputs used in the development of prices are not provided to the Company by the brokers as the brokers often do not provide the necessary transparency into their quotes and methodologies. At least annually, the Company performs reviews and tests to ensure that quotes are a reasonable estimate of the investments' fair value. Price movements of broker quotes are subject to validation and require approval from the Company's management. Management uses its knowledge of the investment and current market conditions to determine if the price is indicative of the investment's fair value.

The Company carries short-term investments at amortized cost, which approximates fair value.

No assets or liabilities were held at fair value as of March 31, 2019.

B. & C. The following table summarizes the carrying value and fair value of the Company's assets not held at fair value as of March 31, 2019:

	Aggregate Fair Value	Admitted Assets	Level 1	Level 2	Level 3	Net Asset Value (NAV)	Not Practicable (Carrying Value)
Assets							
Bonds	\$370,095,948	\$366,124,182	\$9,765,557	\$360,330,391	\$-	\$-	\$-
Short-term investments	14,987,323	14,987,323	-	14,987,323	-	-	-
Policy loans	5,246,646	5,246,646	-	-	5,246,646	-	-
Total Assets	\$390,329,917	\$386,358,151	\$9,765,557	\$375,317,714	\$5,246,646	\$-	\$-

D. Not Practicable to Estimate Fair Value

Not applicable.

E. Measured using net asset value

Not applicable.

Note 21 - Other Items

No significant changes from prior year end.

Note 22 - Events Subsequent

Type I – Recognized Subsequent Events:

Subsequent events have been considered through May 10, 2019 for the statutory statement issued on May 13, 2019.

There were no Type I material events occurring subsequent to the end of the period that merited recognition or disclosure in these statements that have not already been reflected as required.

Type II – Nonrecognized Subsequent Events:

Subsequent events have been considered through May 10, 2019 for the statutory statement issued on May 13, 2019.

There were no Type II material events occurring subsequent to the end of the period that merited disclosure in these statements that have not already been disclosed as required.

Note 23 - Reinsurance

No significant changes from prior year end.

Note 24 - Retrospectively Rated Contracts and Contracts Subject to Redetermination

Not applicable.

Note 25 - Changes in Incurred Losses and Loss Adjustment Expenses

No significant changes from prior year end.

Note 26 - Intercompany Pooling Arrangements

Not applicable.

NOTES TO THE FINANCIAL STATEMENTS

Note 27 - Structured Settlements

Not applicable.

Note 28 - Health Care Receivables

Not applicable.

Note 29 – Participating Policies

Not applicable.

Note 30 - Premium Deficiency Reserves

No significant changes from prior year end.

Note 31 – Reserves for Life Contracts and Annuity Contracts

No significant changes from prior year end.

Note 32 - Analysis of Annuity Actuarial Reserves and Deposit Type Liabilities by Withdrawal Characteristics

No significant changes from prior year end.

Note 33 - Premium and Annuity Considerations Deferred and Uncollected

No significant changes from prior year end.

Note 34 – Separate Accounts

Not applicable.

Note 35 – Loss/Claim Adjustment Expenses

Not applicable.

HARLEYSVILLE LIFE INSURANCE COMPANY
GENERAL INTERROGATORIES

PART 1 - COMMON INTERROGATORIES

GENERAL

1.1 Did the reporting entity experience any material transactions requiring the filing of Disclosure of Material Transactions with the State of Domicile, as required by the Model Act? Yes [☐] No [☒]

1.2 If yes, has the report been filed with the domiciliary state? Yes [☐] No [☐]

2.1 Has any change been made during the year of this statement in the charter, by-laws, articles of incorporation, or deed of settlement of the reporting entity? Yes [☐] No [☒]

2.2 If yes, date of change:

3.1 Is the reporting entity a member of an Insurance Holding Company System consisting of two or more affiliated persons, one or more of which is an insurer? If yes, complete Schedule Y, Parts 1 and 1A. Yes [☒] No [☐]

3.2 Have there been any substantial changes in the organizational chart since the prior quarter end? Yes [☐] No [☒]

3.3 If the response to 3.2 is yes, provide a brief description of those changes.

3.4 Is the reporting entity publicly traded or a member of a publicly traded group? Yes [☐] No [☒]

3.5 If the response to 3.4 is yes, provide the CIK (Central Index Key) code issued by the SEC for the entity/group.

4.1 Has the reporting entity been a party to a merger or consolidation during the period covered by this statement? If yes, complete and file the merger history data file with the NAIC for the annual filing corresponding to this period. Yes [☐] No [☒]

4.2 If yes, provide name of entity, NAIC Company Code, and state of domicile (use two letter state abbreviation) for any entity that has ceased to exist as a result of the merger or consolidation.

1	2	3
Name of Entity	NAIC Company Code	State of Domicile

5. If the reporting entity is subject to a management agreement, including third-party administrator(s), managing general agent(s), attorney-in-fact, or similar agreement, have there been any significant changes regarding the terms of the agreement or principals involved? If yes, attach an explanation. Yes [☐] No [☐] N/A [☒]

6.1 State as of what date the latest financial examination of the reporting entity was made or is being made. 12/31/2016

6.2 State the as of date that the latest financial examination report became available from either the state of domicile or the reporting entity. This date should be the date of the examined balance sheet and not the date the report was completed or released. 12/31/2016

6.3 State as of what date the latest financial examination report became available to other states or the public from either the state of domicile or the reporting entity. This is the release date or completion date of the examination report and not the date of the examination (balance sheet date). 06/28/2018

6.4 By what department or departments?

PA

6.5 Have all financial statement adjustments within the latest financial examination report been accounted for in a subsequent financial statement filed with Departments? Yes [☐] No [☐] N/A [☒]

6.6 Have all of the recommendations within the latest financial examination report been complied with? Yes [☐] No [☐] N/A [☒]

7.1 Has this reporting entity had any Certificates of Authority, licenses or registrations (including corporate registration, if applicable) suspended or revoked by any governmental entity during the reporting period? Yes [☐] No [☒]

7.2 If yes, give full information:

8.1 Is the company a subsidiary of a bank holding company regulated with the Federal Reserve Board? Yes [☐] No [☒]

8.2 If response to 8.1 is yes, please identify the name of the bank holding company.

8.3 Is the company affiliated with one or more banks, thrifts or securities firms? Yes [☒] No [☐]

8.4 If the response to 8.3 is yes, please provide below the names and location (city and state of the main office) of any affiliates regulated by a federal regulatory services agency [i.e. the Federal Reserve Board (FRB), the Office of the Comptroller of the Currency (OCC), the Federal Deposit Insurance Corporation (FDIC) and the Securities Exchange Commission (SEC)] and identify the affiliate's primary federal regulator].

1	2	3	4	5	6
Affiliate Name	Location (City, State)	FRB	OCC	FDIC	SEC
Nationwide Trust Company, FSB	Columbus, OH	No	Yes	No	No
Nationwide Investment Services Corp.	Columbus, OH	No	No	No	Yes
Nationwide Investment Advisors, LLC	Columbus, OH	No	No	No	Yes
Nationwide Securities, LLC	Columbus, OH	No	No	No	Yes
Nationwide Fund Advisors	Columbus, OH	No	No	No	Yes
Nationwide Fund Distributors, LLC	Columbus, OH	No	No	No	Yes
Nationwide Asset Management, LLC	Columbus, OH	No	No	No	Yes
Jefferson National Securities Corporation	Louisville, KY	No	No	No	Yes
JNF Advisors, Inc.	Louisville, KY	No	No	No	Yes

9.1 Are the senior officers (principal executive officer, principal financial officer, principal accounting officer or controller, or persons performing similar functions) of the reporting entity subject to a code of ethics, which includes the following standards? Yes [☒] No [☐]

- (a) Honest and ethical conduct, including the ethical handling of actual or apparent conflicts of interest between personal and professional relationships;
- (b) Full, fair, accurate, timely and understandable disclosure in the periodic reports required to be filed by the reporting entity;
- (c) Compliance with applicable governmental laws, rules and regulations;
- (d) The prompt internal reporting of violations to an appropriate person or persons identified in the code; and
- (e) Accountability for adherence to the code.

9.11 If the response to 9.1 is No, please explain:

HARLEYSVILLE LIFE INSURANCE COMPANY

GENERAL INTERROGATORIES

PART 1 - COMMON INTERROGATORIES

- 9.2Has the code of ethics for senior managers been amended?Yes []No [X]
- 9.21If the response to 9.2 is Yes, provide information related to amendment(s).
- 9.3Have any provisions of the code of ethics been waived for any of the specified officers?Yes []No [X]
- 9.31If the response to 9.3 is Yes, provide the nature of any waiver(s).

FINANCIAL

- 10.1Does the reporting entity report any amounts due from parent, subsidiaries or affiliates on Page 2 of this statement?Yes [X]No []
- 10.2If yes, indicate any amounts receivable from parent included in the Page 2 amount:\$1,326,721

INVESTMENT

- 11.1Were any of the stocks, bonds, or other assets of the reporting entity loaned, placed under option agreement, or otherwise made available for use by another person? (Exclude securities under securities lending agreements.)Yes []No [X]
- 11.2If yes, give full and complete information relating thereto:

- 12.Amount of real estate and mortgages held in other invested assets in Schedule BA:\$0
- 13.Amount of real estate and mortgages held in short-term investments:\$0
- 14.1Does the reporting entity have any investments in parent, subsidiaries and affiliates?Yes []No [X]
- 14.2If yes, please complete the following:

- 14.21Bonds
- 14.22Preferred Stock
- 14.23Common Stock
- 14.24Short-Term Investments
- 14.25Mortgage Loans on Real Estate
- 14.26All Other
- 14.27Total Investment in Parent, Subsidiaries and Affiliates (Subtotal Lines 14.21 to 14.26)
- 14.28Total Investment in Parent included in Lines 14.21 to 14.26 above

1	2
Prior Year End Book/Adjusted Carrying Value	Current Quarter Book/Adjusted Carrying Value
\$0	\$0
0	0
0	0
0	0
0	0
0	0
\$0	\$0
\$0	\$0

- 15.1Has the reporting entity entered into any hedging transactions reported on Schedule DB?Yes []No [X]
- 15.2If yes, has a comprehensive description of the hedging program been made available to the domiciliary state?Yes []No []
- If no, attach a description with this statement.

- 16.For the reporting entity's security lending program, state the amount of the following as of current statement date:
- 16.1Total fair value of reinvested collateral assets reported on Schedule DL, Parts 1 and 2:\$0
- 16.2Total book adjusted/carrying value of reinvested collateral assets reported on Schedule DL, Parts 1 and 2:\$0
- 16.3Total payable for securities lending reported on the liability page:\$0
- 17.Excluding items in Schedule E-Part 3-Special Deposits, real estate, mortgage loans and investments held physically in the reporting entity's offices, vaults or safety deposit boxes, were all stocks, bonds and other securities, owned throughout the current year held pursuant to a custodial agreement with a qualified bank or trust company in accordance with Section 1, III - General Examination Considerations, F. Outsourcing of Critical Functions, Custodial or Safekeeping Agreements of the NAIC *Financial Condition Examiners Handbook*?Yes [X]No []

- 17.1 For all agreements that comply with the requirements of the NAIC *Financial Condition Examiners Handbook*, complete the following:

1	2
Name of Custodian(s)	Custodian Address
The Bank of New York Mellon	1 Wall Street, New York, NY 10286

- 17.2 For all agreements that do not comply with the requirements of the NAIC *Financial Condition Examiners Handbook*, provide the name, location and a complete explanation:

1	2	3
Name(s)	Location(s)	Complete Explanation(s)

- 17.3Have there been any changes, including name changes, in the custodian(s) identified in 17.1 during the current quarter?Yes []No [X]
- 17.4If yes, give full and complete information relating thereto:

1	2	3	4
Old Custodian	New Custodian	Date of Change	Reason

- 17.5 Investment management – Identify all investment advisors, investment managers, broker/dealers, including individuals that have the authority to make investment decisions on behalf of the reporting entity. For assets that are managed internally by employees of the reporting entity, note as such ["...that have access to the investment accounts", "handle securities"].

1	2
Name of Firm or Individual	Affiliation
Members of the investment staff designated by the Chief Investment Officer as detailed in the Corporate Resolution	I

- 17.5097For those firms/individuals listed in the table for Question 17.5, do any firms/individuals unaffiliated with the reporting entity (i.e., designated with a "U") manage more than 10% of the reporting entity's assets?Yes []No []
- 17.5098For firms/individuals unaffiliated with the reporting entity (i.e., designated with a "U") listed in the table for Question 17.5, does the total assets under management aggregate to more than 50% of the reporting entity's assets?Yes []No []
- 17.6For those firms or individuals listed in the table for 17.5 with an affiliation code of "A" (affiliated) or "U" (unaffiliated), provide the information for the table below.

HARLEYSVILLE LIFE INSURANCE COMPANY
GENERAL INTERROGATORIES

PART 1 - COMMON INTERROGATORIES

1	2	3	4	5
Central Registration Depository Number	Name of Firm or Individual	Legal Entity Identifier (LEI)	Registered With	Investment Management Agreement (IMA) Filed

18.1

Have all the filing requirements of the *Purposes and Procedures Manual of the NAIC Investment Analysis Office* been followed?

Yes ☒ No ☐

18.2

If no, list exceptions:

19.

By self-designating 5GI securities, the reporting entity is certifying the following elements for each self-designated 5GI security:

a.

Documentation necessary to permit a full credit analysis of the security does not exist or an NAIC CRP credit rating for an FE or PL security is not available.

b.

Issuer or obligor is current on all contracted interest and principal payments.

c.

The insurer has an actual expectation of ultimate payment of all contracted interest and principal.

Has the reporting entity self-designated 5GI securities?

Yes ☐ No ☒

20.

By self-designating PLGI securities, the reporting entity is certifying the following elements for each self-designated PLGI security:

a.

The security was purchased prior to January 1, 2018.

b.

The reporting entity is holding capital commensurate with the NAIC Designation reported for the security.

c.

The NAIC Designation was derived from the credit rating assigned by an NAIC CRP in its legal capacity as a NRSRO which is shown on a current private letter rating held by the insurer and available for examination by state insurance regulators.

d.

The reporting entity is not permitted to share this credit rating of the PL security with the SVO.

Has the reporting entity self-designated PLGI securities?

Yes ☐ No ☒

HARLEYSVILLE LIFE INSURANCE COMPANY
GENERAL INTERROGATORIES (continued)

PART 2 - LIFE AND ACCIDENT AND HEALTH COMPANIES/FRATERNAL BENEFIT SOCIETIES

Life and Accident and Health Companies/Fraternal Benefit Societies

1. Report the statement value of mortgage loans at the end of this reporting period for the following categories:

1.1 Long-term mortgages in good standing

1.11 Farm mortgages..... \$

1.12 Residential mortgages..... \$

1.13 Commercial mortgages..... \$

1.14 Total mortgages in good standing..... \$0

1.2 Long-term mortgages in good standing with restructured terms

1.21 Total mortgages in good standing with restructured terms..... \$

1.3 Long-term mortgage loans upon which interest is overdue more than three months

1.31 Farm mortgages..... \$

1.32 Residential mortgages..... \$

1.33 Commercial mortgages..... \$

1.34 Total mortgages with interest overdue more than three months..... \$0

1.4 Long-term mortgage loans in process of foreclosure

1.41 Farm mortgages..... \$

1.42 Residential mortgages..... \$

1.43 Commercial mortgages..... \$

1.44 Total mortgages in process of foreclosure..... \$0

1.5 Total mortgage loans (Lines 1.14 + 1.21 + 1.34 + 1.44) (Page 2, Column 3, Lines 3.1 + 3.2) \$0

1.6 Long-term mortgages foreclosed, properties transferred to real estate in current quarter

1.61 Farm mortgages..... \$

1.62 Residential mortgages..... \$

1.63 Commercial mortgages..... \$

1.64 Total mortgages foreclosed and transferred to real estate..... \$0

2. Operating Percentages:

2.1 A&H loss percent..... Not Meaningful.....

2.2 A&H cost containment percent.....

2.3 A&H expense percent excluding cost containment expenses..... Not Meaningful.....

3.1 Do you act as a custodian for health savings accounts?..... Yes [] No [X]

3.2 If yes, please provide the amount of custodial funds held as of the reporting date..... \$

3.3 Do you act as an administrator for health savings accounts?..... Yes [] No [X]

3.4 If yes, please provide the balance of the funds administered as of the reporting date..... \$

4. Is the reporting entity licensed or chartered, registered, qualified, eligible or writing business in at least two states?..... Yes [X] No []

4.1 If no, does the reporting entity assume reinsurance business that covers risks residing in at least one state other than the state of domicile of the reporting entity?..... Yes [] No []

Fraternal Benefit Societies Only:

5.1 In all cases where the reporting entity has assumed accident and health risks from another company, provisions should be made in this statement on account of such reinsurance for reserve equal to that which the original company would have been required to establish had it retained the risks. Has this been done? Yes [] No [] N/A []

5.2 If no, explain:

6.1 Does the reporting entity have outstanding assessments in the form of liens against policy benefits that have increased surplus? Yes [] No []

6.2 If yes, what is the date(s) of the original lien and the total outstanding balance of liens that remain in surplus?

Date	Outstanding Lien Amount

Q09

HARLEYSVILLE LIFE INSURANCE COMPANY
SCHEDULE S - CEDED REINSURANCE

Showing All New Reinsurance Treaties - Current Year to Date

1	2	3	4	5	6	7	8	9
NAIC Company Code	ID Number	Effective Date	Name of Reinsurer	Domiciliary Jurisdiction	Type of Reinsurance Ceded	Type of Reinsurer	Certified Reinsurer Rating (1 through 6)	Effective Date of Certified Reinsurer Rating

NONE

HARLEYSVILLE LIFE INSURANCE COMPANY
SCHEDULE T - PREMIUMS AND ANNUITY CONSIDERATIONS

Current Year to Date - Allocated by States and Territories

States, Etc.		1 Active Status (a)	Direct Business Only					
			Life Contracts		4 A&H Insurance Premiums, Including Policy Membership and Other Fees	5 Other Considerations	6 Total Columns 2 through 5	7 Deposit-Type Contracts
			2 Life Insurance Premiums	3 Annuity Considerations				
1.	Alabama.....AL	L	25,119	1,050			26,169	
2.	Alaska.....AK	N	539				539	
3.	Arizona.....AZ	L	21,149				21,149	
4.	Arkansas.....AR	L	40,785				40,785	
5.	California.....CA	N	14,932				14,932	
6.	Colorado.....CO	N	23,043				23,043	
7.	Connecticut.....CT	L	46,464	7,190			53,654	
8.	Delaware.....DE	L	121,301	1,600			122,901	
9.	District of Columbia.....DC	L	2,936				2,936	
10.	Florida.....FL	L	94,525	29,740			124,265	
11.	Georgia.....GA	L	23,225				23,225	
12.	Hawaii.....HI	N	62				62	
13.	Idaho.....ID	N	495				495	
14.	Illinois.....IL	L	183,411	1,350			184,761	
15.	Indiana.....IN	L	135,881	540			136,421	
16.	Iowa.....IA	L	998				998	
17.	Kansas.....KS	N	810				810	
18.	Kentucky.....KY	L	2,475	450			2,925	
19.	Louisiana.....LA	N	770				770	
20.	Maine.....ME	N	12,878				12,878	
21.	Maryland.....MD	L	268,853	216,231			485,084	
22.	Massachusetts.....MA	L	377,911	34,947			412,858	
23.	Michigan.....MI	L	342,609	750	72		343,431	
24.	Minnesota.....MN	L	153,691				153,691	
25.	Mississippi.....MS	N	2,856				2,856	
26.	Missouri.....MO	N	789				789	
27.	Montana.....MT	N	988				988	
28.	Nebraska.....NE	L	8,354				8,354	
29.	Nevada.....NV	N	1,817	153,460			155,277	
30.	New Hampshire.....NH	L	44,998	574			45,572	
31.	New Jersey.....NJ	L	1,118,508	297,922	196		1,416,626	
32.	New Mexico.....NM	L	1,783				1,783	
33.	New York.....NY	N	29,039	6,300			35,339	
34.	North Carolina.....NC	L	317,546	11,069	229		328,844	
35.	North Dakota.....ND	L	4,395				4,395	
36.	Ohio.....OH	L	29,673	7,871	219		37,763	
37.	Oklahoma.....OK	N	1,667				1,667	
38.	Oregon.....OR	N	2,824				2,824	
39.	Pennsylvania.....PA	L	2,066,211	250,016	1,378		2,317,605	
40.	Rhode Island.....RI	L	111,793	13,300			125,093	
41.	South Carolina.....SC	L	114,215	6,600			120,815	
42.	South Dakota.....SD	L	1,670				1,670	
43.	Tennessee.....TN	L	12,950				12,950	
44.	Texas.....TX	L	30,752	125			30,877	
45.	Utah.....UT	L	844				844	
46.	Vermont.....VT	N	4,453				4,453	
47.	Virginia.....VA	L	475,083	27,856	535		503,474	
48.	Washington.....WA	N	5,789				5,789	
49.	West Virginia.....WV	L	6,700	6,500			13,200	
50.	Wisconsin.....WI	L	72,762				72,762	
51.	Wyoming.....WY	N	209				209	
52.	American Samoa.....AS	N					0	
53.	Guam.....GU	N					0	
54.	Puerto Rico.....PR	N					0	
55.	US Virgin Islands.....VI	N					0	
56.	Northern Mariana Islands.....MP	N					0	
57.	Canada.....CAN	N	415				415	
58.	Aggregate Other Alien.....OT	.XXX.	2,159	0	0	0	2,159	0
59.	Subtotal.....	.XXX.	6,366,104	1,075,441	2,629	0	7,444,174	0
90.	Reporting entity contributions for employee benefit plans.....	.XXX.					0	
91.	Dividends or refunds applied to purchase paid-up additions and annuities.....	.XXX.					0	
92.	Dividends or refunds applied to shorten endowment or premium paying period.....	.XXX.					0	
93.	Premium or annuity considerations waived under disability or other contract provisions.....	.XXX.	41,632		31		41,663	
94.	Aggregate other amounts not allocable by State.....	.XXX.	0	0	0	0	0	0
95.	Totals (Direct Business).....	.XXX.	6,407,736	1,075,441	2,660	0	7,485,837	0
96.	Plus Reinsurance Assumed.....	.XXX.					0	
97.	Totals (All Business).....	.XXX.	6,407,736	1,075,441	2,660	0	7,485,837	0
98.	Less Reinsurance Ceded.....	.XXX.	2,950,975		1,336		2,952,311	
99.	Totals (All Business) less Reinsurance Ceded.....	.XXX.	3,456,761	1,075,441	1,324	0	4,533,526	0

DETAILS OF WRITE-INS

58001.	Foreign - Other Alien.....	.XXX.	2,159				2,159	
58002.XXX.					0	
58003.XXX.					0	
58998.	Summary of remaining write-ins for line 58 from overflow page.....	.XXX.	0	0	0	0	0	0
58999.	Total (Lines 58001 thru 58003 plus 58998) (Line 58 above).....	.XXX.	2,159	0	0	0	2,159	0
9401.XXX.					0	
9402.XXX.					0	
9403.XXX.					0	
9498.	Summary of remaining write-ins for line 94 from overflow page.....	.XXX.	0	0	0	0	0	0
9499.	Total (Lines 9401 thru 9403 plus 9498) (Line 94 above).....	.XXX.	0	0	0	0	0	0

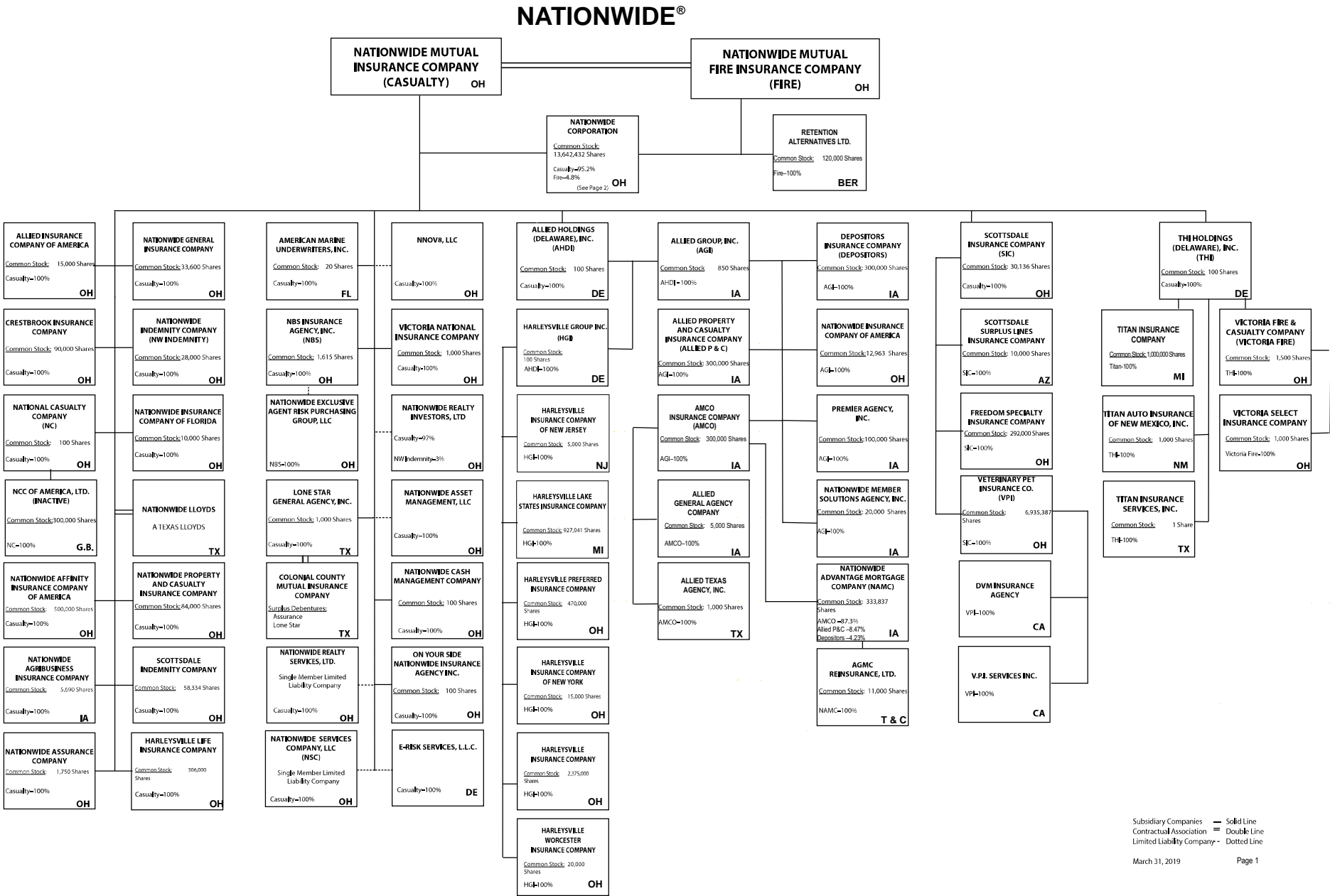
(a) Active Status Count

L - Licensed or Chartered - Licensed insurance carrier or domiciled RRG.....	33
E - Eligible - Reporting entities eligible or approved to write surplus lines in the state	0

R - Registered - Non-domiciled RRGs.....	0
Q - Qualified - Qualified or accredited reinsurer.....	0
N - None of the above - Not allowed to write business in the state	24

HARLEYSVILLE LIFE INSURANCE COMPANY

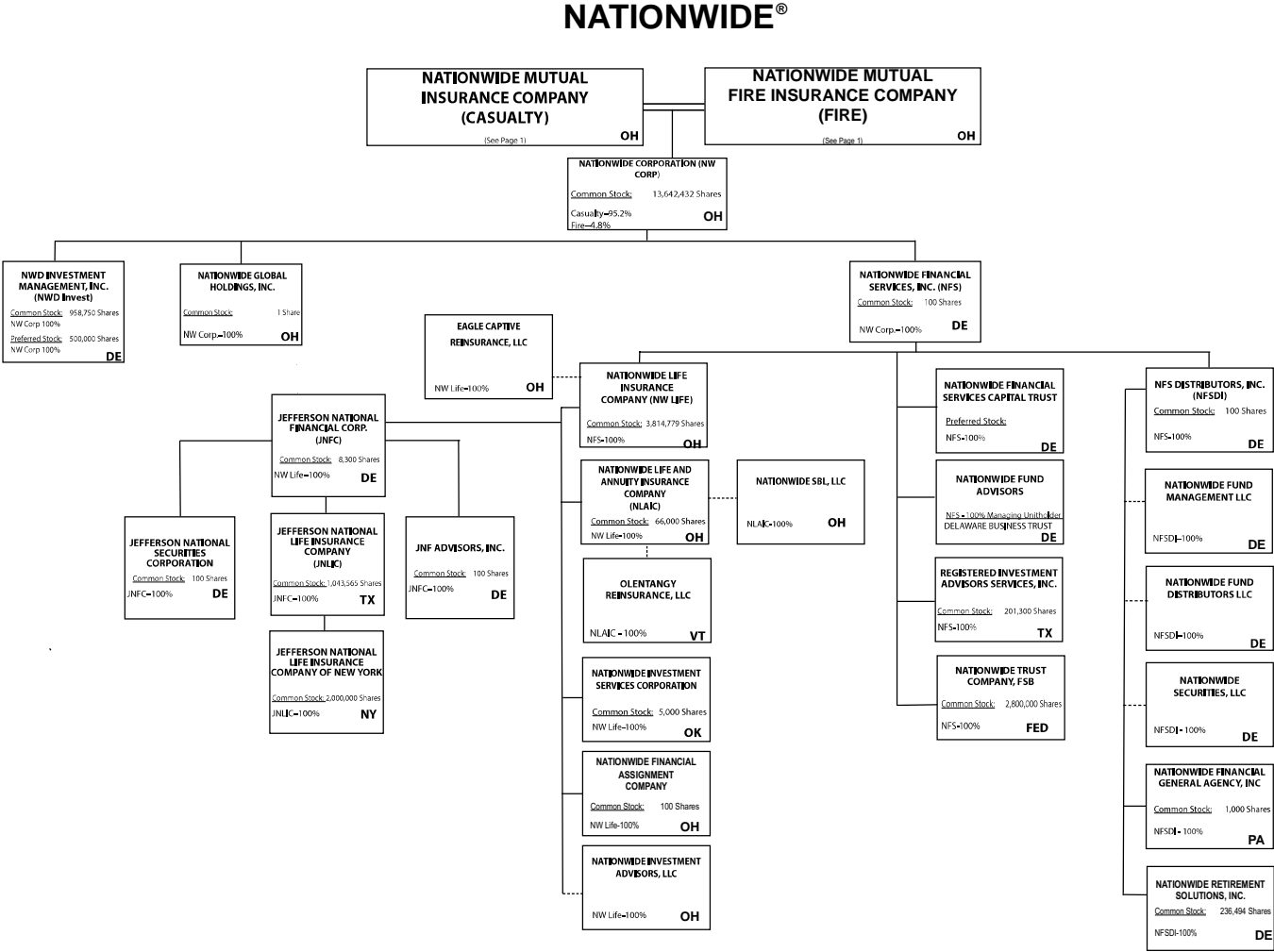
Q12



Subsidiary Companies — Solid Line
Contractual Association — Double Line
Limited Liability Company - Dotted Line

(Casualty/Fire subsidiaries)

Q12.1



(Nationwide Corp. subsidiaries)

Subsidiary Companies — Solid Line
Contractual Association = Double Line
Limited Liability Company - - Dotted Line

NATIONWIDE INSURANCE COMPANIES

NAIC Group Code	Group Name	NAIC Company Code	State of Domicile	Federal ID Number	Name of Company
0140	Nationwide	10127	OH	27-0114983	Allied Insurance Company of America
0140	Nationwide	42579	IA	42-1201931	Allied Property and Casualty Insurance Company
0140	Nationwide	19100	IA	42-6054959	AMCO Insurance Company
0140	Nationwide	29262	TX	74-1061659	Colonial County Mutual Insurance Company
0140	Nationwide	18961	OH	68-0066866	Crestbrook Insurance Company
0140	Nationwide	42587	IA	42-1207150	Depositors Insurance Company
0140	Nationwide	15821	OH	42-4523959	Eagle Captive Reinsurance, LLC
0140	Nationwide	22209	OH	75-6013587	Freedom Specialty Insurance Company
0140	Nationwide	23582	PA	41-0417250	Harleysville Insurance Company
0140	Nationwide	42900	NJ	23-2253669	Harleysville Insurance Company of New Jersey
0140	Nationwide	10674	PA	23-2864924	Harleysville Insurance Company of New York
0140	Nationwide	14516	MI	38-3198542	Harleysville Lake States Insurance Company
0140	Nationwide	64327	PA	23-1580983	Harleysville Life Insurance Company
0140	Nationwide	35696	PA	23-2384978	Harleysville Preferred Insurance Company
0140	Nationwide	26182	PA	04-1989660	Harleysville Worcester Insurance Company
0140	Nationwide	64017	TX	75-0300900	Jefferson National Life Insurance Company
0140	Nationwide	15727	NY	47-1180302	Jefferson National Life Insurance Company of New York
0140	Nationwide	11991	OH	38-0865250	National Casualty Company
0140	Nationwide	26093	OH	48-0470690	Nationwide Affinity Insurance Company of America
0140	Nationwide	28223	IA	42-1015537	Nationwide Agribusiness Insurance Company
0140	Nationwide	10723	OH	95-0639970	Nationwide Assurance Company
0140	Nationwide	23760	OH	31-4425763	Nationwide General Insurance Company
0140	Nationwide	10070	OH	31-1399201	Nationwide Indemnity Company
0140	Nationwide	25453	OH	95-2130882	Nationwide Insurance Company of America
0140	Nationwide	10948	OH	31-1613686	Nationwide Insurance Company of Florida
0140	Nationwide	92657	OH	31-1000740	Nationwide Life and Annuity Insurance Company
0140	Nationwide	66869	OH	31-4156830	Nationwide Life Insurance Company
0140	Nationwide	42110	TX	75-1780981	Nationwide Lloyds
0140	Nationwide	23779	OH	31-4177110	Nationwide Mutual Fire Insurance Company
0140	Nationwide	23787	OH	31-4177100	Nationwide Mutual Insurance Company
0140	Nationwide	37877	OH	31-0970750	Nationwide Property & Casualty Insurance Company
0140	Nationwide	13999	VT	27-1712056	Olentangy Reinsurance, LLC
0140	Nationwide	15580	OH	31-1117969	Scottsdale Indemnity Company
0140	Nationwide	41297	OH	31-1024978	Scottsdale Insurance Company
0140	Nationwide	10672	AZ	86-0835870	Scottsdale Surplus Lines Insurance Company
0140	Nationwide	36269	MI	86-0619597	Titan Insurance Company
0140	Nationwide	42285	OH	95-3750113	Veterinary Pet Insurance Company
0140	Nationwide	42889	OH	34-1394913	Victoria Fire & Casualty Company
0140	Nationwide	10778	OH	34-1842604	Victoria National Insurance Company
0140	Nationwide	10105	OH	34-1777972	Victoria Select Insurance Company

SCHEDULE Y

PART 1A - DETAIL OF INSURANCE HOLDING COMPANY SYSTEM

1	2	3	4	5	6	7	8	9	10	11	12	13	14	15	16
Group Code	Group Name	NAIC Company Code	ID Number	Federal RSSD	CIK	Name of Securities Exchange if Publicly Traded (U.S. or International)	Names of Parent, Subsidiaries or Affiliates	Domiciliary Location	Relationship to Reporting Entity	Directly Controlled by (Name of Entity/Person)	Type of Control (Ownership Board, Management, Attorney-in-Fact, Influence, Other)	If Control is Ownership Provide Percentage	Ultimate Controlling Entity(ies)/Person(s)	Is an SCA Filing Required? (Y/N)	*
Members															
0140	Nationwide.....	31-1486309..	10 W. Nationwide, LLC.....	OH.....	NIA.....	Nationwide Realty Investors, Ltd.....	ownership.....	...100.000	Nationwide Mutual Insurance Company.....	...N.....
0140	Nationwide.....	31-1486309..	1000 Yard Street, LLC.....	OH.....	NIA.....	Nationwide Realty Investors, Ltd.....	ownership.....	...100.000	Nationwide Mutual Insurance Company.....	...N.....
0140	Nationwide.....	31-1486309..	1015 Long Street, LLC.....	OH.....	NIA.....	Nationwide Realty Investors, Ltd.....	ownership.....	...100.000	Nationwide Mutual Insurance Company.....	...N.....
0140	Nationwide.....	31-1486309..	1050 Yard Street, LLC.....	OH.....	NIA.....	Nationwide Realty Investors, Ltd.	ownership.....	...100.000	Nationwide Mutual Insurance Company.....	...N.....
0140	Nationwide.....	31-1486309..	1125 Rail Street, LLC.....	OH.....	NIA.....	Nationwide Realty Investors, Ltd.....	ownership.....	...100.000	Nationwide Mutual Insurance Company.....	...N.....
0140	Nationwide.....	31-1733036..	120 Acre Partners, LLC.....	DE.....	NIA.....	Nationwide Realty Investors, Ltd.....	ownership.....	...95.000	Nationwide Mutual Insurance Company.....	...N.....
0140	Nationwide.....	20-4939866..	1125 Yard Street, LLC.....	OH.....	NIA.....	NRI Equity Land Investments, LLC.....	ownership.....	...100.000	Nationwide Mutual Insurance Company.....	...N.....
0140	Nationwide.....	20-4939867..	1175 Bobcat Avenue, LLC.....	OH.....	NIA.....	NRI Equity Land Investments, LLC.....	ownership.....	...100.000	Nationwide Mutual Insurance Company.....	...N.....
0140	Nationwide.....	26-2451988..	1492 Capital, LLC.....	OH.....	NIA.....	Nationwide Mutual Insurance Company.....	ownership.....	...100.000	Nationwide Mutual Insurance Company.....	...N.....
0140	Nationwide.....	31-1486309..	111 Rivulon Boulevard, LLC.....	OH.....	NIA.....	NRI-Rivulon, LLC.....	ownership.....	...100.000	Nationwide Mutual Insurance Company.....	...N.....
0140	Nationwide.....	31-1486309..	155 Rivulon Boulevard, LLC.....	OH.....	NIA.....	NRI-Rivulon, LLC.....	ownership.....	...100.000	Nationwide Mutual Insurance Company.....	...N.....
0140	Nationwide.....	31-1486309..	161 Rivulon Boulevard, LLC.....	OH.....	NIA.....	NRI-Rivulon, LLC.....	ownership.....	...100.000	Nationwide Mutual Insurance Company.....	...N.....
0140	Nationwide.....	31-1580283..	170 Marconi, LLC.....	OH.....	NIA.....	NWD Investments, LLC.....	ownership.....	...100.000	Nationwide Mutual Insurance Company.....	...N.....
0140	Nationwide.....	31-1580283..	245 Parks Edge Place, LLC.....	OH.....	NIA.....	NWD Investments, LLC.....	ownership.....	...100.000	Nationwide Mutual Insurance Company.....	...N.....
0140	Nationwide.....	31-1486309..	275 Rivulon Boulevard, LLC.....	OH.....	NIA.....	NRI-Rivulon, LLC.....	ownership.....	...100.000	Nationwide Mutual Insurance Company.....	...N.....
0140	Nationwide.....	31-1486309..	300 Rivulon Boulevard, LLC.....	OH.....	NIA.....	NRI-Rivulon, LLC.....	ownership.....	...100.000	Nationwide Mutual Insurance Company.....	...N.....
0140	Nationwide.....	31-1486309..	310 Rivulon Boulevard, LLC.....	OH.....	NIA.....	NRI-Rivulon, LLC.....	ownership.....	...100.000	Nationwide Mutual Insurance Company.....	...N.....
0140	Nationwide.....	31-1486309..	343 N. Front, LLC.....	OH.....	NIA.....	Nationwide Realty Investors, Ltd.....	ownership.....	...100.000	Nationwide Mutual Insurance Company.....	...N.....
0140	Nationwide.....	31-1486309..	400 Rivulon Boulevard, LLC.....	OH.....	NIA.....	NRI-Rivulon, LLC.....	ownership.....	...100.000	Nationwide Mutual Insurance Company.....	...N.....
0140	Nationwide.....	31-1580283..	400 West Nationwide Boulevard, LLC.....	OH.....	NIA.....	NWD Investments, LLC.....	ownership.....	...100.000	Nationwide Mutual Insurance Company.....	...N.....
0140	Nationwide.....	31-1486309..	410 Rivulon Boulevard, LLC.....	OH.....	NIA.....	NRI-Rivulon, LLC.....	ownership.....	...100.000	Nationwide Mutual Insurance Company.....	...N.....
0140	Nationwide.....	31-1580283..	425 West Nationwide Boulevard, LLC.....	OH.....	NIA.....	NWD Investments, LLC.....	ownership.....	...100.000	Nationwide Mutual Insurance Company.....	...N.....
0140	Nationwide.....	31-1486309..	44 Chestnut, LLC.....	OH.....	NIA.....	Nationwide Realty Investors, Ltd.....	ownership.....	...100.000	Nationwide Mutual Insurance Company.....	...N.....
0140	Nationwide.....	31-1486309..	75 Rivulon Boulevard, LLC.....	OH.....	NIA.....	NRI-Rivulon, LLC.....	ownership.....	...100.000	Nationwide Mutual Insurance Company.....	...N.....
0140	Nationwide.....	20-4939866..	775 Yard Street, LLC.....	OH.....	NIA.....	NRI Equity Land Investments, LLC.....	ownership.....	...100.000	Nationwide Mutual Insurance Company.....	...N.....
0140	Nationwide.....	20-4939866..	777 Swan Street, LLC.....	OH.....	NIA.....	NRI Equity Land Investments, LLC.....	ownership.....	...100.000	Nationwide Mutual Insurance Company.....	...N.....
0140	Nationwide.....	20-4939866..	780 Yard Street, LLC.....	OH.....	NIA.....	NRI Equity Land Investments, LLC.....	ownership.....	...100.000	Nationwide Mutual Insurance Company.....	...N.....
0140	Nationwide.....	20-4939866..	795 Rail Street, LLC.....	OH.....	NIA.....	NRI Equity Land Investments, LLC.....	ownership.....	...100.000	Nationwide Mutual Insurance Company.....	...N.....
0140	Nationwide.....	20-4939866..	800 Bobcat Avenue, LLC.....	OH.....	NIA.....	NRI Equity Land Investments, LLC.....	ownership.....	...100.000	Nationwide Mutual Insurance Company.....	...N.....
0140	Nationwide.....	20-4939866..	800 Goodale Boulevard, LLC.....	OH.....	NIA.....	NRI Equity Land Investments, LLC.....	ownership.....	...100.000	Nationwide Mutual Insurance Company.....	...N.....
0140	Nationwide.....	20-4939866..	800 Yard Street, LLC.....	OH.....	NIA.....	NRI Equity Land Investments, LLC.....	ownership.....	...100.000	Nationwide Mutual Insurance Company.....	...N.....
0140	Nationwide.....	20-4939866..	805 Bobcat Avenue, LLC.....	OH.....	NIA.....	GVY Residential, LLC.....	ownership.....	...100.000	Nationwide Mutual Insurance Company.....	...N.....
0140	Nationwide.....	20-4939866..	808 Yard Street, LLC.....	OH.....	NIA.....	GVY Residential, LLC.....	ownership.....	...100.000	Nationwide Mutual Insurance Company.....	...N.....
0140	Nationwide.....	20-4939866..	820 Goodale Boulevard, LLC.....	OH.....	NIA.....	NRI Equity Land Investments, LLC.....	ownership.....	...100.000	Nationwide Mutual Insurance Company.....	...N.....
0140	Nationwide.....	20-4939866..	825 Junction Way, LLC.....	OH.....	NIA.....	GVY Residential, LLC.....	ownership.....	...100.000	Nationwide Mutual Insurance Company.....	...N.....
.....	37-1865892..	828 at the Yard Condominiums Home Owners Association	OH.....	OTH.....	Other non-Nationwide.....	n/a.....	Other non-Nationwide.....	...N.....	2.....

SCHEDULE Y

PART 1A - DETAIL OF INSURANCE HOLDING COMPANY SYSTEM

Q13.1

1	2	3	4	5	6	7	8	9	10	11	12	13	14	15	16
Group Code	Group Name	NAIC Company Code	ID Number	Federal RSSD	CIK	Name of Securities Exchange if Publicly Traded (U.S. or International)	Names of Parent, Subsidiaries or Affiliates	Domiciliary Location	Relationship to Reporting Entity	Directly Controlled by (Name of Entity/Person)	Type of Control (Ownership Board, Management, Attorney-in-Fact, Influence, Other)	If Control is Ownership Provide Percentage	Ultimate Controlling Entity(ies)/Person(s)	Is an SCA Filing Required? (Y/N)	*
0140	Nationwide.....	20-4939866..	828 Bobcat Avenue, LLC.....	OH.....	NIA.....	NRI Equity Land Investments, LLC.....	ownership.....	...100.000	Nationwide Mutual Insurance Company.....N.....
0140	Nationwide.....	20-4939866..	840 Third Avenue, LLC.....	OH.....	NIA.....	NRI Equity Land Investments, LLC.....	ownership.....	...100.000	Nationwide Mutual Insurance Company.....N.....
0140	Nationwide.....	20-4939866..	845 Yard Street, LLC.....	OH.....	NIA.....	GVY Residential, LLC.....	ownership.....	...100.000	Nationwide Mutual Insurance Company.....N.....
0140	Nationwide.....	20-4939866..	860 Third Avenue, LLC.....	OH.....	NIA.....	NRI Equity Land Investments, LLC.....	ownership.....	...100.000	Nationwide Mutual Insurance Company.....N.....
0140	Nationwide.....	20-4939866..	880 Third Avenue, LLC.....	OH.....	NIA.....	NRI Equity Land Investments, LLC.....	ownership.....	...100.000	Nationwide Mutual Insurance Company.....N.....
0140	Nationwide.....	20-4939866..	895 W. Third Avenue, LLC.....	OH.....	NIA.....	NRI Equity Land Investments, LLC.....	ownership.....	...100.000	Nationwide Mutual Insurance Company.....N.....
0140	Nationwide.....	20-4939866..	950 Dorchester Way, LLC.....	OH.....	NIA.....	GVY Residential, LLC.....	ownership.....	...100.000	Nationwide Mutual Insurance Company.....N.....
.....	20-4939866..	950 Goodale Boulevard, LLC.....	OH.....	NIA.....	NRI Equity Land Investments, LLC.....	ownership.....	...100.000	Nationwide Mutual Insurance Company.....N.....
0140	Nationwide.....	31-1486309..	960 Bobcat Avenue, LLC.....	OH.....	NIA.....	Nationwide Realty Investors, Ltd.....	ownership.....	...100.000	Nationwide Mutual Insurance Company.....N.....
0140	Nationwide.....	31-1486309..	975 Rail Street, LLC.....	OH.....	NIA.....	Nationwide Realty Investors, Ltd.....	ownership.....	...100.000	Nationwide Mutual Insurance Company.....N.....
0140	Nationwide.....	31-1486309..	995 Yard Street, LLC.....	OH.....	NIA.....	Nationwide Realty Investors, Ltd.....	ownership.....	...100.000	Nationwide Mutual Insurance Company.....N.....
0140	Nationwide.....	31-1680808..	AD Investments, LLC.....	OH.....	NIA.....	Nationwide Realty Investors, Ltd.....	ownership.....	...60.000	Nationwide Mutual Insurance Company.....N.....
0140	Nationwide.....	31-1580283..	ADTV, LLC.....	OH.....	NIA.....	NWD Investments, LLC.....	ownership.....	...100.000	Nationwide Mutual Insurance Company.....N.....
0140	Nationwide.....	52-2227314..	AGMC Reinsurance, Ltd.....	TCA.....	NIA.....	Nationwide Advantage Mortgage Company.....	ownership.....	...100.000	Nationwide Mutual Insurance Company.....N.....
0140	Nationwide.....	42-1011300..	ALLIED General Agency Company.....	IA.....	IA.....	AMCO Insurance Company.....	ownership.....	...100.000	Nationwide Mutual Insurance Company.....N.....
0140	Nationwide.....	42-0958655..	ALLIED Group, Inc.....	IA.....	IA.....	Allied Holdings (Delaware), Inc.....	ownership.....	...100.000	Nationwide Mutual Insurance Company.....N.....
0140	Nationwide.....	46-4628790..	Allied Holdings (Delaware), Inc.....	DE.....	IA.....	Nationwide Mutual Insurance Company.....	ownership.....	...100.000	Nationwide Mutual Insurance Company.....Y.....
0140	Nationwide.....	10127..	27-0114983..	ALLIED Insurance Company of America.....	OH.....	IA.....	Nationwide Mutual Insurance Company.....	ownership.....	...100.000	Nationwide Mutual Insurance Company.....N.....
.....	ALLIED Property and Casualty Insurance Company	IA.....	IA.....	ALLIED Group, Inc.....	ownership.....	...100.000	Nationwide Mutual Insurance Company.....N.....
0140	Nationwide.....	42-1201931..	ALLIED Texas Agency, Inc.....	TX.....	IA.....	AMCO Insurance Company.....	ownership.....	...100.000	Nationwide Mutual Insurance Company.....N.....
0140	Nationwide.....	19100..	42-6054959..	AMCO Insurance Company.....	IA.....	IA.....	ALLIED Group, Inc.....	ownership.....	...100.000	Nationwide Mutual Insurance Company.....N.....
0140	Nationwide.....	59-1031596..	American Marine Underwriters, Inc.....	FL.....	NIA.....	Nationwide Mutual Insurance Company.....	ownership.....	...100.000	Nationwide Mutual Insurance Company.....N.....
0140	Nationwide.....	81-4532504..	American Tax Credit Fund 2017-A, LLC.....	OH.....	NIA.....	Nationwide Life Insurance Company	ownership.....	...100.000	Nationwide Mutual Insurance Company.....N.....
0140	Nationwide.....	82-2001573..	American Tax Credit Fund 2017-B, LLC.....	OH.....	NIA.....	Nationwide Life Insurance Company	ownership.....	...100.000	Nationwide Mutual Insurance Company.....N.....
0140	Nationwide.....	82-4591498..	American Tax Credit Fund 2018-A, LLC.....	OH.....	NIA.....	Nationwide Life Insurance Company	ownership.....	...100.000	Nationwide Mutual Insurance Company.....N.....
0140	Nationwide.....	83-0606592..	American Tax Credit Fund 2018-B, LLC.....	OH.....	NIA.....	Nationwide Life Insurance Company	ownership.....	...100.000	Nationwide Mutual Insurance Company.....N.....
0140	Nationwide.....	83-0620232..	American Tax Credit Fund 2018-C, LLC.....	OH.....	NIA.....	Nationwide Life Insurance Company	ownership.....	...100.000	Nationwide Mutual Insurance Company.....N.....
0140	Nationwide.....	83-3900932..	American Tax Credit Fund 2019-A, LLC.....	OH.....	NIA.....	Nationwide Life Insurance Company	ownership.....	...100.000	Nationwide Mutual Insurance Company.....N.....
0140	Nationwide.....	83-3953721..	American Tax Credit Fund 2019-B, LLC.....	OH.....	NIA.....	Nationwide Life Insurance Company	ownership.....	...100.000	Nationwide Mutual Insurance Company.....N.....
0140	Nationwide.....	31-1580283..	Arena District CA I, LLC.....	OH.....	NIA.....	NWD Investments, LLC.....	ownership.....	...100.000	Nationwide Mutual Insurance Company.....N.....
.....	36-4857239..	Arena District Garage Condominium Association	OH.....	OTH.....	Other non-Nationwide.....	n/a.....	Other non-Nationwide.....N.....	2.....
.....	90-0280710..	Arena District Owners Association.....	OH.....	OTH.....	Other non-Nationwide.....	n/a.....	Other non-Nationwide.....N.....	2.....
.....	35-2582728..	Arena District Swim Club Association.....	OH.....	OTH.....	Other non-Nationwide.....	n/a.....	Other non-Nationwide.....N.....	2.....

SCHEDULE Y

PART 1A - DETAIL OF INSURANCE HOLDING COMPANY SYSTEM

Q13.2

1	2	3	4	5	6	7	8	9	10	11	12	13	14	15	16
Group Code	Group Name	NAIC Company Code	ID Number	Federal RSSD	CIK	Name of Securities Exchange if Publicly Traded (U.S. or International)	Names of Parent, Subsidiaries or Affiliates	Domiciliary Location	Relationship to Reporting Entity	Directly Controlled by (Name of Entity/Person)	Type of Control (Ownership Board, Management, Attorney-in-Fact, Influence, Other)	If Control is Ownership Provide Percentage	Ultimate Controlling Entity(ies)/Person(s)	Is an SCA Filing Required? (Y/N)	*
0140	Nationwide.....	31-1486309..	Ballantrae Woods, LLC.....	OH.....	NIA.....	Nationwide Realty Investors, Ltd.....	ownership.....	...100.000	Nationwide Mutual Insurance Company.....N.....
0140	Nationwide.....	26-4083207..	Berkshire Crossing Development, LLC.....	DE.....	NIA.....	NorthStar Commercial Development, LLC.....	ownership.....	...100.000	Nationwide Mutual Insurance Company.....N.....
0140	Nationwide.....	31-1555487..	Broad Street Retail, LLC.....	DE.....	NIA.....	Nationwide Realty Investors, Ltd.....	ownership.....	...60.000	Nationwide Mutual Insurance Company.....N.....	1.....
0140	Nationwide.....	20-3624379..	Brooke School Investment Fund, LLC.....	DE.....	NIA.....	Nationwide Mutual Insurance Company.....	ownership.....	...100.000	Nationwide Mutual Insurance Company.....N.....
0140	Nationwide.....	31-1486309..	Cavasson Hotel, LLC.....	OH.....	NIA.....	Cavasson Hotel Holdings, LLC.....	ownership.....	...100.000	Nationwide Mutual Insurance Company.....N.....
0140	Nationwide.....	31-1486309..	Cavasson Hotel Holdings, LLC.....	OH.....	NIA.....	NRI Cavasson, LLC.....	ownership.....	...100.000	Nationwide Mutual Insurance Company.....N.....
0140	Nationwide.....	26-0899413..	CHP New Markets Investment Fund, LLC.....	OH.....	OTH.....	Nationwide Mutual Insurance Company.....	Limited partner /no control	...50.000	other non-Nationwide.....N.....	2.....
0140	Nationwide.....	20-1618232..	CNRI-Cannonsport Condominium, LLC.....	OH.....	NIA.....	CNRI-Cannonsport, LLC.....	ownership.....	...100.000	Nationwide Mutual Insurance Company.....N.....
0140	Nationwide.....	20-1618232..	CNRI- Cannonsport, LLC.....	OH.....	NIA.....	Nationwide Realty Investors, Ltd.....	ownership.....	...100.000	Nationwide Mutual Insurance Company.....N.....
.....	n/a.....	Co-Investment Fund, LLC.....	DE.....	OTH.....	Other non-Nationwide.....	n/a.....	Other non-Nationwide.....N.....	2.....
0140	Nationwide.....	31-1579973..	COLHOC Limited Partnership.....	OH.....	NIA.....	NRI Arena, LLC.....	ownership.....	...30.760	Other non-Nationwide.....N.....	1.....
0140	Nationwide.....	29262..	74-1061659..	Colonial County Mutual Insurance Company.....	TX.....	IA.....	Other non-Nationwide.....	contract.....	Other non-Nationwide.....N.....
.....	45-4901238..	Columbus Arena Management, LLC.....	OH.....	OTH.....	Other non-Nationwide.....	n/a.....	Other non-Nationwide.....N.....	2.....
0140	Nationwide.....	31-1486309..	Cottages at Hyatts LLC.....	OH.....	NIA.....	Nationwide Realty Investors, Ltd.....	ownership.....	...100.000	Nationwide Mutual Insurance Company.....N.....
0140	Nationwide.....	18961..	68-0066866..	Crestbrook Insurance Company.....	OH.....	IA.....	Nationwide Mutual Insurance Company.....	ownership.....	...100.000	Nationwide Mutual Insurance Company.....N.....
0140	Nationwide.....	31-1486309..	Crewville, Ltd.....	OH.....	NIA.....	Nationwide Realty Investors, Ltd.....	ownership.....	...100.000	Nationwide Mutual Insurance Company.....N.....
0140	Nationwide.....	42587..	42-1207150..	Depositors Insurance Company.....	IA.....	IA.....	ALLIED Group, Inc.....	ownership.....	...100.000	Nationwide Mutual Insurance Company.....N.....
.....	46-4104813..	Discover Affordable Housing Investment Fund I LLC	OH.....	OTH.....	Other non-Nationwide.....	n/a.....	Other non-Nationwide.....N.....	2.....
0140	Nationwide.....	33-0096671..	DVM Insurance Agency.....	CA.....	NIA.....	Veterinary Pet Insurance Company.....	ownership.....	...100.000	Nationwide Mutual Insurance Company.....N.....
0140	Nationwide.....	15821..	47-4523959..	Eagle Captive Reinsurance, LLC.....	OH.....	IA.....	Nationwide Life Insurance Company.....	ownership.....	...100.000	Nationwide Mutual Insurance Company.....N.....
0140	Nationwide.....	20-1945276..	East of Madison, LLC.....	DE.....	NIA.....	120 Acre Partners, Ltd.....	ownership.....	...24.910	Nationwide Mutual Insurance Company.....N.....	1.....
0140	Nationwide.....	20-1945276..	East of Madison, LLC.....	DE.....	NIA.....	ND La Quinta Partners, LLC.....	ownership.....	...75.090	Nationwide Mutual Insurance Company.....N.....	1.....
0140	Nationwide.....	26-32605559	E-Risk Services, L.L.C.....	DE.....	NIA.....	Nationwide Mutual Insurance Company.....	ownership.....	...100.000	Nationwide Mutual Insurance Company.....N.....
.....	30-0951639..	ERN-4 Property Owners Association, Inc.....	OH.....	OTH.....	Other non-Nationwide.....	n/a.....	Other non-Nationwide.....N.....	2.....
0140	Nationwide.....	22209..	75-6013587..	Freedom Specialty Insurance Company.....	OH.....	IA.....	Scottsdale Insurance Company	ownership.....	...100.000	Nationwide Mutual Insurance Company.....N.....
.....	46-4736379..	GPN-1 Property Owners Association, Inc.....	OH.....	OTH.....	Other non-Nationwide.....	n/a.....	other non-Nationwide.....N.....	2.....
0140	Nationwide.....	20-4939866..	Grandview Yard Hotel Holdings, LLC.....	OH.....	NIA.....	NRI Equity Land Investments, LLC.....	ownership.....	...100.000	Nationwide Mutual Insurance Company.....N.....
0140	Nationwide.....	20-4939866..	Grandview Yard Hotel, LLC.....	OH.....	NIA.....	Grandview Yard Hotel Holdings, LLC.....	ownership.....	...100.000	Nationwide Mutual Insurance Company.....N.....
0140	Nationwide.....	20-4939866..	GVY Residential, LLC.....	OH.....	NIA.....	NRI Equity Land Investments, LLC.....	ownership.....	...100.000	Nationwide Mutual Insurance Company.....N.....
0140	Nationwide.....	31-1486309..	Harlem Road Developers, LLC.....	OH.....	NIA.....	Nationwide Realty Investors, Ltd.....	ownership.....	...100.000	Nationwide Mutual Insurance Company.....N.....
0140	Nationwide.....	51-0241172..	Harleysville Group Inc.....	DE.....	NIA.....	Allied Holdings (Delaware), Inc.....	ownership.....	...100.000	Nationwide Mutual Insurance Company.....N.....
0140	Nationwide.....	23582..	41-0417250..	Harleysville Insurance Company.....	OH.....	IA.....	Harleysville Group, Inc.....	ownership.....	...100.000	Nationwide Mutual Insurance Company.....N.....
0140	Nationwide.....	42900..	23-2253669..	Harleysville Insurance Company of New Jersey	NJ.....	IA.....	Harleysville Group, Inc.....	ownership.....	...100.000	Nationwide Mutual Insurance Company.....N.....
0140	Nationwide.....	10674..	23-2864924..	Harleysville Insurance Company of New York...	OH.....	IA.....	Harleysville Group, Inc.....	ownership.....	...100.000	Nationwide Mutual Insurance Company.....N.....

HARLEYSVILLE LIFE INSURANCE COMPANY

SCHEDULE Y

PART 1A - DETAIL OF INSURANCE HOLDING COMPANY SYSTEM

Q13.3

1	2	3	4	5	6	7	8	9	10	11	12	13	14	15	16
Group Code	Group Name	NAIC Company Code	ID Number	Federal RSSD	CIK	Name of Securities Exchange if Publicly Traded (U.S. or International)	Names of Parent, Subsidiaries or Affiliates	Domiciliary Location	Relationship to Reporting Entity	Directly Controlled by (Name of Entity/Person)	Type of Control (Ownership Board, Management, Attorney-in-Fact, Influence, Other)	If Control is Ownership Provide Percentage	Ultimate Controlling Entity(ies)/Person(s)	Is an SCA Filing Required? (Y/N)	*
0140	Nationwide.....	14516...	38-3198542..	Harleysville Lake States Insurance Company.....	MI.....	IA.....	Harleysville Group, Inc.....	ownership.....	...100.000	Nationwide Mutual Insurance Company.....N.....
0140	Nationwide.....	64327...	23-1580983..	Harleysville Life Insurance Company.....	OH.....	RE.....	Nationwide Mutual Insurance Company.....	ownership.....	...100.000	Nationwide Mutual Insurance Company.....N.....
0140	Nationwide.....	35696...	23-2384978..	Harleysville Preferred Insurance Company.....	OH.....	IA.....	Harleysville Group, Inc.....	ownership.....	...100.000	Nationwide Mutual Insurance Company.....N.....
0140	Nationwide.....	26182...	04-1989660..	Harleysville Worcester Insurance Company.....	OH.....	IA.....	Harleysville Group, Inc.....	ownership.....	...100.000	Nationwide Mutual Insurance Company.....N.....
0140	Nationwide.....	32-0051216..	Hideaway Properties Corporation.....	CA.....	NIA.....	Nationwide Realty Investors, Ltd.....	ownership.....50.000	Nationwide Mutual Insurance Company.....N.....	1.....
0140	Nationwide.....	20-3289512..	Jefferson National Financial Corp.....	DE.....	NIA.....	Nationwide Life Insurance Company.....	ownership.....	...100.000	Nationwide Mutual Insurance Company.....Y.....
0140	Nationwide.....	64017...	75-0300900..	Jefferson National Life Insurance Company.....	TX.....	IA.....	Jefferson National Financial Corporation.....	ownership.....	...100.000	Nationwide Mutual Insurance Company.....N.....
0140	Nationwide.....	15727...	47-1180302..	Jefferson National Life Insurance Company of New York	NY.....	IA.....	Jefferson National Life Insurance Company....	ownership.....	...100.000	Nationwide Mutual Insurance Company.....N.....
0140	Nationwide.....	61-1340595..	Jefferson National Securities Corporation.....	DE.....	NIA.....	Jefferson National Financial Corporation.....	ownership.....	...100.000	Nationwide Mutual Insurance Company.....N.....
0140	Nationwide.....	31-1486309..	Jerome Village Company, LLC.....	OH.....	NIA.....	Nationwide Realty Investors, Ltd.....	ownership.....	...100.000	Nationwide Mutual Insurance Company.....N.....
0140	Nationwide.....	46-2974590..	Jerome Village Master Property Owners Association, Inc.	OH.....	OTH.....	Other non-Nationwide.....	n/a.....	Other non-Nationwide.....N.....	2.....
0140	Nationwide.....	20-8945345..	JNF Advisors, Inc.....	DE.....	NIA.....	Jefferson National Financial Corporation.....	ownership.....	...100.000	Nationwide Mutual Insurance Company.....N.....
0140	Nationwide.....	46-2956640..	Jerome Village Residential Property Owners Association, Inc.	OH.....	OTH.....	Other non-Nationwide.....	n/a.....	Other non-Nationwide.....N.....	2.....
0140	Nationwide.....	31-1486309..	JV Developers, LLC.....	OH.....	OTH.....	Nationwide Realty Investors, Ltd.....	ownership.....	...100.000	Nationwide Mutual Insurance Company.....N.....	2.....
0140	Nationwide.....	74-1395229..	Lone Star General Agency, Inc.....	TX.....	IA.....	Nationwide Mutual Insurance Company.....	ownership.....	...100.000	Nationwide Mutual Insurance Company.....N.....
0140	Nationwide.....	11991...	38-0865250..	National Casualty Company.....	OH.....	IA.....	Nationwide Mutual Insurance Company.....	ownership.....	...100.000	Nationwide Mutual Insurance Company.....N.....
0140	Nationwide.....	AC000920...	National Casualty Company of America, Ltd.....	GBR.....	IA.....	National Casualty Company.....	ownership.....	...100.000	Nationwide Mutual Insurance Company.....N.....
0140	Nationwide.....	42-1154244..	Nationwide Advantage Mortgage Company.....	IA.....	NIA.....	AMCO Insurance Company.....	ownership.....87.300	Nationwide Mutual Insurance Company.....Y.....	1.....
0140	Nationwide.....	42-1154244..	Nationwide Advantage Mortgage Company.....	IA.....	NIA.....	ALLIED Property & Casualty Insurance Company	ownership.....8.470	Nationwide Mutual Insurance Company.....Y.....	1.....
0140	Nationwide.....	42-1154244..	Nationwide Advantage Mortgage Company.....	IA.....	NIA.....	Depositors Insurance Company.....	ownership.....4.230	Nationwide Mutual Insurance Company.....Y.....	1.....
0140	Nationwide.....	26093...	48-0470690..	Nationwide Affinity Insurance Company of America	OH.....	IA.....	Nationwide Mutual Insurance Company.....	ownership.....	...100.000	Nationwide Mutual Insurance Company.....N.....
0140	Nationwide.....	28223...	42-1015537..	Nationwide Agribusiness Insurance Company...	IA.....	IA.....	Nationwide Mutual Insurance Company.....	ownership.....	...100.000	Nationwide Mutual Insurance Company.....N.....
0140	Nationwide.....	31-1578869..	Nationwide Arena, LLC.....	OH.....	NIA.....	NRI Arena, LLC.....	ownership.....90.000	Nationwide Mutual Insurance Company.....N.....	1.....
0140	Nationwide.....	20-8670712..	Nationwide Asset Management, LLC.....	OH.....	NIA.....	Nationwide Mutual Insurance Company.....	ownership.....	...100.000	Nationwide Mutual Insurance Company.....N.....
0140	Nationwide.....	10723...	95-0639970..	Nationwide Assurance Company.....	OH.....	IA.....	Nationwide Mutual Insurance Company.....	ownership.....	...100.000	Nationwide Mutual Insurance Company.....N.....
0140	Nationwide.....	31-1036287..	Nationwide Cash Management Company.....	OH.....	NIA.....	Nationwide Mutual Insurance Company.....	ownership.....	...100.000	Nationwide Mutual Insurance Company.....N.....
0140	Nationwide.....	31-4416546..	Nationwide Corporation.....	OH.....	NIA.....	Nationwide Mutual Insurance Company.....	ownership.....95.200	Nationwide Mutual Insurance Company.....Y.....	1.....
0140	Nationwide.....	31-4416546..	Nationwide Corporation.....	OH.....	NIA.....	Nationwide Mutual Fire Insurance Company...	ownership.....4.800	Nationwide Mutual Insurance Company.....Y.....	1.....
0140	Nationwide.....	05-0630007..	Nationwide Exclusive Agent Risk Purchasing Group, LLC	OH.....	NIA.....	Insurance Intermediaries, Inc.....	ownership.....	...100.000	Nationwide Mutual Insurance Company.....N.....
0140	Nationwide.....	31-1667326..	Nationwide Financial Assignment Company.....	OH.....	NIA.....	Nationwide Life Insurance Company.....	ownership.....	...100.000	Nationwide Mutual Insurance Company.....N.....

HARLEYSVILLE LIFE INSURANCE COMPANY

SCHEDULE Y

PART 1A - DETAIL OF INSURANCE HOLDING COMPANY SYSTEM

Q13.4

1	2	3	4	5	6	7	8	9	10	11	12	13	14	15	16
Group Code	Group Name	NAIC Company Code	ID Number	Federal RSSD	CIK	Name of Securities Exchange if Publicly Traded (U.S. or International)	Names of Parent, Subsidiaries or Affiliates	Domiciliary Location	Relationship to Reporting Entity	Directly Controlled by (Name of Entity/Person)	Type of Control (Ownership Board, Management, Attorney-in-Fact, Influence, Other)	If Control is Ownership Provide Percentage	Ultimate Controlling Entity(ies)/Person(s)	Is an SCA Filing Required? (Y/N)	*
0140	Nationwide.....		23-2412039..				Nationwide Financial General Agency, Inc.....	PA.....	NIA.....	NFS Distributors, Inc.....	ownership.....	...100.000	Nationwide Mutual Insurance Company.....N.....	
0140	Nationwide.....		31-6554353..				Nationwide Financial Services Capital Trust.....	DE.....	NIA.....	Nationwide Financial Services, Inc.	ownership.....	...100.000	Nationwide Mutual Insurance Company.....N.....	
0140	Nationwide.....		31-1486870..				Nationwide Financial Services, Inc.....	DE.....	NIA.....	Nationwide Corporation.....	ownership.....	...100.000	Nationwide Mutual Insurance Company.....N.....	
0140	Nationwide.....		52-6969857..				Nationwide Fund Advisors.....	DE.....	NIA.....	Nationwide Financial Services, Inc.	ownership.....	...100.000	Nationwide Mutual Insurance Company.....N.....	
0140	Nationwide.....		31-1748721..				Nationwide Fund Distributors LLC.....	DE.....	NIA.....	NFS Distributors, Inc.....	ownership.....	...100.000	Nationwide Mutual Insurance Company.....N.....	
0140	Nationwide.....		31-0900518..				Nationwide Fund Management LLC.....	DE.....	NIA.....	NFS Distributors, Inc.....	ownership.....	...100.000	Nationwide Mutual Insurance Company.....N.....	
0140	Nationwide.....	23760..	31-4425763..				Nationwide General Insurance Company.....	OH.....	IA.....	Nationwide Mutual Insurance Company.....	ownership.....	...100.000	Nationwide Mutual Insurance Company.....N.....	
0140	Nationwide.....		31-1570938..				Nationwide Global Holdings, Inc.....	OH.....	NIA.....	Nationwide Corporation.....	ownership.....	...100.000	Nationwide Mutual Insurance Company.....N.....	
0140	Nationwide.....	10070..	31-1399201..				Nationwide Indemnity Company.....	OH.....	IA.....	Nationwide Mutual Insurance Company.....	ownership.....	...100.000	Nationwide Mutual Insurance Company.....N.....	
0140	Nationwide.....	25453..	95-2130882..				Nationwide Insurance Company of America.....	OH.....	IA.....	ALLIED Group, Inc.	ownership.....	...100.000	Nationwide Mutual Insurance Company.....N.....	
0140	Nationwide.....	10948..	31-1613686..				Nationwide Insurance Company of Florida.....	OH.....	IA.....	Nationwide Mutual Insurance Company.....	ownership.....	...100.000	Nationwide Mutual Insurance Company.....N.....	
0140	Nationwide.....		41-2206199..				Nationwide Investment Advisors, LLC.....	OH.....	NIA.....	Nationwide Life Insurance Company.....	ownership.....	...100.000	Nationwide Mutual Insurance Company.....N.....	
0140	Nationwide.....		73-0988442..				Nationwide Investment Services Corporation...	OK.....	NIA.....	Nationwide Life Insurance Company.....	ownership.....	...100.000	Nationwide Mutual Insurance Company.....Y.....	
0140	Nationwide.....	92657..	31-1000740..				Nationwide Life and Annuity Insurance Company	OH.....	IA.....	Nationwide Life Insurance Company.....	ownership.....	...100.000	Nationwide Mutual Insurance Company.....N.....	
0140	Nationwide.....	66869..	31-4156830..				Nationwide Life Insurance Company.....	OH.....	IA.....	Nationwide Financial Services, Inc.....	ownership.....	...100.000	Nationwide Mutual Insurance Company.....N.....	
0140	Nationwide.....		13-4212969..				Nationwide Life Tax Credit Partners 2002-A, LLC	OH.....	NIA.....	Nationwide Life Insurance Company.....	other.....0.010	Nationwide Mutual Insurance Company.....N.....	1.....
0140	Nationwide.....		01-0749754..				Nationwide Life Tax Credit Partners 2002-B, LLC	OH.....	NIA.....	Nationwide Life Insurance Company.....	other.....0.010	Nationwide Mutual Insurance Company.....N.....	1.....
0140	Nationwide.....		54-2113175..				Nationwide Life Tax Credit Partners 2003-A, LLC	OH.....	NIA.....	Nationwide Life Insurance Company.....	other.....0.010	Nationwide Mutual Insurance Company.....N.....	1.....
0140	Nationwide.....		58-2672725..				Nationwide Life Tax Credit Partners 2003-B, LLC	OH.....	NIA.....	Nationwide Life Insurance Company.....	other.....0.010	Nationwide Mutual Insurance Company.....N.....	1.....
0140	Nationwide.....		20-0382144..				Nationwide Life Tax Credit Partners 2004-A, LLC	OH.....	NIA.....	Nationwide Life Insurance Company.....	other.....0.010	Nationwide Mutual Insurance Company.....N.....	1.....
0140	Nationwide.....		20-0745944..				Nationwide Life Tax Credit Partners 2004-B, LLC	OH.....	NIA.....	Nationwide Life Insurance Company.....	other.....0.010	Nationwide Mutual Insurance Company.....N.....	1.....
0140	Nationwide.....		20-0745965..				Nationwide Life Tax Credit Partners 2004-C, LLC	OH.....	NIA.....	Nationwide Life Insurance Company.....	other.....0.010	Nationwide Mutual Insurance Company.....N.....	1.....
0140	Nationwide.....		20-1128408..				Nationwide Life Tax Credit Partners 2004-D, LLC	OH.....	NIA.....	Nationwide Life Insurance Company.....	other.....0.010	Nationwide Mutual Insurance Company.....N.....	1.....
0140	Nationwide.....		20-1128472..				Nationwide Life Tax Credit Partners 2004-E, LLC	OH.....	NIA.....	Nationwide Life Insurance Company.....	other.....0.010	Nationwide Mutual Insurance Company.....N.....	1.....
0140	Nationwide.....		20-1918935..				Nationwide Life Tax Credit Partners 2004-F, LLC	OH.....	NIA.....	Nationwide Life Insurance Company.....	other.....0.010	Nationwide Mutual Insurance Company.....N.....	1.....
0140	Nationwide.....		20-2303694..				Nationwide Life Tax Credit Partners 2005-A, LLC	OH.....	NIA.....	Nationwide Life Insurance Company.....	other.....0.010	Nationwide Mutual Insurance Company.....N.....	1.....

SCHEDULE Y

PART 1A - DETAIL OF INSURANCE HOLDING COMPANY SYSTEM

Q13.5

1	2	3	4	5	6	7	8	9	10	11	12	13	14	15	16
Group Code	Group Name	NAIC Company Code	ID Number	Federal RSSD	CIK	Name of Securities Exchange if Publicly Traded (U.S. or International)	Names of Parent, Subsidiaries or Affiliates	Domiciliary Location	Relationship to Reporting Entity	Directly Controlled by (Name of Entity/Person)	Type of Control (Ownership Board, Management, Attorney-in-Fact, Influence, Other)	If Control is Ownership Provide Percentage	Ultimate Controlling Entity(ies)/Person(s)	Is an SCA Filing Required? (Y/N)	*
0140	Nationwide.....		20-2303602..				Nationwide Life Tax Credit Partners 2005-B, LLC	OH.....	NIA.....	Nationwide Life Insurance Company.....	other.....0.010	Nationwide Mutual Insurance Company.....N.....	1.....
0140	Nationwide.....		20-2450960..				Nationwide Life Tax Credit Partners 2005-C, LLC	OH.....	NIA.....	Nationwide Life Insurance Company.....	other.....0.010	Nationwide Mutual Insurance Company.....N.....	1.....
0140	Nationwide.....		20-2451052..				Nationwide Life Tax Credit Partners 2005-D, LLC	OH.....	NIA.....	Nationwide Life Insurance Company.....	other.....0.010	Nationwide Mutual Insurance Company.....N.....	1.....
0140	Nationwide.....		20-2774223..				Nationwide Life Tax Credit Partners 2005-E, LLC	OH.....	NIA.....	Nationwide Life Insurance Company.....	other.....0.010	Nationwide Mutual Insurance Company.....N.....	1.....
0140	Nationwide.....		21-1288836..				Nationwide Life Tax Credit Partners 2007-A, LLC	OH.....	NIA.....	Nationwide Life Insurance Company.....	other.....0.010	Nationwide Mutual Insurance Company.....N.....	1.....
0140	Nationwide.....		26-3427373..				Nationwide Life Tax Credit Partners 2009-A, LLC	OH.....	NIA.....	Nationwide Life Insurance Company.....	other.....0.010	Nationwide Mutual Insurance Company.....N.....	1.....
0140	Nationwide.....		26-3427435..				Nationwide Life Tax Credit Partners 2009-B, LLC	OH.....	NIA.....	Nationwide Life Insurance Company.....	other.....0.010	Nationwide Mutual Insurance Company.....N.....	1.....
0140	Nationwide.....		26-3427479..				Nationwide Life Tax Credit Partners 2009-C, LLC	OH.....	NIA.....	Nationwide Life Insurance Company.....	other.....0.010	Nationwide Mutual Insurance Company.....N.....	1.....
0140	Nationwide.....		26-3427525..				Nationwide Life Tax Credit Partners 2009-D, LLC	OH.....	NIA.....	Nationwide Life Insurance Company.....	other.....0.010	Nationwide Mutual Insurance Company.....N.....	1.....
0140	Nationwide.....		26-4737055..				Nationwide Life Tax Credit Partners 2009-E, LLC	OH.....	NIA.....	Nationwide Life Insurance Company.....	ownership.....	...100.000	Nationwide Mutual Insurance Company.....N.....	
0140	Nationwide.....		26-4737157..				Nationwide Life Tax Credit Partners 2009-F, LLC	OH.....	NIA.....	Nationwide Life Insurance Company.....	ownership.....	...100.000	Nationwide Mutual Insurance Company.....N.....	
0140	Nationwide.....		27-1362364..				Nationwide Life Tax Credit Partners 2009-I, LLC	OH.....	NIA.....	Nationwide Life Insurance Company.....	other.....0.010	Nationwide Mutual Insurance Company.....N.....	1.....
0140	Nationwide.....		45-0469525..				Nationwide Life Tax Credit Partners No. 1, LLC	OH.....	NIA.....	Nationwide Life Insurance Company.....	other.....0.010	Nationwide Mutual Insurance Company.....N.....	1.....
0140	Nationwide.....	42110..	75-1780981..				Nationwide Lloyds.....	TX.....	IA.....	n/a.....	contract.....	Nationwide Mutual Insurance Company.....N.....	2.....
0140	Nationwide.....		42-1373380..				Nationwide Member Solutions Agency Inc.....	IA.....	NIA.....	ALLIED Group, Inc.....	ownership.....	...100.000	Nationwide Mutual Insurance Company.....N.....	
0140	Nationwide.....		75-3191025..				Nationwide Mutual Capital I, LLC.....	DE.....	NIA.....	Nationwide Mutual Capital, LLC.....	ownership.....	...100.000	Nationwide Mutual Insurance Company.....N.....	
0140	Nationwide.....		75-3191025..				Nationwide Mutual Capital, LLC.....	OH.....	NIA.....	Nationwide Mutual Insurance Company.....	ownership.....	...100.000	Nationwide Mutual Insurance Company.....N.....	
0140	Nationwide.....	23779..	31-4177110..				Nationwide Mutual Fire Insurance Company.....	OH.....	OTH.....	Other non-Nationwide.....	n/a.....	Other non-Nationwide.....N.....	2.....
0140	Nationwide.....	23787..	31-4177100..				Nationwide Mutual Insurance Company.....	OH.....	UDP.....	Other non-Nationwide.....	n/a.....	Other non-Nationwide.....N.....	2.....
0140	Nationwide.....		34-2012765..				Nationwide Private Equity Fund, LLC.....	OH.....	NIA.....	Nationwide Mutual Insurance Company.....	ownership.....	...100.000	Nationwide Mutual Insurance Company.....N.....	
0140	Nationwide.....	37877..	31-0970750..				Nationwide Property and Casualty Insurance Company	OH.....	IA.....	Nationwide Mutual Insurance Company.....	ownership.....	...100.000	Nationwide Mutual Insurance Company.....N.....	
0140	Nationwide.....		31-1486309..				Nationwide Realty Investors, Ltd.....	OH.....	NIA.....	Nationwide Mutual Insurance Company.....	ownership.....97.000	Nationwide Mutual Insurance Company.....N.....	1.....

SCHEDULE Y

PART 1A - DETAIL OF INSURANCE HOLDING COMPANY SYSTEM

Q13.6

1	2	3	4	5	6	7	8	9	10	11	12	13	14	15	16
Group Code	Group Name	NAIC Company Code	ID Number	Federal RSSD	CIK	Name of Securities Exchange if Publicly Traded (U.S. or International)	Names of Parent, Subsidiaries or Affiliates	Domiciliary Location	Relationship to Reporting Entity	Directly Controlled by (Name of Entity/Person)	Type of Control (Ownership Board, Management, Attorney-in-Fact, Influence, Other)	If Control is Ownership Provide Percentage	Ultimate Controlling Entity(ies)/Person(s)	Is an SCA Filing Required? (Y/N)	*
0140	Nationwide.....	31-1486309..	Nationwide Realty Investors, Ltd.....	OH.....	NIA.....	Nationwide Indemnity Company.....	ownership.....3.000	Nationwide Mutual Insurance Company.....N.....	1.....
0140	Nationwide.....	31-1486309..	Nationwide Realty Management, LLC.....	OH.....	NIA.....	Nationwide Realty Investors, Ltd.....	ownership.....100.000	Nationwide Mutual Insurance Company.....N.....
0140	Nationwide.....	n/a.....	Nationwide Realty Services, Ltd.....	OH.....	NIA.....	Nationwide Mutual Insurance Company.....	ownership.....100.000	Nationwide Mutual Insurance Company.....N.....
0140	Nationwide.....	73-0948330..	Nationwide Retirement Solutions, Inc.....	DE.....	NIA.....	NFS Distributors, Inc.....	ownership.....100.000	Nationwide Mutual Insurance Company.....N.....
0140	Nationwide.....	83-2250056..	Nationwide SBL, LLC.....	OH.....	NIA.....	Nationwide Life and Annuity Insurance Company	ownership.....100.000	Nationwide Mutual Insurance Company.....N.....
0140	Nationwide.....	36-2434406..	Nationwide Securities, LLC.....	OH.....	NIA.....	NFS Distributors, Inc.....	ownership.....100.000	Nationwide Mutual Insurance Company.....N.....
0140	Nationwide.....	31-4177100..	Nationwide Services Company, LLC.....	OH.....	NIA.....	Nationwide Mutual Insurance Company.....	ownership.....100.000	Nationwide Mutual Insurance Company.....N.....
0140	Nationwide.....	27-0743545..	Nationwide Tax Credit Partners 2009-G, LLC.....	OH.....	NIA.....	Nationwide Mutual Insurance Company.....	other.....0.010	Nationwide Mutual Insurance Company.....N.....	1.....
0140	Nationwide.....	27-0768791..	Nationwide Tax Credit Partners 2009-H, LLC.....	OH.....	NIA.....	Nationwide Mutual Insurance Company.....	ownership.....100.000	Nationwide Mutual Insurance Company.....N.....
0140	Nationwide.....	46-1952215..	Nationwide Tax Credit Partners 2013-A, LLC.....	OH.....	NIA.....	Nationwide Life Insurance Company.....	other.....0.010	Nationwide Mutual Insurance Company.....N.....	1.....
0140	Nationwide.....	46-1971926..	Nationwide Tax Credit Partners 2013-B, LLC.....	OH.....	NIA.....	Nationwide Life Insurance Company.....	other.....0.010	Nationwide Mutual Insurance Company.....N.....	1.....
0140	Nationwide.....	31-1592130..2729677	Nationwide Trust Company, FSB.....	USA.....	OTH.....	Nationwide Financial Services, Inc.....	ownership.....100.000	Nationwide Mutual Insurance Company.....N.....	2.....
0140	Nationwide.....	20-5976272..	Nationwide Ventures, LLC.....	OH.....	NIA.....	Nationwide Mutual Insurance Company.....	ownership.....100.000	Nationwide Mutual Insurance Company.....N.....
0140	Nationwide.....	31-0871532..	NBS Insurance Agency, Inc.....	OH.....	IA.....	Nationwide Mutual Insurance Company.....	ownership.....100.000	Nationwide Mutual Insurance Company.....N.....
0140	Nationwide.....	11-3651828..	ND La Quinta Partners, LLC.....	DE.....	NIA.....	Nationwide Realty Investors, Ltd.....	ownership.....95.000	Nationwide Mutual Insurance Company.....N.....	1.....
0140	Nationwide.....	31-1630871..	NFS Distributors, Inc.....	DE.....	NIA.....	Nationwide Financial Services, Inc.	ownership.....100.000	Nationwide Mutual Insurance Company.....N.....
0140	Nationwide.....	14-1892640..	NHT XII Tax Credit Fund, LLC.....	DC.....	NIA.....	Nationwide Life Insurance Company.....	ownership.....49.990	Nationwide Mutual Insurance Company.....N.....	1.....
0140	Nationwide.....	14-1892640..	NHT XII Tax Credit Fund, LLC.....	DC.....	NIA.....	Nationwide Assurance Company	ownership.....25.000	Nationwide Mutual Insurance Company.....N.....	1.....
0140	Nationwide.....	14-1892640..	NHT XII Tax Credit Fund, LLC.....	DC.....	NIA.....	Nationwide Mutual Insurance Company.....	ownership.....25.000	Nationwide Mutual Insurance Company.....N.....	1.....
0140	Nationwide.....	82-5195340..	NLIC REO Holdings, LLC.....	OH.....	NIA.....	Nationwide Life Insurance Company.....	ownership.....100.000	Nationwide Mutual Insurance Company.....N.....
0140	Nationwide.....	82-5194959..	NMIC REO Holdings, LLC.....	OH.....	NIA.....	Nationwide Mutual Insurance Company.....	ownership.....100.000	Nationwide Mutual Insurance Company.....N.....
0140	Nationwide.....	46-3762545..	NNOV8, LLC.....	OH.....	NIA.....	Nationwide Mutual Insurance Company.....	ownership.....100.000	Nationwide Mutual Insurance Company.....N.....
0140	Nationwide.....	20-4939866..	North of Third, LLC.....	OH.....	NIA.....	NRI Equity Land Investments, LLC.....	ownership.....100.000	Nationwide Mutual Insurance Company.....N.....
.....	61-1753500..	Northstar Master Property Owners Association, Inc.	OH.....	OTH.....	Other non-Nationwide.....	n/a.....	Other non-Nationwide.....N.....	2.....
0140	Nationwide.....	26-4083354..	Northstar Residential Development, LLC.....	OH.....	NIA.....	Nationwide Realty Investors, Ltd.....	ownership.....50.000	Nationwide Mutual Insurance Company.....N.....	1.....
0140	Nationwide.....	31-1486309..	NRI Arena, LLC.....	OH.....	NIA.....	Nationwide Realty Investors, Ltd.....	ownership.....100.000	Nationwide Mutual Insurance Company.....N.....
0140	Nationwide.....	31-1486309..	NRI Brookside, LLC.....	OH.....	NIA.....	Nationwide Realty Investors, Ltd.....	ownership.....100.000	Nationwide Mutual Insurance Company.....N.....
0140	Nationwide.....	31-1486309..	NRI Builders, LLC.....	OH.....	NIA.....	Nationwide Realty Investors, Ltd.....	ownership.....100.000	Nationwide Mutual Insurance Company.....N.....
0140	Nationwide.....	31-1486309..	NRI Cavasson, LLC.....	OH.....	NIA.....	Nationwide Realty Investors, Ltd.....	ownership.....100.000	Nationwide Mutual Insurance Company.....N.....
0140	Nationwide.....	31-1486309..	NRI Communities/Harris Blvd., LLC.....	OH.....	NIA.....	Nationwide Realty Investors, Ltd.....	ownership.....100.000	Nationwide Mutual Insurance Company.....N.....
0140	Nationwide.....	31-1486309..	NRI Corporate Housing, LLC.....	OH.....	NIA.....	Nationwide Realty Investors, Ltd.....	ownership.....100.000	Nationwide Mutual Insurance Company.....N.....
0140	Nationwide.....	31-1486309..	NRI Cramer Creek, LLC.....	OH.....	NIA.....	Nationwide Realty Investors, Ltd.....	ownership.....100.000	Nationwide Mutual Insurance Company.....N.....
0140	Nationwide.....	20-4939866..	NRI Equity Land Investments, LLC.....	OH.....	NIA.....	Nationwide Realty Investors, Ltd.....	ownership.....80.000	Nationwide Mutual Insurance Company.....N.....	1.....
0140	Nationwide.....	26-0212217..	NRI Equity Tampa, LLC.....	OH.....	NIA.....	Nationwide Realty Investors, Ltd.....	ownership.....100.000	Nationwide Mutual Insurance Company.....N.....

SCHEDULE Y

PART 1A - DETAIL OF INSURANCE HOLDING COMPANY SYSTEM

Q13.7

1	2	3	4	5	6	7	8	9	10	11	12	13	14	15	16
Group Code	Group Name	NAIC Company Code	ID Number	Federal RSSD	CIK	Name of Securities Exchange if Publicly Traded (U.S. or International)	Names of Parent, Subsidiaries or Affiliates	Domiciliary Location	Relationship to Reporting Entity	Directly Controlled by (Name of Entity/Person)	Type of Control (Ownership Board, Management, Attorney-in-Fact, Influence, Other)	If Control is Ownership Provide Percentage	Ultimate Controlling Entity(ies)/Person(s)	Is an SCA Filing Required? (Y/N)	*
0140	Nationwide.....	31-1486309..	NRI Office Ventures, Ltd.....	OH.....	NIA.....	Nationwide Realty Investors, Ltd.....	ownership.....	...100.000	Nationwide Mutual Insurance Company.....N.....
0140	Nationwide.....	31-1580283..	NRI Telecom, LLC.....	OH.....	NIA.....	NWD Investments, LLC.....	ownership.....	...100.000	Nationwide Mutual Insurance Company.....N.....
0140	Nationwide.....	31-1486309..	NRI-Rivulon, LLC.....	OH.....	NIA.....	Nationwide Realty Investors, Ltd.....	ownership.....	...100.000	Nationwide Mutual Insurance Company.....N.....
0140	Nationwide.....	26-4083354..	NS Developers, LLC.....	OH.....	NIA.....	Northstar Residential Development, LLC.....	ownership.....	...100.000	Nationwide Mutual Insurance Company.....N.....
0140	Nationwide.....	45-3123274..	NTCIF-2011 Georgia State Investor, LLC.....	OH.....	NIA.....	Nationwide Property and Casualty Company...	ownership.....	...100.000	Nationwide Mutual Insurance Company.....N.....
0140	Nationwide.....	90-0729552..	NTCIF-2011, LLC.....	OH.....	NIA.....	Nationwide Mutual Insurance Company.....	ownership.....50.000	Nationwide Mutual Insurance Company.....N.....	1.....
0140	Nationwide.....	90-0729552..	NTCIF-2011, LLC.....	OH.....	NIA.....	Nationwide Mutual Fire Insurance Company...	ownership.....50.000	Nationwide Mutual Insurance Company.....N.....	1.....
0140	Nationwide.....	27-4700627..	NTCP 2011-A, LLC.....	OH.....	OTH.....	Nationwide Life Insurance Company.....	other.....0.010	Nationwide Mutual Insurance Company.....N.....	2.....
0140	Nationwide.....	46-0741029..	NTCP 2012-A, LLC.....	OH.....	OTH.....	Nationwide Life Insurance Company.....	other.....0.010	Nationwide Mutual Insurance Company.....N.....	2.....
0140	Nationwide.....	46-3309896..	NTCP 2013-C, LLC.....	OH.....	OTH.....	Nationwide Life Insurance Company.....	other.....0.010	Nationwide Mutual Insurance Company.....N.....	2.....
0140	Nationwide.....	46-4111078..	NTCP 2014-A, LLC.....	OH.....	OTH.....	Nationwide Life Insurance Company.....	other.....0.010	Nationwide Mutual Insurance Company.....N.....	2.....
0140	Nationwide.....	47-1404116..	NTCP 2014-B, LLC.....	OH.....	OTH.....	Nationwide Life Insurance Company.....	other.....0.010	Nationwide Mutual Insurance Company.....N.....	2.....
0140	Nationwide.....	47-1413242..	NTCP 2014-C, LLC.....	OH.....	OTH.....	Nationwide Life Insurance Company.....	other.....0.010	Nationwide Mutual Insurance Company.....N.....	2.....
0140	Nationwide.....	47-3909345..	NTCP 2015-A, LLC.....	OH.....	OTH.....	Nationwide Life Insurance Company.....	other.....0.010	Nationwide Mutual Insurance Company.....N.....	2.....
0140	Nationwide.....	47-4148470..	NTCP 2015-B, LLC.....	OH.....	OTH.....	Nationwide Life Insurance Company.....	other.....0.010	Nationwide Mutual Insurance Company.....N.....	2.....
0140	Nationwide.....	81-3836925..	NTCP 2016-A, LLC.....	OH.....	NIA.....	Nationwide Life Insurance Company.....	ownership.....	...100.000	Nationwide Mutual Insurance Company.....N.....
0140	Nationwide.....	82--2015065..	NTCP 2017-A, LLC.....	OH.....	NIA.....	Nationwide Life Insurance Company.....	ownership.....	...100.000	Nationwide Mutual Insurance Company.....N.....
0140	Nationwide.....	81-0936428..	NW Private Debt, LLC.....	OH.....	NIA.....	Nationwide Mutual Insurance Company.....	ownership.....	...100.000	Nationwide Mutual Insurance Company.....N.....
0140	Nationwide.....	26-1903919..	NW REI, LLC.....	DE.....	NIA.....	Nationwide Mutual Insurance Company.....	ownership.....	...100.000	Nationwide Mutual Insurance Company.....N.....
0140	Nationwide.....	81-2326191..	NW-442 Ocean, LLC.....	OH.....	NIA.....	NW REI (NLIC), LLC.....	ownership.....	...100.000	Nationwide Mutual Insurance Company.....N.....
0140	Nationwide.....	46-3654078..	NW-Amesbury, LLC.....	OH.....	NIA.....	NW-REI, LLC.....	ownership.....	...100.000	Nationwide Mutual Insurance Company.....N.....
0140	Nationwide.....	81-1263284..	NW-Amesbury II, LLC.....	OH.....	NIA.....	Nationwide Mutual Insurance Company.....	ownership.....	...100.000	Nationwide Mutual Insurance Company.....N.....
0140	Nationwide.....	83-2056769..	NW-Athens Way, LLC.....	OH.....	NIA.....	Nationwide Life Insurance Company.....	ownership.....	...100.000	Nationwide Mutual Insurance Company.....N.....
0140	Nationwide.....	81-1246932..	NW-Baseline, LLC.....	OH.....	NIA.....	Nationwide Mutual Insurance Company.....	ownership.....	...100.000	Nationwide Mutual Insurance Company.....N.....
0140	Nationwide.....	81-1869861..	NW-Beech, LLC.....	OH.....	NIA.....	NW REI, (NMFIC), LLC.....	ownership.....	...100.000	Nationwide Mutual Insurance Company.....N.....
0140	Nationwide.....	47-4999493..	NW-Bellevue, LLC.....	OH.....	NIA.....	NW REI, LLC.....	ownership.....	...100.000	Nationwide Mutual Insurance Company.....N.....
0140	Nationwide.....	83-0553339..	NW-Buena Vista, LLC.....	OH.....	NIA.....	Nationwide Mutual Fire Insurance Company...	ownership.....	...100.000	Nationwide Mutual Insurance Company.....N.....
0140	Nationwide.....	83-1613456..	NW-Cameron Village, LLC.....	OH.....	NIA.....	Nationwide Life Insurance Company.....	ownership.....	...100.000	Nationwide Mutual Insurance Company.....N.....
0140	Nationwide.....	81-1211881..	NW-Castle Rock, LLC.....	OH.....	NIA.....	Nationwide Mutual Insurance Company.....	ownership.....	...100.000	Nationwide Mutual Insurance Company.....N.....
0140	Nationwide.....	46-3674167..	NW-Cedar Springs, LLC.....	OH.....	NIA.....	NW REI, LLC.....	ownership.....	...100.000	Nationwide Mutual Insurance Company.....N.....
0140	Nationwide.....	82-2957977..	NW-Civita, LLC.....	OH.....	NIA.....	Nationwide Life Insurance Company.....	ownership.....	...100.000	Nationwide Mutual Insurance Company.....N.....
0140	Nationwide.....	82-2958440..	NW-Civita NLAIC, LLC.....	OH.....	NIA.....	Nationwide Life and Annuity Insurance Company	ownership.....	...100.000	Nationwide Mutual Insurance Company.....N.....
0140	Nationwide.....	81-1285433..	NW-College Park, LLC.....	OH.....	NIA.....	Nationwide Mutual Insurance Company.....	ownership.....	...100.000	Nationwide Mutual Insurance Company.....N.....
0140	Nationwide.....	31-1580283..	NWD 205 Vine, LLC.....	OH.....	NIA.....	NWD Investments, LLC.....	ownership.....	...100.000	Nationwide Mutual Insurance Company.....N.....
0140	Nationwide.....	31-1580283..	NWD 225 Nationwide, LLC.....	OH.....	NIA.....	NWD Investments, LLC.....	ownership.....	...100.000	Nationwide Mutual Insurance Company.....N.....

SCHEDULE Y

PART 1A - DETAIL OF INSURANCE HOLDING COMPANY SYSTEM

Q13.8

1	2	3	4	5	6	7	8	9	10	11	12	13	14	15	16
Group Code	Group Name	NAIC Company Code	ID Number	Federal RSSD	CIK	Name of Securities Exchange if Publicly Traded (U.S. or International)	Names of Parent, Subsidiaries or Affiliates	Domiciliary Location	Relationship to Reporting Entity	Directly Controlled by (Name of Entity/Person)	Type of Control (Ownership Board, Management, Attorney-in-Fact, Influence, Other)	If Control is Ownership Provide Percentage	Ultimate Controlling Entity(ies)/Person(s)	Is an SCA Filing Required? (Y/N)	*
0140	Nationwide.....	31-1580283..	NWD 230 West, LLC.....	OH.....	NIA.....	NWD Investments, LLC.....	ownership.....	...100.000	Nationwide Mutual Insurance Company.....N.....
0140	Nationwide.....	31-1580283..	NWD 240 Nationwide, LLC.....	OH.....	NIA.....	NWD Investments, LLC.....	ownership.....	...100.000	Nationwide Mutual Insurance Company.....N.....
0140	Nationwide.....	31-1580283..	NWD 250 Brodbelt, LLC.....	OH.....	NIA.....	NWD Investments, LLC.....	ownership.....	...100.000	Nationwide Mutual Insurance Company.....N.....
0140	Nationwide.....	31-1580283..	NWD 250 West, LLC.....	OH.....	NIA.....	NWD Investments, LLC.....	ownership.....	...100.000	Nationwide Mutual Insurance Company.....N.....
0140	Nationwide.....	31-1580283..	NWD 265 Neil, LLC.....	OH.....	NIA.....	NWD Investments, LLC.....	ownership.....	...100.000	Nationwide Mutual Insurance Company.....N.....
0140	Nationwide.....	31-1580283..	NWD 275 Marconi, LLC.....	OH.....	NIA.....	NWD Investments, LLC.....	ownership.....	...100.000	Nationwide Mutual Insurance Company.....N.....
0140	Nationwide.....	31-1580283..	NWD 300 Neil, LLC.....	OH.....	NIA.....	NWD Investments, LLC.....	ownership.....	...100.000	Nationwide Mutual Insurance Company.....N.....
0140	Nationwide.....	31-1580283..	NWD 300 Spring, LLC.....	OH.....	NIA.....	NWD Investments, LLC.....	ownership.....	...100.000	Nationwide Mutual Insurance Company.....N.....
0140	Nationwide.....	31-1580283..	NWD 355 McConnell, LLC.....	OH.....	NIA.....	NWD Investments, LLC.....	ownership.....	...100.000	Nationwide Mutual Insurance Company.....N.....
0140	Nationwide.....	31-1580283..	NWD 425 Nationwide, LLC.....	OH.....	NIA.....	NWD Investments, LLC.....	ownership.....	...100.000	Nationwide Mutual Insurance Company.....N.....
0140	Nationwide.....	31-1580283..	NWD 500 Nationwide, LLC.....	OH.....	NIA.....	NWD Investments, LLC.....	ownership.....	...100.000	Nationwide Mutual Insurance Company.....N.....
0140	Nationwide.....	31-1580283..	NWD Arena Crossing, LLC.....	OH.....	NIA.....	NWD Investments, LLC.....	ownership.....	...100.000	Nationwide Mutual Insurance Company.....N.....
0140	Nationwide.....	31-1580283..	NWD Arena District I, LLC.....	OH.....	NIA.....	NWD Investments, LLC.....	ownership.....	...100.000	Nationwide Mutual Insurance Company.....N.....
0140	Nationwide.....	31-1580283..	NWD Arena District II, LLC.....	OH.....	NIA.....	NWD Investments, LLC.....	ownership.....	...100.000	Nationwide Mutual Insurance Company.....N.....
0140	Nationwide.....	31-1580283..	NWD Arena District MM, LLC.....	OH.....	NIA.....	NWD Investments, LLC.....	ownership.....	...100.000	Nationwide Mutual Insurance Company.....N.....
0140	Nationwide.....	31-1580283..	NWD Arena District PW, LLC.....	OH.....	NIA.....	NWD Investments, LLC.....	ownership.....	...100.000	Nationwide Mutual Insurance Company.....N.....
0140	Nationwide.....	31-1580283..	NWD Arena District V, LLC.....	OH.....	NIA.....	NWD Investments, LLC.....	ownership.....	...100.000	Nationwide Mutual Insurance Company.....N.....
0140	Nationwide.....	31-1580283..	NWD Athletic Club, LLC.....	OH.....	NIA.....	NWD Investments, LLC.....	ownership.....	...100.000	Nationwide Mutual Insurance Company.....N.....
0140	Nationwide.....	31-1580283..	NWD Brodbelt, LLC.....	OH.....	NIA.....	NWD Investments, LLC.....	ownership.....	...100.000	Nationwide Mutual Insurance Company.....N.....
0140	Nationwide.....	30-0876022..	NWD Franklinton, LLC.....	DE.....	NIA.....	Nationwide Realty Investors, Ltd.....	ownership.....	...80.000	Nationwide Mutual Insurance Company.....N.....	1.....
0140	Nationwide.....	31-1636299..	NWD Investment Management, Inc.....	DE.....	NIA.....	Nationwide Corporation.....	ownership.....	...100.000	Nationwide Mutual Insurance Company.....N.....
0140	Nationwide.....	31-1580283..	NWD Investments, LLC.....	OH.....	NIA.....	Nationwide Realty Investors, Ltd.....	ownership.....	...80.000	Nationwide Mutual Insurance Company.....N.....	1.....
0140	Nationwide.....	35-2642005..	NWGH, LLC.....	DE.....	OTH.....	Nationwide Realty Investors, Ltd.....	ownership.....	...75.000	Nationwide Mutual Insurance Company.....N.....	2.....
0140	Nationwide.....	81-2327221..	NW-Deerfield II, LLC.....	OH.....	NIA.....	NW REI, LLC.....	ownership.....	...100.000	Nationwide Mutual Insurance Company.....N.....
0140	Nationwide.....	81-4401901..	NW-Grapevine Bluffs, LLC.....	OH.....	NIA.....	Nationwide Mutual Insurance Company.....	ownership.....	...100.000	Nationwide Mutual Insurance Company.....N.....
0140	Nationwide.....	46-4330384..	NW-Hudnall, LLC.....	OH.....	NIA.....	NW REI, LLC.....	ownership.....	...100.000	Nationwide Mutual Insurance Company.....N.....
0140	Nationwide.....	82-1881115..	NW-Ironhorse, LLC.....	OH.....	NIA.....	Nationwide Mutual Insurance Company.....	ownership.....	...100.000	Nationwide Mutual Insurance Company.....N.....
0140	Nationwide.....	47-2482818..	NW-Jasper WAG, LLC.....	OH.....	NIA.....	NW REI, LLC.....	ownership.....	...100.000	Nationwide Mutual Insurance Company.....N.....
0140	Nationwide.....	81-1232565..	NW-Lenexa, LLC.....	OH.....	NIA.....	NW REI (NLAIC), LLC.....	ownership.....	...100.000	Nationwide Mutual Insurance Company.....N.....
0140	Nationwide.....	81-1671648..	NW-Lenexa II, LLC.....	OH.....	NIA.....	NW REI (NLAIC), LLC.....	ownership.....	...100.000	Nationwide Mutual Insurance Company.....N.....
0140	Nationwide.....	81-5146596..	NW-Logan, LLC.....	OH.....	NIA.....	NW REI, LLC.....	ownership.....	...100.000	Nationwide Mutual Insurance Company.....N.....
0140	Nationwide.....	81-1361460..	NW-Marketplace, LLC.....	OH.....	NIA.....	Nationwide Mutual Insurance Company.....	ownership.....	...100.000	Nationwide Mutual Insurance Company.....N.....
0140	Nationwide.....	82-4777464..	NW-Mayo, LLC.....	OH.....	NIA.....	NW REI, LLC.....	ownership.....	...100.000	Nationwide Mutual Insurance Company.....N.....
0140	Nationwide.....	81-5146266..	NW-Millenia, LLC.....	OH.....	NIA.....	NW REI, LLC.....	ownership.....	...100.000	Nationwide Mutual Insurance Company.....N.....
0140	Nationwide.....	46-2457568..	NW-Montrose, LLC.....	OH.....	NIA.....	NW REI, LLC.....	ownership.....	...100.000	Nationwide Mutual Insurance Company.....N.....
0140	Nationwide.....	83-2260477..	NW-ORBDP, LLC.....	OH.....	NIA.....	NW REI (NMFIC), LLC.....	ownership.....	...100.000	Nationwide Mutual Insurance Company.....N.....
0140	Nationwide.....	46-3888719..	NW-Park 288, LLC.....	OH.....	NIA.....	NW REI, LLC.....	ownership.....	...100.000	Nationwide Mutual Insurance Company.....N.....

HARLEYSVILLE LIFE INSURANCE COMPANY

SCHEDULE Y

PART 1A - DETAIL OF INSURANCE HOLDING COMPANY SYSTEM

Q13.9

1	2	3	4	5	6	7	8	9	10	11	12	13	14	15	16
Group Code	Group Name	NAIC Company Code	ID Number	Federal RSSD	CIK	Name of Securities Exchange if Publicly Traded (U.S. or International)	Names of Parent, Subsidiaries or Affiliates	Domiciliary Location	Relationship to Reporting Entity	Directly Controlled by (Name of Entity/Person)	Type of Control (Ownership Board, Management, Attorney-in-Fact, Influence, Other)	If Control is Ownership Provide Percentage	Ultimate Controlling Entity(ies)/Person(s)	Is an SCA Filing Required? (Y/N)	*
0140	Nationwide.....		83-0849392..				NW-Park Place, LLC.....	OH.....	NIA.....	Nationwide Life Insurance Company.....	ownership.....	...100.000	Nationwide Mutual Insurance Company.....	...N.....	
0140	Nationwide.....		47-1740812..				NW-Peachtree, LLC.....	OH.....	NIA.....	NW REI, LLC.....	ownership.....	...100.000	Nationwide Mutual Insurance Company.....	...N.....	
0140	Nationwide.....		46-2469044..				NW-Portales, LLC.....	OH.....	NIA.....	NW REI, LLC.....	ownership.....	...100.000	Nationwide Mutual Insurance Company.....	...N.....	
0140	Nationwide.....		47-2449044..				NW-Promenade at Madison, LLC.....	OH.....	NIA.....	NW REI, LLC.....	ownership.....	...100.000	Nationwide Mutual Insurance Company.....	...N.....	
0140	Nationwide.....		83-2173918..				NW-Radius, LLC.....	OH.....	NIA.....	NW REI (NLIC), LLC.....	ownership.....	...100.000	Nationwide Mutual Insurance Company.....	...N.....	
0140	Nationwide.....		82-4016536..				NW-Santa Cruz, LLC.....	OH.....	NIA.....	NW REI, LLC.....	ownership.....	...100.000	Nationwide Mutual Insurance Company.....	...N.....	
0140	Nationwide.....		82-5083560..				NW-Twin Lakes, LLC.....	OH.....	NIA.....	NW REI (NMFIC), LLC.....	ownership.....	...100.000	Nationwide Mutual Insurance Company.....	...N.....	
0140	Nationwide.....		46-1100378..				NW-Triangle, LLC.....	OH.....	NIA.....	NW REI, LLC.....	ownership.....	...100.000	Nationwide Mutual Insurance Company.....	...N.....	
0140	Nationwide.....		46-5764783..				NW-Tyson, LLC.....	OH.....	NIA.....	NW REI, LLC.....	ownership.....	...100.000	Nationwide Mutual Insurance Company.....	...N.....	
0140	Nationwide.....		81-1603024..				NW REI (NLAIC), LLC.....	OH.....	NIA.....	Nationwide Life and Annuity Insurance Company	ownership.....	...100.000	Nationwide Mutual Insurance Company.....	...N.....	
0140	Nationwide.....		81-1619428..				NW REI (NLIC), LLC.....	OH.....	NIA.....	Nationwide Life Insurance Company.....	ownership.....	...100.000	Nationwide Mutual Insurance Company.....	...N.....	
0140	Nationwide.....		81-1861190..				NW REI (NMFIC), LLC.....	OH.....	NIA.....	Nationwide Mutual Fire Insurance Company...	ownership.....	...100.000	Nationwide Mutual Insurance Company.....	...N.....	
0140	Nationwide.....		82-4876417..				NW Village Park, LLC.....	OH.....	NIA.....	NW REI, LLC.....	ownership.....	...100.000	Nationwide Mutual Insurance Company.....	...N.....	
0140	Nationwide.....		31-0947092..				OCH Company, LLC.....	OH.....	NIA.....	Nationwide Realty Investors, Ltd.....	ownership.....	...100.000	Nationwide Mutual Insurance Company.....	...N.....	
0140	Nationwide.....		31-0947092..				Ohio Center Hotel Company Limited.....	OH.....	NIA.....	Nationwide Realty Investors, Ltd.	ownership.....	...55.250	Nationwide Mutual Insurance Company.....	...N.....	1.....
0140	Nationwide.....		31-0947092..				Ohio Center Hotel Company Limited.....	OH.....	NIA.....	OCH Company, LLC.....	ownership.....	...1.000	Nationwide Mutual Insurance Company.....	...N.....	1.....
0140	Nationwide.....		26-0263012..				Old Track Street Owners Association, Inc.....	OH.....	OTH.....	Other non-Nationwide.....	n/a.....		Other non-Nationwide.....	...N.....	2.....
0140	Nationwide.....	13999..	27-1712056..				Olentangy Reinsurance, LLC.....	VT.....	IA.....	Nationwide Life and Annuity Insurance Company	ownership.....	...100.000	Nationwide Mutual Insurance Company.....	...N.....	
0140	Nationwide.....		47-1923444..				On Your Side Nationwide Insurance Agency, Inc.	OH.....	NIA.....	Nationwide Mutual Insurance Company.....	ownership.....	...100.000	Nationwide Mutual Insurance Company.....	...N.....	
0140	Nationwide.....		n/a.....				OYS Fund LLC.....	DE.....	NIA.....	Nationwide Mutual Insurance Company.....	ownership.....	...100.000	Nationwide Mutual Insurance Company.....	...N.....	
0140	Nationwide.....		n/a.....				Park 288 Industrial, LLC.....	TX.....	OTH.....	Nationwide Mutual Insurance Company.....	Investor member / no control	...95.000	other non-Nationwide.....	...N.....	2.....
			32-0516252..				Parks Edge Condominium Home Owners Association	OH.....	OTH.....	Other non-Nationwide.....	n/a.....		Other non-Nationwide.....	...N.....	2.....
0140	Nationwide.....		31-1486309..				Perimeter A, Ltd.....	OH.....	NIA.....	Nationwide Realty Investors, Ltd.....	ownership.....	...100.000	Nationwide Mutual Insurance Company.....	...N.....	
0140	Nationwide.....		20-1169305..				Polyphony Fund LLC.....	DE.....	NIA.....	Nationwide Mutual Insurance Company.....	ownership.....	...100.000	Nationwide Mutual Insurance Company.....	...N.....	
0140	Nationwide.....		39-1907217..				Premier Agency, Inc.....	IA.....	NIA.....	ALLIED Group, Inc.....	ownership.....	...100.000	Nationwide Mutual Insurance Company.....	...N.....	
0140	Nationwide.....		75-2938844..				Registered Investment Advisors Services, Inc..	TX.....	NIA.....	Nationwide Financial Services, Inc.....	ownership.....	...100.000	Nationwide Mutual Insurance Company.....	...N.....	
0140	Nationwide.....		82-0549218..				Retention Alternatives Ltd.....	BMU.....	IA.....	Nationwide Mutual Fire Insurance Company...	ownership.....	...100.000	Nationwide Mutual Insurance Company.....	...N.....	
0140	Nationwide.....		20-2726014..				Riverview Diversified Opportunities, LLC.....	DE.....	OTH.....	Nationwide Mutual Insurance Company.....	ownership.....		Nationwide Mutual Insurance Company.....	...N.....	2.....
0140	Nationwide.....		20-2726014..				Riverview Diversified Opportunities, LLC.....	DE.....	OTH.....	Nationwide Mutual Fire Insurance Company...	ownership.....		Nationwide Mutual Insurance Company.....	...N.....	2.....
0140	Nationwide.....		20-2726014..				Riverview Diversified Opportunities, LLC.....	DE.....	OTH.....	Nationwide Life Insurance Company.....	ownership.....		Nationwide Mutual Insurance Company.....	...N.....	2.....

HARLEYSVILLE LIFE INSURANCE COMPANY

SCHEDULE Y

PART 1A - DETAIL OF INSURANCE HOLDING COMPANY SYSTEM

1	2	3	4	5	6	7	8	9	10	11	12	13	14	15	16
Group Code	Group Name	NAIC Company Code	ID Number	Federal RSSD	CIK	Name of Securities Exchange if Publicly Traded (U.S. or International)	Names of Parent, Subsidiaries or Affiliates	Domiciliary Location	Relationship to Reporting Entity	Directly Controlled by (Name of Entity/Person)	Type of Control (Ownership Board, Management, Attorney-in-Fact, Influence, Other)	If Control is Ownership Provide Percentage	Ultimate Controlling Entity(ies)/Person(s)	Is an SCA Filing Required? (Y/N)	*
0140	Nationwide.....	26-0384865..	Riverview Multi Series Fund, LL - Class Event..	DE.....	NIA.....	Nationwide Mutual Insurance Company.....	ownership.....100.000	Nationwide Mutual Insurance Company.....N.....
0140	Nationwide.....	20-8027258..	Riverview Multi Series Fund, LL - Class N.....	DE.....	NIA.....	Nationwide Mutual Insurance Company.....	ownership.....100.000	Nationwide Mutual Insurance Company.....N.....
0140	Nationwide.....	15580..	31-1117969..	Scottsdale Indemnity Company.....	OH.....	IA.....	Nationwide Mutual Insurance Company.....	ownership.....100.000	Nationwide Mutual Insurance Company.....N.....
0140	Nationwide.....	41297..	31-1024978..	Scottsdale Insurance Company.....	OH.....	IA.....	Nationwide Mutual Insurance Company.....	ownership.....100.000	Nationwide Mutual Insurance Company.....N.....
0140	Nationwide.....	10672..	86-0835870..	Scottsdale Surplus Lines Insurance Company...	AZ.....	IA.....	Scottsdale Insurance Company.....	ownership.....100.000	Nationwide Mutual Insurance Company.....N.....
0140	Nationwide.....	91-2158214..	The Hideaway Club.....	CA.....	OTH.....	Other non-Nationwide.....	n/a.....	Other non-Nationwide.....N.....	2.....
0140	Nationwide.....	20-3541511..	The Madison Club.....	CA.....	OTH.....	Other non-Nationwide.....	n/a.....	Other non-Nationwide.....N.....	2.....
0140	Nationwide.....	31-1610040..	The Waterfront Partners, LLC.....	OH.....	NIA.....	Nationwide Realty Investors, Ltd.....	ownership.....50.000	Nationwide Mutual Insurance Company.....N.....	1.....
0140	Nationwide.....	52-2031677..	THI Holdings (Delaware), Inc.....	DE.....	NIA.....	Nationwide Mutual Insurance Company.....	ownership.....100.000	Nationwide Mutual Insurance Company.....Y.....
0140	Nationwide.....	74-2825853..	Titan Auto Insurance of New Mexico, Inc.....	NM.....	IA.....	THI Holdings (Delaware), Inc.....	ownership.....100.000	Nationwide Mutual Insurance Company.....N.....
0140	Nationwide.....	36269..	86-0619597..	Titan Insurance Company.....	MI.....	IA.....	THI Holdings (Delaware), Inc.....	ownership.....100.000	Nationwide Mutual Insurance Company.....N.....
0140	Nationwide.....	75-1284530..	Titan Insurance Services, Inc.....	TX.....	NIA.....	THI Holdings (Delaware), Inc.....	ownership.....100.000	Nationwide Mutual Insurance Company.....N.....
0140	Nationwide.....	81-1456923..	US Regional Logistics Program, L.P.....	DE.....	NIA.....	Nationwide Mutual Insurance Company.....	ownership.....23.330	Nationwide Mutual Insurance Company.....N.....	1.....
0140	Nationwide.....	81-1456923..	US Regional Logistics Program, L.P.....	DE.....	NIA.....	Nationwide Life Insurance Company.....	ownership.....13.330	Nationwide Mutual Insurance Company.....N.....	1.....
0140	Nationwide.....	81-1456923..	US Regional Logistics Program, L.P.....	DE.....	NIA.....	Nationwide Life and Annuity Insurance Company	ownership.....6.660	Nationwide Mutual Insurance Company.....N.....	1.....
0140	Nationwide.....	81-1456923..	US Regional Logistics Program, L.P.....	DE.....	NIA.....	Nationwide Mutual Fire Insurance Company...	ownership.....6.660	Nationwide Mutual Insurance Company.....N.....	1.....
0140	Nationwide.....	33-0160222..	V.P.I. Services, Inc.....	CA.....	NIA.....	Veterinary Pet Insurance Company.....	ownership.....100.000	Nationwide Mutual Insurance Company.....N.....
0140	Nationwide.....	42285..	95-3750113..	Veterinary Pet Insurance Company.....	OH.....	IA.....	Scottsdale Insurance Company.....	ownership.....100.000	Nationwide Mutual Insurance Company.....N.....
0140	Nationwide.....	42889..	34-1394913..	Victoria Fire & Casualty Company.....	OH.....	IA.....	THI Holdings (Delaware), Inc.....	ownership.....100.000	Nationwide Mutual Insurance Company.....N.....
0140	Nationwide.....	10778..	34-1842604..	Victoria National Insurance Company.....	OH.....	IA.....	Nationwide Mutual Insurance Company.....	ownership.....100.000	Nationwide Mutual Insurance Company.....N.....
0140	Nationwide.....	10105..	34-1777972..	Victoria Select Insurance Company.....	OH.....	IA.....	Victoria Fire & Casualty Insurance Company...	ownership.....100.000	Nationwide Mutual Insurance Company.....N.....
0140	Nationwide.....	31-1486309..	Wellington Park, LLC.....	OH.....	NIA.....	Nationwide Realty Investors, Ltd.....	ownership.....100.000	Nationwide Mutual Insurance Company.....N.....
0140	Nationwide.....	n/a.....	Zais Zephyr A4, LLC.....	DE.....	OTH.....	Nationwide Life Insurance Company.....	limited member / no control60.000	other non-Nationwide.....N.....	2.....

Aster Explanation

1	For the purposes of this schedule, Nationwide presumed control of these entities because they are owned by at least 10% and are not wholly-owned by a Nationwide entity.
2	Other ownership indicates a non-ownership circumstance by a Nationwide entity.

Q13.10

HARLEYSVILLE LIFE INSURANCE COMPANY

SUPPLEMENTAL EXHIBITS AND SCHEDULES INTERROGATORIES

The following supplemental reports are required to be filed as part of your statement filing. However, in the event that your company does not transact the type of business for which the special report must be filed, your response of NO to the specific interrogatory will be accepted in lieu of filing a "NONE" report and a bar code will be printed below. If the supplement is required of your company but is not being filed for whatever reason, enter SEE EXPLANATION and provide an explanation following the interrogatory questions.

	Response
1. Will the Trusteed Surplus Statement be filed with the state of domicile and the NAIC with this statement?	NO
2. Will the Medicare Part D Coverage Supplement be filed with the state of domicile and the NAIC with this statement?	NO
3. Will the Reasonableness of Assumptions Certification required by Actuarial Guideline XXXV be filed with the state of domicile and electronically with the NAIC?	NO
4. Will the Reasonableness and Consistency of Assumptions Certification required by Actuarial Guideline XXXV be filed with the state of domicile and electronically with the NAIC?	NO
5. Will the Reasonableness of Assumptions Certification for Implied Guaranteed Rate Method required by Actuarial Guideline XXXVI be filed with the state of domicile and electronically with the NAIC?	NO
6. Will the Reasonableness and Consistency of Assumptions Certification required by Actuarial Guideline XXXVI (Updated Average Market Value) be filed with the state of domicile and electronically with the NAIC?	NO
7. Will the Reasonableness and Consistency of Assumptions Certification required by Actuarial Guideline XXXVI (Updated Market Value) be filed with the state of domicile and electronically with the NAIC?	NO
8. Will the Life PBR Statement of Exemption be filed with the state of domicile by July 1st and electronically with the NAIC with the second quarterly filing per the Valuation Manual (by August 15)? (2nd Quarterly Only). The response for 1st and 3rd quarters should be N/A. A NO response resulting with a barcode is only appropriate in the 2nd quarter.	N/A

Explanations:

1.

The data for this supplement is not required to be filed.
2.

The data for this supplement is not required to be filed.
3.

The data for this supplement is not required to be filed.
4.

The data for this supplement is not required to be filed.
5.

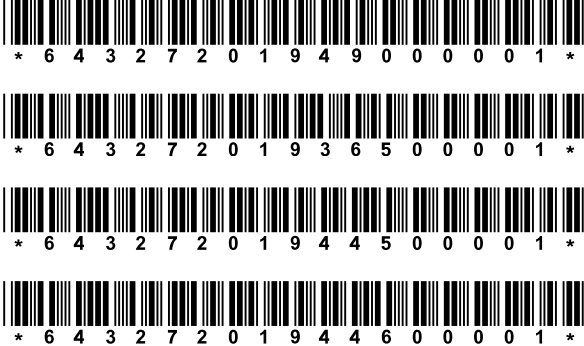
The data for this supplement is not required to be filed.
6.

The data for this supplement is not required to be filed.
7.

The data for this supplement is not required to be filed.
8.

Not Applicable for 1st and 3rd Quarters

Bar Code:



HARLEYSVILLE LIFE INSURANCE COMPANY
Overflow Page for Write-Ins

NONE

HARLEYSVILLE LIFE INSURANCE COMPANY
SCHEDULE A - VERIFICATION

Real Estate

	1	2
	Year to Date	Prior Year Ended December 31
1. Book/adjusted carrying value, December 31 of prior year.....	0	
2. Cost of acquired:		
2.1 Actual cost at time of acquisition.....		
2.2 Additional investment made after acquisition.....		
3. Current year change in encumbrances.....		
4. Total gain (loss) on disposals.....		
5. Deduct amounts received on disposals.....		
6. Total foreign exchange change in book/adjusted carrying value.....		
7. Deduct current year's other-than-temporary impairment recognized.....		
8. Deduct current year's depreciation.....		
9. Book/adjusted carrying value at end of current period (Lines 1+2+3+4-5+6-7-8).....	0	0
10. Deduct total nonadmitted amounts.....		
11. Statement value at end of current period (Line 9 minus Line 10).....	0	0

SCHEDULE B - VERIFICATION

Mortgage Loans

	1	2
	Year to Date	Prior Year Ended December 31
1. Book value/recorded investment excluding accrued interest, December 31 of prior year.....	0	
2. Cost of acquired:		
2.1 Actual cost at time of acquisition.....		
2.2 Additional investment made after acquisition.....		
3. Capitalized deferred interest and other.....		
4. Accrual of discount.....		
5. Unrealized valuation increase (decrease).....		
6. Total gain (loss) on disposals.....		
7. Deduct amounts received on disposals.....		
8. Deduct amortization of premium and mortgage interest points and commitment fees.....		
9. Total foreign exchange change in book value/recorded investment excluding accrued interest.....		
10. Deduct current year's other-than-temporary impairment recognized.....		
11. Book value/recorded investment excluding accrued interest at end of current period (Lines 1+2+3+4+5+6-7-8+9-10).....	0	0
12. Total valuation allowance.....		
13. Subtotal (Line 11 plus Line 12).....	0	0
14. Deduct total nonadmitted amounts.....		
15. Statement value at end of current period (Line 13 minus Line 14).....	0	0

SCHEDULE BA - VERIFICATION

Other Long-Term Invested Assets

	1	2
	Year to Date	Prior Year Ended December 31
1. Book/adjusted carrying value, December 31 of prior year.....	0	
2. Cost of acquired:		
2.1 Actual cost at time of acquisition.....		
2.2 Additional investment made after acquisition.....		
3. Capitalized deferred interest and other.....		
4. Accrual of discount.....		
5. Unrealized valuation increase (decrease).....		
6. Total gain (loss) on disposals.....		
7. Deduct amounts received on disposals.....		
8. Deduct amortization of premium and depreciation.....		
9. Total foreign exchange change in book/adjusted carrying value.....		
10. Deduct current year's other-than-temporary impairment recognized.....		
11. Book/adjusted carrying value at end of current period (Lines 1+2+3+4+5+6-7-8+9-10).....	0	0
12. Deduct total nonadmitted amounts.....		
13. Statement value at end of current period (Line 11 minus Line 12).....	0	0

SCHEDULE D - VERIFICATION

Bonds and Stocks

	1	2
	Year to Date	Prior Year Ended December 31
1. Book/adjusted carrying value of bonds and stocks, December 31 of prior year.....	363,893,995	369,570,175
2. Cost of bonds and stocks acquired.....	10,310,117	41,109,282
3. Accrual of discount.....	46,880	190,073
4. Unrealized valuation increase (decrease).....		
5. Total gain (loss) on disposals.....	2,029	6,570
6. Deduct consideration for bonds and stocks disposed of.....	7,994,596	46,468,737
7. Deduct amortization of premium.....	134,238	527,576
8. Total foreign exchange change in book/adjusted carrying value.....		
9. Deduct current year's other-than-temporary impairment recognized.....		
10. Total investment income recognized as a result of prepayment penalties and/or acceleration fees.....		14,208
11. Book/adjusted carrying value at end of current period (Lines 1+2+3+4+5-6-7+8-9+10).....	366,124,187	363,893,995
12. Deduct total nonadmitted amounts.....		
13. Statement value at end of current period (Line 11 minus Line 12).....	366,124,187	363,893,995

SCHEDULE D - PART 1B

Showing the Acquisitions, Dispositions and Non-Trading Activity
During the Current Quarter for all Bonds and Preferred Stock by NAIC Designation

NAIC Designation	1 Book/Adjusted Carrying Value Beginning of Current Quarter	2 Acquisitions During Current Quarter	3 Dispositions During Current Quarter	4 Non-Trading Activity During Current Quarter	5 Book/Adjusted Carrying Value End of First Quarter	6 Book/Adjusted Carrying Value End of Second Quarter	7 Book/Adjusted Carrying Value End of Third Quarter	8 Book/Adjusted Carrying Value December 31 Prior Year
BONDS								
1. NAIC 1 (a).....	178,122,269	1,530,946	7,273,164	(39,823)	172,340,228			178,122,269
2. NAIC 2 (a).....	181,427,184	8,779,171	719,403	(2,191,812)	187,295,140			181,427,184
3. NAIC 3 (a).....	4,344,539			2,144,277	6,488,816			4,344,539
4. NAIC 4 (a).....					0			
5. NAIC 5 (a).....					0			
6. NAIC 6 (a).....					0			
7. Total Bonds.....	363,893,992	10,310,117	7,992,567	(87,358)	366,124,184	0	0	363,893,992
PREFERRED STOCK								
8. NAIC 1.....					0			
9. NAIC 2.....					0			
10. NAIC 3.....					0			
11. NAIC 4.....					0			
12. NAIC 5.....					0			
13. NAIC 6.....					0			
14. Total Preferred Stock.....	0	0	0	0	0	0	0	0
15. Total Bonds and Preferred Stock.....	363,893,992	10,310,117	7,992,567	(87,358)	366,124,184	0	0	363,893,992

(a) Book/Adjusted Carrying Value column for the end of the current reporting period includes the following amount of short-term and cash equivalent bonds by NAIC designation:
NAIC 1 \$.....0; NAIC 2 \$.....0; NAIC 3 \$.....0; NAIC 4 \$.....0; NAIC 5 \$.....0; NAIC 6 \$.....0.

HARLEYSVILLE LIFE INSURANCE COMPANY
SCHEDULE DA - PART 1

Short-Term Investments					
	1 Book/Adjusted Carrying Value	2 Par Value	3 Actual Cost	4 Interest Collected Year To Date	5 Paid for Accrued Interest Year To Date
9199999.....14,987,323XXX.....14,987,32347,457

SCHEDULE DA - VERIFICATION

Short-Term Investments		
	1 Year To Date	2 Prior Year Ended December 31
1. Book/adjusted carrying value, December 31 of prior year.....17,906,906
2. Cost of short-term investments acquired.....15,076,86173,987,763
3. Accrual of discount.....
4. Unrealized valuation increase (decrease).....
5. Total gain (loss) on disposals.....
6. Deduct consideration received on disposals.....17,996,44456,080,857
7. Deduct amortization of premium.....
8. Total foreign exchange change in book/adjusted carrying value.....
9. Deduct current year's other-than-temporary impairment recognized.....
10. Book/adjusted carrying value at end of current period (Lines 1+2+3+4+5-6-7+8-9).....14,987,32317,906,906
11. Deduct total nonadmitted amounts.....
12. Statement value at end of current period (Line 10 minus Line 11).....14,987,32317,906,906

Sch. DB - Pt. A - Verification

NONE

Sch. DB - Pt. B - Verification

NONE

Sch. DB - Pt. C - Sn. 1

NONE

Sch. DB - Pt. C - Sn. 2

NONE

Sch. DB - Verification

NONE

HARLEYSVILLE LIFE INSURANCE COMPANY
SCHEDULE E - PART 2 - VERIFICATION
Cash Equivalents

	1	2
	Year To Date	Prior Year Ended December 31
1. Book/adjusted carrying value, December 31 of prior year.....	0	14,814,232
2. Cost of cash equivalents acquired.....		16,131,553
3. Accrual of discount.....		
4. Unrealized valuation increase (decrease).....		
5. Total gain (loss) on disposals.....		
6. Deduct consideration received on disposals.....		30,945,785
7. Deduct amortization of premium.....		
8. Total foreign exchange change in book/ adjusted carrying value.....		
9. Deduct current year's other-than-temporary impairment recognized.....		
10. Book/adjusted carrying value at end of current period (Lines 1+2+3+4+5-6-7+8-9).....	0	0
11. Deduct total nonadmitted amounts.....		
12. Statement value at end of current period (Line 10 minus Line 11).....	0	0

Sch. A Pt. 2
NONE

Sch. A Pt. 3
NONE

Sch. B - Pt. 2
NONE

Sch. B - Pt. 3
NONE

Sch. BA - Pt. 2
NONE

Sch. BA - Pt. 3
NONE

QE01, QE02, QE03

HARLEYSVILLE LIFE INSURANCE COMPANY

SCHEDULE D - PART 3

Showing all Long-Term Bonds and Stocks ACQUIRED During Current Quarter

1	2		3	4	5	6	7	8	9	10
CUSIP Identification	Description		Foreign	Date Acquired	Name of Vendor	Number of Shares of Stock	Actual Cost	Par Value	Paid for Accrued Interest and Dividends	NAIC Designation and Administrative Symbol/Market Indicator (a)
Bonds - Industrial and Miscellaneous										
101137	AW	7	Boston Scientific Corp Sr Nt	3.750% 03/07/2019	Morgan Stanley & Co LLC		1,006,050	1,000,000	1,667	2FE
29278N	AG	8	Energy Transfer Partners Sr Nt	5.250% 01/09/2019	Bank of America BISD Dealer		303,180	300,000		2FE
361448	BE	2	GATX Corp Sr Nt	4.700% 04/01/29	Bank of America BISD Dealer		499,180	500,000		2FE
476556	DC	6	Jersey Central Pwr & Lt Co Sr Nt	4.300% 02/05/2019	Morgan Stanley & Co LLC		3,855,898	3,800,000	10,439	2FE
53117C	AT	9	Liberty Property LP Sr Nt	4.375% 02/01	Various		1,459,784	1,460,000		2FE
591894	CC	2	Metropolitan Edison Company Nt	4.300% 01/07/2019	JP Morgan Securities LLC		249,695	250,000		2FE
595620	AU	9	MidAmerican Energy Co 1st Mtg Bd	4.250% 01/07/2019	Mizuho Securities USA Inc		993,900	1,000,000		1FE
90931E	AA	2	United Air Lines LBASS PTC Ser 2019-1 Cl	01/30/2019	Citigroup Global Markets Inc		537,046	537,000		1FE
94106L	BE	8	Waste Management Inc Sr Nt	3.150% 11/1	Barclays Capital Inc		477,100	500,000	2,406	2FE
941053	AH	3	Waste Connections Inc Sr Nt	4.250% 12/1	Deutsche Bank Capital		511,160	500,000	3,896	2FE
44962L	AF	4	IHS Markit Ltd Sr Nt	4.750% 08/01/28	Morgan Stanley & Co LLC		417,124	400,000	3,008	2FE
3899999. Total - Bonds - Industrial and Miscellaneous							10,310,117	10,247,000	21,416	XXX
8399997. Total - Bonds - Part 3							10,310,117	10,247,000	21,416	XXX
8399999. Total - Bonds							10,310,117	10,247,000	21,416	XXX
9999999. Total - Bonds, Preferred and Common Stocks							10,310,117	XXX	21,416	XXX

(a) For all common stock bearing NAIC market indicator "U" provide the number of such issues:0.

SCHEDULE D - PART 4

Showing all Long-Term Bonds and Stocks SOLD, REDEEMED or Otherwise DISPOSED OF During Current Quarter

1	2			3	4	5	6	7	8	9	10	Change in Book/Adjusted Carrying Value					16	17	18	19	20	21	22
												11	12	13	14	15							
CUSIP Identification	Description			F o r e i g n	Disposal Date	Name of Purchaser	Number of Shares of Stock	Consideration	Par Value	Actual Cost	Prior Year Book/Adjusted Carrying Value	Unrealized Valuation Increase (Decrease)	Current Year's (Amortization) / Accretion	Current Year's Other-Than-Temporary Impairment Recognized	Total Change in B./A.C.V. (11+12-13)	Total Foreign Exchange Change in B./A.C.V.	Book/Adjusted Carrying Value at Disposal Date	Foreign Exchange Gain (Loss) on Disposal	Realized Gain (Loss) on Disposal	Total Gain (Loss) on Disposal	Bond Interest / Stock Dividends Received During Year	Stated Contractual Maturity Date	NAIC Designation and Administrative Symbol/ Market Indicator (a)
Bonds - U.S. Government																							
38377N	R4	8	GNMA REMIC Ser 2010-164 CI PC 3.500% 1	..	03/01/2019.	Paydown.....	188,320188,320185,760187,679640640188,32001,079	10/20/2038.	1.....
38377R	KS	3	GNMA REMIC Ser 2010-163 CI MD 4.000% 0	..	03/01/2019.	Paydown.....	146,281146,281140,755144,7591,5221,522146,28101,162	06/16/2039.	1.....
38377U	PV	4	GNMA REMIC Ser 2011-34 CI PB 4.000% 08	..	03/01/2019.	Paydown.....	189,426189,426182,856188,0971,3291,329189,42601,225	08/20/2039.	1.....
0599999.	Total - Bonds - U.S. Government.....						524,027524,027509,371520,53503,49103,4910524,0270003,466	XXX	XXX
Bonds - U.S. Political Subdivisions of States																							
232760	T4	0	Cypress-Fairbanks TX ISD GO Bld Amer Bd	..	02/22/2019.	Call 100.0000.....	1,000,0001,000,0001,000,0001,000,00001,000,000033,915	02/15/2031.	1FE.....
2499999.	Total - Bonds - U.S. Political Subdivisions of States.....						1,000,0001,000,0001,000,0001,000,000000001,000,00000033,915	XXX	XXX
Bonds - U.S. Special Revenue and Special Assessment																							
3133TH	RV	1	FHLMC REMIC Ser 2120 CI PC 6.000% 01/1	..	01/01/2019.	Paydown.....	797978790790	01/15/2019.	1.....
3137A2	NK	3	FHLMC REMIC Ser 3756 CI PB 4.000% 12/1	..	03/01/2019.	Paydown.....	148,566148,566141,788146,8721,6941,694148,5660990	12/15/2037.	1.....
3137A5	R7	1	FHLMC REMIC Ser 3786 CI EB 4.000% 08/1	..	02/01/2019.	Paydown.....	44,06744,06745,04544,020474744,0670211	08/15/2035.	1.....
3138M6	DN	4	FNMA Pool #AP2808 3.000% 08/25/42....	..	03/01/2019.	Paydown.....	16,13116,13116,78616,716(585)(585)16,131081	08/25/2042.	1.....
31393W	X8	7	FHLMC REMIC Ser 2638 CI DH 5.000% 07/1	..	03/01/2019.	Paydown.....	128,538128,538125,586127,792746746128,53801,062	07/15/2023.	1.....
31397S	KV	5	FNMA REMIC Ser 2011-30 CI LC 3.500% 12	..	03/01/2019.	Paydown.....	98,20798,20796,73497,84436236298,2070373	12/25/2036.	1.....
64908P	AA	1	New Valley Generation III Ser 2002 5.1....	..	01/15/2019.	Redemption 100.0000.....	84,02684,02684,02684,026084,02602,156	01/15/2021.	1FE.....
65830T	AF	2	North Carolina St Tpk Auth Rev Bld Amer..	..	01/01/2019.	Call 100.0000.....	1,500,0001,500,0001,496,0251,497,97101,497,9712,0292,02945,000	01/01/2025.	1FE.....
3199999.	Total - Bonds - U.S. Special Revenue and Special Assessments.....						2,019,6142,019,6142,006,0682,015,32002,26402,26402,017,58502,0292,02949,873	XXX	XXX
Bonds - Industrial and Miscellaneous																							
05568B	AA	6	BNSF Trust ABS PTC Ser 2006-1 5.720% 0	..	01/15/2019.	Redemption 100.0000.....	113,245113,245113,245113,2450113,24503,239	01/15/2024.	1FE.....
06051G	EX	3	Bank of America Corp Nt 2.600% 01/15/1	..	01/15/2019.	Maturity.....	2,000,0002,000,0002,005,5802,000,045(45)(45)2,000,000026,000	01/15/2019.	1FE.....
31331F	AX	9	Fedex Corp ABS PTC Ser 1998-1A 6.720%	..	01/15/2019.	Paydown.....	195,403195,403185,315194,0901,3131,313195,40306,566	07/15/2023.	2FE.....
47215B	AD	9	JCP&L Transition Funding LLC LBASS Ser 2	..	03/05/2019.	Paydown.....	71,49571,49571,43171,485101071,49501,003	06/05/2023.	1FE.....
61763B	AS	3	Morgan Stanley BAML Tr CMBS Ser 2013-C13	..	03/01/2019.	Paydown.....	211,395211,395217,735213,387(1,993)(1,993)211,39501,309	11/15/2046.	1FM.....
628962	AC	6	Natl Inst Health Neuroscience Gov Gtd Se.	..	02/15/2019.	Redemption 100.0000.....	117,216117,216114,509117,1447272117,21604,031	02/15/2019.	1.....
904764	AQ	0	Unilever Cap Corp Sr Nt 2.200% 03/06/1.	..	03/06/2019.	Maturity.....	1,000,0001,000,000988,530999,6093913911,000,000011,000	03/06/2019.	1FE.....
907833	AJ	6	Union Pacific RR ABS PTC Ser 2000-1 8.	..	01/10/2019.	Redemption 100.0000.....	89,81889,81889,81889,818089,81803,593	01/10/2021.	1FE.....
90783T	AA	8	Union Pacific RR PTC Ser 2004-1 5.404%	..	01/02/2019.	Redemption 100.0000.....	38,62238,62238,62238,622038,62201,044	07/02/2025.	1FE.....
90783X	AA	9	Union Pacific RR PTC Ser 2007-3 6.176%	..	01/02/2019.	Redemption 100.0000.....	62,59262,59262,59262,592062,59201,933	01/02/2031.	1FE.....

QE05

HARLEYSVILLE LIFE INSURANCE COMPANY

SCHEDULE D - PART 4

Showing all Long-Term Bonds and Stocks SOLD, REDEEMED or Otherwise DISPOSED OF During Current Quarter

1	2			3	4	5	6	7	8	9	10	Change in Book/Adjusted Carrying Value					16	17	18	19	20	21	22
												11	12	13	14	15							
CUSIP Identification	Description			F o r e i g n	Disposal Date	Name of Purchaser	Number of Shares of Stock	Consideration	Par Value	Actual Cost	Prior Year Book/Adjusted Carrying Value	Unrealized Valuation Increase (Decrease)	Current Year's (Amortization) / Accretion	Current Year's Other-Than-Temporary Impairment Recognized	Total Change in B./A.C.V. (11+12-13)	Total Foreign Exchange Change in B./A.C.V.	Book/Adjusted Carrying Value at Disposal Date	Foreign Exchange Gain (Loss) on Disposal	Realized Gain (Loss) on Disposal	Total Gain (Loss) on Disposal	Bond Interest / Stock Dividends Received During Year	Stated Contractual Maturity Date	NAIC Designation and Administrative Symbol/Market Indicator (a)
90931V AA 4	United Air Lines PTC Ser 2018-1 A	3.70	..	03/01/2019.	Redemption	100.0000.....8,7048,7048,7048,70408,7040161	09/01/2031.	1FE.....
931422 AE 9	Walgreen Co Sr Nt	5.250% 01/15/19.....	..	01/15/2019.	Maturity.....524,000524,000521,259523,9871313524,000013,755	01/15/2019.	2FE.....
00908P AA 5	Air Canada LBASS EETC Ser 2017-1AA	3.3	A	01/15/2019.	Redemption	100.0000.....12,80012,80012,80012,800012,8000211	01/15/2030.	1FE.....
11042T AA 1	British Airways Plc PTC	3.800% 09/20/3..	C	03/20/2019.	Redemption	100.0000.....5,6655,6655,6655,66505,665054	06/20/2031.	1FE.....
3899999.	Total - Bonds - Industrial and Miscellaneous.....						4,450,9554,450,9554,435,8054,451,1930(239)0(239)04,450,95500073,899	XXX	XXX
8399997.	Total - Bonds - Part 4.....						7,994,5967,994,5967,951,2447,987,04805,51605,51607,992,56702,0292,029161,153	XXX	XXX
8399999.	Total - Bonds.....						7,994,5967,994,5967,951,2447,987,04805,51605,51607,992,56702,0292,029161,153	XXX	XXX
9999999.	Total - Bonds, Preferred and Common Stocks.....						7,994,596XXX7,951,2447,987,04805,51605,51607,992,56702,0292,029161,153	XXX	XXX

(a) For all common stock bearing the NAIC market indicator "U" provide: the number of such issues:0.

Sch. DB - Pt. A - Sn. 1

NONE

Sch. DB - Pt. B - Sn. 1

NONE

Sch. DB - Pt. D - Sn. 1

NONE

Sch. DB - Pt. D - Sn. 2

NONE

Sch. DL - Pt. 1

NONE

Sch. DL - Pt. 2

NONE

HARLEYSVILLE LIFE INSURANCE COMPANY
SCHEDULE E - PART 1 - CASH

Month End Depository Balances

1	2	3	4	5	Book Balance at End of Each Month During Current Quarter			9
					6	7	8	
Depository	Code	Rate of Interest	Amount of Interest Received During Current Quarter	Amount of Interest Accrued at Current Statement Date	First Month	Second Month	Third Month	*
Open Depositories								
JP Morgan Chase..... New York, NY.....(874,104)(490,273)(5,026,685)	XXX
Wells Fargo..... San Francisco, CA.....247,929248,468247,588	XXX
0199998. Deposits in.....3 depositories that do not exceed the allowable limit in any one depository (see Instructions) - Open Depositories.....	XXX	XXX158,285222,241158,405	XXX
0199999. Total Open Depositories.....	XXX	XXX00(467,890)(19,564)(4,620,692)	XXX
0399999. Total Cash on Deposit.....	XXX	XXX00(467,890)(19,564)(4,620,692)	XXX
0599999. Total Cash.....	XXX	XXX00(467,890)(19,564)(4,620,692)	XXX

HARLEYSVILLE LIFE INSURANCE COMPANY
SCHEDULE E - PART 2 - CASH EQUIVALENTS

Show Investments Owned End of Current Quarter

1	2	3	4	5	6	7	8	9
CUSIP	Description	Code	Date Acquired	Rate of Interest	Maturity Date	Book/Adjusted Carrying Value	Amount of Interest Due & Accrued	Amount Received During Year

NONE