



PROPERTY AND CASUALTY COMPANIES—ASSOCIATION EDITION

QUARTERLY STATEMENT

AS OF MARCH 31, 2019
OF THE CONDITION AND AFFAIRS OF THE

Ohio Indemnity Company

NAIC Group Code00000,00000NAIC Company Code26565Employer's ID Number31-0620146

(Current Period)(Prior Period)

Organized under the Laws ofOhio, State of Domicile or Port of EntryOhio

Country of DomicileUnited States

Incorporated/Organized02/11/1956Commenced Business07/24/1956

Statutory Home Office250 E. Broad St., 7th FloorColumbus, OH, US 43215-0000

(Street and Number)(City or Town, State, Country and Zip Code)

Main Administrative Office250 E. Broad St., 7th FloorColumbus, OH, US 43215-0000614-228-2800

(Street and Number)(City or Town, State, Country and Zip Code)(Area Code) (Telephone Number)

Mail Address250 E. Broad St., 7th FloorColumbus, OH, US 43215-0000

(Street and Number or P.O. Box)(City or Town, State, Country and Zip Code)

Primary Location of Books and Records250 E. Broad St., 7th FloorColumbus, OH, US 43215-0000614-228-2800

(Street and Number)(City or Town, State, Country and Zip Code)(Area Code) (Telephone Number)

Internet Web Site Addresswww.ohioindemnity.com

Statutory Statement ContactMatt C Nolan614-220-5207

(Name)(Area Code) (Telephone Number) (Extension)

Mnolan@ohioindemnity.com614-228-5552

(E-Mail Address)(Fax Number)

OFFICERS

Name	Title	Name	Title
John Scott Sokol	CEO and President	Matthew Christopher Nolan	Vice President, CFO, Treasurer and Secretary

OTHER OFFICERS

Daniel John Stephan	Senior Vice President	Stephen John Toth	Vice President
Margaret Ann Noreen	Vice President		

DIRECTORS OR TRUSTEES

Kenton Robert Bowen	Annemarie LoConti	Robert W Price	John Scott Sokol
Matthew Douglas Walter			

State ofOhio.....

County ofFranklin.....ss

The officers of this reporting entity being duly sworn, each depose and say that they are the described officers of said reporting entity, and that on the reporting period stated above, all of the herein described assets were the absolute property of the said reporting entity, free and clear from any liens or claims thereon, except as herein stated, and that this statement, together with related exhibits, schedules and explanations therein contained, annexed or referred to, is a full and true statement of all the assets and liabilities and of the condition and affairs of the said reporting entity as of the reporting period stated above, and of its income and deductions therefrom for the period ended, and have been completed in accordance with the NAIC Annual Statement Instructions and Accounting Practices and Procedures manual except to the extent that: (1) state law may differ; or, (2) that state rules or regulations require differences in reporting not related to accounting practices and procedures, according to the best of their information, knowledge and belief, respectively. Furthermore, the scope of this attestation by the described officers also includes the related corresponding electronic filing with the NAIC, when required, that is an exact copy (except for formatting differences due to electronic filing) of the enclosed statement. The electronic filing may be requested by various regulators in lieu of or in addition to the enclosed statement.

John Scott Sokol
CEO and President

Matthew Christopher Nolan
Vice President, CFO, Treasurer and Secretary

Matthew Christopher Nolan
Vice President, CFO, Treasurer and Secretary

Subscribed and sworn to before me this
8th day of May, 2019

a. Is this an original filing? Yes [X] No []

b. If no:
1. State the amendment number
2. Date filed
3. Number of pages attached

Jennifer R. Burns, Notary
5/16/2023

STATEMENT AS OF MARCH 31, 2019 OF THE Ohio Indemnity Company

ASSETS

	Current Statement Date			4 December 31 Prior Year Net Admitted Assets
	1	2	3	
	Assets	Nonadmitted Assets	Net Admitted Assets (Cols. 1 - 2)	
1. Bonds	113,086,871		113,086,871	106,838,864
2. Stocks:				
2.1 Preferred stocks			0	0
2.2 Common stocks	12,350,866		12,350,866	11,057,081
3. Mortgage loans on real estate:				
3.1 First liens			0	0
3.2 Other than first liens			0	0
4. Real estate:				
4.1 Properties occupied by the company (less \$ encumbrances)			0	0
4.2 Properties held for the production of income (less \$ encumbrances)			0	0
4.3 Properties held for sale (less \$ encumbrances)			0	0
5. Cash (\$8,923,667), cash equivalents (\$1,109,338) and short-term investments (\$0)	10,033,005		10,033,005	16,830,524
6. Contract loans (including \$premium notes)			0	0
7. Derivatives	0		0	0
8. Other invested assets	1,000,000		1,000,000	0
9. Receivables for securities			0	0
10. Securities lending reinvested collateral assets			0	0
11. Aggregate write-ins for invested assets	0	0	0	0
12. Subtotals, cash and invested assets (Lines 1 to 11)	136,470,742	0	136,470,742	134,726,470
13. Title plants less \$charged off (for Title insurers only)			0	0
14. Investment income due and accrued	1,103,874		1,103,874	1,131,336
15. Premiums and considerations:				
15.1 Uncollected premiums and agents' balances in the course of collection	14,791,148	32,290	14,758,858	15,673,401
15.2 Deferred premiums, agents' balances and installments booked but deferred and not yet due (including \$earned but unbilled premiums)	2,624,382		2,624,382	2,791,632
15.3 Accrued retrospective premiums (\$) and contracts subject to redetermination (\$)			0	0
16. Reinsurance:				
16.1 Amounts recoverable from reinsurers	10,840,337		10,840,337	9,093,628
16.2 Funds held by or deposited with reinsured companies			0	0
16.3 Other amounts receivable under reinsurance contracts			0	0
17. Amounts receivable relating to uninsured plans			0	0
18.1 Current federal and foreign income tax recoverable and interest thereon			0	0
18.2 Net deferred tax asset	2,234,247		2,234,247	2,654,209
19. Guaranty funds receivable or on deposit			0	0
20. Electronic data processing equipment and software			0	0
21. Furniture and equipment, including health care delivery assets (\$)			0	0
22. Net adjustment in assets and liabilities due to foreign exchange rates			0	0
23. Receivables from parent, subsidiaries and affiliates			0	950,432
24. Health care (\$) and other amounts receivable			0	0
25. Aggregate write-ins for other-than-invested assets	48,708	48,708	0	0
26. Total assets excluding Separate Accounts, Segregated Accounts and Protected Cell Accounts (Lines 12 to 25)	168,113,438	80,998	168,032,440	167,021,108
27. From Separate Accounts, Segregated Accounts and Protected Cell Accounts			0	0
28. Total (Lines 26 and 27)	168,113,438	80,998	168,032,440	167,021,108
DETAILS OF WRITE-INS				
1101.			0	0
1102.			0	0
1103.			0	0
1198. Summary of remaining write-ins for Line 11 from overflow page	0	0	0	0
1199. Totals (Lines 1101 through 1103 plus 1198) (Line 11 above)	0	0	0	0
2501. Deferred Expenses	48,708	48,708	0	0
2502.	0	0	0	0
2503.			0	0
2598. Summary of remaining write-ins for Line 25 from overflow page	0	0	0	0
2599. Totals (Lines 2501 through 2503 plus 2598) (Line 25 above)	48,708	48,708	0	0

LIABILITIES, SURPLUS AND OTHER FUNDS

	1 Current Statement Date	2 December 31, Prior Year
1. Losses (current accident year \$13,518,707)	21,230,024	21,862,453
2. Reinsurance payable on paid losses and loss adjustment expenses		0
3. Loss adjustment expenses	121,000	291,470
4. Commissions payable, contingent commissions and other similar charges	2,149,248	2,343,393
5. Other expenses (excluding taxes, licenses and fees)	590,491	1,427,192
6. Taxes, licenses and fees (excluding federal and foreign income taxes)	(156,706)	2,087,999
7.1 Current federal and foreign income taxes (including \$ on realized capital gains (losses))	744,848	1,264,067
7.2 Net deferred tax liability		0
8. Borrowed money \$ and interest thereon \$		0
9. Unearned premiums (after deducting unearned premiums for ceded reinsurance of \$215,932,806 and including warranty reserves of \$44,519 and accrued accident and health experience rating refunds including \$0 for medical loss ratio rebate per the Public Health Service Act)	59,097,856	62,717,373
10. Advance premium		0
11. Dividends declared and unpaid:		
11.1 Stockholders		0
11.2 Policyholders		0
12. Ceded reinsurance premiums payable (net of ceding commissions)	15,478,102	13,985,088
13. Funds held by company under reinsurance treaties	11,314,221	9,370,417
14. Amounts withheld or retained by company for account of others	5,053,245	4,969,069
15. Remittances and items not allocated		0
16. Provision for reinsurance (including \$ certified)		0
17. Net adjustments in assets and liabilities due to foreign exchange rates		0
18. Drafts outstanding		0
19. Payable to parent, subsidiaries and affiliates	854,532	0
20. Derivatives	0	0
21. Payable for securities		0
22. Payable for securities lending		0
23. Liability for amounts held under uninsured plans		0
24. Capital notes \$ and interest thereon \$		0
25. Aggregate write-ins for liabilities	0	0
26. Total liabilities excluding protected cell liabilities (Lines 1 through 25)	116,476,861	120,318,521
27. Protected cell liabilities		0
28. Total liabilities (Lines 26 and 27)	116,476,861	120,318,521
29. Aggregate write-ins for special surplus funds	0	0
30. Common capital stock	3,000,746	3,000,746
31. Preferred capital stock		0
32. Aggregate write-ins for other than special surplus funds	0	0
33. Surplus notes		0
34. Gross paid in and contributed surplus	8,199,503	8,199,503
35. Unassigned funds (surplus)	40,355,330	35,502,337
36. Less treasury stock, at cost:		
36.1 shares common (value included in Line 30 \$)		0
36.2 shares preferred (value included in Line 31 \$)		0
37. Surplus as regards policyholders (Lines 29 to 35, less 36)	51,555,579	46,702,586
38. Totals (Page 2, Line 28, Col. 3)	168,032,440	167,021,107
DETAILS OF WRITE-INS		
2501. Reserve for Rate Credits and Retrospective Adjustment Based on Experience.....		0
2502.		0
2503.		0
2598. Summary of remaining write-ins for Line 25 from overflow page	0	0
2599. Totals (Lines 2501 through 2503 plus 2598) (Line 25 above)	0	0
2901.		0
2902.		0
2903.		0
2998. Summary of remaining write-ins for Line 29 from overflow page	0	0
2999. Totals (Lines 2901 through 2903 plus 2998) (Line 29 above)	0	0
3201.		0
3202.		0
3203.		0
3298. Summary of remaining write-ins for Line 32 from overflow page	0	0
3299. Totals (Lines 3201 through 3203 plus 3298) (Line 32 above)	0	0

STATEMENT OF INCOME

	1	2	3
	Current Year	Prior Year	Prior Year Ended
	to Date	to Date	December 31
UNDERWRITING INCOME			
1. Premiums earned:			
1.1 Direct (written \$ 69,066,489)	72,087,377	62,685,561	275,111,711
1.2 Assumed (written \$ 857,488)	1,025,598	1,152,207	4,320,296
1.3 Ceded (written \$ 46,734,321)	46,303,801	35,090,203	161,754,183
1.4 Net (written \$ 23,189,656)	26,809,174	28,747,565	117,677,824
DEDUCTIONS:			
2. Losses incurred (current accident year \$ 16,080,123):			
2.1 Direct	32,241,471	21,954,899	126,265,050
2.2 Assumed	23,638	(176,226)	(41,047)
2.3 Ceded	20,716,720	8,226,736	67,262,676
2.4 Net	11,548,389	13,551,937	58,961,327
3. Loss adjustment expenses incurred	974,215	745,132	4,060,355
4. Other underwriting expenses incurred	10,652,394	13,049,365	44,772,330
5. Aggregate write-ins for underwriting deductions	0	0	0
6. Total underwriting deductions (Lines 2 through 5)	23,174,998	27,346,434	107,794,012
7. Net income of protected cells		0	0
8. Net underwriting gain (loss) (Line 1 minus Line 6 + Line 7)	3,634,176	1,401,131	9,883,812
INVESTMENT INCOME			
9. Net investment income earned	1,025,872	806,085	3,072,776
10. Net realized capital gains (losses) less capital gains tax of \$ (2,725)	93,144	362,220	918,503
11. Net investment gain (loss) (Lines 9 + 10)	1,119,016	1,168,305	3,991,279
OTHER INCOME			
12. Net gain or (loss) from agents' or premium balances charged off (amount recovered \$ amount charged off \$)		0	0
13. Finance and service charges not included in premiums		0	0
14. Aggregate write-ins for miscellaneous income	0	0	0
15. Total other income (Lines 12 through 14)	0	0	0
16. Net income before dividends to policyholders, after capital gains tax and before all other federal and foreign income taxes (Lines 8 + 11 + 15)	4,753,192	2,569,436	13,875,091
17. Dividends to policyholders		0	0
18. Net income, after dividends to policyholders, after capital gains tax and before all other federal and foreign income taxes (Line 16 minus Line 17)	4,753,192	2,569,436	13,875,091
19. Federal and foreign income taxes incurred	747,573	394,190	2,602,643
20. Net income (Line 18 minus Line 19)(to Line 22)	4,005,619	2,175,246	11,272,448
CAPITAL AND SURPLUS ACCOUNT			
21. Surplus as regards policyholders, December 31 prior year	46,702,585	45,462,613	45,462,613
22. Net income (from Line 20)	4,005,619	2,175,246	11,272,448
23. Net transfers (to) from Protected Cell accounts		0	0
24. Change in net unrealized capital gains or (losses) less capital gains tax of \$ 258,792	973,549	(775,324)	(2,390,107)
25. Change in net unrealized foreign exchange capital gain (loss)		0	0
26. Change in net deferred income tax	(161,170)	291,547	418,144
27. Change in nonadmitted assets	34,996	(53,181)	(60,513)
28. Change in provision for reinsurance		0	0
29. Change in surplus notes		0	0
30. Surplus (contributed to) withdrawn from protected cells		0	0
31. Cumulative effect of changes in accounting principles		0	0
32. Capital changes:			
32.1 Paid in		0	0
32.2 Transferred from surplus (Stock Dividend)		0	0
32.3 Transferred to surplus		0	0
33. Surplus adjustments:			
33.1 Paid in		0	0
33.2 Transferred to capital (Stock Dividend)		0	0
33.3 Transferred from capital		0	0
34. Net remittances from or (to) Home Office		0	0
35. Dividends to stockholders		0	(8,000,000)
36. Change in treasury stock		0	0
37. Aggregate write-ins for gains and losses in surplus	0	0	0
38. Change in surplus as regards policyholders (Lines 22 through 37)	4,852,994	1,638,288	1,239,972
39. Surplus as regards policyholders, as of statement date (Lines 21 plus 38)	51,555,579	47,100,901	46,702,585
DETAILS OF WRITE-INS			
0501.		0	0
0502.		0	0
0503.		0	0
0598. Summary of remaining write-ins for Line 5 from overflow page	0	0	0
0599. TOTALS (Lines 0501 through 0503 plus 0598) (Line 5 above)	0	0	0
1401.		0	0
1402. Miscellaneous income		0	0
1403.		0	0
1498. Summary of remaining write-ins for Line 14 from overflow page	0	0	0
1499. TOTALS (Lines 1401 through 1403 plus 1498) (Line 14 above)	0	0	0
3701. Surplus Correction		0	0
3702.		0	0
3703.		0	0
3798. Summary of remaining write-ins for Line 37 from overflow page	0	0	0
3799. TOTALS (Lines 3701 through 3703 plus 3798) (Line 37 above)	0	0	0

CASH FLOW

	1 Current Year To Date	2 Prior Year To Date	3 Prior Year Ended December 31
Cash from Operations			
1. Premiums collected net of reinsurance.....	25,836,087	30,738,165	125,198,334
2. Net investment income	1,250,952	1,206,148	4,491,675
3. Miscellaneous income	0	0	0
4. Total (Lines 1 to 3)	27,087,039	31,944,313	129,690,009
5. Benefit and loss related payments	13,927,527	14,093,490	56,686,099
6. Net transfers to Separate Accounts, Segregated Accounts and Protected Cell Accounts	0	0	0
7. Commissions, expenses paid and aggregate write-ins for deductions	15,109,259	15,038,565	46,369,855
8. Dividends paid to policyholders	0	0	0
9. Federal and foreign income taxes paid (recovered) net of \$ tax on capital gains (losses).....	1,264,067	1,264,423	3,020,660
10. Total (Lines 5 through 9)	30,300,853	30,396,478	106,076,614
11. Net cash from operations (Line 4 minus Line 10)	(3,213,814)	1,547,835	23,613,395
Cash from Investments			
12. Proceeds from investments sold, matured or repaid:			
12.1 Bonds	2,010,784	462,278	28,405,884
12.2 Stocks	965,330	2,107,764	9,968,706
12.3 Mortgage loans	0	0	0
12.4 Real estate	0	0	0
12.5 Other invested assets	0	0	0
12.6 Net gains or (losses) on cash, cash equivalents and short-term investments	0	0	0
12.7 Miscellaneous proceeds	0	0	0
12.8 Total investment proceeds (Lines 12.1 to 12.7)	2,976,114	2,570,042	38,374,591
13. Cost of investments acquired (long-term only):			
13.1 Bonds	8,462,989	2,262,871	39,256,271
13.2 Stocks	929,774	2,421,652	10,410,960
13.3 Mortgage loans	0	0	0
13.4 Real estate	0	0	0
13.5 Other invested assets	1,000,000	0	0
13.6 Miscellaneous applications	0	1	0
13.7 Total investments acquired (Lines 13.1 to 13.6)	10,392,763	4,684,523	49,667,231
14. Net increase (or decrease) in contract loans and premium notes	0	0	0
15. Net cash from investments (Line 12.8 minus Line 13.7 and Line 14)	(7,416,650)	(2,114,481)	(11,292,641)
Cash from Financing and Miscellaneous Sources			
16. Cash provided (applied):			
16.1 Surplus notes, capital notes	0	0	0
16.2 Capital and paid in surplus, less treasury stock.....	0	0	0
16.3 Borrowed funds	0	0	0
16.4 Net deposits on deposit-type contracts and other insurance liabilities	0	0	0
16.5 Dividends to stockholders	0	0	8,000,000
16.6 Other cash provided (applied).....	3,832,944	(3,016,056)	(2,150,656)
17. Net cash from financing and miscellaneous sources (Line 16.1 through Line 16.4 minus Line 16.5 plus Line 16.6).....	3,832,944	(3,016,056)	(10,150,656)
RECONCILIATION OF CASH, CASH EQUIVALENTS AND SHORT-TERM INVESTMENTS			
18. Net change in cash, cash equivalents and short-term investments (Line 11, plus Lines 15 and 17)	(6,797,520)	(3,582,702)	2,170,098
19. Cash, cash equivalents and short-term investments:			
19.1 Beginning of year.....	16,830,525	14,660,427	14,660,427
19.2 End of period (Line 18 plus Line 19.1)	10,033,005	11,077,725	16,830,525

NOTES TO FINANCIAL STATEMENTS

SECTION A

1. Summary of Significant Accounting Policies:

A. Accounting Practices:

The financial statements of Ohio Indemnity Company ("the Company") are presented on the basis of accounting practices prescribed or permitted by the Ohio Insurance Department ("the Department").

The Department recognizes only statutory accounting practices prescribed or permitted by the state of Ohio for determining and reporting the financial condition and results of operations of an insurance company, for determining its solvency under the Ohio Insurance Law. The National Association of Insurance Commissioners' (NAIC) Accounting Practices and Procedures manual has been adopted as a component of prescribed or permitted practices by the state of Ohio.

	SSAP #	F/S Page	F/S Line #	2019	2018
<u>NET INCOME</u>					
(1) Company state basis (Page 4, Line 20, Columns 1 & 2)	XXX	XXX	XXX	\$ 4,005,619	\$ 11,272,449
(2) State Prescribed Practices that are an increase/(decrease) from NAIC SAP:				\$	\$
(3) State Permitted Practices that are an increase/(decrease) from NAIC SAP:				\$	\$
(4) NAIC SAP (1-2-3=4)	XXX	XXX	XXX	\$ 4,005,619	\$ 11,272,449
<u>SURPLUS</u>					
(5) Company state basis (Page 3, Line 37, Columns 1 & 2)	XXX	XXX	XXX	\$ 51,555,579	\$ 46,702,586
(6) State Prescribed Practices that are an increase/(decrease) from NAIC SAP:				\$	\$
(7) State Permitted Practices that are an increase/(decrease) from NAIC SAP:				\$	\$
(8) NAIC SAP (5-6-7=8)	XXX	XXX	XXX	\$ 51,555,579	\$ 46,702,586

B. Use of Estimates in the Preparation of the Financial Statements:

The preparation of financial statements in conformity with Statutory Accounting Principles requires management to make estimates and assumptions that affect the reported amounts of assets and liabilities as of the date of the financial statements and revenue and expenses for the period then ended. It also requires estimates in the disclosure of contingent assets and liabilities at the date of the financial statements. Actual results could differ materially from these estimates.

C. Accounting Policy:

Ohio Indemnity's insurance premiums are earned over the terms of the related insurance policies and reinsurance contracts. For certain of our lender service products, premiums are earned over the contract period in proportion to the amount of insurance protection provided as the amount of insurance protection declines according to a predetermined schedule. For all other products, premiums are earned pro rata over the contract period. The portion of premiums written applicable to the unexpired portion of insurance policies is recorded in the balance sheet as unearned premiums.

Certain lender service policies are eligible for premium adjustments based on loss experience. For certain policies, return premiums are calculated and settled on an annual basis. Certain other policies are eligible for an experience rating adjustment that is calculated and adjusted from period to period and settled upon cancellation of the policy. These balances are presented in the accompanying balance sheet as unearned premiums.

SSAP No. 65, "Property and Casualty Contracts," requires a separate test for unearned premiums for policies with coverage periods equal to or in excess of thirteen months. Depending on the results of this test, a reporting entity may be required to record additional unearned premiums on a statutory basis that are not recorded on a GAAP basis. As of March 31, 2019 and December 31, 2018, we recorded \$1,332,311 and \$1,495,471, respectively, of additional unearned premiums under SSAP No. 65 for our GAP product line.

NOTES TO FINANCIAL STATEMENTS

Expenses incurred in connection with acquiring new insurance business, including such acquisition costs as sales commissions, are charged to operations as incurred. Expenses incurred are reduced for ceding commissions received or receivable.

In addition, the Company uses the following accounting policies:

- (1) Short-term investments are stated at amortized cost. Money market investments are reflected at cost.
- (2) Bonds not backed by other loans are stated at amortized value using the scientific interest method.
- (3) Redeemable preferred stocks are stated at amortized cost.
- (4) Common stocks, non-redeemable preferred stocks and mutual funds are stated at market values based upon prices prescribed by the NAIC.
- (5) Realized gains and losses on disposal of investments are determined by the specific identification method and are included in investment income. The carrying value of investments is revised and the amount of revision is charged to net realized losses on investments when management determines that a decline in the value of an investment is other-than-temporary.

We continually monitor the difference between the book value and the estimated fair value of our investments, which involves judgment as to whether declines in value are temporary in nature. If we believe the decline in any investment is "other-than-temporarily impaired," we record the decline as a realized loss through the income statement. If our judgment changes in the future, we may ultimately record a realized loss for a security after having originally concluded that the decline in value was temporary. We begin to monitor a security for other-than-temporary impairment when its fair value to book value ratio falls below 80%. Our assessment as to whether a security is other-than-temporarily impaired depends on, among other things: (1) the length of time and extent to which the estimated fair value has been less than book value; (2) whether the decline appears to be related to general market or industry conditions or is issuer specific; (3) our current judgment as to the financial condition and future prospects of the entity that issued the investment security; and (4) our intent to sell the security or the likelihood that we will be required to sell the security before its anticipated recovery.

(6) Unpaid losses and loss adjustment expenses ("LAE") include an amount determined from individual case estimates and loss reports and an amount, based on past experience, for losses incurred but not reported. Such liabilities are necessarily based on assumptions and estimates and while management believes the amount is adequate, the ultimate liability may be in excess of or less than the amount provided. The methods for making such estimates and for establishing the resulting liability are continually reviewed and any adjustments are reflected in the period determined.

LAE is classified into two broad categories in the annual statement in schedule P: Defense and Cost Containment (DCC) and Adjusting and Other (A&O). Previously, the annual statement classified LAE into the following two categories before the change to DCC and A&O: Allocated Loss Adjustment Expense (ALAE) and Unallocated Loss Adjustment Expense (ULAE). The Company reports LAE based on the old statutory definitions. Thus, what the Company reports as DCC in the annual statement is ALAE and what the Company reports as A&O is ULAE.

Assumed reinsurance is a line of business with inherent volatility. Since the length of time required for the losses to be reported through the reinsurance system can be quite long, unexpected events are more difficult to predict. Ultimate loss experience for assumed reinsurance is based primarily on reports received by the Company from the underlying ceding insurers.

D. Going concern: not applicable.

2. Accounting Changes and Corrections of Errors: Not applicable.

3. Business Combinations and Goodwill: Not applicable.

4. Discontinued Operations: Not applicable.

5. Investments:

A. Mortgage Loans: Not applicable.

B. Debt Restructuring: Not applicable.

C. Reverse Mortgages: Not applicable.

D. Loan-Backed Securities: Not applicable.

E. Dollar Repurchase Agreements and/or Securities Lending: Not applicable.

F. Repurchase Agreements Transactions Accounted for as Secured borrowing: Not applicable.

G. Reverse Repurchase Agreements Transactions Accounted for as Secured Borrowing: Not applicable.

H. Repurchase Agreements Transactions Accounted for as a Sale: Not applicable

NOTES TO FINANCIAL STATEMENTS

1. Reverse Repurchase Agreements Transactions Accounted for as a Sale: Not applicable

J. Real Estate: Not applicable

K. Low-Income housing Tax Credits(LIHTC): Not applicable

L. Restricted Assets (Including Pledged)

Restricted Asset Category	Gross (Admitted & Nonadmitted) Restricted						
	Current Year					6 Total From Prior Year	7 Increase/ (Decrease) (5 minus 6)
	1 Total General Account (G/A)	2 G/A Supporting Protected Cell Account Activity (a)	3 Total Protected Cell Account Restricted Assets	4 Protected Cell Account Assets Supporting G/A Activity (b)	5 Total (1 plus 3)		
a. Subject to contractual obligation for which liability is not shown	\$	\$	\$	\$	0	\$ 0	\$ 0
b. Collateral held under security lending agreements					0	0	0
c. Subject to repurchase agreements					0	0	0
d. Subject to reverse repurchase agreements					0	0	0
e. Subject to dollar repurchase agreements					0	0	0
f. Subject to dollar reverse repurchase agreements					0	0	0
g. Placed under option contracts					0	0	0
h. Letter stock or securities restricted as to sale – excluding FHLB capital stock					0	0	0
i. FHLB capital stock					0	0	0
j. On deposit with states	5,118,528				5,118,528	5,124,432	(5,904)
k. On deposit with other regulatory bodies					0	0	0
l. Pledged as collateral to FHLB (including assets backing funding agreements)					0	0	0
m. Pledged as collateral not captured in other categories					0	0	0
n. Other restricted assets					0	0	0
o. Total Restricted Assets	\$ 5,118,528	\$ 0	\$ 0	\$ 0	\$ 5,118,528	\$ 5,124,432	\$ (5,904)

(a) Subset of column 1

(b) Subset of column 3

Restricted Asset Category	Current Year			
	8	9	Percentage	
	Total Nonadmitted Restricted	Total Admitted Restricted (5 minus 8)	10 Gross (Admitted & Nonadmitted) Restricted to Total Assets (c)	11 Admitted Restricted to Total Admitted Assets (d)
a. Subject to contractual obligation for which liability is not shown	\$	\$ 0	0.0 %	0.0 %
b. Collateral held under security lending agreements		0	0.0	0.0
c. Subject to repurchase agreements		0	0.0	0.0
d. Subject to reverse repurchase agreements		0	0.0	0.0
e. Subject to dollar repurchase agreements		0	0.0	0.0

NOTES TO FINANCIAL STATEMENTS

Restricted Asset Category	Current Year			
	8	9	Percentage	
	Total Nonadmitted Restricted	Total Admitted Restricted (5 minus 8)	10 Gross (Admitted & Nonadmitted) Restricted to Total Assets (c)	11 Admitted Restricted to Total Admitted Assets (d)
f. Subject to dollar reverse repurchase agreements		0	0.0	0.0
g. Placed under option contracts		0	0.0	0.0
h. Letter stock or securities restricted as to sale – excluding FHLB capital stock		0	0.0	0.0
i. FHLB capital stock		0	0.0	0.0
j. On deposit with states		5,118,528	3.0%	3.0%
k. On deposit with other regulatory bodies		0	0.0	0.0
l. Pledged as collateral to FHLB (including assets backing funding agreements)		0	0.0	0.0
m. Pledged as collateral not captured in other categories		0	0.0	0.0
n. Other restricted assets		0	0.0	0.0
o. Total Restricted Assets	\$ 0	\$ 5,118,528	3.0 %	3.0 %

- (c) Column 5 divided by Asset Page, Column 1 Line 28
(d) Column 9 divided by Asset Page, Column 3 Line 28
- (2) Detail of Assets Pledged as Collateral Not Captured in Other Categories (Contracts that Share Similar Characteristics, Such as Reinsurance and Derivatives, Are Reported in the Aggregate)
- (a) Subset of column 1
(b) Subset of column 3
(c) Total Line for Columns 1 through 7 should equal 5L(1)m Columns 1 through 7 respectively and Total Line for Columns 8 through 10 should equal 5L(1)m Columns 9 through 11 respectively
- (3) Detail of Other Restricted Assets (Contracts that Share Similar Characteristics, Such as Reinsurance and Derivatives, Are Reported in the Aggregate)
- (a) Subset of column 1
(b) Subset of column 3
(c) Total Line for Columns 1 through 7 should equal 5L(1)n Columns 1 through 7 respectively and Total Line for Columns 8 through 10 should equal 5L(1)n Columns 9 through 11 respectively

M. Working Capital Finance Investments: Not applicable

N. Offsetting and Netting of Assets and Liabilities: Not applicable

O. Structured Notes: Not applicable

P. 5* Securities: None

Q. Short Sales: Not applicable

R. Prepayment Penalty and Acceleration Fees: Not applicable

7. Investment Income:

A. Accrued Investment Income: The Company non-admits investment income due and accrued if amounts are not received within 15 days of the settlement date.

B. Amounts Nonadmitted: Not applicable.

8. Derivative Instruments: Not applicable.

9. Income Taxes

A. The components of the net deferred tax asset/(liability) at March 31 are as follows:

1.

3/31/2019		
(1)	(2)	(3)
Ordinary	Capital	(Col 1+2) Total

NOTES TO FINANCIAL STATEMENTS

(a)	Gross Deferred Tax Assets	\$.....2,373,306	\$.....149,461	\$.....2,522,767
(b)	Statutory Valuation Allowance Adjustments	\$.....0	\$.....0	\$.....0
(c)	Adjusted Gross Deferred Tax Assets			
(1a - 1b)		\$.....2,373,306	\$.....149,461	\$.....2,522,767
(d)	Deferred Tax Assets Nonadmitted	\$.....0	\$.....0	\$.....0
(e)	Subtotal Net Admitted Deferred Tax Asset			
(1c - 1d)		\$.....2,373,306	\$.....149,461	\$.....2,522,767
(f)	Deferred Tax Liabilities	\$.....45,873	\$.....242,647	\$.....288,520
(g)	Net Admitted Deferred Tax Asset/(Net Deferred Tax Liability)			
(1e - 1f)		\$.....2,327,433	\$.....(93,186)	\$.....2,234,247

12/31/2018		
(4)	(5)	(6)
Ordinary	Capital	(Col 4+5) Total

(a)	Gross Deferred Tax Assets	\$.....2,505,108	\$.....327,193	\$.....2,832,301
(b)	Statutory Valuation Allowance Adjustments	\$.....0	\$.....0	\$.....0
(c)	Adjusted Gross Deferred Tax Assets			
(1a - 1b)		\$.....2,505,108	\$.....327,193	\$.....2,832,301
(d)	Deferred Tax Assets Nonadmitted	\$.....0	\$.....0	\$.....0
(e)	Subtotal Net Admitted Deferred Tax Asset			
(1c - 1d)		\$.....2,505,108	\$.....327,193	\$.....2,832,301
(f)	Deferred Tax Liabilities	\$.....38,218	\$.....139,874	\$.....178,092
(g)	Net Admitted Deferred Tax Asset/(Net Deferred Tax Liability)			
(1e - 1f)		\$.....2,466,890	\$.....187,319	\$.....2,654,209

Change		
(7)	(8)	(9)
(Col 1-4) Ordinary	(Col 2-5) Capital	(Col 7+8) Total

(a)	Gross Deferred Tax Assets	\$.....(131,802)	\$.....(177,732)	\$.....(309,534)
(b)	Statutory Valuation Allowance Adjustments	\$.....0	\$.....0	\$.....0
(c)	Adjusted Gross Deferred Tax Assets			
(1a - 1b)		\$.....(131,802)	\$.....(177,732)	\$.....(309,534)
(d)	Deferred Tax Assets Nonadmitted	\$.....0	\$.....0	\$.....0
(e)	Subtotal Net Admitted Deferred Tax Asset			
(1c - 1d)		\$.....(131,802)	\$.....(177,732)	\$.....(309,534)
(f)	Deferred Tax Liabilities	\$.....7,655	\$.....102,773	\$.....110,428
(g)	Net Admitted Deferred Tax Asset/(Net Deferred Tax Liability)			
(1e - 1f)		\$.....(139,457)	\$.....(280,505)	\$.....(419,962)

2.

3/31/2019		
(1)	(2)	(3)
Ordinary	Capital	(Col 1+2) Total

Admission Calculation Components SSAP No. 101

(a)	Federal Income Taxes Paid In Prior Years Recoverable Through Loss Carrybacks.	\$.....1,980,162	\$.....0	\$.....1,980,162
(b)	Adjusted Gross Deferred Tax Assets Expected To Be Realized (Excluding The Amount Of Deferred Tax Assets From 2(a) above) After Application of the Threshold Limitation. (The Lesser of 2(b)1 and 2(b)2 Below)	\$.....254,085	\$.....0	\$.....254,085
1.	Adjusted Gross Deferred Tax Assets Expected to be Realized Following the Balance Sheet Date.	\$.....542,605	\$.....0	\$.....542,605
2.	Adjusted Gross Deferred Tax Assets Allowed per Limitation Threshold.	XXX	XXX	\$.....7,938,200
(c)	Adjusted Gross Deferred Tax Assets (Excluding The Amount Of Deferred Tax Assets From 2(a) and 2(b) above) Offset by Gross Deferred Tax Liabilities.	\$.....	\$.....	\$.....0
(d)	Deferred Tax Assets Admitted as the result of application of SSAP No. 101.			
Total	(2(a) + 2(b) + 2(c))	\$.....2,234,247	\$.....0	\$.....2,234,247

12/31/2018		
(4)	(5)	(6)
Ordinary	Capital	(Col 4+5) Total

(a)	Federal Income Taxes Paid In Prior Years Recoverable Through Loss Carrybacks.	\$.....3,209,348	\$.....0	\$.....3,209,348
(b)	Adjusted Gross Deferred Tax Assets Expected To Be Realized (Excluding The Amount Of Deferred Tax Assets From 2(a) above) After Application of the Threshold Limitation. (The Lesser of 2(b)1 and 2(b)2 Below)	\$.....(932,186)	\$.....0	\$.....(932,186)
1.	Adjusted Gross Deferred Tax Assets Expected to be Realized Following the Balance Sheet Date.	\$.....(377,047)	\$.....0	\$.....(377,047)
2.	Adjusted Gross Deferred Tax Assets Allowed per Limitation Threshold.	XXX	XXX	\$.....6,607,256
(c)	Adjusted Gross Deferred Tax Assets (Excluding The Amount Of Deferred Tax Assets From 2(a) and 2(b) above) Offset by Gross Deferred Tax Liabilities.	\$.....237,173	\$.....139,874	\$.....377,047
(d)	Deferred Tax Assets Admitted as the result of application of SSAP No. 101.	\$.....2,514,335	\$.....139,874	\$.....2,654,209

NOTES TO FINANCIAL STATEMENTS

Total (2(a) + 2(b) + 2(c))

Change		
(7)	(8)	(9)
(Col 1-4) Ordinary	(Col 2-5) Capital	(Col 7+8) Total

(a) Federal Income Taxes Paid In Prior Years Recoverable Through Loss Carrybacks.	\$.....(1,229,186)	\$.....0	\$.....(1,229,186)
(b) Adjusted Gross Deferred Tax Assets Expected To Be Realized (Excluding The Amount Of Deferred Tax Assets From 2(a) above) After Application of the Threshold Limitation. (The Lesser of 2(b)1 and 2(b)2 Below)	\$.....1,186,271	\$.....0	\$.....1,186,271
1. Adjusted Gross Deferred Tax Assets Expected to be Realized Following the Balance Sheet Date.	\$.....919,652	\$.....0	\$.....919,652
2. Adjusted Gross Deferred Tax Assets Allowed per Limitation Threshold.	XXX	XXX	\$.....1,330,944
(c) Adjusted Gross Deferred Tax Assets (Excluding The Amount Of Deferred Tax Assets From 2(a) and 2(b) above) Offset by Gross Deferred Tax Liabilities.	\$.....(237,173)	\$.....(139,874)	\$.....(377,047)
(d) Deferred Tax Assets Admitted as the result of application of SSAP No. 101.			
Total (2(a) + 2(b) + 2(c))	\$.....(280,088)	\$.....(139,874)	\$.....(419,962)

3.	2019	2018
----	------	------

(a) Ratio Percentage Used To Determine Recovery Period And Threshold Limitation Amount.15%15%
(b) Amount Of Adjusted Capital And Surplus Used To Determine Recovery Period And Threshold Limitation In 2(b)2 Above.	\$.....49,321,332	\$.....44,048,377

4.	3/31/2019	
	(1)	(2)
	Ordinary	Capital

Impact of Tax-Planning Strategies

(a) Determination Of Adjusted Gross Deferred Tax Assets And Net Admitted Deferred Tax Assets, By Tax Character As A Percentage.		
1. Adjusted Gross DTAs Amount From Note 9A1(c)2,373,306149,461
2. Percentage Of Adjusted Gross DTAs By Tax Character Attributable To The Impact Of Tax Planning Strategies0.00.0
3. Net Admitted Adjusted Gross DTAs Amount From Note 9A1(e)2,373,306149,461
4. Percentage Of Net Admitted Adjusted Gross DTAs By Tax Character Admitted Because Of The Impact Of Tax Planning Strategies0.00.0

12/31/2018	
(3)	(4)
Ordinary	Capital

(a) Determination Of Adjusted Gross Deferred Tax Assets And Net Admitted Deferred Tax Assets, By Tax Character As A Percentage.		
1. Adjusted Gross DTAs Amount From Note 9A1(c)2,505,108327,193
2. Percentage Of Adjusted Gross DTAs By Tax Character Attributable To The Impact Of Tax Planning Strategies0.00.0
3. Net Admitted Adjusted Gross DTAs Amount From Note 9A1(e)2,505,108327,193
4. Percentage Of Net Admitted Adjusted Gross DTAs By Tax Character Admitted Because Of The Impact Of Tax Planning Strategies0.00.0

Change	
(5)	(6)
(Col 1-3) Ordinary	(Col 2-4) Capital

(a) Determination Of Adjusted Gross Deferred Tax Assets And Net Admitted Deferred Tax Assets, By Tax Character As A Percentage.		
1. Adjusted Gross DTAs Amount From Note 9A1(c)(131,802)(177,732)
2. Percentage Of Adjusted Gross DTAs By Tax Character Attributable To The Impact Of Tax Planning Strategies0.00.0
3. Net Admitted Adjusted Gross DTAs Amount From Note 9A1(e)(131,802)(177,732)
4. Percentage Of Net Admitted Adjusted Gross DTAs By Tax Character Admitted Because Of The Impact Of Tax Planning Strategies0.00.0

(b) Does the Company's tax-planning strategies include the use of reinsurance?	Yes.....	No.....X.....
--	----------	---------------

C. Current income taxes incurred consist of the following major components:

(1)	(2)	(3)
3/31/2019	12/31/2018	(Col 1-2) Change

1. Current Income Tax

(a) Federal	\$.....747,573	\$.....2,602,643	\$.....(1,855,070)
(b) Foreign	\$.....0	\$.....0	\$.....0
(c) Subtotal	\$.....747,573	\$.....2,602,643	\$.....(1,855,070)

NOTES TO FINANCIAL STATEMENTS

(d)	Federal income tax on net capital gains	\$.....(2,725)	\$.....417,661	\$.....(420,386)
(e)	Utilization of capital loss carry-forwards	\$.....0	\$.....0	\$.....0
(f)	Other	\$.....0	\$.....0	\$.....0
(g)	Federal and foreign income taxes incurred	\$.....744,848	\$.....3,020,304	\$.....(2,275,456)
2.	Deferred Tax Assets:			
(a)	Ordinary			
(1)	Discounting of unpaid losses	\$.....0	\$.....0	\$.....0
(2)	Unearned premium reserve	\$.....2,283,567	\$.....2,412,718	\$.....(129,151)
(3)	Policyholder reserves	\$.....89,674	\$.....92,331	\$.....(2,657)
(4)	Investments	\$.....	\$.....0	\$.....0
(5)	Deferred acquisition costs	\$.....	\$.....0	\$.....0
(6)	Policyholder dividends accrual	\$.....	\$.....0	\$.....0
(7)	Fixed assets	\$.....	\$.....0	\$.....0
(8)	Compensation and benefits accrual	\$.....	\$.....0	\$.....0
(9)	Pension accrual	\$.....	\$.....0	\$.....0
(10)	Receivables - nonadmitted	\$.....	\$.....0	\$.....0
(11)	Net operating loss carry-forward	\$.....	\$.....0	\$.....0
(12)	Tax credit carry-forward	\$.....	\$.....0	\$.....0
(13)	Other (including items <5% of total ordinary tax assets)	\$.....65	\$.....59	\$.....6
(99)	Subtotal	\$.....2,373,306	\$.....2,505,108	\$.....(131,802)
(b)	Statutory valuation allowance adjustment	\$.....	\$.....0	\$.....0
(c)	Nonadmitted	\$.....	\$.....0	\$.....0
(d)	Admitted ordinary deferred tax assets (2a99 - 2b - 2c)	\$.....2,373,306	\$.....2,505,108	\$.....(131,802)
(e)	Capital:			
(1)	Investments	\$.....149,461	\$.....327,193	\$.....(177,732)
(2)	Net capital loss carry-forward	\$.....	\$.....0	\$.....0
(3)	Real estate	\$.....	\$.....0	\$.....0
(4)	Other (including items <5% of total capital tax assets)	\$.....	\$.....0	\$.....0
(99)	Subtotal	\$.....149,461	\$.....327,193	\$.....(177,732)
(f)	Statutory valuation allowance adjustment	\$.....	\$.....0	\$.....0
(g)	Nonadmitted	\$.....	\$.....0	\$.....0
(h)	Admitted capital deferred tax assets (2e99 - 2f - 2g)	\$.....149,461	\$.....327,193	\$.....(177,732)
(i)	Admitted deferred tax assets (2d + 2h)	\$.....2,522,767	\$.....2,832,301	\$.....(309,534)
3.	Deferred Tax Liabilities:			
(a)	Ordinary			
(1)	Investments	\$.....4,142	\$.....38,218	\$.....(34,076)
(2)	Fixed assets	\$.....31,503	\$.....0	\$.....31,503
(3)	Deferred and uncollected premium	\$.....	\$.....0	\$.....0
(4)	Policyholder reserves	\$.....	\$.....0	\$.....0
(5)	Other (including items<5% of total ordinary tax liabilities)	\$.....10,228	\$.....0	\$.....10,228
(99)	Subtotal	\$.....45,873	\$.....38,218	\$.....7,655
(b)	Capital:			
(1)	Investments	\$.....242,647	\$.....139,874	\$.....102,773
(2)	Real estate	\$.....	\$.....0	\$.....0
(3)	Other (including items <5% of total capital tax liabilities)	\$.....	\$.....0	\$.....0
(99)	Subtotal	\$.....242,647	\$.....139,874	\$.....102,773
(c)	Deferred tax liabilities (3a99 + 3b99)	\$.....288,520	\$.....178,092	\$.....110,428
4.	Net deferred tax assets/liabilities (2i - 3c)	\$.....2,234,247	\$.....2,654,209	\$.....(419,962)

NOTES TO FINANCIAL STATEMENTS

D. Federal income tax expense differs from the amount computed by applying the normal tax rate of 21% to income before federal Income tax as follows:

	March 31, 2019	March 31, 2018
Expected federal income tax expense	\$ 997,601	\$ 559,801
Change in unearned premium reserves	(138,872)	34,411
Book over capital gains (losses)	-	-
Book over tax reserves	(2,656)	24
Tax exempt interest and dividends received deduction	(95,587)	(108,419)
Other-than-temporary impairments on investments	(21,713)	-
Other	6,075	4,659
Federal income tax expense	\$ 744,848	\$ 490,476

E. Operating Loss and Tax Credit Carryforwards:

At March 31, 2019, the Company had \$0 of net operating loss carryforward. The Company also had \$0 alternative minimum tax credit at March 31, 2019.

The following is income tax expense for 2019, 2018 and 2017 that is available for recoupement in the event of future net losses:

2019 (current year)	\$ 744,848
2018 (current - 1)	3,020,304
2017 (current - 2)	3,258,788

F. Consolidated Federal Income Tax Return: The Company's federal income tax return is consolidated with Bancinsurance Corporation.

The Company files a consolidated federal income tax return with its parent, Bancinsurance Corporation. The Company has a tax sharing agreement, as approved by the Board of Directors, with its parent whereby federal income tax expense is determined as if the Company filed a separate federal income tax return and payments for this liability are made to the parent.

G. Federal or Foreign Income Tax Loss Contingencies: Not applicable

10. Information Concerning Parent, Subsidiaries and Affiliates:

A. Ohio Indemnity is a wholly-owned subsidiary of Bancinsurance Corporation, an insurance holding company domiciled in the State of Ohio. See Schedule Y, Part 1 Organizational Chart.

B. The Company has no investment in parent or affiliates. The Company has no subsidiaries or affiliated insurers.

C. There are no guarantees or undertakings for the benefit of an affiliate which result in a material contingent exposure of the Company's net assets to liabilities.

D - L. Other Disclosures: In 2005, the Company entered into a cost sharing agreement with Bancinsurance. During 2019 and 2018, the amount of expenses Bancinsurance allocated to the Company under this agreement were \$0 and \$101,903 respectively, which have been recorded in the accompanying statements of income.

In 2007, the Company entered into an intercompany agreement (the "Agreement") by and between the Company, Bancinsurance and USA (collectively, the "Parties"). Pursuant to the terms of the agreement, amounts owed relating to transactions between the Parties during each quarter shall be settled within forty-five days after quarter end. In accordance with SSAP No. 96, amounts owed to the Company over ninety days from the due date in the Agreement shall be nonadmitted.

Effective October 27, 2010, Fenist and Bancinsurance (collectively, the "Borrowers") entered into a credit agreement (the "Credit Agreement") with a lender. As of March 31, 2019, the Credit Agreement consists of a \$5.5 million senior secured revolving credit facility, of which zero is borrowed as of March 31, 2019. The Borrowers' obligations under the Credit Agreement are secured by a first priority lien on substantially all of the assets of the Borrowers and by a pledge by Bancinsurance of 100% of the stock of Ohio Indemnity, subject to the restrictions on the exercise of remedies under applicable insurance law. As of March 31, 2019, the Borrowers and were in compliance with all covenants under the Credit Agreement.

The Company pays certain fees and commissions to its affiliate, Ultimate Services Agency, LLC ("USA"), a property and casualty insurance agency. The company also allocates certain expenses to USA under a cost sharing agreement. During 2019 and 2018, the amount of commissions and fees, net of allocated expenses, incurred by the Company related to USA were \$2,367,645 and \$2,021,416, respectively. As of March 31, 2019 the Company had no amounts owed to it by the parties greater than ninety days from the due date.

During 2002 and 2003, Bancinsurance Corporation entered into an arrangement with BIC Statutory Trust I ("BIC Trust I"), a Connecticut special purpose business trust, and BIC Statutory Trust II ("BIC Trust II"), a Delaware special purpose business trust (collectively, the "Trusts"), whereby the Trusts issued and Bancinsurance Corporation purchased approximately \$8 million and \$7 million respectively, of floating rate trust preferred capital securities in exchange for junior subordinated debentures of Bancinsurance Corporation. Bancinsurance Corporation has fully and unconditionally guaranteed the obligations of the Trusts with respect to the floating rate trust preferred capital securities. The floating rate trust preferred capital securities, and the junior subordinated debentures issued in connection therewith, pay dividends and interest, as applicable, on a quarterly basis, are

NOTES TO FINANCIAL STATEMENTS

redeemable at par and mature in 2032 (for BIC Trust I) and 2033 (for BIC Trust II). Dividends paid by Ohio Indemnity to Bancinsurance Corporation can be a source of funds used to pay interest and any principal payments, if applicable, on the junior subordinated debentures by Bancinsurance Corporation. During 2018, Bancinsurance Corporation redeemed \$5.0 million of BIC Trust II leaving a remaining principal balance of approximately \$2.0 million as of March 31, 2019.

M. SCA Investments: Not applicable.

N. Investment in Insurance SCA's: Not applicable.

11. Debt:

A. Debt: Not applicable.

B. FHLB Agreements: Not applicable.

12. Retirement Plans, Deferred Compensation, Postemployment Benefits and Compensated Absences and Other post retirement Benefit Plans:

Defined Benefit Plan(A - D):

A. Reconciliation: Not applicable

B. Description: Not applicable

C. Fair Value: Not applicable

D. Narrative Description of Basis: Not applicable

E. Defined Contribution Plan: The Company provides a qualified 401(k) profit sharing plan, available to full-time employees who meet the plan's eligibility requirements. The Company matches 100% of the qualified employee's contribution up to 3% of salary and 50% of the qualified employee's contribution between 3% and 5% of salary. The total cost of the matching contribution was \$41,468 and \$47,929 for the years ended March 31, 2019 and 2018, respectively.

F. Multiemployer Plans: Not applicable.

G. Consolidated/Holding Company Plans: Not applicable.

H. Post employment Benefits and Compensated Absences: Not applicable.

I. Impact of Medicare Modernization Act: Not applicable

13. Capital and Surplus, Dividend Restrictions and Quasi-Reorganizations:

(1) The Company has 40,000 common shares authorized, 37,332 common shares issued and 37,332 common shares outstanding. All shares are Class A shares. The Company has 5,000 non-voting preferred shares authorized, none issued and outstanding.

(2) Dividend Rate of Preferred Stock: Not applicable.

(3) Dividend Restrictions: Generally, the Company is restricted by the insurance laws of the State of Ohio as to amounts that can be transferred to the parent in the form of dividends, loans, or advances without the approval of the Department to the greater of (a) 10 percent of statutory surplus as of December 31 of the year preceding the dividend, loan or advancement or (b) 100 percent of statutory net income for the year ended December 31 preceding the dividend, loan or advancement. Under the above restrictions, during 2019, dividends, loans or advances in excess of \$11,272,449 will require the approval of the Department.

(4) The following dividends were declared by Ohio Indemnity to Bancinsurance Corporation during 2019 and 2018:

- On October 26, 2018, Ohio Indemnity's board of directors declared a cash dividend in an aggregate amount of \$8,000,000 that was paid to Bancinsurance Corporation during the fourth quarter of 2018.

The Company is subject to a risk-based capital ("RBC") test applicable to property and casualty insurers. The RBC test serves as a benchmark of insurance enterprises' solvency by state insurance regulators by establishing statutory surplus targets which will require certain Company level or regulatory level actions. Based on the Company's analysis, the Company's total adjusted capital was in excess of all required action levels at March 31, 2019.

All insurance companies must file annual financial statements (prepared in accordance with statutory accounting rules) in states where they are authorized to do business and are subject to regular and special examinations by the regulatory agencies of those states. In 2017, the Department initiated its financial examination of Ohio Indemnity covering the period from January 1, 2012 through December 31, 2016. On November 17, 2017, the Department issued its examination report. No adjustments to Ohio Indemnity's previously filed statutory financial statements were required as a result of the examination.

NOTES TO FINANCIAL STATEMENTS

(5) Portion of the Company's Profits that may be paid as Ordinary Dividends to Stockholders: See Note 13(3) above.

(6) Restrictions Placed on the Unassigned Funds, Including for Whom the Surplus is Being Held: Not applicable.

(7) Mutual Surplus Advances: Not applicable.

(8) Company Stock Held for Special Purposes: See Note 10

(9) Changes in Special Surplus Funds: Not applicable.

(10) Changes in Unassigned Funds:

The portion of unassigned funds (surplus) represented or reduced by cumulative unrealized gains and losses is 973,549.

(11) Surplus Notes: Not applicable.

(12) Impact of Restatement Due to Quasi Reorganizations: Not applicable.

(13) Effective Date of Quasi Reorganizations: Not applicable.

14. Liabilities, Contingencies and Assessments:

A. Contingent Commitments: Not applicable.

B. Assessments: Not applicable.

C. Gain Contingencies: Not applicable.

D. Claims related extra Contractual Obligation and bad faith losses stemming from lawsuits: Not applicable

E. Contingencies related to product warranties: Not applicable

F. Joint and Several Liabilities: Not applicable

G. All Other Contingencies:

We are involved in legal proceedings arising in the ordinary course of business which are routine in nature and incidental to our business. We currently believe that none of these matters, either individually or in the aggregate, is reasonably likely to have a material adverse effect on our financial condition, results of operations or liquidity. However, because litigation is subject to inherent uncertainties and the outcome of such matters cannot be predicted with certainty, future developments could cause any one or more of these matters to have a material adverse effect on our financial condition, results of operations and liquidity.

15. Leases:

A. Lessee Operating Lease: As of March 31, 2019, we leased approximately 11,700 square feet in Columbus, Ohio for our headquarters pursuant to a lease that commenced on January 1, 2009, as amended April 1, 2015, and expires on December 31, 2020. Rent expense is recognized evenly over the lease term ending December 31, 2020. Rental expenses, which primarily include expenses for our office lease, were \$69,912 and \$66,970 for the years ended March 31, 2019 and 2018, respectively.

The future minimum lease payments required under operating leases for the next five fiscal years are as follows:

2019	207,675
2020	<u>210,600</u>
Total	<u>\$ 418,275</u>

B. Lessor Leases:

1. Operating Leases: Not applicable

2. Leveraged leases: Not applicable.

16. Information About Financial Instruments With Off-Balance Sheet Risk and Financial Instruments With Concentrations of Credit Risk: Not applicable.

17. Sale, Transfer and Servicing of Financial Assets and Extinguishments of Liabilities:

A. Transfers of Receivables Reported as Sales: Not applicable.

B. Transfers and Servicing of Financial Assets: Not applicable.

C. Wash Sales: Not applicable.

18. Gain or Loss to the Reporting Entity from Uninsured Plans and the Uninsured Portion of Partially Insured Plans: Not applicable.

19. Direct Premium Written/Produced by Managing General Agents/Third Party Administrators:

NOTES TO FINANCIAL STATEMENTS

The Company uses several managing general agents to write and administer its lender services products in specified territories. The following are the Company's managing general agents and their respective direct premiums written for the period ended March 31, 2019.

Name and Address of Managing General Agent or Third Party Administration	FEIN Number	Exclusive Contract	Types of Business Written	Types of Authority Granted	Total Direct Premium Written/ Produced By
American Risk Services, 11135 Kenwood Road, Cincinnati, Oh 45242	38-3773191	No	Credit	C, CA, R, P, U	\$11,766,699
Southwest Business Corporation, 9311 San Pedro, Suite 600, San Antonio, TX 78216	75-1553739	No	Credit & Auto Physical damage	C, CA, P, U	\$9,978,630
Berkshire Risk Servies, LLC, 7400 W. 132nd St., Suite 200, Overland Park, KS 66213	20-8682003	No	Credit	C, CA, R, P, U	\$6,395,464
Lee & Mason Financial Services, Inc. P.O. Box 270, Route 30, Northville, NY 12134	14-1722170	No	Credit	C, CA, P, U	\$4,173,027
HUB International of Midwest Limited, 265 East Parkway, Suite 100, Coppell, TX 75019	35-0672425	No	Credit	C, CA, P, U	\$3,094,818
Allied Solutions LLC, 1320 City Center Dr. Suite 300, Carmel, Indiana 46032	35-2125376	No	Credit & Auto Physical damage	C. CA, P, U	\$2,683,780
Financial GAP Administrator, LLC 1670 Fenpark Drive, Fenton, MO 63026	45-4777616	No	Credit, Auto Physical damage & Other liability	C. CA, P, U	\$691,015
Total					<u>\$38,783,433</u>

- C - Claims Payment,
CA - Claims Adjustment
R - Reinsurance Ceding
B - Binding Authority
P - Premium Collection
U - Underwriting

20. Fair Value Measurement:

A. The following table summarizes the Company’s financial assets measured at fair value on a recurring basis as of March 31, 2019 and December 31, 2018:

1. Fair Value Measurements at Reporting Date

March 31, 2019	Description for each class of asset or liability	(Level 1)	(Level 2)	(Level 3)	Total
	Assets at fair value:				
	Common Stock	\$ 12,350,866	\$ -	\$ -	\$ 12,350,866
	Total assets at fair value	\$ 12,350,866	\$ -	\$ -	\$ 12,350,866
December 31, 2018	Description for each class of asset or liability	(Level 1)	(Level 2)	(Level 3)	Total
	Assets at fair value:				
	Common Stocks	\$ 11,507,081	\$ -	\$ -	\$ 11,507,081
	Total assets at fair value	\$ 11,057,081	\$ -	\$ -	\$ 11,057,081

B. Fair Value Measurements in (Level 3) of the Fair Value Hierarchy: None

The Company has categorized its assets into the three-level hierarchy based upon the priority of the inputs to the respective valuation technique. The following summarizes the type of assets included within the three-level hierarchy presented in the table above:

- *Level 1* – This category includes exchange-traded preferred stocks, common stocks and mutual funds. Certain preferred stocks (redeemable preferred stocks and preferred stocks with an NAIC rating of 3 through 6) are carried at the lower of cost or fair value. The preferred stocks and common stocks listed in the above table are carried at fair value.
- *Level 2* – This category includes bonds. Bonds with an NAIC rating of 3 through 6 are carried at the lower of amortized cost or fair value. The company has no level 2 assets or liabilities.
- *Level 3* – The Company has no Level 3 assets or liabilities.

As of March 31, 2019, the Company had no financial liabilities that were measured at fair value and no financial assets that were measured at fair value on a non-recurring basis. The Company also did not have any non-financial assets or non-financial liabilities

NOTES TO FINANCIAL STATEMENTS

that were measured at fair value on a recurring or non-recurring basis.

C. The carrying amount and estimated fair value of financial instruments subject to disclosure requirements were as follows as of March 31, 2019 and December 31, 2018:

March 31, 2019						Not Practicable (Carrying Value)	Net Asset Value (NAV) Included in Level 2
Type of Financial Instrument	Aggregate Fair Value	Admitted Assets	(Level 1)	(Level 2)	(Level 3)		
Bonds.....	\$ 117,004,541	\$ 113,086,871	\$ -	\$ 117,004,541	\$ -	\$ -	\$ -
Common Stock.....	\$ 12,350,866	\$ 12,350,866	\$ 12,350,866	\$ -	\$ -	\$ -	\$ -
Cash.....	\$ 10,033,005	\$ 10,033,005	\$ 10,033,005	\$ -	\$ -	\$ -	\$ -

December 31, 2018						Not Practicable (Carrying Value)	Net Asset Value (NAV) Included in Level 2
Type of Financial Instrument	Aggregate Fair Value	Admitted Assets	(Level 1)	(Level 2)	(Level 3)		
Bonds.....	\$ 109,008,749	\$ 106,838,864	\$ -	\$ 109,008,749	\$ -	\$ -	\$ -
Common Stock.....	\$ 11,057,081	\$ 11,057,081	\$ 11,057,081	\$ -	\$ -	\$ -	\$ -
Cash.....	\$ 16,830,524	\$ 16,830,524	\$ 16,830,524	\$ -	\$ -	\$ -	\$ -

D. Not Practicable Estimated Fair Values: None

21. Other Items:

A. Extraordinary Items: Not applicable.

B. Troubled Debt Restructuring: Not applicable.

C. Other Disclosures and unusual items: The Company elected to use rounding in reporting amounts in this Annual Statement. The Company files the Annual Statement in accordance with NAIC validation tolerance levels.

D.. Business Interruption Insurance recoveries: Not applicable.

E. State Transferable Tax Credits: Not applicable.

F. Subprime-Mortgage-Related Risk Exposure: Not applicable

G. Insurance-Linked securities: Not applicable

22. Events Subsequent:

A. Accident and Health Insurance subject to the Section 910 of the Affordable Health Act (ACA): Not applicable

B. ACA fee assessment payable for the upcoming year: None

C. ACA fee assessment paid: None

D. Premium written subject to ACA 9010 assessment: None

E. Total Adjusted Capital before surplus adjustment(Five-Year Historical Line 28): \$46,702,5863 at December 31, 2018

F. Total Adjusted Capital after surplus adjustment(Five-Year Historical Line 28 minus 22B above): \$46,702,586 at December 31, 2018

G. Authorized Control Level(Five-Year Historical Line 29): \$11,448,070 at December 31, 2018

H. Would reporting the ACA assessment as of March 31, 2019 have triggered an RBC action level(YES/NO): No

23. Reinsurance:

A. Unsecured Reinsurance Recoverables: Not applicable.

B. Reinsurance Recoverable in Dispute: Not applicable.

C. Reinsurance Assumed and Ceded:

(1)The following table summarizes assumed and ceded unearned premiums and the related commission equity at March 31, 2019 and December 31, 2018 stated in dollars.

<u>March 31, 2019</u>	<u>Assumed Reinsurance</u>	<u>Ceded Reinsurance</u>	<u>Net</u>
-----------------------	--------------------------------	------------------------------	------------

NOTES TO FINANCIAL STATEMENTS

	Premium Reserve	Commission Equity	Premium Reserve	Commission Equity	Premium Reserve	Commission Equity
a. Affiliates	\$	\$	\$	\$	\$	\$
b. All Other	\$ 1,121,436	\$ 557,159	\$ 215,932,806	\$ 14,251,800	\$ (214,811,370)	\$ (13,694,641)
c. TOTAL	\$ 1,121,436	\$ 557,159	\$ 215,932,806	\$ 14,251,800	\$ (214,811,370)	\$ (13,694,641)
d. Direct Unearned Premium Reserve			\$ 273,909,225			

Line (c) of Ceded Reinsurance Premium Reserve Column must equal Page 3, Line 9, first inside amount.

	December 31, 2018		Assumed Reinsurance		Ceded Reinsurance		Net	
	Premium Reserve	Commission Equity	Premium Reserve	Commission Equity	Premium Reserve	Commission Equity	Premium Reserve	Commission Equity
a. Affiliates	\$	\$	\$	\$	\$	\$	\$	\$
b. All Other	\$ 1,289,545	\$ 636,407	\$ 215,389,577	\$ 14,266,330	\$ (214,100,032)	\$ (13,629,923)		
c. TOTAL	\$ 1,289,545	\$ 636,407	\$ 215,389,577	\$ 14,266,330	\$ (214,100,032)	\$ (13,629,923)		
d. Direct Unearned Premium Reserve			\$ 276,817,405					

2. The additional or return commission, predicated on loss experience or on any other form of profit sharing arrangements in this annual statement as a result of existing contractual arrangements: Not applicable.

D. Uncollectible Reinsurance: Not applicable.

E. Commutation of Ceded Reinsurance: Not applicable.

F. Retroactive Reinsurance: Not applicable.

G. Reinsurance Accounted For As A Deposit: Not applicable.

H. Disclosures for the transfer of Property and Casualty run-off agreements: Not applicable

I. Certified Reinsurer Rating Downgraded or Status subject to Revocation: Not applicable

J. Reinsurance Agreements Qualifying for Reinsurance Aggregation: Not applicable

24. Retrospectively Rated contracts & Contract subject to redetermination:

A -E. Not applicable

F. Risk Sharing Provisions of the Affordable Care Act (ACA):

1. The Company did not write Accident and Health insurance Premium that is subject to the health care Risk-Sharing provisions.

2. Impact on Risk-Sharing provisions of the Affordable Care Act on Admitted assets, Liabilities and Revenue for the Current year: None

3. Rollover of prior year ACA risk-sharing provisions: None

25. Change in incurred Losses and Loss Adjustment Expenses:

Loss and LAE reserves as of December 31, 2018 were \$22.1 million. As of March 31, 2019, \$10.6 million had been paid for incurred claims and claim adjustment expenses attributable to insured events of prior years. Reserves remaining for prior years are now \$7.7 million as a result of re-estimation of unpaid claims and claim adjustment expenses principally from our lender services, unemployment, waste industry and other specialty product lines. Therefore, there has been approximately \$3.8 million of favorable prior-year development from December 31, 2018 to March 31, 2019. The decrease is generally the result of ongoing analysis of recent loss development trends. Original estimates are increased or decreased, as additional information becomes known regarding individual claims. Conditions that affected these changes in reserves may not necessarily occur in the future. Accordingly, it may not be appropriate to extrapolate these changes to future periods.

26. Intercompany Pooling Arrangements: Not applicable.

27. Structured Settlements: Not applicable.

28. Health Care Receivables: Not applicable.

29. Participating Policies: Not applicable.

30. Premium Deficiency Reserves:

1. Liability carried for premium deficiency reserves

2. Date of the most recent evaluation of this liability

3. Was anticipated investment income utilized in the calculation?
- 03/31/2019

no

31. High Deductibles: Not applicable.

NOTES TO FINANCIAL STATEMENTS

32. Discounting of Liabilities for Unpaid Losses of Unpaid Loss Adjustment Expenses: Not applicable.

33. Asbestos/Environmental Reserves: Not applicable.

34. Subscriber Savings Accounts: Not applicable.

35. Multiple Peril Crop Insurance: Not applicable.

36. Financial guaranty Insurance: Not applicable

GENERAL INTERROGATORIES

PART 1 - COMMON INTERROGATORIES
GENERAL

- 1.1

Did the reporting entity experience any material transactions requiring the filing of Disclosure of Material Transactions with the State of Domicile, as required by the Model Act?

Yes ☐ No ☒
- 1.2

If yes, has the report been filed with the domiciliary state?

Yes ☐ No ☐
- 2.1

Has any change been made during the year of this statement in the charter, by-laws, articles of incorporation, or deed of settlement of the reporting entity?

Yes ☐ No ☒
- 2.2

If yes, date of change:
- 3.1

Is the reporting entity a member of an Insurance Holding Company System consisting of two or more affiliated persons, one or more of which is an insurer?

Yes ☒ No ☐

If yes, complete Schedule Y, Parts 1 and 1A.
- 3.2

Have there been any substantial changes in the organizational chart since the prior quarter end?

Yes ☐ No ☒
- 3.3

If the response to 3.2 is yes, provide a brief description of those changes.
- 3.4

Is the reporting entity publicly traded or a member of a publicly traded group?

Yes ☐ No ☒
- 3.5

If the response to 3.4 is yes, provide the CIK (Central Index Key) code issued by the SEC for the entity/group.
- 4.1

Has the reporting entity been a party to a merger or consolidation during the period covered by this statement?

Yes ☐ No ☒

If yes, complete and file the merger history data file with the NAIC for the annual filing corresponding to this period.
- 4.2

If yes, provide the name of entity, NAIC Company Code, and state of domicile (use two letter state abbreviation) for any entity that has ceased to exist as a result of the merger or consolidation.

1	2	3
Name of Entity	NAIC Company Code	State of Domicile

5.

If the reporting entity is subject to a management agreement, including third-party administrator(s), managing general agent(s), attorney-in-fact, or similar agreement, have there been any significant changes regarding the terms of the agreement or principals involved?

If yes, attach an explanation.

Yes ☐ No ☒ NA ☐
- 6.1

State as of what date the latest financial examination of the reporting entity was made or is being made.

12/31/2016
- 6.2

State the as of date that the latest financial examination report became available from either the state of domicile or the reporting entity. This date should be the date of the examined balance sheet and not the date the report was completed or released.

12/31/2016
- 6.3

State as of what date the latest financial examination report became available to other states or the public from either the state of domicile or the reporting entity. This is the release date or completion date of the examination report and not the date of the examination (balance sheet date).

11/17/2017
- 6.4

By what department or departments?

Ohio Department of Insurance.
- 6.5

Have all financial statement adjustments within the latest financial examination report been accounted for in a subsequent financial statement filed with Departments?

Yes ☐ No ☐ NA ☒
- 6.6

Have all of the recommendations within the latest financial examination report been complied with?

Yes ☒ No ☐ NA ☐
- 7.1

Has this reporting entity had any Certificates of Authority, licenses or registrations (including corporate registration, if applicable) suspended or revoked by any governmental entity during the reporting period?

Yes ☐ No ☒
- 7.2

If yes, give full information:
- 8.1

Is the company a subsidiary of a bank holding company regulated by the Federal Reserve Board?

Yes ☐ No ☒
- 8.2

If response to 8.1 is yes, please identify the name of the bank holding company.
- 8.3

Is the company affiliated with one or more banks, thrifts or securities firms?

Yes ☐ No ☒
- 8.4

If response to 8.3 is yes, please provide below the names and location (city and state of the main office) of any affiliates regulated by a federal regulatory services agency [i.e. the Federal Reserve Board (FRB), the Office of the Comptroller of the Currency (OCC), the Federal Deposit Insurance Corporation (FDIC) and the Securities Exchange Commission (SEC)] and identify the affiliate's primary federal regulator.]

1	2	3	4	5	6
Affiliate Name	Location (City, State)	FRB	OCC	FDIC	SEC

GENERAL INTERROGATORIES

9.1

Are the senior officers (principal executive officer, principal financial officer, principal accounting officer or controller, or persons performing similar functions) of the reporting entity subject to a code of ethics, which includes the following standards?
(a) Honest and ethical conduct, including the ethical handling of actual or apparent conflicts of interest between personal and professional relationships;
(b) Full, fair, accurate, timely and understandable disclosure in the periodic reports required to be filed by the reporting entity;
(c) Compliance with applicable governmental laws, rules and regulations;
(d) The prompt internal reporting of violations to an appropriate person or persons identified in the code; and
(e) Accountability for adherence to the code.

Yes [X] No []

9.11

If the response to 9.1 is No, please explain:
.....

9.2

Has the code of ethics for senior managers been amended?

Yes [] No [X]

9.21

If the response to 9.2 is Yes, provide information related to amendment(s).
.....

9.3

Have any provisions of the code of ethics been waived for any of the specified officers?

Yes [] No [X]

9.31

If the response to 9.3 is Yes, provide the nature of any waiver(s).
.....

FINANCIAL

10.1

Does the reporting entity report any amounts due from parent, subsidiaries or affiliates on Page 2 of this statement?.....

Yes [] No [X]

10.2

If yes, indicate any amounts receivable from parent included in the Page 2 amount:.....\$

INVESTMENT

11.1

Were any of the stocks, bonds, or other assets of the reporting entity loaned, placed under option agreement, or otherwise made available for use by another person? (Exclude securities under securities lending agreements.)

Yes [] No [X]

11.2

If yes, give full and complete information relating thereto:
.....

12.

Amount of real estate and mortgages held in other invested assets in Schedule BA:\$

13.

Amount of real estate and mortgages held in short-term investments:\$

14.1

Does the reporting entity have any investments in parent, subsidiaries and affiliates?

Yes [] No [X]

14.2

If yes, please complete the following:

	1	2
	Prior Year-End Book/Adjusted Carrying Value	Current Quarter Book/Adjusted Carrying Value
14.21 Bonds	\$0	\$
14.22 Preferred Stock	\$0	\$
14.23 Common Stock	\$0	\$
14.24 Short-Term Investments	\$0	\$
14.25 Mortgage Loans on Real Estate	\$	\$
14.26 All Other	\$	\$
14.27 Total Investment in Parent, Subsidiaries and Affiliates (Subtotal Lines 14.21 to 14.26).....	\$0	\$0
14.28 Total Investment in Parent included in Lines 14.21 to 14.26 above	\$	\$

15.1

Has the reporting entity entered into any hedging transactions reported on Schedule DB?

Yes [] No [X]

15.2

If yes, has a comprehensive description of the hedging program been made available to the domiciliary state?

Yes [] No []

If no, attach a description with this statement.

16

For the reporting entity's security lending program, state the amount of the following as of the current statement date:

16.1

Total fair value of reinvested collateral assets reported on Schedule DL, Parts 1 and 2

\$0

16.2

Total book adjusted/carrying value of reinvested collateral assets reported on Schedule DL, Parts 1 and 2

\$0

16.3

Total payable for securities lending reported on the liability page

\$0

GENERAL INTERROGATORIES

17. Excluding items in Schedule E – Part 3 – Special Deposits, real estate, mortgage loans and investments held physically in the reporting entity’s offices, vaults or safety deposit boxes, were all stocks, bonds and other securities, owned throughout the current year held pursuant to a custodial agreement with a qualified bank or trust company in accordance with Section 1, III – General Examination Considerations, F. Outsourcing of Critical Functions, Custodial or Safekeeping Agreements of the NAIC *Financial Condition Examiners Handbook*?

Yes [X] No []

17.1 For all agreements that comply with the requirements of the NAIC *Financial Condition Examiners Handbook*, complete the following:

1 Name of Custodian(s)	2 Custodian Address
Fifth Third Bank.....	38 Fountain Square Cincinnati, Ohio 45263.....
Meeder Asset Management.....	6125 Memorial Drive Dublin, Ohio 43017.....
Huntington National Bank.....	30050 Chagrin Boulevard Ste 150 Pepper Pike Oh 44124.....
Raymond James and Associates.....	2154 E Main Street Columbus, Oh 43209.....

17.2 For all agreements that do not comply with the requirements of the NAIC *Financial Condition Examiners Handbook*, provide the name, location and a complete explanation:

1 Name(s)	2 Location(s)	3 Complete Explanation(s)

17.3 Have there been any changes, including name changes, in the custodian(s) identified in 17.1 during the current quarter?

Yes [] No [X]

17.4 If yes, give full and complete information relating thereto:

1 Old Custodian	2 New Custodian	3 Date of Change	4 Reason

17.5 Investment management – Identify all investment advisors, investment managers, broker/dealers, including individuals that have the authority to make investment decisions on behalf of the reporting entity. For assets that are managed internally by employees of the reporting entity, note as such. [...that have access to the investment accounts”; “...handle securities”]

1 Name of Firm or Individual	2 Affiliation
J P Morgan Investment INC.....	U.....
Diamond Hill Capital Management.....	U.....
Matt Nolan, entity CFO, auth to make ST investment.....	A.....
Brad Hix, Invest Acct, access to invest accounts.....	A.....

17.5097 For those firms/individuals listed in the table for Question 17.5, do any firms/individuals unaffiliated with the reporting entity (i.e., designated with a “U”) manage more than 10% of the reporting entity’s assets?

Yes [X] No []

17.5098 For firms/individuals unaffiliated with the reporting entity (i.e., designated with a “U”) listed in the table for Question 17.5, does the total assets under management aggregate to more than 50% of the reporting entity’s assets?

Yes [X] No []

17.6 For those firms or individuals listed in the table for 17.5 with an affiliation code of “A” (affiliated) or “U” (unaffiliated), provide the information for the table below.

1 Central Registration Depository Number	2 Name of Firm or Individual	3 Legal Entity Identifier (LEI)	4 Registered With	5 Investment Management Agreement (IMA) Filed
1110638.....	Diamond Hill Capital Management.....		Security Exchange Comission.....	NO.....
107038.....	J P Morgan Investment inc.....		Security Exchange Comission.....	NO.....
N/A.....	Matt Nolan.....		N/A.....	NO.....
N/A.....	Brad Hix.....		N/A.....	NO.....

18.1 Have all the filing requirements of the *Purposes and Procedures Manual of the NAIC Investment Analysis Office* been followed?

Yes [X] No []

18.2 If no, list exceptions:
.....

19. By self-designating 5GI securities, the reporting entity is certifying the following elements for each self-designated 5GI security:
Documentation necessary to permit a full credit analysis of the security does not exist or an NAIC CRP credit rating for an FE or
a. PL security is not available.
b. Issuer or obligor is current on all contracted interest and principal payments.
c. The insurer has an actual expectation of ultimate payment of all contracted interest and principal.
Has the reporting entity self-designated 5GI securities?.....

Yes [] No [X]

20. By self-designating PLGI securities, the reporting entity is certifying the following elements of each self-designated PLGI security:
a. The security was purchased prior to January 1, 2018.
b. The reporting entity is holding capital commensurate with the NAIC Designation reported for the security.
The NAIC Designation was derived from the credit rating assigned by an NAIC CRP in its legal capacity as a NRSRO which is shown on a current private letter rating held by the insurer and available for examination by state insurance regulators.
c. The reporting entity is not permitted to share this credit rating of the PL security with the SVO.
d. The reporting entity is not permitted to share this credit rating of the PL security with the SVO.
Has the reporting entity self-designated PLGI securities?.....

Yes [] No [X]

GENERAL INTERROGATORIES
PART 2 - PROPERTY & CASUALTY INTERROGATORIES

1. If the reporting entity is a member of a pooling arrangement, did the agreement or the reporting entity's participation change? Yes [] No [X] NA []
If yes, attach an explanation.

2. Has the reporting entity reinsured any risk with any other reporting entity and agreed to release such entity from liability, in whole or in part, from any loss that may occur on the risk, or portion thereof, reinsured? Yes [] No [X]
If yes, attach an explanation.

3.1 Have any of the reporting entity's primary reinsurance contracts been canceled? Yes [] No [X]

3.2 If yes, give full and complete information thereto.
.....

4.1 Are any of the liabilities for unpaid losses and loss adjustment expenses other than certain workers' compensation tabular reserves (see *Annual Statement Instructions* pertaining to disclosure of discounting for definition of "tabular reserves,") discounted at a rate of interest greater than zero? Yes [] No [X]

4.2 If yes, complete the following schedule:

			TOTAL DISCOUNT				DISCOUNT TAKEN DURING PERIOD			
1	2	3	4	5	6	7	8	9	10	11
Line of Business	Maximum Interest	Discount Rate	Unpaid Losses	Unpaid LAE	IBNR	TOTAL	Unpaid Losses	Unpaid LAE	IBNR	TOTAL
.....
.....
.....
.....
.....
TOTAL			0	0	0	0	0	0	0	0

5. Operating Percentages:
5.1 A&H loss percent %
5.2 A&H cost containment percent %
5.3 A&H expense percent excluding cost containment expenses %
6.1 Do you act as a custodian for health savings accounts?..... Yes [] No [X]
6.2 If yes, please provide the amount of custodial funds held as of the reporting date..... \$
6.3 Do you act as an administrator for health savings accounts?..... Yes [] No [X]
6.4 If yes, please provide the balance of the funds administered as of the reporting date..... \$
7. Is the reporting entity licensed or chartered, registered, qualified, eligible or writing business in at least two states?..... Yes [X] No []
7.1 If no, does the reporting entity assume reinsurance business that covers risks residing in at least one state other than the state of domicile of the reporting entity?..... Yes [] No []

SCHEDULE F - CEDED REINSURANCE

[illegible]

STATEMENT AS OF MARCH 31, 2019 OF THE Ohio Indemnity Company

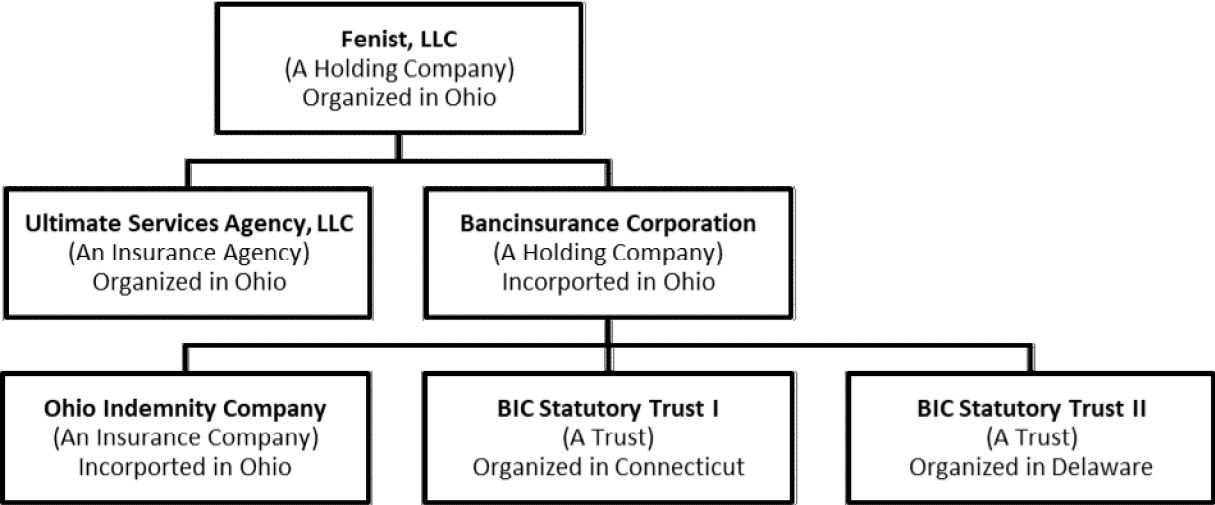
SCHEDULE T - EXHIBIT OF PREMIUMS WRITTEN

Current Year to Date – Allocated by States and Territories								
States, etc.	1	Direct Premiums Written		Direct Losses Paid (Deducting Salvage)		Direct Losses Unpaid		
		2	3	4	5	6	7	
	Active Status (a)	Current Year To Date	Prior Year To Date	Current Year To Date	Prior Year To Date	Current Year To Date	Prior Year To Date	
1. Alabama	AL	L	377,711	262,784	169,820	224,158	153,362	119,456
2. Alaska	AK	L	9,425	5,109	0	0	606	610
3. Arizona	AZ	L	225,704	1,559,147	346,805	605,355	382,716	590,763
4. Arkansas	AR	L	748,393	619,450	162,882	184,755	128,725	128,052
5. California	CA	L	1,826,718	3,223,707	973,041	1,121,536	1,703,516	1,590,809
6. Colorado	CO	L	2,256,941	1,539,920	519,581	785,817	563,979	945,006
7. Connecticut	CT	L	512,164	380,509	294,488	177,892	580,534	389,665
8. Delaware	DE	L	9,390	8,804	0	2,504	4,119	771
9. Dist. Columbia	DC	L	3,507	3,727	0	0	1,440	3,218
10. Florida	FL	L	2,444,077	2,246,824	1,054,013	837,874	1,166,957	755,879
11. Georgia	GA	L	309,402	600,703	253,393	463,092	313,801	413,661
12. Hawaii	HI	L	672,754	640,099	267,783	215,855	278,012	190,510
13. Idaho	ID	L	75,543	112,971	62,848	80,422	68,369	53,961
14. Illinois	IL	L	1,619,279	1,405,497	725,504	731,624	739,809	587,064
15. Indiana	IN	L	2,251,462	2,816,521	1,308,916	1,412,959	1,463,905	1,057,460
16. Iowa	IA	L	1,278,085	1,505,108	549,545	565,651	481,919	337,358
17. Kansas	KS	L	173,636	846,527	188,835	463,097	244,792	363,065
18. Kentucky	KY	L	288,815	364,518	100,066	264,025	574,794	576,936
19. Louisiana	LA	L	455,768	479,505	204,473	202,354	148,452	171,591
20. Maine	ME	L	250,961	214,866	128,167	22,700	243,300	101,416
21. Maryland	MD	L	722,943	706,295	265,519	352,974	328,718	316,497
22. Massachusetts	MA	L	1,032,593	479,223	563,847	456,593	825,613	859,318
23. Michigan	MI	L	1,564,585	1,399,185	579,808	657,236	657,878	578,795
24. Minnesota	MN	L	70,842	51,567	22,634	36,681	34,445	44,109
25. Mississippi	MS	L	343,679	301,732	213,200	190,296	189,533	174,940
26. Missouri	MO	L	954,743	1,446,764	463,222	347,579	751,498	559,169
27. Montana	MT	L	43,383	34,659	6,081	11,035	11,052	21,877
28. Nebraska	NE	L	399,672	265,417	19,290	51,506	47,220	59,425
29. Nevada	NV	L	37,966	(21,773)	36,584	95,113	79,757	167,229
30. New Hampshire	NH	L	158,279	111,146	65,990	54,180	125,985	70,151
31. New Jersey	NJ	L	29,194	1,633	446,311	1,082,160	576,301	939,767
32. New Mexico	NM	L	631,470	519,135	150,162	312,570	222,194	262,967
33. New York	NY	L	3,845,619	2,969,119	2,513,124	2,106,450	3,187,517	2,845,213
34. No. Carolina	NC	L	399,298	533,744	336,872	429,062	451,702	493,776
35. No. Dakota	ND	L	23,350	2,877	1,350	0	1,078	26
36. Ohio	OH	L	1,463,304	1,608,556	502,477	654,471	609,975	711,864
37. Oklahoma	OK	L	1,020,185	883,619	765,767	358,235	788,268	319,647
38. Oregon	OR	L	(23,399)	323,392	79,138	69,151	191,258	237,728
39. Pennsylvania	PA	L	1,411,996	1,378,894	412,990	189,334	419,935	249,735
40. Rhode Island	RI	L	219,074	115,662	88,629	57,859	96,199	30,767
41. So. Carolina	SC	L	391,683	430,981	137,631	125,936	159,870	109,041
42. So. Dakota	SD	L	58,930	18,801	0	0	0	3,815
43. Tennessee	TN	L	499,285	467,735	237,538	310,747	323,021	468,859
44. Texas	TX	L	35,839,403	30,821,443	15,631,589	10,440,123	11,858,039	7,004,451
45. Utah	UT	L	383,690	476,385	217,541	149,190	340,192	177,023
46. Vermont	VT	L	167,037	124,677	63,745	64,722	84,560	82,783
47. Virginia	VA	L	353,777	458,042	400,432	433,441	473,688	381,048
48. Washington	WA	L	159,101	814,564	192,269	497,748	362,910	594,819
49. West Virginia	WV	L	133,386	105,660	29,879	35,059	70,771	106,306
50. Wisconsin	WI	L	928,651	938,857	568,284	557,433	735,118	433,011
51. Wyoming	WY	L	13,034	13,711	890	8,908	13,833	25,599
52. American Samoa	AS	N		0		0		0
53. Guam	GU	N		0		0		0
54. Puerto Rico	PR	N		0		0		0
55. U.S. Virgin Islands	VI	N		0		0		0
56. Northern Mariana Islands	MP	N		0		0		0
57. Canada	CAN	N		0		0		0
58. Aggregate Other Alien	OT	XXX	0	0	0	0	0	0
59. Totals	XXX		69,066,488	66,617,998	32,322,953	28,497,462	33,261,235	26,707,006
DETAILS OF WRITE-INS								
58001.		XXX						
58002.		XXX						
58003.		XXX						
58998.	Summary of remaining write-ins for Line 58 from overflow page	XXX	0	0	0	0	0	0
58999.	TOTALS (Lines 58001 through 58003 plus 58998) (Line 58 above)	XXX	0	0	0	0	0	0

(a) Active Status Counts

L – Licensed or Chartered – Licensed insurance carrier or domiciled RRG51 R – Registered – Non-domiciled RRGs0
E – Eligible – Reporting entities eligible or approved to write surplus lines in the state (other than their state of domicile – See DSLI)0 Q – Qualified – Qualified or accredited reinsurer0
D – Domestic Surplus Lines Insurer (DSLI) – Reporting entities authorized to write surplus lines in the state of domicile0 N – None of the above – Not allowed to write business in the state6

SCHEDULE Y - INFORMATION CONCERNING ACTIVITIES OF INSURER MEMBERS OF A HOLDING COMPANY GROUP
PART 1 - ORGANIZATIONAL CHART



12

12

12

1212

PART 1 - LOSS EXPERIENCE

Line of Business		Current Year to Date			4 Prior Year to Date Direct Loss Percentage
		1 Direct Premiums Earned	2 Direct Losses Incurred	3 Direct Loss Percentage	
1.	Fire			0.0	0.0
2.	Allied lines			0.0	0.0
3.	Farmowners multiple peril			0.0	0.0
4.	Homeowners multiple peril			0.0	0.0
5.	Commercial multiple peril			0.0	0.0
6.	Mortgage guaranty			0.0	0.0
8.	Ocean marine			0.0	0.0
9.	Inland marine	27,479,641	11,690,245	42.5	10.6
10.	Financial guaranty			0.0	0.0
11.1	Medical professional liability -occurrence			0.0	0.0
11.2	Medical professional liability -claims made			0.0	0.0
12.	Earthquake			0.0	0.0
13.	Group accident and health			0.0	0.0
14.	Credit accident and health			0.0	0.0
15.	Other accident and health			0.0	0.0
16.	Workers' compensation			0.0	0.0
17.1	Other liability occurrence			0.0	(945.2)
17.2	Other liability-claims made			0.0	0.0
17.3	Excess Workers' Compensation			0.0	0.0
18.1	Products liability-occurrence			0.0	0.0
18.2	Products liability-claims made			0.0	0.0
19.1,19.2	Private passenger auto liability			0.0	0.0
19.3,19.4	Commercial auto liability			0.0	0.0
21.	Auto physical damage	2,467,895	870,620	35.3	28.3
22.	Aircraft (all perils)			0.0	0.0
23.	Fidelity			0.0	0.0
24.	Surety	1,584,472	(22,482)	(1.4)	(1.1)
26.	Burglary and theft			0.0	0.0
27.	Boiler and machinery			0.0	0.0
28.	Credit	40,526,410	19,703,088	48.6	54.2
29.	International			0.0	0.0
30.	Warranty	22,113		0.0	0.0
31.	Reinsurance - Nonproportional Assumed Property	XXX	XXX	XXX	XXX
32.	Reinsurance - Nonproportional Assumed Liability	XXX	XXX	XXX	XXX
33.	Reinsurance - Nonproportional Assumed Financial Lines	XXX	XXX	XXX	XXX
34.	Aggregate write-ins for other lines of business	6,846	0	0.0	0.0
35.	TOTALS	72,087,377	32,241,471	44.7	35.0
DETAILS OF WRITE-INS					
3401.	COLLATERAL PROTECTION			0.0	0.0
3402.	EXCESS OF LOSS	6,846		0.0	0.0
3403.	GAP			0.0	0.0
3498.	Sum. of remaining write-ins for Line 34 from overflow page	0	0	0.0	0.0
3499.	Totals (Lines 3401 through 3403 plus 3498) (Line 34)	6,846	0	0.0	0.0

PART 2 - DIRECT PREMIUMS WRITTEN

Line of Business		1 Current Quarter	2 Current Year to Date	3 Prior Year Year to Date
1.	Fire	0		0
2.	Allied lines	0		0
3.	Farmowners multiple peril	0		0
4.	Homeowners multiple peril	0		0
5.	Commercial multiple peril	0		0
6.	Mortgage guaranty	0		0
8.	Ocean marine	0		0
9.	Inland marine	28,228,207	28,228,207	26,125,101
10.	Financial guaranty	0		0
11.1	Medical professional liability-occurrence	0		0
11.2	Medical professional liability-claims made	0		0
12.	Earthquake	0		0
13.	Group accident and health	0		0
14.	Credit accident and health	0		0
15.	Other accident and health	0		0
16.	Workers' compensation	0		0
17.1	Other liability occurrence	0		0
17.2	Other liability-claims made	0		0
17.3	Excess Workers' Compensation	0		0
18.1	Products liability-occurrence	0		0
18.2	Products liability-claims made	0		0
19.1,19.2	Private passenger auto liability	0		0
19.3,19.4	Commercial auto liability	0		0
21.	Auto physical damage	1,679,406	1,679,406	3,102,875
22.	Aircraft (all perils)	0		0
23.	Fidelity	0		0
24.	Surety	1,414,193	1,414,193	1,311,089
26.	Burglary and theft	0		0
27.	Boiler and machinery	0		0
28.	Credit	37,730,572	37,730,572	36,053,426
29.	International	0		0
30.	Warranty	12,210	12,210	19,191
31.	Reinsurance - Nonproportional Assumed Property	XXX	XXX	XXX
32.	Reinsurance - Nonproportional Assumed Liability	XXX	XXX	XXX
33.	Reinsurance - Nonproportional Assumed Financial Lines	XXX	XXX	XXX
34.	Aggregate write-ins for other lines of business	1,901	1,901	6,316
35.	TOTALS	69,066,489	69,066,489	66,617,998
DETAILS OF WRITE-INS				
3401.	COLLATERAL PROTECTION	0		0
3402.	EXCESS OF LOSS	1,901	1,901	6,316
3403.	GAP	0		0
3498.	Sum. of remaining write-ins for Line 34 from overflow page	0	0	0
3499.	Totals (Lines 3401 through 3403 plus 3498) (Line 34)	1,901	1,901	6,316

STATEMENT AS OF MARCH 31, 2019 OF THE Ohio Indemnity Company

PART 3 (000 omitted)

LOSS AND LOSS ADJUSTMENT EXPENSE RESERVES SCHEDULE

	1	2	3	4	5	6	7	8	9	10	11	12	13
Years in Which Losses Occurred	Prior Year-End Known Case Loss and LAE Reserves	Prior Year-End IBNR Loss and LAE Reserves	Total Prior Year-End Loss and LAE Reserves (Cols. 1 + 2)	2019 Loss and LAE Payments on Claims Reported as of Prior Year-End	2019 Loss and LAE Payments on Claims Unreported as of Prior Year-End	Total 2019 Loss and LAE Payments (Cols. 4 + 5)	Q.S. Date Known Case Loss and LAE Reserves on Claims Reported and Open as of Prior Year End	Q.S. Date Known Case Loss and LAE Reserves on Claims Reported or Reopened Subsequent to Prior Year End	Q.S. Date IBNR Loss and LAE Reserves	Total Q.S. Loss and LAE Reserves (Cols.7 + 8 + 9)	Prior Year-End Known Case Loss and LAE Reserves Developed (Savings)/ Deficiency (Cols. 4 + 7 minus Col. 1)	Prior Year-End IBNR Loss and LAE Reserves Developed (Savings)/ Deficiency (Cols. 5 + 8 + 9 minus Col. 2)	Prior Year-End Total Loss and LAE Reserve Developed (Savings)/ Deficiency (Cols. 11 + 12)
1. 2016 + Prior13903916141529557017116(182)(176)
2. 20171531,0601,213169(133)361274864995143(325)(182)
3. Subtotals 2017 + prior1661,9632,129183(118)6513291,5651,706149(507)(358)
4. 2018.....3,78716,23820,0256,4264,12110,5471,1084654,4326,0053,747(7,220)(3,473)
5. Subtotals 2018 + prior3,95318,20122,1546,6094,00310,6121,2404745,9977,7113,896(7,727)(3,831)
6. 2019XXXXXXXXXXXX2,7142,714XXX1,73311,90713,640XXXXXXXXX
7. Totals	3,953	18,201	22,154	6,609	6,717	13,326	1,240	2,207	17,904	21,351	3,896	(7,727)	(3,831)
8. Prior Year-End Surplus As Regards Policy-holders	46,703										Col. 11, Line 7 As % of Col. 1, Line 7	Col. 12, Line 7 As % of Col. 2, Line 7	Col. 13, Line 7 As % of Col. 3, Line 7
											1. 98.6	2. (42.5)	3. (17.3)
											Col. 13, Line 7 Line 8		
											4. (8.2)		

SUPPLEMENTAL EXHIBITS AND SCHEDULES INTERROGATORIES


The following supplemental reports are required to be filed as part of your statement filing. However, in the event that your company does not transact the type of business for which the special report must be filed, your response of **NO** to the specific interrogatory will be accepted in lieu of filing a "NONE" report and a bar code will be printed below. If the supplement is required of your company but is not being filed for whatever reason enter **SEE EXPLANATION** and provide an explanation following the interrogatory questions.

	Response
1. Will the Trusteed Surplus Statement be filed with the state of domicile and the NAIC with this statement?NO.....
2. Will Supplement A to Schedule T (Medical Professional Liability Supplement) be filed with this statement?NO.....
3. Will the Medicare Part D Coverage Supplement be filed with the state of domicile and the NAIC with this statement?NO.....
4. Will the Director and Officer Insurance Coverage Supplement be filed with the state of domicile and the NAIC with this statement?NO.....

Explanation:


Bar Code:

1.




265652019490000001

2.




265652019455000001

3.



265652019365000001

4.



265652019505000001

OVERFLOW PAGE FOR WRITE-INS

SCHEDULE A – VERIFICATION

Real Estate

	1	2
	Year To Date	Prior Year Ended December 31
1. Book/adjusted carrying value, December 31 of prior year	0	0
2. Cost of acquired:		
2.1 Actual cost at time of acquisition		0
2.2 Additional investment made after acquisition		0
3. Current year change in encumbrances		0
4. Total gain (loss) on disposals		0
5. Deduct amounts received on disposals		0
6. Total foreign exchange change in book/adjusted carrying value		0
7. Deduct current year's other-than-temporary impairment recognized		0
8. Deduct current year's depreciation		0
9. Book/adjusted carrying value at the end of current period (Lines 1+2+3+4-5+6-7-8)	0	0
10. Deduct total nonadmitted amounts	0	0
11. Statement value at end of current period (Line 9 minus Line 10)	0	0

SCHEDULE B – VERIFICATION

Mortgage Loans

	1	2
	Year To Date	Prior Year Ended December 31
1. Book value/recorded investment excluding accrued interest, December 31 of prior year	0	0
2. Cost of acquired:		
2.1 Actual cost at time of acquisition		0
2.2 Additional investment made after acquisition		0
3. Capitalized deferred interest and other		0
4. Accrual of discount		0
5. Unrealized valuation increase (decrease)		0
6. Total gain (loss) on disposals		0
7. Deduct amounts received on disposals		0
8. Deduct amortization of premium and mortgage interest points and commitment fees		0
9. Total foreign exchange change in book value/recorded investment excluding accrued interest		0
10. Deduct current year's other-than-temporary impairment recognized		0
11. Book value/recorded investment excluding accrued interest at end of current period (Lines 1+2+3+4+5+6-7-8+9-10)	0	0
12. Total valuation allowance		0
13. Subtotal (Line 11 plus Line 12)	0	0
14. Deduct total nonadmitted amounts	0	0
15. Statement value at end of current period (Line 13 minus Line 14)	0	0

SCHEDULE BA – VERIFICATION

Other Long-Term Invested Assets

	1	2
	Year To Date	Prior Year Ended December 31
1. Book/adjusted carrying value, December 31 of prior year	0	0
2. Cost of acquired:		
2.1 Actual cost at time of acquisition	1,000,000	0
2.2 Additional investment made after acquisition		0
3. Capitalized deferred interest and other		0
4. Accrual of discount		0
5. Unrealized valuation increase (decrease)		0
6. Total gain (loss) on disposals		0
7. Deduct amounts received on disposals		0
8. Deduct amortization of premium and depreciation		0
9. Total foreign exchange change in book/adjusted carrying value		0
10. Deduct current year's other-than-temporary impairment recognized		0
11. Book/adjusted carrying value at end of current period (Lines 1+2+3+4+5+6-7-8+9-10)	1,000,000	0
12. Deduct total nonadmitted amounts	0	0
13. Statement value at end of current period (Line 11 minus Line 12)	1,000,000	0

SCHEDULE D – VERIFICATION

Bonds and Stocks

	1	2
	Year To Date	Prior Year Ended December 31
1. Book/adjusted carrying value of bonds and stocks, December 31 of prior year	117,895,946	109,524,713
2. Cost of bonds and stocks acquired	9,392,763	49,667,231
3. Accrual of discount	33,427	107,588
4. Unrealized valuation increase (decrease)	1,232,341	(3,025,452)
5. Total gain (loss) on disposals	90,419	1,988,858
6. Deduct consideration for bonds and stocks disposed of	2,976,114	38,374,591
7. Deduct amortization of premium	231,045	1,339,709
8. Total foreign exchange change in book/adjusted carrying value		0
9. Deduct current year's other-than-temporary impairment recognized		652,694
10. Total investment income recognized as a result of prepayment penalties and/or acceleration fees		0
11. Book/adjusted carrying value at end of current period (Lines 1+2+3+4+5-6-7+8-9+10)	125,437,737	117,895,946
12. Deduct total nonadmitted amounts	0	0
13. Statement value at end of current period (Line 11 minus Line 12)	125,437,737	117,895,946

STATEMENT AS OF MARCH 31, 2019 OF THE Ohio Indemnity Company

SCHEDULE D - PART 1B

Showing the Acquisitions, Dispositions and Non-Trading Activity
During the Current Quarter for all Bonds and Preferred Stock by NAIC Designation

NAIC Designation	1 Book/Adjusted Carrying Value Beginning of Current Quarter	2 Acquisitions During Current Quarter	3 Dispositions During Current Quarter	4 Non-Trading Activity During Current Quarter	5 Book/Adjusted Carrying Value End of First Quarter	6 Book/Adjusted Carrying Value End of Second Quarter	7 Book/Adjusted Carrying Value End of Third Quarter	8 Book/Adjusted Carrying Value December 31 Prior Year
BONDS								
1. NAIC 1 (a).....	104,676,044	8,462,989	2,017,364	(194,979)	110,926,690	0	0	104,676,044
2. NAIC 2 (a).....	2,067,412			92,769	2,160,181	0	0	2,067,412
3. NAIC 3 (a).....	95,408			(95,408)	0	0	0	95,408
4. NAIC 4 (a).....	0				0	0	0	0
5. NAIC 5 (a).....	0				0	0	0	0
6. NAIC 6 (a).....	0				0	0	0	0
7. Total Bonds	106,838,864	8,462,989	2,017,364	(197,618)	113,086,871	0	0	106,838,864
PREFERRED STOCK								
8. NAIC 1	0				0	0	0	0
9. NAIC 2	0				0	0	0	0
10. NAIC 3	0				0	0	0	0
11. NAIC 4	0				0	0	0	0
12. NAIC 5	0				0	0	0	0
13. NAIC 6	0				0	0	0	0
14. Total Preferred Stock.....	0	0	0	0	0	0	0	0
15. Total Bonds & Preferred Stock	106,838,864	8,462,989	2,017,364	(197,618)	113,086,871	0	0	106,838,864

(a) Book/Adjusted Carrying Value column for the end of the current reporting period includes the following amount of short-term and cash equivalent bonds by NAIC designation: NAIC 1 \$; NAIC 2 \$;

NAIC 3 \$; NAIC 4 \$; NAIC 5 \$; NAIC 6 \$

Schedule DA - Part 1

NONE

Schedule DA - Verification

NONE

Schedule DB - Part A - Verification

NONE

Schedule DB - Part B - Verification

NONE

Schedule DB - Part C - Section 1

NONE

Schedule DB - Part C - Section 2

NONE

Schedule DB - Verification

NONE

SCHEDULE E – PART 2 – VERIFICATION
(Cash Equivalents)

	1 Year To Date	2 Prior Year Ended December 31
1. Book/adjusted carrying value, December 31 of prior year.....	1,549,561	3,197,617
2. Cost of cash equivalents acquired	9,029,877	38,240,707
3. Accrual of discount		0
4. Unrealized valuation increase (decrease)		0
5. Total gain (loss) on disposals.....		0
6. Deduct consideration received on disposals	9,470,100	39,888,763
7. Deduct amortization of premium		0
8. Total foreign exchange change in book/adjusted carrying value		0
9. Deduct current year's other than temporary impairment recognized		0
10. Book/adjusted carrying value at end of current period (Lines 1+2+3+4+5-6-7+8-9)	1,109,338	1,549,561
11. Deduct total nonadmitted amounts		0
12. Statement value at end of current period (Line 10 minus Line 11)	1,109,338	1,549,561

Schedule A - Part 2

NONE

Schedule A - Part 3

NONE

Schedule B - Part 2

NONE

Schedule B - Part 3

NONE

STATEMENT AS OF MARCH 31, 2019 OF THE Ohio Indemnity Company

SCHEDULE BA - PART 2

Showing Other Long-Term Invested Assets ACQUIRED AND ADDITIONS MADE During the Current Quarter

[illegible]

SCHEDULE BA - PART 3

Showing Other Long-Term Invested Assets DISPOSED, Transferred or Repaid During the Current Quarter

[illegible]

STATEMENT AS OF MARCH 31, 2019 OF THE Ohio Indemnity Company

SCHEDULE D - PART 3

Show All Long-Term Bonds and Stock Acquired During the Current Quarter

1	2	3	4	5	6	7	8	9	10
CUSIP Identification	Description	Foreign	Date Acquired	Name of Vendor	Number of Shares of Stock	Actual Cost	Par Value	Paid for Accrued Interest and Dividends	NAIC Designation and Administrative Symbol/Market Indicator ^(a)
Bonds - U.S. Governments									
912828-4M-9	UNITED STATES TREASURY		02/04/2019	CITADEL SECURITIES LLC	XXX	812,688	800,000	6,227	1
0599999 - Bonds - U.S. Governments						812,688	800,000	6,227	XXX
Bonds - U.S. Special Revenue									
31335B-TV-8	FH G61464 - RMBS		02/01/2019	JANNEY MONTGOMERY SCOTT INC.	XXX	719,292	702,498	937	1
3136B0-YM-2	FNA 18M2 A2 - CMBS		01/24/2019	BANC / AMERICA SECUR. LLC, MONT	XXX	964,883	1,000,000	2,257	1
3137AV-2U-0	FHR 4122D PY - CMO/RMBS		03/14/2019	AMHERST PIERPONT SECURITIES	XXX	503,394	528,000	792	1
3199999 - Bonds - U.S. Special Revenue and Special Assessment and all Non-Guaranteed Obligations of Agencies and Authorities of Governments and Their Political Subdivisions						2,187,569	2,230,498	3,986	XXX
Bonds - Industrial and Miscellaneous (Unaffiliated)									
125504-AA-8	CIGARETTE AUTO RECEIVABLES TRUST 2019-1		02/19/2019	DEUTSCHE BANK SECURITIES, INC.	XXX	404,997	405,000		1FE
14315N-AC-4	CARMX 191 A3 - ABS		01/16/2019	CREDIT SUISSE SECURITIES (USA)	XXX	1,149,870	1,150,000		1FE
26208N-AE-4	DRIVE 191 B - ABS		01/15/2019	DEUTSCHE BANK SECURITIES, INC.	XXX	729,886	730,000		1FE
33844M-AC-6	FCAT 181 B - ABS		01/15/2019	BANC / AMERICA SECUR. LLC, MONT	XXX	317,138	320,000	56	1FE
48283P-AE-1	KABB 191 A - ABS		03/12/2019	GUGGENHEIM	XXX	399,996	400,000		
68267D-AA-4	OMFIT 191 A - ABS		01/15/2019	CITIGROUP GLOBAL MARKETS INC	XXX	1,069,853	1,070,000		1FE
74361M-AA-7	PROSPER MARKETPLACE ISSUANCE TRUST, SER1		02/01/2019	GOLDMAN SACHS & CO, NY	XXX	394,743	395,000	233	
78471W-AB-1	SCLP 182 A2 - ABS		01/15/2019	GOLDMAN SACHS & CO, NY	XXX	996,250	1,000,000	2,047	1FE
3899999 - Bonds - Industrial and Miscellaneous (Unaffiliated)						5,462,732	5,470,000	2,336	XXX
8399997 - Subtotals - Bonds - Part 3						8,462,989	8,500,498	12,548	XXX
8399999 - Subtotals - Bonds						8,462,989	8,500,498	12,548	XXX
Common Stocks - Industrial and Miscellaneous									
026874-78-4	AMERICAN INTERNATIONAL GROUP ORD		02/14/2019	VARIOUS	1,504,000	61,866	XXX		L
06417N-10-3	BANK OZK ORD		03/22/2019	WEEDEN + CO	1,178,000	32,600	XXX		L
084670-70-2	BERKSHIRE HATHWAY CL B ORD		01/11/2019	WEEDEN + CO	104,000	20,262	XXX		L
099724-10-6	BORGWARNER ORD		02/11/2019	WEEDEN + CO	420,000	16,352	XXX		L
443320-10-6	HUB GROUP CL A ORD		02/11/2019	WEEDEN + CO	181,000	7,906	XXX		L
48251W-10-4	KKR AND CO CL A ORD		03/26/2019	VARIOUS	7,955,000	188,210	XXX		L
59156R-10-8	METLIFE ORD		02/08/2019	KEEFE BRUYETTE + WOODS INC	789,000	33,576	XXX		L
62482R-10-7	MR COOPER GROUP ORD		03/22/2019	VARIOUS	20,930,000	250,314	XXX		L
910047-10-9	UNITED CONTINENTAL HOLDINGS ORD		03/11/2019	WEEDEN + CO	516,000	42,384	XXX		L
91879Q-10-9	VAIL RESORTS ORD		01/15/2019	WEEDEN + CO	443,000	82,908	XXX		L
N20146-10-1	CIMPRESS ORD	C	03/07/2019	VARIOUS	2,451,000	193,395	XXX		L
9099999 - Common Stocks - Industrial and Miscellaneous (Unaffiliated)						929,774	XXX	0	XXX
9799997 - Subtotals - Common Stocks - Part 3						929,774	XXX	0	XXX
9799999 - Subtotals - Common Stocks						929,774	XXX	0	XXX
9899999 - Subtotals- Preferred and Common Stocks						929,774	XXX	0	XXX
9999999 Totals						9,392,763	XXX	12,548	XXX

(a) For all common stock bearing the NAIC market indicator "U" provide: the number of such issues

STATEMENT AS OF MARCH 31, 2019 OF THE Ohio Indemnity Company

SCHEDULE D - PART 4

Show All Long-Term Bonds and Stock Sold, Redeemed or Otherwise Disposed of During the Current Quarter

1	2	3 F o r e i g n	4	5	6	7	8	9	10	Change in Book/Adjusted Carrying Value					16	17	18	19	20	21	22
										11	12	13	14	15							
CUSIP Identi- fication	Description		Disposal Date	Name of Purchaser	Number of Shares of Stock	Consideration	Par Value	Actual Cost	Prior Year Book/Adjusted Carrying Value	Unrealized Valuation Increase/ (Decrease)	Current Year's (Amortization)/ Accretion	Current Year's Other Than Temporary Impairment Recognized	Total Change in B./A.C.V. (11+12-13)	Total Foreign Exchange Change in B./A.C.V.	Book/ Adjusted Carrying Value at Disposal Date	Foreign Exchange Gain (Loss) on Disposal	Realized Gain (Loss) on Disposal	Total Gain (Loss) on Disposal	Bond Interest/Stock Dividends Received During Year	Stated Contractual Maturity Date	NAIC Designation and Administrative Symbol/Market Indicator ^(a)
Bonds - U.S. Governments																					
912828-KD-1	UNITED STATES TREASURY		02/15/2019	Maturity @ 100.00	XXX	800,000	800,000	846,971	801,169		(1,169)		(1,169)		800,000			0	11,000	02/15/2019	1
0599999	Bonds - U.S. Governments					800,000	800,000	846,971	801,169	0	(1,169)	0	(1,169)	0	800,000	0	0	0	11,000	XXX	XXX
Bonds - U.S. Political Subdivisions of States, Territories and Possessions																					
895793-CV-7	TRIAD OHIO LOC SCH DIST		01/01/2019	Call @ 100.00	XXX									0				0	(19)	12/01/2025	1FE
2499999	Bonds - U.S. Political Subdivisions of States, Territories and Possessions					0	0	0	0	0	0	0	0	0	0	0	0	0	(19)	XXX	XXX
Bonds - U.S. Special Revenue and Special Assessment and all Non-Guaranteed Obligations of Agencies and Authorities of Governments and Their Political Subdivisions																					
248297-BU-6	DENHAM SPRINGS-LIVINGSTON HSG & MTG FIN		03/01/2019	Call @ 100.00	XXX	1,222	1,222	1,275	1,222				0		1,222		0		10	11/01/2040	1FE
312934-HE-5	FH A87429 - RMBS		03/01/2019	Paydown	XXX	30,919	30,919	31,962	31,959		(3)		(3)		31,956		(1,037)	(1,037)	144	07/01/2039	1
31335B-TV-8	FH G61464 - RMBS		03/01/2019	Paydown	XXX	9,012	9,012	9,227			1		1		9,228		(216)	(216)		10/01/2046	1
3136AA-LT-0	FNR 12139J JA - CMO/RMBS		03/01/2019	Paydown	XXX	43,587	43,587	43,220	43,216		1		1		43,217		371	371	144	12/25/2042	1
31412P-PS-4	FN 931133 - RMBS		03/01/2019	Paydown	XXX	33,954	33,954	35,196	35,190		(3)		(3)		35,187		(1,233)	(1,233)	124	05/01/2039	1
34074M-HW-4	FLORIDA HSG FIN CORP REV		01/01/2019	Call @ 100.00	XXX	5,000	5,000	5,000	5,000						5,000			0		01/01/2030	1FE
	GEORGIA ST HSG & FIN AUTH REV		03/01/2019	Call @ 100.00	XXX	75,000	75,000	80,459	78,521		(90)		(90)		78,432		(3,432)	(3,432)		06/01/2045	1FE
45201L-SN-6	ILLINOIS HSG DEV AUTH		03/18/2019	Call @ 100.00	XXX	10,000	10,000	10,000	10,000				0		10,000			0	343	07/01/2028	1FE
462590-HH-6	IOWA STUDENT LN LIQUIDITY CORP STUDENT		01/01/2019	Call @ 100.00	XXX								0					0	(638)	12/01/2022	1FE
56040P-BR-8	MAINE EDL LN AUTH STUDENT LN REV		01/01/2019	Call @ 100.00	XXX								0					0	(1)	12/01/2027	1FE
	MASSACHUSETTS EDL FING												0					0			
57563R-HN-2	AUTH MASSACHUSETTS ST HSG FIN		01/01/2019	Call @ 100.00	XXX	20,000	20,000	20,660	20,000				0		20,000			0		01/01/2028	1FE
57586P-V3-7	AGY HSG REV		01/21/2019	Call @ 100.00	XXX	5,000	5,000	5,000	5,000				0		5,000			0		12/01/2032	1FE
	MILLAN IND 21ST CENTY SCH												0					0			
598776-AA-0	BLDG CORP		01/15/2019	Call @ 100.00	XXX	20,000	20,000	20,596	20,000				0		20,000			0		01/15/2027	1FE
60416S-MZ-0	MINNESOTA ST HSG FIN AGY		03/01/2019	Call @ 100.00	XXX	30,000	30,000	31,559	31,106		(15)		(15)		31,091		(1,091)	(1,091)	356	01/01/2046	1FE
	MISSOURI ST HSG DEV COMM																	0			
60636X-20-5	SINGLE FAMILY		03/01/2019	Call @ 100.00	XXX	15,000	15,000	15,000	15,000				0		15,000			0	347	09/01/2031	1FE
	NEW HAMPSHIRE ST HSG FIN												0					0			
64469D-LA-7	AUTH SINGLE FAM		02/01/2019	Call @ 100.00	XXX	5,000	5,000	5,000	5,000				0		5,000			0	134	07/01/2034	1FE
647200-C4-4	NEW MEXICO MTG FIN AUTH		03/01/2019	Call @ 100.00	XXX	60,000	60,000	60,000	60,000				0		60,000			0	1,538	09/01/2028	1FE
796886-AW-9	SAN BRUNO CALIF CTF5 PARTN		03/25/2019	Call @ 100.00	XXX	250,000	250,000	251,000	250,000				0		250,000			0	8,531	02/01/2027	1FE
3199999	Bonds - U.S. Special Revenue and Special Assessment and all Non-Guaranteed Obligations of Agencies and Authorities of Governments and Their Political Subdivisions					613,694	613,694	625,154	611,213	0	(109)	0	(109)	0	620,332	0	(6,637)	(6,637)	11,031	XXX	XXX
Bonds - Industrial and Miscellaneous (Unaffiliated)																					
125504-AA-8	CIGAR 191 A - ABS		03/15/2019	Paydown	XXX	14,943	14,943	14,943			3		3		14,945		(3)	(3)		08/15/2024	1FE
35634B-AA-3	FREED 182 A - ABS		03/18/2019	Paydown	XXX	130,625	130,625	130,621	130,622		0		0		130,622		3	3	480	10/20/2025	1FE
36255X-AA-1	GCAR 183 A - ABS		03/15/2019	Paydown	XXX	150,869	150,869	150,866	150,867		0		0		150,867		2	2	455	08/15/2022	1FE
	PROSPER MARKETPLACE																				
74361M-AA-7	ISSUANCE TRUST, SER1		03/15/2019	Paydown	XXX	20,991	20,991	20,977			0		0		20,977		13	13		04/15/2025	
82653G-AA-0	SRFC 183 A - ABS		03/20/2019	Paydown	XXX	77,851	77,851	77,831	77,832		1		1		77,833		18	18	226	09/20/2035	1FE
92511A-AA-4	VEROS 181 A - ABS		03/15/2019	Paydown	XXX	201,811	201,811	201,798	201,784		4		4		201,788		23	23	643	05/15/2023	
3899999	Bonds - Industrial and Miscellaneous (Unaffiliated)					597,089	597,089	597,035	561,104	0	9	0	9	0	597,033	0	57	57	1,804	XXX	XXX
8399997	Subtotals - Bonds - Part 4					2,010,784	2,010,784	2,069,160	1,973,487	0	(1,270)	0	(1,270)	0	2,017,364	0	(6,581)	(6,581)	23,816	XXX	XXX
8399999	Subtotals - Bonds					2,010,784	2,010,784	2,069,160	1,973,487	0	(1,270)	0	(1,270)	0	2,017,364	0	(6,581)	(6,581)	23,816	XXX	XXX
Common Stocks - Industrial and Miscellaneous (Unaffiliated)																					
06652K-10-3	BANKUNITED ORD		02/11/2019	JP MORGAN SECURITIES INC		979,000	34,651	XXX	29,047				(264)		29,047		5,604	5,604	206	XXX	L
10922N-10-3	BRIGHTHOUSE FINANCIAL ORD		03/20/2019	VARIOUS		6,380,000	245,317	XXX	194,462						194,462		50,855	50,855		XXX	L
	DISCOVER FINANCIAL			CITIGROUP GLOBAL MARKETS																	
254709-10-8	SERVICES ORD		02/08/2019	INC		944,000	63,742	XXX	63,184				7,506		63,184		558	558		XXX	L
	LIBERTY MEDIA FORMULA ONE																				
531229-85-4	SRS C ORD		03/22/2019	VARIOUS		2,657,000	91,661	XXX	98,456				16,886		98,456		(6,794)	(6,794)		XXX	L
540424-10-8	LOEWS ORD		03/07/2019	VARIOUS		6,175,000	290,004	XXX	257,610				(23,476)		257,610		32,395	32,395	87	XXX	L
62944T-10-5	NVR ORD		02/25/2019	WEEDEN + CO		25,000	66,026	XXX	66,193				5,268		66,193		(166)	(166)		XXX	L
	PHILIP MORRIS			CITIGROUP GLOBAL MARKETS																	
718172-10-9	INTERNAT ONAL ORD		02/26/2019	INC		743,000	64,476	XXX	49,603						49,603		14,873	14,873	847	XXX	L
801056-10-2	SANMINA ORD		02/25/2019	SG COWEN SECURITIES CORP		3,321,000	109,453	XXX	109,777				29,873		109,777		(324)	(324)		XXX	L
9099999	Common Stocks - Industrial and Miscellaneous (Unaffiliated)					965,330	XXX	868,330	832,537	35,793	0	0	35,793	0	868,330	0	97,000	97,000	1,139	XXX	XXX
9799997	Subtotals - Common Stocks - Part 4					965,330	XXX	868,330	832,537	35,793	0	0	35,793	0	868,330	0	97,000	97,000	1,139	XXX	XXX
9799999	Subtotals - Common Stocks					965,330	XXX	868,330	832,537	35,793	0	0	35,793	0	868,330	0	97,000	97,000	1,139	XXX	XXX
9899999	Subtotals - Preferred and Common Stocks					965,330	XXX	868,330	832,537	35,793	0	0	35,793	0	868,330	0	97,000	97,000	1,139	XXX	XXX
9999999	Totals					2,976,114	XXX	2,937,490	2,806,024	35,793	(1,270)	0	34,523	0	2,885,695	0	90,419	90,419	24,955	XXX	XXX

(a) For all common stock bearing the NAIC market indicator "U" provide: the number of such issues

Schedule DB - Part A - Section 1

NONE

Schedule DB - Part B - Section 1

NONE

Schedule DB - Part D - Section 1

NONE

Schedule DB - Part D - Section 2

NONE

Schedule DL - Part 1

NONE

Schedule DL - Part 2

NONE

SCHEDULE E - PART 2 - CASH EQUIVALENTS

E13