



PROPERTY AND CASUALTY COMPANIES - ASSOCIATION EDITION

ANNUAL STATEMENT
FOR THE YEAR ENDED DECEMBER 31, 2018
OF THE CONDITION AND AFFAIRS OF THE

THE CINCINNATI CASUALTY COMPANY

NAIC Group Code	0244 (Current)	0244 (Prior)	NAIC Company Code	28665	Employer's ID Number	31-0826946
Organized under the Laws of	OHIO			State of Domicile or Port of Entry		OH
Country of Domicile	United States of America					
Incorporated/Organized	12/27/1972			Commenced Business		03/31/1973
Statutory Home Office	6200 SOUTH GILMORE ROAD (Street and Number)			FAIRFIELD, OH, US 45014-5141 (City or Town, State, Country and Zip Code)		
Main Administrative Office	6200 SOUTH GILMORE ROAD (Street and Number)					
	FAIRFIELD, OH, US 45014-5141 (City or Town, State, Country and Zip Code)			513-870-2000 (Area Code) (Telephone Number)		
Mail Address	P.O. BOX 145496 (Street and Number or P.O. Box)			CINCINNATI, OH, US 45250-5496 (City or Town, State, Country and Zip Code)		
Primary Location of Books and Records	6200 SOUTH GILMORE ROAD (Street and Number)					
	FAIRFIELD, OH, US 45014-5141 (City or Town, State, Country and Zip Code)			513-870-2000 (Area Code) (Telephone Number)		
Internet Website Address	WWW.CINFIN.COM					
Statutory Statement Contact	ANDREW SCHNELL (Name)			513-870-2000 (Area Code) (Telephone Number)		
	andrew_schnell@cinfin.com (E-mail Address)			513-603-5500 (FAX Number)		

OFFICERS

CHIEF EXECUTIVE OFFICER, PRESIDENT	STEVEN JUSTUS JOHNSTON	SENIOR VICE PRESIDENT, TREASURER	THERESA ANN HOFFER
CHIEF FINANCIAL OFFICER, SENIOR VICE PRESIDENT	MICHAEL JAMES SEWELL		

OTHER

TERESA CURRIN CRACAS, SENIOR VICE PRESIDENT	DONALD JOSEPH DOYLE JR, SENIOR VICE PRESIDENT	SEAN MICHAEL GIVLER, SENIOR VICE PRESIDENT
MARTIN FRANCIS HOLLENBECK, SENIOR VICE PRESIDENT	JOHN SCOTT KELLINGTON, SENIOR VICE PRESIDENT	LISA ANNE LOVE, SENIOR VICE PRESIDENT, CORPORATE SECRETARY
MARTIN JOSEPH MULLEN, SENIOR VICE PRESIDENT	JACOB FERDINAND SCHERER, EXECUTIVE VICE PRESIDENT	STEPHEN MICHAEL SPRAY, SENIOR VICE PRESIDENT
WILLIAM HAROLD VAN DEN HEUVEL, SENIOR VICE PRESIDENT		

DIRECTORS OR TRUSTEES

WILLIAM FOREST BAHL	GREGORY THOMAS BIER	TERESA CURRIN CRACAS
DONALD JOSEPH DOYLE JR	SEAN MICHAEL GIVLER	MARTIN FRANCIS HOLLENBECK
STEVEN JUSTUS JOHNSTON	JOHN SCOTT KELLINGTON	LISA ANNE LOVE
WILLIAM RODNEY MCMULLEN	MARTIN JOSEPH MULLEN	DAVID PAUL OSBORN
JACOB FERDINAND SCHERER	THOMAS REID SCHIFF	MICHAEL JAMES SEWELL
STEPHEN MICHAEL SPRAY	KENNETH WILLIAM STECHER	JOHN FREDRICK STEELE JR
WILLIAM HAROLD VAN DEN HEUVEL	LARRY RUSSEL WEBB	

State of OHIO
County of BUTLER SS:

The officers of this reporting entity being duly sworn, each depose and say that they are the described officers of said reporting entity, and that on the reporting period stated above, all of the herein described assets were the absolute property of the said reporting entity, free and clear from any liens or claims thereon, except as herein stated, and that this statement, together with related exhibits, schedules and explanations therein contained, annexed or referred to, is a full and true statement of all the assets and liabilities and of the condition and affairs of the said reporting entity as of the reporting period stated above, and of its income and deductions therefrom for the period ended, and have been completed in accordance with the NAIC Annual Statement Instructions and Accounting Practices and Procedures manual except to the extent that: (1) state law may differ; or, (2) that state rules or regulations require differences in reporting not related to accounting practices and procedures, according to the best of their information, knowledge and belief, respectively. Furthermore, the scope of this attestation by the described officers also includes the related corresponding electronic filing with the NAIC, when required, that is an exact copy (except for formatting differences due to electronic filing) of the enclosed statement. The electronic filing may be requested by various regulators in lieu of or in addition to the enclosed statement.

STEVEN J. JOHNSTON CHIEF EXECUTIVE OFFICER, PRESIDENT	MICHAEL J. SEWELL CHIEF FINANCIAL OFFICER, SENIOR VICE PRESIDENT	THERESA A. HOFFER SENIOR VICE PRESIDENT, TREASURER
Subscribed and sworn to before me this 15TH day of FEBRUARY 2019	a. Is this an original filing? Yes [X] No [] b. If no, 1. State the amendment number..... 2. Date filed 3. Number of pages attached.....	

ASSETS

	Current Year			Prior Year
	1	2	3	4
	Assets	Nonadmitted Assets	Net Admitted Assets (Cols. 1 - 2)	Net Admitted Assets
1. Bonds (Schedule D)	294,075,871		294,075,871	284,854,544
2. Stocks (Schedule D):				
2.1 Preferred stocks				
2.2 Common stocks	107,767,463		107,767,463	117,862,429
3. Mortgage loans on real estate (Schedule B):				
3.1 First liens				
3.2 Other than first liens				
4. Real estate (Schedule A):				
4.1 Properties occupied by the company (less \$				
encumbrances)				
4.2 Properties held for the production of income (less				
\$				
encumbrances)				
4.3 Properties held for sale (less \$				
encumbrances)				
5. Cash (\$6,214,748 , Schedule E - Part 1), cash equivalents				
(\$, Schedule E - Part 2) and short-term				
investments (\$, Schedule DA)	6,214,748		6,214,748	1,969,438
6. Contract loans (including \$ premium notes)				
7. Derivatives (Schedule DB)				
8. Other invested assets (Schedule BA)				
9. Receivable for securities				
10. Securities lending reinvested collateral assets (Schedule DL)				
11. Aggregate write-ins for invested assets				
12. Subtotals, cash and invested assets (Lines 1 to 11)	408,058,081		408,058,081	404,686,411
13. Title plants less \$ charged off (for Title insurers				
only)				
14. Investment income due and accrued	3,323,464		3,323,464	3,052,757
15. Premiums and considerations:				
15.1 Uncollected premiums and agents' balances in the course of collection				
15.2 Deferred premiums and agents' balances and installments booked but				
deferred and not yet due (including \$				
earned but unbilled premiums)				
15.3 Accrued retrospective premiums (\$) and				
contracts subject to redetermination (\$)				
16. Reinsurance:				
16.1 Amounts recoverable from reinsurers	18,659,379		18,659,379	17,742,841
16.2 Funds held by or deposited with reinsured companies				
16.3 Other amounts receivable under reinsurance contracts	2,963,358		2,963,358	3,349,783
17. Amounts receivable relating to uninsured plans				
18.1 Current federal and foreign income tax recoverable and interest thereon				
18.2 Net deferred tax asset				
19. Guaranty funds receivable or on deposit				
20. Electronic data processing equipment and software	911,308	911,308		
21. Furniture and equipment, including health care delivery assets				
(\$)				
22. Net adjustment in assets and liabilities due to foreign exchange rates				
23. Receivables from parent, subsidiaries and affiliates	2,519,383		2,519,383	4,744,091
24. Health care (\$) and other amounts receivable				
25. Aggregate write-ins for other than invested assets				2
26. Total assets excluding Separate Accounts, Segregated Accounts and				
Protected Cell Accounts (Lines 12 to 25)	436,434,973	911,308	435,523,665	433,575,884
27. From Separate Accounts, Segregated Accounts and Protected Cell				
Accounts				
28. Total (Lines 26 and 27)	436,434,973	911,308	435,523,665	433,575,884
DETAILS OF WRITE-INS				
1101.				
1102.				
1103.				
1198. Summary of remaining write-ins for Line 11 from overflow page				
1199. Totals (Lines 1101 thru 1103 plus 1198)(Line 11 above)				
2501. Equities and Deposits in Pools and Associations				2
2502.				
2503.				
2598. Summary of remaining write-ins for Line 25 from overflow page				
2599. Totals (Lines 2501 thru 2503 plus 2598)(Line 25 above)				2

ANNUAL STATEMENT FOR THE YEAR 2018 OF THE THE CINCINNATI CASUALTY COMPANY

LIABILITIES, SURPLUS AND OTHER FUNDS

	1 Current Year	2 Prior Year
1. Losses (Part 2A, Line 35, Column 8)		
2. Reinsurance payable on paid losses and loss adjustment expenses (Schedule F, Part 1, Column 6)		95,867
3. Loss adjustment expenses (Part 2A, Line 35, Column 9)		
4. Commissions payable, contingent commissions and other similar charges		
5. Other expenses (excluding taxes, licenses and fees)	(926)	(277)
6. Taxes, licenses and fees (excluding federal and foreign income taxes)		
7.1 Current federal and foreign income taxes (including \$85,579 on realized capital gains (losses))	217,681	405,507
7.2 Net deferred tax liability	12,069,354	14,565,041
8. Borrowed money \$ and interest thereon \$		
9. Unearned premiums (Part 1A, Line 38, Column 5) (after deducting unearned premiums for ceded reinsurance of \$159,718,181 and including warranty reserves of \$ and accrued accident and health experience rating refunds including \$ for medical loss ratio rebate per the Public Health Service Act)		
10. Advance premium		
11. Dividends declared and unpaid:		
11.1 Stockholders		
11.2 Policyholders		
12. Ceded reinsurance premiums payable (net of ceding commissions)	23,943,206	25,205,703
13. Funds held by company under reinsurance treaties (Schedule F, Part 3, Column 20)		
14. Amounts withheld or retained by company for account of others	1,193,014	1,017,385
15. Remittances and items not allocated		
16. Provision for reinsurance (including \$ certified) (Schedule F, Part 3, Column 78)		
17. Net adjustments in assets and liabilities due to foreign exchange rates		
18. Drafts outstanding		
19. Payable to parent, subsidiaries and affiliates		
20. Derivatives		
21. Payable for securities		
22. Payable for securities lending		
23. Liability for amounts held under uninsured plans		
24. Capital notes \$ and interest thereon \$		
25. Aggregate write-ins for liabilities	991	
26. Total liabilities excluding protected cell liabilities (Lines 1 through 25)	37,423,319	41,289,227
27. Protected cell liabilities		
28. Total liabilities (Lines 26 and 27)	37,423,319	41,289,227
29. Aggregate write-ins for special surplus funds		
30. Common capital stock	3,750,000	3,750,000
31. Preferred capital stock		
32. Aggregate write-ins for other than special surplus funds		
33. Surplus notes		
34. Gross paid in and contributed surplus	18,000,000	18,000,000
35. Unassigned funds (surplus)	376,350,347	370,536,657
36. Less treasury stock, at cost:		
36.1 shares common (value included in Line 30 \$)		
36.2 shares preferred (value included in Line 31 \$)		
37. Surplus as regards policyholders (Lines 29 to 35, less 36) (Page 4, Line 39)	398,100,347	392,286,657
38. TOTALS (Page 2, Line 28, Col. 3)	435,523,666	433,575,884
DETAILS OF WRITE-INS		
2501. Accounts Payable Other	991	
2502.		
2503.		
2598. Summary of remaining write-ins for Line 25 from overflow page		
2599. Totals (Lines 2501 thru 2503 plus 2598)(Line 25 above)	991	
2901.		
2902.		
2903.		
2998. Summary of remaining write-ins for Line 29 from overflow page		
2999. Totals (Lines 2901 thru 2903 plus 2998)(Line 29 above)		
3201.		
3202.		
3203.		
3298. Summary of remaining write-ins for Line 32 from overflow page		
3299. Totals (Lines 3201 thru 3203 plus 3298)(Line 32 above)		

STATEMENT OF INCOME

	1 Current Year	2 Prior Year
UNDERWRITING INCOME		
1. Premiums earned (Part 1, Line 35, Column 4).....		
DEDUCTIONS:		
2. Losses incurred (Part 2, Line 35, Column 7)		
3. Loss adjustment expenses incurred (Part 3, Line 25, Column 1)		
4. Other underwriting expenses incurred (Part 3, Line 25, Column 2)		
5. Aggregate write-ins for underwriting deductions		
6. Total underwriting deductions (Lines 2 through 5)		
7. Net income of protected cells		
8. Net underwriting gain or (loss) (Line 1 minus Line 6 plus Line 7)		
INVESTMENT INCOME		
9. Net investment income earned (Exhibit of Net Investment Income, Line 17)	14,071,424	14,105,600
10. Net realized capital gains or (losses) less capital gains tax of \$999,631 (Exhibit of Capital Gains (Losses))	3,841,181	9,771,515
11. Net investment gain (loss) (Lines 9 + 10)	17,912,605	23,877,115
OTHER INCOME		
12. Net gain (loss) from agents' or premium balances charged off (amount recovered \$ amount charged off \$)		
13. Finance and service charges not included in premiums		
14. Aggregate write-ins for miscellaneous income	268	
15. Total other income (Lines 12 through 14)	268	
16. Net income before dividends to policyholders, after capital gains tax and before all other federal and foreign income taxes (Lines 8 + 11 + 15)	17,912,873	23,877,115
17. Dividends to policyholders		
18. Net income, after dividends to policyholders, after capital gains tax and before all other federal and foreign income taxes (Line 16 minus Line 17)	17,912,873	23,877,115
19. Federal and foreign income taxes incurred	1,638,437	2,844,691
20. Net income (Line 18 minus Line 19)(to Line 22)	16,274,436	21,032,424
CAPITAL AND SURPLUS ACCOUNT		
21. Surplus as regards policyholders, December 31 prior year (Page 4, Line 39, Column 2)	392,286,657	359,898,775
22. Net income (from Line 20)	16,274,436	21,032,424
23. Net transfers (to) from Protected Cell accounts		
24. Change in net unrealized capital gains or (losses) less capital gains tax of \$(2,529,476)	(9,515,650)	13,077,463
25. Change in net unrealized foreign exchange capital gain (loss)		
26. Change in net deferred income tax	(33,789)	(1,722,006)
27. Change in nonadmitted assets (Exhibit of Nonadmitted Assets, Line 28, Col. 3)	(911,308)	
28. Change in provision for reinsurance (Page 3, Line 16, Column 2 minus Column 1)		
29. Change in surplus notes		
30. Surplus (contributed to) withdrawn from protected cells		
31. Cumulative effect of changes in accounting principles		
32. Capital changes:		
32.1 Paid in		
32.2 Transferred from surplus (Stock Dividend)		
32.3 Transferred to surplus		
33. Surplus adjustments:		
33.1 Paid in		
33.2 Transferred to capital (Stock Dividend)		
33.3 Transferred from capital		
34. Net remittances from or (to) Home Office		
35. Dividends to stockholders		
36. Change in treasury stock (Page 3, Lines 36.1 and 36.2, Column 2 minus Column 1)		
37. Aggregate write-ins for gains and losses in surplus		
38. Change in surplus as regards policyholders for the year (Lines 22 through 37)	5,813,690	32,387,882
39. Surplus as regards policyholders, December 31 current year (Line 21 plus Line 38) (Page 3, Line 37)	398,100,347	392,286,657
DETAILS OF WRITE-INS		
0501.		
0502.		
0503.		
0598. Summary of remaining write-ins for Line 5 from overflow page		
0599. Totals (Lines 0501 thru 0503 plus 0598)(Line 5 above)		
1401. Miscellaneous Income	268	
1402.		
1403.		
1498. Summary of remaining write-ins for Line 14 from overflow page		
1499. Totals (Lines 1401 thru 1403 plus 1498)(Line 14 above)	268	
3701.		
3702.		
3703.		
3798. Summary of remaining write-ins for Line 37 from overflow page		
3799. Totals (Lines 3701 thru 3703 plus 3798)(Line 37 above)		

ANNUAL STATEMENT FOR THE YEAR 2018 OF THE THE CINCINNATI CASUALTY COMPANY

CASH FLOW

	1	2
	Current Year	Prior Year
Cash from Operations		
1. Premiums collected net of reinsurance	(1,262,497)	(2,987,342)
2. Net investment income	14,979,099	15,390,858
3. Miscellaneous income	268	
4. Total (Lines 1 through 3)	13,716,870	12,403,516
5. Benefit and loss related payments	625,979	3,656,266
6. Net transfers to Separate Accounts, Segregated Accounts and Protected Cell Accounts		
7. Commissions, expenses paid and aggregate write-ins for deductions		
8. Dividends paid to policyholders		
9. Federal and foreign income taxes paid (recovered) net of \$1,040,802 tax on capital gains (losses)	2,825,895	3,499,828
10. Total (Lines 5 through 9)	3,451,873	7,156,094
11. Net cash from operations (Line 4 minus Line 10)	10,264,996	5,247,422
Cash from Investments		
12. Proceeds from investments sold, matured or repaid:		
12.1 Bonds	10,745,000	49,029,000
12.2 Stocks	8,328,780	7,732,536
12.3 Mortgage loans		
12.4 Real estate		
12.5 Other invested assets		
12.6 Net gains or (losses) on cash, cash equivalents and short-term investments		
12.7 Miscellaneous proceeds		
12.8 Total investment proceeds (Lines 12.1 to 12.7)	19,073,780	56,761,536
13. Cost of investments acquired (long-term only):		
13.1 Bonds	21,195,055	66,805,688
13.2 Stocks	5,388,431	2,711,593
13.3 Mortgage loans		
13.4 Real estate		
13.5 Other invested assets	97	2,194
13.6 Miscellaneous applications		
13.7 Total investments acquired (Lines 13.1 to 13.6)	26,583,583	69,519,475
14. Net increase (decrease) in contract loans and premium notes		
15. Net cash from investments (Line 12.8 minus Line 13.7 minus Line 14)	(7,509,803)	(12,757,939)
Cash from Financing and Miscellaneous Sources		
16. Cash provided (applied):		
16.1 Surplus notes, capital notes		
16.2 Capital and paid in surplus, less treasury stock		
16.3 Borrowed funds		
16.4 Net deposits on deposit-type contracts and other insurance liabilities		
16.5 Dividends to stockholders		
16.6 Other cash provided (applied)	1,490,116	6,619,855
17. Net cash from financing and miscellaneous sources (Lines 16.1 to 16.4 minus Line 16.5 plus Line 16.6)	1,490,116	6,619,855
RECONCILIATION OF CASH, CASH EQUIVALENTS AND SHORT-TERM INVESTMENTS		
18. Net change in cash, cash equivalents and short-term investments (Line 11, plus Lines 15 and 17)	4,245,309	(890,662)
19. Cash, cash equivalents and short-term investments:		
19.1 Beginning of year	1,969,438	2,860,101
19.2 End of period (Line 18 plus Line 19.1)	6,214,748	1,969,438

Note: Supplemental disclosures of cash flow information for non-cash transactions:

--	--	--

Underwriting and Investment Exhibit - Part 1 - Premiums Earned

N O N E

Underwriting and Investment Exhibit - Part 1A - Recapitulation of all Premiums

N O N E

ANNUAL STATEMENT FOR THE YEAR 2018 OF THE THE CINCINNATI CASUALTY COMPANY

UNDERWRITING AND INVESTMENT EXHIBIT

PART 1B - PREMIUMS WRITTEN						
Line of Business	1	Reinsurance Assumed		Reinsurance Ceded		6
	Direct Business (a)	2	3	4	5	Net Premiums Written Cols. 1+2+3-4-5
		From Affiliates	From Non-Affiliates	To Affiliates	To Non-Affiliates	
1. Fire	3,507,148			3,507,148		
2. Allied lines	4,125,853			4,125,853		
3. Farmowners multiple peril						
4. Homeowners multiple peril	251,139			251,139		
5. Commercial multiple peril	125,795,223			125,795,223		
6. Mortgage guaranty						
8. Ocean marine						
9. Inland marine	1,773,453			1,773,453		
10. Financial guaranty						
11.1 Medical professional liability - occurrence	2,239,831			2,239,831		
11.2 Medical professional liability - claims-made	423,416			423,416		
12. Earthquake	100,221			100,221		
13. Group accident and health						
14. Credit accident and health (group and individual)						
15. Other accident and health						
16. Workers' compensation	118,508,412		98	118,508,510		
17.1 Other liability - occurrence	35,778,553			35,778,553		
17.2 Other liability - claims-made	1,886,328			1,886,328		
17.3 Excess workers' compensation						
18.1 Products liability - occurrence	9,476,366			9,476,366		
18.2 Products liability - claims-made						
19.1, 19.2 Private passenger auto liability	88,746			88,746		
19.3, 19.4 Commercial auto liability	34,434,133			34,434,133		
21. Auto physical damage	14,067,249			14,067,249		
22. Aircraft (all perils)						
23. Fidelity						
24. Surety	1,029,681			1,029,681		
26. Burglary and theft	200,843			200,843		
27. Boiler and machinery	527,316			527,316		
28. Credit						
29. International						
30. Warranty						
31. Reinsurance - nonproportional assumed property	XXX					
32. Reinsurance - nonproportional assumed liability	XXX					
33. Reinsurance - nonproportional assumed financial lines	XXX					
34. Aggregate write-ins for other lines of business						
35. TOTALS	354,213,910		98	354,214,008		
DETAILS OF WRITE-INS						
3401.						
3402.						
3403.						
3498. Summary of remaining write-ins for Line 34 from overflow page						
3499. Totals (Lines 3401 thru 3403 plus 3498)(Line 34 above)						

(a) Does the company's direct premiums written include premiums recorded on an installment basis? Yes [] No [X]

If yes: 1. The amount of such installment premiums \$
 2. Amount at which such installment premiums would have been reported had they been reported on an annualized basis \$

ANNUAL STATEMENT FOR THE YEAR 2018 OF THE THE CINCINNATI CASUALTY COMPANY

UNDERWRITING AND INVESTMENT EXHIBIT

PART 2 - LOSSES PAID AND INCURRED

		Losses Paid Less Salvage				5	6	7	8
		1	2	3	4				
Line of Business		Direct Business	Reinsurance Assumed	Reinsurance Recovered	Net Payments (Cols. 1 + 2 -3)	Net Losses Unpaid Current Year (Part 2A , Col. 8)	Net Losses Unpaid Prior Year	Losses Incurred Current Year (Cols. 4 + 5 - 6)	Percentage of Losses Incurred (Col. 7, Part 2) to Premiums Earned (Col. 4, Part 1)
1.	Fire	2,247,821		2,247,821					
2.	Allied lines	1,706,783		1,706,783					
3.	Farmowners multiple peril								
4.	Homeowners multiple peril								
5.	Commercial multiple peril	60,043,007		60,043,007					
6.	Mortgage guaranty								
8.	Ocean marine								
9.	Inland marine	213,738		213,738					
10.	Financial guaranty								
11.1	Medical professional liability - occurrence	262,750		262,750					
11.2	Medical professional liability - claims-made								
12.	Earthquake								
13.	Group accident and health								
14.	Credit accident and health (group and individual)								
15.	Other accident and health								
16.	Workers' compensation	74,696,819	355,247	75,052,066					
17.1	Other liability - occurrence	18,627,262		18,627,262					
17.2	Other liability - claims-made	320,800		320,800					
17.3	Excess workers' compensation								
18.1	Products liability - occurrence	1,678,478		1,678,478					
18.2	Products liability - claims-made								
19.1, 19.2	Private passenger auto liability	310,043		310,043					
19.3, 19.4	Commercial auto liability	19,870,361		19,870,361					
21.	Auto physical damage	7,746,630		7,746,630					
22.	Aircraft (all perils)								
23.	Fidelity								
24.	Surety								
26.	Burglary and theft	90,906		90,906					
27.	Boiler and machinery	7,782		7,782					
28.	Credit								
29.	International								
30.	Warranty								
31.	Reinsurance - nonproportional assumed property	XXX							
32.	Reinsurance - nonproportional assumed liability	XXX							
33.	Reinsurance - nonproportional assumed financial lines	XXX							
34.	Aggregate write-ins for other lines of business								
35.	TOTALS	187,823,179	355,247	188,178,427					
DETAILS OF WRITE-INS									
3401.								
3402.								
3403.								
3498.	Summary of remaining write-ins for Line 34 from overflow page								
3499.	Totals (Lines 3401 thru 3403 plus 3498)(Line 34 above)								

ANNUAL STATEMENT FOR THE YEAR 2018 OF THE THE CINCINNATI CASUALTY COMPANY

UNDERWRITING AND INVESTMENT EXHIBIT

PART 2A - UNPAID LOSSES AND LOSS ADJUSTMENT EXPENSES

		Reported Losses				Incurred But Not Reported			8	9
		1	2	3	4	5	6	7		
Line of Business		Direct	Reinsurance Assumed	Deduct Reinsurance Recoverable	Net Losses Excl. Incurred But Not Reported (Cols. 1 + 2 - 3)	Direct	Reinsurance Assumed	Reinsurance Ceded	Net Losses Unpaid (Cols. 4 + 5 + 6 - 7)	Net Unpaid Loss Adjustment Expenses
1.	Fire	1,948,916		1,948,916						
2.	Allied lines	461,618		461,618						
3.	Farmowners multiple peril									
4.	Homeowners multiple peril	5,699		5,699						
5.	Commercial multiple peril	67,597,500		67,597,500		8,417,000		8,417,000		
6.	Mortgage guaranty									
8.	Ocean marine									
9.	Inland marine	361,116		361,116						
10.	Financial guaranty									
11.1	Medical professional liability - occurrence	3,224,585		3,224,585		681,000		681,000		
11.2	Medical professional liability - claims-made	605,392		605,392						
12.	Earthquake									
13.	Group accident and health								(a)	
14.	Credit accident and health (group and individual)									
15.	Other accident and health								(a)	
16.	Workers' compensation	145,863,736	4,885,821	150,749,558		233,568,000	3,309,857	236,877,857		
17.1	Other liability - occurrence	13,122,448		13,122,448		23,672,000		23,672,000		
17.2	Other liability - claims-made	619,804		619,804						
17.3	Excess workers' compensation									
18.1	Products liability - occurrence	6,642,438		6,642,438		6,624,000		6,624,000		
18.2	Products liability - claims-made									
19.1, 19.2	Private passenger auto liability	442,520		442,520						
19.3, 19.4	Commercial auto liability	31,222,287		31,222,287		9,792,000		9,792,000		
21.	Auto physical damage	874,186		874,186		674,000		674,000		
22.	Aircraft (all perils)									
23.	Fidelity									
24.	Surety									
26.	Burglary and theft	20,550		20,550						
27.	Boiler and machinery	8,000		8,000						
28.	Credit									
29.	International									
30.	Warranty									
31.	Reinsurance - nonproportional assumed property	XXX				XXX				
32.	Reinsurance - nonproportional assumed liability	XXX				XXX				
33.	Reinsurance - nonproportional assumed financial lines	XXX				XXX				
34.	Aggregate write-ins for other lines of business									
35.	TOTALS	273,020,794	4,885,821	277,906,615		283,428,000	3,309,857	286,737,857		
DETAILS OF WRITE-INS										
3401.									
3402.									
3403.									
3498.	Summary of remaining write-ins for Line 34 from overflow page									
3499.	Totals (Lines 3401 thru 3403 plus 3498)(Line 34 above)									

(a) Including \$ for present value of life indemnity claims.

ANNUAL STATEMENT FOR THE YEAR 2018 OF THE THE CINCINNATI CASUALTY COMPANY

UNDERWRITING AND INVESTMENT EXHIBIT

PART 3 - EXPENSES

	1	2	3	4
	Loss Adjustment Expenses	Other Underwriting Expenses	Investment Expenses	Total
1. Claim adjustment services:				
1.1 Direct	27,326,353			27,326,353
1.2 Reinsurance assumed				
1.3 Reinsurance ceded	27,326,353			27,326,353
1.4 Net claim adjustment service (1.1 + 1.2 - 1.3)				
2. Commission and brokerage:				
2.1 Direct excluding contingent		43,278,465		43,278,465
2.2 Reinsurance assumed, excluding contingent		18,240		18,240
2.3 Reinsurance ceded, excluding contingent		43,296,705		43,296,705
2.4 Contingent - direct		10,100,000		10,100,000
2.5 Contingent - reinsurance assumed				
2.6 Contingent - reinsurance ceded		10,100,000		10,100,000
2.7 Policy and membership fees				
2.8 Net commission and brokerage (2.1 + 2.2 - 2.3 + 2.4 + 2.5 - 2.6 + 2.7)				
3. Allowances to managers and agents				
4. Advertising				
5. Boards, bureaus and associations			111	111
6. Surveys and underwriting reports				
7. Audit of assureds' records				
8. Salary and related items:				
8.1 Salaries			140,668	140,668
8.2 Payroll taxes			7,170	7,170
9. Employee relations and welfare			36,901	36,901
10. Insurance				
11. Directors' fees				
12. Travel and travel items			1,314	1,314
13. Rent and rent items			4,390	4,390
14. Equipment			99,352	99,352
15. Cost or depreciation of EDP equipment and software			32	32
16. Printing and stationery			222	222
17. Postage, telephone and telegraph, exchange and express			11	11
18. Legal and auditing			28,608	28,608
19. Totals (Lines 3 to 18)			318,780	318,780
20. Taxes, licenses and fees:				
20.1 State and local insurance taxes deducting guaranty association credits of \$				
20.2 Insurance department licenses and fees				
20.3 Gross guaranty association assessments				
20.4 All other (excluding federal and foreign income and real estate)				
20.5 Total taxes, licenses and fees (20.1 + 20.2 + 20.3 + 20.4)				
21. Real estate expenses				
22. Real estate taxes				
23. Reimbursements by uninsured plans				
24. Aggregate write-ins for miscellaneous expenses				
25. Total expenses incurred			318,780 (a)	318,780
26. Less unpaid expenses - current year			(926)	(926)
27. Add unpaid expenses - prior year			(277)	(277)
28. Amounts receivable relating to uninsured plans, prior year				
29. Amounts receivable relating to uninsured plans, current year				
30. TOTAL EXPENSES PAID (Lines 25 - 26 + 27 - 28 + 29)			319,429	319,429
DETAILS OF WRITE-INS				
2401.				
2402.				
2403.				
2498. Summary of remaining write-ins for Line 24 from overflow page				
2499. Totals (Lines 2401 thru 2403 plus 2498)(Line 24 above)				

(a) Includes management fees of \$ to affiliates and \$ to non-affiliates.

ANNUAL STATEMENT FOR THE YEAR 2018 OF THE THE CINCINNATI CASUALTY COMPANY

EXHIBIT OF NET INVESTMENT INCOME

		1	2
		Collected During Year	Earned During Year
1.	U.S. Government bonds	(a)28,04628,487
1.1	Bonds exempt from U.S. tax	(a)5,912,8735,903,171
1.2	Other bonds (unaffiliated)	(a)4,910,3915,171,045
1.3	Bonds of affiliates	(a)
2.1	Preferred stocks (unaffiliated)	(b)
2.11	Preferred stocks of affiliates	(b)
2.2	Common stocks (unaffiliated)3,258,1623,287,482
2.21	Common stocks of affiliates
3.	Mortgage loans	(c)
4.	Real estate	(d)
5	Contract loans
6	Cash, cash equivalents and short-term investments	(e)1919
7	Derivative instruments	(f)
8.	Other invested assets
9.	Aggregate write-ins for investment income
10.	Total gross investment income	14,109,491	14,390,204
11.	Investment expenses		(g)318,780
12.	Investment taxes, licenses and fees, excluding federal income taxes		(g)
13.	Interest expense		(h)
14.	Depreciation on real estate and other invested assets		(i)
15.	Aggregate write-ins for deductions from investment income
16.	Total deductions (Lines 11 through 15)318,780
17.	Net investment income (Line 10 minus Line 16)		14,071,424
DETAILS OF WRITE-INS			
0901.		
0902.		
0903.		
0998.	Summary of remaining write-ins for Line 9 from overflow page		
0999.	Totals (Lines 0901 thru 0903 plus 0998) (Line 9, above)		
1501.		
1502.		
1503.		
1598.	Summary of remaining write-ins for Line 15 from overflow page		
1599.	Totals (Lines 1501 thru 1503 plus 1598) (Line 15, above)		

- (a) Includes \$103,426 accrual of discount less \$1,282,458 amortization of premium and less \$ paid for accrued interest on purchases.
- (b) Includes \$ accrual of discount less \$ amortization of premium and less \$ paid for accrued dividends on purchases.
- (c) Includes \$ accrual of discount less \$ amortization of premium and less \$ paid for accrued interest on purchases.
- (d) Includes \$ for company's occupancy of its own buildings; and excludes \$ interest on encumbrances.
- (e) Includes \$ accrual of discount less \$ amortization of premium and less \$ paid for accrued interest on purchases.
- (f) Includes \$ accrual of discount less \$ amortization of premium.
- (g) Includes \$ investment expenses and \$ investment taxes, licenses and fees, excluding federal income taxes, attributable to segregated and Separate Accounts.
- (h) Includes \$ interest on surplus notes and \$ interest on capital notes.
- (i) Includes \$ depreciation on real estate and \$ depreciation on other invested assets.

EXHIBIT OF CAPITAL GAINS (LOSSES)

		1	2	3	4	5
		Realized Gain (Loss) On Sales or Maturity	Other Realized Adjustments	Total Realized Capital Gain (Loss) (Columns 1 + 2)	Change in Unrealized Capital Gain (Loss)	Change in Unrealized Foreign Exchange Capital Gain (Loss)
1.	U.S. Government bonds					
1.1	Bonds exempt from U.S. tax					
1.2	Other bonds (unaffiliated)				(49,697)	
1.3	Bonds of affiliates					
2.1	Preferred stocks (unaffiliated)					
2.11	Preferred stocks of affiliates					
2.2	Common stocks (unaffiliated)	4,840,812		4,840,812	(11,995,430)	
2.21	Common stocks of affiliates					
3.	Mortgage loans					
4.	Real estate					
5.	Contract loans					
6.	Cash, cash equivalents and short-term investments					
7.	Derivative instruments					
8.	Other invested assets					
9.	Aggregate write-ins for capital gains (losses)					
10.	Total capital gains (losses)	4,840,812		4,840,812	(12,045,126)	
DETAILS OF WRITE-INS						
0901.					
0902.					
0903.					
0998.	Summary of remaining write-ins for Line 9 from overflow page					
0999.	Totals (Lines 0901 thru 0903 plus 0998) (Line 9, above)					

ANNUAL STATEMENT FOR THE YEAR 2018 OF THE THE CINCINNATI CASUALTY COMPANY

EXHIBIT OF NON-ADMITTED ASSETS

	1	2	3
	Current Year Total Nonadmitted Assets	Prior Year Total Nonadmitted Assets	Change in Total Nonadmitted Assets (Col. 2 - Col. 1)
1. Bonds (Schedule D)			
2. Stocks (Schedule D):			
2.1 Preferred stocks			
2.2 Common stocks			
3. Mortgage loans on real estate (Schedule B):			
3.1 First liens			
3.2 Other than first liens.....			
4. Real estate (Schedule A):			
4.1 Properties occupied by the company			
4.2 Properties held for the production of income.....			
4.3 Properties held for sale			
5. Cash (Schedule E - Part 1), cash equivalents (Schedule E - Part 2) and short-term investments (Schedule DA)			
6. Contract loans			
7. Derivatives (Schedule DB)			
8. Other invested assets (Schedule BA)			
9. Receivables for securities			
10. Securities lending reinvested collateral assets (Schedule DL)			
11. Aggregate write-ins for invested assets			
12. Subtotals, cash and invested assets (Lines 1 to 11)			
13. Title plants (for Title insurers only)			
14. Investment income due and accrued			
15. Premiums and considerations:			
15.1 Uncollected premiums and agents' balances in the course of collection			
15.2 Deferred premiums, agents' balances and installments booked but deferred and not yet due			
15.3 Accrued retrospective premiums and contracts subject to redetermination			
16. Reinsurance:			
16.1 Amounts recoverable from reinsurers			
16.2 Funds held by or deposited with reinsured companies			
16.3 Other amounts receivable under reinsurance contracts			
17. Amounts receivable relating to uninsured plans			
18.1 Current federal and foreign income tax recoverable and interest thereon			
18.2 Net deferred tax asset			
19. Guaranty funds receivable or on deposit			
20. Electronic data processing equipment and software	911,308		(911,308)
21. Furniture and equipment, including health care delivery assets			
22. Net adjustment in assets and liabilities due to foreign exchange rates			
23. Receivables from parent, subsidiaries and affiliates			
24. Health care and other amounts receivable			
25. Aggregate write-ins for other than invested assets			
26. Total assets excluding Separate Accounts, Segregated Accounts and Protected Cell Accounts (Lines 12 to 25)	911,308		(911,308)
27. From Separate Accounts, Segregated Accounts and Protected Cell Accounts			
28. Total (Lines 26 and 27)	911,308		(911,308)
DETAILS OF WRITE-INS			
1101.			
1102.			
1103.			
1198. Summary of remaining write-ins for Line 11 from overflow page			
1199. Totals (Lines 1101 thru 1103 plus 1198)(Line 11 above)			
2501.			
2502.			
2503.			
2598. Summary of remaining write-ins for Line 25 from overflow page			
2599. Totals (Lines 2501 thru 2503 plus 2598)(Line 25 above)			

NOTES TO FINANCIAL STATEMENTS

ANNUAL STATEMENT FOR THE YEAR 2018 OF THE CINCINNATI CASUALTY COMPANY

NOTES TO FINANCIAL STATEMENTS

1. Summary of Significant Accounting Policies and Going Concern

A. Accounting Practices

The financial statements of The Cincinnati Casualty Company (the Company) are presented on the basis of accounting practices prescribed or permitted by the Ohio Department of Insurance.

The Ohio Department of Insurance recognizes only statutory accounting practices prescribed or permitted by the state of Ohio for determining and reporting the financial condition and results of operations of an insurance company, and for determining its solvency under the Ohio Insurance Law. The National Association of Insurance Commissioners' Accounting Practices and Procedures Manual (NAIC SAP), version effective January 1, 2001 and updates through the current year have been adopted as a component of prescribed or permitted practices by the state of Ohio.

The Company has no prescribed or permitted practices that would result in differences between the NAIC SAP and the state of Ohio basis, as shown below:

	SSAP #	F/S Page	F/S Line #	2018	2017
NET INCOME					
(1) Company state basis (Page 4, Line 20, Columns 1 & 2)	XXX	XXX	XXX	\$ 16,274,436	\$ 21,032,424
(2) State Prescribed Practices that increase/(decrease) NAIC SAP	N/A	N/A	N/A	0	0
(3) State Permitted Practices that increase/(decrease) NAIC SAP	N/A	N/A	N/A	0	0
(4) NAIC SAP (1-2-3=4)	XXX	XXX	XXX	\$ 16,274,436	\$ 21,032,424
SURPLUS					
(5) Company state basis (Page 3, Line 37, Columns 1 & 2)	XXX	XXX	XXX	\$ 398,100,347	\$ 392,286,657
(6) State Prescribed Practices that increase/(decrease) NAIC SAP	N/A	N/A	N/A	0	0
(7) State Permitted Practices that increase/(decrease) NAIC SAP	N/A	N/A	N/A	0	0
(8) NAIC SAP (5-6-7=8)	XXX	XXX	XXX	\$ 398,100,347	\$ 392,286,657

B. Use of Estimates in the Preparation of the Financial Statements

The preparation of financial statements in conformity with Statutory Accounting Principles requires management to make estimates and assumptions that affect the reported amounts of assets and liabilities. It also requires disclosure of contingent assets and liabilities at the date of the financial statements and the reported amounts of revenue and expenses during the period. Actual results could differ from those estimates.

C. Accounting Policies

Premiums are earned over the terms of the related insurance policies and reinsurance contracts. Unearned premium reserves are established to cover the unexpired portion of premiums written. These reserves are computed by pro rata methods for direct business and are based on reports received from ceding companies for reinsurance.

Expenses incurred in connection with acquiring new insurance business, including such acquisition costs as sales commissions, are charged to operations as incurred. Expenses incurred are reduced for ceding allowances received or receivable.

In addition, the Company uses the following accounting policies:

1. Cash equivalents, highly liquid debt instruments with original maturities of 90 days or less, and short term investments are carried at amortized cost, which approximates fair value.
2. Fixed maturities (bonds and notes) with an NAIC designation of 1 or 2 are valued and reported in accordance with the NAIC *Purposes and Procedures Manual of the NAIC Investment Analysis Office*, generally at amortized cost using the scientific interest method. Fixed maturities with an NAIC designation 3 through 6 are carried at the lower of amortized cost or fair value, with the difference reflected in assigned surplus.
3. Common stocks of non-affiliates are stated at fair values.
4. The Company does not have any investments in preferred stocks.
5. The Company does not have any investments in mortgage loans.
6. The Company does not have any investments in loan-backed and structured securities.
7. The Company does not have any investments in non-insurance subsidiaries, controlled or affiliated companies.
8. The Company does not have any investments in joint ventures, partnerships, and limited liability entities.
9. The Company does not have any investments in derivatives.
10. In the event that a first-order approximation (excluding anticipated investment income) of estimated future costs related to unearned premium as of a particular evaluation date exceeds the unearned premium as of that date, the Company would incorporate consideration of the related investment income it would expect to earn. However, to date the Company has not had to proceed to this step in order to demonstrate that no premium deficiency exists.
11. Unpaid losses and loss adjustment expenses include an amount determined from individual case estimates and loss reports and an amount, based on past experience, for losses incurred but not reported. Such liabilities are necessarily based on assumptions and estimates and while management believes the amount is adequate, the ultimate liability may be in excess of or less than the amount provided. The methods for making such estimates and for establishing the resulting liability is continually reviewed and any adjustments are reflected in the period

ANNUAL STATEMENT FOR THE YEAR 2018 OF THE CINCINNATI CASUALTY COMPANY

NOTES TO FINANCIAL STATEMENTS

determined.

- 12. The Company has not modified its capitalization policy from a prior period.
- 13. The Company has no pharmaceutical rebate receivables.

D. Going Concern

After review of the Company’s financial condition, management has no doubts about the Company’s ability to continue as a going concern.

2. Accounting Changes and Correction of Errors

The Company had no material changes in accounting principles and/or corrections of errors.

3. Business Combinations and Goodwill – Not applicable

4. Discontinued Operations – Not applicable

5. Investments

- A. Mortgage Loans - Not applicable
- B. Debt Restructuring – Not applicable
- C. Reverse Mortgages - Not applicable
- D. Loan-Backed Securities – Not applicable
- E. Dollar Repurchase Agreements and/or Securities Lending Transactions - Not applicable
- F. Repurchase Agreements Transactions Accounted for as Secured Borrowing – Not applicable
- G. Reverse Repurchase Agreements Transactions Accounted for as Secured Borrowing – Not applicable
- H. Repurchase Agreements Transactions Accounted for as a Sale – Not applicable
- I. Reverse Repurchase Agreements Transactions Accounted for as a Sale – Not applicable
- J. Real Estate - Not applicable
- K. Investments in Low-Income Housing Tax Credits (LIHTC) – Not applicable
- L. Restricted Assets

1. Restricted Assets (Including Pledged)

Restricted Asset Category	Gross (Admitted and Nonadmitted) Restricted									Percentage	
	Current Year									10	11
	1	2	3	4	5	6	7	8	9		
	Total General Account (GIA)	GIA Supporting Protected Cell Account Activity (a)	Total Protected Cell Account Restricted Assets	Protected Cell Account Assets Supporting GIA Activity (b)	Total (1 plus 3)	Total from Prior Year	Increase/ (Decrease) (5 minus 6)	Total Nonadmitted Restricted	Total Admitted Restricted (5 minus 8)	Gross (Admitted & Nonadmitted) Restricted to Total Assets (c)	Admitted Restricted to Total Admitted Assets (d)
a. Subject to contractual obligation for which liability is not shown	\$ 0	\$ 0	\$ 0	\$ 0	\$ 0	\$ 0	\$ 0	\$ 0	\$ 0	0.00%	0.00%
b. Collateral held under security lending agreements	0	0	0	0	0	0	0	0	0	0.00%	0.00%
c. Subject to repurchase agreements	0	0	0	0	0	0	0	0	0	0.00%	0.00%
d. Subject to reverse repurchase agreements	0	0	0	0	0	0	0	0	0	0.00%	0.00%
e. Subject to dollar repurchase agreements	0	0	0	0	0	0	0	0	0	0.00%	0.00%
f. Subject to dollar reverse repurchase agreements	0	0	0	0	0	0	0	0	0	0.00%	0.00%
g. Placed under option contracts	0	0	0	0	0	0	0	0	0	0.00%	0.00%
h. Letter stock or securities restricted as to sale – excluding FHLB capital stock	0	0	0	0	0	0	0	0	0	0.00%	0.00%
i. FHLB capital stock	0	0	0	0	0	0	0	0	0	0.00%	0.00%
j. On deposit with states	8,567,115	0	0	0	8,567,115	8,336,064	(428,949)	0	8,567,115	1.96%	1.97%
k. On deposit with other regulatory bodies	0	0	0	0	0	0	0	0	0	0.00%	0.00%
l. Pledged collateral to FHLB (including assets backing funding agreements)	0	0	0	0	0	0	0	0	0	0.00%	0.00%
m. Pledged as collateral not captured in other categories	0	0	0	0	0	0	0	0	0	0.00%	0.00%
n. Other restricted assets	0	0	0	0	0	0	0	0	0	0.00%	0.00%
o. Total Restricted Assets	\$ 8,567,115	\$ 0	\$ 0	\$ 0	\$ 8,567,115	\$ 8,336,064	\$ (428,949)	\$ 0	\$ 8,567,115	1.96%	1.97%

(a) Subset of column 1

(b) Subset of column 3

(c) Column 5 divided by Asset Page, Column 1, Line 28

(d) Column 3 divided by Asset Page, Column 3, Line 28

- 2. Detail of Assets Pledged as Collateral Not Captured in Other Categories – Not applicable
- 3. Detail of Other Restricted Assets – Not applicable
- 4. Collateral Received and Reflected as Assets Within the Reporting Entity’s Financial Statements – Not applicable

M. Working Capital Finance Investments – Not applicable

N. Offsetting and Netting of Assets and Liabilities – Not applicable

O. Structured Notes – Not applicable

P. 5* Securities – Not applicable

Q. Short Sales – Not applicable

R. Prepayment Penalties and Acceleration Fees

ANNUAL STATEMENT FOR THE YEAR 2018 OF THE CINCINNATI CASUALTY COMPANY

NOTES TO FINANCIAL STATEMENTS

	General Account	Protected Cell
(1) Number of CUSIPs	0	0
(2) Aggregate Amount of Investment Income	\$ 0	\$ 0

6. Joint Ventures, Partnerships and Limited Liability Companies – Not applicable

7. Investment Income

- A. The Company does not admit investment income due and accrued if amounts are over 90 days past due.
- B. No amount of investment income was excluded.

8. Derivative Instruments – Not applicable

9. Income Taxes

A. Components of Deferred Tax Assets (DTAs) and Deferred Tax Liabilities (DTLs):

1.

	2018		
	Ordinary	Capital	Total
(a) Gross Deferred Tax Assets	\$ 191,375	\$ 0	\$ 191,375
(b) Statutory Valuation Allowance Adjustments	0	0	0
(c) Adjusted Gross Deferred Tax Assets (1a - 1b)	191,375	0	191,375
(d) Deferred Tax Assets Nonadmitted	0	0	0
(e) Subtotal Net Admitted Deferred Tax Asset (1c - 1d)	191,375	0	191,375
(f) Deferred Tax Liabilities	\$ 208,400	\$ 12,052,329	\$ 12,260,729
(g) Net Admitted Deferred Tax Asset/(Liability) (1e - 1f)	\$ (17,025)	\$ (12,052,329)	\$ (12,069,354)

	2017		
	Ordinary	Capital	Total
(a) Gross Deferred Tax Assets	\$ 0	\$ 0	\$ 0
(b) Statutory Valuation Allowance Adjustments	0	0	0
(c) Adjusted Gross Deferred Tax Assets (1a - 1b)	0	0	0
(d) Deferred Tax Assets Nonadmitted	0	0	0
(e) Subtotal Net Admitted Deferred Tax Asset (1c - 1d)	0	0	0
(f) Deferred Tax Liabilities	\$ 13,386	\$ 14,551,656	\$ 14,565,042
(g) Net Admitted Deferred Tax Asset/(Liability) (1e - 1f)	\$ (13,386)	\$ (14,551,656)	\$ (14,565,042)

	Change		
	Ordinary	Capital	Total
(a) Gross Deferred Tax Assets	\$ 191,375	\$ 0	\$ 191,375
(b) Statutory Valuation Allowance Adjustments	0	0	0
(c) Adjusted Gross Deferred Tax Assets (1a - 1b)	191,375	0	191,375
(d) Deferred Tax Assets Nonadmitted	0	0	0
(e) Subtotal Net Admitted Deferred Tax Asset (1c - 1d)	191,375	0	191,375
(f) Deferred Tax Liabilities	\$ 195,014	\$ (2,499,327)	\$ (2,304,313)
(g) Net Admitted Deferred Tax Asset/(Liability) (1e - 1f)	\$ (3,639)	\$ 2,499,327	\$ 2,495,688

2.

	2018		
	Ordinary	Capital	Total
Admission Calculation Components SSAP No. 101			
(a)Federal Income Taxes Paid in Prior Years Recoverable Through Loss Carrybacks	\$ 58,577	\$ 0	\$ 58,577
(b)Adjusted Gross Deferred Tax Assets Expected to be Realized (Excluding The Amount of Deferred Tax Assets From 2(a) above) After Application of the Threshold Limitation. (The lesser of 2(b)1 and 2(b)2 Below)	29,288	0	29,288
1. Adjusted Gross Deferred Tax Assets Expected to be Realized Following the Balance Sheet Date	29,288	0	29,288
2. Adjusted Gross Deferred Tax Assets Allowed per Limitation Threshold	XXX	XXX	59,715,052
(c)Adjusted Gross Deferred Tax Assets (Excluding the amount of Deferred Tax Assets from 2(a) and 2(b) above) Offset by Gross Deferred Tax Liabilities	103,510	0	103,510
(d)Deferred Tax Assets Admitted as the Result of Application of SSAP No.101 Total (2(a)+2(b)+2(c))	\$ 191,375	\$ 0	\$ 191,375

	2017		
	Ordinary	Capital	Total
Admission Calculation Components SSAP No. 101			
(a)Federal Income Taxes Paid in Prior Years Recoverable Through Loss Carrybacks	\$ 0	\$ 0	\$ 0
(b)Adjusted Gross Deferred Tax Assets Expected to be Realized (Excluding The Amount of Deferred Tax Assets From 2(a) above) After Application of the Threshold Limitation. (The lesser of 2(b)1 and 2(b)2 Below)	0	0	0
1. Adjusted Gross Deferred Tax Assets Expected to be Realized Following the Balance Sheet Date	0	0	0
2. Adjusted Gross Deferred Tax Assets Allowed per Limitation Threshold	XXX	XXX	58,842,999
(c)Adjusted Gross Deferred Tax Assets (Excluding the amount of Deferred Tax Assets from 2(a) and 2(b) above) Offset by Gross Deferred Tax Liabilities	0	0	0
(d)Deferred Tax Assets Admitted as the Result of Application of SSAP No.101 Total (2(a)+2(b)+2(c))	\$ 0	\$ 0	\$ 0

ANNUAL STATEMENT FOR THE YEAR 2018 OF THE CINCINNATI CASUALTY COMPANY

NOTES TO FINANCIAL STATEMENTS

Admission Calculation Components SSAP No. 101	Change		
	Ordinary	Capital	Total
(a)Federal Income Taxes Paid in Prior Years Recoverable Through Loss Carrybacks	\$ 58,577	\$ 0	\$ 58,577
(b)Adjusted Gross Deferred Tax Assets Expected to be Realized (Excluding The Amount of Deferred Tax Assets From 2(a) above) After Application of the Threshold Limitation. (The lesser of 2(b)1 and 2(b)2 Below)	29,288	0	29,288
1. Adjusted Gross Deferred Tax Assets Expected to be Realized Following the Balance Sheet Date	29,288	0	29,288
2. Adjusted Gross Deferred Tax Assets Allowed per Limitation Threshold	XXX	XXX	872,053
(c)Adjusted Gross Deferred Tax Assets (Excluding the amount of Deferred Tax Assets from 2(a) and 2(b) above) Offset by Gross Deferred Tax Liabilities	103,510	0	103,510
(d)Deferred Tax Assets Admitted as the Result of Application of SSAP No.101 Total (2(a)+2(b)+2(c))	\$ 191,375	\$ 0	\$ 191,375

3.

(a)Ratio Percentage Used to Determine Recovery Period and Threshold Limitation Amount	2018 Percentage	2017 Percentage
	2790%	2608%
(b)Amount of Adjusted Capital and Surplus Used to Determine Recovery Period and Threshold Limitation in 2(b)2 above	\$ 398,100,347	\$ 392,286,657

4.

Impact of Tax Planning Strategies	2018		
	Ordinary	Capital	Total
(a)Determination of adjusted gross deferred tax assets and net admitted deferred tax assets, by tax character as a percentage.			
1. Adjusted Gross DTAs amount from Note 9A1(c)	\$ 191,375	\$ 0	\$ 191,375
2. Percentage of Adjusted gross DTAs by tax character attributable to the impact of tax planning strategies	0.00%	0.00%	0.00%
3. Net Admitted Adjusted Gross DTAs amount from Note 9A1(e)	\$ 191,375	\$ 0	\$ 191,375
4. Percentage of net admitted adjusted gross DTAs by tax character admitted because of the impact of tax planning strategies	0.00%	0.00%	0.00%
(b)The Company's tax-planning strategies did not include the use of reinsurance-related tax planning strategies.			

Impact of Tax Planning Strategies	2017		
	Ordinary	Capital	Total
(a)Determination of adjusted gross deferred tax assets and net admitted deferred tax assets, by tax character as a percentage.			
1. Adjusted Gross DTAs amount from Note 9A1(c)	\$ 0	\$ 0	\$ 0
2. Percentage of Adjusted gross DTAs by tax character attributable to the impact of tax planning strategies	0.00%	0.00%	0.00%
3. Net Admitted Adjusted Gross DTAs amount from Note 9A1(e)	\$ 0	\$ 0	\$ 0
4. Percentage of net admitted adjusted gross DTAs by tax character admitted because of the impact of tax planning strategies	0.00%	0.00%	0.00%
(b)The Company's tax-planning strategies did not include the use of reinsurance-related tax planning strategies.			

Impact of Tax Planning Strategies	Change		
	Ordinary	Capital	Total
(a)Determination of adjusted gross deferred tax assets and net admitted deferred tax assets, by tax character as a percentage.			
1. Adjusted Gross DTAs amount from Note 9A1(c)	\$ 191,375	\$ 0	\$ 191,375
2. Percentage of Adjusted gross DTAs by tax character attributable to the impact of tax planning strategies	0.00%	0.00%	0.00%
3. Net Admitted Adjusted Gross DTAs amount from Note 9A1(e)	\$ 191,375	\$ 0	\$ 191,375
4. Percentage of net admitted adjusted gross DTAs by tax character admitted because of the impact of tax planning strategies	0.00%	0.00%	0.00%
(b)The Company's tax-planning strategies did not include the use of reinsurance-related tax planning strategies.			

B. Unrecognized DTLs – Not applicable

C. Current Tax and Change in Deferred Tax

1. Current income tax:	2018	2017	Change
(a)Federal	\$ 1,543,050	\$ 2,778,621	\$ (1,235,571)
(b)Foreign	95,387	66,070	29,317
(c) Subtotal	1,638,437	2,844,691	(1,206,254)
(d)Federal income tax on capital gains/(losses)	999,631	951,387	48,244
(e)Utilization of capital loss carryforwards	0	0	0
(f) Other	0	0	0
(g)Federal income taxes incurred	\$ 2,638,068	\$ 3,796,078	\$ (1,158,010)

ANNUAL STATEMENT FOR THE YEAR 2018 OF THE CINCINNATI CASUALTY COMPANY

NOTES TO FINANCIAL STATEMENTS

2. Deferred tax assets:			
	2018	2017	Change
(a)Ordinary			
1. Unearned premium reserve	\$ 0	\$ 0	\$ 0
2. Unpaid loss reserve	0	0	0
3. Contingent commission	0	0	0
4. Nonadmitted assets	191,375	0	191,375
5. Other deferred tax assets	0	0	0
99.Subtotal	\$ 191,375	\$ 0	\$ 191,375
(b)Statutory valuation allowance adjustment	0	0	0
(c)Nonadmitted	0	0	0
(d)Admitted ordinary deferred tax assets (2(a)99-2(b)-2(c))	\$ 191,375	\$ 0	\$ 191,375
(e)Capital			
1. Investments	\$ 0	\$ 0	\$ 0
2. Unrealized loss on investments	0	0	0
99.Subtotal	\$ 0	\$ 0	\$ 0
(f) Statutory valuation allowance	0	0	0
(g)Nonadmitted	0	0	0
(h)Admitted capital deferred tax assets ((2(e)99- 2(f)-2(g))	\$ 0	\$ 0	\$ 0
(i) Admitted deferred tax assets (2(d)+2(h))	\$ 191,375	\$ 0	\$ 191,375

3. Deferred tax liabilities:			
	2018	2017	Change
(a)Ordinary			
1. Commission expense	\$ 0	\$ 0	\$ 0
2. Other, net	208,400	13,386	195,014
99.Subtotal	\$ 208,400	\$ 13,386	\$ 195,014
(b)Capital			
1. Investment	\$ 1,623,355	\$ 1,593,206	\$ 30,149
2. Unrealized gain on investments	10,428,974	12,958,450	(2,529,476)
99.Subtotal	\$ 12,052,329	\$ 14,551,656	\$ (2,499,327)
(c)Deferred tax liabilities (3(a)99+3(b)99)	\$ 12,260,729	\$ 14,565,042	\$ (2,304,313)
4. Net deferred tax assets/(liabilities) (2(i)-3(c)):	\$(12,069,354)	\$(14,565,042)	\$ 2,495,688

The change in net deferred income taxes is comprised of the following (this analysis is exclusive of nonadmitted assets as the Change in Nonadmitted Assets is reported separately from the Change in Net Deferred Income Taxes in the surplus section of the Annual Statement):

	December 31, 2018	December 31, 2017	Change
Total deferred tax assets	\$ 191,375	\$ 0	\$ 191,375
Total deferred tax liabilities	12,260,729	14,565,042	(2,304,313)
Net deferred tax asset/(liability)	\$(12,069,354)	\$(14,565,042)	\$ 2,495,688
Tax effect of unrealized (gains)/losses			(2,529,476)
Change in net deferred income tax (charge)/benefit			\$ (33,788)
	December 31, 2017	December 31, 2016	Change
Total deferred tax assets	\$ 0	\$ 129,614	\$ (129,614)
Total deferred tax liabilities	14,565,042	19,221,656	(4,656,614)
Net deferred tax asset/(liability)	\$(14,565,042)	\$(19,092,042)	\$ 4,527,000
Tax effect of unrealized (gains)/losses			(6,249,006)
Change in net deferred income tax (charge)/benefit			\$ (1,722,006)

Our accounting for all elements of the 2017 Tax Cut and Jobs Act (“Tax Act”) is now complete, consistent with the closing of the SAB 118 measurement period on December 22, 2018. There were no measurement period adjustments recorded during 2018.

D. Reconciliation of Federal Income Tax Rate to Actual Effective Rate

The provision for federal income taxes incurred is different from that which would be obtained by applying the statutory federal income tax rate to income before income taxes. The significant items causing this difference are as follows:

Description	As of December 31, 2018		
	Amount	Tax Effect	Effective Tax Rate
Income before taxes	\$ 18,912,505	\$ 3,971,626	21.00 %
Net tax exempt interest	(4,299,448)	(902,884)	(4.77)%
Net dividends received deduction (DRD)	(967,648)	(203,206)	(1.08)%
Other items permanent, net	18	4	0.00 %
DRD on accrued	(10,995)	(2,309)	(0.01)%
Total	\$ 13,634,432	\$ 2,863,231	15.14 %
Federal income tax expense incurred/(benefit)	\$ 7,802,081	\$ 1,638,437	8.66 %
Tax on capital gains/(losses)	4,760,148	999,631	5.29 %
Change in nonadmitted excluding deferred tax asset	911,308	191,375	1.01 %
Change in net deferred income tax charge/(benefit)	160,895	33,788	0.18 %
Total statutory income taxes incurred/(benefit)	\$ 13,634,432	\$ 2,863,231	15.14 %

Description	As of December 31, 2017		
	Amount	Tax Effect	Effective Tax Rate
Income before taxes	\$ 24,828,503	\$ 8,689,976	35.00 %
Net tax exempt interest	(4,446,183)	(1,556,164)	(6.27)%
Net dividends received deduction (DRD)	(1,577,571)	(552,150)	(2.22)%
Impact of tax rate change	(3,037,738)	(1,063,208)	(4.28)%
Other items permanent, net	20	7	0.00 %
DRD on accrued	(1,076)	(377)	0.00 %
Total	\$ 15,765,955	\$ 5,518,084	22.23 %
Federal income tax expense incurred/(benefit)	\$ 8,127,689	\$ 2,844,691	11.46 %
Tax on capital gains/(losses)	2,718,249	951,387	3.83 %
Change in net deferred income tax charge/(benefit)	4,920,017	1,722,006	6.94 %
Total statutory income taxes incurred/(benefit)	\$ 15,765,955	\$ 5,518,084	22.23 %

E. Operating Loss and Tax Credit Carryforwards

At December 31, 2018 the Company had no net operating loss carryforwards or capital loss carryforwards.

ANNUAL STATEMENT FOR THE YEAR 2018 OF THE CINCINNATI CASUALTY COMPANY

NOTES TO FINANCIAL STATEMENTS

The following is income tax expense for the current and prior years that is available for recoupment in the event of future net losses:

Year	Ordinary	Capital	Total
2018	\$ 1,543,050	\$ 999,631	\$ 2,542,681
2017	2,565,696	1,164,313	3,730,009
2016	0	156,016	156,016
Total	\$ 4,108,746	\$ 2,319,960	\$ 6,428,706

At December 31, 2018 the Company had no protective tax deposits under Section 6603 of the Internal Revenue Code.

F. Consolidated Federal Income Tax Return

- The Company's federal income tax return is consolidated with the following entities:

Cincinnati Financial Corporation (Parent)
The Cincinnati Insurance Company
The Cincinnati Life Insurance Company
The Cincinnati Indemnity Company
The Cincinnati Specialty Underwriters Insurance Company
CFC Investment Company
CSU Producer Resources, Inc.
- The method of allocation between the companies is subject to a written agreement, approved by the Board of Directors, whereby allocation is made primarily on a separate return basis, with the company receiving a current benefit for losses generated to the extent federal taxes are reduced for the consolidated tax group.

G. Federal or Foreign Income Tax Loss Contingencies

For the years ended December 31, 2018 and 2017, the Company did not have tax contingencies under the principles of SSAP No. 5, *Liabilities, Contingencies and Impairment of Assets*. This is subject to change but it is not expected to significantly increase in the 12 month period following the balance sheet date. The Company is primarily subject to examination by U.S. federal and various U.S. state and local tax authorities. The statute of limitations for federal tax purposes has closed for tax years 2014 and earlier. The statute of limitations for state income tax purposes has closed for tax years 2014 and earlier. As of December 31, 2018, there are no U.S. federal or state returns under examination.

10. Information Concerning Parent, Subsidiaries, Affiliates and Other Related Parties

A. Nature of Relationships

The Company is a wholly-owned subsidiary of The Cincinnati Insurance Company (See Schedule Y, Part 1, Organizational Chart).

- B. Detail of Transactions Greater than ½% of Admitted Assets – Not applicable
- C. Change in Terms of Intercompany Agreements – Not Applicable
- D. Amounts Due to or from Related Parties

At December 31, 2018, the Company reported \$2,519,383 due from the Parent Company, The Cincinnati Insurance Company. The terms of the settlement require that these amounts be settled within 30 days.

- E. Guarantees or Contingencies for Related Parties – Not applicable
- F. Management, Service Contracts, Cost Sharing Arrangements

The Company has the following management agreements with related parties:

- Inter-company Benefits and Expense Allocation Agreement.
- Inter-company Cost Sharing and Expense Allocation Agreement.
- Inter-company Tax Sharing Agreement.
- Inter-company Reinsurance Agreement.

G. Nature of Relationships that Could Affect Operations

All outstanding shares of the Company are owned by the Parent Company, The Cincinnati Insurance Company, an insurance company domiciled in the state of Ohio.

- H. Amount Deducted from Value of an Investment in Upstream Entity – Not applicable
- I. Investment in an SCA that exceeds 10% of Admitted Assets – Not applicable
- J. Impairment Writedowns related to Investments in SCA entities – Not applicable

ANNUAL STATEMENT FOR THE YEAR 2018 OF THE CINCINNATI CASUALTY COMPANY

NOTES TO FINANCIAL STATEMENTS

- K. Investment in Foreign Insurance Subsidiaries – Not applicable
- L. Investment in Downstream Noninsurance Holding Company – Not applicable
- M. All SCA Investments (Except 8bi Entities) – Not applicable
- N. Investment in Insurance SCA Entities Utilizing Permitted or Prescribed Practices – Not applicable

11. Debt – Not applicable

12. Retirement Plans, Deferred Compensation, Postemployment Benefits and Compensated Absences and Other Postretirement Benefit Plans

- A. Defined Benefit Plan – Not applicable
- B. Defined Benefit Plan Assets – Not applicable
- C. Fair Value Measurement of Defined Benefit Plan Assets – Not Applicable
- D. Defined Benefit Plan Rate of Return on Assets Assumptions – Not applicable
- E. Defined Contribution Plans – Not applicable
- F. Multiemployer Plans – Not applicable
- G. Consolidated/Holding Company Plans
 - 1. Defined Benefit Pension Plan – The Company participates in a qualified, noncontributory defined benefit pension plan sponsored by Cincinnati Financial Corporation, the Ultimate Parent. The Company has no legal obligations for benefits under the plan.
 - 2. Defined Contribution Plan - The Company participates in a qualified, defined contribution plan sponsored by Cincinnati Financial Corporation, the Ultimate Parent. The Company has no legal obligation for benefits under the plan. Cincinnati Financial Corporation allocates amounts to the Company based on an inter-company management fee. The Company's share of net expense for the defined contribution plan was \$4,144 and \$3,446 for 2018 and 2017, respectively.
- H. Postemployment Benefits and Compensated Absences – Not applicable
- I. Impact of Medicare Modernization Act on Postretirement Benefits – Not applicable

13. Capital and Surplus, Dividend Restrictions and Quasi-Reorganizations

- 1. The Company has 2,000 shares authorized, 1,875 shares issued and 1,875 shares outstanding. All shares are Class A shares.
- 2. Preferred stock issues – Not applicable
- 3. The maximum amount of dividends or distributions which may be paid to stockholders by property and casualty companies domiciled in the state of Ohio without prior approval or expiration of a 30 day waiting period without disapproval of the Director of Insurance is the greater of net income or 10% of policyholders' surplus as of the preceding December 31, but only to the extent of earned surplus as of the preceding December 31. The maximum amount of ordinary dividends or distributions the Company may pay in 2019 based upon surplus is \$39,810,035.
- 4. The Company did not pay any dividends during 2018.
- 5. Within the limitations of item 3 above, there are no specific restrictions placed on the portion of Company profits that may be paid as ordinary dividends to stockholders.
- 6. Surplus restrictions – Not applicable
- 7. Mutual Surplus Advances – Not applicable
- 8. Company Stock Held for Special Purposes – Not applicable
- 9. Changes in Special Surplus Funds – Not applicable
- 10. The portion of unassigned funds (surplus) represented or (reduced) by cumulative unrealized gains/(losses) are \$49,661,777 offset by deferred tax of \$10,428,973 for a net balance of \$39,232,804.
- 11. Surplus Notes – Not applicable
- 12. Restatement of Quasi-Reorganization – Not applicable
- 13. Date of Quasi-Reorganization – Not applicable

NOTES TO FINANCIAL STATEMENTS

14. Liabilities, Contingencies and Assessments

- A. Contingent Commitments – Not applicable
- B. Assessments

The Company was not aware of any material assessments as of December 31, 2018.

- C. Gain Contingencies – Not applicable
- D. Claims Related to Extra Contractual Obligations or Bad Faith Claims Stemming from Lawsuits – Not applicable
- E. Product Warranties – Not applicable
- F. Joint and Several Liabilities – Not applicable
- G. All Other Contingencies

Various lawsuits against the Company have arisen in the course of the Company's business. Contingent liabilities arising from litigation, income taxes and other matters are not considered material in relation to the financial position of the Company. The Company has no assets it considers impaired.

15. Leases – Not applicable**16. Information About Financial Instruments with Off-Balance Sheet Risk and Financial Instruments with Concentrations of Credit Risk – Not applicable****17. Sale, Transfer and Servicing of Financial Assets and Extinguishments of Liabilities – Not applicable****18. Gain or Loss to the Reporting Entity from Uninsured Plans and Uninsured Portion of Partially Insured Plans – Not applicable****19. Direct Written Premium/Produced by Managing General Agents/Third Party Administrators – Not applicable****20. Fair Value Measurements**

A. Inputs Used for Assets and Liabilities Measured at Fair Value

1. Included in various investment related line items in the financial statements are certain financial instruments carried at fair value. Other financial instruments are periodically measured at fair value, such as when impaired, or, for certain fixed maturities and preferred stock, when carried at the lower of cost or market.

The fair value of an asset is the amount at which that asset could be bought or sold in a current transaction between willing parties, that is, other than in a forced or liquidation sale. The Company does not have any material liabilities carried at fair value.

The Company has categorized its financial instruments, based on the priority of the inputs to the valuation technique, into a three-level fair value hierarchy. The fair value hierarchy gives the highest priority to quoted prices in active markets for identical assets or liabilities (Level 1) and the lowest priority to unobservable inputs (Level 3). If the inputs used to measure the financial instruments fall within different levels of the hierarchy, the categorization is based on the lowest level that is significant to the fair value measurement of the instrument.

Financial assets that fall within Level 1 and Level 2 are priced according to observable data from identical or similar securities that have traded in the marketplace. Also within Level 2 are securities that are valued by outside services or brokers where the Company has evaluated the pricing methodology and determined that the inputs are observable. Financial assets that fall within Level 3 of the hierarchy are valued based upon unobservable market inputs. Pricing for each Level 3 security is based upon inputs that are market driven, including third-party reviews provided to the issuer or broker quotes. However, the Company places in the Level 3 hierarchy securities for which it is unable to obtain the pricing methodology or it could not consider the price provided as binding. Management ultimately determines the fair value for each Level 3 security that it considers to be the best exit price valuation.

The Company primarily bases fair value estimates for investments in equity and fixed-maturity securities on quoted market prices or on prices from a nationally recognized pricing vendor, an outside resource that supplies global securities pricing, dividend, corporate action and descriptive information to support fund pricing, securities operations, research and portfolio management. The Company obtains and reviews the pricing service's valuation methodologies and related inputs and validates these prices by replicating a sample across each asset class using a discounted cash flow model. When a price is not available from these sources, as in the case of securities that are not publicly traded, the Company determines the fair value using various inputs including quotes from independent brokers. In these circumstances, the Company has generally obtained and evaluated two nonbinding quotes from brokers; its investment professionals determine the best estimate of fair value. The fair value of investments not priced by a pricing vendor is less than 1 percent of the fair value of the Company's total investment portfolio.

Financial instruments are categorized based upon the following characteristics or inputs to the valuation techniques:

- Level 1—Financial assets and liabilities for which inputs are observable and are obtained from reliable quoted

ANNUAL STATEMENT FOR THE YEAR 2018 OF THE CINCINNATI CASUALTY COMPANY

NOTES TO FINANCIAL STATEMENTS

prices for identical assets or liabilities in active markets. This is the most reliable fair value measurement and includes, for example, active exchange-traded equity securities.

- Level 2 – Financial assets and liabilities for which values are based on quoted prices in markets that are not active or for which values are based on similar assets and liabilities that are actively traded. This also includes pricing models for which the inputs are corroborated by market data. The technique used for the Level 2 fixed-maturity securities is the application of market based modeling. The inputs used for all classes of fixed-maturity securities listed in the table below include relevant market information by asset class, trade activity of like securities, marketplace quotes, benchmark yields, spreads off benchmark yields, interest rates, U.S. Treasury or swap curves, yield to maturity and economic events. Level 2 fixed-maturity securities are primarily priced by a nationally recognized pricing vendor.
- Level 3—Financial assets and liabilities for which values are based on prices or valuation techniques that require inputs that are both unobservable and significant to the overall fair value measurement. Level 3 inputs include the following:
 - Quotes from brokers or other external sources that are not considered binding;
 - Quotes from brokers or other external sources where it cannot be determined that market participants would in fact transact for the asset or liability at the quoted price; or
 - Quotes from brokers or other external sources where the inputs are not deemed observable.

Reclassification of certain financial instruments may occur when input observability changes. Reclassifications are reported as transfers into/out of the Level 3 category.

The following table presents the Company’s assets measured and reported at fair value by level within the fair value hierarchy as of December 31, 2018:

Assets at Fair Value:

	Level 1	Level 2	Level 3	Total	Net Asset Value (NAV) Included in Level 2
Bonds	\$ 0	\$ 3,947,230	\$ 0	\$ 3,947,230	\$ 0
Common Stock	107,767,463	0	0	107,767,463	0
Total	\$ 107,767,463	\$ 3,947,230	\$ 0	\$ 111,714,693	\$ 0

- 2. Fair Value Measurements in Level 3 of the Fair Value Hierarchy – Not applicable
 - 3. Transfers between levels are assumed to occur at the beginning of the period.
 - 4. Inputs and Techniques Used for Level 2 and Level 3 Fair Values – See narrative in Note 20A1.
- B. Other Fair Value Disclosures – Not applicable
- C. Fair Values for all Financial Instruments by Level

Type of Financial Instrument	Aggregate Fair Value	Admitted Assets	Level 1	Level 2	Level 3	Not Practicable (Carrying Value)	Net Asset Value (NAV) Included in Level 2
Bonds	\$ 296,383,192	\$ 294,075,871	\$ 1,624,086	\$ 294,759,106	\$ 0	\$ 0	\$ 0
Common Stock	107,767,463	107,767,463	107,767,463	0	0	0	0

- D. Reasons Not Practical to Estimate Fair Values – Not applicable

21. Other Items

- A. Unusual or Infrequent Items – Not applicable
- B. Troubled Debt Restructuring – Not applicable
- C. Other Disclosures

Assets in the amount of \$8,567,115 and \$8,996,064 at December 31, 2018 and 2017, respectively, were on deposit with government authorities or trustees as required by law.

- D. Business Interruption Insurance Recoveries – Not applicable
- E. State Transferable and Non-Transferable Tax Credits – Not applicable
- F. Subprime-Mortgage-Related Risk Exposure

The Company has no investments in subprime or related areas. This includes direct investments in subprime mortgage loans, RMBS, CMBS, CDO's, hedge funds, credit default swaps or SIVs. Additionally, the Company has no equity investments in SCA entities with subprime exposure nor does it underwrite any form of mortgage guaranty or financial

NOTES TO FINANCIAL STATEMENTS

guaranty insurance.

G. Insurance-Linked Securities (ILS) Contracts – Not applicable

22. Subsequent Events

The Company has considered subsequent events through February 28, 2019, the date of issuance of these statutory financial statements. There were no events occurring subsequent to December 31, 2018, which may have a material effect on the Company.

23. Reinsurance

A. Unsecured Reinsurance Recoverable

The Company does not have an unsecured aggregate recoverable for paid and unpaid losses, loss adjustment expenses and unearned premiums from any individual reinsurer that exceeds 3% of policyholders' surplus.

B. Reinsurance Recoverable in Dispute – Not applicable

C. Reinsurance Assumed and Ceded

1.

	Assumed Reinsurance		Ceded Reinsurance		Net	
	Premium	Commission	Premium	Commission	Premium	Commission
	Reserve	Equity	Reserve	Equity	Reserve	Equity
a. Affiliates	\$ 0	\$ 0	\$ 159,718,181	\$ 19,184,168	\$ (159,718,181)	\$ (19,184,168)
b. All Other	0	0	0	0	0	0
c. Total	\$ 0	\$ 0	\$ 159,718,181	\$ 19,184,168	\$ (159,718,181)	\$ (19,184,168)
d. Direct Unearned Premium Reserve			\$ 159,718,181			

2.

REINSURANCE				
	Direct	Assumed	Ceded	Net
a. Contingent Commission	\$ 10,100,000	\$ 0	\$ 10,100,000	\$ 0
b. Sliding Scale Adjustments	0	0	0	0
c. Other Profit Commission Arrangements	0	0	0	0
d. Total	\$ 10,100,000	\$ 0	\$ 10,100,000	\$ 0

3. Protected Cell – Not applicable

D. Uncollectible Reinsurance – Not applicable

E. Commutation of Ceded Reinsurance – Not applicable

F. Retroactive Reinsurance – Not applicable

G. Reinsurance Accounted for as a Deposit – Not applicable

H. Disclosure for the Transfer of Property and Casualty Run-off Agreements – Not applicable

I. Certified Reinsurer Rating Downgraded or Status Subject to Revocation – Not applicable

J. Reinsurance Agreement Qualifying for Reinsurer Aggregation – Not applicable

24. Retrospectively Rated Contracts & Contracts Subject to Redetermination – Not applicable

25. Changes in Incurred Losses and Loss Adjustment Expense – Not applicable

26. Intercompany Pooling Arrangements – Not applicable

27. Structured Settlements – Not applicable

28. Health Care Receivables – Not applicable

29. Participating Policies – Not applicable

30. Premium Deficiency Reserves

1. Liability carried for premium deficiency reserves	\$0
2. Date of most recent evaluation of this liability	01/16/2019
3. Was anticipated investment income utilized in the calculation	No

31. High Deductibles – Not applicable

32. Discounting of Liabilities for Unpaid Losses or Unpaid Loss Adjustment Expenses

ANNUAL STATEMENT FOR THE YEAR 2018 OF THE CINCINNATI CASUALTY COMPANY

NOTES TO FINANCIAL STATEMENTS

The Company does not discount unpaid losses or loss adjustment expenses except for income tax purposes.

33. Asbestos and Environmental Reserves

- A. Does the company have on the books, or has it ever written an insured for which you have identified a potential for the existence of, a liability due to asbestos losses? Yes (X) No ()

The Company's exposure arose from the sale of commercial liability products. The Company tries to estimate the full impact of the asbestos exposures by establishing full case basis reserves on all known losses and computing IBNR based on generally accepted actuarial methodologies.

	ASBESTOS LOSSES	2014	2015	2016	2017	2018
1.	Direct	Direct	Direct	Direct	Direct	Direct
	Beginning Reserves	\$ 0	\$ 0	\$ 0	\$ 0	\$ 23,578
	Incurred Loss & LAE	0	0	0	25,000	196,000
	Calendar year payments for Loss and LAE	0	0	0	1,422	55,852
	Ending Reserves	\$ 0	\$ 0	\$ 0	\$ 23,578	\$ 163,726
2.	Assumed	Assumed	Assumed	Assumed	Assumed	Assumed
	Beginning Reserves	\$ 0	\$ 0	\$ 0	\$ 0	\$ 0
	Incurred Loss & LAE	0	0	0	0	0
	Calendar year payments for Loss and LAE	0	0	0	0	0
	Ending Reserves	\$ 0	\$ 0	\$ 0	\$ 0	\$ 0
3.	Net	Net	Net	Net	Net	Net
	Beginning Reserves	\$ 0	\$ 0	\$ 0	\$ 0	\$ 0
	Incurred Loss & LAE	0	0	0	0	0
	Calendar year payments for Loss and LAE	0	0	0	0	0
	Ending Reserves	\$ 0	\$ 0	\$ 0	\$ 0	\$ 0

- B. Ending Reserves for Asbestos Claims for Bulk and IBNR Losses Included in A above:

	IBNR Reserves	2014	2015	2016	2017	2018
	Direct	\$ 0	\$ 0	\$ 0	\$ 0	\$ 0
	Assumed	0	0	0	0	0
	Net	0	0	0	0	0

- C. Ending Reserves for Asbestos Claims for LAE Included in A above (Case, Bulk and IBNR):

	LAE Reserves	2014	2015	2016	2017	2018
	Direct	\$ 0	\$ 0	\$ 0	\$ 0	\$ 0
	Assumed	0	0	0	0	0
	Net	0	0	0	0	0

- D. Does the company have on the books, or has it ever written an insured for which you have identified a potential for the existence of, a liability due to environmental losses? Yes (X) No ()

The Company's exposure arose from the sale of commercial liability products. The Company tries to estimate the full impact of the environmental exposures by establishing full case basis reserves on all known losses and computing IBNR based on generally accepted actuarial methodologies. The Company's environmental losses for each of the five most recent calendar years were as follows:

	ENVIRONMENTAL LOSSES	2014	2015	2016	2017	2018
1.	Direct	Direct	Direct	Direct	Direct	Direct
	Beginning Reserves	\$ 15,000	\$ 80,067	\$ 0	\$ 42,166	\$ 86,493
	Incurred Loss & LAE	106,688	(9,315)	695,632	103,456	27,729
	Calendar year payments	41,620	70,752	653,466	59,129	36,199
	Ending Reserves	\$ 80,067	\$ 0	\$ 42,166	\$ 86,493	\$ 78,023
2.	Assumed	Assumed	Assumed	Assumed	Assumed	Assumed
	Beginning Reserves	\$ 0	\$ 0	\$ 0	\$ 0	\$ 0
	Incurred Loss & LAE	0	0	0	0	0
	Calendar year payments	0	0	0	0	0
	Ending Reserves	\$ 0	\$ 0	\$ 0	\$ 0	\$ 0
3.	Net	Net	Net	Net	Net	Net
	Beginning Reserves	\$ 0	\$ 0	\$ 0	\$ 0	\$ 0
	Incurred Loss & LAE	0	0	0	0	0
	Calendar year payments	0	0	0	0	0
	Ending Reserves	\$ 0	\$ 0	\$ 0	\$ 0	\$ 0

- E. Ending Reserves for Environmental Claims for Bulk and IBNR Losses Included in D above:

	IBNR Reserves	2014	2015	2016	2017	2018
	Direct	\$ 0	\$ 0	\$ 0	\$ 0	\$ 0
	Assumed	0	0	0	0	0
	Net	0	0	0	0	0

ANNUAL STATEMENT FOR THE YEAR 2018 OF THE CINCINNATI CASUALTY COMPANY

NOTES TO FINANCIAL STATEMENTS

F. Ending Reserves for Environmental Claims for LAE included in D above (Case, Bulk and IBNR):

	LAE Reserves	2014	2015	2016	2017	2018
	Direct	\$ 0	\$ 0	\$ 0	\$ 0	\$ 0
	Assumed	0	0	0	0	0
	Net	0	0	0	0	0

34. Subscriber Savings Accounts – Not applicable

35. Multiple Peril Crop Insurance – Not applicable

36. Financial Guaranty Insurance – Not applicable

37. Other

Prior year data included in Schedule P is calculated as follows:

Part 1-Payments made in the current year and current reserves for AY's 2008 & prior.

Parts 2&3-The prior line on last year's statement is combined with the year 2008 total. Paid amounts prior to 2009 are then subtracted from this sum to arrive at the prior figure.

Part 4-The sum of the prior year line and the 2008 line from the prior year's Schedule P compose the prior figures for this section.

Part 5 Section 1&3-The prior line is combined with year 2007 from the prior schedule P. Counts for accident year 2008 in the preceding year are then subtracted from this sum to arrive at the prior figure, removing the cumulative effect.

Part 5 Section 2 - The prior line is combined with the 2008 AY of the prior year's Schedule P to arrive at the new prior number.

ANNUAL STATEMENT FOR THE YEAR 2018 OF THE THE CINCINNATI CASUALTY COMPANY

GENERAL INTERROGATORIES

PART 1 - COMMON INTERROGATORIES

GENERAL

1.1

Is the reporting entity a member of an Insurance Holding Company System consisting of two or more affiliated persons, one or more of which is an insurer?
If yes, complete Schedule Y, Parts 1, 1A and 2

Yes [X] No []

1.2

If yes, did the reporting entity register and file with its domiciliary State Insurance Commissioner, Director or Superintendent, or with such regulatory official of the state of domicile of the principal insurer in the Holding Company System, a registration statement providing disclosure substantially similar to the standards adopted by the National Association of Insurance Commissioners (NAIC) in its Model Insurance Holding Company System Regulatory Act and model regulations pertaining thereto, or is the reporting entity subject to standards and disclosure requirements substantially similar to those required by such Act and regulations?

Yes [X] No [] N/A []

1.3

State Regulating?

Ohio

1.4

Is the reporting entity publicly traded or a member of a publicly traded group?

Yes [X] No []

1.5

If the response to 1.4 is yes, provide the CIK (Central Index Key) code issued by the SEC for the entity/group.

0001279888

2.1

Has any change been made during the year of this statement in the charter, by-laws, articles of incorporation, or deed of settlement of the reporting entity?

Yes [] No [X]

2.2

If yes, date of change:

3.1

State as of what date the latest financial examination of the reporting entity was made or is being made.

12/31/2014

3.2

State the as of date that the latest financial examination report became available from either the state of domicile or the reporting entity. This date should be the date of the examined balance sheet and not the date the report was completed or released.

12/31/2014

3.3

State as of what date the latest financial examination report became available to other states or the public from either the state of domicile or the reporting entity. This is the release date or completion date of the examination report and not the date of the examination (balance sheet date).

10/05/2015

3.4

By what department or departments?
Ohio

3.5

Have all financial statement adjustments within the latest financial examination report been accounted for in a subsequent financial statement filed with Departments?

Yes [X] No [] N/A []

3.6

Have all of the recommendations within the latest financial examination report been complied with?

Yes [X] No [] N/A []

4.1

During the period covered by this statement, did any agent, broker, sales representative, non-affiliated sales/service organization or any combination thereof under common control (other than salaried employees of the reporting entity), receive credit or commissions for or control a substantial part (more than 20 percent of any major line of business measured on direct premiums) of:
4.11 sales of new business?
4.12 renewals?

Yes [] No [X]
Yes [] No [X]

4.2

During the period covered by this statement, did any sales/service organization owned in whole or in part by the reporting entity or an affiliate, receive credit or commissions for or control a substantial part (more than 20 percent of any major line of business measured on direct premiums) of:
4.21 sales of new business?
4.22 renewals?

Yes [] No [X]
Yes [] No [X]

5.1

Has the reporting entity been a party to a merger or consolidation during the period covered by this statement?
If yes, complete and file the merger history data file with the NAIC.

Yes [] No [X]

5.2

If yes, provide the name of the entity, NAIC Company Code, and state of domicile (use two letter state abbreviation) for any entity that has ceased to exist as a result of the merger or consolidation.

1 Name of Entity	2 NAIC Company Code	3 State of Domicile
.....

6.1

Has the reporting entity had any Certificates of Authority, licenses or registrations (including corporate registration, if applicable) suspended or revoked by any governmental entity during the reporting period?

Yes [] No [X]

6.2

If yes, give full information:

7.1

Does any foreign (non-United States) person or entity directly or indirectly control 10% or more of the reporting entity?

Yes [] No [X]

7.2

If yes,
7.21 State the percentage of foreign control; %
7.22 State the nationality(s) of the foreign person(s) or entity(s) or if the entity is a mutual or reciprocal, the nationality of its manager or attorney-in-fact; and identify the type of entity(s) (e.g., individual, corporation or government, manager or attorney in fact).

1 Nationality	2 Type of Entity
.....

ANNUAL STATEMENT FOR THE YEAR 2018 OF THE THE CINCINNATI CASUALTY COMPANY

GENERAL INTERROGATORIES

8.1

Is the company a subsidiary of a bank holding company regulated by the Federal Reserve Board?

Yes [] No [X]

8.2

If response to 8.1 is yes, please identify the name of the bank holding company.

8.3

Is the company affiliated with one or more banks, thrifts or securities firms?

Yes [] No [X]

8.4

If response to 8.3 is yes, please provide below the names and location (city and state of the main office) of any affiliates regulated by a federal regulatory services agency [i.e. the Federal Reserve Board (FRB), the Office of the Comptroller of the Currency (OCC), the Federal Deposit Insurance Corporation (FDIC) and the Securities Exchange Commission (SEC)] and identify the affiliate's primary federal regulator.

1	2	3	4	5	6
Affiliate Name	Location (City, State)	FRB	OCC	FDIC	SEC

9.

What is the name and address of the independent certified public accountant or accounting firm retained to conduct the annual audit?

Deloitte & Touche; Suite 1900; 250 E. 5th St; PO Box 5340; Cincinnati, OH 45201-5340

10.1

Has the insurer been granted any exemptions to the prohibited non-audit services provided by the certified independent public accountant requirements as allowed in Section 7H of the Annual Financial Reporting Model Regulation (Model Audit Rule), or substantially similar state law or regulation?

Yes [] No [X]

10.2

If the response to 10.1 is yes, provide information related to this exemption:

10.3

Has the insurer been granted any exemptions related to the other requirements of the Annual Financial Reporting Model Regulation as allowed for in Section 18A of the Model Regulation, or substantially similar state law or regulation?

Yes [] No [X]

10.4

If the response to 10.3 is yes, provide information related to this exemption:

10.5

Has the reporting entity established an Audit Committee in compliance with the domiciliary state insurance laws?

Yes [X] No [] N/A []

10.6

If the response to 10.5 is no or n/a, please explain

11.

What is the name, address and affiliation (officer/employee of the reporting entity or actuary/consultant associated with an actuarial consulting firm) of the individual providing the statement of actuarial opinion/certification?

Kevin Bingham; Deloitte Consulting LLP; City Place I, 33rd Floor; 185 Asylum Street; Hartford, CT 06103-3402

12.1

Does the reporting entity own any securities of a real estate holding company or otherwise hold real estate indirectly?

Yes [] No [X]

12.11

Name of real estate holding company

12.12

Number of parcels involved

12.13

Total book/adjusted carrying value

\$

12.2

If, yes provide explanation:

13.

FOR UNITED STATES BRANCHES OF ALIEN REPORTING ENTITIES ONLY:

13.1

What changes have been made during the year in the United States manager or the United States trustees of the reporting entity?

13.2

Does this statement contain all business transacted for the reporting entity through its United States Branch on risks wherever located?

Yes [] No []

13.3

Have there been any changes made to any of the trust indentures during the year?

Yes [] No []

13.4

If answer to (13.3) is yes, has the domiciliary or entry state approved the changes?

Yes [] No [] N/A []

14.1

Are the senior officers (principal executive officer, principal financial officer, principal accounting officer or controller, or persons performing similar functions) of the reporting entity subject to a code of ethics, which includes the following standards?

Yes [X] No []

(a)

Honest and ethical conduct, including the ethical handling of actual or apparent conflicts of interest between personal and professional relationships;

(b)

Full, fair, accurate, timely and understandable disclosure in the periodic reports required to be filed by the reporting entity;

(c)

Compliance with applicable governmental laws, rules and regulations;

(d)

The prompt internal reporting of violations to an appropriate person or persons identified in the code; and

(e)

Accountability for adherence to the code.

14.11

If the response to 14.1 is No, please explain:

14.2

Has the code of ethics for senior managers been amended?

Yes [] No [X]

14.21

If the response to 14.2 is yes, provide information related to amendment(s).

14.3

Have any provisions of the code of ethics been waived for any of the specified officers?

Yes [] No [X]

14.31

If the response to 14.3 is yes, provide the nature of any waiver(s).

ANNUAL STATEMENT FOR THE YEAR 2018 OF THE THE CINCINNATI CASUALTY COMPANY

GENERAL INTERROGATORIES

- 15.1 Is the reporting entity the beneficiary of a Letter of Credit that is unrelated to reinsurance where the issuing or confirming bank is not on the SVO Bank List? Yes [] No [X]
- 15.2 If the response to 15.1 is yes, indicate the American Bankers Association (ABA) Routing Number and the name of the issuing or confirming bank of the Letter of Credit and describe the circumstances in which the Letter of Credit is triggered.

1 American Bankers Association (ABA) Routing Number	2 Issuing or Confirming Bank Name	3 Circumstances That Can Trigger the Letter of Credit	4 Amount

BOARD OF DIRECTORS

16. Is the purchase or sale of all investments of the reporting entity passed upon either by the board of directors or a subordinate committee thereof? Yes [X] No []
17. Does the reporting entity keep a complete permanent record of the proceedings of its board of directors and all subordinate committees thereof? Yes [X] No []
18. Has the reporting entity an established procedure for disclosure to its board of directors or trustees of any material interest or affiliation on the part of any of its officers, directors, trustees or responsible employees that is in conflict with the official duties of such person? Yes [X] No []

FINANCIAL

19. Has this statement been prepared using a basis of accounting other than Statutory Accounting Principles (e.g., Generally Accepted Accounting Principles)? Yes [] No [X]
- 20.1 Total amount loaned during the year (inclusive of Separate Accounts, exclusive of policy loans):

20.11 To directors or other officers\$

20.12 To stockholders not officers\$

20.13 Trustees, supreme or grand (Fraternal Only)\$
- 20.2 Total amount of loans outstanding at the end of year (inclusive of Separate Accounts, exclusive of policy loans):

20.21 To directors or other officers\$

20.22 To stockholders not officers\$

20.23 Trustees, supreme or grand (Fraternal Only)\$
- 21.1 Were any assets reported in this statement subject to a contractual obligation to transfer to another party without the liability for such obligation being reported in the statement? Yes [] No [X]
- 21.2 If yes, state the amount thereof at December 31 of the current year:

21.21 Rented from others\$

21.22 Borrowed from others\$

21.23 Leased from others\$

21.24 Other\$
- 22.1 Does this statement include payments for assessments as described in the Annual Statement Instructions other than guaranty fund or guaranty association assessments? Yes [] No [X]
- 22.2 If answer is yes:

22.21 Amount paid as losses or risk adjustment\$

22.22 Amount paid as expenses\$

22.23 Other amounts paid\$
- 23.1 Does the reporting entity report any amounts due from parent, subsidiaries or affiliates on Page 2 of this statement? Yes [X] No []
- 23.2 If yes, indicate any amounts receivable from parent included in the Page 2 amount:\$2,519,383

INVESTMENT

- 24.01 Were all the stocks, bonds and other securities owned December 31 of current year, over which the reporting entity has exclusive control, in the actual possession of the reporting entity on said date? (other than securities lending programs addressed in 24.03) Yes [X] No []
- 24.02 If no, give full and complete information relating thereto
- 24.03 For security lending programs, provide a description of the program including value for collateral and amount of loaned securities, and whether collateral is carried on or off-balance sheet. (an alternative is to reference Note 17 where this information is also provided)
- 24.04 Does the Company's security lending program meet the requirements for a conforming program as outlined in the Risk-Based Capital Instructions? Yes [] No [] N/A [X]
- 24.05 If answer to 24.04 is yes, report amount of collateral for conforming programs.\$
- 24.06 If answer to 24.04 is no, report amount of collateral for other programs.\$
- 24.07 Does your securities lending program require 102% (domestic securities) and 105% (foreign securities) from the counterparty at the outset of the contract? Yes [] No [] N/A [X]
- 24.08 Does the reporting entity non-admit when the collateral received from the counterparty falls below 100%? Yes [] No [] N/A [X]
- 24.09 Does the reporting entity or the reporting entity 's securities lending agent utilize the Master Securities lending Agreement (MSLA) to conduct securities lending? Yes [] No [] N/A [X]

ANNUAL STATEMENT FOR THE YEAR 2018 OF THE THE CINCINNATI CASUALTY COMPANY

GENERAL INTERROGATORIES

24.10 For the reporting entity's security lending program state the amount of the following as December 31 of the current year:

24.101	Total fair value of reinvested collateral assets reported on Schedule DL, Parts 1 and 2.	\$	
24.102	Total book adjusted/carrying value of reinvested collateral assets reported on Schedule DL, Parts 1 and 2.	\$	
24.103	Total payable for securities lending reported on the liability page.	\$	

25.1 Were any of the stocks, bonds or other assets of the reporting entity owned at December 31 of the current year not exclusively under the control of the reporting entity, or has the reporting entity sold or transferred any assets subject to a put option contract that is currently in force? (Exclude securities subject to Interrogatory 21.1 and 24.03).

Yes [X] No []

25.2	If yes, state the amount thereof at December 31 of the current year:	25.21 Subject to repurchase agreements	\$	
		25.22 Subject to reverse repurchase agreements	\$	
		25.23 Subject to dollar repurchase agreements	\$	
		25.24 Subject to reverse dollar repurchase agreements	\$	
		25.25 Placed under option agreements	\$	
		25.26 Letter stock or securities restricted as to sale - excluding FHLB Capital Stock	\$	
		25.27 FHLB Capital Stock	\$	
		25.28 On deposit with states	\$	8,567,115
		25.29 On deposit with other regulatory bodies	\$	
		25.30 Pledged as collateral - excluding collateral pledged to an FHLB	\$	
		25.31 Pledged as collateral to FHLB - including assets backing funding agreements	\$	
		25.32 Other	\$	

25.3 For category (25.26) provide the following:

1	2	3
Nature of Restriction	Description	Amount

26.1 Does the reporting entity have any hedging transactions reported on Schedule DB?

Yes [] No [X]

26.2 If yes, has a comprehensive description of the hedging program been made available to the domiciliary state?

Yes [] No [] N/A [X]

If no, attach a description with this statement.

27.1 Were any preferred stocks or bonds owned as of December 31 of the current year mandatorily convertible into equity, or, at the option of the issuer, convertible into equity?

Yes [] No [X]

27.2 If yes, state the amount thereof at December 31 of the current year.

\$

28. Excluding items in Schedule E - Part 3 - Special Deposits, real estate, mortgage loans and investments held physically in the reporting entity's offices, vaults or safety deposit boxes, were all stocks, bonds and other securities, owned throughout the current year held pursuant to a custodial agreement with a qualified bank or trust company in accordance with Section 1, III - General Examination Considerations, F. Outsourcing of Critical Functions, Custodial or Safekeeping Agreements of the NAIC Financial Condition Examiners Handbook?

Yes [X] No []

28.01 For agreements that comply with the requirements of the NAIC Financial Condition Examiners Handbook, complete the following:

1	2
Name of Custodian(s)	Custodian's Address
Fifth Third Bank	Fifth Third Center; Cincinnati, Ohio 45263

28.02 For all agreements that do not comply with the requirements of the NAIC Financial Condition Examiners Handbook, provide the name, location and a complete explanation:

1	2	3
Name(s)	Location(s)	Complete Explanation(s)

28.03 Have there been any changes, including name changes, in the custodian(s) identified in 28.01 during the current year?

Yes [] No [X]

28.04 If yes, give full and complete information relating thereto:

1	2	3	4
Old Custodian	New Custodian	Date of Change	Reason

ANNUAL STATEMENT FOR THE YEAR 2018 OF THE THE CINCINNATI CASUALTY COMPANY

GENERAL INTERROGATORIES

28.05 Investment management – Identify all investment advisors, investment managers, broker/dealers, including individuals that have the authority to make investment decisions on behalf of the reporting entity. For assets that are managed internally by employees of the reporting entity, note as such. ["...that have access to the investment accounts"; "...handle securities"]

1	2
Name of Firm or Individual	Affiliation

28.0597 For those firms/individuals listed in the table for Question 28.05, do any firms/individuals unaffiliated with the reporting entity (i.e. designated with a "U") manage more than 10% of the reporting entity's assets?..... Yes [] No [X]

28.0598 For firms/individuals unaffiliated with the reporting entity (i.e. designated with a "U") listed in the table for Question 28.05, does the total assets under management aggregate to more than 50% of the reporting entity's assets?..... Yes [] No [X]

28.06 For those firms or individuals listed in the table for 28.05 with an affiliation code of "A" (affiliated) or "U" (unaffiliated), provide the information for the table below.

1	2	3	4	5
Central Registration Depository Number	Name of Firm or Individual	Legal Entity Identifier (LEI)	Registered With	Investment Management Agreement (IMA) Filed

29.1 Does the reporting entity have any diversified mutual funds reported in Schedule D, Part 2 (diversified according to the Securities and Exchange Commission (SEC) in the Investment Company Act of 1940 [Section 5(b)(1)])? Yes [] No [X]

29.2 If yes, complete the following schedule:

1	2	3
CUSIP #	Name of Mutual Fund	Book/Adjusted Carrying Value
29.2999 - Total		

29.3 For each mutual fund listed in the table above, complete the following schedule:

1	2	3	4
Name of Mutual Fund (from above table)	Name of Significant Holding of the Mutual Fund	Amount of Mutual Fund's Book/Adjusted Carrying Value Attributable to the Holding	Date of Valuation

30. Provide the following information for all short-term and long-term bonds and all preferred stocks. Do not substitute amortized value or statement value for fair value.

	1	2	3
	Statement (Admitted) Value	Fair Value	Excess of Statement over Fair Value (-), or Fair Value over Statement (+)
30.1 Bonds	294,075,871	296,383,193	2,307,322
30.2 Preferred stocks			
30.3 Totals	294,075,871	296,383,193	2,307,322

30.4 Describe the sources or methods utilized in determining the fair values:
The majority of fair market values are obtained from Interactive Data Corporation (IDC). For securities IDC is unable to price, the company looks to Bloomberg and uses a recent historical price method. If this cannot be determined the company uses outside brokers to analytically determine the price.

31.1 Was the rate used to calculate fair value determined by a broker or custodian for any of the securities in Schedule D? Yes [X] No []

31.2 If the answer to 31.1 is yes, does the reporting entity have a copy of the broker's or custodian's pricing policy (hard copy or electronic copy) for all brokers or custodians used as a pricing source? Yes [] No [X]

31.3 If the answer to 31.2 is no, describe the reporting entity's process for determining a reliable pricing source for purposes of disclosure of fair value for Schedule D:
For our private placement securities, the company receives the fair value price from an outside private placement manager's firm. For all other securities not priced by IDC the company looks to outside security brokers who are market makers in that type of security.

32.1 Have all the filing requirements of the Purposes and Procedures Manual of the NAIC Investment Analysis Office been followed? Yes [] No [X]

32.2 If no, list exceptions:
For securities not filed with the SVO, please see the attached on paged 15.5.1

ANNUAL STATEMENT FOR THE YEAR 2018 OF THE THE CINCINNATI CASUALTY COMPANY

GENERAL INTERROGATORIES

33.

By self-designating 5GI securities, the reporting entity is certifying the following elements of each self-designated 5GI security:
a. Documentation necessary to permit a full credit analysis of the security does not exist or an NAIC CRP credit rating for an FE or PL security is not available.
b. Issuer or obligor is current on all contracted interest and principal payments.
c. The insurer has an actual expectation of ultimate payment of all contracted interest and principal.
Has the reporting entity self-designated 5GI securities?

Yes [] No [X]
34.

By self-designating PLGI securities, the reporting entity is certifying the following elements of each self-designated PLGI security:
a. The security was purchased prior to January 1, 2018.
b. The reporting entity is holding capital commensurate with the NAIC Designation reported for the security.
c. The NAIC Designation was derived from the credit rating assigned by an NAIC CRP in its legal capacity as a NRSRO which is shown on a current private letter rating held by the insurer and available for examination by state insurance regulators.
d. The reporting entity is not permitted to share this credit rating of the PL security with the SVO.
Has the reporting entity self-designated PLGI securities?

Yes [] No [X]

OTHER

35.1 Amount of payments to trade associations, service organizations and statistical or rating bureaus, if any?\$1,105,430

35.2 List the name of the organization and the amount paid if any such payment represented 25% or more of the total payments to trade associations, service organizations and statistical or rating bureaus during the period covered by this statement.

1 Name	2 Amount Paid
.....

36.1 Amount of payments for legal expenses, if any?\$12,792

36.2 List the name of the firm and the amount paid if any such payment represented 25% or more of the total payments for legal expenses during the period covered by this statement.

1 Name	2 Amount Paid
HUNTER WARFIELD INC8,463
LITCHFIELD CAVO LLP4,079
.....

37.1 Amount of payments for expenditures in connection with matters before legislative bodies, officers or departments of government, if any?\$

37.2 List the name of the firm and the amount paid if any such payment represented 25% or more of the total payment expenditures in connection with matters before legislative bodies, officers or departments of government during the period covered by this statement.

1 Name	2 Amount Paid
.....

GENERAL INTERROGATORIES

PART 2 - PROPERTY AND CASUALTY INTERROGATORIES

1.1

Does the reporting entity have any direct Medicare Supplement Insurance in force?

Yes [] No [X]

1.2

If yes, indicate premium earned on U. S. business only.

\$ _____

1.3

What portion of Item (1.2) is not reported on the Medicare Supplement Insurance Experience Exhibit?

\$ _____

1.31

Reason for excluding

1.4

Indicate amount of earned premium attributable to Canadian and/or Other Alien not included in Item (1.2) above.

\$ _____

1.5

Indicate total incurred claims on all Medicare Supplement Insurance.

\$ _____

1.6

Individual policies:

Most current three years:

1.61

Total premium earned

\$ _____

1.62

Total incurred claims

\$ _____

1.63

Number of covered lives

All years prior to most current three years

1.64

Total premium earned

\$ _____

1.65

Total incurred claims

\$ _____

1.66

Number of covered lives

1.7

Group policies:

Most current three years:

1.71

Total premium earned

\$ _____

1.72

Total incurred claims

\$ _____

1.73

Number of covered lives

All years prior to most current three years

1.74

Total premium earned

\$ _____

1.75

Total incurred claims

\$ _____

1.76

Number of covered lives

2.

Health Test:

1

Current Year

2

Prior Year

2.1

Premium Numerator

2.2

Premium Denominator

2.3

Premium Ratio (2.1/2.2)

0.000

0.000

2.4

Reserve Numerator

2.5

Reserve Denominator

95,867

2.6

Reserve Ratio (2.4/2.5)

0.000

0.000

3.1

Does the reporting entity issue both participating and non-participating policies?

Yes [] No [X]

3.2

If yes, state the amount of calendar year premiums written on:

3.21

Participating policies

\$ _____

3.22

Non-participating policies

\$ _____

4.

For mutual reporting Entities and Reciprocal Exchanges Only:

4.1

Does the reporting entity issue assessable policies?

Yes [] No []

4.2

Does the reporting entity issue non-assessable policies?

Yes [] No []

4.3

If assessable policies are issued, what is the extent of the contingent liability of the policyholders?

%

4.4

Total amount of assessments paid or ordered to be paid during the year on deposit notes or contingent premiums.

\$ _____

5.

For Reciprocal Exchanges Only:

5.1

Does the Exchange appoint local agents?

Yes [] No []

5.2

If yes, is the commission paid:

5.21

Out of Attorney's-in-fact compensation.....

Yes [] No [] N/A []

5.22

As a direct expense of the exchange.....

Yes [] No [] N/A []

5.3

What expenses of the Exchange are not paid out of the compensation of the Attorney-in-fact?

5.4

Has any Attorney-in-fact compensation, contingent on fulfillment of certain conditions, been deferred?

Yes [] No []

5.5

If yes, give full information

GENERAL INTERROGATORIES

PART 2 - PROPERTY AND CASUALTY INTERROGATORIES

6.1

What provision has this reporting entity made to protect itself from an excessive loss in the event of a catastrophe under a workers' compensation contract issued without limit of loss?
Protection is provided through several excess reinsurance contracts for workers' compensation coverage.

6.2

Describe the method used to estimate this reporting entity's probable maximum insurance loss, and identify the type of insured exposures comprising that probable maximum loss, the locations of concentrations of those exposures and the external resources (such as consulting firms or computer software models), if any, used in the estimation process.
The company has engaged with JLT Re, who uses the catastrophe risk models from Risk Management Solutions and Applied Insurance Research to model potential maximum loss exposure.

6.3

What provision has this reporting entity made (such as a catastrophic reinsurance program) to protect itself from an excessive loss arising from the types and concentrations of insured exposures comprising its probable maximum property insurance loss?
The company has a catastrophe reinsurance program insuring losses to \$500 million in excess of \$100 million, plus co-participation by layer.

6.4

Does the reporting entity carry catastrophe reinsurance protection for at least one reinstatement, in an amount sufficient to cover its estimated probable maximum loss attributable to a single loss event or occurrence?

Yes ☒ No ☐

6.5

If no, describe any arrangements or mechanisms employed by the reporting entity to supplement its catastrophe reinsurance program or to hedge its exposure to uninsured catastrophic loss.

7.1

Has this reporting entity reinsured any risk with any other entity under a quota share reinsurance contract that includes a provision that would limit the reinsurer's losses below the stated quota share percentage (e.g., a deductible, a loss ratio corridor, a loss ratio cap, an aggregate limit or any similar provisions)?

Yes ☐ No ☒

7.2

If yes, indicate the number of reinsurance contracts containing such provisions:

7.3

If yes, does the amount of reinsurance credit taken reflect the reduction in quota share coverage caused by any applicable limiting provision(s)?

Yes ☐ No ☐

8.1

Has this reporting entity reinsured any risk with any other entity and agreed to release such entity from liability, in whole or in part, from any loss that may occur on this risk, or portion thereof, reinsured?

Yes ☐ No ☒

8.2

If yes, give full information

9.1

Has the reporting entity ceded any risk under any reinsurance contract (or under multiple contracts with the same reinsurer or its affiliates) for which during the period covered by the statement: (i) it recorded a positive or negative underwriting result greater than 5% of prior year-end surplus as regards policyholders or it reported calendar year written premium ceded or year-end loss and loss expense reserves ceded greater than 5% of prior year-end surplus as regards policyholders; (ii) it accounted for that contract as reinsurance and not as a deposit; and (iii) the contract(s) contain one or more of the following features or other features that would have similar results:
(a) A contract term longer than two years and the contract is noncancellable by the reporting entity during the contract term;
(b) A limited or conditional cancellation provision under which cancellation triggers an obligation by the reporting entity, or an affiliate of the reporting entity, to enter into a new reinsurance contract with the reinsurer, or an affiliate of the reinsurer;
(c) Aggregate stop loss reinsurance coverage;
(d) A unilateral right by either party (or both parties) to commute the reinsurance contract, whether conditional or not, except for such provisions which are only triggered by a decline in the credit status of the other party;
(e) A provision permitting reporting of losses, or payment of losses, less frequently than on a quarterly basis (unless there is no activity during the period); or
(f) Payment schedule, accumulating retentions from multiple years or any features inherently designed to delay timing of the reimbursement to the ceding entity.

Yes ☐ No ☒

9.2

Has the reporting entity during the period covered by the statement ceded any risk under any reinsurance contract (or under multiple contracts with the same reinsurer or its affiliates), for which, during the period covered by the statement, it recorded a positive or negative underwriting result greater than 5% of prior year-end surplus as regards policyholders or it reported calendar year written premium ceded or year-end loss and loss expense reserves ceded greater than 5% of prior year-end surplus as regards policyholders; excluding cessions to approved pooling arrangements or to captive insurance companies that are directly or indirectly controlling, controlled by, or under common control with (i) one or more unaffiliated policyholders of the reporting entity, or (ii) an association of which one or more unaffiliated policyholders of the reporting entity is a member where:
(a) The written premium ceded to the reinsurer by the reporting entity or its affiliates represents fifty percent (50%) or more of the entire direct and assumed premium written by the reinsurer based on its most recently available financial statement; or
(b) Twenty-five percent (25%) or more of the written premium ceded to the reinsurer has been retroceded back to the reporting entity or its affiliates in a separate reinsurance contract.

Yes ☐ No ☒

9.3

If yes to 9.1 or 9.2, please provide the following information in the Reinsurance Summary Supplemental Filing for General Interrogatory 9:
(a) The aggregate financial statement impact gross of all such ceded reinsurance contracts on the balance sheet and statement of income;
(b) A summary of the reinsurance contract terms and indicate whether it applies to the contracts meeting the criteria in 9.1 or 9.2; and
(c) A brief discussion of management's principle objectives in entering into the reinsurance contract including the economic purpose to be achieved.

9.4

Except for transactions meeting the requirements of paragraph 32 of SSAP No. 62R, Property and Casualty Reinsurance, has the reporting entity ceded any risk under any reinsurance contract (or multiple contracts with the same reinsurer or its affiliates) during the period covered by the financial statement, and either:
(a) Accounted for that contract as reinsurance (either prospective or retroactive) under statutory accounting principles ("SAP") and as a deposit under generally accepted accounting principles ("GAAP"); or
(b) Accounted for that contract as reinsurance under GAAP and as a deposit under SAP?

Yes ☐ No ☒

9.5

If yes to 9.4, explain in the Reinsurance Summary Supplemental Filing for General Interrogatory 9 (Section D) why the contract(s) is treated differently for GAAP and SAP.

9.6

The reporting entity is exempt from the Reinsurance Attestation Supplement under one or more of the following criteria:
(a) The entity does not utilize reinsurance; or,
(b) The entity only engages in a 100% quota share contract with an affiliate and the affiliated or lead company has filed an attestation supplement; or
(c) The entity has no external cessions and only participates in an intercompany pool and the affiliated or lead company has filed an attestation supplement.

Yes ☐ No ☒
Yes ☒ No ☐
Yes ☐ No ☒

10.

If the reporting entity has assumed risks from another entity, there should be charged on account of such reinsurances a reserve equal to that which the original entity would have been required to charge had it retained the risks. Has this been done?

Yes ☒ No ☐ N/A ☐

ANNUAL STATEMENT FOR THE YEAR 2018 OF THE THE CINCINNATI CASUALTY COMPANY

GENERAL INTERROGATORIES

PART 2 - PROPERTY AND CASUALTY INTERROGATORIES

11.1 Has the reporting entity guaranteed policies issued by any other entity and now in force? Yes [] No [X]

11.2 If yes, give full information
.....

12.1 If the reporting entity recorded accrued retrospective premiums on insurance contracts on Line 15.3 of the asset schedule, Page 2, state the amount of corresponding liabilities recorded for:

12.11 Unpaid losses\$

12.12 Unpaid underwriting expenses (including loss adjustment expenses)\$

12.2 Of the amount on Line 15.3, Page 2, state the amount which is secured by letters of credit, collateral, and other funds\$

12.3 If the reporting entity underwrites commercial insurance risks, such as workers' compensation, are premium notes or promissory notes accepted from its insureds covering unpaid premiums and/or unpaid losses? Yes [] No [X] N/A []

12.4 If yes, provide the range of interest rates charged under such notes during the period covered by this statement:

12.41 From %

12.42 To %

12.5 Are letters of credit or collateral and other funds received from insureds being utilized by the reporting entity to secure premium notes or promissory notes taken by a reporting entity, or to secure any of the reporting entity's reported direct unpaid loss reserves , including unpaid losses under loss deductible features of commercial policies? Yes [] No [X]

12.6 If yes, state the amount thereof at December 31 of the current year:

12.61 Letters of credit\$

12.62 Collateral and other funds.....\$

13.1 Largest net aggregate amount insured in any one risk (excluding workers' compensation):\$

13.2 Does any reinsurance contract considered in the calculation of this amount include an aggregate limit of recovery without also including a reinstatement provision? Yes [] No [X]

13.3 State the number of reinsurance contracts (excluding individual facultative risk certificates, but including facultative programs, automatic facilities or facultative obligatory contracts) considered in the calculation of the amount.

14.1 Is the company a cedant in a multiple cedant reinsurance contract? Yes [] No [X]

14.2 If yes, please describe the method of allocating and recording reinsurance among the cedants:
.....

14.3 If the answer to 14.1 is yes, are the methods described in item 14.2 entirely contained in the respective multiple cedant reinsurance contracts? Yes [] No []

14.4 If the answer to 14.3 is no, are all the methods described in 14.2 entirely contained in written agreements? Yes [] No []

14.5 If the answer to 14.4 is no, please explain:
.....

15.1 Has the reporting entity guaranteed any financed premium accounts? Yes [] No [X]

15.2 If yes, give full information
.....

16.1 Does the reporting entity write any warranty business? Yes [] No [X]
If yes, disclose the following information for each of the following types of warranty coverage:

	1 Direct Losses Incurred	2 Direct Losses Unpaid	3 Direct Written Premium	4 Direct Premium Unearned	5 Direct Premium Earned
16.11 Home					
16.12 Products					
16.13 Automobile					
16.14 Other*					

* Disclose type of coverage:
.....

ANNUAL STATEMENT FOR THE YEAR 2018 OF THE THE CINCINNATI CASUALTY COMPANY

GENERAL INTERROGATORIES

PART 2 - PROPERTY AND CASUALTY INTERROGATORIES

17.1

Does the reporting entity include amounts recoverable on unauthorized reinsurance in Schedule F - Part 3 that is exempt from the statutory provision for unauthorized reinsurance?

Yes [☐] No [☒]

Incurred but not reported losses on contracts in force prior to July 1, 1984, and not subsequently renewed are exempt from the statutory provision for unauthorized reinsurance. Provide the following information for this exemption:

17.11

Gross amount of unauthorized reinsurance in Schedule F - Part 3 exempt from the statutory provision for unauthorized reinsurance

\$

17.12

Unfunded portion of Interrogatory 17.11

\$

17.13

Paid losses and loss adjustment expenses portion of Interrogatory 17.11.....

\$

17.14

Case reserves portion of Interrogatory 17.11

\$

17.15

Incurred but not reported portion of Interrogatory 17.11

\$

17.16

Unearned premium portion of Interrogatory 17.11

\$

17.17

Contingent commission portion of Interrogatory 17.11

\$

18.1

Do you act as a custodian for health savings accounts?

Yes [☐] No [☒]

18.2

If yes, please provide the amount of custodial funds held as of the reporting date.

\$

18.3

Do you act as an administrator for health savings accounts?

Yes [☐] No [☒]

18.4

If yes, please provide the balance of funds administered as of the reporting date.

\$

19.

Is the reporting entity licensed or chartered, registered, qualified, eligible or writing business in at least two states?

Yes [☒] No [☐]

19.1

If no, does the reporting entity assume reinsurance business that covers risks residing in at least one state other than the state of domicile of the reporting entity?

Yes [☐] No [☐]

FIVE-YEAR HISTORICAL DATA

Show amounts in whole dollars only, no cents; show percentages to one decimal place, i.e. 17.6.

	1 2018	2 2017	3 2016	4 2015	5 2014
Gross Premiums Written (Page 8, Part 1B Cols. 1, 2 & 3)					
1. Liability lines (Lines 11.1, 11.2, 16, 17.1, 17.2, 17.3, 18.1, 18.2, 19.1, 19.2 & 19.3, 19.4)	202,835,882	216,600,602	220,097,059	205,486,152	209,785,548
2. Property lines (Lines 1, 2, 9, 12, 21 & 26)	23,774,767	23,293,615	20,707,669	16,417,839	14,695,967
3. Property and liability combined lines (Lines 3, 4, 5, 8, 22 & 27)	126,573,678	119,268,026	105,401,780	91,115,297	77,121,572
4. All other lines (Lines 6, 10, 13, 14, 15, 23, 24, 28, 29, 30 & 34)	1,029,681	448,385	206,353	68,210	89,154
5. Nonproportional reinsurance lines (Lines 31, 32 & 33)					
6. Total (Line 35)	354,214,008	359,610,628	346,412,861	313,087,498	301,692,241
Net Premiums Written (Page 8, Part 1B, Col. 6)					
7. Liability lines (Lines 11.1, 11.2, 16, 17.1, 17.2, 17.3, 18.1, 18.2, 19.1, 19.2 & 19.3, 19.4)					
8. Property lines (Lines 1, 2, 9, 12, 21 & 26)					
9. Property and liability combined lines (Lines 3, 4, 5, 8, 22 & 27)					
10. All other lines (Lines 6, 10, 13, 14, 15, 23, 24, 28, 29, 30 & 34)					
11. Nonproportional reinsurance lines (Lines 31, 32 & 33)					
12. Total (Line 35)					
Statement of Income (Page 4)					
13. Net underwriting gain (loss) (Line 8)					
14. Net investment gain or (loss) (Line 11)	17,912,605	23,877,115	13,725,933	14,683,301	14,427,596
15. Total other income (Line 15)	268				
16. Dividends to policyholders (Line 17)					
17. Federal and foreign income taxes incurred (Line 19)	1,638,437	2,844,691	2,632,242	2,454,628	2,420,523
18. Net income (Line 20)	16,274,436	21,032,424	11,093,691	12,228,673	12,007,073
Balance Sheet Lines (Pages 2 and 3)					
19. Total admitted assets excluding protected cell business (Page 2, Line 26, Col. 3)	435,523,665	433,575,884	408,281,041	377,670,966	371,768,778
20. Premiums and considerations (Page 2, Col. 3)					
20.1 In course of collection (Line 15.1)					
20.2 Deferred and not yet due (Line 15.2)					
20.3 Accrued retrospective premiums (Line 15.3)					
21. Total liabilities excluding protected cell business (Page 3, Line 26)	37,423,319	41,289,227	48,382,266	41,167,715	41,548,185
22. Losses (Page 3, Line 1)					
23. Loss adjustment expenses (Page 3, Line 3)					
24. Unearned premiums (Page 3, Line 9)					
25. Capital paid up (Page 3, Lines 30 & 31)	3,750,000	3,750,000	3,750,000	3,750,000	3,750,000
26. Surplus as regards policyholders (Page 3, Line 37)	398,100,347	392,286,657	359,898,775	336,503,250	330,220,593
Cash Flow (Page 5)					
27. Net cash from operations (Line 11)	10,264,996	5,247,422	13,865,511	12,168,754	5,246,010
Risk-Based Capital Analysis					
28. Total adjusted capital	398,100,347	392,286,657	359,898,775	336,503,250	330,220,593
29. Authorized control level risk-based capital	14,269,975	15,038,784	13,243,352	10,130,965	11,543,725
Percentage Distribution of Cash, Cash Equivalents and Invested Assets (Page 2, Col. 3) (Line divided by Page 2, Line 12, Col. 3) x100.0					
30. Bonds (Line 1)	72.1	70.4	71.3	74.1	72.1
31. Stocks (Lines 2.1 & 2.2)	26.4	29.1	28.0	23.4	26.3
32. Mortgage loans on real estate (Lines 3.1 and 3.2)					
33. Real estate (Lines 4.1, 4.2 & 4.3)					
34. Cash, cash equivalents and short-term investments (Line 5)	1.5	0.5	0.8	2.6	1.6
35. Contract loans (Line 6)					
36. Derivatives (Line 7)					
37. Other invested assets (Line 8)			0.0		
38. Receivables for securities (Line 9)					
39. Securities lending reinvested collateral assets (Line 10)					
40. Aggregate write-ins for invested assets (Line 11)					
41. Cash, cash equivalents and invested assets (Line 12)	100.0	100.0	100.0	100.0	100.0
Investments in Parent, Subsidiaries and Affiliates					
42. Affiliated bonds (Schedule D, Summary, Line 12, Col. 1)					
43. Affiliated preferred stocks (Schedule D, Summary, Line 18, Col. 1)					
44. Affiliated common stocks (Schedule D, Summary, Line 24, Col. 1)					
45. Affiliated short-term investments (subtotals included in Schedule DA Verification, Col. 5, Line 10)					
46. Affiliated mortgage loans on real estate					
47. All other affiliated					
48. Total of above Lines 42 to 47					
49. Total Investment in Parent included in Lines 42 to 47 above					
50. Percentage of investments in parent, subsidiaries and affiliates to surplus as regards policyholders (Line 48 above divided by Page 3, Col. 1, Line 37 x 100.0)					

FIVE-YEAR HISTORICAL DATA

(Continued)

	1 2018	2 2017	3 2016	4 2015	5 2014
Capital and Surplus Accounts (Page 4)					
51. Net unrealized capital gains (losses) (Line 24)	(9,515,650)	13,077,463	12,297,474	(5,929,819)	1,673,855
52. Dividends to stockholders (Line 35)					
53. Change in surplus as regards policyholders for the year (Line 38)	5,813,690	32,387,882	23,395,525	6,282,657	13,694,365
Gross Losses Paid (Page 9, Part 2, Cols. 1 & 2)					
54. Liability lines (Lines 11.1, 11.2, 16, 17.1, 17.2, 17.3, 18.1, 18.2, 19.1, 19.2 & 19.3, 19.4)	116,121,759	100,623,127	88,410,815	95,324,902	93,670,516
55. Property lines (Lines 1, 2, 9, 12, 21 & 26)	12,005,879	11,937,595	11,879,542	8,485,239	6,860,685
56. Property and liability combined lines (Lines 3, 4, 5, 8, 22 & 27)	60,050,789	65,474,483	59,026,756	39,713,891	40,306,695
57. All other lines (Lines 6, 10, 13, 14, 15, 23, 24, 28, 29, 30 & 34)					
58. Nonproportional reinsurance lines (Lines 31, 32 & 33)					
59. Total (Line 35)	188,178,427	178,035,204	159,317,113	143,524,032	140,837,896
Net Losses Paid (Page 9, Part 2, Col. 4)					
60. Liability lines (Lines 11.1, 11.2, 16, 17.1, 17.2, 17.3, 18.1, 18.2, 19.1, 19.2 & 19.3, 19.4)					
61. Property lines (Lines 1, 2, 9, 12, 21 & 26)					
62. Property and liability combined lines (Lines 3, 4, 5, 8, 22 & 27)					
63. All other lines (Lines 6, 10, 13, 14, 15, 23, 24, 28, 29, 30 & 34)					
64. Nonproportional reinsurance lines (Lines 31, 32 & 33)					
65. Total (Line 35)					
Operating Percentages (Page 4) (Line divided by Page 4, Line 1) x 100.0					
66. Premiums earned (Line 1)	100.0	100.0	100.0	100.0	100.0
67. Losses incurred (Line 2)					
68. Loss expenses incurred (Line 3)					
69. Other underwriting expenses incurred (Line 4)					
70. Net underwriting gain (loss) (Line 8)					
Other Percentages					
71. Other underwriting expenses to net premiums written (Page 4, Lines 4 + 5 - 15 divided by Page 8, Part 1B, Col. 6, Line 35 x 100.0)					
72. Losses and loss expenses incurred to premiums earned (Page 4, Lines 2 + 3 divided by Page 4, Line 1 x 100.0)					
73. Net premiums written to policyholders' surplus (Page 8, Part 1B, Col. 6, Line 35 divided by Page 3, Line 37, Col. 1 x 100.0)					
One Year Loss Development (\$000 omitted)					
74. Development in estimated losses and loss expenses incurred prior to current year (Schedule P - Part 2 - Summary, Line 12, Col. 11)					
75. Percent of development of losses and loss expenses incurred to policyholders' surplus of prior year end (Line 74 above divided by Page 4, Line 21, Col. 1 x 100.0).....					
Two Year Loss Development (\$000 omitted)					
76. Development in estimated losses and loss expenses incurred two years before the current year and prior year (Schedule P, Part 2 - Summary, Line 12, Col. 12)					
77. Percent of development of losses and loss expenses incurred to reported policyholders' surplus of second prior year end (Line 76 above divided by Page 4, Line 21, Col. 2 x 100.0)					

NOTE: If a party to a merger, have the two most recent years of this exhibit been restated due to a merger in compliance with the disclosure requirements of SSAP No. 3, Accounting Changes and Correction of Errors? Yes [] No []

If no, please explain:

ANNUAL STATEMENT FOR THE YEAR 2018 OF THE THE CINCINNATI CASUALTY COMPANY

SCHEDULE P - ANALYSIS OF LOSSES AND LOSS EXPENSES

SCHEDULE P - PART 1 - SUMMARY

(\$000 OMITTED)

Years in Which Premiums Were Earned and Losses Were Incurred	Premiums Earned			Loss and Loss Expense Payments								12
	1 Direct and Assumed	2 Ceded	3 Net (1 - 2)	Loss Payments		Defense and Cost Containment Payments		Adjusting and Other Payments		10 Salvage and Subrogation Received	11 Total Net Paid Cols (4 - 5 + 6 - 7 + 8 - 9)	Number of Claims Reported Direct and Assumed
				4 Direct and Assumed	5 Ceded	6 Direct and Assumed	7 Ceded	8 Direct and Assumed	9 Ceded			
1. Prior.....	XXX	XXX	XXX	10,271	10,271	371	371	355	355			XXX
2. 2009.....	158,219	158,219		96,057	96,057	7,965	7,965	8,543	8,543			XXX
3. 2010.....	156,890	156,890		103,410	103,410	8,127	8,127	10,189	10,189			XXX
4. 2011.....	174,970	174,970		104,405	104,405	7,605	7,605	13,263	13,263			XXX
5. 2012.....	261,587	261,587		136,479	136,479	10,423	10,423	15,860	15,860			XXX
6. 2013.....	299,461	299,461		130,952	130,952	11,749	11,749	15,288	15,288			XXX
7. 2014.....	307,591	307,591		158,793	158,793	14,246	14,246	16,707	16,707			XXX
8. 2015.....	305,080	305,080		110,702	110,702	12,905	12,905	15,404	15,404			XXX
9. 2016.....	329,327	329,327		150,516	150,516	9,939	9,939	16,902	16,902			XXX
10. 2017.....	353,418	353,418		108,596	108,596	6,715	6,715	15,858	15,858			XXX
11. 2018.....	359,390	359,390		88,523	88,523	3,018	3,018	9,091	9,091			XXX
12. Totals	XXX	XXX	XXX	1,198,703	1,198,703	93,063	93,063	137,461	137,461			XXX

	Losses Unpaid				Defense and Cost Containment Unpaid				Adjusting and Other Unpaid		23	24	25
	Case Basis		Bulk + IBNR		Case Basis		Bulk + IBNR						
	13	14	15	16	17	18	19	20	21	22			
	Direct and Assumed	Ceded	Direct and Assumed	Ceded	Direct and Assumed	Ceded	Direct and Assumed	Ceded	Direct and Assumed	Ceded			
1. Prior.....	40,206	40,206	84,897	84,897			3,871	3,871					XXX
2. 2009.....	5,458	5,458	7,416	7,416			370	370					XXX
3. 2010.....	5,565	5,565	8,726	8,726			453	453					XXX
4. 2011.....	3,938	3,938	8,543	8,543			602	602					XXX
5. 2012.....	6,168	6,168	10,415	10,415			1,494	1,494	17	17			XXX
6. 2013.....	10,904	10,904	11,304	11,304			2,585	2,585	245	245			XXX
7. 2014.....	17,000	17,000	9,073	9,073			3,981	3,981	933	933			XXX
8. 2015.....	24,483	24,483	21,339	21,339			6,352	6,352	2,356	2,356			XXX
9. 2016.....	30,073	30,073	23,867	23,867			11,197	11,197	3,453	3,453			XXX
10. 2017.....	51,398	51,398	40,564	40,564			18,385	18,385	5,116	5,116			XXX
11. 2018.....	82,716	82,716	60,594	60,594			24,574	24,574	10,976	10,976			XXX
12. Totals	277,907	277,907	286,738	286,738			73,864	73,864	23,096	23,096			XXX

	Total Losses and Loss Expenses Incurred			Loss and Loss Expense Percentage (Incurred /Premiums Earned)			Nontabular Discount		34 Inter-Company Pooling Participation Percentage	Net Balance Sheet Reserves After Discount	
	26	27	28	29	30	31	32	33		35	36
	Direct and Assumed	Ceded	Net	Direct and Assumed	Ceded	Net	Loss	Loss Expense		Losses Unpaid	Loss Expenses Unpaid
1. Prior.....	XXX	XXX	XXX	XXX	XXX	XXX			XXX		
2. 2009.....	125,809	125,809		79.5	79.5						
3. 2010.....	136,470	136,470		87.0	87.0						
4. 2011.....	138,356	138,356		79.1	79.1						
5. 2012.....	180,855	180,855		69.1	69.1						
6. 2013.....	183,026	183,026		61.1	61.1						
7. 2014.....	220,732	220,732		71.8	71.8						
8. 2015.....	193,541	193,541		63.4	63.4						
9. 2016.....	245,947	245,947		74.7	74.7						
10. 2017.....	246,632	246,632		69.8	69.8						
11. 2018.....	279,491	279,491		77.8	77.8						
12. Totals	XXX	XXX	XXX	XXX	XXX	XXX			XXX		

Note: Parts 2 and 4 are gross of all discounting, including tabular discounting. Part 1 is gross of only nontabular discounting, which is reported in Columns 32 and 33 of Part 1. The tabular discount, if any, is reported in the Notes to Financial Statements which will reconcile Part 1 with Parts 2 and 4.

Schedule P - Part 2 - Summary
N O N E

Schedule P - Part 3 - Summary
N O N E

Schedule P - Part 4 - Summary
N O N E

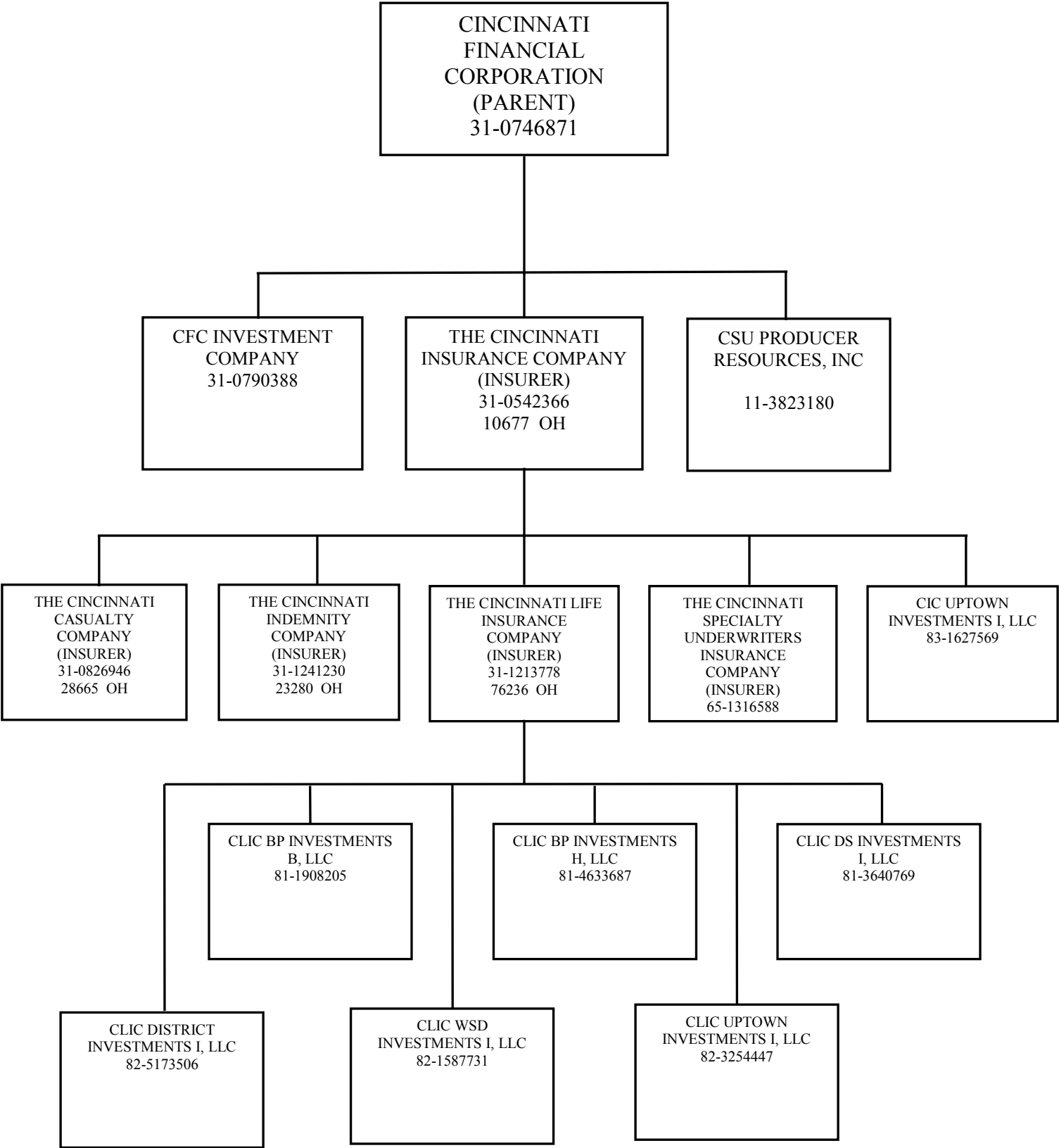
SCHEDULE T - EXHIBIT OF PREMIUMS WRITTEN

Allocated by States and Territories										
States, Etc.	1	Gross Premiums, Including Policy and Membership Fees, Less Return Premiums and Premiums on Policies Not Taken		4	5	6	7	8	9	
		2	3							
	Active Status (a)	Direct Premiums Written	Direct Premiums Earned	Dividends Paid or Credited to Policyholders on Direct Business	Direct Losses Paid (Deducting Salvage)	Direct Losses Incurred	Direct Losses Unpaid	Finance and Service Charges Not Included in Premiums	Direct Premiums Written for Federal Purchasing Groups (Included in Column 2)	
1. Alabama	AL	L	10,545,669	10,401,231		12,274,396	15,388,092	10,569,223	1,058	
2. Alaska	AK	L								
3. Arizona	AZ	L	8,008,924	8,291,402		2,113,252	5,560,065	7,922,809	471	
4. Arkansas	AR	L	7,341,169	7,287,173		3,592,756	5,851,124	6,405,171	914	
5. California	CA	L	661,049	634,751		27,902	250,195	594,054	20	
6. Colorado	CO	L	2,550,938	2,697,049		2,425,091	6,076,110	7,331,509	120	
7. Connecticut	CT	L	1,164,684	1,055,375		166,523	406,044	1,309,278	9	
8. Delaware	DE	L	3,483,340	3,105,434		1,126,469	1,116,839	3,106,225	546	
9. District of Columbia	DC	L	182,587	195,014		368,550	567,921	1,412,498		
10. Florida	FL	L	1,275,336	907,406		960,104	996,620	3,430,428	65	
11. Georgia	GA	L	20,251,948	22,114,338		22,113,771	22,048,221	27,639,007	1,600	
12. Hawaii	HI	L	3,946	2,238			428	1,213		
13. Idaho	ID	L	3,732,953	3,695,985		893,494	985,324	3,167,699	384	
14. Illinois	IL	L	27,875,855	32,437,135		19,831,600	17,584,859	101,709,241	1,200	
15. Indiana	IN	L	22,212,416	22,932,762		11,784,316	10,242,442	40,514,889	1,420	
16. Iowa	IA	L	6,084,999	6,696,392		4,970,189	9,541,824	19,148,962	445	
17. Kansas	KS	L	6,092,383	6,013,517		1,455,536	1,700,659	6,660,722	1,508	
18. Kentucky	KY	L	8,257,609	7,909,832		2,253,724	2,464,242	8,904,271	1,094	
19. Louisiana	LA	L	71,149	110,924		53,719	100,957	153,930		
20. Maine	ME	L	77,988	45,230		2,980	11,721	23,969		
21. Maryland	MD	L	5,482,421	5,753,859		3,703,589	2,309,000	16,665,100	447	
22. Massachusetts	MA	L	93,265	101,031		15,634	108,337	103,127		
23. Michigan	MI	L	20,472,505	20,438,614		20,680,872	18,826,123	35,249,202	1,640	
24. Minnesota	MN	L	7,941,261	7,693,857		2,690,346	3,365,772	10,048,164	359	
25. Mississippi	MS	L	210,232	255,193		20,875	35,105	291,572		
26. Missouri	MO	L	15,345,340	14,803,180		5,056,717	4,240,433	22,198,813	1,457	
27. Montana	MT	L	2,578,322	2,247,217		590,341	773,974	1,242,742	230	
28. Nebraska	NE	L	6,423,738	6,265,530		(1,277,840)	(1,585,821)	9,038,637	125	
29. Nevada	NV	L	48,041	47,479		97	9,106	30,977		
30. New Hampshire	NH	L	1,667,174	1,463,630		859,228	1,252,804	3,185,367	91	
31. New Jersey	NJ	L	1,248,416	1,118,656		480,852	835,434	963,355		
32. New Mexico	NM	L	2,398,998	2,263,521		261,520	958,349	1,821,810	56	
33. New York	NY	L	3,596,894	3,847,438		917,925	1,281,246	6,714,175	273	
34. North Carolina	NC	L	17,991,490	18,524,926		8,562,242	12,806,263	30,692,993	1,378	
35. North Dakota	ND	L	804,010	879,632		94,173	(60,359)	494,568	88	
36. Ohio	OH	L	34,818,473	33,776,032		9,386,904	10,596,490	21,579,532	8,496	
37. Oklahoma	OK	L	350,853	335,357		34,638	18,282	507,721		
38. Oregon	OR	L	9,685,281	8,814,262		2,807,800	4,869,309	6,024,285	208	
39. Pennsylvania	PA	L	32,084,981	30,793,804		14,772,590	18,639,619	49,431,231	3,210	
40. Rhode Island	RI	L	8,410	7,147		14,452	(2,857)	164,099		
41. South Carolina	SC	L	4,212,831	4,250,274		2,217,229	1,793,566	6,928,109	224	
42. South Dakota	SD	L	1,203,975	1,345,252		477,436	643,757	2,289,511	37	
43. Tennessee	TN	L	10,030,443	11,054,387		5,139,837	3,432,618	17,994,555	915	
44. Texas	TX	L	10,404,099	11,100,210	47,422	7,140,217	2,852,556	10,062,747	203	
45. Utah	UT	L	4,920,373	5,435,433		1,285,155	1,749,746	5,973,038	341	
46. Vermont	VT	L	3,248,614	3,336,947		1,688,789	2,281,130	6,583,785	179	
47. Virginia	VA	L	14,013,915	14,124,178		7,286,222	8,969,333	22,679,194	847	
48. Washington	WA	L	2,283,560	2,219,367		325,168	563,459	898,916	50	
49. West Virginia	WV	L	2,219,447	2,444,109		1,449,392	651,770	2,543,676	211	
50. Wisconsin	WI	L	8,169,258	7,807,281		4,658,909	3,374,172	13,889,463	584	
51. Wyoming	WY	L	382,347	309,298		67,499	(103,169)	153,232	70	
52. American Samoa	AS	N								
53. Guam	GU	N								
54. Puerto Rico	PR	N								
55. U.S. Virgin Islands	VI	N								
56. Northern Mariana Islands	MP	N								
57. Canada	CAN	N								
58. Aggregate other alien	OT	XXX								
59. Totals	XXX		354,213,910	359,390,291	47,422	187,823,179	206,379,234	556,448,794	32,573	
DETAILS OF WRITE-INS										
58001.	XXX									
58002.	XXX									
58003.	XXX									
58998. Summary of remaining write-ins for Line 58 from overflow page	XXX									
58999. Totals (Lines 58001 through 58003 plus 58998)(Line 58 above)	XXX									

(a) Active Status Counts:
L - Licensed or Chartered - Licensed insurance carrier or domiciled RRG.....51
E - Eligible - Reporting entities eligible or approved to write surplus lines in the state (other than their state of domicile - see DSLI).....
D - Domestic Surplus Lines Insurer (DSLI) - Reporting entities authorized to write surplus lines in the state of domicile.....
R - Registered - Non-domiciled RRGs.....
Q - Qualified - Qualified or accredited reinsurer.
N - None of the above - Not allowed to write business in the state6

(b) Explanation of basis of allocation of premiums by states, etc.

**SCHEDULE Y – INFORMATION CONCERNING ACTIVITES OF
INSURER MEMBERS OF A HOLDING COMPANY GROUP PART 1
– ORGANIZATIONAL CHART**



ALPHABETICAL INDEX

ANNUAL STATEMENT BLANK

Assets	2
Cash Flow	5
Exhibit of Capital Gains (Losses)	12
Exhibit of Net Investment Income	12
Exhibit of Nonadmitted Assets	13
Exhibit of Premiums and Losses (State Page)	19
Five-Year Historical Data	17
General Interrogatories	15
Jurat Page	1
Liabilities, Surplus and Other Funds	3
Notes To Financial Statements	14
Overflow Page For Write-ins	100
Schedule A - Part 1	E01
Schedule A - Part 2	E02
Schedule A - Part 3	E03
Schedule A - Verification Between Years	SI02
Schedule B - Part 1	E04
Schedule B - Part 2	E05
Schedule B - Part 3	E06
Schedule B - Verification Between Years	SI02
Schedule BA - Part 1	E07
Schedule BA - Part 2	E08
Schedule BA - Part 3	E09
Schedule BA - Verification Between Years	SI03
Schedule D - Part 1	E10
Schedule D - Part 1A - Section 1	SI05
Schedule D - Part 1A - Section 2	SI08
Schedule D - Part 2 - Section 1	E11
Schedule D - Part 2 - Section 2	E12
Schedule D - Part 3	E13
Schedule D - Part 4	E14
Schedule D - Part 5	E15
Schedule D - Part 6 - Section 1	E16
Schedule D - Part 6 - Section 2	E16
Schedule D - Summary By Country	SI04
Schedule D - Verification Between Years	SI03
Schedule DA - Part 1	E17
Schedule DA - Verification Between Years	SI10
Schedule DB - Part A - Section 1	E18
Schedule DB - Part A - Section 2	E19
Schedule DB - Part A - Verification Between Years	SI11
Schedule DB - Part B - Section 1	E20
Schedule DB - Part B - Section 2	E21
Schedule DB - Part B - Verification Between Years	SI11
Schedule DB - Part C - Section 1	SI12
Schedule DB - Part C - Section 2	SI13
Schedule DB - Part D - Section 1	E22
Schedule DB - Part D - Section 2	E23
Schedule DB - Verification	SI14
Schedule DL - Part 1	E24
Schedule DL - Part 2	E25
Schedule E - Part 1 - Cash	E26
Schedule E - Part 2 - Cash Equivalents	E27
Schedule E - Part 2 - Verification Between Years	SI15
Schedule E - Part 3 - Special Deposits	E28
Schedule F - Part 1	20
Schedule F - Part 2	21
Schedule F - Part 3	22
Schedule F - Part 4	27
Schedule F - Part 5	28
Schedule F - Part 6	29
Schedule H - Accident and Health Exhibit - Part 1	30
Schedule H - Part 2, Part 3 and 4	31
Schedule H - Part 5 - Health Claims	32

ANNUAL STATEMENT BLANK (Continued)

Schedule P - Part 1 - Summary	33
Schedule P - Part 1A - Homeowners/Farmowners	35
Schedule P - Part 1B - Private Passenger Auto Liability/Medical	36
Schedule P - Part 1C - Commercial Auto/Truck Liability/Medical	37
Schedule P - Part 1D - Workers' Compensation (Excluding Excess Workers' Compensation)	38
Schedule P - Part 1E - Commercial Multiple Peril	39
Schedule P - Part 1F - Section 1 - Medical Professional Liability - Occurrence	40
Schedule P - Part 1F - Section 2 - Medical Professional Liability - Claims-Made	41
Schedule P - Part 1G - Special Liability (Ocean, Marine, Aircraft (All Perils), Boiler and Machinery)	42
Schedule P - Part 1H - Section 1 - Other Liability-Occurrence	43
Schedule P - Part 1H - Section 2 - Other Liability - Claims-Made	44
Schedule P - Part 1I - Special Property (Fire, Allied Lines, Inland Marine, Earthquake, Burglary & Theft)	45
Schedule P - Part 1J - Auto Physical Damage	46
Schedule P - Part 1K - Fidelity/Surety	47
Schedule P - Part 1L - Other (Including Credit, Accident and Health)	48
Schedule P - Part 1M - International	49
Schedule P - Part 1N - Reinsurance - Nonproportional Assumed Property	50
Schedule P - Part 1O - Reinsurance - Nonproportional Assumed Liability	51
Schedule P - Part 1P - Reinsurance - Nonproportional Assumed Financial Lines	52
Schedule P - Part 1R - Section 1 - Products Liability - Occurrence	53
Schedule P - Part 1R - Section 2 - Products Liability - Claims-Made	54
Schedule P - Part 1S - Financial Guaranty/Mortgage Guaranty	55
Schedule P - Part 1T - Warranty	56
Schedule P - Part 2, Part 3 and Part 4 - Summary	34
Schedule P - Part 2A - Homeowners/Farmowners	57
Schedule P - Part 2B - Private Passenger Auto Liability/Medical	57
Schedule P - Part 2C - Commercial Auto/Truck Liability/Medical	57
Schedule P - Part 2D - Workers' Compensation (Excluding Excess Workers' Compensation)	57
Schedule P - Part 2E - Commercial Multiple Peril	57
Schedule P - Part 2F - Section 1 - Medical Professional Liability - Occurrence	58
Schedule P - Part 2F - Section 2 - Medical Professional Liability - Claims-Made	58
Schedule P - Part 2G - Special Liability (Ocean Marine, Aircraft (All Perils), Boiler and Machinery)	58
Schedule P - Part 2H - Section 1 - Other Liability - Occurrence	58
Schedule P - Part 2H - Section 2 - Other Liability - Claims-Made	58
Schedule P - Part 2I - Special Property (Fire, Allied Lines, Inland Marine, Earthquake, Burglary, and Theft)	59
Schedule P - Part 2J - Auto Physical Damage	59
Schedule P - Part 2K - Fidelity, Surety	59
Schedule P - Part 2L - Other (Including Credit, Accident and Health)	59
Schedule P - Part 2M - International	59
Schedule P - Part 2N - Reinsurance - Nonproportional Assumed Property	60
Schedule P - Part 2O - Reinsurance - Nonproportional Assumed Liability	60
Schedule P - Part 2P - Reinsurance - Nonproportional Assumed Financial Lines	60
Schedule P - Part 2R - Section 1 - Products Liability - Occurrence	61
Schedule P - Part 2R - Section 2 - Products Liability - Claims-Made	61
Schedule P - Part 2S - Financial Guaranty/Mortgage Guaranty	61
Schedule P - Part 2T - Warranty	61
Schedule P - Part 3A - Homeowners/Farmowners	62
Schedule P - Part 3B - Private Passenger Auto Liability/Medical	62
Schedule P - Part 3C - Commercial Auto/Truck Liability/Medical	62
Schedule P - Part 3D - Workers' Compensation (Excluding Excess Workers' Compensation)	62
Schedule P - Part 3E - Commercial Multiple Peril	62
Schedule P - Part 3F - Section 1 - Medical Professional Liability - Occurrence	63
Schedule P - Part 3F - Section 2 - Medical Professional Liability - Claims-Made	63
Schedule P - Part 3G - Special Liability (Ocean Marine, Aircraft (All Perils), Boiler and Machinery)	63
Schedule P - Part 3H - Section 1 - Other Liability - Occurrence	63
Schedule P - Part 3H - Section 2 - Other Liability - Claims-Made	63
Schedule P - Part 3I - Special Property (Fire, Allied Lines, Inland Marine, Earthquake, Burglary, and Theft)	64
Schedule P - Part 3J - Auto Physical Damage	64
Schedule P - Part 3K - Fidelity/Surety	64
Schedule P - Part 3L - Other (Including Credit, Accident and Health)	64
Schedule P - Part 3M - International	64
Schedule P - Part 3N - Reinsurance - Nonproportional Assumed Property	65
Schedule P - Part 3O - Reinsurance - Nonproportional Assumed Liability	65
Schedule P - Part 3P - Reinsurance - Nonproportional Assumed Financial Lines	65
Schedule P - Part 3R - Section 1 - Products Liability - Occurrence	66
Schedule P - Part 3R - Section 2 - Products Liability - Claims-Made	66
Schedule P - Part 3S - Financial Guaranty/Mortgage Guaranty	66
Schedule P - Part 3T - Warranty	66

ANNUAL STATEMENT BLANK (Continued)

Schedule P - Part 4A - Homeowners/Farmowners	67
Schedule P - Part 4B - Private Passenger Auto Liability/Medical	67
Schedule P - Part 4C - Commercial Auto/Truck Liability/Medical	67
Schedule P - Part 4D - Workers' Compensation (Excluding Excess Workers' Compensation)	67
Schedule P - Part 4E - Commercial Multiple Peril	67
Schedule P - Part 4F - Section 1 - Medical Professional Liability - Occurrence	68
Schedule P - Part 4F - Section 2 - Medical Professional Liability - Claims-Made	68
Schedule P - Part 4G - Special Liability (Ocean Marine, Aircraft (All Perils), Boiler and Machinery)	68
Schedule P - Part 4H - Section 1 - Other Liability - Occurrence	68
Schedule P - Part 4H - Section 2 - Other Liability - Claims-Made	68
Schedule P - Part 4I - Special Property (Fire, Allied Lines, Inland Marine, Earthquake, Burglary and Theft)	69
Schedule P - Part 4J - Auto Physical Damage	69
Schedule P - Part 4K - Fidelity/Surety	69
Schedule P - Part 4L - Other (Including Credit, Accident and Health)	69
Schedule P - Part 4M - International	69
Schedule P - Part 4N - Reinsurance - Nonproportional Assumed Property	70
Schedule P - Part 4O - Reinsurance - Nonproportional Assumed Liability	70
Schedule P - Part 4P - Reinsurance - Nonproportional Assumed Financial Lines	70
Schedule P - Part 4R - Section 1 - Products Liability - Occurrence	71
Schedule P - Part 4R - Section 2 - Products Liability - Claims-Made	71
Schedule P - Part 4S - Financial Guaranty/Mortgage Guaranty	71
Schedule P - Part 4T - Warranty	71
Schedule P - Part 5A - Homeowners/Farmowners	72
Schedule P - Part 5B - Private Passenger Auto Liability/Medical	73
Schedule P - Part 5C - Commercial Auto/Truck Liability/Medical	74
Schedule P - Part 5D - Workers' Compensation (Excluding Excess Workers' Compensation)	75
Schedule P - Part 5E - Commercial Multiple Peril	76
Schedule P - Part 5F - Medical Professional Liability - Claims-Made	78
Schedule P - Part 5F - Medical Professional Liability - Occurrence	77
Schedule P - Part 5H - Other Liability - Claims-Made	80
Schedule P - Part 5H - Other Liability - Occurrence	79
Schedule P - Part 5R - Products Liability - Claims-Made	82
Schedule P - Part 5R - Products Liability - Occurrence	81
Schedule P - Part 5T - Warranty	83
Schedule P - Part 6C - Commercial Auto/Truck Liability/Medical	84
Schedule P - Part 6D - Workers' Compensation (Excluding Excess Workers' Compensation)	84
Schedule P - Part 6E - Commercial Multiple Peril	85
Schedule P - Part 6H - Other Liability - Claims-Made	86
Schedule P - Part 6H - Other Liability - Occurrence	85
Schedule P - Part 6M - International	86
Schedule P - Part 6N - Reinsurance - Nonproportional Assumed Property	87
Schedule P - Part 6O - Reinsurance - Nonproportional Assumed Liability	87
Schedule P - Part 6R - Products Liability - Claims-Made	88
Schedule P - Part 6R - Products Liability - Occurrence	88
Schedule P - Part 7A - Primary Loss Sensitive Contracts	89
Schedule P - Part 7B - Reinsurance Loss Sensitive Contracts	91
Schedule P Interrogatories	93
Schedule T - Exhibit of Premiums Written	94
Schedule T - Part 2 - Interstate Compact	95
Schedule Y - Information Concerning Activities of Insurer Members of a Holding Company Group	96
Schedule Y - Part 1A - Detail of Insurance Holding Company System	97
Schedule Y - Part 2 - Summary of Insurer's Transactions With Any Affiliates	98
Statement of Income	4
Summary Investment Schedule	SI01
Supplemental Exhibits and Schedules Interrogatories	99
Underwriting and Investment Exhibit Part 1	6
Underwriting and Investment Exhibit Part 1A	7
Underwriting and Investment Exhibit Part 1B	8
Underwriting and Investment Exhibit Part 2	9
Underwriting and Investment Exhibit Part 2A	10
Underwriting and Investment Exhibit Part 3	11