



ANNUAL STATEMENT
For the Year Ended DECEMBER 31, 2018
OF THE CONDITION AND AFFAIRS OF THE
ALL AMERICA INSURANCE COMPANY

NAIC Group Code	0036 (Current Period)	0036 (Prior Period)	NAIC Company Code	20222	Employer's ID Number	34-0935740
Organized under the Laws of	Ohio		State of Domicile or Port of Entry	OH		
Country of Domicile	United States of America					
Incorporated/Organized	04/12/1961		Commenced Business	08/01/1961		
Statutory Home Office	800 SOUTH WASHINGTON STREET (Street and Number)		VAN WERT, OH, US 45891-2357 (City or Town, State, Country and Zip Code)			
Main Administrative Office	800 SOUTH WASHINGTON STREET (Street and Number)					
	VAN WERT, OH, US 45891-2357 (City or Town, State, Country and Zip Code)		(419)238-1010 (Area Code) (Telephone Number)			
Mail Address	P.O. BOX 351 (Street and Number or P.O. Box)		VAN WERT, OH, US 45891-0351 (City or Town, State, Country and Zip Code)			
Primary Location of Books and Records	800 SOUTH WASHINGTON STREET (Street and Number)					
	VAN WERT, OH, US 45891-2357 (City or Town, State, Country and Zip Code)		(419)238-1010 (Area Code) (Telephone Number)			
Internet Website Address	WWW.CENTRAL-INSURANCE.COM					
Statutory Statement Contact	THAD RYAN EIKENBARY (Name)		(419)238-5551-2437 (Area Code)(Telephone Number)(Extension)			
	TEIKENBARY@CENTRAL-INSURANCE.COM (E-Mail Address)		(419)238-7626 (Fax Number)			

OFFICERS

Name	Title
FRANCIS WALWORTH PURMORT III	PRESIDENT
STEPHEN KEITH MOORE	SECRETARY
THAD RYAN EIKENBARY	TREASURER

OTHERS

SCOTT ALLEN ETZLER, VICE PRESIDENT
TRINTIN CHAD GLENN, CHIEF ACTUARY
CYNTHIA MARIE HURLESS, CHIEF OPERATING OFFICER
JOCELYN LEIGH PFEIFER, VICE PRESIDENT #
JANA LOU RINGWALD, VICE PRESIDENT

BENJAMIN SCOTT FAUROTE, VICE PRESIDENT
KEITH ALLEN GOAD, CHIEF FINANCIAL OFFICER
PATRICK JOHN JACKSON, VICE PRESIDENT
EVAN PENNINGTON PURMORT, CHIEF MARKETING OFFICER
TODD EDWARD SIMPSON, VICE PRESIDENT

ANGELA MARIE GIBSON, VICE PRESIDENT #
MICHAEL PATRICK GUTH, SR. VICE PRESIDENT
MATTHEW PAUL KORTE, VICE PRESIDENT #
TIMOTHY LEE RAUCH, VICE PRESIDENT

DIRECTORS OR TRUSTEES

EDWARD RAY BUHL
STEPHEN KEITH MOORE
FRANCIS WALWORTH PURMORT III

JOSIE LEE COVINGTON II
EDWARD JOSEPH NOONAN
DENNIS DALE STRIPE

THOMAS B KEARNEY
EVAN PENNINGTON PURMORT
DAVID CARTER WARD #

State of Ohio
County of Van Wert ss

The officers of this reporting entity being duly sworn, each depose and say that they are the described officers of the said reporting entity, and that on the reporting period stated above, all of the herein described assets were the absolute property of the said reporting entity, free and clear from any liens or claims thereon, except as herein stated, and that this statement, together with related exhibits, schedules and explanations therein contained, annexed or referred to, is a full and true statement of all the assets and liabilities and of the condition and affairs of the said reporting entity as of the reporting period stated above, and of its income and deductions therefrom for the period ended, and have been completed in accordance with the NAIC Annual Statement Instructions and Accounting Practices and Procedures manual except to the extent that: (1) state law may differ; or, (2) that state rules or regulations require differences in reporting not related to accounting practices and procedures, according to the best of their information, knowledge and belief, respectively. Furthermore, the scope of this attestation by the described officers also includes the related corresponding electronic filing with the NAIC, when required, that is an exact copy (except for formatting differences due to electronic filing) of the enclosed statement. The electronic filing may be requested by various regulators in lieu of or in addition to the enclosed statement.

(Signature)	(Signature)	(Signature)
FRANCIS WALWORTH PURMORT III	KEITH ALLEN GOAD	THAD RYAN EIKENBARY
(Printed Name)	(Printed Name)	(Printed Name)
1.	2.	3.
PRESIDENT	CHIEF FINANCIAL OFFICER	TREASURER
(Title)	(Title)	(Title)

Subscribed and sworn to before me this
22nd day of February, 2019

a. Is this an original filing?
b. If no,
1. State the amendment number
2. Date filed
3. Number of pages attached

Yes[X] No[]

(Notary Public Signature)

ASSETS

		Current Year			Prior Year
		1	2	3	4
		Assets	Nonadmitted Assets	Net Admitted Assets (Cols.1-2)	Net Admitted Assets
1.	Bonds (Schedule D)	243,253,664		243,253,664	234,118,629
2.	Stocks (Schedule D):				
2.1	Preferred stocks				
2.2	Common Stocks	70,404	70,404		1,979
3.	Mortgage loans on real estate (Schedule B):				
3.1	First liens				
3.2	Other than first liens				
4.	Real estate (Schedule A):				
4.1	Properties occupied by the company (less \$.....0 encumbrances)				
4.2	Properties held for the production of income (less \$.....0 encumbrances)				
4.3	Properties held for sale (less \$.....0 encumbrances)				
5.	Cash (\$.....17,388,841, Schedule E Part 1), cash equivalents (\$.....1, Schedule E Part 2) and short-term investments (\$.....0, Schedule DA)	17,388,841		17,388,841	16,829,412
6.	Contract loans (including \$.....0 premium notes)				
7.	Derivatives (Schedule DB)				
8.	Other invested assets (Schedule BA)				
9.	Receivables for securities				
10.	Securities Lending Reinvested Collateral Assets (Schedule DL)				
11.	Aggregate write-ins for invested assets				
12.	Subtotals, cash and invested assets (Lines 1 to 11)	260,712,909	70,404	260,642,505	250,950,020
13.	Title plants less \$.....0 charged off (for Title insurers only)				
14.	Investment income due and accrued	2,073,133		2,073,133	2,331,422
15.	Premiums and considerations:				
15.1	Uncollected premiums and agents' balances in the course of collection	6,806,353	63,134	6,743,219	6,378,440
15.2	Deferred premiums, agents' balances and installments booked but deferred and not yet due (Including \$.....77,749 earned but unbilled premiums)	29,307,065	9,367	29,297,697	27,827,666
15.3	Accrued retrospective premiums (\$.....0) and contracts subject to redetermination (\$.....0)				
16.	Reinsurance:				
16.1	Amounts recoverable from reinsurers	8,822,707		8,822,707	736,169
16.2	Funds held by or deposited with reinsured companies				
16.3	Other amounts receivable under reinsurance contracts				
17.	Amounts receivable relating to uninsured plans				
18.1	Current federal and foreign income tax recoverable and interest thereon				
18.2	Net deferred tax asset	4,196,166	207,586	3,988,580	3,038,926
19.	Guaranty funds receivable or on deposit	10,755		10,755	21,650
20.	Electronic data processing equipment and software				
21.	Furniture and equipment, including health care delivery assets (\$.....0)				
22.	Net adjustment in assets and liabilities due to foreign exchange rates				
23.	Receivables from parent, subsidiaries and affiliates				
24.	Health care (\$.....0) and other amounts receivable				
25.	Aggregate write-ins for other than invested assets	615,652		615,652	330,954
26.	TOTAL assets excluding Separate Accounts, Segregated Accounts and Protected Cell Accounts (Lines 12 to 25)	312,544,740	350,491	312,194,249	291,615,248
27.	From Separate Accounts, Segregated Accounts and Protected Cell Accounts				
28.	TOTAL (Lines 26 and 27)	312,544,740	350,491	312,194,249	291,615,248
DETAILS OF WRITE-INS					
1101.				
1102.				
1103.				
1198.	Summary of remaining write-ins for Line 11 from overflow page				
1199.	TOTALS (Lines 1101 through 1103 plus 1198) (Line 11 above)				
2501.	EQUITIES & DEPOSITS IN POOLS & ASSOCIATIONS	615,652		615,652	330,954
2502.				
2503.				
2598.	Summary of remaining write-ins for Line 25 from overflow page				
2599.	TOTALS (Lines 2501 through 2503 plus 2598) (Line 25 above)	615,652		615,652	330,954

LIABILITIES, SURPLUS AND OTHER FUNDS

	1	2
	Current Year	Prior Year
1. Losses (Part 2A, Line 35, Column 8)	56,899,262	49,744,090
2. Reinsurance payable on paid losses and loss adjustment expenses (Schedule F, Part 1, Column 6)		
3. Loss adjustment expenses (Part 2A, Line 35, Column 9)	20,107,618	19,019,528
4. Commissions payable, contingent commissions and other similar charges	3,240,114	3,472,810
5. Other expenses (excluding taxes, licenses and fees)	1,440,789	1,749,958
6. Taxes, licenses and fees (excluding federal and foreign income taxes)	1,065,046	1,138,703
7.1 Current federal and foreign income taxes (including \$.....0 on realized capital gains (losses))	254,363	279,802
7.2 Net deferred tax liability		
8. Borrowed money \$.....0 and interest thereon \$.....0		
9. Unearned premiums (Part 1A, Line 38, Column 5) (after deducting unearned premiums for ceded reinsurance of \$.....24,738,611 and including warranty reserves of \$.....0 and accrued accident and health experience rating refunds including \$.....0 for medical loss ratio rebate per the Public Health Service Act)	61,062,064	57,652,175
10. Advance premiums	1,038,257	966,510
11. Dividends declared and unpaid:		
11.1 Stockholders		
11.2 Policyholders	39,729	44,886
12. Ceded reinsurance premiums payable (net of ceding commissions)	1,801,136	749,162
13. Funds held by company under reinsurance treaties (Schedule F, Part 3, Column 20)		
14. Amounts withheld or retained by company for account of others		
15. Remittances and items not allocated		
16. Provision for reinsurance (including (\$.....0 certified)) (Schedule F, Part 3 Column 78)		
17. Net adjustments in assets and liabilities due to foreign exchange rates		
18. Drafts outstanding		
19. Payable to parent, subsidiaries and affiliates	5,418,288	137,212
20. Derivatives		
21. Payable for securities		
22. Payable for securities lending		
23. Liability for amounts held under uninsured plans		
24. Capital notes \$.....0 and interest thereon \$.....0		
25. Aggregate write-ins for liabilities	26,146	36,767
26. TOTAL Liabilities excluding protected cell liabilities (Lines 1 through 25)	152,392,813	134,991,603
27. Protected cell liabilities		
28. TOTAL Liabilities (Lines 26 and 27)	152,392,813	134,991,603
29. Aggregate write-ins for special surplus funds		
30. Common capital stock	5,250,000	5,250,000
31. Preferred capital stock		
32. Aggregate write-ins for other-than-special surplus funds		
33. Surplus notes		
34. Gross paid in and contributed surplus	9,302,000	9,302,000
35. Unassigned funds (surplus)	145,249,436	142,071,636
36. Less treasury stock, at cost:		
36.10 shares common (value included in Line 30 \$.....0)		
36.20 shares preferred (value included in Line 31 \$.....0)		
37. Surplus as regards policyholders (Lines 29 to 35, minus 36) (Page 4, Line 39)	159,801,436	156,623,636
38. TOTALS (Page 2, Line 28, Column 3)	312,194,249	291,615,239
DETAILS OF WRITE-INS		
2501. Reserve for Escheats	26,344	36,767
2502. Reserve for Police Reports/Tele-Interpreter	(198)	
2503.		
2598. Summary of remaining write-ins for Line 25 from overflow page		
2599. TOTALS (Lines 2501 through 2503 plus 2598) (Line 25 above)	26,146	36,767
2901.		
2902.		
2903.		
2998. Summary of remaining write-ins for Line 29 from overflow page		
2999. TOTALS (Lines 2901 through 2903 plus 2998) (Line 29 above)		
3201.		
3202.		
3203.		
3298. Summary of remaining write-ins for Line 32 from overflow page		
3299. TOTALS (Lines 3201 through 3203 plus 3298) (Line 32 above)		

STATEMENT OF INCOME

	1 Current Year	2 Prior Year
UNDERWRITING INCOME		
1. Premiums earned (Part 1, Line 35, Column 4)	109,431,646	101,968,041
DEDUCTIONS		
2. Losses incurred (Part 2, Line 35, Column 7)	69,723,374	58,896,947
3. Loss adjustment expenses incurred (Part 3, Line 25, Column 1)	9,565,344	7,382,206
4. Other underwriting expenses incurred (Part 3, Line 25, Column 2)	35,403,500	35,513,960
5. Aggregate write-ins for underwriting deductions		
6. TOTAL Underwriting Deductions (Lines 2 through 5)	114,692,218	101,793,112
7. Net income of protected cells		
8. Net underwriting gain or (loss) (Line 1 minus Line 6 plus Line 7)	(5,260,572)	174,929
INVESTMENT INCOME		
9. Net investment income earned (Exhibit of Net Investment Income, Line 17)	7,540,242	7,374,654
10. Net realized capital gains (losses) less capital gains tax of \$(68,166) (Exhibit of Capital Gains (Losses))	(256,435)	40,084
11. Net investment gain or (loss) (Lines 9 + 10)	7,283,807	7,414,738
OTHER INCOME		
12. Net gain or (loss) from agents' or premium balances charged off (amount recovered \$0 amount charged off \$89,456)	(89,456)	(84,019)
13. Finance and service charges not included in premiums	369,289	383,877
14. Aggregate write-ins for miscellaneous income	(61,137)	(54,790)
15. TOTAL Other Income (Lines 12 through 14)	218,696	245,068
16. Net income before dividends to policyholders, after capital gains tax and before all other federal and foreign income taxes (Lines 8 + 11 + 15)	2,241,931	7,834,735
17. Dividends to policyholders	71,572	74,058
18. Net income, after dividends to policyholders, after capital gains tax and before all other federal and foreign income taxes (Line 16 minus Line 17)	2,170,359	7,760,677
19. Federal and foreign income taxes incurred	26,369	1,998,016
20. Net income (Line 18 minus Line 19) (to Line 22)	2,143,990	5,762,661
CAPITAL AND SURPLUS ACCOUNT		
21. Surplus as regards policyholders, December 31 prior year (Page 4, Line 39, Column 2)	156,623,526	152,615,115
22. Net income (from Line 20)	2,143,990	5,762,661
23. Net transfers (to) from Protected Cell accounts		
24. Change in net unrealized capital gains or (losses) less capital gains tax of \$282	1,062	26,663
25. Change in net unrealized foreign exchange capital gain (loss)		
26. Change in net deferred income tax	(63,534)	(2,558,318)
27. Change in nonadmitted assets (Exhibit of Nonadmitted Assets Line 28, Column 3)	1,096,284	777,404
28. Change in provision for reinsurance (Page 3, Line 16, Column 2 minus Column 1)		
29. Change in surplus notes		
30. Surplus (contributed to) withdrawn from protected cells		
31. Cumulative effect of changes in accounting principles		
32. Capital changes:		
32.1 Paid in		
32.2 Transferred from surplus (Stock Dividend)		
32.3 Transferred to surplus		
33. Surplus adjustments:		
33.1 Paid in		
33.2 Transferred to capital (Stock Dividend)		
33.3 Transferred from capital		
34. Net remittances from or (to) Home Office		
35. Dividends to stockholders		
36. Change in treasury stock (Page 3, Line 36.1 and 36.2, Column 2 minus Column 1)		
37. Aggregate write-ins for gains and losses in surplus		
38. Change in surplus as regards policyholders for the year (Lines 22 through 37)	3,177,802	4,008,410
39. Surplus as regards policyholders, December 31 current year (Line 21 plus Line 38) (Page 3, Line 37)	159,801,327	156,623,526
DETAILS OF WRITE-INS		
0501.		
0502.		
0503.		
0598. Summary of remaining write-ins for Line 5 from overflow page		
0599. TOTALS (Lines 0501 through 0503 plus 0598) (Line 5 above)		
1401. Miscellaneous Income	(61,137)	(54,790)
1402.		
1403.		
1498. Summary of remaining write-ins for Line 14 from overflow page		
1499. TOTALS (Lines 1401 through 1403 plus 1498) (Line 14 above)	(61,137)	(54,790)
3701.		
3702.		
3703.		
3798. Summary of remaining write-ins for Line 37 from overflow page		
3799. TOTALS (Lines 3701 through 3703 plus 3798) (Lines 37 above)		

ANNUAL STATEMENT FOR THE YEAR 2018 OF THE ALL AMERICA INSURANCE COMPANY

CASH FLOW

		1	2
		Current Year	Prior Year
Cash from Operations			
1.	Premiums collected net of reinsurance	116,634,426	103,435,283
2.	Net investment income	8,695,843	8,336,513
3.	Miscellaneous income	218,696	245,069
4.	TOTAL (Lines 1 through 3)	125,548,966	112,016,865
5.	Benefit and loss related payments	70,654,739	57,248,347
6.	Net transfers to Separate Accounts, Segregated Accounts and Protected Cell Accounts		
7.	Commissions, expenses paid and aggregate write-ins for deductions	44,478,367	44,456,024
8.	Dividends paid to policyholders	76,728	96,799
9.	Federal and foreign income taxes paid (recovered) net of \$.....0 tax on capital gains (losses)	(16,358)	2,115,025
10.	TOTAL (Lines 5 through 9)	115,193,476	103,916,195
11.	Net cash from operations (Line 4 minus Line 10)	10,355,490	8,100,670
Cash from Investments			
12.	Proceeds from investments sold, matured or repaid:		
12.1	Bonds	179,053,642	24,999,344
12.2	Stocks	100,206	
12.3	Mortgage loans		
12.4	Real estate		
12.5	Other invested assets		
12.6	Net gains or (losses) on cash, cash equivalents and short-term investments		
12.7	Miscellaneous proceeds		(518,415)
12.8	TOTAL Investment proceeds (Lines 12.1 to 12.7)	179,153,847	24,480,929
13.	Cost of investments acquired (long-term only):		
13.1	Bonds	193,935,625	27,883,446
13.2	Stocks		
13.3	Mortgage loans		
13.4	Real estate		
13.5	Other invested assets		
13.6	Miscellaneous applications		
13.7	TOTAL Investments acquired (Lines 13.1 to 13.6)	193,935,625	27,883,446
14.	Net increase (decrease) in contract loans and premium notes		
15.	Net cash from investments (Line 12.8 minus Line 13.7 minus Line 14)	(14,781,778)	(3,402,518)
Cash from Financing and Miscellaneous Sources			
16.	Cash provided (applied):		
16.1	Surplus notes, capital notes		
16.2	Capital and paid in surplus, less treasury stock		
16.3	Borrowed funds		
16.4	Net deposits on deposit-type contracts and other insurance liabilities		
16.5	Dividends to stockholders		
16.6	Other cash provided (applied)	4,985,717	1,854,471
17.	Net cash from financing and miscellaneous sources (Lines 16.1 to 16.4 minus Line 16.5 plus Line 16.6)	4,985,717	1,854,471
RECONCILIATION OF CASH, CASH EQUIVALENTS AND SHORT-TERM INVESTMENTS			
18.	Net change in cash, cash equivalents and short-term investments (Line 11, plus Lines 15 and 17)	559,429	6,552,624
19.	Cash, cash equivalents and short-term investments:		
19.1	Beginning of year	16,829,411	10,276,787
19.2	End of year (Line 18 plus Line 19.1)	17,388,840	16,829,411

Note: Supplemental Disclosures of Cash Flow Information for Non-Cash Transactions:

20.0001			
---------	--	--	--

UNDERWRITING AND INVESTMENT EXHIBIT
PART 1 - PREMIUMS EARNED

Line of Business		1 Net Premiums Written Per Column 6, Part 1B	2 Unearned Premiums Dec. 31 Prior Year - per Column 3, Last Year's Part 1	3 Unearned Premiums Dec. 31 Current Year - per Column 5, Part 1A	4 Premiums Earned During Year (Columns 1 + 2 - 3)
1.	Fire	1,094,656	676,138	624,250	1,146,544
2.	Allied lines	1,436,274	897,127	847,547	1,485,855
3.	Farmowners multiple peril				
4.	Homeowners multiple peril	25,452,356	14,141,651	14,278,551	25,315,456
5.	Commercial multiple peril	19,312,650	11,129,875	11,218,541	19,223,984
6.	Mortgage guaranty				
8.	Ocean marine				
9.	Inland marine	2,965,309	1,446,148	1,520,556	2,890,901
10.	Financial guaranty				
11.1	Medical professional liability - occurrence				
11.2	Medical professional liability - claims-made				
12.	Earthquake	334,050	174,775	185,927	322,898
13.	Group accident and health				
14.	Credit accident and health (group and individual)				
15.	Other accident and health				
16.	Workers' compensation	1,731,463	884,139	847,931	1,767,670
17.1	Other liability - occurrence	5,701,460	3,117,111	3,349,197	5,469,374
17.2	Other liability - claims-made				
17.3	Excess Workers' Compensation				
18.1	Products liability - occurrence	2,928,465	1,404,364	1,478,448	2,854,381
18.2	Products liability - claims-made				
19.1	19.2 Private passenger auto liability	20,144,450	10,011,563	10,305,867	19,850,146
19.3	19.4 Commercial auto liability	10,956,181	4,174,049	5,712,852	9,417,378
21.	Auto physical damage	20,737,108	9,539,094	10,595,921	19,680,282
22.	Aircraft (all perils)				
23.	Fidelity	2,578	1,880	982	3,476
24.	Surety	246	94	92	247
26.	Burglary and theft	3,103	1,770	1,732	3,142
27.	Boiler and machinery	(93)	0	(6)	(87)
28.	Credit				
29.	International				
30.	Warranty				
31.	Reinsurance-Nonproportional Assumed Property				
32.	Reinsurance-Nonproportional Assumed Liability				
33.	Reinsurance-Nonproportional Assumed Financial Lines				
34.	Aggregate write-ins for other lines of business				
35.	TOTALS	112,800,256	57,599,779	60,968,389	109,431,646
DETAILS OF WRITE-INS					
3401.				
3402.				
3403.				
3498.	Summary of remaining write-ins for Line 34 from overflow page				
3499.	TOTALS (Lines 3401 through 3403 plus 3498) (Line 34 above)				

UNDERWRITING AND INVESTMENT EXHIBIT
PART 1A - RECAPITULATION OF ALL PREMIUMS

		1	2	3	4	5
		Amount Unearned (Running One Year or Less From Date of Policy) (a)	Amount Unearned (Running More Than One Year From Date of Policy) (a)	Earned But Unbilled Premium	Reserve for Rate Credits and Retrospective Adjustments Based on Experience	Total Reserve For Unearned Premiums Columns 1 + 2 + 3 + 4
Line of Business						
1.	Fire	624,250				624,250
2.	Allied lines	847,547				847,547
3.	Farmowners multiple peril					
4.	Homeowners multiple peril	14,278,551				14,278,551
5.	Commercial multiple peril	11,275,439		(56,899)		11,218,541
6.	Mortgage guaranty					
8.	Ocean marine					
9.	Inland marine	1,520,556				1,520,556
10.	Financial guaranty					
11.1	Medical professional liability - occurrence					
11.2	Medical professional liability - claims-made					
12.	Earthquake	185,927				185,927
13.	Group accident and health					
14.	Credit accident and health (group and individual)					
15.	Other accident and health					
16.	Workers' compensation	870,411		(22,480)		847,931
17.1	Other liability - occurrence	3,349,197				3,349,197
17.2	Other liability - claims-made					
17.3	Excess Workers' Compensation					
18.1	Products liability - occurrence	1,478,448				1,478,448
18.2	Products liability - claims-made					
19.1	19.2 Private passenger auto liability	10,305,867				10,305,867
19.3	19.4 Commercial auto liability	5,727,148		(14,296)		5,712,852
21.	Auto physical damage	10,595,921				10,595,921
22.	Aircraft (all perils)					
23.	Fidelity	982				982
24.	Surety	92				92
26.	Burglary and theft	1,732				1,732
27.	Boiler and machinery	(6)				(6)
28.	Credit					
29.	International					
30.	Warranty					
31.	Reinsurance-Nonproportional Assumed Property					
32.	Reinsurance-Nonproportional Assumed Liability					
33.	Reinsurance-Nonproportional Assumed Financial Lines					
34.	Aggregate write-ins for other lines of business					
35.	TOTALS	61,062,064		(93,675)		60,968,389
36.	Accrued retrospective premiums based on experience					
37.	Earned but unbilled premiums					93,675
38.	Balance (Sum of Lines 35 through 37)					61,062,064
DETAILS OF WRITE-INS						
3401.					
3402.					
3403.					
3498.	Summary of remaining write-ins for Line 34 from overflow page					
3499.	TOTALS (Lines 3401 through 3403 plus 3498) (Line 34 above)					

(a) State here basis of computation used in each case: Monthly Pro-Rata Method

UNDERWRITING AND INVESTMENT EXHIBIT
PART 1B - PREMIUMS WRITTEN

Line of Business		1 Direct Business (a)	Reinsurance Assumed		Reinsurance Ceded		6 Net Premiums Written Columns 1+2+3-4-5
			2 From Affiliates	3 From Non-Affiliates	4 To Affiliates	5 To Non-Affiliates	
1.	Fire	27,921	1,094,656		27,921		1,094,656
2.	Allied lines	51,525	1,436,274		49,118	2,407	1,436,274
3.	Farmowners multiple peril						
4.	Homeowners multiple peril		25,452,356				25,452,356
5.	Commercial multiple peril	28,611,291	19,312,650		25,449,759	3,161,532	19,312,650
6.	Mortgage guaranty						
8.	Ocean marine						
9.	Inland marine	25,907	2,965,309		25,907		2,965,309
10.	Financial guaranty						
11.1	Medical professional liability - occurrence						
11.2	Medical professional liability - claims-made						
12.	Earthquake	3,855	334,050		3,855		334,050
13.	Group accident and health						
14.	Credit accident and health (group and individual)						
15.	Other accident and health						
16.	Workers' compensation	3,021,939	1,731,463		3,021,939		1,731,463
17.1	Other liability - occurrence	110,489	5,701,460		100,537	9,952	5,701,460
17.2	Other liability - claims-made						
17.3	Excess Workers' Compensation						
18.1	Products liability - occurrence	1,871,382	2,928,465		1,871,382		2,928,465
18.2	Products liability - claims-made						
19.1	19.2 Private passenger auto liability		20,144,450				20,144,450
19.3	19.4 Commercial auto liability	11,672,022	10,956,181		11,576,776	95,246	10,956,181
21.	Auto physical damage	5,312,894	20,737,108		5,312,827	67	20,737,108
22.	Aircraft (all perils)						
23.	Fidelity	4	2,578		4		2,578
24.	Surety		246				246
26.	Burglary and theft		3,103				3,103
27.	Boiler and machinery	8,772	(93)			8,772	(93)
28.	Credit						
29.	International						
30.	Warranty						
31.	Reinsurance-Nonproportional Assumed Property	X X X					
32.	Reinsurance-Nonproportional Assumed Liability	X X X					
33.	Reinsurance-Nonproportional Assumed Financial Lines	X X X					
34.	Aggregate write-ins for other lines of business						
35.	TOTALS	50,718,001	112,800,256		47,440,025	3,277,976	112,800,256
DETAILS OF WRITE-INS							
3401.						
3402.						
3403.						
3498.	Summary of remaining write-ins for Line 34 from overflow page						
3499.	TOTALS (Lines 3401 through 3403 plus 3498) (Line 34 above)						

(a) Does the company's direct premiums written include premiums recorded on an installment basis? Yes[] No[X]
If yes, (1) The amount of such installment premiums \$.....0.
(2) Amount at which such installment premiums would have been reported had they been recorded on an annualized basis \$.....0

UNDERWRITING AND INVESTMENT EXHIBIT
PART 2 - LOSSES PAID AND INCURRED

Line of Business		Losses Paid Less Salvage				5 Net Losses Unpaid Current Year (Part 2A, Column 8)	6 Net Losses Unpaid Prior Year	7 Losses Incurred Current Year (Columns 4 + 5 - 6)	8 Percentage of Losses Incurred (Column 7, Part 2) to Premiums Earned (Column 4, Part 1)
		1 Direct Business	2 Reinsurance Assumed	3 Reinsurance Recovered	4 Net Payments (Columns 1 + 2 - 3)				
1.	Fire		437,550		437,550	158,992	258,296	338,246	29.50
2.	Allied lines	48,859	971,973	48,859	971,973	363,166	334,610	1,000,528	67.34
3.	Farmowners multiple peril								
4.	Homeowners multiple peril	(900)	18,478,588	(900)	18,478,588	5,102,508	4,644,079	18,937,017	74.80
5.	Commercial multiple peril	15,092,583	10,466,074	15,092,583	10,466,074	10,594,213	9,088,447	11,971,840	62.28
6.	Mortgage guaranty								
8.	Ocean marine								
9.	Inland marine		897,134		897,134	268,649	229,690	936,092	32.38
10.	Financial guaranty								
11.1	Medical professional liability - occurrence								
11.2	Medical professional liability - claims-made								
12.	Earthquake		590		590			590	0.18
13.	Group accident and health								
14.	Credit accident and health (group and individual)								
15.	Other accident and health								
16.	Workers' compensation	1,523,476	974,071	1,523,476	974,071	8,100,365	8,331,701	742,735	42.02
17.1	Other liability - occurrence	8,607	1,262,777	8,607	1,262,777	4,105,866	3,491,208	1,877,435	34.33
17.2	Other liability - claims-made								
17.3	Excess Workers' Compensation								
18.1	Products liability - occurrence	2,198,558	941,117	2,198,558	941,117	5,510,368	5,485,750	965,735	33.83
18.2	Products liability - claims made								
19.1	19.2 Private passenger auto liability	4,243	12,122,155	4,243	12,122,155	13,197,024	11,091,278	14,227,900	71.68
19.3	19.4 Commercial auto liability	4,444,650	3,602,613	4,444,650	3,602,613	8,642,204	6,001,106	6,243,711	66.30
21.	Auto physical damage	3,502,887	12,411,821	3,502,887	12,411,821	859,108	787,923	12,483,005	63.43
22.	Aircraft (all perils)								
23.	Fidelity								
24.	Surety								
26.	Burglary and theft								
27.	Boiler and machinery		1,741		1,741	(3,200)		(1,459)	1,685.38
28.	Credit								
29.	International								
30.	Warranty								
31.	Reinsurance-Nonproportional Assumed Property	X X X							
32.	Reinsurance-Nonproportional Assumed Liability	X X X							
33.	Reinsurance-Nonproportional Assumed Financial Lines	X X X							
34.	Aggregate write-ins for other lines of business								
35.	TOTALS	26,822,962	62,568,201	26,822,962	62,568,201	56,899,262	49,744,090	69,723,374	63.71
DETAILS OF WRITE-INS									
3401.								
3402.								
3403.								
3498.	Summary of remaining write-ins for Line 34 from overflow page								
3499.	TOTALS (Lines 3401 through 3403 plus 3498) (Line 34 above)								

UNDERWRITING AND INVESTMENT EXHIBIT
PART 2A - UNPAID LOSSES AND LOSS ADJUSTMENT EXPENSES

		Reported Losses				Incurred But Not Reported			8	9
		1	2	3	4	5	6	7		
Line of Business		Direct	Reinsurance Assumed	Deduct Reinsurance Recoverable	Net Losses Excluding Incurred But Not Reported (Columns 1 + 2 - 3)	Direct	Reinsurance Assumed	Reinsurance Ceded	Net Losses Unpaid (Columns 4 + 5 + 6 - 7)	Net Unpaid Loss Adjustment Expenses
1.	Fire		70,014		70,014	2,657	88,978	2,657	158,992	34,610
2.	Allied Lines		213,606		213,606	9,881	149,560	9,881	363,166	90,758
3.	Farmowners multiple peril									
4.	Homeowners multiple peril		3,134,525		3,134,525		1,967,983		5,102,508	1,470,375
5.	Commercial multiple peril	14,475,606	6,894,474	14,475,668	6,894,412	5,822,781	3,699,801	5,822,781	10,594,213	5,199,424
6.	Mortgage guaranty									
8.	Ocean marine									
9.	Inland marine		66,030		66,030	2,400	202,619	2,400	268,649	136,192
10.	Financial guaranty									
11.1	Medical professional liability - occurrence									
11.2	Medical professional liability - claims-made									
12.	Earthquake									14
13.	Group accident & health								(a)	
14.	Credit accident & health (group & individual)								(a)	
15.	Other accident & health									
16.	Workers' compensation	4,952,405	3,922,958	4,952,405	3,922,958	8,878,176	4,177,407	8,878,176	8,100,365	2,093,308
17.1	Other liability - occurrence	25,005	2,348,933	25,005	2,348,933	45,675	1,756,933	45,675	4,105,866	890,578
17.2	Other liability - claims-made									
17.3	Excess Workers' Compensation									
18.1	Products liability - occurrence	1,677,500	2,264,899	1,677,500	2,264,899	2,960,364	3,245,470	2,960,364	5,510,368	5,116,432
18.2	Products liability - claims-made									
19.1	19.2 Private passenger auto liability		10,250,016		10,250,016		2,947,008		13,197,024	2,622,431
19.3	19.4 Commercial auto liability	11,871,863	6,278,961	11,871,863	6,278,961	2,697,711	2,363,243	2,697,711	8,642,204	2,017,753
21.	Auto physical damage	430,837	769,221	430,837	769,221	140,936	89,887	140,936	859,108	435,560
22.	Aircraft (all perils)									
23.	Fidelity									1
24.	Surety									
26.	Burglary and theft									
27.	Boiler and machinery		(3,200)		(3,200)				(3,200)	182
28.	Credit									
29.	International									
30.	Warranty									
31.	Reinsurance-Nonproportional Assumed Property	X X X				X X X				
32.	Reinsurance-Nonproportional Assumed Liability	X X X				X X X				
33.	Reinsurance-Nonproportional Assumed Financial Lines	X X X				X X X				
34.	Aggregate write-ins for other lines of business									
35.	TOTALS	33,433,216	36,210,436	33,433,278	36,210,374	20,560,581	20,688,889	20,560,581	56,899,262	20,107,618
DETAILS OF WRITE-INS										
3401.									
3402.									
3403.									
3498.	Summary of remaining write-ins for Line 34 from overflow page									
3499.	TOTALS (Lines 3401 through 3403 plus 3498) (Line 34 above)									

(a) Including \$.....0 for present value of life indemnity claims.

UNDERWRITING AND INVESTMENT EXHIBIT
PART 3 - EXPENSES

	1	2	3	4
	Loss Adjustment Expenses	Other Underwriting Expenses	Investment Expenses	Total
1. Claim adjustment services:				
1.1 Direct	4,326,547			4,326,547
1.2 Reinsurance assumed	5,696,766			5,696,766
1.3 Reinsurance ceded	4,462,689			4,462,689
1.4 Net claim adjustment services (1.1 + 1.2 - 1.3)	5,560,624			5,560,624
2. Commission and brokerage:				
2.1 Direct, excluding contingent		7,546,163		7,546,163
2.2 Reinsurance assumed, excluding contingent		16,880,604		16,880,604
2.3 Reinsurance ceded, excluding contingent		7,546,163		7,546,163
2.4 Contingent - direct		691,794		691,794
2.5 Contingent - reinsurance assumed		1,638,174		1,638,174
2.6 Contingent - reinsurance ceded		691,794		691,794
2.7 Policy and membership fees				
2.8 Net commission and brokerage (2.1 + 2.2 - 2.3 + 2.4 + 2.5 - 2.6 + 2.7)		18,518,778		18,518,778
3. Allowances to manager and agents		102,679		102,679
4. Advertising		24,781		24,781
5. Boards, bureaus and associations	18,467	1,030,719		1,049,186
6. Surveys and underwriting reports		899,553		899,553
7. Audit of assureds' records		43,507		43,507
8. Salary and related items:				
8.1 Salaries	2,152,613	5,221,615	182,891	7,557,119
8.2 Payroll taxes	153,275	351,365	11,990	516,630
9. Employee relations and welfare	943,262	2,580,571	103,120	3,626,953
10. Insurance		138,056		138,056
11. Directors' fees	9,609	23,316	851	33,776
12. Travel and travel items	90,731	875,175	5,362	971,268
13. Rent and rent items	137,762	468,620	44,674	651,056
14. Equipment	219,992	940,203	23,751	1,183,946
15. Cost or depreciation of EDP equipment and software	81,783	198,435	7,244	287,462
16. Printing and stationery	5,705	55,508	14,998	76,211
17. Postage, telephone and telegraph, exchange and express	165,644	411,656	12,476	589,776
18. Legal and auditing	3,662	103,023	6,303	112,987
19. TOTALS (Lines 3 to 18)	3,982,504	13,468,782	413,660	17,864,947
20. Taxes, licenses and fees:				
20.1 State and local insurance taxes deducting guaranty association credits of \$.....0		3,001,255		3,001,255
20.2 Insurance department licenses and fees		160,571		160,571
20.3 Gross guaranty association assessments		(28,606)		(28,606)
20.4 All other (excluding federal and foreign income and real estate)		2,690		2,690
20.5 TOTAL taxes, licenses and fees (20.1 + 20.2 + 20.3 + 20.4)		3,135,910		3,135,910
21. Real estate expenses				
22. Real estate taxes				
23. Reimbursements by uninsured plans				
24. Aggregate write-ins for miscellaneous expenses	22,216	280,030	151,825	454,071
25. TOTAL expenses incurred	9,565,344	35,403,500	565,486	(a) 45,534,330
26. Less unpaid expenses - current year	20,107,618	5,745,949		25,853,567
27. Add unpaid expenses - prior year	19,019,527	6,361,472		25,380,999
28. Amounts receivable relating to uninsured plans, prior year				
29. Amounts receivable relating to uninsured plans, current year				
30. TOTAL EXPENSES PAID (Lines 25 - 26 + 27 - 28 + 29)	8,477,253	36,019,023	565,486	45,061,762
DETAILS OF WRITE-INS				
2401. Miscellaneous Expenses	22,216	201,129	151,825	375,170
2402. Donations		78,901		78,901
2403.				
2498. Summary of remaining write-ins for Line 24 from overflow page				
2499. TOTALS (Lines 2401 through 2403 plus 2498) (Line 24 above)	22,216	280,030	151,825	454,071

(a) Includes management fees of \$.....0 to affiliates and \$.....0 to non-affiliates.

EXHIBIT OF NET INVESTMENT INCOME

		1	2
		Collected During Year	Earned During Year
1.	U.S. Government bonds	(a)..... 167,345 129,293
1.1	Bonds exempt from U.S. tax	(a)..... 5,470,704 3,864,396
1.2	Other bonds (unaffiliated)	(a)..... 3,546,025 4,034,784
1.3	Bonds of affiliates	(a).....	
2.1	Preferred stocks (unaffiliated)	(b).....	
2.11	Preferred stocks of affiliates	(b).....	
2.2	Common stocks (unaffiliated)		
2.21	Common stocks of affiliates		
3.	Mortgage loans	(c).....	
4.	Real estate	(d).....	
5.	Contract loans		
6.	Cash, cash equivalents and short-term investments	(e)..... 1,088 1,088
7.	Derivative instruments	(f).....	
8.	Other invested assets		
9.	Aggregate write-ins for investment income 76,167 76,167
10.	TOTAL gross investment income 9,261,329 8,105,728
11.	Investment expenses		(g)..... 565,486
12.	Investment taxes, licenses and fees, excluding federal income taxes		(g).....
13.	Interest expense		(h).....
14.	Depreciation on real estate and other invested assets		(i).....
15.	Aggregate write-ins for deductions from investment income		
16.	TOTAL Deductions (Lines 11 through 15) 565,486
17.	Net Investment income (Line 10 minus Line 16) 7,540,242
DETAILS OF WRITE-INS			
0901.	MISC INTEREST RECD 76,167 76,167
0902.		
0903.		
0998.	Summary of remaining write-ins for Line 9 from overflow page		
0999.	TOTALS (Lines 0901 through 0903 plus 0998) (Line 9 above) 76,167 76,167
1501.		
1502.		
1503.		
1598.	Summary of remaining write-ins for Line 15 from overflow page		
1599.	TOTALS (Lines 1501 through 1503 plus 1598) (Line 15 above)		
(a) Includes \$.....92,639 accrual of discount less \$.....989,951 amortization of premium and less \$.....1,343,881 paid for accrued interest on purchases.			
(b) Includes \$.....0 accrual of discount less \$.....0 amortization of premium and less \$.....0 paid for accrued dividends on purchases.			
(c) Includes \$.....0 accrual of discount less \$.....0 amortization of premium and less \$.....0 paid for accrued interest on purchases.			
(d) Includes \$.....0 for company's occupancy of its own buildings; and excludes \$.....0 interest on encumbrances.			
(e) Includes \$.....0 accrual of discount less \$.....0 amortization of premium and less \$.....0 paid for accrued interest on purchases.			
(f) Includes \$.....0 accrual of discount less \$.....0 amortization of premium.			
(g) Includes \$.....0 investment expenses and \$.....0 investment taxes, licenses and fees, excluding federal income taxes, attributable to segregated and Separate Accounts.			
(h) Includes \$.....0 interest on surplus notes and \$.....0 interest on capital notes.			
(i) Includes \$.....0 depreciation on real estate and \$.....0 depreciation on other invested assets.			

EXHIBIT OF CAPITAL GAINS (LOSSES)

		1	2	3	4	5
		Realized Gain (Loss) on Sales or Maturity	Other Realized Adjustments	Total Realized Capital Gain (Loss) (Columns 1 + 2)	Change in Unrealized Capital Gain (Loss)	Change in Unrealized Foreign Exchange Capital Gain (Loss)
1.	U.S. Government bonds (6,774)	 (6,774)		
1.1	Bonds exempt from U.S. tax (45,994)	 (45,994)		
1.2	Other bonds (unaffiliated) (272,039)	 (272,039)		
1.3	Bonds of affiliates					
2.1	Preferred stocks (unaffiliated)					
2.11	Preferred stocks of affiliates					
2.2	Common stocks (unaffiliated) 206	 206 (1,979)	
2.21	Common stocks of affiliates 3,323	
3.	Mortgage loans					
4.	Real estate					
5.	Contract loans					
6.	Cash, cash equivalents and short-term investments					
7.	Derivative instruments					
8.	Other invested assets					
9.	Aggregate write-ins for capital gains (losses)					
10.	TOTAL Capital gains (losses) (324,601)	 (324,601) 1,344	
DETAILS OF WRITE-INS						
0901.					
0902.					
0903.					
0998.	Summary of remaining write-ins for Line 9 from overflow page ..					
0999.	TOTALS (Lines 0901 through 0903 plus 0998) (Line 9 above) ..					

EXHIBIT OF NONADMITTED ASSETS

		1	2	3
		Current Year Total Nonadmitted Assets	Prior Year Total Nonadmitted Assets	Change in Total Nonadmitted Assets (Col. 2 - Col. 1)
1.	Bonds (Schedule D)			
2.	Stocks (Schedule D):			
2.1	Preferred stocks			
2.2	Common stocks	70,404	167,081	96,677
3.	Mortgage loans on real estate (Schedule B):			
3.1	First liens			
3.2	Other than first liens			
4.	Real estate (Schedule A):			
4.1	Properties occupied by the company			
4.2	Properties held for the production of income			
4.3	Properties held for sale			
5.	Cash (Schedule E-Part 1), cash equivalents (Schedule E-Part 2) and short-term investments (Schedule DA)			
6.	Contract loans			
7.	Derivatives (Schedule DB)			
8.	Other invested assets (Schedule BA)			
9.	Receivables for securities			
10.	Securities lending reinvested collateral assets (Schedule DL)			
11.	Aggregate write-ins for invested assets			
12.	Subtotals, cash and invested assets (Lines 1 to 11)	70,404	167,081	96,677
13.	Title plants (for Title insurers only)			
14.	Invested income due and accrued			
15.	Premium and considerations:			
15.1	Uncollected premiums and agents' balances in the course of collection	63,134	53,398	(9,735)
15.2	Deferred premiums, agents' balances and installments booked but deferred and not yet due	9,367	5,240	(4,128)
15.3	Accrued retrospective premiums and contracts subject to redetermination			
16.	Reinsurance:			
16.1	Amounts recoverable from reinsurers			
16.2	Funds held by or deposited with reinsured companies			
16.3	Other amounts receivable under reinsurance contracts			
17.	Amounts receivable relating to uninsured plans			
18.1	Current federal and foreign income tax recoverable and interest thereon			
18.2	Net deferred tax asset	207,586	1,221,056	1,013,470
19.	Guaranty funds receivable or on deposit			
20.	Electronic data processing equipment and software			
21.	Furniture and equipment, including health care delivery assets			
22.	Net adjustment in assets and liabilities due to foreign exchange rates			
23.	Receivables from parent, subsidiaries and affiliates			
24.	Health care and other amounts receivable			
25.	Aggregate write-ins for other than invested assets			
26.	TOTAL Assets excluding Separate Accounts, Segregated Accounts and Protected Cell Accounts (Lines 12 to 25)	350,491	1,446,775	1,096,284
27.	From Separate Accounts, Segregated Accounts and Protected Cell Accounts			
28.	TOTAL (Lines 26 and 27)	350,491	1,446,775	1,096,284
DETAILS OF WRITE-INS				
1101.			
1102.			
1103.			
1198.	Summary of remaining write-ins for Line 11 from overflow page			
1199.	TOTALS (Lines 1101 through 1103 plus 1198) (Line 11 above)			
2501.			
2502.			
2503.			
2598.	Summary of remaining write-ins for Line 25 from overflow page			
2599.	TOTALS (Lines 2501 through 2503 plus 2598) (Line 25 above)			

Notes to Financial Statements

1. Summary of Significant Accounting Policies

A. Accounting Practices

The financial statements of All America Insurance Company are presented on the basis of accounting practices prescribed or permitted by the Ohio Insurance Department.

The Ohio Insurance Department recognizes only statutory accounting practices prescribed or permitted by the State of Ohio for determining and reporting the financial condition and results of operations of an insurance company, for determining solvency under the Ohio Insurance Law. The National Association of Insurance Commissioners' (NAIC) *Accounting Practices and Procedures* manual - Version effective January 1, 2001, (NAIC SAP) has been adopted as a component of prescribed or permitted practices by the State of Ohio. The Commissioner of Insurance has the right to permit specific practices that deviate from prescribed practices.

B. Use of Estimates in the Preparation of the Financial Statements

The preparation of financial statements in conformity with Statutory Accounting Principles requires management to make estimates and assumptions that affect the reported amounts of assets and liabilities. It also requires disclosure of contingent assets and liabilities at the date of the financial statements and the reported amounts of revenue and expenses during the period. Actual results could differ from those estimates.

C. Accounting Policy

Premiums are earned over the terms of the related insurance policies and reinsurance contracts. Unearned premium reserves are established to cover the unexpired portion of premiums written. Such reserves are computed by pro rata methods for direct business and are based on reports received from ceding companies for reinsurance.

Expenses incurred in connection with acquiring new insurance business, including such acquisition costs as sales commissions, are charged to operations as incurred. Expenses incurred are reduced for ceding allowances received or receivable.

In addition, All America Insurance Company uses the following accounting policies:

- (1) Short-term investments are stated at amortized cost.
- (2) Bonds, mandatory convertible securities and SVO-Identified investments identified in SSAP No. 26R are stated at amortized cost using the interest method.
- (3) Common stocks are stated at market value except investments in stocks of uncombined subsidiaries and affiliates in which All America Insurance Company has an interest of 20% or more are carried on the equity basis.
- (4) All America Insurance Company owns no preferred stocks.
- (5) All America Insurance Company holds no mortgage loans on real estate.
- (6) Loan-backed securities are stated at amortized cost. Prepayment assumptions for loan-backed bonds and structured securities are obtained from dealer surveys. These assumptions are consistent with the current interest rate and economic environment. The prospective adjustment method is used to value these securities.
- (7) All America Insurance Company owns 100% of the common stock of Central Insurex Agency, Inc., a surplus and excess lines insurance agency. All America Insurance Company owns 100% of the common stock of CAFCO, Inc., an inactive premium finance company. Stocks held in all subsidiaries are carried at their Admitted Asset Equivalent.
- (8) All America Insurance Company has no investments in joint ventures, partnerships or limited liability companies.
- (9) All America Insurance Company owns no derivatives.
- (10) All America Insurance Company anticipates investment income as a factor in the premium deficiency calculation, in accordance with SSAP No. 53, Property-Casualty Contracts - Premiums.
- (11) Unpaid losses and loss adjustment expenses include an amount determined from individual case estimates and loss reports and an amount, based on past experience, for losses incurred but not reported. Such liabilities are necessarily based on assumptions and estimates and while management believes the amount is adequate, the ultimate liability may be in excess of or less than the amount provided. The methods for making such estimates and for establishing the resulting liability are continually reviewed and any adjustments are reflected in the period determined.
- (12) The Company did change its capitalization policy in 2016 to increase the threshold for internally developed software from \$10,000 to \$50,000 in the interest of saving time spent tracking projects that fall below that new threshold.
- (13) All America Insurance Company has no pharmaceutical rebate receivables.

D. Going Concern

- (1)
 - a. No principal conditions or events have occurred to raise substantial doubt about All America's ability to continue as a going concern.
 - b. N/A
 - c. N/A
- (2) N/A
- (3) N/A
- (4) N/A

Notes to Financial Statements

2. Accounting Changes and Correction of Errors

Changes in accounting principle and/or correction of errors – NONE

3. Business Combinations and Goodwill

All America Insurance Company has not purchased or merged with another entity during the prior two years. No goodwill is recorded in the company's assets.

4. Discontinued Operations

- A. Discontinued Operation of or Classified as Held for Sale – NONE
- B. Change in Plan of Sale of Discontinued Operation – NONE
- C. Nature of Any Significant Continuing Involvement with Discontinued Operations After Disposal – NONE
- D. Equity Interest Retained in the Discontinued Operation After Disposal - NONE

5. Investments

- A. Mortgage Loans, including Mezzanine Real Estate Loans - NONE
- B. Debt Restructuring - NONE
- C. Reverse Mortgages - NONE
- D. Loan-Backed Securities – NONE
- E. Dollar Repurchase Agreements and/or Securities Lending Transactions – NONE
- F. Repurchase Agreements Transactions Accounted for as Secured Borrowing - NONE
- G. Reverse Repurchase Agreements Transactions Accounted for as Secured Borrowing - NONE
- H. Repurchase Agreements Transactions Accounted for as a Sale - NONE
- I. Reverse Repurchase Agreements Transactions Accounted for as a Sale - NONE
- J. Real Estate – NO TRANSACTIONS TO REPORT
- K. Investments in low-income housing tax credits (LIHTC) – NONE
- L. Restricted Assets:

1. Restricted Assets (including Pledged)			1	2	3	4	5	6	7	8	9	10
			Total General Account	G/A Supporting Protected Cell Acct (a)	Total Protected Cell Account	Protected Cell Account (b)	Total (Col. 1 + Col. 3)	Total From Prior Year	Increase/(Decrease) (Col. 5 - Col. 6)	Total Current Year Admitted Restricted	Gross Restricted to Total Assets	Admitted Restricted to Total Admitted Assets
J.	On deposit with states		4,702,001				4,702,001	5,387,910	(685,909)	4,702,001	1.4	1.4

- M. Working Capital Finance Investments -NONE
- N. Offsetting and Netting of Assets and Liabilities - NONE
- O. Structured Notes – NONE
- P. 5* Securities – NONE
- Q. Short Sales - NONE
- R. Prepayment Penalty and Acceleration Fees - NONE

6. Joint Ventures, Partnerships and Limited Liability Companies

All America Insurance Company has no investments in Joint Ventures, Partnerships or Limited Liability companies that exceed 10% of admitted assets.

7. Investment Income

- A. Due and accrued income was excluded from surplus on the following bases:
 - All income due and accrued with amounts that are over 90 days past due with the exception of mortgage loans in default.
- B. No amount was excluded.

8. Derivative Instruments

All America Insurance Company owns no derivative instruments.

Notes to Financial Statements

9. Income Taxes

ALL AMERICA INSURANCE COMPANY
Income Tax Disclosures Required under SSAP 101
AS OF DECEMBER 31, 2018

Note 9 - Income Taxes

A. Deferred Tax Asset/Liability

1. The components of the net deferred tax asset/(liability) at December 31 are as follows:

	December 31, 2018			December 31, 2017			Change		
	1	2	3	4	5	6	7	8	9
	Ordinary	Capital	(Col 1+2) Total	Ordinary	Capital	(Col 4+5) Total	Ordinary	Capital	(Col 7+8) Total
(a) Gross deferred tax assets	4,664,523	0	4,664,523	4291096.32	0	4291096.321	373,427	0	373,427
(b) Statutory valuation allowance adjustments	0	0	0	0	0	0	0	0	0
(c) Adjusted gross deferred tax assets (a1 - 1b)	4,664,523	0	4,664,523	4,291,096	0	4,291,096	373,427	0	373,427
(d) Deferred Tax Assets Nonadmitted	207,586	0	207,586	1221056	0	1221056	(1,013,470)	0	(1,013,470)
(e) Subtotal Net Admitted Defered Tax Asset (1c - 1d)	4,456,937	0	4,456,937	3,070,040	0	3,070,040	1,386,897	0	1,386,897
(f) Deferred Tax Liabilities	454,932	13,425	468,357	17,971	13,143	31,114	436,961	282	437,243
(g) Net admitted deferred tax asset/(Net Deferred Tax Liability)(1e - 1f)	4,002,005	(13,425)	3,988,580	3,052,070	(13,143)	3,038,927	949,936	(282)	949,653

2. Admission Calculation Components

	December 31, 2018			December 31, 2017			Change		
	1	2	3	4	5	6	7	8	9
	Ordinary	Capital	(Col 1+2) Total	Ordinary	Capital	(Col 4+5) Total	Ordinary	Capital	(Col 7+8) Total
(a) Federal Income Taxes Paid in Prior Years Recoverable Through Loss Carrybacks	2,199,313	0	2,199,313	2,769,414	0	2,769,414	(570,101)	0	(570,101)
(b) Adjusted Gross Deferred Tax Assets Expected to be Realized (Excluding The Amount of Deferred Tax AssetsFrom 2(a) above) After Application of the Threshold Limitation. (The Lesser of 2(b)1 and 2(b)2 Below)	1,789,267	0	1,789,267	269,512	0	269,512	1,519,755	0	1,519,755
1. Adjusted Gross Deferred Tax Assets Expected to be Realized Following the Balance Sheet Date	1,789,267	0	1,789,267	269,512	0	269,512	1,519,755	0	1,519,755
2. Adjusted Gross Deferred Tax Assets Allowed per Limitation Threshold	XXX	XXX	23,025,010	XXX	XXX	22,680,212	XXX	XXX	344,798
(c) Adjusted Gross Deferred Tax Assets (Excluding the Amount of Deferred Tax Assets From 2(a) and 2(b) above) Offset by Gross Deferred Tax Liabilities	468,357	0	468,357	31,114	0	31,114	437,243	0	437,243
as the Result of Application of SSAP No. 101 Total 2(a) + 2(b) + 2(c)	4,456,937	0	4,456,937	3,070,040	0	3,070,040	1,386,897	0	1,386,897

3. Other Admissibility Criteria

	2018	2017
(a) Ratio Percentage Used to Determine Recovery Period and Threshold Limitation Amount	1545%	1546%
(b) Amount of Adjusted Capital and Surplus Used to DetermineRecovery Period and Threshold Limitation in 2(b)2 Above	153,500,067	153,584,710

4. Impact of Tax Planning Strategies

	December 31, 2018			0-Jan-00			Change		
	1	2	3	4	5	6	7	8	9
	Ordinary	Capital	(Col 1+2) Total	Ordinary	Capital	(Col 4+5) Total	(Col 1 & 4) Ordinary	(Col 2 & 5) Capital	(Col 7+8) Total
Impact of Tax Planning Strategies									
(a) Adjusted Gross DTAs (% of Total Adjusted Gross DTAs)	0.0%	0.0%	0.0%	0.0%	0.0%	0.0%	0.0%	0.0%	0.0%
(b) Net Admitted Adjusted Gross DTAs (% of Total Net Admitted Adjusted Gross DTAs)	0.0%	0.0%	0.0%	0.0%	0.0%	0.0%	0.0%	0.0%	0.0%
(c) Does the Company's tax-planning strategies include the use of reinsurance Yes [] No [X]									

B. Unrecognized DTLs
Not applicable

Notes to Financial Statements

ALL AMERICA INSURANCE COMPANY
Income Tax Disclosures Required under SSAP 101
AS OF DECEMBER 31, 2018

Note 9 - Income Taxes (continued)

C. Current Tax and Change in Deferred Tax

1. Current income tax

	2018	2017	Change
(a) Federal	508,725	1,933,139	(1,424,414)
(b) Foreign	0	0	0
(c) Subtotal	508,725	1,933,139	(1,424,414)
(d) Federal income tax on net capital gains	0	22,557	(22,557)
(e) Utilization of capital loss carryforward	0	0	0
(f) Other	(550,522)	0	(550,522)
Federal and foreign income taxes incurred	(41,797)	1,955,696	(1,997,493)

2. Deferred income tax

	2018	2017	Change
(a) Ordinary:			
(1) Discounting of unpaid losses	1,179,200	598,579	580,621
(2) Unearned premium reserve	2,606,788	2,460,560	146,228
(3) Non-Qualifying Pension	0	0	0
(4) SPP Equalization Plan	0	0	0
(5) Post Retirement Expenses	519,729	519,729	0
(6) Charitable Contribution Deduction Carryforward	0	0	0
(7) AMT Tax Carryforward	343,580	699,914	(356,334)
(8)			0
(9) Net operating loss carry-forward	0	0	0
(10) Tax credit carry-forward			0
(11) Other (including items <5% of total ordinary tax assets)			0
(12) Other assets – nonadmitted	15,225	12,314	2,911
(99) Subtotal	4,664,522	4,291,096	373,426
(b) Statutory valuation allowance adjustment			0
(c) Nonadmitted	207,586	1,221,056	(1,013,470)
(d) Admitted ordinary deferred tax assets (2a99-2b-2c)	4,456,936	3,070,040	1,386,896
(e) Capital			
(1) Investments - Other than temporary impairments (OTTI)	0	0	0
(2) Net capital loss carry-forward			0
(3) Real estate			0
(4) Other (including items <5% of total capital tax assets)			0
(99) Subtotal	0	0	0
(f) Statutory valuation allowance adjustment			0
(g) Nonadmitted			0
(h) Admitted capital deferred tax assets (2e99-2f-2g)	0	0	0
(i) Admitted deferred tax assets (2d+2h)	4,456,936	3,070,040	1,386,896

3. Deferred tax liabilities:

	2018	2017	Change
(a) Ordinary:			
(1) Employee Benefit Trust Fund	0	0	0
(2) Discount on Salvage and Subrogation	40,575	17,971	22,604
(3) Tax/Book Depreciaton	0	0	0
(4)			0
(5)			0
(6) Transition adjustment for LRD	281,875		281,875
(99) Subtotal	322,450	17,971	304,479
(b) Capital			
(1) Investments - Unrealized capital gains - net	13,425	13,143	282
(2)			0
(3)			0
(99) Subtotal	13,425	13,143	282
(c) Deferred tax liabilities (3a99+3b99)	335,875	31,114	304,761

4. Net deferred tax assets/liabilities (2i-3c) 4,121,061 3,038,926 1,082,135

Notes to Financial Statements
ALL AMERICA INSURANCE COMPANY
Income Tax Disclosures Required under SSAP 101
AS OF DECEMBER 31, 2018

Note 9 - Income Taxes (continued)

D. Reconciliation of Federal Income Tax Rate to Actual Effective Rate

The significant items causing a difference between the statutory federal income tax rate and All America's effective income tax rate are as follows:

	2018	Effective Tax Rate
Provision computed at statutory rate	441,460	21.0%
Change in nonadmitted assets	(2,911)	-0.1%
Tax exempt income deduction	(810,508)	-38.6%
Proration of tax exempt investment income	202,627	9.6%
Disallowed other permanent non-deductible items	35,931	1.7%
Accrued dividend from 100% owned affiliate	0	0.0%
Dividends received deduction	0	0.0%
AMT Credit Utilized	392,961	18.7%
Other	(232,410)	-11.1%
Totals	27,150	1.3%
Federal and foreign income taxes incurred	(41,797)	-2.0%
Change in net deferred income taxes	68,947	3.3%
	27,150	1.3%

Notes to Financial Statements
ALL AMERICA INSURANCE COMPANY
Income Tax Disclosures Required under SSAP 101
AS OF DECEMBER 31, 2018

Note 9 - Income Taxes (continued)

E. Operating Loss and Tax Credit Carryforwards

- (1) At December 31, 2018, the Company had no in unused operating loss carryforwards available to offset against future taxable income.
- (2) The following is income tax expense for 2018 and 2017 that is available for recoupment in the event of future net losses:

Year	Amount
2018	\$0
2017	\$1,955,696

- (3) The Company did not have any protective tax deposits under Section 6603 of the Internal Revenue Code.

F. Consolidated Federal Income Tax Return

- (1) The Company's federal income tax return is consolidated with the following entities:
 - Central Mutual Insurance Company (Parent)
 - CAFCO, Inc.
 - Central Insurex Agency
 - Security Central
- (2) The method of allocation among companies is subject to a written agreement, approved by the Board of Directors. It is agreed among the companies that the tax liability of the subsidiaries shall be determined as if each was filing an individual tax return and the amount of tax so determined, if any, shall be paid to Central Mutual Insurance Company, which, in turn, shall be responsible for payment of the total tax liability calculated in the consolidated return. In the event the subsidiary produces a tax loss, which is utilized by Central Mutual in the consolidated return to reduce its tax liability, Central Mutual shall pay to the subsidiary the tax cash benefit so utilized in the consolidated tax return.

G. Federal or Foreign Federal Income Tax Loss Contingencies

The Company has no tax loss contingencies for which it is reasonably possible that the total liability will significantly increase within twelve months of the reporting date.

10. Information Concerning Parent, Subsidiaries and Affiliates

- A., B, & C. There were no transactions with affiliated companies other than reinsurance transactions and cost allocation transactions that are based on generally accepted accounting principles.
- D. At December 31, 2018, All America Insurance Company reported \$5,418,288 as amounts payable to its parent Central Mutual Insurance Company. The terms of the settlement require that this amount be settled within 30 days.
- E. No guarantees or undertakings have been taken for the benefit of an affiliate or related party that result in a material contingent exposure for All America Insurance Company.
- F. All America Insurance Company has an intercompany pooling agreement with its parent Central Mutual Insurance Company whereby premiums, losses, underwriting and claims expenses are shared 16%/84% respectively in accordance with the pooling arrangement between the two entities. Investment expenses are allocated based on number of securities held in each company.
- G. All America Insurance Company is owned 100% by Central Mutual Insurance Company which is domiciled in the State of Ohio.
- H. All America Insurance Company owns no shares of an upstream company.
- I. All America Insurance Company has no Subsidiary, Controlled or Affiliate companies whose carrying value is equal to or exceeds 10% of admitted assets.
- J. All America Insurance Company did not recognize any impairment write down for its investments in Subsidiary, Controlled or Affiliated companies during the statement period.
- K. All America Insurance Company has no investment in foreign insurance subsidiaries.

Notes to Financial Statements

- L. All America Insurance Company does not utilize the look-through approach for the valuation of downstream non-insurance entities. Such entities are non-admitted assets.
- M. All America Insurance Company does not have any non-insurance Subsidiary, Controlled or Affiliate companies.
- N. Audited statutory equity of investments in insurance Subsidiary, Controlled or Affiliated companies does reflect NAIC statutory accounting practices and procedures.
- O. All America Insurance Company does not have any losses in an SCA that exceed its investment.

11. Debt

All America Insurance Company has no debt obligations.

12. Retirement Plans, Deferred Compensation, Postemployment Benefits and Compensated Absences and Other Postretirement Benefit Plans

A. Defined Benefit Plan

Qualified Pension Plan – All America Insurance Company's parent company, Central Mutual Insurance Company, sponsors a non-contributory defined benefit pension plan covering substantially all of its employees as well as a separate post-retirement medical plan. The details of these plans are fully disclosed within Central Mutual's financial statements.

Non-Qualified Pension Plan – All America Insurance Company does share in a non-qualified pension plan to pay benefits to certain employees whose pension benefits under the qualified plan are limited by Sections 415 and 401(a)(17) of the Internal Revenue Code. The non-qualified plan is unfunded and will pay the difference of (1) the benefit determined by the qualified plan formula with no IRC limits applied less (2) the benefit determined by the qualified plan formula after the IRC limits are applied. All America's share of this liability as of December 31, 2018 is \$1,870,978.

- B. All America Insurance Company's parent company, Central Mutual Insurance Company, sponsors a non-contributory defined benefit pension plan covering substantially all of its employees as well as a separate post-retirement medical plan. The details of these plans are fully disclosed within Central Mutual's financial statements.
- C. All America Insurance Company's parent company, Central Mutual Insurance Company, sponsors a non-contributory defined benefit pension plan covering substantially all of its employees as well as a separate post-retirement medical plan. The details of these plans are fully disclosed within Central Mutual's financial statements.
- D. All America Insurance Company's parent company, Central Mutual Insurance Company, sponsors a non-contributory defined benefit pension plan covering substantially all of its employees as well as a separate post-retirement medical plan. The details of these plans are fully disclosed within Central Mutual's financial statements.

E. Defined Contribution Plan

- (1) Qualified Defined-Contribution Plan – All America Insurance Company has a qualified Savings and Profit Sharing Plan (SPP) for which substantially all employees are eligible. Up to 5% of each employee's savings is matched at 20% by contributions by the company each year. Additionally, 5% of the combined insurance companies' net income before federal income taxes is contributed to the plan each year. All America Insurance Company's contribution for the plan was \$0.76 million for 2018 and \$0.49 million for 2017, respectively. At December 31, 2018, the fair value of plan assets was \$142.8 million.
- (2) Non-Qualified Defined-Contribution Plan – All America Insurance Company also has a non-qualified Savings and Profit Participation Equalization Plan (Plan), which coordinates with the benefits available under the Central Employees' Savings and Profit Participation Plan (SPP), to provide a supplemental savings program for key executive employees who are limited by Sections 401(a)(17), 415, and 402(g) of the Internal Revenue Code. The non-qualified Plan is unfunded and a participant is eligible to defer compensation under the non-qualified Plan only if he has made the maximum elective contributions which are permitted under the qualified SPP Plan. All America's share of this liability as of December 31, 2018 is \$937,949.

F. Multiemployer Plans - NONE

G. Consolidated / Holding Company Plans – All America participates in Central Mutual Insurance Company's (its parent company) defined benefit, defined contribution, and various other employee benefit plans.

H. Postemployment Benefits and Compensated Absences – The company participates in Central Mutual Insurance Company's (its parent company) postemployment health care benefit plan.

I. Impact of Medicare Modernization Act on Postretirement Benefits (INT 04-17) – NOT APPLICABLE

13. Capital and Surplus, Dividend Restrictions and Quasi-Reorganizations

- (1) All America Insurance Company has 15,000 shares authorized, issued and outstanding.
- (2) All America Insurance Company has no preferred stock outstanding.
- (3) All America Insurance Company has no restrictions on dividends paid to shareholders.
- (4) No ordinary or extraordinary dividends were paid.
- (5) All America Insurance Company has no restrictions placed on the portion of the Company's profits that may be paid as ordinary dividends to stockholders.
- (6) There are no restrictions placed on All America Insurance Company's surplus.
- (7) There are no advances on surplus.
- (8) There is no stock of affiliated companies held for special purposes.
- (9) There are no balances held in special surplus funds.
- (10) The portion of unassigned funds (surplus) represented or reduced by each item below is as follows:

Notes to Financial Statements

- (a) Unrealized gains and losses: \$ 14,334,972
- (b) Non-admitted asset values \$ 350,491
- (c) Provision for reinsurance \$ 0
- (11) No surplus debentures or similar obligations exist.
- (12) & (13) No quasi-reorganization has taken place.

14. Contingencies

- A. Contingent Commitments - NONE
- B. Assessments - It is expected that various insolvencies will result in guaranty fund assessments against the company of \$28,606 and have been charged to operations in 2018. A decrease in premium tax credits of \$10,895 was incurred in 2018 to offset premium taxes in multiple states over the next ten years. Various other smaller insolvency assessments are accrued for by the company.

There were no assessments from insolvencies of entities that wrote long-term care contracts.

- C. Gain Contingencies - NONE
- D. Claims related extra contractual obligation and bad faith losses stemming from lawsuits

The company paid the following amounts in the reporting period to settle claims related extra contractual obligations or bad faith claims stemming from lawsuits:

	Direct
Claims related ECO and bad faith losses paid during the reporting period	\$0.00

Number of claims where amounts were paid to settle claims related extra contractual obligations or bad faith claims resulting from lawsuits during the reporting period:

(a)	(b)	(c)	(d)	(e)
0-25 Claims	26-50 Claims	51-100 Claims	101-500 Claims	More than 500 Claims
X				

Indicate whether claim count information is disclosed per claim or per claimant:
(f) Per Claim [X] (g) Per Claimant []

- E. Product Warranties – THE COMPANY DOES NOT OFFER ANY PRODUCT WARRANTIES
- F. Joint and Several Liabilities – THE COMPANY DOES NOT HAVE ANY JOINT AND SEVERAL LIABILITY ARRANGEMENTS
- G. All Other Contingencies - NONE

15. Leases

- A. Lessee Operating Lease
 - (1) a. All America Insurance Company leases office space under various non-cancelable operating lease agreements that expire through December, 2019. All America Insurance company's share of this rental expense for 2018 and 2017 was approximately \$214,058 and \$174,442, respectively.
 - b. All America Insurance Company leases computer hardware and software under various non-cancelable operating lease agreements that expire through December, 2022. All America's share of this rental expense for 2018 and 2017, was approximately \$234,000 and \$153,000, respectively.
 - c. All America Insurance Company leases automobiles under various non-cancelable operating lease agreements that expire through December, 2019. All America's share of this rental expense for 2018 and 2017 was approximately \$ 63,440 and \$ 68,233, respectively.
- (2) a. At January 1, 2019, All America Insurance Company's share of the minimum aggregate rental commitments are as follows:

Year Ending December 31	Operating Leases
1. 2019	\$242,000
2. 2020	\$212,000
3. 2021	\$205,000
4. 2022	\$ 27,000
5. 2023	\$ 0
Total	\$686,000
- b. None of the property included above is subleased.

(3) All America Insurance Company is not involved in any material sales - leaseback transactions.

- B. (1) Lessor Leases - NONE
- (2) Leveraged Leases - NONE

16. Information about Financial Instruments with Concentration of Credit Risk

NONE

Notes to Financial Statements

17. Sale, Transfer and Servicing of Financial Assets and Extinguishments of Liabilities

- A. Transfers of Receivables Reported as Sales - NONE
- B. Transfer of Servicing of Financial Assets - NONE
- C. Wash Sales - NONE

18. Gain or Loss from Uninsured A&H Plans and Uninsured Portion of Partially Insured Plans

The Company does not offer A&H coverages or provide services as an ASO or ASC plan administrator.

19. Direct Premium Written / Produced by Managing General Agents / Third Party Administrators

All America Insurance Company does not write business through managing general agents or third party administrators.

20. Fair Value Measurements

- A. Assets and Liabilities Measured at Fair Value
 - 1. Fair Value Measurements at Reporting Date

DESCRIPTION		<u>LEVEL 1</u>	<u>LEVEL 2</u>	<u>LEVEL 3</u>	<u>TOTAL</u>
a. Assets at Fair Market Value					
Preferred Stock					
Industrial & Miscellaneous					
Parent, Subsidiaries					
Total Preferred Stock					
Bonds					
US Government		6,017,586			6,017,586
US States		2,464,211			2,464,211
US Political Subdivisions		48,686,934			48,686,934
US Special Revenue		69,538,835			69,538,835
Industrial & Miscellaneous		116,364,597			116,364,597
Parent, Subsidiaries					
Total Bonds		243,072,163			243,072,163
Common Stocks					
Industrial & Miscellaneous					-
Parent, Subsidiaries				70,404	70,404
Total Common Stocks				70,404	70,404
Derivative Assets					
Warrants					
Total Derivative Assets					
Total at Fair Market Value		243,072,163	-	70,404	243,142,567
b. Liabilities at Fair Market Value					
Derivative Liabilities		-			-
Total at Fair Market Value		-			-
LEVEL 1	Active markets/exchanges				
LEVEL 2	Quoted prices for similar assets in active markets				
LEVEL 3	Valued at book value of the entity as filed with the NAIC				

2. Fair value measurements categorized within Level 3:

	Balance at	Realized	Unrealized	Purchases,	Transfer	Balance at
	1/1/2018	Gain (Loss)	Gain (Loss)	Issuances, Sales	In (Out) Level 3	12/31/2018
Equity	169,060	(99,794)	1,344	(206)	-	70,404
Separate Account Assets	-	-	-	-	-	
Derivative Assets	-	-	-	-	-	
Derivative Liabilities	-	-	-	-	-	
Total	169,060	(99,794)	1,344	(206)	-	70,404

- B. NONE
- C. NONE
- D. NONE
- E. There are no investments measured in NAV to report.

21. Other Items

- A. Extraordinary Items - NONE
- B. Troubled Debt Restructuring: NONE

Notes to Financial Statements

- C. Other Disclosures
- 1. Assets in the amount of \$4,701,999 and \$5,387,911 at December 31, 2018 and 2017, respectively, were on deposit with government authorities or trustees as required by law. No assets were maintained as compensating balances or pledged as collateral for bank loans or other financing agreements.
 - 2. At December 31, 2018 and 2017, the company had admitted assets of \$36,040,917 and \$34,206,106, respectively, in accounts receivable amounts due from agents and insureds. All America Insurance Company routinely assesses the collectibility of these receivables. Based on All America's experience, less than 1% of the balance may become uncollectible and the potential loss is not material to All America's financial condition.
- D. Business Interruption Recoveries - NONE
- E. State Transferable Tax Credits – NONE
- F. Subprime Mortgage Related Risk Exposure
- 1. Exposures to subprime mortgage related risk in practice
 - a. Direct investments in subprime mortgage loans: NONE
 - b. Direct investments in securities with underlying subprime exposure, such as residential mortgage backed securities, commercial mortgage backed securities, collateralized debt obligations, structured securities (including principal protected notes), hedge funds, credit default swaps, and special investment vehicles: NONE
 - c. Equity investments in subsidiary, controlled or affiliated entities with significant subprime related risk exposure: NONE
 - d. Underwriting risk on policies issued for Mortgage Guaranty or Financial Guaranty insurance coverage: NONE
- G. Possible proceeds as an issuer, ceding insurer, or counterparty of insurance-linked securities - NONE

22. Events Subsequent

No subsequent events requiring disclosure occurred.

23. Reinsurance

- A. Unsecured Reinsurance Recoverables
- All America Insurance Company has the following unsecured reinsurance recoverables in excess of 3% of Policyholders' Surplus.

	NAIC #	FED ID#	Amount
Central Mutual Insurance Co.	20230	34-4202560	\$ 66,091,000

- B. Reinsurance Recoverable in Dispute
- Reinsurance recoverable on losses from any company in dispute do not exceed 5% of All America's Policyholders' Surplus.

- C. Reinsurance Assumed and Ceded
- (1) Maximum amount of return commission which would have been due reinsurers if they or All America had cancelled all of the Company's reinsurance or if All America or a receiver had cancelled all of the company's insurance assumed as of the end of the period covered by this Annual Statement with the return of the unearned premium reserve.

	Assumed Reinsurance		Ceded Reinsurance		Net	
	Premium Reserve	Commission Equity	Premium Reserve	Commission Equity	Premium Reserve	Commission Equity
a. Affiliates	\$ 60,968,375	\$ 10,009,373	\$ 23,039,841	\$ 3,742,286	\$ 37,928,534	\$ 6,267,087
b. All Other	0	0	1,566,568	579,017	(1,566,568)	(579,017)
c. Total	\$ 60,968,375	\$ 10,009,373	\$ 24,606,408	\$ 4,321,303	\$ 36,361,967	\$ 5,688,070

- d. Direct Unearned Premium Reserve: \$24,738,610

(2) Additional or return commission, predicated on loss experience or on any other form of profit sharing arrangements in this Annual Statement as a result of existing contractual arrangements are accrued as follows:

	REINSURANCE					
	Direct	Assumed	Ceded	Net		
a. Contingent Commissions	\$ 691,794	\$ 3,240,114	\$ 691,794	\$ 3,240,114		
b. Sliding Scale Adjustments	0	0	0	0		
c. Other Profit Commission Arrangements	0	4760	0	0		
d. TOTAL	\$ 691,794	\$ 3,240,114	\$ 691,794	\$ 3,240,114		

- D. Uncollectible Reinsurance - NONE
- E. Commutation of Ceded Reinsurance - NONE
- F. Retroactive Reinsurance - No retroactive reinsurance contracts exist.
- G. Reinsurance Accounted for as a Deposit – NONE
- H. Transfer of Property and Casualty Run-off Agreements – NONE
- I. Certified Reinsurer Rating Downgraded or Status Subject to Revocation - NONE
- J. Reinsurance Agreements Qualifying for Reinsurer Aggregation - NONE

24. Retrospectively Rated Contracts & Contracts Subject to Redetermination

- A.-E. All America Insurance Company does not issue policies that are retrospectively rated or subject to redetermination.
- F. Risk Sharing Provisions of the Affordable Care Act (ACA) – N/A
- All America Insurance Company does not write accident and health insurance premium.

Notes to Financial Statements

25. Change to Incurred Losses and Loss Adjustment Expenses

Reserves for incurred losses and loss adjustment expenses attributable to insured events of prior years has increased by \$1.2 million from \$68.8 million in 2017 to \$70.0 million (\$44.1 million in total net losses and expenses unpaid and \$25.9 million in total net losses and expenses paid) in 2018. To provide further detail, losses & defense and medical cost containment expenses increased by \$2.2 million from \$60.4 million in 2017 to \$62.6 million (\$38.5 million in total net losses and defense & medical cost containment expenses unpaid and \$24.1 million in total net losses & defense and medical cost containment expenses paid) in 2018. Adjusting and other expenses decreased by \$0.9 million from \$8.3 million in 2017 to \$7.4 million (\$5.6 million in total net adjusting and other expenses unpaid and \$1.8 million in total net adjusting and other expenses paid) in 2018. Included in this change, All America Insurance Company experienced \$0.0 million of unfavorable (favorable) prior year loss development on retrospectively rated policies. Thus, there was no impact to surplus as a result.

There were no changes in the methodologies and assumptions used in calculating the liability for unpaid losses and loss adjusting expenses for the most recent reporting period.

26. Intercompany Pooling Arrangements

An intercompany pooling agreement exists between the following companies to share in premiums, losses, expenses and accounts receivable balances according to the percentages shown:

Lead Company:	Central Mutual Insurance Company	20230	84%
Affiliate:	All America Insurance Company	20222	16%

All lines of business are pooled. Each company can make facultative cessions to non-affiliated reinsurers prior to pooling. All treaty cessions are processed through the lead company after cessions are made from the affiliate. Both companies though, have contract rights under all non-affiliated treaty reinsurance contracts.

27. Structured Settlements

All America Insurance Company has purchased several annuities on which claimants are payees in settlement of claims under the company's policies. The company has obtained releases from the respective claimants acknowledging that receipt of the structured settlement under each annuity is full payment of the claim. All America has no contingent liability for these annuities since ownership has been transferred to another insurance company.

28. Health Care Receivables - NONE

29. Participating Policies - NONE

30. Premium Deficiency Reserves –

1. Liability carried for premium deficiency reserves	\$0.00
2. Date of the most recent evaluation of this liability	12/31/2018
3. Was anticipated investment income utilized in the calculation?	Yes

31. High Deductibles

All America Insurance Company does not issue policies subject to high deductibles on claims.

32. Discounting of Liabilities for Unpaid Losses or Unpaid Loss Adjustment Expenses

All America Insurance Company does not discount the liabilities for unpaid losses or unpaid loss adjustment expenses.

33. Asbestos / Environmental Reserves

A. & D. Does All America Insurance Company have on the books, or has it ever written an insured for which it has been identified as having a potential for the existence of, a liability due to asbestos losses?
Yes(X) No()

Does All America Insurance Company have on the books, or has it ever written an insured for which it has been identified as having a potential for the existence of, a liability due to environmental losses?
Yes(X) No()

All America's exposure arises primarily from the sale of general liability insurance, including the general liability portion of commercial package policies. However, smaller exposure also exists for these lines of insurance: workers' compensation, homeowners, and commercial property.

All America tries to estimate the full impact of the environmental and asbestos exposure by establishing full case basis reserves on all known losses and computing incurred but not reported loss reserves and allocated loss adjustment reserves based on previous experience.

The previous experience is combined with the other Company experience and analyzed in a combined manner as part of the regular loss reserve analysis.

All America's systems do not separate environmental and asbestos-related claims. Therefore, only combined environmental and asbestos-related loss data is available for presentation. Environmental claims represent the majority of the exposure included in the following numbers.

All America's environmental and asbestos-related losses (including coverage dispute costs) for each of the five most recent calendar years were as follows:

(1) Gross of Reinsurance Basis:

Notes to Financial Statements

	2014	2015	2016	2017	2018
a. Beginning reserves:	\$ 2,415,007	\$ 1,596,108	\$ 1,352,360	\$ 1,268,390	\$ 1,138,290
b. Incurred losses and loss adjustment expense:	-604,189	-148,362	104,514	-72,642	47,600
c. Calendar year payments for losses and loss adjustment expenses:	214,710	95,386	188,484	57,458	110,587
d. Ending reserves:	1,596,108	1,352,360	1,268,390	1,138,290	1,075,303

(2) Net of Reinsurance Basis:

	2014	2015	2016	2017	2018
a. Beginning reserves:	\$ 2,166,545	\$ 1,492,239	\$ 1,258,014	\$ 1,007,802	\$ 953,637
b. Incurred losses and loss adjustment expense:	-459,644	-138,840	-61,680	3,292	122,507
c. Calendar year payments for losses and loss adjustment expenses:	214,662	95,386	188,532	57,548	110,587
d. Ending reserves:	1,492,239	1,258,014	1,007,802	953,546	965,557

B. & E. The amount of ending reserves for Bulk + IBNR included in A & D (Loss & LAE) is:

1. Gross of Reinsurance Basis:

\$ 615,103
2. Net of Reinsurance Basis

\$ 505,357

C. & F. The amount of ending reserves for loss adjustment expenses included in A & D (Case, Bulk + IBNR):

1. Gross of Reinsurance Basis:

\$ 289,406
2. Net of Reinsurance Basis

\$ 223,187

34. Subscriber Savings Accounts - NONE

35. Multiple Peril Crop Insurance – NONE

36. Financial Guaranty Insurance – All America does not write Financial Guaranty insurance.

GENERAL INTERROGATORIES
PART 1 - COMMON INTERROGATORIES
GENERAL

- 1.1 Is the reporting entity a member of an Insurance Holding Company System consisting of two or more affiliated persons, one or more of which is an insurer?
If yes, complete Schedule Y, Parts 1, 1A and 2.

Yes[X] No[]
- 1.2 If yes, did the reporting entity register and file with its domiciliary State Insurance Commissioner, Director or Superintendent or with such regulatory official of the state of domicile of the principal insurer in the Holding Company System, a registration statement providing disclosure substantially similar to the standards adopted by the National Association of Insurance Commissioners (NAIC) in its Model Insurance Holding Company System Regulatory Act and model regulations pertaining thereto, or is the reporting entity subject to standards and disclosure requirements substantially similar to those required by such Act and regulations?

Yes[X] No[] N/A[]
OHIO
- 1.3 State Regulating?

Yes[] No[X]
- 1.4 Is the reporting entity publicly traded or a member of a publicly traded group?

Yes[] No[X]
- 1.5 If the response to 1.4 is yes, provide the CIK (Central Index Key) code issued by the SEC for the entity/group.
- 2.1 Has any change been made during the year of this statement in the charter, by-laws, articles of incorporation, or deed of settlement of the reporting entity?

Yes[] No[X]
- 2.2 If yes, date of change:
- 3.1 State as of what date the latest financial examination of the reporting entity was made or is being made.

12/31/2016
- 3.2 State the as of date that the latest financial examination report became available from either the state of domicile or the reporting entity. This date should be the date of the examined balance sheet and not the date the report was completed or released.

12/31/2016
- 3.3 State as of what date the latest financial examination report became available to other states or the public from either the state of domicile or the reporting entity. This is the release date or completion date of the examination report and not the date of the examination (balance sheet date).

04/18/2018
- 3.4 By what department or departments?
OHIO DEPARTMENT OF INSURANCE
- 3.5 Have all financial statement adjustments within the latest financial examination report been accounted for in a subsequent financial statement filed with departments?

Yes[] No[] N/A[X]
- 3.6 Have all of the recommendations within the latest financial examination report been complied with?

Yes[] No[] N/A[X]
- 4.1 During the period covered by this statement, did any agent, broker, sales representative, non-affiliated sales/service organization or any combination thereof under common control (other than salaried employees of the reporting entity) receive credit or commissions for or control a substantial part (more than 20 percent of any major line of business measured on direct premiums) of:
- 4.11 sales of new business?

Yes[] No[X]
- 4.12 renewals?

Yes[] No[X]
- 4.2 During the period covered by this statement, did any sales/service organization owned in whole or in part by the reporting entity or an affiliate, receive credit or commissions for or control a substantial part (more than 20 percent of any major line of business measured on direct premiums) of:
- 4.21 sales of new business?

Yes[] No[X]
- 4.22 renewals?

Yes[] No[X]
- 5.1 Has the reporting entity been a party to a merger or consolidation during the period covered by this statement?
If yes, complete and file the merger history data file with the NAIC.

Yes[] No[X]
- 5.2 If yes, provide the name of the entity, NAIC company code, and state of domicile (use two letter state abbreviation) for any entity that has ceased to exist as a result of the merger or consolidation.

1 Name of Entity	2 NAIC Company Code	3 State of Domicile

- 6.1 Has the reporting entity had any Certificates of Authority, licenses or registrations (including corporate registration, if applicable) suspended or revoked by any governmental entity during the reporting period?

Yes[] No[X]
- 6.2 If yes, give full information:
- 7.1 Does any foreign (non-United States) person or entity directly or indirectly control 10% or more of the reporting entity?

Yes[] No[X]
- 7.2 If yes,
- 7.21 State the percentage of foreign control

0.000%
- 7.22 State the nationality(s) of the foreign person(s) or entity(s); or if the entity is a mutual or reciprocal, the nationality of its manager or attorney-in-fact and identify the type of entity(s) (e.g., individual, corporation, government, manager or attorney-in-fact).

1 Nationality	2 Type of Entity

- 8.1 Is the company a subsidiary of a bank holding company regulated by the Federal Reserve Board?

Yes[] No[X]
- 8.2 If response to 8.1 is yes, please identify the name of the bank holding company.
- 8.3 Is the company affiliated with one or more banks, thrifts or securities firms?

Yes[] No[X]
- 8.4 If response to 8.3 is yes, please provide the names and locations (city and state of the main office) of any affiliates regulated by a federal financial regulatory services agency [i.e. the Federal Reserve Board (FRB), the Office of the Comptroller of the Currency (OCC), the Federal Deposit Insurance Corporation (FDIC) and the Securities Exchange Commission (SEC) and identify the affiliate's primary federal regulator.

1 Affiliate Name	2 Location (City, State)	3 FRB	4 OCC	5 FDIC	6 SEC
		No	No	No	No

9. What is the name and address of the independent certified public accountant or accounting firm retained to conduct the annual audit?
PLANTE & MORAN, PLLC 2601 CAMBRIDGE COURT, SUITE 500 AUBURN HILLS, MI 48326-2572
- 10.1 Has the insurer been granted any exemptions to the prohibited non-audit services provided by the certified independent public accountant requirements as allowed in Section 7H of the Annual Financial Reporting Model Regulation (Model Audit Rule), or substantially similar state law or regulation?

Yes[] No[X]
- 10.2 If response to 10.1 is yes, provide information related to this exemption:
- 10.3 Has the insurer been granted any exemptions related to the other requirements of the Annual Financial Reporting Model Regulation as allowed for in Section 18A of the Model Regulation, or substantially similar state law or regulation?

Yes[] No[X]
- 10.4 If response to 10.3 is yes, provide information related to this exemption:
- 10.5 Has the reporting entity established an Audit Committee in compliance with the domiciliary state insurance laws?

Yes[X] No[] N/A[]
- 10.6 If the response to 10.5 is no or n/a please explain:
11. What is the name, address and affiliation (officer/employee of the reporting entity or actuary/consultant associated with an actuarial consulting firm) of the individual providing the statement of actuarial opinion/certification?
T. CHAD GLENN, FCAS, MAAA, CHIEF ACTUARY All America Insurance Company Van Wert, OH 45891

GENERAL INTERROGATORIES (Continued)

- 12.1 Does the reporting entity own any securities of a real estate holding company or otherwise hold real estate indirectly?

Yes[X] No[]
- 12.11 Name of real estate holding company
VEREIT OPERATING PARTNERSHIP, HCP INC, SIMON PROPERTY
- 12.12 Number of parcels involved

3
- 12.13 Total book/adjusted carrying value

\$ 1,801,979
- 12.2 If yes, provide explanation
REITS ARE HELD AS INCOME PRODUCING BOND INVESTMENTS
13. FOR UNITED STATES BRANCHES OF ALIEN REPORTING ENTITIES ONLY:
- 13.1 What changes have been made during the year in the United States manager or the United States trustees of the reporting entity?
- 13.2 Does this statement contain all business transacted for the reporting entity through its United States Branch on risks wherever located?

Yes[] No[] N/A[X]
- 13.3 Have there been any changes made to any of the trust indentures during the year?

Yes[] No[] N/A[X]
- 13.4 If answer to (13.3) is yes, has the domiciliary or entry state approved the changes?

Yes[] No[] N/A[X]
- 14.1 Are the senior officers (principal executive officer, principal financial officer, principal accounting officer or controller, or persons performing similar functions) of the reporting entity subject to a code of ethics, which includes the following standards?

Yes[X] No[]
- a. Honest and ethical conduct, including the ethical handling of actual or apparent conflicts of interest between personal and professional relationships;
- b. Full, fair, accurate, timely and understandable disclosure in the periodic reports required to be filed by the reporting entity;
- c. Compliance with applicable governmental laws, rules and regulations;
- d. The prompt internal reporting of violations to an appropriate person or persons identified in the code; and
- e. Accountability for adherence to the code.
- 14.11 If the response to 14.1 is no, please explain:
- 14.2 Has the code of ethics for senior managers been amended?

Yes[] No[X]
- 14.21 If the response to 14.2 is yes, provide information related to amendment(s).
- 14.3 Have any provisions of the code of ethics been waived for any of the specified officers?

Yes[] No[X]
- 14.31 If the response to 14.3 is yes, provide the nature of any waiver(s).
- 15.1 Is the reporting entity the beneficiary of a Letter of Credit that is unrelated to reinsurance where the issuing or confirming bank is not on the SVO Bank List?

Yes[] No[X]
- 15.2 If the response to 15.1 is yes, indicate the American Bankers Association (ABA) Routing Number and the name of the issuing or confirming bank of the Letter of Credit and describe the circumstances in which the Letter of Credit is triggered.

1	2	3	4
American Bankers Association (ABA) Routing Number	Issuing or Confirming Bank Name	Circumstances That Can Trigger the Letter of Credit	Amount

BOARD OF DIRECTORS

16. Is the purchase or sale of all investments of the reporting entity passed upon either by the Board of Directors or a subordinate committee thereof?

Yes[X] No[]
17. Does the reporting entity keep a complete permanent record of the proceedings of its Board of Directors and all subordinate committees thereof?

Yes[X] No[]
18. Has the reporting entity an established procedure for disclosure to its board of directors or trustees of any material interest or affiliation on the part of any of its officers, directors, trustees or responsible employees that is in conflict or is likely to conflict with the official duties of such person?

Yes[X] No[]

FINANCIAL

19. Has this statement been prepared using a basis of accounting other than Statutory Accounting Principles (e.g., Generally Accepted Accounting Principles)?

Yes[] No[X]
- 20.1 Total amount loaned during the year (inclusive of Separate Accounts, exclusive of policy loans):
- 20.11 To directors or other officers

\$ 0
- 20.12 To stockholders not officers

\$ 0
- 20.13 Trustees, supreme or grand (Fraternal only)

\$ 0
- 20.2 Total amount of loans outstanding at end of year (inclusive of Separate Accounts, exclusive of policy loans):
- 20.21 To directors or other officers

\$ 0
- 20.22 To stockholders not officers

\$ 0
- 20.23 Trustees, supreme or grand (Fraternal only)

\$ 0
- 21.1 Were any assets reported in this statement subject to a contractual obligation to transfer to another party without the liability for such obligation being reported in the statement?

Yes[] No[X]
- 21.2 If yes, state the amount thereof at December 31 of the current year:
- 21.21 Rented from others

\$ 0
- 21.22 Borrowed from others

\$ 0
- 21.23 Leased from others

\$ 0
- 21.24 Other

\$ 0
- 22.1 Does this statement include payments for assessments as described in the Annual Statement Instructions other than guaranty fund or guaranty association assessments?

Yes[] No[X]
- 22.2 If answer is yes:
- 22.21 Amount paid as losses or risk adjustment

\$ 0
- 22.22 Amount paid as expenses

\$ 0
- 22.23 Other amounts paid

\$ 0
- 23.1 Does the reporting entity report any amounts due from parent, subsidiaries or affiliates on Page 2 of this statement?

Yes[] No[X]
- 23.2 If yes, indicate any amounts receivable from parent included in the Page 2 amount:

\$ 0

INVESTMENT

- 24.01 Were all the stocks, bonds and other securities owned December 31 of current year, over which the reporting entity has exclusive control, in the actual possession of the reporting entity on said date? (other than securities lending programs addressed in 24.03)

Yes[X] No[]
- 24.02 If no, give full and complete information, relating thereto
- 24.03 For security lending programs, provide a description of the program including value for collateral and amount of loaned securities, and whether collateral is carried on or off-balance sheet. (an alternative is to reference Note 17 where this information is also provided)
- 24.04 Does the Company's security lending program meet the requirements for a conforming program as outlined in the Risk-Based Capital Instructions?

Yes[] No[] N/A[X]
- 24.05 If answer to 24.04 is yes, report amount of collateral for conforming programs.

\$ 0
- 24.06 If answer to 24.04 is no, report amount of collateral for other programs.

\$ 0
- 24.07 Does your securities lending program require 102% (domestic securities) and 105% (foreign securities) from the counterparty at the outset of the contract?

Yes[] No[] N/A[X]
- 24.08 Does the reporting entity non-admit when the collateral received from the counterparty falls below 100%?

Yes[] No[] N/A[X]

GENERAL INTERROGATORIES (Continued)

24.09 Does the reporting entity or the reporting entity's securities lending agent utilize the Master Securities Lending Agreement (MSLA) to conduct securities lending?

24.10 For the reporting entity's security lending program, state the amount of the following as of December 31 of the current year:

24.101 Total fair value of reinvested collateral assets reported on Schedule DL, Parts 1 and 2.

\$ 0

24.102 Total book/adjusted carrying value of reinvested collateral assets reported on Schedule DL, Parts 1 and 2.

\$ 0

24.103 Total payable for securities lending reported on the liability page.

\$ 0

Yes[] No[] N/A[X]

25.1 Were any of the stocks, bonds or other assets of the reporting entity owned at December 31 of the current year not exclusively under the control of the reporting entity, or has the reporting entity sold or transferred any assets subject to a put option contract that is currently in force? (Exclude securities subject to Interrogatory 21.1 and 24.03).

25.2 If yes, state the amount thereof at December 31 of the current year:

25.21 Subject to repurchase agreements

\$ 0

25.22 Subject to reverse repurchase agreements

\$ 0

25.23 Subject to dollar repurchase agreements

\$ 0

25.24 Subject to reverse dollar repurchase agreements

\$ 0

25.25 Placed under option agreements

\$ 0

25.26 Letter stock or securities restricted as to sale - excluding FHLB Capital Stock

\$ 0

25.27 FHLB Capital Stock

\$ 0

25.28 On deposit with states

\$ 4,702,001

25.29 On deposit with other regulatory bodies

\$ 0

25.30 Pledged as collateral - excluding collateral pledged to an FHLB

\$ 0

25.31 Pledged as collateral to FHLB - including assets backing funding agreements

\$ 0

25.32 Other

\$ 0

Yes[X] No[]

25.3 For category (25.26) provide the following:

1	2	3
Nature of Restriction	Description	Amount
.....

26.1 Does the reporting entity have any hedging transactions reported on Schedule DB?

26.2 If yes, has a comprehensive description of the hedging program been made available to the domiciliary state?

If no, attach a description with this statement.

27.1 Were any preferred stocks or bonds owned as of December 31 of the current year mandatorily convertible into equity, or, at the option of the issuer, convertible into equity?

27.2 If yes, state the amount thereof at December 31 of the current year.

\$ 0

Yes[] No[X]

Yes[] No[] N/A[X]

Yes[] No[X]

28. Excluding items in Schedule E - Part 3 - Special Deposits, real estate, mortgage loans and investments held physically in the reporting entity's offices, vaults or safety deposit boxes, were all stocks, bonds and other securities, owned throughout the current year held pursuant to a custodial agreement with a qualified bank or trust company in accordance with Section I, III - General Examination Considerations, F. Outsourcing of Critical Functions, Custodial or Safekeeping Agreements of the NAIC Financial Condition Examiners Handbook?

28.01 For agreements that comply with the requirements of the NAIC Financial Condition Examiners Handbook, complete the following:

Yes[X] No[]

1	2
Name of Custodian(s)	Custodian's Address
JP MORGAN CHASE BANK	4 CHASE METROTECH CENTER FLOOR 6, BROOKLYN, NY 11245

28.02 For all agreements that do not comply with the requirements of the NAIC Financial Condition Examiners Handbook, provide the name, location and a complete explanation:

1	2	3
Name(s)	Location(s)	Complete Explanation(s)
.....

28.03 Have there been any changes, including name changes, in the custodian(s) identified in 28.01 during the current year?

28.04 If yes, give full and complete information relating thereto:

Yes[] No[X]

1	2	3	4
Old Custodian	New Custodian	Date of Change	Reason
.....

28.05 Investment management - Identify all investment advisors, investment managers, broker/dealers, including individuals that have the authority to make investment decisions on behalf of the reporting entity. For assets that are managed internally by employees of the reporting entity, note as such. [" that have access to the investment accounts"; " handle securities"]

1	2
Name of Firm or Individual	Affiliation
GOLDMAN SACHS ASSET MANAGEMENT, LP U
BLACKROCK FINANCIAL MANAGEMENT, INC. U

28.0597 For those firms/individuals listed in the table for Question 28.05, do any firms/individuals unaffiliated with the reporting entity (i.e. designated with a "U") manage more than 10% of the reporting entity's assets?

28.0598 For firms/individuals unaffiliated with the reporting entity (i.e. designated with a "U") listed in the table for Question 28.05, does the total assets under management aggregate to more than 50% of the reporting entity's assets?

28.06 For those firms or individuals listed in the table for 28.05 with an affiliation code of "A" (affiliated) or "U" (unaffiliated), provide the information for the table below.

Yes[X] No[]

Yes[X] No[]

GENERAL INTERROGATORIES (Continued)

1 Central Registration Depository Number	2 Name of Firm or Individual	3 Legal Entity Identifier (LEI)	4 Registered With	5 Investment Management Agreement (IMA) Filed
107738	GOLDMAN SACHS ASSET MANAGEMENT, LP	CF5M58QA35CFPUX70H17 ...	SEC	NO
107105	BLACKROCK FINANCIAL MANAGEMENT, INC.	549300LVXYIVJKE13M84	SEC	NO

29.1 Does the reporting entity have any diversified mutual funds reported in Schedule D - Part 2 (diversified according to the Securities and Exchange Commission (SEC) in the Investment Company Act of 1940 [Section 5 (b)(1)])?

Yes[] No[X]

29.2 If yes, complete the following schedule:

1 CUSIP #	2 Name of Mutual Fund	3 Book/Adjusted Carrying Value
29.2999 Total

29.3 For each mutual fund listed in the table above, complete the following schedule:

1 Name of Mutual Fund (from above table)	2 Name of Significant Holding of the Mutual Fund	3 Amount of Mutual Fund's Book/Adjusted Carrying Value Attributable to the Holding	4 Date of Valuation
.....

30. Provide the following information for all short-term and long-term bonds and all preferred stocks. Do not substitute amortized value or statement value for fair value.

	1 Statement (Admitted) Value	2 Fair Value	3 Excess of Statement over Fair Value (-), or Fair Value over Statement (+)
30.1 Bonds 243,253,663 243,072,163 (181,500)
30.2 Preferred stocks
30.3 Totals 243,253,663 243,072,163 (181,500)

30.4 Describe the sources or methods utilized in determining the fair values:

ALL BONDS ARE PRICED INDEPENDENTLY THROUGH INTERACTIVE DATA CORP

31.1 Was the rate used to calculate fair value determined by a broker or custodian for any of the securities in Schedule D?

Yes[X] No[]

31.2 If the answer to 31.1 is yes, does the reporting entity have a copy of the broker's or custodian's pricing policy (hard copy or electronic copy) for all brokers or custodians used as a pricing source?

Yes[X] No[] N/A[]

31.3 If the answer to 31.2 is no, describe the reporting entity's process for determining a reliable pricing source for purposes of disclosure of fair value for Schedule D:

32.1 Have all the filing requirements of the Purposes and Procedures Manual of the NAIC Investment Analysis Office been followed?

Yes[X] No[]

32.2 If no, list exceptions:

33. By self-designation 5GI securities, the reporting entity is certifying the following elements for each self-designated 5GI security:

a. Documentation necessary to permit a full credit analysis of the security does not exist or an NAIC CRP credit rating for an FE or PL security is not available.

b. Issuer or obligor is current on all contracted interest and principal payments.

c. The insurer has an actual expectation of ultimate payment of all contracted interest and principal.

Has the reporting-entity self-designated 5GI securities?

Yes[] No[X]

34. By self-designating PLGI securities, the reporting entity is certifying the following elements of each self-designated PLGI security:

a. The security was purchased prior to January 1, 2018.

b. The reporting entity is holding capital commensurate with the NAIC Designation reported for the security

c. The NAIC Designation was derived from the credit rating assigned by an NAIC CRP in its legal capacity as an NRSRO which is shown on a current private letter rating held by the insurer and available for examination by state insurance regulators.

d. The reporting entity is not permitted to share this credit rating of the PL security with the SVO.

Has the reporting entity self-designated PLGI securities?

Yes[] No[X]

OTHER

35.1 Amount of payments to Trade Associations, Service Organizations and Statistical or Rating Bureaus, if any?

\$ 588,997

35.2 List the name of the organization and the amount paid if any such payment represented 25% or more of the total payments to Trade Associations, Service Organizations and Statistical or Rating Bureaus during the period covered by this statement.

1 Name	2 Amount Paid
INSURANCE SERVICE OFFICE (ISO) 508,446

36.1 Amount of payments for legal expenses, if any?

\$ 32,878

36.2 List the name of the firm and the amount paid if any such payments represented 25% or more of the total payments for legal expenses during the period covered by this statement.

GENERAL INTERROGATORIES (Continued)

1 Name	2 Amount Paid
.....

37.1 Amount of payments for expenditures in connection with matters before legislative bodies, officers or department of government, if any?

\$..... 54,061

37.2 List the name of firm and the amount paid if any such payment represented 25% or more of the total payment expenditures in connection with matters before legislative bodies, officers or departments of government during the period covered by this statement.

1 Name	2 Amount Paid
AMERICAN PROPERTY CASUALTY INSURERS ASSOCIATION 14,182

GENERAL INTERROGATORIES (Continued)

PART 2 - PROPERTY & CASUALTY INTERROGATORIES

1.1 Does the reporting entity have any direct Medicare Supplement Insurance in force?

Yes[] No[X]

1.2 If yes, indicate premium earned on U.S. business only.

\$ 0

1.3 What portion of Item (1.2) is not reported on the Medicare Supplement Insurance Experience Exhibit?

\$ 0

1.31 Reason for excluding:

1.4 Indicate amount of earned premium attributable to Canadian and/or Other Alien not included in Item (1.2) above.

\$ 0

1.5 Indicate total incurred claims on all Medicare Supplement insurance.

\$ 0

1.6 Individual policies

Most current three years:

1.61 Total premium earned

\$ 0

1.62 Total incurred claims

\$ 0

1.63 Number of covered lives

..... 0

All years prior to most current three years:

1.64 Total premium earned

\$ 0

1.65 Total incurred claims

\$ 0

1.66 Number of covered lives

..... 0

1.7 Group policies

Most current three years:

1.71 Total premium earned

\$ 0

1.72 Total incurred claims

\$ 0

1.73 Number of covered lives

..... 0

All years prior to most current three years:

1.74 Total premium earned

\$ 0

1.75 Total incurred claims

\$ 0

1.76 Number of covered lives

..... 0

2. Health Test

		1	2
		Current Year	Prior Year
2.1	Premium Numerator
2.2	Premium Denominator 109,431,646 101,968,041
2.3	Premium Ratio (2.1 / 2.2)
2.4	Reserve Numerator
2.5	Reserve Denominator 138,068,944 126,415,793
2.6	Reserve Ratio (2.4 / 2.5)

3.1 Does the reporting entity issue both participating and non-participating policies?

Yes[] No[X]

3.2 If yes, state the amount of calendar year premiums written on:

3.21 Participating policies

\$ 0

3.22 Non-participating policies

\$ 0

4. For Mutual reporting entities and Reciprocal Exchanges only:

4.1 Does the reporting entity issue assessable policies?

Yes[] No[X] N/A[]

4.2 Does the reporting entity issue non-assessable policies?

Yes[X] No[] N/A[]

4.3 If assessable policies are issued, what is the extent of the contingent liability of the policyholders?

..... 0.000%

4.4 Total amount of assessments paid or ordered to be paid during the year on deposit notes or contingent premiums.

\$ 0

5. For Reciprocal Exchanges Only:

5.1 Does the exchange appoint local agents?

Yes[] No[] N/A[X]

5.2 If yes, is the commission paid:

5.21 Out of Attorney's-in-fact compensation

Yes[] No[] N/A[X]

5.22 As a direct expense of the exchange

Yes[] No[] N/A[X]

5.3 What expenses of the Exchange are not paid out of the compensation of the Attorney-in-fact?

5.4 Has any Attorney-in-fact compensation, contingent on fulfillment of certain conditions been deferred?

Yes[] No[] N/A[X]

5.5 If yes, give full information:

6.1 What provision has this reporting entity made to protect itself from an excessive loss in the event of a catastrophe under a workers' compensation contract issued without limit of loss:
THE COMPANY HAS A CASUALTY EXCESS REINSURANCE PROGRAM

6.2 Describe the method used to estimate this reporting entity's probable maximum insurance loss, and identify the type of insured exposures comprising that probable maximum loss, the locations of concentrations of those exposures and the external resources (such as consulting firms or computer software models), if any, used in the estimation process:
THE CATALYST CATASTROPHE RISK ANALYSIS AND IRAS HURRICANE MODELS ARE RUN ANNUALLY

6.3 What provision has this reporting entity made (such as a catastrophic reinsurance program) to protect itself from an excessive loss arising from the types and concentrations of insured exposures comprising its probable maximum property insurance loss:
THE COMPANY HAS PURCHASED CATASTROPHE REINSURANCE COVERAGE

6.4 Does the reporting entity carry catastrophic reinsurance protection for at least one reinstatement, in an amount sufficient to cover its estimated probable maximum loss attributable to a single loss event or occurrence?

Yes[X] No[]

6.5 If no, describe any arrangements or mechanisms employed by the reporting entity to supplement its catastrophe reinsurance program or to hedge its exposure to uninsured catastrophic loss

7.1 Has the reporting entity reinsured any risk with any other entity under a quota share reinsurance contract that includes a provision that would limit the reinsurer's losses below the stated quota share percentage (e.g., a deductible, a loss ratio corridor, a loss cap, an aggregate limit or any similar provisions)?

Yes[] No[X]

7.2 If yes, indicate the number of reinsurance contracts containing such provisions.

..... 0

7.3 If yes, does the amount of reinsurance credit taken reflect the reduction in quota share coverage caused by any applicable limiting provision(s)?

Yes[] No[] N/A[X]

8.1 Has this reporting entity reinsured any risk with any other entity and agreed to release such entity from liability, in whole or in part, from any loss that may occur on this risk, or portion thereof, reinsured?

Yes[] No[X]

8.2 If yes, give full information.

9.1 Has the reporting entity ceded any risk under any reinsurance contract (or under multiple contracts with the same reinsurer or its affiliates) for which during the period covered by the statement: (i) it recorded a positive or negative underwriting result greater than 5% of prior year-end surplus as regards policyholders or it reported calendar year written premium ceded or year-end loss and loss expense reserves ceded greater than 5% of prior year-end surplus as regards policyholders; (ii) it accounted for that contract as reinsurance and not as a deposit; and (iii) the contract(s) contain one or more of the following features or other features that would have similar results:
(a) A contract term longer than two years and the contract is noncancellable by the reporting entity during the contract term;
(b) A limited or conditional cancellation provision under which cancellation triggers an obligation by the reporting entity, or an affiliate of the reporting entity, to enter into a new reinsurance contract with the reinsurer, or an affiliate of the reinsurer;
(c) Aggregate stop loss reinsurance coverage;

GENERAL INTERROGATORIES (Continued)

(d) A unilateral right by either party (or both parties) to commute the reinsurance contract, whether conditional or not, except for such provisions which are only triggered by a decline in the credit status of the other party;

(e) A provision permitting reporting of losses, or payment of losses, less frequently than on a quarterly basis (unless there is no activity during the period); or

(f) Payment schedule, accumulating retentions from multiple years or any features inherently designed to delay timing of the reimbursement to the ceding entity.

Yes[] No[X]

9.2 Has the reporting entity during the period covered by the statement ceded any risk under any reinsurance contract (or under multiple contracts with the same reinsurer or its affiliates), for which, during the period covered by the statement, it recorded a positive or negative underwriting result greater than 5% of prior year-end surplus as regards policyholders or it reported calendar year written premium ceded or year-end loss and loss expense reserves ceded greater than 5% of prior year-end surplus as regards policyholders; excluding cessions to approved pooling arrangements or to captive insurance companies that are directly or indirectly controlling, controlled by, or under common control with (i) one or more unaffiliated policyholders of the reporting entity, or (ii) an association of which one or more unaffiliated policyholders of the reporting entity is a member where:
(a) The written premium ceded to the reinsurer by the reporting entity or its affiliates represents fifty percent (50%) or more of the entire direct and assumed premium written by the reinsurer based on its most recently available financial statement; or
(b) Twenty-five percent (25%) or more of the written premium ceded to the reinsurer has been retroceded back to the reporting entity or its affiliates in a separate reinsurance contract.

Yes[] No[X]

9.3 If yes to 9.1 or 9.2, please provide the following information in the Reinsurance Summary Supplemental Filing for General Interrogatory 9:
(a) The aggregate financial statement impact gross of all such ceded reinsurance contracts on the balance sheet and statement of income.
(b) A summary of the reinsurance contract terms and indicate whether it applies to the contracts meeting the criteria in 9.1 or 9.2; and
(c) A brief discussion of management's principle objectives in entering into the reinsurance contract including the economic purpose to be achieved.

9.4 Except for transactions meeting the requirements of paragraph 31 of SSAP No. 62R, Property and Casualty Reinsurance, has the reporting entity ceded any risk under any reinsurance contract (or multiple contracts with the same reinsurer or its affiliates) during the period covered by the financial statement, and either:
(a) Accounted for that contract as reinsurance (either prospective or retroactive) under statutory accounting principles ("SAP") and as a deposit under generally accepted accounting principles ("GAAP"); or
(b) Accounted for that contract as reinsurance under GAAP and as a deposit under SAP?

Yes[] No[X]

9.5 If yes to 9.4, explain in the Reinsurance Summary Supplemental Filing for General Interrogatory 9 (section D) why the contract(s) is treated differently for GAAP and SAP.

9.6 The reporting entity is exempt from the Reinsurance Attestation Supplement under one or more of the following criteria:
(a) The entity does not utilize reinsurance; or
(b) The entity only engages in a 100% quota share contract with an affiliate and the affiliated or lead company has filed an attestation supplement; or
(c) The entity has no external cessions and only participates in an intercompany pool and the affiliated or lead company has filed an attestation supplement.

Yes[] No[X]

Yes[] No[X]

Yes[] No[X]

10. If the reporting entity has assumed risks from another entity, there should be charged on account of such reinsurances a reserve equal to that which the original entity would have been required to charge had it retained the risks. Has this been done?

Yes[] No[] N/A[X]

11.1 Has the reporting entity guaranteed policies issued by any other entity and now in force?

Yes[] No[X]

11.2 If yes, give full information:

12.1 If the reporting entity recorded accrued retrospective premiums on insurance contracts on Line 15.3 of the asset schedule, Page 2, state the amount of corresponding liabilities recorded for:
12.11 Unpaid losses
12.12 Unpaid underwriting expenses (including loss adjustment expenses)

\$ 0
\$ 0
\$ 0

12.2 Of the amount on Line 15.3, Page 2, state the amount that is secured by letters of credit, collateral and other funds.

\$ 0

12.3 If the reporting entity underwrites commercial insurance risks, such as workers' compensation, are premium notes or promissory notes accepted from its insureds covering unpaid premiums and/or unpaid losses?

Yes[] No[X] N/A[]

12.4 If yes, provide the range of interest rates charged under such notes during the period covered by this statement:
12.41 From
12.42 To

..... 0.000%
..... 0.000%

12.5 Are letters of credit or collateral and other funds received from insureds being utilized by the reporting entity to secure premium notes or promissory notes taken by a reporting entity, or to secure any of the reporting entity's reported direct unpaid loss reserves, including unpaid losses under loss deductible features of commercial policies?

Yes[] No[X]

12.6 If yes, state the amount thereof at December 31 of current year:
12.61 Letters of Credit
12.62 Collateral and other funds

\$ 0
\$ 0

13.1 Largest net aggregate amount insured in any one risk (excluding workers' compensation):

\$ 1,500,000

13.2 Does any reinsurance contract considered in the calculation of this amount include an aggregate limit of recovery without also including a reinstatement provision?

Yes[] No[X]

13.3 State the number of reinsurance contracts (excluding individual facultative risk certificates, but including facultative programs, automatic facilities or facultative obligatory contracts) considered in the calculation of the amount.

..... 10

14.1 Is the company a cedant in a multiple cedant reinsurance contract?

Yes[] No[X]

14.2 If yes, please describe the method of allocating and recording reinsurance among the cedants

14.3 If the answer to 14.1 is yes, are the methods described in item 14.2 entirely contained in the respective multiple cedant reinsurance contracts?

Yes[] No[] N/A[X]

14.4 If the answer to 14.3 is no, are all the methods described in 14.2 entirely contained in written agreements?

Yes[] No[] N/A[X]

14.5 If the answer to 14.4 is no, please explain

15.1 Has the reporting entity guaranteed any financed premium accounts?

Yes[] No[X]

15.2 If yes, give full information:

16.1 Does the reporting entity write any warranty business?

Yes[] No[X]

If yes, disclose the following information for each of the following types of warranty coverage:

	1 Direct Losses Incurred	2 Direct Losses Unpaid	3 Direct Written Premium	4 Direct Premium Unearned	5 Direct Premium Earned
16.11 Home
16.12 Products
16.13 Automobile
16.14 Other *

* Disclose type of coverage:

17.1 Does the reporting entity include amounts recoverable on unauthorized reinsurance in Schedule F - Part 3 that is exempt from the statutory provision for unauthorized reinsurance?
Incurred but not reported losses on contracts in force prior to July 1, 1984 and not subsequently renewed are exempt from the statutory provision for unauthorized reinsurance. Provide the following information for this exemption.

Yes[] No[X]

17.11 Gross amount of unauthorized reinsurance in Schedule F - Part 3 exempt from the statutory provision for unauthorized reinsurance

\$ 0

17.12 Unfunded portion of Interrogatory 17.11

\$ 0

17.13 Paid losses and loss adjustment expenses portion of Interrogatory 17.11

\$ 0

17.14 Case reserves portion of Interrogatory 17.11

\$ 0

17.15 Incurred but not reported portion of Interrogatory 17.11

\$ 0

17.16 Unearned premium portion of Interrogatory 17.11

\$ 0

17.17 Contingent commission portion of Interrogatory 17.11

\$ 0

GENERAL INTERROGATORIES (Continued)

18.1	Do you act as a custodian for health savings accounts?	Yes[] No[X]	
18.2	If yes, please provide the amount of custodial funds held as of the reporting date:	\$.....	0
18.3	Do you act as an administrator for health savings accounts?	Yes[] No[X]	
18.4	If yes, please provide the balance of the funds administered as of the reporting date:	\$.....	0
19.	Is the reporting entity licensed or chartered, registered, qualified, eligible or writing business in at least two states?	Yes[X] No[]	
19.1	If no, does the reporting entity assume reinsurance business that covers risks residing in at least one state other than the state of domicile of the reporting entity?	Yes[] No[X]	

FIVE - YEAR HISTORICAL DATA

Show amounts in whole dollars only, no cents; show percentages to one decimal place, i.e., 17.6

	1 2018	2 2017	3 2016	4 2015	5 2014
Gross Premiums Written (Page 8, Part 1B, Columns 1, 2 & 3)					
1. Liability Lines (Lines 11.1, 11.2, 16, 17.1, 17.2, 17.3, 18.1, 18.2, 19.1, 19.2 & 19.3, 19.4)	58,137,850	52,292,907	47,503,291	44,881,106	42,022,277
2. Property Lines (Lines 1, 2, 9, 12, 21, & 26)	31,992,602	29,449,523	25,607,656	23,713,950	21,114,485
3. Property and Liability Combined Lines (Lines 3, 4, 5, 8, 22 & 27)	73,384,976	70,993,056	68,285,110	66,680,565	60,021,016
4. All Other Lines (Lines 6, 10, 13, 14, 15, 23, 24, 28, 29, 30 & 34)	2,828	3,766	3,136	5,041	14,312
5. Nonproportional Reinsurance Lines (Lines 31, 32, & 33)					
6. TOTAL (Line 35)	163,518,257	152,739,252	141,399,193	135,280,662	123,172,091
Net Premiums Written (Page 8, Part 1B, Column 6)					
7. Liability Lines (Lines 11.1, 11.2, 16, 17.1, 17.2, 17.3, 18.1, 18.2, 19.1, 19.2 & 19.3, 19.4)	41,462,018	37,034,394	33,084,303	30,737,344	28,033,766
8. Property Lines (Lines 1, 2, 9, 12, 21 & 26)	26,570,500	24,455,804	21,878,992	20,067,876	18,268,762
9. Property and Liability Combined Lines (Lines 3, 4, 5, 8, 22 & 27)	44,764,913	45,002,601	43,861,993	42,141,753	38,952,413
10. All Other Lines (Lines 6, 10, 13, 14, 15, 23, 24, 28, 29, 30 & 34)	2,824	3,617	2,994	4,138	6,102
11. Non-proportional Reinsurance Lines (Lines 31, 32 & 33)					
12. TOTAL (Line 35)	112,800,256	106,496,416	98,828,282	92,951,111	85,261,044
Statement of Income (Page 4)					
13. Net underwriting gain or (loss) (Line 8)	(5,260,572)	174,929	1,275,837	6,325,024	5,164,302
14. Net investment gain or (loss) (Line 11)	7,283,807	7,414,738	7,267,657	7,694,848	7,621,954
15. TOTAL other income (Line 15)	218,696	245,068	271,892	300,110	287,173
16. Dividends to policyholders (Line 17)	71,572	74,058	97,676	85,492	75,376
17. Federal and foreign income taxes incurred (Line 19)	26,369	1,998,016	2,229,407	2,993,736	2,679,185
18. Net income (Line 20)	2,143,990	5,762,661	6,488,303	11,240,753	10,318,867
Balance Sheet Lines (Pages 2 and 3)					
19. TOTAL admitted assets excluding protected cell business (Page 2, Line 26, Col. 3)	312,194,249	291,615,248	283,892,378	275,783,528	258,833,552
20. Premiums and considerations (Page 2, Column 3)					
20.1 In course of collection (Line 15.1)	6,743,219	6,378,440	5,569,301	5,334,656	4,955,917
20.2 Deferred and not yet due (Line 15.2)	29,297,697	27,827,666	25,491,979	23,924,087	21,827,582
20.3 Accrued retrospective premiums (Line 15.3)					
21. TOTAL liabilities excluding protected cell business (Page 3, Line 26)	152,392,813	134,991,603	131,277,147	129,818,475	124,135,739
22. Losses (Page 3, Line 1)	56,899,262	49,744,090	48,590,872	49,533,395	49,925,267
23. Loss adjustment expenses (Page 3, Line 3)	20,107,618	19,019,528	19,243,569	19,279,378	18,848,148
24. Unearned premiums (Page 3, Line 9)	61,062,064	57,652,175	53,194,131	50,172,014	46,287,358
25. Capital paid up (Page 3, Lines 30 & 31)	5,250,000	5,250,000	5,250,000	5,250,000	5,250,000
26. Surplus as regards policyholders (Page 3, Line 37)	159,801,436	156,623,636	152,615,225	145,965,052	134,697,813
Cash Flow (Page 5)					
27. Net cash from operations (Line 11)	10,355,490	8,100,670	7,921,896	14,898,228	11,752,925
Risk-Based Capital Analysis					
28. TOTAL adjusted capital	159,801,436	156,623,636	152,615,225	145,965,052	134,697,813
29. Authorized control level risk-based capital	17,570,763	9,935,972	9,591,066	9,093,858	8,297,640
Percentage Distribution of Cash, Cash Equivalents and Invested Assets (Page 2, Column 3)					
(Item divided by Page 2, Line 12, Column 3) x 100.0					
30. Bonds (Line 1)	93.3	93.3	95.8	95.9	96.1
31. Stocks (Lines 2.1 & 2.2)		0.0	0.0	0.0	0.0
32. Mortgage loans on real estate (Lines 3.1 and 3.2)					
33. Real estate (Lines 4.1, 4.2 & 4.3)					
34. Cash, cash equivalents and short-term investments (Line 5)	6.7	6.7	4.2	4.1	3.9
35. Contract loans (Line 6)					
36. Derivatives (Line 7)					
37. Other invested assets (Line 8)					
38. Receivables for securities (Line 9)					
39. Securities lending reinvested collateral assets (Line 10)					
40. Aggregate write-ins for invested assets (Line 11)					
41. Cash, cash equivalents and invested assets (Line 12)	100.0	100.0	100.0	100.0	100.0
Investments in Parent, Subsidiaries and Affiliates					
42. Affiliated bonds, (Schedule D, Summary, Line 12, Column 1)					
43. Affiliated preferred stocks (Schedule D, Summary, Line 18, Column 1)					
44. Affiliated common stocks (Schedule D, Summary, Line 24, Column 1)	70,404	167,081	126,061	213,456	287,805
45. Affiliated short-term investments (subtotals included in Schedule DA Verification, Column 5, Line 10)					
46. Affiliated mortgage loans on real estate					
47. All other affiliated					
48. TOTAL of above Lines 42 to 47	70,404	167,081	126,061	213,456	287,805
49. TOTAL investment in parent included in Lines 42 to 47 above					
50. Percentage of investments in parent, subsidiaries and affiliates to surplus as regards policyholders (Line 48 above divided by Page 3, Column 1, Line 37 x 100.0)	0.0	0.1	0.1	0.1	0.2

FIVE - YEAR HISTORICAL DATA (Continued)

	1 2018	2 2017	3 2016	4 2015	5 2014
Capital and Surplus Accounts (Page 4)					
51. Net unrealized capital gains or (Losses) (Line 24)	1,062	26,663	(56,807)	(48,327)	1,345
52. Dividends to stockholders (Line 35)					
53. Change in surplus as regards policyholders for the year (Line 38)	3,177,802	4,008,410	6,650,170	11,267,244	10,001,760
Gross Losses Paid (Page 9, Part 2, Columns 1 and 2)					
54. Liability lines (Lines 11.1, 11.2, 16, 17.1, 17.2, 17.3, 18.1, 18.2, 19.1,19.2 & 19.3,19.4)	27,082,265	23,176,673	22,186,380	22,544,849	21,517,335
55. Property lines (Lines 1, 2, 9, 12, 21 & 26)	18,270,813	16,530,492	16,455,564	13,098,452	11,604,871
56. Property and liability combined lines (Lines 3, 4, 5, 8, 22, & 27)	44,038,086	42,700,647	41,262,001	24,864,418	29,251,071
57. All other lines (Lines 6, 10, 13, 14, 15, 23, 24, 28, 29, 30 & 34)					1,017
58. Nonproportional reinsurance lines (Lines 31, 32 & 33)					
59. TOTAL (Line 35)	89,391,164	82,407,812	79,903,944	60,507,719	62,374,294
Net Losses Paid (Page 9, Part 2, Column 4)					
60. Liability lines (Lines 11.1, 11.2, 16, 17.1, 17.2, 17.3, 18.1, 18.2, 19.1,19.2 & 19.3,19.4)	18,902,732	16,574,510	15,548,175	14,588,008	14,797,697
61. Property lines (Lines 1, 2, 9, 12, 21 & 26)	14,719,066	14,488,844	13,232,422	11,055,837	9,893,583
62. Property and liability combined lines (Lines 3, 4, 5, 8, 22, & 27)	28,946,403	26,680,376	26,624,038	19,424,685	19,168,473
63. All other lines (Lines 6, 10, 13, 14, 15, 23, 24, 28, 29, 30, & 34)					1,017
64. Nonproportional reinsurance lines (Lines 31, 32 & 33)					
65. TOTAL (Line 35)	62,568,201	57,743,730	55,404,635	45,068,531	43,860,770
Operating Percentages (Page 4)					
(Item divided by Page 4, Line 1) x 100.0					
66. Premiums earned (Line 1)	100.0	100.0	100.0	100.0	100.0
67. Losses incurred (Line 2)	63.7	57.8	56.8	50.2	53.8
68. Loss expenses incurred (Line 3)	8.7	7.2	7.2	7.7	6.1
69. Other underwriting expenses incurred (Line 4)	32.4	34.8	34.6	35.1	33.8
70. Net underwriting gain (loss) (Line 8)	(4.8)	0.2	1.3	7.1	6.3
Other Percentages					
71. Other underwriting expenses to net premiums written (Page 4, Lines 4 + 5 - 15 divided by Page 8, Part 1B, Column 6, Line 35 x 100.0)	31.2	33.1	33.3	33.3	32.0
72. Losses and loss expenses incurred to premiums earned (Page 4, Lines 2 + 3 divided by Page 4, Line 1 x 100.0)	72.5	65.0	64.0	57.8	59.8
73. Net premiums written to policyholders' surplus (Page 8, Part 1B, Column 6, Line 35 divided by Page 3, Line 37, Column 1 x 100.0)	70.6	68.0	64.8	63.7	63.3
One Year Loss Development (\$000 omitted)					
74. Development in estimated losses and loss expenses incurred prior to current year (Schedule P, Part 2 - Summary, Line 12, Column 11)	2,508	(3,343)	(6,568)	(5,683)	(4,374)
75. Percent of development of losses and loss expenses incurred to policyholders' surplus of prior year end (Line 74 above divided by Page 4, Line 21, Column 1 x 100.0)	1.6	(2.2)	(4.5)	(4.2)	(3.5)
Two Year Loss Development (\$000 omitted)					
76. Development in estimated losses and loss expenses incurred 2 years before the current year and prior year (Schedule P, Part 2 - Summary, Line 12, Column 12)	(2,733)	(10,976)	(10,587)	(9,101)	(12,777)
77. Percent of development of losses and loss expenses incurred to reported policyholders' surplus of second prior year end (Line 76 above divided by Page 4, Line 21, Column 2 x 100.0)	(1.8)	(7.5)	(7.9)	(7.3)	(11.3)

NOTE: If a party to a merger, have the two most recent years of this exhibit been restated due to a merger in compliance with the disclosure requirements of SSAP No. 3 - Accounting Changes and Correction of Errors? Yes[] No[] N/A[X]

If no, please explain:

SCHEDULE P - ANALYSIS OF LOSSES AND LOSS EXPENSES
SCHEDULE P - PART 1 - SUMMARY

(\$000 omitted)													
Years in Which Premiums Were Earned and Losses Were Incurred		Premiums Earned			Loss and Loss Expense Payments								12 Number of Claims Reported - Direct and Assumed
		1 Direct and Assumed	2 Ceded	3 Net (Columns 1 - 2)	Loss Payments		Defense and Cost Containment Payments		Adjusting and Other Payments		10 Salvage and Subrogation Received	11 Total Net Paid (Columns 4 - 5 + 6 - 7 + 8 - 9)	
					4 Direct and Assumed	5 Ceded	6 Direct and Assumed	7 Ceded	8 Direct and Assumed	9 Ceded			
1.	Prior	... X X X X X X X X X ...	702	228	219	18	89	24	29	741	X X X
2.	2009	94,037	7,809	86,228	55,975	2,207	2,550	281	4,763	45	2,631	60,756	X X X
3.	2010	92,091	9,568	82,523	60,215	4,837	1,968	102	4,534	61	2,529	61,717	X X X
4.	2011	83,659	8,733	74,926	63,669	5,915	1,851	21	4,419	138	2,534	63,866	X X X
5.	2012	80,177	9,901	70,276	47,488	705	1,677	0	3,504	23	2,270	51,941	X X X
6.	2013	82,790	8,995	73,795	43,471	2,210	1,570	8	3,486	26	2,092	46,283	X X X
7.	2014	89,317	7,800	81,516	44,684	1,272	1,679	1	4,012	49	2,410	49,055	X X X
8.	2015	97,199	8,133	89,066	46,360	1,656	1,856	16	4,293	11	2,654	50,825	X X X
9.	2016	104,147	8,255	95,893	62,705	6,679	1,181	30	4,770	128	3,341	61,819	X X X
10.	2017	110,942	8,974	101,968	54,247	2,576	605	3	4,597	47	3,383	56,824	X X X
11.	2018	120,085	10,653	109,432	52,727	11,730	165	1	4,274	287	1,812	45,148	X X X
12.	Totals	... X X X X X X X X X ...	532,244	40,014	15,322	481	42,742	838	25,684	548,975	X X X

	Losses Unpaid				Defense and Cost Containment Unpaid				Adjusting and Other		23	24	25
	Case Basis		Bulk + IBNR		Case Basis		Bulk + IBNR		Unpaid				
	13	14	15	16	17	18	19	20	21	22			
	Direct and Assumed	Ceded	Direct and Assumed	Ceded	Direct and Assumed	Ceded	Direct and Assumed	Ceded	Direct and Assumed	Ceded			
1. Prior	4,174	926	4,821	1,619			1,158	320	1,220	83		8,424	X X X
2. 2009	567	198	471	126			241	89	170	13	35	1,023	X X X
3. 2010	539	17	424	137			231	59	160	11	44	1,129	X X X
4. 2011	239		317	72			180	31	137	15	53	756	X X X
5. 2012	221		338	68			267	45	139	11	64	841	X X X
6. 2013	516	0	328	57			246	31	150	9	70	1,143	X X X
7. 2014	1,085	15	622	113			675	115	271	13	134	2,397	X X X
8. 2015	2,824	618	830	184			1,285	131	552	23	271	4,535	X X X
9. 2016	5,584	781	1,554	509			1,914	161	1,018	52	439	8,569	X X X
10. 2017	9,299	996	3,265	597			2,765	159	1,760	55	917	15,282	X X X
11. 2018	20,431	5,719	13,001	1,799			3,492	217	4,225	504	2,585	32,908	X X X
12. Totals	45,480	9,270	25,971	5,282			12,453	1,359	9,802	789	4,611	77,007	X X X

	Total Losses and Loss Expenses Incurred			Loss and Loss Expense Percentage (Incurred/Premiums Earned)			Nontabular Discount		34 Inter-Company Pooling Participation Percentage	Net Balance Sheet Reserves After Discount	
	26 Direct and Assumed	27 Ceded	28 Net	29 Direct and Assumed	30 Ceded	31 Net	32 Loss	33 Loss Expense		35 Losses Unpaid	36 Loss Expenses Unpaid
1. Prior ...	X X X ...	X X X ...	X X X ...	X X X ...	X X X ...	X X X ...			X X X ...	6,450	1,974
2. 2009 ...	64,737	2,959	61,779	68.8	37.9	71.6			16.0	715	308
3. 2010 ...	68,070	5,224	62,846	73.9	54.6	76.2			16.0	809	320
4. 2011 ...	70,813	6,192	64,621	84.6	70.9	86.2			16.0	484	272
5. 2012 ...	53,635	853	52,782	66.9	8.6	75.1			16.0	491	350
6. 2013 ...	49,768	2,341	47,427	60.1	26.0	64.3			16.0	788	356
7. 2014 ...	53,029	1,577	51,452	59.4	20.2	63.1			16.0	1,579	817
8. 2015 ...	57,999	2,639	55,360	59.7	32.5	62.2			16.0	2,852	1,683
9. 2016 ...	78,728	8,339	70,388	75.6	101.0	73.4			16.0	5,848	2,720
10. 2017 ...	76,539	4,433	72,106	69.0	49.4	70.7			16.0	10,971	4,312
11. 2018 ...	98,314	20,257	78,056	81.9	190.2	71.3			16.0	25,913	6,996
12. Totals ...	X X X ...	X X X ...	X X X ...	X X X ...	X X X ...	X X X ...			X X X ...	56,899	20,108

Note: Parts 2 and 4 are gross of all discounting, including tabular discounting. Part 1 is gross of only nontabular discounting, which is reported in Columns 32 and 33 of Part 1. The tabular discount, if any, is reported in the Notes to Financial Statements which will reconcile Part 1 with Parts 2 and 4.

SCHEDULE P - PART 2 - SUMMARY

Years in Which Losses Were Incurred	INCURRED NET LOSSES AND DEFENSE AND COST CONTAINMENT EXPENSES REPORTED AT YEAR END (\$000 OMITTED)										DEVELOPMENT	
	1	2	3	4	5	6	7	8	9	10	11	12
	2009	2010	2011	2012	2013	2014	2015	2016	2017	2018	One Year	Two Year
1. Prior ...	56,065	55,271	50,570	48,204	43,515	41,750	40,470	39,122	38,405	38,203	(202)	(918)
2. 2009 ...	61,733	63,611	60,827	61,292	59,106	57,995	57,593	57,117	56,895	56,903	8	(214)
3. 2010 ...	X X X	65,598	64,134	62,765	61,468	59,284	58,857	58,802	58,370	58,224	(146)	(577)
4. 2011 ...	X X X	X X X	63,833	62,843	61,863	61,687	61,038	60,491	60,181	60,218	37	(273)
5. 2012 ...	X X X	X X X	X X X	50,085	52,210	51,696	50,948	50,096	49,233	49,173	(60)	(923)
6. 2013 ...	X X X	X X X	X X X	X X X	45,433	46,808	45,586	44,403	43,673	43,826	153	(577)
7. 2014 ...	X X X	X X X	X X X	X X X	X X X	49,271	48,316	47,873	47,184	47,230	46	(644)
8. 2015 ...	X X X	X X X	X X X	X X X	X X X	X X X	52,532	50,869	50,422	50,549	127	(319)
9. 2016 ...	X X X	X X X	X X X	X X X	X X X	X X X	X X X	63,068	64,133	64,780	647	1,712
10. 2017 ...	X X X	X X X	X X X	X X X	X X X	X X X	X X X	X X X	63,952	65,850	1,898	X X X
11. 2018 ...	X X X	X X X	X X X	X X X	X X X	X X X	X X X	X X X	X X X	70,349	X X X	X X X
12. TOTALS											2,508	(2,733)

SCHEDULE P - PART 3 - SUMMARY

Years in Which Losses Were Incurred	CUMULATIVE PAID NET LOSSES AND DEFENSE AND COST CONTAINMENT EXPENSES REPORTED AT YEAR END (\$000 OMITTED)										11	12
	1	2	3	4	5	6	7	8	9	10	Number of Claims Closed With Loss Payment	Number of Claims Closed Without Loss Payment
	2009	2010	2011	2012	2013	2014	2015	2016	2017	2018		
1. Prior ...	000	12,492	19,322	23,169	25,770	27,076	28,581	29,494	30,240	30,916	X X X	X X X
2. 2009 ...	34,685	46,539	50,865	53,189	54,546	55,450	55,828	55,908	55,946	56,038	X X X	X X X
3. 2010 ...	X X X	37,587	49,250	53,606	55,562	56,530	56,829	57,122	57,211	57,244	X X X	X X X
4. 2011 ...	X X X	X X X	41,600	51,390	55,147	57,151	58,643	59,095	59,367	59,585	X X X	X X X
5. 2012 ...	X X X	X X X	X X X	32,564	41,965	45,351	47,249	48,185	48,309	48,460	X X X	X X X
6. 2013 ...	X X X	X X X	X X X	X X X	28,445	36,740	39,423	40,876	42,031	42,823	X X X	X X X
7. 2014 ...	X X X	X X X	X X X	X X X	X X X	28,943	38,287	42,166	43,916	45,091	X X X	X X X
8. 2015 ...	X X X	X X X	X X X	X X X	X X X	X X X	29,568	40,145	43,902	46,544	X X X	X X X
9. 2016 ...	X X X	X X X	X X X	X X X	X X X	X X X	X X X	39,055	52,052	57,178	X X X	X X X
10. 2017 ...	X X X	X X X	X X X	X X X	X X X	X X X	X X X	X X X	39,029	52,273	X X X	X X X
11. 2018 ...	X X X	X X X	X X X	X X X	X X X	X X X	X X X	X X X	X X X	41,162	X X X	X X X

SCHEDULE P - PART 4 - SUMMARY

Years in Which Losses Were Incurred	BULK AND IBNR RESERVES ON NET LOSSES AND DEFENSE AND COST CONTAINMENT EXPENSES REPORTED AT YEAR END (\$000 OMITTED)									
	1	2	3	4	5	6	7	8	9	10
	2009	2010	2011	2012	2013	2014	2015	2016	2017	2018
1. Prior	29,273	23,188	16,764	15,683	10,246	8,610	7,186	5,523	3,976	4,040
2. 2009	15,260	9,654	4,920	5,408	2,885	1,679	1,288	816	609	496
3. 2010	X X X	14,688	6,918	4,937	3,551	1,616	1,144	809	562	458
4. 2011	X X X	X X X	9,210	4,271	2,129	1,754	1,347	677	443	394
5. 2012	X X X	X X X	X X X	5,722	4,225	3,150	2,376	1,441	722	492
6. 2013	X X X	X X X	X X X	X X X	7,134	5,162	2,765	1,511	571	487
7. 2014	X X X	X X X	X X X	X X X	X X X	10,621	4,979	2,710	1,307	1,069
8. 2015	X X X	X X X	X X X	X X X	X X X	X X X	11,711	4,993	2,689	1,799
9. 2016	X X X	X X X	X X X	X X X	X X X	X X X	X X X	11,475	4,490	2,799
10. 2017	X X X	X X X	X X X	X X X	X X X	X X X	X X X	X X X	11,558	5,273
11. 2018	X X X	X X X	X X X	X X X	X X X	X X X	X X X	X X X	X X X	14,476

SCHEDULE T - EXHIBIT OF PREMIUMS WRITTEN
ALLOCATED BY STATES AND TERRITORIES

		1	Gross Premiums, Including Policy and Membership Fees Less Return Premiums and Premiums on Policies Not Taken		4	5	6	7	8	9
		Active Status (a)	2	3	Dividends Paid or Credited to Policyholders on Direct Business	Direct Losses Paid (Deducting Salvage)	Direct Losses Incurred	Direct Losses Unpaid	Finance and Service Charges Not Included in Premiums	Direct Premium Written for Federal Purchasing Groups (Included in Column 2)
States, Etc.			Direct Premiums Written	Direct Premiums Earned						
1.	Alabama (AL)	N								
2.	Alaska (AK)	N								
3.	Arizona (AZ)	L	1,638,995	1,642,966	10,420	1,364,195	247,770	841,472	4,284	
4.	Arkansas (AR)	L								
5.	California (CA)	L								
6.	Colorado (CO)	L	66,753	45,184		31,076	50,767	20,568		
7.	Connecticut (CT)	L	3,004,869	2,792,126	57,952	1,032,869	1,977,930	3,107,629	8,104	
8.	Delaware (DE)	N								
9.	District of Columbia (DC)	N								
10.	Florida (FL)	N				(2,747)	(2,747)			
11.	Georgia (GA)	L	9,358,774	8,988,371	67,357	3,106,170	6,683,965	7,789,004	18,697	
12.	Hawaii (HI)	N								
13.	Idaho (ID)	L	55,690	27,304		61,283	127,169	65,886	184	
14.	Illinois (IL)	L	886,354	837,268		1,140,490	(928,736)	1,440,182	1,576	
15.	Indiana (IN)	L	2,366,242	2,557,714	6,583	1,879,707	1,251,397	1,983,088	3,736	
16.	Iowa (IA)	L								
17.	Kansas (KS)	N								
18.	Kentucky (KY)	L	368,126	351,706	45	103,180	129,676	78,008	992	
19.	Louisiana (LA)	N								
20.	Maine (ME)	L								
21.	Maryland (MD)	L	84,450	111,399		21,318	8,726	69,980	328	
22.	Massachusetts (MA)	L	3,956,826	3,826,952	75,713	3,069,665	2,257,702	9,248,632	11,336	
23.	Michigan (MI)	L	4,063,562	3,533,945		593,999	1,688,426	1,706,878	4,193	
24.	Minnesota (MN)	L								
25.	Mississippi (MS)	L								
26.	Missouri (MO)	N								
27.	Montana (MT)	L								
28.	Nebraska (NE)	N								
29.	Nevada (NV)	L	50,619	31,557		1,073	6,571	5,498	48	
30.	New Hampshire (NH)	L	974,086	785,783		566,963	1,385,862	1,209,992	1,408	
31.	New Jersey (NJ)	L				79,481	8,633	2,267,955		
32.	New Mexico (NM)	L	39,225	28,168		9,152	12,168	3,743	72	
33.	New York (NY)	L	5,249,506	5,491,448	95,669	1,883,298	1,718,177	8,569,225	6,518	
34.	North Carolina (NC)	L	4,949,336	5,018,307	63,408	2,738,095	3,225,239	4,058,001	8,008	
35.	North Dakota (ND)	N								
36.	Ohio (OH)	L	4,602,702	4,370,769		1,550,225	207,407	2,662,201	6,320	
37.	Oklahoma (OK)	L	712,410	875,901	1,578	452,293	411,577	774,556	1,392	
38.	Oregon (OR)	L								
39.	Pennsylvania (PA)	L								
40.	Rhode Island (RI)	N								
41.	South Carolina (SC)	L	2,238,564	2,103,481	11,414	5,777,356	1,332,982	3,121,112	3,072	
42.	South Dakota (SD)	N								
43.	Tennessee (TN)	L	2,677,804	2,543,714	1,422	672,783	1,404,168	1,995,649	5,152	
44.	Texas (TX)	L	687,750	412,052	1,130	172,554	189,992	1,483,192	776	
45.	Utah (UT)	L	14,074	11,242			1,679	1,716		
46.	Vermont (VT)	L								
47.	Virginia (VA)	L	2,671,284	2,544,761	16,291	518,483	64,043	1,489,630	5,138	
48.	Washington (WA)	L								
49.	West Virginia (WV)	N								
50.	Wisconsin (WI)	L								
51.	Wyoming (WY)	N								
52.	American Samoa (AS)	N								
53.	Guam (GU)	N								
54.	Puerto Rico (PR)	N								
55.	U.S. Virgin Islands (VI)	N								
56.	Northern Mariana Islands (MP)	N								
57.	Canada (CAN)	N								
58.	Aggregate other alien (OT)	X X X								
59.	TOTALS	X X X	50,718,001	48,932,116	408,982	26,822,962	23,460,544	53,993,797	91,334	

DETAILS OF WRITE-INS

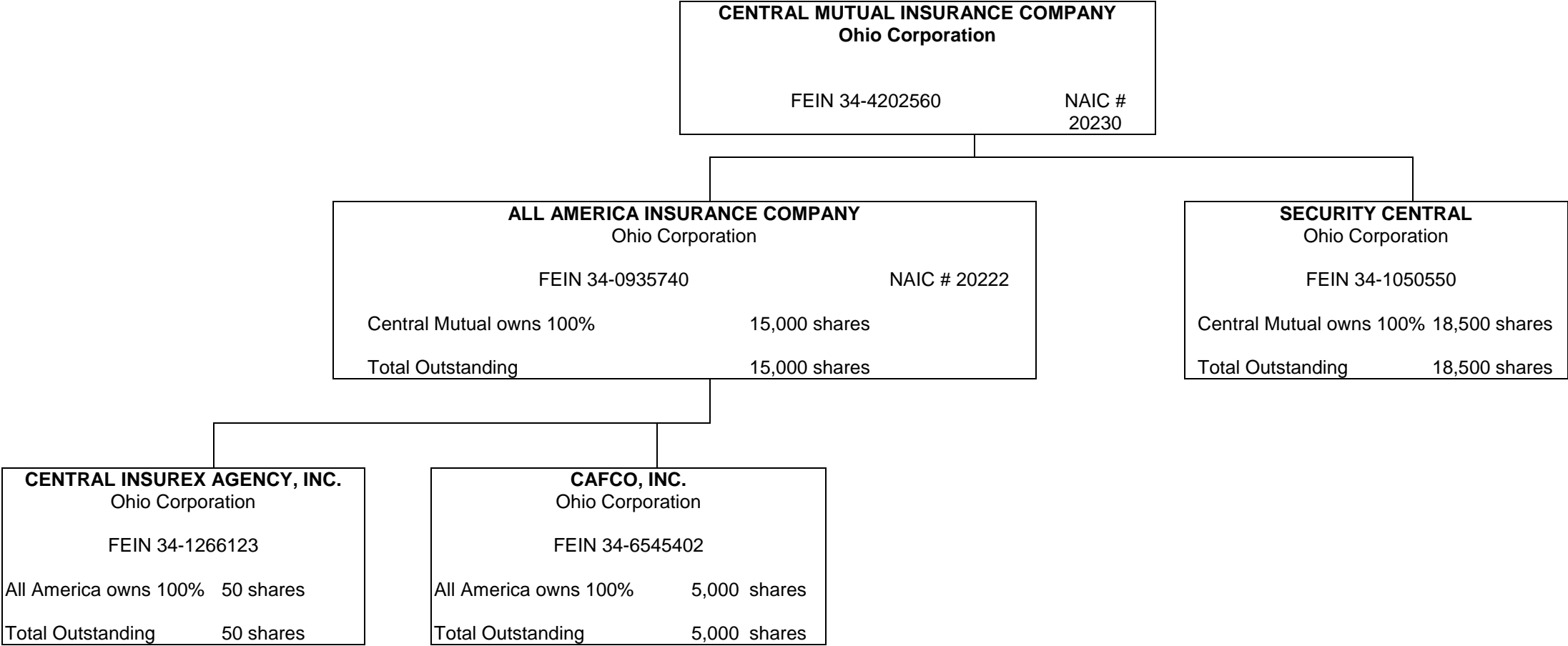
58001.		X X X								
58002.		X X X								
58003.		X X X								
58998.	Summary of remaining write-ins for Line 58 from overflow page	X X X								
58999.	TOTALS (Lines 58001 through 58003 plus 58998) (Line 58 above)	X X X								

(a) Active Status Counts:										
L	Licensed or Chartered - Licensed insurance carrier or domiciled RRG					36	R	Registered - Non-domiciled RRGs		
E	Eligible - Reporting entities eligible or approved to write surplus lines in the state (other than their state of domicile See DSLI)						Q	Qualified - Qualified or accredited reinsurer		
D	Domestic Surplus Lines Insurer (DSLI) Reporting entities authorized to write surplus lines in the state of domicile.						N	None of the above Not allowed to write business in the state		21

Explanation of basis of allocation of premiums by states, etc.: PREMIUMS ARE ALLOCATED ACCORDING TO THE FOLLOWING: WORKERS' COMPENSATION-THE LOCATIONS OF THE INSURED'S OPERATIONS; AUTOMOBILE LIABILITY AND AUTOMOBILE PHYSICAL DAMAGE-THE LOCATION OF THE PRINCIPAL GARAGE; GROUP ACCIDENT AND HEALTH AND OTHER ACCIDENT AND HEALTH-THE ADDRESS OF THE INSURED'S RESIDENCE; FIDELITY-THE LOCATION OF THE EMPLOYER OR INSURED; SURETY-THE PRINCIPAL, THE COURT, THE OBLIGEE, OR WORK. ALL OTHER PREMIUMS-THE LOCATIONS OF THE RISK.

SCHEDULE Y - INFORMATION CONCERNING ACTIVITIES OF INSURER
MEMBERS OF A HOLDING COMPANY GROUP
PART 1 - ORGANIZATIONAL CHART

96



INDEX TO PROPERTY & CASUALTY
ANNUAL STATEMENT

Assets	2
Cash Flow	5
Exhibit of Capital Gains (Losses)	12
Exhibit of Net Investment Income	12
Exhibit of Nonadmitted Assets	13
Exhibit of Premiums and Losses (State Page)	19
Five-Year Historical Data	17
General Interrogatories	15
Jurat Page	1
Liabilities, Surplus and Other Funds	3
Notes To Financial Statements	14
Overflow Page for Write-ins	100
Schedule A - Part 1	E01
Schedule A - Part 2	E02
Schedule A - Part 3	E03
Schedule A - Verification Between Years	SI02
Schedule B - Part 1	E04
Schedule B - Part 2	E05
Schedule B - Part 3	E06
Schedule B - Verification Between Years	SI02
Schedule BA - Part 1	E07
Schedule BA - Part 2	E08
Schedule BA - Part 3	E09
Schedule BA - Verification Between Years	SI03
Schedule D - Part 1	E10
Schedule D - Part 1A - Section 1	SI05
Schedule D - Part 1A - Section 2	SI08
Schedule D - Part 2 - Section 1	E11
Schedule D - Part 2 - Section 2	E12
Schedule D - Part 3	E13
Schedule D - Part 4	E14
Schedule D - Part 5	E15
Schedule D - Part 6 - Section 1	E16
Schedule D - Part 6 - Section 2	E16
Schedule D - Summary By Country	SI04
Schedule D - Verification Between Years	SI03
Schedule DA - Part 1	E17
Schedule DA - Verification Between Years	SI10
Schedule DB - Part A - Section 1	E18
Schedule DB - Part A - Section 2	E19
Schedule DB - Part A - Verification Between Years	SI11
Schedule DB - Part B - Section 1	E20
Schedule DB - Part B - Section 2	E21
Schedule DB - Part B - Verification Between Years	SI11
Schedule DB - Part C - Section 1	SI12
Schedule DB - Part C - Section 2	SI13
Schedule DB - Part D - Section 1	E22
Schedule DB - Part D - Section 2	E23
Schedule DB - Verification	SI14
Schedule DL - Part 1	E24
Schedule DL - Part 2	E25
Schedule E - Part 1 - Cash	E26
Schedule E - Part 2 - Cash Equivalents	E27
Schedule E - Part 2 - Verification Between Years	SI15
Schedule E - Part 3 - Special Deposits	E28
Schedule F - Part 1	20
Schedule F - Part 2	21
Schedule F - Part 3	22
Schedule F - Part 4	23
Schedule F - Part 5	24

INDEX TO PROPERTY & CASUALTY
ANNUAL STATEMENT

Schedule F - Part 6 - Section 1	25
Schedule F - Part 6 - Section 2	26
Schedule F - Part 7	27
Schedule F - Part 8	28
Schedule F - Part 9	29
Schedule H - Accident and Health Exhibit - Part 1	30
Schedule H - Parts 2, 3, and 4	31
Schedule H - Part 5 - Health Claims	32
Schedule P - Part 1 - Summary	33
Schedule P - Part 1A - Homeowners/Farmowners	35
Schedule P - Part 1B - Private Passenger Auto Liability/Medical	36
Schedule P - Part 1C - Commercial Auto/Truck Liability/Medical	37
Schedule P - Part 1D - Workers' Compensation (Excluding Excess Workers' Compensation)	38
Schedule P - Part 1E - Commercial Multiple Peril	39
Schedule P - Part 1F - Section 1 - Medical Professional Liability - Occurrence	40
Schedule P - Part 1F - Section 2 - Medical Professional Liability - Claims-Made	41
Schedule P - Part 1G - Special Liability (Ocean Marine, Aircraft (All Perils), Boiler and Machinery)	42
Schedule P - Part 1H - Section 1 - Other Liability - Occurrence	43
Schedule P - Part 1H - Section 2 - Other Liability - Claims-Made	44
Schedule P - Part 1I - Special Property (Fire, Allied Lines, Inland Marine, Earthquake, Burglary & Theft)	45
Schedule P - Part 1J - Auto Physical Damage	46
Schedule P - Part 1K - Fidelity/Surety	47
Schedule P - Part 1L - Other (Including Credit, Accident and Health)	48
Schedule P - Part 1M - International	49
Schedule P - Part 1N - Reinsurance - Nonproportional Assumed Property	50
Schedule P - Part 1O - Reinsurance - Nonproportional Assumed Liability	51
Schedule P - Part 1P - Reinsurance - Nonproportional Assumed Financial Lines	52
Schedule P - Part 1R - Section 1 - Products Liability - Occurrence	53
Schedule P - Part 1R - Section 2 - Products Liability - Claims-Made	54
Schedule P - Part 1S - Financial Guaranty/Mortgage Guaranty	55
Schedule P - Part 1T - Warranty	56
Schedule P - Part 2, Part 3 and Part 4 - Summary	34
Schedule P - Part 2A - Homeowners/Farmowners	57
Schedule P - Part 2B - Private Passenger Auto Liability/Medical	57
Schedule P - Part 2C - Commercial Auto/Truck Liability/Medical	57
Schedule P - Part 2D - Workers' Compensation (Excluding Excess Workers' Compensation)	57
Schedule P - Part 2E - Commercial Multiple Peril	57
Schedule P - Part 2F - Section 1 - Medical Professional Liability - Occurrence	58
Schedule P - Part 2F - Section 2 - Medical Professional Liability - Claims-Made	58
Schedule P - Part 2G - Special Liability (Ocean Marine, Aircraft (All Perils), Boiler and Machinery)	58
Schedule P - Part 2H - Section 1 - Other Liability - Occurrence	58
Schedule P - Part 2H - Section 2 - Other Liability - Claims - Made	58
Schedule P - Part 2I - Special Property (Fire, Allied Lines, Inland Marine, Earthquake, Burglary, and Theft)	59
Schedule P - Part 2J - Auto Physical Damage	59
Schedule P - Part 2K - Fidelity, Surety	59
Schedule P - Part 2L - Other (Including Credit, Accident and Health)	59
Schedule P - Part 2M - International	59
Schedule P - Part 2N - Reinsurance - Nonproportional Assumed Property	60
Schedule P - Part 2O - Reinsurance - Nonproportional Assumed Liability	60
Schedule P - Part 2P - Reinsurance - Nonproportional Assumed Financial Lines	60
Schedule P - Part 2R - Section 1 - Products Liability - Occurrence	61
Schedule P - Part 2R - Section 2 - Products Liability - Claims-Made	61
Schedule P - Part 2S - Financial Guaranty/Mortgage Guaranty	61
Schedule P - Part 2T - Warranty	61
Schedule P - Part 3A - Homeowners/Farmowners	62
Schedule P - Part 3B - Private Passenger Auto Liability/Medical	62
Schedule P - Part 3C - Commercial Auto/Truck Liability/Medical	62
Schedule P - Part 3D - Workers' Compensation (Excluding Excess Workers' Compensation)	62
Schedule P - Part 3E - Commercial Multiple Peril	62
Schedule P - Part 3F - Section 1 - Medical Professional Liability - Occurrence	63
Schedule P - Part 3F - Section 2 - Medical Professional Liability - Claims-Made	63
Schedule P - Part 3G - Special Liability (Ocean Marine, Aircraft (All Perils), Boiler and Machinery)	63
Schedule P - Part 3H - Section 1 - Other Liability - Occurrence	63
Schedule P - Part 3H - Section 2 - Other Liability - Claims-Made	63

INDEX TO PROPERTY & CASUALTY
ANNUAL STATEMENT

Schedule P - Part 3I - Special Property (Fire, Allied Lines, Inland Marine, Earthquake, Burglary, and Theft)	64
Schedule P - Part 3J - Auto Physical Damage	64
Schedule P - Part 3K - Fidelity/Surety	64
Schedule P - Part 3L - Other (Including Credit, Accident and Health)	64
Schedule P - Part 3M - International	64
Schedule P - Part 3N - Reinsurance - Nonproportional Assumed Property	65
Schedule P - Part 3O - Reinsurance - Nonproportional Assumed Liability	65
Schedule P - Part 3P - Reinsurance - Nonproportional Assumed Financial Lines	65
Schedule P - Part 3R - Section 1 - Products Liability - Occurrence	66
Schedule P - Part 3R - Section 2 - Products Liability - Claims-Made	66
Schedule P - Part 3S - Financial Guaranty/Mortgage Guaranty	66
Schedule P - Part 3T - Warranty	66
Schedule P - Part 4A - Homeowners/Farmowners	67
Schedule P - Part 4B - Private Passenger Auto Liability/Medical	67
Schedule P - Part 4C - Commercial Auto/Truck Liability/Medical	67
Schedule P - Part 4D Workers' Compensation (Excluding Excess Workers' Compensation)	67
Schedule P - Part 4E - Commercial Multiple Peril	67
Schedule P - Part 4F - Section 1 - Medical Professional Liability - Occurrence	68
Schedule P - Part 4F - Section 2 - Medical Professional Liability - Claims-Made	68
Schedule P - Part 4G - Special Liability (Ocean Marine, Aircraft (All Perils), Boiler and Machinery)	68
Schedule P - Part 4H - Section 1 - Other Liability - Occurrence	68
Schedule P - Part 4H - Section 2 - Other Liability - Claims-Made	68
Schedule P - Part 4I - Special Property (Fire, Allied Lines, Inland Marine, Earthquake, Burglary and Theft)	69
Schedule P - Part 4J - Auto Physical Damage	69
Schedule P - Part 4K - Fidelity/Surety	69
Schedule P - Part 4L - Other (Including Credit, Accident and Health)	69
Schedule P - Part 4M - International	69
Schedule P - Part 4N - Reinsurance - Nonproportional Assumed Property	70
Schedule P - Part 4O - Reinsurance - Nonproportional Assumed Liability	70
Schedule P - Part 4P - Reinsurance - Nonproportional Assumed Financial Lines	70
Schedule P - Part 4R - Section 1 - Products Liability - Occurrence	71
Schedule P - Part 4R - Section 2 - Products Liability - Claims-Made	71
Schedule P - Part 4S - Financial Guaranty/Mortgage Guaranty	71
Schedule P - Part 4T - Warranty	71
Schedule P - Part 5A - Homeowners/Farmowners	72
Schedule P - Part 5B - Private Passenger Auto Liability/Medical	73
Schedule P - Part 5C - Commercial Auto/Truck Liability/Medical	74
Schedule P - Part 5D - Workers' Compensation (Excluding Excess Worker' Compensation)	75
Schedule P - Part 5E - Commercial Multiple Peril	76
Schedule P - Part 5F - Medical Professional Liability - Claims-Made	78
Schedule P - Part 5F - Medical Professional Liability - Occurrence	77
Schedule P - Part 5H - Other Liability - Claims-Made	80
Schedule P - Part 5H - Other Liability - Occurrence	79
Schedule P - Part 5R - Products Liability - Claims-Made	82
Schedule P - Part 5R - Products Liability - Occurrence	81
Schedule P - Part 5T - Warranty	83
Schedule P - Part 6C - Commercial Auto/Truck Liability/Medical	84
Schedule P - Part 6D - Workers' Compensation (Excluding Excess Workers' Compensation)	84
Schedule P - Part 6E - Commercial Multiple Peril	85
Schedule P - Part 6H - Other Liability - Claims-Made	86
Schedule P - Part 6H - Other Liability - Occurrence	85
Schedule P - Part 6M - International	86
Schedule P - Part 6N - Reinsurance - Nonproportional Assumed Property	87
Schedule P - Part 6O - Reinsurance - Nonproportional Assumed Liability	87
Schedule P - Part 6R - Products Liability - Claims-Made	88
Schedule P - Part 6R - Products Liability - Occurrence	88
Schedule P - Part 7A - Primary Loss Sensitive Contracts	89
Schedule P - Part 7B - Reinsurance Loss Sensitive Contracts	91
Schedule P Interrogatories	93
Schedule T - Exhibit of Premiums Written	94
Schedule T - Part 2 - Interstate Compact	95

INDEX TO PROPERTY & CASUALTY
ANNUAL STATEMENT

Schedule Y - Part 1 - Information Concerning Activities of Insurer Members of a Holding Company Group	96
Schedule Y - Part 1A - Detail of Insurance Holding Company System	97
Schedule Y - Part 2 - Summary of Insurer's Transactions With Any Affiliates	98
Statement of Income	4
Summary Investment Schedule	SI01
Supplemental Exhibits and Schedules Interrogatories	99
Underwriting and Investment Exhibit Part 1	6
Underwriting and Investment Exhibit Part 1A	7
Underwriting and Investment Exhibit Part 1B	8
Underwriting and Investment Exhibit Part 2	9
Underwriting and Investment Exhibit Part 2A	10
Underwriting and Investment Exhibit Part 3	11