



HEALTH ANNUAL STATEMENT

FOR THE YEAR ENDED DECEMBER 31, 2018
OF THE CONDITION AND AFFAIRS OF THE

MANAGED DENTALGUARD INC

NAIC Group Code: 0428 (Current) 0429 (Prior) NAIC Company Code: 14142 Employer's ID Number: 27-4328698

Organized under the Laws of Ohio State of Domicile or Part of Entry OH

Country of Domicile US

Licensed as business type: Dental Service Corporation

Is HMO Federally Qualified? Yes [] No [X]

Incorporated/Organized 08/08/2010 Commenced Business 10/18/2011

Statutory Home Office Crown Centre, 5005 Rockside Road #430 Independence, OH, US 44131
(Street and Number) (City or Town, State, Country and Zip Code)

Main Administrative Office 7 Hanover Square
(Street and Number)
New York, NY, US 10004
(City or Town, State, Country and Zip Code) (Area Code) (Telephone Number)

Mail Address 7 Hanover Square New York, NY, US 10004
(Street and Number or P.O. Box) (City or Town, State, Country and Zip Code)

Primary Location of Books and Records 7 Hanover Square
(Street and Number)
New York, NY, US 10004
(City or Town, State, Country and Zip Code) (Area Code) (Telephone Number)

Internet Website Address www.Guardianlife.com

Statutory Statement Contact Abel Hernandez 212-919-3885
(Name) (Area Code) (Telephone Number)
Abel.Hernandez@gdlc.com 212-919-2583
(E-mail Address) (FAX Number)

OFFICERS

Chairman, President, CEO & COO Walter Kevin Klein Treasurer Walter R. Skinner
Secretary Charles L. Thomas Vice President & Appointed Actuary Sanford E. Penn

OTHER

Larry M. Weiss, Controller Stuart J. Shaw, Vice President John A. Dolan, Assistant Secretary
Harris Cinar, Assistant Secretary

DIRECTORS OR TRUSTEES

Walter Kevin Klein Shari L. Norman Larry M. Weiss

State of _____ SS: _____
County of _____

The officers of this reporting entity being duly sworn, each depose and say that they are the described officers of said reporting entity, and that on the reporting period stated above, all of the herein described assets were the absolute property of the said reporting entity, free and clear from any liens or claims thereon, except as herein stated, and that this statement, together with related exhibits, schedules and explanations therein contained, annexed or referred to, is a full and true statement of all the assets and liabilities and of the condition and affairs of the said reporting entity as of the reporting period stated above, and of its income and deductions therefrom for the period ended, and have been completed in accordance with the NAIC Annual Statement Instructions and Accounting Practices and Procedures manual except to the extent that: (1) state law may differ; or, (2) that state rules or regulations require differences in reporting not related to accounting practices and procedures, according to the best of their information, knowledge and belief, respectively. Furthermore, the scope of this attestation by the described officers also includes the related corresponding electronic filing with the NAIC, when required, that is an exact copy (except for formatting differences due to electronic filing) of the enclosed statement. The electronic filing may be requested by various regulations in lieu of or in addition to the enclosed statement.

Sanford E. Penn

Sanford E. Penn
Vice President & Appointed Actuary

Larry Weiss

Larry Weiss
Controller

Subscribed and sworn to before me this 25th day of February 2019
A. C. [Signature]

a. Is this an original filing? Yes [X] No []
b. If no,
1. State the amendment number: _____
2. Date filed: _____
3. Number of pages attached: _____

ALEXANDER GRINBERG
COMMISSION # 2210235
NOTARY PUBLIC OF NEW JERSEY
COMMISSION EXPIRES 10/19/2019

ANNUAL STATEMENT FOR THE YEAR 2018 OF THE MANAGED DENTALGUARD INC (OHIO)

ASSETS

	Current Year			Prior Year
	1 Assets	2 Nonadmitted Assets	3 Net Admitted Assets (Cols. 1 - 2)	4 Net Admitted Assets
1. Bonds (Schedule D)	564,907		564,907	472,549
2. Stocks (Schedule D):				
2.1 Preferred stocks			0	0
2.2 Common stocks			0	0
3. Mortgage loans on real estate (Schedule B):				
3.1 First liens			0	0
3.2 Other than first liens			0	0
4. Real estate (Schedule A):				
4.1 Properties occupied by the company (less \$			0	0
encumbrances)				
4.2 Properties held for the production of income (less				
\$			0	0
encumbrances)				
4.3 Properties held for sale (less \$			0	0
encumbrances)				
5. Cash (\$125,423 , Schedule E - Part 1), cash equivalents				
(\$, Schedule E - Part 2) and short-term				
investments (\$, Schedule DA)	125,423		125,423	136,505
6. Contract loans, (including \$ premium notes)			0	0
7. Derivatives (Schedule DB)			0	0
8. Other invested assets (Schedule BA)			0	0
9. Receivables for securities			0	0
10. Securities lending reinvested collateral assets (Schedule DL)			0	0
11. Aggregate write-ins for invested assets	0	0	0	0
12. Subtotals, cash and invested assets (Lines 1 to 11)	690,330	0	690,330	609,054
13. Title plants less \$ charged off (for Title insurers				
only)			0	0
14. Investment income due and accrued	2,888		2,888	1,012
15. Premiums and considerations:				
15.1 Uncollected premiums and agents' balances in the course of collection	1,074		1,074	771
15.2 Deferred premiums and agents' balances and installments booked but				
deferred and not yet due (including \$				
earned but unbilled premiums)			0	0
15.3 Accrued retrospective premiums (\$) and				
contracts subject to redetermination (\$)			0	0
16. Reinsurance:				
16.1 Amounts recoverable from reinsurers			0	0
16.2 Funds held by or deposited with reinsured companies			0	0
16.3 Other amounts receivable under reinsurance contracts			0	0
17. Amounts receivable relating to uninsured plans			0	0
18.1 Current federal and foreign income tax recoverable and interest thereon			0	5,219
18.2 Net deferred tax asset	316	316	0	0
19. Guaranty funds receivable or on deposit			0	0
20. Electronic data processing equipment and software			0	0
21. Furniture and equipment, including health care delivery assets				
(\$)			0	0
22. Net adjustment in assets and liabilities due to foreign exchange rates			0	0
23. Receivables from parent, subsidiaries and affiliates	8,265		8,265	250
24. Health care (\$) and other amounts receivable			0	0
25. Aggregate write-ins for other than invested assets	5	0	5	0
26. Total assets excluding Separate Accounts, Segregated Accounts and				
Protected Cell Accounts (Lines 12 to 25)	702,878	316	702,562	616,306
27. From Separate Accounts, Segregated Accounts and Protected Cell				
Accounts			0	0
28. Total (Lines 26 and 27)	702,878	316	702,562	616,306
DETAILS OF WRITE-INS				
1101.				
1102.				
1103.				
1198. Summary of remaining write-ins for Line 11 from overflow page	0	0	0	0
1199. Totals (Lines 1101 thru 1103 plus 1198)(Line 11 above)	0	0	0	0
2501. Misc Receivable	5		5	
2502.				
2503.				
2598. Summary of remaining write-ins for Line 25 from overflow page	0	0	0	0
2599. Totals (Lines 2501 thru 2503 plus 2598)(Line 25 above)	5	0	5	0

LIABILITIES, CAPITAL AND SURPLUS

	Current Year			Prior Year
	1	2	3	4
	Covered	Uncovered	Total	Total
1. Claims unpaid (less \$0 reinsurance ceded)	20,451		20,451	20,622
2. Accrued medical incentive pool and bonus amounts			0	0
3. Unpaid claims adjustment expenses		360	360	313
4. Aggregate health policy reserves, including the liability of \$0 for medical loss ratio rebate per the Public Health Service Act			0	0
5. Aggregate life policy reserves			0	0
6. Property/casualty unearned premium reserves			0	0
7. Aggregate health claim reserves			0	0
8. Premiums received in advance		4,263	4,263	2,292
9. General expenses due or accrued		31,614	31,614	31,939
10.1 Current federal and foreign income tax payable and interest thereon (including \$ on realized capital gains (losses))		1,691	1,691	0
10.2 Net deferred tax liability			0	0
11. Ceded reinsurance premiums payable			0	0
12. Amounts withheld or retained for the account of others		1,352	1,352	2,099
13. Remittances and items not allocated			0	0
14. Borrowed money (including \$ current) and interest thereon \$ (including \$ current)			0	0
15. Amounts due to parent, subsidiaries and affiliates			0	0
16. Derivatives			0	0
17. Payable for securities			0	0
18. Payable for securities lending			0	0
19. Funds held under reinsurance treaties (with \$ authorized reinsurers, \$0 unauthorized reinsurers and \$0 certified reinsurers)			0	0
20. Reinsurance in unauthorized and certified (\$) companies			0	0
21. Net adjustments in assets and liabilities due to foreign exchange rates			0	0
22. Liability for amounts held under uninsured plans			0	0
23. Aggregate write-ins for other liabilities (including \$ current)	0	25	25	763
24. Total liabilities (Lines 1 to 23)	20,451	39,305	59,756	58,028
25. Aggregate write-ins for special surplus funds	XXX	XXX	0	6,323
26. Common capital stock	XXX	XXX	10	10
27. Preferred capital stock	XXX	XXX		
28. Gross paid in and contributed surplus	XXX	XXX	299,990	299,990
29. Surplus notes	XXX	XXX	0	
30. Aggregate write-ins for other than special surplus funds	XXX	XXX	0	0
31. Unassigned funds (surplus)	XXX	XXX	342,806	251,955
32. Less treasury stock, at cost: 32.1 shares common (value included in Line 26 \$)	XXX	XXX		
32.2 shares preferred (value included in Line 27 \$)	XXX	XXX		
33. Total capital and surplus (Lines 25 to 31 minus Line 32)	XXX	XXX	642,806	558,278
34. Total liabilities, capital and surplus (Lines 24 and 33)	XXX	XXX	702,562	616,306
DETAILS OF WRITE-INS				
2301. Investment Clearing		25	25	763
2302.				
2303.				
2398. Summary of remaining write-ins for Line 23 from overflow page	0	0	0	0
2399. Totals (Lines 2301 thru 2303 plus 2398)(Line 23 above)	0	25	25	763
2501. Est. ACA Payable in Subsq Yr	XXX	XXX		6,323
2502.	XXX	XXX		
2503.	XXX	XXX		
2598. Summary of remaining write-ins for Line 25 from overflow page	XXX	XXX	0	0
2599. Totals (Lines 2501 thru 2503 plus 2598)(Line 25 above)	XXX	XXX	0	6,323
3001.	XXX	XXX		
3002.	XXX	XXX		
3003.	XXX	XXX		
3098. Summary of remaining write-ins for Line 30 from overflow page	XXX	XXX	0	0
3099. Totals (Lines 3001 thru 3003 plus 3098)(Line 30 above)	XXX	XXX	0	0

STATEMENT OF REVENUE AND EXPENSES

	Current Year		Prior Year
	1 Uncovered	2 Total	3 Total
1. Member Months.....	XXX	20,149	18,732
2. Net premium income (including \$ non-health premium income).....	XXX	345,738	316,170
3. Change in unearned premium reserves and reserve for rate credits	XXX	0	
4. Fee-for-service (net of \$ medical expenses)	XXX	0	
5. Risk revenue	XXX	0	
6. Aggregate write-ins for other health care related revenues	XXX	0	0
7. Aggregate write-ins for other non-health revenues	XXX	0	0
8. Total revenues (Lines 2 to 7)	XXX	345,738	316,170
Hospital and Medical:			
9. Hospital/medical benefits		0	
10. Other professional services		191,128	156,625
11. Outside referrals		0	
12. Emergency room and out-of-area		0	
13. Prescription drugs		0	
14. Aggregate write-ins for other hospital and medical.....	0	0	0
15. Incentive pool, withhold adjustments and bonus amounts		0	
16. Subtotal (Lines 9 to 15)	0	191,128	156,625
Less:			
17. Net reinsurance recoveries		0	
18. Total hospital and medical (Lines 16 minus 17)	0	191,128	156,625
19. Non-health claims (net)			
20. Claims adjustment expenses, including \$200 cost containment expenses		1,064	520
21. General administrative expenses		54,730	75,452
22. Increase in reserves for life and accident and health contracts (including \$ increase in reserves for life only)		0	0
23. Total underwriting deductions (Lines 18 through 22).....	0	246,922	232,597
24. Net underwriting gain or (loss) (Lines 8 minus 23)	XXX	98,816	83,573
25. Net investment income earned (Exhibit of Net Investment Income, Line 17)		9,944	4,563
26. Net realized capital gains (losses) less capital gains tax of \$			
27. Net investment gains (losses) (Lines 25 plus 26)	0	9,944	4,563
28. Net gain or (loss) from agents' or premium balances charged off [(amount recovered \$) (amount charged off \$)]			
29. Aggregate write-ins for other income or expenses	0	0	0
30. Net income or (loss) after capital gains tax and before all other federal income taxes (Lines 24 plus 27 plus 28 plus 29)	XXX	108,760	88,136
31. Federal and foreign income taxes incurred	XXX	24,233	30,772
32. Net income (loss) (Lines 30 minus 31)	XXX	84,527	57,364
DETAILS OF WRITE-INS			
0601.	XXX		
0602.	XXX		
0603.	XXX		
0698. Summary of remaining write-ins for Line 6 from overflow page	XXX	0	0
0699. Totals (Lines 0601 thru 0603 plus 0698)(Line 6 above)	XXX	0	0
0701.	XXX		
0702.	XXX		
0703.	XXX		
0798. Summary of remaining write-ins for Line 7 from overflow page	XXX	0	0
0799. Totals (Lines 0701 thru 0703 plus 0798)(Line 7 above)	XXX	0	0
1401.			
1402.			
1403.			
1498. Summary of remaining write-ins for Line 14 from overflow page	0	0	0
1499. Totals (Lines 1401 thru 1403 plus 1498)(Line 14 above)	0	0	0
2901.			
2902.			
2903.			
2998. Summary of remaining write-ins for Line 29 from overflow page	0	0	0
2999. Totals (Lines 2901 thru 2903 plus 2998)(Line 29 above)	0	0	0

STATEMENT OF REVENUE AND EXPENSES (Continued)

	1 Current Year	2 Prior Year
CAPITAL AND SURPLUS ACCOUNT		
33. Capital and surplus prior reporting year.....	558,278	500,427
34. Net income or (loss) from Line 32	84,527	57,364
35. Change in valuation basis of aggregate policy and claim reserves		
36. Change in net unrealized capital gains (losses) less capital gains tax of \$		
37. Change in net unrealized foreign exchange capital gain or (loss)		
38. Change in net deferred income tax	86	(400)
39. Change in nonadmitted assets	(84)	887
40. Change in unauthorized and certified reinsurance	0	0
41. Change in treasury stock	0	0
42. Change in surplus notes	0	0
43. Cumulative effect of changes in accounting principles.....		
44. Capital Changes:		
44.1 Paid in	0	0
44.2 Transferred from surplus (Stock Dividend).....	0	0
44.3 Transferred to surplus.....		
45. Surplus adjustments:		
45.1 Paid in	0	0
45.2 Transferred to capital (Stock Dividend)		
45.3 Transferred from capital		
46. Dividends to stockholders		
47. Aggregate write-ins for gains or (losses) in surplus	0	0
48. Net change in capital and surplus (Lines 34 to 47)	84,529	57,851
49. Capital and surplus end of reporting period (Line 33 plus 48)	642,807	558,278
DETAILS OF WRITE-INS		
4701.		
4702.		
4703.		
4798. Summary of remaining write-ins for Line 47 from overflow page	0	0
4799. Totals (Lines 4701 thru 4703 plus 4798)(Line 47 above)	0	0

CASH FLOW

	1	2
	Current Year	Prior Year
Cash from Operations		
1. Premiums collected net of reinsurance	347,406	320,826
2. Net investment income	4,612	2,987
3. Miscellaneous income	0	0
4. Total (Lines 1 through 3)	352,018	323,813
5. Benefit and loss related payments	191,299	162,487
6. Net transfers to Separate Accounts, Segregated Accounts and Protected Cell Accounts		
7. Commissions, expenses paid and aggregate write-ins for deductions	56,071	49,494
8. Dividends paid to policyholders		
9. Federal and foreign income taxes paid (recovered) net of \$ tax on capital gains (losses)	17,323	31,979
10. Total (Lines 5 through 9)	264,693	243,960
11. Net cash from operations (Line 4 minus Line 10)	87,325	79,853
Cash from Investments		
12. Proceeds from investments sold, matured or repaid:		
12.1 Bonds	300,000	85,000
12.2 Stocks	0	0
12.3 Mortgage loans	0	0
12.4 Real estate	0	0
12.5 Other invested assets	0	0
12.6 Net gains or (losses) on cash, cash equivalents and short-term investments	0	0
12.7 Miscellaneous proceeds	0	0
12.8 Total investment proceeds (Lines 12.1 to 12.7)	300,000	85,000
13. Cost of investments acquired (long-term only):		
13.1 Bonds	388,902	172,947
13.2 Stocks	0	0
13.3 Mortgage loans	0	0
13.4 Real estate	0	0
13.5 Other invested assets	0	0
13.6 Miscellaneous applications	0	0
13.7 Total investments acquired (Lines 13.1 to 13.6)	388,902	172,947
14. Net increase (decrease) in contract loans and premium notes	0	0
15. Net cash from investments (Line 12.8 minus Line 13.7 minus Line 14)	(88,902)	(87,947)
Cash from Financing and Miscellaneous Sources		
16. Cash provided (applied):		
16.1 Surplus notes, capital notes	0	0
16.2 Capital and paid in surplus, less treasury stock	0	0
16.3 Borrowed funds	0	0
16.4 Net deposits on deposit-type contracts and other insurance liabilities	0	0
16.5 Dividends to stockholders	0	0
16.6 Other cash provided (applied)	(9,505)	6,310
17. Net cash from financing and miscellaneous sources (Lines 16.1 to 16.4 minus Line 16.5 plus Line 16.6)	(9,505)	6,310
RECONCILIATION OF CASH, CASH EQUIVALENTS AND SHORT-TERM INVESTMENTS		
18. Net change in cash, cash equivalents and short-term investments (Line 11, plus Lines 15 and 17)	(11,082)	(1,784)
19. Cash, cash equivalents and short-term investments:		
19.1 Beginning of year	136,505	138,289
19.2 End of year (Line 18 plus Line 19.1)	125,423	136,505

Note: Supplemental disclosures of cash flow information for non-cash transactions:

--	--	--

ANNUAL STATEMENT FOR THE YEAR 2018 OF THE MANAGED DENTALGUARD INC (OHIO)

ANALYSIS OF OPERATIONS BY LINES OF BUSINESS

	1	2	3	4	5	6	7	8	9	10
	Total	Comprehensive (Hospital & Medical)	Medicare Supplement	Dental Only	Vision Only	Federal Employees Health Benefits Plan	Title XVIII Medicare	Title XIX Medicaid	Other Health	Other Non-Health
1. Net premium income	345,738			345,738						
2. Change in unearned premium reserves and reserve for rate credit	0									
3. Fee-for-service (net of \$ medical expenses)	0									XXX
4. Risk revenue	0									XXX
5. Aggregate write-ins for other health care related revenues	0	0	0	0	0	0	0	0	0	XXX
6. Aggregate write-ins for other non-health care related revenues	0	XXX	XXX	XXX	XXX	XXX	XXX	XXX	XXX	0
7. Total revenues (Lines 1 to 6)	345,738	0	0	345,738	0	0	0	0	0	0
8. Hospital/medical benefits	0									XXX
9. Other professional services	191,128			191,128						XXX
10. Outside referrals	0									XXX
11. Emergency room and out-of-area	0									XXX
12. Prescription drugs	0									XXX
13. Aggregate write-ins for other hospital and medical	0	0	0	0	0	0	0	0	0	XXX
14. Incentive pool, withhold adjustments and bonus amounts	0									XXX
15. Subtotal (Lines 8 to 14)	191,128	0	0	191,128	0	0	0	0	0	XXX
16. Net reinsurance recoveries	0									XXX
17. Total medical and hospital (Lines 15 minus 16)	191,128	0	0	191,128	0	0	0	0	0	XXX
18. Non-health claims (net)	0	XXX	XXX	XXX	XXX	XXX	XXX	XXX	XXX	
19. Claims adjustment expenses including \$ ²⁰⁰ cost containment expenses	1,064			1,064						
20. General administrative expenses	54,730			54,730						
21. Increase in reserves for accident and health contracts	0									XXX
22. Increase in reserves for life contracts	0	XXX	XXX	XXX	XXX	XXX	XXX	XXX	XXX	
23. Total underwriting deductions (Lines 17 to 22)	246,922	0	0	246,922	0	0	0	0	0	0
24. Total underwriting gain or (loss) (Line 7 minus Line 23)	98,816	0	0	98,816	0	0	0	0	0	0
DETAILS OF WRITE-INS										XXX
0501.										XXX
0502.										XXX
0503.										XXX
0598. Summary of remaining write-ins for Line 5 from overflow page	0	0	0	0	0	0	0	0	0	XXX
0599. Totals (Lines 0501 thru 0503 plus 0598) (Line 5 above)	0	0	0	0	0	0	0	0	0	XXX
0601.		XXX	XXX	XXX	XXX	XXX	XXX	XXX	XXX	
0602.		XXX	XXX	XXX	XXX	XXX	XXX	XXX	XXX	
0603.		XXX	XXX	XXX	XXX	XXX	XXX	XXX	XXX	
0698. Summary of remaining write-ins for Line 6 from overflow page	0	XXX	XXX	XXX	XXX	XXX	XXX	XXX	XXX	0
0699. Totals (Lines 0601 thru 0603 plus 0698) (Line 6 above)	0	XXX	XXX	XXX	XXX	XXX	XXX	XXX	XXX	0
1301.										XXX
1302.										XXX
1303.										XXX
1398. Summary of remaining write-ins for Line 13 from overflow page	0	0	0	0	0	0	0	0	0	XXX
1399. Totals (Lines 1301 thru 1303 plus 1398) (Line 13 above)	0	0	0	0	0	0	0	0	0	XXX

UNDERWRITING AND INVESTMENT EXHIBIT

PART 1 - PREMIUMS

	1	2	3	4
Line of Business	Direct Business	Reinsurance Assumed	Reinsurance Ceded	Net Premium Income (Cols. 1 + 2 - 3)
1. Comprehensive (hospital and medical)				0
2. Medicare Supplement				0
3. Dental only	345,738			345,738
4. Vision only				0
5. Federal Employees Health Benefits Plan	0			0
6. Title XVIII - Medicare	0			0
7. Title XIX - Medicaid	0			0
8. Other health				0
9. Health subtotal (Lines 1 through 8)	345,738	0	0	345,738
10. Life	0			0
11. Property/casualty	0			0
12. Totals (Lines 9 to 11)	345,738	0	0	345,738

UNDERWRITING AND INVESTMENT EXHIBIT

PART 2 - CLAIMS INCURRED DURING THE YEAR

	1	2	3	4	5	6	7	8	9	10
	Total	Comprehensive (Hospital & Medical)	Medicare Supplement	Dental Only	Vision Only	Federal Employees Health Benefits Plan	Title XVIII Medicare	Title XIX Medicaid	Other Health	Other Non-Health
1. Payments during the year:										
1.1 Direct	191,299			191,299						
1.2 Reinsurance assumed0									
1.3 Reinsurance ceded0									
1.4 Net	191,299	.0	.0	191,299	.0	.0	.0	.0	.0	.0
2. Paid medical incentive pools and bonuses0									
3. Claim liability December 31, current year from Part 2A:										
3.1 Direct	20,451	.0	.0	20,451	.0	.0	.0	.0	.0	.0
3.2 Reinsurance assumed0	.0	.0	.0	.0	.0	.0	.0	.0	.0
3.3 Reinsurance ceded0	.0	.0	.0	.0	.0	.0	.0	.0	.0
3.4 Net	20,451	.0	.0	20,451	.0	.0	.0	.0	.0	.0
4. Claim reserve December 31, current year from Part 2D:										
4.1 Direct0									
4.2 Reinsurance assumed0									
4.3 Reinsurance ceded0									
4.4 Net0	.0	.0	.0	.0	.0	.0	.0	.0	.0
5. Accrued medical incentive pools and bonuses, current year0									
6. Net healthcare receivables (a)0									
7. Amounts recoverable from reinsurers December 31, current year0									
8. Claim liability December 31, prior year from Part 2A:										
8.1 Direct	20,622	.0	.0	20,622	.0	.0	.0	.0	.0	.0
8.2 Reinsurance assumed0	.0	.0	.0	.0	.0	.0	.0	.0	.0
8.3 Reinsurance ceded0	.0	.0	.0	.0	.0	.0	.0	.0	.0
8.4 Net	20,622	.0	.0	20,622	.0	.0	.0	.0	.0	.0
9. Claim reserve December 31, prior year from Part 2D:										
9.1 Direct0									
9.2 Reinsurance assumed0									
9.3 Reinsurance ceded0									
9.4 Net0	.0	.0	.0	.0	.0	.0	.0	.0	.0
10. Accrued medical incentive pools and bonuses, prior year	0									
11. Amounts recoverable from reinsurers December 31, prior year	0									
12. Incurred Benefits:										
12.1 Direct	191,128	.0	.0	191,128	.0	.0	.0	.0	.0	.0
12.2 Reinsurance assumed0	.0	.0	.0	.0	.0	.0	.0	.0	.0
12.3 Reinsurance ceded0	.0	.0	.0	.0	.0	.0	.0	.0	.0
12.4 Net	191,128	0	0	191,128	0	0	0	0	0	0
13. Incurred medical incentive pools and bonuses	0	0	0	0	0	0	0	0	0	0

(a) Excludes \$ loans or advances to providers not yet expensed.

UNDERWRITING AND INVESTMENT EXHIBIT

PART 2A - CLAIMS LIABILITY END OF CURRENT YEAR

	1	2	3	4	5	6	7	8	9	10
	Total	Comprehensive (Hospital & Medical)	Medicare Supplement	Dental Only	Vision Only	Federal Employees Health Benefits Plan	Title XVIII Medicare	Title XIX Medicaid	Other Health	Other Non-Health
1. Reported in Process of Adjustment:										
1.1 Direct0									
1.2 Reinsurance assumed0									
1.3 Reinsurance ceded0									
1.4 Net0	.0	.0	.0	.0	.0	.0	.0	.0	.0
2. Incurred but Unreported:										
2.1 Direct	20,451			20,451						
2.2 Reinsurance assumed0									
2.3 Reinsurance ceded0									
2.4 Net	20,451	.0	.0	20,451	.0	.0	.0	.0	.0	.0
3. Amounts Withheld from Paid Claims and Capitations:										
3.1 Direct0									
3.2 Reinsurance assumed0									
3.3 Reinsurance ceded0									
3.4 Net0	.0	.0	.0	.0	.0	.0	.0	.0	.0
4. TOTALS:										
4.1 Direct	20,451	.0	.0	20,451	.0	.0	.0	.0	.0	.0
4.2 Reinsurance assumed0	.0	.0	.0	.0	.0	.0	.0	.0	.0
4.3 Reinsurance ceded0	.0	.0	.0	.0	.0	.0	.0	.0	.0
4.4 Net	20,451	0	0	20,451	0	0	0	0	0	0

UNDERWRITING AND INVESTMENT EXHIBIT

PART 2B - ANALYSIS OF CLAIMS UNPAID - PRIOR YEAR - NET OF REINSURANCE

Line of Business	Claims Paid During the Year		Claim Reserve and Claim Liability December 31 of Current Year		5	6
	1	2	3	4		
	On Claims Incurred Prior to January 1 of Current Year	On Claims Incurred During the Year	On Claims Unpaid December 31 of Prior Year	On Claims Incurred During the Year	Claims Incurred In Prior Years (Columns 1 + 3)	Estimated Claim Reserve and Claim Liability December 31 of Prior Year
1. Comprehensive (hospital and medical)					0	0
2. Medicare Supplement					0	0
3. Dental Only	13,916	177,383	1,419	19,032	15,335	20,622
4. Vision Only					0	0
5. Federal Employees Health Benefits Plan					0	0
6. Title XVIII - Medicare					0	0
7. Title XIX - Medicaid					0	0
8. Other health					0	0
9. Health subtotal (Lines 1 to 8)	13,916	177,383	1,419	19,032	15,335	20,622
10. Healthcare receivables (a)					0	0
11. Other non-health					0	0
12. Medical incentive pools and bonus amounts					0	0
13. Totals (Lines 9 - 10 + 11 + 12)	13,916	177,383	1,419	19,032	15,335	20,622

(a) Excludes \$ loans or advances to providers not yet expensed.

ANNUAL STATEMENT FOR THE YEAR 2018 OF THE MANAGED DENTALGUARD INC (OHIO)

UNDERWRITING AND INVESTMENT EXHIBIT

PART 2C - DEVELOPMENT OF PAID AND INCURRED HEALTH CLAIMS
(\$000 Omitted)

Section A - Paid Health Claims - Dental Only

Year in Which Losses Were Incurred		Cumulative Net Amounts Paid				
		1 2014	2 2015	3 2016	4 2017	5 2018
1.	Prior	6	6	6	6	6
2.	2014	174	186	186	186	186
3.	2015	XXX	163	177	177	177
4.	2016	XXX	XXX	153	168	168
5.	2017	XXX	XXX	XXX	148	162
6.	2018	XXX	XXX	XXX	XXX	177

Section B - Incurred Health Claims - Dental Only

Year in Which Losses Were Incurred		Sum of Cumulative Net Amount Paid and Claim Liability, Claim Reserve and Medical Incentive Pool and Bonuses Outstanding at End of Year				
		1 2014	2 2015	3 2016	4 2017	5 2018
1.	Prior	5	5	5	5	5
2.	2014	201	187	187	187	187
3.	2015	XXX	192	177	177	177
4.	2016	XXX	XXX	178	194	194
5.	2017	XXX	XXX	XXX	167	162
6.	2018	XXX	XXX	XXX	XXX	196

Section C - Incurred Year Health Claims and Claims Adjustment Expense Ratio - Dental Only

Years in which Premiums were Earned and Claims were Incurred	1 Premiums Earned	2 Claims Payment	3 Claim Adjustment Expense Payments	4 (Col. 3/2) Percent	5 Claim and Claim Adjustment Expense Payments (Col. 2 + 3)	6 (Col. 5/1) Percent	7 Claims Unpaid	8 Unpaid Claims Adjustment Expenses	9 Total Claims and Claims Adjustment Expense Incurred (Col. 5+7+8)	10 (Col. 9/1) Percent
1. 2014	329	197	3	1.5	200	60.8	0	0	200	60.8
2. 2015	327	175	2	1.1	177	54.1	0	0	177	54.1
3. 2016	303	166	0	0.0	166	54.8	0	0	166	54.8
4. 2017	316	163	1	0.6	164	51.9	0	0	164	51.9
5. 2018	346	191	1	0.5	192	55.5	20	0	212	61.3

UNDERWRITING AND INVESTMENT EXHIBIT

PART 2C - DEVELOPMENT OF PAID AND INCURRED HEALTH CLAIMS
(\$000 Omitted)

Section A - Paid Health Claims - Grand Total

Year in Which Losses Were Incurred		Cumulative Net Amounts Paid				
		1 2014	2 2015	3 2016	4 2017	5 2018
1.	Prior	6	6	6	6	6
2.	2014	174	186	186	186	186
3.	2015	XXX	163	177	177	177
4.	2016	XXX	XXX	153	168	168
5.	2017	XXX	XXX	XXX	148	162
6.	2018	XXX	XXX	XXX	XXX	177

Section B - Incurred Health Claims - Grand Total

Year in Which Losses Were Incurred		Sum of Cumulative Net Amount Paid and Claim Liability, Claim Reserve and Medical Incentive Pool and Bonuses Outstanding at End of Year				
		1 2014	2 2015	3 2016	4 2017	5 2018
1.	Prior	5	5	5	5	5
2.	2014	201	187	187	187	187
3.	2015	XXX	192	177	177	177
4.	2016	XXX	XXX	178	194	194
5.	2017	XXX	XXX	XXX	167	162
6.	2018	XXX	XXX	XXX	XXX	196

Section C - Incurred Year Health Claims and Claims Adjustment Expense Ratio - Grand Total

Years in which Premiums were Earned and Claims were Incurred	1 Premiums Earned	2 Claims Payment	3 Claim Adjustment Expense Payments	4 (Col. 3/2) Percent	5 Claim and Claim Adjustment Expense Payments (Col. 2 + 3)	6 (Col. 5/1) Percent	7 Claims Unpaid	8 Unpaid Claims Adjustment Expenses	9 Total Claims and Claims Adjustment Expense Incurred (Col. 5+7+8)	10 (Col. 9/1) Percent
1. 2014	329	197	3	1.5	200	60.8	0	0	200	60.8
2. 2015	327	175	2	1.1	177	54.1	0	0	177	54.1
3. 2016	303	166	0	0.0	166	54.8	0	0	166	54.8
4. 2017	316	163	1	0.6	164	51.9	0	0	164	51.9
5. 2018	346	191	1	0.5	192	55.5	20	0	212	61.3

UNDERWRITING AND INVESTMENT EXHIBIT

PART 2D - AGGREGATE RESERVE FOR ACCIDENT AND HEALTH CONTRACTS ONLY

	1	2	3	4	5	6	7	8	9
	Total	Comprehensive (Hospital & Medical)	Medicare Supplement	Dental Only	Vision Only	Federal Employees Health Benefits Plan	Title XVIII Medicare	Title XIX Medicaid	Other
1. Unearned premium reserves									
2. Additional policy reserves (a)									
3. Reserve for future contingent benefits									
4. Reserve for rate credits or experience rating refunds (including \$) for investment income									
5. Aggregate write-ins for other policy reserves									
6. Totals (gross)									
7. Reinsurance ceded									
8. Totals (Net)(Page 3, Line 4)									
9. Present value of amounts not yet due on claims									
10. Reserve for future contingent benefits									
11. Aggregate write-ins for other claim reserves									
12. Totals (gross)									
13. Reinsurance ceded									
14. Totals (Net)(Page 3, Line 7)									
DETAILS OF WRITE-INS									
0501.									
0502.									
0503.									
0598. Summary of remaining write-ins for Line 5 from overflow page.....									
0599. Totals (Lines 0501 thru 0503 plus 0598) (Line 5 above)									
1101.									
1102.									
1103.									
1198. Summary of remaining write-ins for Line 11 from overflow page									
1199. Totals (Lines 1101 thru 1103 plus 1198) (Line 11 above)									

(a) Includes \$ premium deficiency reserve.

ANNUAL STATEMENT FOR THE YEAR 2018 OF THE MANAGED DENTALGUARD INC (OHIO)

UNDERWRITING AND INVESTMENT EXHIBIT

PART 3 - ANALYSIS OF EXPENSES					
	Claim Adjustment Expenses		3	4	5
	1 Cost Containment Expenses	2 Other Claim Adjustment Expenses			
			General Administrative Expenses	Investment Expenses	Total
1. Rent (\$ for occupancy of own building)					0
2. Salary, wages and other benefits					0
3. Commissions (less \$ ceded plus \$ assumed)			28,729		28,729
4. Legal fees and expenses			90		90
5. Certifications and accreditation fees					0
6. Auditing, actuarial and other consulting services	200	864	7,201		8,265
7. Traveling expenses					0
8. Marketing and advertising			4,133		4,133
9. Postage, express and telephone			1,653		1,653
10. Printing and office supplies			2,480		2,480
11. Occupancy, depreciation and amortization					0
12. Equipment					0
13. Cost or depreciation of EDP equipment and software					0
14. Outsourced services including EDP, claims, and other services					0
15. Boards, bureaus and association fees					0
16. Insurance, except on real estate					0
17. Collection and bank service charges					0
18. Group service and administration fees					0
19. Reimbursements by uninsured plans					0
20. Reimbursements from fiscal intermediaries					0
21. Real estate expenses					0
22. Real estate taxes					0
23. Taxes, licenses and fees:					
23.1 State and local insurance taxes			700		700
23.2 State premium taxes			3,457		3,457
23.3 Regulatory authority licenses and fees					0
23.4 Payroll taxes					0
23.5 Other (excluding federal income and real estate taxes)			6,287		6,287
24. Investment expenses not included elsewhere					0
25. Aggregate write-ins for expenses	0	0	0	0	0
26. Total expenses incurred (Lines 1 to 25)	200	864	54,730	0	(a) 55,794
27. Less expenses unpaid December 31, current year .		360	31,614		31,974
28. Add expenses unpaid December 31, prior year		313	31,939		32,252
29. Amounts receivable relating to uninsured plans, prior year					0
30. Amounts receivable relating to uninsured plans, current year					0
31. Total expenses paid (Lines 26 minus 27 plus 28 minus 29 plus 30)	200	817	55,055	0	56,072
DETAILS OF WRITE-INS					
2501.					
2502.					
2503.					
2598. Summary of remaining write-ins for Line 25 from overflow page	0	0	0	0	0
2599. Totals (Lines 2501 thru 2503 plus 2598)(Line 25 above)	0	0	0	0	0

(a) Includes management fees of \$ to affiliates and \$ to non-affiliates.

ANNUAL STATEMENT FOR THE YEAR 2018 OF THE MANAGED DENTALGUARD INC (OHIO)

EXHIBIT OF NET INVESTMENT INCOME

		1	2
		Collected During Year	Earned During Year
1.	U.S. government bonds	(a)8,0689,944
1.1	Bonds exempt from U.S. tax	(a)
1.2	Other bonds (unaffiliated)	(a)
1.3	Bonds of affiliates	(a)
2.1	Preferred stocks (unaffiliated)	(b)
2.11	Preferred stocks of affiliates	(b)
2.2	Common stocks (unaffiliated)
2.21	Common stocks of affiliates
3.	Mortgage loans	(c)
4.	Real estate	(d)
5	Contract Loans
6	Cash, cash equivalents and short-term investments	(e)
7	Derivative instruments	(f)
8.	Other invested assets
9.	Aggregate write-ins for investment income00
10.	Total gross investment income	8,068	9,944
11.	Investment expenses	(g)0
12.	Investment taxes, licenses and fees, excluding federal income taxes	(g)0
13.	Interest expense	(h)
14.	Depreciation on real estate and other invested assets	(i)
15.	Aggregate write-ins for deductions from investment income0
16.	Total deductions (Lines 11 through 15)0
17.	Net investment income (Line 10 minus Line 16)		9,944
DETAILS OF WRITE-INS			
0901.		
0902.		
0903.		
0998.	Summary of remaining write-ins for Line 9 from overflow page00
0999.	Totals (Lines 0901 thru 0903 plus 0998) (Line 9, above)	0	0
1501.		
1502.		
1503.		
1598.	Summary of remaining write-ins for Line 15 from overflow page0
1599.	Totals (Lines 1501 thru 1503 plus 1598) (Line 15, above)		0

(a) Includes \$3,456 accrual of discount less \$ amortization of premium and less \$1,075 paid for accrued interest on purchases.

(b) Includes \$ accrual of discount less \$ amortization of premium and less \$ paid for accrued dividends on purchases.

(c) Includes \$ accrual of discount less \$ amortization of premium and less \$ paid for accrued interest on purchases.

(d) Includes \$ for company's occupancy of its own buildings; and excludes \$ interest on encumbrances.

(e) Includes \$ accrual of discount less \$ amortization of premium and less \$ paid for accrued interest on purchases.

(f) Includes \$ accrual of discount less \$ amortization of premium.

(g) Includes \$. investment expenses and \$ investment taxes, licenses and fees, excluding federal income taxes, attributable to segregated and Separate Accounts.

(h) Includes \$ interest on surplus notes and \$ interest on capital notes.

(i) Includes \$ depreciation on real estate and \$ depreciation on other invested assets.

EXHIBIT OF CAPITAL GAINS (LOSSES)

		1	2	3	4	5
		Realized Gain (Loss) On Sales or Maturity	Other Realized Adjustments	Total Realized Capital Gain (Loss) (Columns 1 + 2)	Change in Unrealized Capital Gain (Loss)	Change in Unrealized Foreign Exchange Capital Gain (Loss)
1.	U.S. Government bonds					
1.1	Bonds exempt from U.S. tax					
1.2	Other bonds (unaffiliated)					
1.3	Bonds of affiliates					
2.1	Preferred stocks (unaffiliated)					
2.11	Preferred stocks of affiliates					
2.2	Common stocks (unaffiliated)					
2.21	Common stocks of affiliates					
3.	Mortgage loans					
4.	Real estate					
5.	Contract loans					
6.	Cash, cash equivalents and short-term investments					
7.	Derivative instruments					
8.	Other invested assets					
9.	Aggregate write-ins for capital gains (losses)					
10.	Total capital gains (losses)					
DETAILS OF WRITE-INS						
0901.					
0902.					
0903.					
0998.	Summary of remaining write-ins for Line 9 from overflow page					
0999.	Totals (Lines 0901 thru 0903 plus 0998) (Line 9, above)					

EXHIBIT OF NON-ADMITTED ASSETS

	1	2	3
	Current Year Total Nonadmitted Assets	Prior Year Total Nonadmitted Assets	Change in Total Nonadmitted Assets (Col. 2 - Col. 1)
1. Bonds (Schedule D)			0
2. Stocks (Schedule D):			
2.1 Preferred stocks			0
2.2 Common stocks			0
3. Mortgage loans on real estate (Schedule B):			
3.1 First liens			0
3.2 Other than first liens.....			0
4. Real estate (Schedule A):			
4.1 Properties occupied by the company			0
4.2 Properties held for the production of income.....			0
4.3 Properties held for sale			0
5. Cash (Schedule E - Part 1), cash equivalents (Schedule E - Part 2) and short-term investments (Schedule DA)			0
6. Contract loans			0
7. Derivatives (Schedule DB)			0
8. Other invested assets (Schedule BA)			0
9. Receivables for securities			0
10. Securities lending reinvested collateral assets (Schedule DL)			0
11. Aggregate write-ins for invested assets	0	0	0
12. Subtotals, cash and invested assets (Lines 1 to 11)	0	0	0
13. Title plants (for Title insurers only)			0
14. Investment income due and accrued			0
15. Premiums and considerations:			
15.1 Uncollected premiums and agents' balances in the course of collection			0
15.2 Deferred premiums, agents' balances and installments booked but deferred and not yet due			0
15.3 Accrued retrospective premiums and contracts subject to redetermination			0
16. Reinsurance:			
16.1 Amounts recoverable from reinsurers			0
16.2 Funds held by or deposited with reinsured companies			0
16.3 Other amounts receivable under reinsurance contracts			0
17. Amounts receivable relating to uninsured plans			0
18.1 Current federal and foreign income tax recoverable and interest thereon			0
18.2 Net deferred tax asset	316	232	(84)
19. Guaranty funds receivable or on deposit			0
20. Electronic data processing equipment and software			0
21. Furniture and equipment, including health care delivery assets			0
22. Net adjustment in assets and liabilities due to foreign exchange rates			0
23. Receivable from parent, subsidiaries and affiliates			0
24. Health care and other amounts receivable			0
25. Aggregate write-ins for other than invested assets	0	0	0
26. Total assets excluding Separate Accounts, Segregated Accounts and Protected Cell Accounts (Lines 12 to 25)	316	232	(84)
27. From Separate Accounts, Segregated Accounts and Protected Cell Accounts			0
28. Total (Lines 26 and 27)	316	232	(84)
DETAILS OF WRITE-INS			
1101.			
1102.			
1103.			
1198. Summary of remaining write-ins for Line 11 from overflow page	0	0	0
1199. Totals (Lines 1101 thru 1103 plus 1198)(Line 11 above)	0	0	0
2501.			
2502.			
2503.			
2598. Summary of remaining write-ins for Line 25 from overflow page	0	0	0
2599. Totals (Lines 2501 thru 2503 plus 2598)(Line 25 above)	0	0	0

EXHIBIT 1 - ENROLLMENT BY PRODUCT TYPE FOR HEALTH BUSINESS ONLY

Source of Enrollment	Total Members at End of					6 Current Year Member Months
	1 Prior Year	2 First Quarter	3 Second Quarter	4 Third Quarter	5 Current Year	
1. Health Maintenance Organizations	1,683	1,738	1,766	1,430	1,703	20,149
2. Provider Service Organizations						
3. Preferred Provider Organizations						
4. Point of Service						
5. Indemnity Only						
6. Aggregate write-ins for other lines of business.....	0	0	0	0	0	0
7. Total	1,683	1,738	1,766	1,430	1,703	20,149
DETAILS OF WRITE-INS						
0601.						
0602.						
0603.						
0698. Summary of remaining write-ins for Line 6 from overflow page	0	0	0	0	0	0
0699. Totals (Lines 0601 thru 0603 plus 0698) (Line 6 above)	0	0	0	0	0	0

ANNUAL STATEMENT FOR THE YEAR 2018 OF THE MANAGED DENTALGUARD INC (OHIO)

NOTES TO FINANCIAL STATEMENTS

1. Summary of Significant Accounting Policies

A. Accounting Practices

Basis of Presentation

The financial statements of Managed DentalGuard, Inc. (Company) are presented on the basis of accounting practices prescribed or permitted by the Ohio Department of Insurance.

The Ohio Department of Insurance (ODI) requires insurance companies domiciled therein to prepare their statutory financial statements in accordance with the National Association of Insurance Commissioners' (NAIC) *Accounting Practices and Procedures Manual* (NAIC SAP) subject to any deviations prescribed or permitted by the ODI. There are no material differences between the Company's surplus and net income (loss) calculated in accordance with the ODI and NAIC SAP for the year ending December 31, 2018.

Note 1 - Summary of Significant Accounting Policies and Going Concern

	SSAP #	F/S Page	F/S Line #	December 31, 2018	December 31, 2017
NET INCOME					
(1) Net Income, state basis (Page 4, Line 32, Columns 2 & 4)	1	4	32	\$ 84,527	\$ 57,364
(2) State Prescribed Practices that increase/(decrease) NAIC SAP				-	-
(3) State Permitted Practices that increase/(decrease) NAIC SAP				-	-
(4) Net Income, NAIC SAP (1-2-3=4)				<u>\$ 84,527</u>	<u>\$ 57,364</u>
STATUTORY SURPLUS					
(5) Statutory surplus, state basis (Page 3, Line 33, Columns 3 & 4)	1	3	33	\$ 642,806	\$ 558,278
(6) State Prescribed Practices that increase/(decrease) NAIC SAP				-	-
(7) State Permitted Practices that increase/(decrease) NAIC SAP				-	-
(8) Statutory Surplus, NAIC SAP (5-6-7=8)				<u>\$ 642,806</u>	<u>\$ 558,278</u>

B. Use of Estimates in the Preparation of the Financial Statements

The preparation of financial statements in accordance with Statutory Accounting Principles requires management to make estimates and assumptions that affect the reported amounts of admitted assets and liabilities, disclosure of contingent assets and liabilities at the date of the financial statements and the reported amounts of revenues and expenses for each reporting period. Actual results could differ from those estimates.

C. Accounting Policy

Dental premiums are earned ratably over the terms of the related insurance policies.

In addition, the Company uses the following accounting policies:

1. Short-term investments are stated at amortized cost.
2. The Company's investments in fixed maturity securities are valued using prices provided by third party pricing vendors. The pricing vendors determine the prices using market inputs, including benchmark yields, reported trades, broker-dealer quotes, issuer spreads, two-sided markets, benchmark securities, bids, offers and reference data. Bonds are stated at amortized cost using the interest method.
3. Common Stocks
Not applicable
4. Preferred Stocks
Not applicable
5. Mortgage Loans
Not applicable
6. Loan-Backed Securities
Not applicable
7. Investment in Subsidiaries, Controlled and Affiliated Companies
Not applicable
8. Investment in Joint Ventures, Partnerships and Limited Liability Companies
Not applicable

ANNUAL STATEMENT FOR THE YEAR 2018 OF THE MANAGED DENTALGUARD INC (OHIO)

NOTES TO FINANCIAL STATEMENTS

9. Derivatives
Not applicable

10. Investment Income as a Factor in the Premium and methodologies
Not applicable

11. A Summary of management’s policies and methodologies
The estimate for incurred but not reported dental claims is based on actuarial projections of costs using historical claims paid data. Estimates are continually monitored and reviewed and, as settlements are made or estimates adjusted, differences are reflected in current operations. Such estimates are subject to the impact of changes in the regulatory environment and economic conditions. Given the inherent nature of such estimates, the actual liability could differ significantly from the amounts provided. Actual future experience will generally differ from assumptions used to determine claim liabilities.

Premium revenue is recognized in the period in which the member is entitled to receive dental services.

Other Professional Services for Benefits include claims incurred and capitation expense to dental network providers.

The provision for federal income taxes is based on income from operations currently taxable. In accordance with the Company’s state of domicile, the Company recognizes deferred income taxes for temporary differences between financial statement carrying amounts of assets and liabilities and their related tax basis. Realized gains and losses are reported net of applicable federal income taxes. Increases or decreases in certain federal income tax assets and liabilities established in prior years are reflected as adjustments to surplus.

Net investment income includes interest and dividends received or accrued on investments. It also includes amortization of any purchase premium or discount using the interest method, adjusted retrospectively for any change in estimated yield to maturity. Investment income due and accrued that is deemed uncollectible is charged against net investment income in the period such determination is made.

12. If the Capitalization policy and the resultant predefined thresholds changed from prior period, the reason for change.
Not applicable

13. The method used to estimate pharmaceutical rebate receivables
Not applicable

D. Going Concern
The management has no doubt about Company’s ability to continue as a going concern.

2. Accounting Changes and Corrections of Errors
Not applicable

3. Business Combinations and Goodwill

A. Statutory Purchase Method
Not applicable.

B. Statutory Merger
Not applicable.

C. Assumption Reinsurance
Not applicable.

D. Impairment Loss
Not applicable.

4. Discontinued Operations

A. Discontinued Operation Disposed of or Classified as Held for Sale
Not applicable.

NOTES TO FINANCIAL STATEMENTS

B. Change in Plan of Sale of Discontinued Operation
Not applicable.

C. Nature of Any Significant Involvement with Discontinued Operations After Disposal
Not applicable.

D. Equity Interest Retained in the Discontinued Operation After Disposal
Not applicable.

5. Investments

A. Mortgage Loans, including Mezzanine Real Estate Loans
The Company owns no mortgage loan assets.

B. Debt Restructuring
The Company owns no investments which have had a debt restructuring.

C. Reverse Mortgages
The Company owns no reverse mortgage assets.

D. Loan-Backed Securities
The Company owns no loan backed securities.

E. Dollar Repurchase Agreements and/or Securities Lending Transactions
Not applicable

F. Repurchase Agreements Transactions Accounted for as Secured Borrowing
Not applicable

G. Reverse Repurchase Agreements Transactions Accounted for as Secured Borrowing
Not applicable

H. Repurchase Agreements Transactions Accounted for as a Sale
Not applicable

I. Reverse Repurchase Agreements Transactions Accounted for as a Sale
Not applicable

J. Real Estate
The Company owns no real estate assets.

K. Investment in Low Income Housing Tax Credits (LIHTC)
The Company owns no investments in low income housing.

L. Restricted Assets
The Company's restricted assets as of December 31, 2018 and December 31, 2017 are as follows:

(1) Restricted Assets (Including Pledged)

ANNUAL STATEMENT FOR THE YEAR 2018 OF THE MANAGED DENTALGUARD INC (OHIO)

NOTES TO FINANCIAL STATEMENTS

Restricted Assets (Including Pledged)

Restricted Asset Category	1 (Admitted & Nonadmitted) Restricted from Current	2 (Admitted & Nonadmitted) Restricted from Prior	3 Increase/ (Decrease) (1 minus 2)	4 Total Current Year Nonadmitted Restricted	5 Year Admitted Restricted (1 minus 4)	6 (Admitted & Nonadmitted) Restricted to Total Assets	7 Restricted to Total Admitted Assets (b)
a. Subject to contractual obligation for which liability is not shown	-	-	-	-	-	-	-
b. Collateral held under security lending agreements	-	-	-	-	-	-	-
c. Subject to repurchase agreements	-	-	-	-	-	-	-
d. Subject to reverse repurchase agreements	-	-	-	-	-	-	-
e. Subject to dollar repurchase agreements	-	-	-	-	-	-	-
f. Subject to dollar reverse repurchase agreements	-	-	-	-	-	-	-
g. Placed under option contracts	-	-	-	-	-	-	-
h. Letter stock or securities restricted as to sale - excluding FHLB capital stock	-	-	-	-	-	-	-
i. FHLB capital stock	-	-	-	-	-	-	-
j. On deposit with states	\$74,888	\$74,850	\$38	\$0	\$74,888	12.1%	12.2%
k. On deposit with other regulatory bodies	-	-	-	-	-	-	-
l. Pledged collateral to FHLB (including assets backing funding agreements)	-	-	-	-	-	-	-
m. Pledged as collateral not captured in other	-	-	-	-	-	-	-
n. Other restricted assets	-	-	-	-	-	-	-
o. Total Restricted Assets	\$74,888	\$74,850	\$38	\$0	\$74,888	12.1%	12.2%

Column 1, Line 28

Column 3, Line 28

(2) Details of Assets Pledged as Collateral Not Captured in Other Categories
Not applicable

(3) Details of Other Restricted Assets
Not applicable

(4) Collateral Received and Reflected as Assets Within the Reporting Entity’s Financial Statements
Not applicable

M. Working Capital Finance Investments
Not applicable.

N. Offsetting and Netting of Assets and Liabilities
Not applicable.

O. Structured Notes
Not applicable

P. 5GI Securities
Not applicable

Q. Short Sales
Not applicable.

R. Prepayment Penalty and Acceleration Fees
Not applicable.

6. Joint Ventures, Partnerships and Limited Liability Companies

- A. The Company has no investments in Joint Ventures, Partnerships or Limited Liability Companies that exceed 10% of its admitted assets
- B. The Company did not recognize any impairment write down for its investments in Joint ventures, Partnerships and Limited Liabilities Companies during statement periods.

7. Investment Income

Net Investment Income, including accrual of discount and amortization of premium, arose from the following sources for the years ending December 31, 2018 and December 31, 2017:

ANNUAL STATEMENT FOR THE YEAR 2018 OF THE MANAGED DENTALGUARD INC (OHIO)

NOTES TO FINANCIAL STATEMENTS

	December 31, 2018	December 31, 2017
Bonds	\$ 9,944	\$ 4,563
Cash and short term investments	-	-
Gross investment income	\$ 9,944	\$ 4,563
Less: investment expenses	-	-
Net investment income	\$ 9,944	\$ 4,563

8. Derivative Instruments

Not applicable

9. Income Taxes

Deferred income taxes are generally recognized, based on enacted tax rates, when assets and liabilities have different values for financial statement and tax purposes.

The Tax Cuts and Jobs Act ("the Act") was enacted into law on December 22, 2017. Effective January 1, 2018, the Act reduces the corporate tax rate to 21%. There is no impact to the unassigned surplus as a result of the Act.

A. The components of the net DTA recognized in the Company’s Assets, Liabilities, Surplus and Other Funds are as follows:

1.	December 31, 2018		
	Ordinary	Capital	Total
(a) Gross Deferred Tax Assets	\$ 347	\$ -	\$ 347
(b) Statutory valuation allowance adjustments	-	-	-
(c) Adjusted Gross Deferred Tax Assets (1a - 1b)	347	-	347
(d) Deferred Tax Assets Nonadmitted	316	-	316
(e) Subtotal Net Admitted Deferred Tax Asset (1c - 1d)	31	-	31
(f) Deferred Tax Liabilities	31	-	31
(g) Net Admitted Deferred Tax Asset/(Net Deferred Tax Liability)	\$ -	\$ -	\$ -
(1e - 1f)			

	December 31, 2017		
	Ordinary	Capital	Total
(a) Gross Deferred Tax Assets	\$ 231	\$ -	\$ 231
(b) Statutory valuation allowance adjustments	-	-	-
(c) Adjusted Gross Deferred Tax Assets (1a - 1b)	231	-	231
(d) Deferred Tax Assets Nonadmitted	231	-	231
(e) Subtotal Net Admitted Deferred Tax Asset (1c - 1d)	-	-	-
(f) Deferred Tax Liabilities	-	-	-
(g) Net Admitted Deferred Tax Asset/(Net Deferred Tax Liability)	\$ -	\$ -	\$ -
(1e - 1f)			

	Change		
	Ordinary	Capital	Total
(a) Gross Deferred Tax Assets	\$ 116	\$ -	\$ 116
(b) Statutory valuation allowance adjustments	-	-	-
(c) Adjusted Gross Deferred Tax Assets (1a - 1b)	116	-	116
(d) Deferred Tax Assets Nonadmitted	85	-	85
(e) Subtotal Net Admitted Deferred Tax Asset (1c - 1d)	31	-	31
(f) Deferred Tax Liabilities	31	-	31
(g) Net Admitted Deferred Tax Asset/(Net Deferred Tax Liability)	\$ -	\$ -	\$ -
(1e - 1f)			

As a result of the new tax law and rate, gross DTAs and DTLs were reduced by \$154 and \$0, respectively.

A valuation allowance is recorded if it is more likely than not that some portion or all of the deferred tax asset will not be realized. The Company’s management has concluded that the deferred income tax assets are more likely than not to be realized. Therefore, no valuation allowance has been provided.

ANNUAL STATEMENT FOR THE YEAR 2018 OF THE MANAGED DENTALGUARD INC (OHIO)

NOTES TO FINANCIAL STATEMENTS

Admission calculation components SSAP No. 101 (Paragraph 11)

The Company follows the guidance in Statement of Statutory Accounting Principles No. 101 - Income Taxes, a replacement of SSAP No. 10R and SSAP No.10 ("SSAP 101"). SSAP 101 included a similar calculation for limitation of gross deferred tax assets as SSAP 10R for insurers that maintain a minimum of 300% of their authorized control level RBC computed without net deferred tax assets. The Company exceeded the 300% minimum RBC requirement at December 31, 2018 and 2017.

2.	December 31, 2018		
	Ordinary	Capital	Total
(a) Federal Income Taxes Paid In Prior Years Recoverable Through Loss Carrybacks.	\$ -	\$ -	\$ -
(b) Adjusted Gross Deferred Tax Assets Expected To Be Realized (Excluding The Amount Of Deferred Tax Assets From 2(a) above).After Application of the Threshold Limitation. (The Lesser of 2(b)1 and 2(b)2 Below)	-	-	-
(1) Adjusted Gross Deferred Tax Assets Expected To Be Realized Following The Balance Sheet Date	-	-	-
(2) Adjusted Gross Deferred Tax Assets Allowed per Limitation Threshold.	N/A	N/A	96,421
(c) Adjusted Gross Deferred Tax Assets (Excluding The Amount Of Deferred Tax Assets From 2(a) and 2(b) above) Offset by Gross Deferred Tax Liabilities.	31	-	31
(d) Deferred Tax Assets Admitted as the result of application of SSAP No. 101.Total (2(a). + 2(b). + 2(c).)	\$ 31	\$ -	\$ 31

	December 31, 2017		
	Ordinary	Capital	Total
(a) Federal Income Taxes Paid In Prior Years Recoverable Through Loss Carrybacks.	\$ -	\$ -	\$ -
(b) Adjusted Gross Deferred Tax Assets Expected To Be Realized (Excluding The Amount Of Deferred Tax Assets From 2(a) above).After Application of the Threshold Limitation. (The Lesser of 2(b)1 and 2(b)2 Below)	-	-	-
(1) Adjusted Gross Deferred Tax Assets Expected To Be Realized Following The Balance Sheet Date	-	-	-
(2) Adjusted Gross Deferred Tax Assets Allowed per Limitation Threshold.	N/A	N/A	83,742
(c) Adjusted Gross Deferred Tax Assets (Excluding The Amount Of Deferred Tax Assets From 2(a) and 2(b) above) Offset by Gross Deferred Tax Liabilities.	-	-	-
(d) Deferred Tax Assets Admitted as the result of application of SSAP No. 101.Total (2(a). + 2(b). + 2(c).)	\$ -	\$ -	\$ -

	Change		
	Ordinary	Capital	Total
(a) Federal Income Taxes Paid In Prior Years Recoverable Through Loss Carrybacks.	\$ -	\$ -	\$ -
(b) Adjusted Gross Deferred Tax Assets Expected To Be Realized (Excluding The Amount Of Deferred Tax Assets From 2(a) above).After Application of the Threshold Limitation. (The Lesser of 2(b)1 and 2(b)2 Below)	-	-	-
(1) Adjusted Gross Deferred Tax Assets Expected To Be Realized Following The Balance Sheet Date	-	-	-
(2) Adjusted Gross Deferred Tax Assets Allowed per Limitation Threshold.	N/A	N/A	12,679
(c) Adjusted Gross Deferred Tax Assets (Excluding The Amount Of Deferred Tax Assets From 2(a) and 2(b) above) Offset by Gross Deferred Tax Liabilities.	31	-	31
(d) Deferred Tax Assets Admitted as the result of application of SSAP No. 101.Total (2(a). + 2(b). + 2(c).)	\$ 31	\$ -	\$ 31

3.	2018	2017
(a) Ratio Percentage Used To Determine Recovery Period And Threshold Limitation Amount	6975%	5404%
(b) Amount Of Adjusted Capital And Surplus Used To Determine Recovery Period And Threshold Limitation in 2(b)2 Above	\$ 642,806	\$ 558,278

ANNUAL STATEMENT FOR THE YEAR 2018 OF THE MANAGED DENTALGUARD INC (OHIO)

NOTES TO FINANCIAL STATEMENTS

Impact of Tax Planning Strategies

4.	December 31, 2018	
	Ordinary	Capital
(a) Determination of adjusted gross deferred assets and net admitted deferred tax assets, by tax character as a percentage of total.		
(1) Adjusted Gross DTAs amount from Note 9A1(c)	\$ 347	\$ -
(2) Percentage of adusted gross DTA's by tax character attributable to the impact of tax planning strategies	0.0%	0.0%
(3) Net Admitted Adjusted Gross DTAs amount from Note 9A1 (e)	31	-
(4) Percentage of net admitted adjusted Gross DTAs by tax character admitted because of the impact of tax planning strategies	0.0%	0.0%

	December 31, 2017	
	Ordinary	Capital
(1) Adjusted Gross DTAs amount from Note 9A1(c)	\$ 231	\$ -
(2) Percentage of adusted gross DTA's by tax character attributable to the impact of tax planning strategies	0.0%	0.0%
(3) Net Admitted Adjusted Gross DTAs amount from Note 9A1 (e)	-	-
(4) Percentage of net admitted adjusted Gross DTAs by tax character admitted because of the impact of tax planning strategies	0.0%	0.0%

	Change	
	Ordinary	Capital
(1) Adjusted Gross DTAs amount from Note 9A1(c)	\$ 116	\$ -
(2) Percentage of adusted gross DTA's by tax character attributable to the impact of tax planning strategies	0%	0%
(3) Net Admitted Adjusted Gross DTAs amount from Note 9A1 (e)	31	-
(4) Percentage of net admitted adjusted Gross DTAs by tax character admitted because of the impact of tax planning strategies	0%	0%

(b) Does the Company's tax-planning strategies include the use of reinsurance? Yes No X

B. All DTL were recognized as of December 31, 2018 and December 31, 2017.

C. Current income taxes incurred consisted of the following major components:

	December 31, 2018	December 31, 2017	Change
1. Current Income Tax			
(a) Federal	\$ 24,233	\$ 30,772	\$ (6,538)
(b) Foreign	-	-	-
(c) Subtotal	\$ 24,233	\$ 30,772	\$ (6,538)
(d) Federal income tax on net capital gains	\$ -	\$ -	-
(e) Utilization of capital loss carry-forwards			-
(f) Other			-
(g) Federal and foreign income taxes incurred	\$ 24,233	\$ 30,772	\$ (6,538)

The tax effects of temporary differences that give rise to significant portions of the deferred tax assets and deferred tax liabilities are as follows:

	December 31, 2018	December 31, 2017	Change
2. Deferred Tax Assets:			
(a) Ordinary:			
(1) Discount Unpaid Loss	\$ 168	\$ 135	\$ 33
(2) Unearned premium reserve	179	96	83
(99) Gross ordinary DTA - (admitted and nonadmitted)	\$ 347	\$ 231	\$ 116
(b) Statutory valuation allowance adjustment - ordinary			-
(c) Total ordinary DTA - (nonadmitted)	\$ 316	\$ 231	\$ 85
(d) Admitted ordinary deferred tax assets (2a99 -2b -2c)	\$ 31	\$ -	\$ 31
(e) Capital:			
(1) Investments			-
(2) Net capital loss carry-forward			-
(3) Real estate			-
(4) Other (including items <5% of total capital tax assets)			-
(99) Gross capital DTA - (admitted and nonadmitted)	-	-	-
(f) Statutory valuation allowance adjustment - capital			-
(g) Total capital DTA - (nonadmitted)			-
(h) Admitted capital deferred tax assets (2e99 - 2f - 2g)	-	-	-
(i) Admitted deferred tax assets (2d + 2h)	\$ 31	\$ -	\$ 31

ANNUAL STATEMENT FOR THE YEAR 2018 OF THE MANAGED DENTALGUARD INC (OHIO)

NOTES TO FINANCIAL STATEMENTS

	December 31, 2018	December 31, 2017	Change
3. Deferred Tax Liabilities			
(a) Ordinary:			
(1) Investment	\$ -	\$ -	\$ -
(2) Fixed Assets			-
(3) Deferred and uncollected premium			-
(4) Policyholder Reserves	31		31
(5) Other (including items <5% of total ordinary tax liabilities)			-
(99) Subtotal	\$ 31	\$ -	\$ 31
(b) Capital:			
(1) Investment			-
(2) Real Estate			-
(3) Other (including items <5% of total ordinary tax liabilities)			-
(99) Subtotal	-	-	-
(c) Deferred tax liabilities (3a99 + 3b99)	\$ 31	\$ -	\$ 31
4. NNet Deferred assets/liabilites (2i - 3c)	\$ -	\$ -	\$ -

The change in net deferred income taxes is comprised of the following:

	December 31, 2018	December 31, 2017	Change
Adjusted gross deferred tax assets	\$ 347	\$ 231	\$ 116
Total Deferred Tax Liabilities	31	-	31
Net deferred tax assets (liabilities)	\$ 316	\$ 231	85
Tax effect of unrealized gains (losses)			-
Change in net deferred income tax			\$ 85

Changes in net deferred income tax, including changes attributable to changes in tax rates and changes in tax status, if any, shall be recognized as a separate component of gains and losses in unassigned funds (Surplus).

D. The provision for federal and foreign income taxes incurred is different from that which would be obtained by applying the statutory Federal income tax rate to income before income taxes. The significant items causing the difference are as follows:

Description	December 31, 2018	Effective Tax Rate
Net gain from operations after dividends to policyholders and before Federal income tax @ 21%	\$ 22,840	21.00%
Net realized capital gains (losses) @ 21%	-	-
Provision calculated at statutory rate	\$ 22,840	21.00%
Tax effect of:		
PPACA Fee	\$ 1,310	1.20%
Other	(2)	0.00%
Subtotal	\$ 24,148	22.20%
Contingent Taxes	-	0.00%
Return to provision	-	0.00%
Foreign Tax	-	0.00%
Total statutory income taxes	\$ 24,148	22.20%
Federal and foreign income taxes incurred	\$ 24,233	22.28%
Change in net deferred income taxes	(85)	-0.08%
Total statutory income taxes	\$ 24,148	22.20%

E. Operating Loss and Tax Credit carryforwards

- (1) As of December 31, 2018, the Company has no net ordinary loss carryforwards
- (2) The following are income taxes incurred in prior years that will be available for recoupment in the event of future net losses:

Year	Ordinary	Capital	Total
2018	\$ 24,236	\$ -	\$ 24,236
2017	30,769	-	30,769
2016	-	-	-
Total	\$ 55,005	\$ -	\$ 55,005

F. Consolidated Federal Income Tax Return

The Company's federal income tax return is consolidated with the following entities:

- Guardian Life Insurance Company of America;
- Guardian Insurance & Annuity Company, Inc. and its subsidiaries;
- Park Avenue Life Insurance Company;
- Sentinel American Life Insurance Company;
- Family Service Life Insurance Company;
- Managed Dental Care of California;
- Managed DentalGuard of Texas;
- Managed DentalGuard of New Jersey;
- Innovative Underwriters Inc.;
- Berkshire Life Insurance Company of America;
- First Commonwealth Inc and its subsidiaries;
- Reed Group Ltd;
- GIS Canada Holdings Corp;
- Guardian Abbey LLC;
- STX Healthcare Management Services, Inc.;
- Vital Smiles, Inc.

ANNUAL STATEMENT FOR THE YEAR 2018 OF THE MANAGED DENTALGUARD INC (OHIO)

NOTES TO FINANCIAL STATEMENTS

(1) The Company is included in a consolidated federal income tax return with its parent company. The Company has a written agreement, approved by the Company's Board of Directors, which sets forth the manner in which the total combined federal income tax is allocated to each entity which is a party to the consolidation. Pursuant to this agreement, the Company has the enforceable right to recoup federal income taxes paid in prior years in the event of future net losses, which it may incur, or to recoup its net losses carried forward as an offset to future net income subject to federal income taxes.

(2) The Internal Revenue Code limits the amount of non-life insurance losses that may offset life insurance company taxable income. The consolidated income tax liability is allocated among the members of the group pursuant to a tax allocation agreement. In accordance with the tax allocation agreement, each qualifying member of the group computes its tax provision and liability on a separate return basis, but may, where applicable, recognize benefits of net operating losses and capital losses utilized in the consolidated group. Subsidiary tax liabilities/benefits are settled subsequent to the filing of the federal income tax return.

G. The Company does not anticipate any significant changes to its tax contingencies within the next 12 months.

H. Repatriation Transition Tax (RTT)

Not Applicable

I. Alternative Minimum Tax (AMT) Credit

Not Applicable

10. Information Concerning Parent, Subsidiaries and Affiliates

A.B.C The Company is a wholly owned subsidiary of First Commonwealth, Inc. (FCW). FCW is a wholly owned subsidiary of The Guardian Life Insurance Company of America (Guardian), therefore by the law of transitive relations, the Company is a wholly owned subsidiary of its ultimate Parent – Guardian.

The Company has entered into a management services agreement with the Parent. Under this agreement, the Parent performs billing and accounting, claims administration, facilities and personnel, financial, information systems, marketing, member services, underwriting and actuarial and product design and development services for the Company. This agreement may be terminated upon either party giving sixty days written notice.

D. At December 31, 2018, the Parent had obligations to the Company in the net amount of \$8,265. This amount relates to advance premiums collected by the Parent on behalf of the Company, medical services and administrative expenses, partially offset by the amounts due by Company to parent under management service agreement. These amounts were settled within 15 days.

E. Not applicable

F. The Company has entered into a management services agreement with the Parent. Under this agreement, the Parent performs billing and accounting, claims administration, facilities and personnel, financial, information systems, marketing, member services, underwriting, actuarial and product design and development services for the Company. For these services, the Company was charged \$16,530 for the year ending December 31, 2018. This agreement may be terminated upon sixty days written notice.

G. Not applicable

H. Not applicable

I. Not applicable

J. Not applicable

K. Not applicable

L. Not applicable

M. Not applicable

N. Not applicable

O. Not applicable

11. Debt

A. Capital Notes
Not applicable

NOTES TO FINANCIAL STATEMENTS

- B. FHLB (Federal Home Loan Bank) Agreements
Not applicable

12. Retirement Plans, Deferred Compensation, Postemployment Benefits and Compensated Absences and Other Postretirement Benefit Plans

Not applicable

13. Capital and Surplus, Shareholders' Dividend Restrictions

- 1) Common stock, \$1 par value; 10 shares authorized, 10 shares issued and outstanding, as of December 31, 2018.
- 2) The Company has no preferred stock outstanding.
- 3) Not Applicable
- 4) The Company had no plans to declare a dividend as of December 31, 2018.
- 5) An ordinary dividend cannot exceed the net income of the year just ended.
- 6) The Affordable Care Act (ACA) imposes an assessment on entities that issue health insurance for each calendar year. The amount of the assessment for the reporting entity is based on the ratio of the amount of an entity's net health insurance premiums written for the previous calendar year compared to the aggregate net premiums written by all United States health insurance providers for the previous calendar year. The IRS institutes the 2017 moratorium on annual fee on health insurance providers where the collection of health insurance provider fee is suspended. There was no reclassification from unassigned surplus to special surplus funds as of December 31, 2018. The State of Ohio statutes and related regulations of the Ohio Department of Insurance require the Company to maintain a minimum net worth of \$250,000. The State of Ohio also requires that the Company maintain a \$75,000 statutory deposit.
- 7) Not applicable
- 8) Not applicable
- 9) Not applicable
- 10) Not applicable
- 11) The company has not issued any surplus notes.
- 12) Not applicable
- 13) Not applicable

14. Contingencies

Not applicable

15. Leases

Not applicable

16. Information About Financial Instruments with Off-Balance-Sheet Risk and Financial Instruments with Concentration of Credit Risk

Not applicable

17. Sale, Transfer and Servicing of Financial Assets and Extinguishments of Liabilities

Not applicable

NOTES TO FINANCIAL STATEMENTS

18. Gain or Loss to the Reporting Entity from Uninsured Plans and the Uninsured Portion of Partially Insured Plans

Not applicable

19. Direct Premium Written/Produced by Managing General Agents/Third Party Administrators

Not applicable

20. Fair Value Measurements

Not applicable

21. Other Items

A. A. Extraordinary Items

Not applicable.

B. Troubled Debt Restructuring: Debtors

Not applicable

C. Other Disclosures

1. Revenue Recognition

No significant changes from December 31, 2017.

2. Other Professional Services for Benefits

No significant changes from December 31, 2017.

3. Federal Income Taxes

No significant changes from December 31, 2017.

4. Net Investment Income

No significant changes from December 31, 2017.

5. Supplemental Health Care Exhibit

The Company only writes dental business. It does not write comprehensive major medical health business. Therefore, the Company is not required to file the Supplemental Health Care Exhibit.

6. The Company has no non-admitted assets in uncollected premiums as at December 31, 2018. The Company routinely assesses the collectability of these receivables.

D. Business Interruption Insurance Recoveries

Not applicable.

E. State Transferable and Non-transferable Tax Credits

Not applicable.

F. Subprime-Mortgage- Related Risk Exposure

Not applicable.

G. Retained Assets

Not applicable.

H. Insurance-Linked Securities (ILS) Contracts

Not applicable

I. Offsetting and Netting of Assets and Liabilities

Not applicable

J. Joint and Several Liabilities

Not applicable

K. Risk Sharing Provisions of the Affordable Care Act

The risk sharing provisions of the Affordable Care Act do not apply to any of the Guardian current products as we do not offer medical insurance coverage on the exchange.

ANNUAL STATEMENT FOR THE YEAR 2018 OF THE MANAGED DENTALGUARD INC (OHIO)

NOTES TO FINANCIAL STATEMENTS

22. Events Subsequent

Type I – Recognized Subsequent Events
Not applicable

Type II – Non-recognized Subsequent Events
Not applicable

The health insurance industry assessment mandated by the Patient Protection and Affordable Care Act of 2010 was levied on health insurance beginning in 2014 based on a ratio of an insurer's net health insurance premiums written for the previous calendar year compared to the total premiums written by U.S. health insurance industry for that year. The Company recorded a liability for the amount of its expected fees as of January 1, 2019 of \$0 and as January 1, 2018 of \$107,125. The Company paid the actual fee amount of \$0 and \$0 to the U.S. Treasury in September 2018 and 2017, respectively. The 2019 fee amount was based on dental and vision premiums written in 2018.

23. Reinsurance

Not applicable

24. Retrospectively Rated Contracts & Contracts Subject to Redetermination

Not applicable

25. Change in Incurred Claims and Claim Adjustment Expenses

Reserves as of December 31, 2018 were \$20,811. As of 12/31/2018, \$14,011 was paid for incurred claims for dental services provided in 2017 or prior. Reserves remaining for prior years are now \$1,419 as a result of re-estimation of unpaid claims. Original estimates are increased or decreased as additional information becomes known regarding individual claims. The 12/31/2018 reserve is \$124 or 0.6% lower than the 12/31/2017 reserve.

The liability for unpaid accident and health claims and claim adjustment expenses represents the Company's best estimate with a margin; however, there may be future adjustments to this estimate and related assumptions. Such adjustments, reflecting any variety of new and adverse trends, could possibly be significant and result in increase in liabilities. As of December 31, 2018, and 2017, the Company had no significant changes in methodologies and assumptions used in calculating the liability. The Company updates its experience study annually for recent company claim experience used to set the liability for unpaid claims.

The Company's claims liability, claims incurred, claims payments and other professional service for benefits, including capitation, for the periods ending December 31, 2018 and December 31, 2017 are as follows:

	<u>December 31, 2018</u>	<u>December 31, 2017</u>
Claims unpaid, beginning of year	\$ 20,935	\$ 26,747
Incurred related to:		
Current year	197,559	167,720
Prior year	(5,320)	(10,525)
Total incurred	<u>\$ 192,239</u>	<u>\$ 157,195</u>
Paid related to:		
Current year	178,352	148,388
Prior year	14,011	14,619
	-	
Total paid	<u>\$ 192,363</u>	<u>\$ 163,007</u>
Claims unpaid, end of year	<u>\$ 20,811</u>	<u>\$ 20,935</u>

ANNUAL STATEMENT FOR THE YEAR 2018 OF THE MANAGED DENTALGUARD INC (OHIO)

NOTES TO FINANCIAL STATEMENTS

26. Intercompany Pooling Arrangements

Not applicable

27. Structured Settlements

Not applicable

28. Health Care Receivables

Not applicable

29. Participating Policies

Not applicable

30. Premium Deficiency Reserves

Not applicable

31. Anticipated Salvage and Subrogation

Not applicable

GENERAL INTERROGATORIES

PART 1 - COMMON INTERROGATORIES
GENERAL

1.1

Is the reporting entity a member of an Insurance Holding Company System consisting of two or more affiliated persons, one or more of which is an insurer?
If yes, complete Schedule Y, Parts 1, 1A and 2

Yes [X] No []

1.2

If yes, did the reporting entity register and file with its domiciliary State Insurance Commissioner, Director or Superintendent, or with such regulatory official of the state of domicile of the principal insurer in the Holding Company System, a registration statement providing disclosure substantially similar to the standards adopted by the National Association of Insurance Commissioners (NAIC) in its Model Insurance Holding Company System Regulatory Act and model regulations pertaining thereto, or is the reporting entity subject to standards and disclosure requirements substantially similar to those required by such Act and regulations?

Yes [X] No [] N/A []

1.3

State Regulating?

New York

1.4

Is the reporting entity publicly traded or a member of a publicly traded group?

Yes [] No [X]

1.5

If the response to 1.4 is yes, provide the CIK (Central Index Key) code issued by the SEC for the entity/group.

2.1

Has any change been made during the year of this statement in the charter, by-laws, articles of incorporation, or deed of settlement of the reporting entity?

Yes [] No [X]

2.2

If yes, date of change:

3.1

State as of what date the latest financial examination of the reporting entity was made or is being made.

12/31/2013

3.2

State the as of date that the latest financial examination report became available from either the state of domicile or the reporting entity. This date should be the date of the examined balance sheet and not the date the report was completed or released.

12/31/2013

3.3

State as of what date the latest financial examination report became available to other states or the public from either the state of domicile or the reporting entity. This is the release date or completion date of the examination report and not the date of the examination (balance sheet date).

06/03/2015

3.4

By what department or departments?
New York Department of Financial Services

3.5

Have all financial statement adjustments within the latest financial examination report been accounted for in a subsequent financial statement filed with Departments?

Yes [] No [] N/A [X]

3.6

Have all of the recommendations within the latest financial examination report been complied with?

Yes [] No [] N/A [X]

4.1

During the period covered by this statement, did any agent, broker, sales representative, non-affiliated sales/service organization or any combination thereof under common control (other than salaried employees of the reporting entity), receive credit or commissions for or control a substantial part (more than 20 percent of any major line of business measured on direct premiums) of:
4.11 sales of new business?
4.12 renewals?

Yes [] No [X]
Yes [] No [X]

4.2

During the period covered by this statement, did any sales/service organization owned in whole or in part by the reporting entity or an affiliate, receive credit or commissions for or control a substantial part (more than 20 percent of any major line of business measured on direct premiums) of:
4.21 sales of new business?
4.22 renewals?

Yes [] No [X]
Yes [] No [X]

5.1

Has the reporting entity been a party to a merger or consolidation during the period covered by this statement?
If yes, complete and file the merger history data file with the NAIC.

Yes [] No [X]

5.2

If yes, provide the name of the entity, NAIC Company Code, and state of domicile (use two letter state abbreviation) for any entity that has ceased to exist as a result of the merger or consolidation.

1 Name of Entity	2 NAIC Company Code	3 State of Domicile

6.1

Has the reporting entity had any Certificates of Authority, licenses or registrations (including corporate registration, if applicable) suspended or revoked by any governmental entity during the reporting period?

Yes [] No [X]

6.2

If yes, give full information:

7.1

Does any foreign (non-United States) person or entity directly or indirectly control 10% or more of the reporting entity?

Yes [] No [X]

7.2

If yes,
7.21 State the percentage of foreign control; %
7.22 State the nationality(s) of the foreign person(s) or entity(s) or if the entity is a mutual or reciprocal, the nationality of its manager or attorney-in-fact; and identify the type of entity(s) (e.g., individual, corporation or government, manager or attorney in fact).

1 Nationality	2 Type of Entity

ANNUAL STATEMENT FOR THE YEAR 2018 OF THE MANAGED DENTALGUARD INC (OHIO)

GENERAL INTERROGATORIES

- 8.1

Is the company a subsidiary of a bank holding company regulated by the Federal Reserve Board?

Yes [] No [X]
- 8.2

If response to 8.1 is yes, please identify the name of the bank holding company.
- 8.3

Is the company affiliated with one or more banks, thrifts or securities firms?

Yes [X] No []
- 8.4

If response to 8.3 is yes, please provide below the names and location (city and state of the main office) of any affiliates regulated by a federal regulatory services agency [i.e. the Federal Reserve Board (FRB), the Office of the Comptroller of the Currency (OCC), the Federal Deposit Insurance Corporation (FDIC) and the Securities Exchange Commission (SEC)] and identify the affiliate's primary federal regulator.

1 Affiliate Name	2 Location (City, State)	3 FRB	4 OCC	5 FDIC	6 SEC
Park Avenue Securities, LLC	New York, NY	NO	NO	NO	YES
Park Avenue Institutional Advisers LLC	New York, NY	NO	NO	NO	YES

9.

What is the name and address of the independent certified public accountant or accounting firm retained to conduct the annual audit?
- 10.1

Has the insurer been granted any exemptions to the prohibited non-audit services provided by the certified independent public accountant requirements as allowed in Section 7H of the Annual Financial Reporting Model Regulation (Model Audit Rule), or substantially similar state law or regulation?

Yes [] No [X]
- 10.2

If the response to 10.1 is yes, provide information related to this exemption:
- 10.3

Has the insurer been granted any exemptions related to the other requirements of the Annual Financial Reporting Model Regulation as allowed for in Section 18A of the Model Regulation, or substantially similar state law or regulation?

Yes [] No [X]
- 10.4

If the response to 10.3 is yes, provide information related to this exemption:
- 10.5

Has the reporting entity established an Audit Committee in compliance with the domiciliary state insurance laws?

Yes [X] No [] N/A []
- 10.6

If the response to 10.5 is no or n/a, please explain
11.

What is the name, address and affiliation (officer/employee of the reporting entity or actuary/consultant associated with an actuarial consulting firm) of the individual providing the statement of actuarial opinion/certification?
- 12.1

Does the reporting entity own any securities of a real estate holding company or otherwise hold real estate indirectly?

Yes [] No [X]
- 12.11

Name of real estate holding company
- 12.12

Number of parcels involved
- 12.13

Total book/adjusted carrying value

\$
- 12.2

If, yes provide explanation:
13.

FOR UNITED STATES BRANCHES OF ALIEN REPORTING ENTITIES ONLY:
- 13.1

What changes have been made during the year in the United States manager or the United States trustees of the reporting entity?
- 13.2

Does this statement contain all business transacted for the reporting entity through its United States Branch on risks wherever located?

Yes [] No []
- 13.3

Have there been any changes made to any of the trust indentures during the year?

Yes [] No []
- 13.4

If answer to (13.3) is yes, has the domiciliary or entry state approved the changes?

Yes [] No [] N/A []
- 14.1

Are the senior officers (principal executive officer, principal financial officer, principal accounting officer or controller, or persons performing similar functions) of the reporting entity subject to a code of ethics, which includes the following standards?

Yes [X] No []
- (a)

Honest and ethical conduct, including the ethical handling of actual or apparent conflicts of interest between personal and professional relationships;
- (b)

Full, fair, accurate, timely and understandable disclosure in the periodic reports required to be filed by the reporting entity;
- (c)

Compliance with applicable governmental laws, rules and regulations;
- (d)

The prompt internal reporting of violations to an appropriate person or persons identified in the code; and
- (e)

Accountability for adherence to the code.
- 14.11

If the response to 14.1 is No, please explain:
- 14.2

Has the code of ethics for senior managers been amended?

Yes [] No [X]
- 14.21

If the response to 14.2 is yes, provide information related to amendment(s).
- 14.3

Have any provisions of the code of ethics been waived for any of the specified officers?

Yes [] No [X]
- 14.31

If the response to 14.3 is yes, provide the nature of any waiver(s).

ANNUAL STATEMENT FOR THE YEAR 2018 OF THE MANAGED DENTALGUARD INC (OHIO)

GENERAL INTERROGATORIES

- 15.1 Is the reporting entity the beneficiary of a Letter of Credit that is unrelated to reinsurance where the issuing or confirming bank is not on the SVO Bank List?

Yes [] No [X]
- 15.2 If the response to 15.1 is yes, indicate the American Bankers Association (ABA) Routing Number and the name of the issuing or confirming bank of the Letter of Credit and describe the circumstances in which the Letter of Credit is triggered.

1 American Bankers Association (ABA) Routing Number	2 Issuing or Confirming Bank Name	3 Circumstances That Can Trigger the Letter of Credit	4 Amount
.....

BOARD OF DIRECTORS

16. Is the purchase or sale of all investments of the reporting entity passed upon either by the board of directors or a subordinate committee thereof?

Yes [X] No []
17. Does the reporting entity keep a complete permanent record of the proceedings of its board of directors and all subordinate committees thereof?

Yes [X] No []
18. Has the reporting entity an established procedure for disclosure to its board of directors or trustees of any material interest or affiliation on the part of any of its officers, directors, trustees or responsible employees that is in conflict with the official duties of such person?

Yes [X] No []

FINANCIAL

19. Has this statement been prepared using a basis of accounting other than Statutory Accounting Principles (e.g., Generally Accepted Accounting Principles)?

Yes [] No [X]
- 20.1 Total amount loaned during the year (inclusive of Separate Accounts, exclusive of policy loans):

20.11 To directors or other officers.....\$

20.12 To stockholders not officers.....\$

20.13 Trustees, supreme or grand (Fraternal Only)\$
- 20.2 Total amount of loans outstanding at the end of year (inclusive of Separate Accounts, exclusive of policy loans):

20.21 To directors or other officers.....\$

20.22 To stockholders not officers.....\$

20.23 Trustees, supreme or grand (Fraternal Only)\$
- 21.1 Were any assets reported in this statement subject to a contractual obligation to transfer to another party without the liability for such obligation being reported in the statement?

Yes [] No [X]
- 21.2 If yes, state the amount thereof at December 31 of the current year:

21.21 Rented from others.....\$

21.22 Borrowed from others.....\$

21.23 Leased from others\$

21.24 Other\$
- 22.1 Does this statement include payments for assessments as described in the Annual Statement Instructions other than guaranty fund or guaranty association assessments?

Yes [] No [X]
- 22.2 If answer is yes:

22.21 Amount paid as losses or risk adjustment \$

22.22 Amount paid as expenses\$

22.23 Other amounts paid\$
- 23.1 Does the reporting entity report any amounts due from parent, subsidiaries or affiliates on Page 2 of this statement?

Yes [X] No []
- 23.2 If yes, indicate any amounts receivable from parent included in the Page 2 amount:\$0

INVESTMENT

- 24.01 Were all the stocks, bonds and other securities owned December 31 of current year, over which the reporting entity has exclusive control, in the actual possession of the reporting entity on said date? (other than securities lending programs addressed in 24.03).....

Yes [X] No []
- 24.02 If no, give full and complete information relating thereto
.....
- 24.03 For security lending programs, provide a description of the program including value for collateral and amount of loaned securities, and whether collateral is carried on or off-balance sheet. (an alternative is to reference Note 17 where this information is also provided)
.....
- 24.04 Does the Company's security lending program meet the requirements for a conforming program as outlined in the Risk-Based Capital Instructions?

Yes [] No [] N/A [X]
- 24.05 If answer to 24.04 is yes, report amount of collateral for conforming programs.\$
- 24.06 If answer to 24.04 is no, report amount of collateral for other programs.\$
- 24.07 Does your securities lending program require 102% (domestic securities) and 105% (foreign securities) from the counterparty at the outset of the contract?

Yes [] No [] N/A [X]
- 24.08 Does the reporting entity non-admit when the collateral received from the counterparty falls below 100%?

Yes [] No [] N/A [X]
- 24.09 Does the reporting entity or the reporting entity 's securities lending agent utilize the Master Securities lending Agreement (MSLA) to conduct securities lending?

Yes [] No [] N/A [X]

ANNUAL STATEMENT FOR THE YEAR 2018 OF THE MANAGED DENTALGUARD INC (OHIO)

GENERAL INTERROGATORIES

24.10 For the reporting entity’s security lending program state the amount of the following as December 31 of the current year:

24.101	Total fair value of reinvested collateral assets reported on Schedule DL, Parts 1 and 2.	\$	0
24.102	Total book adjusted/carrying value of reinvested collateral assets reported on Schedule DL, Parts 1 and 2.	\$	0
24.103	Total payable for securities lending reported on the liability page.	\$	0

25.1 Were any of the stocks, bonds or other assets of the reporting entity owned at December 31 of the current year not exclusively under the control of the reporting entity, or has the reporting entity sold or transferred any assets subject to a put option contract that is currently in force? (Exclude securities subject to Interrogatory 21.1 and 24.03).

Yes [X] No []

25.2	If yes, state the amount thereof at December 31 of the current year:	25.21 Subject to repurchase agreements	\$	
		25.22 Subject to reverse repurchase agreements	\$	
		25.23 Subject to dollar repurchase agreements	\$	
		25.24 Subject to reverse dollar repurchase agreements	\$	
		25.25 Placed under option agreements	\$	
		25.26 Letter stock or securities restricted as to sale - excluding FHLB Capital Stock	\$	
		25.27 FHLB Capital Stock	\$	
		25.28 On deposit with states	\$	74,888
		25.29 On deposit with other regulatory bodies	\$	
		25.30 Pledged as collateral - excluding collateral pledged to an FHLB	\$	
		25.31 Pledged as collateral to FHLB - including assets backing funding agreements	\$	
		25.32 Other	\$	

25.3 For category (25.26) provide the following:

1	2	3
Nature of Restriction	Description	Amount

26.1 Does the reporting entity have any hedging transactions reported on Schedule DB?

Yes [] No [X]

26.2 If yes, has a comprehensive description of the hedging program been made available to the domiciliary state?

Yes [] No [] N/A [X]

If no, attach a description with this statement.

27.1 Were any preferred stocks or bonds owned as of December 31 of the current year mandatorily convertible into equity, or, at the option of the issuer, convertible into equity?

Yes [] No [X]

27.2 If yes, state the amount thereof at December 31 of the current year.

\$

28. Excluding items in Schedule E - Part 3 - Special Deposits, real estate, mortgage loans and investments held physically in the reporting entity's offices, vaults or safety deposit boxes, were all stocks, bonds and other securities, owned throughout the current year held pursuant to a custodial agreement with a qualified bank or trust company in accordance with Section 1, III - General Examination Considerations, F. Outsourcing of Critical Functions, Custodial or Safekeeping Agreements of the NAIC Financial Condition Examiners Handbook?

Yes [X] No []

28.01 For agreements that comply with the requirements of the NAIC Financial Condition Examiners Handbook, complete the following:

1	2
Name of Custodian(s)	Custodian's Address
JP MORGAN CHASE	270 PARK AVENUE, FLOOR 41, NEW YORK, NY 10017

28.02 For all agreements that do not comply with the requirements of the NAIC Financial Condition Examiners Handbook, provide the name, location and a complete explanation:

1	2	3
Name(s)	Location(s)	Complete Explanation(s)

28.03 Have there been any changes, including name changes, in the custodian(s) identified in 28.01 during the current year?

Yes [] No [X]

28.04 If yes, give full and complete information relating thereto:

1	2	3	4
Old Custodian	New Custodian	Date of Change	Reason

ANNUAL STATEMENT FOR THE YEAR 2018 OF THE MANAGED DENTALGUARD INC (OHIO)

GENERAL INTERROGATORIES

28.05 Investment management – Identify all investment advisors, investment managers, broker/dealers, including individuals that have the authority to make investment decisions on behalf of the reporting entity. For assets that are managed internally by employees of the reporting entity, note as such. ["...that have access to the investment accounts"; "...handle securities"]

1 Name of Firm or Individual	2 Affiliation
Paul Gillin	A.....
Charles Golden	A.....
Keith Simon	A.....
Martin Vernon	A.....
John Gargana	A.....
Rob Simmons	A.....
Rob Crimmins	A.....
Stewart Johnson	A.....
Kampoleak Pal	A.....
Kevin Booth	A.....
Demetrios Tsaparas	A.....
Douglas Dupont	A.....
Tim Cashman	A.....
Brian Keating	A.....
William Lee	A.....
Paul Jablansky	A.....
Douglas Gaylor	A.....
.....

28.0597 For those firms/individuals listed in the table for Question 28.05, do any firms/individuals unaffiliated with the reporting entity (i.e. designated with a "U") manage more than 10% of the reporting entity's assets?..... Yes [] No [X]

28.0598 For firms/individuals unaffiliated with the reporting entity (i.e. designated with a "U") listed in the table for Question 28.05, does the total assets under management aggregate to more than 50% of the reporting entity's assets?..... Yes [] No [X]

28.06 For those firms or individuals listed in the table for 28.05 with an affiliation code of "A" (affiliated) or "U" (unaffiliated), provide the information for the table below.

1 Central Registration Depository Number	2 Name of Firm or Individual	3 Legal Entity Identifier (LEI)	4 Registered With	5 Investment Management Agreement (IMA) Filed
N/A	The Guardian Life Insurance Company of America	N1Y1DVMMKBHFYCCAIX69	N/A	DS.....
.....

29.1 Does the reporting entity have any diversified mutual funds reported in Schedule D, Part 2 (diversified according to the Securities and Exchange Commission (SEC) in the Investment Company Act of 1940 [Section 5(b)(1)])? Yes [] No [X]

29.2 If yes, complete the following schedule:

1 CUSIP #	2 Name of Mutual Fund	3 Book/Adjusted Carrying Value
29.2999 - Total		0

29.3 For each mutual fund listed in the table above, complete the following schedule:

1 Name of Mutual Fund (from above table)	2 Name of Significant Holding of the Mutual Fund	3 Amount of Mutual Fund's Book/Adjusted Carrying Value Attributable to the Holding	4 Date of Valuation
.....

30. Provide the following information for all short-term and long-term bonds and all preferred stocks. Do not substitute amortized value or statement value for fair value.

	1 Statement (Admitted) Value	2 Fair Value	3 Excess of Statement over Fair Value (-), or Fair Value over Statement (+)
30.1 Bonds	564,907	565,445	538
30.2 Preferred stocks	0		0
30.3 Totals	564,907	565,445	538

30.4 Describe the sources or methods utilized in determining the fair values:
Prices are determined by various external pricing services or third party broker quotes.

31.1 Was the rate used to calculate fair value determined by a broker or custodian for any of the securities in Schedule D? Yes [] No [X]

31.2 If the answer to 31.1 is yes, does the reporting entity have a copy of the broker's or custodian's pricing policy (hard copy or electronic copy) for all brokers or custodians used as a pricing source? Yes [] No []

31.3 If the answer to 31.2 is no, describe the reporting entity's process for determining a reliable pricing source for purposes of disclosure of fair value for Schedule D:
Broker prices are used in a small number of instances for the pricing of certain securities such as convertibles and private placements.

32.1 Have all the filing requirements of the Purposes and Procedures Manual of the NAIC Investment Analysis Office been followed? Yes [X] No []

32.2 If no, list exceptions:
.....

ANNUAL STATEMENT FOR THE YEAR 2018 OF THE MANAGED DENTALGUARD INC (OHIO)

GENERAL INTERROGATORIES

33.

By self-designating 5GI securities, the reporting entity is certifying the following elements of each self-designated 5GI security:

a.

Documentation necessary to permit a full credit analysis of the security does not exist or an NAIC CRP credit rating for an FE or PL security is not available.

b.

Issuer or obligor is current on all contracted interest and principal payments.

c.

The insurer has an actual expectation of ultimate payment of all contracted interest and principal.

Has the reporting entity self-designated 5GI securities? Yes No

X
34.

By self-designating PLGI securities, the reporting entity is certifying the following elements of each self-designated PLGI security:

a.

The security was purchased prior to January 1, 2018.

b.

The reporting entity is holding capital commensurate with the NAIC Designation reported for the security.

c.

The NAIC Designation was derived from the credit rating assigned by an NAIC CRP in its legal capacity as a NRSRO which is shown on a current private letter rating held by the insurer and available for examination by state insurance regulators.

d.

The reporting entity is not permitted to share this credit rating of the PL security with the SVO.

Has the reporting entity self-designated PLGI securities? Yes No

X

OTHER

35.1 Amount of payments to trade associations, service organizations and statistical or rating bureaus, if any? \$

35.2 List the name of the organization and the amount paid if any such payment represented 25% or more of the total payments to trade associations, service organizations and statistical or rating bureaus during the period covered by this statement.

1	2
Name	Amount Paid

36.1 Amount of payments for legal expenses, if any? \$

36.2 List the name of the firm and the amount paid if any such payment represented 25% or more of the total payments for legal expenses during the period covered by this statement.

1	2
Name	Amount Paid

37.1 Amount of payments for expenditures in connection with matters before legislative bodies, officers or departments of government, if any? \$

37.2 List the name of the firm and the amount paid if any such payment represented 25% or more of the total payment expenditures in connection with matters before legislative bodies, officers or departments of government during the period covered by this statement.

1	2
Name	Amount Paid

GENERAL INTERROGATORIES

PART 2 - HEALTH INTERROGATORIES

1.1

Does the reporting entity have any direct Medicare Supplement Insurance in force?

Yes [] No [X]

1.2

If yes, indicate premium earned on U.S. business only.

\$

1.3

What portion of Item (1.2) is not reported on the Medicare Supplement Insurance Experience Exhibit?

\$

1.31

Reason for excluding

1.4

Indicate amount of earned premium attributable to Canadian and/or Other Alien not included in Item (1.2) above

\$

1.5

Indicate total incurred claims on all Medicare Supplement Insurance.

\$0

1.6

Individual policies:

Most current three years:

1.61

Total premium earned

\$0

1.62

Total incurred claims

\$0

1.63

Number of covered lives

0

All years prior to most current three years:

1.64

Total premium earned

\$0

1.65

Total incurred claims

\$0

1.66

Number of covered lives

0

1.7

Group policies:

Most current three years:

1.71

Total premium earned

\$0

1.72

Total incurred claims

\$0

1.73

Number of covered lives

0

All years prior to most current three years:

1.74

Total premium earned

\$0

1.75

Total incurred claims

\$0

1.76

Number of covered lives

0

2.

Health Test:

1

Current Year

2

Prior Year

2.1

Premium Numerator

345,738

316,170

2.2

Premium Denominator

345,738

316,170

2.3

Premium Ratio (2.1/2.2)

1.000

1.000

2.4

Reserve Numerator

20,451

20,622

2.5

Reserve Denominator

20,451

20,622

2.6

Reserve Ratio (2.4/2.5)

1.000

1.000

3.1

Has the reporting entity received any endowment or gift from contracting hospitals, physicians, dentists, or others that is agreed will be returned when, as and if the earnings of the reporting entity permits?

Yes [] No [X]

3.2

If yes, give particulars:

4.1

Have copies of all agreements stating the period and nature of hospitals', physicians', and dentists' care offered to subscribers and dependents been filed with the appropriate regulatory agency?

Yes [X] No []

4.2

If not previously filed, furnish herewith a copy(ies) of such agreement(s). Do these agreements include additional benefits offered?

Yes [] No []

5.1

Does the reporting entity have stop-loss reinsurance?

Yes [] No [X]

5.2

If no, explain:

5.3

Maximum retained risk (see instructions)

5.31

Comprehensive Medical

\$

5.32

Medical Only

\$

5.33

Medicare Supplement

\$

5.34

Dental & Vision

\$2,000

5.35

Other Limited Benefit Plan

\$

5.36

Other

\$

6.

Describe arrangement which the reporting entity may have to protect subscribers and their dependents against the risk of insolvency including hold harmless provisions, conversion privileges with other carriers, agreements with providers to continue rendering services, and any other agreements:

7.1

Does the reporting entity set up its claim liability for provider services on a service date basis?

Yes [X] No []

7.2

If no, give details

8.

Provide the following information regarding participating providers:

8.1

Number of providers at start of reporting year

311

8.2

Number of providers at end of reporting year

67

9.1

Does the reporting entity have business subject to premium rate guarantees?

Yes [] No [X]

9.2

If yes, direct premium earned:

9.21

Business with rate guarantees between 15-36 months

\$

9.22

Business with rate guarantees over 36 months

\$

28

ANNUAL STATEMENT FOR THE YEAR 2018 OF THE MANAGED DENTALGUARD INC (OHIO)

GENERAL INTERROGATORIES

- 10.1 Does the reporting entity have Incentive Pool, Withhold or Bonus Arrangements in its provider contracts? Yes [] No [X]
- 10.2 If yes:

10.21 Maximum amount payable bonuses.....\$

10.22 Amount actually paid for year bonuses.....\$

10.23 Maximum amount payable withholds.....\$

10.24 Amount actually paid for year withholds.....\$
- 11.1 Is the reporting entity organized as:

11.12 A Medical Group/Staff Model, Yes [] No []

11.13 An Individual Practice Association (IPA), or, . Yes [] No []

11.14 A Mixed Model (combination of above)? Yes [] No []
- 11.2 Is the reporting entity subject to Statutory Minimum Capital and Surplus Requirements? Yes [X] No []
- 11.3 If yes, show the name of the state requiring such minimum capital and surplus. Ohio
- 11.4 If yes, show the amount required.\$ 125,000
- 11.5 Is this amount included as part of a contingency reserve in stockholder's equity? Yes [] No [X]
- 11.6 If the amount is calculated, show the calculation

12. List service areas in which reporting entity is licensed to operate:

1
Name of Service Area
Ohio
.....

- 13.1 Do you act as a custodian for health savings accounts? Yes [] No [X]
- 13.2 If yes, please provide the amount of custodial funds held as of the reporting date.\$
- 13.3 Do you act as an administrator for health savings accounts? Yes [] No [X]
- 13.4 If yes, please provide the balance of funds administered as of the reporting date.\$
- 14.1 Are any of the captive affiliates reported on Schedule S, Part 3, authorized reinsurers? Yes [] No [] N/A [X]
- 14.2 If the answer to 14.1 is yes, please provide the following:

1 Company Name	2 NAIC Company Code	3 Domiciliary Jurisdiction	4 Reserve Credit	Assets Supporting Reserve Credit		
				5 Letters of Credit	6 Trust Agreements	7 Other
.....						

15. Provide the following for individual ordinary life insurance* policies (U.S. business only) for the current year (prior to reinsurance assumed or ceded):

15.1 Direct Premium Written\$

15.2 Total Incurred Claims\$

15.3 Number of Covered Lives

*Ordinary Life Insurance Includes
Term(whether full underwriting, limited underwriting, jet issue, "short form app")
Whole Life (whether full underwriting, limited underwriting, jet issue, "short form app")
Variable Life (with or without secondary gurantee)
Universal Life (with or without secondary gurantee)
Variable Universal Life (with or without secondary gurantee)

16. Is the reporting entity licensed or chartered, registered, qualified, eligible or writing business in at least two states? Yes [] No [X]
- 16.1 If no, does the reporting entity assume reinsurance business that covers risks residing in at least one state other than the state of domicile of the reporting entity? Yes [] No [X]

FIVE-YEAR HISTORICAL DATA

	1 2018	2 2017	3 2016	4 2015	5 2014
Balance Sheet (Pages 2 and 3)					
1. Total admitted assets (Page 2, Line 28)	702,562	616,306	539,921	484,847	418,195
2. Total liabilities (Page 3, Line 24)	59,756	58,028	39,494	45,528	42,120
3. Statutory minimum capital and surplus requirement	125,000	125,000	125,000	125,000	125,000
4. Total capital and surplus (Page 3, Line 33)	642,806	558,278	500,427	439,319	376,075
Income Statement (Page 4)					
5. Total revenues (Line 8)	345,738	316,170	302,616	327,466	329,235
6. Total medical and hospital expenses (Line 18)	191,128	156,625	163,175	177,291	197,297
7. Claims adjustment expenses (Line 20)	1,064	520	437	2,465	2,508
8. Total administrative expenses (Line 21)	54,730	75,452	45,812	53,755	57,206
9. Net underwriting gain (loss) (Line 24)	98,816	83,573	93,192	93,955	72,224
10. Net investment gain (loss) (Line 27)	9,944	4,563	4,137	3,644	2,183
11. Total other income (Lines 28 plus 29)	0	0	0	0	0
12. Net income or (loss) (Line 32)	84,527	57,364	61,513	61,299	47,276
Cash Flow (Page 6)					
13. Net cash from operations (Line 11)	87,325	79,853	54,462	67,579	52,871
Risk-Based Capital Analysis					
14. Total adjusted capital	642,806	558,278	500,427	439,319	376,075
15. Authorized control level risk-based capital	9,216	7,667	7,670	8,525	9,324
Enrollment (Exhibit 1)					
16. Total members at end of period (Column 5, Line 7)	1,703	1,683	1,570	1,744	1,894
17. Total members months (Column 6, Line 7)	20,149	18,732	19,348	21,060	21,783
Operating Percentage (Page 4) (Item divided by Page 4, sum of Lines 2, 3 and 5) x 100.0					
18. Premiums earned plus risk revenue (Line 2 plus Lines 3 and 5)	100.0	100.0	100.0	100.0	100.0
19. Total hospital and medical plus other non-health (Lines 18 plus Line 19)	55.3	49.5	53.9	54.1	59.9
20. Cost containment expenses	0.1	0.1	0.1	0.1	0.1
21. Other claims adjustment expenses	0.2	0.1	0.1	0.7	0.7
22. Total underwriting deductions (Line 23)	71.4	73.6	69.2	71.3	78.1
23. Total underwriting gain (loss) (Line 24)	28.6	26.4	30.8	28.7	21.9
Unpaid Claims Analysis (U&I Exhibit, Part 2B)					
24. Total claims incurred for prior years (Line 13, Col. 5)	15,335	15,812	14,885	12,795	174,443
25. Estimated liability of unpaid claims-[prior year (Line 13, Col. 6)]	20,622	26,484	29,768	27,470	10,457
Investments In Parent, Subsidiaries and Affiliates					
26. Affiliated bonds (Sch. D Summary, Line 12, Col. 1)		0	0		
27. Affiliated preferred stocks (Sch. D Summary, Line 18, Col. 1)					
28. Affiliated common stocks (Sch. D Summary, Line 24, Col. 1)					
29. Affiliated short-term investments (subtotal included in Schedule DA Verification, Col. 5, Line 10)			0	0	0
30. Affiliated mortgage loans on real estate					
31. All other affiliated					
32. Total of above Lines 26 to 31	0	0	0	0	0
33. Total investment in parent included in Lines 26 to 31 above.					

NOTE: If a party to a merger, have the two most recent years of this exhibit been restated due to a merger in compliance with the disclosure requirements of SSAP No. 3, Accounting Changes and Correction of Errors? Yes [] No []

If no, please explain:

ANNUAL STATEMENT FOR THE YEAR 2018 OF THE MANAGED DENTALGUARD INC (OHIO)

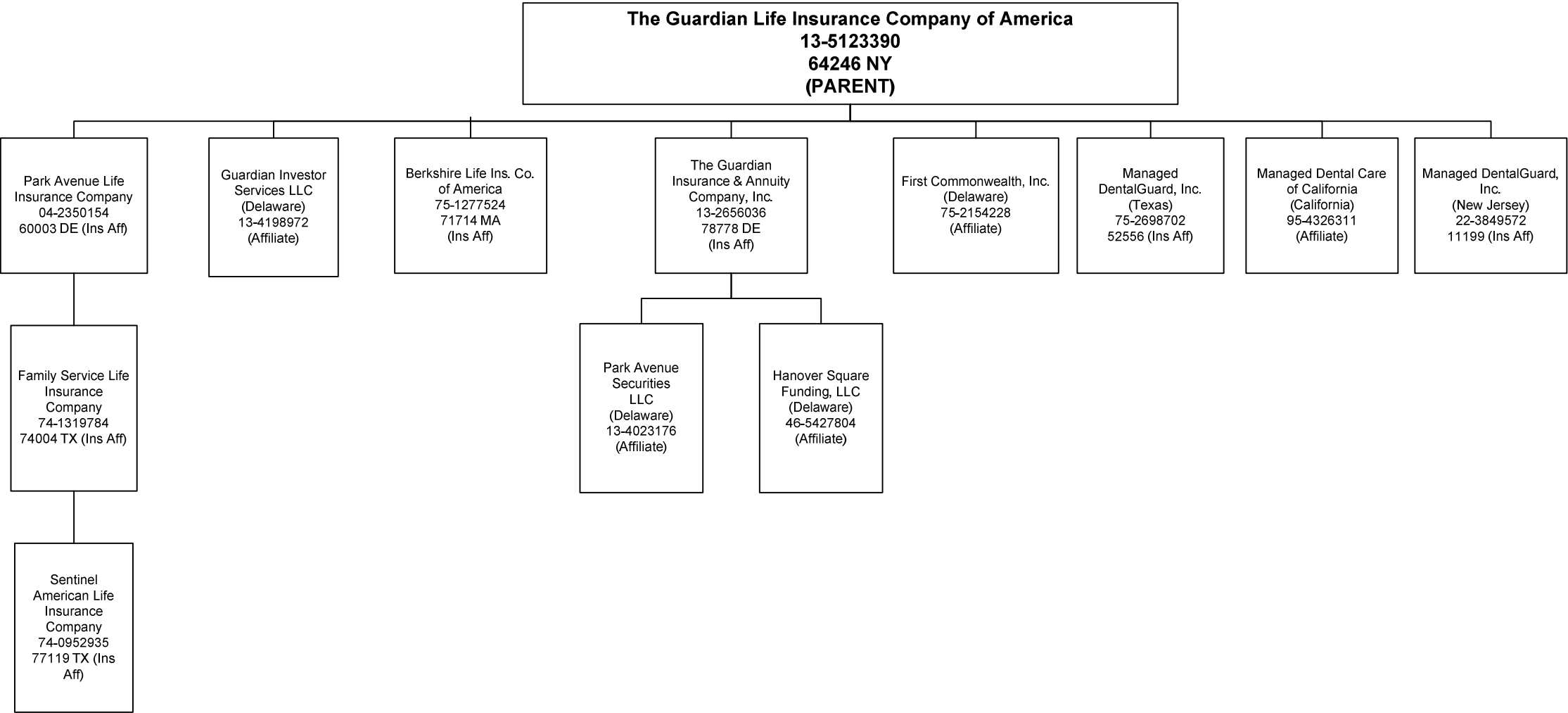
SCHEDULE T PREMIUMS AND OTHER CONSIDERATIONS

Allocated by States and Territories											
			1	Direct Business Only							
				2	3	4	5	6	7	8	9
States, etc.			Active Status (a)	Accident & Health Premiums	Medicare Title XVIII	Medicaid Title XIX	Federal Employees Health Benefits Plan Premiums	Life & Annuity Premiums & Other Considerations	Property/ Casualty Premiums	Total Columns 2 Through 7	Deposit-Type Contracts
1.	Alabama	AL	N							.0	
2.	Alaska	AK	N							.0	
3.	Arizona	AZ	N							.0	
4.	Arkansas	AR	N							.0	
5.	California	CA	N							.0	
6.	Colorado	CO	N							.0	
7.	Connecticut	CT	N							.0	
8.	Delaware	DE	N							.0	
9.	District of Columbia	DC	N							.0	
10.	Florida	FL	N							.0	
11.	Georgia	GA	N							.0	
12.	Hawaii	HI	N							.0	
13.	Idaho	ID	N							.0	
14.	Illinois	IL	N							.0	
15.	Indiana	IN	N							.0	
16.	Iowa	IA	N							.0	
17.	Kansas	KS	N							.0	
18.	Kentucky	KY	N							.0	
19.	Louisiana	LA	N							.0	
20.	Maine	ME	N							.0	
21.	Maryland	MD	N							.0	
22.	Massachusetts	MA	N							.0	
23.	Michigan	MI	N							.0	
24.	Minnesota	MN	N							.0	
25.	Mississippi	MS	N							.0	
26.	Missouri	MO	N							.0	
27.	Montana	MT	N							.0	
28.	Nebraska	NE	N							.0	
29.	Nevada	NV	N							.0	
30.	New Hampshire	NH	N							.0	
31.	New Jersey	NJ	N							.0	
32.	New Mexico	NM	N							.0	
33.	New York	NY	N							.0	
34.	North Carolina	NC	N							.0	
35.	North Dakota	ND	N							.0	
36.	Ohio	OH	L	345,738						345,738	
37.	Oklahoma	OK	N							.0	
38.	Oregon	OR	N							.0	
39.	Pennsylvania	PA	N							.0	
40.	Rhode Island	RI	N							.0	
41.	South Carolina	SC	N							.0	
42.	South Dakota	SD	N							.0	
43.	Tennessee	TN	N							.0	
44.	Texas	TX	N							.0	
45.	Utah	UT	N							.0	
46.	Vermont	VT	N							.0	
47.	Virginia	VA	N							.0	
48.	Washington	WA	N							.0	
49.	West Virginia	WV	N							.0	
50.	Wisconsin	WI	N							.0	
51.	Wyoming	WY	N							.0	
52.	American Samoa	AS	N							.0	
53.	Guam	GU	N							.0	
54.	Puerto Rico	PR	N							.0	
55.	U.S. Virgin Islands	VI	N							.0	
56.	Northern Mariana Islands	MP	N							.0	
57.	Canada	CAN	N							.0	
58.	Aggregate other alien	OT	XXX	.0	.0	.0	.0	.0	.0	.0	.0
59.	Subtotal		XXX	345,738	.0	.0	.0	.0	.0	345,738	.0
60.	Reporting entity contributions for Employee Benefit Plans		XXX							.0	
61.	Total (Direct Business)		XXX	345,738	0	0	0	0	0	345,738	0
DETAILS OF WRITE-INS											
58001.			XXX								
58002.			XXX								
58003.			XXX								
58998.	Summary of remaining write-ins for Line 58 from overflow page		XXX	.0	.0	.0	.0	.0	.0	.0	.0
58999.	Totals (Lines 58001 through 58003 plus 58998)(Line 58 above)		XXX	0	0	0	0	0	0	0	0

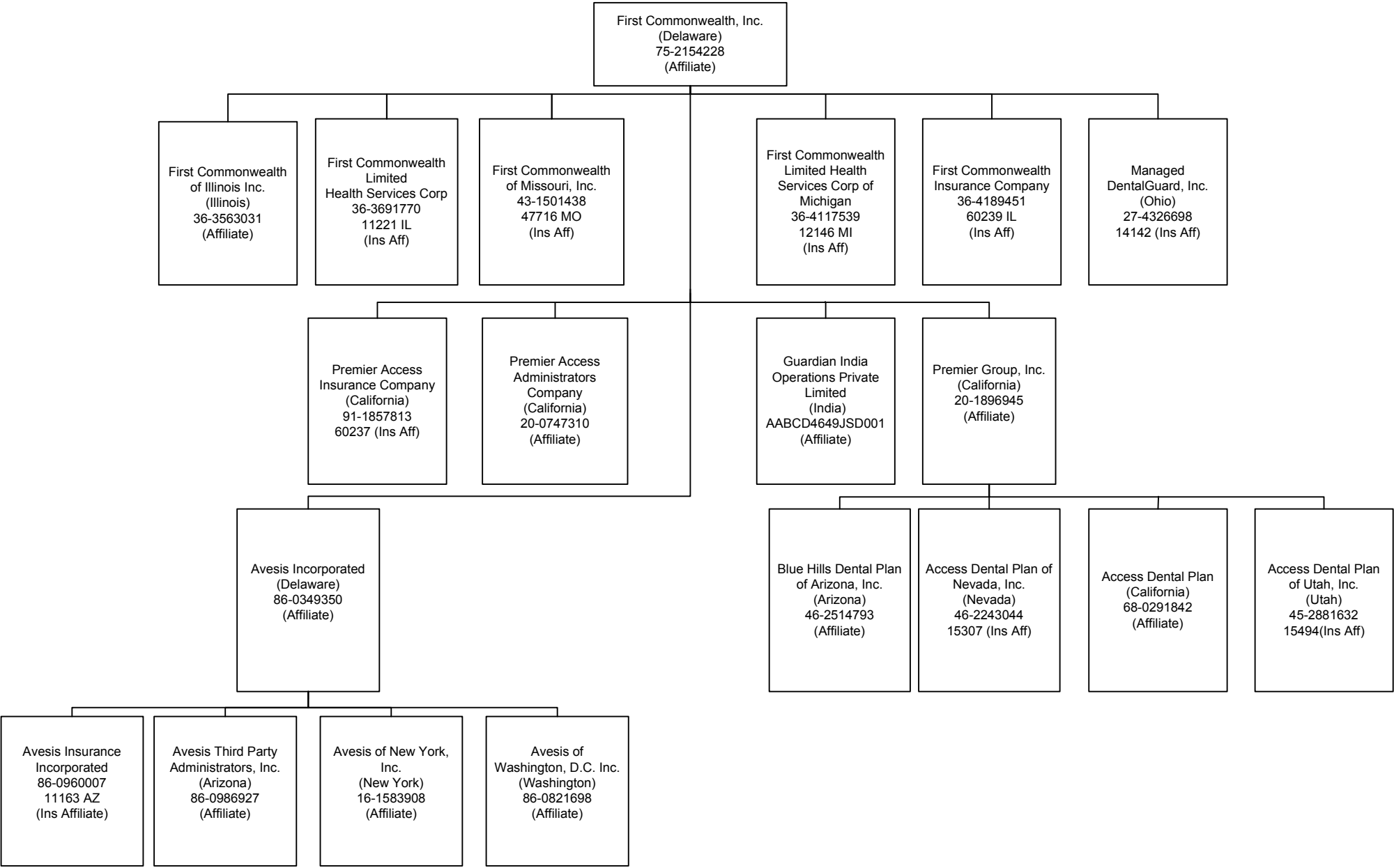
(a) Active Status Counts:
L - Licensed or Chartered - Licensed insurance carrier or domiciled RRG.....1 R - Registered - Non-domiciled RRGs.....0
E - Eligible - Reporting entities eligible or approved to write surplus lines in the state.....0 Q - Qualified - Qualified or accredited reinsurer.....0
N - None of the above - Not allowed to write business in the state.....56

(b) Explanation of basis of allocation by states, premiums by state, etc.

ANNUAL STATEMENT FOR THE YEAR 2018 OF THE MANAGED DENTALGUARD INC (OHIO)



ANNUAL STATEMENT FOR THE YEAR 2018 OF THE MANAGED DENTALGUARD INC (OHIO)



OVERFLOW PAGE FOR WRITE-INS

NONE

ALPHABETICAL INDEX

ANNUAL STATEMENT BLANK

Analysis of Operations By Lines of Business 7

Assets 2

Cash Flow 6

Exhibit 1 - Enrollment By Product Type for Health Business Only 17

Exhibit 2 - Accident and Health Premiums Due and Unpaid 18

Exhibit 3 - Health Care Receivables 19

Exhibit 3A - Analysis of Health Care Receivables Collected and Accrued 20

Exhibit 4 - Claims Unpaid and Incentive Pool, Withhold and Bonus 21

Exhibit 5 - Amounts Due From Parent, Subsidiaries and Affiliates 22

Exhibit 6 - Amounts Due To Parent, Subsidiaries and Affiliates 23

Exhibit 7 - Part 1 - Summary of Transactions With Providers 24

Exhibit 7 - Part 2 - Summary of Transactions With Intermediaries 24

Exhibit 8 - Furniture, Equipment and Supplies Owned 25

Exhibit of Capital Gains (Losses) 15

Exhibit of Net Investment Income 15

Exhibit of Nonadmitted Assets 16

Exhibit of Premiums, Enrollment and Utilization (State Page) 30

Five-Year Historical Data 29

General Interrogatories 27

Jurat Page 1

Liabilities, Capital and Surplus 3

Notes To Financial Statements 26

Overflow Page For Write-ins 44

Schedule A - Part 1 E01

Schedule A - Part 2 E02

Schedule A - Part 3 E03

Schedule A - Verification Between Years SI02

Schedule B - Part 1 E04

Schedule B - Part 2 E05

Schedule B - Part 3 E06

Schedule B - Verification Between Years SI02

Schedule BA - Part 1 E07

Schedule BA - Part 2 E08

Schedule BA - Part 3 E09

Schedule BA - Verification Between Years SI03

Schedule D - Part 1 E10

Schedule D - Part 1A - Section 1 SI05

Schedule D - Part 1A - Section 2 SI08

Schedule D - Part 2 - Section 1 E11

Schedule D - Part 2 - Section 2 E12

Schedule D - Part 3 E13

Schedule D - Part 4 E14

Schedule D - Part 5 E15

Schedule D - Part 6 - Section 1 E16

Schedule D - Part 6 - Section 2 E16

Schedule D - Summary By Country SI04

Schedule D - Verification Between Years SI03

Schedule DA - Part 1 E17

Schedule DA - Verification Between Years SI10

Schedule DB - Part A - Section 1 E18

Schedule DB - Part A - Section 2 E19

Schedule DB - Part A - Verification Between Years SI11

Schedule DB - Part B - Section 1 E20

Schedule DB - Part B - Section 2 E21

Schedule DB - Part B - Verification Between Years SI11

Schedule DB - Part C - Section 1 SI12

Schedule DB - Part C - Section 2 SI13

Schedule DB - Part D - Section 1 E22

Schedule DB - Part D - Section 2 E23

Schedule DB - Verification SI14

Schedule DL - Part 1 E24

Schedule DL - Part 2 E25

Schedule E - Part 1 - Cash E26

Schedule E - Part 2 - Cash Equivalents E27

Schedule E - Part 2 - Verification Between Years SI15

Schedule E - Part 3 - Special Deposits E28

ANNUAL STATEMENT BLANK (Continued)

Schedule S - Part 1 - Section 2	31
Schedule S - Part 2	32
Schedule S - Part 3 - Section 2	33
Schedule S - Part 4	34
Schedule S - Part 5	35
Schedule S - Part 6.....	36
Schedule S - Part 7.....	37
Schedule T - Part 2 - Interstate Compact	39
Schedule T - Premiums and Other Considerations	38
Schedule Y - Information Concerning Activities of Insurer Members of a Holding Company Group	40
Schedule Y - Part 1A - Detail of Insurance Holding Company System	41
Schedule Y - Part 2 - Summary of Insurer's Transactions With Any Affiliates	42
Statement of Revenue and Expenses	4
Summary Investment Schedule	SI01
Supplemental Exhibits and Schedules Interrogatories	43
Underwriting and Investment Exhibit - Part 1	8
Underwriting and Investment Exhibit - Part 2	9
Underwriting and Investment Exhibit - Part 2A	10
Underwriting and Investment Exhibit - Part 2B	11
Underwriting and Investment Exhibit - Part 2C	12
Underwriting and Investment Exhibit - Part 2D	13
Underwriting and Investment Exhibit - Part 3	14