



ANNUAL STATEMENT

For the Year Ended December 31, 2018

of the Condition and Affairs of the

PROGRESSIVE FREEDOM INSURANCE COMPANY

NAIC Group Code.....155, 155	NAIC Company Code..... 12302	Employer's ID Number..... 20-3187886
(Current Period) (Prior Period)		
Organized under the Laws of OH	State of Domicile or Port of Entry OH	Country of Domicile US
Incorporated/Organized..... June 16, 2005	Commenced Business..... September 30, 2005	
Statutory Home Office	6300 WILSON MILLS ROAD, W33 .. CLEVELAND .. OH .. US .. 44143-2182	
	(Street and Number) (City or Town, State, Country and Zip Code)	
Main Administrative Office	6300 WILSON MILLS ROAD, W33 .. CLEVELAND .. OH .. US .. 44143-2182	440-461-5000
	(Street and Number) (City or Town, State, Country and Zip Code)	(Area Code) (Telephone Number)
Mail Address	P.O. BOX 89490 .. CLEVELAND .. OH .. US .. 44101-6490	
	(Street and Number or P. O. Box) (City or Town, State, Country and Zip Code)	
Primary Location of Books and Records	6300 WILSON MILLS ROAD, W33 .. CLEVELAND .. OH .. US .. 44143-2182	440-395-4460
	(Street and Number) (City or Town, State, Country and Zip Code)	(Area Code) (Telephone Number)
Internet Web Site Address	PROGRESSIVE.COM	
Statutory Statement Contact	MARY BETH ANDREANO	440-395-4460
	(Name)	(Area Code) (Telephone Number) (Extension)
	FINANCIAL_REPORTING@PROGRESSIVE.COM	440-603-5500
	(E-Mail Address)	(Fax Number)

POLICYHOLDER SERVICES AND CLAIMS REPORTING -- 1-800-PROGRESSIVE (1-800-776-4737)

OFFICERS

Name	Title	Name	Title
GEOFFREY THOMAS SOUSER #	PRESIDENT	PETER JAMES ALBERT #	SECRETARY
PATRICK SEAN BRENNAN #	TREASURER		

OTHER

MARY BETH ANDREANO #	(VICE PRESIDENT)	CHRISTINA LYNN CREWS #	(ASST. SECRETARY)
JAMES LEE KUSMER #	(ASST. TREASURER)		

DIRECTORS OR TRUSTEES

RICHARD RUSSELL CRAWLEY #	JOHN ALLEN CURTISS, JR. #	HEATHER ELIZABETH DAY #	KATHRYN MARGARET LEMIEUX #
GEOFFREY THOMAS SOUSER #			

State of..... OHIO
County of..... CUYAHOGA

The officers of this reporting entity being duly sworn, each depose and say that they are the described officers of said reporting entity, and that on the reporting period stated above, all of the herein described assets were the absolute property of the said reporting entity, free and clear from any liens or claims thereon, except as herein stated, and that this statement, together with related exhibits, schedules and explanations therein contained, annexed or referred to, is a full and true statement of all the assets and liabilities and of the condition and affairs of the said reporting entity as of the reporting period stated above, and of its income and deductions therefrom for the period ended, and have been completed in accordance with the NAIC Annual Statement Instructions and Accounting Practices and Procedures manual except to the extent that: (1) state law may differ; or, (2) that state rules or regulations require differences in reporting not related to accounting practices and procedures, according to the best of their information, knowledge and belief, respectively. Furthermore, the scope of this attestation by the described officers also includes the related corresponding electronic filing with the NAIC, when required, that is an exact copy (except for formatting differences due to electronic filing) of the enclosed statement. The electronic filing may be requested by various regulators in lieu of or in addition to the enclosed statement.

(Signature)	(Signature)	(Signature)
GEOFFREY THOMAS SOUSER #	CHRISTINA LYNN CREWS #	JAMES LEE KUSMER #
(Printed Name)	2. (Printed Name)	3. (Printed Name)
PRESIDENT	ASSISTANT SECRETARY	ASSISTANT TREASURER
(Title)	(Title)	(Title)
Subscribed and sworn to before me	a. Is this an original filing?	Yes [X] No []
This 13TH day of FEBRUARY, 2019	b. If no	1. State the amendment number
		2. Date filed
		3. Number of pages attached

PROGRESSIVE FREEDOM INSURANCE COMPANY
ASSETS

	Current Year			Prior Year
	1	2	3	4
	Assets	Nonadmitted Assets	Net Admitted Assets (Cols. 1 - 2)	Net Admitted Assets
1. Bonds (Schedule D).....	5,383,986		5,383,986	5,389,926
2. Stocks (Schedule D):				
2.1 Preferred stocks.....			0	
2.2 Common stocks.....			0	
3. Mortgage loans on real estate (Schedule B):				
3.1 First liens.....			0	
3.2 Other than first liens.....			0	
4. Real estate (Schedule A):				
4.1 Properties occupied by the company (less \$.....0 encumbrances).....			0	
4.2 Properties held for the production of income (less \$.....0 encumbrances).....			0	
4.3 Properties held for sale (less \$.....0 encumbrances).....			0	
5. Cash (\$.....0, Schedule E-Part 1), cash equivalents (\$.....0, Schedule E-Part 2) and short-term investments (\$.....0, Schedule DA).....			0	
6. Contract loans (including \$.....0 premium notes).....			0	
7. Derivatives (Schedule DB).....			0	
8. Other invested assets (Schedule BA).....			0	
9. Receivables for securities.....			0	
10. Securities lending reinvested collateral assets (Schedule DL).....			0	
11. Aggregate write-ins for invested assets.....	0	0	0	0
12. Subtotals, cash and invested assets (Lines 1 to 11).....	5,383,986	0	5,383,986	5,389,926
13. Title plants less \$.....0 charged off (for Title insurers only).....			0	
14. Investment income due and accrued.....	32,987		32,987	32,987
15. Premiums and considerations:				
15.1 Uncollected premiums and agents' balances in the course of collection.....			0	
15.2 Deferred premiums, agents' balances and installments booked but deferred and not yet due (including \$.....0 earned but unbilled premiums).....			0	
15.3 Accrued retrospective premiums (\$.....0) and contracts subject to redetermination (\$.....0).....			0	
16. Reinsurance:				
16.1 Amounts recoverable from reinsurers.....			0	
16.2 Funds held by or deposited with reinsured companies.....			0	
16.3 Other amounts receivable under reinsurance contracts.....			0	
17. Amounts receivable relating to uninsured plans.....			0	
18.1 Current federal and foreign income tax recoverable and interest thereon.....			0	
18.2 Net deferred tax asset.....	522		522	8,903
19. Guaranty funds receivable or on deposit.....			0	
20. Electronic data processing equipment and software.....			0	
21. Furniture and equipment, including health care delivery assets (\$.....0).....			0	
22. Net adjustment in assets and liabilities due to foreign ex change rates.....			0	
23. Receivables from parent, subsidiaries and affiliates.....	33,417		33,417	
24. Health care (\$.....0) and other amounts receivable.....			0	
25. Aggregate write-ins for other-than-invested assets.....	0	0	0	0
26. Total assets ex cluding Separate Accounts, Segregated Accounts and Protected Cell Accounts (Lines 12 to 25).....	5,450,912	0	5,450,912	5,431,816
27. From Separate Accounts, Segregated Accounts and Protected Cell Accounts.....			0	
28. TOTAL (Lines 26 and 27).....	5,450,912	0	5,450,912	5,431,816

DETAILS OF WRITE-INS

1101.			0	
1102.			0	
1103.			0	
1198. Summary of remaining write-ins for Line 11 from overflow page.....	0	0	0	0
1199. Totals (Lines 1101 through 1103 plus 1198) (Line 11 above).....	0	0	0	0
2501.			0	
2502.			0	
2503.			0	
2598. Summary of remaining write-ins for Line 25 from overflow page.....	0	0	0	0
2599. Totals (Lines 2501 through 2503 plus 2598) (Line 25 above).....	0	0	0	0

PROGRESSIVE FREEDOM INSURANCE COMPANY
LIABILITIES, SURPLUS AND OTHER FUNDS

	1 Current Year	2 Pnor Year
1. Losses (Part 2A, Line 35, Column 8).....		
2. Reinsurance payable on paid losses and loss adjustment expenses (Schedule F, Part 1, Column 6).....		
3. Loss adjustment ex penses (Part 2A, Line 35, Column 9).....		
4. Commissions payable, contingent commissions and other similar charges.....		
5. Other ex penses (ex cluding tax es, licenses and fees).....	2,208	1,201
6. Tax es, licenses and fees (ex cluding federal and foreign income taxes).....	11,223	11,991
7.1 Current federal and foreign income taxes (including \$.....0 on realized capital gains (losses)).....	4,692	9,471
7.2 Net deferred tax liability.....		
8. Borrowed money \$.....0 and interest thereon \$.....0.....		
9. Uneamed premiums (Part 1A, Line 38, Column 5) (after deducting uneamed premiums for ceded reinsurance of \$.....0 and including warranty reserves of \$.....0 and accrued accident and health ex perience rating refunds including \$.....0 for medical loss ratio rebate per the Public Health Service Act).....		
10. Advance premium.....		
11. Dividends declared and unpaid:		
11.1 Stockholders.....		
11.2 Policyholders.....		
12. Ceded reinsurance premiums payable (net of ceding commissions).....		
13. Funds held by company under reinsurance treaties (Schedule F, Part 3, Column 20).....		
14. Amounts withheld or retained by company for account of others.....		
15. Remittances and items not allocated.....		
16. Provision for reinsurance (including \$.....0 certified) (Schedule F, Part 3, Column 78).....		
17. Net adjustments in assets and liabilities due to foreign ex change rates.....		
18. Drafts outstanding.....	58,364	53,448
19. Payable to parent, subsidiaries and affiliates.....		43,412
20. Derivatives.....		
21. Payable for securities.....		
22. Payable for securities lending.....		
23. Liability for amounts held under uninsured plans.....		
24. Capital notes \$.....0 and interest thereon \$.....0.....		
25. Aggregate write-ins for liabilities.....	0	606
26. Total liabilities ex cluding protected cell liabilities (Lines 1 through 25).....	76,487	120,129
27. Protected cell liabilities.....		
28. Total liabilities (Lines 26 and 27).....	76,487	120,129
29. Aggregate write-ins for special surplus funds.....	0	0
30. Common capital stock.....	1,200,000	1,200,000
31. Preferred capital stock.....		
32. Aggregate write-ins for other-than-special surplus funds.....	0	0
33. Surplus notes.....		
34. Gross paid in and contributed surplus.....	3,800,000	3,800,000
35. Unassigned funds (surplus).....	374,425	311,687
36. Less treasury stock, at cost:		
36.10.000 shares common (value included in Line 30 \$.....0).....		
36.20.000 shares preferred (value included in Line 31 \$.....0).....		
37. Surplus as regards policyholders (Lines 29 to 35, less 36) (Page 4, Line 39).....	5,374,425	5,311,687
38. TOTAL (Page 2, Line 28, Col. 3).....	5,450,912	5,431,816

DETAILS OF WRITE-INS

2501. ESCH EATABLE PROPERTY.....		606
2502.		
2503.		
2598. Summary of remaining write-ins for Line 25 from overflow page.....	0	0
2599. Totals (Lines 2501 through 2503 plus 2598) (Line 25 above).....	0	606
2901.		
2902.		
2903.		
2998. Summary of remaining write-ins for Line 29 from overflow page.....	0	0
2999. Totals (Lines 2901 through 2903 plus 2998) (Line 29 above).....	0	0
3201.		
3202.		
3203.		
3298. Summary of remaining write-ins for Line 32 from overflow page.....	0	0
3299. Totals (Lines 3201 through 3203 plus 3298) (Line 32 above).....	0	0

PROGRESSIVE FREEDOM INSURANCE COMPANY
STATEMENT OF INCOME

UNDERWRITING INCOME	1	2
	Current Year	Prior Year
1. Premiums earned (Part 1, Line 35, Column 4).....		15,938
DEDUCTIONS:		
2. Losses incurred (Part 2, Line 35, Column 7).....		9,044
3. Loss adjustment ex penses incurred (Part 3, Line 25, Column 1).....		(6,424)
4. Other underwriting expenses incurred (Part 3, Line 25, Column 2).....	14,146	2,374
5. Aggregate write-ins for underwriting deductions.....	0	0
6. Total underwriting deductions (Lines 2 through 5).....	14,146	4,994
7. Net income of protected cells.....		
8. Net underwriting gain (loss) (Line 1 minus Line 6 plus Line 7).....	(14,146)	10,944
INVESTMENT INCOME		
9. Net investment income earned (Ex hibit of Net Investment Income, Line 17).....	91,633	89,320
10. Net realized capital gains (losses) less capital gains tax of \$.....0 (Ex hibit of Capital Gains (Losses)).....		
11. Net investment gain (loss) (Lines 9 + 10).....	91,633	89,320
OTHER INCOME		
12. Net gain (loss) from agents' or premium balances charged off (amount recovered \$.....0 amount charged off \$.....0).....	0	(353)
13. Finance and service charges not included in premiums.....		1,729
14. Aggregate write-ins for miscellaneous income.....	(810)	(4,356)
15. Total other income (Lines 12 through 14).....	(810)	(2,980)
16. Net income before dividends to policyholders, after capital gains tax and before all other federal and foreign income tax es (Lines 8 + 11 + 15).....	76,777	97,284
17. Dividends to policyholders.....		
18. Net income, after dividends to policyholders, after capital gains tax and before all other federal and foreign income tax es (Line 16 minus Line 17).....	76,777	97,284
19. Federal and foreign income taxes incurred.....	6,329	29,807
20. Net income (Line 18 minus Line 19) (to Line 22).....	70,348	67,477
CAPITAL AND SURPLUS ACCOUNT		
21. Surplus as regards policyholders, December 31 prior year (Page 4, Line 39, Column 2).....	5,311,687	5,149,765
22. Net income (from Line 20).....	70,348	67,477
23. Net transfers (to) from Protected Cell accounts.....		
24. Change in net unrealized capital gains or (losses) less capital gains tax of \$.....0.....		
25. Change in net unrealized foreign ex change capital gain (loss).....		
26. Change in net deferred income tax.....	(8,381)	(9,392)
27. Change in nonadmitted assets (Ex hibit of Nonadmitted Assets, Line 28, Column 3).....	771	3,837
28. Change in provision for reinsurance (Page 3, Line 16, Column 2 minus Column 1).....		
29. Change in surplus notes.....		
30. Surplus (contributed to) withdrawn from Protected Cells.....		
31. Cumulative effect of changes in accounting principles.....		
32. Capital changes:		
32.1 Paid in.....		
32.2 Transferred from surplus (Stock Dividend).....		
32.3 Transferred to surplus.....		
33. Surplus adjustments:		
33.1 Paid in.....		100,000
33.2 Transferred to capital (Stock Dividend).....		
33.3. Transferred from capital.....		
34. Net remittances from or (to) Home Office.....		
35. Dividends to stockholders.....		
36. Change in treasury stock (Page 3, Lines 36.1 and 36.2, Column 2 minus Column 1).....		
37. Aggregate write-ins for gains and losses in surplus.....	0	0
38. Change in surplus as regards policyholders for the year (Lines 22 through 37).....	62,738	161,922
39. Surplus as regards policyholders, December 31 current year (Line 21 plus Line 38) (Page 3, Line 37).....	5,374,425	5,311,687
DETAILS OF WRITE-INS		
0501.		
0502.		
0503.		
0598. Summary of remaining write-ins for Line 5 from overflow page.....	0	0
0599. Totals (Lines 0501 through 0503 plus 0598) (Line 5 above).....	0	0
1401. MISCELLANEOUS OTHER INCOME.....	776	3
1402. FINANCE & SERVICE CHARGE REVENUE CEDED.....		(1,557)
1403. INTEREST EXPENSE ON INTERCOMPANY BALANCES.....	(1,586)	(2,802)
1498. Summary of remaining write-ins for Line 14 from overflow page.....	0	0
1499. Totals (Lines 1401 through 1403 plus 1498) (Line 14 above).....	(810)	(4,356)
3701.		
3702.		
3703.		
3798. Summary of remaining write-ins for Line 37 from overflow page.....	0	0
3799. Totals (Lines 3701 through 3703 plus 3798) (Line 37 above).....	0	0

PROGRESSIVE FREEDOM INSURANCE COMPANY
CASH FLOW

	1	2
	Current Year	Prior Year
CASH FROM OPERATIONS		
1. Premiums collected net of reinsurance.....	771	(65,362)
2. Net investment income.....	98,580	97,388
3. Miscellaneous income.....	(810)	(3,216)
4. Total (Lines 1 through 3).....	98,541	28,810
5. Benefit and loss related payments.....		131,837
6. Net transfers to Separate Accounts, Segregated Accounts and Protected Cell Accounts.....		
7. Commissions, expenses paid and aggregate write-ins for deductions.....	14,914	76,390
8. Dividends paid to policyholders.....		
9. Federal and foreign income taxes paid (recovered) net of \$.....0 tax on capital gains (losses).....	11,108	31,414
10. Total (Lines 5 through 9).....	26,022	239,641
11. Net cash from operations (Line 4 minus Line 10).....	72,519	(210,831)
CASH FROM INVESTMENTS		
12. Proceeds from investments sold, matured or repaid:		
12.1 Bonds.....		520,000
12.2 Stocks.....		
12.3 Mortgage loans.....		
12.4 Real estate.....		
12.5 Other invested assets.....		
12.6 Net gains or (losses) on cash, cash equivalents and short-term investments.....		
12.7 Miscellaneous proceeds.....		
12.8 Total investment proceeds (Lines 12.1 to 12.7).....	0	520,000
13. Cost of investments acquired (long-term only):		
13.1 Bonds.....		253,871
13.2 Stocks.....		
13.3 Mortgage loans.....		
13.4 Real estate.....		
13.5 Other invested assets.....		
13.6 Miscellaneous applications.....		
13.7 Total investments acquired (Lines 13.1 to 13.6).....	0	253,871
14. Net increase (decrease) in contract loans and premium notes.....		
15. Net cash from investments (Line 12.8 minus Lines 13.7 minus Line 14).....	0	266,129
CASH FROM FINANCING AND MISCELLANEOUS SOURCES		
16. Cash provided (applied):		
16.1 Surplus notes, capital notes.....		
16.2 Capital and paid in surplus, less treasury stock.....		100,000
16.3 Borrowed funds.....		
16.4 Net deposits on deposit-type contracts and other insurance liabilities.....		
16.5 Dividends to stockholders.....		
16.6 Other cash provided (applied).....	(72,519)	(255,038)
17. Net cash from financing and miscellaneous sources (Lines 16.1 to 16.4 minus Line 16.5 plus Line 16.6).....	(72,519)	(155,038)
RECONCILIATION OF CASH, CASH EQUIVALENTS AND SHORT-TERM INVESTMENTS		
18. Net change in cash, cash equivalents and short-term investments (Line 11, plus Lines 15 and 17).....	0	(99,740)
19. Cash, cash equivalents and short-term investments:		
19.1 Beginning of year.....	0	99,740
19.2 End of year (Line 18 plus Line 19.1).....	0	0
Note: Supplemental disclosures of cash flow information for non-cash transactions:		
20.0001		

Underwriting and Investment Ex. - Pt. 1 - Ex. of Premiums Earned
NONE

Underwriting and Investment Ex. - Pt. 1A - Recapitulation of All Premiums
NONE

Underwriting and Investment Ex. - Pt. 1B - Ex. Premiums Written
NONE

Underwriting and Investment Ex. - Pt. 2 - Losses Paid and Incurred
NONE

Underwriting and Investment Ex. - Pt. 2A - Unpaid Losses and Loss Adjustment Expenses
NONE

PROGRESSIVE FREEDOM INSURANCE COMPANY
UNDERWRITING AND INVESTMENT EXHIBIT

PART 3 - EXPENSES

	1	2	3	4
	Loss Adjustment Ex penses	Other Underwriting Ex penses	Investment Ex penses	Total
1. Claim adjustment services:				
1.1 Direct.....				0
1.2 Reinsurance assumed.....				0
1.3 Reinsurance ceded.....				0
1.4 Net claim adjustment services (1.1 + 1.2 - 1.3).....	0	0	0	0
2. Commission and brokerage:				
2.1 Direct, ex cluding contingent.....				0
2.2 Reinsurance assumed, ex cluding contingent.....				0
2.3 Reinsurance ceded, ex cluding contingent.....				0
2.4 Contingent - direct.....				0
2.5 Contingent - reinsurance assumed.....				0
2.6 Contingent - reinsurance ceded.....				0
2.7 Policy and membership fees.....				0
2.8 Net commission and brokerage (2.1 + 2.2 - 2.3 + 2.4 + 2.5 - 2.6 + 2.7).....	0	0	0	0
3. Allowances to manager and agents.....				0
4. Advertising.....				0
5. Boards, bureaus and associations.....			61	61
6. Surveys and underwriting reports.....				0
7. Audit of assureds' records.....				0
8. Salary and related items:				
8.1 Salaries.....	0		2,748	2,748
8.2 Payroll tax es.....			92	92
9. Employee relations and welfare.....			125	125
10. Insurance.....				0
11. Directors' fees.....				0
12. Travel and travel items.....			24	24
13. Rent and rent items.....			59	59
14. Equipment.....				0
15. Cost or depreciation of EDP equipment and software.....			17	17
16. Printing and stationery.....			4	4
17. Postage, telephone and telegraph, ex change and ex press.....			24	24
18. Legal and auditing.....		1,105	6,289	7,393
19. Totals (Lines 3 to 18).....	0	1,105	9,444	10,548
20. Tax es, licenses and fees:				
20.1 State and local insurance tax es deducting guaranty association credits of \$.....0.....		250		250
20.2 Insurance department licenses and fees.....		12,792		12,792
20.3 Gross guaranty association assessments.....				0
20.4 All other (ex cluding federal and foreign income and real estate).....				0
20.5 Total taxes, licenses and fees (20.1 + 20.2 + 20.3 + 20.4).....	0	13,042	0	13,042
21. Real estate ex penses.....				0
22. Real estate tax es.....				0
23. Reimbursements by uninsured plans.....				0
24. Aggregate write-ins for miscellaneous ex penses.....	0	0	542	542
25. Total ex penses incurred.....	0	14,146	9,986	(a) 24,132
26. Less unpaid ex penses - current year.....		11,223	2,208	13,431
27. Add unpaid ex penses - prior year.....		11,991	1,201	13,192
28. Amounts receivable relating to uninsured plans, prior year.....				0
29. Amounts receivable relating to uninsured plans, current year.....				0
30. TOTAL EXPENSES PAID (Lines 25 - 26 + 27 - 28 + 29).....	0	14,914	8,979	23,893

DETAILS OF WRITE-INS

2401. MISCELLANEOUS EXPENSES.....			542	542
2402.				0
2403.				0
2498. Summary of remaining write-ins for Line 24 from overflow page.....	0	0	0	0
2499. Totals (Lines 2401 through 2403 plus 2498) (Line 24 above).....	0	0	542	542

(a) Includes management fees of \$.....3,566 to affiliates and \$.....0 to non-affiliates.

PROGRESSIVE FREEDOM INSURANCE COMPANY
EXHIBIT OF NET INVESTMENT INCOME

	1 Collected During Year	2 Earned During Year
1. U.S. government bonds.....	(a).....94,68494,684
1.1 Bonds ex empt from U.S. tax.....	(a).....6,9336,933
1.2 Other bonds (unaffiliated).....	(a).....
1.3 Bonds of affiliates.....	(a).....
2.1 Preferred stocks (unaffiliated).....	(b).....
2.11 Preferred stocks of affiliates.....	(b).....
2.2 Common stocks (unaffiliated).....
2.21 Common stocks of affiliates.....
3. Mortgage loans.....	(c).....
4. Real estate.....	(d).....
5. Contract loans.....
6. Cash, cash equivalents and short-term investments.....	(e).....22
7. Derivative instruments.....	(f).....
8. Other invested assets.....
9. Aggregate write-ins for investment income.....00
10. Total gross investment income.....101,619101,619
11. Investment ex penses.....		(g).....9,986
12. Investment tax es, licenses and fees, ex cluding federal income tax es.....		(g).....
13. Interest ex pense.....		(h).....
14. Depreciation on real estate and other invested assets.....		(i).....0
15. Aggregate write-ins for deductions from investment income.....	0
16. Total deductions (Lines 11 through 15).....	9,986
17. Net investment income (Line 10 minus Line 16).....	91,633

DETAILS OF WRITE-INS

0901.		
0902.		
0903.		
0998. Summary of remaining write-ins for Line 9 from overflow page.....00
0999. Totals (Lines 0901 through 0903 plus 0998) (Line 9 above).....00
1501.		
1502.		
1503.		
1598. Summary of remaining write-ins for Line 15 from overflow page.....	0
1599. Totals (Lines 1501 through 1503 plus 1598) (Line 15 above).....	0

- (a) Includes \$.....3,313 accrual of discount less \$.....9,253 amortization of premium and less \$.....0 paid for accrued interest on purchases.
- (b) Includes \$.....0 accrual of discount less \$.....0 amortization of premium and less \$.....0 paid for accrued dividends on purchases.
- (c) Includes \$.....0 accrual of discount less \$.....0 amortization of premium and less \$.....0 paid for accrued interest on purchases.
- (d) Includes \$.....0 for company's occupancy of its own buildings; and ex cludes \$.....0 interest on encumbrances.
- (e) Includes \$.....0 accrual of discount less \$.....0 amortization of premium and less \$.....0 paid for accrued interest on purchases.
- (f) Includes \$.....0 accrual of discount less \$.....0 amortization of premium.
- (g) Includes \$.....0 investment ex penses and \$.....0 investment tax es, licenses and fees, ex cluding federal income tax es, attributable to segregated and Separate Accounts.
- (h) Includes \$.....0 interest on surplus notes and \$.....0 interest on capital notes.
- (i) Includes \$.....0 depreciation on real estate and \$.....0 depreciation on other invested assets.

EXHIBIT OF CAPITAL GAINS (LOSSES)

	1 Realized Gain (Loss) on Sales or Maturity	2 Other Realized Adjustments	3 Total Realized Capital Gain (Loss) (Columns 1 + 2)	4 Change in Unrealized Capital Gain (Loss)	5 Change in Unrealized Foreign Ex change Capital Gain (Loss)
1. U.S. government bonds.....		0		
1.1 Bonds ex empt from U.S. tax.....		0		
1.2 Other bonds (unaffiliated).....		0		
1.3 Bonds of affiliates.....		0		
2.1 Preferred stocks (unaffiliated).....		0		
2.11 Preferred stocks of affiliates.....		0		
2.2 Common stocks (unaffiliated).....		0		
2.21 Common stocks of affiliates.....		0		
3. Mortgage loans.....		0		
4. Real estate.....		0		
5. Contract loans.....		0		
6. Cash, cash equivalents and short-term investments.....		0		
7. Derivative instruments.....		0		
8. Other invested assets.....		0		
9. Aggregate write-ins for capital gains (losses).....00000
10. Total capital gains (losses).....00000

DETAILS OF WRITE-INS

0901.0		
0902.0		
0903.0		
0998. Summary of remaining write-ins for Line 9 from overflow page.....00000
0999. Totals (Lines 0901 through 0903 plus 0998) (Line 9 above).....00000

PROGRESSIVE FREEDOM INSURANCE COMPANY
EXHIBIT OF NONADMITTED ASSETS

	1 Current Year Total Nonadmitted Assets	2 Prior Year Total Nonadmitted Assets	3 Change in Total Nonadmitted Assets (Col. 2 - Col. 1)
1. Bonds (Schedule D).....		0
2. Stocks (Schedule D):			
2.1 Preferred stocks.....		0
2.2 Common stocks.....		0
3. Mortgage loans on real estate (Schedule B):			
3.1 First liens.....		0
3.2 Other than first liens.....		0
4. Real estate (Schedule A):			
4.1 Properties occupied by the company.....		0
4.2 Properties held for the production of income.....		0
4.3 Properties held for sale.....		0
5. Cash (Schedule E-Part 1), cash equivalents (Schedule E-Part 2) and short-term investments (Schedule DA).....		0
6. Contract loans.....		0
7. Derivatives (Schedule DB).....		0
8. Other invested assets (Schedule BA).....		0
9. Receivables for securities.....		0
10. Securities lending reinvested collateral assets (Schedule DL).....		0
11. Aggregate write-ins for invested assets.....000
12. Subtotals, cash and invested assets (Lines 1 to 11).....000
13. Title plants (for Title insurers only).....		0
14. Investment income due and accrued.....		0
15. Premiums and considerations:			
15.1 Uncollected premiums and agents' balances in the course of collection.....	771771
15.2 Deferred premiums, agents' balances and installments booked but deferred and not yet due.....		0
15.3 Accrued retrospective premiums and contracts subject to redetermination.....		0
16. Reinsurance:			
16.1 Amounts recoverable from reinsurers.....		0
16.2 Funds held by or deposited with reinsured companies.....		0
16.3 Other amounts receivable under reinsurance contracts.....		0
17. Amounts receivable relating to uninsured plans.....		0
18.1 Current federal and foreign income tax recoverable and interest thereon.....		0
18.2 Net deferred tax asset.....		0
19. Guaranty funds receivable or on deposit.....		0
20. Electronic data processing equipment and software.....		0
21. Furniture and equipment, including health care delivery assets.....		0
22. Net adjustment in assets and liabilities due to foreign ex change rates.....		0
23. Receivables from parent, subsidiaries and affiliates.....		0
24. Health care and other amounts receivable.....		0
25. Aggregate write-ins for other-than-invested assets.....000
26. Total assets excluding Separate Accounts, Segregated Accounts and Protected Cell Accounts (Lines 12 through 25).....0771771
27. From Separate Accounts, Segregated Accounts and Protected Cell Accounts.....		0
28. TOTALS (Lines 26 and 27).....0771771

DETAILS OF WRITE-INS			
1101.0
1102.0
1103.0
1198. Summary of remaining write-ins for Line 11 from overflow page.....000
1199. Totals (Lines 1101 through 1103 plus 1198) (Line 11 above).....000
2501.0
2502.0
2503.0
2598. Summary of remaining write-ins for Line 25 from overflow page.....000
2599. Totals (Lines 2501 through 2503 plus 2598) (Line 25 above).....000

NOTES TO FINANCIAL STATEMENTS

Note 1 – Summary of Significant Accounting Policies and Going Concern

A. Accounting Practices

The accompanying statutory-basis financial statements of Progressive Freedom Insurance Company (the “Company”) were prepared on the basis of accounting practices prescribed or permitted by the Ohio Department of Insurance (“DOI”).

The Ohio DOI requires insurance companies domiciled in the state of Ohio to prepare their statutory-basis financial statements in accordance with the National Association of Insurance Commissioners’ (“NAIC”) *Accounting Practices and Procedures Manual* subject to any deviations prescribed or permitted by the Ohio DOI. No deviations from NAIC statutory accounting practices (“NAIC SAP”) were used in preparing these statutory-basis financial statements as illustrated in the table below:

	SSAP #	F/S Page	F/S Line #	2018	2017
NET INCOME					
(1) PROGRESSIVE FREEDOM INSURANCE COMPANY state basis (Page 4, Line 20, Columns 1 & 2)	XXX	XXX	XXX	\$ 70,348	\$ 67,477
(2) State Prescribed Practices that increase/decrease NAIC SAP					
(3) State Permitted Practices that increase/decrease NAIC SAP					
(4) NAIC SAP (1 – 2 – 3 = 4)	XXX	XXX	XXX	\$ 70,348	\$ 67,477
SURPLUS					
(5) PROGRESSIVE FREEDOM INSURANCE COMPANY state basis (Page 3, line 37, Columns 1 & 2)	XXX	XXX	XXX	\$ 5,374,425	\$ 5,311,687
(6) State Prescribed Practices that increase/decrease NAIC SAP					
(7) State Permitted Practices that increase/decrease NAIC SAP					
(8) NAIC SAP (5 – 6 – 7 = 8)	XXX	XXX	XXX	\$ 5,374,425	\$ 5,311,687

B. Use of Estimates in the Preparation of the Financial Statement

The Company is required to make estimates and assumptions when preparing its financial statements and accompanying notes in conformity with NAIC SAP. Actual results may differ from those estimates.

C. Accounting Policy

Insurance premiums written are being earned into income on a pro-rata basis over the period of risk based on a daily earnings convention. Unearned premiums are established to cover the unexpired portion of premiums written. The Company offers a variety of payment plans to meet individual customer needs. Generally, insurance premiums are collected in advance of providing risk coverage, minimizing the Company's exposure to credit risk.

Acquisition costs, such as agents' commissions, premium taxes, and other policy initiation costs, are charged to operations as incurred. Advertising costs are expensed as incurred.

Certain assets designated as “nonadmitted assets”, in accordance with Statement of Statutory Accounting Principles (“SSAP”) No. 4, Assets and Nonadmitted Assets, are reported on page 13, Exhibit of Nonadmitted Assets. The change in nonadmitted assets is charged directly against surplus as regards policyholders on page 4, Statement of Income, capital and surplus section.

In addition, the Company uses the following accounting policies:

Investments

- Cash and cash equivalents include bank accounts and certificates of deposit as well as short-term investments with original maturities of three months or less and securities acquired with remaining maturities of three months or less that are reported at amortized cost which approximates market value. Also includes money market mutual funds valued at fair value or net asset value (NAV) as a practical expedient.
- Short-term investments include securities acquired within one year of maturity, excluding those with maturities of three months or less (see cash and cash equivalents above) and are reported at amortized cost which approximates market value.
- Investment grade bond valuations are based on NAIC designations or NAIC Credit Rating Provider (“CRP”) designations from the Acceptable Rating Organization (“ARO”) list and are reported at amortized cost using the scientific method which closely approximates the effective interest method. Non-investment grade bond valuations are also based on NAIC designations or NAIC CRP-ARO designations and are reported at the lower of amortized cost or fair market value. Loan-backed and structured securities follow the guidance prescribed by SSAP No. 43R for the determination of the bond valuation and reporting designation. The difference between the original cost and redemption value of these securities is recognized over the lives of the respective issues and included in net investment gain.
- Common stocks, other than investments in stocks of subsidiaries and affiliates, are reported at fair market values based on active market closing quotations from a regulated exchange. Changes in the fair market values of these securities are reflected directly as unrealized gains or losses in statutory surplus, net of deferred income taxes.
- Non-redeemable preferred stocks are reported at fair market values. Changes in the fair market values of these securities are reflected directly as unrealized gains or losses in statutory surplus, net of deferred income taxes. Investment grade redeemable preferred stocks are reported at amortized cost, while non-investment grade redeemable preferred stocks are reported at the lower of amortized cost or fair market value. The difference between the original cost and redemption value of the redeemable preferred securities is recognized using the scientific method, which closely approximates the effective interest method, over the lives of the respective issues and included in net investment gain.
- The fair market values reported are derived from independent and observable market input evaluations provided by reputable pricing services, independent broker/dealer bid lists, independent broker/dealer quotations, independent broker/dealer pricing services, or active market closing quotations from a regulated exchange. In very rare cases, if none of the aforementioned primary sources are available, matrix pricing using the reporting entity's own market based assumptions may be utilized. The approved methods for computation of fair market value are prescribed in Part Five of the Securities Valuation Office *Purposes and Procedures Manual*.
- The Company has no investments in mortgage loans.
- Loan-backed and structured securities are accounted for as prescribed by SSAP No. 43R. These securities are generally stated at amortized cost as determined by the estimated value of future cash flows. Prepayment assumptions for loan-backed and structured debt securities are obtained from available market data, broker/dealers, and/or internal estimates, and are consistent with current interest rate and economic trends.
- The Company has no investments in joint ventures, partnerships, or limited liability companies.
- The Company has no investments in derivatives.

NOTES TO FINANCIAL STATEMENTS

- The Company may enter into repurchase agreements in which it borrows cash by providing certain underlying securities as collateral for the arrangement. The cash borrowed is invested in cash equivalents and an offsetting liability is established. The cash equivalent investment maturities and the term of the borrowing arrangement on the collateralized securities match, eliminating duration risk exposure to the Company. The Company did not have any open repurchase agreements at December 31, 2018 and December 31, 2017.
- Realized gains and losses on sales of securities are computed based on the first-in, first-out method.
- The Company's management routinely monitors individual securities in its investment portfolio for pricing changes that might indicate potential impairments and performs detailed reviews of securities with unrealized losses based on predetermined guidelines to determine whether a decline in the value of a security is other-than-temporary. A review for other-than-temporary impairment ("OTTI") requires making certain judgments regarding the materiality of the decline, its effect on the financial statements, the probability, extent, and timing of a valuation recovery, and the Company's ability and intent to hold the security. The scope of this review is broad and requires a forward-looking assessment of the fundamental characteristics of a security, as well as the market-related prospects of the issuer and its industry.

Management assesses valuation declines to determine the extent to which such changes are attributable to (i) fundamental factors specific to the issuer, such as financial conditions, business prospects or other factors, or (i) market-related factors such as interest rates or equity market declines (i.e., negative returns at either a sector index level or the broader market level), or (ii) credit-related losses where the present value of cash flows expected to be collected are lower than the amortized cost basis of the security (includes only those securities covered under SSAP No. 43R). This evaluation reflects management's assessment of current conditions, as well as predictions of uncertain future events that may have a material effect on the financial statements related to security valuation.

When persuasive evidence exists that causes management to conclude that a decline in fair value is other-than-temporary, the book value of such security is written down and recognized as a realized loss. All other unrealized gains or losses are reflected in statutory surplus.

Loss, Loss Adjustment Expense, and Premium Deficiency Reserves

- The Company has no loss, loss adjustment expense, or premium deficiency reserves. The Company transferred responsibility, as direct obligations, for 100% of the policy liabilities with regard to all binders, riders, policies and contracts of insurance issued by the Company to Progressive Max Insurance Company under a reinsurance and assumption agreement effective December 29, 2017.

Capitalization of Assets

- Prepaid assets above a \$100,000 threshold are capitalized. Under certain circumstances, the Company may decide to establish a prepaid expense for amounts less than the threshold. Prepaid assets are nonadmitted. There have been no changes to the written policy or predefined capitalization threshold from the prior year.

Pharmaceutical Rebate Receivables

- The Company does not write medical insurance or prescription drug coverage.

D. Going Concern

Management continuously monitors the Company's financial results and compliance with regulatory requirements and found no reason to expect the Company to not continue as a going concern.

Note 2 – Accounting Changes and Correction of Errors

Not Applicable

Note 3 – Business Combinations and Goodwill

Not Applicable

Note 4 – Discontinued Operations

Not Applicable

Note 5 – Investments

A. Mortgage Loans, including Mezzanine Real Estate Loans

Not Applicable

B. Debt Restructuring

Not Applicable

C. Reverse Mortgages

Not Applicable

D. Loan-Backed Securities

The Company does not own any loan-backed or structured debt securities.

E. Dollar Repurchase Agreements and/or Securities Lending Transactions

Not Applicable

F. Repurchase Agreements Transactions Accounted for as Secured Borrowing

Not Applicable

G. Reverse Repurchase Agreements Transactions Accounted for as Secured Borrowing

Not Applicable

H. Repurchase Agreements Transactions Accounted for as a Sale

Not Applicable

NOTES TO FINANCIAL STATEMENTS

I. Reverse Repurchase Agreements Transactions Accounted for as a Sale

Not Applicable

J. Real Estate

Not Applicable

K. Low-Income Housing Tax Credits (LIHTC)

Not Applicable

L. Restricted Assets

1. Restricted Assets (Including Pledged)

Restricted Asset Category	Gross (Admitted & Nonadmitted) Restricted							Current Year			
	Current Year					6	7	8	9	Percentage	
	1	2	3	4	5					10	11
	Total General Account (G/A)	G/A Supporting Protected Cell Account Activity (a)	Total Protected Cell Account Restricted Assets	Protected Cell Account Assets Supporting G/A Activity (b)	Total (1 plus 3)	Total From Prior Year	Increase/ (Decrease) (5 minus 6)	Total Nonadmitted Restricted	Total Admitted Restricted (5 minus 8)	Gross (Admitted & Nonadmitted) Restricted to Total Assets (c)	Admitted Restricted to Total Admitted Assets (d)
a. Subject to contractual obligation for which liability is not shown										%	%
b. Collateral held under security lending arrangements										%	%
c. Subject to repurchase agreements										%	%
d. Subject to reverse repurchase agreements										%	%
e. Subject to dollar repurchase agreements										%	%
f. Subject to dollar reverse repurchase agreements										%	%
g. Placed under option contracts										%	%
h. Letter stock or securities restricted as to sale – excluding FHLB capital stock										%	%
i. FHLB capital stock										%	%
j. On deposit with states	223,383				223,383	203,703	19,680		223,383	4.1%	4.1%
k. On deposit with other regulatory bodies										%	%
l. Pledged as collateral to FHLB (including assets backing funding agreements)										%	%
m. Pledged as collateral not captured in other categories										%	%
n. Other restricted assets										%	%
o. Total Restricted Assets	\$ 223,383	\$	\$	\$	\$ 223,383	\$ 203,703	\$ 19,680	\$	\$ 223,383	4.1%	4.1%

- (a) Subset of column 1
(b) Subset of column 3
(c) Column 5 divided by Asset Page, Column 1, Line 28
(d) Column 9 divided by Asset Page, Column 3, Line 28

2. Detail of Assets Pledged as Collateral Not Captured in Other Categories (Contracts that Share Similar Characteristics, Such as Reinsurance and Deriv atives, are Reported in the Aggregate)

Not Applicable

3. Detail of Other Restricted Assets (Contracts that Share Similar Characteristics, such as Reinsurance and Deriv atives, are Reported in the Aggregate)

Not Applicable

4. Collateral Received and Reflected as Assets Within the Reporting Entity's Financial Statements

Not Applicable

M. Working Capital Finance Investments

Not Applicable

N. Offsetting and Netting of Assets and Liabilities

Not Applicable

O. Structured Notes

Not Applicable

NOTES TO FINANCIAL STATEMENTS

P. 5GI Securities
Not Applicable

Q. Short Sales
Not Applicable

R. Prepayment Penalty and Acceleration Fees
Not Applicable

Note 6 – Joint Ventures, Partnerships and Limited Liability Companies

Not Applicable

Note 7 – Investment Income

A. Accrued Investment Income
The Company nonadmits investment income due and accrued if the amounts are greater than 90 days past due.

B. Amounts Nonadmitted
Not Applicable

Note 8 – Derivative Instruments

Not Applicable

Note 9 – Income Taxes

A. Deferred Tax Assets/(Liabilities)

1. Components of Net Deferred Tax Asset/(Liability)

	2018			2017			Change		
	1	2	3	4	5	6	7	8	9
	Ordinary	Capital	(Col 1+2) Total	Ordinary	Capital	(Col 4+5) Total	(Col 1-4) Ordinary	(Col 2-5) Capital	(Col 7+8) Total
a. Gross deferred tax assets	\$ 2,304	\$	\$ 2,304	\$ 10,034	\$	\$ 10,034	\$ (7,730)	\$	\$ (7,730)
b. Statutory valuation allowance adjustment									
c. Adjusted gross deferred tax assets (1a-1b)	\$ 2,304	\$	\$ 2,304	\$ 10,034	\$	\$ 10,034	\$ (7,730)	\$	\$ (7,730)
d. Deferred tax assets nonadmitted									
e. Subtotal net admitted deferred tax asset (1c-1d)	\$ 2,304	\$	\$ 2,304	\$ 10,034	\$	\$ 10,034	\$ (7,730)	\$	(7,730)
f. Deferred tax liabilities	1,782		1,782	1,131		1,131	651		651
g. Net admitted deferred tax assets/(net deferred tax liability) (1e-1f)	\$ 522	\$	\$ 522	\$ 8,903	\$	\$ 8,903	\$ (8,381)	\$	\$ (8,381)

NOTES TO FINANCIAL STATEMENTS

2. Admission Calculation Components SSAP No. 101

	2018			2017			Change		
	1 Ordinary	2 Capital	3 (Col 1+2) Total	4 Ordinary	5 Capital	6 (Col 4+5) Total	7 (Col 1-4) Ordinary	8 (Col 2-5) Capital	9 (Col 7+8) Total
a. Federal income taxes paid in prior years recoverable through loss carrybacks	\$ 1,479		\$ 1,479	\$ 10,030		\$ 10,030	\$ (8,551)		\$ (8,551)
b. Adjusted gross deferred tax assets expected to be realized (excluding the amount of deferred tax assets from 2(a) above) after application of the threshold limitation. (The lesser of 2(b)1 and 2(b)2 below)									
1. Adjusted gross deferred tax assets expected to be realized following the balance sheet date									
2. Adjusted gross deferred tax assets allowed per limitation threshold			806,085			795,417			10,668
c. Adjusted gross deferred tax assets (excluding the amount of deferred tax assets from 2(a) and 2(b) above) offset by gross deferred tax liabilities	825		825	4		4	821		821
d. Deferred tax assets admitted as the result of application of SSAP 101. Total (2(a)+2(b)+2(c))	\$ 2,304		\$ 2,304	\$ 10,034		\$ 10,034	\$ (7,730)		\$ (7,730)

3. Other Admissibility Criteria

	2018	2017
a. Ratio percentage used to determine recovery period and threshold limitation amount	199,403.0%	232,884.7%
b. Amount of adjusted capital and surplus used to determine recovery period and threshold limitation in 2(b)2 above	\$ 5,373,903	\$ 5,302,784

4. Impact of Tax Planning Strategies

(a) Determination of adjusted gross deferred tax assets and net admitted deferred tax assets, by tax character as a percentage.

	2018		2017		Change	
	1 Ordinary	2 Capital	3 Ordinary	4 Capital	5 (Col. 1-3) Ordinary	6 (Col. 2-4) Capital
1. Adjusted gross DTAs amount from Note 9A1(c)	\$ 2,304		\$ 10,034		\$ (7,730)	
2. Percentage of adjusted gross DTAs by tax character attributable to the impact of tax planning strategies	0 %	0 %	0 %	0 %	0 %	0 %
3. Net Admitted Adjusted Gross DTAs amount from Note 9A1(e)	\$ 2,304		\$ 10,034		\$ (7,730)	
4. Percentage of net admitted adjusted gross DTAs by tax character admitted because of the impact of tax planning strategies	0 %	0 %	0 %	0 %	0 %	0 %

(b) Does the company's tax planning strategies include the use of reinsurance? NO

NOTES TO FINANCIAL STATEMENTS

B. Deferred Tax Liabilities Not Recognized

Not Applicable

C. Current and Deferred Income Taxes

1. Current Income Tax

	1	2	3
	2018	2017	(Col 1-2) Change
a. Federal	\$ 6,329	\$ 29,807	\$ (23,478)
b. Foreign			
c. Subtotal	\$ 6,329	\$ 29,807	\$ (23,478)
d. Federal income tax on net capital gains			
e. Utilization of capital loss carry-forwards			
f. Other			
g. Federal and Foreign income taxes incurred	\$ 6,329	\$ 29,807	\$ (23,478)

2. Deferred Tax Assets

	1	2	3
	2018	2017	(Col 1-2) Change
a. Ordinary:			
1. Discounting of unpaid losses	\$	\$ 44	\$ (44)
2. Unearned premium reserve			
3. Policyholder reserves			
4. Investments			
5. Deferred acquisition costs			
6. Policyholder dividends accrual			
7. Fixed assets			
8. Compensation and benefits accrual			
9. Pension accrual			
10. Receivables - nonadmitted		162	(162)
11. Net operating loss carry-forward			
12. Tax credit carry-forward			
13. Other (items <=5% and >5% of total ordinary tax assets)	2,304	9,828	(7,524)
Other (items listed individually >5%of total ordinary tax assets)			
Accrued insurance department exam fees	2,304	9,828	(7,524)
99. Subtotal	2,304	10,034	(7,730)
b. Statutory valuation allowance adjustment			
c. Nonadmitted			
d. Admitted ordinary deferred tax assets (2a99-2b-2c)	2,304	10,034	(7,730)
e. Capital:			
1. Investments	\$	\$	\$
2. Net capital loss carry-forward			
3. Real estate			
4. Other (items <=5% and >5% of total capital tax assets)			
Other (items listed individually >5% of total capital tax assets)			
99. Subtotal	\$	\$	\$
f. Statutory valuation allowance adjustment			
g. Nonadmitted			
h. Admitted capital deferred tax assets (2e99-2f-2g)			
i. Admitted deferred tax assets (2d+2h)	\$ 2,304	\$ 10,034	\$ (7,730)

NOTES TO FINANCIAL STATEMENTS

3. Deferred Tax Liabilities

	1	2	3
	2018	2017	(Col 1-2) Change
a. Ordinary:			
1. Investments	\$ 1,782	\$ 1,087	\$ 695
2. Fixed assets			
3. Deferred and uncollected premium			
4. Policyholder reserves			
5. Other (items <=5% and >5% of total ordinary tax liabilities)		44	(44)
Other (items listed individually >5% of total ordinary tax liabilities)			
Salvage and subrogation		44	(44)
99. Subtotal	1,782	1,131	651
b. Capital:			
1. Investments			
2. Real estate			
3. Other (Items <=5% and >5% of total capital tax liabilities)			
Other (items listed individually >5% of total capital tax liabilities)			
99. Subtotal			
c. Deferred tax liabilities (3a99+3b99)	\$ 1,782	\$ 1,131	\$ 651
4. Net Deferred Tax Assets (2i – 3c)	\$ 522	\$ 8,903	\$ (8,381)

The change in net deferred income tax is comprised of the following (this analysis excludes nonadmitted assets; the change in nonadmitted assets is reported separately from the change in net deferred income tax in the Statement of Income, Surplus section):

Description	December 31, 2018	December 31, 2017	Change
Total deferred tax assets	\$ 2,304	\$ 10,034	\$ (7,730)
Total deferred tax liabilities	1,782	1,131	651
Net deferred tax asset (liability)	\$ 522	\$ 8,903	\$ (8,381)
Tax effect of unrealized gains (losses)			--
Change in net deferred income tax			\$ (8,381)

D. Reconciliation of Federal Income Tax Rate to Actual Effective Rate Among the more significant book to tax adjustments were the following:

Description	Tax Effect Amount	Effective Tax Rate
Provision computed at statutory rate	\$ 16,102	21%
Exempt interest income	(1,092)	-1%
Impact of nonadmitted assets	162	0%
Other	(462)	-1%
Total	\$ 14,710	19%
Federal and foreign income taxes incurred	\$ 6,329	
Change in net deferred income tax	8,381	
Total statutory income taxes	\$ 14,710	

E. Operating Loss Carryforwards and Income Taxes Available for Recoupment

1. During the reporting period, the Company did not have any unused operating loss carryforwards available to offset against future taxable income.
2. The following is income tax expense for current year and proceeding years that is available for recoupment in the event of future net losses:

Period	Amount
Current tax year:	\$ 7,479
First preceding tax year:	\$ 29,111

The amounts that can be recouped may be subject to the alternative minimum tax rules, and therefore may be limited.

The Company did not have any protective tax deposits under Section 6603 of the Internal Revenue Code.

F. Consolidated Federal Income Tax Return

1. The Company's Federal income tax return is consolidated with The Progressive Corporation ("TPC") and all its wholly-owned United States corporate subsidiaries. Effective 4/3/2018, ARX Holding Corp ("ARX"), a holding company incorporated in Delaware and its corporate subsidiaries also became members of TPC's consolidated federal income tax return filing group.
2. The method of allocation between the companies is subject to written agreement and is jointly approved by an officer of TPC and the Company. The allocation is based upon separate tax return calculations with current credit for net losses or other items utilized in the consolidated tax return. Intercompany tax balances are settled quarterly.

NOTES TO FINANCIAL STATEMENTS

G.	Federal or Foreign Federal Income Tax Loss Contingencies: The Company does not have any tax loss contingencies for which it is reasonably possible that the total liability will significantly increase within twelve months of the reporting date.
H.	Repatriation Transition Tax (RTT) - RTT owed under the TCJA Not Applicable
I.	Alternative Minimum Tax (AMT Credit) Not Applicable
Note 10 – Information Concerning Parent, Subsidiaries, Affiliates and Other Related Parties	
A.	Nature of Relationships The Company is wholly owned by Drive Insurance Holdings, Inc. ("DIH"), a holding company incorporated in Delaware. Effective June 1, 2018, ownership of the Company was transferred from Progressive Direct Holdings, Inc. ("PDH"), a holding company incorporated in Delaware, to DIH. The change in ownership was approved by the Ohio DOI. The structure of the holding company organization is shown on Schedule Y, Part 1.
B.	Detail of Transactions Greater than ½% of Admitted Assets The Company received a capital contribution of \$100,000 from PDH in 2017. All significant transactions by the Company or any affiliated insurer with any affiliate are summarized in Schedule Y, Part 2.
C.	Change in Terms of Intercompany Arrangements Not Applicable
D.	Amounts Due to or from Related Parties The Company reported a \$33,417 receivable from parent, subsidiaries, and affiliates at December 31, 2018 and a \$43,412 payable to parent, subsidiaries, and affiliates at December 31, 2017. These balances are due to cash collections and disbursements on behalf of the Company under the Group's centralized cash management system and the reinsurance and management agreements in which the Company participates. The Company also reported a \$4,692 and \$9,471 current Federal income tax payable at December 31, 2018 and 2017, respectively. These balances are due to TPC for the Company's Federal income tax liability. The intercompany balances are settled by the end of the following quarter depending on the timing of investment cash transactions. These transactions are dependent upon market timing, investment needs and overall portfolio strategy as to the timing of such settlement transactions.
E.	Guarantees or Contingencies for Related Parties Not Applicable
F.	Management, Service Contracts, Cost Sharing Arrangements Effective July 1, 2018, the Company terminated the Management (cost allocation) Agreement with Progressive Direct Insurance Company, an insurance affiliate domiciled in Ohio. The termination agreement was approved by the Ohio DOI on June 27, 2018. Effective July 1, 2018, the Company entered into a Management (cost allocation) Agreement with Progressive Casualty Insurance Company ("Casualty"), an insurance affiliate domiciled in Ohio. Under the terms of the agreement, the Company is provided various management services and facilities. The agreement was approved by the Ohio DOI on June 27, 2018. The Company participates in an investment services agreement with Progressive Capital Management Corp., a non-insurance affiliate. Under the terms of the agreement, the Company is provided investment and capital management services in exchange for an investment management fee based on its use of services. All intercompany agreements are approved by the participating insurance companies' states of domicile when established. Upon redomestication, intercompany agreements are not required to be approved by the new state of domicile.
G.	Nature of Relationships that Could Affect Operations All outstanding shares of the Company are owned by DIH.
H.	Amount Deducted for Investment in Upstream Company Not Applicable
I.	Detail of Investments in Affiliates Greater than 10% of Admitted Assets Not Applicable
J.	Write-Downs for Impairment of Investments in Affiliates Not Applicable
K.	Investment in Foreign Insurance Subsidiary Not Applicable
L.	Investment in Downstream Non-Insurance Holding Company Not Applicable
M.	Subsidiary, Controlled and Affiliated Entities (except insurance subsidiary, controlled and affiliated entities) Value Not Applicable
N.	Insurance Subsidiary, Controlled and Affiliated Entities Valuation That Departs From NAIC Statutory Accounting Practices and Procedures Not Applicable

NOTES TO FINANCIAL STATEMENTS

O.

SCA Loss Tracking

Not Applicable

Note 11 – Debt

Not Applicable

Note 12 – Retirement Plans, Deferred Compensation, Postemployment Benefits and Compensated Absences and Other Postretirement Benefit Plans

Not Applicable

Note 13 – Capital and Surplus, Dividend Restrictions and Quasi-Reorganizations

1.
- Outstanding Shares
- The Company has 12,000 shares of \$100 par value common stock authorized and 12,000 shares issued and outstanding. The Company has no preferred stock authorized, issued, or outstanding.
2.
- Dividend Rate of Preferred Stock
- Not Applicable
- 3,4,5,6.
- Dividends
- The maximum amount of dividends the Company can pay to DIH in 2019 without prior regulatory approval is limited by insurance laws in Ohio. Based on the dividend laws currently in effect, the Company may pay dividends of \$374,425 in 2019 without prior approval from the Ohio DOI, provided the dividend payment is not made within 12 months of the previous payment.
- Within the limitations described above, there are no additional restrictions placed on the portion of Company profits that may be paid as ordinary dividends to stockholders.
7.
- Mutual Surplus Advances
- Not Applicable
8.
- Company Stock Held for Special Purposes
- Not Applicable
9.
- Changes in Special Surplus Funds
- Not Applicable
10.
- The portion of unassigned funds (surplus) represented or reduced by unrealized gains and losses.
- Not Applicable
11.
- The reporting entity issued the following surplus debentures or similar obligations:
- Not Applicable
12.
- The impact of any restatement due to prior quasi-reorganizations is as follows:
- Not Applicable
13.
- The effective dates of all quasi-reorganizations in the prior 10 years are:
- Not Applicable

Note 14 – Liabilities, Contingencies and Assessments

- A.
- Contingent Commitments
- Not Applicable
- B.
- Assessments
- As of the reporting date the Company had no liability for surcharges or assessments.
- C.
- Gain Contingencies
- Not Applicable
- D.
- Claims Related Extra Contractual Obligation and Bad Faith Losses Stemming from Lawsuits
- Not Applicable
- E.
- Product Warranties
- Not Applicable
- F.
- Joint and Several Liabilities
- Not Applicable

NOTES TO FINANCIAL STATEMENTS

G. All Other Contingen cies

The Company routinely assesses the collectibility of premiums and agents' balances receivable and records a bad debt reserve for amounts exceeding the nonadmitted balance that the Company believes are uncollectible.

The Company is named as defendant in various lawsuits arising out of its insurance operations. All legal actions relating to claims made under insurance policies are considered by the Company in establishing its loss and LAE reserves. The Company also has potential exposure relating to lawsuits due to its participation in the management agreement for which it is allocated litigation expenses (see Note 10.F).

The following is a discussion of potentially significant pending cases at the reporting date. The Company does not consider a loss from these cases to be probable and is unable to estimate a range of loss, if any, at this time.

There were two cases consolidated into multi-district proceedings alleging that the Company improperly steers automobile repair work to certain auto body repair shops and challenging the labor rates the Company pays to auto body repair shops.

There was a putative class action lawsuit challenging the Company's compliance regarding Medicare/Medicaid reimbursement.

Note 15 – Leases

Not Applicable

Note 16 – Information about Financial Instruments with Off-Balance Sheet Risk and Financial Instruments with Concentrations of Credit Risk

Not Applicable

Note 17 – Sale, Transfer and Servicing of Financial Assets and Extinguishments of Liabilities

Not Applicable

Note 18 – Gain or Loss to the Reporting Entity from Uninsured Plans and the Portion of Partially Insured Plans

Not Applicable

Note 19 – Direct Premium Written/Produced by Managing General Agents/Third Party Administrators

Not Applicable

Note 20 – Fair Value Measurements

A. Inputs Used for Assets and Liabilities Measured at Fair Value

1. Fair Value Measurements by Levels 1, 2 and 3

The Company categorizes its financial instruments, based on the degree of subjectivity inherent in the method by which they are valued, into a fair value hierarchy of three levels, as follows:

Level 1 - Inputs are unadjusted, quoted prices in active markets for identical instruments at the measurement date (e.g., U.S. government obligations, which are continually priced on a daily basis, active exchange-traded equity securities, and certain short-term securities).

Level 2 - Inputs (other than quoted prices included within Level 1) that are observable for the instrument either directly or indirectly (e.g., certain corporate and municipal bonds and certain preferred stocks). This includes: (i) quoted prices for similar instruments in active markets, (ii) quoted prices for identical or similar instruments in markets that are not active, (iii) inputs other than quoted prices that are observable for the instruments, and (iv) inputs that are derived principally from or corroborated by observable market data by correlation or other means.

Level 3 - Inputs that are unobservable. Unobservable inputs reflect our subjective evaluation about the assumptions market participants would use in pricing the financial instrument (e.g., certain structured securities and privately held investments).

See Note 1, Investment Policies section for further information regarding methods used to determine fair market value.

The Company's management evaluated whether the market was distressed or inactive in determining the fair value of the Company's securities and reviewed certain market level inputs to evaluate whether sufficient activity, volume, and new issuances existed to create an active market. Based on this evaluation, management concluded that there was sufficient activity in determining the fair market value of the Company's securities.

As of the reporting date, the Company did not measure and report any securities at fair value on the balance sheet. All bonds were carried at amortized cost.

2. Rollforward of Level 3 Items

Not Applicable

3. Policy on Transfers Into and Out of Level 3

At the end of each reporting period, the Company evaluates whether or not any event has occurred or circumstances have changed that would cause an instrument to be transferred into or out of Level 3.

4. Inputs and Techniques Used for Level 2 and Level 3 Fair Values

See Note 20.A.1 above.

5. Derivative Fair Values

Not Applicable

B. Other Fair Value Disclosures

Not Applicable

NOTES TO FINANCIAL STATEMENTS

C. Fair Values for all Financial Instruments by Levels 1, 2, and 3

The table below represents the fair value of all financial instruments at the reporting date, however, not all financial instruments are reported at fair value in the Company's financial statements.

Type of Financial Instrument	Aggregate Fair Value	Admitted Assets	(Level 1)	(Level 2)	(Level 3)	Net Asset Value (NAV)	Not Practicable (Carrying Value)
Bonds	\$ 5,302,129	\$ 5,383,986	\$ 5,006,846	\$ 295,283	\$	\$	\$
Cash equivalents	\$	\$	\$	\$	\$	\$	\$
Common stock	\$	\$	\$	\$	\$	\$	\$
Preferred stock	\$	\$	\$	\$	\$	\$	\$
Short-term investments	\$	\$	\$	\$	\$	\$	\$

D. Not Practicable to Estimate Fair Value

Not Applicable

E. NAV Practical Expedient Investments

Not Applicable

Note 21 – Other Items

A. Unusual or Infrequent Items

Not Applicable

B. Troubled Debt Restructuring Debtors

Not Applicable

C. Other Disclosures

Effective November 8, 2017, the New Jersey DOI approved management's request to withdraw the Company's certificate of authority.

Effective November 3, 2017, the Company changed its state of domicile from New Jersey to Ohio. All required regulatory approvals were obtained by the Company.

Effective December 29, 2017, the Company entered into a reinsurance and assumption agreement with Progressive Max Insurance Company ("PMIC"), an insurance affiliate domiciled in Ohio. Under the terms of the agreement, the Company transferred responsibility, as direct obligations, for 100% of the policy liabilities with regard to all binders, riders, policies and contracts of insurance issues by the Company prior to the effective date of the agreement. The Company transferred loss and loss adjustment expense reserves of \$766,452. The agreement was approved by the Ohio DOI.

Effective December 29, 2017, the Company terminated its Quota Share Reinsurance Agreement with PDH. The termination of this agreement did not require regulatory approval.

D. Business Interruption Insurance Recoveries

Not Applicable

E. State Transferable and Non-Transferable Tax Credits

Not Applicable

F. Subprime Mortgage Related Risk Exposure

1. Exposure to Subprime Mortgage Related Risk

The following subprime disclosure and the review and procedures described within are completed at a consolidated level for all the Progressive companies. To the extent the Company had any direct subprime exposure, those securities would be listed in Note 21.F.3.

Management's review of the investment portfolio for securities with direct subprime exposure, such as Alt-A residential mortgage loan-backed bonds and home equity loan-backed bonds is performed in conjunction with the OTTI analysis and procedures (see Note 1.C). Additionally, securities that were determined to have an indirect subprime exposure were also reviewed as part of the OTTI process.

The Company's management continues to perform a detailed review of its investment portfolio, paying particular attention to the credit profile of the issuers to identify the extent to which any asset values may have been impacted by direct or indirect exposure to the subprime mortgage loan disruption, as well as broader credit and financial market events.

In the reporting period, the Company recorded no OTTI write-downs on any securities as a result of direct subprime exposure.

2. Direct Investment in Subprime Mortgage Loans

Not Applicable

3. Direct Investment in Securities with Underlying Subprime Exposure

Not Applicable

4. Mortgage or Financial Guaranty Subprime Exposure

Not Applicable

G. Insurance-Linked Securities (ILS) Contracts

Not Applicable

NOTES TO FINANCIAL STATEMENTS

Note 22 – Events Subsequent

Subsequent events have been considered through February 14, 2019 for the statutory statement that was available for issuance by March 1, 2019.

Effective January 1, 2019, the Company entered into a pre-existing intercompany pooling reinsurance agreement with the property-casualty affiliates listed below (the “Agency Pool”) , under which 100% of the underwriting business of each member company, net of external reinsurance, is ceded to Casualty, the Agency Pool manager and an Agency Pool participant. The combined premiums, losses, and expenses are then retroceded to each member based on pre-determined pooling percentages. This amendment to the agreement was approved by the Ohio DOI, Wisconsin DOI, Indiana DOI, Michigan Department of Insurance and Financial Services, and Florida Department of Financial Services. The pooling percentages for each of the members as of January 1, 2019 and December 31, 2018, are as follows:

Company	NAIC Code	January 1, 2019 Pool %	December 31, 2018 Pool %
Progressive Casualty Insurance Company (Lead)	24260	49.0%	49.0%
Progressive Northern Insurance Company	38628	12.0	12.0
Progressive Northwestern Insurance Company	42919	12.0	12.0
Progressive Specialty Insurance Company	32786	7.0	7.0
Progressive Preferred Insurance Company	37834	6.0	6.0
Progressive Michigan Insurance Company	10187	4.0	4.0
Progressive Classic Insurance Company	42994	3.0	3.0
Progressive American Insurance Company	24252	2.0	2.0
Progressive Gulf Insurance Company	42412	2.0	2.0
Progressive Mountain Insurance Company	35190	1.0	1.0
Progressive Southeastern Insurance Company	38784	1.0	1.0
Progressive Bayside Insurance Company	17350	0.5	1.0
Progressive Freedom Insurance Company	12302	0.5	--
Progressive Hawaii Insurance Corp.	10067	--	--
National Continental Insurance Company	10243	--	--
		100.0%	100.0%

A.

Did the reporting entity write accident and health insurance premium that is subject to Section 9010 of the Federal Affordable Care Act (YES/NO)?

Yes [] No [X]

Note 23 – Reinsurance

Not Applicable

Note 24 – Retrospectively Rated Contracts and Contracts Subject to Redetermination

F.

Risk Sharing Provisions of the Affordable Care Act

1. Did the reporting entity write accident and health insurance premium which is subject to the Affordable Care Act risk sharing provisions?

Yes [] No [X]

Note 25 – Change in Incurred Losses and Loss Adjustment Expenses

Not Applicable

Note 26 – Intercompany Pooling Arrangements

See Note 22

Note 27 – Structured Settlements

Not Applicable

Note 28 – Health Care Receivables

Not Applicable

Note 29 – Participating Policies

Not Applicable

Note 30 – Premium Deficiency Reserves

1.

Liability carried for premium deficiency reserve:

\$0
2.

Date of most recent evaluation of this liability:

December 31, 2018
3.

Was anticipated investment income utilized in the calculation?

Yes [X] No []

Note 31 – High Deductibles

Not Applicable

NOTES TO FINANCIAL STATEMENTS

Note 32 – Discounting of Liabilities for Unpaid Losses or Unpaid Loss Adjustment Expenses

Not Applicable

Note 33 – Asbestos/Environmental Reserves

Not Applicable

Note 34 – Subscriber Savings Accounts

Not Applicable

Note 35 – Multiple Peril Crop Insurance

Not Applicable

Note 36 – Financial Guaranty Insurance

Not Applicable

GENERAL INTERROGATORIES

PART 1 - COMMON INTERROGATORIES

GENERAL

1.1

Is the reporting entity a member of an Insurance Holding Company System consisting of two or more affiliated persons, one or more of which is an insurer?
If yes, complete Schedule Y, Parts 1, 1A and 2.

Yes [X] No []

1.2

If yes, did the reporting entity register and file with its domiciliary State Insurance Commissioner, Director or Superintendent or with such regulatory official of the state of domicile of the principal insurer in the Holding Company System, a registration statement providing disclosure substantially similar to the standards adopted by the National Association of Insurance Commissioners (NAIC) in its Model Insurance Holding Company System Regulatory Act and model regulations pertaining thereto, or is the reporting entity subject to standards and disclosure requirements substantially similar to those required by such Act and regulations?

Yes [X] No [] N/A []

1.3

State regulating? OHIO

1.4

Is the reporting entity publicly traded or a member of publicly traded group?

Yes [X] No []

1.5

If the response to 1.4 is yes, provide the CIK (Central Index Key) code issued by the SEC for the entity/group.

0000080661

2.1

Has any change been made during the year of this statement in the charter, by-laws, articles of incorporation, or deed of settlement of the reporting entity?

Yes [] No [X]

2.2

If yes, date of change:

3.1

State as of what date the latest financial examination of the reporting entity was made or is being made.

12/31/2017

3.2

State the as of date that the latest financial examination report became available from either the state of domicile or the reporting entity.
This date should be the date of the examined balance sheet and not the date the report was completed or released.

12/31/2012

3.3

State as of what date the latest financial examination report became available to other states or the public from either the state of domicile or the reporting entity. This is the release date or completion date of the examination report and not the date of the examination (balance sheet date).

12/16/2013

3.4

By what department or departments?
NEW JERSEY

3.5

Have all financial statement adjustments within the latest financial examination report been accounted for in a subsequent financial statement filed with departments?

Yes [] No [] N/A [X]

3.6

Have all of the recommendations within the latest financial examination report been complied with?

Yes [X] No [] N/A []

4.1

During the period covered by this statement, did any agent, broker, sales representative, non-affiliated sales/service organization or any combination thereof under common control (other than salaried employees of the reporting entity) receive credit or commissions for or control a substantial part (more than 20 percent of any major line of business measured on direct premiums) of:

4.11

sales of new business?

Yes [] No [X]

4.12

renewals?

Yes [] No [X]

4.2

During the period covered by this statement, did any sales/service organization owned in whole or in part by the reporting entity or an affiliate, receive credit or commissions for or control a substantial part (more than 20 percent of any major line of business measured on direct premiums) of:

4.21

sales of new business?

Yes [] No [X]

4.22

renewals?

Yes [] No [X]

5.1

Has the reporting entity been a party to a merger or consolidation during the period covered by this statement?
If the answer is YES, complete and file the merger history data file with the NAIC.

Yes [] No [X]

5.2

If yes, provide the name of entity, NAIC company code, and state of domicile (use two letter state abbreviation) for any entity that has ceased to exist as a result of the merger or consolidation.

1	2	3
Name of Entity	NAIC Company Code	State of Domicile

6.1

Has the reporting entity had any Certificates of Authority, licenses or registrations (including corporate registration, if applicable) suspended or revoked by any governmental entity during the reporting period?

Yes [] No [X]

6.2

If yes, give full information:

7.1

Does any foreign (non-United States) person or entity directly or indirectly control 10% or more of the reporting entity?

Yes [] No [X]

7.2

If yes,

7.21

State the percentage of foreign control

%

7.22

State the nationality(s) of the foreign person(s) or entity(s); or if the entity is a mutual or reciprocal, the nationality of its manager or attorney-in-fact and identify the type of entity(s) (e.g., individual, corporation, government, manager or attorney-in-fact).

1	2
Nationality	Type of Entity

8.1

Is the company a subsidiary of a bank holding company regulated with the Federal Reserve Board?

Yes [] No [X]

8.2

If response to 8.1 is yes, please identify the name of the bank holding company.

8.3

Is the company affiliated with one or more banks, thrifts or securities firms?

Yes [] No [X]

8.4

If the response to 8.3 is yes, please provide below the names and locations (city and state of the main office) of any affiliates regulated by a federal financial regulatory services agency [i.e. the Federal Reserve Board (FRB), the Office of the Comptroller of the Currency (OCC), the Federal Deposit Insurance Corporation (FDIC) and the Securities Exchange Commission (SEC)] and identify the affiliate's primary federal regulator.

1	2	3	4	5	6
Affiliate Name	Location (City, State)	FRB	OCC	FDIC	SEC

9.

What is the name and address of the independent certified public accountant or accounting firm retained to conduct the annual audit?
THE COMPANY HAS BEEN GRANTED AN EXEMPTION FROM FILING AUDITED FINANCIAL STATEMENTS AS OF AND FOR THE YEAR ENDING DECEMBER 31, 2018 BY THE OHIO DEPARTMENT OF INSURANCE.

10.1

Has the insurer been granted any exemptions to the prohibited non-audit services provided by the certified independent public accountant requirements as allowed in Section 7H of the Annual Financial Reporting Model Regulation (Model Audit Rule), or substantially similar state law or regulation?

Yes [] No [X]

10.2

If the response to 10.1 is yes, provide information related to this exemption:

10.3

Has the insurer been granted any exemptions related to other requirements of the Annual Financial Reporting Model Regulation as allowed for in Section 18A of the Model Regulation, or substantially similar state law or regulation?

Yes [X] No []

10.4

If the response to 10.3 is yes, provide information related to this exemption:

GENERAL INTERROGATORIES

PART 1 - COMMON INTERROGATORIES

THE COMPANY (PROGRESSIVE FREEDOM INSURANCE COMPANY) HAS BEEN GRANTED AN EXEMPTION BY THE OHIO DEPARTMENT OF INSURANCE FROM COMPLETING THE ANNUAL AUDITED FINANCIAL REPORT, MANAGEMENT'S REPORT OF INTERNAL CONTROL OVER FINANCIAL REPORTING, AND THE COMMUNICATION OF INTERNAL CONTROL MATTERS NOTED IN AN AUDIT AS A RESULT OF NO LONGER WRITING BUSINESS.

10.5

Has the reporting entity established an Audit Committee in compliance with the domiciliary state insurance laws?

Yes ☒ No ☐ N/A ☐

10.6

If the response to 10.5 is no or n/a, please explain:

11.

What is the name, address and affiliation (officer/employee of the reporting entity or actuary/consultant associated with an actuarial consulting firm) of the individual providing the statement of actuarial opinion/certification?
GARY S. TRAICOFF, FCAS, MAAA CORPORATE ACTUARY 6300 WILSON MILLS ROAD MAYFIELD VILLAGE, OH 44143-2182

12.1

Does the reporting entity own any securities of a real estate holding company or otherwise hold real estate indirectly?

Yes ☐ No ☒

12.11

Name of real estate holding company

12.12

Number of parcels involved

0

12.13

Total book/adjusted carrying value

\$0

12.2

If yes, provide explanation

13.

FOR UNITED STATES BRANCHES OF ALIEN REPORTING ENTITIES ONLY:

13.1

What changes have been made during the year in the United States manager or the United States trustees of the reporting entity?
N/A

13.2

Does this statement contain all business transacted for the reporting entity through its United States Branch on risks wherever located?

Yes ☐ No ☐

13.3

Have there been any changes made to any of the trust indentures during the year?

Yes ☐ No ☐

13.4

If answer to (13.3) is yes, has the domiciliary or entry state approved the changes?

Yes ☐ No ☐ N/A ☐

14.1

Are the senior officers (principal executive officer, principal financial officer, principal accounting officer or controller, or persons performing similar functions) of the reporting entity subject to a code of ethics, which includes the following standards?

Yes ☒ No ☐

(a)

Honest and ethical conduct, including the ethical handling of actual or apparent conflicts of interest between personal and professional relationships;

(b)

Full, fair, accurate, timely and understandable disclosure in the periodic reports required to be filed by the reporting entity;

(c)

Compliance with applicable governmental laws, rules and regulations;

(d)

The prompt internal reporting of violations to an appropriate person or persons identified in the code; and

(e)

Accountability for adherence to the code.

14.11

If the response to 14.1 is no, please explain:

14.2

Has the code of ethics for senior managers been amended?

Yes ☒ No ☐

14.21

If the response to 14.2 is yes, provide information related to amendment(s).
ON AUGUST 3, 2018, THE BOARD OF DIRECTORS APPROVED CHANGES TO THE COMPANY'S CODE OF BUSINESS CONDUCT AND ETHICS AND THE CEO/SENIOR FINANCIAL OFFICE CODE OF CONDUCT TO PROVIDE THAT PROHIBITIONS IN THE "GIFTS AND ENTERTAINMENT" POLICY DO NOT APPLY TO THE CHIEF EXECUTIVE OFFICER, THE EXECUTIVES THAT REPORT TO HER, AND CERTAIN OTHER SENIOR LEADERS, IN CONNECTION WITH HOSTING OF, OR ATTENDANCE AT, EVENTS THAT ARE INTENDED TO FACILITATE BUSINESS GOALS AND ARE REASONABLE GIVEN THE CONTEXT. IN ADDITION, THE AMENDMENTS PROVIDE A MECHANISM FOR OTHER EMPLOYEES TO OBTAIN EXCEPTIONS TO THOSE PROHIBITIONS IN APPROPRIATE CIRCUMSTANCES.

14.3

Have any provisions of the code of ethics been waived for any of the specified officers?

Yes ☐ No ☒

14.31

If the response to 14.3 is yes, provide the nature of any waiver(s).

15.1

Is the reporting entity the beneficiary of a Letter of Credit that is unrelated to reinsurance where the issuing or confirming bank is not on the SVO Bank List?

Yes ☐ No ☒

15.2

If the response to 15.1 is yes, indicate the American Bankers Association (ABA) Routing Number and the name of the issuing or confirming bank of the Letter of Credit and describe the circumstances in which the Letter of Credit is triggered.

1 American Bankers Association (ABA) Routing Number	2 Issuing or Confirming Bank Name	3 Circumstances That Can Trigger the Letter of Credit	4 Amount
			\$

16.

Is the purchase or sale of all investments of the reporting entity passed upon either by the Board of Directors or a subordinator committee thereof?

Yes ☒ No ☐

17.

Does the reporting entity keep a complete permanent record of the proceedings of its Board of Directors and all subordinate committees thereof?

Yes ☒ No ☐

18.

Has the reporting entity an established procedure for disclosure to its Board of Directors or trustees of any material interest or affiliation on the part of any of its officers, directors, trustees or responsible employees that is in conflict or is likely to conflict with the official duties of such person?

Yes ☒ No ☐

19.

Has this statement been prepared using a basis of accounting other than Statutory Accounting Principles (e.g., Generally Accepted Accounting Principles)?

Yes ☐ No ☒

20.1

Total amount loaned during the year (inclusive of Separate Accounts, exclusive of policy loans):

20.11

To directors or other officers

\$0

20.12

To stockholders not officers

\$0

20.13

Trustees, supreme or grand (Fraternal only)

\$0

20.2

Total amount of loans outstanding at the end of year (inclusive of Separate Accounts, exclusive of policy loans):

20.21

To directors or other officers

\$0

20.22

To stockholders not officers

0

20.23

Trustees, supreme or grand (Fraternal only)

0

21.1

Were any assets reported in this statement subject to a contractual obligation to transfer to another party without the liability for such obligation being reporting in the statement?

Yes ☐ No ☒

21.2

If yes, state the amount thereof at December 31 of the current year:

21.21

Rented from others

\$0

21.22

Borrowed from others

\$0

21.23

Leased from others

\$0

21.24

Other

\$0

15.1

GENERAL INTERROGATORIES

PART 1 - COMMON INTERROGATORIES

22.1	Does this statement include payments for assessments as described in the <i>Annual Statement Instructions</i> other than guaranty fund or guaranty association assessments?	Yes [<input type="checkbox"/>]	No [<input checked="" type="checkbox"/> X]
22.2	If answer is yes:		
22.21	Amount paid as losses or risk adjustment	\$	0
22.22	Amount paid as expenses	\$	0
22.23	Other amounts paid	\$	0
23.1	Does the reporting entity report any amounts due from parent, subsidiaries or affiliates on Page 2 of this statement?	Yes [<input checked="" type="checkbox"/> X]	No [<input type="checkbox"/>]
23.2	If yes, indicate any amounts receivable from parent included in the Page 2 amount:	\$	0

INVESTMENT

24.01	Were all the stocks, bonds and other securities owned December 31 of current year, over which the reporting entity has exclusive control, in the actual possession of the reporting entity on said date (other than securities lending programs addressed in 24.03)?	Yes [<input checked="" type="checkbox"/> X]	No [<input type="checkbox"/>]
24.02	If no, give full and complete information, relating thereto:		
24.03	For security lending programs, provide a description of the program including value for collateral and amount of loaned securities, and whether collateral is carried on or off-balance sheet (an alternative is to reference Note 17 where this information is also provided). N/A		
24.04	Does the company's security lending program meet the requirements for a conforming program as outlined in the <i>Risk-Based Capital Instructions</i> ?	Yes [<input type="checkbox"/>]	No [<input type="checkbox"/>] N/A [<input checked="" type="checkbox"/> X]
24.05	If answer to 24.04 is yes, report amount of collateral for conforming programs.	\$	0
24.06	If answer to 24.04 is no, report amount of collateral for other programs	\$	0
24.07	Does your securities lending program require 102% (domestic securities) and 105% (foreign securities) from the counterparty at the outset of the contract?	Yes [<input type="checkbox"/>]	No [<input type="checkbox"/>] N/A [<input checked="" type="checkbox"/> X]
24.08	Does the reporting entity non-admit when the collateral received from the counterparty falls below 100%?	Yes [<input type="checkbox"/>]	No [<input type="checkbox"/>] N/A [<input checked="" type="checkbox"/> X]
24.09.	Does the reporting entity or the reporting entity's securities lending agent utilize the Master Securities Lending Agreement (MSLA) to conduct securities lending?	Yes [<input type="checkbox"/>]	No [<input type="checkbox"/>] N/A [<input checked="" type="checkbox"/> X]
24.10	For the reporting entity's security lending program, state the amount of the following as of December 31 of the current year:		
24.101	Total fair value of reinvested collateral assets reported on Schedule DL, Parts 1 and 2:	\$	0
24.102	Total book adjusted/carrying value of reinvested collateral assets reported on Schedule DL, Parts 1 and 2:	\$	0
24.103	Total payable for securities lending reported on the liability page:	\$	0
25.1	Were any of the stocks, bonds or other assets of the reporting entity owned at December 31 of the current year not exclusively under the control of the reporting entity or has the reporting entity sold or transferred any assets subject to a put option contract that is current in force? (Exclude securities subject to Interrogatory 21.1 and 24.03.)	Yes [<input checked="" type="checkbox"/> X]	No [<input type="checkbox"/>]
25.2	If yes, state the amount thereof at December 31 of the current year:		
25.21	Subject to repurchase agreements	\$	0
25.22	Subject to reverse repurchase agreements	\$	0
25.23	Subject to dollar repurchase agreements	\$	0
25.24	Subject to reverse dollar repurchase agreements	\$	0
25.25	Placed under option agreements	\$	0
25.26	Letter stock or securities restricted as sale – excluding FHLB Capital Stock	\$	0
25.27	FHLB Capital Stock	\$	0
25.28	On deposit with states	\$	223,383
25.29	On deposit with other regulatory bodies	\$	0
25.30	Pledged as collateral – excluding collateral pledged to an FHLB	\$	0
25.31	Pledged as collateral to FHLB – including assets backing funding agreements	\$	0
25.32	Other	\$	0

25.3

For category (25.26) provide the following:

1	2	3
Nature of Restriction	Description	Amount
		\$

26.1	Does the reporting entity have any hedging transactions reported on Schedule DB?	Yes [<input type="checkbox"/>]	No [<input checked="" type="checkbox"/> X]
26.2	If yes, has a comprehensive description of the hedging program been made available to the domiciliary state? If no, attach a description with this statement.	Yes [<input type="checkbox"/>]	No [<input type="checkbox"/>] N/A [<input checked="" type="checkbox"/> X]
27.1	Were any preferred stocks or bonds owned as of December 31 of the current year mandatorily convertible into equity, or, at the option of the issuer, convertible into equity?	Yes [<input type="checkbox"/>]	No [<input checked="" type="checkbox"/> X]
27.2	If yes, state the amount thereof at December 31 of the current year:	\$	0
28.	Excluding items in Schedule E-Part 3-Special Deposits, real estate, mortgage loans and investments held physically in the reporting entity's offices, vaults or safety deposit boxes, were all stocks, bonds and other securities, owned throughout the current year held pursuant to a custodial agreement with a qualified bank or trust company in accordance with Section 1, III - General Examination Considerations, F. Outsourcing of Critical Functions, Custodial or Safekeeping Agreements of the NAIC <i>Financial Condition Examiners Handbook</i> ?	Yes [<input checked="" type="checkbox"/> X]	No [<input type="checkbox"/>]

28.01	For agreements that comply with the requirements of the NAIC <i>Financial Condition Examiners Handbook</i> , complete the following:						
	<table><tr><td>1</td><td>2</td></tr><tr><td>Name of Custodian(s)</td><td>Custodian's Address</td></tr><tr><td>CITIBANK, N.A.</td><td>338 GREENWICH STREET, NEW YORK, NY 10013</td></tr></table>	1	2	Name of Custodian(s)	Custodian's Address	CITIBANK, N.A.	338 GREENWICH STREET, NEW YORK, NY 10013
1	2						
Name of Custodian(s)	Custodian's Address						
CITIBANK, N.A.	338 GREENWICH STREET, NEW YORK, NY 10013						

28.02 For all agreements that do not comply with the requirements of the NAIC *Financial Condition Examiners Handbook*, provide the name, location and a complete explanation

1 Name(s)	2 Location(s)	3 Complete Explanation(s)
NONE		

28.03	Have there been any changes, including name changes, in the custodian(s) identified in 28.01 during the current year?	Yes [<input type="checkbox"/>]	No [<input checked="" type="checkbox"/> X]
28.04	If yes, give full and complete information relating thereto:		

	1	2	3	4
--	---	---	---	---

GENERAL INTERROGATORIES

PART 1 - COMMON INTERROGATORIES

Old Custodian	New Custodian	Date of Change	Reason
NONE			

- 28.05Investment management – Identify all investment advisors, investment managers, broker/dealers, including individuals that have the authority to make investment decisions on behalf of the reporting entity. For assets that are managed internally by employees of the reporting entity, note as such. ["...that have access to the investment accounts", "... handle securities"].
- | | |
|-------------------------------------|-------------|
| 1 | 2 |
| Name of Firm or Individual | Affiliation |
| PROGRESSIVE CAPITAL MANAGEMENT CORP | A |
- 28.0597 For those firms/individuals listed in the table for Question 28.05, do any firms/individuals unaffiliated with the reporting entity (i.e. designated with a "U") manage more than 10% of the reporting entity's assets? Yes [☐] No [☐]
- 28.0598 For firms/individuals unaffiliated with the reporting entity (i.e. designated with a "U") listed in the table for Question 28.05, does the total assets under management aggregate to more than 50% of the reporting entity's assets? Yes [☐] No [☐]
- 28.06 For those firms or individuals listed in the table for 28.05 with an affiliation code of "A" (affiliated) or "U" (unaffiliated), provide the information for the table below.

1	2	3	4	5
Central Registration Depository Number	Name of Firm or Individual	Legal Entity Identifier (LEI)	Registered With	Investment Management Agreement (IMA) Filed
N/A	PROGRESSIVE CAPITAL MANAGEMENT CORP		N/A	DS

- 29.1Does the reporting entity have any diversified mutual funds reported in Schedule D-Part 2 (diversified according to the Securities and Exchange Commission (SEC) in the Investment Company Act of 1940 [Section 5 (b) (1)])? Yes [☐] No [☒]
- 29.2If yes, complete the following schedule:

1	2	3
CUSIP	Name of Mutual Fund	Book/Adjusted Carrying Value
		\$
29.2999 TOTAL		\$

- 29.3For each mutual fund listed in the table above, complete the following schedule:
- | 1 | 2 | 3 | 4 |
|--|--|--|-------------------|
| Name of Mutual Fund (from above table) | Name of Significant Holding of the Mutual Fund | Amount of Mutual Fund's Book/Adjusted Carrying Value Attributable to the Holding | Date of Valuation |
| | | \$ | |

30. Provide the following information for all short-term and long-term bonds and all preferred stocks. Do not substitute amortized value or statement value for fair value.
- | | 1 | 2 | 3 | |
|------|----------------------------|--------------|---|-------------|
| | Statement (Admitted) Value | Fair Value | Excess of Statement over Fair Value (-), or Fair Value over Statement (+) | |
| 30.1 | Bonds | \$ 5,383,986 | \$ 5,302,129 | \$ (81,857) |
| 30.2 | Preferred Stocks | \$ 0 | \$ 0 | \$ 0 |
| 30.3 | Totals | \$ 5,383,986 | \$ 5,302,129 | \$ (81,857) |

- 30.4Describe the sources or methods utilized in determining the fair values:
THE FAIR MARKET VALUES REPORTED ARE DERIVED FROM INDEPENDENT AND OBSERVABLE MARKET INPUT EVALUATIONS PROVIDED BY WIDELY UTILIZED REPUTABLE PRICING SERVICES, INDEPENDENT BROKER/DEALER BID LISTS, INDEPENDENT BROKER/DEALER QUOTATIONS, INDEPENDENT BROKER/DEALER PRICING SERVICES, OR ACTIVE MARKET CLOSING QUOTATIONS FROM A REGULATED EXCHANGE. IN VERY RARE CASES, IF NONE OF THE AFOREMENTIONED PRIMARY SOURCES ARE AVAILABLE, MATRIX PRICING USING THE REPORTING ENTITY'S OWN MARKET BASED ASSUMPTIONS MAY BE UTILIZED. THE APPROVED METHODS FOR COMPUTATION OF FAIR MARKET VALUE ARE PRESCRIBED IN PART FIVE OF THE SECURITIES VALUATION OFFICE PURPOSES AND PROCEDURES MANUAL.
- 31.1Was the rate used to calculate fair value determined by a broker or custodian for any of the securities in Schedule D? Yes [☐] No [☒]
- 31.2If the answer to 31.1 is yes, does the reporting entity have a copy of the broker's or custodian's pricing policy (hard copy or electronic copy) for all brokers or custodians used as a pricing source? Yes [☐] No [☐]
- 31.3If the answer to 31.2 is no, describe the reporting entity's process for determining a reliable pricing source for purposes of disclosure of fair value for Schedule D:
- 32.1Have all the filing requirements of the *Purposes and Procedures Manual of the NAIC Investment Analysis Office* been followed? Yes [☒] No [☐]
- 32.2If no, list exceptions:

33. By self-designating 5GI securities, the reporting entity is certifying the following elements for each self-designation 5GI security:
a. Documentation necessary to permit a full credit analysis of the security does not exist or an NAIC CRP credit rating for an FE or PL security is not available.
b. Issuer or obligor is current on all contracted interest and principal payments.
c. The insurer has an actual expectation of ultimate payment of all contracted interest and principal.
Has the reporting entity self-designated 5GI securities? Yes [☐] No [☒]
34. By self-designating PLGI securities, the reporting entity is certifying the following elements of each self-designated PLGI security:
a. The security was purchased prior to January 1, 2018.
b. The reporting entity is holding capital commensurate with the NAIC Designation reported for the security.
c. The NAIC Designation was derived from the credit rating assigned by an NAIC CRP in its legal capacity as an NRSRO which is shown on a current private letter rating held by the insurer and available for examination by state insurance regulators.
d. The reporting entity is not permitted to share this credit rating of the PL security with the SVO.
Has the reporting entity self-designated PLGI securities? Yes [☐] No [☒]

OTHER

- 35.1Amount of payments to trade associations, service organizations and statistical or rating bureaus, if any? \$ 0
- 35.2List the name of the organization and the amount paid if any such payment represented 25% or more of the total payments to trade associations, service organizations and statistical or rating bureaus during the period covered by this statement.

GENERAL INTERROGATORIES

PART 1 - COMMON INTERROGATORIES

	<div>1</div> <div>Name</div>	<div>2</div> <div>Amount Paid</div>
	NONE	\$

36.1

Amount of payments for legal expenses, if any?

\$

0

36.2

List the name of the firm and the amount paid if any such payment represented 25% or more of the total payments for legal expenses during the period covered by this statement.

	<div>1</div> <div>Name</div>	<div>2</div> <div>Amount Paid</div>
	NONE	\$

37.1

Amount of payments for expenditures in connection with matters before legislative bodies, officers or departments of government, if any?

\$

0

37.2

List the name of the firm and the amount paid if any such payment represented 25% or more of the total payment expenditures in connection with matters before legislative bodies, officers or departments of government during the period covered by this statement.

	<div>1</div> <div>Name</div>	<div>2</div> <div>Amount Paid</div>
	NONE	\$

PROGRESSIVE FREEDOM INSURANCE COMPANY

GENERAL INTERROGATORIES

PART 2 – PROPERTY & CASUALTY INTERROGATORIES

1.1	Does the reporting entity have any direct Medicare Supplement Insurance in force?			Yes []	No [X]
1.2	If yes, indicate premium earned on U.S. business only.			\$	0
1.3	What portion of Item (1.2) is not reported on the Medicare Supplement Insurance Experience Exhibit?			\$	0
1.31	Reason for excluding:				
1.4	Indicate amount of earned premium attributable to Canadian and/or Other Alien not included in Item (1.2) above.			\$	0
1.5	Indicate total incurred claims on all Medicare Supplement insurance.			\$	0
1.6	Individual policies:				
	Most current three years:				
1.61	Total premium earned			\$	0
1.62	Total incurred claims			\$	0
1.63	Number of covered lives				0
	All years prior to most current three years:				
1.64	Total premium earned			\$	0
1.65	Total incurred claims			\$	0
1.66	Number of covered lives				0
1.7	Group policies:				
	Most current three years:				
1.71	Total premium earned			\$	0
1.72	Total incurred claims			\$	0
1.73	Number of covered lives				0
	All years prior to most current three years:				
1.74	Total premium earned			\$	0
1.75	Total incurred claims			\$	0
1.76	Number of covered lives				0
2.	Health Test:				
		1	2		
		Current Year	Prior Year		
2.1	Premium Numerator	\$	0	\$	0
2.2	Premium Denominator	\$	0	\$	15,938
2.3	Premium Ratio (2.1/2.2)		0.0%		0.0%
2.4	Reserve Numerator	\$	0	\$	0
2.5	Reserve Denominator	\$	0	\$	0
2.6	Reserve Ratio (2.4/2.5)		0.0%		0.0%
3.1	Does the reporting entity issue both participating and non-participating policies?			Yes []	No [X]
3.2	If yes, state the amount of calendar year premiums written on:				
3.21	Participating policies			\$	0
3.22	Non-participating policies			\$	0
4.	FOR MUTUAL REPORTING ENTITIES AND RECIPROCAL EXCHANGES ONLY:				
4.1	Does the reporting entity issue assessable policies?			Yes []	No []
4.2	Does the reporting entity issue non-assessable policies?			Yes []	No []
4.3	If assessable policies are issued, what is the extent of the contingent liability of the policyholders?				%
4.4	Total amount of assessments paid or ordered to be paid during the year on deposit notes or contingent premiums.			\$	0
5.	FOR RECIPROCAL EXCHANGES ONLY:				
5.1	Does the exchange appoint local agents?			Yes []	No []
5.2	If yes, is the commission paid:				
5.21	Out of Attorney's-in-fact compensation			Yes []	No [] N/A []
5.22	As a direct expense of the exchange			Yes []	No [] N/A []
5.3	What expenses of the exchange are not paid out of the compensation of the Attorney-in-fact?				
5.4	Has any Attorney-in-fact compensation, contingent on fulfillment of certain conditions, been deferred?			Yes []	No []
5.5	If yes, give full information:				
6.1	What provision has this reporting entity made to protect itself from an excessive loss in the event of a catastrophe under a workers' compensation contract issued without limit of loss?				
	THE COMPANY DOES NOT WRITE WORKERS' COMPENSATION INSURANCE.				
6.2	Describe the method used to estimate this reporting entity's probable maximum insurance loss, and identify the type of insured exposures comprising that probable maximum loss, the locations of concentrations of those exposures and the external resources (such as consulting firms or computer software models), if any, used in the estimation process:				
	THE COMPANY HAS NO WRITTEN PREMIUM OR OPEN RESERVES AND CARRIES NO EXTERNAL CATASTROPHE REINSURANCE.				
6.3	What provision has this reporting entity made (such as catastrophic reinsurance program) to protect itself from an excessive loss arising from the types and concentrations of insured exposures comprising its probable maximum property insurance loss?				
	THE COMPANY HAS NO OPEN RESERVES AND CARRIES NO EXTERNAL CATASTROPHE REINSURANCE.				
6.4	Does the reporting entity carry catastrophe reinsurance protection for at least one reinstatement, in an amount sufficient to cover its estimated probable maximum loss attributable to a single loss event or occurrence?			Yes []	No [X]
6.5	If no, describe any arrangements or mechanisms employed by the reporting entity to supplement its catastrophe reinsurance program or to hedge its exposure to uninsured catastrophic loss:				
	NONE				
7.1	Has the reporting entity reinsured any risk with any other entity under a quota share reinsurance contract that includes a provision that would limit the reinsurer's losses below the stated quota share percentage (e.g., a deductible, a loss ratio corridor, a loss cap, an aggregate limit or any similar provisions)?			Yes []	No [X]

GENERAL INTERROGATORIES

PART 2 – PROPERTY & CASUALTY INTERROGATORIES

7.2	If yes, indicate the number of reinsurance contracts containing such provisions.	0
7.3	If yes, does the amount of reinsurance credit taken reflect the reduction in quota share coverage caused by any applicable limiting provision(s)?	Yes [] No [X]
8.1	Has this reporting entity reinsured any risk with any other entity and agreed to release such entity from liability, in whole or in part, from any loss that may occur on this risk, or portion thereof, reinsured?	Yes [] No [X]
8.2	If yes, give full information	
9.1	Has the reporting entity ceded any risk under any reinsurance contract (or under multiple contracts with the same reinsurer or its affiliates) for which during the period covered by the statement: (i) it recorded a positive or negative underwriting result greater than 5% of prior year-end surplus as regards policyholders or it reported calendar year written premium ceded or year-end loss and loss expense reserves ceded greater than 5% of prior year-end surplus as regards policyholders; (ii) it accounted for that contract as reinsurance and not as a deposit; and (iii) the contract(s) contain one or more of the following features or other features that would have similar results: (a) A contract term longer than two years and the contract is noncancellable by the reporting entity during the contract term; (b) A limited or conditional cancellation provision under which cancellation triggers an obligation by the reporting entity, or an affiliate of the reporting entity, to enter into a new reinsurance contract with the reinsurer, or an affiliate of the reinsurer; (c) Aggregate stop loss reinsurance coverage; (d) A unilateral right by either party (or both parties) to commute the reinsurance contract, whether conditional or not, except for such provisions which are only triggered by a decline in the credit status of the other party; (e) A provision permitting reporting of losses, or payment of losses, less frequently than on a quarterly basis (unless there is no activity during the period); or (f) Payment schedule, accumulating retentions from multiple years or any features inherently designed to delay timing of the reimbursement to the ceding entity?	Yes [] No [X]
9.2	Has the reporting entity during the period covered by the statement ceded any risk under any reinsurance contract (or under multiple contracts with the same reinsurer or its affiliates), for which, during the period covered by the statement, it recorded a positive or negative underwriting result greater than 5% of prior year-end surplus as regards policyholders or it reported calendar year written premium ceded or year-end loss and loss expense reserves ceded greater than 5% of prior year-end surplus as regards policyholders; excluding cessions to approved pooling arrangements or to captive insurance companies that are directly or indirectly controlling, controlled by, or under common control with (i) one or more unaffiliated policyholders of the reporting entity, or (i) an association of which one or more unaffiliated policyholders of the reporting entity is a member where: (a) The written premium ceded to the reinsurer by the reporting entity or its affiliates represents fifty percent (50%) or more of the entire direct and assumed premium written by the reinsurer based on its most recently available financial statement; or (b) Twenty-five percent (25%) or more of the written premium ceded to the reinsurer has been retroceded back to the reporting entity or its affiliates in a separate reinsurance contract.	Yes [] No [X]
9.3	If yes to 9.1 or 9.2, please provide the following information in the Reinsurance Summary Supplemental Filing for General Interrogatory 9: (a) The aggregate financial statement impact gross of all such ceded reinsurance contracts on the balance sheet and statement of income; (b) A summary of the reinsurance contract terms and indicate whether it applies to the contracts meeting the criteria in 9.1 or 9.2; and (c) A brief discussion of management’s principle objectives in entering into the reinsurance contract including the economic purpose to be achieved.	
9.4	Except for transactions meeting the requirements of paragraph 31 of SSAP No. 62R, <i>Property and Casualty Reinsurance</i> , has the reporting entity ceded any risk under any reinsurance contract (or multiple contracts with the same reinsurer or its affiliates) during the period covered by the financial statement, and either: (a) Accounted for that contract as reinsurance (either prospective or retroactive) under statutory accounting principles (“SAP”) and as a deposit under generally accepted accounting principles (“GAAP”); or (b) Accounted for that contract as reinsurance under GAAP and as a deposit under SAP?	Yes [] No [X]
9.5	If yes to 9.4, explain in the Reinsurance Summary Supplemental Filing for General Interrogatory 9 (Section D) why the contract(s) is treated differently for GAAP and SAP.	
9.6	The reporting entity is exempt from the Reinsurance Attestation Supplement under one or more of the following criteria: (a) The entity does not utilize reinsurance; or, (b) The entity only engages in a 100% quota share contract with an affiliate and the affiliated or lead company has filed an attestation supplement; or (c) The entity has no external cessions and only participates in an intercompany pool and the affiliated or lead company has filed an attestation supplement.	Yes [] No [X] Yes [] No [X] Yes [] No [X]
10.	If the reporting entity has assumed risks from another entity, there should be charged on account of such reinsurances a reserve equal to that which the original entity would have been required to charge had it retained the risks. Has this been done?	Yes [] No [] N/A [X]
11.1	Has the reporting entity guaranteed policies issued by any other entity and now in force?	Yes [] No [X]
11.2	If yes, give full information	
12.1	If the reporting entity recorded accrued retrospective premiums on insurance contracts on Line 15.3 of the assets schedule, Page 2, state the amount of corresponding liabilities recorded for: 12.11 Unpaid losses 12.12 Unpaid underwriting expenses (including loss adjustment expenses)	\$ 0 \$ 0
12.2	Of the amount on Line 15.3, Page 2, state the amount that is secured by letters of credit, collateral and other funds?	\$ 0
12.3	If the reporting entity underwrites commercial insurance risks, such as workers’ compensation, are premium notes or promissory notes accepted from its insureds covering unpaid premiums and/or unpaid losses?	Yes [] No [] N/A [X]
12.4	If yes, provide the range of interest rates charged under such notes during the period covered by this statement: 12.41 From 12.42 To	% %
12.5	Are letters of credit or collateral and other funds received from insureds being utilized by the reporting entity to secure premium notes or promissory notes taken by a reporting entity, or to secure any of the reporting entity’s reported direct unpaid loss reserves, including unpaid losses under loss deductible features of commercial policies?	Yes [] No [X]
12.6	If yes, state the amount thereof at December 31 of current year: 12.61 Letters of Credit 12.62 Collateral and other funds	\$ 0 \$ 0
13.1	Largest net aggregate amount insured in any one risk (excluding workers’ compensation):	\$ 0
13.2	Does any reinsurance contract considered in the calculation of this amount include an aggregate limit of recovery without also including a reinstatement provision?	Yes [] No [X]
13.3	State the number of reinsurance contracts (excluding individual facultative risk certificates, but including facultative programs, automatic	0

GENERAL INTERROGATORIES

PART 2 – PROPERTY & CASUALTY INTERROGATORIES

facilities or facultative obligatory contracts) considered in the calculation of the amount.

14.1

Is the reporting entity a cedant in a multiple cedant reinsurance contract?

Yes [☐] No [☒]

14.2

If yes, please describe the method of allocating and recording reinsurance among the cedants:

14.3

If the answer to 14.1 is yes, are the methods described in item 14.2 entirely contained in the respective multiple cedant reinsurance contracts?

Yes [☐] No [☐]

14.4

If the answer to 14.3 is no, are all the methods described in 14.2 entirely contained in written agreements?

Yes [☐] No [☐]

14.5

If the answer to 14.4 is no, please explain:

15.1

Has the reporting entity guaranteed any financed premium accounts?

Yes [☐] No [☒]

15.2

If yes, give full information

16.1

Does the reporting entity write any warranty business?

Yes [☐] No [☒]

If yes, disclose the following information for each of the following types of warranty coverage:

		1		2		3		4		5	
		Direct Losses Incurred		Direct Losses Unpaid		Direct Written Premium		Direct Premium Unearned		Direct Premium Earned	
16.11	Home	\$	0	\$	0	\$	0	\$	0	\$	0
16.12	Products	\$	0	\$	0	\$	0	\$	0	\$	0
16.13	Automobile	\$	0	\$	0	\$	0	\$	0	\$	0
16.14	Other*	\$	0	\$	0	\$	0	\$	0	\$	0

* Disclose type of coverage:

17.1

Does the reporting entity include amounts recoverable on unauthorized reinsurance in Schedule F-Part 3 that is exempt from the statutory provision for unauthorized reinsurance?

Yes [☐] No [☒]

Included but not reported losses on contracts in force prior to July 1, 1984, and not subsequently renewed are exempt from the statutory provision for unauthorized reinsurance. Provide the following information for this exemption:

17.11	Gross amount of unauthorized reinsurance in Schedule F-Part 3 exempt from the statutory provision for unauthorized reinsurance	\$	0
17.12	Unfunded portion of Interrogatory 17.11	\$	0
17.13	Paid losses and loss adjustment expenses portion of Interrogatory 17.11	\$	0
17.14	Case reserves portion of Interrogatory 17.11	\$	0
17.15	Incurred but not reported portion of Interrogatory 17.11	\$	0
17.16	Unearned premium portion of Interrogatory 17.11	\$	0
17.17	Contingent commission portion of Interrogatory 17.11	\$	0

18.1

Do you act as a custodian for health savings accounts?

Yes [☐] No [☒]

18.2

If yes, please provide the amount of custodial funds held as of the reporting date.

\$ 0 |

18.3

Do you act as an administrator for health savings accounts?

Yes [☐] No [☒]

18.4

If yes, please provide the balance of the funds administered as of the reporting date.

\$ 0 |

19.

Is the reporting entity licensed or chartered, registered, qualified, eligible, or writing business in at least 2 states?

Yes [☐] No [☒]

19.1

If no, does the reporting entity assume reinsurance business that covers risks residing in at least one state other than the state of domicile of the reporting entity?

Yes [☐] No [☒]

16.2

PROGRESSIVE FREEDOM INSURANCE COMPANY
FIVE-YEAR HISTORICAL DATA

Show amounts in whole dollars only, no cents; show percentages to one decimal place, i.e. 17.6.

	1 2018	2 2017	3 2016	4 2015	5 2014
Gross Premiums Written (Page 8, Part 1B, Cols. 1, 2 & 3)					
1. Liability lines (Lines 11.1, 11.2, 16, 17.1, 17.2, 17.3, 18.1, 18.2, 19.1, 19.2 & 19.3, 19.4).....		23,435	1,153,553	2,497,570	3,647,973
2. Property lines (Lines 1, 2, 9, 12, 21 & 26).....		11,722	518,636	1,071,974	1,472,620
3. Property and liability combined lines (Lines 3, 4, 5, 8, 22 & 27).....					
4. All other lines (Lines 6, 10, 13, 14, 15, 23, 24, 28, 29, 30 & 34).....					
5. Nonproportional reinsurance lines (Lines 31, 32 & 33).....					
6. Total (Line 35).....	0	35,157	1,672,189	3,569,544	5,120,593
Net Premiums Written (Page 8, Part 1B, Col. 6)					
7. Liability lines (Lines 11.1, 11.2, 16, 17.1, 17.2, 17.3, 18.1, 18.2, 19.1, 19.2 & 19.3, 19.4).....		2,283	115,109	249,244	357,802
8. Property lines (Lines 1, 2, 9, 12, 21 & 26).....		1,172	51,864	107,197	147,262
9. Property and liability combined lines (Lines 3, 4, 5, 8, 22 & 27).....					
10. All other lines (Lines 6, 10, 13, 14, 15, 23, 24, 28, 29, 30 & 34).....					
11. Nonproportional reinsurance lines (Lines 31, 32 & 33).....					
12. Total (Line 35).....	0	3,456	166,973	356,441	505,064
Statement of Income (Page 4)					
13. Net underwriting gain (loss) (Line 8).....	(14,146)	10,944	121,310	67,692	191,233
14. Net investment gain (loss) (Line 11).....	91,633	89,320	70,476	54,219	49,661
15. Total other income (Line 15).....	(810)	(2,980)	2,810	3,981	6,231
16. Dividends to policyholders (Line 17).....					
17. Federal and foreign income taxes incurred (Line 19).....	6,329	29,807	48,762	26,123	70,543
18. Net income (Line 20).....	70,348	67,477	145,834	99,769	176,582
Balance Sheet Lines (Pages 2 and 3)					
19. Total admitted assets excluding protected cell business (Page 2, Line 26, Col. 3).....	5,450,912	5,431,816	6,025,341	3,950,986	4,537,036
20. Premiums and considerations (Page 2, Col. 3):					
20.1 In course of collection (Line 15.1).....			29,166	63,318	118,360
20.2 Deferred and not yet due (Line 15.2).....			63,329	465,377	737,581
20.3 Accrued retrospective premiums (Line 15.3).....					
21. Total liabilities excluding protected cell business (Page 3, Line 26).....	76,487	120,129	875,576	1,553,416	2,012,442
22. Losses (Page 3, Line 1).....			199,641	335,084	362,449
23. Loss adjustment expenses (Page 3, Line 3).....			54,874	86,792	93,252
24. Unearned premiums (Page 3, Line 9).....			12,482	66,876	109,744
25. Capital paid up (Page 3, Lines 30 & 31).....	1,200,000	1,200,000	1,200,000	1,200,000	1,200,000
26. Surplus as regards policyholders (Page 3, Line 37).....	5,374,425	5,311,687	5,149,765	2,397,570	2,524,594
Cash Flow (Page 5)					
27. Net cash from operations (Line 11).....	72,519	(210,831)	(110,074)	136,118	714,447
Risk-Based Capital Analysis					
28. Total adjusted capital.....	5,374,425	5,311,687	5,149,765	2,397,570	2,524,594
29. Authorized control level risk-based capital.....	2,695	2,277	15,099	25,348	26,503
Percentage Distribution of Cash, Cash Equivalents and Invested Assets (Page 2, Col. 3) (Item divided by Page 2, Line 12, Col. 3) x 100.0					
30. Bonds (Line 1).....	100.0	100.0	98.3	90.5	81.6
31. Stocks (Lines 2.1 & 2.2).....					
32. Mortgage loans on real estate (Lines 3.1 & 3.2).....					
33. Real estate (Lines 4.1, 4.2 & 4.3).....					
34. Cash, cash equivalents and short-term investments (Line 5).....			1.7	9.5	18.4
35. Contract loans (Line 6).....					
36. Derivatives (Line 7).....					
37. Other invested assets (Line 8).....					
38. Receivables for securities (Line 9).....					
39. Securities lending reinvested collateral assets (Line 10).....					
40. Aggregate write-ins for invested assets (Line 11).....					
41. Cash, cash equivalents and invested assets (Line 12).....	100.0	100.0	100.0	100.0	100.0
Investments in Parent, Subsidiaries and Affiliates					
42. Affiliated bonds (Sch. D, Summary, Line 12, Col. 1).....					
43. Affiliated preferred stocks (Sch. D, Summary, Line 18, Col. 1).....					
44. Affiliated common stocks (Sch. D, Summary, Line 24, Col. 1).....					
45. Affiliated short-term investments (subtotals included in Schedule DA, Verification, Column 5, Line 10).....					
46. Affiliated mortgage loans on real estate.....					
47. All other affiliated.....					
48. Total of above lines 42 to 47.....	0	0	0	0	0
49. Total investment in parent included in Lines 42 to 47 above.....					
50. Percentage of investments in parent, subsidiaries and affiliates to surplus as regards policyholders (Line 48 above divided by Page 3, Col. 1, Line 37 x 100.0).....	0.0				

PROGRESSIVE FREEDOM INSURANCE COMPANY
FIVE-YEAR HISTORICAL DATA

(Continued)

	1	2	3	4	5
	2018	2017	2016	2015	2014
Capital and Surplus Accounts (Page 4)					
51. Net unrealized capital gains (losses) (Line 24).....					
52. Dividends to stockholders (Line 35).....				(224,000)	
53. Change in surplus as regards policyholders for the year (Line 38).....	62,738	161,922	2,752,195	(127,024)	171,017
Gross Losses Paid (Page 9, Part 2, Cols. 1 & 2)					
54. Liability lines (Lines 11.1, 11.2, 16, 17.1, 17.2, 17.3, 18.1, 18.2, 19.1, 19.2 & 19.3, 19.4)....		2,075,261	1,805,145	1,864,958	2,581,023
55. Property lines (Lines 1, 2, 9, 12, 21 & 26).....		2,817	232,984	647,141	756,597
56. Property and liability combined lines (Lines 3, 4, 5, 8, 22 & 27).....					
57. All other lines (Lines 6, 10, 13, 14, 15, 23, 24, 28, 29, 30 & 34).....					
58. Nonproportional reinsurance lines (Lines 31, 32 & 33).....					
59. Total (Line 35).....	0	2,078,078	2,038,129	2,512,099	3,337,620
Net Losses Paid (Page 9, Part 2, Col. 4)					
60. Liability lines (Lines 11.1, 11.2, 16, 17.1, 17.2, 17.3, 18.1, 18.2, 19.1, 19.2 & 19.3, 19.4)....		208,402	178,749	184,160	256,136
61. Property lines (Lines 1, 2, 9, 12, 21 & 26).....		283	23,299	64,714	75,660
62. Property and liability combined lines (Lines 3, 4, 5, 8, 22 & 27).....					
63. All other lines (Lines 6, 10, 13, 14, 15, 23, 24, 28, 29, 30 & 34).....					
64. Nonproportional reinsurance lines (Lines 31, 32 & 33).....					
65. Total (Line 35).....	0	208,685	202,048	248,874	331,796
Operating Percentages (Page 4) (Item divided by Page 4, Line 1) x 100.0					
66. Premiums earned (Line 1).....	100.0	100.0	100.0	100.0	100.0
67. Losses incurred (Line 2).....		56.7	30.1	55.5	36.8
68. Loss ex penses incurred (Line 3).....		(40.3)	2.9	13.3	11.8
69. Other underwriting ex penses incurred (Line 4).....		14.9	12.2	14.3	15.7
70. Net underwriting gain (loss) (Line 8).....		68.7	54.8	17.0	35.8
Other Percentages					
71. Other underwriting ex penses to net premiums written (Page 4, Lines 4 + 5 - 15 divided by Page 8, Part 1B, Col. 6, Line 35 x 100.0).....		154.9	14.5	14.9	15.4
72. Losses and loss ex penses incurred to premiums earned (Page 4, Lines 2 + 3 divided by Page 4, Line 1 x 100.0).....		16.4	33.0	68.8	48.6
73. Net premiums written to policyholders' surplus (Page 8, Part 1B, Col. 6, Line 35, divided by Page 3, Line 37, Col. 1 x 100.0).....		0.1	3.2	14.9	20.0
One Year Loss Development (\$000 omitted)					
74. Development in estimated losses and loss ex penses incurred prior to current year (Schedule P, Part 2-Summary, Line 12, Col. 11).....		(1)	(61)	31	(64)
75. Percent of development of losses and loss ex penses incurred to policyholders' surplus of prior year-end (Line 74 above divided by Page 4, Line 21, Col. 1 x 100).....		(0.0)	(2.5)	1.2	(2.7)
Two Year Loss Development (\$000 omitted)					
76. Development in estimated losses and loss ex penses incurred 2 years before the current year and prior year (Schedule P, Part 2-Summary, Line 12, Col. 12).....	(1)	(47)	(15)	(71)	(18)
77. Percent of development of losses and loss ex penses incurred to reported policyholders' surplus of second prior-year end (Line 76 above divided by Page 4, Line 21, Col. 2 x 100.0).....	(0.0)	(2.0)	(0.6)	(3.0)	(0.8)

If a party to a merger, have the two most recent years of this exhibit been restated due to a merger in compliance with the disclosure requirements of
SSAP No. 3, *Accounting Changes and Correction of Errors*?

Yes [] No []

If no, please ex plain:

SCHEDULE P - ANALYSIS OF LOSSES AND LOSS EXPENSES

SCHEDULE P - PART 1 - SUMMARY

(\$000 Omitted)

Years in Which Premiums Were Earned and Losses Were Incurred	Premiums Earned			Loss and Loss Expense Payments								12 Number or Claims Reported- Direct and Assumed
	1	2	3	Loss Payments		Defense and Cost Containment Payments		Adjusting and Other Payments		10	11	
	Direct and Assumed	Ceded	Net (Cols. 1 - 2)	4 Direct and Assumed	5 Ceded	6 Direct and Assumed	7 Ceded	8 Direct and Assumed	9 Ceded	Salvage and Subrogation Received	Total Net Paid (Cols. 4 - 5 + 6 - 7 + 8 - 9)	
1. Prior.....	XXX	XXX	XXX								0	XXX
2. 2009.....	24,204	21,784	2,420	10,941	9,847	771	694	1,780	1,602	137	1,349	XXX
3. 2010.....	18,442	16,597	1,845	9,145	8,231	521	469	1,494	1,345	100	1,116	XXX
4. 2011.....	12,755	11,480	1,275	7,338	6,605	658	592	969	872	73	896	XXX
5. 2012.....	8,072	7,264	808	4,943	4,450	304	273	547	492	48	578	XXX
6. 2013.....	6,539	5,885	654	3,303	2,973	218	196	424	382	43	394	XXX
7. 2014.....	5,418	4,883	535	3,023	2,722	137	123	344	309	25	350	XXX
8. 2015.....	3,998	3,599	399	1,676	1,508	121	109	260	234	28	206	XXX
9. 2016.....	2,216	1,995	221	987	889	91	82	157	142	10	124	XXX
10. 2017.....	160	144	16	76	69	2	2	3	2	1	7	XXX
11. 2018.....			0								0	XXX
12. Totals.....	XXX	XXX	XXX	41,432	37,294	2,824	2,541	5,978	5,380	465	5,018	XXX

	Losses Unpaid				Defense and Cost Containment Unpaid				Adjusting and Other Unpaid		23	24	25
	Case Basis		Bulk + IBNR		Case Basis		Bulk + IBNR		21	22	Salvage and Subrogation Anticipated	Total Net Losses and Expenses Unpaid	Number of Claims Outstanding- Direct and Assumed
	13 Direct and Assumed	14 Ceded	15 Direct and Assumed	16 Ceded	17 Direct and Assumed	18 Ceded	19 Direct and Assumed	20 Ceded	Direct and Assumed	Ceded			
1. Prior.....												0	XXX
2. 2009.....												0	XXX
3. 2010.....												0	XXX
4. 2011.....												0	XXX
5. 2012.....												0	XXX
6. 2013.....												0	XXX
7. 2014.....												0	XXX
8. 2015.....												0	XXX
9. 2016.....												0	XXX
10. 2017.....												0	XXX
11. 2018.....												0	XXX
12. Totals..	0	0	0	0	0	0	0	0	0	0	0	0	XXX

	Total Losses and Loss Expenses Incurred			Loss and Loss Expense Percentage (Incurred/Premiums Earned)			Nontabular Discount		34	Net Balance Sheet Reserves after Discount	
	26 Direct and Assumed	27 Ceded	28 Net	29 Direct and Assumed	30 Ceded	31 Net	32 Loss	33 Loss Expense	Inter-Company Pooling Participation Percentage	35 Losses Unpaid	36 Loss Expenses Unpaid
1. Prior.....	XXX	XXX	XXX	XXX	XXX	XXX			XXX	0	0
2. 2009.....	13,493	12,144	1,349	55.7	55.7	55.7				0	0
3. 2010.....	11,161	10,045	1,116	60.5	60.5	60.5				0	0
4. 2011.....	8,964	8,069	896	70.3	70.3	70.2				0	0
5. 2012.....	5,794	5,216	578	71.8	71.8	71.5				0	0
6. 2013.....	3,946	3,551	394	60.3	60.3	60.3				0	0
7. 2014.....	3,504	3,154	350	64.7	64.6	65.4				0	0
8. 2015.....	2,056	1,850	206	51.4	51.4	51.5				0	0
9. 2016.....	1,236	1,113	124	55.8	55.8	55.8				0	0
10. 2017.....	80	73	7	50.3	50.9	44.8				0	0
11. 2018.....	0	0	0	0.0	0.0	0.0				0	0
12. Totals	XXX	XXX	XXX	XXX	XXX	XXX	0	0	XXX	0	0

Note: Parts 2 and 4 are gross of all discounting, including tabular discounting. Part 1 is gross of only nontabular discounting, which is reported in Columns 32 and 33 of Part 1. The tabular discount, if any, is reported in the Notes to Financial Statements, which will reconcile Part 1 with Parts 2 and 4.

SCHEDULE P - PART 2 - SUMMARY

Years in Which Losses Were Incurred	Incurred Net Losses and Defense and Cost Containment Expenses Reported at Year End (\$000 omitted)										DEVELOPMENT	
	1	2	3	4	5	6	7	8	9	10	11	12
	2009	2010	2011	2012	2013	2014	2015	2016	2017	2018	One Year	Two Year
1. Prior.....97699586984784284684383783983902
2. 2009.....1,3541,2691,2441,2091,1701,1781,1681,1691,1711,17102
3. 2010.....XXX1,036962962978963972964966966(0)2
4. 2011.....XXXXXX705751795794795793799799(0)5
5. 2012.....XXXXXXXXX563553533529496523523(0)27
6. 2013.....XXXXXXXXXXXX383342342356352352(0)(4)
7. 2014.....XXXXXXXXXXXXXXX2913293173153150(1)
8. 2015.....XXXXXXXXXXXXXXXXXX2141991801800(19)
9. 2016.....XXXXXXXXXXXXXXXXXXXXX1231081080(15)
10. 2017.....XXXXXXXXXXXXXXXXXXXXXXXX770XXX
11. 2018.....XXXXXXXXXXXXXXXXXXXXXXXXXXXXXXXXXXXX
12. Totals.....										(0)(1)

SCHEDULE P - PART 3 - SUMMARY

Years in Which Losses Were Incurred	Cumulative Paid Net Losses and Defense and Cost Containment Expenses Reported at Year End (\$000 omitted)										11	12
	1	2	3	4	5	6	7	8	9	10	Number of Claims Closed With Loss Payment	Number of Claims Closed Without Loss Payment
	2009	2010	2011	2012	2013	2014	2015	2016	2017	2018		
1. Prior.....000386686786810833836837839839XXXXXX
2. 2009.....6799541,0711,1121,1421,1651,1671,1691,1711,171XXXXXX
3. 2010.....XXX564757861938954960964966966XXXXXX
4. 2011.....XXXXXX347539647722765790799799XXXXXX
5. 2012.....XXXXXXXXX299413456480490523523XXXXXX
6. 2013.....XXXXXXXXXXXX202256295345352352XXXXXX
7. 2014.....XXXXXXXXXXXXXXX139181222315315XXXXXX
8. 2015.....XXXXXXXXXXXXXXXXXX116151180180XXXXXX
9. 2016.....XXXXXXXXXXXXXXXXXXXXX51108108XXXXXX
10. 2017.....XXXXXXXXXXXXXXXXXXXXXXXX77XXXXXX
11. 2018.....XXXXXXXXXXXXXXXXXXXXXXXXXXXXXXXXXXXX

SCHEDULE P - PART 4 - SUMMARY

Years in Which Losses Were Incurred	Bulk and IBNR Reserves on Net Losses and Defense and Cost Containment Expenses Reported at Year End (\$000 omitted)									
	1	2	3	4	5	6	7	8	9	10
	2009	2010	2011	2012	2013	2014	2015	2016	2017	2018
1. Prior.....19914044			0			
2. 2009.....22785461600				
3. 2010.....XXX1406026120				
4. 2011.....XXXXXX96432212	0		
5. 2012.....XXXXXXXXX76391611(0)		
6. 2013.....XXXXXXXXXXXX7533168		
7. 2014.....XXXXXXXXXXXXXXX603013		
8. 2015.....XXXXXXXXXXXXXXXXXX4522		
9. 2016.....XXXXXXXXXXXXXXXXXXXXX24		
10. 2017.....XXXXXXXXXXXXXXXXXXXXXXXX		
11. 2018.....XXXXXXXXXXXXXXXXXXXXXXXXXXX	

PROGRESSIVE FREEDOM INSURANCE COMPANY
SCHEDULE T - EXHIBIT OF PREMIUMS WRITTEN

Allocated by States and Territories

States, Etc.	Active Status (a)	Gross Premiums, Including Policy and Membership Fees Less Return Premiums and Premiums on Policies Not Taken		Dividends Paid or Credited to Policyholders on Direct Business	Direct Losses Paid (Deducting Salvage)	Direct Losses Incurred	Direct Losses Unpaid	Finance and Service Charges not Included in Premiums	Direct Premiums Written for Federal Purchasing Groups (Incl. in Col. 2)
		Direct Premiums Written	Direct Premiums Earned						
1. Alabama.....AL	.N								
2. Alaska.....AK	.N								
3. Arizona.....AZ	.N								
4. Arkansas.....AR	.N								
5. California.....CA	.N								
6. Colorado.....CO	.N								
7. Connecticut.....CT	.N								
8. Delaware.....DE	.N								
9. District of Columbia.....DC	.N								
10. Florida.....FL	.N								
11. Georgia.....GA	.N								
12. Hawaii.....HI	.N								
13. Idaho.....ID	.N								
14. Illinois.....IL	.N								
15. Indiana.....IN	.N								
16. Iowa.....IA	.N								
17. Kansas.....KS	.N								
18. Kentucky.....KY	.N								
19. Louisiana.....LA	.N								
20. Maine.....ME	.N								
21. Maryland.....MD	.N								
22. Massachusetts.....MA	.N								
23. Michigan.....MI	.N								
24. Minnesota.....MN	.N								
25. Mississippi.....MS	.N								
26. Missouri.....MO	.N								
27. Montana.....MT	.N								
28. Nebraska.....NE	.N								
29. Nevada.....NV	.N								
30. New Hampshire.....NH	.N								
31. New Jersey.....NJ	.N								
32. New Mexico.....NM	.N								
33. New York.....NY	.N								
34. North Carolina.....NC	.N								
35. North Dakota.....ND	.N								
36. Ohio.....OH	.L								
37. Oklahoma.....OK	.N								
38. Oregon.....OR	.N								
39. Pennsylvania.....PA	.N								
40. Rhode Island.....RI	.N								
41. South Carolina.....SC	.N								
42. South Dakota.....SD	.N								
43. Tennessee.....TN	.N								
44. Texas.....TX	.N								
45. Utah.....UT	.N								
46. Vermont.....VT	.N								
47. Virginia.....VA	.N								
48. Washington.....WA	.N								
49. West Virginia.....WV	.N								
50. Wisconsin.....WI	.N								
51. Wyoming.....WY	.N								
52. American Samoa.....AS	.N								
53. Guam.....GU	.N								
54. Puerto Rico.....PR	.N								
55. US Virgin Islands.....VI	.N								
56. Northern Mariana Islands.....MP	.N								
57. Canada.....CAN	.N								
58. Aggregate Other Alien.....OT	XXX	0	0	0	0	0	0	0	0
59. Totals.....	XXX	0	0	0	0	0	0	0	0

DETAILS OF WRITE-INS

58001.	XXX								
58002.	XXX								
58003.	XXX								
58998. Summary of remaining write-ins for Line 58 from overflow page	XXX	0	0	0	0	0	0	0	0
58999. Totals (Lines 58001 thru 58003+ Line 58998) (Line 58 above)	XXX	0	0	0	0	0	0	0	0

Explanation of Basis of Allocation of Premiums by States, etc.

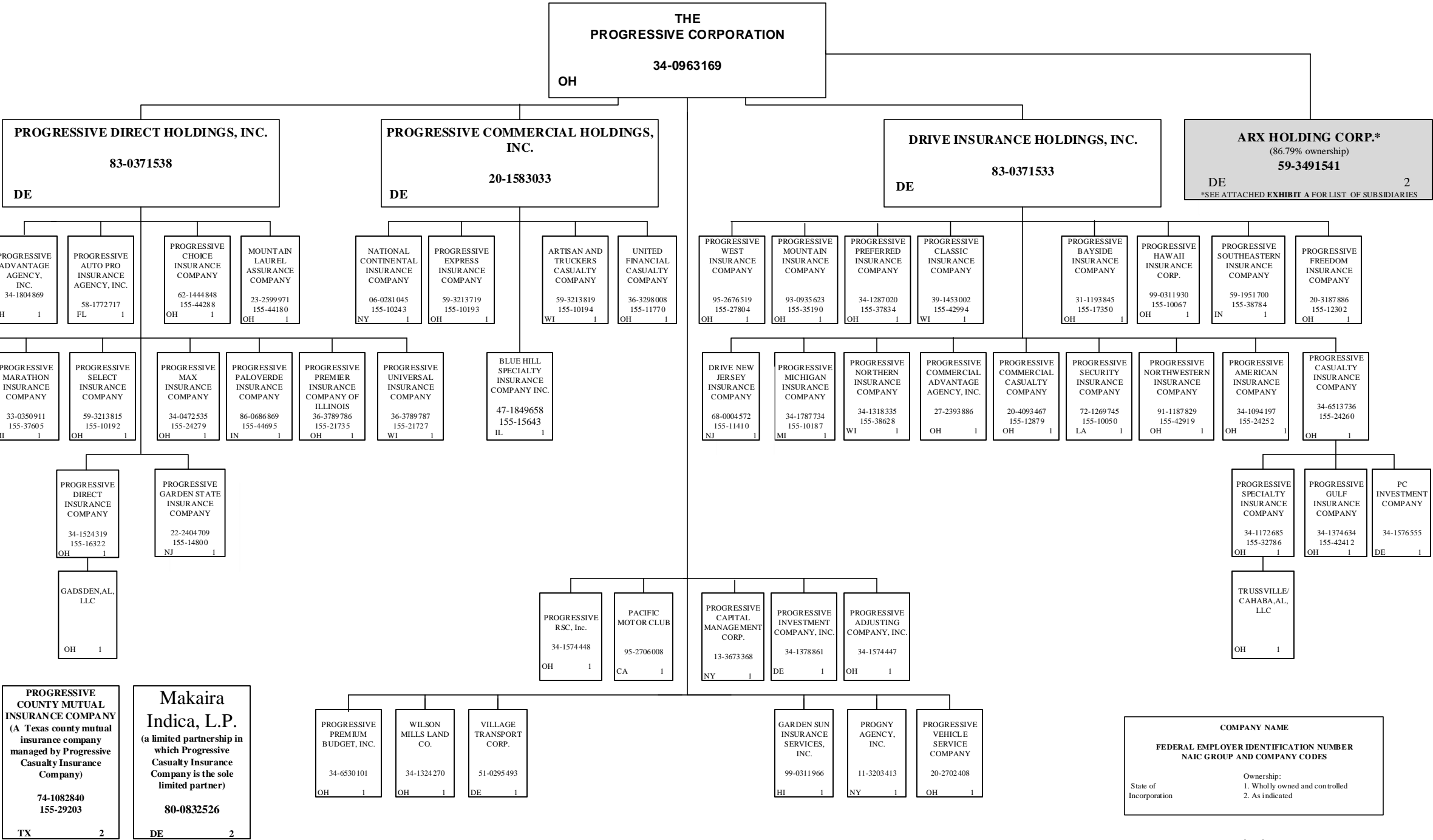
Allocation on the basis of the location where the vehicle is principally garaged and used.

(a) Active Status Counts:	
L - Licensed or Chartered - Licensed insurance carrier or domiciled RRG.....	1
E - Eligible - Reporting entities eligible or approved to write surplus lines in the state (other than their state of domicile - See USLI).....	0
D - Domestic Surplus Lines Insurer (USLI) - Reporting entities authorized to write surplus lines in the state of domicile.....	0

R - Registered - Non-domiciled RRGs.....	0
Q - Qualified - Qualified or accredited reinsurer.....	0
N - None of the above - Not allowed to write business in the state.....	56

SCHEDULE Y – INFORMATION CONCERNING ACTIVITIES OF INSURER MEMBERS OF A HOLDING COMPANY GROUP -- PART 1 – ORGANIZATIONAL CHART

96



SCHEDULE Y – INFORMATION CONCERNING ACTIVITIES OF INSURER MEMBERS OF A HOLDING COMPANY GROUP -- PART 1 – ORGANIZATIONAL CHART



EXHIBIT A

2018 ALPHABETICAL INDEX -- PROPERTY & CASUALTY ANNUAL STATEMENT BLANK

Assets	2	Schedule P-Part 2H-Section 2-Other Liability-Claims-Made	58
Cash Flow	5	Schedule P-Part 2I-Spec. Prop. (Fire, Allied Lines, Inland Marine, Earthquake, Burglary, Theft)	59
Exhibit of Capital Gains (Losses)	12	Schedule P-Part 2J-Auto Physical Damage	59
Exhibit of Net Investment Income	12	Schedule P-Part 2K-Fidelity, Surety	59
Exhibit of Nonadmitted Assets	13	Schedule P-Part 2L-Other (Including Credit, Accident and Health)	59
Exhibit of Premiums and Losses (State Page)	19	Schedule P-Part 2M-International	59
Five-Year Historical Data	17	Schedule P-Part 2N-Reinsurance -- Nonproportional Assumed Property	60
General Interrogatories	15	Schedule P-Part 2O-Reinsurance -- Nonproportional Assumed Liability	60
Jurat Page	1	Schedule P-Part 2P-Reinsurance -- Nonproportional Assumed Financial Lines	60
Liabilities, Surplus and Other Funds	3	Schedule P-Part 2R-Section 1-Products Liability-Occurrence	61
Notes To Financial Statements	14	Schedule P-Part 2R-Section 2-Products Liability-Claims-Made	61
Overflow Page For Write-ins	100	Schedule P-Part 2S-Financial Guaranty/Mortgage Guaranty	61
Schedule A-Part 1	E01	Schedule P-Part 2T-Warranty	61
Schedule A-Part 2	E02	Schedule P-Part 3A-Homeowners/Farmowners	62
Schedule A-Part 3	E03	Schedule P-Part 3B-Private Passenger Auto Liability/Medical	62
Schedule A-Verification Between Years	SI02	Schedule P-Part 3C-Commercial Auto/Truck Liability/Medical	62
Schedule B-Part 1	E04	Schedule P-Part 3D-Workers' Compensation (Excluding Excess Workers Compensation)	62
Schedule B-Part 2	E05	Schedule P-Part 3E-Commercial Multiple Peril	62
Schedule B-Part 3	E06	Schedule P-Part 3F-Section 1-Medical Professional Liability-Occurrence	63
Schedule B-Verification Between Years	SI02	Schedule P-Part 3F-Section 2-Medical Professional Liability-Claims-Made	63
Schedule BA-Part 1	E07	Schedule P-Part 3G-Special Liability (Ocean Marine, Aircraft (All Perils), Boiler & Machinery)	63
Schedule BA-Part 2	E08	Schedule P-Part 3H-Section 1-Other Liability-Occurrence	63
Schedule BA-Part 3	E09	Schedule P-Part 3H-Section 2-Other Liability-Claims-Made	63
Schedule BA-Verification Between Years	SI03	Schedule P-Part 3I-Spec. Prop. (Fire, Allied Lines, Inland Marine, Earthquake, Burglary, Theft)	64
Schedule D-Part 1	E10	Schedule P-Part 3J-Auto Physical Damage	64
Schedule D-Part 1A-Section 1	SI05	Schedule P-Part 3K-Fidelity/Surety	64
Schedule D-Part 1A-Section 2	SI08	Schedule P-Part 3L-Other (Including Credit, Accident and Health)	64
Schedule D-Part 2-Section 1	E11	Schedule P-Part 3M-International	64
Schedule D-Part 2-Section 2	E12	Schedule P-Part 3N-Reinsurance -- Nonproportional Assumed Property	65
Schedule D-Part 3	E13	Schedule P-Part 3O-Reinsurance -- Nonproportional Assumed Liability	65
Schedule D-Part 4	E14	Schedule P-Part 3P-Reinsurance -- Nonproportional Assumed Financial Lines	65
Schedule D-Part 5	E15	Schedule P-Part 3R-Section 1-Products Liability-Occurrence	66
Schedule D-Part 6-Section 1	E16	Schedule P-Part 3R-Section 2-Products Liability-Claims-Made	66
Schedule D-Part 6-Section 2	E16	Schedule P-Part 3S-Financial Guaranty/Mortgage Guaranty	66
Schedule D-Summary By Country	SI04	Schedule P-Part 3T-Warranty	66
Schedule D-Verification Between Years	SI03	Schedule P-Part 4A-Homeowners/Farmowners	67
Schedule DA-Part 1	E17	Schedule P-Part 4B-Private Passenger Auto Liability/Medical	67
Schedule DA-Verification Between Years	SI10	Schedule P-Part 4C-Commercial Auto/Truck Liability/Medical	67
Schedule DB-Part A-Section 1	E18	Schedule P-Part 4D-Workers' Compensation (Excluding Excess Workers Compensation)	67
Schedule DB-Part A-Section 2	E19	Schedule P-Part 4E-Commercial Multiple Peril	67
Schedule DB-Part A-Verification Between Years	SI11	Schedule P-Part 4F-Section 1-Medical Professional Liability-Occurrence	68
Schedule DB-Part B-Section 1	E20	Schedule P-Part 4F-Section 2-Medical Professional Liability-Claims-Made	68
Schedule DB-Part B-Section 2	E21	Schedule P-Part 4G-Special Liability (Ocean Marine, Aircraft (All Perils), Boiler & Machinery)	68
Schedule DB-Part B-Verification Between Years	SI11	Schedule P-Part 4H-Section 1-Other Liability-Occurrence	68
Schedule DB-Part C-Section 1	SI12	Schedule P-Part 4H-Section 2-Other Liability-Claims-Made	68
Schedule DB-Part C-Section 2	SI13	Schedule P-Part 4I-Spec. Prop. (Fire, Allied Lines, Inland Marine, Earthquake, Burglary & Theft)	69
Schedule DB-Part D-Section 1	E22	Schedule P-Part 4J-Auto Physical Damage	69
Schedule DB-Part D-Section 2	E23	Schedule P-Part 4K-Fidelity/Surety	69
Schedule DB-Verification	SI14	Schedule P-Part 4L-Other (Including Credit, Accident and Health)	69
Schedule DL-Part 1	E24	Schedule P-Part 4M-International	69
Schedule DL-Part 2	E25	Schedule P-Part 4N-Reinsurance -- Nonproportional Assumed Property	70
Schedule E-Part 1-Cash	E26	Schedule P-Part 4O-Reinsurance -- Nonproportional Assumed Liability	70
Schedule E-Part 2-Cash Equivalents	E27	Schedule P-Part 4P-Reinsurance -- Nonproportional Assumed Financial Lines	70
Schedule E-Verification Between Years	SI15	Schedule P-Part 4R-Section 1-Products Liability-Occurrence	71
Schedule E-Part 3-Special Deposits	E28	Schedule P-Part 4R-Section 2-Products Liability-Claims-Made	71
Schedule F-Part 1	20	Schedule P-Part 4S-Financial Guaranty/Mortgage Guaranty	71
Schedule F-Part 2	21	Schedule P-Part 4T-Warranty	71
Schedule F-Part 3	22	Schedule P-Part 5A-Homeowners/Farmowners	72
Schedule F-Part 4	27	Schedule P-Part 5B-Private Passenger Auto Liability/Medical	73
Schedule F-Part 5	28	Schedule P-Part 5C-Commercial Auto/Truck Liability/Medical	74
Schedule F-Part 6	29	Schedule P-Part 5D-Workers' Compensation (Excluding Excess Workers Compensation)	75
Schedule H-Accident and Health Exhibit-Part 1	30	Schedule P-Part 5E-Commercial Multiple Peril	76
Schedule H-Part 2, Part 3 and Part 4	31	Schedule P-Part 5F-Medical Professional Liability-Claims-Made	78
Schedule H-Part 5-Health Claims	32	Schedule P-Part 5F-Medical Professional Liability-Occurrence	77
Schedule P-Part 1-Summary	33	Schedule P-Part 5H-Other Liability-Claims-Made	80
Schedule P-Part 1A-Homeowners/Farmowners	35	Schedule P-Part 5H-Other Liability-Occurrence	79
Schedule P-Part 1B-Private Passenger Auto Liability/Medical	36	Schedule P-Part 5R-Products Liability-Claims-Made	82
Schedule P-Part 1C-Commercial Auto/Truck Liability/Medical	37	Schedule P-Part 5R-Products Liability-Occurrence	81
Schedule P-Part 1D-Workers' Compensation (Excluding Excess Workers Compensation)	38	Schedule P-Part 5T-Warranty	83
Schedule P-Part 1E-Commercial Multiple Peril	39	Schedule P-Part 6C-Commercial Auto/Truck Liability/Medical	84
Schedule P-Part 1F-Section 1-Medical Professional Liability-Occurrence	40	Schedule P-Part 6D-Workers' Compensation (Excluding Excess Workers Compensation)	84
Schedule P-Part 1F-Section 2-Medical Professional Liability-Claims-Made	41	Schedule P-Part 6E-Commercial Multiple Peril	85
Schedule P-Part 1G-Special Liability (Ocean, Marine, Aircraft (All Perils), Boiler & Machinery)	42	Schedule P-Part 6H-Other Liability-Claims-Made	86
Schedule P-Part 1H-Section 1-Other Liability-Occurrence	43	Schedule P-Part 6H-Other Liability-Occurrence	85
Schedule P-Part 1H-Section 2-Other Liability-Claims-Made	44	Schedule P-Part 6M-International	86
Schedule P-Part 1I-Spec. Prop. (Fire, Allied Lines, Inland Marine, Earthquake, Burglary & Theft)	45	Schedule P-Part 6N-Reinsurance -- Nonproportional Assumed Property	87
Schedule P-Part 1J-Auto Physical Damage	46	Schedule P-Part 6O-Reinsurance -- Nonproportional Assumed Liability	87
Schedule P-Part 1K-Fidelity/Surety	47	Schedule P-Part 6R-Products Liability-Claims-Made	88
Schedule P-Part 1L-Other (Including Credit, Accident and Health)	48	Schedule P-Part 6R-Products Liability-Occurrence	88
Schedule P-Part 1M-International	49	Schedule P-Part 7A-Primary Loss Sensitive Contracts	89
Schedule P-Part 1N-Reinsurance -- Nonproportional Assumed Property	50	Schedule P-Part 7B-Reinsurance Loss Sensitive Contracts	91
Schedule P-Part 1O-Reinsurance -- Nonproportional Assumed Liability	51	Schedule P Interrogatories	93
Schedule P-Part 1P-Reinsurance -- Nonproportional Assumed Financial Lines	52	Schedule T-Exhibit of Premiums Written	94
Schedule P-Part 1R-Section 1-Products Liability-Occurrence	53	Schedule T-Part 2-Interstate Compact	95
Schedule P-Part 1R-Section 2-Products Liability-Claims-Made	54	Schedule Y-Information Concerning Activities of Insurer Members of a Holding Company Group	96
Schedule P-Part 1S-Financial Guaranty/Mortgage Guaranty	55	Schedule Y-Detail of Insurance Holding Company System	97
Schedule P-Part 1T-Warranty	56	Schedule Y-Part 2-Summary of Insurer's Transactions With Any Affiliates	98
Schedule P-Part 2, Part 3 and Part 4 - Summary	34	Statement of Income	4
Schedule P-Part 2A-Homeowners/Farmowners	57	Summary Investment Schedule	SI01
Schedule P-Part 2B-Private Passenger Auto Liability/Medical	57	Supplemental Exhibits and Schedules Interrogatories	99
Schedule P-Part 2C-Commercial Auto/Truck Liability/Medical	57	Underwriting and Investment Exhibit Part 1	6
Schedule P-Part 2D-Workers' Compensation (Excluding Excess Workers Compensation)	57	Underwriting and Investment Exhibit Part 1A	7
Schedule P-Part 2E-Commercial Multiple Peril	57	Underwriting and Investment Exhibit Part 1B	8
Schedule P-Part 2F-Section 1-Medical Professional Liability-Occurrence	58	Underwriting and Investment Exhibit Part 2	9
Schedule P-Part 2F-Section 2-Medical Professional Liability-Claims-Made	58	Underwriting and Investment Exhibit Part 2A	10
Schedule P-Part 2G-Special Liability (Ocean Marine, Aircraft (All Perils), Boiler & Machinery)	58	Underwriting and Investment Exhibit Part 3	11
Schedule P-Part 2H-Section 1-Other Liability-Occurrence	58		