



PROPERTY AND CASUALTY COMPANIES - ASSOCIATION EDITION

QUARTERLY STATEMENT

AS OF SEPTEMBER 30, 2018

OF THE CONDITION AND AFFAIRS OF THE

THE CINCINNATI CASUALTY COMPANY

NAIC Group Code 0244 (Current) 0244 (Prior) NAIC Company Code 28665 Employer's ID Number 31-0826946

Organized under the Laws of OHIO, State of Domicile or Port of Entry OH

Country of Domicile United States of America

Incorporated/Organized 12/27/1972 Commenced Business 03/31/1973

Statutory Home Office 6200 SOUTH GILMORE ROAD, FAIRFIELD, OH, US 45014-5141

Main Administrative Office 6200 SOUTH GILMORE ROAD, FAIRFIELD, OH, US 45014-5141

Mail Address P.O. BOX 145496, CINCINNATI, OH, US 45250-5496

Primary Location of Books and Records 6200 SOUTH GILMORE ROAD, FAIRFIELD, OH, US 45014-5141

Internet Website Address WWW.CINFIN.COM

Statutory Statement Contact ANDREW SCHNELL, 513-870-2000

OFFICERS

CHIEF EXECUTIVE OFFICER, PRESIDENT STEVEN JUSTUS JOHNSTON SENIOR VICE PRESIDENT, TREASURER THERESA ANN HOFFER

OTHER

TERESA CURRIN CRACAS, SENIOR VICE PRESIDENT DONALD JOSEPH DOYLE JR, SENIOR VICE PRESIDENT SEAN MICHAEL GIVLER, SENIOR VICE PRESIDENT

DIRECTORS OR TRUSTEES

WILLIAM FOREST BAHL GREGORY THOMAS BIER TERESA CURRIN CRACAS DONALD JOSEPH DOYLE JR SEAN MICHAEL GIVLER MARTIN FRANCIS HOLLENBECK

State of OHIO County of BUTLER SS:

The officers of this reporting entity being duly sworn, each depose and say that they are the described officers of said reporting entity, and that on the reporting period stated above, all of the herein described assets were the absolute property of the said reporting entity, free and clear from any liens or claims thereon, except as herein stated, and that this statement, together with related exhibits, schedules and explanations therein contained, annexed or referred to, is a full and true statement of all the assets and liabilities and of the condition and affairs of the said reporting entity as of the reporting period stated above, and of its income and deductions therefrom for the period ended, and have been completed in accordance with the NAIC Annual Statement Instructions and Accounting Practices and Procedures manual except to the extent that: (1) state law may differ; or, (2) that state rules or regulations require differences in reporting not related to accounting practices and procedures, according to the best of their information, knowledge and belief, respectively. Furthermore, the scope of this attestation by the described officers also includes the related corresponding electronic filing with the NAIC, when required, that is an exact copy (except for formatting differences due to electronic filing) of the enclosed statement. The electronic filing may be requested by various regulators in lieu of or in addition to the enclosed statement.

STEVEN J. JOHNSTON CHIEF EXECUTIVE OFFICER, PRESIDENT

MICHAEL J. SEWELL CHIEF FINANCIAL OFFICER, SENIOR VICE PRESIDENT

THERESA A. HOFFER SENIOR VICE PRESIDENT, TREASURER

Subscribed and sworn to before me this 7TH day of NOVEMBER 2018

a. Is this an original filing? Yes [X] No []

b. If no,

1. State the amendment number.....

2. Date filed

3. Number of pages attached.....

STATEMENT AS OF SEPTEMBER 30, 2018 OF THE THE CINCINNATI CASUALTY COMPANY

ASSETS

	Current Statement Date			4 December 31 Prior Year Net Admitted Assets
	1 Assets	2 Nonadmitted Assets	3 Net Admitted Assets (Cols. 1 - 2)	
1. Bonds	293,281,272		293,281,272	284,854,544
2. Stocks:				
2.1 Preferred stocks				
2.2 Common stocks	121,369,345		121,369,345	117,862,429
3. Mortgage loans on real estate:				
3.1 First liens				
3.2 Other than first liens.....				
4. Real estate:				
4.1 Properties occupied by the company (less \$ encumbrances)				
4.2 Properties held for the production of income (less \$ encumbrances)				
4.3 Properties held for sale (less \$ encumbrances)				
5. Cash (\$3,515,774), cash equivalents (\$) and short-term investments (\$)	3,515,774		3,515,774	1,969,438
6. Contract loans (including \$ premium notes)				
7. Derivatives				
8. Other invested assets				
9. Receivables for securities				
10. Securities lending reinvested collateral assets				
11. Aggregate write-ins for invested assets				
12. Subtotals, cash and invested assets (Lines 1 to 11)	418,166,392		418,166,392	404,686,411
13. Title plants less \$ charged off (for Title insurers only)				
14. Investment income due and accrued	3,514,060		3,514,060	3,052,757
15. Premiums and considerations:				
15.1 Uncollected premiums and agents' balances in the course of collection				
15.2 Deferred premiums, agents' balances and installments booked but deferred and not yet due (including \$ earned but unbilled premiums)				
15.3 Accrued retrospective premiums (\$) and contracts subject to redetermination (\$)				
16. Reinsurance:				
16.1 Amounts recoverable from reinsurers	16,594,061		16,594,061	17,742,841
16.2 Funds held by or deposited with reinsured companies				
16.3 Other amounts receivable under reinsurance contracts	2,727,080		2,727,080	3,349,783
17. Amounts receivable relating to uninsured plans				
18.1 Current federal and foreign income tax recoverable and interest thereon	185,529		185,529	
18.2 Net deferred tax asset				
19. Guaranty funds receivable or on deposit				
20. Electronic data processing equipment and software	839,795	839,795		
21. Furniture and equipment, including health care delivery assets (\$)				
22. Net adjustment in assets and liabilities due to foreign exchange rates				
23. Receivables from parent, subsidiaries and affiliates	2,121,746		2,121,746	4,744,091
24. Health care (\$) and other amounts receivable				
25. Aggregate write-ins for other than invested assets	111,857	111,854	3	2
26. Total assets excluding Separate Accounts, Segregated Accounts and Protected Cell Accounts (Lines 12 to 25)	444,260,520	951,649	443,308,871	433,575,884
27. From Separate Accounts, Segregated Accounts and Protected Cell Accounts				
28. Total (Lines 26 and 27)	444,260,520	951,649	443,308,871	433,575,884
DETAILS OF WRITE-INS				
1101.				
1102.				
1103.				
1198. Summary of remaining write-ins for Line 11 from overflow page				
1199. Totals (Lines 1101 through 1103 plus 1198)(Line 11 above)				
2501. Equities and Deposits in Pools and Associations	3		3	2
2502. Miscellaneous Receivables	111,854	111,854		
2503.				
2598. Summary of remaining write-ins for Line 25 from overflow page				
2599. Totals (Lines 2501 through 2503 plus 2598)(Line 25 above)	111,857	111,854	3	2

STATEMENT AS OF SEPTEMBER 30, 2018 OF THE THE CINCINNATI CASUALTY COMPANY

LIABILITIES, SURPLUS AND OTHER FUNDS

	1 Current Statement Date	2 December 31, Prior Year
1. Losses (current accident year \$)		
2. Reinsurance payable on paid losses and loss adjustment expenses	96,540	95,867
3. Loss adjustment expenses		
4. Commissions payable, contingent commissions and other similar charges		
5. Other expenses (excluding taxes, licenses and fees)	(1,839)	(277)
6. Taxes, licenses and fees (excluding federal and foreign income taxes)		
7.1 Current federal and foreign income taxes (including \$0 on realized capital gains (losses))		405,507
7.2 Net deferred tax liability	15,297,248	14,565,041
8. Borrowed money \$ and interest thereon \$		
9. Unearned premiums (after deducting unearned premiums for ceded reinsurance of \$166,105,065 and including warranty reserves of \$ and accrued accident and health experience rating refunds including \$ for medical loss ratio rebate per the Public Health Service Act)		
10. Advance premium		
11. Dividends declared and unpaid:		
11.1 Stockholders		
11.2 Policyholders		
12. Ceded reinsurance premiums payable (net of ceding commissions)	20,719,915	25,205,703
13. Funds held by company under reinsurance treaties		
14. Amounts withheld or retained by company for account of others	1,443,102	1,017,385
15. Remittances and items not allocated		
16. Provision for reinsurance (including \$ certified)		
17. Net adjustments in assets and liabilities due to foreign exchange rates		
18. Drafts outstanding		
19. Payable to parent, subsidiaries and affiliates		
20. Derivatives		
21. Payable for securities		
22. Payable for securities lending		
23. Liability for amounts held under uninsured plans		
24. Capital notes \$ and interest thereon \$		
25. Aggregate write-ins for liabilities	200	
26. Total liabilities excluding protected cell liabilities (Lines 1 through 25)	37,555,166	41,289,227
27. Protected cell liabilities		
28. Total liabilities (Lines 26 and 27)	37,555,166	41,289,227
29. Aggregate write-ins for special surplus funds		
30. Common capital stock	3,750,000	3,750,000
31. Preferred capital stock		
32. Aggregate write-ins for other than special surplus funds		
33. Surplus notes		
34. Gross paid in and contributed surplus	18,000,000	18,000,000
35. Unassigned funds (surplus)	384,003,705	370,536,657
36. Less treasury stock, at cost:		
36.1 shares common (value included in Line 30 \$)		
36.2 shares preferred (value included in Line 31 \$)		
37. Surplus as regards policyholders (Lines 29 to 35, less 36)	405,753,705	392,286,657
38. Totals (Page 2, Line 28, Col. 3)	443,308,871	433,575,884
DETAILS OF WRITE-INS		
2501. Accounts Payable Other	200	
2502.		
2503.		
2598. Summary of remaining write-ins for Line 25 from overflow page		
2599. Totals (Lines 2501 through 2503 plus 2598)(Line 25 above)	200	
2901.		
2902.		
2903.		
2998. Summary of remaining write-ins for Line 29 from overflow page		
2999. Totals (Lines 2901 through 2903 plus 2998)(Line 29 above)		
3201.		
3202.		
3203.		
3298. Summary of remaining write-ins for Line 32 from overflow page		
3299. Totals (Lines 3201 through 3203 plus 3298)(Line 32 above)		

STATEMENT OF INCOME

	1 Current Year to Date	2 Prior Year to Date	3 Prior Year Ended December 31
UNDERWRITING INCOME			
1. Premiums earned:			
1.1 Direct (written \$ 271,173,574)	270,386,830	262,820,756	
1.2 Assumed (written \$ 63)	63	67	
1.3 Ceded (written \$ 271,173,637)	270,386,892	262,820,823	
1.4 Net (written \$)			
DEDUCTIONS:			
2. Losses incurred (current accident year \$):			
2.1 Direct	168,816,890	132,747,366	
2.2 Assumed	81,117	(86,703)	
2.3 Ceded	168,898,008	132,660,662	
2.4 Net			
3. Loss adjustment expenses incurred			
4. Other underwriting expenses incurred			
5. Aggregate write-ins for underwriting deductions			
6. Total underwriting deductions (Lines 2 through 5)			
7. Net income of protected cells			
8. Net underwriting gain or (loss) (Line 1 minus Line 6 + Line 7)			
INVESTMENT INCOME			
9. Net investment income earned	10,457,389	10,114,931	14,105,600
10. Net realized capital gains (losses) less capital gains tax of \$ 617,115	2,402,190	8,890,973	9,771,515
11. Net investment gain (loss) (Lines 9 + 10)	12,859,579	19,005,903	23,877,115
OTHER INCOME			
12. Net gain or (loss) from agents' or premium balances charged off (amount recovered \$ amount charged off \$)			
13. Finance and service charges not included in premiums			
14. Aggregate write-ins for miscellaneous income	268		
15. Total other income (Lines 12 through 14)	268		
16. Net income before dividends to policyholders, after capital gains tax and before all other federal and foreign income taxes (Lines 8 + 11 + 15)	12,859,847	19,005,903	23,877,115
17. Dividends to policyholders			
18. Net income, after dividends to policyholders, after capital gains tax and before all other federal and foreign income taxes (Line 16 minus Line 17)	12,859,847	19,005,903	23,877,115
19. Federal and foreign income taxes incurred	1,180,149	1,976,316	2,844,691
20. Net income (Line 18 minus Line 19)(to Line 22)	11,679,698	17,029,587	21,032,424
CAPITAL AND SURPLUS ACCOUNT			
21. Surplus as regards policyholders, December 31 prior year	392,286,657	359,898,775	359,898,775
22. Net income (from Line 20)	11,679,698	17,029,587	21,032,424
23. Net transfers (to) from Protected Cell accounts			
24. Change in net unrealized capital gains (losses) less capital gains tax of \$ 728,953	2,742,252	963,570	13,077,463
25. Change in net unrealized foreign exchange capital gain (loss)			
26. Change in net deferred income tax	(3,253)	(2,781,570)	(1,722,006)
27. Change in nonadmitted assets	(951,649)		
28. Change in provision for reinsurance			
29. Change in surplus notes			
30. Surplus (contributed to) withdrawn from protected cells			
31. Cumulative effect of changes in accounting principles			
32. Capital changes:			
32.1 Paid in			
32.2 Transferred from surplus (Stock Dividend)			
32.3 Transferred to surplus			
33. Surplus adjustments:			
33.1 Paid in			
33.2 Transferred to capital (Stock Dividend)			
33.3 Transferred from capital			
34. Net remittances from or (to) Home Office			
35. Dividends to stockholders			
36. Change in treasury stock			
37. Aggregate write-ins for gains and losses in surplus			
38. Change in surplus as regards policyholders (Lines 22 through 37)	13,467,048	15,211,588	32,387,882
39. Surplus as regards policyholders, as of statement date (Lines 21 plus 38)	405,753,705	375,110,363	392,286,657
DETAILS OF WRITE-INS			
0501.			
0502.			
0503.			
0598. Summary of remaining write-ins for Line 5 from overflow page			
0599. Totals (Lines 0501 through 0503 plus 0598)(Line 5 above)			
1401. Miscellaneous Income	268		
1402.			
1403.			
1498. Summary of remaining write-ins for Line 14 from overflow page			
1499. Totals (Lines 1401 through 1403 plus 1498)(Line 14 above)	268		
3701.			
3702.			
3703.			
3798. Summary of remaining write-ins for Line 37 from overflow page			
3799. Totals (Lines 3701 through 3703 plus 3798)(Line 37 above)			

STATEMENT AS OF SEPTEMBER 30, 2018 OF THE THE CINCINNATI CASUALTY COMPANY

CASH FLOW

	1 Current Year To Date	2 Prior Year To Date	3 Prior Year Ended December 31
Cash from Operations			
1. Premiums collected net of reinsurance	(4,485,788)	(5,729,735)	(2,987,342)
2. Net investment income	10,865,606	11,018,213	15,390,858
3. Miscellaneous income	268		
4. Total (Lines 1 to 3)	6,380,086	5,288,478	12,403,516
5. Benefit and loss related payments	(1,772,156)	589,111	3,656,266
6. Net transfers to Separate Accounts, Segregated Accounts and Protected Cell Accounts			
7. Commissions, expenses paid and aggregate write-ins for deductions			
8. Dividends paid to policyholders			
9. Federal and foreign income taxes paid (recovered) net of \$753,914 tax on capital gains (losses)	2,388,300	2,844,066	3,499,828
10. Total (Lines 5 through 9)	616,145	3,433,177	7,156,094
11. Net cash from operations (Line 4 minus Line 10)	5,763,941	1,855,301	5,247,422
Cash from Investments			
12. Proceeds from investments sold, matured or repaid:			
12.1 Bonds	10,145,000	41,964,780	49,029,000
12.2 Stocks	4,513,880	2,349,296	7,732,536
12.3 Mortgage loans			
12.4 Real estate			
12.5 Other invested assets			
12.6 Net gains or (losses) on cash, cash equivalents and short-term investments			
12.7 Miscellaneous proceeds		1,208,478	
12.8 Total investment proceeds (Lines 12.1 to 12.7)	14,658,880	45,522,554	56,761,536
13. Cost of investments acquired (long-term only):			
13.1 Bonds	19,452,136	50,391,603	66,805,688
13.2 Stocks	1,520,962	2,711,593	2,711,593
13.3 Mortgage loans			
13.4 Real estate			
13.5 Other invested assets97	755	2,194
13.6 Miscellaneous applications			
13.7 Total investments acquired (Lines 13.1 to 13.6)	20,973,195	53,103,952	69,519,475
14. Net increase (or decrease) in contract loans and premium notes			
15. Net cash from investments (Line 12.8 minus Line 13.7 and Line 14)	(6,314,315)	(7,581,397)	(12,757,939)
Cash from Financing and Miscellaneous Sources			
16. Cash provided (applied):			
16.1 Surplus notes, capital notes			
16.2 Capital and paid in surplus, less treasury stock			
16.3 Borrowed funds			
16.4 Net deposits on deposit-type contracts and other insurance liabilities			
16.5 Dividends to stockholders			
16.6 Other cash provided (applied)	2,096,710	6,203,140	6,619,855
17. Net cash from financing and miscellaneous sources (Line 16.1 through Line 16.4 minus Line 16.5 plus Line 16.6)	2,096,710	6,203,140	6,619,855
RECONCILIATION OF CASH, CASH EQUIVALENTS AND SHORT-TERM INVESTMENTS			
18. Net change in cash, cash equivalents and short-term investments (Line 11, plus Lines 15 and 17)	1,546,336	477,044	(890,662)
19. Cash, cash equivalents and short-term investments:			
19.1 Beginning of year	1,969,438	2,860,101	2,860,101
19.2 End of period (Line 18 plus Line 19.1)	3,515,774	3,337,144	1,969,438

Note: Supplemental disclosures of cash flow information for non-cash transactions:

NOTES TO FINANCIAL STATEMENTS

NOTES TO FINANCIAL STATEMENTS

1. Summary of Significant Accounting Policies and Going Concern

A. Accounting Practices

The financial statements of The Cincinnati Casualty Company (the Company) are presented on the basis of accounting practices prescribed or permitted by the Ohio Department of Insurance.

The Ohio Department of Insurance recognizes only statutory accounting practices prescribed or permitted by the state of Ohio for determining and reporting the financial condition and results of operations of an insurance company, and for determining its solvency under the Ohio Insurance Law. The National Association of Insurance Commissioners' Accounting Practices and Procedures Manual (NAIC SAP), version effective January 1, 2001 and updates through the current year have been adopted as a component of prescribed or permitted practices by the state of Ohio.

The Company has no prescribed or permitted practices that would result in differences between the NAIC SAP and the state of Ohio basis, as shown below as of September 30, 2018 and December 31, 2017:

	SSAP #	F/S Page	F/S Line #	2018	2017
NET INCOME					
(1) Company state basis (Page 4, Line 20, Columns 1 & 2)	XXX	XXX	XXX	\$ 11,679,698	\$ 21,032,424
(2) State Prescribed Practices that increase/(decrease) NAIC SAP	N/A	N/A	N/A	0	0
(3) State Permitted Practices that increase/(decrease) NAIC SAP	N/A	N/A	N/A	0	0
(4) NAIC SAP (1-2-3=4)	XXX	XXX	XXX	\$ 11,679,698	\$ 21,032,424
SURPLUS					
(5) Company state basis (Page 3, Line 37, Columns 1 & 2)	XXX	XXX	XXX	\$ 405,753,705	\$ 392,286,657
(6) State Prescribed Practices that increase/(decrease) NAIC SAP	N/A	N/A	N/A	0	0
(7) State Permitted Practices that increase/(decrease) NAIC SAP	N/A	N/A	N/A	0	0
(8) NAIC SAP (5-6-7=8)	XXX	XXX	XXX	\$ 405,753,705	\$ 392,286,657

B. Use of Estimates in the Preparation of the Financial Statements – No significant change

C. Accounting Policies – No significant change

D. Going Concern

After review of the Company's financial condition, management has no doubts about the Company's ability to continue as a going concern.

2. Accounting Changes and Correction of Errors – No significant change

3. Business Combinations and Goodwill – Not applicable

4. Discontinued Operations – Not applicable

5. Investments – No significant change

6. Joint Ventures, Partnerships and Limited Liability Companies – Not applicable

7. Investment Income – No significant change

8. Derivative Instruments – Not applicable

9. Income Taxes

A. Components of Deferred Tax Assets (DTAs) and Deferred Tax Liabilities (DTLs):

1.

	September 30, 2018		
	Ordinary	Capital	Total
(a) Gross Deferred Tax Assets	\$ 199,846	\$ 0	\$ 199,846
(b) Statutory Valuation Allowance Adjustments	0	0	0
(c) Adjusted Gross Deferred Tax Assets (1a - 1b)	199,846	0	199,846
(d) Deferred Tax Assets Nonadmitted	0	0	0
(e) Subtotal Net Admitted Deferred Tax Asset (1c - 1d)	199,846	0	199,846
(f) Deferred Tax Liabilities	\$ 188,181	\$ 15,308,914	\$ 15,497,095
(g) Net Admitted Deferred Tax Asset/(Liability) (1e - 1f)	\$ 11,665	\$(15,308,914)	\$(15,297,249)

	December 31, 2017		
	Ordinary	Capital	Total
(a) Gross Deferred Tax Assets	\$ 0	\$ 0	\$ 0
(b) Statutory Valuation Allowance Adjustments	0	0	0
(c) Adjusted Gross Deferred Tax Assets (1a - 1b)	0	0	0
(d) Deferred Tax Assets Nonadmitted	0	0	0
(e) Subtotal Net Admitted Deferred Tax Asset (1c - 1d)	0	0	0
(f) Deferred Tax Liabilities	\$ 13,386	\$ 14,551,656	\$ 14,565,042
(g) Net Admitted Deferred Tax Asset/(Liability) (1e - 1f)	\$ (13,386)	\$(14,551,656)	\$(14,565,042)

	Change		
	Ordinary	Capital	Total
(a) Gross Deferred Tax Assets	\$ 199,846	\$ 0	\$ 199,846
(b) Statutory Valuation Allowance Adjustments	0	0	0
(c) Adjusted Gross Deferred Tax Assets (1a - 1b)	199,846	0	199,846
(d) Deferred Tax Assets Nonadmitted	0	0	0
(e) Subtotal Net Admitted Deferred Tax Asset (1c - 1d)	199,846	0	199,846
(f) Deferred Tax Liabilities	\$ 174,795	\$ 757,258	\$ 932,053
(g) Net Admitted Deferred Tax Asset/(Liability) (1e - 1f)	\$ 25,051	\$(757,258)	\$(732,207)

NOTES TO FINANCIAL STATEMENTS

2.

	September 30, 2018		
	Ordinary	Capital	Total
Admission Calculation Components SSAP No. 101			
(a)Federal Income Taxes Paid in Prior Years Recoverable Through Loss Carrybacks	\$ 82,066	\$ 0	\$ 82,066
(b)Adjusted Gross Deferred Tax Assets Expected to be Realized (Excluding The Amount of Deferred Tax Assets From 2(a) above) After Application of the Threshold Limitation. (The lesser of 2(b)1 and 2(b)2 Below)	29,288	0	29,288
1. Adjusted Gross Deferred Tax Assets Expected to be Realized Following the Balance Sheet Date	29,288	0	29,288
2. Adjusted Gross Deferred Tax Assets Allowed per Limitation Threshold	XXX	XXX	60,863,056
(c)Adjusted Gross Deferred Tax Assets (Excluding the amount of Deferred Tax Assets from 2(a) and 2(b) above) Offset by Gross Deferred Tax Liabilities	88,492	0	88,492
(d)Deferred Tax Assets Admitted as the Result of Application of SSAP No.101 Total (2(a)+2(b)+2(c))	\$ 199,846	\$ 0	\$ 199,846

	December 31, 2017		
	Ordinary	Capital	Total
Admission Calculation Components SSAP No. 101			
(a)Federal Income Taxes Paid in Prior Years Recoverable Through Loss Carrybacks	\$ 0	\$ 0	\$ 0
(b)Adjusted Gross Deferred Tax Assets Expected to be Realized (Excluding The Amount of Deferred Tax Assets From 2(a) above) After Application of the Threshold Limitation. (The lesser of 2(b)1 and 2(b)2 Below)	0	0	0
1. Adjusted Gross Deferred Tax Assets Expected to be Realized Following the Balance Sheet Date	0	0	0
2. Adjusted Gross Deferred Tax Assets Allowed per Limitation Threshold	XXX	XXX	58,842,999
(c)Adjusted Gross Deferred Tax Assets (Excluding the amount of Deferred Tax Assets from 2(a) and 2(b) above) Offset by Gross Deferred Tax Liabilities	0	0	0
(d)Deferred Tax Assets Admitted as the Result of Application of SSAP No.101 Total (2(a)+2(b)+2(c))	\$ 0	\$ 0	\$ 0

	Change		
	Ordinary	Capital	Total
Admission Calculation Components SSAP No. 101			
(a)Federal Income Taxes Paid in Prior Years Recoverable Through Loss Carrybacks	\$ 82,066	\$ 0	\$ 82,066
(b)Adjusted Gross Deferred Tax Assets Expected to be Realized (Excluding The Amount of Deferred Tax Assets From 2(a) above) After Application of the Threshold Limitation. (The lesser of 2(b)1 and 2(b)2 Below)	29,288	0	29,288
1. Adjusted Gross Deferred Tax Assets Expected to be Realized Following the Balance Sheet Date	29,288	0	29,288
2. Adjusted Gross Deferred Tax Assets Allowed per Limitation Threshold	XXX	XXX	2,020,057
(c)Adjusted Gross Deferred Tax Assets (Excluding the amount of Deferred Tax Assets from 2(a) and 2(b) above) Offset by Gross Deferred Tax Liabilities	88,492	0	88,492
(d)Deferred Tax Assets Admitted as the Result of Application of SSAP No.101 Total (2(a)+2(b)+2(c))	\$ 199,846	\$ 0	\$ 199,846

3.

	2018 Percentage	2017 Percentage
(a)Ratio Percentage Used to Determine Recovery Period and Threshold Limitation Amount	2608%	2608%
(b)Amount of Adjusted Capital and Surplus Used to Determine Recovery Period and Threshold Limitation in 2(b)2 above	\$ 392,286,657	\$ 392,286,657

4.

	September 30, 2018		
	Ordinary	Capital	Total
Impact of Tax Planning Strategies			
(a)Determination of adjusted gross deferred tax assets and net admitted deferred tax assets, by tax character as a percentage.			
1. Adjusted Gross DTAs amount from Note 9A1(c)	\$ 199,846	\$ 0	\$ 199,846
2. Percentage of Adjusted gross DTAs by tax character attributable to the impact of tax planning strategies	0.00%	0.00%	0.00%
3. Net Admitted Adjusted Gross DTAs amount from Note 9A1(e)	\$ 199,846	\$ 0	\$ 199,846
4. Percentage of net admitted adjusted gross DTAs by tax character admitted because of the impact of tax planning strategies	0.00%	0.00%	0.00%
(b)The Company's tax-planning strategies did not include the use of reinsurance-related tax planning strategies.			

NOTES TO FINANCIAL STATEMENTS

Impact of Tax Planning Strategies	December 31, 2017		
	Ordinary	Capital	Total
(a) Determination of adjusted gross deferred tax assets and net admitted deferred tax assets, by tax character as a percentage.			
1. Adjusted Gross DTAs amount from Note 9A1(c)	\$ 0	\$ 0	\$ 0
2. Percentage of Adjusted gross DTAs by tax character attributable to the impact of tax planning strategies	0.00%	0.00%	0.00%
3. Net Admitted Adjusted Gross DTAs amount from Note 9A1(e)	\$ 0	\$ 0	\$ 0
4. Percentage of net admitted adjusted gross DTAs by tax character admitted because of the impact of tax planning strategies	0.00%	0.00%	0.00%
(b) The Company's tax-planning strategies did not include the use of reinsurance-related tax planning strategies.			

Impact of Tax Planning Strategies	Change		
	Ordinary	Capital	Total
(a) Determination of adjusted gross deferred tax assets and net admitted deferred tax assets, by tax character as a percentage.			
1. Adjusted Gross DTAs amount from Note 9A1(c)	\$ 199,846	\$ 0	\$ 199,846
2. Percentage of Adjusted gross DTAs by tax character attributable to the impact of tax planning strategies	0.00%	0.00%	0.00%
3. Net Admitted Adjusted Gross DTAs amount from Note 9A1(e)	\$ 199,846	\$ 0	\$ 199,846
4. Percentage of net admitted adjusted gross DTAs by tax character admitted because of the impact of tax planning strategies	0.00%	0.00%	0.00%
(b) The Company's tax-planning strategies did not include the use of reinsurance-related tax planning strategies.			

B. Unrecognized DTLs – Not applicable

C. Current Tax and Change in Deferred Tax

1. Current income tax:

	September 30, 2018	December 31, 2017	Change
(a) Federal	\$ 1,108,356	\$ 2,778,621	\$ (1,670,265)
(b) Foreign	71,793	66,070	5,723
(c) Subtotal	1,180,149	2,844,691	(1,664,542)
(d) Federal income tax on capital gains/(losses)	617,115	951,387	(334,272)
(e) Utilization of capital loss carryforwards	0	0	0
(f) Other	0	0	0
(g) Federal income taxes incurred	\$ 1,797,264	\$ 3,796,078	\$ (1,998,814)

2. Deferred tax assets:

	September 30, 2018	December 31, 2017	Change
(a) Ordinary			
1. Unearned premium reserve	\$ 0	\$ 0	\$ 0
2. Unpaid loss reserve	0	0	0
3. Contingent commission	0	0	0
4. Nonadmitted assets	199,846	0	199,846
5. Other deferred tax assets	0	0	0
99. Subtotal	\$ 199,846	\$ 0	\$ 199,846
(b) Statutory valuation allowance adjustment	0	0	0
(c) Nonadmitted	0	0	0
(d) Admitted ordinary deferred tax assets (2(a)99-2(b)-2(c))	\$ 199,846	\$ 0	\$ 199,846
(e) Capital			
1. Investments	\$ 0	\$ 0	\$ 0
2. Unrealized loss on investments	0	0	0
99. Subtotal	\$ 0	\$ 0	\$ 0
(f) Statutory valuation allowance	0	0	0
(g) Nonadmitted	0	0	0
(h) Admitted capital deferred tax assets (2(e)99- 2(f)-2(g))	\$ 0	\$ 0	\$ 0
(i) Admitted deferred tax assets (2(d)+2(h))	\$ 199,846	\$ 0	\$ 199,846

3. Deferred tax liabilities:

	September 30, 2018	December 31, 2017	Change
(a) Ordinary			
1. Commission expense	\$ 0	\$ 0	\$ 0
2. Other, net	188,181	13,386	174,795
99. Subtotal	\$ 188,181	\$ 13,386	\$ 174,795
(b) Capital			
1. Investment	\$ 1,621,511	\$ 1,593,206	\$ 28,305
2. Unrealized gain on investments	13,687,403	12,958,450	728,953
99. Subtotal	\$ 15,308,914	\$ 14,551,656	\$ 757,258
(c) Deferred tax liabilities (3(a)99+3(b)99)	\$ 15,497,095	\$ 14,565,042	\$ 932,053
4. Net deferred tax assets/(liabilities) (2(i)-3(c)):	\$ (15,297,249)	\$ (14,565,042)	\$ (732,207)

NOTES TO FINANCIAL STATEMENTS

The change in net deferred income taxes is comprised of the following (this analysis is exclusive of nonadmitted assets as the Change in Nonadmitted Assets is reported separately from the Change in Net Deferred Income Taxes in the surplus section of the Annual Statement):

	September 30, 2018	December 31, 2017	Change
Total deferred tax assets	\$ 199,846	\$ 0	\$ 199,846
Total deferred tax liabilities	15,497,095	14,565,042	932,053
Net deferred tax asset/(liability)	\$(15,297,249)	\$(14,565,042)	\$ (732,207)
Tax effect of unrealized gains/(losses)			728,953
Change in net deferred income tax (charge)/benefit			\$ (3,254)
	December 31, 2017	December 31, 2016	Change
Total deferred tax assets	\$ 0	\$ 129,614	\$ (129,614)
Total deferred tax liabilities	14,565,042	19,221,656	(4,656,614)
Net deferred tax asset/(liability)	\$(14,565,042)	\$(19,092,042)	\$ 4,527,000
Tax effect of unrealized gains/(losses)			(6,249,006)
Change in net deferred income tax (charge)/benefit			\$ (1,722,006)

Our accounting for the Tax Cuts and Jobs Act is incomplete. As noted at year-end, we are able to make reasonable estimates of certain effects. We have not recorded any adjustments to these provisional amounts during the current quarter.

D. Reconciliation of Federal Income Tax Rate to Actual Effective Rate

The provision for federal income taxes incurred is different from that which would be obtained by applying the statutory federal income tax rate to income before income taxes. The significant items causing this difference are as follows:

Description	As of September 30, 2018		
	Amount	Tax Effect	Effective Tax Rate
Income before taxes	\$ 13,476,962	\$ 2,830,162	21.00 %
Net tax exempt interest	(3,235,910)	(679,541)	(5.04)%
Net dividends received deduction (DRD)	(719,995)	(151,199)	(1.13)%
Other items permanent, net	23	5	0.00 %
DRD on accrued	4,462	937	0.01 %
Total	\$ 9,525,542	\$ 2,000,364	14.84 %
Federal income tax expense incurred/(benefit)	\$ 5,619,757	\$ 1,180,149	8.76 %
Tax on capital gains/(losses)	2,938,643	617,115	4.58 %
Change in nonadmitted excluding deferred tax asset	951,647	199,846	1.48 %
Change in net deferred income tax charge/(benefit)	15,495	3,254	0.02 %
Total statutory income taxes incurred/(benefit)	\$ 9,525,542	\$ 2,000,364	14.84 %

Description	As of December 31, 2017		
	Amount	Tax Effect	Effective Tax Rate
Income before taxes	\$ 24,828,503	\$ 8,689,976	35.00 %
Net tax exempt interest	(4,446,183)	(1,556,164)	(6.27)%
Net dividends received deduction (DRD)	(1,577,571)	(552,150)	(2.22)%
Impact of tax rate change	(3,037,738)	(1,063,208)	(4.28)%
Other items permanent, net	20	7	0.00 %
DRD on accrued	(1,076)	(377)	0.00 %
Total	\$ 15,765,955	\$ 5,518,084	22.23 %
Federal income tax expense incurred/(benefit)	\$ 8,127,689	\$ 2,844,691	11.46 %
Tax on capital gains/(losses)	2,718,249	951,387	3.83 %
Change in net deferred income tax charge/(benefit)	4,920,017	1,722,006	6.94 %
Total statutory income taxes incurred/(benefit)	\$ 15,765,955	\$ 5,518,084	22.23 %

E. Operating Loss and Tax Credit Carryforwards

At September 30, 2018 the Company had no net operating loss carryforwards or capital loss carryforwards.

The following is income tax expense for the current and prior years that is available for recoupment in the event of future net losses:

Year	Ordinary	Capital	Total
2018	\$ 1,108,356	\$ 617,115	\$ 1,725,471
2017	2,565,696	1,164,313	3,730,009
2016	0	156,016	156,016
Total	\$ 3,674,052	\$ 1,937,444	\$ 5,611,496

At September 30, 2018 the Company had no protective tax deposits under Section 6603 of the Internal Revenue Code.

F. Consolidated Federal Income Tax Return

- The Company's federal income tax return is consolidated with the following entities:

Cincinnati Financial Corporation (Parent)
The Cincinnati Insurance Company
The Cincinnati Life Insurance Company
The Cincinnati Indemnity Company
The Cincinnati Specialty Underwriters Insurance Company
CFC Investment Company
CSU Producer Resources, Inc.

- The method of allocation between the companies is subject to a written agreement, approved by the Board of Directors, whereby allocation is made primarily on a separate return basis, with the company receiving a current benefit for losses generated to the extent federal taxes are reduced for the consolidated tax group.

NOTES TO FINANCIAL STATEMENTS

G. Federal or Foreign Income Tax Loss Contingencies

The Company did not have tax contingencies under the principles of SSAP No. 5, *Liabilities, Contingencies and Impairment of Assets*. This is subject to change but it is not expected to significantly increase in the 12 month period following the balance sheet date. The Company is primarily subject to examination by U.S. federal and various U.S. state and local tax authorities. The statute of limitations for federal tax purposes has closed for tax years 2014 and earlier. The statute of limitations for state income tax purposes has closed for tax years 2014 and earlier. There are no U.S. federal or state returns under examination.

10. Information Concerning Parent, Subsidiaries, Affiliates and Other Related Parties

A. Nature of Relationships – No significant change

B. Detail of Transactions Greater than ½% of Admitted Assets – Not applicable

C. Change in Terms of Intercompany Agreements – Not Applicable

D. Amounts Due to or from Related Parties

At September 30, 2018, the Company reported \$2,121,746 due from the Parent Company, The Cincinnati Insurance Company. The terms of the settlement require that these amounts be settled within 30 days.

E. Guarantees or Contingencies for Related Parties – Not applicable

F. Management, Service Contracts, Cost Sharing Arrangements – No significant change

G. Nature of Relationships that Could Affect Operations – No significant change

H. Amount Deducted from Value of an Investment in Upstream Entity – Not applicable

I. Investment in an SCA that exceeds 10% of Admitted Assets – Not applicable

J. Impairment Writedowns related to Investments in SCA entities – Not applicable

K. Investment in Foreign Insurance Subsidiaries – Not applicable

L. Investment in Downstream Noninsurance Holding Company – Not applicable

M. All SCA Investments (Except 8bi Entities) – Not applicable

N. Investment in Insurance SCA Entities Utilizing Permitted or Prescribed Practices – Not applicable

11. Debt – Not applicable**12. Retirement Plans, Deferred Compensation, Postemployment Benefits and Compensated Absences and Other Postretirement Benefit Plans** – No significant change**13. Capital and Surplus, Dividend Restrictions and Quasi-Reorganizations**

1. Shares authorized, issued and outstanding – No significant change

2. Preferred stock issues – Not applicable

3. Dividend restrictions – No significant change

4. Dividends paid – Not applicable

5. Portion of profits that may be paid as ordinary dividends – No significant change

6. Surplus restrictions – Not applicable

7. Mutual Surplus Advances – Not applicable

8. Company Stock Held for Special Purposes – Not applicable

9. Changes in Special Surplus Funds – Not applicable

10. The portion of unassigned funds (surplus) represented or (reduced) by cumulative unrealized gains/(losses) are \$65,178,109 offset by deferred tax of \$13,687,403 for a net balance of \$51,490,706.

11. Surplus Notes – Not applicable

12. Restatement of Quasi-Reorganization – Not applicable

13. Date of Quasi-Reorganization – Not applicable

NOTES TO FINANCIAL STATEMENTS

- 14. Liabilities, Contingencies and Assessments** – No significant change
- 15. Leases** – Not applicable
- 16. Information About Financial Instruments with Off-Balance Sheet Risk and Financial Instruments with Concentrations of Credit Risk** – Not applicable
- 17. Sale, Transfer and Servicing of Financial Assets and Extinguishments of Liabilities** – Not applicable
- 18. Gain or Loss to the Reporting Entity from Uninsured Plans and Uninsured Portion of Partially Insured Plans** – Not applicable
- 19. Direct Written Premium/Produced by Managing General Agents/Third Party Administrators** – Not applicable
- 20. Fair Value Measurements**

A. Inputs Used for Assets and Liabilities Measured at Fair Value

- Included in various investment related line items in the financial statements are certain financial instruments carried at fair value. Other financial instruments are periodically measured at fair value, such as when impaired, or, for certain fixed maturities and preferred stock, when carried at the lower of cost or market.

The fair value of an asset is the amount at which that asset could be bought or sold in a current transaction between willing parties, that is, other than in a forced or liquidation sale. The Company does not have any material liabilities carried at fair value.

The Company has categorized its financial instruments, based on the priority of the inputs to the valuation technique, into a three-level fair value hierarchy. The fair value hierarchy gives the highest priority to quoted prices in active markets for identical assets or liabilities (Level 1) and the lowest priority to unobservable inputs (Level 3). If the inputs used to measure the financial instruments fall within different levels of the hierarchy, the categorization is based on the lowest level that is significant to the fair value measurement of the instrument.

Financial assets that fall within Level 1 and Level 2 are priced according to observable data from identical or similar securities that have traded in the marketplace. Also within Level 2 are securities that are valued by outside services or brokers where the Company has evaluated the pricing methodology and determined that the inputs are observable. Financial assets that fall within Level 3 of the hierarchy are valued based upon unobservable market inputs. Pricing for each Level 3 security is based upon inputs that are market driven, including third-party reviews provided to the issuer or broker quotes. However, the Company places in the Level 3 hierarchy securities for which it is unable to obtain the pricing methodology or it could not consider the price provided as binding. Management ultimately determines the fair value for each Level 3 security that it considers to be the best exit price valuation.

The Company primarily bases fair value estimates for investments in equity and fixed-maturity securities on quoted market prices or on prices from a nationally recognized pricing vendor, an outside resource that supplies global securities pricing, dividend, corporate action and descriptive information to support fund pricing, securities operations, research and portfolio management. The Company obtains and reviews the pricing service's valuation methodologies and related inputs and validates these prices by replicating a sample across each asset class using a discounted cash flow model. When a price is not available from these sources, as in the case of securities that are not publicly traded, the Company determines the fair value using various inputs including quotes from independent brokers. In these circumstances, the Company has generally obtained and evaluated two nonbinding quotes from brokers; its investment professionals determine the best estimate of fair value. The fair value of investments not priced by a pricing vendor is less than 1 percent of the fair value of the Company's total investment portfolio.

Financial instruments are categorized based upon the following characteristics or inputs to the valuation techniques:

- Level 1—Financial assets and liabilities for which inputs are observable and are obtained from reliable quoted prices for identical assets or liabilities in active markets. This is the most reliable fair value measurement and includes, for example, active exchange-traded equity securities.
- Level 2 – Financial assets and liabilities for which values are based on quoted prices in markets that are not active or for which values are based on similar assets and liabilities that are actively traded. This also includes pricing models for which the inputs are corroborated by market data.
- The technique used for the Level 2 fixed-maturity securities is the application of market based modeling. The inputs used for all classes of fixed-maturity securities listed in the table below include relevant market information by asset class, trade activity of like securities, marketplace quotes, benchmark yields, spreads off benchmark yields, interest rates, U.S. Treasury or swap curves, yield to maturity and economic events. Level 2 fixed-maturity securities are primarily priced by a nationally recognized pricing vendor.
- Level 3—Financial assets and liabilities for which values are based on prices or valuation techniques that require inputs that are both unobservable and significant to the overall fair value measurement. Level 3 inputs include the following:
 - Quotes from brokers or other external sources that are not considered binding;

NOTES TO FINANCIAL STATEMENTS

- Quotes from brokers or other external sources where it cannot be determined that market participants would in fact transact for the asset or liability at the quoted price; or
- Quotes from brokers or other external sources where the inputs are not deemed observable.

Reclassification of certain financial instruments may occur when input observability changes. Reclassifications are reported as transfers into/out of the Level 3 category.

The following table presents the Company's assets measured and reported at fair value by level within the fair value hierarchy as of September 30, 2018:

Assets at Fair Value:

	Level 1	Level 2	Level 3	Total	Net Asset Value (NAV) Included in Level 2
Bonds	\$ 0	\$ 1,987,346	\$ 0	\$ 1,987,346	\$ 0
Common Stock	121,369,345	0	0	121,369,345	0
Total	\$ 121,369,345	\$ 1,987,346	\$ 0	\$ 123,356,691	\$ 0

2. Fair Value Measurements in Level 3 of the Fair Value Hierarchy – Not applicable
3. Transfers between levels are assumed to occur at the beginning of the period.
4. Inputs and Techniques Used for Level 2 and Level 3 Fair Values – See narrative in Note 20A1.

B. Other Fair Value Disclosures – Not applicable

C. Fair Values for all Financial Instruments by Level

Type of Financial Instrument	Aggregate Fair Value	Admitted Assets	Level 1	Level 2	Level 3	Not Practicable (Carrying Value)	Net Asset Value (NAV) Included in Level 2
Bonds	\$ 293,157,798	\$ 293,281,272	\$ 1,611,259	\$ 291,546,539	\$ 0	\$ 0	\$ 0
Common Stock	121,369,345	121,369,345	121,369,345	0	0	0	0

D. Reasons Not Practical to Estimate Fair Values – Not applicable

21. **Other Items** – No significant change

22. **Subsequent Events**

The Company has considered subsequent events through November 14, 2018, the date of issuance of these statutory financial statements. There were no events occurring subsequent to September 30, 2018, which may have a material effect on the Company.

23. **Reinsurance** – No significant change

24. **Retrospectively Rated Contracts & Contracts Subject to Redetermination** – Not applicable

25. **Changes in Incurred Losses and Loss Adjustment Expense** – Not applicable

26. **Intercompany Pooling Arrangements** – Not applicable

27. **Structured Settlements** – Not applicable

28. **Health Care Receivables** – Not applicable

29. **Participating Policies** – Not applicable

30. **Premium Deficiency Reserves** – No significant change

31. **High Deductibles** – Not applicable

32. **Discounting of Liabilities for Unpaid Losses or Unpaid Loss Adjustment Expenses** – No significant change

33. **Asbestos and Environmental Reserves** – No significant change

34. **Subscriber Savings Accounts** – Not applicable

35. **Multiple Peril Crop Insurance** – Not applicable

36. **Financial Guaranty Insurance** – Not applicable

37. **Other** – No significant change

GENERAL INTERROGATORIES

PART 1 - COMMON INTERROGATORIES

GENERAL

- 1.1 Did the reporting entity experience any material transactions requiring the filing of Disclosure of Material Transactions with the State of Domicile, as required by the Model Act? Yes [] No [X]
- 1.2 If yes, has the report been filed with the domiciliary state? Yes [] No []
- 2.1 Has any change been made during the year of this statement in the charter, by-laws, articles of incorporation, or deed of settlement of the reporting entity? Yes [] No [X]
- 2.2 If yes, date of change:
- 3.1 Is the reporting entity a member of an Insurance Holding Company System consisting of two or more affiliated persons, one or more of which is an insurer? Yes [X] No []
If yes, complete Schedule Y, Parts 1 and 1A.
- 3.2 Have there been any substantial changes in the organizational chart since the prior quarter end? Yes [X] No []
- 3.3 If the response to 3.2 is yes, provide a brief description of those changes.
Cincinnati Insurance Company added a new non-insurance affiliate during the current quarter.
- 3.4 Is the reporting entity publicly traded or a member of a publicly traded group? Yes [X] No []
- 3.5 If the response to 3.4 is yes, provide the CIK (Central Index Key) code issued by the SEC for the entity/group. 0001279888
- 4.1 Has the reporting entity been a party to a merger or consolidation during the period covered by this statement? Yes [] No [X]
- 4.2 If yes, provide the name of the entity, NAIC Company Code, and state of domicile (use two letter state abbreviation) for any entity that has ceased to exist as a result of the merger or consolidation.

1	2	3
Name of Entity	NAIC Company Code	State of Domicile

5. If the reporting entity is subject to a management agreement, including third-party administrator(s), managing general agent(s), attorney-in-fact, or similar agreement, have there been any significant changes regarding the terms of the agreement or principals involved? Yes [] No [X] N/A []
If yes, attach an explanation.
- 6.1 State as of what date the latest financial examination of the reporting entity was made or is being made. 12/31/2014
- 6.2 State the as of date that the latest financial examination report became available from either the state of domicile or the reporting entity. This date should be the date of the examined balance sheet and not the date the report was completed or released. 12/31/2014
- 6.3 State as of what date the latest financial examination report became available to other states or the public from either the state of domicile or the reporting entity. This is the release date or completion date of the examination report and not the date of the examination (balance sheet date). 10/05/2015
- 6.4 By what department or departments?
Ohio
- 6.5 Have all financial statement adjustments within the latest financial examination report been accounted for in a subsequent financial statement filed with Departments? Yes [X] No [] N/A []
- 6.6 Have all of the recommendations within the latest financial examination report been complied with? Yes [X] No [] N/A []
- 7.1 Has this reporting entity had any Certificates of Authority, licenses or registrations (including corporate registration, if applicable) suspended or revoked by any governmental entity during the reporting period? Yes [] No [X]
- 7.2 If yes, give full information:
- 8.1 Is the company a subsidiary of a bank holding company regulated by the Federal Reserve Board? Yes [] No [X]
- 8.2 If response to 8.1 is yes, please identify the name of the bank holding company.
- 8.3 Is the company affiliated with one or more banks, thrifts or securities firms? Yes [] No [X]
- 8.4 If response to 8.3 is yes, please provide below the names and location (city and state of the main office) of any affiliates regulated by a federal regulatory services agency [i.e. the Federal Reserve Board (FRB), the Office of the Comptroller of the Currency (OCC), the Federal Deposit Insurance Corporation (FDIC) and the Securities Exchange Commission (SEC)] and identify the affiliate's primary federal regulator.

1	2	3	4	5	6
Affiliate Name	Location (City, State)	FRB	OCC	FDIC	SEC

GENERAL INTERROGATORIES

- 9.1 Are the senior officers (principal executive officer, principal financial officer, principal accounting officer or controller, or persons performing similar functions) of the reporting entity subject to a code of ethics, which includes the following standards? Yes [X] No []
- (a) Honest and ethical conduct, including the ethical handling of actual or apparent conflicts of interest between personal and professional relationships;
- (b) Full, fair, accurate, timely and understandable disclosure in the periodic reports required to be filed by the reporting entity;
- (c) Compliance with applicable governmental laws, rules and regulations;
- (d) The prompt internal reporting of violations to an appropriate person or persons identified in the code; and
- (e) Accountability for adherence to the code.
- 9.11 If the response to 9.1 is No, please explain:
- 9.2 Has the code of ethics for senior managers been amended? Yes [] No [X]
- 9.21 If the response to 9.2 is Yes, provide information related to amendment(s).
- 9.3 Have any provisions of the code of ethics been waived for any of the specified officers? Yes [] No [X]
- 9.31 If the response to 9.3 is Yes, provide the nature of any waiver(s).

FINANCIAL

- 10.1 Does the reporting entity report any amounts due from parent, subsidiaries or affiliates on Page 2 of this statement? Yes [X] No []
- 10.2 If yes, indicate any amounts receivable from parent included in the Page 2 amount: \$ 2,121,746

INVESTMENT

- 11.1 Were any of the stocks, bonds, or other assets of the reporting entity loaned, placed under option agreement, or otherwise made available for use by another person? (Exclude securities under securities lending agreements.) Yes [] No [X]
- 11.2 If yes, give full and complete information relating thereto:
12. Amount of real estate and mortgages held in other invested assets in Schedule BA: \$
13. Amount of real estate and mortgages held in short-term investments: \$
- 14.1 Does the reporting entity have any investments in parent, subsidiaries and affiliates? Yes [] No [X]
- 14.2 If yes, please complete the following:
- | | 1 | 2 |
|---|---|--|
| | Prior Year-End
Book/Adjusted
Carrying Value | Current Quarter
Book/Adjusted
Carrying Value |
| 14.21 Bonds | \$ | \$ |
| 14.22 Preferred Stock | \$ | \$ |
| 14.23 Common Stock | \$ | \$ |
| 14.24 Short-Term Investments | \$ | \$ |
| 14.25 Mortgage Loans on Real Estate | \$ | \$ |
| 14.26 All Other | \$ | \$ |
| 14.27 Total Investment in Parent, Subsidiaries and Affiliates (Subtotal Lines 14.21 to 14.26) | \$ | \$ |
| 14.28 Total Investment in Parent included in Lines 14.21 to 14.26 above | \$ | \$ |
- 15.1 Has the reporting entity entered into any hedging transactions reported on Schedule DB? Yes [] No [X]
- 15.2 If yes, has a comprehensive description of the hedging program been made available to the domiciliary state? Yes [] No []
- If no, attach a description with this statement.

GENERAL INTERROGATORIES

16. For the reporting entity's security lending program, state the amount of the following as of the current statement date:
- 16.1 Total fair value of reinvested collateral assets reported on Schedule DL, Parts 1 and 2\$
 - 16.2 Total book adjusted/carrying value of reinvested collateral assets reported on Schedule DL, Parts 1 and 2\$
 - 16.3 Total payable for securities lending reported on the liability page\$

17. Excluding items in Schedule E - Part 3 - Special Deposits, real estate, mortgage loans and investments held physically in the reporting entity's offices, vaults or safety deposit boxes, were all stocks, bonds and other securities, owned throughout the current year held pursuant to a custodial agreement with a qualified bank or trust company in accordance with Section 1, III - General Examination Considerations, F. Outsourcing of Critical Functions, Custodial or Safekeeping Agreements of the NAIC Financial Condition Examiners Handbook? Yes [X] No []
- 17.1 For all agreements that comply with the requirements of the NAIC Financial Condition Examiners Handbook, complete the following:

1 Name of Custodian(s)	2 Custodian Address
Fifth Third Bank	Fifth Third Center, Cincinnati OH 45263

- 17.2 For all agreements that do not comply with the requirements of the NAIC Financial Condition Examiners Handbook, provide the name, location and a complete explanation:

1 Name(s)	2 Location(s)	3 Complete Explanation(s)

- 17.3 Have there been any changes, including name changes, in the custodian(s) identified in 17.1 during the current quarter? Yes [] No [X]

- 17.4 If yes, give full information relating thereto:

1 Old Custodian	2 New Custodian	3 Date of Change	4 Reason

- 17.5 Investment management – Identify all investment advisors, investment managers, broker/dealers, including individuals that have the authority to make investment decisions on behalf of the reporting entity. For assets that are managed internally by employees of the reporting entity, note as such. ["...that have access to the investment accounts"; "...handle securities"]

1 Name of Firm or Individual	2 Affiliation

- 17.5097 For those firms/individuals listed in the table for Question 17.5, do any firms/individuals unaffiliated with the reporting entity (i.e. designated with a "U") manage more than 10% of the reporting entity's assets? Yes [] No []

- 17.5098 For firms/individuals unaffiliated with the reporting entity (i.e. designated with a "U") listed in the table for Question 17.5, does the total assets under management aggregate to more than 50% of the reporting entity's assets? Yes [] No []

- 17.6 For those firms or individuals listed in the table for 17.5 with an affiliation code of "A" (affiliated) or "U" (unaffiliated), provide the information for the table below.

1 Central Registration Depository Number	2 Name of Firm or Individual	3 Legal Entity Identifier (LEI)	4 Registered With	5 Investment Management Agreement (IMA) Filed

- 18.1 Have all the filing requirements of the Purposes and Procedures Manual of the NAIC Investment Analysis Office been followed? Yes [X] No []

- 18.2 If no, list exceptions:

19. By self-designating 5*GI securities, the reporting entity is certifying the following elements for each self-designated 5*GI security:

- a. Documentation necessary to permit a full credit analysis of the security does not exist.
- b. Issuer or obligor is current on all contracted interest and principal payments.
- c. The insurer has an actual expectation of ultimate payment of all contracted interest and principal.

- Has the reporting entity self-designated 5*GI securities? Yes [] No [X]

GENERAL INTERROGATORIES

PART 2 - PROPERTY & CASUALTY INTERROGATORIES

1. If the reporting entity is a member of a pooling arrangement, did the agreement or the reporting entity's participation change? Yes [] No [X] N/A []
If yes, attach an explanation.

2. Has the reporting entity reinsured any risk with any other reporting entity and agreed to release such entity from liability, in whole or in part, from any loss that may occur on the risk, or portion thereof, reinsured? Yes [] No [X]
If yes, attach an explanation.

3.1 Have any of the reporting entity's primary reinsurance contracts been canceled? Yes [] No [X]

3.2 If yes, give full and complete information thereto.

4.1 Are any of the liabilities for unpaid losses and loss adjustment expenses other than certain workers' compensation tabular reserves (see Annual Statement Instructions pertaining to disclosure of discounting for definition of "tabular reserves") discounted at a rate of interest greater than zero? Yes [] No [X]

4.2 If yes, complete the following schedule:

			TOTAL DISCOUNT				DISCOUNT TAKEN DURING PERIOD			
1	2	3	4	5	6	7	8	9	10	11
Line of Business	Maximum Interest	Discount Rate	Unpaid Losses	Unpaid LAE	IBNR	TOTAL	Unpaid Losses	Unpaid LAE	IBNR	TOTAL
TOTAL										

5. Operating Percentages:

5.1 A&H loss percent %

5.2 A&H cost containment percent %

5.3 A&H expense percent excluding cost containment expenses %

6.1 Do you act as a custodian for health savings accounts? Yes [] No [X]

6.2 If yes, please provide the amount of custodial funds held as of the reporting date \$.

6.3 Do you act as an administrator for health savings accounts? Yes [] No [X]

6.4 If yes, please provide the balance of the funds administered as of the reporting date \$.

7. Is the reporting entity licensed or chartered, registered, qualified, eligible or writing business in at least two states? Yes [X] No []

7.1 If no, does the reporting entity assume reinsurance business that covers risks residing in at least one state other than the state of domicile of the reporting entity? Yes [] No []

SCHEDULE F - CEDED REINSURANCE

Showing All New Reinsurers - Current Year to Date

1 NAIC Company Code	2 ID Number	3 Name of Reinsurer	4 Domiciliary Jurisdiction	5 Type of Reinsurer	6 Certified Reinsurer Rating (1 through 6)	7 Effective Date of Certified Reinsurer Rating
NONE						

STATEMENT AS OF SEPTEMBER 30, 2018 OF THE THE CINCINNATI CASUALTY COMPANY

SCHEDULE T - EXHIBIT OF PREMIUMS WRITTEN

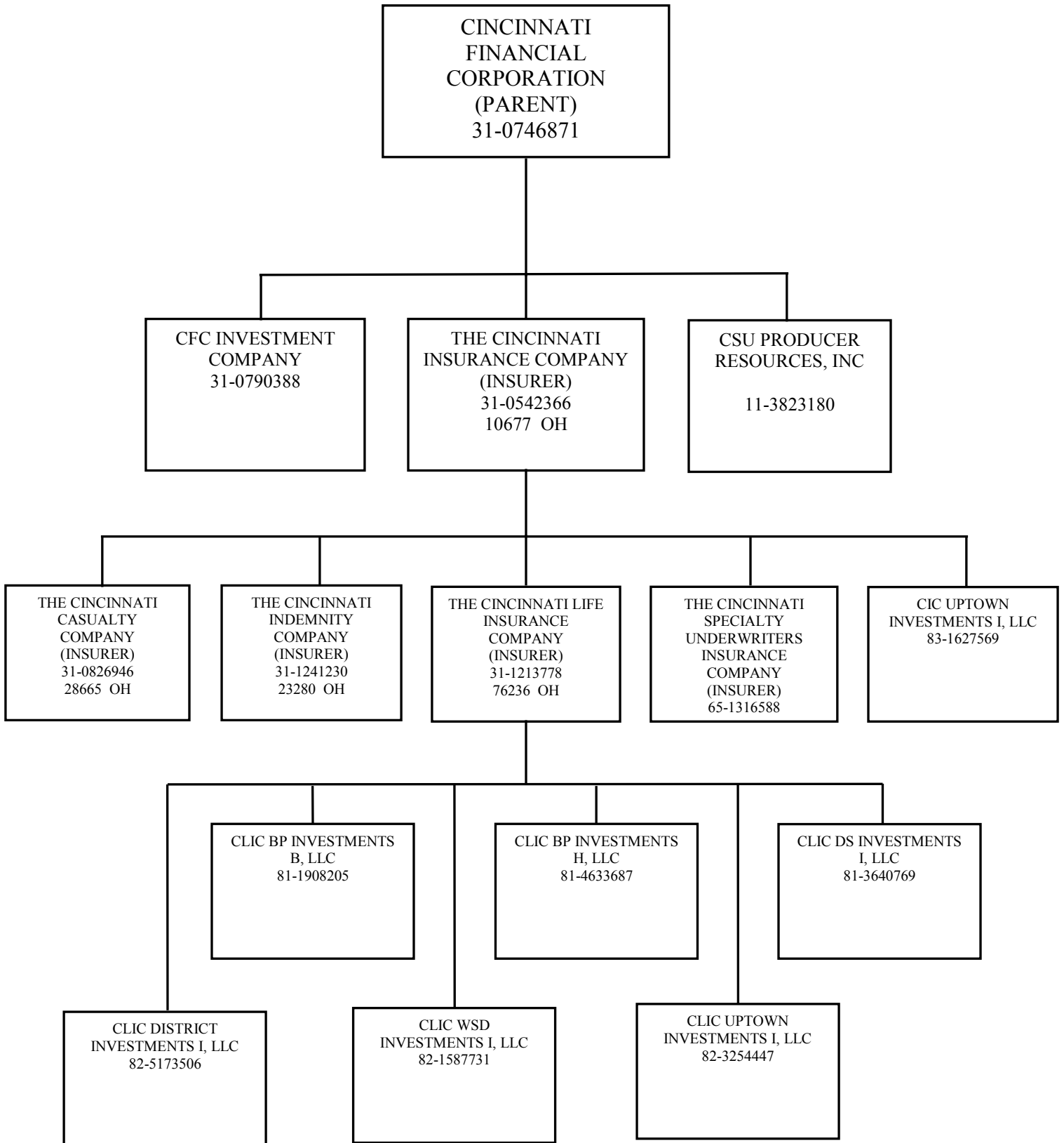
Current Year to Date - Allocated by States and Territories

States, etc.	1 Active Status (a)	Direct Premiums Written		Direct Losses Paid (Deducting Salvage)		Direct Losses Unpaid	
		2 Current Year To Date	3 Prior Year To Date	4 Current Year To Date	5 Prior Year To Date	6 Current Year To Date	7 Prior Year To Date
1. Alabama AL	L	7,189,867	6,983,915	5,775,249	3,719,219	16,202,440	5,504,688
2. Alaska AK	L						
3. Arizona AZ	L	6,415,167	6,523,301	1,295,367	2,680,368	6,981,587	4,407,387
4. Arkansas AR	L	5,868,862	6,266,240	2,736,162	1,410,107	5,207,252	4,525,940
5. California CA	L	514,211	309,443	9,714	42,785	544,858	383,131
6. Colorado CO	L	1,876,215	2,319,861	2,059,314	1,135,332	3,533,669	4,713,290
7. Connecticut CT	L	970,369	760,310	115,140	150,042	1,247,440	1,076,610
8. Delaware DE	L	3,027,036	2,008,116	564,363	816,011	3,493,152	2,780,207
9. District of Columbia DC	L	160,951	208,947	253,096	30,538	1,603,820	1,098,453
10. Florida FL	L	693,574	599,681	253,566	202,637	3,263,849	3,461,509
11. Georgia GA	L	15,637,551	17,552,746	20,197,683	7,132,018	24,069,159	26,712,807
12. Hawaii HI	L	2,522	435			1,005	793
13. Idaho ID	L	2,908,472	2,596,417	707,183	523,217	3,542,198	1,583,361
14. Illinois IL	L	20,520,834	24,254,229	14,826,923	12,169,950	104,729,987	103,620,100
15. Indiana IN	L	16,267,670	18,168,978	7,751,255	12,045,238	40,740,727	42,270,864
16. Iowa IA	L	5,052,647	5,181,921	2,987,264	3,140,366	19,768,894	14,978,147
17. Kansas KS	L	5,104,133	4,747,875	1,095,071	1,136,172	6,479,334	5,666,794
18. Kentucky KY	L	6,678,183	6,494,386	1,775,190	11,504,031	9,523,718	8,809,827
19. Louisiana LA	L	67,134	82,850	14,943	29,249	194,468	91,677
20. Maine ME	L	42,306	(2,058)	2,980	109	22,759	15,830
21. Maryland MD	L	3,959,664	4,725,784	2,927,426	3,042,656	17,435,451	18,463,929
22. Massachusetts MA	L	74,955	59,933	5,303	1,260	107,111	5,181
23. Michigan MI	L	15,258,878	15,251,856	18,339,496	10,816,611	37,894,050	39,059,588
24. Minnesota MN	L	5,796,600	6,080,766	2,106,651	1,375,489	9,982,107	9,702,297
25. Mississippi MS	L	204,659	255,213	18,278	(561)	286,755	277,050
26. Missouri MO	L	11,401,910	11,494,731	3,498,929	4,184,340	23,051,849	23,280,800
27. Montana MT	L	1,806,857	1,360,563	431,519	220,059	1,240,370	736,743
28. Nebraska NE	L	5,178,737	5,122,519	1,453,854	1,765,549	9,643,989	11,451,064
29. Nevada NV	L	43,561	34,649	97		28,842	18,776
30. New Hampshire NH	L	1,196,431	1,161,751	708,706	692,204	2,850,598	2,580,360
31. New Jersey NJ	L	1,227,413	743,043	408,659	186,302	878,562	672,899
32. New Mexico NM	L	2,042,597	1,522,388	159,847	501,693	1,691,205	1,098,161
33. New York NY	L	2,789,501	3,023,003	769,281	2,030,144	6,979,600	6,968,015
34. North Carolina NC	L	13,662,635	13,932,375	5,241,732	5,152,712	30,087,855	25,719,520
35. North Dakota ND	L	545,069	435,544	81,975	174,449	481,590	663,648
36. Ohio OH	L	25,727,836	23,140,580	6,746,596	5,514,800	19,987,300	19,463,386
37. Oklahoma OK	L	278,045	227,904	30,210	36,582	508,381	500,579
38. Oregon OR	L	8,404,561	6,424,512	2,541,495	1,682,553	4,890,467	3,306,803
39. Pennsylvania PA	L	26,217,271	23,719,086	11,452,042	8,049,026	50,772,840	45,602,695
40. Rhode Island RI	L	5,486	1,211	8,776	33,414	171,939	185,029
41. South Carolina SC	L	3,379,376	2,918,009	1,727,633	1,461,834	6,915,142	7,603,423
42. South Dakota SD	L	722,111	822,168	416,386	944,255	2,180,679	2,190,986
43. Tennessee TN	L	8,258,991	9,693,053	4,339,247	8,371,792	18,827,333	21,620,631
44. Texas TX	L	7,314,850	7,705,577	5,964,055	9,564,505	11,189,211	15,880,206
45. Utah UT	L	3,969,173	4,423,010	1,038,162	1,955,027	6,191,105	5,404,251
46. Vermont VT	L	2,243,514	2,594,027	1,314,895	989,484	6,165,781	5,645,505
47. Virginia VA	L	10,684,984	9,219,137	4,600,034	4,198,664	22,976,175	20,660,182
48. Washington WA	L	1,544,303	1,436,963	260,466	129,130	985,420	551,400
49. West Virginia WV	L	1,921,515	2,008,983	1,406,086	272,794	2,105,498	3,343,416
50. Wisconsin WI	L	6,009,238	5,676,871	4,155,980	2,651,104	14,280,190	15,066,878
51. Wyoming WY	L	305,149	294,860	67,499	23,657	130,144	371,585
52. American Samoa AS	N						
53. Guam GU	N						
54. Puerto Rico PR	N						
55. U.S. Virgin Islands VI	N						
56. Northern Mariana Islands MP	N						
57. Canada CAN	N						
58. Aggregate Other Alien OT	XXX						
59. Totals	XXX	271,173,574	270,567,662	144,641,777	133,888,917	562,067,853	539,796,401
DETAILS OF WRITE-INS							
58001.	XXX						
58002.	XXX						
58003.	XXX						
58998. Summary of remaining write-ins for Line 58 from overflow page	XXX						
58999. Totals (Lines 58001 through 58003 plus 58998)(Line 58 above)	XXX						

(a) Active Status Counts:

- L - Licensed or Chartered - Licensed Insurance carrier or domiciled RRG 51
- E - Eligible - Reporting entities eligible or approved to write surplus lines in the state (other than their state of domicile - see DSLI)
- D - Domestic Surplus Lines Insurer (DSLII) - Reporting entities authorized to write surplus lines in the state of domicile
- R - Registered - Non-domiciled RRGs
- Q - Qualified - Qualified or accredited reinsurer
- N - None of the above - Not allowed to write business in the state 6

**SCHEDULE Y – INFORMATION CONCERNING ACTIVITES OF
INSURER MEMBERS OF A HOLDING COMPANY GROUP PART 1
– ORGANIZATIONAL CHART**



STATEMENT AS OF SEPTEMBER 30, 2018 OF THE THE CINCINNATI CASUALTY COMPANY

SCHEDULE Y

PART 1A - DETAIL OF INSURANCE HOLDING COMPANY SYSTEM

1	2	3	4	5	6	7	8	9	10	11	12	13	14	15	16
Group Code	Group Name	NAIC Company Code	ID Number	Federal RSSD	CIK	Name of Securities Exchange if Publicly Traded (U.S. or International)	Names of Parent, Subsidiaries Or Affiliates	Domi-ciliary Loca-tion	Relation-ship to Reporting Entity	Directly Controlled by (Name of Entity/Person)	Type of Control (Ownership, Board, Management, Attorney-in-Fact, Influence, Other)	If Control is Ownership Provide Percen-tage	Ultimate Controlling Entity(ies)/Person(s)	Is an SCA Filing Re-quired? (Y/N)	*
.0244	CINCINNATI INS GRP	.00000	31-0746871		000002028	NASDAQ	CINCINNATI FINANCIAL CORPORATION	.OH	.UIP	CINCINNATI FINANCIAL CORPORATION	Board of Directors	0.000	CINCINNATI FINANCIAL CORPORATION	.N	.0
.0244	CINCINNATI INS GRP	.10677	31-0542366		000127988		THE CINCINNATI INSURANCE COMPANY	.OH	.LDP	CINCINNATI FINANCIAL CORPORATION	Ownership	100.000	CINCINNATI FINANCIAL CORPORATION	.N	.0
.0244	CINCINNATI INS GRP	.76236	31-1213778		000127988		THE CINCINNATI LIFE INSURANCE COMPANY	.OH	.IA	THE CINCINNATI INSURANCE COMPANY	Ownership	100.000	CINCINNATI FINANCIAL CORPORATION	.N	.0
.0244	CINCINNATI INS GRP	.28665	31-0826946		000127988		THE CINCINNATI CASUALTY COMPANY	.OH	.RE	THE CINCINNATI INSURANCE COMPANY	Ownership	100.000	CINCINNATI FINANCIAL CORPORATION	.N	.0
.0244	CINCINNATI INS GRP	.23280	31-1241230		000127988		THE CINCINNATI INDEMNITY COMPANY	.OH	.IA	THE CINCINNATI INSURANCE COMPANY	Ownership	100.000	CINCINNATI FINANCIAL CORPORATION	.N	.0
.0244	CINCINNATI INS GRP	.13037	65-1316588		000142676		THE CINCINNATI SPECIALTY UNDERWRITERS INSURANCE COMPANY	.OH	.IA	THE CINCINNATI INSURANCE COMPANY	Ownership	100.000	CINCINNATI FINANCIAL CORPORATION	.N	.0
.0244	CINCINNATI INS GRP	.00000	31-0790388				CFC INVESTMENT COMPANY	.OH	.NIA	CINCINNATI FINANCIAL CORPORATION	Ownership	100.000	CINCINNATI FINANCIAL CORPORATION	.N	.0
.0244	CINCINNATI INS GRP	.00000	11-3823180		000153446		CSU PRODUCER RESOURCES, INC	.OH	.NIA	CINCINNATI FINANCIAL CORPORATION	Ownership	100.000	CINCINNATI FINANCIAL CORPORATION	.N	.0
.0244	CINCINNATI INS GRP	.00000	81-1908205				CLIC BP INVESTMENTS B, LLC	.OH	.NIA	THE CINCINNATI LIFE INSURANCE COMPANY	Ownership	100.000	CINCINNATI FINANCIAL CORPORATION	.N	.0
.0244	CINCINNATI INS GRP	.00000	81-3640769				CLIC DS INVESTMENTS I, LLC	.OH	.NIA	THE CINCINNATI LIFE INSURANCE COMPANY	Ownership	100.000	CINCINNATI FINANCIAL CORPORATION	.N	.0
.0244	CINCINNATI INS GRP	.00000	81-4633687				CLIC BP INVESTMENTS H, LLC	.OH	.NIA	THE CINCINNATI LIFE INSURANCE COMPANY	Ownership	100.000	CINCINNATI FINANCIAL CORPORATION	.N	.0
.0244	CINCINNATI INS GRP	.00000	82-1587731				CLIC WDS INVESTMENTS I, LLC	.OH	.NIA	THE CINCINNATI LIFE INSURANCE COMPANY	Ownership	100.000	CINCINNATI FINANCIAL CORPORATION	.N	.0
.0244	CINCINNATI INS GRP	.00000	82-3254447				CLIC UPTOWN INVESTMENTS I, LLC	.OH	.NIA	THE CINCINNATI LIFE INSURANCE COMPANY	Ownership	100.000	CINCINNATI FINANCIAL CORPORATION	.N	.0
.0244	CINCINNATI INS GRP	.00000	82-5173506				CLIC DISTRICT INVESTMENTS I, LLC	.OH	.NIA	THE CINCINNATI LIFE INSURANCE COMPANY	Ownership	100.000	CINCINNATI FINANCIAL CORPORATION	.N	.0
.0244	CINCINNATI INS GRP	.00000	83-1627569				CIC UPTOWN INVESTMENTS I, LLC	.OH	.NIA	THE CINCINNATI INSURANCE COMPANY	Ownership	100.000	CINCINNATI FINANCIAL CORPORATION	.N	.0

Asterisk	Explanation
----------	-------------

STATEMENT AS OF SEPTEMBER 30, 2018 OF THE THE CINCINNATI CASUALTY COMPANY

PART 1 - LOSS EXPERIENCE

Line of Business	Current Year to Date			4 Prior Year to Date Direct Loss Percentage
	1 Direct Premiums Earned	2 Direct Losses Incurred	3 Direct Loss Percentage	
1. Fire	2,742,630	1,965,916	71.7	51.4
2. Allied Lines	3,113,716	748,504	24.0	89.5
3. Farmowners multiple peril				
4. Homeowners multiple peril	1,799	(63)	(3.5)	
5. Commercial multiple peril	91,997,495	58,901,080	64.0	56.9
6. Mortgage guaranty				
8. Ocean marine				
9. Inland marine	1,285,408	231,650	18.0	6.0
10. Financial guaranty				
11.1 Medical professional liability - occurrence	1,565,016	916,597	58.6	87.6
11.2 Medical professional liability - claims-made	167,054	48,183	28.8	16.0
12. Earthquake	73,110			
13. Group accident and health				
14. Credit accident and health				
15. Other accident and health				
16. Workers' compensation	98,758,030	55,219,148	55.9	40.7
17.1 Other liability - occurrence	26,554,307	19,883,071	74.9	39.5
17.2 Other liability - claims-made	1,298,598	395,821	30.5	45.8
17.3 Excess workers' compensation				
18.1 Products liability - occurrence	6,784,752	2,442,403	36.0	31.8
18.2 Products liability - claims-made				
19.1,19.2 Private passenger auto liability	6,852	(9,251)	(135.0)	41.4
19.3,19.4 Commercial auto liability	24,903,005	21,924,061	88.0	76.5
21. Auto physical damage	10,028,525	6,053,227	60.4	73.8
22. Aircraft (all perils)				
23. Fidelity				
24. Surety	575,828			
26. Burglary and theft	142,301	91,581	64.4	
27. Boiler and machinery	388,405	4,962	1.3	44.8
28. Credit				
29. International				
30. Warranty				
31. Reinsurance - Nonproportional Assumed Property	XXX	XXX	XXX	XXX
32. Reinsurance - Nonproportional Assumed Liability	XXX	XXX	XXX	XXX
33. Reinsurance - Nonproportional Assumed Financial Lines	XXX	XXX	XXX	XXX
34. Aggregate write-ins for other lines of business				
35. Totals	270,386,830	168,816,890	62.4	50.5
DETAILS OF WRITE-INS				
3401.				
3402.				
3403.				
3498. Summary of remaining write-ins for Line 34 from overflow page				
3499. Totals (Lines 3401 through 3403 plus 3498)(Line 34 above)				

PART 2 - DIRECT PREMIUMS WRITTEN

Line of Business	1	2	3
	Current Quarter	Current Year to Date	Prior Year Year to Date
1. Fire	687,550	2,527,390	2,923,832
2. Allied Lines	834,817	2,707,940	2,728,549
3. Farmowners multiple peril			
4. Homeowners multiple peril	40,202	40,202	
5. Commercial multiple peril	28,403,453	95,668,001	87,912,948
6. Mortgage guaranty			
8. Ocean marine			
9. Inland marine	476,997	1,342,305	1,229,535
10. Financial guaranty			
11.1 Medical professional liability - occurrence	332,701	1,421,358	1,402,342
11.2 Medical professional liability - claims-made	54,699	166,747	38,779
12. Earthquake	18,621	81,057	89,632
13. Group accident and health			
14. Credit accident and health			
15. Other accident and health			
16. Workers' compensation	24,720,424	94,290,847	104,984,700
17.1 Other liability - occurrence	6,981,428	26,167,081	25,512,438
17.2 Other liability - claims-made	429,325	1,420,628	1,266,239
17.3 Excess workers' compensation			
18.1 Products liability - occurrence	1,534,978	7,164,057	6,502,642
18.2 Products liability - claims-made			
19.1,19.2 Private passenger auto liability	23,083	24,303	10,479
19.3,19.4 Commercial auto liability	7,658,385	26,188,402	25,359,127
21. Auto physical damage	3,075,521	10,621,298	9,892,604
22. Aircraft (all perils)			
23. Fidelity			
24. Surety	390,145	803,013	170,277
26. Burglary and theft	42,413	150,924	155,528
27. Boiler and machinery	126,392	388,023	388,011
28. Credit			
29. International			
30. Warranty			
31. Reinsurance - Nonproportional Assumed Property	XXX	XXX	XXX
32. Reinsurance - Nonproportional Assumed Liability	XXX	XXX	XXX
33. Reinsurance - Nonproportional Assumed Financial Lines	XXX	XXX	XXX
34. Aggregate write-ins for other lines of business			
35. Totals	75,831,133	271,173,574	270,567,662
DETAILS OF WRITE-INS			
3401.			
3402.			
3403.			
3498. Summary of remaining write-ins for Line 34 from overflow page			
3499. Totals (Lines 3401 through 3403 plus 3498)(Line 34 above)			

STATEMENT AS OF SEPTEMBER 30, 2018 OF THE THE CINCINNATI CASUALTY COMPANY

PART 3 (000 omitted)

LOSS AND LOSS ADJUSTMENT EXPENSE RESERVES SCHEDULE

	1	2	3	4	5	6	7	8	9	10	11	12	13
Years in Which Losses Occurred	Prior Year-End Known Case Loss and LAE Reserves	Prior Year-End IBNR Loss and LAE Reserves	Total Prior Year-End Loss and LAE Reserves (Cols. 1+2)	2018 Loss and LAE Payments on Claims Reported as of Prior Year-End	2018 Loss and LAE Payments on Claims Unreported as of Prior Year-End	Total 2018 Loss and LAE Payments (Cols. 4+5)	Q.S. Date Known Case Loss and LAE Reserves on Claims Reported and Open as of Prior Year End	Q.S. Date Known Case Loss and LAE Reserves on Claims Reported or Reopened Subsequent to Prior Year End	Q.S. Date IBNR Loss and LAE Reserves	Total Q.S. Loss and LAE Reserves (Cols.7+8+9)	Prior Year-End Known Case Loss and LAE Reserves Developed (Savings)/ Deficiency (Cols.4+7 minus Col. 1)	Prior Year-End IBNR Loss and LAE Reserves Developed (Savings)/ Deficiency (Cols. 5+8+9 minus Col. 2)	Prior Year-End Total Loss and LAE Reserve Developed (Savings)/ Deficiency (Cols. 11+12)
1. 2015 + Prior													
2. 2016													
3. Subtotals 2016 + Prior													
4. 2017													
5. Subtotals 2017 + Prior													
6. 2018	XXX	XXX	XXX	XXX			XXX				XXX	XXX	XXX
7. Totals													
8. Prior Year-End Surplus As Regards Policyholders											Col. 11, Line 7 As % of Col. 1 Line 7	Col. 12, Line 7 As % of Col. 2 Line 7	Col. 13, Line 7 As % of Col. 3 Line 7
											1.	2.	3.
													Col. 13, Line 7 As a % of Col. 1 Line 8
													4.

NONE

SUPPLEMENTAL EXHIBITS AND SCHEDULES INTERROGATORIES

The following supplemental reports are required to be filed as part of your statement filing. However, in the event that your company does not transact the type of business for which the special report must be filed, your response of NO to the specific interrogatory will be accepted in lieu of filing a "NONE" report and a bar code will be printed below. If the supplement is required of your company but is not being filed for whatever reason enter SEE EXPLANATION and provide an explanation following the interrogatory questions.

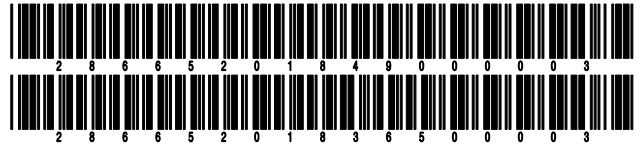
	Response
1. Will the Trusteed Surplus Statement be filed with the state of domicile and the NAIC with this statement?	NO
2. Will Supplement A to Schedule T (Medical Professional Liability Supplement) be filed with this statement?	YES
3. Will the Medicare Part D Coverage Supplement be filed with the state of domicile and the NAIC with this statement?	NO
4. Will the Director and Officer Insurance Coverage Supplement be filed with the state of domicile and the NAIC with this statement?	YES

Explanations:

- 1.
- 3.

Bar Codes:

1. Trusteed Surplus Statement [Document Identifier 490]
3. Medicare Part D Coverage Supplement [Document Identifier 365]



OVERFLOW PAGE FOR WRITE-INS

STATEMENT AS OF SEPTEMBER 30, 2018 OF THE THE CINCINNATI CASUALTY COMPANY

SCHEDULE A - VERIFICATION

Real Estate

	1 Year to Date	2 Prior Year Ended December 31
1. Book/adjusted carrying value, December 31 of prior year		
2. Cost of acquired:		
2.1 Actual cost at time of acquisition		
2.2 Additional investment made after acquisition		
3. Current year change in encumbrances		
4. Total gain (loss) on disposals		
5. Deduct amounts received on disposals		
6. Total foreign exchange change in book/adjusted carrying value		
7. Deduct current year's other than temporary impairment recognized		
8. Deduct current year's depreciation		
9. Book/adjusted carrying value at the end of current period (Lines 1+2+3+4-5+6-7-8)		
10. Deduct total nonadmitted amounts		
11. Statement value at end of current period (Line 9 minus Line 10)		

NONE

SCHEDULE B - VERIFICATION

Mortgage Loans

	1 Year to Date	2 Prior Year Ended December 31
1. Book value/recorded investment excluding accrued interest, December 31 of prior year		
2. Cost of acquired:		
2.1 Actual cost at time of acquisition		
2.2 Additional investment made after acquisition		
3. Capitalized deferred interest and other		
4. Accrual of discount		
5. Unrealized valuation increase (decrease)		
6. Total gain (loss) on disposals		
7. Deduct amounts received on disposals		
8. Deduct amortization of premium and mortgage investment and commitment fees		
9. Total foreign exchange change in book value/recorded investment including accrued interest		
10. Deduct current year's other than temporary impairment recognized		
11. Book value/recorded investment excluding accrued interest at end of current period (Lines 1+2+3+4+5+6-7-8+9-10)		
12. Total valuation allowance		
13. Subtotal (Line 11 plus Line 12)		
14. Deduct total nonadmitted amounts		
15. Statement value at end of current period (Line 13 minus Line 14)		

NONE

SCHEDULE BA - VERIFICATION

Other Long-Term Invested Assets

	1 Year to Date	2 Prior Year Ended December 31
1. Book/adjusted carrying value, December 31 of prior year		2,924
2. Cost of acquired:		
2.1 Actual cost at time of acquisition		
2.2 Additional investment made after acquisition		
3. Capitalized deferred interest and other		
4. Accrual of discount		
5. Unrealized valuation increase (decrease)		
6. Total gain (loss) on disposals		
7. Deduct amounts received on disposals		
8. Deduct amortization of premium and depreciation		2,924
9. Total foreign exchange change in book/adjusted carrying value		
10. Deduct current year's other than temporary impairment recognized		
11. Book/adjusted carrying value at end of current period (Lines 1+2+3+4+5+6-7-8+9-10)		
12. Deduct total nonadmitted amounts		
13. Statement value at end of current period (Line 11 minus Line 12)		

SCHEDULE D - VERIFICATION

Bonds and Stocks

	1 Year to Date	2 Prior Year Ended December 31
1. Book/adjusted carrying value of bonds and stocks, December 31 of prior year	402,716,973	373,535,341
2. Cost of bonds and stocks acquired	23,303,138	82,309,109
3. Accrual of discount	82,736	77,102
4. Unrealized valuation increase (decrease)	3,471,205	6,828,456
5. Total gain (loss) on disposals	3,019,304	10,722,784
6. Deduct consideration for bonds and stocks disposed of	16,988,920	69,553,244
7. Deduct amortization of premium	953,819	1,202,574
8. Total foreign exchange change in book/adjusted carrying value		
9. Deduct current year's other than temporary impairment recognized		
10. Total investment income recognized as a result of prepayment penalties and/or acceleration fees		
11. Book/adjusted carrying value at end of current period (Lines 1+2+3+4+5-6-7+8-9+10)	414,650,617	402,716,973
12. Deduct total nonadmitted amounts		
13. Statement value at end of current period (Line 11 minus Line 12)	414,650,617	402,716,973

STATEMENT AS OF SEPTEMBER 30, 2018 OF THE THE CINCINNATI CASUALTY COMPANY

SCHEDULE D - PART 1B

Showing the Acquisitions, Dispositions and Non-Trading Activity
During the Current Quarter for all Bonds and Preferred Stock by NAIC Designation

NAIC Designation	1 Book/Adjusted Carrying Value Beginning of Current Quarter	2 Acquisitions During Current Quarter	3 Dispositions During Current Quarter	4 Non-Trading Activity During Current Quarter	5 Book/Adjusted Carrying Value End of First Quarter	6 Book/Adjusted Carrying Value End of Second Quarter	7 Book/Adjusted Carrying Value End of Third Quarter	8 Book/Adjusted Carrying Value December 31 Prior Year
BONDS								
1. NAIC 1 (a)	199,685,768			(3,264,888)	194,923,406	199,685,768	196,420,880	201,221,188
2. NAIC 2 (a)	87,914,045	1,997,560		2,961,399	87,589,461	87,914,045	92,873,003	77,607,090
3. NAIC 3 (a)	3,960,178			2,017,211	3,950,638	3,960,178	5,977,389	6,026,269
4. NAIC 4 (a)				(1,990,000)			(1,990,000)	
5. NAIC 5 (a)								
6. NAIC 6 (a)								
7. Total Bonds	291,559,991	1,997,560		(276,279)	286,463,505	291,559,991	293,281,272	284,854,547
PREFERRED STOCK								
8. NAIC 1								
9. NAIC 2								
10. NAIC 3								
11. NAIC 4								
12. NAIC 5								
13. NAIC 6								
14. Total Preferred Stock								
15. Total Bonds and Preferred Stock	291,559,991	1,997,560		(276,279)	286,463,505	291,559,991	293,281,272	284,854,547

(a) Book/Adjusted Carrying Value column for the end of the current reporting period includes the following amount of short-term and cash equivalent bonds by NAIC designation:

NAIC 1 \$; NAIC 2 \$; NAIC 3 \$ NAIC 4 \$; NAIC 5 \$; NAIC 6 \$

Schedule DA - Part 1 - Short-Term Investments

NONE

Schedule DA - Verification - Short-Term Investments

NONE

Schedule DB - Part A - Verification - Options, Caps, Floors, Collars, Swaps and Forwards

NONE

Schedule DB - Part B - Verification - Futures Contracts

NONE

Schedule DB - Part C - Section 1 - Replication (Synthetic Asset) Transactions (RSATs) Open

NONE

Schedule DB-Part C-Section 2-Reconciliation of Replication (Synthetic Asset) Transactions Open

NONE

Schedule DB - Verification - Book/Adjusted Carrying Value, Fair Value and Potential Exposure of Derivatives

NONE

Schedule E - Part 2 - Verification - Cash Equivalents

NONE

Schedule A - Part 2 - Real Estate Acquired and Additions Made

NONE

Schedule A - Part 3 - Real Estate Disposed

NONE

Schedule B - Part 2 - Mortgage Loans Acquired and Additions Made

NONE

Schedule B - Part 3 - Mortgage Loans Disposed, Transferred or Repaid

NONE

Schedule BA - Part 2 - Other Long-Term Invested Assets Acquired and Additions Made

NONE

Schedule BA - Part 3 - Other Long-Term Invested Assets Disposed, Transferred or Repaid

NONE

STATEMENT AS OF SEPTEMBER 30, 2018 OF THE THE CINCINNATI CASUALTY COMPANY

SCHEDULE D - PART 3

Show All Long-Term Bonds and Stock Acquired During the Current Quarter

1	2	3	4	5	6	7	8	9	10
CUSIP Identification	Description	Foreign	Date Acquired	Name of Vendor	Number of Shares of Stock	Actual Cost	Par Value	Paid for Accrued Interest and Dividends	NAIC Designation or Market Indicator (a)
120568-BA-7	BUNGE LIMITED FINANCE CORP		09/04/2018	JPMISL/EQUITIES,LDN		1,997,560	2,000,000		2FE
8399999. Subtotal - Bonds - Industrial and Miscellaneous (Unaffiliated)						1,997,560	2,000,000		XXX
8399997. Total - Bonds - Part 3						1,997,560	2,000,000		XXX
8399998. Total - Bonds - Part 5						XXX	XXX	XXX	XXX
8399999. Total - Bonds						1,997,560	2,000,000		XXX
8999997. Total - Preferred Stocks - Part 3							XXX		XXX
8999998. Total - Preferred Stocks - Part 5						XXX	XXX	XXX	XXX
8999999. Total - Preferred Stocks							XXX		XXX
872540-10-9	TJX ORD		09/11/2018	Stifel Nicolaus & Co.	13,750,000	1,520,962			L
9099999. Subtotal - Common Stocks - Industrial and Miscellaneous (Unaffiliated)						1,520,962	XXX		XXX
9799997. Total - Common Stocks - Part 3						1,520,962	XXX		XXX
9799998. Total - Common Stocks - Part 5						XXX	XXX	XXX	XXX
9799999. Total - Common Stocks						1,520,962	XXX		XXX
9899999. Total - Preferred and Common Stocks						1,520,962	XXX		XXX
9999999 - Totals						3,518,522	XXX		XXX

(a) For all common stock bearing the NAIC market indicator "U" provide: the number of such issues

STATEMENT AS OF SEPTEMBER 30, 2018 OF THE THE CINCINNATI CASUALTY COMPANY

SCHEDULE D - PART 4

Show All Long-Term Bonds and Stock Sold, Redeemed or Otherwise Disposed of During the Current Quarter

1 CUSIP Ident- ification	2 Description	3 For- eign	4 Disposal Date	5 Name of Purchaser	6 Number of Shares of Stock	7 Consid- eration	8 Par Value	9 Actual Cost	10 Prior Year Book/ Adjusted Carrying Value	Change In Book/Adjusted Carrying Value					16 Book/ Adjusted Carrying Value at Disposal Date	17 Foreign Exchange Gain (Loss) on Disposal	18 Realized Gain (Loss) on Disposal	19 Total Gain (Loss) on Disposal	20 Bond Interest/ Stock Dividends Received During Year	21 Stated Con- tractual Maturity Date	22 NAIC Desig- nation or Market In- dicator (a)		
										11 Unrealized Valuation Increase/ (Decrease)	12 Current Year's (Amor- tization)/ Accretion	13 Other Than Temporary Impairment Recogn- ized	14 Total Change in Book/ Adjusted Carrying Value (11 + 12 - 13)	15 Total Foreign Exchange Change in Book /Adjusted Carrying Value									
8399997.	Total - Bonds - Part 4																				XXX	XXX	
8399998.	Total - Bonds - Part 5					XXX	XXX	XXX	XXX	XXX	XXX	XXX	XXX	XXX	XXX	XXX	XXX	XXX	XXX	XXX	XXX	XXX	XXX
8399999.	Total - Bonds																				XXX	XXX	
8999997.	Total - Preferred Stocks - Part 4						XXX														XXX	XXX	
8999998.	Total - Preferred Stocks - Part 5					XXX	XXX	XXX	XXX	XXX	XXX	XXX	XXX	XXX	XXX	XXX	XXX	XXX	XXX	XXX	XXX	XXX	XXX
8999999.	Total - Preferred Stocks						XXX														XXX	XXX	
372460-10-5	GENUINE PARTS ORD		09/11/2018	RBC CAPITAL MARKETS	15,000,000	1,531,530		476,795	1,425,150	(948,356)			(948,356)	476,795		1,054,735	1,054,735			31,725			
9099999.	Subtotal - Common Stocks - Industrial and Miscellaneous (Unaffiliated)					1,531,530	XXX	476,795	1,425,150	(948,356)			(948,356)	476,795		1,054,735	1,054,735			31,725	XXX	XXX	
9799997.	Total - Common Stocks - Part 4					1,531,530	XXX	476,795	1,425,150	(948,356)			(948,356)	476,795		1,054,735	1,054,735			31,725	XXX	XXX	
9799998.	Total - Common Stocks - Part 5					XXX	XXX	XXX	XXX	XXX	XXX	XXX	XXX	XXX	XXX	XXX	XXX	XXX	XXX	XXX	XXX	XXX	XXX
9799999.	Total - Common Stocks					1,531,530	XXX	476,795	1,425,150	(948,356)			(948,356)	476,795		1,054,735	1,054,735			31,725	XXX	XXX	
9899999.	Total - Preferred and Common Stocks					1,531,530	XXX	476,795	1,425,150	(948,356)			(948,356)	476,795		1,054,735	1,054,735			31,725	XXX	XXX	
9999999.	Totals					1,531,530	XXX	476,795	1,425,150	(948,356)			(948,356)	476,795		1,054,735	1,054,735			31,725	XXX	XXX	

(a) For all common stock bearing the NAIC market indicator "U" provide: the number of such issues.....

Schedule DB - Part A - Section 1 - Options, Caps, Floors, Collars, Swaps and Forwards Open

NONE

Schedule DB - Part B - Section 1 - Futures Contracts Open

NONE

Schedule DB - Part B - Section 1B - Brokers with whom cash deposits have been made

NONE

Schedule DB - Part D - Section 1 - Counterparty Exposure for Derivative Instruments Open

NONE

Schedule DB - Part D-Section 2 - Collateral for Derivative Instruments Open - Pledged By

NONE

Schedule DB - Part D-Section 2 - Collateral for Derivative Instruments Open - Pledged To

NONE

Schedule DL - Part 1 - Reinvested Collateral Assets Owned

NONE

Schedule DL - Part 2 - Reinvested Collateral Assets Owned

NONE

Schedule E - Part 2 - Cash Equivalents - Investments Owned End of Current Quarter

N O N E



SUPPLEMENT FOR THE QUARTER ENDING SEPTEMBER 30, 2018 OF THE THE CINCINNATI CASUALTY COMPANY

Designate the type of health care providers reported on this page:
Physicians, including surgeons and osteopaths

**SUPPLEMENT A TO SCHEDULE T
EXHIBIT OF MEDICAL PROFESSIONAL LIABILITY PREMIUMS WRITTEN
ALLOCATED BY STATES AND TERRITORIES**

States, etc.	1 Direct Premiums Written	2 Direct Premiums Earned	Direct Losses Paid		5 Direct Losses Incurred	Direct Losses Unpaid		8 Direct Losses Incurred But Not Reported
			3 Amount	4 No. of Claims		6 Amount Reported	7 No. of Claims	
1. Alabama AL								
2. Alaska AK								
3. Arizona AZ								
4. Arkansas AR								
5. California CA								
6. Colorado CO								
7. Connecticut CT								
8. Delaware DE								
9. District of Columbia DC								
10. Florida FL								
11. Georgia GA	6,191	4,240			1,494			2,179
12. Hawaii HI								
13. Idaho ID								
14. Illinois IL								
15. Indiana IN								
16. Iowa IA								
17. Kansas KS								
18. Kentucky KY								
19. Louisiana LA								
20. Maine ME								
21. Maryland MD	5,525	3,239			905			1,854
22. Massachusetts MA								
23. Michigan MI								
24. Minnesota MN								
25. Mississippi MS								
26. Missouri MO								
27. Montana MT								
28. Nebraska NE								
29. Nevada NV								
30. New Hampshire NH								
31. New Jersey NJ								
32. New Mexico NM								
33. New York NY								
34. North Carolina NC	7,490	5,618			10,193			10,550
35. North Dakota ND								
36. Ohio OH								
37. Oklahoma OK								
38. Oregon OR								
39. Pennsylvania PA	644	205			(23)			(23)
40. Rhode Island RI								
41. South Carolina SC								
42. South Dakota SD								
43. Tennessee TN								
44. Texas TX	1,236	927			72			61
45. Utah UT								
46. Vermont VT								
47. Virginia VA								
48. Washington WA								
49. West Virginia WV								
50. Wisconsin WI								
51. Wyoming WY								
52. American Samoa AS								
53. Guam GU								
54. Puerto Rico PR								
55. U.S. Virgin Islands VI								
56. Northern Mariana Islands MP								
57. Canada CAN								
58. Aggregate Other Aliens OT								
59. Totals	21,086	14,229			12,641			14,620
DETAILS OF WRITE-INS								
58001.								
58002.								
58003.								
58998. Summary of remaining write-ins for Line 58 from overflow page								
58999. Totals (Lines 58001 through 58003 plus 58998)(Line 58 above)								



SUPPLEMENT FOR THE QUARTER ENDING SEPTEMBER 30, 2018 OF THE THE CINCINNATI CASUALTY COMPANY

Designate the type of health care providers reported on this page:
Hospitals

**SUPPLEMENT A TO SCHEDULE T
EXHIBIT OF MEDICAL PROFESSIONAL LIABILITY PREMIUMS WRITTEN
ALLOCATED BY STATES AND TERRITORIES**

States, etc.	1 Direct Premiums Written	2 Direct Premiums Earned	Direct Losses Paid		5 Direct Losses Incurred	Direct Losses Unpaid		8 Direct Losses Incurred But Not Reported
			3 Amount	4 No. of Claims		6 Amount Reported	7 No. of Claims	
1. AlabamaAL								
2. AlaskaAK								
3. ArizonaAZ								
4. ArkansasAR								
5. CaliforniaCA								
6. ColoradoCO								
7. ConnecticutCT								
8. DelawareDE								
9. District of ColumbiaDC								
10. FloridaFL								
11. GeorgiaGA								
12. HawaiiHI								
13. IdahoID								
14. IllinoisIL								
15. IndianaIN								
16. IowaIA								
17. KansasKS								
18. KentuckyKY								
19. LouisianaLA								
20. MaineME								
21. MarylandMD								
22. MassachusettsMA								
23. MichiganMI								
24. MinnesotaMN								
25. MississippiMS								
26. MissouriMO								
27. MontanaMT								
28. NebraskaNE								
29. NevadaNV								
30. New HampshireNH								
31. New JerseyNJ								
32. New MexicoNM								
33. New YorkNY								
34. North CarolinaNC								
35. North DakotaND								
36. OhioOH								
37. OklahomaOK								
38. OregonOR								
39. PennsylvaniaPA								
40. Rhode IslandRI								
41. South CarolinaSC								
42. South DakotaSD								
43. TennesseeTN								
44. TexasTX								
45. UtahUT								
46. VermontVT								
47. VirginiaVA								
48. WashingtonWA								
49. West VirginiaWV								
50. WisconsinWI								
51. WyomingWY								
52. American SamoaAS								
53. GuamGU								
54. Puerto RicoPR								
55. U.S. Virgin IslandsVI								
56. Northern Mariana IslandsMP								
57. CanadaCAN								
58. Aggregate Other AliensOT								
59. Totals								
DETAILS OF WRITE-INS								
58001.								
58002.								
58003.								
58998. Summary of remaining write-ins for Line 58 from overflow page								
58999. Totals (Lines 58001 through 58003 plus 58998)(Line 58 above)								



SUPPLEMENT FOR THE QUARTER ENDING SEPTEMBER 30, 2018 OF THE THE CINCINNATI CASUALTY COMPANY

Designate the type of health care providers reported on this page:
 Other health care professionals, including dentists, chiropractors, and podiatrists

**SUPPLEMENT A TO SCHEDULE T
 EXHIBIT OF MEDICAL PROFESSIONAL LIABILITY PREMIUMS WRITTEN
 ALLOCATED BY STATES AND TERRITORIES**

States, etc.	1 Direct Premiums Written	2 Direct Premiums Earned	Direct Losses Paid		5 Direct Losses Incurred	Direct Losses Unpaid		8 Direct Losses Incurred But Not Reported
			3 Amount	4 No. of Claims		6 Amount Reported	7 No. of Claims	
1. Alabama AL	38,497	44,379			68,801	61,009	2	6,707
2. Alaska AK								
3. Arizona AZ	41,157	35,079	3,500	1	9,126			15,001
4. Arkansas AR	5,854	4,868			510			1,486
5. California CA								
6. Colorado CO	5,310	13,851			1,277			5,493
7. Connecticut CT	1,108	523			155			226
8. Delaware DE	62,708	31,245			13,269			13,269
9. District of Columbia DC								
10. Florida FL	974	731			89			397
11. Georgia GA	36,344	38,120			(13,298)	409,352	2	12,789
12. Hawaii HI								
13. Idaho ID	23,972	16,968			4,703			7,213
14. Illinois IL	95,292	89,388		1	94,861	83,636	2	33,971
15. Indiana IN	16,303	16,615			16,963	480,954	3	1,198
16. Iowa IA	3,806	2,938			1,300			1,199
17. Kansas KS	120,552	98,084			21,293			42,122
18. Kentucky KY	20,303	15,214			6,974			(1,055)
19. Louisiana LA								
20. Maine ME	553	300			70			70
21. Maryland MD	13,784	10,698			656			4,625
22. Massachusetts MA								
23. Michigan MI	190,787	163,192			69,640	321,151	6	33,331
24. Minnesota MN	14,078	12,063			2,828			5,572
25. Mississippi MS								
26. Missouri MO	20,868	17,402			4,603			6,640
27. Montana MT	13,522	13,497			49,145	30,846	1	19,803
28. Nebraska NE	9,921	5,383			1,395			1,880
29. Nevada NV								
30. New Hampshire NH	3,983	2,821			1,198			1,198
31. New Jersey NJ								
32. New Mexico NM	1,774	1,109			471			471
33. New York NY					1,318			(1,430)
34. North Carolina NC	49,898	40,324			63,428	5,000	1	70,283
35. North Dakota ND								
36. Ohio OH	139,993	144,975			22,189			23,993
37. Oklahoma OK								
38. Oregon OR	5,368	7,143			(86)			747
39. Pennsylvania PA	86,563	69,938	5,000	1	(85,889)	91,556	3	(3,116)
40. Rhode Island RI								
41. South Carolina SC	2,695	1,454			243			764
42. South Dakota SD	3,684	1,729			655			732
43. Tennessee TN	68,276	78,938		1	276,651	277,643	3	30,426
44. Texas TX	16,612	66,077			6,634	279,063	2	815
45. Utah UT	7,673	4,820			1,047			2,037
46. Vermont VT	9,572	2,159			70			70
47. Virginia VA	38,681	29,837			5,151			11,090
48. Washington WA	20,032	20,383			3,529			10,238
49. West Virginia WV	18,031	14,005			3,914			6,409
50. Wisconsin WI	13,395	10,080			7,929			(1,737)
51. Wyoming WY	2,359	1,910			348			631
52. American Samoa AS								
53. Guam GU								
54. Puerto Rico PR								
55. U.S. Virgin Islands VI								
56. Northern Mariana Islands MP								
57. Canada CAN								
58. Aggregate Other Aliens OT								
59. Totals	1,224,282	1,128,239	8,500	4	663,160	2,040,210	25	365,558
DETAILS OF WRITE-INS								
58001.								
58002.								
58003.								
58998. Summary of remaining write-ins for Line 58 from overflow page								
58999. Totals (Lines 58001 through 58003 plus 58998)(Line 58 above)								



SUPPLEMENT FOR THE QUARTER ENDING SEPTEMBER 30, 2018 OF THE THE CINCINNATI CASUALTY COMPANY

Designate the type of health care providers reported on this page:
Other health care facilities

**SUPPLEMENT A TO SCHEDULE T
EXHIBIT OF MEDICAL PROFESSIONAL LIABILITY PREMIUMS WRITTEN
ALLOCATED BY STATES AND TERRITORIES**

States, etc.	1 Direct Premiums Written	2 Direct Premiums Earned	Direct Losses Paid		5 Direct Losses Incurred	Direct Losses Unpaid		8 Direct Losses Incurred But Not Reported
			3 Amount	4 No. of Claims		6 Amount Reported	7 No. of Claims	
1. Alabama AL	128,500	88,654	50,000		38,201	22,477	1	22,389
2. Alaska AK								
3. Arizona AZ								
4. Arkansas AR								
5. California CA								
6. Colorado CO								
7. Connecticut CT								
8. Delaware DE								
9. District of Columbia DC								
10. Florida FL								
11. Georgia GA								
12. Hawaii HI								
13. Idaho ID								
14. Illinois IL	19,063	15,092			3,161			6,796
15. Indiana IN								
16. Iowa IA								
17. Kansas KS								
18. Kentucky KY				1	3,025	147,903	3	
19. Louisiana LA								
20. Maine ME								
21. Maryland MD								
22. Massachusetts MA								
23. Michigan MI	20,158	14,977	90,000		(98,564)	82	1	3,522
24. Minnesota MN								
25. Mississippi MS								
26. Missouri MO								
27. Montana MT		31,537			(4,944)			
28. Nebraska NE								
29. Nevada NV								
30. New Hampshire NH								
31. New Jersey NJ								
32. New Mexico NM								
33. New York NY								
34. North Carolina NC		243,759	25,000	2	443,060	724,658	5	
35. North Dakota ND								
36. Ohio OH	81,104	93,880			40,105	166,310	1	13,900
37. Oklahoma OK								
38. Oregon OR	49,080	29,322			3,833			6,830
39. Pennsylvania PA	44,832	72,250	1,750		(138,661)	853,196	7	(1,614)
40. Rhode Island RI								
41. South Carolina SC								
42. South Dakota SD								
43. Tennessee TN		133			(41)			
44. Texas TX								
45. Utah UT								
46. Vermont VT								
47. Virginia VA								
48. Washington WA								
49. West Virginia WV								
50. Wisconsin WI					(195)			
51. Wyoming WY								
52. American Samoa AS								
53. Guam GU								
54. Puerto Rico PR								
55. U.S. Virgin Islands VI								
56. Northern Mariana Islands MP								
57. Canada CAN								
58. Aggregate Other Aliens OT								
59. Totals	342,737	589,603	166,750	3	288,979	1,914,626	18	51,823
DETAILS OF WRITE-INS								
58001.								
58002.								
58003.								
58998. Summary of remaining write-ins for Line 58 from overflow page								
58999. Totals (Lines 58001 through 58003 plus 58998)(Line 58 above)								



SUPPLEMENT FOR THE QUARTER ENDING SEPTEMBER 30, 2018 OF THE THE CINCINNATI CASUALTY COMPANY

DIRECTOR AND OFFICER INSURANCE COVERAGE SUPPLEMENT

Year To Date For The Period Ended SEPTEMBER 30, 2018

NAIC Group Code 0244

NAIC Company Code 28665

Company Name THE CINCINNATI CASUALTY COMPANY

If the reporting entity writes any director and officer (D&O) business, please provide the following:

1. Monoline Policies

1 Direct Written Premium	2 Direct Earned Premium	3 Direct Losses Incurred
\$6,425	\$6,979	\$8,157

2. Commercial Multiple Peril (CMP) Packaged Policies

- 2.1 Does the reporting entity provide D&O liability coverage as part of a CMP packaged policy? Yes [X] No []
- 2.2 Can the direct premium earned for D&O liability coverage provided as part of a CMP packaged policy be quantified or estimated? Yes [X] No []
- 2.3 If the answer to question 2.2 is yes, provide the quantified or estimated direct premium earned amount for D&O liability coverage in CMP packaged policies
- 2.31 Amount quantified:\$79,212
- 2.32 Amount estimated using reasonable assumptions:\$
- 2.4 If the answer to question 2.1 is yes, provide direct losses incurred (losses paid plus change in case reserves) for the D&O liability coverage provided in CMP packaged policies.\$(13,806)