



PROPERTY AND CASUALTY COMPANIES - ASSOCIATION EDITION

QUARTERLY STATEMENT

AS OF SEPTEMBER 30, 2018

OF THE CONDITION AND AFFAIRS OF THE

Motorists Commercial Mutual Insurance Company

NAIC Group Code 0291 (Current) 0291 (Prior) NAIC Company Code 13331 Employer's ID Number 41-0299900

Organized under the Laws of Ohio, State of Domicile or Port of Entry OH

Country of Domicile United States of America

Incorporated/Organized 05/25/1899 Commenced Business 01/04/1900

Statutory Home Office 471 East Broad Street, Columbus, OH, US 43215

Main Administrative Office 471 East Broad Street, Columbus, OH, US 43215

Mail Address 471 East Broad Street, Columbus, OH, US 43215

Primary Location of Books and Records 471 East Broad Street, Columbus, OH, US 43215

Internet Website Address MotoristsGroup.com

Statutory Statement Contact Melissa A. Wood, Accounting@MotoristsGroup.com

OFFICERS

Chief Executive Officer David Lynn Kaufman, Secretary Marchelle Elaine Moore

OTHER

DIRECTORS OR TRUSTEES

Gregory Arthur Burton, Robert Lee McCracken, Charles Donovan Stapleton, Sandra Werth Habrecht, Thomas Joseph Obrokta, Jr., Robert Lynn Western, David Lynn Kaufman, Thomas Charles Ogg, Michael Lee Wiseman

State of Ohio, County of Franklin SS:

The officers of this reporting entity being duly sworn, each depose and say that they are the described officers of said reporting entity, and that on the reporting period stated above, all of the herein described assets were the absolute property of the said reporting entity, free and clear from any liens or claims thereon, except as herein stated, and that this statement, together with related exhibits, schedules and explanations therein contained, annexed or referred to, is a full and true statement of all the assets and liabilities and of the condition and affairs of the said reporting entity as of the reporting period stated above, and of its income and deductions therefrom for the period ended, and have been completed in accordance with the NAIC Annual Statement Instructions and Accounting Practices and Procedures manual except to the extent that: (1) state law may differ; or, (2) that state rules or regulations require differences in reporting not related to accounting practices and procedures, according to the best of their information, knowledge and belief, respectively. Furthermore, the scope of this attestation by the described officers also includes the related corresponding electronic filing with the NAIC, when required, that is an exact copy (except for formatting differences due to electronic filing) of the enclosed statement. The electronic filing may be requested by various regulators in lieu of or in addition to the enclosed statement.

David L. Kaufman, Chief Executive Officer

Marchelle E. Moore, Secretary

J. Christopher Howat, Treasurer

Subscribed and sworn to before me this 7th day of November, 2018

- a. Is this an original filing? Yes [ X ] No [ ]
b. If no, 1. State the amendment number, 2. Date filed, 3. Number of pages attached

STATEMENT AS OF SEPTEMBER 30, 2018 OF THE MOTORISTS COMMERCIAL MUTUAL INSURANCE COMPANY

**ASSETS**

	Current Statement Date			4 December 31 Prior Year Net Admitted Assets
	1 Assets	2 Nonadmitted Assets	3 Net Admitted Assets (Cols. 1 - 2)	
1. Bonds .....	247,694,419		247,694,419	168,081,423
2. Stocks:				
2.1 Preferred stocks .....				
2.2 Common stocks .....	81,656,598	87,573	81,569,025	79,324,274
3. Mortgage loans on real estate:				
3.1 First liens .....				
3.2 Other than first liens.....				
4. Real estate:				
4.1 Properties occupied by the company (less \$ encumbrances) .....	7,721,359	1,620,428	6,100,931	6,225,414
4.2 Properties held for the production of income (less \$ ..... encumbrances) .....				
4.3 Properties held for sale (less \$ encumbrances) .....				
5. Cash (\$ .....1,990,206 ), cash equivalents (\$ .....14,957,441 ) and short-term investments (\$ .....0 ) .....	16,947,647		16,947,647	3,735,597
6. Contract loans (including \$ ..... premium notes) .....				
7. Derivatives .....				
8. Other invested assets .....	25,839,804		25,839,804	26,048,744
9. Receivables for securities .....				113,994
10. Securities lending reinvested collateral assets .....	656,781		656,781	
11. Aggregate write-ins for invested assets .....				
12. Subtotals, cash and invested assets (Lines 1 to 11) .....	380,516,608	1,708,000	378,808,607	283,529,447
13. Title plants less \$ ..... charged off (for Title insurers only) .....				
14. Investment income due and accrued .....	1,907,279		1,907,279	1,887,494
15. Premiums and considerations:				
15.1 Uncollected premiums and agents' balances in the course of collection .....	7,838,202		7,838,202	9,370,455
15.2 Deferred premiums, agents' balances and installments booked but deferred and not yet due (including \$ .....221,400 earned but unbilled premiums) .....	29,054,090	24,600	29,029,490	19,336,010
15.3 Accrued retrospective premiums (\$ ..... ) and contracts subject to redetermination (\$ ..... ) .....				
16. Reinsurance:				
16.1 Amounts recoverable from reinsurers .....	4,951,141		4,951,141	4,192,426
16.2 Funds held by or deposited with reinsured companies .....	32,100,478		32,100,478	39,237,963
16.3 Other amounts receivable under reinsurance contracts .....				
17. Amounts receivable relating to uninsured plans .....				
18.1 Current federal and foreign income tax recoverable and interest thereon .....	4,586,951		4,586,951	2,447,634
18.2 Net deferred tax asset .....	3,482,018		3,482,018	5,699,919
19. Guaranty funds receivable or on deposit .....				
20. Electronic data processing equipment and software .....				
21. Furniture and equipment, including health care delivery assets (\$ ..... ) .....				
22. Net adjustment in assets and liabilities due to foreign exchange rates .....				
23. Receivables from parent, subsidiaries and affiliates .....	1,944,444		1,944,444	1,573,156
24. Health care (\$ ..... ) and other amounts receivable .....				
25. Aggregate write-ins for other than invested assets .....	2,282,724	528,232	1,754,492	1,538,676
26. Total assets excluding Separate Accounts, Segregated Accounts and Protected Cell Accounts (Lines 12 to 25) .....	468,663,934	2,260,832	466,403,102	368,813,179
27. From Separate Accounts, Segregated Accounts and Protected Cell Accounts .....				
28. Total (Lines 26 and 27)	468,663,934	2,260,832	466,403,102	368,813,179
<b>DETAILS OF WRITE-INS</b>				
1101. ....				
1102. ....				
1103. ....				
1198. Summary of remaining write-ins for Line 11 from overflow page .....				
1199. Totals (Lines 1101 through 1103 plus 1198)(Line 11 above)				
2501. Pooled general expenses receivable .....	1,582,488		1,582,488	1,366,699
2502. Equities and deposits in pools and associations .....	172,004		172,004	171,977
2503. Prepaid expenses .....	505,205	505,205		
2598. Summary of remaining write-ins for Line 25 from overflow page .....	23,026	23,026		
2599. Totals (Lines 2501 through 2503 plus 2598)(Line 25 above)	2,282,724	528,232	1,754,492	1,538,676

STATEMENT AS OF SEPTEMBER 30, 2018 OF THE MOTORISTS COMMERCIAL MUTUAL INSURANCE COMPANY

**LIABILITIES, SURPLUS AND OTHER FUNDS**

	1 Current Statement Date	2 December 31, Prior Year
1. Losses (current accident year \$ .....36,206,999 ) .....	158,623,789	91,369,559
2. Reinsurance payable on paid losses and loss adjustment expenses .....	5,398,173	6,918,535
3. Loss adjustment expenses .....	28,854,436	22,898,014
4. Commissions payable, contingent commissions and other similar charges .....	4,142,910	4,185,665
5. Other expenses (excluding taxes, licenses and fees) .....	7,080,293	2,537,391
6. Taxes, licenses and fees (excluding federal and foreign income taxes) .....	1,047,586	1,340,489
7.1 Current federal and foreign income taxes (including \$ .....1,082,792 on realized capital gains (losses)) .....		
7.2 Net deferred tax liability .....		
8. Borrowed money \$ ..... and interest thereon \$ .....		
9. Unearned premiums (after deducting unearned premiums for ceded reinsurance of \$ .....34,188,201 and including warranty reserves of \$ .....0 and accrued accident and health experience rating refunds including \$ .....0 for medical loss ratio rebate per the Public Health Service Act) .....	53,132,370	60,322,981
10. Advance premium .....		6,581
11. Dividends declared and unpaid:		
11.1 Stockholders .....		
11.2 Policyholders .....	584,953	924,541
12. Ceded reinsurance premiums payable (net of ceding commissions) .....	6,308,944	3,923,815
13. Funds held by company under reinsurance treaties .....	29,310,572	21,248,429
14. Amounts withheld or retained by company for account of others .....	59,302	123,329
15. Remittances and items not allocated .....	28,143	(84,482)
16. Provision for reinsurance (including \$ .....0 certified) .....	350,917	350,917
17. Net adjustments in assets and liabilities due to foreign exchange rates .....		
18. Drafts outstanding .....		
19. Payable to parent, subsidiaries and affiliates .....	8,427,799	1,919,357
20. Derivatives .....		
21. Payable for securities .....	3,032,618	21,888
22. Payable for securities lending .....	656,781	
23. Liability for amounts held under uninsured plans .....		
24. Capital notes \$ ..... and interest thereon \$ .....		
25. Aggregate write-ins for liabilities .....	2,126,332	3,331,937
26. Total liabilities excluding protected cell liabilities (Lines 1 through 25) .....	309,165,917	221,338,947
27. Protected cell liabilities .....		
28. Total liabilities (Lines 26 and 27) .....	309,165,917	221,338,947
29. Aggregate write-ins for special surplus funds .....		
30. Common capital stock .....		
31. Preferred capital stock .....		
32. Aggregate write-ins for other than special surplus funds .....		
33. Surplus notes .....		
34. Gross paid in and contributed surplus .....		
35. Unassigned funds (surplus) .....	157,237,186	147,474,232
36. Less treasury stock, at cost:		
36.1 ..... shares common (value included in Line 30 \$ ..... ) .....		
36.2 ..... shares preferred (value included in Line 31 \$ ..... ) .....		
37. Surplus as regards policyholders (Lines 29 to 35, less 36) .....	157,237,186	147,474,232
38. Totals (Page 2, Line 28, Col. 3)	466,403,102	368,813,179
<b>DETAILS OF WRITE-INS</b>		
2501. Pooled general expenses payable .....	1,858,910	3,002,054
2502. Reinsurance assumed overhead payable .....	115,663	159,957
2503. Escheatable funds .....	80,306	81,154
2598. Summary of remaining write-ins for Line 25 from overflow page .....	71,454	88,772
2599. Totals (Lines 2501 through 2503 plus 2598)(Line 25 above)	2,126,332	3,331,937
2901. ....		
2902. ....		
2903. ....		
2998. Summary of remaining write-ins for Line 29 from overflow page .....		
2999. Totals (Lines 2901 through 2903 plus 2998)(Line 29 above)		
3201. ....		
3202. ....		
3203. ....		
3298. Summary of remaining write-ins for Line 32 from overflow page .....		
3299. Totals (Lines 3201 through 3203 plus 3298)(Line 32 above)		

**STATEMENT OF INCOME**

	1 Current Year to Date	2 Prior Year to Date	3 Prior Year Ended December 31
<b>UNDERWRITING INCOME</b>			
1. Premiums earned:			
1.1 Direct (written \$ 51,048,976 )	38,653,976	23,429,831	33,106,042
1.2 Assumed (written \$ 77,513,202 )	84,654,556	99,681,480	134,426,124
1.3 Ceded (written \$ 51,766,334 )	39,322,076	24,032,067	33,913,455
1.4 Net (written \$ 76,795,844 )	83,986,455	99,079,244	133,618,711
<b>DEDUCTIONS:</b>			
2. Losses incurred (current accident year \$ 53,532,000 ):			
2.1 Direct	26,554,780	14,451,259	27,065,255
2.2 Assumed	46,971,352	63,691,848	89,539,848
2.3 Ceded	27,311,510	15,249,519	28,020,426
2.4 Net	46,214,622	62,893,588	88,584,677
3. Loss adjustment expenses incurred	11,175,195	16,151,310	22,954,310
4. Other underwriting expenses incurred	22,420,888	44,946,223	56,627,260
5. Aggregate write-ins for underwriting deductions			
6. Total underwriting deductions (Lines 2 through 5)	79,810,706	123,991,121	168,166,248
7. Net income of protected cells			
8. Net underwriting gain or (loss) (Line 1 minus Line 6 + Line 7)	4,175,749	(24,911,877)	(34,547,537)
<b>INVESTMENT INCOME</b>			
9. Net investment income earned	7,150,025	4,556,134	6,782,953
10. Net realized capital gains (losses) less capital gains tax of \$ 115,688	503,517	1,111,859	2,249,808
11. Net investment gain (loss) (Lines 9 + 10)	7,653,542	5,667,993	9,032,761
<b>OTHER INCOME</b>			
12. Net gain or (loss) from agents' or premium balances charged off (amount recovered \$ 0 amount charged off \$ 152,599 )	(152,599)	(53,180)	(67,787)
13. Finance and service charges not included in premiums	284,696	495,745	652,469
14. Aggregate write-ins for miscellaneous income	(202)	(8,123)	(14,392)
15. Total other income (Lines 12 through 14)	131,895	434,443	570,290
16. Net income before dividends to policyholders, after capital gains tax and before all other federal and foreign income taxes (Lines 8 + 11 + 15)	11,961,186	(18,809,441)	(24,944,486)
17. Dividends to policyholders	586,649	586,731	745,616
18. Net income, after dividends to policyholders, after capital gains tax and before all other federal and foreign income taxes (Line 16 minus Line 17)	11,374,538	(19,396,172)	(25,690,102)
19. Federal and foreign income taxes incurred	(293,919)	(1,706,313)	(3,264,964)
20. Net income (Line 18 minus Line 19)(to Line 22)	11,668,457	(17,689,859)	(22,425,138)
<b>CAPITAL AND SURPLUS ACCOUNT</b>			
21. Surplus as regards policyholders, December 31 prior year	147,474,232	156,687,857	156,687,857
22. Net income (from Line 20)	11,668,457	(17,689,859)	(22,425,138)
23. Net transfers (to) from Protected Cell accounts			
24. Change in net unrealized capital gains (losses) less capital gains tax of \$ (106,890)	824,715	2,196,883	7,777,041
25. Change in net unrealized foreign exchange capital gain (loss)	16,078	101,336	114,946
26. Change in net deferred income tax	(2,324,791)	5,492,766	1,671,398
27. Change in nonadmitted assets	(421,505)	26,053,804	26,079,601
28. Change in provision for reinsurance			(3,793)
29. Change in surplus notes			
30. Surplus (contributed to) withdrawn from protected cells			
31. Cumulative effect of changes in accounting principles		(22,368,199)	(22,427,680)
32. Capital changes:			
32.1 Paid in			
32.2 Transferred from surplus (Stock Dividend)			
32.3 Transferred to surplus			
33. Surplus adjustments:			
33.1 Paid in			
33.2 Transferred to capital (Stock Dividend)			
33.3 Transferred from capital			
34. Net remittances from or (to) Home Office			
35. Dividends to stockholders			
36. Change in treasury stock			
37. Aggregate write-ins for gains and losses in surplus			
38. Change in surplus as regards policyholders (Lines 22 through 37)	9,762,953	(6,213,269)	(9,213,625)
39. Surplus as regards policyholders, as of statement date (Lines 21 plus 38)	157,237,186	150,474,588	147,474,232
<b>DETAILS OF WRITE-INS</b>			
0501.			
0502.			
0503.			
0598. Summary of remaining write-ins for Line 5 from overflow page			
0599. Totals (Lines 0501 through 0503 plus 0598)(Line 5 above)			
1401. Gain / (loss) from sale of assets other than securities	449		
1402. Miscellaneous income or expense	(1)	(7,923)	(14,192)
1403. Penalties and assessments	(650)	(200)	(200)
1498. Summary of remaining write-ins for Line 14 from overflow page			
1499. Totals (Lines 1401 through 1403 plus 1498)(Line 14 above)	(202)	(8,123)	(14,392)
3701.			
3702.			
3703.			
3798. Summary of remaining write-ins for Line 37 from overflow page			
3799. Totals (Lines 3701 through 3703 plus 3798)(Line 37 above)			

## STATEMENT AS OF SEPTEMBER 30, 2018 OF THE MOTORISTS COMMERCIAL MUTUAL INSURANCE COMPANY

**CASH FLOW**

	1 Current Year To Date	2 Prior Year To Date	3 Prior Year Ended December 31
<b>Cash from Operations</b>			
1. Premiums collected net of reinsurance .....	79,963,265	100,483,583	134,529,590
2. Net investment income .....	8,036,571	5,741,178	7,892,927
3. Miscellaneous income .....	131,895	434,443	570,290
4. Total (Lines 1 to 3) .....	88,131,731	106,659,204	142,992,806
5. Benefit and loss related payments .....	(24,984,389)	57,643,180	77,502,180
6. Net transfers to Separate Accounts, Segregated Accounts and Protected Cell Accounts .....			
7. Commissions, expenses paid and aggregate write-ins for deductions .....	24,836,267	61,665,783	75,574,052
8. Dividends paid to policyholders .....	926,236	563,404	705,415
9. Federal and foreign income taxes paid (recovered) net of \$ .....0 tax on capital gains (losses) .....	1,961,086	220,634	215,354
10. Total (Lines 5 through 9) .....	2,739,200	120,093,001	153,997,001
11. Net cash from operations (Line 4 minus Line 10) .....	85,392,531	(13,433,797)	(11,004,195)
<b>Cash from Investments</b>			
12. Proceeds from investments sold, matured or repaid:			
12.1 Bonds .....	31,990,631	39,452,188	42,115,623
12.2 Stocks .....	3,386,718	4,167,475	7,665,813
12.3 Mortgage loans .....			
12.4 Real estate .....			
12.5 Other invested assets .....	627,008	9,885,342	10,266,543
12.6 Net gains or (losses) on cash, cash equivalents and short-term investments .....	(54)	776	847
12.7 Miscellaneous proceeds .....	114,578	601,477	488,520
12.8 Total investment proceeds (Lines 12.1 to 12.7) .....	36,118,881	54,107,258	60,537,345
13. Cost of investments acquired (long-term only):			
13.1 Bonds .....	111,882,626	22,419,511	25,283,771
13.2 Stocks .....	4,145,108	16,855,132	17,816,238
13.3 Mortgage loans .....			
13.4 Real estate .....		7,945,428	7,945,428
13.5 Other invested assets .....	1,066,529	8,498,850	8,776,195
13.6 Miscellaneous applications .....	(3,010,729)	(132,524)	64,221
13.7 Total investments acquired (Lines 13.1 to 13.6) .....	114,083,532	55,586,396	59,885,853
14. Net increase (or decrease) in contract loans and premium notes .....			
15. Net cash from investments (Line 12.8 minus Line 13.7 and Line 14) .....	(77,964,652)	(1,479,138)	651,492
<b>Cash from Financing and Miscellaneous Sources</b>			
16. Cash provided (applied):			
16.1 Surplus notes, capital notes .....			
16.2 Capital and paid in surplus, less treasury stock .....			
16.3 Borrowed funds .....			
16.4 Net deposits on deposit-type contracts and other insurance liabilities .....			
16.5 Dividends to stockholders .....			
16.6 Other cash provided (applied) .....	5,784,171	9,985,503	5,118,408
17. Net cash from financing and miscellaneous sources (Line 16.1 through Line 16.4 minus Line 16.5 plus Line 16.6) .....	5,784,171	9,985,503	5,118,408
<b>RECONCILIATION OF CASH, CASH EQUIVALENTS AND SHORT-TERM INVESTMENTS</b>			
18. Net change in cash, cash equivalents and short-term investments (Line 11, plus Lines 15 and 17) .....	13,212,050	(4,927,431)	(5,234,295)
19. Cash, cash equivalents and short-term investments:			
19.1 Beginning of year .....	3,735,597	8,969,893	8,969,893
19.2 End of period (Line 18 plus Line 19.1) .....	16,947,647	4,042,461	3,735,597

Note: Supplemental disclosures of cash flow information for non-cash transactions:

--	--	--	--

## NOTES TO FINANCIAL STATEMENTS

### 1. Summary of Significant Accounting Policies and Going Concern

#### A. Accounting Practices

This statement has been completed in accordance with the accounting practices and procedures prescribed or permitted by the National Association of Insurance Commissioners (NAIC) and the State of Ohio. A reconciliation of the company's net income and capital and surplus between NAIC SAP and practices prescribed and permitted by the State of Ohio is shown below.

<u>Net Income</u>	<u>SSAP #</u>	<u>F/S Page</u>	<u>F/S Line #</u>	<u>Period Ended September 30, 2018</u>	<u>Period Ended December 31, 2017</u>
(1) Motorists Commercial Mutual Insurance Company state basis	XXX	XXX	XXX	11,668,457	(22,425,138)
(2) State Prescribed Practices that is an increase/(decrease) from NAIC SAP				-	-
(3) State Permitted Practices that is an increase/(decrease) from NAIC SAP				-	-
(4) NAIC SAP (1 - 2 - 3 = 4)	XXX	XXX	XXX	11,668,457	(22,425,138)
<b><u>Surplus</u></b>					
(5) Motorists Commercial Mutual Insurance Company state basis	XXX	XXX	XXX	157,237,186	147,474,232
(6) State Prescribed Practices that is an increase/(decrease) from NAIC SAP				-	-
(7) State Permitted Practices that is an increase/(decrease) from NAIC SAP				-	-
(8) NAIC SAP (5 - 6 - 7 = 8)	XXX	XXX	XXX	157,237,186	147,474,232

#### B. Use of Estimates in the Preparation of the Financial Statements

There were not any significant changes since last year end.

#### C. Accounting Policy

There were not any significant changes since last year end.

- 6) Loan-backed securities are stated in accordance with the guidance provided in SSAP No. 43R: Loan-backed and Structured Securities. The retrospective adjustment method is used to value these securities.

#### D. Going Concern

Management has concluded that there is no substantial doubt of the Company's ability to continue as a going concern.

### 2. Accounting Changes and Corrections of Errors

There were not any significant changes since last year end.

### 3. Business Combinations and Goodwill

There were not any significant changes since last year end.

### 4. Discontinued Operations

There were not any significant changes since last year end.

### 5. Investments

A., B., C., F., G., H., I., J., K., L., O., P., Q., & R.

There were not any significant changes since last year end.

#### D. Loan-Backed Securities

- 1) Prepayment assumptions for single class and multi-class mortgage-backed/asset-backed securities were obtained from market data vendors or broker dealer values.
- 2) The company did not hold any loan-backed securities with other-than-temporary recognized losses.
- 3) The company did not hold any loan-backed securities with current year other-than-temporary recognized losses.
- 4) The financial impact of the company's impaired securities (fair value is less than cost or amortized cost) for which other-than temporary impairments have not been recognized in earnings as a realized loss (including securities with a recognized other-than-temporary impairment for non-interest related declines when a non-recognized interest related impairment remains) is listed below.
  - a. The aggregate amount of unrealized losses:
    1. Less than 12 months 906,797
    2. 12 months or longer 794,963
  - b. The aggregate related fair value of securities with unrealized losses:
    1. Less than 12 months 58,287,110
    2. 12 months or longer 14,324,167
- 5) The company performed an analysis of loan-backed securities and determined that exposure to credit risk was not a factor and did not warrant any other-than-temporary impairments.

#### E. Repurchase Agreements and / or Securities Lending Transactions

- 3) Collateral Received

b. The fair value of collateral received was \$656,781

#### M. Working Capital Finance Investments

The company did not hold any working capital finance investments.

#### N. Offsetting and Netting of Assets and Liabilities

The company was not involved in any Offsetting and Netting of Assets and Liabilities.

### 6. Joint Ventures, Partnerships and Limited Liability Companies

There were not any significant changes since last year end.

## NOTES TO FINANCIAL STATEMENTS

7. **Investment Income**

There were not any significant changes since last year end.

8. **Derivative Instruments**

There were not any significant changes since last year end.

9. **Income Taxes**

There were not any significant changes since last year end.

10. **Information Concerning Parent, Subsidiaries, Affiliates and Other Related Parties**

A.-C.

Motorists Mutual Insurance Company and BrickStreet Mutual Insurance Company secured regulatory approval to enter into an affiliation agreement on April 20th and executed the agreement on April 24, 2017. The companies entered into various intercompany agreements, including intercompany reinsurance pooling and cost sharing agreements, effective January 1, 2018. For more details, refer to Note 26.

D.-N.

There were no other significant changes since last year end.

11. **Debt**

The company did not have any capital notes or other debt obligations outstanding during the periods reported. The company was not party to any Federal Home Loan Bank (FHLB) agreements during the periods reported.

12. **Retirement Plans, Deferred Compensation, Postemployment Benefits and Compensated Absences and Other Postretirement Benefit Plans**

There were not any significant changes since last year end.

13. **Capital and Surplus, Dividend Restrictions and Quasi-Reorganizations**

There were not any significant changes since last year end.

14. **Contingencies**

There were not any significant changes since last year end.

15. **Leases**

There were not any significant changes since last year end.

16. **Information About Financial Instruments with Off-Balance Sheet Risk and Financial Instruments with Concentrations of Credit Risk**

There were not any significant changes since last year end.

17. **Sale, Transfer and Servicing of Financial Assets and Extinguishments of Liabilities**

B. Transfer and Servicing of Financial Assets

2) The company did not have any servicing assets or servicing liabilities to disclose for the periods reported.

4) The company did not securitize any financial assets during the periods reported.

C. Wash Sales

In the course of the company's asset management, there were not any securities sales and reacquisitions made within 30 days of the sale date to enhance the yield on the investment portfolio.

18. **Gain or Loss to the Reporting Entity from Uninsured Plans and the Uninsured Portion of Partially Insured Plans**

There were not any significant changes since last year end.

19. **Direct Premium Written/Produced by Managing General Agents/Third Party Administrators**

There were not any significant changes since last year end.

20. **Fair Value Measurements**

**NOTES TO FINANCIAL STATEMENTS**

A. Fair Value Hierarchy

1) Information regarding assets measured at fair value on a recurring basis is provided below.

Description for each class of asset or liability	Fair Value Measurements at September 30, 2018			
	Quoted Prices in Active Markets for Identical Assets (Level 1)	Significant Other Observable Inputs (Level 2)	Significant Unobservable Inputs (Level 3)	Total
	Assets at fair value			
Perpetual Preferred stock				
Industrial and Misc	-	-	-	-
Parents, Subsidiaries and Affiliates	-	-	-	-
Total Perpetual Preferred Stocks	-	-	-	-
Bonds				
U.S. Governments	-	-	-	-
Industrial and Misc	-	-	-	-
Hybrid Securities	-	-	-	-
Parents, Subsidiaries and Affiliates	-	-	-	-
Total Bonds	-	-	-	-
Common Stock				
Industrial and Misc	60,417,641	-	44,974	60,462,615
Parents, Subsidiaries and Affiliates	-	-	21,193,983	21,193,983
Total Common Stocks	60,417,641	-	21,238,957	81,656,597
Other invested assets	-	-	25,375,477	25,375,477
Total assets at fair value	60,417,641	-	46,614,433	107,032,074

2) Information regarding assets measured at fair value on a recurring basis using significant unobservable inputs (Level 3) is provided below.

	Ending balance at June 30, 2018	Transfers into Level 3	Transfers out of Level 3	Total gains or losses included in Net Income (realized)	Total gains or losses included in Surplus (unrealized)	Purchases	Issuances	Sales	Settlements	Ending balance at September 30, 2018
(a)										
Preferred Stock	-	-	-	-	-	-	-	-	-	-
Fixed Maturities	-	-	-	-	-	-	-	-	-	-
Common Stock										
Industrial and Misc	44,974	-	-	-	-	-	-	-	-	44,974
Parents, Subsidiaries and Affiliates	21,108,973	-	-	-	85,009	-	-	-	-	21,193,983
Other Invested Assets	25,435,686	-	-	(993)	(489,268)	612,866	-	(182,815)	-	25,375,477
Total Assets	46,589,634	-	-	(993)	(404,259)	612,866	-	(182,815)	-	46,614,433
(b)										
Liabilities	-	-	-	-	-	-	-	-	-	-
Total Liabilities	-	-	-	-	-	-	-	-	-	-

3) (a) The company did not recognize any transfers into or out of the Level 3 classification during the reporting period.

(b) The company's policy is to recognize transfers of this nature on the actual date of the event or change in circumstances that caused the transfer.

4) The company valued common stocks using the equity method. Other invested assets were valued using equity statements from the respective fund managers.

5) The company does not hold any derivative assets or liabilities.

B. The company did not have any other assets measured at fair value.

C. Fair Value Measurement

Type of Financial Instrument	Aggregate Fair Value	Admitted Assets	(Level 1)	(Level 2)	(Level 3)	Not Practicable (Carrying Value)
Bonds	245,361,584	247,694,419		245,361,584		
Common Stock	81,656,597	81,569,024	60,417,641		21,238,957	
Other Invested Assets	25,839,805	25,839,805			25,375,477	464,329
	352,857,987	355,103,249	60,417,641	245,361,584	46,614,433	464,329

D. Not Practicable to Estimate Fair Value

	Effective Interest			Explanation
	Carrying Value	Rate	Maturity Date	
Other Invested Assets				
Low Income Housing	464,329	n/a	n/a	Asset is not a marketable financial instrument

21. Other Items

A., B., C., D., E., F., & G.

There were not any significant changes since last year end.

22. Events Subsequent

## NOTES TO FINANCIAL STATEMENTS

There were not any significant changes since last year end.

A. Did the reporting entity write accident and health insurance premium that is subject to section 9010 of the federal Affordable Care Act? NO

### 23. Reinsurance

There were not any significant changes since last year end.

### 24. Retrospectively Rated Contracts & Contracts Subject to Redetermination

There were not any significant changes since last year end.

F. Risk-Sharing Provisions of the Affordable Care Act (ACA)

1) Did the reporting entity write accident and health insurance premium that is subject to the Affordable Care Act risk-sharing provisions (YES/NO)?

NO

2) Impact of Risk Sharing Provisions of the Affordable Care Act on admitted assets, liabilities, and revenues for the current year.

Not Applicable

3) Roll forward of prior year ACA Risk sharing Provisions for the following asset (gross of any nonadmission) and liability balances along with the reasons for adjustments to prior year balance:

Not Applicable

4) Roll forward of risk corridors asset and liability balances by program benefit year

Not Applicable

5) ACA risk corridors receivable as of reporting date

Not Applicable

### 25. Change in Incurred Losses and Loss Adjustment Expenses

Reserves for the company's incurred losses and loss adjustment expenses (after intercompany pooling) attributable to insured events of prior years reflect favorable development totaling \$9,946,869. The development can be attributed primarily to the re-estimation of unpaid losses and loss adjustment expenses in the workers' compensation, products liability, private passenger auto liability, commercial auto liability, auto physical damage, and homeowners lines of business. The favorable development in these lines was slightly offset by losses in the other liability and commercial multiple peril lines of business. The changes reflected in these lines were generally the result of recent development trends. There were not any premium adjustments made as a result of this loss and loss adjustment expense development.

### 26. Intercompany Pooling Arrangements

Effective January 1, 2018, Motorists Mutual Insurance Company and BrickStreet Insurance Group entered into an intercompany pooling arrangement. The arrangement called for the realignment of pooling participation rates. Intercompany balances arising from the pool realignment were settled during the quarter ended March 31, 2018. Updated rates are highlighted below.

BrickStreet Mutual Insurance Company	48.0%
Motorists Mutual Insurance Company	32.4%
Motorists Commercial Mutual Insurance Company	10.3%
Consumers Insurance USA, Inc.	2.1%
Wilson Mutual Insurance Company	1.7%
Iowa Mutual Insurance Company	1.7%
Phenix Mutual Fire Insurance Company	1.6%
SummitPoint Insurance Company	0.8%
PinnaclePoint Insurance Company	0.8%
Iowa American Insurance Company	0.6%
MICO Insurance Company	0.0%
NorthStone Insurance Company	0.0%
AlleghenyPoint Insurance Company	0.0%

### 27. Structured Settlements

There were not any significant changes since last year end.

### 28. Health Care Receivables

There were not any significant changes since last year end.

### 29. Participating Policies

There were not any significant changes since last year end.

### 30. Premium Deficiency Reserves

There were not any significant changes since last year end.

### 31. High Deductibles

There were not any significant changes since last year end.

### 32. Discounting of Liabilities for Unpaid Losses or Unpaid Loss Adjustment Expenses

There were not any significant changes since last year end.

### 33. Asbestos/Environmental Reserves

## NOTES TO FINANCIAL STATEMENTS

There were not any significant changes since last year end.

34. **Subscriber Savings Accounts**

There were not any significant changes since last year end.

35. **Multiple Peril Crop Insurance**

There were not any significant changes since last year end.

36. **Financial Guaranty Insurance**

The company did not write financial guaranty insurance during the periods reported.

# GENERAL INTERROGATORIES

## PART 1 - COMMON INTERROGATORIES

### GENERAL

- 1.1 Did the reporting entity experience any material transactions requiring the filing of Disclosure of Material Transactions with the State of Domicile, as required by the Model Act? ..... Yes [ ] No [ X ]
- 1.2 If yes, has the report been filed with the domiciliary state? ..... Yes [ ] No [ ]
- 2.1 Has any change been made during the year of this statement in the charter, by-laws, articles of incorporation, or deed of settlement of the reporting entity? ..... Yes [ ] No [ X ]
- 2.2 If yes, date of change: .....
- 3.1 Is the reporting entity a member of an Insurance Holding Company System consisting of two or more affiliated persons, one or more of which is an insurer? ..... Yes [ X ] No [ ]  
If yes, complete Schedule Y, Parts 1 and 1A.
- 3.2 Have there been any substantial changes in the organizational chart since the prior quarter end? ..... Yes [ ] No [ X ]
- 3.3 If the response to 3.2 is yes, provide a brief description of those changes.
- 3.4 Is the reporting entity publicly traded or a member of a publicly traded group? ..... Yes [ ] No [ X ]
- 3.5 If the response to 3.4 is yes, provide the CIK (Central Index Key) code issued by the SEC for the entity/group. ....
- 4.1 Has the reporting entity been a party to a merger or consolidation during the period covered by this statement? ..... Yes [ ] No [ X ]
- 4.2 If yes, provide the name of the entity, NAIC Company Code, and state of domicile (use two letter state abbreviation) for any entity that has ceased to exist as a result of the merger or consolidation.

1	2	3
Name of Entity	NAIC Company Code	State of Domicile

5. If the reporting entity is subject to a management agreement, including third-party administrator(s), managing general agent(s), attorney-in-fact, or similar agreement, have there been any significant changes regarding the terms of the agreement or principals involved? ..... Yes [ ] No [ ] N/A [ X ]  
If yes, attach an explanation.
- 6.1 State as of what date the latest financial examination of the reporting entity was made or is being made. .... 12/31/2013
- 6.2 State the as of date that the latest financial examination report became available from either the state of domicile or the reporting entity. This date should be the date of the examined balance sheet and not the date the report was completed or released. .... 12/31/2013
- 6.3 State as of what date the latest financial examination report became available to other states or the public from either the state of domicile or the reporting entity. This is the release date or completion date of the examination report and not the date of the examination (balance sheet date). .... 11/07/2014
- 6.4 By what department or departments?  
Ohio Department of Insurance
- 6.5 Have all financial statement adjustments within the latest financial examination report been accounted for in a subsequent financial statement filed with Departments? ..... Yes [ ] No [ ] N/A [ X ]
- 6.6 Have all of the recommendations within the latest financial examination report been complied with? ..... Yes [ ] No [ ] N/A [ X ]
- 7.1 Has this reporting entity had any Certificates of Authority, licenses or registrations (including corporate registration, if applicable) suspended or revoked by any governmental entity during the reporting period? ..... Yes [ ] No [ X ]
- 7.2 If yes, give full information:
- 8.1 Is the company a subsidiary of a bank holding company regulated by the Federal Reserve Board? ..... Yes [ ] No [ X ]
- 8.2 If response to 8.1 is yes, please identify the name of the bank holding company.
- 8.3 Is the company affiliated with one or more banks, thrifts or securities firms? ..... Yes [ ] No [ X ]
- 8.4 If response to 8.3 is yes, please provide below the names and location (city and state of the main office) of any affiliates regulated by a federal regulatory services agency [i.e. the Federal Reserve Board (FRB), the Office of the Comptroller of the Currency (OCC), the Federal Deposit Insurance Corporation (FDIC) and the Securities Exchange Commission (SEC)] and identify the affiliate's primary federal regulator.

1	2	3	4	5	6
Affiliate Name	Location (City, State)	FRB	OCC	FDIC	SEC

## GENERAL INTERROGATORIES

- 9.1 Are the senior officers (principal executive officer, principal financial officer, principal accounting officer or controller, or persons performing similar functions) of the reporting entity subject to a code of ethics, which includes the following standards? ..... Yes  No
- (a) Honest and ethical conduct, including the ethical handling of actual or apparent conflicts of interest between personal and professional relationships;
- (b) Full, fair, accurate, timely and understandable disclosure in the periodic reports required to be filed by the reporting entity;
- (c) Compliance with applicable governmental laws, rules and regulations;
- (d) The prompt internal reporting of violations to an appropriate person or persons identified in the code; and
- (e) Accountability for adherence to the code.
- 9.11 If the response to 9.1 is No, please explain:
- 9.2 Has the code of ethics for senior managers been amended? ..... Yes  No
- 9.21 If the response to 9.2 is Yes, provide information related to amendment(s).
- 9.3 Have any provisions of the code of ethics been waived for any of the specified officers? ..... Yes  No
- 9.31 If the response to 9.3 is Yes, provide the nature of any waiver(s).

### FINANCIAL

- 10.1 Does the reporting entity report any amounts due from parent, subsidiaries or affiliates on Page 2 of this statement? ..... Yes  No
- 10.2 If yes, indicate any amounts receivable from parent included in the Page 2 amount: ..... \$ .....0

### INVESTMENT

- 11.1 Were any of the stocks, bonds, or other assets of the reporting entity loaned, placed under option agreement, or otherwise made available for use by another person? (Exclude securities under securities lending agreements.) ..... Yes  No
- 11.2 If yes, give full and complete information relating thereto:
12. Amount of real estate and mortgages held in other invested assets in Schedule BA: ..... \$ .....0
13. Amount of real estate and mortgages held in short-term investments: ..... \$ .....0
- 14.1 Does the reporting entity have any investments in parent, subsidiaries and affiliates? ..... Yes  No
- 14.2 If yes, please complete the following:
- |   | 1<br>Prior Year-End<br>Book/Adjusted<br>Carrying Value | 2<br>Current Quarter<br>Book/Adjusted<br>Carrying Value |
|---|--|---|
| 14.21 Bonds .....   | \$ .....   | \$ .....  |
| 14.22 Preferred Stock .....   | \$ .....   | \$ .....  |
| 14.23 Common Stock .....  | \$ 20,672,804  | \$ 20,368,983   |
| 14.24 Short-Term Investments .....  | \$ .....   | \$ .....  |
| 14.25 Mortgage Loans on Real Estate .....   | \$ .....   | \$ .....  |
| 14.26 All Other .....   | \$ .....   | \$ .....  |
| 14.27 Total Investment in Parent, Subsidiaries and Affiliates (Subtotal Lines 14.21 to 14.26) ..... | \$ 20,672,804  | \$ 20,368,983   |
| 14.28 Total Investment in Parent included in Lines 14.21 to 14.26 above .....                       | \$ .....   | \$ .....  |
- 15.1 Has the reporting entity entered into any hedging transactions reported on Schedule DB? ..... Yes  No
- 15.2 If yes, has a comprehensive description of the hedging program been made available to the domiciliary state? ..... Yes  No
- If no, attach a description with this statement.

STATEMENT AS OF SEPTEMBER 30, 2018 OF THE MOTORISTS COMMERCIAL MUTUAL INSURANCE COMPANY  
**GENERAL INTERROGATORIES**

16. For the reporting entity's security lending program, state the amount of the following as of the current statement date:
- 16.1 Total fair value of reinvested collateral assets reported on Schedule DL, Parts 1 and 2 .....\$ .....656,781  
 16.2 Total book adjusted/carrying value of reinvested collateral assets reported on Schedule DL, Parts 1 and 2 .....\$ .....656,781  
 16.3 Total payable for securities lending reported on the liability page .....\$ .....656,781

17. Excluding items in Schedule E - Part 3 - Special Deposits, real estate, mortgage loans and investments held physically in the reporting entity's offices, vaults or safety deposit boxes, were all stocks, bonds and other securities, owned throughout the current year held pursuant to a custodial agreement with a qualified bank or trust company in accordance with Section 1, III - General Examination Considerations, F. Outsourcing of Critical Functions, Custodial or Safekeeping Agreements of the NAIC Financial Condition Examiners Handbook? ..... Yes [ X ] No [ ]
- 17.1 For all agreements that comply with the requirements of the NAIC Financial Condition Examiners Handbook, complete the following:

1 Name of Custodian(s)	2 Custodian Address
BNY Mellon .....	500 Grant Street One Mellon Center, Suite #1035, Pittsburgh, PA 15258 .....

- 17.2 For all agreements that do not comply with the requirements of the NAIC Financial Condition Examiners Handbook, provide the name, location and a complete explanation:

1 Name(s)	2 Location(s)	3 Complete Explanation(s)

- 17.3 Have there been any changes, including name changes, in the custodian(s) identified in 17.1 during the current quarter? ..... Yes [ ] No [ X ]

- 17.4 If yes, give full information relating thereto:

1 Old Custodian	2 New Custodian	3 Date of Change	4 Reason

- 17.5 Investment management – Identify all investment advisors, investment managers, broker/dealers, including individuals that have the authority to make investment decisions on behalf of the reporting entity. For assets that are managed internally by employees of the reporting entity, note as such. ["...that have access to the investment accounts"; "...handle securities"]

1 Name of Firm or Individual	2 Affiliation
Aberdeen Asset Management Inc. ....	U.....
Adams Street Partners, LLC .....	U.....
Chickasaw Capital Management, LLC .....	U.....
Crescent Capital Group LP .....	U.....
Diamond Hill Capital Management, Inc. ....	U.....
HarbourVest Partners LLC .....	U.....
New England Asset Management, Inc. ....	U.....
Northern Trust Investments, Inc. ....	U.....
Park Street Capital private Equity Fund VIII, LLC .....	U.....

- 17.5097 For those firms/individuals listed in the table for Question 17.5, do any firms/individuals unaffiliated with the reporting entity (i.e. designated with a "U") manage more than 10% of the reporting entity's assets? ..... Yes [ X ] No [ ]

- 17.5098 For firms/individuals unaffiliated with the reporting entity (i.e. designated with a "U") listed in the table for Question 17.5, does the total assets under management aggregate to more than 50% of the reporting entity's assets? ..... Yes [ ] No [ X ]

- 17.6 For those firms or individuals listed in the table for 17.5 with an affiliation code of "A" (affiliated) or "U" (unaffiliated), provide the information for the table below.

1 Central Registration Depository Number	2 Name of Firm or Individual	3 Legal Entity Identifier (LEI)	4 Registered With	5 Investment Management Agreement (IMA) Filed
111069 .....	Aberdeen Asset Management Inc. ....	5493001MVQ1SZLW4JU74 .....	Sec .....	NO.....
109358 .....	Adams Street Partners, LLC .....	549300GXEOBEF8KQ2C40 .....	Sec .....	NO.....
127398 .....	Chickasaw Capital Management, LLC .....		Sec .....	NO.....
153966 .....	Crescent Capital Group LP .....	549300L8Z46F3ZAWSB82 .....	Sec .....	NO.....
110638 .....	Diamond Hill Capital Management, Inc. ....		Sec .....	NO.....
109846 .....	HarbourVest Partners LLC .....	5493001MCDH716N1XC24 .....	Sec .....	NO.....

- 18.1 Have all the filing requirements of the Purposes and Procedures Manual of the NAIC Investment Analysis Office been followed? ..... Yes [ X ] No [ ]

- 18.2 If no, list exceptions:

19. By self-designating 5\*GI securities, the reporting entity is certifying the following elements for each self-designated 5\*GI security:
- a. Documentation necessary to permit a full credit analysis of the security does not exist.  
 b. Issuer or obligor is current on all contracted interest and principal payments.  
 c. The insurer has an actual expectation of ultimate payment of all contracted interest and principal.
- Has the reporting entity self-designated 5\*GI securities? ..... Yes [ ] No [ X ]

# GENERAL INTERROGATORIES

## PART 2 - PROPERTY & CASUALTY INTERROGATORIES

1. If the reporting entity is a member of a pooling arrangement, did the agreement or the reporting entity's participation change? ..... Yes  No  N/A   
 If yes, attach an explanation.

Effective January 1, 2018, Motorists Mutual Insurance Company and BrickStreet Insurance Group entered into a pooling arrangement. Each pool member's participation rate was revised. For more details, refer to Note 26.

2. Has the reporting entity reinsured any risk with any other reporting entity and agreed to release such entity from liability, in whole or in part, from any loss that may occur on the risk, or portion thereof, reinsured? ..... Yes  No   
 If yes, attach an explanation.

3.1 Have any of the reporting entity's primary reinsurance contracts been canceled? ..... Yes  No

3.2 If yes, give full and complete information thereto.

4.1 Are any of the liabilities for unpaid losses and loss adjustment expenses other than certain workers' compensation tabular reserves (see Annual Statement Instructions pertaining to disclosure of discounting for definition of "tabular reserves") discounted at a rate of interest greater than zero? ..... Yes  No

4.2 If yes, complete the following schedule:

			TOTAL DISCOUNT				DISCOUNT TAKEN DURING PERIOD			
1	2	3	4	5	6	7	8	9	10	11
Line of Business	Maximum Interest	Discount Rate	Unpaid Losses	Unpaid LAE	IBNR	TOTAL	Unpaid Losses	Unpaid LAE	IBNR	TOTAL
TOTAL										

5. Operating Percentages:

5.1 A&H loss percent .....(0.146)%

5.2 A&H cost containment percent .....0.000 %

5.3 A&H expense percent excluding cost containment expenses .....(0.346)%

6.1 Do you act as a custodian for health savings accounts? ..... Yes  No

6.2 If yes, please provide the amount of custodial funds held as of the reporting date .....\$.....

6.3 Do you act as an administrator for health savings accounts? ..... Yes  No

6.4 If yes, please provide the balance of the funds administered as of the reporting date .....\$.....

7. Is the reporting entity licensed or chartered, registered, qualified, eligible or writing business in at least two states? ..... Yes  No

7.1 If no, does the reporting entity assume reinsurance business that covers risks residing in at least one state other than the state of domicile of the reporting entity? ..... Yes  No

STATEMENT AS OF SEPTEMBER 30, 2018 OF THE MOTORISTS COMMERCIAL MUTUAL INSURANCE COMPANY

**SCHEDULE F - CEDED REINSURANCE**

Showing All New Reinsurers - Current Year to Date

1 NAIC Company Code	2 ID Number	3 Name of Reinsurer	4 Domiciliary Jurisdiction	5 Type of Reinsurer	6 Certified Reinsurer Rating (1 through 6)	7 Effective Date of Certified Reinsurer Rating
.10677	.31-0542366	U.S. Insurers Cincinnati Insurance Company	.OH	Authorized		
.42374	.74-2195939	Houston Casualty Company	.TX	Authorized		
.10829	.06-1481194	Markel Global Reinsurance Company	.DE	Authorized		
		All Other Insurers				
.00000	.AA-1120175	Fidelis Underwriting Ltd	.GBR	Unauthorized		
.00000	.AA-1120084	Lloyd's Syndicate Number 1955	.GBR	Authorized		
.00000	.AA-3190686	Partner Reinsurance Company Ltd	.BMU	Authorized		
.00000	.CR-1460023	Tokio Millennium Re AG	.CHE	Certified	1	.01/01/2016

STATEMENT AS OF SEPTEMBER 30, 2018 OF THE MOTORISTS COMMERCIAL MUTUAL INSURANCE COMPANY

**SCHEDULE T - EXHIBIT OF PREMIUMS WRITTEN**

Current Year to Date - Allocated by States and Territories

States, etc.	1 Active Status (a)	Direct Premiums Written		Direct Losses Paid (Deducting Salvage)		Direct Losses Unpaid	
		2 Current Year To Date	3 Prior Year To Date	4 Current Year To Date	5 Prior Year To Date	6 Current Year To Date	7 Prior Year To Date
1. Alabama	AL	N		9,238	9,386	349,255	360,061
2. Alaska	AK	N				823	394
3. Arizona	AZ	L		(306)	(2,926)	26,949	54,126
4. Arkansas	AR	N					
5. California	CA	L		332,003	414,935	1,706,567	2,343,025
6. Colorado	CO	L	(2,843)	(15,383)	2,511	44,793	200,742
7. Connecticut	CT	L		25,803	195,312	91,220	1,054,843
8. Delaware	DE	L		(2,859)	(480)	1,355,318	1,320,533
9. District of Columbia	DC	L					
10. Florida	FL	N		68,150	61,579	468,272	618,379
11. Georgia	GA	L				114,131	113,975
12. Hawaii	HI	N					
13. Idaho	ID	L	315	(2,191)	(1,967)	24,193	74,513
14. Illinois	IL	L	4,760,952	2,097,862	1,112,047	8,437,689	6,467,560
15. Indiana	IN	L	627,349	582,214	105,048	1,977,333	1,488,617
16. Iowa	IA	L	3,008,832	2,351,443	931,107	2,239,872	1,168,693
17. Kansas	KS	L	1,428	1,436		611	457
18. Kentucky	KY	L	786,816	721,262	63,470	630,355	586,106
19. Louisiana	LA	N	275	275	10,625	40,631	868,002
20. Maine	ME	L	1,657,086	1,408,561	894,160	390,534	1,347,761
21. Maryland	MD	L	2,349	3,277		(100)	21,807
22. Massachusetts	MA	L	3,817,949	3,427,417	1,216,751	1,303,394	2,598,288
23. Michigan	MI	L	7,197,314	3,882,744	2,831,636	679,206	4,861,464
24. Minnesota	MN	L	1,435,095	971,455	603,095	315,125	4,318,877
25. Mississippi	MS	N					23
26. Missouri	MO	L	1,875	1,882			25,341
27. Montana	MT	N			10,254	15,252	119,747
28. Nebraska	NE	L	1,997,859	902,916	138,871	630,041	2,142,381
29. Nevada	NV	L			(2,239)	(2,425)	22,178
30. New Hampshire	NH	L	1,129,982	1,266,573	2,450,854	520,241	8,818,443
31. New Jersey	NJ	L			58,704	455,670	1,392,718
32. New Mexico	NM	L					395
33. New York	NY	L	1,075	1,750	281,954	193,637	2,977,052
34. North Carolina	NC	L	(1,017)	7,447			3,759
35. North Dakota	ND	L					149
36. Ohio	OH	L	2,109,775	2,075,044	390,923	830,166	1,464,141
37. Oklahoma	OK	L					185
38. Oregon	OR	L			466,817	372,595	2,197,683
39. Pennsylvania	PA	L	848,709	1,008,347	2,442,885	1,939,598	1,933,854
40. Rhode Island	RI	L	1,113,924	208,860	143,985	165,930	401,275
41. South Carolina	SC	L	5,602,769	350,471	856,745	16,709	3,700,716
42. South Dakota	SD	L	20,276	19,099	24,848	23,832	296,758
43. Tennessee	TN	L	2,953,570	870,557	282,424		1,477,266
44. Texas	TX	L	(2,651)	22,055	171,862	69,719	4,322,953
45. Utah	UT	L					5,597
46. Vermont	VT	L	690,322	664,488	158,022	79,608	1,021,791
47. Virginia	VA	L	3,508	3,556	23,981	12,441	470,277
48. Washington	WA	L		361	11,566	97,834	845,010
49. West Virginia	WV	L	44,574	17,418		7,000	29,299
50. Wisconsin	WI	L	11,238,665	3,380,600	1,841,401	1,660,270	7,177,740
51. Wyoming	WY	L					8
52. American Samoa	AS	N					
53. Guam	GU	N					
54. Puerto Rico	PR	N					
55. U.S. Virgin Islands	VI	N					
56. Northern Mariana Islands	MP	N					
57. Canada	CAN	N					
58. Aggregate Other Alien	OT	XXX					
59. Totals	XXX		51,048,976	26,246,842	17,936,250	13,753,012	72,330,319
DETAILS OF WRITE-INS							
58001.	XXX						
58002.	XXX						
58003.	XXX						
58998. Summary of remaining write-ins for Line 58 from overflow page	XXX						
58999. Totals (Lines 58001 through 58003 plus 58998)(Line 58 above)	XXX						

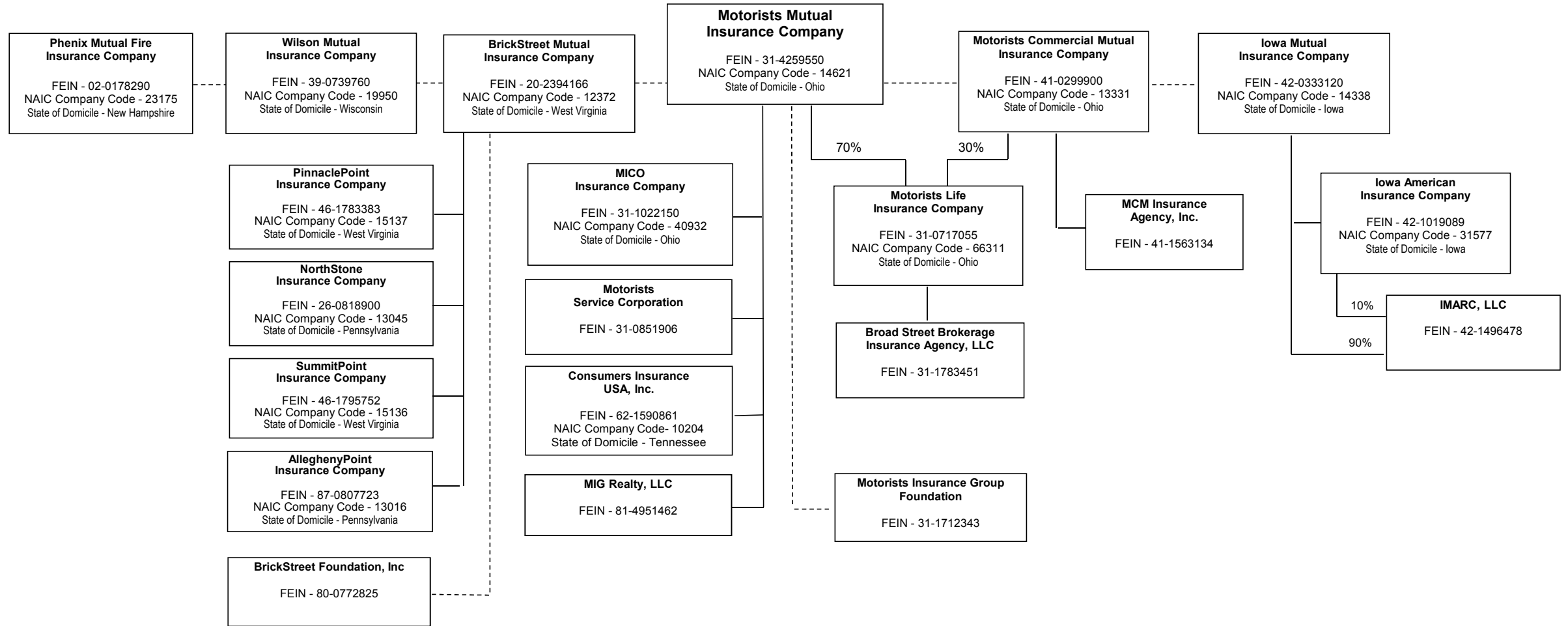
(a) Active Status Counts:

L - Licensed or Chartered - Licensed Insurance carrier or domiciled RRG .....43  
 E - Eligible - Reporting entities eligible or approved to write surplus lines in the state (other than their state of domicile - see DSLI) .....  
 D - Domestic Surplus Lines Insurer (DSLII) - Reporting entities authorized to write surplus lines in the state of domicile.....

R - Registered - Non-domiciled RRGs.....  
 Q - Qualified - Qualified or accredited reinsurer.....  
 N - None of the above - Not allowed to write business in the state .....14

STATEMENT AS OF SEPTEMBER 30, 2018 OF THE MOTORISTS COMMERCIAL MUTUAL INSURANCE COMPANY

**SCHEDULE Y - INFORMATION CONCERNING ACTIVITIES OF INSURER MEMBERS OF A HOLDING COMPANY GROUP**  
**PART 1 - ORGANIZATIONAL CHART**



STATEMENT AS OF SEPTEMBER 30, 2018 OF THE MOTORISTS COMMERCIAL MUTUAL INSURANCE COMPANY

**SCHEDULE Y**

**PART 1A - DETAIL OF INSURANCE HOLDING COMPANY SYSTEM**

1	2	3	4	5	6	7	8	9	10	11	12	13	14	15	16
Group Code	Group Name	NAIC Company Code	ID Number	Federal RSSD	CIK	Name of Securities Exchange if Publicly Traded (U.S. or International)	Names of Parent, Subsidiaries Or Affiliates	Domi-ciliary Location	Relation-ship to Reporting Entity	Directly Controlled by (Name of Entity/Person)	Type of Control (Ownership, Board, Management, Attorney-in-Fact, Influence, Other)	If Control is Ownership Provide Percentage	Ultimate Controlling Entity(ies)/Person(s)	Is an SCA Filing Re-quired? (Y/N)	*
							Broad Street Brokerage Insurance Agency, LLC	OH	NIA	Motorists Life Insurance Company	Ownership	100.000	Motorists Mutual Insurance Company	N	2
.0291	Motorists Insurance Group	10204	31-1783451 62-1590861 42-1496478				Consumers Insurance USA, Inc. IMARC, LLC	TN IA	IA NIA	Motorists Mutual Insurance Company Iowa Mutual Insurance Company	Ownership Ownership	100.000 90.000	Motorists Mutual Insurance Company Motorists Mutual Insurance Company	N N	2 2
.0291	Motorists Insurance Group	31577	42-0119089				Iowa American Insurance Company	IA	IA	Iowa Mutual Insurance Company	Ownership	100.000	Motorists Mutual Insurance Company	N	2
.0291	Motorists Insurance Group	14338	42-0333120				Iowa Mutual Insurance Company	IA	IA	Iowa Mutual Insurance Company	Ownership	100.000	Motorists Mutual Insurance Company	N	1
							Motorists Commercial Mutual Insurance Company								
.0291	Motorists Insurance Group	40932	41-1563134 31-1022150				MCM Insurance Agency, Inc. MICO Insurance Company	MN OH	DS IA	Motorists Mutual Insurance Company Motorists Mutual Insurance Company	Ownership Ownership	100.000 100.000	Motorists Mutual Insurance Company Motorists Mutual Insurance Company	N N	2 2
.0291	Motorists Insurance Group	13331	41-0299900				Motorists Commercial Mutual Insurance Company	OH	RE				Motorists Mutual Insurance Company	N	1
.0291	Motorists Insurance Group	66311	31-0717055				Motorists Life Insurance Company	OH	DS	Motorists Mutual Insurance Company	Ownership	70.000	Motorists Mutual Insurance Company	N	2
.0291	Motorists Insurance Group	14621	31-4259550				Motorists Mutual Insurance Company	OH	IA				Motorists Mutual Insurance Company	N	1
.0291	Motorists Insurance Group	23175	31-0851906 02-0178290				Motorists Service Corporation	OH	NIA	Motorists Mutual Insurance Company	Ownership	100.000	Motorists Mutual Insurance Company	N	2
.0291	Motorists Insurance Group	19950	39-0739760				Phenix Mutual Fire Insurance Company	NH	IA				Motorists Mutual Insurance Company	N	1
							Wilson Mutual Insurance Company	WI	IA				Motorists Mutual Insurance Company	N	1
							MIG Realty, LLC	OH	NIA	Motorists Mutual Insurance Company	Ownership	100.000	Motorists Mutual Insurance Company	N	2
.0291	BrickStreet Mutual Group	12372	31-1712343 20-2394166				Motorists Insurance Group Foundation BrickStreet Mutual Insurance Company	OH WV	NIA IA	Motorists Mutual Insurance Company BrickStreet Mutual Insurance Company	Board		Motorists Mutual Insurance Company Motorists Mutual Insurance Company	N N	3 1
.0291	BrickStreet Mutual Group	15137	46-1783383				PinnaclePoint Insurance Company	WV	IA	BrickStreet Mutual Insurance Company	Ownership	100.000	Motorists Mutual Insurance Company	N	2
.0291	BrickStreet Mutual Group	13045	26-0818900				NorthStone Insurance Company	PA	IA	BrickStreet Mutual Insurance Company	Ownership	100.000	Motorists Mutual Insurance Company	N	2
.0291	BrickStreet Mutual Group	15136	46-1795752				SummitPoint Insurance Company	WV	IA	BrickStreet Mutual Insurance Company	Ownership	100.000	Motorists Mutual Insurance Company	N	2
.0291	BrickStreet Mutual Group	13016	87-0807723 80-0772825				AlleghenyPoint Insurance Company BrickStreet Foundation, Inc	PA WV	IA NIA	BrickStreet Mutual Insurance Company BrickStreet Mutual Insurance Company	Ownership Board	100.000	Motorists Mutual Insurance Company Motorists Mutual Insurance Company	N N	2 4

Asterisk	Explanation
1	The company is a mutual property/casualty insurer and an affiliate of The Motorists Insurance Group. Motorists Mutual Insurance Company is the ultimate controlling entity of the Group through an interlocking board of directors.
2	The entity in Column 8 is a subsidiary of an insurer that is an affiliate of The Motorists Insurance Group. Motorists Mutual Insurance Company is the ultimate controlling entity of the Group through an interlocking board of directors.
3	Schedule Y, Parts 1 and 1A, includes the Motorists Insurance Group Foundation, a 501( c)(3) tax-exempt private foundation, incorporated on July 12,2000.
4	Schedule Y, Parts 1 and 1A, includes Brickstreet Foundation, Inc, a 501( c)(3) tax-exempt private foundation incorporated on December 23, 2011.

## STATEMENT AS OF SEPTEMBER 30, 2018 OF THE MOTORISTS COMMERCIAL MUTUAL INSURANCE COMPANY

**PART 1 - LOSS EXPERIENCE**

Line of Business	Current Year to Date			4 Prior Year to Date Direct Loss Percentage
	1 Direct Premiums Earned	2 Direct Losses Incurred	3 Direct Loss Percentage	
1. Fire	2,258	105	4.6	
2. Allied Lines	4,634	136	2.9	
3. Farmowners multiple peril				
4. Homeowners multiple peril		(23,159)		
5. Commercial multiple peril	10,038,830	6,884,670	68.6	33.2
6. Mortgage guaranty				
8. Ocean marine				
9. Inland marine	2,294,278	1,159,041	50.5	36.3
10. Financial guaranty				
11.1 Medical professional liability - occurrence				
11.2 Medical professional liability - claims-made				
12. Earthquake	25,621			
13. Group accident and health		45		
14. Credit accident and health				
15. Other accident and health	443	48	10.8	(410.2)
16. Workers' compensation	3,844,479	5,397,290	140.4	82.1
17.1 Other liability - occurrence	4,556,912	2,369,517	52.0	37.4
17.2 Other liability - claims-made	116,525	183,012	157.1	
17.3 Excess workers' compensation				
18.1 Products liability - occurrence	416,580	478,381	114.8	(85.8)
18.2 Products liability - claims-made				
19.1,19.2 Private passenger auto liability		100		
19.3,19.4 Commercial auto liability	11,296,163	7,049,500	62.4	113.4
21. Auto physical damage	4,957,730	2,903,490	58.6	53.7
22. Aircraft (all perils)				
23. Fidelity		(1,228)		
24. Surety				(63,532.3)
26. Burglary and theft	405,282	(41,808)	(10.3)	(8.9)
27. Boiler and machinery	694,241	195,639	28.2	10.6
28. Credit				
29. International				
30. Warranty				
31. Reinsurance - Nonproportional Assumed Property	XXX	XXX	XXX	XXX
32. Reinsurance - Nonproportional Assumed Liability	XXX	XXX	XXX	XXX
33. Reinsurance - Nonproportional Assumed Financial Lines	XXX	XXX	XXX	XXX
34. Aggregate write-ins for other lines of business				
35. Totals	38,653,976	26,554,780	68.7	61.7
<b>DETAILS OF WRITE-INS</b>				
3401.				
3402.				
3403.				
3498. Summary of remaining write-ins for Line 34 from overflow page				
3499. Totals (Lines 3401 through 3403 plus 3498)(Line 34 above)				

**PART 2 - DIRECT PREMIUMS WRITTEN**

Line of Business	1	2	3
	Current Quarter	Current Year to Date	Prior Year Year to Date
1. Fire	589	4,745	
2. Allied Lines	1,729	8,308	
3. Farmowners multiple peril			
4. Homeowners multiple peril			
5. Commercial multiple peril	6,026,367	14,853,955	5,777,348
6. Mortgage guaranty			
8. Ocean marine			
9. Inland marine	1,102,238	2,747,476	1,888,707
10. Financial guaranty			
11.1 Medical professional liability - occurrence			
11.2 Medical professional liability - claims-made			
12. Earthquake	24,376	47,199	16,984
13. Group accident and health			
14. Credit accident and health			
15. Other accident and health		275	275
16. Workers' compensation	2,896,007	5,475,744	1,405,568
17.1 Other liability - occurrence	2,313,224	5,571,074	3,807,852
17.2 Other liability - claims-made	69,709	149,246	
17.3 Excess workers' compensation			
18.1 Products liability - occurrence	132,456	400,312	437,408
18.2 Products liability - claims-made			
19.1,19.2 Private passenger auto liability			
19.3,19.4 Commercial auto liability	5,686,387	14,663,092	8,163,857
21. Auto physical damage	2,110,026	5,836,054	3,920,814
22. Aircraft (all perils)			
23. Fidelity			
24. Surety			
26. Burglary and theft	187,911	475,314	308,906
27. Boiler and machinery	310,783	816,182	519,122
28. Credit			
29. International			
30. Warranty			
31. Reinsurance - Nonproportional Assumed Property	XXX	XXX	XXX
32. Reinsurance - Nonproportional Assumed Liability	XXX	XXX	XXX
33. Reinsurance - Nonproportional Assumed Financial Lines	XXX	XXX	XXX
34. Aggregate write-ins for other lines of business			
35. Totals	20,861,802	51,048,976	26,246,842
<b>DETAILS OF WRITE-INS</b>			
3401.			
3402.			
3403.			
3498. Summary of remaining write-ins for Line 34 from overflow page			
3499. Totals (Lines 3401 through 3403 plus 3498)(Line 34 above)			

STATEMENT AS OF SEPTEMBER 30, 2018 OF THE MOTORISTS COMMERCIAL MUTUAL INSURANCE COMPANY

**PART 3 (000 omitted)**

LOSS AND LOSS ADJUSTMENT EXPENSE RESERVES SCHEDULE

	1	2	3	4	5	6	7	8	9	10	11	12	13
Years in Which Losses Occurred	Prior Year-End Known Case Loss and LAE Reserves	Prior Year-End IBNR Loss and LAE Reserves	Total Prior Year-End Loss and LAE Reserves (Cols. 1+2)	2018 Loss and LAE Payments on Claims Reported as of Prior Year-End	2018 Loss and LAE Payments on Claims Unreported as of Prior Year-End	Total 2018 Loss and LAE Payments (Cols. 4+5)	Q.S. Date Known Case Loss and LAE Reserves on Claims Reported and Open as of Prior Year End	Q.S. Date Known Case Loss and LAE Reserves on Claims Reported or Reopened Subsequent to Prior Year End	Q.S. Date IBNR Loss and LAE Reserves	Total Q.S. Loss and LAE Reserves (Cols.7+8+9)	Prior Year-End Known Case Loss and LAE Reserves Developed (Savings)/ Deficiency (Cols.4+7 minus Col. 1)	Prior Year-End IBNR Loss and LAE Reserves Developed (Savings)/ Deficiency (Cols. 5+8+9 minus Col. 2)	Prior Year-End Total Loss and LAE Reserve Developed (Savings)/ Deficiency (Cols. 11+12)
1. 2015 + Prior .....	21,765	19,417	41,182	8,513	605	9,119	35,426	2,625	40,570	78,621	22,175	24,383	46,558
2. 2016 .....	13,562	12,225	25,787	5,509	530	6,040	8,229	1,078	14,605	23,913	177	3,989	4,166
3. Subtotals 2016 + Prior .....	35,326	31,642	66,968	14,023	1,136	15,158	43,655	3,703	55,176	102,534	22,351	28,373	50,724
4. 2017 .....	22,956	24,343	47,299	13,771	(66,668)	(52,897)	12,015	2,945	24,566	39,525	2,830	(63,501)	(60,671)
5. Subtotals 2017 + Prior .....	58,282	55,985	114,268	27,794	(65,532)	(37,739)	55,670	6,648	79,741	142,059	25,181	(35,128)	(9,947)
6. 2018 .....	XXX	XXX	XXX	XXX	21,918	21,918	XXX	16,967	28,452	45,419	XXX	XXX	XXX
7. Totals .....	58,282	55,985	114,268	27,794	(43,614)	(15,821)	55,670	23,615	108,193	187,478	25,181	(35,128)	(9,947)
8. Prior Year-End Surplus As Regards Policyholders	147,474										Col. 11, Line 7 As % of Col. 1 Line 7	Col. 12, Line 7 As % of Col. 2 Line 7	Col. 13, Line 7 As % of Col. 3 Line 7
											1. 43.2	2. (62.7)	3. (8.7)
													Col. 13, Line 7 As a % of Col. 1 Line 8
													4. (6.7)

STATEMENT AS OF SEPTEMBER 30, 2018 OF THE MOTORISTS COMMERCIAL MUTUAL INSURANCE COMPANY

## SUPPLEMENTAL EXHIBITS AND SCHEDULES INTERROGATORIES

The following supplemental reports are required to be filed as part of your statement filing. However, in the event that your company does not transact the type of business for which the special report must be filed, your response of NO to the specific interrogatory will be accepted in lieu of filing a "NONE" report and a bar code will be printed below. If the supplement is required of your company but is not being filed for whatever reason enter SEE EXPLANATION and provide an explanation following the interrogatory questions.

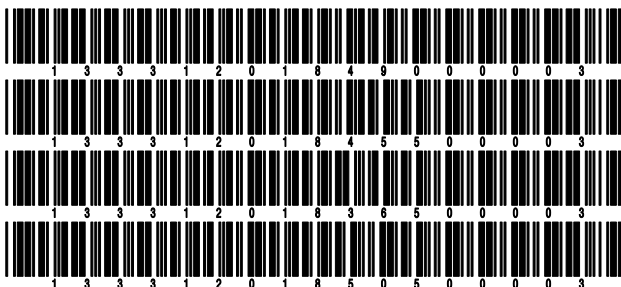
	Response
1. Will the Trusteed Surplus Statement be filed with the state of domicile and the NAIC with this statement? .....	NO
2. Will Supplement A to Schedule T (Medical Professional Liability Supplement) be filed with this statement? .....	NO
3. Will the Medicare Part D Coverage Supplement be filed with the state of domicile and the NAIC with this statement? .....	NO
4. Will the Director and Officer Insurance Coverage Supplement be filed with the state of domicile and the NAIC with this statement? .....	NO

Explanations:

- 1.
- 2.
- 3.
- 4.

Bar Codes:

1. Trusteed Surplus Statement [Document Identifier 490]
2. Supplement A to Schedule T [Document Identifier 455]
3. Medicare Part D Coverage Supplement [Document Identifier 365]
4. Director and Officer Supplement [Document Identifier 505]



STATEMENT AS OF SEPTEMBER 30, 2018 OF THE MOTORISTS COMMERCIAL MUTUAL INSURANCE COMPANY  
**OVERFLOW PAGE FOR WRITE-INS**

Additional Write-ins for Assets Line 25

	Current Statement Date			4 December 31 Prior Year Net Admitted Assets
	1 Assets	2 Nonadmitted Assets	3 Net Admitted Assets (Cols. 1 - 2)	
2504. Assessments paid in advance .....	9,566	9,566		
2505. Automobiles .....	8,419	8,419		
2506. Tenant allowances .....	3,990	3,990		
2507. Employee advances .....	1,051	1,051		
2597. Summary of remaining write-ins for Line 25 from overflow page	23,026	23,026		

Additional Write-ins for Liabilities Line 25

	1 Current Statement Date	2 December 31, Prior Year
2504. Obligations in pools and associations .....	44,578	46,118
2505. State surcharges payable .....	22,616	25,301
2506. Tenant allowances payable .....	4,259	4,259
2507. Miscellaneous liabilities .....	0	13,094
2597. Summary of remaining write-ins for Line 25 from overflow page	71,454	88,772

STATEMENT AS OF SEPTEMBER 30, 2018 OF THE MOTORISTS COMMERCIAL MUTUAL INSURANCE COMPANY

**SCHEDULE A - VERIFICATION**

Real Estate

	1 Year to Date	2 Prior Year Ended December 31
1. Book/adjusted carrying value, December 31 of prior year .....	7,833,393	
2. Cost of acquired:		
2.1 Actual cost at time of acquisition .....		7,945,428
2.2 Additional investment made after acquisition .....		
3. Current year change in encumbrances .....		
4. Total gain (loss) on disposals .....		
5. Deduct amounts received on disposals .....		
6. Total foreign exchange change in book/adjusted carrying value .....		
7. Deduct current year's other than temporary impairment recognized .....		
8. Deduct current year's depreciation .....	112,034	112,034
9. Book/adjusted carrying value at the end of current period (Lines 1+2+3+4-5+6-7-8) .....	7,721,359	7,833,393
10. Deduct total nonadmitted amounts .....	1,620,428	1,607,979
11. Statement value at end of current period (Line 9 minus Line 10) .....	6,100,931	6,225,414

**SCHEDULE B - VERIFICATION**

Mortgage Loans

	1 Year to Date	2 Prior Year Ended December 31
1. Book value/recorded investment excluding accrued interest, December 31 of prior year .....		
2. Cost of acquired:		
2.1 Actual cost at time of acquisition .....		
2.2 Additional investment made after acquisition .....		
3. Capitalized deferred interest and other .....		
4. Accrual of discount .....		
5. Unrealized valuation increase (decrease) .....		
6. Total gain (loss) on disposals .....		
7. Deduct amounts received on disposals .....		
8. Deduct amortization of premium and mortgage interest points and commitment fees .....		
9. Total foreign exchange change in book value/recorded investment excluding accrued interest .....		
10. Deduct current year's other than temporary impairment recognized .....		
11. Book value/recorded investment excluding accrued interest at end of current period (Lines 1+2+3+4+5+6-7-8+9-10) .....		
12. Total valuation allowance .....		
13. Subtotal (Line 11 plus Line 12) .....		
14. Deduct total nonadmitted amounts .....		
15. Statement value at end of current period (Line 13 minus Line 14) .....		

**NONE**

**SCHEDULE BA - VERIFICATION**

Other Long-Term Invested Assets

	1 Year to Date	2 Prior Year Ended December 31
1. Book/adjusted carrying value, December 31 of prior year .....	26,048,745	27,353,330
2. Cost of acquired:		
2.1 Actual cost at time of acquisition .....		8,000,000
2.2 Additional investment made after acquisition .....	1,066,529	770,000
3. Capitalized deferred interest and other .....		
4. Accrual of discount .....		
5. Unrealized valuation increase (decrease) .....	(573,759)	355,799
6. Total gain (loss) on disposals .....	(90,781)	(278,787)
7. Deduct amounts received on disposals .....	627,008	10,266,543
8. Deduct amortization of premium and depreciation .....		
9. Total foreign exchange change in book/adjusted carrying value .....	16,078	114,946
10. Deduct current year's other than temporary impairment recognized .....		
11. Book/adjusted carrying value at end of current period (Lines 1+2+3+4+5+6-7-8+9-10) .....	25,839,805	26,048,745
12. Deduct total nonadmitted amounts .....		
13. Statement value at end of current period (Line 11 minus Line 12) .....	25,839,805	26,048,745

**SCHEDULE D - VERIFICATION**

Bonds and Stocks

	1 Year to Date	2 Prior Year Ended December 31
1. Book/adjusted carrying value of bonds and stocks, December 31 of prior year .....	247,493,270	245,980,068
2. Cost of bonds and stocks acquired .....	116,318,738	44,855,394
3. Accrual of discount .....	78,003	(76,737)
4. Unrealized valuation increase (decrease) .....	1,291,637	5,575,069
5. Total gain (loss) on disposals .....	709,402	3,739,806
6. Deduct consideration for bonds and stocks disposed of .....	35,689,591	51,536,820
7. Deduct amortization of premium .....	871,680	1,043,509
8. Total foreign exchange change in book/adjusted carrying value .....		
9. Deduct current year's other than temporary impairment recognized .....		
10. Total investment income recognized as a result of prepayment penalties and/or acceleration fees .....	21,237	
11. Book/adjusted carrying value at end of current period (Lines 1+2+3+4+5-6-7+8-9+10) .....	329,351,017	247,493,270
12. Deduct total nonadmitted amounts .....	87,573	87,573
13. Statement value at end of current period (Line 11 minus Line 12) .....	329,263,444	247,405,697

STATEMENT AS OF SEPTEMBER 30, 2018 OF THE MOTORISTS COMMERCIAL MUTUAL INSURANCE COMPANY

**SCHEDULE D - PART 1B**

Showing the Acquisitions, Dispositions and Non-Trading Activity  
During the Current Quarter for all Bonds and Preferred Stock by NAIC Designation

NAIC Designation	1 Book/Adjusted Carrying Value Beginning of Current Quarter	2 Acquisitions During Current Quarter	3 Dispositions During Current Quarter	4 Non-Trading Activity During Current Quarter	5 Book/Adjusted Carrying Value End of First Quarter	6 Book/Adjusted Carrying Value End of Second Quarter	7 Book/Adjusted Carrying Value End of Third Quarter	8 Book/Adjusted Carrying Value December 31 Prior Year
<b>BONDS</b>								
1. NAIC 1 (a) .....	207,324,179	33,181,899	16,499,375	515,629	209,865,217	207,324,179	224,522,333	147,575,381
2. NAIC 2 (a) .....	21,577,712	3,244,383	931,385	(718,623)	19,593,481	21,577,712	23,172,087	20,006,938
3. NAIC 3 (a) .....	0				494,330	0	0	499,105
4. NAIC 4 (a) .....								
5. NAIC 5 (a) .....								
6. NAIC 6 (a) .....								
7. Total Bonds	228,901,892	36,426,282	17,430,760	(202,994)	229,953,028	228,901,892	247,694,419	168,081,423
<b>PREFERRED STOCK</b>								
8. NAIC 1 .....								
9. NAIC 2 .....								
10. NAIC 3 .....								
11. NAIC 4 .....								
12. NAIC 5 .....								
13. NAIC 6 .....								
14. Total Preferred Stock								
15. Total Bonds and Preferred Stock	228,901,892	36,426,282	17,430,760	(202,994)	229,953,028	228,901,892	247,694,419	168,081,423

(a) Book/Adjusted Carrying Value column for the end of the current reporting period includes the following amount of short-term and cash equivalent bonds by NAIC designation:

NAIC 1 \$ .....0 ; NAIC 2 \$ .....0 ; NAIC 3 \$ ..... ; NAIC 4 \$ ..... ; NAIC 5 \$ ..... ; NAIC 6 \$ .....

S102

**SCHEDULE DA - PART 1**

Short-Term Investments

	1 Book/Adjusted Carrying Value	2 Purchase Price	3 Actual Cost	4 Interest Collected Year-to-Date	5 Paid for Accrued Interest Year-to-Date
9199999 Totals					

**NONE**

**SCHEDULE DA - VERIFICATION**

Short-Term Investments

	1 Year To Date	2 Prior Year Ended December 31
1. Book/adjusted carrying value, December 31 of prior year .....		8,761,621
2. Cost of short-term investments acquired .....		(1,369)
3. Accrual of discount .....		
4. Unrealized valuation increase (decrease) .....		
5. Total gain (loss) on disposals .....		
6. Deduct consideration received on disposals .....		8,760,252
7. Deduct amortization of premium .....		
8. Total foreign exchange change in book/adjusted carrying value .....		
9. Deduct current year's other than temporary impairment recognized .....		
10. Book/adjusted carrying value at end of current period (Lines 1+2+3+4+5-6-7+8-9) .....		
11. Deduct total nonadmitted amounts .....		
12. Statement value at end of current period (Line 10 minus Line 11)		

Schedule DB - Part A - Verification - Options, Caps, Floors, Collars, Swaps and Forwards

**NONE**

Schedule DB - Part B - Verification - Futures Contracts

**NONE**

Schedule DB - Part C - Section 1 - Replication (Synthetic Asset) Transactions (RSATs) Open

**NONE**

Schedule DB-Part C-Section 2-Reconciliation of Replication (Synthetic Asset) Transactions Open

**NONE**

Schedule DB - Verification - Book/Adjusted Carrying Value, Fair Value and Potential Exposure of  
Derivatives

**NONE**

**SCHEDULE E - PART 2 - VERIFICATION**

(Cash Equivalents)

	1	2
	Year To Date	Prior Year Ended December 31
1. Book/adjusted carrying value, December 31 of prior year .....	3,776,168	.....
2. Cost of cash equivalents acquired .....	91,196,995	118,608,584
3. Accrual of discount .....	.....	880
4. Unrealized valuation increase (decrease) .....	(57)	.....
5. Total gain (loss) on disposals .....	0	847
6. Deduct consideration received on disposals .....	80,015,665	114,834,143
7. Deduct amortization of premium .....	.....	.....
8. Total foreign exchange change in book/adjusted carrying value .....	.....	.....
9. Deduct current year's other than temporary impairment recognized .....	.....	.....
10. Book/adjusted carrying value at end of current period (Lines 1+2+3+4+5-6-7+8-9) .....	14,957,441	3,776,168
11. Deduct total nonadmitted amounts .....	.....	.....
12. Statement value at end of current period (Line 10 minus Line 11)	14,957,441	3,776,168

Schedule A - Part 2 - Real Estate Acquired and Additions Made

**NONE**

Schedule A - Part 3 - Real Estate Disposed

**NONE**

Schedule B - Part 2 - Mortgage Loans Acquired and Additions Made

**NONE**

Schedule B - Part 3 - Mortgage Loans Disposed, Transferred or Repaid

**NONE**

STATEMENT AS OF SEPTEMBER 30, 2018 OF THE MOTORISTS COMMERCIAL MUTUAL INSURANCE COMPANY

**SCHEDULE BA - PART 2**

Showing Other Long-Term Invested Assets ACQUIRED AND ADDITIONS MADE During the Current Quarter

1 CUSIP Identification	2 Name or Description	Location		5 Name of Vendor or General Partner	6 NAIC Designation	7 Date Originally Acquired	8 Type and Strategy	9 Actual Cost at Time of Acquisition	10 Additional Investment Made After Acquisition	11 Amount of Encumbrances	12 Commitment for Additional Investment	13 Percentage of Ownership
		3 City	4 State									
Joint Venture Interests - Other - Unaffiliated												
	Aberdeen Institutional Commingled Funds, LLC	Philadelphia	PA	Aberdeen Asset Management Inc.		08/24/2017			223,380			1.340
	Adams Street 2012 Global Fund LP	Chicago	IL	Adams Street Partners		02/15/2012			288,000		1,114,400	0.510
	Crescent Senior Secured Floating Rate Fund	Dover	DE	Crescent Capital Group LP		05/01/2007			101,486			5.190
2199999. Joint Venture Interests - Other - Unaffiliated									612,866		1,114,400	XXX
4499999. Total - Unaffiliated									612,866		1,114,400	XXX
4599999. Total - Affiliated												XXX
4699999 - Totals									612,866		1,114,400	XXX

**SCHEDULE BA - PART 3**

Showing Other Long-Term Invested Assets DISPOSED, Transferred or Repaid During the Current Quarter

1 CUSIP Identification	2 Name or Description	Location		5 Name of Purchaser or Nature of Disposal	6 Date Originally Acquired	7 Disposal Date	8 Book/ Adjusted Carrying Value Less Encum- brances, Prior Year	Change in Book/Adjusted Carrying Value						15 Book/ Adjusted Carrying Value Less Encum- brances on Disposal	16 Consid- eration	17 Foreign Exchange Gain (Loss) on Disposal	18 Realized Gain (Loss) on Disposal	19 Total Gain (Loss) on Disposal	20 Invest- ment Income
		3 City	4 State					9 Unrealized Valuation Increase (De- crease)	10 Current Year's (Depre- ciation) or (Amorti- zation)/ Accretion	11 Current Year's Other Than Temporary Impair- ment Recogn- ized	12 Capital- ized Deferred Interest and Other	13 Total Change in Book/ Adjusted Carrying Value (9+10- 11+12)	14 Total Foreign Exchange Change in Book/ Adjusted Carrying Value						
Joint Venture Interests - Other - Unaffiliated																			
	Adams Street 2012 Global Fund LP	Chicago	IL	Adams Street Partners	02/15/2012	08/31/2018	3,145,464	(21,508)				(21,508)	3,416,185	242,564				195,787	
	HarbourVest Partners VIII Buyout Fund LP	Wilmington	DE	HarbourVest	03/29/2007	09/28/2018	1,130,209	(27,759)				(27,759)	902,316	13,274				93,096	
	HarbourVest Partners VIII Mezzanine LP	Wilmington	DE	HarbourVest	03/29/2007	08/31/2018	136,663	(2,998)				(2,998)	107,355	2,633					
	HarbourVest Partners VIII Venture Capital Fund LP	Wilmington	DE	HarbourVest	03/29/2007	09/28/2018	319,764	(4,590)				(4,590)	298,492	2,989					
	HIPEP V 2007 European Buyout Companion Fund LP	Wilmington	DE	HarbourVest	05/02/2007	09/30/2018	270,064	(10,254)				(10,254)	181,381	(28,155)				28,155	
	HarbourVest Partners IX-Buyout Fund LP	Wilmington	DE	HarbourVest	12/21/2011	09/30/2018	1,934,591	(12,348)				(12,348)	2,083,718	(69,570)				144,430	
	HarbourVest Partners IX-Credit Opportunities Fund LP	Wilmington	DE	HarbourVest	12/21/2011	09/30/2018	282,752	3,804				3,804	300,945	4,116				6,047	
	HarbourVest Partners IX-Venture Fund LP	Wilmington	DE	HarbourVest	12/21/2011	09/30/2018	1,407,244	63,110				63,110	1,642,052	(13,847)				39,952	
	Park Street Capital Private Equity Fund VIII	Boston	MA	Park Street Capital	05/04/2007	09/30/2018	609,893	359				359	581,295	28,811				23,439	
2199999. Joint Venture Interests - Other - Unaffiliated								9,236,644	(12,184)			(12,184)	(852)	9,513,739	182,815				530,906
All Other Low Income Housing Tax Credit - Unaffiliated																			
	3.05233503 Units LTD Partnership WNC Institutional Tax Credit Fund XXI	Irving	CA	3.05233503 Units LTD Partnership WNC Institutional Tax Credit Fund XXI	03/28/2006	09/30/2018	531,673						464,329		(22,448)		(22,448)		
3999999. All Other Low Income Housing Tax Credit - Unaffiliated								531,673					464,329		(22,448)		(22,448)		
4499999. Total - Unaffiliated								9,768,317	(12,184)			(12,184)	(852)	9,978,068	182,815	(22,448)		(22,448)	530,906
4599999. Total - Affiliated																			
4699999 - Totals								9,768,317	(12,184)			(12,184)	(852)	9,978,068	182,815	(22,448)		(22,448)	530,906

STATEMENT AS OF SEPTEMBER 30, 2018 OF THE MOTORISTS COMMERCIAL MUTUAL INSURANCE COMPANY

**SCHEDULE D - PART 3**

Show All Long-Term Bonds and Stock Acquired During the Current Quarter

1	2	3	4	5	6	7	8	9	10	
CUSIP Identification	Description	Foreign	Date Acquired	Name of Vendor	Number of Shares of Stock	Actual Cost	Par Value	Paid for Accrued Interest and Dividends	NAIC Designation or Market Indicator (a)	
36179T-4P-7	G2 MAS330 - RMBS		.07/05/2018	SUNTRUST CAPITAL MARKETS, INC.		1,537,734	1,500,000	3,000	1	
36179T-7L-3	G2 MAS399 - RMBS		.09/01/2018	MITSUBISHI UFJ SECURITIES		4,146,918	3,992,201	9,463	1	
36179T-Z5-7	G2 MAS264 - RMBS		.07/12/2018	WELLS FARGO SECURITIES LLC		5,118,489	4,989,085	9,978	1	
<b>0599999. Subtotal - Bonds - U.S. Governments</b>						<b>10,803,141</b>	<b>10,481,286</b>	<b>22,441</b>	<b>XXX</b>	
06035R-AR-7	BANK 18BK14 A3 - CMBS		.09/18/2018	MORGAN STANLEY CO		3,534,844	3,500,000	10,025	1FE	
08160B-AD-6	BMARK 18B5 A4 - CMBS		.07/27/2018	JP MORGAN SECURITIES INC.		1,802,500	1,750,000	4,091	1FE	
08162C-AC-4	BMARK 18B6 A3 - CMBS		.09/20/2018	Citigroup (SSB)		3,029,954	3,000,000	2,663	1FE	
26444H-AE-1	DUKE ENERGY FLORIDA LLC		.07/17/2018	PERSHING DIV OF DLJ SEC LNDING		2,127,300	2,100,000	6,207	1FE	
36250S-AE-9	GSMS 18GS10 A5 - CMBS		.07/18/2018	GOLDMAN		4,634,844	4,500,000	15,062	1FE	
40573L-AS-5	HALFMOON PARENT INC		.09/06/2018	MORGAN STANLEY CO		249,668	250,000		2FE	
43284B-AA-0	HGVT 18A A - ABS		.09/11/2018	MERRILL LYNCH PIERCE FENNER		499,988	500,000		1FE	
655844-BZ-0	NORFOLK SOUTHERN CORP		.07/30/2018	MERRILL LYNCH PIERCE FENNER		1,746,115	1,750,000		2FE	
68233J-BE-3	ONCOR ELECTRIC DELIVERY COMPANY LLC		.08/07/2018	RBC CAPITAL MARKETS		749,648	750,000		1FE	
74456Q-BX-3	PUBLIC SERVICE ELECTRIC AND GAS CO		.09/05/2018	MITSUBISHI UFJ SECURITIES		1,999,680	2,000,000		1FE	
855244-AR-0	STARBUCKS CORP		.08/08/2018	MORGAN STANLEY CO		1,248,600	1,250,000		2FE	
892331-AD-1	TOYOTA MOTOR CORP	C.	.07/10/2018	JP MORGAN SECURITIES INC.		2,000,000	2,000,000		1FE	
92914X-AL-3	VOYA 152R AR - CDO	C.	.07/13/2018	MORGAN STANLEY CO		2,000,000	2,000,000		1FE	
<b>3899999. Subtotal - Bonds - Industrial and Miscellaneous (Unaffiliated)</b>						<b>25,623,141</b>	<b>25,350,000</b>	<b>38,048</b>	<b>XXX</b>	
<b>8399997. Total - Bonds - Part 3</b>							<b>36,426,282</b>	<b>35,831,286</b>	<b>60,489</b>	<b>XXX</b>
<b>8399998. Total - Bonds - Part 5</b>							<b>XXX</b>	<b>XXX</b>	<b>XXX</b>	<b>XXX</b>
<b>8399999. Total - Bonds</b>							<b>36,426,282</b>	<b>35,831,286</b>	<b>60,489</b>	<b>XXX</b>
<b>8999997. Total - Preferred Stocks - Part 3</b>								<b>XXX</b>	<b>XXX</b>	<b>XXX</b>
<b>8999998. Total - Preferred Stocks - Part 5</b>							<b>XXX</b>	<b>XXX</b>	<b>XXX</b>	<b>XXX</b>
<b>8999999. Total - Preferred Stocks</b>								<b>XXX</b>	<b>XXX</b>	<b>XXX</b>
00817Y-10-8	AETNA ORD		.09/13/2018	CORPORATE ACTION	427,000	86,870			L	
023135-10-6	AMAZON COM ORD		.08/08/2018	ITG INC	5,000	9,425			L	
03965L-10-0	ARCONIC ORD		.08/08/2018	ITG INC	235,000	4,926			L	
099724-10-6	BORGWARNER ORD		.07/26/2018	WEEDEN + CO.	1,379,000	61,243			L	
11133T-10-3	BROADRIDGE FINANCIAL SOLUTIONS ORD		.08/08/2018	ITG INC	20,000	2,597			L	
11282X-10-3	BROOKFIELD PROPERTY REIT CL A ORD	C.	.08/27/2018	MERGER	129,720	2,620			L	
118230-10-1	BUCKEYE PARTNERS UNIT		.08/03/2018	CITIGROUP GLOBAL MARKETS INC.	5,000,000	179,388			L	
126650-10-0	CVS HEALTH ORD		.09/25/2018	CORPORATE ACTION	2,391,000	186,156			L	
134429-10-9	CAMPBELL SOUP ORD		.08/08/2018	ITG INC	95,000	4,002			L	
14149Y-10-8	CARDINAL HEALTH ORD		.08/08/2018	ITG INC	90,000	4,425			L	
21036P-10-8	CONSTELLATION BRANDS CL A ORD		.09/25/2018	WEEDEN + CO.	289,000	62,524			L	
217204-10-6	COPART ORD		.08/08/2018	ITG INC	105,000	6,257			L	
25179M-10-3	DEVON ENERGY ORD		.08/08/2018	WEEDEN + CO.	377,000	16,065			L	
253868-10-3	DIGITAL REALTY REIT ORD		.08/08/2018	ITG INC	15,000	1,820			L	
264411-50-5	DUKE REALTY REIT ORD		.08/08/2018	ITG INC	170,000	4,957			L	
30303M-10-2	FACEBOOK CL A ORD		.08/17/2018	WEEDEN + CO.	159,000	27,385			L	
40412C-10-1	HCA HEALTHCARE ORD		.08/08/2018	ITG INC	40,000	5,135			L	
410345-10-2	HANESBRANDS ORD		.08/22/2018	CORPORATE ACTION	985,000	18,308			L	
416515-10-4	HARTFORD FINANCIAL SERVICES GRUP ORD		.09/21/2018	WEEDEN + CO.	907,000	46,067			L	
418056-10-7	HASBRO ORD		.08/08/2018	ITG INC	50,000	4,881			L	
436440-10-1	HOLOGIC ORD		.08/08/2018	ITG INC	75,000	3,098			L	
44980X-10-9	IPG PHOTONICS ORD		.08/08/2018	ITG INC	20,000	3,340			L	
45168D-10-4	IDEXX LABORATORIES ORD		.08/08/2018	ITG INC	15,000	3,676			L	
45337C-10-2	JNCYTE ORD		.08/08/2018	ITG INC	70,000	4,440			L	
49271V-10-0	KEURIG DR PEPPER ORD	C.	.07/10/2018	CORPORATE ACTION	150,000	5,819			L	
552953-10-1	MGM RESORTS INTERNATIONAL ORD		.08/08/2018	ITG INC	220,000	6,387			L	
55336V-10-0	MPLX COM UNIT		.08/03/2018	UBS SECURITIES LLC	5,200,000	194,255			L	
57164Y-10-7	MARRIOTT VACATIONS WORLDWIDE ORD		.09/01/2018	CORPORATE ACTION	0,165	20			L	
571748-10-2	MARSH & MCLENNAN ORD		.09/18/2018	WEEDEN + CO.	228,000	19,107			L	
59156R-10-8	METLIFE ORD		.09/21/2018	VARIOUS	521,000	24,909			L	
608190-10-4	MOHAWK INDUSTRIES ORD		.08/08/2018	ITG INC	25,000	4,667			L	
61174X-10-9	MONSTER BEVERAGE ORD		.08/08/2018	ITG INC	60,000	3,550			L	
62944T-10-5	NVR ORD		.09/24/2018	WEEDEN + CO.	61,000	160,149			L	
640268-10-8	NEKTAR THERAPEUTICS ORD		.08/08/2018	ITG INC	75,000	4,177			L	
695156-10-9	PACKAGING CORP OF AMERICA ORD		.08/08/2018	ITG INC	45,000	5,012			L	
756577-10-2	RED HAT ORD		.08/08/2018	ITG INC	25,000	3,576			L	

E04

STATEMENT AS OF SEPTEMBER 30, 2018 OF THE MOTORISTS COMMERCIAL MUTUAL INSURANCE COMPANY

**SCHEDULE D - PART 3**

Show All Long-Term Bonds and Stock Acquired During the Current Quarter

1 CUSIP Identification	2 Description	3 Foreign	4 Date Acquired	5 Name of Vendor	6 Number of Shares of Stock	7 Actual Cost	8 Par Value	9 Paid for Accrued Interest and Dividends	10 NAIC Desig- nation or Market Indicator (a)
806857-10-8	SCHLUMBERGER ORD	C	.08/08/2018	ITG INC	105.000	6.955			L
863667-10-1	STRYKER ORD		.08/08/2018	ITG INC	15.000	2.491			L
871658-10-3	SYNCHRONY FINANCIAL ORD		.08/08/2018	ITG INC	115.000	3.462			L
874054-10-9	TAKE TWO INTERACTIVE SOFTWARE ORD		.08/08/2018	ITG INC	30.000	3.752			L
882508-10-4	TEXAS INSTRUMENTS ORD		.09/12/2018	JP MORGAN SECS INC. - FIXED INCOME	394.000	40.468			L
969457-10-0	WILLIAMS ORD		.08/07/2018	RBC CAPITAL MARKETS	6,500.000	202.568			L
60177J-10-8	ALLERGAN ORD	C	.08/08/2018	ITG INC	5.000	929			L
66518L-10-8	NIELSEN HOLDINGS ORD	C	.08/08/2018	ITG INC	180.000	3.908			L
666721-10-4	NORWEGIAN CRUISE LINE HOLDINGS ORD		.08/08/2018	ITG INC	95.000	4.652			L
V7780T-10-3	ROYAL CARIBBEAN CRUISES ORD		.08/08/2018	ITG INC	35.000	3.894			L
9099999	Subtotal - Common Stocks - Industrial and Miscellaneous (Unaffiliated)					1,454,312	XXX		XXX
9799997	Total - Common Stocks - Part 3					1,454,312	XXX		XXX
9799998	Total - Common Stocks - Part 5					XXX	XXX	XXX	XXX
9799999	Total - Common Stocks					1,454,312	XXX		XXX
9899999	Total - Preferred and Common Stocks					1,454,312	XXX		XXX
9999999	Totals					37,880,593	XXX	60,489	XXX

(a) For all common stock bearing the NAIC market indicator "U" provide: the number of such issues .....

STATEMENT AS OF SEPTEMBER 30, 2018 OF THE MOTORISTS COMMERCIAL MUTUAL INSURANCE COMPANY

**SCHEDULE D - PART 4**

Show All Long-Term Bonds and Stock Sold, Redeemed or Otherwise Disposed of During the Current Quarter

1	2	3	4	5	6	7	8	9	10	Change In Book/Adjusted Carrying Value					16	17	18	19	20	21	22
										11	12	13	14	15							
CUSIP Identification	Description	Foreign	Disposal Date	Name of Purchaser	Number of Shares of Stock	Consideration	Par Value	Actual Cost	Prior Year Book/Adjusted Carrying Value	Unrealized Valuation Increase/(Decrease)	Current Year's (Amortization)/Accretion	Current Year's Other Than Temporary Impairment Recognized	Total Change in Book/Adjusted Carrying Value (11 + 12 - 13)	Total Foreign Exchange Change in Book /Adjusted Carrying Value	Book/Adjusted Carrying Value at Disposal Date	Foreign Exchange Gain (Loss) on Disposal	Realized Gain (Loss) on Disposal	Total Gain (Loss) on Disposal	Bond Interest/Stock Dividends Received During Year	Stated Contractual Maturity Date	NAIC Designation or Market Indicator (a)
36179T-4P-7	G2 MA5330 - RMBS		09/01/2018	Paydown		9,534	9,534	9,774			(240)		(240)		9,534		0	0	14	07/20/2048	1
36179T-25-7	G2 MA5264 - RMBS		09/01/2018	Paydown		33,929	33,929	34,809			(880)		(880)		33,929				56	06/20/2048	1
36290S-RR-4	GN 616196 - RMBS		09/01/2018	Paydown		5,971	5,971	6,224	6,099		(128)		(128)		5,971				202	01/15/2048	1
36296S-E3-5	GN 699554 - RMBS		09/01/2018	Paydown		267	267	264	264		4		4		267				8	11/15/2038	1
36297A-AT-0	GN 705718 - RMBS		09/01/2018	Paydown		386	386	400	402		(16)		(16)		386				11	01/15/2039	1
38373A-D9-4	GNR 0969E PV - CMO/RMBS		09/01/2018	Paydown		1,391	1,391	1,408	1,406		(15)		(15)		1,391				33	08/20/2039	1
38376G-M8-0	GNR 1158 C - CMBS		09/01/2018	Paydown		5,449	5,449	5,213	5,246		203		203		5,449				119	08/16/2051	1
38377L-AQ-1	GNR 10116F HB - CMO/RMBS		09/01/2018	Paydown		6,927	6,927	7,357	7,270		(343)		(343)		6,927		0	0	164	09/20/2040	1
0599999	Subtotal - Bonds - U.S. Governments					63,854	63,854	65,449	20,686		(1,415)		(1,415)		63,854		0	0	608	XXX	XXX
373384-GV-2	GEORGIA ST		07/01/2018	Call @ 100.00		2,350,000	2,350,000	2,537,366	2,363,172		(13,172)		(13,172)		2,350,000				117,500	07/01/2019	1FE
546415-ZN-3	LOUISIANA ST		08/29/2018	RBC CAPITAL MARKETS		1,194,643	1,150,000	1,302,341			(7,947)		(7,947)		1,173,427		21,216	21,216	45,681	11/15/2019	1FE
1799999	Subtotal - Bonds - U.S. States, Territories and Possessions					3,544,643	3,500,000	3,839,706	2,363,172		(21,119)		(21,119)		3,523,427		21,216	21,216	163,181	XXX	XXX
349460-Z9-9	FORT WORTH TEX INDPOT SCH DIST		08/29/2018	MERRILL LYNCH PIERCE FENNER & SMITH INC.		2,132,571	2,100,000	2,278,395	2,124,877		(14,627)		(14,627)		2,110,249		22,322	22,322	109,667	02/15/2029	1FE
542264-AL-0	LONE STAR COLLEGE SYS TEX		08/15/2018	Call @ 100.00		2,000,000	2,000,000	2,079,300	2,006,126		(6,126)		(6,126)		2,000,000				100,000	08/15/2021	1FE
592112-PE-0	METROPOLITAN GOVT NASHVILLE & DAVIDSON C		08/29/2018	MERRILL LYNCH PIERCE FENNER & SMITH INC.		730,420	690,000	795,901	719,789		(7,715)		(7,715)		712,075		18,345	18,345	40,250	07/01/2022	1FE
734260-U5-9	PORT HOUSTON AUTH TEX HARRIS CNTY		08/29/2018	MERRILL LYNCH PIERCE FENNER & SMITH INC.		775,868	750,000	800,115	758,024		(2,972)		(2,972)		755,053		20,815	20,815	34,375	10/01/2019	1FE
2499999	Subtotal - Bonds - U.S. Political Subdivisions of States, Territories and Possessions					5,638,859	5,540,000	5,953,711	5,608,816		(31,439)		(31,439)		5,577,377		61,482	61,482	284,292	XXX	XXX
040654-SH-9	ARIZONA ST TRANSN BRD HIWY REV		07/01/2018	Call @ 100.00		750,000	750,000	807,278	754,675		(4,675)		(4,675)		750,000				37,500	07/01/2031	1FE
040654-UD-5	ARIZONA ST TRANSN BRD HIWY REV		08/23/2018	MORGAN STANLEY CO		434,748	400,000	465,500			(2,937)		(2,937)		421,469		13,279	13,279	13,111	07/01/2022	1FE
196632-D9-1	COLORADO SPRINGS COLO UTILS REV		08/23/2018	Bank of NYC		610,732	570,000	666,872			(4,228)		(4,228)		593,823		16,910	16,910	22,325	11/15/2023	1FE
29270C-WA-9	ENERGY NORTHWEST WASH ELEC REV		07/02/2018	Call @ 100.00		400,000	400,000	459,644			(2,150)		(2,150)		400,000				10,000	07/01/2018	1FE
3128MA-BS-7	FH 607849 - RMBS		09/01/2018	Paydown		71,715	71,715	72,146			(431)		(431)		71,715				835	05/01/2044	1
3128MB-X6-9	FH 613201 - RMBS		09/01/2018	Paydown		5,208	5,208	4,975	5,054		154		154		5,208				140	07/01/2023	1
3128MB-Y0-5	FH 613187 - RMBS		09/01/2018	Paydown		3,799	3,799	3,643	3,689		109		109		3,799		0	0	103	06/01/2023	1
3128MC-GZ-2	FH 613616 - RMBS		09/01/2018	Paydown		3,772	3,772	3,844	3,814		(42)		(42)		3,772		0	0	108	07/01/2024	1
3128MD-XJ-7	FH 614981 - RMBS		09/01/2018	Paydown		11,069	11,069	11,652	11,519		(450)		(450)		11,069		0	0	227	12/01/2028	1
3128MJ-Q7-8	FH 608477 - RMBS		09/01/2018	Paydown		2,914	2,914	3,022	3,022		(108)		(108)		2,914		0	0	59	02/01/2042	1
3128MJ-RM-4	FH 608491 - RMBS		09/01/2018	Paydown		6,161	6,161	6,397	6,392		(232)		(232)		6,161				126	05/01/2042	1
3128MJ-RV-4	FH 608499 - RMBS		09/01/2018	Paydown		22,080	22,080	21,663			417		417		22,080		0	0	229	07/01/2042	1
3128MJ-S4-3	FH 608538 - RMBS		09/01/2018	Paydown		5,027	5,027	5,053	5,050		(23)		(23)		5,027		0	0	104	07/01/2043	1
3128MJ-YT-1	FH 608721 - RMBS		09/01/2018	Paydown		63,223	63,223	61,627			1,596		1,596		63,223		0	0	639	09/01/2046	1
3128MI-PQ-0	FH 618430 - RMBS		09/01/2018	Paydown		59,426	59,426	59,721			(295)		(295)		59,426		0	0	613	04/01/2027	1
3128PB-FQ-9	FH 619175 - RMBS		09/01/2018	Paydown		67,449	67,449	66,532			917		917		67,449				692	02/01/2038	1
3128PL-CS-9	FH 608181 - RMBS		09/01/2018	Paydown		4,504	4,504	4,319	4,404		99		99		4,504		0	0	124	06/01/2023	1
3128PM-6D-7	FH 609868 - RMBS		09/01/2018	Paydown		10,814	10,814	11,081	10,999		(185)		(185)		10,814				288	06/01/2024	1
3128PQ-FE-6	FH 611065 - RMBS		09/01/2018	Paydown		13,054	13,054	13,552	13,351		(297)		(297)		13,054		0	0	379	10/01/2024	1
31292S-AH-3	FH 609008 - RMBS		09/01/2018	Paydown		16,960	16,960	16,639			320		320		16,960				168	08/01/2042	1
31292S-AN-0	FH 609013 - RMBS		09/01/2018	Paydown		19,235	19,235	19,575	19,544		(309)		(309)		19,235				339	09/01/2042	1
312944-FE-6	FH 695565 - RMBS		09/01/2018	Paydown		17,899	17,899	17,619	17,611		287		287		17,899				451	12/01/2040	1
312988-KQ-0	FH 670303 - RMBS		09/01/2018	Paydown		1,692	1,692	1,704	1,696		(4)		(4)		1,692				50	02/01/2034	1
3132GU-DX-9	FH 608818 - RMBS		09/01/2018	Paydown		6,880	6,880	7,144	7,150		(270)		(270)		6,880		0	0	141	06/01/2042	1
3132GU-KM-5	FH 609000 - RMBS		09/01/2018	Paydown		30,699	30,699	30,883			(185)		(185)		30,699				364	06/01/2042	1
3132HL-PP-2	FH 610430 - RMBS		09/01/2018	Paydown		4,707	4,707	4,979	4,976		(269)		(269)		4,707		0	0	97	08/01/2042	1
3132HQ-BE-1	FH 613637 - RMBS		09/01/2018	Paydown		55,514	55,514	54,465			1,049		1,049		55,514				570	11/01/2042	1
3132J8-UR-9	FH 617391 - RMBS		09/01/2018	Paydown		18,147	18,147	18,913	18,800		(653)		(653)		18,147				464	04/01/2043	1
3132JP-P2-2	FH 622241 - RMBS		09/01/2018	Paydown		5,361	5,361	5,610	5,592		(231)		(231)		5,361		0	0	126	10/01/2043	1
3132M8-QW-9	FH 627969 - RMBS		09/01/2018	Paydown		9,439	9,439	9,973	9,888		(449)		(449)		9,439				225	08/01/2044	1
3132OL-ZB-8	FH 630769 - RMBS		09/01/2018	Paydown		22,136	22,136	23,696	23,618		(1,482)		(1,482)		22,136		0	0	543	01/01/2045	1
3132OL-6N-8	FH 630876 - RMBS		09/01/2018	Paydown		44,337	44,337	44,504			(167)		(167)		44,337				579	01/01/2045	1
3132OM-LQ-2	FH 631234 - RMBS		09/01/2018	Paydown		12,261	12,261	12,862	12,840		(579)		(579)		12,261		0	0	278	02/01/2045	1
3132OU-SB-7	FH 637993 - RMBS		09/01/2018	Paydown		11,202	11,202	11,932	11,897		(695)		(695)		11,202				292	12/01/2045	1
3132OU-DC-4	FH 637298 - RMBS		09/01/2018	Paydown		19,727	19,727	20,473	20,427		(700)		(700)		19,727				416	11/01/2045	1
3136AC-U5-8	FNR 1315E EP - CMO/RMBS		09/01/2018	Paydown		10,685	10,685	11,106	11,021		(335)		(335)		10,685				220	08/25/2042	1
3137AM-NN-3	FHR 4012A JK - CMO/RMBS		09/01/2018	Paydown		41,041	41,041	41,803			(762)										

STATEMENT AS OF SEPTEMBER 30, 2018 OF THE MOTORISTS COMMERCIAL MUTUAL INSURANCE COMPANY

**SCHEDULE D - PART 4**

Show All Long-Term Bonds and Stock Sold, Redeemed or Otherwise Disposed of During the Current Quarter

1	2	3	4	5	6	7	8	9	10	Change In Book/Adjusted Carrying Value					16	17	18	19	20	21	22	
										11	12	13	14	15								
CUSIP Identification	Description	Foreign	Disposal Date	Name of Purchaser	Number of Shares of Stock	Consideration	Par Value	Actual Cost	Prior Year Book/Adjusted Carrying Value	Unrealized Valuation Increase/(Decrease)	Current Year's (Amortization)/Accretion	Current Year's Other Than Temporary Impairment Recognized	Total Change in Book/Adjusted Carrying Value (11 + 12 - 13)	Total Foreign Exchange Change in Book /Adjusted Carrying Value	Book/Adjusted Carrying Value at Disposal Date	Foreign Exchange Gain (Loss) on Disposal	Realized Gain (Loss) on Disposal	Total Gain (Loss) on Disposal	Bond Interest/Stock Dividends Received During Year	Stated Contractual Maturity Date	NAIC Designation or Market Indicator (a)	
3137BC-R6-7	FHR 43748 CE - CMO/RMBS		09/01/2018	Paydown		42,873	42,873	43,627			(754)		(754)		42,873				493	12/15/2043	1	
3138AS-4B-5	FN AJ1717 - RMBS		09/01/2018	Paydown		30,080	30,080	31,070			(990)		(990)		30,080		0	0	372	09/01/2041	1	
3138AX-Z9-5	FN AJ6167 - RMBS		09/01/2018	Paydown		51,023	51,023	52,700			(1,678)		(1,678)		51,023		0	0	543	12/01/2041	1	
3138EN-HJ-1	FN AL5632 - RMBS		09/01/2018	Paydown		27,625	27,625	29,390	29,169		(1,545)		(1,545)		27,625		0	0	639	08/01/2044	1	
3138IG-EZ-3	FN AS6451 - RMBS		09/01/2018	Paydown		23,031	23,031	24,077	23,980		(948)		(948)		23,031		0	0	496	01/01/2045	1	
3138WH-L3-4	FN AS7545 - RMBS		09/01/2018	Paydown		94,682	94,682	94,870			(187)		(187)		94,682		0	0	1,117	07/01/2046	1	
3138WH-LR-1	FN AS7535 - RMBS		09/01/2018	Paydown		58,684	58,684	57,660			1,024		1,024		58,684		0	0	556	07/01/2041	1	
3138WJ-YB-8	FN AS8805 - RMBS		09/01/2018	Paydown		31,842	31,842	33,065	33,032		(1,190)		(1,190)		31,842		0	0	858	02/01/2042	1	
3138X3-AY-8	FN AU3622 - RMBS		09/01/2018	Paydown		13,066	13,066	13,749	13,632		(566)		(566)		13,066		0	0	295	07/01/2043	1	
3138X3-BX-9	FN AU3653 - RMBS		09/01/2018	Paydown		8,030	8,030	8,443	8,403		(372)		(372)		8,030		0	0	188	09/01/2043	1	
3138Y6-MY-7	FN AX4874 - RMBS		09/01/2018	Paydown		32,220	32,220	34,154	33,795		(1,575)		(1,575)		32,220		0	0	656	12/01/2044	1	
3138Y9-SB-2	FN AX7742 - RMBS		09/01/2018	Paydown		2,613	2,613	2,734			(129)		(129)		2,613		0	0	54	01/01/2045	1	
3140EC-S9-1	FN BA7743 - RMBS		09/01/2018	Paydown		58,955	58,955	57,465			1,490		1,490		58,955		0	0	530	07/01/2046	1	
3140EV-4E-4	FN BC1720 - RMBS		09/01/2018	Paydown		25,913	25,913	27,221	27,157		(1,243)		(1,243)		25,913		0	0	599	01/01/2046	1	
3140H1-V2-3	FN BJ0632 - RMBS		09/01/2018	Paydown		12,938	12,938	13,267			(330)		(330)		12,938		0	0	144	03/01/2048	1	
31410L-UV-2	FN B90796 - RMBS		09/01/2018	Paydown		23,225	23,225	23,755			(530)		(530)		23,225		0	0	364	12/01/2045	1	
31412U-L7-3	FN 935150 - RMBS		09/01/2018	Paydown		2,737	2,737	2,849	2,812		(75)		(75)		2,737		0	0	73	04/01/2024	1	
31414P-M2-2	FN 972077 - RMBS		09/01/2018	Paydown		8,198	8,198	8,429	8,292		(94)		(94)		8,198		0	0	221	02/01/2023	1	
31415M-4F-9	FN 984722 - RMBS		09/01/2018	Paydown		1,633	1,633	1,579	1,591		42		42		1,633		0	0	44	06/01/2023	1	
31416T-JN-0	FN AA9268 - RMBS		09/01/2018	Paydown		1,745	1,745	1,730	1,730		15		15		1,745		0	0	42	07/01/2024	1	
31418A-FC-7	FN MA1062 - RMBS		09/01/2018	Paydown		32,074	32,074	32,196			(122)		(122)		32,074		0	0	328	05/01/2027	1	
31418B-6J-0	FN MA2672 - RMBS		09/01/2018	Paydown		69,904	69,904	69,348			556		556		69,904		0	0	685	07/01/2036	1	
31418C-AF-1	FN MA2705 - RMBS		09/01/2018	Paydown		58,672	58,672	57,169			1,503		1,503		58,672		0	0	589	08/01/2046	1	
665444-JD-8	NORTHERN MUN PWIR AGY MINN ELEC SYS REV		08/29/2018	JP MORGAN SECURITIES LLC		782,265	750,000	855,503	775,641		(8,366)		(8,366)		767,276		14,989	14,989	43,750	01/01/2020	1FE	
837147-7C-5	SOUTH CAROLINA ST PUB SVC AUTH REV		08/29/2018	PERSHING DIV OF DLJ SEC LNDING		682,883	655,000	718,483	672,797		(5,793)		(5,793)		667,004		15,880	15,880	38,208	01/01/2040	1FE	
914301-J6-4	UNIVERSITY HOUSTON TEX UNIV REVS		08/29/2018	FENNER & SMITH INC		558,531	550,000	624,569			(4,162)		(4,162)		554,588		3,943	3,943	14,972	02/15/2026	1FE	
92817L-LG-6	VIRGINIA ST RES AUTH CLEAN WTR REV		08/29/2018	MERRILL LYNCH PIERCE FENNER & SMITH INC		799,673	750,000	861,855	783,205		(7,735)		(7,735)		775,470		24,202	24,202	34,375	10/01/2021	1FE	
3199999	Subtotal - Bonds - U.S. Special Revenues					6,428,729	6,234,897	6,883,357	3,405,005		(51,945)		(51,945)		6,339,527		89,202	89,202	234,403	XXX	XXX	
07177M-AD-5	BAXALTA INC	C	09/04/2018	Not Available		169,960	175,000	174,944	174,972		8		8		174,980		(5,620)	(5,620)	3,606	06/23/2020	2FE	
073902-CD-8	BEAR STEARNS COMPANIES INC. (THE)		07/02/2018	Maturity @ 100.00		500,000	500,000	454,141	497,587		2,413		2,413		500,000				23,250	07/02/2018	1FE	
21870K-AA-6	CORE 15WEST A - CMBS		08/01/2018	Paydown		46,437	46,437	47,827	47,676		(1,241)		(1,241)		46,437		0	0	892	02/12/2037	1FE	
28415P-AA-2	EHGVT 16A A - ABS		09/25/2018	Paydown		37,921	37,921	37,921	37,921		0		0		37,921		0	0	609	04/25/2028	1FE	
34531A-AE-4	FORDL 16A A4 - ABS		07/16/2018	Paydown		133,639	133,639	133,622			1		1		133,639		0	0	1,543	07/15/2019	1FE	
38014B-AC-3	GMALT 181 A2B - ABS		09/20/2018	Paydown		108,970	108,970	108,970			1		1		108,970		0	0	1,115	04/20/2020	1FE	
57165A-AA-6	MVCOIT 121 A - ABS		09/20/2018	Paydown		8,748	8,748	8,747	8,747		1		1		8,748		0	0	132	05/20/2030	1FE	
82650H-AA-1	SRFC 133 A - ABS		09/01/2018	Paydown		106,710	106,710	106,680	106,691		19		19		106,710		0	0	1,597	10/21/2030	1FE	
82652J-AA-5	SRFC 153 A - ABS		09/20/2018	Paydown		13,557	13,557	13,555	13,553		4		4		13,557		0	0	211	09/20/2032	1FE	
82652K-AA-2	SRFC 171 A - ABS		09/20/2018	Paydown		14,133	14,133	14,132	14,132		1		1		14,133		0	0	250	03/20/2034	1FE	
887317-AF-2	TIME WARNER INC		09/27/2018	CORPORATE ACTION		771,237	750,000	783,248	759,465		(3,059)		(3,059)		756,405		(6,405)	(6,405)	59,018	03/15/2020	2FE	
92903P-AA-7	VNO 10VNO A1 - CMBS		09/10/2018	Paydown		25,075	25,075	25,075	25,069		6		6		25,075		0	0	448	09/13/2028	1FE	
3899999	Subtotal - Bonds - Industrial and Miscellaneous (Unaffiliated)					1,935,786	1,920,190	1,908,860	1,685,813		(1,848)		(1,848)		1,926,575		(12,025)	(12,025)	92,672	XXX	XXX	
8399997	Total - Bonds - Part 4					17,611,871	17,258,941	18,651,084	13,083,492		(107,767)		(107,767)		17,430,760		159,874	159,874	775,156	XXX	XXX	
8399998	Total - Bonds - Part 5					XXX	XXX	XXX	XXX	XXX	XXX	XXX	XXX	XXX	XXX	XXX	XXX	XXX	XXX	XXX	XXX	XXX
8399999	Total - Bonds					17,611,871	17,258,941	18,651,084	13,083,492		(107,767)		(107,767)		17,430,760		159,874	159,874	775,156	XXX	XXX	
8999997	Total - Preferred Stocks - Part 4					XXX	XXX	XXX	XXX											XXX	XXX	
8999998	Total - Preferred Stocks - Part 5					XXX	XXX	XXX	XXX	XXX	XXX	XXX	XXX	XXX	XXX	XXX	XXX	XXX	XXX	XXX	XXX	XXX
8999999	Total - Preferred Stocks					XXX	XXX	XXX	XXX	XXX	XXX	XXX	XXX	XXX	XXX	XXX	XXX	XXX	XXX	XXX	XXX	XXX
003654-10-0	ABIOMED ORD		08/08/2018	ITG INC		20,000	7,582	8,402						8,402			(819)	(819)				
037833-10-0	APPLE ORD		08/28/2018	VARIOUS		261,000	56,822	14,901	44,169		(29,268)		(29,268)		14,901		41,920	41,920	747			
11282X-10-3	BROOKFIELD PROPERTY REIT CL A ORD	C	08/27/2018	CORPORATE ACTION		0,720	15	15						15								
12503M-10-8	CBCE GLOBAL MARKETS ORD		08/08/2018	ITG INC		25,000	2,316	2,860						2,860			(544)	(544)	7			
172908-10-5	CINTAS ORD		08/08/2018	ITG INC		15,000	3,162	348	2,337		(1,989)		(1,989)		348		2,813	2,813				

E05.1

STATEMENT AS OF SEPTEMBER 30, 2018 OF THE MOTORISTS COMMERCIAL MUTUAL INSURANCE COMPANY

**SCHEDULE D - PART 4**

Show All Long-Term Bonds and Stock Sold, Redeemed or Otherwise Disposed of During the Current Quarter

1	2	3	4	5	6	7	8	9	10	Change In Book/Adjusted Carrying Value					16	17	18	19	20	21	22	
										11	12	13	14	15								
CUSIP Identification	Description	Foreign	Disposal Date	Name of Purchaser	Number of Shares of Stock	Consideration	Par Value	Actual Cost	Prior Year Book/Adjusted Carrying Value	Unrealized Valuation Increase/(Decrease)	Current Year's (Amortization)/Accretion	Current Year's Other Than Temporary Impairment Recognized	Total Change in Book/Adjusted Carrying Value (11 + 12 - 13)	Total Foreign Exchange Change in Book /Adjusted Carrying Value	Book/Adjusted Carrying Value at Disposal Date	Foreign Exchange Gain (Loss) on Disposal	Realized Gain (Loss) on Disposal	Total Gain (Loss) on Disposal	Bond Interest/Stock Dividends Received During Year	Stated Contractual Maturity Date	NAIC Designation or Market Indicator (a)	
222070-20-3	COTY CL A ORD		08/08/2018	ITG INC	265,000	3,559		4,178	4,891	(1,060)			(1,060)		4,178		(619)	(619)		33		
257454-10-8	DOMINION ENERGY MIDSTREAM PARTNE UNIT		08/02/2018	UBS SECURITIES LLC	6,900,000	100,883		197,376	210,105	(12,729)			(12,729)		197,376		(96,493)	(96,493)		4,499		
26138E-10-9	DR PEPPER SNAPPLE GROUP ORD	C	07/31/2018	CORPORATE ACTION	150,000			16,956	14,559	(8,741)			(8,741)		5,819		11,138	11,138		4,611		
26885B-10-0	EQT MIDSTREAM PARTNERS UNIT		08/01/2018	RBC CAPITAL MARKETS	800,000			60,102	58,480	1,622			1,622		60,102		(19,511)	(19,511)		1,672		
26885J-10-3	EQT GP HOLDINGS UNIT		08/03/2018	RBC CAPITAL MARKETS	600,000			17,640	16,140	1,500			1,500		17,640		(4,486)	(4,486)		301		
30303M-10-2	FACEBOOK CL A ORD		08/08/2018	ITG INC	30,000			5,976							5,976		(406)	(406)				
34354P-10-5	FLOWSERVE ORD		08/08/2018	ITG INC	30,000			882	1,264	(382)			(382)		882		496	496		17		
354613-10-1	FRANKLIN RESOURCES ORD		09/21/2018	VARIOUS	3,135,000	101,845		112,202	135,840	(23,638)			(23,638)		112,202		(10,356)	(10,356)		11,568		
36174X-10-1	GGP ORD	C	08/27/2018	MERGER	345,000			2,620	7,105	(129)			(129)		7,105		(4,485)	(4,485)		5,154		
369604-10-3	GENERAL ELECTRIC ORD		08/08/2018	ITG INC	1,310,000			17,030	22,860	(1,898)			(1,898)		20,961		(3,932)	(3,932)		472		
372460-10-5	GENUINE PARTS ORD		08/08/2018	ITG INC	20,000			1,986	759				(1,141)		759		1,227	1,227		42		
43300A-20-3	HILTON WORLDWIDE HOLDINGS ORD		08/08/2018	ITG INC	85,000			6,522							6,762		(240)	(240)				
44967H-10-1	ILG ORD		09/12/2018	CORPORATE ACTION	1,000			34	28	(25)			(25)		3		31	31		0		
460690-10-0	INTERPUBLIC GROUP OF COMPANIES ORD		08/08/2018	ITG INC	65,000			1,442	257				(1,053)		257		1,185	1,185		27		
46625H-10-0	JPMORGAN CHASE ORD		09/20/2018	VARIOUS	375,000	44,624		13,507	40,103	(26,596)			(26,596)		13,507		31,117	31,117		660		
49271V-10-0	KEURIG DR PEPPER ORD	C	08/08/2018	ITG INC	150,000			3,555	5,819						5,819		(2,284)	(2,284)				
513272-10-4	LAMB WESTON HOLDINGS ORD		08/01/2018	Adjustment	0.000			0.000									0.000	0.000				
524660-10-7	LEGGITT & PLATT ORD		08/08/2018	ITG INC	20,000			887	428				(527)		428		460	460		22		
54142L-10-9	LOGMEIN ORD		08/01/2018	Adjustment	0.000			0.000									0.000	0.000				
57164Y-10-7	MARRIOTT VACATIONS WORLDWIDE ORD		09/04/2018	Not Available	0.165			15	20						20		(5)	(5)				
579780-20-6	MCCORMICK ORD		08/08/2018	ITG INC	5,000			608	160				(349)		160		447	447		8		
594918-10-4	MICROSOFT ORD		09/18/2018	CO. LLC	625,000	70,786		16,436	53,463	(37,027)			(37,027)		16,436		54,350	54,350		788		
595112-10-3	MICRON TECHNOLOGY ORD		08/08/2018	ITG INC	40,000			2,124	2,138						2,138		(15)	(15)				
60871R-20-9	MOLSON COORS BREWING NONVTG CL B ORD		09/21/2018	CORPORATE ACTION	2,202,000	148,010		192,226	150,598	12,659			12,659		192,226		(44,216)	(44,216)		2,182		
631103-10-8	NASDAQ ORD		08/08/2018	ITG INC	20,000			1,864	396				(1,140)		396		1,467	1,467		16		
651229-10-8	NEWELL BRANDS ORD		08/08/2018	ITG INC	270,000	5,578		4,764	4,172	(2,851)			(2,851)		4,764		814	814		124		
715347-10-0	PERSPECTA ORD		08/01/2018	ITG INC	0.000			0.000									0.000	0.000		3		
776696-10-6	ROPER TECHNOLOGIES ORD		08/08/2018	ITG INC	5,000	1,482		310	1,295	(985)			(985)		310		1,172	1,172		6		
78410G-10-4	SBA COMMUNICATIONS CORPORATION		08/08/2018	ITG INC	30,000			4,732	4,950						4,950		(218)	(218)				
806857-10-8	SCHLUMBERGER ORD	C	06/27/2018	ITG INC	0.000			0.000												25		
81663A-10-5	SEMGROUP CL A ORD		08/02/2018	UBS SECURITIES LLC	2,200,000	54,877		56,998	66,440	(9,442)			(9,442)		56,998		(2,121)	(2,121)		2,079		
822634-10-1	SHELL MIDSTREAM PARTNERS UNIT	C	08/02/2018	WELLS FARGO SECURITIES	5,400,000	119,417		155,775	161,028	(5,253)			(5,253)		155,775		(36,358)	(36,358)		3,677		
872540-10-9	TJX ORD		08/08/2018	CORPORATE ACTION	36,000	3,586		1,554	2,753	(1,199)			(1,199)		1,554		2,033	2,033		25		
87612G-10-1	TARGA RESOURCES ORD		08/03/2018	WELLS FARGO SECURITIES	1,400,000	72,351		61,463	67,788	(6,325)			(6,325)		61,463		10,889	10,889		2,548		
883556-10-2	THERMO FISHER SCIENTIFIC ORD		09/25/2018	CORPORATE ACTION	147,000	35,662		19,547	27,912	(8,365)			(8,365)		19,547		16,115	16,115		72		
90130A-20-0	TWENTY FIRST CENTURY FOX CL B ORD		09/25/2018	CORPORATE ACTION	3,899,000	173,947		153,085	58,140	(337)			(337)		153,085		20,861	20,861		453		
90184L-10-2	TWITTER ORD		08/08/2018	ITG INC	285,000	9,114		12,720	9,114						12,720		(3,605)	(3,605)				
91529Y-10-6	UNUM ORD		08/08/2018	ITG INC	45,000	1,631		1,014	2,470	(1,456)			(1,456)		1,014		617	617		21		
91820A-10-8	VF ORD		08/20/2018	CORPORATE ACTION	1,049,000	97,409		39,015	77,626	(38,612)			(38,612)		39,015		58,394	58,394		965		
92220P-10-5	VARIAN MEDICAL SYSTEMS ORD		08/08/2018	ITG INC	15,000	1,669		625	1,667	(1,042)			(1,042)		625		1,044	1,044				
981558-10-9	WORLDPAY CL A ORD		09/18/2018	CORPORATE ACTION	596,000	58,810		18,855	43,836	(24,981)			(24,981)		18,855		39,956	39,956				
087110-10-5	TECHNIPFIC ORD	D	08/08/2018	ITG INC	100,000	3,068		3,226							3,226		(158)	(158)				
098294-10-4	XL GROUP ORD	D	09/12/2018	CORPORATE ACTION	160,000	9,216		724	5,626	(4,902)			(4,902)		724		8,492	8,492		106		
9099999. Subtotal - Common Stocks - Industrial and Miscellaneous (Unaffiliated)						1,308,488	XXX	1,243,437	1,283,203	(237,662)			(237,662)		1,232,299		76,189	76,189		42,932	XXX	XXX
9799997. Total - Common Stocks - Part 4						1,308,488	XXX	1,243,437	1,283,203	(237,662)			(237,662)		1,232,299		76,189	76,189		42,932	XXX	XXX
9799998. Total - Common Stocks - Part 5						XXX	XXX	XXX	XXX	XXX	XXX	XXX	XXX	XXX	XXX	XXX	XXX	XXX	XXX	XXX	XXX	XXX
9799999. Total - Common Stocks						1,308,488	XXX	1,243,437	1,283,203	(237,662)			(237,662)		1,232,299		76,189	76,189		42,932	XXX	XXX
9899999. Total - Preferred and Common Stocks						1,308,488	XXX	1,243,437	1,283,203	(237,662)			(237,662)		1,232,299		76,189	76,189		42,932	XXX	XXX
9999999 - Totals						18,920,359	XXX	19,894,521	14,366,695	(237,662)	(107,767)		(345,428)		18,663,059		236,063	236,063		818,088	XXX	XXX

(a) For all common stock bearing the NAIC market indicator "U" provide: the number of such issues.....

E05.2

Schedule DB - Part A - Section 1 - Options, Caps, Floors, Collars, Swaps and Forwards Open

**N O N E**

Schedule DB - Part B - Section 1 - Futures Contracts Open

**N O N E**

Schedule DB - Part B - Section 1B - Brokers with whom cash deposits have been made

**N O N E**

Schedule DB - Part D - Section 1 - Counterparty Exposure for Derivative Instruments Open

**N O N E**

Schedule DB - Part D-Section 2 - Collateral for Derivative Instruments Open - Pledged By

**N O N E**

Schedule DB - Part D-Section 2 - Collateral for Derivative Instruments Open - Pledged To

**N O N E**

**SCHEDULE DL - PART 1  
SECURITIES LENDING COLLATERAL ASSETS**

Reinvested Collateral Assets Owned Current Statement Date

(Securities lending collateral assets reported in aggregate on Line 10 of the Assets page and not included on Schedules A, B, BA, D, DB and E)

1 CUSIP Identification	2 Description	3 Code	4 NAIC Designation/ Market Indicator	5 Fair Value	6 Book/Adjusted Carrying Value	7 Maturity Date
0599999. Total - U.S. Government Bonds						XXX
1099999. Total - All Other Government Bonds						XXX
1799999. Total - U.S. States, Territories and Possessions Bonds						XXX
2499999. Total - U.S. Political Subdivisions Bonds						XXX
3199999. Total - U.S. Special Revenues Bonds						XXX
3899999. Total - Industrial and Miscellaneous (Unaffiliated) Bonds						XXX
4899999. Total - Hybrid Securities						XXX
5599999. Total - Parent, Subsidiaries and Affiliates Bonds						XXX
6099999. Subtotal - SVO Identified Funds						XXX
6199999. Total - Issuer Obligations						XXX
6299999. Total - Residential Mortgage-Backed Securities						XXX
6399999. Total - Commercial Mortgage-Backed Securities						XXX
6499999. Total - Other Loan-Backed and Structured Securities						XXX
6599999. Total - SVO Identified Funds						XXX
6699999. Total Bonds						XXX
7099999. Total - Preferred Stocks						XXX
Subtotal - Common Stocks - Industrial and Miscellaneous (Unaffiliated)						
000000-00-0	BNY MELLON Securities Lending Overnight Fund	0	L	656,781	656,781	
7199999. Subtotal - Common Stocks - Industrial and Miscellaneous (Unaffiliated)				656,781	656,781	XXX
7599999. Total - Common Stocks				656,781	656,781	XXX
7699999. Total - Preferred and Common Stocks				656,781	656,781	XXX
9999999 - Totals				656,781	656,781	XXX

General Interrogatories:

- Total activity for the year Fair Value \$ .....656,781 Book/Adjusted Carrying Value \$ .....656,781
- Average balance for the year Fair Value \$ .....710,473 Book/Adjusted Carrying Value \$ .....710,473
- Reinvested securities lending collateral assets book/adjusted carrying value included in this schedule by NAIC designation:  
 NAIC 1 \$ .....656,781 NAIC 2 \$ ..... NAIC 3 \$ ..... NAIC 4 \$ ..... NAIC 5 \$ ..... NAIC 6 \$ .....

**SCHEDULE DL - PART 2  
SECURITIES LENDING COLLATERAL ASSETS**

Reinvested Collateral Assets Owned Current Statement Date

(Securities lending collateral assets included on Schedules A, B, BA, D, DB and E and not reported in aggregate on Line 10 of the Assets page)

1	2	3	4	5	6	7
CUSIP Identification	Description	Code	NAIC Designation/ Market Category	Fair Value	Book/Adjusted Carrying Value	Maturity Date
9999999 - Totals						XXX

**NONE**

General Interrogatories:

- 1. Total activity for the year Fair value \$ ..... Book/Adjusted Carrying Value \$ .....
- 2. Average balance for the year Fair value \$ ..... Book/Adjusted Carrying Value \$ .....

**SCHEDULE E - PART 1 - CASH**

Month End Depository Balances

1 Depository	2 Code	3 Rate of Interest	4 Amount of Interest Received During Current Quarter	5 Amount of Interest Accrued at Current Statement Date	Book Balance at End of Each Month During Current Quarter			9 *
					6 First Month	7 Second Month	8 Third Month	
BNY Mellon ..... Pittsburgh, PA .....						(15,185,122)	1,966,892	XXX
PNC Bank ..... Columbus, OH .....					16,319	16,319	16,319	XXX
0199998. Deposits in ... 2 depositories that do not exceed the allowable limit in any one depository (See instructions) - Open Depositories	XXX	XXX			6,486	6,496	6,496	XXX
0199999. Totals - Open Depositories	XXX	XXX			22,805	(15,162,307)	1,989,706	XXX
0299998. Deposits in ... depositories that do not exceed the allowable limit in any one depository (See instructions) - Suspended Depositories	XXX	XXX						XXX
0299999. Totals - Suspended Depositories	XXX	XXX						XXX
0399999. Total Cash on Deposit	XXX	XXX			22,805	(15,162,307)	1,989,706	XXX
0499999. Cash in Company's Office	XXX	XXX	XXX	XXX	500	500	500	XXX
0599999. Total - Cash	XXX	XXX			23,305	(15,161,807)	1,990,206	XXX

STATEMENT AS OF SEPTEMBER 30, 2018 OF THE MOTORISTS COMMERCIAL MUTUAL INSURANCE COMPANY

**SCHEDULE E - PART 2 - CASH EQUIVALENTS**

Show Investments Owned End of Current Quarter

1 CUSIP	2 Description	3 Code	4 Date Acquired	5 Rate of Interest	6 Maturity Date	7 Book/Adjusted Carrying Value	8 Amount of Interest Due and Accrued	9 Amount Received During Year
0599999. Total - U.S. Government Bonds								
1099999. Total - All Other Government Bonds								
1799999. Total - U.S. States, Territories and Possessions Bonds								
2499999. Total - U.S. Political Subdivisions Bonds								
3199999. Total - U.S. Special Revenues Bonds								
3899999. Total - Industrial and Miscellaneous (Unaffiliated) Bonds								
4899999. Total - Hybrid Securities								
5599999. Total - Parent, Subsidiaries and Affiliates Bonds								
6099999. Subtotal - SVO Identified Funds								
7799999. Total - Issuer Obligations								
7899999. Total - Residential Mortgage-Backed Securities								
7999999. Total - Commercial Mortgage-Backed Securities								
8099999. Total - Other Loan-Backed and Structured Securities								
8199999. Total - SVO Identified Funds								
8399999. Total Bonds								
31846V-41-9	FIRST AMER:TRS OBG V		.08/02/2018	1.900	XXX	.0		
94975H-29-6	WELLS FRGO TREASURY PLUS CL I MMF		.09/05/2018	2.010	XXX	1,366	.2	.3
8599999. Subtotal - Exempt Money Market Mutual Funds - as Identified by the SVO						1,366	.2	.3
09248U-61-9	BLKPK LQ:TEMPFUND INSTL		.12/02/2016	2.200	XXX	.0		
316175-10-8	FIDELITY IMM:GOVT I		.09/28/2018	2.000	XXX	14,575,819	29,268	11,515
60934N-20-3	FEDERATED INS PR OB INST		.09/01/2018	2.230	XXX	305,185	530	2,838
711990-33-3	TD BANK DEPOSIT SWEEP		.09/04/2018	0.000	XXX	75,071		.57
8699999. Subtotal - All Other Money Market Mutual Funds						14,956,074	29,798	14,410
8899999 - Total Cash Equivalents						14,957,441	29,800	14,413