



QUARTERLY STATEMENT

As of September 30, 2018
of the Condition and Affairs of the

EVERGREEN NATIONAL INDEMNITY COMPANY

NAIC Group Code.....4869, 4869 (Current Period) (Prior Period)	NAIC Company Code..... 12750	Employer's ID Number..... 36-2467238
Organized under the Laws of OH	State of Domicile or Port of Entry OH	Country of Domicile US
Incorporated/Organized..... December 30, 1939	Commenced Business..... January 1, 1940	
Statutory Home Office	6140 PARKLAND BLVD, STE 321 .. MAYFIELD HEIGHTS .. OH .. US .. 44124 <i>(Street and Number) (City or Town, State, Country and Zip Code)</i>	
Main Administrative Office	6140 PARKLAND BLVD, STE 321 .. MAYFIELD HEIGHTS .. OH .. US .. 44124 <i>(Street and Number) (City or Town, State, Country and Zip Code)</i>	440-229-3420 <i>(Area Code) (Telephone Number)</i>
Mail Address	6140 PARKLAND BLVD, STE 321 .. MAYFIELD HEIGHTS .. OH .. US .. 44124 <i>(Street and Number or P. O. Box) (City or Town, State, Country and Zip Code)</i>	
Primary Location of Books and Records	6140 PARKLAND BLVD, STE 321 .. MAYFIELD HEIGHTS .. OH .. US .. 44124 <i>(Street and Number) (City or Town, State, Country and Zip Code)</i>	440-229-3403 <i>(Area Code) (Telephone Number)</i>
Internet Web Site Address		
Statutory Statement Contact	DAVID ALAN CANZONE <i>(Name)</i> dcanzone@evergreen-national.com <i>(E-Mail Address)</i>	440-229-3403 <i>(Area Code) (Telephone Number) (Extension)</i> 440-229-3421 <i>(Fax Number)</i>

OFFICERS

Name	Title	Name	Title
1. MATTHEW TRACY TUCKER	PRESIDENT	2. DAVID ALAN CANZONE	CFO/TREASURER
3. WAN CHEN COLLIER	SECRETARY	4. ROBERT WILLARD SHEPARD	VICE PRESIDENT OF FINANCE

OTHER

DIRECTORS OR TRUSTEES

CHARLES KYLE SLATERY	MATTHEW TRACY TUCKER	ROBERT WILLARD SHEPARD	JAMES DONALD LACKIE
DAVID ALAN CANZONE	EMMEL BERNHARDT GOLDEN III		

State of..... Ohio
County of..... Cuyahoga

The officers of this reporting entity being duly sworn, each depose and say that they are the described officers of said reporting entity, and that on the reporting period stated above, all of the herein described assets were the absolute property of the said reporting entity, free and clear from any liens or claims thereon, except as herein stated, and that this statement, together with related exhibits, schedules and explanations therein contained, annexed or referred to, is a full and true statement of all the assets and liabilities and of the condition and affairs of the said reporting entity as of the reporting period stated above, and of its income and deductions therefrom for the period ended, and have been completed in accordance with the NAIC *Annual Statement Instructions and Accounting Practices and Procedures* manual except to the extent that: (1) state law may differ; or, (2) that state rules or regulations require differences in reporting not related to accounting practices and procedures, according to the best of their information, knowledge and belief, respectively. Furthermore, the scope of this attestation by the described officers also includes the related corresponding electronic filing with the NAIC, when required, that is an exact copy (except for formatting differences due to electronic filing) of the enclosed statement. The electronic filing may be requested by various regulators in lieu of or in addition to the enclosed statement.

_____ (Signature) MATTHEW TRACY TUCKER 1. (Printed Name) PRESIDENT _____ (Title)	_____ (Signature) DAVID ALAN CANZONE 2. (Printed Name) CFO/TREASURER _____ (Title)	_____ (Signature) WAN CHEN COLLIER 3. (Printed Name) SECRETARY _____ (Title)
--	--	--

Subscribed and sworn to before me
This _____ day of _____

a. Is this an original filing? Yes [X] No []
b. If no: 1. State the amendment number _____
2. Date filed _____
3. Number of pages attached _____

ASSETS

	Current Statement Date			4 December 31 Prior Year Net Admitted Assets
	1 Assets	2 Nonadmitted Assets	3 Net Admitted Assets (Cols. 1 - 2)	
1. Bonds.....	26,204,062		26,204,062	24,473,113
2. Stocks:				
2.1 Preferred stocks.....	4,499,235		4,499,235	4,175,759
2.2 Common stocks.....	9,011,530		9,011,530	9,495,690
3. Mortgage loans on real estate:				
3.1 First liens.....	664,696		664,696	664,696
3.2 Other than first liens.....			0	
4. Real estate:				
4.1 Properties occupied by the company (less \$.....0 encumbrances).....			0	
4.2 Properties held for the production of income (less \$.....0 encumbrances).....			0	
4.3 Properties held for sale (less \$.....0 encumbrances).....	457,412		457,412	1,669,366
5. Cash (\$.....2,994,118), cash equivalents (\$.....839,183) and short-term investments (\$.....0).....	3,833,301		3,833,301	2,324,805
6. Contract loans (including \$.....0 premium notes).....			0	
7. Derivatives.....			0	
8. Other invested assets.....	2,838,681		2,838,681	2,853,090
9. Receivables for securities.....	49,927		49,927	
10. Securities lending reinvested collateral assets.....			0	
11. Aggregate write-ins for invested assets.....	0	0	0	0
12. Subtotals, cash and invested assets (Lines 1 to 11).....	47,558,844	0	47,558,844	45,656,519
13. Title plants less \$.....0 charged off (for Title insurers only).....			0	
14. Investment income due and accrued.....	302,582		302,582	312,971
15. Premiums and considerations:				
15.1 Uncollected premiums and agents' balances in the course of collection.....	2,035,922		2,035,922	1,636,605
15.2 Deferred premiums, agents' balances and installments booked but deferred and not yet due (including \$.....0 earned but unbilled premiums).....			0	
15.3 Accrued retrospective premiums (\$.....0) and contracts subject to redetermination (\$.....0).....			0	
16. Reinsurance:				
16.1 Amounts recoverable from reinsurers.....	98,877		98,877	256,413
16.2 Funds held by or deposited with reinsured companies.....			0	
16.3 Other amounts receivable under reinsurance contracts.....			0	
17. Amounts receivable relating to uninsured plans.....			0	
18.1 Current federal and foreign income tax recoverable and interest thereon.....	133,117		133,117	
18.2 Net deferred tax asset.....	297,217	209,884	87,333	223,640
19. Guaranty funds receivable or on deposit.....			0	
20. Electronic data processing equipment and software.....	1,548		1,548	1,877
21. Furniture and equipment, including health care delivery assets (\$.....0).....	33	33	0	
22. Net adjustment in assets and liabilities due to foreign exchange rates.....			0	
23. Receivables from parent, subsidiaries and affiliates.....			0	
24. Health care (\$.....0) and other amounts receivable.....			0	
25. Aggregate write-ins for other than invested assets.....	17,249	17,249	0	0
26. Total assets excluding Separate Accounts, Segregated Accounts and Protected Cell Accounts (Lines 12 through 25).....	50,445,389	227,166	50,218,223	48,088,025
27. From Separate Accounts, Segregated Accounts and Protected Cell Accounts.....			0	
28. Total (Lines 26 and 27).....	50,445,389	227,166	50,218,223	48,088,025

DETAILS OF WRITE-INS

1101.....			0	
1102.....			0	
1103.....			0	
1198. Summary of remaining write-ins for Line 11 from overflow page.....	0	0	0	0
1199. Totals (Lines 1101 thru 1103 plus 1198) (Line 11 above).....	0	0	0	0
2501. Miscellaneous Receivable.....	5,248	5,248	0	
2502. Prepaid Insurance.....	12,001	12,001	0	
2503.....			0	
2598. Summary of remaining write-ins for Line 25 from overflow page.....	0	0	0	0
2599. Totals (Lines 2501 thru 2503 plus 2598) (Line 25 above).....	17,249	17,249	0	0

EVERGREEN NATIONAL INDEMNITY COMPANY

LIABILITIES, SURPLUS AND OTHER FUNDS

	1 Current Statement Date	2 December 31 Prior Year
1. Losses (current accident year \$.....2,406,855).....	3,747,553	3,509,010
2. Reinsurance payable on paid losses and loss adjustment expenses.....		
3. Loss adjustment expenses.....	1,160,363	1,062,571
4. Commissions payable, contingent commissions and other similar charges.....	7,466	
5. Other expenses (excluding taxes, licenses and fees).....	247,175	248,735
6. Taxes, licenses and fees (excluding federal and foreign income taxes).....	77,105	116,388
7.1 Current federal and foreign income taxes (including \$.....0 on realized capital gains (losses)).....		261,540
7.2 Net deferred tax liability.....		
8. Borrowed money \$.....0 and interest thereon \$.....0.....		
9. Unearned premiums (after deducting unearned premiums for ceded reinsurance of \$.....10,594,118 and including warranty reserves of \$.....153,652 and accrued accident and health experience rating refunds including \$.....0 for medical loss ratio rebate per the Public Health Service Act).....	6,426,536	5,395,140
10. Advance premium.....		
11. Dividends declared and unpaid:		
11.1 Stockholders.....		
11.2 Policyholders.....		
12. Ceded reinsurance premiums payable (net of ceding commissions).....	2,221,008	2,576,252
13. Funds held by company under reinsurance treaties.....		
14. Amounts withheld or retained by company for account of others.....	35,769	32,339
15. Remittances and items not allocated.....		
16. Provision for reinsurance (including \$.....0 certified).....		
17. Net adjustments in assets and liabilities due to foreign exchange rates.....		
18. Drafts outstanding.....		
19. Payable to parent, subsidiaries and affiliates.....		
20. Derivatives.....		
21. Payable for securities.....		50,000
22. Payable for securities lending.....		
23. Liability for amounts held under uninsured plans.....		
24. Capital notes \$.....0 and interest thereon \$.....0.....		
25. Aggregate write-ins for liabilities.....	630,542	383,817
26. Total liabilities excluding protected cell liabilities (Lines 1 through 25).....	14,553,517	13,635,792
27. Protected cell liabilities.....		
28. Total liabilities (Lines 26 and 27).....	14,553,517	13,635,792
29. Aggregate write-ins for special surplus funds.....	0	0
30. Common capital stock.....	3,018,004	3,018,004
31. Preferred capital stock.....		
32. Aggregate write-ins for other than special surplus funds.....	0	0
33. Surplus notes.....		
34. Gross paid in and contributed surplus.....	25,841,820	25,841,820
35. Unassigned funds (surplus).....	6,804,882	5,592,409
36. Less treasury stock, at cost:		
36.10.000 shares common (value included in Line 30 \$.....0).....		
36.20.000 shares preferred (value included in Line 31 \$.....0).....		
37. Surplus as regards policyholders (Lines 29 to 35, less 36).....	35,664,706	34,452,233
38. Totals (Page 2, Line 28, Col. 3).....	50,218,223	48,088,025

DETAILS OF WRITE-INS

2501. Unrestricted Collateral.....	327,360	1,579
2502. Pledged as Collateral.....	303,182	382,238
2503.		
2598. Summary of remaining write-ins for Line 25 from overflow page.....	0	0
2599. Totals (Lines 2501 thru 2503 plus 2598) (Line 25 above).....	630,542	383,817
2901.		
2902.		
2903.		
2998. Summary of remaining write-ins for Line 29 from overflow page.....	0	0
2999. Totals (Lines 2901 thru 2903 plus 2998) (Line 29 above).....	0	0
3201.		
3202.		
3203.		
3298. Summary of remaining write-ins for Line 32 from overflow page.....	0	0
3299. Totals (Lines 3201 thru 3203 plus 3298) (Line 32 above).....	0	0

STATEMENT OF INCOME

	1 Current Year to Date	2 Prior Year to Date	3 Prior Year Ended December 31
UNDERWRITING INCOME			
1. Premiums earned:			
1.1 Direct..... (written \$.....24,471,792).....	23,615,038	24,879,254	32,955,777
1.2 Assumed..... (written \$.....1,998,346).....	2,125,434	2,197,137	2,942,513
1.3 Ceded..... (written \$.....16,525,630).....	16,827,360	18,191,904	24,232,902
1.4 Net..... (written \$.....9,944,508).....	8,913,112	8,884,487	11,665,388
DEDUCTIONS:			
2. Losses incurred (current accident year \$.....2,406,855):			
2.1 Direct.....	1,717,506	1,089,781	599,999
2.2 Assumed.....	64,735	218,367	258,358
2.3 Ceded.....	1,162,405	565,830	68,624
2.4 Net.....	619,836	742,318	789,733
3. Loss adjustment expenses incurred.....	97,300	182,870	110,314
4. Other underwriting expenses incurred.....	6,733,019	6,558,519	7,979,518
5. Aggregate write-ins for underwriting deductions.....	0	0	0
6. Total underwriting deductions (Lines 2 through 5).....	7,450,155	7,483,707	8,879,565
7. Net income of protected cells.....			
8. Net underwriting gain (loss) (Line 1 minus Line 6 + Line 7).....	1,462,957	1,400,780	2,785,823
INVESTMENT INCOME			
9. Net investment income earned.....	1,213,700	1,225,592	1,772,613
10. Net realized capital gains (losses) less capital gains tax of \$.....0.....	(152,184)	(211,022)	624,880
11. Net investment gain (loss) (Lines 9 + 10).....	1,061,516	1,014,570	2,397,493
OTHER INCOME			
12. Net gain or (loss) from agents' or premium balances charged off (amount recovered \$.....0 amount charged off \$.....0).....	0		
13. Finance and service charges not included in premiums.....			
14. Aggregate write-ins for miscellaneous income.....	72,231	8,984	9,024
15. Total other income (Lines 12 through 14).....	72,231	8,984	9,024
16. Net income before dividends to policyholders, after capital gains tax and before all other federal and foreign income taxes (Lines 8 + 11 + 15).....	2,596,704	2,424,334	5,192,340
17. Dividends to policyholders.....			
18. Net income, after dividends to policyholders, after capital gains tax and before all other federal and foreign income taxes (Line 16 minus Line 17).....	2,596,704	2,424,334	5,192,340
19. Federal and foreign income taxes incurred.....	368,343	834,842	1,402,018
20. Net income (Line 18 minus Line 19) (to Line 22).....	2,228,361	1,589,492	3,790,322
CAPITAL AND SURPLUS ACCOUNT			
21. Surplus as regards policyholders, December 31 prior year.....	34,452,233	33,283,220	33,283,220
22. Net income (from Line 20).....	2,228,361	1,589,492	3,790,322
23. Net transfers (to) from Protected Cell accounts.....			
24. Change in net unrealized capital gains or (losses) less capital gains tax of \$.....(70,846).....	266,514	668,545	73,525
25. Change in net unrealized foreign exchange capital gain (loss).....			
26. Change in net deferred income tax.....	(31,444)	140,989	(497,414)
27. Change in nonadmitted assets.....	(958)	(107,090)	252,580
28. Change in provision for reinsurance.....			
29. Change in surplus notes.....			
30. Surplus (contributed to) withdrawn from protected cells.....			
31. Cumulative effect of changes in accounting principles.....			
32. Capital changes:			
32.1 Paid in.....			
32.2 Transferred from surplus (Stock Dividend).....			
32.3 Transferred to surplus.....			
33. Surplus adjustments:			
33.1 Paid in.....			
33.2 Transferred to capital (Stock Dividend).....			
33.3 Transferred from capital.....			
34. Net remittances from or (to) Home Office.....			
35. Dividends to stockholders.....	(1,250,000)	(1,250,000)	(2,450,000)
36. Change in treasury stock.....			
37. Aggregate write-ins for gains and losses in surplus.....	0	0	0
38. Change in surplus as regards policyholders (Lines 22 through 37).....	1,212,473	1,041,936	1,169,013
39. Surplus as regards policyholders, as of statement date (Lines 21 plus 38).....	35,664,706	34,325,156	34,452,233

DETAILS OF WRITE-INS

0501.			
0502.			
0503.			
0598. Summary of remaining write-ins for Line 5 from overflow page.....	0	0	0
0599. Totals (Lines 0501 thru 0503 plus 0598) (Line 5 above).....	0	0	0
1401. Miscellaneous Income.....	72,231	8,984	9,024
1402.			
1403.			
1498. Summary of remaining write-ins for Line 14 from overflow page.....	0	0	0
1499. Totals (Lines 1401 thru 1403 plus 1498) (Line 14 above).....	72,231	8,984	9,024
3701. Misc Surplus Change.....			
3702.			
3703.			
3798. Summary of remaining write-ins for Line 37 from overflow page.....	0	0	0
3799. Totals (Lines 3701 thru 3703 plus 3798) (Line 37 above).....	0	0	0

CASH FLOW

	1 Current Year to Date	2 Prior Year To Date	3 Prior Year Ended December 31
CASH FROM OPERATIONS			
1. Premiums collected net of reinsurance.....	9,189,947	9,186,879	11,510,648
2. Net investment income.....	1,222,450	1,230,116	1,693,416
3. Miscellaneous income.....	72,231	8,984	9,024
4. Total (Lines 1 through 3).....	10,484,628	10,425,979	13,213,088
5. Benefit and loss related payments.....	223,757	595,229	735,195
6. Net transfers to Separate Accounts, Segregated Accounts and Protected Cell Accounts.....			
7. Commissions, expenses paid and aggregate write-ins for deductions.....	6,765,904	6,626,491	8,005,993
8. Dividends paid to policyholders.....			
9. Federal and foreign income taxes paid (recovered) net of \$.....0 tax on capital gains (losses).....	763,000	1,000,000	1,250,000
10. Total (Lines 5 through 9).....	7,752,661	8,221,720	9,991,188
11. Net cash from operations (Line 4 minus Line 10).....	2,731,967	2,204,259	3,221,900
CASH FROM INVESTMENTS			
12. Proceeds from investments sold, matured or repaid:			
12.1 Bonds.....	4,143,054	3,772,693	5,759,658
12.2 Stocks.....	3,831,133	1,473,329	7,128,453
12.3 Mortgage loans.....			
12.4 Real estate.....	1,211,954		45,741
12.5 Other invested assets.....	253,892	1,213,719	1,574,605
12.6 Net gains or (losses) on cash, cash equivalents and short-term investments.....			(186)
12.7 Miscellaneous proceeds.....			50,000
12.8 Total investment proceeds (Lines 12.1 to 12.7).....	9,440,033	6,459,741	14,558,271
13. Cost of investments acquired (long-term only):			
13.1 Bonds.....	5,887,215	5,355,914	8,124,437
13.2 Stocks.....	3,478,463	1,073,269	6,332,869
13.3 Mortgage loans.....			
13.4 Real estate.....		983,250	1,715,107
13.5 Other invested assets.....	194,814	675,678	1,090,987
13.6 Miscellaneous applications.....	99,927	802,530	
13.7 Total investments acquired (Lines 13.1 to 13.6).....	9,660,419	8,890,642	17,263,400
14. Net increase or (decrease) in contract loans and premium notes.....			
15. Net cash from investments (Line 12.8 minus Line 13.7 and Line 14).....	(220,386)	(2,430,900)	(2,705,128)
CASH FROM FINANCING AND MISCELLANEOUS SOURCES			
16. Cash provided (applied):			
16.1 Surplus notes, capital notes.....			
16.2 Capital and paid in surplus, less treasury stock.....			
16.3 Borrowed funds.....			
16.4 Net deposits on deposit-type contracts and other insurance liabilities.....			
16.5 Dividends to stockholders.....	1,250,000	1,250,000	2,450,000
16.6 Other cash provided (applied).....	246,915	1,550,430	(979,283)
17. Net cash from financing and miscellaneous sources (Lines 16.1 through 16.4 minus Line 16.5 plus Line 16.6).....	(1,003,085)	300,430	(3,429,283)
RECONCILIATION OF CASH, CASH EQUIVALENTS AND SHORT-TERM INVESTMENTS			
18. Net change in cash, cash equivalents and short-term investments (Line 11 plus Line 15 plus Line 17).....	1,508,496	73,789	(2,912,512)
19. Cash, cash equivalents and short-term investments:			
19.1 Beginning of year.....	2,324,805	5,237,316	5,237,316
19.2 End of period (Line 18 plus Line 19.1).....	3,833,301	5,311,105	2,324,805

Note: Supplemental disclosures of cash flow information for non-cash transactions:

20.0001			
---------------	--	--	--

NOTES TO FINANCIAL STATEMENTS**Note 1 – Summary of Significant Accounting Policies and Going Concern**

- A. Accounting Practices
N/A

	SSAP #	F/S Page	F/S Line #	Current Year to Date	2017
NET INCOME					
(1) The Company state basis (Page 4, Line 20, Columns 1 & 3)	XXX	XXX	XXX	\$ 2,228,361	\$ 3,790,322
(2) State Prescribed Practice that are an increase/(decrease) from NAIC SAP					
N/A				\$	\$
(3) State Permitted Practice that are an increase/(decrease) from NAIC SAP					
N/A				\$	\$
(4) NAIC SAP (1 – 2 – 3 = 4)	XXX	XXX	XXX	\$ 2,228,361	\$ 3,790,322
SURPLUS					
(5) The Company state basis (Page 3, line 37, Columns 1 & 2)	XXX	XXX	XXX	\$ 35,664,706	\$ 34,452,233
(6) State Prescribed Practice that are an increase/(decrease) from NAIC SAP					
N/A				\$	\$
(7) State Permitted Practice that are an increase/(decrease) from NAIC SAP					
N/A				\$	\$
(8) NAIC SAP (5 – 6 – 7 = 8)	XXX	XXX	XXX	\$ 35,664,706	\$ 34,452,233

- C. Accounting Policy
N/A

- (6) Basis for Loan-Backed Securities and Adjustment Methodology
N/A

- D. Going Concern
N/A

Note 2 – Accounting Changes and Corrections of Errors

No significant changes

Note 3 – Business Combinations and Goodwill

No significant changes

Note 4 – Discontinued Operations

No significant changes

Note 5 – Investments

- D. Loan-Backed Securities

- (1) Description of Sources Used to Determine Prepayment Assumptions

	1 Amortized Cost Basis Before Other-than-Temporary Impairment	2 Other-than-Temporary Impairment Recognized in Loss	3 Fair Value 1 – 2
(2)			
OTTI Recognized 1 st Quarter			
a. Intent to sell	\$	\$	\$
b. Inability or lack of intent to retain the investment in the security for a period of time sufficient to recover the amortized cost basis			
c. Total 1 st Quarter	\$ None	\$	\$
OTTI Recognized 2 nd Quarter			
d. Intent to sell	\$	\$	\$
e. Inability or lack of intent to retain the investment in the security for a period of time sufficient to recover the amortized cost basis			
f. Total 2 nd Quarter	\$ None	\$	\$
OTTI Recognized 3 rd Quarter			

NOTES TO FINANCIAL STATEMENTS

(2)	1 Amortized Cost Basis Before Other-than-Temporary Impairment	2 Other-than-Temporary Impairment Recognized in Loss	3 Fair Value 1 – 2
g. Intent to sell	\$	\$	\$
h. Inability or lack of intent to retain the investment in the security for a period of time sufficient to recover the amortized cost basis			
i. Total 3rd Quarter	\$ None	\$	\$
OTTI Recognized 4 th Quarter			
j. Intent to sell	\$	\$	\$
k. Inability or lack of intent to retain the investment in the security for a period of time sufficient to recover the amortized cost basis			
l. Total 4th Quarter	\$	\$	\$
m. Annual aggregate total	XXX		XXX

(3) Recognized OTTI securities

CUSIP	Book/Adjusted Carrying Value Amortized Cost Before Current Period OTTI	Present Value of Projected Cash Flows	Recognized Other-Than- Temporary Impairment	Amortized Cost After Other-Than- Temporary Impairment	Fair Value at Time of OTTI	Date of Financial Statement Where Reported
	\$	\$	\$	\$	\$	
Total			\$			

(4) All impaired securities (fair value is less than cost or amortized cost) for which an other-than-temporary impairment has not been recognized in earnings as a realized loss (including securities with a recognized other-than-temporary impairment for non-interest related declines when a non-recognized interest related impairment remains):

a. The aggregate amount of unrealized losses:	1. Less than 12 Months	\$	10,686
	2. 12 Months or Longer	\$	24,264
b. The aggregate related fair value of securities with unrealized losses:	1. Less than 12 Months	\$	1,484,388
	2. 12 Months or Longer	\$	1,060,112

(5) Information Investor Considered in Reaching Conclusion that Impairments are Not Other-Than-Temporary

- E. Dollar Repurchase Agreements and/or Securities Lending Transactions
Not applicable
- F. Repurchase Agreements Transactions Accounted for as Secured Borrowing
Not applicable
- G. Reverse Repurchase Agreements Transactions Accounted for as Secured Borrowing
Not applicable
- H. Repurchase Agreements Transactions Accounted for as a Sale
Not applicable
- I. Reverse Repurchase Agreements Transactions Accounted for as a Sale
Not applicable
- M. Working Capital Finance Investments
Not applicable
- N. Offsetting and Netting of Assets and Liabilities
Not applicable

Note 6 – Joint Ventures, Partnerships and Limited Liability Companies

No significant changes

Note 7 – Investment Income

No significant changes

Note 8 – Derivative Instruments

NOTES TO FINANCIAL STATEMENTS

No significant changes

Note 9 – Income Taxes

No significant changes

Note 10 – Information Concerning Parent, Subsidiaries, Affiliates and Other Related Parties

No significant changes

Note 11 – Debt

Not applicable

Note 12 – Retirement Plans, Deferred Compensation, Postemployment Benefits and Compensated Absences and Other Postretirement Benefit Plans

Not applicable

Note 13 – Capital and Surplus, Dividend Restrictions and Quasi-Reorganizations

On May 14, 2018, the Company declared an ordinary dividend of \$1,250,000. The cash dividend was paid May 25, 2018.

Note 14 – Liabilities, Contingencies and Assessments

No significant changes

Note 15 – Leases

No significant changes

Note 16 – Information about Financial Instruments with Off-Balance Sheet Risk and Financial Instruments with Concentrations of Credit Risk

No significant changes

Note 17 – Sale, Transfer and Servicing of Financial Assets and Extinguishments of Liabilities

Not applicable

Note 18 – Gain or Loss to the Reporting Entity from Uninsured Plans and the Portion of Partially Insured Plans

No significant changes

Note 19 – Direct Premium Written/Produced by Managing General Agents/Third Party Administrators

No significant changes

Note 20 – Fair Value Measurements

A. Fair Value Measurements

(1) Fair Value Measurements at Reporting Date

	Level 1	Level 2	Level 3	Total	Net Asset Value (NAV) Included in Level 2
Assets at Fair Value					
Bonds	\$	\$ 5,078,081	\$	\$ 5,078,081	\$
Preferred Stocks	\$	\$ 1,640,299	\$	\$ 1,640,299	\$
Common Stocks	\$ 2,322,694	\$ 6,688,836	\$	\$ 9,011,530	\$
Total	\$ 2,322,694	\$ 13,407,216	\$	\$ 15,729,910	\$
Liabilities at Fair Value					
	\$	\$	\$	\$	\$
Total	\$	\$	\$	\$	\$

(2) Fair Value Measurements in (Level 3) of the Fair Value Hierarchy

	Ending Balance as of Prior Period	Transfers Into Level 3	Transfers Out of Level 3	Total Gains and (Losses) Included in Net Income	Total Gains and (Losses) Included in Surplus	Purchases	Issuances	Sales	Settlements	Ending Balance as of End of Current Period
a. Assets										
	\$	\$	\$	\$	\$	\$	\$	\$	\$	\$
Total	\$	\$	\$	\$	\$	\$	\$	\$	\$	\$
b. Liabilities										
	\$	\$	\$	\$	\$	\$	\$	\$	\$	\$
Total	\$	\$	\$	\$	\$	\$	\$	\$	\$	\$

(3) Policies when Transfers Between Levels are Recognized

NOTES TO FINANCIAL STATEMENTS

(4) Description of Valuation Techniques and Inputs Used in Fair Value Measurement

(5) Fair Value Disclosures

B. Fair Value Reporting under SSAP 100 and Other Accounting Pronouncements

C. Fair Value Level

Type of Financial Instrument	Aggregate Fair Value	Admitted Assets	(Level 1)	(Level 2)	(Level 3)	Not Practicable (Carrying Value)	Net Asset Value (NAV) Included in Level 2
Bonds	\$ 26,215,533	\$ 26,204,062	\$ 3,441,994	\$ 22,773,539	\$	\$	\$
Preferred Stocks	\$ 4,622,470	\$ 4,499,235	\$	\$ 4,622,470	\$	\$	\$
Common Stocks	\$ 9,011,530	\$ 9,011,530	\$ 2,322,694	\$ 6,688,836	\$	\$	\$
Mortgage Loans	\$	\$ 664,696	\$	\$	\$	\$ 664,696	\$
Cash & Short Term Investments	\$ 3,833,301	\$ 3,833,301	\$ 3,833,301	\$	\$	\$	\$
Other Invested Assets	\$ 2,838,681	\$ 2,838,681	\$	\$ 2,838,681	\$	\$	\$

D. Not Practicable to Estimate Fair Value

Type of Class or Financial Instrument	Carrying Value	Effective Interest Rate	Maturity Date	Explanation
Mortgage Loan	\$ 664,696	%	01/29/2016	Not available for sale therefore price not available

Note 21 – Other Items

No significant changes

Note 22 – Events Subsequent

No significant changes

Note 23 – Reinsurance

No significant changes

Note 24 – Retrospectively Rated Contracts and Contracts Subject to RedeterminationF. Risk Sharing Provisions of the Affordable Care Act
Not Applicable**Note 25 – Change in Incurred Losses and Loss Adjustment Expenses**

A. Change in Incurred Losses and Loss Adjustment Expenses

Reserves as of December 31, 2017 were \$4.572 million. As of September 30, 2018, \$381 thousand has been paid for net incurred claims and claim adjustment expenses attributable to insured events of prior years. Reserves remaining for prior years are now \$2.21 million as a result of re-estimation of unpaid claims and claim adjustment expenses principally on the landfill and contract lines of business. Therefore, there has been a \$1.98 million favorable prior year development since December 31, 2017 to September 30, 2018. The decrease is the result of ongoing analysis of recent loss development trends. Original estimates are increased or decreased, as additional information becomes known regarding individual claims. None of the decrease the Company experienced was due to retrospectively rated policies.

B. Information about Significant Changes in Methodologies and Assumptions

N/A

Note 26 – Intercompany Pooling Arrangements

No significant changes

Note 27 – Structured Settlements

No significant changes

NOTES TO FINANCIAL STATEMENTS

Note 28 – Health Care Receivables

No significant changes

Note 29 – Participating policies

No significant changes

Note 30 – Premium Deficiency Reserves

No significant changes

Note 31 – High Deductibles

No significant changes

Note 32 – Discounting of Liabilities for Unpaid Losses or Unpaid Loss Adjustment Expenses

No significant changes

Note 33 – Asbestos/Environmental Reserves

No significant changes

Note 34 – Subscriber Savings Accounts

No significant changes

Note 35 – Multiple Peril Crop Insurance

No significant changes

Note 36 – Financial Guaranty Insurance

Not Applicable

GENERAL INTERROGATORIES

PART 1 - COMMON INTERROGATORIES

GENERAL

- 1.1 Did the reporting entity experience any material transactions requiring the filing of Disclosure of Material Transactions with the State of Domicile, as required by the Model Act? Yes [] No [X]
- 1.2 If yes, has the report been filed with the domiciliary state? Yes [] No []
- 2.1 Has any change been made during the year of this statement in the charter, by-laws, articles of incorporation, or deed of settlement of the reporting entity? Yes [] No [X]
- 2.2 If yes, date of change: _____
- 3.1 Is the reporting entity a member of an Insurance Holding Company System consisting of two or more affiliated persons, one or more of which is an insurer? If yes, complete Schedule Y, Parts 1 and 1A. Yes [X] No []
- 3.2 Have there been any substantial changes in the organizational chart since the prior quarter end? Yes [] No [X]
- 3.3 If the response to 3.2 is yes, provide a brief description of those changes.
- 3.4 Is the reporting entity publicly traded or a member of a publicly traded group? Yes [] No [X]
- 3.5 If the response to 3.4 is yes, provide the CIK (Central Index Key) code issued by the SEC for the entity/group. _____
- 4.1 Has the reporting entity been a party to a merger or consolidation during the period covered by this statement? Yes [] No [X]
- 4.2 If yes, provide name of entity, NAIC Company Code, and state of domicile (use two letter state abbreviation) for any entity that has ceased to exist as a result of the merger or consolidation.

1 Name of Entity	2 NAIC Company Code	3 State of Domicile

5. If the reporting entity is subject to a management agreement, including third-party administrator(s), managing general agent(s), attorney-in-fact, or similar agreement, have there been any significant changes regarding the terms of the agreement or principals involved? If yes, attach an explanation. Yes [] No [X] N/A []
- 6.1 State as of what date the latest financial examination of the reporting entity was made or is being made. 12/31/2014
- 6.2 State the as of date that the latest financial examination report became available from either the state of domicile or the reporting entity. This date should be the date of the examined balance sheet and not the date the report was completed or released. 12/31/2014
- 6.3 State as of what date the latest financial examination report became available to other states or the public from either the state of domicile or the reporting entity. This is the release date or completion date of the examination report and not the date of the examination (balance sheet date). 05/19/2016
- 6.4 By what department or departments?
OHIO DEPARTMENT OF INSURANCE
- 6.5 Have all financial statement adjustments within the latest financial examination report been accounted for in a subsequent financial statement filed with Departments? Yes [] No [] N/A [X]
- 6.6 Have all of the recommendations within the latest financial examination report been complied with? Yes [X] No [] N/A []
- 7.1 Has this reporting entity had any Certificates of Authority, licenses or registrations (including corporate registration, if applicable) suspended or revoked by any governmental entity during the reporting period? Yes [] No [X]
- 7.2 If yes, give full information:
- 8.1 Is the company a subsidiary of a bank holding company regulated with the Federal Reserve Board? Yes [] No [X]
- 8.2 If response to 8.1 is yes, please identify the name of the bank holding company.

- 8.3 Is the company affiliated with one or more banks, thrifts or securities firms? Yes [] No [X]
- 8.4 If the response to 8.3 is yes, please provide below the names and location (city and state of the main office) of any affiliates regulated by a federal regulatory services agency [i.e. the Federal Reserve Board (FRB), the Office of the Comptroller of the Currency (OCC), the Federal Deposit Insurance Corporation (FDIC) and the Securities Exchange Commission (SEC)] and identify the affiliate's primary federal regulator].

1 Affiliate Name	2 Location (City, State)	3 FRB	4 OCC	5 FDIC	6 SEC

- 9.1 Are the senior officers (principal executive officer, principal financial officer, principal accounting officer or controller, or persons performing similar functions) of the reporting entity subject to a code of ethics, which includes the following standards? Yes [X] No []
- (a) Honest and ethical conduct, including the ethical handling of actual or apparent conflicts of interest between personal and professional relationships;
- (b) Full, fair, accurate, timely and understandable disclosure in the periodic reports required to be filed by the reporting entity;
- (c) Compliance with applicable governmental laws, rules and regulations;
- (d) The prompt internal reporting of violations to an appropriate person or persons identified in the code; and
- (e) Accountability for adherence to the code.
- 9.11 If the response to 9.1 is No, please explain:
- 9.2 Has the code of ethics for senior managers been amended? Yes [] No [X]
- 9.21 If the response to 9.2 is Yes, provide information related to amendment(s).
- 9.3 Have any provisions of the code of ethics been waived for any of the specified officers? Yes [] No [X]
- 9.31 If the response to 9.3 is Yes, provide the nature of any waiver(s).

EVERGREEN NATIONAL INDEMNITY COMPANY GENERAL INTERROGATORIES

PART 1 - COMMON INTERROGATORIES

FINANCIAL

- 10.1 Does the reporting entity report any amounts due from parent, subsidiaries or affiliates on Page 2 of this statement? Yes [] No [X]
- 10.2 If yes, indicate any amounts receivable from parent included in the Page 2 amount: \$ 0

INVESTMENT

- 11.1 Were any of the stocks, bonds, or other assets of the reporting entity loaned, placed under option agreement, or otherwise made available for use by another person? (Exclude securities under securities lending agreements.) Yes [] No [X]
- 11.2 If yes, give full and complete information relating thereto:
12. Amount of real estate and mortgages held in other invested assets in Schedule BA: \$ 0
13. Amount of real estate and mortgages held in short-term investments: \$ 0
- 14.1 Does the reporting entity have any investments in parent, subsidiaries and affiliates? Yes [] No [X]
- 14.2 If yes, please complete the following:

	1 Prior Year End Book/Adjusted Carrying Value		2 Current Quarter Book/Adjusted Carrying Value
14.21 Bonds	\$ 0		\$ 0
14.22 Preferred Stock	0		0
14.23 Common Stock	0		0
14.24 Short-Term Investments	0		0
14.25 Mortgage Loans on Real Estate	0		0
14.26 All Other	1,146,160		0
14.27 Total Investment in Parent, Subsidiaries and Affiliates (Subtotal Lines 14.21 to 14.26)	\$ 1,146,160		\$ 0
14.28 Total Investment in Parent included in Lines 14.21 to 14.26 above	\$ 0		\$ 0

- 15.1 Has the reporting entity entered into any hedging transactions reported on Schedule DB? Yes [] No [X]
- 15.2 If yes, has a comprehensive description of the hedging program been made available to the domiciliary state? Yes [] No []
- If no, attach a description with this statement.

16. For the reporting entity's security lending program, state the amount of the following as of current statement date:
- 16.1 Total fair value of reinvested collateral assets reported on Schedule DL, Parts 1 and 2: \$ 0
- 16.2 Total book adjusted/carrying value of reinvested collateral assets reported on Schedule DL, Parts 1 and 2: \$ 0
- 16.3 Total payable for securities lending reported on the liability page: \$ 0
17. Excluding items in Schedule E-Part 3-Special Deposits, real estate, mortgage loans and investments held physically in the reporting entity's offices, vaults or safety deposit boxes, were all stocks, bonds and other securities, owned throughout the current year held pursuant to a custodial agreement with a qualified bank or trust company in accordance with Section 1, III - General Examination Considerations, F. Outsourcing of Critical Functions, Custodial or Safekeeping Agreements of the NAIC *Financial Condition Examiners Handbook*? Yes [X] No []

17.1 For all agreements that comply with the requirements of the NAIC *Financial Condition Examiners Handbook*, complete the following:

1 Name of Custodian(s)	2 Custodian Address
Huntington Bank	7 Easton Oval, Columbus, OH 43219

17.2 For all agreements that do not comply with the requirements of the NAIC *Financial Condition Examiners Handbook*, provide the name, location and a complete explanation:

1 Name(s)	2 Location(s)	3 Complete Explanation(s)

- 17.3 Have there been any changes, including name changes, in the custodian(s) identified in 17.1 during the current quarter? Yes [] No [X]
- 17.4 If yes, give full and complete information relating thereto:

1 Old Custodian	2 New Custodian	3 Date of Change	4 Reason

17.5 Investment management – Identify all investment advisors, investment managers, broker/dealers, including individuals that have the authority to make investment decisions on behalf of the reporting entity. For assets that are managed internally by employees of the reporting entity, note as such ["...that have access to the investment accounts", "handle securities"].

1 Name of Firm or Individual	2 Affiliation
NFC INVESTMENTS, LLC	U

- 17.5097 For those firms/individuals listed in the table for Question 17.5, do any firms/individuals unaffiliated with the reporting entity (i.e., designated with a "U") manage more than 10% of the reporting entity's assets? Yes [X] No []
- 17.5098 For firms/individuals unaffiliated with the reporting entity (i.e., designated with a "U") listed in the table for Question 17.5, does the total assets under management aggregate to more than 50% of the reporting entity's assets? Yes [X] No []
- 17.6 For those firms or individuals listed in the table for 17.5 with an affiliation code of "A" (affiliated) or "U" (unaffiliated), provide the information for the table below.

1 Central Registration Depository Number	2 Name of Firm or Individual	3 Legal Entity Identifier (LEI)	4 Registered With	5 Investment Management Agreement (IMA) Filed
132844	NFC INVESTMENTS, LLC		SEC	NO

- 18.1 Have all the filing requirements of the *Purposes and Procedures Manual of the NAIC Investment Analysis Office* been followed? Yes [X] No []
- 18.2 If no, list exceptions:

GENERAL INTERROGATORIES

PART 1 - COMMON INTERROGATORIES

19. By self-designating 5*GI securities, the reporting entity is certifying the following elements for each self-designated 5*GI security:
- a. Documentation necessary to permit a full credit analysis of the security does not exist.
 - b. Issuer or obligor is current on all contracted interest and principal payments.
 - c. The insurer has an actual expectation of ultimate payment of all contracted interest and principal.
- Has the reporting entity self-designated 5*GI securities?

Yes [X] No []

GENERAL INTERROGATORIES (continued)

PART 2 – PROPERTY & CASUALTY INTERROGATORIES

1. If the reporting entity is a member of a pooling arrangement, did the agreement or the reporting entity's participation change? Yes [] No [] N/A [X]
If yes, attach an explanation.
2. Has the reporting entity reinsured any risk with any other reporting entity and agreed to release such entity from liability, in whole or in part, from any loss that may occur on the risk, or portion thereof, reinsured? Yes [] No [X]
If yes, attach an explanation.
- 3.1 Have any of the reporting entity's primary reinsurance contracts been canceled? Yes [] No [X]
- 3.2 If yes, give full and complete information thereto:

- 4.1 Are any of the liabilities for unpaid losses and loss adjustment expenses other than certain workers' compensation tabular reserves (see *Annual Statement Instructions* pertaining to disclosure of discounting for definition of "tabular reserves,") discounted at a rate of interest greater than zero? Yes [] No [X]
- 4.2 If yes, complete the following schedule:

1 Line of Business	2 Maximum Interest	3 Disc. Rate	Total Discount				Discount Taken During Period			
			4 Unpaid Losses	5 Unpaid LAE	6 IBNR	7 Total	8 Unpaid Losses	9 Unpaid LAE	10 IBNR	11 Total
	0.000	0.000	0	0	0	0	0	0	0	0
Total	XXX	XXX	0	0	0	0	0	0	0	0

- 5.1 Operating Percentages:
- 5.1 A&H loss percent 0.000%
- 5.2 A&H cost containment percent 0.000%
- 5.3 A&H expense percent excluding cost containment expenses 0.000%
- 6.1 Do you act as a custodian for health savings accounts? Yes [] No [X]
- 6.2 If yes, please provide the amount of custodial funds held as of the reporting date. \$ 0
- 6.3 Do you act as an administrator for health savings accounts? Yes [] No [X]
- 6.4 If yes, please provide the amount of funds administered as of the reporting date. \$ 0
7. Is the reporting entity licensed or chartered, registered, qualified, eligible or writing business in at least two states? Yes [X] No []
- 7.1 If no, does the reporting entity assume reinsurance business that covers risks residing in at least one state other than the state of domicile of the reporting entity? Yes [] No []

EVERGREEN NATIONAL INDEMNITY COMPANY
SCHEDULE F - CEDED REINSURANCE

Showing All New Reinsurers - Current Year to Date

1	2	3	4	5	6	7
NAIC Company Code	ID Number	Name of Reinsurer	Domiciliary Jurisdiction	Type of Reinsurer	Certified Reinsurer Rating (1 through 6)	Effective Date of Certified Reinsurer Rating

NONE

EVERGREEN NATIONAL INDEMNITY COMPANY

SCHEDULE T - EXHIBIT OF PREMIUMS WRITTEN

Current Year to Date - Allocated by States and Territories

States, Etc.	1 Active Status (a)	Direct Premiums Written		Direct Losses Paid (Deducting Salvage)		Direct Losses Unpaid	
		2 Current Year to Date	3 Prior Year to Date	4 Current Year to Date	5 Prior Year to Date	6 Current Year to Date	7 Prior Year to Date
1. Alabama.....AL.....L.....		239,027	205,528	5,204		79,874	68,232
2. Alaska.....AK.....L.....		600	100			767	90
3. Arizona.....AZ.....L.....		120,208	83,482			46,502	34,087
4. Arkansas.....AR.....L.....		175,448	223,626	6,794	85,298	63,909	71,421
5. California.....CA.....L.....		1,650,325	2,385,562		3,628	762,672	946,954
6. Colorado.....CO.....L.....		157,394	112,125	368		58,069	45,893
7. Connecticut.....CT.....L.....		235,268	229,479	707	866	148,803	137,522
8. Delaware.....DE.....L.....		53,612	22,623	6,998	16,413	12,589	6,317
9. District of Columbia.....DC.....L.....		90,046	56,570			8,104	20,501
10. Florida.....FL.....L.....		590,957	423,601	13,297	5,000	236,114	137,430
11. Georgia.....GA.....L.....		336,176	250,895	39,305	2,176	106,513	78,867
12. Hawaii.....HI.....N.....							
13. Idaho.....ID.....L.....		1,465	559			546	185
14. Illinois.....IL.....L.....		786,283	833,551	12,278	62,791	283,024	276,498
15. Indiana.....IN.....L.....		1,218,011	1,100,474	13,867	2,051	455,650	374,066
16. Iowa.....IA.....L.....		244,176	112,793	2,412		176,405	37,388
17. Kansas.....KS.....L.....		69,018	89,539			25,672	29,703
18. Kentucky.....KY.....L.....		349,840	907,608	511,972	235,370	4,389,493	5,453,117
19. Louisiana.....LA.....L.....		812,592	746,844	32	37,280	306,433	247,835
20. Maine.....ME.....L.....		376,844	629,301			140,366	208,763
21. Maryland.....MD.....L.....		183,178	99,450	13,012		60,455	37,604
22. Massachusetts.....MA.....L.....		466,442	656,959			181,632	220,018
23. Michigan.....MI.....L.....		1,247,325	1,231,460			464,601	408,578
24. Minnesota.....MN.....L.....		96,815	144,789			36,056	68,979
25. Mississippi.....MS.....L.....		229,092	235,201	11,777		85,195	77,348
26. Missouri.....MO.....L.....		340,875	367,792	43,347	45,442	819,666	915,723
27. Montana.....MT.....L.....		34,557	23,029			13,152	6,989
28. Nebraska.....NE.....L.....		108,561	120,808			40,425	41,815
29. Nevada.....NV.....L.....		2,774	9,891			1,381	3,453
30. New Hampshire.....NH.....L.....		360,273	548,083			134,447	181,938
31. New Jersey.....NJ.....L.....		159,746	97,303	56,027	41,470	56,215	32,136
32. New Mexico.....NM.....L.....		71,953	44,412			23,107	16,228
33. New York.....NY.....L.....		1,292,199	1,470,974	4,872	2,699	602,112	594,838
34. North Carolina.....NC.....E.....		177,104	82,220	65,352	32,485	31,872	21,372
35. North Dakota.....ND.....L.....		9,632	6,240			3,547	4,552
36. Ohio.....OH.....L.....		3,453,094	3,432,122	750	2,250	1,726,838	1,568,970
37. Oklahoma.....OK.....L.....		312,059	383,385		39,137	118,343	129,477
38. Oregon.....OR.....L.....		312,884	289,346		1,901	109,559	88,536
39. Pennsylvania.....PA.....L.....		3,153,966	3,372,942	103,811	41,347	1,138,687	1,117,117
40. Rhode Island.....RI.....L.....		100	6,678			37	5,869
41. South Carolina.....SC.....L.....		438,177	235,285	409,563	4,478	669,976	78,053
42. South Dakota.....SD.....L.....		3,631	3,631			1,352	1,205
43. Tennessee.....TN.....L.....		496,721	520,078	2,021	11,452	181,407	289,439
44. Texas.....TX.....L.....		711,844	703,180		119,863	337,231	323,935
45. Utah.....UT.....L.....		36,173	37,785			14,138	12,734
46. Vermont.....VT.....L.....		295,799	677,372			194,806	470,813
47. Virginia.....VA.....L.....		1,233,303	1,297,446			840,730	851,979
48. Washington.....WA.....L.....		253,455	146,404			226,623	75,833
49. West Virginia.....WV.....E.....							
50. Wisconsin.....WI.....L.....		1,499,591	1,583,211			558,522	525,669
51. Wyoming.....WY.....L.....		(16,821)	84,620			(6,543)	27,866
52. American Samoa.....AS.....N.....							
53. Guam.....GU.....N.....							
54. Puerto Rico.....PR.....N.....							
55. US Virgin Islands.....VI.....N.....							
56. Northern Mariana Islands.....MP.....N.....							
57. Canada.....CAN.....N.....							
58. Aggregate Other Alien.....OT.....XXX.....		0	0	0	0	0	0
59. Totals.....	XXX	24,471,792	26,326,356	1,323,766	793,397	15,967,074	16,373,935

DETAILS OF WRITE-INS

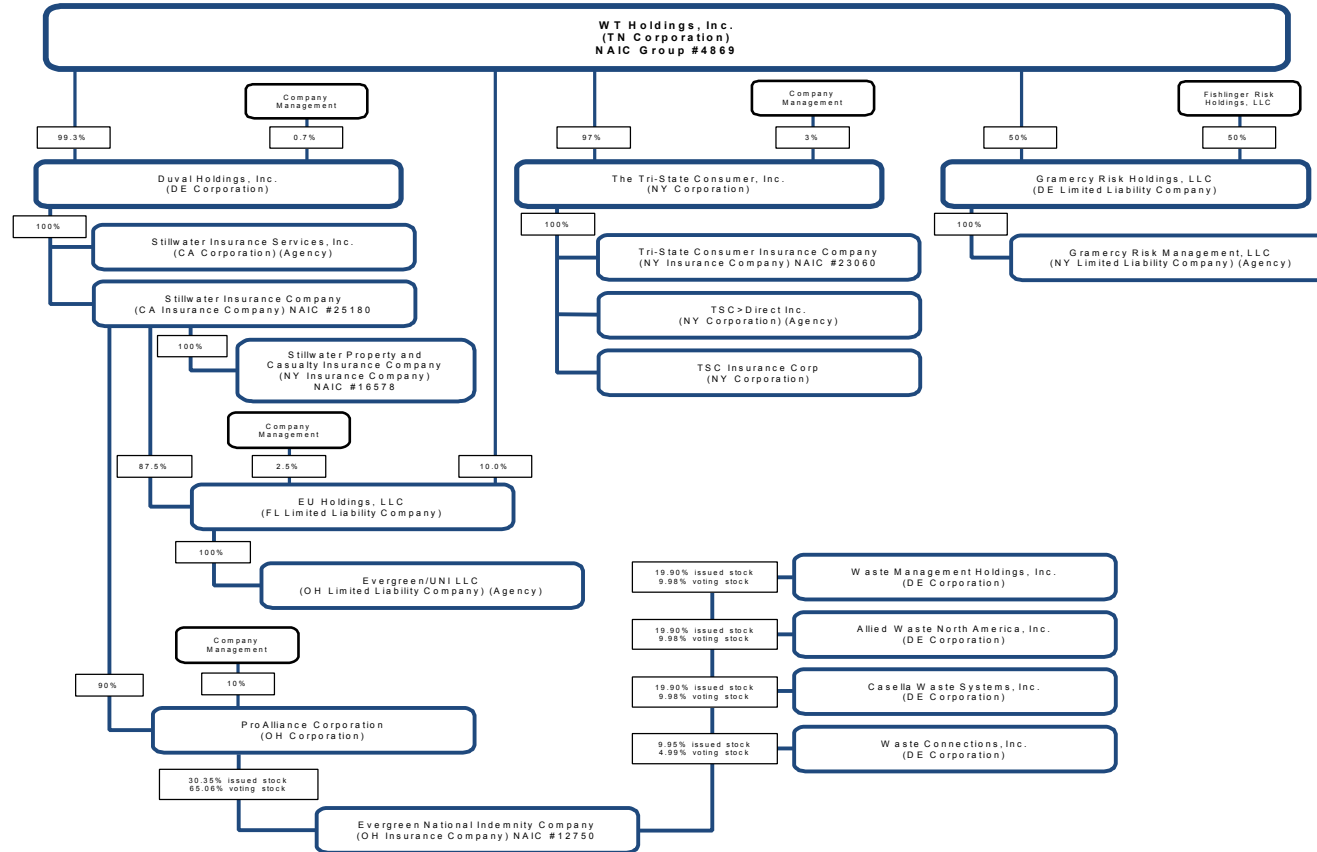
58001.....	XXX						
58002.....	XXX						
58003.....	XXX						
58998. Summary of remaining write-ins for Line 58 from overflow page....	XXX	0	0	0	0	0	0
58999. Totals (Lines 58001 thru 58003+ Line 58998) (Line 58 above).....	XXX	0	0	0	0	0	0

(a) Active Status Count

L - Licensed or Chartered - Licensed insurance carrier or domiciled RRG.....	48	R - Registered - Non-domiciled RRGs.....	0
E - Eligible - Reporting entities eligible or approved to write surplus lines in the state (other than their state of domicile - See DSLI).....	2	Q - Qualified - Qualified or accredited reinsurer.....	0
D - Domestic Surplus Lines Insurer (DSLI) - Reporting entities authorized to write surplus lines in the state of domicile.....	0	N - None of the above - Not allowed to write business in the state.....	7

SCHEDULE Y – INFORMATION CONCERNING ACTIVITIES OF INSURER MEMBERS OF A HOLDING COMPANY GROUP

PART 1 – ORGANIZATIONAL CHART



Q11

SCHEDULE Y

PART 1A - DETAIL OF INSURANCE HOLDING COMPANY SYSTEM

1	2	3	4	5	6	7	8	9	10	11	12	13	14	15	16
Group Code	Group Name	NAIC Company Code	ID Number	Federal RSSD	CIK	Name of Securities Exchange if Publicly Traded (U.S. or International)	Names of Parent, Subsidiaries or Affiliates	Domiciliary Location	Relationship to Reporting Entity	Directly Controlled by (Name of Entity/Person)	Type of Control (Ownership Board, Management, Attorney-in-Fact, Influence, Other)	If Control is Ownership Provide Percentage	Ultimate Controlling Entity(ies)/Person(s)	Is an SCA Filing Required? (Y/N)	*
Members															
4869	WT Holdings Group.....	00000...	26-2099042..		1546636	none.....	WT Holdings, Inc.....	TN.....	UIP.....	Various Investors.....	Ownership, Board, Mgmt	1.000		N.....	
4869	WT Holdings Group.....	00000...	38-3865632..				Duval Holdings, Inc.....	DE.....	UIP.....	WT Holdings, Inc.....	Ownership, Board, Mgmt	0.993	WT Holdings, Inc.....	N.....	
4869	WT Holdings Group.....	25180...	68-0266416..				Stillwater Insurance Company.....	CA.....	UIP.....	Duval Holdings, Inc.....	Ownership, Board, Mgmt	1.000	WT Holdings, Inc.....	N.....	
4869	WT Holdings Group.....	00000...	71-0900874..				Stillwater Insurance Services, Inc.....	CA.....	NIA.....	Duval Holdings, Inc.....	Ownership, Board, Mgmt	1.000	WT Holdings, Inc.....	N.....	
4869	WT Holdings Group.....	16578...	16-0986300..				Stillwater Property & Casualty Insurance Company	NY.....	IA.....	Stillwater Insurance Company.....	Ownership, Board, Mgmt	1.000	WT Holdings, Inc.....	N.....	
4869	WT Holdings Group.....	00000...	20-1048841..				Pro-Alliance Corporation.....	OH.....	UDP.....	Stillwater Insurance Company.....	Ownership.....	0.900	WT Holdings, Inc.....	N.....	**.....
4869	WT Holdings Group.....	00000...	73-1039529..				Waste Management Holdings, Inc.....	DE.....	OTH.....	Waste Management, Inc.....	Ownership.....	1.000	N/A public entity.....	N.....	**.....
4869	WT Holdings Group.....	00000...	86-0843596..				Allied Waste North America, Inc.....	DE.....	OTH.....	Republic Services, Inc.....	Ownership.....	1.000	N/A public entity.....	N.....	
4869	WT Holdings Group.....	00000...	03-0338873..		911177	NASDAC.....	Cassella Waste Systems, Inc.....	DE.....	OTH.....	N/A public entity.....	N/A.....	N/A.....	N/A public entity.....	N.....	
4869	WT Holdings Group.....	00000...	94-3283464..		1057058	NYSE.....	Waste Connections, Inc.....	DE.....	OTH.....	N/A public entity.....	N/A.....	N/A.....	N/A public entity.....	N.....	
4869	WT Holdings Group.....	12750...	36-2467238..				Evergreen National Indemnity Company.....	OH.....	RE.....	Pro-Alliance Corporation.....	Ownership.....	0.304	WT Holdings, Inc.....	N.....	
4869	WT Holdings Group.....	12750...	36-2467238..				Evergreen National Indemnity Company.....	OH.....	RE.....	Waste Management Holdings, Inc.....	Ownership.....	0.199	Waste Management, Inc.....	N.....	
4869	WT Holdings Group.....	12750...	36-2467238..				Evergreen National Indemnity Company.....	OH.....	RE.....	Allied Waste North America, Inc.....	Ownership.....	0.199	Republic Services, Inc.....	N.....	
4869	WT Holdings Group.....	12750...	36-2467238..				Evergreen National Indemnity Company.....	OH.....	RE.....	Cassella Waste Systems, Inc.....	Ownership.....	0.199	N/A public entity.....	N.....	
4869	WT Holdings Group.....	12750...	36-2467238..				Evergreen National Indemnity Company.....	OH.....	RE.....	Waste Connections, Inc.....	Ownership.....	0.100	N/A public entity.....	N.....	
4869	WT Holdings Group.....	00000...	46-4581025..				EU Holdings, LLC.....	FL.....	NIA.....	Stillwater Insurance Company.....	Ownership.....	0.875	WT Holdings, Inc.....	N.....	
4869	WT Holdings Group.....	00000...	46-4581025..				EU Holdings, LLC.....	FL.....	NIA.....	WT Holdings, Inc.....	Ownership.....	0.100	WT Holdings, Inc.....	N.....	
4869	WT Holdings Group.....	00000...	46-4545990..				Evergreen/UNI, LLC.....	OH.....	NIA.....	EU Holdings, LLC.....	Ownership.....	1.000	WT Holdings, Inc.....	N.....	
4869	WT Holdings Group.....	00000...	11-2339905..				The Tri-State Consumer Inc.....	NY.....	NIA.....	WT Holdings, Inc.....	Ownership.....	0.970	WT Holdings, Inc.....	N.....	
4869	WT Holdings Group.....	23060...	11-2729262..				Tri-State Consumer Insurance Company.....	NY.....	IA.....	The Tri-State Consumer Inc.....	Ownership.....	1.000	WT Holdings, Inc.....	N.....	
4869	WT Holdings Group.....	00000...	26-4642498..				TSC Insurance Corp.....	NY.....	NIA.....	The Tri-State Consumer Inc.....	Ownership.....	1.000	WT Holdings, Inc.....	N.....	
4869	WT Holdings Group.....	00000...	26-4642462..				American Plan Insurance Company.....	NY.....	NIA.....	The Tri-State Consumer Inc.....	Ownership.....	1.000	WT Holdings, Inc.....	N.....	
4869	WT Holdings Group.....	00000...	26-3464393..				TSC>Direct, Inc.....	NY.....	NIA.....	The Tri-State Consumer Inc.....	Ownership.....	1.000	WT Holdings, Inc.....	N.....	
4869	WT Holdings Group.....	00000...	94-3283464..		1057058	NYSE.....	Waste Connections, Inc.....	DE.....	OTH.....	N/A public entity.....	N/A.....	N/A.....	N/A public entity.....	N.....	
4869	WT Holdings Group.....	00000...	73-1039529..				Waste Management Holdings, Inc.....	DE.....	OTH.....	Waste Management, Inc.....	Ownership.....	100.000	N/A public entity.....	N.....	
4869	WT Holdings Group.....	00000...	26-2099042..		1546636	none.....	WT Holdings, Inc.....	TN.....	UIP.....	Various Investors.....	Ownership, Board, Mgmt	100.000			*.....

Q12

SCHEDULE Y

PART 1A - DETAIL OF INSURANCE HOLDING COMPANY SYSTEM

1	2	3	4	5	6	7	8	9	10	11	12	13	14	15	16
Group Code	Group Name	NAIC Company Code	ID Number	Federal RSSD	CIK	Name of Securities Exchange if Publicly Traded (U.S. or International)	Names of Parent, Subsidiaries or Affiliates	Domiciliary Location	Relationship to Reporting Entity	Directly Controlled by (Name of Entity/Person)	Type of Control (Ownership Board, Management, Attorney-in-Fact, Influence, Other)	If Control is Ownership Provide Percentage	Ultimate Controlling Entity(ies)/Person(s)	Is an SCA Filing Required? (Y/N)	*

Aster: Explanation

*	No Securities Exchange listing as CIK # is for Reg D filing only
**	Ultimate controlling entity is publicly held

Q12.1

EVERGREEN NATIONAL INDEMNITY COMPANY PART 1 - LOSS EXPERIENCE

Lines of Business	Current Year to Date			4 Prior Year to Date Direct Loss Percentage
	1 Direct Premiums Earned	2 Direct Losses Incurred	3 Direct Loss Percentage	
1. Fire.....			0.000	
2. Allied lines.....			0.000	
3. Farmowners multiple peril.....			0.000	
4. Homeowners multiple peril.....			0.000	
5. Commercial multiple peril.....			0.000	
6. Mortgage guaranty.....			0.000	
8. Ocean marine.....			0.000	
9. Inland marine.....			0.000	
10. Financial guaranty.....			0.000	
11.1. Medical professional liability - occurrence.....			0.000	
11.2. Medical professional liability - claims-made.....			0.000	
12. Earthquake.....			0.000	
13. Group accident and health.....			0.000	
14. Credit accident and health.....			0.000	
15. Other accident and health.....			0.000	
16. Workers' compensation.....		(69,471)	0.000	
17.1. Other liability-occurrence.....			0.000	
17.2. Other liability-claims made.....			0.000	
17.3. Excess workers' compensation.....			0.000	
18.1. Products liability-occurrence.....			0.000	
18.2. Products liability-claims made.....			0.000	
19.1, 19.2. Private passenger auto liability.....			0.000	
19.3, 19.4. Commercial auto liability.....			0.000	
21. Auto physical damage.....			0.000	
22. Aircraft (all perils).....			0.000	
23. Fidelity.....			0.000	
24. Surety.....	23,564,406	1,786,977	7.583	4.542
26. Burglary and theft.....			0.000	
27. Boiler and machinery.....			0.000	
28. Credit.....			0.000	
29. International.....			0.000	
30. Warranty.....	50,632		0.000	
31. Reinsurance-nonproportional assumed property.....	XXX	XXX	XXX	XXX
32. Reinsurance-nonproportional assumed liability.....	XXX	XXX	XXX	XXX
33. Reinsurance-nonproportional assumed financial lines.....	XXX	XXX	XXX	XXX
34. Aggregate write-ins for other lines of business.....	.0	.0	0.000	
35. Totals.....	23,615,038	1,717,506	7.273	4.380
DETAILS OF WRITE-INS				
3401.....			0.000	
3402.....			0.000	
3403.....			0.000	
3498. Sum. of remaining write-ins for Line 34 from overflow page.....	.0	.0	0.000	XXX
3499. Totals (Lines 3401 thru 3403 plus 3498) (Line 34).....	.0	.0	0.000	

PART 2 - DIRECT PREMIUMS WRITTEN

Lines of Business	1	2	3
	Current Quarter	Current Year to Date	Prior Year Year to Date
1. Fire.....			
2. Allied lines.....			
3. Farmowners multiple peril.....			
4. Homeowners multiple peril.....			
5. Commercial multiple peril.....			
6. Mortgage guaranty.....			
8. Ocean marine.....			
9. Inland marine.....			
10. Financial guaranty.....			
11.1. Medical professional liability - occurrence.....			
11.2. Medical professional liability - claims made.....			
12. Earthquake.....			
13. Group accident and health.....			
14. Credit accident and health.....			
15. Other accident and health.....			
16. Workers' compensation.....			
17.1. Other liability-occurrence.....			
17.2. Other liability-claims made.....			
17.3. Excess workers' compensation.....			
18.1. Products liability-occurrence.....			
18.2. Products liability-claims made.....			
19.1 19.2. Private passenger auto liability.....			
19.3 19.4. Commercial auto liability.....			
21. Auto physical damage.....			
22. Aircraft (all perils).....			
23. Fidelity.....			
24. Surety.....	10,421,621	24,403,072	26,263,866
26. Burglary and theft.....			
27. Boiler and machinery.....			
28. Credit.....			
29. International.....			
30. Warranty.....	33,330	68,720	62,490
31. Reinsurance-nonproportional assumed property.....	XXX	XXX	XXX
32. Reinsurance-nonproportional assumed liability.....	XXX	XXX	XXX
33. Reinsurance-nonproportional assumed financial lines.....	XXX	XXX	XXX
34. Aggregate write-ins for other lines of business.....	.0	.0	.0
35. Totals.....	10,454,951	24,471,792	26,326,356
DETAILS OF WRITE-INS			
3401.....			
3402.....			
3403.....			
3498. Sum. of remaining write-ins for Line 34 from overflow page.....	.0	.0	.0
3499. Totals (Lines 3401 thru 3403 plus 3498) (Line 34).....	.0	.0	.0

PART 3 (000 omitted)

LOSS AND LOSS ADJUSTMENT EXPENSE RESERVES SCHEDULE

	1	2	3	4	5	6	7	8	9	10	11	12	13
Years in Which Losses Occurred	Prior Year-End Known Case Loss and LAE Reserves	Prior Year-End IBNR Loss and LAE Reserves	Total Prior Year-End Loss and LAE Reserves (Cols. 1 + 2)	2018 Loss and LAE Payments on Claims Reported as of Prior Year-End	2018 Loss and LAE Payments on Claims Unreported as of Prior Year-End	Total 2018 Loss and LAE Payments (Cols. 4 + 5)	Q.S. Date Known Case Loss and LAE Reserves on Claims Reported and Open as of Prior Year-End	Q.S. Date Known Case Loss and LAE Reserves on Claims Reported or Reopened Subsequent to Prior Year-End	Q.S. Date IBNR Loss and LAE Reserves	Total Q.S. Loss and LAE Reserves (Cols. 7 + 8 + 9)	Prior Year-End Known Case Loss and LAE Reserves Developed (Savings)/Deficiency (Cols. 4 + 7 minus Col. 1)	Prior Year-End IBNR Loss and LAE Reserves Developed (Savings)/Deficiency (Cols. 5 + 8 + 9 minus Col. 2)	Prior Year-End Total Loss and LAE Reserve Developed (Savings)/Deficiency (Cols. 11 + 12)
1. 2015 + Prior.....113718831		0113	6107230(108)(108)
2. 2016.....	551551381	381		429429381(122)259
3. Subtotals 2016 + Prior.....1131,2691,382381038111301,0391,152381(230)151
4. 2017.....	3,1903,190		0		1,0591,0590(2,131)(2,131)
5. Subtotals 2017 + Prior.....1134,4594,572381038111302,0982,211381(2,361)(1,980)
6. 2018.....XXXXXXXXXXXX	0XXX	2,6972,697XXXXXXXXX
7. Totals.....1134,4594,572381038111304,7954,908381(2,361)(1,980)
8. Prior Year-End's Surplus As Regards Policyholders34,452												
											Col. 11, Line 7 As % of Col. 1, Line 7	Col. 12, Line 7 As % of Col. 2, Line 7	Col. 13, Line 7 As % of Col. 3, Line 7
											1.337.2%	2.(52.9)%	3.(43.3)%
													Col. 13, Line 7 Line 8
													4.(5.7)%

Q14

SUPPLEMENTAL EXHIBITS AND SCHEDULES INTERROGATORIES

The following supplemental reports are required to be filed as part of your statement filing. However, in the event that your company does not transact the type of business for which the special report must be filed, your response of NO to the specific interrogatory will be accepted in lieu of filing a "NONE" report and a bar code will be printed below. If the supplement is required of your company but is not being filed for whatever reason, enter SEE EXPLANATION and provide an explanation following the interrogatory questions.

	Response
1. Will the Trusteed Surplus Statement be filed with the state of domicile and the NAIC with this statement?	NO _____
2. Will Supplement A to Schedule T (Medical Professional Liability Supplement) be filed with this statement?	NO _____
3. Will the Medicare Part D Coverage Supplement be filed with the state of domicile and the NAIC with this statement?	NO _____
4. Will the Director and Officer Insurance Coverage Supplement be filed with the state of domicile and the NAIC with this statement?	NO _____

Explanation:

1. The data for this supplement is not required to be filed.
2. The data for this supplement is not required to be filed.
3. The data for this supplement is not required to be filed.
4. The data for this supplement is not required to be filed.

Bar Code:



NONE

EVERGREEN NATIONAL INDEMNITY COMPANY SCHEDULE A - VERIFICATION

Real Estate

	1 Year to Date	2 Prior Year Ended December 31
1. Book/adjusted carrying value, December 31 of prior year.....	1,669,366	
2. Cost of acquired:		
2.1 Actual cost at time of acquisition.....		1,715,107
2.2 Additional investment made after acquisition.....		
3. Current year change in encumbrances.....		
4. Total gain (loss) on disposals.....		
5. Deduct amounts received on disposals.....	1,211,954	45,741
6. Total foreign exchange change in book/adjusted carrying value.....		
7. Deduct current year's other-than-temporary impairment recognized.....		
8. Deduct current year's depreciation.....		
9. Book/adjusted carrying value at end of current period (Lines 1+2+3+4-5+6-7-8).....	457,412	1,669,366
10. Deduct total nonadmitted amounts.....		
11. Statement value at end of current period (Line 9 minus Line 10).....	457,412	1,669,366

SCHEDULE B - VERIFICATION

Mortgage Loans

	1 Year to Date	2 Prior Year Ended December 31
1. Book value/recorded investment excluding accrued interest, December 31 of prior year.....	664,696	830,870
2. Cost of acquired:		
2.1 Actual cost at time of acquisition.....		
2.2 Additional investment made after acquisition.....		
3. Capitalized deferred interest and other.....		
4. Accrual of discount.....		
5. Unrealized valuation increase (decrease).....		
6. Total gain (loss) on disposals.....		
7. Deduct amounts received on disposals.....		
8. Deduct amortization of premium and mortgage interest points and commitment fees.....		
9. Total foreign exchange change in book value/recorded investment excluding accrued interest.....		
10. Deduct current year's other-than-temporary impairment recognized.....		166,174
11. Book value/recorded investment excluding accrued interest at end of current period (Lines 1+2+3+4+5+6-7-8+9-10).....	664,696	664,696
12. Total valuation allowance.....		
13. Subtotal (Line 11 plus Line 12).....	664,696	664,696
14. Deduct total nonadmitted amounts.....		
15. Statement value at end of current period (Line 13 minus Line 14).....	664,696	664,696

SCHEDULE BA - VERIFICATION

Other Long-Term Invested Assets

	1 Year to Date	2 Prior Year Ended December 31
1. Book/adjusted carrying value, December 31 of prior year.....	2,889,718	3,240,059
2. Cost of acquired:		
2.1 Actual cost at time of acquisition.....	25,000	725,000
2.2 Additional investment made after acquisition.....	169,814	365,987
3. Capitalized deferred interest and other.....		
4. Accrual of discount.....		
5. Unrealized valuation increase (decrease).....	(58,008)	366,560
6. Total gain (loss) on disposals.....	66,049	(233,283)
7. Deduct amounts received on disposals.....	253,892	1,574,605
8. Deduct amortization of premium and depreciation.....		
9. Total foreign exchange change in book/adjusted carrying value.....		
10. Deduct current year's other-than-temporary impairment recognized.....		
11. Book/adjusted carrying value at end of current period (Lines 1+2+3+4+5+6-7-8+9-10).....	2,838,681	2,889,718
12. Deduct total nonadmitted amounts.....		36,628
13. Statement value at end of current period (Line 11 minus Line 12).....	2,838,681	2,853,090

SCHEDULE D - VERIFICATION

Bonds and Stocks

	1 Year to Date	2 Prior Year Ended December 31
1. Book/adjusted carrying value of bonds and stocks, December 31 of prior year.....	38,144,562	35,784,530
2. Cost of bonds and stocks acquired.....	9,365,679	14,457,305
3. Accrual of discount.....	77,735	160,501
4. Unrealized valuation increase (decrease).....	395,369	(121,872)
5. Total gain (loss) on disposals.....	(218,234)	858,349
6. Deduct consideration for bonds and stocks disposed of.....	7,974,187	12,888,111
7. Deduct amortization of premium.....	76,096	106,139
8. Total foreign exchange change in book/adjusted carrying value.....		
9. Deduct current year's other-than-temporary impairment recognized.....		
10. Total investment income recognized as a result of prepayment penalties and/or acceleration fees.....		
11. Book/adjusted carrying value at end of current period (Lines 1+2+3+4+5-6-7+8-9+10).....	39,714,827	38,144,562
12. Deduct total nonadmitted amounts.....		
13. Statement value at end of current period (Line 11 minus Line 12).....	39,714,827	38,144,562

SCHEDULE D - PART 1B

Showing the Acquisitions, Dispositions and Non-Trading Activity

During the Current Quarter for all Bonds and Preferred Stock by NAIC Designation

NAIC Designation	1 Book/Adjusted Carrying Value Beginning of Current Quarter	2 Acquisitions During Current Quarter	3 Dispositions During Current Quarter	4 Non-Trading Activity During Current Quarter	5 Book/Adjusted Carrying Value End of First Quarter	6 Book/Adjusted Carrying Value End of Second Quarter	7 Book/Adjusted Carrying Value End of Third Quarter	8 Book/Adjusted Carrying Value December 31 Prior Year
BONDS								
1. NAIC 1 (a).....	12,541,304	1,962,439	844,955	9,951	13,011,033	12,541,304	13,668,739	13,189,285
2. NAIC 2 (a).....	6,438,574	50,000	365,905	298,565	4,588,529	6,438,574	6,421,234	4,822,343
3. NAIC 3 (a).....	4,012,389	235,290	7,098	(315,486)	4,728,493	4,012,389	3,925,094	3,689,600
4. NAIC 4 (a).....	1,360,059			(23,098)	1,777,256	1,360,059	1,336,960	1,444,296
5. NAIC 5 (a).....	1,285,548		496,828	15,283	1,241,110	1,285,548	804,003	1,287,340
6. NAIC 6 (a).....	46,090			1,942	44,312	46,090	48,032	40,250
7. Total Bonds.....	25,683,963	2,247,729	1,714,786	(12,843)	25,390,732	25,683,963	26,204,063	24,473,113
PREFERRED STOCK								
8. NAIC 1.....	250,847			(109)	250,955	250,847	250,738	251,062
9. NAIC 2.....	830,129	502,000	115,819	(1,103)	1,083,365	830,129	1,215,207	750,727
10. NAIC 3.....	3,019,511			(1,320)	2,823,430	3,019,511	3,018,191	3,158,870
11. NAIC 4.....							0	
12. NAIC 5.....							0	
13. NAIC 6.....	15,100				15,100	15,100	15,100	15,100
14. Total Preferred Stock.....	4,115,587	502,000	115,819	(2,533)	4,172,849	4,115,587	4,499,235	4,175,759
15. Total Bonds and Preferred Stock.....	29,799,550	2,749,729	1,830,605	(15,376)	29,563,582	29,799,550	30,703,298	28,648,872

QS102

(a) Book/Adjusted Carrying Value column for the end of the current reporting period includes the following amount of short-term and cash equivalent bonds by NAIC designation:

NAIC 1 \$.....0; NAIC 2 \$.....0; NAIC 3 \$.....0; NAIC 4 \$.....0; NAIC 5 \$.....0; NAIC 6 \$.....0.

SCHEDULE DA - PART 1

Short-Term Investments

	1 Book/Adjusted Carrying Value	2 Par Value	3 Actual Cost	4 Interest Collected Year To Date	5 Paid for Accrued Interest Year To Date
9199999.....		X			

NONE

SCHEDULE DA - VERIFICATION

Short-Term Investments

	1 Year To Date	2 Prior Year Ended December 31
1. Book/adjusted carrying value, December 31 of prior year.....	.0	735,541
2. Cost of short-term investments acquired.....		
3. Accrual of discount.....		
4. Unrealized valuation increase (decrease).....		
5. Total gain (loss) on disposals.....		
6. Deduct consideration received on disposals.....		735,541
7. Deduct amortization of premium.....		
8. Total foreign exchange change in book/adjusted carrying value.....		
9. Deduct current year's other-than-temporary impairment recognized.....		
10. Book/adjusted carrying value at end of current period (Lines 1+2+3+4+5-6-7+8-9).....	.0	.0
11. Deduct total nonadmitted amounts.....		
12. Statement value at end of current period (Line 10 minus Line 11).....	.0	.0

**Sch. DB - Pt. A - Verification
NONE**

**Sch. DB - Pt. B - Verification
NONE**

**Sch. DB - Pt. C - Sn. 1
NONE**

**Sch. DB - Pt. C - Sn. 2
NONE**

**Sch. DB - Verification
NONE**

SCHEDULE E - PART 2 - VERIFICATION

Cash Equivalents

	1 Year To Date	2 Prior Year Ended December 31
1. Book/adjusted carrying value, December 31 of prior year.....	893,702	
2. Cost of cash equivalents acquired.....	7,638,908	13,203,335
3. Accrual of discount.....		
4. Unrealized valuation increase (decrease).....		
5. Total gain (loss) on disposals.....		
6. Deduct consideration received on disposals.....	7,693,428	12,309,632
7. Deduct amortization of premium.....		
8. Total foreign exchange change in book/ adjusted carrying value.....		
9. Deduct current year's other-than-temporary impairment recognized.....		
10. Book/adjusted carrying value at end of current period (Lines 1+2+3+4+5-6-7+8-9).....	839,183	893,702
11. Deduct total nonadmitted amounts.....		
12. Statement value at end of current period (Line 10 minus Line 11).....	839,183	893,702

SCHEDULE A - PART 2

Showing all Real Estate ACQUIRED AND ADDITIONS MADE During the Current Quarter

1 Description of Property	Location		4 Date Acquired	5 Name of Vendor	6 Actual Cost at Time of Acquisition	7 Amount of Encumbrances	8 Book/Adjusted Carrying Value Less Encumbrances	9 Additional Investment Made After Acquisition
	2 City	3 State						

NONE

SCHEDULE A - PART 3

Showing all Real Estate DISPOSED During the Quarter, Including Payments During the Final Year on "Sales Under Contract "

QE01

1 Description of Property	Location		4 Disposal Date	5 Name of Purchaser	6 Actual Cost	7 Expended for Additions, Permanent Improvements and Changes in Encumbrances	8 Book/Adjusted Carrying Value Less Encumbrances Prior Year	Change in Book/Adjusted Carrying Value Less Encumbrances					14 Book/Adjusted Carrying Value Less Encumbrances on Disposal	15 Amounts Received During Year	16 Foreign Exchange Gain (Loss) on Disposal	17 Realized Gain (Loss) on Disposal	18 Total Gain (Loss) on Disposal	19 Gross Income Earned Less Interest Incurred on Encumbrances	20 Taxes, Repairs, and Expenses Incurred
	2 City	3 State						9 Current Year's Depreciation	10 Current Year's Other-Than-Temporary Impairment Recognized	11 Current Year's Change in Encumbrances	12 Total Change in B./A.C.V. (11 - 9 - 10)	13 Total Foreign Exchange Change in B./A.C.V.							
Property Disposed																			
Village Glen Subdivision Phase 1 - Sublot 26	Madison Village.....	OH.	07/06/2018	K. Hovnanian Village Glenn, LLC.....	22,870		22,870				0		22,870	22,870			0		
Village Glen Subdivision Phase 1 - Sublot 62	Madison Village.....	OH.	07/06/2018	K. Hovnanian Village Glenn, LLC.....	22,871		22,871				0		22,871	22,871			0		
Village Glen Subdivision Phase 1 - Sublot 41	Madison Village.....	OH.	08/06/2018	K. Hovnanian Village Glenn, LLC.....	22,870		22,870				0		22,870	22,870			0		
Village Glen Subdivision Phase 1 - Sublot 22	Madison Village.....	OH.	09/28/2018	K. Hovnanian Village Glenn, LLC.....	22,870		22,870				0		22,870	22,870			0		
0199999. Totals.....					91,481	0	91,481	0	0	0	0	0	91,481	91,481	0	0	0	0	0
0399999. Totals.....					91,481	0	91,481	0	0	0	0	0	91,481	91,481	0	0	0	0	0

Sch. B - Pt. 2
NONE

Sch. B - Pt. 3
NONE

Sch. BA - Pt. 2
NONE

Sch. BA - Pt. 3
NONE

SCHEDULE D - PART 3

Showing all Long-Term Bonds and Stocks ACQUIRED During Current Quarter

1	2	3	4	5	6	7	8	9	10
CUSIP Identification	Description	Foreign	Date Acquired	Name of Vendor	Number of Shares of Stock	Actual Cost	Par Value	Paid for Accrued Interest and Dividends	NAIC Designation or Market Indicator (a)
Bonds - U.S. Special Revenue and Special Assessment									
10620N BD 9	BRASSTD 062IB2 IB2 - ABS		08/14/2018	Stifel Nicolaus & Co		297,750	300,000	463	1FE
3199999	Total - Bonds - U.S. Special Revenue and Special Assessments					297,750	300,000	463	XXX
Bonds - Industrial and Miscellaneous									
00085U AE 1	ABPCI 4 B - CDO	C	09/10/2018	RAYMOND JAMES & ASSOCIATES		295,668	300,000	2,159	1FE
12738A AD 3	CADENCE BANCORP		09/01/2018	Stifel Nicolaus & Co		235,290	230,000	5,523	3FE
139797 GY 4	The Capital Bank		08/20/2018	National Financial Securities		100,000	100,000		
34961J AJ 3	FCO 9 C - CDO		09/10/2018	RAYMOND JAMES & ASSOCIATES		298,377	300,000	1,158	1FE
78443D AH 5	SLMA 07A C1 - ABS		08/27/2018	RAYMOND JAMES & ASSOCIATES		319,644	369,531	2,133	1FE
803169 AU 5	SRANC 3R CR - CDO	C	08/14/2018	RAYMOND JAMES & ASSOCIATES		401,000	400,000	2,861	1FE
89640X BJ 4	TRNTS 4R 2LR - CDO		08/08/2018	RAYMOND JAMES & ASSOCIATES		250,000	250,000		1FE
949763 SE 7	Wells Fargo Bank, National Association		07/01/2018	National Financial Securities		50,000	50,000		2FE
3899999	Total - Bonds - Industrial and Miscellaneous					1,949,979	1,999,531	13,834	XXX
8399997	Total - Bonds - Part 3					2,247,729	2,299,531	14,298	XXX
8399999	Total - Bonds					2,247,729	2,299,531	14,298	XXX
Preferred Stocks - Industrial and Miscellaneous									
857477 BA 0	STATE STREET CORP		09/21/2018	Stifel Nicolaus & Co	500,000.000	502,000			P2VFE
8499999	Total - Preferred Stocks - Industrial and Miscellaneous					502,000	XXX	0	XXX
8999997	Total - Preferred Stocks - Part 3					502,000	XXX	0	XXX
8999999	Total - Preferred Stocks					502,000	XXX	0	XXX
Common Stocks - Industrial and Miscellaneous									
26078J 10 0	DOWDUPONT ORD		09/04/2018	HILLTOP SECURITIES INC	4,500.000	314,642	XXX		L
816120 30 7	SELECT INTERIOR CONCEPTS CL A ORD		08/28/2018	Unknown	40,416.440	480,000	XXX		L
9099999	Total - Common Stocks - Industrial and Miscellaneous					794,642	XXX	0	XXX
Common Stocks - Mutual Funds									
89148B 10 1	TORTOISE MLP		07/31/2018	VARIOUS	6,331.000	97,911	XXX		L
9299999	Total - Common Stocks - Mutual Funds					97,911	XXX	0	XXX
9799997	Total - Common Stocks - Part 3					892,553	XXX	0	XXX
9799999	Total - Common Stocks					892,553	XXX	0	XXX
9899999	Total - Preferred and Common Stocks					1,394,553	XXX	0	XXX
9999999	Total - Bonds, Preferred and Common Stocks					3,642,282	XXX	14,298	XXX

(a) For all common stock bearing NAIC market indicator "U" provide the number of such issues:.....0.

QE04

SCHEDULE D - PART 4

Showing all Long-Term Bonds and Stocks SOLD, REDEEMED or Otherwise DISPOSED OF During Current Quarter

1	2	3	4	5	6	7	8	9	10	Change in Book/Adjusted Carrying Value					16	17	18	19	20	21	22										
										11	12	13	14	15																	
CUSIP Identification	Description	F o r e i g n	Disposal Date	Name of Purchaser	Number of Shares of Stock	Consideration	Par Value	Actual Cost	Prior Year Book/Adjusted Carrying Value	Unrealized Valuation Increase (Decrease)	Current Year's (Amortization) / Accretion	Current Year's Other-Than-Temporary Impairment Recognized	Total Change in B./A.C.V. (11+12-13)	Total Foreign Exchange Change in B./A.C.V.	Book/Adjusted Carrying Value at Disposal Date	Foreign Exchange Gain (Loss) on Disposal	Realized Gain (Loss) on Disposal	Total Gain (Loss) on Disposal	Bond Interest / Stock Dividends Received During Year	Stated Contractual Maturity Date	NAIC Designation or Market Indicator (a)										
Bonds - U.S. Government																															
38374B	LQ 4		09/01/2018	Paydown		558	558	539	549				1		550		8	8	12	07/16/2033	1										
0599999	Total - Bonds - U.S. Government																			0	1	0	1	0	550	0	8	8	12	XXX	XXX
Bonds - U.S. Special Revenue and Special Assessment																															
207784	AQ 2		08/07/2018	Call @ 100.00		100,000	100,000	98,900			1,100		1,100		100,000			0	1,320	06/01/2034	1FE										
3137BP	D2 2		09/01/2018	Direct				3,036	3,036				0		2,586		(2,586)	(2,586)		05/15/2031	1										
3137BP	D4 8		09/01/2018	Direct				2,569	2,569				0		1,756		(1,756)	(1,756)		05/15/2031	1										
60637B	PX 2		08/01/2018	Call @ 100.00		5,000	5,000	5,000	5,000				0		5,000			0	70	11/01/2042	1FE										
3199999	Total - Bonds - U.S. Special Revenue and Special Assessments																			0	1,100	0	1,100	0	109,342	0	(4,342)	(4,342)	1,390	XXX	XXX
Bonds - Industrial and Miscellaneous																															
02006L	J8 7		08/20/2018	Maturity @ 100.00		50,000	50,000	50,000	50,000				0		50,000			0	553	08/20/2018											
140420	B6 6		08/17/2018	Maturity @ 100.00		50,000	50,000	50,000	50,000				0		50,000			0	525	08/17/2018											
67107K	AG 1		09/06/2018	Paydown		300,000	300,000	299,850	299,873		2,032		2,032		301,905		(1,905)	(1,905)	14,704	10/20/2026	2AM										
67107K	AU 0		09/06/2018	Paydown		500,000	500,000	502,000	501,851		1,430		1,430		503,281		(3,281)	(3,281)	18,043	10/20/2026	1FE										
74043A	AC 5		09/24/2018	Paydown		1,775	1,775	1,278	1,336		23		23		1,359		415	415	19	12/22/2036	1AM										
76009N	AH 3		07/18/2018	Stifel Nicolaus & Co.		500,075	500,000	492,500	480,000	16,147	682		16,828		496,828		3,247	3,247	22,543	11/15/2020	5FE										
78444Y	AD 7		07/25/2018	Paydown		7,067	7,067	7,113	7,102		(4)		(4)		7,098		(31)	(31)	121	07/25/2023	3AM										
90390K	AA 2		08/01/2018	Paydown		79,301	79,301	65,067	78,390		911		911		79,301		0	0	904	08/01/2034	1FE										
G9300F	AA 5		09/01/2018	Paydown		57,565	57,565	49,850	50,914		207		207		51,121		6,444	6,444	656	08/01/2034	1FE										
3899999	Total - Bonds - Industrial and Miscellaneous																			16,147	5,282	0	21,428	0	1,540,895	0	4,889	4,889	58,068	XXX	XXX
Bonds - Hybrid Securities																															
060505	DR 2		08/01/2018	Call @ 100.00		64,000	64,000	66,400	64,196		(196)		(196)		64,000			0	6,227	12/29/2049	2FE										
4899999	Total - Bonds - Hybrid Securities																			0	(196)	0	(196)	0	64,000	0	0	0	6,227	XXX	XXX
8399997	Total - Bonds - Part 4																			16,147	6,186	0	22,333	0	1,714,786	0	554	554	65,697	XXX	XXX
8399999	Total - Bonds																			16,147	6,186	0	22,333	0	1,714,786	0	554	554	65,697	XXX	XXX
Preferred Stocks - Industrial and Miscellaneous																															
060505	61 7		08/28/2018	Redemption @ 25.00		4,000,000	100,000		101,232				0		101,232		(1,232)	(1,232)	4,781	XXX	P2LFE										
060505	83 1		09/14/2018	Redemption @ 25.00		580,000	14,500		14,587				0		14,587		(87)	(87)	1,225	XXX	P2LFE										
8499999	Total - Preferred Stocks - Industrial and Miscellaneous																			0	0	0	0	0	115,819	0	(1,319)	(1,319)	6,007	XXX	XXX
8999997	Total - Preferred Stocks - Part 4																			0	0	0	0	0	115,819	0	(1,319)	(1,319)	6,007	XXX	XXX
8999999	Total - Preferred Stocks																			0	0	0	0	0	115,819	0	(1,319)	(1,319)	6,007	XXX	XXX
Common Stocks - Industrial and Miscellaneous																															
693366	20 5		09/28/2018	HILLTOP SECURITIES INC.		4,000,000	49,927	XXX	65,907				14,707		65,907		(15,981)	(15,981)		XXX	L										
816120	20 8		08/28/2018	SELECT INTERIOR CONCEPTS, INC.		40,416,440	480,000	XXX	480,000				0		480,000			0		XXX	V										
9099999	Total - Common Stocks - Industrial and Miscellaneous																			14,707	0	0	14,707	0	545,907	0	(15,981)	(15,981)	0	XXX	XXX
9799997	Total - Common Stocks - Part 4																			14,707	0	0	14,707	0	545,907	0	(15,981)	(15,981)	0	XXX	XXX
9799999	Total - Common Stocks																			14,707	0	0	14,707	0	545,907	0	(15,981)	(15,981)	0	XXX	XXX
9899999	Total - Preferred and Common Stocks																			14,707	0	0	14,707	0	661,726	0	(17,300)	(17,300)	6,007	XXX	XXX
9999999	Total - Bonds, Preferred and Common Stocks																			30,854	6,186	0	37,040	0	2,355,828	0	(16,745)	(16,745)	71,703	XXX	XXX

QE05

(a) For all common stock bearing the NAIC market indicator "U" provide: the number of such issues:0.

Sch. DB - Pt. A - Sn. 1
NONE

Sch. DB - Pt. B - Sn. 1
NONE

Sch. DB - Pt. D - Sn. 1
NONE

Sch. DB - Pt. D - Sn. 2
NONE

Sch. DL - Pt. 1
NONE

Sch. DL - Pt. 2
NONE

EVERGREEN NATIONAL INDEMNITY COMPANY SCHEDULE E - PART 1 - CASH

Month End Depository Balances

1 Depository	2 Code	3 Rate of Interest	4 Amount of Interest Received During Current Quarter	5 Amount of Interest Accrued at Current Statement Date	Book Balance at End of Each Month During Current Quarter			9 *
					6 First Month	7 Second Month	8 Third Month	
Open Depositories								
HUNTINGTON TRUST..... COLUMBUS, OH.....					43,229	53,787	50,935	XXX
HUNTINGTON OPERATING..... COLUMBUS, OH.....					2,314,121	982,576	2,321,487	XXX
INDEPENDENCE BANK, US WARR..... INDEPENDENCE, OH.....					303,181	303,181	303,182	XXX
0199998. Deposits in5 depositories that do not exceed the allowable limit in any one depository (see Instructions) - Open Depositories.....	XXX	XXX			183,945	209,603	318,514	XXX
0199999. Total Open Depositories.....	XXX	XXX	0	0	2,844,475	1,549,147	2,994,118	XXX
0399999. Total Cash on Deposit.....	XXX	XXX	0	0	2,844,475	1,549,147	2,994,118	XXX
0599999. Total Cash.....	XXX	XXX	0	0	2,844,475	1,549,147	2,994,118	XXX

SCHEDULE E - PART 2 - CASH EQUIVALENTS

Show Investments Owned End of Current Quarter

1	2		3	4	5	6	7	8	9
CUSIP	Description		Code	Date Acquired	Rate of Interest	Maturity Date	Book/Adjusted Carrying Value	Amount of Interest Due & Accrued	Amount Received During Year
Exempt Money Market Mutual Funds as Identified by the SVO									
94975H	29	6		08/02/2018	1.990		0		
8599999. Total - Exempt Money Market Mutual Funds as Identified by the SVO									
All Other Money Market Mutual Funds									
101100	84	0		09/28/2018			12,010		79
60934N	10	4		09/28/2018	1.980		827,171	1,975	610
990220	47	7		09/04/2018			1		1
8699999. Total - All Other Money Market Mutual Funds									
8899999. Total - Cash Equivalents									

QE13