



PROPERTY AND CASUALTY COMPANIES—ASSOCIATION EDITION

QUARTERLY STATEMENT

AS OF JUNE 30, 2018
OF THE CONDITION AND AFFAIRS OF THE

TRUSTGARD INSURANCE COMPANY

NAIC Group Code00267, 00267NAIC Company Code40118Employer's ID Number41-1405571

(Current Period)(Prior Period)

Organized under the Laws ofOhio, State of Domicile or Port of EntryOhio

Country of DomicileUnited States

Incorporated/Organized07/01/1981Commenced Business11/10/1981

Statutory Home Office671 South High Street, Columbus, OH, US 43206-1014

(Street and Number)(City or Town, State, Country and Zip Code)

Main Administrative Office671 South High StreetColumbus, OH, US 43206-1014614-445-2900

(Street and Number)(City or Town, State, Country and Zip Code)(Area Code) (Telephone Number)

Mail Address671 South High Street, P.O. Box 1218, Columbus, OH, US 43216-1218

(Street and Number or P.O. Box)(City or Town, State, Country and Zip Code)

Primary Location of Books and Records671 South High StreetColumbus, OH, US 43206-1014614-445-2900

(Street and Number)(City or Town, State, Country and Zip Code)(Area Code) (Telephone Number)

Internet Web Site Addresswww.grangeinsurance.com

Statutory Statement ContactDavid Sidney Ackermann614-445-2900

(Name)(Area Code) (Telephone Number) (Extension)

ackermannnd@grangeinsurance.com614-449-3757

(E-Mail Address)(Fax Number)

OFFICERS

Name	Title	Name	Title
JOHN (NMN) AMMENDOLA	PRESIDENT & CEO	LAVAWN DEE COLEMAN	EVP & SECRETARY
TERESA JEAN DALENTA	EVP & CFO		

OTHER OFFICERS

JOHN CHRISTOPHER MONTGOMERY	VP - INVESTMENTS		
-----------------------------	------------------	--	--

DIRECTORS OR TRUSTEES

JOHN (NMN) AMMENDOLA	MARK LEWIS BOXER	DOUGLAS PAUL BUTH	TERESA JEAN DALENTA
MICHAEL DESMOND FRAIZER	ROBERT ENLOW HOYT	SUZAN BULYABA KEREERE #	MARY MARNETTE PERRY
THOMAS SIMRALL STEWART	DAVID CHARLES WETMORE	CHRISTIANNA (NMN) WOOD	

State ofOhio.....

County ofFranklin.....ss

The officers of this reporting entity being duly sworn, each depose and say that they are the described officers of said reporting entity, and that on the reporting period stated above, all of the herein described assets were the absolute property of the said reporting entity, free and clear from any liens or claims thereon, except as herein stated, and that this statement, together with related exhibits, schedules and explanations therein contained, annexed or referred to, is a full and true statement of all the assets and liabilities and of the condition and affairs of the said reporting entity as of the reporting period stated above, and of its income and deductions therefrom for the period ended, and have been completed in accordance with the NAIC Annual Statement Instructions and Accounting Practices and Procedures manual except to the extent that: (1) state law may differ; or, (2) that state rules or regulations require differences in reporting not related to accounting practices and procedures, according to the best of their information, knowledge and belief, respectively. Furthermore, the scope of this attestation by the described officers also includes the related corresponding electronic filing with the NAIC, when required, that is an exact copy (except for formatting differences due to electronic filing) of the enclosed statement. The electronic filing may be requested by various regulators in lieu of or in addition to the enclosed statement.

JOHN (NMN) AMMENDOLA
PRESIDENT & CEO

LAVAWN DEE COLEMAN
EVP & SECRETARY

TERESA JEAN DALENTA
EVP & CFO

Subscribed and sworn to before me this
10th day of August, 2018

a. Is this an original filing? Yes [X] No []

b. If no:
1. State the amendment number
2. Date filed
3. Number of pages attached

Teresa J. Burchwell, Notary Public
April 28, 2022

STATEMENT AS OF JUNE 30, 2018 OF THE TRUSTGARD INSURANCE COMPANY

ASSETS

	Current Statement Date			4 December 31 Prior Year Net Admitted Assets
	1 Assets	2 Nonadmitted Assets	3 Net Admitted Assets (Cols. 1 - 2)	
1. Bonds	71,590,957		71,590,957	66,733,571
2. Stocks:				
2.1 Preferred stocks			0	0
2.2 Common stocks			0	0
3. Mortgage loans on real estate:				
3.1 First liens			0	0
3.2 Other than first liens			0	0
4. Real estate:				
4.1 Properties occupied by the company (less \$ encumbrances)			0	0
4.2 Properties held for the production of income (less \$ encumbrances)			0	0
4.3 Properties held for sale (less \$ encumbrances)			0	0
5. Cash (\$0), cash equivalents (\$458,867) and short-term investments (\$0)	458,867		458,867	4,165,930
6. Contract loans (including \$premium notes)			0	0
7. Derivatives	0		0	0
8. Other invested assets	0		0	0
9. Receivables for securities	129,625		129,625	9,240
10. Securities lending reinvested collateral assets			0	0
11. Aggregate write-ins for invested assets	0	0	0	0
12. Subtotals, cash and invested assets (Lines 1 to 11)	72,179,449	0	72,179,449	70,908,741
13. Title plants less \$charged off (for Title insurers only)			0	0
14. Investment income due and accrued	685,406		685,406	806,197
15. Premiums and considerations:				
15.1 Uncollected premiums and agents' balances in the course of collection			0	0
15.2 Deferred premiums, agents' balances and installments booked but deferred and not yet due (including \$earned but unbilled premiums)			0	0
15.3 Accrued retrospective premiums (\$) and contracts subject to redetermination (\$)			0	0
16. Reinsurance:				
16.1 Amounts recoverable from reinsurers			0	0
16.2 Funds held by or deposited with reinsured companies			0	0
16.3 Other amounts receivable under reinsurance contracts			0	0
17. Amounts receivable relating to uninsured plans			0	0
18.1 Current federal and foreign income tax recoverable and interest thereon			0	637,093
18.2 Net deferred tax asset			0	0
19. Guaranty funds receivable or on deposit			0	0
20. Electronic data processing equipment and software			0	0
21. Furniture and equipment, including health care delivery assets (\$)			0	0
22. Net adjustment in assets and liabilities due to foreign exchange rates			0	0
23. Receivables from parent, subsidiaries and affiliates	976,952		976,952	488,428
24. Health care (\$) and other amounts receivable			0	0
25. Aggregate write-ins for other-than-invested assets	0	0	0	0
26. Total assets excluding Separate Accounts, Segregated Accounts and Protected Cell Accounts (Lines 12 to 25)	73,841,807	0	73,841,807	72,840,459
27. From Separate Accounts, Segregated Accounts and Protected Cell Accounts			0	0
28. Total (Lines 26 and 27)	73,841,807	0	73,841,807	72,840,459
DETAILS OF WRITE-INS				
1101.			0	0
1102.			0	0
1103.			0	0
1198. Summary of remaining write-ins for Line 11 from overflow page	0	0	0	0
1199. Totals (Lines 1101 through 1103 plus 1198) (Line 11 above)	0	0	0	0
2501.			0	0
2502.			0	0
2503.			0	0
2598. Summary of remaining write-ins for Line 25 from overflow page	0	0	0	0
2599. Totals (Lines 2501 through 2503 plus 2598) (Line 25 above)	0	0	0	0

LIABILITIES, SURPLUS AND OTHER FUNDS

	1 Current Statement Date	2 December 31, Prior Year
1. Losses (current accident year \$)		0
2. Reinsurance payable on paid losses and loss adjustment expenses		0
3. Loss adjustment expenses		0
4. Commissions payable, contingent commissions and other similar charges		0
5. Other expenses (excluding taxes, licenses and fees)	4,166	4,166
6. Taxes, licenses and fees (excluding federal and foreign income taxes)		0
7.1 Current federal and foreign income taxes (including \$(293) on realized capital gains (losses))	109,506	0
7.2 Net deferred tax liability	101,584	101,584
8. Borrowed money \$ and interest thereon \$		0
9. Unearned premiums (after deducting unearned premiums for ceded reinsurance of \$59,648,645 and including warranty reserves of \$ and accrued accident and health experience rating refunds including \$ for medical loss ratio rebate per the Public Health Service Act)		0
10. Advance premium		0
11. Dividends declared and unpaid:		
11.1 Stockholders		0
11.2 Policyholders		0
12. Ceded reinsurance premiums payable (net of ceding commissions)		0
13. Funds held by company under reinsurance treaties		0
14. Amounts withheld or retained by company for account of others		0
15. Remittances and items not allocated		0
16. Provision for reinsurance (including \$ certified)		0
17. Net adjustments in assets and liabilities due to foreign exchange rates		0
18. Drafts outstanding		0
19. Payable to parent, subsidiaries and affiliates		0
20. Derivatives	0	0
21. Payable for securities		0
22. Payable for securities lending		0
23. Liability for amounts held under uninsured plans		0
24. Capital notes \$ and interest thereon \$		0
25. Aggregate write-ins for liabilities	0	0
26. Total liabilities excluding protected cell liabilities (Lines 1 through 25)	215,256	105,750
27. Protected cell liabilities		0
28. Total liabilities (Lines 26 and 27)	215,256	105,750
29. Aggregate write-ins for special surplus funds	0	0
30. Common capital stock	2,500,000	2,500,000
31. Preferred capital stock		0
32. Aggregate write-ins for other than special surplus funds	0	0
33. Surplus notes		0
34. Gross paid in and contributed surplus	4,657,724	4,657,724
35. Unassigned funds (surplus)	66,468,827	65,576,985
36. Less treasury stock, at cost:		
36.1 shares common (value included in Line 30 \$)		0
36.2 shares preferred (value included in Line 31 \$)		0
37. Surplus as regards policyholders (Lines 29 to 35, less 36)	73,626,551	72,734,709
38. Totals (Page 2, Line 28, Col. 3)	73,841,807	72,840,459
DETAILS OF WRITE-INS		
2501.		0
2502.		0
2503.		0
2598. Summary of remaining write-ins for Line 25 from overflow page	0	0
2599. Totals (Lines 2501 through 2503 plus 2598) (Line 25 above)	0	0
2901.		0
2902.		0
2903.		0
2998. Summary of remaining write-ins for Line 29 from overflow page	0	0
2999. Totals (Lines 2901 through 2903 plus 2998) (Line 29 above)	0	0
3201.		0
3202.		0
3203.		0
3298. Summary of remaining write-ins for Line 32 from overflow page	0	0
3299. Totals (Lines 3201 through 3203 plus 3298) (Line 32 above)	0	0

STATEMENT OF INCOME

	1	2	3
	Current Year	Prior Year	Prior Year Ended
	to Date	to Date	December 31
UNDERWRITING INCOME			
1. Premiums earned:			
1.1 Direct (written \$ 75,856,335)	72,806,706	75,763,967	149,561,377
1.2 Assumed (written \$ 12,156)	24,602	66,873	140,426
1.3 Ceded (written \$ 75,868,492)	72,831,309	75,830,840	149,701,804
1.4 Net (written \$ 0)	0	0	0
DEDUCTIONS:			
2. Losses incurred (current accident year \$)::			
2.1 Direct	39,260,678	43,075,665	85,512,899
2.2 Assumed	9,405	29,890	61,084
2.3 Ceded	39,270,082	43,105,555	85,573,983
2.4 Net	0	0	0
3. Loss adjustment expenses incurred	0	0	0
4. Other underwriting expenses incurred	0	0	0
5. Aggregate write-ins for underwriting deductions	0	0	0
6. Total underwriting deductions (Lines 2 through 5)	0	0	0
7. Net income of protected cells	0	0	0
8. Net underwriting gain (loss) (Line 1 minus Line 6 + Line 7)	0	0	0
INVESTMENT INCOME			
9. Net investment income earned	1,002,742	1,643,297	2,687,931
10. Net realized capital gains (losses) less capital gains tax of \$ (293)	(1,101)	426,103	417,440
11. Net investment gain (loss) (Lines 9 + 10)	1,001,641	2,069,400	3,105,371
OTHER INCOME			
12. Net gain or (loss) from agents' or premium balances charged off (amount recovered \$ amount charged off \$)	0	0	0
13. Finance and service charges not included in premiums	0	0	0
14. Aggregate write-ins for miscellaneous income	0	0	0
15. Total other income (Lines 12 through 14)	0	0	0
16. Net income before dividends to policyholders, after capital gains tax and before all other federal and foreign income taxes (Lines 8 + 11 + 15)	1,001,641	2,069,400	3,105,371
17. Dividends to policyholders	0	0	0
18. Net income, after dividends to policyholders, after capital gains tax and before all other federal and foreign income taxes (Line 16 minus Line 17)	1,001,641	2,069,400	3,105,371
19. Federal and foreign income taxes incurred	109,799	(1,021,178)	(861,868)
20. Net income (Line 18 minus Line 19)(to Line 22)	891,842	3,090,578	3,967,239
CAPITAL AND SURPLUS ACCOUNT			
21. Surplus as regards policyholders, December 31 prior year	72,734,709	70,102,929	70,102,929
22. Net income (from Line 20)	891,842	3,090,578	3,967,239
23. Net transfers (to) from Protected Cell accounts	0	0	0
24. Change in net unrealized capital gains or (losses) less capital gains tax of \$	0	0	0
25. Change in net unrealized foreign exchange capital gain (loss)	0	0	0
26. Change in net deferred income tax	(1,423,526)	(1,385,544)	(1,385,544)
27. Change in nonadmitted assets	50,085	50,085	50,085
28. Change in provision for reinsurance	0	0	0
29. Change in surplus notes	0	0	0
30. Surplus (contributed to) withdrawn from protected cells	0	0	0
31. Cumulative effect of changes in accounting principles	0	0	0
32. Capital changes:			
32.1 Paid in	0	0	0
32.2 Transferred from surplus (Stock Dividend)	0	0	0
32.3 Transferred to surplus	0	0	0
33. Surplus adjustments:			
33.1 Paid in	0	0	0
33.2 Transferred to capital (Stock Dividend)	0	0	0
33.3 Transferred from capital	0	0	0
34. Net remittances from or (to) Home Office	0	0	0
35. Dividends to stockholders	0	0	0
36. Change in treasury stock	0	0	0
37. Aggregate write-ins for gains and losses in surplus	0	0	0
38. Change in surplus as regards policyholders (Lines 22 through 37)	891,842	1,717,137	2,631,780
39. Surplus as regards policyholders, as of statement date (Lines 21 plus 38)	73,626,551	71,820,066	72,734,709
DETAILS OF WRITE-INS			
0501.	0	0	0
0502.	0	0	0
0503.	0	0	0
0598. Summary of remaining write-ins for Line 5 from overflow page	0	0	0
0599. TOTALS (Lines 0501 through 0503 plus 0598) (Line 5 above)	0	0	0
1401.	0	0	0
1402.	0	0	0
1403.	0	0	0
1498. Summary of remaining write-ins for Line 14 from overflow page	0	0	0
1499. TOTALS (Lines 1401 through 1403 plus 1498) (Line 14 above)	0	0	0
3701.	0	0	0
3702.	0	0	0
3703.	0	0	0
3798. Summary of remaining write-ins for Line 37 from overflow page	0	0	0
3799. TOTALS (Lines 3701 through 3703 plus 3798) (Line 37 above)	0	0	0

CASH FLOW

	1 Current Year To Date	2 Prior Year To Date	3 Prior Year Ended December 31
Cash from Operations			
1. Premiums collected net of reinsurance.....	0	(8,724,954)	(8,724,954)
2. Net investment income	1,484,691	2,290,271	3,692,017
3. Miscellaneous income	0	0	0
4. Total (Lines 1 to 3)	1,484,691	(6,434,683)	(5,032,937)
5. Benefit and loss related payments	0	18,742,947	18,742,947
6. Net transfers to Separate Accounts, Segregated Accounts and Protected Cell Accounts	0	0	0
7. Commissions, expenses paid and aggregate write-ins for deductions	0	8,310,377	8,310,377
8. Dividends paid to policyholders	0	85,499	85,499
9. Federal and foreign income taxes paid (recovered) net of \$ (293) tax on capital gains (losses).....	(637,093)	2,675,624	2,675,624
10. Total (Lines 5 through 9)	(637,093)	29,814,447	29,814,447
11. Net cash from operations (Line 4 minus Line 10)	2,121,784	(36,249,130)	(34,847,384)
Cash from Investments			
12. Proceeds from investments sold, matured or repaid:			
12.1 Bonds	3,166,630	40,469,893	46,054,462
12.2 Stocks	0	0	0
12.3 Mortgage loans	0	0	0
12.4 Real estate	0	0	0
12.5 Other invested assets	0	0	0
12.6 Net gains or (losses) on cash, cash equivalents and short-term investments	0	0	0
12.7 Miscellaneous proceeds	0	0	0
12.8 Total investment proceeds (Lines 12.1 to 12.7)	3,166,630	40,469,893	46,054,462
13. Cost of investments acquired (long-term only):			
13.1 Bonds	8,386,569	3,296,477	7,511,797
13.2 Stocks	0	0	0
13.3 Mortgage loans	0	0	0
13.4 Real estate	0	0	0
13.5 Other invested assets	0	0	0
13.6 Miscellaneous applications	120,385	0	8,124
13.7 Total investments acquired (Lines 13.1 to 13.6)	8,506,954	3,296,477	7,519,921
14. Net increase (or decrease) in contract loans and premium notes	0	0	0
15. Net cash from investments (Line 12.8 minus Line 13.7 and Line 14)	(5,340,324)	37,173,416	38,534,541
Cash from Financing and Miscellaneous Sources			
16. Cash provided (applied):			
16.1 Surplus notes, capital notes	0	0	0
16.2 Capital and paid in surplus, less treasury stock.....	0	0	0
16.3 Borrowed funds	0	0	0
16.4 Net deposits on deposit-type contracts and other insurance liabilities	0	0	0
16.5 Dividends to stockholders	0	0	0
16.6 Other cash provided (applied).....	(488,523)	(286,123)	(149,065)
17. Net cash from financing and miscellaneous sources (Line 16.1 through Line 16.4 minus Line 16.5 plus Line 16.6).....	(488,523)	(286,123)	(149,065)
RECONCILIATION OF CASH, CASH EQUIVALENTS AND SHORT-TERM INVESTMENTS			
18. Net change in cash, cash equivalents and short-term investments (Line 11, plus Lines 15 and 17)	(3,707,063)	638,163	3,538,092
19. Cash, cash equivalents and short-term investments:			
19.1 Beginning of year.....	4,165,930	627,838	627,838
19.2 End of period (Line 18 plus Line 19.1)	458,867	1,266,001	4,165,930

STATEMENT AS OF JUNE 30, 2018 OF THE
TRUSTGARD INSURANCE COMPANY

NOTES TO FINANCIAL STATEMENTS

1. SUMMARY OF SIGNIFICANT ACCOUNT POLICIES

A. Accounting Practices:

The Company prepares its statutory financial statements in conformity with accounting practices prescribed or permitted by the State of Ohio. The State of Ohio requires that insurance companies domiciled in the State prepare their statutory basis financial statements in accordance with the NAIC Accounting Practices and Procedures manual subject to any deviations prescribed or permitted by the State of Ohio insurance commissioner. The Company does not employ accounting practices that depart from the NAIC Accounting Practices and Procedures Manual.

	SSAP #	F/S Page	F/S Line Number	2018	2017
NET INCOME					
(1) Trustgard Insurance Company state basis (Page 4, Line 20, Columns 1 & 2)	xxx	xxx	xxx	\$ 891,842	\$ 3,967,239
(2) State Prescribed Practices that increase/(decrease) NAIC SAP				0	0
(3) State Permitted Practices that increase/(decrease) NAIC SAP				0	0
(4) NAIC SAP (1-2-3=4)	xxx	xxx	xxx	<u>\$ 891,842</u>	<u>\$ 3,967,239</u>
SURPLUS					
(5) Trustgard Insurance Company state basis (Page 3, Line 37, Columns 1 & 2)	xxx	xxx	xxx	\$ 73,626,551	\$ 72,734,709
(6) State Prescribed Practices that increase/(decrease) NAIC SAP				0	0
(7) State Permitted Practices that increase/(decrease) NAIC SAP				0	0
(8) NAIC SAP (5-6-7=8)	xxx	xxx	xxx	<u>\$ 73,626,551</u>	<u>\$ 72,734,709</u>

C. Accounting Policy

6. Loan-backed securities are stated at either amortized cost or the lower or amortized cost or fair market value. The retrospective adjustment method is used to value all securities except for interest only securities or securities where the yield had become negative, those are valued using the prospective method.

D. Going Concern: None

2. ACCOUNTING CHANGES AND CORRECTIONS OF ERRORS
NONE

3. BUSINESS COMBINATIONS AND GOODWILL
NONE

4. DISCONTINUED OPERATIONS
NO CHANGE

5. INVESTMENTS

D. Loan-backed Securities:

1. Prepayment assumptions for single class and multi-class mortgage-backed/asset-backed securities were obtained from Bloomberg. These assumptions are consistent with the current interest rate and economic environment.
2. NONE
3. NONE
4. Impaired securities (fair value is less than cost or amortized cost) for which an other-than-temporary impairment has not been recognized in earnings as a realized loss (including securities with a recognized other-than-temporary impairment for non-interest related declines when a non-recognized interest related impairment remains):
- a.
- | | |
|--|---|
| Aggregate Amount of Unrealized Losses: | |
| 1 Less than 12 Months | 0 |
| 2 Greater than 12 Months | 0 |
- b.
- | | |
|--|---|
| The Aggregate Related Fair Value of Securities with Unrealized Losses: | |
| 1 Less than 12 Months | 0 |
| 2 Greater than 12 Months | 0 |
5. According to SSAP 43R, loan-backed and structured securities with an unrealized loss position were reviewed for impairment. The best estimate of future cash flows using the appropriate discount rate was calculated for each affected security, with other-than-temporary impairments realized to the extent that present value was less than amortized cost. Securities with a present value greater than amortized cost were not other-than-temporarily impaired.

E. Repurchase Agreements and/or Securities Lending Transactions:

3. COLLATERAL RECEIVED
The fair value of that collateral and of the portion of that collateral that it has sold or re-pledged.

	Fair Value
Open	0
30 Days or Less	0
31 to 60 Days	0
61 to 90 Days	0
Greater than 90 Days	0
Sub-Total	0
Securities Received	0
Total Collateral Received	<u>0</u>

F. Repurchase Agreements Transactions Accounted for as Secured Borrowing: None

G. Reverse Repurchase Agreements Transactions Accounted for as Secured Borrowing: None

H. Repurchase Agreements Transactions Accounted for as a Sale: None

I. Reverse Repurchase Agreements Transactions Accounted for as a Sale: None

M. Working Capital Finance Investments: None

STATEMENT AS OF JUNE 30, 2018 OF THE
TRUSTGARD INSURANCE COMPANY

NOTES TO FINANCIAL STATEMENTS

N. Offsetting and Netting of Assets and Liabilities: None

6. JOINT VENTURES, PARTNERSHIPS AND LIMITED LIABILITY COMPANIES
NO CHANGE

7. INVESTMENT INCOME
NO CHANGE

8. DERIVATIVE INSTRUMENTS
NONE

9. FEDERAL INCOME TAXES

A. The components of the net deferred tax assets at June 30, 2018 and December 31, 2017 are as follows:

	6/30/2018	12/31/2017
Gross Deferred Tax Assets	\$ -	
Gross Deferred Tax Liabilities	101,584	101,584
Net Deferred Tax Asset (Liability)	(101,584)	(101,584)
Non-admitted Deferred Tax Assets	-	-
Admitted Deferred Tax Asset (Liability)	(101,584)	(101,584)
(Increase) Decrease in Deferred Tax Assets Non-admitted	\$ -	\$ -

B. The Company has no deferred tax liabilities that are not recognized

C. Current income taxes incurred consist of the following major components:

	6/30/2018	12/31/2017
Current Income Tax Expense (Benefit)	\$ 109,799	\$ (861,483)
Tax on Capital Gains/(Losses)	(293)	224,775
Prior Year Under Accrual (Over Accrual)	-	(385)
Federal Income Taxes Incurred (Benefit)	\$ 109,506	\$ (637,093)

10. INFORMATION CONCERNING PARENT, SUBSIDIARIES AND AFFILIATES

A. Relationship with Parent, Subsidiaries and Affiliates:

On June 4, 2018, the Company announced a plan to convert its corporate structure to a Mutual Holding Company structure. Through this conversion, the Company’s parent, Grange Mutual Casualty Company (GMCC) will become a stock company and change its name to Grange Insurance Company (GIC). GIC and its wholly-owned subsidiaries will be owned by a new holding company, Grange Holdings, Inc. (GHI), which will be 100% owned by a new mutual holding company, Grange Mutual Holding Company (GMHC). The conversion plan was approved by the policyholders of GMCC on July 19, 2018 and is subject to approval by the Ohio Department of Insurance. The change in structure is anticipated to be effective on January 1, 2019.

11. DEBT

B. FHLB
NONE

12. RETIREMENT PLANS, DEFERRED COMPENSATION, AND POSTRETIREMENT BENEFIT PLANS
No Pension, Postretirement or Postemployment and Compensated Absence Benefit Plans

13. CAPITAL AND SURPLUS, DIVIDEND RESTRICTIONS AND QUSAI-REORGANIZATIONS
NO CHANGE

14. CONTINGENCIES
NO CHANGE

15. LEASES
NO CHANGE

16. INFORMATION ABOUT FINANCIAL INSTRUMENTS WITH OFF-BALANCE SHEET RISK AND FINANCIAL INSTRUMENTS WITH
CONCENTRATION OF CREDIT RISK.
NONE

17. SALE, TRANSFER AND SERVICING OF FINANCIAL ASSETS AND EXTINGUISHMENTS OF LIABILITIES

- B. Transfer and Servicing of Financial Assets
2. For all servicing assets and servicing liabilities:
- b) None
4. For securitizations, asset-backed financing arrangements and similar transfers accounted for as sales when the transferor has continuing involvement (as defined in the Accounting Practices and Procedures Manual) with the transferred financial assets:
- a) None
- b) None
- C. Wash Sales
None

18. GAINS OR LOSS TO THE REPORTING ENTITY FROM UNINSURED A&H PLANS AND THE UNINSURED PORTION OF PARTIALLY INSURED
PLANS.
NONE

19. DIRECT PREMIUM WRITTEN / PRODUCED BY MANAGING GENERAL AGENTS / THIRD PARTY ADMINISTRATORS
NONE

STATEMENT AS OF JUNE 30, 2018 OF THE
TRUSTGARD INSURANCE COMPANY

NOTES TO FINANCIAL STATEMENTS

20. FAIR VALUE MEASUREMENTS

- A.

1. NONE

2. NONE

3. The Company’s policy is to recognize transfers in and out as of the end of the reporting period.

4. As of June 30, 2018, the reported fair value of the entity's investments categorized within Level 2 and Level 3 of the fair value hierarchy are as follows:

According to statutory accounting rules, fixed income securities with a rating of NAIC 1 or 2 are reported at amortized cost. Securities with a rating of NAIC 3 thru 6, or non-investment grade ratings, are measured and reported at the lower of amortized cost or fair value on the statement of financial position. As of June 30, 2018, the Company did not have any bonds rated NAIC 3 thru 6, and therefore did not report any securities at fair value.
- B. Not Required
- C.

Type of Financial Instrument	Aggregate Fair Value	Admitted Assets	Level 1	Level 2	Level 3	Not Practicable (CV)
Bonds	71,841,469	71,590,957	0	71,841,469	0	0
Common Stock	0	0	0	0	0	0
Perpetual Preferred	0	0	0	0	0	0
Mortgage Loans	0	0	0	0	0	0
Money Market	458,867	458,867	458,867	0	0	0
Total	72,300,335	72,049,824	458,867	71,841,469	0	0

- D. NONE

21. OTHER ITEMS
NONE

22. EVENTS SUBSEQUENT
NO CHANGE

23. REINSURANCE
NO CHANGE

24. RETROSPECTIVELY RATED CONTRACTS & CONTRACTS SUBJECT TO REDETERMINATION
NONE

25. CHANGES IN INCURRED LOSSES AND LOSS ADJUSTMENT EXPENSES
As a result of the change to the Intercompany Pooling Agreement (See FN 26), all reserves have been ceded to the lead company of the pooling agreement.

LOSSES AND LAE	June 30, 2018	December 31, 2017
BALANCE JANUARY 1	-	32,947,527
LESS REINSURANCE RECOVERABLES	-	8,574,571
NET BALANCE JANUARY 1	-	24,372,956
INCURRED RELATED TO:		
CURRENT YEAR	-	-
PRIOR YEAR	-	-
TOTAL INCURRED	-	-
PAID RELATED TO:		
CURRENT YEAR	-	-
PRIOR YEAR	-	24,372,956
TOTAL PAID	-	24,372,956
NET BALANCE AT DECEMBER 31	-	-
PLUS REINSURANCE RECOVERABLES	-	-
BALANCE AT DECEMBER 31	-	-

26. INTERCOMPANY POOLING AGREEMENTS
Effective January 1, 2017 the pooling agreement was modified to have the pooling percentages as follows:

		Pool		
		NAIC #	Share	
			12/31/2017	12/31/2016
Lead Company:	Grange Mutual Casualty Company	14060	96.0%	84.0%
Affiliates:	Trustgard Insurance Company	40118	0.0%	3.5%
	Grange Indemnity Insurance Company	10322	0.0%	4.0%
	Grange Insurance Company of Michigan	11136	0.0%	2.5%
	Grange Property & Casualty Insurance Company	11982	0.0%	2.0%
	Integrity Mutual Insurance Company	14303	4.0%	3.3%
	Integrity Property & Casualty Insurance Company	12986	0.0%	0.7%
	Integrity Select Insurance Company	10288	0.0%	n/a

The purpose of the pooling agreement change was to add a new stock company, Integrity Select Insurance Company, to the agreement, as well as to create operational efficiencies and simplify reporting of financial results for the companies in the pool. The intercompany pooling agreement now cedes underwriting results back only to the two mutual parent companies, Grange Mutual Casualty Company and Integrity Mutual Insurance Company, with their respective stock subsidiary companies receiving 0% from the pool. Grange Mutual Casualty Company remains the lead company.

STATEMENT AS OF JUNE 30, 2018 OF THE
TRUSTGARD INSURANCE COMPANY

NOTES TO FINANCIAL STATEMENTS

- 27. STRUCTURED SETTLEMENTS
NO CHANGE
- 28. HEALTH CARE RECEIVABLES
NONE
- 29. PARTICIPATING POLICIES
NONE
- 30. PREMIUM DEFICIENCY RESERVES
NO CHANGE
- 31. HIGH DEDUCTIBLES
NONE
- 32. DISCOUNTING OF LIABILITIES FOR UNPAID LOSSES OR UNPAID LOSS ADJUSTMENT EXPENSES
NONE
- 33. ASBESTOS/ENVIRONMENTAL RESERVES
NONE
- 34. SUBSCRIBER SAVINGS ACCOUNTS
NOT APPLICABLE
- 35. MULTIPLE PERIL CROP INSURANCE
NONE
- 36. FINANCIAL GUARANTY INSURANCE
No Financial Guaranty Insurance
- 37. CATASTROPHIC PLANNING
NO CHANGE

GENERAL INTERROGATORIES

PART 1 - COMMON INTERROGATORIES
GENERAL

- 1.1

Did the reporting entity experience any material transactions requiring the filing of Disclosure of Material Transactions with the State of Domicile, as required by the Model Act?

Yes ☐ No ☒
- 1.2

If yes, has the report been filed with the domiciliary state?

Yes ☐ No ☐
- 2.1

Has any change been made during the year of this statement in the charter, by-laws, articles of incorporation, or deed of settlement of the reporting entity?

Yes ☐ No ☒
- 2.2

If yes, date of change:

01/01/3000
- 3.1

Is the reporting entity a member of an Insurance Holding Company System consisting of two or more affiliated persons, one or more of which is an insurer?

Yes ☒ No ☐
- If yes, complete Schedule Y, Parts 1 and 1A.
- 3.2

Have there been any substantial changes in the organizational chart since the prior quarter end?

Yes ☐ No ☒
- 3.3

If the response to 3.2 is yes, provide a brief description of those changes.
- 3.4

Is the reporting entity publicly traded or a member of a publicly traded group?

Yes ☐ No ☒
- 3.5

If the response to 3.4 is yes, provide the CIK (Central Index Key) code issued by the SEC for the entity/group
- 4.1

Has the reporting entity been a party to a merger or consolidation during the period covered by this statement?

Yes ☐ No ☒
- 4.2

If yes, provide the name of entity, NAIC Company Code, and state of domicile (use two letter state abbreviation) for any entity that has ceased to exist as a result of the merger or consolidation.

1	2	3
Name of Entity	NAIC Company Code	State of Domicile

5.

If the reporting entity is subject to a management agreement, including third-party administrator(s), managing general agent(s), attorney-in-fact, or similar agreement, have there been any significant changes regarding the terms of the agreement or principals involved?

Yes ☐ No ☒ NA ☐
- If yes, attach an explanation.
- 6.1

State as of what date the latest financial examination of the reporting entity was made or is being made.

12/31/2014
- 6.2

State the as of date that the latest financial examination report became available from either the state of domicile or the reporting entity. This date should be the date of the examined balance sheet and not the date the report was completed or released.

12/31/2014
- 6.3

State as of what date the latest financial examination report became available to other states or the public from either the state of domicile or the reporting entity. This is the release date or completion date of the examination report and not the date of the examination (balance sheet date).

11/24/2015
- 6.4

By what department or departments?

Ohio
- 6.5

Have all financial statement adjustments within the latest financial examination report been accounted for in a subsequent financial statement filed with Departments?

Yes ☐ No ☐ NA ☒
- 6.6

Have all of the recommendations within the latest financial examination report been complied with?

Yes ☒ No ☐ NA ☐
- 7.1

Has this reporting entity had any Certificates of Authority, licenses or registrations (including corporate registration, if applicable) suspended or revoked by any governmental entity during the reporting period?

Yes ☐ No ☒
- 7.2

If yes, give full information:
- 8.1

Is the company a subsidiary of a bank holding company regulated by the Federal Reserve Board?

Yes ☐ No ☒
- 8.2

If response to 8.1 is yes, please identify the name of the bank holding company.
- 8.3

Is the company affiliated with one or more banks, thrifts or securities firms?

Yes ☐ No ☒
- 8.4

If response to 8.3 is yes, please provide below the names and location (city and state of the main office) of any affiliates regulated by a federal regulatory services agency [i.e. the Federal Reserve Board (FRB), the Office of the Comptroller of the Currency (OCC), the Federal Deposit Insurance Corporation (FDIC) and the Securities Exchange Commission (SEC)] and identify the affiliate's primary federal regulator.]

1	2	3	4	5	6
Affiliate Name	Location (City, State)	FRB	OCC	FDIC	SEC

GENERAL INTERROGATORIES

9.1

Are the senior officers (principal executive officer, principal financial officer, principal accounting officer or controller, or persons performing similar functions) of the reporting entity subject to a code of ethics, which includes the following standards?
(a) Honest and ethical conduct, including the ethical handling of actual or apparent conflicts of interest between personal and professional relationships;
(b) Full, fair, accurate, timely and understandable disclosure in the periodic reports required to be filed by the reporting entity;
(c) Compliance with applicable governmental laws, rules and regulations;
(d) The prompt internal reporting of violations to an appropriate person or persons identified in the code; and
(e) Accountability for adherence to the code.

Yes [X] No []

9.11

If the response to 9.1 is No, please explain:
.....

9.2

Has the code of ethics for senior managers been amended?

Yes [] No [X]

9.21

If the response to 9.2 is Yes, provide information related to amendment(s).
.....

9.3

Have any provisions of the code of ethics been waived for any of the specified officers?

Yes [] No [X]

9.31

If the response to 9.3 is Yes, provide the nature of any waiver(s).
.....

FINANCIAL

10.1

Does the reporting entity report any amounts due from parent, subsidiaries or affiliates on Page 2 of this statement?.....

Yes [X] No []

10.2

If yes, indicate any amounts receivable from parent included in the Page 2 amount:.....\$976,952

INVESTMENT

11.1

Were any of the stocks, bonds, or other assets of the reporting entity loaned, placed under option agreement, or otherwise made available for use by another person? (Exclude securities under securities lending agreements.)

Yes [] No [X]

11.2

If yes, give full and complete information relating thereto:
.....

12.

Amount of real estate and mortgages held in other invested assets in Schedule BA:\$

13.

Amount of real estate and mortgages held in short-term investments:\$

14.1

Does the reporting entity have any investments in parent, subsidiaries and affiliates?

Yes [] No [X]

14.2

If yes, please complete the following:

	1	2
	Prior Year-End Book/Adjusted Carrying Value	Current Quarter Book/Adjusted Carrying Value
14.21 Bonds	\$	\$
14.22 Preferred Stock	\$	\$
14.23 Common Stock	\$	\$
14.24 Short-Term Investments	\$	\$
14.25 Mortgage Loans on Real Estate	\$	\$
14.26 All Other	\$	\$
14.27 Total Investment in Parent, Subsidiaries and Affiliates (Subtotal Lines 14.21 to 14.26).....	\$0	\$0
14.28 Total Investment in Parent included in Lines 14.21 to 14.26 above	\$	\$

15.1

Has the reporting entity entered into any hedging transactions reported on Schedule DB?

Yes [] No [X]

15.2

If yes, has a comprehensive description of the hedging program been made available to the domiciliary state?

Yes [] No []

If no, attach a description with this statement.

GENERAL INTERROGATORIES

16

For the reporting entity's security lending program, state the amount of the following as of the current statement date:

16.1

Total fair value of reinvested collateral assets reported on Schedule DL, Parts 1 and 2

\$.....0

16.2

Total book adjusted/carrying value of reinvested collateral assets reported on Schedule DL, Parts 1 and 2

\$.....0

16.3

Total payable for securities lending reported on the liability page

\$.....0

17

Excluding items in Schedule E – Part 3 – Special Deposits, real estate, mortgage loans and investments held physically in the reporting entity's offices, vaults or safety deposit boxes, were all stocks, bonds and other securities, owned throughout the current year held pursuant to a custodial agreement with a qualified bank or trust company in accordance with Section 1, III – General Examination Considerations, F. Outsourcing of Critical Functions, Custodial or Safekeeping Agreements of the NAIC *Financial Condition Examiners Handbook*?

Yes [X] No []

17.1 For all agreements that comply with the requirements of the NAIC *Financial Condition Examiners Handbook*, complete the following:

1	2
Name of Custodian(s)	Custodian Address
Northern Trust.....	50 South LaSalle Street-M27, Chicago, IL 60603.....

17.2 For all agreements that do not comply with the requirements of the NAIC *Financial Condition Examiners Handbook*, provide the name, location and a complete explanation:

1	2	3
Name(s)	Location(s)	Complete Explanation(s)

17.3

Have there been any changes, including name changes, in the custodian(s) identified in 17.1 during the current quarter?

Yes [] No [X]

17.4 If yes, give full and complete information relating thereto:

1	2	3	4
Old Custodian	New Custodian	Date of Change	Reason

17.5 Investment management – Identify all investment advisors, investment managers, broker/dealers, including individuals that have the authority to make investment decisions on behalf of the reporting entity. For assets that are managed internally by employees of the reporting entity, note as such. [...that have access to the investment accounts"; "...handle securities"]

1	2
Name of Firm or Individual	Affiliation
J. Christopher Montgomery.....	I.....
James Habegger.....	I.....
John Ammendola.....	I.....
Teresa Dalenta.....	I.....

17.5097

For those firms/individuals listed in the table for Question 17.5, do any firms/individuals unaffiliated with the reporting entity (i.e., designated with a "U") manage more than 10% of the reporting entity's assets?

Yes [] No [X]

17.5098

For firms/individuals unaffiliated with the reporting entity (i.e., designated with a "U") listed in the table for Question 17.5, does the total assets under management aggregate to more than 50% of the reporting entity's assets?

Yes [] No [X]

17.6 For those firms or individuals listed in the table for 17.5 with an affiliation code of "A" (affiliated) or "U" (unaffiliated), provide the information for the table below.

1	2	3	4	5
Central Registration Depository Number	Name of Firm or Individual	Legal Entity Identifier (LEI)	Registered With	Investment Management Agreement (IMA) Filed

18.1

Have all the filing requirements of the *Purposes and Procedures Manual of the NAIC Investment Analysis Office* been followed?

Yes [X] No []

18.2

If no, list exceptions:

19. By self-designating 5*GI securities, the reporting entity is certifying the following elements for each self-designated 5*GI security:

- a.
- Documentation necessary to permit a full credit analysis of the security does not exist.
- b.
- Issuer or obligor is current on all contracted interest and principal payments.
- c.
- The insurer has an actual expectation of ultimate payment of all contracted interest and principal.

Has the reporting entity self-designated 5*GI securities?.....

Yes [] No [X]

GENERAL INTERROGATORIES
PART 2 - PROPERTY & CASUALTY INTERROGATORIES

1. If the reporting entity is a member of a pooling arrangement, did the agreement or the reporting entity's participation change? Yes [] No [X] NA []
If yes, attach an explanation.

2. Has the reporting entity reinsured any risk with any other reporting entity and agreed to release such entity from liability, in whole or in part, from any loss that may occur on the risk, or portion thereof, reinsured? Yes [] No [X]
If yes, attach an explanation.

3.1 Have any of the reporting entity's primary reinsurance contracts been canceled? Yes [] No [X]

3.2 If yes, give full and complete information thereto.
.....

4.1 Are any of the liabilities for unpaid losses and loss adjustment expenses other than certain workers' compensation tabular reserves (see *Annual Statement Instructions* pertaining to disclosure of discounting for definition of "tabular reserves,") discounted at a rate of interest greater than zero? Yes [] No [X]

4.2 If yes, complete the following schedule:

			TOTAL DISCOUNT				DISCOUNT TAKEN DURING PERIOD			
1	2	3	4	5	6	7	8	9	10	11
Line of Business	Maximum Interest	Discount Rate	Unpaid Losses	Unpaid LAE	IBNR	TOTAL	Unpaid Losses	Unpaid LAE	IBNR	TOTAL
.....
.....
.....
.....
.....
TOTAL			0	0	0	0	0	0	0	0

5. Operating Percentages:
5.1 A&H loss percent %
5.2 A&H cost containment percent %
5.3 A&H expense percent excluding cost containment expenses %
6.1 Do you act as a custodian for health savings accounts?..... Yes [] No [X]
6.2 If yes, please provide the amount of custodial funds held as of the reporting date..... \$
6.3 Do you act as an administrator for health savings accounts?..... Yes [] No [X]
6.4 If yes, please provide the balance of the funds administered as of the reporting date..... \$
7. Is the reporting entity licensed or chartered, registered, qualified, eligible or writing business in at least two states?..... Yes [X] No []
7.1 If no, does the reporting entity assume reinsurance business that covers risks residing in at least one state other than the state of domicile of the reporting entity?..... Yes [] No []

STATEMENT AS OF JUNE 30, 2018 OF THE TRUSTGARD INSURANCE COMPANY

SCHEDULE F - CEDED REINSURANCE

Showing All New Reinsurers - Current Year to Date

[illegible]

STATEMENT AS OF JUNE 30, 2018 OF THE TRUSTGARD INSURANCE COMPANY

SCHEDULE T - EXHIBIT OF PREMIUMS WRITTEN

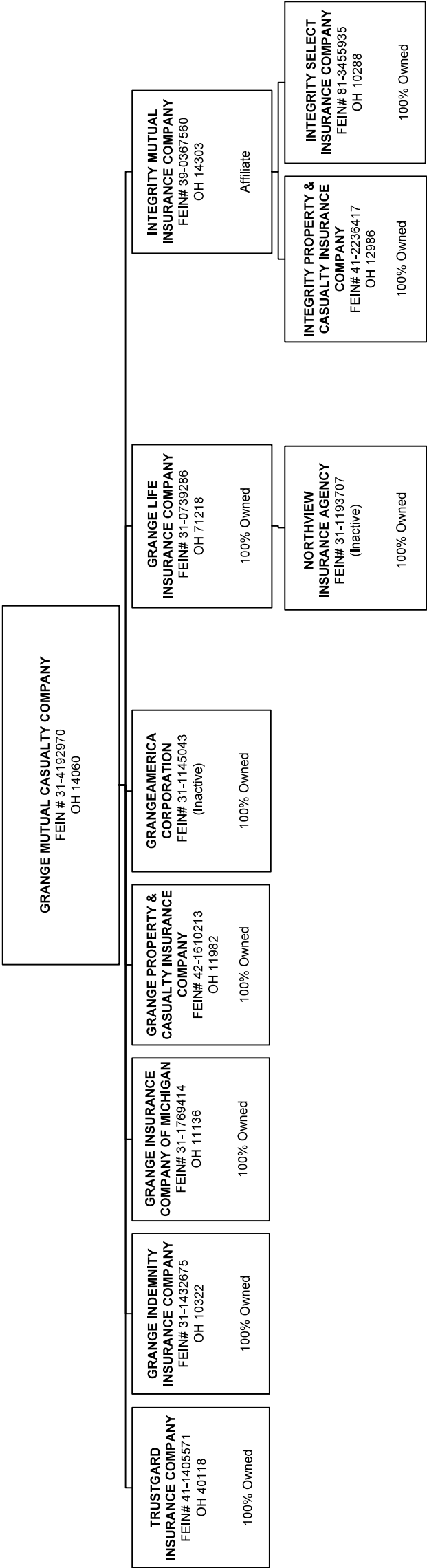
Current Year to Date – Allocated by States and Territories							
States, etc.	1	Direct Premiums Written		Direct Losses Paid (Deducting Salvage)		Direct Losses Unpaid	
		2	3	4	5	6	7
	Active Status (a)	Current Year To Date	Prior Year To Date	Current Year To Date	Prior Year To Date	Current Year To Date	Prior Year To Date
1. Alabama	AL	N	0		0		0
2. Alaska	AK	N	0		0		0
3. Arizona	AZ	N	0		0		0
4. Arkansas	AR	N	0		0		0
5. California	CA	N	0		0		0
6. Colorado	CO	L	0		0		0
7. Connecticut	CT	N	0		0		0
8. Delaware	DE	N	0		0		0
9. Dist. Columbia	DC	N	0		0		0
10. Florida	FL	N	0		0		0
11. Georgia	GA	L	12,194,424	8,501,167	6,102,642	4,329,430	4,450,414
12. Hawaii	HI	N	0		0		0
13. Idaho	ID	N	0		0		0
14. Illinois	IL	L	6,229,848	7,210,268	4,530,803	5,711,044	5,942,203
15. Indiana	IN	L	15,172,673	14,959,956	7,688,580	9,100,056	8,129,701
16. Iowa	IA	L	0		0		0
17. Kansas	KS	L	0		0		0
18. Kentucky	KY	L	3,877,525	4,182,136	1,231,877	2,030,656	2,217,747
19. Louisiana	LA	N	0		0		0
20. Maine	ME	N	0		0		0
21. Maryland	MD	N	0		0		0
22. Massachusetts	MA	N	0		0		0
23. Michigan	MI	N	0		0		0
24. Minnesota	MN	L	0		0		0
25. Mississippi	MS	N	0		0		0
26. Missouri	MO	L	0		(67)		0
27. Montana	MT	N	0		0		0
28. Nebraska	NE	L	0		0		0
29. Nevada	NV	N	0		0		0
30. New Hampshire	NH	N	0		0		0
31. New Jersey	NJ	N	0		0		0
32. New Mexico	NM	N	0		0		0
33. New York	NY	N	0		0		0
34. No. Carolina	NC	N	0		0		0
35. No. Dakota	ND	L	0		0		0
36. Ohio	OH	L	7,923,384	8,536,271	4,730,530	5,246,359	5,624,065
37. Oklahoma	OK	N	0		0		0
38. Oregon	OR	L	0		0		0
39. Pennsylvania	PA	L	6,769,830	7,298,306	3,888,097	4,561,287	6,587,107
40. Rhode Island	RI	N	0		0		0
41. So. Carolina	SC	L	1,862,631	3,185,104	2,484,501	2,898,134	8,157,062
42. So. Dakota	SD	L	0		0		0
43. Tennessee	TN	L	12,291,497	10,865,002	5,529,220	5,880,601	6,095,843
44. Texas	TX	L	0		0		0
45. Utah	UT	N	0		0		0
46. Vermont	VT	N	0		0		0
47. Virginia	VA	L	9,534,523	8,440,602	6,223,688	4,297,847	12,064,203
48. Washington	WA	L	0		0		0
49. West Virginia	WV	N	0		0		0
50. Wisconsin	WI	L	0		0		0
51. Wyoming	WY	N	0		0		0
52. American Samoa	AS	N	0		0		0
53. Guam	GU	N	0		0		0
54. Puerto Rico	PR	N	0		0		0
55. U.S. Virgin Islands	VI	N	0		0		0
56. Northern Mariana Islands	MP	N	0		0		0
57. Canada	CAN	N	0		0		0
58. Aggregate Other Alien	OT	XXX	0	0	0	0	0
59. Totals	XXX	75,856,335	73,178,813	42,409,938	44,055,347	59,268,343	63,131,050
DETAILS OF WRITE-INS							
58001.	XXX						
58002.	XXX						
58003.	XXX						
58998. Summary of remaining write-ins for Line 58 from overflow page.	XXX	0	0	0	0	0	0
58999. TOTALS (Lines 58001 through 58003 plus 58998) (Line 58 above)	XXX	0	0	0	0	0	0

(a) Active Status Counts

L – Licensed or Chartered – Licensed insurance carrier or domiciled RRG21 R – Registered – Non-domiciled RRGs0
E – Eligible – Reporting entities eligible or approved to write surplus lines in the state (other than their state of domicile – See DSLI)0 Q – Qualified – Qualified or accredited reinsurer0
D – Domestic Surplus Lines Insurer (DSLII) – Reporting entities authorized to write surplus lines in the state of domicile0 N – None of the above – Not allowed to write business in the state36

SCHEDULE Y – INFORMATION CONCERNING ACTIVITIES OF INSURER
MEMBERS OF A HOLDING COMPANY GROUP

PART 1 – ORGANIZATIONAL CHART



12

12

12

1212

PART 1 - LOSS EXPERIENCE

Line of Business		Current Year to Date			4 Prior Year to Date Direct Loss Percentage
		1 Direct Premiums Earned	2 Direct Losses Incurred	3 Direct Loss Percentage	
1.	Fire	1,813,070	1,416,429	78.1	67.8
2.	Allied lines	1,144,505	439,600	38.4	23.3
3.	Farmowners multiple peril			0.0	0.0
4.	Homeowners multiple peril	17,533,207	7,277,196	41.5	60.5
5.	Commercial multiple peril	568,457	213,981	37.6	0.0
6.	Mortgage guaranty			0.0	0.0
8.	Ocean marine			0.0	0.0
9.	Inland marine	250,030	32,282	12.9	34.5
10.	Financial guaranty			0.0	0.0
11.1	Medical professional liability -occurrence			0.0	0.0
11.2	Medical professional liability -claims made			0.0	0.0
12.	Earthquake	152,392		0.0	0.0
13.	Group accident and health			0.0	0.0
14.	Credit accident and health			0.0	0.0
15.	Other accident and health			0.0	0.0
16.	Workers' compensation	617,455	587,590	95.2	(14.8)
17.1	Other liability occurrence	309,180	(105,737)	(34.2)	(7.0)
17.2	Other liability-claims made			0.0	0.0
17.3	Excess Workers' Compensation			0.0	0.0
18.1	Products liability-occurrence			0.0	0.0
18.2	Products liability-claims made			0.0	0.0
19.1,19.2	Private passenger auto liability	26,768,890	17,920,394	66.9	65.3
19.3,19.4	Commercial auto liability	2,652,934	962,724	36.3	42.7
21.	Auto physical damage	20,996,586	10,516,219	50.1	49.1
22.	Aircraft (all perils)			0.0	0.0
23.	Fidelity			0.0	0.0
24.	Surety			0.0	0.0
26.	Burglary and theft			0.0	0.0
27.	Boiler and machinery			0.0	0.0
28.	Credit			0.0	0.0
29.	International			0.0	0.0
30.	Warranty			0.0	0.0
31.	Reinsurance - Nonproportional Assumed Property	XXX	XXX	XXX	XXX
32.	Reinsurance - Nonproportional Assumed Liability	XXX	XXX	XXX	XXX
33.	Reinsurance - Nonproportional Assumed Financial Lines	XXX	XXX	XXX	XXX
34.	Aggregate write-ins for other lines of business	0	0	0.0	0.0
35.	TOTALS	72,806,706	39,260,678	53.9	56.9
DETAILS OF WRITE-INS					
3401.				0.0	0.0
3402.				0.0	0.0
3403.				0.0	0.0
3498.	Sum. of remaining write-ins for Line 34 from overflow page	0	0	0.0	0.0
3499.	Totals (Lines 3401 through 3403 plus 3498) (Line 34)	0	0	0.0	0.0

PART 2 - DIRECT PREMIUMS WRITTEN

Line of Business		1 Current Quarter	2 Current Year to Date	3 Prior Year Year to Date
1.	Fire	869,390	1,768,586	1,827,997
2.	Allied lines	549,551	1,112,649	1,154,222
3.	Farmowners multiple peril	0		0
4.	Homeowners multiple peril	8,652,196	15,873,074	18,373,648
5.	Commercial multiple peril	1,003,896	1,758,558	0
6.	Mortgage guaranty	0		0
8.	Ocean marine	0		0
9.	Inland marine	127,994	228,953	270,128
10.	Financial guaranty	0		0
11.1	Medical professional liability-occurrence	0		0
11.2	Medical professional liability-claims made	0		0
12.	Earthquake	72,605	131,908	152,853
13.	Group accident and health	0		0
14.	Credit accident and health	0		0
15.	Other accident and health	0		0
16.	Workers' compensation	1,112,439	1,429,699	604,786
17.1	Other liability occurrence	182,087	325,778	327,457
17.2	Other liability-claims made	0		0
17.3	Excess Workers' Compensation	0		0
18.1	Products liability-occurrence	0		0
18.2	Products liability-claims made	0		0
19.1,19.2	Private passenger auto liability	13,846,768	27,846,682	26,916,379
19.3,19.4	Commercial auto liability	1,519,025	3,114,736	2,675,875
21.	Auto physical damage	11,131,831	22,265,712	20,875,469
22.	Aircraft (all perils)	0		0
23.	Fidelity	0		0
24.	Surety	0		0
26.	Burglary and theft	0		0
27.	Boiler and machinery	0		0
28.	Credit	0		0
29.	International	0		0
30.	Warranty	0		0
31.	Reinsurance - Nonproportional Assumed Property	XXX	XXX	XXX
32.	Reinsurance - Nonproportional Assumed Liability	XXX	XXX	XXX
33.	Reinsurance - Nonproportional Assumed Financial Lines	XXX	XXX	XXX
34.	Aggregate write-ins for other lines of business	0	0	0
35.	TOTALS	39,067,783	75,856,335	73,178,813
DETAILS OF WRITE-INS				
3401.		0		0
3402.		0		0
3403.		0		0
3498.	Sum. of remaining write-ins for Line 34 from overflow page	0	0	0
3499.	Totals (Lines 3401 through 3403 plus 3498) (Line 34)	0	0	0

PART 3 (000 omitted)

LOSS AND LOSS ADJUSTMENT EXPENSE RESERVES SCHEDULE

	1	2	3	4	5	6	7	8	9	10	11	12	13
Years in Which Losses Occurred	Prior Year-End Known Case Loss and LAE Reserves	Prior Year-End IBNR Loss and LAE Reserves	Total Prior Year-End Loss and LAE Reserves (Cols. 1 + 2)	2018 Loss and LAE Payments on Claims Reported as of Prior Year-End	2018 Loss and LAE Payments on Claims Unreported as of Prior Year-End	Total 2018 Loss and LAE Payments (Cols. 4 + 5)	Q.S. Date Known Case Loss and LAE Reserves on Claims Reported and Open as of Prior Year End	Q.S. Date Known Case Loss and LAE Reserves on Claims Reported or Reopened Subsequent to Prior Year End	Q.S. Date IBNR Loss and LAE Reserves	Total Q.S. Loss and LAE Reserves (Cols.7 + 8 + 9)	Prior Year-End Known Case Loss and LAE Reserves Developed (Savings)/ Deficiency (Cols. 4 + 7 minus Col. 1)	Prior Year-End IBNR Loss and LAE Reserves Developed (Savings)/ Deficiency (Cols. 5 + 8 + 9 minus Col. 2)	Prior Year-End Total Loss and LAE Reserve Developed (Savings)/ Deficiency (Cols. 11 + 12)
1. 2015 + Prior0		0			0000
2. 20160		0			0000
3. Subtotals 2016 + prior0000000000000
4. 2017.....		0		0			0000
5. Subtotals 2017 + prior0000000000000
6. 2018XXXXXXXXXXXX	0XXX		0XXXXXXXXX
7. Totals	0	0	0	0	0	0	0	0	0	0	0	0	0
8. Prior Year-End Surplus As Regards Policy-holders	72,735										Col. 11, Line 7 As % of Col. 1, Line 7	Col. 12, Line 7 As % of Col. 2, Line 7	Col. 13, Line 7 As % of Col. 3, Line 7
											1. 0.0	2. 0.0	3. 0.0
											Col. 13, Line 7 Line 8		
											4. 0.0		

SUPPLEMENTAL EXHIBITS AND SCHEDULES INTERROGATORIES

The following supplemental reports are required to be filed as part of your statement filing. However, in the event that your company does not transact the type of business for which the special report must be filed, your response of **NO** to the specific interrogatory will be accepted in lieu of filing a "NONE" report and a bar code will be printed below. If the supplement is required of your company but is not being filed for whatever reason enter **SEE EXPLANATION** and provide an explanation following the interrogatory questions.

	Response
1. Will the Trusteed Surplus Statement be filed with the state of domicile and the NAIC with this statement?NO.....
2. Will Supplement A to Schedule T (Medical Professional Liability Supplement) be filed with this statement?NO.....
3. Will the Medicare Part D Coverage Supplement be filed with the state of domicile and the NAIC with this statement?NO.....
4. Will the Director and Officer Insurance Coverage Supplement be filed with the state of domicile and the NAIC with this statement?NO.....

Explanation:

- 1. No Business Written
- 2. No Business Written
- 3. No Business Written
- 4. No Business Written

Bar Code:

1.



401182018490000002

2.



401182018455000002

3.



401182018365000002

4.



401182018505000002

OVERFLOW PAGE FOR WRITE-INS

SCHEDULE A – VERIFICATION

Real Estate

	1	2
	Year To Date	Prior Year Ended December 31
1. Book/adjusted carrying value, December 31 of prior year	0	0
2. Cost of acquired:		
2.1 Actual cost at time of acquisition		0
2.2 Additional investment made after acquisition		0
3. Current year change in encumbrances		0
4. Total gain (loss) on disposals		0
5. Deduct amounts received on disposals		0
6. Total foreign exchange change in book/adjusted carrying value		0
7. Deduct current year's other-than-temporary impairment recognized		0
8. Deduct current year's depreciation		0
9. Book/adjusted carrying value at the end of current period (Lines 1+2+3+4-5+6-7-8)	0	0
10. Deduct total nonadmitted amounts	0	0
11. Statement value at end of current period (Line 9 minus Line 10)	0	0

SCHEDULE B – VERIFICATION

Mortgage Loans

	1	2
	Year To Date	Prior Year Ended December 31
1. Book value/recorded investment excluding accrued interest, December 31 of prior year	0	0
2. Cost of acquired:		
2.1 Actual cost at time of acquisition		0
2.2 Additional investment made after acquisition		0
3. Capitalized deferred interest and other		0
4. Accrual of discount		0
5. Unrealized valuation increase (decrease)		0
6. Total gain (loss) on disposals		0
7. Deduct amounts received on disposals		0
8. Deduct amortization of premium and mortgage interest points and commitment fees		0
9. Total foreign exchange change in book value/recorded investment excluding accrued interest		0
10. Deduct current year's other-than-temporary impairment recognized		0
11. Book value/recorded investment excluding accrued interest at end of current period (Lines 1+2+3+4+5+6-7-8+9-10)	0	0
12. Total valuation allowance		0
13. Subtotal (Line 11 plus Line 12)	0	0
14. Deduct total nonadmitted amounts	0	0
15. Statement value at end of current period (Line 13 minus Line 14)	0	0

SCHEDULE BA – VERIFICATION

Other Long-Term Invested Assets

	1	2
	Year To Date	Prior Year Ended December 31
1. Book/adjusted carrying value, December 31 of prior year	0	0
2. Cost of acquired:		
2.1 Actual cost at time of acquisition		0
2.2 Additional investment made after acquisition		0
3. Capitalized deferred interest and other		0
4. Accrual of discount		0
5. Unrealized valuation increase (decrease)		0
6. Total gain (loss) on disposals		0
7. Deduct amounts received on disposals		0
8. Deduct amortization of premium and depreciation		0
9. Total foreign exchange change in book/adjusted carrying value		0
10. Deduct current year's other-than-temporary impairment recognized		0
11. Book/adjusted carrying value at end of current period (Lines 1+2+3+4+5+6-7-8+9-10)	0	0
12. Deduct total nonadmitted amounts	0	0
13. Statement value at end of current period (Line 11 minus Line 12)	0	0

SCHEDULE D – VERIFICATION

Bonds and Stocks

	1	2
	Year To Date	Prior Year Ended December 31
1. Book/adjusted carrying value of bonds and stocks, December 31 of prior year	66,733,570	105,337,959
2. Cost of bonds and stocks acquired	8,386,568	7,511,797
3. Accrual of discount	15,078	120,702
4. Unrealized valuation increase (decrease)		0
5. Total gain (loss) on disposals	(1,394)	642,215
6. Deduct consideration for bonds and stocks disposed of	3,183,860	46,054,462
7. Deduct amortization of premium	376,236	824,641
8. Total foreign exchange change in book/adjusted carrying value		0
9. Deduct current year's other-than-temporary impairment recognized		0
10. Total investment income recognized as a result of prepayment penalties and/or acceleration fees	17,230	
11. Book/adjusted carrying value at end of current period (Lines 1+2+3+4+5-6-7+8-9+10)	71,590,956	66,733,570
12. Deduct total nonadmitted amounts	0	0
13. Statement value at end of current period (Line 11 minus Line 12)	71,590,956	66,733,570

STATEMENT AS OF JUNE 30, 2018 OF THE TRUSTGARD INSURANCE COMPANY

SCHEDULE D - PART 1B

Showing the Acquisitions, Dispositions and Non-Trading Activity
During the Current Quarter for all Bonds and Preferred Stock by NAIC Designation

NAIC Designation	1 Book/Adjusted Carrying Value Beginning of Current Quarter	2 Acquisitions During Current Quarter	3 Dispositions During Current Quarter	4 Non-Trading Activity During Current Quarter	5 Book/Adjusted Carrying Value End of First Quarter	6 Book/Adjusted Carrying Value End of Second Quarter	7 Book/Adjusted Carrying Value End of Third Quarter	8 Book/Adjusted Carrying Value December 31 Prior Year
BONDS								
1. NAIC 1 (a).....	61,868,306	4,194,596	1,150,000	313,820	61,868,306	65,226,722	0	58,577,207
2. NAIC 2 (a).....	7,375,571	(400)	499,017	(511,919)	7,375,571	6,364,235	0	7,635,137
3. NAIC 3 (a).....	1				1	1	0	521,227
4. NAIC 4 (a).....	0				0	0	0	0
5. NAIC 5 (a).....	0				0	0	0	0
6. NAIC 6 (a).....	0				0	0	0	0
7. Total Bonds	69,243,877	4,194,196	1,649,017	(198,099)	69,243,877	71,590,957	0	66,733,571
PREFERRED STOCK								
8. NAIC 1	0				0	0	0	0
9. NAIC 2	0				0	0	0	0
10. NAIC 3	0				0	0	0	0
11. NAIC 4	0				0	0	0	0
12. NAIC 5	0				0	0	0	0
13. NAIC 6	0				0	0	0	0
14. Total Preferred Stock.....	0	0	0	0	0	0	0	0
15. Total Bonds & Preferred Stock	69,243,877	4,194,196	1,649,017	(198,099)	69,243,877	71,590,957	0	66,733,571

(a) Book/Adjusted Carrying Value column for the end of the current reporting period includes the following amount of short-term and cash equivalent bonds by NAIC designation: NAIC 1 \$; NAIC 2 \$;
NAIC 3 \$; NAIC 4 \$; NAIC 5 \$; NAIC 6 \$

Schedule DA - Part 1

NONE

Schedule DA - Verification

NONE

Schedule DB - Part A - Verification

NONE

Schedule DB - Part B - Verification

NONE

Schedule DB - Part C - Section 1

NONE

Schedule DB - Part C - Section 2

NONE

Schedule DB - Verification

NONE

SCHEDULE E – PART 2 – VERIFICATION
(Cash Equivalents)

	1 Year To Date	2 Prior Year Ended December 31
1. Book/adjusted carrying value, December 31 of prior year.....	0	0
2. Cost of cash equivalents acquired	2,946,294	0
3. Accrual of discount		0
4. Unrealized valuation increase (decrease)		0
5. Total gain (loss) on disposals.....		0
6. Deduct consideration received on disposals	2,487,427	0
7. Deduct amortization of premium		0
8. Total foreign exchange change in book/adjusted carrying value		0
9. Deduct current year's other than temporary impairment recognized		0
10. Book/adjusted carrying value at end of current period (Lines 1+2+3+4+5-6-7+8-9)	458,867	0
11. Deduct total nonadmitted amounts		0
12. Statement value at end of current period (Line 10 minus Line 11)	458,867	0

Schedule A - Part 2

NONE

Schedule A - Part 3

NONE

Schedule B - Part 2

NONE

Schedule B - Part 3

NONE

Schedule BA - Part 2

NONE

Schedule BA - Part 3

NONE

E04

[illegible]

(a) For all common stock bearing the NAIC market indicator "U" provide: the number of such issues

E05

E05

E05

E05

E05

Schedule DB - Part A - Section 1

NONE

Schedule DB - Part B - Section 1

NONE

Schedule DB - Part D - Section 1

NONE

Schedule DB - Part D - Section 2

NONE

Schedule DL - Part 1

NONE

Schedule DL - Part 2

NONE

Schedule E - Part 1

NONE

SCHEDULE E - PART 2 - CASH EQUIVALENTS

E13