



LIFE AND ACCIDENT AND HEALTH COMPANIES - ASSOCIATION EDITION

QUARTERLY STATEMENT

AS OF MARCH 31, 2018

OF THE CONDITION AND AFFAIRS OF THE

Cincinnati Equitable Life Insurance Company

NAIC Group Code 0838 0838 NAIC Company Code 88064 Employer's ID Number 35-1452221
(Current) (Prior)

Organized under the Laws of OHIO, State of Domicile or Port of Entry OH

Country of Domicile United States of America

Incorporated/Organized 10/19/1977 Commenced Business 07/11/1978

Statutory Home Office 525 Vine Street, Suite 1925, Cincinnati, OH, US 45202
(Street and Number) (City or Town, State, Country and Zip Code)

Main Administrative Office 525 Vine Street, Suite 1925
(Street and Number)
Cincinnati, OH, US 45202, 513-621-1826
(City or Town, State, Country and Zip Code) (Area Code) (Telephone Number)

Mail Address P.O. BOX 3428, Cincinnati, OH, US 45202-3428
(Street and Number or P.O. Box) (City or Town, State, Country and Zip Code)

Primary Location of Books and Records 525 Vine Street, Suite 1925
(Street and Number)
Cincinnati, OH, US 45202, 513-621-1826
(City or Town, State, Country and Zip Code) (Area Code) (Telephone Number)

Internet Website Address www.cineqlife.com

Statutory Statement Contact Gregory Allen Baker, 513-621-1826
(Name) (Area Code) (Telephone Number)
gbaker@cineqlife.com, 513-621-4531
(E-mail Address) (FAX Number)

OFFICERS

Chairman of the Board Peter A Alpaugh President/CEO/CFO/Treasurer Gregory A Baker
Secretary Linda S Bales V.P. Sales & Marketing Tonya G Crawford

OTHER

DIRECTORS OR TRUSTEES

Peter A Alpaugh Andrea A Kessel Gregory A Baker
James W Ketring Drew F Knowles

State of Ohio SS:
County of Hamilton

The officers of this reporting entity being duly sworn, each depose and say that they are the described officers of said reporting entity, and that on the reporting period stated above, all of the herein described assets were the absolute property of the said reporting entity, free and clear from any liens or claims thereon, except as herein stated, and that this statement, together with related exhibits, schedules and explanations therein contained, annexed or referred to, is a full and true statement of all the assets and liabilities and of the condition and affairs of the said reporting entity as of the reporting period stated above, and of its income and deductions therefrom for the period ended, and have been completed in accordance with the NAIC Annual Statement Instructions and Accounting Practices and Procedures manual except to the extent that: (1) state law may differ; or, (2) that state rules or regulations require differences in reporting not related to accounting practices and procedures, according to the best of their information, knowledge and belief, respectively. Furthermore, the scope of this attestation by the described officers also includes the related corresponding electronic filing with the NAIC, when required, that is an exact copy (except for formatting differences due to electronic filing) of the enclosed statement. The electronic filing may be requested by various regulators in lieu of or in addition to the enclosed statement.

Peter A. Alpaugh
Chairman of the Board

Linda S. Bales
Secretary

Gregory A. Baker
Treasurer

Subscribed and sworn to before me this 11th day of May, 2018

- a. Is this an original filing? Yes [X] No []
b. If no,
1. State the amendment number.....
2. Date filed05/18/2018
3. Number of pages attached.....

Richard H. Hansman, Jr.

November 8, 2019

STATEMENT AS OF MARCH 31, 2018 OF THE Cincinnati Equitable Life Insurance Company

ASSETS

	Current Statement Date			4 December 31 Prior Year Net Admitted Assets
	1 Assets	2 Nonadmitted Assets	3 Net Admitted Assets (Cols. 1 - 2)	
1. Bonds	125,536,574		125,536,574	119,624,269
2. Stocks:				
2.1 Preferred stocks	1,891,446		1,891,446	2,240,336
2.2 Common stocks	9,767,666		9,767,666	9,917,288
3. Mortgage loans on real estate:				
3.1 First liens			0	0
3.2 Other than first liens.....			0	0
4. Real estate:				
4.1 Properties occupied by the company (less \$ encumbrances)			0	0
4.2 Properties held for the production of income (less \$ encumbrances)			0	0
4.3 Properties held for sale (less \$ encumbrances)			0	0
5. Cash (\$949,477), cash equivalents (\$889,455) and short-term investments (\$0)	1,838,932		1,838,932	1,549,818
6. Contract loans (including \$ premium notes)	158,575		158,575	154,689
7. Derivatives			0	0
8. Other invested assets	245,522		245,522	245,958
9. Receivables for securities			0	0
10. Securities lending reinvested collateral assets			0	0
11. Aggregate write-ins for invested assets	0	0	0	0
12. Subtotals, cash and invested assets (Lines 1 to 11)	139,438,715	0	139,438,715	133,732,358
13. Title plants less \$ charged off (for Title insurers only)			0	0
14. Investment income due and accrued	1,167,786		1,167,786	1,040,962
15. Premiums and considerations:				
15.1 Uncollected premiums and agents' balances in the course of collection	304		304	110
15.2 Deferred premiums, agents' balances and installments booked but deferred and not yet due (including \$ earned but unbilled premiums)	1,148,227		1,148,227	1,076,591
15.3 Accrued retrospective premiums (\$) and contracts subject to redetermination (\$)			0	0
16. Reinsurance:				
16.1 Amounts recoverable from reinsurers			0	0
16.2 Funds held by or deposited with reinsured companies			0	0
16.3 Other amounts receivable under reinsurance contracts			0	0
17. Amounts receivable relating to uninsured plans			0	0
18.1 Current federal and foreign income tax recoverable and interest thereon	178,647		178,647	178,647
18.2 Net deferred tax asset	1,328,000	126,000	1,202,000	863,000
19. Guaranty funds receivable or on deposit			0	0
20. Electronic data processing equipment and software	907		907	907
21. Furniture and equipment, including health care delivery assets (\$)	1,234	1,234	0	0
22. Net adjustment in assets and liabilities due to foreign exchange rates			0	0
23. Receivables from parent, subsidiaries and affiliates	5,511		5,511	969
24. Health care (\$) and other amounts receivable			0	0
25. Aggregate write-ins for other than invested assets	2,145,413	36,344	2,109,069	4,765,650
26. Total assets excluding Separate Accounts, Segregated Accounts and Protected Cell Accounts (Lines 12 to 25)	145,414,744	163,578	145,251,166	141,659,194
27. From Separate Accounts, Segregated Accounts and Protected Cell Accounts			0	0
28. Total (Lines 26 and 27)	145,414,744	163,578	145,251,166	141,659,194
DETAILS OF WRITE-INS				
1101.				
1102.				
1103.				
1198. Summary of remaining write-ins for Line 11 from overflow page	0	0	0	0
1199. Totals (Lines 1101 through 1103 plus 1198)(Line 11 above)	0	0	0	0
2501. Receivable for Additional Capital Contribution			0	2,500,000
2502. Assignments Receivable	1,932,118		1,932,118	1,934,981
2503. Premium Receivable	96,951		96,951	250,669
2598. Summary of remaining write-ins for Line 25 from overflow page	116,344	36,344	80,000	80,000
2599. Totals (Lines 2501 through 2503 plus 2598)(Line 25 above)	2,145,413	36,344	2,109,069	4,765,650

STATEMENT AS OF MARCH 31, 2018 OF THE Cincinnati Equitable Life Insurance Company

LIABILITIES, SURPLUS AND OTHER FUNDS

	1 Current Statement Date	2 December 31 Prior Year
1. Aggregate reserve for life contracts \$ less \$ included in Line 6.3 (including \$ Modco Reserve)	131,142,288	127,170,751
2. Aggregate reserve for accident and health contracts (including \$ Modco Reserve)	6,618	6,618
3. Liability for deposit-type contracts (including \$ Modco Reserve)	206,116	205,336
4. Contract claims:		
4.1 Life	398,680	656,668
4.2 Accident and health	8,753	8,753
5. Policyholders' dividends \$ and coupons \$ due and unpaid		0
6. Provision for policyholders' dividends and coupons payable in following calendar year - estimated amounts:		
6.1 Dividends apportioned for payment (including \$ Modco)	357	638
6.2 Dividends not yet apportioned (including \$ Modco)		
6.3 Coupons and similar benefits (including \$ Modco)	1,553	2,520
7. Amount provisionally held for deferred dividend policies not included in Line 6		
8. Premiums and annuity considerations for life and accident and health contracts received in advance less \$ discount; including \$ accident and health premiums	483,117	506,445
9. Contract liabilities not included elsewhere:		
9.1 Surrender values on canceled contracts		
9.2 Provision for experience rating refunds, including the liability of \$ accident and health experience rating refunds of which \$ is for medical loss ratio rebate per the Public Health Service Act		
9.3 Other amounts payable on reinsurance, including \$ assumed and \$ ceded	0	0
9.4 Interest Maintenance Reserve	1,005,289	1,004,870
10. Commissions to agents due or accrued-life and annuity contracts \$, accident and health \$ and deposit-type contract funds \$	93,786	87,193
11. Commissions and expense allowances payable on reinsurance assumed		
12. General expenses due or accrued	310,163	352,322
13. Transfers to Separate Accounts due or accrued (net) (including \$ accrued for expense allowances recognized in reserves, net of reinsured allowances)		
14. Taxes, licenses and fees due or accrued, excluding federal income taxes	155,302	139,323
15.1 Current federal and foreign income taxes, including \$ on realized capital gains (losses)		
15.2 Net deferred tax liability		
16. Unearned investment income	3,429	3,435
17. Amounts withheld or retained by company as agent or trustee		
18. Amounts held for agents' account, including \$ agents' credit balances		
19. Remittances and items not allocated		
20. Net adjustment in assets and liabilities due to foreign exchange rates		
21. Liability for benefits for employees and agents if not included above		
22. Borrowed money \$ and interest thereon \$		
23. Dividends to stockholders declared and unpaid		
24. Miscellaneous liabilities:		
24.01 Asset valuation reserve	1,655,149	1,705,242
24.02 Reinsurance in unauthorized and certified (\$) companies		0
24.03 Funds held under reinsurance treaties with unauthorized and certified (\$) reinsurers		
24.04 Payable to parent, subsidiaries and affiliates		
24.05 Drafts outstanding		
24.06 Liability for amounts held under uninsured plans		
24.07 Funds held under coinsurance		
24.08 Derivatives	0	0
24.09 Payable for securities		
24.10 Payable for securities lending		
24.11 Capital notes \$ and interest thereon \$		
25. Aggregate write-ins for liabilities	0	0
26. Total liabilities excluding Separate Accounts business (Lines 1 to 25)	135,470,600	131,850,114
27. From Separate Accounts Statement		
28. Total liabilities (Lines 26 and 27)	135,470,600	131,850,114
29. Common capital stock	1,000,000	1,000,000
30. Preferred capital stock		
31. Aggregate write-ins for other than special surplus funds	0	0
32. Surplus notes		
33. Gross paid in and contributed surplus	9,780,231	9,780,231
34. Aggregate write-ins for special surplus funds	0	0
35. Unassigned funds (surplus)	(999,665)	(971,151)
36. Less treasury stock, at cost:		
36.1 shares common (value included in Line 29 \$)		
36.2 shares preferred (value included in Line 30 \$)		
37. Surplus (Total Lines 31+32+33+34+35-36) (including \$ in Separate Accounts Statement)	8,780,566	8,809,080
38. Totals of Lines 29, 30 and 37	9,780,566	9,809,080
39. Totals of Lines 28 and 38 (Page 2, Line 28, Col. 3)	145,251,166	141,659,194
DETAILS OF WRITE-INS		
2501.		
2502.		
2503.		
2598. Summary of remaining write-ins for Line 25 from overflow page	0	0
2599. Totals (Lines 2501 through 2503 plus 2598)(Line 25 above)	0	0
3101.		
3102.		
3103.		
3198. Summary of remaining write-ins for Line 31 from overflow page	0	0
3199. Totals (Lines 3101 through 3103 plus 3198)(Line 31 above)	0	0
3401.		
3402.		
3403.		
3498. Summary of remaining write-ins for Line 34 from overflow page	0	0
3499. Totals (Lines 3401 through 3403 plus 3498)(Line 34 above)	0	0

SUMMARY OF OPERATIONS

	1 Current Year To Date	2 Prior Year To Date	3 Prior Year Ended December 31
1. Premiums and annuity considerations for life and accident and health contracts	9,433,797	9,940,547	36,045,632
2. Considerations for supplementary contracts with life contingencies			0
3. Net investment income	1,079,211	971,383	4,270,831
4. Amortization of Interest Maintenance Reserve (IMR)	42,705	47,355	195,822
5. Separate Accounts net gain from operations excluding unrealized gains or losses			0
6. Commissions and expense allowances on reinsurance ceded			0
7. Reserve adjustments on reinsurance ceded			0
8. Miscellaneous Income:			
8.1 Income from fees associated with investment management, administration and contract guarantees from Separate Accounts			0
8.2 Charges and fees for deposit-type contracts			0
8.3 Aggregate write-ins for miscellaneous income	144,791	113,688	398,761
9. Totals (Lines 1 to 8.3)	10,700,504	11,072,973	40,911,046
10. Death benefits	5,096,178	4,734,029	18,780,758
11. Matured endowments (excluding guaranteed annual pure endowments)			0
12. Annuity benefits	64,612	24,467	143,858
13. Disability benefits and benefits under accident and health contracts	2,521	5,703	24,859
14. Coupons, guaranteed annual pure endowments and similar benefits	908	983	2,550
15. Surrender benefits and withdrawals for life contracts	10,164	21,767	81,869
16. Group conversions			0
17. Interest and adjustments on contract or deposit-type contract funds	44	27	133
18. Payments on supplementary contracts with life contingencies			0
19. Increase in aggregate reserves for life and accident and health contracts	3,971,536	4,524,364	15,803,552
20. Totals (Lines 10 to 19)	9,145,963	9,311,340	34,837,579
21. Commissions on premiums, annuity considerations, and deposit-type contract funds (direct business only)	1,047,790	1,194,785	4,188,735
22. Commissions and expense allowances on reinsurance assumed			0
23. General insurance expenses	597,560	639,959	2,379,222
24. Insurance taxes, licenses and fees, excluding federal income taxes	144,237	87,877	612,022
25. Increase in loading on deferred and uncollected premiums	59,088	94,028	(19,907)
26. Net transfers to or (from) Separate Accounts net of reinsurance			0
27. Aggregate write-ins for deductions	5,966	6,301	7,244
28. Totals (Lines 20 to 27)	11,000,604	11,334,290	42,004,895
29. Net gain from operations before dividends to policyholders and federal income taxes (Line 9 minus Line 28)	(300,100)	(261,317)	(1,093,849)
30. Dividends to policyholders	229	248	635
31. Net gain from operations after dividends to policyholders and before federal income taxes (Line 29 minus Line 30)	(300,329)	(261,565)	(1,094,484)
32. Federal and foreign income taxes incurred (excluding tax on capital gains)	(11,461)	5,985	(251,237)
33. Net gain from operations after dividends to policyholders and federal income taxes and before realized capital gains or (losses) (Line 31 minus Line 32)	(288,868)	(267,550)	(843,247)
34. Net realized capital gains (losses) (excluding gains (losses) transferred to the IMR) less capital gains tax of \$(2) (excluding taxes of \$11,463 transferred to the IMR)	(7)	(29,983)	(51,615)
35. Net income (Line 33 plus Line 34)	(288,875)	(297,533)	(894,862)
CAPITAL AND SURPLUS ACCOUNT			
36. Capital and surplus, December 31, prior year	9,809,080	8,070,537	8,070,537
37. Net income (Line 35)	(288,875)	(297,533)	(894,862)
38. Change in net unrealized capital gains (losses) less capital gains tax of \$(31,000)	(118,622)	195,639	628,244
39. Change in net unrealized foreign exchange capital gain (loss)			
40. Change in net deferred income tax	388,000	160,000	(588,000)
41. Change in nonadmitted assets	(59,111)	(74,021)	835,107
42. Change in liability for reinsurance in unauthorized and certified companies			
43. Change in reserve on account of change in valuation basis, (increase) or decrease			0
44. Change in asset valuation reserve	50,094	(168,794)	(821,946)
45. Change in treasury stock			0
46. Surplus (contributed to) withdrawn from Separate Accounts during period			
47. Other changes in surplus in Separate Accounts Statement			
48. Change in surplus notes			
49. Cumulative effect of changes in accounting principles			
50. Capital changes:			
50.1 Paid in			
50.2 Transferred from surplus (Stock Dividend)			
50.3 Transferred to surplus			
51. Surplus adjustment:			
51.1 Paid in	0	0	2,500,000
51.2 Transferred to capital (Stock Dividend)			
51.3 Transferred from capital			
51.4 Change in surplus as a result of reinsurance			
52. Dividends to stockholders			
53. Aggregate write-ins for gains and losses in surplus	0	0	80,000
54. Net change in capital and surplus for the year (Lines 37 through 53)	(28,514)	(184,709)	1,738,543
55. Capital and surplus, as of statement date (Lines 36 + 54)	9,780,566	7,885,828	9,809,080
DETAILS OF WRITE-INS			
08.301. Advanced Funding Fees	144,791	113,688	398,761
08.302.			
08.303.			
08.398. Summary of remaining write-ins for Line 8.3 from overflow page	0	0	0
08.399. Totals (Lines 08.301 through 08.303 plus 08.398) (Line 8.3 above)	144,791	113,688	398,761
2701. Change in Dividend & Coupon Reserves	5,966	6,301	7,244
2702.			0
2703.			
2798. Summary of remaining write-ins for Line 27 from overflow page	0	0	0
2799. Totals (Lines 2701 through 2703 plus 2798)(Line 27 above)	5,966	6,301	7,244
5301. AMT Loss Carry Forward Sperated from DTA			80,000
5302.			
5303.			
5398. Summary of remaining write-ins for Line 53 from overflow page	0	0	0
5399. Totals (Lines 5301 through 5303 plus 5398)(Line 53 above)	0	0	80,000

STATEMENT AS OF MARCH 31, 2018 OF THE Cincinnati Equitable Life Insurance Company

CASH FLOW

	1 Current Year To Date	2 Prior Year To Date	3 Prior Year Ended December 31
Cash from Operations			
1. Premiums collected net of reinsurance	9,279,551	9,767,068	36,105,804
2. Net investment income	1,003,534	927,057	4,373,306
3. Miscellaneous income	144,791	113,688	398,761
4. Total (Lines 1 to 3)	10,427,876	10,807,813	40,877,871
5. Benefit and loss related payments	5,433,381	4,767,990	18,789,011
6. Net transfers to Separate Accounts, Segregated Accounts and Protected Cell Accounts	0	0	0
7. Commissions, expenses paid and aggregate write-ins for deductions	1,781,883	1,960,180	7,195,034
8. Dividends paid to policyholders	510	495	660
9. Federal and foreign income taxes paid (recovered) net of \$ tax on capital gains (losses)	0	20,000	20,000
10. Total (Lines 5 through 9)	7,215,774	6,748,665	26,004,705
11. Net cash from operations (Line 4 minus Line 10)	3,212,102	4,059,148	14,873,166
Cash from Investments			
12. Proceeds from investments sold, matured or repaid:			
12.1 Bonds	2,806,313	4,199,953	16,546,210
12.2 Stocks	531,734	523,548	2,975,889
12.3 Mortgage loans	0	0	0
12.4 Real estate	0	0	0
12.5 Other invested assets	0	0	517,490
12.6 Net gains or (losses) on cash, cash equivalents and short-term investments	0	0	0
12.7 Miscellaneous proceeds	0	0	75,000
12.8 Total investment proceeds (Lines 12.1 to 12.7)	3,338,047	4,723,500	20,114,589
13. Cost of investments acquired (long-term only):			
13.1 Bonds	8,780,557	8,292,116	32,341,532
13.2 Stocks	150,300	737,252	2,410,052
13.3 Mortgage loans	0	0	0
13.4 Real estate	0	0	0
13.5 Other invested assets	0	0	900,139
13.6 Miscellaneous applications	0	16,937	2,764
13.7 Total investments acquired (Lines 13.1 to 13.6)	8,930,857	9,046,305	35,654,488
14. Net increase (or decrease) in contract loans and premium notes	3,886	498	21,997
15. Net cash from investments (Line 12.8 minus Line 13.7 and Line 14)	(5,596,696)	(4,323,303)	(15,561,895)
Cash from Financing and Miscellaneous Sources			
16. Cash provided (applied):			
16.1 Surplus notes, capital notes	0	0	0
16.2 Capital and paid in surplus, less treasury stock	0	0	2,500,000
16.3 Borrowed funds	0	0	0
16.4 Net deposits on deposit-type contracts and other insurance liabilities	780	8,249	(10,155)
16.5 Dividends to stockholders	0	0	0
16.6 Other cash provided (applied)	2,672,928	242,729	(2,388,568)
17. Net cash from financing and miscellaneous sources (Line 16.1 through Line 16.4 minus Line 16.5 plus Line 16.6)	2,673,708	250,978	101,277
RECONCILIATION OF CASH, CASH EQUIVALENTS AND SHORT-TERM INVESTMENTS			
18. Net change in cash, cash equivalents and short-term investments (Line 11, plus Lines 15 and 17)	289,114	(13,177)	(587,452)
19. Cash, cash equivalents and short-term investments:			
19.1 Beginning of year	1,549,818	2,137,270	2,137,270
19.2 End of period (Line 18 plus Line 19.1)	1,838,932	2,124,093	1,549,818

Note: Supplemental disclosures of cash flow information for non-cash transactions:

--	--	--	--

EXHIBIT 1

DIRECT PREMIUMS AND DEPOSIT-TYPE CONTRACTS

	1 Current Year To Date	2 Prior Year To Date	3 Prior Year Ended December 31
1. Industrial life			0
2. Ordinary life insurance	9,185,551	9,753,600	35,976,597
3. Ordinary individual annuities	89,958	6,068	33,092
4. Credit life (group and individual)			0
5. Group life insurance			0
6. Group annuities			0
7. A & H - group			0
8. A & H - credit (group and individual)			0
9. A & H - other	8,610	11,557	40,369
10. Aggregate of all other lines of business	0	0	0
11. Subtotal	9,284,119	9,771,225	36,050,058
12. Deposit-type contracts	0		0
13. Total	9,284,119	9,771,225	36,050,058
DETAILS OF WRITE-INS			
1001.			
1002.			
1003.			
1098. Summary of remaining write-ins for Line 10 from overflow page	0	0	0
1099. Totals (Lines 1001 through 1003 plus 1098)(Line 10 above)	0	0	0

STATEMENT AS OF March 31, 2018 OF THE Cincinnati Equitable Life Insurance Company
NOTES TO FINANCIAL STATEMENTS

1. Summary of Significant Accounting Policies

A. Accounting Practices

The financial statements of Cincinnati Equitable Life Insurance Company are presented on the basis of accounting practices prescribed or permitted by the Ohio Insurance Department.

The Ohio Insurance Department recognizes only statutory accounting practices prescribed or permitted by the State of Ohio for determining and reporting the financial condition and results of operations of an insurance company, for determining its solvency under the Ohio Insurance Law. The National Association of Insurance Commissioners' (NAIC) Accounting Practices and Procedures manual, version effective January 1, 2001, (NAIC SAP) has been adopted as a component of prescribed or permitted practices by the State of Ohio. The State of Ohio has not adopted any prescribed or permitted practices that differ from NAIC SAP.

- 2. No significant change
- 3. No significant change
- 4. No significant change
- 5. Investments

D. Loan-Backed Securities

- 1. Prepayment assumptions for single class and multi-class mortgage-backed/asset-backed securities were obtained from broker dealer survey values or NAIC RMBS/ CMBS modeling.
- 2. The Company had no securities with a recognized other-than-temporary impairment.
- 3. The Company had no securities with a recognized other-than-temporary impairment.
- 4. All impaired securities (fair value is less than cost or amortized cost) for which an other-than-temporary impairment has not been recognized in earnings as a realized loss (including securities with a recognized other-than-temporary impairment for non-interest related declines when a non-recognized interest related impairment remains):

a. The aggregate amount of unrealized losses:

- 1. Less than 12 Months \$ 110,072
- 2. 12 Months or Longer \$ 71,145

b. The aggregate related fair value of securities with unrealized losses:

- 1. Less than 12 Months \$ 9,477,572
- 2. 12 Months or Longer \$ 3,030,236

- 5. We used market values obtained from broker dealers and money managers to determine that these securities are not other-than-temporary differences.

- 6. No significant change
- 7. No significant change
- 8. No significant change
- 9. No significant change
- 10. No significant change
- 11. No significant change
- 12. No significant change
- 13. No significant change
- 14. No significant change
- 15. No significant change
- 16. No significant change
- 17. Sale, Transfer and Servicing of Financial Assets and Extinguishments of Liabilities
 - A. The Company has not transferred receivable balances.
 - B. The Company has no transaction in accordance with SSAP No.18.
 - C. The Company has made no wash sale transactions.

- 18. No significant change
- 19. No significant change

STATEMENT AS OF March 31, 2018 OF THE Cincinnati Equitable Life Insurance Company
NOTES TO FINANCIAL STATEMENTS

20. Fair Value Measure

A.

(1) Fair Value Measurements at Reporting Date

Description for each class of asset or liability	(Level 1)	(Level 2)	(Level 3)	Total
a. Assets at fair value				
Preferred Stocks	1,970,981			1,970,981
Bonds -Government	1,297,806			1,297,806
Bonds - Other		122,687,776		122,687,776
Other		252,540		252,540
Common Stock - Unaffiliated	6,695,673			6,695,673
Common Stock - Affiliated		3,071,993		3,071,993
Total assets at fair value	9,964,460	126,012,309	0	135,976,769

Description for each class of asset or liability	(Level 1)	(Level 2)	(Level 3)	Total
b. Liabilities at fair value				
.....
.....
Total liabilities at fair value	0	0	0	0

A. The Company had no assets that rely on Level 3 fair value measurement.

C. Aggregate fair value for all financial instruments and the level within the fair value hierarchy in which the fair value measurements in their entirety fall.

Type of Financial Instrument	Aggregate Fair Value	Admitted Assets	(Level 1)	(Level 2)	(Level 3)	Not Practicable (Carrying Value)
Bonds	123,985,582	125,536,574	1,297,806	122,687,776		
Other Invested Assets	252,540	245,522		252,540		
Preferred Stock	1,970,981	1,891,446	1,970,981			
Common Stock	9,767,666	9,767,666	6,695,673	3,071,993		

21. No significant change

22. No significant change

23. No significant change

24. No significant change

25. Change in Incurred Losses and Loss Adjustment Expenses

There have been no significant changes in the Loss and Loss Adjustment Expense reserves for losses incurred in prior accident years.

26. No significant change

27. No significant change

28. No significant change

29. No significant change

30. No significant change

31. No significant change

32. No significant change

33. No significant change

34. No significant change

GENERAL INTERROGATORIES

PART 1 - COMMON INTERROGATORIES

GENERAL

- 1.1 Did the reporting entity experience any material transactions requiring the filing of Disclosure of Material Transactions with the State of Domicile, as required by the Model Act? Yes [X] No []
- 1.2 If yes, has the report been filed with the domiciliary state? Yes [X] No []
- 2.1 Has any change been made during the year of this statement in the charter, by-laws, articles of incorporation, or deed of settlement of the reporting entity? Yes [] No [X]
- 2.2 If yes, date of change:
- 3.1 Is the reporting entity a member of an Insurance Holding Company System consisting of two or more affiliated persons, one or more of which is an insurer? Yes [X] No []
If yes, complete Schedule Y, Parts 1 and 1A.
- 3.2 Have there been any substantial changes in the organizational chart since the prior quarter end? Yes [] No [X]
- 3.3 If the response to 3.2 is yes, provide a brief description of those changes.
- 3.4 Is the reporting entity publicly traded or a member of a publicly traded group? Yes [] No [X]
- 3.5 If the response to 3.4 is yes, provide the CIK (Central Index Key) code issued by the SEC for the entity/group.
- 4.1 Has the reporting entity been a party to a merger or consolidation during the period covered by this statement? Yes [] No [X]
- 4.2 If yes, provide the name of the entity, NAIC Company Code, and state of domicile (use two letter state abbreviation) for any entity that has ceased to exist as a result of the merger or consolidation.

1	2	3
Name of Entity	NAIC Company Code	State of Domicile

5. If the reporting entity is subject to a management agreement, including third-party administrator(s), managing general agent(s), attorney-in-fact, or similar agreement, have there been any significant changes regarding the terms of the agreement or principals involved? Yes [] No [X] N/A []
If yes, attach an explanation.
- 6.1 State as of what date the latest financial examination of the reporting entity was made or is being made. 12/31/2013
- 6.2 State the as of date that the latest financial examination report became available from either the state of domicile or the reporting entity. This date should be the date of the examined balance sheet and not the date the report was completed or released. 12/31/2013
- 6.3 State as of what date the latest financial examination report became available to other states or the public from either the state of domicile or the reporting entity. This is the release date or completion date of the examination report and not the date of the examination (balance sheet date). 11/16/2014
- 6.4 By what department or departments?
Ohio
- 6.5 Have all financial statement adjustments within the latest financial examination report been accounted for in a subsequent financial statement filed with Departments? Yes [] No [] N/A [X]
- 6.6 Have all of the recommendations within the latest financial examination report been complied with? Yes [X] No [] N/A []
- 7.1 Has this reporting entity had any Certificates of Authority, licenses or registrations (including corporate registration, if applicable) suspended or revoked by any governmental entity during the reporting period? Yes [] No []
- 7.2 If yes, give full information:
- 8.1 Is the company a subsidiary of a bank holding company regulated by the Federal Reserve Board? Yes [] No [X]
- 8.2 If response to 8.1 is yes, please identify the name of the bank holding company.
- 8.3 Is the company affiliated with one or more banks, thrifts or securities firms? Yes [] No [X]
- 8.4 If response to 8.3 is yes, please provide below the names and location (city and state of the main office) of any affiliates regulated by a federal regulatory services agency [i.e. the Federal Reserve Board (FRB), the Office of the Comptroller of the Currency (OCC), the Federal Deposit Insurance Corporation (FDIC) and the Securities Exchange Commission (SEC)] and identify the affiliate's primary federal regulator.

1	2	3	4	5	6
Affiliate Name	Location (City, State)	FRB	OCC	FDIC	SEC

GENERAL INTERROGATORIES

- 9.1 Are the senior officers (principal executive officer, principal financial officer, principal accounting officer or controller, or persons performing similar functions) of the reporting entity subject to a code of ethics, which includes the following standards? Yes No
 (a) Honest and ethical conduct, including the ethical handling of actual or apparent conflicts of interest between personal and professional relationships;
 (b) Full, fair, accurate, timely and understandable disclosure in the periodic reports required to be filed by the reporting entity;
 (c) Compliance with applicable governmental laws, rules and regulations;
 (d) The prompt internal reporting of violations to an appropriate person or persons identified in the code; and
 (e) Accountability for adherence to the code.
- 9.11 If the response to 9.1 is No, please explain:
- 9.2 Has the code of ethics for senior managers been amended? Yes No
- 9.21 If the response to 9.2 is Yes, provide information related to amendment(s).
- 9.3 Have any provisions of the code of ethics been waived for any of the specified officers? Yes No
- 9.31 If the response to 9.3 is Yes, provide the nature of any waiver(s).

FINANCIAL

- 10.1 Does the reporting entity report any amounts due from parent, subsidiaries or affiliates on Page 2 of this statement? Yes No
- 10.2 If yes, indicate any amounts receivable from parent included in the Page 2 amount: \$ 5,511

INVESTMENT

- 11.1 Were any of the stocks, bonds, or other assets of the reporting entity loaned, placed under option agreement, or otherwise made available for use by another person? (Exclude securities under securities lending agreements.) Yes No
- 11.2 If yes, give full and complete information relating thereto:
12. Amount of real estate and mortgages held in other invested assets in Schedule BA: \$ 0
13. Amount of real estate and mortgages held in short-term investments: \$ 0
- 14.1 Does the reporting entity have any investments in parent, subsidiaries and affiliates? Yes No
- 14.2 If yes, please complete the following:
- | | 1
Prior Year-End
Book/Adjusted
Carrying Value | 2
Current Quarter
Book/Adjusted
Carrying Value |
|---|--|---|
| 14.21 Bonds | \$ 0 | \$ 0 |
| 14.22 Preferred Stock | \$ 0 | \$ 0 |
| 14.23 Common Stock | \$ 3,079,516 | \$ 3,071,993 |
| 14.24 Short-Term Investments | \$ 0 | \$ 0 |
| 14.25 Mortgage Loans on Real Estate | \$ 0 | \$ 0 |
| 14.26 All Other | \$ 0 | \$ 0 |
| 14.27 Total Investment in Parent, Subsidiaries and Affiliates (Subtotal Lines 14.21 to 14.26) | \$ 3,079,516 | \$ 3,071,993 |
| 14.28 Total Investment in Parent included in Lines 14.21 to 14.26 above | \$ 3,079,516 | \$ 3,071,993 |
- 15.1 Has the reporting entity entered into any hedging transactions reported on Schedule DB? Yes No
- 15.2 If yes, has a comprehensive description of the hedging program been made available to the domiciliary state? Yes No
 If no, attach a description with this statement.

STATEMENT AS OF MARCH 31, 2018 OF THE Cincinnati Equitable Life Insurance Company
GENERAL INTERROGATORIES

16. For the reporting entity's security lending program, state the amount of the following as of the current statement date:
- | | |
|--|-----------|
| 16.1 Total fair value of reinvested collateral assets reported on Schedule DL, Parts 1 and 2 | \$0 |
| 16.2 Total book adjusted/carrying value of reinvested collateral assets reported on Schedule DL, Parts 1 and 2 | \$0 |
| 16.3 Total payable for securities lending reported on the liability page | \$0 |

17. Excluding items in Schedule E - Part 3 - Special Deposits, real estate, mortgage loans and investments held physically in the reporting entity's offices, vaults or safety deposit boxes, were all stocks, bonds and other securities, owned throughout the current year held pursuant to a custodial agreement with a qualified bank or trust company in accordance with Section 1, III - General Examination Considerations, F. Outsourcing of Critical Functions, Custodial or Safekeeping Agreements of the NAIC Financial Condition Examiners Handbook? Yes No
- 17.1 For all agreements that comply with the requirements of the NAIC Financial Condition Examiners Handbook, complete the following:

1 Name of Custodian(s)	2 Custodian Address
Fifth Third Bank	38 Fountin Square Plaza, Cincinnati, OH45263
US Bank	225 Water Street, Suite 7, Jacksonville, FL 32202

- 17.2 For all agreements that do not comply with the requirements of the NAIC Financial Condition Examiners Handbook, provide the name, location and a complete explanation:

1 Name(s)	2 Location(s)	3 Complete Explanation(s)

- 17.3 Have there been any changes, including name changes, in the custodian(s) identified in 17.1 during the current quarter? Yes No

- 17.4 If yes, give full information relating thereto:

1 Old Custodian	2 New Custodian	3 Date of Change	4 Reason

- 17.5 Investment management – Identify all investment advisors, investment managers, broker/dealers, including individuals that have the authority to make investment decisions on behalf of the reporting entity. For assets that are managed internally by employees of the reporting entity, note as such. ["...that have access to the investment accounts"; "...handle securities"]

1 Name of Firm or Individual	2 Affiliation
Fort Washington Investment Advisors	U.....
Bahl & Gaynor	U.....

- 17.5097 For those firms/individuals listed in the table for Question 17.5, do any firms/individuals unaffiliated with the reporting entity (i.e. designated with a "U") manage more than 10% of the reporting entity's assets?..... Yes No

- 17.5098 For firms/individuals unaffiliated with the reporting entity (i.e. designated with a "U") listed in the table for Question 17.5, does the total assets under management aggregate to more than 50% of the reporting entity's assets?..... Yes No

- 17.6 For those firms or individuals listed in the table for 17.5 with an affiliation code of "A" (affiliated) or "U" (unaffiliated), provide the information for the table below.

1	2	3	4	5
Central Registration Depository Number	Name of Firm or Individual	Legal Entity Identifier (LEI)	Registered With	Investment Management Agreement (IMA) Filed

- 18.1 Have all the filing requirements of the Purposes and Procedures Manual of the NAIC Investment Analysis Office been followed? Yes No

- 18.2 If no, list exceptions:

19. By self-designating 5*GI securities, the reporting entity is certifying the following elements for each self-designated 5*GI security:

- a. Documentation necessary to permit a full credit analysis of the security does not exist.
- b. Issuer or obligor is current on all contracted interest and principal payments.
- c. The insurer has an actual expectation of ultimate payment of all contracted interest and principal.

- Has the reporting entity self-designated 5*GI securities? Yes No

GENERAL INTERROGATORIES

PART 2 - LIFE & HEALTH

1.	Report the statement value of mortgage loans at the end of this reporting period for the following categories:	1 Amount
1.1	Long-Term Mortgages In Good Standing	
1.11	Farm Mortgages	\$
1.12	Residential Mortgages	\$
1.13	Commercial Mortgages	\$
1.14	Total Mortgages in Good Standing	\$ <u>0</u>
1.2	Long-Term Mortgages In Good Standing with Restructured Terms	
1.21	Total Mortgages in Good Standing with Restructured Terms	\$ <u>0</u>
1.3	Long-Term Mortgage Loans Upon which Interest is Overdue more than Three Months	
1.31	Farm Mortgages	\$
1.32	Residential Mortgages	\$
1.33	Commercial Mortgages	\$
1.34	Total Mortgages with Interest Overdue more than Three Months	\$ <u>0</u>
1.4	Long-Term Mortgage Loans in Process of Foreclosure	
1.41	Farm Mortgages	\$
1.42	Residential Mortgages	\$
1.43	Commercial Mortgages	\$
1.44	Total Mortgages in Process of Foreclosure	\$ <u>0</u>
1.5	Total Mortgage Loans (Lines 1.14 + 1.21 + 1.34 + 1.44) (Page 2, Column 3, Lines 3.1 + 3.2)	\$ <u>0</u>
1.6	Long-Term Mortgages Foreclosed, Properties Transferred to Real Estate in Current Quarter	
1.61	Farm Mortgages	\$
1.62	Residential Mortgages	\$
1.63	Commercial Mortgages	\$
1.64	Total Mortgages Foreclosed and Transferred to Real Estate	\$ <u>0</u>
2.	Operating Percentages:	
2.1	A&H loss percent	%
2.2	A&H cost containment percent	%
2.3	A&H expense percent excluding cost containment expenses	%
3.1	Do you act as a custodian for health savings accounts?	Yes [] No [X]
3.2	If yes, please provide the amount of custodial funds held as of the reporting date	\$
3.3	Do you act as an administrator for health savings accounts?	Yes [] No [X]
3.4	If yes, please provide the balance of the funds administered as of the reporting date	\$
4.	Is the reporting entity licensed or chartered, registered, qualified, eligible or writing business in at least two states?	Yes [X] No []
4.1	If no, does the reporting entity assume reinsurance business that covers risks residing in at least one state other than the state of domicile of the reporting entity?	Yes [] No [X]

SCHEDULE S - CEDED REINSURANCE

Showing All New Reinsurance Treaties - Current Year to Date

1 NAIC Company Code	2 ID Number	3 Effective Date	4 Name of Reinsurer	5 Domiciliary Jurisdiction	6 Type of Reinsurance Ceded	7 Type of Reinsurer	8 Certified Reinsurer Rating (1 through 6)	9 Effective Date of Certified Reinsurer Rating
NONE								

STATEMENT AS OF MARCH 31, 2018 OF THE Cincinnati Equitable Life Insurance Company
SCHEDULE T - PREMIUMS AND ANNUITY CONSIDERATIONS

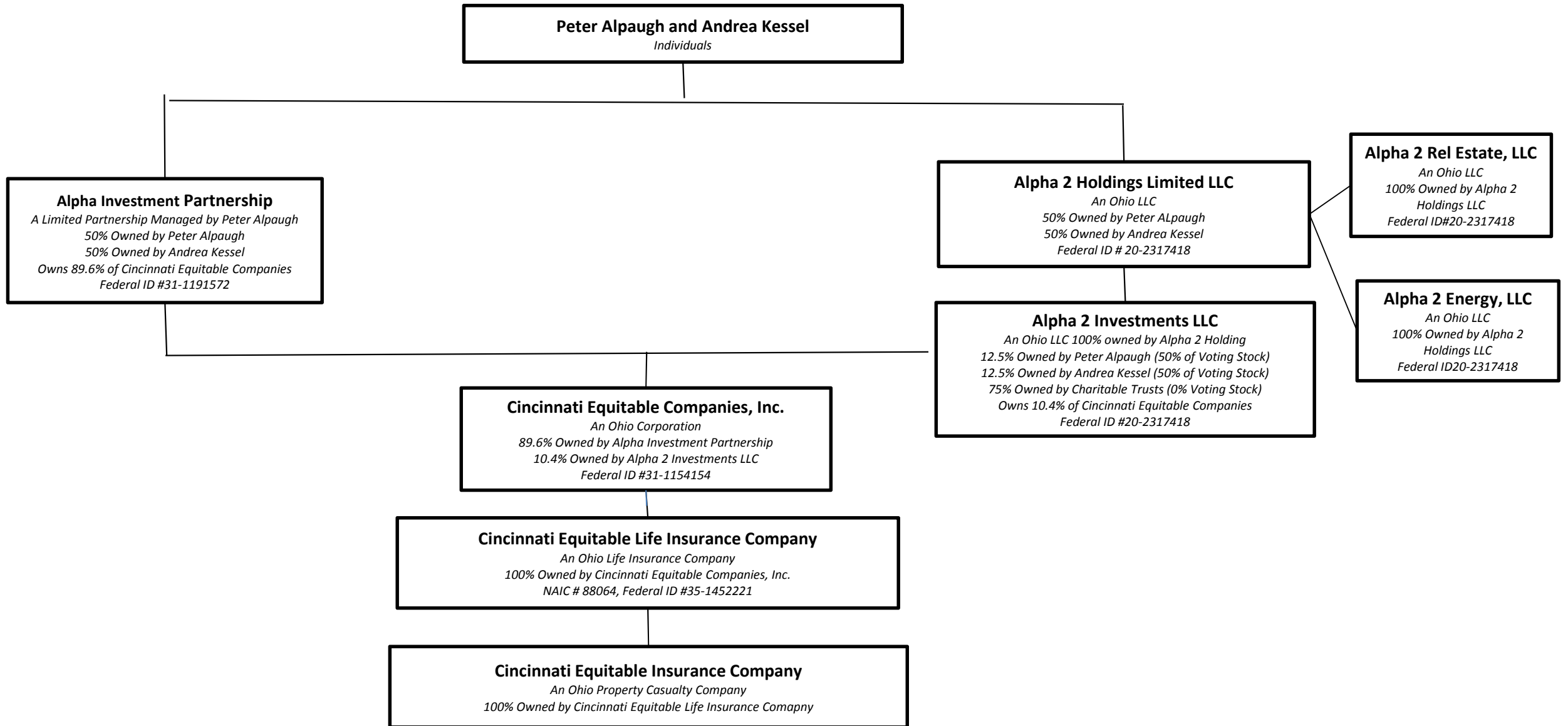
Current Year To Date - Allocated by States and Territories

States, Etc.	1 Active Status (a)	Life Contracts		Direct Business Only			7 Deposit-Type Contracts
		2 Life Insurance Premiums	3 Annuity Considerations	4 Accident and Health Insurance Premiums, Including Policy, Membership and Other Fees	5 Other Considerations	6 Total Columns 2 Through 5	
1. Alabama	AL	N					0
2. Alaska	AK	N					0
3. Arizona	AZ	N					0
4. Arkansas	AR	N					0
5. California	CA	N					0
6. Colorado	CO	N					0
7. Connecticut	CT	N					0
8. Delaware	DE	N					0
9. District of Columbia	DC	N					0
10. Florida	FL	N					0
11. Georgia	GA	L	2,420,935	89,563		2,510,498	
12. Hawaii	HI	N					0
13. Idaho	ID	N					0
14. Illinois	IL	N					0
15. Indiana	IN	L	3,085,673	13		3,085,686	
16. Iowa	IA	N					0
17. Kansas	KS	N					0
18. Kentucky	KY	L	1,499,100	332		1,499,432	
19. Louisiana	LA	N					0
20. Maine	ME	N					0
21. Maryland	MD	N					0
22. Massachusetts	MA	N					0
23. Michigan	MI	N					0
24. Minnesota	MN	N					0
25. Mississippi	MS	L	88,301			88,301	
26. Missouri	MO	N					0
27. Montana	MT	N					0
28. Nebraska	NE	N					0
29. Nevada	NV	N					0
30. New Hampshire	NH	N					0
31. New Jersey	NJ	N					0
32. New Mexico	NM	N					0
33. New York	NY	N					0
34. North Carolina	NC	N					0
35. North Dakota	ND	N					0
36. Ohio	OH	L	1,963,502	50	8,610	1,972,162	
37. Oklahoma	OK	N					0
38. Oregon	OR	N					0
39. Pennsylvania	PA	N					0
40. Rhode Island	RI	N					0
41. South Carolina	SC	N					0
42. South Dakota	SD	N					0
43. Tennessee	TN	L	128,040			128,040	
44. Texas	TX	N					0
45. Utah	UT	N					0
46. Vermont	VT	N					0
47. Virginia	VA	N					0
48. Washington	WA	N					0
49. West Virginia	WV	N					0
50. Wisconsin	WI	N					0
51. Wyoming	WY	N					0
52. American Samoa	AS	N					0
53. Guam	GU	N					0
54. Puerto Rico	PR	N					0
55. U.S. Virgin Islands	VI	N					0
56. Northern Mariana Islands	MP	N					0
57. Canada	CAN	N					0
58. Aggregate Other Aliens	OT	XXX	0	0	0	0	0
59. Subtotal	XXX	9,185,551	89,958	8,610	0	9,284,119	0
90. Reporting entity contributions for employee benefits plans	XXX					0	
91. Dividends or refunds applied to purchase paid-up additions and annuities	XXX					0	
92. Dividends or refunds applied to shorten endowment or premium paying period	XXX					0	
93. Premium or annuity considerations waived under disability or other contract provisions	XXX					0	
94. Aggregate or other amounts not allocable by State	XXX	0	0	0	0	0	0
95. Totals (Direct Business)	XXX	9,185,551	89,958	8,610	0	9,284,119	0
96. Plus Reinsurance Assumed	XXX					0	
97. Totals (All Business)	XXX	9,185,551	89,958	8,610	0	9,284,119	0
98. Less Reinsurance Ceded	XXX	4,568				4,568	
99. Totals (All Business) less Reinsurance Ceded	XXX	9,180,983	89,958	8,610	0	9,279,551	0
DETAILS OF WRITE-INS							
58001.	XXX						
58002.	XXX						
58003.	XXX						
58998. Summary of remaining write-ins for Line 58 from overflow page	XXX	0	0	0	0	0	0
58999. Totals (Lines 58001 through 58003 plus 58998)(Line 58 above)	XXX	0	0	0	0	0	0
9401.	XXX						
9402.	XXX						
9403.	XXX						
9498. Summary of remaining write-ins for Line 94 from overflow page	XXX	0	0	0	0	0	0
9499. Totals (Lines 9401 through 9403 plus 9498)(Line 94 above)	XXX	0	0	0	0	0	0

(a) Active Status Counts:

L - Licensed or Chartered - Licensed Insurance carrier or domiciled RRG..... 6 R - Registered - Non-domiciled RRGs..... 0
E - Eligible - Reporting entities eligible or approved to write surplus lines in the state..... 0 Q - Qualified - Qualified or accredited reinsurer..... 0
N - None of the above - Not allowed to write business in the state..... 51

STATEMENT AS OF MARCH 31, 2018 OF THE Cincinnati Equitable Life Insurance Company



SCHEDULE Y

PART 1A - DETAIL OF INSURANCE HOLDING COMPANY SYSTEM

1	2	3	4	5	6	7	8	9	10	11	12	13	14	15	16
Group Code	Group Name	NAIC Company Code	ID Number	Federal RSSD	CIK	Name of Securities Exchange if Publicly Traded (U.S. or International)	Names of Parent, Subsidiaries Or Affiliates	Domiciliary Location	Relationship to Reporting Entity	Directly Controlled by (Name of Entity/Person)	Type of Control (Ownership, Board, Management, Attorney-in-Fact, Influence, Other)	If Control is Ownership Provide Percentage	Ultimate Controlling Entity(ies)/Person(s)	Is an SCA Filing Required? (Y/N)	*
			31-1191572				Alpha Investment Partnership	OH	UIP	Peter Alpaugh/ Andrea Kessel	Ownership	100.000	Peter Alpaugh/ Andrea Kessel	N	
			20-2317418				Alpha 2 Holdings, LLC	OH	UIP	Peter Alpaugh/ Andrea Kessel	Ownership	100.000	Peter Alpaugh/ Andrea Kessel	N	
			20-2317418				Alpha 2 Investments, LLC	OH	UIP	Peter Alpaugh/ Andrea Kessel	Ownership	100.000	Peter Alpaugh/ Andrea Kessel	N	
.0838	Cincinnati Equitable Companies	.00020	31-1154154				Cincinnati Equitable Companies, Inc	OH	LDP	Peter Alpaugh/ Andrea Kessel	Ownership	100.000	Peter Alpaugh/ Andrea Kessel	N	
.0838	Cincinnati Equitable Companies	.88064	35-1452221				Cincinnati Equitable Life Insurance Co	OH	IA	Cincinnati Equitable Companies, Inc	Ownership	100.000	Cincinnati Equitable Companies, Inc	N	
.0838	Cincinnati Equitable Companies	.16721	31-0239840				Cincinnati Equitable Insurance Co	OH	IA	Cincinnati Equitable Life Insurance Co	Ownership	100.000	Cincinnati Equitable Life Insurance Co	N	

NONE

Asterisk	Explanation

SUPPLEMENTAL EXHIBITS AND SCHEDULES INTERROGATORIES

The following supplemental reports are required to be filed as part of your statement filing. However, in the event that your company does not transact the type of business for which the special report must be filed, your response of NO to the specific interrogatory will be accepted in lieu of filing a "NONE" report and a bar code will be printed below. If the supplement is required of your company but is not being filed for whatever reason enter SEE EXPLANATION and provide an explanation following the interrogatory questions.

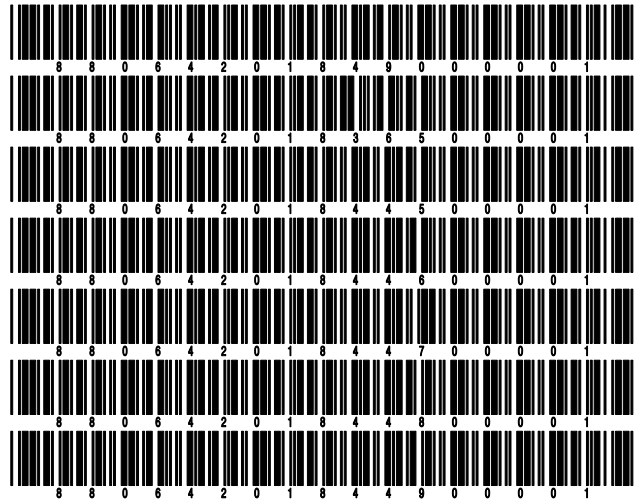
	Response
1. Will the Trusteed Surplus Statement be filed with the state of domicile and the NAIC with this statement?	NO
2. Will the Medicare Part D Coverage Supplement be filed with the state of domicile and the NAIC with this statement?	NO
3. Will the Reasonableness of Assumptions Certification required by Actuarial Guideline XXXV be filed with the state of domicile and electronically with the NAIC?	NO
4. Will the Reasonableness and Consistency of Assumptions Certification required by Actuarial Guideline XXXV be filed with the state of domicile and electronically with the NAIC?	NO
5. Will the Reasonableness of Assumptions Certification for Implied Guaranteed Rate Method required by Actuarial Guideline XXXVI be filed with the state of domicile and electronically with the NAIC?	NO
6. Will the Reasonableness and Consistency of Assumptions Certification required by Actuarial Guideline XXXVI (Updated Average Market Value) be filed with the state of domicile and electronically with the NAIC?	NO
7. Will the Reasonableness and Consistency of Assumptions Certification required by Actuarial Guideline XXXVI (Updated Market Value) be filed with the state of domicile and electronically with the NAIC?	NO

Explanation:

1. N/A
2. N/A
3. N/A
4. N/A
5. N/A
6. N/A
7. N/A

Bar Code:

1. Trusteed Surplus Statement [Document Identifier 490]
2. Medicare Part D Coverage Supplement [Document Identifier 365]
3. Reasonableness of Assumptions Certification required by Actuarial Guideline XXXV [Document Identifier 445]
4. Reasonableness and Consistency of Assumptions Certification required by Actuarial Guideline XXXV [Document Identifier 446]
5. Reasonableness of Assumptions Certification for Implied Guaranteed Rate Method required by Actuarial Guideline XXXVI [Document Identifier 447]
6. Reasonableness and Consistency of Assumptions Certification required by Actuarial Guideline XXXVI [Document Identifier 448]
7. Reasonableness and Consistency of Assumptions Certification required by Actuarial Guideline XXXVI (Updated Market Value) [Document Identifier 449]



OVERFLOW PAGE FOR WRITE-INS

Additional Write-ins for Assets Line 25

	Current Statement Date			4 December 31 Prior Year Net Admitted Assets
	1 Assets	2 Nonadmitted Assets	3 Net Admitted Assets (Cols. 1 - 2)	
2504. Prepaid Expenses	36,344	36,344	0	0
2505. FIT Receivable for AMT Loss Carry Forward	80,000		80,000	80,000
2597. Summary of remaining write-ins for Line 25 from overflow page	116,344	36,344	80,000	80,000

SCHEDULE A - VERIFICATION

Real Estate

	1 Year to Date	2 Prior Year Ended December 31
1. Book/adjusted carrying value, December 31 of prior year		
2. Cost of acquired:		
2.1 Actual cost at time of acquisition		
2.2 Additional investment made after acquisition		
3. Current year change in encumbrances		
4. Total gain (loss) on disposals		
5. Deduct amounts received on disposals		
6. Total foreign exchange change in book/adjusted carrying value		
7. Deduct current year's other than temporary impairment recognized		
8. Deduct current year's depreciation		
9. Book/adjusted carrying value at the end of current period (Lines 1+2+3+4-5+6-7-8)		
10. Deduct total nonadmitted amounts		
11. Statement value at end of current period (Line 9 minus Line 10)		

NONE

SCHEDULE B - VERIFICATION

Mortgage Loans

	1 Year to Date	2 Prior Year Ended December 31
1. Book value/recorded investment excluding accrued interest, December 31 of prior year		
2. Cost of acquired:		
2.1 Actual cost at time of acquisition		
2.2 Additional investment made after acquisition		
3. Capitalized deferred interest and other		
4. Accrual of discount		
5. Unrealized valuation increase (decrease)		
6. Total gain (loss) on disposals		
7. Deduct amounts received on disposals		
8. Deduct amortization of premium and mortgage investment and commitment fees		
9. Total foreign exchange change in book value/recorded investment including accrued interest		
10. Deduct current year's other than temporary impairment recognized		
11. Book value/recorded investment excluding accrued interest at end of current period (Lines 1+2+3+4+5+6-7-8+9-10)		
12. Total valuation allowance		
13. Subtotal (Line 11 plus Line 12)		
14. Deduct total nonadmitted amounts		
15. Statement value at end of current period (Line 13 minus Line 14)		

NONE

SCHEDULE BA - VERIFICATION

Other Long-Term Invested Assets

	1 Year to Date	2 Prior Year Ended December 31
1. Book/adjusted carrying value, December 31 of prior year	245,958	
2. Cost of acquired:		
2.1 Actual cost at time of acquisition		900,139
2.2 Additional investment made after acquisition		0
3. Capitalized deferred interest and other		
4. Accrual of discount		
5. Unrealized valuation increase (decrease)		
6. Total gain (loss) on disposals		(134,922)
7. Deduct amounts received on disposals		517,490
8. Deduct amortization of premium and depreciation	435	1,769
9. Total foreign exchange change in book/adjusted carrying value		
10. Deduct current year's other than temporary impairment recognized		
11. Book/adjusted carrying value at end of current period (Lines 1+2+3+4+5+6-7-8+9-10)	245,522	245,958
12. Deduct total nonadmitted amounts		
13. Statement value at end of current period (Line 11 minus Line 12)	245,522	245,958

SCHEDULE D - VERIFICATION

Bonds and Stocks

	1 Year to Date	2 Prior Year Ended December 31
1. Book/adjusted carrying value of bonds and stocks, December 31 of prior year	131,781,893	115,419,818
2. Cost of bonds and stocks acquired	8,930,857	34,751,585
3. Accrual of discount	15,560	115,927
4. Unrealized valuation increase (decrease)	(149,622)	951,244
5. Total gain (loss) on disposals	54,578	441,315
6. Deduct consideration for bonds and stocks disposed of	3,345,897	19,522,099
7. Deduct amortization of premium	99,532	375,897
8. Total foreign exchange change in book/adjusted carrying value		
9. Deduct current year's other than temporary impairment recognized		
10. Total investment income recognized as a result of prepayment penalties and/or acceleration fees	7,849	0
11. Book/adjusted carrying value at end of current period (Lines 1+2+3+4+5-6-7+8-9+10)	137,195,686	131,781,893
12. Deduct total nonadmitted amounts		
13. Statement value at end of current period (Line 11 minus Line 12)	137,195,686	131,781,893

STATEMENT AS OF MARCH 31, 2018 OF THE Cincinnati Equitable Life Insurance Company

SCHEDULE D - PART 1B

Showing the Acquisitions, Dispositions and Non-Trading Activity
During the Current Quarter for all Bonds and Preferred Stock by NAIC Designation

NAIC Designation	1 Book/Adjusted Carrying Value Beginning of Current Quarter	2 Acquisitions During Current Quarter	3 Dispositions During Current Quarter	4 Non-Trading Activity During Current Quarter	5 Book/Adjusted Carrying Value End of First Quarter	6 Book/Adjusted Carrying Value End of Second Quarter	7 Book/Adjusted Carrying Value End of Third Quarter	8 Book/Adjusted Carrying Value December 31 Prior Year
BONDS								
1. NAIC 1 (a)	84,236,437	3,922,346	1,775,859	1,475,387	87,858,310	0	0	84,236,437
2. NAIC 2 (a)	30,076,600	4,858,212	1,004,710	(1,554,186)	32,375,916	0	0	30,076,600
3. NAIC 3 (a)	4,769,698	0	3,750	(4,829)	4,761,119	0	0	4,769,698
4. NAIC 4 (a)	252,688	0	0	(393)	252,295	0	0	252,688
5. NAIC 5 (a)	288,846	0	0	88	288,934	0	0	288,846
6. NAIC 6 (a)	0				0			
7. Total Bonds	119,624,269	8,780,557	2,784,319	(83,933)	125,536,574	0	0	119,624,269
PREFERRED STOCK								
8. NAIC 1	605,418	0	200,317	(298,833)	106,267	0	0	605,418
9. NAIC 2	409,984	0	298,833	298,833	409,984	0	0	409,984
10. NAIC 3	1,224,934	150,300	0	(39)	1,375,195	0	0	1,224,934
11. NAIC 4	0				0			
12. NAIC 5	0				0			
13. NAIC 6	0				0			
14. Total Preferred Stock	2,240,336	150,300	499,150	(39)	1,891,446	0	0	2,240,336
15. Total Bonds and Preferred Stock	121,864,605	8,930,857	3,283,470	(83,972)	127,428,020	0	0	121,864,605

(a) Book/Adjusted Carrying Value column for the end of the current reporting period includes the following amount of short-term and cash equivalent bonds by NAIC designation:

NAIC 1 \$; NAIC 2 \$; NAIC 3 \$ NAIC 4 \$; NAIC 5 \$; NAIC 6 \$

S102

SCHEDULE DA - PART 1

Short-Term Investments

	1	2	3	4	5
	Book/Adjusted Carrying Value	Par Value	Cost	Interest Collected Year-to-Date	Paid for Accrued Interest Year-to-Date
9199999 Totals					

NONE

SCHEDULE DA - VERIFICATION

Short-Term Investments

	1	2
	Year To Date	Prior Year Ended December 31
1. Book/adjusted carrying value, December 31 of prior year	0	1,487,902
2. Cost of short-term investments acquired		
3. Accrual of discount		
4. Unrealized valuation increase (decrease)		
5. Total gain (loss) on disposals		
6. Deduct consideration received on disposals		1,487,902
7. Deduct amortization of premium		
8. Total foreign exchange change in book/adjusted carrying value		
9. Deduct current year's other than temporary impairment recognized		
10. Book/adjusted carrying value at end of current period (Lines 1+2+3+4+5-6-7+8-9)	0	0
11. Deduct total nonadmitted amounts		
12. Statement value at end of current period (Line 10 minus Line 11)	0	0

Schedule DB - Part A - Verification - Options, Caps, Floors, Collars, Swaps and Forwards

NONE

Schedule DB - Part B - Verification - Futures Contracts

NONE

Schedule DB - Part C - Section 1 - Replication (Synthetic Asset) Transactions (RSATs) Open

NONE

Schedule DB-Part C-Section 2-Reconciliation of Replication (Synthetic Asset) Transactions Open

NONE

Schedule DB - Verification - Book/Adjusted Carrying Value, Fair Value and Potential Exposure of
Derivatives

NONE

SCHEDULE E - PART 2 - VERIFICATION

(Cash Equivalents)

	1	2
	Year To Date	Prior Year Ended December 31
1. Book/adjusted carrying value, December 31 of prior year	1,207,253	
2. Cost of cash equivalents acquired	7,877,223	25,221,438
3. Accrual of discount		
4. Unrealized valuation increase (decrease)		
5. Total gain (loss) on disposals		
6. Deduct consideration received on disposals	8,195,022	24,014,185
7. Deduct amortization of premium		
8. Total foreign exchange change in book/adjusted carrying value		
9. Deduct current year's other than temporary impairment recognized		
10. Book/adjusted carrying value at end of current period (Lines 1+2+3+4+5-6-7+8-9)	889,455	1,207,253
11. Deduct total nonadmitted amounts		
12. Statement value at end of current period (Line 10 minus Line 11)	889,455	1,207,253

Schedule A - Part 2 - Real Estate Acquired and Additions Made

NONE

Schedule A - Part 3 - Real Estate Disposed

NONE

Schedule B - Part 2 - Mortgage Loans Acquired and Additions Made

NONE

Schedule B - Part 3 - Mortgage Loans Disposed, Transferred or Repaid

NONE

Schedule BA - Part 2 - Other Long-Term Invested Assets Acquired and Additions Made

NONE

Schedule BA - Part 3 - Other Long-Term Invested Assets Disposed, Transferred or Repaid

NONE

STATEMENT AS OF MARCH 31, 2018 OF THE Cincinnati Equitable Life Insurance Company

SCHEDULE D - PART 3

Show All Long-Term Bonds and Stock Acquired During the Current Quarter

1 CUSIP Identification	2 Description	3 Foreign	4 Date Acquired	5 Name of Vendor	6 Number of Shares of Stock	7 Actual Cost	8 Par Value	9 Paid for Accrued Interest and Dividends	10 NAIC Designation or Market Indicator (a)
00206R-DD-1	AT&T INC		.01/19/2018	CITIGROUP GLOBAL MARKETS INC		405,276	400,000	.351	2FE
038790-AF-1	VEREIT OPERATING PARTNERSHIP LP		.02/20/2018	MORGAN STANLEY & CO INC, NY		770,385	750,000	1,533	2FE
06051G-GL-7	BANK OF AMERICA CORP		.02/20/2018	RBC CAPITAL MARKETS		197,602	200,000	2,429	1FE
06406R-AE-7	BANK OF NEW YORK MELLON		.01/22/2018	CITIGROUP GLOBAL MARKETS INC		299,544	300,000	.0	1FE
096630-AF-5	BOARDWALK PIPELINES LP		.02/13/2018	BARCLAYS CAPITAL INC		490,855	500,000	1,854	2FE
11042T-AA-1	BRITISH AIRWAYS PASS THRU TRUST 2018-1AA	C	.03/19/2018	CITIGROUP GLOBAL MARKETS INC		506,250	500,000	.0	1FE
126650-CX-6	CVS HEALTH CORP		.03/19/2018	MORGAN STANLEY & CO INC, NY		497,610	500,000	.717	2FE
225460-AP-2	CREDIT SUISSE AG (NEW YORK BRANCH)	C	.03/09/2018	CREDIT SUISSE SECURITIES (USA)		397,896	400,000	.161	1FE
26969P-AA-6	EAGLE MATERIALS INC		.03/07/2018	JEFFERIES & CO INC, NEW YORK		274,050	270,000	1,283	2FE
46647P-AM-8	JPMORGAN CHASE & CO		.02/20/2018	WELLS FARGO SECURITIES LLC		194,674	200,000	.565	1FE
512807-AN-8	LAM RESEARCH CORP		.01/18/2018	MITSUBISHI UFJ SECURITIES		290,183	281,000	3,767	2FE
539439-AR-0	LLOYDS BANKING GROUP PLC	C	.03/19/2018	JEFFERIES & CO INC, NEW YORK		500,320	500,000	.0	2FE
55336V-AR-1	MPLX LP		.02/09/2018	MILLENNIUM ADVISORS, LLC		740,333	750,000	.417	2FE
57629W-CE-8	MASSMUTUAL GLOBAL FUNDING II		.03/19/2018	JEFFERIES & CO INC, NEW YORK		843,080	875,000	5,949	1FE
64952W-CX-9	NEW YORK LIFE GLOBAL FUNDING		.01/19/2018	DEUTSCHE BANK SECURITIES, INC		611,263	625,000	.677	1FE
88032W-AG-1	TENCENT HOLDINGS LTD	C	.02/12/2018	HSBC SECURITIES INC		722,370	750,000	1,872	1FE
89236T-EM-3	TOYOTA MOTOR CREDIT CORP	C	.01/08/2018	HSBC SECURITIES INC		149,667	150,000	.0	1FE
92277G-AM-9	VENTAS REALTY LP		.02/15/2018	JEFFERIES & CO INC, NEW YORK		743,700	750,000	.0	2FE
3899999	Subtotal - Bonds - Industrial and Miscellaneous (Unaffiliated)					8,635,057	8,701,000	21,575	XXX
48128B-AD-3	JPMORGAN CHASE & CO		.03/12/2018	GOLDMAN SACHS & CO, NY		145,500	150,000	2,775	2FE
4899999	Subtotal - Bonds - Hybrid Securities					145,500	150,000	2,775	XXX
8399997	Total - Bonds - Part 3					8,780,557	8,851,000	24,350	XXX
8399998	Total - Bonds - Part 5					XXX	XXX	XXX	XXX
8399999	Total - Bonds					8,780,557	8,851,000	24,350	XXX
060505-FL-3	BANK OF AMERICA CORP		.03/12/2018	GOLDMAN SACHS & CO, NY	150,000.000	150,300	0.00	.0	RP3VFE
8499999	Subtotal - Preferred Stocks - Industrial and Miscellaneous (Unaffiliated)					150,300	XXX	0	XXX
8999997	Total - Preferred Stocks - Part 3					150,300	XXX	0	XXX
8999998	Total - Preferred Stocks - Part 5					XXX	XXX	XXX	XXX
8999999	Total - Preferred Stocks					150,300	XXX	0	XXX
9799997	Total - Common Stocks - Part 3					0	XXX	0	XXX
9799998	Total - Common Stocks - Part 5					XXX	XXX	XXX	XXX
9799999	Total - Common Stocks					0	XXX	0	XXX
9899999	Total - Preferred and Common Stocks					150,300	XXX	0	XXX
9999999	Totals					8,930,857	XXX	24,350	XXX

(a) For all common stock bearing the NAIC market indicator "U" provide: the number of such issues

STATEMENT AS OF MARCH 31, 2018 OF THE Cincinnati Equitable Life Insurance Company

SCHEDULE D - PART 4

Show All Long-Term Bonds and Stock Sold, Redeemed or Otherwise Disposed of During the Current Quarter

1	2	3	4	5	6	7	8	9	10	Change In Book/Adjusted Carrying Value					16	17	18	19	20	21	22
										11	12	13	14	15							
CUSIP Identification	Description	Foreign	Disposal Date	Name of Purchaser	Number of Shares of Stock	Consideration	Par Value	Actual Cost	Prior Year Book/Adjusted Carrying Value	Unrealized Valuation Increase/(Decrease)	Current Year's (Amortization)/Accretion	Current Year's Other Than Temporary Impairment Recognized	Total Change in Book/Adjusted Carrying Value (11 + 12 - 13)	Total Foreign Exchange Change in Book/Adjusted Carrying Value	Book/Adjusted Carrying Value at Disposal Date	Foreign Exchange Gain (Loss) on Disposal	Realized Gain (Loss) on Disposal	Total Gain (Loss) on Disposal	Bond Interest/Stock Dividends Received During Year	Stated Contractual Maturity Date	NAIC Designation or Market Indicator (a)
36200N-KA-8	GN 605189 - RMBS		03/01/2018	Paydown		149	149	151	150	.0	(1)	.0	(1)	.0	149	.0	.0	.0	.1	04/15/2034	1
36202E-JH-3	G2 003964 - RMBS		03/01/2018	Paydown		229	229	228	228	.0	1	.0	1	.0	229	.0	.0	.0	.1	06/20/2036	1
36202E-MA-4	G2 003953 - RMBS		03/01/2018	Paydown		137	137	136	136	.0	1	.0	1	.0	137	.0	.0	.0	.1	02/20/2037	1
36202E-NP-0	G2 003998 - RMBS		03/01/2018	Paydown		247	247	245	244	.0	3	.0	3	.0	247	.0	.0	.0	.1	06/20/2037	1
36202E-OL-6	G2 004059 - RMBS		03/01/2018	Paydown		248	248	248	247	.0	1	.0	1	.0	248	.0	.0	.0	.1	12/20/2037	1
36202E-RS-0	G2 004097 - RMBS		03/01/2018	Paydown		115	115	114	114	.0	1	.0	1	.0	115	.0	.0	.0	.1	03/20/2038	1
36202E-SB-6	G2 004114 - RMBS		03/01/2018	Paydown		233	233	235	235	.0	(1)	.0	(1)	.0	233	.0	.0	.0	.1	04/20/2038	1
36202F-3N-4	G2 005305 - RMBS		03/01/2018	Paydown		1,627	1,627	1,763	1,786	.0	(159)	.0	(159)	.0	1,627	.0	.0	.0	.5	02/20/2042	1
36202F-DW-3	G2 004617 - RMBS		03/01/2018	Paydown		892	892	904	903	.0	(11)	.0	(11)	.0	892	.0	.0	.0	.3	01/20/2040	1
36207J-LY-7	GN 433343 - RMBS		03/01/2018	Paydown		10	10	10	10	.0	.0	.0	.0	.0	10	.0	.0	.0	.0	12/15/2026	1
36208W-TL-7	GN 463255 - RMBS		03/01/2018	Paydown		17	17	17	17	.0	.0	.0	.0	.0	17	.0	.0	.0	.0	02/15/2037	1
36210N-MM-8	GN 497264 - RMBS		03/01/2018	Paydown		114	114	114	114	.0	1	.0	1	.0	114	.0	.0	.0	.1	12/15/2028	1
38375Q-EY-1	GNR 0833A PB - CMO/RMBS		03/01/2018	Paydown		2,385	2,385	2,665	2,684	.0	(299)	.0	(299)	.0	2,385	.0	.0	.0	.11	04/20/2038	1
38378B-WQ-8	GNR 1283A AB - CMB		03/01/2018	Paydown		585	585	570	574	.0	11	.0	11	.0	585	.0	.0	.0	.0	05/16/2045	1
0599999	Subtotal - Bonds - U.S. Governments					6,988	6,988	7,400	7,442	0	(454)	0	(454)	0	6,988	0	0	0	26	XXX	XXX
194304-AH-4	COLLEGE PARK GA BUSINESS & INDL DEV AUTH		02/01/2018	Call @ 100.00		85,000	85,000	95,174	85,256	.0	(256)	.0	(256)	.0	85,000	.0	.0	.0	2,852	02/01/2023	1FE
25477P-NF-8	DISTRICT COLUMBIA HSG FIN AGY MULTIFAMIL		03/26/2018	VARIOUS		10,830	10,830	10,830	10,830	.0	.0	.0	.0	.0	10,830	.0	.0	.0	.36	06/15/2045	1FE
3128LY-J7-6	FH 602086 - RMBS		03/01/2018	Paydown		146	146	144	144	.0	.3	.0	.3	.0	146	.0	.0	.0	.1	02/01/2036	1
3128LY-QC-7	FH 602251 - RMBS		03/01/2018	Paydown		318	318	341	344	.0	(26)	.0	(26)	.0	318	.0	.0	.0	.2	08/01/2036	1
3128FR-LS-6	FH J12137 - RMBS		03/01/2018	Paydown		500	500	519	513	.0	(13)	.0	(13)	.0	500	.0	.0	.0	.2	05/01/2025	1
312931-4A-3	FH A85317 - RMBS		03/01/2018	Paydown		1,136	1,136	1,139	1,142	.0	(6)	.0	(6)	.0	1,136	.0	.0	.0	.3	04/01/2039	1
3136A7-DE-9	FNR 1268E NA - CMO/RMBS		03/01/2018	Paydown		2,146	2,146	2,116	2,121	.0	25	.0	25	.0	2,146	.0	.0	.0	.4	03/25/2042	1
3136AD-FZ-7	FNR 1331D NT - CMO/RMBS		03/01/2018	Paydown		1,053	1,053	1,032	1,036	.0	.17	.0	.17	.0	1,053	.0	.0	.0	.3	04/25/2043	1
3136AF-TP-9	FNR 1373E PL - CMO/RMBS		03/01/2018	Paydown		1,305	1,305	1,380	1,361	.0	(55)	.0	(55)	.0	1,305	.0	.0	.0	.4	06/25/2042	1
31371N-V4-4	FN 257235 - RMBS		03/01/2018	Paydown		876	876	935	905	.0	(29)	.0	(29)	.0	876	.0	.0	.0	.5	06/01/2023	1
3137AP-H6-0	FHR 4032A AD - CMO/RMBS		03/01/2018	Paydown		489	489	478	479	.0	11	.0	11	.0	489	.0	.0	.0	.1	10/15/2041	1
3137BO-H6-8	FHR 4181E TB - CMO/RMBS		03/01/2018	Paydown		1,539	1,539	1,531	1,531	.0	.9	.0	.9	.0	1,539	.0	.0	.0	.3	10/15/2042	1
31393R-FB-1	FHR 2613A LL - CMO/RMBS		01/16/2018	Call @ 100.0		1,000	1,000	1,125	1,101	.0	(1)	.0	(1)	.0	1,100	.0	(100)	(100)	.4	05/15/2033	1
31402D-JS-0	FN 725773 - RMBS		03/01/2018	Paydown		943	943	946	944	.0	(1)	.0	(1)	.0	943	.0	.0	.0	.5	09/01/2034	1
31403C-YH-8	FN 745112 - RMBS		03/01/2018	Paydown		600	600	622	618	.0	(18)	.0	(18)	.0	600	.0	.0	.0	.1	10/01/2035	1
31403D-P9-4	FN 745748 - RMBS		03/01/2018	Paydown		642	642	628	626	.0	.15	.0	.15	.0	642	.0	.0	.0	.3	07/01/2036	1
31404N-FW-1	FN 773981 - RMBS		03/01/2018	Paydown		44	44	41	41	.0	.3	.0	.3	.0	44	.0	.0	.0	.0	05/01/2034	1
31406V-R2-4	FN 821405 - RMBS		03/01/2018	Paydown		105	105	106	105	.0	(1)	.0	(1)	.0	105	.0	.0	.0	.0	05/01/2035	1
31408A-E4-8	FN 845355 - RMBS		03/01/2018	Paydown		156	156	159	159	.0	(3)	.0	(3)	.0	156	.0	.0	.0	.1	01/01/2036	1
31408Q-Q3-2	FN 848355 - RMBS		03/01/2018	Paydown		1,061	1,061	1,047	1,047	.0	13	.0	13	.0	1,061	.0	.0	.0	.2	08/01/2035	1
31408G-VU-8	FN 851227 - RMBS		03/01/2018	Paydown		39	39	40	40	.0	(1)	.0	(1)	.0	39	.0	.0	.0	.0	05/01/2036	1
31408J-D9-9	FN 852528 - RMBS		03/01/2018	Paydown		12	12	12	11	.0	.0	.0	.0	.0	12	.0	.0	.0	.0	05/01/2036	1
31409G-JX-5	FN 870678 - RMBS		03/01/2018	Paydown		829	829	881	845	.0	(16)	.0	(16)	.0	829	.0	.0	.0	.6	12/01/2021	1
31410F-AZ-5	FN 888340 - RMBS		03/01/2018	Paydown		481	481	497	495	.0	(14)	.0	(14)	.0	481	.0	.0	.0	.2	08/01/2036	1
31410G-BC-6	FN 888435 - RMBS		03/01/2018	Paydown		345	345	349	346	.0	(1)	.0	(1)	.0	345	.0	.0	.0	.2	06/01/2022	1
31410G-W9-0	FN 889072 - RMBS		03/01/2018	Paydown		352	352	363	364	.0	(13)	.0	(13)	.0	352	.0	.0	.0	.2	12/01/2037	1
31410K-XR-0	FN 889988 - RMBS		03/01/2018	Paydown		883	883	916	913	.0	(30)	.0	(30)	.0	883	.0	.0	.0	.5	08/01/2038	1
31410T-WZ-4	FN 897164 - RMBS		03/01/2018	Paydown		82	82	83	83	.0	(1)	.0	(1)	.0	82	.0	.0	.0	.0	08/01/2036	1
31412S-LR-4	FN 933336 - RMBS		03/01/2018	Paydown		184	184	180	179	.0	.5	.0	.5	.0	184	.0	.0	.0	.1	01/01/2038	1
31414D-U2-0	FN 963301 - RMBS		03/01/2018	Paydown		1,783	1,783	1,753	1,765	.0	.18	.0	.18	.0	1,783	.0	.0	.0	.5	05/01/2023	1
31414L-3U-0	FN 969811 - RMBS		03/01/2018	Paydown		41	41	42	41	.0	.0	.0	.0	.0	41	.0	.0	.0	.0	02/01/2023	1
31416H-UM-5	FN AA0587 - RMBS		03/01/2018	Paydown		297	297	303	302	.0	(6)	.0	(6)	.0	297	.0	.0	.0	.1	02/01/2039	1
31417V-RS-4	FN AC8596 - RMBS		03/01/2018	Paydown		1,400	1,400	1,412	1,405	.0	(5)	.0	(5)	.0	1,400	.0	.0	.0	.5	01/01/2025	1
31418M-UM-2	FN AD0587 - RMBS		03/01/2018	Paydown		3,373	3,373	3,447	3,439	.0	(66)	.0	(66)	.0	3,373	.0	.0	.0	13	12/01/2039	1
443730-FT-8	HUDSON CNTY N J IMPT AUTH LEASE REV		02/01/2018	Call @ 100.00		5,000	5,000	5,293	5,161	.0	(2)	.0	(2)	.0	5,159	.0	(159)	(159)	166	02/01/2024	1FE
73208T-QL-0	POMONA CALIF PUB FING AUTH REV		02/01/2018	Call @ 100.00		5,000	5,000	5,198	5,000	.0	.0	.0	.0	.0	5,000	.0	.0	.0	143	02/01/2027	1FE
798147-ZS-6	SAN JOSE CALIF REDEV AGY TAX ALLOCATION		03/01/2018	VARIOUS		60,000	60,000	60,346	60,000	.0	.0	.0	.0	.0	60,000	.0	.0	.0	1,335	08/01/2020	1FE
83712D-UC-8	SOUTH CAROLINA ST HSG FIN & DEV AUTH MTG		01/01/2018	Call @ 100.0		5,000	5,000	5,097	5,074	.0	.0	.0	.0	.0	5,074	.0	(74)	(74)	.0	01/01/2024	1FE
3199999	Subtotal - Bonds - U.S. Special Revenues					194,989	194,989	206,503	195,767	0	(445)	0	(445)	0	195,322	0	(333)	(333)	4,617	XXX	XXX
00206R-CE-0	AT&T INC		01/19/2018	CITIGROUP GLOBAL MARKETS INC		407,800	400,000	414,374	409,578	.0	(88)	.0	(88)	.0	409,490	.0	(1,690)	(1,690)	5,720	03/11/2024	2FE
009090-AA-9	AIR CANADA 2015-1 PASS THROUGH TRUST																				

STATEMENT AS OF MARCH 31, 2018 OF THE Cincinnati Equitable Life Insurance Company

SCHEDULE D - PART 4

Show All Long-Term Bonds and Stock Sold, Redeemed or Otherwise Disposed of During the Current Quarter

1	2	3	4	5	6	7	8	9	10	Change In Book/Adjusted Carrying Value					16	17	18	19	20	21	22	
										11	12	13	14	15								
CUSIP Identification	Description	Foreign	Disposal Date	Name of Purchaser	Number of Shares of Stock	Consideration	Par Value	Actual Cost	Prior Year Book/Adjusted Carrying Value	Unrealized Valuation Increase/(Decrease)	Current Year's (Amortization)/Accretion	Current Year's Other Than Temporary Impairment Recognized	Total Change in Book/Adjusted Carrying Value (11 + 12 - 13)	Total Foreign Exchange Change in Book /Adjusted Carrying Value	Book/Adjusted Carrying Value at Disposal Date	Foreign Exchange Gain (Loss) on Disposal	Realized Gain (Loss) on Disposal	Total Gain (Loss) on Disposal	Bond Interest/Stock Dividends Received During Year	Stated Contractual Maturity Date	NAIC Designation or Market Indicator (a)	
02665X-AA-7	AHAR 14SFR3 A - ABS		03/01/2018	Paydown		2,181	2,181	2,181	2,178	0	3	0	3	0	2,181	0	0	0	7	12/18/2036	1FE	
03065B-AG-6	AMCAR 133 E - ABS		02/08/2018	Paydown	600,000	600,000	600,000	611,813	606,438	0	(6,438)	0	(6,438)	0	600,000	0	0	0	3,740	12/08/2020	1FE	
12669F-ZP-1	CIHL 048 1A7 - CMO/RMBS		03/05/2018	VARIOUS	2,000	2,000	2,000	2,010	2,010	0	0	0	0	0	2,010	0	(10)	(10)	14	07/25/2034	1FM	
22822R-AR-1	CROWN CASTLE TOWERS LLC		02/01/2018	VARIOUS	152,849	145,000	145,000	160,477	151,288	0	(120)	0	(120)	0	151,168	0	(6,168)	(6,168)	8,588	01/15/2040	1FE	
25272K-AK-9	DIAMOND 1 FINANCE CORP		01/19/2018	BANC / AMERICA SECUR. LLC, MONT.	65,237	60,000	60,000	65,595	65,245	0	(32)	0	(32)	0	65,213	0	24	24	381	06/15/2026	2FE	
25755T-AD-2	DPABS 151 A21 - ABS		01/25/2018	Paydown	1,250	1,250	1,250	1,262	1,250	0	(12)	0	(12)	0	1,250	0	0	0	0	10/25/2045	3AM	
28415P-AA-2	EHGT 16A A - ABS		03/25/2018	Paydown	22,306	22,306	22,306	22,306	22,306	0	0	0	0	0	22,306	0	0	0	48	04/25/2028	1FE	
302570-AX-4	NEXTERA ENERGY CAPITAL HOLDINGS INC		03/21/2018	JP MORGAN SECURITIES LLC	244,375	250,000	250,000	218,125	218,728	0	140	0	140	0	218,868	0	25,507	25,507	2,557	06/15/2067	2FE	
34417M-AB-3	FOCUS 171 A22 - ABS		01/30/2018	Paydown	1,250	1,250	1,250	1,258	1,257	0	(7)	0	(7)	0	1,250	0	0	0	0	04/30/2047	3AM	
432837-AA-0	HGVT 13A NTS - ABS		03/25/2018	Paydown	32,290	32,290	32,290	32,290	32,234	0	570	0	570	0	32,290	0	0	0	61	01/26/2026	1FE	
46616Y-AA-2	HENDR 122 A - ABS		03/15/2018	Paydown	5,482	5,482	5,482	5,776	5,789	0	(307)	0	(307)	0	5,482	0	0	0	18	10/15/2059	1FE	
47760Q-AB-9	JIMMY 171 211 - ABS		01/30/2018	Paydown	1,252	1,252	1,252	1,252	1,252	0	(2)	0	(2)	0	1,250	0	0	0	0	07/30/2047	3AM	
582839-AH-9	MEAD JOHNSON NUTRITION CO	C	01/19/2018	BANC / AMERICA SECUR. LLC, MONT.	197,592	189,000	189,000	202,952	202,236	0	(94)	0	(94)	0	202,142	0	(4,550)	(4,550)	1,473	11/15/2025	1FE	
693456-AN-5	PMTLT 13J1 B1 - CMO/RMBS		03/01/2018	Paydown	4,462	4,462	4,462	4,467	4,467	0	(5)	0	(5)	0	4,462	0	0	0	13	09/25/2043	1FM	
74160M-GL-0	PRIME 051 1A3 - CMO/RMBS		01/24/2018	Call @ 100.0	3,000	3,000	3,000	3,000	3,000	0	0	0	0	0	3,000	0	0	0	0	03/25/2035	1FM	
744320-AM-4	PRUDENTIAL FINANCIAL INC		02/01/2018	VARIOUS	326,024	300,000	300,000	315,750	311,297	0	(157)	0	(157)	0	311,140	0	14,884	14,884	2,185	06/15/2043	2FE	
81733Y-EC-9	SEMT 152 B1 - CMO/RMBS		03/01/2018	Paydown	3,243	3,243	3,243	3,348	3,333	0	(90)	0	(90)	0	3,243	0	0	0	10	05/25/2045	1FM	
81745B-AN-5	SEQUOIA MORTGAGE TRUST 2013-6 - CMO		03/01/2018	Paydown	7,388	7,388	7,388	7,362	7,363	0	25	0	25	0	7,388	0	0	0	29	05/25/2043	1FM	
82620K-AS-2	SIEMENS FINANCIERINGSMAATSCHAPPIJ NV	C	03/09/2018	Fifth Third Bank Sec	393,960	400,000	400,000	399,576	399,620	0	11	0	11	0	399,631	0	(5,671)	(5,671)	6,146	03/16/2024	1FE	
82652W-AA-6	SRFC 162 A - ABS		03/20/2018	Paydown	20,338	20,338	20,338	20,334	20,331	0	6	0	6	0	20,338	0	0	0	38	07/20/2033	1FE	
85022W-AA-2	SCFT 16A A - ABS		03/25/2018	Paydown	27,333	27,333	27,333	27,332	27,332	0	1	0	1	0	27,333	0	0	0	71	11/25/2023	1FE	
87266H-AA-6	TRUPS FINANCIALS NOTE SECURITIZATION 201	C	01/02/2018	Paydown	26,429	26,429	26,429	23,720	25,320	0	1,109	0	1,109	0	26,429	0	0	0	0	01/20/2038	1FE	
909319-AA-3	UNITED AIRLINES INC		02/15/2018	Paydown	8,721	8,721	8,721	9,000	8,940	0	(219)	0	(219)	0	8,721	0	0	0	188	02/15/2027	1FE	
909320-AA-4	UNITED AIRLINES INC		03/03/2018	Paydown	14,002	14,002	14,002	14,000	14,025	0	(23)	0	(23)	0	14,002	0	0	0	0	03/03/2028	1FE	
96033C-AA-0	WESTR 161 A - ABS		03/01/2018	Paydown	23,329	23,329	23,329	23,246	23,255	0	74	0	74	0	23,329	0	0	0	70	12/20/2028	1FE	
3899999	Subtotal - Bonds - Industrial and Miscellaneous (Unaffiliated)					2,612,185	2,568,349	2,610,887	2,588,191	0	(5,668)	0	(5,668)	0	2,582,009	0	22,327	22,327	31,357	XXX	XXX	
8399997	Total - Bonds - Part 4					2,814,162	2,770,326	2,824,790	2,791,400	0	(6,567)	0	(6,567)	0	2,784,319	0	21,994	21,994	36,000	XXX	XXX	
8399998	Total - Bonds - Part 5					XXX	XXX	XXX	XXX	XXX	XXX	XXX	XXX	XXX	XXX	XXX	XXX	XXX	XXX	XXX	XXX	XXX
8399999	Total - Bonds					2,814,162	2,770,326	2,824,790	2,791,400	0	(6,567)	0	(6,567)	0	2,784,319	0	21,994	21,994	36,000	XXX	XXX	
29364W-10-8	ENTERGY LOUISIANA LLC		03/19/2018	Cantor Fitzgerald	9,443,000	230,876	230,876	0	200,317	0	0	0	0	0	200,317	0	30,559	30,559	2,877		RP1LFE	
369604-BQ-5	GENERAL ELECTRIC CO		03/12/2018	GOLDMAN SACHS & CO, NY	300,000,000	300,858	300,858	0	298,833	0	0	0	0	0	298,833	0	2,025	2,025	0		P2WFE	
8499999	Subtotal - Preferred Stocks - Industrial and Miscellaneous (Unaffiliated)					531,734	XXX	499,150	499,150	0	0	0	0	0	499,150	0	32,584	32,584	2,877	XXX	XXX	
8999997	Total - Preferred Stocks - Part 4					531,734	XXX	499,150	499,150	0	0	0	0	0	499,150	0	32,584	32,584	2,877	XXX	XXX	
8999998	Total - Preferred Stocks - Part 5					XXX	XXX	XXX	XXX	XXX	XXX	XXX	XXX	XXX	XXX	XXX	XXX	XXX	XXX	XXX	XXX	XXX
8999999	Total - Preferred Stocks					531,734	XXX	499,150	499,150	0	0	0	0	0	499,150	0	32,584	32,584	2,877	XXX	XXX	
9799997	Total - Common Stocks - Part 4					0	XXX	0	0	0	0	0	0	0	0	0	0	0	0	0	XXX	XXX
9799998	Total - Common Stocks - Part 5					XXX	XXX	XXX	XXX	XXX	XXX	XXX	XXX	XXX	XXX	XXX	XXX	XXX	XXX	XXX	XXX	XXX
9799999	Total - Common Stocks					0	XXX	0	0	0	0	0	0	0	0	0	0	0	0	0	XXX	XXX
9899999	Total - Preferred and Common Stocks					531,734	XXX	499,150	499,150	0	0	0	0	0	499,150	0	32,584	32,584	2,877	XXX	XXX	
9999999	Totals					3,345,897	XXX	3,323,941	3,290,550	0	(6,567)	0	(6,567)	0	3,283,470	0	54,578	54,578	38,877	XXX	XXX	

(a) For all common stock bearing the NAIC market indicator "U" provide: the number of such issues.....

Schedule DB - Part A - Section 1 - Options, Caps, Floors, Collars, Swaps and Forwards Open

NONE

Schedule DB - Part B - Section 1 - Futures Contracts Open

NONE

Schedule DB - Part B - Section 1B - Brokers with whom cash deposits have been made

NONE

Schedule DB - Part D - Section 1 - Counterparty Exposure for Derivative Instruments Open

NONE

Schedule DB - Part D-Section 2 - Collateral for Derivative Instruments Open - Pledged By

NONE

Schedule DB - Part D-Section 2 - Collateral for Derivative Instruments Open - Pledged To

NONE

Schedule DL - Part 1 - Reinvested Collateral Assets Owned

NONE

Schedule DL - Part 2 - Reinvested Collateral Assets Owned

NONE

