



# QUARTERLY STATEMENT

As of March 31, 2018  
of the Condition and Affairs of the

## HARLEYSVILLE LIFE INSURANCE COMPANY

NAIC Group Code..... 0140, 0140 (Current Period) (Prior Period)	NAIC Company Code..... 64327	Employer's ID Number..... 23-1580983
Organized under the Laws of OH	State of Domicile or Port of Entry OH	Country of Domicile US
Incorporated/Organized..... November 29, 1960		Commenced Business..... June 12, 1961
Statutory Home Office	ONE WEST NATIONWIDE BLVD. .. COLUMBUS..OH..US..43215-2220 (Street and Number) (City or Town, State, Country and Zip Code)	
Main Administrative Office	355 MAPLE AVENUE .. HARLEYSVILLE..PA..US..19438-2297 (Street and Number) (City or Town, State, Country and Zip Code)	215-256-5000 (Area Code) (Telephone Number)
Mail Address	ONE WEST NATIONWIDE BLVD., 1-04-701..COLUMBUS..OH..US .. 43215-2220 (Street and Number or P. O. Box) (City or Town, State, Country and Zip Code)	
Primary Location of Books and Records	ONE WEST NATIONWIDE BLVD., 1-04-701..COLUMBUS..OH..US .. 43215-2220 (Street and Number) (City or Town, State, Country and Zip Code)	614-249-1545 (Area Code) (Telephone Number)
Internet Web Site Address	WWW.HARLEYSVILLEGROUP.COM	
Statutory Statement Contact	RONALD S. PORTER (Name)	614-249-1545 (Area Code) (Telephone Number) (Extension)
	STATACT@NATIONWIDE.COM (E-Mail Address)	877-669-5908 (Fax Number)

### OFFICERS

Name	Title	Name	Title
1. ERIC SHAWN HENDERSON	PRESIDENT	2. ROBERT WILLIAM HORNER III	VP & SECRETARY
3. HOLLY RENEE SNYDER	VP & TREASURER		

### OTHER

PAMELA ANN BIESECKER	SVP-HEAD OF TAXATION	MICHAEL ALOYSIUS BOYD #	SVP-MARKT SERV
PETER ANTHONY GOLATO	SVP-NW FIN NETWORK	HARRY HANSEN HALLOWELL	SVP-CIO

### DIRECTORS OR TRUSTEES

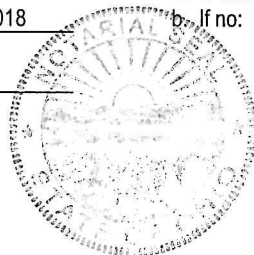
MARK ALLEN BERVEN	JOHN LAUGHLIN CARTER	TIMOTHY GERARD FROMMEYER	PETER ANTHONY GOLATO
ERIC SHAWN HENDERSON	STEVEN CHARLES POWER	APRIL LEE VANDERVORT	KIRT ALAN WALKER

State of..... OHIO  
County of..... FRANKLIN

The officers of this reporting entity being duly sworn, each depose and say that they are the described officers of said reporting entity, and that on the reporting period stated above, all of the herein described assets were the absolute property of the said reporting entity, free and clear from any liens or claims thereon, except as herein stated, and that this statement, together with related exhibits, schedules and explanations therein contained, annexed or referred to, is a full and true statement of all the assets and liabilities and of the condition and affairs of the said reporting entity as of the reporting period stated above, and of its income and deductions therefrom for the period ended, and have been completed in accordance with the NAIC Annual Statement Instructions and Accounting Practices and Procedures manual except to the extent that: (1) state law may differ; or, (2) that state rules or regulations require differences in reporting not related to accounting practices and procedures, according to the best of their information, knowledge and belief, respectively. Furthermore, the scope of this attestation by the described officers also includes the related corresponding electronic filing with the NAIC, when required, that is an exact copy (except for formatting differences due to electronic filing) of the enclosed statement. The electronic filing may be requested by various regulators in lieu of or in addition to the enclosed statement.

ERIC SHAWN HENDERSON 1. (Printed Name)	ROBERT WILLIAM HORNER III 2. (Printed Name)	HOLLY RENEE SNYDER 3. (Printed Name)
PRESIDENT (Title)	VP & SECRETARY (Title)	VP & TREASURER (Title)

Subscribed and sworn to before me  
This 15 day of May 2018



a. Is this an original filing? Yes [ X ] No [ ]  
b. If no:  
1. State the amendment number \_\_\_\_\_  
2. Date filed \_\_\_\_\_  
3. Number of pages attached \_\_\_\_\_

Notary Public, State of Ohio  
My Commission Expires  
April 22, 2020

**ASSETS**

	Current Statement Date			4 December 31 Prior Year Net Admitted Assets
	1 Assets	2 Nonadmitted Assets	3 Net Admitted Assets (Cols. 1 - 2)	
1. Bonds.....	369,126,203		369,126,203	369,570,179
2. Stocks:				
2.1 Preferred stocks.....			0	
2.2 Common stocks.....			0	
3. Mortgage loans on real estate:				
3.1 First liens.....			0	
3.2 Other than first liens.....			0	
4. Real estate:				
4.1 Properties occupied by the company (less \$.....0 encumbrances).....			0	
4.2 Properties held for the production of income (less \$.....0 encumbrances).....			0	
4.3 Properties held for sale (less \$.....0 encumbrances).....			0	
5. Cash (\$.....(550,333)), cash equivalents (\$.....0) and short-term investments (\$.....15,651,936).....	15,101,603		15,101,603	15,424,342
6. Contract loans (including \$.....0 premium notes).....	5,740,638	26,047	5,714,591	5,706,962
7. Derivatives.....			0	
8. Other invested assets.....			0	
9. Receivables for securities.....			0	
10. Securities lending reinvested collateral assets.....			0	
11. Aggregate write-ins for invested assets.....	0	0	0	0
12. Subtotals, cash and invested assets (Lines 1 to 11).....	389,968,444	26,047	389,942,397	390,701,483
13. Title plants less \$.....0 charged off (for Title insurers only).....			0	
14. Investment income due and accrued.....	4,147,464		4,147,464	4,064,563
15. Premiums and considerations:				
15.1 Uncollected premiums and agents' balances in the course of collection.....	259,408	8,064	251,344	314,660
15.2 Deferred premiums, agents' balances and installments booked but deferred and not yet due (including \$.....0 earned but unbilled premiums).....	5,497,723		5,497,723	5,999,304
15.3 Accrued retrospective premiums (\$.....0) and contracts subject to redetermination (\$.....0).....			0	
16. Reinsurance:				
16.1 Amounts recoverable from reinsurers.....	998,793		998,793	974,014
16.2 Funds held by or deposited with reinsured companies.....			0	
16.3 Other amounts receivable under reinsurance contracts.....			0	
17. Amounts receivable relating to uninsured plans.....			0	
18.1 Current federal and foreign income tax recoverable and interest thereon.....	474,645		474,645	147,487
18.2 Net deferred tax asset.....	5,453,354	3,554,289	1,899,065	1,961,649
19. Guaranty funds receivable or on deposit.....			0	
20. Electronic data processing equipment and software.....			0	
21. Furniture and equipment, including health care delivery assets (\$.....0).....			0	
22. Net adjustment in assets and liabilities due to foreign exchange rates.....			0	
23. Receivables from parent, subsidiaries and affiliates.....	1,953,756		1,953,756	2,350,290
24. Health care (\$.....0) and other amounts receivable.....			0	
25. Aggregate write-ins for other than invested assets.....	57,833	54,218	3,615	3,613
26. Total assets excluding Separate Accounts, Segregated Accounts and Protected Cell Accounts (Lines 12 through 25).....	408,811,420	3,642,618	405,168,802	406,517,063
27. From Separate Accounts, Segregated Accounts and Protected Cell Accounts.....			0	
28. Total (Lines 26 and 27).....	408,811,420	3,642,618	405,168,802	406,517,063

**DETAILS OF WRITE-INS**

1101.....			0	
1102.....			0	
1103.....			0	
1198. Summary of remaining write-ins for Line 11 from overflow page.....	0	0	0	0
1199. Totals (Lines 1101 thru 1103 plus 1198) (Line 11 above).....	0	0	0	0
2501. Other assets.....	21,794	18,179	3,615	3,613
2502. Disallowed interest maintenance reserve.....	36,039	36,039	0	
2503.....			0	
2598. Summary of remaining write-ins for Line 25 from overflow page.....	0	0	0	0
2599. Totals (Lines 2501 thru 2503 plus 2598) (Line 25 above).....	57,833	54,218	3,615	3,613

**LIABILITIES, SURPLUS AND OTHER FUNDS**

	1 Current Statement Date	2 December 31 Prior Year
1. Aggregate reserve for life contracts \$.....344,411,633 less \$.....0 included in Line 6.3 (including \$.....0 Modco Reserve).....	344,411,633	346,747,977
2. Aggregate reserve for accident and health contracts (including \$.....0 Modco Reserve).....	4,562,535	4,980,842
3. Liability for deposit-type contracts (including \$.....0 Modco Reserve).....	410,958	438,931
4. Contract claims:		
4.1 Life.....	2,600,909	2,860,358
4.2 Accident and health.....		
5. Policyholders' dividends \$.....0 and coupons \$.....0 due and unpaid.....		
6. Provision for policyholders' dividends and coupons payable in following calendar year - estimated amounts:		
6.1 Dividends apportioned for payment (including \$.....0 Modco).....		
6.2 Dividends not yet apportioned (including \$.....0 Modco).....		
6.3 Coupons and similar benefits (including \$.....0 Modco).....		
7. Amount provisionally held for deferred dividend policies not included in Line 6.....		
8. Premiums and annuity considerations for life and accident and health contracts received in advance less \$.....0 discount; including \$.....0 accident and health premiums.....	262,950	176,445
9. Contract liabilities not included elsewhere:		
9.1 Surrender values on canceled contracts.....		
9.2 Provision for experience rating refunds, including the liability of \$.....0 accident and health experience rating refunds of which \$.....0 is for medical loss ratio rebate per the Public Health Service Act.....		
9.3 Other amounts payable on reinsurance, including \$.....0 assumed and \$.....1,016,447 ceded.....	1,016,447	1,829,470
9.4 Interest Maintenance Reserve.....		
10. Commissions to agents due or accrued - life and annuity contracts \$.....11,482, accident and health \$.....0 and deposit-type contract funds \$.....0.....	11,482	9,974
11. Commissions and expense allowances payable on reinsurance assumed.....		
12. General expenses due or accrued.....		
13. Transfers to Separate Accounts due or accrued (net) (including \$.....0 accrued for expense allowances recognized in reserves, net of reinsured allowances).....		
14. Taxes, licenses and fees due or accrued, excluding federal income taxes.....	345,166	503,903
15.1 Current federal and foreign income taxes, including \$.....0 on realized capital gains (losses).....		
15.2 Net deferred tax liability.....		
16. Unearned investment income.....		
17. Amounts withheld or retained by company as agent or trustee.....		
18. Amounts held for agents' account, including \$.....0 agents' credit balances.....		
19. Remittances and items not allocated.....	64,012	86,200
20. Net adjustment in assets and liabilities due to foreign exchange rates.....		
21. Liability for benefits for employees and agents if not included above.....		
22. Borrowed money \$.....0 and interest thereon \$.....0.....		
23. Dividends to stockholders declared and unpaid.....		
24. Miscellaneous liabilities:		
24.01 Asset valuation reserve.....	2,184,623	2,110,177
24.02 Reinsurance in unauthorized and certified (\$.....0) companies.....		
24.03 Funds held under reinsurance treaties with unauthorized and certified (\$.....0) reinsurers.....		
24.04 Payable to parent, subsidiaries and affiliates.....	10	10
24.05 Drafts outstanding.....		
24.06 Liability for amounts held under uninsured plans.....		
24.07 Funds held under coinsurance.....		
24.08 Derivatives.....		
24.09 Payable for securities.....	979,166	
24.10 Payable for securities lending.....		
24.11 Capital notes \$.....0 and interest thereon \$.....0.....		
25. Aggregate write-ins for liabilities.....	81,023	101,588
26. Total liabilities excluding Separate Accounts business (Lines 1 to 25).....	356,930,914	359,845,875
27. From Separate Accounts statement.....		
28. Total liabilities (Lines 26 and 27).....	356,930,914	359,845,875
29. Common capital stock.....	1,530,000	1,530,000
30. Preferred capital stock.....		
31. Aggregate write-ins for other-than-special surplus funds.....	0	0
32. Surplus notes.....		
33. Gross paid in and contributed surplus.....	26,842,056	26,842,056
34. Aggregate write-ins for special surplus funds.....	240,779	240,779
35. Unassigned funds (surplus).....	19,625,053	18,058,353
36. Less treasury stock, at cost:		
36.1 .....0.000 shares common (value included in Line 29 \$.....0).....		
36.2 .....0.000 shares preferred (value included in Line 30 \$.....0).....		
37. Surplus (Total Lines 31 + 32 + 33 + 34 + 35 - 36) (including \$.....0 in Separate Accounts Statement).....	46,707,888	45,141,188
38. Totals of Lines 29, 30 and 37.....	48,237,888	46,671,188
39. Totals of Lines 28 and 38 (Page 2, Line 28, Col. 3).....	405,168,802	406,517,063

**DETAILS OF WRITE-INS**

2501. Liability for premium and other deposit funds.....	2,062	2,062
2502. Reserve for escheat funds.....	78,961	99,526
2503. ....		
2598. Summary of remaining write-ins for Line 25 from overflow page.....	0	0
2599. Totals (Lines 2501 thru 2503 plus 2598) (Line 25 above).....	81,023	101,588
3101. ....		
3102. ....		
3103. ....		
3198. Summary of remaining write-ins for Line 31 from overflow page.....	0	0
3199. Totals (Lines 3101 thru 3103 plus 3198) (Line 31 above).....	0	0
3401. Group contingency reserve.....	121,423	121,423
3402. Group stop-loss reserve.....	119,356	119,356
3403. ....		
3498. Summary of remaining write-ins for Line 34 from overflow page.....	0	0
3499. Totals (Lines 3401 thru 3403 plus 3498) (Line 34 above).....	240,779	240,779

## SUMMARY OF OPERATIONS

	1 Current Year to Date	2 Prior Year to Date	3 Prior Year Ended December 31
1. Premiums and annuity considerations for life and accident and health contracts.....	3,606,684	4,570,496	16,713,070
2. Considerations for supplementary contracts with life contingencies.....			
3. Net investment income.....	3,683,126	4,080,153	15,934,994
4. Amortization of Interest Maintenance Reserve (IMR).....	(4,340)	(16,280)	(39,401)
5. Separate Accounts net gain from operations excluding unrealized gains or losses.....			
6. Commissions and expense allowances on reinsurance ceded.....	305,744	342,191	1,485,896
7. Reserve adjustments on reinsurance ceded.....			
8. Miscellaneous Income:			
8.1 Income from fees associated with investment management, administration and contract guarantees from Separate Accounts.....			
8.2 Charges and fees for deposit-type contracts.....			
8.3 Aggregate write-ins for miscellaneous income.....	0	0	4,677
9. Totals (Lines 1 to 8.3).....	7,591,214	8,976,560	34,099,236
10. Death benefits.....	2,524,384	2,391,541	10,966,743
11. Matured endowments (excluding guaranteed annual pure endowments).....			
12. Annuity benefits.....	622,812	1,356,959	3,345,992
13. Disability benefits and benefits under accident and health contracts.....	258,159	321,266	1,243,030
14. Coupons, guaranteed annual pure endowments and similar benefits.....			
15. Surrender benefits and withdrawals for life contracts.....	4,822,264	5,238,843	16,976,999
16. Group conversions.....			
17. Interest and adjustments on contract or deposit-type contract funds.....	5,115	337,994	24,860
18. Payments on supplementary contracts with life contingencies.....		5,826	
19. Increase in aggregate reserves for life and accident and health contracts.....	(2,754,651)	(2,508,782)	(6,178,898)
20. Totals (Lines 10 to 19).....	5,478,083	7,143,647	26,378,726
21. Commissions on premiums, annuity considerations and deposit-type contract funds (direct business only).....	142,468	146,696	568,264
22. Commissions and expense allowances on reinsurance assumed.....			
23. General insurance expenses.....	414,222	428,892	1,802,542
24. Insurance taxes, licenses and fees, excluding federal income taxes.....	186,226	227,682	845,639
25. Increase in loading on deferred and uncollected premiums.....			
26. Net transfers to or (from) Separate Accounts net of reinsurance.....			
27. Aggregate write-ins for deductions.....	0	0	0
28. Totals (Lines 20 to 27).....	6,220,999	7,946,917	29,595,171
29. Net gain from operations before dividends to policyholders and federal income taxes (Line 9 minus Line 28).....	1,370,215	1,029,643	4,504,065
30. Dividends to policyholders.....			
31. Net gain from operations after dividends to policyholders and before federal income taxes (Line 29 minus Line 30).....	1,370,215	1,029,643	4,504,065
32. Federal and foreign income taxes incurred (excluding tax on capital gains).....	(351,073)	79,797	1,287,665
33. Net gain from operations after dividends to policyholders and federal income taxes and before realized capital gains or (losses) (Line 31 minus Line 32).....	1,721,288	949,846	3,216,400
34. Net realized capital gains (losses) (excluding gains (losses) transferred to the IMR) less capital gains tax of \$.....23,824 (excluding taxes of \$.....91 transferred to the IMR).....	(23,824)	(55,911)	(181,126)
35. Net income (Line 33 plus Line 34).....	1,697,464	893,935	3,035,274

### CAPITAL AND SURPLUS ACCOUNT

36. Capital and surplus, December 31, prior year.....	46,671,188	44,242,622	44,242,622
37. Net income (Line 35).....	1,697,464	893,935	3,035,274
38. Change in net unrealized capital gains (losses) less capital gains tax of \$.....0.....			
39. Change in net unrealized foreign exchange capital gain (loss).....			
40. Change in net deferred income tax.....	(616,242)	(230,060)	(4,117,292)
41. Change in nonadmitted assets.....	559,924	171,233	3,671,495
42. Change in liability for reinsurance in unauthorized and certified companies.....			
43. Change in reserve on account of change in valuation basis, (increase) or decrease.....			
44. Change in asset valuation reserve.....	(74,446)	(66,912)	(160,911)
45. Change in treasury stock.....			
46. Surplus (contributed to) withdrawn from Separate Accounts during period.....			
47. Other changes in surplus in Separate Accounts Statement.....			
48. Change in surplus notes.....			
49. Cumulative effect of changes in accounting principles.....			
50. Capital changes:			
50.1 Paid in.....			
50.2 Transferred from surplus (Stock Dividend).....			
50.3 Transferred to surplus.....			
51. Surplus adjustment:			
51.1 Paid in.....			
51.2 Transferred to capital (Stock Dividend).....			
51.3 Transferred from capital.....			
51.4 Change in surplus as a result of reinsurance.....			
52. Dividends to stockholders.....			
53. Aggregate write-ins for gains and losses in surplus.....	0	0	0
54. Net change in capital and surplus (Lines 37 through 53).....	1,566,700	768,196	2,428,566
55. Capital and surplus as of statement date (Lines 36 + 54).....	48,237,888	45,010,818	46,671,188

### DETAILS OF WRITE-INS

08.301. Miscellaneous income.....			4,677
08.302. ....			
08.303. ....			
08.398. Summary of remaining write-ins for Line 8.3 from overflow page.....	0	0	0
08.399. Totals (Lines 08.301 thru 08.303 plus 08.398) (Line 8.3 above).....	0	0	4,677
2701. ....			
2702. ....			
2703. ....			
2798. Summary of remaining write-ins for Line 27 from overflow page.....	0	0	0
2799. Totals (Lines 2701 thru 2703 plus 2798) (Line 27 above).....	0	0	0
5301. ....			
5302. ....			
5303. ....			
5398. Summary of remaining write-ins for Line 53 from overflow page.....	0	0	0
5399. Totals (Lines 5301 thru 5303 plus 5398) (Line 53 above).....	0	0	0

## CASH FLOW

	1 Current Year to Date	2 Prior Year To Date	3 Prior Year Ended December 31
<b>CASH FROM OPERATIONS</b>			
1. Premiums collected net of reinsurance.....	4,260,063	5,301,473	17,010,297
2. Net investment income.....	3,678,508	4,022,817	15,857,463
3. Miscellaneous income.....	305,744	342,191	1,490,573
4. Total (Lines 1 through 3).....	8,244,315	9,666,481	34,358,333
5. Benefit and loss related payments.....	9,329,985	8,587,815	30,687,964
6. Net transfers to Separate Accounts, Segregated Accounts and Protected Cell Accounts.....			
7. Commissions, expenses paid and aggregate write-ins for deductions.....	900,145	771,536	3,092,020
8. Dividends paid to policyholders.....			
9. Federal and foreign income taxes paid (recovered) net of \$.....0 tax on capital gains (losses).....			1,750,000
10. Total (Lines 5 through 9).....	10,230,130	9,359,351	35,529,984
11. Net cash from operations (Line 4 minus Line 10).....	(1,985,815)	307,130	(1,171,651)
<b>CASH FROM INVESTMENTS</b>			
12. Proceeds from investments sold, matured or repaid:			
12.1 Bonds.....	12,338,517	17,911,510	53,246,236
12.2 Stocks.....			
12.3 Mortgage loans.....			
12.4 Real estate.....			
12.5 Other invested assets.....			
12.6 Net gains or (losses) on cash, cash equivalents and short-term investments.....			
12.7 Miscellaneous proceeds.....	979,166	7,976,960	
12.8 Total investment proceeds (Lines 12.1 to 12.7).....	13,317,683	25,888,470	53,246,236
13. Cost of investments acquired (long-term only):			
13.1 Bonds.....	11,972,394	17,934,220	47,351,657
13.2 Stocks.....			
13.3 Mortgage loans.....			
13.4 Real estate.....			
13.5 Other invested assets.....			
13.6 Miscellaneous applications.....			
13.7 Total investments acquired (Lines 13.1 to 13.6).....	11,972,394	17,934,220	47,351,657
14. Net increase or (decrease) in contract loans and premium notes.....	7,945	(76,104)	(180,664)
15. Net cash from investments (Line 12.8 minus Line 13.7 and Line 14).....	1,337,344	8,030,354	6,075,243
<b>CASH FROM FINANCING AND MISCELLANEOUS SOURCES</b>			
16. Cash provided (applied):			
16.1 Surplus notes, capital notes.....			
16.2 Capital and paid in surplus, less treasury stock.....			
16.3 Borrowed funds.....			
16.4 Net deposits on deposit-type contracts and other insurance liabilities.....	(27,973)	(40,541)	(159,708)
16.5 Dividends to stockholders.....			
16.6 Other cash provided (applied).....	353,705	4,764,619	5,315,854
17. Net cash from financing and miscellaneous sources (Lines 16.1 through 16.4 minus Line 16.5 plus Line 16.6).....	325,732	4,724,078	5,156,146
<b>RECONCILIATION OF CASH, CASH EQUIVALENTS AND SHORT-TERM INVESTMENTS</b>			
18. Net change in cash, cash equivalents and short-term investments (Line 11 plus Line 15 plus Line 17).....	(322,739)	13,061,562	10,059,738
19. Cash, cash equivalents and short-term investments:			
19.1 Beginning of year.....	15,424,342	5,364,604	5,364,604
19.2 End of period (Line 18 plus Line 19.1).....	15,101,603	18,426,166	15,424,342
<b>Note: Supplemental disclosures of cash flow information for non-cash transactions:</b>			
20.0001 Exchange of bond investment to bond investment.....	4,996,152		

**EXHIBIT 1**

**DIRECT PREMIUMS AND DEPOSIT-TYPE CONTRACTS**

	1 Current Year To Date	2 Prior Year To Date	3 Prior Year Ended December 31
1. Industrial life.....			
2. Ordinary life insurance.....	6,226,608	6,621,857	28,513,898
3. Ordinary individual annuities.....	641,979	1,466,802	3,560,709
4. Credit life (group and individual).....			
5. Group life insurance.....	12,984	13,338	52,847
6. Group annuities.....			
7. A&H - group.....			
8. A&H - credit (group and individual).....			
9. A&H - other.....	3,643	4,775	20,865
10. Aggregate of all other lines of business.....	0	0	0
11. Subtotal.....	6,885,214	8,106,772	32,148,319
12. Deposit-type contracts.....			
13. Total.....	6,885,214	8,106,772	32,148,319

**DETAILS OF WRITE-INS**

1001. ....			
1002. ....			
1003. ....			
1098. Summary of remaining write-ins for Line 10 from overflow page.....	0	0	0
1099. Total (Lines 1001 thru 1003 plus 1098) (Line 10 above).....	0	0	0

**NOTES TO THE FINANCIAL STATEMENTS****Note 1 – Summary of Significant Accounting Policies and Going Concern**

## A. Accounting Practices

The accompanying statutory financial statements of Harleysville Life Insurance Company (the Company) have been prepared in conformity with accounting practices prescribed or permitted by the National Association of Insurance Commissioners (NAIC) and the State of Ohio.

The Ohio Department of Insurance (Department) recognizes only statutory accounting practices (SAP) prescribed or permitted by the Department for determining and reporting the financial condition and results of operations of an insurance company, as well as, determining its solvency under the Ohio Insurance Law. The NAIC's *Accounting Practices and Procedures* manual (NAIC SAP) has been adopted as a component of prescribed or permitted practices by the State of Ohio. The Commissioner of Insurance has the right to permit other specific practices that deviate from prescribed practices. The Company has no statutory accounting practices that differ from NAIC SAP.

A reconciliation of the Company's net income and capital and surplus between NAIC SAP and practices prescribed and permitted by the State of Ohio is shown below:

	SSAP #	F/S Page	F/S Line #	2018	2017
<b>Net Income</b>					
Harleysville Life Insurance Company state basis (Page 4, Line 35, (1) Columns 1 & 3)	XXX	XXX	XXX	\$ 1,697,464	\$ 3,035,274
(2) State Prescribed Practice that is an increase/(decrease) from NAIC SAP				-	-
(3) State Permitted Practice that is an increase/(decrease) from NAIC SAP				-	-
(4) NAIC SAP (1-2-3=4)	XXX	XXX	XXX	<u>\$ 1,697,464</u>	<u>\$ 3,035,274</u>
<b>Surplus</b>					
Harleysville Life Insurance Company state basis (Page 3, Line 38, (5) Columns 1 & 2)	XXX	XXX	XXX	\$ 48,237,888	\$ 46,671,188
(6) State Prescribed Practice that is an increase/(decrease) from NAIC SAP				-	-
(7) State Permitted Practice that is an increase/(decrease) from NAIC SAP				-	-
(8) NAIC SAP (5-6-7=8)	XXX	XXX	XXX	<u>\$ 48,237,888</u>	<u>\$ 46,671,188</u>

## B. Use of Estimates in the Preparation of the Financial Statements

No significant changes from prior year end.

## C. Accounting Policies

No significant changes from prior year end.

(6) Loan-backed and structured securities (collectively, loan-backed securities) are stated at amortized cost or the lower of amortized cost or fair value in accordance with the provisions of Statement of Statutory Accounting Principles (SSAP) No. 43-*Revised and the Purposes and Procedures Manual* of the NAIC Securities Valuation Office. The retrospective adjustment method is used to value loan-backed securities where the collection of all contractual cash flows is probable. For all other loan-backed securities, the Company uses the prospective adjustment method. Refer to Note 5(D) for a discussion of the other-than-temporary impairment policy for loan-backed securities.

## D. Going Concern

Not applicable.

**Note 2 - Accounting Changes and Corrections of Errors**

Not applicable.

**Note 3 - Business Combinations and Goodwill**

Not applicable.

**Note 4 – Discontinued Operations**

Not applicable.

**Note 5 – Investments**

## A. Mortgage Loans

Not applicable.

## B. Troubled Debt Restructuring

Not applicable.

## C. Reverse Mortgages

Not applicable.

## D. Loan-Backed Securities

1. Prepayment assumptions are generally obtained using a model provided by a third-party vendor.

2. Not applicable.

3. Not applicable.

**NOTES TO THE FINANCIAL STATEMENTS**

4. All impaired securities (fair value is less than cost or amortized cost) for which an other-than-temporary impairment has not been recognized in earnings as a realized loss (including securities with a recognized other-than-temporary impairment for non-interest related declines when a non-recognized interest related impairment remains):

a. The aggregate amount of unrealized losses:

1. Less than 12 Months	\$	<u>(22,730)</u>
2. 12 Months or Longer	\$	<u>(141,172)</u>

b. The aggregate related fair value of securities with unrealized losses:

1. Less than 12 Months	\$	<u>1,807,929</u>
2. 12 Months or Longer	\$	<u>3,093,580</u>

5. The Company reviews all loan-backed and structured securities in which the fair value of the given security is less than the amortized cost to determine if a given security is other-than-temporarily impaired. The Company examines characteristics of the underlying collateral, such as delinquency and default rates, the quality of the underlying borrower, the type of collateral in the pool, the vintage year of the collateral, subordination levels within the structure of the collateral pool, and the quality of any credit guarantors, to determine the cash flows expected to be received for the security.

If the severity and duration of the security's unrealized loss indicates a risk of an other-than-temporary impairment, then the Company will evaluate if the amortized cost basis of the security will be recovered by comparing the present value of the cash flows expected to be received for the given security with the amortized cost basis of the security. If the present value of cash flows is greater than the amortized cost basis of a security then the security is deemed not to be other-than-temporarily impaired.

E. Dollar Repurchase Agreements and/or Securities Lending Transactions

Not applicable.

3. Collateral Received

b. Not applicable.

F. Repurchase Agreements Transactions Accounted for as Secured Borrowing

Not applicable.

G. Reverse Repurchase Agreements Transactions Accounted for as Secured Borrowing

Not applicable.

H. Repurchase Agreements Transactions Accounted for as a Sale

Not applicable.

I. Reverse Repurchase Agreements Transactions Accounted for as a Sale

Not applicable.

J. Real Estate

Not applicable.

K. Low-Income Housing Tax Credits

Not applicable.

L. Restricted Assets

No significant changes from prior year end.

M. Working Capital Finance Investments

Not applicable.

N. Offsetting and Netting of Assets and Liabilities

No assets or liabilities are offset and reported net in accordance with a valid right to offset per SSAP No 64, *Offsetting and Netting of Assets and Liabilities*.

O. Structured Notes

Not applicable.

P. 5\* Securities

Not applicable.

Q. Short Sales

Not applicable.

R. Prepayment Penalty and Acceleration Fees

No significant changes from prior year end.

**Note 6 - Joint Ventures, Partnerships and Limited Liability Companies**

Not applicable.

**Note 7 - Investment Income**

No significant changes from prior year end.

## NOTES TO THE FINANCIAL STATEMENTS

### **Note 8 - Derivative Instruments**

Not applicable.

### **Note 9 - Income Taxes**

No significant changes from prior year end, except the following.

Effective January 1, 2018, the Tax Cuts and Jobs Act ("the Act") reduced the corporate tax rate from 35% to 21%. As noted in the Company's 2017 annual statement, the Company remeasured deferred tax assets and liabilities as of December 31, 2017. No significant adjustments were made during the quarter related to the Act.

### **Note 10 - Information Concerning Parent, Subsidiaries, Affiliates and Other Related Parties**

No significant changes from prior year end, except the following.

Effective February 19, 2018, the Company entered into an agreement with Nationwide Cash Management Company (NCCM) a subsidiary of Nationwide Mutual Insurance Company, under which NCCM acts as a common agent in handling the purchases and sales of short-term investments for the respective accounts of the participants. The amount on deposit with NCCM was \$15,651,936 as of March 31, 2018.

### **Note 11 - Debt**

Not applicable.

### **Note 12 - Retirement Plans, Deferred Compensation, Postemployment Benefits and Compensated Absences and Other Postretirement Benefit Plans**

Not applicable.

### **Note 13 - Capital and Surplus, Shareholders' Dividend Restrictions and Quasi-Reorganizations**

No significant changes from prior year end.

### **Note 14 - Liabilities, Contingencies and Assessments**

No significant changes from prior year end.

### **Note 15 - Leases**

Not applicable.

### **Note 16 - Information About Financial Instruments With Off-Balance Sheet Risk And Financial Instruments With Concentrations of Credit Risk**

Not applicable.

### **Note 17 - Sale, Transfer and Servicing of Financial Assets and Extinguishments of Liabilities**

A. Transfers of Receivables Reported as Sales

Not applicable.

B. Transfers and Servicing of Financial Assets

Not applicable.

C. Wash Sales

Not applicable.

### **Note 18 - Gain or Loss to the Reporting Entity from Uninsured Plans and the Uninsured Portion of Partially Insured Plans**

Not applicable.

### **Note 19 - Direct Premium Written/Produced by Managing General Agents/Third Party Administrators**

Not applicable.

### **Note 20 - Fair Value Measurements**

A. Fair value is defined as the price that would be received to sell an asset or paid to transfer a liability in an orderly transaction between market participants at the measurement date. Fair value measurements are based upon observable and unobservable inputs. Observable inputs reflect market data obtained from independent sources while unobservable inputs reflect the Company's view of market assumptions in the absence of observable market information. The Company utilizes valuation techniques that maximize the use of observable inputs and minimize the use of unobservable inputs. In determining fair value, the Company uses various methods including market, income and cost approaches.

The Company categorizes its financial instruments into a three-level hierarchy based on the priority of the inputs to the valuation technique. The fair value hierarchy gives the highest priority to quoted prices in active markets for identical assets or liabilities (Level 1) and the lowest priority to unobservable inputs (Level 3). If the inputs used to measure fair value fall within different levels of the hierarchy, the category level is based on the lowest priority level input that is significant to the fair value measurement of the instrument in its entirety.

The Company categorizes assets and liabilities held at fair value in the statutory statements of assets and liabilities, surplus and other funds as follows:

*Level 1.* Unadjusted quoted prices accessible in active markets for identical assets or liabilities at the measurement date and mutual funds where the value per share (unit) is determined and published daily and is the basis for current transactions.

## NOTES TO THE FINANCIAL STATEMENTS

*Level 2.* Unadjusted quoted prices for similar assets or liabilities in active markets or inputs (other than quoted prices) that are observable or that are derived principally from or corroborated by observable market data through correlation or other means. Primary inputs to this valuation technique may include comparative trades, bid/asks, interest rate movements, U.S. Treasury rates, London Interbank Offered Rate, prime rates, cash flows, maturity dates, call ability, estimated prepayments and/or underlying collateral values.

*Level 3.* Prices or valuation techniques that require inputs that are both unobservable and significant to the overall fair value measurement. Inputs reflect management's best estimates of the assumptions market participants would use at the measurement date in pricing the asset or liability. Consideration is given to the risk inherent in both the method of valuation and the valuation inputs. Primary inputs to this valuation technique include broker quotes and comparative trades.

The Company reviews its fair value hierarchy classifications for assets and liabilities quarterly. Changes in observability of significant valuation inputs identified during these reviews may trigger reclassifications. Reclassifications are reported as transfers at the beginning of the period in which the change occurs.

Independent pricing services are most often utilized to determine the fair value of bonds and stocks for which market quotations or quotations on comparable securities are available. For these bonds and stocks, the Company obtains the pricing services' methodologies, pricing from additional sources, inputs and assumptions and classifies the investments accordingly in the fair value hierarchy.

A corporate pricing matrix is used in valuing certain corporate bonds. The corporate pricing matrix was developed using publicly available spreads for privately placed corporate securities with varying weighted average lives and credit quality ratings. The weighted average life and credit quality rating of a particular bond to be priced using the corporate pricing matrix are important inputs into the model and are used to determine a corresponding spread that is added to the appropriate U.S. Treasury yield to create an estimated market yield for that bond. The estimated market yield and other relevant factors are then used to estimate the fair value of the particular bond.

Non-binding broker quotes are also utilized to determine the fair value of certain bonds when deemed appropriate or when quotes are not available from independent pricing services or a corporate pricing matrix. These bonds are classified with the lowest priority in the fair value hierarchy as only one broker quote is ordinarily obtained, the investment is not traded on an exchange, the pricing is not available to other entities and/or the transaction volume in the same or similar investments has decreased. Inputs used in the development of prices are not provided to the Company by the brokers as the brokers often do not provide the necessary transparency into their quotes and methodologies. At least annually, the Company performs reviews and tests to ensure that quotes are a reasonable estimate of the investments' fair value. Price movements of broker quotes are subject to validation and require approval from the Company's management. Management uses its knowledge of the investment and current market conditions to determine if the price is indicative of the investment's fair value.

The Company carries short-term investments at amortized cost, which approximates fair value.

No assets or liabilities were held at fair value as of March 31, 2018.

B. & C. The following table summarizes the carrying value and fair value of the Company's assets not held at fair value as of March 31, 2018:

	Aggregate Fair Value	Admitted Assets	Level 1	Level 2	Level 3	Not Practicable (Carrying Value)
<b>Assets</b>						
Bonds	\$370,197,174	\$369,126,203	\$9,977,493	\$360,219,681	\$-	\$-
Short-term investments	15,651,936	15,651,936	-	15,651,936	-	-
Policy loans	5,714,591	5,714,591	-	-	5,714,591	-
<b>Total Assets</b>	<b>\$391,563,701</b>	<b>\$390,492,730</b>	<b>\$9,977,493</b>	<b>\$375,871,617</b>	<b>\$5,714,591</b>	<b>\$-</b>

D. Not Practicable to Estimate Fair Value

Not applicable.

### **Note 21 - Other Items**

No significant changes from prior year end.

### **Note 22 - Events Subsequent**

Type I – Recognized Subsequent Events:

Subsequent events have been considered through May 11, 2018 for the statutory statement issued on May 14, 2018.

There were no Type I material events occurring subsequent to the end of the period that merited recognition or disclosure in these statements that have not already been reflected as required.

Type II – Nonrecognized Subsequent Events:

Subsequent events have been considered through May 11, 2018 for the statutory statement issued on May 14, 2018.

There were no Type II material events occurring subsequent to the end of the period that merited disclosure in these statements that have not already been disclosed as required.

### **Note 23 - Reinsurance**

No significant changes from prior year end.

### **Note 24 - Retrospectively Rated Contracts and Contracts Subject to Redetermination**

Not applicable.

E. Risk Sharing Provisions of the Affordable Care Act

The Company does not have any accident and health insurance premiums that are subject to the Affordable Care Act risk sharing provisions.

### **Note 25 - Changes in Incurred Losses and Loss Adjustment Expenses**

No significant changes from prior year end.

## **NOTES TO THE FINANCIAL STATEMENTS**

### **Note 26 - Intercompany Pooling Arrangements**

Not applicable.

### **Note 27 - Structured Settlements**

Not applicable.

### **Note 28 - Health Care Receivables**

Not applicable.

### **Note 29 – Participating Policies**

Not applicable.

### **Note 30 - Premium Deficiency Reserves**

No significant changes from prior year end.

### **Note 31 – Reserves for Life Contracts and Annuity Contracts**

No significant changes from prior year end.

### **Note 32 - Analysis of Annuity Actuarial Reserves and Deposit Type Liabilities by Withdrawal Characteristics**

No significant changes from prior year end.

### **Note 33 - Premium and Annuity Considerations Deferred and Uncollected**

No significant changes from prior year end.

### **Note 34 – Separate Accounts**

Not applicable.

### **Note 35 – Loss/Claim Adjustment Expenses**

Not applicable.

# GENERAL INTERROGATORIES

## PART 1 - COMMON INTERROGATORIES

### GENERAL

- 1.1 Did the reporting entity experience any material transactions requiring the filing of Disclosure of Material Transactions with the State of Domicile, as required by the Model Act? Yes [ ] No [X]
- 1.2 If yes, has the report been filed with the domiciliary state? Yes [ ] No [ ]
- 2.1 Has any change been made during the year of this statement in the charter, by-laws, articles of incorporation, or deed of settlement of the reporting entity? Yes [ ] No [X]
- 2.2 If yes, date of change: \_\_\_\_\_
- 3.1 Is the reporting entity a member of an Insurance Holding Company System consisting of two or more affiliated persons, one or more of which is an insurer? Yes [X] No [ ]  
If yes, complete Schedule Y, Parts 1 and 1A.
- 3.2 Have there been any substantial changes in the organizational chart since the prior quarter end? Yes [ ] No [X]
- 3.3 If the response to 3.2 is yes, provide a brief description of those changes.
- 3.4 Is the reporting entity publicly traded or a member of a publicly traded group? Yes [ ] No [X]
- 3.5 If the response to 3.4 is yes, provide the CIK (Central Index Key) code issued by the SEC for the entity/group.
- 4.1 Has the reporting entity been a party to a merger or consolidation during the period covered by this statement? Yes [ ] No [X]
- 4.2 If yes, provide name of entity, NAIC Company Code, and state of domicile (use two letter state abbreviation) for any entity that has ceased to exist as a result of the merger or consolidation.

1 Name of Entity	2 NAIC Company Code	3 State of Domicile

5. If the reporting entity is subject to a management agreement, including third-party administrator(s), managing general agent(s), attorney-in-fact, or similar agreement, have there been any significant changes regarding the terms of the agreement or principals involved? Yes [ ] No [ ] N/A [X]  
If yes, attach an explanation.
- 6.1 State as of what date the latest financial examination of the reporting entity was made or is being made. 12/31/2016
- 6.2 State the as of date that the latest financial examination report became available from either the state of domicile or the reporting entity. This date should be the date of the examined balance sheet and not the date the report was completed or released. 12/31/2013
- 6.3 State as of what date the latest financial examination report became available to other states or the public from either the state of domicile or the reporting entity. This is the release date or completion date of the examination report and not the date of the examination (balance sheet date). 06/24/2015
- 6.4 By what department or departments?  
PA
- 6.5 Have all financial statement adjustments within the latest financial examination report been accounted for in a subsequent financial statement filed with Departments? Yes [ ] No [ ] N/A [X]
- 6.6 Have all of the recommendations within the latest financial examination report been complied with? Yes [ ] No [ ] N/A [X]
- 7.1 Has this reporting entity had any Certificates of Authority, licenses or registrations (including corporate registration, if applicable) suspended or revoked by any governmental entity during the reporting period? Yes [ ] No [X]
- 7.2 If yes, give full information:
- 8.1 Is the company a subsidiary of a bank holding company regulated with the Federal Reserve Board? Yes [ ] No [X]
- 8.2 If response to 8.1 is yes, please identify the name of the bank holding company.

- 8.3 Is the company affiliated with one or more banks, thrifts or securities firms? Yes [X] No [ ]
- 8.4 If the response to 8.3 is yes, please provide below the names and location (city and state of the main office) of any affiliates regulated by a federal regulatory services agency [i.e. the Federal Reserve Board (FRB), the Office of the Comptroller of the Currency (OCC), the Federal Deposit Insurance Corporation (FDIC) and the Securities Exchange Commission (SEC)] and identify the affiliate's primary federal regulator].

1 Affiliate Name	2 Location (City, State)	3 FRB	4 OCC	5 FDIC	6 SEC
Nationwide Bank	Columbus, OH	NO	YES	NO	NO
Nationwide Mutual Insurance Company	Columbus, OH	YES	NO	NO	NO
Nationwide Mutual Fire Insurance Company	Columbus, OH	YES	NO	NO	NO
Nationwide Corporation	Columbus, OH	YES	NO	NO	NO
Nationwide Financial Services, Inc.	Columbus, OH	YES	NO	NO	NO
Nationwide Investment Services Corp	Columbus, OH	NO	NO	NO	YES
Nationwide Investment Advisors, LLC	Columbus, OH	NO	NO	NO	YES
Nationwide Securities, LLC	Columbus, OH	NO	NO	NO	YES
Nationwide Fund Advisors	Columbus, OH	NO	NO	NO	YES
Nationwide Fund Distributors, LLC	Columbus, OH	NO	NO	NO	YES
Nationwide Asset Management, LLC	Columbus, OH	NO	NO	NO	YES
Jefferson National Securities Corporation	Louisville, KY	NO	NO	NO	YES
JNF Advisors, Inc.	Louisville, KY	NO	NO	NO	YES

- 9.1 Are the senior officers (principal executive officer, principal financial officer, principal accounting officer or controller, or persons performing similar functions) of the reporting entity subject to a code of ethics, which includes the following standards? Yes [X] No [ ]
- (a) Honest and ethical conduct, including the ethical handling of actual or apparent conflicts of interest between personal and professional relationships;
- (b) Full, fair, accurate, timely and understandable disclosure in the periodic reports required to be filed by the reporting entity;
- (c) Compliance with applicable governmental laws, rules and regulations;
- (d) The prompt internal reporting of violations to an appropriate person or persons identified in the code; and

## GENERAL INTERROGATORIES

## PART 1 - COMMON INTERROGATORIES

(e) Accountability for adherence to the code.

9.11 If the response to 9.1 is No, please explain:

9.2 Has the code of ethics for senior managers been amended?

Yes [ ] No [ X ]

9.21 If the response to 9.2 is Yes, provide information related to amendment(s).

9.3 Have any provisions of the code of ethics been waived for any of the specified officers?

Yes [ ] No [ X ]

9.31 If the response to 9.3 is Yes, provide the nature of any waiver(s).

## FINANCIAL

10.1 Does the reporting entity report any amounts due from parent, subsidiaries or affiliates on Page 2 of this statement?

Yes [ X ] No [ ]

10.2 If yes, indicate any amounts receivable from parent included in the Page 2 amount:

\$ 1,952,426

## INVESTMENT

11.1 Were any of the stocks, bonds, or other assets of the reporting entity loaned, placed under option agreement, or otherwise made available for use by another person? (Exclude securities under securities lending agreements.)

Yes [ ] No [ X ]

11.2 If yes, give full and complete information relating thereto:

12. Amount of real estate and mortgages held in other invested assets in Schedule BA:

\$ 0

13. Amount of real estate and mortgages held in short-term investments:

\$ 0

14.1 Does the reporting entity have any investments in parent, subsidiaries and affiliates?

Yes [ ] No [ X ]

14.2 If yes, please complete the following:

14.21 Bonds

14.22 Preferred Stock

14.23 Common Stock

14.24 Short-Term Investments

14.25 Mortgage Loans on Real Estate

14.26 All Other

14.27 Total Investment in Parent, Subsidiaries and Affiliates (Subtotal Lines 14.21 to 14.26)

14.28 Total Investment in Parent included in Lines 14.21 to 14.26 above

	1 Prior Year End Book/Adjusted Carrying Value	2 Current Quarter Book/Adjusted Carrying Value
\$	0	\$ 0
	0	0
	0	0
	0	0
	0	0
	0	0
\$	0	\$ 0
\$	0	\$ 0

15.1 Has the reporting entity entered into any hedging transactions reported on Schedule DB?

Yes [ ] No [ X ]

15.2 If yes, has a comprehensive description of the hedging program been made available to the domiciliary state?

Yes [ ] No [ ]

If no, attach a description with this statement.

16. For the reporting entity's security lending program, state the amount of the following as of current statement date:

16.1 Total fair value of reinvested collateral assets reported on Schedule DL, Parts 1 and 2:

\$ 0

16.2 Total book adjusted/carrying value of reinvested collateral assets reported on Schedule DL, Parts 1 and 2:

\$ 0

16.3 Total payable for securities lending reported on the liability page:

\$ 0

17. Excluding items in Schedule E-Part 3-Special Deposits, real estate, mortgage loans and investments held physically in the reporting entity's offices, vaults or safety deposit boxes, were all stocks, bonds and other securities, owned throughout the current year held pursuant to a custodial agreement with a qualified bank or trust company in accordance with Section 1, III - General Examination Considerations, F. Outsourcing of Critical Functions, Custodial or Safekeeping Agreements of the NAIC *Financial Condition Examiners Handbook*?

Yes [ X ] No [ ]

17.1 For all agreements that comply with the requirements of the NAIC *Financial Condition Examiners Handbook*, complete the following:

1 Name of Custodian(s)	2 Custodian Address
The Bank of New York Mellon	1 Wall Street, New York, NY 10286

17.2 For all agreements that do not comply with the requirements of the NAIC *Financial Condition Examiners Handbook*, provide the name, location and a complete explanation:

1 Name(s)	2 Location(s)	3 Complete Explanation(s)

17.3 Have there been any changes, including name changes, in the custodian(s) identified in 17.1 during the current quarter?

Yes [ ] No [ X ]

17.4 If yes, give full and complete information relating thereto:

1 Old Custodian	2 New Custodian	3 Date of Change	4 Reason

17.5 Investment management – Identify all investment advisors, investment managers, broker/dealers, including individuals that have the authority to make investment decisions on behalf of the reporting entity. For assets that are managed internally by employees of the reporting entity, note as such ["...that have access to the investment accounts", "handle securities"].

1 Name of Firm or Individual	2 Affiliation
Members of the investment staff designated by the Chief Investment Officer as detailed in the Corporate Resolution	I

17.5097 For those firms/individuals listed in the table for Question 17.5, do any firms/individuals unaffiliated with the reporting entity (i.e., designated with a "U") manage more than 10% of the reporting entity's assets?

Yes [ ] No [ ]

**GENERAL INTERROGATORIES****PART 1 - COMMON INTERROGATORIES**

17.5098 For firms/individuals unaffiliated with the reporting entity (i.e., designated with a "U") listed in the table for Question 17.5, does the total assets under management aggregate to more than 50% of the reporting entity's assets? Yes [ ] No [ ]

17.6 For those firms or individuals listed in the table for 17.5 with an affiliation code of "A" (affiliated) or "U" (unaffiliated), provide the information for the table below.

1	2	3	4	5
Central Registration Depository Number	Name of Firm or Individual	Legal Entity Identifier (LEI)	Registered With	Investment Management Agreement (IMA) Filed

18.1 Have all the filing requirements of the *Purposes and Procedures Manual of the NAIC Investment Analysis Office* been followed? Yes [ X ] No [ ]

18.2 If no, list exceptions:

19. By self-designating 5\*GI securities, the reporting entity is certifying the following elements for each self-designated 5\*GI security:

- Documentation necessary to permit a full credit analysis of the security does not exist.
- Issuer or obligor is current on all contracted interest and principal payments.
- The insurer has an actual expectation of ultimate payment of all contracted interest and principal.

Has the reporting entity self-designated 5\*GI securities?

Yes [ ] No [ X ]

**GENERAL INTERROGATORIES (continued)**

**PART 2 - LIFE & HEALTH**

1.	Report the statement value of mortgage loans at the end of this reporting period for the following categories:		
1.1	Long-term mortgages in good standing	Amount	
1.11	Farm mortgages.....	\$.....	
1.12	Residential mortgages.....	\$.....	
1.13	Commercial mortgages.....	\$.....	
1.14	Total mortgages in good standing.....	\$.....	.0
1.2	Long-term mortgages in good standing with restructured terms		
1.21	Total mortgages in good standing with restructured terms.....	\$.....	
1.3	Long-term mortgage loans upon which interest is overdue more than three months		
1.31	Farm mortgages.....	\$.....	
1.32	Residential mortgages.....	\$.....	
1.33	Commercial mortgages.....	\$.....	
1.34	Total mortgages with interest overdue more than three months.....	\$.....	.0
1.4	Long-term mortgage loans in process of foreclosure		
1.41	Farm mortgages.....	\$.....	
1.42	Residential mortgages.....	\$.....	
1.43	Commercial mortgages.....	\$.....	
1.44	Total mortgages in process of foreclosure.....	\$.....	.0
1.5	Total mortgage loans (Lines 1.14 + 1.21 + 1.34 + 1.44) (Page 2, Column 3, Lines 3.1 + 3.2)	\$.....	.0
1.6	Long-term mortgages foreclosed, properties transferred to real estate in current quarter		
1.61	Farm mortgages.....	\$.....	
1.62	Residential mortgages.....	\$.....	
1.63	Commercial mortgages.....	\$.....	
1.64	Total mortgages foreclosed and transferred to real estate.....	\$.....	.0
2.	Operating Percentages:		
2.1	A&H loss percent.....	Not Meaningful.....	
2.2	A&H cost containment percent.....	.....	
2.3	A&H expense percent excluding cost containment expenses.....	Not Meaningful.....	
3.1	Do you act as a custodian for health savings accounts?.....	Yes [ ]	No [ X ]
3.2	If yes, please provide the amount of custodial funds held as of the reporting date.....	\$.....	
3.3	Do you act as an administrator for health savings accounts?.....	Yes [ ]	No [ X ]
3.4	If yes, please provide the balance of the funds administered as of the reporting date.....	\$.....	
4.	Is the reporting entity licensed or chartered, registered, qualified, eligible or writing business in at least two states?.....	Yes [ X ]	No [ ]
4.1	If no, does the reporting entity assume reinsurance business that covers risks residing in at least one state other than the state of domicile or the reporting entity?.....	Yes [ ]	No [ ]

**SCHEDULE S - CEDED REINSURANCE**

Showing All New Reinsurance Treaties - Current Year to Date

1 NAIC Company Code	2 ID Number	3 Effective Date	4 Name of Reinsurer	5 Domiciliary Jurisdiction	6 Type of Reinsurance Ceded	7 Type of Reinsurer	8 Certified Reinsurer Rating (1 through 6)	9 Effective Date of Certified Reinsurer Rating
------------------------------	----------------	------------------------	------------------------	----------------------------------	--------------------------------------	---------------------------	---	--

**NONE**

# HARLEYSVILLE LIFE INSURANCE COMPANY SCHEDULE T - PREMIUMS AND ANNUITY CONSIDERATIONS

Current Year to Date - Allocated by States and Territories

1	States, Etc.	Active Status (a)	Direct Business Only					
			Life Contracts		4	5	6	7
			2	3				
			Life Insurance Premiums	Annuity Considerations	A&H Insurance Premiums, Including Policy Membership and Other Fees	Other Considerations	Total Columns 2 through 5	Deposit-Type Contracts
1.	Alabama	AL	25,531	1,050			26,581	
2.	Alaska	AK	739				739	
3.	Arizona	AZ	22,622				22,622	
4.	Arkansas	AR	42,287				42,287	
5.	California	CA	10,235		(32)		10,203	
6.	Colorado	CO	23,771				23,771	
7.	Connecticut	CT	46,495	7,515			54,010	
8.	Delaware	DE	98,886	1,800			100,686	
9.	District of Columbia	DC	3,695				3,695	
10.	Florida	FL	120,927	67,200			188,127	
11.	Georgia	GA	23,348				23,348	
12.	Hawaii	HI	62				62	
13.	Idaho	ID	426				426	
14.	Illinois	IL	199,873	1,200			201,073	
15.	Indiana	IN	161,330	13,000			174,330	
16.	Iowa	IA	1,347				1,347	
17.	Kansas	KS	810				810	
18.	Kentucky	KY	2,342	450			2,792	
19.	Louisiana	LA	923				923	
20.	Maine	ME	7,733				7,733	
21.	Maryland	MD	303,042	20,070			323,112	
22.	Massachusetts	MA	414,149	29,888			444,037	
23.	Michigan	MI	360,665	600	144		361,409	
24.	Minnesota	MN	162,112	150			162,262	
25.	Mississippi	MS	3,063				3,063	
26.	Missouri	MO	1,169				1,169	
27.	Montana	MT	696				696	
28.	Nebraska	NE	9,059				9,059	
29.	Nevada	NV	1,654				1,654	
30.	New Hampshire	NH	36,282	1,610			37,892	
31.	New Jersey	NJ	1,214,758	107,095	196		1,322,049	
32.	New Mexico	NM	1,677				1,677	
33.	New York	NY	27,613	661			28,274	
34.	North Carolina	NC	330,989	10,311	229		341,529	
35.	North Dakota	ND	4,774				4,774	
36.	Ohio	OH	32,511	4,546	219		37,276	
37.	Oklahoma	OK	1,819				1,819	
38.	Oregon	OR	2,281				2,281	
39.	Pennsylvania	PA	2,241,467	295,799	2,248		2,539,514	
40.	Rhode Island	RI	125,939	18,700			144,639	
41.	South Carolina	SC	119,553	49			119,602	
42.	South Dakota	SD	1,040				1,040	
43.	Tennessee	TN	13,120				13,120	
44.	Texas	TX	26,351				26,351	
45.	Utah	UT	899				899	
46.	Vermont	VT	4,637				4,637	
47.	Virginia	VA	519,593	53,785	535		573,913	
48.	Washington	WA	4,341				4,341	
49.	West Virginia	WV	10,214	6,500			16,714	
50.	Wisconsin	WI	79,359				79,359	
51.	Wyoming	WY					0	
52.	American Samoa	AS					0	
53.	Guam	GU					0	
54.	Puerto Rico	PR					0	
55.	US Virgin Islands	VI					0	
56.	Northern Mariana Islands	MP					0	
57.	Canada	CAN	403				403	
58.	Aggregate Other Alien	OT	1,938	0	0	0	1,938	0
59.	Subtotal	.XXX.	6,850,549	641,979	3,539	0	7,496,067	0
90.	Reporting entity contributions for employee benefit plans	.XXX.					0	
91.	Dividends or refunds applied to purchase paid-up additions and annuities	.XXX.					0	
92.	Dividends or refunds applied to shorten endowment or premium paying period	.XXX.					0	
93.	Premium or annuity considerations waived under disability or other contract provisions	.XXX.	42,422		104		42,526	
94.	Aggregate other amounts not allocable by State	.XXX.	0	0	0	0	0	0
95.	Totals (Direct Business)	.XXX.	6,892,971	641,979	3,643	0	7,538,593	0
96.	Plus Reinsurance Assumed	.XXX.					0	
97.	Totals (All Business)	.XXX.	6,892,971	641,979	3,643	0	7,538,593	0
98.	Less Reinsurance Ceded	.XXX.	3,276,649		1,882		3,278,531	
99.	Totals (All Business) less Reinsurance Ceded	.XXX.	3,616,322	641,979	1,761	0	4,260,062	0

**DETAILS OF WRITE-INS**

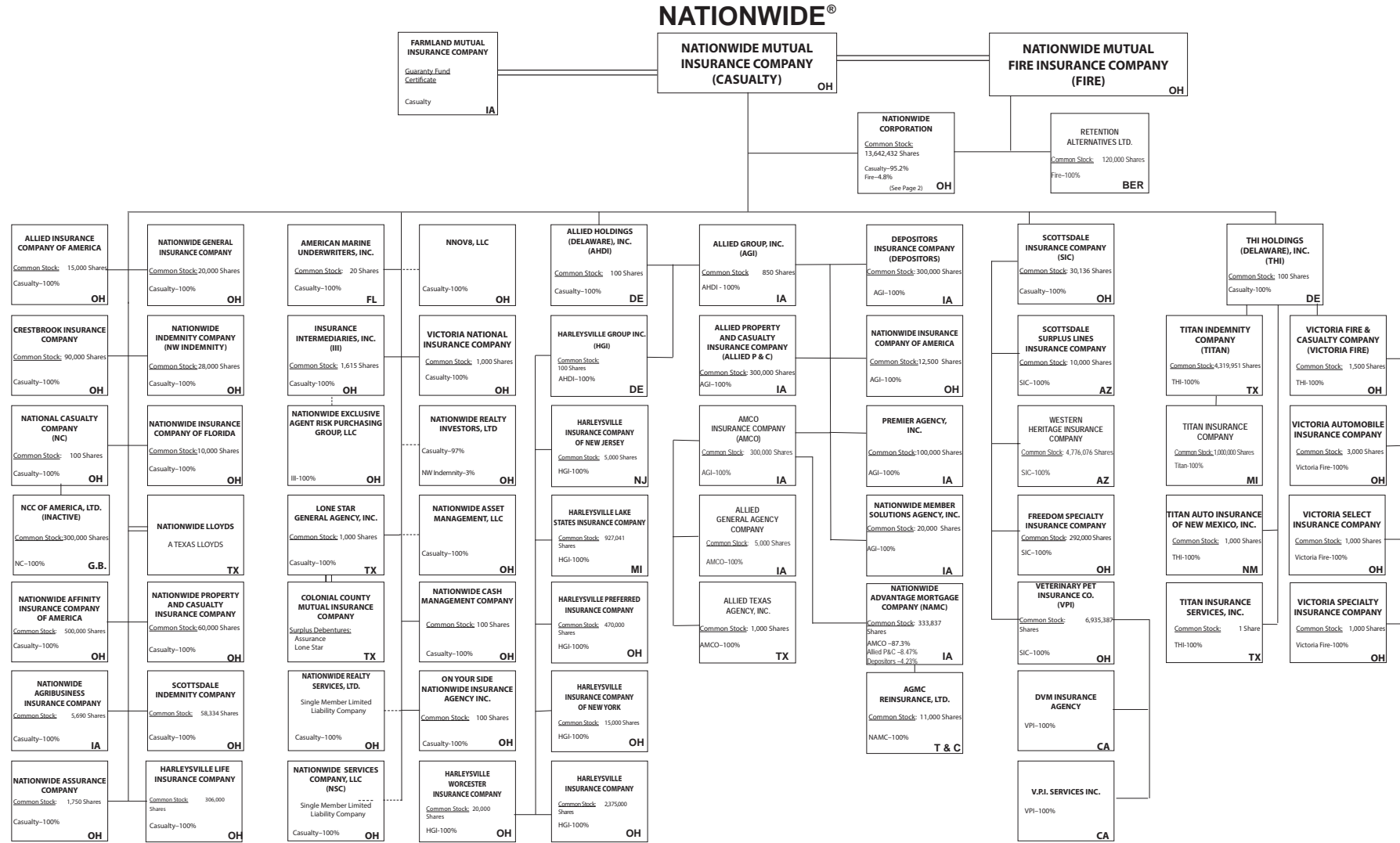
58001.	Foreign - Other Alien	.XXX.	1,938				1,938	
58002.		.XXX.					0	
58003.		.XXX.					0	
58998.	Summary of remaining write-ins for line 58 from overflow page	.XXX.	0	0	0	0	0	0
58999.	Total (Lines 58001 thru 58003 plus 58998) (Line 58 above)	.XXX.	1,938	0	0	0	1,938	0
9401.		.XXX.					0	
9402.		.XXX.					0	
9403.		.XXX.					0	
9498.	Summary of remaining write-ins for line 94 from overflow page	.XXX.	0	0	0	0	0	0
9499.	Total (Lines 9401 thru 9403 plus 9498) (Line 94 above)	.XXX.	0	0	0	0	0	0

(a) Active Status Count

L - Licensed or Chartered - Licensed insurance carrier or domiciled RRG..... 33  
E - Eligible - Reporting entities eligible or approved to write surplus lines in the state..... 0

R - Registered - Non-domiciled RRGs..... 0  
Q - Qualified - Qualified or accredited reinsurer..... 0  
N - None of the above - Not allowed to write business in the state..... 24

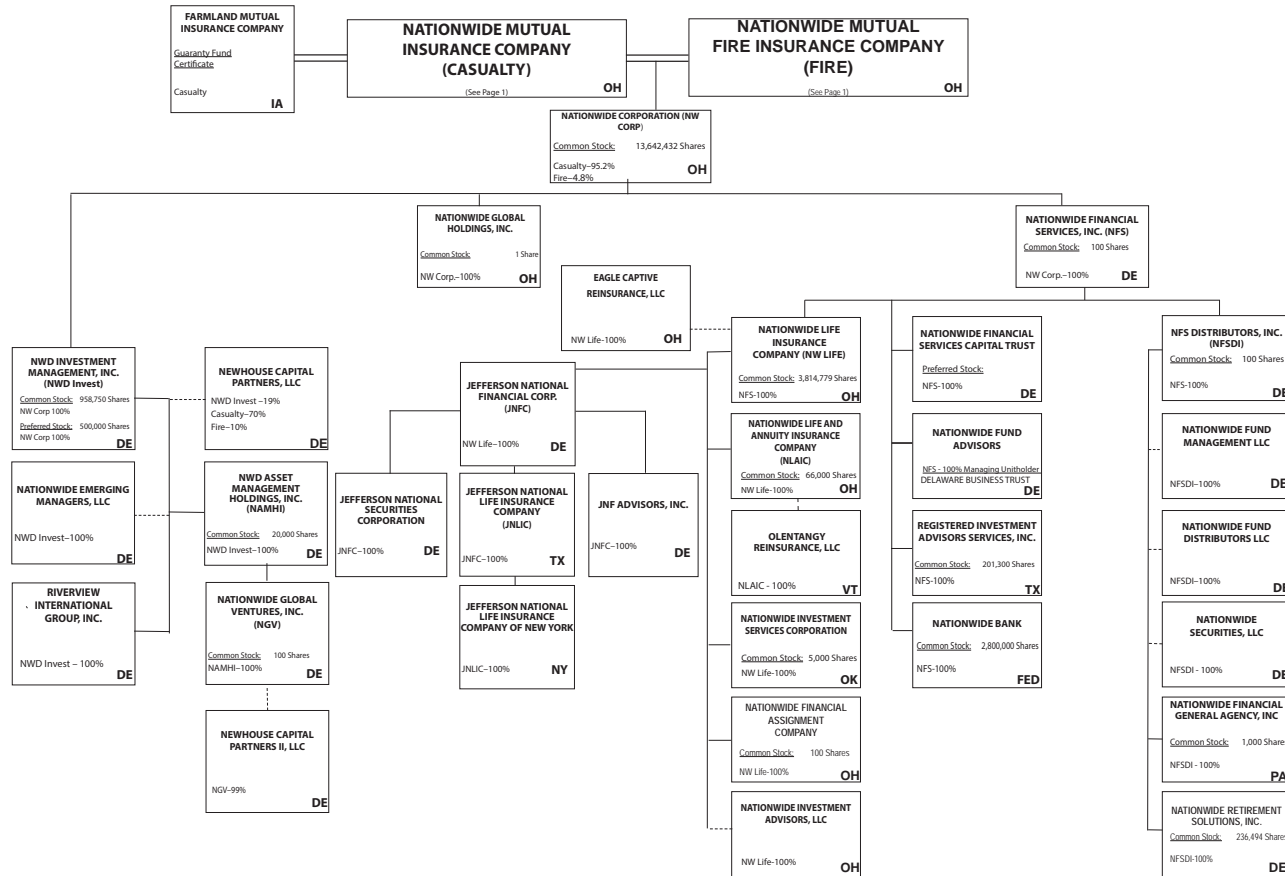
Q12



Subsidiary Companies — Solid Line  
Contractual Association = Double Line  
Limited Liability Company - Dotted Line

(Casualty/Fire subsidiaries)

**NATIONWIDE®**



Q12.1

Subsidiary Companies — Solid Line  
 Contractual Association = Double Line  
 Limited Liability Company - - Dotted Line

(Nationwide Corp. subsidiaries)

**NATIONWIDE INSURANCE COMPANIES**

NAIC Group Code	Group Name	NAIC Company Code	State of Domicile	Federal ID Number	Name of Company
0140	Nationwide	10127	OH	27-0114983	Allied Insurance Company of America
0140	Nationwide	42579	IA	42-1201931	Allied Property and Casualty Insurance Company
0140	Nationwide	19100	IA	42-6054959	AMCO Insurance Company
0140	Nationwide	29262	TX	74-1061659	Colonial County Mutual Insurance Company
0140	Nationwide	18961	OH	68-0066866	Crestbrook Insurance Company
0140	Nationwide	42587	IA	42-1207150	Depositors Insurance Company
0140	Nationwide	15821	OH	42-4523959	Eagle Captive Reinsurance, LLC
0140	Nationwide	13838	IA	42-0618271	Farmland Mutual Insurance Company
0140	Nationwide	22209	OH	75-6013587	Freedom Specialty Insurance Company
0140	Nationwide	23582	OH	41-0417250	Harleysville Insurance Company
0140	Nationwide	42900	NJ	23-2253669	Harleysville Insurance Company of New Jersey
0140	Nationwide	10674	OH	23-2864924	Harleysville Insurance Company of New York
0140	Nationwide	14516	MI	38-3198542	Harleysville Lake States Insurance Company
0140	Nationwide	64327	OH	23-1580983	Harleysville Life Insurance Company
0140	Nationwide	35696	OH	23-2384978	Harleysville Preferred Insurance Company
0140	Nationwide	26182	OH	04-1989660	Harleysville Worcester Insurance Company
0140	Nationwide	64017	TX	75-0300900	Jefferson National Life Insurance Company
0140	Nationwide	15727	NY	47-1180302	Jefferson National Life Insurance Company of New York
0140	Nationwide	11991	OH	38-0865250	National Casualty Company
0140	Nationwide	26093	OH	48-0470690	Nationwide Affinity Insurance Company of America
0140	Nationwide	28223	IA	42-1015537	Nationwide Agribusiness Insurance Company
0140	Nationwide	10723	OH	95-0639970	Nationwide Assurance Company
0140	Nationwide	23760	OH	31-4425763	Nationwide General Insurance Company
0140	Nationwide	10070	OH	31-1399201	Nationwide Indemnity Company
0140	Nationwide	25453	OH	95-2130882	Nationwide Insurance Company of America
0140	Nationwide	10948	OH	31-1613686	Nationwide Insurance Company of Florida
0140	Nationwide	92657	OH	31-1000740	Nationwide Life and Annuity Insurance Company
0140	Nationwide	66869	OH	31-4156830	Nationwide Life Insurance Company
0140	Nationwide	42110	TX	75-1780981	Nationwide Lloyds
0140	Nationwide	23779	OH	31-4177110	Nationwide Mutual Fire Insurance Company
0140	Nationwide	23787	OH	31-4177100	Nationwide Mutual Insurance Company
0140	Nationwide	37877	OH	31-0970750	Nationwide Property & Casualty Insurance Company
0140	Nationwide	13999	VT	27-1712056	Olentangy Reinsurance, LLC
0140	Nationwide	15580	OH	31-1117969	Scottsdale Indemnity Company
0140	Nationwide	41297	OH	31-1024978	Scottsdale Insurance Company
0140	Nationwide	10672	AZ	86-0835870	Scottsdale Surplus Lines Insurance Company
0140	Nationwide	13242	TX	74-2286759	Titan Indemnity Company
0140	Nationwide	36269	MI	86-0619597	Titan Insurance Company
0140	Nationwide	42285	OH	95-3750113	Veterinary Pet Insurance Company
0140	Nationwide	10644	OH	34-1785903	Victoria Automobile Insurance Company
0140	Nationwide	42889	OH	34-1394913	Victoria Fire & Casualty Company
0140	Nationwide	10778	OH	34-1842604	Victoria National Insurance Company
0140	Nationwide	10105	OH	34-1777972	Victoria Select Insurance Company
0140	Nationwide	10777	OH	34-1842602	Victoria Specialty Insurance Company
0140	Nationwide	37150	AZ	86-0561941	Western Heritage Insurance Company

**SCHEDULE Y**

**PART 1A - DETAIL OF INSURANCE HOLDING COMPANY SYSTEM**

1	2	3	4	5	6	7	8	9	10	11	12	13	14	15	16
Group Code	Group Name	NAIC Company Code	ID Number	Federal RSSD	CIK	Name of Securities Exchange if Publicly Traded (U.S. or International)	Names of Parent, Subsidiaries or Affiliates	Domiciliary Location	Relationship to Reporting Entity	Directly Controlled by (Name of Entity/Person)	Type of Control (Ownership Board, Management, Attorney-in-Fact, Influence, Other)	If Control is Ownership Provide Percentage	Ultimate Controlling Entity(ies)/Person(s)	Is an SCA Filing Required? (Y/N)	*
<b>Members</b>															
0140	Nationwide.....		31-1486309..	4595018		0.....	10 W. Nationwide, LLC.....	OH.....	NIA.....	Nationwide Realty Investors, Ltd.....	ownership.....	..100.000	Nationwide Mutual Insurance Company.....	.....N.....	
0140	Nationwide.....		31-1486309..	4810074		0.....	1000 Yard Street, LLC.....	OH.....	NIA.....	Nationwide Realty Investors, Ltd.....	ownership.....	..100.000	Nationwide Mutual Insurance Company.....	.....N.....	
0140	Nationwide.....		31-1486309..	4869474		0.....	1015 Long Street, LLC.....	OH.....	NIA.....	Nationwide Realty Investors, Ltd.....	ownership.....	..100.000	Nationwide Mutual Insurance Company.....	.....N.....	
0140	Nationwide.....		31-1486309..	4810047		0.....	1050 Yard Street, LLC.....	OH.....	NIA.....	Nationwide Realty Investors, Ltd.....	ownership.....	..100.000	Nationwide Mutual Insurance Company.....	.....N.....	
0140	Nationwide.....		31-1486309..	4810038		0.....	1125 Rail Street, LLC.....	OH.....	NIA.....	Nationwide Realty Investors, Ltd.....	ownership.....	..100.000	Nationwide Mutual Insurance Company.....	.....N.....	
0140	Nationwide.....		31-1733036..	4594963		0.....	120 Acre Partners, LLC.....	DE.....	NIA.....	Nationwide Realty Investors, Ltd.....	ownership.....	..95.000	Nationwide Mutual Insurance Company.....	.....N.....	1.....
0140	Nationwide.....		20-4939866..	5217036		0.....	1125 Yard Street, LLC.....	OH.....	NIA.....	NRI Equity Land Investments, LLC.....	ownership.....	..100.000	Nationwide Mutual Insurance Company.....	.....N.....	
0140	Nationwide.....		26-2451988..	4288132		0.....	1492 Capital, LLC.....	OH.....	NIA.....	Nationwide Mutual Insurance Company.....	ownership.....	..100.000	Nationwide Mutual Insurance Company.....	.....N.....	
0140	Nationwide.....		31-1486309..	5113932		0.....	111 Rivulon Boulevard, LLC.....	OH.....	NIA.....	Nationwide Realty Investors, Ltd.....	ownership.....	..100.000	Nationwide Mutual Insurance Company.....	.....N.....	
0140	Nationwide.....		31-1486309..	4810083		0.....	155 Rivulon Boulevard, LLC.....	OH.....	NIA.....	Nationwide Realty Investors, Ltd.....	ownership.....	..100.000	Nationwide Mutual Insurance Company.....	.....N.....	
0140	Nationwide.....		31-1486309..	5113923		0.....	161 Rivulon Boulevard, LLC.....	OH.....	NIA.....	Nationwide Realty Investors, Ltd.....	ownership.....	..100.000	Nationwide Mutual Insurance Company.....	.....N.....	
0140	Nationwide.....		31-1580283..	5042171		0.....	170 Marconi, LLC.....	OH.....	NIA.....	NWD Investments, LLC.....	ownership.....	..100.000	Nationwide Mutual Insurance Company.....	.....N.....	
0140	Nationwide.....		31-1580283..	4960960		0.....	245 Parks Edge Place, LLC.....	OH.....	NIA.....	NWD Investments, LLC.....	ownership.....	..100.000	Nationwide Mutual Insurance Company.....	.....N.....	
0140	Nationwide.....		31-1486309..	4810092		0.....	275 Rivulon Boulevard, LLC.....	OH.....	NIA.....	Nationwide Realty Investors, Ltd.....	ownership.....	..100.000	Nationwide Mutual Insurance Company.....	.....N.....	
0140	Nationwide.....		31-1486309..	5092952		0.....	343 N. Front, LLC.....	OH.....	NIA.....	Nationwide Realty Investors, Ltd.....	ownership.....	..100.000	Nationwide Mutual Insurance Company.....	.....N.....	
0140	Nationwide.....		31-1580283..	4590835		0.....	400 West Nationwide Boulevard, LLC.....	OH.....	NIA.....	NWD Investments, LLC.....	ownership.....	..100.000	Nationwide Mutual Insurance Company.....	.....N.....	
0140	Nationwide.....		31-1580283..	4591140		0.....	425 West Nationwide Boulevard, LLC.....	OH.....	NIA.....	NWD Investments, LLC.....	ownership.....	..100.000	Nationwide Mutual Insurance Company.....	.....N.....	
0140	Nationwide.....		31-1486309..	4595009		0.....	44 Chestnut, LLC.....	OH.....	NIA.....	Nationwide Realty Investors, Ltd.....	ownership.....	..100.000	Nationwide Mutual Insurance Company.....	.....N.....	
0140	Nationwide.....		31-1486309..	4890843		0.....	75 Rivulon Boulevard, LLC.....	OH.....	NIA.....	Nationwide Realty Investors, Ltd.....	ownership.....	..100.000	Nationwide Mutual Insurance Company.....	.....N.....	
0140	Nationwide.....		20-4939866..	4590750		0.....	775 Yard Street, LLC.....	OH.....	NIA.....	NRI Equity Land Investments, LLC.....	ownership.....	..100.000	Nationwide Mutual Insurance Company.....	.....N.....	
0140	Nationwide.....		20-4939866..	4810104		0.....	780 Yard Street, LLC.....	OH.....	NIA.....	NRI Equity Land Investments, LLC.....	ownership.....	..100.000	Nationwide Mutual Insurance Company.....	.....N.....	
0140	Nationwide.....		20-4939866..	4671583		0.....	795 Rail Street, LLC.....	OH.....	NIA.....	NRI Equity Land Investments, LLC.....	ownership.....	..100.000	Nationwide Mutual Insurance Company.....	.....N.....	
0140	Nationwide.....		20-4939866..	4590602		0.....	800 Bobcat Avenue, LLC.....	OH.....	NIA.....	NRI Equity Land Investments, LLC.....	ownership.....	..100.000	Nationwide Mutual Insurance Company.....	.....N.....	
0140	Nationwide.....		20-4939866..	4671499		0.....	800 Goodale Boulevard, LLC.....	OH.....	NIA.....	NRI Equity Land Investments, LLC.....	ownership.....	..100.000	Nationwide Mutual Insurance Company.....	.....N.....	
0140	Nationwide.....		20-4939866..	4671789		0.....	800 Yard Street, LLC.....	OH.....	NIA.....	NRI Equity Land Investments, LLC.....	ownership.....	..100.000	Nationwide Mutual Insurance Company.....	.....N.....	
0140	Nationwide.....		20-4939866..	4590778		0.....	805 Bobcat Avenue, LLC.....	OH.....	NIA.....	GVY Residential, LLC.....	ownership.....	..100.000	Nationwide Mutual Insurance Company.....	.....N.....	
0140	Nationwide.....		20-4939866..	4890834		0.....	808 Yard Street, LLC.....	OH.....	NIA.....	GVY Residential, LLC.....	ownership.....	..100.000	Nationwide Mutual Insurance Company.....	.....N.....	
0140	Nationwide.....		20-4939866..	4869465		0.....	820 Goodale Boulevard, LLC.....	OH.....	NIA.....	NRI Equity Land Investments, LLC.....	ownership.....	..100.000	Nationwide Mutual Insurance Company.....	.....N.....	
0140	Nationwide.....		20-4939866..	5042612		0.....	825 Junction Way, LLC.....	OH.....	NIA.....	GVY Residential, LLC.....	ownership.....	..100.000	Nationwide Mutual Insurance Company.....	.....N.....	
.....	0.....		37-1865892..	n/a.....		0.....	828 at the Yard Condominimums Home Owners Association	OH.....	OTH.....	Other non-Nationwide.....	n/a.....	.....	Other non-Nationwide.....	.....N.....	2.....
0140	Nationwide.....		20-4939866..	5012286		0.....	828 Bobcat Avenue, LLC.....	OH.....	NIA.....	NRI Equity Land Investments, LLC.....	ownership.....	..100.000	Nationwide Mutual Insurance Company.....	.....N.....	
0140	Nationwide.....		20-4939866..	4890759		0.....	840 Third Avenue, LLC.....	OH.....	NIA.....	NRI Equity Land Investments, LLC.....	ownership.....	..100.000	Nationwide Mutual Insurance Company.....	.....N.....	
0140	Nationwide.....		20-4939866..	4590611		0.....	845 Yard Street, LLC.....	OH.....	NIA.....	GVY Residential, LLC.....	ownership.....	..100.000	Nationwide Mutual Insurance Company.....	.....N.....	
0140	Nationwide.....		20-4939866..	4590787		0.....	850 Goodale Blvd., LLC.....	OH.....	NIA.....	NRI Equity Land Investments, LLC.....	ownership.....	..100.000	Nationwide Mutual Insurance Company.....	.....N.....	
0140	Nationwide.....		20-4939866..	4903921		0.....	860 Third Avenue, LLC.....	OH.....	NIA.....	NRI Equity Land Investments, LLC.....	ownership.....	..100.000	Nationwide Mutual Insurance Company.....	.....N.....	

Q13

**SCHEDULE Y**

**PART 1A - DETAIL OF INSURANCE HOLDING COMPANY SYSTEM**

1	2	3	4	5	6	7	8	9	10	11	12	13	14	15	16
Group Code	Group Name	NAIC Company Code	ID Number	Federal RSSD	CIK	Name of Securities Exchange if Publicly Traded (U.S. or International)	Names of Parent, Subsidiaries or Affiliates	Domiciliary Location	Relationship to Reporting Entity	Directly Controlled by (Name of Entity/Person)	Type of Control (Ownership Board, Management, Attorney-in-Fact, Influence, Other)	If Control is Ownership Provide Percentage	Ultimate Controlling Entity(ies)/Person(s)	Is an SCA Filing Required? (Y/N)	*
0140	Nationwide		20-4939866	4903912			880 Third Avenue, LLC	OH	NIA	NRI Equity Land Investments, LLC	ownership	100.000	Nationwide Mutual Insurance Company	N	
0140	Nationwide		20-4939866	4869438			895 W. Third Avenue, LLC	OH	NIA	NRI Equity Land Investments, LLC	ownership	100.000	Nationwide Mutual Insurance Company	N	
0140	Nationwide		20-4939866	5143069			950 Dorchester Way, LLC	OH	NIA	GVY Residential, LLC	ownership	100.000	Nationwide Mutual Insurance Company	N	
0140	Nationwide		31-1486309	5092943			960 Bobcat Avenue, LLC	OH	NIA	Nationwide Realty Investors, Ltd	ownership	100.000	Nationwide Mutual Insurance Company	N	
0140	Nationwide		31-1486309	4810029			975 Rail Street, LLC	OH	NIA	Nationwide Realty Investors, Ltd	ownership	100.000	Nationwide Mutual Insurance Company	N	
0140	Nationwide		31-1486309	5082001			995 Yard Street, LLC	OH	NIA	Nationwide Realty Investors, Ltd	ownership	100.000	Nationwide Mutual Insurance Company	N	
0140	Nationwide		31-1680808	4594833			AD Investments, LLC	OH	NIA	Nationwide Realty Investors, Ltd	ownership	60.000	Nationwide Mutual Insurance Company	N	1
0140	Nationwide		31-1580283	4590992			ADTV, LLC	OH	NIA	NWD Investments, LLC	ownership	100.000	Nationwide Mutual Insurance Company	N	
0140	Nationwide		52-2227314	4287247			AGMC Reinsurance, Ltd	TCA	IA	Nationwide Advantage Mortgage Company	ownership	100.000	Nationwide Mutual Insurance Company	N	
0140	Nationwide		42-1011300	4287229			ALLIED General Agency Company	IA	IA	AMCO Insurance Company	ownership	100.000	Nationwide Mutual Insurance Company	N	
0140	Nationwide		42-0958655	1677548			ALLIED Group, Inc	IA	IA	Allied Holdings (Delaware), Inc	ownership	100.000	Nationwide Mutual Insurance Company	N	
0140	Nationwide		46-4628790	4613462			Allied Holdings (Delaware), Inc	DE	IA	Nationwide Mutual Insurance Company	ownership	100.000	Nationwide Mutual Insurance Company	Y	
0140	Nationwide	10127	27-0114983	4288169			ALLIED Insurance Company of America	OH	IA	Nationwide Mutual Insurance Company	ownership	100.000	Nationwide Mutual Insurance Company	N	
0140	Nationwide	42579	42-1201931	4287144			ALLIED Property and Casualty Insurance Company	IA	IA	ALLIED Group, Inc	ownership	100.000	Nationwide Mutual Insurance Company	N	
0140	Nationwide		42-1527863	4287238			ALLIED Texas Agency, Inc	TX	IA	AMCO Insurance Company	ownership	100.000	Nationwide Mutual Insurance Company	N	
0140	Nationwide	19100	42-6054959	4287153			AMCO Insurance Company	IA	IA	ALLIED Group, Inc	ownership	100.000	Nationwide Mutual Insurance Company	N	
0140	Nationwide		59-1031596	4288011			American Marine Underwriters, Inc	FL	IA	Nationwide Mutual Insurance Company	ownership	100.000	Nationwide Mutual Insurance Company	N	
0140	Nationwide		81-4532504	5082029			American Tax Credit Fund 2017-A, LLC	OH	NIA	Nationwide Life Insurance Company	ownership	100.000	Nationwide Mutual Insurance Company	N	
0140	Nationwide		82-2001573	5167113			American Tax Credit Fund 2017-B, LLC	OH	NIA	Nationwide Life Insurance Company	ownership	100.000	Nationwide Mutual Insurance Company	N	
0140	Nationwide		82-4591498	5215292			American Tax Credit Fund 2018-A, LLC	OH	NIA	Nationwide Life Insurance Company	ownership	100.000	Nationwide Mutual Insurance Company	N	
0140	Nationwide		31-1580283	4591177			Arena District CA I, LLC	OH	NIA	NWD Investments, LLC	ownership	100.000	Nationwide Mutual Insurance Company	N	
0			36-4857239	n/a			Arena District Garage Condominium Association	OH	OTH	Other non-Nationwide	n/a		Other non-Nationwide	N	2
0			90-0280710	n/a			Arena District Owners Association	OH	OTH	Other non-Nationwide	n/a		Other non-Nationwide	N	2
0			35-2582728	n/a			Arena District Swim Club Association	OH	OTH	Other non-Nationwide	n/a		Other non-Nationwide	N	2
0140	Nationwide		31-1486309	5012277			Ballantrae Woods, LLC	OH	NIA	Nationwide Realty Investors, Ltd	ownership	100.000	Nationwide Mutual Insurance Company	N	
0140	Nationwide		26-4083207	4869447			Berkshire Crossing Development, LLC	DE	NIA	NorthStar Commercial Development, LLC	ownership	100.000	Nationwide Mutual Insurance Company	N	
0140	Nationwide		31-1555487	4593658			Broad Street Retail, LLC	DE	NIA	Nationwide Realty Investors, Ltd	ownership	60.000	Nationwide Mutual Insurance Company	N	1
0140	Nationwide		20-3624379	4595531			Brooke School Investment Fund, LLC	DE	NIA	Nationwide Mutual Insurance Company	ownership	100.000	Nationwide Mutual Insurance Company	N	
0140	Nationwide		26-0899413	3730540			CHP New Markets Investment Fund, LLC	OH	OTH	Nationwide Mutual Insurance Company	Limited partner /no control	50.000	other non-Nationwide	N	2
0140	Nationwide		20-1618232	4595241			CNRI-Cannonsport Condominium, LLC	OH	NIA	CNRI-Cannonsport, LLC	ownership	100.000	Nationwide Mutual Insurance Company	N	
0140	Nationwide		20-1618232	4595045			CNRI- Cannonsport, LLC	OH	NIA	Nationwide Realty Investors, Ltd	ownership	100.000	Nationwide Mutual Insurance Company	N	
0			n/a	n/a			Co-Investment Fund, LLC	DE	OTH	Other non-Nationwide	n/a		Other non-Nationwide	N	2
0140	Nationwide		31-1579973	2998688			COLHOC Limited Partnership	OH	NIA	NRI Arena, LLC	ownership	30.757	Other non-Nationwide	N	1

Q13.1

**SCHEDULE Y**

**PART 1A - DETAIL OF INSURANCE HOLDING COMPANY SYSTEM**

1	2	3	4	5	6	7	8	9	10	11	12	13	14	15	16
Group Code	Group Name	NAIC Company Code	ID Number	Federal RSSD	CIK	Name of Securities Exchange if Publicly Traded (U.S. or International)	Names of Parent, Subsidiaries or Affiliates	Domiciliary Location	Relationship to Reporting Entity	Directly Controlled by (Name of Entity/Person)	Type of Control (Ownership Board, Management, Attorney-in-Fact, Influence, Other)	If Control is Ownership Provide Percentage	Ultimate Controlling Entity(ies)/Person(s)	Is an SCA Filing Required? (Y/N)	*
0140	Nationwide	29262	74-1061659	4288057			Colonial County Mutual Insurance Company	TX	IA	Other non-Nationwide	contract		Other non-Nationwide	N	2
0			45-4901238	n/a			Columbus Arena Management, LLC	OH	OTH	Other non-Nationwide	n/a		Other non-Nationwide	N	2
0140	Nationwide	18961	68-0066866	4288178			Crestbrook Insurance Company	OH	IA	Nationwide Mutual Insurance Company	ownership	100.000	Nationwide Mutual Insurance Company	N	
0140	Nationwide		31-1486309	4590255			Crewville, Ltd.	OH	NIA	Nationwide Realty Investors, Ltd	ownership	100.000	Nationwide Mutual Insurance Company	N	
0140	Nationwide	42587	42-1207150	4287162			Depositors Insurance Company	IA	IA	ALLIED Group, Inc.	ownership	100.000	Nationwide Mutual Insurance Company	N	
0			46-4104813	n/a			Discover Affordable Housing Investment Fund I LLC	OH	OTH	Other non-Nationwide	n/a		Other non-Nationwide	N	2
0140	Nationwide		33-009671	4287694			DVM Insurance Agency	CA	NIA	Veterinary Pet Insurance Company	ownership	100.000	Nationwide Mutual Insurance Company	N	
0140	Nationwide	15821	47-4523959	4890825			Eagle Captive Reinsurance, LLC	OH	IA	Nationwide Life Insurance Company	ownership	100.000	Nationwide Mutual Insurance Company	N	
0140	Nationwide		20-1945276	4590590			East of Madison, LLC	DE	NIA	120 Acre Partners, Ltd.	ownership	24.910	Nationwide Mutual Insurance Company	N	1
0140	Nationwide		20-1945276	4590590			East of Madison, LLC	DE	NIA	ND La Quinta Partners, LLC	ownership	75.090	Nationwide Mutual Insurance Company	N	1
0			30-0951639	n/a			ERN-4 Property Owners Association, Inc.	OH	OTH	Other non-Nationwide	n/a		Other non-Nationwide	N	2
0140	Nationwide	13838	42-0618271	4569372			Farmland Mutual Insurance Company	IA	OTH	Other non-Nationwide	debt		Other non-Nationwide	N	2
0140	Nationwide	22209	75-6013587	4287676			Freedom Specialty Insurance Company	OH	IA	Scottsdale Insurance Company	ownership	100.000	Nationwide Mutual Insurance Company	N	
0			46-4736379	n/a			GPN-1 Property Owners Association, Inc.	OH	OTH	Other non-Nationwide	n/a		Other non-Nationwide	N	2
0140	Nationwide		20-4939866	4590808			Grandview Yard Hotel Holdings, LLC	OH	NIA	NRI Equity Land Investments, LLC	ownership	100.000	Nationwide Mutual Insurance Company	N	
0140	Nationwide		20-4939866	4590826			Grandview Yard Hotel, LLC	OH	NIA	Grandview Yard Hotel Holdings, LLC	ownership	100.000	Nationwide Mutual Insurance Company	N	
0140	Nationwide		20-4939866	5036200			GVY Residential, LLC	OH	NIA	NRI Equity Land Investments, LLC	ownership	100.000	Nationwide Mutual Insurance Company	N	
0140	Nationwide		51-0241172	3582909			Harleysville Group Inc.	DE	NIA	Allied Holdings (Delaware), Inc.	ownership	100.000	Nationwide Mutual Insurance Company	N	
0140	Nationwide	23582	41-0417250	4442260			Harleysville Insurance Company	OH	IA	Harleysville Group, Inc.	ownership	100.000	Nationwide Mutual Insurance Company	N	
0140	Nationwide	42900	23-2253669	4442158			Harleysville Insurance Company of New Jersey	NJ	IA	Harleysville Group, Inc.	ownership	100.000	Nationwide Mutual Insurance Company	N	
0140	Nationwide	10674	23-2864924	4442242			Harleysville Insurance Company of New York	OH	IA	Harleysville Group, Inc.	ownership	100.000	Nationwide Mutual Insurance Company	N	
0140	Nationwide	14516	38-3198542	4442251			Harleysville Lake States Insurance Company	MI	IA	Harleysville Group, Inc.	ownership	100.000	Nationwide Mutual Insurance Company	N	
0140	Nationwide	64327	23-1580983	4440659			Harleysville Life Insurance Company	OH	RE	Nationwide Mutual Insurance Company	ownership	100.000	Nationwide Mutual Insurance Company	N	
0140	Nationwide	35696	23-2384978	4442288			Harleysville Preferred Insurance Company	OH	IA	Harleysville Group, Inc.	ownership	100.000	Nationwide Mutual Insurance Company	N	
0140	Nationwide	26182	04-1989660	4442372			Harleysville Worcester Insurance Company	OH	IA	Harleysville Group, Inc.	ownership	100.000	Nationwide Mutual Insurance Company	N	
0140	Nationwide		32-0051216	4596903			Hideaway Properties Corporation	CA	NIA	Nationwide Realty Investors, Ltd.	ownership	50.000	Nationwide Mutual Insurance Company	N	1
0140	Nationwide		31-0871532	4288020			Insurance Intermediaries, Inc.	OH	IA	Nationwide Mutual Insurance Company	ownership	100.000	Nationwide Mutual Insurance Company	N	
0140	Nationwide		20-3289512	3848436			Jefferson National Financial Corp.	DE	NIA	Nationwide Life Insurance Company	ownership	100.000	Nationwide Mutual Insurance Company	Y	
0140	Nationwide	64017	75-0300900	3332887			Jefferson National Life Insurance Company	TX	IA	Jefferson National Financial Corporation	ownership	100.000	Nationwide Mutual Insurance Company	N	
0140	Nationwide	15727	47-1180302	5111899			Jefferson National Life Insurance Company of New York	NY	IA	Jefferson National Life Insurance Company	ownership	100.000	Nationwide Mutual Insurance Company	N	
0140	Nationwide		61-1340595	5113503			Jefferson National Securities Corporation	DE	NIA	Jefferson National Financial Corporation	ownership	100.000	Nationwide Mutual Insurance Company	N	
0140	Nationwide		31-1486309	4097802			Jerome Village Company, LLC	OH	NIA	Nationwide Realty Investors, Ltd	ownership	100.000	Nationwide Mutual Insurance Company	N	
0			46-2974590	n/a			Jerome Village Master Property Owners Association, Inc.	OH	OTH	Other non-Nationwide	n/a		Other non-Nationwide	N	2

Q13.2

**SCHEDULE Y**

**PART 1A - DETAIL OF INSURANCE HOLDING COMPANY SYSTEM**

1	2	3	4	5	6	7	8	9	10	11	12	13	14	15	16
Group Code	Group Name	NAIC Company Code	ID Number	Federal RSSD	CIK	Name of Securities Exchange if Publicly Traded (U.S. or International)	Names of Parent, Subsidiaries or Affiliates	Domiciliary Location	Relationship to Reporting Entity	Directly Controlled by (Name of Entity/Person)	Type of Control (Ownership Board, Management, Attorney-in-Fact, Influence, Other)	If Control is Ownership Provide Percentage	Ultimate Controlling Entity(ies)/Person(s)	Is an SCA Filing Required? (Y/N)	*
0140	Nationwide		20-8945345	5111938			JNF Advisors, Inc.	DE	NIA	Jefferson National Financial Corporation	ownership	100.000	Nationwide Mutual Insurance Company	N	
0140	Nationwide		46-2956640	n/a			Jerome Village Residential Property Owners Association, Inc.	OH	OTH	Other non-Nationwide	n/a		Other non-Nationwide	N	2
0140	Nationwide		31-1486309	4590312			JV Developers, LLC	OH	OTH	Nationwide Realty Investors, Ltd	ownership	100.000	Nationwide Mutual Insurance Company	N	2
0140	Nationwide		74-1395229	4613350			Lone Star General Agency, Inc.	TX	IA	Nationwide Mutual Insurance Company	ownership	100.000	Nationwide Mutual Insurance Company	N	
0140	Nationwide	11991	38-0865250	4288187			National Casualty Company	OH	IA	Nationwide Mutual Insurance Company	ownership	100.000	Nationwide Mutual Insurance Company	N	
0140	Nationwide		AC000920	4614900			National Casualty Company of America, Ltd.	GBR	IA	Nationwide Mutual Insurance Company	ownership	100.000	Nationwide Mutual Insurance Company	N	
0140	Nationwide		42-1154244	2889795			Nationwide Advantage Mortgage Company	IA	NIA	AMCO Insurance Company	ownership	87.300	Nationwide Mutual Insurance Company	Y	1
0140	Nationwide		42-1154244	2889795			Nationwide Advantage Mortgage Company	IA	NIA	ALLIED Property & Casualty Insurance Company	ownership	8.470	Nationwide Mutual Insurance Company	Y	1
0140	Nationwide		42-1154244	2889795			Nationwide Advantage Mortgage Company	IA	NIA	Depositors Insurance Company	ownership	4.230	Nationwide Mutual Insurance Company	Y	1
0140	Nationwide	26093	48-0470690	4288196			Nationwide Affinity Insurance Company of America	OH	IA	Nationwide Mutual Insurance Company	ownership	100.000	Nationwide Mutual Insurance Company	N	
0140	Nationwide	28223	42-1015537	4288208			Nationwide Agribusiness Insurance Company	IA	IA	Nationwide Mutual Insurance Company	ownership	100.000	Nationwide Mutual Insurance Company	N	
0140	Nationwide		31-1578869	4288075			Nationwide Arena, LLC	OH	NIA	NRI Arena, LLC	ownership	90.000	Nationwide Mutual Insurance Company	N	1
0140	Nationwide		20-8670712	4288114			Nationwide Asset Management, LLC	OH	NIA	Nationwide Mutual Insurance Company	ownership	100.000	Nationwide Mutual Insurance Company	N	
0140	Nationwide	10723	95-0639970	4288217			Nationwide Assurance Company	OH	IA	Nationwide Mutual Insurance Company	ownership	100.000	Nationwide Mutual Insurance Company	N	
0140	Nationwide		31-1592130	2729677			Nationwide Bank	OH	OTH	Nationwide Financial Services, Inc.	ownership	100.000	Nationwide Mutual Insurance Company	N	2
0140	Nationwide		31-1036287	4288123			Nationwide Cash Management Company	OH	NIA	Nationwide Mutual Insurance Company	ownership	100.000	Nationwide Mutual Insurance Company	N	
0140	Nationwide		31-4416546	3828081			Nationwide Corporation	OH	NIA	Nationwide Mutual Insurance Company	ownership	95.200	Nationwide Mutual Insurance Company	Y	1
0140	Nationwide		31-4416546	3828081			Nationwide Corporation	OH	NIA	Nationwide Mutual Fire Insurance Company	ownership	4.800	Nationwide Mutual Insurance Company	Y	1
0140	Nationwide		04-3679407	4286839			Nationwide Emerging Managers, LLC	DE	NIA	NWD Investment Management, Inc.	ownership	100.000	Nationwide Mutual Insurance Company	N	
0140	Nationwide		05-0630007	4288048			Nationwide Exclusive Agent Risk Purchasing Group, LLC	OH	NIA	Insurance Intermediaries, Inc.	ownership	100.000	Nationwide Mutual Insurance Company	N	
0140	Nationwide		31-1667326	4286932			Nationwide Financial Assignment Company	OH	NIA	Nationwide Life Insurance Company	ownership	100.000	Nationwide Mutual Insurance Company	N	
0140	Nationwide		23-2412039	4287087			Nationwide Financial General Agency, Inc.	PA	NIA	NFS Distributors, Inc.	ownership	100.000	Nationwide Mutual Insurance Company	N	
0140	Nationwide		31-6554353	4286978			Nationwide Financial Services Capital Trust	DE	NIA	Nationwide Financial Services, Inc.	ownership	100.000	Nationwide Mutual Insurance Company	N	
0140	Nationwide		31-1486870	3828063			Nationwide Financial Services, Inc.	DE	NIA	Nationwide Corporation	ownership	100.000	Nationwide Mutual Insurance Company	N	
0140	Nationwide		52-6969857	4286996			Nationwide Fund Advisors	DE	NIA	Nationwide Financial Services, Inc.	ownership	100.000	Nationwide Mutual Insurance Company	N	
0140	Nationwide		31-1748721	4287050			Nationwide Fund Distributors LLC	DE	NIA	NFS Distributors, Inc.	ownership	100.000	Nationwide Mutual Insurance Company	N	
0140	Nationwide		31-0900518	4287041			Nationwide Fund Management LLC	DE	NIA	NFS Distributors, Inc.	ownership	100.000	Nationwide Mutual Insurance Company	N	
0140	Nationwide	23760	31-4425763	4287957			Nationwide General Insurance Company	OH	IA	Nationwide Mutual Insurance Company	ownership	100.000	Nationwide Mutual Insurance Company	N	
0140	Nationwide		31-1570938	4286398			Nationwide Global Holdings, Inc.	OH	NIA	Nationwide Corporation	ownership	100.000	Nationwide Mutual Insurance Company	N	
0140	Nationwide		04-3732385	4286857			Nationwide Global Ventures, Inc.	DE	NIA	NWD Asset Management Holdings, Inc.	ownership	100.000	Nationwide Mutual Insurance Company	N	
0140	Nationwide	10070	31-1399201	2839398			Nationwide Indemnity Company	OH	IA	Nationwide Mutual Insurance Company	ownership	100.000	Nationwide Mutual Insurance Company	N	
0140	Nationwide	25453	95-2130882	4287180			Nationwide Insurance Company of America	OH	IA	ALLIED Group, Inc.	ownership	100.000	Nationwide Mutual Insurance Company	N	

Q13.3

## SCHEDULE Y

### PART 1A - DETAIL OF INSURANCE HOLDING COMPANY SYSTEM

1	2	3	4	5	6	7	8	9	10	11	12	13	14	15	16
Group Code	Group Name	NAIC Company Code	ID Number	Federal RSSD	CIK	Name of Securities Exchange if Publicly Traded (U.S. or International)	Names of Parent, Subsidiaries or Affiliates	Domiciliary Location	Relationship to Reporting Entity	Directly Controlled by (Name of Entity/Person)	Type of Control (Ownership Board, Management, Attorney-in-Fact, Influence, Other)	If Control is Ownership Provide Percentage	Ultimate Controlling Entity(ies)/Person(s)	Is an SCA Filing Required? (Y/N)	*
0140	Nationwide.....	10948...	31-1613686..	4287966		0.....	Nationwide Insurance Company of Florida.....	OH.....	IA.....	Nationwide Mutual Insurance Company.....	ownership.....	100.000	Nationwide Mutual Insurance Company.....	N.....	
0140	Nationwide.....		41-2206199..	4286950		0.....	Nationwide Investment Advisors, LLC.....	OH.....	NIA.....	Nationwide Life Insurance Company.....	ownership.....	100.000	Nationwide Mutual Insurance Company.....	N.....	
0140	Nationwide.....		73-0988442..	4286923		0.....	Nationwide Investment Services Corporation...	OK.....	NIA.....	Nationwide Life Insurance Company.....	ownership.....	100.000	Nationwide Mutual Insurance Company.....	Y.....	
0140	Nationwide.....	92657...	31-1000740..	2995098		0.....	Nationwide Life and Annuity Insurance Company	OH.....	IA.....	Nationwide Life Insurance Company.....	ownership.....	100.000	Nationwide Mutual Insurance Company.....	N.....	
0140	Nationwide.....	66869...	31-4156830..	2819288		0.....	Nationwide Life Insurance Company.....	OH.....	IA.....	Nationwide Financial Services, Inc.....	ownership.....	100.000	Nationwide Mutual Insurance Company.....	N.....	
0140	Nationwide.....		13-4212969..	4596127		0.....	Nationwide Life Tax Credit Partners 2002-A, LLC	OH.....	NIA.....	Nationwide Life Insurance Company.....	other.....	0.010	Nationwide Mutual Insurance Company.....	N.....	1.....
0140	Nationwide.....		01-0749754..	4595960		0.....	Nationwide Life Tax Credit Partners 2002-B, LLC	OH.....	NIA.....	Nationwide Life Insurance Company.....	other.....	0.010	Nationwide Mutual Insurance Company.....	N.....	1.....
0140	Nationwide.....		54-2113175..	4596127		0.....	Nationwide Life Tax Credit Partners 2003-A, LLC	OH.....	NIA.....	Nationwide Life Insurance Company.....	other.....	0.010	Nationwide Mutual Insurance Company.....	N.....	1.....
0140	Nationwide.....		58-2672725..	4596163		0.....	Nationwide Life Tax Credit Partners 2003-B, LLC	OH.....	NIA.....	Nationwide Life Insurance Company.....	other.....	0.010	Nationwide Mutual Insurance Company.....	N.....	1.....
0140	Nationwide.....		20-0382144..	4596707		0.....	Nationwide Life Tax Credit Partners 2004-A, LLC	OH.....	NIA.....	Nationwide Life Insurance Company.....	other.....	0.010	Nationwide Mutual Insurance Company.....	N.....	1.....
0140	Nationwide.....		20-0745944..	4596211		0.....	Nationwide Life Tax Credit Partners 2004-B, LLC	OH.....	NIA.....	Nationwide Life Insurance Company.....	other.....	0.010	Nationwide Mutual Insurance Company.....	N.....	1.....
0140	Nationwide.....		20-0745965..	4596239		0.....	Nationwide Life Tax Credit Partners 2004-C, LLC	OH.....	NIA.....	Nationwide Life Insurance Company.....	other.....	0.010	Nationwide Mutual Insurance Company.....	N.....	1.....
0140	Nationwide.....		20-1128408..	4596332		0.....	Nationwide Life Tax Credit Partners 2004-D, LLC	OH.....	NIA.....	Nationwide Life Insurance Company.....	other.....	0.010	Nationwide Mutual Insurance Company.....	N.....	1.....
0140	Nationwide.....		20-1128472..	4596350		0.....	Nationwide Life Tax Credit Partners 2004-E, LLC	OH.....	NIA.....	Nationwide Life Insurance Company.....	other.....	0.010	Nationwide Mutual Insurance Company.....	N.....	1.....
0140	Nationwide.....		20-1918935..	3318117		0.....	Nationwide Life Tax Credit Partners 2004-F, LLC	OH.....	NIA.....	Nationwide Life Insurance Company.....	other.....	0.010	Nationwide Mutual Insurance Company.....	N.....	1.....
0140	Nationwide.....		20-2303694..	4596369		0.....	Nationwide Life Tax Credit Partners 2005-A, LLC	OH.....	NIA.....	Nationwide Life Insurance Company.....	other.....	0.010	Nationwide Mutual Insurance Company.....	N.....	1.....
0140	Nationwide.....		20-2303602..	4596378		0.....	Nationwide Life Tax Credit Partners 2005-B, LLC	OH.....	NIA.....	Nationwide Life Insurance Company.....	other.....	0.010	Nationwide Mutual Insurance Company.....	N.....	1.....
0140	Nationwide.....		20-2450960..	4596387		0.....	Nationwide Life Tax Credit Partners 2005-C, LLC	OH.....	NIA.....	Nationwide Life Insurance Company.....	other.....	0.010	Nationwide Mutual Insurance Company.....	N.....	1.....
0140	Nationwide.....		20-2451052..	4596396		0.....	Nationwide Life Tax Credit Partners 2005-D, LLC	OH.....	NIA.....	Nationwide Life Insurance Company.....	other.....	0.010	Nationwide Mutual Insurance Company.....	N.....	1.....
0140	Nationwide.....		20-2774223..	4596408		0.....	Nationwide Life Tax Credit Partners 2005-E, LLC	OH.....	NIA.....	Nationwide Life Insurance Company.....	other.....	0.010	Nationwide Mutual Insurance Company.....	N.....	1.....
0140	Nationwide.....		21-1288836..	4596426		0.....	Nationwide Life Tax Credit Partners 2007-A, LLC	OH.....	NIA.....	Nationwide Life Insurance Company.....	other.....	0.010	Nationwide Mutual Insurance Company.....	N.....	1.....

Q13.4

## SCHEDULE Y

### PART 1A - DETAIL OF INSURANCE HOLDING COMPANY SYSTEM

1	2	3	4	5	6	7	8	9	10	11	12	13	14	15	16
Group Code	Group Name	NAIC Company Code	ID Number	Federal RSSD	CIK	Name of Securities Exchange if Publicly Traded (U.S. or International)	Names of Parent, Subsidiaries or Affiliates	Domiciliary Location	Relationship to Reporting Entity	Directly Controlled by (Name of Entity/Person)	Type of Control (Ownership Board, Management, Attorney-in-Fact, Influence, Other)	If Control is Ownership Provide Percentage	Ultimate Controlling Entity(ies)/Person(s)	Is an SCA Filing Required? (Y/N)	*
0140	Nationwide		26-3427373	4596435			Nationwide Life Tax Credit Partners 2009-A, LLC	OH	NIA	Nationwide Life Insurance Company	other	0.010	Nationwide Mutual Insurance Company	N	1
0140	Nationwide		26-3427435	4596444			Nationwide Life Tax Credit Partners 2009-B, LLC	OH	NIA	Nationwide Life Insurance Company	other	0.010	Nationwide Mutual Insurance Company	N	1
0140	Nationwide		26-3427479	4596499			Nationwide Life Tax Credit Partners 2009-C, LLC	OH	NIA	Nationwide Life Insurance Company	other	0.010	Nationwide Mutual Insurance Company	N	1
0140	Nationwide		26-3427525	4596510			Nationwide Life Tax Credit Partners 2009-D, LLC	OH	NIA	Nationwide Life Insurance Company	other	0.010	Nationwide Mutual Insurance Company	N	1
0140	Nationwide		26-4737055	4596529			Nationwide Life Tax Credit Partners 2009-E, LLC	OH	NIA	Nationwide Life Insurance Company	ownership	100.000	Nationwide Mutual Insurance Company	N	
0140	Nationwide		26-4737157	4596547			Nationwide Life Tax Credit Partners 2009-F, LLC	OH	NIA	Nationwide Life Insurance Company	ownership	100.000	Nationwide Mutual Insurance Company	N	
0140	Nationwide		27-1362364	4596622			Nationwide Life Tax Credit Partners 2009-I, LLC	OH	NIA	Nationwide Life Insurance Company	other	0.010	Nationwide Mutual Insurance Company	N	1
0140	Nationwide		45-0469525	3779811			Nationwide Life Tax Credit Partners No. 1, LLC	OH	NIA	Nationwide Life Insurance Company	other	0.010	Nationwide Mutual Insurance Company	N	1
0140	Nationwide	42110	75-1780981	4287984			Nationwide Lloyds	TX	IA	n/a	contract		Nationwide Mutual Insurance Company	N	2
0140	Nationwide		42-1373380	4287210			Nationwide Member Solutions Agency Inc.	IA	NIA	ALLIED Group, Inc.	ownership	100.000	Nationwide Mutual Insurance Company	N	
0140	Nationwide		75-3191025	4597094			Nationwide Mutual Capital I, LLC	DE	NIA	Nationwide Mutual Capital, LLC	ownership	100.000	Nationwide Mutual Insurance Company	N	
0140	Nationwide		75-3191025	4595269			Nationwide Mutual Capital, LLC	OH	NIA	Nationwide Mutual Insurance Company	ownership	100.000	Nationwide Mutual Insurance Company	N	
0140	Nationwide	23779	31-4177110	3828090			Nationwide Mutual Fire Insurance Company	OH	OTH	Other non-Nationwide	n/a		Other non-Nationwide	N	2
0140	Nationwide	23787	31-4177100	3828072			Nationwide Mutual Insurance Company	OH	UDP	Other non-Nationwide	n/a		Other non-Nationwide	N	2
0140	Nationwide		34-2012765	4288084			Nationwide Private Equity Fund, LLC	OH	NIA	Nationwide Mutual Insurance Company	ownership	100.000	Nationwide Mutual Insurance Company	N	
0140	Nationwide	37877	31-0970750	4287993			Nationwide Property and Casualty Insurance Company	OH	IA	Nationwide Mutual Insurance Company	ownership	100.000	Nationwide Mutual Insurance Company	N	
0140	Nationwide		31-1486309	4288105			Nationwide Realty Investors, Ltd	OH	NIA	Nationwide Mutual Insurance Company	ownership	97.000	Nationwide Mutual Insurance Company	N	1
0140	Nationwide		31-1486309	4288105			Nationwide Realty Investors, Ltd	OH	NIA	Nationwide Indemnity Company	ownership	3.000	Nationwide Mutual Insurance Company	N	1
0140	Nationwide		31-1486309	4590264			Nationwide Realty Management, LLC	OH	NIA	Nationwide Realty Investors, Ltd	ownership	100.000	Nationwide Mutual Insurance Company	N	
0140	Nationwide		n/a	4288066			Nationwide Realty Services, Ltd	OH	NIA	Nationwide Mutual Insurance Company	ownership	100.000	Nationwide Mutual Insurance Company	N	
0140	Nationwide		73-0948330	4287096			Nationwide Retirement Solutions, Inc.	DE	NIA	NFS Distributors, Inc.	ownership	100.000	Nationwide Mutual Insurance Company	N	
0140	Nationwide		36-2434406	4287078			Nationwide Securities, LLC	OH	NIA	NFS Distributors, Inc.	ownership	100.000	Nationwide Mutual Insurance Company	N	
0140	Nationwide		31-4177100	4288093			Nationwide Services Company, LLC	OH	NIA	Nationwide Mutual Insurance Company	ownership	100.000	Nationwide Mutual Insurance Company	N	
0140	Nationwide		27-0743545	4564041			Nationwide Tax Credit Partners 2009-G, LLC	OH	NIA	Nationwide Mutual Insurance Company	other	0.010	Nationwide Mutual Insurance Company	N	1
0140	Nationwide		27-0768791	4596891			Nationwide Tax Credit Partners 2009-H, LLC	OH	NIA	Nationwide Mutual Insurance Company	ownership	100.000	Nationwide Mutual Insurance Company	N	
0140	Nationwide		46-1952215	4596556			Nationwide Tax Credit Partners 2013-A, LLC	OH	NIA	Nationwide Life Insurance Company	other	0.010	Nationwide Mutual Insurance Company	N	1
0140	Nationwide		46-1971926	4596592			Nationwide Tax Credit Partners 2013-B, LLC	OH	NIA	Nationwide Life Insurance Company	other	0.010	Nationwide Mutual Insurance Company	N	1

Q13.5

## SCHEDULE Y

### PART 1A - DETAIL OF INSURANCE HOLDING COMPANY SYSTEM

1	2	3	4	5	6	7	8	9	10	11	12	13	14	15	16
Group Code	Group Name	NAIC Company Code	ID Number	Federal RSSD	CIK	Name of Securities Exchange if Publicly Traded (U.S. or International)	Names of Parent, Subsidiaries or Affiliates	Domiciliary Location	Relationship to Reporting Entity	Directly Controlled by (Name of Entity/Person)	Type of Control (Ownership Board, Management, Attorney-in-Fact, Influence, Other)	If Control is Ownership Provide Percentage	Ultimate Controlling Entity(ies)/Person(s)	Is an SCA Filing Required? (Y/N)	*
0140	Nationwide.....		20-5976272..	4595410		0.....	Nationwide Ventures, LLC.....	OH.....	NIA.....	Nationwide Mutual Insurance Company.....	ownership.....	100.000	Nationwide Mutual Insurance Company.....	N.....	
0140	Nationwide.....		11-3651828..	4588168		0.....	ND La Quinta Partners, LLC.....	DE.....	NIA.....	Nationwide Realty Investors, Ltd.....	ownership.....	95.000	Nationwide Mutual Insurance Company.....	N.....	1.....
0140	Nationwide.....		20-0585594..	4286866		0.....	Newhouse Capital Partners II, LLC.....	DE.....	NIA.....	Nationwide Global Ventures, Inc.....	ownership.....	99.000	Nationwide Mutual Insurance Company.....	N.....	1.....
0140	Nationwide.....		13-4110716..	4286679		0.....	Newhouse Capital Partners, LLC.....	DE.....	NIA.....	NWD Investment Management, Inc.....	ownership.....	19.000	Nationwide Mutual Insurance Company.....	N.....	1.....
0140	Nationwide.....		13-4110716..	4286679		0.....	Newhouse Capital Partners, LLC.....	DE.....	NIA.....	Nationwide Mutual Insurance Company.....	ownership.....	70.000	Nationwide Mutual Insurance Company.....	N.....	1.....
0140	Nationwide.....		13-4110716..	4286679		0.....	Newhouse Capital Partners, LLC.....	DE.....	NIA.....	Nationwide Mutual Fire Insurance Company..	ownership.....	10.000	Nationwide Mutual Insurance Company.....	N.....	1.....
0140	Nationwide.....		31-1630871..	4287032		0.....	NFS Distributors, Inc.....	DE.....	NIA.....	Nationwide Financial Services, Inc.....	ownership.....	100.000	Nationwide Mutual Insurance Company.....	N.....	
0140	Nationwide.....		14-1892640..	4596677		0.....	NHT XII Tax Credit Fund, LLC.....	DC.....	NIA.....	Nationwide Life Insurance Company.....	ownership.....	49.990	Nationwide Mutual Insurance Company.....	N.....	1.....
0140	Nationwide.....		14-1892640..	4596677		0.....	NHT XII Tax Credit Fund, LLC.....	DC.....	NIA.....	Nationwide Assurance Company.....	ownership.....	25.000	Nationwide Mutual Insurance Company.....	N.....	1.....
0140	Nationwide.....		14-1892640..	4596677		0.....	NHT XII Tax Credit Fund, LLC.....	DC.....	NIA.....	Nationwide Mutual Insurance Company.....	ownership.....	25.000	Nationwide Mutual Insurance Company.....	N.....	1.....
0140	Nationwide.....		46-3762545..	4750442		0.....	NNOV8, LLC.....	OH.....	NIA.....	Nationwide Mutual Insurance Company.....	ownership.....	100.000	Nationwide Mutual Insurance Company.....	N.....	
0140	Nationwide.....		20-4939866..	4590817		0.....	North of Third, LLC.....	OH.....	NIA.....	NRI Equity Land Investments, LLC.....	ownership.....	100.000	Nationwide Mutual Insurance Company.....	N.....	
0140	Nationwide.....		26-4083207..	4590385		0.....	Northstar Commercial Development, LLC.....	OH.....	NIA.....	Nationwide Realty Investors, Ltd.....	ownership.....	50.000	Nationwide Mutual Insurance Company.....	N.....	1.....
0140	Nationwide.....		61-1753500..	n/a.....		0.....	Northstar Master Property Owners Association, Inc.	OH.....	OTH.....	Other non-Nationwide.....	n/a.....		Other non-Nationwide.....	N.....	2.....
0140	Nationwide.....		26-4083354..	4594909		0.....	Northstar Residential Development, LLC.....	OH.....	NIA.....	Nationwide Realty Investors, Ltd.....	ownership.....	50.000	Nationwide Mutual Insurance Company.....	N.....	1.....
0140	Nationwide.....		31-1486309..	4594794		0.....	NRI Arena, LLC.....	OH.....	NIA.....	Nationwide Realty Investors, Ltd.....	ownership.....	100.000	Nationwide Mutual Insurance Company.....	N.....	
0140	Nationwide.....		31-1486309..	4594815		0.....	NRI Brookside, LLC.....	OH.....	NIA.....	Nationwide Realty Investors, Ltd.....	ownership.....	100.000	Nationwide Mutual Insurance Company.....	N.....	
0140	Nationwide.....		31-1486309..	4595027		0.....	NRI Builders, LLC.....	OH.....	NIA.....	Nationwide Realty Investors, Ltd.....	ownership.....	100.000	Nationwide Mutual Insurance Company.....	N.....	
0140	Nationwide.....		31-1486309..	4590246		0.....	NRI Communities/Harris Blvd., LLC.....	OH.....	NIA.....	Nationwide Realty Investors, Ltd.....	ownership.....	100.000	Nationwide Mutual Insurance Company.....	N.....	
0140	Nationwide.....		31-1486309..	5217027		0.....	NRI Corporate Housing, LLC.....	OH.....	NIA.....	Nationwide Realty Investors, Ltd.....	ownership.....	100.000	Nationwide Mutual Insurance Company.....	N.....	
0140	Nationwide.....		31-1486309..	4590282		0.....	NRI Cramer Creek, LLC.....	OH.....	NIA.....	Nationwide Realty Investors, Ltd.....	ownership.....	100.000	Nationwide Mutual Insurance Company.....	N.....	
0140	Nationwide.....		20-4939866..	4590460		0.....	NRI Equity Land Investments, LLC.....	OH.....	NIA.....	Nationwide Realty Investors, Ltd.....	ownership.....	80.000	Nationwide Mutual Insurance Company.....	N.....	1.....
0140	Nationwide.....		26-0212217..	4590394		0.....	NRI Equity Tampa, LLC.....	OH.....	NIA.....	Nationwide Realty Investors, Ltd.....	ownership.....	100.000	Nationwide Mutual Insurance Company.....	N.....	
0140	Nationwide.....		31-1486309..	4590376		0.....	NRI Maxtown, LLC.....	OH.....	NIA.....	Nationwide Realty Investors, Ltd.....	ownership.....	100.000	Nationwide Mutual Insurance Company.....	N.....	
0140	Nationwide.....		31-1486309..	4590406		0.....	NRI Office Ventures, Ltd.....	OH.....	NIA.....	Nationwide Realty Investors, Ltd.....	ownership.....	100.000	Nationwide Mutual Insurance Company.....	N.....	
0140	Nationwide.....		31-1580283..	4596912		0.....	NRI Telecom, LLC.....	OH.....	NIA.....	NWD Investments, LLC.....	ownership.....	100.000	Nationwide Mutual Insurance Company.....	N.....	
0140	Nationwide.....		31-1486309..	4590349		0.....	NRI-Rivulon, LLC.....	OH.....	NIA.....	Nationwide Realty Investors, Ltd.....	ownership.....	100.000	Nationwide Mutual Insurance Company.....	N.....	
0140	Nationwide.....		26-4083354..	4869456		0.....	NS Developers, LLC.....	OH.....	NIA.....	Northstar Residential Development, LLC.....	ownership.....	100.000	Nationwide Mutual Insurance Company.....	N.....	
0140	Nationwide.....		45-3123274..	4595438		0.....	NTCIF-2011 Georgia State Investor, LLC.....	OH.....	NIA.....	Nationwide Property and Casualty Company..	ownership.....	100.000	Nationwide Mutual Insurance Company.....	N.....	
0140	Nationwide.....		90-0729552..	4596695		0.....	NTCIF-2011, LLC.....	OH.....	NIA.....	Nationwide Mutual Insurance Company.....	ownership.....	50.000	Nationwide Mutual Insurance Company.....	N.....	1.....
0140	Nationwide.....		90-0729552..	4596695		0.....	NTCIF-2011, LLC.....	OH.....	NIA.....	Nationwide Mutual Fire Insurance Company..	ownership.....	50.000	Nationwide Mutual Insurance Company.....	N.....	1.....
0140	Nationwide.....		27-4700627..	4596716		0.....	NTCP 2011-A, LLC.....	OH.....	OTH.....	Nationwide Life Insurance Company.....	other.....	0.010	Nationwide Mutual Insurance Company.....	N.....	2.....
0140	Nationwide.....		46-0741029..	4464703		0.....	NTCP 2012-A, LLC.....	OH.....	OTH.....	Nationwide Life Insurance Company.....	other.....	0.010	Nationwide Mutual Insurance Company.....	N.....	2.....
0140	Nationwide.....		46-3309896..	4586164		0.....	NTCP 2013-C, LLC.....	OH.....	OTH.....	Nationwide Life Insurance Company.....	other.....	0.010	Nationwide Mutual Insurance Company.....	N.....	2.....
0140	Nationwide.....		46-4111078..	4596743		0.....	NTCP 2014-A, LLC.....	OH.....	OTH.....	Nationwide Life Insurance Company.....	other.....	0.010	Nationwide Mutual Insurance Company.....	N.....	2.....

Q13.6

**SCHEDULE Y**

**PART 1A - DETAIL OF INSURANCE HOLDING COMPANY SYSTEM**

1	2	3	4	5	6	7	8	9	10	11	12	13	14	15	16
Group Code	Group Name	NAIC Company Code	ID Number	Federal RSSD	CIK	Name of Securities Exchange if Publicly Traded (U.S. or International)	Names of Parent, Subsidiaries or Affiliates	Domiciliary Location	Relationship to Reporting Entity	Directly Controlled by (Name of Entity/Person)	Type of Control (Ownership Board, Management, Attorney-in-Fact, Influence, Other)	If Control is Ownership Provide Percentage	Ultimate Controlling Entity(ies)/Person(s)	Is an SCA Filing Required? (Y/N)	*
0140	Nationwide.....		47-1404116..	4802734		0.....	NTCP 2014-B, LLC.....	OH.....	OTH.....	Nationwide Life Insurance Company.....	other.....	...0.010	Nationwide Mutual Insurance Company.....	...N.....	2.....
0140	Nationwide.....		47-1413242..	4809948		0.....	NTCP 2014-C, LLC.....	OH.....	OTH.....	Nationwide Life Insurance Company.....	other.....	...0.010	Nationwide Mutual Insurance Company.....	...N.....	2.....
0140	Nationwide.....		47-3909345..	4869483		0.....	NTCP 2015-A, LLC.....	OH.....	OTH.....	Nationwide Life Insurance Company.....	other.....	...0.010	Nationwide Mutual Insurance Company.....	...N.....	2.....
0140	Nationwide.....		47-4148470..	4890807		0.....	NTCP 2015-B, LLC.....	OH.....	OTH.....	Nationwide Life Insurance Company.....	other.....	...0.010	Nationwide Mutual Insurance Company.....	...N.....	2.....
0140	Nationwide.....		81-3836925..	5048678		0.....	NTCP 2016-A, LLC.....	OH.....	NIA.....	Nationwide Life Insurance Company.....	ownership.....	..100.000	Nationwide Mutual Insurance Company.....	...N.....	
0140	Nationwide.....		82-2015065..	5167122		0.....	NTCP 2017-A, LLC.....	OH.....	NIA.....	Nationwide Life Insurance Company.....	ownership.....	..100.000	Nationwide Mutual Insurance Company.....	...N.....	
0140	Nationwide.....		81-0936428..	4966663		0.....	NW Private Debt, LLC.....	OH.....	NIA.....	Nationwide Mutual Insurance Company.....	ownership.....	..100.000	Nationwide Mutual Insurance Company.....	...N.....	
0140	Nationwide.....		26-1903919..	5012295		0.....	NW REI, LLC.....	DE.....	NIA.....	Nationwide Mutual Insurance Company.....	ownership.....	..100.000	Nationwide Mutual Insurance Company.....	...N.....	
0140	Nationwide.....		81-2326191..	5011609		0.....	NW-442 Ocean, LLC.....	OH.....	NIA.....	NW REI (NLIC), LLC.....	ownership.....	..100.000	Nationwide Mutual Insurance Company.....	...N.....	
0140	Nationwide.....		46-3654078..	4593621		0.....	NW-Amesbury, LLC.....	OH.....	NIA.....	NW-REI, LLC.....	ownership.....	..100.000	Nationwide Mutual Insurance Company.....	...N.....	
0140	Nationwide.....		81-1263284..	4960979		0.....	NW-Amesbury II, LLC.....	OH.....	NIA.....	Nationwide Mutual Insurance Company.....	ownership.....	..100.000	Nationwide Mutual Insurance Company.....	...N.....	
0140	Nationwide.....		81-1246932..	4958855		0.....	NW-Baseline, LLC.....	OH.....	NIA.....	Nationwide Mutual Insurance Company.....	ownership.....	..100.000	Nationwide Mutual Insurance Company.....	...N.....	
0140	Nationwide.....		81-1869861..	4984911		0.....	NW-Beech, LLC.....	OH.....	NIA.....	NW REI, (NMFIC), LLC.....	ownership.....	..100.000	Nationwide Mutual Insurance Company.....	...N.....	
0140	Nationwide.....		47-4999493..	4902223		0.....	NW-Belleview, LLC.....	OH.....	NIA.....	NW REI, LLC.....	ownership.....	..100.000	Nationwide Mutual Insurance Company.....	...N.....	
0140	Nationwide.....		81-1211881..	4962151		0.....	NW-Castle Rock, LLC.....	OH.....	NIA.....	Nationwide Mutual Insurance Company.....	ownership.....	..100.000	Nationwide Mutual Insurance Company.....	...N.....	
0140	Nationwide.....		46-3674167..	4595090		0.....	NW-Cedar Springs, LLC.....	OH.....	NIA.....	NW REI, LLC.....	ownership.....	..100.000	Nationwide Mutual Insurance Company.....	...N.....	
0140	Nationwide.....		82-2957977..	5167131		0.....	NW-Civita, LLC.....	OH.....	NIA.....	Nationwide Life Insurance Company.....	ownership.....	..100.000	Nationwide Mutual Insurance Company.....	...N.....	
0140	Nationwide.....		82-2958440..	5167140		0.....	NW-Civita NLAIC, LLC.....	OH.....	NIA.....	Nationwide Life and Annuity Insurance Company.....	ownership.....	..100.000	Nationwide Mutual Insurance Company.....	...N.....	
0140	Nationwide.....		81-1285433..	4961024		0.....	NW-College Park, LLC.....	OH.....	NIA.....	Nationwide Mutual Insurance Company.....	ownership.....	..100.000	Nationwide Mutual Insurance Company.....	...N.....	
0140	Nationwide.....		31-1580283..	4591038		0.....	NWD 205 Vine, LLC.....	OH.....	NIA.....	NWD Investments, LLC.....	ownership.....	..100.000	Nationwide Mutual Insurance Company.....	...N.....	
0140	Nationwide.....		31-1580283..	4591261		0.....	NWD 225 Nationwide, LLC.....	OH.....	NIA.....	NWD Investments, LLC.....	ownership.....	..100.000	Nationwide Mutual Insurance Company.....	...N.....	
0140	Nationwide.....		31-1580283..	4591056		0.....	NWD 230 West, LLC.....	OH.....	NIA.....	NWD Investments, LLC.....	ownership.....	..100.000	Nationwide Mutual Insurance Company.....	...N.....	
0140	Nationwide.....		31-1580283..	4590545		0.....	NWD 240 Nationwide, LLC.....	OH.....	NIA.....	NWD Investments, LLC.....	ownership.....	..100.000	Nationwide Mutual Insurance Company.....	...N.....	
0140	Nationwide.....		31-1580283..	4590273		0.....	NWD 250 Brodbelt, LLC.....	OH.....	NIA.....	NWD Investments, LLC.....	ownership.....	..100.000	Nationwide Mutual Insurance Company.....	...N.....	
0140	Nationwide.....		31-1580283..	4981134		0.....	NWD 250 West, LLC.....	OH.....	NIA.....	NWD Investments, LLC.....	ownership.....	..100.000	Nationwide Mutual Insurance Company.....	...N.....	
0140	Nationwide.....		31-1580283..	4590554		0.....	NWD 265 Neil, LLC.....	OH.....	NIA.....	NWD Investments, LLC.....	ownership.....	..100.000	Nationwide Mutual Insurance Company.....	...N.....	
0140	Nationwide.....		31-1580283..	4590518		0.....	NWD 275 Marconi, LLC.....	OH.....	NIA.....	NWD Investments, LLC.....	ownership.....	..100.000	Nationwide Mutual Insurance Company.....	...N.....	
0140	Nationwide.....		31-1580283..	4590509		0.....	NWD 300 Neil, LLC.....	OH.....	NIA.....	NWD Investments, LLC.....	ownership.....	..100.000	Nationwide Mutual Insurance Company.....	...N.....	
0140	Nationwide.....		31-1580283..	4590572		0.....	NWD 300 Spring, LLC.....	OH.....	NIA.....	NWD Investments, LLC.....	ownership.....	..100.000	Nationwide Mutual Insurance Company.....	...N.....	
0140	Nationwide.....		31-1580283..	4590527		0.....	NWD 355 McConnell, LLC.....	OH.....	NIA.....	NWD Investments, LLC.....	ownership.....	..100.000	Nationwide Mutual Insurance Company.....	...N.....	
0140	Nationwide.....		31-1580283..	4590581		0.....	NWD 425 Nationwide, LLC.....	OH.....	NIA.....	NWD Investments, LLC.....	ownership.....	..100.000	Nationwide Mutual Insurance Company.....	...N.....	
0140	Nationwide.....		31-1580283..	4590536		0.....	NWD 500 Nationwide, LLC.....	OH.....	NIA.....	NWD Investments, LLC.....	ownership.....	..100.000	Nationwide Mutual Insurance Company.....	...N.....	
0140	Nationwide.....		31-1580283..	4591298		0.....	NWD Arena Crossing, LLC.....	OH.....	NIA.....	NWD Investments, LLC.....	ownership.....	..100.000	Nationwide Mutual Insurance Company.....	...N.....	
0140	Nationwide.....		31-1580283..	4591083		0.....	NWD Arena District I, LLC.....	OH.....	NIA.....	NWD Investments, LLC.....	ownership.....	..100.000	Nationwide Mutual Insurance Company.....	...N.....	
0140	Nationwide.....		31-1580283..	4591300		0.....	NWD Arena District II, LLC.....	OH.....	NIA.....	NWD Investments, LLC.....	ownership.....	..100.000	Nationwide Mutual Insurance Company.....	...N.....	

Q13.7

**SCHEDULE Y**

**PART 1A - DETAIL OF INSURANCE HOLDING COMPANY SYSTEM**

1	2	3	4	5	6	7	8	9	10	11	12	13	14	15	16
Group Code	Group Name	NAIC Company Code	ID Number	Federal RSSD	CIK	Name of Securities Exchange if Publicly Traded (U.S. or International)	Names of Parent, Subsidiaries or Affiliates	Domiciliary Location	Relationship to Reporting Entity	Directly Controlled by (Name of Entity/Person)	Type of Control (Ownership Board, Management, Attorney-in-Fact, Influence, Other)	If Control is Ownership Provide Percentage	Ultimate Controlling Entity(ies)/Person(s)	Is an SCA Filing Required? (Y/N)	*
0140	Nationwide		31-1580283	4591113		0	NWD Arena District MM, LLC	OH	NIA	NWD Investments, LLC	ownership	100.000	Nationwide Mutual Insurance Company	N	
0140	Nationwide		31-1580283	4591319		0	NWD Arena District PW, LLC	OH	NIA	NWD Investments, LLC	ownership	100.000	Nationwide Mutual Insurance Company	N	
0140	Nationwide		31-1580283	4591131		0	NWD Arena District V, LLC	OH	NIA	NWD Investments, LLC	ownership	100.000	Nationwide Mutual Insurance Company	N	
0140	Nationwide		04-3679396	4286848		0	NWD Asset Management Holdings, Inc.	DE	NIA	NWD Investment Management, Inc.	ownership	100.000	Nationwide Mutual Insurance Company	N	
0140	Nationwide		31-1580283	4591328		0	NWD Athletic Club, LLC	OH	NIA	NWD Investments, LLC	ownership	100.000	Nationwide Mutual Insurance Company	N	
0140	Nationwide		30-0876022	4810010		0	NWD Franklinton, LLC	DE	NIA	Nationwide Realty Investors, Ltd.	ownership	80.000	Nationwide Mutual Insurance Company	N	1
0140	Nationwide		31-1636299	4286594		0	NWD Investment Management, Inc.	DE	NIA	Nationwide Corporation	ownership	100.000	Nationwide Mutual Insurance Company	N	
0140	Nationwide		31-1580283	4587965		0	NWD Investments, LLC	OH	NIA	Nationwide Realty Investors, Ltd.	ownership	80.000	Nationwide Mutual Insurance Company	N	1
0140	Nationwide		47-4036460	4869492		0	NW-Deerfield, LLC	OH	NIA	Nationwide Mutual Insurance Company	ownership	74.030	Nationwide Mutual Insurance Company	N	1
0140	Nationwide		47-4036460	4869492		0	NW-Deerfield, LLC	OH	NIA	Nationwide Life and Annuity Insurance Company	ownership	25.970	Nationwide Mutual Insurance Company	N	1
0140	Nationwide		81-2327221	5013443		0	NW-Deerfield II, LLC	OH	NIA	NW REI, LLC	ownership	100.000	Nationwide Mutual Insurance Company	N	
0140	Nationwide		81-4401901	5082010		0	NW-Grapevine Bluffs, LLC	OH	NIA	Nationwide Mutual Insurance Company	ownership	100.000	Nationwide Mutual Insurance Company	N	
0140	Nationwide		46-4330384	4750443		0	NW-Hudnall, LLC	OH	NIA	NW REI, LLC	ownership	100.000	Nationwide Mutual Insurance Company	N	
0140	Nationwide		82-1881115	5143078		0	NW-Ironhorse, LLC	OH	NIA	Nationwide Mutual Insurance Company	ownership	100.000	Nationwide Mutual Insurance Company	N	
0140	Nationwide		47-2482818	4810122		0	NW-Jasper WAG, LLC	OH	NIA	NW REI, LLC	ownership	100.000	Nationwide Mutual Insurance Company	N	
0140	Nationwide		47-1497429	4809957		0	NW-Jefferson, LLC	OH	NIA	NW REI, LLC	ownership	100.000	Nationwide Mutual Insurance Company	N	
0140	Nationwide		81-1232565	4961042		0	NW-Lenexa, LLC	OH	NIA	NW REI (NLAIC), LLC	ownership	100.000	Nationwide Mutual Insurance Company	N	
0140	Nationwide		81-1671648	4981116		0	NW-Lenexa II, LLC	OH	NIA	NW REI (NLAIC), LLC	ownership	100.000	Nationwide Mutual Insurance Company	N	
0140	Nationwide		81-5146596	5092961		0	NW-Logan, LLC	OH	NIA	NW REI, LLC	ownership	100.000	Nationwide Mutual Insurance Company	N	
0140	Nationwide		81-5146266	5092989		0	NW-Millenia, LLC	OH	NIA	NW REI, LLC	ownership	100.000	Nationwide Mutual Insurance Company	N	
0140	Nationwide		46-2457568	4591467		0	NW-Montrose, LLC	OH	NIA	NW REI, LLC	ownership	100.000	Nationwide Mutual Insurance Company	N	
0140	Nationwide		46-3888719	4593603		0	NW-Park 288, LLC	OH	NIA	NW REI, LLC	ownership	100.000	Nationwide Mutual Insurance Company	N	
0140	Nationwide		47-1740812	4809966		0	NW-Peachtree, LLC	OH	NIA	NW REI, LLC	ownership	100.000	Nationwide Mutual Insurance Company	N	
0140	Nationwide		46-2469044	4591494		0	NW-Portales, LLC	OH	NIA	NW REI, LLC	ownership	100.000	Nationwide Mutual Insurance Company	N	
0140	Nationwide		47-2449044	4810113		0	NW-Promenade at Madison, LLC	OH	NIA	NW REI, LLC	ownership	100.000	Nationwide Mutual Insurance Company	N	
0140	Nationwide		81-1603024	4981086		0	NW REI (NLAIC), LLC	OH	NIA	Nationwide Life and Annuity Insurance Company	ownership	100.000	Nationwide Mutual Insurance Company	N	
0140	Nationwide		81-1619428	4981107		0	NW REI (NLIC), LLC	OH	NIA	Nationwide Life Insurance Company	ownership	100.000	Nationwide Mutual Insurance Company	N	
0140	Nationwide		81-1861190	4984902		0	NW REI (NMFIC), LLC	OH	NIA	Nationwide Mutual Fire Insurance Company	ownership	100.000	Nationwide Mutual Insurance Company	N	
0140	Nationwide		82-4016536			0	NW-Santa Cruz, LLC	OH	NIA	NW REI, LLC	ownership	100.000	Nationwide Mutual Insurance Company	N	
0140	Nationwide		46-1100378	4591524		0	NW-Triangle, LLC	OH	NIA	NW REI, LLC	ownership	100.000	Nationwide Mutual Insurance Company	N	
0140	Nationwide		46-5764783	4809939		0	NW-Tyson's, LLC	OH	NIA	NW REI, LLC	ownership	100.000	Nationwide Mutual Insurance Company	N	
0140	Nationwide		31-0947092	4590479		0	OCH Company, LLC	OH	NIA	Nationwide Realty Investors, Ltd.	ownership	100.000	Nationwide Mutual Insurance Company	N	
0140	Nationwide		31-0947092	4590442		0	Ohio Center Hotel Company Limited	OH	NIA	Nationwide Realty Investors, Ltd.	ownership	55.250	Nationwide Mutual Insurance Company	N	1
0140	Nationwide		31-0947092	4590442		0	Ohio Center Hotel Company Limited	OH	NIA	OCH Company, LLC	ownership	1.000	Nationwide Mutual Insurance Company	N	1
0140	Nationwide		26-0263012	n/a		0	Old Track Street Owners Association, Inc.	OH	OTH	Other non-Nationwide	n/a		Other non-Nationwide	N	2

Q13.8

**SCHEDULE Y**

**PART 1A - DETAIL OF INSURANCE HOLDING COMPANY SYSTEM**

1	2	3	4	5	6	7	8	9	10	11	12	13	14	15	16
Group Code	Group Name	NAIC Company Code	ID Number	Federal RSSD	CIK	Name of Securities Exchange if Publicly Traded (U.S. or International)	Names of Parent, Subsidiaries or Affiliates	Domiciliary Location	Relationship to Reporting Entity	Directly Controlled by (Name of Entity/Person)	Type of Control (Ownership Board, Management, Attorney-in-Fact, Influence, Other)	If Control is Ownership Provide Percentage	Ultimate Controlling Entity(ies)/Person(s)	Is an SCA Filing Required? (Y/N)	*
0140	Nationwide	13999	27-1712056	4286914		0	Olentangy Reinsurance, LLC	VT	IA	Nationwide Life and Annuity Insurance Company	ownership	100.000	Nationwide Mutual Insurance Company	N	
0140	Nationwide		47-1923444	4809975		0	On Your Side Nationwide Insurance Agency, Inc.	OH	NIA	Nationwide Mutual Insurance Company	ownership	100.000	Nationwide Mutual Insurance Company	N	
0140	Nationwide		n/a	4596462		0	OYS Fund LLC	DE	NIA	Nationwide Mutual Insurance Company	ownership	100.000	Nationwide Mutual Insurance Company	N	
0140	Nationwide		n/a	4596480		0	Park 288 Industrial, LLC	TX	OTH	Nationwide Mutual Insurance Company	Investor member / no control	95.000	other non-Nationwide	N	2
0			32-0516252	n/a		0	Parks Edge Condominium Home Owners Association	OH	OTH	Other non-Nationwide	n/a		Other non-Nationwide	N	2
0140	Nationwide		31-1486309	4590358		0	Perimeter A, Ltd	OH	NIA	Nationwide Realty Investors, Ltd	ownership	100.000	Nationwide Mutual Insurance Company	N	
0140	Nationwide		20-1169305	4564032		0	Polyphony Fund LLC	DE	NIA	Nationwide Mutual Insurance Company	ownership	100.000	Nationwide Mutual Insurance Company	N	
0140	Nationwide		39-1907217	4287201		0	Premier Agency, Inc.	IA	NIA	ALLIED Group, Inc.	ownership	100.000	Nationwide Mutual Insurance Company	N	
0140	Nationwide		75-2938844	4287005		0	Registered Investment Advisors Services, Inc.	TX	NIA	Nationwide Financial Services, Inc.	ownership	100.000	Nationwide Mutual Insurance Company	N	
0140	Nationwide		82-0549218	4288244		0	Retention Alternatives Ltd	BMU	IA	Nationwide Mutual Fire Insurance Company	ownership	100.000	Nationwide Mutual Insurance Company	N	
0140	Nationwide		20-2726014	4595278		0	Riverview Diversified Opportunities, LLC	DE	OTH	Nationwide Mutual Insurance Company	ownership		Nationwide Mutual Insurance Company	N	2
0140	Nationwide		20-2726014	4595278		0	Riverview Diversified Opportunities, LLC	DE	OTH	Nationwide Mutual Fire Insurance Company	ownership		Nationwide Mutual Insurance Company	N	2
0140	Nationwide		20-2726014	4595278		0	Riverview Diversified Opportunities, LLC	DE	OTH	Nationwide Life Insurance Company	ownership		Nationwide Mutual Insurance Company	N	2
0140	Nationwide		22-3655264	4286530		0	Riverview International Group, Inc.	DE	NIA	NWD Investment Management, Inc.	ownership	100.000	Nationwide Mutual Insurance Company	N	
0140	Nationwide		26-0384865	4595287		0	Riverview Multi Series Fund, LL - Class Event.	DE	NIA	Nationwide Mutual Insurance Company	ownership	100.000	Nationwide Mutual Insurance Company	N	
0140	Nationwide		20-8027258	4595335		0	Riverview Multi Series Fund, LL - Class N.	DE	NIA	Nationwide Mutual Insurance Company	ownership	100.000	Nationwide Mutual Insurance Company	N	
0140	Nationwide	15580	31-1117969	4288002		0	Scottsdale Indemnity Company	OH	IA	Nationwide Mutual Insurance Company	ownership	100.000	Nationwide Mutual Insurance Company	N	
0140	Nationwide	41297	31-1024978	3091988		0	Scottsdale Insurance Company	OH	IA	Nationwide Mutual Insurance Company	ownership	100.000	Nationwide Mutual Insurance Company	N	
0140	Nationwide	10672	86-0835870	4287649		0	Scottsdale Surplus Lines Insurance Company	AZ	IA	Scottsdale Insurance Company	ownership	100.000	Nationwide Mutual Insurance Company	N	
0140	Nationwide		91-2158214	n/a		0	The Hideaway Club	CA	OTH	Other non-Nationwide	n/a		Other non-Nationwide	N	2
0140	Nationwide		20-3541511	n/a		0	The Madison Club	CA	OTH	Other non-Nationwide	n/a		Other non-Nationwide	N	2
0140	Nationwide		31-1610040	2989882		0	The Waterfront Partners, LLC	OH	NIA	Nationwide Realty Investors, Ltd	ownership	50.000	Nationwide Mutual Insurance Company	N	1
0140	Nationwide		52-2031677	4287751		0	THI Holdings (Delaware), Inc.	DE	NIA	Nationwide Mutual Insurance Company	ownership	100.000	Nationwide Mutual Insurance Company	Y	
0140	Nationwide		74-2825853	4287863		0	Titan Auto Insurance of New Mexico, Inc.	NM	IA	THI Holdings (Delaware), Inc.	ownership	100.000	Nationwide Mutual Insurance Company	N	
0140	Nationwide	13242	74-2286759	4287797		0	Titan Indemnity Company	TX	IA	THI Holdings (Delaware), Inc.	ownership	100.000	Nationwide Mutual Insurance Company	N	
0140	Nationwide	36269	86-0619597	4287845		0	Titan Insurance Company	MI	IA	Titan Indemnity Company	ownership	100.000	Nationwide Mutual Insurance Company	N	
0140	Nationwide		75-1284530	4287890		0	Titan Insurance Services, Inc.	TX	NIA	THI Holdings (Delaware), Inc.	ownership	100.000	Nationwide Mutual Insurance Company	N	
0140	Nationwide		81-1456923	4975937		0	US Regional Logistics Program, L.P.	DE	NIA	Nationwide Mutual Insurance Company	ownership	23.330	Nationwide Mutual Insurance Company	N	1
0140	Nationwide		81-1456923	4975937		0	US Regional Logistics Program, L.P.	DE	NIA	Nationwide Life Insurance Company	ownership	13.330	Nationwide Mutual Insurance Company	N	1
0140	Nationwide		81-1456923	4975937		0	US Regional Logistics Program, L.P.	DE	NIA	Nationwide Life and Annuity Insurance Company	ownership	6.660	Nationwide Mutual Insurance Company	N	1

Q13.9

**SCHEDULE Y**

**PART 1A - DETAIL OF INSURANCE HOLDING COMPANY SYSTEM**

1	2	3	4	5	6	7	8	9	10	11	12	13	14	15	16
Group Code	Group Name	NAIC Company Code	ID Number	Federal RSSD	CIK	Name of Securities Exchange if Publicly Traded (U.S. or International)	Names of Parent, Subsidiaries or Affiliates	Domiciliary Location	Relationship to Reporting Entity	Directly Controlled by (Name of Entity/Person)	Type of Control (Ownership Board, Management, Attorney-in-Fact, Influence, Other)	If Control is Ownership Provide Percentage	Ultimate Controlling Entity(ies)/Person(s)	Is an SCA Filing Required? (Y/N)	*
0140	Nationwide.....	.....	81-1456923..	...4975937	.....	0.....	US Regional Logistics Program, L.P.....	DE.....	NIA.....	Nationwide Mutual Fire Insurance Company...	ownership.....	.....6.660	Nationwide Mutual Insurance Company.....	....N.....	1.....
0140	Nationwide.....	.....	33-0160222..	...4653196	.....	0.....	V.P.I. Services, Inc.....	CA.....	NIA.....	Veterinary Pet Insurance Company.....	ownership.....	...100.000	Nationwide Mutual Insurance Company.....	....N.....	.....
0140	Nationwide.....	42285...	95-3750113..	...4287685	.....	0.....	Veterinary Pet Insurance Company.....	OH.....	IA.....	Scottsdale Insurance Company.....	ownership.....	...100.000	Nationwide Mutual Insurance Company.....	....N.....	.....
0140	Nationwide.....	10644...	34-1785903..	...4287911	.....	0.....	Victoria Automobile Insurance Company.....	OH.....	IA.....	Victoria Fire & Casualty Insurance Company..	ownership.....	...100.000	Nationwide Mutual Insurance Company.....	....N.....	.....
0140	Nationwide.....	42889...	34-1394913..	...4287827	.....	0.....	Victoria Fire & Casualty Company.....	OH.....	IA.....	THI Holdings (Delaware), Inc.....	ownership.....	...100.000	Nationwide Mutual Insurance Company.....	....N.....	.....
0140	Nationwide.....	10778...	34-1842604..	...4287920	.....	0.....	Victoria National Insurance Company.....	OH.....	IA.....	Nationwide Mutual Insurance Company.....	ownership.....	...100.000	Nationwide Mutual Insurance Company.....	....N.....	.....
0140	Nationwide.....	10105...	34-1777972..	...4287939	.....	0.....	Victoria Select Insurance Company.....	OH.....	IA.....	Victoria Fire & Casualty Insurance Company..	ownership.....	...100.000	Nationwide Mutual Insurance Company.....	....N.....	.....
0140	Nationwide.....	10777...	34-1842602..	...4287948	.....	0.....	Victoria Specialty Insurance Company.....	OH.....	IA.....	Victoria Fire & Casualty Insurance Company..	ownership.....	...100.000	Nationwide Mutual Insurance Company.....	....N.....	.....
0140	Nationwide.....	.....	31-1486309..	...5080696	.....	0.....	Wellington Park, LLC.....	OH.....	NIA.....	Nationwide Realty Investors, Ltd.....	ownership.....	...100.000	Nationwide Mutual Insurance Company.....	....N.....	.....
0140	Nationwide.....	37150...	86-0561941..	...4287667	.....	0.....	Western Heritage Insurance Company.....	AZ.....	IA.....	Scottsdale Insurance Company.....	ownership.....	...100.000	Nationwide Mutual Insurance Company.....	....N.....	.....
0140	Nationwide.....	.....	n/a.....	...4613323	.....	0.....	Zais Zephyr A4, LLC.....	DE.....	OTH.....	Nationwide Life Insurance Company.....	limited member / no control	.....60.000	other non-Nationwide.....	....N.....	2.....

Q13.10

Aster	Explanation
1	For the purposes of this schedule, Nationwide presumed control of these entities because they are owned by at least 10% and are not wholly-owned by a Nationwide entity.
2	Other ownership indicates a non-ownership circumstance by a Nationwide entity.

# HARLEYSVILLE LIFE INSURANCE COMPANY SUPPLEMENTAL EXHIBITS AND SCHEDULES INTERROGATORIES

The following supplemental reports are required to be filed as part of your statement filing. However, in the event that your company does not transact the type of business for which the special report must be filed, your response of NO to the specific interrogatory will be accepted in lieu of filing a "NONE" report and a bar code will be printed below. If the supplement is required of your company but is not being filed for whatever reason, enter SEE EXPLANATION and provide an explanation following the interrogatory questions.

	Response
1. Will the Trusteed Surplus Statement be filed with the state of domicile and the NAIC with this statement?	NO
2. Will the Medicare Part D Coverage Supplement be filed with the state of domicile and the NAIC with this statement?	NO
3. Will the Reasonableness of Assumptions Certification required by Actuarial Guideline XXXV be filed with the state of domicile and electronically with the NAIC?	NO
4. Will the Reasonableness and Consistency of Assumptions Certification required by Actuarial Guideline XXXV be filed with the state of domicile and electronically with the NAIC?	NO
5. Will the Reasonableness of Assumptions Certification for Implied Guaranteed Rate Method required by Actuarial Guideline XXXVI be filed with the state of domicile and electronically with the NAIC?	NO
6. Will the Reasonableness and Consistency of Assumptions Certification required by Actuarial Guideline XXXVI (Updated Average Market Value) be filed with the state of domicile and electronically with the NAIC?	NO
7. Will the Reasonableness and Consistency of Assumptions Certification required by Actuarial Guideline XXXVI (Updated Market Value) be filed with the state of domicile and electronically with the NAIC?	NO

**Explanations:**

1. The data for this supplement is not required to be filed.
2. The data for this supplement is not required to be filed.
3. The data for this supplement is not required to be filed.
4. The data for this supplement is not required to be filed.
5. The data for this supplement is not required to be filed.
6. The data for this supplement is not required to be filed.
7. The data for this supplement is not required to be filed.

**Bar Code:**



**NONE**

**HARLEYSVILLE LIFE INSURANCE COMPANY  
SCHEDULE A - VERIFICATION**

Real Estate

	1 Year to Date	2 Prior Year Ended December 31
1. Book/adjusted carrying value, December 31 of prior year.....	0	
2. Cost of acquired:		
2.1 Actual cost at time of acquisition.....		
2.2 Additional investment made after acquisition.....		
3. Current year change in encumbrances.....		
4. Total gain (loss) on disposals.....		
5. Deduct amounts received on disposals.....		
6. Total foreign exchange change in book/adjusted carrying value.....		
7. Deduct current year's other-than-temporary impairment recognized.....		
8. Deduct current year's depreciation.....		
9. Book/adjusted carrying value at end of current period (Lines 1+2+3+4-5+6-7-8).....	0	0
10. Deduct total nonadmitted amounts.....		
11. Statement value at end of current period (Line 9 minus Line 10).....	0	0

NONE

**SCHEDULE B - VERIFICATION**

Mortgage Loans

	1 Year to Date	2 Prior Year Ended December 31
1. Book value/recorded investment excluding accrued interest, December 31 of prior year.....	0	
2. Cost of acquired:		
2.1 Actual cost at time of acquisition.....		
2.2 Additional investment made after acquisition.....		
3. Capitalized deferred interest and other.....		
4. Accrual of discount.....		
5. Unrealized valuation increase (decrease).....		
6. Total gain (loss) on disposals.....		
7. Deduct amounts received on disposals.....		
8. Deduct amortization of premium and mortgage interest points and commitment fees.....		
9. Total foreign exchange change in book value/recorded investment excluding accrued interest.....		
10. Deduct current year's other-than-temporary impairment recognized.....		
11. Book value/recorded investment excluding accrued interest at end of current period (Lines 1+2+3+4+5+6-7-8+9-10).....	0	0
12. Total valuation allowance.....		
13. Subtotal (Line 11 plus Line 12).....	0	0
14. Deduct total nonadmitted amounts.....		
15. Statement value at end of current period (Line 13 minus Line 14).....	0	0

NONE

**SCHEDULE BA - VERIFICATION**

Other Long-Term Invested Assets

	1 Year to Date	2 Prior Year Ended December 31
1. Book/adjusted carrying value, December 31 of prior year.....	0	
2. Cost of acquired:		
2.1 Actual cost at time of acquisition.....		
2.2 Additional investment made after acquisition.....		
3. Capitalized deferred interest and other.....		
4. Accrual of discount.....		
5. Unrealized valuation increase (decrease).....		
6. Total gain (loss) on disposals.....		
7. Deduct amounts received on disposals.....		
8. Deduct amortization of premium and depreciation.....		
9. Total foreign exchange change in book/adjusted carrying value.....		
10. Deduct current year's other-than-temporary impairment recognized.....		
11. Book/adjusted carrying value at end of current period (Lines 1+2+3+4+5+6-7-8+9-10).....	0	0
12. Deduct total nonadmitted amounts.....		
13. Statement value at end of current period (Line 11 minus Line 12).....	0	0

NONE

**SCHEDULE D - VERIFICATION**

Bonds and Stocks

	1 Year to Date	2 Prior Year Ended December 31
1. Book/adjusted carrying value of bonds and stocks, December 31 of prior year.....	369,570,175	374,676,898
2. Cost of bonds and stocks acquired.....	16,968,546	47,351,652
3. Accrual of discount.....	49,446	709,634
4. Unrealized valuation increase (decrease).....		
5. Total gain (loss) on disposals.....	432	551,220
6. Deduct consideration for bonds and stocks disposed of.....	17,355,719	53,246,236
7. Deduct amortization of premium.....	127,729	472,993
8. Total foreign exchange change in book/adjusted carrying value.....		
9. Deduct current year's other-than-temporary impairment recognized.....		
10. Total investment income recognized as a result of prepayment penalties and/or acceleration fees.....	21,051	
11. Book/adjusted carrying value at end of current period (Lines 1+2+3+4+5-6-7+8-9+10).....	369,126,202	369,570,175
12. Deduct total nonadmitted amounts.....		
13. Statement value at end of current period (Line 11 minus Line 12).....	369,126,202	369,570,175

**SCHEDULE D - PART 1B**

Showing the Acquisitions, Dispositions and Non-Trading Activity

During the Current Quarter for all Bonds and Preferred Stock by NAIC Designation

NAIC Designation	1 Book/Adjusted Carrying Value Beginning of Current Quarter	2 Acquisitions During Current Quarter	3 Dispositions During Current Quarter	4 Non-Trading Activity During Current Quarter	5 Book/Adjusted Carrying Value End of First Quarter	6 Book/Adjusted Carrying Value End of Second Quarter	7 Book/Adjusted Carrying Value End of Third Quarter	8 Book/Adjusted Carrying Value December 31 Prior Year
<b>BONDS</b>								
1. NAIC 1 (a).....	201,993,549	1,992,290	8,387,011	(3,037,913)	192,560,915			201,993,549
2. NAIC 2 (a).....	165,618,962	14,554,193	8,947,226	995,461	172,221,390			165,618,962
3. NAIC 3 (a).....	1,957,667	422,063		1,964,168	4,343,898			1,957,667
4. NAIC 4 (a).....					0			
5. NAIC 5 (a).....					0			
6. NAIC 6 (a).....					0			
7. Total Bonds.....	369,570,178	16,968,546	17,334,237	(78,284)	369,126,203	0	0	369,570,178
<b>PREFERRED STOCK</b>								
8. NAIC 1.....					0			
9. NAIC 2.....					0			
10. NAIC 3.....					0			
11. NAIC 4.....					0			
12. NAIC 5.....					0			
13. NAIC 6.....					0			
14. Total Preferred Stock.....	0	0	0	0	0	0	0	0
15. Total Bonds and Preferred Stock.....	369,570,178	16,968,546	17,334,237	(78,284)	369,126,203	0	0	369,570,178

QS102

(a) Book/Adjusted Carrying Value column for the end of the current reporting period includes the following amount of short-term and cash equivalent bonds by NAIC designation:

NAIC 1 \$.....804,725; NAIC 2 \$.....0; NAIC 3 \$.....0; NAIC 4 \$.....0; NAIC 5 \$.....0; NAIC 6 \$.....0.

**HARLEYSVILLE LIFE INSURANCE COMPANY  
SCHEDULE DA - PART 1**

Short-Term Investments

	1 Book/Adjusted Carrying Value	2 Par Value	3 Actual Cost	4 Interest Collected Year To Date	5 Paid for Accrued Interest Year To Date
9199999.....	15,651,936	XXX.....	15,651,936	9,245	

**SCHEDULE DA - VERIFICATION**

Short-Term Investments

	1 Year To Date	2 Prior Year Ended December 31
1. Book/adjusted carrying value, December 31 of prior year.....	0	4,854,300
2. Cost of short-term investments acquired.....	18,375,058	88,209,932
3. Accrual of discount.....		
4. Unrealized valuation increase (decrease).....		
5. Total gain (loss) on disposals.....		
6. Deduct consideration received on disposals.....	2,723,122	93,064,232
7. Deduct amortization of premium.....		
8. Total foreign exchange change in book/adjusted carrying value.....		
9. Deduct current year's other-than-temporary impairment recognized.....		
10. Book/adjusted carrying value at end of current period (Lines 1+2+3+4+5-6-7+8-9).....	15,651,936	0
11. Deduct total nonadmitted amounts.....		
12. Statement value at end of current period (Line 10 minus Line 11).....	15,651,936	0

## SCHEDULE DB - PART A - VERIFICATION

### Options, Caps, Floors, Collars, Swaps and Forwards

1. Book/adjusted carrying value, December 31, prior year (Line 9, prior year).....		
2. Cost paid/(consideration received) on additions.....		
3. Unrealized valuation increase/(decrease).....		
4. Total gain (loss) on termination recognized.....	<b>NONE</b>	
5. Considerations received/(paid) on terminations.....		
6. Amortization.....		
7. Adjustment to the book/adjusted carrying value of hedge item.....		
8. Total foreign exchange change in book/adjusted carrying value.....		
9. Book/adjusted carrying value at end of current period (Lines 1 + 2 + 3 + 4 - 5 + 6 + 7 + 8).....		0
10. Deduct nonadmitted assets.....		
11. Statement value at end of current period (Line 9 minus Line 10).....		0

## SCHEDULE DB - PART B - VERIFICATION

### Futures Contracts

1. Book/adjusted carrying value, December 31, prior year (Line 6, prior year).....		
2. Cumulative cash change (Section 1, Broker Name/Net Cash Deposits Footnote - Cumulative Cash Change column).....		
3.1 Add:		
Change in variation margin on open contracts - Highly Effective Hedges:		
3.11 Section 1, Column 15, current year to date minus.....		
3.12 Section 1, Column 15, prior year.....		0
Change in variation margin on open contracts - All Other:		
3.13 Section 1, Column 18, current year to date minus.....		
3.14 Section 1, Column 18, prior year.....		0
3.2 Add:		
Change in adjustment to basis of hedged item:		
3.21 Section 1, Column 17, current year to date minus.....		
3.22 Section 1, Column 17, prior year.....	<b>NONE</b>	0
Change in amount recognized:		
3.23 Section 1, Column 19, current year to date minus.....		
3.24 Section 1, Column 19, prior year.....		0
3.3 Subtotal (Line 3.1 minus Line 3.2).....		0
4.1 Cumulative variation margin on terminated contracts during the year.....		
4.2 Less:		
4.21 Amount used to adjust basis of hedged item.....		
4.22 Amount recognized.....		0
4.3 Subtotal (Line 4.1 minus Line 4.2).....		0
5. Dispositions gains (losses) on contracts terminated in prior year:		
5.1 Total gain (loss) recognized for terminations in prior year.....		
5.2 Total gain (loss) adjusted into the hedged item(s) for the terminations in prior year.....		
6. Book/adjusted carrying value at end of current period (Lines 1 + 2 + 3.3 - 4.3 - 5.1 - 5.2).....		0
7. Deduct nonadmitted assets.....		
8. Statement value at end of current period (Line 6 minus Line 7).....		0

**SCHEDULE DB - PART C - SECTION 1**

Replication (Synthetic Asset) Transactions Open as of Current Statement Date

Replication (Synthetic) Asset Transactions								Components of the Replication (Synthetic Asset) Transactions							
1	2	3	4	5	6	7	8	Derivative Instrument(s) Open			Cash Instrument(s) Held				
		NAIC Designation or Other Description	Notional Amount	Book/Adjusted Carrying Value	Fair Value	Effective Date	Maturity Date	9	10	11	12	13	14	15	16
Number	Description	Description	Amount	Value	Value	Date	Date	Description	Book/Adjusted Carrying Value	Fair Value	CUSIP	Description	NAIC Designation or Other Description	Book/Adjusted Carrying Value	Fair Value

**NONE**

## SCHEDULE DB - PART C - SECTION 2

### Reconciliation (Synthetic Asset) Transactions Open

	First Quarter		Second Quarter		Third Quarter		Fourth Quarter		Year-To-Date	
	1 Number of Positions	2 Total Replication (Synthetic Asset) Transactions Statement Value	3 Number of Positions	4 Total Replication (Synthetic Asset) Transactions Statement Value	5 Number of Positions	6 Total Replication (Synthetic Asset) Transactions Statement Value	7 Number of Positions	8 Total Replication (Synthetic Asset) Transactions Statement Value	9 Number of Positions	10 Total Replication (Synthetic Asset) Transactions Statement Value
1. Beginning Inventory.....			.0	.0	.0	.0	.0	.0	.0	.0
2. Add: Opened or acquired transactions.....				<b>NONE</b>					.0	.0
3. Add: Increases in replication (synthetic asset) transactions statement value.....	XXX		XXX		XXX		XXX		XXX	.0
4. Less: Closed or disposed of transactions.....									.0	.0
5. Less: Positions disposed of for failing effectiveness criteria.....									.0	.0
6. Less: Decreases in replication (synthetic asset) transactions statement value.....	XXX		XXX		XXX		XXX		XXX	.0
7. Ending Inventory.....	.0	.0	.0	.0	.0	.0	.0	.0	.0	.0

**SCHEDULE DB - VERIFICATION**

Verification of Book/Adjusted Carrying Value, Fair Value and Potential Exposure of all Open Derivative Contracts

Book/Adjusted Carrying Value Check

1. Part A, Section 1, Column 14.....	_____	
2. Part B, Section 1, Column 15 plus Part B, Section 1 Footnote - Total Ending Cash Balance.....	_____	
3. Total (Line 1 plus Line 2).....	_____	0
4. Part D, Section 1, Column 5.....	_____	
5. Part D, Section 1, Column 6.....	_____	
6. Total (Line 3 minus Line 4 minus Line 5).....	_____	0

Fair Value Check

7. Part A, Section 1, Column 16.....	<b>NONE</b>	_____	
8. Part B, Section 1, Column 13.....		_____	
9. Total (Line 7 plus Line 8).....		_____	0
10. Part D, Section 1, Column 8.....		_____	
11. Part D, Section 1, Column 9.....		_____	
12. Total (Line 9 minus Line 10 minus Line 11).....		_____	0

Potential Exposure Check

13. Part A, Section 1, Column 21.....	_____	
14. Part B, Section 1, Column 20.....	_____	
15. Part D, Section 1, Column 11.....	_____	
16. Total (Line 13 plus Line 14 minus Line 15).....	_____	0

**SCHEDULE E - PART 2 - VERIFICATION**

Cash Equivalents

	1 Year To Date	2 Prior Year Ended December 31
1. Book/adjusted carrying value, December 31 of prior year.....	14,814,232	
2. Cost of cash equivalents acquired.....	16,131,554	14,814,232
3. Accrual of discount.....		
4. Unrealized valuation increase (decrease).....		
5. Total gain (loss) on disposals.....		
6. Deduct consideration received on disposals.....	30,945,786	
7. Deduct amortization of premium.....		
8. Total foreign exchange change in book/ adjusted carrying value.....		
9. Deduct current year's other-than-temporary impairment recognized.....		
10. Book/adjusted carrying value at end of current period (Lines 1+2+3+4+5-6-7+8-9).....	0	14,814,232
11. Deduct total nonadmitted amounts.....		
12. Statement value at end of current period (Line 10 minus Line 11).....	0	14,814,232

### SCHEDULE A - PART 2

Showing all Real Estate ACQUIRED AND ADDITIONS MADE During the Current Quarter

1 Description of Property	Location		4 Date Acquired	5 Name of Vendor	6 Actual Cost at Time of Acquisition	7 Amount of Encumbrances	8 Book/Adjusted Carrying Value Less Encumbrances	9 Additional Investment Made After Acquisition
	2 City	3 State						

**NONE**

QE01

### SCHEDULE A - PART 3

Showing all Real Estate DISPOSED During the Quarter, Including Payments During the Final Year on "Sales Under Contract "

1 Description of Property	Location		4 Disposal Date	5 Name of Purchaser	6 Actual Cost	7 Expended for Additions, Permanent Improvements and Changes in Encumbrances	8 Book/Adjusted Carrying Value Less Encumbrances Prior Year	Change in Book/Adjusted Carrying Value Less Encumbrances					14 Book/Adjusted Carrying Value Less Encumbrances on Disposal	15 Amounts Received During Year	16 Foreign Exchange Gain (Loss) on Disposal	17 Realized Gain (Loss) on Disposal	18 Total Gain (Loss) on Disposal	19 Gross Income Earned Less Interest Incurred on Encumbrances	20 Taxes, Repairs, and Expenses Incurred
	2 City	3 State						9 Current Year's Depreciation	10 Current Year's Other-Than-Temporary Impairment Recognized	11 Current Year's Change in Encumbrances	12 Total Change in B./A.C.V. (11 - 9 - 10)	13 Total Foreign Exchange Change in B./A.C.V.							

**NONE**

### SCHEDULE B - PART 2

Showing all Mortgage Loans ACQUIRED AND ADDITIONS MADE During the Current Quarter

1	Location		4	5	6	7	8	9
Loan Number	2	3	Loan Type	Date Acquired	Rate of Interest	Actual Cost at Time of Acquisition	Additional Investment Made After Acquisition	Value of Land and Buildings
	City	State						

**NONE**

QE02

### SCHEDULE B - PART 3

Showing all Mortgage Loans DISPOSED, Transferred or Repaid During the Current Quarter

1	Location		4	5	6	7	Change in Book Value/Recorded Investment					14	15	16	17	18	
Loan Number	2	3	Loan Type	Date Acquired	Disposal Date	Book Value/Recorded Investment Excluding Accrued Interest Prior Year	8	9	10	11	12	13	Book Value / Recorded Investment Excluding Accrued Interest on Disposal	Consideration	Foreign Exchange Gain (Loss) on Disposal	Realized Gain (Loss) on Disposal	Total Gain (Loss) on Disposal
	City	State					Unrealized Valuation Increase (Decrease)	Current Year's (Amortization) / Accretion	Current Year's Other-Than-Temporary Impairment Recognized	Capitalized Deferred Interest and Other	Total Change in Book Value (8 + 9 - 10 + 11)	Total Foreign Exchange Change in Book Value					

**NONE**

### SCHEDULE BA - PART 2

Showing Other Long-Term Invested Assets ACQUIRED AND ADDITIONS MADE During the Current Quarter

1 CUSIP Identification	2 Name or Description	Location		5 Name of Vendor or General Partner	6 NAIC Designation	7 Date Originally Acquired	8 Type and Strategy	9 Actual Cost at Time of Acquisition	10 Additional Investment Made after Acquisition	11 Amount of Encumbrances	12 Commitment for Additional Investment	13 Percentage of Ownership
		3 City	4 State									

**NONE**

QE03

### SCHEDULE BA - PART 3

Showing Other Long-Term Invested Assets DISPOSED, Transferred or Repaid During the Current Quarter

1 CUSIP Identification	2 Name or Description	Location		5 Name of Purchaser or Nature of Disposal	6 Date Originally Acquired	7 Disposal Date	8 Book/Adjusted Carrying Value Less Encumbrances, Prior Year	Changes in Book/Adjusted Carrying Value						15 Book/Adjusted Carrying Value Less Encumbrances on Disposal	16 Consideration	17 Foreign Exchange Gain (Loss) on Disposal	18 Realized Gain (Loss) on Disposal	19 Total Gain (Loss) on Disposal	20 Investment Income
		3 City	4 State					9 Unrealized Valuation Increase (Decrease)	10 Current Year's (Depreciation) or (Amortization) / Accretion	11 Current Year's Other-Than-Temporary Impairment Recognized	12 Capitalized Deferred Interest and Other	13 Total Change in B./A.C.V. (9+10-11+12)	14 Total Foreign Exchange Change in B./A.C.V.						

**NONE**

### SCHEDULE D - PART 3

Showing all Long-Term Bonds and Stocks ACQUIRED During Current Quarter

1	2	3	4	5	6	7	8	9	10
CUSIP Identification	Description	Foreign	Date Acquired	Name of Vendor	Number of Shares of Stock	Actual Cost	Par Value	Paid for Accrued Interest and Dividends	NAIC Designation or Market Indicator (a)
<b>Bonds - Industrial and Miscellaneous</b>									
019736 AE 7	Allison Transmission Inc Sr Nt 4.750%		02/07/2018	Citigroup		88,763	90,000	1,558	3FE
038522 AQ 1	Aramark Services Inc Sr Nt 5.000% 02/0		02/05/2018	JP Morgan Securities LLC		80,800	80,000	211	3FE
11134L AF 6	Broadcom Crp/ Caymn Fi Sr Nt 3.625% 01		02/21/2018	Tax Free Exchange		3,996,411	4,000,000	14,500	2FE
11134L AP 4	Broadcom Crp/ Caymn Fi Sr Nt 3.125% 01		02/21/2018	Tax Free Exchange		999,741	1,000,000	10,764	2FE
24422E UE 7	Deere /John/ Cap Corp Sr MTN 3.450% 03		03/08/2018	Barclays Capital Inc		499,845	500,000		1FE
30040W AB 4	Eversource Energy Sr Nt 3.350% 03/15/2		01/16/2018	Citigroup		2,001,220	2,000,000	22,892	2FE
30040W AE 8	Eversource Energy Sr Nt 3.300% 01/15/2		01/03/2018	Wells Fargo Securities LLC		999,320	1,000,000		2FE
31428X BP 0	Fedex Corp Sr Nt 3.400% 02/15/28		03/28/2018	Morgan Stanley & Co LLC		1,971,360	2,000,000	5,856	2FE
55336V AK 6	MPLX LP Sr Nt 4.125% 03/01/27		02/06/2018	JP Morgan Securities LLC		504,390	500,000	8,995	2FE
559080 AK 2	Magellan Midstream Partn Sr Nt 5.000%		03/06/2018	Bank of America BISD Dealer		965,871	900,000	875	2FE
62912X AF 1	NGPL Pipeco LLC Sr Nt 4.875% 08/15/27		02/05/2018	JP Morgan Securities LLC		70,700	70,000	1,763	3FE
78409V AK 0	S&P Global Inc Sr Nt 4.400% 02/15/26		02/07/2018	Amherst Pierpont		2,133,460	2,000,000	42,533	2FE
785592 AU 0	Sabine Pass Liquefaction 1st Lien Nt 4		02/20/2018	Barclays Capital Inc		982,420	1,000,000	18,317	2FE
880349 AR 6	Tenneco Automotive Inc Sr Nt 5.000% 07		02/07/2018	Various		181,800	180,000	557	3FE
904764 BC 0	Unilever Cap Corp Sr Nt 3.500% 03/22/2		03/19/2018	Citigroup		492,445	500,000		1FE
90931V AA 4	United Air Lines PTC Ser 2018-1 A 3.70		01/31/2018	Credit Suisse Securities LLC		500,000	500,000		1FE
11042T AA 1	British Airways Plc PTC 3.800% 09/20/3	C	03/14/2018	Citigroup		500,000	500,000		1FE
3899999	Total - Bonds - Industrial and Miscellaneous					16,968,546	16,820,000	128,821	XXX
8399997	Total - Bonds - Part 3					16,968,546	16,820,000	128,821	XXX
8399999	Total - Bonds					16,968,546	16,820,000	128,821	XXX
9999999	Total - Bonds, Preferred and Common Stocks					16,968,546	XXX	128,821	XXX

(a) For all common stock bearing NAIC market indicator "U" provide the number of such issues:.....0.

QE04

### SCHEDULE D - PART 4

Showing all Long-Term Bonds and Stocks SOLD, REDEEMED or Otherwise DISPOSED OF During Current Quarter

1	2	3	4	5	6	7	8	9	10	Change in Book/Adjusted Carrying Value					16	17	18	19	20	21	22
										11	12	13	14	15							
CUSIP Identification	Description	F o r e i g n	Disposal Date	Name of Purchaser	Number of Shares of Stock	Consideration	Par Value	Actual Cost	Prior Year Book/Adjusted Carrying Value	Unrealized Valuation Increase (Decrease)	Current Year's (Amortization) / Accretion	Current Year's Other-Than-Temporary Impairment Recognized	Total Change in B./A.C.V. (11+12-13)	Total Foreign Exchange Change in B./A.C.V.	Book/Adjusted Carrying Value at Disposal Date	Foreign Exchange Gain (Loss) on Disposal	Realized Gain (Loss) on Disposal	Total Gain (Loss) on Disposal	Bond Interest / Stock Dividends Received During Year	Stated Contractual Maturity Date	NAIC Designation or Market Indicator (a)
<b>Bonds - U.S. Government</b>																					
38377N R4 8	GNMA REMIC Ser 2010-164 CI PC 3.500% 1		03/01/2018	Paydown		333,867	333,867	329,328	332,580		1,287		1,287		333,867			0	1,858	10/20/2038	1
38377U PV 4	GNMA REMIC Ser 2011-34 CI PB 4.000% 08		03/01/2018	Paydown		339,626	339,626	327,846	336,872		2,755		2,755		339,626			0	2,184	08/20/2039	1
0599999	Total - Bonds - U.S. Government					673,493	673,493	657,174	669,452	0	4,042	0	4,042	0	673,493	0	0	0	4,042	XXX	XXX
<b>Bonds - U.S. Special Revenue and Special Assessment</b>																					
3133TH RV 1	FHLMC REMIC Ser 2120 CI PC 6.000% 01/1		03/01/2018	Paydown		8,979	8,979	8,909	8,955		24		24		8,979			0	88	01/15/2019	1
3137A2 NK 3	FHLMC REMIC Ser 3756 CI PB 4.000% 12/1		03/01/2018	Paydown		295,203	295,203	281,735	291,769		3,434		3,434		295,203			0	2,260	12/15/2037	1
3137A5 R7 1	FHLMC REMIC Ser 3786 CI EB 4.000% 08/1		03/01/2018	Paydown		89,612	89,612	91,600	89,673		(61)		(61)		89,612			0	590	08/15/2035	1
3138M6 DN 4	FNMA Pool #AP2808 3.000% 08/25/42		03/01/2018	Paydown		56,213	56,213	58,497	58,300		(2,087)		(2,087)		56,213			0	252	08/25/2042	1
31393W X8 7	FHLMC REMIC Ser 2638 CI DH 5.000% 07/1		03/01/2018	Paydown		176,308	176,308	172,259	175,186		1,123		1,123		176,308			0	1,457	07/15/2023	1
31397S KV 5	FNMA REMIC Ser 2011-30 CI LC 3.500% 12		03/01/2018	Paydown		138,734	138,734	136,653	138,146		588		588		138,734			0	753	12/25/2036	1
64908P AA 1	New Valley Generation III Ser 2002 5.1		01/15/2018	Redemption 100.0000		79,822	79,822	79,822	79,822				0		79,822			0	2,048	01/15/2021	1FE
3199999	Total - Bonds - U.S. Special Revenue and Special Assessments					844,871	844,871	829,475	841,851	0	3,021	0	3,021	0	844,871	0	0	0	7,448	XXX	XXX
<b>Bonds - Industrial and Miscellaneous</b>																					
002824 AU 4	Abbott Labs Sr Nt 5.125% 04/01/19		03/22/2018	Call 102.6446		817,051	796,000	792,553	795,479		89		89		795,568		432	432	40,428	04/01/2019	2FE
009363 AN 2	Airgas Inc Sr Nt 1.650% 02/15/18		02/15/2018	Maturity		2,000,000	2,000,000	1,996,660	1,999,915		85		85		2,000,000			0	16,500	02/15/2018	1FE
05568B AA 6	BNSF Trust ABS PTC Ser 2006-1 5.720% 0		01/15/2018	Redemption 100.0000		105,380	105,380	105,380	105,380				0		105,380			0	3,014	01/15/2024	1FE
11134L AE 9	01		02/21/2018	Tax Free Exchange		3,996,411	4,000,000	3,995,840	3,996,334		77		77		3,996,411			0	87,000	01/15/2024	2FE
11134L AN 9	01		02/21/2018	Tax Free Exchange		999,741	1,000,000	999,720	999,720		21		21		999,741			0	10,764	01/15/2025	2FE
260003 AH 1	Dover Corp Sr Nt 5.450% 03/15/18		03/15/2018	Maturity		1,000,000	1,000,000	997,250	999,929		71		71		1,000,000			0	27,250	03/15/2018	2FE
31331F AX 9	Fedex Corp ABS PTC Ser 1998-1A 6.720%		01/15/2018	Paydown		155,506	155,506	147,477	154,009		1,497		1,497		155,506			0	5,225	07/15/2023	2FE
628962 AC 6	Natl Inst Health Neurosciences Gov Gtd Se		02/15/2018	Redemption 100.0000		109,540	109,540	107,010	109,315		225		225		109,540			0	3,767	02/15/2019	1
717081 AQ 6	Pfizer Inc Nt 4.650% 03/01/18		03/01/2018	Maturity		1,500,000	1,500,000	1,495,155	1,499,928		72		72		1,500,000			0	34,875	03/01/2018	1FE
871829 AL 1	Sysco Corp Co Gtd Nt 5.250% 02/12/18		02/12/2018	Maturity		2,000,000	2,000,000	1,986,200	1,999,800		200		200		2,000,000			0	52,500	02/12/2018	2FE
87612E AS 5	Target Corp Sr Nt 6.000% 01/15/18		01/15/2018	Maturity		2,000,000	2,000,000	1,983,880	1,999,920		80		80		2,000,000			0	60,000	01/15/2018	1FE
907833 AJ 6	Union Pacific RR ABS PTC Ser 2000-1 8		01/10/2018	Redemption 100.0000		98,476	98,476	98,476	98,476				0		98,476			0	3,939	01/10/2021	1FE
90783T AA 8	Union Pacific RR PTC Ser 2004-1 5.404%		01/02/2018	Redemption 100.0000		36,590	36,590	36,590	36,590				0		36,590			0	989	07/02/2025	1FE
90783X AA 9	Union Pacific RR PTC Ser 2007-3 6.176%		01/02/2018	Redemption 100.0000		18,659	18,659	18,659	18,659				0		18,659			0	576	01/02/2031	1FE
911312 AH 9	United Parcel Service Sr Nt 5.500% 01/1		01/15/2018	Maturity		1,000,000	1,000,000	998,020	999,990		10		10		1,000,000			0	27,500	01/15/2018	1FE
3899999	Total - Bonds - Industrial and Miscellaneous					15,837,354	15,820,151	15,758,870	15,813,444	0	2,427	0	2,427	0	15,815,871	0	432	432	374,327	XXX	XXX
8399997	Total - Bonds - Part 4					17,355,718	17,338,515	17,245,519	17,324,747	0	9,490	0	9,490	0	17,334,235	0	432	432	385,817	XXX	XXX
8399999	Total - Bonds					17,355,718	17,338,515	17,245,519	17,324,747	0	9,490	0	9,490	0	17,334,235	0	432	432	385,817	XXX	XXX
9999999	Total - Bonds, Preferred and Common Stocks					17,355,718	XXX	17,245,519	17,324,747	0	9,490	0	9,490	0	17,334,235	0	432	432	385,817	XXX	XXX

QE05

(a) For all common stock bearing the NAIC market indicator "U" provide: the number of such issues: .....0.

**SCHEDULE DB - PART A - SECTION 1**

Showing all Options, Caps, Floors, Collars, Swaps and Forwards Open as of Current Statement Date

1	2	3	4	5	6	7	8	9	10	11	12	13	14	15	16	17	18	19	20	21	22	23
Description	Description of Item(s) Hedged, Used for Income Generation or Replicated	Schedule / Exhibit Identifier	Type(s) of Risk(s) (a)	Exchange, Counterparty or Central Clearinghouse	Trade Date	Date of Maturity or Expiration	Number of Contracts	Notional Amount	Strike Price, Rate of Index Received (Paid)	Cumulative Prior Year(s) Initial Cost of Premium (Received) Paid	Current Year Initial Cost of Premium (Received) Paid	Current Year Income	Book/Adjusted Carrying Value	Code	Fair Value	Unrealized Valuation Increase (Decrease)	Total Foreign Exchange Change in B./A.C.V.	Current Year's (Amortization) / Accretion	Adjustment to Carrying Value of Hedged Items	Potential Exposure	Credit Quality of Reference Entity	Hedge Effectiveness at Inception and at Year-end (b)

**NONE**

**SCHEDULE DB - PART B - SECTION 1**

Futures Contracts Open as of the Current Statement Date

1 Ticker Symbol	2 Number of Contracts	3 Notional Amount	4 Description	5 Description of Item(s) Hedged, Used for Income Generation or Replicated	6 Schedule / Exhibit Identifier	7 Type(s) of Risk(s) (a)	8 Date of Maturity or Expiration	9 Exchange	10 Trade Date	11 Transaction Price	12 Reporting Date Price	13 Fair Value	14 Book/Adjusted Carrying Value	Highly Effective Hedges			18 Cumulative Variation Margin for All Other Hedges	19 Change in Variation Margin Gain (Loss) Recognized in Current Year	20 Potential Exposure	21 Hedge Effectiveness at Inception and at Year- end (b)	22 Value of One (1) Point
														15 Cumulative Variation Margin	16 Deferred Variation Margin	17 Change in Variation Margin Gain (Loss) Used to Adjust Basis of Hedged Item					

**NONE**

QE07

**SCHEDULE DB - PART D - SECTION 1**  
 Counterparty Exposure for Derivative Instruments Open as of Current Statement Date

1 Description of Exchange, Counterparty or Central Clearinghouse	2 Master Agreement (Y or N)	3 Credit Support Annex (Y or N)	4 Fair Value of Acceptable Collateral	Book Adjusted Carrying Value			Fair Value			11 Potential Exposure	12 Off-Balance Sheet Exposure
				5 Contracts with Book/Adjusted Carrying Value > 0	6 Contracts with Book/Adjusted Carrying Value < 0	7 Exposure Net of Collateral	8 Contracts with Fair Value > 0	9 Contracts with Fair Value < 0	10 Exposure Net of Collateral		
1. Offset per SSAP No. 64.....											
2. Net after right of offset per SSAP No. 64.....					0						

**NONE**

**SCHEDULE DB - PART D - SECTION 2**

Collateral for Derivative Instruments Open as of Current Statement Date

1 Exchange, Counterparty or Central Clearinghouse	2 Type of Asset Pledged	3 CUSIP Identification	4 Description	5 Fair Value	6 Par Value	7 Book/Adjusted Carrying Value	8 Maturity Date	9 Type of Margin (I, V or IV)
--	----------------------------	---------------------------	------------------	-----------------	----------------	-----------------------------------	--------------------	----------------------------------

**NONE**

QE09

**SCHEDULE DL - PART 1  
SECURITIES LENDING COLLATERAL ASSETS**

Reinvested Collateral Assets Owned Current Statement Date

(Securities lending collateral assets reported in aggregate on Line 10 of the Assets page and not included on Schedules A, B, BA, D, DB and E)

1	2	3	4	5	6	7
CUSIP Identification	Description	Code	NAIC Designation / Market Indicator	Fair Value	Book/Adjusted Carrying Value	Maturity Date

General Interrogatories:

1. The activity for the year: Fair Value \$.....0 Book/Adjusted Carrying Value \$.....0
2. Average balance for the year: Fair Value \$.....0 Book/Adjusted Carrying Value \$.....0
3. Reinvested securities lending collateral assets book/adjusted carrying value included in this schedule by NAIC designation:  
 NAIC 1: \$.....0 NAIC 2: \$.....0 NAIC 3: \$.....0 NAIC 4: \$.....0 NAIC 5: \$.....0 NAIC 6: \$.....0

**NONE**

**SCHEDULE DL - PART 2  
SECURITIES LENDING COLLATERAL ASSETS**

Reinvested Collateral Assets Owned Current Statement Date

(Securities lending collateral assets included on Schedules A, B, BA, D, DB and E and not reported in aggregate on Line 10 of the Assets page)

1	2	3	4	5	6	7
CUSIP Identification	Description	Code	NAIC Designation / Market Indicator	Fair Value	Book/Adjusted Carrying Value	Maturity Date

General Interrogatories:

1. The activity for the year: Fair Value \$.....0 Book/Adjusted Carrying Value \$.....0
2. Average balance for the year: Fair Value \$.....0 Book/Adjusted Carrying Value \$.....0

**NONE**

# HARLEYSVILLE LIFE INSURANCE COMPANY SCHEDULE E - PART 1 - CASH

## Month End Depository Balances

1 Depository	2 Code	3 Rate of Interest	4 Amount of Interest Received During Current Quarter	5 Amount of Interest Accrued at Current Statement Date	Book Balance at End of Each Month During Current Quarter			9 *
					6 First Month	7 Second Month	8 Third Month	
<b>Open Depositories</b>								
JP Morgan Chase..... New York, NY.....					(2,072,560)	(731,270)	(962,832)	XXX
Wells Fargo..... San Francisco, CA.....					254,967	261,377	248,287	XXX
0199998. Deposits in.....3 depositories that do not exceed the allowable limit in any one depository (see Instructions) - Open Depositories.....	XXX	XXX			229,760	324,069	164,212	XXX
0199999. Total Open Depositories.....	XXX	XXX	0	0	(1,587,833)	(145,824)	(550,333)	XXX
0399999. Total Cash on Deposit.....	XXX	XXX	0	0	(1,587,833)	(145,824)	(550,333)	XXX
0599999. Total Cash.....	XXX	XXX	0	0	(1,587,833)	(145,824)	(550,333)	XXX

**SCHEDULE E - PART 2 - CASH EQUIVALENTS**

Show Investments Owned End of Current Quarter

1			2	3	4	5	6	7	8	9
CUSIP Identification			Description	Code	Date Acquired	Rate of Interest	Maturity Date	Book/Adjusted Carrying Value	Amount of Interest Due & Accrued	Amount Received During Year
<b>Exempt Money Market Mutual Funds as Identified by the SVO</b>										
09248U	71	8	BlackRock Liquidity Funds T-Fund Portfol.....		03/02/2018.....	1.565			3,683	291
316175	10	8	Fidelity Institutional Govt Fd # 57.....		03/02/2018.....	1.541			1,657	1,165
61747C	70	7	Morgan Stanley Inst Liquidity Money Mark.....		03/02/2018.....	1.593			1,892	
8599999. Total - Exempt Money Market Mutual Funds as Identified by the SVO.....								0	7,232	1,456
8899999. Total - Cash Equivalents.....								0	7,232	1,456

QE13