



# QUARTERLY STATEMENT

As of March 31, 2018  
of the Condition and Affairs of the

## PROGRESSIVE CHOICE INSURANCE COMPANY

NAIC Group Code.....155, 155 (Current Period) (Prior Period)	NAIC Company Code..... 44288	Employer's ID Number..... 62-1444848
Organized under the Laws of OH	State of Domicile or Port of Entry OH	Country of Domicile US
Incorporated/Organized..... September 17, 1990	Commenced Business..... November 30, 1990	
Statutory Home Office	6300 WILSON MILLS ROAD, W33 .. CLEVELAND .. OH .. US .. 44143-2182 <i>(Street and Number) (City or Town, State, Country and Zip Code)</i>	
Main Administrative Office	6300 WILSON MILLS ROAD, W33 .. CLEVELAND .. OH .. US .. 44143-2182 <i>(Street and Number) (City or Town, State, Country and Zip Code)</i>	
Mail Address	P.O. BOX 89490 .. CLEVELAND .. OH .. US .. 44101-6490 <i>(Street and Number or P. O. Box) (City or Town, State, Country and Zip Code)</i>	
Primary Location of Books and Records	6300 WILSON MILLS ROAD, W33 .. CLEVELAND .. OH .. US .. 44143-2182 <i>(Street and Number) (City or Town, State, Country and Zip Code)</i>	
Internet Web Site Address	PROGRESSIVE.COM	
Statutory Statement Contact	MARY BETH ANDREANO <i>(Name)</i>	440-395-4460 <i>(Area Code) (Telephone Number) (Extension)</i>
	FINANCIAL_REPORTING@PROGRESSIVE.COM <i>(E-Mail Address)</i>	440-603-5500 <i>(Fax Number)</i>

### POLICYHOLDER SERVICES AND CLAIMS REPORTING -- 1-800-PROGRESSIVE (1-800-776-4737)

#### OFFICERS

<b>Name</b>	<b>Title</b>	<b>Name</b>	<b>Title</b>
BRIAN JACOB GURA	PRESIDENT	MICHAEL ROBERT UTH	SECRETARY
DANIEL JOSEPH WITALEC	TREASURER		

#### OTHER

SCOTT EDWARD COLEMAN	(ASST. TREASURER)	JOHN ALLEN CURTISS JR.	(VICE PRESIDENT)
KAREN ANN KOSUDA	(ASST. SECRETARY)	MARIANN WOJTKUN MARSHALL	(VICE PRESIDENT)

#### DIRECTORS OR TRUSTEES

JOHN ALLEN CURTISS JR.	BRIAN JACOB GURA	CHRISTINE ANN JOHNSON	SANJAY MAHESH VYAS
DANIEL JOSEPH WITALEC			

State of..... OHIO  
County of..... CUYAHOGA

The officers of this reporting entity being duly sworn, each depose and say that they are the described officers of said reporting entity, and that on the reporting period stated above, all of the herein described assets were the absolute property of the said reporting entity, free and clear from any liens or claims thereon, except as herein stated, and that this statement, together with related exhibits, schedules and explanations therein contained, annexed or referred to, is a full and true statement of all the assets and liabilities and of the condition and affairs of the said reporting entity as of the reporting period stated above, and of its income and deductions therefrom for the period ended, and have been completed in accordance with the NAIC *Annual Statement Instructions and Accounting Practices and Procedures* manual except to the extent that: (1) state law may differ; or, (2) that state rules or regulations require differences in reporting not related to accounting practices and procedures, according to the best of their information, knowledge and belief, respectively. Furthermore, the scope of this attestation by the described officers also includes the related corresponding electronic filing with the NAIC, when required, that is an exact copy (except for formatting differences due to electronic filing) of the enclosed statement. The electronic filing may be requested by various regulators in lieu of or in addition to the enclosed statement.

_____ (Signature) BRIAN JACOB GURA _____ 1. (Printed Name) PRESIDENT _____ (Title)	_____ (Signature) KAREN ANN KOSUDA _____ 2. (Printed Name) ASSISTANT SECRETARY _____ (Title)	_____ (Signature) SCOTT EDWARD COLEMAN _____ 3. (Printed Name) ASSISTANT TREASURER _____ (Title)
---	---	---

Subscribed and sworn to before me  
This 9TH day of MAY, 2018

a. Is this an original filing? Yes [ X ] No [ ]  
b. If no: 1. State the amendment number \_\_\_\_\_  
2. Date filed \_\_\_\_\_  
3. Number of pages attached \_\_\_\_\_

## ASSETS

	Current Statement Date			4 December 31 Prior Year Net Admitted Assets
	1 Assets	2 Nonadmitted Assets	3 Net Admitted Assets (Cols. 1 - 2)	
1. Bonds.....	6,293,211		6,293,211	6,316,243
2. Stocks:				
2.1 Preferred stocks.....			0	
2.2 Common stocks.....			0	
3. Mortgage loans on real estate:				
3.1 First liens.....			0	
3.2 Other than first liens.....			0	
4. Real estate:				
4.1 Properties occupied by the company (less \$.....0 encumbrances).....			0	
4.2 Properties held for the production of income (less \$.....0 encumbrances).....			0	
4.3 Properties held for sale (less \$.....0 encumbrances).....			0	
5. Cash (\$.....0), cash equivalents (\$.....0) and short-term investments (\$.....0).....			0	
6. Contract loans (including \$.....0 premium notes).....			0	
7. Derivatives.....			0	
8. Other invested assets.....			0	
9. Receivables for securities.....	792		792	
10. Securities lending reinvested collateral assets.....			0	
11. Aggregate write-ins for invested assets.....	0	0	0	0
12. Subtotals, cash and invested assets (Lines 1 to 11).....	6,294,003	0	6,294,003	6,316,243
13. Title plants less \$.....0 charged off (for Title insurers only).....			0	
14. Investment income due and accrued.....	31,085		31,085	33,639
15. Premiums and considerations:				
15.1 Uncollected premiums and agents' balances in the course of collection.....			0	
15.2 Deferred premiums, agents' balances and installments booked but deferred and not yet due (including \$.....0 earned but unbilled premiums).....			0	
15.3 Accrued retrospective premiums (\$.....0) and contracts subject to redetermination (\$.....0).....			0	
16. Reinsurance:				
16.1 Amounts recoverable from reinsurers.....			0	
16.2 Funds held by or deposited with reinsured companies.....			0	
16.3 Other amounts receivable under reinsurance contracts.....			0	
17. Amounts receivable relating to uninsured plans.....			0	
18.1 Current federal and foreign income tax recoverable and interest thereon.....			0	
18.2 Net deferred tax asset.....	2,386		2,386	1,523
19. Guaranty funds receivable or on deposit.....			0	
20. Electronic data processing equipment and software.....			0	
21. Furniture and equipment, including health care delivery assets (\$.....0).....			0	
22. Net adjustment in assets and liabilities due to foreign exchange rates.....			0	
23. Receivables from parent, subsidiaries and affiliates.....			0	
24. Health care (\$.....0) and other amounts receivable.....			0	
25. Aggregate write-ins for other than invested assets.....	0	0	0	0
26. Total assets excluding Separate Accounts, Segregated Accounts and Protected Cell Accounts (Lines 12 through 25).....	6,327,474	0	6,327,474	6,351,405
27. From Separate Accounts, Segregated Accounts and Protected Cell Accounts.....			0	
28. Total (Lines 26 and 27).....	6,327,474	0	6,327,474	6,351,405

### DETAILS OF WRITE-INS

1101.....			0	
1102.....			0	
1103.....			0	
1198. Summary of remaining write-ins for Line 11 from overflow page.....	0	0	0	0
1199. Totals (Lines 1101 thru 1103 plus 1198) (Line 11 above).....	0	0	0	0
2501.....			0	
2502.....			0	
2503.....			0	
2598. Summary of remaining write-ins for Line 25 from overflow page.....	0	0	0	0
2599. Totals (Lines 2501 thru 2503 plus 2598) (Line 25 above).....	0	0	0	0

**LIABILITIES, SURPLUS AND OTHER FUNDS**

	1 Current Statement Date	2 December 31 Prior Year
1. Losses (current accident year \$.....0).....		
2. Reinsurance payable on paid losses and loss adjustment expenses.....		
3. Loss adjustment expenses.....		
4. Commissions payable, contingent commissions and other similar charges.....		
5. Other expenses (excluding taxes, licenses and fees).....	1,892	1,364
6. Taxes, licenses and fees (excluding federal and foreign income taxes).....	45,020	46,142
7.1 Current federal and foreign income taxes (including \$....151 on realized capital gains (losses)).....	1,758	4,600
7.2 Net deferred tax liability.....		
8. Borrowed money \$.....0 and interest thereon \$.....0.....		
9. Unearned premiums (after deducting unearned premiums for ceded reinsurance of \$.....0 and including warranty reserves of \$.....0 and accrued accident and health experience rating refunds including \$.....0 for medical loss ratio rebate per the Public Health Service Act).....		
10. Advance premium.....		
11. Dividends declared and unpaid:		
11.1 Stockholders.....		
11.2 Policyholders.....		
12. Ceded reinsurance premiums payable (net of ceding commissions).....		
13. Funds held by company under reinsurance treaties.....		
14. Amounts withheld or retained by company for account of others.....		
15. Remittances and items not allocated.....		
16. Provision for reinsurance (including \$.....0 certified).....		
17. Net adjustments in assets and liabilities due to foreign exchange rates.....		
18. Drafts outstanding.....	277,844	513,499
19. Payable to parent, subsidiaries and affiliates.....	163,734	8,274
20. Derivatives.....		
21. Payable for securities.....		
22. Payable for securities lending.....		
23. Liability for amounts held under uninsured plans.....		
24. Capital notes \$.....0 and interest thereon \$.....0.....		
25. Aggregate write-ins for liabilities.....	136,346	92,530
26. Total liabilities excluding protected cell liabilities (Lines 1 through 25).....	626,594	666,409
27. Protected cell liabilities.....		
28. Total liabilities (Lines 26 and 27).....	626,594	666,409
29. Aggregate write-ins for special surplus funds.....	0	0
30. Common capital stock.....	2,650,000	2,650,000
31. Preferred capital stock.....		
32. Aggregate write-ins for other than special surplus funds.....	0	0
33. Surplus notes.....		
34. Gross paid in and contributed surplus.....	1,555,228	1,555,228
35. Unassigned funds (surplus).....	1,495,652	1,479,768
36. Less treasury stock, at cost:		
36.1 .....0.000 shares common (value included in Line 30 \$.....0).....		
36.2 .....0.000 shares preferred (value included in Line 31 \$.....0).....		
37. Surplus as regards policyholders (Lines 29 to 35, less 36).....	5,700,880	5,684,996
38. Totals (Page 2, Line 28, Col. 3).....	6,327,474	6,351,405

**DETAILS OF WRITE-INS**

2501. ESCHEATABLE PROPERTY.....	136,346	92,530
2502. ....		
2503. ....		
2598. Summary of remaining write-ins for Line 25 from overflow page.....	0	0
2599. Totals (Lines 2501 thru 2503 plus 2598) (Line 25 above).....	136,346	92,530
2901. ....		
2902. ....		
2903. ....		
2998. Summary of remaining write-ins for Line 29 from overflow page.....	0	0
2999. Totals (Lines 2901 thru 2903 plus 2998) (Line 29 above).....	0	0
3201. ....		
3202. ....		
3203. ....		
3298. Summary of remaining write-ins for Line 32 from overflow page.....	0	0
3299. Totals (Lines 3201 thru 3203 plus 3298) (Line 32 above).....	0	0

**STATEMENT OF INCOME**

	1 Current Year to Date	2 Prior Year to Date	3 Prior Year Ended December 31
<b>UNDERWRITING INCOME</b>			
1. Premiums earned:			
1.1 Direct..... (written \$.....0).....			
1.2 Assumed..... (written \$.....0).....			
1.3 Ceded..... (written \$.....0).....			
1.4 Net..... (written \$.....0).....	0	0	0
DEDUCTIONS:			
2. Losses incurred (current accident year \$.....0):			
2.1 Direct.....			
2.2 Assumed.....			
2.3 Ceded.....			
2.4 Net.....	0	0	0
3. Loss adjustment expenses incurred.....			
4. Other underwriting expenses incurred.....	7,124	8,745	21,615
5. Aggregate write-ins for underwriting deductions.....	0	0	0
6. Total underwriting deductions (Lines 2 through 5).....	7,124	8,745	21,615
7. Net income of protected cells.....			
8. Net underwriting gain (loss) (Line 1 minus Line 6 + Line 7).....	(7,124)	(8,745)	(21,615)
<b>INVESTMENT INCOME</b>			
9. Net investment income earned.....	24,261	373	78,480
10. Net realized capital gains (losses) less capital gains tax of \$.....151.....	(151)	(283)	52,901
11. Net investment gain (loss) (Lines 9 + 10).....	24,110	90	131,381
<b>OTHER INCOME</b>			
12. Net gain or (loss) from agents' or premium balances charged off (amount recovered \$.....0 amount charged off \$.....0).....	0		
13. Finance and service charges not included in premiums.....			
14. Aggregate write-ins for miscellaneous income.....	(357)	(377)	(6,546)
15. Total other income (Lines 12 through 14).....	(357)	(377)	(6,546)
16. Net income before dividends to policyholders, after capital gains tax and before all other federal and foreign income taxes (Lines 8 + 11 + 15).....	16,629	(9,032)	103,220
17. Dividends to policyholders.....			
18. Net income, after dividends to policyholders, after capital gains tax and before all other federal and foreign income taxes (Line 16 minus Line 17).....	16,629	(9,032)	103,220
19. Federal and foreign income taxes incurred.....	1,607	4,646	14,194
20. Net income (Line 18 minus Line 19) (to Line 22).....	15,022	(13,678)	89,026
<b>CAPITAL AND SURPLUS ACCOUNT</b>			
21. Surplus as regards policyholders, December 31 prior year.....	5,684,996	5,577,926	5,577,926
22. Net income (from Line 20).....	15,022	(13,678)	89,026
23. Net transfers (to) from Protected Cell accounts.....			
24. Change in net unrealized capital gains or (losses) less capital gains tax of \$.....0.....			
25. Change in net unrealized foreign exchange capital gain (loss).....			
26. Change in net deferred income tax.....	862	12,900	18,044
27. Change in nonadmitted assets.....			
28. Change in provision for reinsurance.....			
29. Change in surplus notes.....			
30. Surplus (contributed to) withdrawn from protected cells.....			
31. Cumulative effect of changes in accounting principles.....			
32. Capital changes:			
32.1 Paid in.....			
32.2 Transferred from surplus (Stock Dividend).....			
32.3 Transferred to surplus.....			
33. Surplus adjustments:			
33.1 Paid in.....			
33.2 Transferred to capital (Stock Dividend).....			
33.3 Transferred from capital.....			
34. Net remittances from or (to) Home Office.....			
35. Dividends to stockholders.....			
36. Change in treasury stock.....			
37. Aggregate write-ins for gains and losses in surplus.....	0	0	0
38. Change in surplus as regards policyholders (Lines 22 through 37).....	15,884	(778)	107,070
39. Surplus as regards policyholders, as of statement date (Lines 21 plus 38).....	5,700,880	5,577,148	5,684,996

**DETAILS OF WRITE-INS**

0501. ....			
0502. ....			
0503. ....			
0598. Summary of remaining write-ins for Line 5 from overflow page.....	0	0	0
0599. Totals (Lines 0501 thru 0503 plus 0598) (Line 5 above).....	0	0	0
1401. INTEREST EXPENSE ON INTERCOMPANY BALANCES.....	(357)	(365)	(1,537)
1402. MISCELLANEOUS OTHER EXPENSE.....		(12)	(5,009)
1403. ....			
1498. Summary of remaining write-ins for Line 14 from overflow page.....	0	0	0
1499. Totals (Lines 1401 thru 1403 plus 1498) (Line 14 above).....	(357)	(377)	(6,546)
3701. ....			
3702. ....			
3703. ....			
3798. Summary of remaining write-ins for Line 37 from overflow page.....	0	0	0
3799. Totals (Lines 3701 thru 3703 plus 3798) (Line 37 above).....	0	0	0

## PROGRESSIVE CHOICE INSURANCE COMPANY CASH FLOW

	1 Current Year to Date	2 Prior Year To Date	3 Prior Year Ended December 31
<b>CASH FROM OPERATIONS</b>			
1. Premiums collected net of reinsurance.....			
2. Net investment income.....	32,790	40,353	133,914
3. Miscellaneous income.....	(357)	(377)	(6,546)
4. Total (Lines 1 through 3).....	32,433	39,976	127,368
5. Benefit and loss related payments.....			
6. Net transfers to Separate Accounts, Segregated Accounts and Protected Cell Accounts.....			
7. Commissions, expenses paid and aggregate write-ins for deductions.....	7,718	6,462	12,655
8. Dividends paid to policyholders.....			
9. Federal and foreign income taxes paid (recovered) net of \$.732 tax on capital gains (losses).....	4,600	6,820	44,851
10. Total (Lines 5 through 9).....	12,318	13,282	57,506
11. Net cash from operations (Line 4 minus Line 10).....	20,115	26,694	69,862
<b>CASH FROM INVESTMENTS</b>			
12. Proceeds from investments sold, matured or repaid:			
12.1 Bonds.....	17,057	37,343	523,796
12.2 Stocks.....			
12.3 Mortgage loans.....			
12.4 Real estate.....			
12.5 Other invested assets.....			
12.6 Net gains or (losses) on cash, cash equivalents and short-term investments.....			
12.7 Miscellaneous proceeds.....			
12.8 Total investment proceeds (Lines 12.1 to 12.7).....	17,057	37,343	523,796
13. Cost of investments acquired (long-term only):			
13.1 Bonds.....			
13.2 Stocks.....			
13.3 Mortgage loans.....			
13.4 Real estate.....			
13.5 Other invested assets.....			
13.6 Miscellaneous applications.....	792	625	
13.7 Total investments acquired (Lines 13.1 to 13.6).....	792	625	0
14. Net increase or (decrease) in contract loans and premium notes.....			
15. Net cash from investments (Line 12.8 minus Line 13.7 and Line 14).....	16,265	36,718	523,796
<b>CASH FROM FINANCING AND MISCELLANEOUS SOURCES</b>			
16. Cash provided (applied):			
16.1 Surplus notes, capital notes.....			
16.2 Capital and paid in surplus, less treasury stock.....			
16.3 Borrowed funds.....			
16.4 Net deposits on deposit-type contracts and other insurance liabilities.....			
16.5 Dividends to stockholders.....			
16.6 Other cash provided (applied).....	(36,380)	(63,412)	(593,658)
17. Net cash from financing and miscellaneous sources (Lines 16.1 through 16.4 minus Line 16.5 plus Line 16.6).....	(36,380)	(63,412)	(593,658)
<b>RECONCILIATION OF CASH, CASH EQUIVALENTS AND SHORT-TERM INVESTMENTS</b>			
18. Net change in cash, cash equivalents and short-term investments (Line 11 plus Line 15 plus Line 17).....	0	0	0
19. Cash, cash equivalents and short-term investments:			
19.1 Beginning of year.....	0	0	0
19.2 End of period (Line 18 plus Line 19.1).....	0	0	0

Note: Supplemental disclosures of cash flow information for non-cash transactions:

20.0001 .....			
---------------	--	--	--

**NOTES TO FINANCIAL STATEMENTS****Note 1 – Summary of Significant Accounting Policies and Going Concern**

## A. Accounting Practices

The accompanying statutory-basis financial statements of Progressive Choice Insurance Company (the "Company") were prepared on the basis of accounting practices prescribed or permitted by the Ohio Department of Insurance ("DOI").

The Ohio DOI requires insurance companies domiciled in the state of Ohio to prepare their statutory-basis financial statements in accordance with the National Association of Insurance Commissioners' ("NAIC") *Accounting Practices and Procedures Manual* subject to any deviations prescribed or permitted by the Ohio DOI. No deviations from NAIC statutory accounting practices ("NAIC SAP") were used in preparing these statutory-basis financial statements as illustrated in the table below:

	SSAP #	F/S Page	F/S Line #	2018	2017
<b>NET INCOME</b>					
(1) PROGRESSIVE CHOICE INSURANCE COMPANY state basis (Page 4, Line 20, Columns 1 & 2)	XXX	XXX	XXX	\$ 15,022	\$ 89,026
(2) State Prescribed Practices that increase/decrease NAIC SAP					
(3) State Permitted Practices that increase/decrease NAIC SAP					
(4) NAIC SAP (1 – 2 – 3 = 4)	XXX	XXX	XXX	\$ 15,022	\$ 89,026
<b>SURPLUS</b>					
(5) PROGRESSIVE CHOICE INSURANCE COMPANY state basis (Page 3, line 37, Columns 1 & 2)	XXX	XXX	XXX	\$ 5,700,880	\$ 5,684,996
(6) State Prescribed Practices that increase/decrease NAIC SAP					
(7) State Permitted Practices that increase/decrease NAIC SAP					
(8) NAIC SAP (5 – 6 – 7 = 8)	XXX	XXX	XXX	\$ 5,700,880	\$ 5,684,996

## C. Accounting Policy

## 6. Loan-backed securities

Loan-backed and structured securities are accounted for as prescribed by Statement of Statutory Accounting Principles No. 43R, Loan-backed and Structured Securities. These securities are generally stated at amortized cost as determined by the estimated value of future cash flows. Prepayment assumptions for loan-backed and structured debt securities are obtained from available market data, broker/dealers, and/or internal estimates, and are consistent with current interest rate and economic trends. See Note 5.D.

## D. Going Concern

Management continuously monitors the Company's financial results and compliance with regulatory requirements and found no reason to expect the Company to not continue as a going concern.

**Note 2 – Accounting Changes and Corrections of Errors**

No significant changes

**Note 3 – Business Combinations and Goodwill**

No significant changes

**Note 4 – Discontinued Operations**

No significant changes

**Note 5 – Investments**

## D. Loan-Backed Securities

The Company does not own any load-backed or structured debt securities.

## E. Dollar Repurchase Agreements and/or Securities Lending Transactions

Not applicable

## F. Repurchase Agreements Transactions Accounted for as Secured Borrowing

Not applicable

## G. Reverse Repurchase Agreements Transactions Accounted for as Secured Borrowing

Not applicable

## H. Repurchase Agreements Transactions Accounted for as a Sale

Not applicable

## I. Reverse Repurchase Agreements Transactions Accounted for as a Sale

Not applicable

## M. Working Capital Finance Investments

Not applicable

---

## NOTES TO FINANCIAL STATEMENTS

---

N. Offsetting and Netting of Assets and Liabilities

Not applicable

**Note 6 – Joint Ventures, Partnerships and Limited Liability Companies**

No significant changes

**Note 7 – Investment Income**

No significant changes

**Note 8 – Derivative Instruments**

No significant changes

**Note 9 – Income Taxes**

No significant changes

**Note 10 – Information Concerning Parent, Subsidiaries, Affiliates and Other Related Parties**

No significant changes

**Note 11 – Debt**

B. FHLB (Federal Home Loan Bank) Agreements

Not applicable

**Note 12 – Retirement Plans, Deferred Compensation, Postemployment Benefits and Compensated Absences and Other Postretirement Benefit Plans**

A. Defined Benefit Plan

Not applicable

**Note 13 – Capital and Surplus, Dividend Restrictions and Quasi-Reorganizations**

No significant changes

**Note 14 – Liabilities, Contingencies and Assessments**

D. Claims Related Extra Contractual Obligation and Bad Faith Losses Stemming from Lawsuits

Not applicable

G. All Other Contingencies

All legal actions relating to claims made under insurance policies are considered by the Company in establishing its loss and loss adjustment expense ("LAE") reserves. The Company also has potential exposure relating to lawsuits due to its participation in a management agreement for which it is allocated litigation expenses.

**Note 15 – Leases**

No significant changes

**Note 16 – Information about Financial Instruments with Off-Balance Sheet Risk and Financial Instruments with Concentrations of Credit Risk**

No significant changes

**Note 17 – Sale, Transfer and Servicing of Financial Assets and Extinguishments of Liabilities**

A. Transfers of Receivables Reported as Sales

Not applicable

B. Transfer and Servicing of Financial Assets

Not applicable

C. Wash Sales

Not applicable

**Note 18 – Gain or Loss to the Reporting Entity from Uninsured Plans and the Portion of Partially Insured Plans**

No significant changes

**Note 19 – Direct Premium Written/Produced by Managing General Agents/Third Party Administrators**

No significant changes

**NOTES TO FINANCIAL STATEMENTS****Note 20 – Fair Value Measurements****A. Inputs Used for Assets and Liabilities Measured at Fair Value in the Company's Financial Statements**

## 1. Fair Value Measurements by Levels 1, 2 and 3

The Company categorizes its financial instruments, based on the degree of subjectivity inherent in the method by which they are valued, into a fair value hierarchy of three levels, as follows:

Level 1 - Inputs are unadjusted, quoted prices in active markets for identical instruments at the measurement date (e.g., active exchange-traded equity securities).

Level 2 - Inputs (other than quoted prices included within Level 1) that are observable for the instrument either directly or indirectly. This includes: (i) quoted prices for similar instruments in active markets, (ii) quoted prices for identical or similar instruments in markets that are not active, (iii) inputs other than quoted prices that are observable for the instruments, and (iv) inputs that are derived principally from or corroborated by observable market data by correlation or other means.

Level 3 - Inputs that are unobservable. Unobservable inputs reflect the Company's subjective evaluation about the assumptions market participants would use in pricing the financial instrument.

The Company's management evaluated whether the market was distressed or inactive in determining the fair value of the Company's securities and reviewed certain market level inputs to evaluate whether sufficient activity, volume, and new issuances existed to create an active market. Based on this evaluation, management concluded that there was sufficient activity in determining the fair market value of the Company's securities.

As of the reporting date, the Company did not measure and report any securities at fair value on the balance sheet. All bonds were carried at amortized cost.

## 2. Roll forward of Level 3 Items

Not applicable

## 3. Policy on Transfers Into and Out of Level 3

At the end of each reporting period, the Company evaluates whether or not any event has occurred or circumstances have changed that would cause an instrument to be transferred into or out of Level 3.

## 4. Inputs and Techniques Used for Level 2 and Level 3 Fair Values

See Note 20.A.1 above.

## 5. Derivative Fair Values

Not applicable

**B. Other Fair Value Disclosures**

Not applicable

**C. Fair Values for all Financial Instruments by Levels 1, 2, and 3**

The table below represents the fair value of all financial instruments at the reporting date, however, not all financial instruments are reported at fair value in the Company's financial statements.

Type of Financial Instrument	Aggregate Fair Value	Admitted Assets	(Level 1)	(Level 2)	(Level 3)	Not Practicable (Carrying Value)
Bonds	\$ 6,136,783	\$ 6,293,211	\$ 2,686,257	\$ 3,450,526	\$	\$
Cash equivalents	\$	\$	\$	\$	\$	\$
Common stock	\$	\$	\$	\$	\$	\$
Preferred stock	\$	\$	\$	\$	\$	\$
Short-term investments	\$	\$	\$	\$	\$	\$

**D. Not Practicable to Estimate Fair Value**

Not applicable

**Note 21 – Other Items**

No significant changes

**Note 22 – Events Subsequent**

No significant changes

**Note 23 – Reinsurance**

No significant changes

**Note 24 – Retrospectively Rated Contracts and Contracts Subject to Redetermination****F. Risk Sharing Provisions of the Affordable Care Act**

The Company does not write health insurance

**Note 25 – Change in Incurred Losses and Loss Adjustment Expenses**

Not applicable

**Note 26 – Intercompany Pooling Arrangements**

No significant changes

---

## NOTES TO FINANCIAL STATEMENTS

---

**Note 27 – Structured Settlements**

No significant changes

**Note 28 – Health Care Receivables**

No significant changes

**Note 29 – Participating policies**

No significant changes

**Note 30 – Premium Deficiency Reserves**

No significant changes

**Note 31 – High Deductibles**

No significant changes

**Note 32 – Discounting of Liabilities for Unpaid Losses or Unpaid Loss Adjustment Expenses**

No significant changes

**Note 33 – Asbestos/Environmental Reserves**

No significant changes

**Note 34 – Subscriber Savings Accounts**

No significant changes

**Note 35 – Multiple Peril Crop Insurance**

No significant changes

**Note 36 – Financial Guaranty Insurance**

B. Schedule of Insured Financial Obligations at the End of the Period:

Not applicable

**GENERAL INTERROGATORIES**

**PART 1 - COMMON INTERROGATORIES**

**GENERAL**

- 1.1 Did the reporting entity experience any material transactions requiring the filing of Disclosure of Material Transactions with the State of Domicile, as required by the Model Act? Yes [ ] No [X]
- 1.2 If yes, has the report been filed with the domiciliary state? Yes [ ] No [ ]
- 2.1 Has any change been made during the year of this statement in the charter, by-laws, articles of incorporation, or deed of settlement of the reporting entity? Yes [ ] No [X]
- 2.2 If yes, date of change: \_\_\_\_\_
- 3.1 Is the reporting entity a member of an Insurance Holding Company System consisting of two or more affiliated persons, one or more of which is an insurer? Yes [X] No [ ]  
If yes, complete Schedule Y, Parts 1 and 1A.
- 3.2 Have there been any substantial changes in the organizational chart since the prior quarter end? Yes [ ] No [X]
- 3.3 If the response to 3.2 is yes, provide a brief description of those changes.
- 3.4 Is the reporting entity publicly traded or a member of a publicly traded group? Yes [X] No [ ]
- 3.5 If the response to 3.4 is yes, provide the CIK (Central Index Key) code issued by the SEC for the entity/group. 0000080661
- 4.1 Has the reporting entity been a party to a merger or consolidation during the period covered by this statement? Yes [ ] No [X]
- 4.2 If yes, provide name of entity, NAIC Company Code, and state of domicile (use two letter state abbreviation) for any entity that has ceased to exist as a result of the merger or consolidation.

1 Name of Entity	2 NAIC Company Code	3 State of Domicile

- 5. If the reporting entity is subject to a management agreement, including third-party administrator(s), managing general agent(s), attorney-in-fact, or similar agreement, have there been any significant changes regarding the terms of the agreement or principals involved? Yes [ ] No [X] N/A [ ]  
If yes, attach an explanation.
- 6.1 State as of what date the latest financial examination of the reporting entity was made or is being made. 12/31/2017
- 6.2 State the as of date that the latest financial examination report became available from either the state of domicile or the reporting entity. This date should be the date of the examined balance sheet and not the date the report was completed or released. 12/31/2012
- 6.3 State as of what date the latest financial examination report became available to other states or the public from either the state of domicile or the reporting entity. This is the release date or completion date of the examination report and not the date of the examination (balance sheet date). 08/06/2013
- 6.4 By what department or departments?  
OHIO
- 6.5 Have all financial statement adjustments within the latest financial examination report been accounted for in a subsequent financial statement filed with Departments? Yes [ ] No [ ] N/A [X]
- 6.6 Have all of the recommendations within the latest financial examination report been complied with? Yes [X] No [ ] N/A [ ]
- 7.1 Has this reporting entity had any Certificates of Authority, licenses or registrations (including corporate registration, if applicable) suspended or revoked by any governmental entity during the reporting period? Yes [ ] No [X]
- 7.2 If yes, give full information:
- 8.1 Is the company a subsidiary of a bank holding company regulated with the Federal Reserve Board? Yes [ ] No [X]
- 8.2 If response to 8.1 is yes, please identify the name of the bank holding company.
- 8.3 Is the company affiliated with one or more banks, thrifts or securities firms? Yes [ ] No [X]
- 8.4 If the response to 8.3 is yes, please provide below the names and location (city and state of the main office) of any affiliates regulated by a federal regulatory services agency [i.e. the Federal Reserve Board (FRB), the Office of the Comptroller of the Currency (OCC), the Federal Deposit Insurance Corporation (FDIC) and the Securities Exchange Commission (SEC)] and identify the affiliate's primary federal regulator].

1 Affiliate Name	2 Location (City, State)	3 FRB	4 OCC	5 FDIC	6 SEC

- 9.1 Are the senior officers (principal executive officer, principal financial officer, principal accounting officer or controller, or persons performing similar functions) of the reporting entity subject to a code of ethics, which includes the following standards? Yes [X] No [ ]
  - (a) Honest and ethical conduct, including the ethical handling of actual or apparent conflicts of interest between personal and professional relationships;
  - (b) Full, fair, accurate, timely and understandable disclosure in the periodic reports required to be filed by the reporting entity;
  - (c) Compliance with applicable governmental laws, rules and regulations;
  - (d) The prompt internal reporting of violations to an appropriate person or persons identified in the code; and
  - (e) Accountability for adherence to the code.
- 9.11 If the response to 9.1 is No, please explain:
- 9.2 Has the code of ethics for senior managers been amended? Yes [ ] No [X]
- 9.21 If the response to 9.2 is Yes, provide information related to amendment(s).
- 9.3 Have any provisions of the code of ethics been waived for any of the specified officers? Yes [ ] No [X]
- 9.31 If the response to 9.3 is Yes, provide the nature of any waiver(s).

## GENERAL INTERROGATORIES

## PART 1 - COMMON INTERROGATORIES

## FINANCIAL

10.1 Does the reporting entity report any amounts due from parent, subsidiaries or affiliates on Page 2 of this statement? Yes [ ] No [X]

10.2 If yes, indicate any amounts receivable from parent included in the Page 2 amount: \$ 0

## INVESTMENT

11.1 Were any of the stocks, bonds, or other assets of the reporting entity loaned, placed under option agreement, or otherwise made available for use by another person? (Exclude securities under securities lending agreements.) Yes [ ] No [X]

11.2 If yes, give full and complete information relating thereto:

12. Amount of real estate and mortgages held in other invested assets in Schedule BA: \$ 0

13. Amount of real estate and mortgages held in short-term investments: \$ 0

14.1 Does the reporting entity have any investments in parent, subsidiaries and affiliates? Yes [ ] No [X]

14.2 If yes, please complete the following:

	1 Prior Year End Book/Adjusted Carrying Value	2 Current Quarter Book/Adjusted Carrying Value
14.21 Bonds	\$ 0	\$ 0
14.22 Preferred Stock	0	0
14.23 Common Stock	0	0
14.24 Short-Term Investments	0	0
14.25 Mortgage Loans on Real Estate	0	0
14.26 All Other	0	0
14.27 Total Investment in Parent, Subsidiaries and Affiliates (Subtotal Lines 14.21 to 14.26)	\$ 0	\$ 0
14.28 Total Investment in Parent included in Lines 14.21 to 14.26 above	\$ 0	\$ 0

15.1 Has the reporting entity entered into any hedging transactions reported on Schedule DB? Yes [ ] No [X]

15.2 If yes, has a comprehensive description of the hedging program been made available to the domiciliary state? Yes [ ] No [ ]

If no, attach a description with this statement.

16. For the reporting entity's security lending program, state the amount of the following as of current statement date:

16.1 Total fair value of reinvested collateral assets reported on Schedule DL, Parts 1 and 2: \$ 0

16.2 Total book adjusted/carrying value of reinvested collateral assets reported on Schedule DL, Parts 1 and 2: \$ 0

16.3 Total payable for securities lending reported on the liability page: \$ 0

17. Excluding items in Schedule E-Part 3-Special Deposits, real estate, mortgage loans and investments held physically in the reporting entity's offices, vaults or safety deposit boxes, were all stocks, bonds and other securities, owned throughout the current year held pursuant to a custodial agreement with a qualified bank or trust company in accordance with Section 1, III - General Examination Considerations, F. Outsourcing of Critical Functions, Custodial or Safekeeping Agreements of the NAIC *Financial Condition Examiners Handbook*? Yes [X] No [ ]

17.1 For all agreements that comply with the requirements of the NAIC *Financial Condition Examiners Handbook*, complete the following:

1 Name of Custodian(s)	2 Custodian Address
CITIBANK, N.A.	338 GREENWICH STREET, NEW YORK, NY 10013

17.2 For all agreements that do not comply with the requirements of the NAIC *Financial Condition Examiners Handbook*, provide the name, location and a complete explanation:

1 Name(s)	2 Location(s)	3 Complete Explanation(s)
NONE		

17.3 Have there been any changes, including name changes, in the custodian(s) identified in 17.1 during the current quarter? Yes [ ] No [X]

17.4 If yes, give full and complete information relating thereto:

1 Old Custodian	2 New Custodian	3 Date of Change	4 Reason
NONE			

17.5 Investment management – Identify all investment advisors, investment managers, broker/dealers, including individuals that have the authority to make investment decisions on behalf of the reporting entity. For assets that are managed internally by employees of the reporting entity, note as such ["...that have access to the investment accounts", "handle securities"].

1 Name of Firm or Individual	2 Affiliation
PROGRESSIVE CAPITAL MANAGEMENT CORP.	A

17.5097 For those firms/individuals listed in the table for Question 17.5, do any firms/individuals unaffiliated with the reporting entity (i.e., designated with a "U") manage more than 10% of the reporting entity's assets? Yes [ ] No [X]

17.5098 For firms/individuals unaffiliated with the reporting entity (i.e., designated with a "U") listed in the table for Question 17.5, does the total assets under management aggregate to more than 50% of the reporting entity's assets? Yes [ ] No [X]

17.6 For those firms or individuals listed in the table for 17.5 with an affiliation code of "A" (affiliated) or "U" (unaffiliated), provide the information for the table below.

1 Central Registration Depository Number	2 Name of Firm or Individual	3 Legal Entity Identifier (LEI)	4 Registered With	5 Investment Management Agreement (IMA) Filed
N/A	PROGRESSIVE CAPITAL MANAGEMENT CORP.		N/A	DS

18.1 Have all the filing requirements of the *Purposes and Procedures Manual of the NAIC Investment Analysis Office* been followed? Yes [X] No [ ]

18.2 If no, list exceptions:

**GENERAL INTERROGATORIES**

**PART 1 - COMMON INTERROGATORIES**

19. By self-designating 5\*GI securities, the reporting entity is certifying the following elements for each self-designated 5\*GI security:
- a. Documentation necessary to permit a full credit analysis of the security does not exist.
  - b. Issuer or obligor is current on all contracted interest and principal payments.
  - c. The insurer has an actual expectation of ultimate payment of all contracted interest and principal.
- Has the reporting entity self-designated 5\*GI securities?

Yes [ ] No [X]

## GENERAL INTERROGATORIES (continued)

### PART 2 – PROPERTY & CASUALTY INTERROGATORIES

1. If the reporting entity is a member of a pooling arrangement, did the agreement or the reporting entity's participation change? Yes [ ] No [ ] N/A [X]  
 If yes, attach an explanation.

2. Has the reporting entity reinsured any risk with any other reporting entity and agreed to release such entity from liability, in whole or in part, from any loss that may occur on the risk, or portion thereof, reinsured? Yes [ ] No [X]  
 If yes, attach an explanation.

3.1 Have any of the reporting entity's primary reinsurance contracts been canceled? Yes [ ] No [X]

3.2 If yes, give full and complete information thereto:

4.1 Are any of the liabilities for unpaid losses and loss adjustment expenses other than certain workers' compensation tabular reserves (see *Annual Statement Instructions* pertaining to disclosure of discounting for definition of "tabular reserves,") discounted at a rate of interest greater than zero? Yes [ ] No [X]

4.2 If yes, complete the following schedule:

1 Line of Business	2 Maximum Interest	3 Disc. Rate	Total Discount				Discount Taken During Period			
			4 Unpaid Losses	5 Unpaid LAE	6 IBNR	7 Total	8 Unpaid Losses	9 Unpaid LAE	10 IBNR	11 Total
	0.000	0.000	0	0	0	0	0	0	0	0
<b>Total</b>	XXX	XXX	0	0	0	0	0	0	0	0

5.1 Operating Percentages:

5.1 A&H loss percent	0.000%
5.2 A&H cost containment percent	0.000%
5.3 A&H expense percent excluding cost containment expenses	0.000%

6.1 Do you act as a custodian for health savings accounts? Yes [ ] No [X]

6.2 If yes, please provide the amount of custodial funds held as of the reporting date. \$ 0

6.3 Do you act as an administrator for health savings accounts? Yes [ ] No [X]

6.4 If yes, please provide the amount of funds administered as of the reporting date. \$ 0

7. Is the reporting entity licensed or chartered, registered, qualified, eligible or writing business in at least two states? Yes [X] No [ ]

7.1 If no, does the reporting entity assume reinsurance business that covers risks residing in at least one state other than the state of domicile of the reporting entity? Yes [ ] No [ ]

**PROGRESSIVE CHOICE INSURANCE COMPANY**  
**SCHEDULE F - CEDED REINSURANCE**

Showing All New Reinsurers - Current Year to Date

1 NAIC Company Code	2 ID Number	3 Name of Reinsurer	4 Domiciliary Jurisdiction	5 Type of Reinsurer	6 Certified Reinsurer Rating (1 through 6)	7 Effective Date of Certified Reinsurer Rating
------------------------------	----------------	------------------------	----------------------------------	---------------------------	---	--

**NONE**

**SCHEDULE T - EXHIBIT OF PREMIUMS WRITTEN**

Current Year to Date - Allocated by States and Territories

States, Etc.	1 Active Status (a)	Direct Premiums Written		Direct Losses Paid (Deducting Salvage)		Direct Losses Unpaid	
		2 Current Year to Date	3 Prior Year to Date	4 Current Year to Date	5 Prior Year to Date	6 Current Year to Date	7 Prior Year to Date
1. Alabama.....AL	..N...						
2. Alaska.....AK	..N...						
3. Arizona.....AZ	..N...						
4. Arkansas.....AR	..N...						
5. California.....CA	..N...						
6. Colorado.....CO	..N...						
7. Connecticut.....CT	..N...						
8. Delaware.....DE	..N...						
9. District of Columbia.....DC	..L...						
10. Florida.....FL	..N...						
11. Georgia.....GA	..L...						
12. Hawaii.....HI	..N...						
13. Idaho.....ID	..N...						
14. Illinois.....IL	..E...						
15. Indiana.....IN	..N...						
16. Iowa.....IA	..N...						
17. Kansas.....KS	..L...						
18. Kentucky.....KY	..N...						
19. Louisiana.....LA	..L...						
20. Maine.....ME	..N...						
21. Maryland.....MD	..N...						
22. Massachusetts.....MA	..N...						
23. Michigan.....MI	..N...						
24. Minnesota.....MN	..N...						
25. Mississippi.....MS	..N...						
26. Missouri.....MO	..N...						
27. Montana.....MT	..N...						
28. Nebraska.....NE	..N...						
29. Nevada.....NV	..N...						
30. New Hampshire.....NH	..N...						
31. New Jersey.....NJ	..N...						
32. New Mexico.....NM	..N...						
33. New York.....NY	..N...						
34. North Carolina.....NC	..N...						
35. North Dakota.....ND	..L...						
36. Ohio.....OH	..L...						
37. Oklahoma.....OK	..N...						
38. Oregon.....OR	..N...						
39. Pennsylvania.....PA	..L...						
40. Rhode Island.....RI	..N...						
41. South Carolina.....SC	..N...						
42. South Dakota.....SD	..N...						
43. Tennessee.....TN	..L...						
44. Texas.....TX	..L...						
45. Utah.....UT	..N...						
46. Vermont.....VT	..N...						
47. Virginia.....VA	..N...						
48. Washington.....WA	..N...						
49. West Virginia.....WV	..L...						
50. Wisconsin.....WI	..N...						
51. Wyoming.....WY	..N...						
52. American Samoa.....AS	..N...						
53. Guam.....GU	..N...						
54. Puerto Rico.....PR	..N...						
55. US Virgin Islands.....VI	..N...						
56. Northern Mariana Islands.....MP	..N...						
57. Canada.....CAN	..N...						
58. Aggregate Other Alien.....OT	..XXX...	0	0	0	0	0	0
59. Totals.....	..XXX...	0	0	0	0	0	0

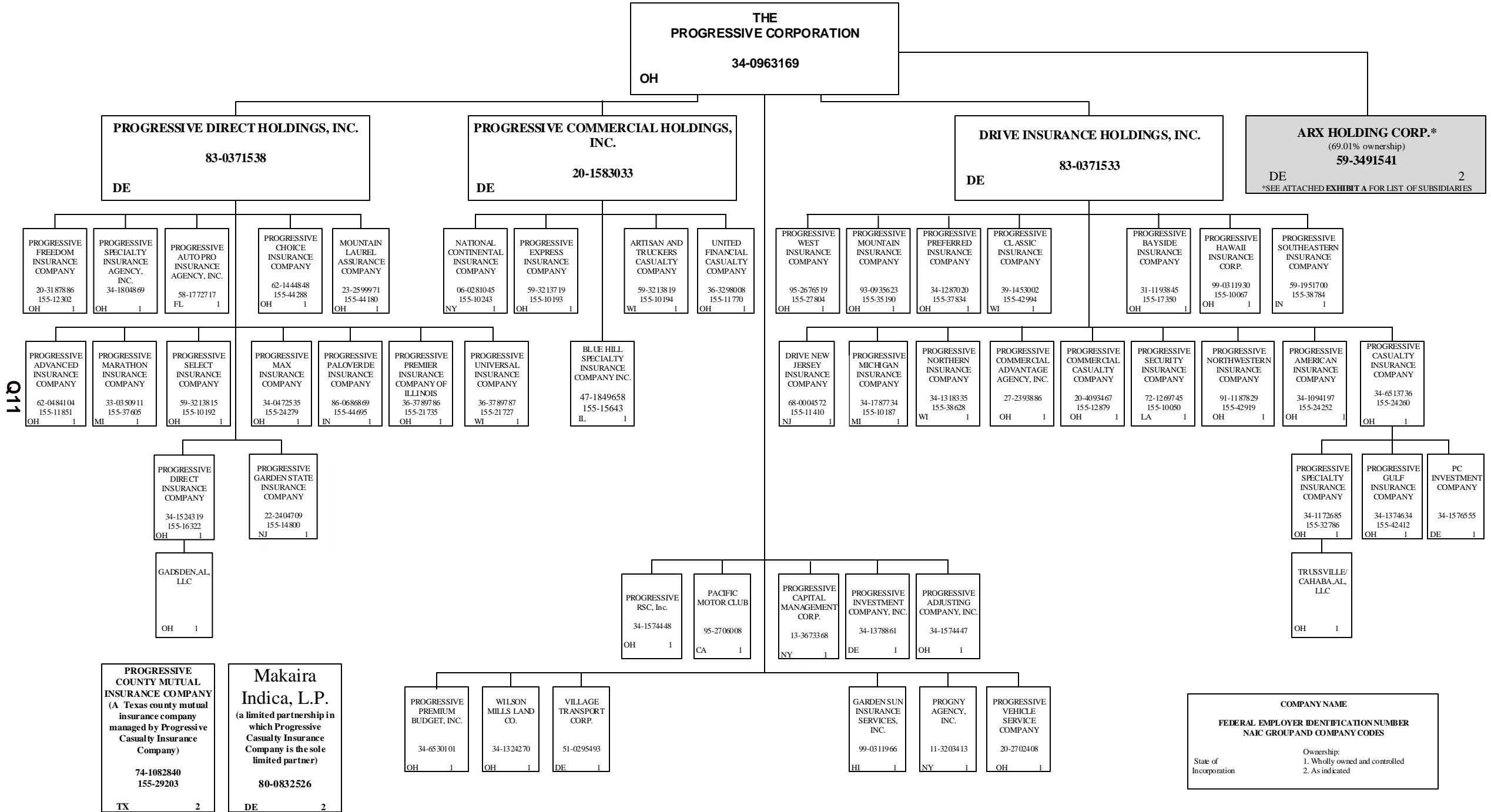
**DETAILS OF WRITE-INS**

58001.....	..XXX...						
58002.....	..XXX...						
58003.....	..XXX...						
58998. Summary of remaining write-ins for Line 58 from overflow page....	..XXX...	0	0	0	0	0	0
58999. Totals (Lines 58001 thru 58003+ Line 58998) (Line 58 above).....	..XXX...	0	0	0	0	0	0

(a) Active Status Count

L - Licensed or Chartered - Licensed insurance carrier or domiciled RRG.....	10	R - Registered - Non-domiciled RRGs.....	0
E - Eligible - Reporting entities eligible or approved to write surplus lines in the state (other than their state of domicile - See DSLI).....	1	Q - Qualified - Qualified or accredited reinsurer.....	0
D - Domestic Surplus Lines Insurer (DSLI) - Reporting entities authorized to write surplus lines in the state of domicile.....	0	N - None of the above - Not allowed to write business in the state.....	46

**SCHEDULE Y – INFORMATION CONCERNING ACTIVITIES OF INSURER MEMBERS OF A HOLDING COMPANY GROUP -- PART 1 – ORGANIZATIONAL CHART**

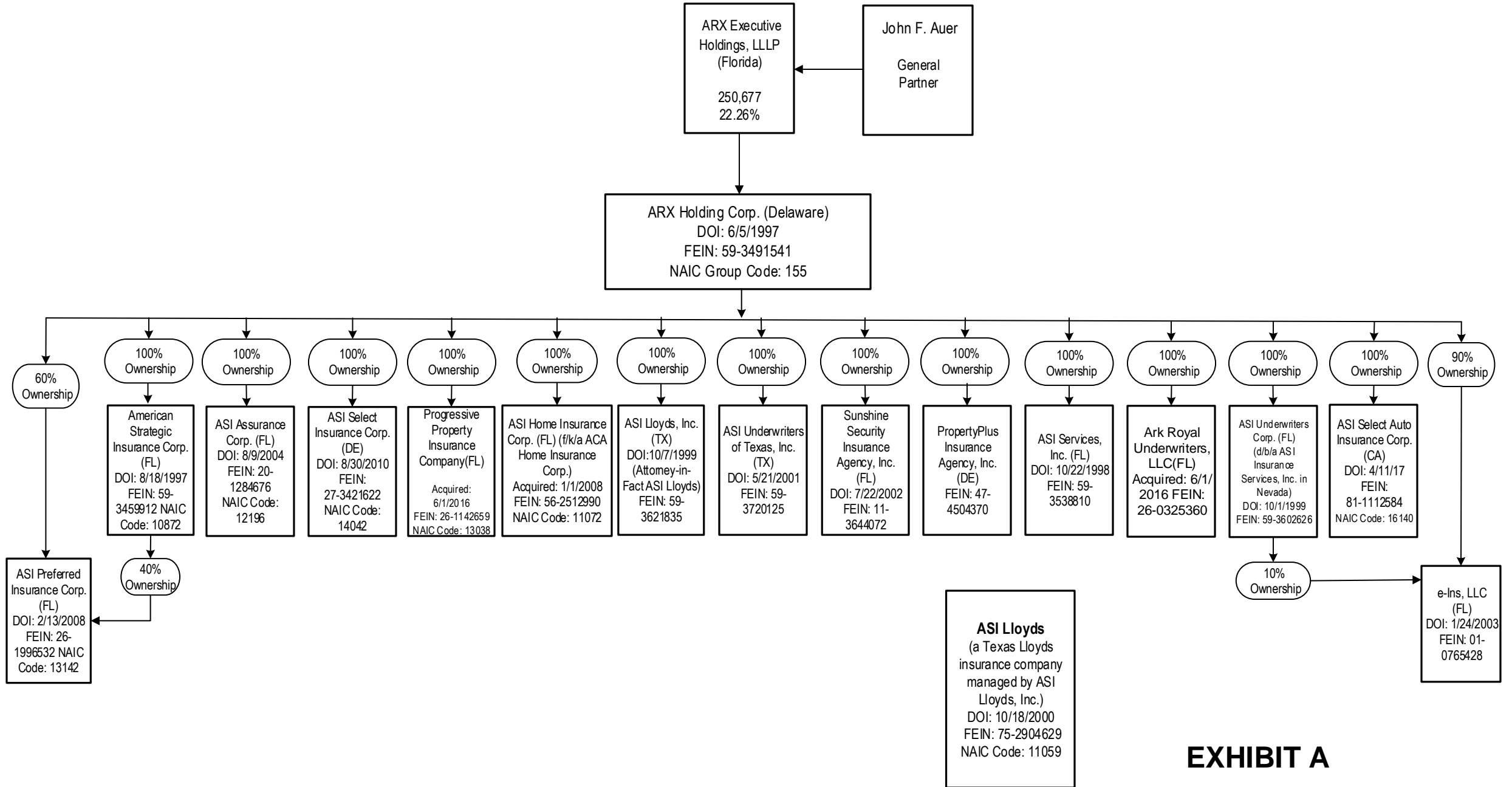


COMPANY NAME	Ownership:
FEDERAL EMPLOYER IDENTIFICATION NUMBER	1. Wholly owned and controlled
NAIC GROUP AND COMPANY CODES	2. As indicated
State of Incorporation	

**PROGRESSIVE CHOICE INSURANCE COMPANY**

**SCHEDULE Y – INFORMATION CONCERNING ACTIVITIES OF INSURER MEMBERS OF A HOLDING COMPANY GROUP – PART 1 – ORGANIZATIONAL CHART**

Q11.1



**EXHIBIT A**

**SCHEDULE Y**

**PART 1A - DETAIL OF INSURANCE HOLDING COMPANY SYSTEM**

1	2	3	4	5	6	7	8	9	10	11	12	13	14	15	16
Group Code	Group Name	NAIC Company Code	ID Number	Federal RSSD	CIK	Name of Securities Exchange if Publicly Traded (U.S. or International)	Names of Parent, Subsidiaries or Affiliates	omicilia Location	Relationship to Reporting Entity	Directly Controlled by (Name of Entity/Person)	Type of Control (Ownership Board, Management, Attorney-in-Fact, Influence, Other)	If Control is Ownership Provide Percentage	Ultimate Controlling Entity(ies)/Person(s)	Is an SCA Filing Required? (Y/N)	*
<b>Members</b>															
		00000..	34-0963169..		..80661	NYSE.....	The Progressive Corporation.....	OH....	UIP.....	Board, Management.....	Board.....		The Progressive Corporation.....	..N.....	1, 3.....
		00000..	83-0371533..				Drive Insurance Holdings, Inc.....	DE....	NIA.....	The Progressive Corporation.....	Ownership.....	...100.000	The Progressive Corporation.....	..N.....	1, 3.....
0155	Progressive Insurance Group.	11410..	68-0004572..				Drive New Jersey Insurance Company.....	NJ....	IA.....	Drive Insurance Holdings, Inc.....	Ownership.....	...100.000	The Progressive Corporation.....	..N.....	1, 3.....
0155	Progressive Insurance Group.	12879..	20-4093467..				Progressive Commercial Casualty Company.....	OH....	IA.....	Drive Insurance Holdings, Inc.....	Ownership.....	...100.000	The Progressive Corporation.....	..N.....	1, 3.....
0155	Progressive Insurance Group.	24252..	34-1094197..				Progressive American Insurance Company.....	OH....	IA.....	Drive Insurance Holdings, Inc.....	Ownership.....	...100.000	The Progressive Corporation.....	..N.....	1, 3.....
0155	Progressive Insurance Group.	17350..	31-1193845..				Progressive Bayside Insurance Company.....	OH....	IA.....	Drive Insurance Holdings, Inc.....	Ownership.....	...100.000	The Progressive Corporation.....	..N.....	1, 3.....
0155	Progressive Insurance Group.	24260..	34-6513736..				Progressive Casualty Insurance Company.....	OH....	IA.....	Drive Insurance Holdings, Inc.....	Ownership.....	...100.000	The Progressive Corporation.....	..N.....	1, 3.....
		00000..	34-1576555..				PC Investment Company.....	DE....	NIA.....	Progressive Casualty Insurance Company.....	Ownership.....	...100.000	The Progressive Corporation.....	..Y.....	1, 3.....
0155	Progressive Insurance Group.	29203..	74-1082840..				Progressive County Mutual Insurance Company.....	TX....	IA.....	Progressive Casualty Insurance Company.....	Management.....		The Progressive Corporation.....	..N.....	2, 3.....
0155	Progressive Insurance Group.	42412..	34-1374634..				Progressive Gulf Insurance Company.....	OH....	IA.....	Progressive Casualty Insurance Company.....	Ownership.....	...100.000	The Progressive Corporation.....	..Y.....	1, 3.....
0155	Progressive Insurance Group.	32786..	34-1172685..				Progressive Specialty Insurance Company.....	OH....	IA.....	Progressive Casualty Insurance Company.....	Ownership.....	...100.000	The Progressive Corporation.....	..Y.....	1, 3.....
		00000..					Trussville/Cahaba, AL, LLC.....	OH....	NIA.....	Progressive Specialty Insurance Company.....	Ownership.....	...100.000	The Progressive Corporation.....	..N.....	1, 3.....
0155	Progressive Insurance Group.	42994..	39-1453002..				Progressive Classic Insurance Company.....	WI....	IA.....	Drive Insurance Holdings, Inc.....	Ownership.....	...100.000	The Progressive Corporation.....	..N.....	1, 3.....
0155	Progressive Insurance Group.	10067..	99-0311930..				Progressive Hawaii Insurance Corp.....	OH....	IA.....	Drive Insurance Holdings, Inc.....	Ownership.....	...100.000	The Progressive Corporation.....	..N.....	1, 3.....
0155	Progressive Insurance Group.	10187..	34-1787734..				Progressive Michigan Insurance Company.....	MI....	IA.....	Drive Insurance Holdings, Inc.....	Ownership.....	...100.000	The Progressive Corporation.....	..N.....	1, 3.....
0155	Progressive Insurance Group.	35190..	93-0935623..				Progressive Mountain Insurance Company.....	OH....	IA.....	Drive Insurance Holdings, Inc.....	Ownership.....	...100.000	The Progressive Corporation.....	..N.....	1, 3.....
0155	Progressive Insurance Group.	38628..	34-1318335..				Progressive Northern Insurance Company.....	WI....	IA.....	Drive Insurance Holdings, Inc.....	Ownership.....	...100.000	The Progressive Corporation.....	..N.....	1, 3.....
0155	Progressive Insurance Group.	42919..	91-1187829..				Progressive Northwestern Insurance Company.....	OH....	IA.....	Drive Insurance Holdings, Inc.....	Ownership.....	...100.000	The Progressive Corporation.....	..N.....	1, 3.....
0155	Progressive Insurance Group.	37834..	34-1287020..				Progressive Preferred Insurance Company.....	OH....	IA.....	Drive Insurance Holdings, Inc.....	Ownership.....	...100.000	The Progressive Corporation.....	..N.....	1, 3.....
0155	Progressive Insurance Group.	10050..	72-1269745..				Progressive Security Insurance Company.....	LA....	IA.....	Drive Insurance Holdings, Inc.....	Ownership.....	...100.000	The Progressive Corporation.....	..N.....	1, 3.....
0155	Progressive Insurance Group.	38784..	59-1951700..				Progressive Southeastern Insurance Company.....	IN....	IA.....	Drive Insurance Holdings, Inc.....	Ownership.....	...100.000	The Progressive Corporation.....	..N.....	1, 3.....
0155	Progressive Insurance Group.	27804..	95-2676519..				Progressive West Insurance Company.....	OH....	IA.....	Drive Insurance Holdings, Inc.....	Ownership.....	...100.000	The Progressive Corporation.....	..N.....	1, 3.....
		00000..	27-2393886..				Progressive Commercial Advantage Agency, Inc.....	OH....	NIA.....	Drive Insurance Holdings, Inc.....	Ownership.....	...100.000	The Progressive Corporation.....	..N.....	1, 3.....
		00000..	20-1583033..				Progressive Commercial Holdings, Inc.....	DE....	NIA.....	The Progressive Corporation.....	Ownership.....	...100.000	The Progressive Corporation.....	..N.....	1, 3.....
0155	Progressive Insurance Group.	10194..	59-3213819..				Artisan and Truckers Casualty Company.....	WI....	IA.....	Progressive Commercial Holdings, Inc.....	Ownership.....	...100.000	The Progressive Corporation.....	..N.....	1, 3.....
0155	Progressive Insurance Group.	10243..	06-0281045..				National Continental Insurance Company.....	NY....	IA.....	Progressive Commercial Holdings, Inc.....	Ownership.....	...100.000	The Progressive Corporation.....	..N.....	1, 3.....
0155	Progressive Insurance Group.	10193..	59-3213719..				Progressive Express Insurance Company.....	OH....	IA.....	Progressive Commercial Holdings, Inc.....	Ownership.....	...100.000	The Progressive Corporation.....	..N.....	1, 3.....
0155	Progressive Insurance Group.	11770..	36-3298008..				United Financial Casualty Company.....	OH....	IA.....	Progressive Commercial Holdings, Inc.....	Ownership.....	...100.000	The Progressive Corporation.....	..N.....	1, 3.....
0155	Progressive Insurance Group.	15643..	47-1849658..				Blue Hill Specialty Insurance Company, Inc.....	IL....	IA.....	Progressive Commercial Holdings, Inc.....	Ownership.....	...100.000	The Progressive Corporation.....	..N.....	1, 3.....
		00000..	83-0371538..				Progressive Direct Holdings, Inc.....	DE....	UDP.....	The Progressive Corporation.....	Ownership.....	...100.000	The Progressive Corporation.....	..N.....	1, 3.....
0155	Progressive Insurance Group.	44180..	23-2599971..				Mountain Laurel Assurance Company.....	OH....	IA.....	Progressive Direct Holdings, Inc.....	Ownership.....	...100.000	The Progressive Corporation.....	..N.....	1, 3.....
0155	Progressive Insurance Group.	11851..	62-0484104..				Progressive Advanced Insurance Company.....	OH....	IA.....	Progressive Direct Holdings, Inc.....	Ownership.....	...100.000	The Progressive Corporation.....	..N.....	1, 3.....
		00000..	58-1772717..				Progressive Auto Pro Insurance Agency, Inc.....	FL....	NIA.....	Progressive Direct Holdings, Inc.....	Ownership.....	...100.000	The Progressive Corporation.....	..N.....	1, 3.....
0155	Progressive Insurance Group.	44288..	62-1444848..				Progressive Choice Insurance Company.....	OH....	RE.....	Progressive Direct Holdings, Inc.....	Ownership.....	...100.000	The Progressive Corporation.....	..N.....	1, 3.....
0155	Progressive Insurance Group.	16322..	34-1524319..				Progressive Direct Insurance Company.....	OH....	IA.....	Progressive Direct Holdings, Inc.....	Ownership.....	...100.000	The Progressive Corporation.....	..N.....	1, 3.....
		00000..					Gadsden, AL, LLC.....	OH....	NIA.....	Progressive Direct Insurance Company.....	Ownership.....	...100.000	The Progressive Corporation.....	..N.....	1, 3.....

Q12

# SCHEDULE Y

## PART 1A - DETAIL OF INSURANCE HOLDING COMPANY SYSTEM

1	2	3	4	5	6	7	8	9	10	11	12	13	14	15	16
Group Code	Group Name	NAIC Company Code	ID Number	Federal RSSD	CIK	Name of Securities Exchange if Publicly Traded (U.S. or International)	Names of Parent, Subsidiaries or Affiliates	Location	Relationship to Reporting Entity	Directly Controlled by (Name of Entity/Person)	Type of Control (Ownership Board, Management, Attorney-in-Fact, Influence, Other)	If Control is Ownership Provide Percentage	Ultimate Controlling Entity(ies)/Person(s)	Is an SCA Filing Required? (Y/N)	*
0155	Progressive Insurance Group.	12302...	20-3187886..				Progressive Freedom Insurance Company.....	OH...	IA.....	Progressive Direct Holdings, Inc.....	Ownership.....	100.000	The Progressive Corporation.....	N.....	1, 3.....
0155	Progressive Insurance Group.	14800...	22-2404709..				Progressive Garden State Insurance Company.....	NJ...	IA.....	Progressive Direct Holdings, Inc.....	Ownership.....	100.000	The Progressive Corporation.....	N.....	1, 3.....
0155	Progressive Insurance Group.	37605...	33-0350911..				Progressive Marathon Insurance Company.....	MI.....	IA.....	Progressive Direct Holdings, Inc.....	Ownership.....	100.000	The Progressive Corporation.....	N.....	1, 3.....
0155	Progressive Insurance Group.	24279...	34-0472535..				Progressive Max Insurance Company.....	OH...	IA.....	Progressive Direct Holdings, Inc.....	Ownership.....	100.000	The Progressive Corporation.....	N.....	1, 3.....
0155	Progressive Insurance Group.	44695...	86-0686869..				Progressive Paloverde Insurance Company.....	IN.....	IA.....	Progressive Direct Holdings, Inc.....	Ownership.....	100.000	The Progressive Corporation.....	N.....	1, 3.....
0155	Progressive Insurance Group.	21735...	36-3789786..				Progressive Premier Insurance Company of Illinois.....	OH...	IA.....	Progressive Direct Holdings, Inc.....	Ownership.....	100.000	The Progressive Corporation.....	N.....	1, 3.....
0155	Progressive Insurance Group.	10192...	59-3213815..				Progressive Select Insurance Company.....	OH...	IA.....	Progressive Direct Holdings, Inc.....	Ownership.....	100.000	The Progressive Corporation.....	N.....	1, 3.....
		00000...	34-1804869..				Progressive Specialty Insurance Agency, Inc.....	OH...	NIA.....	Progressive Direct Holdings, Inc.....	Ownership.....	100.000	The Progressive Corporation.....	N.....	1, 3.....
0155	Progressive Insurance Group.	21727...	36-3789787..				Progressive Universal Insurance Company.....	WI.....	IA.....	Progressive Direct Holdings, Inc.....	Ownership.....	100.000	The Progressive Corporation.....	N.....	1, 3.....
		00000...	99-0311966..				Garden Sun Insurance Services, LLC.....	HI.....	NIA.....	The Progressive Corporation.....	Ownership.....	100.000	The Progressive Corporation.....	N.....	1, 3.....
		00000...	95-2706008..				Pacific Motor Club.....	CA.....	NIA.....	The Progressive Corporation.....	Ownership.....	100.000	The Progressive Corporation.....	N.....	1, 3.....
		00000...	11-3203413..				PROGNY Agency, Inc.....	NY.....	NIA.....	The Progressive Corporation.....	Ownership.....	100.000	The Progressive Corporation.....	N.....	1, 3.....
		00000...	34-1574447..				Progressive Adjusting Company, Inc.....	OH...	NIA.....	The Progressive Corporation.....	Ownership.....	100.000	The Progressive Corporation.....	N.....	1, 3.....
		00000...	13-3673368..				Progressive Capital Management Corp.....	NY.....	NIA.....	The Progressive Corporation.....	Ownership.....	100.000	The Progressive Corporation.....	N.....	1, 3.....
		00000...	34-1378861..				Progressive Investment Company, Inc.....	DE.....	NIA.....	The Progressive Corporation.....	Ownership.....	100.000	The Progressive Corporation.....	N.....	1, 3.....
		00000...	34-6530101..				Progressive Premium Budget, Inc.....	OH...	NIA.....	The Progressive Corporation.....	Ownership.....	100.000	The Progressive Corporation.....	N.....	1, 3.....
		00000...	34-1574448..				Progressive RSC, Inc.....	OH...	NIA.....	The Progressive Corporation.....	Ownership.....	100.000	The Progressive Corporation.....	N.....	1, 3.....
		00000...	20-2702408..				Progressive Vehicle Service Company.....	OH...	NIA.....	The Progressive Corporation.....	Ownership.....	100.000	The Progressive Corporation.....	N.....	1, 3.....
		00000...	51-0295493..				Village Transport Corp.....	DE.....	NIA.....	The Progressive Corporation.....	Ownership.....	100.000	The Progressive Corporation.....	N.....	1, 3.....
		00000...	34-1324270..				Wilson Mills Land Co.....	OH...	NIA.....	The Progressive Corporation.....	Ownership.....	100.000	The Progressive Corporation.....	N.....	1, 3.....
		00000...	80-0832526..				Makaira Indica, LP.....	CA.....	NIA.....	Progressive Casualty Insurance Company.....	Other.....		The Progressive Corporation.....	N.....	1, 3, 4.....
		00000...	59-3491541..				ARX Holding Corp.....	DE.....	NIA.....	The Progressive Corporation.....	Ownership.....	69.010	The Progressive Corporation.....	N.....	1, 3, 5.....
0155	Progressive Insurance Group.	11072...	56-2512990..				ASI Home Insurance Corp.....	FL...	IA.....	ARX Holding Corp.....	Ownership.....	100.000	The Progressive Corporation.....	N.....	1, 3, 5.....
0155	Progressive Insurance Group.	13142...	26-1996532..				ASI Preferred Insurance Corp.....	FL...	IA.....	American Strategic Insurance Corp.....	Ownership.....	40.000	The Progressive Corporation.....	N.....	1, 3, 5.....
0155	Progressive Insurance Group.	13142...	26-1996532..				ASI Preferred Insurance Corp.....	FL...	IA.....	ARX Holding Corp.....	Ownership.....	60.000	The Progressive Corporation.....	N.....	1, 3, 5.....
0155	Progressive Insurance Group.	10872...	59-3459912..				American Strategic Insurance Corp.....	FL...	IA.....	ARX Holding Corp.....	Ownership.....	100.000	The Progressive Corporation.....	N.....	1, 3, 5.....
0155	Progressive Insurance Group.	11059...	75-2904629..				ASI Lloyds.....	TX...	IA.....	ASI Lloyds, Inc.....	Management.....		The Progressive Corporation.....	N.....	1, 3, 5, 6.....
0155	Progressive Insurance Group.	12196...	20-1284676..				ASI Assurance Corp.....	FL...	IA.....	ARX Holding Corp.....	Ownership.....	100.000	The Progressive Corporation.....	N.....	1, 3, 5.....
0155	Progressive Insurance Group.	14042...	27-3421622..				ASI Select Insurance Corp.....	DE...	IA.....	ARX Holding Corp.....	Ownership.....	100.000	The Progressive Corporation.....	N.....	1, 3, 5.....
		00000...	59-3538810..				ASI Services Inc.....	FL...	NIA.....	ARX Holding Corp.....	Ownership.....	100.000	The Progressive Corporation.....	N.....	1, 3, 5.....
		00000...	59-3621835..				ASI Lloyds, Inc.....	TX...	NIA.....	ARX Holding Corp.....	Ownership.....	100.000	The Progressive Corporation.....	N.....	1, 3, 5.....
		00000...	59-3720125..				ASI Underwriters of Texas, Inc.....	TX...	NIA.....	ARX Holding Corp.....	Ownership.....	100.000	The Progressive Corporation.....	N.....	1, 3, 5.....
		00000...	11-3644072..				Sunshine Security Insurance Agency, Inc.....	FL...	NIA.....	ARX Holding Corp.....	Ownership.....	100.000	The Progressive Corporation.....	N.....	1, 3, 5.....
		00000...	59-3602626..				ASI Underwriters Corp.....	FL...	NIA.....	ARX Holding Corp.....	Ownership.....	100.000	The Progressive Corporation.....	N.....	1, 3, 5.....
		00000...	01-0765428..				e-Ins, LLC.....	FL...	NIA.....	ARX Holding Corp.....	Ownership.....	90.000	The Progressive Corporation.....	N.....	1, 3, 5.....
		00000...	01-0765428..				e-Ins, LLC.....	FL...	NIA.....	ASI Underwriters Corp.....	Ownership.....	10.000	The Progressive Corporation.....	N.....	1, 3, 5.....

Q12.1

## SCHEDULE Y

### PART 1A - DETAIL OF INSURANCE HOLDING COMPANY SYSTEM

1	2	3	4	5	6	7	8	9	10	11	12	13	14	15	16
Group Code	Group Name	NAIC Company Code	ID Number	Federal RSSD	CIK	Name of Securities Exchange if Publicly Traded (U.S. or International)	Names of Parent, Subsidiaries or Affiliates	omicilia Location	Relationship to Reporting Entity	Directly Controlled by (Name of Entity/Person)	Type of Control (Ownership Board, Management, Attorney-in-Fact, Influence, Other)	If Control is Ownership Provide Percentage	Ultimate Controlling Entity(ies)/Person(s)	Is an SCA Filing Required? (Y/N)	*
0155	Progressive Insurance Group.	13038...	26-1142659..	.....	.....	.....	Progressive Property Insurance Company.....	FL.....	IA.....	ARX Holding Corp.....	Ownership.....	...100.000	The Progressive Corporation.....	.....N.....	1, 3, 5...
0155	Progressive Insurance Group.	16140...	81-1112584..	.....	.....	.....	ASI Select Auto Insurance Corp.....	CA.....	IA.....	ARX Holding Corp.....	Ownership.....	...100.000	The Progressive Corporation.....	.....N.....	1,3,5...
		00000...	26-0325360..	.....	.....	.....	Ark Royal Underwriters, LLC.....	FL.....	NIA.....	ARX Holding Corp.....	Ownership.....	...100.000	The Progressive Corporation.....	.....N.....	1, 3, 5...
		00000...	47-4504370..	.....	.....	.....	PropertyPlus Insurance Agency, Inc.....	DE.....	NIA.....	ARX Holding Corp.....	Ownership.....	...100.000	The Progressive Corporation.....	.....N.....	1, 3, 5...

Aster	Explanation
1	Schedule Y Part 1A is a common schedule for all companies of The Progressive Corporation, however column 10 requires specific relationship information relative to the reporting entity.
2	Progressive County Mutual Insurance Company is a Texas county mutual insurance company that is managed, but not owned by Progressive Casualty Insurance Company.
3	None of the companies that are part of The Progressive Corporation are Federally chartered or insured institutions and therefore, do not have Federal RSSD numbers.
4	Makaira Indica, LP is a limited partnership in which Progressive Casualty Insurance Company is the sole limited partner.
5	Effective April 1, 2015, The Progressive Corporation purchased a majority ownership share in the ARX Holding Corp.
6	ASI Lloyds is a Texas Lloyds insurance company that is managed, but not owned by ASI Lloyds, Inc.

**PROGRESSIVE CHOICE INSURANCE COMPANY**  
**PART 1 - LOSS EXPERIENCE**

Lines of Business	Current Year to Date			4 Prior Year to Date Direct Loss Percentage
	1 Direct Premiums Earned	2 Direct Losses Incurred	3 Direct Loss Percentage	
1. Fire.....			0.000	
2. Allied lines.....			0.000	
3. Farmowners multiple peril.....			0.000	
4. Homeowners multiple peril.....			0.000	
5. Commercial multiple peril.....			0.000	
6. Mortgage guaranty.....			0.000	
8. Ocean marine.....			0.000	
9. Inland marine.....			0.000	
10. Financial guaranty.....			0.000	
11.1. Medical professional liability - occurrence.....			0.000	
11.2. Medical professional liability - claims-made.....			0.000	
12. Earthquake.....			0.000	
13. Group accident and health.....			0.000	
14. Credit accident and health.....			0.000	
15. Other accident and health.....			0.000	
16. Workers' compensation.....			0.000	
17.1. Other liability-occurrence.....			0.000	
17.2. Other liability-claims made.....			0.000	
17.3. Excess workers' compensation.....			0.000	
18.1. Products liability-occurrence.....			0.000	
18.2. Products liability-claims made.....			0.000	
19.1, 19.2. Private passenger auto liability.....			0.000	
19.3, 19.4. Commercial auto liability.....			0.000	
21. Auto physical damage.....			0.000	
22. Aircraft (all perils).....			0.000	
23. Fidelity.....			0.000	
24. Surety.....			0.000	
26. Burglary and theft.....			0.000	
27. Boiler and machinery.....			0.000	
28. Credit.....			0.000	
29. International.....			0.000	
30. Warranty.....			0.000	
31. Reinsurance-nonproportional assumed property.....	XXX	XXX	XXX	XXX
32. Reinsurance-nonproportional assumed liability.....	XXX	XXX	XXX	XXX
33. Reinsurance-nonproportional assumed financial lines.....	XXX	XXX	XXX	XXX
34. Aggregate write-ins for other lines of business.....	.0	.0	0.000	
35. Totals.....	.0	.0	0.000	

NONE

DETAILS OF WRITE-INS				
3401. ....			0.000	
3402. ....			0.000	
3403. ....			0.000	
3498. Sum. of remaining write-ins for Line 34 from overflow page.....	.0	.0	0.000	XXX
3499. Totals (Lines 3401 thru 3403 plus 3498) (Line 34).....	.0	.0	0.000	

**PART 2 - DIRECT PREMIUMS WRITTEN**

Lines of Business	1	2	3
	Current Quarter	Current Year to Date	Prior Year Year to Date
1. Fire.....			
2. Allied lines.....			
3. Farmowners multiple peril.....			
4. Homeowners multiple peril.....			
5. Commercial multiple peril.....			
6. Mortgage guaranty.....			
8. Ocean marine.....			
9. Inland marine.....			
10. Financial guaranty.....			
11.1. Medical professional liability - occurrence.....			
11.2. Medical professional liability - claims made.....			
12. Earthquake.....			
13. Group accident and health.....			
14. Credit accident and health.....			
15. Other accident and health.....			
16. Workers' compensation.....			
17.1. Other liability-occurrence.....			
17.2. Other liability-claims made.....			
17.3. Excess workers' compensation.....			
18.1. Products liability-occurrence.....			
18.2. Products liability-claims made.....			
19.1 19.2. Private passenger auto liability.....			
19.3 19.4. Commercial auto liability.....			
21. Auto physical damage.....			
22. Aircraft (all perils).....			
23. Fidelity.....			
24. Surety.....			
26. Burglary and theft.....			
27. Boiler and machinery.....			
28. Credit.....			
29. International.....			
30. Warranty.....			
31. Reinsurance-nonproportional assumed property.....	XXX	XXX	XXX
32. Reinsurance-nonproportional assumed liability.....	XXX	XXX	XXX
33. Reinsurance-nonproportional assumed financial lines.....	XXX	XXX	XXX
34. Aggregate write-ins for other lines of business.....	.0	.0	.0
35. Totals.....	.0	.0	.0

NONE

DETAILS OF WRITE-INS			
3401. ....			
3402. ....			
3403. ....			
3498. Sum. of remaining write-ins for Line 34 from overflow page.....	.0	.0	.0
3499. Totals (Lines 3401 thru 3403 plus 3498) (Line 34).....	.0	.0	.0

**PART 3 (000 omitted)**

**LOSS AND LOSS ADJUSTMENT EXPENSE RESERVES SCHEDULE**

	1	2	3	4	5	6	7	8	9	10	11	12	13
Years in Which Losses Occurred	Prior Year-End Known Case Loss and LAE Reserves	Prior Year-End IBNR Loss and LAE Reserves	Total Prior Year-End Loss and LAE Reserves (Cols. 1 + 2)	2018 Loss and LAE Payments on Claims Reported as of Prior Year-End	2018 Loss and LAE Payments on Claims Unreported as of Prior Year-End	Total 2018 Loss and LAE Payments (Cols. 4 + 5)	Q.S. Date Known Case Loss and LAE Reserves on Claims Reported and Open as of Prior Year-End	Q.S. Date Known Case Loss and LAE Reserves on Claims Reported or Reopened Subsequent to Prior Year-End	Q.S. Date IBNR Loss and LAE Reserves	Total Q.S. Loss and LAE Reserves (Cols. 7 + 8 + 9)	Prior Year-End Known Case Loss and LAE Reserves Developed (Savings)/Deficiency (Cols. 4 + 7 minus Col. 1)	Prior Year-End IBNR Loss and LAE Reserves Developed (Savings)/Deficiency (Cols. 5 + 8 + 9 minus Col. 2)	Prior Year-End Total Loss and LAE Reserve Developed (Savings)/Deficiency (Cols. 11 + 12)
1. 2015 + Prior.....			.0			.0				.0	.0	.0	.0
2. 2016.....			.0			.0				.0	.0	.0	.0
3. Subtotals 2016 + Prior.....	.0	.0	.0	.0	.0	.0	.0	.0	.0	.0	.0	.0	.0
4. 2017.....			.0			.0				.0	.0	.0	.0
5. Subtotals 2017 + Prior.....	.0	.0	.0	.0	.0	.0	.0	.0	.0	.0	.0	.0	.0
6. 2018.....	.XXX	.XXX	.XXX	.XXX		.0	.XXX			.0	.XXX	.XXX	.XXX
7. Totals.....	.0	.0	.0	.0	.0	.0	.0	.0	.0	.0	.0	.0	.0
8. Prior Year-End's Surplus As Regards Policyholders.....	5,685										Col. 11, Line 7 As % of Col. 1, Line 7	Col. 12, Line 7 As % of Col. 2, Line 7	Col. 13, Line 7 As % of Col. 3, Line 7
											1. ....0.0 %	2. ....0.0 %	3. ....0.0 %
											Col. 13, Line 7 Line 8		
											4. ....0.0 %		

Q14

# SUPPLEMENTAL EXHIBITS AND SCHEDULES INTERROGATORIES

The following supplemental reports are required to be filed as part of your statement filing. However, in the event that your company does not transact the type of business for which the special report must be filed, your response of NO to the specific interrogatory will be accepted in lieu of filing a "NONE" report and a bar code will be printed below. If the supplement is required of your company but is not being filed for whatever reason, enter SEE EXPLANATION and provide an explanation following the interrogatory questions.

	<b>Response</b>
1. Will the Trusteed Surplus Statement be filed with the state of domicile and the NAIC with this statement?	NO
2. Will Supplement A to Schedule T (Medical Professional Liability Supplement) be filed with this statement?	NO
3. Will the Medicare Part D Coverage Supplement be filed with the state of domicile and the NAIC with this statement?	NO
4. Will the Director and Officer Insurance Coverage Supplement be filed with the state of domicile and the NAIC with this statement?	NO

**Explanation:**

1. The data for this supplement is not required to be filed.
2. The data for this supplement is not required to be filed.
3. The data for this supplement is not required to be filed.
4. The data for this supplement is not required to be filed.

**Bar Code:**



**NONE**

**PROGRESSIVE CHOICE INSURANCE COMPANY  
SCHEDULE A - VERIFICATION**

Real Estate

	1 Year to Date	2 Prior Year Ended December 31
1. Book/adjusted carrying value, December 31 of prior year.....	0	
2. Cost of acquired:		
2.1 Actual cost at time of acquisition.....		
2.2 Additional investment made after acquisition.....		
3. Current year change in encumbrances.....		
4. Total gain (loss) on disposals.....		
5. Deduct amounts received on disposals.....		
6. Total foreign exchange change in book/adjusted carrying value.....		
7. Deduct current year's other-than-temporary impairment recognized.....		
8. Deduct current year's depreciation.....		
9. Book/adjusted carrying value at end of current period (Lines 1+2+3+4-5+6-7-8).....	0	0
10. Deduct total nonadmitted amounts.....		
11. Statement value at end of current period (Line 9 minus Line 10).....	0	0

NONE

**SCHEDULE B - VERIFICATION**

Mortgage Loans

	1 Year to Date	2 Prior Year Ended December 31
1. Book value/recorded investment excluding accrued interest, December 31 of prior year.....	0	
2. Cost of acquired:		
2.1 Actual cost at time of acquisition.....		
2.2 Additional investment made after acquisition.....		
3. Capitalized deferred interest and other.....		
4. Accrual of discount.....		
5. Unrealized valuation increase (decrease).....		
6. Total gain (loss) on disposals.....		
7. Deduct amounts received on disposals.....		
8. Deduct amortization of premium and mortgage interest points and commitment fees.....		
9. Total foreign exchange change in book value/recorded investment excluding accrued interest.....		
10. Deduct current year's other-than-temporary impairment recognized.....		
11. Book value/recorded investment excluding accrued interest at end of current period (Lines 1+2+3+4+5+6-7-8+9-10).....	0	0
12. Total valuation allowance.....		
13. Subtotal (Line 11 plus Line 12).....	0	0
14. Deduct total nonadmitted amounts.....		
15. Statement value at end of current period (Line 13 minus Line 14).....	0	0

NONE

**SCHEDULE BA - VERIFICATION**

Other Long-Term Invested Assets

	1 Year to Date	2 Prior Year Ended December 31
1. Book/adjusted carrying value, December 31 of prior year.....	0	
2. Cost of acquired:		
2.1 Actual cost at time of acquisition.....		
2.2 Additional investment made after acquisition.....		
3. Capitalized deferred interest and other.....		
4. Accrual of discount.....		
5. Unrealized valuation increase (decrease).....		
6. Total gain (loss) on disposals.....		
7. Deduct amounts received on disposals.....		
8. Deduct amortization of premium and depreciation.....		
9. Total foreign exchange change in book/adjusted carrying value.....		
10. Deduct current year's other-than-temporary impairment recognized.....		
11. Book/adjusted carrying value at end of current period (Lines 1+2+3+4+5+6-7-8+9-10).....	0	0
12. Deduct total nonadmitted amounts.....		
13. Statement value at end of current period (Line 11 minus Line 12).....	0	0

NONE

**SCHEDULE D - VERIFICATION**

Bonds and Stocks

	1 Year to Date	2 Prior Year Ended December 31
1. Book/adjusted carrying value of bonds and stocks, December 31 of prior year.....	6,316,243	6,811,712
2. Cost of bonds and stocks acquired.....		
3. Accrual of discount.....	913	4,961
4. Unrealized valuation increase (decrease).....		
5. Total gain (loss) on disposals.....		81,338
6. Deduct consideration for bonds and stocks disposed of.....	17,057	523,796
7. Deduct amortization of premium.....	6,888	57,972
8. Total foreign exchange change in book/adjusted carrying value.....		
9. Deduct current year's other-than-temporary impairment recognized.....		
10. Total investment income recognized as a result of prepayment penalties and/or acceleration fees.....		
11. Book/adjusted carrying value at end of current period (Lines 1+2+3+4+5-6-7+8-9+10).....	6,293,211	6,316,243
12. Deduct total nonadmitted amounts.....		
13. Statement value at end of current period (Line 11 minus Line 12).....	6,293,211	6,316,243

### SCHEDULE D - PART 1B

Showing the Acquisitions, Dispositions and Non-Trading Activity

During the Current Quarter for all Bonds and Preferred Stock by NAIC Designation

NAIC Designation	1 Book/Adjusted Carrying Value Beginning of Current Quarter	2 Acquisitions During Current Quarter	3 Dispositions During Current Quarter	4 Non-Trading Activity During Current Quarter	5 Book/Adjusted Carrying Value End of First Quarter	6 Book/Adjusted Carrying Value End of Second Quarter	7 Book/Adjusted Carrying Value End of Third Quarter	8 Book/Adjusted Carrying Value December 31 Prior Year
<b>BONDS</b>								
1. NAIC 1 (a).....	6,316,243		17,057	(5,975)	6,293,211			6,316,243
2. NAIC 2 (a).....					0			
3. NAIC 3 (a).....					0			
4. NAIC 4 (a).....					0			
5. NAIC 5 (a).....					0			
6. NAIC 6 (a).....					0			
7. Total Bonds.....	6,316,243	0	17,057	(5,975)	6,293,211	0	0	6,316,243
<b>PREFERRED STOCK</b>								
8. NAIC 1.....					0			
9. NAIC 2.....					0			
10. NAIC 3.....					0			
11. NAIC 4.....					0			
12. NAIC 5.....					0			
13. NAIC 6.....					0			
14. Total Preferred Stock.....	0	0	0	0	0	0	0	0
15. Total Bonds and Preferred Stock.....	6,316,243	0	17,057	(5,975)	6,293,211	0	0	6,316,243

QS102

(a) Book/Adjusted Carrying Value column for the end of the current reporting period includes the following amount of short-term and cash equivalent bonds by NAIC designation:

NAIC 1 \$.....0; NAIC 2 \$.....0; NAIC 3 \$.....0; NAIC 4 \$.....0; NAIC 5 \$.....0; NAIC 6 \$.....0.

**Sch. DA - Pt. 1  
NONE**

**Sch. DA - Verification  
NONE**

**Sch. DB - Pt. A - Verification  
NONE**

**Sch. DB - Pt. B - Verification  
NONE**

**Sch. DB - Pt. C - Sn. 1  
NONE**

**Sch. DB - Pt. C - Sn. 2  
NONE**

**Sch. DB - Verification  
NONE**

**Sch. E - Pt. 2 Verification  
NONE**

**Sch. A - Pt. 2  
NONE**

**Sch. A - Pt. 3  
NONE**

**Sch. B - Pt. 2  
NONE**

**Sch. B - Pt. 3  
NONE**

**Sch. BA - Pt. 2  
NONE**

**Sch. BA - Pt. 3  
NONE**

**Sch. D - Pt. 3  
NONE**

### SCHEDULE D - PART 4

Showing all Long-Term Bonds and Stocks SOLD, REDEEMED or Otherwise DISPOSED OF During Current Quarter

1	2	3	4	5	6	7	8	9	10	Change in Book/Adjusted Carrying Value					16	17	18	19	20	21	22
										11	12	13	14	15							
CUSIP Identification	Description	F o r e i g n	Disposal Date	Name of Purchaser	Number of Shares of Stock	Consideration	Par Value	Actual Cost	Prior Year Book/Adjusted Carrying Value	Unrealized Valuation Increase (Decrease)	Current Year's (Amortization) / Accretion	Current Year's Other-Than-Temporary Impairment Recognized	Total Change in B./A.C.V. (11+12-13)	Total Foreign Exchange Change in B./A.C.V.	Book/Adjusted Carrying Value at Disposal Date	Foreign Exchange Gain (Loss) on Disposal	Realized Gain (Loss) on Disposal	Total Gain (Loss) on Disposal	Bond Interest / Stock Dividends Received During Year	Stated Contractual Maturity Date	NAIC Designation or Market Indicator (a)
<b>Bonds - Industrial and Miscellaneous</b>																					
576433 UF 1	MARM 2004-13 3A1 3.467% 02/21/54.....		03/01/2018	Paydown.....		.....15,014	.....15,014	.....14,617	.....14,572	.....	.....442	.....	.....442	.....	.....15,014	.....	.....	.....0	.....67	02/21/2054	1FM.....
65535V BZ 0	NAA 2003-A3 A1 5.500% 08/25/33.....		03/01/2018	Paydown.....		.....2,043	.....2,043	.....2,048	.....2,081	.....	.....(38)	.....	.....(38)	.....	.....2,043	.....	.....	.....0	.....24	08/25/2033	1FM.....
3899999	Total - Bonds - Industrial and Miscellaneous.....					.....17,057	.....17,057	.....16,665	.....16,653	.....0	.....404	.....0	.....404	.....0	.....17,057	.....0	.....0	.....0	.....91	XXX	XXX
8399997	Total - Bonds - Part 4.....					.....17,057	.....17,057	.....16,665	.....16,653	.....0	.....404	.....0	.....404	.....0	.....17,057	.....0	.....0	.....0	.....91	XXX	XXX
8399999	Total - Bonds.....					.....17,057	.....17,057	.....16,665	.....16,653	.....0	.....404	.....0	.....404	.....0	.....17,057	.....0	.....0	.....0	.....91	XXX	XXX
9999999	Total - Bonds, Preferred and Common Stocks.....					.....17,057	.....XXX	.....16,665	.....16,653	.....0	.....404	.....0	.....404	.....0	.....17,057	.....0	.....0	.....0	.....91	XXX	XXX

(a) For all common stock bearing the NAIC market indicator "U" provide: the number of such issues: .....0.

QE05

**Sch. DB - Pt. A - Sn. 1  
NONE**

**Sch. DB - Pt. B - Sn. 1  
NONE**

**Sch. DB - Pt. D - Sn. 1  
NONE**

**Sch. DB - Pt. D - Sn. 2  
NONE**

**Sch. DL - Pt. 1  
NONE**

**Sch. DL - Pt. 2  
NONE**

Statement for March 31, 2018 of the **PROGRESSIVE CHOICE INSURANCE COMPANY**  
**SCHEDULE E - PART 1 - CASH**

Month End Depository Balances

1 Depository	2 Code	3 Rate of Interest	4 Amount of Interest Received During Current Quarter	5 Amount of Interest Accrued at Current Statement Date	Book Balance at End of Each Month During Current Quarter			9 *
					6 First Month	7 Second Month	8 Third Month	
<b>Open Depositories</b>								
CITIBANK..... NEW YORK, NY.....								XXX
0199999. Total Open Depositories.....	XXX	XXX	.....0	.....0	.....0	.....0	.....0	XXX
0399999. Total Cash on Deposit.....	XXX	XXX	.....0	.....0	.....0	.....0	.....0	XXX
0599999. Total Cash.....	XXX	XXX	.....0	.....0	.....0	.....0	.....0	XXX

**SCHEDULE E - PART 2 - CASH EQUIVALENTS**

Show Investments Owned End of Current Quarter

1 CUSIP	2 Description	3 Code	4 Date Acquired	5 Rate of Interest	6 Maturity Date	7 Book/Adjusted Carrying Value	8 Amount of Interest Due & Accrued	9 Amount Received During Year
------------	------------------	-----------	--------------------	-----------------------	--------------------	-----------------------------------	---------------------------------------	----------------------------------

**NONE**