

ASSETS

	Current Statement Date			4 December 31 Prior Year Net Admitted Assets
	1 Assets	2 Nonadmitted Assets	3 Net Admitted Assets (Cols. 1 - 2)	
1. Bonds.....	21,695,126		21,695,126	21,817,327
2. Stocks:				
2.1 Preferred stocks.....			0	
2.2 Common stocks.....			0	
3. Mortgage loans on real estate:				
3.1 First liens.....			0	
3.2 Other than first liens.....			0	
4. Real estate:				
4.1 Properties occupied by the company (less \$.....0 encumbrances).....			0	
4.2 Properties held for the production of income (less \$.....0 encumbrances).....			0	
4.3 Properties held for sale (less \$.....0 encumbrances).....			0	
5. Cash (\$.....224,234), cash equivalents (\$.....0) and short-term investments (\$.....696,947).....	921,181		921,181	566,854
6. Contract loans (including \$.....0 premium notes).....			0	
7. Derivatives.....			0	
8. Other invested assets.....	1,477,702		1,477,702	1,477,702
9. Receivables for securities.....			0	
10. Securities lending reinvested collateral assets.....			0	
11. Aggregate write-ins for invested assets.....	0	0	0	0
12. Subtotals, cash and invested assets (Lines 1 to 11).....	24,094,009	0	24,094,009	23,861,883
13. Title plants less \$.....0 charged off (for Title insurers only).....			0	
14. Investment income due and accrued.....	126,668		126,668	91,579
15. Premiums and considerations:				
15.1 Uncollected premiums and agents' balances in the course of collection.....	52,766,270		52,766,270	54,284,460
15.2 Deferred premiums, agents' balances and installments booked but deferred and not yet due (including \$.....0 earned but unbilled premiums).....	228,767,967	106,314	228,661,653	220,916,156
15.3 Accrued retrospective premiums (\$.....0) and contracts subject to redetermination (\$.....0).....			0	
16. Reinsurance:				
16.1 Amounts recoverable from reinsurers.....	99,369,189		99,369,189	66,911,233
16.2 Funds held by or deposited with reinsured companies.....	269		269	114
16.3 Other amounts receivable under reinsurance contracts.....	30,948,572		30,948,572	28,518,995
17. Amounts receivable relating to uninsured plans.....			0	
18.1 Current federal and foreign income tax recoverable and interest thereon.....	287,658		287,658	332,477
18.2 Net deferred tax asset.....	257,619	257,619	0	
19. Guaranty funds receivable or on deposit.....			0	
20. Electronic data processing equipment and software.....			0	
21. Furniture and equipment, including health care delivery assets (\$.....0).....			0	
22. Net adjustment in assets and liabilities due to foreign exchange rates.....			0	
23. Receivables from parent, subsidiaries and affiliates.....	12,094,511	8	12,094,503	11,383,323
24. Health care (\$.....0) and other amounts receivable.....			0	
25. Aggregate write-ins for other than invested assets.....	9	0	9	12,151
26. Total assets excluding Separate Accounts, Segregated Accounts and Protected Cell Accounts (Lines 12 through 25).....	448,712,740	363,941	448,348,799	406,312,372
27. From Separate Accounts, Segregated Accounts and Protected Cell Accounts.....			0	
28. Total (Lines 26 and 27).....	448,712,740	363,941	448,348,799	406,312,372

DETAILS OF WRITE-INS

1101.....			0	
1102.....			0	
1103.....			0	
1198. Summary of remaining write-ins for Line 11 from overflow page.....	0	0	0	0
1199. Totals (Lines 1101 thru 1103 plus 1198) (Line 11 above).....	0	0	0	0
2501. Miscellaneous assets.....	9		9	12,151
2502.....			0	
2503.....			0	
2598. Summary of remaining write-ins for Line 25 from overflow page.....	0	0	0	0
2599. Totals (Lines 2501 thru 2503 plus 2598) (Line 25 above).....	9	0	9	12,151

LIABILITIES, SURPLUS AND OTHER FUNDS

	1 Current Statement Date	2 December 31 Prior Year
1. Losses (current accident year \$.....0).....		
2. Reinsurance payable on paid losses and loss adjustment expenses.....		
3. Loss adjustment expenses.....		
4. Commissions payable, contingent commissions and other similar charges.....		
5. Other expenses (excluding taxes, licenses and fees).....		
6. Taxes, licenses and fees (excluding federal and foreign income taxes).....		
7.1 Current federal and foreign income taxes (including \$.....0 on realized capital gains (losses)).....		
7.2 Net deferred tax liability.....		
8. Borrowed money \$.....0 and interest thereon \$.....0.....		
9. Unearned premiums (after deducting unearned premiums for ceded reinsurance of \$...575,620,485 and including warranty reserves of \$.....0 and accrued accident and health experience rating refunds including \$.....0 for medical loss ratio rebate per the Public Health Service Act).....		
10. Advance premium.....		
11. Dividends declared and unpaid:		
11.1 Stockholders.....		
11.2 Policyholders.....		
12. Ceded reinsurance premiums payable (net of ceding commissions).....	404,493,506	355,860,093
13. Funds held by company under reinsurance treaties.....	269	114
14. Amounts withheld or retained by company for account of others.....		
15. Remittances and items not allocated.....		
16. Provision for reinsurance (including \$.....0 certified).....		
17. Net adjustments in assets and liabilities due to foreign exchange rates.....		
18. Drafts outstanding.....		
19. Payable to parent, subsidiaries and affiliates.....	19,320,320	26,086,370
20. Derivatives.....		
21. Payable for securities.....		
22. Payable for securities lending.....		
23. Liability for amounts held under uninsured plans.....		
24. Capital notes \$.....0 and interest thereon \$.....0.....		
25. Aggregate write-ins for liabilities.....	3,060,086	3,060,086
26. Total liabilities excluding protected cell liabilities (Lines 1 through 25).....	426,874,181	385,006,663
27. Protected cell liabilities.....		
28. Total liabilities (Lines 26 and 27).....	426,874,181	385,006,663
29. Aggregate write-ins for special surplus funds.....	0	0
30. Common capital stock.....	2,500,000	2,500,000
31. Preferred capital stock.....		
32. Aggregate write-ins for other than special surplus funds.....	0	0
33. Surplus notes.....		
34. Gross paid in and contributed surplus.....	2,660,974	2,660,974
35. Unassigned funds (surplus).....	16,313,644	16,144,735
36. Less treasury stock, at cost:		
36.10.000 shares common (value included in Line 30 \$.....0).....		
36.20.000 shares preferred (value included in Line 31 \$.....0).....		
37. Surplus as regards policyholders (Lines 29 to 35, less 36).....	21,474,618	21,305,709
38. Totals (Page 2, Line 28, Col. 3).....	448,348,799	406,312,372

DETAILS OF WRITE-INS

2501. Miscellaneous liabilities.....	3,060,086	3,060,086
2502.		
2503.		
2598. Summary of remaining write-ins for Line 25 from overflow page.....	0	0
2599. Totals (Lines 2501 thru 2503 plus 2598) (Line 25 above).....	3,060,086	3,060,086
2901.		
2902.		
2903.		
2998. Summary of remaining write-ins for Line 29 from overflow page.....	0	0
2999. Totals (Lines 2901 thru 2903 plus 2998) (Line 29 above).....	0	0
3201.		
3202.		
3203.		
3298. Summary of remaining write-ins for Line 32 from overflow page.....	0	0
3299. Totals (Lines 3201 thru 3203 plus 3298) (Line 32 above).....	0	0

**NATIONWIDE GENERAL INSURANCE COMPANY
STATEMENT OF INCOME**

	1 Current Year to Date	2 Prior Year to Date	3 Prior Year Ended December 31
UNDERWRITING INCOME			
1. Premiums earned:			
1.1 Direct..... (written \$.....354,345,013).....	356,952,310	313,801,447	1,334,818,181
1.2 Assumed..... (written \$.....29,648,559).....	26,233,798	22,819,266	39,385,092
1.3 Ceded..... (written \$.....383,993,572).....	383,186,108	336,620,713	1,374,203,273
1.4 Net..... (written \$.....0).....	0	0	0
DEDUCTIONS:			
2. Losses incurred (current accident year \$.....0):			
2.1 Direct.....	244,989,217	235,723,049	899,419,757
2.2 Assumed.....	21,966,493	17,874,601	29,224,442
2.3 Ceded.....	266,955,710	253,597,650	928,644,199
2.4 Net.....	0	0	0
3. Loss adjustment expenses incurred.....			
4. Other underwriting expenses incurred.....			
5. Aggregate write-ins for underwriting deductions.....	0	0	0
6. Total underwriting deductions (Lines 2 through 5).....	0	0	0
7. Net income of protected cells.....			
8. Net underwriting gain (loss) (Line 1 minus Line 6 + Line 7).....	0	0	0
INVESTMENT INCOME			
9. Net investment income earned.....	116,043	123,168	(2,406,767)
10. Net realized capital gains (losses) less capital gains tax of \$.....0.....			(22,382)
11. Net investment gain (loss) (Lines 9 + 10).....	116,043	123,168	(2,429,149)
OTHER INCOME			
12. Net gain or (loss) from agents' or premium balances charged off (amount recovered \$.....0 amount charged off \$.....0).....	0		
13. Finance and service charges not included in premiums.....			
14. Aggregate write-ins for miscellaneous income.....	84,811	(4,606)	303,092
15. Total other income (Lines 12 through 14).....	84,811	(4,606)	303,092
16. Net income before dividends to policyholders, after capital gains tax and before all other federal and foreign income taxes (Lines 8 + 11 + 15).....	200,854	118,562	(2,126,057)
17. Dividends to policyholders.....			
18. Net income, after dividends to policyholders, after capital gains tax and before all other federal and foreign income taxes (Line 16 minus Line 17).....	200,854	118,562	(2,126,057)
19. Federal and foreign income taxes incurred.....	44,819	45,546	(320,969)
20. Net income (Line 18 minus Line 19) (to Line 22).....	156,035	73,016	(1,805,088)
CAPITAL AND SURPLUS ACCOUNT			
21. Surplus as regards policyholders, December 31 prior year.....	21,305,709	23,067,185	23,067,185
22. Net income (from Line 20).....	156,035	73,016	(1,805,088)
23. Net transfers (to) from Protected Cell accounts.....			
24. Change in net unrealized capital gains or (losses) less capital gains tax of \$.....2,704.....	10,171	7,774	34,511
25. Change in net unrealized foreign exchange capital gain (loss).....			
26. Change in net deferred income tax.....	13,692	13,085	255,281
27. Change in nonadmitted assets.....	(63,624)	(25,816)	(258,141)
28. Change in provision for reinsurance.....			
29. Change in surplus notes.....			
30. Surplus (contributed to) withdrawn from protected cells.....			
31. Cumulative effect of changes in accounting principles.....			
32. Capital changes:			
32.1 Paid in.....			
32.2 Transferred from surplus (Stock Dividend).....			
32.3 Transferred to surplus.....			
33. Surplus adjustments:			
33.1 Paid in.....			
33.2 Transferred to capital (Stock Dividend).....			
33.3 Transferred from capital.....			
34. Net remittances from or (to) Home Office.....			
35. Dividends to stockholders.....			
36. Change in treasury stock.....			
37. Aggregate write-ins for gains and losses in surplus.....	52,635	25,818	11,961
38. Change in surplus as regards policyholders (Lines 22 through 37).....	168,909	93,877	(1,761,476)
39. Surplus as regards policyholders, as of statement date (Lines 21 plus 38).....	21,474,618	23,161,062	21,305,709

DETAILS OF WRITE-INS

0501.			
0502.			
0503.			
0598. Summary of remaining write-ins for Line 5 from overflow page.....	0	0	0
0599. Totals (Lines 0501 thru 0503 plus 0598) (Line 5 above).....	0	0	0
1401. Other income/(expenses).....	84,811	(4,606)	303,092
1402.			
1403.			
1498. Summary of remaining write-ins for Line 14 from overflow page.....	0	0	0
1499. Totals (Lines 1401 thru 1403 plus 1498) (Line 14 above).....	84,811	(4,606)	303,092
3701. Change in surplus - miscellaneous.....	52,635	25,818	11,961
3702.			
3703.			
3798. Summary of remaining write-ins for Line 37 from overflow page.....	0	0	0
3799. Totals (Lines 3701 thru 3703 plus 3798) (Line 37 above).....	52,635	25,818	11,961

CASH FLOW

	1 Current Year to Date	2 Prior Year To Date	3 Prior Year Ended December 31
CASH FROM OPERATIONS			
1. Premiums collected net of reinsurance.....	42,406,106	150,168,133	(1,709,415)
2. Net investment income.....	100,238	99,511	580,225
3. Miscellaneous income.....	(2,344,920)	(9,077,995)	(6,438,417)
4. Total (Lines 1 through 3).....	40,161,424	141,189,650	(7,567,607)
5. Benefit and loss related payments.....	32,457,956	24,248,769	6,605,836
6. Net transfers to Separate Accounts, Segregated Accounts and Protected Cell Accounts.....			
7. Commissions, expenses paid and aggregate write-ins for deductions.....			
8. Dividends paid to policyholders.....			
9. Federal and foreign income taxes paid (recovered) net of \$.....0 tax on capital gains (losses).....			161,871
10. Total (Lines 5 through 9).....	32,457,956	24,248,769	6,767,707
11. Net cash from operations (Line 4 minus Line 10).....	7,703,468	116,940,881	(14,335,314)
CASH FROM INVESTMENTS			
12. Proceeds from investments sold, matured or repaid:			
12.1 Bonds.....	115,792	184,250	6,358,203
12.2 Stocks.....			
12.3 Mortgage loans.....			
12.4 Real estate.....			
12.5 Other invested assets.....			
12.6 Net gains or (losses) on cash, cash equivalents and short-term investments.....			
12.7 Miscellaneous proceeds.....			
12.8 Total investment proceeds (Lines 12.1 to 12.7).....	115,792	184,250	6,358,203
13. Cost of investments acquired (long-term only):			
13.1 Bonds.....			8,168,763
13.2 Stocks.....			
13.3 Mortgage loans.....			
13.4 Real estate.....			
13.5 Other invested assets.....			1,218,738
13.6 Miscellaneous applications.....			
13.7 Total investments acquired (Lines 13.1 to 13.6).....	0	0	9,387,501
14. Net increase or (decrease) in contract loans and premium notes.....			
15. Net cash from investments (Line 12.8 minus Line 13.7 and Line 14).....	115,792	184,250	(3,029,298)
CASH FROM FINANCING AND MISCELLANEOUS SOURCES			
16. Cash provided (applied):			
16.1 Surplus notes, capital notes.....			
16.2 Capital and paid in surplus, less treasury stock.....			
16.3 Borrowed funds.....			
16.4 Net deposits on deposit-type contracts and other insurance liabilities.....			
16.5 Dividends to stockholders.....			
16.6 Other cash provided (applied).....	(7,464,933)	(119,484,774)	15,468,475
17. Net cash from financing and miscellaneous sources (Lines 16.1 through 16.4 minus Line 16.5 plus Line 16.6).....	(7,464,933)	(119,484,774)	15,468,475
RECONCILIATION OF CASH, CASH EQUIVALENTS AND SHORT-TERM INVESTMENTS			
18. Net change in cash, cash equivalents and short-term investments (Line 11 plus Line 15 plus Line 17).....	354,327	(2,359,643)	(1,896,137)
19. Cash, cash equivalents and short-term investments:			
19.1 Beginning of year.....	566,854	2,462,991	2,462,991
19.2 End of period (Line 18 plus Line 19.1).....	921,181	103,349	566,854
Note: Supplemental disclosures of cash flow information for non-cash transactions:			
20.0001 Tax credit commitment liabilities.....			3,060,086

NOTES TO THE FINANCIAL STATEMENTS**Note 1 – Summary of Significant Accounting Policies and Going Concern**

A. Accounting Practices

The accompanying statutory financial statements of Nationwide General Insurance Company (the Company) have been prepared in conformity with accounting practices prescribed or permitted by the National Association of Insurance Commissioners (NAIC) and the State of Ohio.

The Ohio Department of Insurance (Department) recognizes only statutory accounting practices (SAP) prescribed or permitted by the State of Ohio for determining and reporting the financial condition and results of operations of an insurance company, as well as, determining its solvency under the Ohio Insurance law. The NAIC's *Accounting Practices and Procedures Manual* (NAIC SAP) has been adopted as a component of prescribed or permitted practices by the State of Ohio. The Company has no statutory accounting practices that differ from the NAIC SAP.

A reconciliation of the Company's net income and capital and surplus between NAIC SAP and practices prescribed and permitted by the State of Ohio is shown below:

	SSAP #	F/S Page	F/S Line #	2018	2017
<u>Net Income</u>					
Nationwide General Insurance Company state basis (Page 4, Line 20, (1) Columns 1 & 3)	XXX	XXX	XXX	\$ 156,035	\$ (1,805,088)
(2) State Prescribed Practice that is an increase/(decrease) from NAIC SAP				-	-
(3) State Permitted Practice that is an increase/(decrease) from NAIC SAP				-	-
(4) NAIC SAP (1-2-3=4)	XXX	XXX	XXX	<u>\$ 156,035</u>	<u>\$ (1,805,088)</u>
<u>Surplus</u>					
Nationwide General Insurance Company state basis (Page 3, Line 37, (5) Columns 1 & 2)	XXX	XXX	XXX	\$ 21,474,618	\$ 21,305,709
(6) State Prescribed Practice that is an increase/(decrease) from NAIC SAP				-	-
(7) State Permitted Practice that is an increase/(decrease) from NAIC SAP				-	-
(8) NAIC SAP (5-6-7=8)	XXX	XXX	XXX	<u>\$ 21,474,618</u>	<u>\$ 21,305,709</u>

B. Use of Estimates in the Preparation of the Financial Statements

No significant changes from prior year end.

C. Accounting Policies

1-5. No significant changes from prior year end.

6. Loan-backed and structured securities (collectively, loan-backed securities) are stated at amortized cost or the lower of amortized cost or fair value in accordance with the provisions of Statement of Statutory Accounting Principles No. 43-Revised and the Purposes and Procedures Manual of the NAIC Securities Valuation Office. The retrospective adjustment method is used to value loan-backed securities where the collection of all contractual cash flows is probable. For all other loan-backed securities, the Company uses the prospective adjustment method.

7-13. No significant changes from prior year end.

D. Going Concern

Not applicable.

Note 2 – Accounting Changes and Corrections of Errors

No significant changes from prior year end.

Note 3 - Business Combinations and Goodwill

Not applicable.

Note 4 – Discontinued Operations

Not applicable.

Note 5 – Investments

A. Mortgage Loans

Not applicable.

B. Troubled Debt Restructuring

Not applicable.

C. Reverse Mortgages

Not applicable.

D. Loan-Backed Securities

1. Prepayment assumptions are generally obtained using a model provided by a third-party vendor.

2. Not applicable.

3. Not applicable.

NOTES TO THE FINANCIAL STATEMENTS

4. All impaired securities (fair value is less than cost or amortized cost) for which an other-than-temporary impairment has not been recognized in earnings as a realized loss (including securities with a recognized other-than-temporary impairment for non-interest related declines when a non-recognized interest related impairment remains):

a. The aggregate amount of unrealized losses:

1. Less than 12 Months	\$	<u>(54,519)</u>
2. 12 Months or Longer	\$	<u>(46,568)</u>

b. The aggregate related fair value of securities with unrealized losses:

1. Less than 12 Months	\$	<u>2,844,075</u>
2. 12 Months or Longer	\$	<u>1,106,625</u>

5. The Company reviews all loan-backed and structured securities in which the fair value of the given security is less than the amortized cost to determine if a given security is other-than-temporarily impaired. The Company examines characteristics of the underlying collateral, such as delinquency and default rates, the quality of the underlying borrower, the type of collateral in the pool, the vintage year of the collateral, subordination levels within the structure of the collateral pool, and the quality of any credit guarantors, to determine the cash flows expected to be received for the security.

If the severity and duration of the security's unrealized loss indicates a risk of an other-than-temporary impairment, then the Company will evaluate if the amortized cost basis of the security will be recovered by comparing the present value of the cash flows expected to be received for the given security with the amortized cost basis of the security. If the present value of cash flows is greater than the amortized cost basis of a security then the security is deemed not to be other-than-temporarily impaired.

E. Dollar Repurchase Agreements and/or Securities Lending Transactions

1-2. No significant changes from prior year end.

3. Collateral Received

- a. No significant changes from prior year end.
 b. Not applicable.
 c. No significant changes from prior year end.

4-7. No significant changes from prior year end.

F. Repurchase Agreements Transactions Accounted for as Secured Borrowing

1. To manage short-term liquidity needs within the Nationwide insurance subsidiaries', the company has agreements to enter into repurchase or reverse repurchase agreements with several authorized affiliated insurance companies. The collateral required meets minimum state specific requirements or statutory requirements if state of domicile does not specify.

As these transactions are with affiliated insurance companies within the Nationwide family and are short-term in nature, the risk of changes in the fair value of the collateral are considered negligible.

2-11. Not applicable.

G. Reverse Repurchase Agreements Transactions Accounted for as Secured Borrowing

1. To manage short-term liquidity needs within the Nationwide insurance subsidiaries', the company has agreements to enter into repurchase or reverse repurchase agreements with several authorized affiliated insurance companies. The collateral required meets minimum state specific requirements or statutory requirements if state of domicile does not specify.

As these transactions are with affiliated insurance companies within the Nationwide family and are short-term in nature, the risk of changes in the fair value of the collateral are considered negligible.

2-10. Not applicable.

H. Repurchase Agreements Transactions Accounted for as a Sale

Not applicable.

I. Reverse Repurchase Agreements Transactions Accounted for as a Sale

Not applicable.

J. Real Estate

Not applicable.

K. Low-Income Housing Tax Credits

No significant changes from prior year end.

L. Restricted Assets

No significant changes from prior year end.

M. Working Capital Finance Investments

Not applicable.

N. Offsetting and Netting of Assets and Liabilities

No assets or liabilities are offset and reported net in accordance with a valid right to offset per SSAP No 64, Offsetting and Netting of Assets and Liabilities.

O. Structured Notes

No significant changes from prior year end.

NOTES TO THE FINANCIAL STATEMENTS

P. 5⁺ Securities

No significant changes from prior year end.

Q. Short Sales

Not applicable.

R. Prepayment Penalty and Acceleration Fees

No significant changes from prior year end.

Note 6 - Joint Ventures, Partnerships and Limited Liability Companies

No significant changes from prior year end.

Note 7 - Investment Income

No significant changes from prior year end.

Note 8 - Derivative Instruments

Not applicable.

Note 9 - Income Taxes

Effective January 1, 2018, the Tax Cuts and Jobs Act ("the Act") reduced the corporate tax rate from 35% to 21%. As noted in the Company's 2017 annual statement, the Company remeasured deferred tax assets and liabilities at December 31, 2017. No significant adjustments were made during the quarter related to the Act.

Note 10 - Information concerning parent, subs, and affiliates

No significant changes from prior year end.

Note 11 - Debt

A. All Other Debt

Not applicable.

B. Funding Agreements with Federal Home Loan Bank (FHLB)

Not applicable.

Note 12 - Retirement Plans, Deferred Compensation, Postemployment Benefits and Compensated Absences and Other Postretirement Benefit Plans

Not applicable.

Note 13 - Capital and Surplus, Dividend Restrictions and Quasi-Reorganizations

No significant changes from prior year end.

Note 14 - Contingencies

No significant changes from prior year end.

Note 15 - Leases

Not applicable.

Note 16 - Information About Financial Instruments With Off-Balance Sheet Risk And Financial Instruments With Concentrations of Credit Risk

Not applicable.

Note 17 - Sale, Transfer and Servicing of Financial Assets and Extinguishments of Liabilities

A. Transfers of Receivables Reported as Sales

Not applicable.

B. Transfers and Servicing of Financial Assets

Not applicable.

C. Wash Sales

Not applicable.

Note 18 - Gain or Loss to the Reporting Entity from Uninsured Plans and the Uninsured Portion of Partially Insured Plans

Not applicable.

Note 19 - Direct Premiums Written/Produced by Managing General Agents/Third Party Administrators

Not applicable.

NOTES TO THE FINANCIAL STATEMENTS

Note 20 – Fair Value Measurements

A. Fair value is defined as the price that would be received to sell an asset or paid to transfer a liability in an orderly transaction between market participants at the measurement date. Fair value measurements are based upon observable and unobservable inputs. Observable inputs reflect market data obtained from independent sources while unobservable inputs reflect the Company's view of market assumptions in the absence of observable market information. The Company utilizes valuation techniques that maximize the use of observable inputs and minimize the use of unobservable inputs. In determining fair value, the Company uses various methods including market, income and cost approaches.

The Company categorizes its financial instruments into a three-level hierarchy based on the priority of the inputs to the valuation technique. The fair value hierarchy gives the highest priority to quoted prices in active markets for identical assets or liabilities (Level 1) and the lowest priority to unobservable inputs (Level 3). If the inputs used to measure fair value fall within different levels of the hierarchy, the category level is based on the lowest priority level input that is significant to the fair value measurement of the instrument in its entirety.

The Company categorizes assets and liabilities held at fair value in the statutory statements of assets and liabilities, surplus and other funds as follows:

Level 1. Unadjusted quoted prices accessible in active markets for identical assets or liabilities at the measurement date and mutual funds where the value per share (unit) is determined and published daily and is the basis for current transactions.

Level 2. Unadjusted quoted prices for similar assets or liabilities in active markets or inputs (other than quoted prices) that are observable or that are derived principally from or corroborated by observable market data through correlation or other means. Primary inputs to this valuation technique may include comparative trades, bid/asks, interest rate movements, U.S. Treasury rates, London Interbank Offered Rate, prime rates, cash flows, maturity dates, call ability, estimated prepayments and/or underlying collateral values.

Level 3. Prices or valuation techniques that require inputs that are both unobservable and significant to the overall fair value measurement. Inputs reflect management's best estimates of the assumptions market participants would use at the measurement date in pricing the asset or liability. Consideration is given to the risk inherent in both the method of valuation and the valuation inputs. Primary inputs to this valuation technique include broker quotes and comparative trades.

The Company reviews its fair value hierarchy classifications for assets and liabilities quarterly. Changes in observability of significant valuation inputs identified during these reviews may trigger reclassifications. Reclassifications are reported as transfers at the beginning of the period in which the change occurs.

Independent pricing services are most often utilized to determine the fair value of bonds and stocks for which market quotations or quotations on comparable securities are available. For these bonds and stocks, the Company obtains the pricing services' methodologies, pricing from additional sources, inputs and assumptions and classifies the investments accordingly in the fair value hierarchy.

A corporate pricing matrix is used in valuing certain corporate bonds. The corporate pricing matrix was developed using publicly available spreads for privately placed corporate securities with varying weighted average lives and credit quality ratings. The weighted average life and credit quality rating of a particular bond to be priced using the corporate pricing matrix are important inputs into the model and are used to determine a corresponding spread that is added to the appropriate U.S. Treasury yield to create an estimated market yield for that bond. The estimated market yield and other relevant factors are then used to estimate the fair value of the particular bond.

Non-binding broker quotes are also utilized to determine the fair value of certain bonds when deemed appropriate or when quotes are not available from independent pricing services or a corporate pricing matrix. These bonds are classified with the lowest priority in the fair value hierarchy as only one broker quote is ordinarily obtained, the investment is not traded on an exchange, the pricing is not available to other entities and/or the transaction volume in the same or similar investments has decreased. Inputs used in the development of prices are not provided to the Company by the brokers as the brokers often do not provide the necessary transparency into their quotes and methodologies. At least annually, the Company performs reviews and tests to ensure that quotes are a reasonable estimate of the investments' fair value. Price movements of broker quotes are subject to validation and require approval from the Company's management. Management uses its knowledge of the investment and current market conditions to determine if the price is indicative of the investment's fair value.

The Company carries short-term investments at amortized cost, which approximates fair value.

No assets or liabilities were held at fair value as of March 31, 2018.

B. & C. The following table summarizes the carrying value and fair value of the Company's assets not held at fair value as of March 31, 2018:

	Aggregate Fair Value	Admitted Assets	Level 1	Level 2	Level 3	Not Practicable (Carrying Value)
Assets						
Bonds	\$21,272,784	\$21,695,126	\$11,239,968	\$10,032,816	\$-	\$-
Short-term investments	696,947	696,947	-	696,947	-	-
Total Assets	\$21,969,731	\$22,392,073	\$11,239,968	\$10,729,763	\$-	\$-

D. Not Practicable to Estimate Fair Value

Not applicable.

Note 21 - Other Items

No significant changes from prior year end.

Note 22 - Events Subsequent

Type I – Recognized Subsequent Events:

Subsequent events have been considered through May 7, 2018 for the statutory statement issued on May 10, 2018.

There were no material Type I events occurring subsequent to the end of the period that merited recognition or disclosure in these statements that have not already been reflected as required.

Type II – Nonrecognized Subsequent Events:

Subsequent events have been considered through May 7, 2018 for the statutory statement issued on May 10, 2018.

There were no material Type II events occurring subsequent to the end of the period that merited disclosure in these statements that have not already been reflected as required.

NOTES TO THE FINANCIAL STATEMENTS

Note 23 Reinsurance

No significant changes from prior year end.

Note 24 - Retrospectively Rated Contracts and Contracts Subject to Redetermination

Not applicable.

Note 25 - Changes in Incurred Losses and Loss Adjustment Expenses

No significant changes from prior year end.

Note 26 – Intercompany Pooling Arrangements

No significant changes from prior year end.

Note 27 - Structured Settlements

Not applicable.

Note 28 - Health Care Receivables

Not applicable.

Note 29 – Participating Policies

Not applicable.

Note 30 – Premium Deficiency Reserves

No significant changes from prior year end.

Note 31 – High Deductibles

Not applicable.

Note 32 - Discounting of Liabilities for Unpaid Losses or Unpaid Loss Adjustment Expenses

Not applicable.

Note 33 - Asbestos/Environmental Reserves

No significant changes from prior year end.

Note 34 – Subscriber Savings Accounts

Not applicable.

Note 35 – Multiple Peril Crop Insurance

Not applicable.

Note 36 – Financial Guaranty Insurance

Not applicable.

GENERAL INTERROGATORIES

PART 1 - COMMON INTERROGATORIES

GENERAL

- 1.1 Did the reporting entity experience any material transactions requiring the filing of Disclosure of Material Transactions with the State of Domicile, as required by the Model Act? Yes [] No [X]
- 1.2 If yes, has the report been filed with the domiciliary state? Yes [] No []
- 2.1 Has any change been made during the year of this statement in the charter, by-laws, articles of incorporation, or deed of settlement of the reporting entity? Yes [] No [X]
- 2.2 If yes, date of change: _____
- 3.1 Is the reporting entity a member of an Insurance Holding Company System consisting of two or more affiliated persons, one or more of which is an insurer? Yes [X] No []
If yes, complete Schedule Y, Parts 1 and 1A.
- 3.2 Have there been any substantial changes in the organizational chart since the prior quarter end? Yes [] No [X]
- 3.3 If the response to 3.2 is yes, provide a brief description of those changes.
- 3.4 Is the reporting entity publicly traded or a member of a publicly traded group? Yes [] No [X]
- 3.5 If the response to 3.4 is yes, provide the CIK (Central Index Key) code issued by the SEC for the entity/group.
- 4.1 Has the reporting entity been a party to a merger or consolidation during the period covered by this statement? Yes [] No [X]
- 4.2 If yes, provide name of entity, NAIC Company Code, and state of domicile (use two letter state abbreviation) for any entity that has ceased to exist as a result of the merger or consolidation.

1 Name of Entity	2 NAIC Company Code	3 State of Domicile

- 5. If the reporting entity is subject to a management agreement, including third-party administrator(s), managing general agent(s), attorney-in-fact, or similar agreement, have there been any significant changes regarding the terms of the agreement or principals involved? Yes [] No [X] N/A []
If yes, attach an explanation.
- 6.1 State as of what date the latest financial examination of the reporting entity was made or is being made. 12/31/2016
- 6.2 State the as of date that the latest financial examination report became available from either the state of domicile or the reporting entity. This date should be the date of the examined balance sheet and not the date the report was completed or released. 12/31/2011
- 6.3 State as of what date the latest financial examination report became available to other states or the public from either the state of domicile or the reporting entity. This is the release date or completion date of the examination report and not the date of the examination (balance sheet date). 03/25/2013
- 6.4 By what department or departments?
QH
- 6.5 Have all financial statement adjustments within the latest financial examination report been accounted for in a subsequent financial statement filed with Departments? Yes [] No [] N/A [X]
- 6.6 Have all of the recommendations within the latest financial examination report been complied with? Yes [] No [] N/A [X]
- 7.1 Has this reporting entity had any Certificates of Authority, licenses or registrations (including corporate registration, if applicable) suspended or revoked by any governmental entity during the reporting period? Yes [] No [X]
- 7.2 If yes, give full information:
- 8.1 Is the company a subsidiary of a bank holding company regulated with the Federal Reserve Board? Yes [] No [X]
- 8.2 If response to 8.1 is yes, please identify the name of the bank holding company.

- 8.3 Is the company affiliated with one or more banks, thrifts or securities firms? Yes [X] No []
- 8.4 If the response to 8.3 is yes, please provide below the names and location (city and state of the main office) of any affiliates regulated by a federal regulatory services agency [i.e. the Federal Reserve Board (FRB), the Office of the Comptroller of the Currency (OCC), the Federal Deposit Insurance Corporation (FDIC) and the Securities Exchange Commission (SEC)] and identify the affiliate's primary federal regulator].

1 Affiliate Name	2 Location (City, State)	3 FRB	4 OCC	5 FDIC	6 SEC
Nationwide Bank	Columbus, OH	NO	YES	NO	NO
Nationwide Mutual Insurance Company	Columbus, OH	YES	NO	NO	NO
Nationwide Mutual Fire Insurance Company	Columbus, OH	YES	NO	NO	NO
Nationwide Corporation	Columbus, OH	YES	NO	NO	NO
Nationwide Financial Services, Inc.	Columbus, OH	YES	NO	NO	NO
Nationwide Investment Services Corp	Columbus, OH	NO	NO	NO	YES
Nationwide Investment Advisors, LLC	Columbus, OH	NO	NO	NO	YES
Nationwide Securities, LLC	Columbus, OH	NO	NO	NO	YES
Nationwide Fund Advisors	Columbus, OH	NO	NO	NO	YES
Nationwide Fund Distributors, LLC	Columbus, OH	NO	NO	NO	YES
Nationwide Asset Management, LLC	Columbus, OH	NO	NO	NO	YES
Jefferson National Securities Corporation	Louisville, KY	NO	NO	NO	YES
JNF Advisors, Inc.	Louisville, KY	NO	NO	NO	YES

- 9.1 Are the senior officers (principal executive officer, principal financial officer, principal accounting officer or controller, or persons performing similar functions) of the reporting entity subject to a code of ethics, which includes the following standards? Yes [X] No []
 - (a) Honest and ethical conduct, including the ethical handling of actual or apparent conflicts of interest between personal and professional relationships;
 - (b) Full, fair, accurate, timely and understandable disclosure in the periodic reports required to be filed by the reporting entity;
 - (c) Compliance with applicable governmental laws, rules and regulations;
 - (d) The prompt internal reporting of violations to an appropriate person or persons identified in the code; and

GENERAL INTERROGATORIES

PART 1 - COMMON INTERROGATORIES

(e) Accountability for adherence to the code.

9.11 If the response to 9.1 is No, please explain:

9.2 Has the code of ethics for senior managers been amended?

Yes [] No [X]

9.21 If the response to 9.2 is Yes, provide information related to amendment(s).

9.3 Have any provisions of the code of ethics been waived for any of the specified officers?

Yes [] No [X]

9.31 If the response to 9.3 is Yes, provide the nature of any waiver(s).

FINANCIAL

10.1 Does the reporting entity report any amounts due from parent, subsidiaries or affiliates on Page 2 of this statement?

Yes [X] No []

10.2 If yes, indicate any amounts receivable from parent included in the Page 2 amount:

\$ 0

INVESTMENT

11.1 Were any of the stocks, bonds, or other assets of the reporting entity loaned, placed under option agreement, or otherwise made available for use by another person? (Exclude securities under securities lending agreements.)

Yes [] No [X]

11.2 If yes, give full and complete information relating thereto:

12. Amount of real estate and mortgages held in other invested assets in Schedule BA:

\$ 1,477,702

13. Amount of real estate and mortgages held in short-term investments:

\$ 0

14.1 Does the reporting entity have any investments in parent, subsidiaries and affiliates?

Yes [] No [X]

14.2 If yes, please complete the following:

14.21	Bonds
14.22	Preferred Stock
14.23	Common Stock
14.24	Short-Term Investments
14.25	Mortgage Loans on Real Estate
14.26	All Other
14.27	Total Investment in Parent, Subsidiaries and Affiliates (Subtotal Lines 14.21 to 14.26)
14.28	Total Investment in Parent included in Lines 14.21 to 14.26 above

	1 Prior Year End Book/Adjusted Carrying Value	2 Current Quarter Book/Adjusted Carrying Value
\$	0	\$ 0
	0	0
	0	0
	0	0
	0	0
	0	0
\$	0	\$ 0
\$	0	\$ 0

15.1 Has the reporting entity entered into any hedging transactions reported on Schedule DB?

Yes [] No [X]

15.2 If yes, has a comprehensive description of the hedging program been made available to the domiciliary state?

Yes [] No []

If no, attach a description with this statement.

16. For the reporting entity's security lending program, state the amount of the following as of current statement date:

16.1 Total fair value of reinvested collateral assets reported on Schedule DL, Parts 1 and 2:

\$ 0

16.2 Total book adjusted/carrying value of reinvested collateral assets reported on Schedule DL, Parts 1 and 2:

\$ 0

16.3 Total payable for securities lending reported on the liability page:

\$ 0

17. Excluding items in Schedule E-Part 3-Special Deposits, real estate, mortgage loans and investments held physically in the reporting entity's offices, vaults or safety deposit boxes, were all stocks, bonds and other securities, owned throughout the current year held pursuant to a custodial agreement with a qualified bank or trust company in accordance with Section 1, III - General Examination Considerations, F. Outsourcing of Critical Functions, Custodial or Safekeeping Agreements of the NAIC *Financial Condition Examiners Handbook*?

Yes [X] No []

17.1 For all agreements that comply with the requirements of the NAIC *Financial Condition Examiners Handbook*, complete the following:

1 Name of Custodian(s)	2 Custodian Address
The Bank of New York Mellon	1 Wall Street, New York, NY 10286

17.2 For all agreements that do not comply with the requirements of the NAIC *Financial Condition Examiners Handbook*, provide the name, location and a complete explanation:

1 Name(s)	2 Location(s)	3 Complete Explanation(s)

17.3 Have there been any changes, including name changes, in the custodian(s) identified in 17.1 during the current quarter?

Yes [] No [X]

17.4 If yes, give full and complete information relating thereto:

1 Old Custodian	2 New Custodian	3 Date of Change	4 Reason

17.5 Investment management – Identify all investment advisors, investment managers, broker/dealers, including individuals that have the authority to make investment decisions on behalf of the reporting entity. For assets that are managed internally by employees of the reporting entity, note as such ["...that have access to the investment accounts", "handle securities"].

1 Name of Firm or Individual	2 Affiliation
Members of the investment staff designated by the Chief Investment Officer as detailed in the Corporate Resolution	I

17.5097 For those firms/individuals listed in the table for Question 17.5, do any firms/individuals unaffiliated with the reporting entity (i.e., designated with a "U") manage more than 10% of the reporting entity's assets?

Yes [] No []

GENERAL INTERROGATORIES**PART 1 - COMMON INTERROGATORIES**

17.5098 For firms/individuals unaffiliated with the reporting entity (i.e., designated with a "U") listed in the table for Question 17.5, does the total assets under management aggregate to more than 50% of the reporting entity's assets? Yes [] No []

17.6 For those firms or individuals listed in the table for 17.5 with an affiliation code of "A" (affiliated) or "U" (unaffiliated), provide the information for the table below.

1	2	3	4	5
Central Registration Depository Number	Name of Firm or Individual	Legal Entity Identifier (LEI)	Registered With	Investment Management Agreement (IMA) Filed

18.1 Have all the filing requirements of the *Purposes and Procedures Manual of the NAIC Investment Analysis Office* been followed? Yes [X] No []

18.2 If no, list exceptions:

19. By self-designating 5*GI securities, the reporting entity is certifying the following elements for each self-designated 5*GI security:

- Documentation necessary to permit a full credit analysis of the security does not exist.
- Issuer or obligor is current on all contracted interest and principal payments.
- The insurer has an actual expectation of ultimate payment of all contracted interest and principal.

Has the reporting entity self-designated 5*GI securities?

Yes [] No [X]

GENERAL INTERROGATORIES (continued)

PART 2 – PROPERTY & CASUALTY INTERROGATORIES

1. If the reporting entity is a member of a pooling arrangement, did the agreement or the reporting entity's participation change? Yes [] No [X] N/A []
If yes, attach an explanation.
2. Has the reporting entity reinsured any risk with any other reporting entity and agreed to release such entity from liability, in whole or in part, from any loss that may occur on the risk, or portion thereof, reinsured? Yes [] No [X]
If yes, attach an explanation.
- 3.1 Have any of the reporting entity's primary reinsurance contracts been canceled? Yes [] No [X]
- 3.2 If yes, give full and complete information thereto:

- 4.1 Are any of the liabilities for unpaid losses and loss adjustment expenses other than certain workers' compensation tabular reserves (see *Annual Statement Instructions* pertaining to disclosure of discounting for definition of "tabular reserves.") discounted at a rate of interest greater than zero? Yes [] No [X]

- 4.2 If yes, complete the following schedule:

1 Line of Business	2 Maximum Interest	3 Disc. Rate	Total Discount				Discount Taken During Period			
			4 Unpaid Losses	5 Unpaid LAE	6 IBNR	7 Total	8 Unpaid Losses	9 Unpaid LAE	10 IBNR	11 Total
	0.000	0.000	0	0	0	0	0	0	0	0
Total	XXX	XXX	0	0	0	0	0	0	0	0

- 5.1 Operating Percentages:
- 5.1 A&H loss percent 0.000%
- 5.2 A&H cost containment percent 0.000%
- 5.3 A&H expense percent excluding cost containment expenses 0.000%
- 6.1 Do you act as a custodian for health savings accounts? Yes [] No [X]
- 6.2 If yes, please provide the amount of custodial funds held as of the reporting date. \$ 0
- 6.3 Do you act as an administrator for health savings accounts? Yes [] No [X]
- 6.4 If yes, please provide the amount of funds administered as of the reporting date. \$ 0
7. Is the reporting entity licensed or chartered, registered, qualified, eligible or writing business in at least two states? Yes [X] No []
- 7.1 If no, does the reporting entity assume reinsurance business that covers risks residing in at least one state other than the state of domicile of the reporting entity? Yes [] No []

NATIONWIDE GENERAL INSURANCE COMPANY
SCHEDULE F - CEDED REINSURANCE

Showing All New Reinsurers - Current Year to Date

1 NAIC Company Code	2 ID Number	3 Name of Reinsurer	4 Domiciliary Jurisdiction	5 Type of Reinsurer	6 Certified Reinsurer Rating (1 through 6)	7 Effective Date of Certified Reinsurer Rating
------------------------------	----------------	------------------------	----------------------------------	---------------------------	---	--

NONE

SCHEDULE T - EXHIBIT OF PREMIUMS WRITTEN

Current Year to Date - Allocated by States and Territories

States, Etc.	1 Active Status (a)	Direct Premiums Written		Direct Losses Paid (Deducting Salvage)		Direct Losses Unpaid	
		2 Current Year to Date	3 Prior Year to Date	4 Current Year to Date	5 Prior Year to Date	6 Current Year to Date	7 Prior Year to Date
1. Alabama.....AL	L	8,817,142	8,582,910	6,082,084	5,019,925	13,625,629	9,328,959
2. Alaska.....AK	L						
3. Arizona.....AZ	L	110,831				594	(1)
4. Arkansas.....AR	L	2,380,946	1,907,083	1,347,389	752,868	1,877,459	895,570
5. California.....CA	L						
6. Colorado.....CO	N						
7. Connecticut.....CT	L	20,573,884	20,760,571	14,347,421	13,701,523	45,975,751	45,423,675
8. Delaware.....DE	L	3,710,156	3,673,427	2,532,999	1,778,716	4,938,037	6,274,401
9. District of Columbia.....DC	L	546,955	440,188	258,144	279,473	362,933	398,212
10. Florida.....FL	L		(16)	(2,720)	(584)	(39,106)	(51,842)
11. Georgia.....GA	L	12,099,091	11,398,316	11,287,366	9,060,096	13,275,229	12,143,955
12. Hawaii.....HI	N						
13. Idaho.....ID	L						
14. Illinois.....IL	L	3,944,822	1,362,955	1,733,481	493,327	1,611,754	879,258
15. Indiana.....IN	L	929,758	841,638	582,512	173,558	1,487,984	764,273
16. Iowa.....IA	L						
17. Kansas.....KS	L						
18. Kentucky.....KY	L	7,895,114	8,048,701	3,724,021	3,794,559	8,158,194	11,198,617
19. Louisiana.....LA	L						
20. Maine.....ME	L	812,835	823,852	542,138	646,950	1,159,242	1,331,419
21. Maryland.....MD	L	21,614,540	22,042,776	19,602,272	14,873,969	34,925,423	28,033,358
22. Massachusetts.....MA	N					(3)	
23. Michigan.....MI	L	630,916	482,026	444,064	117,614	1,671,407	816,036
24. Minnesota.....MN	L						
25. Mississippi.....MS	L	7,785,313	6,772,856	4,401,421	4,825,552	4,951,227	5,104,543
26. Missouri.....MO	L						
27. Montana.....MT	L						
28. Nebraska.....NE	L						
29. Nevada.....NV	L						
30. New Hampshire.....NH	L	341,035	288,342	478,565	81,337	537,164	224,021
31. New Jersey.....NJ	N						
32. New Mexico.....NM	L						
33. New York.....NY	L	9,632,333	9,021,710	6,338,462	4,360,398	21,420,434	16,430,924
34. North Carolina.....NC	L	99,293,544	87,204,321	54,878,523	45,626,618	73,092,253	67,030,534
35. North Dakota.....ND	L						
36. Ohio.....OH	L	46,867,308	38,412,548	28,393,531	22,251,287	51,732,219	35,877,449
37. Oklahoma.....OK	L						
38. Oregon.....OR	L	258,922				3,972	
39. Pennsylvania.....PA	L	18,642,464	17,407,624	13,708,613	7,251,227	21,226,886	16,932,134
40. Rhode Island.....RI	L	3,653,712	2,741,860	3,265,184	1,215,513	3,637,192	2,400,666
41. South Carolina.....SC	L	8,565,277	8,264,324	3,587,004	1,996,470	5,729,100	11,482,021
42. South Dakota.....SD	L						
43. Tennessee.....TN	L	18,826,685	21,537,688	14,011,463	14,990,491	22,913,575	24,635,203
44. Texas.....TX	L	28,858,330	29,925,892	17,845,844	22,281,453	24,731,240	43,267,877
45. Utah.....UT	L						
46. Vermont.....VT	L	226,512	199,625	73,547	704,763	432,700	684,027
47. Virginia.....VA	L	24,769,300	24,342,933	19,063,605	15,979,375	32,341,974	32,819,179
48. Washington.....WA	L	141,555				568	
49. West Virginia.....WV	L	2,415,733	1,776,614	1,402,854	717,988	1,612,806	959,959
50. Wisconsin.....WI	N						
51. Wyoming.....WY	N						
52. American Samoa.....AS	N						
53. Guam.....GU	N						
54. Puerto Rico.....PR	N						
55. US Virgin Islands.....VI	N						
56. Northern Mariana Islands.....MP	N						
57. Canada.....CAN	N						
58. Aggregate Other Alien.....OT	XXX	0	0	0	0	0	0
59. Totals.....	XXX	354,345,013	328,260,764	229,929,787	192,974,466	393,393,837	375,284,427

DETAILS OF WRITE-INS

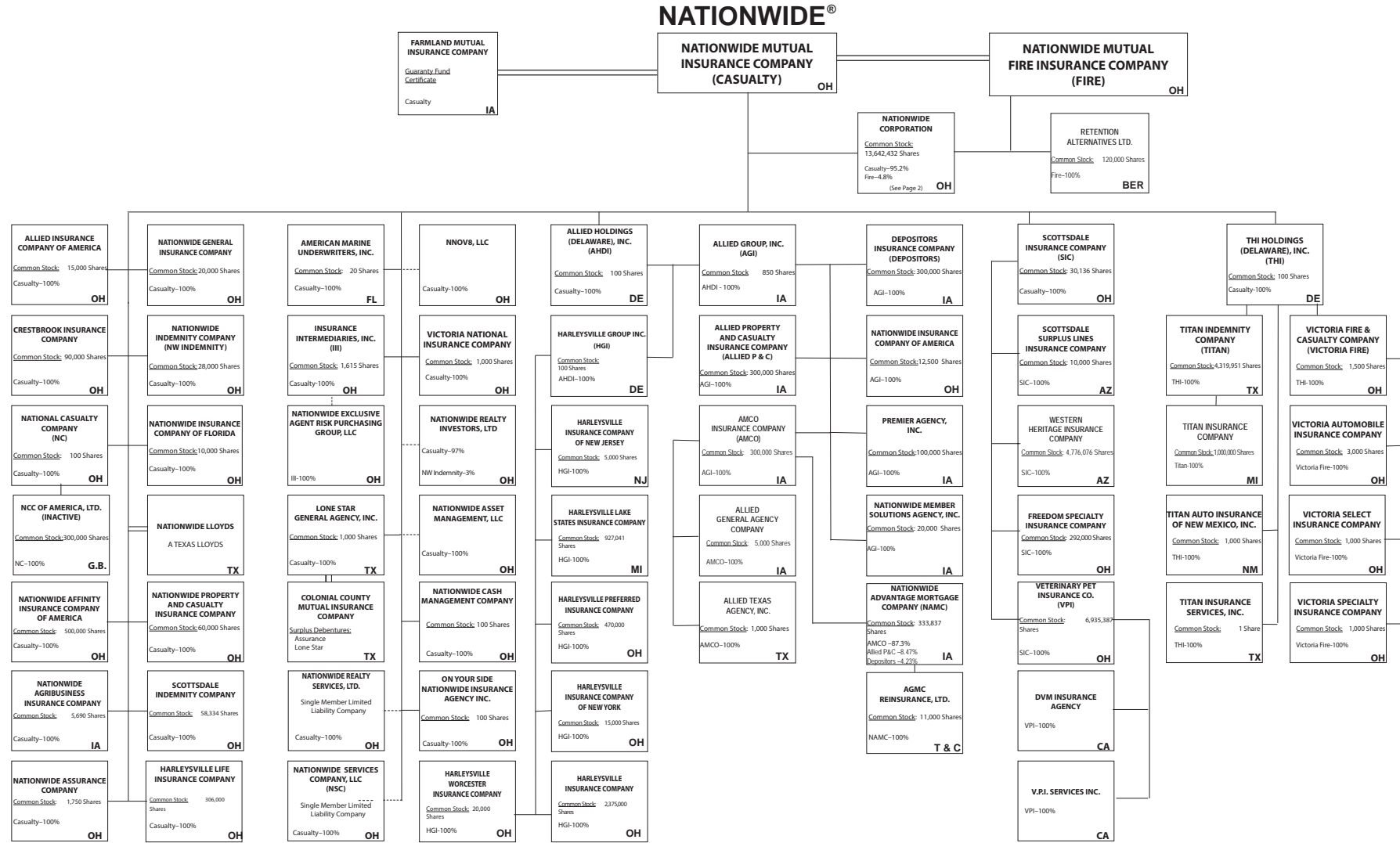
58001.....	XXX						
58002.....	XXX						
58003.....	XXX						
58998. Summary of remaining write-ins for Line 58 from overflow page.....	XXX	0	0	0	0	0	0
58999. Totals (Lines 58001 thru 58003+ Line 58998) (Line 58 above).....	XXX	0	0	0	0	0	0

(a) Active Status Count

L - Licensed or Chartered - Licensed insurance carrier or domiciled RRG.....	45	R - Registered - Non-domiciled RRGs.....	0
E - Eligible - Reporting entities eligible or approved to write surplus lines in the state (other than their state of domicile - See DSLI).....	0	Q - Qualified - Qualified or accredited reinsurer.....	0
D - Domestic Surplus Lines Insurer (DSLI) - Reporting entities authorized to write surplus lines in the state of domicile.....	0	N - None of the above - Not allowed to write business in the state.....	12

NATIONWIDE GENERAL INSURANCE COMPANY

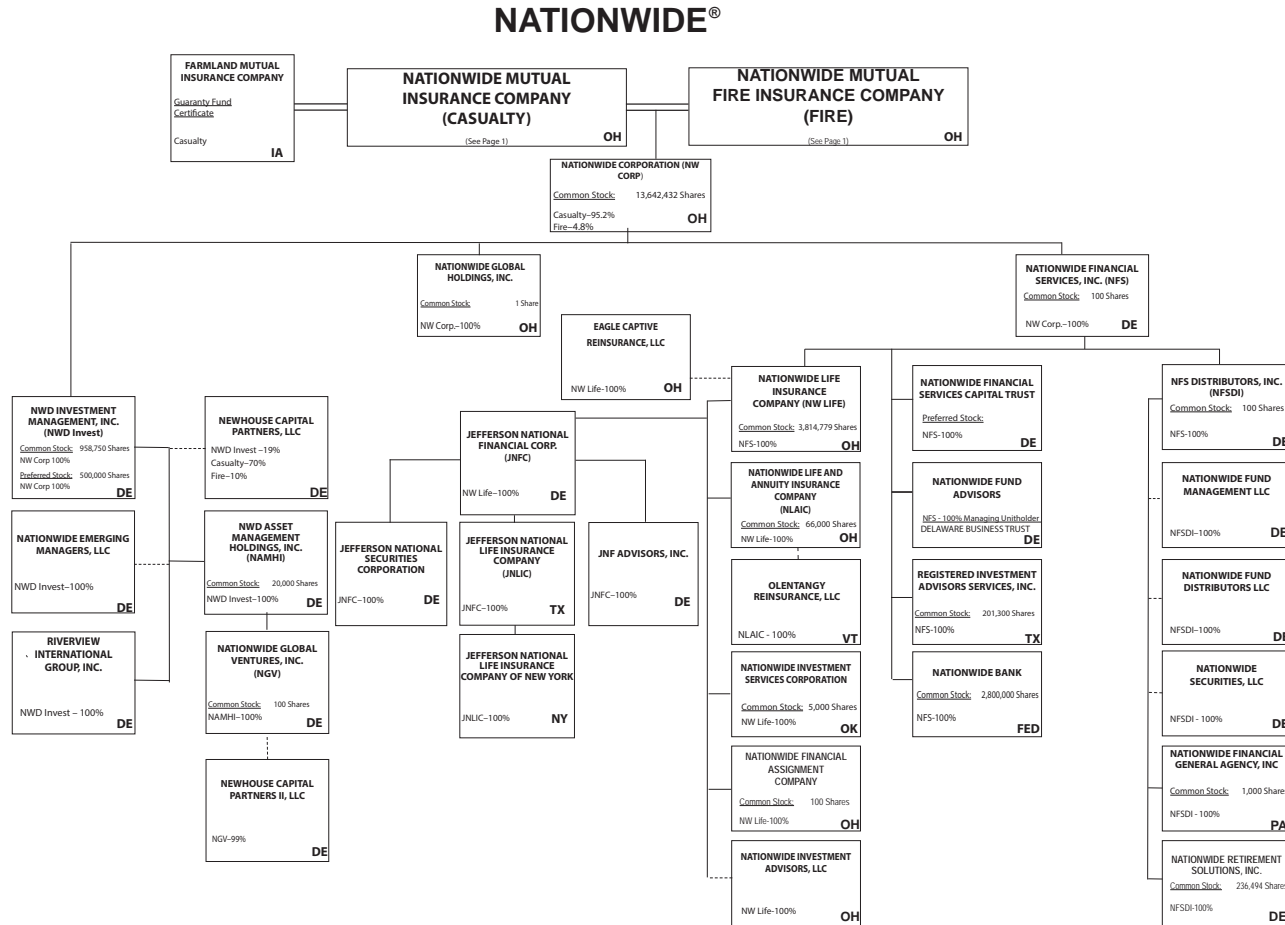
Q11



Subsidiary Companies — Solid Line
Contractual Association = Double Line
Limited Liability Company - Dotted Line

(Casualty/Fire subsidiaries)

Q11.1



Subsidiary Companies — Solid Line
 Contractual Association = Double Line
 Limited Liability Company - - Dotted Line

(Nationwide Corp. subsidiaries)

NATIONWIDE INSURANCE COMPANIES

NAIC Group Code	Group Name	NAIC Company Code	State of Domicile	Federal ID Number	Name of Company
0140	Nationwide	10127	OH	27-0114983	Allied Insurance Company of America
0140	Nationwide	42579	IA	42-1201931	Allied Property and Casualty Insurance Company
0140	Nationwide	19100	IA	42-6054959	AMCO Insurance Company
0140	Nationwide	29262	TX	74-1061659	Colonial County Mutual Insurance Company
0140	Nationwide	18961	OH	68-0066866	Crestbrook Insurance Company
0140	Nationwide	42587	IA	42-1207150	Depositors Insurance Company
0140	Nationwide	15821	OH	42-4523959	Eagle Captive Reinsurance, LLC
0140	Nationwide	13838	IA	42-0618271	Farmland Mutual Insurance Company
0140	Nationwide	22209	OH	75-6013587	Freedom Specialty Insurance Company
0140	Nationwide	23582	OH	41-0417250	Harleysville Insurance Company
0140	Nationwide	42900	NJ	23-2253669	Harleysville Insurance Company of New Jersey
0140	Nationwide	10674	OH	23-2864924	Harleysville Insurance Company of New York
0140	Nationwide	14516	MI	38-3198542	Harleysville Lake States Insurance Company
0140	Nationwide	64327	OH	23-1580983	Harleysville Life Insurance Company
0140	Nationwide	35696	OH	23-2384978	Harleysville Preferred Insurance Company
0140	Nationwide	26182	OH	04-1989660	Harleysville Worcester Insurance Company
0140	Nationwide	64017	TX	75-0300900	Jefferson National Life Insurance Company
0140	Nationwide	15727	NY	47-1180302	Jefferson National Life Insurance Company of New York
0140	Nationwide	11991	OH	38-0865250	National Casualty Company
0140	Nationwide	26093	OH	48-0470690	Nationwide Affinity Insurance Company of America
0140	Nationwide	28223	IA	42-1015537	Nationwide Agribusiness Insurance Company
0140	Nationwide	10723	OH	95-0639970	Nationwide Assurance Company
0140	Nationwide	23760	OH	31-4425763	Nationwide General Insurance Company
0140	Nationwide	10070	OH	31-1399201	Nationwide Indemnity Company
0140	Nationwide	25453	OH	95-2130882	Nationwide Insurance Company of America
0140	Nationwide	10948	OH	31-1613686	Nationwide Insurance Company of Florida
0140	Nationwide	92657	OH	31-1000740	Nationwide Life and Annuity Insurance Company
0140	Nationwide	66869	OH	31-4156830	Nationwide Life Insurance Company
0140	Nationwide	42110	TX	75-1780981	Nationwide Lloyds
0140	Nationwide	23779	OH	31-4177110	Nationwide Mutual Fire Insurance Company
0140	Nationwide	23787	OH	31-4177100	Nationwide Mutual Insurance Company
0140	Nationwide	37877	OH	31-0970750	Nationwide Property & Casualty Insurance Company
0140	Nationwide	13999	VT	27-1712056	Olentangy Reinsurance, LLC
0140	Nationwide	15580	OH	31-1117969	Scottsdale Indemnity Company
0140	Nationwide	41297	OH	31-1024978	Scottsdale Insurance Company
0140	Nationwide	10672	AZ	86-0835870	Scottsdale Surplus Lines Insurance Company
0140	Nationwide	13242	TX	74-2286759	Titan Indemnity Company
0140	Nationwide	36269	MI	86-0619597	Titan Insurance Company
0140	Nationwide	42285	OH	95-3750113	Veterinary Pet Insurance Company
0140	Nationwide	10644	OH	34-1785903	Victoria Automobile Insurance Company
0140	Nationwide	42889	OH	34-1394913	Victoria Fire & Casualty Company
0140	Nationwide	10778	OH	34-1842604	Victoria National Insurance Company
0140	Nationwide	10105	OH	34-1777972	Victoria Select Insurance Company
0140	Nationwide	10777	OH	34-1842602	Victoria Specialty Insurance Company
0140	Nationwide	37150	AZ	86-0561941	Western Heritage Insurance Company

SCHEDULE Y

PART 1A - DETAIL OF INSURANCE HOLDING COMPANY SYSTEM

1	2	3	4	5	6	7	8	9	10	11	12	13	14	15	16
Group Code	Group Name	NAIC Company Code	ID Number	Federal RSSD	CIK	Name of Securities Exchange if Publicly Traded (U.S. or International)	Names of Parent, Subsidiaries or Affiliates	Domiciliary Location	Relationship to Reporting Entity	Directly Controlled by (Name of Entity/Person)	Type of Control (Ownership Board, Management, Attorney-in-Fact, Influence, Other)	If Control is Ownership Provide Percentage	Ultimate Controlling Entity(ies)/Person(s)	Is an SCA Filing Required? (Y/N)	*
Members															
0140	Nationwide.....		31-1486309..	4595018		0.....	10 W. Nationwide, LLC.....	OH.....	NIA.....	Nationwide Realty Investors, Ltd.....	ownership.....	..100.000	Nationwide Mutual Insurance Company.....N.....	
0140	Nationwide.....		31-1486309..	4810074		0.....	1000 Yard Street, LLC.....	OH.....	NIA.....	Nationwide Realty Investors, Ltd.....	ownership.....	..100.000	Nationwide Mutual Insurance Company.....N.....	
0140	Nationwide.....		31-1486309..	4869474		0.....	1015 Long Street, LLC.....	OH.....	NIA.....	Nationwide Realty Investors, Ltd.....	ownership.....	..100.000	Nationwide Mutual Insurance Company.....N.....	
0140	Nationwide.....		31-1486309..	4810047		0.....	1050 Yard Street, LLC.....	OH.....	NIA.....	Nationwide Realty Investors, Ltd.....	ownership.....	..100.000	Nationwide Mutual Insurance Company.....N.....	
0140	Nationwide.....		31-1486309..	4810038		0.....	1125 Rail Street, LLC.....	OH.....	NIA.....	Nationwide Realty Investors, Ltd.....	ownership.....	..100.000	Nationwide Mutual Insurance Company.....N.....	
0140	Nationwide.....		31-1733036..	4594963		0.....	120 Acre Partners, LLC.....	DE.....	NIA.....	Nationwide Realty Investors, Ltd.....	ownership.....	..95.000	Nationwide Mutual Insurance Company.....N.....	1.....
0140	Nationwide.....		20-4939866..	5217036		0.....	1125 Yard Street, LLC.....	OH.....	NIA.....	NRI Equity Land Investments, LLC.....	ownership.....	..100.000	Nationwide Mutual Insurance Company.....N.....	
0140	Nationwide.....		26-2451988..	4288132		0.....	1492 Capital, LLC.....	OH.....	NIA.....	Nationwide Mutual Insurance Company.....	ownership.....	..100.000	Nationwide Mutual Insurance Company.....N.....	
0140	Nationwide.....		31-1486309..	5113932		0.....	111 Rivulon Boulevard, LLC.....	OH.....	NIA.....	Nationwide Realty Investors, Ltd.....	ownership.....	..100.000	Nationwide Mutual Insurance Company.....N.....	
0140	Nationwide.....		31-1486309..	4810083		0.....	155 Rivulon Boulevard, LLC.....	OH.....	NIA.....	Nationwide Realty Investors, Ltd.....	ownership.....	..100.000	Nationwide Mutual Insurance Company.....N.....	
0140	Nationwide.....		31-1486309..	5113923		0.....	161 Rivulon Boulevard, LLC.....	OH.....	NIA.....	Nationwide Realty Investors, Ltd.....	ownership.....	..100.000	Nationwide Mutual Insurance Company.....N.....	
0140	Nationwide.....		31-1580283..	5042171		0.....	170 Marconi, LLC.....	OH.....	NIA.....	NWD Investments, LLC.....	ownership.....	..100.000	Nationwide Mutual Insurance Company.....N.....	
0140	Nationwide.....		31-1580283..	4960960		0.....	245 Parks Edge Place, LLC.....	OH.....	NIA.....	NWD Investments, LLC.....	ownership.....	..100.000	Nationwide Mutual Insurance Company.....N.....	
0140	Nationwide.....		31-1486309..	4810092		0.....	275 Rivulon Boulevard, LLC.....	OH.....	NIA.....	Nationwide Realty Investors, Ltd.....	ownership.....	..100.000	Nationwide Mutual Insurance Company.....N.....	
0140	Nationwide.....		31-1486309..	5092952		0.....	343 N. Front, LLC.....	OH.....	NIA.....	Nationwide Realty Investors, Ltd.....	ownership.....	..100.000	Nationwide Mutual Insurance Company.....N.....	
0140	Nationwide.....		31-1580283..	4590835		0.....	400 West Nationwide Boulevard, LLC.....	OH.....	NIA.....	NWD Investments, LLC.....	ownership.....	..100.000	Nationwide Mutual Insurance Company.....N.....	
0140	Nationwide.....		31-1580283..	4591140		0.....	425 West Nationwide Boulevard, LLC.....	OH.....	NIA.....	NWD Investments, LLC.....	ownership.....	..100.000	Nationwide Mutual Insurance Company.....N.....	
0140	Nationwide.....		31-1486309..	4595009		0.....	44 Chestnut, LLC.....	OH.....	NIA.....	Nationwide Realty Investors, Ltd.....	ownership.....	..100.000	Nationwide Mutual Insurance Company.....N.....	
0140	Nationwide.....		31-1486309..	4890843		0.....	75 Rivulon Boulevard, LLC.....	OH.....	NIA.....	Nationwide Realty Investors, Ltd.....	ownership.....	..100.000	Nationwide Mutual Insurance Company.....N.....	
0140	Nationwide.....		20-4939866..	4590750		0.....	775 Yard Street, LLC.....	OH.....	NIA.....	NRI Equity Land Investments, LLC.....	ownership.....	..100.000	Nationwide Mutual Insurance Company.....N.....	
0140	Nationwide.....		20-4939866..	4810104		0.....	780 Yard Street, LLC.....	OH.....	NIA.....	NRI Equity Land Investments, LLC.....	ownership.....	..100.000	Nationwide Mutual Insurance Company.....N.....	
0140	Nationwide.....		20-4939866..	4671583		0.....	795 Rail Street, LLC.....	OH.....	NIA.....	NRI Equity Land Investments, LLC.....	ownership.....	..100.000	Nationwide Mutual Insurance Company.....N.....	
0140	Nationwide.....		20-4939866..	4590602		0.....	800 Bobcat Avenue, LLC.....	OH.....	NIA.....	NRI Equity Land Investments, LLC.....	ownership.....	..100.000	Nationwide Mutual Insurance Company.....N.....	
0140	Nationwide.....		20-4939866..	4671499		0.....	800 Goodale Boulevard, LLC.....	OH.....	NIA.....	NRI Equity Land Investments, LLC.....	ownership.....	..100.000	Nationwide Mutual Insurance Company.....N.....	
0140	Nationwide.....		20-4939866..	4671789		0.....	800 Yard Street, LLC.....	OH.....	NIA.....	NRI Equity Land Investments, LLC.....	ownership.....	..100.000	Nationwide Mutual Insurance Company.....N.....	
0140	Nationwide.....		20-4939866..	4590778		0.....	805 Bobcat Avenue, LLC.....	OH.....	NIA.....	GVY Residential, LLC.....	ownership.....	..100.000	Nationwide Mutual Insurance Company.....N.....	
0140	Nationwide.....		20-4939866..	4890834		0.....	808 Yard Street, LLC.....	OH.....	NIA.....	GVY Residential, LLC.....	ownership.....	..100.000	Nationwide Mutual Insurance Company.....N.....	
0140	Nationwide.....		20-4939866..	4869465		0.....	820 Goodale Boulevard, LLC.....	OH.....	NIA.....	NRI Equity Land Investments, LLC.....	ownership.....	..100.000	Nationwide Mutual Insurance Company.....N.....	
0140	Nationwide.....		20-4939866..	5042612		0.....	825 Junction Way, LLC.....	OH.....	NIA.....	GVY Residential, LLC.....	ownership.....	..100.000	Nationwide Mutual Insurance Company.....N.....	
.....	0.....		37-1865892..	n/a.....		0.....	828 at the Yard Condominimums Home Owners Association	OH.....	OTH.....	Other non-Nationwide.....	n/a.....	Other non-Nationwide.....N.....	2.....
0140	Nationwide.....		20-4939866..	5012286		0.....	828 Bobcat Avenue, LLC.....	OH.....	NIA.....	NRI Equity Land Investments, LLC.....	ownership.....	..100.000	Nationwide Mutual Insurance Company.....N.....	
0140	Nationwide.....		20-4939866..	4890759		0.....	840 Third Avenue, LLC.....	OH.....	NIA.....	NRI Equity Land Investments, LLC.....	ownership.....	..100.000	Nationwide Mutual Insurance Company.....N.....	
0140	Nationwide.....		20-4939866..	4590611		0.....	845 Yard Street, LLC.....	OH.....	NIA.....	GVY Residential, LLC.....	ownership.....	..100.000	Nationwide Mutual Insurance Company.....N.....	
0140	Nationwide.....		20-4939866..	4590787		0.....	850 Goodale Blvd., LLC.....	OH.....	NIA.....	NRI Equity Land Investments, LLC.....	ownership.....	..100.000	Nationwide Mutual Insurance Company.....N.....	
0140	Nationwide.....		20-4939866..	4903921		0.....	860 Third Avenue, LLC.....	OH.....	NIA.....	NRI Equity Land Investments, LLC.....	ownership.....	..100.000	Nationwide Mutual Insurance Company.....N.....	

Q12

SCHEDULE Y

PART 1A - DETAIL OF INSURANCE HOLDING COMPANY SYSTEM

1	2	3	4	5	6	7	8	9	10	11	12	13	14	15	16
Group Code	Group Name	NAIC Company Code	ID Number	Federal RSSD	CIK	Name of Securities Exchange if Publicly Traded (U.S. or International)	Names of Parent, Subsidiaries or Affiliates	Domiciliary Location	Relationship to Reporting Entity	Directly Controlled by (Name of Entity/Person)	Type of Control (Ownership Board, Management, Attorney-in-Fact, Influence, Other)	If Control is Ownership Provide Percentage	Ultimate Controlling Entity(ies)/Person(s)	Is an SCA Filing Required? (Y/N)	*
0140	Nationwide		20-4939866	4903912			880 Third Avenue, LLC	OH	NIA	NRI Equity Land Investments, LLC	ownership	100.000	Nationwide Mutual Insurance Company	N	
0140	Nationwide		20-4939866	4869438			895 W. Third Avenue, LLC	OH	NIA	NRI Equity Land Investments, LLC	ownership	100.000	Nationwide Mutual Insurance Company	N	
0140	Nationwide		20-4939866	5143069			950 Dorchester Way, LLC	OH	NIA	GVY Residential, LLC	ownership	100.000	Nationwide Mutual Insurance Company	N	
0140	Nationwide		31-1486309	5092943			960 Bobcat Avenue, LLC	OH	NIA	Nationwide Realty Investors, Ltd	ownership	100.000	Nationwide Mutual Insurance Company	N	
0140	Nationwide		31-1486309	4810029			975 Rail Street, LLC	OH	NIA	Nationwide Realty Investors, Ltd	ownership	100.000	Nationwide Mutual Insurance Company	N	
0140	Nationwide		31-1486309	5082001			995 Yard Street, LLC	OH	NIA	Nationwide Realty Investors, Ltd	ownership	100.000	Nationwide Mutual Insurance Company	N	
0140	Nationwide		31-1680808	4594833			AD Investments, LLC	OH	NIA	Nationwide Realty Investors, Ltd	ownership	60.000	Nationwide Mutual Insurance Company	N	1
0140	Nationwide		31-1580283	4590992			ADTV, LLC	OH	NIA	NWD Investments, LLC	ownership	100.000	Nationwide Mutual Insurance Company	N	
0140	Nationwide		52-2227314	4287247			AGMC Reinsurance, Ltd	TCA	IA	Nationwide Advantage Mortgage Company	ownership	100.000	Nationwide Mutual Insurance Company	N	
0140	Nationwide		42-1011300	4287229			ALLIED General Agency Company	IA	IA	AMCO Insurance Company	ownership	100.000	Nationwide Mutual Insurance Company	N	
0140	Nationwide		42-0958655	1677548			ALLIED Group, Inc	IA	IA	Allied Holdings (Delaware), Inc	ownership	100.000	Nationwide Mutual Insurance Company	N	
0140	Nationwide		46-4628790	4613462			Allied Holdings (Delaware), Inc	DE	IA	Nationwide Mutual Insurance Company	ownership	100.000	Nationwide Mutual Insurance Company	Y	
0140	Nationwide	10127	27-0114983	4288169			ALLIED Insurance Company of America	OH	IA	Nationwide Mutual Insurance Company	ownership	100.000	Nationwide Mutual Insurance Company	N	
0140	Nationwide	42579	42-1201931	4287144			ALLIED Property and Casualty Insurance Company	IA	IA	ALLIED Group, Inc	ownership	100.000	Nationwide Mutual Insurance Company	N	
0140	Nationwide		42-1527863	4287238			ALLIED Texas Agency, Inc	TX	IA	AMCO Insurance Company	ownership	100.000	Nationwide Mutual Insurance Company	N	
0140	Nationwide	19100	42-6054959	4287153			AMCO Insurance Company	IA	IA	ALLIED Group, Inc	ownership	100.000	Nationwide Mutual Insurance Company	N	
0140	Nationwide		59-1031596	4288011			American Marine Underwriters, Inc	FL	IA	Nationwide Mutual Insurance Company	ownership	100.000	Nationwide Mutual Insurance Company	N	
0140	Nationwide		81-4532504	5082029			American Tax Credit Fund 2017-A, LLC	OH	NIA	Nationwide Life Insurance Company	ownership	100.000	Nationwide Mutual Insurance Company	N	
0140	Nationwide		82-2001573	5167113			American Tax Credit Fund 2017-B, LLC	OH	NIA	Nationwide Life Insurance Company	ownership	100.000	Nationwide Mutual Insurance Company	N	
0140	Nationwide		82-4591498	5215292			American Tax Credit Fund 2018-A, LLC	OH	NIA	Nationwide Life Insurance Company	ownership	100.000	Nationwide Mutual Insurance Company	N	
0140	Nationwide		31-1580283	4591177			Arena District CA I, LLC	OH	NIA	NWD Investments, LLC	ownership	100.000	Nationwide Mutual Insurance Company	N	
0			36-4857239	n/a			Arena District Garage Condominium Association	OH	OTH	Other non-Nationwide	n/a		Other non-Nationwide	N	2
0			90-0280710	n/a			Arena District Owners Association	OH	OTH	Other non-Nationwide	n/a		Other non-Nationwide	N	2
0			35-2582728	n/a			Arena District Swim Club Association	OH	OTH	Other non-Nationwide	n/a		Other non-Nationwide	N	2
0140	Nationwide		31-1486309	5012277			Ballantrae Woods, LLC	OH	NIA	Nationwide Realty Investors, Ltd	ownership	100.000	Nationwide Mutual Insurance Company	N	
0140	Nationwide		26-4083207	4869447			Berkshire Crossing Development, LLC	DE	NIA	NorthStar Commercial Development, LLC	ownership	100.000	Nationwide Mutual Insurance Company	N	
0140	Nationwide		31-1555487	4593658			Broad Street Retail, LLC	DE	NIA	Nationwide Realty Investors, Ltd	ownership	60.000	Nationwide Mutual Insurance Company	N	1
0140	Nationwide		20-3624379	4595531			Brooke School Investment Fund, LLC	DE	NIA	Nationwide Mutual Insurance Company	ownership	100.000	Nationwide Mutual Insurance Company	N	
0140	Nationwide		26-0899413	3730540			CHP New Markets Investment Fund, LLC	OH	OTH	Nationwide Mutual Insurance Company	Limited partner /no control	50.000	other non-Nationwide	N	2
0140	Nationwide		20-1618232	4595241			CNRI-Cannonsport Condominium, LLC	OH	NIA	CNRI-Cannonsport, LLC	ownership	100.000	Nationwide Mutual Insurance Company	N	
0140	Nationwide		20-1618232	4595045			CNRI- Cannonsport, LLC	OH	NIA	Nationwide Realty Investors, Ltd	ownership	100.000	Nationwide Mutual Insurance Company	N	
0			n/a	n/a			Co-Investment Fund, LLC	DE	OTH	Other non-Nationwide	n/a		Other non-Nationwide	N	2
0140	Nationwide		31-1579973	2998688			COLHOC Limited Partnership	OH	NIA	NRI Arena, LLC	ownership	30.757	Other non-Nationwide	N	1

Q12.1

SCHEDULE Y

PART 1A - DETAIL OF INSURANCE HOLDING COMPANY SYSTEM

1	2	3	4	5	6	7	8	9	10	11	12	13	14	15	16
Group Code	Group Name	NAIC Company Code	ID Number	Federal RSSD	CIK	Name of Securities Exchange if Publicly Traded (U.S. or International)	Names of Parent, Subsidiaries or Affiliates	Domiciliary Location	Relationship to Reporting Entity	Directly Controlled by (Name of Entity/Person)	Type of Control (Ownership Board, Management, Attorney-in-Fact, Influence, Other)	If Control is Ownership Provide Percentage	Ultimate Controlling Entity(ies)/Person(s)	Is an SCA Filing Required? (Y/N)	*
0140	Nationwide	29262	74-1061659	4288057			Colonial County Mutual Insurance Company	TX	IA	Other non-Nationwide	contract		Other non-Nationwide	N	2
0			45-4901238	n/a			Columbus Arena Management, LLC	OH	OTH	Other non-Nationwide	n/a		Other non-Nationwide	N	2
0140	Nationwide	18961	68-0066866	4288178			Crestbrook Insurance Company	OH	IA	Nationwide Mutual Insurance Company	ownership	100.000	Nationwide Mutual Insurance Company	N	
0140	Nationwide		31-1486309	4590255			Crewville, Ltd.	OH	NIA	Nationwide Realty Investors, Ltd	ownership	100.000	Nationwide Mutual Insurance Company	N	
0140	Nationwide	42587	42-1207150	4287162			Depositors Insurance Company	IA	IA	ALLIED Group, Inc.	ownership	100.000	Nationwide Mutual Insurance Company	N	
0			46-4104813	n/a			Discover Affordable Housing Investment Fund I LLC	OH	OTH	Other non-Nationwide	n/a		Other non-Nationwide	N	2
0140	Nationwide		33-009671	4287694			DVM Insurance Agency	CA	NIA	Veterinary Pet Insurance Company	ownership	100.000	Nationwide Mutual Insurance Company	N	
0140	Nationwide	15821	47-4523959	4890825			Eagle Captive Reinsurance, LLC	OH	IA	Nationwide Life Insurance Company	ownership	100.000	Nationwide Mutual Insurance Company	N	
0140	Nationwide		20-1945276	4590590			East of Madison, LLC	DE	NIA	120 Acre Partners, Ltd.	ownership	24.910	Nationwide Mutual Insurance Company	N	1
0140	Nationwide		20-1945276	4590590			East of Madison, LLC	DE	NIA	ND La Quinta Partners, LLC	ownership	75.090	Nationwide Mutual Insurance Company	N	1
0			30-0951639	n/a			ERN-4 Property Owners Association, Inc.	OH	OTH	Other non-Nationwide	n/a		Other non-Nationwide	N	2
0140	Nationwide	13838	42-0618271	4569372			Farmland Mutual Insurance Company	IA	OTH	Other non-Nationwide	debt		Other non-Nationwide	N	2
0140	Nationwide	22209	75-6013587	4287676			Freedom Specialty Insurance Company	OH	IA	Scottsdale Insurance Company	ownership	100.000	Nationwide Mutual Insurance Company	N	
0			46-4736379	n/a			GPN-1 Property Owners Association, Inc.	OH	OTH	Other non-Nationwide	n/a		Other non-Nationwide	N	2
0140	Nationwide		20-4939866	4590808			Grandview Yard Hotel Holdings, LLC	OH	NIA	NRI Equity Land Investments, LLC	ownership	100.000	Nationwide Mutual Insurance Company	N	
0140	Nationwide		20-4939866	4590826			Grandview Yard Hotel, LLC	OH	NIA	Grandview Yard Hotel Holdings, LLC	ownership	100.000	Nationwide Mutual Insurance Company	N	
0140	Nationwide		20-4939866	5036200			GVY Residential, LLC	OH	NIA	NRI Equity Land Investments, LLC	ownership	100.000	Nationwide Mutual Insurance Company	N	
0140	Nationwide		51-0241172	3582909			Harleysville Group Inc.	DE	NIA	Allied Holdings (Delaware), Inc.	ownership	100.000	Nationwide Mutual Insurance Company	N	
0140	Nationwide	23582	41-0417250	4442260			Harleysville Insurance Company	OH	IA	Harleysville Group, Inc.	ownership	100.000	Nationwide Mutual Insurance Company	N	
0140	Nationwide	42900	23-2253669	4442158			Harleysville Insurance Company of New Jersey	NJ	IA	Harleysville Group, Inc.	ownership	100.000	Nationwide Mutual Insurance Company	N	
0140	Nationwide	10674	23-2864924	4442242			Harleysville Insurance Company of New York	OH	IA	Harleysville Group, Inc.	ownership	100.000	Nationwide Mutual Insurance Company	N	
0140	Nationwide	14516	38-3198542	4442251			Harleysville Lake States Insurance Company	MI	IA	Harleysville Group, Inc.	ownership	100.000	Nationwide Mutual Insurance Company	N	
0140	Nationwide	64327	23-1580983	4440659			Harleysville Life Insurance Company	OH	IA	Nationwide Mutual Insurance Company	ownership	100.000	Nationwide Mutual Insurance Company	N	
0140	Nationwide	35696	23-2384978	4442288			Harleysville Preferred Insurance Company	OH	IA	Harleysville Group, Inc.	ownership	100.000	Nationwide Mutual Insurance Company	N	
0140	Nationwide	26182	04-1989660	4442372			Harleysville Worcester Insurance Company	OH	IA	Harleysville Group, Inc.	ownership	100.000	Nationwide Mutual Insurance Company	N	
0140	Nationwide		32-0051216	4596903			Hideaway Properties Corporation	CA	NIA	Nationwide Realty Investors, Ltd.	ownership	50.000	Nationwide Mutual Insurance Company	N	1
0140	Nationwide		31-0871532	4288020			Insurance Intermediaries, Inc.	OH	IA	Nationwide Mutual Insurance Company	ownership	100.000	Nationwide Mutual Insurance Company	N	
0140	Nationwide		20-3289512	3848436			Jefferson National Financial Corp.	DE	NIA	Nationwide Life Insurance Company	ownership	100.000	Nationwide Mutual Insurance Company	Y	
0140	Nationwide	64017	75-0300900	3332887			Jefferson National Life Insurance Company	TX	IA	Jefferson National Financial Corporation	ownership	100.000	Nationwide Mutual Insurance Company	N	
0140	Nationwide	15727	47-1180302	5111899			Jefferson National Life Insurance Company of New York	NY	IA	Jefferson National Life Insurance Company	ownership	100.000	Nationwide Mutual Insurance Company	N	
0140	Nationwide		61-1340595	5113503			Jefferson National Securities Corporation	DE	NIA	Jefferson National Financial Corporation	ownership	100.000	Nationwide Mutual Insurance Company	N	
0140	Nationwide		31-1486309	4097802			Jerome Village Company, LLC	OH	NIA	Nationwide Realty Investors, Ltd	ownership	100.000	Nationwide Mutual Insurance Company	N	
0			46-2974590	n/a			Jerome Village Master Property Owners Association, Inc.	OH	OTH	Other non-Nationwide	n/a		Other non-Nationwide	N	2

Q12.2

SCHEDULE Y

PART 1A - DETAIL OF INSURANCE HOLDING COMPANY SYSTEM

1	2	3	4	5	6	7	8	9	10	11	12	13	14	15	16
Group Code	Group Name	NAIC Company Code	ID Number	Federal RSSD	CIK	Name of Securities Exchange if Publicly Traded (U.S. or International)	Names of Parent, Subsidiaries or Affiliates	Domiciliary Location	Relationship to Reporting Entity	Directly Controlled by (Name of Entity/Person)	Type of Control (Ownership Board, Management, Attorney-in-Fact, Influence, Other)	If Control is Ownership Provide Percentage	Ultimate Controlling Entity(ies)/Person(s)	Is an SCA Filing Required? (Y/N)	*
0140	Nationwide		20-8945345	5111938		0	JNF Advisors, Inc.	DE	NIA	Jefferson National Financial Corporation	ownership	100.000	Nationwide Mutual Insurance Company	N	
0			46-2956640	n/a		0	Jerome Village Residential Property Owners Association, Inc.	OH	OTH	Other non-Nationwide	n/a		Other non-Nationwide	N	2
0140	Nationwide		31-1486309	4590312		0	JV Developers, LLC	OH	OTH	Nationwide Realty Investors, Ltd	ownership	100.000	Nationwide Mutual Insurance Company	N	2
0140	Nationwide		74-1395229	4613350		0	Lone Star General Agency, Inc.	TX	IA	Nationwide Mutual Insurance Company	ownership	100.000	Nationwide Mutual Insurance Company	N	
0140	Nationwide	11991	38-0865250	4288187		0	National Casualty Company	OH	IA	Nationwide Mutual Insurance Company	ownership	100.000	Nationwide Mutual Insurance Company	N	
0140	Nationwide		AC000920	4614900		0	National Casualty Company of America, Ltd.	GBR	IA	Nationwide Mutual Insurance Company	ownership	100.000	Nationwide Mutual Insurance Company	N	
0140	Nationwide		42-1154244	2889795		0	Nationwide Advantage Mortgage Company	IA	NIA	AMCO Insurance Company	ownership	87.300	Nationwide Mutual Insurance Company	Y	1
0140	Nationwide		42-1154244	2889795		0	Nationwide Advantage Mortgage Company	IA	NIA	ALLIED Property & Casualty Insurance Company	ownership	8.470	Nationwide Mutual Insurance Company	Y	1
0140	Nationwide		42-1154244	2889795		0	Nationwide Advantage Mortgage Company	IA	NIA	Depositors Insurance Company	ownership	4.230	Nationwide Mutual Insurance Company	Y	1
0140	Nationwide	26093	48-0470690	4288196		0	Nationwide Affinity Insurance Company of America	OH	IA	Nationwide Mutual Insurance Company	ownership	100.000	Nationwide Mutual Insurance Company	N	
0140	Nationwide	28223	42-1015537	4288208		0	Nationwide Agribusiness Insurance Company	IA	IA	Nationwide Mutual Insurance Company	ownership	100.000	Nationwide Mutual Insurance Company	N	
0140	Nationwide		31-1578869	4288075		0	Nationwide Arena, LLC	OH	NIA	NRI Arena, LLC	ownership	90.000	Nationwide Mutual Insurance Company	N	1
0140	Nationwide		20-8670712	4288114		0	Nationwide Asset Management, LLC	OH	NIA	Nationwide Mutual Insurance Company	ownership	100.000	Nationwide Mutual Insurance Company	N	
0140	Nationwide	10723	95-0639970	4288217		0	Nationwide Assurance Company	OH	IA	Nationwide Mutual Insurance Company	ownership	100.000	Nationwide Mutual Insurance Company	N	
0140	Nationwide		31-1592130	2729677		0	Nationwide Bank	OH	OTH	Nationwide Financial Services, Inc.	ownership	100.000	Nationwide Mutual Insurance Company	N	2
0140	Nationwide		31-1036287	4288123		0	Nationwide Cash Management Company	OH	NIA	Nationwide Mutual Insurance Company	ownership	100.000	Nationwide Mutual Insurance Company	N	
0140	Nationwide		31-4416546	3828081		0	Nationwide Corporation	OH	NIA	Nationwide Mutual Insurance Company	ownership	95.200	Nationwide Mutual Insurance Company	Y	1
0140	Nationwide		31-4416546	3828081		0	Nationwide Corporation	OH	NIA	Nationwide Mutual Fire Insurance Company	ownership	4.800	Nationwide Mutual Insurance Company	Y	1
0140	Nationwide		04-3679407	4286839		0	Nationwide Emerging Managers, LLC	DE	NIA	NWD Investment Management, Inc.	ownership	100.000	Nationwide Mutual Insurance Company	N	
0140	Nationwide		05-0630007	4288048		0	Nationwide Exclusive Agent Risk Purchasing Group, LLC	OH	NIA	Insurance Intermediaries, Inc.	ownership	100.000	Nationwide Mutual Insurance Company	N	
0140	Nationwide		31-1667326	4286932		0	Nationwide Financial Assignment Company	OH	NIA	Nationwide Life Insurance Company	ownership	100.000	Nationwide Mutual Insurance Company	N	
0140	Nationwide		23-2412039	4287087		0	Nationwide Financial General Agency, Inc.	PA	NIA	NFS Distributors, Inc.	ownership	100.000	Nationwide Mutual Insurance Company	N	
0140	Nationwide		31-6554353	4286978		0	Nationwide Financial Services Capital Trust	DE	NIA	Nationwide Financial Services, Inc.	ownership	100.000	Nationwide Mutual Insurance Company	N	
0140	Nationwide		31-1486870	3828063		0	Nationwide Financial Services, Inc.	DE	NIA	Nationwide Corporation	ownership	100.000	Nationwide Mutual Insurance Company	N	
0140	Nationwide		52-6969857	4286996		0	Nationwide Fund Advisors	DE	NIA	Nationwide Financial Services, Inc.	ownership	100.000	Nationwide Mutual Insurance Company	N	
0140	Nationwide		31-1748721	4287050		0	Nationwide Fund Distributors LLC	DE	NIA	NFS Distributors, Inc.	ownership	100.000	Nationwide Mutual Insurance Company	N	
0140	Nationwide		31-0900518	4287041		0	Nationwide Fund Management LLC	DE	NIA	NFS Distributors, Inc.	ownership	100.000	Nationwide Mutual Insurance Company	N	
0140	Nationwide	23760	31-4425763	4287957		0	Nationwide General Insurance Company	OH	RE	Nationwide Mutual Insurance Company	ownership	100.000	Nationwide Mutual Insurance Company	N	
0140	Nationwide		31-1570938	4286398		0	Nationwide Global Holdings, Inc.	OH	NIA	Nationwide Corporation	ownership	100.000	Nationwide Mutual Insurance Company	N	
0140	Nationwide		04-3732385	4286857		0	Nationwide Global Ventures, Inc.	DE	NIA	NWD Asset Management Holdings, Inc.	ownership	100.000	Nationwide Mutual Insurance Company	N	
0140	Nationwide	10070	31-1399201	2839398		0	Nationwide Indemnity Company	OH	IA	Nationwide Mutual Insurance Company	ownership	100.000	Nationwide Mutual Insurance Company	N	
0140	Nationwide	25453	95-2130882	4287180		0	Nationwide Insurance Company of America	OH	IA	ALLIED Group, Inc.	ownership	100.000	Nationwide Mutual Insurance Company	N	

Q12.3

SCHEDULE Y

PART 1A - DETAIL OF INSURANCE HOLDING COMPANY SYSTEM

1	2	3	4	5	6	7	8	9	10	11	12	13	14	15	16
Group Code	Group Name	NAIC Company Code	ID Number	Federal RSSD	CIK	Name of Securities Exchange if Publicly Traded (U.S. or International)	Names of Parent, Subsidiaries or Affiliates	Domiciliary Location	Relationship to Reporting Entity	Directly Controlled by (Name of Entity/Person)	Type of Control (Ownership Board, Management, Attorney-in-Fact, Influence, Other)	If Control is Ownership Provide Percentage	Ultimate Controlling Entity(ies)/Person(s)	Is an SCA Filing Required? (Y/N)	*
0140	Nationwide.....	10948...	31-1613686..	4287966		0.....	Nationwide Insurance Company of Florida.....	OH.....	IA.....	Nationwide Mutual Insurance Company.....	ownership.....	100.000	Nationwide Mutual Insurance Company.....	N.....	
0140	Nationwide.....		41-2206199..	4286950		0.....	Nationwide Investment Advisors, LLC.....	OH.....	NIA.....	Nationwide Life Insurance Company.....	ownership.....	100.000	Nationwide Mutual Insurance Company.....	N.....	
0140	Nationwide.....		73-0988442..	4286923		0.....	Nationwide Investment Services Corporation...	OK.....	NIA.....	Nationwide Life Insurance Company.....	ownership.....	100.000	Nationwide Mutual Insurance Company.....	Y.....	
0140	Nationwide.....	92657...	31-1000740..	2995098		0.....	Nationwide Life and Annuity Insurance Company	OH.....	IA.....	Nationwide Life Insurance Company.....	ownership.....	100.000	Nationwide Mutual Insurance Company.....	N.....	
0140	Nationwide.....	66869...	31-4156830..	2819288		0.....	Nationwide Life Insurance Company.....	OH.....	IA.....	Nationwide Financial Services, Inc.....	ownership.....	100.000	Nationwide Mutual Insurance Company.....	N.....	
0140	Nationwide.....		13-4212969..	4596127		0.....	Nationwide Life Tax Credit Partners 2002-A, LLC	OH.....	NIA.....	Nationwide Life Insurance Company.....	other.....	0.010	Nationwide Mutual Insurance Company.....	N.....	1.....
0140	Nationwide.....		01-0749754..	4595960		0.....	Nationwide Life Tax Credit Partners 2002-B, LLC	OH.....	NIA.....	Nationwide Life Insurance Company.....	other.....	0.010	Nationwide Mutual Insurance Company.....	N.....	1.....
0140	Nationwide.....		54-2113175..	4596127		0.....	Nationwide Life Tax Credit Partners 2003-A, LLC	OH.....	NIA.....	Nationwide Life Insurance Company.....	other.....	0.010	Nationwide Mutual Insurance Company.....	N.....	1.....
0140	Nationwide.....		58-2672725..	4596163		0.....	Nationwide Life Tax Credit Partners 2003-B, LLC	OH.....	NIA.....	Nationwide Life Insurance Company.....	other.....	0.010	Nationwide Mutual Insurance Company.....	N.....	1.....
0140	Nationwide.....		20-0382144..	4596707		0.....	Nationwide Life Tax Credit Partners 2004-A, LLC	OH.....	NIA.....	Nationwide Life Insurance Company.....	other.....	0.010	Nationwide Mutual Insurance Company.....	N.....	1.....
0140	Nationwide.....		20-0745944..	4596211		0.....	Nationwide Life Tax Credit Partners 2004-B, LLC	OH.....	NIA.....	Nationwide Life Insurance Company.....	other.....	0.010	Nationwide Mutual Insurance Company.....	N.....	1.....
0140	Nationwide.....		20-0745965..	4596239		0.....	Nationwide Life Tax Credit Partners 2004-C, LLC	OH.....	NIA.....	Nationwide Life Insurance Company.....	other.....	0.010	Nationwide Mutual Insurance Company.....	N.....	1.....
0140	Nationwide.....		20-1128408..	4596332		0.....	Nationwide Life Tax Credit Partners 2004-D, LLC	OH.....	NIA.....	Nationwide Life Insurance Company.....	other.....	0.010	Nationwide Mutual Insurance Company.....	N.....	1.....
0140	Nationwide.....		20-1128472..	4596350		0.....	Nationwide Life Tax Credit Partners 2004-E, LLC	OH.....	NIA.....	Nationwide Life Insurance Company.....	other.....	0.010	Nationwide Mutual Insurance Company.....	N.....	1.....
0140	Nationwide.....		20-1918935..	3318117		0.....	Nationwide Life Tax Credit Partners 2004-F, LLC	OH.....	NIA.....	Nationwide Life Insurance Company.....	other.....	0.010	Nationwide Mutual Insurance Company.....	N.....	1.....
0140	Nationwide.....		20-2303694..	4596369		0.....	Nationwide Life Tax Credit Partners 2005-A, LLC	OH.....	NIA.....	Nationwide Life Insurance Company.....	other.....	0.010	Nationwide Mutual Insurance Company.....	N.....	1.....
0140	Nationwide.....		20-2303602..	4596378		0.....	Nationwide Life Tax Credit Partners 2005-B, LLC	OH.....	NIA.....	Nationwide Life Insurance Company.....	other.....	0.010	Nationwide Mutual Insurance Company.....	N.....	1.....
0140	Nationwide.....		20-2450960..	4596387		0.....	Nationwide Life Tax Credit Partners 2005-C, LLC	OH.....	NIA.....	Nationwide Life Insurance Company.....	other.....	0.010	Nationwide Mutual Insurance Company.....	N.....	1.....
0140	Nationwide.....		20-2451052..	4596396		0.....	Nationwide Life Tax Credit Partners 2005-D, LLC	OH.....	NIA.....	Nationwide Life Insurance Company.....	other.....	0.010	Nationwide Mutual Insurance Company.....	N.....	1.....
0140	Nationwide.....		20-2774223..	4596408		0.....	Nationwide Life Tax Credit Partners 2005-E, LLC	OH.....	NIA.....	Nationwide Life Insurance Company.....	other.....	0.010	Nationwide Mutual Insurance Company.....	N.....	1.....
0140	Nationwide.....		21-1288836..	4596426		0.....	Nationwide Life Tax Credit Partners 2007-A, LLC	OH.....	NIA.....	Nationwide Life Insurance Company.....	other.....	0.010	Nationwide Mutual Insurance Company.....	N.....	1.....

Q12.4

SCHEDULE Y

PART 1A - DETAIL OF INSURANCE HOLDING COMPANY SYSTEM

1	2	3	4	5	6	7	8	9	10	11	12	13	14	15	16
Group Code	Group Name	NAIC Company Code	ID Number	Federal RSSD	CIK	Name of Securities Exchange if Publicly Traded (U.S. or International)	Names of Parent, Subsidiaries or Affiliates	Domiciliary Location	Relationship to Reporting Entity	Directly Controlled by (Name of Entity/Person)	Type of Control (Ownership Board, Management, Attorney-in-Fact, Influence, Other)	If Control is Ownership Provide Percentage	Ultimate Controlling Entity(ies)/Person(s)	Is an SCA Filing Required? (Y/N)	*
0140	Nationwide		26-3427373	4596435			Nationwide Life Tax Credit Partners 2009-A, LLC	OH	NIA	Nationwide Life Insurance Company	other	0.010	Nationwide Mutual Insurance Company	N	1
0140	Nationwide		26-3427435	4596444			Nationwide Life Tax Credit Partners 2009-B, LLC	OH	NIA	Nationwide Life Insurance Company	other	0.010	Nationwide Mutual Insurance Company	N	1
0140	Nationwide		26-3427479	4596499			Nationwide Life Tax Credit Partners 2009-C, LLC	OH	NIA	Nationwide Life Insurance Company	other	0.010	Nationwide Mutual Insurance Company	N	1
0140	Nationwide		26-3427525	4596510			Nationwide Life Tax Credit Partners 2009-D, LLC	OH	NIA	Nationwide Life Insurance Company	other	0.010	Nationwide Mutual Insurance Company	N	1
0140	Nationwide		26-4737055	4596529			Nationwide Life Tax Credit Partners 2009-E, LLC	OH	NIA	Nationwide Life Insurance Company	ownership	100.000	Nationwide Mutual Insurance Company	N	
0140	Nationwide		26-4737157	4596547			Nationwide Life Tax Credit Partners 2009-F, LLC	OH	NIA	Nationwide Life Insurance Company	ownership	100.000	Nationwide Mutual Insurance Company	N	
0140	Nationwide		27-1362364	4596622			Nationwide Life Tax Credit Partners 2009-I, LLC	OH	NIA	Nationwide Life Insurance Company	other	0.010	Nationwide Mutual Insurance Company	N	1
0140	Nationwide		45-0469525	3779811			Nationwide Life Tax Credit Partners No. 1, LLC	OH	NIA	Nationwide Life Insurance Company	other	0.010	Nationwide Mutual Insurance Company	N	1
0140	Nationwide	42110	75-1780981	4287984			Nationwide Lloyds	TX	IA	n/a	contract		Nationwide Mutual Insurance Company	N	2
0140	Nationwide		42-1373380	4287210			Nationwide Member Solutions Agency Inc.	IA	NIA	ALLIED Group, Inc.	ownership	100.000	Nationwide Mutual Insurance Company	N	
0140	Nationwide		75-3191025	4597094			Nationwide Mutual Capital I, LLC	DE	NIA	Nationwide Mutual Capital, LLC	ownership	100.000	Nationwide Mutual Insurance Company	N	
0140	Nationwide		75-3191025	4595269			Nationwide Mutual Capital, LLC	OH	NIA	Nationwide Mutual Insurance Company	ownership	100.000	Nationwide Mutual Insurance Company	N	
0140	Nationwide	23779	31-4177110	3828090			Nationwide Mutual Fire Insurance Company	OH	OTH	Other non-Nationwide	n/a		Other non-Nationwide	N	2
0140	Nationwide	23787	31-4177100	3828072			Nationwide Mutual Insurance Company	OH	UDP	Other non-Nationwide	n/a		Other non-Nationwide	N	2
0140	Nationwide		34-2012765	4288084			Nationwide Private Equity Fund, LLC	OH	NIA	Nationwide Mutual Insurance Company	ownership	100.000	Nationwide Mutual Insurance Company	N	
0140	Nationwide	37877	31-0970750	4287993			Nationwide Property and Casualty Insurance Company	OH	IA	Nationwide Mutual Insurance Company	ownership	100.000	Nationwide Mutual Insurance Company	N	
0140	Nationwide		31-1486309	4288105			Nationwide Realty Investors, Ltd	OH	NIA	Nationwide Mutual Insurance Company	ownership	97.000	Nationwide Mutual Insurance Company	N	1
0140	Nationwide		31-1486309	4288105			Nationwide Realty Investors, Ltd	OH	NIA	Nationwide Indemnity Company	ownership	3.000	Nationwide Mutual Insurance Company	N	1
0140	Nationwide		31-1486309	4590264			Nationwide Realty Management, LLC	OH	NIA	Nationwide Realty Investors, Ltd	ownership	100.000	Nationwide Mutual Insurance Company	N	
0140	Nationwide		n/a	4288066			Nationwide Realty Services, Ltd	OH	NIA	Nationwide Mutual Insurance Company	ownership	100.000	Nationwide Mutual Insurance Company	N	
0140	Nationwide		73-0948330	4287096			Nationwide Retirement Solutions, Inc.	DE	NIA	NFS Distributors, Inc.	ownership	100.000	Nationwide Mutual Insurance Company	N	
0140	Nationwide		36-2434406	4287078			Nationwide Securities, LLC	OH	NIA	NFS Distributors, Inc.	ownership	100.000	Nationwide Mutual Insurance Company	N	
0140	Nationwide		31-4177100	4288093			Nationwide Services Company, LLC	OH	NIA	Nationwide Mutual Insurance Company	ownership	100.000	Nationwide Mutual Insurance Company	N	
0140	Nationwide		27-0743545	4564041			Nationwide Tax Credit Partners 2009-G, LLC	OH	NIA	Nationwide Mutual Insurance Company	other	0.010	Nationwide Mutual Insurance Company	N	1
0140	Nationwide		27-0768791	4596891			Nationwide Tax Credit Partners 2009-H, LLC	OH	NIA	Nationwide Mutual Insurance Company	ownership	100.000	Nationwide Mutual Insurance Company	N	
0140	Nationwide		46-1952215	4596556			Nationwide Tax Credit Partners 2013-A, LLC	OH	NIA	Nationwide Life Insurance Company	other	0.010	Nationwide Mutual Insurance Company	N	1
0140	Nationwide		46-1971926	4596592			Nationwide Tax Credit Partners 2013-B, LLC	OH	NIA	Nationwide Life Insurance Company	other	0.010	Nationwide Mutual Insurance Company	N	1

Q12.5

SCHEDULE Y

PART 1A - DETAIL OF INSURANCE HOLDING COMPANY SYSTEM

1	2	3	4	5	6	7	8	9	10	11	12	13	14	15	16
Group Code	Group Name	NAIC Company Code	ID Number	Federal RSSD	CIK	Name of Securities Exchange if Publicly Traded (U.S. or International)	Names of Parent, Subsidiaries or Affiliates	Domiciliary Location	Relationship to Reporting Entity	Directly Controlled by (Name of Entity/Person)	Type of Control (Ownership Board, Management, Attorney-in-Fact, Influence, Other)	If Control is Ownership Provide Percentage	Ultimate Controlling Entity(ies)/Person(s)	Is an SCA Filing Required? (Y/N)	*
0140	Nationwide.....		20-5976272..	4595410		0.....	Nationwide Ventures, LLC.....	OH.....	NIA.....	Nationwide Mutual Insurance Company.....	ownership.....	100.000	Nationwide Mutual Insurance Company.....	N.....	
0140	Nationwide.....		11-3651828..	4588168		0.....	ND La Quinta Partners, LLC.....	DE.....	NIA.....	Nationwide Realty Investors, Ltd.....	ownership.....	95.000	Nationwide Mutual Insurance Company.....	N.....	1.....
0140	Nationwide.....		20-0585594..	4286866		0.....	Newhouse Capital Partners II, LLC.....	DE.....	NIA.....	Nationwide Global Ventures, Inc.....	ownership.....	99.000	Nationwide Mutual Insurance Company.....	N.....	1.....
0140	Nationwide.....		13-4110716..	4286679		0.....	Newhouse Capital Partners, LLC.....	DE.....	NIA.....	NWD Investment Management, Inc.....	ownership.....	19.000	Nationwide Mutual Insurance Company.....	N.....	1.....
0140	Nationwide.....		13-4110716..	4286679		0.....	Newhouse Capital Partners, LLC.....	DE.....	NIA.....	Nationwide Mutual Insurance Company.....	ownership.....	70.000	Nationwide Mutual Insurance Company.....	N.....	1.....
0140	Nationwide.....		13-4110716..	4286679		0.....	Newhouse Capital Partners, LLC.....	DE.....	NIA.....	Nationwide Mutual Fire Insurance Company..	ownership.....	10.000	Nationwide Mutual Insurance Company.....	N.....	1.....
0140	Nationwide.....		31-1630871..	4287032		0.....	NFS Distributors, Inc.....	DE.....	NIA.....	Nationwide Financial Services, Inc.....	ownership.....	100.000	Nationwide Mutual Insurance Company.....	N.....	
0140	Nationwide.....		14-1892640..	4596677		0.....	NHT XII Tax Credit Fund, LLC.....	DC.....	NIA.....	Nationwide Life Insurance Company.....	ownership.....	49.990	Nationwide Mutual Insurance Company.....	N.....	1.....
0140	Nationwide.....		14-1892640..	4596677		0.....	NHT XII Tax Credit Fund, LLC.....	DC.....	NIA.....	Nationwide Assurance Company.....	ownership.....	25.000	Nationwide Mutual Insurance Company.....	N.....	1.....
0140	Nationwide.....		14-1892640..	4596677		0.....	NHT XII Tax Credit Fund, LLC.....	DC.....	NIA.....	Nationwide Mutual Insurance Company.....	ownership.....	25.000	Nationwide Mutual Insurance Company.....	N.....	1.....
0140	Nationwide.....		46-3762545..	4750442		0.....	NNOV8, LLC.....	OH.....	NIA.....	Nationwide Mutual Insurance Company.....	ownership.....	100.000	Nationwide Mutual Insurance Company.....	N.....	
0140	Nationwide.....		20-4939866..	4590817		0.....	North of Third, LLC.....	OH.....	NIA.....	NRI Equity Land Investments, LLC.....	ownership.....	100.000	Nationwide Mutual Insurance Company.....	N.....	
0140	Nationwide.....		26-4083207..	4590385		0.....	Northstar Commercial Development, LLC.....	OH.....	NIA.....	Nationwide Realty Investors, Ltd.....	ownership.....	50.000	Nationwide Mutual Insurance Company.....	N.....	1.....
0140	Nationwide.....		61-1753500..	n/a.....		0.....	Northstar Master Property Owners Association, Inc.	OH.....	OTH.....	Other non-Nationwide.....	n/a.....		Other non-Nationwide.....	N.....	2.....
0140	Nationwide.....		26-4083354..	4594909		0.....	Northstar Residential Development, LLC.....	OH.....	NIA.....	Nationwide Realty Investors, Ltd.....	ownership.....	50.000	Nationwide Mutual Insurance Company.....	N.....	1.....
0140	Nationwide.....		31-1486309..	4594794		0.....	NRI Arena, LLC.....	OH.....	NIA.....	Nationwide Realty Investors, Ltd.....	ownership.....	100.000	Nationwide Mutual Insurance Company.....	N.....	
0140	Nationwide.....		31-1486309..	4594815		0.....	NRI Brookside, LLC.....	OH.....	NIA.....	Nationwide Realty Investors, Ltd.....	ownership.....	100.000	Nationwide Mutual Insurance Company.....	N.....	
0140	Nationwide.....		31-1486309..	4595027		0.....	NRI Builders, LLC.....	OH.....	NIA.....	Nationwide Realty Investors, Ltd.....	ownership.....	100.000	Nationwide Mutual Insurance Company.....	N.....	
0140	Nationwide.....		31-1486309..	4590246		0.....	NRI Communities/Harris Blvd., LLC.....	OH.....	NIA.....	Nationwide Realty Investors, Ltd.....	ownership.....	100.000	Nationwide Mutual Insurance Company.....	N.....	
0140	Nationwide.....		31-1486309..	5217027		0.....	NRI Corporate Housing, LLC.....	OH.....	NIA.....	Nationwide Realty Investors, Ltd.....	ownership.....	100.000	Nationwide Mutual Insurance Company.....	N.....	
0140	Nationwide.....		31-1486309..	4590282		0.....	NRI Cramer Creek, LLC.....	OH.....	NIA.....	Nationwide Realty Investors, Ltd.....	ownership.....	100.000	Nationwide Mutual Insurance Company.....	N.....	
0140	Nationwide.....		20-4939866..	4590460		0.....	NRI Equity Land Investments, LLC.....	OH.....	NIA.....	Nationwide Realty Investors, Ltd.....	ownership.....	80.000	Nationwide Mutual Insurance Company.....	N.....	1.....
0140	Nationwide.....		26-0212217..	4590394		0.....	NRI Equity Tampa, LLC.....	OH.....	NIA.....	Nationwide Realty Investors, Ltd.....	ownership.....	100.000	Nationwide Mutual Insurance Company.....	N.....	
0140	Nationwide.....		31-1486309..	4590376		0.....	NRI Maxtown, LLC.....	OH.....	NIA.....	Nationwide Realty Investors, Ltd.....	ownership.....	100.000	Nationwide Mutual Insurance Company.....	N.....	
0140	Nationwide.....		31-1486309..	4590406		0.....	NRI Office Ventures, Ltd.....	OH.....	NIA.....	Nationwide Realty Investors, Ltd.....	ownership.....	100.000	Nationwide Mutual Insurance Company.....	N.....	
0140	Nationwide.....		31-1580283..	4596912		0.....	NRI Telecom, LLC.....	OH.....	NIA.....	NWD Investments, LLC.....	ownership.....	100.000	Nationwide Mutual Insurance Company.....	N.....	
0140	Nationwide.....		31-1486309..	4590349		0.....	NRI-Rivulon, LLC.....	OH.....	NIA.....	Nationwide Realty Investors, Ltd.....	ownership.....	100.000	Nationwide Mutual Insurance Company.....	N.....	
0140	Nationwide.....		26-4083354..	4869456		0.....	NS Developers, LLC.....	OH.....	NIA.....	Northstar Residential Development, LLC.....	ownership.....	100.000	Nationwide Mutual Insurance Company.....	N.....	
0140	Nationwide.....		45-3123274..	4595438		0.....	NTCIF-2011 Georgia State Investor, LLC.....	OH.....	NIA.....	Nationwide Property and Casualty Company..	ownership.....	100.000	Nationwide Mutual Insurance Company.....	N.....	
0140	Nationwide.....		90-0729552..	4596695		0.....	NTCIF-2011, LLC.....	OH.....	NIA.....	Nationwide Mutual Insurance Company.....	ownership.....	50.000	Nationwide Mutual Insurance Company.....	N.....	1.....
0140	Nationwide.....		90-0729552..	4596695		0.....	NTCIF-2011, LLC.....	OH.....	NIA.....	Nationwide Mutual Fire Insurance Company..	ownership.....	50.000	Nationwide Mutual Insurance Company.....	N.....	1.....
0140	Nationwide.....		27-4700627..	4596716		0.....	NTCP 2011-A, LLC.....	OH.....	OTH.....	Nationwide Life Insurance Company.....	other.....	0.010	Nationwide Mutual Insurance Company.....	N.....	2.....
0140	Nationwide.....		46-0741029..	4464703		0.....	NTCP 2012-A, LLC.....	OH.....	OTH.....	Nationwide Life Insurance Company.....	other.....	0.010	Nationwide Mutual Insurance Company.....	N.....	2.....
0140	Nationwide.....		46-3309896..	4586164		0.....	NTCP 2013-C, LLC.....	OH.....	OTH.....	Nationwide Life Insurance Company.....	other.....	0.010	Nationwide Mutual Insurance Company.....	N.....	2.....
0140	Nationwide.....		46-4111078..	4596743		0.....	NTCP 2014-A, LLC.....	OH.....	OTH.....	Nationwide Life Insurance Company.....	other.....	0.010	Nationwide Mutual Insurance Company.....	N.....	2.....

Q12.6

SCHEDULE Y

PART 1A - DETAIL OF INSURANCE HOLDING COMPANY SYSTEM

1	2	3	4	5	6	7	8	9	10	11	12	13	14	15	16
Group Code	Group Name	NAIC Company Code	ID Number	Federal RSSD	CIK	Name of Securities Exchange if Publicly Traded (U.S. or International)	Names of Parent, Subsidiaries or Affiliates	Domiciliary Location	Relationship to Reporting Entity	Directly Controlled by (Name of Entity/Person)	Type of Control (Ownership Board, Management, Attorney-in-Fact, Influence, Other)	If Control is Ownership Provide Percentage	Ultimate Controlling Entity(ies)/Person(s)	Is an SCA Filing Required? (Y/N)	*
0140	Nationwide		47-1404116	4802734		0	NTCP 2014-B, LLC	OH	OTH	Nationwide Life Insurance Company	other	0.010	Nationwide Mutual Insurance Company	N	2
0140	Nationwide		47-1413242	4809948		0	NTCP 2014-C, LLC	OH	OTH	Nationwide Life Insurance Company	other	0.010	Nationwide Mutual Insurance Company	N	2
0140	Nationwide		47-3909345	4869483		0	NTCP 2015-A, LLC	OH	OTH	Nationwide Life Insurance Company	other	0.010	Nationwide Mutual Insurance Company	N	2
0140	Nationwide		47-4148470	4890807		0	NTCP 2015-B, LLC	OH	OTH	Nationwide Life Insurance Company	other	0.010	Nationwide Mutual Insurance Company	N	2
0140	Nationwide		81-3836925	5048678		0	NTCP 2016-A, LLC	OH	NIA	Nationwide Life Insurance Company	ownership	100.000	Nationwide Mutual Insurance Company	N	
0140	Nationwide		82-2015065	5167122		0	NTCP 2017-A, LLC	OH	NIA	Nationwide Life Insurance Company	ownership	100.000	Nationwide Mutual Insurance Company	N	
0140	Nationwide		81-0936428	4966663		0	NW Private Debt, LLC	OH	NIA	Nationwide Mutual Insurance Company	ownership	100.000	Nationwide Mutual Insurance Company	N	
0140	Nationwide		26-1903919	5012295		0	NW REI, LLC	DE	NIA	Nationwide Mutual Insurance Company	ownership	100.000	Nationwide Mutual Insurance Company	N	
0140	Nationwide		81-2326191	5011609		0	NW-442 Ocean, LLC	OH	NIA	NW REI (NLIC), LLC	ownership	100.000	Nationwide Mutual Insurance Company	N	
0140	Nationwide		46-3654078	4593621		0	NW-Amesbury, LLC	OH	NIA	NW-REI, LLC	ownership	100.000	Nationwide Mutual Insurance Company	N	
0140	Nationwide		81-1263284	4960979		0	NW-Amesbury II, LLC	OH	NIA	Nationwide Mutual Insurance Company	ownership	100.000	Nationwide Mutual Insurance Company	N	
0140	Nationwide		81-1246932	4958855		0	NW-Baseline, LLC	OH	NIA	Nationwide Mutual Insurance Company	ownership	100.000	Nationwide Mutual Insurance Company	N	
0140	Nationwide		81-1869861	4984911		0	NW-Beech, LLC	OH	NIA	NW REI, (NMFIC), LLC	ownership	100.000	Nationwide Mutual Insurance Company	N	
0140	Nationwide		47-4999493	4902223		0	NW-Belleview, LLC	OH	NIA	NW REI, LLC	ownership	100.000	Nationwide Mutual Insurance Company	N	
0140	Nationwide		81-1211881	4962151		0	NW-Castle Rock, LLC	OH	NIA	Nationwide Mutual Insurance Company	ownership	100.000	Nationwide Mutual Insurance Company	N	
0140	Nationwide		46-3674167	4595090		0	NW-Cedar Springs, LLC	OH	NIA	NW REI, LLC	ownership	100.000	Nationwide Mutual Insurance Company	N	
0140	Nationwide		82-2957977	5167131		0	NW-Civita, LLC	OH	NIA	Nationwide Life Insurance Company	ownership	100.000	Nationwide Mutual Insurance Company	N	
0140	Nationwide		82-2958440	5167140		0	NW-Civita NLAIC, LLC	OH	NIA	Nationwide Life and Annuity Insurance Company	ownership	100.000	Nationwide Mutual Insurance Company	N	
0140	Nationwide		81-1285433	4961024		0	NW-College Park, LLC	OH	NIA	Nationwide Mutual Insurance Company	ownership	100.000	Nationwide Mutual Insurance Company	N	
0140	Nationwide		31-1580283	4591038		0	NWD 205 Vine, LLC	OH	NIA	NWD Investments, LLC	ownership	100.000	Nationwide Mutual Insurance Company	N	
0140	Nationwide		31-1580283	4591261		0	NWD 225 Nationwide, LLC	OH	NIA	NWD Investments, LLC	ownership	100.000	Nationwide Mutual Insurance Company	N	
0140	Nationwide		31-1580283	4591056		0	NWD 230 West, LLC	OH	NIA	NWD Investments, LLC	ownership	100.000	Nationwide Mutual Insurance Company	N	
0140	Nationwide		31-1580283	4590545		0	NWD 240 Nationwide, LLC	OH	NIA	NWD Investments, LLC	ownership	100.000	Nationwide Mutual Insurance Company	N	
0140	Nationwide		31-1580283	4590273		0	NWD 250 Brodbelt, LLC	OH	NIA	NWD Investments, LLC	ownership	100.000	Nationwide Mutual Insurance Company	N	
0140	Nationwide		31-1580283	4981134		0	NWD 250 West, LLC	OH	NIA	NWD Investments, LLC	ownership	100.000	Nationwide Mutual Insurance Company	N	
0140	Nationwide		31-1580283	4590554		0	NWD 265 Neil, LLC	OH	NIA	NWD Investments, LLC	ownership	100.000	Nationwide Mutual Insurance Company	N	
0140	Nationwide		31-1580283	4590518		0	NWD 275 Marconi, LLC	OH	NIA	NWD Investments, LLC	ownership	100.000	Nationwide Mutual Insurance Company	N	
0140	Nationwide		31-1580283	4590509		0	NWD 300 Neil, LLC	OH	NIA	NWD Investments, LLC	ownership	100.000	Nationwide Mutual Insurance Company	N	
0140	Nationwide		31-1580283	4590572		0	NWD 300 Spring, LLC	OH	NIA	NWD Investments, LLC	ownership	100.000	Nationwide Mutual Insurance Company	N	
0140	Nationwide		31-1580283	4590527		0	NWD 355 McConnell, LLC	OH	NIA	NWD Investments, LLC	ownership	100.000	Nationwide Mutual Insurance Company	N	
0140	Nationwide		31-1580283	4590581		0	NWD 425 Nationwide, LLC	OH	NIA	NWD Investments, LLC	ownership	100.000	Nationwide Mutual Insurance Company	N	
0140	Nationwide		31-1580283	4590536		0	NWD 500 Nationwide, LLC	OH	NIA	NWD Investments, LLC	ownership	100.000	Nationwide Mutual Insurance Company	N	
0140	Nationwide		31-1580283	4591298		0	NWD Arena Crossing, LLC	OH	NIA	NWD Investments, LLC	ownership	100.000	Nationwide Mutual Insurance Company	N	
0140	Nationwide		31-1580283	4591083		0	NWD Arena District I, LLC	OH	NIA	NWD Investments, LLC	ownership	100.000	Nationwide Mutual Insurance Company	N	
0140	Nationwide		31-1580283	4591300		0	NWD Arena District II, LLC	OH	NIA	NWD Investments, LLC	ownership	100.000	Nationwide Mutual Insurance Company	N	

Q12.7

SCHEDULE Y

PART 1A - DETAIL OF INSURANCE HOLDING COMPANY SYSTEM

1	2	3	4	5	6	7	8	9	10	11	12	13	14	15	16
Group Code	Group Name	NAIC Company Code	ID Number	Federal RSSD	CIK	Name of Securities Exchange if Publicly Traded (U.S. or International)	Names of Parent, Subsidiaries or Affiliates	Domiciliary Location	Relationship to Reporting Entity	Directly Controlled by (Name of Entity/Person)	Type of Control (Ownership Board, Management, Attorney-in-Fact, Influence, Other)	If Control is Ownership Provide Percentage	Ultimate Controlling Entity(ies)/Person(s)	Is an SCA Filing Required? (Y/N)	*
0140	Nationwide		31-1580283	4591113		0	NWD Arena District MM, LLC	OH	NIA	NWD Investments, LLC	ownership	100.000	Nationwide Mutual Insurance Company	N	
0140	Nationwide		31-1580283	4591319		0	NWD Arena District PW, LLC	OH	NIA	NWD Investments, LLC	ownership	100.000	Nationwide Mutual Insurance Company	N	
0140	Nationwide		31-1580283	4591131		0	NWD Arena District V, LLC	OH	NIA	NWD Investments, LLC	ownership	100.000	Nationwide Mutual Insurance Company	N	
0140	Nationwide		04-3679396	4286848		0	NWD Asset Management Holdings, Inc.	DE	NIA	NWD Investment Management, Inc.	ownership	100.000	Nationwide Mutual Insurance Company	N	
0140	Nationwide		31-1580283	4591328		0	NWD Athletic Club, LLC	OH	NIA	NWD Investments, LLC	ownership	100.000	Nationwide Mutual Insurance Company	N	
0140	Nationwide		30-0876022	4810010		0	NWD Franklinton, LLC	DE	NIA	Nationwide Realty Investors, Ltd.	ownership	80.000	Nationwide Mutual Insurance Company	N	1
0140	Nationwide		31-1636299	4286594		0	NWD Investment Management, Inc.	DE	NIA	Nationwide Corporation	ownership	100.000	Nationwide Mutual Insurance Company	N	
0140	Nationwide		31-1580283	4587965		0	NWD Investments, LLC	OH	NIA	Nationwide Realty Investors, Ltd.	ownership	80.000	Nationwide Mutual Insurance Company	N	1
0140	Nationwide		47-4036460	4869492		0	NW-Deerfield, LLC	OH	NIA	Nationwide Mutual Insurance Company	ownership	74.030	Nationwide Mutual Insurance Company	N	1
0140	Nationwide		47-4036460	4869492		0	NW-Deerfield, LLC	OH	NIA	Nationwide Life and Annuity Insurance Company	ownership	25.970	Nationwide Mutual Insurance Company	N	1
0140	Nationwide		81-2327221	5013443		0	NW-Deerfield II, LLC	OH	NIA	NW REI, LLC	ownership	100.000	Nationwide Mutual Insurance Company	N	
0140	Nationwide		81-4401901	5082010		0	NW-Grapevine Bluffs, LLC	OH	NIA	Nationwide Mutual Insurance Company	ownership	100.000	Nationwide Mutual Insurance Company	N	
0140	Nationwide		46-4330384	4750443		0	NW-Hudnall, LLC	OH	NIA	NW REI, LLC	ownership	100.000	Nationwide Mutual Insurance Company	N	
0140	Nationwide		82-1881115	5143078		0	NW-Ironhorse, LLC	OH	NIA	Nationwide Mutual Insurance Company	ownership	100.000	Nationwide Mutual Insurance Company	N	
0140	Nationwide		47-2482818	4810122		0	NW-Jasper WAG, LLC	OH	NIA	NW REI, LLC	ownership	100.000	Nationwide Mutual Insurance Company	N	
0140	Nationwide		47-1497429	4809957		0	NW-Jefferson, LLC	OH	NIA	NW REI, LLC	ownership	100.000	Nationwide Mutual Insurance Company	N	
0140	Nationwide		81-1232565	4961042		0	NW-Lenexa, LLC	OH	NIA	NW REI (NLAIC), LLC	ownership	100.000	Nationwide Mutual Insurance Company	N	
0140	Nationwide		81-1671648	4981116		0	NW-Lenexa II, LLC	OH	NIA	NW REI (NLAIC), LLC	ownership	100.000	Nationwide Mutual Insurance Company	N	
0140	Nationwide		81-5146596	5092961		0	NW-Logan, LLC	OH	NIA	NW REI, LLC	ownership	100.000	Nationwide Mutual Insurance Company	N	
0140	Nationwide		81-5146266	5092989		0	NW-Millenia, LLC	OH	NIA	NW REI, LLC	ownership	100.000	Nationwide Mutual Insurance Company	N	
0140	Nationwide		46-2457568	4591467		0	NW-Montrose, LLC	OH	NIA	NW REI, LLC	ownership	100.000	Nationwide Mutual Insurance Company	N	
0140	Nationwide		46-3888719	4593603		0	NW-Park 288, LLC	OH	NIA	NW REI, LLC	ownership	100.000	Nationwide Mutual Insurance Company	N	
0140	Nationwide		47-1740812	4809966		0	NW-Peachtree, LLC	OH	NIA	NW REI, LLC	ownership	100.000	Nationwide Mutual Insurance Company	N	
0140	Nationwide		46-2469044	4591494		0	NW-Portales, LLC	OH	NIA	NW REI, LLC	ownership	100.000	Nationwide Mutual Insurance Company	N	
0140	Nationwide		47-2449044	4810113		0	NW-Promenade at Madison, LLC	OH	NIA	NW REI, LLC	ownership	100.000	Nationwide Mutual Insurance Company	N	
0140	Nationwide		81-1603024	4981086		0	NW REI (NLAIC), LLC	OH	NIA	Nationwide Life and Annuity Insurance Company	ownership	100.000	Nationwide Mutual Insurance Company	N	
0140	Nationwide		81-1619428	4981107		0	NW REI (NLIC), LLC	OH	NIA	Nationwide Life Insurance Company	ownership	100.000	Nationwide Mutual Insurance Company	N	
0140	Nationwide		81-1861190	4984902		0	NW REI (NMFIC), LLC	OH	NIA	Nationwide Mutual Fire Insurance Company	ownership	100.000	Nationwide Mutual Insurance Company	N	
0140	Nationwide		82-4016536			0	NW-Santa Cruz, LLC	OH	NIA	NW REI, LLC	ownership	100.000	Nationwide Mutual Insurance Company	N	
0140	Nationwide		46-1100378	4591524		0	NW-Triangle, LLC	OH	NIA	NW REI, LLC	ownership	100.000	Nationwide Mutual Insurance Company	N	
0140	Nationwide		46-5764783	4809939		0	NW-Tyson's, LLC	OH	NIA	NW REI, LLC	ownership	100.000	Nationwide Mutual Insurance Company	N	
0140	Nationwide		31-0947092	4590479		0	OCH Company, LLC	OH	NIA	Nationwide Realty Investors, Ltd.	ownership	100.000	Nationwide Mutual Insurance Company	N	
0140	Nationwide		31-0947092	4590442		0	Ohio Center Hotel Company Limited	OH	NIA	Nationwide Realty Investors, Ltd.	ownership	55.250	Nationwide Mutual Insurance Company	N	1
0140	Nationwide		31-0947092	4590442		0	Ohio Center Hotel Company Limited	OH	NIA	OCH Company, LLC	ownership	1.000	Nationwide Mutual Insurance Company	N	1
0140	Nationwide		26-0263012	n/a		0	Old Track Street Owners Association, Inc.	OH	OTH	Other non-Nationwide	n/a		Other non-Nationwide	N	2

Q12.8

SCHEDULE Y

PART 1A - DETAIL OF INSURANCE HOLDING COMPANY SYSTEM

1	2	3	4	5	6	7	8	9	10	11	12	13	14	15	16
Group Code	Group Name	NAIC Company Code	ID Number	Federal RSSD	CIK	Name of Securities Exchange if Publicly Traded (U.S. or International)	Names of Parent, Subsidiaries or Affiliates	Domiciliary Location	Relationship to Reporting Entity	Directly Controlled by (Name of Entity/Person)	Type of Control (Ownership Board, Management, Attorney-in-Fact, Influence, Other)	If Control is Ownership Provide Percentage	Ultimate Controlling Entity(ies)/Person(s)	Is an SCA Filing Required? (Y/N)	*
0140	Nationwide	13999	27-1712056	4286914			Olentangy Reinsurance, LLC	VT	IA	Nationwide Life and Annuity Insurance Company	ownership	100.000	Nationwide Mutual Insurance Company	N	
0140	Nationwide		47-1923444	4809975			On Your Side Nationwide Insurance Agency, Inc.	OH	NIA	Nationwide Mutual Insurance Company	ownership	100.000	Nationwide Mutual Insurance Company	N	
0140	Nationwide		n/a	4596462			OYS Fund LLC	DE	NIA	Nationwide Mutual Insurance Company	ownership	100.000	Nationwide Mutual Insurance Company	N	
0140	Nationwide		n/a	4596480			Park 288 Industrial, LLC	TX	OTH	Nationwide Mutual Insurance Company	Investor member / no control	95.000	other non-Nationwide	N	2
0			32-0516252	n/a			Parks Edge Condominium Home Owners Association	OH	OTH	Other non-Nationwide	n/a		Other non-Nationwide	N	2
0140	Nationwide		31-1486309	4590358			Perimeter A, Ltd	OH	NIA	Nationwide Realty Investors, Ltd	ownership	100.000	Nationwide Mutual Insurance Company	N	
0140	Nationwide		20-1169305	4564032			Polyphony Fund LLC	DE	NIA	Nationwide Mutual Insurance Company	ownership	100.000	Nationwide Mutual Insurance Company	N	
0140	Nationwide		39-1907217	4287201			Premier Agency, Inc.	IA	NIA	ALLIED Group, Inc.	ownership	100.000	Nationwide Mutual Insurance Company	N	
0140	Nationwide		75-2938844	4287005			Registered Investment Advisors Services, Inc.	TX	NIA	Nationwide Financial Services, Inc.	ownership	100.000	Nationwide Mutual Insurance Company	N	
0140	Nationwide		82-0549218	4288244			Retention Alternatives Ltd	BMU	IA	Nationwide Mutual Fire Insurance Company	ownership	100.000	Nationwide Mutual Insurance Company	N	
0140	Nationwide		20-2726014	4595278			Riverview Diversified Opportunities, LLC	DE	OTH	Nationwide Mutual Insurance Company	ownership		Nationwide Mutual Insurance Company	N	2
0140	Nationwide		20-2726014	4595278			Riverview Diversified Opportunities, LLC	DE	OTH	Nationwide Mutual Fire Insurance Company	ownership		Nationwide Mutual Insurance Company	N	2
0140	Nationwide		20-2726014	4595278			Riverview Diversified Opportunities, LLC	DE	OTH	Nationwide Life Insurance Company	ownership		Nationwide Mutual Insurance Company	N	2
0140	Nationwide		22-3655264	4286530			Riverview International Group, Inc.	DE	NIA	NWD Investment Management, Inc.	ownership	100.000	Nationwide Mutual Insurance Company	N	
0140	Nationwide		26-0384865	4595287			Riverview Multi Series Fund, LL - Class Event.	DE	NIA	Nationwide Mutual Insurance Company	ownership	100.000	Nationwide Mutual Insurance Company	N	
0140	Nationwide		20-8027258	4595335			Riverview Multi Series Fund, LL - Class N.	DE	NIA	Nationwide Mutual Insurance Company	ownership	100.000	Nationwide Mutual Insurance Company	N	
0140	Nationwide	15580	31-1117969	4288002			Scottsdale Indemnity Company	OH	IA	Nationwide Mutual Insurance Company	ownership	100.000	Nationwide Mutual Insurance Company	N	
0140	Nationwide	41297	31-1024978	3091988			Scottsdale Insurance Company	OH	IA	Nationwide Mutual Insurance Company	ownership	100.000	Nationwide Mutual Insurance Company	N	
0140	Nationwide	10672	86-0835870	4287649			Scottsdale Surplus Lines Insurance Company	AZ	IA	Scottsdale Insurance Company	ownership	100.000	Nationwide Mutual Insurance Company	N	
0140	Nationwide		91-2158214	n/a			The Hideaway Club	CA	OTH	Other non-Nationwide	n/a		Other non-Nationwide	N	2
0140	Nationwide		20-3541511	n/a			The Madison Club	CA	OTH	Other non-Nationwide	n/a		Other non-Nationwide	N	2
0140	Nationwide		31-1610040	2989882			The Waterfront Partners, LLC	OH	NIA	Nationwide Realty Investors, Ltd	ownership	50.000	Nationwide Mutual Insurance Company	N	1
0140	Nationwide		52-2031677	4287751			THI Holdings (Delaware), Inc.	DE	NIA	Nationwide Mutual Insurance Company	ownership	100.000	Nationwide Mutual Insurance Company	Y	
0140	Nationwide		74-2825853	4287863			Titan Auto Insurance of New Mexico, Inc.	NM	IA	THI Holdings (Delaware), Inc.	ownership	100.000	Nationwide Mutual Insurance Company	N	
0140	Nationwide	13242	74-2286759	4287797			Titan Indemnity Company	TX	IA	THI Holdings (Delaware), Inc.	ownership	100.000	Nationwide Mutual Insurance Company	N	
0140	Nationwide	36269	86-0619597	4287845			Titan Insurance Company	MI	IA	Titan Indemnity Company	ownership	100.000	Nationwide Mutual Insurance Company	N	
0140	Nationwide		75-1284530	4287890			Titan Insurance Services, Inc.	TX	NIA	THI Holdings (Delaware), Inc.	ownership	100.000	Nationwide Mutual Insurance Company	N	
0140	Nationwide		81-1456923	4975937			US Regional Logistics Program, L.P.	DE	NIA	Nationwide Mutual Insurance Company	ownership	23.330	Nationwide Mutual Insurance Company	N	1
0140	Nationwide		81-1456923	4975937			US Regional Logistics Program, L.P.	DE	NIA	Nationwide Life Insurance Company	ownership	13.330	Nationwide Mutual Insurance Company	N	1
0140	Nationwide		81-1456923	4975937			US Regional Logistics Program, L.P.	DE	NIA	Nationwide Life and Annuity Insurance Company	ownership	6.660	Nationwide Mutual Insurance Company	N	1

Q12.9

SCHEDULE Y

PART 1A - DETAIL OF INSURANCE HOLDING COMPANY SYSTEM

1	2	3	4	5	6	7	8	9	10	11	12	13	14	15	16
Group Code	Group Name	NAIC Company Code	ID Number	Federal RSSD	CIK	Name of Securities Exchange if Publicly Traded (U.S. or International)	Names of Parent, Subsidiaries or Affiliates	Domiciliary Location	Relationship to Reporting Entity	Directly Controlled by (Name of Entity/Person)	Type of Control (Ownership Board, Management, Attorney-in-Fact, Influence, Other)	If Control is Ownership Provide Percentage	Ultimate Controlling Entity(ies)/Person(s)	Is an SCA Filing Required? (Y/N)	*
0140	Nationwide.....		81-1456923..	...4975937	0.....	US Regional Logistics Program, L.P.....	DE.....	NIA.....	Nationwide Mutual Fire Insurance Company...	ownership.....6.660	Nationwide Mutual Insurance Company.....N.....	1.....
0140	Nationwide.....		33-0160222..	...4653196	0.....	V.P.I. Services, Inc.....	CA.....	NIA.....	Veterinary Pet Insurance Company.....	ownership.....	...100.000	Nationwide Mutual Insurance Company.....N.....
0140	Nationwide.....	42285...	95-3750113..	...4287685	0.....	Veterinary Pet Insurance Company.....	OH.....	IA.....	Scottsdale Insurance Company.....	ownership.....	...100.000	Nationwide Mutual Insurance Company.....N.....
0140	Nationwide.....	10644...	34-1785903..	...4287911	0.....	Victoria Automobile Insurance Company.....	OH.....	IA.....	Victoria Fire & Casualty Insurance Company..	ownership.....	...100.000	Nationwide Mutual Insurance Company.....N.....
0140	Nationwide.....	42889...	34-1394913..	...4287827	0.....	Victoria Fire & Casualty Company.....	OH.....	IA.....	THI Holdings (Delaware), Inc.....	ownership.....	...100.000	Nationwide Mutual Insurance Company.....N.....
0140	Nationwide.....	10778...	34-1842604..	...4287920	0.....	Victoria National Insurance Company.....	OH.....	IA.....	Nationwide Mutual Insurance Company.....	ownership.....	...100.000	Nationwide Mutual Insurance Company.....N.....
0140	Nationwide.....	10105...	34-1777972..	...4287939	0.....	Victoria Select Insurance Company.....	OH.....	IA.....	Victoria Fire & Casualty Insurance Company..	ownership.....	...100.000	Nationwide Mutual Insurance Company.....N.....
0140	Nationwide.....	10777...	34-1842602..	...4287948	0.....	Victoria Specialty Insurance Company.....	OH.....	IA.....	Victoria Fire & Casualty Insurance Company..	ownership.....	...100.000	Nationwide Mutual Insurance Company.....N.....
0140	Nationwide.....		31-1486309..	...5080696	0.....	Wellington Park, LLC.....	OH.....	NIA.....	Nationwide Realty Investors, Ltd.....	ownership.....	...100.000	Nationwide Mutual Insurance Company.....N.....
0140	Nationwide.....	37150...	86-0561941..	...4287667	0.....	Western Heritage Insurance Company.....	AZ.....	IA.....	Scottsdale Insurance Company.....	ownership.....	...100.000	Nationwide Mutual Insurance Company.....N.....
0140	Nationwide.....		n/a.....	...4613323	0.....	Zais Zephyr A4, LLC.....	DE.....	OTH.....	Nationwide Life Insurance Company.....	limited member / no control60.000	other non-Nationwide.....N.....	2.....

Q12.10

Aster	Explanation
1	For the purposes of this schedule, Nationwide presumed control of these entities because they are owned by at least 10% and are not wholly-owned by a Nationwide entity.
2	Other ownership indicates a non-ownership circumstance by a Nationwide entity.

NATIONWIDE GENERAL INSURANCE COMPANY PART 1 - LOSS EXPERIENCE

Lines of Business	Current Year to Date			4 Prior Year to Date Direct Loss Percentage
	1 Direct Premiums Earned	2 Direct Losses Incurred	3 Direct Loss Percentage	
1. Fire.....	140,425	28,825	20.527	49.066
2. Allied lines.....	79,107	830	1.049	22.489
3. Farmowners multiple peril.....			0.000	
4. Homeowners multiple peril.....	155,620,020	130,712,164	83.994	84.565
5. Commercial multiple peril.....	19,595,488	13,558,456	69.192	59.766
6. Mortgage guaranty.....			0.000	
8. Ocean marine.....			0.000	
9. Inland marine.....	1,091,562	146,315	13.404	18.031
10. Financial guaranty.....			0.000	
11.1. Medical professional liability - occurrence.....			0.000	
11.2. Medical professional liability - claims-made.....			0.000	
12. Earthquake.....	686,207	66,101	9.633	18.406
13. Group accident and health.....			0.000	
14. Credit accident and health.....			0.000	
15. Other accident and health.....			0.000	
16. Workers' compensation.....	1,667		0.000	
17.1 Other liability-occurrence.....	2,331,954	1,338	0.057	0.006
17.2 Other liability-claims made.....			0.000	
17.3 Excess workers' compensation.....			0.000	
18.1 Products liability-occurrence.....			0.000	
18.2 Products liability-claims made.....			0.000	
19.1, 19.2 Private passenger auto liability.....	88,204,312	50,702,764	57.483	76.659
19.3, 19.4 Commercial auto liability.....	9,810,802	9,244,355	94.226	93.108
21. Auto physical damage.....	78,877,523	40,298,716	51.090	60.131
22. Aircraft (all perils).....			0.000	
23. Fidelity.....			0.000	
24. Surety.....			0.000	
26. Burglary and theft.....	2,046	(194)	(9.470)	0.636
27. Boiler and machinery.....	511,197	229,546	44.904	40.887
28. Credit.....			0.000	
29. International.....			0.000	
30. Warranty.....			0.000	
31. Reinsurance-nonproportional assumed property.....	XXX	XXX	XXX	XXX
32. Reinsurance-nonproportional assumed liability.....	XXX	XXX	XXX	XXX
33. Reinsurance-nonproportional assumed financial lines.....	XXX	XXX	XXX	XXX
34. Aggregate write-ins for other lines of business.....	0	0	0.000	
35. Totals.....	356,952,310	244,989,217	68.634	75.119

DETAILS OF WRITE-INS

3401.....			0.000	
3402.....			0.000	
3403.....			0.000	
3498 Sum. of remaining write-ins for Line 34 from overflow page.....	0	0	0.000	XXX
3499 Totals (Lines 3401 thru 3403 plus 3498) (Line 34).....	0	0	0.000	

PART 2 - DIRECT PREMIUMS WRITTEN

Lines of Business	1	2	3
	Current Quarter	Current Year to Date	Prior Year Year to Date
1. Fire.....	88,984	88,984	41,549
2. Allied lines.....	60,870	60,870	32,269
3. Farmowners multiple peril.....			
4. Homeowners multiple peril.....	141,899,032	141,899,032	135,687,872
5. Commercial multiple peril.....	21,357,250	21,357,250	16,764,930
6. Mortgage guaranty.....			
8. Ocean marine.....			
9. Inland marine.....	1,010,425	1,010,425	836,425
10. Financial guaranty.....			
11.1 Medical professional liability - occurrence.....			
11.2 Medical professional liability - claims made.....			
12. Earthquake.....	582,330	582,330	597,627
13. Group accident and health.....			
14. Credit accident and health.....			
15. Other accident and health.....			
16. Workers' compensation.....	1,501	1,501	1,316
17.1 Other liability-occurrence.....	1,910,938	1,910,938	2,039,026
17.2 Other liability-claims made.....			
17.3 Excess workers' compensation.....			
18.1 Products liability-occurrence.....			
18.2 Products liability-claims made.....			
19.1 19.2 Private passenger auto liability.....	92,268,147	92,268,147	86,208,232
19.3 19.4 Commercial auto liability.....	11,346,249	11,346,249	7,945,110
21. Auto physical damage.....	83,263,327	83,263,327	77,659,634
22. Aircraft (all perils).....			
23. Fidelity.....			
24. Surety.....			
26. Burglary and theft.....	1,215	1,215	542
27. Boiler and machinery.....	554,745	554,745	446,233
28. Credit.....			
29. International.....			
30. Warranty.....			
31. Reinsurance-nonproportional assumed property.....	XXX	XXX	XXX
32. Reinsurance-nonproportional assumed liability.....	XXX	XXX	XXX
33. Reinsurance-nonproportional assumed financial lines.....	XXX	XXX	XXX
34. Aggregate write-ins for other lines of business.....	0	0	0
35. Totals.....	354,345,013	354,345,013	328,260,764

DETAILS OF WRITE-INS

3401.....			
3402.....			
3403.....			
3498 Sum. of remaining write-ins for Line 34 from overflow page.....	0	0	0
3499 Totals (Lines 3401 thru 3403 plus 3498) (Line 34).....	0	0	0

PART 3 (000 omitted)

LOSS AND LOSS ADJUSTMENT EXPENSE RESERVES SCHEDULE

	1	2	3	4	5	6	7	8	9	10	11	12	13
Years in Which Losses Occurred	Prior Year-End Known Case Loss and LAE Reserves	Prior Year-End IBNR Loss and LAE Reserves	Total Prior Year-End Loss and LAE Reserves (Cols. 1 + 2)	2018 Loss and LAE Payments on Claims Reported as of Prior Year-End	2018 Loss and LAE Payments on Claims Unreported as of Prior Year-End	Total 2018 Loss and LAE Payments (Cols. 4 + 5)	Q.S. Date Known Case Loss and LAE Reserves on Claims Reported and Open as of Prior Year-End	Q.S. Date Known Case Loss and LAE Reserves on Claims Reported or Reopened Subsequent to Prior Year-End	Q.S. Date IBNR Loss and LAE Reserves	Total Q.S. Loss and LAE Reserves (Cols. 7 + 8 + 9)	Prior Year-End Known Case Loss and LAE Reserves Developed (Savings)/Deficiency (Cols. 4 + 7 minus Col. 1)	Prior Year-End IBNR Loss and LAE Reserves Developed (Savings)/Deficiency (Cols. 5 + 8 + 9 minus Col. 2)	Prior Year-End Total Loss and LAE Reserve Developed (Savings)/Deficiency (Cols. 11 + 12)
1. 2015 + Prior.....		0		0			0000
2. 2016.....		0		0			0000
3. Subtotals 2016 + Prior.....0000000000000
4. 2017.....		0		0			0000
5. Subtotals 2017 + Prior.....0000000000000
6. 2018.....XXXXXXXXXXXX	0XXX		0XXXXXXXXX
7. Totals.....0000000000000
8. Prior Year-End's Surplus As Regards Policyholders21,306										Col. 11, Line 7 As % of Col. 1, Line 7	Col. 12, Line 7 As % of Col. 2, Line 7	Col. 13, Line 7 As % of Col. 3, Line 7
											1.0.0 %	2.0.0 %	3.0.0 %
													Col. 13, Line 7 Line 8
													4.0.0 %

Q14

SUPPLEMENTAL EXHIBITS AND SCHEDULES INTERROGATORIES

The following supplemental reports are required to be filed as part of your statement filing. However, in the event that your company does not transact the type of business for which the special report must be filed, your response of NO to the specific interrogatory will be accepted in lieu of filing a "NONE" report and a bar code will be printed below. If the supplement is required of your company but is not being filed for whatever reason, enter SEE EXPLANATION and provide an explanation following the interrogatory questions.

	Response
1. Will the Trusteed Surplus Statement be filed with the state of domicile and the NAIC with this statement?	NO _____
2. Will Supplement A to Schedule T (Medical Professional Liability Supplement) be filed with this statement?	NO _____
3. Will the Medicare Part D Coverage Supplement be filed with the state of domicile and the NAIC with this statement?	NO _____
4. Will the Director and Officer Insurance Coverage Supplement be filed with the state of domicile and the NAIC with this statement?	NO _____

Explanation:

1. The data for this supplement is not required to be filed.
2. The data for this supplement is not required to be filed.
3. The data for this supplement is not required to be filed.
4. The data for this supplement is not required to be filed.

Bar Code:



NONE

**NATIONWIDE GENERAL INSURANCE COMPANY
SCHEDULE A - VERIFICATION**

Real Estate

	1 Year to Date	2 Prior Year Ended December 31
1. Book/adjusted carrying value, December 31 of prior year.....	0	
2. Cost of acquired:		
2.1 Actual cost at time of acquisition.....		
2.2 Additional investment made after acquisition.....		
3. Current year change in encumbrances.....		
4. Total gain (loss) on disposals.....		
5. Deduct amounts received on disposals.....		
6. Total foreign exchange change in book/adjusted carrying value.....		
7. Deduct current year's other-than-temporary impairment recognized.....		
8. Deduct current year's depreciation.....		
9. Book/adjusted carrying value at end of current period (Lines 1+2+3+4-5+6-7-8).....	0	0
10. Deduct total nonadmitted amounts.....		
11. Statement value at end of current period (Line 9 minus Line 10).....	0	0

NONE

SCHEDULE B - VERIFICATION

Mortgage Loans

	1 Year to Date	2 Prior Year Ended December 31
1. Book value/recorded investment excluding accrued interest, December 31 of prior year.....	0	
2. Cost of acquired:		
2.1 Actual cost at time of acquisition.....		
2.2 Additional investment made after acquisition.....		
3. Capitalized deferred interest and other.....		
4. Accrual of discount.....		
5. Unrealized valuation increase (decrease).....		
6. Total gain (loss) on disposals.....		
7. Deduct amounts received on disposals.....		
8. Deduct amortization of premium and mortgage interest points and commitment fees.....		
9. Total foreign exchange change in book value/recorded investment excluding accrued interest.....		
10. Deduct current year's other-than-temporary impairment recognized.....		
11. Book value/recorded investment excluding accrued interest at end of current period (Lines 1+2+3+4+5+6-7-8+9-10).....	0	0
12. Total valuation allowance.....		
13. Subtotal (Line 11 plus Line 12).....	0	0
14. Deduct total nonadmitted amounts.....		
15. Statement value at end of current period (Line 13 minus Line 14).....	0	0

NONE

SCHEDULE BA - VERIFICATION

Other Long-Term Invested Assets

	1 Year to Date	2 Prior Year Ended December 31
1. Book/adjusted carrying value, December 31 of prior year.....	1,477,702	100,880
2. Cost of acquired:		
2.1 Actual cost at time of acquisition.....		2,397,977
2.2 Additional investment made after acquisition.....		1,880,848
3. Capitalized deferred interest and other.....		
4. Accrual of discount.....		
5. Unrealized valuation increase (decrease).....		
6. Total gain (loss) on disposals.....		
7. Deduct amounts received on disposals.....		
8. Deduct amortization of premium and depreciation.....		2,902,003
9. Total foreign exchange change in book/adjusted carrying value.....		
10. Deduct current year's other-than-temporary impairment recognized.....		
11. Book/adjusted carrying value at end of current period (Lines 1+2+3+4+5+6-7-8+9-10).....	1,477,702	1,477,702
12. Deduct total nonadmitted amounts.....		
13. Statement value at end of current period (Line 11 minus Line 12).....	1,477,702	1,477,702

SCHEDULE D - VERIFICATION

Bonds and Stocks

	1 Year to Date	2 Prior Year Ended December 31
1. Book/adjusted carrying value of bonds and stocks, December 31 of prior year.....	21,817,326	20,089,072
2. Cost of bonds and stocks acquired.....		8,168,763
3. Accrual of discount.....	368	1,511
4. Unrealized valuation increase (decrease).....	12,875	53,094
5. Total gain (loss) on disposals.....		(33,890)
6. Deduct consideration for bonds and stocks disposed of.....	115,792	6,358,199
7. Deduct amortization of premium.....	19,651	103,025
8. Total foreign exchange change in book/adjusted carrying value.....		
9. Deduct current year's other-than-temporary impairment recognized.....		
10. Total investment income recognized as a result of prepayment penalties and/or acceleration fees.....		
11. Book/adjusted carrying value at end of current period (Lines 1+2+3+4+5-6-7+8-9+10).....	21,695,126	21,817,326
12. Deduct total nonadmitted amounts.....		
13. Statement value at end of current period (Line 11 minus Line 12).....	21,695,126	21,817,326

SCHEDULE D - PART 1B

Showing the Acquisitions, Dispositions and Non-Trading Activity
During the Current Quarter for all Bonds and Preferred Stock by NAIC Designation

NAIC Designation	1 Book/Adjusted Carrying Value Beginning of Current Quarter	2 Acquisitions During Current Quarter	3 Dispositions During Current Quarter	4 Non-Trading Activity During Current Quarter	5 Book/Adjusted Carrying Value End of First Quarter	6 Book/Adjusted Carrying Value End of Second Quarter	7 Book/Adjusted Carrying Value End of Third Quarter	8 Book/Adjusted Carrying Value December 31 Prior Year
BONDS								
1. NAIC 1 (a).....	18,286,317		115,792	(4,495)	18,166,030			18,286,317
2. NAIC 2 (a).....	3,531,010			(1,913)	3,529,097			3,531,010
3. NAIC 3 (a).....					.0			
4. NAIC 4 (a).....					.0			
5. NAIC 5 (a).....					.0			
6. NAIC 6 (a).....					.0			
7. Total Bonds.....	21,817,327	0	115,792	(6,408)	21,695,127	0	0	21,817,327
PREFERRED STOCK								
8. NAIC 1.....					.0			
9. NAIC 2.....					.0			
10. NAIC 3.....					.0			
11. NAIC 4.....					.0			
12. NAIC 5.....					.0			
13. NAIC 6.....					.0			
14. Total Preferred Stock.....	0	0	0	0	0	0	0	0
15. Total Bonds and Preferred Stock.....	21,817,327	0	115,792	(6,408)	21,695,127	0	0	21,817,327

QS102

(a) Book/Adjusted Carrying Value column for the end of the current reporting period includes the following amount of short-term and cash equivalent bonds by NAIC designation:

NAIC 1 \$.....0; NAIC 2 \$.....0; NAIC 3 \$.....0; NAIC 4 \$.....0; NAIC 5 \$.....0; NAIC 6 \$.....0.

SCHEDULE DA - PART 1

Short-Term Investments

	1 Book/Adjusted Carrying Value	2 Par Value	3 Actual Cost	4 Interest Collected Year To Date	5 Paid for Accrued Interest Year To Date
9199999.....696,947XXX.....696,94758

SCHEDULE DA - VERIFICATION

Short-Term Investments

	1 Year To Date	2 Prior Year Ended December 31
1. Book/adjusted carrying value, December 31 of prior year.....561,4472,455,800
2. Cost of short-term investments acquired.....125,658,028534,849,505
3. Accrual of discount.....
4. Unrealized valuation increase (decrease).....
5. Total gain (loss) on disposals.....
6. Deduct consideration received on disposals.....125,522,528536,743,858
7. Deduct amortization of premium.....
8. Total foreign exchange change in book/adjusted carrying value.....
9. Deduct current year's other-than-temporary impairment recognized.....
10. Book/adjusted carrying value at end of current period (Lines 1+2+3+4+5-6-7+8-9).....696,947561,447
11. Deduct total nonadmitted amounts.....
12. Statement value at end of current period (Line 10 minus Line 11).....696,947561,447

SCHEDULE DB - PART A - VERIFICATION

Options, Caps, Floors, Collars, Swaps and Forwards

1. Book/adjusted carrying value, December 31, prior year (Line 9, prior year).....	_____
2. Cost paid/(consideration received) on additions.....	_____
3. Unrealized valuation increase/(decrease).....	_____
4. Total gain (loss) on termination recognized.....	_____
5. Considerations received/(paid) on terminations.....	_____
6. Amortization.....	_____
7. Adjustment to the book/adjusted carrying value of hedge item.....	_____
8. Total foreign exchange change in book/adjusted carrying value.....	_____
9. Book/adjusted carrying value at end of current period (Lines 1 + 2 + 3 + 4 - 5 + 6 + 7 + 8).....	<u>0</u>
10. Deduct nonadmitted assets.....	_____
11. Statement value at end of current period (Line 9 minus Line 10).....	<u>0</u>

NONE

SCHEDULE DB - PART B - VERIFICATION

Futures Contracts

1. Book/adjusted carrying value, December 31, prior year (Line 6, prior year).....	_____
2. Cumulative cash change (Section 1, Broker Name/Net Cash Deposits Footnote - Cumulative Cash Change column).....	_____
3.1 Add:	
Change in variation margin on open contracts - Highly Effective Hedges:	
3.11 Section 1, Column 15, current year to date minus.....	_____
3.12 Section 1, Column 15, prior year.....	<u>0</u>
Change in variation margin on open contracts - All Other:	
3.13 Section 1, Column 18, current year to date minus.....	_____
3.14 Section 1, Column 18, prior year.....	<u>0</u> <u>0</u>
3.2 Add:	
Change in adjustment to basis of hedged item:	
3.21 Section 1, Column 17, current year to date minus.....	_____
3.22 Section 1, Column 17, prior year.....	<u>0</u>
Change in amount recognized:	
3.23 Section 1, Column 19, current year to date minus.....	_____
3.24 Section 1, Column 19, prior year.....	<u>0</u> <u>0</u>
3.3 Subtotal (Line 3.1 minus Line 3.2).....	<u>0</u>
4.1 Cumulative variation margin on terminated contracts during the year.....	_____
4.2 Less:	
4.21 Amount used to adjust basis of hedged item.....	_____
4.22 Amount recognized.....	<u>0</u>
4.3 Subtotal (Line 4.1 minus Line 4.2).....	<u>0</u>
5. Dispositions gains (losses) on contracts terminated in prior year:	
5.1 Total gain (loss) recognized for terminations in prior year.....	_____
5.2 Total gain (loss) adjusted into the hedged item(s) for the terminations in prior year.....	_____
6. Book/adjusted carrying value at end of current period (Lines 1 + 2 + 3.3 - 4.3 - 5.1 - 5.2).....	<u>0</u>
7. Deduct nonadmitted assets.....	_____
8. Statement value at end of current period (Line 6 minus Line 7).....	<u>0</u>

NONE

SCHEDULE DB - PART C - SECTION 1

Replication (Synthetic Asset) Transactions Open as of Current Statement Date

Replication (Synthetic) Asset Transactions								Components of the Replication (Synthetic Asset) Transactions							
1	2	3	4	5	6	7	8	Derivative Instrument(s) Open			Cash Instrument(s) Held				
		NAIC Designation or Other Description	Notional Amount	Book/Adjusted Carrying Value	Fair Value	Effective Date	Maturity Date	9	10	11	12	13	14	15	16
Number	Description	Description	Amount	Value	Value	Date	Date	Description	Book/Adjusted Carrying Value	Fair Value	CUSIP	Description	NAIC Designation or Other Description	Book/Adjusted Carrying Value	Fair Value

NONE

SCHEDULE DB - PART C - SECTION 2

Reconciliation (Synthetic Asset) Transactions Open

	First Quarter		Second Quarter		Third Quarter		Fourth Quarter		Year-To-Date	
	1 Number of Positions	2 Total Replication (Synthetic Asset) Transactions Statement Value	3 Number of Positions	4 Total Replication (Synthetic Asset) Transactions Statement Value	5 Number of Positions	6 Total Replication (Synthetic Asset) Transactions Statement Value	7 Number of Positions	8 Total Replication (Synthetic Asset) Transactions Statement Value	9 Number of Positions	10 Total Replication (Synthetic Asset) Transactions Statement Value
1. Beginning Inventory.....			.0	.0	.0	.0	.0	.0	.0	.0
2. Add: Opened or acquired transactions.....				NONE					.0	.0
3. Add: Increases in replication (synthetic asset) transactions statement value.....	XXX		XXX		XXX		XXX		XXX	.0
4. Less: Closed or disposed of transactions.....									.0	.0
5. Less: Positions disposed of for failing effectiveness criteria.....									.0	.0
6. Less: Decreases in replication (synthetic asset) transactions statement value.....	XXX		XXX		XXX		XXX		XXX	.0
7. Ending Inventory.....	.0	.0	.0	.0	.0	.0	.0	.0	.0	.0

NATIONWIDE GENERAL INSURANCE COMPANY SCHEDULE DB - VERIFICATION

Verification of Book/Adjusted Carrying Value, Fair Value and Potential Exposure of all Open Derivative Contracts

Book/Adjusted Carrying Value Check

1. Part A, Section 1, Column 14.....	_____	
2. Part B, Section 1, Column 15 plus Part B, Section 1 Footnote - Total Ending Cash Balance.....	_____	
3. Total (Line 1 plus Line 2).....	_____	0
4. Part D, Section 1, Column 5.....	_____	
5. Part D, Section 1, Column 6.....	_____	
6. Total (Line 3 minus Line 4 minus Line 5).....	_____	0

Fair Value Check

7. Part A, Section 1, Column 16.....	_____	
8. Part B, Section 1, Column 13.....	_____	
9. Total (Line 7 plus Line 8).....	_____	0
10. Part D, Section 1, Column 8.....	_____	
11. Part D, Section 1, Column 9.....	_____	
12. Total (Line 9 minus Line 10 minus Line 11).....	_____	0

NONE

Potential Exposure Check

13. Part A, Section 1, Column 21.....	_____	
14. Part B, Section 1, Column 20.....	_____	
15. Part D, Section 1, Column 11.....	_____	
16. Total (Line 13 plus Line 14 minus Line 15).....	_____	0

SCHEDULE E - PART 2 - VERIFICATION

Cash Equivalents

	1 Year To Date	2 Prior Year Ended December 31
1. Book/adjusted carrying value, December 31 of prior year.....	0	
2. Cost of cash equivalents acquired.....		
3. Accrual of discount.....		
4. Unrealized valuation increase (decrease).....		
5. Total gain (loss) on disposals.....		
6. Deduct consideration received on disposals.....		
7. Deduct amortization of premium.....		
8. Total foreign exchange change in book/ adjusted carrying value.....		
9. Deduct current year's other-than-temporary impairment recognized.....		
10. Book/adjusted carrying value at end of current period (Lines 1+2+3+4+5-6-7+8-9).....	0	0
11. Deduct total nonadmitted amounts.....		
12. Statement value at end of current period (Line 10 minus Line 11).....	0	0

NONE

SCHEDULE A - PART 2

Showing all Real Estate ACQUIRED AND ADDITIONS MADE During the Current Quarter

1 Description of Property	Location		4 Date Acquired	5 Name of Vendor	6 Actual Cost at Time of Acquisition	7 Amount of Encumbrances	8 Book/Adjusted Carrying Value Less Encumbrances	9 Additional Investment Made After Acquisition
	2 City	3 State						

NONE

QE01

SCHEDULE A - PART 3

Showing all Real Estate DISPOSED During the Quarter, Including Payments During the Final Year on "Sales Under Contract "

1 Description of Property	Location		4 Disposal Date	5 Name of Purchaser	6 Actual Cost	7 Expended for Additions, Permanent Improvements and Changes in Encumbrances	8 Book/Adjusted Carrying Value Less Encumbrances Prior Year	Change in Book/Adjusted Carrying Value Less Encumbrances					14 Book/Adjusted Carrying Value Less Encumbrances on Disposal	15 Amounts Received During Year	16 Foreign Exchange Gain (Loss) on Disposal	17 Realized Gain (Loss) on Disposal	18 Total Gain (Loss) on Disposal	19 Gross Income Earned Less Interest Incurred on Encumbrances	20 Taxes, Repairs, and Expenses Incurred
	2 City	3 State						9 Current Year's Depreciation	10 Current Year's Other-Than-Temporary Impairment Recognized	11 Current Year's Change in Encumbrances	12 Total Change in B./A.C.V. (11 - 9 - 10)	13 Total Foreign Exchange Change in B./A.C.V.							

NONE

SCHEDULE B - PART 2

Showing all Mortgage Loans ACQUIRED AND ADDITIONS MADE During the Current Quarter

1	Location		4	5	6	7	8	9
Loan Number	2	3	Loan Type	Date Acquired	Rate of Interest	Actual Cost at Time of Acquisition	Additional Investment Made After Acquisition	Value of Land and Buildings
	City	State						

NONE

QE02

SCHEDULE B - PART 3

Showing all Mortgage Loans DISPOSED, Transferred or Repaid During the Current Quarter

1	Location		4	5	6	7	Change in Book Value/Recorded Investment					14	15	16	17	18	
Loan Number	2	3	Loan Type	Date Acquired	Disposal Date	Book Value/Recorded Investment Excluding Accrued Interest Prior Year	8	9	10	11	12	13	Book Value / Recorded Investment Excluding Accrued Interest on Disposal	Consideration	Foreign Exchange Gain (Loss) on Disposal	Realized Gain (Loss) on Disposal	Total Gain (Loss) on Disposal
	City	State					Unrealized Valuation Increase (Decrease)	Current Year's (Amortization) / Accretion	Current Year's Other-Than-Temporary Impairment Recognized	Capitalized Deferred Interest and Other	Total Change in Book Value (8 + 9 - 10 + 11)	Total Foreign Exchange Change in Book Value					

NONE

SCHEDULE BA - PART 2

Showing Other Long-Term Invested Assets ACQUIRED AND ADDITIONS MADE During the Current Quarter

1 CUSIP Identification	2 Name or Description	Location		5 Name of Vendor or General Partner	6 NAIC Designation	7 Date Originally Acquired	8 Type and Strategy	9 Actual Cost at Time of Acquisition	10 Additional Investment Made after Acquisition	11 Amount of Encumbrances	12 Commitment for Additional Investment	13 Percentage of Ownership
		3 City	4 State									

NONE

QE03

SCHEDULE BA - PART 3

Showing Other Long-Term Invested Assets DISPOSED, Transferred or Repaid During the Current Quarter

1 CUSIP Identification	2 Name or Description	Location		5 Name of Purchaser or Nature of Disposal	6 Date Originally Acquired	7 Disposal Date	8 Book/Adjusted Carrying Value Less Encumbrances, Prior Year	Changes in Book/Adjusted Carrying Value						15 Book/Adjusted Carrying Value Less Encumbrances on Disposal	16 Consideration	17 Foreign Exchange Gain (Loss) on Disposal	18 Realized Gain (Loss) on Disposal	19 Total Gain (Loss) on Disposal	20 Investment Income
		3 City	4 State					9 Unrealized Valuation Increase (Decrease)	10 Current Year's (Depreciation) or (Amortization) / Accretion	11 Current Year's Other-Than-Temporary Impairment Recognized	12 Capitalized Deferred Interest and Other	13 Total Change in B./A.C.V. (9+10-11+12)	14 Total Foreign Exchange Change in B./A.C.V.						

NONE

SCHEDULE D - PART 3

Showing all Long-Term Bonds and Stocks ACQUIRED During Current Quarter

1 CUSIP Identification	2 Description	3 Foreign	4 Date Acquired	5 Name of Vendor	6 Number of Shares of Stock	7 Actual Cost	8 Par Value	9 Paid for Accrued Interest and Dividends	10 NAIC Designation or Market Indicator (a)
---------------------------	------------------	--------------	--------------------	---------------------	--------------------------------	------------------	----------------	--	--

(a) For all common stock bearing NAIC market indicator "U" provide the number of such issues:.....0.

NONE

QE04

SCHEDULE D - PART 4

Showing all Long-Term Bonds and Stocks SOLD, REDEEMED or Otherwise DISPOSED OF During Current Quarter

1	2	3	4	5	6	7	8	9	10	Change in Book/Adjusted Carrying Value					16	17	18	19	20	21	22
										11	12	13	14	15							
CUSIP Identification	Description	F o r e i g n	Disposal Date	Name of Purchaser	Number of Shares of Stock	Consideration	Par Value	Actual Cost	Prior Year Book/Adjusted Carrying Value	Unrealized Valuation Increase (Decrease)	Current Year's (Amortization) / Accretion	Current Year's Other-Than-Temporary Impairment Recognized	Total Change in B./A.C.V. (11+12-13)	Total Foreign Exchange Change in B./A.C.V.	Book/Adjusted Carrying Value at Disposal Date	Foreign Exchange Gain (Loss) on Disposal	Realized Gain (Loss) on Disposal	Total Gain (Loss) on Disposal	Bond Interest / Stock Dividends Received During Year	Stated Contractual Maturity Date	NAIC Designation or Market Indicator (a)
Bonds - U.S. Special Revenue and Special Assessment																					
313603	GW 6		03/01/2018	FNMA REMIC Ser 1989-86E 8.750% 11/25/1	Paydown	105	105	106	105				0		105			0	2	11/25/2019	1
31419B	CT 0		03/01/2018	FNMA Pool #AE0981 3.500% 03/25/41	Paydown	99,723	99,723	102,824	102,600		(2,877)		(2,877)		99,723			0	548	03/25/2041	1
31419L	3D 3		03/01/2018	FNMA Pool #AE9795 3.500% 11/25/40	Paydown	15,964	15,964	16,835	16,795		(831)		(831)		15,964			0	94	11/25/2040	1
3199999	Total - Bonds - U.S. Special Revenue and Special Assessments					115,792	115,792	119,765	119,500	0	(3,708)	0	(3,708)	0	115,792	0	0	0	644	XXX	XXX
8399997	Total - Bonds - Part 4					115,792	115,792	119,765	119,500	0	(3,708)	0	(3,708)	0	115,792	0	0	0	644	XXX	XXX
8399999	Total - Bonds					115,792	115,792	119,765	119,500	0	(3,708)	0	(3,708)	0	115,792	0	0	0	644	XXX	XXX
9999999	Total - Bonds, Preferred and Common Stocks					115,792	XXX	119,765	119,500	0	(3,708)	0	(3,708)	0	115,792	0	0	0	644	XXX	XXX

(a) For all common stock bearing the NAIC market indicator "U" provide: the number of such issues:0.

QE05

SCHEDULE DB - PART A - SECTION 1

Showing all Options, Caps, Floors, Collars, Swaps and Forwards Open as of Current Statement Date

1	2	3	4	5	6	7	8	9	10	11	12	13	14	15	16	17	18	19	20	21	22	23
Description	Description of Item(s) Hedged, Used for Income Generation or Replicated	Schedule / Exhibit Identifier	Type(s) of Risk(s) (a)	Exchange, Counterparty or Central Clearinghouse	Trade Date	Date of Maturity or Expiration	Number of Contracts	Notional Amount	Strike Price, Rate of Index Received (Paid)	Cumulative Prior Year(s) Initial Cost of Premium (Received) Paid	Current Year Initial Cost of Premium (Received) Paid	Current Year Income	Book/Adjusted Carrying Value	Code	Fair Value	Unrealized Valuation Increase (Decrease)	Total Foreign Exchange Change in B./A.C.V.	Current Year's (Amortization) / Accretion	Adjustment to Carrying Value of Hedged Items	Potential Exposure	Credit Quality of Reference Entity	Hedge Effectiveness at Inception and at Year-end (b)

NONE

SCHEDULE DB - PART B - SECTION 1

Futures Contracts Open as of the Current Statement Date

1 Ticker Symbol	2 Number of Contracts	3 Notional Amount	4 Description	5 Description of Item(s) Hedged, Used for Income Generation or Replicated	6 Schedule / Exhibit Identifier	7 Type(s) of Risk(s) (a)	8 Date of Maturity or Expiration	9 Exchange	10 Trade Date	11 Transaction Price	12 Reporting Date Price	13 Fair Value	14 Book/Adjusted Carrying Value	Highly Effective Hedges			18 Cumulative Variation Margin for All Other Hedges	19 Change in Variation Margin Gain (Loss) Recognized in Current Year	20 Potential Exposure	21 Hedge Effectiveness at Inception and at Year- end (b)	22 Value of One (1) Point
														15 Cumulative Variation Margin	16 Deferred Variation Margin	17 Change in Variation Margin Gain (Loss) Used to Adjust Basis of Hedged Item					

NONE

QE07

SCHEDULE DB - PART D - SECTION 1
 Counterparty Exposure for Derivative Instruments Open as of Current Statement Date

1 Description of Exchange, Counterparty or Central Clearinghouse	2 Master Agreement (Y or N)	3 Credit Support Annex (Y or N)	4 Fair Value of Acceptable Collateral	Book Adjusted Carrying Value			Fair Value			11 Potential Exposure	12 Off-Balance Sheet Exposure
				5 Contracts with Book/Adjusted Carrying Value > 0	6 Contracts with Book/Adjusted Carrying Value < 0	7 Exposure Net of Collateral	8 Contracts with Fair Value > 0	9 Contracts with Fair Value < 0	10 Exposure Net of Collateral		
1. Offset per SSAP No. 64.....											
2. Net after right of offset per SSAP No. 64.....					0						

NONE

QE08

SCHEDULE DB - PART D - SECTION 2

Collateral for Derivative Instruments Open as of Current Statement Date

1 Exchange, Counterparty or Central Clearinghouse	2 Type of Asset Pledged	3 CUSIP Identification	4 Description	5 Fair Value	6 Par Value	7 Book/Adjusted Carrying Value	8 Maturity Date	9 Type of Margin (I, V or IV)
--	----------------------------	---------------------------	------------------	-----------------	----------------	-----------------------------------	--------------------	----------------------------------

NONE

QE09

**SCHEDULE DL - PART 1
SECURITIES LENDING COLLATERAL ASSETS**

Reinvested Collateral Assets Owned Current Statement Date

(Securities lending collateral assets reported in aggregate on Line 10 of the Assets page and not included on Schedules A, B, BA, D, DB and E)

1	2	3	4	5	6	7
CUSIP Identification	Description	Code	NAIC Designation / Market Indicator	Fair Value	Book/Adjusted Carrying Value	Maturity Date

General Interrogatories:

1. The activity for the year: Fair Value \$.....0 Book/Adjusted Carrying Value \$.....0
2. Average balance for the year: Fair Value \$.....0 Book/Adjusted Carrying Value \$.....0
3. Reinvested securities lending collateral assets book/adjusted carrying value included in this schedule by NAIC designation:
 NAIC 1: \$.....0 NAIC 2: \$.....0 NAIC 3: \$.....0 NAIC 4: \$.....0 NAIC 5: \$.....0 NAIC 6: \$.....0

NONE

**SCHEDULE DL - PART 2
SECURITIES LENDING COLLATERAL ASSETS**

Reinvested Collateral Assets Owned Current Statement Date

(Securities lending collateral assets included on Schedules A, B, BA, D, DB and E and not reported in aggregate on Line 10 of the Assets page)

1	2	3	4	5	6	7
CUSIP Identification	Description	Code	NAIC Designation / Market Indicator	Fair Value	Book/Adjusted Carrying Value	Maturity Date

General Interrogatories:

1. The activity for the year: Fair Value \$.....0 Book/Adjusted Carrying Value \$.....0
2. Average balance for the year: Fair Value \$.....0 Book/Adjusted Carrying Value \$.....0

NONE

NATIONWIDE GENERAL INSURANCE COMPANY
SCHEDULE E - PART 1 - CASH

Month End Depository Balances

1 Depository	2 Code	3 Rate of Interest	4 Amount of Interest Received During Current Quarter	5 Amount of Interest Accrued at Current Statement Date	Book Balance at End of Each Month During Current Quarter			9 *
					6 First Month	7 Second Month	8 Third Month	
Open Depositories								
The Bank of New York Mellon..... NEW YORK, NY					94,746	177,639	224,234	XXX
0199999. Total Open Depositories.....	XXX	XXX	0	0	94,746	177,639	224,234	XXX
0399999. Total Cash on Deposit.....	XXX	XXX	0	0	94,746	177,639	224,234	XXX
0599999. Total Cash.....	XXX	XXX	0	0	94,746	177,639	224,234	XXX

SCHEDULE E - PART 2 - CASH EQUIVALENTS

Show Investments Owned End of Current Quarter

1 CUSIP Identification	2 Description	3 Code	4 Date Acquired	5 Rate of Interest	6 Maturity Date	7 Book/Adjusted Carrying Value	8 Amount of Interest Due & Accrued	9 Amount Received During Year
---------------------------	------------------	-----------	--------------------	-----------------------	--------------------	-----------------------------------	--	----------------------------------

NONE

QE13