



PROPERTY AND CASUALTY COMPANIES - ASSOCIATION EDITION

QUARTERLY STATEMENT

AS OF MARCH 31, 2018
OF THE CONDITION AND AFFAIRS OF THE

Dealers Assurance Company

NAIC Group Code 0315 0000 NAIC Company Code 16705 Employer's ID Number 34-6513705
Organized under the Laws of Ohio, State of Domicile or Port of Entry OH
Country of Domicile United States of America
Incorporated/Organized 08/02/1935 Commenced Business 08/02/1935
Statutory Home Office 240 North Fifth Street, Suite 350 Columbus, OH, US 43215
Main Administrative Office 15920 Addison Road Addison, TX, US 75001 800-282-8913
Mail Address 240 North Fifth Street, Suite 350 Columbus, OH, US 43215
Primary Location of Books and Records 240 North Fifth Street, Suite 350 Columbus, OH, US 43215 800-282-8913
Internet Website Address www.dealersassurance.com
Statutory Statement Contact Linda M. Toy 800-282-8913
toy@dealersassurance.com 614-459-2665

OFFICERS

President Kristen Anne Gruber Treasurer Linda Marie Toy
Secretary Joshua Robert Pedelty # Assistant Secretary Lisa Aileen Kirk #

OTHER

Edmond Melgar Eckert, Senior Vice President Kirk Alan Borchardt, Executive Vice President Linda Marie Toy, Vice President
Michael Lee Stickney #, Managing Director

DIRECTORS OR TRUSTEES

Warren Van Genderen # Michael Lee Stickney # Douglas Alexander Carrothers #
Yvon Charest # Marilyn Rose Froelich # Joseph Rawltsar Manning #
Douglas Curtis Oksendahl # Shelby Land Peavy # Normand Pepin #
Denis Yves Ricard #

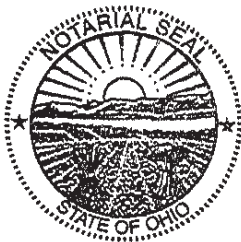
State of Ohio SS:
County of Franklin

The officers of this reporting entity being duly sworn, each depose and say that they are the described officers of said reporting entity, and that on the reporting period stated above, all of the herein described assets were the absolute property of the said reporting entity, free and clear from any liens or claims thereon, except as herein stated, and that this statement, together with related exhibits, schedules and explanations therein contained, annexed or referred to, is a full and true statement of all the assets and liabilities and of the condition and affairs of the said reporting entity as of the reporting period stated above, and of its income and deductions therefrom for the period ended, and have been completed in accordance with the NAIC Annual Statement Instructions and Accounting Practices and Procedures manual except to the extent that: (1) state law may differ; or, (2) that state rules or regulations require differences in reporting not related to accounting practices and procedures, according to the best of their information, knowledge and belief, respectively. Furthermore, the scope of this attestation by the described officers also includes the related corresponding electronic filing with the NAIC, when required, that is an exact copy (except for formatting differences due to electronic filing) of the enclosed statement. The electronic filing may be requested by various regulators in lieu of or in addition to the enclosed statement.

Handwritten signatures of Kristen Anne Gruber, Joshua Robert Pedelty, and Linda Marie Toy with their respective titles: President, Secretary, and Treasurer.

Subscribed and sworn to before me this 8th day of May 2018
Keith H Burkholder

- a. Is this an original filing? Yes [X] No []
b. If no,
1. State the amendment number.....
2. Date filed.....
3. Number of pages attached.....



KEITH H BURKHOLDER
Notary Public
In and for the State of Ohio
My Commission Expires
August 17, 2020

STATEMENT AS OF MARCH 31, 2018 OF THE Dealers Assurance Company

ASSETS

	Current Statement Date			4 December 31 Prior Year Net Admitted Assets
	1 Assets	2 Nonadmitted Assets	3 Net Admitted Assets (Cols. 1 - 2)	
1. Bonds	97,655,331		97,655,331	78,563,762
2. Stocks:				
2.1 Preferred stocks			0	3,334,835
2.2 Common stocks	2,121,858		2,121,858	13,373,400
3. Mortgage loans on real estate:				
3.1 First liens	245,997		245,997	248,726
3.2 Other than first liens.....			0	0
4. Real estate:				
4.1 Properties occupied by the company (less \$ encumbrances)	3,107,110		3,107,110	2,952,088
4.2 Properties held for the production of income (less \$ encumbrances)			0	0
4.3 Properties held for sale (less \$ encumbrances)			0	0
5. Cash (\$2,160,428), cash equivalents (\$11,999,816) and short-term investments (\$0)	14,160,244		14,160,244	13,429,402
6. Contract loans (including \$ premium notes)			0	0
7. Derivatives			0	0
8. Other invested assets			0	0
9. Receivables for securities	140,420		140,420	16,660
10. Securities lending reinvested collateral assets			0	0
11. Aggregate write-ins for invested assets	0	0	0	0
12. Subtotals, cash and invested assets (Lines 1 to 11)	117,430,960	0	117,430,960	111,918,872
13. Title plants less \$ charged off (for Title insurers only)			0	0
14. Investment income due and accrued	634,515		634,515	577,044
15. Premiums and considerations:				
15.1 Uncollected premiums and agents' balances in the course of collection	2,350,397		2,350,397	3,501,295
15.2 Deferred premiums, agents' balances and installments booked but deferred and not yet due (including \$ earned but unbilled premiums)			0	0
15.3 Accrued retrospective premiums (\$) and contracts subject to redetermination (\$)			0	0
16. Reinsurance:				
16.1 Amounts recoverable from reinsurers			0	0
16.2 Funds held by or deposited with reinsured companies			0	0
16.3 Other amounts receivable under reinsurance contracts	216,431		216,431	216,431
17. Amounts receivable relating to uninsured plans			0	0
18.1 Current federal and foreign income tax recoverable and interest thereon			0	0
18.2 Net deferred tax asset	346,213		346,213	0
19. Guaranty funds receivable or on deposit			0	0
20. Electronic data processing equipment and software			0	0
21. Furniture and equipment, including health care delivery assets (\$)			0	0
22. Net adjustment in assets and liabilities due to foreign exchange rates			0	0
23. Receivables from parent, subsidiaries and affiliates	7,558		7,558	6,723
24. Health care (\$) and other amounts receivable			0	0
25. Aggregate write-ins for other than invested assets	860,038	0	860,038	840,970
26. Total assets excluding Separate Accounts, Segregated Accounts and Protected Cell Accounts (Lines 12 to 25)	121,846,112	0	121,846,112	117,061,335
27. From Separate Accounts, Segregated Accounts and Protected Cell Accounts			0	0
28. Total (Lines 26 and 27)	121,846,112	0	121,846,112	117,061,335
DETAILS OF WRITE-INS				
1101.				
1102.				
1103.				
1198. Summary of remaining write-ins for Line 11 from overflow page	0	0	0	0
1199. Totals (Lines 1101 through 1103 plus 1198)(Line 11 above)	0	0	0	0
2501. Accounts Receivable	859,136		859,136	840,832
2502. Interest Receivable	902		902	138
2503.				
2598. Summary of remaining write-ins for Line 25 from overflow page	0	0	0	0
2599. Totals (Lines 2501 through 2503 plus 2598)(Line 25 above)	860,038	0	860,038	840,970

STATEMENT AS OF MARCH 31, 2018 OF THE Dealers Assurance Company
LIABILITIES, SURPLUS AND OTHER FUNDS

	1 Current Statement Date	2 December 31, Prior Year
1. Losses (current accident year \$ 357,610)	357,610	357,610
2. Reinsurance payable on paid losses and loss adjustment expenses		0
3. Loss adjustment expenses		
4. Commissions payable, contingent commissions and other similar charges	717,328	604,384
5. Other expenses (excluding taxes, licenses and fees)	796,653	802,574
6. Taxes, licenses and fees (excluding federal and foreign income taxes)	176,304	281,628
7.1 Current federal and foreign income taxes (including \$ on realized capital gains (losses))	1,135,087	652,838
7.2 Net deferred tax liability		72,197
8. Borrowed money \$ and interest thereon \$ 17,549	17,549	18,089
9. Unearned premiums (after deducting unearned premiums for ceded reinsurance of \$ 227,599,269 and including warranty reserves of \$ 19,364,611 and accrued accident and health experience rating refunds including \$ for medical loss ratio rebate per the Public Health Service Act)	24,883,108	23,949,164
10. Advance premium		
11. Dividends declared and unpaid:		
11.1 Stockholders		
11.2 Policyholders		
12. Ceded reinsurance premiums payable (net of ceding commissions)	535,426	786,452
13. Funds held by company under reinsurance treaties	12,808,912	12,660,804
14. Amounts withheld or retained by company for account of others	11,169,348	9,443,125
15. Remittances and items not allocated	27,037	17,911
16. Provision for reinsurance (including \$ certified)		0
17. Net adjustments in assets and liabilities due to foreign exchange rates		
18. Drafts outstanding		
19. Payable to parent, subsidiaries and affiliates	98,087	85,563
20. Derivatives	0	0
21. Payable for securities		69,859
22. Payable for securities lending		
23. Liability for amounts held under uninsured plans		
24. Capital notes \$ and interest thereon \$		
25. Aggregate write-ins for liabilities	0	0
26. Total liabilities excluding protected cell liabilities (Lines 1 through 25)	52,722,449	49,802,198
27. Protected cell liabilities		
28. Total liabilities (Lines 26 and 27)	52,722,449	49,802,198
29. Aggregate write-ins for special surplus funds	0	0
30. Common capital stock	4,200,990	4,200,990
31. Preferred capital stock		
32. Aggregate write-ins for other than special surplus funds	0	0
33. Surplus notes	3,000,000	3,000,000
34. Gross paid in and contributed surplus	9,732,810	9,732,810
35. Unassigned funds (surplus)	52,189,863	50,325,337
36. Less treasury stock, at cost:		
36.1 shares common (value included in Line 30 \$)		
36.2 shares preferred (value included in Line 31 \$)		
37. Surplus as regards policyholders (Lines 29 to 35, less 36)	69,123,663	67,259,137
38. Totals (Page 2, Line 28, Col. 3)	121,846,112	117,061,335
DETAILS OF WRITE-INS		
2501.		
2502.		
2503.		
2598. Summary of remaining write-ins for Line 25 from overflow page	0	0
2599. Totals (Lines 2501 through 2503 plus 2598)(Line 25 above)	0	0
2901.		
2902.		
2903.		
2998. Summary of remaining write-ins for Line 29 from overflow page	0	0
2999. Totals (Lines 2901 through 2903 plus 2998)(Line 29 above)	0	0
3201.		
3202.		
3203.		
3298. Summary of remaining write-ins for Line 32 from overflow page	0	0
3299. Totals (Lines 3201 through 3203 plus 3298)(Line 32 above)	0	0

STATEMENT AS OF MARCH 31, 2018 OF THE Dealers Assurance Company

STATEMENT OF INCOME

	1 Current Year to Date	2 Prior Year to Date	3 Prior Year Ended December 31
UNDERWRITING INCOME			
1. Premiums earned:			
1.1 Direct (written \$ 39,305,049)	29,561,210	31,794,848	126,021,931
1.2 Assumed (written \$ (143,560))	(114,420)	(61,212)	(356,866)
1.3 Ceded (written \$ 35,519,850)	26,739,094	28,760,279	114,067,670
1.4 Net (written \$ 3,641,639)	2,707,696	2,973,357	11,597,395
DEDUCTIONS:			
2. Losses incurred (current accident year \$ 53,891):			
2.1 Direct	15,784,514	15,384,102	67,969,290
2.2 Assumed	0	17,396	21,726
2.3 Ceded	15,574,869	15,122,871	66,609,688
2.4 Net	209,645	278,627	1,381,328
3. Loss adjustment expenses incurred	46,911	38,621	151,457
4. Other underwriting expenses incurred	1,111,494	999,996	4,852,684
5. Aggregate write-ins for underwriting deductions	0	0	0
6. Total underwriting deductions (Lines 2 through 5)	1,368,050	1,317,244	6,385,469
7. Net income of protected cells			
8. Net underwriting gain or (loss) (Line 1 minus Line 6 + Line 7)	1,339,646	1,656,113	5,211,926
INVESTMENT INCOME			
9. Net investment income earned	459,013	410,090	1,797,578
10. Net realized capital gains (losses) less capital gains tax of \$ 730,225	2,747,037	71,978	375,762
11. Net investment gain (loss) (Lines 9 + 10)	3,206,050	482,068	2,173,340
OTHER INCOME			
12. Net gain or (loss) from agents' or premium balances charged off (amount recovered \$ amount charged off \$ 17)	(17)	(27,353)	(104,050)
13. Finance and service charges not included in premiums			
14. Aggregate write-ins for miscellaneous income	(16,372)	(56,478)	(259,697)
15. Total other income (Lines 12 through 14)	(16,389)	(83,831)	(363,747)
16. Net income before dividends to policyholders, after capital gains tax and before all other federal and foreign income taxes (Lines 8 + 11 + 15)	4,529,307	2,054,350	7,021,519
17. Dividends to policyholders			
18. Net income, after dividends to policyholders, after capital gains tax and before all other federal and foreign income taxes (Line 16 minus Line 17)	4,529,307	2,054,350	7,021,519
19. Federal and foreign income taxes incurred	404,862	695,940	2,571,631
20. Net income (Line 18 minus Line 19)(to Line 22)	4,124,445	1,358,410	4,449,888
CAPITAL AND SURPLUS ACCOUNT			
21. Surplus as regards policyholders, December 31 prior year	67,259,136	61,216,945	61,216,945
22. Net income (from Line 20)	4,124,445	1,358,410	4,449,888
23. Net transfers (to) from Protected Cell accounts			
24. Change in net unrealized capital gains (losses) less capital gains tax of \$ (562,449)	(2,115,879)	317,646	1,351,280
25. Change in net unrealized foreign exchange capital gain (loss)			
26. Change in net deferred income tax	(144,039)	17,471	241,023
27. Change in nonadmitted assets			0
28. Change in provision for reinsurance			0
29. Change in surplus notes			
30. Surplus (contributed to) withdrawn from protected cells			
31. Cumulative effect of changes in accounting principles			
32. Capital changes:			
32.1 Paid in			
32.2 Transferred from surplus (Stock Dividend)			
32.3 Transferred to surplus			
33. Surplus adjustments:			
33.1 Paid in	0	0	0
33.2 Transferred to capital (Stock Dividend)			
33.3 Transferred from capital			
34. Net remittances from or (to) Home Office			
35. Dividends to stockholders			
36. Change in treasury stock			0
37. Aggregate write-ins for gains and losses in surplus	0	0	0
38. Change in surplus as regards policyholders (Lines 22 through 37)	1,864,527	1,693,527	6,042,191
39. Surplus as regards policyholders, as of statement date (Lines 21 plus 38)	69,123,663	62,910,472	67,259,136
DETAILS OF WRITE-INS			
0501.			
0502.			
0503.			
0598. Summary of remaining write-ins for Line 5 from overflow page	0	0	0
0599. Totals (Lines 0501 through 0503 plus 0598)(Line 5 above)	0	0	0
1401. Misc. Income (Expense)	(235)	(2,358)	(4,405)
1402. Admin/Service Fee Income	35,115	44,979	164,337
1403. Interest Expense-Funds held	(51,252)	(99,099)	(419,629)
1498. Summary of remaining write-ins for Line 14 from overflow page	0	0	0
1499. Totals (Lines 1401 through 1403 plus 1498)(Line 14 above)	(16,372)	(56,478)	(259,697)
3701.			
3702.			
3703.			
3798. Summary of remaining write-ins for Line 37 from overflow page	0	0	0
3799. Totals (Lines 3701 through 3703 plus 3798)(Line 37 above)	0	0	0

STATEMENT AS OF MARCH 31, 2018 OF THE Dealers Assurance Company

CASH FLOW

	1 Current Year To Date	2 Prior Year To Date	3 Prior Year Ended December 31
Cash from Operations			
1. Premiums collected net of reinsurance	4,541,513	4,192,086	14,969,393
2. Net investment income	557,471	617,590	2,359,164
3. Miscellaneous income	(16,389)	(83,831)	(363,747)
4. Total (Lines 1 to 3)	5,082,595	4,725,845	16,964,810
5. Benefit and loss related payments	209,645	278,627	1,179,807
6. Net transfers to Separate Accounts, Segregated Accounts and Protected Cell Accounts	0	0	0
7. Commissions, expenses paid and aggregate write-ins for deductions	1,157,706	1,320,574	4,943,567
8. Dividends paid to policyholders	0	0	0
9. Federal and foreign income taxes paid (recovered) net of \$ tax on capital gains (losses)	652,838	671,095	2,783,465
10. Total (Lines 5 through 9)	2,020,189	2,270,296	8,906,839
11. Net cash from operations (Line 4 minus Line 10)	3,062,406	2,455,549	8,057,972
Cash from Investments			
12. Proceeds from investments sold, matured or repaid:			
12.1 Bonds	7,204,264	6,247,279	17,571,132
12.2 Stocks	16,342,528	3,430,060	9,671,719
12.3 Mortgage loans	2,729	10,560	543,445
12.4 Real estate	0	0	0
12.5 Other invested assets	0	0	0
12.6 Net gains or (losses) on cash, cash equivalents and short-term investments	0	0	0
12.7 Miscellaneous proceeds	0	1,527,778	69,859
12.8 Total investment proceeds (Lines 12.1 to 12.7)	23,549,521	11,215,677	27,856,155
13. Cost of investments acquired (long-term only):			
13.1 Bonds	26,482,162	7,513,096	23,708,526
13.2 Stocks	902,248	3,328,796	8,397,281
13.3 Mortgage loans	0	0	0
13.4 Real estate	178,591	1,008,035	1,267,844
13.5 Other invested assets	0	0	0
13.6 Miscellaneous applications	193,619	0	16,660
13.7 Total investments acquired (Lines 13.1 to 13.6)	27,756,620	11,849,928	33,390,311
14. Net increase (or decrease) in contract loans and premium notes	0	0	0
15. Net cash from investments (Line 12.8 minus Line 13.7 and Line 14)	(4,207,099)	(634,251)	(5,534,157)
Cash from Financing and Miscellaneous Sources			
16. Cash provided (applied):			
16.1 Surplus notes, capital notes	0	0	0
16.2 Capital and paid in surplus, less treasury stock	0	0	0
16.3 Borrowed funds	(540)	(44)	2,133
16.4 Net deposits on deposit-type contracts and other insurance liabilities	0	0	0
16.5 Dividends to stockholders	0	0	0
16.6 Other cash provided (applied)	1,876,075	(756,952)	(98,233)
17. Net cash from financing and miscellaneous sources (Line 16.1 through Line 16.4 minus Line 16.5 plus Line 16.6)	1,875,535	(756,996)	(96,100)
RECONCILIATION OF CASH, CASH EQUIVALENTS AND SHORT-TERM INVESTMENTS			
18. Net change in cash, cash equivalents and short-term investments (Line 11, plus Lines 15 and 17)	730,842	1,064,302	2,427,715
19. Cash, cash equivalents and short-term investments:			
19.1 Beginning of year	13,429,402	11,001,687	11,001,687
19.2 End of period (Line 18 plus Line 19.1)	14,160,244	12,065,989	13,429,402

Note: Supplemental disclosures of cash flow information for non-cash transactions:

NOTES TO FINANCIAL STATEMENTS

1. Summary of Significant Accounting Policies

A.- Accounting Practices

The accompanying financial statements of Dealers Assurance Company have been prepared in conformity with accounting practices prescribed or permitted by the National Association of Insurance Commissioners and the State of Ohio. The company adopted codification as of 01/01/01.

	SSAP #	F/S Page	F/S Line #	2018	2017
Net Income					
(1) Company state basis (Page 4, Line 20, Columns 1 & 2)	-	-	-	4,124,445	\$ 4,449,888
(2) State Prescribed Practices that (increase)/decrease NAIC SAP	-	-	-	-	-
(3) State Permitted Practices that (increase)/decrease NAIC SAP S	-	-	-	-	-
(4) NAIC SAP (1 – 2 – 3 = 4)	-	-	-	4,124,445	\$ 4,449,888
Surplus					
(5) Company state basis (Page 3, Line 37, Columns 1 & 2)	-	-	-	69,123,663	\$ 67,259,137
(6) State Prescribed Practices that increase/(decrease) NAIC SAP	-	-	-	-	-
(7) State Permitted Practices that increase/(decrease) NAIC SAP	-	-	-	-	-
(8) NAIC SAP (1 – 2 – 3 = 4)	-	-	-	69,123,663	\$ 67,259,137

1B. No changes to note

1C Real estate investments on the balance sheet are classified as properties occupied by the company. These are carried at the amortized cost less encumbrances.

1C (1) to 1C (5) No changes to Note

1 C (6) Loan-backed securities are stated at either amortized cost or the lower of amortized cost or fair value. The retrospective adjustment method is used to value all securities except for interest only securities or securities where the yield had become negative, that are valued using the prospective method.

1D Going Concern

Based upon its evaluation of relevant conditions and events, management does not have substantial doubt about the Company's ability to continue as a going concern.

2 to 4 No changes to note.

NOTES TO FINANCIAL STATEMENTS

5A Mortgage Loans, including Mezzanine Real Estate Loans

(1) The minimum and maximum lending rates for mortgage loans during 2018 were:

Commercial Loans 5.50% Residential Loans 4.00%

(2) The maximum percentage of any one loan to the value of security at the time of the loan, exclusive of insured or guaranteed or purchase money mortgages was 39.36%.

(3) Taxes, assessments and any amounts advanced and not included in the mortgage loan total:

Current Year	Prior Year
-0-	-0-

(4) Age Analysis of Mortgage Loans:

Farm	Residential		Commercial		Mezzanine	Total
	Insured	All Other	Insured	All Other		

a Current Year

1.	Recorded Investment (All)								
	(a) Current	\$	-	\$	-	\$	245,997	\$	-
	(b) 30-59 Days Past Due	-	-	-	-	-	-	-	-
	(c) 60-89 Days Past Due	-	-	-	-	-	-	-	-
	(d) 60-179 Days Past Due	-	-	-	-	-	-	-	-
	(e) 180+ Past Days Past Due	-	-	-	-	-	-	-	-
2.	Accruing Interest 90-179 Days Past Due								
	(a) Recorded Investment	-	-	-	-	-	-	-	-
	(b) Interest Accrued	-	-	-	-	-	-	-	-
3.	Accruing Interest 180+ Days Past Due								
	(a) Recorded Investment	-	-	-	-	-	-	-	-
	(b) Interest Accrued	-	-	-	-	-	-	-	-
4.	Interest Reduced								
	(a) Recorded Investment	-	-	-	-	-	-	-	-
	(b) Number of Loans	-	-	-	-	-	-	-	-
	(c) Percent Reduced	-	-	-	-	-	-	-	-

Prior Year

1.	Recorded Investment								
	(a) Current	-	-	248,726	-	-	-	-	248,726
	(b) 30-59 Days Past Due	-	-	-	-	-	-	-	-
	(c) 60-89 Days Past Due	-	-	-	-	-	-	-	-
	(d) 90-179 Days Past Due	-	-	-	-	-	-	-	-
	(e) 180+ Days Past Due	-	-	-	-	-	-	-	-
2.	Accruing Interest 90-179 Days Past Due								
	(a) Recorded Investment	-	-	-	-	-	-	-	-
	(b) Interest Accrued	-	-	-	-	-	-	-	-
3.	Accruing Interest 180+ Days Past Due								
	(a) Recorded Investment	-	-	-	-	-	-	-	-
	(b) Interest Accrued	-	-	-	-	-	-	-	-
4.	Interest Reduced								
	(a) Recorded Investment	-	-	-	-	-	-	-	-
	(b) Number of Loans	-	-	-	-	-	-	-	-
	(c) Percent Reduced	-	-	-	-	-	-	-	-

5A (5) to 5 C. No changes to note.

5D. Loan-Backed Securities

1. Bloomberg is used as a source for the prepayment factors.
2. – 4. Not applicable, no permanently impaired bonds.
5. No impairments exist other than interest rate related declines classified as temporary.

5E. The Company did not have any repurchase agreements in 2017.

5F. The Company did not have any repurchase transactions accounted for as Secured Borrowing.

5G. The Company did not have any reverse Repurchase Transactions Accounted for as Secured Borrowing.

5H. The Company did not have any Repurchase Agreements Transactions Accounted for as a Sale.

5I. The Company did not have any Reverse Repurchase Agreements Transactions Accounted for as a Sale.

5J-L. No changes to note

5M. The Company has no Working Capital Finance Investments.

5N. The company has no offsetting or netting of assets and liabilities

5O-R. No changes to not

6.-7. No changes to note

8. The Company does not have any Derivative Instruments.

NOTES TO FINANCIAL STATEMENTS

9. Income Taxes

A. The components of the net deferred tax assets/(liability) at March 31, 2018 are as follows:

1.

	3/31/18			12/31/17			Change		
	(1) Ordinary	(2) Capital	(3) (Col 1 + 2) Total	(4) Ordinary	(5) Capital	(6) (Col 4 + 5) Total	(7) (Col 1 – 4) Ordinary	(8) (Col 2 – 5) Capital	(9) (Col 7 + 8) Total
a Gross Deferred Tax Assets	1,268,237	-	1,268,237	1,240,466	-	1,240,466	27,771	-	27,771
b Statutory Valuation allowance adjustment	-	-	-	-	-	-	-	-	-
c Adjusted Gross Deferred Tax Asset (1a -1d)	1,268,237	-	1,268,237	1,240,466	-	1,240,466	27,771	-	27,771
d Deferred Tax Assets Nonadmitted	825,622	-	825,622	653,812	-	653,812	171,810	-	171,810
e Subtotal Net Admitted Deferred Tax Assets (1c-1f)	442,615	-	442,615	586,654	-	586,654	(144,039)	-	(144,039)
f Deferred Tax Liabilities	-	96,402	96,402	-	658,851	658,851	-	(562,449)	(562,449)
g Net Admitted Deferred Tax Asset (Net Deferred Tax Liability)	442,615	(96,402)	346,213	586,654	(658,851)	(72,197)	(144,039)	562,449	418,410

2.

	3/31/18			12/31/17			Change		
	(1) Ordinary	(2) Capital	(3) (Col 1 + 2) Total	(4) Ordinary	(5) Capital	(6) (Col 4 + 5) Total	(7) (Col 1 – 4) Ordinary	(8) (Col 2 – 5) Capital	(9) (Col 7 + 8) Total
a Federal Income Taxes Paid in Prior Years Recoverable Through Loss Carrybacks	-	-	-	-	-	-	-	-	-
b Adjusted Gross Deferred Tax Asset Expected To Be Realized (Excluding the Amount of Deferred Tax Assets From 2(a) above). After Application of the Threshold Limitation. (The Lesser of 2(b)1 and 2(b)2 Below)	442,615	(96,402)	346,213	586,654	(658,851)	(72,197)	(144,039)	562,449	418,410
1 Adjusted Gross Deferred Tax Assets Expected to be Realized Following the Balance Sheet Date	442,615	(96,402)	346,213	586,654	(658,851)	(72,197)	(144,039)	562,449	418,410
2. Adjusted Gross Deferred Tax Assets (Excluding the Amount of Deferred Tax Allowed per Limitation Threshold)	xxxxxxx	xxxxx	10,316,618	xxxxxxx	xxxxxxx	10,099,700	xxxxxxxxx	xxxxxxxxx	216,918
c Adjusted Gross Deferred Tax Assets (Excluding the Amount of Deferred Tax Assets from 2(a) and 2 (b) above) Offset by Gross Deferred Tax Liabilities	-	-	-	-	-	-	-	-	-
d Deferred Tax Assets Admitted as the result of application of SSAP 101. Total)2(a) + 2(b) + 2 (c))	442,615	(96,402)	346,213	586,654	(658,851)	(72,197)	(144,039)	562,449	418,410

Admission Calculation Components SSAP No. 101

a Federal Income Taxes Paid in Prior Years Recoverable Through Loss Carrybacks	-	-	-	-	-	-	-	-	-
b Adjusted Gross Deferred Tax Asset Expected To Be Realized (Excluding the Amount of Deferred Tax Assets From 2(a) above). After Application of the Threshold Limitation. (The Lesser of 2(b)1 and 2(b)2 Below)	442,615	(96,402)	346,213	586,654	(658,851)	(72,197)	(144,039)	562,449	418,410
1 Adjusted Gross Deferred Tax Assets Expected to be Realized Following the Balance Sheet Date	442,615	(96,402)	346,213	586,654	(658,851)	(72,197)	(144,039)	562,449	418,410
2. Adjusted Gross Deferred Tax Assets (Excluding the Amount of Deferred Tax Allowed per Limitation Threshold)	xxxxxxx	xxxxx	10,316,618	xxxxxxx	xxxxxxx	10,099,700	xxxxxxxxx	xxxxxxxxx	216,918
c Adjusted Gross Deferred Tax Assets (Excluding the Amount of Deferred Tax Assets from 2(a) and 2 (b) above) Offset by Gross Deferred Tax Liabilities	-	-	-	-	-	-	-	-	-
d Deferred Tax Assets Admitted as the result of application of SSAP 101. Total)2(a) + 2(b) + 2 (c))	442,615	(96,402)	346,213	586,654	(658,851)	(72,197)	(144,039)	562,449	418,410

3

	2018	2017
(a) Ratio Percentage Used to Determine Recovery Period and Threshold Limitation Amount	603%	593%
(b) Amount of Adjusted Capital and Surplus Used to Determine Recovery Period and Threshold Limitation in 1(b) above	69,123,663	67,259,137

- (a) Ratio Percentage Used to Determine Recovery Period and Threshold Limitation Amount
- (b) Amount of Adjusted Capital and Surplus Used to Determine Recovery Period and Threshold Limitation in 1(b) above

NOTES TO FINANCIAL STATEMENTS

4.

3/31/18			12/31/17			Change		
(1)	(2)	(3)	(4)	(5)	(6)	(7)	(8)	(9)
Ordinary	Capital	(Col 1 + 2) Total	Ordinary	Capital	(Col 4 + 5) Total	(Col 1 - 4) Ordinary	(Col 2 - 5) Capital	(Col 7 + 8) Total

Impact of Tax Planning Strategies

a	Adjusted Gross DTA's (% of Total Adjusted Gross DTA's)	100%	0%	100%	100%	0%	100%	0%	0%	0%
b	Net Admitted Adjusted Gross DTA's (% of Total Net Admitted Adjusted Gross DTA's)	128%	-28%	100%	-813%	913%	100%	941%	-941%	0%

c Does the Company's tax-planning strategies include the use of Reinsurance? Yes No

B Deferred tax liabilities not recognized at March 31, 2018 and December 31, 2017 are as follows:

N/A-All Deferred Tax Liabilities have been recognized

C Current income taxes incurred consist of the following major components

	(1)	(2)	(3)
	3/31/18	12/31/17	(Col 1 + 2) Change
1. Current Income Tax			
(a) Federal	404,862	2,571,632	(2,166,770)
(b) Foreign	-	-	-
(c) Subtotal	404,862	2,571,632	(2,166,770)
(d) Federal Income tax on net capital gains	730,225	193,574	536,651
(e) Utilization of capital loss carry-forwards	-	-	-
(f) Other	-	-	-
(g) Federal and foreign income taxes incurred	1,135,087	2,765,206	(1,630,119)
2. Deferred Tax Assets			
(a) Ordinary			
(1) Discounting of Unpaid Losses	11,265	11,265	-
(2) Unearned Premium Reserve	1,045,091	1,005,864	39,227
(3) Policyholder Reserves	-	-	-
(4) Investments	210,743	218,773	(8,030)
(5) Deferred Acquisition Costs	-	-	-
(6) Policyholder Dividends Accrual	-	-	-
(7) Fixed Assets	1,138	4,564	(3,426)
(8) Compensation and Benefits Accrual	-	-	-
(9) Pension Accrual	-	-	-
(10) Receivables-Nonadmitted	-	-	-
(11) Net Operating Loss Carry-forward	-	-	-
(12) Tax Credit Carry-forward	-	-	-
(13) Other (including items <5% of total Capital Assets)	-	-	-
(99) Subtotal	1,268,237	1,240,466	27,771
(b) Statutory Valuation Allowance Adjustment	-	-	-
(c) Nonadmitted	825,622	653,812	171,810
(d) Admitted Ordinary Deferred tax Asset (2a99 - 2f - 2g)	442,615	586,654	(144,039)
(e) Capital:			
(1) Investments	-	-	-
(2) Net Capital less Carry-forward	-	-	-
(3) Real Estate	-	-	-
(4) Other (including items <5% of total Capital Assets)	-	-	-
(99) Subtotal	-	-	-
(f) Statutory Valuation Allowance Adjustment	-	-	-
(g) Nonadmitted	-	-	-
(h) Admitted Capital Deferred Tax Assets (2a99 - 2f - 2g)	-	-	-
(i) Admitted Deferred Tax Asset (2d + 22h)	442,615	586,654	(144,039)

NOTES TO FINANCIAL STATEMENTS

	(1)	(2)	(3)
	3/31/18	12/31/17	(Col 1 + 2) Change
3 Deferred Tax Liabilities			
(a) Ordinary			
(1) Investments	-	-	-
(2) Fixed Assets	-	-	-
(3) Deferred and Uncollected premium	-	-	-
(4) Policyholder Reserves	-	-	-
(5) Other (including items <5% of ordinary Tax Liabilities)	-	-	-
(99) Subtotal	-	-	-
(b) Capital			
(1) Investments	96,402	658,851	(562,449)
(2) Real Estate		-	
(3) Other (including items <5% of ordinary Tax Liabilities)		-	
(99) Subtotal	96,402	658,851	(562,449)
(c) Deferred Tax Liabilities (3a99 + 3b99)	96,402	658,851	(562,449)
4. Net Deferred Tax Assets/Liabilities (2i – 3c)	346,213	(72,197)	418,410

D Among the more significant book to tax adjustments were the following:

	Amount	Tax Effect	%
Income before taxes	5,259,531	1,104,502	21%
Unearned Premium Adjustment	186,789	39,226	1%
Bond Discount	(38,234)	(8,029)	0%
Loss Reserve Discounting	2,547	535	0%
Dividends Received Deduction	(16,977)	(3,565)	0%
Capital Loss Carry-Forward	-	-	0%
Other, net	11,518	2,418	0%
Total	5,405,174	1,135,087	22%

E At March 31, 2018, the Company has no net capital-loss forward available for recoupment against future capital gains.

F The Company is included in a consolidated federal income tax return with its parent company, DAC Financial Holdings, Inc. The Company has a written agreement, approved by the Company's Board of Directors, which sets forth the manner in which the total combined federal income tax is allocated to each entity which is party to the consolidation. Pursuant to this agreement, the Company has the enforceable right to recoup federal income taxes paid in prior years in the event of future net losses, which it may incur, or recoup its net losses carried forward as an offset to future net income subject to federal income taxes.

10. Information Concerning Parent, Subsidiaries and Affiliates and Other Related Parties

A-C No changes.

D The Company reported \$7,558 and \$6,723 due from affiliates and \$98,087 and \$85,563 due to affiliates in the current and prior years, respectively.

E-F No changes.

G The parent company, Dealers Alliance Corporation, is a non-insurance entity. Through 09/30/10 (and prior years) Dealers Assurance Company provided funds for federal income tax deposits (on a consolidated basis). In prior years other companies included in consolidated tax return reimbursed their portion of federal income tax deposits on a quarterly basis.

H-L Dealers Assurance Company holds no investments in its parent company or affiliates.

11. Debt

The Company does not have any outstanding debt.

12A The Company has no defined benefit plans.

12B-16 No changes to note

17. Sale, Transfer and Servicing of Financial Assets and Extinguishments of Liabilities

The Company does not have any sales or transfers to report.

18. – 19. No changes to note

NOTES TO FINANCIAL STATEMENTS

20. Fair Value Measurements

A.

(1) Assets Measured at Fair Value on a Recurring Basis

(1) Description	(2) (Level 1)	(3) (Level 2)	(4) (Level 3)	(5) Total
a. Assets at fair value				
Cash Equivalents	-			-
Exempt MM Fund	\$ 4,610,028	-	-	\$ 4,610,028
Other MM Fund	391,616	-	-	391,616
Total Cash Equivalent	5,001,644	-	-	5,001,644
Common Stock:				
Indust. & Misc	\$ 2,121,858			\$ 2,121,858
Derivative assets	-	-	-	-
Separate account assets	-	-	-	-
Total assets at fair value	\$ 7,123,502	-	-	\$ 7,123,502
Liabilities at fair value	\$ -	-	-	\$ -
b. Total liabilities at fair value	\$ -	-	-	-

(2) There have been no significant transfers between level 1 and 2.

(3-4) Assets measured at Fair Value on a recurring basis with significant unobservable inputs (level 3)

NONE

B. Other Fair Value Disclosures-Not Applicable

C. Fair Values for all Financial Instruments by level 1, 2 and 3.

Description	Aggregate Fair Value	Admitted Assets	Level 1	Level 2	Level 3	Not Practicable (carrying value)
Bonds	96,463,725	97,655,331	96,463,725			
Preferred Stock	-	-	-			
Common Stock	2,121,858	2,121,858	2,121,858			
Mortgage loans						245,997
Cash, cash equivalents and short-term investments	14,159,972	14,160,244	14,159,972			

D. Items which are not practicable to estimate fair values

It is not practical to determine the fair value of mortgage loans for purposes of the above disclosure of Note 20C due the fact that these items are not traded and therefore quoted market prices are not available. Also, the cost of obtaining estimates of fair values from other sources is considered excessive given the immateriality of the mortgage loans.

Type or Class of Financial Instrument	Carrying Value	Effective Interest Rate	Maturity Date	Explanation
Mortgage Loans DAC 001 Albuquerque, NM	245,997	5.500	07/01/2019	See paragraph above

21 A-F No changes to note.

G The Company has no offsetting and netting of Assets and Liabilities

H The Company has no Joint and Severable Liabilities

I The Company has no risk sharing involving the Affordable Care Act

22 -23 No changes to Note

24. Retrospectively Rated Contracts & Contracts Subject to Redetermination

The Company does not have retrospectively rated contracts or contracts subject to redetermination.

25. Change in Incurred Losses and Loss Adjustment Expenses

Reserves as of December 31, 2017 were \$357,610. As of March 31, 2018, \$155,755 (net of reinsured prior year claims) was paid for incurred losses and loss adjustment expenses attributable to insured events of prior years. There has been a \$201,855 positive prior year development.

There was no re-estimation of unpaid claims and claim adjustment expenses. Business written by DAC is related to service contracts issued on an assortment of consumer goods, but primarily, automobile service contracts. Historically, losses on this coverage are settled within 90 days of incurred date (98.7%); and the balance is settled within 180 days of incurred date

26. – 35. No changes to note.

36. Financial Guaranty Insurance

The company does not write financial guaranty insurance.

GENERAL INTERROGATORIES

PART 1 - COMMON INTERROGATORIES

GENERAL

- 1.1 Did the reporting entity experience any material transactions requiring the filing of Disclosure of Material Transactions with the State of Domicile, as required by the Model Act? Yes [] No [X]
- 1.2 If yes, has the report been filed with the domiciliary state? Yes [] No []
- 2.1 Has any change been made during the year of this statement in the charter, by-laws, articles of incorporation, or deed of settlement of the reporting entity? Yes [] No [X]
- 2.2 If yes, date of change:
- 3.1 Is the reporting entity a member of an Insurance Holding Company System consisting of two or more affiliated persons, one or more of which is an insurer? Yes [X] No []
If yes, complete Schedule Y, Parts 1 and 1A.
- 3.2 Have there been any substantial changes in the organizational chart since the prior quarter end? Yes [X] No []
- 3.3 If the response to 3.2 is yes, provide a brief description of those changes.
Industrial Alliance Insurance and Finance Inc. (iA) purchased Helios Financial Holdings Corp. (including subsidiaries) January 23, 2018.
- 3.4 Is the reporting entity publicly traded or a member of a publicly traded group? Yes [] No [X]
- 3.5 If the response to 3.4 is yes, provide the CIK (Central Index Key) code issued by the SEC for the entity/group.
- 4.1 Has the reporting entity been a party to a merger or consolidation during the period covered by this statement? Yes [] No [X]
- 4.2 If yes, provide the name of the entity, NAIC Company Code, and state of domicile (use two letter state abbreviation) for any entity that has ceased to exist as a result of the merger or consolidation.

1 Name of Entity	2 NAIC Company Code	3 State of Domicile
.....

- 5. If the reporting entity is subject to a management agreement, including third-party administrator(s), managing general agent(s), attorney-in-fact, or similar agreement, have there been any significant changes regarding the terms of the agreement or principals involved? Yes [] No [X] N/A []
If yes, attach an explanation.
- 6.1 State as of what date the latest financial examination of the reporting entity was made or is being made. 12/31/2013
- 6.2 State the as of date that the latest financial examination report became available from either the state of domicile or the reporting entity. This date should be the date of the examined balance sheet and not the date the report was completed or released. 12/31/2013
- 6.3 State as of what date the latest financial examination report became available to other states or the public from either the state of domicile or the reporting entity. This is the release date or completion date of the examination report and not the date of the examination (balance sheet date). 10/03/2014
- 6.4 By what department or departments?
Ohio Department of Insurance
- 6.5 Have all financial statement adjustments within the latest financial examination report been accounted for in a subsequent financial statement filed with Departments? Yes [] No [] N/A [X]
- 6.6 Have all of the recommendations within the latest financial examination report been complied with? Yes [] No [] N/A [X]
- 7.1 Has this reporting entity had any Certificates of Authority, licenses or registrations (including corporate registration, if applicable) suspended or revoked by any governmental entity during the reporting period? Yes [] No [X]
- 7.2 If yes, give full information:
- 8.1 Is the company a subsidiary of a bank holding company regulated by the Federal Reserve Board? Yes [] No [X]
- 8.2 If response to 8.1 is yes, please identify the name of the bank holding company.
- 8.3 Is the company affiliated with one or more banks, thrifts or securities firms? Yes [X] No []
- 8.4 If response to 8.3 is yes, please provide below the names and location (city and state of the main office) of any affiliates regulated by a federal regulatory services agency [i.e. the Federal Reserve Board (FRB), the Office of the Comptroller of the Currency (OCC), the Federal Deposit Insurance Corporation (FDIC) and the Securities Exchange Commission (SEC)] and identify the affiliate's primary federal regulator.

1 Affiliate Name	2 Location (City, State)	3 FRB	4 OCC	5 FDIC	6 SEC
The securities affiliates do not operate in the US.	Quebec, Canada	NO	NO	NO	NO

GENERAL INTERROGATORIES

- 9.1 Are the senior officers (principal executive officer, principal financial officer, principal accounting officer or controller, or persons performing similar functions) of the reporting entity subject to a code of ethics, which includes the following standards? Yes No
 (a) Honest and ethical conduct, including the ethical handling of actual or apparent conflicts of interest between personal and professional relationships;
 (b) Full, fair, accurate, timely and understandable disclosure in the periodic reports required to be filed by the reporting entity;
 (c) Compliance with applicable governmental laws, rules and regulations;
 (d) The prompt internal reporting of violations to an appropriate person or persons identified in the code; and
 (e) Accountability for adherence to the code.
- 9.11 If the response to 9.1 is No, please explain:
- 9.2 Has the code of ethics for senior managers been amended? Yes No
- 9.21 If the response to 9.2 is Yes, provide information related to amendment(s).
- 9.3 Have any provisions of the code of ethics been waived for any of the specified officers? Yes No
- 9.31 If the response to 9.3 is Yes, provide the nature of any waiver(s).

FINANCIAL

- 10.1 Does the reporting entity report any amounts due from parent, subsidiaries or affiliates on Page 2 of this statement? Yes No
- 10.2 If yes, indicate any amounts receivable from parent included in the Page 2 amount: \$ 7,558

INVESTMENT

- 11.1 Were any of the stocks, bonds, or other assets of the reporting entity loaned, placed under option agreement, or otherwise made available for use by another person? (Exclude securities under securities lending agreements.) Yes No
- 11.2 If yes, give full and complete information relating thereto:
12. Amount of real estate and mortgages held in other invested assets in Schedule BA: \$
13. Amount of real estate and mortgages held in short-term investments: \$
- 14.1 Does the reporting entity have any investments in parent, subsidiaries and affiliates? Yes No
- 14.2 If yes, please complete the following:
- | | 1
Prior Year-End
Book/Adjusted
Carrying Value | 2
Current Quarter
Book/Adjusted
Carrying Value |
|---|--|---|
| 14.21 Bonds | \$ 0 | \$ |
| 14.22 Preferred Stock | \$ 0 | \$ |
| 14.23 Common Stock | \$ 0 | \$ |
| 14.24 Short-Term Investments | \$ 0 | \$ |
| 14.25 Mortgage Loans on Real Estate | \$ 0 | \$ |
| 14.26 All Other | \$ 0 | \$ |
| 14.27 Total Investment in Parent, Subsidiaries and Affiliates (Subtotal Lines 14.21 to 14.26) | \$ 0 | \$ 0 |
| 14.28 Total Investment in Parent included in Lines 14.21 to 14.26 above | \$ | \$ |
- 15.1 Has the reporting entity entered into any hedging transactions reported on Schedule DB? Yes No
- 15.2 If yes, has a comprehensive description of the hedging program been made available to the domiciliary state? Yes No
 If no, attach a description with this statement.

STATEMENT AS OF MARCH 31, 2018 OF THE Dealers Assurance Company
GENERAL INTERROGATORIES

16. For the reporting entity's security lending program, state the amount of the following as of the current statement date:
- 16.1 Total fair value of reinvested collateral assets reported on Schedule DL, Parts 1 and 2\$0
- 16.2 Total book adjusted/carrying value of reinvested collateral assets reported on Schedule DL, Parts 1 and 2\$0
- 16.3 Total payable for securities lending reported on the liability page\$0

17. Excluding items in Schedule E - Part 3 - Special Deposits, real estate, mortgage loans and investments held physically in the reporting entity's offices, vaults or safety deposit boxes, were all stocks, bonds and other securities, owned throughout the current year held pursuant to a custodial agreement with a qualified bank or trust company in accordance with Section 1, III - General Examination Considerations, F. Outsourcing of Critical Functions, Custodial or Safekeeping Agreements of the NAIC Financial Condition Examiners Handbook? Yes No
- 17.1 For all agreements that comply with the requirements of the NAIC Financial Condition Examiners Handbook, complete the following:

1 Name of Custodian(s)	2 Custodian Address
US Bank	Winston Salem, NC
Wells Fargo Bank	Richmond, VA
First National Bankers Bank	Little Rock, AR
Citibank, NA	NY, NY
Century Bank	Sante Fe, NM
RBS Citizens, NA	Providence, RI
Conduent State & Local Solutions, Inc	Quincy, MA
Bank of New York Mellon	Atlanta, GA

- 17.2 For all agreements that do not comply with the requirements of the NAIC Financial Condition Examiners Handbook, provide the name, location and a complete explanation:

1 Name(s)	2 Location(s)	3 Complete Explanation(s)
.....

- 17.3 Have there been any changes, including name changes, in the custodian(s) identified in 17.1 during the current quarter? Yes No

- 17.4 If yes, give full information relating thereto:

1 Old Custodian	2 New Custodian	3 Date of Change	4 Reason
.....

- 17.5 Investment management – Identify all investment advisors, investment managers, broker/dealers, including individuals that have the authority to make investment decisions on behalf of the reporting entity. For assets that are managed internally by employees of the reporting entity, note as such. ["...that have access to the investment accounts"; "...handle securities"]

1 Name of Firm or Individual	2 Affiliation
Industrial Alliance Investment Management Inc. (make investment decisions)	A.....
Asset Allocation and Management Company	U.....
Bank of New York Mellon Wealth Management	U.....

- 17.5097 For those firms/individuals listed in the table for Question 17.5, do any firms/individuals unaffiliated with the reporting entity (i.e. designated with a "U") manage more than 10% of the reporting entity's assets? Yes No

- 17.5098 For firms/individuals unaffiliated with the reporting entity (i.e. designated with a "U") listed in the table for Question 17.5, does the total assets under management aggregate to more than 50% of the reporting entity's assets? Yes No

- 17.6 For those firms or individuals listed in the table for 17.5 with an affiliation code of "A" (affiliated) or "U" (unaffiliated), provide the information for the table below.

1 Central Registration Depository Number	2 Name of Firm or Individual	3 Legal Entity Identifier (LEI)	4 Registered With	5 Investment Management Agreement (IMA) Filed
EXEMPT	Industrial Alliance Investment Management Inc.	N/A	N/A	DS.....
109875	Asset Allocation and Management Company	549300DSCHEV1V5113U963	Securities Exchange Commission	NO.....
8275	Bank of New York Wealth Management	N/A	Office of Controller of Currency	NO.....

- 18.1 Have all the filing requirements of the Purposes and Procedures Manual of the NAIC Investment Analysis Office been followed? Yes No

- 18.2 If no, list exceptions:

19. By self-designating 5*GI securities, the reporting entity is certifying the following elements for each self-designated 5*GI security:
- a. Documentation necessary to permit a full credit analysis of the security does not exist.
- b. Issuer or obligor is current on all contracted interest and principal payments.
- c. The insurer has an actual expectation of ultimate payment of all contracted interest and principal.
- Has the reporting entity self-designated 5*GI securities? Yes No

GENERAL INTERROGATORIES

PART 2 - PROPERTY & CASUALTY INTERROGATORIES

1. If the reporting entity is a member of a pooling arrangement, did the agreement or the reporting entity's participation change? Yes [] No [X] N/A []
If yes, attach an explanation.

2. Has the reporting entity reinsured any risk with any other reporting entity and agreed to release such entity from liability, in whole or in part, from any loss that may occur on the risk, or portion thereof, reinsured? Yes [] No [X]
If yes, attach an explanation.

3.1 Have any of the reporting entity's primary reinsurance contracts been canceled? Yes [] No [X]

3.2 If yes, give full and complete information thereto.

4.1 Are any of the liabilities for unpaid losses and loss adjustment expenses other than certain workers' compensation tabular reserves (see Annual Statement Instructions pertaining to disclosure of discounting for definition of "tabular reserves") discounted at a rate of interest greater than zero? Yes [] No [X]

4.2 If yes, complete the following schedule:

1 Line of Business	2 Maximum Interest	3 Discount Rate	TOTAL DISCOUNT				DISCOUNT TAKEN DURING PERIOD			
			4 Unpaid Losses	5 Unpaid LAE	6 IBNR	7 TOTAL	8 Unpaid Losses	9 Unpaid LAE	10 IBNR	11 TOTAL
						0				0
TOTAL			0	0	0	0	0	0	0	0

5. Operating Percentages:

5.1 A&H loss percent %

5.2 A&H cost containment percent %

5.3 A&H expense percent excluding cost containment expenses %

6.1 Do you act as a custodian for health savings accounts? Yes [] No [X]

6.2 If yes, please provide the amount of custodial funds held as of the reporting date \$.....

6.3 Do you act as an administrator for health savings accounts? Yes [] No [X]

6.4 If yes, please provide the balance of the funds administered as of the reporting date \$.....

7. Is the reporting entity licensed or chartered, registered, qualified, eligible or writing business in at least two states? Yes [X] No []

7.1 If no, does the reporting entity assume reinsurance business that covers risks residing in at least one state other than the state of domicile of the reporting entity? Yes [X] No []

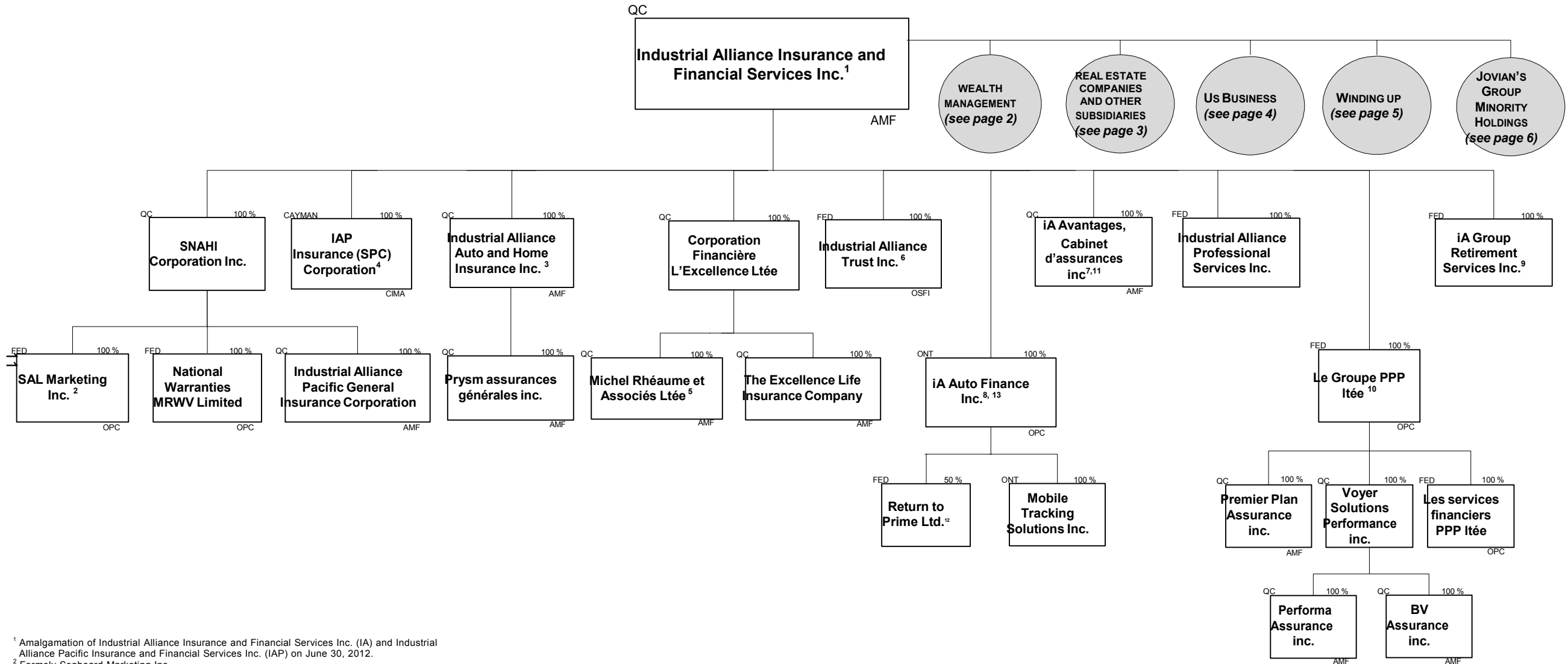
STATEMENT AS OF MARCH 31, 2018 OF THE Dealers Assurance Company
SCHEDULE T - EXHIBIT OF PREMIUMS WRITTEN

Current Year to Date - Allocated by States and Territories

States, etc.	1 Active Status (a)	Direct Premiums Written		Direct Losses Paid (Deducting Salvage)		Direct Losses Unpaid		
		2 Current Year To Date	3 Prior Year To Date	4 Current Year To Date	5 Prior Year To Date	6 Current Year To Date	7 Prior Year To Date	
1. Alabama	AL	L	1,044,687	618,703	162,660	170,597	66,807	47,155
2. Alaska	AK	L	(778)	(192)	0	0	94	5
3. Arizona	AZ	L	142,659	165,039	154,917	69,882	33,256	26,913
4. Arkansas	AR	L	863,990	613,436	287,682	220,316	92,037	68,402
5. California	CA	L	803,495	403,778	198,158	129,729	89,169	27,509
6. Colorado	CO	L	1,527,921	1,582,933	797,086	960,647	120,486	150,369
7. Connecticut	CT	L	141,649	130,623	94,346	120,212	14,419	18,545
8. Delaware	DE	L	2,480,182	(244,408)	1,239,037	105,796	241,990	102,651
9. District of Columbia	DC	L		0		0		
10. Florida	FL	L	1,901,761	2,086,486	1,255,228	966,745	426,337	191,854
11. Georgia	GA	L	491,742	294,834	118,008	84,375	41,266	149,030
12. Hawaii	HI	L		0		0		
13. Idaho	ID	L	119,791	6,342	8,525	0	1,122	78
14. Illinois	IL	L	369,086	234,102	252,135	112,282	44,090	29,260
15. Indiana	IN	L	748,693	417,429	154,371	184,411	43,608	35,805
16. Iowa	IA	L	74,664	34,633	21,560	21,158	5,852	5,683
17. Kansas	KS	L	28,439	9,785	1,086	5,999	267	591
18. Kentucky	KY	L	257,006	215,620	80,496	69,620	26,440	24,915
19. Louisiana	LA	L	853,533	816,582	458,989	328,670	202,657	134,274
20. Maine	ME	L	217,152	170,111	59,573	83,061	33,595	12,286
21. Maryland	MD	L	620,169	483,698	202,929	241,006	50,832	47,904
22. Massachusetts	MA	L	210,307	211,002	94,329	98,462	23,978	22,656
23. Michigan	MI	L	1,811,643	1,403,378	879,763	1,019,681	118,826	109,978
24. Minnesota	MN	L	289,261	234,972	151,345	175,786	24,760	25,623
25. Mississippi	MS	L	555,179	585,604	140,742	136,697	34,274	34,276
26. Missouri	MO	L	645,535	380,338	126,265	126,831	58,509	31,834
27. Montana	MT	L	144,552	27,442	36,107	26,665	4,744	4,273
28. Nebraska	NE	L	168,395	93,657	52,841	24,833	14,562	9,979
29. Nevada	NV	L	61,384	77,538	31,494	33,986	6,481	7,471
30. New Hampshire	NH	L	64,098	68,370	32,025	48,008	6,953	7,249
31. New Jersey	NJ	L	378,380	295,992	139,313	142,268	24,808	23,399
32. New Mexico	NM	L	817,828	595,216	60,121	87,894	34,329	20,379
33. New York	NY	L	1,202,170	1,009,797	632,083	781,386	94,091	98,039
34. North Carolina	NC	L	1,965,011	2,146,774	1,423,964	1,556,531	366,187	410,965
35. North Dakota	ND	L	7,674	11,597	18,595	23,346	2,559	3,469
36. Ohio	OH	L	2,837,031	2,727,684	781,711	730,784	223,981	195,339
37. Oklahoma	OK	L	344,666	122,015	60,718	57,262	63,626	38,142
38. Oregon	OR	L	24,095	26,642	6,399	4,250	3,042	1,791
39. Pennsylvania	PA	L	999,811	980,441	288,145	377,655	104,277	69,552
40. Rhode Island	RI	L	58,714	38,229	21,208	11,754	4,296	3,526
41. South Carolina	SC	L	78,165	171,404	81,679	82,825	50,507	32,545
42. South Dakota	SD	L	16,886	(754)	1,540	95	417	410
43. Tennessee	TN	L	924,145	701,413	205,634	205,498	100,832	62,294
44. Texas	TX	L	8,642,126	9,140,927	2,830,004	3,394,877	2,032,906	1,871,251
45. Utah	UT	L	1,145	1,566	190	95	452	182
46. Vermont	VT	L	9,270	51,594	36,174	49,640	7,569	7,375
47. Virginia	VA	L	387,318	293,955	102,029	117,930	28,513	25,458
48. Washington	WA	L	3,618,833	4,652,333	1,871,541	2,005,949	282,679	201,966
49. West Virginia	WV	L	159,626	122,231	49,698	131,401	28,830	8,890
50. Wisconsin	WI	L	152,989	209,197	69,384	44,100	42,401	24,583
51. Wyoming	WY	L	42,971	53,201	12,685	13,107	3,991	2,526
52. American Samoa	AS	N						
53. Guam	GU	N						
54. Puerto Rico	PR	N						
55. U.S. Virgin Islands	VI	N						
56. Northern Mariana Islands	MP	N						
57. Canada	CAN	N						
58. Aggregate Other Alien	OT	XXX	0	0	0	0	0	0
59. Totals	XXX		39,305,049	34,473,289	15,784,512	15,384,102	5,327,704	4,428,649
DETAILS OF WRITE-INS								
58001.	XXX							
58002.	XXX							
58003.	XXX							
58998. Summary of remaining write-ins for Line 58 from overflow page	XXX		0	0	0	0	0	0
58999. Totals (Lines 58001 through 58003 plus 58998)(Line 58 above)	XXX		0	0	0	0	0	0

(a) Active Status Counts:

L - Licensed or Chartered - Licensed Insurance carrier or domiciled RRG	51	R - Registered - Non-domiciled RRGs	0
E - Eligible - Reporting entities eligible or approved to write surplus lines in the state (other than their state of domicile - see DSLI)	0	Q - Qualified - Qualified or accredited reinsurer	0
D - Domestic Surplus Lines Insurer (DSLII) - Reporting entities authorized to write surplus lines in the state of domicile	0	N - None of the above - Not allowed to write business in the state	6



¹ Amalgamation of Industrial Alliance Insurance and Financial Services Inc. (IA) and Industrial Alliance Pacific Insurance and Financial Services Inc. (IAP) on June 30, 2012.

² Formerly Seaboard Marketing Inc.

³ Formerly Industrial Alliance General Insurance Company.

⁴ Following the amalgamation of IA and IAP, this subsidiary is wholly-owned by IA.

⁵ Formerly Société d'Investissements L'Excellence Ltée.

⁶ Industrial Alliance Trust Company changed its name and its jurisdiction on March 2, 2005.

⁷ Amalgamation of Solicour Inc. and Solicour Insurance Services Inc. on January 1st, 2014.

⁸ Acquisition of CTL Corp. by IAIFS on October 1st, 2015.

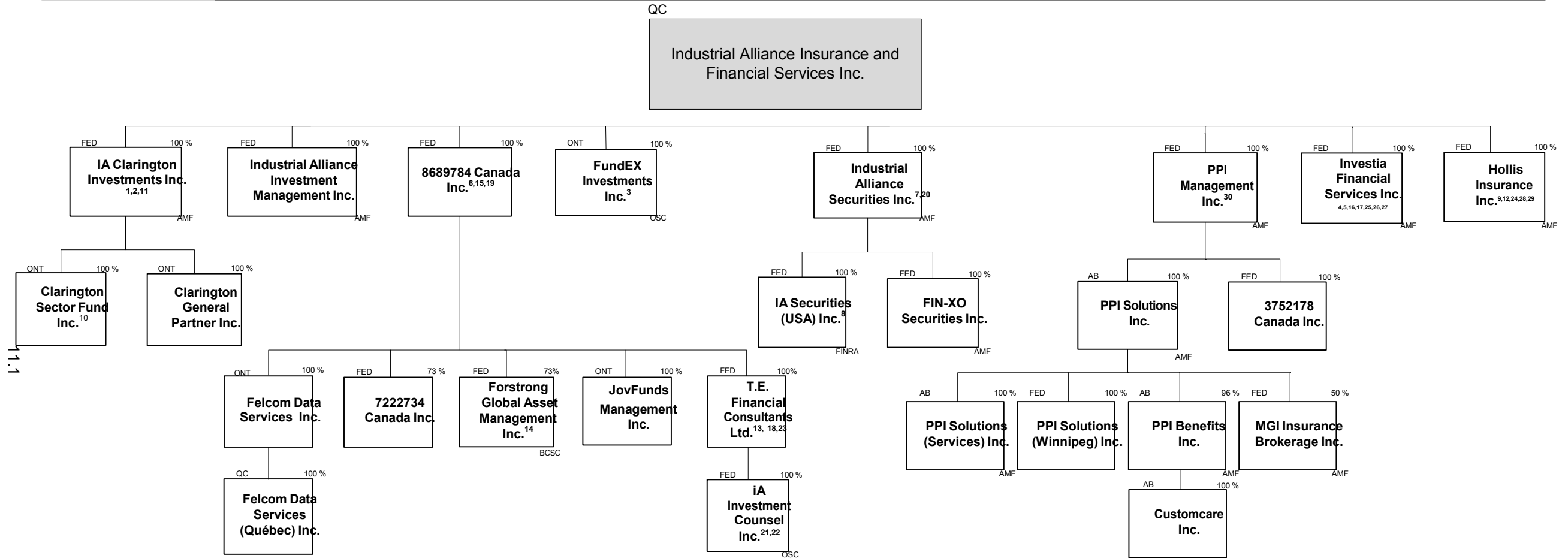
⁹ Acquisition of iA Group Retirement Services Inc. (Formerly BMO Group Retirement Services Inc.) by IAIFS on March 22nd, 2016.

¹⁰ Acquisition of Groupe PPP by IAIFS on November 18, 2016.

¹¹ Amalgamation of iA Avantages Cabinets d'assurances inc. and Solicour inc. on March 1st, 2017.

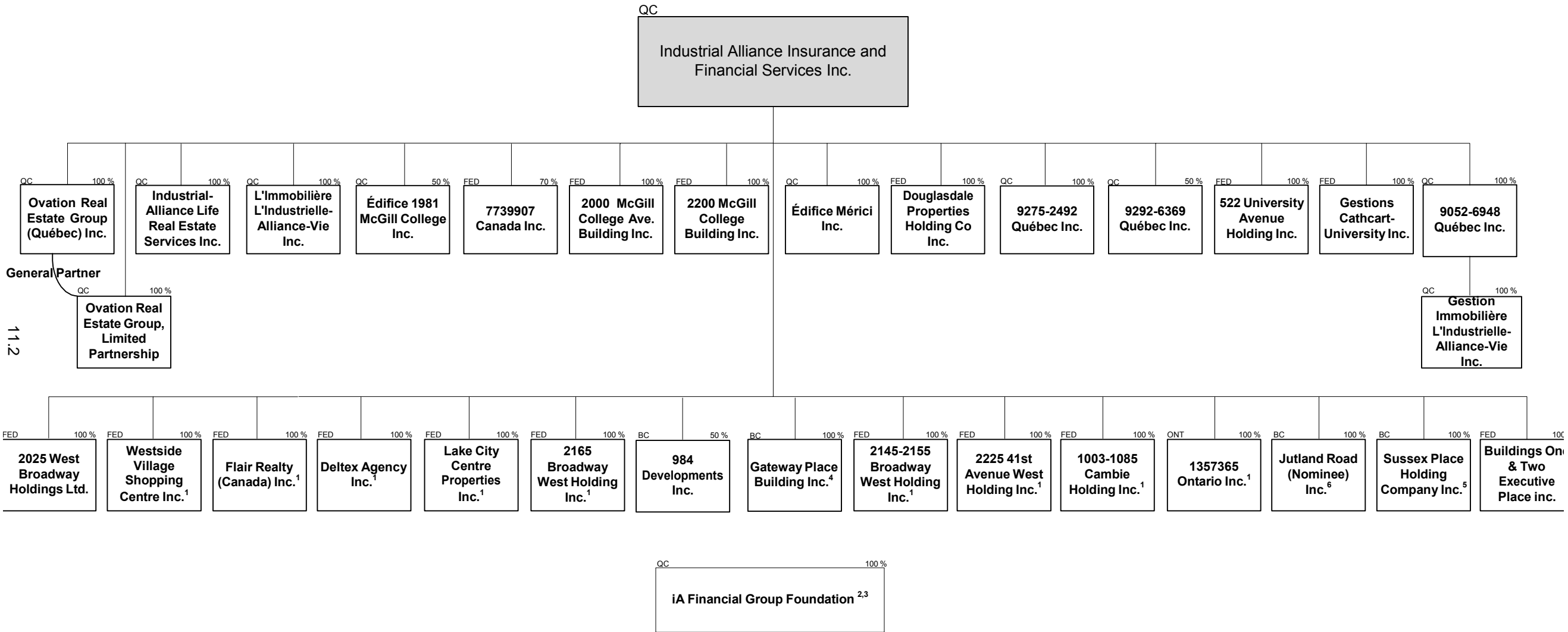
¹² Incorporation of Return to Prime Ltd. on February 16, 2017, 50% owned by CTL Corp. on March 3rd, 2017.

¹³ CTL Corp. changed its name to iA Auto Finance Inc. on June 19, 2017.



¹ Amalgamation of Sarbit Asset Management Inc. (acquired on October 31, 2008) and IA Clarington Investments Inc. on January 1st, 2009.
² Amalgamation of Industrial Alliance Mutual Funds Inc. and IA Clarington Investments on January 1st, 2011.
³ Acquisition of Fundtrade Financial Corp. on August 18, 2006 and amalgamation of Fundtrade Financial Corp. and FundEx Investments Inc. on September 1st, 2006.
⁴ Acquisition of National Financial Corporation on July 1st, 2008 and amalgamation of NFC, Aegon Dealer Services Canada and Investia Services Inc. on September 30, 2008.
⁵ Amalgamation of Investia Financial Services Inc. and Dundee Private Investors Ltd. on September 1st, 2009.
⁶ Amalgamation of Jovian Capital Corporation and Jovian Asset Management Inc. on January 1st, 2014.
⁷ Amalgamation of Industrial Alliance Securities Inc. and MGI Securities Inc. on April 1st, 2014.
⁸ Formerly MGI Securities (USA) Inc.
⁹ Amalgamation of National Financial Insurance Agency Inc. and E. Paul Abbott Financial Group Inc. on July 18, 2014.
¹⁰ Amalgamation of Clarington Sector Fund Inc. and JovCorporate Funds Ltd. on November 28, 2014.
¹¹ Amalgamation of IA Clarington Investments Inc. and JovFinancial Solutions Inc. on March 1st, 2015.
¹² Amalgamation of National Financial Insurance Agency Inc. and Ten Star Life Insurance Brokers Inc. on May 1st, 2015.
¹³ Acquisition of Conseillers Financiers T.E. (Québec) Inc. on May 15, 2015.
¹⁴ Formerly Hahn Investment Stewards & Company Inc.
¹⁵ Formerly Jovian Capital Corporation
¹⁶ Acquisition of Les Services financiers Planifax inc. by Investia on January 1st, 2016
¹⁷ Amalgamation of Investia Financial Services and Planifax on January 1st, 2016

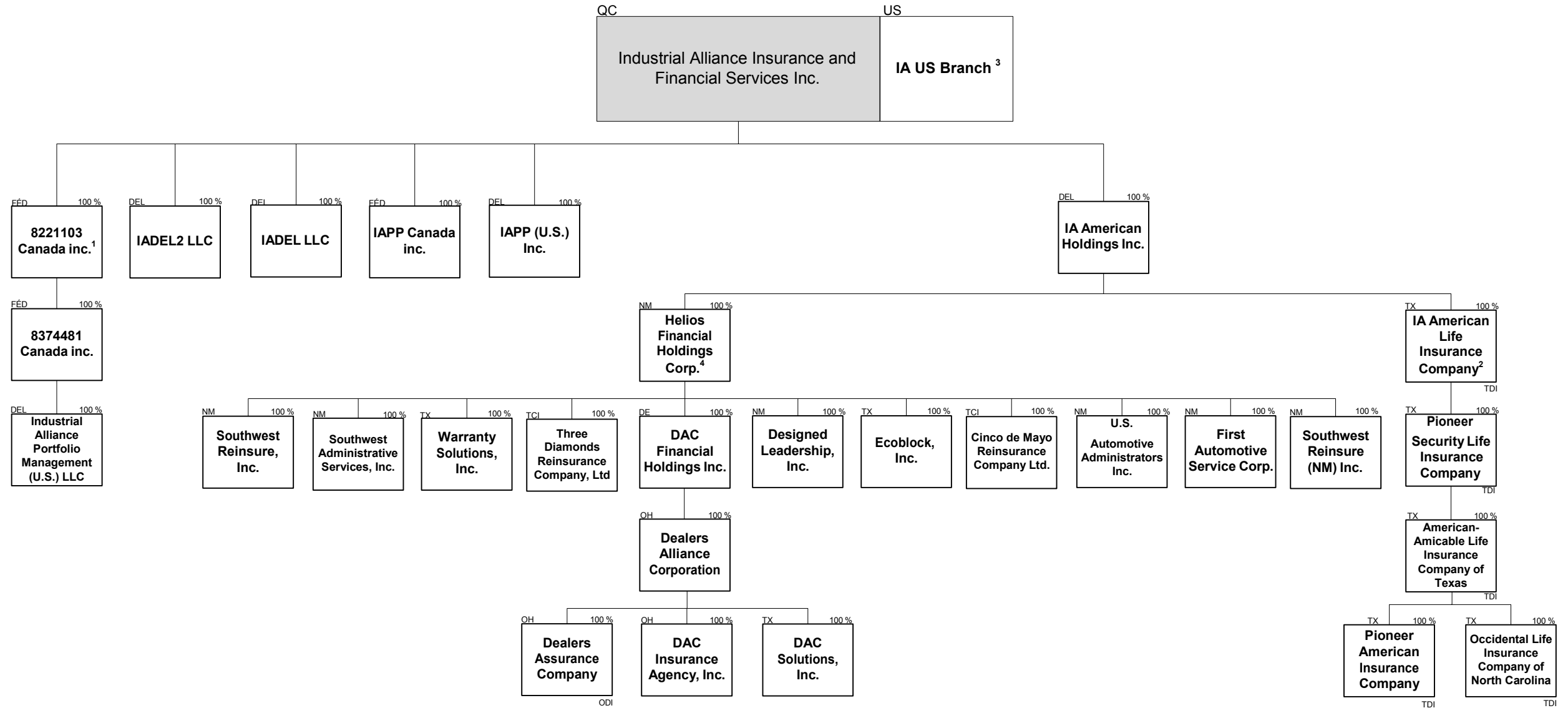
¹⁸ Acquisition of Doherty & Bryant Financial Strategists Inc. by TEFC on March 1st, 2016.
¹⁹ Amalgamation of 8689784 Canada Inc. and 2782073 Canada Inc. on April 28, 2016.
²⁰ Amalgamation of Industrial Alliance Securities Inc. and Burgeonvest Bick Securities Limited on May 1st, 2016.
²¹ Amalgamation of T.E. Investment Counsel Inc., Leon Frazer & Associates Inc. and Fit Private Investment Counsel Inc. on May 1st, 2016.
²² Formerly T.E. Investment Counsel Inc.
²³ Amalgamation of Consillers Financiers T.E. (Québec) Inc., Doherty & Bryant Financial Strategists Inc., Bryant Financial Group Inc. and T.E. Financial Consultants Ltd on June 1st, 2016
²⁴ Amalgamation of NFIA, FAB Financial Advisors Brokerage Group Inc., Integrated Financial Group Inc., Groupe Uni-Vie B.B.A. inc., Groupe Financier Moreau Inc. MGI Insurance Agency Inc. and Burgeonvest Insurance Corporation on July 1st, 2016
²⁵ Acquisition of Byrns Holdings Inc. and Christoph Holdings Inc. by Investia Financial Services Inc. on December 1st, 2016
²⁶ Liquidation of Byrns Holdings Inc., Christoph Holdings Inc. Roybyrns & Associates Inc. and Services Financier G.A.P. Financial Services Inc. on December 15, 2016 and Winding up of Byrns, Christoph, Roybyrns and G.A.P. on December 31st, 2016
²⁷ Acquisition of HollisWealth Advisory Services Inc. by IAIFS and amalgamated with Investia, both on August 4, 2017.
²⁸ Formerly National Financial Insurance Agency Inc. August 4, 2017.
²⁹ Acquisition of HollisWealth Insurance Agency Ltd. by IAIFS, transfert of shares to Investia and afterwards to Hollis Insurance Inc. and finally liquidate into Hollis Insurance Inc., all on August 4, 2017. (page 5)
³⁰ Acquisition of PPI Management Inc. by IAIFS on February 26, 2018.



¹ Following the amalgamation of IA and IAP, these subsidiaries are wholly-owned by IA.
² Non-profit organization with charitable status.
³ Formely Industrial Alliance Foundation for Learning a Second Language
⁴ Formely Bosa Properties (Gateway-Comm) Inc.
⁵ Incorporated by IAISF on November 1st, 2017
⁶ Incorporated by IAISF on November 15, 2017

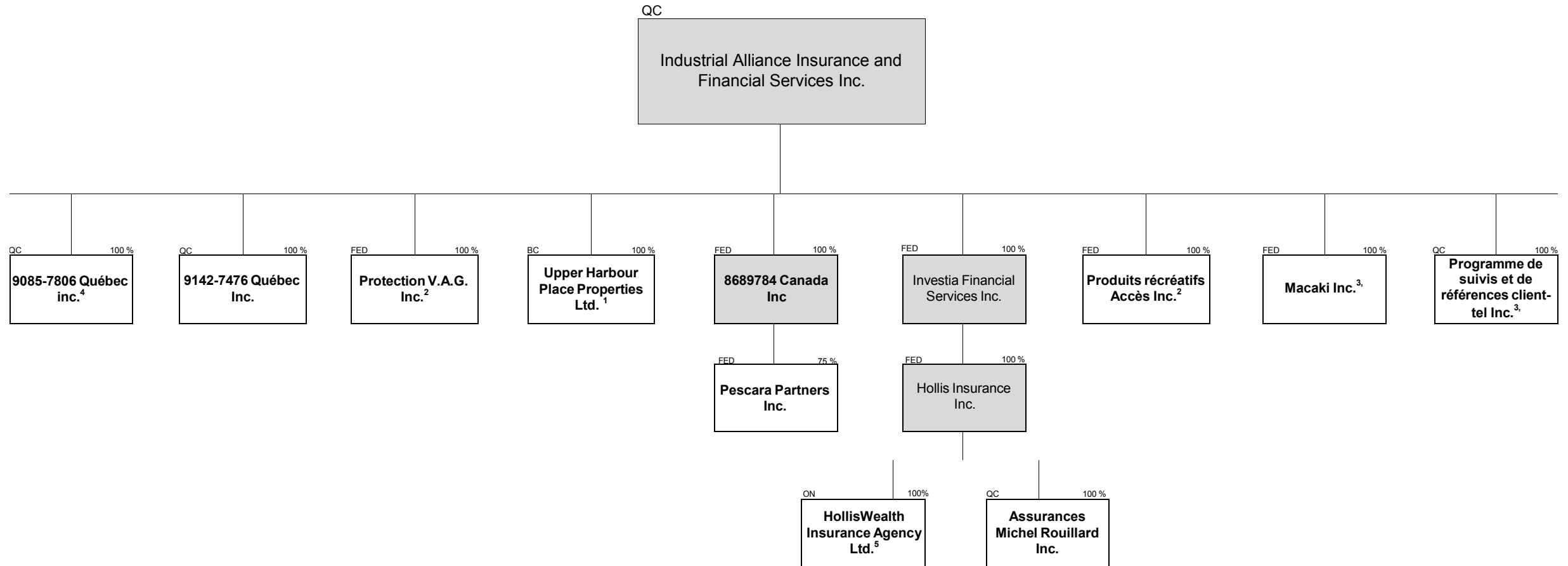


CORPORATE CHART
US BUSINESS and INVESTMENT ACTIVITIES



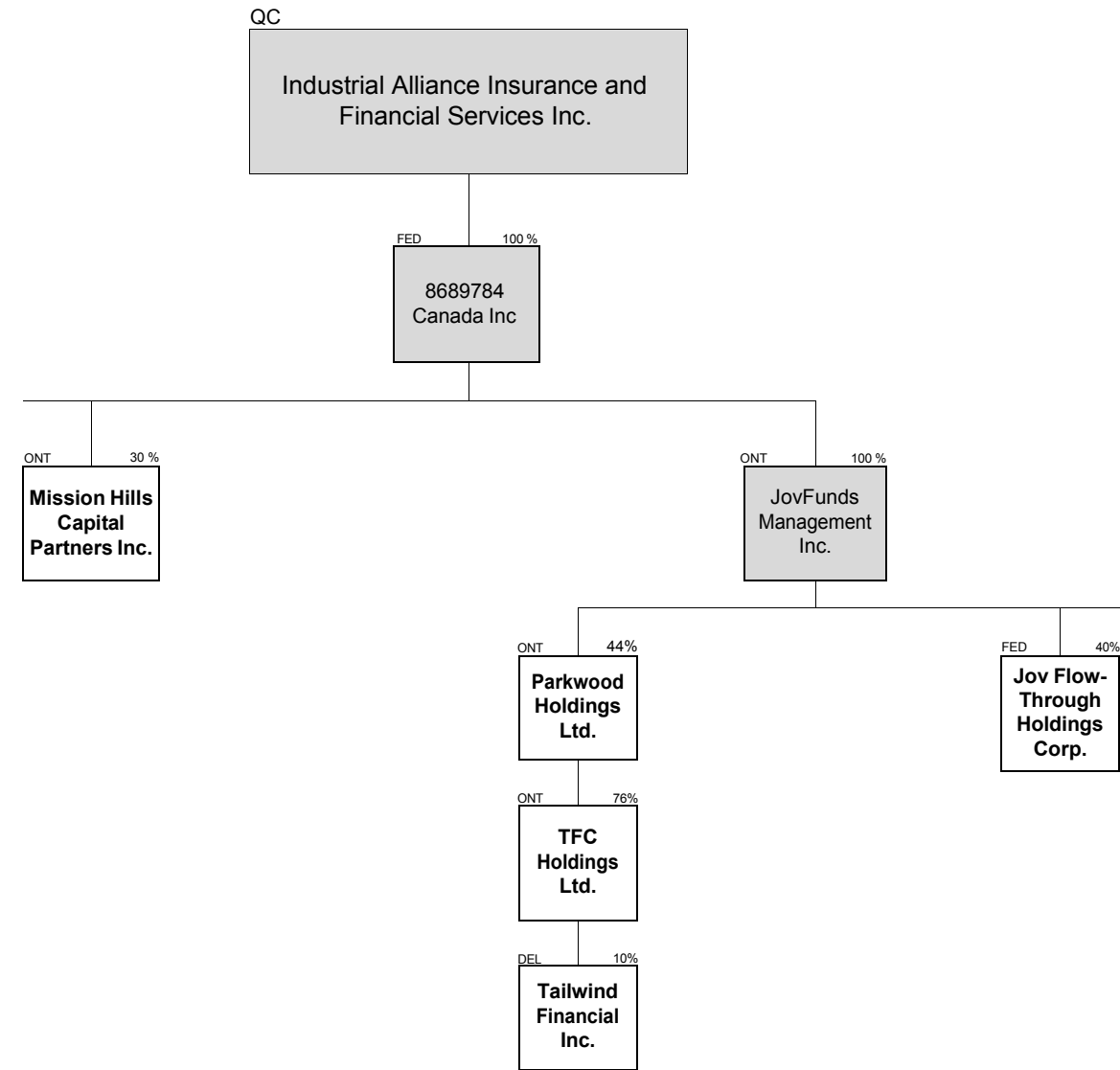
11.3

¹ New company resulting of the amalgamation of 6895808 Canada Inc. and 6895816 Canada Inc. on July 4, 2012.
² Formely United Family Life Insurance Company.
³ IAIFS carries on business in the U.S. via its American branch which is not a distinct corporate entity.
⁴ Acquisition by IA American Holdings Inc. on January 23, 2018.



11.4

¹ Following the amalgamation of IA and IAP, this subsidiary is wholly-owned by IA.
² Liquidated in IA on July 1st, 2013.
³ Liquidated in IA on November 1st, 2013.
⁴ Liquidated in IA on February 15, 2017.
⁵ Liquidated in Hollis Insurance Inc. (Formelly NFIA) on August 4,2017.



STATEMENT AS OF MARCH 31, 2018 OF THE Dealers Assurance Company

SCHEDULE Y

PART 1A - DETAIL OF INSURANCE HOLDING COMPANY SYSTEM

1	2	3	4	5	6	7	8	9	10	11	12	13	14	15	16
Group Code	Group Name	NAIC Company Code	ID Number	Federal RSSD	CIK	Name of Securities Exchange if Publicly Traded (U.S. or International)	Names of Parent, Subsidiaries Or Affiliates	Domiciliary Location	Relationship to Reporting Entity	Directly Controlled by (Name of Entity/Person)	Type of Control (Ownership, Board, Management, Attorney-in-Fact, Influence, Other)	If Control is Ownership Provide Percentage	Ultimate Controlling Entity(ies)/Person(s)	Is an SCA Filing Required? (Y/N)	*
..0315	Industrial Alliance GRP	..00000	00-0000000			TSX	Industrial Alliance Insurance and Financial Services Inc.	..CAN	..UIP	Publicly Traded			Industrial Alliance Ins. & Fin. Srv., Inc.	..N	
..0315	Industrial Alliance GRP	..14406	98-0018913				Industrial Alliance Insurance and Financial Services - USB	..TX	..IA	Industrial Alliance Insurance and Financial Services Inc	Ownership/Management/Board of Directors		Industrial Alliance Ins. & Fin. Srv., Inc.	..N	
..0315	Industrial Alliance GRP	..00000	85-0479228				Helios Financial Holdings, Corp.	..NM	..UIP	IA American Holdings Inc.	Ownership		Industrial Alliance Ins. & Fin. Srv., Inc.	..N	
..0315	Industrial Alliance GRP	..00000	20-0833446				DAC Financial Holdings, Inc.	..DE	..UIP	Helios Financial Holdings, Corp.	Ownership/Management/Board of Directors		Industrial Alliance Ins. & Fin. Srv., Inc.	..N	
..0315	Industrial Alliance GRP	..00000	31-0906655				Dealers Alliance Corp.	..OH	..UDP	DAC Financial Holdings, Inc	Ownership/Management/Board of Directors		Industrial Alliance Ins. & Fin. Srv., Inc.	..N	
..0315	Industrial Alliance GRP	..16705	34-6513705				Dealers Assurance Company	..OH	..RE	Dealers Alliance Corp.	Ownership/Management/Board of Directors		Industrial Alliance Ins. & Fin. Srv., Inc.	..N	
..0315	Industrial Alliance GRP	..00000	31-0908416				DAC Insurance Agency, Inc.	..OH	..IA	Dealers Alliance Corp.	Ownership/Management/Board of Directors		Industrial Alliance Ins. & Fin. Srv., Inc.	..N	
..0315	Industrial Alliance GRP	..00000	46-2008908				DAC Solutions, Inc.	..TX	..NIA	Dealers Alliance Corp.	Ownership/Management/Board of Directors		Industrial Alliance Ins. & Fin. Srv., Inc.	..N	
..0315	Industrial Alliance GRP	..00000	85-0339432				Southwest Reinsure, Inc.	..NM	..NIA	Helios Financial Holdings, Corp.	Ownership/Management/Board of Directors		Industrial Alliance Ins. & Fin. Srv., Inc.	..N	
..0315	Industrial Alliance GRP	..00000	85-0465455				Southwest Administrative Svcs, Inc.	..NM	..NIA	Helios Financial Holdings, Corp.	Ownership/Management/Board of Directors		Industrial Alliance Ins. & Fin. Srv., Inc.	..N	
..0315	Industrial Alliance GRP	..00000	42-1560831				Warranty Solutions, Inc.	..TX	..NIA	Helios Financial Holdings, Corp.	Ownership/Management/Board of Directors		Industrial Alliance Ins. & Fin. Srv., Inc.	..N	
..0315	Industrial Alliance GRP	..00000	98-0231706				Three Diamonds Reinsurance Co., LTD	..TCA	..IA	Helios Financial Holdings, Corp.	Ownership/Management/Board of Directors		Industrial Alliance Ins. & Fin. Srv., Inc.	..N	
..0315	Industrial Alliance GRP	..00000	85-0339431				Designed Leadership, Inc.	..NM	..NIA	Helios Financial Holdings, Corp.	Ownership/Management/Board of Directors		Industrial Alliance Ins. & Fin. Srv., Inc.	..N	
..0315	Industrial Alliance GRP	..00000	42-1563507				Ecoblock, Inc.	..TX	..NIA	Helios Financial Holdings, Corp.	Ownership/Management/Board of Directors		Industrial Alliance Ins. & Fin. Srv., Inc.	..N	
..0315	Industrial Alliance GRP	..00000	98-0516902				Cinco de Mayo Reinsurance Co., LTD	..TCA	..IA	Helios Financial Holdings, Corp.	Ownership/Management/Board of Directors		Industrial Alliance Ins. & Fin. Srv., Inc.	..N	
..0315	Industrial Alliance GRP	..00000	85-0464095				US Automotive Administrators, Inc.	..NM	..NIA	Helios Financial Holdings, Corp.	Ownership/Management/Board of Directors		Industrial Alliance Ins. & Fin. Srv., Inc.	..N	
..0315	Industrial Alliance GRP	..00000	91-2020119				First Automotive Service Corp.	..NM	..NIA	Helios Financial Holdings, Corp.	Ownership/Management/Board of Directors		Industrial Alliance Ins. & Fin. Srv., Inc.	..N	
..0315	Industrial Alliance GRP	..00000	20-4986921				Southwest Reinsure (NM), Inc.	..NM	..NIA	Helios Financial Holdings, Corp.	Ownership/Management/Board of Directors		Industrial Alliance Ins. & Fin. Srv., Inc.	..N	
..0315	Industrial Alliance GRP	..91693	13-3036472				IA American Life Insurance Company	..TX	..IA	IA American Holdings Inc.	Ownership		Industrial Alliance Ins. & Fin. Srv., Inc.	..N	
..0315	Industrial Alliance GRP	..67946	75-1083342				Pioneer Security Life Insurance Company	..TX	..IA	IA American Life Insurance Company	Ownership/Management/Board of Directors		Industrial Alliance Ins. & Fin. Srv., Inc.	..N	
..0315	Industrial Alliance GRP	..68594	74-2179909				American Amicable Life Ins. Co. of Texas	..TX	..IA	Pioneer Security Life Insurance Company	Ownership/Management/Board of Directors		Industrial Alliance Ins. & Fin. Srv., Inc.	..N	
..0315	Industrial Alliance GRP	..67148	56-0343440				Occidental Life Insurance Co. of North Carolina	..TX	..IA	American Amicable Life Insurance Co. of Texas	Ownership/Management/Board of Directors		Industrial Alliance Ins. & Fin. Srv., Inc.	..N	
..0315	Industrial Alliance GRP	..67873	75-0914374				Pioneer American Insurance Company	..TX	..IA	American Amicable Life Insurance Co. of Texas	Ownership/Management/Board of Directors		Industrial Alliance Ins. & Fin. Srv., Inc.	..N	

Asterisk	Explanation
----------	-------------

STATEMENT AS OF MARCH 31, 2018 OF THE Dealers Assurance Company

PART 1 - LOSS EXPERIENCE

Line of Business	Current Year to Date			4 Prior Year to Date Direct Loss Percentage
	1 Direct Premiums Earned	2 Direct Losses Incurred	3 Direct Loss Percentage	
1. Fire			0.0	0.0
2. Allied Lines			0.0	0.0
3. Farmowners multiple peril			0.0	0.0
4. Homeowners multiple peril			0.0	0.0
5. Commercial multiple peril			0.0	0.0
6. Mortgage guaranty			0.0	0.0
8. Ocean marine			0.0	0.0
9. Inland marine			0.0	0.0
10. Financial guaranty			0.0	0.0
11.1 Medical professional liability - occurrence			0.0	0.0
11.2 Medical professional liability - claims-made			0.0	0.0
12. Earthquake			0.0	0.0
13. Group accident and health			0.0	0.0
14. Credit accident and health			0.0	0.0
15. Other accident and health			0.0	0.0
16. Workers' compensation			0.0	0.0
17.1 Other liability - occurrence	1,639,790	1,743,564	106.3	112.6
17.2 Other liability - claims-made			0.0	0.0
17.3 Excess workers' compensation			0.0	0.0
18.1 Products liability - occurrence			0.0	0.0
18.2 Products liability - claims-made			0.0	0.0
19.1,19.2 Private passenger auto liability			0.0	0.0
19.3,19.4 Commercial auto liability			0.0	0.0
21. Auto physical damage			0.0	0.0
22. Aircraft (all perils)			0.0	0.0
23. Fidelity			0.0	0.0
24. Surety			0.0	0.0
26. Burglary and theft			0.0	0.0
27. Boiler and machinery			0.0	0.0
28. Credit			0.0	0.0
29. International			0.0	0.0
30. Warranty	27,921,420	14,040,950	50.3	46.3
31. Reinsurance - Nonproportional Assumed Property	XXX	XXX	XXX	XXX
32. Reinsurance - Nonproportional Assumed Liability	XXX	XXX	XXX	XXX
33. Reinsurance - Nonproportional Assumed Financial Lines	XXX	XXX	XXX	XXX
34. Aggregate write-ins for other lines of business	0	0	0.0	0.0
35. Totals	29,561,210	15,784,514	53.4	48.4
DETAILS OF WRITE-INS				
3401.				
3402.				
3403.				
3498. Summary of remaining write-ins for Line 34 from overflow page	0	0	0.0	0.0
3499. Totals (Lines 3401 through 3403 plus 3498)(Line 34 above)	0	0	0.0	0.0

PART 2 - DIRECT PREMIUMS WRITTEN

Line of Business	1	2	3
	Current Quarter	Current Year to Date	Prior Year Year to Date
1. Fire	0		
2. Allied Lines	0		
3. Farmowners multiple peril	0		
4. Homeowners multiple peril	0		
5. Commercial multiple peril	0		
6. Mortgage guaranty	0		
8. Ocean marine	0		
9. Inland marine	0		
10. Financial guaranty	0		
11.1 Medical professional liability - occurrence	0		
11.2 Medical professional liability - claims-made	0		
12. Earthquake	0		
13. Group accident and health	0		
14. Credit accident and health	0		
15. Other accident and health	0		
16. Workers' compensation	0		
17.1 Other liability - occurrence	3,476,147	3,476,147	3,147,571
17.2 Other liability - claims-made	0		
17.3 Excess workers' compensation	0		
18.1 Products liability - occurrence	0		
18.2 Products liability - claims-made	0		
19.1,19.2 Private passenger auto liability	0		
19.3,19.4 Commercial auto liability	0		
21. Auto physical damage	0		
22. Aircraft (all perils)	0		
23. Fidelity	0		
24. Surety	0		
26. Burglary and theft	0		
27. Boiler and machinery	0		
28. Credit	0		
29. International	0		
30. Warranty	35,828,902	35,828,902	31,325,718
31. Reinsurance - Nonproportional Assumed Property	XXX	XXX	XXX
32. Reinsurance - Nonproportional Assumed Liability	XXX	XXX	XXX
33. Reinsurance - Nonproportional Assumed Financial Lines	XXX	XXX	XXX
34. Aggregate write-ins for other lines of business	0	0	0
35. Totals	39,305,049	39,305,049	34,473,289
DETAILS OF WRITE-INS			
3401.			
3402.			
3403.			
3498. Summary of remaining write-ins for Line 34 from overflow page	0	0	0
3499. Totals (Lines 3401 through 3403 plus 3498)(Line 34 above)	0	0	0

STATEMENT AS OF MARCH 31, 2018 OF THE Dealers Assurance Company

PART 3 (000 omitted)

LOSS AND LOSS ADJUSTMENT EXPENSE RESERVES SCHEDULE

	1	2	3	4	5	6	7	8	9	10	11	12	13
Years in Which Losses Occurred	Prior Year-End Known Case Loss and LAE Reserves	Prior Year-End IBNR Loss and LAE Reserves	Total Prior Year-End Loss and LAE Reserves (Cols. 1+2)	2018 Loss and LAE Payments on Claims Reported as of Prior Year-End	2018 Loss and LAE Payments on Claims Unreported as of Prior Year-End	Total 2018 Loss and LAE Payments (Cols. 4+5)	Q.S. Date Known Case Loss and LAE Reserves on Claims Reported and Open as of Prior Year End	Q.S. Date Known Case Loss and LAE Reserves on Claims Reported or Reopened Subsequent to Prior Year End	Q.S. Date IBNR Loss and LAE Reserves	Total Q.S. Loss and LAE Reserves (Cols.7+8+9)	Prior Year-End Known Case Loss and LAE Reserves Developed (Savings)/ Deficiency (Cols.4+7 minus Col. 1)	Prior Year-End IBNR Loss and LAE Reserves Developed (Savings)/ Deficiency (Cols. 5+8+9 minus Col. 2)	Prior Year-End Total Loss and LAE Reserve Developed (Savings)/ Deficiency (Cols. 11+12)
1. 2015 + Prior			0			0				0	0	0	0
2. 2016			0			0				0	0	0	0
3. Subtotals 2016 + Prior	0	0	0	0	0	0	0	0	0	0	0	0	0
4. 2017		358	358		156	156			0	0	0	(202)	(202)
5. Subtotals 2017 + Prior	0	358	358	0	156	156	0	0	0	0	0	(202)	(202)
6. 2018	XXX	XXX	XXX	XXX	101	101	XXX		358	358	XXX	XXX	XXX
7. Totals	0	358	358	0	257	257	0	0	358	358	0	(202)	(202)
8. Prior Year-End Surplus As Regards Policyholders	67,259										Col. 11, Line 7 As % of Col. 1 Line 7	Col. 12, Line 7 As % of Col. 2 Line 7	Col. 13, Line 7 As % of Col. 3 Line 7
											1. 0.0	2. (56.4)	3. (56.4)
													Col. 13, Line 7 As a % of Col. 1 Line 8
													4. (0.3)

SUPPLEMENTAL EXHIBITS AND SCHEDULES INTERROGATORIES

The following supplemental reports are required to be filed as part of your statement filing. However, in the event that your company does not transact the type of business for which the special report must be filed, your response of NO to the specific interrogatory will be accepted in lieu of filing a "NONE" report and a bar code will be printed below. If the supplement is required of your company but is not being filed for whatever reason enter SEE EXPLANATION and provide an explanation following the interrogatory questions.

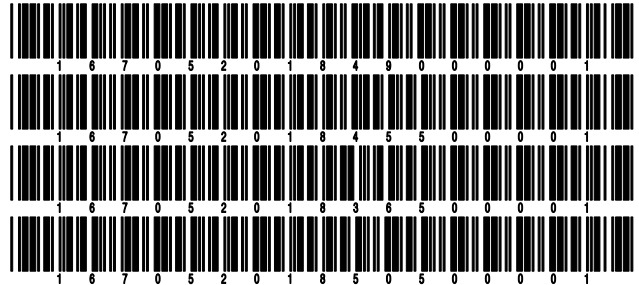
	Response
1. Will the Trusteed Surplus Statement be filed with the state of domicile and the NAIC with this statement?	NO
2. Will Supplement A to Schedule T (Medical Professional Liability Supplement) be filed with this statement?	NO
3. Will the Medicare Part D Coverage Supplement be filed with the state of domicile and the NAIC with this statement?	NO
4. Will the Director and Officer Insurance Coverage Supplement be filed with the state of domicile and the NAIC with this statement?	NO

Explanations:

1. Not Applicable
2. Not Applicable
3. Not Applicable
4. Not Applicable

Bar Codes:

1. Trusteed Surplus Statement [Document Identifier 490]
2. Supplement A to Schedule T [Document Identifier 455]
3. Medicare Part D Coverage Supplement [Document Identifier 365]
4. Director and Officer Supplement [Document Identifier 505]



OVERFLOW PAGE FOR WRITE-INS

STATEMENT AS OF MARCH 31, 2018 OF THE Dealers Assurance Company

SCHEDULE A - VERIFICATION

Real Estate

	1 Year to Date	2 Prior Year Ended December 31
1. Book/adjusted carrying value, December 31 of prior year	2,952,088	1,778,518
2. Cost of acquired:		
2.1 Actual cost at time of acquisition		
2.2 Additional investment made after acquisition	178,591	264,209
3. Current year change in encumbrances		1,003,635
4. Total gain (loss) on disposals		
5. Deduct amounts received on disposals		
6. Total foreign exchange change in book/adjusted carrying value		
7. Deduct current year's other than temporary impairment recognized		
8. Deduct current year's depreciation	23,569	94,274
9. Book/adjusted carrying value at the end of current period (Lines 1+2+3+4-5+6-7-8)	3,107,110	2,952,088
10. Deduct total nonadmitted amounts		
11. Statement value at end of current period (Line 9 minus Line 10)	3,107,110	2,952,088

SCHEDULE B - VERIFICATION

Mortgage Loans

	1 Year to Date	2 Prior Year Ended December 31
1. Book value/recorded investment excluding accrued interest, December 31 of prior year	248,726	792,171
2. Cost of acquired:		
2.1 Actual cost at time of acquisition		
2.2 Additional investment made after acquisition		
3. Capitalized deferred interest and other		
4. Accrual of discount		
5. Unrealized valuation increase (decrease)		
6. Total gain (loss) on disposals		
7. Deduct amounts received on disposals	2,729	543,445
8. Deduct amortization of premium and mortgage interest points and commitment fees		
9. Total foreign exchange change in book value/recorded investment excluding accrued interest		
10. Deduct current year's other than temporary impairment recognized		
11. Book value/recorded investment excluding accrued interest at end of current period (Lines 1+2+3+4+5+6-7-8+9-10)	245,997	248,726
12. Total valuation allowance		
13. Subtotal (Line 11 plus Line 12)	245,997	248,726
14. Deduct total nonadmitted amounts		
15. Statement value at end of current period (Line 13 minus Line 14)	245,997	248,726

SCHEDULE BA - VERIFICATION

Other Long-Term Invested Assets

	1 Year to Date	2 Prior Year Ended December 31
1. Book/adjusted carrying value, December 31 of prior year		
2. Cost of acquired:		
2.1 Actual cost at time of acquisition		
2.2 Additional investment made after acquisition		
3. Capitalized deferred interest and other		
4. Accrual of discount		
5. Unrealized valuation increase (decrease)		
6. Total gain (loss) on disposals		
7. Deduct amounts received on disposals		
8. Deduct amortization of premium and depreciation		
9. Total foreign exchange change in book/adjusted carrying value		
10. Deduct current year's other than temporary impairment recognized		
11. Book/adjusted carrying value at end of current period (Lines 1+2+3+4+5+6-7-8+9-10)		
12. Deduct total nonadmitted amounts		
13. Statement value at end of current period (Line 11 minus Line 12)		

NONE

SCHEDULE D - VERIFICATION

Bonds and Stocks

	1 Year to Date	2 Prior Year Ended December 31
1. Book/adjusted carrying value of bonds and stocks, December 31 of prior year	95,271,998	88,301,899
2. Cost of bonds and stocks acquired	27,384,410	32,105,807
3. Accrual of discount	9,974	12,644
4. Unrealized valuation increase (decrease)	(2,678,328)	2,047,396
5. Total gain (loss) on disposals	3,477,262	569,337
6. Deduct consideration for bonds and stocks disposed of	23,546,792	27,242,851
7. Deduct amortization of premium	141,333	522,235
8. Total foreign exchange change in book/adjusted carrying value		0
9. Deduct current year's other than temporary impairment recognized		0
10. Total investment income recognized as a result of prepayment penalties and/or acceleration fees		
11. Book/adjusted carrying value at end of current period (Lines 1+2+3+4+5-6-7+8-9+10)	99,777,190	95,271,998
12. Deduct total nonadmitted amounts		0
13. Statement value at end of current period (Line 11 minus Line 12)	99,777,190	95,271,998

STATEMENT AS OF MARCH 31, 2018 OF THE Dealers Assurance Company

SCHEDULE D - PART 1B

Showing the Acquisitions, Dispositions and Non-Trading Activity
During the Current Quarter for all Bonds and Preferred Stock by NAIC Designation

NAIC Designation	1 Book/Adjusted Carrying Value Beginning of Current Quarter	2 Acquisitions During Current Quarter	3 Dispositions During Current Quarter	4 Non-Trading Activity During Current Quarter	5 Book/Adjusted Carrying Value End of First Quarter	6 Book/Adjusted Carrying Value End of Second Quarter	7 Book/Adjusted Carrying Value End of Third Quarter	8 Book/Adjusted Carrying Value December 31 Prior Year
BONDS								
1. NAIC 1 (a)	70,399,583	73,920,915	53,813,919	10,035,424	100,542,003	0	0	70,399,583
2. NAIC 2 (a)	8,284,185	1,311,794	1,302,247	427,795	8,721,527	0	0	8,284,185
3. NAIC 3 (a)	0				0			0
4. NAIC 4 (a)	0				0			0
5. NAIC 5 (a)	0				0			0
6. NAIC 6 (a)	0				0			0
7. Total Bonds	78,683,768	75,232,709	55,116,166	10,463,219	109,263,530	0	0	78,683,768
PREFERRED STOCK								
8. NAIC 1	679,979	101,970	764,664	(17,285)	0	0	0	679,979
9. NAIC 2	1,190,092	0	1,179,757	(10,335)	0	0	0	1,190,092
10. NAIC 3	1,377,847	0	1,384,215	6,368	0	0	0	1,377,847
11. NAIC 4	0				0			0
12. NAIC 5	86,917	0	86,917	0	0	0	0	86,917
13. NAIC 6	0				0			0
14. Total Preferred Stock	3,334,835	101,970	3,415,553	(21,252)	0	0	0	3,334,835
15. Total Bonds and Preferred Stock	82,018,604	75,334,679	58,531,719	10,441,967	109,263,530	0	0	82,018,604

(a) Book/Adjusted Carrying Value column for the end of the current reporting period includes the following amount of short-term and cash equivalent bonds by NAIC designation:

NAIC 1 \$ 11,608,200 ; NAIC 2 \$ 0 ; NAIC 3 \$ 0 ; NAIC 4 \$ 0 ; NAIC 5 \$ 0 ; NAIC 6 \$ 0

SCHEDULE DA - PART 1

Short-Term Investments

	1 Book/Adjusted Carrying Value	2 Par Value	3 Actual Cost	4 Interest Collected Year-to-Date	5 Paid for Accrued Interest Year-to-Date
9199999 Totals	0	xxx	0	870	0

SCHEDULE DA - VERIFICATION

Short-Term Investments

	1 Year To Date	2 Prior Year Ended December 31
1. Book/adjusted carrying value, December 31 of prior year	120,007	7,913,988
2. Cost of short-term investments acquired		235,352
3. Accrual of discount		0
4. Unrealized valuation increase (decrease)		0
5. Total gain (loss) on disposals		0
6. Deduct consideration received on disposals	120,000	8,028,987
7. Deduct amortization of premium	7	345
8. Total foreign exchange change in book/adjusted carrying value		0
9. Deduct current year's other than temporary impairment recognized		0
10. Book/adjusted carrying value at end of current period (Lines 1+2+3+4+5-6-7+8-9)	0	120,007
11. Deduct total nonadmitted amounts		0
12. Statement value at end of current period (Line 10 minus Line 11)	0	120,007

Schedule DB - Part A - Verification - Options, Caps, Floors, Collars, Swaps and Forwards

N O N E

Schedule DB - Part B - Verification - Futures Contracts

N O N E

Schedule DB - Part C - Section 1 - Replication (Synthetic Asset) Transactions (RSATs) Open

N O N E

Schedule DB-Part C-Section 2-Reconciliation of Replication (Synthetic Asset) Transactions Open

N O N E

Schedule DB - Verification - Book/Adjusted Carrying Value, Fair Value and Potential Exposure of
Derivatives

N O N E

SCHEDULE E - PART 2 - VERIFICATION

(Cash Equivalents)

	1	2
	Year To Date	Prior Year Ended December 31
1. Book/adjusted carrying value, December 31 of prior year	11,081,682	0
2. Cost of cash equivalents acquired	49,535,800	38,170,611
3. Accrual of discount	6,922	0
4. Unrealized valuation increase (decrease)		0
5. Total gain (loss) on disposals		0
6. Deduct consideration received on disposals	48,624,588	27,088,929
7. Deduct amortization of premium		0
8. Total foreign exchange change in book/adjusted carrying value		0
9. Deduct current year's other than temporary impairment recognized		0
10. Book/adjusted carrying value at end of current period (Lines 1+2+3+4+5-6-7+8-9)	11,999,816	11,081,682
11. Deduct total nonadmitted amounts		0
12. Statement value at end of current period (Line 10 minus Line 11)	11,999,816	11,081,682

STATEMENT AS OF MARCH 31, 2018 OF THE Dealers Assurance Company

SCHEDULE A - PART 2

Showing All Real Estate ACQUIRED AND ADDITIONS MADE During the Current Quarter

1 Description of Property	2 Location		4 Date Acquired	5 Name of Vendor	6 Actual Cost at Time of Acquisition	7 Amount of Encumbrances	8 Book/Adjusted Carrying Value Less Encumbrances	9 Additional Investment Made After Acquisition
	2 City	3 State						
Addison Building	Addison	TX	03/15/2018	Lopez Co				178,591
0199999. Acquired by Purchase					0	0	0	178,591
0299999. Acquired by Internal Transfer					0	0	0	0
0399999 - Totals					0	0	0	178,591

SCHEDULE A - PART 3

Showing All Real Estate DISPOSED During the Quarter, Including Payments During the Final Year on "Sales Under Contract"

1 Description of Property	2 Location		4 Disposal Date	5 Name of Purchaser	6 Actual Cost	7 Expended for Additions, Permanent Improvements and Changes in Encumbrances	8 Book/Adjusted Carrying Value Less Encumbrances Prior Year	9 Change in Book/Adjusted Carrying Value Less Encumbrances					14 Book/Adjusted Carrying Value Less Encumbrances on Disposal	15 Amounts Received During Year	16 Foreign Exchange Gain (Loss) on Disposal	17 Realized Gain (Loss) on Disposal	18 Total Gain (Loss) on Disposal	19 Gross Income Earned Less Interest Incurred on Encumbrances	20 Taxes, Repairs and Expenses Incurred
	2 City	3 State						9 Current Year's Depreciation	10 Current Year's Other Than Temporary Impairment Recognized	11 Current Year's Change in Encumbrances	12 Total Change in Book/Adjusted Carrying Value (11-9-10)	13 Total Foreign Exchange Change in Book/Adjusted Carrying Value							
NONE																			
0399999 - Totals																			

E01

STATEMENT AS OF MARCH 31, 2018 OF THE Dealers Assurance Company

SCHEDULE B - PART 2

Showing All Mortgage Loans ACQUIRED AND ADDITIONS MADE During the Current Quarter

1 Loan Number	2 Location		4 Loan Type	5 Date Acquired	6 Rate of Interest	7 Actual Cost at Time of Acquisition	8 Additional Investment Made After Acquisition	9 Value of Land and Buildings
	2 City	3 State						
NONE								
3399999 - Totals								

SCHEDULE B - PART 3

Showing All Mortgage Loans DISPOSED, Transferred or Repaid During the Current Quarter

1 Loan Number	2 Location		4 Loan Type	5 Date Acquired	6 Disposal Date	7 Book Value/Recorded Investment Excluding Accrued Interest Prior Year	8 Change in Book Value/Recorded Investment					14 Book Value/Recorded Investment Excluding Accrued Interest on Disposal	15 Consid-eration	16 Foreign Exchange Gain (Loss) on Disposal	17 Realized Gain (Loss) on Disposal	18 Total Gain (Loss) on Disposal
	2 City	3 State					8 Unrealized Valuation Increase (Decrease)	9 Current Year's (Amortization) /Accretion	10 Current Year's Other Than Temporary Impairment Recognized	11 Capitalized Deferred Interest and Other	12 Total Change in Book Value (8+9-10+11)					
DAC002	Mokena	IL		08/21/2014							0		2,729			0
0299999. Mortgages with partial repayments																
						0	0	0	0	0	0	0	2,729	0	0	0
0599999 - Totals																
						0	0	0	0	0	0	0	2,729	0	0	0

E02

Schedule BA - Part 2 - Other Long-Term Invested Assets Acquired and Additions Made

N O N E

Schedule BA - Part 3 - Other Long-Term Invested Assets Disposed, Transferred or Repaid

N O N E

STATEMENT AS OF MARCH 31, 2018 OF THE Dealers Assurance Company

SCHEDULE D - PART 3

Show All Long-Term Bonds and Stock Acquired During the Current Quarter

1	2	3	4	5	6	7	8	9	10
CUSIP Identification	Description	Foreign	Date Acquired	Name of Vendor	Number of Shares of Stock	Actual Cost	Par Value	Paid for Accrued Interest and Dividends	NAIC Designation or Market Indicator (a)
912828-3U-2	UNITED STATES TREASURY		03/28/2018	VARIOUS		18,741,218	18,925,000	11,326	1
0599999	Subtotal - Bonds - U.S. Governments					18,741,218	18,925,000	11,326	XXX
001055-AN-2	AFLAC INC		01/04/2018	MILLENNIUM ADVISORS, LLC		115,284	115,000	866	1FE
00440E-AT-4	CHUBB INA HOLDINGS INC	C	01/04/2018	BARCLAYS CAPITAL INC		49,882	50,000	208	1FE
02079K-AA-5	ALPHABET INC		01/04/2018	GOLDMAN SACHS & CO, NY		36,567	35,000	173	1FE
02865W-AH-4	AMERICAN HONDA FINANCE CORP	C	01/04/2018	MARKETAXESS CORPORATION		95,253	95,000	849	1FE
03523T-AV-0	ANHEUSER-BUSCH INBEV WORLDWIDE INC	C	01/04/2018	US BANCORP		58,346	55,000	634	2FE
037833-OM-0	APPLE INC		01/04/2018	BARCLAYS CAPITAL INC		94,948	95,000	983	1FE
038222-AF-2	APPLIED MATERIALS INC		01/04/2018	MARKETAXESS CORPORATION		58,394	55,000	158	1FE
05526D-AY-1	BAT CAPITAL CORP	C	03/26/2018	DEUTSCHE BANC SECURITIES INC		383,488	400,000	1,539	2FE
05531F-AU-7	BB&T CORP		01/04/2018	WELLS FARGO SECURITIES LLC		694,106	690,000	453	1FE
05565Q-CR-7	BP CAPITAL MARKETS PLC	C	01/04/2018	MILLENNIUM ADVISORS, LLC		80,131	80,000	288	1FE
05574L-XH-6	BNP PARIBAS SA	C	01/04/2018	BARCLAYS CAPITAL INC		190,789	190,000	1,435	1FE
06051G-EX-3	BANK OF AMERICA CORP		01/04/2018	WELLS FARGO SECURITIES LLC		190,912	190,000	2,374	1FE
06367T-YL-8	BANK OF MONTREAL		01/04/2018	BNY/MIZUHO SECURITIES USA INC		49,734	50,000	67	1FE
084670-BC-1	BERKSHIRE HATHAWAY INC		01/04/2018	MILLENNIUM ADVISORS, LLC		31,530	30,000	447	1FE
09247X-AE-1	BLACKROCK INC		01/04/2018	MARKETAXESS CORPORATION		94,794	90,000	350	1FE
14912L-6U-0	CATERPILLAR FINANCIAL SERVICES CORP		01/04/2018	GOLDMAN SACHS & CO, NY		34,059	35,000	246	1FE
166751-AJ-6	CHEVRON CORP		01/04/2018	GOLDMAN SACHS & CO, NY		46,476	45,000	773	1FE
17275R-AH-5	CISCO SYSTEMS INC		01/04/2018	GOLDMAN SACHS & CO, NY		99,280	95,000	2,032	1FE
22160K-AH-8	COSTCO WHOLESALE CORP		01/04/2018	HSBC SECURITIES INC		64,500	65,000	585	1FE
254683-BX-2	DCENT 172 A - ABS		01/08/2018	JP MORGAN SECURITIES LLC		897,188	900,000	1,494	1FE
30231G-AV-4	EXXON MOBIL CORP		01/04/2018	GOLDMAN SACHS & CO, NY		64,873	65,000	510	1FE
38141E-A2-5	GOLDMAN SACHS GROUP INC		01/04/2018	JP MORGAN SECURITIES LLC		316,809	300,000	8,938	1FE
404280-AK-5	HSBC HOLDINGS PLC	C	01/04/2018	WELLS FARGO SECURITIES LLC		155,707	145,000	1,910	1FE
437076-BE-1	HOME DEPOT INC		01/04/2018	WELLS FARGO SECURITIES LLC		79,998	80,000	102	1FE
458140-AM-2	INTEL CORP		03/08/2018	MORGAN STANLEY & CO INC, NY		197,554	200,000	1,305	1FE
46625H-HS-2	JPMORGAN CHASE & CO		01/18/2018	GOLDMAN SACHS & CO, NY		83,701	80,000	0	1FE
501044-DE-8	KROGER CO		03/27/2018	BARCLAYS CAPITAL		449,960	500,000	6,036	2FE
532457-BQ-0	ELI LILLY AND CO		01/04/2018	Stifel Nicolaus & Co.		34,798	35,000	121	1FE
53944V-AK-5	LLOYDS BANK PLC	C	03/07/2018	MORGAN STANLEY & CO INC, NY		198,378	200,000	330	1FE
637432-NF-8	NATIONAL RURAL UTILITIES COOPERATIVE FIN		01/18/2018	WELLS FARGO SECURITIES LLC		99,601	100,000	518	1FE
713448-BW-7	PEPSICO INC		01/18/2018	BNP PARIBAS SECURITIES BOND		81,439	80,000	980	1FE
717081-DM-2	PFIZER INC		03/27/2018	MORGAN STANLEY & CO LLC		705,775	700,000	8,859	1FE
822582-BU-5	SHELL INTERNATIONAL FINANCE BV	C	01/18/2018	WELLS FARGO SECURITIES LLC		78,884	80,000	397	1FE
87612E-AZ-9	TARGET CORP		01/18/2018	GOLDMAN SACHS & CO, NY		76,082	75,000	42	1FE
87938W-AR-4	TELEFONICA EMISIONES SAU	C	03/26/2018	BNP SECURITIES		420,000	400,000	7,667	2FE
89114Q-BC-1	TORONTO-DOMINION BANK		01/18/2018	TORONTO DOMINION SECS USA INC		74,974	75,000	198	1FE
89152U-AD-4	TOTAL CAPITAL SA	C	01/18/2018	BNP PARIBAS SECURITIES BOND		670,995	640,000	2,215	1FE
89233P-4S-2	TOYOTA MOTOR CREDIT CORPORATION	C	01/18/2018	HILLTOP SECURITIES INC		215,156	205,000	266	1FE
91159H-HL-7	U.S. BANCORP		01/18/2018	US BANCORP		94,703	95,000	1,073	1FE
93114Z-DD-2	WAL MART STORES INC		01/18/2018	MILLENNIUM ADVISORS, LLC		275,899	260,000	2,977	1FE
3899999	Subtotal - Bonds - Industrial and Miscellaneous (Unaffiliated)					7,740,944	7,675,000	60,399	XXX
8399997	Total - Bonds - Part 3					26,482,162	26,600,000	71,724	XXX
8399998	Total - Bonds - Part 5					XXX	XXX	XXX	XXX
8399999	Total - Bonds					26,482,162	26,600,000	71,724	XXX
035710-86-2	ANNALY CAPITAL MANAGEMENT INC		01/09/2018	CABRERA CAPITAL MARKETS	4,120,000	101,970	0.00	0	P2LZ
8499999	Subtotal - Preferred Stocks - Industrial and Miscellaneous (Unaffiliated)					101,970	XXX	0	XXX
8999997	Total - Preferred Stocks - Part 3					101,970	XXX	0	XXX
8999998	Total - Preferred Stocks - Part 5					XXX	XXX	XXX	XXX
8999999	Total - Preferred Stocks					101,970	XXX	0	XXX
002824-10-0	ABBOTT LABORATORIES ORD		01/04/2018	JP MORGAN SECURITIES INC	962,000	56,647	0	0	L
071813-10-9	BAXTER INTERNATIONAL ORD		01/04/2018	JP MORGAN SECURITIES INC	830,000	56,774	0	0	L
09062X-10-3	BIOGEN ORD		01/18/2018	J P MORGAN CHASE/J P MORGAN IN	43,000	14,776	0	0	L
194162-10-3	COLGATE PALMOLIVE ORD		01/16/2018	J P MORGAN CHASE/J P MORGAN IN	350,000	26,447	0	0	L
21036P-10-8	CONSTELLATION BRANDS CL A ORD		01/04/2018	JP MORGAN SECURITIES INC	251,000	56,633	0	0	L
26875P-10-1	EOG RESOURCES ORD		01/04/2018	Stifel Nicolaus & Co.	513,000	56,938	0	0	L
30063P-10-5	EXACT SCIENCES ORD		01/18/2018	J P MORGAN CHASE/J P MORGAN IN	300,000	15,642	0	0	L
30303M-10-2	FACEBOOK CL A ORD		01/04/2018	BERNSTEIN (SANFORD C) & CO.	304,000	56,205	0	0	L
31428X-10-6	FEDEX ORD		01/04/2018	BERNSTEIN (SANFORD C) & CO.	211,000	55,921	0	0	L

E04

STATEMENT AS OF MARCH 31, 2018 OF THE Dealers Assurance Company

SCHEDULE D - PART 3

Show All Long-Term Bonds and Stock Acquired During the Current Quarter

1 CUSIP Identification	2 Description	3 Foreign	4 Date Acquired	5 Name of Vendor	6 Number of Shares of Stock	7 Actual Cost	8 Par Value	9 Paid for Accrued Interest and Dividends	10 NAIC Desig- nation or Market Indicator (a)	
45866F-10-4	INTERCONTINENTAL EXCHANGE ORD		.02/16/2018	Barclays Capital, Inc.	80.000	5,753		.0	L	
46625H-10-0	JPMORGAN CHASE ORD		.01/04/2018	BERNSTEIN (SANFORD C) & CO.	515.000	56,250		.0	L	
513272-10-4	LAMB WESTON HOLDINGS ORD		.01/04/2018	BERNSTEIN (SANFORD C) & CO.	993.000	56,861		.0	L	
571903-20-2	MARRIOTT INTERNATIONAL CL A ORD		.01/04/2018	JP MORGAN SECURITIES INC.	423.000	57,461		.0	L	
654106-10-3	NIKE CL B ORD		.02/14/2018	MERRILL LYNCH, PIERCE, FENNER & SM/BAS	180.000	12,214		.0	L	
816851-10-9	SEMPRA ENERGY ORD		.01/03/2018	J P MORGAN CHASE/J P MORGAN IN	223.000	23,963		.0	L	
918204-10-8	VF ORD		.01/04/2018	BERNSTEIN (SANFORD C) & CO.	755.000	56,950		.0	L	
931142-10-3	WALMART ORD		.01/04/2018	JP MORGAN SECURITIES INC.	568.000	56,529		.0	L	
98978V-10-3	ZOETIS CL A ORD		.01/04/2018	JP MORGAN SECURITIES INC.	783.000	56,889		.0	L	
65876H-10-5	MARVELL TECHNOLOGY GROUP ORD	C.	.02/06/2018	VARIOUS	950.000	21,429		.0	L	
9099999. Subtotal - Common Stocks - Industrial and Miscellaneous (Unaffiliated)						800,278	XXX	0	XXX	
9799997. Total - Common Stocks - Part 3							800,278	XXX	0	XXX
9799998. Total - Common Stocks - Part 5						XXX	XXX	XXX	XXX	
9799999. Total - Common Stocks						800,278	XXX	0	XXX	
9899999. Total - Preferred and Common Stocks							902,248	XXX	0	XXX
9999999 - Totals						27,384,410	XXX	71,724	XXX	

(a) For all common stock bearing the NAIC market indicator "U" provide: the number of such issues

STATEMENT AS OF MARCH 31, 2018 OF THE Dealers Assurance Company

SCHEDULE D - PART 4

Show All Long-Term Bonds and Stock Sold, Redeemed or Otherwise Disposed of During the Current Quarter

1	2	3	4	5	6	7	8	9	10	Change In Book/Adjusted Carrying Value					16	17	18	19	20	21	22	
										11	12	13	14	15								
CUSIP Identification	Description	Foreign	Disposal Date	Name of Purchaser	Number of Shares of Stock	Consideration	Par Value	Actual Cost	Prior Year Book/Adjusted Carrying Value	Unrealized Valuation Increase/(Decrease)	Current Year's (Amortization)/Accretion	Current Year's Other Than Temporary Impairment Recognized	Total Change in Book/Adjusted Carrying Value (11 + 12 - 13)	Total Foreign Exchange Change in Book/Adjusted Carrying Value	Book/Adjusted Carrying Value at Disposal Date	Foreign Exchange Gain (Loss) on Disposal	Realized Gain (Loss) on Disposal	Total Gain (Loss) on Disposal	Bond Interest/Stock Dividends Received During Year	Stated Contractual Maturity Date	NAIC Designation or Market Indicator (a)	
912828-3U-2	UNITED STATES TREASURY		03/27/2018	JEFFERIES & COMPANY INC		148,664	150,000	148,541	.0	.0	.39	.0	.39	.0	148,580	.0	.84	.84	.551	01/31/2023	1	
912828-PT-1	UNITED STATES TREASURY		01/31/2018	Maturity @ 100.0		770,000	770,000	807,046	771,058	.0	(1,058)	.0	(1,058)	.0	770,000	.0	.0	.0	10,106	01/31/2018	1	
0599999. Subtotal - Bonds - U.S. Governments						918,664	920,000	955,588	771,058	0	(1,019)	0	(1,019)	0	918,580	0	84	84	10,657	XXX	XXX	
3128M7-4G-8	FH 605923 - RMBS		03/27/2018	VARIOUS		55,420	51,196	55,725	59,034	.0	(34)	.0	(34)	.0	59,001	.0	(3,581)	(3,581)	.896	02/01/2040	1	
312945-ZD-3	FH A97040 - RMBS		03/27/2018	VARIOUS		424,616	412,959	435,404	438,746	.0	(109)	.0	(109)	.0	438,637	.0	(14,020)	(14,020)	5,263	02/01/2041	1	
313378-A4-3	FEDERAL HOME LOAN BANKS		03/09/2018	Maturity @ 100.00		575,000	575,000	582,513	575,486	.0	(486)	.0	(486)	.0	575,000	.0	.0	.0	3,953	03/09/2018	1	
31368H-M4-2	FN 190379 - CDO/RMBS		03/28/2018	VARIOUS		8,545	7,948	8,512	8,883	.0	(4)	.0	(4)	.0	8,879	.0	(334)	(334)	.138	05/01/2037	1	
31368H-MY-6	FN 190375 - RMBS		03/27/2018	VARIOUS		54,408	50,293	55,024	58,592	.0	(50)	.0	(50)	.0	58,542	.0	(4,133)	(4,133)	.874	11/01/2036	1	
3136A4-M9-7	FNA 12M3B 2A2 - CMBS		03/01/2018	Paydown		77,612	78,510	78,088	78,088	.0	(1,533)	.0	(1,533)	.0	76,555	.0	1,057	1,057	.277	01/25/2019	1	
3137B1-AZ-5	FHMS K712 A2 - CMBS		03/01/2018	Paydown		15,855	15,855	15,898	15,884	.0	(38)	.0	(38)	.0	15,845	.0	.9	.9	25	11/25/2019	1	
3138A4-V5-8	FN AH3431 - RMBS		03/01/2018	Paydown		5,672	5,672	5,941	5,941	.0	(2)	.0	(2)	.0	5,875	.0	(203)	(203)	.17	01/01/2026	1	
3138AM-UJ-2	FN A17784 - RMBS		03/27/2018	VARIOUS		157,038	149,921	159,760	163,493	.0	(48)	.0	(48)	.0	163,446	.0	(6,408)	(6,408)	2,119	07/01/2041	1	
3138EG-FA-7	FN AL0160 - RMBS		03/27/2018	VARIOUS		120,583	115,021	122,820	124,336	.0	(37)	.0	(37)	.0	124,299	.0	(3,716)	(3,716)	1,644	05/01/2041	1	
31402C-PL-0	FN 725027 - RMBS		03/27/2018	VARIOUS		122,185	114,819	123,728	126,167	.0	(101)	.0	(101)	.0	126,066	.0	(3,881)	(3,881)	1,819	11/01/2033	1	
31403C-GL-0	FN 745275 - RMBS		03/27/2018	VARIOUS		77,387	72,736	78,804	81,643	.0	(57)	.0	(57)	.0	81,585	.0	(4,198)	(4,198)	1,151	02/01/2036	1	
31403D-DX-4	FN 745418 - RMBS		03/28/2018	VARIOUS		116,397	107,599	117,171	122,327	.0	(92)	.0	(92)	.0	122,235	.0	(5,838)	(5,838)	1,872	04/01/2036	1	
31410F-VW-2	FN 888129 - RMBS		03/28/2018	VARIOUS		9,614	8,940	9,574	10,001	.0	(6)	.0	(6)	.0	9,995	.0	(381)	(381)	155	02/01/2037	1	
31410K-JY-1	FN 889579 - RMBS		03/28/2018	VARIOUS		51,930	47,058	51,665	55,003	.0	(35)	.0	(35)	.0	54,969	.0	(3,039)	(3,039)	891	05/01/2038	1	
31412P-RQ-6	FN 931195 - RMBS		03/01/2018	Paydown		391	391	414	414	.0	.0	.0	.0	.0	411	.0	(20)	(20)	.2	05/01/2024	1	
31416B-QD-3	FN 995152 - RMBS		03/01/2018	Paydown		3,187	3,187	3,486	3,259	.0	(5)	.0	(5)	.0	3,254	.0	(67)	(67)	.75	01/01/2021	1	
31416B-TW-8	FN 995265 - RMBS		03/01/2018	Paydown		602	602	634	634	.0	.0	.0	.0	.0	633	.0	(31)	(31)	.3	01/01/2024	1	
31417V-N6-6	FN AC8512 - RMBS		03/28/2018	VARIOUS		11,241	10,778	11,425	11,703	.0	(4)	.0	(4)	.0	11,699	.0	(458)	(458)	154	12/01/2039	1	
31418N-YK-0	FN AD1613 - RMBS		03/01/2018	Paydown		6,247	6,247	6,692	6,692	.0	(3)	.0	(3)	.0	6,625	.0	(378)	(378)	24	02/01/2025	1	
31418R-GS-4	FN AD3808 - RMBS		03/28/2018	VARIOUS		36,458	34,839	36,505	37,154	.0	(10)	.0	(10)	.0	37,145	.0	(687)	(687)	497	04/01/2040	1	
3199999. Subtotal - Bonds - U.S. Special Revenues						1,930,388	1,868,672	1,960,224	1,983,348	0	(2,653)	0	(2,653)	0	1,980,695	0	(50,307)	(50,307)	21,849	XXX	XXX	
00206R-AJ-1	AT&T INC		02/01/2018	Maturity @ 100.00		360,000	360,000	420,238	360,870	.0	(870)	.0	(870)	.0	360,000	.0	.0	.0	9,900	02/01/2018	2FE	
12592W-AC-2	CNH 15A A3 - ABS		03/15/2018	Paydown		67,484	67,484	67,481	67,483	.0	.3	.0	.3	.0	67,487	.0	(3)	(3)	.50	04/15/2020	1FE	
20826F-AJ-5	CONOCOPHILLIPS CO		01/22/2018	Call @ 100.0		500,000	500,000	498,670	499,324	.0	.16	.0	.16	.0	499,340	.0	.660	.660	2,961	05/15/2020	1FE	
278865-AQ-3	ECOLAB INC		01/12/2018	Maturity @ 100.0		300,000	300,000	300,873	300,010	.0	(10)	.0	(10)	.0	300,000	.0	.0	.0	2,325	01/12/2018	2FE	
46642N-BA-3	JPMBB 14C22 A1 - CMBS		03/27/2018	VARIOUS		172,853	173,830	173,830	173,741	.0	(1)	.0	(1)	.0	173,740	.0	(886)	(886)	748	09/17/2047	1FM	
501044-DA-6	KROGER CO		03/27/2018	MARKETAXESS CORPORATION		496,440	500,000	507,065	502,721	.0	(625)	.0	(625)	.0	502,095	.0	(5,655)	(5,655)	7,056	01/15/2019	2FE	
58013M-EE-0	MCDONALDS CORPORATION		03/01/2018	Maturity @ 100.00		55,000	55,000	65,160	55,244	.0	(244)	.0	(244)	.0	55,000	.0	.0	.0	1,471	03/01/2018	2FE	
65474V-AJ-0	NMOTR 15A A2 - ABS		01/16/2018	Paydown		450,000	450,000	449,875	449,998	.0	.2	.0	.2	.0	450,000	.0	.0	.0	540	01/15/2020	1FE	
687847-AC-7	OSCAR 141 A3 - ABS		03/16/2018	Paydown		24,623	24,623	24,616	24,622	.0	.0	.0	.0	.0	24,622	.0	.0	.0	65	04/15/2019	1FE	
808513-AK-1	CHARLES SCHWAB CORP		02/08/2018	Call @ 100.00		300,000	300,000	299,622	299,976	.0	.13	.0	.13	.0	299,989	.0	.11	.11	1,850	03/10/2018	1FE	
828807-CM-7	SIMON PROPERTY GROUP LP		01/03/2018	Call @ 100.0		250,000	250,000	248,373	249,958	.0	.3	.0	.3	.0	249,960	.0	.40	.40	1,583	02/01/2018	1FE	
89153U-AE-1	TOTAL CAPITAL CANADA LTD		01/15/2018	Maturity @ 100.0		500,000	500,000	499,520	499,996	.0	.4	.0	.4	.0	500,000	.0	.0	.0	3,625	01/15/2018	1FE	
911312-AH-9	UNITED PARCEL SERVICE INC		03/01/2018	Maturity @ 100.00		200,000	200,000	222,292	200,321	.0	(321)	.0	(321)	.0	200,000	.0	.0	.0	5,500	01/15/2018	1FE	
92976W-BH-8	WELLS FARGO & CO		02/01/2018	Maturity @ 100.00		360,000	360,000	410,615	360,743	.0	(743)	.0	(743)	.0	360,000	.0	.0	.0	10,350	02/01/2018	1FE	
931142-CZ-4	WAL MART STORES INC		01/23/2018	Unknown		231,516	225,000	239,564	232,735	.0	(162)	.0	(162)	.0	232,573	.0	(1,057)	(1,057)	1,828	10/25/2020	1FE	
3899999. Subtotal - Bonds - Industrial and Miscellaneous (Unaffiliated)						4,267,915	4,265,936	4,427,793	4,277,742	0	(2,936)	0	(2,936)	0	4,274,806	0	(6,891)	(6,891)	49,852	XXX	XXX	
233331-86-7	DTE ENERGY CO		01/29/2018	WELLS FARGO SECURITIES LLC		87,297	84,675	85,223	85,152	.0	.0	.0	.0	.0	85,152	.0	2,145	2,145	.0	12/15/2076	2FE	
4899999. Subtotal - Bonds - Hybrid Securities						87,297	84,675	85,223	85,152	0	0	0	0	0	85,152	0	2,145	2,145	0	XXX	XXX	
8399997. Total - Bonds - Part 4						7,204,264	7,139,283	7,428,827	7,117,299	0	(6,607)	0	(6,607)	0	7,259,233	0	(54,969)	(54,969)	82,358	XXX	XXX	
8399998. Total - Bonds - Part 5						XXX	XXX	XXX	XXX	XXX	XXX	XXX	XXX	XXX	XXX	XXX	XXX	XXX	XXX	XXX	XXX	XXX
8399999. Total - Bonds						7,204,264	7,139,283	7,428,827	7,117,299	0	(6,607)	0	(6,607)	0	7,259,233	0	(54,969)	(54,969)	82,358	XXX	XXX	
001230-30-2	AMERICAN CAPITAL AGENCY CORP		01/29/2018	WELLS FARGO SECURITIES LLC		3,552,000	.91,063	.00	86,917	.0	.0	.0	.0	.0	86,917	.0	4,146	4,146	1,727		P5L	
001230-50-0	AGNC INVESTMENT CORP		01/30/2018	WELLS FARGO SECURITIES LLC		6,344,000	160,927	.00	156,612	(6,555)	.0	.0	(6,555)	.0	156,612	.0	4,315	4,315	2,778			
025932-70-8	AMERICAN FINANCIAL GROUP INC		01/29/2018	WELLS FARGO SECURITIES LLC		6,331,000	164,538	.00	158,391	.0	.0	.0	.0	.0	158,391	.0	6,147	6,147	.0		RP2LFE	

E05

STATEMENT AS OF MARCH 31, 2018 OF THE Dealers Assurance Company

SCHEDULE D - PART 4

Show All Long-Term Bonds and Stock Sold, Redeemed or Otherwise Disposed of During the Current Quarter

1	2	3	4	5	6	7	8	9	10	Change In Book/Adjusted Carrying Value					16	17	18	19	20	21	22
										11	12	13	14	15							
CUSIP Identification	Description	Foreign	Disposal Date	Name of Purchaser	Number of Shares of Stock	Consideration	Par Value	Actual Cost	Prior Year Book/Adjusted Carrying Value	Unrealized Valuation Increase/(Decrease)	Current Year's (Amortization)/Accretion	Current Year's Other Than Temporary Impairment Recognized	Total Change in Book/Adjusted Carrying Value (11 + 12 - 13)	Total Foreign Exchange Change in Book /Adjusted Carrying Value	Book/Adjusted Carrying Value at Disposal Date	Foreign Exchange Gain (Loss) on Disposal	Realized Gain (Loss) on Disposal	Total Gain (Loss) on Disposal	Bond Interest/Stock Dividends Received During Year	Stated Contractual Maturity Date	NAIC Designation or Market Indicator (a)
..02665T-80-1	AMERICAN HOMES 4 RENT		01/29/2018	WELLS FARGO SECURITIES LLC	3,417,000	86,223	0.00	86,683	86,683	0	0	0	0	0	86,683	0	(460)	(460)	1,363		P3L
..035710-86-2	ANNALY CAPITAL MANAGEMENT INC		01/29/2018	WELLS FARGO SECURITIES LLC	4,120,000	101,444	0.00	101,970	0	0	0	0	0	0	101,970	0	(526)	(526)	0		
..044103-60-4	ASHFORD HOSPITALITY TRUST INC		01/29/2018	WELLS FARGO SECURITIES LLC	1,715,000	40,490	0.00	43,092	43,092	0	0	0	0	0	43,092	0	(2,602)	(2,602)	0		
..060505-28-6	BANK OF AMERICA CORP		01/29/2018	WELLS FARGO SECURITIES LLC	4,609,000	121,502	0.00	114,207	114,207	0	0	0	0	0	114,207	0	7,295	7,295	1,785		P3LFE
..084423-60-7	W. R. BERKLEY CORP		01/30/2018	WELLS FARGO SECURITIES LLC	3,545,000	87,058	0.00	88,572	88,572	0	0	0	0	0	88,572	0	(1,514)	(1,514)	0		RP2LFE
..12542R-50-6	CHS INC		03/01/2018	WELLS FARGO SECURITIES LLC	2,842,000	77,402	0.00	79,693	77,744	1,949	0	0	1,949	0	79,693	0	(2,291)	(2,291)	0		P3L
..12542R-70-4	CHS INC		01/29/2018	WELLS FARGO SECURITIES LLC	6,721,000	179,044	0.00	180,958	177,330	3,628	0	0	3,628	0	180,958	0	(1,914)	(1,914)	0		P3L
..16934Q-40-6	CHIMERA INVESTMENT CORP		01/29/2018	WELLS FARGO SECURITIES LLC	7,834,000	199,516	0.00	197,175	202,117	(4,943)	0	0	(4,943)	0	197,175	0	2,342	2,342	0		
..278642-20-2	EBAY INC		03/01/2018	WELLS FARGO SECURITIES LLC	5,636,000	144,995	0.00	140,690	140,690	0	0	0	0	0	140,690	0	4,305	4,305	2,114		RP2LFE
..29364W-10-8	ENTERGY LOUISIANA LLC		03/01/2018	WELLS FARGO SECURITIES LLC	3,482,000	82,472	0.00	86,168	86,168	0	0	0	0	0	86,168	0	(3,696)	(3,696)	0		RP1LFE
..36242H-70-8	GABELLI DIVIDEND & INCOME TRUST		01/29/2018	WELLS FARGO SECURITIES LLC	1,718,000	42,877	0.00	42,951	43,551	(601)	0	0	(601)	0	42,951	0	(73)	(73)	0		P1LFE
..446150-70-8	HUNTINGTON BANCSHARES INC		03/01/2018	WELLS FARGO SECURITIES LLC	5,653,000	148,620	0.00	139,765	139,765	0	0	0	0	0	139,765	0	8,855	8,855	2,220		P3LFE
..45822P-20-4	INTEGRYS ENERGY GROUP INC		01/29/2018	WELLS FARGO SECURITIES LLC	8,299,000	219,752	0.00	213,449	213,449	0	0	0	0	0	213,449	0	6,303	6,303	0		RP2LFE
..524901-50-1	LEGG MASON INC		01/29/2018	WELLS FARGO SECURITIES LLC	4,463,000	115,044	0.00	110,185	110,185	0	0	0	0	0	110,185	0	4,858	4,858	0		RP3LFE
..61761J-40-6	MORGAN STANLEY		01/29/2018	WELLS FARGO SECURITIES LLC	3,284,000	88,666	0.00	90,846	90,173	673	0	0	673	0	90,846	0	(2,180)	(2,180)	1,308		P3LFE
..65339K-10-0	NEXTERA ENERGY CAPITAL HOLDINGS INC		03/01/2018	WELLS FARGO SECURITIES LLC	5,758,000	140,270	0.00	144,758	144,758	0	0	0	0	0	144,758	0	(4,488)	(4,488)	0		RP2LFE
..69360J-64-4	PS BUSINESS PARKS INC		01/30/2018	WELLS FARGO SECURITIES LLC	7,894,000	195,058	0.00	196,064	199,718	(3,655)	0	0	(3,655)	0	196,064	0	(1,005)	(1,005)	0		P2LFE
..74460W-73-5	PUBLIC STORAGE		01/29/2018	WELLS FARGO SECURITIES LLC	2,573,000	59,567	0.00	64,325	64,376	(51)	0	0	(51)	0	64,325	0	(4,758)	(4,758)	0		P2LFE
..74460W-77-6	PUBLIC STORAGE		03/01/2018	WELLS FARGO SECURITIES LLC	3,495,000	86,254	0.00	87,107	89,787	(2,680)	0	0	(2,680)	0	87,107	0	(853)	(853)	0		P2LFE
..759351-80-2	REINSURANCE GROUP OF AMERICA INC		01/29/2018	WELLS FARGO SECURITIES LLC	1,551,000	41,961	0.00	38,768	38,768	0	0	0	0	0	38,768	0	3,193	3,193	0		RP2LFE
..81254U-20-5	SEASPAR CORP	C	01/30/2018	WELLS FARGO SECURITIES LLC	8,128,000	205,709	0.00	200,102	200,102	0	0	0	0	0	200,102	0	5,607	5,607	3,239		RP3L
..857477-85-5	STATE STREET CORP		03/01/2018	WELLS FARGO SECURITIES LLC	1,902,000	49,918	0.00	47,633	51,582	(3,949)	0	0	(3,949)	0	47,633	0	2,285	2,285	0		P2LFE
..90187B-30-9	TWO HARBORS INVESTMENT CORP		01/29/2018	WELLS FARGO SECURITIES LLC	5,403,000	134,991	0.00	136,696	141,883	(5,187)	0	0	(5,187)	0	136,696	0	(1,705)	(1,705)	2,575		
..911684-60-3	UNITED STATES CELLULAR CORP		01/30/2018	WELLS FARGO SECURITIES LLC	7,889,000	195,390	0.00	202,576	202,459	117	0	0	117	0	202,576	0	(7,186)	(7,186)	0		RP3LFE
..957638-20-8	WESTERN ALLIANCE BANCORP		01/30/2018	WELLS FARGO SECURITIES LLC	7,209,000	183,913	0.00	179,198	179,198	0	0	0	0	0	179,198	0	4,715	4,715	2,831		RP3L
8499999. Subtotal - Preferred Stocks - Industrial and Miscellaneous (Unaffiliated)						3,444,666	XXX	3,415,553	3,334,835	(21,252)	0	0	(21,252)	0	3,415,553	0	29,113	29,113	21,939	XXX	XXX
8999997. Total - Preferred Stocks - Part 4						3,444,666	XXX	3,415,553	3,334,835	(21,252)	0	0	(21,252)	0	3,415,553	0	29,113	29,113	21,939	XXX	XXX
8999998. Total - Preferred Stocks - Part 5						XXX	XXX	XXX	XXX	XXX	XXX	XXX	XXX	XXX	XXX	XXX	XXX	XXX	XXX	XXX	XXX
8999999. Total - Preferred Stocks						3,444,666	XXX	3,415,553	3,334,835	(21,252)	0	0	(21,252)	0	3,415,553	0	29,113	29,113	21,939	XXX	XXX
..00206R-10-2	AT&T GRD		03/07/2018	SEI FINANCIAL SERVICES CO	70,000	2,570	0.00	2,614	2,722	(108)	0	0	(108)	0	2,614	0	(44)	(44)	35		L
..002824-10-0	ABBOTT LABORATORIES GRD		03/07/2018	VARIOUS	1,022,000	64,423	0.00	59,391	3,424	(680)	0	0	(680)	0	59,391	0	5,032	5,032	286		L

E05.1

STATEMENT AS OF MARCH 31, 2018 OF THE Dealers Assurance Company

SCHEDULE D - PART 4

Show All Long-Term Bonds and Stock Sold, Redeemed or Otherwise Disposed of During the Current Quarter

1	2	3	4	5	6	7	8	9	10	Change In Book/Adjusted Carrying Value					16	17	18	19	20	21	22
										11	12	13	14	15							
CUSIP Identification	Description	Foreign	Disposal Date	Name of Purchaser	Number of Shares of Stock	Consideration	Par Value	Actual Cost	Prior Year Book/Adjusted Carrying Value	Unrealized Valuation Increase/(Decrease)	Current Year's (Amortization)/Accretion	Current Year's Other Than Temporary Impairment Recognized	Total Change in Book/Adjusted Carrying Value (11 + 12 - 13)	Total Foreign Exchange Change in Book /Adjusted Carrying Value	Book/Adjusted Carrying Value at Disposal Date	Foreign Exchange Gain (Loss) on Disposal	Realized Gain (Loss) on Disposal	Total Gain (Loss) on Disposal	Bond Interest/Stock Dividends Received During Year	Stated Contractual Maturity Date	NAIC Designation or Market Indicator (a)
00287Y-10-9	ABBVIE ORD		03/07/2018	VARIOUS	3,573,000	436,348		269,436	345,545	(76,109)	0	0	(76,109)	0	269,436	0	166,912	166,912	2,537		
00724F-10-1	ADOBE SYSTEM ORD		03/07/2018	SEI FINANCIAL SERVICES CO	31,000	6,550		2,301	5,432	(3,132)	0	0	(3,132)	0	2,301	0	4,249	4,249	0		
00846U-10-1	AGILENT TECHNOLOGIES ORD		03/07/2018	SEI FINANCIAL SERVICES CO	40,000	2,692		1,682	2,679	(96)	0	0	(96)	0	1,682	0	1,009	1,009	6		
015351-10-9	ALEXION PHARMACEUTICALS ORD		03/07/2018	CO	12,000	1,411		1,659	1,435	224	0	0	224	0	1,659	0	(248)	(248)	0		
016255-10-1	ALIGN TECHNOLOGY ORD		03/07/2018	VARIOUS	25,000	6,543		3,967	5,555	(1,588)	0	0	(1,588)	0	3,967	0	2,576	2,576	0		
02003N-10-0	ALLY FINANCIAL ORD		03/07/2018	SEI FINANCIAL SERVICES CO	140,000	3,895		2,933	4,082	(1,150)	0	0	(1,150)	0	2,933	0	962	962	18		
02079K-30-5	ALPHABET CL A ORD		03/07/2018	CO	7,000	7,649		5,348	7,374	(2,026)	0	0	(2,026)	0	5,348	0	2,301	2,301	0		
023135-10-6	AMAZON COM ORD		03/07/2018	VARIOUS	239,000	340,601		192,891	279,503	(86,613)	0	0	(86,613)	0	192,891	0	147,710	147,710	0		
03027X-10-0	AMERICAN TOWER REIT		03/07/2018	CO	18,000	2,483		1,645	2,568	(923)	0	0	(923)	0	1,645	0	838	838	13		
03076C-10-6	AMERIPRISE FINANCE ORD		01/29/2018	INSTINET	2,251,000	399,415		274,450	381,477	(107,027)	0	0	(107,027)	0	274,450	0	124,965	124,965	0		
03349M-10-5	ANDEAVOR ORD		03/07/2018	VARIOUS	44,000	4,709		3,652	5,031	(1,379)	0	0	(1,379)	0	3,652	0	1,057	1,057	0		
037833-10-0	APPLE ORD		03/07/2018	VARIOUS	2,743,000	460,692		334,398	464,198	(129,800)	0	0	(129,800)	0	334,398	0	126,293	126,293	16		
054937-10-7	BB AND T ORD		01/29/2018	VARIOUS	2,515,000	135,166		108,356	125,046	(16,690)	0	0	(16,690)	0	108,356	0	26,810	26,810	0		
060505-10-4	BANK OF AMERICA ORD		03/07/2018	SEI FINANCIAL SERVICES CO	180,000	5,695		2,817	5,314	(2,497)	0	0	(2,497)	0	2,817	0	2,878	2,878	0		
071813-10-9	BAXTER INTERNATIONAL ORD		01/29/2018	INSTINET	830,000	59,847		56,774	0	0	0	0	0	56,774	0	3,073	3,073	0			
09062X-10-3	BIOMERX ORD		03/07/2018	SEI FINANCIAL SERVICES CO	4,000	1,142		1,375	0	0	0	0	0	1,375	0	(233)	(233)	0			
097023-10-5	BOEING ORD		01/29/2018	INSTINET	897,000	305,469		164,201	264,534	(100,333)	0	0	(100,333)	0	164,201	0	141,268	141,268	0		
110122-10-8	BRISTOL MYERS SQUIBB ORD		03/07/2018	CO	30,000	1,946		2,014	1,838	175	0	0	175	0	2,014	0	(68)	(68)	12		
125720-10-5	CME GROUP CL A ORD		01/29/2018	INSTINET	2,416,000	372,332		262,716	352,857	(90,141)	0	0	(90,141)	0	262,716	0	109,616	109,616	8,456		
126408-10-3	CSX ORD		03/07/2018	SEI FINANCIAL SERVICES CO	70,000	3,912		2,707	3,851	(1,143)	0	0	(1,143)	0	2,707	0	1,204	1,204	0		
150870-10-3	CELANESE SR A ORD		03/07/2018	CO	30,000	3,192		1,676	3,212	(1,536)	0	0	(1,536)	0	1,676	0	1,516	1,516	14		
151020-10-4	CELGENE ORD		01/18/2018	MORGAN IN	146,000	14,839		16,356	15,237	1,119	0	0	1,119	0	16,356	0	(1,517)	(1,517)	0		
166764-10-0	CHEVRON ORD		03/12/2018	SEI FINANCIAL SERVICES CO	18,000	2,036		1,599	2,253	(655)	0	0	(655)	0	1,599	0	437	437	15		
172908-10-5	CINTAS ORD		01/29/2018	INSTINET	1,024,000	169,976		132,207	159,570	(27,363)	0	0	(27,363)	0	132,207	0	37,769	37,769	0		
172967-42-4	CITIGROUP ORD		01/29/2018	INSTINET	3,277,000	262,927		231,729	243,842	(12,113)	0	0	(12,113)	0	231,729	0	31,198	31,198	0		
191216-10-0	COCA-COLA ORD		01/29/2018	VARIOUS	7,088,000	335,111		325,648	325,197	451	0	0	451	0	325,648	0	9,463	9,463	0		
194162-10-3	COLGATE PALMOLIVE ORD		03/07/2018	SEI FINANCIAL SERVICES CO	40,000	2,762		3,022	0	0	0	0	0	3,022	0	(261)	(261)	16			
20030N-10-1	COMCAST CL A ORD		03/07/2018	CO	90,000	3,310		3,531	3,605	(73)	0	0	(73)	0	3,531	0	(221)	(221)	14		
21036P-10-8	CONSTELLATION BRANDS CL A ORD		03/07/2018	VARIOUS	267,000	59,181		58,723	3,657	(1,567)	0	0	(1,567)	0	58,723	0	459	459	8		
219350-10-5	CORNING ORD		03/07/2018	VARIOUS	3,669,000	125,804		96,411	117,371	(20,961)	0	0	(20,961)	0	96,411	0	29,393	29,393	0		
22160K-10-5	COSTCO WHOLESALE ORD		03/07/2018	SEI FINANCIAL SERVICES CO	16,000	3,027		2,581	2,978	(397)	0	0	(397)	0	2,581	0	446	446	8		
244199-10-5	DEERE ORD		03/07/2018	SEI FINANCIAL SERVICES CO	21,000	3,276		2,689	3,287	(597)	0	0	(597)	0	2,689	0	586	586	13		
254687-10-6	WALT DISNEY ORD		03/07/2018	SEI FINANCIAL SERVICES CO	27,000	2,801		2,898	2,903	(5)	0	0	(5)	0	2,898	0	(97)	(97)	23		
26078J-10-0	DOWDUPONT ORD		03/07/2018	SEI FINANCIAL SERVICES CO	40,000	2,785		1,880	2,849	(969)	0	0	(969)	0	1,880	0	905	905	0		
26875P-10-1	EOG RESOURCES ORD		01/31/2018	INSTINET	2,192,000	257,328		206,889	181,181	(31,230)	0	0	(31,230)	0	206,889	0	50,439	50,439	367		
285512-10-9	ELECTRONIC ARTS ORD		03/07/2018	SEI FINANCIAL SERVICES CO	29,000	3,584		2,279	3,047	(768)	0	0	(768)	0	2,279	0	1,305	1,305	0		
29444U-70-0	EQUINIX REIT		03/07/2018	CO	4,000	1,560		1,753	1,813	(60)	0	0	(60)	0	1,753	0	(193)	(193)	0		

E05.2

STATEMENT AS OF MARCH 31, 2018 OF THE Dealers Assurance Company

SCHEDULE D - PART 4

Show All Long-Term Bonds and Stock Sold, Redeemed or Otherwise Disposed of During the Current Quarter

1	2	3	4	5	6	7	8	9	10	Change In Book/Adjusted Carrying Value					16	17	18	19	20	21	22
										11	12	13	14	15							
CUSIP Identification	Description	Foreign	Disposal Date	Name of Purchaser	Number of Shares of Stock	Consideration	Par Value	Actual Cost	Prior Year Book/Adjusted Carrying Value	Unrealized Valuation Increase/(Decrease)	Current Year's (Amortization)/Accretion	Current Year's Other Than Temporary Impairment Recognized	Total Change in Book/Adjusted Carrying Value (11 + 12 - 13)	Total Foreign Exchange Change in Book /Adjusted Carrying Value	Book/Adjusted Carrying Value at Disposal Date	Foreign Exchange Gain (Loss) on Disposal	Realized Gain (Loss) on Disposal	Total Gain (Loss) on Disposal	Bond Interest/Stock Dividends Received During Year	Stated Contractual Maturity Date	NAIC Designation or Market Indicator (a)
30063P-10-5	EXACT SCIENCES ORD		03/07/2018	SEI FINANCIAL SERVICES CO	30.000	1,420		1,622	.0	.0	.0	.0	.0	.0	1,622	.0	(202)	(202)	.0		
30161N-10-1	EXELON ORD		03/07/2018	SEI FINANCIAL SERVICES CO	50.000	1,850		1,385	1,971	(586)	.0	.0	(586)	.0	1,385	.0	466	466	.0		
30231G-10-2	EXXON MOBIL ORD		03/07/2018	VARIOUS	140.000	11,651		10,897	11,710	(812)	.0	.0	(812)	.0	10,897	.0	754	754	.0		
30303M-10-2	FACEBOOK CL A ORD		03/07/2018	VARIOUS	1,257.000	233,777		213,063	168,166	(11,308)	.0	.0	(11,308)	.0	213,063	.0	20,714	20,714	.0		
311900-10-4	FASTENAL ORD		01/29/2018	INSTINET	1,484.000	84,193		80,395	81,160	(765)	.0	.0	(765)	.0	80,395	.0	3,798	3,798	.0		
31428X-10-6	FEDEX ORD		01/29/2018	INSTINET	1,693.000	454,580		350,470	369,818	(75,269)	.0	.0	(75,269)	.0	350,470	.0	104,110	104,110	741		
406216-10-1	HALLIBURTON ORD		03/07/2018	VARIOUS	90.000	4,265		3,701	4,398	(698)	.0	.0	(698)	.0	3,701	.0	564	564	.0		
416515-10-4	HARTFORD FINANCIAL SERVICES GRUP ORD		03/07/2018	VARIOUS	150.000	8,124		6,665	8,442	(1,777)	.0	.0	(1,777)	.0	6,665	.0	1,459	1,459	38		
431475-10-2	HILL ROM HOLDINGS ORD		01/16/2018	J P MORGAN CHASE/J P MORGAN IN	140.000	12,141		10,905	11,801	(896)	.0	.0	(896)	.0	10,905	.0	1,236	1,236	.0		
437076-10-2	HOME DEPOT ORD		03/22/2018	VARIOUS	1,774.000	362,939		244,136	336,226	(92,090)	.0	.0	(92,090)	.0	244,136	.0	118,803	118,803	19		
438516-10-6	HONEYWELL INTERNATIONAL ORD		03/07/2018	SEI FINANCIAL SERVICES CO	28.000	4,129		2,827	4,294	(1,467)	.0	.0	(1,467)	.0	2,827	.0	1,302	1,302	.0		
452308-10-9	ILLINOIS TOOL ORD		03/07/2018	VARIOUS	1,716.000	303,595		211,709	286,315	(74,605)	.0	.0	(74,605)	.0	211,709	.0	91,886	91,886	1,338		
45337C-10-2	INCYTE ORD		03/07/2018	SEI FINANCIAL SERVICES CO	10.000	905		1,190	947	243	.0	.0	243	.0	1,190	.0	(285)	(285)	.0		
46625H-10-0	JPMORGAN CHASE ORD		03/07/2018	VARIOUS	3,990.000	464,965		316,280	371,617	(111,587)	.0	.0	(111,587)	.0	316,280	.0	148,685	148,685	1,946		
478160-10-4	JOHNSON & JOHNSON ORD		03/07/2018	VARIOUS	3,019.000	430,979		337,765	421,815	(84,049)	.0	.0	(84,049)	.0	337,765	.0	93,213	93,213	.0		
49446R-10-9	KIMCO REALTY REIT ORD		01/03/2018	J P MORGAN CHASE/J P MORGAN IN	320.000	5,737		6,297	5,808	489	.0	.0	489	.0	6,297	.0	(560)	(560)	90		
512807-10-8	LAM RESEARCH ORD		03/07/2018	SEI FINANCIAL SERVICES CO	17.000	3,498		2,839	3,129	(290)	.0	.0	(290)	.0	2,839	.0	660	660	9		
513272-10-4	LAMB WESTON HOLDINGS ORD		01/29/2018	INSTINET	2,017.000	120,245		110,010	57,805	(4,655)	.0	.0	(4,655)	.0	110,010	.0	10,235	10,235	.0		
518439-10-4	ESTEE LAUDER CL A ORD		01/29/2018	INSTINET	1,463.000	200,724		163,615	186,152	(22,537)	.0	.0	(22,537)	.0	163,615	.0	37,109	37,109	.0		
532457-10-8	ELI LILLY ORD		03/07/2018	SEI FINANCIAL SERVICES CO	10.000	765		796	845	(48)	.0	.0	(48)	.0	796	.0	(31)	(31)	.0		
539830-10-9	LOCKHEED MARTIN ORD		01/29/2018	VARIOUS	687.000	235,881		104,811	220,561	(115,750)	.0	.0	(115,750)	.0	104,811	.0	131,070	131,070	.0		
571903-20-2	MARRIOTT INTERNATIONAL CL A ORD		01/29/2018	INSTINET	1,868.000	276,848		207,944	196,130	(45,847)	.0	.0	(45,847)	.0	207,944	.0	68,904	68,904	.0		
580135-10-1	MCDONALD'S ORD		01/29/2018	INSTINET	1,812.000	322,432		268,417	311,881	(43,464)	.0	.0	(43,464)	.0	268,417	.0	54,015	54,015	.0		
58933Y-10-5	MERCK & CO ORD		03/07/2018	SEI FINANCIAL SERVICES CO	30.000	1,615		1,737	1,688	49	.0	.0	49	.0	1,737	.0	(122)	(122)	14		
594918-10-4	MICROSOFT ORD		03/07/2018	VARIOUS	5,180.000	487,896		280,867	443,097	(162,230)	.0	.0	(162,230)	.0	280,867	.0	207,029	207,029	.0		
595112-10-3	MICRON TECHNOLOGY ORD		03/07/2018	SEI FINANCIAL SERVICES CO	30.000	1,599		683	1,234	(551)	.0	.0	(551)	.0	683	.0	916	916	.0		
609207-10-5	MONDELEZ INTERNATIONAL CL A ORD		03/07/2018	SEI FINANCIAL SERVICES CO	70.000	3,039		2,851	2,996	(145)	.0	.0	(145)	.0	2,851	.0	188	188	15		
61174X-10-9	MONSTER BEVERAGE ORD		03/07/2018	SEI FINANCIAL SERVICES CO	50.000	2,766		2,278	3,165	(887)	.0	.0	(887)	.0	2,278	.0	488	488	.0		
65339F-10-1	NEXTERA ENERGY ORD		01/29/2018	INSTINET	2,091.000	326,544		220,097	326,593	(106,496)	.0	.0	(106,496)	.0	220,097	.0	106,446	106,446	.0		
670346-10-5	NUCOR ORD		03/07/2018	SEI FINANCIAL SERVICES CO	30.000	2,034		1,406	1,907	(501)	.0	.0	(501)	.0	1,406	.0	628	628	11		
67066G-10-4	NVIDIA ORD		03/07/2018	SEI FINANCIAL SERVICES CO	33.000	7,853		3,486	6,386	(2,899)	.0	.0	(2,899)	.0	3,486	.0	4,366	4,366	.0		
693475-10-0	PNC FINANCIAL SERVICES GROUP ORD		02/05/2018	INSTINET	2,429.000	387,336		294,184	350,480	(56,296)	.0	.0	(56,296)	.0	294,184	.0	93,151	93,151	1,822		
713448-10-8	PEPSICO ORD		01/29/2018	VARIOUS	3,258.000	390,671		302,098	390,699	(88,601)	.0	.0	(88,601)	.0	302,098	.0	88,572	88,572	2,623		
717081-10-3	PFIZER ORD		03/07/2018	SEI FINANCIAL SERVICES CO	40.000	1,422		1,421	1,449	(28)	.0	.0	(28)	.0	1,421	.0	.1	.1	14		
718172-10-9	PHILIP MORRIS INTERNATIONAL ORD		03/07/2018	SEI FINANCIAL SERVICES CO	29.000	3,101		2,346	3,064	(717)	.0	.0	(717)	.0	2,346	.0	755	755	31		
723787-10-7	PIONEER NATURAL RESOURCE ORD		03/07/2018	SEI FINANCIAL SERVICES CO	13.000	2,189		1,654	2,247	(594)	.0	.0	(594)	.0	1,654	.0	535	535	.0		
742718-10-9	PROCTER & GAMBLE ORD		03/07/2018	SEI FINANCIAL SERVICES CO	20.000	1,589		1,637	1,838	(201)	.0	.0	(201)	.0	1,637	.0	(48)	(48)	14		
74340W-10-3	PROLOGIS REIT		01/04/2018	Stifel Nicolaus & Co.	2,596.000	162,582		128,302	167,468	(39,166)	.0	.0	(39,166)	.0	128,302	.0	34,281	34,281	.0		
755111-50-7	RAYTHEON ORD		02/01/2018	INSTINET	580.000	122,628		98,474	108,953	(10,479)	.0	.0	(10,479)	.0	98,474	.0	24,154	24,154	463		
773903-10-9	ROCKWELL AUTOMAT ORD		01/29/2018	INSTINET	1,578.000	315,653		240,176	309,840	(69,664)	.0	.0	(69,664)	.0	240,176	.0	75,477	75,477	.0		

E05.3

STATEMENT AS OF MARCH 31, 2018 OF THE Dealers Assurance Company

SCHEDULE D - PART 4

Show All Long-Term Bonds and Stock Sold, Redeemed or Otherwise Disposed of During the Current Quarter

1	2	3	4	5	6	7	8	9	10	Change In Book/Adjusted Carrying Value					16	17	18	19	20	21	22	
										11	12	13	14	15								
CUSIP Identification	Description	Foreign	Disposal Date	Name of Purchaser	Number of Shares of Stock	Consideration	Par Value	Actual Cost	Prior Year Book/Adjusted Carrying Value	Unrealized Valuation Increase/(Decrease)	Current Year's (Amortization)/Accretion	Current Year's Other Than Temporary Impairment Recognized	Total Change in Book/Adjusted Carrying Value (11 + 12 - 13)	Total Foreign Exchange Change in Book /Adjusted Carrying Value	Book/Adjusted Carrying Value at Disposal Date	Foreign Exchange Gain (Loss) on Disposal	Realized Gain (Loss) on Disposal	Total Gain (Loss) on Disposal	Bond Interest/Stock Dividends Received During Year	Stated Contractual Maturity Date	NAIC Designation or Market Indicator (a)	
784860-10-1	SVB FINANCIAL GROUP ORD		03/07/2018	SEI FINANCIAL SERVICES CO	10.000	2,616		1,827	2,338	(511)	0	0	(511)	0	1,827	0	789	789	0			
79466L-30-2	SALESFORCE.COM ORD		03/07/2018	SEI FINANCIAL SERVICES CO	34.000	4,190		2,513	3,476	(963)	0	0	(963)	0	2,513	0	1,677	1,677	0			
806857-10-8	SCHLUMBERGER ORD	C	03/07/2018	SEI FINANCIAL SERVICES CO	20.000	1,315		1,456	1,348	108	0	0	108	0	1,456	0	(140)	(140)	10			
808513-10-5	CHARLES SCHIAB ORD		03/07/2018	SEI FINANCIAL SERVICES CO	90.000	4,851		2,548	4,623	(2,075)	0	0	(2,075)	0	2,548	0	2,303	2,303	9			
816851-10-9	SEMPRA ENERGY ORD		03/07/2018	SEI FINANCIAL SERVICES CO	24.000	2,615		2,579	0	0	0	0	0	0	2,579	0	37	37	0			
848637-10-4	SPLUNK ORD		03/07/2018	SEI FINANCIAL SERVICES CO	39.000	3,976		2,545	3,231	(686)	0	0	(686)	0	2,545	0	1,432	1,432	0			
854502-10-1	STANLEY BLACK AND DECKER ORD		01/29/2018	INSTINET	798.000	134,927		124,029	135,413	(11,384)	0	0	(11,384)	0	124,029	0	10,898	10,898	0			
855244-10-9	STARBUCKS ORD		03/07/2018	SEI FINANCIAL SERVICES CO	60.000	3,406		3,773	3,446	327	0	0	327	0	3,773	0	(368)	(368)	18			
863667-10-1	STRYKER ORD		01/31/2018	INSTINET	1,861.000	314,660		187,731	288,157	(100,426)	0	0	(100,426)	0	187,731	0	126,928	126,928	875			
87165B-10-3	SYNCHRONY FINANCIAL ORD		03/07/2018	SEI FINANCIAL SERVICES CO	70.000	2,504		1,952	2,703	(750)	0	0	(750)	0	1,952	0	552	552	11			
872590-10-4	T MOBILE US ORD	C	03/07/2018	SEI FINANCIAL SERVICES CO	50.000	3,176		3,286	3,176	110	0	0	110	0	3,286	0	(109)	(109)	0			
874039-10-0	TAIWAN SEMICONDUCTOR MINTG ADR 5 ORD	C	03/07/2018	SEI FINANCIAL SERVICES CO	70.000	3,029		1,838	2,776	(937)	0	0	(937)	0	1,838	0	1,191	1,191	0			
87612G-10-1	TARGA RESOURCES ORD		03/07/2018	SEI FINANCIAL SERVICES CO	30.000	1,375		1,700	1,453	247	0	0	247	0	1,700	0	(325)	(325)	27			
882508-10-4	TEXAS INSTRUMENTS ORD		01/29/2018	INSTINET	3,363.000	380,213		207,802	351,232	(143,430)	0	0	(143,430)	0	207,802	0	172,411	172,411	0			
88579Y-10-1	3M ORD		03/07/2018	SEI FINANCIAL SERVICES CO	12.000	2,769		1,737	2,824	(1,087)	0	0	(1,087)	0	1,737	0	1,032	1,032	0			
90130A-10-1	TWENTY FIRST CENTURY FOX CL A ORD		03/07/2018	SEI FINANCIAL SERVICES CO	70.000	2,604		2,132	2,417	(286)	0	0	(286)	0	2,132	0	472	472	0			
91324P-10-2	UNITEDHEALTH GRP ORD		03/07/2018	VARIOUS	2,179.000	540,067		321,286	480,382	(159,096)	0	0	(159,096)	0	321,286	0	218,780	218,780	0			
918204-10-8	VF ORD		01/29/2018	INSTINET	1,493.000	123,090		109,482	54,612	(2,081)	0	0	(2,081)	0	109,482	0	13,608	13,608	0			
91913Y-10-0	VALERO ENERGY ORD		03/07/2018	VARIOUS	2,890.000	279,793		193,697	265,620	(71,923)	0	0	(71,923)	0	193,697	0	86,096	86,096	24			
92826C-83-9	VISA CL A ORD		03/07/2018	VARIOUS	3,668.000	459,112		311,122	418,225	(107,103)	0	0	(107,103)	0	311,122	0	147,989	147,989	8			
929089-10-0	VOYA FINANCIAL ORD		03/28/2018	SEI FINANCIAL SERVICES CO	50.000	2,566		1,739	2,474	(735)	0	0	(735)	0	1,739	0	827	827	0			
931142-10-3	WALMART ORD		01/29/2018	INSTINET	1,151.000	126,116		109,960	57,571	(4,139)	0	0	(4,139)	0	109,960	0	16,156	16,156	297			
981558-10-9	WORLDPAY CL A ORD		03/07/2018	SEI FINANCIAL SERVICES CO	40.000	3,344		2,594	2,942	(348)	0	0	(348)	0	2,594	0	750	750	0			
98310W-10-8	WYNDHAM WORLDWIDE ORD		01/29/2018	INSTINET	574.000	72,006		48,739	66,509	(17,770)	0	0	(17,770)	0	48,739	0	23,267	23,267	0			
988498-10-1	YUM BRANDS ORD		03/09/2018	SEI FINANCIAL SERVICES CO	40.000	3,227		2,248	3,264	(1,016)	0	0	(1,016)	0	2,248	0	979	979	14			
98978V-10-3	ZOETIS CL A ORD		01/29/2018	INSTINET	4,690.000	371,837		311,845	281,460	(26,504)	0	0	(26,504)	0	311,845	0	59,991	59,991	591			
60177J-10-8	ALLERGAN ORD	C	03/07/2018	SEI FINANCIAL SERVICES CO	10.000	1,492		2,833	1,636	1,197	0	0	1,197	0	2,833	0	(1,341)	(1,341)	0			
61151C-10-1	ACCENTURE CL A ORD	C	01/29/2018	INSTINET	391.000	63,199		44,831	59,858	(15,028)	0	0	(15,028)	0	44,831	0	18,368	18,368	0			
629183-10-3	EATON ORD	C	03/07/2018	SEI FINANCIAL SERVICES CO	30.000	2,398		1,750	2,370	(620)	0	0	(620)	0	1,750	0	649	649	0			
647791-10-1	INGERSOLL RAND ORD	C	03/07/2018	SEI FINANCIAL SERVICES CO	40.000	3,430		2,698	3,568	(870)	0	0	(870)	0	2,698	0	732	732	0			
6491BT-10-8	INVESCO ORD		03/07/2018	SEI FINANCIAL SERVICES CO	100.000	3,274		4,072	3,654	418	0	0	418	0	4,072	0	(798)	(798)	29			
N53745-10-0	LYONDELLBASELL INDUSTRIES CL A ORD	C	01/29/2018	INSTINET	848.000	102,618		90,641	93,551	(2,911)	0	0	(2,911)	0	90,641	0	11,977	11,977	0			
Y09827-10-9	BROADCOM ORD	D	03/07/2018	VARIOUS	924.000	226,922		195,124	237,376	(42,252)	0	0	(42,252)	0	195,124	0	31,798	31,798	0			
9099999	Subtotal - Common Stocks - Industrial and Miscellaneous (Unaffiliated)					12,897,862	XXX	9,394,744	11,364,244	(2,658,152)	0	0	(2,658,152)	0	9,394,744	0	3,503,117	3,503,117	22,955	XXX	XXX	
9799997	Total - Common Stocks - Part 4					12,897,862	XXX	9,394,744	11,364,244	(2,658,152)	0	0	(2,658,152)	0	9,394,744	0	3,503,117	3,503,117	22,955	XXX	XXX	
9799998	Total - Common Stocks - Part 5					XXX	XXX	XXX	XXX	XXX	XXX	XXX	XXX	XXX	XXX	XXX	XXX	XXX	XXX	XXX	XXX	XXX

E05.4

STATEMENT AS OF MARCH 31, 2018 OF THE Dealers Assurance Company

SCHEDULE D - PART 4

Show All Long-Term Bonds and Stock Sold, Redeemed or Otherwise Disposed of During the Current Quarter

1	2	3	4	5	6	7	8	9	10	Change In Book/Adjusted Carrying Value					16	17	18	19	20	21	22
										11	12	13	14	15							
CUSIP Identification	Description	For-foreign	Disposal Date	Name of Purchaser	Number of Shares of Stock	Consideration	Par Value	Actual Cost	Prior Year Book/Adjusted Carrying Value	Unrealized Valuation Increase/(Decrease)	Current Year's (Amortization)/Accretion	Other Than Temporary Impairment Recognized	Total Change in Book/Adjusted Carrying Value (11 + 12 - 13)	Total Foreign Exchange Change in Book /Adjusted Carrying Value	Book/Adjusted Carrying Value at Disposal Date	Foreign Exchange Gain (Loss) on Disposal	Realized Gain (Loss) on Disposal	Total Gain (Loss) on Disposal	Bond Interest/Stock Dividends Received During Year	Stated Contractual Maturity Date	NAIC Designation or Market Indicator (a)
9799999	Total - Common Stocks					12,897,862	XXX	9,394,744	11,364,244	(2,658,152)	0	0	(2,658,152)	0	9,394,744	0	3,503,117	3,503,117	22,955	XXX	XXX
9899999	Total - Preferred and Common Stocks					16,342,528	XXX	12,810,297	14,699,079	(2,679,405)	0	0	(2,679,405)	0	12,810,297	0	3,532,231	3,532,231	44,895	XXX	XXX
9999999	Totals					23,546,792	XXX	20,239,124	21,816,378	(2,679,405)	(6,607)	0	(2,686,012)	0	20,069,530	0	3,477,262	3,477,262	127,253	XXX	XXX

(a) For all common stock bearing the NAIC market indicator "U" provide: the number of such issues.....

Schedule DB - Part A - Section 1 - Options, Caps, Floors, Collars, Swaps and Forwards Open

NONE

Schedule DB - Part B - Section 1 - Futures Contracts Open

NONE

Schedule DB - Part B - Section 1B - Brokers with whom cash deposits have been made

NONE

Schedule DB - Part D - Section 1 - Counterparty Exposure for Derivative Instruments Open

NONE

Schedule DB - Part D-Section 2 - Collateral for Derivative Instruments Open - Pledged By

NONE

Schedule DB - Part D-Section 2 - Collateral for Derivative Instruments Open - Pledged To

NONE

Schedule DL - Part 1 - Reinvested Collateral Assets Owned

NONE

Schedule DL - Part 2 - Reinvested Collateral Assets Owned

NONE

