



**QUARTERLY STATEMENT**  
**AS OF MARCH 31, 2018**  
**OF THE CONDITION AND AFFAIRS OF THE**  
**Oscar Insurance Corporation of Ohio**

NAIC Group Code 4818 , 0000 NAIC Company Code 16202 Employer's ID Number 36-4859637  
(Current Period) (Prior Period)

Organized under the Laws of Ohio , State of Domicile or Port of Entry OH

Country of Domicile United States of America

Licensed as business type: Life, Accident & Health[X] Property/Casualty[ ] Hospital, Medical & Dental Service or Indemnity[ ]  
 Dental Service Corporation[ ] Vision Service Corporation[ ] Health Maintenance Organization[ ]  
 Other[ ] Is HMO Federally Qualified? Yes[ ] No[ ] N/A[X]

Incorporated/Organized 02/17/2017 Commenced Business \_\_\_\_\_

Statutory Home Office 1300 East 9th St , Cleveland, OH, US 44114  
(Street and Number) (City or Town, State, Country and Zip Code)

Main Administrative Office 295 Lafayette Street  
(Street and Number)

New York, NY, US 10012 (646)403-3677  
(City or Town, State, Country and Zip Code) (Area Code) (Telephone Number)

Mail Address 295 Lafayette Street , New York, NY, US 10012  
(Street and Number or P.O. Box) (City or Town, State, Country and Zip Code)

Primary Location of Books and Records 295 Lafayette Street  
(Street and Number)

New York, NY, US 10012 (646)403-3677  
(City or Town, State, Country and Zip Code) (Area Code) (Telephone Number)

Internet Web Site Address www.hioscar.com

Statutory Statement Contact Aaron Crawford (646)403-3677  
(Name) (Area Code)(Telephone Number)(Extension)

acrawford@hioscar.com (212)226-1283  
(E-Mail Address) (Fax Number)

**OFFICERS**

<u>Name</u>	<u>Title</u>
Mario Schlosser	Chief Executive Officer
Joel Klein	Chief Policy & Strategy Officer
Brian West	Chief Financial Officer and Treasurer
Alan Warren	Chief Technology Officer
Dennis Weaver	Chief Clinical Officer

**OTHERS**

Bruce Gottlieb, Secretary

**DIRECTORS OR TRUSTEES**

Mario Schlosser	Brian West
Kareem Zaki	Joel Cutler
Joel Klein	Dennis Weaver
Bruce Gottlieb #	

State of New York  
 County of New York ss

The officers of this reporting entity being duly sworn, each depose and say that they are the described officers of said reporting entity, and that on the reporting period stated above, all of the herein described assets were the absolute property of the said reporting entity, free and clear from any liens or claims thereon, except as herein stated, and that this statement, together with related exhibits, schedules and explanations therein contained, annexed or referred to, is a full and true statement of all the assets and liabilities and of the condition and affairs of the said reporting entity as of the reporting period stated above, and of its income and deductions therefrom for the period ended, and have been completed in accordance with the NAIC Annual Statement Instructions and Accounting Practices and Procedures manual except to the extent that: (1) state law may differ; or, (2) that state rules or regulations require differences in reporting not related to accounting practices and procedures, according to the best of their information, knowledge and belief, respectively. Furthermore, the scope of this attestation by the described officers also includes the related corresponding electronic filing with the NAIC, when required, that is an exact copy (except for formatting differences due to electronic filing) of the enclosed statement. The electronic filing may be requested by various regulators in lieu of or in addition to the enclosed statement.

_____ (Signature) Mario Schlosser _____ (Printed Name) 1. Chief Executive Officer _____ (Title)	_____ (Signature) Joel Klein _____ (Printed Name) 2. Chief Policy & Strategy Officer _____ (Title)	_____ (Signature) Brian West _____ (Printed Name) 3. Chief Financial Officer & Treasurer _____ (Title)
---	--	--

Subscribed and sworn to before me this \_\_\_\_\_ day of \_\_\_\_\_, 2018

- a. Is this an original filing? \_\_\_\_\_  
 b. If no, 1. State the amendment number \_\_\_\_\_  
 2. Date filed \_\_\_\_\_  
 3. Number of pages attached \_\_\_\_\_

Yes[X] No[ ]

\_\_\_\_\_  
 (Notary Public Signature)

**ASSETS**

	Current Statement Date			4 December 31 Prior Year Net Admitted Assets
	1 Assets	2 Nonadmitted Assets	3 Net Admitted Assets (Cols. 1 - 2)	
1. Bonds .....	407,691		407,691	407,061
2. Stocks:				
2.1 Preferred stocks .....				
2.2 Common stocks .....				
3. Mortgage loans on real estate:				
3.1 First liens .....				
3.2 Other than first liens .....				
4. Real estate:				
4.1 Properties occupied by the company (less \$.....0 encumbrances) .....				
4.2 Properties held for the production of income (less \$.....0 encumbrances) .....				
4.3 Properties held for sale (less \$.....0 encumbrances) .....				
5. Cash (\$.....15,740,573), cash equivalents (\$.....0) and short-term investments (\$.....0) .....	15,740,573		15,740,573	6,898,574
6. Contract loans (including \$.....0 premium notes) .....				
7. Derivatives .....				
8. Other invested assets .....				
9. Receivables for securities .....				
10. Securities lending reinvested collateral assets .....				
11. Aggregate write-ins for invested assets .....				
12. Subtotals, cash and invested assets (Lines 1 to 11) .....	16,148,264		16,148,264	7,305,635
13. Title plants less \$.....0 charged off (for Title insurers only) .....				
14. Investment income due and accrued .....	647		647	1,424
15. Premiums and considerations:				
15.1 Uncollected premiums and agents' balances in the course of collection .....	218,445		218,445	
15.2 Deferred premiums, agents' balances and installments booked but deferred and not yet due (including \$.....0 earned but unbilled premiums) .....				
15.3 Accrued retrospective premiums (\$.....0) and contracts subject to redetermination (\$.....0) .....				
16. Reinsurance:				
16.1 Amounts recoverable from reinsurers .....				
16.2 Funds held by or deposited with reinsured companies .....				
16.3 Other amounts receivable under reinsurance contracts .....				
17. Amounts receivable relating to uninsured plans .....				
18.1 Current federal and foreign income tax recoverable and interest thereon .....				
18.2 Net deferred tax asset .....				
19. Guaranty funds receivable or on deposit .....				
20. Electronic data processing equipment and software .....				
21. Furniture and equipment, including health care delivery assets (\$.....0) .....				
22. Net adjustments in assets and liabilities due to foreign exchange rates .....				
23. Receivables from parent, subsidiaries and affiliates .....				
24. Health care (\$.....527,896) and other amounts receivable .....	587,457		587,457	200,000
25. Aggregate write-ins for other-than-invested assets .....	5,750	5,750		
26. TOTAL assets excluding Separate Accounts, Segregated Accounts and Protected Cell Accounts (Lines 12 to 25) .....	16,960,563	5,750	16,954,813	7,507,059
27. From Separate Accounts, Segregated Accounts and Protected Cell Accounts .....				
28. TOTAL (Lines 26 and 27) .....	16,960,563	5,750	16,954,813	7,507,059
<b>DETAILS OF WRITE-INS</b>				
1101. ....				
1102. ....				
1103. ....				
1198. Summary of remaining write-ins for Line 11 from overflow page .....				
1199. TOTALS (Lines 1101 through 1103 plus 1198) (Line 11 above) .....				
2501. Prepaid Expense .....	5,750	5,750		
2502. ....				
2503. ....				
2598. Summary of remaining write-ins for Line 25 from overflow page .....				
2599. TOTALS (Lines 2501 through 2503 plus 2598) (Line 25 above) .....	5,750	5,750		

**LIABILITIES, CAPITAL AND SURPLUS**

	Current Period			Prior Year
	1 Covered	2 Uncovered	3 Total	4 Total
1. Claims unpaid (less \$.....120,998 reinsurance ceded) .....	4,122,887		4,122,887	
2. Accrued medical incentive pool and bonus amounts .....				
3. Unpaid claims adjustment expenses .....	80,836		80,836	
4. Aggregate health policy reserves, including the liability of \$.....0 for medical loss ratio rebate per the Public Health Service Act .....	1,402,657		1,402,657	
5. Aggregate life policy reserves .....				
6. Property/casualty unearned premium reserve .....				
7. Aggregate health claim reserves .....	441,464		441,464	
8. Premiums received in advance .....				3,396,810
9. General expenses due or accrued .....	503,262		503,262	
10.1 Current federal and foreign income tax payable and interest thereon (including \$.....0 on realized gains (losses)) .....				
10.2 Net deferred tax liability .....				
11. Ceded reinsurance premiums payable .....	117,677		117,677	
12. Amounts withheld or retained for the account of others .....				
13. Remittances and items not allocated .....				
14. Borrowed money (including \$.....0 current) and interest thereon \$.....0 (including \$.....0 current) .....				
15. Amounts due to parent, subsidiaries and affiliates .....	1,347,646		1,347,646	1,568,738
16. Derivatives .....				
17. Payable for securities .....				
18. Payable for securities lending .....				
19. Funds held under reinsurance treaties with (\$.....0 authorized reinsurers, \$.....0 unauthorized reinsurers and \$.....0 certified reinsurers) .....				
20. Reinsurance in unauthorized and certified (\$.....0) companies .....				
21. Net adjustments in assets and liabilities due to foreign exchange rates .....				
22. Liability for amounts held under uninsured plans .....				
23. Aggregate write-ins for other liabilities (including \$.....0 current) .....				
24. Total liabilities (Lines 1 to 23) .....	8,016,429		8,016,429	4,965,548
25. Aggregate write-ins for special surplus funds .....	X X X	X X X		
26. Common capital stock .....	X X X	X X X	100	100
27. Preferred capital stock .....	X X X	X X X		
28. Gross paid in and contributed surplus .....	X X X	X X X	8,009,900	3,909,900
29. Surplus notes .....	X X X	X X X		
30. Aggregate write-ins for other-than-special surplus funds .....	X X X	X X X		
31. Unassigned funds (surplus) .....	X X X	X X X	928,384	(1,368,489)
32. Less treasury stock, at cost:				
32.1 .....0 shares common (value included in Line 26 \$.....0) .....	X X X	X X X		
32.2 .....0 shares preferred (value included in Line 27 \$.....0) .....	X X X	X X X		
33. Total capital and surplus (Lines 25 to 31 minus Line 32) .....	X X X	X X X	8,938,384	2,541,511
34. Total Liabilities, capital and surplus (Lines 24 and 33) .....	X X X	X X X	16,954,813	7,507,059
<b>DETAILS OF WRITE-INS</b>				
2301. ....				
2302. ....				
2303. ....				
2398. Summary of remaining write-ins for Line 23 from overflow page .....				
2399. TOTALS (Lines 2301 through 2303 plus 2398) (Line 23 above) .....				
2501. ....	X X X	X X X		
2502. ....	X X X	X X X		
2503. ....	X X X	X X X		
2598. Summary of remaining write-ins for Line 25 from overflow page .....	X X X	X X X		
2599. TOTALS (Lines 2501 through 2503 plus 2598) (Line 25 above) .....	X X X	X X X		
3001. ....	X X X	X X X		
3002. ....	X X X	X X X		
3003. ....	X X X	X X X		
3098. Summary of remaining write-ins for Line 30 from overflow page .....	X X X	X X X		
3099. TOTALS (Lines 3001 through 3003 plus 3098) (Line 30 above) .....	X X X	X X X		

**STATEMENT OF REVENUE AND EXPENSES**

	Current Year To Date		Prior Year To Date	Prior Year Ended December 31
	1 Uncovered	2 Total	3 Total	4 Total
1. Member Months .....	X X X	32,622		
2. Net premium income (including \$.....0 non-health premium income) .....	X X X	15,445,425		
3. Change in unearned premium reserves and reserves for rate credits .....	X X X	1,994,153		
4. Fee-for-service (net of \$.....0 medical expenses) .....	X X X			
5. Risk revenue .....	X X X			
6. Aggregate write-ins for other health care related revenues .....	X X X			
7. Aggregate write-ins for other non-health revenues .....	X X X			
8. Total revenues (Lines 2 to 7) .....	X X X	17,439,578		
<b>Hospital and Medical:</b>				
9. Hospital/medical benefits .....		8,464,530		
10. Other professional services .....		942,398		
11. Outside referrals .....				
12. Emergency room and out-of-area .....		41,391		
13. Prescription drugs .....		3,006,749		
14. Aggregate write-ins for other hospital and medical .....				
15. Incentive pool, withhold adjustments and bonus amounts .....				
16. Subtotal (Lines 9 to 15) .....		12,455,068		
<b>Less:</b>				
17. Net reinsurance recoveries .....		120,998		
18. Total hospital and medical (Lines 16 minus 17) .....		12,334,070		
19. Non-health claims (net) .....				
20. Claims adjustment expenses, including \$.....600,684 cost containment expenses .....		1,009,030		
21. General administrative expenses .....		1,795,138		1,370,746
22. Increase in reserves for life and accident and health contracts (including \$.....0 increase in reserves for life only) .....				
23. Total underwriting deductions (Lines 18 through 22) .....		15,138,238		1,370,746
24. Net underwriting gain or (loss) (Lines 8 minus 23) .....	X X X	2,301,340		(1,370,746)
25. Net investment income earned .....		1,283		2,257
26. Net realized capital gains (losses) less capital gains tax of \$.....0 .....				
27. Net investment gains or (losses) (Lines 25 plus 26) .....		1,283		2,257
28. Net gain or (loss) from agents' or premium balances charged off [(amount recovered \$.....0) (amount charged off \$.....0)] .....				
29. Aggregate write-ins for other income or expenses .....				
30. Net income or (loss) after capital gains tax and before all other federal income taxes (Lines 24 plus 27 plus 28 plus 29) .....	X X X	2,302,623		(1,368,489)
31. Federal and foreign income taxes incurred .....	X X X			
32. Net income (loss) (Lines 30 minus 31) .....	X X X	2,302,623		(1,368,489)
<b>DETAILS OF WRITE-INS</b>				
0601. ....	X X X			
0602. ....	X X X			
0603. ....	X X X			
0698. Summary of remaining write-ins for Line 6 from overflow page .....	X X X			
0699. TOTALS (Lines 0601 through 0603 plus 0698) (Line 6 above) .....	X X X			
0701. ....	X X X			
0702. ....	X X X			
0703. ....	X X X			
0798. Summary of remaining write-ins for Line 7 from overflow page .....	X X X			
0799. TOTALS (Lines 0701 through 0703 plus 0798) (Line 7 above) .....	X X X			
1401. ....				
1402. ....				
1403. ....				
1498. Summary of remaining write-ins for Line 14 from overflow page .....				
1499. TOTALS (Lines 1401 through 1403 plus 1498) (Line 14 above) .....				
2901. ....				
2902. ....				
2903. ....				
2998. Summary of remaining write-ins for Line 29 from overflow page .....				
2999. TOTALS (Lines 2901 through 2903 plus 2998) (Line 29 above) .....				

**STATEMENT OF REVENUE AND EXPENSES (Continued)**

	1	2	3
	Current Year To Date	Prior Year To Date	Prior Year Ended December 31
<b>CAPITAL &amp; SURPLUS ACCOUNT</b>			
33. Capital and surplus prior reporting year .....	2,541,511		
34. Net income or (loss) from Line 32 .....	2,302,623		(1,368,489)
35. Change in valuation basis of aggregate policy and claim reserves .....			
36. Change in net unrealized capital gains (losses) less capital gains tax of \$.....0			
37. Change in net unrealized foreign exchange capital gain or (loss) .....			
38. Change in net deferred income tax .....			
39. Change in nonadmitted assets .....	(5,750)		
40. Change in unauthorized and certified reinsurance .....			
41. Change in treasury stock .....			
42. Change in surplus notes .....			
43. Cumulative effect of changes in accounting principles .....			
44. Capital Changes:			
44.1 Paid in .....			100
44.2 Transferred from surplus (Stock Dividend) .....			
44.3 Transferred to surplus .....			
45. Surplus adjustments:			
45.1 Paid in .....	4,100,000		3,909,900
45.2 Transferred to capital (Stock Dividend) .....			
45.3 Transferred from capital .....			
46. Dividends to stockholders .....			
47. Aggregate write-ins for gains or (losses) in surplus .....			
48. Net change in capital and surplus (Lines 34 to 47) .....	6,396,873		2,541,511
49. Capital and surplus end of reporting period (Line 33 plus 48) .....	8,938,384		2,541,511
<b>DETAILS OF WRITE-INS</b>			
4701. ....			
4702. ....			
4703. ....			
4798. Summary of remaining write-ins for Line 47 from overflow page .....			
4799. TOTALS (Lines 4701 through 4703 plus 4798) (Line 47 above) .....			

**CASH FLOW**

	1 Current Year To Date	2 Prior Year To Date	3 Prior Year Ended December 31
<b>Cash from Operations</b>			
1. Premiums collected net of reinsurance .....	15,344,660		3,396,810
2. Net investment income .....	1,430		68
3. Miscellaneous income .....			
4. TOTAL (Lines 1 to 3) .....	15,346,090		3,396,878
5. Benefit and loss related payments .....	9,225,809		
6. Net transfers to Separate Accounts, Segregated Accounts and Protected Cell Accounts .....			
7. Commissions, expenses paid and aggregate write-ins for deductions .....	1,378,282		2,466
8. Dividends paid to policyholders .....			
9. Federal and foreign income taxes paid (recovered) net of \$.....0 tax on capital gains (losses) .....			
10. TOTAL (Lines 5 through 9) .....	10,604,091		2,466
11. Net cash from operations (Line 4 minus Line 10) .....	4,741,999		3,394,412
<b>Cash from Investments</b>			
12. Proceeds from investments sold, matured or repaid:			
12.1 Bonds .....			
12.2 Stocks .....			
12.3 Mortgage loans .....			
12.4 Real estate .....			
12.5 Other invested assets .....			
12.6 Net gains or (losses) on cash, cash equivalents and short-term investments .....			
12.7 Miscellaneous proceeds .....			
12.8 TOTAL investment proceeds (Lines 12.1 to 12.7) .....			
13. Cost of investments acquired (long-term only):			
13.1 Bonds .....			405,838
13.2 Stocks .....			
13.3 Mortgage loans .....			
13.4 Real estate .....			
13.5 Other invested assets .....			
13.6 Miscellaneous applications .....			
13.7 TOTAL investments acquired (Lines 13.1 to 13.6) .....			405,838
14. Net increase (or decrease) in contract loans and premium notes .....			
15. Net cash from investments (Line 12.8 minus Line 13.7 and Line 14) .....			(405,838)
<b>Cash from Financing and Miscellaneous Sources</b>			
16. Cash provided (applied):			
16.1 Surplus notes, capital notes .....			
16.2 Capital and paid in surplus, less treasury stock .....	4,100,000		3,910,000
16.3 Borrowed funds .....			
16.4 Net deposits on deposit-type contracts and other insurance liabilities .....			
16.5 Dividends to stockholders .....			
16.6 Other cash provided (applied) .....			
17. Net cash from financing and miscellaneous sources (Line 16.1 through 16.4 minus Line 16.5 plus Line 16.6) .....	4,100,000		3,910,000
<b>RECONCILIATION OF CASH, CASH EQUIVALENTS AND SHORT-TERM INVESTMENTS</b>			
18. Net change in cash, cash equivalents and short-term investments (Line 11, plus Lines 15 and 17) .....	8,841,999		6,898,574
19. Cash, cash equivalents and short-term investments:			
19.1 Beginning of year .....	6,898,574		
19.2 End of period (Line 18 plus Line 19.1) .....	15,740,573		6,898,574

**Note: Supplemental Disclosures of Cash Flow Information for Non-Cash Transactions:**

20.0001				
---------	--	--	--	--

## EXHIBIT OF PREMIUMS, ENROLLMENT AND UTILIZATION

	1 Total	Comprehensive (Hospital & Medical)		4 Medicare Supplement	5 Vision Only	6 Dental Only	7 Federal Employees Health Benefit Plan	8 Title XVIII Medicare	9 Title XIX Medicaid	10 Other
		2 Individual	3 Group							
Total Members at end of:										
1. Prior Year .....										
2. First Quarter .....	11,022	11,022								
3. Second Quarter .....										
4. Third Quarter .....										
5. Current Year .....										
6. Current Year Member Months .....	32,622	32,622								
Total Member Ambulatory Encounters for Period:										
7. Physician .....	12,776	12,776								
8. Non-Physician .....	1,990	1,990								
9. Total .....	14,766	14,766								
10. Hospital Patient Days Incurred .....	427	427								
11. Number of Inpatient Admissions .....	134	134								
12. Health Premiums Written (a) .....	17,614,050	17,614,050								
13. Life Premiums Direct .....										
14. Property/Casualty Premiums Written .....										
15. Health Premiums Earned .....	17,614,050	17,614,050								
16. Property/Casualty Premiums Earned .....										
17. Amount Paid for Provision of Health Care Services .....	8,211,182	8,211,182								
18. Amount Incurred for Provision of Health Care Services .....	12,455,068	12,455,068								

(a) For health premiums written: amount of Medicare Title XVIII exempt from state taxes or fees \$.....0.

**CLAIMS UNPAID AND INCENTIVE POOL, WITHHOLD AND BONUS (Reported and Unreported)****Aging Analysis of Unpaid Claims**

1 Account	2 1 - 30 Days	3 31 - 60 Days	4 61 - 90 Days	5 91 - 120 days	6 Over 120 Days	7 Total
0199999 Individually Listed Claims Unpaid .....						
0299999 Aggregate Accounts Not Individually Listed - Uncovered .....						
0399999 Aggregate Accounts Not Individually Listed - Covered .....	1,122,720	70,452	6,749			1,199,921
0499999 Subtotals .....	1,122,720	70,452	6,749			1,199,921
0599999 Unreported claims and other claim reserves .....						3,043,964
0699999 Total Amounts Withheld .....						
0799999 Total Claims Unpaid .....						4,243,885
0899999 Accrued Medical Incentive Pool And Bonus Amounts .....						

## UNDERWRITING AND INVESTMENT EXHIBIT

### ANALYSIS OF CLAIMS UNPAID-PRIOR YEAR-NET OF REINSURANCE

	Claims Paid Year to Date		Liability End of Current Quarter		5	6
	1	2	3	4	Claims Incurred in Prior Years (Columns 1+3)	Estimated Claim Reserve and Claim Liability Dec 31 of Prior Year
	On Claims Incurred Prior to January 1 of Current Year	On Claims Incurred During the Year	On Claims Unpaid Dec 31 of Prior Year	On Claims Incurred During the Year		
1. Comprehensive (hospital & medical) .....		8,297,615		4,564,351		
2. Medicare Supplement .....						
3. Dental only .....						
4. Vision only .....						
5. Federal Employees Health Benefits Plan .....						
6. Title XVIII - Medicare .....						
7. Title XIX - Medicaid .....						
8. Other health .....						
9. Health subtotal (Lines 1 to 8) .....		8,297,615		4,564,351		
10. Healthcare receivables (a) .....				527,896		
11. Other non-health .....						
12. Medical incentive pools and bonus amounts .....						
13. Totals (Lines 9 - 10 + 11 + 12) .....		8,297,615		4,036,455		

(a) Excludes \$.....0 loans or advances to providers not yet expensed.

## Notes to Financial Statement

### 1. Summary of Significant Accounting Policies and Going Concern

- A. The accompanying financial statements of Oscar Insurance Corporation of Ohio (the “Company”) have been prepared in conformity with accounting practices prescribed or permitted by the Ohio Department of Insurance (ODI).

Effective August 27, 2017 Oscar Insurance Company of Ohio was licensed by the Ohio Department of Insurance. Our members will enroll during open enrollment, which begins November 1, 2017. Members were be effectuated January 1, 2018, after which the Company began reporting premiums earned and claims expenses.

A reconciliation of The Company’s net income and capital surplus between NAIC SAP and practices prescribed or permitted by Ohio Statutory Accounting Principles (“NAIC SAP”) is shown below:

		SSAP #	F/S Page	F/S Line #	Three months ended March 31, 2018	For the year ended December 31, 2017
<b>NET INCOME</b>						
(1)	Net income (loss), OH SAP (Page 4, Line 32, Columns 2 & 3)	XXX	XXX	XXX	\$2,302,623	(\$1,368,489)
(2)	State Prescribed Practices that are an increase/(decrease) from NAIC SAP:				—	—
(3)	Net income (loss), NAIC SAP (1-2-3=4)	XXX	XXX	XXX	\$2,302,623	(\$1,368,489)
<b>SURPLUS</b>						
(4)	Statutory Surplus, OH SAP (Page 3, Line 33, Columns 3 & 4)	XXX	XXX	XXX	\$8,938,384	\$2,541,511
(5)	State Prescribed Practices that are an increase/(decrease) from NAIC SAP:				—	—
(6)	Statutory Surplus, NAIC SAP (5-6-7=8)	XXX	XXX	XXX	\$8,938,384	\$2,541,511

- B. The preparation of these statutory-basis financial statements requires management to make estimates and assumptions that affect the amounts reported in the statutory-basis financial statements and accompanying notes. Actual results could differ from those estimates. Such estimates and assumptions could change in the future as more information becomes known which could impact the amounts reported and disclosed herein.
- C. Premiums are earned ratably over the terms of the related insurance policies. Ceded premiums are earned ratably over the terms of the applicable reinsurance contracts. Expenses incurred in connection with acquiring new insurance business, including acquisition costs such as marketing, are charged to operations as incurred.

In addition, the company uses the following accounting policies:

- (1) Short-term investments are stated at amortized cost.
- (2) Bonds not backed by other loans are stated at amortized cost using the interest method.
- (3-9) Not applicable
- (10) The Company does not anticipate investment income as a factor in the premium deficiency calculation, in accordance with SSAP No. 54, Individual and Group Accident and Health Contracts.
- (11) Unpaid losses and loss adjustment expenses include an amount determine from individual case estimates and loss reports and an amount, based on past experience, for losses incurred but not reported. Such liabilities are necessarily based on assumptions and estimates and while the management believes the amount is adequate, the ultimate liability may be in excess of or less than the amount provided. The methods for making such estimates and for establishing the resulting liability are continually reviewed and any adjustments are reflected in the period determined.
- (12) The Company has not modified its capitalization policy from the prior period.

## Notes to Financial Statement

- (13) The Company's Pharmacy Benefit Manager – CVSHealth has contractually guaranteed minimum pharmaceutical rebates. These amounts determine the Company's estimated receivable adjusted for payments received.

**D. Going Concern**

As of March 31, 2018, the management team has evaluated the Company's operations and financial position. No uncertainties or doubt exists about the Company's ability to continue as a going concern.

**2. Accounting Changes and Corrections of Errors**

There were no accounting changes or correction of errors in 2018.

**3. Business Combinations and Goodwill**

The Company had no business combinations or goodwill in 2018.

**4. Discontinued Operations**

The Company had no discontinued operations in 2018.

**5. Investments**

A-K. Not applicable

**L. Restricted Assets**

- (1) Restricted Assets (Including Pledged)

## Notes to Financial Statement

		1	2	3	4	5	6	7
		Total Gross (Admitted & Nonadmitted) Restricted from Current Year	Total Gross (Admitted & Nonadmitted) Restricted From Prior Year	Increase/ (Decrease) (1 minus 2)	Total Current Year Nonadmitted Restricted	Total Current Year Admitted Restricted (1 minus 4)	Gross (Admitted & Nonadmitted) Restricted to Total Assets (a)	Admitted Restricted To Total Admitted Assets (b)
a.	Subject to contractual obligation for which liability is not shown	—	—	—	—	—	— %	— %
b.	Collateral held under security lending agreements	—	—	—	—	—	— %	— %
c.	Subject to repurchase agreements	—	—	—	—	—	— %	— %
d.	Subject to reverse repurchase agreements	—	—	—	—	—	— %	— %
e.	Subject to dollar repurchase agreements	—	—	—	—	—	— %	— %
f.	Subject to dollar reverse repurchase agreements	—	—	—	—	—	— %	— %
g.	Placed under option contracts	—	—	—	—	—	— %	— %
h.	Letter stock or securities restricted as to sale—excluding FHLB capital stock	—	—	—	—	—	— %	— %
i.	FHLB capital stock	—	—	—	—	—	— %	— %
j.	On deposit with states	407,691	407,061	630	—	407,691	2.40%	2.41%
k.	On deposit with other regulatory bodies	—	—	—	—	—	— %	— %
l.	Pledged as collateral to FHLB (including assets backing funding agreements)	—	—	—	—	—	— %	— %
m.	Pledged as collateral not captured in other categories	—	—	—	—	—	— %	— %
n.	Other restricted assets	—	—	—	—	—	— %	— %
o.	Total Restricted Assets	407,691	407,061	630	—	407,691	2.40%	2.41%

(2)-(4) Not applicable

M-R. Not applicable

**6. Joint Ventures, Partnerships, and Limited Liability Companies**

A. The Company has no investments in Joint Venture, Partnerships or Limited Liability Companies that exceed 10% of its admitted assets.

B. The Company has no investments in Joint Ventures, Partnerships or Limited Liability Companies.

## Notes to Financial Statement

### 7. Investment Income

A. Due and accrued income was excluded from surplus on the following bases:

All investment income due and accrued with amounts that are over 90 days past due with the exception of mortgage loans in default.

B. The total amount excluded was \$ 0.

### 8. Derivative Instruments

The Company has no derivative instruments.

### 9. Income Taxes

A

1.) The components of the net deferred tax asset/(liability) at March 31, are as follows:

	(1) Ordinary	(2) Capital	(3) (Col. 1+2) Total	(4) Ordinary	(5) Capital	(6) (Col. 4+5) Total	(7) (Col. 1- 4) Ordinary	(8) (Col. 2-5) Capital	(9) (Col. 7+8) Total
(a) Gross Deferred Tax Assets	—	—	—	\$286,826	—	\$286,826	(\$286,826)	—	(\$286,826)
(b) Statutory Valuation Allowance Adjustments	—	—	—	\$286,826	—	\$286,826	(\$286,826)	—	(\$286,826)
(c) Adjusted Gross Deferred Tax Assets (1a – 1b)	—	—	—	—	—	—	—	—	—
(d) Deferred Tax Assets Nonadmitted	—	—	—	—	—	—	—	—	—
(e) Subtotal Net Admitted Deferred Tax Asset (1c – 1d)	—	—	—	—	—	—	—	—	—
(f) Deferred Tax Liabilities	—	—	—	—	—	—	—	—	—
(g) Net Admitted Deferred Tax Asset/(Net Deferred Tax Liability) (1e – 1f)	—	—	—	—	—	—	—	—	—

2) Admission Calculation Components SSAP No. 101

No significant change

3) Threshold Limitations

	2018	2017
(a) Ratio Percentage Used to Determine Recovery Period and Threshold Limitation Amount	0%	0%
(b) Amount of Adjusted Capital and Surplus Used To Determine Recovery Period and Threshold Limitation In 2(b)2 Above	\$8,938,384	\$2,541,511

4) Not applicable. The company did not use tax-planning strategies

B. Not applicable

C. Not applicable

## Notes to Financial Statement

D. No material change since March 31, 2018

E. Not applicable

F. The Company's federal income tax return will be consolidated with the following entities for the reporting year: Mulberry Health Inc. (Mulberry), Oscar Insurance Corporation, Oscar Health Plan of California, Oscar Insurance Company of Texas, Oscar Insurance Corporation of New Jersey, Oscar Garden State Insurance Company, and Mulberry Management Corporation.

G. Not applicable

### 10. Information Concerning Parent, Subsidiaries, Affiliates and Other Related Parties

- A. Mulberry Health Inc. funds the Company in order to support ongoing operations and meet the reserve requirements established by the ODI.
- B. The Company received capital contributions of \$0 and \$4,100,000 in the three months ending March 31, 2017 and March 31, 2018, respectively from its parent Mulberry.
- C. A summary of the contributions is as follows:

Fiscal year ended	Amount
2017	\$ 3,909,900
2018	\$ 4,100,000
Total at March 31, 2018	\$ 8,009,900

The cash was accounted for as a capital contribution credited to additional paid in capital and common stock.

- D. The Company was due to pay \$1,347,747 to parent and affiliate companies Mulberry Health Inc, Mulberry Management Corporation, and Oscar Insurance Corporation as of March 31, 2018 for operating expenses paid on their behalf. The terms of settlement require that these amounts be settled 60 days after receipt of invoice.
- E. None.
- F. Certain General and Administrative costs, including personnel and facility costs as well as charges for legal, marketing and accounting services are paid by Oscar Insurance Corporation and subsequently reimbursed by affiliated companies.
- G. All outstanding shares of The Company are owned by the parent company, Mulberry Health Inc, an insurance holding company domiciled in the State of Delaware.
- H. The Company owns no shares of an upstream, intermediate, or ultimate parent, either directly or indirectly.
- I–N. None

### 11. Debt

Not applicable.

### 12. Retirement Plans, Deferred Compensation, Postemployment Benefits and Compensated Absences and Other Postretirement Benefit Plans

Not applicable

### 13. Capital and Surplus, Shareholders' Dividend Restrictions and Quasi-Reorganizations

- (1) The company has 10,000 shares, with a par value of \$.01 authorized, issued and outstanding as of March 31, 2018. All shares are Class A shares.
- (2) No preferred stock has been authorized.
- (3) Under Ohio law, the Company may pay cash dividends only from earned surplus determined on a statutory basis. Further, the Company is restricted (on the basis of the lower of 10% of the Company's statutory surplus as shown by its last statement on file with the superintendent, or one hundred percent of adjustment net investment income

# Notes to Financial Statement

for such period) as to the amount of dividends it may declare or pay in any twelve-month period without the prior approval of the ODI.

(4)-(13) Not applicable.

## 14. Liabilities, Contingencies and Assessments

Not applicable.

## 15. Leases

Not Applicable

## 16. Information About Financial Instruments With Off-Balance Sheet Risk and Financial Instruments With Concentrations of Credit Risk

Not applicable.

## 17. Sale, Transfer and Servicing of Financial Assets and Extinguishments of Liabilities

Not Applicable

## 18. Gain or Loss to the Reporting Entity from Uninsured Plans and the Uninsured Portion of Partially Insured Plans

Not applicable

## 19. Direct Premium Written/Produced by Managing General Agents/Third Party Administrators

Not Applicable

## 20. Fair Value Measurement

The NAIC SAP defines fair value, establishes a framework for measuring fair value, and outlines the disclosure requirements related to fair value measurements. The fair value hierarchy is as follows:

Level 1 - Quoted (unadjusted) prices for identical assets in active markets.

Level 2 - Other observable inputs, either directly or indirectly, including:

- Quoted prices for similar assets in active markets;
- Quoted prices for identical or similar assets in nonactive markets (few transactions, limited information, noncurrent prices, high variability over time, etc.);
- Inputs other than quoted prices that are observable for the asset (interest rates, yield curves, volatilities, default rates, etc.);
- Inputs that are derived principally from or corroborated by other observable market data.

Level 3 - Unobservable inputs that cannot be corroborated by observable market data.

The estimated fair values of bonds, short-term investment and preferred stocks are based on quoted market prices, where available. The Company obtains one price for each security primarily from a third-party pricing service ("pricing service"), which generally uses quoted prices or other observable inputs for the determination of fair value. The pricing service normally derives the security prices through recently reported trades for identical or similar securities, making adjustments through the reporting date based upon available observable market information. For securities not actively traded, the pricing service may use quoted market prices of comparable instruments or discounted cash flow analyses, incorporating inputs that are currently observable in the markets for similar securities. Inputs that are often used in the valuation methodologies include, but are not limited to, non-binding broker quotes, benchmark yields, credit spreads, default rates and prepayment speeds.

In instances in which the inputs used to measure fair value fall into different levels of the fair value hierarchy, the fair value measurement has been determined based on the lowest-level input that is significant to the fair value measurement in its entirety. The Company's assessment of the significance of a particular item to the fair value measurement in its entirety requires judgment, including the consideration of inputs specific to the asset or liability.

### A. Fair Value

#### 1. Fair Value Measurements at Reporting Date

(2) The Company does not have any financial assets with a fair value hierarchy of Level 3 that were measured and reported at fair value for the three months ended March 31, 2018 and 2017.

## Notes to Financial Statement

(3) Transfers between fair value hierarchy levels, if any, are recorded as of the beginning of the reporting period in which the transfer occurs. There were no transfers between Levels 1, 2, or 3 of any financial assets or liabilities during the three months ended March 31, 2018 and 2017.

(4) Fair values of debt and equity securities are based on quoted market prices, where available. The Company obtains one price for each security primarily from a pricing service, which generally uses quoted prices or other observable inputs for the determination of fair value. The pricing service normally derives the security prices through recently reported trades for identical or similar securities, and, if necessary, makes adjustments through the reporting date based upon available observable market information. For securities not actively traded, the pricing service may use quoted market prices of comparable instruments or discounted cash flow analyses, incorporating inputs that are currently observable in the markets for similar securities. Inputs that are often used in the valuation methodologies include, but are not limited to, benchmark yields, credit spreads, default rates, prepayment speeds and non-binding broker quotes.

(5) The Company does not have an derivative assets and liabilities.

B. Not Applicable.

C. Fair Value Hierarchy at March 31, 2018:

Type of Financial Instrument	Aggregate Fair Value	Admitted Assets	(Level 1)	(Level 2)	(Level 3)	Not Practicable (Carrying Value)
Bonds	\$403,442	\$407,691	\$0	\$403,442	\$0	\$0
<b>Total</b>	<b>\$403,442</b>	<b>\$407,691</b>	<b>\$0</b>	<b>\$403,442</b>	<b>\$0</b>	<b>\$0</b>

### 21. Other Items

A. Unusual or Infrequent Items

Not Applicable

B. Troubled Debt Restructuring: Debtors

Not Applicable

C. Other Disclosures

Not Applicable

D. Business Interruption Insurance Recoveries

Not Applicable

E. State Transferable and Non-Transferable Tax Credits

Not Applicable

F. Subprime Mortgage Related Risk Exposure

Not applicable

G. Retained Assets

Not Applicable

H. Insurance-Linked Securities (ILS) Contracts

Not Applicable

### 22. Events Subsequent

#### Type I – Recognized Subsequent Events:

There have been no Type I events. Subsequent Events have been considered through May 15, 2018 for the statutory quarterly 2017 statements.

#### Type II – Unrecognized Subsequent Events:

## Notes to Financial Statement

There have been no Type II events. Subsequent Events have been considered through May 15, 2018 for the statutory quarterly 2017 statements.

### 23. Reinsurance

#### A. Ceded Reinsurance Report

##### Section 1 – General Interrogatories

1. Are any of the reinsurers, listed in Schedule S as non-affiliated, owned in excess of 10% or controlled, either directly or indirectly, by the company or by any representative, office, trustee, or director of the company?

Yes( ) No (**X**)

2. Have any policies issued by the corporation been reinsured with a company chartered in a country other than the United States (excluding U.S. Branches of such companies) that is owned in excess of 10% or controlled, either directly or indirectly, by an insured, a beneficiary, a creditor or any other person not primarily engaged in the insurance business?

Yes( ) No (**X**)

##### Section 2 – Ceded Reinsurance Report – Part A

- (1) Does the company have any reinsurance agreements in effect under which the reinsurer may unilaterally cancel any reinsurance for reasons other than for nonpayment of premiums or other similar credit?

Yes( ) No (**X**)

a. Not Applicable

b. The total amount of reinsurance credits taken as an asset or reduction of a liability is \$120,998 (both private reinsurance and the Transitional Reinsurance Program)

- (2) Does the reporting entity have any reinsurance agreements in effect such that the amount of losses paid or accrued through the statement date may result in a payment to the reinsurer of amounts that, in aggregate and allowing for offset of mutual credits for other reinsurance agreements with the same insurer, exceed the total of direct premium collected under the reinsured policies.

Yes( ) No (**X**)

##### Section 3 – Ceded Reinsurance Report – Part B

- (1) The estimated change in surplus for elimination of all reinsurance amounts would be (\$50,253).

- (2) Have any new agreements been executed or existing agreements amended, since January 1 of the year of this statement, to include policies or contracts that were in force or which had existing reserves established by the company as of the effective date of the agreement.

Yes( ) No (**X**)

#### B. Uncollectable Reinsurance

Not Applicable

## Notes to Financial Statement

C. Commutation of Reinsurance

Not Applicable

D. Certified Reinsurer Downgraded or Status Subject to Revocation

Not Applicable

### 24. Retrospectively Rated Contracts & Contracts Subject to Redetermination

A. No Significant Changes

B. No Significant Changes

C. No Significant Changes

D. No Significant Changes

E. Risk Sharing Provisions of the Affordable Care Act

(1) Did the Reporting entity write accident and health insurance premiums which is subject to the Affordable Care Act risk sharing provisions? **NO**

(2) Impact of Risk Sharing Provisions of the Affordable Care Act on Assets, Liabilities, and Revenue for the Current Year. Asset balances shall reflect admitted asset balances.

## Notes to Financial Statement

Description	Amount
a. Permanent ACA Risk Adjustment Program	
Assets	
1. Premium adjustments receivable due to ACA Risk Adjustment	-
Liabilities	
2. Risk adjustment user fees payable for ACA Risk Adjustment	-
3. Premium adjustments payable due to ACA Risk Adjustment	-
Operations (Revenue & Expense)	
4. Reported as revenue in premium for accident and health contracts (written/collected) due to ACA Risk Adjustment	-
5. Reported in expenses as ACA risk adjustment user fees (incurred/paid)	(4,585)
b. Transitional ACA Reinsurance Program	
Assets	
1. Amounts recoverable for claims paid due to ACA Reinsurance	-
2. Amounts recoverable for claims unpaid due to ACA Reinsurance (Contra Liability)	-
3. Amounts receivable relating to uninsured plans for contributions for ACA Reinsurance	-
Liabilities	
4. Liabilities for contributions payable due to ACA Reinsurance – not reported as ceded premium	-
5. Ceded reinsurance premiums payable due to ACA Reinsurance	-
6. Liabilities for amounts held under uninsured plans contributions for ACA Reinsurance	-
Operations (Revenue & Expense)	
7. Ceded reinsurance premiums due to ACA Reinsurance	-
8. Reinsurance recoveries (income statement) due to ACA Reinsurance payments or expected payments	-
9. ACA Reinsurance contributions – not reported as ceded premium	-
c. Temporary ACA Risk Corridors Program	
Assets	
1. Accrued retrospective premium due to ACA Risk Corridors	-
Liabilities	
2. Reserve for rate credits or policy experience rating refunds due to ACA Risk Corridors	-
Operations (Revenue & Expense)	
3. Effect of ACA Risk Corridors on net premium income (paid/received)	-
4. Effect of ACA Risk Corridors on change in reserves for rate credits	-

## Notes to Financial Statement

(3) Roll-forward of prior year ACA risk-sharing provisions for the following asset (gross of any non-admission) and liability balances, along with the reasons for the adjustments to prior year balances.

	Accrued During the Prior Year on Business Written Before December 31 of the Prior Year		Received or Paid as of the Current Year on Business Written Before December 31 of the Prior Year		Differences		Adjustments		Unsettled Balances as of the Reporting Date		
					Prior Year Accrued Less Payments (Col 1 - 3)	Prior Year Accrued Less Payments (Col 2 - 4)	To Prior Year Balances	To Prior Year Balances	Cumulative Balance from Prior Years (Col 1 - 3 +7)	Cumulative Balance from Prior Years (Col 2 - 4 +8)	
	1	2	3	4	5	6	7	8	Ref	9	10
	Receivable	(Payable)	Receivable	(Payable)	Receivable	(Payable)	Receivable	(Payable)		Receivable	(Payable)
a. Permanent ACA Risk Adjustment Program											
1.Premium adjustments receivable	-	-	-	-	-	-	-	-	A	-	-
2.Premium adjustments (payable)	-	-	-	-	-	-	-	-	B	-	-
3.Subtotal ACA Permanent Risk Adjustment Program	-	-	-	-	-	-	-	-		-	-
b. Transitional ACA Reinsurance Program											
1.Amounts recoverable for claims paid	-	-	-	-	-	-	-	-	C	-	-
2.Amounts recoverable for claims unpaid (contra liability)	-	-	-	-	-	-	-	-	D	-	-
3.Amounts receivable relating to uninsured plans	-	-	-	-	-	-	-	-	E	-	-
4.Liabilities for contributions payable due to ACA Reinsurance – not reported as ceded premium	-	-	-	-	-	-	-	-	F	-	-
5.Ceded reinsurance premiums payable	-	-	-	-	-	-	-	-	G	-	-
6.Liability for amounts held under uninsured plans	-	-	-	-	-	-	-	-	H	-	-
7.Subtotal ACA Transitional Reinsurance Program	-	-	-	-	-	-	-	-		-	-
c. Temporary ACA Risk Corridors Program											
1.Accrued retrospective premium	-	-	-	-	-	-	-	-	I	-	-
2.Reserve for rate credits or policy experience rating refunds	-	-	-	-	-	-	-	-	J	-	-
3.Subtotal ACA Risk Corridors Program	-	-	-	-	-	-	-	-		-	-
d. Total for ACA Risk Sharing Provisions	-	-	-	-	-	-	-	-		-	-

(4) Roll forward of risk corridors asset and liability balances by program benefit year

## Notes to Financial Statement

Risk Corridors Program Year	Accrued During the Prior Year on Business Written Before December 31 of the Prior Year		Received or Paid as of the Current Year on Business Written Before December 31 of the Prior Year		Differences		Adjustments			Unsettled Balances as of the Reporting Date	
					Prior Year Accrued Less Payments (Col 1 - 3)	Prior Year Accrued Less Payments (Col 2 - 4)	To Prior Year Balances	To Prior Year Balances	Ref	Cumulativ e Balance from Prior Years (Col 1 - 3 +7)	Cumulativ e Balance from Prior Years (Col 2 - 4 +8)
	1	2	3	4	5	6	7	8		9	10
	Receivable	(Payable)	Receivable	(Payable)	Receivable	(Payable)	Receivabl e	(Payable)		Receivabl e	(Payable)
a. 2014											
1.Acrued retrospective premium	-	-	-	-	-	-	-	-	A	-	-
2.Reserve for rate credits or policy experience rating refunds	-	-	-	-	-	-	-	-	B	-	-
b.2015											
1.Acrued retrospective premium	-	-	-	-	-	-	-	-	C	-	-
2.Reserve for rate credits or policy experience rating refunds	-	-	-	-	-	-	-	-	D	-	-
c. 2016											
1.Acrued retrospective premium	-	-	-	-	-	-	-	-	E	-	-
2.Reserve for rate credits or policy experience rating refunds	-	-	-	-	-	-	-	-	F	-	-
d.Total for risk corridors	-	-	-	-	-	-	-	-		-	-

**25. Change in Incurred Claims and Claim Adjustment Expenses**

Not applicable .

**26. Intercompany Pooling Arrangements**

Not applicable.

**27. Structured Settlements**

Not applicable

**28. Health Care Receivables**

A. Pharmaceutical Rebate Receivables

Quarter	Estimated Pharmacy Rebates as Reported on Financial Statements	Pharmacy Rebates as Billed or Otherwise Confirmed	Actual Rebates Received Within 90 Days of Billing	Actual Rebates Received Within 91 to 180 Days of Billing	Actual Rebates Received More Than 180 Days After Billing
3/31/2018	527,896	-	-	-	-

**29. Participating Policies**

Not applicable.

**30. Premium Deficiency Reserves**

## **Notes to Financial Statement**

Not Applicable

### **31. Anticipated Salvage and Subrogation**

Not applicable.

# GENERAL INTERROGATORIES

## PART 1 - COMMON INTERROGATORIES GENERAL

- 1.1 Did the reporting entity experience any material transactions requiring the filing of Disclosure of Material Transactions with the State of Domicile, as required by the Model Act? Yes  No
- 1.2 If yes, has the report been filed with the domiciliary state? Yes  No  N/A
  
- 2.1 Has any change been made during the year of this statement in the charter, by-laws, articles of incorporation, or deed of settlement of the reporting entity? Yes  No
- 2.2 If yes, date of change: .....
  
- 3.1 Is the reporting entity a member of an Insurance Holding Company System consisting of two or more affiliated persons, one or more of which is an insurer? Yes  No   
 If yes, complete Schedule Y, Parts 1 and 1A.
- 3.2 Have there been any substantial changes in the organizational chart since the prior quarter end? Yes  No
- 3.3 If the response to 3.2 is yes, provide a brief description of those changes:  
 Incorporation of Oscar Health Plan, Inc.
- 3.4 Is the reporting entity publicly traded or a member of a publicly traded group? Yes  No
- 3.5 If the response to 3.4 is yes, provide the CIK (Central Index Key) code issued by the SEC for the entity/group.
  
- 4.1 Has the reporting entity been a party to a merger or consolidation during the period covered by this statement? Yes  No
- 4.2 If yes, provide the name of entity, NAIC Company Code, and state of domicile (use two letter state abbreviation) for any entity that has ceased to exist as a result of the merger or consolidation.

1 Name of Entity	2 NAIC Company Code	3 State of Domicile
.....	.....	.....

- 5. If the reporting entity is subject to a management agreement, including third-party administrator(s), managing general agent(s), attorney-in-fact, or similar agreement, have there been any significant changes regarding the terms of the agreement or principals involved? Yes  No  N/A   
 If yes, attach an explanation.
  
- 6.1 State as of what date the latest financial examination of the reporting entity was made or is being made. .....
- 6.2 State the as of date that the latest financial examination report became available from either the state of domicile or the reporting entity. This date should be the date of the examined balance sheet and not the date the report was completed or released. .....
- 6.3 State as of what date the latest financial examination report became available to other states or the public from either the state of domicile or the reporting entity. This is the release date or completion date of the examination report and not the date of the examination (balance sheet date). .....
- 6.4 By what department or departments? .....
- 6.5 Have all financial statement adjustments within the latest financial examination report been accounted for in a subsequent financial statement filed with Departments? Yes  No  N/A
- 6.6 Have all of the recommendations within the latest financial examination report been complied with? Yes  No  N/A
  
- 7.1 Has this reporting entity had any Certificates of Authority, licenses or registrations (including corporate registration, if applicable) suspended or revoked by any governmental entity during the reporting period? Yes  No
- 7.2 If yes, give full information
  
- 8.1 Is the company a subsidiary of a bank holding company regulated by the Federal Reserve Board? Yes  No
- 8.2 If response to 8.1 is yes, please identify the name of the bank holding company.
- 8.3 Is the company affiliated with one or more banks, thrifts or securities firms? Yes  No
- 8.4 If response to 8.3 is yes, please provide below the names and location (city and state of the main office) of any affiliates regulated by a federal regulatory services agency [i.e. the Federal Reserve Board (FRB), the Office of the Comptroller of the Currency (OCC), the Federal Deposit Insurance Corporation (FDIC) and the Securities Exchange Commission (SEC)] and identify the affiliate's primary federal regulator.]

1 Affiliate Name	2 Location (City, State)	3 FRB	4 OCC	5 FDIC	6 SEC
.....	.....	..... No .....	..... No .....	..... No .....	..... No .....

- 9.1 Are the senior officers (principal executive officer, principal financial officer, principal accounting officer or controller, or persons performing similar functions) of the reporting entity subject to a code of ethics, which includes the following standards? Yes  No 
  - (a) Honest and ethical conduct, including the ethical handling of actual or apparent conflicts of interest between personal and professional relationships;
  - (b) Full, fair, accurate, timely and understandable disclosure in the periodic reports required to be filed by the reporting entity;
  - (c) Compliance with applicable governmental laws, rules and regulations;
  - (d) The prompt internal reporting of violations to an appropriate person or persons identified in the code; and
  - (e) Accountability for adherence to the code.
- 9.11 If the response to 9.1 is No, please explain:
- 9.2 Has the code of ethics for senior managers been amended? Yes  No
- 9.21 If the response to 9.2 is Yes, provide information related to amendment(s).
- 9.3 Have any provisions of the code of ethics been waived for any of the specified officers? Yes  No
- 9.31 If the response to 9.3 is Yes, provide the nature of any waiver(s).

### FINANCIAL

- 10.1 Does the reporting entity report any amounts due from parent, subsidiaries or affiliates on Page 2 of this statement? Yes  No
- 10.2 If yes, indicate any amounts receivable from parent included in the Page 2 amount: \$ ..... 0

### INVESTMENT

- 11.1 Were any of the stocks, bonds, or other assets of the reporting entity loaned, placed under option agreement, or otherwise made available for use by another person? (Exclude securities under securities lending agreements.) Yes  No
- 11.2 If yes, give full and complete information relating thereto:
  
- 12. Amount of real estate and mortgages held in other invested assets in Schedule BA: \$ ..... 0
- 13. Amount of real estate and mortgages held in short-term investments: \$ ..... 0
  
- 14.1 Does the reporting entity have any investments in parent, subsidiaries and affiliates? Yes  No
- 14.2 If yes, please complete the following:

## GENERAL INTERROGATORIES (Continued)

	1 Prior Year-End Book/Adjusted Carrying Value	2 Current Quarter Book/Adjusted Carrying Value
14.21 Bonds .....		
14.22 Preferred Stock .....		
14.23 Common Stock .....		
14.24 Short-Term Investments .....		
14.25 Mortgages Loans on Real Estate .....		
14.26 All Other .....		
14.27 Total Investment in Parent, Subsidiaries and Affiliates (Subtotal Lines 14.21 to 14.26) .....		
14.28 Total Investment in Parent included in Lines 14.21 to 14.26 above .....		

15.1 Has the reporting entity entered into any hedging transactions reported on Schedule DB? Yes  No   
 15.2 If yes, has a comprehensive description of the hedging program been made available to the domiciliary state? Yes  No  N/A   
 If no, attach a description with this statement.

16. For the reporting entity's security lending program, state the amount of the following as of the current statement date:  
 16.1 Total fair value of reinvested collateral assets reported on Schedule DL, Parts 1 and 2 \$ ..... 0  
 16.2 Total book adjusted/carrying value of reinvested collateral assets reported on Schedule DL, Parts 1 and 2 \$ ..... 0  
 16.3 Total payable for securities lending reported on the liability page \$ ..... 0

17. Excluding items in Schedule E - Part 3 - Special Deposits, real estate, mortgage loans and investments held physically in the reporting entity's offices, vaults or safety deposit boxes, were all stocks, bonds and other securities, owned throughout the current year held pursuant to a custodial agreement with a qualified bank or trust company in accordance with Section 1, III - General Examination Considerations, F. Outsourcing of Critical Functions, Custodial or Safekeeping Agreements of the NAIC Financial Condition Examiners Handbook? Yes  No   
 17.1 For all agreements that comply with the requirements of the NAIC Financial Condition Examiners Handbook, complete the following:

1 Name of Custodian(s)	2 Custodian Address
State Street Bank and Trust Company .....	801 Pennsylvania Avenue Kansas City, MO 64105 ...

17.2 For all agreements that do not comply with the requirements of the NAIC Financial Condition Examiners Handbook, provide the name, location and a complete explanation:

1 Name(s)	2 Location(s)	3 Complete Explanation(s)

17.3 Have there been any changes, including name changes, in the custodian(s) identified in 17.1 during the current quarter? Yes  No   
 17.4 If yes, give full and complete information relating thereto:

1 Old Custodian	2 New Custodian	3 Date of Change	4 Reason

17.5 Investment management - Identify all investment advisors, investment managers, broker/dealers, including individuals that have the authority to make investment decisions on behalf of the reporting entity. For assets that are managed internally by employees of the reporting entity, note as such. [" that have access to the investment accounts"; " handle securities"]

1 Name of Firm or Individual	2 Affiliation
Goldman Sachs Asset Mangement, L.P. ....	U .....

17.5097 For those firms/individuals listed in the table for Question 17.5, do any firms/individuals unaffiliated with the reporting entity (i.e. designated with a "U") manage more than 10% of the reporting entity's assets? Yes  No

17.5098 For firms/individuals unaffiliated with the reporting entity (i.e. designated with a "U") listed in the table for Question 17.5, does the total assets under management aggregate to more than 50% of the reporting entity's assets? Yes  No

17.6 For those firms or individuals listed in the table for 17.5 with an affiliation code of "A" (affiliated) or "U" (unaffiliated), provide the information for the table below.

1 Central Registration Depository Number	2 Name of Firm or Individual	3 Legal Entity Identifier (LEI)	4 Registered With	5 Investment Management Agreement (IMA) Filed
107738 .....	Goldman Sachs Asset Management, L.P. ....	CF5M58QA35CFPUX70H17 ...	SEC .....	NO .....

18.1 Have all the filing requirements of the Purposes and Procedures Manual of the NAIC Investment Analysis Office been followed? Yes  No

18.2 If no, list exceptions:

19. By self-designating 5\*GI securities, the reporting entity is certifying the following elements for each self-designated 5\*GI security:  
 a. Documentation necessary to permit a full credit analysis of the security does not exist.  
 b. Issuer or obligor is current on all contracted interest and principal payments.  
 c. The insurer has an actual expectation of ultimate payment of all contracted interest and principal.

Has the reporting entity self-designated 5\*GI securities? Yes  No

# GENERAL INTERROGATORIES

## PART 2 - HEALTH

- |   |               |
|---|---------------|
| 1. Operating Percentages:   |               |
| 1.1 A&H loss percent  | ..... 74.000% |
| 1.2 A&H cost containment percent  | ..... 3.000%  |
| 1.3 A&H expense percent excluding cost containment expenses   | ..... 10.000% |
| 2.1 Do you act as a custodian for health savings accounts?  | Yes[ ] No[X]  |
| 2.2 If yes, please provide the amount of custodial funds held as of the reporting date.   | \$..... 0     |
| 2.3 Do you act as an administrator for health savings accounts?   | Yes[ ] No[X]  |
| 2.4 If yes, please provide the balance of the funds administered as of the reporting date.  | \$..... 0     |
| 3. Is the reporting entity licensed or chartered, registered, qualified, eligible or writing business in at least two states?   | Yes[ ] No[X]  |
| 3.1 If no, does the reporting entity assume reinsurance business that covers risks residing in at least one state other than the state of domicile of the reporting entity? | Yes[ ] No[X]  |

**SCHEDULE S - CEDED REINSURANCE**  
**Showing All New Reinsurance Treaties - Current Year to Date**

1 NAIC Company Code	2 ID Number	3 Effective Date	4 Name of Reinsurer	5 Domiciliary Jurisdiction	6 Type of Reinsurance Ceded	7 Type of Reinsurer	8 Certified Reinsurer Rating (1 through 6)	9 Effective Date of Certified Reinsurer Rating
<b>Accident and Health - Non-affiliates</b>								
23680 .....	47-0698507 .....	01/01/2018 .....	ODYSSEY REINS CO .....	CT .....	SSL/A/I .....	Authorized .....		

# SCHEDULE T - PREMIUMS AND OTHER CONSIDERATIONS

## Current Year to Date - Allocated by States and Territories

1	Direct Business Only								
	2	3	4	5	6	7	8	9	
State, Etc.	Active Status (a)	Accident and Health Premiums	Medicare Title XVIII	Medicaid Title XIX	Federal Employees Health Benefits Program Premiums	Life and Annuity Premiums and Other Considerations	Property/Casualty Premiums	Total Columns 2 Through 7	Deposit-Type Contracts
1. Alabama (AL)	N								
2. Alaska (AK)	N								
3. Arizona (AZ)	N								
4. Arkansas (AR)	N								
5. California (CA)	N								
6. Colorado (CO)	N								
7. Connecticut (CT)	N								
8. Delaware (DE)	N								
9. District of Columbia (DC)	N								
10. Florida (FL)	N								
11. Georgia (GA)	N								
12. Hawaii (HI)	N								
13. Idaho (ID)	N								
14. Illinois (IL)	N								
15. Indiana (IN)	N								
16. Iowa (IA)	N								
17. Kansas (KS)	N								
18. Kentucky (KY)	N								
19. Louisiana (LA)	N								
20. Maine (ME)	N								
21. Maryland (MD)	N								
22. Massachusetts (MA)	N								
23. Michigan (MI)	N								
24. Minnesota (MN)	N								
25. Mississippi (MS)	N								
26. Missouri (MO)	N								
27. Montana (MT)	N								
28. Nebraska (NE)	N								
29. Nevada (NV)	N								
30. New Hampshire (NH)	N								
31. New Jersey (NJ)	N								
32. New Mexico (NM)	N								
33. New York (NY)	N								
34. North Carolina (NC)	N								
35. North Dakota (ND)	N								
36. Ohio (OH)	L	17,614,050						17,614,050	
37. Oklahoma (OK)	N								
38. Oregon (OR)	N								
39. Pennsylvania (PA)	N								
40. Rhode Island (RI)	N								
41. South Carolina (SC)	N								
42. South Dakota (SD)	N								
43. Tennessee (TN)	N								
44. Texas (TX)	N								
45. Utah (UT)	N								
46. Vermont (VT)	N								
47. Virginia (VA)	N								
48. Washington (WA)	N								
49. West Virginia (WV)	N								
50. Wisconsin (WI)	N								
51. Wyoming (WY)	N								
52. American Samoa (AS)	N								
53. Guam (GU)	N								
54. Puerto Rico (PR)	N								
55. U.S. Virgin Islands (VI)	N								
56. Northern Mariana Islands (MP)	N								
57. Canada (CAN)	N								
58. Aggregate other alien (OT)	X X X								
59. Subtotal	X X X	17,614,050						17,614,050	
60. Reporting entity contributions for Employee Benefit Plans	X X X								
61. Total (Direct Business)	X X X	17,614,050						17,614,050	
<b>DETAILS OF WRITE-INS</b>									
58001.	X X X								
58002.	X X X								
58003.	X X X								
58998. Summary of remaining write-ins for Line 58 from overflow page	X X X								
58999. TOTALS (Lines 58001 through 58003 plus 58998) (Line 58 above)	X X X								

(a) Active Status Counts:

L Licensed or Chartered - Licensed insurance carrier or domiciled RRG

E Eligible - Reporting entities eligible or approved to write surplus lines in the state

N None of the above Not allowed to write business in the state

1

R Registered - Non-domiciled RRGs

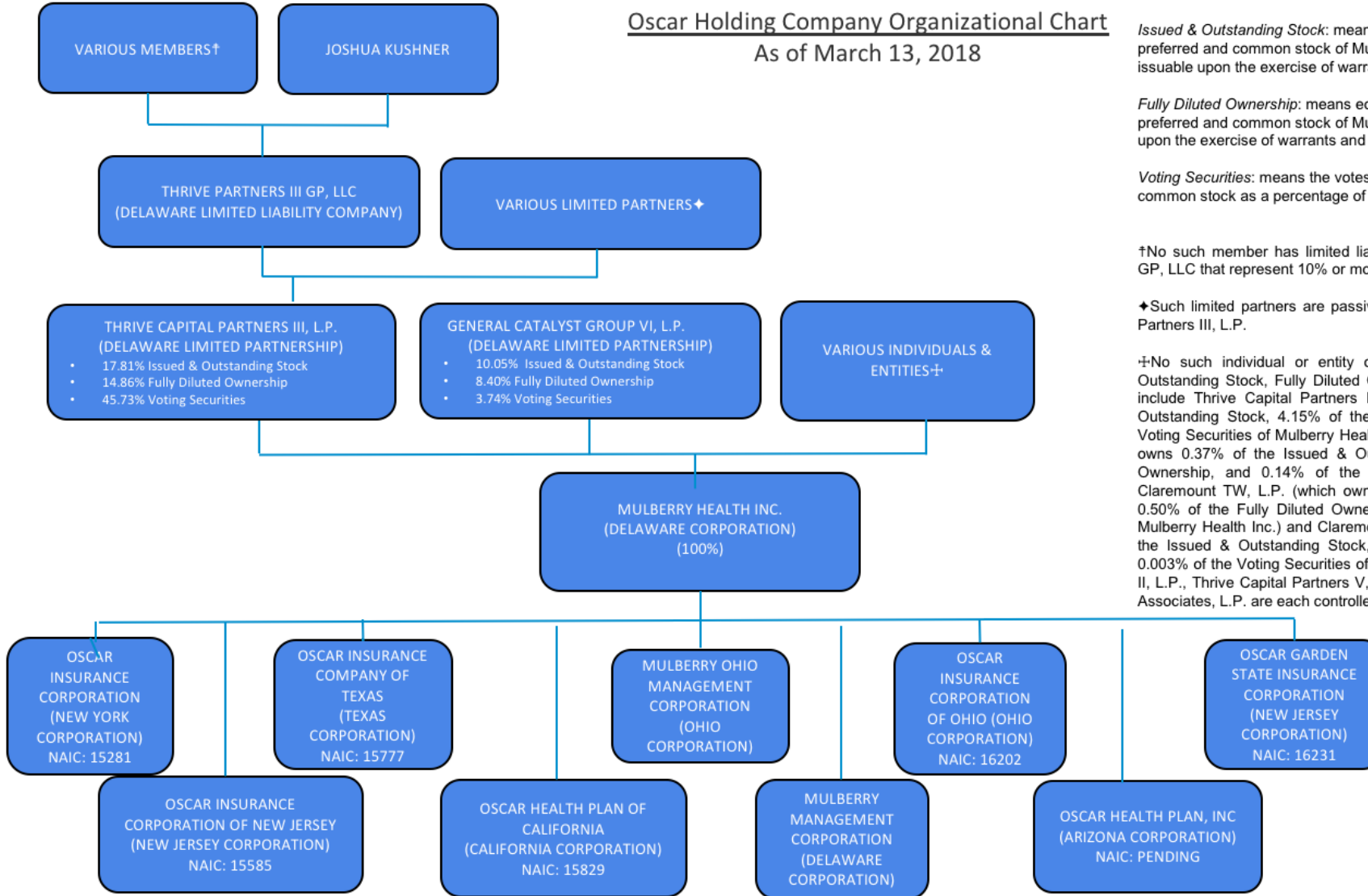
Q Qualified - Qualified or accredited reinsurer

56

# SCHEDULE Y - INFORMATION CONCERNING ACTIVITIES OF INSURER

## MEMBERS OF A HOLDING COMPANY GROUP

### PART 1 - ORGANIZATIONAL CHART



**Definitions**

*Issued & Outstanding Stock:* means economic interest as a percentage of all preferred and common stock of Mulberry Health Inc., not including shares issuable upon the exercise of warrants and options

*Fully Diluted Ownership:* means economic interest as a percentage of all preferred and common stock of Mulberry Health Inc., including shares issuable upon the exercise of warrants and options

*Voting Securities:* means the votes entitled to be cast by a holder of preferred or common stock as a percentage of total votes entitled to be cast

**Key**

†No such member has limited liability company interests in Thrive Partners III GP, LLC that represent 10% or more voting control of Thrive Partners III GP, LLC

‡Such limited partners are passive investors and do not control Thrive Capital Partners III, L.P.

‡No such individual or entity owns 10% or more of Mulberry's Issued & Outstanding Stock, Fully Diluted Ownership, or Voting Securities. Such entities include Thrive Capital Partners II, L.P. (which owns 4.97% of the Issued & Outstanding Stock, 4.15% of the Fully Diluted Ownership, and 8.86% of the Voting Securities of Mulberry Health Inc.), Thrive Capital Partners V, L.P. (which owns 0.37% of the Issued & Outstanding Stock, 0.31% of the Fully Diluted Ownership, and 0.14% of the Voting Securities of Mulberry Health Inc.), Claremount TW, L.P. (which owns 0.60% of the Issued & Outstanding Stock, 0.50% of the Fully Diluted Ownership, and 1.55% of the Voting Securities of Mulberry Health Inc.) and Claremount V Associates, L.P. (which owns 0.01% of the Issued & Outstanding Stock, 0.01% of the Fully Diluted Ownership, and 0.003% of the Voting Securities of Mulberry Health Inc.). Thrive Capital Partners II, L.P., Thrive Capital Partners V, L.P., Claremount TW, L.P. and Claremount V Associates, L.P. are each controlled by Joshua Kushner.

## SCHEDULE Y

### PART 1A - DETAIL OF INSURANCE HOLDING COMPANY SYSTEM

1	2	3	4	5	6	7	8	9	10	11	12	13	14	15	16
Group Code	Group Name	NAIC Company Code	ID Number	FEDERAL RSSD	CIK	Name of Securities Exchange if Publicly Traded (U.S. or International)	Names of Parent, Subsidiaries or Affiliates	Domiciliary Location	Relationship to Reporting Entity	Directly Controlled by (Name of Entity / Person)	Type of Control (Ownership, Board, Management, Attorney-in-Fact, Influence, Other)	If Control is Ownership Provide Percentage	Ultimate Controlling Entity(ies) / Person(s)	Is an SCA Filing Required? (Y/N)	*
4818		15585	471142944			N/A	Oscar Insurance Corporation of New Jersey	NJ	IA	Mulberry Health Inc.	Ownership	100.0	Joshua Kushner	N	0000000
4818		15281	462043136			N/A	Oscar Insurance Corporation	NY	IA	Mulberry Health Inc.	Ownership	100.0	Joshua Kushner	N	0000000
4818		15777	473185443			N/A	Oscar Insurance Company of Texas	TX	IA	Mulberry Health Inc.	Ownership	100.0	Joshua Kushner	N	0000000
4818		15829	473103726			N/A	Oscar Health Plan of California	NY	IA	Mulberry Health Inc.	Ownership	100.0	Joshua Kushner	N	0000000
4818		0000	461315570			N/A	Mulberry Management Inc	DE	NIA	Mulberry Health Inc.	Ownership	100.0	Joshua Kushner	N	0000000
4818		0000	461315570			N/A	Mulberry Health Inc.	DE	UDP	Thrive Capital Partners III, LP	Ownership	45.7	Joshua Kushner	N	0000000
4818		16202	364859637			N/A	Oscar Insurance Corporation of Ohio	OH	RE	Mulberry Health Inc.	Ownership	100.0	Joshua Kushner	N	0000000
4818		00000	371867604			N/A	Oscar Garden State Insurance Corporation	NJ	IA	Mulberry Health Inc.	Ownership	100.0	Joshua Kushner	N	0000000
4818		00000	301007548			N/A	Mulberry Ohio Management Corporation	OH	NIA	Mulberry Health Inc.	Ownership	100.0	Joshua Kushner	N	0000000
4818		00000	824782428			N/A	Oscar Health Plan, Inc.	AZ	IA	Mulberry Health Inc.	Ownership	100.0	Joshua Kushner	N	0000000

Asterisk	Explanation
0000001	

# SUPPLEMENTAL EXHIBITS AND SCHEDULES INTERROGATORIES

The following supplemental reports are required to be filed as part of your statement filing. However, in the event that your company does not transact the type of business for which the special report must be filed, your response of NO to the specific interrogatory will be accepted in lieu of filing a "NONE" report and a bar code will be printed below. If the supplement is required of your company but is not being filed for whatever reason enter SEE EXPLANATION and provide an explanation following the interrogatory questions.

**RESPONSE**

1. Will the Medicare Part D Coverage Supplement be filed with the state of domicile and the NAIC with this statement?

No

Explanations:

Bar Codes:

Medicare Part D Coverage Supplement



16202201836500001

2018

Document Code: 365



STATEMENT AS OF **March 31, 2018** OF THE **Oscar Insurance Corporation of Ohio**  
**SCHEDULE A - VERIFICATION**

**Real Estate**

	1 Year To Date	2 Prior Year Ended December 31
1. Book/adjusted carrying value, December 31 of prior year .....		
2. Cost of acquired:		
2.1 Actual cost at time of acquisition .....		
2.2 Additional investment made after acquisition .....		
3. Current year change in encumbrances .....		
4. Total gain (loss) on disposals .....		
5. Deduct amounts received on disposals .....		
6. Total foreign exchange change in book/adjusted carrying value .....		
7. Deduct current year's other-than-temporary impairment recognized .....		
8. Deduct current year's depreciation .....		
9. Book/adjusted carrying value at the end of current period (Lines 1 + 2 + 3 + 4 - 5 + 6 - 7 - 8) .....		
10. Deduct total nonadmitted amounts .....		
11. Statement value at end of current period (Line 9 minus Line 10) .....		

**NONE**

**SCHEDULE B - VERIFICATION**

**Mortgage Loans**

	1 Year To Date	2 Prior Year Ended December 31
1. Book value/recorded investment excluding accrued interest, December 31 of prior year .....		
2. Cost of acquired:		
2.1 Actual cost at time of acquisition .....		
2.2 Additional investment made after acquisition .....		
3. Capitalized deferred interest and other .....		
4. Accrual of discount .....		
5. Unrealized valuation increase (decrease) .....		
6. Total gain (loss) on disposals .....		
7. Deduct amounts received on disposals .....		
8. Deduct amortization of premium and mortgage interest points .....		
9. Total foreign exchange change in book value/recorded investment .....		
10. Deduct current year's other-than-temporary impairment recognized .....		
11. Book value/recorded investment excluding accrued interest at end of current period (Lines 1 + 2 + 3 + 4 + 5 + 6 - 7 - 8 + 9 - 10) .....		
12. Total valuation allowance .....		
13. Subtotal (Line 11 plus Line 12) .....		
14. Deduct total nonadmitted amounts .....		
15. Statement value at end of current period (Line 13 minus Line 14) .....		

**NONE**

**SCHEDULE BA - VERIFICATION**

**Other Long-Term Invested Assets**

	1 Year To Date	2 Prior Year Ended December 31
1. Book/adjusted carrying value, December 31 of prior year .....		
2. Cost of acquired:		
2.1 Actual cost at time of acquisition .....		
2.2 Additional investment made after acquisition .....		
3. Capitalized deferred interest and other .....		
4. Accrual of discount .....		
5. Unrealized valuation increase (decrease) .....		
6. Total gain (loss) on disposals .....		
7. Deduct amounts received on disposals .....		
8. Deduct amortization of premium and depreciation .....		
9. Total foreign exchange change in book/adjusted carrying value .....		
10. Deduct current year's other-than-temporary impairment recognized .....		
11. Book/adjusted carrying value at end of current period (Lines 1 + 2 + 3 + 4 + 5 + 6 - 7 - 8 + 9 - 10) .....		
12. Deduct total nonadmitted amounts .....		
13. Statement value at end of current period (Line 11 minus Line 12) .....		

**NONE**

**SCHEDULE D - VERIFICATION**

**Bonds and Stocks**

	1 Year To Date	2 Prior Year Ended December 31
1. Book/adjusted carrying value of bonds and stocks, December 31 of prior year .....	407,061	
2. Cost of bonds and stocks acquired .....		405,838
3. Accrual of discount .....	630	1,223
4. Unrealized valuation increase (decrease) .....		
5. Total gain (loss) on disposals .....		
6. Deduct consideration for bonds and stocks disposed of .....		
7. Deduct amortization of premium .....		
8. Total foreign exchange change in book/adjusted carrying value .....		
9. Deduct current year's other-than-temporary impairment recognized .....		
10. Total investment income recognized as a result of prepayment penalties and/or acceleration fees .....		
11. Book/adjusted carrying value at end of current period (Lines 1 + 2 + 3 + 4 + 5 - 6 - 7 + 8 - 9 + 10) .....	407,691	407,061
12. Deduct total nonadmitted amounts .....		
13. Statement value at end of current period (Line 11 minus Line 12) .....	407,691	407,061

## SCHEDULE D - PART 1B

**Showing the Acquisitions, Dispositions and Non-Trading Activity  
During the Current Quarter for all Bonds and Preferred Stock by NAIC Designation**

	1	2	3	4	5	6	7	8
NAIC Designation	Book/Adjusted Carrying Value Beginning of Current Quarter	Acquisitions During Current Quarter	Dispositions During Current Quarter	Non-Trading Activity During Current Quarter	Book/Adjusted Carrying Value End of First Quarter	Book/Adjusted Carrying Value End of Second Quarter	Book/Adjusted Carrying Value End of Third Quarter	Book/Adjusted Carrying Value December 31 Prior Year
<b>BONDS</b>								
1. NAIC 1 (a) .....	407,061			630	407,691			407,061
2. NAIC 2 (a) .....								
3. NAIC 3 (a) .....								
4. NAIC 4 (a) .....								
5. NAIC 5 (a) .....								
6. NAIC 6 (a) .....								
7. Total Bonds .....	407,061			630	407,691			407,061
<b>PREFERRED STOCK</b>								
8. NAIC 1 .....								
9. NAIC 2 .....								
10. NAIC 3 .....								
11. NAIC 4 .....								
12. NAIC 5 .....								
13. NAIC 6 .....								
14. Total Preferred Stock .....								
15. Total Bonds & Preferred Stock .....	407,061			630	407,691			407,061

(a) Book/Adjusted Carrying Value column for the end of the current reporting period includes the following amount of short-term and cash equivalent bonds by NAIC designation: NAIC 1 \$.....0; NAIC 2 \$.....0; NAIC 3 \$.....0; NAIC 4 \$.....0; NAIC 5 \$.....0; NAIC 6 \$.....0

QS102

**SI03 Schedule DA Part 1 ..... NONE**

**SI03 Schedule DA Verification ..... NONE**

**SI04 Schedule DB - Part A Verification ..... NONE**

**SI04 Schedule DB - Part B Verification ..... NONE**

**SI05 Schedule DB Part C Section 1 ..... NONE**

**SI06 Schedule DB Part C Section 2 ..... NONE**

**SI07 Schedule DB - Verification ..... NONE**

**SI08 Schedule E - Verification (Cash Equivalents) ..... NONE**

**E01 Schedule A Part 2 ..... NONE**

**E01 Schedule A Part 3 ..... NONE**

**E02 Schedule B Part 2 ..... NONE**

**E02 Schedule B Part 3 ..... NONE**

**E03 Schedule BA Part 2 ..... NONE**

**E03 Schedule BA Part 3 ..... NONE**

**E04 Schedule D Part 3 ..... NONE**

**E05 Schedule D Part 4 ..... NONE**

# SCHEDULE DB - PART A - SECTION 1

Showing all Options, Caps, Floors, Collars, Swaps and Forwards Open as of Current Statement Date

1	2	3	4	5	6	7	8	9	10	11	12	13	14	15	16	17	18	19	20	21	22	23				
Description	Description of Item(s) Hedged, Used for Income Generation or Replicated	Schedule/ Exhibit Identifier	Type(s) of Risk(s) (a)	Exchange, Counterparty or Central Clearinghouse	Trade Date	Date of Maturity or Expiration	Number of Contracts	Notional Amount	Strike Price, Rate or Indexed Received (Paid)	Cumulative Prior Year(s) Initial Cost of Premium (Received) Paid	Current Year Initial Cost of Premium (Received) Paid	Current Year Income	Book/ Adjusted Carrying Value	Code	Fair Value	Unrealized Valuation Increase/ (Decrease)	Total Foreign Exchange Change in B./A.C.V.	Current Year's (Amortization) Accretion	Adjustment to Carrying Value of Hedged Item	Potential Exposure	Credit Quality of Reference Entity	Hedge Effectiveness at Inception and at Quarter end (b)				
1449999 Totals														XXX											XXX	XXX

(a)

1	2
Code	Description of Hedged Risk(s)

(b)

1	2
Code	Financial or Economic Impact of the Hedge at the End of the Reporting Period
0000	

## SCHEDULE DB - PART B - SECTION 1

### Future Contracts Open as of the Current Statement Date

1 Ticker Symbol	2 Number of Contracts	3 Notional Amount	4 Description	5 Description of Item(s) Hedged, Used for Income Generation or Replicated	6 Schedule/ Exhibit Identifier	7 Type(s) of Risk(s) (a)	8 Date of Maturity or Expiration	9 Exchange	10 Trade Date	11 Transaction Price	12 Reporting Date Price	13 Fair Value	14 Book/ Adjusted Carrying Value	Highly Effective Hedges			18 Cumulative Variation Margin for All Other Hedges	19 Change in Variation Margin Gain (Loss) Recognized in Current Year	20 Potential Exposure	21 Hedge Effectiveness at Inception and at Quarter-end (b)	22 Value of One (1) Point													
														15 Cumulative Variation Margin	16 Deferred Variation Margin	17 Change in Variation Margin Gain (Loss) Used to Adjust Basis of Hedged Item																		
1399999 Subtotal - Hedging Effective																																		
1409999 Subtotal - Hedging Other																																		
1419999 Subtotal - Replication																																		
1429999 Subtotal - Income Generation																																		
1439999 Subtotal - Other																																		
1449999 Totals																																		

1 Broker Name	2 Beginning Cash Balance	3 Cumulative Cash Change	4 Ending Cash Balance
9999999 Total - Net Cash Deposits			

(a)

1 Code	2 Description of Hedged Risk(s)
.....	.....

(b)

1 Code	2 Financial or Economic Impact of the Hedge at the End of the Reporting Period
... 0000 ...	.....

## SCHEDULE DB - PART D - SECTION 1

### Counterparty Exposure for Derivative Instruments Open as of Current Statement Date

1 Description of Exchange, Counterparty or Central Clearinghouse	2 Master Agreement (Y or N)	3 Credit Support Annex (Y or N)	4 Fair Value of Acceptable Collateral	Book/Adjusted Carrying Value			Fair Value			11 Potential Exposure	12 Off-Balance Sheet Exposure
				5 Contracts With Book/Adjusted Carrying Value > 0	6 Contracts With Book/Adjusted Carrying Value < 0	7 Exposure net of Collateral	8 Contracts With Fair Value > 0	9 Contracts With Fair Value < 0	10 Exposure Net of Collateral		
0199999 Aggregate Sum of Exchange Traded Derivatives .....											
0299999 Subtotal - NAIC 1 Designation .....											
0399999 Subtotal - NAIC 2 Designation .....											
0499999 Subtotal - NAIC 3 Designation .....											
0599999 Subtotal - NAIC 4 Designation .....											
0699999 Subtotal - NAIC 5 Designation .....											
0799999 Subtotal - NAIC 6 Designation .....											
0899999 Aggregate Sum of Central Clearinghouses .....											
0999999 Gross Total .....											
1. Offset per SSAP No. 64 .....											
2. Net after right of offset per SSAP No. 64 .....											

## SCHEDULE DB - PART D - SECTION 2

Collateral for Derivative Instruments Open as of Current Statement Date

**Collateral Pledged by Reporting Entity**

1 Exchange, Counterparty or Central Clearinghouse	2 Type of Asset Pledged	3 CUSIP Identification	4 Description	5 Fair Value	6 Par Value	7 Book/Adjusted Carrying Value	8 Maturity Date	9 Type of Margin (I, V or IV)
0199999 Total .....						X X X .....	X X X .....	X X X .....

## SCHEDULE DB - PART D - SECTION 2

Collateral for Derivative Instruments Open as of Current Statement Date

**Collateral Pledged to Reporting Entity**

1 Exchange, Counterparty or Central Clearinghouse	2 Type of Asset Pledged	3 CUSIP Identification	4 Description	5 Fair Value	6 Par Value	7 Book/Adjusted Carrying Value	8 Maturity Date	9 Type of Margin (I, V or IV)
0299999 Total .....						X X X .....	X X X .....	X X X .....

# SCHEDULE DL - PART 1 SECURITIES LENDING COLLATERAL ASSETS

**Reinvested Collateral Assets Owned Current Statement Date**

(Securities lending collateral assets reported in aggregate on Line 10 of the Assets page  
and not included on Schedules A, B, BA, D, DB and E)

1 CUSIP Identification	2 Description	3 Code	4 NAIC Designation / Market Indicator	5 Fair Value	6 Book/Adjusted Carrying Value	7 Maturity Dates
7699999	Total Preferred and Common Stocks .....					X X X
9999999	Grand Totals .....					X X X

General Interrogatories:

1. Total activity for the year to date Fair Value \$.....0 Book/Adjusted Carrying Value \$.....0
2. Average balance for the year to date Fair Value \$.....0 Book/Adjusted Carrying Value \$.....0
3. Reinvested securities lending collateral assets book/adjusted carrying value included in this schedule by NAIC designation: NAIC 1 \$.....0, NAIC 2 \$.....0; NAIC 3 \$.....0; NAIC 4 \$.....0; NAIC 5 \$.....0; NAIC 6 \$.....0

## SCHEDULE DL - PART 2 SECURITIES LENDING COLLATERAL ASSETS

**Reinvested Collateral Assets Owned Current Statement Date**  
(Securities lending collateral assets included on Schedules A, B, BA, D, DB and E  
and not reported in aggregate on Line 10 of the Assets page)

1 CUSIP Identification	2 Description	3 Code	4 NAIC Designation / Market Indicator	5 Fair Value	6 Book/Adjusted Carrying Value	7 Maturity Dates
7699999	Total Preferred and Common Stocks .....					X X X ...
9999999	Grand Totals .....					X X X ...

General Interrogatories:

1. Total activity for the year to date Fair Value \$.....0 Book/Adjusted Carrying Value \$.....0
2. Average balance for the year to date Fair Value \$.....0 Book/Adjusted Carrying Value \$.....0

**SCHEDULE E - PART 1 - CASH****Month End Depository Balances**

1 Depository		2 Code	3 Rate of Interest	4 Amount of Interest Received During Current Quarter	5 Amount of Interest Accrued at Current Statement Date	Book Balance at End of Each Month During Current Quarter			9 *
						6 First Month	7 Second Month	8 Third Month	
<b>open depositories</b>									
State Street .....	Boston, MA .....					5,771	5,771	5,771	X X X
Bank of America .....	New York, NY .....					13,709,854	15,443,133	15,734,802	X X X
0199998 Deposits in .....0 depositories that do not exceed the allowable limit in any one depository (see Instructions) - open depositories .....		X X X	X X X						X X X
0199999 Totals - Open Depositories .....		X X X	X X X			13,715,625	15,448,904	15,740,573	X X X
0299998 Deposits in .....0 depositories that do not exceed the allowable limit in any one depository (see Instructions) - suspended depositories .....		X X X	X X X						X X X
0299999 Totals - Suspended Depositories .....		X X X	X X X						X X X
0399999 Total Cash On Deposit .....		X X X	X X X			13,715,625	15,448,904	15,740,573	X X X
0499999 Cash in Company's Office .....		X X X	X X X	X X X	X X X				X X X
0599999 Total Cash .....		X X X	X X X			13,715,625	15,448,904	15,740,573	X X X

## SCHEDULE E - PART 2 - CASH EQUIVALENTS

Show Investments Owned End of Current Quarter

1	2	3	4	5	6	7	8	9
Cusip	Description	Code	Date Acquired	Rate of Interest	Maturity Date	Book/Adjusted Carrying Value	Amount of Interest Due & Accrued	Amount Received During Year
<div style="border: 1px solid black; padding: 10px; display: inline-block;"> <h1 style="margin: 0;">N O N E</h1> </div>								
8899999 Total - Cash Equivalents .....								

# INDEX TO HEALTH QUARTERLY STATEMENT

Accounting Changes and Corrections of Errors; Q10, Note 2; Q11  
Accounting Practices and Policies; Q5; Q10, Note 1  
Admitted Assets; Q2  
Bonds; Q2; Q6; Q11.1; Q11.2; QE04; QE05  
Bonuses; Q3; Q4; Q8; Q9  
Borrowed Funds; Q3; Q6  
Business Combinations and Goodwill; Q10, Note 3  
Capital Gains (Losses)  
    Realized; Q4  
    Unrealized; Q4; Q5  
Capital Stock; Q3; Q10, Note 13  
Capital Notes; Q6; Q10, Note 11  
Caps; QE06; QSI04  
Cash; Q2; Q6; QE12  
Cash Equivalents; Q2; Q6; QE13  
Claims; Q3; Q4; Q8; Q9  
Collars; QE06; QSI04  
Commissions; Q6  
Common Stock; Q2; Q3; Q6; Q11.1; Q11.2  
Cost Containment Expenses; Q4  
Contingencies; Q10, Note 14  
Counterparty Exposure; Q10, Note 8; QE06; QE08  
Debt; Q10, Note 11  
Deferred Compensation; Q10, Note 12  
Derivative Instruments; Q10, Note 8; QSI04; QSI05; QSI06; QSI07; QE06; QE07; QE08  
Discontinued Operations; Q10, Note 4  
Electronic Data Processing Equipment; Q2  
Encumbrances; Q2; QSI01; QE01  
Emergency Room; Q4  
Expenses; Q3; Q4; Q6  
Extinguishment of Liabilities; Q10, Note 17  
Extraordinary Item; Q10, Note 21  
Fair Value; Q7, Note 20  
Fee for Service; Q4  
Foreign Exchange; Q2; Q3; Q5; QSI01; QSI03; QE01; QE02; QE03; QE05  
Forwards; QE06; QSI04  
Furniture, Equipment and Supplies; Q2  
Guaranty Fund; Q2  
Health Care Receivables; Q2; Q9; Q10, Note 28  
Holding Company; Q16  
Hospital/Medical Benefits; Q4  
Incentive Pools; Q3; Q4; Q8; Q9  
Income; Q4; Q5; Q6  
Income Taxes; Q2; Q3; Q4; Q5; Q10, Note 9  
Incurred Claims and Claim Adjustment Expenses; Q10, Note 25  
Intercompany Pooling; Q10, Note 26  
Investment Income; Q10, Note 7  
    Accrued; Q2  
    Earned; Q2; QSI03  
    Received; Q6  
Investments; Q10, Note 5; Q11.1; Q11.2; QE08  
Joint Venture; Q10, Note 6  
Leases; Q10, Note 15  
Limited Liability Company (LLC); Q10, Note 6  
Limited Partnership; Q10, Note 6  
Long-Term Invested Assets; Q2; QE03  
Managing General Agents; Q10, Note 19  
Medicare Part D Coverage; QSupp1  
Member Months; Q4; Q7  
Mortgage Loans; Q2; Q6; Q11.1; QSI01; QE02  
Nonadmitted Assets; Q2; Q5; QSI01; QSI03  
Off-Balance Sheet Risk; Q10, Note 16  
Options; QE06; QSI04  
Organizational Chart; Q11; Q14  
Out-of-Area; Q4  
Outside Referrals; Q4  
Parent, Subsidiaries and Affiliates; Q2; Q3; Q10, Note 10; Q11.1  
Participating Policies; Q10, Note 29  
Pharmaceutical Rebates; Q10, Note 28  
Policyholder Dividends; Q5; Q6  
Postemployment Benefits; Q10, Note 12  
Postretirement Benefits; Q10, Note 12  
Preferred Stock; Q2; Q3; Q6; Q11.1; Q11.2

## INDEX TO HEALTH QUARTERLY STATEMENT

Premium Deficiency Reserves; Q10, Note 30  
Premiums and Considerations  
    Advance; Q3  
    Collected; Q6  
    Deferred; Q2  
    Direct; Q7; Q13  
    Earned; Q7  
    Retrospective; Q2  
    Uncollected; Q2  
    Unearned; Q4  
    Written; Q4; Q7  
Prescription Drugs; Q4  
Quasi Reorganizations; Q10, Note 13  
Real Estate; Q2; Q6; QE01; QSI01  
Redetermination, Contracts Subject to; Q10, Note 24  
Reinsurance; Q9; Q10, Note 23  
    Ceded; Q3; Q12  
    Funds Held; Q2  
    Payable; Q3  
    Premiums; Q3  
    Receivable; Q2; Q4  
    Unauthorized; Q3; Q5  
Reserves  
    Accident and Health; Q3; Q4  
    Claim; Q3; Q5; Q8  
    Life; Q3  
Retirement Plans; Q10, Note 12  
Retrospectively Rated Policies; Q10, Note 24  
Risk Revenue; Q4  
Salvage and Subrogation; Q10, Note 31  
Securities Lending; Q2; Q3; QE09; QE11  
Servicing of Financial Assets; Q10, Note 17  
Short-Term Investments; Q2; Q6; Q11.1; QSI03  
Stockholder Dividends; Q5; Q6  
Subsequent Events; Q10, Note 22  
Surplus; Q3; Q5; Q6  
Surplus Notes; Q3; Q5; Q6  
Swaps; QE07; QSI04  
Synthetic Assets; QSI04; QSI05  
Third Party Administrator; Q10, Note 19  
Treasury Stock; Q3; Q5  
Uninsured Accident and Health; Q2; Q3; Q10, Note 18  
Valuation Allowance; QSI01  
Wash Sales; Q10, Note 17  
Withholds; Q4; Q8