



PROPERTY AND CASUALTY COMPANIES - ASSOCIATION EDITION

ANNUAL STATEMENT
FOR THE YEAR ENDED DECEMBER 31, 2017
OF THE CONDITION AND AFFAIRS OF THE
Dealers Assurance Company

NAIC Group Code 0000 0000 NAIC Company Code 16705 Employer's ID Number 34-6513705
(Current) (Prior)
Organized under the Laws of Ohio, State of Domicile or Port of Entry OH
Country of Domicile United States of America
Incorporated/Organized 08/02/1935 Commenced Business 08/02/1935
Statutory Home Office 240 North Fifth Street, Suite 350 Columbus, OH, US 43215
(Street and Number) (City or Town, State, Country and Zip Code)
Main Administrative Office 15920 Addison Road
(Street and Number)
Addison, TX, US 75001 800-282-8913
(City or Town, State, Country and Zip Code) (Area Code) (Telephone Number)
Mail Address 240 North Fifth Street, Suite 350 Columbus, OH, US 43215
(Street and Number or P.O. Box) (City or Town, State, Country and Zip Code)
Primary Location of Books and Records 240 North Fifth Street, Suite 350
(Street and Number)
Columbus, OH, US 43215 800-282-8913
(City or Town, State, Country and Zip Code) (Area Code) (Telephone Number)
Internet Website Address www.dealersassurance.com
Statutory Statement Contact Linda M. Toy 800-282-8913
(Name) (Area Code) (Telephone Number)
ltoy@dealersassurance.com 614-459-2665
(E-mail Address) (FAX Number)

OFFICERS

President Kristen Anne Gruber Treasurer Linda Marie Toy
Secretary Kirk Alan Borchardt # Assistant Secretary David Paul May

OTHER

Edmond Melgar Eckert, Senior Vice President Kirk Alan Borchardt #, Executive Vice President Linda Marie Toy, Vice President

DIRECTORS OR TRUSTEES

James Bradford Smith Kristen Anne Gruber Edmond Melgar Eckert
Robert Reynard Bowsher Kelly Aubrey Westlake Michael Thomas Rogers

State of Ohio SS:
County of Franklin

The officers of this reporting entity being duly sworn, each depose and say that they are the described officers of said reporting entity, and that on the reporting period stated above, all of the herein described assets were the absolute property of the said reporting entity, free and clear from any liens or claims thereon, except as herein stated, and that this statement, together with related exhibits, schedules and explanations therein contained, annexed or referred to, is a full and true statement of all the assets and liabilities and of the condition and affairs of the said reporting entity as of the reporting period stated above, and of its income and deductions therefrom for the period ended, and have been completed in accordance with the NAIC Annual Statement Instructions and Accounting Practices and Procedures manual except to the extent that: (1) state law may differ; or, (2) that state rules or regulations require differences in reporting not related to accounting practices and procedures, according to the best of their information, knowledge and belief, respectively. Furthermore, the scope of this attestation by the described officers also includes the related corresponding electronic filing with the NAIC, when required, that is an exact copy (except for formatting differences due to electronic filing) of the enclosed statement. The electronic filing may be requested by various regulators in lieu of or in addition to the enclosed statement.

Kristen Anne Gruber Kirk Alan Borchardt Linda Marie Toy
President Secretary Treasurer

Subscribed and sworn to before me this
21st day of

February 2018

Keith H Burkholder

a. Is this an original filing?

Yes [X] No []

b. If no,

1. State the amendment number.....
2. Date filed
3. Number of pages attached.....



KEITH H BURKHOLDER
Notary Public
In and for the State of Ohio
My Commission Expires
August 17, 2020

ANNUAL STATEMENT FOR THE YEAR 2017 OF THE Dealers Assurance Company

ASSETS

	Current Year			Prior Year
	1 Assets	2 Nonadmitted Assets	3 Net Admitted Assets (Cols. 1 - 2)	4 Net Admitted Assets
1. Bonds (Schedule D)	78,563,762		78,563,762	72,998,379
2. Stocks (Schedule D):				
2.1 Preferred stocks	3,334,835		3,334,835	3,770,044
2.2 Common stocks	13,373,400		13,373,400	11,533,476
3. Mortgage loans on real estate (Schedule B):				
3.1 First liens	248,726		248,726	792,171
3.2 Other than first liens			0	0
4. Real estate (Schedule A):				
4.1 Properties occupied by the company (less \$0 encumbrances)	2,952,088		2,952,088	1,778,518
4.2 Properties held for the production of income (less \$ encumbrances)			0	0
4.3 Properties held for sale (less \$ encumbrances)			0	0
5. Cash (\$2,227,713 , Schedule E - Part 1), cash equivalents (\$11,081,682 , Schedule E - Part 2) and short-term investments (\$120,007 , Schedule DA)	13,429,402		13,429,402	11,001,687
6. Contract loans (including \$ premium notes)			0	0
7. Derivatives (Schedule DB)			0	0
8. Other invested assets (Schedule BA)			0	0
9. Receivable for securities	16,660		16,660	0
10. Securities lending reinvested collateral assets (Schedule DL)			0	0
11. Aggregate write-ins for invested assets	0	0	0	0
12. Subtotals, cash and invested assets (Lines 1 to 11)	111,918,872	0	111,918,872	101,874,275
13. Title plants less \$ charged off (for Title insurers only)			0	0
14. Investment income due and accrued	577,044		577,044	538,334
15. Premiums and considerations:				
15.1 Uncollected premiums and agents' balances in the course of collection	3,501,295		3,501,295	2,655,555
15.2 Deferred premiums and agents' balances and installments booked but deferred and not yet due (including \$ earned but unbilled premiums)			0	0
15.3 Accrued retrospective premiums (\$) and contracts subject to redetermination (\$)			0	0
16. Reinsurance:				
16.1 Amounts recoverable from reinsurers			0	0
16.2 Funds held by or deposited with reinsured companies			0	0
16.3 Other amounts receivable under reinsurance contracts	216,431		216,431	154,540
17. Amounts receivable relating to uninsured plans			0	0
18.1 Current federal and foreign income tax recoverable and interest thereon			0	0
18.2 Net deferred tax asset			0	382,891
19. Guaranty funds receivable or on deposit			0	0
20. Electronic data processing equipment and software			0	0
21. Furniture and equipment, including health care delivery assets (\$)			0	0
22. Net adjustment in assets and liabilities due to foreign exchange rates			0	0
23. Receivables from parent, subsidiaries and affiliates	6,723		6,723	25,414
24. Health care (\$) and other amounts receivable			0	0
25. Aggregate write-ins for other than invested assets	840,970	0	840,970	880,952
26. Total assets excluding Separate Accounts, Segregated Accounts and Protected Cell Accounts (Lines 12 to 25)	117,061,335	0	117,061,335	106,511,961
27. From Separate Accounts, Segregated Accounts and Protected Cell Accounts			0	0
28. Total (Lines 26 and 27)	117,061,335	0	117,061,335	106,511,961
DETAILS OF WRITE-INS				
1101.				
1102.				
1103.				
1198. Summary of remaining write-ins for Line 11 from overflow page	0	0	0	0
1199. Totals (Lines 1101 thru 1103 plus 1198)(Line 11 above)	0	0	0	0
2501. Accounts Receivable	840,832		840,832	877,656
2502. Interest Receivable	138		138	3,296
2503.				
2598. Summary of remaining write-ins for Line 25 from overflow page	0	0	0	0
2599. Totals (Lines 2501 thru 2503 plus 2598)(Line 25 above)	840,970	0	840,970	880,952

ANNUAL STATEMENT FOR THE YEAR 2017 OF THE Dealers Assurance Company

LIABILITIES, SURPLUS AND OTHER FUNDS

	1 Current Year	2 Prior Year
1. Losses (Part 2A, Line 35, Column 8)	357,610	156,089
2. Reinsurance payable on paid losses and loss adjustment expenses (Schedule F, Part 1, Column 6)	0	0
3. Loss adjustment expenses (Part 2A, Line 35, Column 9)	0	0
4. Commissions payable, contingent commissions and other similar charges	604,384	284,189
5. Other expenses (excluding taxes, licenses and fees)	802,574	745,763
6. Taxes, licenses and fees (excluding federal and foreign income taxes)	281,628	601,629
7.1 Current federal and foreign income taxes (including \$ on realized capital gains (losses))	652,838	671,095
7.2 Net deferred tax liability	72,197	
8. Borrowed money \$ and interest thereon \$18,089	18,089	15,956
9. Unearned premiums (Part 1A, Line 38, Column 5) (after deducting unearned premiums for ceded reinsurance of \$218,818,514 and including warranty reserves of \$18,774,642 and accrued accident and health experience rating refunds including \$0 for medical loss ratio rebate per the Public Health Service Act)	23,949,164	19,411,129
10. Advance premium		
11. Dividends declared and unpaid:		
11.1 Stockholders		
11.2 Policyholders		
12. Ceded reinsurance premiums payable (net of ceding commissions)	786,452	1,044,858
13. Funds held by company under reinsurance treaties (Schedule F, Part 3, Column 19)	12,660,804	14,701,541
14. Amounts withheld or retained by company for account of others	9,443,125	7,584,661
15. Remittances and items not allocated	17,911	
16. Provision for reinsurance (including \$0 certified) (Schedule F, Part 8)		0
17. Net adjustments in assets and liabilities due to foreign exchange rates		
18. Drafts outstanding		
19. Payable to parent, subsidiaries and affiliates	85,563	78,106
20. Derivatives	0	0
21. Payable for securities	69,859	
22. Payable for securities lending		
23. Liability for amounts held under uninsured plans		
24. Capital notes \$ and interest thereon \$		
25. Aggregate write-ins for liabilities	0	0
26. Total liabilities excluding protected cell liabilities (Lines 1 through 25)	49,802,198	45,295,016
27. Protected cell liabilities		
28. Total liabilities (Lines 26 and 27)	49,802,198	45,295,016
29. Aggregate write-ins for special surplus funds	0	0
30. Common capital stock	4,200,990	4,200,990
31. Preferred capital stock		
32. Aggregate write-ins for other than special surplus funds	0	0
33. Surplus notes	3,000,000	3,000,000
34. Gross paid in and contributed surplus	9,732,810	9,732,810
35. Unassigned funds (surplus)	50,325,337	44,283,145
36. Less treasury stock, at cost:		
36.1 shares common (value included in Line 30 \$)		
36.2 shares preferred (value included in Line 31 \$)		
37. Surplus as regards policyholders (Lines 29 to 35, less 36) (Page 4, Line 39)	67,259,137	61,216,945
38. TOTALS (Page 2, Line 28, Col. 3)	117,061,335	106,511,961
DETAILS OF WRITE-INS		
2501.		
2502.		
2503.		
2598. Summary of remaining write-ins for Line 25 from overflow page	0	0
2599. Totals (Lines 2501 thru 2503 plus 2598)(Line 25 above)	0	0
2901.		
2902.		
2903.		
2998. Summary of remaining write-ins for Line 29 from overflow page	0	0
2999. Totals (Lines 2901 thru 2903 plus 2998)(Line 29 above)	0	0
3201.		
3202.		
3203.		
3298. Summary of remaining write-ins for Line 32 from overflow page	0	0
3299. Totals (Lines 3201 thru 3203 plus 3298)(Line 32 above)	0	0

STATEMENT OF INCOME

	1 Current Year	2 Prior Year
UNDERWRITING INCOME		
1. Premiums earned (Part 1, Line 35, Column 4)	11,597,395	11,348,767
DEDUCTIONS:		
2. Losses incurred (Part 2, Line 35, Column 7)	1,381,328	1,008,361
3. Loss adjustment expenses incurred (Part 3, Line 25, Column 1)	151,457	245,002
4. Other underwriting expenses incurred (Part 3, Line 25, Column 2)	4,852,684	2,671,679
5. Aggregate write-ins for underwriting deductions	0	0
6. Total underwriting deductions (Lines 2 through 5)	6,385,469	3,925,042
7. Net income of protected cells		
8. Net underwriting gain or (loss) (Line 1 minus Line 6 plus Line 7)	5,211,926	7,423,725
INVESTMENT INCOME		
9. Net investment income earned (Exhibit of Net Investment Income, Line 17)	1,797,578	1,461,084
10. Net realized capital gains or (losses) less capital gains tax of \$ 193,574 (Exhibit of Capital Gains (Losses))	375,762	127,833
11. Net investment gain (loss) (Lines 9 + 10)	2,173,340	1,588,917
OTHER INCOME		
12. Net gain (loss) from agents' or premium balances charged off (amount recovered \$ amount charged off \$ 104,050)	(104,050)	(532,379)
13. Finance and service charges not included in premiums		
14. Aggregate write-ins for miscellaneous income	(259,697)	(29,503)
15. Total other income (Lines 12 through 14)	(363,747)	(561,882)
16. Net income before dividends to policyholders, after capital gains tax and before all other federal and foreign income taxes (Lines 8 + 11 + 15)	7,021,520	8,450,760
17. Dividends to policyholders		
18. Net income, after dividends to policyholders, after capital gains tax and before all other federal and foreign income taxes (Line 16 minus Line 17)	7,021,520	8,450,760
19. Federal and foreign income taxes incurred	2,571,631	3,037,760
20. Net income (Line 18 minus Line 19)(to Line 22)	4,449,889	5,413,000
CAPITAL AND SURPLUS ACCOUNT		
21. Surplus as regards policyholders, December 31 prior year (Page 4, Line 39, Column 2)	61,216,945	56,172,736
22. Net income (from Line 20)	4,449,889	5,413,000
23. Net transfers (to) from Protected Cell accounts		
24. Change in net unrealized capital gains or (losses) less capital gains tax of \$ 696,114	1,351,280	337,561
25. Change in net unrealized foreign exchange capital gain (loss)		
26. Change in net deferred income tax	241,023	293,648
27. Change in nonadmitted assets (Exhibit of Nonadmitted Assets, Line 28, Col. 3)	0	0
28. Change in provision for reinsurance (Page 3, Line 16, Column 2 minus Column 1)	0	0
29. Change in surplus notes		
30. Surplus (contributed to) withdrawn from protected cells		
31. Cumulative effect of changes in accounting principles		
32. Capital changes:		
32.1 Paid in		
32.2 Transferred from surplus (Stock Dividend)		
32.3 Transferred to surplus		
33. Surplus adjustments:		
33.1 Paid in	0	0
33.2 Transferred to capital (Stock Dividend)		
33.3 Transferred from capital		
34. Net remittances from or (to) Home Office		
35. Dividends to stockholders		(1,000,000)
36. Change in treasury stock (Page 3, Lines 36.1 and 36.2, Column 2 minus Column 1)	0	0
37. Aggregate write-ins for gains and losses in surplus	0	0
38. Change in surplus as regards policyholders for the year (Lines 22 through 37)	6,042,192	5,044,209
39. Surplus as regards policyholders, December 31 current year (Line 21 plus Line 38) (Page 3, Line 37)	67,259,137	61,216,945
DETAILS OF WRITE-INS		
0501.		
0502.		
0503.		
0598. Summary of remaining write-ins for Line 5 from overflow page	0	0
0599. Totals (Lines 0501 thru 0503 plus 0598)(Line 5 above)	0	0
1401. Misc. Income (Expense)	(4,405)	(1,080)
1402. Admin/Service Fee Income	164,337	113,803
1403. Interest Expense-Funds held	(419,629)	(142,226)
1498. Summary of remaining write-ins for Line 14 from overflow page	0	0
1499. Totals (Lines 1401 thru 1403 plus 1498)(Line 14 above)	(259,697)	(29,503)
3701.		
3702.		
3703.		
3798. Summary of remaining write-ins for Line 37 from overflow page	0	0
3799. Totals (Lines 3701 thru 3703 plus 3798)(Line 37 above)	0	0

CASH FLOW

	1	2
	Current Year	Prior Year
Cash from Operations		
1. Premiums collected net of reinsurance	14,969,393	11,769,798
2. Net investment income	2,359,164	1,829,577
3. Miscellaneous income	(363,747)	(561,882)
4. Total (Lines 1 through 3)	16,964,810	13,037,493
5. Benefit and loss related payments	1,179,807	890,597
6. Net transfers to Separate Accounts, Segregated Accounts and Protected Cell Accounts	0	0
7. Commissions, expenses paid and aggregate write-ins for deductions	4,943,567	3,238,973
8. Dividends paid to policyholders	0	0
9. Federal and foreign income taxes paid (recovered) net of \$ tax on capital gains (losses)	2,783,465	3,041,697
10. Total (Lines 5 through 9)	8,906,839	7,171,267
11. Net cash from operations (Line 4 minus Line 10)	8,057,972	5,866,226
Cash from Investments		
12. Proceeds from investments sold, matured or repaid:		
12.1 Bonds	17,571,132	23,039,431
12.2 Stocks	9,671,719	14,229,563
12.3 Mortgage loans	543,445	26,744
12.4 Real estate	0	0
12.5 Other invested assets	0	0
12.6 Net gains or (losses) on cash, cash equivalents and short-term investments	0	511,456
12.7 Miscellaneous proceeds	69,859	4
12.8 Total investment proceeds (Lines 12.1 to 12.7)	27,856,155	37,807,198
13. Cost of investments acquired (long-term only):		
13.1 Bonds	23,708,526	28,675,218
13.2 Stocks	8,397,281	15,659,068
13.3 Mortgage loans	0	0
13.4 Real estate	1,267,844	1,825,589
13.5 Other invested assets	0	0
13.6 Miscellaneous applications	16,660	975,812
13.7 Total investments acquired (Lines 13.1 to 13.6)	33,390,311	47,135,687
14. Net increase (decrease) in contract loans and premium notes	0	0
15. Net cash from investments (Line 12.8 minus Line 13.7 minus Line 14)	(5,534,157)	(9,328,489)
Cash from Financing and Miscellaneous Sources		
16. Cash provided (applied):		
16.1 Surplus notes, capital notes	0	0
16.2 Capital and paid in surplus, less treasury stock	0	0
16.3 Borrowed funds	2,133	1,288
16.4 Net deposits on deposit-type contracts and other insurance liabilities	0	0
16.5 Dividends to stockholders	0	1,000,000
16.6 Other cash provided (applied)	(98,233)	4,056,022
17. Net cash from financing and miscellaneous sources (Lines 16.1 to 16.4 minus Line 16.5 plus Line 16.6)	(96,100)	3,057,310
RECONCILIATION OF CASH, CASH EQUIVALENTS AND SHORT-TERM INVESTMENTS		
18. Net change in cash, cash equivalents and short-term investments (Line 11, plus Lines 15 and 17)	2,427,715	(404,953)
19. Cash, cash equivalents and short-term investments:		
19.1 Beginning of year	11,001,687	11,406,640
19.2 End of period (Line 18 plus Line 19.1)	13,429,402	11,001,687

Note: Supplemental disclosures of cash flow information for non-cash transactions:

--	--	--

ANNUAL STATEMENT FOR THE YEAR 2017 OF THE Dealers Assurance Company

UNDERWRITING AND INVESTMENT EXHIBIT

PART 1 - PREMIUMS EARNED

Line of Business		1 Net Premiums Written per Column 6, Part 1B	2 Unearned Premiums Dec. 31 Prior Year - per Col. 3, Last Year's Part 1	3 Unearned Premiums Dec. 31 Current Year - per Col. 5 Part 1A	4 Premiums Earned During Year (Cols. 1 + 2 - 3)
1.	Fire	0	0	0	0
2.	Allied lines	0	0	0	0
3.	Farmowners multiple peril	0	0	0	0
4.	Homeowners multiple peril	0	0	0	0
5.	Commercial multiple peril	0	0	0	0
6.	Mortgage guaranty	0	0	0	0
8.	Ocean marine	0	0	0	0
9.	Inland marine	0	0	0	0
10.	Financial guaranty	0	0	0	0
11.1	Medical professional liability - occurrence	0	0	0	0
11.2	Medical professional liability - claims-made	0	0	0	0
12.	Earthquake	0	0	0	0
13.	Group accident and health	0	0	0	0
14.	Credit accident and health (group and individual)	0	0	0	0
15.	Other accident and health	0	0	0	0
16.	Workers' compensation	0	0	0	0
17.1	Other liability - occurrence	2,754,335	3,327,792	5,174,522	907,605
17.2	Other liability - claims-made	0	0	0	0
17.3	Excess workers' compensation	0	0	0	0
18.1	Products liability - occurrence	0	0	0	0
18.2	Products liability - claims-made	0	0	0	0
19.1, 19.2	Private passenger auto liability	0	0	0	0
19.3, 19.4	Commercial auto liability	0	0	0	0
21.	Auto physical damage	0	0	0	0
22.	Aircraft (all perils)	0	0	0	0
23.	Fidelity	0	0	0	0
24.	Surety	0	0	0	0
26.	Burglary and theft	0	0	0	0
27.	Boiler and machinery	0	0	0	0
28.	Credit	0	23,038	0	23,038
29.	International	0	0	0	0
30.	Warranty	13,381,095	16,060,299	18,774,642	10,666,752
31.	Reinsurance - nonproportional assumed property	0	0	0	0
32.	Reinsurance - nonproportional assumed liability	0	0	0	0
33.	Reinsurance - nonproportional assumed financial lines	0	0	0	0
34.	Aggregate write-ins for other lines of business	0	0	0	0
35.	TOTALS	16,135,430	19,411,129	23,949,164	11,597,395
DETAILS OF WRITE-INS					
3401.				
3402.				
3403.				
3498.	Summary of remaining write-ins for Line 34 from overflow page	0	0	0	0
3499.	Totals (Lines 3401 thru 3403 plus 3498)(Line 34 above)	0	0	0	0

ANNUAL STATEMENT FOR THE YEAR 2017 OF THE Dealers Assurance Company

UNDERWRITING AND INVESTMENT EXHIBIT

PART 1A - RECAPITULATION OF ALL PREMIUMS

Line of Business		1	2	3	4	5
		Amount Unearned (Running One Year or Less from Date of Policy) (a)	Amount Unearned (Running More Than One Year from Date of Policy) (a)	Earned But Unbilled Premium	Reserve for Rate Credits and Retrospective Adjustments Based on Experience	Total Reserve for Unearned Premiums Cols. 1 + 2 + 3 + 4
1.	Fire					0
2.	Allied lines					0
3.	Farmowners multiple peril					0
4.	Homeowners multiple peril					0
5.	Commercial multiple peril					0
6.	Mortgage guaranty					0
8.	Ocean marine					0
9.	Inland marine					0
10.	Financial guaranty					0
11.1	Medical professional liability - occurrence					0
11.2	Medical professional liability - claims-made					0
12.	Earthquake					0
13.	Group accident and health					0
14.	Credit accident and health (group and individual)					0
15.	Other accident and health					0
16.	Workers' compensation					0
17.1	Other liability - occurrence		5,174,522			5,174,522
17.2	Other liability - claims-made					0
17.3	Excess workers' compensation					0
18.1	Products liability - occurrence					0
18.2	Products liability - claims-made					0
19.1, 19.2	Private passenger auto liability					0
19.3, 19.4	Commercial auto liability					0
21.	Auto physical damage					0
22.	Aircraft (all perils)					0
23.	Fidelity					0
24.	Surety					0
26.	Burglary and theft					0
27.	Boiler and machinery					0
28.	Credit					0
29.	International					0
30.	Warranty		18,774,642			18,774,642
31.	Reinsurance - nonproportional assumed property					0
32.	Reinsurance - nonproportional assumed liability					0
33.	Reinsurance - nonproportional assumed financial lines					0
34.	Aggregate write-ins for other lines of business	0	0	0	0	0
35.	TOTALS	0	23,949,164	0	0	23,949,164
36.	Accrued retrospective premiums based on experience					
37.	Earned but unbilled premiums					
38.	Balance (Sum of Line 35 through 37)					23,949,164
DETAILS OF WRITE-INS						
3401.					
3402.					
3403.					
3498.	Summary of remaining write-ins for Line 34 from overflow page	0	0	0	0	0
3499.	Totals (Lines 3401 thru 3403 plus 3498)(Line 34 above)	0	0	0	0	0

(a) State here basis of computation used in each case

ANNUAL STATEMENT FOR THE YEAR 2017 OF THE Dealers Assurance Company

UNDERWRITING AND INVESTMENT EXHIBIT

PART 1B - PREMIUMS WRITTEN

Line of Business		1	Reinsurance Assumed		Reinsurance Ceded		6
		Direct Business (a)	2	3	4	5	Net Premiums Written Cols. 1+2+3-4-5
1.	Fire	0					0
2.	Allied lines	0					0
3.	Farmowners multiple peril	0					0
4.	Homeowners multiple peril	0					0
5.	Commercial multiple peril	0					0
6.	Mortgage guaranty	0					0
8.	Ocean marine	0					0
9.	Inland marine	0					0
10.	Financial guaranty	0					0
11.1	Medical professional liability - occurrence						0
11.2	Medical professional liability - claims-made						0
12.	Earthquake	0					0
13.	Group accident and health	0					0
14.	Credit accident and health (group and individual)	0					0
15.	Other accident and health	0					0
16.	Workers' compensation	0					0
17.1	Other liability - occurrence	13,509,463				10,755,128	2,754,335
17.2	Other liability - claims-made	0					0
17.3	Excess workers' compensation	0					0
18.1	Products liability - occurrence						0
18.2	Products liability - claims-made						0
19.1, 19.2	Private passenger auto liability	0					0
19.3, 19.4	Commercial auto liability	0					0
21.	Auto physical damage	0					0
22.	Aircraft (all perils)	0					0
23.	Fidelity	0					0
24.	Surety	0					0
26.	Burglary and theft	0					0
27.	Boiler and machinery	0					0
28.	Credit	0					0
29.	International						0
30.	Warranty	127,534,596		(546,896)	4,755,022	108,851,583	13,381,095
31.	Reinsurance - nonproportional assumed property	XXX					0
32.	Reinsurance - nonproportional assumed liability	XXX					0
33.	Reinsurance - nonproportional assumed financial lines	XXX					0
34.	Aggregate write-ins for other lines of business	0	0	0	0	0	0
35.	TOTALS	141,044,059	0	(546,896)	4,755,022	119,606,711	16,135,430
DETAILS OF WRITE-INS							
3401.						
3402.						
3403.						
3498.	Summary of remaining write-ins for Line 34 from overflow page	0	0	0	0	0	0
3499.	Totals (Lines 3401 thru 3403 plus 3498)(Line 34 above)	0	0	0	0	0	0

(a) Does the company's direct premiums written include premiums recorded on an installment basis? Yes [] No [X]

If yes: 1. The amount of such installment premiums \$

 2. Amount at which such installment premiums would have been reported had they been reported on an annualized basis \$

ANNUAL STATEMENT FOR THE YEAR 2017 OF THE Dealers Assurance Company

UNDERWRITING AND INVESTMENT EXHIBIT

PART 2 - LOSSES PAID AND INCURRED

		Losses Paid Less Salvage				5	6	7	8
		1	2	3	4				
Line of Business		Direct Business	Reinsurance Assumed	Reinsurance Recovered	Net Payments (Cols. 1 + 2 -3)	Net Losses Unpaid Current Year (Part 2A , Col. 8)	Net Losses Unpaid Prior Year	Losses Incurred Current Year (Cols. 4 + 5 - 6)	Percentage of Losses Incurred (Col. 7, Part 2) to Premiums Earned (Col. 4, Part 1)
1.	Fire	0			0	0	0	0	0.0
2.	Allied lines	0			0	0	0	0	0.0
3.	Farmowners multiple peril	0			0	0	0	0	0.0
4.	Homeowners multiple peril	0			0	0	0	0	0.0
5.	Commercial multiple peril	0			0	0	0	0	0.0
6.	Mortgage guaranty	0			0	0	0	0	0.0
8.	Ocean marine	0			0	0	0	0	0.0
9.	Inland marine	0			0	0	0	0	0.0
10.	Financial guaranty	0			0	0	0	0	0.0
11.1	Medical professional liability - occurrence				0	0	0	0	0.0
11.2	Medical professional liability - claims-made				0	0	0	0	0.0
12.	Earthquake	0			0	0	0	0	0.0
13.	Group accident and health	0			0	0	0	0	0.0
14.	Credit accident and health (group and individual)	0			0	0	0	0	0.0
15.	Other accident and health	0			0	0	0	0	0.0
16.	Workers' compensation	0			0	0	0	0	0.0
17.1	Other liability - occurrence	6,704,360		5,776,377	927,983	343,442	133,893	1,137,532	125.3
17.2	Other liability - claims-made	0			0	0	0	0	0.0
17.3	Excess workers' compensation	0			0	0	0	0	0.0
18.1	Products liability - occurrence				0	0	0	0	0.0
18.2	Products liability - claims-made				0	0	0	0	0.0
19.1, 19.2	Private passenger auto liability	0			0	0	0	0	0.0
19.3, 19.4	Commercial auto liability	0			0	0	0	0	0.0
21.	Auto physical damage	0			0	0	0	0	0.0
22.	Aircraft (all perils)	0			0	0	0	0	0.0
23.	Fidelity	0			0	0	0	0	0.0
24.	Surety	0			0	0	0	0	0.0
26.	Burglary and theft	0			0	0	0	0	0.0
27.	Boiler and machinery	0			0	0	0	0	0.0
28.	Credit	0			0	0	0	0	0.0
29.	International				0	0	0	0	0.0
30.	Warranty	60,365,875	21,727	60,135,778	251,824	14,168	22,196	243,796	2.3
31.	Reinsurance - nonproportional assumed property	XXX			0	0	0	0	0.0
32.	Reinsurance - nonproportional assumed liability	XXX			0	0	0	0	0.0
33.	Reinsurance - nonproportional assumed financial lines	XXX			0	0	0	0	0.0
34.	Aggregate write-ins for other lines of business	0	0	0	0	0	0	0	0.0
35.	TOTALS	67,070,235	21,727	65,912,155	1,179,807	357,610	156,089	1,381,328	11.9
DETAILS OF WRITE-INS									
3401.								
3402.								
3403.								
3498.	Summary of remaining write-ins for Line 34 from overflow page	0	0	0	0	0	0	0	
3499.	Totals (Lines 3401 thru 3403 plus 3498)(Line 34 above)	0	0	0	0	0	0	0	

ANNUAL STATEMENT FOR THE YEAR 2017 OF THE Dealers Assurance Company

UNDERWRITING AND INVESTMENT EXHIBIT

PART 2A - UNPAID LOSSES AND LOSS ADJUSTMENT EXPENSES

Line of Business	Reported Losses				Incurred But Not Reported			8	9
	1	2	3	4	5	6	7		
	Direct	Reinsurance Assumed	Deduct Reinsurance Recoverable	Net Losses Excl. Incurred But Not Reported (Cols. 1 + 2 - 3)	Direct	Reinsurance Assumed	Reinsurance Ceded	Net Losses Unpaid (Cols. 4 + 5 + 6 - 7)	Net Unpaid Loss Adjustment Expenses
1. Fire				0				0	
2. Allied lines				0				0	
3. Farmowners multiple peril				0				0	
4. Homeowners multiple peril				0				0	
5. Commercial multiple peril				0				0	
6. Mortgage guaranty				0				0	
8. Ocean marine				0				0	
9. Inland marine				0				0	
10. Financial guaranty				0				0	
11.1 Medical professional liability - occurrence				0				0	
11.2 Medical professional liability - claims-made				0				0	
12. Earthquake				0				0	
13. Group accident and health				0				(a) 0	
14. Credit accident and health (group and individual)				0				0	
15. Other accident and health				0				(a) 0	
16. Workers' compensation				0				0	
17.1 Other liability - occurrence				0	1,467,661		1,124,219	343,442	
17.2 Other liability - claims-made				0				0	
17.3 Excess workers' compensation				0				0	
18.1 Products liability - occurrence				0				0	
18.2 Products liability - claims-made				0				0	
19.1, 19.2 Private passenger auto liability				0				0	
19.3, 19.4 Commercial auto liability				0				0	
21. Auto physical damage				0				0	
22. Aircraft (all perils)				0				0	
23. Fidelity				0				0	
24. Surety				0				0	
26. Burglary and theft				0				0	
27. Boiler and machinery				0				0	
28. Credit				0				0	
29. International				0				0	
30. Warranty				0	3,860,043		3,845,875	14,168	
31. Reinsurance - nonproportional assumed property	XXX			0	XXX			0	
32. Reinsurance - nonproportional assumed liability	XXX			0	XXX			0	
33. Reinsurance - nonproportional assumed financial lines	XXX			0	XXX			0	
34. Aggregate write-ins for other lines of business	0	0	0	0	0	0	0	0	0
35. TOTALS	0	0	0	0	5,327,704	0	4,970,094	357,610	0
DETAILS OF WRITE-INS									
3401.									
3402.									
3403.									
3498. Summary of remaining write-ins for Line 34 from overflow page	0	0	0	0	0	0	0	0	0
3499. Totals (Lines 3401 thru 3403 plus 3498)(Line 34 above)	0	0	0	0	0	0	0	0	0

(a) Including \$ for present value of life indemnity claims.

ANNUAL STATEMENT FOR THE YEAR 2017 OF THE Dealers Assurance Company

UNDERWRITING AND INVESTMENT EXHIBIT

PART 3 - EXPENSES

	1	2	3	4
	Loss Adjustment Expenses	Other Underwriting Expenses	Investment Expenses	Total
1. Claim adjustment services:				
1.1 Direct				0
1.2 Reinsurance assumed				0
1.3 Reinsurance ceded				0
1.4 Net claim adjustment service (1.1 + 1.2 - 1.3)	0	0	0	0
2. Commission and brokerage:				
2.1 Direct excluding contingent		219,188		219,188
2.2 Reinsurance assumed, excluding contingent				0
2.3 Reinsurance ceded, excluding contingent		378,580		378,580
2.4 Contingent - direct		384,936		384,936
2.5 Contingent - reinsurance assumed				0
2.6 Contingent - reinsurance ceded				0
2.7 Policy and membership fees				0
2.8 Net commission and brokerage (2.1 + 2.2 - 2.3 + 2.4 + 2.5 - 2.6 + 2.7)	0	225,544	0	225,544
3. Allowances to managers and agents				0
4. Advertising	2,363	57,396		59,759
5. Boards, bureaus and associations	2,295	90,547		92,842
6. Surveys and underwriting reports				0
7. Audit of assureds' records				0
8. Salary and related items:				
8.1 Salaries	87,521	2,254,897		2,342,418
8.2 Payroll taxes	7,483	131,225		138,708
9. Employee relations and welfare	18,604	196,945		215,549
10. Insurance		51,546		51,546
11. Directors' fees		75,000		75,000
12. Travel and travel items		160,237		160,237
13. Rent and rent items	5,325	129,327		134,652
14. Equipment	5,386	104,702		110,088
15. Cost or depreciation of EDP equipment and software				0
16. Printing and stationery	320	10,526		10,846
17. Postage, telephone and telegraph, exchange and express	1,338	48,794		50,132
18. Legal and auditing	20,822	706,375		727,197
19. Totals (Lines 3 to 18)	151,457	4,017,517	0	4,168,974
20. Taxes, licenses and fees:				
20.1 State and local insurance taxes deducting guaranty association credits of \$		640		640
20.2 Insurance department licenses and fees		215,435		215,435
20.3 Gross guaranty association assessments				0
20.4 All other (excluding federal and foreign income and real estate)				0
20.5 Total taxes, licenses and fees (20.1 + 20.2 + 20.3 + 20.4)	0	216,075	0	216,075
21. Real estate expenses		10,569		10,569
22. Real estate taxes		34,271		34,271
23. Reimbursements by uninsured plans				0
24. Aggregate write-ins for miscellaneous expenses	0	348,708	238,435	587,143
25. Total expenses incurred	151,457	4,852,684	238,435	(a) 5,242,576
26. Less unpaid expenses - current year	0	1,639,988	48,598	1,688,586
27. Add unpaid expenses - prior year	0	1,579,415	52,167	1,631,582
28. Amounts receivable relating to uninsured plans, prior year	0	0	0	0
29. Amounts receivable relating to uninsured plans, current year				0
30. TOTAL EXPENSES PAID (Lines 25 - 26 + 27 - 28 + 29)	151,457	4,792,111	242,004	5,185,572
DETAILS OF WRITE-INS				
2401. Miscellaneous Outside Services		338,541	208,800	547,341
2402. Miscellaneous Expenses		10,167	29,635	39,802
2403.				
2498. Summary of remaining write-ins for Line 24 from overflow page	0	0	0	0
2499. Totals (Lines 2401 thru 2403 plus 2498)(Line 24 above)	0	348,708	238,435	587,143

(a) Includes management fees of \$ to affiliates and \$ to non-affiliates.

ANNUAL STATEMENT FOR THE YEAR 2017 OF THE Dealers Assurance Company

EXHIBIT OF NET INVESTMENT INCOME

		1	2
		Collected During Year	Earned During Year
1.	U.S. Government bonds	(a)112,050123,136
1.1	Bonds exempt from U.S. tax	(a)
1.2	Other bonds (unaffiliated)	(a)1,345,8941,378,430
1.3	Bonds of affiliates	(a)
2.1	Preferred stocks (unaffiliated)	(b)226,668220,962
2.11	Preferred stocks of affiliates	(b)
2.2	Common stocks (unaffiliated)243,306238,177
2.21	Common stocks of affiliates
3.	Mortgage loans	(c)38,12038,120
4.	Real estate	(d)253,010253,010
5	Contract loans
6	Cash, cash equivalents and short-term investments	(e)37,64843,570
7	Derivative instruments	(f)
8.	Other invested assets
9.	Aggregate write-ins for investment income00
10.	Total gross investment income	2,256,696	2,295,405
11.	Investment expenses		(g)238,435
12.	Investment taxes, licenses and fees, excluding federal income taxes		(g)0
13.	Interest expense		(h)165,118
14.	Depreciation on real estate and other invested assets		(i)94,274
15.	Aggregate write-ins for deductions from investment income0
16.	Total deductions (Lines 11 through 15)497,827
17.	Net investment income (Line 10 minus Line 16)		1,797,578
DETAILS OF WRITE-INS			
0901.		
0902.		
0903.		
0998.	Summary of remaining write-ins for Line 9 from overflow page00
0999.	Totals (Lines 0901 thru 0903 plus 0998) (Line 9, above)	0	0
1501.		
1502.		
1503.		
1598.	Summary of remaining write-ins for Line 15 from overflow page0
1599.	Totals (Lines 1501 thru 1503 plus 1598) (Line 15, above)		0

- (a) Includes \$14,492 accrual of discount less \$522,235 amortization of premium and less \$104,766 paid for accrued interest on purchases.
- (b) Includes \$(1,848) accrual of discount less \$0 amortization of premium and less \$0 paid for accrued dividends on purchases.
- (c) Includes \$ accrual of discount less \$ amortization of premium and less \$ paid for accrued interest on purchases.
- (d) Includes \$28,068 for company's occupancy of its own buildings; and excludes \$10,685 interest on encumbrances.
- (e) Includes \$0 accrual of discount less \$345 amortization of premium and less \$285 paid for accrued interest on purchases.
- (f) Includes \$ accrual of discount less \$ amortization of premium.
- (g) Includes \$ investment expenses and \$ investment taxes, licenses and fees, excluding federal income taxes, attributable to segregated and Separate Accounts.
- (h) Includes \$ interest on surplus notes and \$ interest on capital notes.
- (i) Includes \$94,274 depreciation on real estate and \$ depreciation on other invested assets.

EXHIBIT OF CAPITAL GAINS (LOSSES)

		1	2	3	4	5
		Realized Gain (Loss) On Sales or Maturity	Other Realized Adjustments	Total Realized Capital Gain (Loss) (Columns 1 + 2)	Change in Unrealized Capital Gain (Loss)	Change in Unrealized Foreign Exchange Capital Gain (Loss)
1.	U.S. Government bonds8908900
1.1	Bonds exempt from U.S. tax0
1.2	Other bonds (unaffiliated)(64,358)0(64,358)00
1.3	Bonds of affiliates00000
2.1	Preferred stocks (unaffiliated)8,67008,67083,2650
2.11	Preferred stocks of affiliates00000
2.2	Common stocks (unaffiliated)624,9370624,9371,964,1310
2.21	Common stocks of affiliates00000
3.	Mortgage loans00000
4.	Real estate000
5.	Contract loans0
6.	Cash, cash equivalents and short-term investments0
7.	Derivative instruments0
8.	Other invested assets0000
9.	Aggregate write-ins for capital gains (losses)00000
10.	Total capital gains (losses)	569,337	0	569,337	2,047,396	0
DETAILS OF WRITE-INS						
0901.					
0902.					
0903.					
0998.	Summary of remaining write-ins for Line 9 from overflow page00000
0999.	Totals (Lines 0901 thru 0903 plus 0998) (Line 9, above)	0	0	0	0	0

ANNUAL STATEMENT FOR THE YEAR 2017 OF THE Dealers Assurance Company

EXHIBIT OF NON-ADMITTED ASSETS

	1	2	3
	Current Year Total Nonadmitted Assets	Prior Year Total Nonadmitted Assets	Change in Total Nonadmitted Assets (Col. 2 - Col. 1)
1. Bonds (Schedule D)		0	0
2. Stocks (Schedule D):			
2.1 Preferred stocks		0	0
2.2 Common stocks		0	0
3. Mortgage loans on real estate (Schedule B):			
3.1 First liens		0	0
3.2 Other than first liens.....		0	0
4. Real estate (Schedule A):			
4.1 Properties occupied by the company		0	0
4.2 Properties held for the production of income.....		0	0
4.3 Properties held for sale		0	0
5. Cash (Schedule E - Part 1), cash equivalents (Schedule E - Part 2) and short-term investments (Schedule DA)		0	0
6. Contract loans		0	0
7. Derivatives (Schedule DB)		0	0
8. Other invested assets (Schedule BA)		0	0
9. Receivables for securities		0	0
10. Securities lending reinvested collateral assets (Schedule DL)		0	0
11. Aggregate write-ins for invested assets	0	0	0
12. Subtotals, cash and invested assets (Lines 1 to 11)	0	0	0
13. Title plants (for Title insurers only)		0	0
14. Investment income due and accrued		0	0
15. Premiums and considerations:			
15.1 Uncollected premiums and agents' balances in the course of collection		0	0
15.2 Deferred premiums, agents' balances and installments booked but deferred and not yet due		0	0
15.3 Accrued retrospective premiums and contracts subject to redetermination		0	0
16. Reinsurance:			
16.1 Amounts recoverable from reinsurers		0	0
16.2 Funds held by or deposited with reinsured companies		0	0
16.3 Other amounts receivable under reinsurance contracts		0	0
17. Amounts receivable relating to uninsured plans		0	0
18.1 Current federal and foreign income tax recoverable and interest thereon		0	0
18.2 Net deferred tax asset		0	0
19. Guaranty funds receivable or on deposit		0	0
20. Electronic data processing equipment and software		0	0
21. Furniture and equipment, including health care delivery assets		0	0
22. Net adjustment in assets and liabilities due to foreign exchange rates		0	0
23. Receivables from parent, subsidiaries and affiliates		0	0
24. Health care and other amounts receivable		0	0
25. Aggregate write-ins for other than invested assets	0	0	0
26. Total assets excluding Separate Accounts, Segregated Accounts and Protected Cell Accounts (Lines 12 to 25)	0	0	0
27. From Separate Accounts, Segregated Accounts and Protected Cell Accounts		0	0
28. Total (Lines 26 and 27)	0	0	0
DETAILS OF WRITE-INS			
1101.			
1102.			
1103.			
1198. Summary of remaining write-ins for Line 11 from overflow page	0	0	0
1199. Totals (Lines 1101 thru 1103 plus 1198)(Line 11 above)	0	0	0
2501. Prepaid Expenses		0	0
2502.			
2503.			
2598. Summary of remaining write-ins for Line 25 from overflow page	0	0	0
2599. Totals (Lines 2501 thru 2503 plus 2598)(Line 25 above)	0	0	0

1. Summary of Significant Accounting Policies and Going Concern

A. Accounting Practices

The accompanying financial statements of Dealers Assurance Company have been prepared in accordance with accounting practices prescribed or permitted by the National Association of Insurance Commissioners and the State of Ohio. The company adopted codification as of 01/01/01.

	SSAP #	F/S Page	F/S Line #	2017	2016
Net Income					
(1) Company state basis (Page 4, Line 20, Columns 1 & 2)	-	-	-	4,449,889	\$ 5,413,000
(2) State Prescribed Practices that (increase)/decrease NAIC SAP	-	-	-	-	-
(3) State Permitted Practices that (increase)/decrease NAIC SAP S	-	-	-	-	-
(4) NAIC SAP (1 – 2 – 3 = 4)	-	-	-	4,449,889	\$ 5,413,000
Surplus				-	-
(5) Company state basis (Page 3, Line 37, Columns 1 & 2)	-	-	-	67,259,137	\$ 61,216,945
(6) State Prescribed Practices that increase/(decrease) NAIC SAP	-	-	-	-	-
(7) State Permitted Practices that increase/(decrease) NAIC SAP	-	-	-	-	-
(8) NAIC SAP (1 – 2 – 3 = 4)				67,259,137	\$ 61,216,945

B. Use of Estimates in the Preparation of the Financial Statements

The preparation of financial statements in conformity with Statutory Accounting Principles requires management to make estimates and assumptions that affect the reported amounts of assets and liabilities. It also requires disclosure of contingent assets and liabilities at the date of the financial statements and the reported amounts of revenue and expenses during the period. Actual results could differ from those estimates.

C. Accounting Policies

Real estate investments on the balance sheet are classified as properties occupied by the company. These are carried at depreciated cost.

In addition, the Company uses the following accounting policies:

1. Short-term investments are stated at cost.
2. Bonds are stated at amortized cost using the scientific method.
3. Common stocks are stated at market.
4. Preferred stocks are stated in accordance with the guidelines stated in SSAP No.32.
5. The Company has two first lien mortgage loans on real estate which are stated at their unpaid principal balances.
6. Loan-backed securities are stated at either amortized cost or the lower of amortized cost or fair value. The retrospective adjustment method is used to value all securities except for interest only securities or securities where the yield had become negative, that are valued using the prospective method.
7. The Company has no investments in subsidiaries or the parent company.
8. Investments are not made in joint ventures, partnerships and limited liability companies.
9. The Company does not use derivatives.
10. The Company does not have a premium deficiency reserve.
11. Unpaid losses and loss adjustment expenses include an amount determined from individual case estimates and loss reports and amount, based on past experience, for losses incurred but not reported. Such liabilities are necessarily based on assumptions and estimates and while management believes the amount is adequate, the ultimate liability may be in excess of or less than the amount provided. The methods for making such estimates and for establishing the resulting liabilities are continually reviewed and any adjustments are reflected in the period determined.
12. The Company has not modified its capitalization policy from the prior period.
13. The Company has not reported receivables for pharmaceutical rebates.

D. Going Concern

Based upon its evaluation of relevant conditions and events, management does not have substantial doubt about the Company's ability to continue as a going concern.

2. Accounting Changes and Corrections of Errors

The Company did not make any corrections to prior year annual statements in the 2016 statement.

3. Business Combinations and Goodwill

The Company has not merged with any other entity during 2017.

4. Discontinued Operations

Dealers Assurance Company has no discontinued operations to report.

ANNUAL STATEMENT FOR THE YEAR 2017 OF THE Dealers Assurance Company

5. Investments

A. Mortgage Loans, including Mezzanine Real Estate Loans

(1) The minimum and maximum lending rates for mortgage loans during 2017 were:

Commercial Loans 5.50% Residential Loans 4.00%

(2) The maximum percentage of any one loan to the value of security at the time of the loan, exclusive of insured or guaranteed or purchase money mortgages was 82.91%.

(3) Taxes, assessments and any amounts advanced and not included in the mortgage loan total:

Current Year	Prior Year
-0-	-0-

(4) Age Analysis of Mortgage Loans:

Farm	Residential		Commercial		Mezzanine	Total
	Insured	All Other	Insured	All Other		

a Current Year

1. Recorded Investment (All)						
(a) Current	\$ -	\$ -	248,726	\$ -	\$ -	248,726
(b) 30-59 Days Past Due	-	-	-	-	-	-
(c) 60-89 Days Past Due	-	-	-	-	-	-
(d) 60-179 Days Past Due	-	-	-	-	-	-
(e) 180+ Past Days Past Due	-	-	-	-	-	-
2. Accruing Interest 90-179 Days Past Due						
(a) Recorded Investment	-	-	-	-	-	-
(b) Interest Accrued	-	-	-	-	-	-
3. Accruing Interest 180+ Days Past Due						
(a) Recorded Investment	-	-	-	-	-	-
(b) Interest Accrued	-	-	-	-	-	-
4. Interest Reduced						
(a) Recorded Investment	-	-	-	-	-	-
(b) Number of Loans	-	-	-	-	-	-
(c) Percent Reduced	-	-	-	-	-	-

Prior Year

1. Recorded Investment						
(a) Current	-	-	264,910	-	527,261	792,171
(b) 30-59 Days Past Due	-	-	-	-	-	-
(c) 60-89 Days Past Due	-	-	-	-	-	-
(d) 90-179 Days Past Due	-	-	-	-	-	-
(e) 180+ Days Past Due	-	-	-	-	-	-
2. Accruing Interest 90-179 Days Past Due						
(a) Recorded Investment	-	-	-	-	-	-
(b) Interest Accrued	-	-	-	-	-	-
3. Accruing Interest 180+ Days Past Due						
(a) Recorded Investment	-	-	-	-	-	-
(b) Interest Accrued	-	-	-	-	-	-
4. Interest Reduced						
(a) Recorded Investment	-	-	-	-	-	-
(b) Number of Loans	-	-	-	-	-	-
(c) Percent Reduced	-	-	-	-	-	-

(5) Investment in Impaired Loans with or without allowance for Credit Losses

No investment in impaired loans to report

(6) Investment in impaired loans-Average recorded investment, Interest recognized, Recorded investment on nonaccrual status and amount of interest income recognized using cash-basis method of accounting

No investment impaired loans to report

(7) Allowance for Credit Losses

No allowance for credit loans to report

(8) No mortgage loans were derecognized as a result of foreclosure.

(9) The Company recognizes interest income on its impaired loans upon receipt.

No interest income on impaired loans to report.

B. Troubled Debt Restructuring for Creditors

No recorded investment in restructured loans to report.

C. Reverse Mortgages

The Company has no investment in reverse mortgages.

D. Loan-Backed Securities

1. Bloomberg is used as a source for the prepayment factors.

2. – 4. Not applicable, no permanently impaired bonds.

5. No impairments exists other than interest rate related declines classified as temporary.

E. Dollar Repurchase Agreements and/or Securities lending Transactions

The Company did not have any repurchase agreements or securities lending transactions in 2017.

F. Repurchase Agreements Transactions Accounted for as Secured Borrowing

The Company does not have repurchase agreements.

G. Reverse Repurchase Agreements Transactions Accounted for as Secured Borrowing

The Company does not have repurchase agreements.

H. Repurchase Agreements Transactions Accounted for as a Sale

The Company does not have repurchase agreements.

I. Reverse Repurchase Agreements Transactions Accounted for as a Sale

The Company does not have repurchase agreements.

J. Real Estate

The Company does not own investments in Real Estate.

K. Investments in Low-Income Housing Tax Credits

The Company has no investments to report that result in low-income housing tax credits.

ANNUAL STATEMENT FOR THE YEAR 2017 OF THE Dealers Assurance Company

L. Restricted Assets (including pledge)

Restricted Asset Category		Gross (Admitted & Nonadmitted) Restricted							Current Year			
		Current year					6	7	8	9	Percentage	
		1	2	3	4	5					10	11
		Total general Account (G/A)	G/A Supporting Protected Cell Account Activity (a)	Total Protected Cell Account Restricted Assets	Protected Cell Assets Supporting G/A activity (b)	Total (1 plus 3)	Total from Prior year	Increase/ (Decrease) (5 minus 6)	Total Nonadmitted Restricted	Total Admitted Restricted (5 minus 8)	Gross (Admitted & Nonadmitted) Restricted to Total Assets (c)	Admitted Restricted to Total Admitted Assets (d)
a.	Subject to contractual obligation for which liability is not shown											
b.	Collateral held under security lending arrangements											
c.	Subject to repurchase agreements											
d.	Subject to reverse repurchase agreements											
e.	Subject to dollar repurchase agreements											
f.	Subject to dollar reverse repurchase agreements											
g.	Placed under option contracts											
h.	Letter stock or securities restricted to sale-excluding FHLB capital stock											
i.	FHLB capital stock											
j.	On deposit with states	4,599,170	-	-	-	4,599,170	4,388,535	210,635	-	4,599,170	3.93	3.93
k.	On deposit with other regulatory bodies											
l.	Pledged as collateral to FHLB (including assets backing funding agreements)											
m.	Pledged as collateral not captured in other categories											
n.	Other restricted assets											
o.	Total Restricted Assets	4,599,170	-	-	-	4,599,170	4,388,535	210,635		4,599,170	3.93	3.93

- (a) Subset of Column 1
- (b) Subset of Column 3
- (c) Column 5 divided by Asset Page, Column 1, Line 28
- (d) Column 9 divided by Asset Page, Column 3, Line 28

- M. Working Capital Finance Investments
The Company has no working capital finance investments
- N. Offsetting and Netting of assets and liabilities
The Company has no offsetting or netting of assets and liabilities.
- O. The company has no structured notes.
- P. The Company does not have any 5* Securities
- Q. The Company does not have any Short Sales
- R. The Company had four bonds called during the year, with no prepayment penalty.

		General Account
(1)	Number of CUSIPS	4
(2)	Aggregate Amount of Investment Income	-

6. Joint Ventures, Partnerships and Limited Liability Companies

The Company does not have any investments in joint ventures, partnerships or limited liability companies.

7. Investment Income

All investment income due and accrued that is over 90 days past due would be excluded from surplus. The Company does not have any excluded investment income.

ANNUAL STATEMENT FOR THE YEAR 2017 OF THE Dealers Assurance Company

8. Derivative Instruments

Dealers Assurance Company does not own derivative instruments.

9. Income Taxes

A. The components of the net deferred tax assets/(liability) at December 31, 2017 are as follows:

1.

		12/31/2017			12/31/16			Change		
		(1)	(2)	(3)	(4)	(5)	(6)	(7)	(8)	(9)
		Ordinary	Capital	(Col 1 + 2) Total	Ordinary	Capital	(Col 4 + 5) Total	(Col 1 – 4) Ordinary	(Col 2 – 5) Capital	(Col 7 + 8) Total
a	Gross Deferred Tax Assets	1,240,466	-	1,240,466	1,611,461	-	1,611,461	(370,995)		(370,995)
b	Statutory Valuation allowance adjustment									
c	Adjusted Gross Deferred Tax Asset (1a -1d)	1,240,466	-	1,240,466	1,611,461	-	1,611,461	(370,995)		(370,995)
d	Deferred Tax Assets Nonadmitted	653,812	-	653,812	857,972	-	857,972	(204,160)		(204,160)
e	Subtotal Net Admitted Deferred Tax Assets (1c-1f)	586,654	-	586,654	753,489	-	753,489	(166,835)		(166,835)
f	Deferred Tax Liabilities	-	658,851	658,851	-	370,598	370,598	-	288,253	288,253
g	Net Admitted Deferred Tax Asset (Net Deferred Tax Liability)	586,654	(658,851)	(72,197)	753,489	(370,598)	382,891	(166,835)	288,253	(455,088)

2.

12/31/2017			12/31/2016			Change		
(1)	(2)	(3)	(4)	(5)	(6)	(7)	(8)	(9)
Ordinary	Capital	(Col 1 + 2) Total	Ordinary	Capital	(Col 4 + 5) Total	(Col 1 – 4) Ordinary	(Col 2 – 5) Capital	(Col 7 + 8) Total

Admission Calculation Components SSAP No. 101

a	Federal Income Taxes Paid in Prior Years Recoverable Through Loss Carrybacks	-	-	-	-	-	-	-	-	-
b	Adjusted Gross Deferred Tax Asset Expected To Be Realized (Excluding the Amount of Deferred Tax Assets From 2(a) above). After Application of the Threshold Limitation. (The Lesser of 2(b)1 and 2(b)2 Below)	586,654	(658,851)	(72,197)	753,489	(370,598)	382,891	(166,835)	(288,253)	(455,088)
	1 Adjusted Gross Deferred Tax Assets Expected to be Realized Following the Balance Sheet Date	586,654	(658,851)	(72,197)	753,489	(370,598)	382,891	(166,835)	(288,253)	(455,088)
	2. Adjusted Gross Deferred Tax Assets (Excluding the Amount of Deferred Tax Allowed per Limitation Threshold)	xxxxxxx	xxxxx	10,099,700	xxxxxx	xxxxxxx	9,125,108	xxxxxx	xxxxxxxxx	974,592
c	Adjusted Gross Deferred Tax Assets (Excluding the Amount of Deferred Tax Assets from 2(a) and 2 (b) above)	-	-	-	-	-	-	-	-	-
d	Offset by Gross Deferred Tax Liabilities									
d	Deferred Tax Assets Admitted as the result of application of SSAP 101. Total)2(a) + 2(b) + 2 (c))	586,654	(658,851)	(72,197)	753,489	(370,598)	382,891	(166,835)	(288,253)	(455,088)

3

2017	2016
------	------

(a)	Ratio Percentage Used to Determine Recovery Period and Threshold Limitation Amount	593%	566%
(b)	Amount of Adjusted Capital and Surplus Used to Determine Recovery Period and Threshold Limitation in 1(b) above	67,259,137	61,216,945

ANNUAL STATEMENT FOR THE YEAR 2017 OF THE Dealers Assurance Company

4.

12/31/2017			12/31/2016			Change		
(1)	(2)	(3)	(4)	(5)	(6)	(7)	(8)	(9)
Ordinary	Capital	(Col 1 + 2) Total	Ordinary	Capital	(Col 4 + 5) Total	(Col 1 – 4) Ordinary	(Col 2 – 5) Capital	(Col 7 + 8) Total

Impact of Tax Planning Strategies

a	Adjusted Gross DTA's (% of Total Adjusted Gross DTA's)	100%	0%	100%	100%	0%	100%	0%	0%	0%
b	Net Admitted Adjusted Gross DTA's (% of Total Net Admitted Adjusted Gross DTA's)	-813%	913%	100%	197%	-97%	100%	-1010%	1010%	0%

c Does the Company's tax-planning strategies include the use of Reinsurance? Yes X No

B Deferred tax liabilities are not recognized at December 31, 2017 and 2016 are as follows:

N/A-All Deferred Tax Liabilities have been recognized

C Current income taxes incurred consist of the following major components

		(1)	(2)	(3)
		12/31/2017	12/31/2016	(Col 1 + 2) Change
1.	Current Income Tax			
(a)	Federal	2,571,632	3,037,760	(466,128)
(b)	Foreign	-	-	-
(c)	Subtotal	2,571,632	3,037,760	(466,128)
(d)	Federal Income tax on net capital gains	193,574	65,854	127,720
(e)	Utilization of capital loss carry-forwards	-	-	-
(f)	Other	-	-	-
(g)	Federal and foreign income taxes incurred	2,765,206	3,103,614	(338,408)
2.	Deferred Tax Assets			
(a)	Ordinary			
(1)	Discounting of Unpaid Losses	11,265	7,960	3,305
(2)	Unearned Premium Reserve	1,005,864	1,319,958	(314,094)
(3)	Policyholder Reserves	-	-	-
(4)	Investments	218,773	283,543	(64,770)
(5)	Deferred Acquisition Costs	-	-	-
(6)	Policyholder Dividends Accrual	-	-	-
(7)	Fixed Assets	4,564	-	4,564
(8)	Compensation and Benefits Accrual	-	-	-
(9)	Pension Accrual	-	-	-
(10)	Receivables-Nonadmitted	-	-	-
(11)	Net Operating Loss Carry-forward	-	-	-
(12)	Tax Credit Carry-forward	-	-	-
(13)	Other (including items <5% of total Capital Assets)	-	-	-
(99)	Subtotal	1,240,466	1,611,461	(370,995)
(b)	Statutory Valuation Allowance Adjustment	-	-	-
(c)	Nonadmitted	653,812	857,972	(204,160)
(d)	Admitted Ordinary Deferred tax Asset (2a99 – 2f – 2g)	586,654	753,489	(166,835)
(e)	Capital:			
(1)	Investments	-	-	-
(2)	Net Capital less Carry-forward	-	-	-
(3)	Real Estate	-	-	-
(4)	Other (including items <5% of total Capital Assets)	-	-	-
(99)	Subtotal	-	-	-
(f)	Statutory Valuation Allowance Adjustment	-	-	-
(g)	Nonadmitted	-	-	-
(h)	Admitted Capital Deferred Tax Assets (2a99 – 2f -2g)	-	-	-
(i)	Admitted Deferred Tax Asset (2d + 22h)	586,654	753,489	(166,835)

ANNUAL STATEMENT FOR THE YEAR 2017 OF THE Dealers Assurance Company

	(1)	(2)	(3)
	12/31/2017	12/31/2016	(Col 1 + 2) Change
3 Deferred Tax Liabilities			
(a) Ordinary			
(1) Investments	-	-	-
(2) Fixed Assets	-	-	-
(3) Deferred and Uncollected premium	-	-	-
(4) Policyholder Reserves	-	-	-
(5) Other (including items <5% of ordinary Tax Liabilities)	-	-	-
(99) Subtotal	-	-	-
(b) Capital			
(1) Investments	658,851	370,598	288,253
(2) Real Estate	-	-	-
(3) Other (including items <5% of ordinary Tax Liabilities)	-	-	-
(99) Subtotal	658,851	370,598	288,253
(c) Deferred Tax Liabilities (3a99 + 3b99)	658,851	370,598	288,253
4. Net Deferred Tax Assets/Liabilities (2i – 3c)	(72,197)	382,891	(455,088)

Due to the recent change in the tax rate for 2018, the deferred tax liability decreased by \$44,694.

D Among the more significant book to tax adjustments were the following:

	Amount	Tax Effect	%
Income before taxes	7,215,093	2,453,132	34%
Unearned Premium Adjustment	907,607	308,586	4%
Bond Discount	207,823	70,660	1%
Loss Reserve Discounting	30,228	10,278	0%
Dividends Received Deduction	(273,187)	(92,884)	-1%
Capital Loss Carry-Forward	-	-	0%
Other, net	45,395	15,434	0%
Total	8,132,959	2,765,206	38%

E At December 31, 2017, the Company has no net capital carry-loss forward available for recoupment against future capital gains

F. The Company is included in a consolidated federal income tax return with its parent company, DAC Financial Holdings, Inc. The Company has a written agreement, approved by the Company's Board of Directors, which sets forth the manner in which the total combined federal income tax is allocated to each entity which is party to the consolidation. Pursuant to this agreement, the Company has the enforceable right to recoup federal income taxes paid in prior years in the event of future net losses, which it may incur, or recoup its net losses carried forward as an offset to future net income subject to federal income taxes.

G. Federal or Foreign Federal Income Tax Loss Contingencies
The company does not have any tax loss contingencies for which it is reasonably possible that the total liability will significantly increase within twelve months of the reporting date.

10. Information Concerning Parent, Subsidiaries and Affiliates and Other Related Parties

- Information Concerning Parent, Subsidiaries and Affiliates and Other Related Parties**
- A. All outstanding shares of Dealers Assurance Company are owned by Dealers Alliance Corporation, an insurance holding company domiciled in the State of Ohio.
- B. The Company did not have any transactions greater than .5% of admitted assets.
- C. The Company entered into a reinsurance agreement with an affiliated company, Cinco de Mayo Reinsurance Company LTD., which was approved by the Ohio Department of Insurance on June 23, 2016.
- D. Amounts Due to or from related parties
The Company reported \$85,563 and \$78,106 due to affiliates and \$6,723 and \$25,414 due from affiliates in the current and prior years, respectively.
- E. Dealers Assurance Company has no guarantees or undertakings for the benefit of an affiliate, which result in a material contingent exposure of the Company's assets or liabilities.
- F. Other than cost allocation transactions described in (B-D) above there are no material management or service contracts.
- G. The parent company, Dealers Alliance Corporation, is a non-insurance entity. The Company had no transactions other than cost allocation with its parent company.
- H-N Dealers Assurance Company holds no investments in its parent company or affiliates.

11. Debt

Debt
The Company does not have any outstanding debt.

12. Retirement Plans, Deferred Compensation, Postemployment Benefits and Compensated Absences and Other Post Retirement Benefit

- Post Retirement Benefit**
- A-D Dealers Assurance Company has no defined benefit plans.
- E. Defined Contribution Plan
- Insurance company employees are covered by a qualified defined contribution pension plan sponsored by the insurance company. Contributions of up to 4 percent of each employee's compensation are made each year. The Company's contribution for the plan was \$45,743 and \$49,532 for 2017 and 2016, respectively.
- F-I Dealers Assurance Company does not have any postretirement or postemployment benefits to report in these categories.

13. Capital and Surplus, Dividend Restrictions and Quasi-Reorganizations

- 1. The Company has 3,000 shares authorized, 2,330 shares issued and 2,330 shares outstanding.
- 2. The Company has no preferred stock outstanding.
- 3. There are no restrictions placed on the portion of company profits that may be paid as ordinary dividends to Stockholders other than the restrictions outlined in (5) below.
- 4. An ordinary dividend was not declared in 2017.
- 5. The maximum amount of dividends which can be paid by the State of Ohio insurance companies to shareholders without prior approval of the Insurance Commissioner is subject to restrictions relating to statutory surplus. Statutory surplus at December 31, 2017 was \$67,259,137.
- 6. There were no restrictions placed on the Company's surplus.
- 7. Company is a stock company.
- 8. No stocks are held for special purposes.
- 9. There are no special surplus funds.
- 10. The portion of unassigned funds (surplus) represented or reduced by cumulative unrealized losses are \$1,089,993.
- 11. The Company issued the following surplus note:

Date Issued	Interest Rate	Par Value (Face Amount of Note)	Carrying Value	Interest and/or Principal Paid Current Year	Total Interest and/or Principal Paid	Unapproved Interest and/or Principal	Date of Maturity
5/26/2004	Libor+4.25 w/12.50% cap until 5/24/09	3,000,000	3,000,000	\$162,984	\$2,426,276	\$0	05/24/34 with first optional call date

This debt obligation exposes DAC to variability in interest payments due to changes in interest rates. If interest rates increase, interest expense increases. Conversely, if interest rates decrease, interest expense decreases. Management has allowed the interest rate swap (@8.87%) with Key Bank to expire without renewing.

12-13. Impact and Dates of Quasi Reorganizations
Not Applicable.

14. Liabilities, Contingencies and Assessments

A – G. The Company does not have outstanding assessments, contingencies or liabilities to report.

15. Leases

A. Lessee Operating Lease

- 1. Description of Leasing Arrangements
 - a. The Company leases office space and equipment under various non-cancelable operating lease agreements that expire through February 28, 2019. Rental expense for 2017 and 2016 was approximately \$145,102 and \$135,347, respectively.
- 2. Future Minimum Rental Payments
 - a. At January 1, 2018, the minimum aggregate rental commitments are as follows:

	Year Ending December 31	Operating Leases
1.	2018	\$ 40,900
2.	2019	\$ 10,004
3.	Total	\$ 50,904

- 3. Sale-leaseback transactions
 - a. The company has entered into a sale-leaseback transaction for certain leasehold improvements and office furniture and fixtures. The lease term is for 48 months with end of term options for the company to purchase the leased furniture and fixtures at their fair value or extend the lease for an additional 6 months. The minimum aggregate rental commitments are included in the table above.

B. Leasing is not a significant part of the lessor's business activities.

16. Information about Financial Instruments with Off-Balance Sheet Risk and Financial Instruments with Concentrations of Credit Risk

The Company does not own these types of investments.

17. Sale, Transfer and Servicing of Financial Assets and Extinguishments of Liabilities

The Company does not have any sales or transfers to report.

18. Gain/Loss to the Reporting Entity from Uninsured Plans and the Uninsured Portion of Partially Insured Plans

The Company was not subject to any gain or loss from uninsured accident and health plans or the uninsured portion of Insured plans.

19. Direct Premium Written/Produced by Managing General Agents/Third Party Administrators

The Company does not have premiums to report produced by managing general agents or third party administrators

ANNUAL STATEMENT FOR THE YEAR 2017 OF THE Dealers Assurance Company

20. Fair Value Measurements

A. Inputs Used for Assets and Liabilities Measured and Reported at Fair Value

(1) Items Measured and Reported at fair Value by Levels 1, 2 and 3.

The company has categorized its assets and liabilities that are reported on the balance sheet at fair value into the three-level fair value hierarchy as reflected in the table below. The three-level hierarchy is based on the degree of subjectivity inherent in the valuation method by which fair value was determined. The three levels are defined as follows:

Level 1-Quoted Prices in Active Markets for Identical Assets and Liabilities: This category, for items measured at fair value on a recurring basis. The estimated fair value of the equity securities within this category are based on quoted prices in active markets and are thus classified as Level 1.

Level 2-Significant Other Observable Inputs: The Company has no assets or liabilities measured at fair value in this category.

Level 3-Significant Unobservable Inputs: The Company has no assets or liabilities measured at fair value in this category.

Description	(Level 1)	(Level 2)	(Level 3)	Total
a. Assets at fair value				
Cash Equivalents	\$11,081,682	-	-	\$11,081,682
Preferred Stock	\$ 1,241,348	-	-	\$ 1,241,348
Bonds	-	-	-	-
Common Stock (Ind & Misc)	\$13,373,400	-	-	\$13,373,400
Derivative assets	-	-	-	-
Separate account assets	-	-	-	-
Total assets at fair value	\$25,696,430	\$ -	\$ -	\$25,696,430
b. Liabilities at fair value	-	-	-	-
Total liabilities at fair value	-	-	-	-

- (2) There have been no significant transfers between level 1 and 2.
(3) Assets measured at Fair Value on a recurring basis with significant unobservable inputs (level 3).
NONE
(4) The Company has no investments categorized as level 2 or 3.
(5) The Company has no derivative assets or liabilities.

B. Other Fair Value Disclosures
Not Applicable

C. Fair Value for All Financial Instruments by levels 1, 2 and 3.

The table below reflects the fair values and admitted values of all admitted assets and liabilities that are financial instruments. The fair values are also categorized into the three-level fair value hierarchy as described above in Note 20A. This was not practicable for mortgage loans as described below in Note 20D.

Description	Aggregate Fair Value	Admitted Assets	Level 1	Level 2	Level 3	Not Practicable (carrying value)
Bonds	78,163,404	78,563,762	78,163,404			
Preferred Stock	3,450,360	3,334,835	3,450,360			
Common Stock	13,373,400	13,373,400	13,373,400			
Mortgage loans						248,726
Cash , cash equivalents and short-term investments	13,429,367	13,429,402	13,429,367			

D. Items for which Not Practicable to estimate Fair Values

It is not practical to determine the fair values of mortgage loans for purposes of the above disclosures of Note 20C due to the fact that these items are not traded and therefore quoted market prices are not available. Also, the cost of obtaining estimates of fair values from other sources are considered excessive given the immateriality of the mortgage loans.

Type or Class of Financial Instrument	Carrying Value	Effective Interest Rate	Maturity Date	Explanation
Mortgage Loan DAC 001 Albuquerque, NM	248,726	5.500	07/01/2019	See paragraph above

21. Other Items

- A. The Company does not have unusual or infrequent items to report.
B. No restructuring of debt occurred.
C. Other Disclosures - None
D. Business Interruption Insurance recoveries-Not applicable
E. State Transferable and Non-transferable Tax Credits-Not applicable
F. Subprime Mortgage-Related Risk Exposure

The company does not have any exposure to sub-prime mortgage related risk.

The Company's investment strategy of providing safety and preservation of capital, sufficient liquidity to meet cash flow requirements and the attainment of a competitive after-tax investment return is supported by a well diversified portfolio consisting of many different types of investments.

- G. Insurance-Linked Securities (ILS) Contracts-Not applicable

ANNUAL STATEMENT FOR THE YEAR 2017 OF THE Dealers Assurance Company

22. Events Subsequent

In September 2017, Industrial Alliance Insurance and Finance Inc. (iA) announced its intention to acquire 100% of Helios Financial Holdings, Corp. from James B. Smith. The acquisition was completed in January 2018 and the group was subsequently added to the iA US branch of the organization.

23. Reinsurance

- A. The Company has no unsecured reinsurance recoverable to report.
B. The Company has no reinsurance recoverable in dispute.
C. Reinsurance Assumed or Ceded
1.

		Assumed Reinsurance		Ceded Reinsurance		Net	
		Premium Reserve	Commission Equity	Premium Reserve	Commission Equity	Premium Reserve	Commission Equity
a	Affiliates			(8,986,784)		(8,986,784)	
b	All other	159,707	-	(209,831,730)	-	(209,831,730)	-
c	TOTAL	159,707	-	(218,818,514)	-	(218,818,514)	-
d	Direct Unearned Premium reserve	-	-	-	-	242,607,970	-

2. The additional or return commissions, predicted on loss experience or on any other form of profit sharing arrangements in this annual statement as result of existing contractual arrangements are accrued as follows:

	(1) Direct	(2) Assumed	(3) Ceded	(4) Net
a. Contingent Commissions	596,030	-	-	596,030
b. Sliding Scale Adjustments				
c. Other Profit Commissions				
d. Total	596,030	-	-	596,030

3. The Company does not have risks assigned to protected cells.

- D. The Company has no uncollectible reinsurance.
E. Commutation of Ceded Reinsurance

The Company commuted one ceded reinsurance agreement in the current year with the reinsurer listed below. The Company recognized the amounts received from the reinsurer as a reduction of losses (thereby reducing losses incurred). The Company also increased its unearned premium and IBNR reserves to recognize the effect of releasing the reinsurers from its obligations under the treaties. The net effect of the commutation \$92,093; a decrease in losses incurred of \$49,266 and an increase in UPR of \$141,359. The amounts are shown below by Statement of Income classification and by reinsurer.

Statement of Income Account	Amount
1. Losses Incurred	(\$49,266)
2. Loss adjustment expenses incurred	
3. Premium Earned	(\$141,359)
4. Other	
5. Company	
Universal Reinsurance Company, Ltd.	92,093

- F. The Company did not write any retroactive reinsurance.
G. The Company does not have reinsurance accounted for as a deposit.
H. The Company did not enter into any run-off agreements.
I. The Company did not have any certified reinsurers downgraded.
J. The Company does not have any reinsurance agreements qualifying for reinsurance aggregation

24. Retrospectively Rated Contracts & Contracts Subject to Redetermination

The Company does not have retrospectively rated contracts or contracts subject to redetermination

25. Change in Incurred Losses and Loss Adjustment Expenses

Reserves as of December 31, 2016 were \$156,089. As of December 31, 2017, \$357,610 (net of reinsured prior year claims) were paid for incurred losses and loss adjustment expenses attributable to insured events of prior years which reflects an unfavorable development of \$75,000.

26. Intercompany Pooling Agreements

The Company does not participate in intercompany pooling arrangements.

27. Structured Settlements

Dealers Assurance Company has no structured settlements.

28. Health Care Receivables

The Company does not have health care receivables.

29. Participating Policies

The Company does not write participating policies.

30. Premium Deficiency Reserves

On February 26, 2018 the company's outside actuaries reviewed the reserves at 12/31/17. It was determined that premium deficiency reserves were not necessary. Investment income was not used to make this determination.

31. High Deductibles

The Company does not have reserve credits for high deductibles.

32. Discounting of Liabilities for Unpaid Losses or Unpaid Loss Adjustment Expenses

The Company does not discount unpaid losses or unpaid loss adjustment expenses.

33. Asbestos/Environment Reserves

Dealers Assurance Company does not have exposure to asbestos/environment claims.

- 34. **Subscriber Savings Account**
The Company does not have subscriber savings accounts
- 35. **Multiple Peril Crops Insurance**
The Company does not write multiple peril crop insurance.
- 36. **Financial Guaranty Insurance**
The company does not write financial guaranty insurance.

GENERAL INTERROGATORIES

PART 1 - COMMON INTERROGATORIES
GENERAL

1.1

Is the reporting entity a member of an Insurance Holding Company System consisting of two or more affiliated persons, one or more of which is an insurer?
If yes, complete Schedule Y, Parts 1, 1A and 2

Yes [X] No []

1.2

If yes, did the reporting entity register and file with its domiciliary State Insurance Commissioner, Director or Superintendent, or with such regulatory official of the state of domicile of the principal insurer in the Holding Company System, a registration statement providing disclosure substantially similar to the standards adopted by the National Association of Insurance Commissioners (NAIC) in its Model Insurance Holding Company System Regulatory Act and model regulations pertaining thereto, or is the reporting entity subject to standards and disclosure requirements substantially similar to those required by such Act and regulations?

Yes [X] No [] N/A []

1.3

State Regulating?

Ohio

2.1

Has any change been made during the year of this statement in the charter, by-laws, articles of incorporation, or deed of settlement of the reporting entity?

Yes [] No [X]

2.2

If yes, date of change:

3.1

State as of what date the latest financial examination of the reporting entity was made or is being made.

12/31/2013

3.2

State the as of date that the latest financial examination report became available from either the state of domicile or the reporting entity. This date should be the date of the examined balance sheet and not the date the report was completed or released.

12/31/2013

3.3

State as of what date the latest financial examination report became available to other states or the public from either the state of domicile or the reporting entity. This is the release date or completion date of the examination report and not the date of the examination (balance sheet date).

10/03/2014

3.4

By what department or departments?
Ohio Department of Insurance

3.5

Have all financial statement adjustments within the latest financial examination report been accounted for in a subsequent financial statement filed with Departments?

Yes [] No [] N/A [X]

3.6

Have all of the recommendations within the latest financial examination report been complied with?

Yes [] No [] N/A [X]

4.1

During the period covered by this statement, did any agent, broker, sales representative, non-affiliated sales/service organization or any combination thereof under common control (other than salaried employees of the reporting entity), receive credit or commissions for or control a substantial part (more than 20 percent of any major line of business measured on direct premiums) of:
4.11 sales of new business?
4.12 renewals?

Yes [] No [X]
Yes [] No [X]

4.2

During the period covered by this statement, did any sales/service organization owned in whole or in part by the reporting entity or an affiliate, receive credit or commissions for or control a substantial part (more than 20 percent of any major line of business measured on direct premiums) of:
4.21 sales of new business?
4.22 renewals?

Yes [X] No []
Yes [X] No []

5.1

Has the reporting entity been a party to a merger or consolidation during the period covered by this statement?

Yes [] No [X]

5.2

If yes, provide the name of the entity, NAIC Company Code, and state of domicile (use two letter state abbreviation) for any entity that has ceased to exist as a result of the merger or consolidation.

1 Name of Entity	2 NAIC Company Code	3 State of Domicile

6.1

Has the reporting entity had any Certificates of Authority, licenses or registrations (including corporate registration, if applicable) suspended or revoked by any governmental entity during the reporting period?

Yes [] No [X]

6.2

If yes, give full information:

7.1

Does any foreign (non-United States) person or entity directly or indirectly control 10% or more of the reporting entity?

Yes [] No [X]

7.2

If yes,
7.21 State the percentage of foreign control; %
7.22 State the nationality(s) of the foreign person(s) or entity(s) or if the entity is a mutual or reciprocal, the nationality of its manager or attorney-in-fact; and identify the type of entity(s) (e.g., individual, corporation or government, manager or attorney in fact).

1 Nationality	2 Type of Entity

ANNUAL STATEMENT FOR THE YEAR 2017 OF THE Dealers Assurance Company

GENERAL INTERROGATORIES

8.1

Is the company a subsidiary of a bank holding company regulated by the Federal Reserve Board?

Yes [] No [X]

8.2

If response to 8.1 is yes, please identify the name of the bank holding company.

8.3

Is the company affiliated with one or more banks, thrifts or securities firms?

Yes [] No [X]

8.4

If response to 8.3 is yes, please provide below the names and location (city and state of the main office) of any affiliates regulated by a federal regulatory services agency [i.e. the Federal Reserve Board (FRB), the Office of the Comptroller of the Currency (OCC), the Federal Deposit Insurance Corporation (FDIC) and the Securities Exchange Commission (SEC)] and identify the affiliate's primary federal regulator.

1	2	3	4	5	6
Affiliate Name	Location (City, State)	FRB	OCC	FDIC	SEC

9.

What is the name and address of the independent certified public accountant or accounting firm retained to conduct the annual audit?

Munninghoff, Lange & Co of Covington, KY

10.1

Has the insurer been granted any exemptions to the prohibited non-audit services provided by the certified independent public accountant requirements as allowed in Section 7H of the Annual Financial Reporting Model Regulation (Model Audit Rule), or substantially similar state law or regulation?

Yes [] No [X]

10.2

If the response to 10.1 is yes, provide information related to this exemption:

10.3

Has the insurer been granted any exemptions related to the other requirements of the Annual Financial Reporting Model Regulation as allowed for in Section 18A of the Model Regulation, or substantially similar state law or regulation?

Yes [] No [X]

10.4

If the response to 10.3 is yes, provide information related to this exemption:

10.5

Has the reporting entity established an Audit Committee in compliance with the domiciliary state insurance laws?

Yes [X] No [] N/A []

10.6

If the response to 10.5 is no or n/a, please explain

11.

What is the name, address and affiliation (officer/employee of the reporting entity or actuary/consultant associated with an actuarial consulting firm) of the individual providing the statement of actuarial opinion/certification?

Joseph Kirsits, FCAS, MAAA of GPW and Associates of Phoenix, AZ

12.1

Does the reporting entity own any securities of a real estate holding company or otherwise hold real estate indirectly?

Yes [] No [X]

12.11

Name of real estate holding company

12.12

Number of parcels involved

12.13

Total book/adjusted carrying value

\$

12.2

If, yes provide explanation:

13.

FOR UNITED STATES BRANCHES OF ALIEN REPORTING ENTITIES ONLY:

13.1

What changes have been made during the year in the United States manager or the United States trustees of the reporting entity?

13.2

Does this statement contain all business transacted for the reporting entity through its United States Branch on risks wherever located?

Yes [] No []

13.3

Have there been any changes made to any of the trust indentures during the year?

Yes [] No []

13.4

If answer to (13.3) is yes, has the domiciliary or entry state approved the changes?

Yes [] No [] N/A []

14.1

Are the senior officers (principal executive officer, principal financial officer, principal accounting officer or controller, or persons performing similar functions) of the reporting entity subject to a code of ethics, which includes the following standards?

Yes [X] No []

(a)

Honest and ethical conduct, including the ethical handling of actual or apparent conflicts of interest between personal and professional relationships;

(b)

Full, fair, accurate, timely and understandable disclosure in the periodic reports required to be filed by the reporting entity;

(c)

Compliance with applicable governmental laws, rules and regulations;

(d)

The prompt internal reporting of violations to an appropriate person or persons identified in the code; and

(e)

Accountability for adherence to the code.

14.11

If the response to 14.1 is No, please explain:

14.2

Has the code of ethics for senior managers been amended?

Yes [] No [X]

14.21

If the response to 14.2 is yes, provide information related to amendment(s).

14.3

Have any provisions of the code of ethics been waived for any of the specified officers?

Yes [] No [X]

14.31

If the response to 14.3 is yes, provide the nature of any waiver(s).

ANNUAL STATEMENT FOR THE YEAR 2017 OF THE Dealers Assurance Company

GENERAL INTERROGATORIES

- 15.1 Is the reporting entity the beneficiary of a Letter of Credit that is unrelated to reinsurance where the issuing or confirming bank is not on the SVO Bank List?
- 15.2 If the response to 15.1 is yes, indicate the American Bankers Association (ABA) Routing Number and the name of the issuing or confirming bank of the Letter of Credit and describe the circumstances in which the Letter of Credit is triggered.
- Yes [] No [X]

1 American Bankers Association (ABA) Routing Number	2 Issuing or Confirming Bank Name	3 Circumstances That Can Trigger the Letter of Credit	4 Amount

BOARD OF DIRECTORS

16. Is the purchase or sale of all investments of the reporting entity passed upon either by the board of directors or a subordinate committee thereof?
17. Does the reporting entity keep a complete permanent record of the proceedings of its board of directors and all subordinate committees thereof?
18. Has the reporting entity an established procedure for disclosure to its board of directors or trustees of any material interest or affiliation on the part of any of its officers, directors, trustees or responsible employees that is in conflict with the official duties of such person?
- Yes [X] No []
- Yes [X] No []
- Yes [X] No []

FINANCIAL

19. Has this statement been prepared using a basis of accounting other than Statutory Accounting Principles (e.g., Generally Accepted Accounting Principles)?
- 20.1 Total amount loaned during the year (inclusive of Separate Accounts, exclusive of policy loans):
- 20.11 To directors or other officers
- 20.12 To stockholders not officers
- 20.13 Trustees, supreme or grand (Fraternal Only)
- 20.2 Total amount of loans outstanding at the end of year (inclusive of Separate Accounts, exclusive of policy loans):
- 20.21 To directors or other officers
- 20.22 To stockholders not officers
- 20.23 Trustees, supreme or grand (Fraternal Only)
- 21.1 Were any assets reported in this statement subject to a contractual obligation to transfer to another party without the liability for such obligation being reported in the statement?
- 21.2 If yes, state the amount thereof at December 31 of the current year:
- 21.21 Rented from others
- 21.22 Borrowed from others
- 21.23 Leased from others
- 21.24 Other
- 22.1 Does this statement include payments for assessments as described in the Annual Statement Instructions other than guaranty fund or guaranty association assessments?
- 22.2 If answer is yes:
- 22.21 Amount paid as losses or risk adjustment
- 22.22 Amount paid as expenses
- 22.23 Other amounts paid
- 23.1 Does the reporting entity report any amounts due from parent, subsidiaries or affiliates on Page 2 of this statement?
- 23.2 If yes, indicate any amounts receivable from parent included in the Page 2 amount:
- Yes [] No [X]
- \$
- \$
- \$
- \$
- \$
- \$
- \$
- \$
- \$
- \$
- \$
- Yes [] No [X]
- \$
- \$
- \$
- Yes [X] No []
- \$6,723

INVESTMENT

- 24.01 Were all the stocks, bonds and other securities owned December 31 of current year, over which the reporting entity has exclusive control, in the actual possession of the reporting entity on said date? (other than securities lending programs addressed in 24.03).
- 24.02 If no, give full and complete information relating thereto
- 24.03 For security lending programs, provide a description of the program including value for collateral and amount of loaned securities, and whether collateral is carried on or off-balance sheet. (an alternative is to reference Note 17 where this information is also provided)
- 24.04 Does the Company's security lending program meet the requirements for a conforming program as outlined in the Risk-Based Capital Instructions?
- 24.05 If answer to 24.04 is yes, report amount of collateral for conforming programs.
- 24.06 If answer to 24.04 is no, report amount of collateral for other programs.
- 24.07 Does your securities lending program require 102% (domestic securities) and 105% (foreign securities) from the counterparty at the outset of the contract?
- 24.08 Does the reporting entity non-admit when the collateral received from the counterparty falls below 100%?
- 24.09 Does the reporting entity or the reporting entity 's securities lending agent utilize the Master Securities lending Agreement (MSLA) to conduct securities lending?
- Yes [X] No []
- \$
- \$
- Yes [] No [] N/A [X]
- \$
- \$
- Yes [] No [] N/A [X]
- Yes [] No [] N/A [X]
- Yes [] No [] N/A [X]

ANNUAL STATEMENT FOR THE YEAR 2017 OF THE Dealers Assurance Company

GENERAL INTERROGATORIES

24.10 For the reporting entity's security lending program state the amount of the following as December 31 of the current year:

24.101	Total fair value of reinvested collateral assets reported on Schedule DL, Parts 1 and 2.	\$	0
24.102	Total book adjusted/carrying value of reinvested collateral assets reported on Schedule DL, Parts 1 and 2.	\$	0
24.103	Total payable for securities lending reported on the liability page.	\$	0

25.1 Were any of the stocks, bonds or other assets of the reporting entity owned at December 31 of the current year not exclusively under the control of the reporting entity, or has the reporting entity sold or transferred any assets subject to a put option contract that is currently in force? (Exclude securities subject to Interrogatory 21.1 and 24.03). Yes ☒ No ☐

25.2	If yes, state the amount thereof at December 31 of the current year:	25.21 Subject to repurchase agreements	\$	
		25.22 Subject to reverse repurchase agreements	\$	
		25.23 Subject to dollar repurchase agreements	\$	
		25.24 Subject to reverse dollar repurchase agreements	\$	
		25.25 Placed under option agreements	\$	
		25.26 Letter stock or securities restricted as to sale - excluding FHLB Capital Stock	\$	
		25.27 FHLB Capital Stock	\$	
		25.28 On deposit with states	\$	4,599,170
		25.29 On deposit with other regulatory bodies	\$	
		25.30 Pledged as collateral - excluding collateral pledged to an FHLB	\$	
		25.31 Pledged as collateral to FHLB - including assets backing funding agreements	\$	
		25.32 Other	\$	

25.3 For category (25.26) provide the following:

1 Nature of Restriction	2 Description	3 Amount

26.1 Does the reporting entity have any hedging transactions reported on Schedule DB? Yes ☐ No ☒

26.2 If yes, has a comprehensive description of the hedging program been made available to the domiciliary state? Yes ☐ No ☐ N/A ☐
If no, attach a description with this statement.

27.1 Were any preferred stocks or bonds owned as of December 31 of the current year mandatorily convertible into equity, or, at the option of the issuer, convertible into equity? Yes ☐ No ☒

27.2 If yes, state the amount thereof at December 31 of the current year. \$

28. Excluding items in Schedule E - Part 3 - Special Deposits, real estate, mortgage loans and investments held physically in the reporting entity's offices, vaults or safety deposit boxes, were all stocks, bonds and other securities, owned throughout the current year held pursuant to a custodial agreement with a qualified bank or trust company in accordance with Section 1, III - General Examination Considerations, F. Outsourcing of Critical Functions, Custodial or Safekeeping Agreements of the NAIC Financial Condition Examiners Handbook? Yes ☒ No ☐

28.01 For agreements that comply with the requirements of the NAIC Financial Condition Examiners Handbook, complete the following:

1 Name of Custodian(s)	2 Custodian's Address
Fifth Third Bank	Cincinnati, OH
US Bank	Winston Salem, NC
Wells Fargo Bank	Richmond, VA
First National Bankers Bank	Little Rock, AR
Citibank, NA	NY, NY
Century Bank	Sante Fe, NM
RBS Citizens, NA	Providence, RI
Xerox State & Local Solutions, Inc	Quincy, MA
Bank of New york Mellon	Atlanta, GA

28.02 For all agreements that do not comply with the requirements of the NAIC Financial Condition Examiners Handbook, provide the name, location and a complete explanation:

1 Name(s)	2 Location(s)	3 Complete Explanation(s)

28.03 Have there been any changes, including name changes, in the custodian(s) identified in 28.01 during the current year? Yes ☐ No ☒

28.04 If yes, give full and complete information relating thereto:

1 Old Custodian	2 New Custodian	3 Date of Change	4 Reason

ANNUAL STATEMENT FOR THE YEAR 2017 OF THE Dealers Assurance Company

GENERAL INTERROGATORIES

28.05 Investment management – Identify all investment advisors, investment managers, broker/dealers, including individuals that have the authority to make investment decisions on behalf of the reporting entity. For assets that are managed internally by employees of the reporting entity, note as such. ["...that have access to the investment accounts"; "...handle securities"]

1 Name of Firm or Individual	2 Affiliation
ClearArc Capital, Inc	U.....
Bank of New York Mellon Wealth Management	U.....
.....

28.0597 For those firms/individuals listed in the table for Question 28.05, do any firms/individuals unaffiliated with the reporting entity (i.e. designated with a "U") manage more than 10% of the reporting entity's assets?..... Yes [X] No []

28.0598 For firms/individuals unaffiliated with the reporting entity (i.e. designated with a "U") listed in the table for Question 28.05, does the total assets under management aggregate to more than 50% of the reporting entity's assets?..... Yes [X] No []

28.06 For those firms or individuals listed in the table for 28.05 with an affiliation code of "A" (affiliated) or "U" (unaffiliated), provide the information for the table below.

1 Central Registration Depository Number	2 Name of Firm or Individual	3 Legal Entity Identifier (LEI)	4 Registered With	5 Investment Management Agreement (IMA) Filed
104650	ClearArc Capital, Inc	549300K4SXCOCLBZH67	SEC	NO.....
8275	Bank of New York Wealth Management	Office of Comptroller of Currency	NO.....
.....

29.1 Does the reporting entity have any diversified mutual funds reported in Schedule D, Part 2 (diversified according to the Securities and Exchange Commission (SEC) in the Investment Company Act of 1940 [Section 5(b)(1)])? Yes [] No [X]

29.2 If yes, complete the following schedule:

1 CUSIP #	2 Name of Mutual Fund	3 Book/Adjusted Carrying Value
29.2999 - Total		0

29.3 For each mutual fund listed in the table above, complete the following schedule:

1 Name of Mutual Fund (from above table)	2 Name of Significant Holding of the Mutual Fund	3 Amount of Mutual Fund's Book/Adjusted Carrying Value Attributable to the Holding	4 Date of Valuation
.....

30. Provide the following information for all short-term and long-term bonds and all preferred stocks. Do not substitute amortized value or statement value for fair value.

	1 Statement (Admitted) Value	2 Fair Value	3 Excess of Statement over Fair Value (-), or Fair Value over Statement (+)
30.1 Bonds	78,683,768	78,283,376	(400,392)
30.2 Preferred stocks	3,334,835	3,450,360	115,524
30.3 Totals	82,018,603	81,733,736	(284,868)

30.4 Describe the sources or methods utilized in determining the fair values:

.....

31.1 Was the rate used to calculate fair value determined by a broker or custodian for any of the securities in Schedule D? Yes [X] No []

31.2 If the answer to 31.1 is yes, does the reporting entity have a copy of the broker's or custodian's pricing policy (hard copy or electronic copy) for all brokers or custodians used as a pricing source? Yes [X] No []

31.3 If the answer to 31.2 is no, describe the reporting entity's process for determining a reliable pricing source for purposes of disclosure of fair value for Schedule D:
.....

32.1 Have all the filing requirements of the Purposes and Procedures Manual of the NAIC Investment Analysis Office been followed? Yes [X] No []

32.2 If no, list exceptions:
.....

ANNUAL STATEMENT FOR THE YEAR 2017 OF THE Dealers Assurance Company

GENERAL INTERROGATORIES

33. By self-designating 5*GI securities, the reporting entity is certifying the following elements of each self-designated 5*GI security:
- a. Documentation necessary to permit a full credit analysis of the security does not exist.
 - b. Issuer or obligor is current on all contracted interest and principal payments.
 - c. The insurer has an actual expectation of ultimate payment of all contracted interest and principal.

Has the reporting entity self-designated 5*GI securities? Yes [] No [X]

OTHER

34.1 Amount of payments to trade associations, service organizations and statistical or rating bureaus, if any?\$34,410

34.2 List the name of the organization and the amount paid if any such payment represented 25% or more of the total payments to trade associations, service organizations and statistical or rating bureaus during the period covered by this statement.

1 Name	2 Amount Paid
AM Best	22,300
Service Contract Industry Council	12,500
.....	

35.1 Amount of payments for legal expenses, if any?\$195,668

35.2 List the name of the firm and the amount paid if any such payment represented 25% or more of the total payments for legal expenses during the period covered by this statement.

1 Name	2 Amount Paid
Thompson Hine LLP	134,217
Northern Blue LLP	61,451
.....	

36.1 Amount of payments for expenditures in connection with matters before legislative bodies, officers or departments of government, if any?\$0

36.2 List the name of the firm and the amount paid if any such payment represented 25% or more of the total payment expenditures in connection with matters before legislative bodies, officers or departments of government during the period covered by this statement.

1 Name	2 Amount Paid
.....	

GENERAL INTERROGATORIES

PART 2 - PROPERTY AND CASUALTY INTERROGATORIES

1.1

Does the reporting entity have any direct Medicare Supplement Insurance in force?

Yes [] No [X]

1.2

If yes, indicate premium earned on U. S. business only.

\$

1.3

What portion of Item (1.2) is not reported on the Medicare Supplement Insurance Experience Exhibit?

\$

1.31

Reason for excluding

.....

1.4

Indicate amount of earned premium attributable to Canadian and/or Other Alien not included in Item (1.2) above.

\$

1.5

Indicate total incurred claims on all Medicare Supplement Insurance.

\$0

1.6

Individual policies:

Most current three years:

1.61

Total premium earned

\$0

1.62

Total incurred claims

\$0

1.63

Number of covered lives

.....0

All years prior to most current three years

1.64

Total premium earned

\$0

1.65

Total incurred claims

\$0

1.66

Number of covered lives

.....0

1.7

Group policies:

Most current three years:

1.71

Total premium earned

\$0

1.72

Total incurred claims

\$0

1.73

Number of covered lives

.....0

All years prior to most current three years

1.74

Total premium earned

\$0

1.75

Total incurred claims

\$0

1.76

Number of covered lives

.....0

2.

Health Test:

1

Current Year

2

Prior Year

2.1

Premium Numerator

.....

.....

2.2

Premium Denominator

11,597,395

11,348,767

2.3

Premium Ratio (2.1/2.2)

0.000

0.000

2.4

Reserve Numerator

0

0

2.5

Reserve Denominator

24,306,774

19,567,218

2.6

Reserve Ratio (2.4/2.5)

0.000

0.000

3.1

Does the reporting entity issue both participating and non-participating policies?

Yes [] No [X]

3.2

If yes, state the amount of calendar year premiums written on:

3.21

Participating policies

\$

3.22

Non-participating policies

\$

4.

For mutual reporting Entities and Reciprocal Exchanges Only:

4.1

Does the reporting entity issue assessable policies?

Yes [] No []

4.2

Does the reporting entity issue non-assessable policies?

Yes [] No []

4.3

If assessable policies are issued, what is the extent of the contingent liability of the policyholders?

%

4.4

Total amount of assessments paid or ordered to be paid during the year on deposit notes or contingent premiums.

\$

5.

For Reciprocal Exchanges Only:

5.1

Does the Exchange appoint local agents?

Yes [] No [X]

5.2

If yes, is the commission paid:

5.21

Out of Attorney's-in-fact compensation.....

Yes [] No [] N/A [X]

5.22

As a direct expense of the exchange.....

Yes [] No [] N/A [X]

5.3

What expenses of the Exchange are not paid out of the compensation of the Attorney-in-fact?

.....

5.4

Has any Attorney-in-fact compensation, contingent on fulfillment of certain conditions, been deferred?

Yes [] No [X]

5.5

If yes, give full information

.....

16

GENERAL INTERROGATORIES

PART 2 - PROPERTY AND CASUALTY INTERROGATORIES

6.1

What provision has this reporting entity made to protect itself from an excessive loss in the event of a catastrophe under a workers' compensation contract issued without limit of loss?
Not Applicable

6.2

Describe the method used to estimate this reporting entity's probable maximum insurance loss, and identify the type of insured exposures comprising that probable maximum loss, the locations of concentrations of those exposures and the external resources (such as consulting firms or computer software models), if any, used in the estimation process.

6.3

What provision has this reporting entity made (such as a catastrophic reinsurance program) to protect itself from an excessive loss arising from the types and concentrations of insured exposures comprising its probable maximum property insurance loss?

6.4

Does the reporting entity carry catastrophe reinsurance protection for at least one reinstatement, in an amount sufficient to cover its estimated probable maximum loss attributable to a single loss event or occurrence?

Yes [] No [X]

6.5

If no, describe any arrangements or mechanisms employed by the reporting entity to supplement its catastrophe reinsurance program or to hedge its exposure to uninsured catastrophic loss.
The nature of the Company's business is not susceptible to catastrophic risk.

7.1

Has this reporting entity reinsured any risk with any other entity under a quota share reinsurance contract that includes a provision that would limit the reinsurer's losses below the stated quota share percentage (e.g., a deductible, a loss ratio corridor, a loss ratio cap, an aggregate limit or any similar provisions)?

Yes [] No [X]

7.2

If yes, indicate the number of reinsurance contracts containing such provisions:

7.3

If yes, does the amount of reinsurance credit taken reflect the reduction in quota share coverage caused by any applicable limiting provision(s)?

Yes [] No []

8.1

Has this reporting entity reinsured any risk with any other entity and agreed to release such entity from liability, in whole or in part, from any loss that may occur on this risk, or portion thereof, reinsured?

Yes [] No [X]

8.2

If yes, give full information

9.1

Has the reporting entity ceded any risk under any reinsurance contract (or under multiple contracts with the same reinsurer or its affiliates) for which during the period covered by the statement: (i) it recorded a positive or negative underwriting result greater than 5% of prior year-end surplus as regards policyholders or it reported calendar year written premium ceded or year-end loss and loss expense reserves ceded greater than 5% of prior year-end surplus as regards policyholders; (ii) it accounted for that contract as reinsurance and not as a deposit; and (iii) the contract(s) contain one or more of the following features or other features that would have similar results:
(a) A contract term longer than two years and the contract is noncancellable by the reporting entity during the contract term;
(b) A limited or conditional cancellation provision under which cancellation triggers an obligation by the reporting entity, or an affiliate of the reporting entity, to enter into a new reinsurance contract with the reinsurer, or an affiliate of the reinsurer;
(c) Aggregate stop loss reinsurance coverage;
(d) A unilateral right by either party (or both parties) to commute the reinsurance contract, whether conditional or not, except for such provisions which are only triggered by a decline in the credit status of the other party;
(e) A provision permitting reporting of losses, or payment of losses, less frequently than on a quarterly basis (unless there is no activity during the period); or
(f) Payment schedule, accumulating retentions from multiple years or any features inherently designed to delay timing of the reimbursement to the ceding entity.

Yes [] No [X]

9.2

Has the reporting entity during the period covered by the statement ceded any risk under any reinsurance contract (or under multiple contracts with the same reinsurer or its affiliates), for which, during the period covered by the statement, it recorded a positive or negative underwriting result greater than 5% of prior year-end surplus as regards policyholders or it reported calendar year written premium ceded or year-end loss and loss expense reserves ceded greater than 5% of prior year-end surplus as regards policyholders; excluding cessions to approved pooling arrangements or to captive insurance companies that are directly or indirectly controlling, controlled by, or under common control with (i) one or more unaffiliated policyholders of the reporting entity, or (ii) an association of which one or more unaffiliated policyholders of the reporting entity is a member where:
(a) The written premium ceded to the reinsurer by the reporting entity or its affiliates represents fifty percent (50%) or more of the entire direct and assumed premium written by the reinsurer based on its most recently available financial statement; or
(b) Twenty-five percent (25%) or more of the written premium ceded to the reinsurer has been retroceded back to the reporting entity or its affiliates in a separate reinsurance contract.

Yes [] No [X]

9.3

If yes to 9.1 or 9.2, please provide the following information in the Reinsurance Summary Supplemental Filing for General Interrogatory 9:
(a) The aggregate financial statement impact gross of all such ceded reinsurance contracts on the balance sheet and statement of income;
(b) A summary of the reinsurance contract terms and indicate whether it applies to the contracts meeting the criteria in 9.1 or 9.2; and
(c) A brief discussion of management's principle objectives in entering into the reinsurance contract including the economic purpose to be achieved.

9.4

Except for transactions meeting the requirements of paragraph 32 of SSAP No. 62R, Property and Casualty Reinsurance, has the reporting entity ceded any risk under any reinsurance contract (or multiple contracts with the same reinsurer or its affiliates) during the period covered by the financial statement, and either:
(a) Accounted for that contract as reinsurance (either prospective or retroactive) under statutory accounting principles ("SAP") and as a deposit under generally accepted accounting principles ("GAAP"); or
(b) Accounted for that contract as reinsurance under GAAP and as a deposit under SAP?

Yes [] No [X]

9.5

If yes to 9.4, explain in the Reinsurance Summary Supplemental Filing for General Interrogatory 9 (Section D) why the contract(s) is treated differently for GAAP and SAP.

9.6

The reporting entity is exempt from the Reinsurance Attestation Supplement under one or more of the following criteria:
(a) The entity does not utilize reinsurance; or,
(b) The entity only engages in a 100% quota share contract with an affiliate and the affiliated or lead company has filed an attestation supplement; or
(c) The entity has no external cessions and only participates in an intercompany pool and the affiliated or lead company has filed an attestation supplement.

Yes [] No [X]
Yes [] No [X]
Yes [] No [X]

10.

If the reporting entity has assumed risks from another entity, there should be charged on account of such reinsurances a reserve equal to that which the original entity would have been required to charge had it retained the risks. Has this been done?

Yes [] No [] N/A [X]

ANNUAL STATEMENT FOR THE YEAR 2017 OF THE Dealers Assurance Company

GENERAL INTERROGATORIES

PART 2 - PROPERTY AND CASUALTY INTERROGATORIES

11.1 Has the reporting entity guaranteed policies issued by any other entity and now in force? Yes [] No [X]

11.2 If yes, give full information
.....

12.1 If the reporting entity recorded accrued retrospective premiums on insurance contracts on Line 15.3 of the asset schedule, Page 2, state the amount of corresponding liabilities recorded for:

12.11 Unpaid losses\$

12.12 Unpaid underwriting expenses (including loss adjustment expenses)\$

12.2 Of the amount on Line 15.3, Page 2, state the amount which is secured by letters of credit, collateral, and other funds\$

12.3 If the reporting entity underwrites commercial insurance risks, such as workers' compensation, are premium notes or promissory notes accepted from its insureds covering unpaid premiums and/or unpaid losses? Yes [] No [] N/A [X]

12.4 If yes, provide the range of interest rates charged under such notes during the period covered by this statement:

12.41 From %

12.42 To %

12.5 Are letters of credit or collateral and other funds received from insureds being utilized by the reporting entity to secure premium notes or promissory notes taken by a reporting entity, or to secure any of the reporting entity's reported direct unpaid loss reserves , including unpaid losses under loss deductible features of commercial policies? Yes [] No [X]

12.6 If yes, state the amount thereof at December 31 of the current year:

12.61 Letters of credit\$

12.62 Collateral and other funds.....\$

13.1 Largest net aggregate amount insured in any one risk (excluding workers' compensation):\$ 173,511

13.2 Does any reinsurance contract considered in the calculation of this amount include an aggregate limit of recovery without also including a reinstatement provision? Yes [] No [X]

13.3 State the number of reinsurance contracts (excluding individual facultative risk certificates, but including facultative programs, automatic facilities or facultative obligatory contracts) considered in the calculation of the amount.

14.1 Is the company a cedant in a multiple cedant reinsurance contract? Yes [] No [X]

14.2 If yes, please describe the method of allocating and recording reinsurance among the cedants:
.....

14.3 If the answer to 14.1 is yes, are the methods described in item 14.2 entirely contained in the respective multiple cedant reinsurance contracts? Yes [] No []

14.4 If the answer to 14.3 is no, are all the methods described in 14.2 entirely contained in written agreements? Yes [X] No []

14.5 If the answer to 14.4 is no, please explain:
.....

15.1 Has the reporting entity guaranteed any financed premium accounts? Yes [] No []

15.2 If yes, give full information
.....

16.1 Does the reporting entity write any warranty business? Yes [X] No []
If yes, disclose the following information for each of the following types of warranty coverage:

	1 Direct Losses Incurred	2 Direct Losses Unpaid	3 Direct Written Premium	4 Direct Premium Unearned	5 Direct Premium Earned
16.11 Home	2, 142, 166	77, 289	1, 846, 268	728, 061	3, 232, 536
16.12 Products	5, 019, 563	392, 061	4, 760, 275	18, 256, 014	7, 243, 005
16.13 Automobile	53, 316, 761	3, 390, 693	120, 928, 053	201, 804, 643	110, 121, 968
16.14 Other*					

* Disclose type of coverage:
.....

ANNUAL STATEMENT FOR THE YEAR 2017 OF THE Dealers Assurance Company

GENERAL INTERROGATORIES

PART 2 - PROPERTY AND CASUALTY INTERROGATORIES

17.1 Does the reporting entity include amounts recoverable on unauthorized reinsurance in Schedule F - Part 3 that it excludes from Schedule F - Part 5? Yes [] No [X]

Incurred but not reported losses on contracts in force prior to July 1, 1984, and not subsequently renewed are exempt from inclusion in Schedule F - Part 5. Provide the following information for this exemption:

17.11 Gross amount of unauthorized reinsurance in Schedule F - Part 3 excluded from Schedule F - Part 5 \$

17.12 Unfunded portion of Interrogatory 17.11 \$

17.13 Paid losses and loss adjustment expenses portion of Interrogatory 17.11 \$

17.14 Case reserves portion of Interrogatory 17.11 \$

17.15 Incurred but not reported portion of Interrogatory 17.11 \$

17.16 Unearned premium portion of Interrogatory 17.11 \$

17.17 Contingent commission portion of Interrogatory 17.11 \$

Provide the following information for all other amounts included in Schedule F - P art 3 and excluded from Schedule F - Part 5, not included above.

17.18 Gross amount of unauthorized reinsurance in Schedule F - Part 3 excluded from Schedule F - Part 5 \$

17.19 Unfunded portion of Interrogatory 17.18 \$

17.20 Paid losses and loss adjustment expenses portion of Interrogatory 17.18 \$

17.21 Case reserves portion of Interrogatory 17.18 \$

17.22 Incurred but not reported portion of Interrogatory 17.18 \$

17.23 Unearned premium portion of Interrogatory 17.18 \$

17.24 Contingent commission portion of Interrogatory 17.18 \$

18.1 Do you act as a custodian for health savings accounts? Yes [] No [X]

18.2 If yes, please provide the amount of custodial funds held as of the reporting date. \$

18.3 Do you act as an administrator for health savings accounts? Yes [] No [X]

18.4 If yes, please provide the balance of funds administered as of the reporting date. \$

ANNUAL STATEMENT FOR THE YEAR 2017 OF THE Dealers Assurance Company

FIVE-YEAR HISTORICAL DATA

Show amounts in whole dollars only, no cents; show percentages to one decimal place, i.e. 17.6.

	1 2017	2 2016	3 2015	4 2014	5 2013
Gross Premiums Written (Page 8, Part 1B Cols. 1, 2 & 3)					
1. Liability lines (Lines 11.1, 11.2, 16, 17.1, 17.2, 17.3, 18.1, 18.2, 19.1, 19.2 & 19.3, 19.4)	13,509,463	11,151,383	5,583,439	1,184,491	869,119
2. Property lines (Lines 1, 2, 9, 12, 21 & 26)	0	0	0	0	0
3. Property and liability combined lines (Lines 3, 4, 5, 8, 22 & 27)	0	0	0	0	0
4. All other lines (Lines 6, 10, 13, 14, 15, 23, 24, 28, 29, 30 & 34)	126,987,700	147,696,204	153,364,080	145,426,688	140,258,135
5. Nonproportional reinsurance lines (Lines 31, 32 & 33)	0	0	0	0	0
6. Total (Line 35)	140,497,163	158,847,587	158,947,519	146,611,179	141,127,254
Net Premiums Written (Page 8, Part 1B, Col. 6)					
7. Liability lines (Lines 11.1, 11.2, 16, 17.1, 17.2, 17.3, 18.1, 18.2, 19.1, 19.2 & 19.3, 19.4)	2,754,335	2,405,823	1,116,905	491,841	873,157
8. Property lines (Lines 1, 2, 9, 12, 21 & 26)	0	0	0	0	0
9. Property and liability combined lines (Lines 3, 4, 5, 8, 22 & 27)	0	0	0	0	0
10. All other lines (Lines 6, 10, 13, 14, 15, 23, 24, 28, 29, 30 & 34)	13,381,095	8,943,832	13,355,919	11,527,195	13,280,261
11. Nonproportional reinsurance lines (Lines 31, 32 & 33)	0	0	0	0	0
12. Total (Line 35)	16,135,430	11,349,655	14,472,824	12,019,036	14,153,418
Statement of Income (Page 4)					
13. Net underwriting gain (loss) (Line 8)	5,211,926	7,423,725	4,842,683	7,377,420	6,612,706
14. Net investment gain or (loss) (Line 11)	2,173,340	1,588,917	1,412,769	1,462,671	1,182,719
15. Total other income (Line 15)	(363,747)	(561,882)	88,998	123,871	36,254
16. Dividends to policyholders (Line 17)		0	0	0	0
17. Federal and foreign income taxes incurred (Line 19)	2,571,631	3,037,760	2,263,838	2,901,713	2,718,440
18. Net income (Line 20)	4,449,889	5,413,000	4,080,612	6,062,249	5,113,239
Balance Sheet Lines (Pages 2 and 3)					
19. Total admitted assets excluding protected cell business (Page 2, Line 26, Col. 3)	117,061,335	106,511,961	98,183,761	86,349,464	80,714,715
20. Premiums and considerations (Page 2, Col. 3)					
20.1 In course of collection (Line 15.1)	3,501,295	2,655,555	3,063,825	2,576,966	1,467,716
20.2 Deferred and not yet due (Line 15.2)	0	0	0	0	0
20.3 Accrued retrospective premiums (Line 15.3)	0	0	0	0	0
21. Total liabilities excluding protected cell business (Page 3, Line 26)	49,802,198	45,295,016	42,011,025	31,957,840	29,936,639
22. Losses (Page 3, Line 1)	357,610	156,089	38,325	25,206	39,779
23. Loss adjustment expenses (Page 3, Line 3)	0	0	0	1,512	1,209
24. Unearned premiums (Page 3, Line 9)	23,949,164	19,411,129	19,410,241	15,216,443	15,997,529
25. Capital paid up (Page 3, Lines 30 & 31)	4,200,990	4,200,990	4,200,990	4,200,990	4,200,990
26. Surplus as regards policyholders (Page 3, Line 37)	67,259,137	61,216,945	56,172,736	54,391,624	50,778,076
Cash Flow (Page 5)					
27. Net cash from operations (Line 11)	8,057,972	5,866,226	7,632,445	4,818,119	8,297,902
Risk-Based Capital Analysis					
28. Total adjusted capital	67,259,137	61,216,945	56,172,736	54,391,624	50,778,076
29. Authorized control level risk-based capital	11,346,516	10,742,512	10,377,582	9,753,370	9,354,406
Percentage Distribution of Cash, Cash Equivalents and Invested Assets (Page 2, Col. 3) (Line divided by Page 2, Line 12, Col. 3) x100.0					
30. Bonds (Line 1)	70.2	71.7	72.8	81.6	79.9
31. Stocks (Lines 2.1 & 2.2)	14.9	15.0	14.1	9.3	6.7
32. Mortgage loans on real estate (Lines 3.1 and 3.2)	0.2	0.8	0.9	1.0	0.0
33. Real estate (Lines 4.1, 4.2 & 4.3)	2.6	1.7	0.0	0.0	0.0
34. Cash, cash equivalents and short-term investments (Line 5)	12.0	10.8	12.2	8.1	13.4
35. Contract loans (Line 6)	0.0	0.0	0.0	0.0	0.0
36. Derivatives (Line 7)	0.0	0.0	0.0	0.0	0.0
37. Other invested assets (Line 8)	0.0	0.0	0.0	0.0	0.0
38. Receivables for securities (Line 9)	0.0	0.0	0.0	0.0	0.0
39. Securities lending reinvested collateral assets (Line 10)	0.0	0.0	0.0	0.0	0.0
40. Aggregate write-ins for invested assets (Line 11)	0.0	0.0	0.0	0.0	0.0
41. Cash, cash equivalents and invested assets (Line 12)	100.0	100.0	100.0	100.0	100.0
Investments in Parent, Subsidiaries and Affiliates					
42. Affiliated bonds (Schedule D, Summary, Line 12, Col. 1)	0	0	0	0	0
43. Affiliated preferred stocks (Schedule D, Summary, Line 18, Col. 1)	0	0	0	0	0
44. Affiliated common stocks (Schedule D, Summary, Line 24, Col. 1)	0	0	0	0	0
45. Affiliated short-term investments (subtotals included in Schedule DA Verification, Col. 5, Line 10)	0	0	0	0	0
46. Affiliated mortgage loans on real estate					
47. All other affiliated					
48. Total of above Lines 42 to 47	0	0	0	0	0
49. Total Investment in Parent included in Lines 42 to 47 above					
50. Percentage of investments in parent, subsidiaries and affiliates to surplus as regards policyholders (Line 48 above divided by Page 3, Col. 1, Line 37 x 100.0)	0.0	0.0	0.0	0.0	0.0

FIVE-YEAR HISTORICAL DATA

(Continued)

	1 2017	2 2016	3 2015	4 2014	5 2013
Capital and Surplus Accounts (Page 4)					
51. Net unrealized capital gains (losses) (Line 24)	1,351,280	337,561	(398,845)	197,510	860,596
52. Dividends to stockholders (Line 35)		(1,000,000)	(2,000,000)	(2,500,000)	(2,500,000)
53. Change in surplus as regards policyholders for the year (Line 38)	6,042,192	5,044,209	1,781,112	3,613,548	4,825,417
Gross Losses Paid (Page 9, Part 2, Cols. 1 & 2)					
54. Liability lines (Lines 11.1, 11.2, 16, 17.1, 17.2, 17.3, 18.1, 18.2, 19.1, 19.2 & 19.3, 19.4)	6,704,360	2,982,447	778,102	46,576	32,176
55. Property lines (Lines 1, 2, 9, 12, 21 & 26)	0	0	0	0	0
56. Property and liability combined lines (Lines 3, 4, 5, 8, 22 & 27)	0	0	0	0	0
57. All other lines (Lines 6, 10, 13, 14, 15, 23, 24, 28, 29, 30 & 34)	60,387,602	66,854,373	67,742,627	67,940,189	67,212,659
58. Nonproportional reinsurance lines (Lines 31, 32 & 33)	0	0	0	0	0
59. Total (Line 35)	67,091,962	69,836,820	68,520,729	67,986,765	67,244,835
Net Losses Paid (Page 9, Part 2, Col. 4)					
60. Liability lines (Lines 11.1, 11.2, 16, 17.1, 17.2, 17.3, 18.1, 18.2, 19.1, 19.2 & 19.3, 19.4)	927,983	425,937	59,940	0	3,512
61. Property lines (Lines 1, 2, 9, 12, 21 & 26)	0	0	0	0	0
62. Property and liability combined lines (Lines 3, 4, 5, 8, 22 & 27)	0	0	0	0	0
63. All other lines (Lines 6, 10, 13, 14, 15, 23, 24, 28, 29, 30 & 34)	251,824	464,660	1,278,165	454,340	619,271
64. Nonproportional reinsurance lines (Lines 31, 32 & 33)	0	0	0	0	0
65. Total (Line 35)	1,179,807	890,597	1,338,105	454,340	622,783
Operating Percentages (Page 4) (Line divided by Page 4, Line 1) x 100.0					
66. Premiums earned (Line 1)	100.0	100.0	100.0	100.0	100.0
67. Losses incurred (Line 2)	11.9	8.9	13.1	3.4	5.1
68. Loss expenses incurred (Line 3)	1.3	2.2	2.8	2.2	3.1
69. Other underwriting expenses incurred (Line 4)	41.8	23.5	36.9	36.7	38.6
70. Net underwriting gain (loss) (Line 8)	44.9	65.4	47.1	57.6	53.2
Other Percentages					
71. Other underwriting expenses to net premiums written (Page 4, Lines 4 + 5 - 15 divided by Page 8, Part 1B, Col. 6, Line 35 x 100.0)	32.3	28.5	25.6	38.1	33.7
72. Losses and loss expenses incurred to premiums earned (Page 4, Lines 2 + 3 divided by Page 4, Line 1 x 100.0)	13.2	11.0	16.0	5.7	8.2
73. Net premiums written to policyholders' surplus (Page 8, Part 1B, Col. 6, Line 35 divided by Page 3, Line 37, Col. 1 x 100.0)	24.0	18.5	25.8	22.1	27.9
One Year Loss Development (\$000 omitted)					
74. Development in estimated losses and loss expenses incurred prior to current year (Schedule P - Part 2 - Summary, Line 12, Col. 11)	(75)	3	403	21	(30)
75. Percent of development of losses and loss expenses incurred to policyholders' surplus of prior year end (Line 74 above divided by Page 4, Line 21, Col. 1 x 100.0).....	(0.1)	0.0	0.7	0.0	(0.1)
Two Year Loss Development (\$000 omitted)					
76. Development in estimated losses and loss expenses incurred two years before the current year and prior year (Schedule P, Part 2 - Summary, Line 12, Col. 12)	10	403	22	(1)	(469)
77. Percent of development of losses and loss expenses incurred to reported policyholders' surplus of second prior year end (Line 76 above divided by Page 4, Line 21, Col. 2 x 100.0)	0.0	0.7	0.0	0.0	(1.1)

NOTE: If a party to a merger, have the two most recent years of this exhibit been restated due to a merger in compliance with the disclosure requirements of SSAP No. 3, Accounting Changes and Correction of Errors?

Yes [] No []

If no, please explain:

ANNUAL STATEMENT FOR THE YEAR 2017 OF THE Dealers Assurance Company

SCHEDULE P - ANALYSIS OF LOSSES AND LOSS EXPENSES

SCHEDULE P - PART 1 - SUMMARY

(\$000 OMITTED)

Years in Which Premiums Were Earned and Losses Were Incurred	Premiums Earned			Loss and Loss Expense Payments								12
	1 Direct and Assumed	2 Ceded	3 Net (1 - 2)	Loss Payments		Defense and Cost Containment Payments		Adjusting and Other Payments		10 Salvage and Subrogation Received	11 Total Net Paid Cols (4 - 5 + 6 - 7 + 8 - 9)	Number of Claims Reported Direct and Assumed
				4 Direct and Assumed	5 Ceded	6 Direct and Assumed	7 Ceded	8 Direct and Assumed	9 Ceded			
1. Prior.....	XXX	XXX	XXX	0	0	0	0	0	0	0	0	XXX
2. 2008.....	41,677	30,463	11,214	24,346	22,366	0	0	293	0	0	2,273	XXX
3. 2009.....	56,311	48,493	7,818	30,855	31,921	0	0	278	0	0	(788)	XXX
4. 2010.....	64,993	55,843	9,150	39,281	38,739	0	0	390	0	0	932	XXX
5. 2011.....	80,370	71,192	9,178	51,879	51,469	0	0	356	0	0	766	XXX
6. 2012.....	98,570	87,547	11,023	60,095	59,130	0	0	407	0	0	1,372	XXX
7. 2013.....	113,889	101,459	12,430	71,443	70,790	0	0	385	0	0	1,038	XXX
8. 2014.....	139,785	126,984	12,801	69,390	68,569	0	0	285	0	0	1,106	XXX
9. 2015.....	142,189	131,910	10,279	67,438	66,361	0	0	292	0	121	1,369	XXX
10. 2016.....	151,758	140,410	11,348	70,255	69,331	0	0	245	0	17	1,169	XXX
11. 2017.....	125,665	114,068	11,597	60,937	59,836	0	0	151	0	0	1,252	XXX
12. Totals	XXX	XXX	XXX	545,919	538,512	0	0	3,082	0	138	10,489	XXX

	Losses Unpaid				Defense and Cost Containment Unpaid				Adjusting and Other Unpaid		23	24	25
	Case Basis		Bulk + IBNR		Case Basis		Bulk + IBNR						
	13	14	15	16	17	18	19	20	21	22	Salvage and Subrogation Anticipated	Total Net Losses and Expenses Unpaid	Number of Claims Outstanding Direct and Assumed
	Direct and Assumed	Ceded	Direct and Assumed	Ceded	Direct and Assumed	Ceded	Direct and Assumed	Ceded	Direct and Assumed	Ceded			
1. Prior.....	0	0	0	0	0	0	0	0	0	0			
2. 2008.....	0	0	0	0	0	0	0	0	0	0	0	0	XXX
3. 2009.....	0	0	0	0	0	0	0	0	0	0	0	0	XXX
4. 2010.....	0	0	0	0	0	0	0	0	0	0	0	0	XXX
5. 2011.....	0	0	0	0	0	0	0	0	0	0	0	0	XXX
6. 2012.....	0	0	0	0	0	0	0	0	0	0	0	0	XXX
7. 2013.....	0	0	0	0	0	0	0	0	0	0	0	0	XXX
8. 2014.....	0	0	0	0	0	0	0	0	0	0	0	0	XXX
9. 2015.....	0	0	0	0	0	0	0	0	0	0	0	0	XXX
10. 2016.....	0	0	0	0	0	0	0	0	0	0	0	0	XXX
11. 2017.....	0	0	5,328	4,970	0	0	0	0	0	0	0	358	XXX
12. Totals	0	0	5,328	4,970	0	0	0	0	0	0	0	358	XXX

	Total Losses and Loss Expenses Incurred			Loss and Loss Expense Percentage (Incurred /Premiums Earned)			Nontabular Discount		34 Inter-Company Pooling Participation Percentage	Net Balance Sheet Reserves After Discount	
	26	27	28	29	30	31	32	33		35	36
	Direct and Assumed	Ceded	Net	Direct and Assumed	Ceded	Net	Loss	Loss Expense		Losses Unpaid	Loss Expenses Unpaid
1. Prior.....	XXX	XXX	XXX	XXX	XXX	XXX	0	0	XXX	0	0
2. 2008.....	24,639	22,366	2,273	59.1	73.4	20.3	0	0		0	0
3. 2009.....	31,133	31,921	(788)	55.3	65.8	(10.1)	0	0		0	0
4. 2010.....	39,671	38,739	932	61.0	69.4	10.2	0	0		0	0
5. 2011.....	52,235	51,469	766	65.0	72.3	8.3	0	0		0	0
6. 2012.....	60,502	59,130	1,372	61.4	67.5	12.4	0	0		0	0
7. 2013.....	71,828	70,790	1,038	63.1	69.8	8.4	0	0		0	0
8. 2014.....	69,675	68,569	1,106	49.8	54.0	8.6	0	0		0	0
9. 2015.....	67,730	66,361	1,369	47.6	50.3	13.3	0	0		0	0
10. 2016.....	70,500	69,331	1,169	46.5	49.4	10.3	0	0		0	0
11. 2017.....	66,416	64,806	1,610	52.9	56.8	13.9	0	0		358	0
12. Totals	XXX	XXX	XXX	XXX	XXX	XXX	0	0	XXX	358	0

Note: Parts 2 and 4 are gross of all discounting, including tabular discounting. Part 1 is gross of only nontabular discounting, which is reported in Columns 32 and 33 of Part 1. The tabular discount, if any, is reported in the Notes to Financial Statements which will reconcile Part 1 with Parts 2 and 4.

SCHEDULE P - PART 2 - SUMMARY

Years in Which Losses Were Incurred	INCURRED NET LOSSES AND DEFENSE AND COST CONTAINMENT EXPENSES REPORTED AT YEAR END (\$000 OMITTED)										DEVELOPMENT	
	1 2008	2 2009	3 2010	4 2011	5 2012	6 2013	7 2014	8 2015	9 2016	10 2017	11 One Year	12 Two Year
1. Prior.....	0	0	0	0	0	0	0	0	0	0	0	0
2. 2008.....	1,982	1,980	1,980	1,980	1,980	1,980	1,980	1,980	1,980	1,980	0	0
3. 2009.....	XXX	(1,039)	(1,038)	(1,038)	(1,040)	(1,069)	(1,068)	(1,068)	(1,068)	(1,066)	2	2
4. 2010.....	XXX	XXX	539	537	537	537	542	542	542	542	0	0
5. 2011.....	XXX	XXX	XXX	863	396	396	410	410	410	410	0	0
6. 2012.....	XXX	XXX	XXX	XXX	987	957	966	966	965	965	0	(1)
7. 2013.....	XXX	XXX	XXX	XXX	XXX	659	651	652	653	653	0	1
8. 2014.....	XXX	XXX	XXX	XXX	XXX	XXX	419	821	821	821	0	0
9. 2015.....	XXX	XXX	XXX	XXX	XXX	XXX	XXX	1,069	1,072	1,077	5	8
10. 2016.....	XXX	XXX	XXX	XXX	XXX	XXX	XXX	XXX	1,006	924	(82)	XXX
11. 2017.....	XXX	XXX	XXX	XXX	XXX	XXX	XXX	XXX	XXX	1,459	XXX	XXX
12. Totals											(75)	10

SCHEDULE P - PART 3 - SUMMARY

Years in Which Losses Were Incurred	CUMULATIVE PAID NET LOSSES AND DEFENSE AND COST CONTAINMENT EXPENSES REPORTED AT YEAR END (\$000 OMITTED)										11 Number of Claims Closed With Loss Payment	12 Number of Claims Closed Without Loss Payment
	1	2	3	4	5	6	7	8	9	10		
	2008	2009	2010	2011	2012	2013	2014	2015	2016	2017		
1. Prior.....	000	0	0	0	0	0	0	0	0	0	XXX	XXX
2. 2008.....	1,954	1,980	1,980	1,980	1,980	1,980	1,980	1,980	1,980	1,980	XXX	XXX
3. 2009.....	XXX	(1,039)	(1,039)	(1,039)	(1,039)	(1,069)	(1,068)	(1,068)	(1,068)	(1,066)	XXX	XXX
4. 2010.....	XXX	XXX	522	537	537	537	542	542	542	542	XXX	XXX
5. 2011.....	XXX	XXX	XXX	433	396	396	410	410	410	410	XXX	XXX
6. 2012.....	XXX	XXX	XXX	XXX	955	957	966	966	965	965	XXX	XXX
7. 2013.....	XXX	XXX	XXX	XXX	XXX	619	651	652	653	653	XXX	XXX
8. 2014.....	XXX	XXX	XXX	XXX	XXX	XXX	394	821	821	821	XXX	XXX
9. 2015.....	XXX	XXX	XXX	XXX	XXX	XXX	XXX	1,031	1,072	1,077	XXX	XXX
10. 2016.....	XXX	XXX	XXX	XXX	XXX	XXX	XXX	XXX	850	924	XXX	XXX
11. 2017.....	XXX	XXX	XXX	XXX	XXX	XXX	XXX	XXX	XXX	1,101	XXX	XXX

SCHEDULE P - PART 4 - SUMMARY

Years in Which Losses Were Incurred	BULK AND IBNR RESERVES ON NET LOSSES AND DEFENSE AND COST CONTAINMENT EXPENSES REPORTED AT YEAR END (\$000 OMITTED)									
	1	2	3	4	5	6	7	8	9	10
	2008	2009	2010	2011	2012	2013	2014	2015	2016	2017
1. Prior.....	0	0	0	0	0	0	0	0	0	0
2. 2008.....	4	0	0	0	0	0	0	0	0	0
3. 2009.....	XXX	2	0	0	0	0	0	0	0	0
4. 2010.....	XXX	XXX	3	0	0	0	0	0	0	0
5. 2011.....	XXX	XXX	XXX	18	0	0	0	0	0	0
6. 2012.....	XXX	XXX	XXX	XXX	24	0	0	0	0	0
7. 2013.....	XXX	XXX	XXX	XXX	XXX	26	0	0	0	0
8. 2014.....	XXX	XXX	XXX	XXX	XXX	XXX	23	0	0	0
9. 2015.....	XXX	XXX	XXX	XXX	XXX	XXX	XXX	38	0	0
10. 2016.....	XXX	XXX	XXX	XXX	XXX	XXX	XXX	XXX	156	0
11. 2017.....	XXX	XXX	XXX	XXX	XXX	XXX	XXX	XXX	XXX	358

ANNUAL STATEMENT FOR THE YEAR 2017 OF THE Dealers Assurance Company

SCHEDULE T - EXHIBIT OF PREMIUMS WRITTEN

Allocated by States and Territories									
States, Etc.	1	Gross Premiums, Including Policy and Membership Fees, Less Return Premiums and Premiums on Policies Not Taken		4	5	6	7	8	9
		2	3						
	Active Status	Direct Premiums Written	Direct Premiums Earned	Dividends Paid or Credited to Policyholders on Direct Business	Direct Losses Paid (Deducting Salvage)	Direct Losses Incurred	Direct Losses Unpaid	Finance and Service Charges Not Included in Premiums	Direct Premiums Written for Federal Purchasing Groups (Included in Column 2)
1. Alabama	AL	L	2,233,667	2,002,092	0	706,100	725,752	66,807	
2. Alaska	AK	L	3,798	468	0	0	89	94	
3. Arizona	AZ	L	543,163	627,889	0	363,606	369,949	33,256	
4. Arkansas	AR	L	2,554,535	1,987,013	0	1,189,823	1,213,456	92,037	
5. California	CA	L	2,449,121	1,618,494	0	589,593	651,254	89,169	
6. Colorado	CO	L	3,974,691	7,658,665	0	3,422,719	3,392,836	120,486	
7. Connecticut	CT	L	497,124	663,466	0	397,912	393,787	14,419	
8. Delaware	DE	L	8,484,694	(828,853)	0	4,336,548	4,475,887	241,990	
9. District of Columbia	DC	L	0	0	0	0	0	0	
10. Florida	FL	L	7,369,328	7,810,316	0	5,835,261	6,069,743	426,337	
11. Georgia	GA	L	1,017,032	7,325,039	0	425,751	317,988	41,266	
12. Hawaii	HI	L	0	0	0	0	0	0	
13. Idaho	ID	L	75,104	14,399	0	1,964	3,008	1,122	
14. Illinois	IL	L	2,308,825	1,691,081	0	803,158	817,988	44,090	
15. Indiana	IN	L	1,607,788	1,385,278	0	656,308	664,112	43,608	
16. Iowa	IA	L	156,913	154,065	0	90,933	91,102	5,852	
17. Kansas	KS	L	84,066	5,569	0	7,107	6,783	267	
18. Kentucky	KY	L	718,206	682,094	0	299,132	300,657	26,440	
19. Louisiana	LA	L	2,575,780	2,031,800	0	1,818,957	1,887,341	202,657	
20. Maine	ME	L	720,449	417,209	0	267,125	288,435	33,595	
21. Maryland	MD	L	1,739,125	1,811,262	0	866,656	869,583	50,832	
22. Massachusetts	MA	L	809,057	803,499	0	400,700	402,022	23,978	
23. Michigan	MI	L	4,764,042	4,518,885	0	3,697,045	3,705,894	118,826	
24. Minnesota	MN	L	829,525	877,629	0	638,312	637,450	24,760	
25. Mississippi	MS	L	1,536,083	1,557,274	0	593,593	593,591	34,274	
26. Missouri	MO	L	1,515,521	1,225,407	0	596,542	623,217	58,509	
27. Montana	MT	L	174,359	148,730	0	105,908	106,379	4,744	
28. Nebraska	NE	L	382,475	254,834	0	95,914	100,497	14,562	
29. Nevada	NV	L	254,254	308,410	0	132,829	131,839	6,481	
30. New Hampshire	NH	L	208,865	263,711	0	136,563	136,267	6,953	
31. New Jersey	NJ	L	1,133,104	1,131,501	0	595,613	597,023	24,808	
32. New Mexico	NM	L	2,218,260	2,194,573	0	259,869	273,818	34,329	
33. New York	NY	L	3,486,929	3,675,961	0	2,665,869	2,661,920	94,091	
34. North Carolina	NC	L	7,819,292	8,295,733	0	5,647,508	5,602,730	366,187	
35. North Dakota	ND	L	45,239	81,499	0	78,425	77,514	2,559	
36. Ohio	OH	L	12,098,109	6,857,994	0	3,066,162	3,094,802	223,981	
37. Oklahoma	OK	L	417,400	345,337	0	233,683	259,168	63,626	
38. Oregon	OR	L	(82,996)	(102,820)	0	12,436	13,687	3,042	
39. Pennsylvania	PA	L	3,440,903	3,648,552	0	1,301,480	1,336,205	104,277	
40. Rhode Island	RI	L	135,280	108,591	0	89,448	90,218	4,296	
41. South Carolina	SC	L	420,647	447,388	0	366,610	384,572	50,507	
42. South Dakota	SD	L	12,994	12,979	0	6,497	6,504	417	
43. Tennessee	TN	L	2,482,700	1,950,018	0	2,493,833	2,532,372	100,832	
44. Texas	TX	L	38,654,507	34,995,719	0	13,776,248	13,937,898	2,032,906	
45. Utah	UT	L	18,502	8,495	0	801	1,071	452	
46. Vermont	VT	L	138,357	178,155	0	150,494	150,689	7,569	
47. Virginia	VA	L	1,076,800	1,001,675	0	431,005	434,061	28,513	
48. Washington	WA	L	16,757,974	13,274,361	0	6,807,383	6,888,096	282,679	
49. West Virginia	WV	L	458,369	329,438	0	231,576	251,516	28,830	
50. Wisconsin	WI	L	581,620	481,198	0	325,734	343,551	42,401	
51. Wyoming	WY	L	142,479	89,859	0	53,502	54,967	3,991	
52. American Samoa	AS	N							
53. Guam	GU	N							
54. Puerto Rico	PR	N							
55. U.S. Virgin Islands	VI	N							
56. Northern Mariana Islands	MP	N							
57. Canada	CAN	N							
58. Aggregate other alien	OT	XXX	0	0	0	0	0	0	0
59. Totals	(a)	51	141,044,059	126,021,931	0	67,070,235	67,969,288	5,327,704	0
DETAILS OF WRITE-INS									
58001.	XXX								
58002.	XXX								
58003.	XXX								
58998. Summary of remaining write-ins for Line 58 from overflow page	XXX	0	0	0	0	0	0	0	0
58999. Totals (Lines 58001 through 58003 plus 58998)(Line 58 above)	XXX	0	0	0	0	0	0	0	0

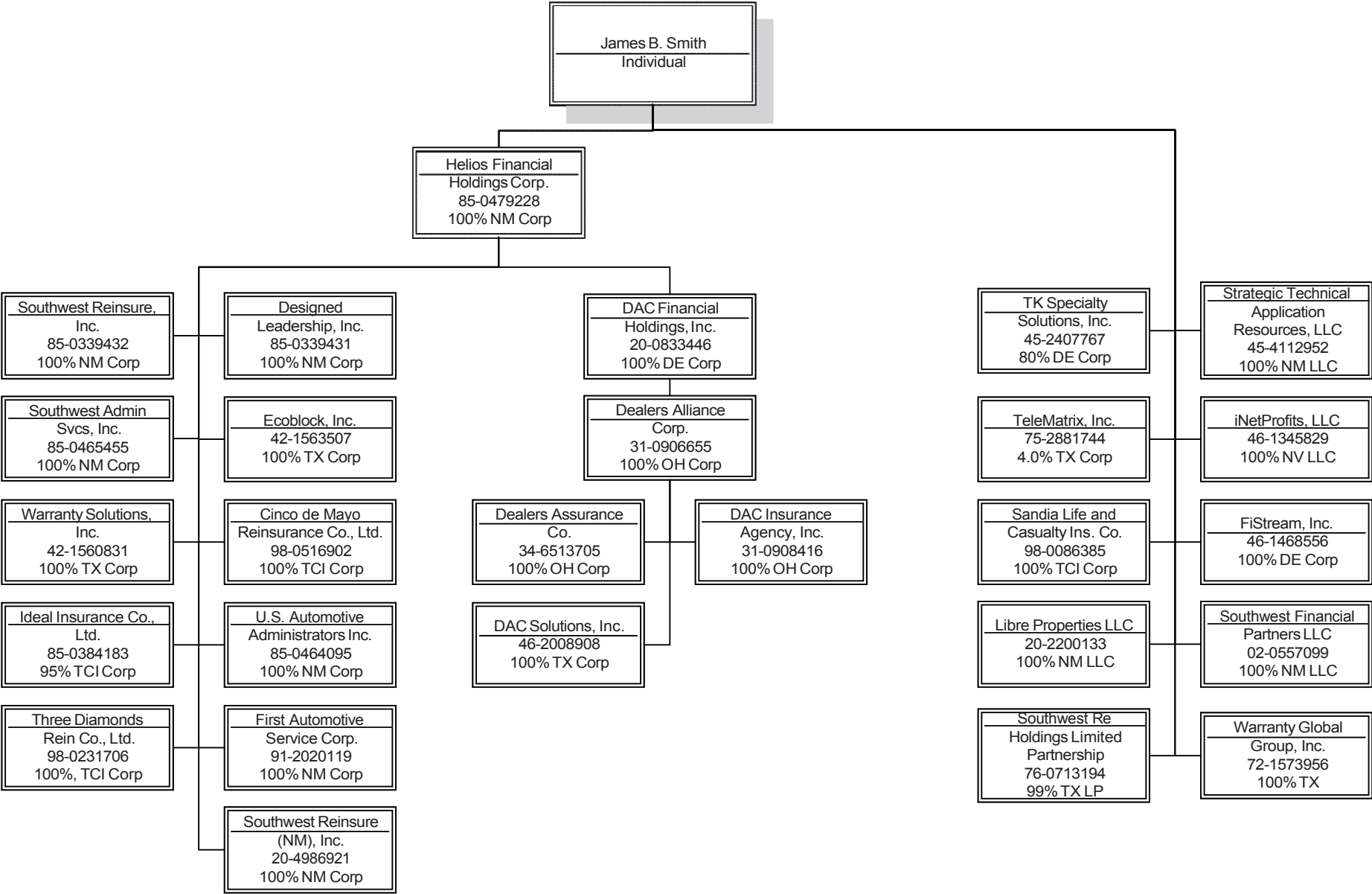
(L) Licensed or Chartered - Licensed Insurance Carrier or Domiciled RRG; (R) Registered - Non-domiciled RRGs; (Q) Qualified - Qualified or Accredited Reinsurer; (E) Eligible - Reporting Entities eligible or approved to write Surplus Lines in the state (other than their state of domicile - see DSLI); (D) DSLI - Domestic Surplus Lines Insurer (DSLI) - Reporting entities authorized to write Surplus Lines in the state of domicile; (N) None of the above - Not allowed to write business in the state.

Explanation of basis of allocation of premiums by states, etc.

Not Applicable

(a) Insert the number of D and L responses except for Canada and Other Alien.

STATEMENT AS OF DECEMBER 31, 2017 OF THE DEALERS ASSURANCE COMPANY



OVERFLOW PAGE FOR WRITE-INS

ALPHABETICAL INDEX

ANNUAL STATEMENT BLANK

Assets	2
Cash Flow	5
Exhibit of Capital Gains (Losses)	12
Exhibit of Net Investment Income	12
Exhibit of Nonadmitted Assets	13
Exhibit of Premiums and Losses (State Page)	19
Five-Year Historical Data	17
General Interrogatories	15
Jurat Page	1
Liabilities, Surplus and Other Funds	3
Notes To Financial Statements	14
Overflow Page For Write-ins	100
Schedule A - Part 1	E01
Schedule A - Part 2	E02
Schedule A - Part 3	E03
Schedule A - Verification Between Years	SI02
Schedule B - Part 1	E04
Schedule B - Part 2	E05
Schedule B - Part 3	E06
Schedule B - Verification Between Years	SI02
Schedule BA - Part 1	E07
Schedule BA - Part 2	E08
Schedule BA - Part 3	E09
Schedule BA - Verification Between Years	SI03
Schedule D - Part 1	E10
Schedule D - Part 1A - Section 1	SI05
Schedule D - Part 1A - Section 2	SI08
Schedule D - Part 2 - Section 1	E11
Schedule D - Part 2 - Section 2	E12
Schedule D - Part 3	E13
Schedule D - Part 4	E14
Schedule D - Part 5	E15
Schedule D - Part 6 - Section 1	E16
Schedule D - Part 6 - Section 2	E16
Schedule D - Summary By Country	SI04
Schedule D - Verification Between Years	SI03
Schedule DA - Part 1	E17
Schedule DA - Verification Between Years	SI10
Schedule DB - Part A - Section 1	E18
Schedule DB - Part A - Section 2	E19
Schedule DB - Part A - Verification Between Years	SI11
Schedule DB - Part B - Section 1	E20
Schedule DB - Part B - Section 2	E21
Schedule DB - Part B - Verification Between Years	SI11
Schedule DB - Part C - Section 1	SI12
Schedule DB - Part C - Section 2	SI13
Schedule DB - Part D - Section 1	E22
Schedule DB - Part D - Section 2	E23
Schedule DB - Verification	SI14
Schedule DL - Part 1	E24
Schedule DL - Part 2	E25
Schedule E - Part 1 - Cash	E26
Schedule E - Part 2 - Cash Equivalents	E27
Schedule E - Part 3 - Special Deposits	E28
Schedule E - Verification Between Years	SI15
Schedule F - Part 1	20
Schedule F - Part 2	21
Schedule F - Part 3	22
Schedule F - Part 4	23
Schedule F - Part 5	24
Schedule F - Part 6 - Section 1	25
Schedule F - Part 6 - Section 2	26
Schedule F - Part 7	27
Schedule F - Part 8	28
Schedule F - Part 9	29

ANNUAL STATEMENT BLANK (Continued)

Schedule H - Accident and Health Exhibit - Part 1	30
Schedule H - Part 2, Part 3 and 4	31
Schedule H - Part 5 - Health Claims	32
Schedule P - Part 1 - Summary	33
Schedule P - Part 1A - Homeowners/Farmowners	35
Schedule P - Part 1B - Private Passenger Auto Liability/Medical	36
Schedule P - Part 1C - Commercial Auto/Truck Liability/Medical	37
Schedule P - Part 1D - Workers' Compensation (Excluding Excess Workers' Compensation)	38
Schedule P - Part 1E - Commercial Multiple Peril	39
Schedule P - Part 1F - Section 1 - Medical Professional Liability - Occurrence	40
Schedule P - Part 1F - Section 2 - Medical Professional Liability - Claims-Made	41
Schedule P - Part 1G - Special Liability (Ocean, Marine, Aircraft (All Perils), Boiler and Machinery)	42
Schedule P - Part 1H - Section 1 - Other Liability-Occurrence	43
Schedule P - Part 1H - Section 2 - Other Liability - Claims-Made	44
Schedule P - Part 1I - Special Property (Fire, Allied Lines, Inland Marine, Earthquake, Burglary & Theft)	45
Schedule P - Part 1J - Auto Physical Damage	46
Schedule P - Part 1K - Fidelity/Surety	47
Schedule P - Part 1L - Other (Including Credit, Accident and Health)	48
Schedule P - Part 1M - International	49
Schedule P - Part 1N - Reinsurance - Nonproportional Assumed Property	50
Schedule P - Part 1O - Reinsurance - Nonproportional Assumed Liability	51
Schedule P - Part 1P - Reinsurance - Nonproportional Assumed Financial Lines	52
Schedule P - Part 1R - Section 1 - Products Liability - Occurrence	53
Schedule P - Part 1R - Section 2 - Products Liability - Claims-Made	54
Schedule P - Part 1S - Financial Guaranty/Mortgage Guaranty	55
Schedule P - Part 1T - Warranty	56
Schedule P - Part 2, Part 3 and Part 4 - Summary	34
Schedule P - Part 2A - Homeowners/Farmowners	57
Schedule P - Part 2B - Private Passenger Auto Liability/Medical	57
Schedule P - Part 2C - Commercial Auto/Truck Liability/Medical	57
Schedule P - Part 2D - Workers' Compensation (Excluding Excess Workers' Compensation)	57
Schedule P - Part 2E - Commercial Multiple Peril	57
Schedule P - Part 2F - Section 1 - Medical Professional Liability - Occurrence	58
Schedule P - Part 2F - Section 2 - Medical Professional Liability - Claims-Made	58
Schedule P - Part 2G - Special Liability (Ocean Marine, Aircraft (All Perils), Boiler and Machinery)	58
Schedule P - Part 2H - Section 1 - Other Liability - Occurrence	58
Schedule P - Part 2H - Section 2 - Other Liability - Claims-Made	58
Schedule P - Part 2I - Special Property (Fire, Allied Lines, Inland Marine, Earthquake, Burglary, and Theft)	59
Schedule P - Part 2J - Auto Physical Damage	59
Schedule P - Part 2K - Fidelity, Surety	59
Schedule P - Part 2L - Other (Including Credit, Accident and Health)	59
Schedule P - Part 2M - International	59
Schedule P - Part 2N - Reinsurance - Nonproportional Assumed Property	60
Schedule P - Part 2O - Reinsurance - Nonproportional Assumed Liability	60
Schedule P - Part 2P - Reinsurance - Nonproportional Assumed Financial Lines	60
Schedule P - Part 2R - Section 1 - Products Liability - Occurrence	61
Schedule P - Part 2R - Section 2 - Products Liability - Claims-Made	61
Schedule P - Part 2S - Financial Guaranty/Mortgage Guaranty	61
Schedule P - Part 2T - Warranty	61
Schedule P - Part 3A - Homeowners/Farmowners	62
Schedule P - Part 3B - Private Passenger Auto Liability/Medical	62
Schedule P - Part 3C - Commercial Auto/Truck Liability/Medical	62
Schedule P - Part 3D - Workers' Compensation (Excluding Excess Workers' Compensation)	62
Schedule P - Part 3E - Commercial Multiple Peril	62
Schedule P - Part 3F - Section 1 - Medical Professional Liability - Occurrence	63
Schedule P - Part 3F - Section 2 - Medical Professional Liability - Claims-Made	63
Schedule P - Part 3G - Special Liability (Ocean Marine, Aircraft (All Perils), Boiler and Machinery)	63
Schedule P - Part 3H - Section 1 - Other Liability - Occurrence	63
Schedule P - Part 3H - Section 2 - Other Liability - Claims-Made	63
Schedule P - Part 3I - Special Property (Fire, Allied Lines, Inland Marine, Earthquake, Burglary, and Theft)	64
Schedule P - Part 3J - Auto Physical Damage	64
Schedule P - Part 3K - Fidelity/Surety	64
Schedule P - Part 3L - Other (Including Credit, Accident and Health)	64
Schedule P - Part 3M - International	64
Schedule P - Part 3N - Reinsurance - Nonproportional Assumed Property	65
Schedule P - Part 3O - Reinsurance - Nonproportional Assumed Liability	65
Schedule P - Part 3P - Reinsurance - Nonproportional Assumed Financial Lines	65
Schedule P - Part 3R - Section 1 - Products Liability - Occurrence	66
Schedule P - Part 3R - Section 2 - Products Liability - Claims-Made	66
Schedule P - Part 3S - Financial Guaranty/Mortgage Guaranty	66
Schedule P - Part 3T - Warranty	66

ANNUAL STATEMENT BLANK (Continued)

Schedule P - Part 4A - Homeowners/Farmowners	67
Schedule P - Part 4B - Private Passenger Auto Liability/Medical	67
Schedule P - Part 4C - Commercial Auto/Truck Liability/Medical	67
Schedule P - Part 4D - Workers' Compensation (Excluding Excess Workers' Compensation)	67
Schedule P - Part 4E - Commercial Multiple Peril	67
Schedule P - Part 4F - Section 1 - Medical Professional Liability - Occurrence	68
Schedule P - Part 4F - Section 2 - Medical Professional Liability - Claims-Made	68
Schedule P - Part 4G - Special Liability (Ocean Marine, Aircraft (All Perils), Boiler and Machinery)	68
Schedule P - Part 4H - Section 1 - Other Liability - Occurrence	68
Schedule P - Part 4H - Section 2 - Other Liability - Claims-Made	68
Schedule P - Part 4I - Special Property (Fire, Allied Lines, Inland Marine, Earthquake, Burglary and Theft)	69
Schedule P - Part 4J - Auto Physical Damage	69
Schedule P - Part 4K - Fidelity/Surety	69
Schedule P - Part 4L - Other (Including Credit, Accident and Health)	69
Schedule P - Part 4M - International	69
Schedule P - Part 4N - Reinsurance - Nonproportional Assumed Property	70
Schedule P - Part 4O - Reinsurance - Nonproportional Assumed Liability	70
Schedule P - Part 4P - Reinsurance - Nonproportional Assumed Financial Lines	70
Schedule P - Part 4R - Section 1 - Products Liability - Occurrence	71
Schedule P - Part 4R - Section 2 - Products Liability - Claims-Made	71
Schedule P - Part 4S - Financial Guaranty/Mortgage Guaranty	71
Schedule P - Part 4T - Warranty	71
Schedule P - Part 5A - Homeowners/Farmowners	72
Schedule P - Part 5B - Private Passenger Auto Liability/Medical	73
Schedule P - Part 5C - Commercial Auto/Truck Liability/Medical	74
Schedule P - Part 5D - Workers' Compensation (Excluding Excess Workers' Compensation)	75
Schedule P - Part 5E - Commercial Multiple Peril	76
Schedule P - Part 5F - Medical Professional Liability - Claims-Made	78
Schedule P - Part 5F - Medical Professional Liability - Occurrence	77
Schedule P - Part 5H - Other Liability - Claims-Made	80
Schedule P - Part 5H - Other Liability - Occurrence	79
Schedule P - Part 5R - Products Liability - Claims-Made	82
Schedule P - Part 5R - Products Liability - Occurrence	81
Schedule P - Part 5T - Warranty	83
Schedule P - Part 6C - Commercial Auto/Truck Liability/Medical	84
Schedule P - Part 6D - Workers' Compensation (Excluding Excess Workers' Compensation)	84
Schedule P - Part 6E - Commercial Multiple Peril	85
Schedule P - Part 6H - Other Liability - Claims-Made	86
Schedule P - Part 6H - Other Liability - Occurrence	85
Schedule P - Part 6M - International	86
Schedule P - Part 6N - Reinsurance - Nonproportional Assumed Property	87
Schedule P - Part 6O - Reinsurance - Nonproportional Assumed Liability	87
Schedule P - Part 6R - Products Liability - Claims-Made	88
Schedule P - Part 6R - Products Liability - Occurrence	88
Schedule P - Part 7A - Primary Loss Sensitive Contracts	89
Schedule P - Part 7B - Reinsurance Loss Sensitive Contracts	91
Schedule P Interrogatories	93
Schedule T - Exhibit of Premiums Written	94
Schedule T - Part 2 - Interstate Compact	95
Schedule Y - Information Concerning Activities of Insurer Members of a Holding Company Group	96
Schedule Y - Part 1A - Detail of Insurance Holding Company System	97
Schedule Y - Part 2 - Summary of Insurer's Transactions With Any Affiliates	98
Statement of Income	4
Summary Investment Schedule	SI01
Supplemental Exhibits and Schedules Interrogatories	99
Underwriting and Investment Exhibit Part 1	6
Underwriting and Investment Exhibit Part 1A	7
Underwriting and Investment Exhibit Part 1B	8
Underwriting and Investment Exhibit Part 2	9
Underwriting and Investment Exhibit Part 2A	10
Underwriting and Investment Exhibit Part 3	11