



PROPERTY AND CASUALTY COMPANIES - ASSOCIATION EDITION

QUARTERLY STATEMENT

AS OF JUNE 30, 2017

OF THE CONDITION AND AFFAIRS OF THE

MICO Insurance Company

NAIC Group Code 0291 (Current) 0291 (Prior) NAIC Company Code 40932 Employer's ID Number 31-1022150

Organized under the Laws of Ohio, State of Domicile or Port of Entry OH

Country of Domicile United States of America

Incorporated/Organized 11/30/1981 Commenced Business 12/03/1981

Statutory Home Office 471 East Broad Street (Street and Number) Columbus, OH, US 43215 (City or Town, State, Country and Zip Code)

Main Administrative Office 471 East Broad Street (Street and Number) Columbus, OH, US 43215 (City or Town, State, Country and Zip Code) 614-225-8211 (Area Code) (Telephone Number)

Mail Address 471 East Broad Street (Street and Number or P.O. Box) Columbus, OH, US 43215 (City or Town, State, Country and Zip Code)

Primary Location of Books and Records 471 East Broad Street (Street and Number) Columbus, OH, US 43215 (City or Town, State, Country and Zip Code) 614-225-8211 (Area Code) (Telephone Number)

Internet Website Address MotoristsGroup.com

Statutory Statement Contact Joel B. Kratzer (Name) 614-225-8327 (Area Code) (Telephone Number) Accounting@MotoristsGroup.com (E-mail Address) 614-225-8330 (FAX Number)

OFFICERS

Chief Executive Officer David Lynn Kaufman Secretary Anne Bridges King

President Thomas Joseph Obrokta, Jr. # Treasurer & CFO James Christopher Howat #

OTHER

DIRECTORS OR TRUSTEES

Gregory Arthur Burton # James Christopher Howat # David Lynn Kaufman

Anne Bridges King # Thomas Joseph Obrokta, Jr. # Charles Donovan Stapleton #

State of Ohio SS:

County of Franklin

The officers of this reporting entity being duly sworn, each depose and say that they are the described officers of said reporting entity, and that on the reporting period stated above, all of the herein described assets were the absolute property of the said reporting entity, free and clear from any liens or claims thereon, except as herein stated, and that this statement, together with related exhibits, schedules and explanations therein contained, annexed or referred to, is a full and true statement of all the assets and liabilities and of the condition and affairs of the said reporting entity as of the reporting period stated above, and of its income and deductions therefrom for the period ended, and have been completed in accordance with the NAIC Annual Statement Instructions and Accounting Practices and Procedures manual except to the extent that: (1) state law may differ; or, (2) that state rules or regulations require differences in reporting not related to accounting practices and procedures, according to the best of their information, knowledge and belief, respectively. Furthermore, the scope of this attestation by the described officers also includes the related corresponding electronic filing with the NAIC, when required, that is an exact copy (except for formatting differences due to electronic filing) of the enclosed statement. The electronic filing may be requested by various regulators in lieu of or in addition to the enclosed statement.

David L. Kaufman Chief Executive Officer Anne B. King Secretary J. Christopher Howat Treasurer

Subscribed and sworn to before me this 7th day of August, 2017

a. Is this an original filing? Yes [X] No [] b. If no, 1. State the amendment number..... 2. Date filed 3. Number of pages attached.....

STATEMENT AS OF JUNE 30, 2017 OF THE MICO INSURANCE COMPANY

ASSETS

	Current Statement Date			4 December 31 Prior Year Net Admitted Assets
	1 Assets	2 Nonadmitted Assets	3 Net Admitted Assets (Cols. 1 - 2)	
1. Bonds	8,275,966		8,275,966	8,128,981
2. Stocks:				
2.1 Preferred stocks				
2.2 Common stocks	2,024,489		2,024,489	1,811,607
3. Mortgage loans on real estate:				
3.1 First liens				
3.2 Other than first liens.....				
4. Real estate:				
4.1 Properties occupied by the company (less \$ encumbrances)				
4.2 Properties held for the production of income (less \$ encumbrances)				
4.3 Properties held for sale (less \$ encumbrances)				
5. Cash (\$1,313), cash equivalents (\$0) and short-term investments (\$232,251)	233,564		233,564	346,705
6. Contract loans (including \$ premium notes)				
7. Derivatives				
8. Other invested assets	720,197		720,197	743,595
9. Receivables for securities	2,958		2,958	
10. Securities lending reinvested collateral assets	13,689		13,689	
11. Aggregate write-ins for invested assets				
12. Subtotals, cash and invested assets (Lines 1 to 11)	11,270,863		11,270,863	11,030,888
13. Title plants less \$ charged off (for Title insurers only)				
14. Investment income due and accrued	49,087		49,087	53,757
15. Premiums and considerations:				
15.1 Uncollected premiums and agents' balances in the course of collection				
15.2 Deferred premiums, agents' balances and installments booked but deferred and not yet due (including \$0 earned but unbilled premiums)	3,489	3,489		
15.3 Accrued retrospective premiums (\$) and contracts subject to redetermination (\$)				
16. Reinsurance:				
16.1 Amounts recoverable from reinsurers	(2,919)		(2,919)	(4,112)
16.2 Funds held by or deposited with reinsured companies				
16.3 Other amounts receivable under reinsurance contracts				
17. Amounts receivable relating to uninsured plans				
18.1 Current federal and foreign income tax recoverable and interest thereon	16,016		16,016	
18.2 Net deferred tax asset				
19. Guaranty funds receivable or on deposit				
20. Electronic data processing equipment and software				
21. Furniture and equipment, including health care delivery assets (\$)				
22. Net adjustment in assets and liabilities due to foreign exchange rates				
23. Receivables from parent, subsidiaries and affiliates	3,708		3,708	4,815
24. Health care (\$) and other amounts receivable				
25. Aggregate write-ins for other than invested assets	1,585		1,585	2,284
26. Total assets excluding Separate Accounts, Segregated Accounts and Protected Cell Accounts (Lines 12 to 25)	11,341,829	3,489	11,338,340	11,087,631
27. From Separate Accounts, Segregated Accounts and Protected Cell Accounts				
28. Total (Lines 26 and 27)	11,341,829	3,489	11,338,340	11,087,631
DETAILS OF WRITE-INS				
1101.				
1102.				
1103.				
1198. Summary of remaining write-ins for Line 11 from overflow page				
1199. Totals (Lines 1101 through 1103 plus 1198)(Line 11 above)				
2501. Pooled general expenses receivable	1,585		1,585	2,284
2502.				
2503.				
2598. Summary of remaining write-ins for Line 25 from overflow page				
2599. Totals (Lines 2501 through 2503 plus 2598)(Line 25 above)	1,585		1,585	2,284

STATEMENT AS OF JUNE 30, 2017 OF THE MICO INSURANCE COMPANY

LIABILITIES, SURPLUS AND OTHER FUNDS

	1 Current Statement Date	2 December 31, Prior Year
1. Losses (current accident year \$)		
2. Reinsurance payable on paid losses and loss adjustment expenses		
3. Loss adjustment expenses		
4. Commissions payable, contingent commissions and other similar charges		
5. Other expenses (excluding taxes, licenses and fees)	9,866	8,724
6. Taxes, licenses and fees (excluding federal and foreign income taxes)		
7.1 Current federal and foreign income taxes (including \$ (475) on realized capital gains (losses))		16,971
7.2 Net deferred tax liability	138,788	78,484
8. Borrowed money \$ and interest thereon \$		
9. Unearned premiums (after deducting unearned premiums for ceded reinsurance of \$ and including warranty reserves of \$ and accrued accident and health experience rating refunds including \$ for medical loss ratio rebate per the Public Health Service Act)		
10. Advance premium		
11. Dividends declared and unpaid:		
11.1 Stockholders		
11.2 Policyholders		
12. Ceded reinsurance premiums payable (net of ceding commissions)	(35)	84
13. Funds held by company under reinsurance treaties	35	(25)
14. Amounts withheld or retained by company for account of others		
15. Remittances and items not allocated	11,379	11,379
16. Provision for reinsurance (including \$ certified)		
17. Net adjustments in assets and liabilities due to foreign exchange rates		
18. Drafts outstanding		
19. Payable to parent, subsidiaries and affiliates	4,041	2,383
20. Derivatives		
21. Payable for securities	2,939	2,481
22. Payable for securities lending	13,689	
23. Liability for amounts held under uninsured plans		
24. Capital notes \$ and interest thereon \$		
25. Aggregate write-ins for liabilities	2,176	2,117
26. Total liabilities excluding protected cell liabilities (Lines 1 through 25)	182,879	122,599
27. Protected cell liabilities		
28. Total liabilities (Lines 26 and 27)	182,879	122,599
29. Aggregate write-ins for special surplus funds		
30. Common capital stock	2,252,000	2,252,000
31. Preferred capital stock		
32. Aggregate write-ins for other than special surplus funds		
33. Surplus notes		
34. Gross paid in and contributed surplus	1,126,000	1,126,000
35. Unassigned funds (surplus)	7,777,460	7,587,031
36. Less treasury stock, at cost:		
36.1 shares common (value included in Line 30 \$)		
36.2 shares preferred (value included in Line 31 \$)		
37. Surplus as regards policyholders (Lines 29 to 35, less 36)	11,155,460	10,965,031
38. Totals (Page 2, Line 28, Col. 3)	11,338,340	11,087,631
DETAILS OF WRITE-INS		
2501. Escheatable funds	2,176	2,117
2502.		
2503.		
2598. Summary of remaining write-ins for Line 25 from overflow page		
2599. Totals (Lines 2501 through 2503 plus 2598)(Line 25 above)	2,176	2,117
2901.		
2902.		
2903.		
2998. Summary of remaining write-ins for Line 29 from overflow page		
2999. Totals (Lines 2901 through 2903 plus 2998)(Line 29 above)		
3201.		
3202.		
3203.		
3298. Summary of remaining write-ins for Line 32 from overflow page		
3299. Totals (Lines 3201 through 3203 plus 3298)(Line 32 above)		

STATEMENT OF INCOME

	1 Current Year to Date	2 Prior Year to Date	3 Prior Year Ended December 31
UNDERWRITING INCOME			
1. Premiums earned:			
1.1 Direct (written \$)			
1.2 Assumed (written \$)			
1.3 Ceded (written \$)			
1.4 Net (written \$)			
DEDUCTIONS:			
2. Losses incurred (current accident year \$0):			
2.1 Direct	405	(6,663)	(18,610)
2.2 Assumed			
2.3 Ceded	405	(6,663)	(18,610)
2.4 Net			
3. Loss adjustment expenses incurred			
4. Other underwriting expenses incurred			
5. Aggregate write-ins for underwriting deductions			
6. Total underwriting deductions (Lines 2 through 5)			
7. Net income of protected cells			
8. Net underwriting gain or (loss) (Line 1 minus Line 6 + Line 7)			
INVESTMENT INCOME			
9. Net investment income earned	100,240	98,145	222,713
10. Net realized capital gains (losses) less capital gains tax of \$9,765	20,023	21,646	53,392
11. Net investment gain (loss) (Lines 9 + 10)	120,263	119,791	276,105
OTHER INCOME			
12. Net gain or (loss) from agents' or premium balances charged off (amount recovered \$ amount charged off \$)			
13. Finance and service charges not included in premiums			
14. Aggregate write-ins for miscellaneous income	(20)		13
15. Total other income (Lines 12 through 14)	(20)		13
16. Net income before dividends to policyholders, after capital gains tax and before all other federal and foreign income taxes (Lines 8 + 11 + 15)	120,243	119,791	276,119
17. Dividends to policyholders			
18. Net income, after dividends to policyholders, after capital gains tax and before all other federal and foreign income taxes (Line 16 minus Line 17)	120,243	119,791	276,119
19. Federal and foreign income taxes incurred	23,955	38,863	70,430
20. Net income (Line 18 minus Line 19)(to Line 22)	96,288	80,928	205,689
CAPITAL AND SURPLUS ACCOUNT			
21. Surplus as regards policyholders, December 31 prior year	10,965,031	10,677,385	10,677,385
22. Net income (from Line 20)	96,288	80,928	205,689
23. Net transfers (to) from Protected Cell accounts			
24. Change in net unrealized capital gains (losses) less capital gains tax of \$59,152	95,272	7,525	80,958
25. Change in net unrealized foreign exchange capital gain (loss)			
26. Change in net deferred income tax	(1,152)	4,480	1,102
27. Change in nonadmitted assets	20	(103)	(103)
28. Change in provision for reinsurance			
29. Change in surplus notes			
30. Surplus (contributed to) withdrawn from protected cells			
31. Cumulative effect of changes in accounting principles			
32. Capital changes:			
32.1 Paid in			
32.2 Transferred from surplus (Stock Dividend)			
32.3 Transferred to surplus			
33. Surplus adjustments:			
33.1 Paid in			
33.2 Transferred to capital (Stock Dividend)			
33.3 Transferred from capital			
34. Net remittances from or (to) Home Office			
35. Dividends to stockholders			
36. Change in treasury stock			
37. Aggregate write-ins for gains and losses in surplus			
38. Change in surplus as regards policyholders (Lines 22 through 37).....	190,429	92,830	287,646
39. Surplus as regards policyholders, as of statement date (Lines 21 plus 38)	11,155,460	10,770,216	10,965,031
DETAILS OF WRITE-INS			
0501.			
0502.			
0503.			
0598. Summary of remaining write-ins for Line 5 from overflow page			
0599. Totals (Lines 0501 through 0503 plus 0598)(Line 5 above)			
1401. Miscellaneous service fees	(20)		
1402. Miscellaneous income or expense			13
1403.			
1498. Summary of remaining write-ins for Line 14 from overflow page			
1499. Totals (Lines 1401 through 1403 plus 1498)(Line 14 above)	(20)		13
3701.			
3702.			
3703.			
3798. Summary of remaining write-ins for Line 37 from overflow page			
3799. Totals (Lines 3701 through 3703 plus 3798)(Line 37 above)			

STATEMENT AS OF JUNE 30, 2017 OF THE MICO INSURANCE COMPANY

CASH FLOW

	1 Current Year To Date	2 Prior Year To Date	3 Prior Year Ended December 31
Cash from Operations			
1. Premiums collected net of reinsurance	(40)	(313)	(253)
2. Net investment income	125,332	130,245	268,995
3. Miscellaneous income	(20)		13
4. Total (Lines 1 to 3)	125,272	129,932	268,755
5. Benefit and loss related payments	1,194	9,701	(6,417)
6. Net transfers to Separate Accounts, Segregated Accounts and Protected Cell Accounts			
7. Commissions, expenses paid and aggregate write-ins for deductions	(699)	(1,945)	142
8. Dividends paid to policyholders			
9. Federal and foreign income taxes paid (recovered) net of \$13,447 tax on capital gains (losses)	66,707	64,853	130,113
10. Total (Lines 5 through 9)	67,202	72,609	123,838
11. Net cash from operations (Line 4 minus Line 10)	58,071	57,323	144,917
Cash from Investments			
12. Proceeds from investments sold, matured or repaid:			
12.1 Bonds	421,502	2,352,655	3,102,687
12.2 Stocks	99,129	87,241	301,431
12.3 Mortgage loans			
12.4 Real estate			
12.5 Other invested assets			
12.6 Net gains or (losses) on cash, cash equivalents and short-term investments	11		115
12.7 Miscellaneous proceeds	(2,891)	(6,582)	26
12.8 Total investment proceeds (Lines 12.1 to 12.7)	517,751	2,433,313	3,404,259
13. Cost of investments acquired (long-term only):			
13.1 Bonds	576,177	726,061	2,283,767
13.2 Stocks	116,069	91,471	168,415
13.3 Mortgage loans			
13.4 Real estate			
13.5 Other invested assets			45,000
13.6 Miscellaneous applications	(459)	(820)	(2,481)
13.7 Total investments acquired (Lines 13.1 to 13.6)	691,786	816,712	2,494,702
14. Net increase (or decrease) in contract loans and premium notes			
15. Net cash from investments (Line 12.8 minus Line 13.7 and Line 14)	(174,036)	1,616,601	909,557
Cash from Financing and Miscellaneous Sources			
16. Cash provided (applied):			
16.1 Surplus notes, capital notes			
16.2 Capital and paid in surplus, less treasury stock			
16.3 Borrowed funds			
16.4 Net deposits on deposit-type contracts and other insurance liabilities			
16.5 Dividends to stockholders		1,172,729	1,172,729
16.6 Other cash provided (applied)	2,824	2,180	(1,674)
17. Net cash from financing and miscellaneous sources (Line 16.1 through Line 16.4 minus Line 16.5 plus Line 16.6)	2,824	(1,170,549)	(1,174,403)
RECONCILIATION OF CASH, CASH EQUIVALENTS AND SHORT-TERM INVESTMENTS			
18. Net change in cash, cash equivalents and short-term investments (Line 11, plus Lines 15 and 17) ..	(113,141)	503,374	(119,928)
19. Cash, cash equivalents and short-term investments:			
19.1 Beginning of year	346,705	466,633	466,633
19.2 End of period (Line 18 plus Line 19.1)	233,564	970,008	346,705

Note: Supplemental disclosures of cash flow information for non-cash transactions:

--	--	--	--

STATEMENT AS OF JUNE 30, 2017 OF THE MICO INSURANCE COMPANY

NOTES TO FINANCIAL STATEMENTS

1. Summary of Significant Accounting Policies and Going Concern

A. Accounting Practices

This statement has been completed in accordance with the accounting practices and procedures prescribed or permitted by the National Association of Insurance Commissioners (NAIC) and the State of Ohio. A reconciliation of the company's net income and capital and surplus between NAIC SAP and practices prescribed and permitted by the State of Ohio is shown below.

<u>Net Income</u>	<u>SSAP #</u>	<u>F/S</u> <u>Page</u>	<u>F/S</u> <u>Line #</u>	<u>Period Ended</u> <u>June 30, 2017</u>	<u>Period Ended</u> <u>December 31, 2016</u>
(1) MICO Insurance Company state basis	XXX	XXX	XXX	96,288	205,689
(2) State Prescribed Practices that is an increase/(decrease) from NAIC SAP				-	-
(3) State Permitted Practices that is an increase/(decrease) from NAIC SAP				-	-
(4) NAIC SAP (1 - 2 - 3 = 4) (1 - 2 - 3 = 4)	XXX	XXX	XXX	96,288	205,689
<u>Surplus</u>					
(5) MICO Insurance Company state basis	XXX	XXX	XXX	11,155,460	10,965,031
(6) State Prescribed Practices that is an increase/(decrease) from NAIC SAP				-	-
(7) State Permitted Practices that is an increase/(decrease) from NAIC SAP				-	-
(8) NAIC SAP (5 - 6 - 7 = 8) (5 - 6 - 7 = 8)	XXX	XXX	XXX	11,155,460	10,965,031

B. Use of Estimates in the Preparation of the Financial Statements

There were not any significant changes since last year end.

C. Accounting Policy

There were not any significant changes since last year end.

- 6) Loan-backed securities are stated in accordance with the guidance provided in SSAP No. 43R: Loan-backed and Structured Securities. The retrospective adjustment method is used to value these securities.

D. Going Concern

Management has concluded that there is no substantial doubt of the Company's ability to continue as a going concern.

2. Accounting Changes and Corrections of Errors

There were not any significant changes since last year end.

3. Business Combinations and Goodwill

There were not any significant changes since last year end.

4. Discontinued Operations

There were not any significant changes since last year end.

5. Investments

A., B., C., F., G., & H.

There were not any significant changes since last year end.

D. Loan-Backed Securities

- 1) Prepayment assumptions for single class and multi-class mortgage-backed/asset-backed securities were obtained from market data vendors or broker dealer values.
- 2) The company did not hold any loan-backed securities with other-than-temporary recognized losses.
- 3) The company did not hold any loan-backed securities with current year other-than-temporary recognized losses.
- 4) The financial impact of the company's impaired securities (fair value is less than cost or amortized cost) for which other-than temporary impairments have not been recognized in earnings as a realized loss (including securities with a recognized other-than-temporary impairment for non-interest related declines when a non-recognized interest related impairment remains) is listed below.
- a. The aggregate amount of unrealized losses:
- | | |
|------------------------|--------|
| 1. Less than 12 months | 52,373 |
| 2. 12 months or longer | 0 |
- b. The aggregate related fair value of securities with unrealized losses:
- | | |
|------------------------|-----------|
| 1. Less than 12 months | 2,436,297 |
| 2. 12 months or longer | 0 |

- 5) The company performed an analysis of loan-backed securities and determined that exposure to credit risk was not a factor and did not warrant any other-than-temporary impairments.

E. Repurchase Agreements and / or Securities Lending Transactions

- 3) Collateral Received

b. The fair value of collateral received was \$13,689.

I. Working Capital Finance Investments

The company did not hold any working capital finance investments.

J. Offsetting and Netting of Assets and Liabilities

The company was not involved in any Offsetting and Netting of Assets and Liabilities.

6. Joint Ventures, Partnerships and Limited Liability Companies

There were not any significant changes since last year end.

STATEMENT AS JUNE 30, 2017 OF THE MICO INSURANCE COMPANY
NOTES TO FINANCIAL STATEMENTS

7. Investment Income

There were not any significant changes since last year end.

8. Derivative Instruments

There were not any significant changes since last year end.

9. Income Taxes

There were not any significant changes since last year end.

10. Information Concerning Parent, Subsidiaries, Affiliates and Other Related Parties

A.-C.

Motorists Mutual Insurance Company and BrickStreet Mutual Insurance Company secured regulatory approval to enter into an affiliation agreement on April 20th and executed the agreement on April 24th, 2017. The companies will enter into various intercompany agreements, including intercompany reinsurance pooling and cost sharing agreements, effective January 1, 2018. Schedule Y reflects an updated organization chart with Motorists Mutual as the ultimate controlling entity of the Motorists Insurance Group.

On June 30, 2017, Consumers Insurance Group, Inc., a Tennessee corporation, was dissolved. The company's assets, including Consumers Insurance USA, Inc., and its liabilities were merged into its parent company, Motorists Mutual Insurance Company.

On June 15, 2017, BrickStreet Insurance Agency, LLC., a West Virginia limited liability company was dissolved.

D.-N.

There were no other significant changes since last year end.

11. Debt

The company did not have any capital notes or other debt obligations outstanding during the periods reported. The company was not party to any Federal Home Loan Bank (FHLB) agreements during the periods reported.

12. Retirement Plans, Deferred Compensation, Postemployment Benefits and Compensated Absences and Other Postretirement Benefit Plans

There were not any significant changes since last year end.

13. Capital and Surplus, Dividend Restrictions and Quasi-Reorganizations

There were not any significant changes since last year end.

14. Contingencies

There were not any significant changes since last year end.

15. Leases

There were not any significant changes since last year end.

16. Information About Financial Instruments with Off-Balance Sheet Risk and Financial Instruments with Concentrations of Credit Risk

There were not any significant changes since last year end.

17. Sale, Transfer and Servicing of Financial Assets and Extinguishments of Liabilities

B. Transfer and Servicing of Financial Assets

2) The company did not have any servicing assets or servicing liabilities to disclose for the periods reported.

4) The company did not securitize any financial assets during the periods reported.

C. Wash Sales

In the course of the company's asset management, there were not any securities sales and reacquisitions made within 30 days of the sale date to enhance the yield on the investment portfolio.

18. Gain or Loss to the Reporting Entity from Uninsured Plans and the Uninsured Portion of Partially Insured Plans

There were not any significant changes since last year end.

19. Direct Premium Written/Produced by Managing General Agents/Third Party Administrators

There were not any significant changes since last year end.

20. Fair Value Measurements

STATEMENT AS JUNE 30, 2017 OF THE MICO INSURANCE COMPANY

NOTES TO FINANCIAL STATEMENTS

A. Fair Value Hierarchy

1) Information regarding assets measured at fair value on a recurring basis is provided below.

Description for each class of asset or liability	Fair Value Measurements at June 30, 2017			Total
	Quoted Prices in Active Markets for Identical Assets (Level 1)	Significant Other Observable Inputs (Level 2)	Significant Unobservable Inputs (Level 3)	
a. Assets at fair value				
Perpetual Preferred stock				
Industrial and Misc	-	-	-	-
Parents, Subsidiaries and Affiliates	-	-	-	-
Total Perpetual Preferred Stocks	-	-	-	-
Bonds				
U.S. Governments	-	-	-	-
Industrial and Misc	-	-	-	-
Hybrid Securities	-	-	-	-
Parents, Subsidiaries and Affiliates	-	-	-	-
Total Bonds	-	-	-	-
Common Stock				
Industrial and Misc	2,024,488	-	-	2,024,488
Parents, Subsidiaries and Affiliates	-	-	-	-
Total Common Stocks	2,024,488	-	-	2,024,488
Other invested assets	-	-	720,197	720,197
Total assets at fair value	2,024,488	-	720,197	2,744,685
b. Liabilities at fair value				
Total liabilities at fair value	-	-	-	-

2) Information regarding assets measured at fair value on a recurring basis using significant unobservable inputs (Level 3) is provided below.

	Beginning balance at April 1, 2017	Transfers into Level 3	Transfers out of Level 3	Total gains or losses included in Net Income (realized)	Total gains or losses included in Surplus (unrealized)	Purchases	Issuances	Sales	Settlements	Ending balance at June 30, 2017
a. Assets										
Preferred Stock	-	-	-	-	-	-	-	-	-	-
Fixed Maturities	-	-	-	-	-	-	-	-	-	-
Common Stock	-	-	-	-	-	-	-	-	-	-
Industrial and Misc	-	-	-	-	-	-	-	-	-	-
Parents, Subsidiaries and Affiliates	-	-	-	-	-	-	-	-	-	-
Other Invested Assets	751,261	-	-	-	(31,064)	-	-	-	-	720,197
Total Assets	751,261	-	-	-	(31,064)	-	-	-	-	720,197
b. Liabilities										
Total Liabilities	-	-	-	-	-	-	-	-	-	-

- 3) (a) The company did not recognize any transfers into or out of the Level 3 classification during the reporting period.
- (b) The company's policy is to recognize transfers of this nature on the actual date of the event or change in circumstances that caused the transfer.
- 4) The company valued common stocks using the equity method. Other invested assets were valued using equity statements from the respective fund managers.
- 5) The company does not hold any derivative assets or liabilities.

B. The company did not have any other assets measured at fair value.

C. Fair Value Measurement

Type of Financial Instrument	Aggregate Fair Value	Admitted Assets	(Level 1)	(Level 2)	(Level 3)	Not Practicable (Carrying Value)
Bonds	8,336,418	8,275,966 [¶]	-	8,336,418 [¶]	-	-
Common Stock	2,024,488	2,024,488	2,024,488	-	-	-
Other Invested Assets	720,197	720,197	-	-	720,197	-
	11,081,103	11,020,652	2,024,488	8,336,418	720,197	-

D. The company did not find it impractical to estimate fair value for any financial instruments.

21. Other Items

A., B., C., D., E., & F.
There were not any significant changes since last year end.

22. Events Subsequent

There were not any significant changes since last year end.

A. Did the reporting entity write accident and health insurance premium that is subject to section 9010 of the federal Affordable Care Act? NO

23. Reinsurance

There were not any significant changes since last year end.

STATEMENT AS JUNE 30, 2017 OF THE MICO INSURANCE COMPANY

NOTES TO FINANCIAL STATEMENTS

24. **Retrospectively Rated Contracts & Contracts Subject to Redetermination**

There were not any significant changes since last year end.

F. Risk-Sharing Provisions of the Affordable Care Act (ACA)

- 1) Did the reporting entity write accident and health insurance premium that is subject to the Affordable Care Act risk-sharing provisions (YES/NO)?

NO

- 2) Impact of Risk Sharing Provisions of the Affordable Care Act on admitted assets, liabilities, and revenues for the current year.

Not Applicable

- 3) Roll forward of prior year ACA Risk sharing Provisions for the following asset (gross of any nonadmission) and liability balances along with the reasons for adjustments to prior year balance:

Not Applicable

- 4) Roll forward of risk corridors asset and liability balances by program benefit year

Not Applicable

- 5) ACA risk corridors receivable as of reporting date

Not Applicable

25. **Change in Incurred Losses and Loss Adjustment Expenses**

Given the company's 0.0% participation percentage in The Motorists Insurance Group's intercompany pooling arrangement, reserves for the company's incurred losses and loss adjustment expenses attributable to insured events of prior years do not reflect any development.

26. **Intercompany Pooling Arrangements**

There were not any significant changes since last year end.

27. **Structured Settlements**

There were not any significant changes since last year end.

28. **Health Care Receivables**

There were not any significant changes since last year end.

29. **Participating Policies**

There were not any significant changes since last year end.

30. **Premium Deficiency Reserves**

There were not any significant changes since last year end.

31. **High Deductibles**

There were not any significant changes since last year end.

32. **Discounting of Liabilities for Unpaid Losses or Unpaid Loss Adjustment Expenses**

There were not any significant changes since last year end.

33. **Asbestos/Environmental Reserves**

There were not any significant changes since last year end.

34. **Subscriber Savings Accounts**

There were not any significant changes since last year end.

35. **Multiple Peril Crop Insurance**

There were not any significant changes since last year end.

36. **Financial Guaranty Insurance**

The company did not write financial guaranty insurance during the periods reported.

STATEMENT AS OF JUNE 30, 2017 OF THE MICO INSURANCE COMPANY

GENERAL INTERROGATORIES

PART 1 - COMMON INTERROGATORIES

GENERAL

- 1.1

Did the reporting entity experience any material transactions requiring the filing of Disclosure of Material Transactions with the State of Domicile, as required by the Model Act?

Yes [] No [X]
- 1.2

If yes, has the report been filed with the domiciliary state?

Yes [] No []
- 2.1

Has any change been made during the year of this statement in the charter, by-laws, articles of incorporation, or deed of settlement of the reporting entity?

Yes [] No [X]
- 2.2

If yes, date of change:
- 3.1

Is the reporting entity a member of an Insurance Holding Company System consisting of two or more affiliated persons, one or more of which is an insurer?

If yes, complete Schedule Y, Parts 1 and 1A.

Yes [X] No []
- 3.2

Have there been any substantial changes in the organizational chart since the prior quarter end?

Yes [X] No []
- 3.3

If the response to 3.2 is yes, provide a brief description of those changes.

Motorists Mutual Insurance Company and BrickStreet Mutual Insurance Company secured regulatory approval to enter into an affiliation agreement in April 2017. Schedule Y reflects an updated organization chart with Motorists Mutual as the ultimate controlling entity of the Motorists Insurance Group. In addition, Consumers Insurance Group, Inc., a Tennessee corporation, and BrickStreet Insurance Agency LLC, a West Virginia limited liability company, were dissolved during the second quarter. Motorists' and BrickStreet's charitable foundations, although existing in prior periods, were also added to Schedule Y.
- 4.1

Has the reporting entity been a party to a merger or consolidation during the period covered by this statement?

Yes [] No [X]
- 4.2

If yes, provide the name of the entity, NAIC Company Code, and state of domicile (use two letter state abbreviation) for any entity that has ceased to exist as a result of the merger or consolidation.

1	2	3
Name of Entity	NAIC Company Code	State of Domicile
5.

If the reporting entity is subject to a management agreement, including third-party administrator(s), managing general agent(s), attorney-in-fact, or similar agreement, have there been any significant changes regarding the terms of the agreement or principals involved?

If yes, attach an explanation.

Yes [] No [] N/A [X]
- 6.1

State as of what date the latest financial examination of the reporting entity was made or is being made.

12/31/2013
- 6.2

State the as of date that the latest financial examination report became available from either the state of domicile or the reporting entity. This date should be the date of the examined balance sheet and not the date the report was completed or released.

12/31/2013
- 6.3

State as of what date the latest financial examination report became available to other states or the public from either the state of domicile or the reporting entity. This is the release date or completion date of the examination report and not the date of the examination (balance sheet date).

11/07/2014
- 6.4

By what department or departments?

Ohio Department of Insurance
- 6.5

Have all financial statement adjustments within the latest financial examination report been accounted for in a subsequent financial statement filed with Departments?

Yes [] No [] N/A [X]
- 6.6

Have all of the recommendations within the latest financial examination report been complied with?

Yes [] No [] N/A [X]
- 7.1

Has this reporting entity had any Certificates of Authority, licenses or registrations (including corporate registration, if applicable) suspended or revoked by any governmental entity during the reporting period?

Yes [] No [X]
- 7.2

If yes, give full information:
- 8.1

Is the company a subsidiary of a bank holding company regulated by the Federal Reserve Board?

Yes [] No [X]
- 8.2

If response to 8.1 is yes, please identify the name of the bank holding company.
- 8.3

Is the company affiliated with one or more banks, thrifts or securities firms?

Yes [] No [X]
- 8.4

If response to 8.3 is yes, please provide below the names and location (city and state of the main office) of any affiliates regulated by a federal regulatory services agency [i.e. the Federal Reserve Board (FRB), the Office of the Comptroller of the Currency (OCC), the Federal Deposit Insurance Corporation (FDIC) and the Securities Exchange Commission (SEC)] and identify the affiliate's primary federal regulator.

1	2	3	4	5	6
Affiliate Name	Location (City, State)	FRB	OCC	FDIC	SEC

STATEMENT AS OF JUNE 30, 2017 OF THE MICO INSURANCE COMPANY

GENERAL INTERROGATORIES

9.1

Are the senior officers (principal executive officer, principal financial officer, principal accounting officer or controller, or persons performing similar functions) of the reporting entity subject to a code of ethics, which includes the following standards? (a) Honest and ethical conduct, including the ethical handling of actual or apparent conflicts of interest between personal and professional relationships; (b) Full, fair, accurate, timely and understandable disclosure in the periodic reports required to be filed by the reporting entity; (c) Compliance with applicable governmental laws, rules and regulations; (d) The prompt internal reporting of violations to an appropriate person or persons identified in the code; and (e) Accountability for adherence to the code.

Yes [X] No []

9.11

If the response to 9.1 is No, please explain:

9.2

Has the code of ethics for senior managers been amended?

Yes [] No [X]

9.21

If the response to 9.2 is Yes, provide information related to amendment(s).

9.3

Have any provisions of the code of ethics been waived for any of the specified officers?

Yes [] No [X]

9.31

If the response to 9.3 is Yes, provide the nature of any waiver(s).

FINANCIAL

10.1

Does the reporting entity report any amounts due from parent, subsidiaries or affiliates on Page 2 of this statement?

Yes [X] No []

10.2

If yes, indicate any amounts receivable from parent included in the Page 2 amount:

\$ 3,708

INVESTMENT

11.1

Were any of the stocks, bonds, or other assets of the reporting entity loaned, placed under option agreement, or otherwise made available for use by another person? (Exclude securities under securities lending agreements.)

Yes [] No [X]

11.2

If yes, give full and complete information relating thereto:

12.

Amount of real estate and mortgages held in other invested assets in Schedule BA:

\$ 0

13.

Amount of real estate and mortgages held in short-term investments:

\$ 0

14.1

Does the reporting entity have any investments in parent, subsidiaries and affiliates?

Yes [] No [X]

14.2

If yes, please complete the following:

	1	2
	Prior Year-End Book/Adjusted Carrying Value	Current Quarter Book/Adjusted Carrying Value
14.21 Bonds	\$	\$
14.22 Preferred Stock	\$	\$
14.23 Common Stock	\$	\$
14.24 Short-Term Investments	\$	\$
14.25 Mortgage Loans on Real Estate	\$	\$
14.26 All Other	\$	\$ 0
14.27 Total Investment in Parent, Subsidiaries and Affiliates (Subtotal Lines 14.21 to 14.26)	\$	\$ 0
14.28 Total Investment in Parent included in Lines 14.21 to 14.26 above	\$	\$

15.1

Has the reporting entity entered into any hedging transactions reported on Schedule DB?

Yes [] No [X]

15.2

If yes, has a comprehensive description of the hedging program been made available to the domiciliary state? If no, attach a description with this statement.

Yes [] No []

STATEMENT AS OF JUNE 30, 2017 OF THE MICO INSURANCE COMPANY

GENERAL INTERROGATORIES

16. For the reporting entity's security lending program, state the amount of the following as of the current statement date:
- 16.1 Total fair value of reinvested collateral assets reported on Schedule DL, Parts 1 and 2.

\$ 13,689
- 16.2 Total book adjusted/carrying value of reinvested collateral assets reported on Schedule DL, Parts 1 and 2

\$ 13,689
- 16.3 Total payable for securities lending reported on the liability page.

\$ 13,689

17. Excluding items in Schedule E - Part 3 - Special Deposits, real estate, mortgage loans and investments held physically in the reporting entity's offices, vaults or safety deposit boxes, were all stocks, bonds and other securities, owned throughout the current year held pursuant to a custodial agreement with a qualified bank or trust company in accordance with Section 1, III - General Examination Considerations, F. Outsourcing of Critical Functions, Custodial or Safekeeping Agreements of the NAIC Financial Condition Examiners Handbook?
- Yes [X] No []

- 17.1 For all agreements that comply with the requirements of the NAIC Financial Condition Examiners Handbook, complete the following:

1 Name of Custodian(s)	2 Custodian Address
BNY Mellon	500 Grant Street One Mellon Center, Suite #1035, Pittsburgh, PA 15258

- 17.2 For all agreements that do not comply with the requirements of the NAIC Financial Condition Examiners Handbook, provide the name, location and a complete explanation:

1 Name(s)	2 Location(s)	3 Complete Explanation(s)

- 17.3 Have there been any changes, including name changes, in the custodian(s) identified in 17.1 during the current quarter?
- Yes [] No [X]

- 17.4 If yes, give full information relating thereto:

1 Old Custodian	2 New Custodian	3 Date of Change	4 Reason

- 17.5 Investment management – Identify all investment advisors, investment managers, broker/dealers, including individuals that have the authority to make investment decisions on behalf of the reporting entity. For assets that are managed internally by employees of the reporting entity, note as such. ["...that have access to the investment accounts"; "...handle securities"]

1 Name of Firm or Individual	2 Affiliation
BlackRock Financial Management	U
Crescent Capital Group LP	U
Diamond Hill Capital Management, Inc.	U
New England Asset Management, Inc.	U

- 17.5097 For those firms/individuals listed in the table for Question 17.5, do any firms/individuals unaffiliated with the reporting entity (i.e. designated with a "U") manage more than 10% of the reporting entity's assets?
- Yes [X] No []

- 17.5098 For firms/individuals unaffiliated with the reporting entity (i.e. designated with a "U") listed in the table for Question 17.5, does the total assets under management aggregate to more than 50% of the reporting entity's assets?
- Yes [X] No []

- 17.6 For those firms or individuals listed in the table for 17.5 with an affiliation code of "A" (affiliated) or "U" (unaffiliated), provide the information for the table below.

1 Central Registration Depository Number	2 Name of Firm or Individual	3 Legal Entity Identifier (LEI)	4 Registered With	5 Investment Management Agreement (IMA) Filed
107105	BlackRock Financial Management	549300LVXY1VJKE13M84	Sec	NO
153966	Crescent Capital Group LP	549300L8Z46F3ZANSB82	Sec	NO
110638	Diamond Hill Capital Management, Inc.		Sec	NO
105900	New England Asset Management, Inc.	KUR85E5PS4GQFZTFC130	Sec	NO

- 18.1 Have all the filing requirements of the Purposes and Procedures Manual of the NAIC Investment Analysis Office been followed?
- Yes [X] No []

- 18.2 If no, list exceptions:

GENERAL INTERROGATORIES

PART 2 - PROPERTY & CASUALTY INTERROGATORIES

1.

If the reporting entity is a member of a pooling arrangement, did the agreement or the reporting entity's participation change?
If yes, attach an explanation.

Yes [] No [X] N/A []
2.

Has the reporting entity reinsured any risk with any other reporting entity and agreed to release such entity from liability, in whole or in part, from any loss that may occur on the risk, or portion thereof, reinsured?
If yes, attach an explanation.

Yes [] No [X]
- 3.1

Have any of the reporting entity's primary reinsurance contracts been canceled?

Yes [] No [X]
- 3.2

If yes, give full and complete information thereto.
- 4.1

Are any of the liabilities for unpaid losses and loss adjustment expenses other than certain workers' compensation tabular reserves (see Annual Statement Instructions pertaining to disclosure of discounting for definition of "tabular reserves") discounted at a rate of interest greater than zero?

4.2 If yes, complete the following schedule:

Yes [] No [X]

			TOTAL DISCOUNT				DISCOUNT TAKEN DURING PERIOD			
1	2	3	4	5	6	7	8	9	10	11
Line of Business	Maximum Interest	Discount Rate	Unpaid Losses	Unpaid LAE	IBNR	TOTAL	Unpaid Losses	Unpaid LAE	IBNR	TOTAL
TOTAL										

5.

Operating Percentages:

5.1 A&H loss percent0.000 %

5.2 A&H cost containment percent0.000 %

5.3 A&H expense percent excluding cost containment expenses0.000 %
- 6.1

Do you act as a custodian for health savings accounts?

Yes [] No [X]
- 6.2

If yes, please provide the amount of custodial funds held as of the reporting date\$.....
- 6.3

Do you act as an administrator for health savings accounts?

Yes [] No [X]
- 6.4

If yes, please provide the balance of the funds administered as of the reporting date\$.....

STATEMENT AS OF JUNE 30, 2017 OF THE MICO INSURANCE COMPANY

SCHEDULE F - CEDED REINSURANCE

Showing All New Reinsurers - Current Year to Date

1	2	3	4	5	6	7
NAIC Company Code	ID Number	Name of Reinsurer	Domiciliary Jurisdiction	Type of Reinsurer	Certified Reinsurer Rating (1 through 6)	Effective Date of Certified Reinsurer Rating
..00000 ..	AA-3190875 ..	All Other Insurers				
..00000 ..	AA-5420050 ..	Hiscox Insurance Company (Bermuda) LtdBMU.....	Unauthorized.....		
..00000 ..	AA-1120157 ..	Korean Reinsurance CompanyKOR.....	Unauthorized.....		
..00000 ..	AA-1120171 ..	Lloyd's Syndicate Number 1729GBR.....	Authorized.....		
..00000 ..	AA-1120181 ..	Lloyd's Syndicate Number 1856GBR.....	Authorized.....		
..00000 ..	AA-1120181 ..	Lloyd's Syndicate Number 5886GBR.....	Authorized.....		

STATEMENT AS OF JUNE 30, 2017 OF THE MICO INSURANCE COMPANY

SCHEDULE T - EXHIBIT OF PREMIUMS WRITTEN

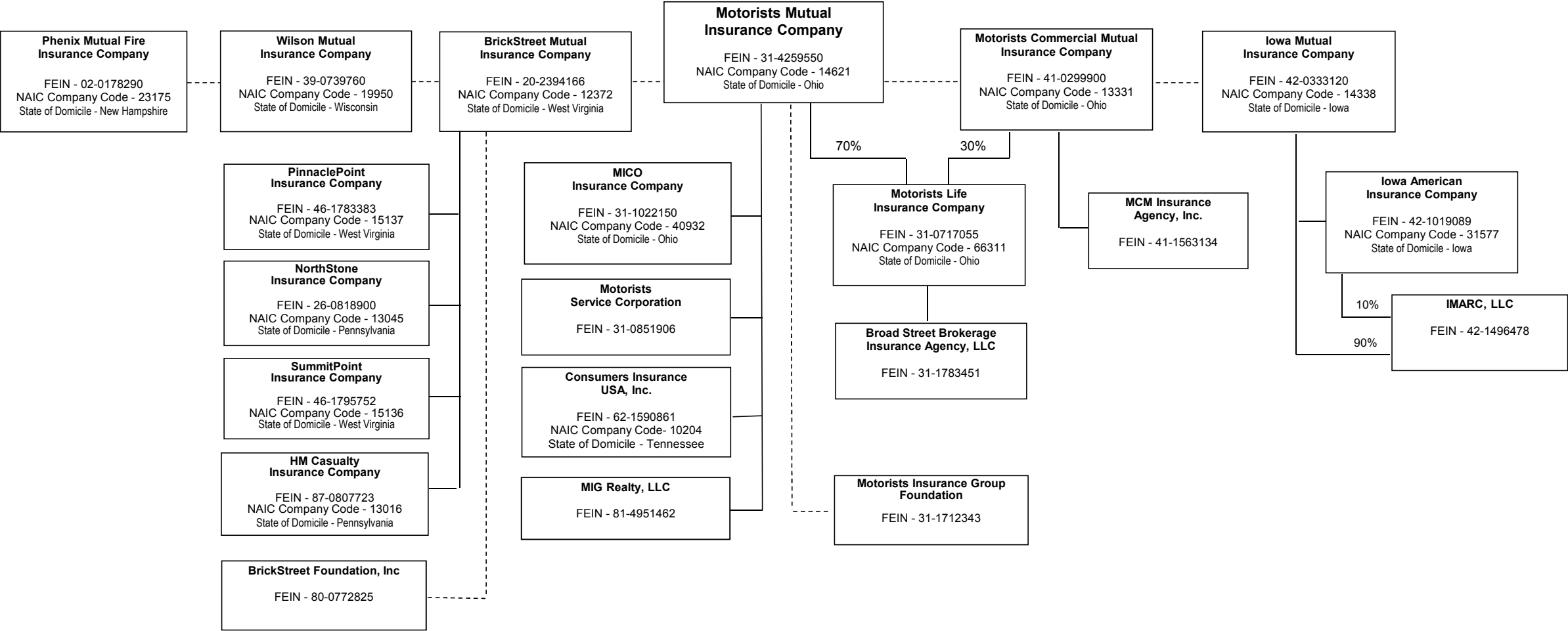
Current Year to Date - Allocated by States and Territories							
States, etc.	1 Active Status	Direct Premiums Written		Direct Losses Paid (Deducting Salvage)		Direct Losses Unpaid	
		2 Current Year To Date	3 Prior Year To Date	4 Current Year To Date	5 Prior Year To Date	6 Current Year To Date	7 Prior Year To Date
1. Alabama.....AL	N						
2. Alaska.....AK	N						
3. Arizona.....AZ	N						
4. Arkansas.....AR	N						
5. California.....CA	N						
6. Colorado.....CO	N						
7. Connecticut.....CT	N						
8. Delaware.....DE	N						
9. District of Columbia.....DC	N						
10. Florida.....FL	N						
11. Georgia.....GA	N						
12. Hawaii.....HI	N						
13. Idaho.....ID	N						
14. Illinois.....IL	N						
15. Indiana.....IN	L			(468)	(787)		.79
16. Iowa.....IA	N						
17. Kansas.....KS	N						
18. Kentucky.....KY	L			10,000		15,000	20,440
19. Louisiana.....LA	N						
20. Maine.....ME	N						
21. Maryland.....MD	N						
22. Massachusetts.....MA	N						
23. Michigan.....MI	N						
24. Minnesota.....MN	N						
25. Mississippi.....MS	N						
26. Missouri.....MO	N						
27. Montana.....MT	N						
28. Nebraska.....NE	N						
29. Nevada.....NV	N						
30. New Hampshire.....NH	N						
31. New Jersey.....NJ	N						
32. New Mexico.....NM	N						
33. New York.....NY	N						
34. North Carolina.....NC	N						
35. North Dakota.....ND	N						
36. Ohio.....OH	L			6,593	12,827		12,056
37. Oklahoma.....OK	N						
38. Oregon.....OR	N						
39. Pennsylvania.....PA	L						
40. Rhode Island.....RI	N						
41. South Carolina.....SC	N						
42. South Dakota.....SD	N						
43. Tennessee.....TN	N						
44. Texas.....TX	N						
45. Utah.....UT	N						
46. Vermont.....VT	N						
47. Virginia.....VA	N						
48. Washington.....WA	N						
49. West Virginia.....WV	L						440
50. Wisconsin.....WI	N						
51. Wyoming.....WY	N						
52. American Samoa.....AS	N						
53. Guam.....GU	N						
54. Puerto Rico.....PR	N						
55. U.S. Virgin Islands.....VI	N						
56. Northern Mariana Islands.....MP	N						
57. Canada.....CAN	N						
58. Aggregate Other Alien OT	XXX						
59. Totals	(a) 5			16,125	12,040	15,000	33,015
DETAILS OF WRITE-INS							
58001.....	XXX						
58002.....	XXX						
58003.....	XXX						
58998. Summary of remaining write-ins for Line 58 from overflow page.....	XXX						
58999. Totals (Lines 58001 through 58003 plus 58998)(Line 58 above)	XXX						

(L) Licensed or Chartered - Licensed Insurance Carrier or Domiciled RRG; (R) Registered - Non-domiciled RRGs; (Q) Qualified - Qualified or Accredited Reinsurer; (E) Eligible - Reporting Entities eligible or approved to write Surplus Lines in the state (other than their state of domicile - see DSLI); (D) DSLI - Domestic Surplus Lines Insurer (DSLI) - Reporting entities authorized to write Surplus Lines in the state of domicile; (N) None of the above - Not allowed to write business in the state.

(a) Insert the number of D and L responses except for Canada and Other Alien.

STATEMENT AS OF JUNE 30, 2017 OF THE MICO INSURANCE COMPANY

SCHEDULE Y - INFORMATION CONCERNING ACTIVITIES OF INSURER MEMBERS OF A HOLDING COMPANY GROUP
PART 1 - ORGANIZATIONAL CHART



STATEMENT AS OF JUNE 30, 2017 OF THE MICO INSURANCE COMPANY

SCHEDULE Y
PART 1A - DETAIL OF INSURANCE HOLDING COMPANY SYSTEM

1	2	3	4	5	6	7	8	9	10	11	12	13	14	15	16
Group Code	Group Name	NAIC Company Code	ID Number	Federal RSSD	CIK	Name of Securities Exchange if Publicly Traded (U.S. or International)	Names of Parent, Subsidiaries Or Affiliates	Domi-ciliary Loca-tion	Rela-tion-ship to Reporting Entity	Directly Controlled by (Name of Entity/Person)	Type of Control (Ownership, Board, Management, Attorney-in-Fact, Influence, Other)	If Control is Owner-ship Provide Percen-tage	Ultimate Controlling Entity(ies)/Person(s)	Is an SCA Filing Re-quired? (Y/N)	*
			31-1783451				Broad Street Brokerage Insurance Agency, LLC								
.0291	Motorists Insurance Group	.10204	62-1590861				Consumers Insurance USA, Inc.	.OH	.NIA	Motorists Life Insurance Company	Ownership	100.000	Motorists Mutual Insurance Company	.N	.2
			42-1496478				IMARC, LLC	.TN	.IA	Motorists Mutual Insurance Company	Ownership	100.000	Motorists Mutual Insurance Company	.N	.2
.0291	Motorists Insurance Group	.31577	42-1019089				Iowa American Insurance Company	.IA	.NIA	Iowa Mutual Insurance Company	Ownership	90.000	Motorists Mutual Insurance Company	.N	.2
.0291	Motorists Insurance Group	.14338	42-0333120				Iowa Mutual Insurance Company	.IA	.IA	Iowa Mutual Insurance Company	Ownership	100.000	Motorists Mutual Insurance Company	.N	.2
								.IA	.IA				Motorists Mutual Insurance Company	.N	.1
			41-1563134				MCM Insurance Agency, Inc.	.MN	.NIA	Motorists Commercial Mutual Insurance Company	Ownership	100.000	Motorists Mutual Insurance Company	.N	.2
.0291	Motorists Insurance Group	.40932	31-1022150				MICO Insurance Company	.OH	.RE	Motorists Mutual Insurance Company	Ownership	100.000	Motorists Mutual Insurance Company	.N	.2
							Motorists Commercial Mutual Insurance Company								
.0291	Motorists Insurance Group	.13331	41-0299900					.OH	.IA				Motorists Mutual Insurance Company	.N	.1
.0291	Motorists Insurance Group	.66311	31-0717055				Motorists Life Insurance Company	.OH	.IA	Motorists Mutual Insurance Company	Ownership	70.000	Motorists Mutual Insurance Company	.N	.2
.0291	Motorists Insurance Group	.14621	31-4259550				Motorists Mutual Insurance Company	.OH	.UDP					.N	.1
			31-0851906				Motorists Service Corporation	.OH	.NIA	Motorists Mutual Insurance Company	Ownership	100.000	Motorists Mutual Insurance Company	.N	.2
.0291	Motorists Insurance Group	.23175	02-0178290				Phenix Mutual Fire Insurance Company	.NH	.IA				Motorists Mutual Insurance Company	.N	.1
.0291	Motorists Insurance Group	.19950	39-0739760				Wilson Mutual Insurance Company	.WI	.IA				Motorists Mutual Insurance Company	.N	.1
			81-4951462				MIG Realty, LLC	.OH	.NIA	Motorists Mutual Insurance Company	Ownership	100.000	Motorists Mutual Insurance Company	.N	.2
			31-1712343				Motorists Insurance Group Foundation	.OH	.NIA	Motorists Mutual Insurance Company	Board		Motorists Mutual Insurance Company	.N	.3
.4768	BrickStreet Mutual Group	.12372	20-2394166				BrickStreet Mutual Insurance Company	.WV	.IA				Motorists Mutual Insurance Company	.N	.4
.4768	BrickStreet Mutual Group	.15137	46-1783383				PinnaclePoint Insurance Company	.WV	.IA	BrickStreet Mutual Insurance Company	Ownership	100.000	Motorists Mutual Insurance Company	.N	.4
.4768	BrickStreet Mutual Group	.13045	26-0818900				NorthStone Insurance Company	.PA	.IA	BrickStreet Mutual Insurance Company	Ownership	100.000	Motorists Mutual Insurance Company	.N	.4
.4768	BrickStreet Mutual Group	.15136	46-1795752				SummitPoint Insurance Company	.WV	.IA	BrickStreet Mutual Insurance Company	Ownership	100.000	Motorists Mutual Insurance Company	.N	.4
.4768	BrickStreet Mutual Group	.13016	87-0807723				HM Casualty Insurance Company	.PA	.IA	BrickStreet Mutual Insurance Company	Ownership	100.000	Motorists Mutual Insurance Company	.N	.5
			80-0772825				BrickStreet Foundation, Inc	.WV	.NIA	BrickStreet Mutual Insurance Company	Board		Motorists Mutual Insurance Company	.N	.6

Asterisk	Explanation
1	The company is a mutual property/casualty insurer and an affiliate of The Motorists Insurance Group. Motorists Mutual Insurance Company is the ultimate controlling entity of the Group through an interlocking board of directors.
2	The entity in Column 8 is a subsidiary of an insurer that is an affiliate of The Motorists Insurance Group. Motorists Mutual Insurance Company is the ultimate controlling entity of the Group through an interlocking board of directors.
3	Schedule Y, Parts 1 and 1A, includes the Motorists Insurance Group Foundation, a 501(c)(3) tax-exempt private foundation, incorporated on 7/12/2000.
4	The companies participate in a pooling arrangement whereby the follow owned subsidiaries cede all of their direct business to the parent and then each assume 2% of the combined pool, with the parent retaining 94%
5	HM Casualty Insurance Company was acquired by BrickStreet Mutual Insurance Company on January 1, 2017. The Company cedes all of its direct business to the Parent as part of a 100% reinsurance agreement.
6	Schedule Y, Parts 1 and 1A, includes Brickstreet Foundation, Inc, a 501(c)(3) tax-exempt private foundation incorporated on December 23, 2011.

STATEMENT AS OF JUNE 30, 2017 OF THE MICO INSURANCE COMPANY

PART 1 - LOSS EXPERIENCE

Line of Business		Current Year to Date			4 Prior Year to Date Direct Loss Percentage
		1 Direct Premiums Earned	2 Direct Losses Incurred	3 Direct Loss Percentage	
1.	Fire				
2.	Allied Lines				
3.	Farmowners multiple peril				
4.	Homeowners multiple peril				
5.	Commercial multiple peril				
6.	Mortgage guaranty				
8.	Ocean marine				
9.	Inland marine				
10.	Financial guaranty				
11.1	Medical professional liability - occurrence				
11.2	Medical professional liability - claims-made				
12.	Earthquake				
13.	Group accident and health				
14.	Credit accident and health				
15.	Other accident and health				
16.	Workers' compensation				
17.1	Other liability - occurrence				
17.2	Other liability - claims-made				
17.3	Excess workers' compensation				
18.1	Products liability - occurrence				
18.2	Products liability - claims-made				
19.1,19.2	Private passenger auto liability761		
19.3,19.4	Commercial auto liability				
21.	Auto physical damage		(.356)		
22.	Aircraft (all perils)				
23.	Fidelity				
24.	Surety				
26.	Burglary and theft				
27.	Boiler and machinery				
28.	Credit				
29.	International				
30.	Warranty				
31.	Reinsurance - Nonproportional Assumed Property	XXX	XXX	XXX	XXX
32.	Reinsurance - Nonproportional Assumed Liability	XXX	XXX	XXX	XXX
33.	Reinsurance - Nonproportional Assumed Financial Lines	XXX	XXX	XXX	XXX
34.	Aggregate write-ins for other lines of business				
35.	Totals		405		
DETAILS OF WRITE-INS					
3401.				
3402.				
3403.				
3498.	Summary of remaining write-ins for Line 34 from overflow page				
3499.	Totals (Lines 3401 through 3403 plus 3498)(Line 34 above)				

PART 2 - DIRECT PREMIUMS WRITTEN

Line of Business		1	2	3
		Current Quarter	Current Year to Date	Prior Year Year to Date
1.	Fire			
2.	Allied Lines			
3.	Farmowners multiple peril			
4.	Homeowners multiple peril			
5.	Commercial multiple peril			
6.	Mortgage guaranty			
8.	Ocean marine			
9.	Inland marine			
10.	Financial guaranty			
11.1	Medical professional liability - occurrence			
11.2	Medical professional liability - claims-made			
12.	Earthquake			
13.	Group accident and health			
14.	Credit accident and health			
15.	Other accident and health			
16.	Workers' compensation			
17.1	Other liability - occurrence			
17.2	Other liability - claims-made			
17.3	Excess workers' compensation			
18.1	Products liability - occurrence			
18.2	Products liability - claims-made			
19.1,19.2	Private passenger auto liability			
19.3,19.4	Commercial auto liability			
21.	Auto physical damage			
22.	Aircraft (all perils)			
23.	Fidelity			
24.	Surety			
26.	Burglary and theft			
27.	Boiler and machinery			
28.	Credit			
29.	International			
30.	Warranty			
31.	Reinsurance - Nonproportional Assumed Property	XXX	XXX	XXX
32.	Reinsurance - Nonproportional Assumed Liability	XXX	XXX	XXX
33.	Reinsurance - Nonproportional Assumed Financial Lines	XXX	XXX	XXX
34.	Aggregate write-ins for other lines of business			
35.	Totals			
DETAILS OF WRITE-INS				
3401.			
3402.			
3403.			
3498.	Summary of remaining write-ins for Line 34 from overflow page			
3499.	Totals (Lines 3401 through 3403 plus 3498)(Line 34 above)			

Part 3 (000 omitted) - Loss and Loss Adjustment Expense Reserves Schedule

N O N E

SUPPLEMENTAL EXHIBITS AND SCHEDULES INTERROGATORIES

The following supplemental reports are required to be filed as part of your statement filing. However, in the event that your company does not transact the type of business for which the special report must be filed, your response of NO to the specific interrogatory will be accepted in lieu of filing a "NONE" report and a bar code will be printed below. If the supplement is required of your company but is not being filed for whatever reason enter SEE EXPLANATION and provide an explanation following the interrogatory questions.

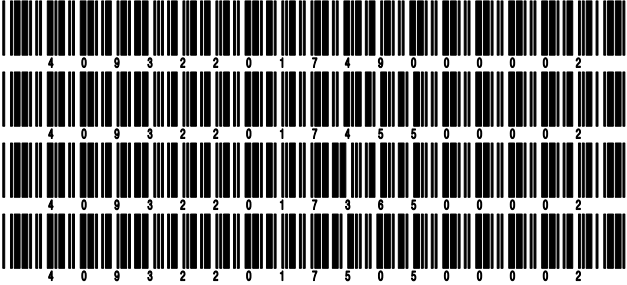
	Response
1. Will the Trusteed Surplus Statement be filed with the state of domicile and the NAIC with this statement?	NO
2. Will Supplement A to Schedule T (Medical Professional Liability Supplement) be filed with this statement?	NO
3. Will the Medicare Part D Coverage Supplement be filed with the state of domicile and the NAIC with this statement?	NO
4. Will the Director and Officer Insurance Coverage Supplement be filed with the state of domicile and the NAIC with this statement?	NO

Explanations:

- 1.
- 2.
- 3.
- 4.

Bar Codes:

- 1. Trusteed Surplus Statement [Document Identifier 490]
- 2. Supplement A to Schedule T [Document Identifier 455]
- 3. Medicare Part D Coverage Supplement [Document Identifier 365]
- 4. Director and Officer Supplement [Document Identifier 505]



NONE

SCHEDULE A - VERIFICATION

Real Estate

	1	2
	Year to Date	Prior Year Ended December 31
1. Book/adjusted carrying value, December 31 of prior year		
2. Cost of acquired:		
2.1 Actual cost at time of acquisition		
2.2 Additional investment made after acquisition		
3. Current year change in encumbrances		
4. Total gain (loss) on disposals		
5. Deduct amounts received on disposals		
6. Total foreign exchange change in book/adjusted carrying		
7. Deduct current year's other than temporary impairment recognized		
8. Deduct current year's depreciation		
9. Book/adjusted carrying value at the end of current period (Lines 1+2+3+4-5+6-7-8)		
10. Deduct total nonadmitted amounts		
11. Statement value at end of current period (Line 9 minus Line 10)		

SCHEDULE B - VERIFICATION

Mortgage Loans

	1	2
	Year to Date	Prior Year Ended December 31
1. Book value/recorded investment excluding accrued interest, December 31 of prior year		
2. Cost of acquired:		
2.1 Actual cost at time of acquisition		
2.2 Additional investment made after acquisition		
3. Capitalized deferred interest and other		
4. Accrual of discount		
5. Unrealized valuation increase (decrease)		
6. Total gain (loss) on disposals		
7. Deduct amounts received on disposals		
8. Deduct amortization of premium and mortgage interest points and commitment fees		
9. Total foreign exchange change in book value/recorded investment excluding accrued interest		
10. Deduct current year's other than temporary impairment recognized		
11. Book value/recorded investment excluding accrued interest at end of current period (Lines 1+2+3+4+5+6-7-8+9-10)		
12. Total valuation allowance		
13. Subtotal (Line 11 plus Line 12)		
14. Deduct total nonadmitted amounts		
15. Statement value at end of current period (Line 13 minus Line 14)		

SCHEDULE BA - VERIFICATION

Other Long-Term Invested Assets

	1	2
	Year to Date	Prior Year Ended December 31
1. Book/adjusted carrying value, December 31 of prior year	743,595	651,967
2. Cost of acquired:		
2.1 Actual cost at time of acquisition		
2.2 Additional investment made after acquisition		45,000
3. Capitalized deferred interest and other		
4. Accrual of discount		
5. Unrealized valuation increase (decrease)	(23,398)	46,628
6. Total gain (loss) on disposals		
7. Deduct amounts received on disposals		
8. Deduct amortization of premium and depreciation		
9. Total foreign exchange change in book/adjusted carrying value		
10. Deduct current year's other than temporary impairment recognized		
11. Book/adjusted carrying value at end of current period (Lines 1+2+3+4+5+6-7-8+9-10)	720,197	743,595
12. Deduct total nonadmitted amounts		
13. Statement value at end of current period (Line 11 minus Line 12)	720,197	743,595

SCHEDULE D - VERIFICATION

Bonds and Stocks

	1	2
	Year to Date	Prior Year Ended December 31
1. Book/adjusted carrying value of bonds and stocks, December 31 of prior year	9,940,588	10,767,662
2. Cost of bonds and stocks acquired	701,102	2,466,629
3. Accrual of discount	103	1,995
4. Unrealized valuation increase (decrease)	177,822	60,734
5. Total gain (loss) on disposals	29,711	103,175
6. Deduct consideration for bonds and stocks disposed of	529,488	3,418,564
7. Deduct amortization of premium	19,384	41,043
8. Total foreign exchange change in book/adjusted carrying value		
9. Deduct current year's other than temporary impairment recognized		
10. Book/adjusted carrying value at end of current period (Lines 1+2+3+4+5-6-7+8-9)	10,300,454	9,940,588
11. Deduct total nonadmitted amounts		
12. Statement value at end of current period (Line 10 minus Line 11)	10,300,454	9,940,588

STATEMENT AS OF JUNE 30, 2017 OF THE MICO INSURANCE COMPANY

SCHEDULE D - PART 1B

Showing the Acquisitions, Dispositions and Non-Trading Activity
During the Current Quarter for all Bonds and Preferred Stock by NAIC Designation

NAIC Designation	1 Book/Adjusted Carrying Value Beginning of Current Quarter	2 Acquisitions During Current Quarter	3 Dispositions During Current Quarter	4 Non-Trading Activity During Current Quarter	5 Book/Adjusted Carrying Value End of First Quarter	6 Book/Adjusted Carrying Value End of Second Quarter	7 Book/Adjusted Carrying Value End of Third Quarter	8 Book/Adjusted Carrying Value December 31 Prior Year
BONDS								
1. NAIC 1 (a)	8,194,523	505,876	589,703	(147,711)	8,194,523	7,962,986		7,980,493
2. NAIC 2 (a)	349,308	149,981	50,000	30	349,308	449,319		349,281
3. NAIC 3 (a)								
4. NAIC 4 (a)								
5. NAIC 5 (a)								
6. NAIC 6 (a)								
7. Total Bonds	8,543,831	655,857	639,703	(147,680)	8,543,831	8,412,305		8,329,773
PREFERRED STOCK								
8. NAIC 1								
9. NAIC 2								
10. NAIC 3								
11. NAIC 4								
12. NAIC 5								
13. NAIC 6								
14. Total Preferred Stock								
15. Total Bonds and Preferred Stock	8,543,831	655,857	639,703	(147,680)	8,543,831	8,412,305		8,329,773

(a) Book/Adjusted Carrying Value column for the end of the current reporting period includes the following amount of short-term and cash equivalent bonds by NAIC designation:
NAIC 1 \$136,339 ; NAIC 2 \$0 ; NAIC 3 \$ NAIC 4 \$; NAIC 5 \$; NAIC 6 \$

SCHEDULE DA - PART 1

Short-Term Investments

	1	2	3	4	5
	Book/Adjusted Carrying Value	Par Value	Actual Cost	Interest Collected Year-to-Date	Paid for Accrued Interest Year-to-Date
9199999 Totals	232,251	xxx	232,251	510	

SCHEDULE DA - VERIFICATION

Short-Term Investments

	1	2
	Year To Date	Prior Year Ended December 31
1. Book/adjusted carrying value, December 31 of prior year	346,705	516,633
2. Cost of short-term investments acquired	653,274	8,852,858
3. Accrual of discount		
4. Unrealized valuation increase (decrease)		
5. Total gain (loss) on disposals	11	115
6. Deduct consideration received on disposals	767,738	9,022,902
7. Deduct amortization of premium		
8. Total foreign exchange change in book/adjusted carrying value		
9. Deduct current year's other than temporary impairment recognized		
10. Book/adjusted carrying value at end of current period (Lines 1+2+3+4+5-6-7+8-9)	232,251	346,705
11. Deduct total nonadmitted amounts		
12. Statement value at end of current period (Line 10 minus Line 11)	232,251	346,705

Schedule DB - Part A - Verification - Options, Caps, Floors, Collars, Swaps and Forwards

N O N E

Schedule DB - Part B - Verification - Futures Contracts

N O N E

Schedule DB - Part C - Section 1 - Replication (Synthetic Asset) Transactions (RSATs) Open

N O N E

Schedule DB-Part C-Section 2-Reconciliation of Replication (Synthetic Asset) Transactions Open

N O N E

Schedule DB - Verification - Book/Adjusted Carrying Value, Fair Value and Potential Exposure of
Derivatives

N O N E

Schedule E - Verification - Cash Equivalents

N O N E

Schedule A - Part 2 - Real Estate Acquired and Additions Made

N O N E

Schedule A - Part 3 - Real Estate Disposed

N O N E

Schedule B - Part 2 - Mortgage Loans Acquired and Additions Made

N O N E

Schedule B - Part 3 - Mortgage Loans Disposed, Transferred or Repaid

N O N E

Schedule BA - Part 2 - Other Long-Term Invested Assets Acquired and Additions Made

N O N E

Schedule BA - Part 3 - Other Long-Term Invested Assets Disposed, Transferred or Repaid

N O N E

STATEMENT AS OF JUNE 30, 2017 OF THE MICO INSURANCE COMPANY

SCHEDULE D - PART 3

Show All Long-Term Bonds and Stock Acquired During the Current Quarter

1	2	3	4	5	6	7	8	9	10
CUSIP Identification	Description	Foreign	Date Acquired	Name of Vendor	Number of Shares of Stock	Actual Cost	Par Value	Paid for Accrued Interest and Dividends	NAIC Designation or Market Indicator (a)
05522R-CQ-9	BACCT 141 A - ABS		.06/26/2017	JP MORGAN SECURITIES INC.		75,325	75,000	.42	1FE
161571-HJ-6	CHAIT 171 A - ABS		.06/13/2017	BARCLAYS CAPITAL INC		100,309	100,000	.4	1FE
31428X-BM-7	FEDEX CORP		.05/17/2017	JP MORGAN SECURITIES INC.		50,266	50,000	.623	2FE
90131H-CB-9	21ST CENTURY FOX AMERICA INC		.05/17/2017	WELLS FARGO SECURITIES LLC		49,911	50,000	.33	2FE
931427-AQ-1	WALGREENS BOOTS ALLIANCE INC		.05/17/2017	Citigroup (SSB)		49,804	50,000	.819	2FE
3899999. Subtotal - Bonds - Industrial and Miscellaneous (Unaffiliated)						325,615	325,000	1,521	XXX
8399997. Total - Bonds - Part 3						325,615	325,000	1,521	XXX
8399998. Total - Bonds - Part 5						XXX	XXX	XXX	XXX
8399999. Total - Bonds						325,615	325,000	1,521	XXX
8999997. Total - Preferred Stocks - Part 3							XXX		XXX
8999998. Total - Preferred Stocks - Part 5						XXX	XXX	XXX	XXX
8999999. Total - Preferred Stocks							XXX		XXX
084670-70-2	BERKSHIRE HATHWAY CL B ORD		.04/26/2017	WEEDEN + CO.	14,000	2,353			L
099724-10-6	BORGWARNER ORD		.05/18/2017	WEEDEN + CO.	5,000	200			L
14575E-10-5	CARS.COM ORD		.06/01/2017	CORPORATE ACTION	135,000	3,182			L
254709-10-8	DISCOVER FINANCIAL SERVICES ORD		.06/29/2017	VARIOUS	209,000	12,715			L
33616C-10-0	FIRST REPUBLIC BANK ORD		.05/08/2017	VARIOUS	107,000	9,996			L
48203R-10-4	JUNIPER NETWORKS ORD		.06/15/2017	VARIOUS	267,000	7,702			L
60871R-20-9	MOLSON COORS BREWING NONVTG CL B ORD		.06/09/2017	VARIOUS	145,000	13,097			L
693475-10-5	PNC FINANCIAL SERVICES GROUP ORD		.04/27/2017	WEEDEN + CO.	67,000	7,933			L
87901J-10-5	TEGNA ORD		.06/01/2017	CORPORATE ACTION	405,000	5,675			L
883556-10-2	THERMO FISHER SCIENTIFIC ORD		.06/08/2017	WELLS FARGO SECURITIES LLC	8,000	1,404			L
92345Y-10-6	VERISK ANALYTICS ORD		.06/22/2017	VARIOUS	61,000	5,116			L
9099999. Subtotal - Common Stocks - Industrial and Miscellaneous (Unaffiliated)						69,372	XXX		XXX
9799997. Total - Common Stocks - Part 3						69,372	XXX		XXX
9799998. Total - Common Stocks - Part 5						XXX	XXX	XXX	XXX
9799999. Total - Common Stocks						69,372	XXX		XXX
9899999. Total - Preferred and Common Stocks						69,372	XXX		XXX
9999999 - Totals						394,987	XXX	1,521	XXX

(a) For all common stock bearing the NAIC market indicator "U" provide: the number of such issues

STATEMENT AS OF JUNE 30, 2017 OF THE MICO INSURANCE COMPANY

SCHEDULE D - PART 4

Show All Long-Term Bonds and Stock Sold, Redeemed or Otherwise Disposed of During the Current Quarter

1	2	3	4	5	6	7	8	9	10	Change In Book/Adjusted Carrying Value					16	17	18	19	20	21	22
										11	12	13	14	15							
CUSIP Identification	Description	For- eign	Disposal Date	Name of Purchaser	Number of Shares of Stock	Consid- eration	Par Value	Actual Cost	Prior Year Book/ Adjusted Carrying Value	Unrealized Valuation Increase/ (Decrease)	Current Year's (Amor- tization)/ Accretion	Current Year's Other Than Temporary Impairment Recogn- ized	Total Change in Book/ Adjusted Carrying Value (11 + 12 - 13)	Total Foreign Exchange Change in Book /Adjusted Carrying Value	Book/ Adjusted Carrying Value at Disposal Date	Foreign Exchange Gain (Loss) on Disposal	Realized Gain (Loss) on Disposal	Total Gain (Loss) on Disposal	Bond Interest/ Stock Dividends Received During Year	Stated Con- tractual Maturity Date	NAIC Design- ation or Market In- dicator (a)
36219Q-YP-2	GN 256418 - RMBS		06/01/2017	Paydown		.563	.563	.567	.561		.2		.2		.563		.0	.0	.20	.07/15/2019	1
36291B-KJ-5	GN 623197 - RMBS		06/01/2017	Paydown		6,295	6,295	6,767	6,373		(79)		(79)		6,295		.0	.0	.160	.11/15/2018	1
38377R-VK-8	GNR 10166F GP - CMO/RMBS		06/01/2017	Paydown		2,840	2,840	2,997	2,936		(96)		(96)		2,840				.30	.04/20/2039	1
0599999. Subtotal - Bonds - U.S. Governments						9,698	9,698	10,331	9,870		(173)		(173)		9,698				.209	XXX	XXX
3128MJ-09-4	FH G08479 - RMBS		06/01/2017	Paydown		1,934	1,934	1,998	1,997		(64)		(64)		1,934				.24	.03/01/2042	1
3128MJ-S4-3	FH G08538 - RMBS		06/01/2017	Paydown		2,698	2,698	2,712	2,711		(13)		(13)		2,698				.32	.07/01/2043	1
3128MJ-X8-8	FH G08702 - RMBS		06/01/2017	Paydown		6,333	6,333	6,638	6,642		(308)		(308)		6,333				.76	.04/01/2046	1
31292S-AH-3	FH C09008 - RMBS		06/01/2017	Paydown		1,650	1,650	1,705	1,704		(54)		(54)		1,650		.0	.0	.17	.08/01/2042	1
31320J-G3-1	FH Q37417 - RMBS		06/01/2017	Paydown		2,856	2,856	2,949	2,945		(89)		(89)		2,856				.33	.11/01/2045	1
31320H-PS-8	FH Q44032 - RMBS		06/01/2017	Paydown		4,168	4,168	4,308	4,307		(139)		(139)		4,168				.36	.10/01/2041	1
3136A4-DA-4	FNR 1224A AC - CMO/RMBS		06/01/2017	Paydown		1,705	1,705	1,748	1,726		(22)		(22)		1,705		.0	.0	.15	.05/25/2030	1
3136A5-YC-4	FNR 1230M ED - CMO/RMBS		06/01/2017	Paydown		1,279	1,279	1,305	1,295		(16)		(16)		1,279		.0	.0	.12	.04/25/2031	1
3136A6-QK-8	FNR 1245A PH - CMO/RMBS		06/01/2017	Paydown		2,979	2,979	3,171	3,080		(101)		(101)		2,979				.35	.12/25/2039	1
3137A8-RX-8	FHR 3841L JK - CMO/RMBS		06/01/2017	Paydown		2,875	2,875	2,992	2,931		(56)		(56)		2,875				.35	.10/15/2038	1
3138MJ-4E-0	FN A08920 - RMBS		06/01/2017	Paydown		2,414	2,414	2,511	2,490		(75)		(75)		2,414				.21	.01/01/2028	1
3138WD-3Z-2	FN AS4415 - RMBS		06/01/2017	Paydown		3,134	3,134	3,354	3,350		(216)		(216)		3,134		.0	.0	.37	.02/01/2045	1
3138WE-KK-4	FN AS4797 - RMBS		06/01/2017	Paydown		2,503	2,503	2,637	2,634		(131)		(131)		2,503				.30	.04/01/2045	1
3138WF-TA-4	FN AS5944 - RMBS		06/01/2017	Paydown		1,503	1,503	1,577	1,572		(68)		(68)		1,503		.0	.0	.16	.10/01/2045	1
313970-LT-3	FNR 114E PK - CMO/RMBS		06/01/2017	Paydown		2,186	2,186	2,300	2,253		(67)		(67)		2,186		.0	.0	.23	.04/25/2040	1
31398V-7F-7	FHR 3649C BW - CMO/RMBS		06/01/2017	Paydown		1,536	1,536	1,632	1,607		(71)		(71)		1,536		.0	.0	.21	.03/15/2025	1
3140F1-YB-2	FN BC6105 - RMBS		06/01/2017	Paydown		.996	.996	1,044	1,042		(47)		(47)		.996		.0	.0	.12	.06/01/2046	1
3199999. Subtotal - Bonds - U.S. Special Revenues						42,748	42,748	44,579	44,285		(1,537)		(1,537)		42,748		0	0	.474	XXX	XXX
0258M0-DN-6	AMERICAN EXPRESS CREDIT CORP		06/05/2017	Maturity @ 100.0		.50,000	50,000	50,098	50,015		(15)		(15)		50,000				.326	.06/05/2017	1FE
037833-AN-0	APPLE INC		05/05/2017	Maturity @ 100.0		50,000	50,000	50,000	50,000						50,000				.256	.05/05/2017	1FE
07401D-BC-4	BSOHS 07PR18 A4 - CMBS		06/01/2017	Paydown		3,529	3,529	3,878	3,566		(37)		(37)		3,529				.76	.06/11/2050	1FM
25152R-VZ-2	DEUTSCHE BANK AG (LONDON BRANCH)	C	05/30/2017	Maturity @ 100.0		50,000	50,000	50,000	50,000						50,000				.368	.05/30/2017	2FE
29366A-AA-2	ELL 1 A1 - ABS		06/01/2017	Paydown		6,025	6,025	6,024	6,024		.0		.0		6,025				.12	.09/01/2023	1FE
41284A-AD-0	HDMOT 141 A3 - ABS		06/15/2017	Paydown		16,345	16,345	16,341	16,344		.1		.1		16,345		.0	.0	.66	.09/16/2019	1FE
3899999. Subtotal - Bonds - Industrial and Miscellaneous (Unaffiliated)						175,898	175,899	176,340	175,950		(51)		(51)		175,899		0	0	.1,105	XXX	XXX
8399997. Total - Bonds - Part 4						228,345	228,345	231,251	230,106		(1,761)		(1,761)		228,345		0	0	.1,788	XXX	XXX
8399998. Total - Bonds - Part 5						XXX	XXX	XXX	XXX	XXX	XXX	XXX	XXX	XXX	XXX	XXX	XXX	XXX	XXX	XXX	XXX
8399999. Total - Bonds						228,345	228,345	231,251	230,106		(1,761)		(1,761)		228,345		0	0	.1,788	XXX	XXX
8999997. Total - Preferred Stocks - Part 4							XXX													XXX	XXX
8999998. Total - Preferred Stocks - Part 5						XXX	XXX	XXX	XXX	XXX	XXX	XXX	XXX	XXX	XXX	XXX	XXX	XXX	XXX	XXX	XXX
8999999. Total - Preferred Stocks							XXX													XXX	XXX
002824-10-0	ABBOTT LABORATORIES ORD		05/01/2017	Adjustment		.0,000														(18)	
14040H-10-5	CAPITAL ONE FINANCIAL ORD		06/29/2017	VARIOUS		.91,000	7,333	.7,312	7,939	(627)			(627)		.7,312	.21	.433	.21	.73		
14575E-10-5	CARS.COM ORD		06/07/2017	VARIOUS		135,000	3,616	.3,182							.3,182	.433	.433				
17275R-10-2	CISCO SYSTEMS ORD		06/15/2017	VARIOUS		259,000	8,127	.5,321	7,827	(2,506)			(2,506)		.5,321	2,806	2,806		.142		
172967-42-4	CITIGROUP ORD		05/01/2017	Adjustment		.0,000													(6)		
20030N-10-1	COMCAST CL A ORD		05/01/2017	Adjustment		.0,000													(6)		
254687-10-6	WALT DISNEY ORD		05/01/2017	Adjustment		.0,000													(26)		
452308-10-9	ILLINOIS TOOL ORD		06/16/2017	VARIOUS		43,000	6,359	.1,327	5,266	(3,939)			(3,939)		1,327	5,033	5,033		.56		
59156R-10-8	METLIFE ORD		05/01/2017	Adjustment		.0,000													(3)		
594918-10-4	MICROSOFT ORD		05/01/2017	Adjustment		.0,000													(18)		
701094-10-4	PARKER HANNIFIN ORD		05/01/2017	Adjustment		.0,000													(19)		
718172-10-9	PHILIP MORRIS INTERNATIONAL ORD		05/01/2017	Adjustment		.0,000													(5)		
	WELLS FARGO SECURITIES																				
863667-10-1	STRYKER ORD		06/08/2017	LLC		12,000	1,723	.980	1,438	(458)			(458)		.980	.743	.743		.10		
872540-10-9	TJX ORD		05/01/2017	Adjustment		.0,000													(1)		
87901J-10-5	TEGNA ORD		06/01/2017	CORPORATE ACTION		405,000	8,857	.8,857	8,663	194			194		.8,857				.113		
913017-10-9	UNITED TECHNOLOGIES ORD		05/01/2017	Adjustment		.0,000													(20)		
949746-10-1	WELLS FARGO ORD		06/01/2017	VARIOUS		345,000	18,597	.18,095	19,013	(918)			(918)		18,095	.502	.502		.169		
65960L-10-3	MEDTRONIC ORD	C	05/01/2017	Adjustment		.0,000													(11)		
9099999. Subtotal - Common Stocks - Industrial and Miscellaneous (Unaffiliated)						54,613	XXX	45,074	50,145	(8,254)			(8,254)		45,074	9,539	9,539		.431	XXX	XXX

STATEMENT AS OF JUNE 30, 2017 OF THE MICO INSURANCE COMPANY

SCHEDULE D - PART 4

Show All Long-Term Bonds and Stock Sold, Redeemed or Otherwise Disposed of During the Current Quarter

1	2	3	4	5	6	7	8	9	10	Change In Book/Adjusted Carrying Value					16	17	18	19	20	21	22
										11	12	13	14	15							
CUSIP Ident- ification	Description	For- eign	Disposal Date	Name of Purchaser	Number of Shares of Stock	Consid- eration	Par Value	Actual Cost	Prior Year Book/ Adjusted Carrying Value	Unrealized Valuation Increase/ (Decrease)	Current Year's (Amor- tization)/ Accretion	Current Year's Other Than Temporary Impairment Recog- nized	Total Change in Book/ Adjusted Carrying Value (11 + 12 - 13)	Total Foreign Exchange Change in Book /Adjusted Carrying Value	Book/ Adjusted Carrying Value at Disposal Date	Foreign Exchange Gain (Loss) on Disposal	Realized Gain (Loss) on Disposal	Total Gain (Loss) on Disposal	Bond Interest/ Stock Dividends Received DuringYear	Stated Con- tractual Maturity Date	NAIC Desig- nation or Market In- dicator (a)
9799997. Total - Common Stocks - Part 4						54,613	XXX	45,074	50,145	(8,254)			(8,254)		45,074		9,539	9,539	431	XXX	XXX
9799998. Total - Common Stocks - Part 5						XXX	XXX	XXX	XXX	XXX	XXX	XXX	XXX	XXX	XXX	XXX	XXX	XXX	XXX	XXX	XXX
9799999. Total - Common Stocks						54,613	XXX	45,074	50,145	(8,254)			(8,254)		45,074		9,539	9,539	431	XXX	XXX
9899999. Total - Preferred and Common Stocks						54,613	XXX	45,074	50,145	(8,254)			(8,254)		45,074		9,539	9,539	431	XXX	XXX
9999999 - Totals						282,958	XXX	276,325	280,251	(8,254)	(1,761)		(10,015)		273,419		9,539	9,539	2,219	XXX	XXX

(a) For all common stock bearing the NAIC market indicator "U" provide: the number of such issues.....

Schedule DB - Part A - Section 1 - Options, Caps, Floors, Collars, Swaps and Forwards Open

N O N E

Schedule DB - Part B - Section 1 - Futures Contracts Open

N O N E

Schedule DB - Part B - Section 1B - Brokers with whom cash deposits have been made

N O N E

Schedule DB - Part D - Section 1 - Counterparty Exposure for Derivative Instruments Open

N O N E

Schedule DB - Part D-Section 2 - Collateral for Derivative Instruments Open - Pledged By

N O N E

Schedule DB - Part D-Section 2 - Collateral for Derivative Instruments Open - Pledged To

N O N E

STATEMENT AS OF JUNE 30, 2017 OF THE MICO INSURANCE COMPANY

SCHEDULE DL - PART 1

SECURITIES LENDING COLLATERAL ASSETS

Reinvested Collateral Assets Owned Current Statement Date						
1	2	3	4	5	6	7
CUSIP Identification	Description	Code	NAIC Designation/ Market Indicator	Fair Value	Book/Adjusted Carrying Value	Maturity Date
0599999. Total - U.S. Government Bonds						XXX
1099999. Total - All Other Government Bonds						XXX
1799999. Total - U.S. States, Territories and Possessions Bonds						XXX
2499999. Total - U.S. Political Subdivisions Bonds						XXX
3199999. Total - U.S. Special Revenues Bonds						XXX
3899999. Total - Industrial and Miscellaneous (Unaffiliated) Bonds						XXX
4899999. Total - Hybrid Securities						XXX
5599999. Total - Parent, Subsidiaries and Affiliates Bonds						XXX
6099999. Subtotal - SVO Identified Funds						XXX
6199999. Total - Issuer Obligations						XXX
6299999. Total - Residential Mortgage-Backed Securities						XXX
6399999. Total - Commercial Mortgage-Backed Securities						XXX
6499999. Total - Other Loan-Backed and Structured Securities						XXX
6599999. Total - SVO Identified Funds						XXX
6699999. Total Bonds						XXX
7099999. Total - Preferred Stocks						XXX
Common Stocks - Industrial and Miscellaneous (Unaffiliated)						
	BNY MELLON Securities Lending Overnight Fund	0		13,689	13,689	
7199999. Subtotal - Common Stocks - Industrial and Miscellaneous (Unaffiliated)				13,689	13,689	XXX
7599999. Total - Common Stocks				13,689	13,689	XXX
7699999. Total - Preferred and Common Stocks				13,689	13,689	XXX
9999999 - Totals				13,689	13,689	XXX

General Interrogatories:

1. Total activity for the year to date Fair Value \$ 13,689 Book/Adjusted Carrying Value \$ 13,689

2. Average balance for the year to date Fair Value \$ 4,371 Book/Adjusted Carrying Value \$ 4,371

3. Reinvested securities lending collateral assets book/adjusted carrying value included in this schedule by NAIC designation:

NAIC 1 \$ 13,689 NAIC 2 \$ NAIC 3 \$ NAIC 4 \$ NAIC 5 \$ NAIC 6 \$

STATEMENT AS OF JUNE 30, 2017 OF THE MICO INSURANCE COMPANY

SCHEDULE DL - PART 2

SECURITIES LENDING COLLATERAL ASSETS

Reinvested Collateral Assets Owned Current Statement Date						
1	2	3	4	5	6	7
CUSIP Identification	Description	Code	NAIC Designation/ Market Indicator	Fair Value	Book/Adjusted Carrying Value	Maturity Date
9999999 - Totals						XXX

General Interrogatories:

1. Total activity for the year to date
- Fair value Book/Adjusted Carrying Value \$
2. Average balance for the year to date
- Fair value Book/Adjusted Carrying Value \$

NONE

SCHEDULE E - PART 1 - CASH

Month End Depository Balances

1	2	3	4	5	Book Balance at End of Each Month During Current Quarter			9
					6	7	8	
Depository	Code	Rate of Interest	Amount of Interest Received During Current Quarter	Amount of Interest Accrued at Current Statement Date	First Month	Second Month	Third Month	*
BNY Mellon Pittsburgh, PA					(7)		1,313	XXX
0199998. Deposits in ... depositories that do not exceed the allowable limit in any one depository (See instructions) - Open Depositories	XXX	XXX						XXX
0199999. Totals - Open Depositories	XXX	XXX			(7)		1,313	XXX
0299998. Deposits in ... depositories that do not exceed the allowable limit in any one depository (See instructions) - Suspended Depositories	XXX	XXX						XXX
0299999. Totals - Suspended Depositories	XXX	XXX						XXX
0399999. Total Cash on Deposit	XXX	XXX			(7)		1,313	XXX
0499999. Cash in Company's Office	XXX	XXX	XXX	XXX				XXX
0599999. Total - Cash	XXX	XXX			(7)		1,313	XXX

SCHEDULE E - PART 2 - CASH EQUIVALENTS

Show Investments Owned End of Current Quarter							
1	2	3	4	5	6	7	8
Description	Cost	Unaccrued Interest	Rate of Interest	Maturity Date	Book/Adjusted Carrying Value	Amount of Interest Due and Accrued	Amount Received During Year
8699999 - Total Cash Equivalents							

NONE