



QUARTERLY STATEMENT

As of March 31, 2017
of the Condition and Affairs of the

Family Heritage Life Insurance Company of America

NAIC Group Code.....0290, 0290 (Current Period) (Prior Period)	NAIC Company Code..... 77968	Employer's ID Number..... 34-1626521
Organized under the Laws of OH	State of Domicile or Port of Entry OH	Country of Domicile US
Incorporated/Organized..... August 22, 1989	Commenced Business..... November 17, 1989	
Statutory Home Office	6001 East Royalton Road, Suite 200..... Cleveland OH US 44147-3529 <i>(Street and Number) (City or Town, State, Country and Zip Code)</i>	
Main Administrative Office	6001 East Royalton Road, Suite 200..... Cleveland OH US 44147-3529 <i>(Street and Number) (City or Town, State, Country and Zip Code)</i>	440-922-5200 <i>(Area Code) (Telephone Number)</i>
Mail Address	P. O. Box 470608..... Cleveland OH US 44147-3529 <i>(Street and Number or P. O. Box) (City or Town, State, Country and Zip Code)</i>	
Primary Location of Books and Records	6001 East Royalton Road, Suite 200..... Cleveland OH US 44147-3529 <i>(Street and Number) (City or Town, State, Country and Zip Code)</i>	440-922-5200 <i>(Area Code) (Telephone Number)</i>
Internet Web Site Address	www.FamilyHeritageLife.com	
Statutory Statement Contact	John A. Wise <i>(Name)</i> acctdept@familyheritagelife.com <i>(E-Mail Address)</i>	440-922-5200 <i>(Area Code) (Telephone Number) (Extension)</i> 440-922-5120 <i>(Fax Number)</i>

OFFICERS

Name	Title	Name	Title
1. J. Matthew Darden #	President	2. Ronald L. Sarosy	Treasurer & CFO
3. Maria Burnett	Assistant Secretary	4. Kenneth J. Matson #	President & CEO, FHL Agency Division

OTHER

David S. Cochrane	Senior Vice President	Seamus Fitzpatrick	Senior Vice President, FHL Agency Division
Corey Jones	Senior Vice President	Eric Lenz	Senior Vice President
Tony M. Martella	Senior Vice President	Jeffrey S. Morris	Senior Vice President
Latrice Robinson #	Senior Vice President	Joel P. Scarborough	Senior Vice President
David K. Carlson	Vice President	Jeremy King	Vice President
Travis W. Korth	Vice President	Bret D. Mottl	Vice President
W. Michael Pressley	Vice President	Robert Schmidt #	Vice President, FHL Agency Division
Eric W. Shanaberger	Vice President, FHL Agency Division	Daniel T. Shelton	Vice President, FHL Agency Division
Duaine L. Styles	Vice President	Tod K. Richardson	Assistant Vice President
John A. Wise	Assistant Vice President	Barbara Sue Emig	Appointed Actuary

DIRECTORS OR TRUSTEES

J. Matthew Darden #	Ronald L. Sarosy	Jeffrey S. Morris	Ben W. Lutek
M. Shane Henrie #	Maria Burnett		

State of..... Ohio
County of..... Cuyahoga

The officers of this reporting entity being duly sworn, each depose and say that they are the described officers of said reporting entity, and that on the reporting period stated above, all of the herein described assets were the absolute property of the said reporting entity, free and clear from any liens or claims thereon, except as herein stated, and that this statement, together with related exhibits, schedules and explanations therein contained, annexed or referred to, is a full and true statement of all the assets and liabilities and of the condition and affairs of the said reporting entity as of the reporting period stated above, and of its income and deductions therefrom for the period ended, and have been completed in accordance with the NAIC *Annual Statement Instructions and Accounting Practices and Procedures* manual except to the extent that: (1) state law may differ; or, (2) that state rules or regulations require differences in reporting not related to accounting practices and procedures, according to the best of their information, knowledge and belief, respectively. Furthermore, the scope of this attestation by the described officers also includes the related corresponding electronic filing with the NAIC, when required, that is an exact copy (except for formatting differences due to electronic filing) of the enclosed statement. The electronic filing may be requested by various regulators in lieu of or in addition to the enclosed statement.

_____ (Signature) J. Matthew Darden 1. (Printed Name) President (Title)	_____ (Signature) Ronald L. Sarosy 2. (Printed Name) Treasurer & CFO (Title)	_____ (Signature) Maria Burnett 3. (Printed Name) Assistant Secretary (Title)
--	---	--

Subscribed and sworn to before me
This _____ day of _____

a. Is this an original filing? Yes [X] No []
b. If no: 1. State the amendment number _____
2. Date filed _____
3. Number of pages attached _____

ASSETS

	Current Statement Date			4 December 31 Prior Year Net Admitted Assets
	1 Assets	2 Nonadmitted Assets	3 Net Admitted Assets (Cols. 1 - 2)	
1. Bonds.....	996,017,176		996,017,176	929,749,601
2. Stocks:				
2.1 Preferred stocks.....			0	
2.2 Common stocks.....			0	
3. Mortgage loans on real estate:				
3.1 First liens.....			0	
3.2 Other than first liens.....			0	
4. Real estate:				
4.1 Properties occupied by the company (less \$.....0 encumbrances).....			0	
4.2 Properties held for the production of income (less \$.....0 encumbrances).....			0	
4.3 Properties held for sale (less \$.....0 encumbrances).....			0	670,000
5. Cash (\$.....(6,059,044)), cash equivalents (\$.....2,697,477) and short-term investments (\$.....(265,773)).....	(3,627,340)		(3,627,340)	5,526,674
6. Contract loans (including \$.....0 premium notes).....	47,269		47,269	43,011
7. Derivatives.....			0	
8. Other invested assets.....	17,167,356		17,167,356	17,159,518
9. Receivables for securities.....			0	
10. Securities lending reinvested collateral assets.....			0	
11. Aggregate write-ins for invested assets.....	0	0	0	0
12. Subtotals, cash and invested assets (Lines 1 to 11).....	1,009,604,461	0	1,009,604,461	953,148,804
13. Title plants less \$.....0 charged off (for Title insurers only).....			0	
14. Investment income due and accrued.....	8,685,328		8,685,328	7,939,485
15. Premiums and considerations:				
15.1 Uncollected premiums and agents' balances in the course of collection.....	5,894,392		5,894,392	5,805,878
15.2 Deferred premiums, agents' balances and installments booked but deferred and not yet due (including \$.....0 earned but unbilled premiums).....	35,858,234		35,858,234	31,273,151
15.3 Accrued retrospective premiums (\$.....0) and contracts subject to redetermination (\$.....0).....			0	
16. Reinsurance:				
16.1 Amounts recoverable from reinsurers.....	3,040,289		3,040,289	2,359,623
16.2 Funds held by or deposited with reinsured companies.....			0	
16.3 Other amounts receivable under reinsurance contracts.....	89,894,335		89,894,335	85,703,513
17. Amounts receivable relating to uninsured plans.....			0	
18.1 Current federal and foreign income tax recoverable and interest thereon.....			0	1,024,455
18.2 Net deferred tax asset.....	64,900,000	41,432,000	23,468,000	21,167,000
19. Guaranty funds receivable or on deposit.....	196,613		196,613	266,906
20. Electronic data processing equipment and software.....	167,614	59,484	108,130	127,498
21. Furniture and equipment, including health care delivery assets (\$.....0).....	43,638	43,638	0	
22. Net adjustment in assets and liabilities due to foreign exchange rates.....			0	
23. Receivables from parent, subsidiaries and affiliates.....			0	
24. Health care (\$.....0) and other amounts receivable.....			0	
25. Aggregate write-ins for other than invested assets.....	13,629,763	13,629,763	0	0
26. Total assets excluding Separate Accounts, Segregated Accounts and Protected Cell Accounts (Lines 12 through 25).....	1,231,914,667	55,164,885	1,176,749,782	1,108,816,313
27. From Separate Accounts, Segregated Accounts and Protected Cell Accounts.....			0	
28. Total (Lines 26 and 27).....	1,231,914,667	55,164,885	1,176,749,782	1,108,816,313

DETAILS OF WRITE-INS

1101.....			0	
1102.....			0	
1103.....			0	
1198. Summary of remaining write-ins for Line 11 from overflow page.....	0	0	0	0
1199. Totals (Lines 1101 thru 1103 plus 1198) (Line 11 above).....	0	0	0	0
2501. Agent Balances.....	13,308,151	13,308,151	0	
2502. Prepaid Expenses.....	281,115	281,115	0	
2503. Other Assets Non-Admitted.....	40,497	40,497	0	
2598. Summary of remaining write-ins for Line 25 from overflow page.....	0	0	0	0
2599. Totals (Lines 2501 thru 2503 plus 2598) (Line 25 above).....	13,629,763	13,629,763	0	0

LIABILITIES, SURPLUS AND OTHER FUNDS

	1 Current Statement Date	2 December 31 Prior Year
1. Aggregate reserve for life contracts \$.....90,293,267 less \$.....0 included in Line 6.3 (including \$.....85,010,899 Modco Reserve).....	90,293,267	76,043,877
2. Aggregate reserve for accident and health contracts (including \$.....0 Modco Reserve).....	838,175,537	814,110,199
3. Liability for deposit-type contracts (including \$.....0 Modco Reserve).....		
4. Contract claims:		
4.1 Life.....	4,413,289	3,602,216
4.2 Accident and health.....	20,682,664	19,585,983
5. Policyholders' dividends \$.....0 and coupons \$.....0 due and unpaid.....		
6. Provision for policyholders' dividends and coupons payable in following calendar year - estimated amounts:		
6.1 Dividends apportioned for payment (including \$.....0 Modco).....		
6.2 Dividends not yet apportioned (including \$.....0 Modco).....		
6.3 Coupons and similar benefits (including \$.....0 Modco).....		
7. Amount provisionally held for deferred dividend policies not included in Line 6.....		
8. Premiums and annuity considerations for life and accident and health contracts received in advance less \$.....0 discount; including \$.....0 accident and health premiums.....	57,333	35,441
9. Contract liabilities not included elsewhere:		
9.1 Surrender values on canceled contracts.....		
9.2 Provision for experience rating refunds, including the liability of \$.....0 accident and health experience rating refunds of which \$.....0 is for medical loss ratio rebate per the Public Health Service Act.....		
9.3 Other amounts payable on reinsurance, including \$.....189,246 assumed and \$.....43,385,407 ceded.....	43,574,653	40,583,975
9.4 Interest Maintenance Reserve.....	1,945,723	2,106,905
10. Commissions to agents due or accrued - life and annuity contracts \$.....24,800, accident and health \$.....860,600 and deposit-type contract funds \$.....0.....	885,400	942,200
11. Commissions and expense allowances payable on reinsurance assumed.....	37,445,522	36,227,603
12. General expenses due or accrued.....	3,433,976	3,967,328
13. Transfers to Separate Accounts due or accrued (net) (including \$.....0 accrued for expense allowances recognized in reserves, net of reinsured allowances).....		
14. Taxes, licenses and fees due or accrued, excluding federal income taxes.....	764,423	959,149
15.1 Current federal and foreign income taxes, including \$.....0 on realized capital gains (losses).....	2,992,272	
15.2 Net deferred tax liability.....		
16. Unearned investment income.....		
17. Amounts withheld or retained by company as agent or trustee.....	6	6
18. Amounts held for agents' account, including \$.....0 agents' credit balances.....		
19. Remittances and items not allocated.....	464,839	565,939
20. Net adjustment in assets and liabilities due to foreign exchange rates.....		
21. Liability for benefits for employees and agents if not included above.....	372,431	366,038
22. Borrowed money \$.....16,000,000 and interest thereon \$.....816,569.....	16,816,569	398,125
23. Dividends to stockholders declared and unpaid.....		
24. Miscellaneous liabilities:		
24.01 Asset valuation reserve.....	4,188,771	3,928,304
24.02 Reinsurance in unauthorized and certified (\$.....0) companies.....		
24.03 Funds held under reinsurance treaties with unauthorized and certified (\$.....0) reinsurers.....		
24.04 Payable to parent, subsidiaries and affiliates.....		
24.05 Drafts outstanding.....		
24.06 Liability for amounts held under uninsured plans.....		
24.07 Funds held under coinsurance.....		
24.08 Derivatives.....		
24.09 Payable for securities.....	4,767,355	
24.10 Payable for securities lending.....		
24.11 Capital notes \$.....0 and interest thereon \$.....0.....		
25. Aggregate write-ins for liabilities.....	1,273,963	1,165,334
26. Total liabilities excluding Separate Accounts business (Lines 1 to 25).....	1,072,547,993	1,004,588,622
27. From Separate Accounts statement.....		
28. Total liabilities (Lines 26 and 27).....	1,072,547,993	1,004,588,622
29. Common capital stock.....	2,556,950	2,556,950
30. Preferred capital stock.....		
31. Aggregate write-ins for other-than-special surplus funds.....	0	0
32. Surplus notes.....	30,000,000	30,000,000
33. Gross paid in and contributed surplus.....	32,646,050	32,646,050
34. Aggregate write-ins for special surplus funds.....	0	0
35. Unassigned funds (surplus).....	38,998,789	39,024,691
36. Less treasury stock, at cost:		
36.10.000 shares common (value included in Line 29 \$.....0).....		
36.20.000 shares preferred (value included in Line 30 \$.....0).....		
37. Surplus (Total Lines 31 + 32 + 33 + 34 + 35 - 36) (including \$.....0 in Separate Accounts Statement).....	101,644,839	101,670,741
38. Totals of Lines 29, 30 and 37.....	104,201,789	104,227,691
39. Totals of Lines 28 and 38 (Page 2, Line 28, Col. 3).....	1,176,749,782	1,108,816,313

DETAILS OF WRITE-INS

2501. Unclaimed Property.....	1,273,963	1,165,334
2502.		
2503.		
2598. Summary of remaining write-ins for Line 25 from overflow page.....	0	0
2599. Totals (Lines 2501 thru 2503 plus 2598) (Line 25 above).....	1,273,963	1,165,334
3101.		
3102.		
3103.		
3198. Summary of remaining write-ins for Line 31 from overflow page.....	0	0
3199. Totals (Lines 3101 thru 3103 plus 3198) (Line 31 above).....	0	0
3401.		
3402.		
3403.		
3498. Summary of remaining write-ins for Line 34 from overflow page.....	0	0
3499. Totals (Lines 3401 thru 3403 plus 3498) (Line 34 above).....	0	0

SUMMARY OF OPERATIONS

	1 Current Year to Date	2 Prior Year to Date	3 Prior Year Ended December 31
1. Premiums and annuity considerations for life and accident and health contracts.....	71,135,584	67,569,989	264,618,524
2. Considerations for supplementary contracts with life contingencies.....			
3. Net investment income.....	10,420,917	9,177,889	38,585,438
4. Amortization of Interest Maintenance Reserve (IMR).....	164,855	236,912	948,180
5. Separate Accounts net gain from operations excluding unrealized gains or losses.....			
6. Commissions and expense allowances on reinsurance ceded.....	38,003,423	33,598,449	142,963,446
7. Reserve adjustments on reinsurance ceded.....	8,770,467	4,933,468	27,106,285
8. Miscellaneous Income:			
8.1 Income from fees associated with investment management, administration and contract guarantees from Separate Accounts.....			
8.2 Charges and fees for deposit-type contracts.....			
8.3 Aggregate write-ins for miscellaneous income.....	0	32,022	43,181
9. Totals (Lines 1 to 8.3).....	128,495,246	115,548,729	474,265,054
10. Death benefits.....	145,001	136,000	583,165
11. Matured endowments (excluding guaranteed annual pure endowments).....			
12. Annuity benefits.....			
13. Disability benefits and benefits under accident and health contracts.....	17,167,546	14,291,697	59,903,413
14. Coupons, guaranteed annual pure endowments and similar benefits.....			
15. Surrender benefits and withdrawals for life contracts.....	26,216	23,465	80,989
16. Group conversions.....			
17. Interest and adjustments on contract or deposit-type contract funds.....		7	7
18. Payments on supplementary contracts with life contingencies.....			
19. Increase in aggregate reserves for life and accident and health contracts.....	38,314,728	32,814,670	140,350,686
20. Totals (Lines 10 to 19).....	55,653,491	47,265,839	200,918,260
21. Commissions on premiums, annuity considerations and deposit-type contract funds (direct business only).....	14,284,667	13,196,810	54,438,300
22. Commissions and expense allowances on reinsurance assumed.....	37,445,522	33,160,689	141,038,033
23. General insurance expenses.....	6,625,808	5,832,417	23,535,723
24. Insurance taxes, licenses and fees, excluding federal income taxes.....	1,457,630	1,361,171	5,685,780
25. Increase in loading on deferred and uncollected premiums.....	3,550,258	4,116,306	11,251,470
26. Net transfers to or (from) Separate Accounts net of reinsurance.....			
27. Aggregate write-ins for deductions.....	0	0	0
28. Totals (Lines 20 to 27).....	119,017,376	104,933,232	436,867,566
29. Net gain from operations before dividends to policyholders and federal income taxes (Line 9 minus Line 28).....	9,477,870	10,615,497	37,397,488
30. Dividends to policyholders.....			
31. Net gain from operations after dividends to policyholders and before federal income taxes (Line 29 minus Line 30).....	9,477,870	10,615,497	37,397,488
32. Federal and foreign income taxes incurred (excluding tax on capital gains).....	3,999,729	4,463,140	13,512,844
33. Net gain from operations after dividends to policyholders and federal income taxes and before realized capital gains or (losses) (Line 31 minus Line 32).....	5,478,141	6,152,357	23,884,644
34. Net realized capital gains (losses) (excluding gains (losses) transferred to the IMR) less capital gains tax of \$..... 16,998 (excluding taxes of \$..... 0 transferred to the IMR).....	(31,998)	(31,128)	(66,528)
35. Net income (Line 33 plus Line 34).....	5,446,143	6,121,229	23,818,116
CAPITAL AND SURPLUS ACCOUNT			
36. Capital and surplus, December 31, prior year.....	104,227,691	78,318,392	78,318,392
37. Net income (Line 35).....	5,446,143	6,121,229	23,818,116
38. Change in net unrealized capital gains (losses) less capital gains tax of \$..... (5,000).....	(8,119)	24,637	2,377
39. Change in net unrealized foreign exchange capital gain (loss).....			
40. Change in net deferred income tax.....	995,684	674,000	3,922,887
41. Change in nonadmitted assets.....	659,585	1,036,905	(11,507,527)
42. Change in liability for reinsurance in unauthorized and certified companies.....			
43. Change in reserve on account of change in valuation basis, (increase) or decrease.....			
44. Change in asset valuation reserve.....	(260,467)	(221,035)	(992,629)
45. Change in treasury stock.....			
46. Surplus (contributed to) withdrawn from Separate Accounts during period.....			
47. Other changes in surplus in Separate Accounts Statement.....			
48. Change in surplus notes.....			30,000,000
49. Cumulative effect of changes in accounting principles.....			
50. Capital changes:			
50.1 Paid in.....			
50.2 Transferred from surplus (Stock Dividend).....			
50.3 Transferred to surplus.....			
51. Surplus adjustment:			
51.1 Paid in.....			
51.2 Transferred to capital (Stock Dividend).....			
51.3 Transferred from capital.....			
51.4 Change in surplus as a result of reinsurance.....			
52. Dividends to stockholders.....	(6,860,000)	(2,138,000)	(19,096,000)
53. Aggregate write-ins for gains and losses in surplus.....	1,272	0	(237,925)
54. Net change in capital and surplus (Lines 37 through 53).....	(25,902)	5,497,736	25,909,299
55. Capital and surplus as of statement date (Lines 36 + 54).....	104,201,789	83,816,128	104,227,691

DETAILS OF WRITE-INS

08.301. Misc Income.....		32,022	43,181
08.302.			
08.303.			
08.398. Summary of remaining write-ins for Line 8.3 from overflow page.....	0	0	0
08.399. Totals (Lines 08.301 thru 08.303 plus 08.398) (Line 8.3 above).....	0	32,022	43,181
2701.			
2702.			
2703.			
2798. Summary of remaining write-ins for Line 27 from overflow page.....	0	0	0
2799. Totals (Lines 2701 thru 2703 plus 2798) (Line 27 above).....	0	0	0
5301. change in executive benefit plans.....	1,956		(366,038)
5302. change in executive benefit plans - Def FIT.....	(684)		128,113
5303.			
5398. Summary of remaining write-ins for Line 53 from overflow page.....	0	0	0
5399. Totals (Lines 5301 thru 5303 plus 5398) (Line 53 above).....	1,272	0	(237,925)

CASH FLOW

	1 Current Year to Date	2 Prior Year To Date	3 Prior Year Ended December 31
CASH FROM OPERATIONS			
1. Premiums collected net of reinsurance.....	62,919,601	58,213,403	239,327,096
2. Net investment income.....	6,798,574	5,202,943	23,982,273
3. Miscellaneous income.....	45,588,050	37,235,161	161,761,674
4. Total (Lines 1 through 3).....	115,306,225	100,651,507	425,071,043
5. Benefit and loss related payments.....	16,125,680	13,864,707	58,220,425
6. Net transfers to Separate Accounts, Segregated Accounts and Protected Cell Accounts.....			
7. Commissions, expenses paid and aggregate write-ins for deductions.....	59,187,651	52,559,129	219,974,984
8. Dividends paid to policyholders.....			
9. Federal and foreign income taxes paid (recovered) net of \$.00 tax on capital gains (losses).....			13,887,433
10. Total (Lines 5 through 9).....	75,313,331	66,423,836	292,082,842
11. Net cash from operations (Line 4 minus Line 10).....	39,992,894	34,227,671	132,988,201
CASH FROM INVESTMENTS			
12. Proceeds from investments sold, matured or repaid:			
12.1 Bonds.....	1,022,500	2,939,400	15,496,604
12.2 Stocks.....			
12.3 Mortgage loans.....			
12.4 Real estate.....	655,000		570,000
12.5 Other invested assets.....			125,000
12.6 Net gains or (losses) on cash, cash equivalents and short-term investments.....			
12.7 Miscellaneous proceeds.....			
12.8 Total investment proceeds (Lines 12.1 to 12.7).....	1,677,500	2,939,400	16,191,604
13. Cost of investments acquired (long-term only):			
13.1 Bonds.....	64,010,752	38,127,475	145,912,421
13.2 Stocks.....			
13.3 Mortgage loans.....			
13.4 Real estate.....		644,295	1,346,795
13.5 Other invested assets.....		954,880	954,880
13.6 Miscellaneous applications.....	(4,767,355)		
13.7 Total investments acquired (Lines 13.1 to 13.6).....	59,243,397	39,726,650	148,214,096
14. Net increase or (decrease) in contract loans and premium notes.....	4,258	4,470	14,305
15. Net cash from investments (Line 12.8 minus Line 13.7 and Line 14).....	(57,570,155)	(36,791,720)	(132,036,797)
CASH FROM FINANCING AND MISCELLANEOUS SOURCES			
16. Cash provided (applied):			
16.1 Surplus notes, capital notes.....			30,000,000
16.2 Capital and paid in surplus, less treasury stock.....			
16.3 Borrowed funds.....	16,000,000		
16.4 Net deposits on deposit-type contracts and other insurance liabilities.....			
16.5 Dividends to stockholders.....	6,860,000	2,138,000	19,096,000
16.6 Other cash provided (applied).....	(716,753)	380,849	(9,042,348)
17. Net cash from financing and miscellaneous sources (Lines 16.1 through 16.4 minus Line 16.5 plus Line 16.6).....	8,423,247	(1,757,151)	1,861,652
RECONCILIATION OF CASH, CASH EQUIVALENTS AND SHORT-TERM INVESTMENTS			
18. Net change in cash, cash equivalents and short-term investments (Line 11 plus Line 15 plus Line 17).....	(9,154,014)	(4,321,200)	2,813,056
19. Cash, cash equivalents and short-term investments:			
19.1 Beginning of year.....	5,526,674	2,713,618	2,713,618
19.2 End of period (Line 18 plus Line 19.1).....	(3,627,340)	(1,607,582)	5,526,674
Note: Supplemental disclosures of cash flow information for non-cash transactions:			
20.0001 Non-cash bond exchanges - acquisitions (line 13.1).....			10,071,650
20.0002 Non-cash bond exchanges - disposals (line 12.1).....			10,071,650

EXHIBIT 1

DIRECT PREMIUMS AND DEPOSIT-TYPE CONTRACTS

	1 Current Year To Date	2 Prior Year To Date	3 Prior Year Ended December 31
1. Industrial life.....			
2. Ordinary life insurance.....	.818,487	732,635	3,160,386
3. Ordinary individual annuities.....			
4. Credit life (group and individual).....			
5. Group life insurance.....			
6. Group annuities.....			
7. A&H - group.....	2,797,035	2,397,053	10,223,382
8. A&H - credit (group and individual).....			
9. A&H - other.....	60,011,379	55,787,653	228,893,622
10. Aggregate of all other lines of business.....	0	0	0
11. Subtotal.....	63,626,901	58,917,341	242,277,390
12. Deposit-type contracts.....			
13. Total.....	63,626,901	58,917,341	242,277,390

DETAILS OF WRITE-INS

1001.			
1002.			
1003.			
1098. Summary of remaining write-ins for Line 10 from overflow page.....	0	0	0
1099. Total (Lines 1001 thru 1003 plus 1098) (Line 10 above).....	0	0	0

NOTES TO FINANCIAL STATEMENTS**Note 1 – Summary of Significant Accounting Policies and Going Concern**

A. Accounting Practices

	SSAP #	F/S Page	F/S Line #	2017	2016
NET INCOME					
(1) Family Heritage Life Insurance Company of America state basis (Page 4, Line 35, Columns 1 & 2)	XXX	XXX	XXX	\$ 5,446,143	\$ 23,818,116
(2) State Prescribed Practice that is an increase/(decrease) from NAIC SAP None					
(3) State Permitted Practice that is an increase/(decrease) from NAIC SAP None					
(4) NAIC SAP (1 – 2 – 3 = 4)	XXX	XXX	XXX	\$ 5,446,143	\$ 23,818,116
SURPLUS					
(5) Family Heritage Life Insurance Company of America state basis (Page 3, line 38, Columns 1 & 2)	XXX	XXX	XXX	\$ 104,201,789	\$ 104,227,691
(6) State Prescribed Practice that is an increase/(decrease) from NAIC SAP None					
(7) State Permitted Practice that is an increase/(decrease) from NAIC SAP None					
(8) NAIC SAP (5 – 6 – 7 = 8)	XXX	XXX	XXX	\$ 104,201,789	\$ 104,227,691

C. Accounting Policy

- (6) Loan-backed securities and other structured securities are stated at amortized cost or the lower of amortized cost or fair value. Anticipated prepayments are used at the time of purchase to determine the effective yield. Changes in the timing of expected cash flows after original acquisition are accounted for using the retrospective method. Securities that are determined to be other-than-temporarily impaired are accounted for using the prospective method.

D. Going Concern

After evaluating the entity's ability to continue as a going concern, management was not aware of any conditions or events which raised substantial doubts concerning the entity's ability to continue as a going concern as of the date of the filing of this statement.

Note 2 – Accounting Changes and Corrections of Errors

No significant changes

Note 3 – Business Combinations and Goodwill

No significant change.

Note 4 – Discontinued Operations

No significant changes

Note 5 – Investments

D. Loan-Backed Securities

Investments in other structured securities include asset-backed securities. The Company does not own any residential or commercial mortgage-backed securities.

- 1) Call, redemption, and sinking fund information for other structured securities were obtained from Bloomberg and bond prospectuses.
- 2) None
- 3) None
- 4) The following table shows loan-backed and other structured securities that have an unrealized loss as of the end of the current quarter:

a. The aggregate amount of unrealized losses:	1. Less than 12 Months	\$	(86,779)
	2. 12 Months or Longer	\$	
b. The aggregate related fair value of securities with unrealized losses:	1. Less than 12 Months	\$	5,895,721
	2. 12 Months or Longer	\$	

- 5) Several sources of information are considered when determining impairments are, or are not, other-than-temporary. These include, but are not limited to, the following. Credit rating agency information related to the security is reviewed, in addition to direct discussions with the rating analyst as needed. Reports from third party research providers and sell-side research analysts are reviewed. Market and trading information on the securities and other like-securities is monitored to assess trends impacting the securities. Market liquidity is analyzed to gauge how much it is impacting prices versus actual credit quality changes. Some

NOTES TO FINANCIAL STATEMENTS

sources of information will not be available for all securities. Where applicable, additional information is gathered for collateralized investments. This includes analysis of the individual underlying collateral and estimates of potential future collateral performance. Multiple cash flow scenarios are calculated based on various loss rate assumptions and used to assess the likelihood of future possible impairment.

- E. Repurchase Agreements and/or Securities Lending Transactions - Not applicable
- I. Working Capital Finance Investments - Not applicable
- J. Offsetting and Netting of Assets and Liabilities - Not applicable

Note 6 – Joint Ventures, Partnerships and Limited Liability Companies

No significant changes

Note 7 – Investment Income

No significant changes

Note 8 – Derivative Instruments

No significant changes

Note 9 – Income Taxes

No significant changes

Note 10 – Information Concerning Parent, Subsidiaries, Affiliates and Other Related Parties

The Company borrowed \$10,000,000 from an affiliate, United American Insurance Company, on March 9, 2017 at an interest rate of 3.75%. The borrowing has a scheduled maturity date of September 7, 2017.

The Company borrowed \$5,000,000 from an affiliate, United American Insurance Company, on March 28, 2017 at an interest rate of 4.00%. The borrowing has a scheduled maturity date of September 26, 2017.

The Company borrowed \$1,000,000 from an affiliate, United American Insurance Company, on March 31, 2017 at an interest rate of 4.00%. The borrowing has a scheduled maturity date of September 29, 2017.

Note 11 – Debt

Not applicable

Note 12 – Retirement Plans, Deferred Compensation, Postemployment Benefits and Compensated Absences and Other Postretirement Benefit Plans

The Company participates in a Supplemental Executive Retirement Plan (SERP) sponsored through its ultimate parent Torchmark Corp, which provides to a limited number of executives an additional supplemental defined pension benefit. The supplemental benefit is based on the participant's qualified plan benefit without consideration to regulatory limits on compensation and benefit payments applicable to qualified plans, except that eligible compensation is capped at \$1 million.

Note 13 – Capital and Surplus, Dividend Restrictions and Quasi-Reorganizations

Dividends on company stock are paid as declared by its Board of Directors and are subject to regulations of the State of Ohio.

	DECLARED	PAID
\$6,860,000 ordinary dividend	03/17/2017	03/29/2017

Note 14 – Liabilities, Contingencies and Assessments

Not applicable

Note 15 – Leases

No significant changes

Note 16 – Information about Financial Instruments with Off-Balance Sheet Risk and Financial Instruments with Concentrations of Credit Risk

No significant changes

Note 17 – Sale, Transfer and Servicing of Financial Assets and Extinguishments of Liabilities

Not applicable

Note 18 – Gain or Loss to the Reporting Entity from Uninsured Plans and the Portion of Partially Insured Plans

NOTES TO FINANCIAL STATEMENTS

No significant changes

Note 19 – Direct Premium Written/Produced by Managing General Agents/Third Party Administrators

No significant changes

Note 20 – Fair Value Measurements

A.

(1) Fair Value Measurements at Reporting Date

	Level 1	Level 2	Level 3	Total
Assets at Fair Value				
Bonds - Municipals	\$	\$ 333,148	\$	\$ 333,148
Total	\$	\$ 333,148	\$	\$ 333,148
Liabilities at Fair Value				
None	\$	\$	\$	\$
Total	\$	\$	\$	\$

As of quarter-end, two municipal bonds, characterized as NAIC 6FE, were measured and reported at fair value on the statement of financial position. Their fair value is categorized as Level 2. During the quarter, the Company did not have any transfers between Levels 1 and 2 for assets measured and reported at fair value on the statement of financial position. Transfers between levels are recognized at the end of the reporting period in which they occur.

- (2) As of quarter-end, the Company did not have any securities categorized as Level 3 that are measured and reported at fair value on the statement of financial position.
- (3) During the quarter, the Company did not have any transfers into or out of Level 3 for assets measured and reported at fair value on the statement of financial position.
- (4) The majority of the Company's securities are not actively traded and direct quotes are not generally available. Management therefore determines the fair values of securities after consideration of data provided by third-party pricing services, independent broker/dealers, and other resources. Prices provided by third-party pricing services are not binding offers but are estimated exit values. They are based on observable market data inputs which can vary by security type. Such inputs include benchmark yields, available trades, broker/dealer quotes, issuer spreads, benchmark securities, bids, offers, and other inputs that are corroborated in the market. All fair value measurements based on prices determined with observable market data are reported as Level 1 or Level 2 measurements. When third-party vendor prices are not available, the Company attempts to obtain valuations from other sources, including but not limited to broker/dealers, broker quotes, and prices on comparable securities.

When valuations have been obtained for all securities in the portfolio, management reviews and analyzes the prices to insure their reasonableness, taking into account available observable information. When two or more valuations are available for a security and the variance between the valuations is 10% or less, the close correlation suggests similar observable inputs were used in deriving the prices, and the average of the prices is used. Securities valued in this manner are classified as Level 2. When the variance exceeds 10%, further review is performed on the available valuations to determine if they can be corroborated within reasonable tolerance to any other observable evidence. If one of the valuations or the average of the available valuations can be corroborated with other observable evidence, then the corroborated value is used and reported as Level 2. The Company uses information and analytical techniques deemed appropriate for determining the point within the range of reasonable fair value estimates that is most representative of fair value under current market conditions. Valuations that cannot be corroborated within a reasonable tolerance are classified as Level 3.

- (5) Derivative assets and liabilities - None

B. Other fair value disclosures - None

C.

Type of Financial Instrument	Aggregate Fair Value	Admitted Assets	(Level 1)	(Level 2)	(Level 3)	Not Practicable (Carrying Value)
Bonds	\$ 1,043,417,276	\$ 996,017,176	\$	\$ 990,076,468	\$ 53,340,808	\$
Other invested asset - Guaranteed LIHTC	\$ 74,343	\$ 74,343	\$	\$	\$ 74,343	\$
Other invested asset - Surplus Notes	\$ 17,433,566	\$ 16,865,676	\$	\$ 17,433,566	\$	\$
Contract loans	\$ 47,269	\$ 47,269	\$	\$	\$	\$ 47,269
Cash, cash equivalents, and short-term investments	\$ (3,627,340)	\$ (3,627,340)	\$ (3,627,340)	\$	\$	\$

D. Not Practicable to Estimate Fair Value

Type of Class or Financial Instrument	Carrying Value	Effective Interest Rate	Maturity Date	Explanation
Contract Loans	\$ 47,269	Various		Quoted market price not available

NOTES TO FINANCIAL STATEMENTS

Note 21 – Other Items

No significant changes

Note 22 – Events Subsequent

No significant changes

Note 23 – Reinsurance

No significant changes

Note 24 – Retrospectively Rated Contracts and Contracts Subject to Redetermination

E. Risk Sharing Provisions of the Affordable Care Act

- (1) Did the reporting entity write accident and health insurance premium which is subject to the Affordable Care Act risk sharing provisions Yes [] No [X]
 The Company was only subject to the Transitional Reinsurance Fee contributions which is no longer applicable in 2017.

- (2) Impact of Risk Sharing Provisions of the Affordable Care Act on admitted assets, liabilities and revenue for the current year:

a. Permanent ACA Risk Adjustment Program		AMOUNT
Assets		
1. Premium adjustments receivable due to ACA Risk Adjustment		\$
Liabilities		
2. Risk adjustment user fees payable for ACA Risk Adjustment		
3. Premium adjustments payable due to ACA Risk Adjustment		
Operations (Revenue & Expenses)		
4. Reported as revenue in premium for accident and health contracts (written/collected) due to ACA Risk Adjustment		
5. Reported in expenses as ACA Risk Adjustment user fees (incurred/paid)		\$

b. Transitional ACA Reinsurance Program		AMOUNT
Assets		
1. Amounts recoverable for claims paid due to ACA Reinsurance		\$
2. Amounts recoverable for claims unpaid due to ACA Reinsurance (contra liability)		
3. Amounts receivable relating to uninsured plans for contributions for ACA Reinsurance		
Liabilities		
4. Liabilities for contributions payable due to ACA Reinsurance – not reported as ceded premium		
5. Ceded reinsurance premiums payable due to ACA Reinsurance		
6. Liabilities for amounts held under uninsured plans contributions for ACA Reinsurance		\$
Operations (Revenue & Expenses)		
7. Ceded reinsurance premiums due to ACA Reinsurance		\$
8. Reinsurance recoveries (income statement) due to ACA Reinsurance payments or expected payments		
9. ACA Reinsurance contributions – not reported as ceded premium		\$

c. Temporary ACA Risk Corridors Program		AMOUNT
Assets		
1. Accrued retrospective premium due to ACA Risk Corridors		\$
Liabilities		
2. Reserve for rate credits or policy experience rating refunds due to ACA Risk Corridors		
Operations (Revenue & Expenses)		
3. Effect of ACA Risk Corridors on net premium income (paid/received)		
4. Effect of ACA Risk Corridors on change in reserves for rate credits		\$

- (3) Roll forward of prior year ACA Risk Sharing Provisions for the following asset (gross of any nonadmission) and liability balances along with the reasons for adjustments to prior year balance:

	Accrued Prior Year Written Before The Prior Year		During the on Business Dec. 31 of Year		Received or the Current Business Before the Prior Year		Paid as of Year on Written Dec 31 of Year		Differences		Adjustments		Unsettled as of the		Balances Reporting Date	
	1	2	3	4	Prior Year Accrued Less Payments (Col. 1-3)	Prior Year Accrued Less Payments (Col. 2-4)	To Prior Year Balances	To Prior Year Balances	Cumulative Balance from Prior Years (Col. 1-3+7)	Cumulative Balance from Prior Years (Col. 2-4+8)	9	10				
	Receivable	(Payable)	Receivable	(Payable)	Receivable	(Payable)	Receivable	(Payable)	Receivable	(Payable)	Receivable	(Payable)	Receivable	(Payable)		
a. Permanent ACA Risk Adjustment Program																
1. Premium adjustments receivable	\$	\$	\$	\$	\$	\$	\$	\$	\$	\$	\$	\$	A	\$	\$	
2. Premium adjustments (payable)													B			
3. Subtotal ACA Permanent Risk Adjustment Program	\$	\$	\$	\$	\$	\$	\$	\$	\$	\$	\$	\$		\$	\$	
b. Transitional ACA Reinsurance Program																
1. Amounts recoverable for	\$	\$	\$	\$	\$	\$	\$	\$	\$	\$	\$	\$	C	\$	\$	

NOTES TO FINANCIAL STATEMENTS

	Accrued Prior Year Written Before The Prior	During the on Business Dec. 31 of Year	Received or the Current Business Before the Prior	Paid as of Year on Written Dec 31 of Year	Differences		Adjustments		Unsettled as of the	Balances Reporting Date
					Prior Year Accrued Less Payments (Col. 1-3)	Prior Year Accrued Less Payments (Col. 2-4)	To Prior Year Balances	To Prior Year Balances	Cumulative Balance from Prior Years (Col. 1-3+7)	Cumulative Balance from Prior Years (Col. 2-4+8)
	1	2	3	4	5	6	7	8	9	10
	Receivable	(Payable)	Receivable	(Payable)	Receivable	(Payable)	Receivable	(Payable)	Receivable	(Payable)
claims paid										
2. Amounts recoverable for claims unpaid (contra liability)									D	
3. Amounts receivable relating to uninsured plans									E	
4. Liabilities for contributions payable due to ACA Reinsurance – not reported as ceded premiums									F	
5. Ceded reinsurance premiums payable									G	
6. Liability for amounts held under uninsured plans		(6,750)		(6,750)					H	
6. Subtotal ACA Transitional Reinsurance Program	\$	\$ (6,750)	\$	\$ (6,750)	\$	\$	\$	\$	\$	\$
c. Temporary ACA Risk Corridors Program										
1. Accrued retrospective premium	\$	\$	\$	\$	\$	\$	\$	\$	I	\$
2. Reserve for rate credits or policy experience rating refunds									J	
3. Subtotal ACA Risk Corridors Program										
d. Total for ACA Risk Sharing Provisions	\$	\$ (6,750)	\$	\$ (6,750)	\$	\$	\$	\$	\$	\$

Note 25 – Change in Incurred Losses and Loss Adjustment Expenses

Reserves on accident and health contracts for incurred losses and loss adjustment expenses attributable to insured events or prior years developed as anticipated during 2016. See Schedule H - Part 3 and the Five Year Historical Data. Original estimates are increased or decreased as additional information becomes known regarding individual claims. However, no significant trends or unanticipated events were noted in 2016. None of the Company's accident and health contracts are subject to retrospective rating or experience refunds.

Note 26 – Intercompany Pooling Arrangements

No significant changes

Note 27 – Structured Settlements

No significant changes

Note 28 – Health Care Receivables

No significant changes

Note 29 – Participating policies

No significant changes

Note 30 – Premium Deficiency Reserves

No significant changes

Note 31 – Reserves for Life Contracts and Deposit-Type Contracts

No significant changes

Note 32 – Analysis of Annuity Actuarial Reserves and Deposit Liabilities by Withdrawal Characteristics

NOTES TO FINANCIAL STATEMENTS

No significant changes

Note 33 – Premium and Annuity Considerations Deferred and Uncollected

No significant changes

Note 34 – Separate Accounts

No significant changes

Note 35 – Loss/Claim Adjustment Expenses

No significant changes

GENERAL INTERROGATORIES

PART 1 - COMMON INTERROGATORIES

GENERAL

- 1.1 Did the reporting entity experience any material transactions requiring the filing of Disclosure of Material Transactions with the State of Domicile, as required by the Model Act? Yes [] No [X]
- 1.2 If yes, has the report been filed with the domiciliary state? Yes [] No []
- 2.1 Has any change been made during the year of this statement in the charter, by-laws, articles of incorporation, or deed of settlement of the reporting entity? Yes [] No [X]
- 2.2 If yes, date of change: _____
- 3.1 Is the reporting entity a member of an Insurance Holding Company System consisting of two or more affiliated persons, one or more of which is an insurer? If yes, complete Schedule Y, Parts 1 and 1A. Yes [X] No []
- 3.2 Have there been any substantial changes in the organizational chart since the prior quarter end? Yes [] No [X]
- 3.3 If the response to 3.2 is yes, provide a brief description of those changes.
- 4.1 Has the reporting entity been a party to a merger or consolidation during the period covered by this statement? Yes [] No [X]
- 4.2 If yes, provide name of entity, NAIC Company Code, and state of domicile (use two letter state abbreviation) for any entity that has ceased to exist as a result of the merger or consolidation.

1 Name of Entity	2 NAIC Company Code	3 State of Domicile

5. If the reporting entity is subject to a management agreement, including third-party administrator(s), managing general agent(s), attorney-in-fact, or similar agreement, have there been any significant changes regarding the terms of the agreement or principals involved? If yes, attach an explanation. Yes [] No [X] N/A []
- 6.1 State as of what date the latest financial examination of the reporting entity was made or is being made. 12/31/2015
- 6.2 State the as of date that the latest financial examination report became available from either the state of domicile or the reporting entity. This date should be the date of the examined balance sheet and not the date the report was completed or released. 12/31/2015
- 6.3 State as of what date the latest financial examination report became available to other states or the public from either the state of domicile or the reporting entity. This is the release date or completion date of the examination report and not the date of the examination (balance sheet date). 02/28/2017
- 6.4 By what department or departments?
Ohio Department of Insurance
- 6.5 Have all financial statement adjustments within the latest financial examination report been accounted for in a subsequent financial statement filed with Departments? Yes [] No [] N/A [X]
- 6.6 Have all of the recommendations within the latest financial examination report been complied with? Yes [] No [] N/A [X]
- 7.1 Has this reporting entity had any Certificates of Authority, licenses or registrations (including corporate registration, if applicable) suspended or revoked by any governmental entity during the reporting period? Yes [] No [X]
- 7.2 If yes, give full information:
- 8.1 Is the company a subsidiary of a bank holding company regulated with the Federal Reserve Board? Yes [] No [X]
- 8.2 If response to 8.1 is yes, please identify the name of the bank holding company.

- 8.3 Is the company affiliated with one or more banks, thrifts or securities firms? Yes [] No [X]
- 8.4 If the response to 8.3 is yes, please provide below the names and location (city and state of the main office) of any affiliates regulated by a federal regulatory services agency [i.e. the Federal Reserve Board (FRB), the Office of the Comptroller of the Currency (OCC), the Federal Deposit Insurance Corporation (FDIC) and the Securities Exchange Commission (SEC)] and identify the affiliate's primary federal regulator].

1 Affiliate Name	2 Location (City, State)	3 FRB	4 OCC	5 FDIC	6 SEC

- 9.1 Are the senior officers (principal executive officer, principal financial officer, principal accounting officer or controller, or persons performing similar functions) of the reporting entity subject to a code of ethics, which includes the following standards? Yes [X] No []
- (a) Honest and ethical conduct, including the ethical handling of actual or apparent conflicts of interest between personal and professional relationships;
- (b) Full, fair, accurate, timely and understandable disclosure in the periodic reports required to be filed by the reporting entity;
- (c) Compliance with applicable governmental laws, rules and regulations;
- (d) The prompt internal reporting of violations to an appropriate person or persons identified in the code; and
- (e) Accountability for adherence to the code.
- 9.11 If the response to 9.1 is No, please explain:
- 9.2 Has the code of ethics for senior managers been amended? Yes [] No [X]
- 9.21 If the response to 9.2 is Yes, provide information related to amendment(s).
- 9.3 Have any provisions of the code of ethics been waived for any of the specified officers? Yes [] No [X]
- 9.31 If the response to 9.3 is Yes, provide the nature of any waiver(s).

FINANCIAL

- 10.1 Does the reporting entity report any amounts due from parent, subsidiaries or affiliates on Page 2 of this statement? Yes [] No [X]

GENERAL INTERROGATORIES

PART 1 - COMMON INTERROGATORIES

10.2 If yes, indicate any amounts receivable from parent included in the Page 2 amount: \$ 0

INVESTMENT

11.1 Were any of the stocks, bonds, or other assets of the reporting entity loaned, placed under option agreement, or otherwise made available for use by another person? (Exclude securities under securities lending agreements.) Yes [] No [X]

11.2 If yes, give full and complete information relating thereto:

12. Amount of real estate and mortgages held in other invested assets in Schedule BA: \$ 0

13. Amount of real estate and mortgages held in short-term investments: \$ 0

14.1 Does the reporting entity have any investments in parent, subsidiaries and affiliates? Yes [] No [X]

14.2 If yes, please complete the following:

	1 Prior Year End Book/Adjusted Carrying Value	2 Current Quarter Book/Adjusted Carrying Value
14.21 Bonds	\$ 0	\$ 0
14.22 Preferred Stock	0	0
14.23 Common Stock	0	0
14.24 Short-Term Investments	0	0
14.25 Mortgage Loans on Real Estate	0	0
14.26 All Other	0	0
14.27 Total Investment in Parent, Subsidiaries and Affiliates (Subtotal Lines 14.21 to 14.26)	\$ 0	\$ 0
14.28 Total Investment in Parent included in Lines 14.21 to 14.26 above	\$ 0	\$ 0

15.1 Has the reporting entity entered into any hedging transactions reported on Schedule DB? Yes [] No [X]

15.2 If yes, has a comprehensive description of the hedging program been made available to the domiciliary state? Yes [] No []

If no, attach a description with this statement.

16. For the reporting entity's security lending program, state the amount of the following as of current statement date:

16.1 Total fair value of reinvested collateral assets reported on Schedule DL, Parts 1 and 2: \$ 0

16.2 Total book adjusted/carrying value of reinvested collateral assets reported on Schedule DL, Parts 1 and 2: \$ 0

16.3 Total payable for securities lending reported on the liability page: \$ 0

17. Excluding items in Schedule E-Part 3-Special Deposits, real estate, mortgage loans and investments held physically in the reporting entity's offices, vaults or safety deposit boxes, were all stocks, bonds and other securities, owned throughout the current year held pursuant to a custodial agreement with a qualified bank or trust company in accordance with Section 1, III - General Examination Considerations, F. Outsourcing of Critical Functions, Custodial or Safekeeping Agreements of the NAIC *Financial Condition Examiners Handbook*? Yes [X] No []

17.1 For all agreements that comply with the requirements of the NAIC *Financial Condition Examiners Handbook*, complete the following:

1 Name of Custodian(s)	2 Custodian Address
The Northern Trust Company	50 South LaSalle Street, Chicago, IL 60603

17.2 For all agreements that do not comply with the requirements of the NAIC *Financial Condition Examiners Handbook*, provide the name, location and a complete explanation:

1 Name(s)	2 Location(s)	3 Complete Explanation(s)

17.3 Have there been any changes, including name changes, in the custodian(s) identified in 17.1 during the current quarter? Yes [] No [X]

17.4 If yes, give full and complete information relating thereto:

1 Old Custodian	2 New Custodian	3 Date of Change	4 Reason

17.5 Investment management – Identify all investment advisors, investment managers, broker/dealers, including individuals that have the authority to make investment decisions on behalf of the reporting entity. For assets that are managed internally by employees of the reporting entity, note as such ["...that have access to the investment accounts", "handle securities"].

1 Name of Firm or Individual	2 Affiliation
Prudential Private Placement Investors, LP	U
Blackrock Investment Management, LLC	U
Torchmark Corporation	A

17.5097 For those firms/individuals listed in the table for Question 17.5, do any firms/individuals unaffiliated with the reporting entity (i.e., designated with a "U") manage more than 10% of the reporting entity's assets? Yes [] No [X]

17.5098 For firms/individuals unaffiliated with the reporting entity (i.e., designated with a "U") listed in the table for Question 17.5, does the total assets under management aggregate to more than 50% of the reporting entity's assets? Yes [] No [X]

17.6 For those firms or individuals listed in the table for 17.5 with an affiliation code of "A" (affiliated) or "U" (unaffiliated), provide the information for the table below.

1 Central Registration Depository Number	2 Name of Firm or Individual	3 Legal Entity Identifier (LEI)	4 Registered With	5 Investment Management Agreement (IMA) Filed
106442	Prudential Private Placement Investors, LP		U.S. Securities & Exchange Commission	No
108928	Blackrock Investment Management, LLC		U.S. Securities & Exchange Commission	No
	Torchmark Corporation		Not Registered	DS

18.1 Have all the filing requirements of the *Purposes and Procedures Manual of the NAIC Investment Analysis Office* been followed? Yes [X] No []

18.2 If no, list exceptions:

GENERAL INTERROGATORIES

PART 1 - COMMON INTERROGATORIES

Family Heritage Life Insurance Company of America
GENERAL INTERROGATORIES (continued)

PART 2 - LIFE & HEALTH

1.	Report the statement value of mortgage loans at the end of this reporting period for the following categories:		
1.1	Long-term mortgages in good standing		Amount
1.11	Farm mortgages.....	\$.....	
1.12	Residential mortgages.....	\$.....	
1.13	Commercial mortgages.....	\$.....	
1.14	Total mortgages in good standing.....	\$.....	0
1.2	Long-term mortgages in good standing with restructured terms		
1.21	Total mortgages in good standing with restructured terms.....	\$.....	
1.3	Long-term mortgage loans upon which interest is overdue more than three months		
1.31	Farm mortgages.....	\$.....	
1.32	Residential mortgages.....	\$.....	
1.33	Commercial mortgages.....	\$.....	
1.34	Total mortgages with interest overdue more than three months.....	\$.....	0
1.4	Long-term mortgage loans in process of foreclosure		
1.41	Farm mortgages.....	\$.....	
1.42	Residential mortgages.....	\$.....	
1.43	Commercial mortgages.....	\$.....	
1.44	Total mortgages in process of foreclosure.....	\$.....	0
1.5	Total mortgage loans (Lines 1.14 + 1.21 + 1.34 + 1.44) (Page 2, Column 3, Lines 3.1 + 3.2)	\$.....	0
1.6	Long-term mortgages foreclosed, properties transferred to real estate in current quarter		
1.61	Farm mortgages.....	\$.....	
1.62	Residential mortgages.....	\$.....	
1.63	Commercial mortgages.....	\$.....	
1.64	Total mortgages foreclosed and transferred to real estate.....	\$.....	0
2.	Operating Percentages:		
2.1	A&H loss percent.....		66.1
2.2	A&H cost containment percent.....		
2.3	A&H expense percent excluding cost containment expenses.....		34.2
3.1	Do you act as a custodian for health savings accounts?.....	Yes []	No [X]
3.2	If yes, please provide the amount of custodial funds held as of the reporting date.....	\$.....	
3.3	Do you act as an administrator for health savings accounts?.....	Yes []	No [X]
3.4	If yes, please provide the balance of the funds administered as of the reporting date.....	\$.....	

SCHEDULE S - CEDED REINSURANCE

Showing All New Reinsurance Treaties - Current Year to Date

1 NAIC Company Code	2 ID Number	3 Effective Date	4 Name of Reinsurer	5 Domiciliary Jurisdiction	6 Type of Reinsurance Ceded	7 Type of Reinsurer	8 Certified Reinsurer Rating (1 through 6)	9 Effective Date of Certified Reinsurer Rating
------------------------------	----------------	------------------------	------------------------	----------------------------------	--------------------------------------	---------------------------	---	---

NONE

Family Heritage Life Insurance Company of America

SCHEDULE T - PREMIUMS AND ANNUITY CONSIDERATIONS

Current Year to Date - Allocated by States and Territories

			Direct Business Only				
			Life Contracts				
States, Etc.	Active Status	Life Insurance Premiums	Annuity Considerations	A&H Insurance Premiums, Including Policy Membership and Other Fees	Other Considerations	Total Columns 2 through 5	Deposit-Type Contracts
1. Alabama.....	AL.....L	8,172		710,099		718,271	
2. Alaska.....	AK.....L	47		10,624		10,671	
3. Arizona.....	AZ.....L	17,827		1,198,258		1,216,085	
4. Arkansas.....	AR.....L	35,622		1,992,869		2,028,491	
5. California.....	CA.....L	13,217		1,380,166		1,393,383	
6. Colorado.....	CO.....L	12,195		1,898,244		1,910,439	
7. Connecticut.....	CT.....L	21		5,094		5,115	
8. Delaware.....	DE.....L	461		98,860		99,321	
9. District of Columbia.....	DC.....L			2,514		2,514	
10. Florida.....	FL.....L	16,194		1,120,093		1,136,287	
11. Georgia.....	GA.....L	20,262		2,381,783		2,402,045	
12. Hawaii.....	HI.....L			13,512		13,512	
13. Idaho.....	ID.....L	705		269,865		270,570	
14. Illinois.....	IL.....L	18,152		2,995,904		3,014,056	
15. Indiana.....	IN.....L	4,024		2,183,715		2,187,739	
16. Iowa.....	IA.....L	7,656		1,342,121		1,349,777	
17. Kansas.....	KS.....L	11,500		2,114,924		2,126,424	
18. Kentucky.....	KY.....L	26,037		1,808,056		1,834,093	
19. Louisiana.....	LA.....L	3,945		1,209,426		1,213,371	
20. Maine.....	ME.....L	279		95,972		96,251	
21. Maryland.....	MD.....L	529		274,259		274,788	
22. Massachusetts.....	MA.....L	313		7,935		8,248	
23. Michigan.....	MI.....L	622		397,137		397,759	
24. Minnesota.....	MN.....L	8,067		2,696,740		2,704,807	
25. Mississippi.....	MS.....L	2,615		218,539		221,154	
26. Missouri.....	MO.....L	13,011		1,817,455		1,830,466	
27. Montana.....	MT.....L	3,081		525,813		528,894	
28. Nebraska.....	NE.....L	3,715		2,135,115		2,138,830	
29. Nevada.....	NV.....L	2,708		291,114		293,822	
30. New Hampshire.....	NH.....L	2,831		170,234		173,065	
31. New Jersey.....	NJ.....L	818		8,275		9,093	
32. New Mexico.....	NM.....L	4,093		432,923		437,016	
33. New York.....	NY.....N					0	
34. North Carolina.....	NC.....L	30,772		2,133,515		2,164,287	
35. North Dakota.....	ND.....L	1,381		345,872		347,253	
36. Ohio.....	OH.....L	22,225		5,121,709		5,143,934	
37. Oklahoma.....	OK.....L	15,516		1,002,060		1,017,576	
38. Oregon.....	OR.....L	1,927		290,624		292,551	
39. Pennsylvania.....	PA.....L	3,302		783,809		787,111	
40. Rhode Island.....	RI.....L			19,262		19,262	
41. South Carolina.....	SC.....L	11,480		667,899		679,379	
42. South Dakota.....	SD.....L	3,714		1,311,310		1,315,024	
43. Tennessee.....	TN.....L	34,928		1,334,012		1,368,940	
44. Texas.....	TX.....L	353,135		12,872,097		13,225,232	
45. Utah.....	UT.....L	214		990,728		990,942	
46. Vermont.....	VT.....L	984		11,286		12,270	
47. Virginia.....	VA.....L	23,996		1,258,267		1,282,263	
48. Washington.....	WA.....L	27,411		851,338		878,749	
49. West Virginia.....	WV.....L	16,016		752,020		768,036	
50. Wisconsin.....	WI.....L	2,118		674,104		676,222	
51. Wyoming.....	WY.....L	2,830		634,737		637,567	
52. American Samoa.....	AS.....N					0	
53. Guam.....	GU.....N					0	
54. Puerto Rico.....	PR.....L			1,725		1,725	
55. US Virgin Islands.....	VI.....N					0	
56. Northern Mariana Islands.....	MP.....N					0	
57. Canada.....	CAN.....N					0	
58. Aggregate Other Alien.....	OT.....XXX	0	0	0	0	0	0
59. Subtotal.....	(a).51	790,668	0	62,864,012	0	63,654,680	0
90. Reporting entity contributions for employee benefit plans.....	XXX					0	
91. Dividends or refunds applied to purchase paid-up additions and annuities.....	XXX					0	
92. Dividends or refunds applied to shorten endowment or premium paying period.....	XXX					0	
93. Premium or annuity considerations waived under disability or other contract provisions.....	XXX					0	
94. Aggregate other amounts not allocable by State.....	XXX	0	0	0	0	0	0
95. Totals (Direct Business).....	XXX	790,668	0	62,864,012	0	63,654,680	0
96. Plus Reinsurance Assumed.....	XXX	43,272,736				43,272,736	
97. Totals (All Business).....	XXX	44,063,404	0	62,864,012	0	106,927,416	0
98. Less Reinsurance Ceded.....	XXX	43,293,361		700,846		43,994,207	
99. Totals (All Business) less Reinsurance Ceded.....	XXX	770,043	0	62,163,166	0	62,933,209	0

DETAILS OF WRITE-INS

58001.....	XXX					0	
58002.....	XXX					0	
58003.....	XXX					0	
58998. Summary of remaining write-ins for line 58 from overflow page.....	XXX	0	0	0	0	0	0
58999. Total (Lines 58001 thru 58003 plus 58998) (Line 58 above).....	XXX	0	0	0	0	0	0
9401.....	XXX					0	
9402.....	XXX					0	
9403.....	XXX					0	
9498. Summary of remaining write-ins for line 94 from overflow page.....	XXX	0	0	0	0	0	0
9499. Total (Lines 9401 thru 9403 plus 9498) (Line 94 above).....	XXX	0	0	0	0	0	0

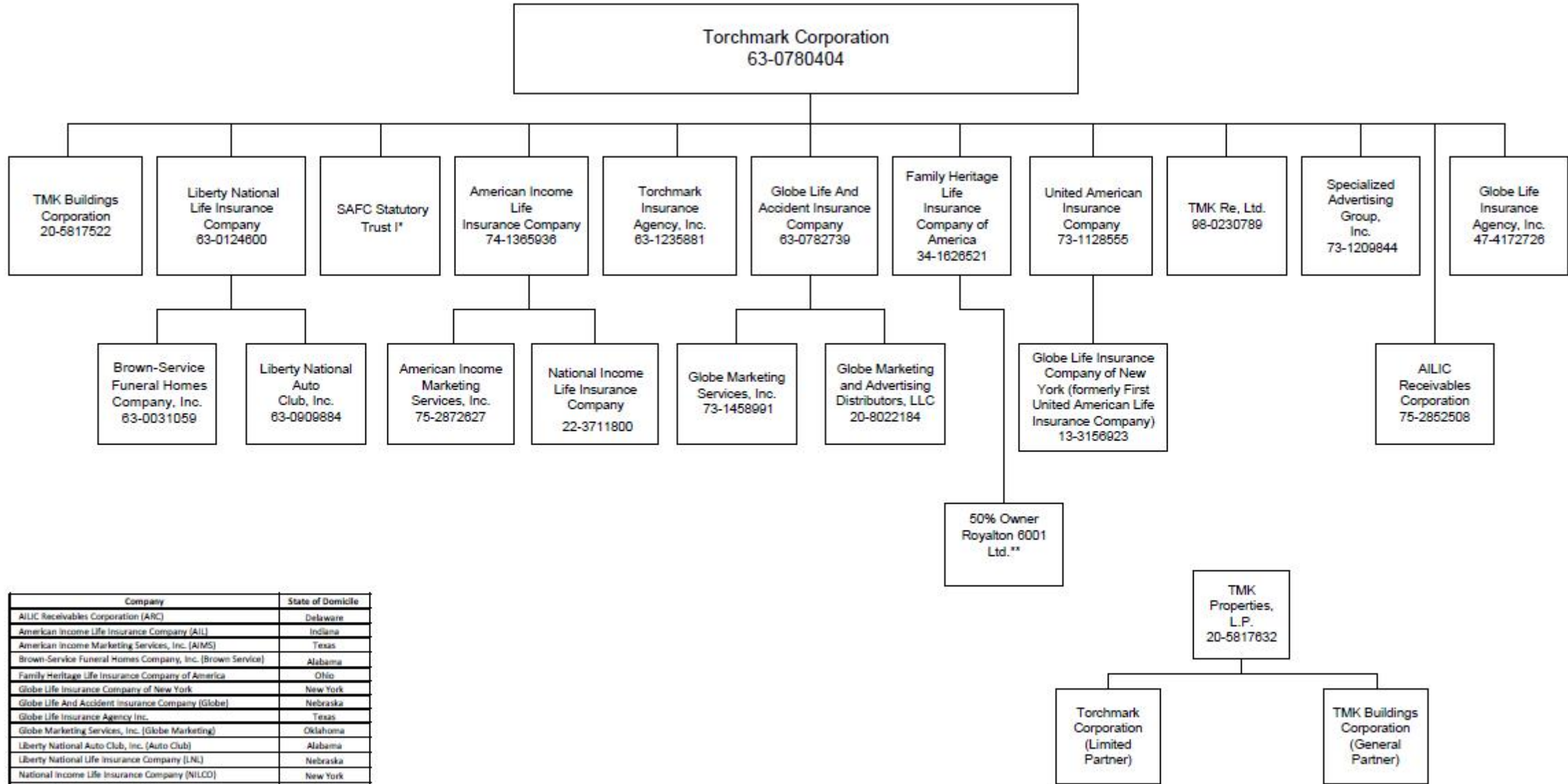
(L) - Licensed or Chartered - Licensed Insurance Carrier or Domiciled RRG; (R) - Registered - Non-domiciled RRGs; (Q) - Qualified - Qualified or Accredited Reinsurer;

(E) - Eligible - Reporting Entities eligible or approved to write Surplus Lines in the state; (N) - None of the above - Not allowed to write business in the state.

(a) Insert the number of L responses except for Canada and Other Alien.

SCHEDULE Y – INFORMATION CONCERNING ACTIVITIES OF INSURER MEMBERS OF A HOLDING COMPANY GROUP

PART 1 – ORGANIZATIONAL CHART



Q12

Company	State of Domicile
AILIC Receivables Corporation (ARC)	Delaware
American Income Life Insurance Company (AIL)	Indiana
American Income Marketing Services, Inc. (AIMS)	Texas
Brown-Service Funeral Homes Company, Inc. (Brown Service)	Alabama
Family Heritage Life Insurance Company of America	Ohio
Globe Life Insurance Company of New York	New York
Globe Life And Accident Insurance Company (Globe)	Nebraska
Globe Life Insurance Agency, Inc.	Texas
Globe Marketing Services, Inc. (Globe Marketing)	Oklahoma
Liberty National Auto Club, Inc. (Auto Club)	Alabama
Liberty National Life Insurance Company (LNL)	Nebraska
National Income Life Insurance Company (NILC)	New York
Specialized Advertising Group, Inc.	Texas
TMK Buildings Corporation (TBC)	Texas
TMK Re, Ltd. (TMK Re)	Bermuda
Torchmark Corporation (TMK)	Delaware
Torchmark Insurance Agency, Inc. (TIA)	Alabama
United American Insurance Company (UAI)	Nebraska

*Special purpose business trust whose obligations were assumed by Torchmark in the acquisition of Family Heritage, common securities of which are owned by Torchmark and preferred securities publicly held.

**Limited liability company, in which Family Heritage has a 50% interest, which leases home office property to Family Heritage; remaining 50% interest held by an unaffiliated entity.

SCHEDULE Y

PART 1A - DETAIL OF INSURANCE HOLDING COMPANY SYSTEM

1	2	3	4	5	6	7	8	9	10	11	12	13	14	15	16
Group Code	Group Name	NAIC Company Code	ID Number	Federal RSSD	CIK	Name of Securities Exchange if Publicly Traded (U.S. or International)	Names of Parent, Subsidiaries or Affiliates	Domiciliary Location	Relationship to Reporting Entity	Directly Controlled by (Name of Entity/Person)	Type of Control (Ownership Board, Management, Attorney-in-Fact, Influence, Other)	If Control is Ownership Provide Percentage	Ultimate Controlling Entity(ies)/Person(s)	Is an SCA Filing Required? (Y/N)	*
Members															
.....	Torchmark Corporation.....	63-0780404..320335	NYSE.....	Torchmark Corporation.....	DE.....	UDP.....Y.....
.....	20-5817522..	TMK Buildings Corp.....	TX.....	NIA.....	Torchmark Corporation.....	Ownership.....	100.000	Torchmark Corporation.....N.....
.....	20-5817632..	TMK Properties LLP.....	TX.....	NIA.....	Torchmark Corporation.....	Ownership.....	99.000	Torchmark Corporation.....N.....
.....	98-0230789..	TMK RE Ltd.....	BMU.....	NIA.....	Torchmark Corporation.....	Ownership.....	100.000	Torchmark Corporation.....N.....
.....	63-1235881..	Torchmark Insurance Agency, Inc.....	AL.....	NIA.....	Torchmark Corporation.....	Ownership.....	100.000	Torchmark Corporation.....N.....
.....	73-1209844..	Specialized Marketing Group, Inc.....	TX.....	NIA.....	Torchmark Corporation.....	Ownership.....	100.000	Torchmark Corporation.....N.....
.....	47-4172726..	Globe Life Insurance Agency, Inc.....	TX.....	NIA.....	Torchmark Corporation.....	Ownership.....	100.000	Torchmark Corporation.....N.....
0290	Torchmark Corporation.....	77968..	34-1626521..	Family Heritage Life Insurance Company of America	OH.....	RE.....	Torchmark Corporation.....	Ownership.....	100.000	Torchmark Corporation.....N.....
.....	Royalton 6001Ltd. (Joint Venture).....	OH.....	DS.....	Family Heritage Life Insurance Company of America	Ownership.....	50.000	Torchmark Corporation.....N.....
0290	Torchmark Corporation.....	65331..	63-0124600..	Liberty National Life Insurance Company.....	NE.....	IA.....	Torchmark Corporation.....	Ownership.....	100.000	Torchmark Corporation.....N.....
.....	63-0031059..	Brown-Service Funeral Homes Company Inc.....	AL.....	NIA.....	Liberty National Life Insurance Company.....	Ownership.....	100.000	Torchmark Corporation.....N.....
.....	63-0909884..	Liberty National Auto Club, Inc.....	AL.....	NIA.....	Liberty National Life Insurance Company.....	Ownership.....	100.000	Torchmark Corporation.....N.....
0290	Torchmark Corporation.....	91472..	63-0782739..	1610611	Globe Life and Accident Insurance Company.....	NE.....	IA.....	Torchmark Corporation.....	Ownership.....	100.000	Torchmark Corporation.....Y.....
.....	73-1458991..	Globe Marketing Services, Inc.....	OK.....	NIA.....	Globe Life and Accident Insurance Company..	Ownership.....	100.000	Torchmark Corporation.....N.....
.....	20-8022184..	Globe Marketing and Advertising Distributors, LLC	DE.....	NIA.....	Globe Life and Accident Insurance Company..	Ownership.....	100.000	Torchmark Corporation.....N.....
0290	Torchmark Corporation.....	60577..	74-1365936..	1102198	American Income Life Insurance Company.....	IN.....	IA.....	Torchmark Corporation.....	Ownership.....	100.000	Torchmark Corporation.....N.....
0290	Torchmark Corporation.....	10093..	22-3711800..	National Income Life Insurance Company.....	NY.....	IA.....	American Income Life Insurance Company.....	Ownership.....	100.000	Torchmark Corporation.....N.....
.....	75-2852508..	AILIC Receivables Corporation.....	IN.....	NIA.....	Torchmark Corporation.....	Ownership.....	100.000	Torchmark Corporation.....N.....
.....	75-2872627..	American Income Marketing Services, Inc.....	TX.....	NIA.....	American Income Life Insurance Company.....	Ownership.....	100.000	Torchmark Corporation.....N.....
0290	Torchmark Corporation.....	92916..	73-1128555..	United American Insurance Company.....	NE.....	IA.....	Torchmark Corporation.....	Ownership.....	100.000	Torchmark Corporation.....N.....
.....	Globe Life Insurance Company of New York (formerly First United American Life Insurance Company)	NY.....	IA.....	United American Insurance Company.....	Ownership.....	100.000	Torchmark Corporation.....N.....

Q13

Family Heritage Life Insurance Company of America

SUPPLEMENTAL EXHIBITS AND SCHEDULES INTERROGATORIES

The following supplemental reports are required to be filed as part of your statement filing. However, in the event that your company does not transact the type of business for which the special report must be filed, your response of NO to the specific interrogatory will be accepted in lieu of filing a "NONE" report and a bar code will be printed below. If the supplement is required of your company but is not being filed for whatever reason, enter SEE EXPLANATION and provide an explanation following the interrogatory questions.

	Response
1. Will the Trusteed Surplus Statement be filed with the state of domicile and the NAIC with this statement?	NO
2. Will the Medicare Part D Coverage Supplement be filed with the state of domicile and the NAIC with this statement?	NO
3. Will the Reasonableness of Assumptions Certification required by Actuarial Guideline XXXV be filed with the state of domicile and electronically with the NAIC?	NO
4. Will the Reasonableness and Consistency of Assumptions Certification required by Actuarial Guideline XXXV be filed with the state of domicile and electronically with the NAIC?	NO
5. Will the Reasonableness of Assumptions Certification for Implied Guaranteed Rate Method required by Actuarial Guideline XXXVI be filed with the state of domicile and electronically with the NAIC?	NO
6. Will the Reasonableness and Consistency of Assumptions Certification required by Actuarial Guideline XXXVI (Updated Average Market Value) be filed with the state of domicile and electronically with the NAIC?	NO
7. Will the Reasonableness and Consistency of Assumptions Certification required by Actuarial Guideline XXXVI (Updated Market Value) be filed with the state of domicile and electronically with the NAIC?	NO

Explanations:

1. The data for this supplement is not required to be filed.
2. The data for this supplement is not required to be filed.
3. The data for this supplement is not required to be filed.
4. The data for this supplement is not required to be filed.
5. The data for this supplement is not required to be filed.
6. The data for this supplement is not required to be filed.
7. The data for this supplement is not required to be filed.

Bar Code:



NONE

Family Heritage Life Insurance Company of America
SCHEDULE A - VERIFICATION

Real Estate

	1 Year to Date	2 Prior Year Ended December 31
1. Book/adjusted carrying value, December 31 of prior year.....	670,000	
2. Cost of acquired:		
2.1 Actual cost at time of acquisition.....		1,346,795
2.2 Additional investment made after acquisition.....		
3. Current year change in encumbrances.....		
4. Total gain (loss) on disposals.....	(15,000)	(55,000)
5. Deduct amounts received on disposals.....	655,000	570,000
6. Total foreign exchange change in book/adjusted carrying value.....		
7. Deduct current year's other-than-temporary impairment recognized.....		51,795
8. Deduct current year's depreciation.....		
9. Book/adjusted carrying value at end of current period (Lines 1+2+3+4-5+6-7-8).....	0	670,000
10. Deduct total nonadmitted amounts.....		
11. Statement value at end of current period (Line 9 minus Line 10).....	0	670,000

SCHEDULE B - VERIFICATION

Mortgage Loans

	1 Year to Date	2 Prior Year Ended December 31
1. Book value/recorded investment excluding accrued interest, December 31 of prior year.....	0	
2. Cost of acquired:		
2.1 Actual cost at time of acquisition.....		
2.2 Additional investment made after acquisition.....		
3. Capitalized deferred interest and other.....		
4. Accrual of discount.....		
5. Unrealized valuation increase (decrease).....		
6. Total gain (loss) on disposals.....		
7. Deduct amounts received on disposals.....		
8. Deduct amortization of premium and mortgage interest points and commitment fees.....		
9. Total foreign exchange change in book value/recorded investment excluding accrued interest.....		
10. Deduct current year's other-than-temporary impairment recognized.....		
11. Book value/recorded investment excluding accrued interest at end of current period (Lines 1+2+3+4+5+6-7-8+9-10).....	0	0
12. Total valuation allowance.....		
13. Subtotal (Line 11 plus Line 12).....	0	0
14. Deduct total nonadmitted amounts.....		
15. Statement value at end of current period (Line 13 minus Line 14).....	0	0

NONE

SCHEDULE BA - VERIFICATION

Other Long-Term Invested Assets

	1 Year to Date	2 Prior Year Ended December 31
1. Book/adjusted carrying value, December 31 of prior year.....	17,159,518	16,400,737
2. Cost of acquired:		
2.1 Actual cost at time of acquisition.....		
2.2 Additional investment made after acquisition.....		954,880
3. Capitalized deferred interest and other.....		
4. Accrual of discount.....	387	1,532
5. Unrealized valuation increase (decrease).....	10,500	(56,589)
6. Total gain (loss) on disposals.....		
7. Deduct amounts received on disposals.....		125,000
8. Deduct amortization of premium and depreciation.....	3,049	16,042
9. Total foreign exchange change in book/adjusted carrying value.....		
10. Deduct current year's other-than-temporary impairment recognized.....		
11. Book/adjusted carrying value at end of current period (Lines 1+2+3+4+5+6-7-8+9-10).....	17,167,356	17,159,518
12. Deduct total nonadmitted amounts.....		
13. Statement value at end of current period (Line 11 minus Line 12).....	17,167,356	17,159,518

SCHEDULE D - VERIFICATION

Bonds and Stocks

	1 Year to Date	2 Prior Year Ended December 31
1. Book/adjusted carrying value of bonds and stocks, December 31 of prior year.....	929,749,601	786,067,257
2. Cost of bonds and stocks acquired.....	64,010,752	155,984,071
3. Accrual of discount.....	3,537,588	13,904,398
4. Unrealized valuation increase (decrease).....	(23,619)	60,966
5. Total gain (loss) on disposals.....	3,673	46,803
6. Deduct consideration for bonds and stocks disposed of.....	1,022,500	25,568,254
7. Deduct amortization of premium.....	238,319	745,640
8. Total foreign exchange change in book/adjusted carrying value.....		
9. Deduct current year's other-than-temporary impairment recognized.....		
10. Book/adjusted carrying value at end of current period (Lines 1+2+3+4+5-6-7+8-9).....	996,017,176	929,749,601
11. Deduct total nonadmitted amounts.....		
12. Statement value at end of current period (Line 10 minus Line 11).....	996,017,176	929,749,601

SCHEDULE D - PART 1B

Showing the Acquisitions, Dispositions and Non-Trading Activity

During the Current Quarter for all Bonds and Preferred Stock by NAIC Designation

NAIC Designation	1 Book/Adjusted Carrying Value Beginning of Current Quarter	2 Acquisitions During Current Quarter	3 Dispositions During Current Quarter	4 Non-Trading Activity During Current Quarter	5 Book/Adjusted Carrying Value End of First Quarter	6 Book/Adjusted Carrying Value End of Second Quarter	7 Book/Adjusted Carrying Value End of Third Quarter	8 Book/Adjusted Carrying Value December 31 Prior Year
BONDS								
1. NAIC 1 (a).....	545,848,550	10,062,227	6,218,386	(160,435)	549,531,956			545,848,550
2. NAIC 2 (a).....	380,491,884	53,948,525	12,500	3,460,299	437,888,208			380,491,884
3. NAIC 3 (a).....	5,971,459			112	5,971,571			5,971,459
4. NAIC 4 (a).....	2,026,639			(119)	2,026,520			2,026,639
5. NAIC 5 (a).....					0			
6. NAIC 6 (a).....	357,355			(24,207)	333,148			357,355
7. Total Bonds.....	934,695,887	64,010,752	6,230,886	3,275,650	995,751,403	0	0	934,695,887
PREFERRED STOCK								
8. NAIC 1.....					0			
9. NAIC 2.....					0			
10. NAIC 3.....					0			
11. NAIC 4.....					0			
12. NAIC 5.....					0			
13. NAIC 6.....					0			
14. Total Preferred Stock.....	0	0	0	0	0	0	0	0
15. Total Bonds and Preferred Stock.....	934,695,887	64,010,752	6,230,886	3,275,650	995,751,403	0	0	934,695,887

QSI02

(a) Book/Adjusted Carrying Value column for the end of the current reporting period includes the following amount of short-term and cash equivalent bonds by NAIC designation:
 NAIC 1 \$(265,773); NAIC 2 \$0; NAIC 3 \$0; NAIC 4 \$0; NAIC 5 \$0; NAIC 6 \$0.

SCHEDULE DA - PART 1

Short-Term Investments

	1 Book/Adjusted Carrying Value	2 Par Value	3 Actual Cost	4 Interest Collected Year To Date	5 Paid for Accrued Interest Year To Date
9199999.....	(265,773)	XXX	(265,773)	2,331	

SCHEDULE DA - VERIFICATION

Short-Term Investments

	1 Year To Date	2 Prior Year Ended December 31
1. Book/adjusted carrying value, December 31 of prior year.....	4,946,286	7,679
2. Cost of short-term investments acquired.....		4,938,607
3. Accrual of discount.....		
4. Unrealized valuation increase (decrease).....		
5. Total gain (loss) on disposals.....		
6. Deduct consideration received on disposals.....	5,212,059	
7. Deduct amortization of premium.....		
8. Total foreign exchange change in book/adjusted carrying value.....		
9. Deduct current year's other-than-temporary impairment recognized.....		
10. Book/adjusted carrying value at end of current period (Lines 1+2+3+4+5-6-7+8-9).....	(265,773)	4,946,286
11. Deduct total nonadmitted amounts.....		
12. Statement value at end of current period (Line 10 minus Line 11).....	(265,773)	4,946,286

**Sch. DB - Pt. A - Verification
NONE**

**Sch. DB - Pt. B - Verification
NONE**

**Sch. DB - Pt. C - Sn. 1
NONE**

**Sch. DB - Pt. C - Sn. 2
NONE**

**Sch. DB - Verification
NONE**

SCHEDULE E- VERIFICATION

Cash Equivalents

	1 Year To Date	2 Prior Year Ended December 31
1. Book/adjusted carrying value, December 31 of prior year.....	2,501,933	1,774,201
2. Cost of cash equivalents acquired.....	195,544	727,732
3. Accrual of discount.....		
4. Unrealized valuation increase (decrease).....		
5. Total gain (loss) on disposals.....		
6. Deduct consideration received on disposals.....		
7. Deduct amortization of premium.....		
8. Total foreign exchange change in book/ adjusted carrying value.....		
9. Deduct current year's other-than-temporary impairment recognized.....		
10. Book/adjusted carrying value at end of current period (Lines 1+2+3+4+5-6-7+8-9).....	2,697,477	2,501,933
11. Deduct total nonadmitted amounts.....		
12. Statement value at end of current period (Line 10 minus Line 11).....	2,697,477	2,501,933

SCHEDULE A - PART 2

Showing all Real Estate ACQUIRED AND ADDITIONS MADE During the Current Quarter

1 Description of Property	Location		4 Date Acquired	5 Name of Vendor	6 Actual Cost at Time of Acquisition	7 Amount of Encumbrances	8 Book/Adjusted Carrying Value Less Encumbrances	9 Additional Investment Made After Acquisition
	2 City	3 State						

NONE

SCHEDULE A - PART 3

Showing all Real Estate DISPOSED During the Quarter, Including Payments During the Final Year on "Sales Under Contract "

1 Description of Property	Location		4 Disposal Date	5 Name of Purchaser	6 Actual Cost	7 Expended for Additions, Permanent Improvements and Changes in Encumbrances	8 Book/Adjusted Carrying Value Less Encumbrances Prior Year	Change in Book/Adjusted Carrying Value Less Encumbrances					14 Book/Adjusted Carrying Value Less Encumbrances on Disposal	15 Amounts Received During Year	16 Foreign Exchange Gain (Loss) on Disposal	17 Realized Gain (Loss) on Disposal	18 Total Gain (Loss) on Disposal	19 Gross Income Earned Less Interest Incurred on Encumbrances	20 Taxes, Repairs, and Expenses Incurred
	2 City	3 State						9 Current Year's Depreciation	10 Current Year's Other-Than-Temporary Impairment Recognized	11 Current Year's Change in Encumbrances	12 Total Change in B./A.C.V. (11 - 9 - 10)	13 Total Foreign Exchange Change in B./A.C.V.							
Property Disposed																			
Personal residence of employee - SF.....	Lake Zurich.....	IL.....	03/01/2017	private party.....	670,000						0		670,000	655,000		(15,000)	(15,000)		61,810
0199999. Totals.....					670,000	0	0	0	0	0	0	0	670,000	655,000	0	(15,000)	(15,000)	0	61,810
0399999. Totals.....					670,000	0	0	0	0	0	0	0	670,000	655,000	0	(15,000)	(15,000)	0	61,810

QE01

Sch. B - Pt. 2
NONE

Sch. B - Pt. 3
NONE

Sch. BA - Pt. 2
NONE

Sch. BA - Pt. 3
NONE

SCHEDULE D - PART 3

Showing all Long-Term Bonds and Stocks ACQUIRED During Current Quarter

1	2		3	4	5	6	7	8	9	10
CUSIP Identification	Description		Foreign	Date Acquired	Name of Vendor	Number of Shares of Stock	Actual Cost	Par Value	Paid for Accrued Interest and Dividends	NAIC Designation or Market Indicator (a)
Bonds - U.S. Government										
912828	V5	6		02/02/2017	SUNTRUST ROBINSON HUMPHREY INC.		119,822	120,000	11	1
912828	W3	0		03/23/2017	SUNTRUST ROBINSON HUMPHREY INC.		79,788	80,000	59	1
0599999	Total - Bonds - U.S. Government						199,610	200,000	70	XXX
Bonds - Industrial and Miscellaneous										
031162	BH	2		02/08/2017	SUSQUEHANNA FINANCIAL GROUP LLP		2,280,120	2,000,000	18,206	2FE
12626P	AN	3		01/06/2017	BARCLAYS CAPITAL INC		2,152,300	2,000,000	15,090	2FE
26138E	AT	6		03/24/2017	JP MORGAN SECURITIES LLC		1,000,000	1,000,000	16,750	2FE
294429	AG	0		03/31/2017	STIFEL NICOLAUS & CO		2,883,105	2,278,000	41,637	2FE
29736R	AF	7		02/22/2017	BANK OF AMERICA MERRILL LYNCH		1,670,357	1,808,000	2,230	1FE
30288*	AB	6		02/08/2017	BLACKROCK		4,263,000	4,263,000		2FE
313747	AX	5		03/29/2017	STIFEL NICOLAUS & CO		884,250	1,000,000	6,243	1FE
33616C	AC	4		02/06/2017	BANK OF AMERICA MERRILL LYNCH		1,968,740	2,000,000		2FE
34417M	AB	3		03/21/2017	BARCLAYS CAPITAL INC		1,000,000	1,000,000		2AM
402740	AE	4		03/07/2017	CANTOR FITZGERALD & CO		4,505,120	4,000,000	95,861	2FE
41810*	AB	0		02/10/2017	BLACKROCK		5,000,000	5,000,000		2AM
44106M	AW	2		01/10/2017	CITIGROUP GLOBAL MARKETS INC		1,979,080	2,000,000		2FE
50076Q	AN	6		02/07/2017	BANK OF AMERICA MERRILL LYNCH		2,448,660	2,000,000	361	2FE
62974*	AA	0		03/09/2017	BLACKROCK		5,000,000	5,000,000		2FE
63861Q	AZ	1		03/22/2017	SUSQUEHANNA FINANCIAL GROUP LLP		1,220,620	1,000,000	33,733	2FE
63946B	AG	5		02/22/2017	VARIOUS		4,876,140	4,000,000	96,522	1FE
693506	BE	6		03/28/2017	SUNTRUST ROBINSON HUMPHREY INC		1,162,790	1,000,000	20,778	1FE
749685	AU	7		01/24/2017	JEFFERIES LLC		2,001,020	2,000,000	16,333	2FE
756109	AT	1		03/08/2017	CITIGROUP GLOBAL MARKETS INC		1,999,360	2,000,000		2FE
75884R	AW	3		01/17/2017	WELLS FARGO SECURITIES LLC		2,973,300	3,000,000		2FE
773903	AE	9		03/23/2017	CANTOR FITZGERALD & CO		1,269,080	1,000,000	20,313	1FE
87244B	AA	6		02/23/2017	BARCLAYS CAPITAL INC		3,000,000	3,000,000		2AM
98978V	AH	6		03/07/2017	MARKETAXESS CORP		1,997,240	2,000,000	10,183	2FE
06738E	AV	7	D	01/03/2017	BARCLAYS CAPITAL INC		1,998,140	2,000,000		2FE
89641U	AB	7	D	02/22/2017	STIFEL NICOLAUS & CO		4,278,720	4,000,000	8,167	2FE
3899999	Total - Bonds - Industrial and Miscellaneous						63,811,142	60,349,000	402,407	XXX
8399997	Total - Bonds - Part 3						64,010,752	60,549,000	402,477	XXX
8399999	Total - Bonds						64,010,752	60,549,000	402,477	XXX
9999999	Total - Bonds, Preferred and Common Stocks						64,010,752	XXX	402,477	XXX

QE04

(a) For all common stock bearing NAIC market indicator "U" provide the number of such issues:.....0.

SCHEDULE D - PART 4

Showing all Long-Term Bonds and Stocks SOLD, REDEEMED or Otherwise DISPOSED OF During Current Quarter

1	2	3	4	5	6	7	8	9	10	Change in Book/Adjusted Carrying Value					16	17	18	19	20	21	22
										11	12	13	14	15							
CUSIP Identification	Description	F o r e i g n	Disposal Date	Name of Purchaser	Number of Shares of Stock	Consideration	Par Value	Actual Cost	Prior Year Book/Adjusted Carrying Value	Unrealized Valuation Increase (Decrease)	Current Year's (Amortization) / Accretion	Current Year's Other-Than-Temporary Impairment Recognized	Total Change in B./A.C.V. (11+12-13)	Total Foreign Exchange Change in B./A.C.V.	Book/Adjusted Carrying Value at Disposal Date	Foreign Exchange Gain (Loss) on Disposal	Realized Gain (Loss) on Disposal	Total Gain (Loss) on Disposal	Bond Interest / Stock Dividends Received During Year	Stated Contractual Maturity Date	NAIC Designation or Market Indicator (a)
Bonds - U.S. Special Revenue and Special Assessment																					
658207 PA 7	NORTH CAROLINA HOUSING FIN AGY (TAXABLE)	..	02/01/2017	REDEMPTION.....	10,00010,00010,01010,000			0	10,000		0252	01/01/2029	1FE.....
92812Q W8 6	VIRGINIA HOUSING DEV AUTH (TAXABLE)	..	03/01/2017	REDEMPTION.....	1,000,0001,000,000995,000996,276	51	51	996,327	3,6733,67326,410	03/01/2028	1FE.....
3199999	Total - Bonds - U.S. Special Revenue and Special Assessments				1,010,0001,010,0001,005,0101,006,27605105101,006,32703,6733,67326,662	XXX	XXX
Bonds - Industrial and Miscellaneous																					
26208L AB 4	DRIVEN BRANDS FDG SER 16-1A CL A2 144A	..	01/20/2017	SINKING FUND REDEMPTION.....	5,0005,0004,9814,984	16	16	5,000		077	07/20/2046	2AM.....
87342R AC 8	TACO BELL 2016-1A CL A23 SR SECD 144A	..	02/25/2017	SINKING FUND REDEMPTION.....	7,5007,5007,5007,500			0	7,500		093	05/25/2046	2AM.....
3899999	Total - Bonds - Industrial and Miscellaneous				12,50012,50012,48112,484016016012,500000170	XXX	XXX
8399997	Total - Bonds - Part 4				1,022,5001,022,5001,017,4911,018,76006706701,018,82703,6733,67326,832	XXX	XXX
8399999	Total - Bonds				1,022,5001,022,5001,017,4911,018,76006706701,018,82703,6733,67326,832	XXX	XXX
9999999	Total - Bonds, Preferred and Common Stocks				1,022,500	XXX1,017,4911,018,76006706701,018,82703,6733,67326,832	XXX	XXX

(a) For all common stock bearing the NAIC market indicator "U" provide: the number of such issues:0.

QE05

Sch. DB - Pt. A - Sn. 1
NONE

Sch. DB - Pt. B - Sn. 1
NONE

Sch. DB - Pt. D - Sn. 1
NONE

Sch. DB - Pt. D - Sn. 2
NONE

Sch. DL - Pt. 1
NONE

Sch. DL - Pt. 2
NONE

SCHEDULE E - PART 1 - CASH

Month End Depository Balances

1 Depository	2 Code	3 Rate of Interest	4 Amount of Interest Received During Current Quarter	5 Amount of Interest Accrued at Current Statement Date	Book Balance at End of Each Month During Current Quarter			9 *
					6 First Month	7 Second Month	8 Third Month	
Open Depositories								
PNC - Checking..... Cleveland, OH.....				815,1241,088,0596,919	XXX
City National Bank - Checking..... Frankfort, KY.....				143,841219,746178,099	XXX
Wells Fargo Bank, N.A. - DDA & Cont. Disb..... Cleveland, OH.....				(3,248,152)(12,701,821)(6,247,462)	XXX
0199999. Total Open Depositories.....	XXX	XXX00(2,289,187)(11,394,016)(6,062,444)	XXX
0399999. Total Cash on Deposit.....	XXX	XXX00(2,289,187)(11,394,016)(6,062,444)	XXX
0499999. Cash in Company's Office.....	XXX	XXX	XXX	XXX3,4003,4003,400	XXX
0599999. Total Cash.....	XXX	XXX00(2,285,787)(11,390,616)(6,059,044)	XXX

SCHEDULE E - PART 2 - CASH EQUIVALENTS

Show Investments Owned End of Current Quarter

1 Description	2 Code	3 Date Acquired	4 Rate of Interest	5 Maturity Date	6 Book/Adjusted Carrying Value	7 Amount of Interest Due & Accrued	8 Amount Received During Year
Sweep Accounts							
Wells Fargo - Stagecoach Sweep Preferred.....		03/24/2017.....	0.150	03/27/2017.....	2,697,477	300	1,517
8499999. Total - Sweep Accounts.....					2,697,477	300	1,517
8699999. Total - Cash Equivalents.....					2,697,477	300	1,517

QE13