



QUARTERLY STATEMENT

AS OF MARCH 31, 2017
OF THE CONDITION AND AFFAIRS OF THE

GRANGE LIFE INSURANCE COMPANY

NAIC Group Code 00267 , 00267 NAIC Company Code 71218 Employer's ID Number 31-0739286
(Current Period) (Prior Period)

Organized under the Laws of Ohio , State of Domicile or Port of Entry Ohio

Country of Domicile United States

Incorporated/Organized 03/05/1968 Commenced Business 07/01/1968

Statutory Home Office 671 South High Street , Columbus, OH, US 43206-1066
(Street and Number) (City or Town, State, Country and Zip Code)

Main Administrative Office 671 South High Street Columbus, OH, US 43206-1066 614-445-2900
(Street and Number) (City or Town, State, Country and Zip Code) (Area Code) (Telephone Number)

Mail Address P.O. Box 1218 , Columbus, OH, US 43216-1212
(Street and Number or P.O. Box) (City or Town, State, Country and Zip Code)

Primary Location of Books and Records 671 South High Street Columbus, OH, US 43206-1066 614-445-2900
(Street and Number) (City or Town, State, Country and Zip Code) (Area Code) (Telephone Number)

Internet Web Site Address www.grangeinsurance.com

Statutory Statement Contact Jeffrey Paul Siefker 614-593-4014
(Name) (Area Code) (Telephone Number) (Extension)

siefkerj@grangeinsurance.com 614-542-6043
(E-mail Address) (FAX Number)

OFFICERS

Name	Title	Name	Title
<u>Theresa Marie Mason</u>	<u>President</u>	<u>Teresa Jean Dalenta</u>	<u>EVP & CFO</u>
<u>LaVawn Dee Coleman</u>	<u>EVP & Secretary</u>	<u>Milliman</u>	<u>Actuary</u>

OTHER OFFICERS

_____, _____, _____

_____, _____, _____

DIRECTORS OR TRUSTEES

<u>JOHN (NMN) AMMENDOLA</u>	<u>MARK LEWIS BOXER</u>	<u>DOUGLAS PAUL BUTH</u>	<u>GLENN EUGENE CORLETT</u>
<u>TERESA JEAN DALENTA</u>	<u>MICHAEL DESMOND FRAIZER</u>	<u>ROBERT ENLOW HOYT</u>	<u>MARY MARNETTE PERRY</u>
<u>THOMAS SIMRALL STEWART</u>	<u>DAVID CHARLES WETMORE</u>	<u>CHRISTIANNA (NMN) WOOD</u>	

State of ss
County of

The officers of this reporting entity being duly sworn, each depose and say that they are the described officers of said reporting entity, and that on the reporting period stated above, all of the herein described assets were the absolute property of the said reporting entity, free and clear from any liens or claims thereon, except as herein stated, and that this statement, together with related exhibits, schedules and explanations therein contained, annexed or referred to, is a full and true statement of all the assets and liabilities and of the condition and affairs of the said reporting entity as of the reporting period stated above, and of its income and deductions therefrom for the period ended, and have been completed in accordance with the NAIC Annual Statement Instructions and Accounting Practices and Procedures manual except to the extent that: (1) state law may differ; or, (2) that state rules or regulations require differences in reporting not related to accounting practices and procedures, according to the best of their information, knowledge and belief, respectively. Furthermore, the scope of this attestation by the described officers also includes the related corresponding electronic filing with the NAIC, when required, that is an exact copy (except for formatting differences due to electronic filing) of the enclosed statement. The electronic filing may be requested by various regulators in lieu of or in addition to the enclosed statement.

Theresa Marie Mason Teresa Jean Dalenta LaVawn Dee Coleman
President EVP & CFO EVP & Secretary

a. Is this an original filing? Yes [X] No []

- b. If no:
1. State the amendment number _____
2. Date filed _____
3. Number of pages attached _____

Subscribed and sworn to before me this
11th day of May, 2017

Teresa J. Burchwell, Notary Public
04/28/2022

STATEMENT AS OF MARCH 31, 2017 OF THE GRANGE LIFE INSURANCE COMPANY

ASSETS

	Current Statement Date			4 December 31 Prior Year Net Admitted Assets
	1 Assets	2 Nonadmitted Assets	3 Net Admitted Assets (Cols. 1 - 2)	
1. Bonds	360,165,753		360,165,753	357,199,558
2. Stocks:				
2.1 Preferred stocks			0	0
2.2 Common stocks	907,306	781	906,525	12,087,891
3. Mortgage loans on real estate:				
3.1 First liens			0	0
3.2 Other than first liens			0	0
4. Real estate:				
4.1 Properties occupied by the company (less \$ encumbrances)			0	0
4.2 Properties held for the production of income (less \$ encumbrances)			0	0
4.3 Properties held for sale (less \$ encumbrances)			0	0
5. Cash (\$ 18,615,325), cash equivalents (\$ 0) and short-term investments (\$ 0)	18,615,325		18,615,325	14,190,667
6. Contract loans (including \$ premium notes)	11,938,568		11,938,568	11,802,628
7. Derivatives	0		0	0
8. Other invested assets	0		0	0
9. Receivables for securities			0	18,983
10. Securities lending reinvested collateral assets	2,690,978		2,690,978	1,161,380
11. Aggregate write-ins for invested assets	0	0	0	0
12. Subtotals, cash and invested assets (Lines 1 to 11)	394,317,930	781	394,317,149	396,461,107
13. Title plants less \$ charged off (for Title insurers only)			0	0
14. Investment income due and accrued	3,138,187		3,138,187	3,142,096
15. Premiums and considerations:				
15.1 Uncollected premiums and agents' balances in the course of collection			0	0
15.2 Deferred premiums, agents' balances and installments booked but deferred and not yet due (including \$ earned but unbilled premiums)	42,009,013		42,009,013	40,949,301
15.3 Accrued retrospective premiums (\$) and contracts subject to redetermination (\$)			0	0
16. Reinsurance:				
16.1 Amounts recoverable from reinsurers	9,471,154		9,471,154	5,402,412
16.2 Funds held by or deposited with reinsured companies			0	0
16.3 Other amounts receivable under reinsurance contracts	1,812,804		1,812,804	995,121
17. Amounts receivable relating to uninsured plans			0	0
18.1 Current federal and foreign income tax recoverable and interest thereon			0	0
18.2 Net deferred tax asset	14,027,335	8,483,384	5,543,951	5,123,558
19. Guaranty funds receivable or on deposit			0	0
20. Electronic data processing equipment and software	358,996	352,478	6,518	7,369
21. Furniture and equipment, including health care delivery assets (\$)			0	0
22. Net adjustment in assets and liabilities due to foreign exchange rates			0	0
23. Receivables from parent, subsidiaries and affiliates			0	178,018
24. Health care (\$) and other amounts receivable			0	0
25. Aggregate write-ins for other-than-invested assets	1,298,674	1,287,706	10,968	10,967
26. Total assets excluding Separate Accounts, Segregated Accounts and Protected Cell Accounts (Lines 12 to 25)	466,434,093	10,124,349	456,309,744	452,269,949
27. From Separate Accounts, Segregated Accounts and Protected Cell Accounts			0	0
28. Total (Lines 26 and 27)	466,434,093	10,124,349	456,309,744	452,269,949
DETAILS OF WRITE-INS				
1101.			0	0
1102.				
1103.				
1198. Summary of remaining write-ins for Line 11 from overflow page	0	0	0	0
1199. Totals (Lines 1101 through 1103 plus 1198) (Line 11 above)	0	0	0	0
2501. Receivable for Agent Loans	460,356	460,356	0	0
2502. Premium Tax Credits	838,318	827,350	10,968	10,967
2503.			0	0
2598. Summary of remaining write-ins for Line 25 from overflow page	0	0	0	0
2599. Totals (Lines 2501 through 2503 plus 2598) (Line 25 above)	1,298,674	1,287,706	10,968	10,967

STATEMENT AS OF MARCH 31, 2017 OF THE GRANGE LIFE INSURANCE COMPANY

LIABILITIES, SURPLUS AND OTHER FUNDS

	1 Current Statement Date	2 December 31 Prior Year
1. Aggregate reserve for life contracts \$ less \$ included in Line 6.3 (including \$ Modco Reserve)	348,818,589	343,295,922
2. Aggregate reserve for accident and health contracts (including \$ Modco Reserve)	364,626	358,790
3. Liability for deposit-type contracts (including \$ Modco Reserve)	307,497	319,224
4. Contract claims:		
4.1 Life	5,598,352	5,117,741
4.2 Accident and health	(8,363)	(6,225)
5. Policyholders' dividends \$ and coupons \$ due and unpaid	302,860	294,703
6. Provision for policyholders' dividends and coupons payable in following calendar year—estimated amounts:		
6.1 Dividends apportioned for payment (including \$ Modco)	59,401	59,401
6.2 Dividends not yet apportioned (including \$ Modco)	0	0
6.3 Coupons and similar benefits (including \$ Modco)	0	0
7. Amount provisionally held for deferred dividend policies not included in Line 6	0	0
8. Premiums and annuity considerations for life and accident and health contracts received in advance less \$ discount; including \$ accident and health premiums	522,596	282,186
9. Contract liabilities not included elsewhere:		
9.1 Surrender values on canceled contracts	0	0
9.2 Provision for experience rating refunds, including the liability of \$ accident and health experience rating refunds of which \$ is for medical loss ratio rebate per the Public Health Service Act	0	0
9.3 Other amounts payable on reinsurance, including \$ 6,809,120 assumed and \$ ceded	6,809,120	3,881,793
9.4 Interest Maintenance Reserve	1,499,450	1,294,572
10. Commissions to agents due or accrued-life and annuity contracts \$, accident and health \$ and deposit-type contract funds \$	384,138	1,137,126
11. Commissions and expense allowances payable on reinsurance assumed	0	0
12. General expenses due or accrued	1,100,804	1,564,724
13. Transfers to Separate Accounts due or accrued (net) (including \$ accrued for expense allowances recognized in reserves, net of reinsured allowances)	0	0
14. Taxes, licenses and fees due or accrued, excluding federal income taxes	1,856,280	1,874,428
15.1 Current federal and foreign income taxes, including \$ on realized capital gains (losses)	135,592	4,036,240
15.2 Net deferred tax liability	0	0
16. Unearned investment income	506,619	483,911
17. Amounts withheld or retained by company as agent or trustee	0	0
18. Amounts held for agents' account, including \$ agents' credit balances	0	0
19. Remittances and items not allocated	218,452	185,300
20. Net adjustment in assets and liabilities due to foreign exchange rates	0	0
21. Liability for benefits for employees and agents if not included above	0	0
22. Borrowed money \$ and interest thereon \$	0	0
23. Dividends to stockholders declared and unpaid	0	0
24. Miscellaneous liabilities:		
24.01 Asset valuation reserve	2,870,195	2,809,978
24.02 Reinsurance in unauthorized and certified (\$) companies	0	0
24.03 Funds held under reinsurance treaties with unauthorized and certified (\$) reinsurers	0	0
24.04 Payable to parent, subsidiaries and affiliates	8,216,455	10,372,674
24.05 Drafts outstanding	0	0
24.06 Liability for amounts held under uninsured plans	0	0
24.07 Funds held under coinsurance	0	0
24.08 Derivatives	0	0
24.09 Payable for securities	275,000	0
24.10 Payable for securities lending	2,690,978	1,161,380
24.11 Capital notes \$ and interest thereon \$	0	0
25. Aggregate write-ins for liabilities	0	0
26. Total liabilities excluding Separate Accounts business (Lines 1 to 25)	382,528,641	378,523,868
27. From Separate Accounts statement	0	0
28. Total liabilities (Lines 26 and 27)	382,528,641	378,523,868
29. Common capital stock	1,893,750	1,893,750
30. Preferred capital stock	0	0
31. Aggregate write-ins for other than special surplus funds	0	0
32. Surplus notes	0	0
33. Gross paid in and contributed surplus	67,031,250	67,031,250
34. Aggregate write-ins for special surplus funds	0	0
35. Unassigned funds (surplus)	4,856,103	4,821,081
36. Less treasury stock, at cost:		
36.1 shares common (value included in Line 29 \$)	0	0
36.2 shares preferred (value included in Line 30 \$)	0	0
37. Surplus (Total Lines 31 + 32 + 33 + 34 + 35 - 36) (including \$ in Separate Accounts Statement)	71,887,353	71,852,331
38. Totals of Lines 29, 30 and 37	73,781,103	73,746,081
39. Totals of Lines 28 and 38 (Page 2, Line 28, Col. 3)	456,309,744	452,269,949
DETAILS OF WRITE-INS		
2501.	0	0
2502.	0	0
2503.	0	0
2598. Summary of remaining write-ins for Line 25 from overflow page	0	0
2599. Totals (Lines 2501 through 2503 plus 2598) (Line 25 above)	0	0
3101.	0	0
3102.	0	0
3103.	0	0
3198. Summary of remaining write-ins for Line 31 from overflow page	0	0
3199. Totals (Lines 3101 through 3103 plus 3198) (Line 31 above)	0	0
3401.	0	0
3402.	0	0
3403.	0	0
3498. Summary of remaining write-ins for Line 34 from overflow page	0	0
3499. Totals (Lines 3401 through 3403 plus 3498) (Line 34 above)	0	0

STATEMENT AS OF MARCH 31, 2017 OF THE GRANGE LIFE INSURANCE COMPANY

SUMMARY OF OPERATIONS

	1 Current Year To Date	2 Prior Year Year to Date	3 Prior Year Ended December 31
1. Premiums and annuity considerations for life and accident and health contracts	14,578,700	14,514,051	68,279,973
2. Considerations for supplementary contracts with life contingencies	0	0	0
3. Net investment income	3,676,792	3,192,963	12,616,422
4. Amortization of Interest Maintenance Reserve (IMR)	135,709	96,145	438,179
5. Separate Accounts net gain from operations excluding unrealized gains or losses	0	0	0
6. Commissions and expense allowances on reinsurance ceded	2,296,814	1,893,450	8,561,833
7. Reserve adjustments on reinsurance ceded	0	0	0
8. Miscellaneous Income:			
8.1 Income from fees associated with investment management, administration and contract guarantees from Separate Accounts	0	0	0
8.2 Charges and fees for deposit-type contracts	0	0	0
8.3 Aggregate write-ins for miscellaneous income	300	26,002	30,721
9. Totals (Lines 1 to 8.3)	20,688,315	19,722,611	89,927,128
10. Death benefits	7,383,009	8,207,351	28,299,434
11. Matured endowments (excluding guaranteed annual pure endowments)	0	0	0
12. Annuity benefits	1,144,531	1,051,221	5,077,267
13. Disability benefits and benefits under accident and health contracts	42,951	16,894	113,930
14. Coupons, guaranteed annual pure endowments and similar benefits	0	0	0
15. Surrender benefits and withdrawals for life contracts	1,501,676	2,027,094	9,139,479
16. Group conversions	0	0	0
17. Interest and adjustments on contract or deposit-type contract funds	0	0	0
18. Payments on supplementary contracts with life contingencies	0	0	0
19. Increase in aggregate reserves for life and accident and health contracts	5,466,598	5,418,108	43,297,540
20. Totals (Lines 10 to 19)	15,538,765	16,720,668	85,927,650
21. Commissions on premiums, annuity considerations, and deposit-type contract funds (direct business only)	2,367,084	3,054,954	11,563,767
22. Commissions and expense allowances on reinsurance assumed	37,197	40,111	154,559
23. General insurance expenses	3,128,435	3,560,509	14,687,987
24. Insurance taxes, licenses and fees, excluding federal income taxes	577,619	499,593	2,023,452
25. Increase in loading on deferred and uncollected premiums	(669,898)	(278,395)	(724,406)
26. Net transfers to or (from) Separate Accounts net of reinsurance	0	0	0
27. Aggregate write-ins for deductions	0	127,567	0
28. Totals (Lines 20 to 27)	20,979,202	23,725,007	113,633,009
29. Net gain from operations before dividends to policyholders and federal income taxes (Line 9 minus Line 28)	(290,887)	(4,002,396)	(23,705,881)
30. Dividends to policyholders	97,627	107,322	356,064
31. Net gain from operations after dividends to policyholders and before federal income taxes (Line 29 minus Line 30)	(388,514)	(4,109,718)	(24,061,945)
32. Federal and foreign income taxes incurred (excluding tax on capital gains)	0	0	4,012,850
33. Net gain from operations after dividends to policyholders and federal income taxes and before realized capital gains or (losses) (Line 31 minus Line 32)	(388,514)	(4,109,718)	(28,074,795)
34. Net realized capital gains (losses) (excluding gains (losses) transferred to the IMR) less capital gains tax of \$ (excluding taxes of \$ transferred to the IMR)	60,380	(555,792)	(6,906,650)
35. Net income (Line 33 plus Line 34)	(328,134)	(4,665,510)	(34,981,445)
CAPITAL AND SURPLUS ACCOUNT			
36. Capital and surplus, December 31, prior year	73,746,081	42,455,075	42,455,075
37. Net income (Line 35)	(328,134)	(4,665,510)	(34,981,445)
38. Change in net unrealized capital gains (losses) less capital gains tax of \$	(5,691)	71,692	8,284,749
39. Change in net unrealized foreign exchange capital gain (loss)	0	0	0
40. Change in net deferred income tax	(35,732)	1,328,467	5,896,884
41. Change in nonadmitted assets	464,797	(1,215,288)	(5,159,369)
42. Change in liability for reinsurance in unauthorized and certified companies	0	0	0
43. Change in reserve on account of change in valuation basis, (increase) or decrease	0	0	0
44. Change in asset valuation reserve	(60,218)	(39,749)	(116,605)
45. Change in treasury stock	0	0	0
46. Surplus (contributed to) withdrawn from Separate Accounts during period	0	0	0
47. Other changes in surplus in Separate Accounts Statement	0	0	0
48. Change in surplus notes	0	0	0
49. Cumulative effect of changes in accounting principles	0	0	0
50. Capital changes:			
50.1 Paid in	0	0	0
50.2 Transferred from surplus (Stock Dividend)	0	0	0
50.3 Transferred to surplus	0	0	0
51. Surplus adjustment:			
51.1 Paid in	0	0	60,000,000
51.2 Transferred to capital (Stock Dividend)	0	0	0
51.3 Transferred from capital	0	0	0
51.4 Change in surplus as a result of reinsurance	0	0	(2,633,208)
52. Dividends to stockholders	0	0	0
53. Aggregate write-ins for gains and losses in surplus	0	0	0
54. Net change in capital and surplus (Lines 37 through 53)	35,022	(4,520,388)	31,291,006
55. Capital and surplus as of statement date (Lines 36 + 54)	73,781,103	37,934,687	73,746,081
DETAILS OF WRITE-INS			
08.301. SERVICE FEES	300	26,002	30,721
08.302.	0	0	0
08.303.	0	0	0
08.398. Summary of remaining write-ins for Line 8.3 from overflow page	0	0	0
08.399. Totals (Lines 08.301 through 08.303 plus 08.398) (Line 8.3 above)	300	26,002	30,721
2701. Investment Income Due GLRE-Classified as Misc Deduction	0	127,567	0
2702. Misc Deduction	0	0	0
2703.	0	0	0
2798. Summary of remaining write-ins for Line 27 from overflow page	0	0	0
2799. Totals (Lines 2701 through 2703 plus 2798) (Line 27 above)	0	127,567	0
5301. Prior Period Adjustment	0	0	0
5302.	0	0	0
5303.	0	0	0
5398. Summary of remaining write-ins for Line 53 from overflow page	0	0	0
5399. Totals (Lines 5301 through 5303 plus 5398) (Line 53 above)	0	0	0

STATEMENT AS OF MARCH 31, 2017 OF THE GRANGE LIFE INSURANCE COMPANY

CASH FLOW

	1 Current Year To Date	2 Prior Year To Date	3 Prior Year Ended December 31
Cash from Operations			
1. Premiums collected net of reinsurance.....	13,611,613	13,695,006	66,066,513
2. Net investment income	3,977,612	3,227,429	12,961,646
3. Miscellaneous income	2,297,114	1,919,452	5,959,530
4. Total (Lines 1 to 3)	19,886,339	18,841,887	84,987,689
5. Benefit and loss related payments	10,723,382	9,765,266	40,746,058
6. Net transfers to Separate Accounts, Segregated Accounts and Protected Cell Accounts.....	0	0	0
7. Commissions, expenses paid and aggregate write-ins for deductions	7,345,390	7,852,821	28,432,245
8. Dividends paid to policyholders	89,470	84,700	333,361
9. Federal and foreign income taxes paid (recovered) net of \$ tax on capital gains (losses).....	0	0	102,156
10. Total (Lines 5 through 9)	18,158,242	17,702,787	69,613,820
11. Net cash from operations (Line 4 minus Line 10)	1,728,097	1,139,100	15,373,869
Cash from Investments			
12. Proceeds from investments sold, matured or repaid:			
12.1 Bonds	17,888,327	11,172,835	86,019,096
12.2 Stocks	250,000	0	0
12.3 Mortgage loans	0	0	0
12.4 Real estate	0	0	0
12.5 Other invested assets	0	0	0
12.6 Net gains or (losses) on cash, cash equivalents and short-term investments	0	0	0
12.7 Miscellaneous proceeds	293,983	3,096,918	236
12.8 Total investment proceeds (Lines 12.1 to 12.7)	18,432,310	14,269,753	86,019,332
13. Cost of investments acquired (long-term only):			
13.1 Bonds	10,855,696	19,706,939	151,692,377
13.2 Stocks	0	0	0
13.3 Mortgage loans	0	0	0
13.4 Real estate	0	0	0
13.5 Other invested assets	0	0	0
13.6 Miscellaneous applications	0	0	0
13.7 Total investments acquired (Lines 13.1 to 13.6)	10,855,696	19,706,939	151,692,377
14. Net increase (or decrease) in contract loans and premium notes	135,940	74,563	752,706
15. Net cash from investments (Line 12.8 minus Line 13.7 and Line 14)	7,440,674	(5,511,749)	(66,425,751)
Cash from Financing and Miscellaneous Sources			
16. Cash provided (applied):			
16.1 Surplus notes, capital notes	0	0	0
16.2 Capital and paid in surplus, less treasury stock.....	0	0	60,000,000
16.3 Borrowed funds	0	0	0
16.4 Net deposits on deposit-type contracts and other insurance liabilities	(61,905)	(8,172)	(42,849)
16.5 Dividends to stockholders	0	0	0
16.6 Other cash provided (applied).....	(4,682,208)	1,954,705	(17,350,905)
17. Net cash from financing and miscellaneous sources (Line 16.1 through Line 16.4 minus Line 16.5 plus Line 16.6).....	(4,744,113)	1,946,533	42,606,246
RECONCILIATION OF CASH, CASH EQUIVALENTS AND SHORT-TERM INVESTMENTS			
18. Net change in cash, cash equivalents and short-term investments (Line 11, plus Lines 15 and 17)	4,424,658	(2,426,116)	(8,445,636)
19. Cash, cash equivalents and short-term investments:			
19.1 Beginning of year.....	14,190,667	22,636,303	22,636,303
19.2 End of period (Line 18 plus Line 19.1)	18,615,325	20,210,187	14,190,667

EXHIBIT 1

DIRECT PREMIUMS AND DEPOSIT-TYPE CONTRACTS

	1 Current Year to Date	2 Prior Year to Date	3 Prior Year Ended December 31
1. Industrial life0	.0
2. Ordinary life insurance	24,190,037	23,906,630	98,826,600
3. Ordinary individual annuities	251,994	372,726	1,039,944
4. Credit life (group and individual)0	.0
5. Group life insurance	552,323	567,133	2,293,424
6. Group annuities0	.0
7. A & H - group0	.0
8. A & H - credit (group and individual)0	.0
9. A & H - other	49,882	54,917	200,576
10. Aggregate of all other lines of business0	.0	.0
11. Subtotal	25,044,236	24,901,406	102,360,544
12. Deposit-type contracts0	.0
13. Total	25,044,236	24,901,406	102,360,544
DETAILS OF WRITE-INS			
1001.			
1002.			
1003.			
1098. Summary of remaining write-ins for Line 10 from overflow page0	.0	.0
1099. Total (Lines 1001 through 1003 plus 1098) (Line 10 above)	0	0	0

1) Summary of Significant Accounting Policies

A. Accounting Practices

The accompanying financial statements of Grange Life Insurance Company (Company) have been prepared in conformity with the *Accounting Practices and Procedures Manual* of the National Association of Insurance Commissioners (NAIC) and accounting practices prescribed or permitted by The Ohio Department of Insurance (Department).

The Net Income and Surplus amounts were as follows for the period ended March 31, 2017 and December 31, 2016, respectively. Failure of the amounts to add to totals is due to rounding or truncation.

<u>NET INCOME</u>	<u>State of Domicile</u>	<u>2016</u>	<u>2015</u>
(1) Company state basis (Pg 4, Line 35, Columns 1 & 3)OH	\$.....(328,134.00)	\$..(34,981,445.00)
(4) NAIC SAP (1-2-3=4)OH	\$.....(328,134.00)	...(34,981,445.00)
 <u>SURPLUS</u>			
(5) Company state basis (Pg 3, Line 38, Columns 1 & 2)OH	\$.....73,781,103.00	\$...73,746,081.00
(8) NAIC SAP (5-6-7=8)OH	\$.....73,781,103.00	\$...73,746,081.00

2) Accounting Changes and Correction of Errors

The Company had no material changes in accounting principles or corrections of errors.

3) Business Combinations and Goodwill

NONE

4) Discontinued Operations

NONE

5) Investments

A. Mortgage Loans, including Mezzanine Real Estate Loans

NONE

B. Debt Restructuring

NONE

C. Reverse Mortgages

NONE

D. Loan-Backed Securities

1. Prepayment assumptions for single class and multi-class mortgage-backed/asset-backed securities were obtained from Hub Data and Bloomberg. These assumptions are consistent with the current interest rate and economic environment.
2. All securities during 2017 with a recognized other-than-temporary impairment, disclosed in the aggregate, classified on the basis for the other-than-temporary impairment:
NONE
3. Securities with a recognized other-than-temporary impairment currently held by the Company, where the present value of cash flows expected to be collected is less than the amortized cost basis of securities:
NONE
4. All impaired securities (fair value is less than cost or amortized cost) for which an other-than-temporary impairment has not been recognized in earnings as a realized loss (including securities with a recognized other-than-temporary impairment for non-interest related declines when a non-recognized interest related impairment remains):

a.	The aggregate amount of unrealized loss:	
1.	Less than 12 Months	\$ (3,281,551)
2.	12 Months or Longer	\$ (41,683)
b.	The aggregate related fair value of securities with unrealized losses:	
1.	Less than 12 Months	\$ 94,750,278
2.	12 Months or Longer	\$ 2,678,429

5. According to SSAP 43R, the best estimate of future cash flows using the appropriate discount rate was calculated for each affected security, with other-than-temporary impairments realized to the extent that present value was less than amortized cost. Securities held with an intent to sell were other-than-temporarily impaired to current fair value. Securities with a present value greater than amortized cost were not other-than-temporarily impaired.

E. Repurchase Agreements and/or Securities Lending Transactions

	<u>Amortized Cost</u>	<u>FAIR VALUE</u>
Securities Lending		
(a) Open		
(b) 30 Days or Less	\$.....2,556,005.00	\$.....2,556,007.00
(c) 31 to 60 Days	\$.....134,973.00	\$.....134,973.00
(d) 61 to 90 Days		
(e) 91 to 120 Days		
(f) 121 to 180 Days		
(g) 181 to 365 Days		
(h) 1 to 2 Years		
(I) 2-3 Year		
(j) Greater Than 3 Years		
(k) Sub-Total	\$.....2,690,978.00	\$.....2,690,980.00
(l) Securities Received		
(m) Total Collateral Reinvested	<u>\$.....2,690,978.00</u>	<u>\$.....2,690,980.00</u>

6) Joint Ventures, Partnerships and Limited Liability Companies

No significant change.

7) Investment Income

No significant change.

8) Derivative Instruments

NONE

9) Income Taxes

\$3.9 million of the federal income tax liability recorded as of December 31, 2016 was returned to the Company as part of the dissolution of GLRE in March 2017. See note 21 for more information.

10) Information Concerning Parent, Subsidiaries, Affiliates, and Other Related Parties

No significant change.

11) Debt

NONE

12) Retirement Plans, Deferred Compensation, Postemployment Benefits and Compensated Absences and Other Postretirement Benefit Plans

No significant change.

13) Capital and Surplus, Shareholders' Dividend Restrictions and Quasi-Reorganizations

No significant change.

14) Contingencies

No significant change.

15) Leases

NONE

16) Information About Financial Instruments With Off-Balance Sheet Risk And Financial Instruments With Concentrations of Credit Risk

NONE

17) Sale, Transfer and Servicing of Financial Assets and Extinguishments of Liabilities

A. Transfers of Receivables Reported as Sales

NONE

B. Transfer and Servicing of Financial Assets

No significant change.

C. Wash Sales

NONE

18) Gain or Loss to the Reporting Entity from Uninsured Plans and the Uninsured Portion of Partially Insured Plans

NONE

19) Direct Premium Written/Produced by Managing General Agents/Third Party Administrators

NONE

20) Fair Value Measurements

A. For assets and liabilities that are measured and reported at fair value in the statement of financial position after initial recognition, the valuation techniques and the inputs used to develop those measurements and for fair value measurements in the statement of financial position determined using significant unobservable inputs (Level 3), the effect of the measurements on earnings (or changes in net assets) for the period.

(1) Fair Value Measurement at Reporting Date

NONE

(2) Fair Value Measurements in (Level 3) of the Fair Value

Description	Beginning Balance at 01/01/2017	Transfers into Level 3	Transfers out of Level 3	Total gains and (losses) included in Net Income	Total gains and (losses) included in Surplus	Purchases	Issuances	Sales	Settlements	Ending Balance at 3/31/2017
a. Assets:										
Common Stock	12,087,891	0	0	0	11,181,366	0	0	0	0	906,525
Total Assets	12,087,891	0	0	0	11,181,366	0	0	0	0	906,525

(3) The reporting entity's policy is to recognize transfers in and out as of the end of the reporting period.

(4) As of March 31, 2017, the reported fair value of the entity's investments categorized within Level 2 and Level 3 of the fair value hierarchy are as follows:

Bonds—According to statutory accounting rules, fixed income securities with a rating of NAIC 1 thru 5 are reported at amortized cost. Securities with a rating of NAIC 6 are measured and reported at the lower of amortized cost or fair value on the statement of financial position. As of March 31, 2017, the Company did not have any bonds rated NAIC 6 and therefore did not report any securities at fair value.

Parent, Subsidiaries, and Affiliates—The Company's investment in one subsidiary is measured and reported at fair value as of March 31, 2017 totaling \$.9 million. Fair value measurement is determined by the individual entity's surplus at the end of a period, or the amount by which assets exceed liabilities. Each subsidiary is in the insurance industry, whereby its assets are largely comprised of fixed income securities carried at amortized cost and its liabilities represent reserves for policyholder claims and benefits. Some inputs to the valuation methodology are unobservable and significant to the fair value measurement, and result in disclosure at Level 3.

(5) The Company does not have derivative assets or liabilities.

B. The Company is not required to combine the fair value information disclosed under SSAP No. 100, since it is not practicable.

C. Fair values for these types of financial instruments:

Type of Financial Instrument	Aggregate Fair Value	Admitted Assets	(Level 1)	(Level 2)	(Level 3)	Not Practicable (Carrying Value)
Bonds	\$ 364,700,893	\$ 360,165,753	\$ 23,778,360	\$ 340,922,532	\$	\$
Common Stock	\$907,306	\$906,525	\$	\$	\$906,525	\$781
Money Market	\$0	\$0	\$0	\$	\$	\$

D. Not Practicable to Estimate Fair Value

Type or Class of Financial Instrument	Carrying Value	Effective Interest Rate	Maturity Date	Explanation
Common Stock	\$781	N/A.....	N/A.....	Stock represents ownership of an insurance agency valued at original cost and reported as a subsidiary of the entity

21) Other Items

A. Extraordinary items

NONE

B. Troubled Debt Restructuring: Debtors

NONE

C. Other Disclosures

On November 1, 2016, the Company's universal life with secondary guarantees and term life business was recaptured from its wholly-owned subsidiary, GLRE, under the provisions of the coinsurance reinsurance agreement. GLRE was subsequently approved for dissolution on March 3, 2017 by the Vermont Department of Financial Regulation.

D. Uncollectible Assets

NONE

E. Business Interruption Insurance Recoveries

NONE

F. State Transferable and Non-Transferable Tax Credits

NONE

G. Subprime Mortgage Related Risk Exposure

NONE

H. Retained Assets

NONE

22) Events Subsequent

The remaining assets in GLRE in the form of cash were returned to the Company in April 2017, as the result of finalizing the dissolution of GLRE.

23) Reinsurance

No significant change.

24) Retrospectively Rated Contracts & Contracts Subject to Redetermination

NONE

25) Change in Incurred Losses and Loss Adjustment Expenses

NONE

26) Intercompany Pooling Arrangements

NONE

27) Structured Settlements

NONE

28) Health Care Receivables

NONE

29) Participating Policies

No significant change.

30) Premium Deficiency Reserves

NONE

31) Reserves for Life Contracts and Annuity Contracts

No significant change.

32) Analysis of Annuity Actuarial Reserves and Deposit Type Liabilities by Withdrawal Characteristics

	Amount	Separate Account With Guarantees	Separate Account Nonguaranteed	Total	% of Total
A. Subject to discretionary withdrawal:					
(1) With fair value adjustment					
(2) At book value less current surrender charge of 5% or more	\$ 24,177.00			\$ 24,177.00	.04
(3) At fair value					
(4) Total with adjustment or at fair value (total of 1 through 3)	\$ 24,177.00			\$ 24,177.00	.04
(5) At book value without adjustment (minimal or no charge or adjustment)	\$56,109,893.00			\$56,109,893.00	99.96
B. Not subject to discretionary withdrawal					
C. Total (gross: direct + assumed)	\$56,134,070.00			\$56,134,070.00	100.00
D. Reinsurance ceded					
E. Total (net) * (C) - (D)	\$56,134,070.00			\$56,134,070.00	

* Reconciliation of total annuity actuarial reserves and deposit fund liabilities.

F.

Amount

Life & Accident & Health Annual Statement

Exhibit 5, Annuities Section, Total (net): \$55,826,574.00
Exhibit 5, Supplementary Contracts With Life Contingencies
Section, Total (net):

Exhibit 7, Deposit-Type Contracts, Line 14, Column 1: \$307,497.00

Subtotal: \$56,134,071.00

Separate Accounts Annual Statement:

Exhibit 3, Line 0299999, Column 2:
Exhibit 3, Line 0399999, Column 2:
Policyholder dividend and coupon accumulations
Policyholder premiums
Guaranteed interest contracts
Other contract deposit funds
Subtotal:

Combined Total: \$56,134,071.00

33) Premium and Annuity Considerations Deferred and Uncollected

No significant change.

34) Separate Accounts

NONE

35) Loss/Claim Adjustment Expenses

NONE

GENERAL INTERROGATORIES

**PART 1 - COMMON INTERROGATORIES
GENERAL**

- 1.1 Did the reporting entity experience any material transactions requiring the filing of Disclosure of Material Transactions with the State of Domicile, as required by the Model Act? Yes No
- 1.2 If yes, has the report been filed with the domiciliary state? Yes No
- 2.1 Has any change been made during the year of this statement in the charter, by-laws, articles of incorporation, or deed of settlement of the reporting entity? Yes No
- 2.2 If yes, date of change:
- 3.1 Is the reporting entity a member of an Insurance Holding Company System consisting of two or more affiliated persons, one or more of which is an insurer? Yes No
If yes, complete Schedule Y, Parts 1 and 1A.
- 3.2 Have there been any substantial changes in the organizational chart since the prior quarter end? Yes No
- 3.3 If the response to 3.2 is yes, provide a brief description of those changes.
.....
- 4.1 Has the reporting entity been a party to a merger or consolidation during the period covered by this statement? Yes No
- 4.2 If yes, provide the name of entity, NAIC Company Code, and state of domicile (use two letter state abbreviation) for any entity that has ceased to exist as a result of the merger or consolidation.

1 Name of Entity	2 NAIC Company Code	3 State of Domicile

- 5. If the reporting entity is subject to a management agreement, including third-party administrator(s), managing general agent(s), attorney-in-fact, or similar agreement, have there been any significant changes regarding the terms of the agreement or principals involved? Yes No NA
If yes, attach an explanation.
- 6.1 State as of what date the latest financial examination of the reporting entity was made or is being made.12/31/2014
- 6.2 State the as of date that the latest financial examination report became available from either the state of domicile or the reporting entity. This date should be the date of the examined balance sheet and not the date the report was completed or released.12/31/2014
- 6.3 State as of what date the latest financial examination report became available to other states or the public from either the state of domicile or the reporting entity. This is the release date or completion date of the examination report and not the date of the examination (balance sheet date).11/24/2015
- 6.4 By what department or departments?
OHIO DEPT. OF INSURANCE.....
- 6.5 Have all financial statement adjustments within the latest financial examination report been accounted for in a subsequent financial statement filed with Departments? Yes No NA
- 6.6 Have all of the recommendations within the latest financial examination report been complied with? Yes No NA
- 7.1 Has this reporting entity had any Certificates of Authority, licenses or registrations (including corporate registration, if applicable) suspended or revoked by any governmental entity during the reporting period? Yes No
- 7.2 If yes, give full information:
.....
- 8.1 Is the company a subsidiary of a bank holding company regulated by the Federal Reserve Board?..... Yes No
- 8.2 If response to 8.1 is yes, please identify the name of the bank holding company.
.....
- 8.3 Is the company affiliated with one or more banks, thrifts or securities firms?..... Yes No
- 8.4 If response to 8.3 is yes, please provide below the names and location (city and state of the main office) of any affiliates regulated by a federal regulatory services agency [i.e. the Federal Reserve Board (FRB), the Office of the Comptroller of the Currency (OCC), the Federal Deposit Insurance Corporation (FDIC) and the Securities Exchange Commission (SEC)] and identify the affiliate's primary federal regulator.]

1 Affiliate Name	2 Location (City, State)	3 FRB	4 OCC	5 FDIC	6 SEC

GENERAL INTERROGATORIES

9.1 Are the senior officers (principal executive officer, principal financial officer, principal accounting officer or controller, or persons performing similar functions) of the reporting entity subject to a code of ethics, which includes the following standards? Yes No

(a) Honest and ethical conduct, including the ethical handling of actual or apparent conflicts of interest between personal and professional relationships;
 (b) Full, fair, accurate, timely and understandable disclosure in the periodic reports required to be filed by the reporting entity;
 (c) Compliance with applicable governmental laws, rules and regulations;
 (d) The prompt internal reporting of violations to an appropriate person or persons identified in the code; and
 (e) Accountability for adherence to the code.

9.11 If the response to 9.1 is No, please explain:

9.2 Has the code of ethics for senior managers been amended? Yes No

9.21 If the response to 9.2 is Yes, provide information related to amendment(s).

9.3 Have any provisions of the code of ethics been waived for any of the specified officers? Yes No

9.31 If the response to 9.3 is Yes, provide the nature of any waiver(s).

FINANCIAL

10.1 Does the reporting entity report any amounts due from parent, subsidiaries or affiliates on Page 2 of this statement? Yes No

10.2 If yes, indicate any amounts receivable from parent included in the Page 2 amount: \$

INVESTMENT

11.1 Were any of the stocks, bonds, or other assets of the reporting entity loaned, placed under option agreement, or otherwise made available for use by another person? (Exclude securities under securities lending agreements.) Yes No

11.2 If yes, give full and complete information relating thereto:

12. Amount of real estate and mortgages held in other invested assets in Schedule BA: \$

13. Amount of real estate and mortgages held in short-term investments: \$

14.1 Does the reporting entity have any investments in parent, subsidiaries and affiliates? Yes No

14.2 If yes, please complete the following:

	1	2
	Prior Year-End Book/Adjusted Carrying Value	Current Quarter Book/Adjusted Carrying Value
14.21 Bonds	\$	\$
14.22 Preferred Stock	\$	\$
14.23 Common Stock	\$ 12,088,672	\$ 907,306
14.24 Short-Term Investments	\$	\$
14.25 Mortgage Loans on Real Estate	\$	\$
14.26 All Other	\$	\$
14.27 Total Investment in Parent, Subsidiaries and Affiliates (Subtotal Lines 14.21 to 14.26).....	\$ 12,088,672	\$ 907,306
14.28 Total Investment in Parent included in Lines 14.21 to 14.26 above	\$	\$

15.1 Has the reporting entity entered into any hedging transactions reported on Schedule DB? Yes No

15.2 If yes, has a comprehensive description of the hedging program been made available to the domiciliary state? Yes No

If no, attach a description with this statement.

STATEMENT AS OF MARCH 31, 2017 OF THE GRANGE LIFE INSURANCE COMPANY

GENERAL INTERROGATORIES

- 16 For the reporting entity's security lending program, state the amount of the following as of the current statement date:
- | | |
|--|-------------------|
| 16.1 Total fair value of reinvested collateral assets reported on Schedule DL, Parts 1 and 2 | \$2,690,980 |
| 16.2 Total book adjusted/carrying value of reinvested collateral assets reported on Schedule DL, Parts 1 and 2 | \$2,690,978 |
| 16.3 Total payable for securities lending reported on the liability page | \$2,690,978 |

17. Excluding items in Schedule E – Part 3 – Special Deposits, real estate, mortgage loans and investments held physically in the reporting entity's offices, vaults or safety deposit boxes, were all stocks, bonds and other securities, owned throughout the current year held pursuant to a custodial agreement with a qualified bank or trust company in accordance with Section 1, III – General Examination Considerations, F. Outsourcing of Critical Functions, Custodial or Safekeeping Agreements of the NAIC *Financial Condition Examiners Handbook*? Yes No

17.1 For all agreements that comply with the requirements of the NAIC *Financial Condition Examiners Handbook*, complete the following:

1 Name of Custodian(s)	2 Custodian Address
JP Morgan Corporate and Investment Bank.....	383 Madison Avenue, Floor 11, New York, NY 10179.....

17.2 For all agreements that do not comply with the requirements of the NAIC *Financial Condition Examiners Handbook*, provide the name, location and a complete explanation:

1 Name(s)	2 Location(s)	3 Complete Explanation(s)

17.3 Have there been any changes, including name changes, in the custodian(s) identified in 17.1 during the current quarter? Yes No

17.4 If yes, give full and complete information relating thereto:

1 Old Custodian	2 New Custodian	3 Date of Change	4 Reason

17.5 Investment management – Identify all investment advisors, investment managers, broker/dealers, including individuals that have the authority to make investment decisions on behalf of the reporting entity. For assets that are managed internally by employees of the reporting entity, note as such. [...that have access to the investment accounts"; "...handle securities"]

1 Name of Firm or Individual	2 Affiliation
Crescent Capital Group LP.....	U.....

17.5097 For those firms/individuals listed in the table for Question 17.5, do any firms/individuals unaffiliated with the reporting entity (i.e., designated with a "U") manage more than 10% of the reporting entity's assets? Yes No

17.5098 For firms/individuals unaffiliated with the reporting entity (i.e., designated with a "U") listed in the table for Question 17.5, does the total assets under management aggregate to more than 50% of the reporting entity's assets? Yes No

17.6 For those firms or individuals listed in the table for 17.5 with an affiliation code of "A" (affiliated) or "U" (unaffiliated), provide the information for the table below.

1 Central Registration Depository Number	2 Name of Firm or Individual	3 Legal Entity Identifier (LEI)	4 Registered With	5 Investment Management Agreement (IMA) Filed

18.1 Have all the filing requirements of the *Purposes and Procedures Manual of the NAIC Investment Analysis Office* been followed? Yes No

18.2 If no, list exceptions:
.....

GENERAL INTERROGATORIES
PART 2 - LIFE & HEALTH

	1 Amount
1. Report the statement value of mortgage loans at the end of this reporting period for the following categories:	
1.1 Long-Term Mortgages in Good Standing	
1.11 Farm Mortgages	\$
1.12 Residential Mortgages	\$
1.13 Commercial Mortgages	\$
1.14 Total Mortgages in Good Standing	\$ <u>0</u>
1.2 Long-Term Mortgages in Good Standing with Restructured Terms	
1.21 Total Mortgages in Good Standing with Restructured Terms	\$
1.3 Long-Term Mortgage Loans upon which Interest is Overdue more than Three Months	
1.31 Farm Mortgages	\$
1.32 Residential Mortgages	\$
1.33 Commercial Mortgages	\$
1.34 Total Mortgages with Interest Overdue more than Three Months	\$ <u>0</u>
1.4 Long-Term Mortgage Loans in Process of Foreclosure	
1.41 Farm Mortgages	\$
1.42 Residential Mortgages	\$
1.43 Commercial Mortgages	\$
1.44 Total Mortgages in Process of Foreclosure	\$ <u>0</u>
1.5 Total Mortgage Loans (Lines 1.14 + 1.21 + 1.34 + 1.44) (Page 2, Column 3, Lines 3.1 + 3.2)	\$ <u>0</u>
1.6 Long-Term Mortgages Foreclosed, Properties Transferred to Real Estate in Current Quarter	
1.61 Farm Mortgages	\$
1.62 Residential Mortgages	\$
1.63 Commercial Mortgages	\$
1.64 Total Mortgages Foreclosed and Transferred to Real Estate	\$ <u>0</u>
2. Operating Percentages:	
2.1 A&H loss percent%
2.2 A&H cost containment percent%
2.3 A&H expense percent excluding cost containment expenses%
3.1 Do you act as a custodian for health savings accounts?	Yes [] No [X]
3.2 If yes, please provide the amount of custodial funds held as of the reporting date	\$
3.3 Do you act as an administrator for health savings accounts?	Yes [] No [X]
3.4 If yes, please provide the balance of the funds administered as of the reporting date	\$

SCHEDULE S – CEDED REINSURANCE

Showing All New Reinsurance Treaties – Current Year to Date

1 NAIC Company Code	2 ID Number	3 Effective Date	4 Name of Reinsurer	5 Domiciliary Jurisdiction	6 Type of Reinsurance Ceded	7 Type of Reinsurer	8 Certified Reinsurer Rating (1 through 6)	9 Effective Date of Certified Reinsurer Rating
NONE								

STATEMENT AS OF MARCH 31, 2017 OF THE GRANGE LIFE INSURANCE COMPANY

SCHEDULE T – PREMIUMS AND ANNUITY CONSIDERATIONS

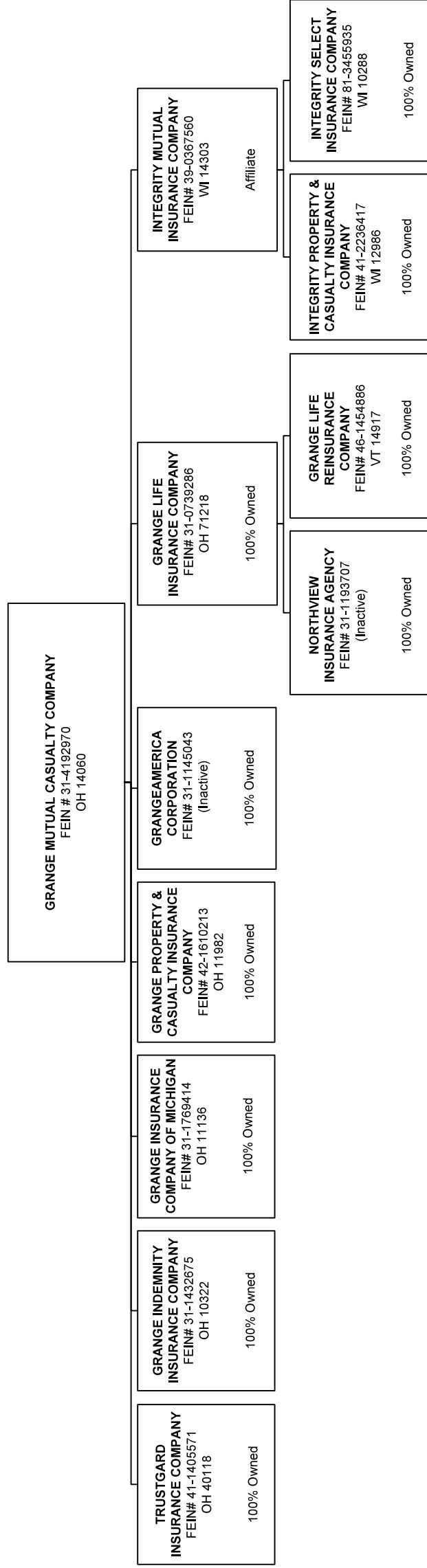
Current Year To Date - Allocated by States and Territories

States, Etc.	1	Direct Business Only					
		Life Contracts		4 Accident and Health Insurance Premiums, Including Policy, Membership and Other Fees	5 Other Considerations	6 Total Columns 2 Through 5	7 Deposit - Type Contracts
		2 Life Insurance Premiums	3 Annuity Considerations				
1. Alabama	AL	32,110				32,110	
2. Alaska	AK	1,341				1,341	
3. Arizona	AZ	87,334				87,334	
4. Arkansas	AR	14,940				14,940	
5. California	CA	47,989		237		48,226	
6. Colorado	CO	17,758				17,758	
7. Connecticut	CT	4,954				4,954	
8. Delaware	DE	2,624				2,624	
9. District of Columbia	DC	542				542	
10. Florida	FL	239,517		171		239,688	
11. Georgia	GA	2,168,534	680	4,848		2,174,062	
12. Hawaii	HI	2,312				2,312	
13. Idaho	ID	1,500				1,500	
14. Illinois	IL	899,666	9,350	1,386		910,402	
15. Indiana	IN	1,823,333	5,850	1,952		1,831,135	
16. Iowa	IA	45,411				45,411	
17. Kansas	KS	6,178				6,178	
18. Kentucky	KY	2,759,519	29,543	9,256		2,798,319	
19. Louisiana	LA	3,978				3,978	
20. Maine	ME	1,147				1,147	
21. Maryland	MD	11,837				11,837	
22. Massachusetts	MA	5,150				5,150	
23. Michigan	MI	1,354,504	28,221	243		1,382,967	
24. Minnesota	MN	134,928	375			135,303	
25. Mississippi	MS	37,310				37,310	
26. Missouri	MO	32,746				32,746	
27. Montana	MT	2,382				2,382	
28. Nebraska	NE	3,112				3,112	
29. Nevada	NV	9,785				9,785	
30. New Hampshire	NH	2,880				2,880	
31. New Jersey	NJ	12,270				12,270	
32. New Mexico	NM	863				863	
33. New York	NY	9,430				9,430	
34. North Carolina	NC	54,624		159		54,783	
35. North Dakota	ND	1,483				1,483	
36. Ohio	OH	10,547,662	162,929	24,881		10,735,472	
37. Oklahoma	OK	9,466				9,466	
38. Oregon	OR	2,676				2,676	
39. Pennsylvania	PA	766,215				766,215	
40. Rhode Island	RI	1,280				1,280	
41. South Carolina	SC	559,511		77		559,588	
42. South Dakota	SD	2,003				2,003	
43. Tennessee	TN	2,348,985	11,695	6,442		2,367,122	
44. Texas	TX	66,471				66,471	
45. Utah	UT	6,284				6,284	
46. Vermont	VT	817				817	
47. Virginia	VA	224,206	1,800	153		226,159	
48. Washington	WA	6,960				6,960	
49. West Virginia	WV	26,651	552	76		27,279	
50. Wisconsin	WI	336,163	1,000			337,163	
51. Wyoming	WY	704				704	
52. American Samoa	AS					0	
53. Guam	GU					0	
54. Puerto Rico	PR					0	
55. US Virgin Islands	VI	84				84	
56. Northern Mariana Islands	MP					0	
57. Canada	CAN	1,093				1,093	
58. Aggregate Other Alien	OT	1,140	0	0	0	1,140	0
59. Subtotal	(a)	24,742,360	251,994	49,882	0	25,044,236	0
90. Reporting entity contributions for employee benefits plans	XXX					0	
91. Dividends or refunds applied to purchase paid-up additions and annuities	XXX					0	
92. Dividends or refunds applied to shorten endowment or premium paying period	XXX					0	
93. Premium or annuity considerations waived under disability or other contract provisions	XXX					0	
94. Aggregate other amounts not allocable by State	XXX	0	0	0	0	0	0
95. Totals (Direct Business)	XXX	24,742,360	251,994	49,882	0	25,044,236	0
96. Plus Reinsurance Assumed	XXX	770,817				770,817	
97. Totals (All Business)	XXX	25,513,177	251,994	49,882	0	25,815,053	0
98. Less Reinsurance Ceded	XXX	7,842,775		3,002		7,845,777	
99. Totals (All Business) less Reinsurance Ceded	XXX	17,670,402	251,994	46,880	0	17,969,276	0
DETAILS OF WRITE-INS							
58001. GBR United Kingdom	XXX	1,140				1,140	
58002.	XXX					0	
58003.	XXX					0	
58998. Summary of remaining write-ins for Line 58 from overflow page	XXX	0	0	0	0	0	0
58999. Total (Lines 58001 through 58003 + 58998) (Line 58 above)	XXX	1,140	0	0	0	1,140	0
9401.	XXX					0	
9402.	XXX					0	
9403.	XXX					0	
9498. Summary of remaining write-ins for Line 94 from overflow page	XXX	0	0	0	0	0	0
9499. Total (Lines 9401 through 9403 + 9498) (Line 94 above)	XXX	0	0	0	0	0	0

(L) Licensed or Chartered - Licensed Insurance Carrier or Domiciled RRG; (R) Registered - Non-domiciled RRGs; (Q) Qualified - Qualified or Accredited Reinsurer; (E) Eligible - Reporting Entities eligible or approved to write Surplus Lines in the state; (N) None of the above - Not allowed to write business in the state.
(a) Insert the number of L responses except for Canada and Other Alien.

**SCHEDULE Y – INFORMATION CONCERNING ACTIVITIES OF INSURER
MEMBERS OF A HOLDING COMPANY GROUP**

PART 1 – ORGANIZATIONAL CHART



STATEMENT AS OF MARCH 31, 2017 OF THE GRANGE LIFE INSURANCE COMPANY

SCHEDULE Y
PART 1A – DETAIL OF INSURANCE HOLDING COMPANY SYSTEM

1	2	3	4	5	6	7	8	9	10	11	12	13	14	15	16
Group Code	Group Name	NAIC Company Code	ID Number	Federal RSSD	CIK	Name of Securities Exchange if Publicly Traded (U.S. or International)	Names of Parent, Subsidiaries or Affiliates	Domiciliary Location	Relationship to Reporting Entity	Directly Controlled by (Name of Entity/Person)	Type of Control (Ownership, Board, Management, Attorney-in-Fact, Influence, Other)	If Control is Ownership Provide Percentage	Ultimate Controlling Entity(ies)/Person(s)	Is an SCA Filing Required? (Y/N)	*
00267	GRANGE MUTUAL CASUALTY GROUP	14060	31-4192970				GRANGE MUTUAL CASUALTY COMPANY	.OH	UDP	GRANGE MUTUAL CASUALTY COMPANY	BOARD	.00	GRANGE MUTUAL CASUALTY COMPANY	N	.0
00267	GRANGE MUTUAL CASUALTY GROUP	71218	31-0739286				GRANGE LIFE INSURANCE COMPANY	.OH	RE	GRANGE MUTUAL CASUALTY COMPANY	OWNERSHIP	100.0	GRANGE MUTUAL CASUALTY COMPANY	N	.0
00267	GRANGE MUTUAL CASUALTY GROUP	40118	41-1405571				TRUSTGARD INSURANCE COMPANY	.OH	IA	GRANGE MUTUAL CASUALTY COMPANY	OWNERSHIP	100.0	GRANGE MUTUAL CASUALTY COMPANY	N	.0
00267	GRANGE MUTUAL CASUALTY GROUP	10322	31-1432675				GRANGE INDEMNITY INSURANCE COMPANY	.OH	IA	GRANGE MUTUAL CASUALTY COMPANY	OWNERSHIP	100.0	GRANGE MUTUAL CASUALTY COMPANY	N	.0
00267	GRANGE MUTUAL CASUALTY GROUP	11136	31-1769414				GRANGE INSURANCE COMPANY OF MICHIGAN	.OH	IA	GRANGE MUTUAL CASUALTY COMPANY	OWNERSHIP	100.0	GRANGE MUTUAL CASUALTY COMPANY	N	.0
00267	GRANGE MUTUAL CASUALTY GROUP	14303	39-0367560				INTEGRITY MUTUAL INSURANCE COMPANY	.WI	UDP	GRANGE MUTUAL CASUALTY COMPANY	BOARD	.00	GRANGE MUTUAL CASUALTY COMPANY	N	.0
00267	GRANGE MUTUAL CASUALTY GROUP	11982	42-1610213				GRANGE PROPERTY & CASUALTY INSURANCE COMPANY	.OH	IA	GRANGE MUTUAL CASUALTY COMPANY	OWNERSHIP	100.0	GRANGE MUTUAL CASUALTY COMPANY	N	.0
00267	GRANGE MUTUAL CASUALTY GROUP	10288	81-3455935				INTEGRITY SELECT INSURANCE COMPANY	.WI	IA	INTEGRITY MUTUAL INSURANCE COMPANY	OWNERSHIP	100.0	GRANGE MUTUAL CASUALTY COMPANY	N	.0
00267	GRANGE MUTUAL CASUALTY GROUP	12986	41-2236417				INTEGRITY PROPERTY & CASUALTY INSURANCE COMPANY	.WI	IA	INTEGRITY MUTUAL INSURANCE COMPANY	OWNERSHIP	100.0	GRANGE MUTUAL CASUALTY COMPANY	N	.0
00267	GRANGE MUTUAL CASUALTY GROUP	14917	46-1454886				GRANGE LIFE REINSURANCE COMPANY	.VT	DS	GRANGE LIFE INSURANCE COMPANY	OWNERSHIP	100.0	GRANGE MUTUAL CASUALTY COMPANY	N	.0
		00000	31-1145043				GRANGEAMERICA	.OH	NIA	GRANGE MUTUAL CASUALTY COMPANY	OWNERSHIP	100.0	GRANGE MUTUAL CASUALTY COMPANY	N	.0
		00000	31-1193707				NORTHVIEW INSURANCE AGENCY	.OH	DS	GRANGE LIFE INSURANCE COMPANY	OWNERSHIP	100.0	GRANGE MUTUAL CASUALTY COMPANY	N	.0
												.00			.0
												.00			.0
												.00			.0

13

Asterisk	Explanation

SUPPLEMENTAL EXHIBITS AND SCHEDULES INTERROGATORIES

The following supplemental reports are required to be filed as part of your statement filing. However, in the event that your company does not transact the type of business for which the special report must be filed, your response of **NO** to the specific interrogatory will be accepted in lieu of filing a "NONE" report and a bar code will be printed below. If the supplement is required of your company but is not being filed for whatever reason enter **SEE EXPLANATION** and provide an explanation following the interrogatory questions.

	<u>RESPONSE</u>
1. Will the Trusteed Surplus Statement be filed with the state of domicile and the NAIC with this statement?NO.....
2. Will the Medicare Part D Coverage Supplement be filed with the state of domicile and the NAIC with this statement?NO.....
3. Will the Reasonableness of Assumptions Certification required by Actuarial Guideline XXXV be filed with the state of domicile and electronically with the NAIC?NO.....
4. Will the Reasonableness and Consistency of Assumptions Certification required by Actuarial Guideline XXXV be filed with the state of domicile and electronically with the NAIC?NO.....
5. Will the Reasonableness of Assumptions Certification for Implied Guaranteed Rate Method required by Actuarial Guideline XXXVI be filed with the state of domicile and electronically with the NAIC?NO.....
6. Will the Reasonableness and Consistency of Assumptions Certification required by Actuarial Guideline XXXVI (Updated Average Market Value) be filed with the state of domicile and electronically with the NAIC?NO.....
7. Will the Reasonableness and Consistency of Assumptions Certification required by Actuarial Guideline XXXVI (Updated Market Value) be filed with the state of domicile and electronically with the NAIC?NO.....

Explanation:

- 1.
- 2.
- 3.
- 4.
- 5.
- 6.
- 7.

Bar Code:



STATEMENT AS OF MARCH 31, 2017 OF THE GRANGE LIFE INSURANCE COMPANY

7.



OVERFLOW PAGE FOR WRITE-INS

STATEMENT AS OF MARCH 31, 2017 OF THE GRANGE LIFE INSURANCE COMPANY

SCHEDULE A – VERIFICATION

Real Estate

	1 Year To Date	2 Prior Year Ended December 31
1. Book/adjusted carrying value, December 31 of prior year	0	0
2. Cost of acquired:		
2.1 Actual cost at time of acquisition		0
2.2 Additional investment made after acquisition		0
3. Current year change in encumbrances		0
4. Total gain (loss) on disposals		0
5. Deduct amounts received on disposals		0
6. Total foreign exchange change in book/adjusted carrying value		0
7. Deduct current year's other-than-temporary impairment recognized		0
8. Deduct current year's depreciation		0
9. Book/adjusted carrying value at the end of current period (Lines 1+2+3+4-5+6-7-8)	0	0
10. Deduct total nonadmitted amounts	0	0
11. Statement value at end of current period (Line 9 minus Line 10)	0	0

NONE

SCHEDULE B – VERIFICATION

Mortgage Loans

	1 Year To Date	2 Prior Year Ended December 31
1. Book value/recorded investment excluding accrued interest, December 31 of prior year	0	0
2. Cost of acquired:		
2.1 Actual cost at time of acquisition		0
2.2 Additional investment made after acquisition		0
3. Capitalized deferred interest and other		0
4. Accrual of discount		0
5. Unrealized valuation increase (decrease)		0
6. Total gain (loss) on disposals		0
7. Deduct amounts received on disposals		0
8. Deduct amortization of premium and mortgage interest points and commitment fees		0
9. Total foreign exchange change in book value/recorded investment excluding accrued interest		0
10. Deduct current year's other-than-temporary impairment recognized		0
11. Book value/recorded investment excluding accrued interest at end of current period (Lines 1+2+3+4+5+6-7-8+9-10)	0	0
12. Total valuation allowance		0
13. Subtotal (Line 11 plus Line 12)	0	0
14. Deduct total nonadmitted amounts	0	0
15. Statement value at end of current period (Line 13 minus Line 14)	0	0

NONE

SCHEDULE BA – VERIFICATION

Other Long-Term Invested Assets

	1 Year To Date	2 Prior Year Ended December 31
1. Book/adjusted carrying value, December 31 of prior year	0	0
2. Cost of acquired:		
2.1 Actual cost at time of acquisition		0
2.2 Additional investment made after acquisition		0
3. Capitalized deferred interest and other		0
4. Accrual of discount		0
5. Unrealized valuation increase (decrease)		0
6. Total gain (loss) on disposals		0
7. Deduct amounts received on disposals		0
8. Deduct amortization of premium and depreciation		0
9. Total foreign exchange change in book/adjusted carrying value		0
10. Deduct current year's other-than-temporary impairment recognized		0
11. Book/adjusted carrying value at end of current period (Lines 1+2+3+4+5+6-7+8+9-10)	0	0
12. Deduct total nonadmitted amounts	0	0
13. Statement value at end of current period (Line 11 minus Line 12)	0	0

NONE

SCHEDULE D – VERIFICATION

Bonds and Stocks

	1 Year To Date	2 Prior Year Ended December 31
1. Book/adjusted carrying value of bonds and stocks, December 31 of prior year	369,288,230	302,429,969
2. Cost of bonds and stocks acquired	20,845,192	151,692,377
3. Accrual of discount	74,241	741,843
4. Unrealized valuation increase (decrease)	(10,931,366)	8,284,749
5. Total gain (loss) on disposals	300,294	649,608
6. Deduct consideration for bonds and stocks disposed of	18,138,327	86,019,096
7. Deduct amortization of premium	348,444	1,592,523
8. Total foreign exchange change in book/adjusted carrying value		0
9. Deduct current year's other-than-temporary impairment recognized	16,761	6,898,697
10. Book/adjusted carrying value at end of current period (Lines 1+2+3+4+5-6-7+8-9)	361,073,059	369,288,230
11. Deduct total nonadmitted amounts	781	781
12. Statement value at end of current period (Line 10 minus Line 11)	361,072,278	369,287,449

STATEMENT AS OF MARCH 31, 2017 OF THE GRANGE LIFE INSURANCE COMPANY

SCHEDULE D - PART 1B

Showing the Acquisitions, Dispositions and Non-Trading Activity
During the Current Quarter for all Bonds and Preferred Stock by NAIC Designation

NAIC Designation	1 Book/Adjusted Carrying Value Beginning of Current Quarter	2 Acquisitions During Current Quarter	3 Dispositions During Current Quarter	4 Non-Trading Activity During Current Quarter	5 Book/Adjusted Carrying Value End of First Quarter	6 Book/Adjusted Carrying Value End of Second Quarter	7 Book/Adjusted Carrying Value End of Third Quarter	8 Book/Adjusted Carrying Value December 31 Prior Year
BONDS								
1. NAIC 1 (a).....	290,622,000	2,891,978	10,743,309	7,676,755	290,447,424	0	0	290,622,000
2. NAIC 2 (a).....	47,900,893	146,625	1,743,568	3,904,595	50,208,544	0	0	47,900,893
3. NAIC 3 (a).....	11,559,036	1,619,434	3,612,891	236,048	9,801,627	0	0	11,559,036
4. NAIC 4 (a).....	7,009,570	2,874,125	1,318,211	323,027	8,888,511	0	0	7,009,570
5. NAIC 5 (a).....	108,059	572,438	170,054	309,204	819,646	0	0	108,059
6. NAIC 6 (a).....	0				0	0	0	0
7. Total Bonds	357,199,558	8,104,599	17,588,033	12,449,629	360,165,753	0	0	357,199,558
PREFERRED STOCK								
8. NAIC 1.....	0				0	0	0	0
9. NAIC 2.....	0				0	0	0	0
10. NAIC 3.....	0				0	0	0	0
11. NAIC 4.....	0				0	0	0	0
12. NAIC 5.....	0				0	0	0	0
13. NAIC 6.....	0				0	0	0	0
14. Total Preferred Stock.....	0	0	0	0	0	0	0	0
15. Total Bonds & Preferred Stock	357,199,558	8,104,599	17,588,033	12,449,629	360,165,753	0	0	357,199,558

(a) Book/Adjusted Carrying Value column for the end of the current reporting period includes the following amount of short-term and cash equivalent bonds by NAIC designation: NAIC 1 \$ 9,989,497 ; NAIC 2 \$; NAIC 3 \$; NAIC 4 \$; NAIC 5 \$; NAIC 6 \$

S102

Schedule DA - Part 1

NONE

Schedule DA - Verification

NONE

Schedule DB - Part A - Verification

NONE

Schedule DB - Part B - Verification

NONE

Schedule DB - Part C - Section 1

NONE

Schedule DB - Part C - Section 2

NONE

Schedule DB - Verification

NONE

Schedule E - Verification

NONE

Schedule A - Part 2

NONE

Schedule A - Part 3

NONE

Schedule B - Part 2

NONE

Schedule B - Part 3

NONE

Schedule BA - Part 2

NONE

Schedule BA - Part 3

NONE

STATEMENT AS OF MARCH 31, 2017 OF THE GRANGE LIFE INSURANCE COMPANY

SCHEDULE D - PART 3

Show All Long-Term Bonds and Stock Acquired During the Current Quarter

1	2	3	4	5	6	7	8	9	10
CUSIP Identification	Description	Foreign	Date Acquired	Name of Vendor	Number of Shares of Stock	Actual Cost	Par Value	Paid for Accrued Interest and Dividends	NAIC Designation or Market Indicator (a)
Bonds - U.S. Governments									
38373Q-HL-8	GNR 2003-34 QG 5.500% 04/20/33		01/04/2017	Stifel Nicolaus & Co.		667,809	575,000	703	1FE
38380A-A5-6	GNMA 2016-121 AZ 4.000% 05/20/45		03/19/2017	Interest Capitalization		20,268	20,268		1FE
38380B-N2-7	GNMA 2016-153 AZ 3.000% 09/20/46		03/01/2017	Interest Capitalization		44,781	44,781		1FE
38380B-N4-3	GNMA 2016-153 ZB 3.000% 09/20/46		03/01/2017	Interest Capitalization		38,592	38,592		1FE
0599999 - Bonds - U.S. Governments						771,450	678,641	703	XXX
Bonds - U.S. Special Revenue									
3136AG-RG-9	FNMA 2013-109 PZ 4.500% 10/25/43		03/01/2017	Interest Capitalization		33,791	33,791		1FE
3137AT-2J-0	Freddie Mac 4092 AV 3.000% 08/15/32		01/25/2017	Stifel Nicolaus & Co.		1,374,625	1,400,000	3,383	1FE
3137BA-AN-2	FHR 4332 VZ 2.500% 01/15/33		01/19/2017	Stifel Nicolaus & Co.		2,077,470	2,221,893	3,549	1
3137BA-AN-2	FHR 4332 VZ 2.500% 01/15/33		03/01/2017	Interest Capitalization		9,268	9,268		1
3199999 - Bonds - U.S. Special Revenue and Special Assessment and all Non-Guaranteed Obligations of Agencies and Authorities of Governments and Their Political Subdivisions						3,495,153	3,664,951	6,932	XXX
Bonds - Industrial and Miscellaneous (Unaffiliated)									
001546-AM-2	AK Steel Corp Call 8.375% 04/01/22		03/16/2017	Banc/America Sec.		156,250	150,000	5,816	4FE
00213M-AN-4	APX Group Inc 144A-Call 7.875% 12/01/2		01/18/2017	Merrill Lynch		162,375	150,000	1,969	4FE
002824-BL-3	Abbott Laboratories Call 3.250% 04/15/		03/22/2017	Taxable Exchange		750,846	750,000	10,630	2FE
013817-AW-1	Alcoa Inc Call 5.125% 10/01/24		03/23/2017	Goldman Sachs		51,500	50,000	1,260	3FE
043436-AN-4	Asbury Automotive Group Call 6.000% 12		03/17/2017	Banc/America Sec.		51,875	50,000	808	4FE
05578M-AA-0	BMC Software Inc 144A-Call 8.125% 07/1		03/16/2017	Credit Suisse First Boston		100,625	100,000	1,490	5FE
093645-AH-2	Block Communications Inc 144A-Call 6.8		02/15/2017	Various		203,563	200,000	72	3FE
1248EP-BR-3	CCO Holdings 144A-Call 5.500% 05/01/26		01/17/2017	Merrill Lynch		87,975	85,000	1,026	3FE
12513G-BC-2	CDW LLC Call 5.000% 09/01/25		02/23/2017	J P Morgan Securities		100,000	100,000		3FE
12543D-AY-6	Community Health Systems Call 6.250% 0		03/07/2017	Credit Suisse First Boston		100,000	100,000		3FE
21241B-AA-8	Contura Energy Inc 144A-Call 10.000% 08		01/10/2017	Baird, Robert W. & Company		26,906	25,000	1,160	4FE
221644-AA-5	Cott Holdings Inc 144A-Call 5.500% 04/		03/08/2017	DBAB		75,000	75,000		4FE
226373-AL-2	Crestwood Midstream Part Call 6.250% 0		03/23/2017	Various		222,900	215,000	5,943	4FE
23283P-AE-4	Cyrusone LP 144A-Call 5.000% 03/15/24		03/03/2017	J P Morgan Securities		100,000	100,000		4FE
23283P-AH-7	Cyrusone LP 144A-Call 5.375% 03/15/27		03/03/2017	J P Morgan Securities		100,000	100,000		4FE
256603-AC-5	Dole Food Co Inc 144A-Call 7.250% 06/1		03/23/2017	Morgan Stanley		125,000	125,000		5FE
30227C-AB-3	Exterran Partners/Exp Call 6.000% 04/		03/23/2017	Barclays Capital		50,125	50,000	1,475	4FE
30283W-AC-8	FTS International Express 144A-Call 8		03/20/2017	Various		152,125	150,000	895	4FE
33936Y-AA-3	Flex Acquisition Co 144A-Call 6.875% 0		01/11/2017	Credit Suisse First Boston		25,000	25,000		5FE
35906A-AZ-1	Frontier Communications Corp Call 11.00		01/17/2017	Barclays Capital		307,500	300,000	11,458	4FE
366651-AB-3	Garda World Security Corp 144A-Call 5		03/16/2017	Goldman Sachs		50,000	50,000		4FE
382550-BG-5	Goodyear Tire Call 4.875% 03/15/27		03/02/2017	J P Morgan Securities		100,000	100,000		3FE
404119-BT-5	HCA-The Healthcare Company Call 5.250%		01/06/2017	Merrill Lynch		209,000	200,000	758	3FE
421924-BK-6	Healthsouth Corp Call 5.750% 11/01/24		02/01/2017	Merrill Lynch		50,875	50,000	759	4FE
421924-BT-7	Healthsouth Corp Call 5.750% 09/15/25		01/13/2017	Various		50,531	50,000	966	4FE
42806L-AB-7	Herc Rentals Inc 144A-Call 7.750% 06/0		02/10/2017	Various		108,938	100,000	1,475	4FE
44053F-AA-8	Horizon Pharma Inc 144A-Call 8.750% 11		03/20/2017	Citigroup Global Markets		52,438	50,000	1,799	4FE
45031U-BZ-3	Istar Financial Inc. 6.000% 04/01/22		03/08/2017	Banc/America Sec.		25,000	25,000		4FE
451102-BG-1	Icahn Enterprises 144A-Call 6.250% 02/		01/12/2017	Jefferies		50,000	50,000		3FE
469815-AH-7	Jacobs Entertainment Inc 144A-Call 7.8		01/27/2017	Credit Suisse First Boston		25,000	25,000		4FE
494580-AD-5	Kindred Helathcare Call 6.375% 04/15/2		03/20/2017	Various		93,750	100,000	2,709	4FE
500605-AH-3	Koopers Inc 144A-Call 6.000% 02/15/25		01/19/2017	Wells Fargo Bk		25,000	25,000		4FE
50106G-AA-0	Kronos Acquisition Holdings 144A-Call		02/09/2017	Barclays Capital		75,000	75,000		5FE
588056-AS-0	Mercer Intl Inc 144A-Call 6.500% 02/01		01/31/2017	Credit Suisse First Boston		25,000	25,000		4FE
609453-AG-0	Monitronics Intl Inc Call 9.125% 04/01		01/20/2017	Merrill Lynch		146,813	150,000	4,334	5FE
629377-BU-5	NRG Energy Inc. Call 6.625% 03/15/23		03/24/2017	Banc/America Sec.		50,313	50,000	124	4FE
680665-AJ-5	Olin Corp Call 5.125% 09/15/27		03/07/2017	Banc/America Sec.		125,063	125,000	4	3FE
70457L-AA-2	Peabody Sec Fin Corp 144A-Call 6.000%		02/08/2017	Goldman Sachs		25,000	25,000		4FE
70457L-AB-0	Peabody Sec Fin Corp 144A-Call 6.375%		02/08/2017	Goldman Sachs		25,000	25,000		4FE
727493-AB-4	Plantronics Inc 144A-Call 5.500% 05/31		03/03/2017	Wells Fargo Bk		51,125	50,000	863	3FE
78573N-AB-8	Sabre Global Inc 144A-Call 5.250% 11/1		02/10/2017	Barclays Capital		101,500	100,000	1,313	3FE
86765L-AG-2	Sunoco LP Call 6.375% 04/01/23		01/20/2017	Merrill Lynch		51,375	50,000	1,009	4FE
871503-AU-2	Symantec 144A-Call 5.000% 04/15/25		02/07/2017	Merrill Lynch		25,000	25,000		3FE
87264A-AS-4	T Mobile USA Inc Call 5.125% 04/15/25		03/13/2017	DBAB		175,000	175,000		3FE
880336-CP-3	Tenet Healthcare Corporation 144A-Call		01/05/2017	Merrill Lynch		106,625	100,000	813	4FE
88047P-AA-2	Tenn Merger Sub Inc 144A-Call 6.375% 0		01/12/2017	Barclays Capital		75,000	75,000		5FE

E04

STATEMENT AS OF MARCH 31, 2017 OF THE GRANGE LIFE INSURANCE COMPANY

SCHEDULE D - PART 3

Show All Long-Term Bonds and Stock Acquired During the Current Quarter

1	2	3	4	5	6	7	8	9	10
CUSIP Identification	Description	Foreign	Date Acquired	Name of Vendor	Number of Shares of Stock	Actual Cost	Par Value	Paid for Accrued Interest and Dividends	NAIC Designation or Market Indicator (a)
.880779-AZ-6	Terex Corp 144A-Call 5.625% 02/01/25		.01/17/2017	DBAB		25,000	25,000		4FE
.892231-AA-9	Townsquare Media Inc 144A-Call 6.500%		.03/22/2017	Credit Suisse First Boston		24,813	25,000		4FE
.909218-AB-5	Unit Corporation Call 6.625% 05/15/21		.01/23/2017	Merrill Lynch		148,500	150,000	1,960	3FE
.912920-AC-9	US West Communication/Qwest Call 6.875		.03/23/2017	RBC Capital Markets		49,375	50,000	124	3FE
.92240M-BF-4	Vector Group LTD 144A-Call 6.125% 02/0		.03/23/2017	Jefferies		217,075	215,000	496	3FE
.96926D-AO-3	William Lyon Homes Inc 144A-Call 5.875		.03/20/2017	Citigroup Global Markets		100,438	100,000	747	4FE
.97381W-AZ-7	Windstream Corp. Call 6.375% 08/01/23		.01/31/2017	Barclays Capital		90,500	100,000	35	4FE
.097751-BJ-9	Bombardier Inc. 144A-Call 6.000% 10/15	A	.01/17/2017	Various		195,000	200,000	2,967	4FE
.552704-AD-0	Meg Energy Corp 144A-Call 6.500% 01/15	A	.01/12/2017	Barclays Capital		25,000	25,000		5FE
.644535-AF-3	New Gold Inc 144A-Call 6.250% 11/15/22	A	.01/31/2017	Baird, Robert W. & Company		50,375	50,000	677	4FE
.91911K-AJ-1	Valeant Pharmaceuticas 144A-Call 6.50	A	.03/09/2017	Barclays Capital		25,000	25,000		3FE
.91911K-AK-8	Valeant Pharmaceuticas 144A-Call 7.00	A	.03/09/2017	Barclays Capital		25,000	25,000		3FE
.92660F-AK-0	Videotron LTD 144A-Call 5.125% 04/15/2	A	.03/31/2017	Banc/America Sec		50,000	50,000		3FE
.151290-BU-6	CEMEX SAB DE CV 144A-Call 7.750% 04/16	D	.03/17/2017	Various		112,656	100,000	3,111	3FE
.235822-AB-9	Dana Financing 144A-Call 5.750% 04/15/	D	.03/21/2017	Citigroup Global Markets		100,000	100,000		4FE
.45824T-AR-6	Intelsat Jackson Hldg 144A-Call 8.000%	D	.01/13/2017	J P Morgan Securities		77,250	75,000	2,567	4FE
.70014L-AA-8	Park Aerospace Holdings 144A 5.250% 08	D	.01/20/2017	UBS Securities		25,000	25,000		4FE
.780099-CH-8	Royal Bank of Scotland NC 5.125% 05/28	D	.03/03/2017	Morgan Stanley		50,890	50,000	712	3FE
.81180W-AL-5	Seagate Hdd Cayman 4.750% 01/01/25	D	.02/01/2017	Goldman Sachs		97,250	100,000	462	2FE
.82845L-AA-8	Silversea Cruise Finance 144A-Call 7.2	D	.01/13/2017	J P Morgan Securities		75,000	75,000		4FE
.918370-AB-3	VTR Finance BV 144A-Call 6.875% 01/15/	D	.02/16/2017	Credit Suisse First Boston		80,063	75,000	530	4FE
.92769X-AM-7	Virgin Media 144A-Call 5.500% 08/15/26	D	.03/23/2017	Barclays Capital		50,625	50,000	328	3FE
.94707V-AC-4	Weatherford Intl Call 4.500% 04/15/22	C	.03/23/2017	J P Morgan Securities		46,375	50,000	1,019	5FE
3899999 - Bonds - Industrial and Miscellaneous (Unaffiliated)						6,589,093	6,515,000	77,455	XXX
8399997 - Subtotals - Bonds - Part 3						10,855,696	10,858,593	85,090	XXX
8399999 - Subtotals - Bonds						10,855,696	10,858,593	85,090	XXX
9999999 Totals						10,855,696	XXX	85,090	XXX

(a) For all common stock bearing the NAIC market indicator "U" provide: the number of such issues

E04.1

STATEMENT AS OF MARCH 31, 2017 OF THE GRANGE LIFE INSURANCE COMPANY

SCHEDULE D - PART 4

Show All Long-Term Bonds and Stock Sold, Redeemed or Otherwise Disposed of During the Current Quarter

1	2	3	4	5	6	7	8	9	10	Change in Book/Adjusted Carrying Value					16	17	18	19	20	21	22
										11	12	13	14	15							
CUSIP Identification	Description	Foreign	Disposal Date	Name of Purchaser	Number of Shares of Stock	Consideration	Par Value	Actual Cost	Prior Year Book/Adjusted Carrying Value	Unrealized Valuation Increase/ (Decrease)	Current Year's (Amortization)/ Accretion	Current Year's Other Than Temporary Impairment Recognized	Total Change in B./A.C.V. (11+12-13)	Total Foreign Exchange Change in B./A.C.V.	Book/ Adjusted Carrying Value at Disposal Date	Foreign Exchange Gain (Loss) on Disposal	Realized Gain (Loss) on Disposal	Total Gain (Loss) on Disposal	Bond Interest/Stock Dividends Received During Year	Stated Contractual Maturity Date	NAIC Designation or Market Indicator (a)
Bonds - U.S. Governments																					
36204D-5J-4	GNMA Pool 367249 6.500%		03/01/2017	Paydown		2,691	2,691	2,817	2,743		(52)		(52)		2,691			.0	.30	12/15/2023	1FE
362056-AD-3	GNMA Pool 389804 5.000%		03/01/2017	Paydown		649	649	651	650		(1)		(1)		649			.0	.5	01/15/2033	1
38376V-SB-4	GNR 2010-21 NB 4.500%		03/01/2017	Paydown		48,930	48,930	50,031	49,013		(83)		(83)		48,930			.0	.345	01/20/2037	1
38377K-MK-3	GNR 2010-120 BP 4.000%		02/01/2017	Stifel Nicolaus & Co.		2,087,500	2,000,000	2,110,938	2,030,656		(1,582)		(1,582)		2,029,074		58,426	58,426	14,444	07/20/2039	1FE
38378C-RT-6	GNR 2012-13 EG 2.000%		03/01/2017	Paydown		30,111	30,111	30,454	30,371		(260)		(260)		30,111			.0	.90	10/20/2040	1FE
38378D-BL-8	GNR 2012-17 CD 4.000%		03/01/2017	Paydown		33,913	33,913	36,912	36,072		(2,159)		(2,159)		33,913			.0	.188	09/20/2040	1FE
38378G-CY-2	GNR 2012-134 EA 3.000%		03/01/2017	Paydown		20,256	20,256	21,231	20,929		(673)		(673)		20,256			.0	.100	11/20/2042	1
38378M-G8-2	GNR 2013-64 PA 1.500%		03/01/2017	Paydown		237,669	237,669	231,987	232,393		5,277		5,277		237,669			.0	.541	12/20/2041	1FE
38379V-Z3-1	GNR 2016-32 PT 4.625%		03/01/2017	Paydown		107,878	107,878	119,559	117,016		(9,138)		(9,138)		107,878			.0	.790	03/30/2044	1
0599999 - Bonds - U.S. Governments						2,569,597	2,482,097	2,604,580	2,519,843	0	(8,671)	0	(8,671)	0	2,511,171	0	58,426	58,426	16,534	XXX	XXX
Bonds - U.S. Special Revenue and Special Assessment and all Non-Guaranteed Obligations of Agencies and Authorities of Governments and Their Political Subdivisions																					
31281B-MU-1	FG N31271 4.500%		03/01/2017	Paydown		2,175	2,175	2,200	2,198		(23)		(23)		2,175			.0	.16	01/01/2036	1FE
31281B-TW-0	FG N31465 5.000%		03/01/2017	Paydown		2,004	2,004	2,053	2,052		(48)		(48)		2,004			.0	.9	11/01/2037	1FE
3128HX-SS-5	FHS 268 30 3.000%		03/01/2017	Paydown		58,917	58,917	61,347	60,851		(1,935)		(1,935)		58,917			.0	.309	08/15/2042	1
3128K9-QY-3	FLMCM Pool A48571 6.000% 05/01/36		03/01/2017	Paydown		375	375	375	375		.0		.0		375			.0	.4	05/01/2036	1FE
3128KJ-CZ-3	FLMCM Pool A55488 5.500% 12/01/36		03/01/2017	Paydown		901	901	897	898		.3		.3		901			.0	.8	12/01/2036	1FE
3128KJ-WA-6	FLMCM Pool A56041 5.500% 01/01/37		03/01/2017	Paydown		120	120	119	119		.1		.1		120			.0	.1	01/01/2037	1FE
3128MJ-BW-9	FLMCM Pool G08052 5.500% 04/01/35		03/01/2017	Paydown		10,710	10,710	10,658	10,660		50		50		10,710			.0	.94	04/01/2035	1FE
3128P7-RY-1	FG C91403 3.500%		03/01/2017	Paydown		29,098	29,098	31,325	31,085		(1,987)		(1,987)		29,098			.0	.150	03/01/2032	1FE
3128P7-S2-0	FG C91437 3.500%		03/01/2017	Paydown		23,635	23,635	24,846	24,713		(1,078)		(1,078)		23,635			.0	.120	04/01/2032	1
3129ZH-NB-6	FLMCM Pool #C01286 6.000% 01/01/32		03/01/2017	Paydown		852	852	840	842		.10		.10		852			.0	.9	01/01/2032	1FE
31294M-A7-6	FG E02730 4.000%		03/01/2017	Paydown		13,904	13,904	14,465	14,325		(420)		(420)		13,904			.0	.83	10/01/2025	1FE
31335H-02-2	FHLMCM Pool #C90473 6.500% 08/01/21		03/01/2017	Paydown		1,030	1,030	1,045	1,036		(5)		(5)		1,030			.0	.12	08/01/2021	1FE
3133TK-G7-9	FHR 2141 E NAS FGLMCM 7.0 6.600% 04/15		03/01/2017	Paydown		1,698	1,698	1,726	1,707		(9)		(9)		1,698			.0	.17	04/15/2029	1FE
3136A1-BB-0	FNR 2011-103 EC 2.000%		03/01/2017	Paydown		31,801	31,801	30,585	30,675		1,126		1,126		31,801			.0	.86	03/25/2041	1
3136A7-ZV-7	FNR 2012-83 BA 3.500%		03/01/2017	Paydown		18,611	18,611	19,088	19,015		(404)		(404)		18,611			.0	.67	03/25/2041	1
3136A8-3H-1	FNR 2012-113 DB 2.000%		03/01/2017	Paydown		44,145	44,145	43,758	43,796		349		349		44,145			.0	.120	01/25/2042	1
3136A9-BK-3	FNR 2012-106 QN 3.500%		03/01/2017	Paydown		20,233	20,233	21,631	21,384		(1,151)		(1,151)		20,233			.0	.118	10/25/2042	1
3136A9-BL-1	FNR 2012-106 QP 3.500%		03/01/2017	Paydown		37,725	37,725	38,032	38,019		(294)		(294)		37,725			.0	.138	10/25/2042	1FE
3136AA-NZ-4	FNR 2012-132 PD 2.000%		03/01/2017	Paydown		91,063	91,063	86,410	87,355		3,708		3,708		91,063			.0	.299	10/25/2042	1FE
3136AB-C7-6	FNR 2013-5 NB 2.000%		03/01/2017	Paydown		78,900	78,900	78,974	78,923		(22)		(22)		78,900			.0	.244	02/25/2043	1FE
3136AB-QX-4	FNR 2013-9 NB 2.000%		03/01/2017	Paydown		22,702	22,702	22,769	22,749		(47)		(47)		22,702			.0	.72	02/25/2033	1
3136AC-P5-4	FNR 2013-15 VB 3.500%		01/25/32	Stifel Nicolaus & Co.		2,065,000	2,000,000	2,100,000	2,069,394		(577)		(577)		2,068,817		(3,817)	(3,817)	10,306	01/25/2032	1FE

EO5

STATEMENT AS OF MARCH 31, 2017 OF THE GRANGE LIFE INSURANCE COMPANY

SCHEDULE D - PART 4

Show All Long-Term Bonds and Stock Sold, Redeemed or Otherwise Disposed of During the Current Quarter

1	2	3	4	5	6	7	8	9	10	Change in Book/Adjusted Carrying Value					16	17	18	19	20	21	22
										11	12	13	14	15							
CUSIP Identification	Description	Foreign	Disposal Date	Name of Purchaser	Number of Shares of Stock	Consideration	Par Value	Actual Cost	Prior Year Book/Adjusted Carrying Value	Unrealized Valuation Increase/(Decrease)	Current Year's (Amortization)/Accretion	Current Year's Other Than Temporary Impairment Recognized	Total Change in B./A.C.V. (11+12-13)	Total Foreign Exchange Change in B./A.C.V.	Book/Adjusted Carrying Value at Disposal Date	Foreign Exchange Gain (Loss) on Disposal	Realized Gain (Loss) on Disposal	Total Gain (Loss) on Disposal	Bond Interest/Stock Dividends Received During Year	Contractual Maturity Date	NAIC Designation or Market Indicator (a)
3136AM-4B-2	FNR 2015-18 NV 3.500% 01/25/30		01/03/2017	Direct									.0					.0		01/25/2030	1FE
31371J-Q7-2	FNMA Pool 253478 8.000% 09/01/20		03/01/2017	Paydown	305	305	308	306		(1)			(1)		305		.0	.4		09/01/2020	1FE
31371J-S8-8	FNMA Pool 253543 7.000% 11/01/20		03/01/2017	Paydown	394	394	390	391		.3			.3		394		.0	.5		11/01/2020	1FE
31371K-UA-7	FNMA Pool 254477 5.500% 10/01/32		03/01/2017	Paydown	4,607	4,607	4,555	4,559		.49			.49		4,607		.0	.38		10/01/2032	1
31371L-DU-0	FNMA Pool 254915 4.500% 09/01/23		03/01/2017	Paydown	3,088	3,088	3,003	3,036		.52			.52		3,088		.0	.23		09/01/2023	1FE
31371L-HE-2	FNMA Pool 255029 5.000% 12/01/23		03/01/2017	Paydown	3,251	3,251	3,245	3,243		.8			.8		3,251		.0	.24		12/01/2023	1FE
31371L-HT-9	FNMA Pool 255042 4.500% 11/01/23		03/01/2017	Paydown	3,507	3,507	3,413	3,450		.58			.58		3,507		.0	.25		11/01/2023	1FE
31371N-CM-5	FN 256676 5.500% 04/01/27		03/01/2017	Paydown	9,389	9,389	10,056	9,922		(532)			(532)		9,389		.0	.90		04/01/2027	1FE
31371N-S0-9	FN 257126 5.500% 02/01/23		03/01/2017	Paydown	35,277	35,277	38,209	37,263		(1,986)			(1,986)		35,277		.0	.321		02/01/2023	1
3137A0-EU-5	FHR 3687 B 4.000% 07/15/30		03/01/2017	Paydown	11,123	11,123	11,677	11,351		(228)			(228)		11,123		.0	.77		07/15/2030	1
3137A2-H8-7	FHR 3766 DB 4.000% 11/15/30		03/01/2017	Paydown	46,371	46,371	51,138	48,986		(2,615)			(2,615)		46,371		.0	.329		11/15/2030	1FE
3137A3-HT-9	FHR 3751 MD 4.000% 01/15/39		02/01/2017	Stifel Nicolaus & Co.	3,105,000	3,000,000	3,141,563	3,084,757		(2,082)			(2,082)		3,082,675		22,325	22,325	21,667	01/15/2039	1FE
3137A3-JW-0	FHR 3753 AS 3.500% 11/15/25		03/01/2017	Paydown	643	643	663	657		(14)			(14)		643		.0	.4		11/15/2025	1
3137A3-PN-3	FHR 3762 GM 3.500% 08/15/28		03/01/2017	Paydown	14,057	14,057	14,496	14,169		(111)			(111)		14,057		.0	.78		08/15/2028	1FE
3137A5-WW-0	FHR 3785 WA 4.000% 12/15/28		03/01/2017	Paydown	17,946	17,946	18,446	18,224		(278)			(278)		17,946		.0	108		12/15/2028	1FE
3137A6-QZ-8	FHR 3816 HA 3.500% 11/15/25		03/01/2017	Paydown	.5	.5	.6	.6		.0			.0		.5		.0	.0		11/15/2025	1FE
3137A8-XZ-6	FHR 3844 DA 4.500% 10/15/39		03/01/2017	Paydown	38,269	38,269	40,822	39,733		(1,464)			(1,464)		38,269		.0	.263		10/15/2039	1
3137AD-ZD-2	FHR 3911 B 3.500% 08/15/26		02/01/2017	Stifel Nicolaus & Co.	1,045,000	1,000,000	1,030,000	1,011,978		(363)			(363)		1,011,615		33,385	33,385	6,319	08/15/2026	1
3137AE-Z6-5	FHR 3928 HC 2.500% 08/15/40		03/01/2017	Paydown	63,171	63,171	63,309	63,284		(113)			(113)		63,171		.0	.281		08/15/2040	1FE
3137AG-CA-6	FHR 3947 BC 2.500% 10/15/26		03/01/2017	Paydown	9,329	9,329	9,649	9,540		(211)			(211)		9,329		.0	.39		10/15/2026	1
3137AM-K7-1	FHR 4020 EJ 3.000% 02/15/42		03/01/2017	Paydown	70,480	70,480	70,480	70,480		.0			.0		70,480		.0	.326		02/15/2042	1FE
3137AN-3R-4	FHR 4019 JC 2.500% 05/15/41		03/01/2017	Paydown	58,845	58,845	57,360	57,738		1,107			1,107		58,845		.0	.225		05/15/2041	1FE
3137AN-QF-5	FHR 4036 PA 2.750% 04/15/41		03/01/2017	Paydown	12,778	12,778	13,000	12,930		(152)			(152)		12,778		.0	.45		04/15/2041	1
3137AX-TP-8	FHR 4156 PC 3.000% 01/15/43		02/01/2017	Paydown	81,111	81,111	80,604	80,664		.447			.447		81,111		.0	.221		01/15/2043	1FE
3137B2-KL-3	FHR 4217 UD 1.750% 06/15/28		03/01/2017	Paydown	32,633	32,633	32,021	32,128		.505			.505		32,633		.0	.90		06/15/2028	1
3137B3-AH-1	FHR 4227 AV 3.500% 08/15/31		03/01/2017	Paydown	22,474	22,474	23,261	23,054		(580)			(580)		22,474		.0	.131		08/15/2031	1FE
3137BJ-H4-8	FHR 4471 N 4.500% 12/15/53		01/01/2017	Paydown	35,518	35,518	39,880	39,765		(4,246)			(4,246)		35,518		.0	.133		12/15/2053	1
3138L4-2C-6	FNMA AM4370 4.870% 09/01/31		03/01/2017	Paydown	3,184	3,184	3,673	3,669		(485)			(485)		3,184		.0	.28		09/01/2031	1FE
3138L4-6B-4	FNMA AM4465 4.500% 10/01/33		03/01/2017	Paydown	19,389	19,389	21,522	21,506		(2,117)			(2,117)		19,389		.0	.146		10/01/2033	1FE
3138L6-ES-3	FNMA AM5544 4.450% 03/01/34		03/01/2017	Paydown	6,945	6,945	7,830	7,824		(800)			(800)		6,945		.0	.55		03/01/2034	1FE
31392E-SX-9	FNR 2002-59 B 5.500% 09/25/17		03/01/2017	Paydown	185	185	189	185		.1			.1		185		.0	.1		09/25/2017	1FE
31393A-CF-2	FNR 2003-29 WG 4.000% 04/25/33		03/01/2017	Paydown	14,396	14,396	14,524	14,446		(50)			(50)		14,396		.0	.88		04/25/2033	1FE
31393J-HC-5	FHR 2553 GB 5.000% 01/15/18		03/01/2017	Paydown	25,385	25,385	25,285	25,333		.52			.52		25,385		.0	.211		01/15/2018	1FE

E05 1

STATEMENT AS OF MARCH 31, 2017 OF THE GRANGE LIFE INSURANCE COMPANY

SCHEDULE D - PART 4

Show All Long-Term Bonds and Stock Sold, Redeemed or Otherwise Disposed of During the Current Quarter

1	2	3	4	5	6	7	8	9	10	Change in Book/Adjusted Carrying Value					16	17	18	19	20	21	22
										11	12	13	14	15							
CUSIP Identification	Description	Foreign	Disposal Date	Name of Purchaser	Number of Shares of Stock	Consideration	Par Value	Actual Cost	Prior Year Book/Adjusted Carrying Value	Unrealized Valuation Increase/ (Decrease)	Current Year's (Amortization)/ Accretion	Current Year's Other Than Temporary Impairment Recognized	Total Change in B./A.C.V. (11+12-13)	Total Foreign Exchange Change in B./A.C.V.	Book/ Adjusted Carrying Value at Disposal Date	Foreign Exchange Gain (Loss) on Disposal	Realized Gain (Loss) on Disposal	Total Gain (Loss) on Disposal	Bond Interest/Stock Dividends Received During Year	Contractual Maturity Date	NAIC Designation or Market Indicator (a)
31393M-W9-8	FHR 2586 W6 4.000%		03/01/2017	Paydown		29,700	29,700	30,489	30,125		(424)		(424)		29,700			.0	.199	03/15/2033	1FE
31393V-MQ-1	FHR 2628 AB 4.500%		03/01/2017	Paydown		6,233	6,233	6,066	6,199		34		34		6,233			.0	.45	06/15/2018	1
31394P-RU-9	FHR 2744 TU 5.500%		03/01/2017	Paydown		13,433	13,433	13,059	13,390		43		43		13,433			.0	.111	05/15/2032	1FE
31395B-D7-5	FNR 2006-22 CE 4.500%		03/01/2017	Paydown		24,335	24,335	24,988	24,501		(166)		(166)		24,335			.0	.173	08/25/2023	1FE
31395E-YP-6	FHR 2835 HB 5.500%		03/01/2017	Paydown		16,688	16,688	17,345	16,968		(280)		(280)		16,688			.0	.147	08/15/2024	1FE
31396J-2L-8	FHR 3127 CY 5.500%		03/01/2017	Paydown		16,118	16,118	16,763	16,388		(269)		(269)		16,118			.0	.146	03/15/2026	1FE
31397S-H4-9	FNR 2011-46 MB 4.000%		03/01/2017	Paydown		381,833	381,833	403,730	389,599		(7,767)		(7,767)		381,833			.0	2,309	06/25/2037	1
31397U-GT-0	FNR 2011-49 CA 3.500%		03/01/2017	Paydown		6,056	6,056	6,166	6,115		(59)		(59)		6,056			.0	.33	12/25/2028	1
31398L-BJ-6	FHR 3597 LE 4.000%		03/01/2017	Paydown		22,890	22,890	23,945	23,629		(739)		(739)		22,890			.0	.151	07/15/2039	1
31402A-D6-0	FNMA Pool 722925 5.000%		03/01/2017	Paydown		1,631	1,631	1,652	1,645		(14)		(14)		1,631			.0	.14	07/01/2023	1FE
31402R-JV-2	FNMA Pool 735676 5.000%		03/01/2017	Paydown		10,694	10,694	11,075	11,042		(347)		(347)		10,694			.0	.85	07/01/2035	1FE
31403D-BW-8	FNMA Pool 745353 5.500%		03/01/2017	Paydown		12,380	12,380	12,043	12,066		314		314		12,380			.0	100	03/01/2036	1FE
31403D-GZ-6	FNMA Pool 745516 5.500%		03/01/2017	Paydown		6,345	6,345	6,337	6,336		9		9		6,345			.0	.53	05/01/2036	1
31403D-TG-4	FNMA Pool 745851 6.000%		03/01/2017	Paydown		2,930	2,930	2,957	2,954		(24)		(24)		2,930			.0	.28	09/01/2036	1FE
31404A-GX-6	FNMA Pool 762614 5.000%		03/01/2017	Paydown		7,195	7,195	7,290	7,231		(36)		(36)		7,195			.0	.61	12/01/2023	1FE
31404S-GD-1	FN 76996 5.000%		03/01/2017	Paydown		6,441	6,441	6,689	6,667		(226)		(226)		6,441			.0	.67	04/01/2034	1FE
31407U-EQ-6	FNMA Pool 840843 5.500%		03/01/2017	Paydown		3,156	3,156	3,101	3,105		51		51		3,156			.0	.29	12/01/2035	1FE
31409J-SF-8	FNMA Pool 872718 6.000%		03/01/2017	Paydown		6,741	6,741	6,695	6,696		45		45		6,741			.0	.35	06/01/2036	1FE
31409X-GG-8	FNMA Pool 881399 6.000%		03/01/2017	Paydown		3,077	3,077	3,063	3,063		15		15		3,077			.0	.31	05/01/2036	1FE
31411B-GM-9	FNMA Pool 903004 5.500%		03/01/2017	Paydown		.81	.81	.81	.81		.0		.0		.81			.0	.1	12/01/2036	1FE
31411J-3H-7	FNMA Pool 909900 5.500%		03/01/2017	Paydown		4,526	4,526	4,481	4,483		43		43		4,526			.0	.31	03/01/2037	1FE
31416B-4A-3	FN 995517 5.500%		03/01/2017	Paydown		7,946	7,946	8,590	8,395		(449)		(449)		7,946			.0	.70	01/01/2024	1
31417G-VK-9	FN AB9617 2.500%		03/01/2017	Paydown		51,201	51,201	51,281	51,258		(57)		(57)		51,201			.0	.228	06/01/2033	1
31417Y-2J-5	FN MA0776 4.500%		03/01/2017	Paydown		32,913	32,913	34,682	34,488		(1,575)		(1,575)		32,913			.0	.226	06/01/2031	1FE
31417Y-3N-5	FN MA0804 4.000%		03/01/2017	Paydown		17,187	17,187	17,698	17,635		(447)		(447)		17,187			.0	.102	07/01/2031	1
31417Y-TV-9	FN MA0563 4.000%		03/01/2017	Paydown		15,301	15,301	15,780	15,721		(419)		(419)		15,301			.0	.89	11/01/2030	1
31418A-E9-5	FN MA1059 3.500%		03/01/2017	Paydown		21,291	21,291	22,536	22,396		(1,104)		(1,104)		21,291			.0	.118	05/01/2032	1
31418A-EB-0	FN MA1029 3.500%		03/01/2017	Paydown		20,891	20,891	21,965	21,847		(956)		(956)		20,891			.0	.107	04/01/2032	1
31418A-TA-6	FN MA 1444 2.500%		03/01/2017	Paydown		30,258	30,258	31,298	31,182		(923)		(923)		30,258			.0	.112	05/01/2033	1
31418B-TK-2	FN MA2353 3.000%		03/01/2017	Paydown		154,905	154,905	158,729	158,550		(3,645)		(3,645)		154,905			.0	.709	08/01/2035	1
3199999	Bonds - U.S. Special Revenue and Special Assessment and all Non-Guaranteed Obligations of Agencies and Authorities of Governments and Their Political Subdivisions					8,284,031	8,069,031	8,398,290	8,270,495	0	(38,358)	0	(38,358)	0	8,232,138	0	51,893	51,893	49,288	XXX	XXX
Bonds - Industrial and Miscellaneous (Unaffiliated)																					
00766T-AB-6	Aecom Technology Corp Call 5.750% 10/1		02/08/2017	J P Morgan Securities		158,063	150,000	151,000	150,690		(19)		(19)		150,670		7,392	7,392	2,827	10/15/2022	3FE

E052

STATEMENT AS OF MARCH 31, 2017 OF THE GRANGE LIFE INSURANCE COMPANY

SCHEDULE D - PART 4

Show All Long-Term Bonds and Stock Sold, Redeemed or Otherwise Disposed of During the Current Quarter

1	2	3	4	5	6	7	8	9	10	Change in Book/Adjusted Carrying Value					16	17	18	19	20	21	22
										11	12	13	14	15							
CUSIP Identification	Description	Foreign	Disposal Date	Name of Purchaser	Number of Shares of Stock	Consideration	Par Value	Actual Cost	Prior Year Book/Adjusted Carrying Value	Unrealized Valuation Increase/(Decrease)	Current Year's (Amortization)/Accretion	Current Year's Other Than Temporary Impairment Recognized	Total Change in B./A.C.V. (11+12-13)	Total Foreign Exchange Change in B./A.C.V.	Book/Adjusted Carrying Value at Disposal Date	Foreign Exchange Gain (Loss) on Disposal	Realized Gain (Loss) on Disposal	Total Gain (Loss) on Disposal	Bond Interest/Stock Dividends Received During Year	Contractual Maturity Date	NAIC Designation or Market Indicator (a)
00782L-AA-5	Advanced Pierre Food Holding 144A-Call		01/20/2017	Oppenheimer and Co.		25,500	25,000	25,000	25,000				0		25,000		500	500	176	12/15/2024	4FE
00928Q-AP-6	Aircastle LTD 5.000%		04/01/23	Merrill Lynch		25,688	25,000	25,000	25,000				0		25,000		688	688	458	04/01/2023	3FE
01877K-AB-9	Alliance Pipeline 144A-Call 6.996% 12/		01/03/2017	Redemption 100.0000		51,429	51,429	56,443	54,638		(3,210)		(3,210)		51,429			0		12/31/2019	2FE
019736-AD-9	Allison Transmission Inc 144A-Call 5.0		01/10/2017	Merrill Lynch		150,375	150,000	150,000	150,000				0		150,000		375	375	2,271	10/01/2024	3FE
02005N-AV-2	Ally Financial Inc NC 5.125% 09/30/24		03/22/2017	Banc/America Sec.		100,750	100,000	98,105	98,450		38		38		98,487		2,263	2,263	2,520	09/30/2024	3FE
035287-AE-1	Anixter Inc NC 5.125%		10/01/21	J P Morgan Securities		130,313	125,000	124,531	124,705		3		3		124,708		5,605	5,605	1,940	10/01/2021	3FE
05409Q-AA-6	Avon International Opera 144A-Call 7.8		03/01/2017	Banc/America Sec.		106,313	100,000	100,706	100,670		(17)		(17)		100,653		5,659	5,659	4,331	08/15/2022	3FE
085790-AY-9	Berry Plastics Corp Call 5.125% 07/15/		02/07/2017	Citigroup Global Markets		25,813	25,000	24,813	24,816		3		3		24,819		993	993	730	07/15/2023	4FE
093645-AG-4	Block Communications Inc 144A-NC 7.250		02/13/2017	Merrill Lynch		153,270	150,000	151,125	150,763		(27)		(27)		150,736		2,534	2,534	5,860	02/01/2020	4FE
09739D-AC-4	Boise Cascade Company 144A-Call 5.625%		01/31/2017	Stifel Nicolaus & Co.		76,313	75,000	75,281	75,272		(3)		(3)		75,269		1,044	1,044	1,805	09/01/2024	4FE
1248EP-AX-1	CCO Holdings Call 6.625% 01/31/22		01/17/2017	Merrill Lynch		88,188	85,000	91,188	87,940		(70)		(70)		87,870		318	318	2,628	01/31/2022	3FE
12513G-BC-2	CDW LLC Call 5.000%		09/01/25	Penserra Securities		101,000	100,000	100,000					0		100,000		1,000	1,000		09/01/2025	3FE
12527G-AF-0	CF Industries Inc 5.150% 03/15/34		03/09/2017	J P Morgan Securities		46,000	50,000	49,500	49,510		3		3		49,513		(3,513)	(3,513)	1,252	03/15/2034	3FE
125581-GR-3	CIT Group Inc NC 5.000%		08/01/23	Barclays Capital		104,250	100,000	101,500	101,204		(31)		(31)		101,173		3,077	3,077	3,111	08/01/2023	3FE
126650-BQ-2	CVS Corp. PT-NC 6.943%		03/10/2017	Redemption 100.0000		4,519	4,519	4,609	4,582		(63)		(63)		4,519			0	52	12/10/2029	2FE
131477-AN-1	Calumet Specialty Products Call 6.500%		03/09/2017	Goldman Sachs		38,025	45,000	45,113	45,059		(4)		(4)		45,054		(7,029)	(7,029)	1,178	04/15/2021	5FE
153527-AL-0	Central Garden & Pet Co Call 6.125% 11		03/17/2017	Various		79,594	75,000	75,500	75,442		(12)		(12)		75,430		4,163	4,163	1,438	11/15/2023	4FE
16412X-AB-1	Cheniere Corp 144A 5.875% 03/31/25		01/23/2017	Merrill Lynch		79,071	75,000	75,219	75,215		(4)		(4)		75,210		3,861	3,861	575	03/31/2025	3FE
212015-AQ-4	Continental Resources Call 4.900% 06/0		03/15/2017	Barclays Capital		83,313	100,000	68,375	68,663		73		73		68,736		14,576	14,576	1,463	06/01/2044	3FE
21241B-AA-8	Contura Energy Inc 144A-Call 10.000% 08		01/10/2017	Nomura Securities		26,938	25,000	25,875	25,845		(4)		(4)		25,841		1,097	1,097	1,160	08/01/2021	4FE
221643-AH-2	Cott Beverages Inc Call 5.375% 07/01/2		03/15/2017	Various		102,063	100,000	101,188	101,179		(40)		(40)		101,139		924	924	3,837	07/01/2022	4FE
226373-AJ-7	Crestwood Midstream Part Call 6.000% 1		03/08/2017	Redemption 103.3000		103,300	100,000	103,388	102,816		484		484		103,300			0	1,483	12/15/2020	4FE
33936Y-AA-3	Flex Acquisition Co 144A-Call 6.875% 0		01/12/2017	Baird, Robert W. & Company		25,375	25,000	25,000					0		25,000		375	375	5	01/15/2025	5FE
35671D-BJ-3	Freeport-McMoran Cooper - B Call 5.400		03/22/2017	Various		261,750	300,000	183,813	185,737		324		324		186,061		75,689	75,689	4,313	11/14/2034	2FE
362338-AQ-8	GTE Southwest NC 8.500%		11/15/31	Baird, Robert W. & Company		510,000	500,000	508,550	508,550		(2)		(2)		508,548		1,452	1,452	6,493	11/15/2031	3FE
382550-BE-0	Goodyear Tire Call 5.125% 11/15/23		02/15/2017	Banc/America Sec.		51,625	50,000	50,000	50,000				0		50,000		1,625	1,625	683	11/15/2023	3FE
382550-BG-5	Goodyear Tire Call 4.875% 03/15/27		03/02/2017	Various		100,000	100,000	100,000	100,000				0		100,000			0		03/15/2027	3FE
42806L-AB-7	Herc Rentals Inc 144A-Call 7.750% 06/0		03/10/2017	Call 103.0000		10,300	10,000	10,850			(550)		(550)		10,300			0	213	06/01/2024	4FE
432891-AD-1	Hilton Worldwide Fin LLC Call 5.625% 1		02/15/2017	Barclays Capital		102,950	100,000	104,500	102,705		(70)		(70)		102,635		315	315	1,969	10/15/2021	3FE
451102-AX-5	Icahn Enterprises Call 6.000% 08/01/20		01/13/2017	Various		51,125	50,000	48,250	48,304		21		21		48,325		2,800	2,800	1,392	08/01/2020	3FE
459745-GN-9	International Lease Finance NC 5.875%		01/17/2017	Goldman Sachs		81,938	75,000	80,625	79,090		(33)		(33)		79,058		2,880	2,880	1,897	08/15/2022	2FE
469815-AH-7	Jacobs Entertainment Inc 144A-Call 7.8		01/27/2017	Credit Suisse First Boston		25,688	25,000	25,000					0		25,000		688	688		02/01/2024	4FE
500605-AH-3	Koopers Inc 144A-Call 6.000% 02/15/25		01/19/2017	Penserra Securities		25,531	25,000	25,000					0		25,000		531	531		02/15/2025	4FE

EO53

STATEMENT AS OF MARCH 31, 2017 OF THE GRANGE LIFE INSURANCE COMPANY

SCHEDULE D - PART 4

Show All Long-Term Bonds and Stock Sold, Redeemed or Otherwise Disposed of During the Current Quarter

1	2	3	4	5	6	7	8	9	10	Change in Book/Adjusted Carrying Value					16	17	18	19	20	21	22
										11	12	13	14	15							
CUSIP Identification	Description	Foreign	Disposal Date	Name of Purchaser	Number of Shares of Stock	Consideration	Par Value	Actual Cost	Prior Year Book/Adjusted Carrying Value	Unrealized Valuation Increase/(Decrease)	Current Year's (Amortization)/Accretion	Current Year's Other Than Temporary Impairment Recognized	Total Change in B./A.C.V. (11+12-13)	Total Foreign Exchange Change in B./A.C.V.	Book/Adjusted Carrying Value at Disposal Date	Foreign Exchange Gain (Loss) on Disposal	Realized Gain (Loss) on Disposal	Total Gain (Loss) on Disposal	Bond Interest/Stock Dividends Received During Year	Contractual Maturity Date	NAIC Designation or Market Indicator (a)
501797-AJ-3	L Brands Inc NC 5.625% 10/15/23		01/17/2017	Merrill Lynch		52,375	50,000	50,000	50,000				0		50,000		2,375	2,375	742	10/15/2023	3FE
505742-AD-8	Ladder Cap Fin 144A-Call 5.875% 08/01/21		03/02/2017	Banc/America Sec		50,813	50,000	48,825	49,067		31		31		49,098		1,714	1,714	1,763	08/01/2021	3FE
588056-AS-0	Mercer Intl Inc 144A-Call 6.500% 02/01		01/31/2017	Stifel Nicolaus & Co		25,313	25,000	25,000					0		25,000		313	313		02/01/2024	4FE
595112-BG-6	Micron Technology Inc Call 5.500% 02/0		01/23/2017	J P Morgan Securities		74,438	75,000	73,094	73,151		13		13		73,163		1,274	1,274	1,994	02/01/2025	3FE
654090-BB-7	Nielsen Finance 144A-Call 5.000% 04/15		01/17/2017	Jefferies		154,125	150,000	151,000	150,841		(7)		(7)		150,834		3,291	3,291	1,979	04/15/2022	4FE
674215-AG-3	Oasis Pete Inc Call 6.875% 03/15/22		01/24/2017	Barclays Capital		76,688	75,000	76,500	76,461		(14)		(14)		76,446		241	241	1,862	03/15/2022	4FE
693522-AG-9	PQ Corp 144A-Call 6.750% 11/15/22		03/20/2017	Jefferies		26,563	25,000	25,000	25,000				0		25,000		1,563	1,563	600	11/15/2022	4FE
708160-CB-0	J.C. Penney & Co. 144A-Call 5.875% 07/		02/28/2017	Various		125,250	125,000	125,625	125,619		(14)		(14)		125,606		(356)	(356)	5,084	07/01/2023	3FE
749780-AD-7	RSP Permian Inc 144A-Call 5.250% 01/15		02/15/2017	Barclays Capital		51,188	50,000	50,000	50,000				0		50,000		1,188	1,188	394	01/15/2025	4FE
78454L-AN-0	SM Energy Co Call 6.750% 09/15/26		03/17/2017	Banc/America Sec		125,000	125,000	125,656	125,642		(10)		(10)		125,632		(632)	(632)	4,453	09/15/2026	4FE
785592-AP-1	Sabine Pass Liquefaction 144A 5.875% 0		03/08/2017	Credit Suisse First Boston		190,969	175,000	175,781	175,773		(12)		(12)		175,761		15,207	15,207	2,028	06/30/2026	3FE
790849-AJ-2	St. Jude Medical Inc Call 3.250% 04/15		03/22/2017	Taxable Exchange		752,721	750,000	751,283	750,877		(28)		(28)		750,848		1,873	1,873	10,630	04/15/2023	2FE
79546V-AJ-5	Sally Holdings Call 5.750% 06/01/22		01/31/2017	Wells Fargo Bk		103,750	100,000	105,250	103,467		(129)		(129)		103,338		412	412	990	06/01/2022	3FE
79970Y-AD-7	Sanchez Energy Corp Call 6.125% 01/15		03/15/2017	Morgan Stanley		77,563	85,000	72,888	73,137		328		328		73,464		4,098	4,098	3,543	01/15/2023	4FE
81211K-AV-2	Sealed Air Corp 144A-Call 4.875% 12/01		01/17/2017	Barclays Capital		129,688	125,000	126,000	125,833		(7)		(7)		125,826		3,861	3,861	829	12/01/2022	3FE
845467-AL-3	Southwestern Energy Co Call 4.950% 01/		03/09/2017	Various		142,625	150,000	148,196	148,286		12		12		148,298		(5,673)	(5,673)	5,918	01/23/2025	3FE
85571B-AE-5	Starwood Property Trust 144A-Call 5.00		03/08/2017	Citigroup Global Markets		102,750	100,000	100,000	100,000				0		100,000		2,750	2,750	1,153	12/15/2021	3FE
858119-BE-9	Steel Dynamics 144A-Call 5.000% 12/15/		03/14/2017	Barclays Capital		49,375	50,000	50,000	50,000				0		50,000		(625)	(625)	694	12/15/2026	3FE
871503-AU-2	Symantec 144A-Call 5.000% 04/15/25		02/07/2017	Baird, Robert W. & Company		25,375	25,000	25,000					0		25,000		375	375		04/15/2025	3FE
87264A-AL-9	T Mobile USA Inc Call 6.625% 04/01/23		03/14/2017	Barclays Capital		121,469	115,000	122,500	121,259		(392)		(392)		120,867		602	602	3,513	04/01/2023	3FE
88037E-AJ-0	Tenneco Inc Call 5.375% 12/15/24		03/15/2017	Suntrust Capital		51,375	50,000	52,125	51,844		(33)		(33)		51,811		(436)	(436)	698	12/15/2024	3FE
88047P-AA-2	Tenn Merger Sub Inc 144A-Call 6.375% 0		01/12/2017	Various		75,000	75,000	75,000					0		75,000			0		02/01/2025	5FE
880779-AZ-6	Terex Corp 144A-Call 5.625% 02/01/25		01/18/2017	DBAB		25,438	25,000	25,000					0		25,000		438	438		02/01/2025	4FE
911365-BF-0	United Rentals Call 5.500% 05/15/27		03/22/2017	Citigroup Global Markets		49,250	50,000	50,000	50,000				0		50,000		(750)	(750)	1,069	05/15/2027	4FE
92240M-BB-3	Vector Group LTD Call 7.750% 02/15/21		01/31/2017	King, CL, & Associates, Inc		104,250	100,000	107,000	104,918		(87)		(87)		104,831		(581)	(581)	3,574	02/15/2021	3FE
15135U-AF-6	Cenovus Energy Inc 6.750% 11/15/39	A	03/15/2017	Barclays Capital		82,031	75,000	85,250	85,371		31		31		85,403		16,629	16,629	1,758	11/15/2039	2FE
552704-AD-0	Meg Energy Corp 144A-Call 6.500% 01/15	A	01/12/2017	Oppenheimer and Co		25,438	25,000	25,000					0		25,000		438	438		01/15/2025	5FE
91911K-AJ-1	Valiant Pharmaceuticals 144A-Call 6.50	A	03/10/2017	Oppenheimer and Co		25,438	25,000	25,000					0		25,000		438	438		03/15/2022	3FE
91911K-AK-8	Valiant Pharmaceuticals 144A-Call 7.00	A	03/10/2017	Oppenheimer and Co		25,469	25,000	25,000					0		25,000		469	469		03/15/2024	3FE
03938L-AU-8	Areclormittal NC 6.000% 03/01/21	D	01/23/2017	Various		109,750	100,000	104,750	103,258		(42)		(42)		103,216		6,534	6,534	2,555	03/01/2021	3FE
302516-AS-6	FMG Resources 144A-Call 9.750% 03/01/2	D	01/13/2017	Goldman Sachs		87,188	75,000	80,250	79,768		(37)		(37)		79,731		7,456	7,456	2,803	03/01/2022	2FE
31562Q-AC-1	Fiat Chrysler Automobile 4.500% 04/15/	D	02/15/2017	Banc/America Sec		102,875	100,000	101,500	101,462		(57)		(57)		101,404		1,471	1,471	1,575	04/15/2020	3FE
44962L-AA-5	IHS Markit LTD 144A-Call 5.000% 11/01/	C	01/17/2017	Merrill Lynch		103,875	100,000	114,205	113,258		(117)		(117)		113,142		(9,267)	(9,267)	1,097	11/01/2022	3FE

E054

STATEMENT AS OF MARCH 31, 2017 OF THE GRANGE LIFE INSURANCE COMPANY

SCHEDULE D - PART 4

Show All Long-Term Bonds and Stock Sold, Redeemed or Otherwise Disposed of During the Current Quarter

1	2	3	4	5	6	7	8	9	10	Change in Book/Adjusted Carrying Value					16	17	18	19	20	21	22	
										11	12	13	14	15								
CUSIP Identification	Description	Foreign	Disposal Date	Name of Purchaser	Number of Shares of Stock	Consideration	Par Value	Actual Cost	Prior Year Book/Adjusted Carrying Value	Unrealized Valuation Increase/ (Decrease)	Current Year's (Amortization)/ Accretion	Current Year's Other Than Temporary Impairment Recognized	Total Change in B./A.C.V. (11+12-13)	Total Foreign Exchange Change in B./A.C.V.	Book/ Adjusted Carrying Value at Disposal Date	Foreign Exchange Gain (Loss) on Disposal	Realized Gain (Loss) on Disposal	Total Gain (Loss) on Disposal	Bond Interest/Stock Dividends Received During Year	Stated Contractual Maturity Date	NAIC Designation or Market Indicator (a)	
67054K-AA-7	Numericable - SFR SA 144A-Call 7.375%		D...03/23/2017	Barclays Capital		51,000	50,000	50,000	50,000				0		50,000		1,000	1,000	3,554	05/01/2026	4FE	
70014L-AA-8	Park Aerospace Holdings 144A 5.250% 08		D...01/20/2017	Baird, Robert W. & Company		25,406	25,000	25,000					0	25,000		406	406		08/15/2022	4FE		
705010-AB-2	Pearson DOL Fin 144A-NC 6.250% 05/06/1		D...03/28/2017	Call 105.3041		526,520	500,000	591,395	521,257		5,263		5,263		526,520				12,326	05/06/2018	2FE	
3899999 - Bonds - Industrial and Miscellaneous (Unaffiliated)						7,034,699	6,920,947	6,929,117	6,307,394	0	1,480	0	1,480	0	6,844,724	0	189,974	189,974	137,239	XXX	XXX	
8399997 - Subtotals - Bonds - Part 4						17,888,327	17,472,075	17,931,987	17,097,732	0	(45,549)	0	(45,549)	0	17,588,033	0	300,294	300,294	203,060	XXX	XXX	
8399999 - Subtotals - Bonds						17,888,327	17,472,075	17,931,987	17,097,732	0	(45,549)	0	(45,549)	0	17,588,033	0	300,294	300,294	203,060	XXX	XXX	
Common Stocks - Parent, Subsidiaries, and Affiliates																						
38705#-10-4	Grange Life Reinsurance Compan Common St		03/03/2017	N/A		250,000	250,000	250,000	250,000	(250,000)	0	0	(250,000)	0	250,000	0	0	0	0	XXX	XXX	
9199999 - Common Stocks - Parent, Subsidiaries and Affiliates						250,000	XXX	250,000	250,000	(250,000)	0	0	(250,000)	0	250,000	0	0	0	0	0	XXX	XXX
9799997 - Subtotals - Common Stocks - Part 4						250,000	XXX	250,000	250,000	(250,000)	0	0	(250,000)	0	250,000	0	0	0	0	0	XXX	XXX
9799999 - Subtotals - Common Stocks						250,000	XXX	250,000	250,000	(250,000)	0	0	(250,000)	0	250,000	0	0	0	0	0	XXX	XXX
9899999 - Subtotals - Preferred and Common Stocks						250,000	XXX	250,000	250,000	(250,000)	0	0	(250,000)	0	250,000	0	0	0	0	0	XXX	XXX
9999999 Totals						18,138,327	XXX	18,181,987	17,347,732	(250,000)	(45,549)	0	(295,549)	0	17,588,033	0	300,294	300,294	203,060	XXX	XXX	

(a) For all common stock bearing the NAIC market indicator "U" provide: the number of such issues

E05.5

Schedule DB - Part A - Section 1

NONE

Schedule DB - Part B - Section 1

NONE

Schedule DB - Part D - Section 1

NONE

Schedule DB - Part D - Section 2

NONE

SCHEDULE DL - PART 2 SECURITIES LENDING COLLATERAL ASSETS

Reinvested Collateral Assets Owned Current Statement Date

1 CUSIP Identification	2 Description	3 Code	4 NAIC Designation/Market Indicator	5 Fair Value	6 Book/Adjusted Carrying Value	7 Maturity Dates
NONE						
9999999 Totals				0	0	XXX

General Interrogatories:

- | | | | |
|--|---------------------|------------------------------|---------|
| 1. Total activity for the year to date..... | Fair Value \$ | Book/Adjusted Carrying Value | \$..... |
| 2. Average balance for the year to date..... | Fair Value \$ | Book/Adjusted Carrying Value | \$..... |

