



PROPERTY AND CASUALTY COMPANIES - ASSOCIATION EDITION

QUARTERLY STATEMENT

AS OF MARCH 31, 2017

OF THE CONDITION AND AFFAIRS OF THE

Permanent General Assurance Corporation of Ohio

NAIC Group Code 0473 (Current) 0473 (Prior) NAIC Company Code 22906 Employer's ID Number 62-1482846

Organized under the Laws of Ohio, State of Domicile or Port of Entry OH

Country of Domicile United States of America

Incorporated/Organized 12/18/1991 Commenced Business 04/09/1992

Statutory Home Office 9700 Rockside Road, Suite 250 (Street and Number) Valley View, OH, US 44125 (City or Town, State, Country and Zip Code)

Main Administrative Office 2636 Elm Hill Pike, Suite 510 (Street and Number) Nashville, TN, US 37214 (City or Town, State, Country and Zip Code) 615-242-1961 (Area Code) (Telephone Number)

Mail Address P.O. Box 305054 (Street and Number or P.O. Box) Nashville, TN, US 37230-5054 (City or Town, State, Country and Zip Code)

Primary Location of Books and Records 2636 Elm Hill Pike, Suite 510 (Street and Number) Nashville, TN, US 37214 (City or Town, State, Country and Zip Code) 615-744-1221 (Area Code) (Telephone Number)

Internet Website Address www.pgac.com

Statutory Statement Contact R Burton Barnes Jr. (Name) 615-744-1221 (Area Code) (Telephone Number) bbarnes@pgac.com (E-mail Address) 615-744-1608 (FAX Number)

OFFICERS

President, Chief Operating Officer John Allen Hollar Sr. Vice President, & Chief Administrative Officer David Lee Hettinger
Chief Financial Officer, Treasurer & Assistant Secretary Brian Michael Donovan

OTHER

Andrew Peter Martin, Sr. V.P., Corporate-wide Sales & Distribution Robert Eugene Nelson, Assistant Secretary Sherrill Cleek Kaiser, Secretary
Elizabeth Ann Roberts, V.P., Human Resources

DIRECTORS OR TRUSTEES

John Allen Hollar David Lee Hettinger Andrew Peter Martin
Brian Michael Donovan Elizabeth Ann Roberts

State of Tennessee SS:
County of Davidson

The officers of this reporting entity being duly sworn, each depose and say that they are the described officers of said reporting entity, and that on the reporting period stated above, all of the herein described assets were the absolute property of the said reporting entity, free and clear from any liens or claims thereon, except as herein stated, and that this statement, together with related exhibits, schedules and explanations therein contained, annexed or referred to, is a full and true statement of all the assets and liabilities and of the condition and affairs of the said reporting entity as of the reporting period stated above, and of its income and deductions therefrom for the period ended, and have been completed in accordance with the NAIC Annual Statement Instructions and Accounting Practices and Procedures manual except to the extent that: (1) state law may differ; or, (2) that state rules or regulations require differences in reporting not related to accounting practices and procedures, according to the best of their information, knowledge and belief, respectively. Furthermore, the scope of this attestation by the described officers also includes the related corresponding electronic filing with the NAIC, when required, that is an exact copy (except for formatting differences due to electronic filing) of the enclosed statement. The electronic filing may be requested by various regulators in lieu of or in addition to the enclosed statement.

John Allen Hollar
President, & COO

Andrew Peter Martin
Sr. VP, & Corporate-wide Sales & Distribution

Sherrill Cleek Kaiser
Secretary

Subscribed and sworn to before me this 8th day of May, 2017

- a. Is this an original filing? Yes [X] No []
b. If no,
1. State the amendment number.....
2. Date filed
3. Number of pages attached.....

Susan Hawk
Notary Public
May 6, 2019

STATEMENT AS OF MARCH 31, 2017 OF THE PERMANENT GENERAL ASSURANCE CORPORATION OF OHIO

ASSETS

	Current Statement Date			4 December 31 Prior Year Net Admitted Assets
	1 Assets	2 Nonadmitted Assets	3 Net Admitted Assets (Cols. 1 - 2)	
1. Bonds	94,356,919		94,356,919	87,633,215
2. Stocks:				
2.1 Preferred stocks			0	0
2.2 Common stocks	35,614,246		35,614,246	36,634,977
3. Mortgage loans on real estate:				
3.1 First liens			0	0
3.2 Other than first liens.....			0	0
4. Real estate:				
4.1 Properties occupied by the company (less \$ encumbrances)			0	0
4.2 Properties held for the production of income (less \$ encumbrances)			0	0
4.3 Properties held for sale (less \$ encumbrances)			0	0
5. Cash (\$), cash equivalents (\$) and short-term investments (\$ 4,147,027)	4,147,027		4,147,027	8,319,464
6. Contract loans (including \$ premium notes)			0	0
7. Derivatives			0	0
8. Other invested assets			0	0
9. Receivables for securities			0	0
10. Securities lending reinvested collateral assets			0	0
11. Aggregate write-ins for invested assets	4,194	0	4,194	2,824
12. Subtotals, cash and invested assets (Lines 1 to 11)	134,122,386	0	134,122,386	132,590,480
13. Title plants less \$ charged off (for Title insurers only)			0	0
14. Investment income due and accrued	886,913		886,913	816,930
15. Premiums and considerations:				
15.1 Uncollected premiums and agents' balances in the course of collection	12,053,840	400,359	11,653,481	9,472,474
15.2 Deferred premiums, agents' balances and installments booked but deferred and not yet due (including \$ earned but unbilled premiums)	87,330,434		87,330,434	65,810,656
15.3 Accrued retrospective premiums (\$) and contracts subject to redetermination (\$)			0	0
16. Reinsurance:				
16.1 Amounts recoverable from reinsurers	5,864,359		5,864,359	3,394,911
16.2 Funds held by or deposited with reinsured companies			0	0
16.3 Other amounts receivable under reinsurance contracts			0	0
17. Amounts receivable relating to uninsured plans			0	0
18.1 Current federal and foreign income tax recoverable and interest thereon	2,239,479		2,239,479	2,906,617
18.2 Net deferred tax asset	7,380,983	455,077	6,925,906	5,611,171
19. Guaranty funds receivable or on deposit			0	0
20. Electronic data processing equipment and software			0	0
21. Furniture and equipment, including health care delivery assets (\$)			0	0
22. Net adjustment in assets and liabilities due to foreign exchange rates			0	0
23. Receivables from parent, subsidiaries and affiliates			0	0
24. Health care (\$) and other amounts receivable			0	0
25. Aggregate write-ins for other than invested assets	0	0	0	0
26. Total assets excluding Separate Accounts, Segregated Accounts and Protected Cell Accounts (Lines 12 to 25)	249,878,394	855,436	249,022,958	220,603,239
27. From Separate Accounts, Segregated Accounts and Protected Cell Accounts			0	0
28. Total (Lines 26 and 27)	249,878,394	855,436	249,022,958	220,603,239
DETAILS OF WRITE-INS				
1101. Income due on security	4,194		4,194	2,824
1102.				
1103.				
1198. Summary of remaining write-ins for Line 11 from overflow page	0	0	0	0
1199. Totals (Lines 1101 through 1103 plus 1198)(Line 11 above)	4,194	0	4,194	2,824
2501. Other Miscellaneous			0	0
2502.				
2503.				
2598. Summary of remaining write-ins for Line 25 from overflow page	0	0	0	0
2599. Totals (Lines 2501 through 2503 plus 2598)(Line 25 above)	0	0	0	0

STATEMENT AS OF MARCH 31, 2017 OF THE PERMANENT GENERAL ASSURANCE CORPORATION OF OHIO
LIABILITIES, SURPLUS AND OTHER FUNDS

	1 Current Statement Date	2 December 31, Prior Year
1. Losses (current accident year \$19,139,244)	47,563,445	46,346,179
2. Reinsurance payable on paid losses and loss adjustment expenses		0
3. Loss adjustment expenses	6,393,264	6,164,646
4. Commissions payable, contingent commissions and other similar charges	2,242,545	1,579,947
5. Other expenses (excluding taxes, licenses and fees)	60	11,798
6. Taxes, licenses and fees (excluding federal and foreign income taxes)	3,375,991	2,660,095
7.1 Current federal and foreign income taxes (including \$ on realized capital gains (losses))		
7.2 Net deferred tax liability		
8. Borrowed money \$ and interest thereon \$		
9. Unearned premiums (after deducting unearned premiums for ceded reinsurance of \$107,614,693 and including warranty reserves of \$ and accrued accident and health experience rating refunds including \$0 for medical loss ratio rebate per the Public Health Service Act)	82,805,885	63,572,698
10. Advance premium	213,442	100,043
11. Dividends declared and unpaid:		
11.1 Stockholders		
11.2 Policyholders		
12. Ceded reinsurance premiums payable (net of ceding commissions)	11,679,494	5,103,375
13. Funds held by company under reinsurance treaties		0
14. Amounts withheld or retained by company for account of others		
15. Remittances and items not allocated		
16. Provision for reinsurance (including \$ certified)		0
17. Net adjustments in assets and liabilities due to foreign exchange rates		
18. Drafts outstanding		
19. Payable to parent, subsidiaries and affiliates	4,399,947	2,051,634
20. Derivatives	0	0
21. Payable for securities		142,249
22. Payable for securities lending		
23. Liability for amounts held under uninsured plans		
24. Capital notes \$ and interest thereon \$		
25. Aggregate write-ins for liabilities	0	0
26. Total liabilities excluding protected cell liabilities (Lines 1 through 25)	158,674,073	127,732,664
27. Protected cell liabilities		
28. Total liabilities (Lines 26 and 27)	158,674,073	127,732,664
29. Aggregate write-ins for special surplus funds	0	0
30. Common capital stock	3,000,000	3,000,000
31. Preferred capital stock		
32. Aggregate write-ins for other than special surplus funds	0	0
33. Surplus notes		
34. Gross paid in and contributed surplus	73,218,117	73,218,117
35. Unassigned funds (surplus)	14,130,768	16,652,458
36. Less treasury stock, at cost:		
36.1 shares common (value included in Line 30 \$)		
36.2 shares preferred (value included in Line 31 \$)		
37. Surplus as regards policyholders (Lines 29 to 35, less 36)	90,348,885	92,870,575
38. Totals (Page 2, Line 28, Col. 3)	249,022,958	220,603,239
DETAILS OF WRITE-INS		
2501.		
2502.		
2503.		
2598. Summary of remaining write-ins for Line 25 from overflow page	0	0
2599. Totals (Lines 2501 through 2503 plus 2598)(Line 25 above)	0	0
2901.		
2902.		
2903.		
2998. Summary of remaining write-ins for Line 29 from overflow page	0	0
2999. Totals (Lines 2901 through 2903 plus 2998)(Line 29 above)	0	0
3201.		
3202.		
3203.		
3298. Summary of remaining write-ins for Line 32 from overflow page	0	0
3299. Totals (Lines 3201 through 3203 plus 3298)(Line 32 above)	0	0

STATEMENT OF INCOME

	1 Current Year to Date	2 Prior Year to Date	3 Prior Year Ended December 31
UNDERWRITING INCOME			
1. Premiums earned:			
1.1 Direct (written \$ 75,112,672)	48,446,999	31,834,389	153,651,937
1.2 Assumed (written \$ 56,833,386)	37,600,199	30,448,523	130,806,358
1.3 Ceded (written \$ 75,112,672)	48,446,999	31,834,389	153,651,937
1.4 Net (written \$ 56,833,386)	37,600,199	30,448,523	130,806,358
DEDUCTIONS:			
2. Losses incurred (current accident year \$ 26,734,245):			
2.1 Direct	30,943,817	22,464,203	110,031,283
2.2 Assumed	25,818,911	20,888,731	96,061,883
2.3 Ceded	30,943,817	22,464,203	110,031,283
2.4 Net	25,818,911	20,888,731	96,061,883
3. Loss adjustment expenses incurred	3,095,292	2,442,994	12,354,116
4. Other underwriting expenses incurred	15,165,084	12,869,078	49,525,159
5. Aggregate write-ins for underwriting deductions	0	0	0
6. Total underwriting deductions (Lines 2 through 5)	44,079,287	36,200,803	157,941,158
7. Net income of protected cells			
8. Net underwriting gain or (loss) (Line 1 minus Line 6 + Line 7)	(6,479,088)	(5,752,280)	(27,134,800)
INVESTMENT INCOME			
9. Net investment income earned	436,061	425,281	1,564,505
10. Net realized capital gains (losses) less capital gains tax of \$	(182,797)	329,250	502,105
11. Net investment gain (loss) (Lines 9 + 10)	253,264	754,531	2,066,610
OTHER INCOME			
12. Net gain or (loss) from agents' or premium balances charged off (amount recovered \$ amount charged off \$)	0	0	0
13. Finance and service charges not included in premiums	4,464,608	3,112,816	14,415,063
14. Aggregate write-ins for miscellaneous income	3,540	2,087	8,901
15. Total other income (Lines 12 through 14)	4,468,148	3,114,903	14,423,964
16. Net income before dividends to policyholders, after capital gains tax and before all other federal and foreign income taxes (Lines 8 + 11 + 15)	(1,757,676)	(1,882,846)	(10,644,226)
17. Dividends to policyholders			
18. Net income, after dividends to policyholders, after capital gains tax and before all other federal and foreign income taxes (Line 16 minus Line 17)	(1,757,676)	(1,882,846)	(10,644,226)
19. Federal and foreign income taxes incurred	667,138	430,405	(2,865,530)
20. Net income (Line 18 minus Line 19)(to Line 22)	(2,424,814)	(2,313,251)	(7,778,696)
CAPITAL AND SURPLUS ACCOUNT			
21. Surplus as regards policyholders, December 31 prior year	92,870,575	80,249,889	80,249,889
22. Net income (from Line 20)	(2,424,814)	(2,313,251)	(7,778,696)
23. Net transfers (to) from Protected Cell accounts			
24. Change in net unrealized capital gains (losses) less capital gains tax of \$	(1,020,731)	(919,275)	(5,398,893)
25. Change in net unrealized foreign exchange capital gain (loss)			
26. Change in net deferred income tax	1,533,340	1,443,858	1,165,129
27. Change in nonadmitted assets	(609,485)	(10,899)	(66,854)
28. Change in provision for reinsurance			0
29. Change in surplus notes			
30. Surplus (contributed to) withdrawn from protected cells			
31. Cumulative effect of changes in accounting principles			
32. Capital changes:			
32.1 Paid in			1,000,000
32.2 Transferred from surplus (Stock Dividend)			
32.3 Transferred to surplus			
33. Surplus adjustments:			
33.1 Paid in	0	0	25,200,000
33.2 Transferred to capital (Stock Dividend)			
33.3 Transferred from capital			
34. Net remittances from or (to) Home Office			(1,500,000)
35. Dividends to stockholders			
36. Change in treasury stock			0
37. Aggregate write-ins for gains and losses in surplus	0	0	0
38. Change in surplus as regards policyholders (Lines 22 through 37)	(2,521,690)	(1,799,567)	12,620,686
39. Surplus as regards policyholders, as of statement date (Lines 21 plus 38)	90,348,885	78,450,322	92,870,575
DETAILS OF WRITE-INS			
0501.			
0502.			
0503.			
0598. Summary of remaining write-ins for Line 5 from overflow page	0	0	0
0599. Totals (Lines 0501 through 0503 plus 0598)(Line 5 above)	0	0	0
1401. MISC INCOME			0
1402. FINANCE ROYALTY INCOME			0
1403. OTHER INTEREST (EXPENSE)			21
1498. Summary of remaining write-ins for Line 14 from overflow page	3,540	2,087	8,880
1499. Totals (Lines 1401 through 1403 plus 1498)(Line 14 above)	3,540	2,087	8,901
3701. OTHER INCREASES / (DECREASES)			0
3702.			
3703.			
3798. Summary of remaining write-ins for Line 37 from overflow page	0	0	0
3799. Totals (Lines 3701 through 3703 plus 3798)(Line 37 above)	0	0	0

STATEMENT AS OF MARCH 31, 2017 OF THE PERMANENT GENERAL ASSURANCE CORPORATION OF OHIO

CASH FLOW

	1 Current Year To Date	2 Prior Year To Date	3 Prior Year Ended December 31
Cash from Operations			
1. Premiums collected net of reinsurance	39,431,239	28,244,345	118,085,676
2. Net investment income	786,724	764,760	2,974,074
3. Miscellaneous income	4,468,148	3,114,903	14,423,964
4. Total (Lines 1 to 3)	44,686,111	32,124,008	135,483,714
5. Benefit and loss related payments	27,071,093	19,155,600	84,674,597
6. Net transfers to Separate Accounts, Segregated Accounts and Protected Cell Accounts	0	0	0
7. Commissions, expenses paid and aggregate write-ins for deductions	16,665,003	14,195,765	57,837,521
8. Dividends paid to policyholders	0	0	0
9. Federal and foreign income taxes paid (recovered) net of \$ tax on capital gains (losses)	0	(709,687)	(668,601)
10. Total (Lines 5 through 9)	43,736,096	32,641,678	141,843,517
11. Net cash from operations (Line 4 minus Line 10)	950,015	(517,670)	(6,359,803)
Cash from Investments			
12. Proceeds from investments sold, matured or repaid:			
12.1 Bonds	17,945,874	24,795,932	61,051,438
12.2 Stocks	0	0	0
12.3 Mortgage loans	0	0	0
12.4 Real estate	0	0	0
12.5 Other invested assets	0	0	0
12.6 Net gains or (losses) on cash, cash equivalents and short-term investments	0	0	0
12.7 Miscellaneous proceeds	0	0	0
12.8 Total investment proceeds (Lines 12.1 to 12.7)	17,945,874	24,795,932	61,051,438
13. Cost of investments acquired (long-term only):			
13.1 Bonds	25,273,020	25,748,876	64,661,641
13.2 Stocks	0	0	10,700,000
13.3 Mortgage loans	0	0	0
13.4 Real estate	0	0	0
13.5 Other invested assets	0	0	0
13.6 Miscellaneous applications	143,619	2,941,889	2,499,654
13.7 Total investments acquired (Lines 13.1 to 13.6)	25,416,639	28,690,765	77,861,295
14. Net increase (or decrease) in contract loans and premium notes	0	0	0
15. Net cash from investments (Line 12.8 minus Line 13.7 and Line 14)	(7,470,765)	(3,894,833)	(16,809,857)
Cash from Financing and Miscellaneous Sources			
16. Cash provided (applied):			
16.1 Surplus notes, capital notes	0	0	0
16.2 Capital and paid in surplus, less treasury stock	0	0	26,200,000
16.3 Borrowed funds	0	0	0
16.4 Net deposits on deposit-type contracts and other insurance liabilities	0	0	0
16.5 Dividends to stockholders	0	0	1,500,000
16.6 Other cash provided (applied)	2,348,313	(3,114,977)	(4,880,498)
17. Net cash from financing and miscellaneous sources (Line 16.1 through Line 16.4 minus Line 16.5 plus Line 16.6)	2,348,313	(3,114,977)	19,819,502
RECONCILIATION OF CASH, CASH EQUIVALENTS AND SHORT-TERM INVESTMENTS			
18. Net change in cash, cash equivalents and short-term investments (Line 11, plus Lines 15 and 17)	(4,172,437)	(7,527,480)	(3,350,158)
19. Cash, cash equivalents and short-term investments:			
19.1 Beginning of year	8,319,464	11,669,622	11,669,622
19.2 End of period (Line 18 plus Line 19.1)	4,147,027	4,142,142	8,319,464

Note: Supplemental disclosures of cash flow information for non-cash transactions:

20.0001. Proceeds from bonds sold	0	0	576,317
20.0002. Proceeds from stocks sold	0	0	0
20.0003. Cost of bonds acquired	1,495	0	582,133
20.0004. Cost of stocks acquired	0	0	0
20.0005. Investment income received	1,495	0	5,816

NOTES TO FINANCIAL STATEMENTS

1. Summary of Significant Accounting Policies and Going Concern

A. The accompanying financial statements of Permanent General Assurance Corporation of Ohio (PGACOH) have been prepared in accordance with the NAIC Accounting Practices and Procedures Manual except to the extent that Ohio law differs. However, as of this Statement date, there have been no requests from the State of Ohio to depart from the prescribed NAIC guidelines.

A reconciliation of the Company's net income and capital and surplus between NAIC SAP and practices prescribed and permitted by the state of Ohio is shown below:

	SSAP #	F/S Page	F/S Line #	2017	2016
NET INCOME					
(1) State basis (Page 4, Line 20, Columns 1 & 2)	XXX	XXX	XXX	... (2,424,814)	.. (7,778,696)
(2) State Prescribed Practices that increase/(decrease) NAIC SAP:
(3) State Permitted Practices that increase/(decrease) NAIC SAP:
(4) NAIC SAP (1-2-3=4)	XXX	XXX	XXX	... (2,424,814)	.. (7,778,696)
SURPLUS					
(5) State basis (Page 3, Line 37, Columns 1 & 2)	XXX	XXX	XXX 90,348,885	... 92,870,575
(6) State Prescribed Practices that increase/(decrease) NAIC SAP:
(7) State Permitted Practices that increase/(decrease) NAIC SAP:
(8) NAIC SAP (5-6-7=8)	XXX	XXX	XXX 90,348,885	... 92,870,575

B. Use of Estimates in the Preparation of the Financial Statements

The preparation of financial statements in conformity with Statutory Accounting Principles requires management to make estimates and assumptions that affect the reported amounts of assets, liabilities, revenues and expenses. It also requires disclosure of contingent assets and liabilities at the date of the financial statements and the reported amounts of revenue and expenses during the period. Actual results could differ from those estimates.

C. Accounting Policy

Premiums are earned over the terms of the related insurance policies. Unearned premium reserves are established to cover the unexpired portion of premiums written. Such reserves are computed by pro rata methods for direct business.

Expenses incurred in connection with acquiring new insurance business, including such acquisition costs as sales commissions, are charged to operations as incurred. Expenses incurred are reduced for ceding allowances received or receivable.

- (1) Investments in short-term bonds rated "1" (highest quality), or "2" (high quality) by the Securities Valuation Office ("SVO") of the NAIC are reported in the financial statements at amortized cost. Bonds rated "3" (medium quality), "4" (low quality), "5" (lower quality), or "6" (lowest quality) by the SVO are reported at the lower of amortized cost or fair value. The interest method is used to amortize any purchase premium or discount, including estimates of future prepayments obtained from independent sources. Money market mutual funds are recorded at amortized cost, which approximates fair market value.
- (2) Investments in bonds rated "1" (highest quality), or "2" (high quality) by the Securities Valuation Office ("SVO") of the NAIC are reported in the financial statements at amortized cost. Bonds rated "3" (medium quality), "4" (low quality), "5" (lower quality), or "6" (lowest quality) by the SVO are reported at the lower of amortized cost or fair value. Investments in commercial mortgage backed securities (CMBS) and non-agency residential mortgage backed securities (RMBS) utilize a two step process to obtain a valuation and rating in accordance with SSAP 43R, Loan Backed and Structured Securities. The first step derives a rating for valuation by comparing the current amortized cost to the modeled range of values assigned to the six NAIC designations for each security. This determines whether the securities are stated at the lower of amortized cost or fair value per the above rules. The second step utilizes the same modeled range of values to derive a rating for reporting using the current carrying value as determined in the first step.

Ratings and valuations for investments in asset backed securities, loan backed securities, and structured securities (other than Equipment Trust Certificates and Credit Tenant Leases) that are otherwise rated by a credit rating provider (CRP) are calculated using a two step process. The first step derives a rating for valuation based on the CRP rating and the NAIC model valuation table. The second step utilizes the model valuation table to derive a rating for reporting using the current carrying value as determined in the first step. Securities whose initial rating is NAIC 1 or NAIC 6 in step one are not further modified by step two. The interest method is used to amortize any purchase premium or discount, including estimates of future prepayments obtained from independent sources.

- (3) Common stocks, if owned are stated at market with exception to the stock of the company's wholly owned subsidiary (which is valued as described in the NAIC Valuation of Securities Manual).
- (4) The Company holds no preferred stock as of the statement date.
- (5) The Company holds no mortgage loans.
- (6) Loan-backed securities are valued at amortized cost using the interest method, including anticipated prepayments at the date of purchase. These values are adjusted for updated prepayment information using the retrospective method.
- (7) The Company values The General Automobile Insurance Company, Inc. (a wholly owned subsidiary) in accordance with the NAIC policies and procedures manual.
- (8) The company has no investments in joint ventures, partnerships or limited liability companies.
- (9) All derivatives if held are stated at fair value.
- (10) The Company does not anticipate investment income as a factor in the premium deficiency calculation.
- (11) Reserve for losses represents the estimated liability for claims reported to the Company and an amount, based on actuarially determined reserves

NOTES TO FINANCIAL STATEMENTS

for losses incurred but not reported. Such liabilities are necessarily based on assumptions and estimates and while management believes the amount is adequate, the ultimate liability may be in excess of or less than the amount provided. The methods for making such estimates and for establishing the resulting liability is continually reviewed and any adjustments are reflected in the period determined.

- (12) The Company has not modified its capitalization policy from the prior period.
- (13) The Company has no pharmaceutical rebate receivables.

D. **Going Concern**
Not applicable.

2. **Accounting Changes and Corrections of Errors**
None.

3. **Business Combinations and Goodwill**
None.

4. **Discontinued Operations**
None.

5. **Investments**

- A) The Company has no mortgage loans.
- B) The Company did not restructure any debt.
- C) The Company has no reverse mortgages.
- D) Loan-Backed Securities

- (1) Prepayment assumptions for the vast majority of loan-backed securities are obtained from a leading, nationally recognized provider of market data and analytics. If the assumptions for a specific security are not available from the provider, the Company obtains the figures from broker dealer survey values.
- (2) Not applicable.
- (3) Not applicable.
- (4) Aggregate unrealized loss positions on loan-backed securities:

a. The aggregate amount of unrealized losses:	
1. Less than 12 Months	(221,648)
2. 12 Months or Longer	(7,550)
b. The aggregate related fair value of securities with unrealized losses:	
1. Less than 12 Months	13,873,802
2. 12 Months or Longer	425,805

(5) The Company believes that the unrealized losses related to these securities are temporary. In determining whether these unrealized losses are temporary, the Company considers severity of impairment, duration of impairment, forecasted market price recovery, and the intent and ability of the Company to hold the investment until the market price has recovered or the investment matures.

- E) The Company has no repurchase agreements.
- F) The Company has no real estate investments
- G) The Company has no low-income housing tax credits (LIHTC)
- H) Restricted Assets.

(1) Restricted Assets (Including Pledged) as of March 31, 2017.

Restricted Asset Category	Gross (Admitted & Nonadmitted) Restricted						
	Current Year					6	7
	1	2	3	4	5		
Total General Account (G/A)	G/A Supporting Protected Cell Account Activity (a)	Total Protected Cell Account Restricted Assets	Protected Cell Account Assets Supporting G/A Activity (b)	Total (1 plus 3)	Total From Prior Year	Increase/ (Decrease) (5 minus 6)	
a. Subject to contractual obligation for which liability is not shown					0		0
b. Collateral held under security lending agreements					0		0
c. Subject to repurchase agreements					0		0
d. Subject to reverse repurchase agreements					0		0
e. Subject to dollar repurchase agreements					0		0
f. Subject to dollar reverse repurchase agreements					0		0
g. Placed under option contracts					0		0
h. Letter stock or securities restricted as to sale - excluding FHLB capital stock					0		0
i. FHLB capital stock					0		0
j. On deposit with states	3,213,407				3,213,407	3,214,914	(1,507)
k. On deposit with other regulatory bodies					0		0
l. Pledged collateral to FHLB (including assets backing funding agreements)					0		0
m. Pledged as collateral not captured in other categories					0		0
n. Other restricted assets					0		0
o. Total Restricted Assets	3,213,407	0	0	0	3,213,407	3,214,914	(1,507)

- (a) Subset of column 1
- (b) Subset of column 3

NOTES TO FINANCIAL STATEMENTS

Restricted Asset Category	Current Year			
	8 Total Nonadmitted Restricted	9 Total Admitted Restricted (5 minus 8)	Percentage	
			10 Gross (Admitted & Nonadmitted) Restricted to Total Assets (c)	11 Admitted Restricted to Total Admitted Assets (d)
a. Subject to contractual obligation for which liability is not shown		0	0.000	0.000
b. Collateral held under security lending agreements		0	0.000	0.000
c. Subject to repurchase agreements		0	0.000	0.000
d. Subject to reverse repurchase agreements		0	0.000	0.000
e. Subject to dollar repurchase agreements		0	0.000	0.000
f. Subject to dollar reverse repurchase agreements		0	0.000	0.000
g. Placed under option contracts		0	0.000	0.000
h. Letter stock or securities restricted as to sale - excluding FHLB capital stock.....		0	0.000	0.000
i. FHLB capital stock		0	0.000	0.000
j. On deposit with states		3,213,407	1.300	1.300
k. On deposit with other regulatory bodies		0	0.000	0.000
l. Pledged collateral to FHLB (including assets backing funding agreements)		0	0.000	0.000
m. Pledged as collateral not captured in other categories		0	0.000	0.000
n. Other restricted assets		0	0.000	0.000
o. Total Restricted Assets	0	3,213,407	1.300	1.300

(c) Column 5 divided by Asset page, Column 1, Line 28
 (d) Column 9 divided by Asset page, Column 3, Line 28

- (2) Detail of Assets Pledged as Collateral Not Captured in Other Categories.
Not applicable.
- (3) Detail of Other Restricted Assets.
Not applicable.
- (4) Collateral received and reflected as assets within the reporting entities financial statements.
Not applicable.
- I) Working Capital Finance Investments.
None.
- J) Offsetting and Netting of Assets and Liabilities.
None.
- K) Structured Notes.

The Company invests in structured notes, which are characterized by non-fixed coupon payments, with the exception of securities tied to a non-leveraged typical interest rate index (such as LIBOR and T-Bill rates). Loan-backed securities are excluded from this category. The following table details the securities that the Company has determined meet this definition at March 31, 2017.

CUSIP Identification	Actual Cost	Fair Value	Book/Adjusted Carrying Value	Mortgage-Referenced Security (Y/N)
311450-FL-9	503,665	500,360	503,333	NO
708692-AJ-7	153,483	153,482	152,764	NO
708692-BF-4	729,713	726,595	729,352	NO
709223-6U-0	304,320	304,809	303,034	NO
Total	1,691,181	1,685,246	1,688,483	XXX

- L) 5* Securities.
None.
- M) Short Sales.
None.
- N) Prepayment Penalty and Acceleration Fees.
The following table discloses the number of CUSIPs sold, disposed or otherwise redeemed as a result of a callable feature (including make whole call provisions) and the aggregate amount of investment income generated as a result of a prepayment penalty and/or acceleration fee for the General Account and Protected Cell.

	General Account	Protected Cell
1. Number of CUSIP's	3	-
2. Aggregate Amount of Investment Income	-	-

6 Joint Ventures, Partnerships and Limited Liability Companies

None.

7. Investment Income

All investment income due and accrued is admitted.

8. Derivative Instruments

None.

9. Income Taxes

No change.

10. Information Concerning Parent, Subsidiaries Affiliates and Other Related Parties

A,B,C. No change.

D. At March 31, 2017, the Company reported \$4,399,947 net payable to its parent and affiliates. The terms of the settlement require these

NOTES TO FINANCIAL STATEMENTS

amounts are settled within 90 days.

- E. The Company has made no guarantees or undertakings for the benefit of the parent or affiliates.
- F. PGACOH has a service agreement in place with its affiliate Permanent General Companies, Inc (PGC), which is also a wholly owned subsidiary of PGC Holdings Corp. Under this agreement PGC performs administrative services on behalf of PGACOH. These services include; claims administration, underwriting, policy issuance and record keeping, legal services, data processing and accounting. Beginning in April 1997, the company began issuing policies through The General Automobile Insurance Services of Ohio (GAIS - OH) an Ohio corporation and affiliate of PGACOH (see Schedule Y for organizational chart). GAIS - OH serves as a captive insurance agency for PGACOH and provides underwriting and customer services for all policies issued.
- G. All outstanding shares of the company are owned by the parent company, PGC Holdings Corp.
- H. No amounts have been deducted from the value of an upstream entity or ultimate parent owned either directly or indirectly.
- I. The Company owns a 100% interest in The General Automobile Insurance Company, Inc., whose carry value exceeds 10% of the admitted assets of The Company. The Company carries The General Automobile Insurance Company, Inc. at statutory equity. Based on the Company's ownership percentage of The General Automobile Insurance Company, Inc., the statement value of assets and liabilities as of 03/31/2017 were \$132,287,926 and \$96,673,680, respectively. The Company's share of the net loss of The General Automobile Insurance Company, Inc. as of 03/31/2017 was \$1,286,784.
- J. The Company did not recognize any impairment write down for its investments in Subsidiary, Controlled or Affiliated Companies during the statement period.
- K. The Company has no investments in a foreign insurance subsidiary.
- L. The Company does not hold an investment in a downstream non-insurance holding company.
- M. All SCA Investments.
Not applicable.
- N. Investment in Insurance SCAs.
Not applicable.

11. Debt

The company has no capital note obligations, FHLB agreements or other long-term debt.

12. Retirement Plans, Deferred Compensation, Postemployment Benefits and Compensated Absences and Other Postretirement Benefit Plans.

None.

13. Capital and Surplus, Dividend Restrictions and Quasi-Reorganizations

- (1) The company has 750 shares of \$10,000 par value common stock authorized, of which 300 shares are issued and outstanding.
- (2) The company has no preferred stock issued.
- (3) The maximum amount of dividends which can be paid by an Ohio domiciled company without approval of the insurance commissioner is subject to restrictions based upon statutory surplus.
- (4) The company has not paid a dividend during the first quarter of 2017.
- (5) The portion of the Company's profits that may be paid as ordinary dividends to stockholders is limited by # (3) above. However, the maximum dividend payout which can be made in 2017 without prior approval is \$9,287,057.
- (6) The company has no restrictions on the unassigned surplus.
- (7) The company has not made advances of surplus.
- (8) The stock of the company has not been allocated for any special purposes.
- (9) The company has no special surplus funds.
- (10) Refer to page 4 lines 21 through 37 and Exhibit of Capital Gain (Losses).
- (11) The company has no surplus notes.
- (12) The company has not been reorganized.
- (13) N/A

14. Liabilities, Contingencies and Assessments.

- (A) The company has no contingent commitments to a SCA entity, joint ventures, partnerships, or limited liability companies.
- (B) The company has not been notified of any assessments that could have a material financial effect.
- (C) The company has no gain contingencies.
- (D) Claims related extra contractual obligations and bad faith losses stemming from lawsuits.

Direct

- (1) The company paid the following amounts in the reporting period to settle claims related extra contractual obligations or bad faith claims stemming from lawsuits0
- (2) Number of claims where amounts were paid to settle claims related extra contractual obligations or bad faith claims resulting from lawsuits during the reporting period0-25 Claims
- (3) Indicate whether claim count information is disclosed per claim or per claimantPer Claim

- (E) The company has no warranty liabilities.
- (F) The company has no joint and several liabilities.
- (G) All Other Contingencies.

Various lawsuits against the Company have arisen in the course of the Company's business. Contingent liabilities arising from litigation, income taxes and other matters are not considered material in relation to the financial position of the Company.

The Company routinely assesses the collectability of premium and agent balances. The uncollectible amounts are not material to the Company's financial condition.

15. Leases.

None.

NOTES TO FINANCIAL STATEMENTS

16. **Information about Financial Instruments with Off-balance Sheet Risk and Financial Instruments with Concentrations of Credit Risk.**

None.

17. **Sale, Transfer and Servicing of Financial Assets and Extinguishments of Liabilities.**

None.

18. **Gain or Loss to the Report Entity from Uninsured Plans and the Uninsured Portion of Partially Insured Plans.**

None.

19. **Direct Premium Written/Produced by MGA/3rd Party Administration**

None.

20. **Fair Value Measurements.**

A. (1) The following summarizes the Company's financial assets and liabilities carried at fair value as of March 31, 2017.

Description for each class of asset or liability	(Level 1)	(Level 2)	(Level 3)	Total
a. Assets at fair value				
Short-term investments	3,701,815	0	0	3,701,815
Derivative assets	0	0	0	0
Total assets at fair value	3,701,815	0	0	3,701,815

There were no material transfers between Levels 1 and 2 during the first quarter of 2017.

(2) The Company held no Level 3 assets carried at fair value as of March 31, 2017.

(3) There were no material transfers into or out of Level 3 during the first quarter of 2017.

(4) The Financial assets recorded on the Balance Sheet at fair value are categorized based on the reliability of inputs to the valuation techniques as follows:

Level 1 Financial assets and financial liabilities whose values are based on unadjusted quoted prices for identical assets or liabilities in an active market that the Company can access.

Level 2 Financial assets and financial liabilities whose values are based on the following:
 Quoted prices for similar assets or liabilities in active markets;
 Quoted Prices for identical or similar assets or liabilities in non-active markets; or
 Valuation models whose inputs are observable, directly or indirectly, for substantially the full term of the asset or liability.

Level 3 Financial assets and financial liabilities whose values are based on prices or valuation techniques that require inputs that are both unobservable and significant to the overall fair value measurement. These inputs may reflect the Company's estimates of the assumptions that market participants would use in valuing the financial assets and financial liabilities.

The availability of observable inputs varies by instrument. In situations where fair value is based on internally developed pricing models or inputs that are unobservable in the market, the determination of fair value requires more judgment. In many instances, inputs used to measure fair value fall into different levels of the fair value hierarchy. In those instances, for disclosure purposes, the level in the fair value hierarchy within which the fair value measurement is categorized is determined based on the lowest level input that is significant to the fair value measurement in its entirety.

The fair value guidance establishes a hierarchy for inputs used in determining fair value that maximize the use of observable inputs and minimizes the use of unobservable inputs by requiring that observable inputs be used when available.

Fair value is a market-based measure considered from the perspective of a market participant who owns an asset or owes a liability. Accordingly, when market observable data is not readily available, the Company's own assumptions are set to reflect those that market participants would be presumed to use in pricing the asset at the measurement date. The Company uses prices and inputs that are current as of the measurement date, including during periods of market disruption. In periods of market disruption, the ability to observe prices and inputs may be reduced for many instruments. This condition could cause an instrument to be reclassified from Level 1 to Level 2 or from Level 2 to Level 3.

When available, the Company uses the market approach to estimate the fair value of its financial instruments, which is based on quoted prices in active markets that are readily and regularly available. Generally, these are the most liquid of the Company's holdings and valuation of these securities does not involve management judgment. Matrix pricing and other similar techniques are other examples of the market approach.

When quoted prices in active markets are not available, the Company uses the income approach, or a combination of the market and income approaches, to estimate the fair value of its financial instruments. The income approach involves using discounted cash flow and other standard valuation methodologies. The inputs in applying these market standard valuation methodologies include, but are not limited to interest rates, benchmark yields, bid/ask spreads, dealer quotes, liquidity, term to maturity, estimated future cash flows, credit risk and default projections, collateral performance, deal and tranche attributes, and general market data.

The following valuation techniques and inputs were used to estimate the fair value of each class of significant financial instruments:

Level 1 Measurements

Short-term Investments: Comprised of actively traded money market funds that have daily quoted net asset values for identical assets that the Company can access.

The Company held no Level 2 or Level 3 securities carried at fair value as of March 31, 2017

NOTES TO FINANCIAL STATEMENTS

B. Not applicable.

C. Valuation, Methods, and Assumptions.

(1) The following table summarizes the fair value of the Company's financial assets as of March 31, 2017.

Type of Financial Instrument	Aggregate Fair Value	Admitted Assets	(Level 1)	(Level 2)	(Level 3)	Not Practicable (Carrying Value)
Bonds	93,743,524	94,356,919	3,341,186	90,402,338	0	
Short-Term Investments	4,146,900	4,147,027	3,701,815	304,815	140,270	

(2) The following valuation methods and assumptions were used to measure the fair values of each type of financial asset and liability:

Bonds: The fair value of Level 1 bonds, consisting of U.S. Treasury Notes, is determined using unadjusted quoted prices in an active market. The majority of the Company's Level 2 bonds are valued using the market and income approaches by leading, nationally recognized providers of market data and analytics. When available, recent trades of identical or similar assets are used to price these securities. However because many fixed income securities do not actively trade on a daily basis, pricing models are often used to determine security prices. The pricing models discount future cash flows at estimated market interest rates. These rates are derived by calculating the appropriate spreads over comparable U.S. Treasury securities based on credit quality, industry, and structure of the asset. Observable inputs used by the models include benchmark yields, bid/ask spreads, dealer quotes, liquidity, term to maturity, credit risk and default projections, collateral performance, deal and tranche attributes, and general market data. Inputs may vary depending on type of security. There was one security listed as a Level 3 which was priced using a broker service which was unable to provide any observable inputs to the Company.

Short-Term Investments: Valuation methods and assumptions for Level 1 money market funds are discussed in Note 20.A.4. Valuation methods and assumptions for Level 2 short-term bonds are the same as methods and assumptions used to value long-term bonds as discussed in Note 20.C.2.

D. Not applicable.

21. Other Items.

A. Extraordinary Items.
None.

B. Troubled Debt Restructuring. Debtors.
None.

C. Other Disclosures.
Assets in the amount of \$3,213,407 and \$3,214,914 at March 31, 2017 and December 31, 2016, respectively, were on deposit with government authorities or trustees as required by law.

D. Business Interruption Insurance Recoveries.
None.

E. State Transferable and Non-transferable Tax Credits.
None.

F. Subprime Mortgage Related Risk Exposure

(1) The Company defines our exposure to subprime mortgage related risk as any mortgage backed security that contains underlying mortgages designated as subprime. We reviewed all our residential mortgage backed pools and collateralized mortgage obligations for any such risk. Since our direct exposure through investments in subprime mortgage related risk is nil and our direct exposure through "other" investments is immaterial, we have not had the need to mitigate that risk exposure.

(2) Direct Exposure through investment in subprime mortgage loans.
Not applicable.

(3) Direct Exposure through other investments.
Not applicable.

(4) Underwriting exposure to subprime mortgage risk through Mortgage Guaranty or Financial Guaranty insurance coverage.
Not applicable.

G. Insurance-Linked Securities.
None.

22. Events Subsequent.

None.

23. Reinsurance

A. Unsecured Reinsurance Recoverable
None.

B. Reinsurance Recoverable in Dispute.
None.

C. Reinsurance Assumed and Ceded

	Assumed Reinsurance		Ceded Reinsurance		Net	
	(1) Premium Reserve	(2) Commission Equity	(3) Premium Reserve	(4) Commission Equity	(5) Premium Reserve	(6) Commission Equity
a.Affiliates	82,805,885	19,873,412	106,762,607	28,847,256	(23,956,722)	(8,973,844)
b.All Other	0	0	852,086	345,095	(852,086)	(345,095)

NOTES TO FINANCIAL STATEMENTS

c.Total	82,805,885	19,873,412	107,614,693	29,192,351	(24,808,808)	(9,318,939)
d.Direct Unearned Premium Reserve						107,614,693

- D. Uncollectible Reinsurance.
None.
- E. Commutation of Ceded Reinsurance
None.
- F. Retroactive Reinsurance
None.
- G. Reinsurance Accounted for as a Deposit.
None.
- H. Transfer of Property and Casualty Run-Off Agreements.
None.
- I. Certified Reinsurer Rating Downgraded or Status Subject to Revocation.
None.
- J. Reinsurance Agreements Qualifying for Reinsurer Aggregation.
None.

24. Retrospectively Rated Contracts & Contracts Subject to Redetermination.
None.

25. Change in Incurred Losses and Loss Adjustment Expenses
Loss & lae reserves as of December 31, 2016 were \$52,511,000. As of March 31, 2017, \$18,242,000 has been paid for incurred loss & lae expenses attributable to insured events or prior years. Reserves remaining for prior years are now \$33,353,000 as a result of re-estimation of unpaid claims and lae expenses. Therefore, there has been a \$916,000 favorable prior year development from 12/31/2016 to 03/31/2017 principally on liability lines of business.

Due to a more cautious approach, loss estimates for older claims were increased by \$147,000 with additional IBNR instead of assuming case reserves would be sufficient. The 2015 and 2016 accident years showed favorable development of \$1,063,000 due to improving loss and lae ratios. Salvage and subrogation estimates were slightly favorable versus the prior year evaluation.

The development is generally the result of an ongoing analysis of recent loss development trends and are increased or decreased as additional information becomes known regarding individual claims. The Company has no retrospectively rated policies that are subject to premium adjustments.

26. Intercompany Pooling Arrangements
Effective January 1, 2010, the Company entered into a reinsurance pooling agreement with PGAC (NAIC company code - 37648) (lead entity) an affiliated property and casualty insurance company domiciled in Ohio and The General Automobile Insurance Company, Inc. (GAIC) (NAIC company code – 13703), a wholly owned subsidiary domiciled in Ohio. The business includes private passenger auto liability & auto physical damage with PGAC receiving 58%, PGAC-Ohio receiving 25%, & GAIC receiving 17%. This Agreement applies only to that portion of any insurance or reinsurance which the parties hereto retain net for their own account and in calculating the amount of any loss hereunder, only loss or losses in respect of that portion of any insurance or reinsurance which the parties hereto retain net for their own account shall be included. The Company has a net payable balance of \$5,578,414 at 03/31/2017.

27. Structured Settlements
None.

28. Health Care Receivables
None.

29. Participating Policies
None.

30. Premium Deficiency Reserves

1. Liability carried for premium deficiency reserves.	\$0
2. Date of the most recent evaluation of this liability.	03/31/2017
3. Was anticipated investment income utilized in the calculation?	Yes <input type="checkbox"/> No <input checked="" type="checkbox"/>

31. High Deductibles
None.

32. Discounting of Liabilities for Unpaid Losses or Unpaid Loss Adjustment Expenses
None.

33. Asbestos/Environmental Reserves
None.

34. Subscriber Savings Accounts
None.

35. Multi-Peril Crop Insurance
None.

36. Financial Guaranty Insurance
None.

STATEMENT AS OF MARCH 31, 2017 OF THE PERMANENT GENERAL ASSURANCE CORPORATION OF OHIO
GENERAL INTERROGATORIES

PART 1 - COMMON INTERROGATORIES

GENERAL

- 1.1 Did the reporting entity experience any material transactions requiring the filing of Disclosure of Material Transactions with the State of Domicile, as required by the Model Act? Yes [] No [X]
- 1.2 If yes, has the report been filed with the domiciliary state? Yes [] No []
- 2.1 Has any change been made during the year of this statement in the charter, by-laws, articles of incorporation, or deed of settlement of the reporting entity? Yes [] No [X]
- 2.2 If yes, date of change:
- 3.1 Is the reporting entity a member of an Insurance Holding Company System consisting of two or more affiliated persons, one or more of which is an insurer? Yes [X] No []
 If yes, complete Schedule Y, Parts 1 and 1A.
- 3.2 Have there been any substantial changes in the organizational chart since the prior quarter end? Yes [] No [X]
- 3.3 If the response to 3.2 is yes, provide a brief description of those changes.
- 4.1 Has the reporting entity been a party to a merger or consolidation during the period covered by this statement? Yes [] No [X]
- 4.2 If yes, provide the name of the entity, NAIC Company Code, and state of domicile (use two letter state abbreviation) for any entity that has ceased to exist as a result of the merger or consolidation.

1 Name of Entity	2 NAIC Company Code	3 State of Domicile

5. If the reporting entity is subject to a management agreement, including third-party administrator(s), managing general agent(s), attorney-in-fact, or similar agreement, have there been any significant changes regarding the terms of the agreement or principals involved? Yes [] No [X] N/A []
 If yes, attach an explanation.
- 6.1 State as of what date the latest financial examination of the reporting entity was made or is being made. 12/31/2014
- 6.2 State the as of date that the latest financial examination report became available from either the state of domicile or the reporting entity. This date should be the date of the examined balance sheet and not the date the report was completed or released. 12/31/2014
- 6.3 State as of what date the latest financial examination report became available to other states or the public from either the state of domicile or the reporting entity. This is the release date or completion date of the examination report and not the date of the examination (balance sheet date). 08/17/2015
- 6.4 By what department or departments?
 Ohio Department of Insurance
- 6.5 Have all financial statement adjustments within the latest financial examination report been accounted for in a subsequent financial statement filed with Departments? Yes [] No [] N/A [X]
- 6.6 Have all of the recommendations within the latest financial examination report been complied with? Yes [X] No [] N/A []
- 7.1 Has this reporting entity had any Certificates of Authority, licenses or registrations (including corporate registration, if applicable) suspended or revoked by any governmental entity during the reporting period? Yes [] No [X]
- 7.2 If yes, give full information:
- 8.1 Is the company a subsidiary of a bank holding company regulated by the Federal Reserve Board? Yes [] No [X]
- 8.2 If response to 8.1 is yes, please identify the name of the bank holding company.
- 8.3 Is the company affiliated with one or more banks, thrifts or securities firms? Yes [] No [X]
- 8.4 If response to 8.3 is yes, please provide below the names and location (city and state of the main office) of any affiliates regulated by a federal regulatory services agency [i.e. the Federal Reserve Board (FRB), the Office of the Comptroller of the Currency (OCC), the Federal Deposit Insurance Corporation (FDIC) and the Securities Exchange Commission (SEC)] and identify the affiliate's primary federal regulator.

1 Affiliate Name	2 Location (City, State)	3 FRB	4 OCC	5 FDIC	6 SEC

STATEMENT AS OF MARCH 31, 2017 OF THE PERMANENT GENERAL ASSURANCE CORPORATION OF OHIO
GENERAL INTERROGATORIES

- 9.1 Are the senior officers (principal executive officer, principal financial officer, principal accounting officer or controller, or persons performing similar functions) of the reporting entity subject to a code of ethics, which includes the following standards? Yes [X] No []
- (a) Honest and ethical conduct, including the ethical handling of actual or apparent conflicts of interest between personal and professional relationships;
- (b) Full, fair, accurate, timely and understandable disclosure in the periodic reports required to be filed by the reporting entity;
- (c) Compliance with applicable governmental laws, rules and regulations;
- (d) The prompt internal reporting of violations to an appropriate person or persons identified in the code; and
- (e) Accountability for adherence to the code.
- 9.11 If the response to 9.1 is No, please explain:
- 9.2 Has the code of ethics for senior managers been amended? Yes [] No [X]
- 9.21 If the response to 9.2 is Yes, provide information related to amendment(s).
- 9.3 Have any provisions of the code of ethics been waived for any of the specified officers? Yes [] No [X]
- 9.31 If the response to 9.3 is Yes, provide the nature of any waiver(s).

FINANCIAL

- 10.1 Does the reporting entity report any amounts due from parent, subsidiaries or affiliates on Page 2 of this statement? Yes [] No [X]
- 10.2 If yes, indicate any amounts receivable from parent included in the Page 2 amount: \$0

INVESTMENT

- 11.1 Were any of the stocks, bonds, or other assets of the reporting entity loaned, placed under option agreement, or otherwise made available for use by another person? (Exclude securities under securities lending agreements.) Yes [] No [X]
- 11.2 If yes, give full and complete information relating thereto:
12. Amount of real estate and mortgages held in other invested assets in Schedule BA: \$0
13. Amount of real estate and mortgages held in short-term investments: \$0
- 14.1 Does the reporting entity have any investments in parent, subsidiaries and affiliates? Yes [X] No []
- 14.2 If yes, please complete the following:
- | | 1
Prior Year-End
Book/Adjusted
Carrying Value | 2
Current Quarter
Book/Adjusted
Carrying Value |
|---|--|---|
| 14.21 Bonds | \$0 | \$0 |
| 14.22 Preferred Stock | \$0 | \$0 |
| 14.23 Common Stock | \$36,634,977 | \$35,614,246 |
| 14.24 Short-Term Investments | \$0 | \$0 |
| 14.25 Mortgage Loans on Real Estate | \$0 | \$0 |
| 14.26 All Other | \$0 | \$0 |
| 14.27 Total Investment in Parent, Subsidiaries and Affiliates (Subtotal Lines 14.21 to 14.26) | \$36,634,977 | \$35,614,246 |
| 14.28 Total Investment in Parent included in Lines 14.21 to 14.26 above | \$ | \$ |
- 15.1 Has the reporting entity entered into any hedging transactions reported on Schedule DB? Yes [] No [X]
- 15.2 If yes, has a comprehensive description of the hedging program been made available to the domiciliary state? Yes [] No []
- If no, attach a description with this statement.

STATEMENT AS OF MARCH 31, 2017 OF THE PERMANENT GENERAL ASSURANCE CORPORATION OF OHIO
GENERAL INTERROGATORIES

16. For the reporting entity's security lending program, state the amount of the following as of the current statement date:
- | | |
|--|-----------|
| 16.1 Total fair value of reinvested collateral assets reported on Schedule DL, Parts 1 and 2 | \$0 |
| 16.2 Total book adjusted/carrying value of reinvested collateral assets reported on Schedule DL, Parts 1 and 2 | \$0 |
| 16.3 Total payable for securities lending reported on the liability page | \$0 |

17. Excluding items in Schedule E - Part 3 - Special Deposits, real estate, mortgage loans and investments held physically in the reporting entity's offices, vaults or safety deposit boxes, were all stocks, bonds and other securities, owned throughout the current year held pursuant to a custodial agreement with a qualified bank or trust company in accordance with Section 1, III - General Examination Considerations, F. Outsourcing of Critical Functions, Custodial or Safekeeping Agreements of the NAIC Financial Condition Examiners Handbook? Yes [X] No []
- 17.1 For all agreements that comply with the requirements of the NAIC Financial Condition Examiners Handbook, complete the following:

1 Name of Custodian(s)	2 Custodian Address
U.S. Bank	777 E. Wisconsin Ave., Milwaukee, WI 53202

- 17.2 For all agreements that do not comply with the requirements of the NAIC Financial Condition Examiners Handbook, provide the name, location and a complete explanation:

1 Name(s)	2 Location(s)	3 Complete Explanation(s)

- 17.3 Have there been any changes, including name changes, in the custodian(s) identified in 17.1 during the current quarter? Yes [] No [X]

- 17.4 If yes, give full information relating thereto:

1 Old Custodian	2 New Custodian	3 Date of Change	4 Reason

- 17.5 Investment management – Identify all investment advisors, investment managers, broker/dealers, including individuals that have the authority to make investment decisions on behalf of the reporting entity. For assets that are managed internally by employees of the reporting entity, note as such. ["...that have access to the investment accounts"; "...handle securities"]

1 Name of Firm or Individual	2 Affiliation
BlackRock Investments, LLC	U.....
Neil Zamansky	A.....
Charles Breunig	A.....

- 17.5097 For those firms/individuals listed in the table for Question 17.5, do any firms/individuals unaffiliated with the reporting entity (i.e. designated with a "U") manage more than 10% of the reporting entity's assets? Yes [] No [X]

- 17.5098 For firms/individuals unaffiliated with the reporting entity (i.e. designated with a "U") listed in the table for Question 17.5, does the total assets under management aggregate to more than 50% of the reporting entity's assets? Yes [] No [X]

- 17.6 For those firms or individuals listed in the table for 17.5 with an affiliation code of "A" (affiliated) or "U" (unaffiliated), provide the information for the table below.

1 Central Registration Depository Number	2 Name of Firm or Individual	3 Legal Entity Identifier (LEI)	4 Registered With	5 Investment Management Agreement (IMA) Filed
CRD#: 38642	BlackRock Investments, LLC	Registered with the SEC	NO.....
.....	Charles Breunig	Not a registered investment advisor	NO.....
.....	Neil Zamansky	Not a registered investment advisor	NO.....

- 18.1 Have all the filing requirements of the Purposes and Procedures Manual of the NAIC Investment Analysis Office been followed? Yes [X] No []

- 18.2 If no, list exceptions:

GENERAL INTERROGATORIES

PART 2 - PROPERTY & CASUALTY INTERROGATORIES

1. If the reporting entity is a member of a pooling arrangement, did the agreement or the reporting entity's participation change? Yes [] No [X] N/A []
If yes, attach an explanation.

2. Has the reporting entity reinsured any risk with any other reporting entity and agreed to release such entity from liability, in whole or in part, from any loss that may occur on the risk, or portion thereof, reinsured? Yes [] No [X]
If yes, attach an explanation.

3.1 Have any of the reporting entity's primary reinsurance contracts been canceled? Yes [] No [X]

3.2 If yes, give full and complete information thereto.

4.1 Are any of the liabilities for unpaid losses and loss adjustment expenses other than certain workers' compensation tabular reserves (see Annual Statement Instructions pertaining to disclosure of discounting for definition of "tabular reserves") discounted at a rate of interest greater than zero? Yes [] No [X]

4.2 If yes, complete the following schedule:

			TOTAL DISCOUNT				DISCOUNT TAKEN DURING PERIOD			
1	2	3	4	5	6	7	8	9	10	11
Line of Business	Maximum Interest	Discount Rate	Unpaid Losses	Unpaid LAE	IBNR	TOTAL	Unpaid Losses	Unpaid LAE	IBNR	TOTAL
TOTAL			0	0	0	0	0	0	0	0

5. Operating Percentages:

5.1 A&H loss percent 0.000 %

5.2 A&H cost containment percent 0.000 %

5.3 A&H expense percent excluding cost containment expenses 0.000 %

6.1 Do you act as a custodian for health savings accounts? Yes [] No [X]

6.2 If yes, please provide the amount of custodial funds held as of the reporting date \$

6.3 Do you act as an administrator for health savings accounts? Yes [] No [X]

6.4 If yes, please provide the balance of the funds administered as of the reporting date \$

SCHEDULE F - CEDED REINSURANCE

Showing All New Reinsurers - Current Year to Date

1 NAIC Company Code	2 ID Number	3 Name of Reinsurer	4 Domiciliary Jurisdiction	5 Type of Reinsurer	6 Certified Reinsurer Rating (1 through 6)	7 Effective Date of Certified Reinsurer Rating
NONE						

STATEMENT AS OF MARCH 31, 2017 OF THE PERMANENT GENERAL ASSURANCE CORPORATION OF OHIO

SCHEDULE T - EXHIBIT OF PREMIUMS WRITTEN

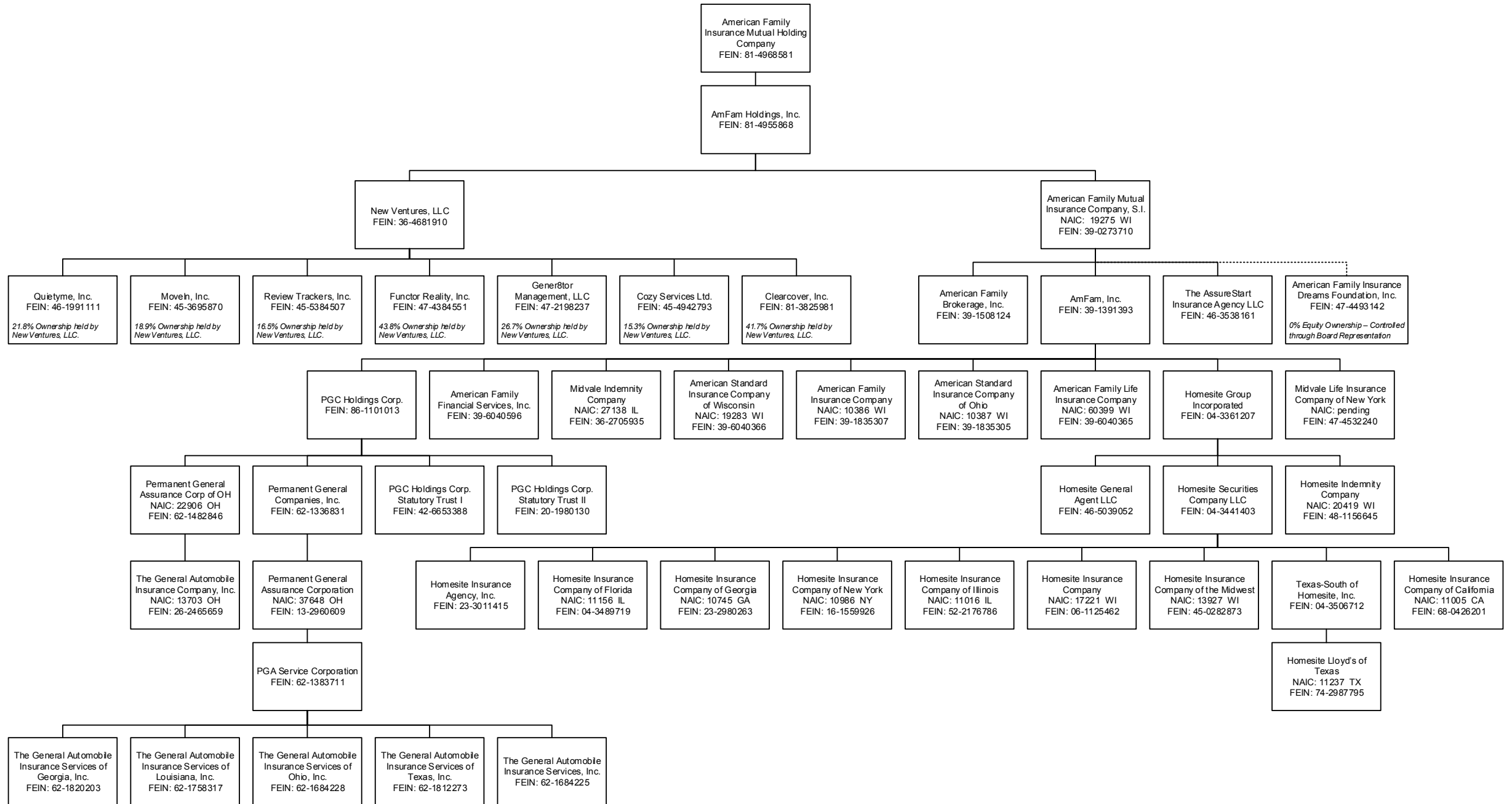
Current Year to Date - Allocated by States and Territories

States, etc.	1 Active Status	Direct Premiums Written		Direct Losses Paid (Deducting Salvage)		Direct Losses Unpaid	
		2 Current Year To Date	3 Prior Year To Date	4 Current Year To Date	5 Prior Year To Date	6 Current Year To Date	7 Prior Year To Date
1. AlabamaAL	L						
2. AlaskaAK	N						
3. ArizonaAZ	L	66,204	131,253	123,963	192,513	168,260	365,992
4. ArkansasAR	N						
5. CaliforniaCA	N						
6. ColoradoCO	L	17,685,161	9,215,388	6,599,023	1,958,346	9,317,669	2,781,466
7. ConnecticutCT	L						
8. DelawareDE	N						
9. District of ColumbiaDC	N						
10. FloridaFL	N						
11. GeorgiaGA	L	6,410,855	2,898,793	2,343,799	1,384,201	3,715,967	3,551,780
12. HawaiiHI	N						
13. IdahoID	N						
14. IllinoisIL	L	166,623	288,916	174,160	281,248	400,538	637,891
15. IndianaIN	L						
16. IowaIA	L	349,788	249,507	54,921	88,094	108,866	21,250
17. KansasKS	N						
18. KentuckyKY	L	1,308,051	1,071,972	530,031	175,189	1,149,563	602,022
19. LouisianaLA	L						
20. MaineME	N						
21. MarylandMD	N						
22. MassachusettsMA	L						
23. MichiganMI	N						
24. MinnesotaMN	N						
25. MississippiMS	L						
26. MissouriMO	L						
27. MontanaMT	N						
28. NebraskaNE	L						
29. NevadaNV	L						
30. New HampshireNH	N						
31. New JerseyNJ	L						
32. New MexicoNM	N						
33. New YorkNY	N						
34. North CarolinaNC	L	981,057	399,539	251,671	45,223	688,549	104,743
35. North DakotaND	L						
36. OhioOH	L	18,047,550	16,160,246	6,347,262	2,622,154	12,207,540	4,026,948
37. OklahomaOK	L						
38. OregonOR	L						
39. PennsylvaniaPA	L	16,618,903	13,233,753	6,330,629	2,790,560	10,356,284	4,529,440
40. Rhode IslandRI	L						
41. South CarolinaSC	L	1,797,175	5,152,186	1,599,362	2,305,377	2,880,717	5,110,482
42. South DakotaSD	L						
43. TennesseeTN	L	11,002,451	9,390,622	5,403,878	3,142,407	7,322,789	4,671,339
44. TexasTX	L	426,146	714,905	426,558	912,063	1,113,370	2,360,887
45. UtahUT	N						
46. VermontVT	L						
47. VirginiaVA	L	252,708	619,890	375,389	820,660	795,320	1,541,670
48. WashingtonWA	L						
49. West VirginiaWV	L						
50. WisconsinWI	L						
51. WyomingWY	N						
52. American SamoaAS	N						
53. GuamGU	N						
54. Puerto RicoPR	N						
55. U.S. Virgin IslandsVI	N						
56. Northern Mariana IslandsMP	N						
57. CanadaCAN	N						
58. Aggregate Other Alien OT	XXX	0	0	0	0	0	0
59. Totals	(a) 32	75,112,672	59,526,970	30,560,646	16,718,035	50,225,432	30,305,910
DETAILS OF WRITE-INS							
58001.	XXX						
58002.	XXX						
58003.	XXX						
58998. Summary of remaining write-ins for Line 58 from overflow page	XXX	0	0	0	0	0	0
58999. Totals (Lines 58001 through 58003 plus 58998)(Line 58 above)	XXX	0	0	0	0	0	0

(L) Licensed or Chartered - Licensed Insurance Carrier or Domiciled RRG; (R) Registered - Non-domiciled RRGs; (Q) Qualified - Qualified or Accredited Reinsurer; (E) Eligible - Reporting Entities eligible or approved to write Surplus Lines in the state (other than their state of domicile - see DSLI); (D) DSLI - Domestic Surplus Lines Insurer (DSLI) - Reporting entities authorized to write Surplus Lines in the state of domicile; (N) None of the above - Not allowed to write business in the state.

(a) Insert the number of D and L responses except for Canada and Other Alien.

SCHEDULE Y - INFORMATION CONCERNING ACTIVITIES OF INSURER MEMBERS OF A HOLDING COMPANY GROUP
PART 1 - ORGANIZATIONAL CHART



STATEMENT AS OF MARCH 31, 2017 OF THE PERMANENT GENERAL ASSURANCE CORPORATION OF OHIO

SCHEDULE Y

PART 1A - DETAIL OF INSURANCE HOLDING COMPANY SYSTEM

1	2	3	4	5	6	7	8	9	10	11	12	13	14	15	16
Group Code	Group Name	NAIC Company Code	ID Number	Federal RSSD	CIK	Name of Securities Exchange if Publicly Traded (U.S. or International)	Names of Parent, Subsidiaries Or Affiliates	Domi-ciliary Location	Relation-ship to Reporting Entity	Directly Controlled by (Name of Entity/Person)	Type of Control (Ownership, Board, Management, Attorney-in-Fact, Influence, Other)	If Control is Ownership Provide Percentage	Ultimate Controlling Entity(ies)/Person(s)	Is an SCA Filing Re-quired? (Y/N)	*
		.0000	81-4968581				American Family Insurance Mutual Holding Company	WI	UIP					N	
		.0000	81-4955868				AmFam Holdings, Inc.	WI	NIA	American Family Insurance Mutual Holding Company	Ownership	100.000	American Family Insurance Mutual Holding Company	N	
.0473	American Family Insurance Group	.19275	39-0273710				American Family Mutual Insurance Company, S.I.	WI	IA	AmFam Holdings, Inc.	Ownership	100.000	American Family Insurance Mutual Holding Company	N	
		.00000	39-1508124				American Family Brokerage, Inc.	WI	NIA	American Family Mutual Insurance Company, S.I.	Ownership	100.000	American Family Insurance Mutual Holding Company	Y	
		.00000	39-1391393				AmFam, Inc.	WI	NIA	American Family Mutual Insurance Company, S.I.	Ownership	100.000	American Family Insurance Mutual Holding Company	Y	
		.00000	46-3538161				The AssureStart Insurance Agency, LLC	WI	NIA	American Family Mutual Insurance Company, S.I.	Ownership	100.000	American Family Insurance Mutual Holding Company	N	
		.00000	47-4493142				American Family Insurance Dreams Foundation, Inc.	WI	OTH	American Family Mutual Insurance Company, S.I.	Board of Directors	0.000	American Family Insurance Dreams Foundation, Inc	N	2
		.00000	86-1101013				PGC Holdings Corporation	DE	UDP	AmFam, Inc.	Ownership	100.000	American Family Insurance Mutual Holding Company	N	
		.00000	39-6040596				American Family Financial Services, Inc.	WI	NIA	AmFam, Inc.	Ownership	100.000	American Family Insurance Mutual Holding Company	N	
.0473	American Family Insurance Group	.27138	36-2705935				Midvale Indemnity Company	IL	IA	AmFam, Inc.	Ownership	100.000	American Family Insurance Mutual Holding Company	N	
.0473	American Family Insurance Group	.19283	39-6040366				American Standard Insurance Company of Wisconsin	WI	IA	AmFam, Inc.	Ownership	100.000	American Family Insurance Mutual Holding Company	N	
.0473	American Family Insurance Group	.10386	39-1835307				American Family Insurance Company	WI	IA	AmFam, Inc.	Ownership	100.000	American Family Insurance Mutual Holding Company	N	
.0473	American Family Insurance Group	.10387	39-1835305				American Standard Insurance Company of Ohio	WI	IA	AmFam, Inc.	Ownership	100.000	American Family Insurance Mutual Holding Company	N	
.0473	American Family Insurance Group	.60399	39-6040365				American Family Life Insurance Company	WI	IA	AmFam, Inc.	Ownership	100.000	American Family Insurance Mutual Holding Company	N	
		.00000	04-3361207				Homesite Group Incorporated	DE	NIA	AmFam, Inc.	Ownership	100.000	American Family Insurance Mutual Holding Company	N	
		.00000	47-4532240				Midvale Life Insurance Company of New York	NY	IA	AmFam, Inc.	Ownership	100.000	American Family Insurance Mutual Holding Company	N	
.0473	Permanent General Holdings	.22906	62-1482846				Permanent General Assurance Corporation of Ohio	OH	RE	PGC Holdings Corporation	Ownership	100.000	American Family Insurance Mutual Holding Company	N	
		.00000	62-1336831				Permanent General Companies, Inc.	TN	NIA	PGC Holdings Corporation	Ownership	100.000	American Family Insurance Mutual Holding Company	N	
		.00000	42-6653388				PGC Holdings Corp. Statutory Trust 1	DE	NIA	PGC Holdings Corporation	Ownership	100.000	American Family Insurance Mutual Holding Company	N	
		.00000	20-1980130				PGC Holdings Corp. Statutory Trust 2	DE	NIA	PGC Holdings Corporation	Ownership	100.000	American Family Insurance Mutual Holding Company	N	
.0473	Permanent General Holdings	.13703	26-2465659				The General Automobile Insurance Company, Inc.	OH	IA	Permanent General Assurance Corporation of Ohio	Ownership	100.000	American Family Insurance Mutual Holding Company	N	
.0473	Permanent General Holdings	.37648	13-2960609				Permanent General Assurance Corporation	OH	IA	Permanent General Companies, Inc.	Ownership	100.000	American Family Insurance Mutual Holding Company	N	
		.00000	62-1383711				PGA Service Corporation	TN	NIA	Permanent General Assurance Corporation	Ownership	100.000	American Family Insurance Mutual Holding Company	N	
		.00000	62-1820203				The General Auto Insurance Services of Georgia, Inc.	GA	NIA	PGA Service Corporation	Ownership	100.000	American Family Insurance Mutual Holding Company	N	
		.00000	62-1758317				The General Auto Insurance Services of Louisiana, Inc.	LA	NIA	PGA Service Corporation	Ownership	100.000	American Family Insurance Mutual Holding Company	N	
		.00000	62-1684228				The General Auto Insurance Services of Ohio, Inc.	OH	NIA	PGA Service Corporation	Ownership	100.000	American Family Insurance Mutual Holding Company	N	
		.00000	62-1812273				The General Auto Insurance Services of Texas, Inc.	TX	NIA	PGA Service Corporation	Ownership	100.000	American Family Insurance Mutual Holding Company	N	

STATEMENT AS OF MARCH 31, 2017 OF THE PERMANENT GENERAL ASSURANCE CORPORATION OF OHIO

SCHEDULE Y

PART 1A - DETAIL OF INSURANCE HOLDING COMPANY SYSTEM

1	2	3	4	5	6	7	8	9	10	11	12	13	14	15	16
Group Code	Group Name	NAIC Company Code	ID Number	Federal RSSD	CIK	Name of Securities Exchange if Publicly Traded (U.S. or International)	Names of Parent, Subsidiaries Or Affiliates	Domi-ciliary Location	Relation-ship to Reporting Entity	Directly Controlled by (Name of Entity/Person)	Type of Control (Ownership, Board, Management, Attorney-in-Fact, Influence, Other)	If Control is Ownership Provide Percentage	Ultimate Controlling Entity(ies)/Person(s)	Is an SCA Filing Re-quired? (Y/N)	*
		.00000	62-1684225				The General Auto Insurance Services, Inc.	CA	NIA	PGA Service Corporation	Ownership	100.000	American Family Insurance Mutual Holding Company	N	
		.00000	46-5039052				Homesite General Agent, LLC	DE	NIA	Homesite Group Incorporated	Ownership	100.000	American Family Insurance Mutual Holding Company	N	
		.00000	04-3441403				Homesite Securities Company LLC	DE	NIA	Homesite Group Incorporated	Ownership	100.000	American Family Insurance Mutual Holding Company	N	
.0473	American Family Insurance Group	.20419	48-1156645				Homesite Indemnity Company	WI	IA	Homesite Group Incorporated	Ownership	100.000	American Family Insurance Mutual Holding Company	N	
		.00000	23-3011415				Homesite Insurance Agency, Inc.	MA	NIA	Homesite Securities Company LLC	Ownership	100.000	American Family Insurance Mutual Holding Company	N	
.0473	American Family Insurance Group	.11156	04-3489719				Homesite Insurance Company of Florida	IL	IA	Homesite Securities Company LLC	Ownership	100.000	American Family Insurance Mutual Holding Company	N	
.0473	American Family Insurance Group	.10745	23-2980263				Homesite Insurance Company of Georgia	GA	IA	Homesite Securities Company LLC	Ownership	100.000	American Family Insurance Mutual Holding Company	N	
.0473	American Family Insurance Group	.10986	16-1559926				Homesite Insurance Company of New York	NY	IA	Homesite Securities Company LLC	Ownership	100.000	American Family Insurance Mutual Holding Company	N	
.0473	American Family Insurance Group	.11016	52-2176786				Homesite Insurance Company of Illinois	IL	IA	Homesite Securities Company LLC	Ownership	100.000	American Family Insurance Mutual Holding Company	N	
.0473	American Family Insurance Group	.17221	06-1125462				Homesite Insurance Company	WI	IA	Homesite Securities Company LLC	Ownership	100.000	American Family Insurance Mutual Holding Company	N	
.0473	American Family Insurance Group	.13927	45-0282873				Homesite Insurance Company of the Midwest	WI	IA	Homesite Securities Company LLC	Ownership	100.000	American Family Insurance Mutual Holding Company	N	
		.00000	04-3506712				Texas-South of Homesite, Inc.	TX	NIA	Homesite Securities Company LLC	Ownership	100.000	American Family Insurance Mutual Holding Company	N	
.0473	American Family Insurance Group	.11005	68-0426201				Homesite Insurance Company of California	CA	IA	Homesite Securities Company LLC	Ownership	100.000	American Family Insurance Mutual Holding Company	N	
.0473	American Family Insurance Group	.11237	74-2987795				Homesite Lloyds's of Texas	TX	IA	Texas-South of Homesite, Inc.	Attorney-In-Fact	0.000	American Family Insurance Mutual Holding Company	N	
		.00000	36-4681910				New Ventures, LLC	WI	NIA	AnFam Holdings, Inc.	Ownership	100.000	American Family Insurance Mutual Holding Company	N	
		.00000	46-1991111				Quietyme, Inc.	WI	DTH	New Ventures, LLC	Ownership	21.800	Quietyme, Inc.	N	1
		.00000	45-3695870				Moveln, Inc.	WI	DTH	New Ventures, LLC	Ownership	18.900	Moveln, Inc.	N	1
		.00000	45-5384507				Review Trackers, Inc.	DE	DTH	New Ventures, LLC	Ownership	16.500	Review Trackers, Inc.	N	1
		.00000	47-4384551				Functor Reality, Inc.	DE	DTH	New Ventures, LLC	Ownership	43.800	Functor Reality, Inc.	N	1
		.00000	47-2198237				Gener8tor Management, LLC	WI	DTH	New Ventures, LLC	Ownership	26.700	Gener8tor Management, LLC	N	1
		.00000	45-4942793				Cozy Services Ltd.	DE	DTH	New Ventures, LLC	Ownership	15.300	Cozy Services Ltd.	N	1
		.00000	81-3825981				Clearcover, Inc.	DE	DTH	New Ventures, LLC	Ownership	41.700	Clearcover, Inc.	N	1

Asterisk	Explanation
1	Investments held by New Ventures, LLC where a controlling interest is presumed to exist due to a greater than 10% ownership interest
2	501(c)(3) organization with greater than 50% board of director control

STATEMENT AS OF MARCH 31, 2017 OF THE PERMANENT GENERAL ASSURANCE CORPORATION OF OHIO

PART 1 - LOSS EXPERIENCE

Line of Business	Current Year to Date			4 Prior Year to Date Direct Loss Percentage
	1 Direct Premiums Earned	2 Direct Losses Incurred	3 Direct Loss Percentage	
1. Fire			0.0	0.0
2. Allied Lines			0.0	0.0
3. Farmowners multiple peril			0.0	0.0
4. Homeowners multiple peril			0.0	0.0
5. Commercial multiple peril			0.0	0.0
6. Mortgage guaranty			0.0	0.0
8. Ocean marine			0.0	0.0
9. Inland marine			0.0	0.0
10. Financial guaranty			0.0	0.0
11.1 Medical professional liability - occurrence			0.0	0.0
11.2 Medical professional liability - claims-made			0.0	0.0
12. Earthquake			0.0	0.0
13. Group accident and health			0.0	0.0
14. Credit accident and health			0.0	0.0
15. Other accident and health			0.0	0.0
16. Workers' compensation			0.0	0.0
17.1 Other liability - occurrence			0.0	0.0
17.2 Other liability - claims-made			0.0	0.0
17.3 Excess workers' compensation			0.0	0.0
18.1 Products liability - occurrence			0.0	0.0
18.2 Products liability - claims-made			0.0	0.0
19.1,19.2 Private passenger auto liability	33,978,072	21,225,801	62.5	68.6
19.3,19.4 Commercial auto liability			0.0	0.0
21. Auto physical damage	14,468,927	9,718,016	67.2	75.6
22. Aircraft (all perils)			0.0	0.0
23. Fidelity			0.0	0.0
24. Surety			0.0	0.0
26. Burglary and theft			0.0	0.0
27. Boiler and machinery			0.0	0.0
28. Credit			0.0	0.0
29. International			0.0	0.0
30. Warranty			0.0	0.0
31. Reinsurance - Nonproportional Assumed Property	XXX	XXX	XXX	XXX
32. Reinsurance - Nonproportional Assumed Liability	XXX	XXX	XXX	XXX
33. Reinsurance - Nonproportional Assumed Financial Lines	XXX	XXX	XXX	XXX
34. Aggregate write-ins for other lines of business	0	0	0.0	0.0
35. Totals	48,446,999	30,943,817	63.9	70.6
DETAILS OF WRITE-INS				
3401.				
3402.				
3403.				
3498. Summary of remaining write-ins for Line 34 from overflow page	0	0	0.0	0.0
3499. Totals (Lines 3401 through 3403 plus 3498)(Line 34 above)	0	0	0.0	0.0

PART 2 - DIRECT PREMIUMS WRITTEN

Line of Business	1	2	3
	Current Quarter	Current Year to Date	Prior Year Year to Date
1. Fire	0		
2. Allied Lines	0		
3. Farmowners multiple peril	0		
4. Homeowners multiple peril	0		
5. Commercial multiple peril	0		
6. Mortgage guaranty	0		
8. Ocean marine	0		
9. Inland marine	0		
10. Financial guaranty	0		
11.1 Medical professional liability - occurrence	0		
11.2 Medical professional liability - claims-made	0		
12. Earthquake	0		
13. Group accident and health	0		
14. Credit accident and health	0		
15. Other accident and health	0		
16. Workers' compensation	0		
17.1 Other liability - occurrence	0		
17.2 Other liability - claims-made	0		
17.3 Excess workers' compensation	0		
18.1 Products liability - occurrence	0		
18.2 Products liability - claims-made	0		
19.1,19.2 Private passenger auto liability	53,489,292	53,489,292	42,369,526
19.3,19.4 Commercial auto liability	0		
21. Auto physical damage	21,623,380	21,623,380	17,157,444
22. Aircraft (all perils)	0		
23. Fidelity	0		
24. Surety	0		
26. Burglary and theft	0		
27. Boiler and machinery	0		
28. Credit	0		
29. International	0		
30. Warranty	0		
31. Reinsurance - Nonproportional Assumed Property	XXX	XXX	XXX
32. Reinsurance - Nonproportional Assumed Liability	XXX	XXX	XXX
33. Reinsurance - Nonproportional Assumed Financial Lines	XXX	XXX	XXX
34. Aggregate write-ins for other lines of business	0	0	0
35. Totals	75,112,672	75,112,672	59,526,970
DETAILS OF WRITE-INS			
3401.			
3402.			
3403.			
3498. Summary of remaining write-ins for Line 34 from overflow page	0	0	0
3499. Totals (Lines 3401 through 3403 plus 3498)(Line 34 above)	0	0	0

STATEMENT AS OF MARCH 31, 2017 OF THE PERMANENT GENERAL ASSURANCE CORPORATION OF OHIO

PART 3 (000 omitted)

LOSS AND LOSS ADJUSTMENT EXPENSE RESERVES SCHEDULE

	1	2	3	4	5	6	7	8	9	10	11	12	13
Years in Which Losses Occurred	Prior Year-End Known Case Loss and LAE Reserves	Prior Year-End IBNR Loss and LAE Reserves	Total Prior Year-End Loss and LAE Reserves (Cols. 1+2)	2017 Loss and LAE Payments on Claims Reported as of Prior Year-End	2017 Loss and LAE Payments on Claims Unreported as of Prior Year-End	Total 2017 Loss and LAE Payments (Cols. 4+5)	Q.S. Date Known Case Loss and LAE Reserves on Claims Reported and Open as of Prior Year End	Q.S. Date Known Case Loss and LAE Reserves on Claims Reported or Reopened Subsequent to Prior Year End	Q.S. Date IBNR Loss and LAE Reserves	Total Q.S. Loss and LAE Reserves (Cols.7+8+9)	Prior Year-End Known Case Loss and LAE Reserves Developed (Savings)/ Deficiency (Cols.4+7 minus Col. 1)	Prior Year-End IBNR Loss and LAE Reserves Developed (Savings)/ Deficiency (Cols. 5+8+9 minus Col. 2)	Prior Year-End Total Loss and LAE Reserve Developed (Savings)/ Deficiency (Cols. 11+12)
1. 2014 + Prior	2,154	357	2,511	1,019	10	1,029	1,288	13	328	1,629	153	(6)	147
2. 2015	5,472	1,818	7,290	1,936	19	1,955	3,895	39	1,280	5,214	359	(480)	(121)
3. Subtotals 2015 + Prior	7,626	2,175	9,801	2,955	29	2,984	5,183	52	1,608	6,843	512	(486)	26
4. 2016	25,447	17,263	42,710	15,105	153	15,258	17,753	179	8,578	26,510	7,411	(8,353)	(942)
5. Subtotals 2016 + Prior	33,073	19,438	52,511	18,060	182	18,242	22,936	231	10,186	33,353	7,923	(8,839)	(916)
6. 2017	XXX	XXX	XXX	XXX	9,226	9,226	XXX	10,343	10,261	20,604	XXX	XXX	XXX
7. Totals	33,073	19,438	52,511	18,060	9,408	27,468	22,936	10,574	20,447	53,957	7,923	(8,839)	(916)
8. Prior Year-End Surplus As Regards Policyholders	92,871										Col. 11, Line 7 As % of Col. 1 Line 7	Col. 12, Line 7 As % of Col. 2 Line 7	Col. 13, Line 7 As % of Col. 3 Line 7
											1. 24.0	2. (45.5)	3. (1.7)
													Col. 13, Line 7 As a % of Col. 1 Line 8
													4. (1.0)

STATEMENT AS OF MARCH 31, 2017 OF THE PERMANENT GENERAL ASSURANCE CORPORATION OF OHIO
SUPPLEMENTAL EXHIBITS AND SCHEDULES INTERROGATORIES

The following supplemental reports are required to be filed as part of your statement filing. However, in the event that your company does not transact the type of business for which the special report must be filed, your response of NO to the specific interrogatory will be accepted in lieu of filing a "NONE" report and a bar code will be printed below. If the supplement is required of your company but is not being filed for whatever reason enter SEE EXPLANATION and provide an explanation following the interrogatory questions.

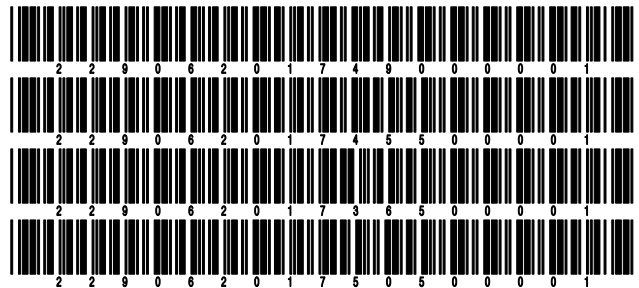
	Response
1. Will the Trusteed Surplus Statement be filed with the state of domicile and the NAIC with this statement?	NO
2. Will Supplement A to Schedule T (Medical Professional Liability Supplement) be filed with this statement?	NO
3. Will the Medicare Part D Coverage Supplement be filed with the state of domicile and the NAIC with this statement?	NO
4. Will the Director and Officer Insurance Coverage Supplement be filed with the state of domicile and the NAIC with this statement?	NO

Explanations:

- 1.
- 2.
- 3.
- 4.

Bar Codes:

1. Trusteed Surplus Statement [Document Identifier 490]
2. Supplement A to Schedule T [Document Identifier 455]
3. Medicare Part D Coverage Supplement [Document Identifier 365]
4. Director and Officer Supplement [Document Identifier 505]



STATEMENT AS OF MARCH 31, 2017 OF THE PERMANENT GENERAL ASSURANCE CORPORATION OF OHIO
OVERFLOW PAGE FOR WRITE-INS

Additional Write-ins for Statement of Income Line 14

	1 Current Year to Date	2 Prior Year to Date	3 Prior Year Ended December 31
1404. SUBROGATION FEES	3,540	2,087	8,880
1405. LEGAL DEFENSE FEES			0
1497. Summary of remaining write-ins for Line 14 from overflow page	3,540	2,087	8,880

SCHEDULE A - VERIFICATION

Real Estate

	1 Year to Date	2 Prior Year Ended December 31
1. Book/adjusted carrying value, December 31 of prior year		
2. Cost of acquired:		
2.1 Actual cost at time of acquisition		
2.2 Additional investment made after acquisition		
3. Current year change in encumbrances		
4. Total gain (loss) on disposals		
5. Deduct amounts received on disposals		
6. Total foreign exchange change in book/adjusted carrying value		
7. Deduct current year's other than temporary impairment recognized		
8. Deduct current year's depreciation		
9. Book/adjusted carrying value at the end of current period (Lines 1+2+3+4-5+6-7-8)		
10. Deduct total nonadmitted amounts		
11. Statement value at end of current period (Line 9 minus Line 10)		

NONE

SCHEDULE B - VERIFICATION

Mortgage Loans

	1 Year to Date	2 Prior Year Ended December 31
1. Book value/recorded investment excluding accrued interest, December 31 of prior year		
2. Cost of acquired:		
2.1 Actual cost at time of acquisition		
2.2 Additional investment made after acquisition		
3. Capitalized deferred interest and other		
4. Accrual of discount		
5. Unrealized valuation increase (decrease)		
6. Total gain (loss) on disposals		
7. Deduct amounts received on disposals		
8. Deduct amortization of premium and mortgage investment and commitment fees		
9. Total foreign exchange change in book value/recorded investment including accrued interest		
10. Deduct current year's other than temporary impairment recognized		
11. Book value/recorded investment excluding accrued interest at end of current period (Lines 1+2+3+4+5+6-7-8+9-10)		
12. Total valuation allowance		
13. Subtotal (Line 11 plus Line 12)		
14. Deduct total nonadmitted amounts		
15. Statement value at end of current period (Line 13 minus Line 14)		

NONE

SCHEDULE BA - VERIFICATION

Other Long-Term Invested Assets

	1 Year to Date	2 Prior Year Ended December 31
1. Book/adjusted carrying value, December 31 of prior year		
2. Cost of acquired:		
2.1 Actual cost at time of acquisition		
2.2 Additional investment made after acquisition		
3. Capitalized deferred interest and other		
4. Accrual of discount		
5. Unrealized valuation increase (decrease)		
6. Total gain (loss) on disposals		
7. Deduct amounts received on disposals		
8. Deduct amortization of premium and depreciation		
9. Total foreign exchange change in book/adjusted carrying value		
10. Deduct current year's other than temporary impairment recognized		
11. Book/adjusted carrying value at end of current period (Lines 1+2+3+4+5+6-7-8+9-10)		
12. Deduct total nonadmitted amounts		
13. Statement value at end of current period (Line 11 minus Line 12)		

NONE

SCHEDULE D - VERIFICATION

Bonds and Stocks

	1 Year to Date	2 Prior Year Ended December 31
1. Book/adjusted carrying value of bonds and stocks, December 31 of prior year	124,268,192	116,392,597
2. Cost of bonds and stocks acquired	25,274,513	73,853,422
3. Accrual of discount	30,717	109,874
4. Unrealized valuation increase (decrease)	(1,020,731)	(5,398,893)
5. Total gain (loss) on disposals	(182,797)	502,105
6. Deduct consideration for bonds and stocks disposed of	17,945,874	59,537,403
7. Deduct amortization of premium	452,855	1,653,510
8. Total foreign exchange change in book/adjusted carrying value		
9. Deduct current year's other than temporary impairment recognized		
10. Book/adjusted carrying value at end of current period (Lines 1+2+3+4+5-6-7+8-9)	129,971,165	124,268,192
11. Deduct total nonadmitted amounts		
12. Statement value at end of current period (Line 10 minus Line 11)	129,971,165	124,268,192

STATEMENT AS OF MARCH 31, 2017 OF THE PERMANENT GENERAL ASSURANCE CORPORATION OF OHIO

SCHEDULE D - PART 1B

Showing the Acquisitions, Dispositions and Non-Trading Activity
During the Current Quarter for all Bonds and Preferred Stock by NAIC Designation

NAIC Designation	1 Book/Adjusted Carrying Value Beginning of Current Quarter	2 Acquisitions During Current Quarter	3 Dispositions During Current Quarter	4 Non-Trading Activity During Current Quarter	5 Book/Adjusted Carrying Value End of First Quarter	6 Book/Adjusted Carrying Value End of Second Quarter	7 Book/Adjusted Carrying Value End of Third Quarter	8 Book/Adjusted Carrying Value December 31 Prior Year
BONDS								
1. NAIC 1 (a)	93,134,150	36,955,437	38,372,038	(2,594,402)	89,123,147	0	0	93,134,150
2. NAIC 2 (a)	2,818,529	5,065,395	673,813	2,170,688	9,380,799	0	0	2,818,529
3. NAIC 3 (a)	0				0			
4. NAIC 4 (a)	0				0			
5. NAIC 5 (a)	0				0			
6. NAIC 6 (a)	0				0			
7. Total Bonds	95,952,679	42,020,832	39,045,851	(423,714)	98,503,946	0	0	95,952,679
PREFERRED STOCK								
8. NAIC 1	0				0			
9. NAIC 2	0				0			
10. NAIC 3	0				0			
11. NAIC 4	0				0			
12. NAIC 5	0				0			
13. NAIC 6	0				0			
14. Total Preferred Stock	0	0	0	0	0	0	0	0
15. Total Bonds and Preferred Stock	95,952,679	42,020,832	39,045,851	(423,714)	98,503,946	0	0	95,952,679

(a) Book/Adjusted Carrying Value column for the end of the current reporting period includes the following amount of short-term and cash equivalent bonds by NAIC designation:

NAIC 1 \$ 4,147,027 ; NAIC 2 \$ 0 ; NAIC 3 \$ 0 ; NAIC 4 \$ 0 ; NAIC 5 \$ 0 ; NAIC 6 \$ 0

SCHEDULE DA - PART 1

Short-Term Investments

	1 Book/Adjusted Carrying Value	2 Par Value	3 Actual Cost	4 Interest Collected Year-to-Date	5 Paid for Accrued Interest Year-to-Date
9199999 Totals	4,147,027	xxx	4,148,826	2,695	400

SCHEDULE DA - VERIFICATION

Short-Term Investments

	1 Year To Date	2 Prior Year Ended December 31
1. Book/adjusted carrying value, December 31 of prior year	8,319,464	10,671,692
2. Cost of short-term investments acquired	16,746,319	65,050,198
3. Accrual of discount		
4. Unrealized valuation increase (decrease)		
5. Total gain (loss) on disposals		
6. Deduct consideration received on disposals	20,917,180	67,362,267
7. Deduct amortization of premium	1,576	40,159
8. Total foreign exchange change in book/adjusted carrying value		
9. Deduct current year's other than temporary impairment recognized		
10. Book/adjusted carrying value at end of current period (Lines 1+2+3+4+5-6-7+8-9)	4,147,027	8,319,464
11. Deduct total nonadmitted amounts		
12. Statement value at end of current period (Line 10 minus Line 11)	4,147,027	8,319,464

Schedule DB - Part A - Verification - Options, Caps, Floors, Collars, Swaps and Forwards

NONE

Schedule DB - Part B - Verification - Futures Contracts

NONE

Schedule DB - Part C - Section 1 - Replication (Synthetic Asset) Transactions (RSATs) Open

NONE

Schedule DB-Part C-Section 2-Reconciliation of Replication (Synthetic Asset) Transactions Open

NONE

Schedule DB - Verification - Book/Adjusted Carrying Value, Fair Value and Potential Exposure of Derivatives

NONE

Schedule E - Verification - Cash Equivalents

NONE

Schedule A - Part 2 - Real Estate Acquired and Additions Made

NONE

Schedule A - Part 3 - Real Estate Disposed

NONE

Schedule B - Part 2 - Mortgage Loans Acquired and Additions Made

NONE

Schedule B - Part 3 - Mortgage Loans Disposed, Transferred or Repaid

NONE

Schedule BA - Part 2 - Other Long-Term Invested Assets Acquired and Additions Made

NONE

Schedule BA - Part 3 - Other Long-Term Invested Assets Disposed, Transferred or Repaid

NONE

STATEMENT AS OF MARCH 31, 2017 OF THE PERMANENT GENERAL ASSURANCE CORPORATION OF OHIO

SCHEDULE D - PART 3

Show All Long-Term Bonds and Stock Acquired During the Current Quarter

1 CUSIP Identification	2 Description	3 Foreign	4 Date Acquired	5 Name of Vendor	6 Number of Shares of Stock	7 Actual Cost	8 Par Value	9 Paid for Accrued Interest and Dividends	10 NAIC Desig- nation or Market Indicator (a)
912810-RV-2	UNITED STATES TREASURY GOVT BND 3.000% 02/15/47		.03/15/2017	JP Morgan		96,836	100,000	.273	1
912828-LJ-4	UNITED STATES TREASURY SENIOR GOVT BND 2.000% 11/15/26		.02/08/2017	SOC GEN LBN FI		145,360	150,000	.746	1
0599999. Subtotal - Bonds - U.S. Governments									
452151-6V-0	ILLINOIS STATE OF MUNI BND GO 4.750% 04/01/20		.03/08/2017	Hutchinson,Shockey,Erley & Co		242,196	250,000	1,019	XXX
452152-CS-8	ILLINOIS STATE OF MUNI BND GO 5.000% 01/01/20		.03/01/2017	Stifel Nicolaus		50,897	50,000	1,069	2FE
452152-CW-9	ILLINOIS STATE OF 2010 5.000% 01/01/24		.03/22/2017	Various		262,373	250,000	2,257	2FE
452152-LC-3	ILLINOIS STATE OF MUNI BND GO 5.000% 03/01/22		.01/11/2017	Headlands Global Markets		276,969	270,000	2,544	2FE
452152-MN-8	ILLINOIS STATE OF MUNI BND GO 4.000% 08/01/25		.03/22/2017	Stifel Nicolaus		63,000	60,000	1,133	2FE
452152-SL-6	ILLINOIS STATE OF MUNI BND GO 5.000% 07/01/20		.01/11/2017	Citi International		58,499	60,000	373	2FE
452152-VA-6	ILLINOIS STATE OF MUNI BND GO 4.000% 02/01/24		.03/14/2017	Hutchinson,Shockey,Erley & Co		121,333	115,000	256	2FE
574193-HS-0	MARYLAND STATE OF MUNI BND GO 5.000% 08/01/21		.02/01/2017	Raymond James & Assoc Inc		9,765	10,000	.51	2FE
97705L-K9-7	WISCONSIN STATE OF MUNI BND GO 4.500% 05/01/31		.03/24/2017	Stifel Nicolaus		947,496	825,000	573	1FE
1799999. Subtotal - Bonds - U.S. States, Territories and Possessions									
054375-SZ-4	AVONDALE MICH SCH DIST MUNI BND GO 5.000% 11/01/22		.01/25/2017	Stifel Nicolaus		2,679,437	2,450,000	23,241	XXX
162376-CT-2	CHATTANOOGA TENN MUNI BND GO 5.000% 03/01/23		.02/02/2017	PNC Na Swaps Counterparty		299,948	265,000	.0	1FE
167615-TJ-2	CHICAGO ILL PK DIST MUNI BND GO 5.000% 01/01/25		.03/15/2017	Stifel Nicolaus		680,288	575,000	958	1FE
213185-JD-4	COOK CNTY ILL MUNI BND GO 5.000% 11/15/23		.01/23/2017	Hutchinson,Shockey,Erley & Co		613,080	550,000	6,035	1FE
215831-EV-6	COOK CNTY ILL CNTY HIGH SCH D MUNI BND GO 4.000% 12/01/24		.02/09/2017	Hutchinson,Shockey,Erley & Co		33,666	30,000	296	1FE
262651-UK-6	DU PAGE CNTY ILL FST PRESV DIS MUNI BND GO 5.000% 01/01/24		.02/07/2017	Hutchinson,Shockey,Erley & Co		543,940	500,000	4,556	1FE
486063-VY-1	KATY TEX INDPT SCH DIST MUNI BND GO 5.000% 02/15/21		.02/03/2017	Jeffries		117,812	100,000	542	1FE
521841-AT-3	LEANDER TEX INDPT SCH DIST MUNI BND GO 5.000% 08/15/30		.01/20/2017	Raymond James & Assoc Inc		624,118	550,000	4,049	1FE
675566-CZ-4	OCONEE CNTY GA SCH DIST MUNI BND GO 4.000% 03/01/21		.01/10/2017	Raymond James & Assoc Inc		1,061,266	920,000	20,444	1FE
725277-EQ-6	PITTSBURGH PA SCH DIST MUNI BND GO 4.000% 09/01/19		.01/23/2017	PNC Na Swaps Counterparty		435,808	400,000	.0	1FE
764581-KB-9	RICHMOND CNTY GA BRD OF EDU MUNI BND GO 5.000% 10/01/20		.02/09/2017	Citi International		637,746	600,000	9,667	1FE
974535-KE-5	WINNEBAGO & BOONE CNTYS ILL SC MUNI BND GO 0.000% 02/01/23		.01/23/2017	Hutchinson,Shockey,Erley & Co		647,686	575,000	.0	1FE
2499999. Subtotal - Bonds - U.S. Political Subdivisions of States, Territories and Possessions									
01728L-EB-4	ALLEGHENY CNTY PA ARPT AUTH AMT 5.000% 01/01/21		.01/10/2017	PNC Na Swaps Counterparty		432,510	390,000	650	1FE
01728R-JX-8	ALLEGHENY CNTY PA HIGHER ED BL MUNI BND REV 5.000% 03/01/25		.01/26/2017	PNC Na Swaps Counterparty		341,166	300,000	6,250	1FE
080692-EK-8	BELOIT WIS MUNI BND REV 4.000% 11/01/27		.01/25/2017	Hutchinson,Shockey,Erley & Co		26,628	25,000	.225	1FE
130174-7R-0	CALIFORNIA EDL FACS AUTH REV MUNI BND REV 0.000% 10/01/23		.02/07/2017	Hutchinson,Shockey,Erley & Co		296,758	350,000	.0	1FE
13066Y-SP-5	CALIFORNIA ST DEPT WTR RES MUNI BND REV 5.000% 05/01/20		.02/07/2017	Stifel Nicolaus		1,455,779	1,300,000	17,875	1FE
167727-SV-9	CHICAGO (CITY OF) MUNI BND REV 4.000% 01/01/19		.01/04/2017	Hutchinson,Shockey,Erley & Co		15,490	15,000	.33	1FE
167727-WG-7	CHICAGO (CITY OF) MUNI BND REV 5.000% 01/01/23		.03/13/2017	Hutchinson,Shockey,Erley & Co		11,056	10,000	104	1FE
167727-WK-8	CHICAGO (CITY OF) MUNI BND REV 5.000% 01/01/26		.02/24/2017	Hutchinson,Shockey,Erley & Co		150,722	135,000	1,125	1FE
16772P-AV-8	CHICAGO ILL TRANSIT AUTH SALES MUNI BND REV 5.250% 12/01/25		.03/10/2017	Hutchinson,Shockey,Erley & Co		87,849	80,000	1,213	1FE
167736-ZY-6	CHICAGO (CITY OF) MUNI BND REV 5.000% 11/01/23		.01/25/2017	Hutchinson,Shockey,Erley & Co		54,555	50,000	618	1FE
23227E-AG-3	GUYAHOGA CNTY OHIO MUNI BND REV 5.000% 12/01/22		.01/26/2017	PNC Na Swaps Counterparty		57,505	50,000	.417	1
25330P-AM-4	DICKINSON N D MUNI BND REV 5.000% 10/01/25		.01/31/2017	PNC Na Swaps Counterparty		464,352	420,000	7,117	1FE
31335A-SR-5	FREDDIE MAC GOLD POOL # G60856 4.500% 07/01/42		.02/01/2017	Goldman Sachs		342,474	317,749	477	1
3137GA-BF-3	FREDDIE MAC FHLMC 3726 FHLMC Mixed Mortgages 4.500% 09/15/40		.03/01/2017	Interest Capitalization		1,495	1,495	.0	1
3140FL-DC-9	FANNIE MAE POOL # BED998 3.500% 12/01/46		.01/12/2017	SunTrust DTC 2095		191,711	185,705	.307	1
37855P-HA-3	GLENDALE WIS CMNTY DEV AUTH MUNI BND REV 1.500% 10/01/19		.01/23/2017	Hutchinson,Shockey,Erley & Co		74,803	75,000	.359	1
45203H-DQ-2	ILLINOIS FIN MUNI BND REV 5.000% 12/01/30		.03/15/2017	Hutchinson,Shockey,Erley & Co		109,616	100,000	1,514	1FE
45203H-E7-3	ILLINOIS FIN MUNI BND REV 5.000% 08/01/33		.03/21/2017	Hutchinson,Shockey,Erley & Co		278,369	250,000	2,549	1FE
507686-PN-7	LAKE CENTRAL IND MULTI-DIST SC MUNI BND REV 5.000% 07/15/27		.02/24/2017	Stifel Nicolaus		398,528	350,000	2,236	1FE
592646-V6-7	METROPOLITAN WASHINGTON D C AR MUNI BND REV 5.000% 10/01/21		.01/05/2017	Hutchinson,Shockey,Erley & Co		60,415	55,000	756	1
606341-DC-6	MISSOURI STATE BOARD OF PUBLIC MUNI BND REV 1.000% 10/01/26		.02/08/2017	Hutchinson,Shockey,Erley & Co		333,192	400,000	1,467	1
642835-MU-3	NEW BRUNSWICK N J PKG AUTH MUNI BND GO 5.000% 09/01/21		.01/24/2017	PNC Na Swaps Counterparty		723,866	640,000	12,978	1
645771-YD-2	NEW JERSEY BLDG AUTH MUNI BND REV 5.000% 06/15/24		.03/21/2017	Stifel Nicolaus		1,372,972	1,295,000	17,806	2FE
64577B-BS-2	NEW JERSEY ECONOMIC DEVELOPMEN MUNI BND REV 5.000% 06/15/30		.02/28/2017	Stifel Nicolaus		1,306,589	1,270,000	13,758	2FE
64577B-E2-6	NEW JERSEY ECONOMIC DEVELOPMEN MUNI BND REV 5.000% 11/01/26		.03/28/2017	First Tennessee Bank		36,962	35,000	.331	2FE
645918-T7-8	NEW JERSEY ECONOMIC DEVELOPMEN MUNI BND REV 5.000% 03/01/24		.03/15/2017	Stifel Nicolaus		781,268	750,000	1,979	2FE
645918-T8-6	NEW JERSEY ECONOMIC DEVELOPMEN MUNI BND REV 5.000% 03/01/25		.03/23/2017	Siebert, Branford, Shank & Co		183,204	175,000	656	2FE
646066-EC-0	NEW JERSEY STATE EDUCATIONAL F MUNI BND REV 5.000% 06/15/22		.03/28/2017	Morgan Stanley		266,465	250,000	3,681	2FE
646136-V3-2	NEW JERSEY ST TRANS TR FD AUT MUNI BND REV 5.250% 06/15/32		.03/24/2017	Stifel Nicolaus		1,427,353	1,365,000	20,703	2FE
646139-Z2-4	NEW JERSEY ST TURNPIKE AUTHROR BND 2012B 5.000% 01/01/20		.01/03/2017	Hutchinson,Shockey,Erley & Co		38,029	35,000	.24	1FE
64990E-C2-1	NEW YORK STATE DORMITORY AUTH MUNI BND REV 5.000% 02/15/29		.02/06/2017	Stifel Nicolaus		935,600	800,000	19,333	1FE
650035-ZB-7	NEW YORK ST URBAN DEV CORP MUNI BND REV 5.000% 03/15/29		.02/06/2017	Hutchinson,Shockey,Erley & Co		289,748	250,000	5,000	1
687909-FB-2	OSCEOLA CNTY FLA MUNI BND REV 5.000% 10/01/27		.02/06/2017	PNC Na Swaps Counterparty		252,165	215,000	3,822	1FE
735240-K9-3	PORT OF PORTLAND OR ARPT MUNI BND REV 5.000% 07/01/23		.01/12/2017	Goldman Sachs		763,422	660,000	.0	1FE
74444Y-AN-4	PUBLIC FINANCE AUTHORITY WIS MUNI BND REV 5.000% 03/01/30		.01/18/2017	PNC Na Swaps Counterparty		603,587	625,000	10,354	1FE
798153-LT-7	SAN JOSE CALIF FING AUTH MUNI BND REV 5.000% 06/01/33		.02/24/2017	Stifel Nicolaus		1,783,091	1,570,000	19,625	1FE

E04

STATEMENT AS OF MARCH 31, 2017 OF THE PERMANENT GENERAL ASSURANCE CORPORATION OF OHIO

SCHEDULE D - PART 3

Show All Long-Term Bonds and Stock Acquired During the Current Quarter

1 CUSIP Identification	2 Description	3 Foreign	4 Date Acquired	5 Name of Vendor	6 Number of Shares of Stock	7 Actual Cost	8 Par Value	9 Paid for Accrued Interest and Dividends	10 NAIC Designation or Market Indicator (a)
850578-TG-0	SPRINGFIELD ILL MUNI BND REV 5.000% 03/01/24		.01/27/2017	Hutchinson, Shockey, Erley & Co		45,073	40,000	.822	1FE
850578-TK-1	SPRINGFIELD ILL MUNI BND REV 5.000% 03/01/27		.02/02/2017	Hutchinson, Shockey, Erley & Co		22,390	20,000	.433	1FE
89546R-NG-5	TRI-CNTY MET TRANSN DIST ORE MUNI BND REV 5.000% 09/01/22		.02/08/2017	JP Morgan		451,724	385,000	.0	1FE
927674-AZ-4	VIRGIN IS PORT AUTH MUNI BND REV 5.000% 09/01/21		.02/15/2017	Hutchinson, Shockey, Erley & Co		151,866	145,000	3,424	2FE
3199999	Subtotal - Bonds - U.S. Special Revenues					16,620,347	15,284,949	180,001	XXX
8399997	Total - Bonds - Part 3					25,274,513	23,094,949	250,808	XXX
8399998	Total - Bonds - Part 5					XXX	XXX	XXX	XXX
8399999	Total - Bonds					25,274,513	23,094,949	250,808	XXX
8999997	Total - Preferred Stocks - Part 3					0	XXX	0	XXX
8999998	Total - Preferred Stocks - Part 5					XXX	XXX	XXX	XXX
8999999	Total - Preferred Stocks					0	XXX	0	XXX
9799997	Total - Common Stocks - Part 3					0	XXX	0	XXX
9799998	Total - Common Stocks - Part 5					XXX	XXX	XXX	XXX
9799999	Total - Common Stocks					0	XXX	0	XXX
9899999	Total - Preferred and Common Stocks					0	XXX	0	XXX
9999999	Totals					25,274,513	XXX	250,808	XXX

(a) For all common stock bearing the NAIC market indicator "U" provide: the number of such issues

STATEMENT AS OF MARCH 31, 2017 OF THE PERMANENT GENERAL ASSURANCE CORPORATION OF OHIO

SCHEDULE D - PART 4

Show All Long-Term Bonds and Stock Sold, Redeemed or Otherwise Disposed of During the Current Quarter

1	2	3	4	5	6	7	8	9	10	Change In Book/Adjusted Carrying Value					16	17	18	19	20	21	22
										11	12	13	14	15							
CUSIP Identification	Description	Foreign	Disposal Date	Name of Purchaser	Number of Shares of Stock	Consideration	Par Value	Actual Cost	Prior Year Book/Adjusted Carrying Value	Unrealized Valuation Increase/(Decrease)	Current Year's (Amortization)/Accretion	Current Year's Other Than Temporary Impairment Recognized	Total Change in Book/Adjusted Carrying Value (11 + 12 - 13)	Total Foreign Exchange Change in Book/Adjusted Carrying Value	Book/Adjusted Carrying Value at Disposal Date	Foreign Exchange Gain (Loss) on Disposal	Realized Gain (Loss) on Disposal	Total Gain (Loss) on Disposal	Bond Interest/Stock Dividends Received During Year	Stated Contractual Maturity Date	NAIC Designation or Market Indicator (a)
36179N-BA-5	GINNIE MAE II GNMA II # MA0933M 3.000%		03/01/2017	Paydown		102,435	102,435	103,892	103,851	0	(1,416)	0	(1,416)	0	102,435	0	0	0	473	04/20/2043	1
36179Q-YU-9	GINNIE MAE II GNMA II # MA2523M 4.500%		03/01/2017	Paydown		37,093	37,093	40,374	40,307	0	(3,214)	0	(3,214)	0	37,093	0	0	0	277	01/20/2045	1
3620AQ-LA-9	GINNIE MAE I GNMA I # 736621X 4.500%		03/01/2017	Paydown		11,195	11,195	12,314	12,236	0	(1,042)	0	(1,042)	0	11,195	0	0	0	55	02/15/2034	1
912828-U2-4	UNITED STATES TREASURY SENIOR GOVT BND 2.000% 11/15/26		02/09/2017	Paydown Brownstone Investment Group, L		96,570	100,000	96,906	0	0	0	0	0	0	96,906	0	(336)	(336)	497	11/15/2026	1
0599999	Subtotal - Bonds - U.S. Governments					247,293	250,723	253,486	156,394	0	(5,672)	0	(5,672)	0	247,629	0	(336)	(336)	1,302	XXX	XXX
34153P-VL-9	FLORIDA ST BRD ED MUNI BND GO 5.000%		03/16/2017	Stifel Nicolaus		331,830	300,000	349,752	337,275	0	(2,323)	0	(2,323)	0	334,952	0	(3,122)	(3,122)	4,583	06/01/2029	1FE
57582P-6Q-8	COMMONWEALTH OF MASSACHUSETTS MUNI BND GO 5.000% 09/01/28		03/16/2017	Stifel Nicolaus		80,195	70,000	85,016	83,043	0	(479)	0	(479)	0	82,564	0	(2,369)	(2,369)	1,944	09/01/2028	1FE
93974D-KH-0	WASHINGTON STATE OF MUNI BND GO 5.000% 07/01/30		01/09/2017	Hutchinson, Shockey, Erley & Co		406,766	350,000	420,690	419,256	0	(241)	0	(241)	0	419,015	0	(12,249)	(12,249)	9,285	07/01/2030	1FE
1799999	Subtotal - Bonds - U.S. States, Territories and Possessions					818,791	720,000	855,458	839,574	0	(3,043)	0	(3,043)	0	836,531	0	(17,740)	(17,740)	15,812	XXX	XXX
110290-LW-1	BRISTOL TWP PA SCH DIST MUNI BND GO 5.000% 06/01/20		02/23/2017	Stifel Nicolaus		591,073	535,000	608,942	598,047	0	(2,877)	0	(2,877)	0	595,170	0	(4,097)	(4,097)	6,465	06/01/2020	1FE
145591-AT-0	CARROLLTON EXEMPTED VILLAGE SC MUNI BND GO 4.000% 12/01/33		01/11/2017	Stifel Nicolaus		423,243	400,000	453,740	451,090	0	(261)	0	(261)	0	450,829	0	(27,586)	(27,586)	2,044	12/01/2033	1FE
147670-BB-8	CASS & MORGAN CNTY ILL CMNTY U MUNI BND GO 7.750% 12/01/22		02/27/2017	Stifel Nicolaus		182,201	145,000	195,112	188,933	0	(1,149)	0	(1,149)	0	187,784	0	(5,583)	(5,583)	2,841	12/01/2022	1FE
213187-CN-5	COOK CNTY ILL CMNTY COLLEGE DI MUNI BND GO 5.250% 12/01/25		02/09/2017	Hutchinson, Shockey, Erley & Co		703,129	620,000	723,286	711,107	0	(1,447)	0	(1,447)	0	709,660	0	(6,531)	(6,531)	6,600	12/01/2025	1FE
215831-EV-6	COOK CNTY ILL CMNTY HIGH SCH D MUNI BND GO 4.000% 12/01/24		03/20/2017	Hutchinson, Shockey, Erley & Co		134,307	125,000	135,985	0	0	(129)	0	(129)	0	135,856	0	(1,549)	(1,549)	1,681	12/01/2024	1
245176-EZ-1	DEL MAR TEX COLLEGE DIST MUNI BND GO 5.000% 08/15/31		01/09/2017	Hutchinson, Shockey, Erley & Co		876,413	750,000	930,945	926,829	0	(487)	0	(487)	0	926,343	0	(49,930)	(49,930)	15,938	08/15/2031	1FE
262651-UK-6	DU PAGE CNTY ILL FST PRESV DIS MUNI BND GO 5.000% 01/01/24		02/27/2017	Stifel Nicolaus		117,606	100,000	117,812	0	0	(133)	0	(133)	0	117,679	0	(73)	(73)	847	01/01/2024	1FE
428272-CX-6	HENRY & WHITESIDE CNTYS ILL CM MUNI BND GO 5.000% 08/15/28		03/06/2017	Hutchinson, Shockey, Erley & Co		535,032	480,000	563,414	561,586	0	(1,530)	0	(1,530)	0	560,056	0	(25,024)	(25,024)	13,600	08/15/2028	1FE
486063-VC-1	KATY TEX INDPT SCH DIST MUNI BND GO 5.000% 02/15/21		03/15/2017	Stifel Nicolaus		619,575	550,000	624,118	0	0	(1,978)	0	(1,978)	0	622,140	0	(2,565)	(2,565)	7,257	02/15/2021	1
671579-ZZ-6	OAK PARK ILL MUNI BND GO 3.125% 11/01/30		01/09/2017	Hutchinson, Shockey, Erley & Co		411,498	450,000	397,364	397,450	0	87	0	87	0	397,537	0	13,961	13,961	2,773	11/01/2030	1FE
919060-GR-8	VALDEZ ALASKA MUNI BND GO 5.000% 06/30/30		03/20/2017	Hutchinson, Shockey, Erley & Co		984,879	810,000	944,663	930,385	0	(4,622)	0	(4,622)	0	925,763	0	59,116	59,116	9,338	06/30/2030	1FE
969078-RT-3	WILL CNTY ILL CMNTY UNIT SCH D MUNI BND GO 0.000% 11/01/21		03/06/2017	Hutchinson, Shockey, Erley & Co		44,585	50,000	43,518	43,518	0	223	0	223	0	43,741	0	844	844	0	11/01/2021	1FE
983068-2Y-2	WYLIE TEX INDPT SCH DIST MUNI BND GO 6.750% 08/15/22		03/15/2017	Stifel Nicolaus		61,693	50,000	61,360	61,225	0	(397)	0	(397)	0	60,828	0	865	865	2,016	08/15/2022	1FE
2499999	Subtotal - Bonds - U.S. Political Subdivisions of States, Territories and Possessions					5,685,234	5,065,000	5,800,259	4,870,170	0	(14,700)	0	(14,700)	0	5,733,386	0	(48,152)	(48,152)	71,400	XXX	XXX
011839-FY-8	ALASKA HOUSING FINANCE CORP MUNI BND REV 5.000% 12/01/27		03/16/2017	Stifel Nicolaus		345,279	300,000	362,706	356,594	0	(1,318)	0	(1,318)	0	355,276	0	(9,997)	(9,997)	4,583	12/01/2027	1FE
01728A-2M-7	ALLEGHENY CNTY PA HOSP DEV AUT MUNI BND REV 5.000% 10/15/31		02/23/2017	Stifel Nicolaus		834,952	750,000	826,403	825,872	0	(2,366)	0	(2,366)	0	823,506	0	11,446	11,446	13,854	10/15/2031	1FE
167736-07-9	CHICAGO (CITY OF) MUNI BND REV 5.000% 11/01/28		02/27/2017	Stifel Nicolaus		660,882	590,000	681,757	675,373	0	(1,560)	0	(1,560)	0	673,813	0	(12,931)	(12,931)	9,588	11/01/2028	2FE
23227E-AG-3	CUYAHOGA CNTY OHIO MUNI BND REV 5.000% 12/01/22		03/15/2017	Stifel Nicolaus		57,125	50,000	57,505	0	0	(159)	0	(159)	0	57,346	0	(221)	(221)	757	12/01/2022	1
235036-N2-2	DALLAS FORT WORTH TEX INTL APP MUNI BND REV 3.000% 11/01/21		03/27/2017	Stifel Nicolaus		337,473	300,000	348,417	339,767	0	(1,905)	0	(1,905)	0	337,862	0	(389)	(389)	6,208	11/01/2021	1FE
271624-AB-4	EAST CHICAGO IND SAN DIST MUNI BND REV 3.000% 01/15/17		01/15/2017	Maturity		250,000	250,000	254,418	250,165	0	(165)	0	(165)	0	250,000	0	0	0	3,750	01/15/2017	1FE
283822-MN-1	EL PASO TEX MUNI BND REV 4.000% 03/01/22		03/28/2017	Stifel Nicolaus		165,384	150,000	172,094	170,643	0	(946)	0	(946)	0	169,696	0	(4,312)	(4,312)	3,733	03/01/2022	1FE

E05

STATEMENT AS OF MARCH 31, 2017 OF THE PERMANENT GENERAL ASSURANCE CORPORATION OF OHIO

SCHEDULE D - PART 4

Show All Long-Term Bonds and Stock Sold, Redeemed or Otherwise Disposed of During the Current Quarter

1	2	3	4	5	6	7	8	9	10	Change In Book/Adjusted Carrying Value					16	17	18	19	20	21	22
										11	12	13	14	15							
CUSIP Identification	Description	Foreign	Disposal Date	Name of Purchaser	Number of Shares of Stock	Consideration	Par Value	Actual Cost	Prior Year Book/Adjusted Carrying Value	Unrealized Valuation Increase/(Decrease)	Current Year's (Amortization)/Accretion	Current Year's Other Than Temporary Impairment Recognized	Total Change in Book/Adjusted Carrying Value (11 + 12 - 13)	Total Foreign Exchange Change in Book /Adjusted Carrying Value	Book/Adjusted Carrying Value at Disposal Date	Foreign Exchange Gain (Loss) on Disposal	Realized Gain (Loss) on Disposal	Total Gain (Loss) on Disposal	Bond Interest/Stock Dividends Received During Year	Stated Contractual Maturity Date	NAIC Designation or Market Indicator (a)
31286V-TY-6	FREDDIE MAC GOLD FHLMC not including strips # E 5.000% 09/01/17		03/01/2017	Paydown		1,028	1,028	1,034	1,028	.0	.0	.0	.0	.0	1,028	.0	.0	.0	.9	09/01/2017	1
3128H6-VN-1	FREDDIE MAC GOLD FHLMC not including strips # E 5.000% 08/01/18		03/01/2017	Paydown		236	236	237	236	.0	.0	.0	.0	.0	236	.0	.0	.0	.2	08/01/2018	1
3128M9-XD-9	FREDDIE MAC GOLD FHLMC not including strips # G 4.500% 03/01/42		03/01/2017	Paydown		47,259	47,259	51,557	51,396	.0	(4,137)	.0	(4,137)	.0	47,259	.0	.0	.0	358	03/01/2042	1
312942-EV-3	FREDDIE MAC GOLD POOL # A93748 4.000% 09/01/40		03/01/2017	Paydown		10,024	10,024	10,790	10,785	.0	(761)	.0	(761)	.0	10,024	.0	.0	.0	53	09/01/2040	1
312962-VE-0	FREDDIE MAC GOLD FHLMC not including strips # B 4.500% 10/01/18		03/01/2017	Paydown		636	636	635	635	.0	.1	.0	.1	.0	636	.0	.0	.0	.4	10/01/2018	1
312963-WK-3	FREDDIE MAC GOLD FHLMC not including strips # B 5.000% 01/01/19		03/01/2017	Paydown		5,797	5,797	5,844	5,815	.0	(17)	.0	(17)	.0	5,797	.0	.0	.0	48	01/01/2019	1
31307G-KQ-1	FREDDIE MAC GOLD FHLMC not including strips # J 3.000% 03/01/29		03/01/2017	Paydown		2,373	2,373	2,519	2,505	.0	(133)	.0	(133)	.0	2,373	.0	.0	.0	13	03/01/2029	1
3132HQ-CF-7	FREDDIE MAC GOLD POOL # Q13670 3.500% 11/01/42		03/01/2017	Paydown		10,787	10,787	11,271	11,262	.0	(475)	.0	(475)	.0	10,787	.0	.0	.0	55	11/01/2042	1
31335A-SR-5	FREDDIE MAC GOLD POOL # G60856 4.500% 07/01/42		03/01/2017	Paydown		6,672	6,672	7,191	.0	.0	(519)	.0	(519)	.0	6,672	.0	.0	.0	25	07/01/2042	1
31335A-A7-3	FREDDIE MAC GOLD POOL # G60030 3.500% 07/01/43		03/01/2017	Paydown		10,773	10,773	11,262	11,254	.0	(482)	.0	(482)	.0	10,773	.0	.0	.0	63	07/01/2043	1
31335A-JF-6	FREDDIE MAC GOLD POOL # G60262 3.500% 01/01/44		03/01/2017	Paydown		3,032	3,032	3,168	3,166	.0	(134)	.0	(134)	.0	3,032	.0	.0	.0	17	01/01/2044	1
31374C-NV-4	FANNIE MAE FNMA # 310104F 5.500% 08/01/37		03/01/2017	Paydown		53,436	53,436	60,349	60,061	.0	(6,625)	.0	(6,625)	.0	53,436	.0	.0	.0	455	08/01/2037	1
31387H-R9-3	FANNIE MAE FNMA # 584712F 6.500% 05/01/31		03/01/2017	Paydown		181	181	182	182	.0	.0	.0	.0	.0	181	.0	.0	.0	.2	05/01/2031	1
3138AM-UX-1	FANNIE MAE FNMA # A17797F 4.000% 07/01/41		03/01/2017	Paydown		3,777	3,777	4,071	4,069	.0	(292)	.0	(292)	.0	3,777	.0	.0	.0	28	07/01/2041	1
3138EJ-BL-1	FANNIE MAE FNMA # AL1842F 3.500% 05/01/42		03/01/2017	Paydown		22	22	23	23	.0	(1)	.0	(1)	.0	22	.0	.0	.0	.0	05/01/2042	1
3138EK-VL-6	FANNIE MAE FNMA # AL3318F 3.500% 03/01/43		03/01/2017	Paydown		23	23	24	24	.0	(1)	.0	(1)	.0	23	.0	.0	.0	.0	03/01/2043	1
3138EQ-FG-2	FANNIE MAE POOL # AL7366 4.500% 08/01/42		03/01/2017	Paydown		72,558	72,558	78,498	78,361	.0	(5,804)	.0	(5,804)	.0	72,558	.0	.0	.0	534	08/01/2042	1
3138LU-SJ-1	FANNIE MAE FNMA # A04141F 4.000% 06/01/42		03/01/2017	Paydown		46,107	46,107	50,077	49,929	.0	(3,822)	.0	(3,822)	.0	46,107	.0	.0	.0	308	06/01/2042	1
3138M7-CD-5	FANNIE MAE FNMA # AP3667F 3.500% 10/01/42		03/01/2017	Paydown		30	30	32	32	.0	(1)	.0	(1)	.0	30	.0	.0	.0	.0	10/01/2042	1
3138MB-ZQ-2	FANNIE MAE FNMA # AP7950F 3.500% 09/01/42		03/01/2017	Paydown		160	160	168	167	.0	(7)	.0	(7)	.0	160	.0	.0	.0	.1	09/01/2042	1
3138MF-2H-9	FANNIE MAE FNMA # A00775F 3.500% 11/01/42		03/01/2017	Paydown		1,309	1,309	1,368	1,366	.0	(58)	.0	(58)	.0	1,309	.0	.0	.0	.8	11/01/2042	1
3138MF-GY-7	FANNIE MAE FNMA # A00214F 3.500% 11/01/42		03/01/2017	Paydown		17	17	18	18	.0	(1)	.0	(1)	.0	17	.0	.0	.0	.0	11/01/2042	1
3138MJ-HF-9	FANNIE MAE FNMA # A02929F 3.500% 01/01/43		03/01/2017	Paydown		2,020	2,020	2,112	2,109	.0	(89)	.0	(89)	.0	2,020	.0	.0	.0	.15	01/01/2043	1
3138MN-2P-4	FANNIE MAE FNMA # A07081F 3.500% 12/01/42		03/01/2017	Paydown		9	9	9	9	.0	.0	.0	.0	.0	9	.0	.0	.0	.0	12/01/2042	1
3138MQ-TX-1	FANNIE MAE FNMA # A08665F 3.500% 12/01/42		03/01/2017	Paydown		886	886	926	925	.0	(39)	.0	(39)	.0	886	.0	.0	.0	.3	12/01/2042	1
3138NX-JH-1	FANNIE MAE FNMA # AR1163F 3.500% 12/01/42		03/01/2017	Paydown		172	172	179	179	.0	(8)	.0	(8)	.0	172	.0	.0	.0	.1	12/01/2042	1
3138WG-ZR-8	FANNIE MAE POOL # AS7051 2.500% 04/01/31		03/01/2017	Paydown		15,147	15,147	15,626	15,608	.0	(461)	.0	(461)	.0	15,147	.0	.0	.0	.61	04/01/2031	1
3138WV-WT-4	FANNIE MAE FNMA # AT7857F 2.500% 06/01/28		03/01/2017	Paydown		31,448	31,448	32,504	32,393	.0	(945)	.0	(945)	.0	31,448	.0	.0	.0	125	06/01/2028	1
3138XZ-JE-2	FANNIE MAE FNMA # AW9260F 3.000% 08/01/29		03/01/2017	Paydown		2,916	2,916	3,084	3,069	.0	(153)	.0	(153)	.0	2,916	.0	.0	.0	15	08/01/2029	1
3138Y2-FN-8	FANNIE MAE FNMA # AX1072F 3.000% 08/01/29		03/01/2017	Paydown		2,510	2,510	2,654	2,641	.0	(131)	.0	(131)	.0	2,510	.0	.0	.0	13	08/01/2029	1
3138Y3-YN-6	FANNIE MAE FNMA # AX2484F 3.500% 10/01/44		03/01/2017	Paydown		29,822	29,822	31,742	31,678	.0	(1,855)	.0	(1,855)	.0	29,822	.0	.0	.0	132	10/01/2044	1
3138Y5-TY-2	FANNIE MAE FNMA # AX4166F 3.000% 09/01/29		03/01/2017	Paydown		3,106	3,106	3,285	3,268	.0	(163)	.0	(163)	.0	3,106	.0	.0	.0	16	09/01/2029	1
3138YG-GE-6	FANNIE MAE FNMA # AY2896F 3.000% 01/01/30		03/01/2017	Paydown		1,561	1,561	1,656	1,647	.0	(86)	.0	(86)	.0	1,561	.0	.0	.0	.8	01/01/2030	1
31391X-SJ-5	FANNIE MAE FNMA # 680142F 5.000% 01/01/18		03/01/2017	Paydown		145	145	145	145	.0	.0	.0	.0	.0	145	.0	.0	.0	.1	01/01/2018	1
31391Y-SW-3	FANNIE MAE FNMA # 681361F 5.000% 03/01/18		03/01/2017	Paydown		665	665	674	667	.0	(2)	.0	(2)	.0	665	.0	.0	.0	.5	03/01/2018	1
31402C-4G-4	FANNIE MAE POOL # 725423 5.500% 05/01/34		03/01/2017	Paydown		48,463	48,463	54,581	54,351	.0	(5,889)	.0	(5,889)	.0	48,463	.0	.0	.0	423	05/01/2034	1
31406B-N4-8	FANNIE MAE FNMA # 805111F 5.500% 12/01/34		03/01/2017	Paydown		23,992	23,992	24,448	24,415	.0	(423)	.0	(423)	.0	23,992	.0	.0	.0	115	12/01/2034	1
3140FL-DC-9	FANNIE MAE POOL # BE0998 3.500% 12/01/46		03/01/2017	Paydown		544	544	561	561	.0	(18)	.0	(18)	.0	544	.0	.0	.0	.2	12/01/2046	1
31410K-K7-4	FANNIE MAE FNMA # 890002F 5.500% 09/01/36		03/01/2017	Paydown		2,784	2,784	3,137	3,121	.0	(337)	.0	(337)	.0	2,784	.0	.0	.0	25	09/01/2036	1
31413S-HS-6	FANNIE MAE FNMA # 953941F 6.000% 12/01/37		03/01/2017	Paydown		1,199	1,199	1,209	1,209	.0	(10)	.0	(10)	.0	1,199	.0	.0	.0	12	12/01/2037	1
31416B-LE-6	FANNIE MAE FNMA # 995025F 5.500% 08/01/37		03/01/2017	Paydown		8,534	8,534	9,617	9,572	.0	(1,038)	.0	(1,038)	.0	8,534	.0	.0	.0	75	08/01/2037	1
31417B-XC-6	FANNIE MAE FNMA # AB5174F 3.500% 05/01/42		03/01/2017	Paydown		15	15	16	16	.0	(1)	.0	(1)	.0	15	.0	.0	.0	.0	05/01/2042	1
31417E-JE-2	FANNIE MAE FNMA # AB7460F 3.000% 01/01/43		03/01/2017	Paydown		15,736	15,736	16,353	16,328	.0	(592)	.0	(592)	.0	15,736	.0	.0	.0	.70	01/01/2043	1
31417E-MX-6	FANNIE MAE FNMA # AB7573F 3.000% 01/01/43		03/01/2017	Paydown		28,025	28,025	29,124	29,080	.0	(1,055)	.0	(1,055)	.0	28,025	.0	.0	.0	145	01/01/2043	1
31417G-UR-5	FANNIE MAE POOL # AB9591 4.000% 06/01/43		03/01/2017	Paydown		7,596	7,596	8,111	8,111	.0	(515)	.0	(515)	.0	7,596	.0	.0	.0	.52	06/01/2043	1
31419H-QX-0	FANNIE MAE POOL # AE6986 4.000% 10/01/40		03/01/2017	Paydown		7,415	7,415	7,992	7,988	.0	(573)	.0	(573)	.0	7,415	.0	.0	.0	.66	10/01/2040	1

STATEMENT AS OF MARCH 31, 2017 OF THE PERMANENT GENERAL ASSURANCE CORPORATION OF OHIO

SCHEDULE D - PART 4

Show All Long-Term Bonds and Stock Sold, Redeemed or Otherwise Disposed of During the Current Quarter

1	2	3	4	5	6	7	8	9	10	Change In Book/Adjusted Carrying Value					16	17	18	19	20	21	22
										11	12	13	14	15							
CUSIP Identification	Description	Foreign	Disposal Date	Name of Purchaser	Number of Shares of Stock	Consideration	Par Value	Actual Cost	Prior Year Book/Adjusted Carrying Value	Unrealized Valuation Increase/(Decrease)	Current Year's (Amortization)/Accretion	Current Year's Other Than Temporary Impairment Recognized	Total Change in Book/Adjusted Carrying Value (11 + 12 - 13)	Total Foreign Exchange Change in Book/Adjusted Carrying Value	Book/Adjusted Carrying Value at Disposal Date	Foreign Exchange Gain (Loss) on Disposal	Realized Gain (Loss) on Disposal	Total Gain (Loss) on Disposal	Bond Interest/Stock Dividends Received During Year	Stated Contractual Maturity Date	NAIC Designation or Market Indicator (a)
373541-D4-0	GEORGIA MUNICIPAL ELEC AUTH PWR REV BDS Z 5.500% 01/01/20		01/01/2017	Call	100.0000	70,000	70,000	74,593	72,359	0	0	0	0	0	72,359	0	(2,359)	(2,359)	1,925	01/01/2020	1FE
37855P-HA-3	GLENDALE WIS CMNTY DEV AUTH MUNI BND REV 1.500% 10/01/19		03/14/2017	Stifel Nicolaus		74,719	75,000	74,803	0	0	10	0	10	74,813	0	(94)	(94)	519	10/01/2019	1	
40785E-S4-9	HAMILTON SOUTHEASTERN IND CONS MUNI BND REV 5.000% 07/15/32		01/09/2017	Stifel Nicolaus		378,701	330,000	402,072	400,135	0	(222)	0	(222)	399,913	0	(21,212)	(21,212)	8,113	07/15/2032	1FE	
442368-NR-3	HOUSTON TEX CMNTY COLLEGE SYS HstnTXCnty.ColI REV/PRA/15/18 5.250% 04/15/22		03/16/2017	Stifel Nicolaus		67,569	65,000	69,089	68,432	0	(576)	0	(576)	67,857	0	(288)	(288)	1,479	04/15/2022	1FE	
45204E-JD-1	ILLINOIS FIN MUNI BND REV 5.000% 07/01/22		01/11/2017	Hutchinson,Shockey,Erley & Co		114,098	100,000	112,929	112,881	0	(97)	0	(97)	112,783	0	1,315	1,315	1,736	07/01/2022	1FE	
45204E-JG-4	ILLINOIS FIN MUNI BND REV 4.000% 07/01/25		01/11/2017	Hutchinson,Shockey,Erley & Co		82,923	75,000	80,604	80,590	0	(26)	0	(26)	80,564	0	2,359	2,359	1,042	07/01/2025	1FE	
45204E-JH-9	ILLINOIS FIN MUNI BND REV 5.000% 01/01/20		03/22/2017	Hutchinson,Shockey,Erley & Co		27,290	25,000	27,089	27,082	0	(159)	0	(159)	26,923	0	367	367	677	01/01/2020	1FE	
45204E-JY-5	ILLINOIS FIN MUNI BND REV 5.000% 01/01/22		01/11/2017	Hutchinson,Shockey,Erley & Co		79,259	70,000	82,985	82,311	0	(106)	0	(106)	82,205	0	(2,946)	(2,946)	1,215	01/01/2022	1FE	
452227-EM-9	ILLINOIS STATE OF MUNI BND REV 4.000% 06/15/20		03/21/2017	Hutchinson,Shockey,Erley & Co		58,051	55,000	57,652	57,631	0	(165)	0	(165)	57,466	0	585	585	605	06/15/2020	1FE	
452227-LS-8	ILLINOIS STATE OF MUNI BND REV 5.000% 06/15/24		03/21/2017	Hutchinson,Shockey,Erley & Co		135,263	120,000	134,352	134,306	0	(375)	0	(375)	133,931	0	1,332	1,332	3,150	06/15/2024	1FE	
45506D-PS-8	INDIANA ST FINANCE AUTHORITY MUNI BND REV 5.000% 02/01/22		03/15/2017	Stifel Nicolaus		28,449	25,000	28,198	28,156	0	(125)	0	(125)	28,032	0	417	417	795	02/01/2022	1FE	
48542A-DF-5	KANSAS ST DEV FIN AUTH MUNI BND REV 5.000% 11/15/28		03/16/2017	Stifel Nicolaus		806,227	720,000	844,826	826,882	0	(4,119)	0	(4,119)	822,764	0	(16,537)	(16,537)	12,600	11/15/2028	1FE	
592646-V6-7	METROPOLITAN WASHINGTON D C AR MUNI BND REV 5.000% 10/01/21		03/15/2017	Stifel Nicolaus		60,351	55,000	60,415	0	0	(266)	0	(266)	60,148	0	203	203	1,291	10/01/2021	1	
605179-OB-9	MISSION TEX MUNI BND REV 4.000% 02/15/25		03/16/2017	Stifel Nicolaus		239,119	225,000	243,704	243,636	0	(432)	0	(432)	243,204	0	(4,085)	(4,085)	5,200	02/15/2025	1FE	
606341-DC-6	MISSOURI STATE BOARD OF PUBLIC MUNI BND REV 1.000% 10/01/26		03/16/2017	Stifel Nicolaus		323,064	400,000	333,192	0	0	615	0	615	333,807	0	(10,743)	(10,743)	1,889	10/01/2026	1	
60954P-JP-0	MONMOUTH CNTY N J IMPT AUTH MUNI BND REV 5.000% 10/01/18		03/24/2017	Loop Capital Markets		291,140	275,000	304,601	293,901	0	(2,563)	0	(2,563)	291,338	0	(198)	(198)	6,799	10/01/2018	1FE	
642835-MU-3	NEW BRUNSWICK N J PKG AUTH MUNI BND GO 5.000% 09/01/21		03/24/2017	Loop Capital Markets		719,706	640,000	723,866	0	0	(2,972)	0	(2,972)	720,894	0	(1,188)	(1,188)	18,489	09/01/2021	1	
646135-SR-0	NEW JERSEY ST TRANSN TR FD AUT MUNI BND REV 5.500% 12/15/21		03/27/2017	Loop Capital Markets		661,998	590,000	677,627	663,777	0	(3,379)	0	(3,379)	660,398	0	1,600	1,600	9,465	12/15/2021	1FE	
646136-2B-6	NEW JERSEY ST TRANSN TR FD AUT MUNI BND REV 5.000% 06/15/27		02/24/2017	Stifel Nicolaus		268,018	250,000	280,300	279,946	0	(437)	0	(437)	279,509	0	(11,491)	(11,491)	2,639	06/15/2027	1FE	
646139-Z2-4	NEW JERSEY ST TURNPIKE AUTHORI REV BDS 2012B 5.000% 01/01/20		03/15/2017	Stifel Nicolaus		37,998	35,000	38,029	0	0	(199)	0	(199)	37,829	0	169	169	384	01/01/2020	1FE	
649519-CD-5	NY LIBERTY DLVPT MUNI BND REV 5.000% 09/15/28		03/16/2017	Stifel Nicolaus		842,579	740,000	886,261	865,564	0	(5,048)	0	(5,048)	860,516	0	(17,937)	(17,937)	19,117	09/15/2028	1FE	
64972G-BW-3	NEW YORK CITY MUNICIPAL WATER MUNI BND REV 5.000% 06/15/34		01/10/2017	Stifel Nicolaus		803,670	700,000	794,500	793,875	0	(441)	0	(441)	793,433	0	10,237	10,237	2,722	06/15/2034	1FE	
64990E-QS-9	NEW YORK STATE DORMITORY AUTH MUNI BND REV 5.000% 03/15/31		01/10/2017	Stifel Nicolaus		1,156,780	1,000,000	1,210,280	1,189,189	0	(805)	0	(805)	1,188,385	0	(31,605)	(31,605)	16,389	03/15/2031	1FE	
64990E-W6-0	NEW YORK STATE DORMITORY AUTH MUNI BND REV 5.000% 03/15/32		01/10/2017	Stifel Nicolaus		351,123	300,000	344,949	344,899	0	(149)	0	(149)	344,751	0	6,372	6,372	4,917	03/15/2032	1FE	
650035-ZB-7	NEW YORK ST URBAN DEV CORP MUNI BND REV 5.000% 03/15/29		03/16/2017	Stifel Nicolaus		285,135	250,000	289,748	0	0	(704)	0	(704)	289,043	0	(3,908)	(3,908)	6,458	03/15/2029	1	
876443-NB-4	TARRANT REGI WTR DIST TEX MUNI BND REV 5.000% 03/01/26		03/15/2017	Stifel Nicolaus		29,284	25,000	29,595	29,573	0	(94)	0	(94)	29,478	0	(194)	(194)	691	03/01/2026	1FE	
88045R-WD-0	TENNESSEE HSG DEV AGY MUNI BND REV 4.125% 01/01/21		01/01/2017	Call	100.0000	5,000	5,000	5,410	5,336	0	0	0	0	5,336	0	(336)	(336)	103	01/01/2021	1FE	
88045R-XU-1	TENNESSEE HSG DEV AGY HOMEOWNERSHIP PROG BDS B 1.950% 07/01/18		03/01/2017	Call	100.0000	35,000	35,000	35,000	35,000	0	0	0	0	35,000	0	0	0	406	07/01/2018	1FE	
3199999	Subtotal - Bonds - U.S. Special Revenues					11,194,556	10,155,947	11,500,039	9,794,718	0	(68,905)	0	(68,905)	0	11,311,125	0	(116,569)	(116,569)	176,651	XXX	XXX

E05.2

STATEMENT AS OF MARCH 31, 2017 OF THE PERMANENT GENERAL ASSURANCE CORPORATION OF OHIO

SCHEDULE D - PART 4

Show All Long-Term Bonds and Stock Sold, Redeemed or Otherwise Disposed of During the Current Quarter

1	2	3	4	5	6	7	8	9	10	Change In Book/Adjusted Carrying Value					16	17	18	19	20	21	22	
										11	12	13	14	15								
CUSIP Identification	Description	Foreign	Disposal Date	Name of Purchaser	Number of Shares of Stock	Consideration	Par Value	Actual Cost	Prior Year Book/Adjusted Carrying Value	Unrealized Valuation Increase/(Decrease)	Current Year's (Amortization)/Accretion	Other Than Temporary Impairment Recognized	Total Change in Book/Adjusted Carrying Value (11 + 12 - 13)	Total Foreign Exchange Change in Book /Adjusted Carrying Value	Book/Adjusted Carrying Value at Disposal Date	Foreign Exchange Gain (Loss) on Disposal	Realized Gain (Loss) on Disposal	Total Gain (Loss) on Disposal	Bond Interest/Stock Dividends Received During Year	Stated Contractual Maturity Date	NAIC Designation or Market Indicator (a)	
8399997. Total - Bonds - Part 4						17,945,874	16,191,670	18,409,242	15,660,856	0	(92,320)	0	(92,320)	0	18,128,671	0	(182,797)	(182,797)	265,165	XXX	XXX	
8399998. Total - Bonds - Part 5						XXX	XXX	XXX	XXX	XXX	XXX	XXX	XXX	XXX	XXX	XXX	XXX	XXX	XXX	XXX	XXX	
8399999. Total - Bonds						17,945,874	16,191,670	18,409,242	15,660,856	0	(92,320)	0	(92,320)	0	18,128,671	0	(182,797)	(182,797)	265,165	XXX	XXX	
8999997. Total - Preferred Stocks - Part 4						0	XXX	0	0	0	0	0	0	0	0	0	0	0	0	0	XXX	XXX
8999998. Total - Preferred Stocks - Part 5						XXX	XXX	XXX	XXX	XXX	XXX	XXX	XXX	XXX	XXX	XXX	XXX	XXX	XXX	XXX	XXX	XXX
8999999. Total - Preferred Stocks						0	XXX	0	0	0	0	0	0	0	0	0	0	0	0	0	XXX	XXX
9799997. Total - Common Stocks - Part 4						0	XXX	0	0	0	0	0	0	0	0	0	0	0	0	0	XXX	XXX
9799998. Total - Common Stocks - Part 5						XXX	XXX	XXX	XXX	XXX	XXX	XXX	XXX	XXX	XXX	XXX	XXX	XXX	XXX	XXX	XXX	XXX
9799999. Total - Common Stocks						0	XXX	0	0	0	0	0	0	0	0	0	0	0	0	0	XXX	XXX
9899999. Total - Preferred and Common Stocks						0	XXX	0	0	0	0	0	0	0	0	0	0	0	0	0	XXX	XXX
9999999 - Totals						17,945,874	XXX	18,409,242	15,660,856	0	(92,320)	0	(92,320)	0	18,128,671	0	(182,797)	(182,797)	265,165	XXX	XXX	

(a) For all common stock bearing the NAIC market indicator "U" provide: the number of such issues.....

Schedule DB - Part A - Section 1 - Options, Caps, Floors, Collars, Swaps and Forwards Open

NONE

Schedule DB - Part B - Section 1 - Futures Contracts Open

NONE

Schedule DB - Part B - Section 1B - Brokers with whom cash deposits have been made

NONE

Schedule DB - Part D - Section 1 - Counterparty Exposure for Derivative Instruments Open

NONE

Schedule DB - Part D-Section 2 - Collateral for Derivative Instruments Open - Pledged By

NONE

Schedule DB - Part D-Section 2 - Collateral for Derivative Instruments Open - Pledged To

NONE

Schedule DL - Part 1 - Reinvested Collateral Assets Owned

NONE

Schedule DL - Part 2 - Reinvested Collateral Assets Owned

NONE

Schedule E - Part 1 - Month End Depository Balances

NONE

Schedule E - Part 2 - Cash Equivalents - Investments Owned End of Current Quarter

NONE