



PROPERTY AND CASUALTY COMPANIES - ASSOCIATION EDITION

QUARTERLY STATEMENT
AS OF MARCH 31, 2017
OF THE CONDITION AND AFFAIRS OF THE
Dealers Assurance Company

NAIC Group Code 0000 (Current) 0000 (Prior) NAIC Company Code 16705 Employer's ID Number 34-6513705
Organized under the Laws of Ohio State of Domicile or Port of Entry OH
Country of Domicile United States of America
Incorporated/Organized 08/02/1935 Commenced Business 08/02/1935
Statutory Home Office 240 North Fifth Street, Suite 350 Columbus, OH, US 43215
Main Administrative Office 15920 Addison Road Addison, TX, US 75001
Mail Address 240 North Fifth Street, Suite 350 Columbus, OH, US 43215
Primary Location of Books and Records 240 North Fifth Street, Suite 350 Columbus, OH, US 43215
Internet Website Address www.dealersassurance.com
Statutory Statement Contact Linda M. Toy toy@dealersassurance.com

OFFICERS

President Kristen Anne Gruber Secretary Kirk Alan Borchardt # Treasurer Linda Marie Toy Assistant Secretary David Paul May

OTHER

Edmond Melgar Eckert, Senior Vice President Kirk Alan Borchardt #, Executive Vice President Linda Marie Toy, Vice President

DIRECTORS OR TRUSTEES

James Bradford Smith Robert Reynard Bowsher Kristen Anne Gruber Kelly Aubrey Westlake Edmond Melgar Eckert Michael Thomas Rogers

State of Ohio County of Franklin SS:

The officers of this reporting entity being duly sworn, each depose and say that they are the described officers of said reporting entity, and that on the reporting period stated above, all of the herein described assets were the absolute property of the said reporting entity, free and clear from any liens or claims thereon, except as herein stated, and that this statement, together with related exhibits, schedules and explanations therein contained, annexed or referred to, is a full and true statement of all the assets and liabilities and of the condition and affairs of the said reporting entity as of the reporting period stated above, and of its income and deductions therefrom for the period ended, and have been completed in accordance with the NAIC Annual Statement Instructions and Accounting Practices and Procedures manual, except to the extent that: (1) state law may differ; or, (2) that state rules or regulations require differences in reporting not related to accounting practices and procedures, according to the best of their information, knowledge and belief, respectively. Furthermore, the scope of this attestation by the described officers also includes the related corresponding electronic filing with the NAIC, when required, that is an exact copy (except for formatting differences due to electronic filing) of the enclosed statement. The electronic filing may be requested by various regulators in lieu of or in addition to the enclosed statement.

Handwritten signatures of Kristen Anne Gruber (President), Kirk Alan Borchardt # (Secretary), and Linda Marie Toy (Treasurer)

Subscribed and sworn to before me this 10th day of May, 2017



- a. Is this an original filing? Yes [X] No []
b. If no,
1. State the amendment number,
2. Date filed,
3. Number of pages attached.

KEITH H BURKHOLDER
Notary Public
In and for the State of Ohio
My Commission Expires
August 17, 2020

ASSETS

	Current Statement Date			4 December 31 Prior Year Net Admitted Assets
	1 Assets	2 Nonadmitted Assets	3 Net Admitted Assets (Cols. 1 - 2)	
1. Bonds	74,131,896		74,131,896	72,998,379
2. Stocks:				
2.1 Preferred stocks	3,620,360		3,620,360	3,770,044
2.2 Common stocks	12,180,830		12,180,830	11,533,476
3. Mortgage loans on real estate:				
3.1 First liens	781,611		781,611	792,171
3.2 Other than first liens			0	0
4. Real estate:				
4.1 Properties occupied by the company (less \$0 encumbrances)	2,762,985		2,762,985	1,778,518
4.2 Properties held for the production of income (less \$ encumbrances)			0	0
4.3 Properties held for sale (less \$ encumbrances)			0	0
5. Cash (\$3,317,209), cash equivalents (\$) and short-term investments (\$8,748,780)	12,065,989		12,065,989	11,001,687
6. Contract loans (including \$ premium notes)			0	0
7. Derivatives			0	0
8. Other invested assets			0	0
9. Receivables for securities			0	0
10. Securities lending reinvested collateral assets			0	0
11. Aggregate write-ins for invested assets	0	0	0	0
12. Subtotals, cash and invested assets (Lines 1 to 11)	105,543,671	0	105,543,671	101,874,275
13. Title plants less \$ charged off (for Title insurers only)			0	0
14. Investment income due and accrued	478,158		478,158	538,334
15. Premiums and considerations:				
15.1 Uncollected premiums and agents' balances in the course of collection	2,062,439		2,062,439	2,655,555
15.2 Deferred premiums, agents' balances and installments booked but deferred and not yet due (including \$ earned but unbilled premiums)			0	0
15.3 Accrued retrospective premiums (\$) and contracts subject to redetermination (\$)			0	0
16. Reinsurance:				
16.1 Amounts recoverable from reinsurers			0	0
16.2 Funds held by or deposited with reinsured companies			0	0
16.3 Other amounts receivable under reinsurance contracts	127,211		127,211	154,540
17. Amounts receivable relating to uninsured plans			0	0
18.1 Current federal and foreign income tax recoverable and interest thereon			0	0
18.2 Net deferred tax asset	236,727		236,727	382,891
19. Guaranty funds receivable or on deposit			0	0
20. Electronic data processing equipment and software			0	0
21. Furniture and equipment, including health care delivery assets (\$)			0	0
22. Net adjustment in assets and liabilities due to foreign exchange rates			0	0
23. Receivables from parent, subsidiaries and affiliates			0	25,414
24. Health care (\$) and other amounts receivable			0	0
25. Aggregate write-ins for other than invested assets	955,147	0	955,147	880,952
26. Total assets excluding Separate Accounts, Segregated Accounts and Protected Cell Accounts (Lines 12 to 25)	109,403,353	0	109,403,353	106,511,961
27. From Separate Accounts, Segregated Accounts and Protected Cell Accounts			0	0
28. Total (Lines 26 and 27)	109,403,353	0	109,403,353	106,511,961
DETAILS OF WRITE-INS				
1101.				
1102.				
1103.				
1198. Summary of remaining write-ins for Line 11 from overflow page	0	0	0	0
1199. Totals (Lines 1101 through 1103 plus 1198)(Line 11 above)	0	0	0	0
2501. Accounts Receivable	952,643		952,643	877,656
2502. Interest Receivable	2,504		2,504	3,296
2503.				
2598. Summary of remaining write-ins for Line 25 from overflow page	0	0	0	0
2599. Totals (Lines 2501 through 2503 plus 2598)(Line 25 above)	955,147	0	955,147	880,952

STATEMENT AS OF MARCH 31, 2017 OF THE Dealers Assurance Company
LIABILITIES, SURPLUS AND OTHER FUNDS

	1 Current Statement Date	2 December 31, Prior Year
1. Losses (current accident year \$156,089)	156,089	156,089
2. Reinsurance payable on paid losses and loss adjustment expenses0
3. Loss adjustment expenses0
4. Commissions payable, contingent commissions and other similar charges	335,390	284,189
5. Other expenses (excluding taxes, licenses and fees)	799,831	745,763
6. Taxes, licenses and fees (excluding federal and foreign income taxes)	214,455	601,629
7.1 Current federal and foreign income taxes (including \$ on realized capital gains (losses))	733,019	671,095
7.2 Net deferred tax liability		
8. Borrowed money \$ and interest thereon \$15,912	15,912	15,956
9. Unearned premiums (after deducting unearned premiums for ceded reinsurance of \$210,529,310 and including warranty reserves of \$16,044,713 and accrued accident and health experience rating refunds including \$ for medical loss ratio rebate per the Public Health Service Act)	20,024,714	19,411,129
10. Advance premium		
11. Dividends declared and unpaid:		
11.1 Stockholders		
11.2 Policyholders		
12. Ceded reinsurance premiums payable (net of ceding commissions)	1,029,557	1,044,858
13. Funds held by company under reinsurance treaties	13,985,887	14,701,541
14. Amounts withheld or retained by company for account of others	7,594,769	7,584,661
15. Remittances and items not allocated		
16. Provision for reinsurance (including \$ certified)0
17. Net adjustments in assets and liabilities due to foreign exchange rates		
18. Drafts outstanding		
19. Payable to parent, subsidiaries and affiliates	75,480	78,106
20. Derivatives0	.0
21. Payable for securities	1,527,778	
22. Payable for securities lending		
23. Liability for amounts held under uninsured plans		
24. Capital notes \$ and interest thereon \$		
25. Aggregate write-ins for liabilities	0	0
26. Total liabilities excluding protected cell liabilities (Lines 1 through 25)	46,492,881	45,295,016
27. Protected cell liabilities		
28. Total liabilities (Lines 26 and 27)	46,492,881	45,295,016
29. Aggregate write-ins for special surplus funds0	.0
30. Common capital stock	4,200,990	4,200,990
31. Preferred capital stock		
32. Aggregate write-ins for other than special surplus funds0	.0
33. Surplus notes	3,000,000	3,000,000
34. Gross paid in and contributed surplus	9,732,810	9,732,810
35. Unassigned funds (surplus)	45,976,672	44,283,145
36. Less treasury stock, at cost:		
36.1 shares common (value included in Line 30 \$)		
36.2 shares preferred (value included in Line 31 \$)		
37. Surplus as regards policyholders (Lines 29 to 35, less 36)	62,910,472	61,216,945
38. Totals (Page 2, Line 28, Col. 3)	109,403,353	106,511,961
DETAILS OF WRITE-INS		
2501.		
2502.		
2503.		
2598. Summary of remaining write-ins for Line 25 from overflow page0	.0
2599. Totals (Lines 2501 through 2503 plus 2598)(Line 25 above)	0	0
2901.		
2902.		
2903.		
2998. Summary of remaining write-ins for Line 29 from overflow page0	.0
2999. Totals (Lines 2901 through 2903 plus 2998)(Line 29 above)	0	0
3201.		
3202.		
3203.		
3298. Summary of remaining write-ins for Line 32 from overflow page0	.0
3299. Totals (Lines 3201 through 3203 plus 3298)(Line 32 above)	0	0

STATEMENT OF INCOME

	1 Current Year to Date	2 Prior Year to Date	3 Prior Year Ended December 31
UNDERWRITING INCOME			
1. Premiums earned:			
1.1 Direct (written \$ 34,473,289)	31,794,848	39,160,866	151,675,554
1.2 Assumed (written \$ (121,210))	(61,212)	156,211	82,521
1.3 Ceded (written \$ 30,765,137)	28,760,279	37,214,872	140,409,308
1.4 Net (written \$ 3,586,942)	2,973,357	2,102,205	11,348,767
DEDUCTIONS:			
2. Losses incurred (current accident year \$ 105,533):			
2.1 Direct	15,384,102	16,169,585	69,989,093
2.2 Assumed	17,396	5,838	44,508
2.3 Ceded	15,122,871	16,055,680	69,025,240
2.4 Net	278,627	119,743	1,008,361
3. Loss adjustment expenses incurred	38,621	75,988	245,002
4. Other underwriting expenses incurred	999,996	1,020,957	2,671,679
5. Aggregate write-ins for underwriting deductions	0	0	0
6. Total underwriting deductions (Lines 2 through 5)	1,317,244	1,216,688	3,925,042
7. Net income of protected cells			
8. Net underwriting gain or (loss) (Line 1 minus Line 6 + Line 7)	1,656,113	885,517	7,423,725
INVESTMENT INCOME			
9. Net investment income earned	410,090	302,964	1,461,084
10. Net realized capital gains (losses) less capital gains tax of \$ 37,079	71,978	(1,104)	127,833
11. Net investment gain (loss) (Lines 9 + 10)	482,068	301,860	1,588,917
OTHER INCOME			
12. Net gain or (loss) from agents' or premium balances charged off (amount recovered \$ 0 amount charged off \$ 27,353)	(27,353)	0	(532,379)
13. Finance and service charges not included in premiums			
14. Aggregate write-ins for miscellaneous income	(56,478)	23,689	(29,503)
15. Total other income (Lines 12 through 14)	(83,831)	23,689	(561,882)
16. Net income before dividends to policyholders, after capital gains tax and before all other federal and foreign income taxes (Lines 8 + 11 + 15)	2,054,350	1,211,066	8,450,760
17. Dividends to policyholders			
18. Net income, after dividends to policyholders, after capital gains tax and before all other federal and foreign income taxes (Line 16 minus Line 17)	2,054,350	1,211,066	8,450,760
19. Federal and foreign income taxes incurred	695,940	507,613	3,037,760
20. Net income (Line 18 minus Line 19)(to Line 22)	1,358,410	703,453	5,413,000
CAPITAL AND SURPLUS ACCOUNT			
21. Surplus as regards policyholders, December 31 prior year	61,216,945	56,172,736	56,172,736
22. Net income (from Line 20)	1,358,410	703,453	5,413,000
23. Net transfers (to) from Protected Cell accounts			
24. Change in net unrealized capital gains (losses) less capital gains tax of \$ 163,635	317,646	73,868	337,561
25. Change in net unrealized foreign exchange capital gain (loss)			
26. Change in net deferred income tax	17,471	18,067	293,648
27. Change in nonadmitted assets			0
28. Change in provision for reinsurance			0
29. Change in surplus notes			
30. Surplus (contributed to) withdrawn from protected cells			
31. Cumulative effect of changes in accounting principles			
32. Capital changes:			
32.1 Paid in			
32.2 Transferred from surplus (Stock Dividend)			
32.3 Transferred to surplus			
33. Surplus adjustments:			
33.1 Paid in	0	0	0
33.2 Transferred to capital (Stock Dividend)			
33.3 Transferred from capital			
34. Net remittances from or (to) Home Office			
35. Dividends to stockholders		0	(1,000,000)
36. Change in treasury stock			0
37. Aggregate write-ins for gains and losses in surplus	0	0	0
38. Change in surplus as regards policyholders (Lines 22 through 37)	1,693,527	795,388	5,044,209
39. Surplus as regards policyholders, as of statement date (Lines 21 plus 38)	62,910,472	56,968,124	61,216,945
DETAILS OF WRITE-INS			
0501.			
0502.			
0503.			
0598. Summary of remaining write-ins for Line 5 from overflow page	0	0	0
0599. Totals (Lines 0501 through 0503 plus 0598)(Line 5 above)	0	0	0
1401. Misc Income/(Expense)	(2,358)	(236)	(1,080)
1402. Adm/Service Fee Income	44,979	23,925	113,803
1403. Interest Expense-Funds Held	(99,099)		(142,226)
1498. Summary of remaining write-ins for Line 14 from overflow page	0	0	0
1499. Totals (Lines 1401 through 1403 plus 1498)(Line 14 above)	(56,478)	23,689	(29,503)
3701.			
3702.			
3703.			
3798. Summary of remaining write-ins for Line 37 from overflow page	0	0	0
3799. Totals (Lines 3701 through 3703 plus 3798)(Line 37 above)	0	0	0

CASH FLOW

	1 Current Year To Date	2 Prior Year To Date	3 Prior Year Ended December 31
Cash from Operations			
1. Premiums collected net of reinsurance	4,192,086	3,834,192	11,769,798
2. Net investment income	617,590	412,142	1,829,577
3. Miscellaneous income	(83,831)	23,689	(561,882)
4. Total (Lines 1 to 3)	4,725,845	4,270,023	13,037,493
5. Benefit and loss related payments	278,627	119,743	890,597
6. Net transfers to Separate Accounts, Segregated Accounts and Protected Cell Accounts0	.0	.0
7. Commissions, expenses paid and aggregate write-ins for deductions	1,320,574	1,258,127	3,238,973
8. Dividends paid to policyholders0	.0	.0
9. Federal and foreign income taxes paid (recovered) net of \$ tax on capital gains (losses)	671,095	609,177	3,041,697
10. Total (Lines 5 through 9)	2,270,296	1,987,047	7,171,267
11. Net cash from operations (Line 4 minus Line 10)	2,455,549	2,282,976	5,866,226
Cash from Investments			
12. Proceeds from investments sold, matured or repaid:			
12.1 Bonds	6,247,279	5,236,873	23,039,431
12.2 Stocks	3,430,060	3,685,028	14,229,563
12.3 Mortgage loans	10,560	7,393	26,744
12.4 Real estate0	.0	.0
12.5 Other invested assets0	.0	.0
12.6 Net gains or (losses) on cash, cash equivalents and short-term investments0	.0	511,456
12.7 Miscellaneous proceeds	1,527,778	731,377	4
12.8 Total investment proceeds (Lines 12.1 to 12.7)	11,215,677	9,660,671	37,807,198
13. Cost of investments acquired (long-term only):			
13.1 Bonds	7,513,096	6,753,302	28,675,218
13.2 Stocks	3,328,796	4,626,996	15,659,068
13.3 Mortgage loans0	.0	.0
13.4 Real estate	1,008,035	.0	1,825,589
13.5 Other invested assets0	.0	.0
13.6 Miscellaneous applications0	73,868	975,812
13.7 Total investments acquired (Lines 13.1 to 13.6)	11,849,928	11,454,166	47,135,687
14. Net increase (or decrease) in contract loans and premium notes0	.0	.0
15. Net cash from investments (Line 12.8 minus Line 13.7 and Line 14)	(634,251)	(1,793,495)	(9,328,489)
Cash from Financing and Miscellaneous Sources			
16. Cash provided (applied):			
16.1 Surplus notes, capital notes0	.0	.0
16.2 Capital and paid in surplus, less treasury stock0	.0	.0
16.3 Borrowed funds	(44)	362	1,288
16.4 Net deposits on deposit-type contracts and other insurance liabilities0	.0	.0
16.5 Dividends to stockholders0	.0	1,000,000
16.6 Other cash provided (applied)	(756,952)	(1,522,146)	4,056,022
17. Net cash from financing and miscellaneous sources (Line 16.1 through Line 16.4 minus Line 16.5 plus Line 16.6)	(756,996)	(1,521,784)	3,057,310
RECONCILIATION OF CASH, CASH EQUIVALENTS AND SHORT-TERM INVESTMENTS			
18. Net change in cash, cash equivalents and short-term investments (Line 11, plus Lines 15 and 17)	1,064,302	(1,032,303)	(404,953)
19. Cash, cash equivalents and short-term investments:			
19.1 Beginning of year	11,001,687	11,406,640	11,406,640
19.2 End of period (Line 18 plus Line 19.1)	12,065,989	10,374,337	11,001,687

Note: Supplemental disclosures of cash flow information for non-cash transactions:

--	--	--	--

NOTES TO FINANCIAL STATEMENTS

1. Summary of Significant Accounting Policies

A.- Accounting Practices

The accompanying financial statements of Dealers Assurance Company have been prepared in conformity with accounting practices prescribed or permitted by the National Association of Insurance Commissioners and the State of Ohio. The company adopted codification as of 01/01/01.

	SSAP #	F/S Page	F/S Line #	2017	2016
Net Income					
(1) Company state basis (Page 4, Line 20, Columns 1 & 2)	-	-	-	1,358,410	\$ 5,413,000
(2) State Prescribed Practices that (increase)/decrease NAIC SAP	-	-	-	-	-
(3) State Permitted Practices that (increase)/decrease NAIC SAP S	-	-	-	-	-
(4) NAIC SAP (1 - 2 - 3 = 4)	-	-	-	1,358,410	\$ 5,413,000
Surplus					
(5) Company state basis (Page 3, Line 37, Columns 1 & 2)	-	-	-	62,910,472	\$ 61,216,945
(6) State Prescribed Practices that increase/(decrease) NAIC SAP	-	-	-	-	-
(7) State Permitted Practices that increase/(decrease) NAIC SAP	-	-	-	-	-
(8) NAIC SAP (1 - 2 - 3 = 4)	-	-	-	62,910,472	\$ 61,216,945

1B. No changes to note

1C Real estate investments on the balance sheet are classified as properties occupied by the company. These are carried at the amortized cost less encumbrances.

1C (1) to 1C (5) No changes to Note

1C (6) Loan-backed securities are stated at either amortized cost or the lower of amortized cost or fair value. The retrospective adjustment method is used to value all securities except for interest only securities or securities where the yield had become negative, that are valued using the prospective method.

1D Going Concern

Based upon its evaluation of relevant conditions and events, management does not have substantial doubt about the Company's ability to continue as a going concern.

2 to 4 No changes to note.

NOTES TO FINANCIAL STATEMENTS

5A Mortgage Loans, including Mezzanine Real Estate Loans

(1) The minimum and maximum lending rates for mortgage loans during 2017 were:

Commercial Loans 5.50% Residential Loans 4.00%

(2) The maximum percentage of any one loan to the value of security at the time of the loan, exclusive of insured or guaranteed or purchase money mortgages was 74.39%.

(3) Taxes, assessments and any amounts advanced and not included in the mortgage loan total:

Current Year	Prior Year
-0-	-0-

(4) Age Analysis of Mortgage Loans:

	Fam	Residential		Commercial		Mezzanine	Total
		Insured	All Other	Insured	All Other		
a Current Year							
1. Recorded Investment (All)							
(a) Current	\$	-	\$	260,898	\$	-	\$ 781,611
(b) 30-59 Days Past Due		-		-		-	-
(c) 60-89 Days Past Due		-		-		-	-
(d) 90-179 Days Past Due		-		-		-	-
(e) 180+ Past Days Past Due		-		-		-	-
2. Accruing Interest 90-179 Days Past Due							
(a) Recorded Investment		-		-		-	-
(b) Interest Accrued		-		-		-	-
3. Accruing Interest 180+ Days Past Due							
(a) Recorded Investment		-		-		-	-
(b) Interest Accrued		-		-		-	-
4. Interest Reduced							
(a) Recorded Investment		-		-		-	-
(b) Number of Loans		-		-		-	-
(c) Percent Reduced		-		-		-	-
Prior Year							
1. Recorded Investment							
(a) Current		-	264,910	-	527,261	-	792,171
(b) 30-59 Days Past Due		-		-		-	-
(c) 60-89 Days Past Due		-		-		-	-
(d) 90-179 Days Past Due		-		-		-	-
(e) 180+ Days Past Due		-		-		-	-
2. Accruing Interest 90-179 Days Past Due							
(a) Recorded Investment		-		-		-	-
(b) Interest Accrued		-		-		-	-
3. Accruing Interest 180+ Days Past Due							
(a) Recorded Investment		-		-		-	-
(b) Interest Accrued		-		-		-	-
4. Interest Reduced							
(a) Recorded Investment		-		-		-	-
(b) Number of Loans		-		-		-	-
(c) Percent Reduced		-		-		-	-

5A (5) to 5 C. No changes to note.

5D. Loan-Backed Securities

1. Bloomberg is used as a source for the prepayment factors.

2. - 4. Not applicable, no permanently impaired bonds.

5. No impairments exist other than interest rate related declines classified as temporary.

5E. The Company did not have any repurchase agreements in 2016.

F-H No changes to note

I. The Company has no Working Capital Finance Investments.

J. The company has no offsetting or netting of assets and liabilities

K. The Company has no structured notes.

NOTES TO FINANCIAL STATEMENTS

6.-8. No changes to note

9. Income Taxes

A. The components of the net deferred tax assets/(liability) at March 31, 2017 are as follows:

1.

	3/31/16			12/31/16			Change		
	(1) Ordinary	(2) Capital	(3) (Col 1 + 2) Total	(4) Ordinary	(5) Capital	(6) (Col 4 + 5) Total	(7) (Col 1 - 4) Ordinary	(8) (Col 2 - 5) Capital	(9) (Col 7 + 8) Total
a Gross Deferred Tax Assets	1,656,052	-	1,656,052	1,611,461	-	1,611,461	44,591	-	44,591
b Statutory Valuation allowance adjustment	-	-	-	-	-	-	-	-	-
c Adjusted Gross Deferred Tax Asset (1a - 1d)	1,656,052	-	1,656,052	1,611,461	-	1,611,461	44,591	-	44,591
d Deferred Tax Assets Nonadmitted	885,092	-	885,092	857,972	-	857,972	27,120	-	27,120
e Subtotal Net Admitted Deferred Tax Assets (1c-1f)	770,960	-	770,960	753,489	-	753,489	17,471	-	17,471
f Deferred Tax Liabilities	-	534,233	534,233	-	370,598	370,598	-	163,635	163,635
g Net Admitted Deferred Tax Asset (Net Deferred Tax Liability)	770,960	(534,233)	236,727	753,489	(370,598)	382,891	17,471	(163,635)	(146,164)

2.

	3/31/17			12/31/16			Change		
	(1) Ordinary	(2) Capital	(3) (Col 1 + 2) Total	(4) Ordinary	(5) Capital	(6) (Col 4 + 5) Total	(7) (Col 1 - 4) Ordinary	(8) (Col 2 - 5) Capital	(9) (Col 7 + 8) Total

Admission Calculation Components SSAP No. 101

a Federal Income Taxes Paid in Prior Years Recoverable Through Loss Carrybacks	-	-	-	-	-	-	-	-	-
b Adjusted Gross Deferred Tax Asset Expected To Be Realized (Excluding the Amount of Deferred Tax Assets From 2(a) above). After Application of the Threshold Limitation. (The Lesser of 2(b)1 and 2(b)2 Below)	770,960	(534,233)	236,727	753,489	(370,598)	382,891	17,471	(163,635)	(146,164)
1 Adjusted Gross Deferred Tax Assets Expected to be Realized Following the Balance Sheet Date	770,960	(534,233)	236,727	753,489	(370,598)	382,891	17,471	(163,635)	(146,164)
2 Adjusted Gross Deferred Tax Assets (Excluding the Amount of Deferred Tax Allowed per Limitation Threshold)	xxxxxxx	xxxxx	9,401,062	xxxxxxx	xxxxxxx	9,125,108	xxxxxxx	xxxxxxx	275,954
c Adjusted Gross Deferred Tax Assets (Excluding the Amount of Deferred Tax Assets from 2(a) and 2 (b) above) Offset by Gross Deferred Tax Liabilities	-	-	-	-	-	-	-	-	-
d Deferred Tax Assets Admitted as the result of application of SSAP 101.	770,960	(534,233)	236,727	753,489	(370,598)	382,891	17,471	(163,635)	(146,164)
Total 2(a) + 2(b) + 2 (c)									

3

	2017	2016
(a) Ratio Percentage Used to Determine Recovery Period and Threshold Limitation Amount	583%	566%
(b) Amount of Adjusted Capital and Surplus Used to Determine Recovery Period and Threshold Limitation in 1(b) above	62,910,472	61,216,945

NOTES TO FINANCIAL STATEMENTS

4.

3/31/17			12/31/16			Change		
(1)	(2)	(3)	(4)	(5)	(6)	(7)	(8)	(9)
Ordinary	Capital	(Col 1 + 2) Total	Ordinary	Capital	(Col 4 + 5) Total	(Col 1 - 4) Ordinary	(Col 2 - 5) Capital	(Col 7 + 8) Total

Impact of Tax Planning Strategies

a	Adjusted Gross DTA's (% of Total Adjusted Gross DTA's)	100%	0%	100%	100%	0%	100%	0%	0%	0%
b	Net Admitted Adjusted Gross DTA's (% of Total Net Admitted Adjusted Gross DTA's)	326%	-226%	100%	197%	-97%	100%	129%	-129%	0%

c Does the Company's tax-planning strategies include the use of Reinsurance? Yes No

B Deferred tax liabilities not recognized at March 31, 2017 and December 31, 2016 are as follows:

N/A-All Deferred Tax Liabilities have been recognized

C Current income taxes incurred consist of the following major components

	(1) 3/31/17	(2) 12/31/16	(3) (Col 1 + 2) Change
1. Current Income Tax			
(a) Federal	695,940	3,037,760	(2,341,820)
(b) Foreign	-	-	-
(c) Subtotal	695,940	3,037,760	(2,341,820)
(d) Federal Income tax on net capital gains	37,079	65,854	(28,775)
(e) Utilization of capital loss carry-forwards	-	-	-
(f) Other	-	-	-
(g) Federal and foreign income taxes incurred	733,019	3,103,614	(2,370,595)
2. Deferred Tax Assets			
(a) Ordinary			
(1) Discounting of Unpaid Losses	7,960	7,960	-
(2) Unearned Premium Reserve	1,361,681	1,319,958	41,723
(3) Policyholder Reserves	-	-	-
(4) Investments	286,411	283,543	2,868
(5) Deferred Acquisition Costs	-	-	-
(6) Policyholder Dividends Accrual	-	-	-
(7) Fixed Assets	-	-	-
(8) Compensation and Benefits Accrual	-	-	-
(9) Pension Accrual	-	-	-
(10) Receivables-Nonadmitted	-	-	-
(11) Net Operating Loss Carry-forward	-	-	-
(12) Tax Credit Carry-forward	-	-	-
(13) Other (including items <5% of total Capital Assets)	-	-	-
(99) Subtotal	1,656,052	1,611,461	44,591
(b) Statutory Valuation Allowance Adjustment	-	-	-
(c) Nonadmitted	885,092	857,972	27,120
(d) Admitted Ordinary Deferred tax Asset (2a99 - 2f - 2g)	770,960	753,489	17,471
(e) Capital:			
(1) Investments	-	-	-
(2) Net Capital less Carry-forward	-	-	-
(3) Real Estate	-	-	-
(4) Other (including items <5% of total Capital Assets)	-	-	-
(99) Subtotal	-	-	-
(f) Statutory Valuation Allowance Adjustment	-	-	-
(g) Nonadmitted	-	-	-
(h) Admitted Capital Deferred Tax Assets (2a99 - 2f - 2g)	-	-	-
(i) Admitted Deferred Tax Asset (2d + 22h)	770,960	753,489	17,471

NOTES TO FINANCIAL STATEMENTS

(1)	(2)	(3)
3/31/17	12/31/16	(Col 1 + 2) Change

3	Deferred Tax Liabilities			
	(a) Ordinary			
	(1) Investments	-	-	-
	(2) Fixed Assets	-	-	-
	(3) Deferred and Uncollected premium	-	-	-
	(4) Policyholder Reserves	-	-	-
	(5) Other (including items <5% of ordinary Tax Liabilities)	-	-	-
	(99) Subtotal	-	-	-
	(b) Capital			
	(1) Investments	534,233	370,598	163,635
	(2) Real Estate	-	-	-
	(3) Other (including items <5% of ordinary Tax Liabilities)	-	-	-
	(99) Subtotal	534,233	370,598	163,635
	(c) Deferred Tax Liabilities (3a99 + 3b99)	534,233	370,598	163,635
4.	Net Deferred Tax Assets/Liabilities (2i - 3c)	236,727	382,891	(146,164)

D Among the more significant book to tax adjustments were the following:

	Amount	Tax Effect	%
Income before taxes	2,091,430	711,085	34%
Unearned Premium Adjustment	122,717	41,724	2%
Bond Discount	8,435	2,868	0%
Loss Reserve Discounting	11,761	3,999	0%
Dividends Received Deduction	(78,404)	(26,657)	-1%
Capital Loss Carry-Forward	-	-	0%
Other, net	-	-	0%
Total	2,155,939	733,019	35%

- E At March 31, 2017, the Company has no net capital-loss forward available for recoupment against future capital gains.
 F. The Company is included in a consolidated federal income tax return with its parent company, DAC Financial Holdings, Inc. The Company has a written agreement, approved by the Company's Board of Directors, which sets forth the manner in which the total combined federal income tax is allocated to each entity which is party to the consolidation. Pursuant to this agreement, the Company has the enforceable right to recoup federal income taxes paid in prior years in the event of future net losses, which it may incur, or recoup its net losses carried forward as an offset to future net income subject to federal income taxes.

10. Information Concerning Parent, Subsidiaries and Affiliates and Other Related Parties

- A-C No changes.
 D The Company reported \$71,959 payable to affiliates and \$3,520 payable to parent as of March 31, 2017 per the cost sharing agreements.
 E-F No changes.
 G The parent company, Dealers Alliance Corporation, is a non-insurance entity. Through 09/30/10 (and prior years) Dealers Assurance Company provided funds for federal income tax deposits (on a consolidated basis). In prior years other companies included in consolidated tax return reimbursed their portion of federal income tax deposits on a quarterly basis.
 H-L Dealers Assurance Company holds no investments in its parent company or affiliates.

11. Debt

The Company does not have any outstanding debt.

12A The Company has no defined benefit plans.

12B-16 No changes to note

17. Sale, Transfer and Servicing of Financial Assets and Extinguishments of Liabilities

The Company does not have any sales or transfers to report.

18. - 19. No changes to note

NOTES TO FINANCIAL STATEMENTS

20. Fair Value Measurements

A.

(1) Assets Measured at Fair Value on a Recurring Basis

(1) Description	(2) (Level 1)	(3) (Level 2)	(4) (Level 3)	(5) Total
a. Assets at fair value				
Preferred Stock	1,203,428	-	-	1,203,428
Bonds	-	-	-	-
Common Stock (Ind & Misc)	\$ 12,180,830	-	-	\$ 12,180,830
Derivative assets	-	-	-	-
Separate account assets	-	-	-	-
Total assets at fair value	\$ 13,384,258	-	-	\$ 13,384,258
b. Liabilities at fair value	\$ -	-	-	\$ -
Total liabilities at fair value	\$ -	-	-	-

(2) There have been no significant transfers between level 1 and 2.

(3-4) Assets measured at Fair Value on a recurring basis with significant unobservable inputs (level 3)

NONE

(5) The Company has no derivative assets or liabilities.

B. Other Fair Value Disclosures-Not Applicable

C. Fair Values for all Financial instruments by level 1, 2 and 3.

Description	Aggregate Fair Value	Admitted Assets	Level 1	Level 2	Level 3	Not Practicable (carrying value)
Bonds	74,005,414	74,131,896	74,005,414			
Preferred Stock	3,682,608	3,620,360	3,682,608			
Common Stock	12,180,360	12,180,360	12,180,360			
Mortgage loans						781,611
Cash, cash equivalents and short-term investments	12,065,853	12,065,988	12,065,853			

D. Items which are not practicable to estimate fair values

It is not practical to determine the fair value of mortgage loans for purposes of the above disclosure of Note 20C due the fact that these items are not traded and therefore quoted market prices are not available. Also, the cost of obtaining estimates of fair values from other sources is considered excessive given the immateriality of the mortgage loans.

Type or Class of Financial Instrument	Carrying Value	Effective Interest Rate	Maturity Date	Explanation
Mortgage Loans				
DAC 001 Albuquerque, NM	260,898	5.500	07/01/2019	See paragraph above
DAC 002 Mokena, IL	520,713	4.000	09/01/2029	See paragraph above

21 A-F No changes to note.

G The Company has no offsetting and netting of Assets and Liabilities

H The Company has no Joint and Severable Liabilities

I The Company has no risk sharing involving the Affordable Care Act

22-23 No changes to Note

24. Retrospectively Rated Contracts & Contracts Subject to Redetermination

The Company does not have retrospectively rated contracts or contracts subject to redetermination.

25. Change in Incurred Losses and Loss Adjustment Expenses

Reserves as of December 31, 2016 were \$156,089. As of March 31, 2017, \$173,094 (net of reinsured prior year claims) was paid for incurred losses and loss adjustment expenses attributable to insured events of prior years. There has been a \$17,095 negative prior year development.

There was no re-estimation of unpaid claims and claim adjustment expenses. Business written by DAC is related to service contracts issued on an assortment of consumer goods, but primarily, automobile service contracts. Historically, losses on this coverage are settled within 90 days of incurred date (98.7%); and the balance is settled within 180 days of incurred date

26. - 35. No changes to note.

36. Financial Guaranty Insurance

The company does not write financial guaranty insurance.

STATEMENT AS OF MARCH 31, 2017 OF THE Dealers Assurance Company
GENERAL INTERROGATORIES

PART 1 - COMMON INTERROGATORIES

GENERAL

- 1.1 Did the reporting entity experience any material transactions requiring the filing of Disclosure of Material Transactions with the State of Domicile, as required by the Model Act? Yes [] No [X]
- 1.2 If yes, has the report been filed with the domiciliary state? Yes [] No []
- 2.1 Has any change been made during the year of this statement in the charter, by-laws, articles of incorporation, or deed of settlement of the reporting entity? Yes [] No [X]
- 2.2 If yes, date of change: _____
- 3.1 Is the reporting entity a member of an Insurance Holding Company System consisting of two or more affiliated persons, one or more of which is an insurer? Yes [X] No []
 If yes, complete Schedule Y, Parts 1 and 1A.
- 3.2 Have there been any substantial changes in the organizational chart since the prior quarter end? Yes [] No [X]
- 3.3 If the response to 3.2 is yes, provide a brief description of those changes.
- 4.1 Has the reporting entity been a party to a merger or consolidation during the period covered by this statement? Yes [] No [X]
- 4.2 If yes, provide the name of the entity, NAIC Company Code, and state of domicile (use two letter state abbreviation) for any entity that has ceased to exist as a result of the merger or consolidation.

1 Name of Entity	2 NAIC Company Code	3 State of Domicile

5. If the reporting entity is subject to a management agreement, including third-party administrator(s), managing general agent(s), attorney-in-fact, or similar agreement, have there been any significant changes regarding the terms of the agreement or principals involved? Yes [] No [] N/A [X]
 If yes, attach an explanation.
- 6.1 State as of what date the latest financial examination of the reporting entity was made or is being made. 12/31/2013
- 6.2 State the as of date that the latest financial examination report became available from either the state of domicile or the reporting entity. This date should be the date of the examined balance sheet and not the date the report was completed or released. 12/31/2013
- 6.3 State as of what date the latest financial examination report became available to other states or the public from either the state of domicile or the reporting entity. This is the release date or completion date of the examination report and not the date of the examination (balance sheet date). 10/03/2014
- 6.4 By what department or departments?
 Ohio Department of Insurance
- 6.5 Have all financial statement adjustments within the latest financial examination report been accounted for in a subsequent financial statement filed with Departments? Yes [] No [] N/A [X]
- 6.6 Have all of the recommendations within the latest financial examination report been complied with? Yes [] No [] N/A [X]
- 7.1 Has this reporting entity had any Certificates of Authority, licenses or registrations (including corporate registration, if applicable) suspended or revoked by any governmental entity during the reporting period? Yes [] No [X]
- 7.2 If yes, give full information:
- 8.1 Is the company a subsidiary of a bank holding company regulated by the Federal Reserve Board? Yes [] No [X]
- 8.2 If response to 8.1 is yes, please identify the name of the bank holding company.
- 8.3 Is the company affiliated with one or more banks, thrifts or securities firms? Yes [] No [X]
- 8.4 If response to 8.3 is yes, please provide below the names and location (city and state of the main office) of any affiliates regulated by a federal regulatory services agency [i.e. the Federal Reserve Board (FRB), the Office of the Comptroller of the Currency (OCC), the Federal Deposit Insurance Corporation (FDIC) and the Securities Exchange Commission (SEC)] and identify the affiliate's primary federal regulator.

1 Affiliate Name	2 Location (City, State)	3 FRB	4 OCC	5 FDIC	6 SEC

STATEMENT AS OF MARCH 31, 2017 OF THE Dealers Assurance Company
GENERAL INTERROGATORIES

- 9.1 Are the senior officers (principal executive officer, principal financial officer, principal accounting officer or controller, or persons performing similar functions) of the reporting entity subject to a code of ethics, which includes the following standards? Yes [] No []
 (a) Honest and ethical conduct, including the ethical handling of actual or apparent conflicts of interest between personal and professional relationships;
 (b) Full, fair, accurate, timely and understandable disclosure in the periodic reports required to be filed by the reporting entity;
 (c) Compliance with applicable governmental laws, rules and regulations;
 (d) The prompt internal reporting of violations to an appropriate person or persons identified in the code; and
 (e) Accountability for adherence to the code.
- 9.11 If the response to 9.1 is No, please explain: _____
- 9.2 Has the code of ethics for senior managers been amended? Yes [] No []
 9.21 If the response to 9.2 is Yes, provide information related to amendment(s). _____
- 9.3 Have any provisions of the code of ethics been waived for any of the specified officers? Yes [] No []
 9.31 If the response to 9.3 is Yes, provide the nature of any waiver(s). _____

FINANCIAL

- 10.1 Does the reporting entity report any amounts due from parent, subsidiaries or affiliates on Page 2 of this statement? Yes [] No []
 10.2 If yes, indicate any amounts receivable from parent included in the Page 2 amount: \$ _____

INVESTMENT

- 11.1 Were any of the stocks, bonds, or other assets of the reporting entity loaned, placed under option agreement, or otherwise made available for use by another person? (Exclude securities under securities lending agreements.) Yes [] No []
 11.2 If yes, give full and complete information relating thereto: _____
12. Amount of real estate and mortgages held in other invested assets in Schedule BA: \$ _____
 13. Amount of real estate and mortgages held in short-term investments: \$ _____
 14.1 Does the reporting entity have any investments in parent, subsidiaries and affiliates? Yes [] No []
 14.2 If yes, please complete the following:

	1 Prior Year-End Book/Adjusted Carrying Value	2 Current Quarter Book/Adjusted Carrying Value
14.21 Bonds	\$ 0	\$ _____
14.22 Preferred Stock	\$ 0	\$ _____
14.23 Common Stock	\$ 0	\$ _____
14.24 Short-Term Investments	\$ 0	\$ _____
14.25 Mortgage Loans on Real Estate	\$ 0	\$ _____
14.26 All Other	\$ 0	\$ _____
14.27 Total Investment in Parent, Subsidiaries and Affiliates (Subtotal Lines 14.21 to 14.26)	\$ 0	\$ _____
14.28 Total Investment in Parent included in Lines 14.21 to 14.26 above	\$ _____	\$ _____

- 15.1 Has the reporting entity entered into any hedging transactions reported on Schedule DB? Yes [] No []
 15.2 If yes, has a comprehensive description of the hedging program been made available to the domiciliary state? Yes [] No []
 If no, attach a description with this statement.

STATEMENT AS OF MARCH 31, 2017 OF THE Dealers Assurance Company
GENERAL INTERROGATORIES

16. For the reporting entity's security lending program, state the amount of the following as of the current statement date:
- 16.1 Total fair value of reinvested collateral assets reported on Schedule DL, Parts 1 and 2\$0
- 16.2 Total book adjusted/carrying value of reinvested collateral assets reported on Schedule DL, Parts 1 and 2\$0
- 16.3 Total payable for securities lending reported on the liability page\$0

17. Excluding items in Schedule E - Part 3 - Special Deposits, real estate, mortgage loans and investments held physically in the reporting entity's offices, vaults or safety deposit boxes, were all stocks, bonds and other securities, owned throughout the current year held pursuant to a custodial agreement with a qualified bank or trust company in accordance with Section 1, III - General Examination Considerations, F. Outsourcing of Critical Functions, Custodial or Safekeeping Agreements of the NAIC Financial Condition Examiners Handbook? Yes No
- 17.1 For all agreements that comply with the requirements of the NAIC Financial Condition Examiners Handbook, complete the following:

1 Name of Custodian(s)	2 Custodian Address
Fifth Third Bank	Cincinnati, Ohio
US Bank	Winston Salem, NC
Wells Fargo Bank	Richmond, VA
First National Bankers Bank	Little Rock, AR
Citibank, NA	NY, NY
Century Bank	Sante Fe, NM
RBS Citizens, NA	Providence, RI
Xerox State & Local Solutions, Inc	Quincy, MA
Bank of New York Mellon	Atlanta, GA

- 17.2 For all agreements that do not comply with the requirements of the NAIC Financial Condition Examiners Handbook, provide the name, location and a complete explanation:

1 Name(s)	2 Location(s)	3 Complete Explanation(s)
.....
.....

- 17.3 Have there been any changes, including name changes, in the custodian(s) identified in 17.1 during the current quarter? Yes No
- 17.4 If yes, give full information relating thereto:

1 Old Custodian	2 New Custodian	3 Date of Change	4 Reason
.....
.....

- 17.5 Investment management – Identify all investment advisors, investment managers, broker/dealers, including individuals that have the authority to make investment decisions on behalf of the reporting entity. For assets that are managed internally by employees of the reporting entity, note as such. ["...that have access to the investment accounts"; "...handle securities"]

1 Name of Firm or Individual	2 Affiliation
ClearArc Capital, Inc	U
Bank of New York Mellon Wealth Management	U

- 17.5097 For those firms/individuals listed in the table for Question 17.5, do any firms/individuals unaffiliated with the reporting entity (i.e. designated with a "U") manage more than 10% of the reporting entity's assets? Yes No
- 17.5098 For firms/individuals unaffiliated with the reporting entity (i.e. designated with a "U") listed in the table for Question 17.5, does the total assets under management aggregate to more than 50% of the reporting entity's assets? Yes No

- 17.6 For those firms or individuals listed in the table for 17.5 with an affiliation code of "A" (affiliated) or "U" (unaffiliated), provide the information for the table below.

1 Central Registration Depository Number	2 Name of Firm or Individual	3 Legal Entity Identifier (LEI)	4 Registered With	5 Investment Management Agreement (IMA) Filed
104650	ClearArc Capital, Inc	549300K4SXC0CLBZHS67	SEC	NO
8275	Bank of New York Wealth Management	Office of Controller of Currency	NO

- 18.1 Have all the filing requirements of the Purposes and Procedures Manual of the NAIC Investment Analysis Office been followed? Yes No
- 18.2 If no, list exceptions:

GENERAL INTERROGATORIES

PART 2 - PROPERTY & CASUALTY INTERROGATORIES

1. If the reporting entity is a member of a pooling arrangement, did the agreement or the reporting entity's participation change? Yes [] No [X] N/A []
If yes, attach an explanation.

2. Has the reporting entity reinsured any risk with any other reporting entity and agreed to release such entity from liability, in whole or in part, from any loss that may occur on the risk, or portion thereof, reinsured? Yes [] No [X]
If yes, attach an explanation.

3.1 Have any of the reporting entity's primary reinsurance contracts been canceled? Yes [] No [X]

3.2 If yes, give full and complete information thereto.

4.1 Are any of the liabilities for unpaid losses and loss adjustment expenses other than certain workers' compensation tabular reserves (see Annual Statement Instructions pertaining to disclosure of discounting for definition of "tabular reserves") discounted at a rate of interest greater than zero? Yes [] No [X]

4.2 If yes, complete the following schedule:

1 Line of Business	2 Maximum Interest	3 Discount Rate	TOTAL DISCOUNT				DISCOUNT TAKEN DURING PERIOD			
			4 Unpaid Losses	5 Unpaid LAE	6 IBNR	7 TOTAL	8 Unpaid Losses	9 Unpaid LAE	10 IBNR	11 TOTAL
.....00
.....00
TOTAL			0	0	0	0	0	0	0	0

5. Operating Percentages:

5.1 A&H loss percent %

5.2 A&H cost containment percent %

5.3 A&H expense percent excluding cost containment expenses %

6.1 Do you act as a custodian for health savings accounts? Yes [] No [X]

6.2 If yes, please provide the amount of custodial funds held as of the reporting date \$

6.3 Do you act as an administrator for health savings accounts? Yes [] No [X]

6.4 If yes, please provide the balance of the funds administered as of the reporting date \$

STATEMENT AS OF MARCH 31, 2017 OF THE Dealers Assurance Company
SCHEDULE T - EXHIBIT OF PREMIUMS WRITTEN

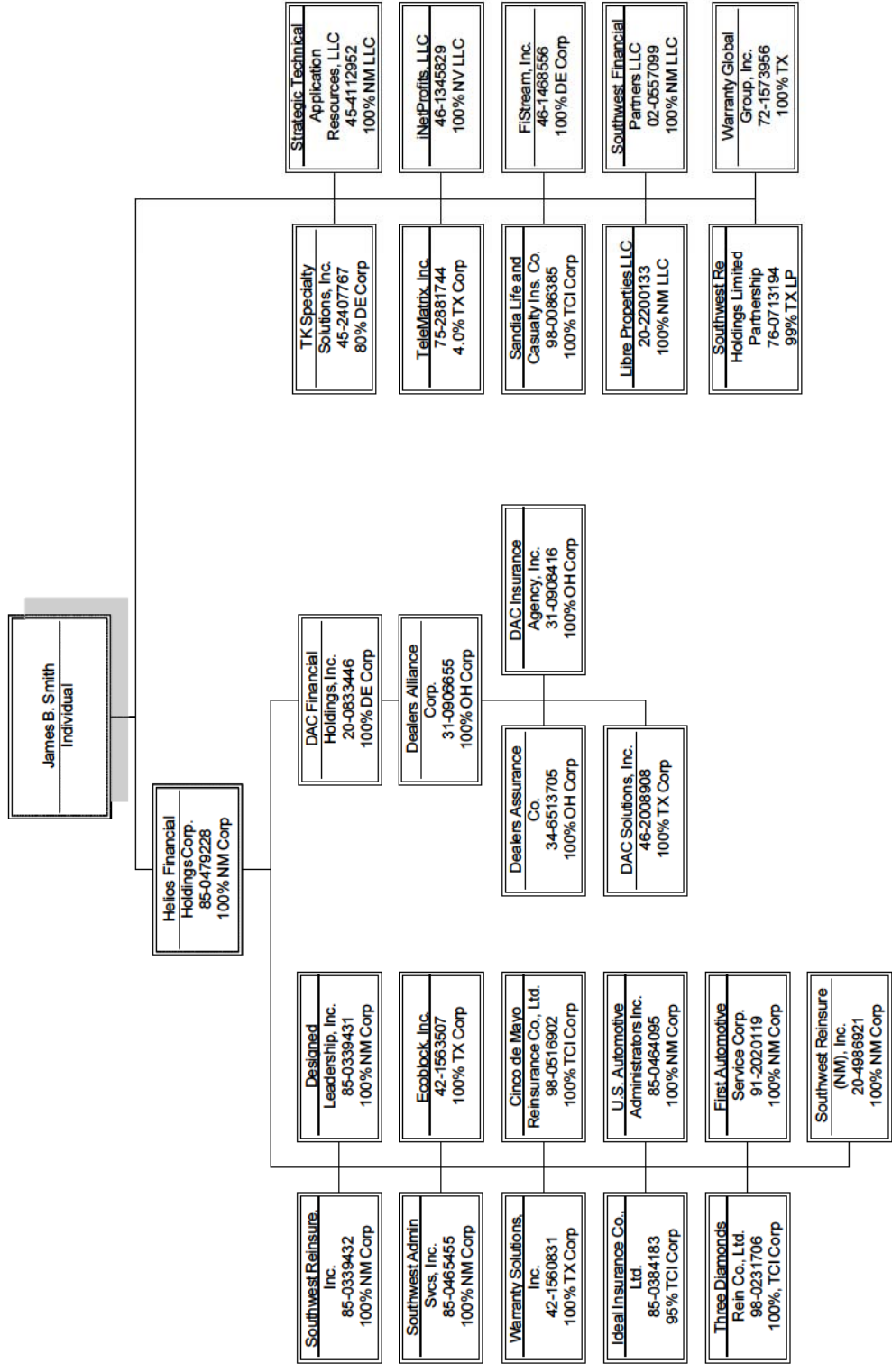
Current Year to Date - Allocated by States and Territories

	1 Active Status	Direct Premiums Written		Direct Losses Paid (Deducting Salvage)		Direct Losses Unpaid		
		2 Current Year To Date	3 Prior Year To Date	4 Current Year To Date	5 Prior Year To Date	6 Current Year To Date	7 Prior Year To Date	
1. Alabama	AL	618,703	535,650	170,597	154,419	47,155	40,866	
2. Alaska	AK	(192)	.0	.0	.0	.5	.42	
3. Arizona	AZ	165,039	176,714	69,882	145,007	26,913	29,471	
4. Arkansas	AR	613,436	615,387	220,316	281,082	68,402	62,792	
5. California	CA	403,778	5,834,557	129,729	388,962	27,509	60,753	
6. Colorado	CO	1,582,933	1,790,046	960,647	922,298	150,369	199,240	
7. Connecticut	CT	130,623	190,658	120,212	180,138	18,545	28,517	
8. Delaware	DE	(244,408)	352,401	105,796	132,246	102,651	25,314	
9. District of Columbia	DC	.0	.0	.0	.0	.0	.0	
10. Florida	FL	2,086,486	4,906,258	966,745	1,268,698	191,854	480,445	
11. Georgia	GA	294,834	1,573,410	84,375	1,227,741	149,030	287,164	
12. Hawaii	HI	.0	.0	.0	.0	.0	.0	
13. Idaho	ID	6,342	.0	.0	.0	.78	108	
14. Illinois	IL	234,102	233,800	112,282	79,633	29,260	30,461	
15. Indiana	IN	417,429	410,372	184,411	131,563	35,805	28,026	
16. Iowa	IA	34,633	43,388	21,158	29,360	5,683	8,318	
17. Kansas	KS	9,785	4,973	5,999	.0	591	613	
18. Kentucky	KY	215,620	236,343	69,620	82,419	24,915	17,272	
19. Louisiana	LA	816,582	442,826	328,670	195,284	134,274	40,890	
20. Maine	ME	170,111	107,897	83,061	55,895	12,286	9,559	
21. Maryland	MD	483,698	491,808	241,006	285,364	47,904	46,183	
22. Massachusetts	MA	211,002	257,904	98,462	191,531	22,656	30,167	
23. Michigan	MI	1,403,378	1,106,930	1,019,681	1,208,428	109,978	145,597	
24. Minnesota	MN	234,972	244,716	175,786	153,220	25,623	25,574	
25. Mississippi	MS	585,604	526,959	136,697	191,648	34,276	48,862	
26. Missouri	MO	380,338	326,327	126,831	108,856	31,834	21,446	
27. Montana	MT	27,442	53,884	26,665	35,965	4,273	5,005	
28. Nebraska	NE	93,657	82,151	24,833	27,089	9,979	7,381	
29. Nevada	NV	77,538	74,034	33,986	41,384	7,471	7,215	
30. New Hampshire	NH	68,370	73,945	48,008	34,411	7,249	8,430	
31. New Jersey	NJ	295,992	326,488	142,268	184,922	23,399	30,193	
32. New Mexico	NM	595,216	573,278	87,894	18,084	20,379	17,854	
33. New York	NY	1,009,797	1,109,116	781,386	1,127,710	98,039	139,049	
34. North Carolina	NC	2,146,774	2,418,257	1,556,531	1,240,636	410,965	272,216	
35. North Dakota	ND	11,597	28,919	23,346	19,124	3,469	4,145	
36. Ohio	OH	2,727,684	1,978,496	730,784	477,411	195,339	122,239	
37. Oklahoma	OK	122,015	55,946	57,262	15,100	38,142	3,742	
38. Oregon	OR	26,642	11,682	4,250	5,357	1,791	1,010	
39. Pennsylvania	PA	980,441	1,144,562	377,655	439,775	69,552	73,660	
40. Rhode Island	RI	38,229	46,473	11,754	10,804	3,526	1,845	
41. South Carolina	SC	171,404	197,871	82,825	59,835	32,545	23,081	
42. South Dakota	SD	(754)	(1,661)	.95	2,112	410	727	
43. Tennessee	TN	701,413	529,636	205,498	161,177	62,294	54,349	
44. Texas	TX	9,140,927	9,632,800	3,394,877	2,878,236	1,871,251	1,353,681	
45. Utah	UT	1,566	3,711	.95	.0	182	134	
46. Vermont	VT	51,594	37,055	49,640	37,122	7,375	8,610	
47. Virginia	VA	293,955	294,676	117,930	145,201	25,458	32,479	
48. Washington	WA	4,652,333	3,361,810	2,005,949	1,676,658	201,966	274,309	
49. West Virginia	WV	122,231	85,386	131,401	34,088	8,890	98,662	
50. Wisconsin	WI	209,197	123,925	44,100	77,650	24,583	21,160	
51. Wyoming	WY	53,201	21,799	13,107	5,942	2,526	3,008	
52. American Samoa	AS	N	.0	.0	.0	.0	.0	
53. Guam	GU	N	.0	.0	.0	.0	.0	
54. Puerto Rico	PR	N	.0	.0	.0	.0	.0	
55. U.S. Virgin Islands	VI	N	.0	.0	.0	.0	.0	
56. Northern Mariana Islands	MP	N	.0	.0	.0	.0	.0	
57. Canada	CAN	N	.0	.0	.0	.0	.0	
58. Aggregate Other Alien	OT	XXX	.0	.0	.0	.0	.0	
59. Totals	(a)	51	34,473,289	42,673,563	15,384,102	16,169,585	4,428,649	4,231,864
DETAILS OF WRITE-INS								
58001.	XXX							
58002.	XXX							
58003.	XXX							
58998. Summary of remaining write-ins for Line 58 from overflow page	XXX	.0	.0	.0	.0	.0	.0	
58999. Totals (Lines 58001 through 58003 plus 58998)(Line 58 above)	XXX	0	0	0	0	0	0	

(L) Licensed or Chartered - Licensed Insurance Carrier or Domiciled RRG; (R) Registered - Non-domiciled RRGs; (Q) Qualified - Qualified or Accredited Reinsurer; (E) Eligible - Reporting Entities eligible or approved to write Surplus Lines in the state (other than their state of domicile - see DSLI); (D) DSLI - Domestic Surplus Lines Insurer (DSLI) - Reporting entities authorized to write Surplus Lines in the state of domicile; (N) None of the above - Not allowed to write business in the state.

(a) Insert the number of D and L responses except for Canada and Other Alien.

STATEMENT AS OF MARCH 31, 2017 OF THE Dealers Assurance Company



PART 1 - LOSS EXPERIENCE

Line of Business	Current Year to Date			4 Prior Year to Date Direct Loss Percentage
	1 Direct Premiums Earned	2 Direct Losses Incurred	3 Direct Loss Percentage	
1. Fire				0.0
2. Allied Lines				0.0
3. Farmowners multiple peril				0.0
4. Homeowners multiple peril				0.0
5. Commercial multiple peril				0.0
6. Mortgage guaranty				0.0
8. Ocean marine				0.0
9. Inland marine				0.0
10. Financial guaranty				0.0
11.1 Medical professional liability - occurrence				0.0
11.2 Medical professional liability - claims-made				0.0
12. Earthquake				0.0
13. Group accident and health				0.0
14. Credit accident and health				0.0
15. Other accident and health				0.0
16. Workers' compensation				0.0
17.1 Other liability - occurrence	999,426	1,125,011	112.6	43.5
17.2 Other liability - claims-made				0.0
17.3 Excess workers' compensation				0.0
18.1 Products liability - occurrence				0.0
18.2 Products liability - claims-made				0.0
19.1,19.2 Private passenger auto liability				0.0
19.3,19.4 Commercial auto liability				0.0
21. Auto physical damage				0.0
22. Aircraft (all perils)				0.0
23. Fidelity				0.0
24. Surety				0.0
26. Burglary and theft				0.0
27. Boiler and machinery				0.0
28. Credit	22,236			1.5
29. International				0.0
30. Warranty	30,773,186	14,259,091	46.3	41.3
31. Reinsurance - Nonproportional Assumed Property	XXX	XXX	XXX	XXX
32. Reinsurance - Nonproportional Assumed Liability	XXX	XXX	XXX	XXX
33. Reinsurance - Nonproportional Assumed Financial Lines	XXX	XXX	XXX	XXX
34. Aggregate write-ins for other lines of business	0	0	0.0	0.0
35. Totals	31,794,848	15,384,102	48.4	41.3
DETAILS OF WRITE-INS				
3401.				
3402.				
3403.				
3498. Summary of remaining write-ins for Line 34 from overflow page	0	0	0.0	
3499. Totals (Lines 3401 through 3403 plus 3498)(Line 34 above)	0	0	0.0	0.0

PART 2 - DIRECT PREMIUMS WRITTEN

Line of Business	1	2	3
	Current Quarter	Current Year to Date	Prior Year Year to Date
1. Fire	0		0
2. Allied Lines	0		0
3. Farmowners multiple peril	0		0
4. Homeowners multiple peril	0		0
5. Commercial multiple peril	0		0
6. Mortgage guaranty	0		0
8. Ocean marine	0		0
9. Inland marine	0		0
10. Financial guaranty	0		0
11.1 Medical professional liability - occurrence	0		0
11.2 Medical professional liability - claims-made	0		0
12. Earthquake	0		0
13. Group accident and health	0		0
14. Credit accident and health	0		0
15. Other accident and health	0		0
16. Workers' compensation	0		0
17.1 Other liability - occurrence	3,147,571	3,147,571	2,353,065
17.2 Other liability - claims-made	0		0
17.3 Excess workers' compensation	0		0
18.1 Products liability - occurrence	0		0
18.2 Products liability - claims-made	0		0
19.1,19.2 Private passenger auto liability	0		0
19.3,19.4 Commercial auto liability	0		0
21. Auto physical damage	0		0
22. Aircraft (all perils)	0		0
23. Fidelity	0		0
24. Surety	0		0
26. Burglary and theft	0		0
27. Boiler and machinery	0		0
28. Credit	0		7,955
29. International	0		0
30. Warranty	31,325,718	31,325,718	40,312,543
31. Reinsurance - Nonproportional Assumed Property	XXX	XXX	XXX
32. Reinsurance - Nonproportional Assumed Liability	XXX	XXX	XXX
33. Reinsurance - Nonproportional Assumed Financial Lines	XXX	XXX	XXX
34. Aggregate write-ins for other lines of business	0	0	0
35. Totals	34,473,289	34,473,289	42,673,563
DETAILS OF WRITE-INS			
3401.			
3402.			
3403.			
3498. Summary of remaining write-ins for Line 34 from overflow page	0	0	0
3499. Totals (Lines 3401 through 3403 plus 3498)(Line 34 above)	0	0	0

STATEMENT AS OF MARCH 31, 2017 OF THE Dealers Assurance Company

PART 3 (000 omitted)

LOSS AND LOSS ADJUSTMENT EXPENSE RESERVES SCHEDULE

	1	2	3	4	5	6	7	8	9	10	11	12	13
	Prior Year-End Known Case Loss and LAE Reserves	Prior Year- End IBNR Loss and LAE Reserves	Total Prior Year-End Loss and LAE Reserves (Cols. 1+2)	2017 Loss and LAE Payments on Claims Reported as of Prior Year-End	2017 Loss and LAE Payments on Claims Unreported as of Prior Year-End	Total 2017 Loss and LAE Payments (Cols. 4+5)	O.S. Date Known Case Loss and LAE Reserves on Claims Reported and Open as of Prior Year-End	O.S. Date Known Case Loss and LAE Reserves on Claims Reported or Recipient to Subsequent to Prior Year-End	Q.S. Date IBNR Loss and LAE Reserves	Total Q.S. Loss Reserves and LAE Reserves (Cols. 7+8+9)	Prior Year-End Known Case Loss and LAE Reserves (Savings) Deficiency (Cols. 4+7 minus Col. 1)	Prior Year-End IBNR Loss and LAE Reserves (Savings) Deficiency (Cols. 5+8+9 minus Col. 2)	Prior Year-End Total Loss and LAE Reserve (Savings) Deficiency (Cols. 11+12)
1. 2014 + Prior			0			0				0	0	0	0
2. 2015			0			0				0	0	0	0
3. Subtotals 2015 + Prior	0	0	0	0	0	0	0	0	0	0	0	0	0
4. 2016		156	156	173	173	173	173	173	0	0	0	17	17
5. Subtotals 2016 + Prior	0	156	156	173	173	173	173	173	0	0	0	17	17
6. 2017	XXX	XXX	XXX	XXX	144	144	XXX	144	156	156	XXX	XXX	XXX
7. Totals	0	156	156	0	317	317	0	0	156	156	0	17	17
8. Prior Year-End Surplus As Regards Policyholders	61,217										Col. 11, Line 7 As % of Col. 1 Line 7	Col. 12, Line 7 As % of Col. 2 Line 7	Col. 13, Line 7 As % of Col. 3 Line 7
											1. 0.0	2. 10.9	3. 10.9
													Col. 13, Line 7 As a % of Col. 1 Line 8
													4. 0.0

SUPPLEMENTAL EXHIBITS AND SCHEDULES INTERROGATORIES

The following supplemental reports are required to be filed as part of your statement filing. However, in the event that your company does not transact the type of business for which the special report must be filed, your response of NO to the specific interrogatory will be accepted in lieu of filing a "NONE" report and a bar code will be printed below. If the supplement is required of your company but is not being filed for whatever reason enter SEE EXPLANATION and provide an explanation following the interrogatory questions.

	Response
1. Will the Trusteed Surplus Statement be filed with the state of domicile and the NAIC with this statement?	NO
2. Will Supplement A to Schedule T (Medical Professional Liability Supplement) be filed with this statement?	NO
3. Will the Medicare Part D Coverage Supplement be filed with the state of domicile and the NAIC with this statement?	NO
4. Will the Director and Officer Insurance Coverage Supplement be filed with the state of domicile and the NAIC with this statement?	NO

Explanations:

1. Not Applicable
2. Not Applicable
3. Not Applicable
4. Not Applicable

Bar Codes:

1. Trusteed Surplus Statement [Document Identifier 490]
2. Supplement A to Schedule T [Document Identifier 455]
3. Medicare Part D Coverage Supplement [Document Identifier 365]
4. Director and Officer Supplement [Document Identifier 505]



NONE

STATEMENT AS OF MARCH 31, 2017 OF THE Dealers Assurance Company

SCHEDULE A - VERIFICATION

Real Estate

	1 Year to Date	2 Prior Year Ended December 31
1. Book/adjusted carrying value, December 31 of prior year	1,778,518	
2. Cost of acquired:		
2.1 Actual cost at time of acquisition		2,800,000
2.2 Additional investment made after acquisition	4,400	29,224
3. Current year change in encumbrances	1,003,635	(1,003,635)
4. Total gain (loss) on disposals0
5. Deduct amounts received on disposals0
6. Total foreign exchange change in book/adjusted carrying value0
7. Deduct current year's other than temporary impairment recognized0
8. Deduct current year's depreciation	23,569	47,071
9. Book/adjusted carrying value at the end of current period (Lines 1+2+3+4-5+6-7-8)	2,762,984	1,778,518
10. Deduct total nonadmitted amounts0
11. Statement value at end of current period (Line 9 minus Line 10)	2,762,984	1,778,518

SCHEDULE B - VERIFICATION

Mortgage Loans

	1 Year to Date	2 Prior Year Ended December 31
1. Book value/recorded investment excluding accrued interest, December 31 of prior year	792,171	818,915
2. Cost of acquired:		
2.1 Actual cost at time of acquisition0
2.2 Additional investment made after acquisition0
3. Capitalized deferred interest and other0
4. Accrual of discount0
5. Unrealized valuation increase (decrease)0
6. Total gain (loss) on disposals0
7. Deduct amounts received on disposals	10,560	26,744
8. Deduct amortization of premium and mortgage interest points and commitment fees0
9. Total foreign exchange change in book value/recorded investment excluding accrued interest0
10. Deduct current year's other than temporary impairment recognized0
11. Book value/recorded investment excluding accrued interest at end of current period (Lines 1+2+3+4+5+6-7-8+9-10)	781,611	792,171
12. Total valuation allowance0
13. Subtotal (Line 11 plus Line 12)	781,611	792,171
14. Deduct total nonadmitted amounts0
15. Statement value at end of current period (Line 13 minus Line 14)	781,611	792,171

SCHEDULE BA - VERIFICATION

Other Long-Term Invested Assets

	1 Year to Date	2 Prior Year Ended December 31
1. Book/adjusted carrying value, December 31 of prior year		
2. Cost of acquired:		
2.1 Actual cost at time of acquisition		
2.2 Additional investment made after acquisition		
3. Capitalized deferred interest and other		
4. Accrual of discount		
5. Unrealized valuation increase (decrease)		
6. Total gain (loss) on disposals		
7. Deduct amounts received on disposals		
8. Deduct amortization of premium and depreciation		
9. Total foreign exchange change in book/adjusted carrying value		
10. Deduct current year's other than temporary impairment recognized		
11. Book/adjusted carrying value at end of current period (Lines 1+2+3+4+5+6-7-8+9-10)		
12. Deduct total nonadmitted amounts		
13. Statement value at end of current period (Line 11 minus Line 12)		

NONE

SCHEDULE D - VERIFICATION

Bonds and Stocks

	1 Year to Date	2 Prior Year Ended December 31
1. Book/adjusted carrying value of bonds and stocks, December 31 of prior year	88,301,899	81,027,032
2. Cost of bonds and stocks acquired	10,841,893	44,334,286
3. Accrual of discount	1,086	14,345
4. Unrealized valuation increase (decrease)	481,280	511,457
5. Total gain (loss) on disposals	109,057	193,683
6. Deduct consideration for bonds and stocks disposed of	9,677,339	37,268,993
7. Deduct amortization of premium	124,789	509,911
8. Total foreign exchange change in book/adjusted carrying value0
9. Deduct current year's other than temporary impairment recognized0
10. Book/adjusted carrying value at end of current period (Lines 1+2+3+4+5-6-7+8-9)	89,933,087	88,301,899
11. Deduct total nonadmitted amounts0
12. Statement value at end of current period (Line 10 minus Line 11)	89,933,087	88,301,899

STATEMENT AS OF MARCH 31, 2017 OF THE Dealers Assurance Company

SCHEDULE D - PART 1B

Showing the Acquisitions, Dispositions and Non-Trading Activity During the Current Quarter for all Bonds and Preferred Stock by NAIC Designation

NAIC Designation	1 Book/Adjusted Carrying Value Beginning of Current Quarter	2 Acquisitions During Current Quarter	3 Dispositions During Current Quarter	4 Non-Trading Activity During Current Quarter	5 Book/Adjusted Carrying Value End of First Quarter	6 Book/Adjusted Carrying Value End of Second Quarter	7 Book/Adjusted Carrying Value End of Third Quarter	8 Book/Adjusted Carrying Value December 31 Prior Year
BONDS								
1. NAIC 1 (a)	70,492,090	14,833,005	12,444,151	360,988	73,241,933	0	0	70,492,090
2. NAIC 2 (a)	10,420,276	26,372	325,000	(482,906)	9,638,742	0	0	10,420,276
3. NAIC 3 (a)	0	0	0	0	0	0	0	0
4. NAIC 4 (a)	0	0	0	0	0	0	0	0
5. NAIC 5 (a)	0	0	0	0	0	0	0	0
6. NAIC 6 (a)	0	0	0	0	0	0	0	0
7. Total Bonds	80,912,366	14,859,378	12,769,151	(121,918)	82,880,675	0	0	80,912,366
PREFERRED STOCK								
8. NAIC 1	371,543	113,031	20,620	4,726	468,681	0	0	371,543
9. NAIC 2	2,218,876	0	211,184	64,300	2,071,991	0	0	2,218,876
10. NAIC 3	935,351	63,156	166,479	814	832,842	0	0	935,351
11. NAIC 4	0	0	0	0	0	0	0	0
12. NAIC 5	244,275	0	0	2,571	246,846	0	0	244,275
13. NAIC 6	0	0	0	0	0	0	0	0
14. Total Preferred Stock	3,770,044	176,188	398,284	72,411	3,620,360	0	0	3,770,044
15. Total Bonds and Preferred Stock	84,682,411	15,035,565	13,167,434	(49,507)	86,501,035	0	0	84,682,411

(a) Book/Adjusted Carrying Value column for the end of the current reporting period includes the following amount of short-term and cash equivalent bonds by NAIC designation:

NAIC 1 \$ 8,748,779 ; NAIC 2 \$ 0 ; NAIC 3 \$ 0 ; NAIC 4 \$ 0 ; NAIC 5 \$ 0 ; NAIC 6 \$ 0

SCHEDULE DA - PART 1

Short-Term Investments

	1 Book/Adjusted Carrying Value	2 Par Value	3 Actual Cost	4 Interest Collected Year-to-Date	5 Paid for Accrued Interest Year-to-Date
9199999 Totals	8,748,780	XXX	8,748,841	2,991	285

SCHEDULE DA - VERIFICATION

Short-Term Investments

	1 Year To Date	2 Prior Year Ended December 31
1. Book/adjusted carrying value, December 31 of prior year	7,913,988	8,045,124
2. Cost of short-term investments acquired	7,346,282	27,938,110
3. Accrual of discount0
4. Unrealized valuation increase (decrease)0
5. Total gain (loss) on disposals0
6. Deduct consideration received on disposals	6,511,428	28,068,048
7. Deduct amortization of premium62	1,198
8. Total foreign exchange change in book/adjusted carrying value0
9. Deduct current year's other than temporary impairment recognized0
10. Book/adjusted carrying value at end of current period (Lines 1+2+3+4+5-6-7+8-9)	8,748,780	7,913,988
11. Deduct total nonadmitted amounts0
12. Statement value at end of current period (Line 10 minus Line 11)	8,748,780	7,913,988

Schedule DB - Part A - Verification - Options, Caps, Floors, Collars, Swaps and Forwards

NONE

Schedule DB - Part B - Verification - Futures Contracts

NONE

Schedule DB - Part C - Section 1 - Replication (Synthetic Asset) Transactions (RSATs) Open

NONE

Schedule DB-Part C-Section 2-Reconciliation of Replication (Synthetic Asset) Transactions Open

NONE

Schedule DB - Verification - Book/Adjusted Carrying Value, Fair Value and Potential Exposure of
Derivatives

NONE

Schedule E - Verification - Cash Equivalents

NONE

STATEMENT AS OF MARCH 31, 2017 OF THE Dealers Assurance Company
SCHEDULE A - PART 2

Showing All Real Estate ACQUIRED AND ADDITIONS MADE During the Current Quarter

1 Description of Property	2 Location		3 State	4 Date Acquired	5 Name of Vendor	6 Actual Cost at Time of Acquisition	7 Amount of Encumbrances	8 Book/Adjusted Carrying Value Less Encumbrances	9 Additional Investment Made After Acquisition
	City	Address							
Admission Bldg - Addition			IL	07/19/2017	AT&T Services Borg Design	0	0	0	2,600
Admission Bldg - Addition			IL	02/28/2017					4,400
0199999 - Acquired by Purchase									
0399999 - Totals						0	0	0	4,600

SCHEDULE A - PART 3

Showing All Real Estate DISPOSED During the Quarter, Including Payments During the Final Year on "Sales Under Contract"

1 Description of Property	2 Location		3 State	4 Disposal Date	5 Name of Purchaser	6 Actual Cost	7 Expended for Additions, Permanent Improvements and Changes in Encumbrances Prior Year	8 Book/Adjusted Carrying Value Less Encumbrances Prior Year	9 Change in Book/Adjusted Carrying Value Less Encumbrances	10 Current Year's Other Than Temporary Impairment Recognized	11 Current Year's Change in Encumbrances	12 Total Book/Adjusted Carrying Value (11-9-10)	13 Total Foreign Exchange Change in Book/Adjusted Carrying Value	14 Book/Adjusted Carrying Value Less Encumbrances on Disposal	15 Amounts Received During Year	16 Foreign Exchange Gain (Loss) on Disposal	17 Realized Gain (Loss) on Disposal	18 Total Gain (Loss) on Disposal	19 Gross Income Earned Less Interest Incurred on Encumbrances	20 Taxes, Repairs and Expenses Incurred
	City	Address																		
NONE																				
0399999 - Totals																				

STATEMENT AS OF MARCH 31, 2017 OF THE Dealers Assurance Company
SCHEDULE B - PART 2

Showing All Mortgage Loans ACQUIRED AND ADDITIONS MADE During the Current Quarter

1	2	3	4	5	6	7	8	9
Loan Number	City	State	Loan Type	Date Acquired	Rate of Interest	Actual Cost at Time of Acquisition	Additional Investment Made After Acquisition	Value of Land and Buildings
NONE								
3399999 - Totals								

SCHEDULE B - PART 3

Showing All Mortgage Loans DISPOSED, Transferred or Repaid During the Current Quarter

1	2	3	4	5	6	7	8	9	10	11	12	13	14	15	16	17	18
Loan Number	City	State	Loan Type	Date Acquired	Disposal Date	Book Value/Recorded Investment Excluding Accrued Interest Prior Year	Unrealized Valuation Increase (Decrease)	Current Year's (Amortization)/Accretion	Current Year's Other Than Temporary Impairment Recognized	Capitalized Deferred Interest and Other	Total Change in Book Value (8+9-10+11)	Total Foreign Exchange Change in Book Value	Book Value/Recorded Investment Excluding Accrued Interest on Disposal	Consolidation	Foreign Exchange Gain (Loss) on Disposal	Realized Gain (Loss) on Disposal	Total Gain (Loss) on Disposal
0001	Albany	IL		07/09/2014		0	0	0	0	0	0	0	0	0	0	0	0
0002	Mekens	IL		08/21/2014		0	0	0	0	0	0	0	0	0	0	0	0
0.2999999 - Mortgages with partial repayments																	
10.5999999 - Totals																	

Schedule BA - Part 2 - Other Long-Term Invested Assets Acquired and Additions Made

NONE

Schedule BA - Part 3 - Other Long-Term Invested Assets Disposed, Transferred or Repaid

NONE

STATEMENT AS OF MARCH 31, 2017 OF THE Dealers Assurance Company
SCHEDULE D - PART 3

Show All Long-Term Bonds and Stock Acquired During the Current Quarter

1	2	3	4	5	6	7	8	9	10
CUSIP Identification	Description	Foreign	Date Acquired	Name of Vendor	Number of Shares of Stock	Actual Cost	Par Value	Paid for Accrued Interest and Dividends	NAIC Designation or Market Indicator (a)
91202A-1A-9	UNITED STATES TREASURY		02/17/2017	CREDIT LYONNAIS SEC		188,936	200,000	859	
91202A-1A-9	UNITED STATES TREASURY		02/17/2017	HBC SEC INC, NEW YORK		206,016	200,000	683	
91202A-1A-9	UNITED STATES TREASURY		02/17/2017	HBC SEC INC, NEW YORK		222,855	225,000	1,748	
91202A-1A-9	UNITED STATES TREASURY		02/17/2017	RBC CAPITAL MARKETS, LLC		199,445	200,000	456	
91202A-1A-9	UNITED STATES TREASURY		01/30/2017	HELLS FARGO SECURITIES LLC		18,422	200,000	596	
91202A-1A-9	UNITED STATES TREASURY		02/06/2017	HELLS FARGO SECURITIES LLC		274,933	275,000	100	
91202A-1A-9	UNITED STATES TREASURY		02/29/2017	HELLS FARGO SECURITIES LLC		295,049	295,000	742	
0599999 Subtotal - U.S. Governments						1,558,597	1,550,000	4,592	XXX
31904A-1A-7	FR 126B 22 - OMS		02/20/2017	LOOP CAPITAL MARKETS LLC		261,417	505,000	112	
31904A-1A-8	FR 196B 12 - OMS		02/29/2017	VARIOUS		841,635	835,000	440	
31904A-1A-4	FR 102D 12 - OMS		02/29/2017	MORGAN STANLEY & CO INC, NY		262,300	600,000	79	XXX
3199999 Subtotal - U.S. Special Revenues						1,865,372	1,790,000	651	XXX
02007A-1A-5	ALVIA 171 M - MS		01/24/2017	CITIGROUP GLOBAL MARKETS INC.		374,930	375,000	50	FE
02007A-1A-5	AMHREIT INC		01/30/2017	HELLS FARGO SECURITIES LLC		79,666	75,000	51	FE
02007A-1A-5	BB CAPITAL MARKETS PC		02/01/2017	HELLS FARGO SECURITIES LLC		115,700	115,000	58	FE
02007A-1A-5	BERSHIRE HATHAWAY INC		02/01/2017	FERRELLS & CO, NEW YORK		15,720	15,000	56	FE
02007A-1A-5	BLACKROCK INC		01/27/2017	HELLS FARGO SECURITIES LLC		85,000	85,000	1,479	FE
02007A-1A-5	BREINZ CO		01/27/2017	MILLENNIUM ADVISORS, LLC		76,151	70,000	496	FE
02007A-1A-5	CARRI 171 M - MS		01/30/2017	MORGAN STANLEY & CO INC, NY		119,366	120,000	244	FE
02007A-1A-5	CHEVRON CORP		01/25/2017	BARCLAYS CAPITAL INC		459,854	460,000	50	FE
02007A-1A-5	COSTCO WHOLESALE CORP		01/30/2017	HELLS FARGO SECURITIES LLC		192,366	190,000	3,688	FE
02007A-1A-5	HUE DEPTV INC		01/30/2017	Brownstone Investment Group LLC		620,566	625,000	6,523	FE
02007A-1A-5	JPMORGAN CHASE & CO		01/30/2017	RBC CAPITAL MARKETS		110,969	110,000	297	FE
02007A-1A-5	KEYX & CO INC		01/27/2017	J.P. MORGAN SECURITIES LLC		14,363	70,000	77	FE
02007A-1A-5	MORGAN STANLEY		01/27/2017	MILLENNIUM ADVISORS, LLC		319,940	320,000	84	FE
02007A-1A-5	PEPSICO INC		01/30/2017	MARITIMEAS CORPORATION		111,003	110,000	61	FE
02007A-1A-5	ROYAL BANK OF CANADA		01/30/2017	US BANKCORP		102,900	100,000	100	FE
02007A-1A-5	SHELL INTERNATIONAL FINNKE BV		01/27/2017	MARITIMEAS CORPORATION		120,378	120,000	100	FE
02007A-1A-5	TARGET CORP		01/27/2017	MILLENNIUM ADVISORS, LLC		84,214	85,000	345	FE
02007A-1A-5	INTERHEALTH GRP INC		01/30/2017	J.P. MORGAN CHASE BANK/HESSI		290,643	295,000	349	FE
02007A-1A-5	LOTE BERYL CO		01/30/2017	BANK 7 AMERICA SECUR. LLC, MNT.		111,862	110,000	140	FE
3899999 Subtotal - Bonds - Industrial and Miscellaneous (Unaffiliated)						4,128,795	4,085,000	17,629	XXX
26331A-1A-7	LOTE BERYL CO		03/31/2017	HELLS FARGO SECURITIES LLC		26,372	1,014	0	FE
4899999 Subtotal - Bonds - Hybrid Securities						26,372	1,014	0	XXX
8399997 Total - Bonds - Part 3						7,513,096	7,426,014	22,852	XXX
8399998 Total - Bonds - Part 5						XXX	XXX	XXX	XXX
8399999 Total - Bonds						7,513,096	7,426,014	22,852	XXX
16340A-1A-6	CHINA INVESTMENT CORP		03/13/2017	VARIOUS		113,031	0.00	0	XXX
61761A-1A-1	MORGAN STANLEY		01/26/2017	Stifel, Nicolaus & Co.		63,156	0.00	0	PLFE
8499999 Subtotal - Preferred Stocks - Industrial and Miscellaneous (Unaffiliated)						176,188	XXX	0	XXX
8999997 Total - Preferred Stocks - Part 3						176,188	XXX	0	XXX
8999998 Total - Preferred Stocks - Part 5						XXX	XXX	XXX	XXX
8999999 Total - Preferred Stocks						176,188	XXX	0	XXX
02007A-1A-9	AMEREN CORP		01/13/2017	CSFTI CAPITAL MARKETS		389,000	400,000	0	
02007A-1A-9	AMEREN CORP		01/13/2017	Stifel, Nicolaus & Co.		45,174	50,000	0	
02007A-1A-9	AMEREN CORP		01/13/2017	VARIOUS		66,791	66,791	0	
02007A-1A-9	AMEREN CORP		01/11/2017	UBS SECURITIES LLC, STAMFORD		12,025	12,025	0	
02007A-1A-9	AMEREN CORP		01/11/2017	Strategic Securities LLC		36,910	36,910	0	
02007A-1A-9	AMEREN CORP		03/09/2017	VARIOUS		1,114,000	1,114,000	44,916	
02007A-1A-9	AMEREN CORP		01/20/2017	SI OWEN SECURITIES CORP		3,396	3,396	0	
02007A-1A-9	AMEREN CORP		01/11/2017	Strategic Securities LLC		548,000	548,000	0	
02007A-1A-9	AMEREN CORP		02/09/2017	J.P. MORGAN SECURITIES INC.		22,334	22,334	0	
02007A-1A-9	AMEREN CORP		01/05/2017	Stifel, Nicolaus & Co.		16,346	16,346	0	
02007A-1A-9	AMEREN CORP		01/11/2017	Stifel, Nicolaus & Co./J.P. MORGAN IN		790,000	790,000	0	
02007A-1A-9	AMEREN CORP		01/11/2017	Strategic Securities LLC		4,900	4,900	0	
02007A-1A-9	AMEREN CORP		02/16/2017	INSTR		68,309	68,309	0	
02007A-1A-9	AMEREN CORP		03/24/2017	Stifel, Nicolaus & Co.		83,598	83,598	0	

STATEMENT AS OF MARCH 31, 2017 OF THE Dealers Assurance Company
SCHEDULE D - PART 3

Show All Long-Term Bonds and Stock Acquired During the Current Quarter

1	2	3	4	5	6	7	8	9	10
CUSIP Identification	Description	Foreign	Date Acquired	Name of Vendor	Number of Shares of Stock	Actual Cost	Par Value	Paid for Accrued Interest and Dividends	NAIC Designation or Market Indicator
31092A-10-8	CONCRETE FIN FINANC CL A ORD		01/11/2017	Strategis Securities LLC	38,000	5,691			
21886-10-5	COSTCO WHOLESALE ORD		01/11/2017	Strategis Securities LLC	35,000	5,855			
24687-10-6	WALT DISNEY ORD		03/24/2017	VARIOUS	717,000	30,375			
25512-10-9	ELECTRONIC ARTS ORD		02/10/2017	VARIOUS	430,000	34,546			
26104-10-6	EMPIRE STATE REALTY CL A REIT		01/23/2017	VARIOUS	580,000	11,761			
26294-10-5	EMPIRE ORD		02/27/2017	Unknown	2,740,440	87,295			
31619-10-1	EDELSON ORD		01/11/2017	US SECURITIES LLC, SWMFRD	190,000	5,640			
41615-10-4	HARFORD FINANCIAL SERVICES GRP ORD		01/11/2017	Strategis Securities LLC	70,000	3,389			
42709-10-2	HUE DEPOT ORD		02/09/2017	VARIOUS	963,000	29,077			
43000-10-1	INTERNATIONAL BUSINESS MACHINES ORD		02/09/2017	VARIOUS	1,000,000	34,000			
430146-10-3	INTERNATIONAL PAPER ORD		02/09/2017	P. MORGAN SECURITIES INC.	742,000	31,000			
52457-10-8	ELI LILLY ORD		01/11/2017	Stifel Nicolaus & Co.	1,611,000	92,514			
571905-30-2	MARRIOTT INTERNATIONAL CL A ORD		02/09/2017	Strategis Securities LLC	50,000	6,140			
56112-10-3	MICRON TECHNOLOGY ORD		01/11/2017	P. MORGAN SECURITIES INC.	508,000	4,143			
670669-10-4	INDIA ORD		01/11/2017	Strategis Securities LLC	2,110,000	48,040			
665475-10-5	PNC FINANCIAL SERVICES GROUP ORD		01/05/2017	Strategis Securities LLC	457,000	46,196			
72397-10-1	PUMPERNORD RESERVE ORD		02/09/2017	Stifel Nicolaus & Co.	519,000	50,338			
71325-10-3	ROCKWELL AUTOMOTIVE ORD		01/11/2017	VARIOUS	428,000	77,942			
71325-10-3	ROCKWELL AUTOMOTIVE ORD		01/11/2017	VARIOUS	1,700,000	18,200			
80852-10-8	SCHLUMBERGER ORD		01/18/2017	Strategis Securities LLC	130,000	11,930			
814039-10-0	TAYAN SEMICONDUCTOR MFG GR S ORD		01/11/2017	Strategis Securities LLC	370,000	11,034			
881609-10-1	TESARO ORD		01/31/2017	LEBRINK SHANN AND OMRN	32,000	9,958			
881609-10-1	TESARO ORD		02/01/2017	VARIOUS	340,000	27,839			
912873-30-1	US BANKCORP ORD		02/09/2017	P. MORGAN SECURITIES INC.	1,273,000	66,211			
917818-10-8	UNITED PACIFIC ORD		01/25/2017	Stifel Nicolaus & Co.	207,000	22,727			
91346-10-2	UNITED TECHNOLOGIES ORD		02/15/2017	VARIOUS	373,000	39,273			
92746-10-9	WELLS FARGO ORD		01/24/2017	VARIOUS	30,000	6,483			
92746-10-9	WELLS FARGO ORD		01/24/2017	BURNS BK SEC INC. (N63038)	28,000	6,875			
017715-10-8	ALLEGIAN ORD		01/11/2017	US SECURITIES LLC, SWMFRD	28,000	6,175			
015115-10-8	ACERBIDE CL A ORD		01/11/2017	US SECURITIES LLC, SWMFRD	6,000	663			
10827-10-9	BROUCCOR ORD		03/09/2017	VARIOUS	665,000	145,187			
90199999-9 Subtotal - Common Stocks - Industrial and Miscellaneous (Unaffiliated)						2,132,143	XXX		XXX
91061-05-2	GRA (BIR HELLON, N.J., WEBER FUND)		03/31/2017	Direct	1,030,466,160	1,030,466	XXX		XXX
93199999-9 Subtotal - Common Stocks - Money Market Mutual Funds						1,030,466	XXX		XXX
97199999-7 Total - Common Stocks - Part 3						3,183,609	XXX		XXX
97199999-8 Total - Common Stocks - Part 5						XXX	XXX	XXX	XXX
97199999-9 Total - Common Stocks						3,182,609	XXX		XXX
99199999-9 Total - Preferred and Common Stocks						3,288,796	XXX		XXX
99199999-9 Totals						10,841,883	XXX	22,882	XXX

(a) For all common stock bearing the NAIC market indicator "U" provide the number of such issues

STATEMENT AS OF MARCH 31, 2017 OF THE Dealers Assurance Company
SCHEDULE D - PART 4

Show All Long-Term Bonds and Stock Sold, Redeemed or Otherwise Disposed of During the Current Quarter

1	2	3	4	5	6	7	8	9	10	11	12	13	14	15	16	17	18	19	20	21	22	
CUSIP Identification	Description	For: Designation	Disposal Date	Name of Purchaser	Number of Shares of Stock	Consideration	Par Value	Actual Cost	Prior Year Book/Adjusted Carrying Value	Unrealized Valuation (Increase/Decrease)	Current Year's (Amortization)/Accretion	Current Other Than Temporary Impairment Recognized	Total Change in Book/Adjusted Carrying Value (11 + 12 - 13)	Total Foreign Exchange Change in Book/Adjusted Carrying Value	Book/Adjusted Carrying Value at Disposal Date	Foreign Exchange Gain (Loss) on Disposal	Realized Gain (Loss) on Disposal	Total Gain (Loss) on Disposal	Bond Interest/Stock Dividends Received During Year	Stated Contractual Maturity Date	NAIC Designation or Market Indicator (a)	
05999999	Subtotal - U.S. Governments																					
312887-31-0	UNITED STATES TREASURY		02/26/2017	Maturity \$ 100.0	150,000	150,000	150,410	150,022	10,022	(22)	(22)	0	(22)	0	150,000	0	0	0	696	02/28/2017	XXX	
312887-38-3	UNITED STATES TREASURY		03/01/2017	Maturity \$ 99,988	20,000	20,000	20,172	20,225	20,225	(25)	(25)	0	(25)	0	20,000	0	0	0	1,000	03/01/2017	XXX	
312887-48-8	FH 92520 - RBS		03/01/2017	Paidown	39,000	39,000	39,192	39,247	39,247	0	(247)	0	(247)	0	39,000	0	0	0	1,659	03/01/2017	XXX	
312887-52-3	FH 92520 - RBS		03/01/2017	Paidown	5,480	5,480	5,480	5,481	5,481	(1)	(1)	0	(1)	0	5,480	0	0	(760)	0	0	01/20/2017	XXX
312887-54-3	FH 92520 - RBS		03/01/2017	Paidown	25,081	25,081	25,081	25,081	25,081	(2)	(2)	0	(2)	0	25,081	0	0	(1,841)	0	0	03/01/2017	XXX
313000-01-3	FH 93075 - COO/RMS		01/30/2017	M&B/BS	386,000	386,000	386,000	385,917	385,917	(107)	(107)	0	(107)	0	386,000	0	0	0	2,469	01/30/2017	FE	
313000-01-3	FH 93075 - COO/RMS		03/01/2017	Paidown	825	825	825	817	817	0	(1)	0	(1)	0	825	0	0	(82)	0	0	03/01/2017	FE
313000-01-6	FH 93075 - RBS		03/01/2017	Paidown	4,928	4,928	4,928	5,699	5,699	(1)	(1)	0	(1)	0	4,928	0	0	(770)	23	11/01/2038	L	
313000-01-6	FH 93075 - RBS		03/01/2017	Paidown	5,585	5,585	5,585	5,669	5,669	(1)	(1)	0	(1)	0	5,585	0	0	(75)	26	11/01/2017	L	
313000-01-6	FH 93075 - RBS		03/01/2017	Paidown	7,437	7,437	7,437	7,724	7,724	(1)	(1)	0	(1)	0	7,437	0	0	(287)	20	11/01/2026	L	
313000-01-6	FH 93075 - RBS		03/01/2017	Paidown	11,741	11,741	12,511	12,808	12,808	(1)	(1)	0	(1)	0	11,741	0	0	(1,064)	27	07/01/2041	L	
313000-01-6	FH 93075 - RBS		03/01/2017	Paidown	8,868	8,868	9,458	9,984	9,984	(1)	(1)	0	(1)	0	8,868	0	0	(705)	28	05/01/2041	L	
313000-01-6	FH 93075 - RBS		03/01/2017	Paidown	8,472	8,472	9,129	9,311	9,311	(2)	(2)	0	(2)	0	8,472	0	0	(837)	35	11/01/2033	L	
313000-01-6	FH 93075 - RBS		03/01/2017	Paidown	9,913	9,913	10,736	10,918	10,918	(1)	(1)	0	(1)	0	9,913	0	0	(1,266)	20	03/01/2038	L	
313000-01-6	FH 93075 - RBS		03/01/2017	Paidown	732	732	732	731	731	(1)	(1)	0	(1)	0	732	0	0	(185)	3	02/01/2037	L	
313000-01-6	FH 93075 - RBS		03/01/2017	Paidown	4,297	4,297	4,718	4,887	4,887	(1)	(1)	0	(1)	0	4,297	0	0	(688)	22	05/01/2038	L	
313000-01-6	FH 93075 - RBS		03/01/2017	Paidown	543	543	575	574	574	(1)	(1)	0	(1)	0	543	0	0	(31)	2	05/01/2024	L	
313000-01-6	FH 93075 - RBS		03/01/2017	Paidown	10,231	10,231	11,190	10,551	10,551	(17)	(17)	0	(17)	0	10,231	0	0	(304)	51	01/01/2021	L	
313000-01-6	FH 93075 - RBS		03/01/2017	Paidown	846	846	898	899	899	(1)	(1)	0	(1)	0	846	0	0	(53)	4	01/01/2024	L	
313000-01-6	FH 93075 - RBS		03/01/2017	Paidown	921	921	977	988	988	(1)	(1)	0	(1)	0	921	0	0	(77)	3	02/01/2039	L	
313000-01-6	FH 93075 - RBS		03/01/2017	Paidown	7,513	7,513	8,046	8,012	8,012	(3)	(3)	0	(3)	0	7,513	0	0	(466)	25	02/01/2025	L	
313000-01-6	FH 93075 - RBS		03/01/2017	Paidown	3,289	3,289	3,426	3,411	3,411	(3)	(3)	0	(3)	0	3,289	0	0	(272)	15	02/01/2026	L	
31999999	Subtotal - Bonds - U.S. Special Revenues				771,778	771,778	782,250	782,362	782,362	(10)	(10)	0	(10)	0	782,223	0	0	(10,443)	4,003	03/01/2017	XXX	
33332-03-5	ATMORF INC		01/15/2017	Maturity \$ 100.0	35,000	35,000	34,936	34,989	34,989	0	0	0	0	0	35,000	0	0	0	2,113	01/15/2017	FE	
33332-03-5	ATMORF INC		01/15/2017	Maturity \$ 100.0	36,000	36,000	35,936	35,989	35,989	0	0	0	0	0	36,000	0	0	0	2,113	01/15/2017	FE	
33332-03-5	ATMORF INC		01/15/2017	Maturity \$ 100.0	37,000	37,000	36,936	36,989	36,989	0	0	0	0	0	37,000	0	0	0	2,113	01/15/2017	FE	
33332-03-5	ATMORF INC		01/15/2017	Maturity \$ 100.0	38,000	38,000	37,936	37,989	37,989	0	0	0	0	0	38,000	0	0	0	2,113	01/15/2017	FE	
33332-03-5	ATMORF INC		01/15/2017	Maturity \$ 100.0	39,000	39,000	38,936	38,989	38,989	0	0	0	0	0	39,000	0	0	0	2,113	01/15/2017	FE	
33332-03-5	ATMORF INC		01/15/2017	Maturity \$ 100.0	40,000	40,000	39,936	39,989	39,989	0	0	0	0	0	40,000	0	0	0	2,113	01/15/2017	FE	
33332-03-5	ATMORF INC		01/15/2017	Maturity \$ 100.0	41,000	41,000	40,936	40,989	40,989	0	0	0	0	0	41,000	0	0	0	2,113	01/15/2017	FE	
33332-03-5	ATMORF INC		01/15/2017	Maturity \$ 100.0	42,000	42,000	41,936	41,989	41,989	0	0	0	0	0	42,000	0	0	0	2,113	01/15/2017	FE	
33332-03-5	ATMORF INC		01/15/2017	Maturity \$ 100.0	43,000	43,000	42,936	42,989	42,989	0	0	0	0	0	43,000	0	0	0	2,113	01/15/2017	FE	
33332-03-5	ATMORF INC		01/15/2017	Maturity \$ 100.0	44,000	44,000	43,936	43,989	43,989	0	0	0	0	0	44,000	0	0	0	2,113	01/15/2017	FE	
33332-03-5	ATMORF INC		01/15/2017	Maturity \$ 100.0	45,000	45,000	44,936	44,989	44,989	0	0	0	0	0	45,000	0	0	0	2,113	01/15/2017	FE	
33332-03-5	ATMORF INC		01/15/2017	Maturity \$ 100.0	46,000	46,000	45,936	45,989	45,989	0	0	0	0	0	46,000	0	0	0	2,113	01/15/2017	FE	
33332-03-5	ATMORF INC		01/15/2017	Maturity \$ 100.0	47,000	47,000	46,936	46,989	46,989	0	0	0	0	0	47,000	0	0	0	2,113	01/15/2017	FE	
33332-03-5	ATMORF INC		01/15/2017	Maturity \$ 100.0	48,000	48,000	47,936	47,989	47,989	0	0	0	0	0	48,000	0	0	0	2,113	01/15/2017	FE	
33332-03-5	ATMORF INC		01/15/2017	Maturity \$ 100.0	49,000	49,000	48,936	48,989	48,989	0	0	0	0	0	49,000	0	0	0	2,113	01/15/2017	FE	
33332-03-5	ATMORF INC		01/15/2017	Maturity \$ 100.0	50,000	50,000	49,936	49,989	49,989	0	0	0	0	0	50,000	0	0	0	2,113	01/15/2017	FE	
33332-03-5	ATMORF INC		01/15/2017	Maturity \$ 100.0	51,000	51,000	50,936	50,989	50,989	0	0	0	0	0	51,000	0	0	0	2,113	01/15/2017	FE	
33332-03-5	ATMORF INC		01/15/2017	Maturity \$ 100.0	52,000	52,000	51,936	51,989	51,989	0	0	0	0	0	52,000	0	0	0	2,113	01/15/2017	FE	
33332-03-5	ATMORF INC		01/15/2017	Maturity \$ 100.0	53,000	53,000	52,936	52,989	52,989	0	0	0	0	0	53,000	0	0	0	2,113	01/15/2017	FE	
33332-03-5	ATMORF INC		01/15/2017	Maturity \$ 100.0	54,000	54,000	53,936	53,989	53,989	0	0	0	0	0	54,000	0	0	0	2,113	01/15/2017	FE	
33332-03-5	ATMORF INC		01/15/2017	Maturity \$ 100.0	55,000	55,000	54,936	54,989	54,989	0	0	0	0	0	55,000	0	0	0	2,113	01/15/2017	FE	
33332-03-5	ATMORF INC		01/15/2017	Maturity \$ 100.0	56,000	56,000	55,936	55,989	55,989	0	0	0	0	0	56,000	0	0	0	2,113	01/15/2017	FE	
33332-03-5	ATMORF INC		01/15/2017	Maturity \$ 100.0	57,000	57,000	56,936	56,989	56,989	0	0	0	0	0	57,000	0	0	0	2,113	01/15/2017	FE	
33332-03-5	ATMORF INC		01/15/2017	Maturity \$ 100.0	58,000	58,000	57,936	57,989	57,989	0	0	0	0	0	58,000	0	0	0	2,113	01/15/2017	FE	
33332-03-5	ATMORF INC		01/15/2017	Maturity \$ 100.0	59,000	59,000	58,936	58,989	58,989	0	0	0	0	0	59,000	0	0	0	2,113	01/15/2017	FE	
33332-03-5	ATMORF INC		01/15/2017	Maturity \$ 100.0	60,000	60,000	59,936	59,989	59,989	0	0	0	0	0	60,000	0	0	0	2,113	01/15/2017	FE	
33332-03-5	ATMORF INC		01/15/2017	Maturity \$ 100.0	61,000	61,000	60,936	60,989	60,989	0	0	0	0	0	61,000	0	0	0	2,113	01/15/2017	FE	
33332-03-5	ATMORF INC		01/15/2017	Maturity \$ 100.0	62,000	62,000	61,936	61,989	61,989	0	0	0	0	0	62,000							

STATEMENT AS OF MARCH 31, 2017 OF THE Dealers Assurance Company
SCHEDULE D - PART 4

Show All Long-Term Bonds and Stock Sold, Redeemed or Otherwise Disposed of During the Current Quarter

1	2	3	4	5	6	7	8	9	10	11	12	13	14	15	16	17	18	19	20	21	22	
CUSIP Identification	Description	Foreign Origin	For: Disposal Date	Name of Purchaser	Number of Shares of Stock	Consideration	Par Value	Actual Cost	Prior Year Book/Adjusted Carrying Value	Unrealized Valuation Increase/(Decrease)/Accretion	Current Year's (Amortization)/Accretion	Current Year's Other Than Temporary Impairment Recognized	Total Change in Book/Adjusted Carrying Value (11 + 12 - 13)	Total Foreign Exchange Change in Book/Adjusted Carrying Value	Book/Adjusted Carrying Value at Disposal Date	Foreign Exchange Gain (Loss) on Disposal	Realized Gain (Loss) on Disposal	Total Gain (Loss) on Disposal	Bond Interest/Dividends Received During Year	Stated Contractual Maturity Date	NAIC Designation or Market Indicator (a)	
84999997	Subtotal - Preferred Stocks - Industrial and Miscellaneous (Unaffiliated)																					
8999997	Total - Preferred Stocks - Part 4																					
8999998	Total - Preferred Stocks - Part 5																					
0008F-10-2	AT&T PFD		02/21/2017	VARIOUS	20,000	403,285	XXX	389,314	389,046	5,238	(1,848)	0	3,420	0	389,294	0	5,001	5,001	4,111	XXX	XXX	
00284-10-0	ABBOTT LABORATORIES PFD		02/15/2017	Strategic Securities LLC	10,000	411	XXX	389,314	389,046	5,238	(1,848)	0	3,420	0	389,294	0	5,001	5,001	4,111	XXX	XXX	
0079F-10-1	ADDC SYSTEM PFD		02/21/2017	VARIOUS	9,000	915	XXX	XXX	XXX	XXX	XXX	XXX	XXX	XXX	XXX	XXX	XXX	XXX	XXX	XXX	XXX	XXX
0079F-10-1	ADDC SYSTEM PFD		02/21/2017	US SECURITIES LLC	9,000	915	XXX	XXX	XXX	XXX	XXX	XXX	XXX	XXX	XXX	XXX	XXX	XXX	XXX	XXX	XXX	XXX
0079F-10-1	ADDC SYSTEM PFD		01/11/2017	STAMPFORD	12,000	361	XXX	XXX	XXX	XXX	XXX	XXX	XXX	XXX	XXX	XXX	XXX	XXX	XXX	XXX	XXX	XXX
0087F-10-6	AETNA PFD		01/27/2017	US SECURITIES LLC	170,000	20,888	XXX	17,811	21,082	(3,271)	0	(3,271)	0	17,811	0	3,067	3,067	43	0	XXX	XXX	
0088F-10-1	AILENT TECHNOLOGIES PFD		03/24/2017	Strategic Securities LLC	200,000	8,818	XXX	8,412	9,112	(700)	0	(700)	0	8,412	0	1,406	1,406	26	0	XXX	XXX	
0095B-10-6	AIR PRODUCTS NO CHEMICALS PFD		03/24/2017	Stifel Nicolaus & Co.	173,000	20,613	XXX	25,016	24,811	196	0	196	0	25,016	0	(1,403)	(1,403)	149	0	XXX	XXX	
0155F-10-9	ALEXION PHARMACEUTICALS PFD		02/21/2017	SET FINANCIAL SERVICES	3,000	383	XXX	415	0	0	0	0	0	415	0	(2)	(2)	0	0	XXX	XXX	
0207K-3-5	ALPHABET CL A PFD		03/24/2017	Stifel Nicolaus & Co.	5,000	46,234	XXX	35,750	43,565	(7,814)	0	(7,814)	0	35,750	0	10,484	10,484	0	0	XXX	XXX	
0207K-3-5	ALPHABET CL A PFD		02/21/2017	VARIOUS	23,000	9,014	XXX	14,340	18,228	(3,888)	0	(3,888)	0	14,340	0	4,674	4,674	0	0	XXX	XXX	
0213F-10-6	AMGEN PFD		02/21/2017	VARIOUS	2,000	1,650	XXX	746	1,300	(346)	0	(346)	0	746	0	91	91	0	0	XXX	XXX	
0213F-10-6	AMGEN PFD		02/21/2017	SET FINANCIAL SERVICES	2,000	1,650	XXX	746	1,300	(346)	0	(346)	0	746	0	91	91	0	0	XXX	XXX	
0304D-10-3	AMERICAN WATER WORKS PFD		01/05/2017	Stifel Nicolaus & Co.	346,000	61,848	XXX	45,975	51,044	(5,069)	0	(5,069)	0	45,975	0	15,973	15,973	0	0	XXX	XXX	
0316Z-10-0	AMEN PFD		01/11/2017	US SECURITIES LLC	76,000	12,023	XXX	11,971	11,112	859	0	859	0	11,971	0	52	52	0	0	XXX	XXX	
0373S-10-0	APPLE PFD		02/21/2017	VARIOUS	69,000	8,262	XXX	8,529	7,592	937	0	937	0	8,529	0	(267)	(267)	0	0	XXX	XXX	
0605S-10-4	BANK OF AMERICA PFD		02/21/2017	VARIOUS	560,000	12,539	XXX	9,061	12,376	(3,315)	0	(3,315)	0	9,061	0	3,779	3,779	0	0	XXX	XXX	
0605S-10-4	BANK OF AMERICA PFD		01/11/2017	US SECURITIES LLC	54,000	5,883	XXX	18,596	15,313	3,282	0	3,282	0	18,596	0	(2,712)	(2,712)	0	0	XXX	XXX	
0605S-10-4	BANK OF AMERICA PFD		01/11/2017	SET FINANCIAL SERVICES	54,000	5,883	XXX	18,596	15,313	3,282	0	3,282	0	18,596	0	(2,712)	(2,712)	0	0	XXX	XXX	
1012Z-10-6	BENTON FRERS SOUTH PFD		02/21/2017	SET FINANCIAL SERVICES	10,000	536	XXX	501	584	(83)	0	(83)	0	501	0	(83)	(83)	0	0	XXX	XXX	
1252Z-10-3	BOE GROUP CL A PFD		01/20/2017	PERKINS LLC	1,000	116	XXX	104	115	(12)	0	(12)	0	104	0	11	11	0	0	XXX	XXX	
1279F-10-3	CB&I OIL & GAS PFD		02/21/2017	SET FINANCIAL SERVICES	10,000	227	XXX	219	0	0	0	0	0	219	0	8	8	0	0	XXX	XXX	
1500F-10-3	CELANESE SR A PFD		01/11/2017	Strategic Securities LLC	10,000	823	XXX	576	787	(211)	0	(211)	0	576	0	247	247	0	0	XXX	XXX	
1502F-10-4	CELEBRE PFD		02/21/2017	SET FINANCIAL SERVICES	3,000	361	XXX	357	347	9	0	9	0	357	0	5	5	0	0	XXX	XXX	
1657K-10-0	CERBERUS PFD		03/10/2017	VARIOUS	5,000	588	XXX	499	598	(99)	0	(99)	0	499	0	99	99	0	0	XXX	XXX	
1729F-10-2	CISCO SYSTEMS PFD		01/25/2017	PERKINS LLC	3,000	30	XXX	28	30	(2)	0	(2)	0	28	0	2	2	0	0	XXX	XXX	
1740F-10-5	CITIZENS FINANCIAL GROUP PFD		02/21/2017	VARIOUS	350,000	12,669	XXX	6,943	12,471	(6,527)	0	(6,527)	0	6,943	0	5,756	5,756	0	0	XXX	XXX	
1824E-10-2	COGNATE TECHNOLOGY SOUTH CL A PFD		01/11/2017	US SECURITIES LLC	140,000	7,923	XXX	7,132	7,844	(713)	0	(713)	0	7,132	0	791	791	0	0	XXX	XXX	
2003N-10-1	CONIGAT CL A PFD		02/21/2017	VARIOUS	110,000	7,476	XXX	6,226	7,250	(1,024)	0	(1,024)	0	6,226	0	1,247	1,247	0	0	XXX	XXX	
2103P-10-8	CORRELATION BONDS CL A PFD		02/23/2017	SET FINANCIAL SERVICES	2,000	320	XXX	261	317	(56)	0	(56)	0	261	0	58	58	0	0	XXX	XXX	
2193D-10-5	CORNING PFD		01/20/2017	VARIOUS	1,802,000	43,929	XXX	41,395	43,735	(340)	0	(340)	0	41,395	0	2,533	2,533	0	0	XXX	XXX	
2193D-10-5	CORNING PFD		01/20/2017	SET FINANCIAL SERVICES	1,802,000	43,929	XXX	41,395	43,735	(340)	0	(340)	0	41,395	0	2,533	2,533	0	0	XXX	XXX	
2200K-10-5	COSTO WHOLESALE PFD		02/24/2017	SET FINANCIAL SERVICES	3,000	530	XXX	449	460	(11)	0	(11)	0	449	0	81	81	0	0	XXX	XXX	
2333B-10-2	DIGS SPORTING PFD		03/01/2017	VARIOUS	4,061,000	196,659	XXX	190,214	215,639	(25,426)	0	(25,426)	0	190,214	0	9,456	9,456	0	0	XXX	XXX	
2548F-10-6	MIL DISNEY PFD		02/21/2017	SET FINANCIAL SERVICES	4,000	440	XXX	414	417	(23)	0	(23)	0	414	0	26	26	0	0	XXX	XXX	
2654S-10-3	DM CHEMICAL PFD		02/21/2017	VARIOUS	20,000	1,192	XXX	893	1,144	(181)	0	(181)	0	893	0	208	208	0	0	XXX	XXX	
2657F-10-8	DINEEN PFD		01/11/2017	Strategic Securities LLC	1,500,000	14,335	XXX	23,703	12,680	11,013	0	11,013	0	23,703	0	(9,367)	(9,367)	0	0	XXX	XXX	
2679F-10-1	EOG RESOURCES PFD		01/31/2017	PERKINS LLC	1,000	106	XXX	88	101	(13)	0	(13)	0	88	0	19	19	0	0	XXX	XXX	
2920M-10-5	EMERSON PFD		03/06/2017	Not Available	0	15	XXX	0	0	0	0	0	0	0	13	0	5	5	0	0	XXX	XXX

STATEMENT AS OF MARCH 31, 2017 OF THE Dealers Assurance Company
SCHEDULE D - PART 4

Show All Long-Term Bonds and Stock Sold, Redeemed or Otherwise Disposed of During the Current Quarter

1	2	3	4	5	6	7	8	9	10	11	12	13	14			15	16	17	18	19	20	21	22
													Total Change in Book/Adjusted Carrying Value (11 + 12 - 13)	Total Book/Adjusted Carrying Value (11 + 12 - 13)	Total Foreign Exchange Change in Book/Adjusted Carrying Value								
201814-10-1	FELDAI ORD		03/10/2017	SET FINANCIAL SERVICES	10,000			203	355	0	0	0	0	0	203	0	54	0	54	0			
201814-10-2	EXCEL MARK ORD		03/10/2017	VARIOUS	100,000	357		163,235	129,897	(18)	0	0	0	0	163,235	0	1,129	0	1,129	0	1,513		
201814-10-3	VARIOUS		02/21/2017	VARIOUS	2,000,000	155		10,420	15,847	(15,871)	0	0	0	0	10,420	0	6,520	0	6,520	0	0		
201814-10-4	FEDERAL CL A ORD		02/21/2017	VARIOUS	10,000	101,013		10,000	15,847	(15,871)	0	0	0	0	10,000	0	1,224	0	1,224	0	0		
201814-10-5	GENERAL ELECTRIC ORD		02/21/2017	VARIOUS	5,086,000	151,543		156,006	161,607	(5,081)	0	0	0	0	156,006	0	(4,463)	0	(4,463)	0	0		
201814-10-6	GENERAL HILLS ORD		03/15/2017	VARIOUS	776,000	47,202		47,304	47,304	(5,587)	0	0	0	0	42,347	0	4,856	0	4,856	0	0		
201816-10-1	VARIOUS		02/21/2017	VARIOUS	10,000	7,138		5,508	7,032	(1,438)	0	0	0	0	5,508	0	1,545	0	1,545	0	0		
201816-10-2	SET FINANCIAL SERVICES		02/21/2017	SET FINANCIAL SERVICES	10,000			42	47	(5)	0	0	0	0	42	0	0	0	0	0	0		
201816-10-3	HARRISON FINANCIAL SERVICES GRP ORD		02/21/2017	VARIOUS	5,000	542		869	304	(18)	0	0	0	0	569	0	0	0	0	0	0		
201816-10-4	HOMERIGHT ORD		02/21/2017	VARIOUS	5,000	542		869	304	(18)	0	0	0	0	569	0	0	0	0	0	0		
201816-10-5	HOMERIGHT ORD		02/21/2017	VARIOUS	5,000	542		869	304	(18)	0	0	0	0	569	0	0	0	0	0	0		
201816-10-6	HOMERIGHT ORD		02/21/2017	VARIOUS	5,000	542		869	304	(18)	0	0	0	0	569	0	0	0	0	0	0		
201816-10-7	ILLINOIS TOOL ORD		02/21/2017	VARIOUS	5,000	542		869	304	(18)	0	0	0	0	569	0	0	0	0	0	0		
201816-10-8	ILLINOIS TOOL ORD		02/21/2017	VARIOUS	5,000	542		869	304	(18)	0	0	0	0	569	0	0	0	0	0	0		
201816-10-9	ILLINOIS TOOL ORD		02/21/2017	VARIOUS	5,000	542		869	304	(18)	0	0	0	0	569	0	0	0	0	0	0		
201816-10-10	ILLINOIS TOOL ORD		02/21/2017	VARIOUS	5,000	542		869	304	(18)	0	0	0	0	569	0	0	0	0	0	0		
201816-10-11	ILLINOIS TOOL ORD		02/21/2017	VARIOUS	5,000	542		869	304	(18)	0	0	0	0	569	0	0	0	0	0	0		
201816-10-12	ILLINOIS TOOL ORD		02/21/2017	VARIOUS	5,000	542		869	304	(18)	0	0	0	0	569	0	0	0	0	0	0		
201816-10-13	ILLINOIS TOOL ORD		02/21/2017	VARIOUS	5,000	542		869	304	(18)	0	0	0	0	569	0	0	0	0	0	0		
201816-10-14	ILLINOIS TOOL ORD		02/21/2017	VARIOUS	5,000	542		869	304	(18)	0	0	0	0	569	0	0	0	0	0	0		
201816-10-15	ILLINOIS TOOL ORD		02/21/2017	VARIOUS	5,000	542		869	304	(18)	0	0	0	0	569	0	0	0	0	0	0		
201816-10-16	ILLINOIS TOOL ORD		02/21/2017	VARIOUS	5,000	542		869	304	(18)	0	0	0	0	569	0	0	0	0	0	0		
201816-10-17	ILLINOIS TOOL ORD		02/21/2017	VARIOUS	5,000	542		869	304	(18)	0	0	0	0	569	0	0	0	0	0	0		
201816-10-18	ILLINOIS TOOL ORD		02/21/2017	VARIOUS	5,000	542		869	304	(18)	0	0	0	0	569	0	0	0	0	0	0		
201816-10-19	ILLINOIS TOOL ORD		02/21/2017	VARIOUS	5,000	542		869	304	(18)	0	0	0	0	569	0	0	0	0	0	0		
201816-10-20	ILLINOIS TOOL ORD		02/21/2017	VARIOUS	5,000	542		869	304	(18)	0	0	0	0	569	0	0	0	0	0	0		
201816-10-21	ILLINOIS TOOL ORD		02/21/2017	VARIOUS	5,000	542		869	304	(18)	0	0	0	0	569	0	0	0	0	0	0		
201816-10-22	ILLINOIS TOOL ORD		02/21/2017	VARIOUS	5,000	542		869	304	(18)	0	0	0	0	569	0	0	0	0	0	0		
201816-10-23	ILLINOIS TOOL ORD		02/21/2017	VARIOUS	5,000	542		869	304	(18)	0	0	0	0	569	0	0	0	0	0	0		
201816-10-24	ILLINOIS TOOL ORD		02/21/2017	VARIOUS	5,000	542		869	304	(18)	0	0	0	0	569	0	0	0	0	0	0		
201816-10-25	ILLINOIS TOOL ORD		02/21/2017	VARIOUS	5,000	542		869	304	(18)	0	0	0	0	569	0	0	0	0	0	0		
201816-10-26	ILLINOIS TOOL ORD		02/21/2017	VARIOUS	5,000	542		869	304	(18)	0	0	0	0	569	0	0	0	0	0	0		
201816-10-27	ILLINOIS TOOL ORD		02/21/2017	VARIOUS	5,000	542		869	304	(18)	0	0	0	0	569	0	0	0	0	0	0		
201816-10-28	ILLINOIS TOOL ORD		02/21/2017	VARIOUS	5,000	542		869	304	(18)	0	0	0	0	569	0	0	0	0	0	0		
201816-10-29	ILLINOIS TOOL ORD		02/21/2017	VARIOUS	5,000	542		869	304	(18)	0	0	0	0	569	0	0	0	0	0	0		
201816-10-30	ILLINOIS TOOL ORD		02/21/2017	VARIOUS	5,000	542		869	304	(18)	0	0	0	0	569	0	0	0	0	0	0		
201816-10-31	ILLINOIS TOOL ORD		02/21/2017	VARIOUS	5,000	542		869	304	(18)	0	0	0	0	569	0	0	0	0	0	0		
201816-10-32	ILLINOIS TOOL ORD		02/21/2017	VARIOUS	5,000	542		869	304	(18)	0	0	0	0	569	0	0	0	0	0	0		
201816-10-33	ILLINOIS TOOL ORD		02/21/2017	VARIOUS	5,000	542		869	304	(18)	0	0	0	0	569	0	0	0	0	0	0		
201816-10-34	ILLINOIS TOOL ORD		02/21/2017	VARIOUS	5,000	542		869	304	(18)	0	0	0	0	569	0	0	0	0	0	0		
201816-10-35	ILLINOIS TOOL ORD		02/21/2017	VARIOUS	5,000	542		869	304	(18)	0	0	0	0	569	0	0	0	0	0	0		
201816-10-36	ILLINOIS TOOL ORD		02/21/2017	VARIOUS	5,000	542		869	304	(18)	0	0	0	0	569	0	0	0	0	0	0		
201816-10-37	ILLINOIS TOOL ORD		02/21/2017	VARIOUS	5,000	542		869	304	(18)	0	0	0	0	569	0	0	0	0	0	0		
201816-10-38	ILLINOIS TOOL ORD		02/21/2017	VARIOUS	5,000	542		869	304	(18)	0	0	0	0	569	0	0	0	0	0	0		
201816-10-39	ILLINOIS TOOL ORD		02/21/2017	VARIOUS	5,000	542		869	304	(18)	0	0	0	0	569	0	0	0	0	0	0		
201816-10-40	ILLINOIS TOOL ORD		02/21/2017	VARIOUS	5,000	542		869	304	(18)	0	0	0	0	569	0	0	0	0	0	0		
201816-10-41	ILLINOIS TOOL ORD		02/21/2017	VARIOUS	5,000	542		869	304	(18)	0	0	0	0	569	0	0	0	0	0	0		
201816-10-42	ILLINOIS TOOL ORD		02/21/2017	VARIOUS	5,000	542		869	304	(18)	0	0	0	0	569	0	0	0	0	0	0		
201816-10-43	ILLINOIS TOOL ORD		02/21/2017	VARIOUS	5,000	542		869	304	(18)	0	0	0	0	569	0	0	0	0	0	0		
201816-10-44	ILLINOIS TOOL ORD		02/21/2017	VARIOUS	5,000	542		869	304	(18)	0	0	0	0	569	0	0	0	0	0	0		
201816-10-45	ILLINOIS TOOL ORD		02/21/2017	VARIOUS	5,000	542		869	304	(18)	0	0	0	0	569	0	0	0	0	0	0		
201816-10-46	ILLINOIS TOOL ORD		02/21/2017	VARIOUS	5,000	542		869	304	(18)	0	0	0	0	569	0	0	0	0	0	0		
201816-10-47	ILLINOIS TOOL ORD		02/21/2017	VARIOUS	5,000	542		869	304	(18)	0	0	0	0	569	0	0	0	0	0	0		
201816-10-48	ILLINOIS TOOL ORD		02/21/2017	VARIOUS	5,000	542		869	304	(18)	0	0	0	0	569	0	0	0	0	0	0		
201816-10-49	ILLINOIS TOOL ORD		02/21/2017	VARIOUS	5,000	542		869	304	(18)	0	0	0	0	569	0	0	0	0	0	0		
201816-10-50	ILLINOIS TOOL ORD		02/21/2017	VARIOUS	5,000	542		869	304	(18)	0	0	0	0	569	0	0	0	0	0	0		
201816-10-51	ILLINOIS TOOL ORD		02/21/2017	VARIOUS	5,000	542		869	304	(18)	0	0	0	0	569	0	0	0	0	0	0		
201816-10-52	ILLINOIS TOOL ORD		02/21/2017	VARIOUS	5,000	542		869	304	(18)	0	0	0	0	569	0	0	0	0	0	0		
201816-10-53	ILLINOIS TOOL ORD		02/21/2017	VARIOUS	5,000	542		869	304	(18)	0	0	0	0	569	0	0						

STATEMENT AS OF MARCH 31, 2017 OF THE Dealers Assurance Company

SCHEDULE D - PART 4

Show All Long-Term Bonds and Stock Sold, Redeemed or Otherwise Disposed of During the Current Quarter

1	2	3	4	5	6	7	8	9	10	11	12	13	14	15	16	17	18	19	20	21	22	
CUSIP Identification	Description	Foreign	For: Disposal Date	Name of Purchaser	Number of Shares of Stock	Consideration	Par Value	Actual Cost	Prior Year Book/Adjusted Carrying Value	Unrealized Valuation (Increase)/Decrease/Accretion	Current Year's (Amortization)/Accretion	Current Year's Temporary Impairment Recognized	Total Change in Book/Adjusted Carrying Value (11 + 12 - 13)	Total Foreign Exchange Change in Book/Adjusted Carrying Value	Book/Adjusted Carrying Value at Disposal Date	Foreign Exchange Gain (Loss) on Disposal	Realized Gain (Loss) on Disposal	Total Gain (Loss) on Disposal	Bond Interest/Dividends Received During Year	Stated Contractual Maturity Date	NAIC Designation or Market Indicator (a)	
87930-10-9	SPECTRA ENERGY CORP		03/01/2017	VARIOUS	2,786,000	87,337	87,335	87,335	114,477	(27,132)	0	0	(27,132)	0	87,325	0	0	0	0	1,125		
88265-10-1	STRIDER		01/01/2017	PERSHING LLC	3,000	100	100	100	100	0	0	0	0	0	100	0	0	0	0	0	0	
87425-10-3	STROBIL FINANCIAL CORP		02/21/2017	SET FINANCIAL SERVICES	30,000	1,104	1,081	1,081	1,081	(23)	0	0	(23)	0	1,058	0	0	0	0	0	0	
87409-10-0	TAIWAN SEMICONDUCTOR MFG CO 5.00%		02/21/2017	SET FINANCIAL SERVICES	10,000	322	248	248	248	(80)	0	0	(80)	0	248	0	0	0	0	0	0	
81159-10-7	TESARO CORP		02/21/2017	CO	1,000	167	161	161	0	0	0	0	0	0	161	0	0	0	0	0	0	
86208-10-4	TEXAS INSTRUMENTS CORP		01/20/2017	PERSHING LLC	2,000	149	150	149	149	(26)	0	0	(26)	0	123	0	0	0	0	0	0	
86791-10-1	3M CORP		03/12/2017	VARIOUS	4,000	723	579	579	714	(136)	0	0	(136)	0	643	0	0	0	0	0	0	
86737-10-3	THE WAFER CORP		02/21/2017	VARIOUS	1,000	1,060	925	925	1,062	(137)	0	0	(137)	0	925	0	0	0	0	0	0	
81317-10-9	UNITED TECHNOLOGIES CORP		01/13/2017	VARIOUS	255,000	26,089	27,930	27,930	27,930	(88)	0	0	(88)	0	27,842	0	0	0	0	0	0	
81305-10-2	UNITED TECHNOLOGIES CORP		02/21/2017	VARIOUS	4,000	456	456	456	456	0	0	0	0	0	456	0	0	0	0	0	0	
81305-10-3	UNITED TECHNOLOGIES CORP		02/21/2017	VARIOUS	4,000	456	456	456	456	0	0	0	0	0	456	0	0	0	0	0	0	
81818-10-0	VALERO ENERGY CORP		03/07/2017	VARIOUS	200,000	13,367	13,664	13,664	13,664	(1,917)	0	0	(1,917)	0	11,747	0	0	0	0	0	0	
82343-10-4	VERIZON COMMUNICATIONS CORP		02/21/2017	CO	10,000	465	436	436	534	(98)	0	0	(98)	0	436	0	0	0	0	0	0	
82690-10-9	VISA CL A CORP		01/20/2017	VARIOUS	31,000	897	815	815	858	(43)	0	0	(43)	0	855	0	0	0	0	0	0	
82698-10-0	VOYA FINANCIAL CORP		02/21/2017	VARIOUS	1,234	1,177	1,248	1,248	1,177	71	0	0	71	0	1,248	0	0	0	0	0	0	
82910-10-9	WALCO MATERIALS CORP		03/10/2017	VARIOUS	1,091,000	129,944	123,686	123,686	129,944	(6,258)	0	0	(6,258)	0	123,686	0	0	0	0	0	0	
84262-10-0	WATSON CORP		03/24/2017	VARIOUS	872,000	128,175	102,701	102,701	129,161	(26,460)	0	0	(26,460)	0	102,701	0	0	0	0	0	0	
84716-10-1	WELLS FARGO CORP		01/11/2017	Strategic Securities LLC	10,000	544	551	551	551	0	0	0	0	0	551	0	0	0	0	0	0	
86457-10-0	WILLIAMS CORP		01/18/2017	VARIOUS	600,000	17,666	18,901	18,901	19,077	(161)	0	0	(161)	0	18,901	0	0	0	0	0	0	
88184-10-0	WILSON CORP		03/15/2017	VARIOUS	2,763,000	132,635	138,275	138,275	138,309	(34)	0	0	(34)	0	138,275	0	0	0	0	0	0	
88498-10-1	WUM BRANDS CORP		02/21/2017	SET FINANCIAL SERVICES	10,000	681	546	546	633	(87)	0	0	(87)	0	546	0	0	0	0	0	0	
88594-10-9	YUM CHINA CORP		01/11/2017	Strategic Securities LLC	350,000	9,090	7,686	7,686	9,142	(1,446)	0	0	(1,446)	0	7,686	0	0	0	0	0	0	
88999-10-2	ZIMMER BIOMET HOLDINGS CORP		02/21/2017	VARIOUS	4,000	465	474	474	413	61	0	0	61	0	474	0	0	0	0	0	0	
89701-10-7	ZIONS BANKCORPORATION CORP		02/09/2017	VARIOUS	1,000,000	66,643	63,686	63,686	65,984	(2,298)	0	0	(2,298)	0	63,686	0	0	0	0	0	0	
80714-10-8	ALLEGION CORP		02/21/2017	SET FINANCIAL SERVICES	2,000	495	600	600	400	200	0	0	200	0	600	0	0	0	0	0	0	
81510-10-1	ACERMIER CL A CORP		02/21/2017	VARIOUS	4,000	480	377	377	469	(91)	0	0	(91)	0	377	0	0	0	0	0	0	
82183-10-3	AXTON CORP		02/21/2017	SET FINANCIAL SERVICES	10,000	721	721	721	671	50	0	0	50	0	721	0	0	0	0	0	0	
84779-10-1	INERSELL PHARM CORP		02/21/2017	SET FINANCIAL SERVICES	10,000	815	678	678	750	(72)	0	0	(72)	0	678	0	0	0	0	0	0	
84981-10-8	INERSELL CORP		03/03/2017	VARIOUS	30,000	966	1,194	1,194	910	274	0	0	274	0	1,194	0	0	0	0	0	0	
85192-10-5	JHESON CONTROLS INTERNATIONAL CORP		01/20/2017	PERSHING LLC	2,000	35	36	36	35	1	0	0	1	0	36	0	0	0	0	0	0	
85901-10-3	JEKONIC CORP		01/20/2017	VARIOUS	69,607	8,007	8,188	8,188	8,013	175	0	0	175	0	8,188	0	0	0	0	0	0	
86339-10-3	JENKINS INDUSTRIES CORP		02/21/2017	VARIOUS	260,000	4,373	3,282	3,282	4,284	(972)	0	0	(972)	0	3,282	0	0	0	0	0	0	
86381-10-9	KIP SEMICONDUCTORS CORP		01/11/2017	Strategic Securities LLC	494,000	46,570	48,417	48,417	48,417	(11,288)	0	0	(11,288)	0	37,119	0	0	0	0	0	0	
86827-10-9	BRACOM CORP		02/21/2017	SET FINANCIAL SERVICES	5,000	1,053	552	552	894	(332)	0	0	(332)	0	552	0	0	0	0	0	0	
90999999 Subtotal - Common Stocks - Industrial and Miscellaneous (Unaffiliated)					2,155,500	87,426	2,040,800	2,040,800	2,239,545	(200,920)	0	0	(200,920)	0	2,040,800	0	0	0	0	0	0	
90999999 Subtotal - Common Stocks - Money Market Mutual Funds					871,426,500	871,426	871,426	871,426	871,426	0	0	0	0	0	871,426	0	0	0	0	0	0	
97999999 Total - Common Stocks - Part 4					3,026,976	XXX	2,912,276	2,912,276	2,734,271	(200,920)	0	0	(200,920)	0	2,912,276	0	0	0	0	0	0	
97999999 Total - Common Stocks - Part 5					3,026,976	XXX	2,912,276	2,912,276	2,734,271	(200,920)	0	0	(200,920)	0	2,912,276	0	0	0	0	0	0	
98999999 Total - Preferred and Common Stocks					3,450,960	XXX	3,310,550	3,310,550	3,127,333	(183,681)	(1,846)	0	(183,681)	0	3,310,550	0	0	0	0	0	0	
99999999 Totals					9,677,338	XXXX	9,681,725	9,681,725	9,398,819	(195,684)	(5,390)	0	(201,044)	0	9,586,282	0	0	0	0	0	0	

(a) For all common stock bearing the NAIC market indicator "U" provide the number of such issues

Schedule DB - Part A - Section 1 - Options, Caps, Floors, Collars, Swaps and Forwards Open

NONE

Schedule DB - Part B - Section 1 - Futures Contracts Open

NONE

Schedule DB - Part B - Section 1B - Brokers with whom cash deposits have been made

NONE

Schedule DB - Part D - Section 1 - Counterparty Exposure for Derivative Instruments Open

NONE

Schedule DB - Part D-Section 2 - Collateral for Derivative Instruments Open - Pledged By

NONE

Schedule DB - Part D-Section 2 - Collateral for Derivative Instruments Open - Pledged To

NONE

Schedule DL - Part 1 - Reinvested Collateral Assets Owned

NONE

Schedule DL - Part 2 - Reinvested Collateral Assets Owned

NONE

Schedule E - Part 2 - Cash Equivalents - Investments Owned End of Current Quarter

NONE