



PROPERTY AND CASUALTY COMPANIES - ASSOCIATION EDITION

QUARTERLY STATEMENT
AS OF MARCH 31, 2017
OF THE CONDITION AND AFFAIRS OF THE
CINCINNATI INSURANCE COMPANY

NAIC Group Code 0244 (Current) 0244 (Prior) NAIC Company Code 10677 Employer's ID Number 31-0542366

Organized under the Laws of OHIO, State of Domicile or Port of Entry OH

Country of Domicile United States of America

Incorporated/Organized 08/02/1950 Commenced Business 01/23/1951

Statutory Home Office 6200 SOUTH GILMORE ROAD, FAIRFIELD, OH, US 45014-5141

Main Administrative Office 6200 SOUTH GILMORE ROAD, FAIRFIELD, OH, US 45014-5141

Mail Address P.O. BOX 145496, CINCINNATI, OH, US 45250-5496

Primary Location of Books and Records 6200 SOUTH GILMORE ROAD, FAIRFIELD, OH, US 45014-5141

Internet Website Address WWW.CINFIN.COM

Statutory Statement Contact CHRISTINA SCHERPENBERG, christina_scherpenberg@cinfin.com

OFFICERS

CHIEF EXECUTIVE OFFICER, PRESIDENT STEVEN JUSTUS JOHNSTON
CHIEF FINANCIAL OFFICER, SENIOR VICE PRESIDENT MICHAEL JAMES SEWELL
SENIOR VICE PRESIDENT, TREASURER THERESA ANN HOFFER

OTHER

TERESA CURRIN CRACAS, SENIOR VICE PRESIDENT
MARTIN FRANCIS HOLLENBECK, SENIOR VICE PRESIDENT
MARTIN JOSEPH MULLEN, SENIOR VICE PRESIDENT
TIMOTHY LEE TIMMEL, SENIOR VICE PRESIDENT
DONALD JOSEPH DOYLE JR, SENIOR VICE PRESIDENT
JOHN SCOTT KELLINGTON, SENIOR VICE PRESIDENT
JACOB FERDINAND SCHERER, EXECUTIVE VICE PRESIDENT
WILLIAM HAROLD VAN DEN HEUVEL, SENIOR VICE PRESIDENT
SEAN MICHAEL GIVLER #, SENIOR VICE PRESIDENT
LISA ANNE LOVE, SENIOR VICE PRESIDENT, CORPORATE SECRETARY
STEPHEN MICHAEL SPRAY, SENIOR VICE PRESIDENT

DIRECTORS OR TRUSTEES

WILLIAM FORREST BAHL
DONALD JOSEPH DOYLE JR
STEVEN JUSTUS JOHNSTON
WILLIAM RODNEY MCMULLEN
JACOB FERDINAND SCHERER
STEPHEN MICHAEL SPRAY
TIMOTHY LEE TIMMEL
GREGORY THOMAS BIER
SEAN MICHAEL GIVLER #
JOHN SCOTT KELLINGTON
MARTIN JOSEPH MULLEN
THOMAS REID SCHIFF
KENNETH WILLIAM STECHER
WILLIAM HAROLD VAN DEN HEUVEL
TERESA CURRIN CRACAS
MARTIN FRANCIS HOLLENBECK
LISA ANNE LOVE
DAVID PAUL OSBORN
MICHAEL JAMES SEWELL
JOHN FREDERICK STEELE JR
LARRY RUSSEL WEBB

State of OHIO
County of BUTLER SS:

The officers of this reporting entity being duly sworn, each depose and say that they are the described officers of said reporting entity, and that on the reporting period stated above, all of the herein described assets were the absolute property of the said reporting entity, free and clear from any liens or claims thereon, except as herein stated, and that this statement, together with related exhibits, schedules and explanations therein contained, annexed or referred to, is a full and true statement of all the assets and liabilities and of the condition and affairs of the said reporting entity as of the reporting period stated above, and of its income and deductions therefrom for the period ended, and have been completed in accordance with the NAIC Annual Statement Instructions and Accounting Practices and Procedures manual except to the extent that: (1) state law may differ; or, (2) that state rules or regulations require differences in reporting not related to accounting practices and procedures, according to the best of their information, knowledge and belief, respectively. Furthermore, the scope of this attestation by the described officers also includes the related corresponding electronic filing with the NAIC, when required, that is an exact copy (except for formatting differences due to electronic filing) of the enclosed statement. The electronic filing may be requested by various regulators in lieu of or in addition to the enclosed statement.

STEVEN J. JOHNSTON
CHIEF EXECUTIVE OFFICER, PRESIDENT

MICHAEL J. SEWELL
CHIEF FINANCIAL OFFICER, SENIOR VICE PRESIDENT

THERESA A. HOFFER
SENIOR VICE PRESIDENT, TREASURER

Subscribed and sworn to before me this 4TH day of MAY

- a. Is this an original filing? Yes [X] No []
b. If no,
1. State the amendment number.....
2. Date filed
3. Number of pages attached.....

STATEMENT AS OF MARCH 31, 2017 OF THE CINCINNATI INSURANCE COMPANY

ASSETS

	Current Statement Date			4 December 31 Prior Year Net Admitted Assets
	1 Assets	2 Nonadmitted Assets	3 Net Admitted Assets (Cols. 1 - 2)	
1. Bonds	5,753,158,073		5,753,158,073	5,628,186,145
2. Stocks:				
2.1 Preferred stocks	192,852,434		192,852,434	184,402,243
2.2 Common stocks	4,177,722,661		4,177,722,661	4,078,245,379
3. Mortgage loans on real estate:				
3.1 First liens				
3.2 Other than first liens.....				
4. Real estate:				
4.1 Properties occupied by the company (less \$ encumbrances)	8,925,109		8,925,109	8,986,709
4.2 Properties held for the production of income (less \$ encumbrances)				
4.3 Properties held for sale (less \$ encumbrances)				
5. Cash (\$277,600,408), cash equivalents (\$) and short-term investments (\$)	277,600,408		277,600,408	412,875,678
6. Contract loans (including \$ premium notes)				
7. Derivatives				
8. Other invested assets	61,705,292		61,705,292	62,681,699
9. Receivables for securities	12,065,979		12,065,979	5,440,493
10. Securities lending reinvested collateral assets				
11. Aggregate write-ins for invested assets				
12. Subtotals, cash and invested assets (Lines 1 to 11)	10,484,029,957		10,484,029,957	10,380,818,345
13. Title plants less \$ charged off (for Title insurers only)				
14. Investment income due and accrued	68,978,533		68,978,533	75,532,205
15. Premiums and considerations:				
15.1 Uncollected premiums and agents' balances in the course of collection	344,168,889	14,130,295	330,038,594	336,321,585
15.2 Deferred premiums, agents' balances and installments booked but deferred and not yet due (including \$33,250,381 earned but unbilled premiums)	1,260,119,735	3,325,038	1,256,794,697	1,196,787,690
15.3 Accrued retrospective premiums (\$) and contracts subject to redetermination (\$)				
16. Reinsurance:				
16.1 Amounts recoverable from reinsurers	25,141,650	9,587	25,132,063	7,642,230
16.2 Funds held by or deposited with reinsured companies	1,610,797		1,610,797	1,903,346
16.3 Other amounts receivable under reinsurance contracts				
17. Amounts receivable relating to uninsured plans				
18.1 Current federal and foreign income tax recoverable and interest thereon	47,569,735		47,569,735	68,823,504
18.2 Net deferred tax asset				
19. Guaranty funds receivable or on deposit				
20. Electronic data processing equipment and software	15,396,582	15,104,495	292,087	339,494
21. Furniture and equipment, including health care delivery assets (\$)	5,138,570	5,138,570		
22. Net adjustment in assets and liabilities due to foreign exchange rates				
23. Receivables from parent, subsidiaries and affiliates	28,152,504		28,152,504	7,991,549
24. Health care (\$) and other amounts receivable				
25. Aggregate write-ins for other than invested assets	32,526,861	21,792,747	10,734,114	16,536,693
26. Total assets excluding Separate Accounts, Segregated Accounts and Protected Cell Accounts (Lines 12 to 25)	12,312,833,814	59,500,732	12,253,333,082	12,092,696,643
27. From Separate Accounts, Segregated Accounts and Protected Cell Accounts				
28. Total (Lines 26 and 27)	12,312,833,814	59,500,732	12,253,333,082	12,092,696,643
DETAILS OF WRITE-INS				
1101.				
1102.				
1103.				
1198. Summary of remaining write-ins for Line 11 from overflow page				
1199. Totals (Lines 1101 through 1103 plus 1198)(Line 11 above)				
2501. Equities and Deposits in Pools and Associations	8,071,656		8,071,656	11,044,602
2502. Miscellaneous Receivables	24,455,205	21,792,747	2,662,459	5,492,091
2503.				
2598. Summary of remaining write-ins for Line 25 from overflow page				
2599. Totals (Lines 2501 through 2503 plus 2598)(Line 25 above)	32,526,861	21,792,747	10,734,114	16,536,693

STATEMENT AS OF MARCH 31, 2017 OF THE CINCINNATI INSURANCE COMPANY
LIABILITIES, SURPLUS AND OTHER FUNDS

	1 Current Statement Date	2 December 31, Prior Year
1. Losses (current accident year \$ 511,171,666)	3,636,166,987	3,552,867,103
2. Reinsurance payable on paid losses and loss adjustment expenses	71,273,487	40,979,030
3. Loss adjustment expenses	965,663,481	953,115,139
4. Commissions payable, contingent commissions and other similar charges	42,691,170	135,328,416
5. Other expenses (excluding taxes, licenses and fees)	24,644,054	52,824,028
6. Taxes, licenses and fees (excluding federal and foreign income taxes)	22,465,966	21,459,076
7.1 Current federal and foreign income taxes (including \$ on realized capital gains (losses))		
7.2 Net deferred tax liability	197,790,136	167,868,466
8. Borrowed money \$ and interest thereon \$		
9. Unearned premiums (after deducting unearned premiums for ceded reinsurance of \$ 34,045,482 and including warranty reserves of \$ and accrued accident and health experience rating refunds including \$ for medical loss ratio rebate per the Public Health Service Act)	2,246,796,668	2,172,469,641
10. Advance premium	15,017,771	14,339,137
11. Dividends declared and unpaid:		
11.1 Stockholders	90,000,000	100,000,000
11.2 Policyholders	13,860,000	13,300,000
12. Ceded reinsurance premiums payable (net of ceding commissions)	19,109,083	36,038,376
13. Funds held by company under reinsurance treaties		
14. Amounts withheld or retained by company for account of others	56,999,431	57,267,412
15. Remittances and items not allocated	389,425	693,275
16. Provision for reinsurance (including \$ certified)	2,229	2,230
17. Net adjustments in assets and liabilities due to foreign exchange rates		
18. Drafts outstanding		
19. Payable to parent, subsidiaries and affiliates	10,855,225	31,662,938
20. Derivatives		
21. Payable for securities	32,991,132	6,692,325
22. Payable for securities lending		
23. Liability for amounts held under uninsured plans		
24. Capital notes \$ and interest thereon \$		
25. Aggregate write-ins for liabilities	43,279,270	49,828,529
26. Total liabilities excluding protected cell liabilities (Lines 1 through 25)	7,489,995,514	7,406,735,128
27. Protected cell liabilities		
28. Total liabilities (Lines 26 and 27)	7,489,995,514	7,406,735,128
29. Aggregate write-ins for special surplus funds		
30. Common capital stock	3,586,355	3,586,355
31. Preferred capital stock		
32. Aggregate write-ins for other than special surplus funds		
33. Surplus notes		
34. Gross paid in and contributed surplus	363,410,416	363,410,416
35. Unassigned funds (surplus)	4,396,340,797	4,318,964,744
36. Less treasury stock, at cost:		
36.1 shares common (value included in Line 30 \$)		
36.2 shares preferred (value included in Line 31 \$)		
37. Surplus as regards policyholders (Lines 29 to 35, less 36)	4,763,337,568	4,685,961,515
38. Totals (Page 2, Line 28, Col. 3)	12,253,333,082	12,092,696,643
DETAILS OF WRITE-INS		
2501. Accounts Payable — Other	43,279,270	49,828,529
2502.		
2503.		
2598. Summary of remaining write-ins for Line 25 from overflow page		
2599. Totals (Lines 2501 through 2503 plus 2598)(Line 25 above)	43,279,270	49,828,529
2901.		
2902.		
2903.		
2998. Summary of remaining write-ins for Line 29 from overflow page		
2999. Totals (Lines 2901 through 2903 plus 2998)(Line 29 above)		
3201.		
3202.		
3203.		
3298. Summary of remaining write-ins for Line 32 from overflow page		
3299. Totals (Lines 3201 through 3203 plus 3298)(Line 32 above)		

STATEMENT AS OF MARCH 31, 2017 OF THE CINCINNATI INSURANCE COMPANY

STATEMENT OF INCOME

	1 Current Year to Date	2 Prior Year to Date	3 Prior Year Ended December 31
UNDERWRITING INCOME			
1. Premiums earned:			
1.1 Direct (written \$946,912,058)	925,526,186	890,149,149	3,615,535,827
1.2 Assumed (written \$262,047,003)	219,164,984	204,694,303	847,304,719
1.3 Ceded (written \$27,535,640)	38,090,193	38,110,528	160,754,051
1.4 Net (written \$1,181,423,421)	1,106,600,977	1,056,732,924	4,302,086,494
DEDUCTIONS:			
2. Losses incurred (current accident year \$670,101,313):			
2.1 Direct	532,928,801	433,974,565	1,977,775,189
2.2 Assumed	122,161,297	105,015,643	425,148,784
2.3 Ceded	14,450,183	(4,867,770)	49,089,884
2.4 Net	640,639,915	543,857,978	2,353,834,089
3. Loss adjustment expenses incurred	133,404,702	102,912,165	438,597,715
4. Other underwriting expenses incurred	353,748,216	329,155,949	1,333,767,320
5. Aggregate write-ins for underwriting deductions			
6. Total underwriting deductions (Lines 2 through 5)	1,127,792,832	975,926,092	4,126,199,123
7. Net income of protected cells			
8. Net underwriting gain or (loss) (Line 1 minus Line 6 + Line 7)	(21,191,855)	80,806,831	175,887,371
INVESTMENT INCOME			
9. Net investment income earned	97,187,126	85,342,862	345,239,544
10. Net realized capital gains (losses) less capital gains tax of \$18,411,280	75,122,626	29,933,590	62,240,066
11. Net investment gain (loss) (Lines 9 + 10)	172,309,752	115,276,451	407,479,610
OTHER INCOME			
12. Net gain or (loss) from agents' or premium balances charged off (amount recovered \$757,008 amount charged off \$1,410,034)	(653,026)	(1,050,721)	(2,648,210)
13. Finance and service charges not included in premiums	2,459,665	1,782,455	8,605,721
14. Aggregate write-ins for miscellaneous income	847,404	285,634	1,271,126
15. Total other income (Lines 12 through 14)	2,654,044	1,017,367	7,228,638
16. Net income before dividends to policyholders, after capital gains tax and before all other federal and foreign income taxes (Lines 8 + 11 + 15)	153,771,941	197,100,650	590,595,618
17. Dividends to policyholders	3,392,017	4,643,917	15,218,815
18. Net income, after dividends to policyholders, after capital gains tax and before all other federal and foreign income taxes (Line 16 minus Line 17)	150,379,924	192,456,733	575,376,803
19. Federal and foreign income taxes incurred	2,842,489	46,224,917	141,288,450
20. Net income (Line 18 minus Line 19)(to Line 22)	147,537,434	146,231,815	434,088,353
CAPITAL AND SURPLUS ACCOUNT			
21. Surplus as regards policyholders, December 31 prior year	4,685,961,515	4,412,431,472	4,412,431,473
22. Net income (from Line 20)	147,537,434	146,231,815	434,088,353
23. Net transfers (to) from Protected Cell accounts			
24. Change in net unrealized capital gains (losses) less capital gains tax of \$13,737,309	39,615,190	80,739,128	319,503,914
25. Change in net unrealized foreign exchange capital gain (loss)			
26. Change in net deferred income tax	(16,184,360)	(1,313,002)	4,682,596
27. Change in nonadmitted assets	(3,592,211)	(4,383,427)	(9,951,573)
28. Change in provision for reinsurance			206,753
29. Change in surplus notes			
30. Surplus (contributed to) withdrawn from protected cells			
31. Cumulative effect of changes in accounting principles			
32. Capital changes:			
32.1 Paid in			
32.2 Transferred from surplus (Stock Dividend)			
32.3 Transferred to surplus			
33. Surplus adjustments:			
33.1 Paid in			
33.2 Transferred to capital (Stock Dividend)			
33.3 Transferred from capital			
34. Net remittances from or (to) Home Office			
35. Dividends to stockholders	(90,000,000)	(100,000,000)	(475,000,000)
36. Change in treasury stock			
37. Aggregate write-ins for gains and losses in surplus			
38. Change in surplus as regards policyholders (Lines 22 through 37)	77,376,053	121,274,513	273,530,042
39. Surplus as regards policyholders, as of statement date (Lines 21 plus 38)	4,763,337,568	4,533,705,985	4,685,961,515
DETAILS OF WRITE-INS			
0501.			
0502.			
0503.			
0598. Summary of remaining write-ins for Line 5 from overflow page			
0599. Totals (Lines 0501 through 0503 plus 0598)(Line 5 above)			
1401. Collection Fees	297,404	285,580	1,214,468
1402. Miscellaneous Interest	550,000	54	56,658
1403.			
1498. Summary of remaining write-ins for Line 14 from overflow page			
1499. Totals (Lines 1401 through 1403 plus 1498)(Line 14 above)	847,404	285,634	1,271,126
3701.			
3702.			
3703.			
3798. Summary of remaining write-ins for Line 37 from overflow page			
3799. Totals (Lines 3701 through 3703 plus 3798)(Line 37 above)			

STATEMENT AS OF MARCH 31, 2017 OF THE CINCINNATI INSURANCE COMPANY

CASH FLOW

	1 Current Year To Date	2 Prior Year To Date	3 Prior Year Ended December 31
Cash from Operations			
1. Premiums collected net of reinsurance	1,107,639,772	1,043,859,042	4,361,042,065
2. Net investment income	105,885,925	92,380,571	354,715,940
3. Miscellaneous income	1,430,396	993,303	7,151,773
4. Total (Lines 1 to 3)	1,214,956,092	1,137,232,916	4,722,909,778
5. Benefit and loss related payments	661,013,519	544,567,186	2,440,839,126
6. Net transfers to Separate Accounts, Segregated Accounts and Protected Cell Accounts			
7. Commissions, expenses paid and aggregate write-ins for deductions	470,989,235	419,579,669	1,306,110,417
8. Dividends paid to policyholders	2,832,017	3,243,917	14,638,815
9. Federal and foreign income taxes paid (recovered) net of \$ tax on capital gains (losses)	0	3,166,345	195,559,039
10. Total (Lines 5 through 9)	1,134,834,771	970,557,118	3,957,147,396
11. Net cash from operations (Line 4 minus Line 10)	80,121,321	166,675,799	765,762,383
Cash from Investments			
12. Proceeds from investments sold, matured or repaid:			
12.1 Bonds	150,362,582	207,514,825	711,124,990
12.2 Stocks	106,002,884	93,968,396	326,774,865
12.3 Mortgage loans			
12.4 Real estate			
12.5 Other invested assets			
12.6 Net gains or (losses) on cash, cash equivalents and short-term investments			
12.7 Miscellaneous proceeds	19,673,320	4,956,557	4,197,607
12.8 Total investment proceeds (Lines 12.1 to 12.7)	276,038,786	306,439,778	1,042,097,463
13. Cost of investments acquired (long-term only):			
13.1 Bonds	270,854,561	287,669,704	1,000,598,825
13.2 Stocks	73,786,971	75,550,407	241,700,497
13.3 Mortgage loans			
13.4 Real estate			
13.5 Other invested assets	593,657		7,647,664
13.6 Miscellaneous applications		6,716,303	5,440,493
13.7 Total investments acquired (Lines 13.1 to 13.6)	345,235,188	369,936,415	1,255,387,478
14. Net increase (or decrease) in contract loans and premium notes			
15. Net cash from investments (Line 12.8 minus Line 13.7 and Line 14)	(69,196,402)	(63,496,637)	(213,290,015)
Cash from Financing and Miscellaneous Sources			
16. Cash provided (applied):			
16.1 Surplus notes, capital notes			
16.2 Capital and paid in surplus, less treasury stock			
16.3 Borrowed funds			
16.4 Net deposits on deposit-type contracts and other insurance liabilities			
16.5 Dividends to stockholders	100,000,000	100,000,000	475,000,000
16.6 Other cash provided (applied)	(46,200,189)	(8,834,902)	(14,842,345)
17. Net cash from financing and miscellaneous sources (Line 16.1 through Line 16.4 minus Line 16.5 plus Line 16.6)	(146,200,189)	(108,834,902)	(489,842,345)
RECONCILIATION OF CASH, CASH EQUIVALENTS AND SHORT-TERM INVESTMENTS			
18. Net change in cash, cash equivalents and short-term investments (Line 11, plus Lines 15 and 17)	(135,275,270)	(5,655,740)	62,630,024
19. Cash, cash equivalents and short-term investments:			
19.1 Beginning of year	412,875,678	350,245,654	350,245,654
19.2 End of period (Line 18 plus Line 19.1)	277,600,408	344,589,914	412,875,678

Note: Supplemental disclosures of cash flow information for non-cash transactions:

--	--	--	--

NOTES TO FINANCIAL STATEMENTS

STATEMENT AS OF MARCH 31, 2017 OF THE CINCINNATI INSURANCE COMPANY

NOTES TO FINANCIAL STATEMENTS

1. Summary of Significant Accounting Policies and Going Concern

A. Accounting Practices

The financial statements of The Cincinnati Insurance Company (the Company) are presented on the basis of accounting practices prescribed or permitted by the Ohio Department of Insurance.

The Ohio Department of Insurance recognizes only statutory accounting practices prescribed or permitted by the state of Ohio for determining and reporting the financial condition and results of operations of an insurance company, and for determining its solvency under the Ohio Insurance Law. The National Association of Insurance Commissioners' Accounting Practices and Procedures Manual (NAIC SAP), version effective January 1, 2001 and updates through the current year have been adopted as a component of prescribed or permitted practices by the state of Ohio.

The Company has no prescribed or permitted practices that would result in differences between the NAIC SAP and the state of Ohio basis, as shown below as of March 31, 2017 and December 31, 2016:

	SSAP #	F/S Page	F/S Line #	2017	2016
NET INCOME					
(1) Company state basis (Page 4, Line 20, Columns 1 & 3)	XXX	XXX	XXX	\$ 147,537,434	\$ 434,088,353
(2) State Prescribed Practices that increase/(decrease) NAIC SAP	N/A	N/A	N/A	0	0
(3) State Permitted Practices that increase/(decrease) NAIC SAP	N/A	N/A	N/A	0	0
(4) NAIC SAP (1-2-3=4)	XXX	XXX	XXX	\$ 147,537,434	\$ 434,088,353
SURPLUS					
(5) Company state basis (Page 3, Line 37, Columns 1 & 2)	XXX	XXX	XXX	\$4,763,337,568	\$4,685,961,515
(6) State Prescribed Practices that increase/(decrease) NAIC SAP	N/A	N/A	N/A	0	0
(7) State Permitted Practices that increase/(decrease) NAIC SAP	N/A	N/A	N/A	0	0
(8) NAIC SAP (5-6-7=8)	XXX	XXX	XXX	\$4,763,337,568	\$4,685,961,515

B. Use of Estimates in the Preparation of the Financial Statements – No significant change

C. Accounting Policies

6. Loan-backed and structured securities with an NAIC designation 1 or 2 are stated at amortized cost. Loan-backed and structured securities with an NAIC designation 3 through 6 are stated at the lower of amortized cost or fair value, with the difference reflected in assigned surplus. Amortized cost of loan-backed and structured securities is determined using the retrospective adjustment method, except for those which an other-than-temporary impairment has been recognized, which use the prospective adjustment method to determine amortized cost.

D. Going Concern

After review of the Company's financial condition, management has no doubts about the Company's ability to continue as a going concern.

2. Accounting Changes and Correction of Errors – No significant change

3. Business Combinations and Goodwill – Not applicable

4. Discontinued Operations – Not applicable

5. Investments

A. Mortgage Loans - Not applicable

B. Debt Restructuring – Not applicable

C. Reverse Mortgages - Not applicable

D. Loan-Backed Securities

1. The Company obtains prepayment assumptions from third-party vendors.
2. The Company recognized no other-than-temporary impairments for loan-backed and structured securities due to the intent to sell or the inability or lack of intent to retain the investment in the security for a period of time sufficient to recover the amortized cost basis during the quarter and three months ended March 31, 2017.
3. The Company recognized no other-than-temporary impairments due to the present value of cash flows expected to be collected being less than the amortized cost basis for loan-backed and structured securities during the quarter and three months ended March 31, 2017.

STATEMENT AS OF MARCH 31, 2017 OF THE CINCINNATI INSURANCE COMPANY

NOTES TO FINANCIAL STATEMENTS

4. The following table presents the aggregate total of all impaired loan-backed and structured securities (fair value is less than cost or amortized cost) for which an other-than-temporary impairment has not been recognized in earnings as a realized loss (including securities with a recognized other-than-temporary impairment for non-interest related declines when a non-recognized interest related impairment remains):

The aggregate amount of unrealized losses:		
1. Less than 12 months		\$ 245,022
2. 12 months or longer		0
The aggregate related fair value of securities with unrealized losses:		
1. Less than 12 months		\$ 10,913,932
2. 12 months or longer		0

5. The Company performs a quarterly analysis to assess whether the decline in the fair value of any loan-backed or structured security is other-than-temporary. Factors considered in determining whether a decline in fair value is considered other-than-temporary included the length of time and the extent to which the fair value of the security has been below cost or amortized cost and changes in credit ratings of the issue during the period. The intent to sell, the intent and ability to hold the security for a period of time sufficient to recover its cost or amortized cost basis and the ability to recover all outstanding amounts when contractually due are also considered. Based upon this analysis the Company believes there were no indications of declines in fair value that were considered to be other-than-temporary for any loan-backed or structured securities with unrealized losses as of March 31, 2017.

E. Repurchase Agreements and/or Securities Lending Transactions - Not applicable

F. Real Estate - Not applicable

G. Investments in Low-income Housing Tax Credits (LIHTC) – No significant change

H. Restricted Assets – No significant change

I. Working Capital Finance Investments – Not applicable

J. Offsetting and Netting of Assets and Liabilities – Not applicable

K. Structured Notes – Not applicable

L. 5* Securities – No significant change

M. Short Sales – Not applicable

N. Prepayment Penalty and Acceleration Fees – No significant change

6. Joint Ventures, Partnerships and Limited Liability Companies – No significant change

7. Investment Income – No significant change

8. Derivative Instruments – Not applicable

9. Income Taxes

A. Components of Deferred Tax Assets (DTAs) and Deferred Tax Liabilities (DTLs):

1.

	March 31, 2017		
	Ordinary	Capital	Total
(a) Gross Deferred Tax Assets	\$ 401,538,155	\$ 0	\$ 401,538,155
(b) Statutory Valuation Allowance Adjustments	0	0	0
(c) Adjusted Gross Deferred Tax Assets (1a - 1b)	401,538,155	0	401,538,155
(d) Deferred Tax Assets Nonadmitted	0	0	0
(e) Subtotal Net Admitted Deferred Tax Asset (1c - 1d)	401,538,155	0	401,538,155
(f) Deferred Tax Liabilities	\$ 70,521,445	\$ 528,806,846	\$ 599,328,291
(g) Net Admitted Deferred Tax Asset/(Liability) (1e - 1f)	\$ 331,016,710	\$(528,806,846)	\$(197,790,136)

	December 31, 2016		
	Ordinary	Capital	Total
(a) Gross Deferred Tax Assets	\$ 401,781,164	\$ 4,841,224	\$ 406,622,388
(b) Statutory Valuation Allowance Adjustments	0	0	0
(c) Adjusted Gross Deferred Tax Assets (1a - 1b)	401,781,164	4,841,224	406,622,388
(d) Deferred Tax Assets Nonadmitted	0	0	0
(e) Subtotal Net Admitted Deferred Tax Asset (1c - 1d)	401,781,164	4,841,224	406,622,388
(f) Deferred Tax Liabilities	\$ 68,389,363	\$ 506,101,492	\$ 574,490,855
(g) Net Admitted Deferred Tax Asset/(Liability) (1e - 1f)	\$ 333,391,801	\$(501,260,268)	\$(167,868,467)

	Change		
	Ordinary	Capital	Total
(a) Gross Deferred Tax Assets	\$ (243,009)	\$ (4,841,224)	\$ (5,084,233)
(b) Statutory Valuation Allowance Adjustments	0	0	0
(c) Adjusted Gross Deferred Tax Assets (1a - 1b)	(243,009)	(4,841,224)	(5,084,233)
(d) Deferred Tax Assets Nonadmitted	0	0	0
(e) Subtotal Net Admitted Deferred Tax Asset (1c - 1d)	(243,009)	(4,841,224)	(5,084,233)
(f) Deferred Tax Liabilities	\$ 2,132,082	\$ 22,705,354	\$ 24,837,436
(g) Net Admitted Deferred Tax Asset/(Liability) (1e - 1f)	\$ (2,375,091)	\$ (27,546,578)	\$ (29,921,669)

STATEMENT AS OF MARCH 31, 2017 OF THE CINCINNATI INSURANCE COMPANY

NOTES TO FINANCIAL STATEMENTS

2.

	March 31, 2017		
	Ordinary	Capital	Total
Admission Calculation Components SSAP No. 101			
(a)Federal Income Taxes Paid in Prior Years Recoverable Through Loss Carrybacks	\$ 184,925,218	\$ 0	\$ 184,925,218
(b)Adjusted Gross Deferred Tax Assets Expected to be Realized (Excluding The Amount of Deferred Tax Assets From 2(a) above) After Application of the Threshold Limitation. (The lesser of 2(b)1 and 2(b)2 Below)	134,486,213	0	134,486,213
1. Adjusted Gross Deferred Tax Assets Expected to be Realized Following the Balance Sheet Date	134,486,213	0	134,486,213
2. Adjusted Gross Deferred Tax Assets Allowed per Limitation Threshold	XXX	XXX	714,456,822
(c)Adjusted Gross Deferred Tax Assets (Excluding the amount of Deferred Tax Assets from 2(a) and 2(b) above) Offset by Gross Deferred Tax Liabilities	82,126,724	0	82,126,724
(d)Deferred Tax Assets Admitted as the Result of Application of SSAP No.101 Total (2(a)+2(b)+2(c))	\$ 401,538,155	\$ 0	\$ 401,538,155

	December 31, 2016		
	Ordinary	Capital	Total
Admission Calculation Components SSAP No. 101			
(a)Federal Income Taxes Paid in Prior Years Recoverable Through Loss Carrybacks	\$ 293,195,344	\$ 0	\$ 293,195,344
(b)Adjusted Gross Deferred Tax Assets Expected to be Realized (Excluding The Amount of Deferred Tax Assets From 2(a) above) After Application of the Threshold Limitation. (The lesser of 2(b)1 and 2(b)2 Below)	25,868,488	0	25,868,488
1. Adjusted Gross Deferred Tax Assets Expected to be Realized Following the Balance Sheet Date	25,868,488	0	25,868,488
2. Adjusted Gross Deferred Tax Assets Allowed per Limitation Threshold	XXX	XXX	702,843,303
(c)Adjusted Gross Deferred Tax Assets (Excluding the amount of Deferred Tax Assets from 2(a) and 2(b) above) Offset by Gross Deferred Tax Liabilities	82,717,332	4,841,224	87,558,556
(d)Deferred Tax Assets Admitted as the Result of Application of SSAP No.101 Total (2(a)+2(b)+2(c))	\$ 401,781,164	\$ 4,841,224	\$ 406,622,388

	Change		
	Ordinary	Capital	Total
Admission Calculation Components SSAP No. 101			
(a)Federal Income Taxes Paid in Prior Years Recoverable Through Loss Carrybacks	\$(108,270,126)	\$ 0	\$(108,270,126)
(b)Adjusted Gross Deferred Tax Assets Expected to be Realized (Excluding The Amount of Deferred Tax Assets From 2(a) above) After Application of the Threshold Limitation. (The lesser of 2(b)1 and 2(b)2 Below)	108,617,725	0	108,617,725
1. Adjusted Gross Deferred Tax Assets Expected to be Realized Following the Balance Sheet Date	108,617,725	0	108,617,725
2. Adjusted Gross Deferred Tax Assets Allowed per Limitation Threshold	XXX	XXX	11,613,519
(c)Adjusted Gross Deferred Tax Assets (Excluding the amount of Deferred Tax Assets from 2(a) and 2(b) above) Offset by Gross Deferred Tax Liabilities	(590,608)	(4,841,224)	(5,431,832)
(d)Deferred Tax Assets Admitted as the Result of Application of SSAP No.101 Total (2(a)+2(b)+2(c))	\$ (243,009)	\$ (4,841,224)	\$ (5,084,233)

3.

	2017 Percentage	2016 Percentage
(a)Ratio Percentage Used to Determine Recovery Period and Threshold Limitation Amount	731%	731%
(b)Amount of Adjusted Capital and Surplus Used to Determine Recovery Period and Threshold Limitation in 2(b)2 above	\$4,714,781,042	\$4,714,781,042

4.

	March 31, 2017		
	Ordinary	Capital	Total
Impact of Tax Planning Strategies			
(a)Determination of adjusted gross deferred tax assets and net admitted deferred tax assets, by tax character as a percentage.			
1. Adjusted Gross DTAs amount from Note 9A1(c)	\$ 401,538,155	\$ 0	\$ 401,538,155
2. Percentage of Adjusted gross DTAs by tax character attributable to the impact of tax planning strategies	0.00%	0.00%	0.00%
3. Net Admitted Adjusted Gross DTAs amount from Note 9A1(e)	\$ 401,538,155	\$ 0	\$ 401,538,155
4. Percentage of net admitted adjusted gross DTAs by tax character admitted because of the impact of tax planning strategies	0.00%	0.00%	0.00%
(b)The Company's tax-planning strategies did not include the use of reinsurance-related tax planning strategies.			

STATEMENT AS OF MARCH 31, 2017 OF THE CINCINNATI INSURANCE COMPANY

NOTES TO FINANCIAL STATEMENTS

	December 31, 2016		
	Ordinary	Capital	Total
Impact of Tax Planning Strategies			
(a) Determination of adjusted gross deferred tax assets and net admitted deferred tax assets, by tax character as a percentage.			
1. Adjusted Gross DTAs amount from Note 9A1(c)	\$ 401,781,164	\$ 4,841,224	\$ 406,622,388
2. Percentage of Adjusted gross DTAs by tax character attributable to the impact of tax planning strategies	0.00%	0.00%	0.00%
3. Net Admitted Adjusted Gross DTAs amount from Note 9A1(e)	\$ 401,781,164	\$ 4,841,224	\$ 406,622,388
4. Percentage of net admitted adjusted gross DTAs by tax character admitted because of the impact of tax planning strategies	0.00%	0.00%	0.00%
(b) The Company's tax-planning strategies did not include the use of reinsurance-related tax planning strategies.			

	Change		
	Ordinary	Capital	Total
Impact of Tax Planning Strategies			
(a) Determination of adjusted gross deferred tax assets and net admitted deferred tax assets, by tax character as a percentage.			
1. Adjusted Gross DTAs amount from Note 9A1(c)	\$ (243,009)	\$ (4,841,224)	\$ (5,084,233)
2. Percentage of Adjusted gross DTAs by tax character attributable to the impact of tax planning strategies	0.00%	0.00%	0.00%
3. Net Admitted Adjusted Gross DTAs amount from Note 9A1(e)	\$ (243,009)	\$ (4,841,224)	\$ (5,084,233)
4. Percentage of net admitted adjusted gross DTAs by tax character admitted because of the impact of tax planning strategies	0.00%	0.00%	0.00%
(b) The Company's tax-planning strategies did not include the use of reinsurance-related tax planning strategies.			

B. Unrecognized DTLs – Not applicable

C. Current Tax and Change in Deferred Tax

1. Current income tax:			
	March 31, 2017	December 31, 2016	Change
(a) Federal	\$ 2,842,489	\$ 141,288,450	\$(138,445,961)
(b) Foreign	0	0	0
(c) Subtotal	2,842,489	141,288,450	(138,445,961)
(d) Federal income tax on capital gains/(losses)	18,411,280	23,305,189	(4,893,909)
(e) Utilization of capital loss carryforwards	0	0	0
(f) Other	0	0	0
(g) Federal income taxes incurred	\$ 21,253,769	\$ 164,593,639	\$(143,339,870)

2. Deferred tax assets:			
	March 31, 2017	December 31, 2016	Change
(a) Ordinary			
1. Unearned premium reserve	\$ 157,275,767	\$ 152,072,875	\$ 5,202,892
2. Unpaid loss reserve	197,539,117	193,439,349	4,099,768
3. Contingent commission	0	0	0
4. Nonadmitted assets	20,824,848	19,567,982	1,256,866
5. Other deferred tax assets	25,898,423	36,700,958	(10,802,535)
99. Subtotal	\$ 401,538,155	\$ 401,781,164	\$ (243,009)
(b) Statutory valuation allowance adjustment	0	0	0
(c) Nonadmitted	0	0	0
(d) Admitted ordinary deferred tax assets (2(a)99-2(b)-2(c))	\$ 401,538,155	\$ 401,781,164	\$ (243,009)
(e) Capital			
1. Investments	\$ 0	\$ 4,841,224	\$ (4,841,224)
2. Unrealized loss on investments	0	0	0
99. Subtotal	\$ 0	\$ 4,841,224	\$ (4,841,224)
(f) Statutory valuation allowance	0	0	0
(g) Nonadmitted	0	0	0
(h) Admitted capital deferred tax assets ((2(e)99- 2(f)-2(g))	\$ 0	\$ 4,841,224	\$ (4,841,224)
(i) Admitted deferred tax assets (2(d)+2(h))	\$ 401,538,155	\$ 406,622,388	\$ (5,084,233)

3. Deferred tax liabilities:			
	March 31, 2017	December 31, 2016	Change
(a) Ordinary			
1. Commission expense	\$ 64,208,488	\$ 61,429,846	\$ 2,778,642
2. Other, net	6,312,957	6,959,517	(646,560)
99. Subtotal	\$ 70,521,445	\$ 68,389,363	\$ 2,132,082
(b) Capital			
1. Investments	\$ 8,968,045	\$ 0	\$ 8,968,045
2. Unrealized gain on investments	519,838,801	506,101,492	13,737,309
99. Subtotal	\$ 528,806,846	\$ 506,101,492	\$ 22,705,354
(c) Deferred tax liabilities (3(a)99+3(b)99)	\$ 599,328,291	\$ 574,490,855	\$ 24,837,436
4. Net deferred tax assets/(liabilities) (2(i)-3(c)):	\$(197,790,136)	\$(167,868,467)	\$ (29,921,669)

STATEMENT AS OF MARCH 31, 2017 OF THE CINCINNATI INSURANCE COMPANY

NOTES TO FINANCIAL STATEMENTS

D. Reconciliation of Federal Income Tax Rate to Actual Effective Rate

The change in net deferred income taxes is comprised of the following (this analysis is exclusive of nonadmitted assets as the Change in Nonadmitted Assets is reported separately from the Change in Net Deferred Income Taxes in the surplus section of the Annual Statement):

	March 31, 2017	December 31, 2016	Change
Total deferred tax assets	\$ 401,538,155	\$ 406,622,388	\$ (5,084,233)
Total deferred tax liabilities	599,328,291	574,490,855	24,837,436
Net deferred tax asset/(liability)	\$ (197,790,136)	\$ (167,868,467)	\$ (29,921,669)
Tax effect of unrealized gains/(losses)			13,737,309
Change in net deferred income tax (charge)/benefit			\$ (16,184,360)
	December 31, 2016	December 31, 2015	Change
Total deferred tax assets	\$ 406,622,388	\$ 390,641,974	\$ 15,980,414
Total deferred tax liabilities	574,490,855	437,688,476	136,802,379
Net deferred tax asset/(liability)	\$ (167,868,467)	\$ (47,046,502)	\$ (120,821,965)
Tax effect of unrealized gains/(losses)			125,504,561
Change in net deferred income tax (charge)/benefit			\$ 4,682,596

The provision for federal income taxes incurred is different from that which would be obtained by applying the statutory federal income tax rate to income before income taxes. The significant items causing this difference are as follows:

Description	As of March 31, 2017		
	Amount	Tax Effect	Effective Tax Rate
Income before taxes	\$ 168,791,203	\$ 59,076,921	35.00 %
Net tax exempt interest	(20,594,335)	(7,208,017)	(4.27)%
Net dividends received deduction (DRD)	(14,817,683)	(5,186,189)	(3.07)%
Other items permanent, net	(23,682,468)	(8,288,863)	(4.92)%
DRD on accrued	860,409	301,143	0.18 %
Total	\$ 110,557,126	\$ 38,694,995	22.92 %
Federal income tax expense incurred/(benefit)	\$ 8,121,396	\$ 2,842,489	1.68 %
Tax on capital gains/(losses)	52,603,657	18,411,280	10.91 %
Change in nonadmitted excluding deferred tax asset	3,591,046	1,256,866	0.74 %
Change in net deferred income tax charge/(benefit)	46,241,027	16,184,360	9.59 %
Total statutory income taxes incurred	\$ 110,557,126	\$ 38,694,995	22.92 %

Description	As of December 31, 2016		
	Amount	Tax Effect	Effective Tax Rate
Income before taxes	\$ 598,681,989	\$ 209,538,696	35.00 %
Net tax exempt interest	(79,269,877)	(27,744,457)	(4.63)%
Net dividends received deduction (DRD)	(56,740,981)	(19,859,343)	(3.32)%
Other items permanent, net	4,144,564	1,450,596	0.24 %
DRD on accrued	24,574	8,601	0.00 %
Total	\$ 466,840,269	\$ 163,394,093	27.29 %
Federal income tax expense incurred/(benefit)	\$ 403,681,287	\$ 141,288,450	23.60 %
Tax on capital gains/(losses)	66,586,255	23,305,189	3.89 %
Change in nonadmitted excluding deferred tax asset	9,951,572	3,483,050	0.58 %
Change in net deferred income tax charge/(benefit)	(13,378,845)	(4,682,596)	(0.78)%
Total statutory income taxes incurred	\$ 466,840,269	\$ 163,394,093	27.29 %

E. Operating Loss and Tax Credit Carryforwards

At March 31, 2017 the Company had no net operating loss carryforwards or capital loss carryforwards.

The following is income tax expense for the current and prior years that is available for recoupment in the event of future net losses:

Year	Ordinary	Capital	Total
2017	\$ 3,048,730	\$ 18,411,280	\$ 21,460,010
2016	140,160,017	23,305,190	163,465,207
2015	0	32,919,657	32,919,657
Total	\$ 143,208,747	\$ 74,636,127	\$ 217,844,874

At March 31, 2017 the Company had no protective tax deposits under Section 6603 of the Internal Revenue Code.

F. Consolidated Federal Income Tax Return

- The Company's federal income tax return is consolidated with the following entities:

Cincinnati Financial Corporation (Parent)
 The Cincinnati Life Insurance Company
 The Cincinnati Casualty Company
 The Cincinnati Indemnity Company
 The Cincinnati Specialty Underwriters Insurance Company
 CFC Investment Company
 CSU Producer Resources, Inc.

- The method of allocation between the companies is subject to a written agreement, approved by the Board of Directors, whereby allocation is made primarily on a separate return basis, with the company receiving a current benefit for losses generated to the extent federal taxes are reduced for the consolidated tax group. Furthermore, tax allocations are computed without regard to any amount attributable to any minimum tax arising under Code Section 55 or minimum tax credit arising under Code Section 53.

STATEMENT AS OF MARCH 31, 2017 OF THE CINCINNATI INSURANCE COMPANY

NOTES TO FINANCIAL STATEMENTS

G. Federal or Foreign Income Tax Loss Contingencies

The Company did not have tax contingencies under the principles of SSAP No. 5, *Liabilities, Contingencies and Impairment of Assets*. This is subject to change but it is not expected to significantly increase in the 12 month period following the balance sheet date. The Company is primarily subject to examination by U.S. federal and various U.S. state and local tax authorities. The statute of limitations for federal tax purposes has closed for tax years 2012 and earlier. The statute of limitations for state income tax purposes has closed for tax years 2012 and earlier. There are no U.S. federal or state returns under examination.

10. Information Concerning Parent, Subsidiaries, Affiliates and Other Related Parties

- A. Nature of Relationships – No significant change
- B. Detail of Transactions Greater than ½% of Admitted Assets

The Company paid the following dividends to Cincinnati Financial Corporation:

Date	Amount	Type
January 17, 2017	\$100,000,000	Ordinary

- C. Change in Terms of Intercompany Agreements – Not Applicable
- D. Amounts Due to or from Related Parties – No significant change
- E. Guarantees or Contingencies for Related Parties – Not applicable
- F. Management, Service Contracts, Cost Sharing Arrangements – No significant change
- G. Nature of Relationships that Could Affect Operations – No significant change
- H. Amount Deducted from Value of an Investment in Upstream Entity – Not applicable
- I. Investment in an SCA that exceeds 10% of Admitted Assets – Not applicable
- J. Impairment Writedowns related to Investments in SCA entities – Not applicable
- K. Investment in Foreign Insurance Subsidiaries – Not applicable
- L. Investment in Downstream Noninsurance Holding Company – Not applicable
- M. All SCA Investments (Except 8bi Entities) – Not applicable
- N. Investment in Insurance SCA Entities Utilizing Permitted or Prescribed Practices – Not applicable

11. Debt – Not applicable

12. Retirement Plans, Deferred Compensation, Postemployment Benefits and Compensated Absences and Other Postretirement Benefit Plans – No significant change

13. Capital and Surplus, Dividend Restrictions and Quasi-Reorganizations

- 1. Shares authorized, issued and outstanding – No significant change
- 2. Preferred stock issues – Not applicable
- 3. Dividend restrictions – No significant change
- 4. The Company paid the following dividends to Cincinnati Financial Corporation:

Date	Amount	Type
January 17, 2017	\$100,000,000	Ordinary

- 5. Portion of profits that may be paid as ordinary dividends – No significant change
- 6. Surplus restrictions – Not applicable
- 7. Mutual Surplus Advances – Not applicable
- 8. Company Stock Held for Special Purposes – Not applicable
- 9. Changes in Special Surplus Funds – Not applicable

STATEMENT AS OF MARCH 31, 2017 OF THE CINCINNATI INSURANCE COMPANY

NOTES TO FINANCIAL STATEMENTS

10. Cumulative unrealized gains/(losses) – No significant change

11. Surplus Notes – Not applicable

12. Restatement of Quasi-Reorganization – Not applicable

13. Date of Quasi-Reorganization – Not applicable

14. Liabilities, Contingencies and Assessments – No significant change

15. Leases – No significant change

16. Information About Financial Instruments with Off-Balance Sheet Risk and Financial Instruments with Concentrations of Credit Risk – Not applicable

17. Sale, Transfer and Servicing of Financial Assets and Extinguishments of Liabilities – Not applicable

18. Gain or Loss to the Reporting Entity from Uninsured Plans and Uninsured Portion of Partially Insured Plans – Not applicable

19. Direct Written Premium/Produced by Managing General Agents/Third Party Administrators – Not applicable

20. Fair Value Measurements

A. Inputs Used for Assets and Liabilities Measured at Fair Value

1. Included in various investment related line items in the financial statements are certain financial instruments carried at fair value. Other financial instruments are periodically measured at fair value, such as when impaired, or, for certain fixed maturities and preferred stock, when carried at the lower of cost or market.

The fair value of an asset is the amount at which that asset could be bought or sold in a current transaction between willing parties, that is, other than in a forced or liquidation sale. The Company does not have any material liabilities carried at fair value.

The Company has categorized its financial instruments, based on the priority of the inputs to the valuation technique, into a three-level fair value hierarchy. The fair value hierarchy gives the highest priority to quoted prices in active markets for identical assets or liabilities (Level 1) and the lowest priority to unobservable inputs (Level 3). If the inputs used to measure the financial instruments fall within different levels of the hierarchy, the categorization is based on the lowest level that is significant to the fair value measurement of the instrument.

Financial assets that fall within Level 1 and Level 2 are priced according to observable data from identical or similar securities that have traded in the marketplace. Also within Level 2 are securities that are valued by outside services or brokers where the Company has evaluated the pricing methodology and determined that the inputs are observable. Financial assets that fall within Level 3 of the hierarchy are valued based upon unobservable market inputs. Pricing for each Level 3 security is based upon inputs that are market driven, including third-party reviews provided to the issuer or broker quotes. However, the Company places in the Level 3 hierarchy securities for which it is unable to obtain the pricing methodology or it could not consider the price provided as binding. Management ultimately determines the fair value for each Level 3 security that it considers to be the best exit price valuation.

The Company primarily bases fair value estimates for investments in equity and fixed-maturity securities on quoted market prices or on prices from a nationally recognized pricing vendor, an outside resource that supplies global securities pricing, dividend, corporate action and descriptive information to support fund pricing, securities operations, research and portfolio management. The Company obtains and reviews the pricing service's valuation methodologies and related inputs and validates these prices by replicating a sample across each asset class using a discounted cash flow model. When a price is not available from these sources, as in the case of securities that are not publicly traded, the Company determines the fair value using various inputs including quotes from independent brokers. In these circumstances, the Company has generally obtained and evaluated two nonbinding quotes from brokers; its investment professionals determine the best estimate of fair value. The fair value of investments not priced by a pricing vendor is less than 1 percent of the fair value of the Company's total investment portfolio.

Financial instruments are categorized based upon the following characteristics or inputs to the valuation techniques:

Level 1—Financial assets and liabilities for which inputs are observable and are obtained from reliable quoted prices for identical assets or liabilities in active markets. This is the most reliable fair value measurement and includes, for example, active exchange-traded equity securities.

Level 2 – Financial assets and liabilities for which values are based on quoted prices in markets that are not active or for which values are based on similar assets and liabilities that are actively traded. This also includes pricing models for which the inputs are corroborated by market data.

The technique used for the Level 2 fixed-maturity securities, including surplus notes which are included in other invested assets, is the application of market based modeling. The inputs used for all classes of fixed-maturity securities in the table below include relevant market information by asset class, trade activity of like securities, marketplace quotes, benchmark yields, spreads off benchmark yields, interest rates, U.S. Treasury or swap curves, yield to maturity

STATEMENT AS OF MARCH 31, 2017 OF THE CINCINNATI INSURANCE COMPANY

NOTES TO FINANCIAL STATEMENTS

and economic events. Specific to commercial mortgage-backed securities, key inputs also include prepayment and default projections based on past performance of the underlying collateral and current market data. All of the Level 2 fixed-maturity securities are priced by a nationally recognized pricing vendor.

The technique used for Level 2 preferred equities is the application of market based modeling. The inputs used, similar to those used by the pricing vendor for our fixed-maturity securities, include relevant market information, trade activity of like securities, yield to maturity, corporate action notices and economic events. All of the Level 2 preferred equities are priced by a nationally recognized pricing vendor.

Level 3—Financial assets and liabilities for which values are based on prices or valuation techniques that require inputs that are both unobservable and significant to the overall fair value measurement. Level 3 inputs include the following:

- Quotes from brokers or other external sources that are not considered binding;
- Quotes from brokers or other external sources where it cannot be determined that market participants would in fact transact for the asset or liability at the quoted price; or
- Quotes from brokers or other external sources where the inputs are not deemed observable.

Reclassification of certain financial instruments may occur when input observability changes. Reclassifications are reported as transfers into/out of the Level 3 category.

The following table presents the Company’s assets measured and reported at fair value by level within the fair value hierarchy as of March 31, 2017:

Assets at Fair Value:

	Level 1	Level 2	Level 3	Total
Bonds	\$ 0	\$ 27,236,328	\$ 0	\$ 27,236,328
Preferred Stock	0	66,954,956	0	66,954,956
Common Stock	3,138,111,854	0	0	3,138,111,854
Total	\$ 3,138,111,854	\$ 94,191,284	\$ 0	\$ 3,232,303,138

2. Fair Value Measurements in Level 3 of the Fair Value Hierarchy – Not applicable
3. Transfers between levels are assumed to occur at the beginning of the period.
4. Inputs and Techniques Used for Level 2 and Level 3 Fair Values – See narrative in Note 20A1.

B. Other Fair Value Disclosures – Not applicable

C. Fair Values for all Financial Instruments by Level

Type of Financial Instrument	Aggregate Fair Value	Admitted Assets	Level 1	Level 2	Level 3	Not Practicable (Carrying Value)
Bonds	\$ 5,923,147,732	\$ 5,753,158,073	\$ 12,812,039	\$ 5,910,335,693	\$ 0	\$ 0
Preferred Stock	217,462,642	192,852,434	0	217,462,642	0	0
Common Stock	3,138,111,854	3,138,111,854	3,138,111,854	0	0	0
Other Invested Assets (Surplus Notes)	7,885,217	7,682,030	0	7,885,217	0	0

D. Reasons Not Practical to Estimate Fair Values – Not applicable

21. Other Items

- A. Unusual or Infrequent Items – Not applicable
- B. Troubled Debt Restructuring – Not applicable
- A. Other Disclosures – No significant change
- D. Business Interruption Insurance Recoveries – Not applicable
- E. State Transferable and Non-Transferable Tax Credits – Not applicable
- F. Subprime-Mortgage-Related Risk Exposure – No significant change

STATEMENT AS OF MARCH 31, 2017 OF THE CINCINNATI INSURANCE COMPANY

NOTES TO FINANCIAL STATEMENTS

G. Insurance-Linked Securities (ILS) Contracts

Effective January 2017, the Company has entered a catastrophe bond arrangement providing up to \$200 million in earthquake reinsurance protection or \$80 million in severe convective storm coverage or various combinations of those coverages. It expires in January 2019. The earthquake coverage is countrywide, excluding California, and the severe convective storm coverage territory is also countrywide, excluding Florida. The storm coverage provides loss recovery when storm losses for all events in aggregate exceed \$190 million, after an \$8 million deductible per event. The table below summarizes the Company's ILS contracts as of March 31, 2017:

Management of Risk Related To:	Number of Outstanding ILS Contracts	Aggregate Maximum Proceeds
1. Directly Written Insurance Risks		
a. ILS Contracts as Issuer	N/A	N/A
b. ILS Contracts as Ceding Insurer	2	\$280,000,000
c. ILS Contracts as Counterparty	N/A	N/A
2. Assumed Insurance Risks		
a. ILS Contracts as Issuer	N/A	N/A
b. ILS Contracts as Ceding Insurer	N/A	N/A
c. ILS Contracts as Counterparty	N/A	N/A

22. Subsequent Events

The Company has considered subsequent events through May 12, 2017, the date of issuance of these statutory financial statements. There were no significant events occurring subsequent to March 31, 2017 requiring adjustment to or disclosure in the financial statements.

23. Reinsurance – No significant change

24. Retrospectively Rated Contracts & Contracts Subject to Redetermination – Not applicable

25. Changes in Incurred Losses and Loss Adjustment Expense

Reserves as of December 31, 2016 were \$4,505,982,243. As of March 31, 2017, \$495,734,190 has been paid for incurred losses and loss adjustment expenses attributable to insured events of prior years. Reserves remaining for prior years are now \$3,985,381,726 as a result of re-estimation of unpaid claims and claim adjustment expenses principally on commercial casualty lines of insurance. Therefore, there has been \$24,866,326 favorable prior-year development since December 31, 2016 to March 31, 2017. The decrease is generally the result of ongoing analysis of recent loss development trends. Original estimates are increased or decreased, as additional information becomes known regarding individual claims. Because the Company does not write retrospectively rated policies, prior-year development does not affect premium adjustments.

26. Intercompany Pooling Arrangements – Not applicable

27. Structured Settlements – No significant change

28. Health Care Receivables – Not applicable

29. Participating Policies – Not applicable

30. Premium Deficiency Reserves – No significant change

31. High Deductibles – Not applicable

32. Discounting of Liabilities for Unpaid Losses or Unpaid Loss Adjustment Expenses – No significant change

33. Asbestos and Environmental Reserves – No significant change

34. Subscriber Savings Accounts – Not applicable

35. Multiple Peril Crop Insurance – Not applicable

36. Financial Guaranty Insurance – Not applicable

37. Other – No significant change

GENERAL INTERROGATORIES

PART 1 - COMMON INTERROGATORIES

GENERAL

- 1.1 Did the reporting entity experience any material transactions requiring the filing of Disclosure of Material Transactions with the State of Domicile, as required by the Model Act? Yes [] No [X]
- 1.2 If yes, has the report been filed with the domiciliary state? Yes [] No []
- 2.1 Has any change been made during the year of this statement in the charter, by-laws, articles of incorporation, or deed of settlement of the reporting entity? Yes [] No [X]
- 2.2 If yes, date of change:
- 3.1 Is the reporting entity a member of an Insurance Holding Company System consisting of two or more affiliated persons, one or more of which is an insurer? Yes [X] No []
If yes, complete Schedule Y, Parts 1 and 1A.
- 3.2 Have there been any substantial changes in the organizational chart since the prior quarter end? Yes [] No [X]
- 3.3 If the response to 3.2 is yes, provide a brief description of those changes.
- 4.1 Has the reporting entity been a party to a merger or consolidation during the period covered by this statement? Yes [] No [X]
- 4.2 If yes, provide the name of the entity, NAIC Company Code, and state of domicile (use two letter state abbreviation) for any entity that has ceased to exist as a result of the merger or consolidation.

1 Name of Entity	2 NAIC Company Code	3 State of Domicile

5. If the reporting entity is subject to a management agreement, including third-party administrator(s), managing general agent(s), attorney-in-fact, or similar agreement, have there been any significant changes regarding the terms of the agreement or principals involved? Yes [] No [X] N/A []
If yes, attach an explanation.
- 6.1 State as of what date the latest financial examination of the reporting entity was made or is being made. 12/31/2014
- 6.2 State the as of date that the latest financial examination report became available from either the state of domicile or the reporting entity. This date should be the date of the examined balance sheet and not the date the report was completed or released. 12/31/2014
- 6.3 State as of what date the latest financial examination report became available to other states or the public from either the state of domicile or the reporting entity. This is the release date or completion date of the examination report and not the date of the examination (balance sheet date). 10/05/2015
- 6.4 By what department or departments?
Ohio
- 6.5 Have all financial statement adjustments within the latest financial examination report been accounted for in a subsequent financial statement filed with Departments? Yes [X] No [] N/A []
- 6.6 Have all of the recommendations within the latest financial examination report been complied with? Yes [X] No [] N/A []
- 7.1 Has this reporting entity had any Certificates of Authority, licenses or registrations (including corporate registration, if applicable) suspended or revoked by any governmental entity during the reporting period? Yes [] No [X]
- 7.2 If yes, give full information:
- 8.1 Is the company a subsidiary of a bank holding company regulated by the Federal Reserve Board? Yes [] No [X]
- 8.2 If response to 8.1 is yes, please identify the name of the bank holding company.
- 8.3 Is the company affiliated with one or more banks, thrifts or securities firms? Yes [] No [X]
- 8.4 If response to 8.3 is yes, please provide below the names and location (city and state of the main office) of any affiliates regulated by a federal regulatory services agency [i.e. the Federal Reserve Board (FRB), the Office of the Comptroller of the Currency (OCC), the Federal Deposit Insurance Corporation (FDIC) and the Securities Exchange Commission (SEC)] and identify the affiliate's primary federal regulator.

1 Affiliate Name	2 Location (City, State)	3 FRB	4 OCC	5 FDIC	6 SEC

GENERAL INTERROGATORIES

- 9.1 Are the senior officers (principal executive officer, principal financial officer, principal accounting officer or controller, or persons performing similar functions) of the reporting entity subject to a code of ethics, which includes the following standards? Yes [X] No []
- (a) Honest and ethical conduct, including the ethical handling of actual or apparent conflicts of interest between personal and professional relationships;
- (b) Full, fair, accurate, timely and understandable disclosure in the periodic reports required to be filed by the reporting entity;
- (c) Compliance with applicable governmental laws, rules and regulations;
- (d) The prompt internal reporting of violations to an appropriate person or persons identified in the code; and
- (e) Accountability for adherence to the code.
- 9.11 If the response to 9.1 is No, please explain:
- 9.2 Has the code of ethics for senior managers been amended? Yes [] No [X]
- 9.21 If the response to 9.2 is Yes, provide information related to amendment(s).
- 9.3 Have any provisions of the code of ethics been waived for any of the specified officers? Yes [] No [X]
- 9.31 If the response to 9.3 is Yes, provide the nature of any waiver(s).

FINANCIAL

- 10.1 Does the reporting entity report any amounts due from parent, subsidiaries or affiliates on Page 2 of this statement? Yes [X] No []
- 10.2 If yes, indicate any amounts receivable from parent included in the Page 2 amount: \$

INVESTMENT

- 11.1 Were any of the stocks, bonds, or other assets of the reporting entity loaned, placed under option agreement, or otherwise made available for use by another person? (Exclude securities under securities lending agreements.) Yes [] No [X]
- 11.2 If yes, give full and complete information relating thereto:
12. Amount of real estate and mortgages held in other invested assets in Schedule BA: \$
13. Amount of real estate and mortgages held in short-term investments: \$
- 14.1 Does the reporting entity have any investments in parent, subsidiaries and affiliates? Yes [X] No []
- 14.2 If yes, please complete the following:
- | | 1 | 2 |
|---|---|--|
| | Prior Year-End
Book/Adjusted
Carrying Value | Current Quarter
Book/Adjusted
Carrying Value |
| 14.21 Bonds | \$ | \$ |
| 14.22 Preferred Stock | \$ | \$ |
| 14.23 Common Stock | \$ | \$ 1,039,610,807 |
| 14.24 Short-Term Investments | \$ | \$ |
| 14.25 Mortgage Loans on Real Estate | \$ | \$ |
| 14.26 All Other | \$ | \$ |
| 14.27 Total Investment in Parent, Subsidiaries and Affiliates (Subtotal Lines 14.21 to 14.26) | \$ | \$ 1,039,610,807 |
| 14.28 Total Investment in Parent included in Lines 14.21 to 14.26 above | \$ | \$ |
- 15.1 Has the reporting entity entered into any hedging transactions reported on Schedule DB? Yes [] No [X]
- 15.2 If yes, has a comprehensive description of the hedging program been made available to the domiciliary state? Yes [] No []
- If no, attach a description with this statement.

STATEMENT AS OF MARCH 31, 2017 OF THE CINCINNATI INSURANCE COMPANY
GENERAL INTERROGATORIES

16. For the reporting entity's security lending program, state the amount of the following as of the current statement date:
- 16.1 Total fair value of reinvested collateral assets reported on Schedule DL, Parts 1 and 2\$
- 16.2 Total book adjusted/carrying value of reinvested collateral assets reported on Schedule DL, Parts 1 and 2\$
- 16.3 Total payable for securities lending reported on the liability page\$

17. Excluding items in Schedule E - Part 3 - Special Deposits, real estate, mortgage loans and investments held physically in the reporting entity's offices, vaults or safety deposit boxes, were all stocks, bonds and other securities, owned throughout the current year held pursuant to a custodial agreement with a qualified bank or trust company in accordance with Section 1, III - General Examination Considerations, F. Outsourcing of Critical Functions, Custodial or Safekeeping Agreements of the NAIC Financial Condition Examiners Handbook? Yes [X] No []
- 17.1 For all agreements that comply with the requirements of the NAIC Financial Condition Examiners Handbook, complete the following:

1 Name of Custodian(s)	2 Custodian Address
FIFTH THIRD BANK	FIFTH THIRD CENTER, CINCINNATI, OHIO 45263

- 17.2 For all agreements that do not comply with the requirements of the NAIC Financial Condition Examiners Handbook, provide the name, location and a complete explanation:

1 Name(s)	2 Location(s)	3 Complete Explanation(s)

- 17.3 Have there been any changes, including name changes, in the custodian(s) identified in 17.1 during the current quarter? Yes [] No [X]

- 17.4 If yes, give full information relating thereto:

1 Old Custodian	2 New Custodian	3 Date of Change	4 Reason

- 17.5 Investment management – Identify all investment advisors, investment managers, broker/dealers, including individuals that have the authority to make investment decisions on behalf of the reporting entity. For assets that are managed internally by employees of the reporting entity, note as such. ["...that have access to the investment accounts"; "...handle securities"]

1 Name of Firm or Individual	2 Affiliation
Advantus Capital Management Inc	U.....

- 17.5097 For those firms/individuals listed in the table for Question 17.5, do any firms/individuals unaffiliated with the reporting entity (i.e. designated with a "U") manage more than 10% of the reporting entity's assets?..... Yes [X] No []

- 17.5098 For firms/individuals unaffiliated with the reporting entity (i.e. designated with a "U") listed in the table for Question 17.5, does the total assets under management aggregate to more than 50% of the reporting entity's assets?..... Yes [] No [X]

- 17.6 For those firms or individuals listed in the table for 17.5 with an affiliation code of "A" (affiliated) or "U" (unaffiliated), provide the information for the table below.

1 Central Registration Depository Number	2 Name of Firm or Individual	3 Legal Entity Identifier (LEI)	4 Registered With	5 Investment Management Agreement (IMA) Filed
109905	Advantus Captial Management Inc	5URRAMPU5ELN18AQJB87	Securities and Exchange Commission ...	NO.....

- 18.1 Have all the filing requirements of the Purposes and Procedures Manual of the NAIC Investment Analysis Office been followed? Yes [] No [X]

- 18.2 If no, list exceptions:

For securities not filed with the SVO, please see the attached on page 7.2.1

CINCINNATI INSURANCE COMPANY

As of 3/31/17

Cusip	Description	Par	Book Adjusted Carry Value	SVO Rating
19910RAD1	OH COLUMBUS FRANKLIN FIN AUTH REVENUE	4,860,000.00	4,860,000.00	2Z
20727PAD6	CONGRESSIONAL BNC SHRS	5,000,000.00	5,000,000.00	2Z
35908VAA8	FRONTIER BANC SHARES	5,000,000.00	5,000,000.00	2Z
561409AA1	MALVERN BANCORP INC	5,000,000.00	5,000,000.00	2Z
70336FAA2	PATRIOT NATIONAL BANCORP	6,000,000.00	6,000,000.00	2Z
170123CF8	KS CHISOLM CREEK UTIL REV	1,065,000.00	1,065,000.00	6*
546279C81	LA LOUISIANA LOCAL CNTY REV	1,000,000.00	1,000,000.00	6*
851010JX7	MO CITY OF SPRINGFIELD PUB BLD CIVIC PAR	35,000.00	35,000.00	6*
80889EBC0	OH SCIOTO CNTY REGL WTR DIST REV	1,175,000.00	1,175,000.00	6*
689648C@0	OTTER TAIL CORP PRIVATE PLACEMENT	4,000,000.00	4,000,000.00	6*
704549AK0	PEABODY ENERGY CORP	2,000,000.00	322,708.72	6*
874704EC9	OH TALLMADGE GO WEST AVENUE IMP SER 2000	330,000.00	330,000.00	6*
745145YU0	PR COMMONWEALTH PUB IMPT GO	1,000,000.00	991,056.99	6FE
		36,465,000.00	34,778,765.71	

GENERAL INTERROGATORIES

PART 2 - PROPERTY & CASUALTY INTERROGATORIES

1. If the reporting entity is a member of a pooling arrangement, did the agreement or the reporting entity's participation change? Yes [] No [X] N/A []
If yes, attach an explanation.

2. Has the reporting entity reinsured any risk with any other reporting entity and agreed to release such entity from liability, in whole or in part, from any loss that may occur on the risk, or portion thereof, reinsured? Yes [] No [X]
If yes, attach an explanation.

3.1 Have any of the reporting entity's primary reinsurance contracts been canceled? Yes [] No [X]

3.2 If yes, give full and complete information thereto.

4.1 Are any of the liabilities for unpaid losses and loss adjustment expenses other than certain workers' compensation tabular reserves (see Annual Statement Instructions pertaining to disclosure of discounting for definition of "tabular reserves") discounted at a rate of interest greater than zero? Yes [] No [X]

4.2 If yes, complete the following schedule:

			TOTAL DISCOUNT				DISCOUNT TAKEN DURING PERIOD			
1	2	3	4	5	6	7	8	9	10	11
Line of Business	Maximum Interest	Discount Rate	Unpaid Losses	Unpaid LAE	IBNR	TOTAL	Unpaid Losses	Unpaid LAE	IBNR	TOTAL
TOTAL										

5. Operating Percentages:

5.1 A&H loss percent %

5.2 A&H cost containment percent %

5.3 A&H expense percent excluding cost containment expenses %

6.1 Do you act as a custodian for health savings accounts? Yes [] No [X]

6.2 If yes, please provide the amount of custodial funds held as of the reporting date \$.....

6.3 Do you act as an administrator for health savings accounts? Yes [] No [X]

6.4 If yes, please provide the balance of the funds administered as of the reporting date \$.....

STATEMENT AS OF MARCH 31, 2017 OF THE CINCINNATI INSURANCE COMPANY

SCHEDULE T - EXHIBIT OF PREMIUMS WRITTEN

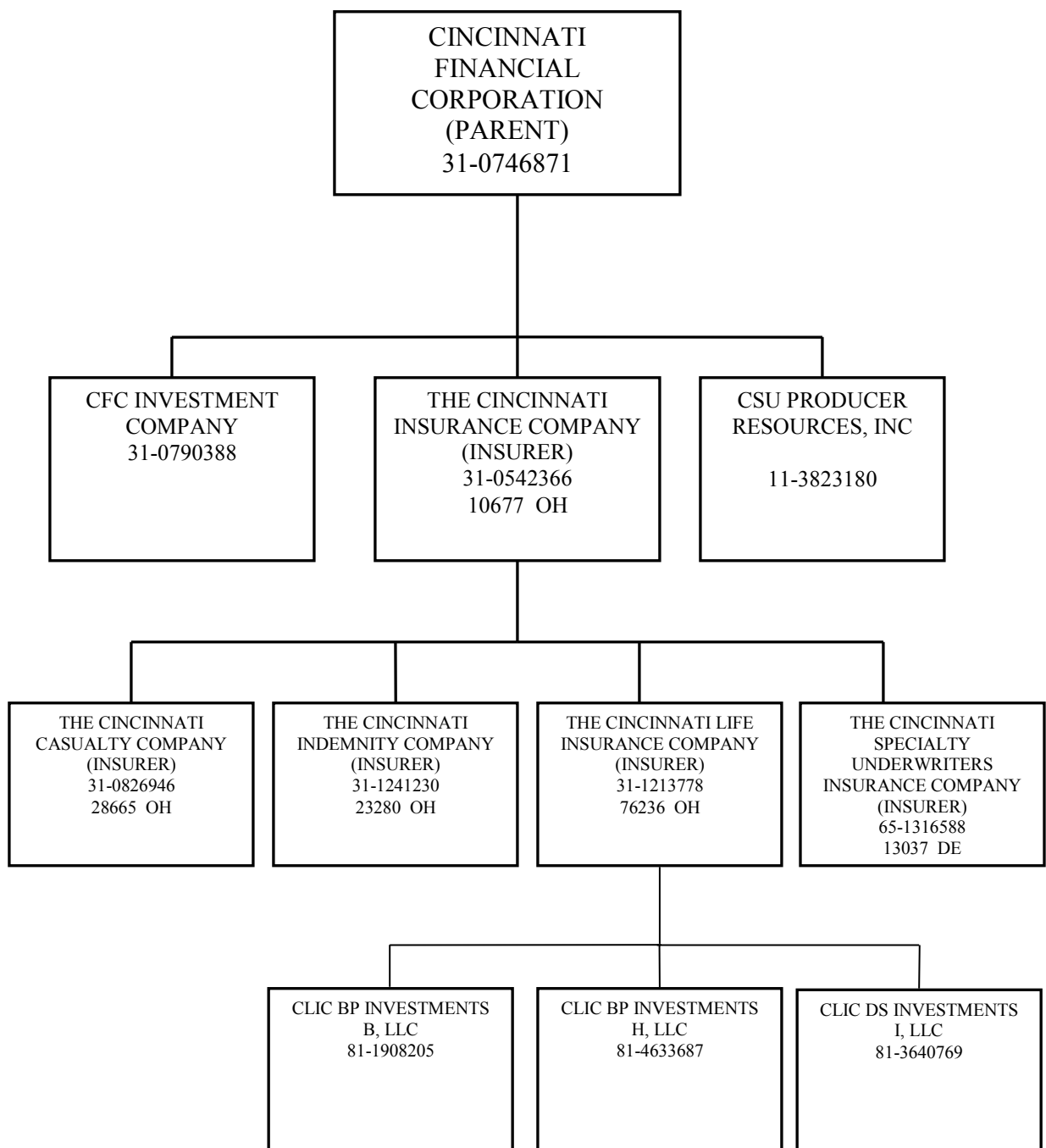
Current Year to Date - Allocated by States and Territories

	1	Direct Premiums Written		Direct Losses Paid (Deducting Salvage)		Direct Losses Unpaid	
		2	3	4	5	6	7
States, etc.	Active Status	Current Year To Date	Prior Year To Date	Current Year To Date	Prior Year To Date	Current Year To Date	Prior Year To Date
1. Alabama AL	L	32,364,315	30,763,600	13,430,739	17,616,894	64,333,530	57,713,075
2. Alaska AK	L	4,338	143,990			36,428	44,803
3. Arizona AZ	L	13,577,475	11,639,175	5,777,585	4,914,267	35,655,778	27,898,017
4. Arkansas AR	L	16,603,869	16,001,025	7,108,523	6,926,829	29,899,569	24,885,008
5. California CA	L	3,724,578	1,071,562	872,858	830,906	7,946,586	7,066,072
6. Colorado CO	L	6,916,943	5,977,451	3,431,662	1,742,541	20,460,487	19,206,895
7. Connecticut CT	L	7,193,029	4,312,241	2,280,656	1,475,456	13,625,513	13,337,592
8. Delaware DE	L	2,579,819	3,738,387	1,046,603	2,213,543	13,892,117	15,025,011
9. District of Columbia DC	L	442,607	193,552	15,770	(86,566)	1,212,432	1,310,349
10. Florida FL	L	15,907,291	10,660,263	5,744,693	3,102,667	56,655,928	42,794,449
11. Georgia GA	L	57,623,844	49,561,070	33,157,236	26,124,485	130,643,764	113,096,533
12. Hawaii HI	L	23,139	19,036			27,055	32,910
13. Idaho ID	L	7,726,454	7,876,200	4,176,227	2,557,672	20,955,271	18,984,170
14. Illinois IL	L	54,551,295	54,545,618	27,150,393	20,842,234	200,801,915	189,219,362
15. Indiana IN	L	55,730,318	55,828,852	29,080,154	24,581,682	160,493,338	155,696,727
16. Iowa IA	L	14,313,080	13,218,259	4,906,711	6,737,488	68,257,305	68,122,773
17. Kansas KS	L	12,898,060	12,466,046	3,952,530	5,475,887	26,428,405	24,526,989
18. Kentucky KY	L	36,029,277	35,455,456	26,225,490	18,102,607	98,924,062	76,533,035
19. Louisiana LA	L	548,695	411,486	87,612	360,547	2,173,018	2,224,372
20. Maine ME	L	59,365	28,848	(220)	3,544	120,628	1,200,462
21. Maryland MD	L	17,926,618	16,132,413	9,598,371	8,839,978	55,365,543	53,957,415
22. Massachusetts MA	L	327,695	293,878	67,409	28,506	1,095,301	1,123,103
23. Michigan MI	L	51,688,300	48,489,191	30,004,637	22,988,736	139,933,837	138,864,900
24. Minnesota MN	L	23,450,915	24,793,401	9,458,968	7,703,431	68,058,741	64,109,874
25. Mississippi MS	L	472,423	291,999	75,623	24,026	2,032,872	1,401,993
26. Missouri MO	L	24,955,144	23,368,838	14,767,522	7,547,432	95,439,133	78,538,262
27. Montana MT	L	12,827,203	11,712,660	5,352,206	4,052,567	25,692,989	22,628,986
28. Nebraska NE	L	7,959,177	8,040,274	4,764,607	2,982,970	29,832,606	22,940,026
29. Nevada NV	L	156,995	314,714	(4,964)	760,534	1,101,106	1,397,014
30. New Hampshire NH	L	3,960,495	3,458,049	1,013,352	2,612,184	8,723,475	9,557,940
31. New Jersey NJ	L	1,260,830	924,545	190,865	266,154	7,648,627	7,937,613
32. New Mexico NM	L	4,119,111	4,548,572	1,317,554	1,054,188	12,981,400	12,141,351
33. New York NY	L	24,180,929	17,018,604	9,186,149	6,377,697	83,741,745	73,490,561
34. North Carolina NC	L	51,238,851	49,804,721	22,488,655	27,712,654	112,639,618	98,731,284
35. North Dakota ND	L	5,538,895	5,781,020	888,734	898,855	8,050,661	7,905,908
36. Ohio OH	L	154,061,585	149,217,961	69,173,839	65,645,579	367,345,950	340,111,615
37. Oklahoma OK	L	726,973	564,588	211,709	10,130	1,604,918	2,220,790
38. Oregon OR	L	7,829,182	6,627,523	9,328,603	2,275,285	19,932,371	16,379,570
39. Pennsylvania PA	L	45,299,920	44,514,754	18,241,899	16,173,608	177,363,440	193,718,165
40. Rhode Island RI	L	115,853	21,500	10,425		215,930	210,385
41. South Carolina SC	L	13,900,301	12,727,224	8,182,693	7,284,786	51,367,433	44,912,755
42. South Dakota SD	L	3,014,595	2,728,093	4,017,329	698,741	15,043,998	9,260,800
43. Tennessee TN	L	40,626,829	37,316,630	25,344,329	12,809,148	118,630,605	79,954,532
44. Texas TX	L	22,159,696	20,178,678	18,326,777	9,650,286	138,491,643	123,717,702
45. Utah UT	L	12,957,636	13,754,145	4,505,202	5,333,691	42,279,567	33,762,339
46. Vermont VT	L	4,425,031	4,347,730	1,960,754	1,916,549	17,978,481	14,081,261
47. Virginia VA	L	29,847,839	28,946,190	9,502,724	9,627,110	96,228,240	90,667,220
48. Washington WA	L	5,028,888	4,513,073	3,691,083	1,512,114	12,853,963	13,246,722
49. West Virginia WV	L	5,583,783	5,525,860	4,196,947	3,534,647	17,069,902	16,688,589
50. Wisconsin WI	L	30,641,207	31,482,611	17,432,445	10,010,186	121,353,716	130,972,520
51. Wyoming WY	L	1,811,243	1,619,936	844,529	310,790	2,566,474	2,067,067
52. American Samoa AS	N						
53. Guam GU	N						
54. Puerto Rico PR	L	125				(17)	(51)
55. U.S. Virgin Islands VI	N						
56. Northern Mariana Islands MP	N						
57. Canada CAN	N						
58. Aggregate Other Alien OT	XXX						
59. Totals	(a) 52	946,912,058	892,971,490	472,586,196	384,165,246	2,805,207,399	2,565,616,814
DETAILS OF WRITE-INS							
58001.	XXX						
58002.	XXX						
58003.	XXX						
58998. Summary of remaining write-ins for Line 58 from overflow page	XXX						
58999. Totals (Lines 58001 through 58003 plus 58998)(Line 58 above)	XXX						

(L) Licensed or Chartered - Licensed Insurance Carrier or Domiciled RRG; (R) Registered - Non-domiciled RRGs; (Q) Qualified - Qualified or Accredited Reinsurer; (E) Eligible - Reporting Entities eligible or approved to write Surplus Lines in the state (other than their state of domicile - see DSLI); (D) DSLI - Domestic Surplus Lines Insurer (DSLI) - Reporting entities authorized to write Surplus Lines in the state of domicile; (N) None of the above - Not allowed to write business in the state.

(a) Insert the number of D and L responses except for Canada and Other Alien.

**SCHEDULE Y – INFORMATION CONCERNING ACTIVITIES OF
INSURER MEMBERS OF A HOLDING COMPANY GROUP PART 1
– ORGANIZATIONAL CHART**



STATEMENT AS OF MARCH 31, 2017 OF THE CINCINNATI INSURANCE COMPANY

SCHEDULE Y

PART 1A - DETAIL OF INSURANCE HOLDING COMPANY SYSTEM

1	2	3	4	5	6	7	8	9	10	11	12	13	14	15	16
Group Code	Group Name	NAIC Company Code	ID Number	Federal RSSD	CIK	Name of Securities Exchange if Publicly Traded (U.S. or International)	Names of Parent, Subsidiaries Or Affiliates	Domi-ciliary Loca-tion	Relation-ship to Reporting Entity	Directly Controlled by (Name of Entity/Person)	Type of Control (Ownership, Board, Management, Attorney-in-Fact, Influence, Other)	If Control is Ownership Provide Percen-tage	Ultimate Controlling Entity(ies)/Person(s)	Is an SCA Filing Re-quired? (Y/N)	*
.0244	CINCINNATI INS GRP	.00000	31-0746871		0000020286	NASDAQ	CINCINNATI FINANCIAL CORPORATION	.OH	DDP	CINCINNATI FINANCIAL CORPORATION	BOARD	0.000	BOARD	.N	.0
.0244	CINCINNATI INS GRP	.10677	31-0542366		0001279885		THE CINCINNATI INSURANCE COMPANY	.OH	RE	CINCINNATI FINANCIAL CORPORATION	Ownership	100.000	CINCINNATI FINANCIAL CORPORATION	.N	.0
.0244	CINCINNATI INS GRP	.76236	31-1213778		0001279887		THE CINCINNATI LIFE INSURANCE COMPANY	.OH	DS	THE CINCINNATI INSURANCE COMPANY	Ownership	100.000	CINCINNATI FINANCIAL CORPORATION	.N	.0
.0244	CINCINNATI INS GRP	.28665	31-0826946		0001279888		THE CINCINNATI CASUALTY COMPANY	.OH	DS	THE CINCINNATI INSURANCE COMPANY	Ownership	100.000	CINCINNATI FINANCIAL CORPORATION	.N	.0
.0244	CINCINNATI INS GRP	.23280	31-1241230		0001279886		THE CINCINNATI INDEMNITY COMPANY	.OH	DS	THE CINCINNATI INSURANCE COMPANY	Ownership	100.000	CINCINNATI FINANCIAL CORPORATION	.N	.0
							THE CINCINNATI SPECIALTY UNDERWRITERS INSURANCE COMPANY	.DE	DS	THE CINCINNATI INSURANCE COMPANY	Ownership	100.000	CINCINNATI FINANCIAL CORPORATION	.N	.0
.0244	CINCINNATI INS GRP	.13037	65-1316588		0001426763		CFC INVESTMENT COMPANY	.OH	NIA	CINCINNATI FINANCIAL CORPORATION	Ownership	100.000	CINCINNATI FINANCIAL CORPORATION	.N	.0
.0244	CINCINNATI INS GRP	.00000	31-0790388				CSU PRODUCER RESOURCES, INC	.OH	NIA	CINCINNATI FINANCIAL CORPORATION	Ownership	100.000	CINCINNATI FINANCIAL CORPORATION	.N	.0
.0244	CINCINNATI INS GRP	.00000	11-3823180		0001534469		CLIC BP INVESTMENTS B, LLC	.OH	DS	THE CINCINNATI LIFE INSURANCE COMPANY	Ownership	100.000	CINCINNATI FINANCIAL CORPORATION	.N	.0
.0244	CINCINNATI INS GRP	.00000	81-1908205				CLIC DS Investments I, LLC	.OH	DS	THE CINCINNATI LIFE INSURANCE COMPANY	Ownership	100.000	CINCINNATI FINANCIAL CORPORATION	.N	.0
.0244	CINCINNATI INS GRP	.00000	81-3640769				CLIC BP Investments H, LLC	.OH	DS	THE CINCINNATI LIFE INSURANCE COMPANY	Ownership	100.000	CINCINNATI FINANCIAL CORPORATION	.N	.0
.0244	CINCINNATI INS GRP	.00000	81-4633687												

Asterisk	Explanation
----------	-------------

STATEMENT AS OF MARCH 31, 2017 OF THE CINCINNATI INSURANCE COMPANY

PART 1 - LOSS EXPERIENCE

Line of Business	Current Year to Date			4 Prior Year to Date Direct Loss Percentage
	1 Direct Premiums Earned	2 Direct Losses Incurred	3 Direct Loss Percentage	
1. Fire	22,190,032	9,581,131	43.2	36.8
2. Allied Lines	18,830,458	25,048,857	133.0	39.5
3. Farmowners multiple peril				
4. Homeowners multiple peril	129,940,896	89,452,315	68.8	43.5
5. Commercial multiple peril	246,211,701	143,211,347	58.2	40.7
6. Mortgage guaranty				
8. Ocean marine				
9. Inland marine	27,739,115	9,168,756	33.1	50.5
10. Financial guaranty				
11.1 Medical professional liability - occurrence	7,973,180	8,006,421	100.4	45.6
11.2 Medical professional liability - claims-made	419,445	125,307	29.9	47.5
12. Earthquake	1,001,931	(24)	0.0	(1.4)
13. Group accident and health				
14. Credit accident and health				
15. Other accident and health				
16. Workers' compensation	22,336,205	5,285,015	23.7	46.4
17.1 Other liability - occurrence	120,539,817	32,963,831	27.3	43.2
17.2 Other liability - claims-made	26,582,058	9,195,704	34.6	25.7
17.3 Excess workers' compensation	352,376	461,915	131.1	19.5
18.1 Products liability - occurrence	14,915,622	8,363,169	56.1	42.4
18.2 Products liability - claims-made				
19.1,19.2 Private passenger auto liability	78,644,804	58,983,437	75.0	76.1
19.3,19.4 Commercial auto liability	88,167,292	66,242,799	75.1	70.9
21. Auto physical damage	102,558,825	65,295,121	63.7	62.6
22. Aircraft (all perils)		(95,667)		
23. Fidelity	1,139,809	1,048,549	92.0	4.9
24. Surety	10,362,143	(879,872)	(8.5)	(3.3)
26. Burglary and theft	1,390,709	259,124	18.6	(58.1)
27. Boiler and machinery	4,229,767	1,211,565	28.6	5.5
28. Credit				
29. International				
30. Warranty				
31. Reinsurance - Nonproportional Assumed Property	XXX	XXX	XXX	XXX
32. Reinsurance - Nonproportional Assumed Liability	XXX	XXX	XXX	XXX
33. Reinsurance - Nonproportional Assumed Financial Lines	XXX	XXX	XXX	XXX
34. Aggregate write-ins for other lines of business				
35. Totals	925,526,186	532,928,801	57.6	48.8
DETAILS OF WRITE-INS				
3401.				
3402.				
3403.				
3498. Summary of remaining write-ins for Line 34 from overflow page				
3499. Totals (Lines 3401 through 3403 plus 3498)(Line 34 above)				

PART 2 - DIRECT PREMIUMS WRITTEN

Line of Business	1	2	3
	Current Quarter	Current Year to Date	Prior Year Year to Date
1. Fire	21,450,486	21,450,486	21,900,805
2. Allied Lines	19,070,068	19,070,068	18,534,878
3. Farmowners multiple peril			
4. Homeowners multiple peril	113,697,647	113,697,647	107,906,792
5. Commercial multiple peril	259,003,462	259,003,462	249,087,174
6. Mortgage guaranty			
8. Ocean marine			
9. Inland marine	29,712,375	29,712,375	26,139,207
10. Financial guaranty			
11.1 Medical professional liability - occurrence	6,703,324	6,703,324	7,232,140
11.2 Medical professional liability - claims-made	461,704	461,704	60,193
12. Earthquake	1,369,954	1,369,954	708,002
13. Group accident and health			
14. Credit accident and health			
15. Other accident and health			
16. Workers' compensation	27,725,111	27,725,111	26,605,598
17.1 Other liability - occurrence	130,593,972	130,593,972	125,156,386
17.2 Other liability - claims-made	28,932,615	28,932,615	24,951,139
17.3 Excess workers' compensation	383,473	383,473	358,136
18.1 Products liability - occurrence	17,441,414	17,441,414	17,583,772
18.2 Products liability - claims-made			
19.1,19.2 Private passenger auto liability	74,142,261	74,142,261	69,041,472
19.3,19.4 Commercial auto liability	95,670,102	95,670,102	87,092,035
21. Auto physical damage	101,806,580	101,806,580	93,838,993
22. Aircraft (all perils)			
23. Fidelity	1,191,587	1,191,587	1,477,336
24. Surety	11,363,542	11,363,542	10,306,724
26. Burglary and theft	2,134,021	2,134,021	1,046,625
27. Boiler and machinery	4,058,362	4,058,362	3,944,083
28. Credit			
29. International			
30. Warranty			
31. Reinsurance - Nonproportional Assumed Property	XXX	XXX	XXX
32. Reinsurance - Nonproportional Assumed Liability	XXX	XXX	XXX
33. Reinsurance - Nonproportional Assumed Financial Lines	XXX	XXX	XXX
34. Aggregate write-ins for other lines of business			
35. Totals	946,912,058	946,912,058	892,971,490
DETAILS OF WRITE-INS			
3401.			
3402.			
3403.			
3498. Summary of remaining write-ins for Line 34 from overflow page			
3499. Totals (Lines 3401 through 3403 plus 3498)(Line 34 above)			

STATEMENT AS OF MARCH 31, 2017 OF THE CINCINNATI INSURANCE COMPANY

PART 3 (000 omitted)

LOSS AND LOSS ADJUSTMENT EXPENSE RESERVES SCHEDULE

	1	2	3	4	5	6	7	8	9	10	11	12	13
Years in Which Losses Occurred	Prior Year-End Known Case Loss and LAE Reserves	Prior Year-End IBNR Loss and LAE Reserves	Total Prior Year-End Loss and LAE Reserves (Cols. 1+2)	2017 Loss and LAE Payments on Claims Reported as of Prior Year-End	2017 Loss and LAE Payments on Claims Unreported as of Prior Year-End	Total 2017 Loss and LAE Payments (Cols. 4+5)	Q.S. Date Known Case Loss and LAE Reserves on Claims Reported and Open as of Prior Year End	Q.S. Date Known Case Loss and LAE Reserves on Claims Reported or Reopened Subsequent to Prior Year End	Q.S. Date IBNR Loss and LAE Reserves	Total Q.S. Loss and LAE Reserves (Cols.7+8+9)	Prior Year-End Known Case Loss and LAE Reserves Developed (Savings)/ Deficiency (Cols.4+7 minus Col. 1)	Prior Year-End IBNR Loss and LAE Reserves Developed (Savings)/ Deficiency (Cols. 5+8+9 minus Col. 2)	Prior Year-End Total Loss and LAE Reserve Developed (Savings)/ Deficiency (Cols. 11+12)
1. 2014 + Prior	940,570	963,086	1,903,656	132,088	7,341	139,429	832,607	27,473	901,564	1,761,643	24,125	(26,709)	(2,584)
2. 2015	461,829	456,393	918,222	84,783	2,906	87,689	400,000	19,683	407,228	826,911	22,954	(26,577)	(3,623)
3. Subtotals 2015 + Prior	1,402,399	1,419,480	2,821,878	216,871	10,247	227,118	1,232,607	47,155	1,308,791	2,588,554	47,080	(53,286)	(6,206)
4. 2016	839,643	844,461	1,684,104	227,761	40,854	268,616	636,549	84,671	675,607	1,396,828	24,668	(43,328)	(18,660)
5. Subtotals 2016 + Prior	2,242,041	2,263,941	4,505,982	444,633	51,101	495,734	1,869,156	131,826	1,984,399	3,985,382	71,748	(96,614)	(24,866)
6. 2017	XXX	XXX	XXX	XXX	182,462	182,462	XXX	289,564	326,885	616,449	XXX	XXX	XXX
7. Totals	2,242,041	2,263,941	4,505,982	444,633	233,564	678,196	1,869,156	421,390	2,311,284	4,601,830	71,748	(96,614)	(24,866)
8. Prior Year-End Surplus As Regards Policyholders	4,685,962										Col. 11, Line 7 As % of Col. 1 Line 7	Col. 12, Line 7 As % of Col. 2 Line 7	Col. 13, Line 7 As % of Col. 3 Line 7
											1. 3.2	2. (4.3)	3. (0.6)
													Col. 13, Line 7 As a % of Col. 1 Line 8
													4. (0.5)

SUPPLEMENTAL EXHIBITS AND SCHEDULES INTERROGATORIES

The following supplemental reports are required to be filed as part of your statement filing. However, in the event that your company does not transact the type of business for which the special report must be filed, your response of NO to the specific interrogatory will be accepted in lieu of filing a "NONE" report and a bar code will be printed below. If the supplement is required of your company but is not being filed for whatever reason enter SEE EXPLANATION and provide an explanation following the interrogatory questions.

	Response
1. Will the Trusteed Surplus Statement be filed with the state of domicile and the NAIC with this statement?	NO
2. Will Supplement A to Schedule T (Medical Professional Liability Supplement) be filed with this statement?	YES
3. Will the Medicare Part D Coverage Supplement be filed with the state of domicile and the NAIC with this statement?	NO
4. Will the Director and Officer Insurance Coverage Supplement be filed with the state of domicile and the NAIC with this statement?	YES

Explanations:

- 1.
- 3.

Bar Codes:

1. Trusteed Surplus Statement [Document Identifier 490]



3. Medicare Part D Coverage Supplement [Document Identifier 365]



NONE

STATEMENT AS OF MARCH 31, 2017 OF THE CINCINNATI INSURANCE COMPANY

SCHEDULE A - VERIFICATION

Real Estate

	1 Year to Date	2 Prior Year Ended December 31
1. Book/adjusted carrying value, December 31 of prior year	8,986,709	9,233,108
2. Cost of acquired:		
2.1 Actual cost at time of acquisition		
2.2 Additional investment made after acquisition		
3. Current year change in encumbrances		
4. Total gain (loss) on disposals		
5. Deduct amounts received on disposals		
6. Total foreign exchange change in book/adjusted carrying value		
7. Deduct current year's other than temporary impairment recognized		
8. Deduct current year's depreciation	61,600	246,399
9. Book/adjusted carrying value at the end of current period (Lines 1+2+3+4-5+6-7-8)	8,925,109	8,986,709
10. Deduct total nonadmitted amounts		
11. Statement value at end of current period (Line 9 minus Line 10)	8,925,109	8,986,709

SCHEDULE B - VERIFICATION

Mortgage Loans

	1 Year to Date	2 Prior Year Ended December 31
1. Book value/recorded investment excluding accrued interest, December 31 of prior year		
2. Cost of acquired:		
2.1 Actual cost at time of acquisition		
2.2 Additional investment made after acquisition		
3. Capitalized deferred interest and other		
4. Accrual of discount		
5. Unrealized valuation increase (decrease)		
6. Total gain (loss) on disposals		
7. Deduct amounts received on disposals		
8. Deduct amortization of premium and mortgage investment and commitment fees		
9. Total foreign exchange change in book value/recorded investment including accrued interest		
10. Deduct current year's other than temporary impairment recognized		
11. Book value/recorded investment excluding accrued interest at end of current period (Lines 1+2+3+4+5+6-7-8+9-10)		
12. Total valuation allowance		
13. Subtotal (Line 11 plus Line 12)		
14. Deduct total nonadmitted amounts		
15. Statement value at end of current period (Line 13 minus Line 14)		

NONE**SCHEDULE BA - VERIFICATION**

Other Long-Term Invested Assets

	1 Year to Date	2 Prior Year Ended December 31
1. Book/adjusted carrying value, December 31 of prior year	62,681,699	35,125,863
2. Cost of acquired:		
2.1 Actual cost at time of acquisition		29,234,501
2.2 Additional investment made after acquisition		
3. Capitalized deferred interest and other		
4. Accrual of discount		
5. Unrealized valuation increase (decrease)		
6. Total gain (loss) on disposals		
7. Deduct amounts received on disposals		
8. Deduct amortization of premium and depreciation	976,407	1,678,665
9. Total foreign exchange change in book/adjusted carrying value		
10. Deduct current year's other than temporary impairment recognized		
11. Book/adjusted carrying value at end of current period (Lines 1+2+3+4+5+6-7-8+9-10)	61,705,292	62,681,699
12. Deduct total nonadmitted amounts		
13. Statement value at end of current period (Line 11 minus Line 12)	61,705,292	62,681,699

SCHEDULE D - VERIFICATION

Bonds and Stocks

	1 Year to Date	2 Prior Year Ended December 31
1. Book/adjusted carrying value of bonds and stocks, December 31 of prior year	9,890,833,770	9,165,390,251
2. Cost of bonds and stocks acquired	417,232,986	1,247,927,300
3. Accrual of discount	1,508,017	8,179,755
4. Unrealized valuation increase (decrease)	53,352,499	445,008,475
5. Total gain (loss) on disposals	91,977,021	87,178,285
6. Deduct consideration for bonds and stocks disposed of	326,252,307	1,043,378,254
7. Deduct amortization of premium	4,918,816	17,689,434
8. Total foreign exchange change in book/adjusted carrying value		
9. Deduct current year's other than temporary impairment recognized		1,782,608
10. Book/adjusted carrying value at end of current period (Lines 1+2+3+4+5-6-7+8-9)	10,123,733,170	9,890,833,770
11. Deduct total nonadmitted amounts		
12. Statement value at end of current period (Line 10 minus Line 11)	10,123,733,170	9,890,833,770

STATEMENT AS OF MARCH 31, 2017 OF THE CINCINNATI INSURANCE COMPANY

SCHEDULE D - PART 1B

Showing the Acquisitions, Dispositions and Non-Trading Activity
During the Current Quarter for all Bonds and Preferred Stock by NAIC Designation

NAIC Designation	1 Book/Adjusted Carrying Value Beginning of Current Quarter	2 Acquisitions During Current Quarter	3 Dispositions During Current Quarter	4 Non-Trading Activity During Current Quarter	5 Book/Adjusted Carrying Value End of First Quarter	6 Book/Adjusted Carrying Value End of Second Quarter	7 Book/Adjusted Carrying Value End of Third Quarter	8 Book/Adjusted Carrying Value December 31 Prior Year
BONDS								
1. NAIC 1 (a)	3,349,930,607	190,671,001	105,356,718	(31,093,064)	3,404,151,826			3,349,930,607
2. NAIC 2 (a)	2,025,680,241	74,712,470	20,463,587	(53,843,889)	2,026,085,235			2,025,680,241
3. NAIC 3 (a)	204,590,692	1,551,090	13,350,851	47,633,380	240,424,311			204,590,692
4. NAIC 4 (a)	29,875,316	5,140,414	6,259,391	20,532,457	49,288,796			29,875,316
5. NAIC 5 (a)	9,266,834			15,022,306	24,289,140			9,266,834
6. NAIC 6 (a)	8,842,455			76,310	8,918,765			8,842,455
7. Total Bonds	5,628,186,145	272,074,975	145,430,547	(1,672,500)	5,753,158,073			5,628,186,145
PREFERRED STOCK								
8. NAIC 1	2,457,274			40,966	2,498,240			2,457,274
9. NAIC 2	62,594,761			1,861,954	64,456,715			62,594,761
10. NAIC 3	112,350,209	9,500,000	2,975,350	22,620	118,897,479			112,350,209
11. NAIC 4	7,000,000				7,000,000			7,000,000
12. NAIC 5								
13. NAIC 6								
14. Total Preferred Stock	184,402,244	9,500,000	2,975,350	1,925,540	192,852,434			184,402,244
15. Total Bonds and Preferred Stock	5,812,588,389	281,574,975	148,405,897	253,040	5,946,010,507			5,812,588,389

(a) Book/Adjusted Carrying Value column for the end of the current reporting period includes the following amount of short-term and cash equivalent bonds by NAIC designation:

NAIC 1 \$; NAIC 2 \$; NAIC 3 \$ NAIC 4 \$; NAIC 5 \$; NAIC 6 \$

Schedule DA - Part 1 - Short-Term Investments

NONE

Schedule DA - Verification - Short-Term Investments

NONE

Schedule DB - Part A - Verification - Options, Caps, Floors, Collars, Swaps and Forwards

NONE

Schedule DB - Part B - Verification - Futures Contracts

NONE

Schedule DB - Part C - Section 1 - Replication (Synthetic Asset) Transactions (RSATs) Open

NONE

Schedule DB-Part C-Section 2-Reconciliation of Replication (Synthetic Asset) Transactions Open

NONE

Schedule DB - Verification - Book/Adjusted Carrying Value, Fair Value and Potential Exposure of Derivatives

NONE

Schedule E - Verification - Cash Equivalents

NONE

Schedule A - Part 2 - Real Estate Acquired and Additions Made

NONE

Schedule A - Part 3 - Real Estate Disposed

NONE

Schedule B - Part 2 - Mortgage Loans Acquired and Additions Made

NONE

Schedule B - Part 3 - Mortgage Loans Disposed, Transferred or Repaid

NONE

Schedule BA - Part 2 - Other Long-Term Invested Assets Acquired and Additions Made

NONE

Schedule BA - Part 3 - Other Long-Term Invested Assets Disposed, Transferred or Repaid

NONE

STATEMENT AS OF MARCH 31, 2017 OF THE CINCINNATI INSURANCE COMPANY

SCHEDULE D - PART 3

Show All Long-Term Bonds and Stock Acquired During the Current Quarter

1	2	3	4	5	6	7	8	9	10
CUSIP Identification	Description	Foreign	Date Acquired	Name of Vendor	Number of Shares of Stock	Actual Cost	Par Value	Paid for Accrued Interest and Dividends	NAIC Designation or Market Indicator (a)
912828-63-8	US TREASURY N/B		02/13/2017	DEUTSCHE BANK		3,134,971	3,150,000	16,748	1
912828-L2-4	US TREASURY N/B		02/13/2017	DEUTSCHE BANK		1,089,730	1,100,000	9,515	1
912828-W8-0	US TREASURY N/B		02/03/2017	DEUTSCHE BANK		498,008	500,000	1,868	1
912828-U5-7	US TREASURY N/B		02/13/2017	DEUTSCHE BANK		993,828	1,000,000	4,437	1
0599999. Subtotal - Bonds - U.S. Governments						5,716,537	5,750,000	32,568	XXX
13063C-6P-0	CA STATE GO		03/08/2017	CITIGROUP GLOBAL MARKETS		5,101,850	5,000,000		1FE
246381-KK-2	DE STATE GO		03/10/2017	MORGAN STANLEY		3,447,045	3,255,000	2,170	1FE
882723-7E-3	TX STATE GO		01/20/2017	MERRILL LYNCH		11,704,100	10,000,000		1FE
1799999. Subtotal - Bonds - U.S. States, Territories and Possessions						20,252,995	18,255,000	2,170	XXX
005626-RZ-1	CO ADAMS CNTY SCH DIST GO		01/27/2017	RBC DAIN RAUSCHER		4,363,739	3,820,000		1FE
007266-LK-3	MI ADRIAN CITY SCH DIST GO		01/11/2017	RAYMOND JAMES		1,140,680	1,000,000		1FE
037105-LE-1	CA ANTIOCH UNIF SCH DIST GO		01/26/2017	RAYMOND JAMES		2,033,811	1,985,000		1FE
145814-RL-5	NV CARSON CITY SCHOOL DIST GO		01/18/2017	JP MORGAN		1,204,370	1,120,000		1FE
145814-RM-3	NV CARSON CITY SCH DIST GO		01/18/2017	JP MORGAN		1,247,447	1,165,000		1FE
153300-VA-3	PA CENTRAL DAUPHIN SCH DIST GO		01/19/2017	RBC DAIN RAUSCHER		1,134,420	1,000,000		1FE
153300-VB-1	PA CENTRAL DAUPHIN SCH DIST GO		01/19/2017	RBC DAIN RAUSCHER		1,238,051	1,095,000		1FE
190335-HV-4	CA COAST COMMUNITY COLLEGE DIST GO		03/09/2017	RBC DAIN RAUSCHER		1,038,620	1,000,000		1FE
199507-5F-7	OH COLUMBUS CITY SCH DIST GO		01/25/2017	KEY CAPITAL MARKETS		1,044,480	1,000,000		1FE
213327-UX-5	IL COOK CNTY SCH DIST ARLINGTON HIGHT GO		01/12/2017	WILLIAM BLAIR & CO		1,962,480	1,700,000		1FE
218080-DK-2	IA CORALVILLE CITY GO		03/24/2017	STIFEL NICOLAUS		3,020,040	3,000,000		2FE
239019-V2-5	UT DAVIS CNTY SCH DIST GO		03/23/2017	CITIGROUP GLOBAL MARKETS		5,702,966	5,800,000		1FE
243859-LK-9	PA DEER LAKES SCH DIST GO		03/30/2017	JANNEY MONTGOMERY SCOTT		3,514,662	3,585,000		1FE
269479-JN-2	CO EAGLE CNTY SCH DIST TO		01/26/2017	GK BAUM		2,880,225	2,500,000		1FE
30382A-FU-1	VA FAIRFAX CNTY GO		01/24/2017	MORGAN STANLEY		5,335,200	5,000,000		1FE
34440P-BD-2	CA FOLSOM CORDOVA UNIF SCH DIST GO		02/01/2017	RBC CAPITAL MARKETS		1,830,623	1,755,000		1FE
345239-CC-9	IL FORD CHAMPAIGN ETC CNTYS SCH DIST GO		01/26/2017	STIFEL NICOLAUS		2,195,573	2,250,000		1FE
374100-KZ-7	WI GERMANTOWN SCH DIST GO		03/14/2017	MESIROW & CO		4,680,804	4,530,000		1FE
495278-U7-6	WA KING CNTY SCH DIST GO		01/27/2017	RW BAIRD		5,015,111	4,815,000		1FE
582112-SS-6	TN NASHVILLE & DAVIDSON CNTY REVENUE		01/25/2017	CITIGROUP GLOBAL MARKETS		5,270,100	5,000,000		1FE
607114-2L-8	AL MOBILE CITY GO		01/26/2017	RAYMOND JAMES		3,193,066	2,745,000		1FE
615104-CY-0	CO MONTROSE CNTY SCH DIST GO		01/11/2017	RW BAIRD		1,159,290	1,000,000		1FE
715875-VN-7	CA PETALUMA CITY UNION HS GO		01/25/2017	STIFEL NICOLAUS		1,649,606	1,610,000		1FE
722086-GC-3	AZ PINAL CNTY ELEM SCH DIST GO		03/24/2017	STIFEL NICOLAUS		896,464	800,000		1FE
751091-TM-1	NC RALEIGH CITY PUB IMP GO		01/24/2017	WELLS FARGO		3,350,700	3,400,000		1FE
756843-YE-2	TX RED OAK INDEP SCH DIST GO		01/25/2017	RW BAIRD		3,511,200	3,520,000	12,320	1FE
766809-TE-7	PA RINGGOLD SCH DIST GO		01/19/2017	RAYMOND JAMES		4,040,000	4,040,000		1FE
789177-QV-7	MN SAINT CLOUD INDEP SCH DIST GO		01/20/2017	RW BAIRD		1,841,403	1,750,000		1FE
850272-N9-2	AR SPRINGDALE SCH DIST GO		03/07/2017	MORGAN STANLEY		1,731,300	1,740,000	5,256	1FE
866045-NE-3	CO SUMMIT CNTY SCH DIST GO		01/25/2017	GK BAUM		1,053,950	1,000,000		1FE
866854-RF-1	WI SUN PRAIRIE AREA SCH DIST GO		01/19/2017	RW BAIRD		5,229,900	5,000,000		1FE
899645-A3-9	OK TULSA CITY GO		01/26/2017	CITIGROUP GLOBAL MARKETS		4,042,563	4,105,000	3,464	1FE
915730-YG-4	PA UPPER DUBLIN SCH DIST GO		01/20/2017	RBC CAPITAL MARKETS		1,052,800	1,000,000		1FE
938395-RT-9	OR WASHINGTON & CLACKAMAS CNTYS SCH GO		03/09/2017	PIPER JAFFRAY		2,288,540	2,000,000		1FE
940858-8C-0	NV WASHOE CNTY SCH DIST GO		01/24/2017	JP MORGAN		2,351,493	2,270,000		1FE
949323-KC-2	CO WELD CNTY REORG SCH DIST GO		01/11/2017	GK BAUM		2,019,063	1,750,000		1FE
965084-LY-0	MI WHITEHALL DIST SCHOES GO		03/23/2017	STIFEL NICOLAUS		1,121,480	1,000,000		1FE
967710-CA-0	CO WIGGINS SCH DIST GO		01/20/2017	GK BAUM		1,413,598	1,245,000		1FE
967710-CB-8	CO WIGGINS SCH DIST GO		01/20/2017	GK BAUM		1,130,950	1,000,000		1FE
2499999. Subtotal - Bonds - U.S. Political Subdivisions of States, Territories and Possessions						98,930,768	94,095,000	21,040	XXX
058508-GY-2	IN BALL STATE UNIV REVENUE		01/11/2017	PIPER JAFFRAY		837,846	725,000		1FE
05922K-Y0-6	MD BALTIMORE PROJ REVENUE		01/27/2017	CITIGROUP GLOBAL MARKETS		2,272,280	2,000,000		1FE
090132-AT-8	MT BILLINGS SWR SYS REVENUE		01/27/2017	PIPER JAFFRAY		576,626	550,000		1FE
100210-RS-4	LA BOSSIER CITY IMPT TAX REVENUE		03/29/2017	STIFEL NICOLAUS		1,502,756	1,335,000		1FE
19910R-AD-1	OH COLUMBUS FRANKLIN FIN AUTH REVENUE		01/20/2017	MISCELLANEOUS		4,880,000	4,880,000		2Z
249015-CA-8	TX DENTON CITY UTIL SYS REVENUE		01/20/2017	JP MORGAN		6,903,533	5,965,000		1FE
249015-C9-7	TX DENTON CITY UTIL SYS REVENUE		01/20/2017	JP MORGAN		5,655,350	5,000,000		1FE
357157-EW-2	CA FREMONT UNIF SCH DIST COPS REVENUE		02/02/2017	MORGAN STANLEY		1,117,200	1,120,000		1FE
478270-AR-2	TN JOHNSON CITY ENERGY AUTH REVENUE		03/08/2017	RAYMOND JAMES		1,125,000	1,125,000		1FE
49151F-TG-5	KY STATE PROP & BLDGS REVENUE		01/25/2017	CITIGROUP GLOBAL MARKETS		5,563,400	5,000,000		1FE
495289-W9-7	WA KING CNTY SWR REVENUE		01/27/2017	PIPER JAFFRAY		3,139,670	3,050,000	10,167	1FE
500296-JY-5	IN KOKOMO SCH BLDG REVENUE		03/30/2017	FIFTH THIRD BANK		563,585	500,000		1FE
516391-CG-2	MI LANSING WTR & LT UTIL SYS REVENUE		01/12/2017	CITIGROUP GLOBAL MARKETS		886,560	750,000		1FE

E04

STATEMENT AS OF MARCH 31, 2017 OF THE CINCINNATI INSURANCE COMPANY

SCHEDULE D - PART 3

Show All Long-Term Bonds and Stock Acquired During the Current Quarter

1	2	3	4	5	6	7	8	9	10
CUSIP Identification	Description	Foreign	Date Acquired	Name of Vendor	Number of Shares of Stock	Actual Cost	Par Value	Paid for Accrued Interest and Dividends	NAIC Designation or Market Indicator (a)
544495-2M-5	CA LOS ANGELES DEPT WTR& PWER REVENUE		.03/10/2017	CITIGROUP GLOBAL MARKETS		5,671,750	5,000,000		1FE
62459H-AB-4	MO MOVE ROLLA TRANSPRTN DEV DIST REVENUE		.03/08/2017	STIFEL NICOLAUS		1,000,000	1,000,000		2FE
641667-RU-6	IN NEW ALBANY FLOYD CNTY SCH REVENUE		.03/14/2017	FIFTH THIRD BANK		2,788,675	2,500,000		1FE
675561-CG-7	FL OCOEE CITY CAP IMPT REVENUE		.03/31/2017	STIFEL NICOLAUS		1,145,660	1,000,000		1FE
709224-UX-5	PA STATE TURNPIKE COMM REVENUE		.01/20/2017	LOOP CAPITAL MARKETS		4,969,450	5,000,000		1FE
735352-QL-3	FL PORT SAINT LUCIE UTIL REVENUE		.01/05/2017	LOOP CAPITAL MARKETS		1,541,055	1,500,000	21,667	1FE
759136-UC-6	CO TRANSPRTN DIST REVENUE		.01/27/2017	PIPER JAFFRAY		3,118,533	3,025,000		1FE
778561-KH-2	NM ROSWELL JT WTR & SWR REVENUE		.01/25/2017	GK BAUM		844,755	750,000		1FE
812728-VV-2	WA SEATTLE WTR SYS REVENUE		.01/12/2017	CITIGROUP GLOBAL MARKETS		5,309,600	5,000,000		1FE
917567-AX-7	UT STATE TRANSIT AUTH SALES TAX REVENUE		.01/26/2017	RBC DAIN RAUSCHER		8,080,305	7,750,000	39,611	1FE
3199999	Subtotal - Bonds - U.S. Special Revenues					69,473,589	64,505,000	71,445	XXX
03076K-AA-6	AMERIS BANCORP		.03/08/2017	STEPHENS INC		5,000,000	5,000,000		2FE
140176-AA-6	CAPITAL FUNDING BANCORP		.02/23/2017	SANDLER O'NEILL		2,000,000	2,000,000		1FE
172967-JT-9	CITIGROUP INC		.03/02/2017	FTN FINANCIAL		13,754,170	13,500,000	108,778	2FE
238795-AA-6	JEFF DAVIS BANCSHARES		.01/11/2017	SANDLER O'NEILL		5,000,000	5,000,000		2FE
26817R-AV-0	DYNEGY INC		.03/01/2017	RECEIVED FROM EXCHANGE		1,220,414	766,590		4FE
30251B-AD-0	FMR LLC		.03/10/2017	FTN FINANCIAL		3,177,153	3,000,000	18,150	1FE
320867-AC-8	FIRST MIDWEST BANCORP		.01/25/2017	FTN FINANCIAL		1,551,090	1,500,000	29,620	3FE
360271-AK-6	FULTON FINANCIAL CORP		.03/13/2017	STIFEL NICOLAUS		2,988,450	3,000,000		2FE
410495-AA-3	HANMI BANK		.03/16/2017	SANDLER O'NEILL		4,000,000	4,000,000		2FE
46134L-AA-3	INVESTAR HOLDING CORP		.03/21/2017	SANDLER O'NEILL		2,000,000	2,000,000		2FE
47102X-AJ-4	JANUS CAPITAL GROUP INC		.01/19/2017	HILLTOP SECURITIES		3,129,690	3,000,000	70,281	2FE
561409-AA-1	MALVERN BANCORP INC		.02/07/2017	STIFEL NICOLAUS		5,000,000	5,000,000		2Z
591774-AA-2	METROPOLITAN BANK HOLDING CORP		.03/08/2017	SANDLER O'NEILL		3,000,000	3,000,000		2FE
64128X-AG-5	NEUBERGER BERMAN GRP/FIN		.03/09/2017	JP MORGAN		5,952,300	6,000,000		2FE
65341T-AA-5	NEXBANK CAPITAL INC		.02/15/2017	SANDLER O'NEILL		2,972,820	3,000,000	27,500	2FE
755763-AA-7	READYCAP HOLDINGS LLC		.02/08/2017	STIFEL NICOLAUS		3,000,000	3,000,000		2FE
83413U-AA-7	SOLAR CAPITAL LTD NOTES		.02/15/2017	ADVANTUS CAPITAL		4,000,000	4,000,000		2FE
843395-AA-2	SOUTHERN NATL BANCORP		.01/20/2017	FIG PARTNERS LLC		4,000,000	4,000,000		2FE
917310-AA-2	USAMERIBANCORP INC		.03/08/2017	SANDLER O'NEILL		2,035,000	2,000,000	57,292	2FE
29358Q-AG-4	ENSCO PLC	C	.01/09/2017	EXCHANGED		3,920,000	3,920,000		4FE
3899999	Subtotal - Bonds - Industrial and Miscellaneous (Unaffiliated)					77,701,087	76,686,590	311,621	XXX
8399997	Total - Bonds - Part 3					272,074,976	259,291,590	438,844	XXX
8399998	Total - Bonds - Part 5					XXX	XXX	XXX	XXX
8399999	Total - Bonds					272,074,976	259,291,590	438,844	XXX
61762V-60-6	MORGAN STANLEY		.01/24/2017	MORGAN STANLEY	100,000,000	2,500,000	0.00		P3LFE
649445-20-2	NY COMMUNITY BANCORP INC		.03/10/2017	GOLDMAN SACHS	280,000,000	7,000,000	0.00		P3LFE
8499999	Subtotal - Preferred Stocks - Industrial and Miscellaneous (Unaffiliated)					9,500,000	XXX		XXX
8999997	Total - Preferred Stocks - Part 3					9,500,000	XXX		XXX
8999998	Total - Preferred Stocks - Part 5					XXX	XXX	XXX	XXX
8999999	Total - Preferred Stocks					9,500,000	XXX		XXX
032654-10-5	ANALOG DEVICES INC		.03/21/2017	VARIOUS	453,214,080	37,558,544			L
375558-10-3	GILEAD SCIENCES INC		.03/09/2017	BLOOMBERG TRADEBOOK	76,000,000	5,245,009			L
437076-10-2	HOME DEPOT INC		.03/06/2017	VARIOUS	105,000,000	15,484,197			L
493267-10-8	KEYCORP INC		.03/23/2017	RECEIVED FROM CONVERSION	248,227,000	2,975,350			L
918204-10-8	VF CORP		.03/07/2017	BLOOMBERG TRADEBOOK	113,540,000	5,999,221			L
29250N-10-5	ENBRIDGE INC	A	.02/27/2017	CORPORATE ACTION	1,654,409,040	68,395,691			L
9099999	Subtotal - Common Stocks - Industrial and Miscellaneous (Unaffiliated)					135,658,012	XXX		XXX
9799997	Total - Common Stocks - Part 3					135,658,012	XXX		XXX
9799998	Total - Common Stocks - Part 5					XXX	XXX	XXX	XXX
9799999	Total - Common Stocks					135,658,012	XXX		XXX
9899999	Total - Preferred and Common Stocks					145,158,012	XXX		XXX
9999999	Totals					417,232,988	XXX	438,844	XXX

(a) For all common stock bearing the NAIC market indicator "U" provide: the number of such issues

STATEMENT AS OF MARCH 31, 2017 OF THE CINCINNATI INSURANCE COMPANY

SCHEDULE D - PART 4

Show All Long-Term Bonds and Stock Sold, Redeemed or Otherwise Disposed of During the Current Quarter

1 CUSIP Ident- ification	2 Description	3 For- eign	4 Disposal Date	5 Name of Purchaser	6 Number of Shares of Stock	7 Consid- eration	8 Par Value	9 Actual Cost	10 Prior Year Book/ Adjusted Carrying Value	Change In Book/Adjusted Carrying Value					16 Book/ Adjusted Carrying Value at Disposal Date	17 Foreign Exchange Gain (Loss) on Disposal	18 Realized Gain (Loss) on Disposal	19 Total Gain (Loss) on Disposal	20 Bond Interest/ Stock Dividends Received During Year	21 Stated Con- tractual Maturity Date	22 NAIC Desig- nation or Market In- dicator (a)
										11 Unrealized Valuation Increase/ (Decrease)	12 Current Year's (Amor- tization)/ Accretion	13 Current Year's Other Than Temporary Impairment Recogn- ized	14 Total Change in Book/ Adjusted Carrying Value (11 + 12 - 13)	15 Total Foreign Exchange Change in Book /Adjusted Carrying Value							
..011415-HX-7	TX ALAMO CNTY COLLEGE GO		02/15/2017	SECURITY CALLED BY ISSUER at 100.000		1,665,000	1,665,000	1,660,022	1,664,106		49		49	1,664,155		845	845	35,798	02/15/2019	1FE	
..014393-KK-7	TX ALDINE INDPT SCHL DIST GO		03/06/2017	SECURITY CALLED BY ISSUER at 100.000		3,000,000	3,000,000	2,996,730	2,998,775		49		49	2,998,824		1,176	1,176	72,024	02/15/2021	1FE	
..073186-CH-9	TX BAYTOWN		02/01/2017	SECURITY CALLED BY ISSUER at 100.000		1,865,000	1,865,000	1,854,258	1,859,322		57		57	1,859,379		5,621	5,621	39,631	02/01/2024	1FE	
..139015-LA-7	TX CANYON SCHL DIST GO		02/15/2017	SECURITY CALLED BY ISSUER at 100.000		1,000,000	1,000,000	999,040	999,799		11		11	999,810		190	190	21,250	02/15/2019	1FE	
..145628-WG-4	TX CARROLLTON INDPT SCHL DIST GO		03/01/2017	SECURITY CALLED BY ISSUER at 100.000		4,000,000	4,000,000	3,979,080	3,993,150		213		213	3,993,364		6,636	6,636	85,000	02/15/2021	1FE	
..161681-QV-6	MN CHASKA SCHL DIST GO		02/01/2017	SECURITY CALLED BY ISSUER at 100.000		3,000,000	3,000,000	3,000,000	3,000,000					3,000,000				63,750	02/01/2021	1FE	
..232760-XU-7	TX CYPRESS-FAIRBANKS INDPT SCHL DIST GO		02/15/2017	SECURITY CALLED BY ISSUER at 100.000		1,000,000	1,000,000	994,770	998,138		50		50	998,188		1,812	1,812	21,250	02/15/2021	1FE	
..279263-LD-7	TX ECTOR CNTY INDPT SCHL DIST GO		02/15/2017	SECURITY CALLED BY ISSUER at 100.000		3,700,000	3,700,000	3,655,082	3,685,364		454		454	3,685,818		14,182	14,182	78,625	08/15/2020	1FE	
..463813-QL-2	TX IRVING INDPT SCHL DIST GO		02/15/2017	SECURITY CALLED BY ISSUER at 100.000		1,575,000	1,575,000	1,568,054	1,571,634		59		59	1,571,692		3,308	3,308	33,469	02/15/2023	1FE	
..511074-RA-6	TX LAKE TRAVIS INDPT SCHL DIST GO		02/15/2017	SECURITY CALLED BY ISSUER at 100.000		725,000	725,000	724,253	724,911		5		5	724,916		84	84	15,588	02/15/2019	1FE	
..513174-PK-2	TX LAMAR CONS INDPT SCHL DIST GO		02/15/2017	SECURITY CALLED BY ISSUER at 100.000		2,080,000	2,080,000	2,080,000	2,080,000					2,080,000				43,680	02/15/2024	1FE	
..549187-7F-3	TX LUBBOCK GO		02/15/2017	SECURITY CALLED BY ISSUER at 100.000		3,265,000	3,265,000	3,265,000	3,265,000					3,265,000				68,565	02/15/2024	1FE	
..613681-YD-1	TX MONTGOMERY CNTY GO		03/01/2017	SECURITY CALLED BY ISSUER at 100.000		3,000,000	3,000,000	2,996,850	2,998,863		41		41	2,998,905		1,095	1,095	65,250	03/01/2021	1FE	
..667825-O9-7	TX NORTHWEST INDPT SCHL DIST GO		02/15/2017	SECURITY CALLED BY ISSUER at 100.000		2,555,000	2,555,000	2,556,686	2,555,036		(36)		(36)	2,555,000				56,849	02/15/2024	1FE	
..800709-DU-8	IL SANGAMON COLLEGE GO		02/03/2017	SECURITY CALLED BY ISSUER at 100.000		1,225,000	1,225,000	1,225,000	1,225,000					1,225,000				8,167	12/15/2024	1FE	
..89438V-J7-2	TX TRAVIS CNTY GO		03/01/2017	SECURITY CALLED BY ISSUER at 100.000		1,890,000	1,890,000	1,888,223	1,889,886		8		8	1,889,894		106	106	40,163	03/01/2019	1FE	
..89438V-J8-0	TX TRAVIS CNTY GO		03/01/2017	SECURITY CALLED BY ISSUER at 100.000		1,970,000	1,970,000	1,968,050	1,969,820		9		9	1,969,828		172	172	42,355	03/01/2020	1FE	
..967171-NH-8	TX WICHITA FALLS INDPT SCHL DIST GO		02/01/2017	SECURITY CALLED BY ISSUER at 100.000		3,260,000	3,260,000	3,250,318	3,257,764		56		56	3,257,820		2,180	2,180	70,090	02/01/2020	1FE	
..982687-DL-6	KS WYANDOTTE CNTY SCHL DIST GO		03/01/2017	SECURITY CALLED BY ISSUER at 100.000		1,380,000	1,380,000	1,380,000	1,380,000					1,380,000				30,015	09/01/2017	1FE	
2499999	Subtotal - Bonds - U.S. Political Subdivisions of States, Territories and Possessions					42,155,000	42,155,000	42,041,416	42,116,568		1,025		1,025	42,117,593		37,407	37,407	891,519	XXX	XXX	
..034033-CU-2	IN ANDERSON WATERWORKS REV		01/01/2017	SECURITY CALLED BY ISSUER at 100.000		1,170,000	1,170,000	1,153,573	1,163,206					1,163,206		6,794	6,794	24,863	01/01/2022	1FE	
..116083-JG-2	IN BROWNSBURG SCHL BLDG CORP REV		01/15/2017	SECURITY CALLED BY ISSUER at 100.000		2,015,000	2,015,000	2,015,000	2,015,000					2,015,000				44,078	07/15/2021	1FE	
..143277-CG-4	IN CARMEL SCHL BLDG CORP REV		01/15/2017	SECURITY CALLED BY ISSUER at 100.000		2,000,000	2,000,000	1,980,780	1,992,655		57		57	1,992,711		7,289	7,289	42,500	07/15/2021	1FE	
..243360-DS-0	IN DECATUR TWP CNTY SCHL REV		01/15/2017	SECURITY CALLED BY ISSUER at 100.000		4,000,000	4,000,000	3,983,560	3,994,805		52		52	3,994,858		5,142	5,142	85,000	07/15/2020	1FE	
..270458-BT-8	IN EAST ALLEN WOODLAN SCH BLD		01/15/2017	MATURITY		825,000	825,000	823,416	824,993		7		7	825,000				16,294	01/15/2017	1FE	
..299620-CA-0	IN VANDERBURGH SCH BLDG CORP REV		01/10/2017	SECURITY CALLED BY ISSUER at 100.000		3,395,000	3,395,000	3,384,509	3,391,691		22		22	3,391,713		3,287	3,287	71,295	07/10/2020	1FE	
..40785E-RJ-7	IN HAMILTON SOUTHEASTERN REV		01/15/2017	SECURITY CALLED BY ISSUER at 100.000		2,010,000	2,010,000	1,999,769	2,006,709		33		33	2,006,742		3,258	3,258	42,713	07/15/2020	1FE	
..40785E-SR-8	IN HAMILTON SOUTHEASTERN REV		01/15/2017	SECURITY CALLED BY ISSUER at 100.000		1,250,000	1,250,000	1,247,138	1,248,716		8		8	1,248,724		1,276	1,276	26,563	07/15/2022	1FE	
..41084T-DG-1	IN HANOVER MULTI SCHL BLDG REV		01/15/2017	SECURITY CALLED BY ISSUER at 100.000		1,330,000	1,330,000	1,325,478	1,327,989		12		12	1,328,001		1,999	1,999	28,263	07/15/2022	1FE	

E05

STATEMENT AS OF MARCH 31, 2017 OF THE CINCINNATI INSURANCE COMPANY

SCHEDULE D - PART 4

Show All Long-Term Bonds and Stock Sold, Redeemed or Otherwise Disposed of During the Current Quarter

1	2	3	4	5	6	7	8	9	10	Change In Book/Adjusted Carrying Value					16	17	18	19	20	21	22
										11	12	13	14	15							
CUSIP Ident- ification	Description	For- eign	Disposal Date	Name of Purchaser	Number of Shares of Stock	Consid- eration	Par Value	Actual Cost	Prior Year Book/ Adjusted Carrying Value	Unrealized Valuation Increase/ (Decrease)	Current Year's (Amor- tization)/ Accretion	Current Year's Other Than Temporary Impairment Recogn- ized	Total Change in Book/ Adjusted Carrying Value (11 + 12 - 13)	Total Foreign Exchange Change in Book /Adjusted Carrying Value	Book/ Adjusted Carrying Value at Disposal Date	Foreign Exchange Gain (Loss) on Disposal	Realized Gain (Loss) on Disposal	Total Gain (Loss) on Disposal	Bond Interest/ Stock Dividends Received During Year	Stated Con- tractual Maturity Date	NAIC Desig- nation or Market Ind- icator (a)
41981T-DP-5	HI HAWAII STATE HARBOR REV		01/05/2017	SECURITY CALLED BY ISSUER at 100.000		3,595,000	3,595,000	3,595,000	3,595,000						3,595,000				88,197	01/01/2019	1FE
437884-MH-9	AL HOMEWOOD WARRANTS REV		03/01/2017	SECURITY CALLED BY ISSUER at 100.000		1,560,000	1,560,000	1,551,264	1,556,045		103		103		1,556,147		3,853	3,853	33,150	09/01/2022	1FE
44635P-CC-7	IN HUNTINGTON COUNTRY WIDE SCHL REV		01/15/2017	SECURITY CALLED BY ISSUER at 100.000		2,665,000	2,665,000	2,665,000	2,665,000						2,665,000				55,965	07/15/2020	1FE
506345-CU-9	IN LAFAYETTE SENIOR WORKS REV		01/01/2017	SECURITY CALLED BY ISSUER at 100.000		1,265,000	1,265,000	1,265,000	1,265,000						1,265,000				26,881	01/01/2020	1FE
596232-CC-0	IN MIDDLEBURY BLDG CORP REV		01/15/2017	SECURITY CALLED BY ISSUER at 100.000		2,250,000	2,250,000	2,247,615	2,249,203		8		8		2,249,211		789	789	47,813	07/15/2020	1FE
61088P-BX-8	IN MONROE GREGG SCHL REV		01/15/2017	SECURITY CALLED BY ISSUER at 100.000		1,160,000	1,160,000	1,156,369	1,158,829		12		12		1,158,841		1,159	1,159	24,940	07/15/2020	1FE
66328Q-CT-3	IN NW HENDRICKS MIDDLE SCHOOL REV		01/15/2017	SECURITY CALLED BY ISSUER at 100.000		190,000	190,000	189,649	189,979		1		1		189,981		19	19	4,085	07/15/2017	1FE
67389P-AP-9	FL OAKSTEAD COMM DEV DIST REV		01/17/2017	SECURITY CALLED BY ISSUER at 100.000		660,000	660,000	659,327	659,842		3		3		659,845		155	155	5,922	05/01/2019	1FE
67389P-BB-9	FL OAKSTEAD COMM DEV DIST REV		02/14/2017	SECURITY CALLED BY ISSUER at 100.000		545,000	545,000	544,444	544,870		6		6		544,876		124	124	6,627	05/01/2019	1FE
677704-VK-1	OH THE OHIO UNIVERSITY REV		03/01/2017	SECURITY CALLED BY ISSUER at 100.000		1,735,000	1,735,000	1,729,500	1,733,535		79		79		1,733,614		1,386	1,386	18,218	12/01/2019	1FE
681663-BK-5	NE OMAHA CONVENTION HOTEL REV		03/27/2017	SECURITY CALLED BY ISSUER at 100.000		3,270,000	3,270,000	3,270,000	3,270,000						3,270,000				92,178	02/01/2022	1FE
735883-ER-7	IN PORTAGE TWP MULTI SCHL REV		01/15/2017	SECURITY CALLED BY ISSUER at 100.000		1,160,000	1,160,000	1,157,541	1,159,204		8		8		1,159,212		788	788	24,650	07/15/2020	1FE
793028-RZ-6	MN ST PAUL PORT AUTH TAX REV		03/01/2017	SECURITY CALLED BY ISSUER at 100.000		1,335,000	1,335,000	1,329,393	1,332,980		74		74		1,333,054		1,946	1,946	28,369	03/01/2021	1FE
876721-AC-5	MI TAWAS CITY HOSP FIN AUTH ST JOSEPH HL		02/15/2017	SECURITY CALLED BY ISSUER at 100.000		285,000	285,000	285,000	285,000						285,000				8,194	02/15/2023	1FE
876721-AG-6	MI TAWAS CITY HOSP FIN AUTH ST JOSEPH HE		02/15/2017	SECURITY CALLED BY ISSUER at 100.000		110,000	110,000	110,000	110,000						110,000				3,163	02/15/2023	1FE
89556G-AY-1	IN TRI CREEK HS BLDG CORP REV		01/15/2017	SECURITY CALLED BY ISSUER at 100.000		1,000,000	1,000,000	994,890	998,373		16		16		998,390		1,610	1,610	21,250	07/15/2020	1FE
3199999 Subtotal - Bonds - U.S. Special Revenues						40,780,000	40,780,000	40,663,215	40,738,624		501		501		40,739,126		40,874	40,874	871,171	XXX	XXX
00206R-CV-2	AT&T INC		03/15/2017	MATURITY		1,500,000	1,500,000	1,510,923	1,502,360		(2,360)		(2,360)		1,500,000				18,000	03/15/2017	2FE
02360X-AM-9	AMERENERGY GENERATING		03/01/2017	EXCHANGED SINKING FUND REDEMPTION		1,220,414	3,000,000	990,000	1,050,000	120,986	49,428		170,414		1,220,414				367,560	04/01/2020	4FE
023654-AW-6	AMERICAN AIRLINES GROUP INC		01/02/2017	SECURITY CALLED BY ISSUER at 103.688		176,253	176,253	173,717	176,215		39		39		176,253				6,988	01/02/2019	2FE
026375-AP-0	AMERICAN GREETINGS CORP		02/28/2017	SECURITY CALLED BY ISSUER at 103.688		2,000,000	2,000,000	2,015,000	2,006,676		(330)		(330)		2,006,346		(6,346)	(6,346)	110,225	12/01/2021	3FE
06051G-EQ-8	BANK OF AMERICA CORP		03/22/2017	MATURITY		5,000,000	5,000,000	5,428,050	5,023,698		(23,698)		(23,698)		5,000,000				96,875	03/22/2017	1FE
16524R-AE-3	CHESAPEAKE MIDSTREAM		02/23/2017	SECURITY CALLED BY ISSUER at 103.063		250,000	250,000	250,000	250,000						250,000				16,931	07/15/2022	2FE
18683K-AJ-0	CLIFFS NATURAL RESOURCES		03/15/2017	SECURITY CALLED BY ISSUER at 107.700		5,600,000	5,600,000	1,970,500	2,266,834		85,666		85,666		2,352,500		3,247,500	3,247,500	636,533	09/30/2020	3FE
205887-BF-8	CONAGRA FOODS INC		02/22/2017	SECURITY CALLED BY ISSUER at 111.113		2,000,000	2,000,000	1,991,920	1,997,633		136		136		1,997,769		2,231	2,231	271,649	04/15/2019	2FE
345397-VX-8	FORD MOTOR CREDIT CO		02/03/2017	MATURITY		2,500,000	2,500,000	2,500,000	2,500,000						2,500,000				53,125	02/03/2017	2FE
370334-BB-9	GENERAL MILLS INC		02/15/2017	MATURITY		2,000,000	2,000,000	2,287,680	2,006,625		(6,625)		(6,625)		2,000,000				57,000	02/15/2017	2FE
57777B-AS-2	MACY DEPARTMENT STORES DEBS		02/15/2017	EXCHANGED SINKING FUND REDEMPTION		50,000	50,000	50,000	50,000						50,000				2,438	02/15/2021	2FE
581557-AV-7	MCKESSON HBOC INC		03/01/2017	MATURITY		3,000,000	3,000,000	2,761,140	2,993,720		6,280		6,280		3,000,000				85,500	03/01/2017	2FE
741530-AG-7	PRIDE INTERNATIONAL INC		01/09/2017	EXCHANGED		7,840,000	7,000,000	6,974,870	6,991,938		67		67		6,992,005		847,995	847,995	39,667	06/15/2019	3FE
759351-AF-6	REINSURANCE GRP OF AMER		03/15/2017	MATURITY		3,500,000	3,500,000	3,856,685	3,516,814		(16,814)		(16,814)		3,500,000				98,438	03/15/2017	1FE
779382-AN-0	ROWAN COMPANIES INC		02/08/2017	SECURITY CALLED BY ISSUER at 102.139		5,000,000	5,000,000	5,391,300	5,045,969		(6,993)		(6,993)		5,038,976		(38,976)	(38,976)	216,000	09/01/2017	4FE
86787G-AD-4	SUNTRUST BANK		01/17/2017	MATURITY		3,000,000	3,000,000	3,239,910	3,002,080		(2,080)		(2,080)		3,000,000				78,000	01/17/2017	2FE
970648-AD-3	WILLIS NORTH AMERICA INC		03/28/2017	MATURITY		5,000,000	5,000,000	3,425,000	4,927,600		72,400		72,400		5,000,000				155,000	03/28/2017	1FE

E05.1

STATEMENT AS OF MARCH 31, 2017 OF THE CINCINNATI INSURANCE COMPANY

SCHEDULE D - PART 4

Show All Long-Term Bonds and Stock Sold, Redeemed or Otherwise Disposed of During the Current Quarter

1	2	3	4	5	6	7	8	9	10	Change In Book/Adjusted Carrying Value					16	17	18	19	20	21	22	
										11	12	13	14	15								
CUSIP Identification	Description	Foreign	Disposal Date	Name of Purchaser	Number of Shares of Stock	Consideration	Par Value	Actual Cost	Prior Year Book/Adjusted Carrying Value	Unrealized Valuation Increase/(Decrease)	Current Year's (Amortization)/Accretion	Current Year's Other Than Temporary Impairment Recognized	Total Change in Book/Adjusted Carrying Value (11 + 12 - 13)	Total Foreign Exchange Change in Book /Adjusted Carrying Value	Book/Adjusted Carrying Value at Disposal Date	Foreign Exchange Gain (Loss) on Disposal	Realized Gain (Loss) on Disposal	Total Gain (Loss) on Disposal	Bond Interest/Stock Dividends Received During Year	Stated Contractual Maturity Date	NAIC Designation or Market Indicator (a)	
984121-BQ-5	XEROX CORP		02/01/2017	MATURITY		2,000,000	2,000,000	2,343,520	2,005,495				(5,495)		2,000,000				67,500	02/01/2017	3FE	
063660-WB-6	BANK OF MONTREAL	A	01/11/2017	MATURITY		2,000,000	2,000,000	1,995,900	1,999,976				24		2,000,000				25,000	01/11/2017	1FE	
00084D-AE-0	ABN AMRO BANK NV	D	02/02/2017	MATURITY		2,000,000	2,000,000	1,998,040	1,999,963				37		2,000,000				42,500	02/02/2017	1FE	
500472-AB-1	PHILIPS ELECTRONICS NV	D	01/20/2017	SECURITY CALLED BY ISSUER at 105.098		6,000,000	6,000,000	5,928,300	5,989,100				464		5,989,565		10,435	10,435	429,505	03/11/2018	2FE	
65557F-AB-2	NORDEA BANK AB	D	03/20/2017	MATURITY		5,000,000	5,000,000	4,996,300	4,999,826				174		5,000,000				78,125	03/20/2017	1FE	
3899999	Subtotal - Bonds - Industrial and Miscellaneous (Unaffiliated)					66,636,667	67,576,253	62,078,755	62,302,522	120,986	150,320		271,306		62,573,828		4,062,839	4,062,839	2,952,559	XXX	XXX	
8399997	Total - Bonds - Part 4					149,571,667	150,511,253	144,783,386	145,157,714	120,986	151,846		272,832		145,430,547		4,141,120	4,141,120	4,715,249	XXX	XXX	
8399998	Total - Bonds - Part 5					XXX	XXX	XXX	XXX	XXX	XXX		XXX		XXX		XXX	XXX	XXX	XXX	XXX	
8399999	Total - Bonds					149,571,667	150,511,253	144,783,386	145,157,714	120,986	151,846		272,832		145,430,547		4,141,120	4,141,120	4,715,249	XXX	XXX	
493267-40-5	KEYCORP INC		03/23/2017	CONVERTED TO COMMON STOCK		35,000,000	100.00	3,500,000	2,975,350					2,975,350					67,813			
8499999	Subtotal - Preferred Stocks - Industrial and Miscellaneous (Unaffiliated)					2,975,350	XXX	3,500,000	2,975,350						2,975,350					67,813	XXX	XXX
8999997	Total - Preferred Stocks - Part 4					2,975,350	XXX	3,500,000	2,975,350						2,975,350					67,813	XXX	XXX
8999998	Total - Preferred Stocks - Part 5					XXX	XXX	XXX	XXX	XXX	XXX		XXX		XXX		XXX	XXX	XXX	XXX	XXX	XXX
8999999	Total - Preferred Stocks					2,975,350	XXX	3,500,000	2,975,350						2,975,350					67,813	XXX	XXX
032654-10-5	ANALOG DEVICES INC		03/23/2017	FRACTIONAL SHARE		0.080		7	7					7								
20825C-10-4	CONOCOPHILLIPS		03/31/2017	BLOOMBERG TRADEBOOK		9,471,000	473,492	727,021	474,876	252,145			252,145		727,021		(253,529)	(253,529)	2,510			
493267-10-8	KEYCORP INC		03/28/2017	SANDLER O'NEILL		248,227,000	4,310,839	3,500,000						2,975,350		1,335,489	1,335,489					
535678-10-6	LINER TECHNOLOGY CORP		03/14/2017	MERGER		1,004,800,000	65,565,908	27,849,463	62,649,280	(34,799,817)			(34,799,817)		27,849,463		37,716,445	37,716,445	331,584			
847560-10-9	SPECTRA ENERGY CORP		02/27/2017	CORPORATE ACTION		1,681,310,000	68,395,691	28,688,242	69,085,028	(40,396,786)			(40,396,786)		28,688,242		39,707,449	39,707,449				
931142-10-3	WAL-MART STORES INC		03/31/2017	VARIOUS		486,200,000	34,959,351	25,629,304	33,606,144	(7,976,840)			(7,976,840)		25,629,304		9,330,046	9,330,046	243,100			
29250N-10-5	ENBRIDGE INC	A	03/06/2017	FRACTIONAL SHARE		0.040		2	2					2								
9099999	Subtotal - Common Stocks - Industrial and Miscellaneous (Unaffiliated)					173,705,290	XXX	86,394,039	165,815,328	(82,921,298)				(82,921,298)	85,869,389		87,835,900	87,835,900	577,194	XXX	XXX	
9799997	Total - Common Stocks - Part 4					173,705,290	XXX	86,394,039	165,815,328	(82,921,298)				(82,921,298)	85,869,389		87,835,900	87,835,900	577,194	XXX	XXX	
9799998	Total - Common Stocks - Part 5					XXX	XXX	XXX	XXX	XXX	XXX		XXX		XXX		XXX	XXX	XXX	XXX	XXX	
9799999	Total - Common Stocks					173,705,290	XXX	86,394,039	165,815,328	(82,921,298)				(82,921,298)	85,869,389		87,835,900	87,835,900	577,194	XXX	XXX	
9899999	Total - Preferred and Common Stocks					176,680,640	XXX	89,894,039	168,790,678	(82,921,298)				(82,921,298)	88,844,739		87,835,900	87,835,900	645,007	XXX	XXX	
9999999	Totals					326,252,307	XXX	234,677,425	313,948,392	(82,800,312)	151,846			(82,648,466)	234,275,286		91,977,020	91,977,020	5,360,256	XXX	XXX	

(a) For all common stock bearing the NAIC market indicator "U" provide: the number of such issues.....

E05.2

Schedule DB - Part A - Section 1 - Options, Caps, Floors, Collars, Swaps and Forwards Open

NONE

Schedule DB - Part B - Section 1 - Futures Contracts Open

NONE

Schedule DB - Part B - Section 1B - Brokers with whom cash deposits have been made

NONE

Schedule DB - Part D - Section 1 - Counterparty Exposure for Derivative Instruments Open

NONE

Schedule DB - Part D-Section 2 - Collateral for Derivative Instruments Open - Pledged By

NONE

Schedule DB - Part D-Section 2 - Collateral for Derivative Instruments Open - Pledged To

NONE

Schedule DL - Part 1 - Reinvested Collateral Assets Owned

NONE

Schedule DL - Part 2 - Reinvested Collateral Assets Owned

NONE

STATEMENT AS OF MARCH 31, 2017 OF THE CINCINNATI INSURANCE COMPANY

SCHEDULE E - PART 1 - CASH

Month End Depository Balances

1 Depository	2 Code	3 Rate of Interest	4 Amount of Interest Received During Current Quarter	5 Amount of Interest Accrued at Current Statement Date	Book Balance at End of Each Month During Current Quarter			9 *
					6 First Month	7 Second Month	8 Third Month	
FIFTH THIRD BANK CINCINNATI, OHIO					101,172,541	(49,227,033)	94,534,119	XXX
U.S. BANK CINCINNATI, OHIO					125,262,355	131,034,977	136,830,208	XXX
HUNTINGTON BANK CINCINNATI, OHIO					137,021,187	92,968,235	46,218,081	XXX
0199998. Deposits in ... depositories that do not exceed the allowable limit in any one depository (See instructions) - Open Depositories	XXX	XXX						XXX
0199999. Totals - Open Depositories	XXX	XXX			363,456,082	174,776,179	277,582,408	XXX
0299998. Deposits in ... depositories that do not exceed the allowable limit in any one depository (See instructions) - Suspended Depositories	XXX	XXX						XXX
0299999. Totals - Suspended Depositories	XXX	XXX						XXX
0399999. Total Cash on Deposit	XXX	XXX			363,456,082	174,776,179	277,582,408	XXX
0499999. Cash in Company's Office	XXX	XXX	XXX	XXX	18,000	18,000	18,000	XXX
0599999. Total - Cash	XXX	XXX			363,474,082	174,794,179	277,600,408	XXX

Schedule E - Part 2 - Cash Equivalents - Investments Owned End of Current Quarter

NONE



SUPPLEMENT FOR THE QUARTER ENDING MARCH 31, 2017 OF THE CINCINNATI INSURANCE COMPANY

Designate the type of health care providers reported on this page:
Physicians, including surgeons and osteopaths

**SUPPLEMENT A TO SCHEDULE T
EXHIBIT OF MEDICAL PROFESSIONAL LIABILITY PREMIUMS WRITTEN
ALLOCATED BY STATES AND TERRITORIES**

States, etc.	1 Direct Premiums Written	2 Direct Premiums Earned	Direct Losses Paid		5 Direct Losses Incurred	Direct Losses Unpaid		8 Direct Losses Incurred But Not Reported
			3 Amount	4 No. of Claims		6 Amount Reported	7 No. of Claims	
1. Alabama AL		2,159			902			
2. Alaska AK								
3. Arizona AZ		1,523			130			
4. Arkansas AR	40,129	9,727			5,157			6,223
5. California CA								
6. Colorado CO	1,899	3,518			1,190			(252)
7. Connecticut CT								
8. Delaware DE								
9. District of Columbia DC								
10. Florida FL								
11. Georgia GA	2,934	1,716			663			38
12. Hawaii HI								
13. Idaho ID		411			186			
14. Illinois IL	3,315	814			(35)			(423)
15. Indiana IN	13,454	5,583			(1,485)			(3,154)
16. Iowa IA								
17. Kansas KS								
18. Kentucky KY		2,340			236			
19. Louisiana LA								
20. Maine ME								
21. Maryland MD								
22. Massachusetts MA								
23. Michigan MI		766			379			
24. Minnesota MN		696			97			
25. Mississippi MS								
26. Missouri MO	1,823	455			364			231
27. Montana MT								
28. Nebraska NE								
29. Nevada NV								
30. New Hampshire NH		155			46			
31. New Jersey NJ								
32. New Mexico NM								
33. New York NY								
34. North Carolina NC	(510)	1,016			332			26
35. North Dakota ND	1,050	306			(13)			(100)
36. Ohio OH	6,371	15,672			4,608			(808)
37. Oklahoma OK								
38. Oregon OR		2,331			(581)			
39. Pennsylvania PA	2,817	1,383			522			445
40. Rhode Island RI								
41. South Carolina SC		179			33			
42. South Dakota SD								
43. Tennessee TN								
44. Texas TX	6,119	21,126			730			976
45. Utah UT		578			61			
46. Vermont VT		1,726			473			
47. Virginia VA		521			108			
48. Washington WA	1,040	260			96			135
49. West Virginia WV		2,234			325			
50. Wisconsin WI								
51. Wyoming WY								
52. American Samoa AS								
53. Guam GU								
54. Puerto Rico PR								
55. U.S. Virgin Islands VI								
56. Northern Mariana Islands MP								
57. Canada CAN								
58. Aggregate Other Aliens OT								
59. Totals	80,441	77,194			14,525			3,335
DETAILS OF WRITE-INS								
58001.								
58002.								
58003.								
58998. Summary of remaining write-ins for Line 58 from overflow page								
58999. Totals (Lines 58001 through 58003 plus 58998)(Line 58 above)								



SUPPLEMENT FOR THE QUARTER ENDING MARCH 31, 2017 OF THE CINCINNATI INSURANCE COMPANY

Designate the type of health care providers reported on this page:
Hospitals

**SUPPLEMENT A TO SCHEDULE T
EXHIBIT OF MEDICAL PROFESSIONAL LIABILITY PREMIUMS WRITTEN
ALLOCATED BY STATES AND TERRITORIES**

States, etc.	1 Direct Premiums Written	2 Direct Premiums Earned	Direct Losses Paid		5 Direct Losses Incurred	Direct Losses Unpaid		8 Direct Losses Incurred But Not Reported
			3 Amount	4 No. of Claims		6 Amount Reported	7 No. of Claims	
1. Alabama AL								
2. Alaska AK								
3. Arizona AZ								
4. Arkansas AR								
5. California CA								
6. Colorado CO								
7. Connecticut CT								
8. Delaware DE								
9. District of Columbia DC								
10. Florida FL								
11. Georgia GA								
12. Hawaii HI								
13. Idaho ID								
14. Illinois IL								
15. Indiana IN								
16. Iowa IA								
17. Kansas KS								
18. Kentucky KY								
19. Louisiana LA								
20. Maine ME								
21. Maryland MD								
22. Massachusetts MA								
23. Michigan MI		1,110			549			
24. Minnesota MN								
25. Mississippi MS								
26. Missouri MO								
27. Montana MT								
28. Nebraska NE								
29. Nevada NV								
30. New Hampshire NH								
31. New Jersey NJ								
32. New Mexico NM								
33. New York NY		945			1,200			
34. North Carolina NC								
35. North Dakota ND								
36. Ohio OH	2,825	975	(53,406)	2	(117,537)			(358)
37. Oklahoma OK								
38. Oregon OR								
39. Pennsylvania PA								
40. Rhode Island RI								
41. South Carolina SC								
42. South Dakota SD								
43. Tennessee TN					(3,659)	53,096	1	
44. Texas TX								
45. Utah UT								
46. Vermont VT								
47. Virginia VA		14,324			2,657			
48. Washington WA								
49. West Virginia WV								
50. Wisconsin WI	272	408			695			(26)
51. Wyoming WY								
52. American Samoa AS								
53. Guam GU								
54. Puerto Rico PR								
55. U.S. Virgin Islands VI								
56. Northern Mariana Islands MP								
57. Canada CAN								
58. Aggregate Other Aliens OT								
59. Totals	3,097	17,763	(53,406)	2	(116,095)	53,096	1	(384)
DETAILS OF WRITE-INS								
58001.								
58002.								
58003.								
58998. Summary of remaining write-ins for Line 58 from overflow page								
58999. Totals (Lines 58001 through 58003 plus 58998)(Line 58 above)								



SUPPLEMENT FOR THE QUARTER ENDING MARCH 31, 2017 OF THE CINCINNATI INSURANCE COMPANY

Designate the type of health care providers reported on this page:
 Other health care professionals, including dentists, chiropractors, and podiatrists

**SUPPLEMENT A TO SCHEDULE T
 EXHIBIT OF MEDICAL PROFESSIONAL LIABILITY PREMIUMS WRITTEN
 ALLOCATED BY STATES AND TERRITORIES**

States, etc.	1 Direct Premiums Written	2 Direct Premiums Earned	Direct Losses Paid		5 Direct Losses Incurred	Direct Losses Unpaid		8 Direct Losses Incurred But Not Reported
			3 Amount	4 No. of Claims		6 Amount Reported	7 No. of Claims	
1. Alabama AL	58,982	81,860	43,674		301,856	489,616	16	2,657
2. Alaska AK					0			1
3. Arizona AZ	53,465	71,757	11,519	1	67,064	419,425	8	6,137
4. Arkansas AR	116,382	72,954	4,113		17,652	5,877		18,048
5. California CA					370	370		
6. Colorado CO	45,596	27,883			42,341	67,172	3	(6,049)
7. Connecticut CT	69,952	42,899	44		331,910	330,696	2	13,054
8. Delaware DE	53,230	54,695	(2,741)		(20,071)	145,824	2	7,174
9. District of Columbia DC			(26)		(16)			13
10. Florida FL	364,119	149,874	12,283	1	50,131	268,429	10	(84,302)
11. Georgia GA	191,355	182,326	737,960	1	(279,214)	713,558	21	2,458
12. Hawaii HI								
13. Idaho ID	(1,134)	11,692	(402)		(864)			(3,646)
14. Illinois IL	432,933	412,794	8,130	2	1,541,818	5,692,586	51	(55,284)
15. Indiana IN	111,550	155,104	448,777	2	(16,710)	616,845	18	(26,154)
16. Iowa IA	70,880	72,782	(60)	1	19,497	139,963	1	(24,777)
17. Kansas KS	81,087	94,911	59,698	1	77,136	145,957	6	(13,217)
18. Kentucky KY	126,436	136,453	315		67,970	628,032	15	7,994
19. Louisiana LA	1,143	513			(6)			451
20. Maine ME								
21. Maryland MD	79,715	45,380	349,329	1	8,476	331,805	8	(5,253)
22. Massachusetts MA					(2,453)			6
23. Michigan MI	602,543	607,457	20,156		399,186	1,960,284	45	(140,278)
24. Minnesota MN	99,439	82,480	3,696	2	41,363	391,077	10	1,510
25. Mississippi MS	7	29			204	185		(1,993)
26. Missouri MO	43,890	53,278	50,000		28,128	64,568	2	5,560
27. Montana MT	81,491	91,112	1,129,492		221,662	1,265,290	10	9,341
28. Nebraska NE	21,687	29,911	94		(38,692)			2,016
29. Nevada NV	800	200			23			156
30. New Hampshire NH	27,849	28,341	(25)		(19,015)	22,328	1	(2,346)
31. New Jersey NJ		25			(11)			(36)
32. New Mexico NM	4,564	15,059			2,369	107,732	2	1,414
33. New York NY	50,999	43,210	675	1	4,432	440,653	8	(32,632)
34. North Carolina NC	273,290	377,706	11,181	3	223,534	2,786,544	35	(14,055)
35. North Dakota ND	4,256	6,885	(7)		1,871			(406)
36. Ohio OH	931,410	1,015,154	(220,977)	10	844,507	3,624,059	33	(118,111)
37. Oklahoma OK		28	640		656			(212)
38. Oregon OR	17,650	12,249	2,176	1	3,127	296		4,700
39. Pennsylvania PA	282,668	301,879	324,732	1	135,769	1,085,356	28	44,610
40. Rhode Island RI								
41. South Carolina SC	41,761	57,898	(846)		48,806	83,914	4	(4,935)
42. South Dakota SD	12,458	9,503			7,952	29,696	2	922
43. Tennessee TN	359,013	276,193	4,730	1	83,428	1,091,973	18	(28,407)
44. Texas TX	61,623	73,887	74,727	1	156,428	90,016	4	9,827
45. Utah UT	121,424	64,461			484,023	600,000	2	7,293
46. Vermont VT	18,728	64,120	(52)		40,962	1,693,860	15	(574)
47. Virginia VA	212,178	210,184	2,233		394,944	1,379,409	25	818
48. Washington WA	38,892	17,190	(474)	1	(8,069)	58,455	1	5,058
49. West Virginia WV	137,938	134,418	7,947	3	(25,498)	114,539	7	7,306
50. Wisconsin WI	124,065	98,193	5,447	1	31,977	406,706	11	(11,763)
51. Wyoming WY	24,234	20,142			6,327			8,090
52. American Samoa AS								
53. Guam GU								
54. Puerto Rico PR								
55. U.S. Virgin Islands VI								
56. Northern Mariana Islands MP								
57. Canada CAN								
58. Aggregate Other Aliens OT								
59. Totals	5,450,550	5,305,069	3,088,157	35	5,277,281	27,293,094	424	(407,813)
DETAILS OF WRITE-INS								
58001.								
58002.								
58003.								
58998. Summary of remaining write-ins for Line 58 from overflow page								
58999. Totals (Lines 58001 through 58003 plus 58998)(Line 58 above)								



SUPPLEMENT FOR THE QUARTER ENDING MARCH 31, 2017 OF THE CINCINNATI INSURANCE COMPANY

Designate the type of health care providers reported on this page:
Other health care facilities

**SUPPLEMENT A TO SCHEDULE T
EXHIBIT OF MEDICAL PROFESSIONAL LIABILITY PREMIUMS WRITTEN
ALLOCATED BY STATES AND TERRITORIES**

States, etc.	1 Direct Premiums Written	2 Direct Premiums Earned	Direct Losses Paid		5 Direct Losses Incurred	Direct Losses Unpaid		8 Direct Losses Incurred But Not Reported
			3 Amount	4 No. of Claims		6 Amount Reported	7 No. of Claims	
1. Alabama AL	121,576	117,382			28,137			5,477
2. Alaska AK								
3. Arizona AZ								
4. Arkansas AR		70			(11)			
5. California CA								
6. Colorado CO		3,235			1,326			
7. Connecticut CT								
8. Delaware DE	142,975	34,882			10,730	19,036	1	19,270
9. District of Columbia DC								
10. Florida FL								
11. Georgia GA	36,073	25,106			3,849			463
12. Hawaii HI								
13. Idaho ID								
14. Illinois IL	138,973	92,688	(190,247)	1	204,891	1,615,512	19	(17,752)
15. Indiana IN	86,757	37,960	187,139	1	(100,402)	1,046,823	13	(20,341)
16. Iowa IA	503	19,200			5,150	6,209	1	(176)
17. Kansas KS	31,692	18,428			1,737			(5,166)
18. Kentucky KY	19,011	38,987			(1,181)	134,558	4	1,200
19. Louisiana LA								
20. Maine ME								
21. Maryland MD	(209,974)	201,750	49,904	1	20,702	566,611	8	13,836
22. Massachusetts MA								
23. Michigan MI	4,243	20,718			326,353	677,117	5	(989)
24. Minnesota MN	7,840	80,816	35,000	1	161,883	1,799,562	9	119
25. Mississippi MS								
26. Missouri MO	3,056	14,437			(1,574)	80,800	2	387
27. Montana MT	265	16,854			1,138			30
28. Nebraska NE	77,830	22,714			6,614			7,234
29. Nevada NV								
30. New Hampshire NH		11,794			3,525			
31. New Jersey NJ								
32. New Mexico NM								
33. New York NY	10,734	7,668		1	195,414	1,390,218	6	(6,868)
34. North Carolina NC	87,944	336,024			39,716	346,612	8	(4,525)
35. North Dakota ND								
36. Ohio OH	472,929	616,246	65,111	3	(255,998)	2,819,609	23	(59,997)
37. Oklahoma OK								
38. Oregon OR		1,666			(374)			
39. Pennsylvania PA	269,822	590,878	519,571	3	953,941	6,460,167	48	42,596
40. Rhode Island RI								
41. South Carolina SC	6,399	17,896			2,378			(756)
42. South Dakota SD	1,998	782			274			148
43. Tennessee TN	34,207	44,978		2	(58,762)	411,422	6	(2,711)
44. Texas TX	474	1,355			45			76
45. Utah UT	86,819	23,222			6,886	1,027,516	1	5,215
46. Vermont VT	17,455	11,952			295,912	294,168	2	(535)
47. Virginia VA	62,988	459,220		2	1,039,669	2,437,596	24	243
48. Washington WA								
49. West Virginia WV	52,876	15,540			5,233	1,020,064	3	2,801
50. Wisconsin WI	67,667	106,999			59,703	337,987	2	(6,416)
51. Wyoming WY		3,239			(886)			
52. American Samoa AS								
53. Guam GU								
54. Puerto Rico PR								
55. U.S. Virgin Islands VI								
56. Northern Mariana Islands MP								
57. Canada CAN								
58. Aggregate Other Aliens OT								
59. Totals	1,633,131	2,994,686	666,480	15	2,956,017	22,491,589	185	(27,138)
DETAILS OF WRITE-INS								
58001.								
58002.								
58003.								
58998. Summary of remaining write-ins for Line 58 from overflow page								
58999. Totals (Lines 58001 through 58003 plus 58998)(Line 58 above)								



SUPPLEMENT FOR THE QUARTER ENDING MARCH 31, 2017 OF THE CINCINNATI INSURANCE COMPANY

DIRECTOR AND OFFICER INSURANCE COVERAGE SUPPLEMENT

Year To Date For The Period Ended MARCH 31, 2017

NAIC Group Code 0244

NAIC Company Code 10677

Company Name CINCINNATI INSURANCE COMPANY

If the reporting entity writes any director and officer (D&O) business, please provide the following:

1. Monoline Policies

1 Direct Written Premium	2 Direct Earned Premium	3 Direct Losses Incurred
\$13,800,335	\$12,903,444	\$3,980,835

2. Commercial Multiple Peril (CMP) Packaged Policies

- 2.1 Does the reporting entity provide D&O liability coverage as part of a CMP packaged policy? Yes [X] No []
- 2.2 Can the direct premium earned for D&O liability coverage provided as part of a CMP packaged policy be quantified or estimated? Yes [X] No []
- 2.3 If the answer to question 2.2 is yes, provide the quantified or estimated direct premium earned amount for D&O liability coverage in CMP packaged policies
- 2.31 Amount quantified:\$238,286
- 2.32 Amount estimated using reasonable assumptions:\$
- 2.4 If the answer to question 2.1 is yes, provide direct losses incurred (losses paid plus change in case reserves) for the D&O liability coverage provided in CMP packaged policies.\$87,028