



ANNUAL STATEMENT

For the Year Ended December 31, 2016
of the Condition and Affairs of the

Family Heritage Life Insurance Company of America

NAIC Group Code.....0290, 0290
(Current Period) (Prior Period)
Organized under the Laws of OH State of Domicile or Port of Entry OH Country of Domicile US
Incorporated/Organized..... August 22, 1989 Commenced Business..... November 17, 1989
Statutory Home Office 6001 East Royalton Road, Suite 200..... Cleveland OH US 44147-3529
(Street and Number) (City or Town, State, Country and Zip Code)
Main Administrative Office 6001 East Royalton Road, Suite 200..... Cleveland OH US..... 44147-3529 440-922-5200
(Street and Number) (City or Town, State, Country and Zip Code) (Area Code) (Telephone Number)
Mail Address P. O. Box 470608..... Cleveland OH US 44147-3529
(Street and Number or P. O. Box) (City or Town, State, Country and Zip Code)
Primary Location of Books and Records 6001 East Royalton Road, Suite 200..... Cleveland OH US 44147-3529 440-922-5200
(Street and Number) (City or Town, State, Country and Zip Code) (Area Code) (Telephone Number)
Internet Web Site Address www.FamilyHeritageLife.com
Statutory Statement Contact John A. Wise 440-922-5200
(Name) (Area Code) (Telephone Number) (Extension)
acctdept@familyheritagelife.com 440-922-5120
(E-Mail Address) (Fax Number)

OFFICERS

Name	Title	Name	Title
1. Kenneth J. Matson	President	2. Ronald L. Sarosy	Treasurer/Chief Financial Officer
3. Maria Burnett	Assistant Secretary	4. Jeffrey S. Morris	Actuary

OTHER

David S. Cochrane	Senior Vice President	Corey Jones #	Senior Vice President
Tony M. Martella	Senior Vice President	R. Brian Mitchell	Senior Vice President
David K. Carlson	Vice President	Seamus Fitzpatrick #	Vice President
Jeremy L. King	Vice President	Travis W. Korth #	Vice President
Eric Lenz	Vice President	Bret D. Mottl #	Vice President
W. Michael Pressley	Vice President	Joel P. Scarborough	Vice President
Eric W. Shanaberger	Vice President	Daniel T. Shelton	Vice President
Duaine L. Styles #	Vice President	Barbara Sue Emig	Appointed Actuary
John A. Wise	Assistant Vice President	Tod K. Richardson	Assistant Vice President
Carol A. McCoy	Assistant Secretary		

DIRECTORS OR TRUSTEES

Ben W. Lutek	Kenneth J. Matson	Jeffrey S. Morris	Maria Burnett
Frank M. Svoboda	Ronald L. Sarosy		

State of..... Ohio
County of..... Cuyahoga

The officers of this reporting entity being duly sworn, each depose and say that they are the described officers of said reporting entity, and that on the reporting period stated above, all of the herein described assets were the absolute property of the said reporting entity, free and clear from any liens or claims thereon, except as herein stated, and that this statement, together with related exhibits, schedules and explanations therein contained, annexed or referred to, is a full and true statement of all the assets and liabilities and of the condition and affairs of the said reporting entity as of the reporting period stated above, and of its income and deductions therefrom for the period ended, and have been completed in accordance with the NAIC *Annual Statement Instructions and Accounting Practices and Procedures* manual except to the extent that: (1) state law may differ; or, (2) that state rules or regulations require differences in reporting not related to accounting practices and procedures, according to the best of their information, knowledge and belief, respectively. Furthermore, the scope of this attestation by the described officers also includes the related corresponding electronic filing with the NAIC, when required, that is an exact copy (except for formatting differences due to electronic filing) of the enclosed statement. The electronic filing may be requested by various regulators in lieu of or in addition to the enclosed statement.

(Signature) Kenneth J. Matson	(Signature) Ronald L. Sarosy	(Signature) Maria Burnett
1. (Printed Name) President	2. (Printed Name) Treasurer/Chief Financial Officer	3. (Printed Name) Assistant Secretary
(Title)	(Title)	(Title)

Subscribed and sworn to before me
This _____ day of February 2017

a. Is this an original filing? Yes [X] No []
b. If no
1. State the amendment number _____
2. Date filed _____
3. Number of pages attached _____

ASSETS

	Current Year			Prior Year
	1	2	3	4
	Assets	Nonadmitted Assets	Net Admitted Assets (Cols. 1 - 2)	Net Admitted Assets
1. Bonds (Schedule D).....	929,749,601		929,749,601	786,067,257
2. Stocks (Schedule D):				
2.1 Preferred stocks.....			.0	
2.2 Common stocks.....			.0	
3. Mortgage loans on real estate (Schedule B):				
3.1 First liens.....			.0	
3.2 Other than first liens.....			.0	
4. Real estate (Schedule A):				
4.1 Properties occupied by the company (less \$.....0 encumbrances).....			.0	
4.2 Properties held for the production of income (less \$.....0 encumbrances).....			.0	
4.3 Properties held for sale (less \$.....0 encumbrances).....	670,000		670,000	
5. Cash (\$.....(1,921,545), Schedule E-Part 1), cash equivalents (\$.....2,501,933, Schedule E-Part 2) and short-term investments (\$.....4,946,286, Schedule DA).....	5,526,674		5,526,674	2,713,618
6. Contract loans (including \$.....0 premium notes).....	43,011		43,011	28,706
7. Derivatives (Schedule DB).....			.0	
8. Other invested assets (Schedule BA).....	17,159,518		17,159,518	16,400,737
9. Receivables for securities.....			.0	
10. Securities lending reinvested collateral assets (Schedule DL).....			.0	
11. Aggregate write-ins for invested assets.....	.0	.0	.0	.0
12. Subtotals, cash and invested assets (Lines 1 to 11).....	953,148,804	.0	953,148,804	805,210,318
13. Title plants less \$.....0 charged off (for Title insurers only).....			.0	
14. Investment income due and accrued.....	7,939,485		7,939,485	6,089,296
15. Premiums and considerations:				
15.1 Uncollected premiums and agents' balances in the course of collection.....	5,805,878		5,805,878	4,855,885
15.2 Deferred premiums, agents' balances and installments booked but deferred and not yet due (including \$.....0 earned but unbilled premiums).....	31,273,151		31,273,151	18,128,098
15.3 Accrued retrospective premiums (\$.....0) and contracts subject to redetermination (\$.....0).....			.0	
16. Reinsurance:				
16.1 Amounts recoverable from reinsurers.....	2,359,623		2,359,623	1,878,347
16.2 Funds held by or deposited with reinsured companies.....			.0	
16.3 Other amounts receivable under reinsurance contracts.....	85,703,513		85,703,513	64,440,687
17. Amounts receivable relating to uninsured plans.....			.0	
18.1 Current federal and foreign income tax recoverable and interest thereon.....	1,024,455		1,024,455	625,508
18.2 Net deferred tax asset.....	63,900,000	42,733,000	21,167,000	19,416,000
19. Guaranty funds receivable or on deposit.....	266,906		266,906	213,526
20. Electronic data processing equipment and software.....	199,984	72,486	127,498	170,590
21. Furniture and equipment, including health care delivery assets (\$.....0).....	46,883	46,883	.0	
22. Net adjustment in assets and liabilities due to foreign exchange rates.....			.0	
23. Receivables from parent, subsidiaries and affiliates.....			.0	
24. Health care (\$.....0) and other amounts receivable.....			.0	
25. Aggregate write-ins for other-than-invested assets.....	12,972,101	12,972,101	.0	.0
26. Total assets excluding Separate Accounts, Segregated Accounts and Protected Cell Accounts (Lines 12 to 25).....	1,164,640,783	55,824,470	1,108,816,313	921,028,255
27. From Separate Accounts, Segregated Accounts and Protected Cell Accounts.....			.0	
28. TOTAL (Lines 26 and 27).....	1,164,640,783	55,824,470	1,108,816,313	921,028,255
DETAILS OF WRITE-INS				
1101.0	
1102.0	
1103.0	
1198. Summary of remaining write-ins for Line 11 from overflow page.....	.0	.0	.0	.0
1199. Totals (Lines 1101 through 1103 plus 1198) (Line 11 above).....	.0	.0	.0	.0
2501. Agent Balances.....	12,653,802	12,653,802	.0	
2502. Prepaid Expenses.....	277,802	277,802	.0	
2503. Other Assets Non-Admitted.....	40,497	40,497	.0	
2598. Summary of remaining write-ins for Line 25 from overflow page.....	.0	.0	.0	.0
2599. Totals (Lines 2501 through 2503 plus 2598) (Line 25 above).....	12,972,101	12,972,101	.0	.0

LIABILITIES, SURPLUS AND OTHER FUNDS

	1	2
	Current Year	Prior Year
1. Aggregate reserve for life contracts \$.....76,043,877 (Exhibit 5, Line 9999999) less \$.....0 included in Line 6.3 (including \$.....71,146,504 Modco Reserve).....	76,043,877	32,979,901
2. Aggregate reserve for accident and health contracts (including \$.....0 Modco Reserve).....	814,110,199	716,823,489
3. Liability for deposit-type contracts (Exhibit 7, Line 14, Col. 1) (including \$.....0 Modco Reserve).....		
4. Contract claims:		
4.1 Life (Exhibit 8, Part 1, Line 4.4, Col. 1 less sum of Cols. 9, 10 and 11).....	3,602,216	2,718,531
4.2 Accident and health (Exhibit 8, Part 1, Line 4.4, sum of Cols. 9, 10 and 11).....	19,585,983	17,670,206
5. Policyholders' dividends \$.....0 and coupons \$.....0 due and unpaid (Exhibit 4, Line 10).....		
6. Provision for policyholders' dividends and coupons payable in following calendar year - estimated amounts:		
6.1 Dividends apportioned for payment (including \$.....0 Modco).....		
6.2 Dividends not yet apportioned (including \$.....0 Modco).....		
6.3 Coupons and similar benefits (including \$.....0 Modco).....		
7. Amount provisionally held for deferred dividend policies not included in Line 6.....		
8. Premiums and annuity considerations for life and accident and health contracts received in advance less \$.....0 discount; including \$.....0 accident and health premiums (Exhibit 1, Part 1, Col. 1, sum of Lines 4 and 14).....	35,441	26,682
9. Contract liabilities not included elsewhere:		
9.1 Surrender values on canceled contracts.....		
9.2 Provision for experience rating refunds, including the liability of \$.....0 accident and health experience rating refunds of which \$.....0 is for medical loss ratio rebate per the Public Health Service Act.....		
9.3 Other amounts payable on reinsurance, including \$....128,849 assumed and \$....40,455,126 ceded.....	40,583,975	27,621,293
9.4 Interest Maintenance Reserve (IMR, Line 6).....	2,106,905	3,024,192
10. Commissions to agents due or accrued - life and annuity contracts \$....28,300, accident and health \$....913,900 and deposit-type contract funds \$.....0.....	942,200	884,300
11. Commissions and expense allowances payable on reinsurance assumed.....	36,227,603	31,971,165
12. General expenses due or accrued (Exhibit 2, Line 12, Col. 6).....	3,967,328	3,781,077
13. Transfers to Separate Accounts due or accrued (net) (including \$.....0 accrued for expense allowances recognized in reserves, net of reinsured allowances).....		
14. Taxes, licenses and fees due or accrued, excluding federal income taxes (Exhibit 3, Line 9, Col. 5).....	959,149	1,134,481
15.1 Current federal and foreign income taxes, including \$.....0 on realized capital gains (losses).....		
15.2 Net deferred tax liability.....		
16. Unearned investment income.....		
17. Amounts withheld or retained by company as agent or trustee.....	6	4
18. Amounts held for agents' account, including \$.....0 agents' credit balances.....		
19. Remittances and items not allocated.....	565,939	441,854
20. Net adjustment in assets and liabilities due to foreign exchange rates.....		
21. Liability for benefits for employees and agents if not included above.....	366,038	
22. Borrowed money \$.....0 and interest thereon \$....398,125.....	398,125	
23. Dividends to stockholders declared and unpaid.....		
24. Miscellaneous liabilities:		
24.01 Asset valuation reserve (AVR Line 16, Col. 7).....	3,928,304	2,935,675
24.02 Reinsurance in unauthorized and certified (\$.....0) companies.....		
24.03 Funds held under reinsurance treaties with unauthorized and certified (\$.....0) reinsurers.....		
24.04 Payable to parent, subsidiaries and affiliates.....		
24.05 Drafts outstanding.....		
24.06 Liability for amounts held under uninsured plans.....		
24.07 Funds held under coinsurance.....		
24.08 Derivatives.....		
24.09 Payable for securities.....		
24.10 Payable for securities lending.....		
24.11 Capital notes \$.....0 and interest thereon \$.....0.....		
25. Aggregate write-ins for liabilities.....	1,165,334	697,013
26. Total liabilities excluding Separate Accounts business (Lines 1 to 25).....	1,004,588,622	842,709,863
27. From Separate Accounts Statement.....		
28. Total liabilities (Line 26 and 27).....	1,004,588,622	842,709,863
29. Common capital stock.....	2,556,950	2,556,950
30. Preferred capital stock.....		
31. Aggregate write-ins for other-than-special surplus funds.....	0	0
32. Surplus notes.....	30,000,000	
33. Gross paid in and contributed surplus (Page 3, Line 33, Col. 2 plus Page 4, Line 51.1, Col. 1).....	32,646,050	32,646,050
34. Aggregate write-ins for special surplus funds.....	0	0
35. Unassigned funds (surplus).....	39,024,691	43,115,392
36. Less treasury stock, at cost:		
36.10.000 shares common (value included in Line 29 \$.....0).....		
36.20.000 shares preferred (value included in Line 30 \$.....0).....		
37. Surplus (Total Lines 31 + 32 + 33 + 34 + 35 - 36) (including \$.....0 in Separate Accounts Statement).....	101,670,741	75,761,442
38. Totals of Lines 29, 30 and 37 (Page 4, Line 55).....	104,227,691	78,318,392
39. Totals of Lines 28 and 38 (Page 2, Line 28, Col. 3).....	1,108,816,313	921,028,255

DETAILS OF WRITE-INS

2501. Unclaimed Property.....	1,165,334	697,013
2502.		
2503.		
2598. Summary of remaining write-ins for Line 25 from overflow page.....	0	0
2599. Totals (Lines 2501 through 2503 plus 2598) (Line 25 above).....	1,165,334	697,013
3101.		
3102.		
3103.		
3198. Summary of remaining write-ins for Line 31 from overflow page.....	0	0
3199. Totals (Lines 3101 through 3103 plus 3198) (Line 31 above).....	0	0
3401.		
3402.		
3403.		
3498. Summary of remaining write-ins for Line 34 from overflow page.....	0	0
3499. Totals (Lines 3401 through 3403 plus 3498) (Line 34 above).....	0	0

Family Heritage Life Insurance Company of America
SUMMARY OF OPERATIONS

	1 Current Year	2 Prior Year
1. Premiums and annuity considerations for life and accident and health contracts (Exhibit 1, Part 1, Line 20.4, Col. 1, less Col. 11)	264,618,524	254,139,871
2. Considerations for supplementary contracts with life contingencies		
3. Net investment income (Exhibit of Net Investment Income, Line 17)	38,585,438	33,304,471
4. Amortization of Interest Maintenance Reserve (IMR) (Line 5)	948,180	1,210,276
5. Separate Accounts net gain from operations excluding unrealized gains or losses		
6. Commissions and expense allowances on reinsurance ceded (Exhibit 1, Part 2, Line 26.1, Col. 1)	142,963,446	119,594,608
7. Reserve adjustments on reinsurance ceded	27,106,285	10,499,198
8. Miscellaneous Income:		
8.1 Income from fees associated with investment management, administration and contract guarantees from Separate Accounts		
8.2 Charges and fees for deposit-type contracts		
8.3 Aggregate write-ins for miscellaneous income	43,181	12,500
9. Totals (Lines 1 to 8.3)	474,265,054	418,760,924
10. Death benefits	583,165	570,184
11. Matured endowments (excluding guaranteed annual pure endowments)		
12. Annuity benefits (Exhibit 8, Part 2, Line 6.4, Cols. 4 + 8)		
13. Disability benefits and benefits under accident and health contracts	59,903,413	55,039,976
14. Coupons, guaranteed annual pure endowments and similar benefits		
15. Surrender benefits and withdrawals for life contracts	80,989	94,645
16. Group conversions		
17. Interest and adjustments on contract or deposit-type contract funds	7	15
18. Payments on supplementary contracts with life contingencies		
19. Increase in aggregate reserves for life and accident and health contracts	140,350,686	116,829,043
20. Totals (Lines 10 to 19)	200,918,260	172,533,863
21. Commissions on premiums, annuity considerations and deposit-type contract funds (direct business only) (Exhibit 1, Part 2, Line 31, Col. 1)	54,438,300	51,830,009
22. Commissions and expense allowances on reinsurance assumed (Exhibit 1, Part 2, Line 26.2, Col. 1)	141,038,033	118,169,387
23. General insurance expenses (Exhibit 2, Line 10, Columns 1, 2, 3 and 4)	23,535,723	23,590,258
24. Insurance taxes, licenses and fees, excluding federal income taxes (Exhibit 3, Line 7, Cols. 1 + 2 + 3)	5,685,780	5,297,697
25. Increase in loading on deferred and uncollected premiums	11,251,470	15,744,894
26. Net transfers to or (from) Separate Accounts net of reinsurance		
27. Aggregate write-ins for deductions	0	0
28. Totals (Lines 20 to 27)	436,867,566	387,166,108
29. Net gain from operations before dividends to policyholders and federal income taxes (Line 9 minus Line 28)	37,397,488	31,594,816
30. Dividends to policyholders		
31. Net gain from operations after dividends to policyholders and before federal income taxes (Line 29 minus Line 30)	37,397,488	31,594,816
32. Federal and foreign income taxes incurred (excluding tax on capital gains)	13,512,844	12,427,720
33. Net gain from operations after dividends to policyholders and federal income taxes and before realized capital gains or (losses) (Line 31 minus Line 32)	23,884,644	19,167,096
34. Net realized capital gains (losses) (excluding gains (losses) transferred to the IMR) less capital gains tax of \$....(40,267) (excluding taxes of \$....15,909 transferred to the IMR)	(66,528)	(71,037)
35. Net income (Line 33 plus Line 34)	23,818,116	19,096,059
CAPITAL AND SURPLUS ACCOUNT		
36. Capital and surplus, December 31, prior year (Page 3, Line 38, Col. 2)	78,318,392	67,406,766
37. Net income (Line 35)	23,818,116	19,096,059
38. Change in net unrealized capital gains (losses) less capital gains tax of \$....2,000	2,377	(290,656)
39. Change in net unrealized foreign exchange capital gain (loss)		
40. Change in net deferred income tax	3,922,887	(1,644,000)
41. Change in nonadmitted assets	(11,507,527)	12,366,858
42. Change in liability for reinsurance in unauthorized and certified companies		
43. Change in reserve on account of change in valuation basis, (increase) or decrease		
44. Change in asset valuation reserve	(992,629)	(559,635)
45. Change in treasury stock, (Page 3, Lines 36.1 and 36.2 Col. 2 minus Col. 1)		
46. Surplus (contributed to) withdrawn from Separate Accounts during period		
47. Other changes in surplus in Separate Accounts Statement		
48. Change in surplus notes	30,000,000	
49. Cumulative effect of changes in accounting principles		
50. Capital changes:		
50.1 Paid in		
50.2 Transferred from surplus (Stock Dividend)		
50.3 Transferred to surplus		
51. Surplus adjustment:		
51.1 Paid in		
51.2 Transferred to capital (Stock Dividend)		
51.3 Transferred from capital		
51.4 Change in surplus as a result of reinsurance		
52. Dividends to stockholders	(19,096,000)	(18,057,000)
53. Aggregate write-ins for gains and losses in surplus	(237,925)	0
54. Net change in capital and surplus for the year (Lines 37 through 53)	25,909,299	10,911,626
55. Capital and surplus, December 31, current year (Lines 36 + 54) (Page 3, Line 38)	104,227,691	78,318,392
DETAILS OF WRITE-INS		
08.301. Misc Income	43,181	12,500
08.302.		
08.303.		
08.398. Summary of remaining write-ins for Line 8.3 from overflow page	0	0
08.399. Totals (Lines 08.301 through 08.303 plus 08.398) (Line 8.3 above)	43,181	12,500
2701.		
2702.		
2703.		
2798. Summary of remaining write-ins for Line 27 from overflow page	0	0
2799. Totals (Lines 2701 through 2703 plus 2798) (Line 27 above)	0	0
5301. change in executive benefit plans	(366,038)	
5302. change in executive benefit plans - Def FIT	128,113	
5303.		
5398. Summary of remaining write-ins for Line 53 from overflow page	0	0
5399. Totals (Lines 5301 through 5303 plus 5398) (Line 53 above)	(237,925)	0

CASH FLOW

		1	2
		Current Year	Prior Year
CASH FROM OPERATIONS			
1.	Premiums collected net of reinsurance.....	239,327,096	223,767,442
2.	Net investment income.....	23,982,273	18,986,634
3.	Miscellaneous income.....	161,761,674	121,666,375
4.	Total (Lines 1 through 3).....	425,071,043	364,420,451
5.	Benefit and loss related payments.....	58,220,425	52,770,273
6.	Net transfers to Separate Accounts, Segregated Accounts and Protected Cell Accounts.....		
7.	Commissions, expenses paid and aggregate write-ins for deductions.....	219,974,984	195,128,180
8.	Dividends paid to policyholders.....		
9.	Federal and foreign income taxes paid (recovered) net of \$.....0 tax on capital gains (losses).....	13,887,433	12,530,000
10.	Total (Lines 5 through 9).....	292,082,842	260,428,453
11.	Net cash from operations (Line 4 minus Line 10).....	132,988,201	103,991,998
CASH FROM INVESTMENTS			
12.	Proceeds from investments sold, matured or repaid:		
12.1	Bonds.....	15,496,604	16,287,025
12.2	Stocks.....		
12.3	Mortgage loans.....		
12.4	Real estate.....	570,000	
12.5	Other invested assets.....	125,000	
12.6	Net gains or (losses) on cash, cash equivalents and short-term investments.....		
12.7	Miscellaneous proceeds.....		
12.8	Total investment proceeds (Lines 12.1 to 12.7).....	16,191,604	16,287,025
13.	Cost of investments acquired (long-term only):		
13.1	Bonds.....	145,912,421	99,703,335
13.2	Stocks.....		
13.3	Mortgage loans.....		
13.4	Real estate.....	1,346,795	
13.5	Other invested assets.....	954,880	8,776,322
13.6	Miscellaneous applications.....		
13.7	Total investments acquired (Lines 13.1 to 13.6).....	148,214,096	108,479,657
14.	Net increase (decrease) in contract loans and premium notes.....	14,305	16,620
15.	Net cash from investments (Line 12.8 minus Lines 13.7 minus Line 14).....	(132,036,797)	(92,209,252)
CASH FROM FINANCING AND MISCELLANEOUS SOURCES			
16.	Cash provided (applied):		
16.1	Surplus notes, capital notes.....	30,000,000	
16.2	Capital and paid in surplus, less treasury stock.....		
16.3	Borrowed funds.....		
16.4	Net deposits on deposit-type contracts and other insurance liabilities.....		
16.5	Dividends to stockholders.....	19,096,000	18,057,000
16.6	Other cash provided (applied).....	(9,042,348)	8,889,693
17.	Net cash from financing and miscellaneous sources (Lines 16.1 to 16.4 minus Line 16.5 plus Line 16.6).....	1,861,652	(9,167,307)
RECONCILIATION OF CASH, CASH EQUIVALENTS AND SHORT-TERM INVESTMENTS			
18.	Net change in cash, cash equivalents and short-term investments (Line 11, plus Lines 15 and 17).....	2,813,056	2,615,439
19.	Cash, cash equivalents and short-term investments:		
19.1	Beginning of year.....	2,713,618	98,179
19.2	End of year (Line 18 plus Line 19.1).....	5,526,674	2,713,618
Note: Supplemental disclosures of cash flow information for non-cash transactions:			
20.0001	Non-cash bond exchanges - acquisitions (line 13.1).....	10,071,650	
20.0002	Non-cash bond exchanges - disposals (line 12.1).....	10,071,650	

ANALYSIS OF OPERATIONS BY LINES OF BUSINESS

	1	2	Ordinary			6	Group		Accident and Health			12
			3	4	5		7	8	9	10	11	
	Total	Industrial Life	Life Insurance	Individual Annuities	Supplementary Contracts	Credit Life (Group and Individual)	Life Insurance(a)	Annuities	Group	Credit (Group and Individual)	Other	Aggregate of All Other Lines of Business
1. Premiums and annuity considerations for life and accident and health contracts.....	264,618,524		27,947,753						10,124,774		226,545,997	
2. Considerations for supplementary contracts with life contingencies.....	0											
3. Net investment income.....	38,585,438		2,498,576						377,079		35,709,783	
4. Amortization of Interest Maintenance Reserve (IMR).....	948,180										948,180	
5. Separate Accounts net gain from operations excluding unrealized gains or losses.....	0											
6. Commissions and expense allowances on reinsurance ceded.....	142,963,446		141,754,653						59,741		1,149,052	
7. Reserve adjustments on reinsurance ceded.....	27,106,285		27,106,285									
8. Miscellaneous Income:												
8.1 Fees associated with income from investment management, administration and contract guarantees from S/A.....	0											
8.2 Charges and fees for deposit-type contracts.....	0											
8.3 Aggregate write-ins for miscellaneous income.....	43,181	0	0	0	0	0	0	0	0	0	43,181	0
9. Totals (Lines 1 to 8.3).....	474,265,054	0	199,307,267	0	0	0	0	0	10,561,594	0	264,396,193	0
10. Death benefits.....	583,165		583,165									
11. Matured endowments (excluding guaranteed annual pure endowments).....	0											
12. Annuity benefits.....	0											
13. Disability benefits and benefits under accident and health contracts.....	59,903,413								1,091,475		58,811,938	
14. Coupons, guaranteed annual pure endowments and similar benefits.....	0											
15. Surrender benefits and withdrawals for life contracts.....	80,989		80,989									
16. Group conversions.....	0											
17. Interest and adjustments on contract or deposit-type contract funds.....	7		7									
18. Payments on supplementary contracts with life contingencies.....	0											
19. Increase in aggregate reserves for life and accident and health contracts.....	140,350,686		43,063,976						3,773,046		93,513,664	
20. Totals (Lines 10 to 19).....	200,918,260	0	43,728,137	0	0	0	0	0	4,864,521	0	152,325,602	0
21. Commissions on premiums, annuity considerations and deposit-type contract funds (direct business only).....	54,438,300		869,122						2,972,238		50,596,940	
22. Commissions and expense allowances on reinsurance assumed.....	141,038,033		141,038,033									
23. General insurance expenses.....	23,535,723		893,767						963,129		21,678,827	
24. Insurance taxes, licenses and fees, excluding federal income taxes.....	5,685,780		67,880						238,971		5,378,929	
25. Increase in loading on deferred and uncollected premiums.....	11,251,470		11,251,470									
26. Net transfers to or (from) Separate Accounts net of reinsurance.....	0											
27. Aggregate write-ins for deductions.....	0	0	0	0	0	0	0	0	0	0	0	0
28. Totals (Lines 20 to 27).....	436,867,566	0	197,848,409	0	0	0	0	0	9,038,859	0	229,980,298	0
29. Net gain from operations before dividends to policyholders and federal income taxes (Line 9 minus Line 28).....	37,397,488	0	1,458,858	0	0	0	0	0	1,522,735	0	34,415,895	0
30. Dividends to policyholders.....	0											
31. Net gain from operations after dividends to policyholders and before federal income taxes (Line 29 minus Line 30).....	37,397,488	0	1,458,858	0	0	0	0	0	1,522,735	0	34,415,895	0
32. Federal income taxes incurred (excluding tax on capital gains).....	13,512,844		527,130						550,210		12,435,504	
33. Net gain from operations after dividends to policyholders and federal income taxes and before realized capital gains or (losses) (Line 31 minus Line 32).....	23,884,644	0	931,728	0	0	0	0	0	972,525	0	21,980,391	0

DETAILS OF WRITE-INS												
08.301. Misc Income.....	43,181										43,181	
08.302.	0											
08.303.	0											
08.398. Summary of remaining write-ins for Line 8.3 from overflow page.....	0	0	0	0	0	0	0	0	0	0	0	0
08.399. Total (Lines 08.301 through 08.303 plus 08.398) (Line 8.3 above).....	43,181	0	0	0	0	0	0	0	0	0	43,181	0
2701.	0											
2702.	0											
2703.	0											
2798. Summary of remaining write-ins for Line 27 from overflow page.....	0	0	0	0	0	0	0	0	0	0	0	0
2799. Total (Lines 2701 through 2703 plus 2798) (Line 27 above).....	0	0	0	0	0	0	0	0	0	0	0	0

(a) Includes the following amounts for FEGLI/SGLI: Line 1.....0 Line 10.....0 Line 16.....0 Line 23.....0 Line 24.....0.

ANALYSIS OF INCREASE IN RESERVES DURING THE YEAR

	1 Total	2 Industrial Life	Ordinary			6 Credit Life (Group and Individual)	Group	
			3 Life Insurance	4 Individual Annuities	5 Supplementary Contracts		7 Life Insurance	8 Annuities
Involving Life or Disability Contingencies (Reserves)								
(Net of Reinsurance Ceded)								
1. Reserve December 31, prior year.....	32,979,901		32,979,901					
2. Tabular net premiums or considerations.....	83,885,529		83,885,529					
3. Present value of disability claims incurred.....	0				XXX			
4. Tabular interest.....	1,407,911		1,407,911					
5. Tabular less actual reserve released.....	0							
6. Increase in reserve on account of change in valuation basis.....	0							
7. Other increases (net).....	0							
8. Totals (Lines 1 to 7).....	118,273,341	0	118,273,341	0	0	0	0	0
9. Tabular cost.....	35,173,715		35,173,715		XXX			
10. Reserves released by death.....	109,088		109,088	XXX	XXX			XXX
11. Reserves released by other terminations (net).....	6,946,661		6,946,661					
12. Annuity, supplementary contract, and disability payments involving life contingencies.....	0							
13. Net transfers to or (from) Separate Accounts.....	0							
14. Total deductions (Lines 9 to 13).....	42,229,464	0	42,229,464	0	0	0	0	0
15. Reserve December 31, current year.....	76,043,877	0	76,043,877	0	0	0	0	0

EXHIBIT OF NET INVESTMENT INCOME

	1 Collected During Year	2 Earned During Year
1. U.S. government bonds.....	(a).....3,236,4383,236,449
1.1 Bonds exempt from U.S. tax.....	(a).....
1.2 Other bonds (unaffiliated).....	(a).....34,339,29936,187,852
1.3 Bonds of affiliates.....	(a).....
2.1 Preferred stocks (unaffiliated).....	(b).....
2.11 Preferred stocks of affiliates.....	(b).....
2.2 Common stocks (unaffiliated).....
2.21 Common stocks of affiliates.....
3. Mortgage loans.....	(c).....
4. Real estate.....	(d).....
5. Contract loans.....3,2243,224
6. Cash, cash equivalents and short-term investments.....	(e).....6,1286,128
7. Derivative instruments.....	(f).....
8. Other invested assets.....819,410821,035
9. Aggregate write-ins for investment income.....752,218752,218
10. Total gross investment income.....39,156,71741,006,906
11. Investment expenses.....		(g).....1,818,928
12. Investment taxes, licenses and fees, excluding federal income taxes.....		(g).....4,490
13. Interest expense.....		(h).....585,549
14. Depreciation on real estate and other invested assets.....		(i).....0
15. Aggregate write-ins for deductions from investment income.....	12,501
16. Total deductions (Lines 11 through 15).....	2,421,468
17. Net investment income (Line 10 minus Line 16).....	38,585,438

DETAILS OF WRITE-INS

0901. Agent Balances.....752,196752,196
0902. Policy Reinstatement Interest.....2222
0903.
0998. Summary of remaining write-ins for Line 9 from overflow page.....00
0999. Totals (Lines 0901 through 0903 plus 0998) (Line 9 above).....752,218752,218
1501. Amortization of Tax Credit Fund.....	12,501
1502.
1503.
1598. Summary of remaining write-ins for Line 15 from overflow page.....	0
1599. Totals (Lines 1501 through 1503 plus 1598) (Line 15 above).....	12,501
(a) Includes \$.....13,904,398 accrual of discount less \$.....745,640 amortization of premium and less \$.....1,255,452 paid for accrued interest on purchases.		
(b) Includes \$.....0 accrual of discount less \$.....0 amortization of premium and less \$.....0 paid for accrued dividends on purchases.		
(c) Includes \$.....0 accrual of discount less \$.....0 amortization of premium and less \$.....0 paid for accrued interest on purchases.		
(d) Includes \$.....0 for company's occupancy of its own buildings; and excludes \$.....0 interest on encumbrances.		
(e) Includes \$.....0 accrual of discount less \$.....0 amortization of premium and less \$.....0 paid for accrued interest on purchases.		
(f) Includes \$.....0 accrual of discount less \$.....0 amortization of premium.		
(g) Includes \$.....0 investment expenses and \$.....0 investment taxes, licenses and fees, excluding federal income taxes, attributable to segregated and Separate Accounts.		
(h) Includes \$.....398,125 interest on surplus notes and \$.....0 interest on capital notes.		
(i) Includes \$.....0 depreciation on real estate and \$.....0 depreciation on other invested assets.		

EXHIBIT OF CAPITAL GAINS (LOSSES)

	1 Realized Gain (Loss) on Sales or Maturity	2 Other Realized Adjustments	3 Total Realized Capital Gain (Loss) (Columns 1 + 2)	4 Change in Unrealized Capital Gain (Loss)	5 Change in Unrealized Foreign Exchange Capital Gain (Loss)
1. U.S. government bonds.....0
1.1 Bonds exempt from U.S. tax.....0
1.2 Other bonds (unaffiliated).....46,80346,80360,966
1.3 Bonds of affiliates.....0
2.1 Preferred stocks (unaffiliated).....0
2.11 Preferred stocks of affiliates.....0
2.2 Common stocks (unaffiliated).....0
2.21 Common stocks of affiliates.....0
3. Mortgage loans.....0
4. Real estate.....(55,000)(51,795)(106,795)
5. Contract loans.....0
6. Cash, cash equivalents and short-term investments.....0
7. Derivative instruments.....0
8. Other invested assets.....0(56,589)
9. Aggregate write-ins for capital gains (losses).....00000
10. Total capital gains (losses).....(8,197)(51,795)(59,992)4,3770

DETAILS OF WRITE-INS

0901.0
0902.0
0903.0
0998. Summary of remaining write-ins for Line 9 from overflow page...00000
0999. Totals (Lines 0901 through 0903 plus 0998) (Line 9 above).....00000

EXHIBIT 1 - PART 1 - PREMIUMS AND ANNUITY CONSIDERATIONS FOR LIFE AND ACCIDENT AND HEALTH CONTRACTS

	1	2	Ordinary		5	Group		Accident and Health			11
	Total	Industrial Life	3 Life Insurance	4 Individual Annuities	Credit Life (Group and Individual)	6 Life Insurance	7 Annuities	8 Group	9 Credit (Group & Individual)	10 Other	Aggregate of All Other Lines of Business
FIRST YEAR (other than single)											
1. Uncollected.....	2,703,238		2,019,426					48,199		635,613	
2. Deferred and accrued.....	35,127,590		35,127,590								
3. Deferred, accrued and uncollected:											
3.1 Direct.....	1,150,361		453,979					48,579		647,803	
3.2 Reinsurance assumed.....	36,693,037		36,693,037								
3.3 Reinsurance ceded.....	12,570							380		12,190	
3.4 Net (Line 1 + Line 2).....	37,830,828	0	37,147,016	0	0	0	0	48,199	0	635,613	0
4. Advance.....	20,228		20,228								
5. Line 3.4 - Line 4.....	37,810,600	0	37,126,788	0	0	0	0	48,199	0	635,613	0
6. Collected during year:											
6.1 Direct.....	41,750,795		928,665					2,891,943		37,930,187	
6.2 Reinsurance assumed.....	73,004,256		73,004,256								
6.3 Reinsurance ceded.....	73,944,618		73,004,256					54,909		885,453	
6.4 Net.....	40,810,433	0	928,665	0	0	0	0	2,837,034	0	37,044,734	0
7. Line 5 + Line 6.4.....	78,621,033	0	38,055,453	0	0	0	0	2,885,233	0	37,680,347	0
8. Prior year (uncollected + deferred and accrued - advance).....	36,787,199		36,142,875					56,175		588,149	
9. First year premiums and considerations:											
9.1 Direct.....	41,727,158		862,890					2,883,609		37,980,659	
9.2 Reinsurance assumed.....	74,053,944		74,053,944								
9.3 Reinsurance ceded.....	73,947,268		73,004,256					54,551		888,461	
9.4 Net (Line 7 - Line 8).....	41,833,834	0	1,912,578	0	0	0	0	2,829,058	0	37,092,198	0
SINGLE											
10. Single premiums and considerations:											
10.1 Direct.....	0										
10.2 Reinsurance assumed.....	0										
10.3 Reinsurance ceded.....	0										
10.4 Net.....	0	0	0	0	0	0	0	0	0	0	0
RENEWAL											
11. Uncollected.....	5,855,506		2,402,018					135,494		3,317,994	
12. Deferred and accrued.....	46,190,522		46,190,522								
13. Deferred, accrued and uncollected:											
13.1 Direct.....	4,582,916		1,107,449					136,226		3,339,241	
13.2 Reinsurance assumed.....	47,486,169		47,486,169								
13.3 Reinsurance ceded.....	23,057		1,078					732		21,247	
13.4 Net (Line 11 + Line 12).....	52,046,028	0	48,592,540	0	0	0	0	135,494	0	3,317,994	0
14. Advance.....	15,213		15,213								
15. Line 13.4 - Line 14.....	52,030,815	0	48,577,327	0	0	0	0	135,494	0	3,317,994	0
16. Collected during year:											
16.1 Direct.....	200,050,341		2,032,165					7,304,095		190,714,081	
16.2 Reinsurance assumed.....	70,271,505		70,271,505								
16.3 Reinsurance ceded.....	71,851,512		70,353,933					43,655		1,453,924	
16.4 Net.....	198,470,334	0	1,949,737	0	0	0	0	7,260,440	0	189,260,157	0
17. Line 15 + Line 16.4.....	250,501,149	0	50,527,064	0	0	0	0	7,395,934	0	192,578,151	0
18. Prior year (uncollected + deferred and accrued - advance).....	27,716,459		24,491,889					100,218		3,124,352	
19. Renewal premiums and considerations:											
19.1 Direct.....	200,550,232		2,297,496					7,339,773		190,912,963	
19.2 Reinsurance assumed.....	94,091,611		94,091,611								
19.3 Reinsurance ceded.....	71,857,153		70,353,932					44,057		1,459,164	
19.4 Net (Line 17 - Line 18).....	222,784,690	0	26,035,175	0	0	0	0	7,295,716	0	189,453,799	0
TOTAL											
20. Total premiums and annuity considerations:											
20.1 Direct.....	242,277,390	0	3,160,386	0	0	0	0	10,223,382	0	228,893,622	0
20.2 Reinsurance assumed.....	168,145,555	0	168,145,555	0	0	0	0	0	0	0	0
20.3 Reinsurance ceded.....	145,804,421	0	143,358,188	0	0	0	0	98,608	0	2,347,625	0
20.4 Net (Lines 9.4 + 10.4 + 19.4).....	264,618,524	0	27,947,753	0	0	0	0	10,124,774	0	226,545,997	0

**EXHIBIT 1 - PART 2 - DIVIDENDS AND COUPONS APPLIED, REINSURANCE COMMISSIONS AND
EXPENSE ALLOWANCES AND COMMISSIONS INCURRED (direct business only)**

10

	1 Total	2 Industrial Life	Ordinary		5 Credit Life (Group and Individual)	Group		Accident and Health			11 Aggregate of All Other Lines of Business
			3 Life Insurance	4 Individual Annuities		6 Life Insurance	7 Annuities	8 Group	9 Credit (Group & Individual)	10 Other	
DIVIDENDS AND COUPONS APPLIED (included in Part 1)											
21. To pay renewal premiums.....	0										
22. All other.....	0										
REINSURANCE COMMISSIONS AND EXPENSE ALLOWANCES INCURRED											
23. First year (other than single):											
23.1 Reinsurance ceded.....	124,139,027		123,296,243					49,089		793,695	
23.2 Reinsurance assumed.....	122,931,222		122,931,222								
23.3 Net ceded less assumed.....	1,207,805	0	365,021	0	0	0	0	49,089	0	793,695	0
24. Single:											
24.1 Reinsurance ceded.....	0										
24.2 Reinsurance assumed.....	0										
24.3 Net ceded less assumed.....	0	0	0	0	0	0	0	0	0	0	0
25. Renewal:											
25.1 Reinsurance ceded.....	18,824,419		18,458,410					10,652		355,357	
25.2 Reinsurance assumed.....	18,106,811		18,106,811								
25.3 Net ceded less assumed.....	717,608	0	351,599	0	0	0	0	10,652	0	355,357	0
26. Totals:											
26.1 Reinsurance ceded (Page 6, Line 6).....	142,963,446	0	141,754,653	0	0	0	0	59,741	0	1,149,052	0
26.2 Reinsurance assumed (Page 6, Line 22).....	141,038,033	0	141,038,033	0	0	0	0	0	0	0	0
26.3 Net ceded less assumed.....	1,925,413	0	716,620	0	0	0	0	59,741	0	1,149,052	0
COMMISSIONS INCURRED (direct business only)											
27. First year (other than single).....	32,188,286		676,045					2,164,157		29,348,084	
28. Single.....	0										
29. Renewal.....	22,250,014		193,077					808,081		21,248,856	
30. Deposit-type contract funds.....	0										
31. Totals (to agree with Page 6, Line 21).....	54,438,300	0	869,122	0	0	0	0	2,972,238	0	50,596,940	0

Family Heritage Life Insurance Company of America
EXHIBIT 2 - GENERAL EXPENSES

		Insurance			5	6	
		1	Accident and Health				4
			2	3			
		Life	Cost Containment	All Other	All Other Lines of Business	Investment	Total
1.	Rent.....	25,600		664,238			689,838
2.	Salaries and wages.....	424,400		10,991,683			11,416,083
3.11	Contributions for benefit plans for employees.....	51,400		1,330,958			1,382,358
3.12	Contributions for benefit plans for agents.....						.0
3.21	Payments to employees under non-funded benefit plans.....						.0
3.22	Payments to agents under non-funded benefit plans.....						.0
3.31	Other employee welfare.....			399,295			399,295
3.32	Other agent welfare.....						.0
4.1	Legal fees and expenses.....			124,082			124,082
4.2	Medical examination fees.....						.0
4.3	Inspection report fees.....	64,892					64,892
4.4	Fees of public accountants and consulting actuaries.....			264,085			264,085
4.5	Expense of investigation and settlement of policy claims.....			134,093			134,093
5.1	Traveling expenses.....	12,500		877,439			889,939
5.2	Advertising.....			165,180			165,180
5.3	Postage, express, telegraph and telephone.....	6,331		513,559			519,890
5.4	Printing and stationery.....	80		826,477			826,557
5.5	Cost or depreciation of furniture and equipment.....			13,161			13,161
5.6	Rental of equipment.....			194,839			194,839
5.7	Cost or depreciation of EDP equipment and software.....			721,735			721,735
6.1	Books and periodicals.....			76,690			76,690
6.2	Bureau and association fees.....			31,534			31,534
6.3	Insurance, except on real estate.....			40,448			40,448
6.4	Miscellaneous losses.....						.0
6.5	Collection and bank service charges.....					208,060	208,060
6.6	Sundry general expenses.....	363		357,826			358,189
6.7	Group service and administration fees.....						.0
6.8	Reimbursements by uninsured plans.....						.0
7.1	Agency expense allowance.....						.0
7.2	Agents' balances charged off (less \$.....0 recovered).....			132,874			132,874
7.3	Agency conferences other than local meetings.....	31,900		1,485,636			1,517,536
9.1	Real estate expenses.....					50,868	50,868
9.2	Investment expenses not included elsewhere.....					1,560,000	1,560,000
9.3	Aggregate write-ins for expenses.....	276,301	.0	3,296,124	.0	.0	3,572,425
10.	General expenses Incurred.....	893,767	.0	22,641,956	.0	1,818,928	(a).....25,354,651
11.	General expenses unpaid December 31, prior year.....	26,750		3,733,627		20,700	3,781,077
12.	General expenses unpaid December 31, current year.....	23,300		3,919,028		25,000	3,967,328
13.	Amounts receivable relating to uninsured plans, prior year.....						.0
14.	Amounts receivable relating to uninsured plans, current year.....						.0
15.	General expenses paid during year (Lines 10+11-12-13+14).....	897,217	.0	22,456,555	.0	1,814,628	25,168,400
DETAILS OF WRITE-INS							
09.301.	Consultant Fees.....	126		90,232			90,358
09.302.	Recruiting Expenses.....			(75,440)			(75,440)
09.303.	Donations.....			62,482			62,482
09.398.	Summary of remaining write-ins for Line 9.3 from overflow page.....	276,175	.0	3,218,850	.0	.0	3,495,025
09.399.	Totals (Lines 09.301 through 09.303 plus 09.398)(Line 9.3 above).....	276,301	.0	3,296,124	.0	.0	3,572,425

EXHIBIT 3 - TAXES, LICENSES AND FEES (EXCLUDING FEDERAL INCOME TAXES)

		Insurance			4	5
		1	2	3		
		Life	Accident and Health	All Other Lines of Business	Investment	Total
1.	Real estate taxes.....				4,490	4,490
2.	State insurance department licenses and fees.....	5,098	427,530			432,628
3.	State taxes on premiums.....	53,801	4,429,575			4,483,376
4.	Other state taxes, including \$.....0 for employee benefits.....					.0
5.	U.S. Social Security taxes.....	7,600	632,554			640,154
6.	All other taxes.....	1,381	128,241			129,622
7.	Taxes, licenses and fees incurred.....	67,880	5,617,900	0	4,490	5,690,270
8.	Taxes, licenses and fees unpaid December 31, prior year.....	11,000	1,123,481			1,134,481
9.	Taxes, licenses and fees unpaid December 31, current year.....	11,500	947,649			959,149
10.	Taxes, licenses and fees paid during year (Lines 7 + 8 - 9).....	67,380	5,793,732	0	4,490	5,865,602

EXHIBIT 4 - DIVIDENDS OR REFUNDS

		1	2
		Life	Accident and Health
1.	Applied to pay renewal premiums.....		
2.	Applied to shorten the endowment or premium-paying period.....		
3.	Applied to provide paid-up additions.....		
4.	Applied to provide paid-up annuities.....		
5.	Total Lines 1 through 4.....	.0	.0
6.	Paid-in cash.....		
7.	Left on deposit.....		
8.	Aggregate write-ins for dividend or refund options.....	.0	.0
9.	Total Lines 5 through 8.....	.0	.0
10.	Amount due and unpaid.....		
11.	Provision for dividends or refunds payable in the following calendar year.....		
12.	Terminal dividends.....		
13.	Provision for deferred dividend contracts.....		
14.	Amount provisionally held for deferred dividend contracts not included in Line 13.....		
15.	Total Lines 10 through 14.....	.0	.0
16.	Total from prior year.....		
17.	Total dividends or refunds (Lines 9 + 15 - 16).....	.0	.0
DETAILS OF WRITE-INS			
0801.		
0802.		
0803.		
0898.	Summary of remaining write-ins for Line 8 from overflow page.....	.0	.0
0899.	Totals (Line 0801 through 0803 plus 0898) (Line 8 above).....	.0	.0

NONE

EXHIBIT 5 - AGGREGATE RESERVE FOR LIFE CONTRACTS

1	2	3	4	5	6
Valuation Standard	Total	Industrial	Ordinary	Credit (Group and Individual)	Group
Life Insurance:					
0100001. 80 CSO 4.5% NLP IDB 01-06.....125,618125,618
0100002. 2001 CSO 4.0% NLP IDB 07-12.....296,102296,102
0100003. 2001 CSO 3.5% NLP IDB 13 - NB.....1,7341,734
0100004. 01 CSO 4.0% CRVM, IDB 07-12.....1,318,9921,318,992
0100005. 01 CSO 4.25% CRVM, IDB 07-12.....850,158850,158
0100006. 01 CSO 3.5% CRVM, IDB NB.....1,577,2301,577,230
0100007. 01 CSO 3.75% CRVM, IDB NB.....676,326676,326
0100008. 01 CSO 3.50% CRVM ALB.....61,707,22661,707,226
0100009. 01 CSO 3.50% NLP ALB.....649,896649,896
0100010. 01 CSO 4.00% CRVM ALB.....9,3179,317
0199997. Totals (Gross).....67,212,599067,212,59900
0199998. Reinsurance ceded.....13,90413,904
0199999. Totals (Net).....67,198,695067,198,69500
Accidental Death Benefits:					
0400001. 59 ADB 4.50% NLP IDB 01-06.....5,0155,015
0400002. 59 ADB 4.00% NLP IDB 07.....16,52816,528
0400003. 59 ADB 3.00% ALB NLP IDB NB 07-NB.....43,57443,574
0400004. 59 ADB & 58 CSO ANB 3.00% NLP.....1717
0400005. 59 ADB & 80 CSO ANB 3.00% NLP.....4,073,2624,073,262
0400006. UNEARNED PREMIUM.....18,86018,860
0499997. Totals (Gross).....4,157,25604,157,25600
0499999. Totals (Net).....4,157,25604,157,25600
Disability - Active Lives:					
0500001. 52 INTERCOMPANY DISABILITY.....1,716,6641,716,664
0599997. Totals (Gross).....1,716,66401,716,66400
0599999. Totals (Net).....1,716,66401,716,66400
Miscellaneous Reserves:					
0700001. DEFICIENCY RESERVES.....224,147224,147
0700002. GIO.....745,948745,948
0700003. NON-DEDUCTION OF DEFERRED FRACTIONAL PREMIUMS.....388,594388,594
0700004. SUBSTANDARD.....1,612,5731,612,573
0799997. Totals (Gross).....2,971,26202,971,26200
0799999. Totals (Net).....2,971,26202,971,26200
9999999. Totals (Net) - Page 3, Line 1.....76,043,877076,043,87700

Family Heritage Life Insurance Company of America

EXHIBIT 5 - INTERROGATORIES


- | | | | |
|---|--|---------|--------|
| 1.1 | Has the reporting entity ever issued both participating and non-participating contracts? | Yes [] | No [X] |
| 1.2 | If not, state which kind is issued
Non-Participating | | |
| 2.1 | Does the reporting entity at present issue both participating and non-participating contracts? | Yes [] | No [X] |
| 2.2 | If not, state which kind is issued
Non-Participating | | |
| 3. | Does the reporting entity at present issue or have in force contracts that contain non-guaranteed elements?
If so, attach a statement that contains the determination procedures, answers to the interrogatories and an actuarial opinion as described in the instructions. | Yes [] | No [X] |
| 
* 7 7 9 6 8 2 0 1 6 3 7 0 0 0 0 0 * | | | |
| 4. | Has the reporting entity any assessment or stipulated premium contracts in force? If so, state: | Yes [] | No [X] |
| 4.1 | Amount of insurance: | \$..... | |
| 4.2 | Amount of reserve: | \$..... | |
| 4.3 | Basis of reserve: | | |
| 4.4 | Basis of regular assessments: | | |
| 4.5 | Basis of special assessments: | | |
| 4.6 | Assessments collected during year: | \$..... | |
| 5. | If the contract loan interest rate guaranteed in any one or more of its currently issued contracts is less than 5%, not in advance, state the contract loan rate guarantees on any such contracts. | | |
| 6. | Does the reporting entity hold reserves for any annuity contracts that are less than the reserves that would be held on a standard basis? | Yes [] | No [X] |
| 6.1 | If so, state the amount of reserve on such contracts on the basis actually held: | \$..... | |
| 6.2 | That would have been held (on an exact or approximate basis) using the actual ages of the annuitants; the interest rate(s) used in 6.1; and the same mortality basis used by the reporting entity for the valuation of comparable annuity benefits issued to standard lives. If the reporting entity has no comparable annuity benefits for standard lives to be valued, the mortality basis shall be the table most recently approved by the state of domicile for valuing individual annuity benefits:
Attach statement of methods employed in their valuation. | \$..... | |
| 7. | Does the reporting entity have any Synthetic GIC contracts or agreements in effect as of December 31 of the current year? | Yes [] | No [X] |
| 7.1 | If yes, state the total dollar amount of assets covered by these contracts or agreements: | \$..... | |
| 7.2 | Specify the basis (fair value, amortized cost, etc.) for determining the amount: | | |
| 7.3 | State the amount of reserves established for this business: | \$..... | |
| 7.4 | Identify where the reserves are reported in the blank. | | |
| 8. | Does the reporting entity have any Contingent Deferred Annuity contracts or agreements in effect as of December of the current year? | Yes [] | No [X] |
| 8.1 | If yes, state the total dollar amount of account value covered by these contracts or agreements: | \$..... | |
| 8.2 | State the amount of reserves established for this business: | \$..... | |
| 8.3 | Identify where the reserves are reported in the blank: | | |
| 9. | Does the reporting entity have any Guaranteed Lifetime Income Benefit contracts, agreements or riders in effect as of December 31 of the current year? | Yes [] | No [X] |
| 9.1 | If yes, state the total dollar amount of any account value associated with these contracts, agreements or riders: | \$..... | |
| 9.2 | State the amount of reserves established for this business: | \$..... | |
| 9.3 | Identify where the reserves are reported in the blank: | | |

EXHIBIT 5A - CHANGES IN BASES OF VALUATION DURING THE YEAR

1 Description of Valuation Class	Valuation Basis		4 Increase in Actuarial Reserve Due To Change
	2 Changed From	3 Changed To	

NONE

EXHIBIT 6 - AGGREGATE RESERVES FOR ACCIDENT AND HEALTH CONTRACTS

	1	2	3	4	Other Individual Contracts				
					5	6	7	8	9
	Total	Group Accident and Health	Credit Accident and Health (Group and Individual)	Collectively Renewable	Non- Cancelable	Guaranteed Renewable	Non-Renewable for Stated Reasons Only	Other Accident Only	All Other
ACTIVE LIFE RESERVE									
1. Unearned premium reserves.....	10,481,716	570,976			15,059	9,895,681			
2. Additional contract reserves (a).....	803,030,076	8,716,580			166,035	794,147,461			
3. Additional actuarial reserves - Asset/Liability analysis.....	0								
4. Reserve for future contingent benefits.....	0								
5. Reserve for rate credits.....	0								
6. Aggregate write-ins for reserves.....	0	0	0	0	0	0	0	0	0
7. Totals (Gross).....	813,511,792	9,287,556	0	0	181,094	804,043,142	0	0	0
8. Reinsurance ceded.....	1,787,135	50,047			30,801	1,706,287			
9. Totals (Net).....	811,724,657	9,237,509	0	0	150,293	802,336,855	0	0	0
CLAIM RESERVE									
10. Present value of amounts not yet due on claims.....	2,385,542	103,257			5,333	2,276,952			
11. Additional actuarial reserves - Asset/Liability analysis.....	0								
12. Reserve for future contingent benefits.....	0								
13. Aggregate write-ins for reserves.....	0	0	0	0	0	0	0	0	0
14. Totals (Gross).....	2,385,542	103,257	0	0	5,333	2,276,952	0	0	0
15. Reinsurance ceded.....	0								
16. Totals (Net).....	2,385,542	103,257	0	0	5,333	2,276,952	0	0	0
17. TOTALS (Net).....	814,110,199	9,340,766	0	0	155,626	804,613,807	0	0	0
18. TABULAR FUND INTEREST.....	32,368,490	275,721			4,631	32,088,138			

DETAILS OF WRITE-INS

0601.	0								
0602.	0								
0603.	0								
0698. Summary of remaining write-ins for Line 6 from overflow page.....	0	0	0	0	0	0	0	0	0
0699. Totals (Lines 0601 through 0603 plus 0698) (Line 6 above).....	0	0	0	0	0	0	0	0	0
1301.	0								
1302.	0								
1303.	0								
1398. Summary of remaining write-ins for Line 13 from overflow page.....	0	0	0	0	0	0	0	0	0
1399. Totals (Lines 1301 through 1303 + 1398) (Line 13 above).....	0	0	0	0	0	0	0	0	0

(a) Attach statement as to valuation standard used in calculating this reserve, specifying reserve bases, interest rates and methods.

EXHIBIT 7 - DEPOSIT-TYPE CONTRACTS

	1	2	3	4	5	6
	Total	Guaranteed Interest Contracts	Annuities Certain	Supplemental Contracts	Dividend Accumulations or Refunds	Premium and Other Deposit Funds
1. Balance at the beginning of the year before reinsurance.....	0					
2. Deposits received during the year.....	0					
3. Investment earnings credited to the account.....	0					
4. Other net change in reserves.....	0					
5. Fees and other charges assessed.....	0					
6. Surrender charges.....	0					
7. Net surrender or withdrawal payments.....	0					
8. Other net transfers to or (from) Separate Accounts.....	0					
9. Balance at the end of current year before reinsurance (Lines 1 + 2 + 3 + 4 - 5 - 6 - 7 - 8).....	0	0	0	0	0	0
10. Reinsurance balance at the beginning of the year.....	0					
11. Net change in reinsurance assumed.....	0					
12. Net change in reinsurance ceded.....	0					
13. Reinsurance balance at the end of the year (Lines 10 + 11 - 12).....	0	0	0	0	0	0
14. Net balance at the end of the current year after reinsurance (Lines 9 + 13).....	0	0	0	0	0	0

NONE

EXHIBIT 8 - CLAIMS FOR LIFE AND ACCIDENT AND HEALTH CONTRACTS

PART 1 - Liability End of Current Year

	1	2	Ordinary			6	Group		Accident and Health		
			3	4	5		7	8	9	10	11
	Total	Industrial Life	Life Insurance	Individual Annuities	Supplementary Contracts	Credit Life (Group and Individual)	Life Insurance	Annuities	Group	Credit (Group and Individual)	Other
1. Due and unpaid:											
1.1 Direct.....	2,958,314								8,373		2,949,941
1.2 Reinsurance assumed.....	2,349,216		2,349,216								
1.3 Reinsurance ceded.....	0										
1.4 Net.....	5,307,530	0	2,349,216	0	0	0	0	0	8,373	0	2,949,941
2. In course of settlement:											
2.1 Resisted:											
2.11 Direct.....	0										
2.12 Reinsurance assumed.....	0										
2.13 Reinsurance ceded.....	0										
2.14 Net.....	0	0	(b) 0	(b) 0	0	(b) 0	(b) 0	0	0	0	0
2.2 Other:											
2.21 Direct.....	117,113										117,113
2.22 Reinsurance assumed.....	0										
2.23 Reinsurance ceded.....	0										
2.24 Net.....	117,113	0	(b) 0	(b) 0	0	(b) 0	(b) 0	0	(b) 0	(b) 0	(b) 117,113
3. Incurred but unreported:											
3.1 Direct.....	18,616,269		1,541,000						757,222		16,318,047
3.2 Reinsurance assumed.....	0										
3.3 Reinsurance ceded.....	852,713		288,000						22,000		542,713
3.4 Net.....	17,763,556	0	(b) 1,253,000	(b) 0	0	(b) 0	(b) 0	0	(b) 735,222	(b) 0	(b) 15,775,334
4. Totals:											
4.1 Direct.....	21,691,696	0	1,541,000	0	0	0	0	0	765,595	0	19,385,101
4.2 Reinsurance assumed.....	2,349,216	0	2,349,216	0	0	0	0	0	0	0	0
4.3 Reinsurance ceded.....	852,713	0	288,000	0	0	0	0	0	22,000	0	542,713
4.4 Net.....	23,188,199	(a) 0	(a) 3,602,216	0	0	0	(a) 0	0	743,595	0	18,842,388

(a) Including matured endowments (but not guaranteed annual pure endowments) unpaid amounting to \$.....0 in Column 2, \$.....0 in Column 3 and \$.....0 in Column 7.

(b) Include only portion of disability and accident and health claim liabilities applicable to assumed "accrued" benefits. Reserves (including reinsurance assumed and net of reinsurance ceded) for unaccrued benefits for Ordinary Life Insurance \$.....0, Individual Annuities \$.....0, Credit Life (Group and Individual) \$.....0, and Group Life \$.....0, are included in Page 3, Line 1, (See Exhibit 5, Section on Disability Disabled Lives); and for Group Accident and Health \$.....0, Credit (Group and Individual) Accident and Health \$.....0 and Other Accident and Health \$.....0 are included in Page 3, Line 2, (See Exhibit 6, Claim Reserve).

EXHIBIT 8 - CLAIMS FOR LIFE AND ACCIDENT AND HEALTH CONTRACTS

PART 2 - Incurred During the Year

	1	2	Ordinary			6	Group		Accident and Health		
			3	4	5		7	8	9	10	11
	Total	Industrial Life (a)	Life Insurance (b)	Individual Annuities	Supplementary Contracts	Credit Life (Group and Individual)	Life Insurance (c)	Annuities	Group	Credit (Group and Individual)	Other
1. Settlements during the year:											
1.1 Direct.....	58,453,992		275,851						1,085,425		57,092,716
1.2 Reinsurance assumed.....	8,235,239		8,235,239								
1.3 Reinsurance ceded.....	8,520,839		8,330,334						3,298		187,207
1.4 Net.....(d)	58,168,392	0	180,756	0	0	0	0	0	1,082,127	0	56,905,509
2. Liability December 31, current year from Part 1:											
2.1 Direct.....	21,691,696	0	1,541,000	0	0	0	0	0	765,595	0	19,385,101
2.2 Reinsurance assumed.....	2,349,216	0	2,349,216	0	0	0	0	0	0	0	0
2.3 Reinsurance ceded.....	852,713	0	288,000	0	0	0	0	0	22,000	0	542,713
2.4 Net.....	23,188,199	0	3,602,216	0	0	0	0	0	743,595	0	18,842,388
3. Amounts recoverable from reinsurers Dec. 31, current year.....	2,359,623		2,359,623								
4. Liability December 31, prior year:											
4.1 Direct.....	19,274,758		1,148,000						753,247		17,373,511
4.2 Reinsurance assumed.....	1,841,531		1,841,531								
4.3 Reinsurance ceded.....	727,552		271,000						19,000		437,552
4.4 Net.....	20,388,737	0	2,718,531	0	0	0	0	0	734,247	0	16,935,959
5. Amounts recoverable from reinsurers Dec. 31, prior year.....	1,878,347		1,878,347								
6. Incurred benefits:											
6.1 Direct.....	60,870,930	0	668,851	0	0	0	0	0	1,097,773	0	59,104,306
6.2 Reinsurance assumed.....	8,742,924	0	8,742,924	0	0	0	0	0	0	0	0
6.3 Reinsurance ceded.....	9,127,276	0	8,828,610	0	0	0	0	0	6,298	0	292,368
6.4 Net.....	60,486,578	0	583,165	0	0	0	0	0	1,091,475	0	58,811,938

(a) Including matured endowments (but not guaranteed annual pure endowments) amounting to \$.....0 in Line 1.1, \$.....0 in Line 1.4, \$.....0 in Line 6.1 and \$.....0 in Line 6.4.

(b) Including matured endowments (but not guaranteed annual pure endowments) amounting to \$.....0 in Line 1.1, \$.....0 in Line 1.4, \$.....0 in Line 6.1 and \$.....0 in Line 6.4.

(c) Including matured endowments (but not guaranteed annual pure endowments) amounting to \$.....0 in Line 1.1, \$.....0 in Line 1.4, \$.....0 in Line 6.1 and \$.....0 in Line 6.4.

(d) Includes \$.....0 premiums waived under total and permanent disability benefits.

EXHIBIT OF NONADMITTED ASSETS

	1 Current Year Total Nonadmitted Assets	2 Prior Year Total Nonadmitted Assets	3 Change in Total Nonadmitted Assets (Col. 2 - Col. 1)
1. Bonds (Schedule D).....			0
2. Stocks (Schedule D):			
2.1 Preferred stocks.....			0
2.2 Common stocks.....			0
3. Mortgage loans on real estate (Schedule B):			
3.1 First liens.....			0
3.2 Other than first liens.....			0
4. Real estate (Schedule A):			
4.1 Properties occupied by the company.....			0
4.2 Properties held for the production of income.....			0
4.3 Properties held for sale.....			0
5. Cash (Schedule E-Part 1), cash equivalents (Schedule E-Part 2) and short-term investments (Schedule DA).....			0
6. Contract loans.....			0
7. Derivatives (Schedule DB).....			0
8. Other invested assets (Schedule BA).....			0
9. Receivables for securities.....			0
10. Securities lending reinvested collateral assets (Schedule DL).....			0
11. Aggregate write-ins for invested assets.....	0	0	0
12. Subtotals, cash and invested assets (Lines 1 to 11).....	0	0	0
13. Title plants (for Title insurers only).....			0
14. Investment income due and accrued.....			0
15. Premiums and considerations:			
15.1 Uncollected premiums and agents' balances in the course of collection.....			0
15.2 Deferred premiums, agents' balances and installments booked but deferred and not yet due.....			0
15.3 Accrued retrospective premiums and contracts subject to redetermination.....			0
16. Reinsurance:			
16.1 Amounts recoverable from reinsurers.....			0
16.2 Funds held by or deposited with reinsured companies.....			0
16.3 Other amounts receivable under reinsurance contracts.....			0
17. Amounts receivable relating to uninsured plans.....			0
18.1 Current federal and foreign income tax recoverable and interest thereon.....			0
18.2 Net deferred tax asset.....	42,733,000	40,435,000	(2,298,000)
19. Guaranty funds receivable or on deposit.....			0
20. Electronic data processing equipment and software.....	72,486	107,506	35,020
21. Furniture and equipment, including health care delivery assets.....	46,883	28,406	(18,477)
22. Net adjustment in assets and liabilities due to foreign exchange rates.....			0
23. Receivables from parent, subsidiaries and affiliates.....			0
24. Health care and other amounts receivable.....			0
25. Aggregate write-ins for other-than-invested assets.....	12,972,101	3,746,031	(9,226,070)
26. Total assets excluding Separate Accounts, Segregated Accounts and Protected Cell Accounts (Lines 12 through 25).....	55,824,470	44,316,943	(11,507,527)
27. From Separate Accounts, Segregated Accounts and Protected Cell Accounts.....			0
28. TOTALS (Lines 26 and 27).....	55,824,470	44,316,943	(11,507,527)

DETAILS OF WRITE-INS

1101.			0
1102.			0
1103.			0
1198. Summary of remaining write-ins for Line 11 from overflow page.....	0	0	0
1199. Totals (Lines 1101 through 1103 plus 1198) (Line 11 above).....	0	0	0
2501. Other Assets Non-Admitted.....	40,497	40,504	7
2502. Agent Balances.....	12,653,802	3,392,029	(9,261,773)
2503. Prepaid Expenses.....	277,802	313,498	35,696
2598. Summary of remaining write-ins for Line 25 from overflow page.....	0	0	0
2599. Totals (Lines 2501 through 2503 plus 2598) (Line 25 above).....	12,972,101	3,746,031	(9,226,070)

NOTES TO FINANCIAL STATEMENTS

Note 1 – Summary of Significant Accounting Policies and Going Concern

This is a statement of the accounting principles and methods applied in preparing these statutory financial statements.

A. Accounting Practices

	SSAP #	F/S Page	F/S Line #	2016	2015
NET INCOME					
(1) Family Heritage Life Insurance Company of America state basis (Page 4, Line 35, Columns 1 & 2)	XXX	XXX	XXX	\$ 23,818,116	\$ 19,096,059
(2) State Prescribed Practices that increase/decrease NAIC SAP None					
(3) State Permitted Practices that increase/decrease NAIC SAP None					
(4) NAIC SAP (1 – 2 – 3 = 4)	XXX	XXX	XXX	\$ 23,818,116	\$ 19,096,059
SURPLUS					
(5) Family Heritage Life Insurance Company of America state basis (Page 3, line 37, Columns 1 & 2)	XXX	XXX	XXX	\$ 104,227,691	\$ 78,318,392
(6) State Prescribed Practices that increase/decrease NAIC SAP None					
(7) State Permitted Practices that increase/decrease NAIC SAP None					
(8) NAIC SAP (5 – 6 – 7 = 8)	XXX	XXX	XXX	\$ 104,227,691	\$ 78,318,392

B. Use of Estimates in the Preparation of the Financial Statement

The preparation of financial statements in conformity with Statutory Accounting Principles requires management to make estimates and assumptions that affect the reported amounts of assets and liabilities. It also requires disclosure of contingent assets and liabilities at the date of the financial statements and the reported amounts of revenue and expenses during the period. Actual results could differ from those estimates.

C. Accounting Policy

Life premiums are recognized as income over the premium paying period of the related policies. Health premiums are earned ratably over the terms of the related insurance policies. Expenses incurred in connection with acquiring new insurance business, including acquisition costs such as sales commissions, are charged to operations as incurred.

In addition, the Company uses the following accounting policies:

1. Short-term investments are stated at amortized cost.
2. Bonds not backed by other loans are stated at amortized cost using the yield to worst method.
3. Common stocks - not applicable
4. Preferred stocks - not applicable
5. Mortgage loans - not applicable
6. Loan-backed securities and other structured securities are stated at amortized cost or the lower of amortized cost or fair value. Anticipated prepayments are used at the time of purchase to determine the effective yield. Changes in the timing of expected cash flows after original acquisition are accounted for using the retrospective method. Securities that are determined to be other-than-temporarily impaired are accounted for using the prospective method.
7. Investments in subsidiaries, controlled and affiliated entities - not applicable
8. The Company has a 50% interest in a joint venture which owns the Company's home office site.
This investment is based on the underlying audited GAAP equity of the entity at December 31, 2016. The Company's liability is limited to its amount invested.
9. Derivatives - not applicable
10. Premium deficiency calculation - not applicable
11. Liabilities for losses and loss/claim adjustment expenses for accident and health contracts are estimated by the Company's valuation actuary using statistical claim development models and tabular reserves employing mortality/morbidity tables.
12. The Company has not modified its capitalization policy from the prior period.
13. Pharmaceutical rebate receivables - not applicable

D. Going Concern

After evaluating the entity's ability to continue as a going concern, management was not aware of any conditions or events which raised substantial doubts concerning the entity's ability to continue as a going concern as of the date of the filing of this statement.

NOTES TO FINANCIAL STATEMENTS

Note 2 – Accounting Changes and Corrections of Errors

Not applicable.

Note 3 – Business Combinations and Goodwill

Not applicable.

Note 4 – Discontinued Operations

Not applicable.

Note 5 – Investments

- A. Mortgage Loans - Not applicable
- B. Debt Restructuring - Not applicable
- C. Reverse Mortgages - Not applicable
- D. Loan-Backed Securities

Investments in other structured securities include asset-backed securities. The Company does not own any residential or commercial mortgage-backed securities.

- 1) Call, redemption, and sinking fund information for other structured securities were obtained from Bloomberg and bond prospectuses.
- 2) None
- 3) None
- 4) The following table shows loan-backed and other structured securities that have an unrealized loss as of the end of the current quarter:

a.	The aggregate amount of unrealized losses:	1.	Less than 12 Months	\$	(69,534)
		2.	12 Months or Longer	\$	-
b.	The aggregate related fair value of securities with unrealized losses:	1.	Less than12 Months	\$	7,893,563
		2.	12 Months or Longer	\$	-

- 5) Several sources of information are considered when determining impairments are, or are not, other-than-temporary. These include, but are not limited to, the following. Credit rating agency information related to the security is reviewed, in addition to direct discussions with the rating analyst as needed. Reports from third party research providers and sell-side research analysts are reviewed. Market and trading information on the securities and other like-securities is monitored to assess trends impacting the securities. Market liquidity is analyzed to gauge how much it is impacting prices versus actual credit quality changes. Some sources of information will not be available for all securities. Where applicable, additional information is gathered for collateralized investments. This includes analysis of the individual underlying collateral and estimates of potential future collateral performance. Multiple cash flow scenarios are calculated based on various loss rate assumptions and used to assess the likelihood of future possible impairment.
- E. Repurchase Agreements and/or Securities Lending Transactions - Not applicable
- F. Real Estate
- 1) The only real estate held by the Company is described in 2a below. Impairment Losses on real estate properties involve reducing the book value to match the current list price of the property. Total impairment losses for 2016 was: \$51,795 Losses are included within the net realized capital gains (losses) caption in the summary of operations.
 - 2) a. The Company may acquire the personal residence of employees who are relocating at the request of the Company. These properties are immediately listed for sale and are generally sold within a short period of time.
 - b. Total realized losses on real estate sold in 2016 was: \$55,000 Losses are included within the net realized capital gains (losses) caption in the summary of operations.
 - 3) None
 - 4) None
 - 5) None

NOTES TO FINANCIAL STATEMENTS

G. Investments in Low-Income Housing Trade Credits (LIHTC)

- 1) There is 1 year of remaining unexpired tax credits for low-incoming housing investments, with a required holding period of 6 years.
- 2) The amount of LIHTC and other tax benefits recognized were \$15,169 and \$39,372 during 2016 and 2015, respectively
- 3) The balance of the investment recognized in the statement of financial position at December 31, 2016 and 2015 was \$76,803 and \$90,547, respectively.
- 4) Currently the LIHTC property is not subject to any regulatory reviews
- 5) Not applicable
- 6) Not applicable
- 7) Not applicable

H. Restricted Assets

(1) Restricted Assets (Including Pledged)

Restricted Asset Category	Gross (Admitted & Nonadmitted) Restricted							Current Year			
	Current Year									Percentage	
	1	2	3	4	5	6	7	8	9	10	11
	Total General Account (G/A)	G/A Supporting S/A Activity (a)	Total Separate Account (S/A) Restricted Assets	S/A Assets Supporting G/A Activity (b)	Total (1 plus 3)	Total From Prior Year	Increase/ (Decrease) (5 minus 6)	Total Nonadmitted Restricted	Total Admitted Restricted (5 minus 8)	Gross (Admitted & Nonadmitted) Restricted to Total Assets (c)	Admitted Restricted to Total Admitted Assets (d)
a. Subject to contractual obligation for which liability is not shown											
b. Collateral held under security lending arrangements											
c. Subject to repurchase agreements											
d. Subject to reverse repurchase agreements											
e. Subject to dollar repurchase agreements											
f. Subject to dollar reverse repurchase agreements											
g. Placed under option contracts											
h. Letter stock or securities restricted as to sale – excluding FHLB capital stock											
i. FHLB capital stock											
j. On deposit with states	3,894,211				3,894,211	4,315,614	(421,403)		3,894,211	0.334	0.351
k. On deposit with other regulatory bodies											
l. Pledged as collateral to FHLB (including assets backing funding agreements)											
m. Pledged as collateral not captured in other categories											
n. Other restricted assets											
o. Total Restricted Assets	\$ 3,894,211	\$	\$	\$	\$ 3,894,211	\$ 4,315,614	\$ (421,403)		\$ 3,894,211	0.334	0.351

- (a) Subset of column 1
- (b) Subset of column 3
- (c) Column 5 divided by Asset Page, Column 1, Line 28
- (d) Column 9 divided by Asset Page, Column 3, Line 28

- I. Working Capital Finance Investments - Not applicable
- J. Offsetting and Netting of Assets and Liabilities - Not applicable
- K. Structured Notes - Not applciable
- L. 5* Securities - Not applicable

NOTES TO FINANCIAL STATEMENTS

Note 6 – Joint Ventures, Partnerships and Limited Liability Companies

- A. The Company has no investment in joint ventures, partnerships, or limited liability companies that exceeds 10% of its admitted assets.
- B. There was no impairment to the Company's only investment in a joint venture.

Note 7 – Investment Income

No investment income due or accrued was nonadmitted as December 31, 2016.

Note 8 – Derivative Instruments

Not applicable

Note 9 – Income Taxes

- A. Deferred Tax Assets/(Liabilities)

1. Components of Net Deferred Tax Asset/(Liability)

	2016			2015			Change		
	1	2	3	4	5	6	7	8	9
	Ordinary	Capital	(Col 1+2) Total	Ordinary	Capital	(Col 4+5) Total	(Col 1-4) Ordinary	(Col 2-5) Capital	(Col 7+8) Total
a. Gross deferred tax assets	\$ 57,767,000	\$ 17,786,000	\$ 75,553,000	\$ 47,527,000	\$ 19,145,000	\$ 66,672,000	\$ 10,240,000	\$ (1,359,000)	\$ 8,881,000
b. Statutory valuation allowance adjustment	0	0	0	0	0	0	0	0	0
c. Adjusted gross deferred tax assets (1a-1b)	57,767,000	17,786,000	75,553,000	47,527,000	19,145,000	66,672,000	10,240,000	(1,359,000)	8,881,000
d. Deferred tax assets nonadmitted	29,567,000	13,166,000	42,733,000	25,863,000	14,572,000	40,435,000	3,704,000	(1,406,000)	2,298,000
e. Subtotal net admitted deferred tax asset (1c-1d)	28,200,000	4,620,000	32,820,000	21,664,000	4,573,000	26,237,000	6,536,000	47,000	6,583,000
f. Deferred tax liabilities	11,653,000	-	11,653,000	6,808,000	13,000	6,821,000	4,845,000	(13,000)	4,832,000
g. Net admitted deferred tax assets/(net deferred tax liability) (1e-1f)	\$ 16,547,000	\$ 4,620,000	\$ 21,167,000	\$ 14,856,000	\$ 4,560,000	\$ 19,416,000	\$ 1,691,000	\$ 60,000	\$ 1,751,000

NOTES TO FINANCIAL STATEMENTS

2. Admission Calculation Components

	2016			2015			Change		
	1 Ordinary	2 Capital	3 (Col 1+2) Total	4 Ordinary	5 Capital	6 (Col 4+5) Total	7 (Col 1-4) Ordinary	8 (Col 2-5) Capital	9 (Col 7+8) Total
a. Federal income taxes paid in prior years recoverable through loss carrybacks	\$ 16,547,000	\$ 3,996,000	\$ 20,543,000	\$ 14,856,000	\$ 3,931,000	\$ 18,787,000	\$ 1,691,000	\$ 65,000	\$ 1,756,000
b. Adjusted gross deferred tax assets expected to be realized (excluding the amount of deferred tax assets from 2(a) above) after application of the threshold limitation. (The lesser of 2(b)1 and 2(b)2 below:	0	624,000	624,000	0	629,000	629,000	0	(5,000)	(5,000)
Adjusted gross deferred tax assets expected to be realized following the balance sheet date	0	624,000	624,000	0	629,000	629,000	0	(5,000)	(5,000)
Adjusted gross deferred tax assets allowed per limitation threshold	XXX	XXX	12,440,000	XXX	XXX	8,810,000	XXX	XXX	3,630,000
c. Adjusted gross deferred tax assets (excluding the amount of deferred tax assets from 2(a) and 2(b) above) offset by gross deferred tax liabilities	11,653,000	0	11,653,000	6,808,000	13,000	6,821,000	4,845,000	(13,000)	4,832,000
d. Deferred tax assets admitted as the result of application of SSAP 101. Total (2(a)+2(b)+2(c)	\$ 28,200,000	\$ 4,620,000	\$ 32,820,000	\$ 21,664,000	\$ 4,573,000	\$ 26,237,000	\$ 6,536,000	\$ 47,000	\$ 6,583,000

3. Other Admissibility Criteria

		2016	2015
a.	Ratio percentage used to determine recovery period and threshold limitation amount	1,300.000%	1,038.000%
b.	Amount of adjusted capital and surplus used to determine recovery period and threshold limitation in 2(b)2 above	\$ 86,988,995	\$ 61,838,067

NOTES TO FINANCIAL STATEMENTS

4. Impact of Tax Planning Strategies

(a) Determination of adjusted gross deferred tax assets and net admitted deferred tax assets, by tax character as a percentage.

	12/31/2016		12/31/2015		Change	
	1 Ordinary	2 Capital	3 Ordinary	4 Capital	5 (Col. 1-3) Ordinary	6 (Col. 2-4) Capital
1. Adjusted gross DTAs amount from Note 9A1(c)	\$ 57,767,000	\$ 17,786,000	\$ 47,527,000	\$ 19,145,000	\$ 10,240,000	\$ (1,359,000)
2. Percentage of adjusted gross DTAs by tax character attributable to the impact of tax planning strategies	0 %	1.000%	0 %	3.000%	0 %	(2.000)%
3. Net Admitted Adjusted Gross DTAs amount from Note 9A1(e)	\$ 28,200,000	\$ 4,620,000	\$ 21,664,000	\$ 4,573,000	\$ 6,536,000	\$ 47,000
4. Percentage of net admitted adjusted gross DTAs by tax character admitted because of the impact of tax planning strategies	16.000%	14.000%	5.000%	14.000%	11.000%	0 %

(b) Does the company’s tax planning strategies include the use of reinsurance? **NO**

B. Deferred Tax Liabilities Not Recognized

The change in deferred income taxes reported in surplus before consideration of nonadmitted asset is comprised of the following components

	12/31/2016			12/31/2015			Change		
	1 Ordinary	2 Capital	3 (Col 1+2) Total	4 Ordinary	5 Capital	6 (Col 4+5) Total	7 (Col 1-4) Ordinary	8 (Col 2-5) Capital	9 (Col 7+8) Total
Net deferred tax asset (liability)	46,114,000	17,786,000	63,900,000	40,719,000	19,132,000	59,851,000	5,395,000	(1,346,000)	4,049,000
- Tax - effect of unrealized gains and losses	0	75,000	75,000	0	77,000	77,000	0	(2,000)	(2,000)
- Tax - effect of other surplus gains and losses	128,113	0	128,113	0	0	0	128,113	0	128,113
- Prior period adjustment, unrealized gain and losses	0	0	0	0	0	0	0	0	0
Net tax effect without unrealized gains and losses and prior period adjustments	45,985,887	17,711,000	63,696,887	40,719,000	19,055,000	59,774,000	5,266,887	(1,344,000)	3,922,887

C. Current and Deferred Income Taxes

1. Current Income Tax

	1 2016	2 2015	3 (Col 1-2) Change
a. Federal	\$ 13,512,844	\$ 12,427,720	\$ 1,085,124
b. Foreign	-	-	-
c. Subtotal	\$ 13,512,844	\$ 12,427,720	\$ 1,085,124
d. Federal income tax on net capital gains	(24,358)	(12,566)	(11,792)
e. Utilization of capital loss carry-forwards	-	-	-
f. Other	-	-	-
g. Federal and Foreign income taxes incurred	\$ 13,488,486	\$ 12,415,154	\$ 1,073,332

NOTES TO FINANCIAL STATEMENTS

2. Deferred Tax Assets

	1	2	3
	2016	2015	(Col 1-2) Change
a. Ordinary:			
1. Discounting of unpaid losses	\$ -	\$ -	\$ -
2. Unearned premium reserve	-	-	-
3. Policyholder reserves	21,592,000	16,925,000	4,667,000
4. Investments	-	-	-
5. Deferred acquisition costs	24,158,000	21,311,000	2,847,000
6. Policyholder dividends accrual	-	-	-
7. Fixed assets	-	-	-
8. Compensation and benefits accrual	128,113	-	128,113
9. Pension accrual	-	-	-
10. Receivables - nonadmitted	-	-	-
11. Net operating loss carry-forward	-	-	-
12. Tax credit carry-forward	-	-	-
13. Agent balances	4,429,000	1,187,000	3,242,000
14. Prepays	97,000	110,000	(13,000)
15. Intangibles	7,167,000	7,829,000	(662,000)
16. Other (including items <5% of total ordinary tax assets)	195,887	165,000	30,887
99. Subtotal	\$ 57,767,000	\$ 47,527,000	\$ 10,240,000
b. Statutory valuation allowance adjustment	-	-	-
c. Nonadmitted	29,567,000	25,863,000	3,704,000
d. Admitted ordinary deferred tax assets (2a99-2b-2c)	\$ 28,200,000	\$ 21,664,000	\$ 6,536,000
e. Capital:			
1. Investments	\$ 17,111,000	\$ 18,462,000	\$ (1,351,000)
2. Net capital loss carry-forward	60,000	71,000	(11,000)
3. Real estate	-	-	-
4. Other (including items <5% of total capital tax assets)	615,000	612,000	3,000
99. Subtotal	\$ 17,786,000	\$ 19,145,000	\$ (1,359,000)
f. Statutory valuation allowance adjustment	-	-	-
g. Nonadmitted	13,166,000	14,572,000	(1,406,000)
h. Admitted capital deferred tax assets (2e99-2f-2g)	4,620,000	4,573,000	47,000
i. Admitted deferred tax assets (2d+2h)	\$ 32,820,000	\$ 26,237,000	\$ 6,583,000

3. Deferred Tax Liabilities

	1	2	3
	2016	2015	(Col 1–2) Change
a. Ordinary:			
1. Investments	\$ -	\$ -	\$ -
2. Fixed assets	32,000	23,000	9,000
3. Deferred and uncollected premium	11,530,000	6,690,000	4,840,000
4. Policyholder reserves	-	-	-
5. Other (including items <5% of total ordinary tax liabilities)	91,000	95,000	(4,000)
99. Subtotal	\$ 11,653,000	\$ 6,808,000	\$ 4,845,000
b. Capital:			
1. Investments	\$ -	\$ -	\$ -
2. Real estate	-	-	-
3. Other (including items <5% of total capital tax liabilities)	-	13,000	(13,000)
99. Subtotal	-	13,000	(13,000)
c. Deferred tax liabilities (3a99+3b99)	\$ 11,653,000	\$ 6,821,000	\$ 4,832,000

4.	Net Deferred Tax Assets (2i – 3c)	\$ 21,167,000	\$ 19,416,000	\$ 1,751,000
----	-----------------------------------	---------------	---------------	--------------

NOTES TO FINANCIAL STATEMENTS

D. Among the more significant book to tax adjustments were the following

	12/31/2016	12/31/2015	Change
(1) Current income taxes incurred	13,488,486	12,415,154	1,073,332
(2) Change in deferred income tax (without tax on unrealized gains and losses or foreign exchange gains and losses	(3,922,887)	1,644,000	(5,566,887)
(3) Total income tax reported	9,565,599	14,059,154	(4,493,555)
(4) Net gain from operations before federal income tax and realized gains	37,937,488	31,594,816	5,802,672
(5) Realized capital gains (losses) before federal income tax, after transfer to IMR	(90,888)	(83,603)	(7,285)
(6) Income before taxes	37,306,600	31,511,213	5,795,387
	35%	35%	35%
Expected income tax expense (benefit) at 35% statutory rate	13,057,310	11,028,925	2,028,386
Increase (decrease) in actual tax reported resulting from:			
a. Nondeductible expenses	105,000	219,000	(114,000)
b. Tax adjustment for IMR	(321,000)	(281,000)	(40,000)
c. Deferred tax benefit on nonadmitted assets	(3,223,000)	3,120,000	(6,343,000)
d. Tax credits	(10,000)	(27,000)	17,000
e. Prior year adjustments	(42,000)	(1,125)	(40,875)
f. Other - Miscellaneous	(711)	354	(1,066)
(7) Total income tax reported	9,565,599	14,059,154	(4,493,555)

E. Operating Loss and Tax Credit Carryforwards and Protective Tax Deposits

- 1) As of December 31, 2016, the Company has no net operating loss or tax credit carryforwards.
- 2) The amount of Federal income taxes incurred that are available for recoupment in the event of future net losses are:

Year	Amount
2016	\$ 13,986,645
2015	\$ 11,974,352
2014	\$ 11,212,018

- 3) The aggregate amount of deposits admitted under Section 6603 of the Internal Revenue Code = None

F. Consolidated Federal Income Tax Return - Not applicable

G. Federal or Foreign Federal Income Tax Loss Contingencies - Not applicable

Note 10 – Information Concerning Parent, Subsidiaries, Affiliates and Other Related Parties

- A. Common stock ownership of the Company and affiliates is shown in the chart on Schedule Y. All companies are 100% owned except where indicated otherwise
- B. During 2016, \$19,096,000 in dividends were paid to the Company's parent, TMK as detaied in note 13 below.

Effective January 1, 2014, the Company entered into reinsurance agreements with two affiliates:

- 1) Coinsurance agreement - The Company assumes from American Income Life, on a 50% quota share basis, the risks on life policies issued in the United States (excluding New York) on or after the effective date.
- 2) Modified coinsurance agreement - The Company cedes to Liberty National Life*, on a 100% quota share basis, the life policies that were assumed from American Income Life as noted above. The company will retain, control, and own all assets for the modified coinsurance reserve.

* - Liberty National Life replaced United American, both Company affiliates, effective 10/01/2015 through a novation agreement.

NOTES TO FINANCIAL STATEMENTS

The Company borrowed \$3,000,000 from an affiliate, United American Insurance Company, on June 15, 2016 at an interest rate of 3.50%. The borrowing was repaid in full on July 21, 2016. Total interest paid was \$10,500.

The Company borrowed \$3,000,000 from an affiliate, United American Insurance Company, on September 15, 2016 at an interest rate of 3.50%. The borrowing was repaid in full on September 23, 2016. Total interest paid was \$2,333.

The Company borrowed \$5,000,000 from an affiliate, United American Insurance Company, on September 16, 2016 at an interest rate of 3.50%. The borrowing was repaid in full on September 30, 2016. Total interest paid was \$6,806.

The Company borrowed \$5,000,000 from an affiliate, American Income Life Insurance Company, on October 13, 2016 at an interest rate of 3.50%. The borrowing was repaid in full on November 30, 2016. Total interest paid was \$22,847.

The Company borrowed \$2,000,000 from an affiliate, Globe Life and Accident Insurance Company, on October 19, 2016 at an interest rate of 3.50%. The borrowing was repaid in full on November 18, 2016. Total interest paid was \$5,639.

During the first quarter the Company sold agent balances of \$3,066,552 to its ultimate parent, Torchmark Corporation.

On September 30, 2016, Liberty National Life Insurance Company and Globe Life and Accident Insurance Company each purchased \$15,000,000 in affiliated surplus notes from Family Heritage Life Insurance Company of America. See Note 13 for more information.

- C. Nothing to report
- D. Based on intercompany reinsurance agreements (described in section B above),
The Company reported \$1,622,782 as amounts due from American Income Life at December 31, 2016.
The Company reported \$7,395,829 as amounts due from Liberty National Life at December 31, 2016.
- E. There are no guarantees or undertakings for the benefit of affiliated party, other than that disclosed in these Notes.
- F. The Company's investment management function is managed by Torchmark Corp. under the master services agreement with Torchmark discussed below. The fee for these services is based on the total value of the securities managed. For the 2016 reporting period, Investment fees paid to Torchmark totaled \$1,560,000.

The Company has a separate service agreement with Torchmark Corporation to provide a wide variety of possible services. The Torchmark agreement is a master service agreement with the Company and the other insurance affiliates. The fee is based on the ratio of certain expenses at the affiliate level to comparable Torchmark consolidated expenses applied to Torchmark's total operating expenses for the prior year. For the 2016 reporting period, management fees paid to Torchmark Corp totaled \$2,952,000.

These fees are paid on a monthly basis

- G. All outstanding shares of the Company are held by Torchmark Corporation.

H, I, J, K, L, M, and N - Not applicable

Note 11 – Debt

A & B - None.

Note 12 – Retirement Plans, Deferred Compensation, Postemployment Benefits and Compensated Absences and Other Postretirement Benefit Plans

A, B, C, D - Not applicable

E. Defined Contribution Plans

The Company participates in a defined contribution thrift plan covering substantially all employees. The liability for the plan is maintained at the holding company level. The thrift plan is funded by employee contributions that are matched by the Company based on a percentage of such contributions. Company contributions approximated \$217,000 and \$231,000 for the years ended December 31, 2016 and 2015, respectively.

F. Multiemployer Plans - Not applicable

G. Consolidated/Holding Company Plans

In 2016, the Company began participating in a Supplemental Executive Retirement Plan (SERP) sponsored through Torchmark, which provides to a limited number of executives an additional supplemental defined pension benefit. The supplemental benefit is based on the participant's qualified plan benefit without consideration to regulatory limits on compensation and benefit payments applicable to qualified plans, except that eligible compensation is capped at \$1 million. During the current period, the Company recorded an initial projected benefit liability of \$366,038 and corresponding charge, net of tax, directly to Surplus.

H. Compensated absences/vacation pay is recorded in accordance with SSAP No. 11.

I. Impact of Medicare Modernization Act on Postretirement Benefits - Not applicable

NOTES TO FINANCIAL STATEMENTS

Note 13 – Capital and Surplus, Dividend Restrictions and Quasi-Reorganizations

1. The Company's capital is common stock; 2000 shares are authorized: 1,000 shares are Class A stock at \$12,000 per share and another 1,000 shares are Class B Stock at \$1 per share. 213 Class A shares (\$12,000 per share par value) and 950 Class B shares (\$1 per share par value) are issued and outstanding at 12/31/2016. There are no other classes of capital stock.
2. The Company has no preferred stock.
- 3, 4, and 5. Dividends on company stock are paid as declared by its Board of Directors and are subject to regulations of the State of Ohio.

	<u>DECLARED</u>	<u>PAID</u>
\$2,138,000 ordinary dividend	03/17/2016	03/28/2016
\$1,458,000 ordinary dividend	04/01/2016	04/14/2016
\$5,200,000 ordinary dividend	05/26/2016	06/06/2016
\$5,200,000 ordinary dividend	10/11/2016	10/24/2016
\$5,100,000 ordinary dividend	12/08/2016	12/19/2016

6, 7, 8 and 9 - Not applicable

10. The portion of unassigned funds (surplus) represented or reduced by cumulative unrealized gains and (losses) is:

Unrealized loss on joint venture (\$20,663)

Unrealized loss on bonds (\$194,795)

(\$215,458)

11. The reporting entity issued the following surplus debentures or similar obligations:

Date Issued	Interest Rate	Par Value (Face Amount of Notes)	Carrying Value of Note*	Principal and/or Interest Paid Current Year	Total Principal and/or Interest Paid	Unapproved Principal and/or Interest	Date of Maturity
09/30/2016	5.250 %	\$ 15,000,000	\$ 15,000,000	\$	\$	\$	09/30/2046
09/30/2016	5.250	15,000,000	15,000,000				09/30/2046
Total	XXX	\$ 30,000,000	\$ 30,000,000	\$	\$	\$	XXX

* Total should agree with Page 3, Line 32.

On 09/30/2016, the Company issued \$30,000,000 in surplus notes to generate additional surplus funds to be used for general business purposes.

The surplus notes have the following repayment conditions and restrictions: 1) Payments of principal and interest can only be made from the issuer's available surplus when the amount of surplus remaining after repayment is equal to or greater than the surplus existing immediately after the issuance of the security. 2) Payments can only be made with the prior approval of the Ohio Insurance Director. Semi-annual interest payments are due June 15 and December 15, commencing June 15, 2017.

The surplus notes are direct, unsecured obligations of the Company. In the event of liquidation, the notes are subordinate to holders of policy claims, other indebtedness, and other creditor claims.

The surplus notes were issued pursuant to Rule 144A under the securities Act of 1933. All proceeds were received in cash. The notes are held by company affiliates: 1) Globe Life and Accident Insurance Company - \$15,000,000. 2) Liberty National Life Insurance Company - \$15,000,000.

12 and 13 - Not applicable

Note 14 – Liabilities, Contingencies and Assessments

- A. Contingent Commitments - None
- B. Assessments - None
- C. Gain Contingencies - None
- D. Claims Related Extra Contractual Obligation and Bad Faith Losses Stemming from Lawsuits - Not applicable
- E. Joint and Several Liabilities - None
- F. All Other Contingencies

Various liabilities arise in the normal course of the Company's business and have been recorded. We believe that any ultimate contingent losses will not have a material adverse effect on the Company's future results of operations and financial position.

NOTES TO FINANCIAL STATEMENTS

Note 15 – Leases

A. Lessee Operating Lease

The Company leases office space, furniture and equipment under various noncancelable operating leases that expire through 2021. Rental expense for 2016 and 2015 was approximately \$773,000 and \$907,000 respectively.

a.	At January 1, 2017 the minimum aggregate rental commitments are as follows:		
		Year Ending December 31	Operating Leases
	1.	2017	\$ 587,000
	2.	2018	\$ 589,000
	3.	2019	\$ 538,000
	4.	2020	\$ 522,000
	5.	2021	\$ 346,000
	6.	Total	\$ 2,582,000

B. Lessor Leases - Not applicable

Note 16 – Information About Financial Instruments with Off-Balance Sheet Risk and Financial Instruments with Concentrations of Credit Risk

None.

Note 17 – Sale, Transfer and Servicing of Financial Assets and Extinguishments of Liabilities

Not applicable

Note 18 – Gain or Loss to the Reporting Entity from Uninsured Plans and the Portion of Partially Insured Plans

Not applicable.

Note 19 – Direct Premium Written/Produced by Managing General Agents/Third Party Administrators

Not applicable.

Note 20 – Fair Value Measurements

A.

(1) Fair Value Measurements at Reporting Date

Assets at Fair Value	Level 1	Level 2	Level 3	Total
Bonds - Municipals	\$	\$ 357,355	\$	\$ 357,355
Real Estate		670,000		670,000
Total	\$	\$ 1,027,355	\$	\$ 1,027,355

As of year-end, two municipal bonds,characterized as NAIC 6FE, were measured and reported at fair value on the statement of financial position. Their fair value is categorized as Level 2. The Company also had a real estate investment measured and reported at fair value at year end catogrizd as Level 2. During the year, the Company did not have any transfers between Levels 1 and 2 for assets measured and reported at fair value on the statement of financial position. Transfers between levels are recognized at the end of the reporting period in which they occur.

- (2) As of year-end, the Company did not have any securities categorized as Level 3 that are measured and reported at fair value on the statement of financial position.
- (3) During the year, the Company did not have any transfers into or out of Level 3 for assets measured and reported at fair value on the statement of financial position.
- (4) The majority of the Company’s securities are not actively traded and direct quotes are not generally available. Management therefore determines the fair values of securities after consideration of data provided by third-party pricing services, independent broker/dealers, and other resources. Prices provided by third-party pricing services are not binding offers but are estimated exit values. They are based on observable market data inputs which can vary by security type. Such inputs include benchmark yields, available trades, broker/dealer quotes, issuer spreads, benchmark securities, bids, offers, and other inputs that are corroborated in the market. All fair value measurements based on prices determined with observable market data are reported as Level 1 or Level 2 measurements. When third-party vendor prices are not available, the Company attempts to obtain valuations from other sources, including but not limited to broker/dealers, broker quotes, and prices on comparable securities.

NOTES TO FINANCIAL STATEMENTS

When valuations have been obtained for all securities in the portfolio, management reviews and analyzes the prices to insure their reasonableness, taking into account available observable information. When two or more valuations are available for a security and the variance between the valuations is 10% or less, the close correlation suggests similar observable inputs were used in deriving the prices, and the average of the prices is used. Securities valued in this manner are classified as Level 2. When the variance exceeds 10%, further review is performed on the available valuations to determine if they can be corroborated within reasonable tolerance to any other observable evidence. If one of the valuations or the average of the available valuations can be corroborated with other observable evidence, then the corroborated value is used and reported as Level 2. The Company uses information and analytical techniques deemed appropriate for determining the point within the range of reasonable fair value estimates that is most representative of fair value under current market conditions. Valuations that cannot be corroborated within a reasonable tolerance are classified as Level 3.

(5) Derivative assets and liabilities - None

B. Other fair value disclosures - None

C. The table below shows the fair values of all financial instruments by level within the fair value hierarchy.

Type of Financial Instrument	Aggregate Fair Value	Admitted Assets	(Level 1)	(Level 2)	(Level 3)	Not Practicable (Carrying Value)
Bonds	\$ 967,371,379	\$ 929,749,601	\$ 526,944	\$ 928,165,058	\$ 38,679,377	\$
Real Estate	670,000	670,000		670,000		
Other invested asset - Guaranteed LIHTC	76,803	76,803			76,803	
Other invested asset - Surplus Notes	16,744,343	16,865,878		16,744,343		
Contract loans	43,011	43,011				43,011
Cash, cash equivalents, and short-term investments	5,526,674	5,526,674	5,526,674			

D. Not Practicable to Estimate Fair Value

Type of Class or Financial Instrument	Carrying Value	Effective Interest Rate	Maturity Date	Explanation
Contract Loans	\$ 43,011	Various %		Quoted market price not available

Note 21 – Other Items

- A. Unusual or Infrequent Items- Not applicable
- B. Troubled Debt Restructuring Debtors - Not applicable
- C. Other Disclosures - Not applicable
- D. Business Interruption Insurance Recoveries - Not applicable
- E. State Transferable and Non-Transferable Tax Credits - Not applicable
- F. Subprime Mortgage Related Risk Exposure - Not applicable
- G. Retained Assets - Not applicable
- H. Insurance-Linked Securities (ILS) Contracts - Not applicable

Note 22 – Events Subsequent

- A. Did the reporting entity write accident and health insurance premium that is subject to Section 9010 of the Federal Affordable Care Act (YES/NO)?

Yes [] No [X]
- B. ACA fee assessment payable for the upcoming year

\$

\$
- C. ACA fee assessment paid
- D. Premium written subject to ACA 9010 assessment
- E. Total adjusted capital before surplus adjustment (Five-Year Historical Line 30)

108,155,995
- F. Total adjusted capital (Five-Year Historical Line 30 minus 22B above)

108,155,995
- G. Authorized control level (Five-Year Historical Line 31)

\$ 6,689,299
- H. Would reporting the ACA assessment as of December 31, 2016 have triggered an RBC action level (YES/NO)?

Yes [] No [X]

NOTES TO FINANCIAL STATEMENTS

Note 23 – Reinsurance

A. Ceded Reinsurance Report

Section1 – General Interrogatories

- (1) Are any of the reinsurers listed in Schedule S as non-affiliated, owned in excess of 10% or controlled, either directly or indirectly, by the company or by any representative, officer, trustee, or director of the company?
Yes () No (X)
- (2) Have any policies issued by the company been reinsured with a company chartered in a country other than the United States (excluding U.S. Branches of such companies) that is owned in excess of 10% or controlled directly or indirectly by an insured, a beneficiary, a creditor or any other person not primarily engaged in the insurance business?
Yes () No (X)

Section 2 – Ceded Reinsurance Report – Part A

- (1) Does the company have any reinsurance agreements in effect under which the reinsurer may unilaterally cancel any reinsurance for reasons other than for nonpayment of premium or other similar credits?
Yes () No (X)
- (2) Does the reporting entity have any reinsurance agreements in effect such that the amount of losses paid or accrued through the statement date may result in a payment to the reinsurer of amounts that, in aggregate and allowing for offset of mutual credits from other reinsurance agreements with the same reinsurer, exceed the total direct premium collected under the reinsured policies?
Yes () No (X)

Section 3 – Ceded Reinsurance Report – Part B

- (1) What is the estimated amount of the aggregate reduction in surplus, (for agreements other than those under which the reinsurer may unilaterally cancel for reasons other than for nonpayment of premium or other similar credits that are reflected in Section 2 above) of termination of ALL reinsurance agreements, by either party, as of the date of this statement? Where necessary, the company may consider the current or anticipated experience of the business reinsured in making this estimate. \$0
- (2) Have any new agreements been executed or existing agreements amended, since January 1 of the year of this statement, to include policies or contracts that were in force or which had existing reserves established by the company as of the effective date of the agreement?
Yes () No (X)

- B. Uncollectible Reinsurance - None
- C. Commutation of Ceded Reinsurance - None
- D. Certified Reinsurer Rating Downgraded or Status Subject to Revocation - None
- E, F and G - Not applicable.

NOTES TO FINANCIAL STATEMENTS

Note 24 – Retrospectively Rated Contracts and Contracts Subject to Redetermination

A, B, C & D - Not applicable

E. Risk Sharing Provisions of the Affordable Care Act

- (1) Did the reporting entity write accident and health insurance premium which is subject to the Affordable Care Act risk sharing provisions
Yes [] No [X] The company was only subject to the Transitional Reinsurance Fee contributions.

- (2) Impact of Risk Sharing Provisions of the Affordable Care Act on admitted assets, liabilities and revenue for the current year:

a.	Permanent ACA Risk Adjustment Program	AMOUNT
	Assets	
1.	Premium adjustments receivable due to ACA Risk Adjustment	\$
	Liabilities	
2.	Risk adjustment user fees payable for ACA Risk Adjustment	
3.	Premium adjustments payable due to ACA Risk Adjustment	
	Operations (Revenue & Expenses)	
4.	Reported as revenue in premium for accident and health contracts (written/collected) due to ACA Risk Adjustment	
5.	Reported in expenses as ACA Risk Adjustment user fees (incurred/paid)	\$
b.	Transitional ACA Reinsurance Program	
	Assets	
1.	Amounts recoverable for claims paid due to ACA Reinsurance	\$
2.	Amounts recoverable for claims unpaid due to ACA Reinsurance (contra liability)	
3.	Amounts receivable relating to uninsured plans for contributions for ACA Reinsurance	
	Liabilities	
4.	Liabilities for contributions payable due to ACA Reinsurance – not reported as ceded premium	
5.	Ceded reinsurance premiums payable due to ACA Reinsurance	
6.	Liabilities for amounts held under uninsured plans contributions for ACA Reinsurance	\$ 6,750
	Operations (Revenue & Expenses)	
7.	Ceded reinsurance premiums due to ACA Reinsurance	\$
8.	Reinsurance recoveries (income statement) due to ACA Reinsurance payments or expected payments	
9.	ACA Reinsurance contributions – not reported as ceded premium	\$
c.	Temporary ACA Risk Corridors Program	
	Assets	
1.	Accrued retrospective premium due to ACA Risk Corridors	\$
	Liabilities	
2.	Reserve for rate credits or policy experience rating refunds due to ACA Risk Corridors	
	Operations (Revenue & Expenses)	
3.	Effect of ACA Risk Corridors on net premium income (paid/received)	
4.	Effect of ACA Risk Corridors on change in reserves for rate credits	\$

NOTES TO FINANCIAL STATEMENTS

(3) Roll forward of prior year ACA Risk Sharing Provisions for the following asset (gross of any nonadmission) and liability balances along with the reasons for adjustments to prior year balance:

		Accrued During the Prior Year on Business Written Before December 31 of the Prior Year		Received or Paid as of the Current Year on Business Written Before December 31 of the Prior Year		Differences		Adjustments		Unsettled Balances as of the Reporting Date		
						Prior Year Accrued Less Payments (Col. 1-3)	Prior Year Accrued Less Payments (Col. 2-4)	To Prior Year Balances	To Prior Year Balances	Cumulative Balance from Prior Years (Col. 1-3+7)		Cumulative Balance from Prior Years (Col. 2-4+8)
		1	2	3	4	5	6	7	8	Ref	9	10
		Receivable	(Payable)	Receivable	(Payable)	Receivable	(Payable)	Receivable	(Payable)		Receivable	(Payable)
a.	Permanent ACA Risk Adjustment Program											
	1.	Premium adjustments receivable	\$	\$	\$	\$	\$	\$	\$	A	\$	\$
	2.	Premium adjustments (payable)								B		
	3.	Subtotal ACA Permanent Risk Adjustment Program	\$	\$	\$	\$	\$	\$	\$		\$	\$
b.	Transitional ACA Reinsurance Program											
	1.	Amounts recoverable for claims paid	\$	\$	\$	\$	\$	\$	\$	C	\$	\$
	2.	Amounts recoverable for claims unpaid (contra liability)								D		
	3.	Amounts receivable relating to uninsured plans								E		
	4.	Liabilities for contributions payable due to ACA Reinsurance – not reported as ceded premiums								F		
	5.	Ceded reinsurance premiums payable								G		
	6.	Liability for amounts held under uninsured plans		(9,240)		(9,240)				H		
	7.	Subtotal ACA Transitional Reinsurance Program	\$	\$ (9,240)	\$	\$ (9,240)	\$	\$	\$		\$	\$
c.	Temporary ACA Risk Corridors Program											
	1.	Accrued retrospective premium	\$	\$	\$	\$	\$	\$	\$	I	\$	\$
	2.	Reserve for rate credits or policy experience rating refunds								J		
	3.	Subtotal ACA Risk Corridors Program										
d.	Total for ACA Risk Sharing Provisions		\$	\$ (9,240)	\$	\$ (9,240)	\$	\$	\$		\$	\$

Note 25 – Change in Incurred Losses and Loss Adjustment Expenses

Reserves on accident and health contracts for incurred losses and loss adjustment expenses attributable to insured events or prior years developed as anticipated during 2016. See Schedule H - Part 3 and the Five Year Historical Data. Original estimates are increased or decreased as additional information becomes known regarding individual claims. However, no significant trends or unanticipated events were noted in 2016. None of the Company's accident and health contracts are subject to retrospective rating or experience refunds.

Note 26 – Intercompany Pooling Arrangements

Not applicable.

Note 27 – Structured Settlements

Not applicable.

Note 28 – Health Care Receivables

Not applicable.

Note 29 – Participating Policies

Not applicable.

Note 30 – Premium Deficiency Reserves

As of December 31, 2016 the Company had liabilities of \$0 related to premium deficiency reserves. The Company did consider anticipated investment income when calculating its premium deficiency reserves.

NOTES TO FINANCIAL STATEMENTS

Note 31 – Reserves for Life Contracts and Annuity Contracts

1.

The company waives deduction of deferred fractional premiums upon death of insured and returns any portion of the final premium beyond the date of death. Surrender values are not promised in excess of the legally computed reserves.
2.

The Company does not currently issue substandard policies, and does not have any substandard policies in force.
3.

There are no policies where the gross premiums are less than the net premiums.
4.

Tabular Interest and Tabular Cost shown on Page 7 have been determined by formula as described in the instructions for Page 7.
5.

None
6.

None

Note 32 – Analysis of Annuity Actuarial Reserves and Deposit Liabilities by Withdrawal Characteristics

Not applicable.

Note 33 – Premium and Annuity Considerations Deferred and Uncollected

A. Deferred and uncollected life insurance premiums and annuity considerations as of December 31, 2016 were:

		Gross	Net of Loading
(1)	Industrial	\$	\$
(2)	Ordinary new business	37,147,016	5,577,470
(3)	Ordinary renewal	48,592,540	27,364,259
(4)	Credit life		
(5)	Group life		
(6)	Group annuity		
(7)	Totals	\$ 85,739,556	\$ 32,941,729

Note 34 – Separate Accounts

Not applicable.

Note 35 – Loss/Claim Adjustment Expenses

	2016
Liability for Future Claim Adjustment Expenses, Prior Year	983,888
Liability for Future Claim Adjustment Expenses, Current Year	1,063,036
Claim Payments - Current Year	58,178,141
Claim Adjustment Expense Percentage	5.5%
Claim Adjustment Expenses Paid	3,199,798
Claim Expense Incurred (Paid + Change in Liability)	3,278,946
Claim Payments Current Year for Prior Year Incurrals	13,837,611
Claim Adjustment Expense Percentage	5.5%
Claim Adjustment Expenses Paid in Current Year for Prior Year Incurrals	761,069

The balance in the liability for unpaid accident and health claim adjustment expenses as of December 31, 2016 and December 31, 2015 was \$1,063,036 and \$983,888 respectively.

The Company incurred \$3,278,946 and paid \$3,199,798 of claim adjustment expenses in the current year, of which \$761,069 of the paid amount was attributable to insured or covered events of prior years.

The Company does not anticipate any salvage or subrogated amounts and therefore no such amounts are reflected in the liability for unpaid claims or losses.

GENERAL INTERROGATORIES

PART 1 - COMMON INTERROGATORIES

GENERAL

1.1

Is the reporting entity a member of an Insurance Holding Company System consisting of two or more affiliated persons, one or more of which is an insurer?
If yes, complete Schedule Y, Parts 1, 1A and 2.

Yes ☒No ☐

1.2

If yes, did the reporting entity register and file with its domiciliary State Insurance Commissioner, Director or Superintendent or with such regulatory official of the state of domicile of the principal insurer in the Holding Company System, a registration statement providing disclosure substantially similar to the standards adopted by the National Association of Insurance Commissioners (NAIC) in its Model Insurance Holding Company System Regulatory Act and model regulations pertaining thereto, or is the reporting entity subject to standards and disclosure requirements substantially similar to those required by such Act and regulations?

Yes ☒No ☐N/A ☐

1.3

State regulating? Ohio

2.1

Has any change been made during the year of this statement in the charter, by-laws, articles of incorporation, or deed of settlement of the reporting entity?

Yes ☐No ☒

2.2

If yes, date of change:

3.1

State as of what date the latest financial examination of the reporting entity was made or is being made.

12/31/2015

3.2

State the as of date that the latest financial examination report became available from either the state of domicile or the reporting entity. This date should be the date of the examined balance sheet and not the date the report was completed or released.

12/31/2011

3.3

State as of what date the latest financial examination report became available to other states or the public from either the state of domicile or the reporting entity. This is the release date or completion date of the examination report and not the date of the examination (balance sheet date).

06/03/2013

3.4

By what department or departments?
Ohio

3.5

Have all financial statement adjustments within the latest financial examination report been accounted for in a subsequent financial statement filed with departments?

Yes ☐No ☐N/A ☒

3.6

Have all of the recommendations within the latest financial examination report been complied with?

Yes ☐No ☐N/A ☒

4.1

During the period covered by this statement, did any agent, broker, sales representative, non-affiliated sales/service organization or any combination thereof under common control (other than salaried employees of the reporting entity) receive credit or commissions for or control a substantial part (more than 20 percent of any major line of business measured on direct premiums) of:

4.11

sales of new business?

Yes ☐No ☒

4.12

renewals?

Yes ☐No ☒

4.2

During the period covered by this statement, did any sales/service organization owned in whole or in part by the reporting entity or an affiliate, receive credit or commissions for or control a substantial part (more than 20 percent of any major line of business measured on direct premiums) of:

4.21

sales of new business?

Yes ☐No ☒

4.22

renewals?

Yes ☐No ☒

5.1

Has the reporting entity been a party to a merger or consolidation during the period covered by this statement?

Yes ☐No ☒

5.2

If yes, provide the name of entity, NAIC company code, and state of domicile (use two letter state abbreviation) for any entity that has ceased to exist as a result of the merger or consolidation.

1	2	3
Name of Entity	NAIC Company Code	State of Domicile

6.1

Has the reporting entity had any Certificates of Authority, licenses or registrations (including corporate registration, if applicable) suspended or revoked by any governmental entity during the reporting period?

Yes ☐No ☒

6.2

If yes, give full information:

7.1

Does any foreign (non-United States) person or entity directly or indirectly control 10% or more of the reporting entity?

Yes ☐No ☒

7.2

If yes,

7.21

State the percentage of foreign control

%

7.22

State the nationality(s) of the foreign person(s) or entity(s); or if the entity is a mutual or reciprocal, the nationality of its manager or attorney-in-fact and identify the type of entity(s) (e.g., individual, corporation, government, manager or attorney-in-fact).

1	2
Nationality	Type of Entity

8.1

Is the company a subsidiary of a bank holding company regulated with the Federal Reserve Board?

Yes ☐No ☒

8.2

If response to 8.1 is yes, please identify the name of the bank holding company.

8.3

Is the company affiliated with one or more banks, thrifts or securities firms?

Yes ☐No ☒

8.4

If the response to 8.3 is yes, please provide below the names and locations (city and state of the main office) of any affiliates regulated by a federal financial regulatory services agency [i.e. the Federal Reserve Board (FRB), the Office of the Comptroller of the Currency (OCC), the Federal Deposit Insurance Corporation (FDIC) and the Securities Exchange Commission (SEC)] and identify the affiliate's primary federal regulator.

1	2	3	4	5	6
Affiliate Name	Location (City, State)	FRB	OCC	FDIC	SEC

9.

What is the name and address of the independent certified public accountant or accounting firm retained to conduct the annual audit?
Deloitte & Touche, LLP, 2200 Ross Avenue, Suite 1600, Dallas, TX 75201

10.1

Has the insurer been granted any exemptions to the prohibited non-audit services provided by the certified independent public accountant requirements as allowed in Section 7H of the Annual Financial Reporting Model Regulation (Model Audit Rule), or substantially similar state law or regulation?

Yes ☐No ☒

10.2

If the response to 10.1 is yes, provide information related to this exemption:

10.3

Has the insurer been granted any exemptions related to other requirements of the Annual Financial Reporting Model Regulation as allowed for in Section 18A of the Model Regulation, or substantially similar state law or regulation?

Yes ☐No ☒

10.4

If the response to 10.3 is yes, provide information related to this exemption:

10.5

Has the reporting entity established an Audit Committee in compliance with the domiciliary state insurance laws?

Yes ☒No ☐N/A ☐

10.6

If the response to 10.5 is no or n/a, please explain:

GENERAL INTERROGATORIES

PART 1 - COMMON INTERROGATORIES

11.

What is the name, address and affiliation (officer/employee of the reporting entity or actuary/consultant associated with an actuarial consulting firm) of the individual providing the statement of actuarial opinion/certification?
Barbara S. Emig, Officer, Family Heritage Life Insurance Company of America, 6001 East Royalton Road Ste. 200, Broadview Heights OH 44147
- 12.1

Does the reporting entity own any securities of a real estate holding company or otherwise hold real estate indirectly?

Yes ☒ No ☐
- 12.11

Name of real estate holding company
AVALONBAY COMMUNITIES, BROOKFIELD ASSET MAN INC, WELLTOWER INC, KIMCO REALTY CORP, LTC PROPERTIES INC, NATL RETAIL PROPERTIES, PIEDMONT OPERATING PARTN, RAMCO-GERSHENSON PROPERTIES LP, SIMON PROPERTY GROUP LP, SPIRIT REALTY LP
- 12.12

Number of parcels involved
- 12.13

Total book/adjusted carrying value
- 12.2

If yes, provide explanation
The Company invests in securities of real estate holding companies and REITS. In addition, the Company has a 50% investment in a joint venture which owns the corporate home office.
13.

FOR UNITED STATES BRANCHES OF ALIEN REPORTING ENTITIES ONLY:
- 13.1

What changes have been made during the year in the United States manager or the United States trustees of the reporting entity?
- 13.2

Does this statement contain all business transacted for the reporting entity through its United States Branch on risks wherever located?

Yes ☐ No ☐
- 13.3

Have there been any changes made to any of the trust indentures during the year?

Yes ☐ No ☐
- 13.4

If answer to (13.3) is yes, has the domiciliary or entry state approved the changes?

Yes ☐ No ☐ N/A ☐
- 14.1

Are the senior officers (principal executive officer, principal financial officer, principal accounting officer or controller, or persons performing similar functions) of the reporting entity subject to a code of ethics, which includes the following standards?

Yes ☒ No ☐
- (a)

Honest and ethical conduct, including the ethical handling of actual or apparent conflicts of interest between personal and professional relationships;
- (b)

Full, fair, accurate, timely and understandable disclosure in the periodic reports required to be filed by the reporting entity;
- (c)

Compliance with applicable governmental laws, rules and regulations;
- (d)

The prompt internal reporting of violations to an appropriate person or persons identified in the code; and
- (e)

Accountability for adherence to the code.
- 14.11

If the response to 14.1 is no, please explain:
- 14.2

Has the code of ethics for senior managers been amended?

Yes ☐ No ☒
- 14.21

If the response to 14.2 is yes, provide information related to amendment(s).
- 14.3

Have any provisions of the code of ethics been waived for any of the specified officers?

Yes ☐ No ☒
- 14.31

If the response to 14.3 is yes, provide the nature of any waiver(s).
- 15.1

Is the reporting entity the beneficiary of a Letter of Credit that is unrelated to reinsurance where the issuing or confirming bank is not on the SVO Bank List?

Yes ☐ No ☒
- 15.2

If the response to 15.1 is yes, indicate the American Bankers Association (ABA) Routing Number and the name of the issuing or confirming bank of the Letter of Credit and describe the circumstances in which the Letter of Credit is triggered.

1	2	3	4
American Bankers Association (ABA) Routing Number	Issuing or Confirming Bank Name	Circumstances That Can Trigger the Letter of Credit	Amount

BOARD OF DIRECTORS

16.

Is the purchase or sale of all investments of the reporting entity passed upon either by the Board of Directors or a subordinator committee thereof?

Yes ☒ No ☐
17.

Does the reporting entity keep a complete permanent record of the proceedings of its Board of Directors and all subordinate committees thereof?

Yes ☒ No ☐
18.

Has the reporting entity an established procedure for disclosure to its Board of Directors or trustees of any material interest or affiliation on the part of any of its officers, directors, trustees or responsible employees that is in conflict or is likely to conflict with the official duties of such person?

Yes ☒ No ☐

FINANCIAL

19.

Has this statement been prepared using a basis of accounting other than Statutory Accounting Principles (e.g., Generally Accepted Accounting Principles)?

Yes ☐ No ☒
- 20.1

Total amount loaned during the year (inclusive of Separate Accounts, exclusive of policy loans):
- 20.11

To directors or other officers
- 20.12

To stockholders not officers
- 20.13

Trustees, supreme or grand (Fraternal only)
- 20.2

Total amount of loans outstanding at the end of year (inclusive of Separate Accounts, exclusive of policy loans):
- 20.21

To directors or other officers
- 20.22

To stockholders not officers
- 20.23

Trustees, supreme or grand (Fraternal only)
- 21.1

Were any assets reported in this statement subject to a contractual obligation to transfer to another party without the liability for such obligation being reporting in the statement?

Yes ☐ No ☒
- 21.2

If yes, state the amount thereof at December 31 of the current year:
- 21.21

Rented from others
- 21.22

Borrowed from others
- 21.23

Leased from others
- 21.24

Other
- 22.1

Does this statement include payments for assessments as described in the *Annual Statement Instructions* other than guaranty fund or guaranty association assessments?

Yes ☐ No ☒
- 22.2

If answer is yes:
- 22.21

Amount paid as losses or risk adjustment
- 22.22

Amount paid as expenses
- 22.23

Other amounts paid

GENERAL INTERROGATORIES

PART 1 - COMMON INTERROGATORIES

- 23.1

Does the reporting entity report any amounts due from parent, subsidiaries or affiliates on Page 2 of this statement?

Yes ☐ No ☒
- 23.2

If yes, indicate any amounts receivable from parent included in the Page 2 amount:

\$0

INVESTMENT

- 24.01

Were all of stocks, bonds and other securities owned December 31 of current year, over which the reporting entity has exclusive control, in the actual possession of the reporting entity on said date (other than securities lending programs addressed in 24.03)?

Yes ☒ No ☐
- 24.02

If no, give full and complete information, relating thereto:
- 24.03

For security lending programs, provide a description of the program including value for collateral and amount of loaned securities, and whether collateral is carried on or off-balance sheet (an alternative is to reference Note 17 where this information is also provided).
- 24.04

Does the company's security lending program meet the requirements for a conforming program as outlined in the *Risk-Based Capital Instructions*?

Yes ☐ No ☐ N/A ☒
- 24.05

If answer to 24.04 is yes, report amount of collateral for conforming programs.

\$
- 24.06

If answer to 24.04 is no, report amount of collateral for other programs

\$
- 24.07

Does your securities lending program require 102% (domestic securities) and 105% (foreign securities) from the counterparty at the outset of the contract?

Yes ☐ No ☐ N/A ☒
- 24.08

Does the reporting entity non-admit when the collateral received from the counterparty falls below 100%?

Yes ☐ No ☐ N/A ☒
- 24.09

Does the reporting entity or the reporting entity's securities lending agent utilize the Master Securities Lending Agreement (MSLA) to conduct securities lending?

Yes ☐ No ☐ N/A ☒
- 24.10

For the reporting entity's security lending program, state the amount of the following as of December 31 of the current year:
- 24.101

Total fair value of reinvested collateral assets reported on Schedule DL, Parts 1 and 2:

\$0
- 24.102

Total book adjusted/carrying value of reinvested collateral assets reported on Schedule DL, Parts 1 and 2:

\$0
- 24.103

Total payable for securities lending reported on the liability page:

\$0
- 25.1

Were any of the stocks, bonds or other assets of the reporting entity owned at December 31 of the current year not exclusively under the control of the reporting entity or has the reporting entity sold or transferred any assets subject to a put option contract that is current in force? (Exclude securities subject to Interrogatory 21.1 and 24.03.)

Yes ☒ No ☐
- 25.2

If yes, state the amount thereof at December 31 of the current year:
- 25.21

Subject to repurchase agreements

\$0
- 25.22

Subject to reverse repurchase agreements

\$0
- 25.23

Subject to dollar repurchase agreements

\$0
- 25.24

Subject to reverse dollar repurchase agreements

\$0
- 25.25

Placed under option agreements

\$0
- 25.26

Letter stock or securities restricted as sale – excluding FHLB Capital Stock

\$0
- 25.27

FHLB Capital Stock

\$0
- 25.28

On deposit with states

\$3,894,211
- 25.29

On deposit with other regulatory bodies

\$0
- 25.30

Pledged as collateral – excluding collateral pledged to an FHLB

\$0
- 25.31

Pledged as collateral to FHLB – including assets backing funding agreements

\$0
- 25.32

Other

\$0
- 25.3

For category (25.26) provide the following:

1 Nature of Restriction	2 Description	3 Amount
		\$
- 26.1

Does the reporting entity have any hedging transactions reported on Schedule DB?

Yes ☐ No ☒
- 26.2

If yes, has a comprehensive description of the hedging program been made available to the domiciliary state?
If no, attach a description with this statement.

Yes ☐ No ☐ N/A ☒
- 27.1

Were any preferred stocks or bonds owned as of December 31 of the current year mandatorily convertible into equity, or, at the option of the issuer, convertible into equity?

Yes ☐ No ☒
- 27.2

If yes, state the amount thereof at December 31 of the current year:

\$
28.

Excluding items in Schedule E-Part 3-Special Deposits, real estate, mortgage loans and investments held physically in the reporting entity's offices, vaults or safety deposit boxes, were all stocks, bonds and other securities, owned throughout the current year held pursuant to a custodial agreement with a qualified bank or trust company in accordance with Section 1, III - General Examination Considerations, F. Outsourcing of Critical Functions, Custodial or Safekeeping Agreements of the NAIC *Financial Condition Examiners Handbook*?

Yes ☒ No ☐
- 28.01

For all agreements that comply with the requirements of the NAIC *Financial Condition Examiners Handbook*, complete the following:

1 Name of Custodian(s)	2 Custodian's Address
The Northern Trust Company	50 South LaSalle Street Chicago, IL 60603
- 28.02

For all agreements that do not comply with the requirements of the NAIC *Financial Condition Examiners Handbook*, provide the name, location and a complete explanation

1 Name(s)	2 Location(s)	3 Complete Explanation(s)
- 28.03

Have there been any changes, including name changes, in the custodian(s) identified in 28.01 during the current year?

Yes ☒ No ☐
- 28.04

If yes, give full and complete information relating thereto:

1 Old Custodian	2 New Custodian	3 Date of Change	4 Reason
Bank of New York Mellon	The Northern Trust Company	08/18/2016	change in business needs
- 28.05

Investment management – Identify all investment advisors, investment managers, broker/dealers, including individuals that have the authority to make investment decisions on behalf of the reporting entity. For assets that are managed internally by employees of the reporting entity, note as such. ["...that have access to the investment accounts", "... handle securities"].

1	2

GENERAL INTERROGATORIES

PART 1 - COMMON INTERROGATORIES

Name of Firm or Individual	Affiliation
PRUDENTIAL PRIVATE PLACEMENT INVESTORS, LP	U
BLACKROCK INVESTMENT MANAGEMENT, LLC	U
TORCHMARK CORPORATION	A

28.0597 For those firms/individuals listed in the table for Question 28.05, do any firms/individuals unaffiliated with the reporting entity (i.e. designated with a "U") manage more than 10% of the reporting entity's assets?

Yes [☐] No [☒ X]

28.0598 For firms/individuals unaffiliated with the reporting entity (i.e. designated with a "U") listed in the table for Question 28.05, does the total assets under management aggregate to more than 50% of the reporting entity's assets?

Yes [☐] No [☒ X]

28.06 For those firms or individuals listed in the table for 28.05 with an affiliation code of "A" (affiliated) or "U" (unaffiliated), provide the information for the table below.

1	2	3	4	5
Central Registration Depository Number	Name of Firm or Individual	Legal Entity Identifier (LEI)	Registered With	Investment Management Agreement (IMA) Filed
106442	PRUDENTIAL PRIVATE PLACEMENT INVESTORS, LP		U.S. Securities & Exchange Commission	NO
108928	BLACKROCK INVESTMENT MANAGEMENT, LLC		U.S. Securities & Exchange Commission	NO
	TORCHMARK CORPORATION		NOT REGISTERED	DS

29.1 Does the reporting entity have any diversified mutual funds reported in Schedule D-Part 2 (diversified according to the Securities and Exchange Commission (SEC) in the Investment Company Act of 1940 [Section 5 (b) (1)])?

Yes [☐] No [☒ X]

29.2 If yes, complete the following schedule:

1 CUSIP	2 Name of Mutual Fund	3 Book/Adjusted Carrying Value
29.2999 TOTAL		

29.3 For each mutual fund listed in the table above, complete the following schedule:

1	2	3	4
Name of Mutual Fund (from above table)	Name of Significant Holding of the Mutual Fund	Amount of Mutual Fund's Book/Adjusted Carrying Value Attributable to the Holding	Date of Valuation

30. Provide the following information for all short-term and long-term bonds and all preferred stocks. Do not substitute amortized value or statement value for fair value.

		1	2	3
		Statement (Admitted) Value	Fair Value	Excess of Statement over Fair Value (-), or Fair Value over Statement (+)
30.1	Bonds	934,695,887	972,317,665	37,621,778
30.2	Preferred Stocks	0	0	0
30.3	Totals	934,695,887	972,317,665	37,621,778

30.4 Describe the sources or methods utilized in determining the fair values:

The Company primarily used IDC, Reuters and Hub Data (which are third party vendors), and certain private placements were valued by a broker.

31.1 Was the rate used to calculate fair value determined by a broker or custodian for any of the securities in Schedule D?

Yes [☒ X] No [☐]

31.2 If the answer to 31.1 is yes, does the reporting entity have a copy of the broker's or custodian's pricing policy (hard copy or electronic copy) for all brokers or custodians used as a pricing source?

Yes [☒ X] No [☐]

31.3 If the answer to 31.2 is no, describe the reporting entity's process for determining a reliable pricing source for purposes of disclosure of fair value for Schedule D:

32.1 Have all the filing requirements of the *Purposes and Procedures Manual of the NAIC Investment Analysis Office* been followed?

Yes [☒ X] No [☐]

32.2 If no, list exceptions:

OTHER

33.1 Amount of payments to trade associations, service organizations and statistical or rating bureaus, if any?

\$ 23,180

33.2 List the name of the organization and the amount paid if any such payment represented 25% or more of the total payments to trade associations, service organizations and statistical or rating bureaus during the period covered by this statement.

1 Name	2 Amount Paid
Better Business Bureau	\$ 6,900
LOMA	9,233

34.1 Amount of payments for legal expenses, if any?

\$ 115,899

34.2 List the name of the firm and the amount paid if any such payment represented 25% or more of the total payments for legal expenses during the period covered by this statement.

GENERAL INTERROGATORIES

PART 1 - COMMON INTERROGATORIES

1 Name	2 Amount Paid
The Gertsburg Law Firm Co., LPA	\$ 29,561
Rath, Young, and Pignatelli PC	29,283

35.1

Amount of payments for expenditures in connection with matters before legislative bodies, officers or departments of government, if any?

\$0

35.2

List the name of the firm and the amount paid if any such payment represented 25% or more of the total payment expenditures in connection with matters before legislative bodies, officers or departments of government during the period covered by this statement.

1 Name	2 Amount Paid
	\$

GENERAL INTERROGATORIES

PART 2 – LIFE INTERROGATORIES

1.1	Does the reporting entity have any direct Medicare Supplement Insurance in force?		Yes [<input type="checkbox"/>]	No [<input checked="" type="checkbox"/> X]		
1.2	If yes, indicate premium earned on U.S. business only.	\$		0		
1.3	What portion of Item (1.2) is not reported on the Medicare Supplement Insurance Experience Exhibit?	\$		0		
1.3	Reason for excluding:					
1.4	Indicate amount of earned premium attributable to Canadian and/or Other Alien not included in Item (1.2) above.	\$		0		
1.5	Indicate total incurred claims on all Medicare Supplement insurance.	\$		0		
1.6	Individual policies:					
	Most current three years:					
1.61	Total premium earned	\$		0		
1.62	Total incurred claims	\$		0		
1.63	Number of covered lives	\$		0		
	All years prior to most current three years:					
1.64	Total premium earned	\$		0		
1.65	Total incurred claims	\$		0		
1.66	Number of covered lives	\$		0		
1.7	Group policies:					
	Most current three years:					
1.71	Total premium earned	\$		0		
1.72	Total incurred claims	\$		0		
1.73	Number of covered lives	\$		0		
	All years prior to most current three years:					
1.74	Total premium earned	\$		0		
1.75	Total incurred claims	\$		0		
1.76	Number of covered lives	\$		0		
2.	Health Test:					
		1	2			
		Current Year	Prior Year			
2.1	Premium Numerator	\$	0	\$	0	
2.2	Premium Denominator	\$	264,618,524	\$	254,139,871	
2.3	Premium Ratio (2.1/2.2)		0.000		0.000	
2.4	Reserve Numerator	\$	30,067,699	\$	27,681,585	
2.5	Reserve Denominator	\$	910,371,013	\$	768,276,992	
2.6	Reserve Ratio (2.4/2.5)		3.303		3.603	
3.1	Does the reporting entity have Separate Accounts?			Yes [<input type="checkbox"/>]	No [<input checked="" type="checkbox"/> X]	
3.2	If yes, has a Separate Accounts statement been filed with this Department			Yes [<input type="checkbox"/>]	No [<input type="checkbox"/>]	N/A [<input checked="" type="checkbox"/> X]
3.3	What portion of capital and surplus funds of the reporting entity covered by assets in the Separate Accounts statement, is not currently distributable from the Separate Accounts to the general account for use by the general account?			\$	0	
3.4	State the authority under which Separate Accounts are maintained:					
3.5	Was any of the reporting entity's Separate Accounts business reinsured as of December 31?			Yes [<input type="checkbox"/>]	No [<input type="checkbox"/>]	
3.6	Has the reporting entity assumed by reinsurance any Separate Accounts business as of December 31?			Yes [<input type="checkbox"/>]	No [<input type="checkbox"/>]	
3.7	If the reporting entity has assumed Separate Accounts business, how much, if any, reinsurance assumed receivable for reinsurance of Separate Accounts reserve expense allowances is included as a negative amount in the liability for "Transfers to Separate Accounts due or accrued (net)?"			\$	0	
4.1	Are personnel or facilities of this reporting entity used by another entity or entities or are personnel or facilities of another entity or entities used by this reporting entity (except for activities such as administration of jointly underwritten group contracts and joint mortality or morbidity studies)?"				Yes [<input type="checkbox"/>]	No [<input checked="" type="checkbox"/> X]
4.2	Net reimbursement of such expenses between reporting entities:					
4.21	Paid	\$		0		
4.22	Received	\$		0		
5.1	Does the reporting entity write any guaranteed interest contracts?				Yes [<input type="checkbox"/>]	No [<input checked="" type="checkbox"/> X]
5.2	If yes, what amount pertaining to these items is included in:					
5.21	Page 3, Line 1	\$		0		
5.22	Page 4, Line 1	\$		0		
6.	For stock reporting entities only:					
6.1	Total amount paid in by stockholders as surplus funds since organization of the reporting entity:	\$		32,646,050		
7.	Total dividends paid stockholders since organization of the reporting entity:					
7.11	Cash	\$		220,810,999		

GENERAL INTERROGATORIES

PART 2 – LIFE INTERROGATORIES

7.12

Stock

\$

0

8.1

Does the reporting entity reinsure any Workers' Compensation Carve-Out business defined as:

Yes []

No [X]

Reinsurance (including retrocessional reinsurance) assumed by life and health insurers of medical, wage loss and death benefits of the occupational illness and accident exposures, but not the employers liability exposures, of business originally written as workers' compensation insurance.

8.2

If yes, has the reporting entity completed the *Workers' Compensation Carve-Out Supplement* to the Annual Statement?

Yes []

No []

8.3

If 8.1 is yes, the amounts of earned premiums and claims incurred in this statement are:

		1		2		3	
		Reinsurance		Reinsurance		Net	
		Assumed		Ceded		Retained	
8.31	Earned premium	\$	0	\$	0	\$	0
8.32	Paid claims	\$	0	\$	0	\$	0
8.33	Claim liability and reserve (beginning of year)	\$	0	\$	0	\$	0
8.34	Claim liability and reserve (end of year)	\$	0	\$	0	\$	0
8.35	Incurred claims	\$	0	\$	0	\$	0

8.4

If reinsurance assumed included amounts with attachment points below \$1,000,000, the distribution of the amounts reported in Lines 8.31 and 8.34 for Column (1) are:

	Attachment		1		2
	Point		Earned		Claim Liability
			Premium		and Reserve
8.41	<\$25,000	\$	0	\$	0
8.42	\$25,000 — 99,999	\$	0	\$	0
8.43	\$100,000 — 249,999	\$	0	\$	0
8.44	\$250,000 — 999,999	\$	0	\$	0
8.45	\$1,000,000 or more	\$	0	\$	0

8.5

What portion of earned premium reported in 8.31, Column 1 was assumed from pools?

\$

0

9.1

Does the reporting entity have variable annuities with guaranteed benefits?

Yes []

No [X]

9.2

If 9.1 is yes, complete the following table for each type of guaranteed benefit.

Type		3	4	5	6	7	8	9
1	2	Waiting Period Remaining	Account Value Related to Col. 3	Total Related Account Values	Gross Amount of Reserve	Location of Reserve	Portion Reinsured	Reinsurance Reserve Credit
Guaranteed Death Benefit	Guaranteed Living Benefit							

10.

For reporting entities having sold annuities to another insurer where the insurer purchasing the annuities has obtained a release of liability from the claimant (payee) as the result of the purchase of an annuity from the reporting entity only:

10.1

Amount of loss reserves established by these annuities during the current year:

\$

0

10.2

List the name and location of the insurance company purchasing the annuities and the statement value on the purchase date of the annuities.

1	2
P&C Insurance Company and Location	Statement Value on Purchase Date of Annuities (i.e., Present Value)
	\$

11.1

Do you act as a custodian for health savings accounts?

Yes []

No [X]

11.2

If yes, please provide the amount of custodial funds held as of the reporting date.

\$

0

11.3

Do you act as an administrator for health savings accounts?

Yes []

No [X]

11.4

If yes, please provide the balance of the funds administered as of the reporting date.

\$

0

12.1

Are any of the captive affiliates reported on Schedule S, Part 3, authorized reinsurers?

Yes []

No []

N/A [X]

12.2

If the answer to 12.1 is yes, please provide the following:

1	2	3	4	Assets Supporting Reserve Credit		
				5	6	7
Company Name	NAIC Company Code	Domiciliary Jurisdiction	Reserve Credit	Letters of Credit	Trust Agreements	Other

13.

Provide the following for individual ordinary life insurance* policies (U.S. business only) for the current year (prior to reinsurance assumed or ceded).

13.1

Direct premiums written

\$

3,160,386

13.2

Total incurred claims

\$

668,851

13.3

Number of covered lives

10,288

*Ordinary Life Insurance Includes
Term (whether full underwriting, limited underwriting, jet issue, "short form app")
Whole Life (whether full underwriting, limited underwriting, jet issue, "short form app")
Variable Life (with or without secondary guarantee)
Universal Life (with or without secondary guarantee)
Variable Universal Life (with or without secondary guarantee)

FIVE-YEAR HISTORICAL DATA

Show amounts in whole dollars only, no cents; show percentages to one decimal place, i.e., 17.6.

Show amounts of life insurance in this exhibit in thousands (omit \$000)

	1 2016	2 2015	3 2014	4 2013	5 2012
Life Insurance in Force (Exhibit of Life Insurance)					
1. Ordinary - whole life and endowment (Line 34, Col. 4).....	7,018,717	5,744,280	3,923,421	95,489	73,328
2. Ordinary - term (Line 21, Col. 4, less Line 34, Col. 4).....	3,481,177	1,711,808	6		
3. Credit life (Line 21, Col. 6).....					
4. Group, excluding FEGLI/SGLI (Line 21, Col. 9 less Lines 43 & 44, Col. 4).....					
5. Industrial (Line 21, Col. 2).....					
6. FEGLI/SGLI (Lines 43 & 44, Col. 4).....					
7. Total (Line 21, Col. 10).....	10,499,894	7,456,088	3,923,427	95,489	73,328
New Business Issued (Exhibit of Life Insurance)					
8. Ordinary - whole life and endowment (Line 34, Col. 2).....	103,967	118,478	131,970	43,460	38,787
9. Ordinary - term (Line 2, Col. 4, less Line 34, Col. 2).....					
10. Credit life (Line 2, Col. 6).....					
11. Group (Line 2, Col. 9).....					
12. Industrial (Line 2, Col. 2).....					
13. Total (Line 2, Col. 10).....	103,967	118,478	131,970	43,460	38,787
Premium Income - Lines of Business (Exhibit 1-Part 1)					
14. Industrial life (Line 20.4, Col. 2).....					
15.1 Ordinary life insurance (Line 20.4, Col. 3).....	27,947,753	32,481,538	31,464,827	1,185,859	894,609
15.2 Ordinary individual annuities (Line 20.4, Col. 4).....					
16. Credit life (group and individual) (Line 20.4, Col. 5).....					
17.1 Group life insurance (Line 20.4, Col. 6).....					
17.2 Group annuities (Line 20.4, Col. 7).....					
18.1 A&H - group (Line 20.4, Col. 8).....	10,124,774	8,444,739	6,410,436	4,944,915	3,601,235
18.2 A&H - credit (group and individual) (Line 20.4, Col. 9).....					
18.3 A&H - other (Line 20.4, Col. 10).....	226,545,997	213,213,594	199,153,892	186,604,234	172,468,731
19. Aggregate of all other lines of business (Line 20.4, Col. 11).....					
20. Total.....	264,618,524	254,139,871	237,029,155	192,735,008	176,964,575
Balance Sheet (Pages 2 and 3)					
21. Total admitted assets excluding Separate Accounts business (Page 2, Line 26, Col. 3)...	1,108,816,313	921,028,255	775,235,289	641,538,774	571,062,288
22. Total liabilities excluding Separate Accounts business (Page 3, Line 26).....	1,004,588,622	842,709,863	707,828,523	574,634,072	508,918,004
23. Aggregate life reserves (Page 3, Line 1).....	76,043,877	32,979,901	7,191,809	1,837,436	1,427,160
24. Aggregate A&H reserves (Page 3, Line 2).....	814,110,199	716,823,489	625,782,538	543,598,121	473,170,134
25. Deposit-type contract funds (Page 3, Line 3).....					
26. Asset valuation reserve (Page 3, Line 24.01).....	3,928,304	2,935,675	2,376,040	1,860,460	1,600,000
27. Capital (Page 3, Lines 29 & 30).....	2,556,950	2,556,950	2,556,950	2,556,950	2,556,950
28. Surplus (Page 3, Line 37).....	101,670,741	75,761,442	64,849,816	64,347,752	59,587,334
Cash Flow (Page 5)					
29. Net Cash from operations (Line 11).....	132,988,201	103,991,998	83,018,189	68,548,972	61,676,938
Risk-Based Capital Analysis					
30. Total adjusted capital.....	108,155,995	81,254,067	69,782,806	68,765,162	63,744,284
31. Authorized control level risk-based capital.....	6,689,299	5,957,862	5,289,747	4,636,674	3,976,688
Percentage Distribution of Cash, Cash Equivalents and Invested Assets (Page 2, Col. 3) (Line No. /Page 2, Line 12, Col. 3) x 100.0					
32. Bonds (Line 1).....	97.5	97.6	98.9	99.3	96.3
33. Stocks (Lines 2.1 and 2.2).....					
34. Mortgage loans on real estate (Lines 3.1 and 3.2).....					
35. Real estate (Line 4.1, 4.2 and 4.3).....	0.1				
36. Cash, cash equivalents and short-term investments (Line 5).....	0.6	0.3	0.0	0.7	2.0
37. Contract loans (Line 6).....	0.0	0.0	0.0	0.0	
38. Derivatives (Line 7).....					
39. Other invested assets (Line 8).....	1.8	2.0	1.1	0.0	0.1
40. Receivables for securities (Line 9).....					1.6
41. Securities lending reinvested collateral assets (Line 10).....					
42. Aggregate write-ins for invested assets (Line 11).....					
43. Cash, cash equivalents and invested assets (Line 12).....	100.0	100.0	100.0	100.0	100.0

FIVE-YEAR HISTORICAL DATA

(continued)

	1 2016	2 2015	3 2014	4 2013	5 2012
Investments in Parent, Subsidiaries and Affiliates					
44. Affiliated bonds (Sch. D Summary, Line 12 Col. 1).....					
45. Affiliated preferred stocks (Sch. D Summary, Line 18 Col. 1).....					
46. Affiliated common stocks (Sch. D Summary, Line 24 Col. 1).....					
47. Affiliated short-term investments (subtotal included in Sch. DA, Verif. Col. 5, Line 10).....					
48. Affiliated mortgage loans on real estate					
49. All other affiliated.....					
50. Total of above Lines 44 to 49.....	0	0	0	0	0
51. Total investment in parent included in Lines 44 to 49 above.....					
Total Nonadmitted and Admitted Assets					
52. Total nonadmitted assets (Page 2, Line 28, Col. 2).....	55,824,470	44,316,943	56,683,801	54,237,189	58,954,189
53. Total admitted assets (Page 2, Line 28, Col. 3).....	1,108,816,313	921,028,255	775,235,289	641,538,774	571,062,288
Investment Data					
54. Net investment income (Exhibit of Net Investment Income).....	38,585,438	33,304,471	29,174,877	26,097,364	25,082,691
55. Realized capital gains (losses) (Page 4, Line 34, Column 1).....	(66,528)	(71,037)	75,694	174,525	
56. Unrealized capital gains (losses) (Page 4, Line 38, Column 1).....	2,377	(290,656)	(9,322)	(84,670)	38,836
57. Total of above Lines 54, 55 and 56.....	38,521,287	32,942,778	29,241,249	26,187,219	25,121,527
Benefits and Reserve Increase (Page 6)					
58. Total contract benefits - life (Lines 10, 11, 12, 13, 14 and 15 Col. 1 minus Lines 10, 11, 12, 13, 14 and 15, Cols. 9, 10 & 11).....	664,154	664,829	435,298	161,497	215,492
59. Total contract benefits - A&H (Lines 13 & 14, Cols. 9, 10 & 11).....	59,903,413	55,039,976	49,874,848	51,443,816	45,390,696
60. Increase in life reserves - other than group and annuities (Line 19, Cols. 2 & 3).....	43,063,976	25,788,092	5,354,373	410,276	319,601
61. Increase in A&H reserves (Line 19, Cols. 9, 10 & 11).....	97,286,710	91,040,951	82,184,417	70,427,987	61,173,847
62. Dividends to policyholders (Line 30, Col 1).....					
Operating Percentages					
63. Insurance expense percent (Page 6, Col. 1, Lines 21, 22, & 23 less Line 6)/(Page 6 Col. 1, Line 1 plus Exhibit 7, Col. 2, Line 2) x 100.00.....	28.7	29.1	29.8	33.4	34.9
64. Lapse percent (ordinary only) [(Exhibit of Life Insurance, Col. 4, Lines 14 & 15) / 1/2 (Exhibit of Life Insurance, Col. 4, Lines 1 & 21)] x 100.00.....	32.9	0.9	1.8	24.2	21.4
65. A&H loss percent (Schedule H, Part 1, Lines 5 & 6, Col. 2).....	66.4	65.8	64.1	63.5	60.6
66. A&H cost containment percent (Schedule H, Part 1, Line 4, Col. 2).....					
67. A&H expense percent excluding cost containment expenses (Schedule H, Part 1, Line 10, Col. 2).....	34.1	35.4	36.4	35.7	37.2
A&H Claim Reserve Adequacy					
68. Incurred losses on prior years' claims - group health (Sch. H, Part 3, Line 3.1, Col. 2).....	439,220	365,825	188,019	329,554	133,987
69. Prior years' claim liability and reserve - group health (Sch. H, Part 3, Line 3.2, Col. 2).....	836,390	585,663	553,591	313,978	223,964
70. Incurred losses on prior years' claims - health other than group (Sch. H, Part 3, Line 3.1, Col. 1 less Col. 2).....	17,156,307	16,172,728	15,133,202	13,975,824	12,944,114
71. Prior years' claim liability and reserve - health other than group (Sch. H, Part 3, Line 3.2, Col. 1 less Col. 2).....	19,072,409	16,431,755	16,452,818	14,110,548	12,991,666
Net Gains From Operations After Federal Income Taxes by Lines of Business (Page 6, Line 33)					
72. Industrial life (Col. 2).....					
73. Ordinary - life (Col. 3).....	931,728	162,582	632	34,866	(86,748)
74. Ordinary - individual annuities (Col. 4).....					
75. Ordinary - supplementary contracts (Col. 5).....					
76. Credit life (Col. 6).....					
77. Group life (Col. 7).....					
78. Group annuities (Col. 8).....					
79. A&H - group (Col. 9).....	972,525	665,563	437,448	894,235	472,541
80. A&H - credit (Col. 10).....					
81. A&H - other (Col. 11).....	21,980,391	18,338,951	17,543,804	15,854,922	16,151,537
82. Aggregate of all other lines of business (Col. 12).....					
83. Total (Col. 1).....	23,884,644	19,167,096	17,981,884	16,784,023	16,537,330

NOTE: If a party to a merger, have the two most recent years of this exhibit been restated due to a merger in compliance with the disclosure requirements of SSAP No. 3, Accounting Changes and Correction of Errors?

Yes [] No []

If no, please explain:

EXHIBIT OF LIFE INSURANCE

	Industrial		Ordinary		Credit Life (Group and Individual)		Group		9 Amount of Insurance (a)	10 Total Amount of Insurance (a)
	1 Number of Policies	2 Amount of Insurance (a)	3 Number of Policies	4 Amount of Insurance (a)	5 Number of Individual Policies and Group Certificates	6 Amount of Insurance (a)	Number of			
							7 Policies	8 Certificates		
1. In force end of prior year.....			510,153	7,456,088						7,456,088
2. Issued during year.....			3,793	103,967						103,967
3. Reinsurance assumed.....			391,768	5,908,542						5,908,542
4. Revived during year.....			4	135						135
5. Increased during year (net).....										0
6. Subtotals, Lines 2 to 5.....	0	0	395,565	6,012,644	0	0	0	0	0	6,012,644
7. Additions by dividends during year.....	XXX		XXX		XXX		XXX	XXX		0
8. Aggregate write-ins for increases.....	0	0	0	0	0	0	0	0	0	0
9. Totals (Lines 1 and 6 to 8).....	0	0	905,718	13,468,732	0	0	0	0	0	13,468,732
Deductions during year:										
10. Death.....			1,252	11,035			XXX			11,035
11. Maturity.....							XXX			0
12. Disability.....							XXX			0
13. Expiry.....				200						200
14. Surrender.....			10,626	113,792						113,792
15. Lapse.....			162,274	2,840,023						2,840,023
16. Conversion.....							XXX	XXX	XXX	0
17. Decreased (net).....			131	3,788						3,788
18. Reinsurance.....										0
19. Aggregate write-ins for decreases.....	0	0	0	0	0	0	0	0	0	0
20. Totals (Lines 10 to 19).....	0	0	174,283	2,968,838	0	0	0	0	0	2,968,838
21. In force end of year (Line 9 minus Line 20).....	0	0	731,435	10,499,894	0	0	0	0	0	10,499,894
22. Reinsurance ceded end of year.....	XXX		XXX	10,232,321	XXX		XXX	XXX		10,232,321
23. Line 21 minus Line 22.....	XXX	0	XXX	267,573	XXX	(b)0	XXX	XXX	0	267,573

DETAILS OF WRITE-INS

0801.										0
0802.										0
0803.										0
0898. Summary of remaining write-ins for Line 8 from overflow page	0	0	0	0	0	0	0	0	0	0
0899. Totals (Lines 0801 through 0803 plus 0898) (Line 8 above).....	0	0	0	0	0	0	0	0	0	0
1901.										0
1902.										0
1903.										0
1998. Summary of remaining write-ins for Line 19 from overflow page	0	0	0	0	0	0	0	0	0	0
1999. Totals (Lines 1901 through 1903 plus 1998) (Line 19 above).....	0	0	0	0	0	0	0	0	0	0

(a) Amounts of life insurance in this exhibit shall be shown in thousands (omit 000).

(b) Group \$.0; Individual \$.0.

Family Heritage Life Insurance Company of America
EXHIBIT OF LIFE INSURANCE (continued)

ADDITIONAL INFORMATION ON INSURANCE IN FORCE END OF YEAR

	Industrial		Ordinary	
	1 Number of Policies	2 Amount of Insurance (a)	3 Number of Policies	4 Amount of Insurance (a)
24. Additions by dividends.....	XXX.....		XXX.....	
25. Other paid-up insurance.....			106.....	574.....
26. Debit ordinary insurance.....	XXX.....	XXX.....		

ADDITIONAL INFORMATION ON ORDINARY INSURANCE

	Issued During Year (Included in Line 2)		In Force End of Year (Included in Line 21)	
	1 Number of Policies	2 Amount of Insurance (a)	3 Number of Policies	4 Amount of Insurance (a)
Term Insurance Excluding Extended Term Insurance				
27. Term policies-decreasing.....				
28. Term policies-other.....			34,915.....	3,480,681.....
29. Other term insurance-decreasing.....	XXX.....		XXX.....	
30. Other term insurance.....	XXX.....		XXX.....	
31. Totals (Lines 27 to 30).....	0.....	0.....	34,915.....	3,480,681.....
Reconciliation to Lines 2 and 21:				
32. Term additions.....	XXX.....		XXX.....	
33. Totals, extended term insurance.....	XXX.....	XXX.....	58.....	496.....
34. Totals, whole life and endowment.....	3,793.....	103,967.....	696,462.....	7,018,717.....
35. Totals (Lines 31 to 34).....	3,793.....	103,967.....	731,435.....	10,499,894.....

CLASSIFICATION OF AMOUNT OF INSURANCE (a) BY PARTICIPATING STATUS

	Issued During Year (Included in Line 2)		In Force End of Year (Included in Line 21)	
	1 Non-Participating	2 Participating	3 Non-Participating	4 Participating
36. Industrial.....				
37. Ordinary.....	103,967.....		10,499,894.....	
38. Credit Life (Group and Individual).....				
39. Group.....				
40. Totals (Lines 36 to 39).....	103,967.....	0.....	10,499,894.....	0.....

ADDITIONAL INFORMATION ON CREDIT LIFE AND GROUP INSURANCE

	Credit Life		Group	
	1 Number of Individual Policies and Group Certificates	2 Amount of Insurance (a)	3 Number of Certificates	4 Amount of Insurance (a)
41. Amount of insurance included in Line 2 ceded to other companies.....	XXX.....		XXX.....	
42. Number in force end of year if the number under shared groups is counted on a pro-rata basis.....		XXX.....		XXX.....
43. Federal Employees' Group Life Insurance included in Line 21.....				
44. Servicemen's Group Life Insurance included in Line 21.....				
45. Group Permanent Insurance included in Line 21.....				

ADDITIONAL ACCIDENTAL DEATH BENEFITS

46. Amount of additional accidental death benefits in force end of year under ordinary policies (a).....	10,671,015.....
--	-----------------

BASIS OF CALCULATION OF ORDINARY TERM INSURANCE

47. State basis of calculation of (47.1) decreasing term insurance contained in Family Income, Mortgage Protection, etc., policies and riders and of (47.2) term insurance on wife and children under Family, Parent and Children, etc., policies and riders included above.
47.1
47.2

POLICIES WITH DISABILITY PROVISIONS

Disability Provision	Industrial		Ordinary		Credit		Group	
	1 Number of Policies	2 Amount of Insurance (a)	3 Number of Policies	4 Amount of Insurance (a)	5 Number of Policies	6 Amount of Insurance (a)	7 Number of Certificates	8 Amount of Insurance (a)
48. Waiver of Premium.....			217,098.....	600,988.....				
49. Disability Income.....								
50. Extended Benefits.....			XXX.....	XXX.....				
51. Other.....								
52. Total.....	0.....	(b).....0.....	217,098.....	(b).....600,988.....	0.....	(b).....0.....	0.....	(b).....0.....

(a) Amounts of life insurance in this exhibit shall be shown in thousands (omit 000).
(b) See Paragraph 9 of the Annual Audited Financial Reports in the General section of the Annual Statement Instructions.

**EXHIBIT OF NUMBER OF POLICIES, CONTRACTS, CERTIFICATES, INCOME PAYABLE
AND ACCOUNT VALUES IN FORCE FOR SUPPLEMENTARY CONTRACTS,
ANNUITIES, ACCIDENT & HEALTH AND OTHER POLICIES**

SUPPLEMENTARY CONTRACTS

	Ordinary		Group	
	1 Involving Life Contingencies	2 Not Involving Life Contingencies	3 Involving Life Contingencies	4 Not Involving Life Contingencies
1. In force end of prior year.....
2. Issued during year.....
3. Reinsurance assumed.....
4. Increased during year (net).....
5. Total (Lines 1 to 4).....0000
Deductions during year:				
6. Decreased (net).....
7. Reinsurance ceded.....
8. Totals (Lines 6 and 7).....0000
9. In force end of year.....0000
10. Amount on deposit.....	(a).....		(a).....	
11. Income now payable.....				
12. Amount of income payable.....	(a).....	(a).....	(a).....	(a).....

ANNUITIES

	Ordinary		Group	
	1 Immediate	2 Deferred	3 Contracts	4 Certificates
1. In force end of prior year.....
2. Issued during year.....
3. Reinsurance assumed.....
4. Increased during year (net).....
5. Total (Lines 1 to 4).....0000
Deductions during year:				
6. Decreased (net).....
7. Reinsurance ceded.....
8. Totals (Lines 6 and 7).....0000
9. In force end of year.....0000
Income now payable:				
10. Amount of income payable.....	(a).....XXX.....XXX.....	(a).....
Deferred fully paid:				
11. Account balance.....XXX.....	(a).....XXX.....	(a).....
Deferred not fully paid:				
12. Account balance.....XXX.....	(a).....XXX.....	(a).....

ACCIDENT AND HEALTH INSURANCE

	Group		Credit		Other	
	1 Certificates	2 Premiums in force	3 Policies	4 Premiums in force	5 Policies	6 Premiums in force
1. In force end of prior year.....9,8039,447,610282,362222,430,764
2. Issued during year.....3,4433,159,97571,45346,967,012
3. Reinsurance assumed.....
4. Increased during year (net).....XXX.....XXX.....XXX.....
5. Total (Lines 1 to 4).....13,246XXX.....0XXX.....353,815XXX.....
Deductions during year:						
6. Conversions.....XXX.....XXX.....XXX.....XXX.....XXX.....
7. Decreased (net).....1,740XXX.....XXX.....42,715XXX.....
8. Reinsurance ceded.....XXX.....XXX.....XXX.....
9. Totals (Lines 6 to 8).....1,740XXX.....0XXX.....42,715XXX.....
10. In force end of year.....11,506	(a).....10,994,7300	(a).....311,100	(a).....236,059,217

DEPOSIT FUNDS AND DIVIDEND ACCUMULATIONS

	1 Deposit Funds Contracts	2 Dividend Accumulations Contracts
1. In force end of prior year.....
2. Issued during year.....
3. Reinsurance assumed.....
4. Increased during year (net).....
5. Total (Lines 1 to 4).....00
Deductions during year:		
6. Decreased (net).....
7. Reinsurance ceded.....
8. Totals (Lines 6 and 7).....00
9. In force end of year.....00
10. Amount of account balance.....	(a).....	(a).....

(a) See Paragraph 9 of the Annual Audited Financial Reports in the General section of the Annual Statement Instructions.

Family Heritage Life Insurance Company of America
SCHEDULE T - PREMIUMS AND ANNUITY CONSIDERATIONS

Allocated by States and Territories

States, Etc.			1	Direct Business Only					
				Life Contracts		4	5	6	7
				2	3				
Active Status	Life Insurance Premiums	Annuity Considerations	Accident and Health Insurance Premiums, Including Policy, Membership and Other Fees			Other Considerations	Total Columns 2 through 5	Deposit-Type Contracts	
1.	Alabama.....	AL	L	32,733		2,872,608		2,905,341	
2.	Alaska.....	AK	L	187		40,594		40,781	
3.	Arizona.....	AZ	L	61,216		4,475,014		4,536,230	
4.	Arkansas.....	AR	L	131,474		7,547,948		7,679,422	
5.	California.....	CA	L	48,522		5,083,304		5,131,826	
6.	Colorado.....	CO	L	49,527		7,313,871		7,363,398	
7.	Connecticut.....	CT	L			16,593		16,593	
8.	Delaware.....	DE	L	1,928		297,244		299,172	
9.	District of Columbia.....	DC	L			10,830		10,830	
10.	Florida.....	FL	L	53,947		3,945,818		3,999,765	
11.	Georgia.....	GA	L	75,168		8,917,159		8,992,327	
12.	Hawaii.....	HI	L			50,813		50,813	
13.	Idaho.....	ID	L	1,703		1,003,044		1,004,747	
14.	Illinois.....	IL	L	66,238		11,726,493		11,792,731	
15.	Indiana.....	IN	L	17,147		8,604,690		8,621,837	
16.	Iowa.....	IA	L	26,796		4,773,114		4,799,910	
17.	Kansas.....	KS	L	37,056		7,911,090		7,948,146	
18.	Kentucky.....	KY	L	85,088		6,859,841		6,944,929	
19.	Louisiana.....	LA	L	11,988		4,652,160		4,664,148	
20.	Maine.....	ME	L			324,652		324,652	
21.	Maryland.....	MD	L	2,651		1,065,787		1,068,438	
22.	Massachusetts.....	MA	L	1,250		24,997		26,247	
23.	Michigan.....	MI	L	2,186		1,310,542		1,312,728	
24.	Minnesota.....	MN	L	22,777		8,895,879		8,918,656	
25.	Mississippi.....	MS	L	9,815		854,531		864,346	
26.	Missouri.....	MO	L	51,332		6,854,602		6,905,934	
27.	Montana.....	MT	L	10,090		1,981,526		1,991,616	
28.	Nebraska.....	NE	L	18,088		8,070,141		8,088,229	
29.	Nevada.....	NV	L	12,616		1,267,809		1,280,425	
30.	New Hampshire.....	NH	L	11,186		639,686		650,872	
31.	New Jersey.....	NJ	L	3,159		31,034		34,193	
32.	New Mexico.....	NM	L	19,016		1,772,162		1,791,178	
33.	New York.....	NY	N					0	
34.	North Carolina.....	NC	L	114,907		7,871,121		7,986,028	
35.	North Dakota.....	ND	L	4,805		1,257,096		1,261,901	
36.	Ohio.....	OH	L	86,520		19,921,300		20,007,820	
37.	Oklahoma.....	OK	L	52,916		3,830,261		3,883,177	
38.	Oregon.....	OR	L	5,815		973,091		978,906	
39.	Pennsylvania.....	PA	L	14,726		3,159,821		3,174,547	
40.	Rhode Island.....	RI	L			88,690		88,690	
41.	South Carolina.....	SC	L	37,206		2,616,075		2,653,281	
42.	South Dakota.....	SD	L	10,022		5,228,186		5,238,208	
43.	Tennessee.....	TN	L	116,984		4,928,372		5,045,356	
44.	Texas.....	TX	L	1,373,136		49,769,826		51,142,962	
45.	Utah.....	UT	L	357		3,918,470		3,918,827	
46.	Vermont.....	VT	L	3,934		42,215		46,149	
47.	Virginia.....	VA	L	89,621		4,941,566		5,031,187	
48.	Washington.....	WA	L	103,647		3,143,422		3,247,069	
49.	West Virginia.....	WV	L	60,794		2,895,831		2,956,625	
50.	Wisconsin.....	WI	L	9,150		2,476,242		2,485,392	
51.	Wyoming.....	WY	L	11,406		2,577,022		2,588,428	
52.	American Samoa.....	AS	N					0	
53.	Guam.....	GU	N					0	
54.	Puerto Rico.....	PR	L			6,123		6,123	
55.	US Virgin Islands.....	VI	N					0	
56.	Northern Mariana Islands.....	MP	N					0	
57.	Canada.....	CAN	N					0	
58.	Aggregate Other Alien.....	OT	XXX	0	0	0	0	0	0
59.	Subtotal.....	(a).....51		2,960,830	0	238,840,306	0	241,801,136	0
90.	Reporting entity contributions for employee benefit plans.....	XXX						0	
91.	Dividends or refunds applied to purchase paid-up additions and annuities.....	XXX						0	
92.	Dividends or refunds applied to shorten endowment or premium paying period.....	XXX						0	
93.	Premium or annuity considerations waived under disability or other contract provisions.....	XXX						0	
94.	Aggregate other amounts not allocable by State.....	XXX		0	0	0	0	0	0
95.	Totals (Direct Business).....	XXX		2,960,830	0	238,840,306	0	241,801,136	0
96.	Plus reinsurance assumed.....	XXX		143,275,761				143,275,761	
97.	Totals (All Business).....	XXX		146,236,591	0	238,840,306	0	385,076,897	0
98.	Less reinsurance ceded.....	XXX		143,358,188		2,437,941		145,796,129	
99.	Totals (All Business) less reinsurance ceded.....	XXX		2,878,403	0	(b).....236,402,365	0	239,280,768	0

DETAILS OF WRITE-INS

58001.	XXX.....					0	
58002.	XXX.....					0	
58003.	XXX.....					0	
58998.	Summ. of remaining write-ins for line 58 from overflow page.....	XXX.....	0	0	0	0	0	0
58999.	Total (Lines 58001 through 58003 plus 58998) (Line 58 above).....	XXX.....	0	0	0	0	0	0
9401.	XXX.....					0	
9402.	XXX.....					0	
9403.	XXX.....					0	
9498.	Summ. of remaining write-ins for line 94 from overflow page.....	XXX.....	0	0	0	0	0	0
9499.	Total (Lines 9401 through 9403 plus 9498) (Line 94 above).....	XXX.....	0	0	0	0	0	0

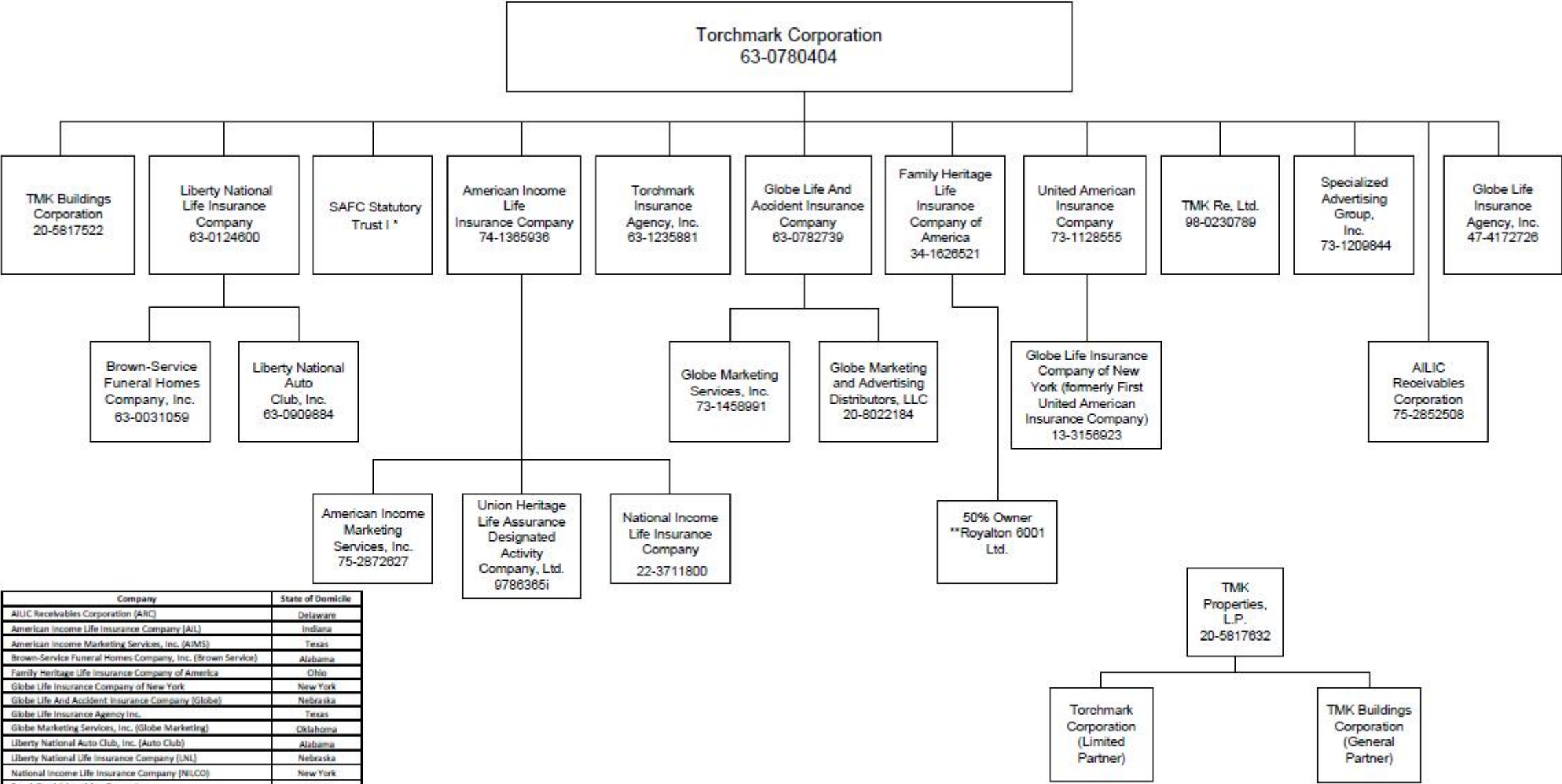
(L) - Licensed or Chartered - Licensed Insurance Carrier or Domiciled RRG; (R) - Registered - Non-domiciled RRGs; (Q) - Qualified - Qualified or Accredited Reinsurer;
(E) - Eligible - Reporting Entities eligible or approved to write Surplus Lines in the state; (N) - None of the above - Not allowed to write business in the state.

Explanation of basis of allocation by states, etc., of premiums and annuity considerations.

Allocation based on residence of the policyholder

- (a) Insert the number of "L" responses except for Canada and Other Alien.
(b) Column 4 should balance with Exhibit 1, Lines 6.4, 10.4 and 16.4, Cols. 8, 9, and 10, or with Schedule H, Part 1, Column 1, Line 1. Indicate which:
Exhibit 1, Lines 6.4, 10.4 and 16.4, Cols. 8, 9 and 10

SCHEDULE Y – INFORMATION CONCERNING ACTIVITIES OF INSURER MEMBERS OF A HOLDING COMPANY GROUP
PART 1 – ORGANIZATIONAL CHART



*Special purpose business trust whose obligations were assumed by Torchmark in the acquisition of Family Heritage, common securities of which are owned by Torchmark and preferred securities publicly held.

**Limited liability company, in which Family Heritage has a 50% interest, which leases home office property to Family Heritage; remaining 50% interest held by an unaffiliated entity.

2016 ALPHABETICAL INDEX

LIFE ANNUAL STATEMENT BLANK

Analysis of Increase in Reserves During The Year	7	Schedule D – Part 2 – Section 1	E11
Analysis of Operations By Lines of Business	6	Schedule D – Part 2 – Section 2	E12
Asset Valuation Reserve Default Component	30	Schedule D – Part 3	E13
Asset Valuation Reserve Equity	32	Schedule D – Part 4	E14
Asset Valuation Reserve Replications (Synthetic) Assets	35	Schedule D – Part 5	E15
Asset Valuation Reserve	29	Schedule D – Part 6 – Section 1	E16
Assets	2	Schedule D – Part 6 – Section 2	E16
Cash Flow	5	Schedule D – Summary By Country	SI04
Exhibit 1 – Part 1 – Premiums and Annuity Considerations for Life and Accident and Health Contracts	9	Schedule D – Verification Between Years	SI03
Exhibit 1 – Part 2 – Dividends and Coupons Applied, Reinsurance Commissions and Expense	10	Schedule DA – Part 1	E17
Exhibit 2 – General Expenses	11	Schedule DA – Verification Between Years	SI10
Exhibit 3 – Taxes, Licenses and Fees (Excluding Federal Income Taxes)	11	Schedule DB – Part A – Section 1	E18
Exhibit 4 – Dividends or Refunds	11	Schedule DB – Part A – Section 2	E19
Exhibit 5 – Aggregate Reserve for Life Contracts	12	Schedule DB – Part A – Verification Between Years	SI11
Exhibit 5 – Interrogatories	13	Schedule DB – Part B – Section 1	E20
Exhibit 5A – Changes in Bases of Valuation During The Year	13	Schedule DB – Part B – Section 2	E21
Exhibit 6 – Aggregate Reserves for Accident and Health Contracts	14	Schedule DB – Part B – Verification Between Years	SI11
Exhibit 7 – Deposit-Type Contracts	15	Schedule DB – Part C – Section 1	SI12
Exhibit 8 – Claims for Life and Accident and Health Contracts – Part 1	16	Schedule DB – Part C – Section 2	SI13
Exhibit 8 – Claims for Life and Accident and Health Contracts – Part 2	17	Schedule DB – Part D – Section 1	E22
Exhibit of Capital Gains (Losses)	8	Schedule DB – Part D – Section 2	E23
Exhibit of Life Insurance	25	Schedule DB – Verification	SI14
Exhibit of Net Investment Income	8	Schedule DL – Part 1	E24
Exhibit of Nonadmitted Assets	18	Schedule DL – Part 2	E25
Exhibit of Number of Policies, Contracts, Certificates, Income Payable and Account Values	27	Schedule E – Part 1 – Cash	E26
Five-Year Historical Data	22	Schedule E – Part 2 – Cash Equivalents	E27
Form for Calculating the Interest Maintenance Reserve (IMR)	28	Schedule E – Part 3 – Special Deposits	E28
General Interrogatories	20	Schedule E – Verification Between Years	SI15
Jurat Page	1	Schedule F	36
Liabilities, Surplus and Other Funds	3	Schedule H – Accident and Health Exhibit – Part 1	37
Life Insurance (State Page)	24	Schedule H – Part 2, Part 3 and Part 4	38
Notes To Financial Statements	19	Schedule H – Part 5 – Health Claims	39
Overflow Page For Write-ins	55	Schedule S – Part 1 – Section 1	40
Schedule A – Part 1	E01	Schedule S – Part 1 – Section 2	41
Schedule A – Part 2	E02	Schedule S – Part 2	42
Schedule A – Part 3	E03	Schedule S – Part 3 – Section 1	43
Schedule A – Verification Between Years	SI02	Schedule S – Part 3 – Section 2	44
Schedule B – Part 1	E04	Schedule S – Part 4	45
Schedule B – Part 2	E05	Schedule S – Part 5	46
Schedule B – Part 3	E06	Schedule S – Part 6	47
Schedule B – Verification Between Years	SI02	Schedule S – Part 7	48
Schedule BA – Part 1	E07	Schedule T – Part 2 Interstate Compact	50
Schedule BA – Part 2	E08	Schedule T – Premiums and Annuity Considerations	49
Schedule BA – Part 3	E09	Schedule Y – Information Concerning Activities of Insurer Members of a Holding Company Group	51
Schedule BA – Verification Between Years	SI03	Schedule Y – Part 1A – Detail of Insurance Holding Company System	52
Schedule D – Part 1	E10	Schedule Y – Part 2 – Summary of Insurer's Transactions With Any Affiliates	53
Schedule D – Part 1A – Section 1	SI05	Summary Investment Schedule	SI01
Schedule D – Part 1A – Section 2	SI08	Summary of Operations	4
		Supplemental Exhibits and Schedules Interrogatories	54