



LIFE AND ACCIDENT AND HEALTH COMPANIES — ASSOCIATION EDITION

ANNUAL STATEMENT  
For the Year Ended December 31, 2016  
OF THE CONDITION AND AFFAIRS OF THE  
GRANGE LIFE INSURANCE COMPANY

NAIC Group Code	00267	(Current Period)	00267	(Prior Period)	NAIC Company Code	71218	Employer's ID Number	31-0739286
Organized under the Laws of	Ohio				State of Domicile or Port of Entry	Ohio		
Country of Domicile	United States							
Incorporated/Organized	03/05/1968				Commenced Business	07/01/1968		
Statutory Home Office	671 South High Street				Columbus, OH, US 43206-1066			
	(Street and Number)				(City or Town, State, Country and Zip Code)			
Main Administrative Office	671 South High Street				Columbus, OH, US 43206-1066		614-445-2900	
	(Street and Number)				(City or Town, State, Country and Zip Code)		(Area Code) (Telephone Number)	
Mail Address	P.O. Box 1218				Columbus, OH, US 43216-1212			
	(Street and Number or P.O. Box)				(City or Town, State, Country and Zip Code)			
Primary Location of Books and Records	671 South High Street				Columbus, OH, US 43206-1066		614-445-2900	
	(Street and Number)				(City or Town, State, Country and Zip Code)		(Area Code) (Telephone Number)	
Internet Web Site Address	www.grangeinsurance.com							
Statutory Statement Contact	Jeffrey P. Siefker				614-593-4014			
	(Name)				(Area Code) (Telephone Number) (Extension)			
	siefkerj@grangeinsurance.com				614-445-2619			
	(E-Mail Address)				(FAX Number)			

OFFICERS

Name	Title	Name	Title
Theresa Marie Mason #	President	Teresa Jean Dalenta #	EVP & CFO
LaVawn Dee Coleman	EVP & Secretary	Milliman	Actuary

OTHER OFFICERS


DIRECTORS OR TRUSTEES

JOHN (NMN) AMMENDOLA	MARK LEWIS BOXER	DOUGLAS PAUL BUTH	GLENN EUGENE CORLETT
TERESA JEAN DALENTA #	MICHAEL DESMOND FRAIZER #	ROBERT ENLOW HOYT	MARY MARNETTE PERRY
THOMAS SIMRALL STEWART	DAVID CHARLES WETMORE	CHRISTIANNA (NMN) WOOD	

State of .....Ohio.....

County of .....Franklin.....

ss

The officers of this reporting entity being duly sworn, each depose and say that they are the described officers of said reporting entity, and that on the reporting period stated above, all of the herein described assets were the absolute property of the said reporting entity, free and clear from any liens or claims thereon, except as herein stated, and that this statement, together with related exhibits, schedules and explanations therein contained, annexed or referred to, is a full and true statement of all the assets and liabilities and of the condition and affairs of the said reporting entity as of the reporting period stated above, and of its income and deductions therefrom for the period ended, and have been completed in accordance with the NAIC Annual Statement Instructions and Accounting Practices and Procedures manual except to the extent that: (1) state law may differ; or, (2) that state rules or regulations require differences in reporting not related to accounting practices and procedures, according to the best of their information, knowledge and belief, respectively. Furthermore, the scope of this attestation by the described officers also includes the related corresponding electronic filing with the NAIC, when required, that is an exact copy (except for formatting differences due to electronic filing) of the enclosed statement. The electronic filing may be requested by various regulators in lieu of or in addition to the enclosed statement.

Theresa Marie Mason President	Teresa Jean Dalenta EVP & CFO	LaVawn Dee Coleman EVP & Secretary
a. Is this an original filing? Yes [ X ] No [ ]		
b. If no:		
1. State the amendment number		
2. Date filed		
3. Number of pages attached		
Subscribed and sworn to before me this		
21 day of February, 2017		

ASSETS

	Current Year			Prior Year
	1	2	3	4
	Assets	Nonadmitted Assets	Net Admitted Assets (Cols. 1 - 2)	Net Admitted Assets
1. Bonds (Schedule D).....	357,199,558		357,199,558	292,463,937
2. Stocks (Schedule D):				
2.1 Preferred stocks .....	0		0	0
2.2 Common stocks .....	12,088,672	781	12,087,891	9,965,251
3. Mortgage loans on real estate (Schedule B):				
3.1 First liens .....			0	0
3.2 Other than first liens .....			0	0
4. Real estate (Schedule A):				
4.1 Properties occupied by the company (less \$ ..... encumbrances).....			0	0
4.2 Properties held for the production of income (less \$ ..... encumbrances) .....			0	0
4.3 Properties held for sale (less \$ ..... encumbrances) .....			0	0
5. Cash (\$ ..... 14,190,667 , Schedule E-Part 1), cash equivalents (\$ ..... 0 , Schedule E-Part 2) and short-term investments (\$ ..... 0 , Schedule DA).....	14,190,667		14,190,667	22,636,303
6. Contract loans (including \$ ..... premium notes).....	11,802,628		11,802,628	11,049,922
7. Derivatives (Schedule DB).....	0		0	0
8. Other invested assets (Schedule BA) .....	0		0	0
9. Receivables for securities .....	18,983		18,983	19,219
10. Securities lending reinvested collateral assets (Schedule DL).....	1,161,380		1,161,380	6,702,589
11. Aggregate write-ins for invested assets .....	0	0	0	0
12. Subtotals, cash and invested assets (Lines 1 to 11) .....	396,461,888	781	396,461,107	342,837,221
13. Title plants less \$ ..... charged off (for Title insurers only).....			0	0
14. Investment income due and accrued .....	3,142,096		3,142,096	2,608,663
15. Premiums and considerations:				
15.1 Uncollected premiums and agents' balances in the course of collection .....			0	0
15.2 Deferred premiums, agents' balances and installments booked but deferred and not yet due (including \$ ..... earned but unbilled premiums).....	40,949,301		40,949,301	37,748,479
15.3 Accrued retrospective premiums (\$ ..... ) and contracts subject to redetermination (\$ ..... ) .....			0	0
16. Reinsurance:				
16.1 Amounts recoverable from reinsurers .....	5,402,412		5,402,412	3,712,828
16.2 Funds held by or deposited with reinsured companies .....			0	0
16.3 Other amounts receivable under reinsurance contracts .....	995,121		995,121	1,234,985
17. Amounts receivable relating to uninsured plans .....			0	0
18.1 Current federal and foreign income tax recoverable and interest thereon .....			0	0
18.2 Net deferred tax asset.....	14,063,067	8,939,509	5,123,558	4,721,102
19. Guaranty funds receivable or on deposit .....			0	0
20. Electronic data processing equipment and software.....	397,088	389,719	7,369	1,142
21. Furniture and equipment, including health care delivery assets (\$ ..... ) .....			0	0
22. Net adjustment in assets and liabilities due to foreign exchange rates .....			0	0
23. Receivables from parent, subsidiaries and affiliates .....	178,018		178,018	0
24. Health care (\$ ..... ) and other amounts receivable.....			0	0
25. Aggregate write-ins for other-than-invested assets .....	1,270,104	1,259,137	10,967	361,477
26. Total assets excluding Separate Accounts, Segregated Accounts and Protected Cell Accounts (Lines 12 to 25).....	462,859,095	10,589,146	452,269,949	393,225,897
27. From Separate Accounts, Segregated Accounts and Protected Cell Accounts.....			0	0
28. Total (Lines 26 and 27)	462,859,095	10,589,146	452,269,949	393,225,897
DETAILS OF WRITE-INS				
1101. ....			0	0
1102. ....				
1103. ....				
1198. Summary of remaining write-ins for Line 11 from overflow page .....	0	0	0	0
1199. Totals (Lines 1101 through 1103 plus 1198) (Line 11 above) .....	0	0	0	0
2501. Receivable for Agent Loans.....	429,429	429,429	0	0
2502. Premium Tax Credits.....	840,675	829,708	10,967	10,842
2503. Reinsurance Recoverable.....			0	350,635
2598. Summary of remaining write-ins for Line 25 from overflow page .....	0	0	0	0
2599. Totals (Lines 2501 through 2503 plus 2598) (Line 25 above) .....	1,270,104	1,259,137	10,967	361,477

ANNUAL STATEMENT FOR THE YEAR 2016 OF THE GRANGE LIFE INSURANCE COMPANY

LIABILITIES, SURPLUS AND OTHER FUNDS

	1 Current Year	2 Prior Year
1. Aggregate reserve for life contracts \$ .....343,295,922 (Exhibit 5, Line 9999999) less \$ ..... included in Line 6.3 (including \$ ..... Modco Reserve).....	343,295,922	299,925,958
2. Aggregate reserve for accident and health contracts (including \$ .....0 Modco Reserve).....	358,790	388,183
3. Liability for deposit-type contracts (Exhibit 7, Line 14, Col. 1) (including \$ ..... Modco Reserve).....	319,224	362,073
4. Contract claims:		
4.1 Life (Exhibit 8, Part 1, Line 4.4, Col. 1 less sum of Cols. 9, 10 and 11).....	5,117,741	3,533,376
4.2 Accident and health (Exhibit 8, Part 1, Line 4.4, sum of Cols. 9, 10 and 11).....	(6,225)	(5,978)
5. Policyholders' dividends \$ ..... and coupons \$ ..... due and unpaid (Exhibit 4, Line 10).....	294,703	273,955
6. Provision for policyholders' dividends and coupons payable in following calendar year—estimated amounts:		
6.1 Dividends apportioned for payment (including \$ ..... Modco).....	59,401	57,446
6.2 Dividends not yet apportioned (including \$ ..... Modco).....		0
6.3 Coupons and similar benefits (including \$ ..... Modco).....		0
7. Amount provisionally held for deferred dividend policies not included in Line 6.....		0
8. Premiums and annuity considerations for life and accident and health contracts received in advance less \$ ..... discount; including \$ .....0 accident and health premiums (Exhibit 1, Part 1, Col. 1, sum of Lines 4 and 14).....	282,186	259,094
9. Contract liabilities not included elsewhere:		
9.1 Surrender values on canceled contracts.....		0
9.2 Provision for experience rating refunds, including the liability of \$ ..... accident and health experience rating refunds of which \$ ..... is for medical loss ratio rebate per the Public Health Service Act.....		0
9.3 Other amounts payable on reinsurance, including \$ ..... assumed and \$ .....3,881,793 ceded.....	3,881,793	1,935,122
9.4 Interest Maintenance Reserve (IMR, Line 6).....	1,294,572	1,075,189
10. Commissions to agents due or accrued-life and annuity contracts \$ .....accident and health \$ ..... and deposit-type contract funds \$ ..... ..	1,137,126	1,227,739
11. Commissions and expense allowances payable on reinsurance assumed.....		0
12. General expenses due or accrued (Exhibit 2, Line 12, Col. 6).....	1,564,724	1,557,594
13. Transfers to Separate Accounts due or accrued (net) (including \$ ..... accrued for expense allowances recognized in reserves, net of reinsured allowances).....		0
14. Taxes, licenses and fees due or accrued, excluding federal income taxes (Exhibit 3, Line 9, Col. 5).....	1,874,428	1,793,425
15.1 Current federal and foreign income taxes, including \$ ..... on realized capital gains (losses).....	4,036,240	125,546
15.2 Net deferred tax liability.....		0
16. Unearned investment income.....	483,911	455,934
17. Amounts withheld or retained by company as agent or trustee.....		0
18. Amounts held for agents' account, including \$ ..... agents' credit balances.....		0
19. Remittances and items not allocated.....	185,300	93,483
20. Net adjustment in assets and liabilities due to foreign exchange rates.....		0
21. Liability for benefits for employees and agents if not included above.....		0
22. Borrowed money \$ ..... and interest thereon \$ ..... ..		0
23. Dividends to stockholders declared and unpaid.....		0
24. Miscellaneous liabilities:		
24.01 Asset valuation reserve (AVR, Line 16, Col. 7).....	2,809,978	2,693,373
24.02 Reinsurance in unauthorized and certified (\$ ..... ) companies.....	0	0
24.03 Funds held under reinsurance treaties with unauthorized and certified (\$ ..... ) reinsurers.....		0
24.04 Payable to parent, subsidiaries and affiliates.....	10,372,674	10,573,350
24.05 Drafts outstanding.....		0
24.06 Liability for amounts held under uninsured plans.....		0
24.07 Funds held under coinsurance.....		17,743,371
24.08 Derivatives.....	0	0
24.09 Payable for securities.....		0
24.10 Payable for securities lending.....	1,161,380	6,702,589
24.11 Capital notes \$ ..... and interest thereon \$ ..... ..		0
25. Aggregate write-ins for liabilities.....	0	0
26. Total liabilities excluding Separate Accounts business (Lines 1 to 25).....	378,523,868	350,770,822
27. From Separate Accounts statement.....	0	0
28. Total liabilities (Lines 26 and 27).....	378,523,868	350,770,822
29. Common capital stock.....	1,893,750	1,893,750
30. Preferred capital stock.....		0
31. Aggregate write-ins for other than special surplus funds.....	0	0
32. Surplus notes.....		0
33. Gross paid in and contributed surplus (Page 3, Line 33, Col. 2 plus Page 4, Line 51.1, Col. 1).....	67,031,250	7,031,250
34. Aggregate write-ins for special surplus funds.....	0	0
35. Unassigned funds (surplus).....	4,821,081	33,530,075
36. Less treasury stock, at cost:		
36.1 ..... shares common (value included in Line 29 \$ ..... ).....		0
36.2 ..... shares preferred (value included in Line 30 \$ ..... ).....		0
37. Surplus (Total Lines 31+32+33+34+35-36) (including \$ ..... in Separate Accounts Statement).....	71,852,331	40,561,325
38. Totals of Lines 29, 30 and 37 (Page 4, Line 55).....	73,746,081	42,455,075
39. Totals of Lines 28 and 38 (Page 2, Line 28, Col. 3).....	452,269,949	393,225,897
DETAILS OF WRITE-INS		
2501. ....		0
2502. ....		
2503. ....		
2598. Summary of remaining write-ins for Line 25 from overflow page.....	0	0
2599. Totals (Lines 2501 through 2503 plus 2598) (Line 25 above).....	0	0
3101. ....		0
3102. ....		0
3103. ....		0
3198. Summary of remaining write-ins for Line 31 from overflow page.....	0	0
3199. Totals (Lines 3101 through 3103 plus 3198) (Line 31 above).....	0	0
3401. ....		0
3402. ....		0
3403. ....		0
3498. Summary of remaining write-ins for Line 34 from overflow page.....	0	0
3499. Totals (Lines 3401 through 3403 plus 3498) (Line 34 above).....	0	0

SUMMARY OF OPERATIONS

	1 Current Year	2 Prior Year
1. Premiums and annuity considerations for life and accident and health contracts (Exhibit 1, Part 1, Line 20.4, Col. 1, less Col. 11) .....	68,279,973	56,645,239
2. Considerations for supplementary contracts with life contingencies .....		45,314
3. Net investment income (Exhibit of Net Investment Income, Line 17) .....	12,616,422	12,781,359
4. Amortization of Interest Maintenance Reserve (IMR, Line 5) .....	438,179	563,988
5. Separate Accounts net gain from operations excluding unrealized gains or losses .....	0	0
6. Commissions and expense allowances on reinsurance ceded (Exhibit 1, Part 2, Line 26.1, Col. 1) .....	8,561,833	14,624,833
7. Reserve adjustments on reinsurance ceded .....		0
8. Miscellaneous Income:		
8.1 Income from fees associated with investment management, administration and contract guarantees from Separate Accounts .....		0
8.2 Charges and fees for deposit-type contracts .....		0
8.3 Aggregate write-ins for miscellaneous income .....	30,721	5,212
9. Totals (Lines 1 to 8.3) .....	89,927,128	84,665,945
10. Death benefits .....	28,299,434	25,105,458
11. Matured endowments (excluding guaranteed annual pure endowments) .....	0	0
12. Annuity benefits (Exhibit 8, Part 2, Line 6.4, Cols. 4 + 8) .....	5,077,267	4,198,198
13. Disability benefits and benefits under accident and health contracts .....	113,930	29,230
14. Coupons, guaranteed annual pure endowments and similar benefits .....		0
15. Surrender benefits and withdrawals for life contracts .....	9,139,479	7,329,707
16. Group conversions .....		0
17. Interest and adjustments on contract or deposit-type contract funds .....		0
18. Payments on supplementary contracts with life contingencies .....		0
19. Increase in aggregate reserves for life and accident and health contracts .....	43,297,540	21,244,762
20. Totals (Lines 10 to 19) .....	85,927,650	57,907,355
21. Commissions on premiums, annuity considerations and deposit-type contract funds (direct business only) (Exhibit 1, Part 2, Line 31, Col. 1) .....	11,563,767	11,186,858
22. Commissions and expense allowances on reinsurance assumed (Exhibit 1, Part 2, Line 26.2, Col. 1) .....	154,559	167,331
23. General insurance expenses (Exhibit 2, Line 10, Columns 1, 2, 3 and 4) .....	14,687,987	14,800,437
24. Insurance taxes, licenses and fees, excluding federal income taxes (Exhibit 3, Line 7, Cols. 1 + 2 + 3) .....	2,023,452	2,086,160
25. Increase in loading on deferred and uncollected premiums .....	(724,406)	(727,542)
26. Net transfers to or (from) Separate Accounts net of reinsurance .....		0
27. Aggregate write-ins for deductions .....	0	169,201
28. Totals (Lines 20 to 27) .....	113,633,009	85,589,800
29. Net gain from operations before dividends to policyholders and federal income taxes (Line 9 minus Line 28) .....	(23,705,881)	(923,855)
30. Dividends to policyholders .....	356,064	332,959
31. Net gain from operations after dividends to policyholders and before federal income taxes (Line 29 minus Line 30) .....	(24,061,945)	(1,256,814)
32. Federal and foreign income taxes incurred (excluding tax on capital gains) .....	4,012,850	105,625
33. Net gain from operations after dividends to policyholders and federal income taxes and before realized capital gains or (losses) (Line 31 minus Line 32) .....	(28,074,795)	(1,362,439)
34. Net realized capital gains (losses) (excluding gains (losses) transferred to the IMR) less capital gains tax of \$ ..... (excluding taxes of \$ ..... transferred to the IMR) .....	(744,541)	(200,558)
35. Net income (Line 33 plus Line 34) .....	(28,819,336)	(1,562,997)
CAPITAL AND SURPLUS ACCOUNT		
36. Capital and surplus, December 31, prior year (Page 3, Line 38, Col. 2) .....	42,455,075	56,130,255
37. Net income (Line 35) .....	(28,819,336)	(1,562,997)
38. Change in net unrealized capital gains (losses) less capital gains tax of \$ .....	2,122,640	(11,760,432)
39. Change in net unrealized foreign exchange capital gain (loss) .....		0
40. Change in net deferred income tax .....	5,896,884	1,282,932
41. Change in nonadmitted assets .....	(5,159,369)	(348,747)
42. Change in liability for reinsurance in unauthorized and certified companies .....	0	0
43. Change in reserve on account of change in valuation basis, (increase) or decrease .....		0
44. Change in asset valuation reserve .....	(116,605)	(63,256)
45. Change in treasury stock (Page 3, Lines 36.1 and 36.2 Col. 2 minus Col. 1) .....	0	0
46. Surplus (contributed to) withdrawn from Separate Accounts during period .....		0
47. Other changes in surplus in Separate Accounts statement .....	0	0
48. Change in surplus notes .....	0	0
49. Cumulative effect of changes in accounting principles .....		0
50. Capital changes:		
50.1 Paid in .....		0
50.2 Transferred from surplus (Stock Dividend) .....		0
50.3 Transferred to surplus .....		0
51. Surplus adjustment:		
51.1 Paid in .....	60,000,000	0
51.2 Transferred to capital (Stock Dividend) .....		0
51.3 Transferred from capital .....		0
51.4 Change in surplus as a result of reinsurance .....	(2,633,208)	(156,635)
52. Dividends to stockholders .....		0
53. Aggregate write-ins for gains and losses in surplus .....	0	(1,066,045)
54. Net change in capital and surplus for the year (Lines 37 through 53) .....	31,291,006	(13,675,180)
55. Capital and surplus, December 31, current year (Lines 36 + 54) (Page 3, Line 38) .....	73,746,081	42,455,075
DETAILS OF WRITE-INS		
08.301 SERVICE FEES .....	30,721	5,212
08.302 .....		0
08.303 .....		
08.398 Summary of remaining write-ins for Line 8.3 from overflow page .....	0	0
08.399 Totals (Lines 08.301 through 08.303 plus 08.398) (Line 8.3 above) .....	30,721	5,212
2701. Investment Income Due GLRE-Classified as Misc Deduction .....		146,305
2702. Misc Deduction .....		22,896
2703. .....		0
2798. Summary of remaining write-ins for Line 27 from overflow page .....	0	0
2799. Totals (Lines 2701 through 2703 plus 2798) (Line 27 above) .....	0	169,201
5301. Prior Period Adjustment .....	0	(1,066,045)
5302. .....	0	0
5303. .....		0
5398. Summary of remaining write-ins for Line 53 from overflow page .....	0	0
5399. Totals (Lines 5301 through 5303 plus 5398) (Line 53 above) .....	0	(1,066,045)

CASH FLOW

	1 Current Year	2 Prior Year
<b>Cash from Operations</b>		
1. Premiums collected net of reinsurance .....	66,066,513	54,939,043
2. Net investment income .....	12,961,646	13,234,914
3. Miscellaneous income .....	5,959,530	14,473,410
4. Total (Lines 1 through 3) .....	84,987,689	82,647,367
5. Benefit and loss related payments .....	40,746,058	36,989,203
6. Net transfers to Separate Accounts, Segregated Accounts and Protected Cell Accounts .....	0	0
7. Commissions, expenses paid and aggregate write-ins for deductions .....	28,432,245	29,230,532
8. Dividends paid to policyholders .....	333,361	352,167
9. Federal and foreign income taxes paid (recovered) net of \$ ..... tax on capital gains (losses).....	102,156	251,215
10. Total (Lines 5 through 9) .....	69,613,820	66,823,117
11. Net cash from operations (Line 4 minus Line 10) .....	15,373,869	15,824,250
<b>Cash from Investments</b>		
12. Proceeds from investments sold, matured or repaid:		
12.1 Bonds .....	86,019,096	52,849,027
12.2 Stocks .....	0	0
12.3 Mortgage loans .....	0	0
12.4 Real estate .....	0	0
12.5 Other invested assets .....	0	0
12.6 Net gains or (losses) on cash, cash equivalents and short-term investments .....	0	0
12.7 Miscellaneous proceeds .....	236	0
12.8 Total investment proceeds (Lines 12.1 to 12.7) .....	86,019,332	52,849,027
13. Cost of investments acquired (long-term only):		
13.1 Bonds .....	151,692,377	62,605,258
13.2 Stocks .....	0	15,000,000
13.3 Mortgage loans .....	0	0
13.4 Real estate .....	0	0
13.5 Other invested assets .....	0	0
13.6 Miscellaneous applications .....	0	18,344
13.7 Total investments acquired (Lines 13.1 to 13.6) .....	151,692,377	77,623,602
14. Net increase (decrease) in contract loans and premium notes .....	752,706	318,590
15. Net cash from investments (Line 12.8 minus Line 13.7 minus Line 14) .....	(66,425,751)	(25,093,165)
<b>Cash from Financing and Miscellaneous Sources</b>		
16. Cash provided (applied):		
16.1 Surplus notes, capital notes .....	0	0
16.2 Capital and paid in surplus, less treasury stock .....	60,000,000	0
16.3 Borrowed funds .....	0	0
16.4 Net deposits on deposit-type contracts and other insurance liabilities .....	(42,849)	(239,159)
16.5 Dividends to stockholders .....	0	0
16.6 Other cash provided (applied).....	(17,350,905)	18,331,607
17. Net cash from financing and miscellaneous sources (Lines 16.1 to 16.4 minus Line 16.5 plus Line 16.6) .....	42,606,246	18,092,448
<b>RECONCILIATION OF CASH, CASH EQUIVALENTS AND SHORT-TERM INVESTMENTS</b>		
18. Net change in cash, cash equivalents and short-term investments (Line 11, plus Lines 15 and 17).....	(8,445,636)	8,823,533
19. Cash, cash equivalents and short-term investments:		
19.1 Beginning of year .....	22,636,303	13,812,770
19.2 End of year (Line 18 plus Line 19.1) .....	14,190,667	22,636,303

ANNUAL STATEMENT FOR THE YEAR 2016 OF THE GRANGE LIFE INSURANCE COMPANY

ANALYSIS OF OPERATIONS BY LINES OF BUSINESS

	1	2	Ordinary			6	Group		Accident and Health			12
			3	4	5		7	8	9	10	11	
	Total	Industrial Life	Life Insurance	Individual Annuities	Supplementary Contracts	Credit Life (Group and Individual)	Life Insurance (a)	Annuities	Group	Credit (Group and Individual)	Other	Aggregate of All Other Lines of Business
1. Premiums and annuity considerations for life and accident and health contracts .....	68,279,973	.0	65,672,812	1,039,944		.0	1,465,679	.0	.0	.0	101,538	
2. Considerations for supplementary contracts with life contingencies .....	.0											
3. Net investment income .....	12,616,422		10,765,590	1,851,212							(380)	
4. Amortization of Interest Maintenance Reserve (IMR) .....	438,178		377,046	61,132								
5. Separate Accounts net gain from operations excluding unrealized gains or losses .....	.0											
6. Commissions and expense allowances on reinsurance ceded .....	8,561,833	.0	8,055,342	.0		.0	496,933	.0	.0	.0	9,558	.0
7. Reserve adjustments on reinsurance ceded .....	.0											
8. Miscellaneous Income:												
8.1 Fees associated with income from investment management, administration and contract guarantees from Separate Accounts .....	.0											
8.2 Charges and fees for deposit-type contracts .....	.0											
8.3 Aggregate write-ins for miscellaneous income .....	30,721	0	30,721	0	0	0	0	0	0	0	0	0
9. Totals (Lines 1 to 8.3) .....	89,927,127	0	84,901,511	2,952,288	0	0	1,962,612	0	0	0	110,716	0
10. Death benefits .....	28,299,434		28,052,983				246,451					
11. Matured endowments (excluding guaranteed annual pure endowments) .....	.0	.0	.0				.0					
12. Annuity benefits .....	5,077,267			5,077,267				.0				
13. Disability benefits and benefits under accident and health contracts .....	113,930								.0	.0	113,930	
14. Coupons, guaranteed annual pure endowments and similar benefits .....	.0											
15. Surrender benefits and withdrawals for life contracts .....	9,139,479		9,139,479									
16. Group conversions .....	.0											
17. Interest and adjustments on contract or deposit-type contract funds .....	.0											
18. Payments on supplementary contracts with life contingencies .....	.0											
19. Increase in aggregate reserves for life and accident and health contracts .....	43,297,540		45,339,767	(2,012,889)							(29,338)	
20. Totals (Lines 10 to 19) .....	85,927,650	.0	82,532,229	3,064,378	.0	.0	246,451	.0	.0	.0	84,592	.0
21. Commissions on premiums, annuity considerations and deposit-type contract funds (direct business only) .....	11,563,767	.0	11,563,595	163		.0	.0	.0	.0	.0	9	.0
22. Commissions and expense allowances on reinsurance assumed .....	154,559	.0	154,559	.0		.0	.0	.0	.0	.0	.0	.0
23. General insurance expenses .....	14,687,987		14,497,762	105,585			58,627		.0	.0	26,013	.0
24. Insurance taxes, licenses and fees, excluding federal income taxes .....	2,023,452		2,023,452						.0	.0	.0	.0
25. Increase in loading on deferred and uncollected premiums .....	(724,406)		(724,406)									
26. Net transfers to or (from) Separate Accounts net of reinsurance .....	.0											
27. Aggregate write-ins for deductions .....	0	0	0	0	0	0	0	0	0	0	0	0
28. Totals (Lines 20 to 27) .....	113,633,009	0	110,047,191	3,170,126	0	0	305,078	0	0	0	110,614	0
29. Net gain from operations before dividends to policyholders and federal income taxes (Line 9 minus Line 28) .....	(23,705,882)	.0	(25,145,680)	(217,838)	.0	.0	1,657,534	.0	.0	.0	102	.0
30. Dividends to policyholders .....	356,064		61,356				294,708		0	0	0	
31. Net gain from operations after dividends to policyholders and before federal income taxes (Line 29 minus Line 30) .....	(24,061,946)	.0	(25,207,036)	(217,838)	.0	.0	1,362,826	.0	.0	.0	102	.0
32. Federal income taxes incurred (excluding tax on capital gains) .....	4,012,850		4,321,535	(80,114)			(228,554)		0		(17)	
33. Net gain from operations after dividends to policyholders and federal income taxes and before realized capital gains or (losses) (Line 31 minus Line 32) .....	(28,074,796)	0	(29,528,571)	(137,724)	0	0	1,591,380	0	0	0	119	0
DETAILS OF WRITE-INS												
08.301. Service Fees .....	30,721		30,721	.0			.0					
08.302. ....												
08.303. ....												
08.398. Summary of remaining write-ins for Line 8.3 from overflow page .....	.0	.0	.0	.0	.0	.0	.0	.0	.0	.0	.0	.0
08.399. Total (Lines 08.301 through 08.303 plus 08.398) (Line 8.3 above) .....	30,721	0	30,721	0	0	0	0	0	0	0	0	0
2701. ....												
2702. ....												
2703. ....												
2798. Summary of remaining write-ins for Line 27 from overflow page .....	.0	.0	.0	.0	.0	.0	.0	.0	.0	.0	.0	.0
2799. Total (Lines 2701 through 2703 plus 2798) (Line 27 above) .....	0	0	0	0	0	0	0	0	0	0	0	0

(a) Includes the following amounts for FEGLI/SGLI: Line 1 ..... Line 10 ..... Line 16 ..... Line 23 ..... Line 24 .....

ANNUAL STATEMENT FOR THE YEAR 2016 OF THE GRANGE LIFE INSURANCE COMPANY

ANALYSIS OF INCREASE IN RESERVES DURING THE YEAR

	1	2	Ordinary			6	Group	
			3	4	5		7	8
	Total	Industrial Life	Life Insurance	Individual Annuities	Supplementary Contracts	Credit Life (Group and Individual)	Life Insurance	Annuities
Involving Life or Disability Contingencies (Reserves)								
(Net of Reinsurance Ceded)								
1. Reserve December 31, prior year .....	299,925,959	0	241,724,614	58,201,345	0	0	0	0
2. Tabular net premiums or considerations .....	125,995,469		124,267,498	1,039,944			688,027	
3. Present value of disability claims incurred .....	82,611		82,611		XXX			
4. Tabular interest .....	14,090,605		12,329,398	1,747,446			13,761	
5. Tabular less actual reserve released .....	318,070			318,070				
6. Increase in reserve on account of change in valuation basis .....	0							
7. Other increases (net) .....	0							
8. Totals (Lines 1 to 7) .....	440,412,714	0	378,404,121	61,306,805	0	0	701,788	0
9. Tabular cost .....	70,712,664		70,010,876		XXX		701,788	
10. Reserves released by death .....	3,689,085		3,689,085	XXX	XXX			XXX
11. Reserves released by other terminations (net) .....	17,449,403		17,449,403					
12. Annuity, supplementary contract, and disability payments involving life contingencies .....	5,265,639		188,372	5,077,267				
13. Net transfers to or (from) Separate Accounts .....	0							
14. Total deductions (Lines 9 to 13) .....	97,116,791	0	91,337,736	5,077,267	0	0	701,788	0
15. Reserve December 31, current year	343,295,923	0	287,066,385	56,229,538	0	0	0	0

EXHIBIT OF NET INVESTMENT INCOME

		1	2
		Collected During Year	Earned During Year
1.	U.S. Government bonds .....	(a).....611,437	.....566,942
1.1	Bonds exempt from U.S. tax .....	(a).....	.....
1.2	Other bonds (unaffiliated) .....	(a).....11,392,454	.....11,970,382
1.3	Bonds of affiliates .....	(a).....0	.....
2.1	Preferred stocks (unaffiliated) .....	(b).....0	.....
2.11	Preferred stocks of affiliates .....	(b).....0	.....
2.2	Common stocks (unaffiliated) .....	.....0	.....
2.21	Common stocks of affiliates .....	.....0	.....
3.	Mortgage loans .....	(c).....	.....
4.	Real estate .....	(d).....	.....
5.	Contract loans.....	.....832,402	.....804,425
6.	Cash, cash equivalents and short-term investments .....	(e).....	.....
7.	Derivative instruments .....	(f).....	.....
8.	Other invested assets .....	.....	.....
9.	Aggregate write-ins for investment income .....	.....(510,937)	.....(510,937)
10.	Total gross investment income .....	12,325,356	12,830,812
11.	Investment expenses .....		(g).....214,390
12.	Investment taxes, licenses and fees, excluding federal income taxes .....		(g).....0
13.	Interest expense .....		(h).....
14.	Depreciation on real estate and other invested assets .....		(i).....
15.	Aggregate write-ins for deductions from investment income .....		.....0
16.	Total deductions (Lines 11 through 15) .....		.....214,390
17.	Net investment income (Line 10 minus Line 16) .....		12,616,422
DETAILS OF WRITE-INS			
0901.	Miscellaneous Income.....	19,976	19,976
0902.	GLRE Paid Interest - Funds Withheld.....	(530,913)	(530,913)
0903.	.....		
0998.	Summary of remaining write-ins for Line 9 from overflow page .....	0	0
0999.	Totals (Lines 0901 through 0903 plus 0998) (Line 9 above) .....	(510,937)	(510,937)
1501.	Investment Income Due GLRE - Classified as Misc Deduction.....		
1502.	.....		
1503.	.....		
1598.	Summary of remaining write-ins for Line 15 from overflow page .....		0
1599.	Totals (Lines 1501 through 1503 plus 1598) (Line 15 above) .....		0

(a) Includes \$ .....741,843 accrual of discount less \$ .....1,592,523 amortization of premium and less \$ .....812,344 paid for accrued interest on purchases.  
(b) Includes \$ .....accrual of discount less \$ .....amortization of premium and less \$ .....0 paid for accrued dividends on purchases.  
(c) Includes \$ .....0 accrual of discount less \$ .....0 amortization of premium and less \$ .....paid for accrued interest on purchases.  
(d) Includes \$ .....for company's occupancy of its own buildings; and excludes \$ .....interest on encumbrances.  
(e) Includes \$ .....accrual of discount less \$ .....amortization of premium and less \$ .....paid for accrued interest on purchases.  
(f) Includes \$ .....accrual of discount less \$ .....amortization of premium.  
(g) Includes \$ .....189,390 investment expenses and \$ .....investment taxes, licenses and fees, excluding federal income taxes, attributable to segregated and Separate Accounts.  
(h) Includes \$ .....interest on surplus notes and \$ .....interest on capital notes.  
(i) Includes \$ .....depreciation on real estate and \$ .....depreciation on other invested assets.

EXHIBIT OF CAPITAL GAINS (LOSSES)

		1	2	3	4	5
		Realized Gain (Loss) On Sales or Maturity	Other Realized Adjustments	Total Realized Capital Gain (Loss) (Columns 1 + 2)	Change in Unrealized Capital Gain (Loss)	Change in Unrealized Foreign Exchange Capital Gain (Loss)
1.	U.S. Government bonds .....			0		
1.1	Bonds exempt from U.S. tax .....			0		
1.2	Other bonds (unaffiliated) .....	657,561	(744,541)	(86,980)	0	
1.3	Bonds of affiliates .....	0	0	0	0	0
2.1	Preferred stocks (unaffiliated) .....	0	0	0	0	0
2.11	Preferred stocks of affiliates .....	0	0	0	0	0
2.2	Common stocks (unaffiliated) .....	0	0	0	0	0
2.21	Common stocks of affiliates .....	0	0	0	2,122,640	0
3.	Mortgage loans .....	0	0	0	0	0
4.	Real estate .....	0	0	0		0
5.	Contract loans .....			0		
6.	Cash, cash equivalents and short-term investments .....			0	0	0
7.	Derivative instruments .....			0		
8.	Other invested assets .....	0	0	0	0	0
9.	Aggregate write-ins for capital gains (losses) .....	0	0	0	0	0
10.	Total capital gains (losses) .....	657,561	(744,541)	(86,980)	2,122,640	0
DETAILS OF WRITE-INS						
0901.	.....			0		
0902.	.....			0		
0903.	.....			0		
0998.	Summary of remaining write-ins for Line 9 from overflow page .....	0	0	0	0	0
0999.	Totals (Lines 0901 through 0903 plus 0998) (Line 9 above) .....	0	0	0	0	0



ANNUAL STATEMENT FOR THE YEAR 2016 OF THE GRANGE LIFE INSURANCE COMPANY

EXHIBIT 1 - PART 1 - PREMIUMS AND ANNUITY CONSIDERATIONS FOR LIFE AND ACCIDENT AND HEALTH CONTRACTS

	1	2	Ordinary		5	Group		Accident and Health			11
			3	4		6	7	8	9	10	
	Total	Industrial Life	Life Insurance	Individual Annuities	Credit Life (Group and Individual)	Life Insurance	Annuities	Group	Credit (Group and Individual)	Other	Aggregate of All Other Lines of Business
<b>FIRST YEAR (other than single)</b>											
1. Uncollected .....	40,867	.0	40,867	.0	.0	.0	.0	.0	.0	.0	.0
2. Deferred and accrued .....	3,353,857	.0	3,353,857	.0	.0	.0	.0	.0	.0	.0	.0
3. Deferred, accrued and uncollected:											
3.1 Direct .....	3,394,724	.0	3,394,724	.0	.0	.0	.0	.0	.0	.0	.0
3.2 Reinsurance assumed .....	.0	.0	.0	.0	.0	.0	.0	.0	.0	.0	.0
3.3 Reinsurance ceded .....	.0	.0	.0	.0	.0	.0	.0	.0	.0	.0	.0
3.4 Net (Line 1 + Line 2) .....	3,394,724	.0	3,394,724	.0	.0	.0	.0	.0	.0	.0	.0
4. Advance .....	25,811	.0	25,811	.0	.0	.0	.0	.0	.0	.0	.0
5. Line 3.4 - Line 4 .....	3,368,913	.0	3,368,913	.0	.0	.0	.0	.0	.0	.0	.0
6. Collected during year:											
6.1 Direct .....	11,744,250	.0	11,744,250	.0	.0	.0	.0	.0	.0	.0	.0
6.2 Reinsurance assumed .....	.0	.0	.0	.0	.0	.0	.0	.0	.0	.0	.0
6.3 Reinsurance ceded .....	(26,201,260)	.0	(26,201,260)	.0	.0	.0	.0	.0	.0	.0	.0
6.4 Net .....	37,945,510	.0	37,945,510	.0	.0	.0	.0	.0	.0	.0	.0
7. Line 5 + Line 6.4 .....	41,314,423	.0	41,314,423	.0	.0	.0	.0	.0	.0	.0	.0
8. Prior year (uncollected + deferred and accrued - advance) .....	2,981,130	.0	2,981,130	.0	.0	.0	.0	.0	.0	.0	.0
9. First year premiums and considerations:											
9.1 Direct .....	12,132,032	.0	12,132,032	.0	.0	.0	.0	.0	.0	.0	.0
9.2 Reinsurance assumed .....	.0	.0	.0	.0	.0	.0	.0	.0	.0	.0	.0
9.3 Reinsurance ceded .....	(26,201,260)	.0	(26,201,260)	.0	.0	.0	.0	.0	.0	.0	.0
9.4 Net (Line 7 - Line 8) .....	38,333,293	.0	38,333,293	.0	.0	.0	.0	.0	.0	.0	.0
<b>SINGLE</b>											
10. Single premiums and considerations:											
10.1 Direct .....	8,499,595	.0	8,499,595	.0	.0	.0	.0	.0	.0	.0	.0
10.2 Reinsurance assumed .....	.0	.0	.0	.0	.0	.0	.0	.0	.0	.0	.0
10.3 Reinsurance ceded .....	.0	.0	.0	.0	.0	.0	.0	.0	.0	.0	.0
10.4 Net .....	8,499,595	.0	8,499,595	.0	.0	.0	.0	.0	.0	.0	.0
<b>RENEWAL</b>											
11. Uncollected .....	(5,055,880)	.0	(5,055,880)	.0	.0	.0	.0	.0	.0	.0	.0
12. Deferred and accrued .....	23,305,663	.0	23,305,663	.0	.0	.0	.0	.0	.0	.0	.0
13. Deferred, accrued and uncollected:											
13.1 Direct .....	23,874,748	.0	23,874,748	.0	.0	.0	.0	.0	.0	.0	.0
13.2 Reinsurance assumed .....	282,791	.0	282,791	.0	.0	.0	.0	.0	.0	.0	.0
13.3 Reinsurance ceded .....	5,907,756	.0	5,907,756	.0	.0	.0	.0	.0	.0	.0	.0
13.4 Net (Line 11 + Line 12) .....	18,249,783	.0	18,249,783	.0	.0	.0	.0	.0	.0	.0	.0
14. Advance .....	256,375	.0	256,375	.0	.0	.0	.0	.0	.0	.0	.0
15. Line 13.4 - Line 14 .....	17,993,408	.0	17,993,408	.0	.0	.0	.0	.0	.0	.0	.0
16. Collected during year:											
16.1 Direct .....	79,663,375	.0	76,129,431	1,039,944	.0	2,293,424	.0	.0	.0	200,576	.0
16.2 Reinsurance assumed .....	3,069,206	.0	3,069,206	.0	.0	.0	.0	.0	.0	.0	.0
16.3 Reinsurance ceded .....	59,603,953	.0	58,677,170	.0	.0	827,745	.0	.0	.0	99,038	.0
16.4 Net .....	23,128,628	.0	20,521,467	1,039,944	.0	1,465,679	.0	.0	.0	101,538	.0
17. Line 15 + Line 16.4 .....	41,122,036	.0	38,514,875	1,039,944	.0	1,465,679	.0	.0	.0	101,538	.0
18. Prior year (uncollected + deferred and accrued - advance) .....	19,674,951	.0	19,674,951	.0	.0	.0	.0	.0	.0	.0	.0
19. Renewal premiums and considerations:											
19.1 Direct .....	81,728,917	.0	78,194,973	1,039,944	.0	2,293,424	.0	.0	.0	200,576	.0
19.2 Reinsurance assumed .....	3,084,447	.0	3,084,447	.0	.0	.0	.0	.0	.0	.0	.0
19.3 Reinsurance ceded .....	63,366,280	.0	62,439,497	.0	.0	827,745	.0	.0	.0	99,038	.0
19.4 Net (Line 17 - Line 18) .....	21,447,085	0	18,839,924	1,039,944	0	1,465,679	0	0	0	101,538	0
<b>TOTAL</b>											
20. Total premiums and annuity considerations:											
20.1 Direct .....	102,360,544	.0	98,826,600	1,039,944	.0	2,293,424	.0	.0	.0	200,576	.0
20.2 Reinsurance assumed .....	3,084,447	.0	3,084,447	.0	.0	.0	.0	.0	.0	.0	.0
20.3 Reinsurance ceded .....	37,165,020	.0	36,238,237	.0	.0	827,745	.0	.0	.0	99,038	.0
20.4 Net (Lines 9.4 + 10.4 + 19.4) .....	68,279,973	0	65,672,812	1,039,944	0	1,465,679	0	0	0	101,538	0

ANNUAL STATEMENT FOR THE YEAR 2016 OF THE GRANGE LIFE INSURANCE COMPANY

EXHIBIT 1 - PART 2 - DIVIDENDS AND COUPONS APPLIED, REINSURANCE COMMISSIONS AND EXPENSE ALLOWANCES AND COMMISSIONS INCURRED (Direct Business Only)

	1	2	Ordinary		5	Group		Accident and Health			11
			3	4		6	7	8	9	10	
	Total	Industrial Life	Life Insurance	Individual Annuities	Credit Life (Group and Individual)	Life Insurance	Annuities	Group	Credit (Group and Individual)	Other	Aggregate of All Other Lines of Business
<b>DIVIDENDS AND COUPONS APPLIED (included in Part 1)</b>											
21. To pay renewal premiums.....	273,960					273,960					
22. All other.....	59,401		59,401								
<b>REINSURANCE COMMISSIONS AND EXPENSE ALLOWANCES INCURRED</b>											
23. First year (other than single):											
23.1 Reinsurance ceded .....	(12,439,316)		(12,439,316)								
23.2 Reinsurance assumed .....	.0										
23.3 Net ceded less assumed .....	(12,439,316)	.0	(12,439,316)	.0	.0	.0	.0	.0	.0	.0	.0
24. Single:											
24.1 Reinsurance ceded .....	.0										
24.2 Reinsurance assumed .....	.0										
24.3 Net ceded less assumed .....	.0	.0	.0	.0	.0	.0	.0	.0	.0	.0	.0
25. Renewal:											
25.1 Reinsurance ceded .....	21,001,149		20,494,658			496,933				9,558	
25.2 Reinsurance assumed .....	154,559		154,559								
25.3 Net ceded less assumed .....	20,846,590	0	20,340,099	0	0	496,933	0	0	0	9,558	0
26. Totals:											
26.1 Reinsurance ceded (Page 6, Line 6) .....	8,561,833	.0	8,055,342	.0	.0	496,933	.0	.0	.0	9,558	.0
26.2 Reinsurance assumed (Page 6, Line 22) .....	154,559	0	154,559	0	0	0	0	0	0	0	0
26.3 Net ceded less assumed .....	8,407,274	.0	7,900,783	.0	.0	496,933	.0	.0	.0	9,558	.0
<b>COMMISSIONS INCURRED (direct business only)</b>											
27. First year (other than single) .....	10,118,079		10,118,079								
28. Single .....	554,302		554,302								
29. Renewal .....	891,386		891,214	.163						.9	
30. Deposit-type contract funds .....	0										
31. Totals (to agree with Page 6, Line 21) .....	11,563,767	0	11,563,595	163	0	0	0	0	0	9	0

EXHIBIT 2 - GENERAL EXPENSES

	Insurance				5	6
	1	Accident and Health		4		
		2	3			
	Life	Cost Containment	All Other	All Other Lines of Business	Investment	Total
1. Rent .....	188,148		553			188,701
2. Salaries and wages .....	8,421,756		17,702			8,439,458
3.11 Contributions for benefit plans for employees .....	450,182					450,182
3.12 Contributions for benefit plans for agents .....						0
3.21 Payments to employees under non-funded benefit plans .....						0
3.22 Payments to agents under non-funded benefit plans .....						0
3.31 Other employee welfare .....						0
3.32 Other agent welfare .....						0
4.1 Legal fees and expenses .....	263,723		775			264,498
4.2 Medical examination fees .....	1,344,335					1,344,335
4.3 Inspection report fees .....	90,747					90,747
4.4 Fees of public accountants and consulting actuaries .....	476,557		1,401			477,958
4.5 Expense of investigation and settlement of policy claims .....	16,382		48			16,430
5.1 Traveling expenses .....	197,844					197,844
5.2 Advertising .....	93,856					93,856
5.3 Postage, express, telegraph and telephone .....	135,919		400			136,319
5.4 Printing and stationery .....	57,047		168			57,215
5.5 Cost or depreciation of furniture and equipment .....	1,293,136		3,802			1,296,938
5.6 Rental of equipment .....						0
5.7 Cost or depreciation of EDP equipment and software .....						0
6.1 Books and periodicals .....	7,284		22			7,306
6.2 Bureau and association fees .....	84,194		248			84,442
6.3 Insurance, except on real estate .....	37,096		109			37,205
6.4 Miscellaneous losses .....						0
6.5 Collection and bank service charges .....	124,633		366			124,999
6.6 Sundry general expenses .....	157,992		235			158,227
6.7 Group service and administration fees .....						0
6.8 Reimbursements by uninsured plans .....						0
7.1 Agency expense allowance .....	62,860		185			63,045
7.2 Agents' balances charged off (less \$ .....recovered) .....						0
7.3 Agency conferences other than local meetings .....	1,158,282					1,158,282
9.1 Real estate expenses .....						0
9.2 Investment expenses not included elsewhere .....					214,390	214,390
9.3 Aggregate write-ins for expenses .....	0	0	0	0	0	0
10. General expenses incurred .....	14,661,973	0	26,014	0	214,390	(a) 14,902,377
11. General expenses unpaid December 31, prior year .....	1,557,594	0	0	0	0	1,557,594
12. General expenses unpaid December 31, current year .....	1,564,724					1,564,724
13. Amounts receivable relating to uninsured plans, prior year .....	0	0	0	0	0	0
14. Amounts receivable relating to uninsured plans, current year .....						0
15. General expenses paid during year (Lines 10+11-12-13+14) .....	14,654,843	0	26,014	0	214,390	14,895,247
<b>DETAILS OF WRITE-INS</b>						
09.301. Need to input details .....	0					0
09.302. ....						
09.303. ....						
09.398. Summary of remaining write-ins for Line 9.3 from overflow page .....	0	0	0	0	0	0
09.399. Totals (Lines 09.301 through 09.303 + 09.398) (Line 9.3 above) .....	0	0	0	0	0	

(a) Includes management fees of \$ 8,894,223 to affiliates and \$ to non-affiliates.

EXHIBIT 3 - TAXES, LICENSES AND FEES (EXCLUDING FEDERAL INCOME TAXES)

	Insurance			4	5
	1	2	3		
	Life	Accident and Health	All Other Lines of Business	Investment	Total
1. Real estate taxes .....					0
2. State insurance department licenses and fees .....	141,241				141,241
3. State taxes on premiums .....	1,870,457				1,870,457
4. Other state taxes, incl. \$ ..... for employee benefits .....					0
5. U.S. Social Security taxes .....					0
6. All other taxes .....	11,754				11,754
7. Taxes, licenses and fees incurred .....	2,023,452	0	0	0	2,023,452
8. Taxes, licenses and fees unpaid December 31, prior year ..	1,793,425	0	0	0	1,793,425
9. Taxes, licenses and fees unpaid December 31, current year ..	1,874,428				1,874,428
10. Taxes, licenses and fees paid during year (Lines 7 + 8 - 9) ..	1,942,449	0	0	0	1,942,449

EXHIBIT 4 - DIVIDENDS OR REFUNDS

	1	2
	Life	Accident and Health
1. Applied to pay renewal premiums .....	273,960	
2. Applied to shorten the endowment or premium-paying period .....		
3. Applied to provide paid-up additions .....	59,401	
4. Applied to provide paid-up annuities .....		
5. Total Lines 1 through 4 .....	333,361	0
6. Paid-in cash .....		
7. Left on deposit .....	0	0
8. Aggregate write-ins for dividend or refund options .....		
9. Total Lines 5 through 8 .....	333,361	0
10. Amount due and unpaid .....	294,703	
11. Provision for dividends or refunds payable in the following calendar year .....	59,401	
12. Terminal dividends .....		
13. Provision for deferred dividend contracts .....		
14. Amount provisionally held for deferred dividend contracts not included in Line 13 .....		
15. Total Lines 10 through 14 .....	354,104	0
16. Total from prior year .....	331,401	0
17. Total dividends or refunds (Lines 9 + 15 - 16) .....	356,064	0
DETAILS OF WRITE-INS		
0801. ....		
0802. ....		
0803. ....		
0898. Summary of remaining write-ins for Line 8 from overflow page .....	0	0
0899. Totals (Line 0801 through 0803 + 0898) (Line 8 above) .....	0	0

EXHIBIT 5 - AGGREGATE RESERVE FOR LIFE CONTRACTS

1	2	3	4	5	6
Valuation Standard	Total	Industrial	Ordinary	Credit (Group and Individual)	Group
LIFE INSURANCE					
0100001. 58 CSO ALB 3.50%.....	3,175,545		3,175,545		
0100002. 58 CSO ALB 4.00%.....	43,039		43,039		
0100003. 58 CSO ALB 2.50%.....	414,062		414,062		
0100004. 58 CSO ALB 4.50%.....	327,792		327,792		
0100005. 80 CSO ALB 4.00%.....	35,762,179		35,762,179		
0100006. 80 CSO ALB 4.50%.....	109,472,994		109,472,994		
0100007. 80 CSO ALB 5.00%.....	3,183,636		3,183,636		
0100008. 80 CSO ALB 5.50%.....	5,025,953		5,025,953		
0100009. 80 CSO ALB 4.00% SEGMENTED.....	71,532,131		71,532,131		
0100010. 80 CSO ALB 4.50% SEGMENTED.....	87,690,857		87,690,857		
0100011. 2001 CSO ALB 3.00%.....	18,467,772		18,467,772		
0100012. 2001 CSO ALB 4.00%.....	105,711,512		105,711,512		
0100013. 2001 CSO ALB 4.00% - AG38.....	6,878,468		6,878,468		
0100014. 2001 CSO ALB 4.50%.....	6,031		6,031		
0100015. 58 CET 2.5%.....	0				
0100016. 2001 CSO ALB 3.50% - AG38.....	11,591,527		11,591,527		
0100017. 2001 CSO ALB 3.50% - AG38.....	66,076,241		66,076,241		
0100018. 58 CET 2.5%.....	234		234		
0100019. 80 CET 4.5%.....	791,609		791,609		
0100020. 2001 CSO ALB 5.0%.....	1,720,876		1,720,876		
0199997 Totals (Gross).....	527,872,458	0	527,872,458	0	0
0199998 Reinsurance ceded.....	255,260,509		255,260,509		
0199999 Totals (Net).....	272,611,949	0	272,611,949	0	0
ANNUITIES (excluding supplementary contracts with life contingencies):					
0200001. 37 SA 3.5% Def.....	0	XXX		XXX	
0200002. 37 SA 4.5% Def.....	6,474,006	XXX	6,474,006	XXX	
0200003. Single Pay Def Annuity.....	30,733,570	XXX	30,733,570	XXX	
0200004. Flex Pay Def Annuity.....	17,614,753	XXX	17,614,753	XXX	
0200005. 457 Annuity.....	0	XXX		XXX	
0200006. Immediate Annuities.....	1,407,210	XXX	1,407,210	XXX	
0299997 Totals (Gross).....	56,229,539	XXX	56,229,539	XXX	0
0299998 Reinsurance ceded.....	0	XXX		XXX	
0299999 Totals (Net).....	56,229,539	XXX	56,229,539	XXX	0
SUPPLEMENTARY CONTRACTS WITH LIFE CONTINGENCIES:					
0399997 Totals (Gross).....	0	0	0	0	0
0399998 Reinsurance ceded.....	0				
0399999 Totals (Net).....	0	0	0	0	0
ACCIDENTAL DEATH BENEFITS:					
0400001. 59 ADB and 58 CSO 3.5%.....	211,758		211,758		
0499997 Totals (Gross).....	211,758	0	211,758	0	0
0499998 Reinsurance ceded.....	166,085		166,085		
0499999 Totals (Net).....	45,673	0	45,673	0	0
DISABILITY-ACTIVE LIVES:					
0500001. 52 Disability and 58 CSO 3.00%.....	1,383,772		1,383,772		
0599997 Totals (Gross).....	1,383,772	0	1,383,772	0	0
0599998 Reinsurance ceded.....	0				
0599999 Totals (Net).....	1,383,772	0	1,383,772	0	0
DISABILITY-DISABLED LIVES:					
0600001. 52 Dis / 58 CSO.....	1,385,670		1,385,670		
0699997 Totals (Gross).....	1,385,670	0	1,385,670	0	0
0699998 Reinsurance ceded.....	0				
0699999 Totals (Net).....	1,385,670	0	1,385,670	0	0
MISCELLANEOUS RESERVES					
0700001. For excesss of valuation net premiums over corresponding gross premiums on respective policies.....	20,570,643		20,570,643		
0700002. For non-deduction of deferred fractional premiums at the death of the insured.....	5,816,973		5,816,973		
0799997 Totals (Gross).....	26,387,616	0	26,387,616	0	0
0799998 Reinsurance ceded.....	14,748,297		14,748,297		
0799999 Totals (Net).....	11,639,319	0	11,639,319	0	0
9999999 Totals (Net) - Page 3, Line 1.....	343,295,922	0	343,295,922	0	0



1.1	Has the reporting entity ever issued both participating and non-participating contracts?.....	Yes [ <input checked="" type="checkbox"/> ]	No [ <input type="checkbox"/> ]
1.2	If not, state which kind is issued: .....		
2.1	Does the reporting entity at present issue both participating and non-participating contracts? .....	Yes [ <input type="checkbox"/> ]	No [ <input checked="" type="checkbox"/> ]
2.2	If not, state which kind is issued: Non-participating contracts only .....		
3.	Does the reporting entity at present issue or have in force contracts that contain non-guaranteed elements? .....	Yes [ <input checked="" type="checkbox"/> ]	No [ <input type="checkbox"/> ]
	If so, attach a statement that contains the determination procedures, answers to the interrogatories and an actuarial opinion as described in the instructions.		
4.	Has the reporting entity any assessment or stipulated premium contracts in force? .....	Yes [ <input type="checkbox"/> ]	No [ <input checked="" type="checkbox"/> ]
	If so, state:		
4.1	Amount of insurance:.....	\$	
4.2	Amount of reserve:.....	\$	
4.3	Basis of reserve: .....		
4.4	Basis of regular assessments: .....		
4.5	Basis of special assessments: .....		
4.6	Assessments collected during the year: .....	\$	
5.	If the contract loan interest rate guaranteed in any one or more of its currently issued contracts is less than 5%, not in advance, state the contract loan rate guarantees on any such contracts: .....		
6.	Does the reporting entity hold reserves for any annuity contracts that are less than the reserves that would be held on a standard basis? .....	Yes [ <input type="checkbox"/> ]	No [ <input checked="" type="checkbox"/> ]
6.1	If so, state the amount of reserve on such contracts on the basis actually held:.....	\$	
6.2	That would have been held (on an exact or approximate basis) using the actual ages of the annuitants; the interest rate(s) used in 6.1; and the same mortality basis used by the reporting entity for the valuation of comparable annuity benefits issued to standard lives. If the reporting entity has no comparable annuity benefits for standard lives to be valued, the mortality basis shall be the table most recently approved by the state of domicile for valuing individual annuity benefits:..... Attach statement of methods employed in their valuation.		
7.	Does the reporting entity have any Synthetic GIC contracts or agreements in effect as of December 31 of the current year? ..	Yes [ <input type="checkbox"/> ]	No [ <input checked="" type="checkbox"/> ]
7.1	If yes, state the total dollar amount of assets covered by these contracts or agreements:.....	\$	
7.2	Specify the basis (fair value, amortized cost, etc.) for determining the amount .....		
7.3	State the amount of reserves established for this business:.....	\$	
7.4	Identify where the reserves are reported in the blank .....		
8.	Does the reporting entity have any Contingent Deferred Annuity contracts or agreements in effect as of December 31 of the current year?.....	Yes [ <input type="checkbox"/> ]	No [ <input checked="" type="checkbox"/> ]
8.1	If yes, state the total dollar amount of account value covered by these contracts or agreements:.....	\$	
8.2	State the amount of reserves established for this business:.....	\$	
8.3	Identify where the reserves are reported in the blank: .....		
9.	Does the reporting entity have any Guaranteed Lifetime Income Benefit contracts, agreements or riders in effect as of December 31 of the current year?.....	Yes [ <input type="checkbox"/> ]	No [ <input checked="" type="checkbox"/> ]
9.1	If yes, state the total dollar amount of any account value associated with these contracts, agreements or riders:.....	\$	
9.2	State the amount of reserves established for this business:.....	\$	
9.3	Identify where the reserves are reported in the blank: .....		

[illegible]

EXHIBIT 6 - AGGREGATE RESERVES FOR ACCIDENT AND HEALTH CONTRACTS

	1  Total	2  Group Accident and Health	3  Credit Accident and Health (Group and Individual)	4  Collectively Renewable	Other Individual Contracts				
					5  Non-Cancelable	6  Guaranteed Renewable	7  Non-Renewable for Stated Reasons Only	8  Other Accident Only	9  All Other
ACTIVE LIFE RESERVE									
1. Unearned premium reserves .....	22,116					22,116			
2. Additional contract reserves (a) .....	802,796					802,796			
3. Additional actuarial reserves - Asset/Liability analysis .....	0								
4. Reserve for future contingent benefits .....	0								
5. Reserve for rate credits .....	0								
6. Aggregate write-ins for reserves .....	0	0	0	0	0	0	0	0	0
7. Totals (Gross) .....	824,912	0	0	0	0	824,912	0	0	0
8. Reinsurance ceded .....	591,596					591,596			
9. Totals (Net) .....	233,316	0	0	0	0	233,316	0	0	0
CLAIM RESERVE									
10. Present value of amounts not yet due on claims .....	414,682					414,682			
11. Additional actuarial reserves-Asset/Liability analysis .....	0								
12. Reserve for future contingent benefits .....	0								
13. Aggregate write-ins for reserves .....	0	0	0	0	0	0	0	0	0
14. Totals (Gross) .....	414,682	0	0	0	0	414,682	0	0	0
15. Reinsurance ceded .....	289,208					289,208			
16. Totals (Net) .....	125,474	0	0	0	0	125,474	0	0	0
17. TOTAL (Net) .....	358,790	0	0	0	0	358,790	0	0	0
18. TABULAR FUND INTEREST	32,088					32,088			
DETAILS OF WRITE-INS									
0601. ....									
0602. ....									
0603. ....									
0698. Summary of remaining write-ins for Line 6 from overflow page .....	0	0	0	0	0	0	0	0	0
0699. Totals (Lines 0601 through 0603 plus 0698) (Line 6 above) .....	0	0	0	0	0	0	0	0	0
1301. ....									
1302. ....									
1303. ....									
1398. Summary of remaining write-ins for Line 13 from overflow page .....	0	0	0	0	0	0	0	0	0
1399. Totals (Lines 1301 through 1303 plus 1398) (Line 13 above) .....	0	0	0	0	0	0	0	0	0

(a) Attach statement as to valuation standard used in calculating this reserve, specifying reserve bases, interest rates and methods.

EXHIBIT 7 – DEPOSIT-TYPE CONTRACTS

	1	2	3	4	5	6
	Total	Guaranteed Interest Contracts	Annuities Certain	Supplemental Contracts	Dividend Accumulations or Refunds	Premium and Other Deposit Funds
1. Balance at the beginning of the year before reinsurance .....	362,072				56,174	305,898
2. Deposits received during the year .....	1,008				1,008	
3. Investment earnings credited to the account .....	18,466				2,543	15,923
4. Other net change in reserves .....	0					
5. Fees and other charges assessed .....	0					
6. Surrender charges .....	0					
7. Net surrender or withdrawal payments .....	62,322				5,317	57,005
8. Other net transfers to or (from) Separate Accounts .....	0					
9. Balance at the end of current year before reinsurance (Lines 1+2+3+4-5-6-7-8) .....	319,224	0	0	0	54,408	264,816
10. Reinsurance balance at the beginning of the year .....	0					
11. Net change in reinsurance assumed .....	0					
12. Net change in reinsurance ceded .....	0					
13. Reinsurance balance at the end of the year (Lines 10+11-12) .....	0	0	0	0	0	0
14. Net balance at the end of current year after reinsurance (Lines 9 + 13)	319,224	0	0	0	54,408	264,816

EXHIBIT 8 - CLAIMS FOR LIFE AND ACCIDENT AND HEALTH CONTRACTS

PART 1 - Liability End of Current Year											
	1	2	Ordinary			6	Group		Accident and Health		
			3	4	5		7	8	9	10	11
	Total	Industrial Life	Life Insurance	Individual Annuities	Supplementary Contracts	Credit Life (Group and Individual)	Life Insurance	Annuities	Group	Credit (Group and Individual)	Other
1. Due and unpaid:											
1.1 Direct .....	6,305,214		6,275,214				30,000				
1.2 Reinsurance assumed .....	386,527		386,527								
1.3 Reinsurance ceded .....	2,280,225		2,264,000				10,000				6,225
1.4 Net .....	4,411,516	0	4,397,741	0	0	0	20,000	0	0	0	(6,225)
2. In course of settlement:											
2.1 Resisted .....	0										
2.11 Direct .....	0										
2.12 Reinsurance assumed .....	0										
2.13 Reinsurance ceded .....	0										
2.14 Net .....	0	0	(b) 0	(b) 0	0	(b) 0	(b) 0	0	0	0	0
2.2 Other .....	0										
2.21 Direct .....	0										
2.22 Reinsurance assumed .....	0										
2.23 Reinsurance ceded .....	0										
2.24 Net .....	0	0	(b) 0	(b) 0	0	(b) 0	(b) 0	0	(b) 0	(b) 0	(b) 0
3. Incurred but unreported:											
3.1 Direct .....	700,000		700,000								
3.2 Reinsurance assumed .....	0										
3.3 Reinsurance ceded .....	0										
3.4 Net .....	700,000	0	(b) 700,000	(b) 0	0	(b) 0	(b) 0	0	(b) 0	(b) 0	(b) 0
4. TOTALS .....											
4.1 Direct .....	7,005,214	0	6,975,214	0	0	0	30,000	0	0	0	0
4.2 Reinsurance assumed .....	386,527	0	386,527	0	0	0	0	0	0	0	0
4.3 Reinsurance ceded .....	2,280,225	0	2,264,000	0	0	0	10,000	0	0	0	6,225
4.4 Net .....	5,111,516	(a) 0	(a) 5,097,741	0	0	0	(a) 20,000	0	0	0	(6,225)

(a) Including matured endowments (but not guaranteed annual pure endowments) unpaid amounting to \$ .....in Column 2, \$ .....in Column 3 and \$ .....in Column 7.

(b) Include only portion of disability and accident and health claim liabilities applicable to assumed "accrued" benefits. Reserves (including reinsurance assumed and net of reinsurance ceded) for unaccrued benefits for Ordinary Life Insurance \$ ..... Individual Annuities \$ ....., Credit Life (Group and Individual) \$ ....., and Group Life \$ ..... are included in Page 3, Line 1, (See Exhibit 5, Section on Disability Disabled Lives); and for Group Accident and Health \$ ..... Credit (Group and Individual) Accident and Health \$ ....., and Other Accident and Health \$ ..... are included in Page 3, Line 2 (See Exhibit 6, Claim Reserve).



EXHIBIT 8 - CLAIMS FOR LIFE AND ACCIDENT AND HEALTH CONTRACTS

	PART 2 - Incurred During the Year										
	1	2	Ordinary			6	Group		Accident and Health		
	Total	Industrial Life (a)	Life Insurance (b)	Individual Annuities	Supplementary Contracts	Credit Life (Group and Individual)	Life Insurance (c)	Annuities	Group	Credit (Group and Individual)	Other
1. Settlements during the year:											
1.1 Direct .....	50,018,537		44,399,142	5,077,267			338,000				204,128
1.2 Reinsurance assumed .....	1,829,604		1,829,604								
1.3 Reinsurance ceded .....	18,252,044		18,050,093				112,000				89,951
1.4 Net ..... <sup>(d)</sup>	33,596,097	0	28,178,653	5,077,267	0	0	226,000	0	0	0	114,177
2. Liability December 31, current year from Part 1:											
2.1 Direct .....	7,005,214	0	6,975,214	0	0	0	30,000	0	0	0	0
2.2 Reinsurance assumed .....	386,527	0	386,527	0	0	0	0	0	0	0	0
2.3 Reinsurance ceded .....	2,280,225	0	2,264,000	0	0	0	10,000	0	0	0	6,225
2.4 Net .....	5,111,516	0	5,097,741	0	0	0	20,000	0	0	0	(6,225)
3. Amounts recoverable from reinsurers December 31, current year .....	5,402,412		5,402,412								
4. Liability December 31, prior year:											
4.1 Direct .....	7,396,024	0	7,396,024	0	0	0	0	0	0	0	0
4.2 Reinsurance assumed .....	462,018	0	462,018	0	0	0	0	0	0	0	0
4.3 Reinsurance ceded .....	4,330,644	0	4,324,666	0	0	0	0	0	0	0	5,978
4.4 Net .....	3,527,398	0	3,533,376	0	0	0	0	0	0	0	(5,978)
5. Amounts recoverable from reinsurers December 31, prior year .....	3,712,828	0	3,712,828	0	0	0	0	0	0	0	0
6. Incurred benefits:											
6.1 Direct .....	49,627,727	0	43,978,332	5,077,267	0	0	368,000	0	0	0	204,128
6.2 Reinsurance assumed .....	1,754,113	0	1,754,113	0	0	0	0	0	0	0	0
6.3 Reinsurance ceded .....	17,891,209	0	17,679,011	0	0	0	122,000	0	0	0	90,198
6.4 Net .....	33,490,631	0	28,053,434	5,077,267	0	0	246,000	0	0	0	113,930

(a) Including matured endowments (but not guaranteed annual pure endowments) amounting to \$ .....in Line 1.1, \$ .....in Line 1.4.  
\$ .....in Line 6.1 and \$ .....in Line 6.4.

(b) Including matured endowments (but not guaranteed annual pure endowments) amounting to \$ .....in Line 1.1, \$ .....in Line 1.4.  
\$ .....in Line 6.1 and \$ .....in Line 6.4.

(c) Including matured endowments (but not guaranteed annual pure endowments) amounting to \$ .....in Line 1.1, \$ .....in Line 1.4.  
\$ .....in Line 6.1 and \$ .....in Line 6.4.

(d) Includes \$ .....premiums waived under total and permanent disability benefits.

EXHIBIT OF NONADMITTED ASSETS

	1	2	3
	Current Year Total Nonadmitted Assets	Prior Year Total Nonadmitted Assets	Change in Total Nonadmitted Assets (Col. 2 - Col. 1)
1. Bonds (Schedule D).....	0	0	0
2. Stocks (Schedule D):			
2.1 Preferred stocks .....	0	0	0
2.2 Common stocks .....	781	781	0
3. Mortgage loans on real estate (Schedule B):			
3.1 First liens .....	0	0	0
3.2 Other than first liens .....	0	0	0
4. Real estate (Schedule A):			
4.1 Properties occupied by the company .....	0	0	0
4.2 Properties held for the production of income.....	0	0	0
4.3 Properties held for sale .....	0	0	0
5. Cash (Schedule E-Part 1), cash equivalents (Schedule E-Part 2) and short-term investments (Schedule DA).....	0	0	0
6. Contract loans .....	0	0	0
7. Derivatives (Schedule DB).....	0	0	0
8. Other invested assets (Schedule BA) .....	0	0	0
9. Receivables for securities .....	0	0	0
10. Securities lending reinvested collateral assets (Schedule DL).....	0	0	0
11. Aggregate write-ins for invested assets .....	0	0	0
12. Subtotals, cash and invested assets (Lines 1 to 11) .....	781	781	0
13. Title plants (for Title insurers only).....	0	0	0
14. Investment income due and accrued .....	0	0	0
15. Premiums and considerations:			
15.1 Uncollected premiums and agents' balances in the course of collection.....	0	0	0
15.2 Deferred premiums, agents' balances and installments booked but deferred and not yet due.....	0	0	0
15.3 Accrued retrospective premiums and contracts subject to redetermination .....	0	0	0
16. Reinsurance:			
16.1 Amounts recoverable from reinsurers .....	0	0	0
16.2 Funds held by or deposited with reinsured companies .....	0	0	0
16.3 Other amounts receivable under reinsurance contracts .....	0	0	0
17. Amounts receivable relating to uninsured plans .....	0	0	0
18.1 Current federal and foreign income tax recoverable and interest thereon .....	0	0	0
18.2 Net deferred tax asset.....	8,939,509	3,445,081	(5,494,428)
19. Guaranty funds receivable or on deposit .....	0	0	0
20. Electronic data processing equipment and software.....	389,719	982,783	593,064
21. Furniture and equipment, including health care delivery assets.....	0	0	0
22. Net adjustment in assets and liabilities due to foreign exchange rates .....	0	0	0
23. Receivables from parent, subsidiaries and affiliates .....	0	0	0
24. Health care and other amounts receivable.....	0	0	0
25. Aggregate write-ins for other-than-invested assets .....	1,259,137	1,001,132	(258,005)
26. Total assets excluding Separate Accounts, Segregated Accounts and Protected Cell Accounts (Lines 12 to 25).....	10,589,146	5,429,777	(5,159,369)
27. From Separate Accounts, Segregated Accounts and Protected Cell Accounts.....	0	0	0
28. Total (Lines 26 and 27)	10,589,146	5,429,777	(5,159,369)
DETAILS OF WRITE-INS			
1101. ....		0	0
1102. ....			
1103. ....			
1198. Summary of remaining write-ins for Line 11 from overflow page .....	0	0	0
1199. Totals (Lines 1101 through 1103 plus 1198) (Line 11 above)	0	0	0
2501. Receivable for Agent Loans.....	429,429	222,641	(206,788)
2502. Premium Tax Credit.....	829,708	778,491	(51,217)
2503. Reinsurance Recoverable.....		0	0
2598. Summary of remaining write-ins for Line 25 from overflow page .....	0	0	0
2599. Totals (Lines 2501 through 2503 plus 2598) (Line 25 above)	1,259,137	1,001,132	(258,005)

ANNUAL STATEMENT FOR THE YEAR 2016 OF THE GRANGE LIFE INSURANCE COMPANY

NOTES TO FINANCIAL STATEMENTS

1) Summary of Significant Accounting Policies

A. Accounting Practices

The accompanying financial statements of Grange Life Insurance Company (Company) have been prepared in conformity with the *Accounting Practices and Procedures Manual* of the National Association of Insurance Commissioners (NAIC) and accounting practices prescribed or permitted by The Ohio Department of Insurance (Department).

A reconciliation of the Company's net income and capital and surplus between NAIC SAP and practices prescribed and permitted by the State of Ohio is shown below:

NET INCOME	SSAP #	F/S Page	F/S Line #	2016	2015
(1) Grange Life Insurance Company state basis (Page 4, Line 35, Columns 1&2)				(28,819,336)	(1,562,997)
(2) State Prescribed Practices that increase/(decrease) NAIC SAP				0	0
(3) State Permitted Practices that increase/(decrease) NAIC SAP				0	0
(4) NAIC SAP (1-2-3=4)				(28,819,336)	(1,562,997)

SURPLUS	SSAP #	F/S Page	F/S Line#	2016	2015
(5) Grange Life Insurance Company state basis (Page 3, Line 38, Columns 1&2)				73,746,081	42,455,075
(6) State Prescribed Practices that increase/(decrease) NAIC SAP				0	0
(7) State Permitted Practices that increase/(decrease) NAIC SAP				0	0
(8) NAIC SAP (5-6-7=8)				73,746,081	42,455,075

Failure of the amounts to add to totals is due to rounding or truncation.

B. Use of Estimates in the Preparation of the Financial Statements

In preparing the financial statements in conformity with Statutory Accounting Principles (SAP) as described in the *Annual Statement Instructions* and the *Accounting Practices and Procedures Manual*, management is required to make certain estimates and assumptions that affect 1) the reported amounts of assets and liabilities and the disclosures of contingent assets and liabilities as of the date of the financial statements and 2) the reported amounts of revenues and expenses for the reporting period. Actual results could differ from those estimates.

C. Accounting Policies

Investments

Management regularly reviews the Company's investment portfolio to evaluate the necessity of recording impairment losses for other-than-temporary declines in the fair value of invested assets. A number of criteria are considered during this process including, but not limited to, the following: 1) the Company's intent and ability to retain the security for a period of time sufficient to allow for an anticipated recovery in fair value; 2) the recoverability of principal and interest in accordance with the contractual terms of the bond or other debt security in effect at the date of acquisition; 3) the extent and duration to which a security's fair value has been less than cost or amortized cost, as appropriate; 4) the current financial condition, near-term and long-term prospects of the issuer, including relevant industry conditions and trends; and 5) general economic conditions. Other-than-temporary impairment losses result in a permanent reduction of the cost basis of the underlying investment. Estimates for other-than-temporary declines in the fair value of invested assets are included in realized capital gains and losses on investments in the Summary of Operations (Page 4, Line 34).

Insurance Revenue and Expense Recognition

Life premiums are recognized as income over the premium paying period of the related policies. Premium income includes deposits made for universal life investment contracts. Annuity considerations are recognized as revenue when received. Accident & health and disability income premiums are earned ratably over the terms of the related insurance and reinsurance contracts or policies. Expenses incurred in connection with acquiring new insurance business, principally commission expenses and certain policy issue expenses (such as medical examination and inspection report fees), are charged to operations as incurred.

In addition, the Company uses the following accounting policies:

- Short-term investments are stated at amortized cost, which approximates fair value.
- Bonds are stated at amortized cost unless rated at a "6" by the NAIC, in which case bonds are stated at the lower of amortized cost or fair value. Amortization of bond premium or discount is calculated using the scientific interest method, taking into consideration interest and principal provisions over the remaining life of the bond.
- Common stocks are stated at fair value.
- The Company has no preferred stocks.
- The Company has no mortgage loans.
- Single class and multi-class mortgage-backed/asset-backed securities are stated at amortized cost using the scientific interest method, including anticipated prepayments. The retrospective adjustment method is used to value these securities.
- The Company carries its wholly owned subsidiaries, Grange Life Reinsurance Company (Grange Life Re) and Northview Insurance Agency, Inc., at the value of its underlying equity.
- The Company has no ownership interests in joint ventures, partnerships or limited liability companies.
- The Company has no derivative instruments.
- The Company does not consider investment income as a factor in the deficiency reserve calculation, in accordance with Statement of Statutory Accounting Principles No. 54, *Individual and Group Accident and Health Contracts*.

ANNUAL STATEMENT FOR THE YEAR 2016 OF THE GRANGE LIFE INSURANCE COMPANY

NOTES TO FINANCIAL STATEMENTS

11. The Company's accident & health liabilities include amounts for long-term disability (LTD). For accident only liabilities, an active life reserve is established for individual policies using an established valuation table and interest rates. For LTD liabilities, a seriatim reserve is established for individual claimants using an established valuation table and interest rates.

The liability recorded for life insurance and accident & health claims includes an amount, based on past experience, for losses incurred but not reported. Such liabilities are necessarily based on assumptions and estimates and while management believes that the recorded amounts are adequate, the ultimate liability may be in excess of or less than the amount provided. The methods for making such estimates and for establishing the resulting liabilities are continually reviewed; any adjustments are reflected in the current period.

12. The Company has not modified its capitalization policy from the prior period.
13. The Company has no pharmaceutical rebate receivables.

2) Accounting Changes and Correction of Errors

- A. Material Changes in Accounting Principles
- NONE
- B. Correction of Errors

1. In 2015, as the Company was in the process of working with the reinsurance companies to collect on the reinsurance recoverable amounts identified in 2014 (see 2014 correction of error footnote), further consideration as to the legal rights to collect such amounts arose. As a result, the Company identified adjustments in net admitted reinsurance recoverable assets and contingent fees accrued of \$1,024,757 as of December 31, 2015. The primary reasons for the inability to collect the reinsurance recoverable amounts were the discovery of an errors and omissions amendment with one reinsurer, and the misinterpretation of contractual language with another reinsurer. This resulted in the Company being unable to collect reinsurance recoverable amounts from these reinsurers and also alleviating the Company of the related contingent fees accrued and initially deemed owed to the consultant. The net result of these errors was that net income in prior periods (and, as a result, unassigned surplus) had been understated by \$110,277, while total capital and surplus was overstated by \$725,923. Details of the errors and the financial impact on prior periods is as follows:
- a. During the collection activities, the Company identified the contractual issues resulting in the inability to collect the reinsurance recoverable amounts. As such, the net admitted reinsurance recoverable amounts related to the reinsurers associated with these contracts were overstated and the accrued contingent fees initially deemed owed to the consultant were overstated. The net impact of the Company's previously issued financial statements is the net admitted reinsurance recoverable (Assets, line 25) was overstated by \$1,024,757 and the contingent fees accrued (Liabilities, Surplus, and Other Funds, line 12) was overstated by \$298,834 as of December 31, 2014. Additionally, premiums and annuity considerations for life and accident and health contracts (Summary of Operations, line 1) was overstated and general insurance expenses (Summary of Operations, line 23) was overstated during the period by \$188,557 and \$298,834, respectively. The following adjustments were recorded in the December 31, 2015 financial results to reflect this error: a) on line 25.03 of Assets, a decrease in net admitted assets of \$1,024,757 was recorded to account for the amounts of reinsurance uncollectible (including the impact of the reversal of the \$340,122 amount non admitted attributable to an estimated allowance for uncollectible amounts); b) on line 12 of the Liabilities, Surplus, and Other Funds page, a decrease in contingent fees accrued of \$298,834 was recorded to reflect the amounts no longer owed to the consultant; c) on line 35 of the Liabilities, Surplus and Other Funds Page, (\$725,923) was recorded to decrease unassigned funds (surplus).

3) Business Combinations and Goodwill

NONE

4) Discontinued Operations

NONE

5) Investments

- A. Mortgage Loans, including Mezzanine Real Estate Loans
- NONE
- B. Debt Restructuring
- NONE
- C. Reverse Mortgages
- NONE
- D. Loan-Backed Securities
1. Prepayment assumptions for single class and multi-class mortgage-backed/asset-backed securities were obtained from Hub Data and Bloomberg. These assumptions are consistent with the current interest rate and economic environment.
2. All securities during 2016 with a recognized other-than-temporary impairment, disclosed in the aggregate, classified on the basis for the other-than-temporary impairment: NONE
3. Securities with a recognized other-than-temporary impairment currently held by the Company, where the present value of cash flows expected to be collected is less than the amortized cost basis of securities: NONE

ANNUAL STATEMENT FOR THE YEAR 2016 OF THE GRANGE LIFE INSURANCE COMPANY

NOTES TO FINANCIAL STATEMENTS

4. All impaired securities (fair value is less than cost or amortized cost) for which another-than-temporary impairment has not been recognized in earnings as a realized loss (including securities with a recognized other-than-temporary impairment for non-interest related declines when a non-recognized interest related impairment remains):

a. The aggregate amount of unrealized loss:

1. Less than 12 Months	\$ (3,855,485)
2. 12 Months or Longer	\$ (46,245)

b. The aggregate related fair value of securities with unrealized losses:

1. Less than 12 Months	\$ 105,261,869
2. 12 Months or Longer	\$ 2,786,646

5. According to SSAP 43R, the best estimate of future cash flows using the appropriate discount rate was calculated for each affected security, with other-than-temporary impairments realized to the extent that present value was less than amortized cost. Securities held with an intent to sell were other-than-temporarily impaired to current fair value. Securities with a present value greater than amortized cost were not other-than-temporarily impaired.

E. Repurchase Agreements and/or Securities Lending Transactions

1. Collateral from lending activities: According to the securities lending agreement, the collateral requirement shall be an amount equal to 102% of the then current market value of the relevant loaned securities where securities and collateral are denominated in the same currency, and 105% for all other securities.

2. As of December 31, 2016, the Company has not pledged any of its assets as collateral.

3. Collateral Received

a. Aggregate Amount of Cash Collateral Received

1. Repurchase Agreements

NONE

2. Securities Lending

(1)

Fair Value

a. Open	
b. 30 Days or Less	1,161,380
c. 31 to 60 Days	0
d. 61 to 90 Days	0
e. Greater Than 90 Days	0
f. Subtotal	\$1,161,380
g. Securities Received	0
h. Total Collateral Received	\$1,161,380

3. Dollar Repurchase Agreement

NONE

b. The aggregate fair value of all securities acquired from the sale, trade or use of the accepted collateral (reinvested collateral): \$1,161,380.

c. The Company receives primarily cash collateral in an amount in excess of the fair value of the securities lent. The Company's lending agent, JPMorgan Corporate and Investment Bank, reinvests the cash collateral according to investment guidelines outlined in the securities lending agreement. Under current conditions, the Company has \$343,395,400 of par value bonds (fair value of \$359,897,381) that are currently tradable securities that could be sold and used to pay for the \$1,161,380 in collateral calls that could come due under a worst-case scenario.

4. Securities Lending Transactions Administered by an Affiliated Agent

NONE

5. Collateral Reinvestment

a. Aggregate Amount of Cash Collateral Received (See schedule)

1. Repurchase Agreements

NONE

2. Securities Lending

(1)

(2)

Amortized Cost

Fair Value

a. Open	\$0	\$0
b. 30 Days or Less	1,032,359	1,032,359
c. 31 to 60 Days	129,021	129,021
d. 61 to 90 Days	0	0
e. 90 to 120 Days	0	0
f. 121 to 180 Days	0	0
g. 181 to 365 Days	0	0
h. 1 to 2 Years	0	0
i. 2 to 3 Years	0	0
j. Greater Than 3 Years	0	0
k. Sub-Total	\$1,161,380	\$1,161,380
l. Securities Received	0	0
m. Total Collateral Reinvested	\$1,161,380	\$1,161,380

ANNUAL STATEMENT FOR THE YEAR 2016 OF THE GRANGE LIFE INSURANCE COMPANY

NOTES TO FINANCIAL STATEMENTS

3. Dollar Repurchase Agreement

NONE

b. The Company's sources of cash that it uses to return cash collateral is dependent upon the liquidity of the current market conditions. Under current conditions, the Company has \$343,395,400 of par value bonds (fair value of \$359,897,381) that are currently tradable securities that could be sold and used to pay for the \$1,161,380 in collateral calls that could come due under a worst-case scenario.

F. Real Estate

NONE

G. Low-income housing tax credits (LHITC)

NONE

H. Restricted Assets

1. Restricted Assets (Including Pledged)

	Gross (Admitted and Non-admitted) Restricted							Current Year			
								8	9	Percentage	
	Current Year					6	7			10	11
	1	2	3	4	5						
Restricted Asset Category	Total General Account (G/A)	G/A Supporting Protected Cell Account Activity (a)	Total Protected Cell Account Restricted Assets	Protected Cell Account Assets Supporting G/A Activity (b)	Total (1 plus 3)	Total From Prior Year	Increase/ (Decrease) (5 minus 6)	Total Non-admitted Restricted	Total Admitted Restricted (5 minus 8)	Gross (Admitted & Non-Admitted) Restricted to Total Assets (c)	Admitted Restricted to Total Admitted Assets (d)
a. Subject to contractual obligation for which liability is not shown											
b. Collateral held under security lending agreements	\$1,161,380	\$0.00	\$0.00	\$0.00	\$1,161,380	\$6,702,589	(\$5,541,209)	\$1,161,380	\$0.00	0.3%	0.3%
c. Subject to repurchase agreements											
d. Subject to reverse repurchase agreements											
e. Subject to dollar repurchase agreements											
f. Subject to dollar reverse repurchase agreements											
g. Placed under option contracts											
h. Letter stock or securities restricted as to sale – excluding FHLB capital stock											
i. FHLB capital stock											
j. On deposit with states	\$2,558,575	\$0.00	\$0.00	\$0.00	\$2,558,575	\$2,591,743	(\$33,168)	\$2,558,575	\$0.00	0.6%	0.6%
k. On deposit with other regulatory bodies											
l. Pledged collateral to FHLB (including assets backing funding agreements)											
m. Pledged as collateral not captured in other categories											
n. Other restricted assets											
o. Total Restricted Assets	\$3,719,955	\$0.00	\$0.00	\$0.00	\$3,719,955	\$9,294,332	(\$5,574,377)		\$3,719,955	0.8%	0.8%

(a) Subset of column 1  
(b) Subset of column 3  
(c) Column 5 divided by Asset Page, Column 1, Line 28  
(d) Column 9 divided by Asset Page, Column 3, Line 28

2. Through 8.

NONE

ANNUAL STATEMENT FOR THE YEAR 2016 OF THE GRANGE LIFE INSURANCE COMPANY

NOTES TO FINANCIAL STATEMENTS

I. Working Capital Finance Investments

NONE

J. Offsetting and Netting of Assets and Liabilities

NONE

K. Structured Notes

Structured notes as defined per the Purposes and Procedures Manual of the NAIC Investment Analysis Office at December 31, 2016:

Cusip Identification	Actual Cost	Fair Value	Book/Adj Carrying Value	Mtg-Ref Security (YES/NO)
3130A9YG0	3,000,000	2,880,330	3,000,000	No
3134GAFP4	1,000,000	957,390	999,981	No
89236TBK0	739,875	742,980	757,180	No
TOTAL	4,739,875	4,580,700	4,757,161	

L. 5\* Securities

NONE

6) Joint Ventures, Partnerships and Limited Liability Companies

A. The Company has no investments in Joint Ventures, Partnerships or Limited Liability Companies.

B. NONE

7) Investment Income

A. Investment income due and accrued on bonds in default is excluded (non-admitted) from surplus.

B. The total amount excluded at December 31, 2016 and 2015 was \$0 and \$0, respectively.

8) Derivative Instruments

NONE

9) Income Taxes

A. The components of the net deferred tax asset/(liability) at December 31 are as follows:

1.

12/31/2016		
(1)	(2)	(3)
Ordinary	Capital	(Col 1+2) Total

(a) Gross Deferred Tax Assets	\$.....14,198,707	\$ .....160,514	\$ ..... 14,359,221
(b) Statutory Valuation Allowance Adjustments	\$.....0	\$ .....0	\$ .....0
(c) Adjusted Gross Deferred Tax Assets (1a - 1b)	\$.....14,198,707	\$ .....160,514	\$ .....14,359,221
(d) Deferred Tax Assets Nonadmitted	\$.....8,778,995	\$ .....160,514	\$ .....8,939,509
(e) Subtotal Net Admitted Deferred Tax Asset (1c -1d )	\$.....5,419,712	\$ .....0	\$ .....5,419,712
(f) Deferred Tax Liabilities	\$.....296,154	\$ .....0	\$ .....296,154
(g) Net Admitted Deferred Tax Asset/(Net Deferred Tax Liability) (1e - 1f)	\$.....5,123,558	\$ .....0	\$ ..... 5,123,558

12/31/2015		
(4)	(5)	(6)
Ordinary	Capital	(Col 4+5) Total

(a) Gross Deferred Tax Assets	\$.....8,496,165	\$ .....208,439	\$ .....8,677,604
(b) Statutory Valuation Allowance Adjustments	\$.....0	\$ .....0	\$ .....0
(c) Adjusted Gross Deferred Tax Assets (1a - 1b)	\$.....8,469,165	\$ .....208,439	\$ ..... 8,677,604
(d) Deferred Tax Assets Nonadmitted	\$.....3,445,081	\$ .....0	\$ ..... 3,445,081
(e) Subtotal Net Admitted Deferred Tax Asset (1c -1d )	\$.....5,024,084	\$ .....208,439	\$ ..... 5,232,523
(f) Deferred Tax Liabilities	\$..... 511,421	\$ .....0	\$ .....511,421
(g) Net Admitted Deferred Tax Asset/(Net Deferred Tax Liability) (1e - 1f)	\$.....4,512,663	\$ .....208,439	\$ ..... 4,721,102

Change		
(7)	(8)	(9)
(Col 1-4) Ordinary	(Col 2-5) Capital	(Col 7+8) Total

(a) Gross Deferred Tax Assets	\$.....5,729,542	\$ .....(47,925)	\$ .....5,681,617
(b) Statutory Valuation Allowance Adjustments	\$.....0	\$ .....0	\$ .....0
(c) Adjusted Gross Deferred Tax Assets (1a - 1b)	\$.....5,729,542	\$ .....(47,925)	\$ .....5,681,617
(d) Deferred Tax Assets Nonadmitted	\$.....5,333,914	\$ .....160,514	\$ .....5,494,428
(e) Subtotal Net Admitted Deferred Tax Asset (1c -1d )	\$.....395,628	\$ .....(208,439)	\$ .....187,189
(f) Deferred Tax Liabilities	\$.....(215,267)	\$ .....0	\$ .....(215,267)
(g) Net Admitted Deferred Tax Asset/(Net Deferred Tax Liability) (1e - 1f)	\$.....610,895	\$ .....(208,439)	\$ .....402,456

ANNUAL STATEMENT FOR THE YEAR 2016 OF THE GRANGE LIFE INSURANCE COMPANY

NOTES TO FINANCIAL STATEMENTS

2.

12/31/2016		
(1)	(2)	(3)
Ordinary	Capital	(Col 1+2) Total

Admission Calculation Components SSAP No. 101

(a)	Federal Income Taxes Paid In Prior Years Recoverable Through Loss Carrybacks.	\$.....0	\$ .....0	\$ .....0
(b)	Adjusted Gross Deferred Tax Assets Expected To Be Realized (Excluding The Amount Of Deferred Tax Assets From 2(a) above) After Application of the Threshold Limitation. (The Lesser of 2(b)1 and 2(b)2 Below)	\$.....5,123,558	\$ .....0	\$ .....5,123,558
1.	Adjusted Gross Deferred Tax Assets Expected to be Realized Following the Balance Sheet Date.	\$.....5,123,558	\$ .....0	\$ .....5,123,558
2.	Adjusted Gross Deferred Tax Assets Allowed per Limitation Threshold.	XXX	XXX	\$ ..... 9,889,567
(c)	Adjusted Gross Deferred Tax Assets (Excluding The Amount Of Deferred Tax Assets From 2(a) and 2(b) above) Offset by Gross Deferred Tax Liabilities.	\$.....296,154	\$ .....0	\$ ..... 296,154
(d)	Deferred Tax Assets Admitted as the result of application of SSAP No. 101.			
	Total (2(a) + 2(b) + 2(c))	\$.....5,419,712	\$ .....0	\$ ..... 5,419,712

12/31/2015		
(4)	(5)	(6)
Ordinary	Capital	(Col 4+5) Total

(a)	Federal Income Taxes Paid In Prior Years Recoverable Through Loss Carrybacks.	\$.....0	\$ .....0	\$ .....0
(b)	Adjusted Gross Deferred Tax Assets Expected To Be Realized (Excluding The Amount Of Deferred Tax Assets From 2(a) above) After Application of the Threshold Limitation. (The Lesser of 2(b)1 and 2(b)2 Below)	\$.....4,512,663	\$ .....208,439	\$ .....4,721,102
1.	Adjusted Gross Deferred Tax Assets Expected to be Realized Following the Balance Sheet Date.	\$.....4,512,663	\$ .....208,439	\$ .....4,721,102
2.	Adjusted Gross Deferred Tax Assets Allowed per Limitation Threshold.	XXX	XXX	\$ ..... 5,659,925
(c)	Adjusted Gross Deferred Tax Assets (Excluding The Amount Of Deferred Tax Assets From 2(a) and 2(b) above) Offset by Gross Deferred Tax Liabilities.	\$.....511,421	\$ .....0	\$ .....511,421
(d)	Deferred Tax Assets Admitted as the result of application of SSAP No. 101.			
	Total (2(a) + 2(b) + 2(c))	\$..... 5,024,084	\$ .....208,439	\$ ..... 5,232,523

Change		
(7)	(8)	(9)
(Col 1-4) Ordinary	(Col 2-5) Capital	(Col 7+8) Total

(a)	Federal Income Taxes Paid In Prior Years Recoverable Through Loss Carrybacks.	\$.....0	\$ .....0	\$ .....0
(b)	Adjusted Gross Deferred Tax Assets Expected To Be Realized (Excluding The Amount Of Deferred Tax Assets From 2(a) above) After Application of the Threshold Limitation. (The Lesser of 2(b)1 and 2(b)2 Below)	\$..... 610,895	\$ .....(208,439)	\$ .....402,456
1.	Adjusted Gross Deferred Tax Assets Expected to be Realized Following the Balance Sheet Date.	\$.....610,895	\$ .....(208,439)	\$ .....402,456
2.	Adjusted Gross Deferred Tax Assets Allowed per Limitation Threshold.	XXX	XXX	\$ .....4,229,642
(c)	Adjusted Gross Deferred Tax Assets (Excluding The Amount Of Deferred Tax Assets From 2(a) and 2(b) above) Offset by Gross Deferred Tax Liabilities.	\$.....(215,267)	\$ .....0	\$ .....(215,267)
(d)	Deferred Tax Assets Admitted as the result of application of SSAP No. 101.			
	Total (2(a) + 2(b) + 2(c))	\$.....395,628	\$ .....(208,439)	\$ .....187,189

3.

2016	2015
------	------

(a)	Ratio Percentage Used To Determine Recovery Period And Threshold Limitation Amount.	.....1385.27%	.....612.9%
(b)	Amount Of Adjusted Capital And Surplus Used To Determine Recovery Period And Threshold Limitation In 2(b) 2 Above.	\$.....71,446,884	\$ .....40,427,346

4.

12/31/2016		
(1)	(2)	(3)
Ordinary Percent	Capital Percent	(Col 1+2) Total Percent

Impact of Tax Planning Strategies

(a)	Adjusted Gross DTAs (% of Total Adjusted Gross DTAs)	.....-0.6%	.....0.7%	.....0.1%
(b)	Net Admitted Adjusted Gross DTAs (% of Total Net Admitted Adjusted Gross DTAs)	.....-1.8%	.....1.9%	..... 0.1%



ANNUAL STATEMENT FOR THE YEAR 2016 OF THE GRANGE LIFE INSURANCE COMPANY

NOTES TO FINANCIAL STATEMENTS

12/31/2015		
(4)	(5)	(6)
Ordinary Percent	Capital Percent	(Col 4+5) Total Percent

(a) Adjusted Gross DTAs (% of Total Adjusted Gross DTAs)	.....20.4%	.....2.4%	.....22.8%
(b) Net Admitted Adjusted Gross DTAs (% of Total Net Admitted Adjusted Gross DTAs)	.....37.5%	.....4.4%	.....41.9%

Change		
(7)	(8)	(9)
(Col 1-4) Ordinary Percent	(Col 2-5) Capital Percent	(Col 7+8) Total Percent

(a) Adjusted Gross DTAs (% of Total Adjusted Gross DTAs)	.....-21.0%	.....-1.7%	.....-22.70%
(b) Net Admitted Adjusted Gross DTAs (% of Total Net Admitted Adjusted Gross DTAs)	.....-39.3%	.....-2.5%	.....-41.8%
(c) Does the Company's tax-planning strategies include the use of reinsurance? Yes..... No..... X .....			

C. Current income taxes incurred consist of the following major components:

(1)	(2)	(3)
12/31/2016	12/31/2015	(Col 1-2) Change

1. Current Income Tax

(a) Federal	\$.....4,036,240	\$.....227,334	\$.....3,808,906
(b) Foreign	\$.....0	\$.....0	\$.....0
(c) Subtotal	\$.....4,036,240	\$.....227,334	\$.....3,808,906
(d) Federal income tax on net capital gains	\$.....0	\$.....(101,787)	\$.....101,787
(e) Utilization of capital loss carry-forwards	\$.....0	\$.....0	\$.....0
(f) Other	\$.....(23,390)	\$.....(121,709)	\$.....97,319
(g) Federal and foreign income taxes incurred	\$.....4,012,850	\$.....3,838	\$.....4,009,012

2. Deferred Tax Assets:

(a) Ordinary

(1) Discounting of unpaid losses	\$.....0	\$.....0	\$.....0
(2) Unearned premium reserve	\$.....0	\$.....0	\$.....0
(3) Policyholder reserves	\$.....6,433,996	\$.....4,194,398	\$.....2,239,598
(4) Investments	\$.....0	\$.....0	\$.....0
(5) Deferred acquisition costs	\$.....3,384,360	\$.....3,136,685	\$.....247,675
(6) Policyholder dividends accrual	\$.....20,790	\$.....19,532	\$.....1,258
(7) Fixed assets	\$.....5,935	\$.....0	\$.....5,935
(8) Compensation and benefits accrual	\$.....0	\$.....0	\$.....0
(9) Pension accrual	\$.....0	\$.....0	\$.....0
(10) Receivables - nonadmitted	\$.....577,099	\$.....674,531	\$.....(97,432)
(11) Net operating loss carry-forward	\$.....3,048,838	\$.....0	\$.....3,048,838
(12) Tax credit carry-forward	\$.....394,904	\$.....21,098	\$.....373,806
(13) Other (including items <5% of total ordinary tax assets)	\$.....332,785	\$.....422,921	\$.....(90,136)
(99) Subtotal	\$.....14,198,707	\$.....8,469,165	\$.....5,729,542
(b) Statutory valuation allowance adjustment	\$.....0	\$.....0	\$.....0
(c) Nonadmitted	\$.....8,778,995	\$.....3,445,081	\$.....5,333,914
(d) Admitted ordinary deferred tax assets (2a99 - 2b - 2c)	\$.....5,419,712	\$.....5,024,084	\$.....395,628
(e) Capital:			
(1) Investments	\$.....72,279	\$.....56,834	\$.....15,445
(2) Net capital loss carry-forward	\$.....88,235	\$.....151,605	\$.....(63,370)
(3) Real estate	\$.....0	\$.....0	\$.....0
(4) Other (including items <5% of total capital tax assets)	\$.....0	\$.....0	\$.....0
(99) Subtotal	\$.....160,514	\$.....208,439	\$.....(47,925)
(f) Statutory valuation allowance adjustment	\$.....0	\$.....0	\$.....0
(g) Nonadmitted	\$.....160,514	\$.....0	\$.....160,514
(h) Admitted capital deferred tax assets (2e99 - 2f - 2g)	\$.....0	\$.....208,439	\$.....(208,439)
(i) Admitted deferred tax assets (2d + 2h)	\$.....5,419,712	\$.....5,232,523	\$.....187,189

3. Deferred Tax Liabilities:

(a) Ordinary

(1) Investments	\$.....296,154	\$.....304,776	\$.....(8,622)
(2) Fixed assets	\$.....0	\$.....86,695	\$.....(86,695)
(3) Deferred and uncollected premium	\$.....0	\$.....0	\$.....0
(4) Policyholder reserves	\$.....0	\$.....0	\$.....0
(5) Other (including items<5% of total ordinary tax liabilities)	\$.....0	\$.....119,947	\$.....(119,947)
(99) Subtotal	\$.....296,154	\$.....511,418	\$.....(215,264)

ANNUAL STATEMENT FOR THE YEAR 2016 OF THE GRANGE LIFE INSURANCE COMPANY

NOTES TO FINANCIAL STATEMENTS

(b) Capital:		
(1) Investments	\$.....0	\$.....0
(2) Real Estate	\$.....0	\$.....0
(3) Other (including items <5% of total capital tax liabilities)	\$.....0	\$.....0
(99) Subtotal	\$.....0	\$.....0
(c) Deferred tax liabilities (3a99 + 3b99)		
	\$.....296,154	\$.....511,418
4. Net deferred tax assets/liabilities (2i - 3c)	\$.....5,123,558	\$.....4,721,105

D. Reconciliation of federal income tax rate to actual effective rate:

The provision for federal income taxed incurred is different from that which would be obtained by applying the statutory federal income tax rate to income before taxes. The significant items causing this difference are as follows:

	Amount	Tax Effect	Effective Tax Rate
1. Description:			
(a) Income Before Taxes	\$.....(24,148,926)	\$.....(8,452,124)	.....35.00%
(b) Reinsurance Recaptured	\$.....45,716,434	\$.....16,000,752	.....-66.26%
(c) Deferred Taxes transferred With Dissolution Election	\$.....(23,663,829)	\$.....(8,282,340)	.....34.30%
(d) Meals & Entertainment	\$.....24,751	\$.....8,663	.....-0.04%
(e) Statutory Valuation Allowance Adjustment	\$.....0	\$.....0	.....0.00%
(f) Reinsurance Deferred income from in-force block	\$.....(2,633,209)	\$.....(921,623)	.....3.82%
(g) Amortization of IMR	\$.....(438,179)	\$.....(153,363)	.....0.64%
(h) Tax Rate differential	\$.....(682,503)	\$.....(238,876)	.....0.99%
Other, Including Prior Year True-Up	\$.....442,506	\$.....154,880	.....-0.64%
Total	\$.....(5,382,954)	\$.....(1,884,031)	.....7.80%
2. Description:			
(a) Federal Income Tax Incurred [Expense/(Benefit)]		\$.....4,012,850	
(b) Tax on Capital Gains/(Losses)		\$.....0	
(c) Change in Net Deferred Income Tax [Charge/(Benefit)]		\$.....(5,896,881)	
Total		\$.....(1,884,031)	

E. Total \$.....(1,884,031)

Carryforwards, recoverable taxes, and IRC S6603 deposits:

1. At December 31, 2016, the Company had net operating loss carry forwards of:	\$.....8,710,965
At December 31, 2016, the Company had capital loss carry forwards, that expire in 2020, in the amount of:	\$.....252,101
At December 31, 2016, the Company had AMT credit carry forwards, which do not expire, in the amount of:	\$.....394,904

2. The following is income tax expense for 2014, 2015, and 2016 that is available for recoupment in the event of future net losses:

Year	Ordinary	Capital	Total
2014	\$.....0	\$.....0	\$.....0
2015	\$.....0	\$.....0	\$.....0
2016	\$.....0	\$.....0	\$.....0
Total	\$.....0	\$.....0	\$.....0

3. Deposits admitted under IRC S6603:  
NONE

F. The Company's federal income tax return is consolidated with the following entities:

1. Grange Life Reinsurance Company  
Northview Insurance Agency, Inc.
2. The method of allocation among companies is subject to a written agreement, approved by the Board of Directors, whereby allocation is made primarily on a separate company basis with current credit for losses.

G. Income tax loss contingencies:  
  
NONE

10) Information Concerning Parent, Subsidiaries, Affiliates, and Other Related Parties

A, B, & C. All employees of the parent company, Grange Mutual Casualty Company (Grange Mutual), are covered by a participating group life insurance policy issued by the Company. Premiums received from Grange Mutual amounted to \$2,097,343 and \$2,092,333 in 2016 and 2015, respectively. Dividends of \$273,960 and \$294,720 were paid to Grange Mutual in 2016 and 2015, respectively.

In December 2012, the Company formed Grange Life Reinsurance Company (Grange Life Re) as a Vermont special purpose financial captive insurance company. Grange Life Re issued 250,000 common shares of its capital stock, each with a par value of \$1.00, to the Company in exchange for paid-in capital of \$250,000. In 2012, the Company contributed an additional \$3,000,000 in surplus, designated as unassigned surplus. In August and December 2015, \$5,000,000 and \$10,000,000, respectively, of additional paid in capital were contributed by the Company and designated as unassigned surplus.

The Company entered into a coinsurance agreement on a funds withheld basis with Grange Life Re, whereby the captive will assume 100% of the risks and rewards of the universal and term life insurance policies effective January 1, 2012.

ANNUAL STATEMENT FOR THE YEAR 2016 OF THE GRANGE LIFE INSURANCE COMPANY

NOTES TO FINANCIAL STATEMENTS

On November 1, 2016, the Company recaptured its universal life with secondary guarantees and term life business from its wholly-owned captive insurance company, GLRE, under the provisions of the coinsurance reinsurance agreement. The Company recognized a one-time loss of \$ (\$18.3) million, after tax, related to this recapture, with the loss driven primarily by the net increase in reserves of \$22.7 million. Following the recapture, GLRE will be dissolved in early 2017 subject to the approval of the Vermont Department of Financial Regulation. The recapture transaction and the subsequent dissolution will be treated as an integrated transaction and taxable as a tax free liquidation under section 333 of the IRS tax code. In addition, the Company and the GLIC have elected to transfer the tax attributes of Company as of the date of the recapture transaction under Treasury Regulation 1,381-1 (b)-1.

On November 1, 2016, contemporaneous with the recapture of GLRE business, GLIC entered into a coinsurance agreement with Reinsurance Group of America (RGA). GLIC ceded 100% of the term business recaptured from GLRE to RGA for an initial premium of \$51.4 million and initial ceding allowance of \$28.9 million. GLIC also initially transferred cash of \$22.5 million to RGA. Trailing ceding commission allowances of 2.5% based on annual premiums will be paid by RGA to GLIC. Policy fees of \$75 per policy on the term series J-L and \$60 per policy on the term series E-I, will be charged by GLIC, of which \$34 will be retained and the remaining will be RGA's share of the policy fee. These allowances and fees are required to cover GLIC's maintenance expenses.

RGA will pay GLIC YRT premiums equal to the reinsurance premiums in each of GLIC's reinsurance agreements with Canada Life, Gen Re, and Hannover Re that are in effect on the date of this agreement. The YRT premium rates between RGA and GLIC will not change for the duration of this reinsurance agreement, and RGA will not participate in any changes to the YRT rates between GLIC and the other reinsurers. GLIC will pay RGA, the proportionate amount of each death claim that is reinsured by Canada Life, Gen Re, and Hannover. GLIC is responsible to pay the claim to RGA irrespective of whether the other reinsurers pay GLIC. GLIC will not recapture any of the third-party YRT reinsurance, nor change the terms or amounts reinsured without mutual agreement with RGA.

The Company recorded the following transactions with Grange Life Re as of December 31, related to the reinsurance agreement:

Transactions	2016	2015
Ceded Premiums	(46,732,094)	19,576,704
Ceded Losses	1,429,508	4,109,046
Ceded Reserves	(60,518,824)	20,655,124
Ceding Allowances	30,137,824	10,554,631

The Company identified Grange Life Re as an unauthorized affiliate U.S. Captive reinsurer on Schedule S, collateralized with a syndicated letter of credit and funds-withheld. As of December 31, 2016 and 2015, the letter of credit totaled \$0 and \$44,131,976, respectively and funds withheld amounts of \$0 and \$17,743,371 respectively. The letter of credit was terminated as of December 16, 2016.

In 2012, the Company recorded aggregate write-ins for deductions and gains in surplus related to the deferred gain of \$3,247,415 (net of tax of \$1,418,411) on in-force business ceded to Grange Life Re. The Company recognized \$2,633,208 (net of tax of \$800,495) of the deferred income and \$156,635 (net of tax of \$47,617) in 2016 and 2015, respectively, through Expense Allowances on Ceded Commission with \$0.00 remaining deferred in surplus to be recognized in future periods.

- D. The Company reported amounts due to the parent company, Grange Mutual, of \$10,372,674 and \$10,672,752 at December 31, 2016 and 2015, respectively. All amounts due to the parent company were settled within 30 days.

As of December 31, 2016 the Company incurred amounts due to Grange Life Re of \$3,900,648 in accordance with tax sharing obligations that will be paid within 30 days of the consolidated federal income tax filing with the Internal Revenue Service. Additionally, \$178,018 is due from Grange Life Re for the settlement of intercompany general expenses, which was settled within 60 days. As of December 31, 2015 the Company reported amounts due to Grange Life Re of \$125,547 for tax sharing obligations that were paid upon receipt of funds from the Internal Revenue Service, and \$146,305 due to Grange Life Re for the settlement of Funds withheld. Additionally, \$244,416 was due from Grange Life Re for the settlement of intercompany general expenses and reinsurance related to funds withheld, which was settled within 30 days.

The Company received proceeds from Grange Life Re of \$0 and \$0 in 2016 and 2015, respectively.

- E. The Company does not have any guarantees or undertakings.
- F. The parent company, Grange Mutual, has a formal cost-sharing agreement with its property-casualty affiliate and certain of its subsidiaries, including the Company, whereby the parent company provides certain operational and administrative services – such as sales support, advertising, information technology support, investment management services, employee benefits and personnel management services, and other general management services – to these companies. Expenses covered by this agreement are subject to allocation among the parent company, its affiliate and its subsidiaries. The allocations are based on techniques and procedures in accordance with SAP and insurance regulatory guidelines. Measures used to allocate expenses among the companies include individual employee estimates of time spent, specific cost studies, salary expenses, and other methods agreed to by the participating companies that are within industry guidelines and practices. The Company does not believe that expenses recognized under this agreement are materially different than expenses that would have been recognized had the Company operated on a stand-alone basis.

In addition, a management fee is assessed by and paid to Grange Mutual as a reimbursement for certain expenses – such as salaries, pension and post-retirement benefits – that are incurred on behalf of the Company.

The Company is also a party to a service agreement with Grange Life Re whereby they provide services and make available services necessary to support their business operations. These services include all necessary financial, actuarial, audit, accounting, tax, information technology, records management and legal and compliance services, other than those provided by third-party service providers. The Company is reimbursed for all direct costs incurred by their subsidiary.

- G. The Company is controlled by Grange Mutual, an Ohio domiciled property-casualty insurance company, which owns approximately 100.00% of the outstanding capital stock of the Company.
- H. The Company did not deduct from the value of an upstream intermediate entity or ultimate parent owned, either directly or indirectly, via a downstream subsidiary, controlled, or affiliated entity.
- I. The Company's investment in Grange Life Re is less than 10% of admitted assets. The Company carries its investment in Grange Life Re at statutory basis equity. Grange Life Re, with the explicit permission of the Commissioner of Insurance of the State of Vermont, records the value of its Letters of Credit (LOC) as part of surplus instead of being excluded from surplus as required by the Manual of the NAIC. The LOC was drawn down and closed (as of December 31, 2016) as a result of the Grange Life Insurance Company recapture of ceded reinsurance on 11/01/2016. As a result the LOC was valued at \$0.00, and the statutory surplus of Grange Life Re was \$12,087,891.
- J. The Company did not recognize any impairment write downs of their subsidiaries.

ANNUAL STATEMENT FOR THE YEAR 2016 OF THE GRANGE LIFE INSURANCE COMPANY

NOTES TO FINANCIAL STATEMENTS

- K. The Company does not hold an investment in a foreign insurance subsidiary.
- L. The Company does not hold an investment in a downstream noninsurance holding company.
- M. All SCA Investments

1) Balance Sheet Value (admitted and Non-admitted) All SCAs (except 8bi Entities)

SCA Entity	Percentage of SCA Ownership	Gross Amount	Admitted Amount	Nonadmitted Amount
a. SSAP No. 97 8a Entities				
b. SSAP No. 97 8b(ii) Entities	100%	781	0	781
c. SSAP No. 97 8b(iii) Entities				
d. SSAP No. 97 8b(iv) Entities				
e. SSAP No. 97 8b Entities (except 8bi entities)(b+c+d)		781	0	781
f. Aggregate Total (a+e)		781	0	781

- 1) NAIC Filing Response Information
- All non-insurance subsidiaries listed in the preceding table are non-admitted and therefore do not have NAIC Sub-2 filings.

SCA Entity	Type of NAIC Filing*	Date of Filing to the NAIC	NAIC Response Received Y/N	NAIC Disallowed Entities Valuation Method, Resubmission Required Y/N	Code**
a. SSAP No. 97 8a Entities					
b. SSAP No. 97 8b(ii) Entities					
c. SSAP No. 97 8b(iii) Entities					
d. SSAP No. 97 8b(iv) Entities					
e. SSAP No. 97 8b Entities (except 8bi entities)(b+c+d)					
f. Aggregate Total (a+e)					

\* S1 – Sub-1, S2 – Sub-s or RDF – Resubmission of Disallowed Filing

\*\* I- Immaterial or M - Material

- N. See (I.) above for a description of the accounting practice and the effect on surplus. The effect on Net Income was \$0. If the Company had not been permitted to include the LOC as a part of surplus, the Company's risk-based capital would have triggered a regulatory event in 2015. However, the LOC was terminated as of December 31, 2016 as a result of the Grange Life Insurance Company recapture of ceded reinsurance as of November 1, 2016. The Company's investment in Grange Life Re had a carrying value of \$12,087,891 at December 31, 2016.

11) Debt

NONE

12) Retirement Plans, Deferred Compensation, Postemployment Benefits and Compensated Absences and Other Postretirement Benefit Plans

- A. Defined Benefit Plan

NONE

- B. Defined Contribution Plans

NONE

- C. Multi-employer Plans

NONE

- D. Consolidated/Holding Company Plans

Employees of the parent company, Grange Mutual, including those employees that provide services to the Company, participate in 1) a defined benefit plan providing pension benefits to eligible participants (for employees hired on or before December 31, 2006), 2) a defined benefit plan providing postretirement health care benefits and life insurance coverage to eligible participants (for employees hired on or before December 31, 2005), 3) a defined contribution Retirement Accumulation Accounts plan that covers substantially all employees hired on or after January 1, 2007, and 4) a defined contribution Incentive Savings Plan (a 401k plan) that covers substantially all employees. Each of these plans is sponsored by the parent company, and the Company has no legal obligation for the related employee benefits. The parent company's policy is to fund pension costs as incurred. Under the Incentive Savings Plan, employee salary deferrals of up to 6% of the base salary are subject to a 50% matching contribution from the parent company. Under the Retirement Accumulation Accounts, the parent company makes annual contributions to eligible employees based on a formula utilizing the employee's salary, age, and years of credited service.

Expenses incurred related to these plans that are attributable to employees providing services to the Company are allocated to the Company and reimbursed to the parent company through a management fee (see note 10F). The Company's allocated share of the net periodic pension benefit cost was \$252,068 and \$376,946 in 2016 and 2015, respectively. The Company's allocated share of the net periodic postretirement benefit cost was \$45,460 and \$74,532 in 2016 and 2015, respectively. The Company's allocated share of the 401k matching contribution cost was \$152,654 and \$135,149 in 2016 and 2015, respectively.

ANNUAL STATEMENT FOR THE YEAR 2016 OF THE GRANGE LIFE INSURANCE COMPANY

NOTES TO FINANCIAL STATEMENTS

E. Postemployment Benefits and Compensated Absences

The Company accrued \$227,000 and \$222,000 for compensated absences at December 31, 2016 and 2015, respectively.

F. Impact of Medicare Modernization Act on Postretirement Benefits (INT 04-17)

NONE

13) Capital and Surplus, Shareholders' Dividend Restrictions and Quasi-Reorganizations

- 1) The Company has 101,000 shares of its capital stock authorized, with 101,000 shares issued and outstanding at December 31, 2016. The par value per share is \$18.75.
- 2) The Company has no preferred stock outstanding.
- 3) Ohio law limits the Company's payment of dividends to the parent company, Grange Mutual. The maximum dividend that may be paid by an Ohio domiciled insurance company to its shareholders in any year without the prior approval of the Director of the Department is limited to the greater of the net income of the preceding calendar year or 10% of capital and surplus as of the preceding December 31. Capital and surplus at December 31, 2016 was \$73,746,081. Therefore, the maximum dividend payments that can be made in 2016, without obtaining prior approval, are \$7,374,608.
- 4) No ordinary dividends were paid by the Company.
- 5) Within the limitations of (3) above, there are no restrictions placed on the portion of Company profits that may be paid as ordinary dividends to stockholders.
- 6) There were no restrictions placed on the Company's surplus, including for whom the surplus is being held. Unassigned surplus held for the benefit of policyholders was \$4,821,080 and \$33,530,075 at December 31, 2016 and 2015, respectively.
- 7) No advances to surplus were made.
- 8) No amounts of stock were held by the Company, including stock of affiliated companies, for special purposes.
- 9) No special surplus funds were maintained.
- 10) The portion of unassigned funds (surplus) represented or reduced by cumulative unrealized gains and losses are (\$2,297,189).
- 11) The Company did not hold any surplus debentures or similar obligations.
- 12) The Company did not have any restatement due to prior quasi-reorganizations.
- 13) There are no effective dates for quasi-reorganizations in the prior 10 years.

14) Liabilities, Contingencies and Assessments

A. Contingent Commitments

NONE

B. Assessments

The Company may be subjected to mandatory assessments from state guarantee funds to cover losses of policyholders of insolvent or rehabilitated insurance companies. Based on data published in the fourth quarter of 2016 by the National Organization of Life & Health Insurance Guaranty Associations, the Company has recorded a liability of \$706,812 and \$634,628 as of December 31, 2016 and 2015, respectively, in anticipation of future mandatory assessments from state guarantee funds in states in which the Company writes business.

2)

a.	Assets recognized from paid and accrued premium tax offsets and policy surcharges prior year-end.....	\$	.....10,842
b.	Decreases current year: Premium credit applied or non-admitted .....	\$	.....10,842
c.	Increases current year: Premium tax offset applied.....	\$	.....10,967
d.	Assets recognized from paid and accrued premium tax offsets and policy surcharges current year-end	\$	.....10,967

C. Gain Contingencies

NONE

D. Claims Related Extra Contractual Obligation and Bad Faith Losses Stemming from Lawsuits

The company paid the following amounts in the reporting period to settle claims related extra contractual obligations or bad faith claims stemming from lawsuits.

	Direct
Claims related ECO and bad faith losses paid during the reporting period	\$ 0.00

ANNUAL STATEMENT FOR THE YEAR 2016 OF THE GRANGE LIFE INSURANCE COMPANY

NOTES TO FINANCIAL STATEMENTS

Number of claims where amounts were paid to settle claims related extra contractual obligations or bad faith claims resulting from lawsuits during the reporting period.

( a ) 0-25 Claims	( b ) 26-50 Claims	( c ) 51-100 Claims	( d ) 101-500 Claims	( e ) More than 500 Claims
X				

Indicate whether claim count information is disclosed per claim or per claimant.

( f ) Per Claim [ X ]                      ( g ) Per Claimant [       ]

E. All Other Contingencies

The Company is a defendant in lawsuits arising in the ordinary course of business from claims under insurance policies and from other matters. Accruals for these lawsuits have been provided to the extent that losses are deemed probable. In the opinion of management, the effects, if any, of such lawsuits are not expected to have a material impact on the Company's financial position or results from operations.

15) Leases

The Company has no lease obligations.

16) Information About Financial Instruments With Off-Balance Sheet Risk And Financial Instruments With Concentrations of Credit Risk

NONE

17) Sale, Transfer and Servicing of Financial Assets and Extinguishments of Liabilities

A. Transfers of Receivables Reported as Sales

NONE

B. Transfer and Servicing of Financial Assets

The Company participates in a securities lending program with JPMorgan Corporate and Investment Bank as lending agent. Securities on loan as of December 31, 2016 were fixed income bonds, totaling \$1,161,380. Collateral received from lending activities is maintained in accordance to the securities lending agreement, whereby the collateral requirement shall be an amount equal to 102% of the then current market value of the relevant loaned securities where securities and collateral are denominated in the same currency, and 105% for all other securities. The Company's lending agent, JPMorgan Corporate and Investment Bank, reinvests the cash collateral according to investment guidelines outlined in the securities lending agreement and is reported on-balance sheet. Collateral received in the form of securities are restricted and off-balance sheet. The Company is not able to sell or reinvest the securities received as collateral and according to the MLSA, the borrower bears all the risk associated with said securities.

C. Wash Sales

NONE

18) Gain or Loss to the Reporting Entity from Uninsured Plans and the Uninsured Portion of Partially Insured Plans

NONE

19) Direct Premium Written/Produced by Managing General Agents/Third Party Administrators

NONE

20) Fair Value Measurements

A.

1. Fair Value Measurements as of December 31, 2016:

Description	Level 1	Level 2	Level 3	Total
a. ASSETS AT FAIR VALUE				
Perpetual Preferred Stock				
Industrial & Misc	0	0	0	0
Parent, Subs, & Affiliates	0	0	0	0
Total Perpetual Preferred Stock	0	0	0	0
Bonds				
US Governments	0	0	0	0
US States, Territories, & Possessions	0	0	0	0
US Political Subdivisions	0	0	0	0
US Special Rev & Assessment	0	0	0	0
Industrial & Misc	0	0	0	0
Parent, Subs, & Affiliates	0	0	0	0
Total Bonds	0	0	0	0
Common Stock				
Industrial & Misc	0	0	0	0
Parent, Subs, & Affiliates	0	0	\$12,087,891	\$12,087,891
Total Common Stock	0	0	\$12,087,891	\$12,087,891
Other Invested Assets	0	0	0	0
Total Other Invested	0	0	0	0
TOTAL ASSETS AT FAIR VALUE	0	0	\$ 12,087,891	\$12,087,891
b. LIABILITIES AT FAIR VALUE				
Derivative liabilities	0	0	0	0
Total Derivative Liabilities	0	0	0	0
TOTAL LIABILITIES AT FAIR VALUE	0	0	0	0

ANNUAL STATEMENT FOR THE YEAR 2016 OF THE GRANGE LIFE INSURANCE COMPANY

NOTES TO FINANCIAL STATEMENTS

2. Fair Value Measurements in (Level 3) of the Fair Value:

	Balance at 01/01/2016	Transfers in to Level 3	Transfers out Level 3	Total G/(L) included in Net Income	Total G/(L) included in Surplus	Purchases	Issuances	Sales	Settlements	Balance at 12/31/2016
Bonds	0	0	0	0	0	0	0	0	0	0
Common Stock	\$ 9,965,251	0	0	0	\$2,122,640	0	0	0	0	\$ 12,087,891
Other Invested Assets	0	0	0	0	0	0	0	0	0	0
	<u>\$ 9,965,251</u>	<u>0</u>	<u>0</u>	<u>0</u>	<u>2,122,640</u>	<u>0</u>	<u>0</u>	<u>0</u>	<u>0</u>	<u>\$12,087,891</u>

3. The reporting entity's policy is to recognize transfers in and out as of the end of the reporting period.
4. As of December 31, 2016, the reported fair value of the entity's investments categorized within Level 2 and Level 3 of the fair value hierarchy are as follows:

**Bonds** - According to statutory accounting rules, fixed income securities with a rating of NAIC 1 thru 5 are reported at amortized cost. Securities with a rating of NAIC of 6 are measured and reported at the lower of amortized cost or fair value on the statement of financial position. As of December 31, 2016, the Company did not have any bonds rated NAIC-6 and therefore did not report any securities at fair value.

**Parents, Subsidiaries, and Affiliates** - The Company's investment in one subsidiary is measured and reported at fair value at December 31, 2016 totaling \$12,087,891. Fair value measurement is determined by the individual entity's surplus at the end of a period, or the amount by which assets exceed liabilities. The subsidiary is in the insurance industry, whereby its assets are largely comprised of fixed income securities carried at amortized cost and its liabilities represent reserves for underwriting losses. Some inputs to the valuation methodology are unobservable and significant to the fair value measurement, and result in disclosure at Level 3.

5. The Company does not have derivative assets or liabilities.

- B. The Company is not required to combine the fair value information disclosed under SSAP No. 100, since it is not practicable.
- C. Fair values for these types of financial instruments:

Type of Financial Instrument	Aggregate Fair Value	Admitted Assets	(Level 1)	(Level 2)	(Level 3)	Not Practicable (Carrying Value)
Bonds	\$ .359,897,381	\$ .357,199,558	\$ .....9,837,063	\$ ..350,060,318	\$ ..... \$ .....	\$ .....
Common Stock	\$ .....12,088,672	\$ .....12087891	\$ ..... \$ .....	\$ ..... \$ .....	\$ .....12,087,891	\$ .....781
Money Market	\$ ..... \$ .....	\$ ..... \$ .....	\$ ..... \$ .....	\$ ..... \$ .....	\$ ..... \$ .....	\$ .....

- D. Not Practicable to Estimate Fair Value

Type or Class of Financial Instrument	Carrying Value	Effective Interest Rate	Maturity Date	Explanation
Common Stock	\$ .....781	.....	.....	Stock represents ownership of an insurance agency valued at original cost and reported as a subsidiary of the entity ...
Total	\$ .....781			

21) Other Items

- A. Unusual or Infrequent items
- NONE
- B. Troubled Debt Restructuring: Debtors
- NONE
- C. Other Disclosures and Unusual Items
- NONE
- D. Business Interruption and Insurance Recoveries
- NONE
- E. State Transferable and Non-Transferable Tax Credits
- NONE
- F. Subprime Mortgage Related Risk Exposure

1. Management Definition of Exposure to Subprime Mortgage Related Risk:

Management defines “subprime” mortgage loans as mortgage loans that are originated with an inherently higher risk profile or have a loan structure that is distinctly different from that of traditional mortgage loans. Management considers the following factors in determining whether or not a mortgage represents a subprime risk: borrowers with low credit ratings (FICO score); unconventionally high initial loan-to-value ratios (LTVs); unconventionally structured loans (option pay adjustable rate mortgages or negative amortizing loans); unconventionally high interest rates; and less than conventional documentation of the borrower's income and/or assets.

The Company does not invest in mortgage loans on a direct basis, nor is it in the practice of originating mortgage loans.

ANNUAL STATEMENT FOR THE YEAR 2016 OF THE GRANGE LIFE INSURANCE COMPANY

NOTES TO FINANCIAL STATEMENTS

2. The Company has no direct exposure through investments in subprime mortgage loans.

3. Estimated Direct Exposure to Subprime Mortgage Risk Through Other Investments:

Management considers the Company's holdings in securities with underlying subprime exposure to be minimal. The majority of residential mortgage backed securities (RMBS) in the portfolio are issued by government-sponsored enterprises (GSEs). Securities with collateral that contain subprime characteristics based on low credit (FICO scores less than 620) and/or high LTVs represent less than 1% of the Company's invested assets. In addition, these securities were issued prior to 2003. The Company's bond portfolio does not include any positions in collateralized debt obligations (CDOs) on a direct basis. On a quarterly basis, management reviews all loan-backed and structured securities with an unrealized loss position according to SSAP 43-R. The best estimate of future cash flows using the appropriate discount rate is calculated for each affected security. To assist in this effort, a brokerage firm provides forward-looking assumptions for default rates, voluntary prepayment speeds, and loss severities on a majority of the securities governed by SSAP 43R. The outcomes of this process assure that anticipated cash flows will not be less than the carrying value subsequent to other-than-temporary impairments. As of December 31, 2016, management estimates there were no unrealized losses present due to subprime mortgage exposure.

Estimated direct exposure to subprime mortgage risk through other investments:

	Actual Cost	Book/Adjusted Carrying Value (excluding interest)	Fair Value	Other Than Temporary Impairment Losses Recognized
a. Residential mortgage-backed securities	0	0	0	0
b. Commercial mortgage-backed securities	0	0	0	0
c. Collateralized debt obligations	0	0	0	0
d. Structured securities	0	0	0	0
e. Equity investment in SCAs *	0	0	0	0
f. Other assets	0	0	0	0
g. Total	0	0	0	0

4. Underwriting Exposure to Subprime Mortgage Risk:

The Company does not write Mortgage Guaranty or Financial Guaranty insurance coverage, nor does it write any other lines of insurance with underwriting exposure to subprime mortgage risk.

G. Retained Assets

NONE

H. Insurance-Linked Securities (ILS) Contracts

NONE

22) Events Subsequent

Type I-Recognized Subsequent Events: NONE

Type II-Nonrecognized Subsequent Events: NONE

23) Reinsurance

A. Ceded Reinsurance Report

Section 1 – General Interrogatories

1. Are any of the reinsurers, listed in Schedule S as non-affiliated, owned in excess of 10% or controlled, either directly or indirectly, by the Company or by any representative, officer, trustee, or director of the Company?

Yes ( ) No ( X ) If yes, give full details.

2. Have any policies issued by the Company been reinsured with a company chartered in a country other than the United States (excluding U.S. Branches of such companies) that is owned in excess of 10% or controlled directly or indirectly by an insured, a beneficiary, a creditor or an insured or any other person not primarily engaged in the insurance business?

Yes ( ) No ( X ) If yes, give full details.

Section 2 – Ceded Reinsurance Report – Part A

1. Does the Company have any reinsurance agreements in effect under which the reinsurer may unilaterally cancel any reinsurance for reasons other than for nonpayment of premium or other similar credits?

Yes ( ) No ( X )

a. If yes, what is the estimated amount of the aggregate reduction in surplus of a unilateral cancellation by the reinsurer as of the date of this statement, for those agreements in which cancellation results in a net obligation of the reporting entity to the reinsurer, and for which such obligation is not presently accrued? Where necessary, the reporting entity may consider the current or anticipated experience of the business reinsured in making this estimate. \$0

b. What is the total amount of reinsurance credits taken, whether as an asset or as a reduction of liability, for these agreements in this statement? \$0

2. Does the reporting entity have any reinsurance agreements in effect such that the amount of losses paid or accrued through the statement date may result in a payment to the reinsurer of amounts that, in aggregate and allowing for offset of mutual credits from other reinsurance agreements with the same reinsurer, exceed the total direct premium collected under the reinsured policies?

Yes ( ) No ( X ) If yes, give full details.



ANNUAL STATEMENT FOR THE YEAR 2016 OF THE GRANGE LIFE INSURANCE COMPANY

NOTES TO FINANCIAL STATEMENTS

Section 3 – Ceded Reinsurance Report – Part B

- 1. What is the estimated amount of the aggregate reduction in surplus (for agreements other than those under which the reinsurer may unilaterally cancel for reasons other than for nonpayment of premium or other similar credits that are reflected in Section 2 above) of termination of ALL reinsurance agreements, by either party, as of the date of this statement? Where necessary, the Company may consider the current or anticipated experience of the business reinsured in making this estimate. \$0
- 2. Have any new agreements been executed or existing agreements amended, since January 1 of the year of this statement, to include policies or contracts that were in force or which had existing reserves established by the Company as of the effective date of the agreement?

Yes ( ) No (X)

If yes, what is the amount of reinsurance credits, whether an asset or a reduction of liability, taken for such new agreements or amendments? \$0

- B. Uncollectible Reinsurance  
NONE
- C. Commutation of Ceded Reinsurance  
NONE
- D. Certified Reinsurer Rating Downgraded and Status Subject to Revocation  
NONE
- E. NONE
- F. NONE
- G. NONE

24) Retrospectively Rated Contracts & Contracts Subject to Redetermination

NONE

25) Change in Incurred Losses and Loss Adjustment Expenses

NONE

26) Intercompany Pooling Arrangements

NONE

27) Structured Settlements

NONE

28) Health Care Receivables

NONE

29) Participating Policies

For the year ending December 31, 2016 and 2015, premiums under individual and group participating policies were \$2,293,424 and \$2,360,080, respectively or 17.18% of total individual and group premiums in both years. The method of accounting for policyholder dividends for participating individual life insurance policies is based upon the accounting regulations in Statement of Statutory Accounting Principles No. 51, *Life Contracts*. The method of accounting for policyholder dividends on the participating group life insurance policy is based on premium and claim experience from the prior year. During 2016 and 2015, the Company paid dividends in the amount of \$59,401 and \$57,446, respectively, to policyholders and did not allocate any additional income to such policyholders.

30) Premium Deficiency Reserves

NONE

31) Reserves for Life Contracts and Annuity Contracts

- 1. The Company waives deduction of deferred fractional premiums upon the death of the insured. The Company returns any portion of the final premium paid beyond the date of death for all policies. Surrender values are not promised in excess of the legally computed reserves.
- 2. Extra premiums are charged for substandard lives, plus the gross premium for a rated age. Mean reserves for substandard lives are determined by computing the regular mean reserve for the plan at the rated age and holding an additional reserve of one-half (1/2) of the extra premium charge for the year.
- 3. As of December 31, 2016, the Company had \$3,917,872,773 of insurance in force for which the gross premiums are less than the net premiums according to the standard valuation set by the State of Ohio. Reserves to cover the above insurance totaled the gross amount of \$20,570,643 at year-end and are reported in Exhibit 5, Miscellaneous Reserves, Line 0700001.
- 4. The tabular interest (Page 7, Line 4), the tabular less actual reserve released (Page 7, Line 5), and the tabular cost (Page 7, Line 9) have been determined by formulas as described in the instructions for Page 7.
- 5. For the determination of tabular interest on funds not involving life contingencies for each valuation rate of interest, the tabular interest is calculated as the product of such valuation rate of interest multiplied by the mean of the amount of funds subject to such valuation rate of interest held at the beginning and end of the year of valuation.
- 6. There were no other material reserve changes.

ANNUAL STATEMENT FOR THE YEAR 2016 OF THE GRANGE LIFE INSURANCE COMPANY

NOTES TO FINANCIAL STATEMENTS

32) Analysis of Annuity Actuarial Reserves and Deposit Type Liabilities by Withdrawal Characteristics

	General Account	Separate Account with Guarantees	Separate Account Nonguaranteed	Total	% of Total
A. Subject to discretionary withdrawal:					
(1) With fair value adjustment	\$ .....	\$ .....	\$ .....	\$.....0	..... 0.000
(2) At book value less current surrender charge of 5% or more	.....23,468	.....	.....	.....23,468	..... 0.040
(3) At fair value	.....	.....	.....	.....0	.....0.000
(4) Total with adjustment or at fair value (total of 1 through 3)	.....23,468	.....0	.....0	.....23,468	..... 0.040
(5) At book value without adjustment (minimal or no charge or adjustment)	..... 56,525,294	.....	.....	.....56,525,294	..... 99.960
B. Not subject to discretionary withdrawal	.....	.....	.....	.....0	..... 0.000
C. Total (gross: direct + assumed)	..... 58,548,762	.....0	.....0	.....58,548,762	.....100.000
D. Reinsurance ceded	.....	.....	.....	.....0	.....

Reconciliation of total annuity actuarial reserves and deposit fund liabilities.

F. Life & Accident & Health Annual Statement:	
1. Exhibit 5, Annuities Section, Total (net)	\$ 56,229,539
2. Exhibit 5, Supplementary Contracts with Life Contingencies Section, Total (net)	-
3. Exhibit 7, Deposit-Type Contracts, Line 14, Column 1	\$ 319,223
4. Subtotal	\$ 56,548,762

Separate Accounts Annual Statement:	
5. Exhibit 3, Line 0299999, Column 2	\$ -
6. Exhibit 3, Line 0399999, Column 2	-
7. Policyholder dividends	-
8. Policyholder premiums	-
9. Guaranteed interest contracts	-
10. Other contract deposit funds	-
11. Subtotal	-
12. Combined Total	\$ 56,548,762

G. FHLB (Federal Home Loan Bank) Agreements	
1. NONE	

E. Total (net)* (C) - (D)	\$ ..... 58,548,762	\$.....0	\$ .....0	\$..... 58,548,762
---------------------------	---------------------	----------	-----------	--------------------

33) Premium and Annuity Considerations Deferred and Uncollected

A. Deferred and uncollected life insurance premiums and annuity considerations as of December 31, 2016, were as follows:

	Type	Gross	Net of Loading
(1)	Industrial	\$ .....	\$ .....
(2)	Ordinary new business	\$ .....3,394,724	\$ .....1,360,909
(3)	Ordinary renewal	\$ .....23,874,748	\$ .....39,588,388
(4)	Credit Life	\$ .....	\$ .....
(5)	Group Life	\$ .....	\$ .....
(6)	Group Annuity	\$ .....	\$ .....
(7)	Totals	\$ .....27,269,472	\$ .....40,949,297

34) Separate Accounts

NONE

35) Loss/Claim Adjustment Expense

NONE

**ANNUAL STATEMENT FOR THE YEAR 2016 OF THE GRANGE LIFE INSURANCE COMPANY**  
**NOTES TO FINANCIAL STATEMENTS**

GENERAL INTERROGATORIES

PART 1 - COMMON INTERROGATORIES

GENERAL

- 1.1

Is the reporting entity a member of an Insurance Holding Company System consisting of two or more affiliated persons, one or more of which is an insurer?

Yes ☒ No ☐
- If yes, complete Schedule Y, Parts 1, 1A and 2.
- 1.2

If yes, did the reporting entity register and file with its domiciliary State Insurance Commissioner, Director or Superintendent or with such regulatory official of the state of domicile of the principal insurer in the Holding Company System, a registration statement providing disclosure substantially similar to the standards adopted by the National Association of Insurance Commissioners (NAIC) in its Model Insurance Holding Company System Regulatory Act and model regulations pertaining thereto, or is the reporting entity subject to standards and disclosure requirements substantially similar to those required by such Act and regulations?

Yes ☒ No ☐ N/A ☐
- 1.3

State Regulating?

Ohio.....
- 2.1

Has any change been made during the year of this statement in the charter, by-laws, articles of incorporation, or deed of settlement of the reporting entity?

Yes ☐ No ☒
- 2.2

If yes, date of change:

.....
- 3.1

State as of what date the latest financial examination of the reporting entity was made or is being made.

.....12/31/2014
- 3.2

State the as of date that the latest financial examination report became available from either the state of domicile or the reporting entity. This date should be the date of the examined balance sheet and not the date the report was completed or released.

.....12/31/2014
- 3.3

State as of what date the latest financial examination report became available to other states or the public from either the state of domicile or the reporting entity. This is the release date or completion date of the examination report and not the date of the examination (balance sheet date).

.....11/24/2015
- 3.4

By what department or departments? Ohio.....
- 3.5

Have all financial statement adjustments within the latest financial examination report been accounted for in a subsequent financial statement filed with Departments?

Yes ☐ No ☐ N/A ☒
- 3.6

Have all of the recommendations within the latest financial examination report been complied with?

Yes ☐ No ☐ N/A ☒
- 4.1

During the period covered by this statement, did any agent, broker, sales representative, non-affiliated sales/service organization or any combination thereof under common control (other than salaried employees of the reporting entity) receive credit or commissions for or control a substantial part (more than 20 percent of any major line of business measured on direct premiums) of:

4.11 sales of new business? Yes ☐ No ☒

4.12 renewals? Yes ☐ No ☒
- 4.2

During the period covered by this statement, did any sales/service organization owned in whole or in part by the reporting entity or an affiliate, receive credit or commissions for or control a substantial part (more than 20 percent of any major line of business measured on direct premiums) of:

4.21 sales of new business? Yes ☐ No ☒

4.22 renewals? Yes ☐ No ☒
- 5.1

Has the reporting entity been a party to a merger or consolidation during the period covered by this statement?

Yes ☐ No ☒
- 5.2

If yes, provide the name of the entity, NAIC company code, and state of domicile (use two letter state abbreviation) for any entity that has ceased to exist as a result of the merger or consolidation.

1 Name of Entity	2 NAIC Company Code	3 State of Domicile
.....	.....	.....
.....	.....	.....
.....	.....	.....
.....	.....	.....
.....	.....	.....

- 6.1

Has the reporting entity had any Certificates of Authority, licenses or registrations (including corporate registration, if applicable) suspended or revoked by any governmental entity during the reporting period?

Yes ☐ No ☒
- 6.2

If yes, give full information .....
- 7.1

Does any foreign (non-United States) person or entity directly or indirectly control 10% or more of the reporting entity?

Yes ☐ No ☒
- 7.2

If yes,
- 7.21

State the percentage of foreign control

.....0.0
- 7.22

State the nationality(s) of the foreign person(s) or entity(s); or if the entity is a mutual or reciprocal, the nationality of its manager or attorney-in-fact and identify the type of entity(s) (e.g., individual, corporation, government, manager or attorney-in-fact).

1 Nationality	2 Type of Entity
.....	.....
.....	.....
.....	.....
.....	.....
.....	.....

GENERAL INTERROGATORIES

8.1 Is the company a subsidiary of a bank holding company regulated by the Federal Reserve Board? Yes [ ] No [ X ]

8.2 If response to 8.1 is yes, please identify the name of the bank holding company.

8.3 Is the company affiliated with one or more banks, thrifts or securities firms? Yes [ ] No [ X ]

8.4 If response to 8.3 is yes, please provide the names and locations (city and state of the main office) of any affiliates regulated by a federal financial regulatory services agency [i.e. the Federal Reserve Board (FRB), the Office of the Comptroller of the Currency (OCC), the Federal Deposit Insurance Corporation (FDIC) and the Securities Exchange Commission (SEC)] and identify the affiliate's primary federal regulator.

1	2	3	4	5	6
Affiliate Name	Location (City, State)	FRB	OCC	FDIC	SEC

9. What is the name and address of the independent certified public accountant or accounting firm retained to conduct the annual audit?  
Price Waterhouse Coopers LLP, 41 S. High Street, Suite 2500 Columbus, OH 43215.....

10.1 Has the insurer been granted any exemptions to the prohibited non-audit services provided by the certified independent public accountant requirements as allowed in Section 7H of the Annual Financial Reporting Model Regulation (Model Audit Rule), or substantially similar state law or regulation? Yes [ ] No [ X ]

10.2 If the response to 10.1 is yes, provide information related to this exemption:

10.3 Has the insurer been granted any exemptions related to the other requirements of the Annual Financial Reporting Model Regulation as allowed for in Section 18A of the Model Regulation, or substantially similar state law or regulation? Yes [ ] No [ X ]

10.4 If the response to 10.3 is yes, provide information related to this exemption:

10.5 Has the reporting entity established an Audit Committee in compliance with the domiciliary state insurance laws? Yes [ X ] No [ ] N/A [ ]

10.6 If the response to 10.5 is no or n/a, please explain

11. What is the name, address and affiliation (officer/employee of the reporting entity or actuary/consultant associated with an actuarial consulting firm) of the individual providing the statement of actuarial opinion/certification?  
Robert P. Stone, Milliman, Inc. Chase Tower/Circle 111 Monument Circle Suite 601 Indianapolis, IN 46204.....

12.1 Does the reporting entity own any securities of a real estate holding company or otherwise hold real estate indirectly? Yes [ ] No [ X ]

12.11 Name of real estate holding company

12.12 Number of parcels involved

12.13 Total book/adjusted carrying value

0

\$.....

12.2 If yes, provide explanation

13. FOR UNITED STATES BRANCHES OF ALIEN REPORTING ENTITIES ONLY:

13.1 What changes have been made during the year in the United States manager or the United States trustees of the reporting entity?

13.2 Does this statement contain all business transacted for the reporting entity through its United States Branch on risks wherever located? Yes [ ] No [ ]

13.3 Have there been any changes made to any of the trust indentures during the year? Yes [ ] No [ ]

13.4 If answer to (13.3) is yes, has the domiciliary or entry state approved the changes? Yes [ ] No [ ] N/A [ X ]

14.1 Are the senior officers (principal executive officer, principal financial officer, principal accounting officer or controller, or persons performing similar functions) of the reporting entity subject to a code of ethics, which includes the following standards? Yes [ X ] No [ ]

a. Honest and ethical conduct, including the ethical handling of actual or apparent conflicts of interest between personal and professional relationships;

b. Full, fair, accurate, timely and understandable disclosure in the periodic reports required to be filed by the reporting entity;

c. Compliance with applicable governmental laws, rules and regulations;

d. The prompt internal reporting of violations to an appropriate person or persons identified in the code; and

e. Accountability for adherence to the code.

14.11 If the response to 14.1 is no, please explain:

14.2 Has the code of ethics for senior managers been amended? Yes [ ] No [ X ]

14.21 If the response to 14.2 is yes, provide information related to amendment(s)

14.3 Have any provisions of the code of ethics been waived for any of the specified officers? Yes [ ] No [ X ]

14.31 If the response to 14.3 is yes, provide the nature of any waiver(s).

GENERAL INTERROGATORIES

- 15.1 Is the reporting entity the beneficiary of a Letter of Credit that is unrelated to reinsurance where the issuing or confirming bank is not on the SVO Bank List?
- Yes [ ] No [ X ]
- 15.2 If the response to 15.1 is yes, indicate the American Bankers Association (ABA) Routing Number and the name of the issuing or confirming bank of the Letter of Credit and describe the circumstances in which the Letter of Credit is triggered.

1	2	3	4
American Bankers Association (ABA) Routing Number	Issuing or Confirming Bank Name	Circumstances That Can Trigger the Letter of Credit	Amount

BOARD OF DIRECTORS

16. Is the purchase or sale of all investments of the reporting entity passed upon either by the board of directors or a subordinate committee thereof?
- Yes [ X ] No [ ]
17. Does the reporting entity keep a complete permanent record of the proceedings of its board of directors and all subordinate committees thereof?
- Yes [ X ] No [ ]
18. Has the reporting entity an established procedure for disclosure to its board of directors or trustees of any material interest or affiliation on the part of any of its officers, directors, trustees or responsible employees that is in conflict or is likely to conflict with the official duties of such person?
- Yes [ X ] No [ ]

FINANCIAL

19. Has this statement been prepared using a basis of accounting other than Statutory Accounting Principles (e.g., Generally Accepted Accounting Principles)?
- Yes [ ] No [ X ]
- 20.1 Total amount loaned during the year (inclusive of Separate Accounts, exclusive of policy loans):
- 20.11 To directors or other officers \$.....
- 20.12 To stockholders not officers \$.....
- 20.13 Trustees, supreme or grand (Fraternal only) \$.....
- 20.2 Total amount of loans outstanding at the end of year (inclusive of Separate Accounts, exclusive of policy loans):
- 20.21 To directors or other officers \$.....
- 20.22 To stockholders not officers \$.....
- 20.23 Trustees, supreme or grand (Fraternal only) \$.....
- 21.1 Were any assets reported in this statement subject to a contractual obligation to transfer to another party without the liability for such obligation being reported in the statement?
- Yes [ ] No [ X ]
- 21.2 If yes, state the amount thereof at December 31 of the current year:
- 21.21 Rented from others \$.....
- 21.22 Borrowed from others \$.....
- 21.23 Leased from others \$.....
- 21.24 Other \$.....
- 22.1 Does this statement include payments for assessments as described in the *Annual Statement Instructions* other than guaranty fund or guaranty association assessments?
- Yes [ ] No [ X ]
- 22.2 If answer is yes:
- 22.21 Amount paid as losses or risk adjustment \$.....
- 22.22 Amount paid as expenses \$.....
- 22.23 Other amounts paid \$.....
- 23.1 Does the reporting entity report any amounts due from parent, subsidiaries or affiliates on Page 2 of this statement?
- Yes [ X ] No [ ]
- 23.2 If yes, indicate any amounts receivable from parent included in the Page 2 amount:
- \$.....178,018

INVESTMENT

- 24.01 Were all the stocks, bonds and other securities owned December 31 of current year, over which the reporting entity has exclusive control, in the actual possession of the reporting entity on said date? (other than securities lending programs addressed in 24.03)
- Yes [ ] No [ X ]
- 24.02 If no, give full and complete information, relating thereto
- Certain bond securities are on deposit with state or regulatory bodies as marked in Schedule D Part 1.....
- 24.03 For security lending programs, provide a description of the program including value for collateral and amount of loaned securities, and whether collateral is carried on or off-balance sheet. (an alternative is to reference Note 17 where this information is also provided)
- 24.04 Does the company's security lending program meet the requirements for a conforming program as outlined in the Risk-Based Capital Instructions?
- Yes [ X ] No [ ] NA [ ]
- 24.05 If answer to 24.04 is yes, report amount of collateral for conforming programs.
- \$.....1,161,380
- 24.06 If answer to 24.04 is no, report amount of collateral for other programs.
- \$.....
- 24.07 Does your securities lending program require 102% (domestic securities) and 105% (foreign securities) from the counterparty at the outset of the contract?
- Yes [ X ] No [ ] NA [ ]
- 24.08 Does the reporting entity non-admit when the collateral received from the counterparty falls below 100%?
- Yes [ X ] No [ ] NA [ ]
- 24.09 Does the reporting entity or the reporting entity's securities lending agent utilize the Master Securities Lending Agreement (MSLA) to conduct securities lending?
- Yes [ X ] No [ ] NA [ ]
- 24.10 For the reporting entity's security lending program, state the amount of the following as of December 31 of the current year:
- 24.101 Total fair value of reinvested collateral assets reported on Schedule DL, Parts 1 and 2 \$.....1,161,380
- 24.102 Total book adjusted/carrying value of reinvested collateral assets reported on Schedule DL, Parts 1 and 2 \$.....1,161,380
- 24.103 Total payable for securities lending reported on the liability page \$.....1,161,380

GENERAL INTERROGATORIES

25.1 Were any of the stocks, bonds or other assets of the reporting entity owned at December 31 of the current year not exclusively under the control of the reporting entity or has the reporting entity sold or transferred any assets subject to a put option contract that is currently in force? (Exclude securities subject to Interrogatory 21.1 and 24.03). Yes [ X ] No [ ]

25.2 If yes, state the amount thereof at December 31 of the current year:

25.21 Subject to repurchase agreements

25.22 Subject to reverse repurchase agreements

25.23 Subject to dollar repurchase agreements

25.24 Subject to reverse dollar repurchase agreements

25.25 Placed under option agreements

25.26 Letter stock or securities restricted as to sale – excluding FHLB Capital Stock

25.27 FHLB Capital Stock

25.28 On deposit with states

25.29 On deposit with other regulatory bodies

25.30 Pledged as collateral – excluding collateral pledged to an FHLB

25.31 Pledged as collateral to FHLB – including assets backing funding agreements

25.32 Other

\$

\$

\$

\$

\$

\$

\$

\$

\$

\$

\$

\$

2,558,575

25.3 For category (25.26) provide the following:

1 Nature of Restriction	2 Description	3 Amount

26.1 Does the reporting entity have any hedging transactions reported on Schedule DB? Yes [ ] No [ X ]

26.2 If yes, has a comprehensive description of the hedging program been made available to the domiciliary state? Yes [ ] No [ ] N/A [ X ]  
If no, attach a description with this statement.

27.1 Were any preferred stocks or bonds owned as of December 31 of the current year mandatorily convertible into equity, or, at the option of the issuer, convertible into equity? Yes [ ] No [ X ]

27.2 If yes, state the amount thereof at December 31 of the current year. \$

28. Excluding items in Schedule E – Part 3 – Special Deposits, real estate, mortgage loans and investments held physically in the reporting entity's offices, vaults or safety deposit boxes, were all stocks, bonds and other securities, owned throughout the current year held pursuant to a custodial agreement with a qualified bank or trust company in accordance with Section 1, III – General Examination Considerations, F. Outsourcing of Critical Functions, Custodial or Safekeeping agreements of the NAIC *Financial Condition Examiners Handbook*? Yes [ X ] No [ ]

28.01 For agreements that comply with the requirements of the NAIC *Financial Condition Examiners Handbook*, complete the following:

1 Name of Custodian(s)	2 Custodian's Address
JPMorgan Corporate and Investment Bank.....	383 Madison Avenue, Floor 11, New York, NY 10179.....

28.02 For all agreements that do not comply with the requirements of the NAIC *Financial Condition Examiners Handbook*, provide the name, location and a complete explanation:

1 Name(s)	2 Location(s)	3 Complete Explanation(s)

28.03 Have there been any changes, including name changes, in the custodian(s) identified in 28.01 during the current year? Yes [ ] No [ X ]

28.04 If yes, give full and complete information relating thereto:

1 Old Custodian	2 New Custodian	3 Date of Change	4 Reason

GENERAL INTERROGATORIES

28.05 Investment management – Identify all investment advisors, investment managers, broker/dealers, including individuals that have the authority to make investment decisions on behalf of the reporting entity. For assets that are managed internally by employees of the reporting entity, note as such. ["...that have access to the investment accounts"; "...handle securities"]

1 Name of Firm or Individual	2 Affiliation
Crescent Capital Group LP.....	U.....
.....	.....
.....	.....

28.0597 For those firms/individuals listed in the table for Question 28.05, do any firms/individuals unaffiliated with the reporting entity (i.e., designated with a "U") manage more than 10% of the reporting entity's assets? Yes [   ] No [ X ]

28.0598 For firms/individuals unaffiliated with the reporting entity (i.e., designated with a "U") listed in the table for Question 28.05, does the total assets under management aggregate to more than 50% of the reporting entity's assets? Yes [   ] No [ X ]

28.06 For those firms or individuals listed in the table for 28.05 with an affiliation code of "A" (affiliated) or "U" (unaffiliated), provide the information for the table below.

1 Central Registration Depository Number	2 Name of Firm or Individual	3 Legal Entity Identifier (LEI)	4 Registered With	5 Investment Management Agreement (IMA) Filed
.....	.....	.....	.....	.....

29.1 Does the reporting entity have any diversified mutual funds reported in Schedule D - Part 2 (diversified according to the Securities and Exchange Commission (SEC) in the Investment Company Act of 1940 [Section 5 (b) (1)])? Yes [   ] No [ X ]

29.2 If yes, complete the following schedule:

1 CUSIP #	2 Name of Mutual Fund	3 Book/Adjusted Carrying Value
.....	.....	.....
.....	.....	.....
.....	.....	.....
29.2999 TOTAL		0

29.3 For each mutual fund listed in the table above, complete the following schedule:

1 Name of Mutual Fund (from above table)	2 Name of Significant Holding of the Mutual Fund	3 Amount of Mutual Fund's Book/Adjusted Carrying Value Attributable to the Holding	4 Date of Valuation
.....	.....	.....	.....
.....	.....	.....	.....
.....	.....	.....	.....

30. Provide the following information for all short-term and long-term bonds and all preferred stocks. Do not substitute amortized value or statement value for fair value.

	1 Statement (Admitted) Value	2 Fair Value	3 Excess of Statement over Fair Value (-), or Fair Value over Statement (+)
30.1 Bonds.....	357,199,558	360,187,128	2,987,570
30.2 Preferred Stocks.....	0		0
30.3 Totals	357,199,558	360,187,128	2,987,570

30.4 Describe the sources or methods utilized in determining the fair values:

31.1 Was the rate used to calculate fair value determined by a broker or custodian for any of the securities in Schedule D? Yes [ X ] No [   ]

31.2 If the answer to 31.1 is yes, does the reporting entity have a copy of the broker's or custodian's pricing policy (hard copy or electronic copy) for all brokers or custodians used as a pricing source? Yes [ X ] No [   ]

31.3 If the answer to 31.2 is no, describe the reporting entity's process for determining a reliable pricing source for purposes of disclosure of fair value for Schedule D:

32.1 Have all the filing requirements of the *Purposes and Procedures Manual of the NAIC Investment Analysis Office* been followed? Yes [ X ] No [   ]

32.2 If no, list exceptions:



GENERAL INTERROGATORIES

OTHER

- 33.1 Amount of payments to trade associations, service organizations and statistical or rating bureaus, if any? \$ .....73,756
- 33.2 List the name of the organization and the amount paid if any such payment represented 25% or more of the total payments to trade associations, service organizations and statistical or rating bureaus during the period covered by this statement.

1 Name	2 Amount Paid
AM BEST RATING SERVICES INC.....	\$.....19,600
LL GLOBAL INC.....	\$.....36,117

- 34.1 Amount of payments for legal expenses, if any? \$ .....69,467
- 34.2 List the name of the firm and the amount paid if any such payment represented 25% or more of the total payments for legal expenses during the period covered by this statement.

1 Name	2 Amount Paid
DAVIS & HARMAN LLP.....	\$.....18,103

- 35.1 Amount of payments for expenditures in connection with matters before legislative bodies, officers or departments of government, if any? \$ .....
- 35.2 List the name of the firm and the amount paid if any such payment represented 25% or more of the total payment expenditures in connection with matters before legislative bodies, officers or departments of government during the period covered by this statement.

1 Name	2 Amount Paid
.....	\$ .....
.....	\$ .....
.....	\$ .....

GENERAL INTERROGATORIES

PART 2 - LIFE INTERROGATORIES

1.1

Does the reporting entity have any direct Medicare Supplement Insurance in force?

Yes [ ] No [ X ]

1.2

If yes, indicate premium earned on U. S. business only.

\$ 0

1.3

What portion of Item (1.2) is not reported on the Medicare Supplement Insurance Experience Exhibit?

\$

1.31

Reason for excluding:

1.4

Indicate amount of earned premium attributable to Canadian and/or Other Alien not included in Item (1.2) above.

\$

1.5

Indicate total incurred claims on all Medicare Supplement insurance.

\$ 0

1.6

Individual policies:

Most current three years:

1.61

Total premium earned

\$ 0

1.62

Total incurred claims

\$ 0

1.63

Number of covered lives

0

All years prior to most current three years:

1.64

Total premium earned

\$ 0

1.65

Total incurred claims

\$ 0

1.66

Number of covered lives

0

1.7

Group policies:

Most current three years:

1.71

Total premium earned

\$ 0

1.72

Total incurred claims

\$ 0

1.73

Number of covered lives

0

All years prior to most current three years:

1.74

Total premium earned

\$ 0

1.75

Total incurred claims

\$ 0

1.76

Number of covered lives

0

2.

Health Test:

		1		2
		Current Year		Prior Year
2.1	Premium Numerator	\$ 0	\$	0
2.2	Premium Denominator	\$ 68,279,973	\$	56,645,239
2.3	Premium Ratio (2.1/2.2)	0.000		0.000
2.4	Reserve Numerator	\$ 15,891	\$	19,598
2.5	Reserve Denominator	\$ 337,126,909	\$	298,955,043
2.6	Reserve Ratio (2.4/2.5)	0.000		0.000

3.1

Does this reporting entity have Separate Accounts?

Yes [ ] No [ X ]

3.2

If yes, has a Separate Accounts statement been filed with this Department?

Yes [ ] No [ ] N/A [ X ]

3.3

What portion of capital and surplus funds of the reporting entity covered by assets in the Separate Accounts statement, is not currently distributable from the Separate Accounts to the general account for use by the general account?

\$

3.4

State the authority under which Separate Accounts are maintained:

3.5

Was any of the reporting entity's Separate Accounts business reinsured as of December 31?

Yes [ ] No [ X ]

3.6

Has the reporting entity assumed by reinsurance any Separate Accounts business as of December 31?

Yes [ ] No [ X ]

3.7

If the reporting entity has assumed Separate Accounts business, how much, if any, reinsurance assumed receivable for reinsurance of Separate Accounts reserve expense allowances is included as a negative amount in the liability for "Transfers to Separate Accounts due or accrued (net)?

\$

4.1

Are personnel or facilities of this reporting entity used by another entity or entities or are personnel or facilities of another entity or entities used by this reporting entity (except for activities such as administration of jointly underwritten group contracts and joint mortality or morbidity studies)?

Yes [ X ] No [ ]

4.2

Net reimbursement of such expenses between reporting entities:

4.21

Paid

\$

4.22

Received

\$ 38,520

5.1

Does the reporting entity write any guaranteed interest contracts?

Yes [ ] No [ X ]

5.2

If yes, what amount pertaining to these items is included in:

5.21

Page 3, Line 1

\$

5.22

Page 4, Line 1

\$

6.

For stock reporting entities only:

6.1

Total amount paid in by stockholders as surplus funds since organization of the reporting entity:

\$ 67,031,250

7.

Total dividends paid stockholders since organization of the reporting entity:

7.11

Cash

\$

7.12

Stock

\$

21

GENERAL INTERROGATORIES

8.1 Does the reporting entity reinsure any Workers' Compensation Carve-Out business defined as: ..... Yes [ ] No [ X ]  
Reinsurance (including retrocessional reinsurance) assumed by life and health insurers of medical, wage loss and death benefits of the occupational illness and accident exposures, but not the employers liability exposures, of business originally written as workers' compensation insurance.

8.2 If yes, has the reporting entity completed the *Workers Compensation Carve-Out Supplement* to the Annual Statement? ..... Yes [ ] No [ ]

8.3 If 8.1 is yes, the amounts of earned premiums and claims incurred in this statement are:

	1	2	3
	Reinsurance Assumed	Reinsurance Ceded	Net Retained
8.31	Earned premium.....		
8.32	Paid claims.....		
8.33	Claim liability and reserve (beginning of year).....		
8.34	Claim liability and reserve (end of year).....		
8.35	Incurred claims.....		

8.4 If reinsurance assumed included amounts with attachment points below \$1,000,000, the distribution of the amounts reported in Lines 8.31 and 8.34 for Column (1) are:

	Attachment Point	1 Earned Premium	2 Claim Liability And Reserve
8.41	<\$25,000	.....	.....
8.42	\$25,000 – 99,999	.....	.....
8.43	\$100,000 – 249,999	.....	.....
8.44	\$250,000 – 999,999	.....	.....
8.45	\$1,000,000 or more	.....	.....

8.5 What portion of earned premium reported in 8.31, Column 1 was assumed from pools? ..... \$.....

9.1 Does the reporting entity have variable annuities with guaranteed benefits? ..... Yes [ ] No [ X ]

9.2 If 9.1 is yes, complete the following table for each type of guaranteed benefit.

Type		3	4	5	6	7	8	9
1 Guaranteed Death Benefits	2 Guaranteed Living Benefits	Waiting Period Remaining	Account Value Related to Col.3	Total Related Account Values	Gross Amount of Reserve	Location of Reserve	Portion Reinsured	Reinsurance Reserve Credit

10. For reporting entities having sold annuities to another insurer where the insurer purchasing the annuities has obtained a release of liability from the claimant (payee) as the result of the purchase of an annuity from the reporting entity only:

10.1 Amount of loss reserves established by these annuities during the current year: ..... \$.....

10.2 List the name and location of the insurance company purchasing the annuities and the statement value on the purchase date of the annuities.

1 P&C Insurance Company and Location	2 Statement Value on Purchase Date of Annuities (i.e., Present Value)
.....	.....
.....	.....
.....	.....
.....	.....

11.1 Do you act as a custodian for health savings accounts?..... Yes [ ] No [ X ]

11.2 If yes, please provide the amount of custodial funds held as of the reporting date. .... \$.....

11.3 Do you act as an administrator for health savings accounts?..... Yes [ ] No [ X ]

11.4 If yes, please provide the balance of the funds administered as of the reporting date. .... \$.....

GENERAL INTERROGATORIES

12.1 Are any of the captive affiliates reported on Schedule S, Part 3, as authorized reinsurers? ..... Yes [    ] No [ X ] N/A [    ]

12.2 If the answer to 12.1 is yes, please provide the following:

1  Company Name	2 NAIC Company Code	3  Domiciliary Jurisdiction	4  Reserve Credit	Assets Supporting Reserve Credit		
				5  Letters of Credit	6 Trust Agreements	7  Other

13. Provide the following for individual ordinary life insurance\* policies (U.S. business only) for the current year (prior to reinsurance assumed or ceded).

13.1 Direct Premium Written..... \$.....98,826,602

13.2 Total Incurred Claims ..... \$.....45,197,931

13.3 Number of Covered Lives ..... 139,271

*Ordinary Life Insurance Includes
Term (whether full underwriting, limited underwriting, jet issue, "short form app")
Whole Life (whether full underwriting, limited underwriting, jet issue, "short form app")
Variable Life (with or without secondary guarantee)
Universal Life (with or without secondary guarantee)
Variable Universal Life (with or without secondary guarantee)

FIVE-YEAR HISTORICAL DATA

Show amounts in whole dollars only, no cents; show percentages to one decimal place, i.e., 17.6.  
Show amounts of life insurance in this exhibit in thousands (OMIT \$000)

	1 2016	2 2015	3 2014	4 2013	5 2012
<u>Life Insurance in Force</u> (Exhibit of Life Insurance)					
1. Ordinary-whole life and endowment (Line 34, Col. 4) .....	2,862,893	2,817,493	2,769,724	2,649,866	2,491,260
2. Ordinary-term (Line 21, Col. 4, less Line 34, Col. 4) .....	21,328,441	20,331,536	18,868,082	17,560,700	16,392,862
3. Credit life (Line 21, Col. 6) .....	0	0	0	0	0
4. Group, excluding FEGLI/SGLI (Line 21, Col. 9 less Lines 43 & 44, Col. 4) .....	289,906	294,242	290,922	276,859	268,438
5. Industrial (Line 21, Col. 2) .....	0	0	0	0	0
6. FEGLI/SGLI (Lines 43 & 44, Col. 4) .....	0	0	0	0	0
7. Total (Line 21, Col. 10) .....	24,481,240	23,443,271	21,928,728	20,487,425	19,152,560
<u>New Business Issued</u> (Exhibit of Life Insurance)					
8. Ordinary-whole life and endowment (Line 34, Col. 2) .....	225,281	248,590	266,672	281,228	278,563
9. Ordinary-term (Line 2, Col. 4, less Line 34, Col. 2) .....	2,051,963	2,377,263	2,179,453	2,121,413	1,800,593
10. Credit life (Line 2, Col. 6) .....	0	0	0	0	0
11. Group (Line 2, Col. 9) .....	35,781	36,110	33,937	10,422	13,946
12. Industrial (Line 2, Col. 2) .....	0	0	0	0	0
13. Total (Line 2, Col. 10) .....	2,313,025	2,661,963	2,480,062	2,413,063	2,093,102
<u>Premium Income - Lines of Business</u> (Exhibit 1 – Part 1)					
14. Industrial life (Line 20.4, Col. 2) .....	0	0	0	0	0
15.1 Ordinary life insurance (Line 20.4, Col. 3) .....	65,672,812	54,097,794	47,053,009	43,868,387	39,851,055
15.2 Ordinary individual annuities (Line 20.4, Col. 4) .....	1,039,944	1,032,785	1,377,821	1,030,193	3,581,819
16. Credit life, (group and individual) (Line 20.4, Col. 5) .....	0	0	0	0	0
17.1 Group life insurance (Line 20.4, Col. 6) .....	1,465,679	1,409,584	1,375,171	1,334,395	1,236,680
17.2 Group annuities (Line 20.4, Col. 7) .....	0	0	0	0	0
18.1A & H-group (Line 20.4, Col. 8) .....	0	0	0	0	0
18.2A & H-credit (group and individual) (Line 20.4, Col. 9) .....	0	0	0	0	0
18.3A & H-other (Line 20.4, Col. 10) .....	101,538	105,076	118,006	128,759	136,391
19. Aggregate of all other lines of business (Line 20.4, Col. 11) .....	0	0	0	0	0
20. Total .....	68,279,973	56,645,239	49,924,007	46,361,734	44,805,945
<u>Balance Sheet</u> (Pages 2 and 3)					
21. Total admitted assets excluding Separate Accounts business (Page 2, Line 26, Col. 3) .....	452,269,949	393,225,897	370,655,077	353,433,690	347,620,297
22. Total liabilities excluding Separate Accounts business (Page 3, Line 26) .....	378,523,868	350,770,822	314,524,822	302,418,257	298,493,176
23. Aggregate life reserves (Page 3, Line 1) .....	343,295,922	299,925,958	278,488,825	264,779,515	251,355,110
24. Aggregate A & H reserves (Page 3, Line 2) .....	358,790	388,183	341,393	407,251	334,317
25. Deposit-type contract funds (Page 3, Line 3) .....	319,224	362,073	601,231	558,078	601,817
26. Asset valuation reserve (Page 3, Line 24.01) .....	2,809,978	2,693,373	2,630,117	2,553,580	2,564,161
27. Capital (Page 3, Lines 29 & 30) .....	1,893,750	1,893,750	1,893,750	1,893,750	1,893,750
28. Surplus (Page 3, Line 37) .....	71,852,331	40,561,325	54,236,505	49,121,683	47,233,371
<u>Cash Flow (Page 5)</u>					
29. Net cash from operations (Line 11) .....	15,373,869	15,824,250	14,801,102	15,526,735	12,685,605
<u>Risk-Based Capital Analysis</u>					
30. Total adjusted capital .....	76,570,442	45,148,448	58,760,372	53,569,013	51,700,282
31. Authorized control level risk-based capital .....	5,158,042	6,595,678	5,944,830	5,285,847	4,910,598
<u>Percentage Distribution of Cash, Cash Equivalents and Invested Assets</u> (Page 2, Col. 3) (Line No./Page 2, Line 12, Col. 3) x 100.0					
32. Bonds (Line 1) .....	90.1	85.3	87.9	87.5	83.6
33. Stocks (Lines 2.1 and 2.2) .....	3.0	2.9	2.1	2.1	2.1
34. Mortgage loans on real estate (Lines 3.1 and 3.2) .....	0.0	0.0	0.0	0.0	0.0
35. Real estate (Lines 4.1, 4.2 and 4.3) .....	0.0	0.0	0.0	0.0	0.0
36. Cash, cash equivalents and short-term investments (Line 5) .....	3.6	6.6	4.3	4.6	4.8
37. Contract loans (Line 6) .....	3.0	3.2	3.3	3.4	3.3
38. Derivatives (Page 2, Line 7) .....	0.0	0.0	0.0	0.0	0.0
39. Other invested assets (Line 8) .....	0.0	0.0	0.0	0.0	0.0
40. Receivables for securities (Line 9) .....	0.0	0.0	0.0	0.0	0.0
41. Securities lending reinvested collateral assets (Line 10) .....	0.3	2.0	2.4	2.4	6.1
42. Aggregate write-ins for invested assets (Line 11) .....	0.0	0.0	0.0	0.0	0.0
43. Cash, cash equivalents and invested assets (Line 12) .....	100.0	100.0	100.0	100.0	100.0

FIVE-YEAR HISTORICAL DATA

(Continued)

	1 2016	2 2015	3 2014	4 2013	5 2012
<u>Investments in Parent, Subsidiaries and Affiliates</u>					
44. Affiliated bonds (Sch. D Summary, Line 12, Col. 1) .....	0	0	0	0	0
45. Affiliated preferred stocks (Sch. D Summary, Line 18, Col. 1) .....	0	0	0	0	0
46. Affiliated common stocks (Sch. D Summary, Line 24, Col. 1) .....	12,088,672	9,966,032	6,726,462	6,455,535	6,233,798
47. Affiliated short-term investments (subtotal included in Schedule DA Verification, Col. 5, Line 10) .....	0	0	0	0	0
48. Affiliated mortgage loans on real estate .....	0	0	0	0	0
49. All other affiliated .....	0	0	0	0	0
50. Total of above Lines 44 to 49 .....	12,088,672	9,966,032	6,726,462	6,455,535	6,233,798
51. Total investment in parent included in Lines 44 to 49 above .....	0	0	0	0	0
<u>Total Nonadmitted and Admitted Assets</u>					
52. Total nonadmitted assets (Page 2, Line 28, Col. 2) .....	10,589,146	5,429,777	5,081,030	5,049,857	3,783,140
53. Total admitted assets (Page 2, Line 28, Col. 3) .....	452,269,949	393,225,897	370,655,077	353,433,690	347,620,297
<u>Investment Data</u>					
54. Net investment income (Exhibit of Net Investment Income) .....	12,616,422	12,781,359	11,979,593	12,862,367	12,390,454
55. Realized capital gains (losses) (Page 4, Line 34, Column 1) .....	(744,541)	(200,558)	(142,551)	0	22,920
56. Unrealized capital gains (losses) (Page 4, Line 38, Column 1) .....	2,122,640	(11,760,432)	1,670,927	221,737	2,983,017
57. Total of above Lines 54, 55 and 56 .....	13,994,521	820,369	13,507,969	13,084,104	15,396,391
<u>Benefits and Reserve Increase (Page 6)</u>					
58. Total contract benefits-life (Lines 10, 11, 12, 13, 14 and 15, Col.1 minus Lines 10, 11, 12, 13, 14, and 15, Cols. 9, 10 and 11) .....	42,516,180	36,633,364	33,831,449	28,810,851	32,751,919
59. Total contract benefits-A & H (Lines 13 & 14, Cols. 9, 10 & 11) .....	113,930	29,230	53,636	132,750	168,199
60. Increase in life reserves-other than group and annuities (Line 19, Cols. 2 & 3 ) .....	45,339,767	22,004,845	15,111,448	13,648,638	3,475,330
61. Increase in A & H reserves (Line 19, Cols. 9, 10 & 11) .....	(29,338)	46,203	(66,733)	(33,521)	(20,630)
62. Dividends to policyholders (Line 30, Col. 1) .....	356,064	332,959	351,551	56,042	404,451
<u>Operating Percentages</u>					
63. Insurance expense percent (Page 6, Col. 1, Lines 21, 22 & 23, less Line 6)/(Page 6, Col.1, Line 1 plus Exhibit 7, Col. 2, Line 2) x 100.00 .....	26.1	20.4	21.6	23.9	25.4
64. Lapse percent (ordinary only) [(Exhibit of Life Insurance, Column 4, Lines 14 & 15) / ½ (Exhibit of Life Insurance, Column 4, Lines 1 & 21)] x 100.00 .....	5.0	4.7	4.6	5.3	7.4
65. A & H loss percent (Schedule H, Part 1, Lines 5 & 6, Col. 2) .....	103.2	(22.1)	55.3	392.9	108.1
66. A & H cost containment percent (Schedule H, Part 1, Line 4, Col. 2) .....	0.0	0.0	0.0	0.0	0.0
67. A & H expense percent excluding cost containment expenses (Schedule H, Part 1, Line 10, Col. 2) .....	16.8	17.7	22.0	19.5	24.0
<u>A &amp; H Claim Reserve Adequacy</u>					
68. Incurred losses on prior years' claims-group health (Sch. H, Part 3, Line 3.1, Col. 2) .....	0	0	0	0	0
69. Prior years' claim liability and reserve-group health (Sch. H, Part 3, Line 3.2, Col. 2) .....	0	0	0	0	0
70. Incurred losses on prior years' claims-health other than group (Sch. H, Part 3, Line 3.1, Col. 1 less Col. 2) .....	196,330	144,600	97,960	202,790	276,599
71. Prior years' claim liability and reserve-health other than group (Sch. H, Part 3, Line 3.2, Col. 1 less Col. 2) .....	130,870	118,570	155,686	191,043	207,769
<u>Net Gains From Operations After Federal Income Taxes by Lines of Business</u> (Page 6, Line 33)					
72. Industrial life (Col. 2) .....	0	0	0	0	0
73. Ordinary-life (Col. 3) .....	(29,528,571)	(2,417,490)	1,461,515	2,633,415	1,233,329
74. Ordinary-individual annuities (Col. 4) .....	(137,724)	(353,390)	(521,610)	(401,303)	(437,127)
75. Ordinary-supplementary contracts (Col. 5) .....	0	0	0	0	0
76. Credit life (Col. 6) .....	0	0	0	0	0
77. Group life (Col. 7) .....	1,591,380	1,396,260	1,112,201	752,671	509,083
78. Group annuities (Col. 8) .....	0	0	0	0	0
79. A & H-group (Col. 9) .....	0	0	0	0	0
80. A & H-credit (Col. 10) .....	0	0	0	0	0
81. A & H-other (Col. 11) .....	119	12,182	87,043	2,660	(18,125)
82. Aggregate of all other lines of business (Col. 12) .....	0	0	0	0	0
83. Total (Col. 1) .....	(28,074,796)	(1,362,438)	2,139,149	2,987,443	1,287,160

NOTE: If a party to a merger, have the two most recent years of this exhibit been restated due to a merger in compliance with the disclosure requirements of SSAP No. 3—Accounting Changes and Correction of Errors?..... Yes [    ] No [    ]

If no, please explain

.....

ANNUAL STATEMENT FOR THE YEAR 2016 OF THE GRANGE LIFE INSURANCE COMPANY

EXHIBIT OF LIFE INSURANCE

	Industrial		Ordinary		Credit Life (Group and Individual)		Group			10 Total Amount of Insurance (a)
	1	2	3	4	5	6	Number of		9	
	Number of Policies	Amount of Insurance (a)	Number of Policies	Amount of Insurance (a)	Number of Individual Policies and Group Certificates	Amount of Insurance (a)	7 Policies	8 Certificates	Amount of Insurance (a)	
1. In force end of prior year .....	0	0	135,134	23,149,029	0	0	2	2,294	294,242	23,443,271
2. Issued during year .....	0	0	13,402	2,277,244	0	0		137	35,781	2,313,025
3. Reinsurance assumed .....										0
4. Revived during year .....										0
5. Increased during year (net) .....										0
6. Subtotals, Lines 2 to 5 .....	0	0	13,402	2,277,244	0	0	0	137	35,781	2,313,025
7. Additions by dividends during year .....	XXX		XXX		XXX		XXX	XXX		0
8. Aggregate write-ins for increases .....	0	0	0	0	0	0	0	0	0	0
9. Totals (Lines 1 and 6 to 8) .....	0	0	148,536	25,426,273	0	0	2	2,431	330,023	25,756,296
Deductions during year:										
10. Death .....			753	46,624			XXX	16	338	46,962
11. Maturity .....			328	5,533			XXX			5,533
12. Disability .....							XXX			0
13. Expiry .....										0
14. Surrender .....			3,235	485,512						485,512
15. Lapse .....			4,875	694,603						694,603
16. Conversion .....							XXX	XXX	XXX	0
17. Decreased (net) .....			74	2,667				170	39,779	42,446
18. Reinsurance .....										0
19. Aggregate write-ins for decreases .....	0	0	0	0	0	0	0	0	0	0
20. Totals (Lines 10 to 19) .....	0	0	9,265	1,234,939	0	0	0	186	40,117	1,275,056
21. In force end of year (Line 9 minus Line 20) .....	0	0	139,271	24,191,334	0	0	2	2,245	289,906	24,481,240
22. Reinsurance ceded end of year .....	XXX		XXX	19,627,002	XXX		XXX	XXX	248,615	19,875,617
23. Line 21 minus Line 22 .....	XXX	0	XXX	4,564,332	XXX	(b) 0	XXX	XXX	41,291	4,605,623
DETAILS OF WRITE-INS										
0801. ....										
0802. ....										
0803. ....										
0898. Summary of remaining write-ins for Line 8 from overflow page .....	0	0	0	0	0	0	0	0	0	0
0899. Totals (Lines 0801 through 0803 plus 0898) (Line 8 above) .....	0	0	0	0	0	0	0	0	0	0
1901. ....										
1902. ....										
1903. ....										
1998. Summary of remaining write-ins for Line 19 from overflow page .....	0	0	0	0	0	0	0	0	0	0
1999. Totals (Lines 1901 through 1903 plus 1998) (Line 19 above) .....	0	0	0	0	0	0	0	0	0	0

(a) Amounts of life insurance in this exhibit shall be shown in thousands (omit 000)

(b) Group \$ .....; Individual \$ .....

EXHIBIT OF LIFE INSURANCE (Continued)

ADDITIONAL INFORMATION ON INSURANCE IN FORCE END OF YEAR			
	Industrial		Ordinary
	1 Number of Policies	2 Amount of Insurance (a)	3 Number of Policies
24. Additions by dividends .....	XXX		XXX
25. Other paid-up insurance .....			
26. Debit ordinary insurance .....	XXX	XXX	

ADDITIONAL INFORMATION ON ORDINARY INSURANCE			
	Issued During Year (Included in Line 2)		In Force End of Year (Included in Line 21)
	1 Number of Policies	2 Amount of Insurance (a)	3 Number of Policies
Term Insurance Excluding Extended Term Insurance			4 Amount of Insurance (a)
27. Term policies-decreasing .....			75
28. Term policies-other .....	7,811	2,051,963	91,548
29. Other term insurance-decreasing .....	XXX		XXX
30. Other term insurance .....	XXX		XXX
31. Totals, (Lines 27 to 30) .....	7,811	2,051,963	91,623
Reconciliation to Lines 2 and 21:			
32. Term additions .....	XXX		XXX
33. Totals, extended term insurance .....	XXX	XXX	
34. Totals, whole life and endowment .....	5,591	225,281	47,648
35. Totals (Lines 31 to 34) .....	13,402	2,277,244	139,271

CLASSIFICATION OF AMOUNT OF INSURANCE (a) BY PARTICIPATING STATUS			
	Issued During Year (included in Line 2)		In Force End of Year (included in Line 21)
	1 Non-Participating	2 Participating	3 Non-Participating
36. Industrial .....			4 Participating
37. Ordinary .....	2,277,244		24,190,176
38. Credit Life (Group and Individual) .....			1,157
39. Group .....	405	35,376	10,010
40. Totals (Lines 36 to 39) .....	2,277,649	35,376	24,200,186

ADDITIONAL INFORMATION ON CREDIT LIFE AND GROUP INSURANCE			
	Credit Life		Group
	1 Number of Individual Policies and Group Certificates	2 Amount of Insurance (a)	3 Number of Certificates
41. Amount of insurance included in Line 2 ceded to other companies .....	XXX		4 Amount of Insurance (a)
42. Number in force end of year if the number under shared groups is rounded on a pro-rata basis .....		XXX	XXX
43. Federal Employees' Group Life Insurance included in Line 21 .....			
44. Servicemen's Group Life Insurance included in Line 21 .....			
45. Group Permanent Insurance included in Line 21 .....			

ADDITIONAL ACCIDENTAL DEATH BENEFITS	
46. Amount of additional accidental death benefits in force end of year under ordinary policies (a)	405,947

BASIS OF CALCULATION OF ORDINARY TERM INSURANCE	
47. State basis of calculation of (47.1) decreasing term insurance contained in Family Income, Mortgage Protection, etc., policies and riders and of (47.2) term insurance on wife and children under Family, Parent and Children, etc., policies and riders included above.	
47.1 .....	
47.2 .....	

POLICIES WITH DISABILITY PROVISIONS							
Disability Provision	Industrial		Ordinary		Credit		Group
	1 Number of Policies	2 Amount of Insurance (a)	3 Number of Policies	4 Amount of Insurance (a)	5 Number of Policies	6 Amount of Insurance (a)	7 Number of Certificate s
48. Waiver of Premium .....			11,622	2,065,095			8 Amount of Insurance (a)
49. Disability Income .....							
50. Extended Benefits .....			XXX	XXX			
51. Other .....							
52. Total	0 (b)	0	11,622 (b)	2,065,095	0 (b)	0	0 (b)

(a) Amounts of life insurance in this exhibit shall be shown in thousands (omit 000)  
(b) See Paragraph 9 of the Annual Audited Financial Reports in the General section of the annual statement instructions.



EXHIBIT OF NUMBER OF POLICIES, CONTRACTS, CERTIFICATES,  
INCOME PAYABLE AND ACCOUNT VALUES IN FORCE FOR  
SUPPLEMENTARY CONTRACTS, ANNUITIES, ACCIDENT & HEALTH  
AND OTHER POLICIES

SUPPLEMENTARY CONTRACTS

	Ordinary		Group	
	1 Involving Life Contingencies	2 Not Involving Life Contingencies	3 Involving Life Contingencies	4 Not Involving Life Contingencies
1. In force end of prior year .....	0	0	0	0
2. Issued during year .....				
3. Reinsurance assumed .....				
4. Increased during year (net) .....				
5. Total (Lines 1 to 4) .....	0	0	0	0
Deductions during year:				
6. Decreased (net) .....				
7. Reinsurance ceded .....				
8. Totals (Lines 6 and 7) .....	0	0	0	0
9. In force end of year .....	0	0	0	0
10. Amount on deposit .....	(a)			(a)
11. Income now payable .....				
12. Amount of income payable .....	(a)	(a)	(a)	(a)

NONE

ANNUITIES

	Ordinary		Group	
	1 Immediate	2 Deferred	3 Contracts	4 Certificates
1. In force end of prior year .....	60	1,530	0	0
2. Issued during year .....				
3. Reinsurance assumed .....				
4. Increased during year (net) .....				
5. Totals (Lines 1 to 4) .....	60	1,530	0	0
Deductions during year:				
6. Decreased (net) .....	1	106		
7. Reinsurance ceded .....				
8. Totals (Lines 6 and 7) .....	1	106	0	0
9. In force end of year .....	59	1,424	0	0
Income now payable:				
10. Amount of income payable .....	(a) 54,407	XXX	XXX	(a)
Deferred fully paid:				
11. Account balance .....	XXX	(a)	XXX	(a)
Deferred not fully paid:				
12. Account balance .....	XXX	(a)	XXX	(a)

ACCIDENT AND HEALTH INSURANCE

	Group		Credit		Other	
	1 Certificates	2 Premiums in Force	3 Policies	4 Premiums in Force	5 Policies	6 Premiums in Force
1. In force end of prior year .....	0	0	0	0	437	203,283
2. Issued during year .....						
3. Reinsurance assumed .....						
4. Increased during year (net) ..		XXX		XXX		XXX
5. Totals (Lines 1 to 4) .....	0	XXX	0	XXX	437	XXX
Deductions during year:						
6. Conversions .....		XXX	XXX	XXX	XXX	XXX
7. Decreased (net) .....		XXX		XXX	26	XXX
8. Reinsurance ceded .....		XXX		XXX		XXX
9. Totals (Lines 6 to 8) .....	0	XXX	0	XXX	26	XXX
10. In force end of year .....	0	(a)	0	(a)	411	(a) 187,119

DEPOSIT FUNDS AND DIVIDEND ACCUMULATIONS

	1	2
	Deposit Funds Contracts	Dividend Accumulations Contracts
1. In force end of prior year .....	0	11
2. Issued during year .....		
3. Reinsurance assumed .....		
4. Increased during year (net) .....		
5. Totals (Lines 1 to 4) .....	0	11
Deductions during year:		
6. Decreased (net) .....		1
7. Reinsurance ceded .....		
8. Totals (Lines 6 and 7) .....	0	1
9. In force end of year .....	0	10
10. Amount of account balance .....	(a)	(a) 54,407

(a) See Paragraph 9 of the Annual Audited Financial Reports in the General section of the annual statement instructions.

ANNUAL STATEMENT FOR THE YEAR 2016 OF THE GRANGE LIFE INSURANCE COMPANY

SCHEDULE T—PREMIUMS AND ANNUITY CONSIDERATIONS

Allocated by States and Territories

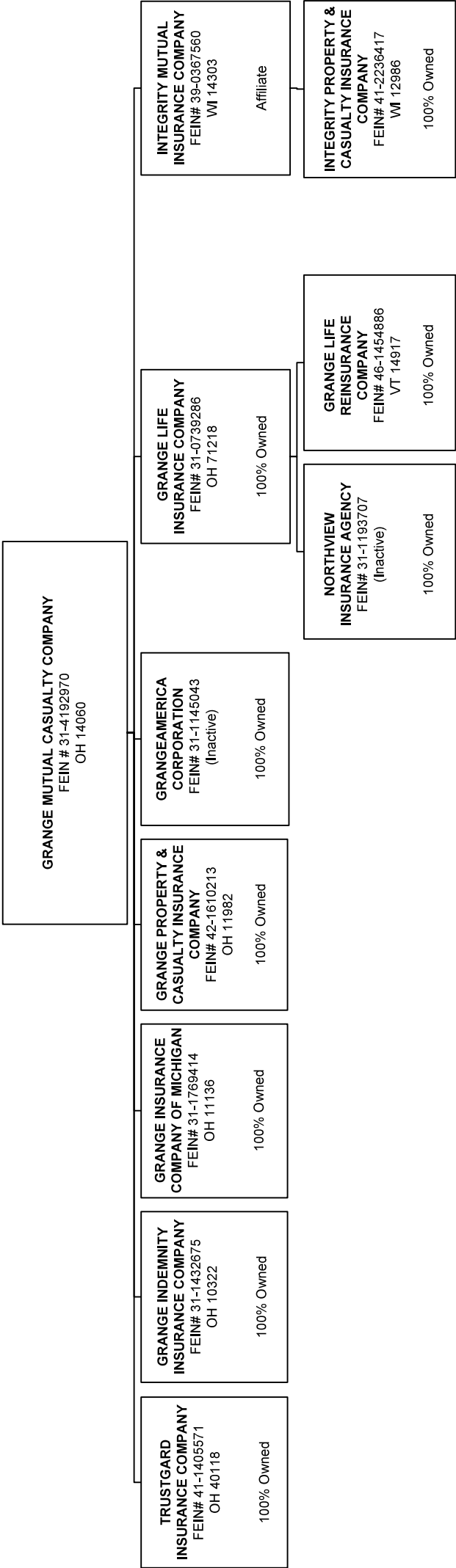
States, Etc.		1	Direct Business Only					
			Life Contracts		4	5	6	7
			2	3				
		Active Status	Life Insurance Premiums	Annuity Considerations	Accident and Health Insurance Premiums, Including Policy, Membership and Other Fees	Other Considerations	Total Columns 2 through 5	Deposit - Type Contracts
1. Alabama	AL		128,598	.0	.0	.0	128,598	.0
2. Alaska	AK		5,919	.0	.0	.0	5,919	.0
3. Arizona	AZ		258,742	.0	.0	.0	258,742	.0
4. Arkansas	AR		43,190	.0	.0	.0	43,190	.0
5. California	CA		175,591	.0	.948	.0	176,539	.0
6. Colorado	CO		64,440	.0	.0	.0	64,440	.0
7. Connecticut	CT		18,814	.0	.0	.0	18,814	.0
8. Delaware	DE		11,615	.0	.0	.0	11,615	.0
9. District of Columbia	DC		2,499	.0	.0	.0	2,499	.0
10. Florida	FL		884,707	4,000	.570	.0	889,277	.0
11. Georgia	GA	L	8,638,152	2,820	20,396	.0	8,661,368	.0
12. Hawaii	HI		8,304	.0	.0	.0	8,304	.0
13. Idaho	ID		9,202	.0	.0	.0	9,202	.0
14. Illinois	IL	L	3,238,644	23,400	5,453	.0	3,267,497	.0
15. Indiana	IN	L	7,087,193	20,600	9,269	.0	7,117,062	.0
16. Iowa	IA	L	193,467	.0	.0	.0	193,467	.0
17. Kansas	KS	L	27,311	.0	.0	.0	27,311	.0
18. Kentucky	KY	L	10,698,055	160,024	35,382	.0	10,893,461	.0
19. Louisiana	LA		16,682	.0	.0	.0	16,682	.0
20. Maine	ME		5,252	.0	.0	.0	5,252	.0
21. Maryland	MD		59,837	.0	.0	.0	59,837	.0
22. Massachusetts	MA		21,887	.0	.0	.0	21,887	.0
23. Michigan	MI	L	4,980,295	128,573	2,264	.0	5,111,132	.0
24. Minnesota	MN	L	508,957	1,425	.0	.0	510,382	.0
25. Mississippi	MS		133,357	.0	.0	.0	133,357	.0
26. Missouri	MO	L	119,592	.0	.0	.0	119,592	.0
27. Montana	MT		7,878	.0	.0	.0	7,878	.0
28. Nebraska	NE		13,712	.0	.0	.0	13,712	.0
29. Nevada	NV		59,101	.0	.0	.0	59,101	.0
30. New Hampshire	NH		8,515	.0	.0	.0	8,515	.0
31. New Jersey	NJ		38,039	.0	.0	.0	38,039	.0
32. New Mexico	NM		4,396	.0	.0	.0	4,396	.0
33. New York	NY		37,676	.0	.0	.0	37,676	.0
34. North Carolina	NC		210,326	.0	.546	.0	210,872	.0
35. North Dakota	ND		6,938	.0	.0	.0	6,938	.0
36. Ohio	OH	L	41,929,803	636,729	98,297	.0	42,664,829	.0
37. Oklahoma	OK		33,369	.0	.0	.0	33,369	.0
38. Oregon	OR		13,033	.0	.0	.0	13,033	.0
39. Pennsylvania	PA	L	3,691,847	.0	.0	.0	3,691,847	.0
40. Rhode Island	RI		5,223	.0	.0	.0	5,223	.0
41. South Carolina	SC	L	1,965,990	.0	.309	.0	1,966,299	.0
42. South Dakota	SD		7,729	.0	.0	.0	7,729	.0
43. Tennessee	TN	L	10,640,929	44,864	25,010	.0	10,710,803	.0
44. Texas	TX		244,749	.0	.0	.0	244,749	.0
45. Utah	UT		21,053	.0	.0	.0	21,053	.0
46. Vermont	VT		3,017	.0	.0	.0	3,017	.0
47. Virginia	VA	L	915,354	7,200	1,106	.0	923,660	.0
48. Washington	WA		22,491	.0	.0	.0	22,491	.0
49. West Virginia	WV		204,554	5,309	903	.0	210,766	.0
50. Wisconsin	WI	L	1,224,425	5,000	.0	.0	1,229,425	.0
51. Wyoming	WY		2,793	.0	.0	.0	2,793	.0
52. American Samoa	AS		.0	.0	.0	.0	.0	.0
53. Guam	GU		.0	.0	.0	.0	.0	.0
54. Puerto Rico	PR		.0	.0	.0	.0	.0	.0
55. US Virgin Islands	VI		.335	.0	.0	.0	.335	.0
56. Northern Mariana Islands	MP		.0	.0	.0	.0	.0	.0
57. Canada	CAN		9,972	.0	.0	.0	9,972	.0
58. Aggregate Other Alien	OT	XXX	3,276	.0	.0	.0	3,276	.0
59. Subtotal	(a)	15	98,666,825	1,039,944	200,453	.0	99,907,222	.0
90. Reporting entity contributions for employee benefits plans		XXX					.0	
91. Dividends or refunds applied to purchase paid-up additions and annuities		XXX					.0	
92. Dividends or refunds applied to shorten endowment or premium paying period		XXX					.0	
93. Premium or annuity considerations waived under disability or other contract provisions		XXX					.0	
94. Aggregate other amounts not allocable by State		XXX	.0	.0	.0	.0	.0	.0
95. Totals (Direct Business)		XXX	98,666,825	1,039,944	200,453	.0	99,907,222	.0
96. Plus reinsurance assumed		XXX	3,069,206				3,069,206	
97. Totals (All Business)		XXX	101,736,031	1,039,944	200,453	.0	102,976,428	.0
98. Less reinsurance ceded		XXX	33,303,656		99,038		33,402,694	
99. Totals (All Business) less Reinsurance Ceded		XXX	68,432,375	1,039,944	(b) 101,415	0	69,573,734	0
DETAILS OF WRITE-INS								
58001. GBR United Kingdom		XXX	3,276	.0	.0	.0	3,276	.0
58002.		XXX	.0	.0	.0	.0	.0	.0
58003.		XXX	.0	.0	.0	.0	.0	.0
58998. Summary of remaining write-ins for Line 58 from overflow page		XXX	.0	.0	.0	.0	.0	.0
58999. Total (Lines 58001 through 58003 + 58998)(Line 58 above)		XXX	3,276	0	0	0	3,276	0
9401.		XXX					.0	
9402.		XXX					.0	
9403.		XXX					.0	
9498. Summary of remaining write-ins for Line 94 from overflow page		XXX	.0	.0	.0	.0	.0	.0
9499. Total (Lines 9401 through 9403 + 9498)(Line 94 above)		XXX	0	0	0	0	0	0

(L) Licensed or Chartered - Licensed Insurance Carrier or Domiciled RRG; (R) Registered - Non-domiciled RRGs; (Q) Qualified - Qualified or Accredited Reinsurer; (E) Eligible - Reporting Entities eligible or approved to write Surplus Lines in the state; (N) None of the above - Not allowed to write business in the state.

Explanation of basis of allocation by states, etc., of premiums and annuity considerations  
Post Office of which notices are sent for individual policies or contract; head office of group policy owners  
(a) Insert the number of L responses except for Canada and Other Alien.  
(b) Column 4 should balance with Exhibit 1, Lines 6.4, 10.4 and 16.4, Cols. 8, 9 and 10, or with Schedule H, Part 1, Column 1, Line 1 indicate which; Exhibit 1, Lines 6.4, 10.4 and 16.4, Cols. 8, 9 and 10.

SCHEDULE Y – INFORMATION CONCERNING ACTIVITIES OF INSURER  
MEMBERS OF A HOLDING COMPANY GROUP

PART 1 – ORGANIZATIONAL CHART



# ALPHABETICAL INDEX

---

## ANNUAL STATEMENT BLANK

Analysis of Increase in Reserves During the Year	7
Analysis of Operations by Lines of Business	6
Asset Valuation Reserve Default Component	30
Asset Valuation Reserve Equity	32
Asset Valuation Reserve Replications (Synthetic) Assets	35
Asset Valuation Reserve	29
Assets	2
Cash Flow	5
Exhibit 1 – Part 1 – Premiums and Annuity Considerations for Life and Accident and Health Contracts	9
Exhibit 1 – Part 2 – Dividends and Coupons Applied, Reinsurance Commissions and Expense	10
Exhibit 2 – General Expenses	11
Exhibit 3 – Taxes, Licenses and Fees (Excluding Federal Income Taxes)	11
Exhibit 4 – Dividends or Refunds	11
Exhibit 5 – Aggregate Reserve for Life Contracts	12
Exhibit 5 – Interrogatories	13
Exhibit 5A – Changes in Bases of Valuation During The Year	13
Exhibit 6 – Aggregate Reserves for Accident and Health Contracts	14
Exhibit 7 – Deposit-Type Contracts	15
Exhibit 8 – Claims for Life and Accident and Health Contracts – Part 1	16
Exhibit 8 – Claims for Life and Accident and Health Contracts – Part 2	17
Exhibit of Capital Gains (Losses)	8
Exhibit of Life Insurance	25
Exhibit of Net Investment Income	8
Exhibit of Nonadmitted Assets	18
Exhibit of Number of Policies, Contracts, Certificates, Income Payable and Account Values	27
Five-Year Historical Data	22
Form for Calculating the Interest Maintenance Reserve (IMR)	28
General Interrogatories	20
Jurat Page	1
Liabilities, Surplus and Other Funds	3
Life Insurance (State Page)	24
Notes to Financial Statements	19
Overflow Page for Write-Ins	55
Schedule A – Part 1	E01
Schedule A – Part 2	E02

# ALPHABETICAL INDEX

**ANNUAL STATEMENT BLANK (Continued)**

Schedule A – Part 3	E03
Schedule A – Verification Between Years	SI02
Schedule B – Part 1	E04
Schedule B – Part 2	E05
Schedule B – Part 3	E06
Schedule B – Verification Between Years	SI02
Schedule BA – Part 1	E07
Schedule BA – Part 2	E08
Schedule BA – Part 3	E09
Schedule BA – Verification Between Years	SI03
Schedule D – Part 1	E10
Schedule D – Part 1A – Section 1	SI05
Schedule D – Part 1A – Section 2	SI08
Schedule D – Part 2 – Section 1	E11
Schedule D – Part 2 – Section 2	E12
Schedule D – Part 3	E13
Schedule D – Part 4	E14
Schedule D – Part 5	E15
Schedule D – Part 6 – Section 1	E16
Schedule D – Part 6 – Section 2	E16
Schedule D – Summary By Country	SI04
Schedule D – Verification Between Years	SI03
Schedule DA – Part 1	E17
Schedule DA – Verification Between Years	SI10
Schedule DB – Part A – Section 1	E18
Schedule DB – Part A – Section 2	E19
Schedule DB – Part A – Verification Between Years	SI11
Schedule DB – Part B – Section 1	E20
Schedule DB – Part B – Section 2	E21
Schedule DB – Part B – Verification Between Years	SI11
Schedule DB – Part C – Section 1	SI12
Schedule DB – Part C – Section 2	SI13
Schedule DB – Part D – Section 1	E22
Schedule DB – Part D – Section 2	E23
Schedule DB – Verification	SI14
Schedule DL – Part 1	E24
Schedule DL – Part 2	E25
Schedule E – Part 1 – Cash	E26
Schedule E – Part 2 – Cash Equivalents	E27
Schedule E – Part 3 – Special Deposits	E28

# ALPHABETICAL INDEX

**ANNUAL STATEMENT BLANK (Continued)**

Schedule E – Verification Between Years	SI15
Schedule F	36
Schedule H – Accident and Health Exhibit – Part 1	37
Schedule H – Part 2, Part 3 and Part 4	38
Schedule H – Part 5 – Health Claims	39
Schedule S – Part 1 – Section 1	40
Schedule S – Part 1 – Section 2	41
Schedule S – Part 2	42
Schedule S – Part 3 – Section 1	43
Schedule S – Part 3 – Section 2	44
Schedule S – Part 4	45
Schedule S – Part 5	46
Schedule S – Part 6	47
Schedule S – Part 7	48
Schedule T – Part 2 Interstate Compact	50
Schedule T – Premiums and Annuity Considerations	49
Schedule Y – Information Concerning Activities of Insurer Members of a Holding Company Group	51
Schedule Y – Part 1A – Detail of Insurance for Holding Company System	52
Schedule Y – Part 2 – Summary of Insurer’s Transactions With Any Affiliates	53
Summary Investment Schedule	SI01
Summary of Operations	4
Supplemental Exhibits and Schedules Interrogatories	54

