



ANNUAL STATEMENT  
For the Year Ended December 31, 2016  
OF THE CONDITION AND AFFAIRS OF THE  
BCS Insurance Company

NAIC Group Code	00023	00023	NAIC Company Code	38245	Employer's ID Number	36-6033921
	(Current Period)	(Prior Period)				
Organized under the Laws of	Ohio	State of Domicile or Port of Entry	Ohio			
Country of Domicile	United States					
Incorporated/Organized	12/05/1950	Commenced Business	11/30/1952			
Statutory Home Office	6740 North High Street	Worthington, OH, US 43085				
	(Street and Number)	(City or Town, State, Country and Zip Code)				
Main Administrative Office	2 Mid America Plaza, Suite 200	Oakbrook Terrace, IL, US 60181	630-472-7700			
	(Street and Number)	(City or Town, State, Country and Zip Code)	(Area Code) (Telephone Number)			
Mail Address	2 Mid America Plaza, Suite 200	Oakbrook Terrace, IL, US 60181				
	(Street and Number or P.O. Box)	(City or Town, State, Country and Zip Code)				
Primary Location of Books and Records	2 Mid America Plaza, Suite 200	Oakbrook Terrace, IL, US 60181	630-472-7700			
	(Street and Number)	(City or Town, State, Country and Zip Code)	(Area Code) (Telephone Number)			
Internet Web Site Address	www.bcsins.com					
Statutory Statement Contact	Elias Georgopoulos	630-472-7749				
	(Name)	(Area Code) (Telephone Number) (Extension)				
	Lgeorgo@bcsf.com	630-472-7837				
	(E-Mail Address)	(Fax Number)				

OFFICERS

Name	Title	Name	Title
Howard Francis Beacham III	President & Chief Executive Officer	Terry Michael Hackett	General Counsel & Secretary
Susan Ann Pickar	Chief Financial Officer & Treasurer	Steven Scott Martin	Chairman of the Board

OTHER OFFICERS

Peter Lorin Costello	Chief Marketing Officer	David John Jacobs	Chief Actuary
Susan Chylla Lindquist	Chief Talent Officer		

DIRECTORS OR TRUSTEES

Howard Francis Beacham III	Peter Lorin Costello	Terry Michael Hackett	David John Jacobs
Susan Ann Pickar	Steven Scott Martin		

State of .....Illinois.....

ss

County of .....DuPage.....

The officers of this reporting entity, being duly sworn, each depose and say that they are the described officers of said reporting entity, and that on the reporting period stated above, all of the herein described assets were the absolute property of the said reporting entity, free and clear from any liens or claims thereon, except as herein stated, and that this statement, together with related exhibits, schedules and explanations therein contained, annexed or referred to, is a full and true statement of all the assets and liabilities and of the condition and affairs of the said reporting entity as of the reporting period stated above, and of its income and deductions therefrom for the period ended, and have been completed in accordance with the NAIC Annual Statement Instructions and Accounting Practices and Procedures manual except to the extent that: (1) state law may differ; or, (2) that state rules or regulations require differences in reporting not related to accounting practices and procedures, according to the best of their information, knowledge and belief, respectively. Furthermore, the scope of this attestation by the described officers also includes the related corresponding electronic filing with the NAIC, when required, that is an exact copy (except for formatting differences due to electronic filing) of the enclosed statement. The electronic filing may be requested by various regulators in lieu of or in addition to the enclosed statement.

Howard Francis Beacham III	Terry Michael Hackett	Susan Ann Pickar
President & Chief Executive Officer	General Counsel & Secretary	Chief Financial Officer & Treasurer

Subscribed and sworn to before me  
this 15th day of February, 2017

Jennifer Mark, Notary Public  
03/24/2018

a. Is this an original filing? Yes [ X ] No [ ]  
b. If no:  
1. State the amendment number 0  
2. Date filed  
3. Number of pages attached 0



ANNUAL STATEMENT FOR THE YEAR 2016 OF THE BCS Insurance Company

ASSETS

	Current Year			Prior Year
	1	2	3	4
	Assets	Nonadmitted Assets	Net Admitted Assets (Cols. 1 - 2)	Net Admitted Assets
1. Bonds (Schedule D).....	185,254,099		185,254,099	182,824,548
2. Stocks (Schedule D):				
2.1 Preferred stocks .....	0		0	0
2.2 Common stocks .....	24,127,813		24,127,813	23,355,644
3. Mortgage loans on real estate (Schedule B):				
3.1 First liens .....			0	0
3.2 Other than first liens .....			0	0
4. Real estate (Schedule A):				
4.1 Properties occupied by the company (less \$ ..... encumbrances).....			0	0
4.2 Properties held for the production of income (less \$ ..... encumbrances) .....			0	0
4.3 Properties held for sale (less \$ ..... encumbrances) .....			0	0
5. Cash (\$ ..... (343,813) , Schedule E-Part 1), cash equivalents (\$ ..... 0 , Schedule E-Part 2) and short-term investments (\$ ..... 1,248,817 , Schedule DA).....	905,004		905,004	17,178,449
6. Contract loans (including \$ ..... premium notes).....			0	0
7. Derivatives (Schedule DB).....	0		0	0
8. Other invested assets (Schedule BA) .....	12,703,787		12,703,787	12,146,695
9. Receivables for securities .....			0	0
10. Securities lending reinvested collateral assets (Schedule DL).....			0	0
11. Aggregate write-ins for invested assets .....	0	0	0	0
12. Subtotals, cash and invested assets (Lines 1 to 11) .....	222,990,703	0	222,990,703	235,505,336
13. Title plants less \$ ..... charged off (for Title insurers only).....			0	0
14. Investment income due and accrued .....	1,706,215		1,706,215	1,811,451
15. Premiums and considerations:				
15.1 Uncollected premiums and agents' balances in the course of collection .....	23,429,540	2,221,712	21,207,828	22,102,090
15.2 Deferred premiums, agents' balances and installments booked but deferred and not yet due (including \$ ..... earned but unbilled premiums).....			0	0
15.3 Accrued retrospective premiums (\$ ..... 2,688,696 ) and contracts subject to redetermination (\$ ..... ) .....	2,688,696		2,688,696	0
16. Reinsurance:				
16.1 Amounts recoverable from reinsurers .....	15,350,352		15,350,352	6,364,268
16.2 Funds held by or deposited with reinsured companies .....			0	0
16.3 Other amounts receivable under reinsurance contracts .....			0	0
17. Amounts receivable relating to uninsured plans .....			0	0
18.1 Current federal and foreign income tax recoverable and interest thereon .....			0	0
18.2 Net deferred tax asset.....	1,867,017	111,868	1,755,149	1,982,634
19. Guaranty funds receivable or on deposit .....			0	0
20. Electronic data processing equipment and software.....			0	0
21. Furniture and equipment, including health care delivery assets (\$ ..... ) .....			0	0
22. Net adjustment in assets and liabilities due to foreign exchange rates .....			0	0
23. Receivables from parent, subsidiaries and affiliates .....			0	0
24. Health care (\$ ..... ) and other amounts receivable.....			0	0
25. Aggregate write-ins for other-than-invested assets .....	3,742,333	25,000	3,717,333	4,441,380
26. Total assets excluding Separate Accounts, Segregated Accounts and Protected Cell Accounts (Lines 12 to 25).....	271,774,856	2,358,580	269,416,276	272,207,159
27. From Separate Accounts, Segregated Accounts and Protected Cell Accounts.....			0	0
28. Total (Lines 26 and 27)	271,774,856	2,358,580	269,416,276	272,207,159
DETAILS OF WRITE-INS				
1101. ....			0	0
1102. ....			0	0
1103. ....			0	0
1198. Summary of remaining write-ins for Line 11 from overflow page .....	0	0	0	0
1199. Totals (Lines 1101 through 1103 plus 1198) (Line 11 above) .....	0	0	0	0
2501. Unapplied Claim Payments.....	2,951,532		2,951,532	3,426,377
2502. Intercompany Reinsurance Asset.....	143,740		143,740	1,000,000
2503. Continuity Credit Receivable.....	0		0	3,388
2598. Summary of remaining write-ins for Line 25 from overflow page .....	647,061	25,000	622,061	11,615
2599. Totals (Lines 2501 through 2503 plus 2598) (Line 25 above) .....	3,742,333	25,000	3,717,333	4,441,380

LIABILITIES, SURPLUS AND OTHER FUNDS

	1 Current Year	2 Prior Year
1. Losses (Part 2A, Line 35, Column 8) .....	31,884,891	40,414,946
2. Reinsurance payable on paid losses and loss adjustment expenses (Schedule F, Part 1, Column 6) .....		0
3. Loss adjustment expenses (Part 2A, Line 35, Column 9) .....	5,369,431	9,422,427
4. Commissions payable, contingent commissions and other similar charges .....	398,778	188,909
5. Other expenses (excluding taxes, licenses and fees) .....	267,869	675,111
6. Taxes, licenses and fees (excluding federal and foreign income taxes) .....	2,948,394	5,081,377
7.1 Current federal and foreign income taxes (including \$ ..... on realized capital gains (losses)) .....	4,229,271	4,926,086
7.2 Net deferred tax liability .....		0
8. Borrowed money \$ .....7,750,000 and interest thereon \$ .....0 .....	7,750,000	0
9. Unearned premiums (Part 1A, Line 38, Column 5) (after deducting unearned premiums for ceded reinsurance of \$ .....19,024,054 and including warranty reserves of \$ ..... and accrued accident and health experience rating refunds including \$ ..... for medical loss ratio rebate per the Public Health Service Act) .....	9,995,502	9,808,511
10. Advance premium .....		0
11. Dividends declared and unpaid:		
11.1 Stockholders .....		0
11.2 Policyholders .....		0
12. Ceded reinsurance premiums payable (net of ceding commissions) .....	28,943,798	23,583,082
13. Funds held by company under reinsurance treaties (Schedule F, Part 3, Column 19) .....	4,748,261	1,086,178
14. Amounts withheld or retained by company for account of others .....		0
15. Remittances and items not allocated .....	4,657,209	6,751,018
16. Provision for reinsurance (including \$ ..... certified) (Schedule F, Part 8) .....	3,122,000	277,000
17. Net adjustments in assets and liabilities due to foreign exchange rates .....		0
18. Drafts outstanding .....		0
19. Payable to parent, subsidiaries and affiliates .....	8,186,901	6,624,902
20. Derivatives .....	0	0
21. Payable for securities .....		0
22. Payable for securities lending .....		0
23. Liability for amounts held under uninsured plans .....		0
24. Capital notes \$ ..... and interest thereon \$ ..... .....		0
25. Aggregate write-ins for liabilities .....	1,760,808	2,051,289
26. Total liabilities excluding protected cell liabilities (Lines 1 through 25) .....	114,263,113	110,890,836
27. Protected cell liabilities .....		0
28. Total liabilities (Lines 26 and 27) .....	114,263,113	110,890,836
29. Aggregate write-ins for special surplus funds .....	0	1,088,264
30. Common capital stock .....	3,000,000	3,000,000
31. Preferred capital stock .....		0
32. Aggregate write-ins for other-than-special surplus funds .....	0	0
33. Surplus notes .....		0
34. Gross paid in and contributed surplus .....	36,484,581	36,484,581
35. Unassigned funds (surplus) .....	115,668,582	120,743,478
36. Less treasury stock, at cost:		
36.1 ..... shares common (value included in Line 30 \$ ..... ) .....		0
36.2 ..... shares preferred (value included in Line 31 \$ ..... ) .....		0
37. Surplus as regards policyholders (Lines 29 to 35, less 36) (Page 4, Line 39) .....	155,153,163	161,316,323
38. Totals (Page 2, Line 28, Col. 3) .....	269,416,276	272,207,159
DETAILS OF WRITE-INS		
2501. Allowance for Doubtful Accounts.....	1,470,000	1,541,000
2502. Retroactive Reinsurance Reserve Assumed.....	257,117	312,934
2503. Escheat Liabilities.....	33,691	197,355
2598. Summary of remaining write-ins for Line 25 from overflow page .....	0	0
2599. Totals (Lines 2501 through 2503 plus 2598) (Line 25 above) .....	1,760,808	2,051,289
2901. Special Surplus for ACA Taxes.....		1,088,264
2902. ....		0
2903. ....		0
2998. Summary of remaining write-ins for Line 29 from overflow page .....	0	0
2999. Totals (Lines 2901 through 2903 plus 2998) (Line 29 above) .....	0	1,088,264
3201. ....		0
3202. ....		0
3203. ....		0
3298. Summary of remaining write-ins for Line 32 from overflow page .....	0	0
3299. Totals (Lines 3201 through 3203 plus 3298) (Line 32 above) .....	0	0

STATEMENT OF INCOME

	1 Current Year	2 Prior Year
UNDERWRITING INCOME		
1. Premiums earned (Part 1, Line 35, Column 4) .....	101,621,425	105,943,215
DEDUCTIONS:		
2. Losses incurred (Part 2, Line 35, Column 7) .....	64,452,877	57,680,130
3. Loss adjustment expenses incurred (Part 3, Line 25, Column 1) .....	1,450,076	6,460,070
4. Other underwriting expenses incurred (Part 3, Line 25, Column 2) .....	26,144,738	29,473,854
5. Aggregate write-ins for underwriting deductions .....	0	0
6. Total underwriting deductions (Lines 2 through 5) .....	92,047,692	93,614,054
7. Net income of protected cells .....		0
8. Net underwriting gain (loss) (Line 1 minus Line 6 plus Line 7) .....	9,573,733	12,329,161
INVESTMENT INCOME		
9. Net investment income earned (Exhibit of Net Investment Income, Line 17) .....	6,236,366	6,297,057
10. Net realized capital gains (losses) less capital gains tax of \$ .....261,479 (Exhibit of Capital Gains (Losses)).....	726,130	451,750
11. Net investment gain (loss) (Lines 9 + 10) .....	6,962,496	6,748,807
OTHER INCOME		
12. Net gain (loss) from agents' or premium balances charged off (amount recovered \$ ..... amount charged off \$ ..... ) .....		0
13. Finance and service charges not included in premiums .....		0
14. Aggregate write-ins for miscellaneous income .....	(41,301)	40,722
15. Total other income (Lines 12 through 14) .....	(41,301)	40,722
16. Net income before dividends to policyholders, after capital gains tax and before all other federal and foreign income taxes (Lines 8 + 11 + 15) .....	16,494,928	19,118,690
17. Dividends to policyholders .....		0
18. Net income, after dividends to policyholders, after capital gains tax and before all other federal and foreign income taxes (Line 16 minus Line 17) .....	16,494,928	19,118,690
19. Federal and foreign income taxes incurred .....	5,100,565	5,795,066
20. Net income (Line 18 minus Line 19) (to Line 22) .....	11,394,363	13,323,624
CAPITAL AND SURPLUS ACCOUNT		
21. Surplus as regards policyholders, December 31 prior year (Page 4, Line 39, Column 2) .....	161,316,323	157,189,684
22. Net income (from Line 20) .....	11,394,363	13,323,624
23. Net transfers (to) from Protected Cell accounts .....		0
24. Change in net unrealized capital gains or (losses) less capital gains tax of \$ .....398,438 .....	773,439	(867,547)
25. Change in net unrealized foreign exchange capital gain (loss) .....		0
26. Change in net deferred income tax .....	(266,721)	(909,260)
27. Change in nonadmitted assets (Exhibit of Nonadmitted Assets, Line 28, Col. 3) .....	780,758	(313,177)
28. Change in provision for reinsurance (Page 3, Line 16, Column 2 minus Column 1) .....	(2,845,000)	(107,000)
29. Change in surplus notes .....		0
30. Surplus (contributed to) withdrawn from protected cells .....		0
31. Cumulative effect of changes in accounting principles .....		0
32. Capital changes:		
32.1 Paid in .....		0
32.2 Transferred from surplus (Stock Dividend) .....		0
32.3 Transferred to surplus .....		0
33. Surplus adjustments:		
33.1 Paid in .....		0
33.2 Transferred to capital (Stock Dividend) .....		0
33.3 Transferred from capital .....		0
34. Net remittances from or (to) Home Office .....		0
35. Dividends to stockholders .....	(16,000,000)	(7,000,000)
36. Change in treasury stock (Page 3, Lines 36.1 and 36.2, Column 2 minus Column 1) .....	0	0
37. Aggregate write-ins for gains and losses in surplus .....	0	0
38. Change in surplus as regards policyholders for the year (Lines 22 through 37) .....	(6,163,161)	4,126,640
39. Surplus as regards policyholders, December 31 current year (Line 21 plus Line 38) (Page 3, Line 37) .....	155,153,162	161,316,323
DETAILS OF WRITE-INS		
0501. ....		0
0502. ....		0
0503. ....		0
0598. Summary of remaining write-ins for Line 5 from overflow page .....	0	0
0599. Totals (Lines 0501 through 0503 plus 0598) (Line 5 above) .....	0	0
1401. Allowance for Doubtful Accounts.....	71,000	(13,000)
1402. Miscellaneous (Expense) Income.....	(102,118)	65,883
1403. Retroactive Reinsurance Assumed.....	(10,183)	(12,161)
1498. Summary of remaining write-ins for Line 14 from overflow page .....	0	0
1499. Totals (Lines 1401 through 1403 plus 1498) (Line 14 above) .....	(41,301)	40,722
3701. ....		0
3702. ....		0
3703. ....		0
3798. Summary of remaining write-ins for Line 37 from overflow page .....	0	0
3799. Totals (Lines 3701 through 3703 plus 3798) (Line 37 above) .....	0	0

CASH FLOW

	1 Current Year	2 Prior Year
<b>Cash from Operations</b>		
1. Premiums collected net of reinsurance	105,742,786	103,304,746
2. Net investment income	7,597,912	7,525,459
3. Miscellaneous income	(41,301)	440,722
4. Total (Lines 1 through 3)	113,299,397	111,270,927
5. Benefit and loss related payments	81,969,016	56,854,626
6. Net transfers to Separate Accounts, Segregated Accounts and Protected Cell Accounts	0	0
7. Commissions, expenses paid and aggregate write-ins for deductions	33,967,090	37,532,770
8. Dividends paid to policyholders	0	0
9. Federal and foreign income taxes paid (recovered) net of \$ tax on capital gains (losses)	6,058,863	3,234,881
10. Total (Lines 5 through 9)	121,994,969	97,622,277
11. Net cash from operations (Line 4 minus Line 10)	(8,695,571)	13,648,649
<b>Cash from Investments</b>		
12. Proceeds from investments sold, matured or repaid:		
12.1 Bonds	45,403,789	26,183,522
12.2 Stocks	175,273	269,302
12.3 Mortgage loans	0	0
12.4 Real estate	0	0
12.5 Other invested assets	0	0
12.6 Net gains or (losses) on cash, cash equivalents and short-term investments	330	0
12.7 Miscellaneous proceeds	11	0
12.8 Total investment proceeds (Lines 12.1 to 12.7)	45,579,403	26,452,824
13. Cost of investments acquired (long-term only):		
13.1 Bonds	48,348,433	33,239,142
13.2 Stocks	97,684	2,045,999
13.3 Mortgage loans	0	0
13.4 Real estate	0	0
13.5 Other invested assets	0	0
13.6 Miscellaneous applications	0	0
13.7 Total investments acquired (Lines 13.1 to 13.6)	48,446,118	35,285,141
14. Net increase (decrease) in contract loans and premium notes	0	0
15. Net cash from investments (Line 12.8 minus Line 13.7 minus Line 14)	(2,866,714)	(8,832,317)
<b>Cash from Financing and Miscellaneous Sources</b>		
16. Cash provided (applied):		
16.1 Surplus notes, capital notes	0	0
16.2 Capital and paid in surplus, less treasury stock	0	0
16.3 Borrowed funds	7,750,000	0
16.4 Net deposits on deposit-type contracts and other insurance liabilities	0	0
16.5 Dividends to stockholders	16,000,000	7,000,000
16.6 Other cash provided (applied)	3,538,840	4,989,007
17. Net cash from financing and miscellaneous sources (Lines 16.1 to 16.4 minus Line 16.5 plus Line 16.6)	(4,711,160)	(2,010,993)
<b>RECONCILIATION OF CASH, CASH EQUIVALENTS AND SHORT-TERM INVESTMENTS</b>		
18. Net change in cash, cash equivalents and short-term investments (Line 11, plus Lines 15 and 17)	(16,273,446)	2,805,339
19. Cash, cash equivalents and short-term investments:		
19.1 Beginning of year	17,178,449	14,373,110
19.2 End of year (Line 18 plus Line 19.1)	905,003	17,178,449

UNDERWRITING AND INVESTMENT EXHIBIT  
PART 1 - PREMIUMS EARNED

Line of Business		1 Net Premiums Written per Column 6, Part 1B	2 Unearned Premiums Dec. 31 Prior Year - per Col. 3, Last Year's Part 1	3 Unearned Premiums Dec. 31 Current Year - per Col. 5 Part 1A	4 Premiums Earned During Year (Cols. 1 + 2 - 3)
1.	Fire .....	0	0	0	0
2.	Allied lines .....	0	0	0	0
3.	Farmowners multiple peril .....	0	0	0	0
4.	Homeowners multiple peril .....	0	0	0	0
5.	Commercial multiple peril .....	440,171	0	13,469	426,702
6.	Mortgage guaranty .....	0	0	0	0
8.	Ocean marine .....	0	0	0	0
9.	Inland marine .....	0	0	0	0
10.	Financial guaranty .....	0	0	0	0
11.1	Medical professional liability-occurrence .....	0	0	0	0
11.2	Medical professional liability-claims-made .....	700,000	0	0	700,000
12.	Earthquake .....	0	0	0	0
13.	Group accident and health .....	84,025,011	6,232,299	6,561,241	83,696,069
14.	Credit accident and health (group and individual) .....	0	0	0	0
15.	Other accident and health .....	105	0	0	105
16.	Workers' compensation .....	0	0	0	0
17.1	Other liability-occurrence .....	9,896,119	0	0	9,896,119
17.2	Other liability-claims-made .....	6,747,010	3,576,212	3,420,792	6,902,430
17.3	Excess workers' compensation.....	0	0	0	0
18.1	Products liability-occurrence .....	0	0	0	0
18.2	Products liability-claims-made .....	0	0	0	0
19.1,19.2	Private passenger auto liability .....	0	0	0	0
19.3,19.4	Commercial auto liability .....	0	0	0	0
21.	Auto physical damage .....	0	0	0	0
22.	Aircraft (all perils) .....	0	0	0	0
23.	Fidelity .....	0	0	0	0
24.	Surety .....	0	0	0	0
26.	Burglary and theft .....	0	0	0	0
27.	Boiler and machinery .....	0	0	0	0
28.	Credit .....	0	0	0	0
29.	International .....	0	0	0	0
30.	Warranty .....	0	0	0	0
31.	Reinsurance-nonproportional assumed property .....	0	0	0	0
32.	Reinsurance-nonproportional assumed liability .....	0	0	0	0
33.	Reinsurance-nonproportional assumed financial lines .....	0	0	0	0
34.	Aggregate write-ins for other lines of business .....	0	0	0	0
35.	TOTALS	101,808,416	9,808,511	9,995,502	101,621,425
DETAILS OF WRITE-INS					
3401.	.....	0	0	0	0
3402.	.....	0	0	0	0
3403.	.....	0	0	0	0
3498.	Sum. of remaining write-ins for Line 34 from overflow page .....	0	0	0	0
3499.	Totals (Lines 3401 through 3403 plus 3498) (Line 34 above)	0	0	0	0

UNDERWRITING AND INVESTMENT EXHIBIT

PART 1A - RECAPITULATION OF ALL PREMIUMS

Line of Business		1 Amount Unearned (Running One Year or Less from Date of Policy) (a)	2 Amount Unearned (Running More Than One Year from Date of Policy) (a)	3  Earned but Unbilled Premium	4 Reserve for Rate Credits and Retrospective Adjustments Based on Experience	5 Total Reserve for Unearned Premiums Cols. 1 + 2 + 3 + 4
1.	Fire .....					0
2.	Allied lines .....					0
3.	Farmowners multiple peril .....					0
4.	Homeowners multiple peril .....					0
5.	Commercial multiple peril .....	13,469				13,469
6.	Mortgage guaranty .....					0
8.	Ocean marine .....					0
9.	Inland marine .....					0
10.	Financial guaranty .....					0
11.1	Medical professional liability-occurrence .....					0
11.2	Medical professional liability-claims-made .....					0
12.	Earthquake .....					0
13.	Group accident and health .....	3,180,556			3,380,685	6,561,241
14.	Credit accident and health (group and individual) ...					0
15.	Other accident and health .....					0
16.	Workers' compensation .....					0
17.1	Other liability-occurrence .....					0
17.2	Other liability-claims-made .....	3,420,792				3,420,792
17.3	Excess workers' compensation .....					0
18.1	Products liability-occurrence .....					0
18.2	Products liability-claims-made .....					0
19.1,19.2	Private passenger auto liability .....					0
19.3,19.4	Commercial auto liability .....					0
21.	Auto physical damage .....					0
22.	Aircraft (all perils) .....					0
23.	Fidelity .....					0
24.	Surety .....					0
26.	Burglary and theft .....					0
27.	Boiler and machinery .....					0
28.	Credit .....					0
29.	International .....					0
30.	Warranty .....					0
31.	Reinsurance-nonproportional assumed property ....					0
32.	Reinsurance-nonproportional assumed liability .....					0
33.	Reinsurance-nonproportional assumed financial lines .....					0
34.	Aggregate write-ins for other lines of business .....	0	0	0	0	0
35.	TOTALS	6,614,817	0	0	3,380,685	9,995,502
36.	Accrued retrospective premiums based on experience .....					
37.	Earned but unbilled premiums .....					
38.	Balance (Sum of Lines 35 through 37)					9,995,502
DETAILS OF WRITE-INS						
3401.	.....					0
3402.	.....					0
3403.	.....					0
3498.	Sum. of remaining write-ins for Line 34 from overflow page .....	0	0	0	0	0
3499.	Totals (Lines 3401 through 3403 plus 3498) (Line 34 above)	0	0	0	0	0

(a) State here basis of computation used in each case. Pro-rata basis

UNDERWRITING AND INVESTMENT EXHIBIT

PART 1B - PREMIUMS WRITTEN

Line of Business	1 Direct Business (a)	Reinsurance Assumed		Reinsurance Ceded		6 Net Premiums Written Cols. 1 + 2 + 3 - 4 - 5
		2 From Affiliates	3 From Non-Affiliates	4 To Affiliates	5 To Non-Affiliates	
1. Fire .....						0
2. Allied lines .....						0
3. Farmowners multiple peril .....						0
4. Homeowners multiple peril .....						0
5. Commercial multiple peril .....	27,648,605				27,208,434	440,171
6. Mortgage guaranty .....						0
8. Ocean marine .....						0
9. Inland marine .....	72,539,712				72,539,712	0
10. Financial guaranty .....						0
11.1 Medical professional liability-occurrence .....						0
11.2 Medical professional liability-claims-made .....	101,618				(598,382)	700,000
12. Earthquake .....						0
13. Group accident and health .....	198,856,149	255,112	14,848,849	53,035,785	76,899,314	84,025,011
14. Credit accident and health (group and individual) .....						0
15. Other accident and health .....	105					105
16. Workers' compensation .....						0
17.1 Other liability-occurrence .....	20,633,323		42	9,896,120	841,126	9,896,119
17.2 Other liability-claims-made .....	27,341,030			3,031,356	17,562,664	6,747,010
17.3 Excess workers' compensation .....						0
18.1 Products liability-occurrence .....						0
18.2 Products liability-claims-made .....						0
19.1,19.2 Private passenger auto liability .....						0
19.3,19.4 Commercial auto liability .....						0
21. Auto physical damage .....						0
22. Aircraft (all perils) .....						0
23. Fidelity .....	73,369			18,209	55,160	0
24. Surety .....						0
26. Burglary and theft .....						0
27. Boiler and machinery .....						0
28. Credit .....						0
29. International .....						0
30. Warranty .....						0
31. Reinsurance-nonproportional assumed property .....	XXX					0
32. Reinsurance-nonproportional assumed liability .....	XXX					0
33. Reinsurance-nonproportional assumed financial lines .....	XXX					0
34. Aggregate write-ins for other lines of business .....	1,461,495	0	0	0	1,461,495	0
35. TOTALS	348,655,406	255,112	14,848,891	65,981,470	195,969,523	101,808,416
DETAILS OF WRITE-INS						
3401. Miscellaneous Casualty .....	1,461,495				1,461,495	0
3402. ....						0
3403. ....						0
3498. Sum. of remaining write-ins for Line 34 from overflow page .....	0	0	0	0	0	0
3499. Totals (Lines 3401 through 3403 plus 3498) (Line 34 above)	1,461,495	0	0	0	1,461,495	0

(a) Does the company's direct premiums written include premiums recorded on an installment basis?    Yes    [    ]    No    [ X ]

If yes: 1. The amount of such installment premiums \$ .....  
2. Amount at which such installment premiums would have been reported had they been recorded on an annualized basis \$ .....



ANNUAL STATEMENT FOR THE YEAR 2016 OF THE BCS Insurance Company

UNDERWRITING AND INVESTMENT EXHIBIT

PART 2 - LOSSES PAID AND INCURRED

Line of Business		Losses Paid Less Salvage				5 Net Losses Unpaid Current Year (Part 2A, Col. 8)	6 Net Losses Unpaid Prior Year	7 Losses Incurred Current Year (Cols. 4 + 5 - 6)	8 Percentage of Losses Incurred (Col. 7, Part 2) to Premiums Earned (Col. 4, Part 1)
		1 Direct Business	2 Reinsurance Assumed	3 Reinsurance Recovered	4 Net Payments (Cols. 1 + 2 - 3)				
1.	Fire .....				.0	.0	0	.0	.0
2.	Allied lines .....				.0	.0	0	.0	.0
3.	Farmowners multiple peril .....				.0	.0	0	.0	.0
4.	Homeowners multiple peril .....				.0	.0	0	.0	.0
5.	Commercial multiple peril .....				.0	88,286	0	88,286	20.7
6.	Mortgage guaranty .....				.0	.0	0	.0	.0
8.	Ocean marine .....				.0	.0	0	.0	.0
9.	Inland marine .....	28,400,002		28,396,757	3,245	.0	0	3,245	.0
10.	Financial guaranty .....				.0	.0	0	.0	.0
11.1	Medical professional liability-occurrence .....				.0	.0	0	.0	.0
11.2	Medical professional liability-claims-made .....				.0	26,963	26,963	.0	.0
12.	Earthquake .....				.0	.0	0	.0	.0
13.	Group accident and health .....	136,164,338	15,005,497	90,009,657	61,160,178	21,463,435	28,207,312	54,416,301	65.0
14.	Credit accident and health (group and individual) .....				.0	.0	0	.0	.0
15.	Other accident and health .....				.0	.0	0	.0	.0
16.	Workers' compensation .....				.0	.0	0	.0	.0
17.1	Other liability-occurrence .....	18,169,750		9,893,861	8,275,889	3,423,050	1,666,801	10,032,138	101.4
17.2	Other liability-claims-made .....	35,361,415		31,798,221	3,563,194	6,883,157	10,513,870	(67,519)	(1.0)
17.3	Excess workers' compensation .....				.0	.0	0	.0	.0
18.1	Products liability-occurrence .....				.0	.0	0	.0	.0
18.2	Products liability-claims-made .....				.0	.0	0	.0	.0
19.1,19.2	Private passenger auto liability .....				.0	.0	0	.0	.0
19.3,19.4	Commercial auto liability .....				.0	.0	0	.0	.0
21.	Auto physical damage .....				.0	.0	0	.0	.0
22.	Aircraft (all perils) .....				.0	.0	0	.0	.0
23.	Fidelity .....	(19,574)			(19,574)	.0	0	(19,574)	.0
24.	Surety .....				.0	.0	0	.0	.0
26.	Burglary and theft .....				.0	.0	0	.0	.0
27.	Boiler and machinery .....				.0	.0	0	.0	.0
28.	Credit .....				.0	.0	0	.0	.0
29.	International .....				.0	.0	0	.0	.0
30.	Warranty .....				.0	.0	0	.0	.0
31.	Reinsurance-nonproportional assumed property .....	XXX			.0	.0	0	.0	.0
32.	Reinsurance-nonproportional assumed liability .....	XXX			.0	.0	0	.0	.0
33.	Reinsurance-nonproportional assumed financial lines .....	XXX			.0	.0	0	.0	.0
34.	Aggregate write-ins for other lines of business .....	756,997	0	756,997	0	0	0	.0	0.0
35.	TOTALS .....	218,832,928	15,005,497	160,855,493	72,982,932	31,884,891	40,414,946	64,452,877	63.4
DETAILS OF WRITE-INS									
3401.	Miscellaneous Casualty .....	756,997		756,997	.0	.0	0	.0	.0
3402.	.....				.0	.0	0	.0	.0
3403.	.....				.0	.0	0	.0	.0
3498.	Sum. of remaining write-ins for Line 34 from overflow page .....	.0	0	.0	.0	.0	0	.0	.0
3499.	Totals (Lines 3401 through 3403 + 3498) (Line 34 above) .....	756,997	0	756,997	0	0	0	.0	0.0

ANNUAL STATEMENT FOR THE YEAR 2016 OF THE BCS Insurance Company

UNDERWRITING AND INVESTMENT EXHIBIT  
PART 2A - UNPAID LOSSES AND LOSS ADJUSTMENT EXPENSES

		Reported Losses				Incurred But Not Reported			8	9
		1	2	3	4	5	6	7		
Line of Business		Direct	Reinsurance Assumed	Deduct Reinsurance Recoverable	Net Losses Excl. Incurred But Not Reported (Cols. 1 + 2 - 3)	Direct	Reinsurance Assumed	Reinsurance Ceded	Net Losses Unpaid (Cols. 4 + 5 + 6 - 7)	Net Unpaid Loss Adjustment Expenses
1.	Fire .....				.0				.0	
2.	Allied lines .....				.0				.0	
3.	Farmowners multiple peril .....				.0				.0	
4.	Homeowners multiple peril .....				.0				.0	
5.	Commercial multiple peril .....				.0	7,816,919		7,728,633	.88,286	.25,931
6.	Mortgage guaranty .....				.0				.0	
8.	Ocean marine .....				.0				.0	
9.	Inland marine .....				.0	8,927,280		8,927,280	.0	
10.	Financial guaranty .....				.0				.0	
11.1	Medical professional liability-occurrence .....				.0				.0	
11.2	Medical professional liability-claims-made .....		.26,963		.26,963	175,000		175,000	.26,963	
12.	Earthquake .....				.0				.0	
13.	Group accident and health .....	.7,285	.7,908	.7,285	.7,908	46,453,868	6,368,326	31,366,667	(a) .21,463,435	.1,017,605
14.	Credit accident and health (group and individual) .....				.0				.0	
15.	Other accident and health .....				.0				(a) .0	
16.	Workers' compensation .....				.0				.0	
17.1	Other liability-occurrence .....				.0	7,164,882		3,741,832	3,423,050	.42,989
17.2	Other liability-claims-made .....	.77,200,584		.74,004,197	.3,196,387	38,222,475		34,535,705	6,883,157	.4,282,906
17.3	Excess workers' compensation .....				.0				.0	
18.1	Products liability-occurrence .....				.0				.0	
18.2	Products liability-claims-made .....				.0				.0	
19.1,19.2	Private passenger auto liability .....				.0				.0	
19.3,19.4	Commercial auto liability .....				.0				.0	
21.	Auto physical damage .....				.0				.0	
22.	Aircraft (all perils) .....				.0				.0	
23.	Fidelity .....				.0	108,068		108,068	.0	
24.	Surety .....				.0				.0	
26.	Burglary and theft .....				.0				.0	
27.	Boiler and machinery .....				.0				.0	
28.	Credit .....				.0				.0	
29.	International .....				.0				.0	
30.	Warranty .....				.0				.0	
31.	Reinsurance-nonproportional assumed property .....	.XXX			.0	.XXX			.0	
32.	Reinsurance-nonproportional assumed liability .....	.XXX			.0	.XXX			.0	
33.	Reinsurance-nonproportional assumed financial lines .....	.XXX			.0	.XXX			.0	
34.	Aggregate write-ins for other lines of business .....	.0	.0	.0	.0	173,845	.0	173,845	.0	.0
35.	TOTALS .....	77,207,869	34,871	74,011,482	3,231,258	109,042,337	6,368,326	86,757,030	31,884,891	5,369,431
DETAILS OF WRITE-INS										
3401.	Miscellaneous Casualty.....				.0	173,845		173,845	.0	
3402.	.....				.0				.0	
3403.	.....				.0				.0	
3498.	Sum. of remaining write-ins for Line 34 from overflow page .....	.0	.0	.0	.0	.0	.0	.0	.0	.0
3499.	Totals (Lines 3401 through 3403 + 3498) (Line 34 above) .....	0	0	0	0	173,845	0	173,845	0	0

(a) Including \$ .....for present value of life indemnity claims.

UNDERWRITING AND INVESTMENT EXHIBIT

PART 3 - EXPENSES

	1	2	3	4
	Loss Adjustment Expenses	Other Underwriting Expenses	Investment Expenses	Total
1. Claim adjustment services:				
1.1 Direct .....	5,286,123			5,286,123
1.2 Reinsurance assumed .....	(100,000)			(100,000)
1.3 Reinsurance ceded .....	5,612,182			5,612,182
1.4 Net claim adjustment services (1.1 + 1.2 - 1.3) .....	(426,059)	0	0	(426,059)
2. Commission and brokerage:				
2.1 Direct, excluding contingent .....		77,885,491		77,885,491
2.2 Reinsurance assumed, excluding contingent .....		259,573		259,573
2.3 Reinsurance ceded, excluding contingent .....		75,395,308		75,395,308
2.4 Contingent-direct .....				0
2.5 Contingent-reinsurance assumed .....				0
2.6 Contingent-reinsurance ceded .....		21,603		21,603
2.7 Policy and membership fees .....				0
2.8 Net commission and brokerage (2.1 + 2.2 - 2.3 + 2.4 + 2.5 - 2.6 + 2.7) .....	0	2,728,153	0	2,728,153
3. Allowances to manager and agents .....				0
4. Advertising .....	9,078	73,052	2,230	84,361
5. Boards, bureaus and associations .....	(943)	52,079	(611)	50,525
6. Surveys and underwriting reports .....				0
7. Audit of assureds' records .....				0
8. Salary and related items:				
8.1 Salaries .....	927,385	7,215,942	237,577	8,380,905
8.2 Payroll taxes .....	48,044	385,792	13,883	447,718
9. Employee relations and welfare .....	495,548	3,894,086	129,315	4,518,949
10. Insurance .....	4,563	34,583	1,027	40,173
11. Directors' fees .....	4,664	37,778	1,026	43,468
12. Travel and travel items .....	78,715	604,173	18,348	701,236
13. Rent and rent items .....	113,895	883,443	29,324	1,026,662
14. Equipment .....	5,589	43,734	1,474	50,797
15. Cost or depreciation of EDP equipment and software .....	65,302	517,093	17,335	599,729
16. Printing and stationery .....	19,478	235,278	4,790	259,546
17. Postage, telephone and telegraph, exchange and express .....	6,360	49,678	1,633	57,672
18. Legal and auditing .....	96,035	1,278,261	375,223	1,749,518
19. Totals (Lines 3 to 18) .....	1,873,713	15,304,969	832,575	18,011,257
20. Taxes, licenses and fees:				
20.1 State and local insurance taxes deducting guaranty association credits of \$ .....		3,519,370		3,519,370
20.2 Insurance department licenses and fees .....		786,036		786,036
20.3 Gross guaranty association assessments .....		(3,586)		(3,586)
20.4 All other (excluding federal and foreign income and real estate) .....		2,363,151		2,363,151
20.5 Total taxes, licenses and fees (20.1 + 20.2 + 20.3 + 20.4) .....	0	6,664,971	0	6,664,971
21. Real estate expenses .....				0
22. Real estate taxes .....				0
23. Reimbursements by uninsured plans .....				0
24. Aggregate write-ins for miscellaneous expenses .....	2,423	1,446,645	565	1,449,633
25. Total expenses incurred .....	1,450,076	26,144,738	833,140	(a) 28,427,955
26. Less unpaid expenses-current year .....	5,369,431	3,572,012	43,029	8,984,472
27. Add unpaid expenses-prior year .....	9,422,427	5,891,290	54,106	15,367,823
28. Amounts receivable relating to uninsured plans, prior year .....	0	0	0	0
29. Amounts receivable relating to uninsured plans, current year .....				0
30. TOTAL EXPENSES PAID (Lines 25 - 26 + 27 - 28 + 29)	5,503,072	28,464,016	844,217	34,811,306
DETAILS OF WRITE-INS				
2401. Donations.....	2,423	17,753	565	20,741
2402. Group Service Administration.....		1,428,892		1,428,892
2403. ....				0
2498. Summary of remaining write-ins for Line 24 from overflow page .....	0	0	0	0
2499. Totals (Lines 2401 through 2403 plus 2498) (Line 24 above)	2,423	1,446,645	565	1,449,633

(a) Includes management fees of \$ 16,763,941 to affiliates and \$ to non-affiliates.

EXHIBIT OF NET INVESTMENT INCOME

		1	2
		Collected During Year	Earned During Year
1.	U.S. Government bonds .....	(a).....450,947	.....458,850
1.1	Bonds exempt from U.S. tax .....	(a).....1,457,887	.....1,395,997
1.2	Other bonds (unaffiliated) .....	(a).....4,362,714	.....4,339,619
1.3	Bonds of affiliates .....	(a).....0	.....
2.1	Preferred stocks (unaffiliated) .....	(b).....0	.....
2.11	Preferred stocks of affiliates .....	(b).....0	.....
2.2	Common stocks (unaffiliated) .....	.....309,643	.....309,643
2.21	Common stocks of affiliates .....	.....0	.....
3.	Mortgage loans .....	(c).....	.....
4.	Real estate .....	(d).....	.....
5.	Contract loans .....	.....	.....
6.	Cash, cash equivalents and short-term investments .....	(e).....20,633	.....18,807
7.	Derivative instruments .....	(f).....	.....
8.	Other invested assets .....	.....572,918	.....546,590
9.	Aggregate write-ins for investment income .....	.....0	.....0
10.	Total gross investment income .....	7,174,743	7,069,507
11.	Investment expenses .....		(g).....833,141
12.	Investment taxes, licenses and fees, excluding federal income taxes .....		(g).....
13.	Interest expense .....		(h).....
14.	Depreciation on real estate and other invested assets .....		(i).....
15.	Aggregate write-ins for deductions from investment income .....		.....0
16.	Total deductions (Lines 11 through 15) .....		.....833,141
17.	Net investment income (Line 10 minus Line 16) .....		6,236,366
DETAILS OF WRITE-INS			
0901.	.....	.....	.....
0902.	.....	.....	.....
0903.	.....	.....	.....
0998.	Summary of remaining write-ins for Line 9 from overflow page .....	.....0	.....0
0999.	Totals (Lines 0901 through 0903 plus 0998) (Line 9 above) .....	0	0
1501.	.....		
1502.	.....		
1503.	.....		
1598.	Summary of remaining write-ins for Line 15 from overflow page .....		.....0
1599.	Totals (Lines 1501 through 1503 plus 1598) (Line 15 above) .....		0

(a) Includes \$ .....131,305 accrual of discount less \$ .....1,398,692 amortization of premium and less \$ .....101,844 paid for accrued interest on purchases.  
(b) Includes \$ ..... accrual of discount less \$ ..... amortization of premium and less \$ .....0 paid for accrued dividends on purchases.  
(c) Includes \$ .....0 accrual of discount less \$ .....0 amortization of premium and less \$ ..... paid for accrued interest on purchases.  
(d) Includes \$ ..... for company's occupancy of its own buildings; and excludes \$ ..... interest on encumbrances.  
(e) Includes \$ ..... accrual of discount less \$ ..... amortization of premium and less \$ ..... paid for accrued interest on purchases.  
(f) Includes \$ ..... accrual of discount less \$ ..... amortization of premium.  
(g) Includes \$ ..... investment expenses and \$ ..... investment taxes, licenses and fees, excluding federal income taxes, attributable to segregated and Separate Accounts.  
(h) Includes \$ ..... interest on surplus notes and \$ ..... interest on capital notes.  
(i) Includes \$ ..... depreciation on real estate and \$ ..... depreciation on other invested assets.

EXHIBIT OF CAPITAL GAINS (LOSSES)

		1	2	3	4	5
		Realized Gain (Loss) On Sales or Maturity	Other Realized Adjustments	Total Realized Capital Gain (Loss) (Columns 1 + 2)	Change in Unrealized Capital Gain (Loss)	Change in Unrealized Foreign Exchange Capital Gain (Loss)
1.	U.S. Government bonds .....	.....33,986		.....33,986		
1.1	Bonds exempt from U.S. tax .....	.....472,045		.....472,045		
1.2	Other bonds (unaffiliated) .....	.....305,965		.....305,965	.....(59,702)	
1.3	Bonds of affiliates .....	.....0	.....0	.....0	.....0	.....0
2.1	Preferred stocks (unaffiliated) .....	.....0	.....0	.....0	.....0	.....0
2.11	Preferred stocks of affiliates .....	.....0	.....0	.....0	.....0	.....0
2.2	Common stocks (unaffiliated) .....	.....175,272	.....0	.....175,272	.....750,415	.....0
2.21	Common stocks of affiliates .....	.....0	.....0	.....0	.....(75,929)	.....0
3.	Mortgage loans .....	.....0	.....0	.....0	.....0	.....0
4.	Real estate .....	.....0	.....0	.....0		.....0
5.	Contract loans .....			.....0		
6.	Cash, cash equivalents and short-term investments .....	.....341		.....341	.....(11)	.....0
7.	Derivative instruments .....			.....0		
8.	Other invested assets .....	.....0	.....0	.....0	.....557,092	.....0
9.	Aggregate write-ins for capital gains (losses) .....	.....0	.....0	.....0	.....0	.....0
10.	Total capital gains (losses) .....	987,609	0	987,609	1,171,866	0
DETAILS OF WRITE-INS						
0901.	.....			.....0		
0902.	.....			.....0		
0903.	.....			.....0		
0998.	Summary of remaining write-ins for Line 9 from overflow page .....	.....0	.....0	.....0	.....0	.....0
0999.	Totals (Lines 0901 through 0903 plus 0998) (Line 9 above) .....	0	0	0	0	0

EXHIBIT OF NONADMITTED ASSETS

	1	2	3
	Current Year Total Nonadmitted Assets	Prior Year Total Nonadmitted Assets	Change in Total Nonadmitted Assets (Col. 2 - Col. 1)
1. Bonds (Schedule D).....	0	0	0
2. Stocks (Schedule D):			
2.1 Preferred stocks .....	0	0	0
2.2 Common stocks .....	0	0	0
3. Mortgage loans on real estate (Schedule B):			
3.1 First liens .....	0	0	0
3.2 Other than first liens .....	0	0	0
4. Real estate (Schedule A):			
4.1 Properties occupied by the company .....	0	0	0
4.2 Properties held for the production of income.....	0	0	0
4.3 Properties held for sale .....	0	0	0
5. Cash (Schedule E-Part 1), cash equivalents (Schedule E-Part 2) and short-term investments (Schedule DA).....	0	0	0
6. Contract loans .....	0	0	0
7. Derivatives (Schedule DB).....	0	0	0
8. Other invested assets (Schedule BA) .....	0	0	0
9. Receivables for securities .....	0	0	0
10. Securities lending reinvested collateral assets (Schedule DL).....	0	0	0
11. Aggregate write-ins for invested assets .....	0	0	0
12. Subtotals, cash and invested assets (Lines 1 to 11) .....	0	0	0
13. Title plants (for Title insurers only).....	0	0	0
14. Investment income due and accrued .....	0	0	0
15. Premiums and considerations:			
15.1 Uncollected premiums and agents' balances in the course of collection.....	2,221,712	2,589,800	368,088
15.2 Deferred premiums, agents' balances and installments booked but deferred and not yet due.....	0	0	0
15.3 Accrued retrospective premiums and contracts subject to redetermination .....	0	0	0
16. Reinsurance:			
16.1 Amounts recoverable from reinsurers .....	0	0	0
16.2 Funds held by or deposited with reinsured companies .....	0	0	0
16.3 Other amounts receivable under reinsurance contracts .....	0	0	0
17. Amounts receivable relating to uninsured plans .....	0	0	0
18.1 Current federal and foreign income tax recoverable and interest thereon .....	0	0	0
18.2 Net deferred tax asset.....	111,868	549,538	437,670
19. Guaranty funds receivable or on deposit .....	0	0	0
20. Electronic data processing equipment and software.....	0	0	0
21. Furniture and equipment, including health care delivery assets .....	0	0	0
22. Net adjustment in assets and liabilities due to foreign exchange rates .....	0	0	0
23. Receivables from parent, subsidiaries and affiliates .....	0	0	0
24. Health care and other amounts receivable.....	0	0	0
25. Aggregate write-ins for other-than-invested assets .....	25,000	0	(25,000)
26. Total assets excluding Separate Accounts, Segregated Accounts and Protected Cell Accounts (Lines 12 to 25).....	2,358,580	3,139,338	780,758
27. From Separate Accounts, Segregated Accounts and Protected Cell Accounts.....	0	0	0
28. Total (Lines 26 and 27)	2,358,580	3,139,338	780,758
DETAILS OF WRITE-INS			
1101. ....		0	0
1102. ....		0	0
1103. ....		0	0
1198. Summary of remaining write-ins for Line 11 from overflow page .....	0	0	0
1199. Totals (Lines 1101 through 1103 plus 1198) (Line 11 above)	0	0	0
2501. Loan Receivable.....	25,000	0	(25,000)
2502. ....		0	0
2503. ....		0	0
2598. Summary of remaining write-ins for Line 25 from overflow page .....	0	0	0
2599. Totals (Lines 2501 through 2503 plus 2598) (Line 25 above)	25,000	0	(25,000)

NOTES TO FINANCIAL STATEMENTS

1. Summary of Significant Accounting Policies

A. Accounting Practices and Going Concern

The accompanying financial statements of the Company have been prepared on the basis of accounting procedures prescribed or permitted by the Ohio Insurance Department. The state of Ohio requires insurance companies domiciled in the state of Ohio to prepare their statutory financial statements in accordance with the National Association of Insurance Commissioners' (NAIC) Accounting Practices and Procedures Manual subject to any deviations prescribed or permitted by the Ohio Insurance Department.

	SSAP #	F/S Page	F/S Line #	2016	2015
<b>Net Income</b>					
(1) BCS Insurance Company State Basis (Page 4, Line 20, Columns 1 & 2)				\$ 11,394,363	\$ 13,323,624
State Prescribed Practices that increase/(decrease)					
(2) NAIC SAP:					
None				-	-
State Permitted Practices that increase/(decrease)					
(3) NAIC SAP:					
None				-	-
(4) NAIC SAP (1-2-3=4)				11,394,363	13,323,624
<b>Surplus</b>					
(5) BCS Insurance Company State Basis (Page 3, Line 37, Columns 1 & 2)				\$ 155,153,163	\$ 161,316,323
State Prescribed Practices that increase/(decrease)					
(6) NAIC SAP:					
None				-	-
State Permitted Practices that increase/(decrease)					
(7) NAIC SAP:					
None				-	-
(8) NAIC SAP (5-6-7=8)				\$ 155,153,163	\$ 161,316,323

B. Use of Estimates in the Preparation of the Financial Statements

The preparation of financial statements requires management to make estimates and assumptions that affect the reported amounts of assets, liabilities, revenues, and expenses. Such estimates and assumptions could change in the future as more information becomes known, which could impact the amounts reported and disclosed herein.

C. Accounting Policy

Premiums are earned over the terms of the related policies and reinsurance contracts. Unearned premium is established to cover the unexpired portion of premiums written. Such reserves are computed by the pro rata method. Expenses incurred in connection with acquiring new insurance business (acquisition costs) are charged to operations as incurred. Net investment income consists primarily of interest and dividends. Net realized capital gains (losses) are recognized on a specific identification basis when securities are sold, redeemed or otherwise disposed.

In addition, the Company uses the following accounting policies:

- Short-term investments are stated at cost, which approximates market.
- Long-term bonds are generally stated at their amortized value using the scientific interest method. Non-investment grade securities with NAIC designations of 3 through 6 are stated at the lower of amortized value or fair value, with any unrealized losses recorded as a reduction to surplus. If a security is deemed to be other than temporarily impaired, it is written down to its fair value through a charge to earnings.
- Common Stocks, other than investments in stocks of subsidiaries and affiliates, are stated at fair value.
- Preferred Stocks - Not applicable
- Mortgage Loans - Not applicable
- Prepayment assumptions for loan-backed securities are obtained from broker dealer survey values or Bloomberg System. These assumptions are consistent with current interest rates and the economic environment. The retrospective scientific method is used to value all loan backed and structured securities.
- Subsidiaries, Controlled and Affiliated Companies are on an equity basis.
- Joint ventures, Partnerships and Limited Liability Companies are stated at fair value.
- Derivatives - Not applicable
- Anticipated investment income is a factor for premium deficiency reserves.

NOTES TO FINANCIAL STATEMENTS

- 11. Unpaid losses and loss adjustment expenses include an amount determined from individual case estimates and loss reports and an amount, based on past experience, for losses incurred but not reported. Such liabilities are necessarily based on assumptions and estimates and while management believes the amount is reasonable, the ultimate liability may be in excess of or less than the amount provided. The methods for making such estimates and for establishing the resulting liabilities are continually reviewed and any adjustments are reflected in the period determined.
- 12. Capitalization Policy - Not applicable
- 13. Pharmaceutical Rebate Receivables – Not applicable

D. Going Concern  
Not Applicable

2. Accounting Changes and Corrections of Errors  
None

3. Business Combinations and Goodwill  
A. Statutory Purchase Method  
None  
B. Statutory Merger  
None  
C. Impairment Loss  
None

4. Discontinued Operations  
Not Applicable

5. Investments  
A. Mortgage Loans, including Mezzanine Real Estate Loans  
None  
B. Debt Restructuring  
None  
C. Reverse Mortgages  
None  
D. Loan-Backed Securities

- 1. Anticipated prepayments for loan-backed and structured securities are used to determine the effective yield of an issue at purchase. Changes in the estimated cash flows of the issue are incorporated when determining the statement value at the end of each quarter and year-end. The Company calculates prepayment speeds for fixed-rate agency mortgage-backed securities utilizing Mortgage Industry Advisory Corporation (MIAC) Mortgage Industry Medians (MIMs). MIMs are derived from a semi-monthly dealer-consensus survey of long-term prepayment projections. For other mortgage-backed, loan-backed, and structured securities, the Company utilizes prepayment assumptions from Moody's Analytics. Moody's applies a flat economic credit model and utilizes a vector of multiple monthly speeds as opposed to a single speed for more robust projections. In instances where Moody's projections are not available, the Company uses data from Reuters, which utilizes the median prepayment speed from contributors' models. These assumptions are consistent with the current interest rate and economic environment. The retrospective scientific method is used to value most loan-backed and structured securities. For structured securities deemed to be high-risk, meaning the Company might not recover substantially all of its recorded investment due to unanticipated prepayment events, changes in investment yields due to changes in estimated future cash flows are accounted for on a prospective basis.
- 2. The Company has the following recognized other-than-temporary impairments on loan-backed securities:  
None
- 3. Securities, by CUSIP, with a recognized other-than-temporary impairment, currently held by the reporting entity, as the present value of cash flows expected to be collected is less than the amortized cost basis of the securities:  
None

## NOTES TO FINANCIAL STATEMENTS

4. All impaired securities (fair value is less than cost or amortized cost) for which an other-than-temporary impairment has not been recognized in earnings as a realized loss (including securities with a recognized other-than-temporary impairment for non-interest related declines when a non-recognized interest related impairment remains):

a. The aggregate amount of unrealized losses:

1. Less than 12 months	\$412,375
2. 12 Months or Longer	\$69,977

b. The aggregate related fair value of securities with unrealized losses:

1. Less than 12 months	\$20,524,823
2. 12 Months or Longer	\$3,544,208

5. The Company periodically reviews its bonds on a case by case basis to determine whether any decline in fair value below amortized cost is other than temporary. Factors considered when determining whether a decline is other than temporary include the length of time a security has been in an unrealized loss position, reasons for the decline in value, expectations for the amount and timing of a recovery in fair value, and whether or not the Company has the intent and ability to hold the security. When the Company intends to sell an impaired security or has the intent and ability to sell an impaired security before recovery of its amortized cost basis, an other than temporary impairment is recognized in the statutory statements of operations as the difference between the amortized cost basis of the security and fair value. For structured securities, a credit loss also exists when an estimate of the present value of cash flows expected to be collected on the security is less than its amortized cost basis. For other bonds, a credit loss exists when the fair value of the security is less than the amortized cost basis and based on analysis, the decrease in value is thought to be other than temporary. Credit losses are recognized in the statutory statements of operations.

Generally, securities with fair values that are less than 80% of cost, other securities the Company determines are underperforming, or potential problem securities are subject to regular impairment review. To facilitate the review, securities with significant declines in value, or where objective criteria evidencing credit deterioration have been met, are included on a watch list. Among the criteria for securities to be included on a watch list are: credit deterioration, which has led to a significant decline in value of the security; rating downgrades, a significant covenant related to the security has been breached; and an issuer has filed or indicated a possibility of filing for bankruptcy, has missed or announced it intends to miss a scheduled interest or principal payment, or has experienced a specific material adverse change that may impair its creditworthiness.

When performing these reviews, the Company considers the relevant facts and circumstances relating to each investment and exercises considerable judgment in determining whether a security is other than temporarily impaired. Assessment factors include judgments about an obligor's current and projected financial position, an issuer's current and projected ability to service and repay its debt obligations, the existence of, and realizable value of, any collateral backing the obligations, the macro economic outlook, and the micro economic outlook for specific industries and issuers. Assessing the duration of asset backed securities can also involve assumptions regarding underlying collateral, such as prepayment rates, default and recovery rates, and third party servicing capabilities.

Among the factors considered is whether the decline in fair value results from a change in the quality of the security itself, or from a downward movement in the market as a whole, the likelihood of recovering the carrying value based on the current and short term prospects of the issuer and the Company's ability and intent to sell the security before such a recovery may occur. Unrealized losses that are considered to be primarily the result of market conditions, such as increasing interest rates, unusual market volatility, or industry related events, and where the Company also believes there exists a reasonable expectation for recovery and, furthermore, has the intent and ability to hold the investment until maturity or the market recovery, are usually determined to be temporary. To the extent factors contributing to recognized other than temporary impairment losses affected other investments, such investments were reviewed for other than temporary impairment and losses were recorded when appropriate.

In addition to the review procedures described above, investments in structured securities where market prices are depressed are subject to a review of their future estimated cash flows, including expected and stress case scenarios, to identify potential shortfalls with regards to full recovery of amortized cost. Even in the case of severely depressed market values on structured securities, the Company places significant importance on the results of its cash flow testing and its intent to sell these securities prior to full recovery of amortized cost until their fair values recover when reaching other than temporary impairment conclusions. If amortized cost of the security is less than the present value of estimated cash flows, an other than temporary impairment is recognized in the statutory statements of operations.

If the Company does not expect to recover the amortized cost of nonstructured securities, an impairment loss is recognized as the difference between amortized cost and fair value under SSAP No. 26, Bonds, Excluding Loan Backed and Structured Securities. If the Company intends to sell an impaired loan backed or structured security or has the intent and ability to sell such a security before a period of time sufficient for recovery of the amortized cost basis, an other than temporary impairment has occurred and an impairment loss is recognized as the difference between amortized cost and fair value of the loan backed or structured security. If the Company does not expect to recover the amortized cost basis of loan backed or structured securities even if the entity has no intent to sell and the entity has the intent and ability to hold, an impairment loss is recognized as the difference between the amortized cost basis and the present value of cash flows expected to be collected. Impairment losses are recognized in the statutory statements of operations.



NOTES TO FINANCIAL STATEMENTS

There are inherent uncertainties in assessing the fair values assigned to the Company’s investments and in determining whether a decline in fair value is other than temporary. The Company’s review of fair value involves several criteria including economic conditions, credit loss experience, other issuer specific developments, and future cash flows. These assessments are based on the best available information at the time. Factors such as market liquidity, the widening of bid/ask spreads, and a change in the cash flow assumptions can contribute to fair value volatility and uncertainty with regards to other than temporary impairment. If actual experience differs negatively from the assumptions and other considerations, realized losses may be recognized in the statutory statements of operations in future periods.

As of December 31, 2016, the Company does not intend to sell securities with unrealized losses not considered other than temporary prior to full recovery of amortized cost. However, if the specific facts and circumstances surrounding a security or the outlook for its industry sector change, the Company may sell the security and realize a loss in the period in which the decision to sell was made.

E. Repurchase Agreements and/or Securities Lending Transactions

None

F. Real Estate

None

G. Investments in Low-Income Housing Tax Credits (LIHTC)

Not Applicable

H. Restricted Assets

1. Restricted Assets (Including Pledged)

Restricted Asset Category	Gross (Admitted & Nonadmitted) Restricted							Current Year			
	Current Year					6	7	8	9	Percentage	
	1	2	3	4	5					10	11
	Total General Account (G/A)	G/A Supporting S/A Activity (a)	Total Separate Account (S/A) Restricted Assets	S/A Assets Supporting G/A Activity (b)	Total (1plus 3)	Total From Prior Year	Increase / (Decrease) (5 minus 6)	Total Nonadmitted Restricted	Total Admitted Restricted (5 minus 8)	Gross (Admitted & Nonadmitted) Restricted to Total Assets (c)	Admitted Restricted to Total Admitted Assets (d)
a. Subject to contractual obligation for which liability is not shown	\$ -	\$ -	\$ -	\$ -	\$ -	\$ -	\$ -	\$ -	\$ -	-	-
b. Collateral held under security lending arrangements	-	-	-	-	-	-	-	-	-	-	-
c. Subject to repurchase agreements	-	-	-	-	-	-	-	-	-	-	-
d. Subject to reverse repurchase agreements	-	-	-	-	-	-	-	-	-	-	-
e. Subject to dollar repurchase agreements	-	-	-	-	-	-	-	-	-	-	-
f. Subject to dollar reverse repurchase agreements	-	-	-	-	-	-	-	-	-	-	-
g. Placed under option contracts	-	-	-	-	-	-	-	-	-	-	-
h. Letter stock or securities restricted as to sale - excluding FHLB capital stock	-	-	-	-	-	-	-	-	-	-	-
i. FHLB capital stock	581800	-	-	-	581800	581800	-	-	581800	0.2%	0.2%
j. On deposit with states	4,976,112	-	-	-	4,976,112	5,037,634	(61,522)	-	4,976,112	18%	18%
k. On deposit with other regulatory bodies	-	-	-	-	-	-	-	-	-	-	-
l. Pledged as collateral to FHLB (including assets backing funding agreements)	8,015,628	-	-	-	8,015,628	8,600,392	(584,764)	-	8,015,628	2.9%	3.0%
m. Pledged as collateral not captured in other categories	-	-	-	-	-	-	-	-	-	-	-
n. Other restricted assets	-	-	-	-	-	-	-	-	-	-	-
o. Total restricted assets	\$ 13,573,540	\$ -	\$ -	\$ -	\$ 13,573,540	\$ 14,219,826	\$ (646,286)	\$ -	\$ 13,573,540	5.0%	5.0%

( a ) Subset of column 1  
( b ) Subset of column 2  
( c ) Column 5 divided by Asset Page, Column 1 Line 28  
( d ) Column 9 divided by Asset Page, Column 3, Line 28

2. Detail of Other Assets Pledged as Collateral Not Captured in Other Categories

None

3. Detail of Other Restricted Assets

None

4. Collateral Received and Reflected as Assets Within the Reporting Entity's Financial Statements

None

NOTES TO FINANCIAL STATEMENTS

I. Working Capital Finance Investments

1. Aggregate Working Capital Finance Investments (WCFI) Book/Adjusted Carrying Value by NAIC designation:  
None
2. Aggregate Maturity Distribution the Underlying Working Capital Finance Programs:  
None
3. Events of Default of Working Capital Finance Investments During the Reporting Period  
None

J. Offsetting and Netting of Assets and Liabilities

None

K. Structured Notes

CUSIP Identification	Actual Cost	Fair Value	Book/Adjusted Carrying Value	Mortgage-Referenced Security (YES/NO)
1248MGAP9	\$ 178,958	\$ 186,086	\$ 178,769	NO
361856DD6	49,986	51,877	50,666	NO
73316PCK4	404,598	386,768	404,040	NO
76110VMH8	15,532	15,346	15,377	NO
Total	\$ 649,074	\$ 640,077	\$ 648,852	XXX

L. 5\* Securities

Not Applicable

6. Joint Ventures, Partnerships and Limited Liability Companies

- A. Detail for Those Greater than 10% of Admitted Assets  
Not Applicable
- B. Write-downs for Impairments  
Not Applicable

7. Investment Income

- A. Due and accrued income was excluded from surplus on the following bases:  
The Company non-admits investment income due and accrued if amounts are over 90 days past due.
- B. Amounts Non-admitted  
The total amount excluded was \$0.

8. Derivative Instruments

Not Applicable

NOTES TO FINANCIAL STATEMENTS

9. Income Taxes

A. The components of the net deferred tax asset/(liability) are as follows:

1. The change between years by tax character (ordinary and capital) for the year 2016 and 2015:

12/31/2016			
(1)	(2)	(3)	
Ordinary	Capital	(Col 1+2) Total	
(a) Gross Deferred Tax Assets	\$ 2,073,789	\$ 344,705	\$ 2,418,494
(b) Statutory Valuation Allowance Adjustments	-	-	-
(c) Adjusted Gross Deferred Tax Assets (1a-1b)	2,073,789	344,705	2,418,494
(d) Deferred Tax Assets Nonadmitted	111,868	-	111,868
(e) Subtotal Net Admitted Deferred Tax Asset (1c-1d)	1,961,921	344,705	2,306,626
(f) Deferred Tax Liabilities	424,681	126,796	551,477
(g) Net Admitted Deferred Tax Asset/(Net Deferred Tax Liability) (1e-1f)	\$ 1,537,240	\$ 217,909	\$ 1,755,149

12/31/2015			
(4)	(5)	(6)	
Ordinary	Capital	(Col 4+5) Total	
(a) Gross Deferred Tax Assets	\$ 2,305,311	\$ 645,735	\$ 2,951,046
(b) Statutory Valuation Allowance Adjustments	-	-	-
(c) Adjusted Gross Deferred Tax Assets (1a-1b)	2,305,311	645,735	2,951,046
(d) Deferred Tax Assets Nonadmitted	470,706	78,832	549,538
(e) Subtotal Net Admitted Deferred Tax Asset (1c-1d)	1,834,605	566,903	2,401,508
(f) Deferred Tax Liabilities	76,421	342,453	418,874
(g) Net Admitted Deferred Tax Asset/(Net Deferred Tax Liability) (1e-1f)	\$ 1,758,184	\$ 224,450	\$ 1,982,634

Change			
(7)	(8)	(9)	
(Col 1-4) Ordinary	(Col 2-5) Capital	(Col 7+8) Total	
(a) Gross Deferred Tax Assets	\$ (231,522)	\$ (301,030)	\$ (532,552)
(b) Statutory Valuation Allowance Adjustments	-	-	-
(c) Adjusted Gross Deferred Tax Assets (1a-1b)	(231,522)	(301,030)	(532,552)
(d) Deferred Tax Assets Nonadmitted	(358,838)	(78,832)	(437,670)
(e) Subtotal Net Admitted Deferred Tax Asset (1c-1d)	127,316	(222,198)	(94,882)
(f) Deferred Tax Liabilities	348,260	(215,657)	132,603
(g) Net Admitted Deferred Tax Asset/(Net Deferred Tax Liability) (1e-1f)	\$ (220,944)	\$ (6,541)	\$ (227,485)

NOTES TO FINANCIAL STATEMENTS

2. The amount of admitted adjusted gross deferred tax assets admitted under each component of SSAP 101:

12/31/2016			
(1)	(2)	(3)	
Ordinary	Capital	(Col 1+2)	Total
Admission Calculation Components SSAP No. 101			
Federal Income Taxes Paid In Prior Years Recoverable			
(a) Adjusted Gross Deferred Tax Assets Expected to be Realized (Excluding the Amount of Deferred Tax Assets From 2(a) above) After Application of the Threshold Limitation (The Lesser of 2(b)1 and 2(b)2 below)	\$ 1,517,018	\$ -	\$ 1,517,018
(b) 1. Adjusted Gross Deferred Tax Assets Expected to be Realized Following the Balance Sheet Date	20,222	217,909	238,131
2. Adjusted Gross Deferred Tax Assets Allowed per Limitation Threshold	20,222	217,909	238,131
Adjusted Gross Deferred Tax Assets (Excluding the Amount of Deferred Tax Assets from 2(a) and 2(b) above) Offset by Gross Deferred Tax Liabilities	XXX	XXX	23,009,702
(c) Deferred Tax Assets Admitted as the Result of Application of SSAP No. 101 Total (2(a) + 2(b) + 2(c))	424,681	126,796	551,477
(d)	\$ 1,961,921	\$ 344,705	\$ 2,306,626

12/31/2015			
(4)	(5)	(6)	
Ordinary	Capital	(Col 4+5)	Total
Federal Income Taxes Paid In Prior Years Recoverable			
(a) Adjusted Gross Deferred Tax Assets Expected to be Realized (Excluding the Amount of Deferred Tax Assets From 2(a) above) After Application of the Threshold Limitation (The Lesser of 2(b)1 and 2(b)2 below)	\$ 1,734,997	\$ -	\$ 1,734,997
(b) 1. Adjusted Gross Deferred Tax Assets Expected to be Realized Following the Balance Sheet Date	23,187	224,450	247,637
2. Adjusted Gross Deferred Tax Assets Allowed per Limitation Threshold	23,187	224,450	247,637
Adjusted Gross Deferred Tax Assets (Excluding the Amount of Deferred Tax Assets from 2(a) and 2(b) above) Offset by Gross Deferred Tax Liabilities	XXX	XXX	23,900,053
(c) Deferred Tax Assets Admitted as the Result of Application of SSAP No. 101 Total (2(a) + 2(b) + 2(c))	76,421	342,453	418,874
(d)	\$ 1,834,605	\$ 566,903	\$ 2,401,508

Change			
(7)	(8)	(9)	
(Col 1-4)	(Col 2-5)	(Col 7+8)	Total
Federal Income Taxes Paid In Prior Years Recoverable			
(a) Adjusted Gross Deferred Tax Assets Expected to be Realized (Excluding the Amount of Deferred Tax Assets From 2(a) above) After Application of the Threshold Limitation (The Lesser of 2(b)1 and 2(b)2 below)	\$ (217,979)	\$ -	\$ (217,979)
(b) 1. Adjusted Gross Deferred Tax Assets Expected to be Realized Following the Balance Sheet Date	(2,965)	(6,541)	(9,506)
2. Adjusted Gross Deferred Tax Assets Allowed per Limitation Threshold	(2,965)	(6,541)	(9,506)
Adjusted Gross Deferred Tax Assets (Excluding the Amount of Deferred Tax Assets from 2(a) and 2(b) above) Offset by Gross Deferred Tax Liabilities	XXX	XXX	(890,351)
(c) Deferred Tax Assets Admitted as the Result of Application of SSAP No. 101 Total (2(a) + 2(b) + 2(c))	348,260	(215,657)	132,603
(d)	\$ 127,316	\$ (222,198)	\$ (94,882)

3. The ratio used to determine applicable period used in 9A(2)b1 for determining the amount of adjusted gross DTAs:

	2016	2015
(a) Ratio Percentage Used to Determine Recovery Period and Threshold Limitation Amount	1290%	1331%
(b) Amount of Adjusted Capital and Surplus Used to Determine Recovery Period and Threshold Limitation in 2(b)2 Above	\$ 153,398,014	\$ 159,333,689

NOTES TO FINANCIAL STATEMENTS

4. Disclose the impact of tax-planning strategies:

12/31/2016		
	(1)	(2)
	Ordinary	Capital
	Percent	Percent
(a) Determination Of Adjusted Gross Deferred Tax Assets and Net Admitted Deferred Tax Assets, By Tax Character as a Percentage.		
1. Adjusted Gross DTAs Amount from Note 9A1(c)	2,073,789	344,705
2. Percentage of Adjusted Gross DTAs By Tax Character Attributable to the Impact of Tax Planning Strategies	0%	0%
3. Net Admitted Adjusted Gross DTAs Amount from Note 9A1(e)	1,961,921	344,705
4. Percentage of Net Admitted Percentage of Adjusted Gross DTAs by Tax Character Admitted because of the Impact of Tax Planning Strategies	0%	0%

12/31/2015		
	(1)	(2)
	Ordinary	Capital
	Percent	Percent
(a) Determination Of Adjusted Gross Deferred Tax Assets and Net Admitted Deferred Tax Assets, By Tax Character as a Percentage.		
1. Adjusted Gross DTAs Amount from Note 9A1(c)	2,305,311	645,735
2. Percentage of Adjusted Gross DTAs By Tax Character Attributable to the Impact of Tax Planning Strategies	0%	0%
3. Net Admitted Adjusted Gross DTAs Amount from Note 9A1(e)	1,834,605	566,903
4. Percentage of Net Admitted Percentage of Adjusted Gross DTAs by Tax Character Admitted because of the Impact of Tax Planning Strategies	0%	0%

Change		
	(7)	(8)
	(Col 1-4)	(Col 2-5)
	Ordinary	Capital
	Percent	Percent
(a) Determination Of Adjusted Gross Deferred Tax Assets and Net Admitted Deferred Tax Assets, By Tax Character as a Percentage.		
1. Adjusted Gross DTAs Amount from Note 9A1(c)	(231,522)	(301,030)
2. Percentage of Adjusted Gross DTAs By Tax Character Attributable to the Impact of Tax Planning Strategies	0%	0%
3. Net Admitted Adjusted Gross DTAs Amount from Note 9A1(e)	127,316	(222,198)
4. Percentage of Net Admitted Percentage of Adjusted Gross DTAs by Tax Character Admitted because of the Impact of Tax Planning Strategies	0%	0%

(b) Does the Company's tax-planning strategies include the use of reinsurance? Yes\_\_\_ No\_X\_

B. Unrecognized Deferred Tax Liabilities

Not Applicable

NOTES TO FINANCIAL STATEMENTS

C. Current income taxes incurred consist of the following major components:

	(1) 12/31/2016	(2) 12/31/2015	(3) (Col 1-2) Change
1. Current Income Tax			
(a) Federal	\$ 5,100,565	\$ 5,795,066	\$ (694,501)
(b) Foreign	-	-	-
(c) Subtotal	5,100,565	5,795,066	(694,501)
(d) Federal income tax on net capital gains	261,479	48,562	212,917
(e) Utilization of capital loss carry-forwards	-	-	-
(f) Other	-	-	-
(g) Federal and foreign income taxes incurred	\$ 5,362,044	\$ 5,843,628	\$ (481,584)
2. Deferred Tax Assets:			
(a) Ordinary			
(1) Discounting of unpaid losses	\$ 337,031	\$ 463,747	\$ (126,716)
(2) Unearned premium reserve	449,808	437,092	12,716
(3) Policyholder reserves	-	-	-
(4) Investments	23,268	-	23,268
(5) Deferred acquisition costs	-	-	-
(6) Policyholder dividends accrual	-	-	-
(7) Fixed assets	-	-	-
(8) Compensation and benefits accrual	-	-	-
(9) Pension accrual	-	-	-
(10) Receivables - nonadmitted	1,263,682	1,404,472	(140,790)
(11) Net operating loss carry-forward	-	-	-
(12) Tax credit carry-forward	-	-	-
(13) Other (including items <5% of total ordinary tax assets)	-	-	-
(99) Subtotal	2,073,789	2,305,311	(231,522)
(b) Statutory valuation allowance adjustment	-	-	-
(c) Nonadmitted	111,868	470,706	(358,838)
(d) Admitted ordinary deferred tax assets (2a99 - 2b - 2c)	1,961,921	1,834,605	127,316
(e) Capital:			
(1) Investments	344,705	645,735	(301,030)
(2) Net capital loss carry-forward	-	-	-
(3) Real estate	-	-	-
(4) Other (including items <5% of total capital tax assets)	-	-	-
(99) Subtotal	344,705	645,735	(301,030)
(f) Statutory valuation allowance adjustment	-	-	-
(g) Nonadmitted	-	78,832	(78,832)
(h) Admitted capital deferred tax assets (2e99 -2f -2g)	344,705	566,903	(222,198)
(i) Admitted deferred tax assets (2d + 2h)	2,306,626	2,401,508	(94,882)
3. Deferred Tax Liabilities:			
(a) Ordinary			
(1) Investments	-	76,421	(76,421)
(2) Fixed assets	-	-	-
(3) Deferred and uncollected premium	-	-	-
(4) Policyholder reserves	-	-	-
(5) Other (including items <5% of total ordinary tax liabilities)	-	-	-
(99) Subtotal	-	76,421	(76,421)
(b) Capital			
(1) Investments	551,477	342,453	209,024
(2) Real estate	-	-	-
(3) Other (including items <5% of total ordinary tax liabilities)	-	-	-
(99) Subtotal	551,477	342,453	209,024
(c) Deferred tax liabilities (3a99 + 3b99)	551,477	418,874	132,603
4. Net deferred tax assets/liabilities (2i - 3c)	\$ 1,755,149	\$ 1,982,634	\$ (227,485)

## NOTES TO FINANCIAL STATEMENTS

D. Among the more significant book to tax adjustments were the following:

	December 31, 2016	Effective Tax Rate
Provision computed at statutory rate	\$ 5,697,181	34%
Nondeductible expense for meals, lobbying and penalties	7,165	0%
Nondeductible health insurance tax	268,212	2%
Tax exempt interest	(403,504)	-2%
Change in nonadmitted balances	116,650	0%
Other Adjustments	11,233	0%
Provision to actual adjustment	(68,172)	0%
Total income tax reported	<u>\$ 5,628,765</u>	<u>34%</u>
Federal and foreign income taxes incurred	\$ 5,100,565	30%
Realized capital gains (losses) tax	261,479	2%
Change in net deferred income taxes	266,721	2%
Total income tax	<u>\$ 5,628,765</u>	<u>34%</u>

E. Operating Loss and Tax Credit Carryforwards and Protective Tax Deposits

1. As of December 31, 2016 and December 31, 2015, the Company did not have any unused operating loss carry forwards available to offset against future taxable income.
2. The income tax expense of \$5,346,073 from 2016 and \$5,878,736 from 2015 is available for recoupment in the event of future net losses.
3. The reporting entity has a total of \$0 protective deposits which are on deposit with the Internal Revenue Service under Section 6603 of the Internal Revenue Service Code.

F. Consolidated Federal Income Tax Return

1. The Company's federal income tax return is consolidated with its parent, BCS Financial Corporation (BCSF).
2. The method of allocation between companies is subject to written agreement, approved by the Board of Directors. Intercompany tax balances are settled annually. Allocation is based upon separate return calculations, with credit for net losses being obtained when utilized.

G. Federal or Foreign Federal Income Tax Loss Contingencies

The Company does not have any tax loss contingencies for which it is reasonably possible that the total liability will significantly increase within twelve months of the reporting date.

#### 10. Information Concerning Parent, Subsidiaries, Affiliates, and Other Related Parties

A. B. & C. Nature of Relationships

The Company is owned 100% by BCS Financial Corporation (BCSF). The Company has a management service agreement with BCSF. It shares common management, staff and facilities provided by BCSF with its other affiliates. Expenses identified as specific to a company are charged directly; all other expenses are charged in accordance with the service agreement.

The Company paid cash dividends to BCSF of \$16,000,000 and \$7,000,000 in 2016 and 2015, respectively.

D. Amounts Due to or from Related Parties

At December 31, 2016, the Company reported \$8,186,901 due to affiliates. This is comprised of \$5,651,256 and \$2,535,645 payable to BCSF and BCS Insurance Agency Inc., respectively.

E. Guarantees or Contingencies for Related Parties

None

F. Management or Service Contracts and Cost Sharing Arrangements

The Company has a management service agreement with BCSF whereby BCSF provides all insurance management, administrative and advisory services as well as investment management and general office administrative services. Expenses identified as specific to a company are charged directly; all other expenses are charged in accordance with the service agreement. There has been no change in the management service agreement in 2016.

G. Nature of Control Relationship

All outstanding common shares are owned by BCSF, an insurance holding company domiciled in the state of Delaware.

NOTES TO FINANCIAL STATEMENTS

H. Amount Deducted for Investment in Upstream Company

Not Applicable

I. Investments in SCA Entities Disclosures

Not Applicable

J. Investments in Impaired SCA Entities Disclosures

Not Applicable

K. Foreign Insurance Subsidiary

Not Applicable

L. Downstream Noninsurance Company

Not Applicable

M. All SCA Investments

Not Applicable

N. Investment in Insurance SCAs

Not Applicable

11. Debt

A. Debt & Holding Company Obligations

Not Applicable

B. Federal Home Loan Bank (FHLB) Agreements

1. The Company is a member of Federal Home Loan Bank (FHLB) of Cincinnati. Through its membership, the Company has conducted business activity (borrowings) with the FHLB. It is part of the Company's strategy to utilize these funds for general operations. The Company has determined the actual/estimated maximum borrowing capacity as \$7,970,090. The Company calculated this amount in accordance with its investment in FHLB capital stock and pledged collateral.

2. FHLB Capital Stock

a. Aggregate Totals

	1 Total 2+3	2 General Account	3 Separate Account
1. Current Year			
(a) Membership Stock - Class A	-	-	-
(b) Membership Stock - Class B	326,648	326,648	-
(c) Activity Stock	255,152	255,152	-
(d) Excess Stock	-	-	-
(e) Aggregate Total (a+b+c)	581,800	581,800	-
(f) Actual or estimated Borrowing Capacity as Determined by the Insurer	7,970,090	XXX	XXX
2. Prior Year-end Year			
(a) Membership Stock - Class A	-	-	-
(b) Membership Stock - Class B	335,528	335,528	-
(c) Activity Stock	-	-	-
(d) Excess Stock	246,272	246,272	-
(e) Aggregate Total (a+b+c)	581,800	581,800	-
(f) Actual or estimated Borrowing Capacity as Determined by the Insurer	8,786,321	XXX	XXX

11B(2)a1(f) should be equal to or greater than 11B(4)a1(d)

11B(2)a2(f) should be equal to or greater than 11B(4)a2(d)



NOTES TO FINANCIAL STATEMENTS

b. Membership Stock (Class A and B) Eligible for Redemption

	1	2	Eligible for Redemption			
Membership Stock	Current Year Total (2+3+4+5+6)	Not Eligible for Redemption	3 Less than 6 Months	4 6 Months to Less than 1 Year	5 1 to Less than 3 Years	6 3 to 5 Years
1. Class A	-	-	-	-	-	-
2. Class B	326,648	326,648	-	-	-	-

11B(2)b1 Current Year Total (Column 1) should equal 11B(2)a1(a) Total (Column 1)  
11B(2)b2 Current Year Total (Column 1) should equal 11B(2)a1(b) Total (Column 1)

3. Collateral Pledged to FHLB

a. Amount Pledged as of Reporting Date

	1 Fair Value	2 Carrying Value	3 Aggregate Total Borrowing
1. Current Year Total General and Separate Accounts Total Collateral Pledged (Lines 2+3)	8,120,896	8,015,628	7,750,000
2. Current Year General Account Total Collateral Pledged	8,120,896	8,015,628	7,750,000
3. Current Year Protected Cell Accounts Total Collateral Pledged	-	-	-
4. Prior Year-end Total General and Separate Accounts Total Collateral Pledged	8,893,864	8,600,392	-

11B(3)a1 (Columns 1, 2 and 3) should be equal to or less than 11B(3)b1 (Columns 1, 2 and 3 respectively)  
11B(3)a2 (Columns 1, 2 and 3) should be equal to or less than 11B(3)b2 (Columns 1, 2 and 3 respectively)  
11B(3)a3 (Columns 1, 2 and 3) should be equal to or less than 11B(3)b3 (Columns 1, 2 and 3 respectively)  
11B(3)a4 (Columns 1, 2 and 3) should be equal to or less than 11B(3)b4 (Columns 1, 2 and 3 respectively)

b. Maximum Amount Pledged During Reporting Period

	1 Fair Value	2 Carrying Value	3 Amount Borrowed at Time of Maximum Collateral
1. Current Year Total General and Separate Accounts Maximum Collateral Pledged (Lines 2+3)	8,924,791	8,559,875	7,750,000
2. Current Year General Account Maximum Collateral Pledged	8,924,791	8,559,875	7,750,000
3. Current Year Separate Accounts Maximum Collateral Pledged	-	-	-
4. Prior year-end Total General and Separate Accounts Maximum Collateral Pledged	9,991,092	9,404,271	-

4. Borrowing from FHLB

a. Amounts as of the Reporting Date

	1 Total 2+3	2 General Account	3 Separate Account	4 Funding Agreements Reserves Established
1. Current Year				
(a) Debt	-	-	-	XXX
(b) Funding	-	-	-	-
(c) Other	7,750,000	7,750,000	-	-
(d) Aggregate Total (a+b+c)	7,750,000	7,750,000	-	XXX
2. Prior Year-end				
(a) Debt	-	-	-	XXX
(b) Funding	-	-	-	-
(c) Other	-	-	-	-
(d) Aggregate Total (a+b+c)	-	-	-	XXX

NOTES TO FINANCIAL STATEMENTS

b. Maximum Amount during Reporting Period (Current Year)

	1 Total 2+3	2 General Account	3 Separate Account
1. Debt	-	-	-
2. Funding	-	-	-
3. Other	7,750,000	7,750,000	-
4. Aggregate Total (Lines 1+2+3)	7,750,000	7,750,000	-

11B(4)b4 (Columns 1, 2 and 3) should be equal to or greater than 11B(4)a1(d) (Columns 1, 2 and 3 respectively)

c. FHLB – Prepayments Obligations

None

12. Retirement Plans, Deferred Compensation, Postemployment Benefits and Compensated Absences and Other Postretirement Benefit Plans

A. Defined Benefit Plan

None

B. Investment Policies & Strategies

None

C. Fair Value of Each Class of Plan Assets

None

D. Basis Used to Determine the Overall Expected Long-Term Rate-of-Return-on-Assets

None

E. Defined Contribution Plans

None

F. Multiemployer Plans

None

G. Consolidated/Holding Company Plans

BCSF sponsors a defined benefit pension plan, a postretirement healthcare benefit plan and a 401(k) Plan covering substantially all of its employees as well as a deferred compensation plan for select employees. The expenses of these plans are charged in accordance with the management service agreement. In 2016, the Company incurred expenses of \$3,960,179 relating to these plans. The Company has no legal obligation for benefits under these plans.

H. Postemployment Benefits and Compensated Absences

None

I. Impact of Medicare Modernization Act on Postretirement Benefits

Not Applicable

13. Capital and Surplus, Shareholders' Dividend Restrictions, and Quasi-Reorganizations

1. Outstanding Shares

The Company has 300,000 shares of \$10 par value common stock authorized, issued and outstanding. The Company has no preferred stock authorized, issued, or outstanding.

2. Dividend Rate of Preferred Stock

Not Applicable

3. , 4. & 5. Dividend Restrictions

All dividends require notification to the Director of the Ohio Department of Insurance. The amount of dividends that can be paid by insurance companies domiciled in Ohio without prior approval of the Director of the Ohio Department of Insurance is subject to restriction and cannot exceed the greater of ten percent of prior year end surplus or the prior year's net income. The amount of dividends that could be paid in 2016 without prior approval was \$16,131,632. The Company paid dividends totaling \$16,000,000 to its stockholders during 2016.

NOTES TO FINANCIAL STATEMENTS

6. Surplus Restriction

None

7. Mutual Surplus Advances

None

8. Company Stock Held for Special Purposes

None

9. Changes in Special Surplus Funds

Due to the moratorium in place for data year 2016, the Company will not be subject to an annual fee under section 9010 of the Federal Affordable Care Act (ACA). As a result, there is no amount reflected in special surplus as of December 31, 2016.

10. Changes in Unassigned Funds

The portion of unassigned funds represented or increased by each item below is as follows:

Description	<u>Cumulative Increase (Decrease) in Surplus</u>	
1. Unrealized gain on Affiliated stock	\$	346,512
2. Unrealized gain on Bonds & Stocks		588,287
Total	\$	<u>934,799</u>

11. Surplus Notes

None

12. & 13. Quasi Reorganizations

None

14. Liabilities, Contingencies and Assessments

A. Contingent Commitments

None

B. Assessments

1. The Company is subject to guaranty fund assessments by the states in which it writes business. Guaranty fund assessments are accrued at the time of insolvency. The Company has accrued a liability for guaranty fund assessments of \$206,927 at December 31, 2016. The amount represents management’s best estimates based on information received from the states in which the Company writes business and may change due to many factors including the Company’s share of the ultimate cost of current insolvencies.
2. Guaranty Fund & Other Assessments with Liabilities Recognized Under SSAP No. 35R:

Assets recognized from paid and accrued premium tax		
a. offsets and policy surcharges prior year-end	\$	-
b. Decrease current year:		
Policy surcharges collected	\$	-
Policy surcharges charged off	\$	-
Premium tax offset applied	\$	-
c. Increases current year:		
Policy surcharges collected	\$	-
Policy surcharges charged off	\$	-
Premium tax offset applied	\$	-
Assets recognized from paid and accrued premium tax		
d. offsets and policy surcharges current year-end	\$	-

C. Gain Contingencies

None

NOTES TO FINANCIAL STATEMENTS

D. Claims Related to Extra Contractual Obligation and Bad Faith Losses Stemming from Lawsuits

The Company paid the following amounts in the reporting period to settle claims related to extra contractual obligations or bad faith claims stemming from lawsuits.

	Direct
Claims related to ECO and bad faith losses paid during the reporting period	\$ -

Number of claims where amounts were paid to settle claims related extra contractual obligations or bad faith claims resulting from lawsuits during the reporting period.

(a)	(b)	(c)	(d)	(e)
0-25 Claims	26-50 Claims	51-100 Claims	101-500 Claims	More than 500 Claims
X				

Indicate whether claim count information is disclosed per claim or per claimant.

( f ) Per Claim [ x ] ( g ) Per Claimant [ ]

E. Product Warranties

None

F. Joint and Several Liabilities

None

G. All Other Contingencies

1. Multistate Market Conduct Examination – NAIC Market Conduct Working Group (NAIC MAWG)

During October 2016, the Company received a proposed Regulatory Settlement Agreement (RSA) from the NAIC MAWG as communicated by the Market Conduct Section of the Missouri Department of Insurance, Financial Institutions and Professional Registration (MO DIFP). The Company’s management reviewed the various issues that were addressed within the RSA as well as the proposed settlement terms and submitted a written response to the MO DIFT within the timeframe specified. The issues addressed in the RSA are complex and because the proposed settlement terms could impact the current business practices of the Company and the travel insurance industry at large, the Company’s management believes that significant uncertainty exists as to the ultimate potential exposure related to these matters and that a range of possible loss cannot be reasonably determined at this time.

2. The Penn Treaty Network America Insurance Company and its subsidiary America Network Insurance Company (collectively, “Penn Treaty”) are currently in rehabilitation with the PA Department of Insurance (“PA DOI”). During 2016, the PA DOI withdrew the latest rehabilitation plan and has filed petitions requesting liquidation of both issuers. The matter is currently being reviewed by the Court. Given the uncertainty around whether Penn Treaty will ultimately be declared insolvent, and, if so, the amount of the insolvency as well as the timing of any associated assessments, we are unable to predict the ultimate outcome or our net exposure, if any, resulting from this potential insolvency. We will continue to monitor the situation and report accordingly.

15. Leases

None

16. Information About Financial Instruments with Off-Balance Sheet Risk and Financial Instruments with Concentrations of Credit Risk

None

17. Sale, Transfer and Servicing of Financial Assets and Extinguishment of Liabilities

A. Transfer of Receivables Reported as Sales

Not Applicable

B. Transfer and Servicing of Financial Assets

Not Applicable

C. Wash Sales

1. The Company has not sold and reacquired any security within a 30 day period of its original sale.
2. The details by NAIC designation 3 or below of securities sold during the year ended December 31, 2016 are reacquired within 30 days of the sale date are:

None

NOTES TO FINANCIAL STATEMENTS

18. Gain or Loss to the Reporting Entity from Uninsured Plans and the Uninsured Portion of Partially Insured Plans

A. Administrative Services Only (ASO) Plans

Not Applicable

B. Administrative Services Contract (ASC) Plans

Not Applicable

C. Medicare or Similarly Structured Cost Based Reimbursement Contracts

Not Applicable

19. Direct Premium Written/Produced by Managing General Agents/Third Party Administrators

Name and Address of Managing General Agent or Third Party Administration	FEIN Number	Exclusive Contract	Types of Business Written	Types of Authority Granted	Total Direct Premium Written/Produced By
AGA Service Company 2805 North Parham Road Richmond, VA 23294	54-1545622	N	Group Travel	C, CA, P, U, B	81,290,883
MGA Financial Services, Inc. 9024 Town Center Parkway Lakewood Ranch, FL 34202	65-0917796	N	Other Liability	P, U, B	7,973,651
Planned Administrators, Inc. 8906 Two Notch Road, Suite 200 Columbia, SC 29223	57-0718839	N	Accident & Health Dental, AD & D Disability	C, CA, P	69,626,185
Risk Placement Services, Inc. 2 Pierce Place, 25th Floor Itasca, IL 60143	36-3110841	N	Other Liability	P, U, B	15,910,297
Worldwide Insurance Services, Inc. dba HTH Worldwide 1 Radnor Corporate Center, Suite 100 Radnor, PA 19087	54-1867679	N	Group Accident & Health	C, CA, P, U, B	28,139,984
All Other TPA Premium					10,437,094

20. Fair Value Measurements

A. Input used for assets measured and reported at Fair Value

1. Items measured and reported at Fair Value by Levels 1, 2, and 3

Statutory accounting principles define the fair value of a financial instrument as the amount at which that asset could be bought or sold in a current transaction between willing parties that is other than in a forced or liquidation sale. The fair value of a liability is the amount at which that liability could be incurred or settled in a current transaction between willing parties. Certain financial instruments and all nonfinancial instruments are excluded from statutory disclosure requirements. Therefore, the aggregate fair value amounts presented below do not represent the underlying fair value of the Company.

Fair values are based on quoted market prices when available. When market prices are not available, fair value is generally estimated using discounted cash flow analyses, incorporation of current market inputs for similar financial instruments with comparable terms and credit quality (matrix pricing). In instances where there is little or no market activity for the same or similar instruments, the Company estimates fair value using methods, models, and assumptions that management believes market participants would use to determine a current transaction price. These valuation techniques involve some level of management estimation and judgment, which becomes significant with increasingly complex instruments or pricing models. Where appropriate, adjustments are included to reflect the risk inherent in a particular methodology model or input used.

The Company's financial assets and liabilities carried at fair value have been classified, for disclosure purposes, based on a hierarchy as defined by SSAP No. 100, Fair Value Measurements. The hierarchy gives the highest ranking to fair values determined using unadjusted quoted prices in active markets for identical assets and liabilities (Level 1) and the lowest ranking to fair values determined using methodologies and models with unobservable inputs (Level 3). An asset's or liability's classification is based on the lowest level input that is significant to its measurement. For example, a Level 3 fair value measurement may include inputs that are both observable (Levels 1 and 2) and unobservable (Level 3).

NOTES TO FINANCIAL STATEMENTS

The levels of the fair value hierarchy are as follows:

*Level 1* – Management’s valuations are unadjusted quoted prices for identical, unrestricted assets and liabilities in active markets accessible at the measurement date. Since valuations are based on quoted prices that are readily available in an active market, valuation of these assets does not involve any meaningful degree of judgment. An active market is defined as a market where transactions for the financial instrument occur with sufficient frequency and volume to provide pricing information on an ongoing basis. Level 1 financial assets and liabilities generally include common stocks and U.S. government debt securities, where management’s valuations are based on quoted market prices.

*Level 2* – Management’s valuations are based on quoted prices where such markets are not deemed to be sufficiently “active.” In such circumstances, additional valuations metrics will be used, which involve direct or indirect observable market inputs. Level 2 financial assets and liabilities generally include debt securities other than debt issued by the U.S. government. Inputs include quoted prices for similar assets or liabilities in active markets, quoted prices from those willing to trade in markets that are not active, or other inputs that are observable or can be corroborated by market data for the term of the instrument. Such inputs include market interest rates and volatilities, spreads, and yield curves.

*Level 3* – Management’s valuations are based on inputs that are unobservable (supported by little or no market activity) and significant to the fair value measurement. Valuations under Level 3 generally involve a significant degree of judgment on the part of management.

Assets Measured at Fair Value

Certain financial assets are measured at fair value, such as certain bonds valued at the lower of cost or fair value, or investments that are impaired during the reporting period and recorded at fair value on the balance sheet at December 31, 2016. The following table summarizes assets measured at fair value:

Description of each class of assets	(Level 1)	(Level 2)	(Level 3)	(Total)
Assets at fair value				
Bonds				
U.S. Treasury	\$ -	\$ -	\$ -	\$ -
U.S. Government agency	-	-	-	-
Mortgage-backed	-	543,549	-	543,549
States, territories, and possessions	-	-	-	-
Asset-backed	-	-	-	-
Corporate	-	1,541,641	-	1,541,641
Total bonds	-	2,085,190	-	2,085,190
Common stock				
Vanguard	8,100,707	-	-	8,100,707
Artisan	5,209,243	-	-	5,209,243
Plan Ultrashort Duration	8,083,545	-	-	8,083,545
Federal Home Loan Bank	-	581,800	-	581,800
Plans' Liability Insurance Company	-	-	2,152,518	2,152,518
Total common stock	21,393,495	581,800	2,152,518	24,127,813
Other invested assets				
Babson	-	-	6,101,207	6,101,207
Eaton Vance	-	-	6,602,580	6,602,580
Total other invested assets	-	-	12,703,787	12,703,787
Total bonds, stocks, and other invested assets	\$ 21,393,495	\$ 2,666,990	\$ 14,856,305	\$ 38,916,790

Bonds measured at fair value are those bonds that were determined to be other-than-temporarily impaired at December 31, 2016 and bonds valued at the lower of cost or fair value at December 31, 2016. NAIC 3 – 6 rated bonds are valued at the lower of cost or market. The Company does not have any investment commitments at December 31, 2016.

NOTES TO FINANCIAL STATEMENTS

2. Fair Value Measurements in (Level 3) of the Fair Value Hierarchy

Description	Beginning Balance at 1/1/2016	Transfers into Level 3	Transfers out of Level 3	Total gains and (losses) included in Net Income	Total gains and (losses) included in Surplus	Purchases	Issuances	Sales	Settle- ments	Ending Balance at 12/31/2016
Bonds										
U.S. Treasury	\$ -	\$ -	\$ -	\$ -	\$ -	\$ -	\$ -	\$ -	\$ -	\$ -
U.S. Government agency	-	-	-	-	-	-	-	-	-	-
Mortgage-backed	-	-	-	-	-	-	-	-	-	-
States, territories, and possessions	-	-	-	-	-	-	-	-	-	-
Asset-backed	-	-	-	-	-	-	-	-	-	-
Corporate	-	-	-	-	-	-	-	-	-	-
Total bonds	-	-	-	-	-	-	-	-	-	-
Common stock										
Vanguard	-	-	-	-	-	-	-	-	-	-
Artisan	-	-	-	-	-	-	-	-	-	-
Federal Home Loan Bank	-	-	-	-	-	-	-	-	-	-
Plans' Liability Insurance Company	2,228,447	-	-	-	(75,929)	-	-	-	-	2,152,518
Total common stock	2,228,447	-	-	-	(75,929)	-	-	-	-	2,152,518
Other invested assets										
Babson	5,887,770	-	-	-	213,437	-	-	-	-	6,101,207
Eaton Vance	6,258,925	-	-	-	343,655	-	-	-	-	6,602,580
Total other invested assets	12,146,695	-	-	-	557,092	-	-	-	-	12,703,787
Total assets	\$ 14,375,142	\$ -	\$ -	\$ -	\$ 481,163	\$ -	\$ -	\$ -	\$ -	\$ 14,856,305

3. Policy on Transfers into and out of Level 3

At the end of each reporting period, the Company evaluates whether or not any event has occurred or circumstances have changed that would cause an instrument to be transferred into or out of Level 3. During the current year, no transfers into or out of Level 3 were required.

4. Inputs and techniques used for level 2 and level 3 Fair Values

Bonds carried at fair value categorized as Level 2 were valued using a market approach. These valuations were determined to be Level 2 valuations as quoted markets prices for similar instruments in an active market were utilized. This was accomplished by the use of matrix pricing. Matrix pricing takes quoted prices of bonds with similar features and applies analytic methods to determine the fair value of bonds held. Features that are inputs into the analysis include duration, credit quality, tax status and call and sinking fund features.

Investments categorized as Level 3 had key unobservable inputs. Also, the investments are less liquid, and there is limited trading activity. The use of independent non-binding broker quotations to value investments generally indicates there is a lack of liquidity or the general lack of transparency in the process to develop the valuation estimates generally causing these investments to be classified in Level 3.

5. Derivative Fair Values

Not applicable

B. Other Fair Value Disclosures

Not applicable

NOTES TO FINANCIAL STATEMENTS

C. Fair Value for all financial instruments by levels 1, 2, and 3

Type of Financial Instrument	Aggregate Fair Value	Admitted Assets	Level 1	Level 2	Level 3	Not Practicable (Carrying Value)
Bonds						
U.S. Treasury	\$ 16,033,767	\$ 15,723,870	\$ -	\$ 15,723,870	\$ -	\$ -
U.S. Government agency	316,350	300,976	-	300,976	-	-
Mortgage-backed	39,460,764	39,021,909	-	39,021,909	-	-
States, territories, and possessions	72,795,727	71,204,617	-	71,204,617	-	-
Asset-backed	11,261,299	10,940,037	-	10,940,037	-	-
Corporate	49,082,128	48,062,690	-	48,062,690	-	-
Total bonds	188,950,035	185,254,099	-	185,254,099	-	-
Common stock						
Vanguard	8,100,707	8,100,707	8,100,707	-	-	-
Artisan	5,209,243	5,209,243	5,209,243	-	-	-
Plan Ultrashort Duration	8,083,545	8,083,545	8,083,545	-	-	-
Federal Home Loan Bank	581,800	581,800	-	581,800	-	-
Plans' Liability Insurance Company	2,152,518	2,152,518	-	-	2,152,518	-
Total common stock	24,127,813	24,127,813	21,393,495	581,800	2,152,518	-
Other invested assets						
Babson	6,101,207	6,101,207	-	-	6,101,207	-
Eaton Vance	6,602,580	6,602,580	-	-	6,602,580	-
Total other invested assets	12,703,787	12,703,787	-	-	12,703,787	-
Cash and short-term investments	905,004	905,004	905,004	-	-	-
Total assets	<u>\$ 226,686,639</u>	<u>\$ 222,990,703</u>	<u>\$ 22,298,499</u>	<u>\$ 185,835,899</u>	<u>\$ 14,856,305</u>	<u>\$ -</u>

D. Financial instruments for which not practicable to Estimate Fair Value

Not applicable

21. Other Items

A. Unusual or Infrequent Items

None

B. Troubled Debt Restructuring: Debtors

None

C. Other Disclosures

None

D. Business Interruption Insurance Recoveries

None

E. State Transferable and Non-transferable Tax Credits

None

F. Subprime-Mortgage-Related Risk Exposure

1. The Company has identified securities with the following characteristics as having subprime mortgage risk:
- a. First lien mortgages where borrowers have a FICO scores less than 650

b. First lien mortgages with loan-to-value ratios greater than 95%

c. Second lien mortgages where borrowers have FICO scores less than 675

d. Borrowers with less than conventional documentation of their income and/or net assets and FICO scores less than 650
2. Direct Exposure through investments in subprime mortgage loans
- None



NOTES TO FINANCIAL STATEMENTS

3. The following summarizes the Company's investments in securities with underlying subprime exposure at December 31, 2016:

Investment Type	Actual Cost	Book Adjusted Carrying Value (excluding interest)	Fair Value	Other-than-Temporary Impairment Losses Recognized
a. Residential mortgage backed securities	\$ 1,602,170	\$ 1,481,236	\$ 1,700,577	\$ 672,564
b. Commercial mortgage backed securities	-	-	-	-
c. Collateralized debt obligations	-	-	-	-
d. Structured securities	-	-	-	-
e. Equity investments in SCAs	-	-	-	-
f. Other assets	-	-	-	-
g. Total	\$ 1,602,170	\$ 1,481,236	\$ 1,700,577	\$ 672,564

4. Underwriting exposure to subprime mortgage risk through Mortgage Guaranty or Financial Guaranty insurance coverage

None

G. Insurance-Linked Securities (ILS) Contracts

None

22. Events Subsequent

Type I – Recognized Subsequent Events:

Subsequent events have been considered through February 15, 2017 for the statutory statement issued on March 1, 2017.

The Company does not have any subsequent events to report.

Type II – Nonrecognized Subsequent Events:

Subsequent events have been considered through February 15, 2017 for the statutory statement issued on March 1, 2017.

In 2017, the Company will not be subject to an annual fee under section 9010 of the Federal Affordable Care Act (ACA) due to the moratorium in place for data year 2016. As a result, there is no amount reflected in special surplus. The annual fee paid in 2016 does not trigger a RBC action level.

	Current Year	Prior Year
A. Did the reporting entity write accident and health insurance premium that is subject to Section 9010 of the federal Affordable Care Act (YES/NO)?	YES	
B. ACA fee assessment payable for the upcoming year	\$ -	\$ 1,088,264
C. ACA fee assessment paid	\$ 788,859	\$ 1,465,718
D. Premium written subject to ACA 9010 assessment	\$ 61,109,031	\$ 88,274,700
E. Total Adjusted Capital before surplus adjustment (Five-Year Historical Line 28)	\$ 155,153,163	
F. Total Adjusted Capital after surplus adjustment (Five-Year Historical Line 28 minus 22B above)	\$ 155,153,163	
G. Authorized Control Level (Five-Year Historical Line 29)	\$ 11,892,271	
H. Would reporting the ACA assessment as of December 31, 2016 have triggered an RBC action	NO	

NOTES TO FINANCIAL STATEMENTS

23. Reinsurance

A. Unsecured Reinsurance Recoverable

The Company has outlined below unsecured aggregate recoverable for losses, paid and unpaid including IBNR, loss adjustment expenses and unearned premium with any individual reinsurers, authorized, unauthorized or certified that exceed 3% of policyholders' surplus.

FEIN	NAIC #	Reinsurer	Recoverable
36-2149353	80985	4 Ever Life Insurance Co.	23,605,000
AA-1120337	00000	Aspen Insurance	9,135,000
AA-1126435	00000	Lloyd's Syndicate Number 435	4,759,000
AA-1128001	00000	Lloyd's Syndicate Number 2001	5,553,000
AA-1128003	00000	Lloyd's Syndicate Number 2003	6,003,000
AA-1120071	00000	Lloyd's Syndicate Number 2007	7,386,000
AA-1128791	00000	Lloyd's Syndicate Number 2791	4,649,000
AA-1128987	00000	Lloyd's Syndicate Number 2987	8,960,000
AA-1126006	00000	Lloyd's Syndicate Number 4472	8,171,000
36-3503382	26794	Plans' Liability Insurance Co.	35,226,000

B. Reinsurance Recoverable in Dispute

None

C. Reinsurance Assumed and Ceded

1. The following table summarizes ceded and assumed unearned premiums and the related commission equity at December 31, 2016:

	Assumed Reinsurance		Ceded Reinsurance		Net	
	Premium	Commission	Premium	Commission	Premium	Commission
	Reserve	Equity	Reserve	Equity	Reserve	Equity
a. Affiliates	\$ -	\$ -	\$ 760,802	\$ 88,158	\$ (760,802)	\$ (88,158)
b. All Other	3,436,037	-	18,263,252	4,262,225	(14,827,215)	(4,262,225)
c. Total	\$ 3,436,037	\$ -	\$ 19,024,054	\$ 4,350,383	\$ (15,588,017)	\$ (4,350,383)
d. Direct Unearned Premium Reserve			\$ 19,024,054			

Line ( c ) of Ceded Reinsurance Premium Reserve Column must equal Page 3, Line 9, first inside amount.

2. The additional or return commission, predicted on loss experience or on any other form of profit sharing arrangements in this annual statement as a result of existing contractual arrangements is accrued as follows:

None

3. Types of risk attributed to each of the Company's protected cells

None

D. Uncollectible Reinsurance

None

E. Commutation of Ceded Reinsurance

None

NOTES TO FINANCIAL STATEMENTS

F. Retroactive Reinsurance

1. Reported Company

As:		December 31, 2016	
	Assumed	Ceded	
a. Reserves Transferred:			
1. Initial Reserves	\$ (316,695)	\$	-
2. Adjustments - Prior Year(s)	3,761		-
3. Adjustments - Current Year	55,817		-
4. Current Total	(257,117)		-
b. Consideration (Paid) or Received:			
1. Initial Consideration	316,695		-
2. Adjustments - Prior Year(s)	10,219		-
3. Adjustments - Current Year	-		-
4. Current Total	326,914		-
c. Paid Losses (Reimbursed) or Recovered:			
1. Prior Year(s)	(851,500)		-
2. Current Year	(66,000)		-
3. Current Total	(917,500)		-
d. Special Surplus from Retroactive Reinsurance:			
1. Initial Surplus Gain or Loss	-		-
2. Adjustments - Prior Year(s)	(186,520)		-
3. Adjustments - Current Year	(10,183)		-
4. Current Year Restricted Surplus	(196,703)		-
5. Cumulative Total Transferred to Unassigned Funds	\$ (847,703)	\$	-
e. All cedents and reinsurers involved in all transactions included in summary totals above:			

Company	Assumed Amount	Ceded Amount
Allianz Life Insurance Company of North America	\$ (257,117)	\$ -
Total	\$ (257,117)	\$ -

f. Total Paid Loss/LAE amounts recoverable (for authorized, unauthorized and certified reinsurers), any amounts more than 90 days overdue (for authorized, unauthorized and certified reinsurers), and for amounts recoverable the collateral held (for authorized, unauthorized and certified reinsurers) as respects amounts recoverable from unauthorized reinsurers:

1. Authorized Reinsurers:

None

2. Unauthorized Reinsurers:

Company	Total Paid/Loss/LAE Recoverable	Amount Over 90 Days Overdue	Collateral Held
Lumbermens Mutual Casualty Company	\$ 145,000	\$ 145,000	\$ -
Total	\$ 145,000	\$ 145,000	\$ -

3. Certified Reinsurers:

None

G. Reinsurance Accounted for as a Deposit

Not Applicable

H. Disclosures for the Transfer of Property and Casualty Run-off Agreements

Not Applicable

I. Certified Reinsurer Rating Downgraded or Status Subject to Revocation

None

J. Reinsurance Agreements Qualifying for Reinsurer Aggregation

None

NOTES TO FINANCIAL STATEMENTS

24. Retrospectively Rated Contracts and Contracts Subject to Redetermination

A. Methods Used to Estimate

The Company estimates accrued retrospective premium adjustments through the review of each individual retrospectively rated risk, comparing case basis loss and IBNR activity in the policy contract to arrive at the best estimate of return or additional retrospective premium.

B. Method used to Record

The Company records accrued retrospective premium as an adjustment to written premium.

C. Amount and Percent of Net Retrospective Premiums

None

D. Medical Loss Ratio Rebates Required Pursuant to the Public Health Service Act

None

E. Calculation of Non-Admitted Retrospective Premiums

None

F. Risk-Sharing Provisions of the Affordable Care Act (ACA)

1. Did the reporting entity write accident and health insurance premium that is subject to the Affordable Care Act risk-sharing provisions (YES/NO)?

NO

2. Impact of Risk-Sharing Provisions of the Affordable Care Act on Admitted Assets, Liabilities and Revenue for the Current Year

Not Applicable

3. Roll-Forward of Prior Year ACA Risk-Sharing Provisions

Not Applicable

4. Roll-Forward of Risk Corridors Asset and Liability Balances by Program Benefit Year

Not Applicable

5. ACA Risk Corridors Receivable as of Reporting Date

Not Applicable

25. Changes in Incurred Losses and Loss Adjustment Expenses

The estimated savings on loss and loss adjustment expenses attributable to insured events of prior years is \$8,965,000 for the twelve months ending December 31, 2016, as shown in the chart below. This is -17.99% of unpaid losses and loss adjustment expenses of \$49,837,000 as of December 31, 2015. The decrease occurred predominantly in the Accident and Health and Other Liability – Claims Made lines of business as a result of favorable claim experience in accident years 2015 and prior.

	2016 Calendar Year Losses and LAE Incurred	2016 Loss Year Losses and LAE Incurred Sch. P - Part 1 - In ('000)	Total Shortage (Redundancy)	Loss and DCC Shortage (Redundancy) Sch. P - Part 2	Impact of AO on Total Shortage (Redundancy)
Medical Malpractice	\$ 4	\$ 4	\$ -	\$ -	\$ -
Group Accident and Health	55,128	62,643	(7,515)	(5,927)	(1,588)
Other Liability - Occurrence	10,148	10,983	(835)	(805)	(30)
Other Liability - Claims Made	456	3,083	(2,627)	(2,216)	(411)
Auto Physical Damage	-	-	-	-	-
Fidelity	(17)	-	(17)	(20)	3
Inland Marine / Other	34	24	10	3	7
Commercial Multi Peril	150	150	-	-	-
Total	<u>\$ 65,903</u>	<u>\$ 76,887</u>	<u>\$ (10,984)</u>	<u>\$ (8,965)</u>	<u>\$ (2,019)</u>

26. Intercompany Pooling Arrangements

Not Applicable

NOTES TO FINANCIAL STATEMENTS

27. Structured Settlements

A. Reserves Released due to Purchase of Annuities

In 2003, the Company purchased annuities that have a remaining balance of \$213,150 through New York Life Insurance Company under which the claimant is the payee.

Loss Reserves Eliminated by Annuities	Unrecorded Loss Contingencies
\$ 213,150	\$ -

B. Annuity Insurers with Balances Due Greater than 1% of Policyholders' Surplus

Not Applicable

28. Health Care Receivables

A. Pharmaceutical Rebate Receivables

None

B. Risk Sharing Receivables

None

29. Participating Policies

Not Applicable

30. Premium Deficiency Reserves

The Company evaluated the need to record a premium deficiency reserve as of the end of the current year and determined a reserve was not necessary. This evaluation was completed on February 8, 2017. The Company does anticipate investment income when evaluating the need for a premium deficiency reserve.

	(1)	
1. Liability carried for premium deficiency reserves	\$	-
2. Date of the most recent evaluation of this liability	2/8/2017	
3. Was anticipated investment income utilized in the calculation?	Yes__X__	No____

31. High Deductibles

Not Applicable

32. Discounting of Liabilities for Unpaid Losses and Loss Adjustment Expenses

A. Tabular Basis

Not Applicable

B. Non-Tabular Basis

Not Applicable

C. Changes in Discount Assumptions

Not Applicable

33. Asbestos/ Environmental Reserves

Not Applicable

34. Subscriber Savings Accounts

Not Applicable

35. Multiple Peril Crop Insurance

None

36. Financial Guaranty Insurance

Not Applicable

GENERAL INTERROGATORIES

PART 1 - COMMON INTERROGATORIES

GENERAL

- 1.1

Is the reporting entity a member of an Insurance Holding Company System consisting of two or more affiliated persons, one or more of which is an insurer?

Yes ☒ No ☐
- If yes, complete Schedule Y, Parts 1, 1A and 2.
- 1.2

If yes, did the reporting entity register and file with its domiciliary State Insurance Commissioner, Director or Superintendent or with such regulatory official of the state of domicile of the principal insurer in the Holding Company System, a registration statement providing disclosure substantially similar to the standards adopted by the National Association of Insurance Commissioners (NAIC) in its Model Insurance Holding Company System Regulatory Act and model regulations pertaining thereto, or is the reporting entity subject to standards and disclosure requirements substantially similar to those required by such Act and regulations?

Yes ☒ No ☐ N/A ☐
- 1.3

State Regulating?

Ohio.....
- 2.1

Has any change been made during the year of this statement in the charter, by-laws, articles of incorporation, or deed of settlement of the reporting entity?

Yes ☐ No ☒
- 2.2

If yes, date of change:

.....
- 3.1

State as of what date the latest financial examination of the reporting entity was made or is being made.

.....12/31/2013
- 3.2

State the as of date that the latest financial examination report became available from either the state of domicile or the reporting entity. This date should be the date of the examined balance sheet and not the date the report was completed or released.

.....12/31/2013
- 3.3

State as of what date the latest financial examination report became available to other states or the public from either the state of domicile or the reporting entity. This is the release date or completion date of the examination report and not the date of the examination (balance sheet date).

.....10/31/2014
- 3.4

By what department or departments? Ohio.....
- 3.5

Have all financial statement adjustments within the latest financial examination report been accounted for in a subsequent financial statement filed with Departments?

Yes ☐ No ☐ N/A ☒
- 3.6

Have all of the recommendations within the latest financial examination report been complied with?

Yes ☒ No ☐ N/A ☐
- 4.1

During the period covered by this statement, did any agent, broker, sales representative, non-affiliated sales/service organization or any combination thereof under common control (other than salaried employees of the reporting entity) receive credit or commissions for or control a substantial part (more than 20 percent of any major line of business measured on direct premiums) of:
- 4.11 sales of new business?

Yes ☒ No ☐
- 4.12 renewals?

Yes ☒ No ☐
- 4.2

During the period covered by this statement, did any sales/service organization owned in whole or in part by the reporting entity or an affiliate, receive credit or commissions for or control a substantial part (more than 20 percent of any major line of business measured on direct premiums) of:
- 4.21 sales of new business?

Yes ☐ No ☒
- 4.22 renewals?

Yes ☐ No ☒
- 5.1

Has the reporting entity been a party to a merger or consolidation during the period covered by this statement?

Yes ☐ No ☒
- 5.2

If yes, provide the name of the entity, NAIC company code, and state of domicile (use two letter state abbreviation) for any entity that has ceased to exist as a result of the merger or consolidation.

1 Name of Entity	2 NAIC Company Code	3 State of Domicile
.....	.....	.....
.....	.....	.....
.....	.....	.....
.....	.....	.....
.....	.....	.....

- 6.1

Has the reporting entity had any Certificates of Authority, licenses or registrations (including corporate registration, if applicable) suspended or revoked by any governmental entity during the reporting period?

Yes ☐ No ☒
- 6.2

If yes, give full information .....
- 7.1

Does any foreign (non-United States) person or entity directly or indirectly control 10% or more of the reporting entity?

Yes ☐ No ☒
- 7.2

If yes,
- 7.21

State the percentage of foreign control

.....0.0
- 7.22

State the nationality(s) of the foreign person(s) or entity(s); or if the entity is a mutual or reciprocal, the nationality of its manager or attorney-in-fact and identify the type of entity(s) (e.g., individual, corporation, government, manager or attorney-in-fact).

1 Nationality	2 Type of Entity
.....	.....
.....	.....
.....	.....
.....	.....
.....	.....

GENERAL INTERROGATORIES

8.1 Is the company a subsidiary of a bank holding company regulated by the Federal Reserve Board? Yes [ ] No [ X ]

8.2 If response to 8.1 is yes, please identify the name of the bank holding company.

8.3 Is the company affiliated with one or more banks, thrifts or securities firms? Yes [ ] No [ X ]

8.4 If response to 8.3 is yes, please provide the names and locations (city and state of the main office) of any affiliates regulated by a federal financial regulatory services agency [i.e. the Federal Reserve Board (FRB), the Office of the Comptroller of the Currency (OCC), the Federal Deposit Insurance Corporation (FDIC) and the Securities Exchange Commission (SEC)] and identify the affiliate's primary federal regulator.

1	2	3	4	5	6
Affiliate Name	Location (City, State)	FRB	OCC	FDIC	SEC

9. What is the name and address of the independent certified public accountant or accounting firm retained to conduct the annual audit?  
KPMG LLP, 200 E. Randolph Drive, Suite 5500, Chicago, IL 60601.....

10.1 Has the insurer been granted any exemptions to the prohibited non-audit services provided by the certified independent public accountant requirements as allowed in Section 7H of the Annual Financial Reporting Model Regulation (Model Audit Rule), or substantially similar state law or regulation? Yes [ ] No [ X ]

10.2 If the response to 10.1 is yes, provide information related to this exemption:

10.3 Has the insurer been granted any exemptions related to the other requirements of the Annual Financial Reporting Model Regulation as allowed for in Section 18A of the Model Regulation, or substantially similar state law or regulation? Yes [ ] No [ X ]

10.4 If the response to 10.3 is yes, provide information related to this exemption:

10.5 Has the reporting entity established an Audit Committee in compliance with the domiciliary state insurance laws? Yes [ X ] No [ ] N/A [ ]

10.6 If the response to 10.5 is no or n/a, please explain

11. What is the name, address and affiliation (officer/employee of the reporting entity or actuary/consultant associated with an actuarial consulting firm) of the individual providing the statement of actuarial opinion/certification?  
Charles C. Emma, EVP Advisors Inc., 115 Campbell Street, Suite 100C, Geneva, IL 60134.....

12.1 Does the reporting entity own any securities of a real estate holding company or otherwise hold real estate indirectly? Yes [ ] No [ X ]

12.11 Name of real estate holding company .....

12.12 Number of parcels involved .....0

12.13 Total book/adjusted carrying value \$ .....0

12.2 If yes, provide explanation

13. FOR UNITED STATES BRANCHES OF ALIEN REPORTING ENTITIES ONLY:

13.1 What changes have been made during the year in the United States manager or the United States trustees of the reporting entity?

13.2 Does this statement contain all business transacted for the reporting entity through its United States Branch on risks wherever located? Yes [ ] No [ ]

13.3 Have there been any changes made to any of the trust indentures during the year? Yes [ ] No [ ]

13.4 If answer to (13.3) is yes, has the domiciliary or entry state approved the changes? Yes [ ] No [ ] N/A [ ]

14.1 Are the senior officers (principal executive officer, principal financial officer, principal accounting officer or controller, or persons performing similar functions) of the reporting entity subject to a code of ethics, which includes the following standards? Yes [ X ] No [ ]

a. Honest and ethical conduct, including the ethical handling of actual or apparent conflicts of interest between personal and professional relationships;

b. Full, fair, accurate, timely and understandable disclosure in the periodic reports required to be filed by the reporting entity;

c. Compliance with applicable governmental laws, rules and regulations;

d. The prompt internal reporting of violations to an appropriate person or persons identified in the code; and

e. Accountability for adherence to the code.

14.11 If the response to 14.1 is no, please explain:

14.2 Has the code of ethics for senior managers been amended? Yes [ X ] No [ ]

14.21 If the response to 14.2 is yes, provide information related to amendment(s)  
The BCS Financial Corporation Code of Business Conduct was updated in 3Qtr 2016 as part of a review to ensure consistency with current best practices. All BCS Insurance Company senior officers are bound by the Code of Business Conduct.....

14.3 Have any provisions of the code of ethics been waived for any of the specified officers? Yes [ ] No [ X ]

14.31 If the response to 14.3 is yes, provide the nature of any waiver(s).

GENERAL INTERROGATORIES

- 15.1

Is the reporting entity the beneficiary of a Letter of Credit that is unrelated to reinsurance where the issuing or confirming bank is not on the SVO Bank List?

Yes ☐ No ☒
- 15.2

If the response to 15.1 is yes, indicate the American Bankers Association (ABA) Routing Number and the name of the issuing or confirming bank of the Letter of Credit and describe the circumstances in which the Letter of Credit is triggered.

1	2	3	4
American Bankers Association (ABA) Routing Number	Issuing or Confirming Bank Name	Circumstances That Can Trigger the Letter of Credit	Amount

BOARD OF DIRECTORS

16.

Is the purchase or sale of all investments of the reporting entity passed upon either by the board of directors or a subordinate committee thereof?

Yes ☒ No ☐
17.

Does the reporting entity keep a complete permanent record of the proceedings of its board of directors and all subordinate committees thereof?

Yes ☒ No ☐
18.

Has the reporting entity an established procedure for disclosure to its board of directors or trustees of any material interest or affiliation on the part of any of its officers, directors, trustees or responsible employees that is in conflict or is likely to conflict with the official duties of such person?

Yes ☒ No ☐

FINANCIAL

19.

Has this statement been prepared using a basis of accounting other than Statutory Accounting Principles (e.g., Generally Accepted Accounting Principles)?

Yes ☐ No ☒
- 20.1

Total amount loaned during the year (inclusive of Separate Accounts, exclusive of policy loans):

20.11 To directors or other officers

\$.....0

20.12 To stockholders not officers

\$.....0

20.13 Trustees, supreme or grand (Fraternal only)

\$.....0
- 20.2

Total amount of loans outstanding at the end of year (inclusive of Separate Accounts, exclusive of policy loans):

20.21 To directors or other officers

\$.....0

20.22 To stockholders not officers

\$.....0

20.23 Trustees, supreme or grand (Fraternal only)

\$.....0
- 21.1

Were any assets reported in this statement subject to a contractual obligation to transfer to another party without the liability for such obligation being reported in the statement?

Yes ☐ No ☒
- 21.2

If yes, state the amount thereof at December 31 of the current year:

21.21 Rented from others

\$.....0

21.22 Borrowed from others

\$.....0

21.23 Leased from others

\$.....0

21.24 Other

\$.....0
- 22.1

Does this statement include payments for assessments as described in the *Annual Statement Instructions* other than guaranty fund or guaranty association assessments?

Yes ☒ No ☐
- 22.2

If answer is yes:

22.21 Amount paid as losses or risk adjustment

\$.....0

22.22 Amount paid as expenses

\$.....478,780

22.23 Other amounts paid

\$.....0
- 23.1

Does the reporting entity report any amounts due from parent, subsidiaries or affiliates on Page 2 of this statement?

Yes ☐ No ☒
- 23.2

If yes, indicate any amounts receivable from parent included in the Page 2 amount:

\$.....

INVESTMENT

- 24.01

Were all the stocks, bonds and other securities owned December 31 of current year, over which the reporting entity has exclusive control, in the actual possession of the reporting entity on said date? (other than securities lending programs addressed in 24.03)

Yes ☐ No ☒
- 24.02

If no, give full and complete information, relating thereto

The Company has securities on deposit with Federal Home Loan Bank to secure a line of credit.....
- 24.03

For security lending programs, provide a description of the program including value for collateral and amount of loaned securities, and whether collateral is carried on or off-balance sheet. (an alternative is to reference Note 17 where this information is also provided)
- 24.04

Does the company's security lending program meet the requirements for a conforming program as outlined in the Risk-Based Capital Instructions?

Yes ☐ No ☐ NA ☒
- 24.05

If answer to 24.04 is yes, report amount of collateral for conforming programs.

\$.....0
- 24.06

If answer to 24.04 is no, report amount of collateral for other programs.

\$.....0
- 24.07

Does your securities lending program require 102% (domestic securities) and 105% (foreign securities) from the counterparty at the outset of the contract?

Yes ☐ No ☐ NA ☒
- 24.08

Does the reporting entity non-admit when the collateral received from the counterparty falls below 100%?

Yes ☐ No ☐ NA ☒
- 24.09

Does the reporting entity or the reporting entity's securities lending agent utilize the Master Securities Lending Agreement (MSLA) to conduct securities lending?

Yes ☐ No ☐ NA ☒
- 24.10

For the reporting entity's security lending program, state the amount of the following as of December 31 of the current year:

24.101

Total fair value of reinvested collateral assets reported on Schedule DL, Parts 1 and 2

\$.....0

24.102

Total book adjusted/carrying value of reinvested collateral assets reported on Schedule DL, Parts 1 and 2

\$.....0

24.103

Total payable for securities lending reported on the liability page

\$.....0



GENERAL INTERROGATORIES

25.1 Were any of the stocks, bonds or other assets of the reporting entity owned at December 31 of the current year not exclusively under the control of the reporting entity or has the reporting entity sold or transferred any assets subject to a put option contract that is currently in force? (Exclude securities subject to Interrogatory 21.1 and 24.03). Yes [ X ] No [ ]

25.2 If yes, state the amount thereof at December 31 of the current year:

25.21 Subject to repurchase agreements

25.22 Subject to reverse repurchase agreements

25.23 Subject to dollar repurchase agreements

25.24 Subject to reverse dollar repurchase agreements

25.25 Placed under option agreements

25.26 Letter stock or securities restricted as to sale – excluding FHLB Capital Stock

25.27 FHLB Capital Stock

25.28 On deposit with states

25.29 On deposit with other regulatory bodies

25.30 Pledged as collateral – excluding collateral pledged to an FHLB

25.31 Pledged as collateral to FHLB – including assets backing funding agreements

25.32 Other

\$

\$

\$

\$

\$

\$

\$

\$

\$

\$

\$

\$

2,152,518

581,800

4,976,112

8,015,628

25.3 For category (25.26) provide the following:

1 Nature of Restriction	2 Description	3 Amount
Must sell to Blue Cross Blue Shield or affiliated Company.....	Plans' Liability Insurance Company common stock.....	2,152,518
.....	.....	.....
.....	.....	.....
.....	.....	.....
.....	.....	.....

26.1 Does the reporting entity have any hedging transactions reported on Schedule DB? Yes [ ] No [ X ]

26.2 If yes, has a comprehensive description of the hedging program been made available to the domiciliary state? Yes [ ] No [ ] N/A [ X ]  
If no, attach a description with this statement.

27.1 Were any preferred stocks or bonds owned as of December 31 of the current year mandatorily convertible into equity, or, at the option of the issuer, convertible into equity? Yes [ ] No [ X ]

27.2 If yes, state the amount thereof at December 31 of the current year. \$ 0

28. Excluding items in Schedule E – Part 3 – Special Deposits, real estate, mortgage loans and investments held physically in the reporting entity's offices, vaults or safety deposit boxes, were all stocks, bonds and other securities, owned throughout the current year held pursuant to a custodial agreement with a qualified bank or trust company in accordance with Section 1, III – General Examination Considerations, F. Outsourcing of Critical Functions, Custodial or Safekeeping agreements of the NAIC *Financial Condition Examiners Handbook*? Yes [ X ] No [ ]

28.01 For agreements that comply with the requirements of the NAIC *Financial Condition Examiners Handbook*, complete the following:

1 Name of Custodian(s)	2 Custodian's Address
Federal Street Bank of Cincinnati.....	221 East Fourth Street, Suite 600 Cincinnati, OH 45202.....
State Street Bank & Trust Company Boston.....	1 Lincoln Street, Boston, MA 02111.....

28.02 For all agreements that do not comply with the requirements of the NAIC *Financial Condition Examiners Handbook*, provide the name, location and a complete explanation:

1 Name(s)	2 Location(s)	3 Complete Explanation(s)
.....	.....	.....
.....	.....	.....
.....	.....	.....

28.03 Have there been any changes, including name changes, in the custodian(s) identified in 28.01 during the current year? Yes [ ] No [ X ]

28.04 If yes, give full and complete information relating thereto:

1 Old Custodian	2 New Custodian	3 Date of Change	4 Reason
.....	.....	.....	.....
.....	.....	.....	.....
.....	.....	.....	.....

GENERAL INTERROGATORIES

28.05 Investment management – Identify all investment advisors, investment managers, broker/dealers, including individuals that have the authority to make investment decisions on behalf of the reporting entity. For assets that are managed internally by employees of the reporting entity, note as such. ["...that have access to the investment accounts"; "...handle securities"]

1 Name of Firm or Individual	2 Affiliation
Asset Allocation & Management Company, LLC.....	U.....
Wellington Management Company, LLP.....	U.....

28.0597 For those firms/individuals listed in the table for Question 28.05, do any firms/individuals unaffiliated with the reporting entity (i.e., designated with a "U") manage more than 10% of the reporting entity's assets? Yes [ X ] No [   ]

28.0598 For firms/individuals unaffiliated with the reporting entity (i.e., designated with a "U") listed in the table for Question 28.05, does the total assets under management aggregate to more than 50% of the reporting entity's assets? Yes [ X ] No [   ]

28.06 For those firms or individuals listed in the table for 28.05 with an affiliation code of "A" (affiliated) or "U" (unaffiliated), provide the information for the table below.

1 Central Registration Depository Number	2 Name of Firm or Individual	3 Legal Entity Identifier (LEI)	4 Registered With	5 Investment Management Agreement (IMA) Filed
109875.....	Asset Allocation & Management Company, LLC.....		Securities Exchange Commission.....	NO.....
106595.....	Wellington Management Company, LLP.....	549300YHP12TEZNL CX41.....	Securities Exchange Commission.....	NO.....

29.1 Does the reporting entity have any diversified mutual funds reported in Schedule D - Part 2 (diversified according to the Securities and Exchange Commission (SEC) in the Investment Company Act of 1940 [Section 5 (b) (1)])? Yes [   ] No [ X ]

29.2 If yes, complete the following schedule:

1 CUSIP #	2 Name of Mutual Fund	3 Book/Adjusted Carrying Value
.....	.....	.....
.....	.....	.....
.....	.....	.....
29.2999 TOTAL		0

29.3 For each mutual fund listed in the table above, complete the following schedule:

1 Name of Mutual Fund (from above table)	2 Name of Significant Holding of the Mutual Fund	3 Amount of Mutual Fund's Book/Adjusted Carrying Value Attributable to the Holding	4 Date of Valuation
.....	.....	.....	.....
.....	.....	.....	.....
.....	.....	.....	.....

30. Provide the following information for all short-term and long-term bonds and all preferred stocks. Do not substitute amortized value or statement value for fair value.

	1 Statement (Admitted) Value	2 Fair Value	3 Excess of Statement over Fair Value (-), or Fair Value over Statement (+)
30.1 Bonds.....	185,256,708	188,952,644	3,695,936
30.2 Preferred Stocks.....	0		0
30.3 Totals	185,256,708	188,952,644	3,695,936

30.4 Describe the sources or methods utilized in determining the fair values:  
See Attachment.....

31.1 Was the rate used to calculate fair value determined by a broker or custodian for any of the securities in Schedule D? Yes [ X ] No [   ]

31.2 If the answer to 31.1 is yes, does the reporting entity have a copy of the broker's or custodian's pricing policy (hard copy or electronic copy) for all brokers or custodians used as a pricing source? Yes [ X ] No [   ]

31.3 If the answer to 31.2 is no, describe the reporting entity's process for determining a reliable pricing source for purposes of disclosure of fair value for Schedule D:

32.1 Have all the filing requirements of the *Purposes and Procedures Manual of the NAIC Investment Analysis Office* been followed? Yes [ X ] No [   ]

32.2 If no, list exceptions:

GENERAL INTERROGATORIES

OTHER

- 33.1 Amount of payments to trade associations, service organizations and statistical or rating bureaus, if any? \$ .....37,986
- 33.2 List the name of the organization and the amount paid if any such payment represented 25% or more of the total payments to trade associations, service organizations and statistical or rating bureaus during the period covered by this statement.

1 Name	2 Amount Paid
Independent Statistical Service Inc.....	\$.....20,200
P&C Insurance Association of America.....	\$.....12,773

- 34.1 Amount of payments for legal expenses, if any? \$ .....32,237
- 34.2 List the name of the firm and the amount paid if any such payment represented 25% or more of the total payments for legal expenses during the period covered by this statement.

1 Name	2 Amount Paid
Kerns, Frost & Johnson, LLP.....	\$.....14,935
Step toe & Johnson, LLP.....	\$.....16,581

- 35.1 Amount of payments for expenditures in connection with matters before legislative bodies, officers or departments of government, if any? \$ .....0
- 35.2 List the name of the firm and the amount paid if any such payment represented 25% or more of the total payment expenditures in connection with matters before legislative bodies, officers or departments of government during the period covered by this statement.

1 Name	2 Amount Paid
.....	\$.....
.....	\$.....
.....	\$.....

30.4 For most security types, the company uses S&P Capital IQ for pricing. S&P utilizes both market and model valuation methods, and the asset classes covered include corporate and government debt, mortgage and asset-backed securities, and US agency and municipal securities.  
In the absence of a price from S&P, the company uses pricing from its custodial bank.

GENERAL INTERROGATORIES  
PART 2 - PROPERTY & CASUALTY INTERROGATORIES

1.1

Does the reporting entity have any direct Medicare Supplement Insurance in force?

Yes [ ] No [ X ]

1.2

If yes, indicate premium earned on U. S. business only.

\$.....0

1.3

What portion of Item (1.2) is not reported on the Medicare Supplement Insurance Experience Exhibit?

\$.....

1.31

Reason for excluding

1.4

Indicate amount of earned premium attributable to Canadian and/or Other Alien not included in Item (1.2) above.

\$.....

1.5

Indicate total incurred claims on all Medicare Supplement insurance.

\$.....0

1.6

Individual policies:

Most current three years:

1.61

Total premium earned

\$.....0

1.62

Total incurred claims

\$.....0

1.63

Number of covered lives

.....0

All years prior to most current three years:

1.64

Total premium earned

\$.....0

1.65

Total incurred claims

\$.....0

1.66

Number of covered lives

.....0

1.7

Group policies:

Most current three years:

1.71

Total premium earned

\$.....0

1.72

Total incurred claims

\$.....0

1.73

Number of covered lives

.....0

All years prior to most current three years:

1.74

Total premium earned

\$.....0

1.75

Total incurred claims

\$.....0

1.76

Number of covered lives

.....0

2.

Health Test:

		1		2
		Current Year		Prior Year
2.1	Premium Numerator	\$ .....49,404,578	\$	.....45,138,367
2.2	Premium Denominator	\$ .....101,621,425	\$	.....105,943,215
2.3	Premium Ratio (2.1/2.2)	.....0.486		.....0.426
2.4	Reserve Numerator	\$ .....25,661,596	\$	.....33,117,691
2.5	Reserve Denominator	\$ .....43,869,139	\$	.....56,265,199
2.6	Reserve Ratio (2.4/2.5)	.....0.585		.....0.589

3.1

Does the reporting entity issue both participating and non-participating policies?

Yes [ ] No [ X ]

3.2

If yes, state the amount of calendar year premiums written on:

3.21

Participating policies

\$.....

3.22

Non-participating policies

\$.....

4.

For Mutual reporting entities and Reciprocal Exchanges only:

4.1

Does the reporting entity issue assessable policies?

Yes [ ] No [ ]

4.2

Does the reporting entity issue non-assessable policies?

Yes [ ] No [ ]

4.3

If assessable policies are issued, what is the extent of the contingent liability of the policyholders?

%

4.4

Total amount of assessments paid or ordered to be paid during the year on deposit notes or contingent premiums.

\$.....

5.

For Reciprocal Exchanges Only:

5.1

Does the exchange appoint local agents?

Yes [ ] No [ ]

5.2

If yes, is the commission paid:

5.21

Out of Attorney's-in-fact compensation

Yes [ ] No [ ] N/A [X]

5.22

As a direct expense of the exchange

Yes [ ] No [ ] N/A [X]

5.3

What expenses of the Exchange are not paid out of the compensation of the Attorney-in-fact?

5.4

Has any Attorney-in-fact compensation, contingent on fulfillment of certain conditions, been deferred?

Yes [ ] No [ ]

5.5

If yes, give full information

16

GENERAL INTERROGATORIES  
PART 2 - PROPERTY & CASUALTY INTERROGATORIES

6.1

What provision has this reporting entity made to protect itself from an excessive loss in the event of a catastrophe under a workers' compensation contract issued without limit of loss: .....  
No workers' compensation contracts were written.....

6.2

Describe the method used to estimate this reporting entity's probable maximum insurance loss, and identify the type of insured exposures comprising that probable maximum loss, the locations of concentrations of those exposures and the external resources (such as consulting firms or computer software models), if any, used in the estimation process: .....  
N/A.....

6.3

What provision has this reporting entity made (such as a catastrophic reinsurance program) to protect itself from an excessive loss arising from the types and concentrations of insured exposures comprising its probable maximum property insurance loss?.....  
N/A.....

6.4

Does the reporting entity carry catastrophe reinsurance protection for at least one reinstatement, in an amount sufficient to cover its estimated probable maximum loss attributable to a single loss event or occurrence?.....

6.5

If no, describe any arrangements or mechanisms employed by the reporting entity to supplement its catastrophe reinsurance program or to hedge its exposure to uninsured catastrophe loss  
The Company is provided protection through excess of loss reinsurance and primarily writes Accident & Health policies.....

7.1

Has the reporting entity reinsured any risk with any other entity under a quota share reinsurance contract that includes a provision that would limit the reinsurer's losses below the stated quota share percentage (e.g., a deductible, a loss ratio corridor, a loss cap, an aggregate limit or any similar provisions)?.....

7.2

If yes, indicate the number of reinsurance contracts containing such provisions.....

7.3

If yes, does the amount of reinsurance credit taken reflect the reduction in quota share coverage caused by any applicable limiting provision(s)?.....

8.1

Has this reporting entity reinsured any risk with any other entity and agreed to release such entity from liability, in whole or in part, from any loss that may occur on this risk, or portion thereof, reinsured?.....

8.2

If yes, give full information

9.1

Has the reporting entity ceded any risk under any reinsurance contract (or under multiple contracts with the same reinsurer or its affiliates) for which during the period covered by the statement: (i) it recorded a positive or negative underwriting result greater than 5% of prior year-end surplus as regards policyholders or it reported calendar year written premium ceded or year-end loss and loss expense reserves ceded greater than 5% of prior year-end surplus as regards policyholders; (ii) it accounted for that contract as reinsurance and not as a deposit; and (iii) the contract(s) contain one or more of the following features or other features that would have similar results:  

(a) A contract term longer than two years and the contract is noncancellable by the reporting entity during the contract term;

(b) A limited or conditional cancellation provision under which cancellation triggers an obligation by the reporting entity, or an affiliate of the reporting entity, to enter into a new reinsurance contract with the reinsurer, or an affiliate of the reinsurer;

(c) Aggregate stop loss reinsurance coverage;

(d) A unilateral right by either party (or both parties) to commute the reinsurance contract, whether conditional or not, except for such provisions which are only triggered by a decline in the credit status of the other party;

(e) A provision permitting reporting of losses, or payment of losses, less frequently than on a quarterly basis (unless there is no activity during the period); or

(f) Payment schedule, accumulating retentions from multiple years or any features inherently designed to delay timing of the reimbursement to the ceding entity.....

9.2

Has the reporting entity during the period covered by the statement ceded any risk under any reinsurance contract (or under multiple contracts with the same reinsurer or its affiliates), for which, during the period covered by the statement, it recorded a positive or negative underwriting result greater than 5% of prior year-end surplus as regards policyholders or it reported calendar year written premium ceded or year-end loss and loss expense reserves ceded greater than 5% of prior year-end surplus as regards policyholders; excluding cessions to approved pooling arrangements or to captive insurance companies that are directly or indirectly controlling, controlled by, or under common control with (i) one or more unaffiliated policyholders of the reporting entity, or (ii) an association of which one or more unaffiliated policyholders of the reporting entity is a member where:  

(a) The written premium ceded to the reinsurer by the reporting entity or its affiliates represents fifty percent (50%) or more of the entire direct and assumed premium written by the reinsurer based on its most recently available financial statement; or

(b) Twenty-five percent (25%) or more of the written premium ceded to the reinsurer has been retroceded back to the reporting entity or its affiliates in a separate reinsurance contract.

9.3

If yes to 9.1 or 9.2, please provide the following information in the Reinsurance Summary Supplemental Filing for General Interrogatory 9:  

(a) The aggregate financial statement impact gross of all such ceded reinsurance contracts on the balance sheet and statement of income;

(b) A summary of the reinsurance contract terms and indicate whether it applies to the contracts meeting the criteria in 9.1 or 9.2; and

(c) A brief discussion of management's principle objectives in entering into the reinsurance contract including the economic purpose to be achieved.

9.4

Except for transactions meeting the requirements of paragraph 31 of SSAP No. 62R - Property and Casualty Reinsurance, has the reporting entity ceded any risk under any reinsurance contract (or multiple contracts with the same reinsurer or its affiliates) during the period covered by the financial statement, and either:  

(a) Accounted for that contract as reinsurance (either prospective or retroactive) under statutory accounting principles ("SAP") and as a deposit under generally accepted accounting principles ("GAAP"); or

(b) Accounted for that contract as reinsurance under GAAP and as a deposit under SAP?

9.5

If yes to 9.4, explain in the Reinsurance Summary Supplemental Filing for General Interrogatory 9 (Section D) why the contract(s) is treated differently for GAAP and SAP.

9.6

The reporting entity is exempt from the Reinsurance Attestation Supplement under one or more of the following criteria:  

(a) The entity does not utilize reinsurance; or,

(b) The entity only engages in a 100% quota share contract with an affiliate and the affiliated or lead company has filed an attestation supplement; or

(c) The entity has no external cessions and only participates in an intercompany pool and the affiliated or lead company has filed an attestation supplement.

10.

If the reporting entity has assumed risks from another entity, there should be charged on account of such reinsurances a reserve equal to that which the original entity would have been required to charge had it retained the risks. Has this been done?

Yes

[ ]

No

[ X ]

Yes

[ ]

No

[ X ]

Yes

[ ]

No

[ X ]

Yes

[ ]

No

[ X ]

Yes

[ X ]

No

[ ]

N/A

[ ]

16.1

GENERAL INTERROGATORIES  
PART 2 - PROPERTY & CASUALTY INTERROGATORIES

11.1

Has the reporting entity guaranteed policies issued by any other entity and now in force:

Yes [ ] No [X]

11.2

If yes, give full information

12.1

If the reporting entity recorded accrued retrospective premiums on insurance contracts on Line 15.3 of the asset schedule, Page 2, state the amount of corresponding liabilities recorded for:

12.11

Unpaid losses

\$ 2,827,930

12.12

Unpaid underwriting expenses (including loss adjustment expenses)

\$ 0

12.2

Of the amount on Line 15.3, Page 2, state the amount that is secured by letters of credit, collateral and other funds?

\$ 0

12.3

If the reporting entity underwrites commercial insurance risks, such as workers' compensation, are premium notes or promissory notes accepted from its insureds covering unpaid premiums and/or unpaid losses?

Yes [ ] No [ ] N/A [X]

12.4

If yes, provide the range of interest rates charged under such notes during the period covered by this statement:

12.41

From

0.0 %

12.42

To

0.0 %

12.5

Are letters of credit or collateral and other funds received from insureds being utilized by the reporting entity to secure premium notes or promissory notes taken by a reporting entity, or to secure any of the reporting entity's reported direct unpaid loss reserves, including unpaid losses under loss deductible features of commercial policies?

Yes [ ] No [X]

12.6

If yes, state the amount thereof at December 31 of current year:

12.61

Letters of Credit

\$ 0

12.62

Collateral and other funds

\$ 0

13.1

Largest net aggregate amount insured in any one risk (excluding workers' compensation):

\$ 875,000

13.2

Does any reinsurance contract considered in the calculation of this amount include an aggregate limit of recovery without also including a reinstatement provision?

Yes [ ] No [X]

13.3

State the number of reinsurance contracts (excluding individual facultative risk certificates, but including facultative programs, automatic facilities or facultative obligatory contracts) considered in the calculation of the amount.

5

14.1

Is the reporting entity a cedant in a multiple cedant reinsurance contract?

Yes [ ] No [X]

14.2

If yes, please describe the method of allocating and recording reinsurance among the cedants:

14.3

If the answer to 14.1 is yes, are the methods described in item 14.2 entirely contained in the respective multiple cedant reinsurance contracts?

Yes [ ] No [ ]

14.4

If the answer to 14.3 is no, are all the methods described in 14.2 entirely contained in written agreements?

Yes [ ] No [ ]

14.5

If the answer to 14.4 is no, please explain:

15.1

Has the reporting entity guaranteed any financed premium accounts?

Yes [ ] No [X]

15.2

If yes, give full information

16.1

Does the reporting entity write any warranty business?

Yes [ ] No [X]

If yes, disclose the following information for each of the following types of warranty coverage:

	1	2	3	4	5
	Direct Losses Incurred	Direct Losses Unpaid	Direct Written Premium	Direct Premium Unearned	Direct Premium Earned
16.11 Home	\$	\$	\$	\$	\$
16.12 Products	\$	\$	\$	\$	\$
16.13 Automobile	\$	\$	\$	\$	\$
16.14 Other*	\$	\$	\$	\$	\$

\* Disclose type of coverage:

GENERAL INTERROGATORIES  
PART 2 - PROPERTY & CASUALTY INTERROGATORIES

17.1 Does the reporting entity include amounts recoverable on unauthorized reinsurance in Schedule F – Part 3 that it excludes from Schedule F – Part 5. Yes [ ] No [ X ]

Incurred but not reported losses on contracts in force prior to July 1, 1984, and not subsequently renewed are exempt from inclusion in Schedule F – Part 5. Provide the following information for this exemption:

17.11	Gross amount of unauthorized reinsurance in Schedule F – Part 3 excluded from Schedule F – Part 5	\$
17.12	Unfunded portion of Interrogatory 17.11	\$
17.13	Paid losses and loss adjustment expenses portion of Interrogatory 17.11	\$
17.14	Case reserves portion of Interrogatory 17.11	\$
17.15	Incurred but not reported portion of Interrogatory 17.11	\$
17.16	Unearned premium portion of Interrogatory 17.11	\$
17.17	Contingent commission portion of Interrogatory 17.11	\$

Provide the following information for all other amounts included in Schedule F – Part 3 and excluded from Schedule F – Part 5, not included above.

17.18	Gross amount of unauthorized reinsurance in Schedule F – Part 3 excluded from Schedule F – Part 5	\$
17.19	Unfunded portion of Interrogatory 17.18	\$
17.20	Paid losses and loss adjustment expenses portion of Interrogatory 17.18	\$
17.21	Case reserves portion of Interrogatory 17.18	\$
17.22	Incurred but not reported portion of Interrogatory 17.18	\$
17.23	Unearned premium portion of Interrogatory 17.18	\$
17.24	Contingent commission portion of Interrogatory 17.18	\$

18.1 Do you act as a custodian for health savings accounts? Yes [ ] No [ X ]  
18.2 If yes, please provide the amount of custodial funds held as of the reporting date. \$  
18.3 Do you act as an administrator for health savings accounts? Yes [ ] No [ X ]  
18.4 If yes, please provide the balance of the funds administered as of the reporting date. \$



ANNUAL STATEMENT FOR THE YEAR 2016 OF THE BCS Insurance Company

FIVE-YEAR HISTORICAL DATA

Show amounts in whole dollars only, no cents; show percentages to one decimal place, i.e., 17.6.

	1 2016	2 2015	3 2014	4 2013	5 2012
<b>Gross Premiums Written</b> (Page 8, Part 1B, Cols. 1, 2 & 3)					
1. Liability lines (Lines 11.1, 11.2, 16, 17.1, 17.2, 17.3, 18.1, 18.2, 19.1, 19.2 & 19.3, 19.4)	48,076,013	39,141,404	36,651,030	39,425,980	35,385,376
2. Property lines (Lines 1, 2, 9, 12, 21 & 26)	72,539,712	70,540,705	21,900,224	14,104,968	11,533,610
3. Property and liability combined lines (Lines 3, 4, 5, 8, 22 & 27)	27,648,605	3,871,420	0	0	0
4. All other lines (Lines 6, 10, 13, 14, 15, 23, 24, 28, 29, 30 & 34)	215,495,079	203,423,839	307,391,717	295,330,805	261,863,697
5. Nonproportional reinsurance lines (Lines 31, 32 & 33)	0	0	0	0	0
6. Total (Line 35)	363,759,409	316,977,368	365,942,971	348,861,753	308,782,683
<b>Net Premiums Written</b> (Page 8, Part 1B, Col. 6)					
7. Liability lines (Lines 11.1, 11.2, 16, 17.1, 17.2, 17.3, 18.1, 18.2, 19.1, 19.2 & 19.3, 19.4)	17,343,129	11,824,158	15,493,756	20,712,724	17,510,770
8. Property lines (Lines 1, 2, 9, 12, 21 & 26)	0	0	8,342	105,104	54,340
9. Property and liability combined lines (Lines 3, 4, 5, 8, 22 & 27)	440,171	0	0	0	0
10. All other lines (Lines 6, 10, 13, 14, 15, 23, 24, 28, 29, 30 & 34)	84,025,116	83,473,960	114,053,491	111,043,291	94,054,266
11. Nonproportional reinsurance lines (Lines 31, 32 & 33)	0	0	0	0	0
12. Total (Line 35)	101,808,416	95,298,118	129,555,589	131,861,119	111,619,376
<b>Statement of Income</b> (Page 4)					
13. Net underwriting gain (loss) (Line 8)	9,573,733	12,329,161	5,042,437	1,900,407	3,526,576
14. Net investment gain (loss) (Line 11)	6,962,496	6,748,807	6,594,587	6,799,442	7,564,767
15. Total other income (Line 15)	(41,301)	40,722	187,095	445,762	685,868
16. Dividends to policyholders (Line 17)	0	0	0	0	0
17. Federal and foreign income taxes incurred (Line 19)	5,100,565	5,795,066	3,828,656	2,789,975	3,583,887
18. Net income (Line 20)	11,394,363	13,323,624	7,995,463	6,355,636	8,193,324
<b>Balance Sheet Lines</b> (Pages 2 and 3)					
19. Total admitted assets excluding protected cell business (Page 2, Line 26, Col. 3)	269,416,276	272,207,159	279,607,832	267,891,365	254,500,945
20. Premiums and considerations (Page 2, Col. 3)					
20.1 In course of collection (Line 15.1)	21,207,828	22,102,090	34,377,757	36,910,997	33,371,850
20.2 Deferred and not yet due (Line 15.2)	0	0	0	0	0
20.3 Accrued retrospective premiums (Line 15.3)	2,688,696	0	0	0	0
21. Total liabilities excluding protected cell business (Page 3, Line 26)	114,263,113	110,890,836	122,418,148	115,023,222	102,622,199
22. Losses (Page 3, Line 1)	31,884,891	40,414,946	41,467,658	34,579,367	27,709,015
23. Loss adjustment expenses (Page 3, Line 3)	5,369,431	9,422,427	10,860,565	8,864,481	6,667,270
24. Unearned premiums (Page 3, Line 9)	9,995,502	9,808,511	20,453,608	23,748,443	18,018,045
25. Capital paid up (Page 3, Lines 30 & 31)	3,000,000	3,000,000	3,000,000	3,000,000	3,000,000
26. Surplus as regards policyholders (Page 3, Line 37)	155,153,163	161,316,323	157,189,684	152,868,143	151,878,746
<b>Cash Flow</b> (Page 5)					
27. Net cash from operations (Line 11)	(8,695,571)	13,648,649	21,304,000	9,719,704	22,441,987
<b>Risk-Based Capital Analysis</b>					
28. Total adjusted capital	155,153,163	161,316,323	157,189,684	152,868,143	151,878,746
29. Authorized control level risk-based capital	11,892,271	11,967,770	12,655,198	10,653,400	8,452,151
<b>Percentage Distribution of Cash, Cash Equivalents and Invested Assets</b>					
(Page 2, Col. 3)(Item divided by Page 2, Line 12, Col. 3) x 100.0					
30. Bonds (Line 1)	83.1	77.6	78.3	83.2	89.4
31. Stocks (Lines 2.1 & 2.2)	10.8	9.9	9.8	7.4	1.9
32. Mortgage loans on real estate (Lines 3.1 and 3.2)	0.0	0.0	0.0	0.0	0.0
33. Real estate (Lines 4.1, 4.2 & 4.3)	0.0	0.0	0.0	0.0	0.0
34. Cash, cash equivalents and short-term investments (Line 5)	0.4	7.3	6.4	6.3	8.7
35. Contract loans (Line 6)	0.0	0.0	0.0	0.0	0.0
36. Derivatives (Line 7)	0.0	0.0	0.0	0.0	0.0
37. Other invested assets (Line 8)	5.7	5.2	5.6	3.0	0.0
38. Receivables for securities (Line 9)	0.0	0.0	0.0	0.0	0.0
39. Securities lending reinvested collateral assets (Line 10)	0.0	0.0	0.0	0.0	0.0
40. Aggregate write-ins for invested assets (Line 11)	0.0	0.0	0.0	0.0	0.0
41. Cash, cash equivalents and invested assets (Line 12)	100.0	100.0	100.0	100.0	100.0
<b>Investments in Parent, Subsidiaries and Affiliates</b>					
42. Affiliated bonds, (Sch. D, Summary, Line 12, Col. 1)	0	0	0	0	0
43. Affiliated preferred stocks (Sch. D, Summary, Line 18, Col. 1)	0	0	0	0	0
44. Affiliated common stocks (Sch. D, Summary, Line 24, Col. 1)	2,152,518	2,228,447	2,488,288	2,648,198	3,403,912
45. Affiliated short-term investments (subtotals included in Schedule DA Verification, Col. 5, Line 10)	0	0	0	129,251	128,930
46. Affiliated mortgage loans on real estate	0	0	0	0	0
47. All other affiliated	0	0	0	0	0
48. Total of above Lines 42 to 47	2,152,518	2,228,447	2,488,288	2,777,449	3,532,842
49. Total Investment in parent included in Lines 42 to 47 above		0	0	0	0
50. Percentage of investments in parent, subsidiaries and affiliates to surplus as regards policyholders (Line 48 above divided by Page 3, Col. 1, Line 37 x 100.0)	1.4	1.4	1.6	1.8	2.3

FIVE-YEAR HISTORICAL DATA

	1	2	3	4	5
	2016	2015	2014	2013	2012
(Continued)					
Capital and Surplus Accounts (Page 4)					
51. Net unrealized capital gains (losses) (Line 24) .....	773,439	(867,547)	8,757	130,580	808,341
52. Dividends to stockholders (Line 35) .....	(16,000,000)	(7,000,000)	(6,000,000)	(5,000,000)	(4,000,000)
53. Change in surplus as regards policyholders for the year (Line 38) .....	(6,163,161)	4,126,640	4,321,541	989,397	5,262,333
Gross Losses Paid (Page 9, Part 2, Cols. 1 & 2)					
54. Liability lines (Lines 11.1, 11.2, 16, 17.1, 17.2, 17.3, 18.1, 18.2, 19.1, 19.2 & 19.3, 19.4) .....	53,531,165	25,336,931	9,034,387	27,507,041	7,651,429
55. Property lines (Lines 1, 2, 9, 12, 21 & 26) .....	28,400,002	22,063,044	3,391,422	6,019,736	5,611,011
56. Property and liability combined lines (Lines 3, 4, 5, 8, 22 & 27) .....	0	0	0	0	0
57. All other lines (Lines 6, 10, 13, 14, 15, 23, 24, 28, 29, 30 & 34) .....	151,907,258	125,404,443	180,888,040	175,890,701	139,527,427
58. Nonproportional reinsurance lines (Lines 31, 32 & 33) .....	0	0	0	0	0
59. Total (Line 35) .....	233,838,425	172,804,418	193,313,849	209,417,478	152,789,867
Net Losses Paid (Page 9, Part 2, Col. 4)					
60. Liability lines (Lines 11.1, 11.2, 16, 17.1, 17.2, 17.3, 18.1, 18.2, 19.1, 19.2 & 19.3, 19.4) .....	11,839,083	5,609,534	5,760,689	4,203,932	2,938,447
61. Property lines (Lines 1, 2, 9, 12, 21 & 26) .....	3,245	2,594	42,578	50,749	0
62. Property and liability combined lines (Lines 3, 4, 5, 8, 22 & 27) .....	0	0	0	0	0
63. All other lines (Lines 6, 10, 13, 14, 15, 23, 24, 28, 29, 30 & 34) .....	61,140,604	53,120,714	68,747,462	67,285,461	57,824,022
64. Nonproportional reinsurance lines (Lines 31, 32 & 33) .....	0	0	0	0	0
65. Total (Line 35) .....	72,982,932	58,732,842	74,550,729	71,540,142	60,762,469
Operating Percentages (Page 4) (Item divided by Page 4, Line 1) x 100.0					
66. Premiums earned (Line 1) .....	100.0	100.0	100.0	100.0	100.0
67. Losses incurred (Line 2) .....	63.4	54.4	61.3	62.2	55.7
68. Loss expenses incurred (Line 3) .....	1.4	6.1	7.7	8.0	7.7
69. Other underwriting expenses incurred (Line 4) .....	25.7	27.8	27.2	28.3	33.3
70. Net underwriting gain (loss) (Line 8) .....	9.4	11.6	3.8	1.5	3.2
Other Percentages					
71. Other underwriting expenses to net premiums written (Page 4, Lines 4 + 5 - 15 divided by Page 8, Part 1B, Col. 6, Line 35 x 100.0) .....	25.7	30.9	27.8	26.8	31.9
72. Losses and loss expenses incurred to premiums earned (Page 4, Lines 2 + 3 divided by Page 4, Line 1 x 100.0) .....	64.9	60.5	69.0	70.2	63.4
73. Net premiums written to policyholders' surplus (Page 8, Part 1B, Col. 6, Line 35 divided by Page 3, Line 37, Col. 1 x 100.0) .....	65.6	59.1	82.4	86.3	73.5
One Year Loss Development (000 omitted)					
74. Development in estimated losses and loss expenses incurred prior to current year (Schedule P, Part 2-Summary, Line 12, Col. 11) .....	(8,965)	(11,785)	(1,029)	2,296	(3,179)
75. Percent of development of losses and loss expenses incurred to policyholders' surplus of prior year end (Line 74 above divided by Page 4, Line 21, Col. 1 x 100.0) .....	(5.6)	(7.5)	(0.7)	1.5	(2.2)
Two Year Loss Development (000 omitted)					
76. Development in estimated losses and loss expenses incurred 2 years before the current year and prior year (Schedule P, Part 2 - Summary, Line 12, Col. 12) .....	(17,199)	(3,890)	4,510	(2,951)	(6,532)
77. Percent of development of losses and loss expenses incurred to reported policyholders' surplus of second prior year end (Line 76 above divided by Page 4, Line 21, Col. 2 x 100.0) .....	(10.9)	(2.5)	3.0	(2.0)	(4.6)

NOTE: If a party to a merger, have the two most recent years of this exhibit been restated due to a merger in compliance with the disclosure requirements of SSAP No. 3 - Accounting Changes and Correction of Errors?

Yes [ ] No [ ]

If no, please explain

SCHEDULE P - ANALYSIS OF LOSSES AND LOSS EXPENSES  
SCHEDULE P - PART 1 - SUMMARY

(\$000 Omitted)

Years in Which Premiums Were Earned and Losses Were Incurred	Premiums Earned			Loss and Loss Expense Payments								12
	1  Direct and Assumed	2  Ceded	3  Net (Cols. 1 - 2)	Loss Payments		Defense and Cost Containment Payments		Adjusting and Other Payments		10  Salvage and Subrogation Received	11  Total Net Paid (Cols. 4 - 5 + 6 - 7 + 8 - 9)	Number of Claims Reported Direct and Assumed
				4  Direct and Assumed	5  Ceded	6  Direct and Assumed	7  Ceded	8  Direct and Assumed	9  Ceded			
1. Prior	XXX	XXX	XXX	329	343	38	33	10	0	20	1	XXX
2. 2007	297,379	195,546	101,833	158,159	97,432	3,435	2,026	2,568	1,111	0	63,593	XXX
3. 2008	260,235	148,263	111,972	159,464	90,495	3,971	1,827	3,323	1,280	0	73,155	XXX
4. 2009	236,739	128,599	108,140	140,873	70,214	2,723	842	2,439	932	0	74,047	XXX
5. 2010	238,765	133,255	105,509	151,690	86,277	3,599	1,419	2,308	962	0	68,939	XXX
6. 2011	263,133	153,017	110,116	143,930	78,675	4,735	877	3,016	753	0	71,377	XXX
7. 2012	295,879	186,915	108,964	207,508	143,115	10,489	3,843	6,010	1,756	0	75,293	XXX
8. 2013	344,207	218,075	126,132	184,028	111,024	4,693	580	4,518	1,677	0	79,958	XXX
9. 2014	370,533	237,682	132,851	181,965	113,949	6,359	841	4,112	1,295	0	76,351	XXX
10. 2015	325,508	219,565	105,943	163,079	100,563	2,203	970	3,322	1,130	0	65,941	XXX
11. 2016	362,232	260,611	101,621	148,433	100,935	238	88	2,061	612	0	49,097	XXX
12. Totals	XXX	XXX	XXX	1,639,459	993,022	42,483	13,346	33,687	11,509	20	697,753	XXX

	Losses Unpaid				Defense and Cost Containment Unpaid				Adjusting and Other Unpaid		23	24	25
	Case Basis		Bulk + IBNR		Case Basis		Bulk + IBNR		21	22			
	13	14	15	16	17	18	19	20					
	Direct and Assumed	Ceded	Direct and Assumed	Ceded	Direct and Assumed	Ceded	Direct and Assumed	Ceded	Direct and Assumed	Ceded	Salvage and Subrogation Anticipated	Total Net Losses and Expenses Unpaid	Number of Claims Outstanding Direct and Assumed
1. ....	1,628	1,557	50	0	104	59	0	0	0	0	0	166	XXX
2. ....	668	668	1,356	1,356	76	76	0	0	0	0	0	0	XXX
3. ....	112	112	1,170	1,170	0	0	0	0	0	0	0	0	XXX
4. ....	224	224	1,241	1,241	0	0	0	0	0	0	0	0	XXX
5. ....	244	244	2,210	2,210	0	0	450	450	0	0	0	0	XXX
6. ....	672	672	3,102	3,102	42	42	765	765	188	188	0	0	XXX
7. ....	59,309	59,069	6,356	6,356	774	595	306	306	168	158	0	429	XXX
8. ....	2,641	2,120	3,510	3,360	253	0	361	361	217	215	0	926	XXX
9. ....	2,800	1,630	5,524	4,097	815	195	921	569	107	103	0	3,573	XXX
10. ....	7,348	6,514	7,517	5,191	899	358	1,567	940	154	112	0	4,370	XXX
11. ....	1,597	1,202	83,374	58,674	246	4	5,017	3,554	1,480	490	0	27,790	XXX
12. ....	77,243	74,012	115,410	86,757	3,209	1,329	9,387	6,945	2,314	1,266	0	37,254	XXX

	Total Losses and Loss Expenses Incurred			Loss and Loss Expense Percentage (Incurred/Premiums Earned)			Nontabular Discount		34 Inter-Company Pooling Participation Percentage	Net Balance Sheet Reserves After Discount	
	26	27	28	29	30	31	32	33		35	36
	Direct and Assumed	Ceded	Net	Direct and Assumed	Ceded	Net	Loss	Loss Expense		Losses Unpaid	Loss Expenses Unpaid
1. ....	XXX	XXX	XXX	XXX	XXX	XXX	0	0	XXX	121	45
2. ....	166,262	102,669	63,593	55.9	52.5	62.4	0	0		0	0
3. ....	168,040	94,885	73,155	64.6	64.0	65.3	0	0		0	0
4. ....	147,500	73,454	74,047	62.3	57.1	68.5	0	0		0	0
5. ....	160,501	91,562	68,939	67.2	68.7	65.3	0	0		0	0
6. ....	156,451	85,074	71,377	59.5	55.6	64.8	0	0		0	0
7. ....	290,920	215,198	75,722	98.3	115.1	69.5	0	0		240	189
8. ....	200,221	119,337	80,884	58.2	54.7	64.1	0	0		671	255
9. ....	202,603	122,679	79,924	54.7	51.6	60.2	0	0		2,597	976
10. ....	186,089	115,778	70,311	57.2	52.7	66.4	0	0		3,160	1,210
11. ....	242,446	165,559	76,887	66.9	63.5	75.7	0	0		25,095	2,695
12. ....	XXX	XXX	XXX	XXX	XXX	XXX	0	0	XXX	31,884	5,370

Note: Parts 2 and 4 are gross of all discounting, including tabular discounting. Part 1 is gross of only nontabular discounting, which is reported in Columns 32 and 33 of Part 1. The tabular discount, if any, is reported in the Notes to Financial Statements, which will reconcile Part 1 with Parts 2 and 4.

SCHEDULE P - PART 2 - SUMMARY

Years in Which Losses Were Incurred	INCURRED NET LOSSES AND DEFENSE AND COST CONTAINMENT EXPENSES REPORTED AT YEAR END (\$000 OMITTED)										DEVELOPMENT	
	1	2	3	4	5	6	7	8	9	10	11	12
	2007	2008	2009	2010	2011	2012	2013	2014	2015	2016	One Year	Two Year
1. Prior	11,690	9,382	7,390	7,201	7,023	8,042	7,978	8,463	8,520	8,278	(242)	(185)
2. 2007	60,992	64,206	62,648	62,196	62,175	62,141	62,136	62,140	62,137	62,137	0	(3)
3. 2008	XXX	67,844	71,868	72,018	71,135	71,126	71,114	71,113	71,112	71,112	0	(1)
4. 2009	XXX	XXX	77,489	74,684	73,161	72,556	72,544	72,544	72,542	72,540	(2)	(4)
5. 2010	XXX	XXX	XXX	71,462	66,895	67,164	67,423	67,644	67,593	67,594	1	(50)
6. 2011	XXX	XXX	XXX	XXX	73,840	70,023	70,085	69,347	69,136	69,114	(22)	(233)
7. 2012	XXX	XXX	XXX	XXX	XXX	68,889	70,957	73,200	71,868	71,458	(410)	(1,742)
8. 2013	XXX	XXX	XXX	XXX	XXX	XXX	83,344	80,101	78,783	78,041	(742)	(2,060)
9. 2014	XXX	XXX	XXX	XXX	XXX	XXX	XXX	90,024	81,100	77,103	(3,997)	(12,921)
10. 2015	XXX	XXX	XXX	XXX	XXX	XXX	XXX	XXX	71,628	68,077	(3,551)	XXX
11. 2016	XXX	XXX	XXX	XXX	XXX	XXX	XXX	XXX	XXX	74,448	XXX	XXX
12. Totals											(8,965)	(17,199)

SCHEDULE P - PART 3 - SUMMARY

Years in Which Losses Were Incurred	CUMULATIVE PAID NET LOSSES AND DEFENSE AND COST CONTAINMENT EXPENSES REPORTED AT YEAR END (\$000 OMITTED)										11	12
	1	2	3	4	5	6	7	8	9	10	Number of Claims Closed With Loss Payment	Number of Claims Closed Without Loss Payment
	2007	2008	2009	2010	2011	2012	2013	2014	2015	2016		
1. Prior	000	2,118	5,708	6,626	6,704	7,768	7,785	8,057	8,121	8,112	XXX	XXX
2. 2007	34,599	59,824	62,161	62,188	62,168	62,141	62,136	62,140	62,137	62,137	XXX	XXX
3. 2008	XXX	39,021	69,263	70,998	71,042	71,113	71,114	71,113	71,112	71,112	XXX	XXX
4. 2009	XXX	XXX	47,409	71,849	72,349	72,411	72,527	72,540	72,541	72,540	XXX	XXX
5. 2010	XXX	XXX	XXX	47,555	65,122	66,463	67,371	67,412	67,593	67,594	XXX	XXX
6. 2011	XXX	XXX	XXX	XXX	46,734	66,465	68,530	68,985	69,116	69,114	XXX	XXX
7. 2012	XXX	XXX	XXX	XXX	XXX	42,054	65,151	69,496	70,521	71,039	XXX	XXX
8. 2013	XXX	XXX	XXX	XXX	XXX	XXX	50,179	74,597	76,421	77,117	XXX	XXX
9. 2014	XXX	XXX	XXX	XXX	XXX	XXX	XXX	50,036	69,867	73,534	XXX	XXX
10. 2015	XXX	XXX	XXX	XXX	XXX	XXX	XXX	XXX	40,575	63,749	XXX	XXX
11. 2016	XXX	XXX	XXX	XXX	XXX	XXX	XXX	XXX	XXX	47,648	XXX	XXX

SCHEDULE P - PART 4 - SUMMARY

Years in Which Losses Were Incurred	BULK AND IBNR RESERVES ON NET LOSSES AND DEFENSE AND COST CONTAINMENT EXPENSES REPORTED AT YEAR END (\$000 OMITTED)									
	1 2007	2 2008	3 2009	4 2010	5 2011	6 2012	7 2013	8 2014	9 2015	10 2016
1. Prior	8,952	5,596	450	287	217	179	106	50	50	50
2. 2007	25,338	2,922	93	6	6	0	0	0	0	0
3. 2008	XXX	26,840	1,380	98	37	10	0	0	0	0
4. 2009	XXX	XXX	28,792	1,406	236	11	11	0	0	0
5. 2010	XXX	XXX	XXX	22,995	795	105	10	12	0	0
6. 2011	XXX	XXX	XXX	XXX	24,615	1,676	525	26	0	0
7. 2012	XXX	XXX	XXX	XXX	XXX	23,187	1,434	260	0	0
8. 2013	XXX	XXX	XXX	XXX	XXX	XXX	29,225	2,807	730	150
9. 2014	XXX	XXX	XXX	XXX	XXX	XXX	XXX	30,763	5,260	1,779
10. 2015	XXX	XXX	XXX	XXX	XXX	XXX	XXX	XXX	29,267	2,953
11. 2016	XXX	XXX	XXX	XXX	XXX	XXX	XXX	XXX	XXX	26,163

ANNUAL STATEMENT FOR THE YEAR 2016 OF THE BCS Insurance Company

SCHEDULE T - EXHIBIT OF PREMIUMS WRITTEN

Allocated By States And Territories									
States, etc.	1	Gross Premiums, Including Policy and Membership Fees Less Return Premiums and Premiums on Policies Not Taken		4	5	6	7	8	9
		2	3						
	Active Status	Direct Premiums Written	Direct Premiums Earned	Dividends Paid or Credited to Policyholders on Direct Business	Direct Losses Paid (Deducting Salvage)	Direct Losses Incurred	Direct Losses Unpaid	Finance and Service Charges Not Included in Premiums	Direct Premium Written for Federal Purchasing Groups (Included in Col. 2)
1. Alabama	AL L	25,946,962	25,930,596	0	23,280,323	33,446,970	24,695,817	0	
2. Alaska	AK L	94,136	86,197	0	60,397	64,377	15,128	0	
3. Arizona	AZ L	3,488,354	3,465,291	0	1,323,671	1,409,798	734,641	0	
4. Arkansas	AR L	2,931,504	2,969,307	0	592,756	696,955	1,640,555	0	
5. California	CA L	20,474,862	21,225,410	0	12,431,337	9,937,503	18,086,178	0	
6. Colorado	CO L	5,019,920	5,013,434	0	1,803,774	1,450,203	1,190,587	0	
7. Connecticut	CT L	7,899,696	7,842,696	0	2,303,951	2,391,647	990,312	0	
8. Delaware	DE L	752,732	776,738	0	277,538	228,415	80,786	0	
9. Dist. Columbia	DC L	3,005,335	2,708,010	0	1,648,427	1,592,205	239,928	0	
10. Florida	FL L	7,416,300	6,763,904	0	3,569,950	4,069,525	1,517,728	0	
11. Georgia	GA L	8,769,535	8,662,661	0	5,783,538	6,114,759	2,121,594	0	
12. Hawaii	HI L	459,788	460,099	0	34,843	169,887	149,563	0	
13. Idaho	ID L	1,091,715	1,199,635	0	154,179	220,127	385,202	0	
14. Illinois	IL L	15,099,757	15,098,564	0	21,016,555	10,498,394	22,352,616	0	
15. Indiana	IN L	10,728,081	10,411,378	0	3,798,203	4,115,255	1,850,889	0	
16. Iowa	IA L	3,356,717	2,718,477	0	1,552,536	1,658,378	1,129,388	0	
17. Kansas	KS L	2,056,935	1,955,292	0	589,544	772,981	593,899	0	
18. Kentucky	KY L	1,217,738	1,135,320	0	382,492	387,037	179,041	0	
19. Louisiana	LA L	19,538,506	19,366,071	0	17,123,480	20,788,513	8,275,570	0	
20. Maine	ME L	532,700	529,540	0	196,980	218,846	81,723	0	
21. Maryland	MD L	1,779,762	2,310,825	0	490,925	1,287,084	1,173,570	0	
22. Massachusetts	MA L	3,340,687	3,588,156	0	1,756,744	1,783,326	859,083	0	
23. Michigan	MI L	7,247,817	7,371,689	0	8,751,679	17,476,502	18,117,094	0	
24. Minnesota	MN L	3,974,579	3,861,648	0	3,487,892	3,829,733	2,727,371	0	
25. Mississippi	MS L	3,425,461	3,809,142	0	1,619,487	2,014,419	1,880,932	0	
26. Missouri	MO L	4,759,993	4,288,110	0	5,195,005	10,140,196	9,194,924	0	
27. Montana	MT L	662,731	660,940	0	140,437	340,903	239,185	0	
28. Nebraska	NE L	2,228,684	2,194,815	0	2,892,458	5,180,651	7,529,169	0	
29. Nevada	NV L	1,060,448	967,688	0	479,217	462,036	162,226	0	
30. New Hampshire	NH L	2,322,467	2,294,757	0	880,834	937,708	306,047	0	
31. New Jersey	NJ L	9,262,938	8,102,740	0	5,941,945	6,638,633	2,727,349	0	
32. New Mexico	NM L	1,827,535	1,883,825	0	839,126	1,031,403	341,641	0	
33. New York	NY L	54,494,917	56,959,990	0	29,304,489	27,864,348	9,517,756	0	
34. No.Carolina	NC L	10,966,478	10,934,640	0	4,486,551	4,899,003	3,649,044	0	
35. No.Dakota	ND L	153,829	155,252	0	45,238	123,638	1,083,163	0	
36. Ohio	OH L	7,116,967	7,186,525	0	2,499,251	2,519,124	892,949	0	
37. Oklahoma	OK L	4,917,732	4,876,610	0	3,975,201	4,418,661	1,522,083	0	
38. Oregon	OR L	1,127,283	1,105,195	0	385,016	683,559	1,699,776	0	
39. Pennsylvania	PA L	14,189,417	12,988,571	0	4,125,086	5,290,601	5,774,394	0	
40. Rhode Island	RI L	2,201,096	2,140,310	0	728,999	589,546	1,822,575	0	
41. So. Carolina	SC L	7,655,901	7,528,316	0	5,282,495	5,822,160	2,683,990	0	
42. So. Dakota	SD L	749,624	751,191	0	105,661	179,945	205,322	0	
43. Tennessee	TN L	6,417,692	6,469,172	0	1,597,298	2,365,328	3,377,352	0	
44. Texas	TX L	38,192,262	37,718,562	0	24,509,412	28,831,084	11,201,234	0	
45. Utah	UT L	1,904,181	2,013,355	0	649,314	701,285	379,594	0	
46. Vermont	VT L	2,018,614	2,020,212	0	751,834	853,991	4,972,180	0	
47. Virginia	VA L	4,244,312	4,277,840	0	2,200,392	2,437,687	980,262	0	
48. Washington	WA L	4,011,052	3,934,331	0	1,235,687	850,786	2,930,664	0	
49. West Virginia	WV L	271,267	264,461	0	139,879	95,590	34,886	0	
50. Wisconsin	WI L	2,063,039	1,936,990	0	684,726	824,640	303,728	0	
51. Wyoming	WY L	3,378,933	3,406,687	0	5,518,882	4,102,907	1,223,784	0	
52. American Samoa	AS N	0	0	0	0	0	0	0	
53. Guam	GU N	0	0	0	0	0	0	0	
54. Puerto Rico	PR L	806,430	806,488	0	207,301	220,374	425,743	0	
55. U.S. Virgin Islands	VI N	0	0	0	0	0	0	0	
56. Northern Mariana Islands	MP N	0	0	0	0	0	0	0	
57. Canada	CAN N	0	0	0	0	0	0	0	
58. Aggregate other alien	OT XXX	0	0	0	0	0	0	0	0
59. Totals	(a) 52	348,655,401	347,127,653	0	218,832,935	245,028,626	186,250,215	0	0
DETAILS OF WRITE-INS									
58001.	XXX								
58002.	XXX								
58003.	XXX								
58998. Sum. of remaining write-ins for Line 58 from overflow page	XXX	0	0	0	0	0	0	0	0
58999. Totals (Lines 58001 through 58003 + 58998) (Line 58 above)	XXX	0	0	0	0	0	0	0	0

(L) Licensed or Chartered - Licensed Insurance Carrier or Domiciled RRG; (R) Registered - Non-domiciled RRGs; (Q) Qualified - Qualified or Accredited Reinsurer; (E) Eligible - Reporting Entities eligible or approved to write Surplus Lines in the state; (N) None of the above - Not allowed to write business in the state.

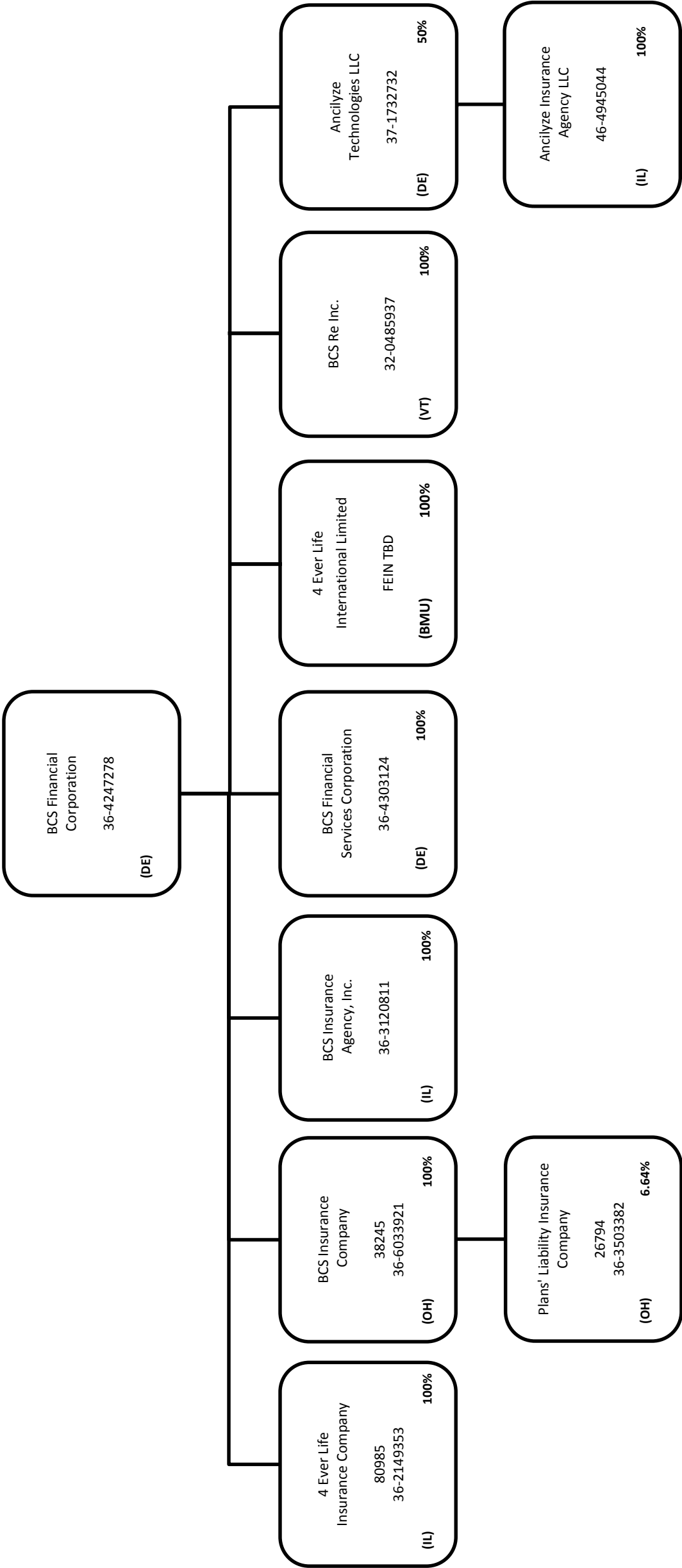
Explanation of basis of allocation of premiums by states, etc.

(a) Insert the number of L responses except for Canada and Other Alien

For group accident and health business BCS Insurance Company allocates premium by either the group situs state or by the insured member state depending upon the specific type of accident and health business. The group is the entity, usually an employer, that the policy is issued to and the insured member is the participant, usually an employee, to whom a certificate is issued to. For travel accident business the premium is allocated by state based upon the insured state of residence. The insured is the individual that purchases the travel accident coverage through a particular entity. For professional liability business the premium is allocated by the group situs state. The group is a corporate entity that purchases the policy.

SCHEDULE Y – INFORMATION CONCERNING ACTIVITIES OF INSURER MEMBERS OF A HOLDING COMPANY GROUP

PART 1 – ORGANIZATIONAL CHART



# ALPHABETICAL INDEX

ANNUAL STATEMENT BLANK

Assets	2
Cash Flow	5
Exhibit of Capital Gains (Losses)	12
Exhibit of Net Investment Income	12
Exhibit of Nonadmitted Assets	13
Exhibit of Premiums and Losses (State Page)	19
Five-Year Historical Data	17
General Interrogatories	15
Jurat Page	1
Liabilities, Surplus and Other Funds	3
Notes To Financial Statements	14
Overflow Page For Write-Ins	100
Schedule A – Part 1	E01
Schedule A – Part 2	E02
Schedule A – Part 3	E03
Schedule A – Verification Between Years	SI02
Schedule B – Part 1	E04
Schedule B – Part 2	E05
Schedule B – Part 3	E06
Schedule B – Verification Between Years	SI02
Schedule BA – Part 1	E07
Schedule BA – Part 2	E08
Schedule BA – Part 3	E09
Schedule BA – Verification Between Years	SI03
Schedule D – Part 1	E10
Schedule D – Part 1A – Section 1	SI05
Schedule D – Part 1A – Section 2	SI08
Schedule D – Part 2 – Section 1	E11
Schedule D – Part 2 – Section 2	E12
Schedule D – Part 3	E13
Schedule D – Part 4	E14
Schedule D – Part 5	E15
Schedule D – Part 6 – Section 1	E16
Schedule D – Part 6 – Section 2	E16
Schedule D – Summary By Country	SI04
Schedule D – Verification Between Years	SI03
Schedule DA – Part 1	E17

# ALPHABETICAL INDEX

---

## ANNUAL STATEMENT BLANK (Continued)

Schedule DA – Verification Between Years	SI10
Schedule DB – Part A – Section 1	E18
Schedule DB – Part A – Section 2	E19
Schedule DB – Part A – Verification Between Years	SI11
Schedule DB – Part B – Section 1	E20
Schedule DB – Part B – Section 2	E21
Schedule DB – Part B – Verification Between Years	SI11
Schedule DB – Part C – Section 1	SI12
Schedule DB – Part C – Section 2	SI13
Schedule DB – Part D – Section 1	E22
Schedule DB – Part D – Section 2	E23
Schedule DB – Verification	SI14
Schedule DL – Part 1	E24
Schedule DL – Part 2	E25
Schedule E – Part 1 – Cash	E26
Schedule E – Part 2 – Cash Equivalents	E27
Schedule E – Part 3 – Special Deposits	E28
Schedule E – Verification Between Years	SI15
Schedule F – Part 1	20
Schedule F – Part 2	21
Schedule F – Part 3	22
Schedule F – Part 4	23
Schedule F – Part 5	24
Schedule F – Part 6 – Section 1	25
Schedule F – Part 6 – Section 2	26
Schedule F – Part 7	27
Schedule F – Part 8	28
Schedule F – Part 9	29
Schedule H – Accident and Health Exhibit – Part 1	30
Schedule H – Part 2, Part 3, and Part 4	31
Schedule H – Part 5 – Health Claims	32
Schedule P – Part 1 – Summary	33
Schedule P – Part 1A – Homeowners/Farmowners	35
Schedule P – Part 1B – Private Passenger Auto Liability/Medical	36
Schedule P – Part 1C – Commercial Auto/Truck Liability/Medical	37
Schedule P – Part 1D – Workers’ Compensation (Excluding Excess Workers’ Compensation)	38



# ALPHABETICAL INDEX

---

## ANNUAL STATEMENT BLANK (Continued)

Schedule P – Part 1E – Commercial Multiple Peril	39
Schedule P – Part 1F – Section 1 – Medical Professional Liability – Occurrence	40
Schedule P – Part 1F – Section 2 – Medical Professional Liability – Claims-Made	41
Schedule P – Part 1G – Special Liability (Ocean, Marine, Aircraft (All Perils), Boiler and Machinery)	42
Schedule P – Part 1H – Section 1 – Other Liability–Occurrence	43
Schedule P – Part 1H – Section 2 – Other Liability – Claims-Made	44
Schedule P – Part 1I – Special Property (Fire, Allied Lines, Inland Marine, Earthquake, Burglary & Theft)	45
Schedule P – Part 1J – Auto Physical Damage	46
Schedule P – Part 1K – Fidelity/Surety	47
Schedule P – Part 1L – Other (Including Credit, Accident and Health)	48
Schedule P – Part 1M – International	49
Schedule P – Part 1N – Reinsurance – Nonproportional Assumed Property	50
Schedule P – Part 1O – Reinsurance – Nonproportional Assumed Liability	51
Schedule P – Part 1P – Reinsurance – Nonproportional Assumed Financial Lines	52
Schedule P – Part 1R – Section 1 – Products Liability – Occurrence	53
Schedule P – Part 1R – Section 2 – Products Liability – Claims – Made	54
Schedule P – Part 1S – Financial Guaranty/Mortgage Guaranty	55
Schedule P – Part 1T – Warranty	56
Schedule P – Part 2, Part 3 and Part 4 – Summary	34
Schedule P – Part 2A – Homeowners/Farmowners	57
Schedule P – Part 2B – Private Passenger Auto Liability/Medical	57
Schedule P – Part 2C – Commercial Auto/Truck Liability/Medical	57
Schedule P – Part 2D – Workers’ Compensation (Excluding Excess Workers’ Compensation)	57
Schedule P – Part 2E – Commercial Multiple Peril	57
Schedule P – Part 2F – Section 1 – Medical Professional Liability – Occurrence	58
Schedule P – Part 2F – Section 2 – Medical Professional Liability – Claims – Made	58
Schedule P – Part 2G – Special Liability (Ocean Marine, Aircraft (All Perils), Boiler and Machinery)	58
Schedule P – Part 2H – Section 1 – Other Liability – Occurrence	58
Schedule P – Part 2H – Section 2 – Other Liability – Claims – Made	58
Schedule P – Part 2I – Special Property (Fire, Allied Lines, Inland Marine, Earthquake, Burglary, and Theft)	59
Schedule P – Part 2J – Auto Physical Damage	59
Schedule P – Part 2K – Fidelity, Surety	59
Schedule P – Part 2L – Other (Including Credit, Accident and Health)	59
Schedule P – Part 2M – International	59
Schedule P – Part 2N – Reinsurance – Nonproportional Assumed Property	60
Schedule P – Part 2O – Reinsurance – Nonproportional Assumed Liability	60
Schedule P – Part 2P – Reinsurance – Nonproportional Assumed Financial Lines	60
Schedule P – Part 2R – Section 1 – Products Liability – Occurrence	61
Schedule P – Part 2R – Section 2 – Products Liability – Claims-Made	61
Schedule P – Part 2S – Financial Guaranty/Mortgage Guaranty	61
Schedule P – Part 2T – Warranty	61
Schedule P – Part 3A – Homeowners/Farmowners	62

# ALPHABETICAL INDEX

---

## ANNUAL STATEMENT BLANK (Continued)

Schedule P – Part 3B – Private Passenger Auto Liability/Medical	62
Schedule P – Part 3C – Commercial Auto/Truck Liability/Medical	62
Schedule P – Part 3D – Workers’ Compensation (Excluding Excess Workers’ Compensation)	62
Schedule P – Part 3E – Commercial Multiple Peril	62
Schedule P – Part 3F – Section 1 – Medical Professional Liability – Occurrence	63
Schedule P – Part 3F – Section 2 – Medical Professional Liability – Claims-Made	63
Schedule P – Part 3G – Special Liability (Ocean Marine, Aircraft (All Perils), Boiler and Machinery)	63
Schedule P – Part 3H – Section 1 – Other Liability – Occurrence	63
Schedule P – Part 3H – Section 2 – Other Liability – Claims-Made	63
Schedule P – Part 3I – Special Property (Fire, Allied Lines, Inland Marine, Earthquake, Burglary, and Theft)	64
Schedule P – Part 3J – Auto Physical Damage	64
Schedule P – Part 3K – Fidelity/Surety	64
Schedule P – Part 3L – Other (Including Credit, Accident and Health)	64
Schedule P – Part 3M – International	64
Schedule P – Part 3N – Reinsurance – Nonproportional Assumed Property	65
Schedule P – Part 3O – Reinsurance – Nonproportional Assumed Liability	65
Schedule P – Part 3P – Reinsurance – Nonproportional Assumed Financial Lines	65
Schedule P – Part 3R – Section 1 – Products Liability – Occurrence	66
Schedule P – Part 3R – Section 2 – Products Liability – Claims-Made	66
Schedule P – Part 3S – Financial Guaranty/Mortgage Guaranty	66
Schedule P – Part 3T – Warranty	66
Schedule P – Part 4A – Homeowners/Farmowners	67
Schedule P – Part 4B – Private Passenger Auto Liability/Medical	67
Schedule P – Part 4C – Commercial Auto/Truck Liability/Medical	67
Schedule P – Part 4D – Workers’ Compensation (Excluding Excess Workers’ Compensation)	67
Schedule P – Part 4E – Commercial Multiple Peril	67
Schedule P – Part 4F – Section 1 – Medical Professional Liability – Occurrence	68
Schedule P – Part 4F – Section 2 – Medical Professional Liability – Claims-Made	68
Schedule P – Part 4G – Special Liability (Ocean Marine, Aircraft (All Perils), Boiler and Machinery)	68
Schedule P – Part 4H – Section 1 – Other Liability – Occurrence	68
Schedule P – Part 4H – Section 2 – Other Liability – Claims-Made	68
Schedule P – Part 4I – Special Property (Fire, Allied Lines, Inland Marine, Earthquake, Burglary and Theft)	69
Schedule P – Part 4J – Auto Physical Damage	69
Schedule P – Part 4K – Fidelity/Surety	69
Schedule P – Part 4L – Other (Including Credit, Accident and Health)	69
Schedule P – Part 4M – International	69
Schedule P – Part 4N – Reinsurance – Nonproportional Assumed Property	70
Schedule P – Part 4O – Reinsurance – Nonproportional Assumed Liability	70
Schedule P – Part 4P – Reinsurance – Nonproportional Assumed Financial Lines	70
Schedule P – Part 4R – Section 1 – Products Liability – Occurrence	71
Schedule P – Part 4R – Section 2 – Products Liability – Claims-Made	71

# ALPHABETICAL INDEX

## ANNUAL STATEMENT BLANK (Continued)

Schedule P – Part 4S – Financial Guaranty/Mortgage Guaranty	71
Schedule P – Part 4T – Warranty	71
Schedule P – Part 5A – Homeowners/Farmowners	72
Schedule P – Part 5B – Private Passenger Auto Liability/Medical	73
Schedule P – Part 5C – Commercial Auto/Truck Liability/Medical	74
Schedule P – Part 5D – Workers’ Compensation (Excluding Excess Workers’ Compensation)	75
Schedule P – Part 5E – Commercial Multiple Peril	76
Schedule P – Part 5F – Medical Professional Liability – Claims-Made	78
Schedule P – Part 5F – Medical Professional Liability – Occurrence	77
Schedule P – Part 5H – Other Liability – Claims-Made	80
Schedule P – Part 5H – Other Liability – Occurrence	79
Schedule P – Part 5R – Products Liability – Claims-Made	82
Schedule P – Part 5R – Products Liability – Occurrence	81
Schedule P – Part 5T – Warranty	83
Schedule P – Part 6C – Commercial Auto/Truck Liability/Medical	84
Schedule P – Part 6D – Workers’ Compensation (Excluding Excess Workers’ Compensation)	84
Schedule P – Part 6E – Commercial Multiple Peril	85
Schedule P – Part 6H – Other Liability – Claims-Made	86
Schedule P – Part 6H – Other Liability – Occurrence	85
Schedule P – Part 6M – International	86
Schedule P – Part 6N – Reinsurance – Nonproportional Assumed Property	87
Schedule P – Part 6O – Reinsurance – Nonproportional Assumed Liability	87
Schedule P – Part 6R – Products Liability – Claims-Made	88
Schedule P – Part 6R – Products Liability – Occurrence	88
Schedule P – Part 7A – Primary Loss Sensitive Contracts	89
Schedule P – Part 7B – Reinsurance Loss Sensitive Contracts	91
Schedule P Interrogatories	93
Schedule T – Exhibit of Premiums Written	94
Schedule T – Part 2 – Interstate Compact	95
Schedule Y – Information Concerning Activities of Insurer Members of a Holding Company Group	96
Schedule Y – Part 1A – Detail of Insurance Holding Company System	97
Schedule Y – Part 2 – Summary of Insurer’s Transactions With Any Affiliates	98
Statement of Income	4
Summary Investment Schedule	SI01
Supplemental Exhibits and Schedules Interrogatories	99
Underwriting and Investment Exhibit Part 1	6
Underwriting and Investment Exhibit Part 1A	7
Underwriting and Investment Exhibit Part 1B	8
Underwriting and Investment Exhibit Part 2	9
Underwriting and Investment Exhibit Part 2A	10
Underwriting and Investment Exhibit Part 3	11

