



ANNUAL STATEMENT

For the Year Ended December 31, 2016
of the Condition and Affairs of the

PROGRESSIVE WEST INSURANCE COMPANY

NAIC Group Code.....155, 155
(Current Period) (Prior Period)
Organized under the Laws of OH
Incorporated/Organized..... July 23, 1970
Statutory Home Office
Main Administrative Office
Mail Address
Primary Location of Books and Records
Internet Web Site Address
Statutory Statement Contact

NAIC Company Code..... 27804
State of Domicile or Port of Entry OH
Commenced Business..... October 30, 1972
6300 WILSON MILLS ROAD, W33..... CLEVELAND OH US 44143-2182
(Street and Number) (City or Town, State, Country and Zip Code)
6300 WILSON MILLS ROAD, W33..... CLEVELAND OH US..... 44143-2182 440-461-5000
(Street and Number) (City or Town, State, Country and Zip Code) (Area Code) (Telephone Number)
P.O. BOX 89490..... CLEVELAND OH US 44101-6490
(Street and Number or P. O. Box) (City or Town, State, Country and Zip Code)
6300 WILSON MILLS ROAD, W33..... CLEVELAND OH US 44143-2182 440-395-4460
(Street and Number) (City or Town, State, Country and Zip Code) (Area Code) (Telephone Number)
PROGRESSIVE.COM
MARY BETH ANDREANO
(Name)
FINANCIAL_REPORTING@PROGRESSIVE.COM
(E-Mail Address)
440-395-4460
(Area Code) (Telephone Number) (Extension)
440-603-5500
(Fax Number)

POLICYHOLDER SERVICES AND CLAIMS REPORTING -- 1-800-PROGRESSIVE (1-800-776-4737)

OFFICERS

Name	Title	Name	Title
KANIK (NMN) VARMA	PRESIDENT	CHRISTOPHER EDWARD ZIANCE #	SECRETARY
PATRICK SEAN BRENNAN #	TREASURER		

OTHER

KAREN BARONE BAILO	(VICE PRESIDENT)	MARGARET ANN ROSE	(ASSISTANT SECRETARY)
--------------------	------------------	-------------------	-----------------------

DIRECTORS OR TRUSTEES

PATRICK SEAN BRENNAN #	WILLIAM RAYMOND KAMPF	MICHAEL DAVID SIEGER	KANIK (NMN) VARMA
CHRISTOPHER EDWARD ZIANCE #			

State of..... OHIO
County of..... CUYAHOGA

The officers of this reporting entity being duly sworn, each depose and say that they are the described officers of said reporting entity, and that on the reporting period stated above, all of the herein described assets were the absolute property of the said reporting entity, free and clear from any liens or claims thereon, except as herein stated, and that this statement, together with related exhibits, schedules and explanations therein contained, annexed or referred to, is a full and true statement of all the assets and liabilities and of the condition and affairs of the said reporting entity as of the reporting period stated above, and of its income and deductions therefrom for the period ended, and have been completed in accordance with the NAIC Annual Statement Instructions and Accounting Practices and Procedures manual except to the extent that: (1) state law may differ; or, (2) that state rules or regulations require differences in reporting not related to accounting practices and procedures, according to the best of their information, knowledge and belief, respectively. Furthermore, the scope of this attestation by the described officers also includes the related corresponding electronic filing with the NAIC, when required, that is an exact copy (except for formatting differences due to electronic filing) of the enclosed statement. The electronic filing may be requested by various regulators in lieu of or in addition to the enclosed statement.

(Signature) KANIK (NMN) VARMA	(Signature) MARGARET ANN ROSE	(Signature) PATRICK SEAN BRENNAN #
1. (Printed Name) PRESIDENT	2. (Printed Name) ASSISTANT SECRETARY	3. (Printed Name) TREASURER
(Title)	(Title)	(Title)

Subscribed and sworn to before me	a. Is this an original filing?	Yes [X] No []
This 14TH day of FEBRUARY, 2017	b. If no	1. State the amendment number
		2. Date filed
		3. Number of pages attached

PROGRESSIVE WEST INSURANCE COMPANY
ASSETS

	Current Year			Prior Year
	1	2	3	4
	Assets	Nonadmitted Assets	Net Admitted Assets (Cols. 1 - 2)	Net Admitted Assets
1. Bonds (Schedule D).....	59,449,009		59,449,009	65,585,265
2. Stocks (Schedule D):				
2.1 Preferred stocks.....			.0	
2.2 Common stocks.....			.0	
3. Mortgage loans on real estate (Schedule B):				
3.1 First liens.....			.0	
3.2 Other than first liens.....			.0	
4. Real estate (Schedule A):				
4.1 Properties occupied by the company (less \$.....0 encumbrances).....			.0	
4.2 Properties held for the production of income (less \$.....0 encumbrances).....			.0	
4.3 Properties held for sale (less \$.....0 encumbrances).....			.0	
5. Cash (\$.....0, Schedule E-Part 1), cash equivalents (\$.....0, Schedule E-Part 2) and short-term investments (\$.....3,094,546, Schedule DA).....	3,094,546		3,094,546	499,947
6. Contract loans (including \$.....0 premium notes).....			.0	
7. Derivatives (Schedule DB).....			.0	
8. Other invested assets (Schedule BA).....			.0	
9. Receivables for securities.....			.0	
10. Securities lending reinvested collateral assets (Schedule DL).....			.0	
11. Aggregate write-ins for invested assets.....	0	0	.0	0
12. Subtotals, cash and invested assets (Lines 1 to 11).....	62,543,555	0	62,543,555	66,085,212
13. Title plants less \$.....0 charged off (for Title insurers only).....			.0	
14. Investment income due and accrued.....	282,976		282,976	348,547
15. Premiums and considerations:				
15.1 Uncollected premiums and agents' balances in the course of collection.....	8,150,563	969,352	7,181,211	7,634,387
15.2 Deferred premiums, agents' balances and installments booked but deferred and not yet due (including \$.....0 earned but unbilled premiums).....	41,291,419		41,291,419	45,255,089
15.3 Accrued retrospective premiums (\$.....0) and contracts subject to redetermination (\$.....0).....			.0	
16. Reinsurance:				
16.1 Amounts recoverable from reinsurers.....	14,025,668		14,025,668	15,131,460
16.2 Funds held by or deposited with reinsured companies.....			.0	
16.3 Other amounts receivable under reinsurance contracts.....			.0	
17. Amounts receivable relating to uninsured plans.....			.0	
18.1 Current federal and foreign income tax recoverable and interest thereon.....			.0	50,812
18.2 Net deferred tax asset.....	1,181,059		1,181,059	1,394,151
19. Guaranty funds receivable or on deposit.....			.0	
20. Electronic data processing equipment and software.....			.0	
21. Furniture and equipment, including health care delivery assets (\$.....0).....			.0	
22. Net adjustment in assets and liabilities due to foreign exchange rates.....			.0	
23. Receivables from parent, subsidiaries and affiliates.....			.0	32,058
24. Health care (\$.....0) and other amounts receivable.....			.0	
25. Aggregate write-ins for other-than-invested assets.....	5,039	5,039	.0	0
26. Total assets excluding Separate Accounts, Segregated Accounts and Protected Cell Accounts (Lines 12 to 25).....	127,480,279	974,391	126,505,888	135,931,716
27. From Separate Accounts, Segregated Accounts and Protected Cell Accounts.....			.0	
28. TOTAL (Lines 26 and 27).....	127,480,279	974,391	126,505,888	135,931,716

DETAILS OF WRITE-INS				
1101.0	
1102.0	
1103.0	
1198. Summary of remaining write-ins for Line 11 from overflow page.....	0	0	.0	0
1199. Totals (Lines 1101 through 1103 plus 1198) (Line 11 above).....	0	0	.0	0
2501. MISCELLANEOUS OTHER ASSETS.....	5,039	5,039	.0	
2502.0	
2503.0	
2598. Summary of remaining write-ins for Line 25 from overflow page.....	0	0	.0	0
2599. Totals (Lines 2501 through 2503 plus 2598) (Line 25 above).....	5,039	5,039	.0	0

PROGRESSIVE WEST INSURANCE COMPANY
LIABILITIES, SURPLUS AND OTHER FUNDS

	1 Current Year	2 Prior Year
1. Losses (Part 2A, Line 35, Column 8).....	9,251,184	9,780,777
2. Reinsurance payable on paid losses and loss adjustment expenses (Schedule F, Part 1, Column 6).....		
3. Loss adjustment expenses (Part 2A, Line 35, Column 9).....	2,414,305	2,525,537
4. Commissions payable, contingent commissions and other similar charges.....	261,894	347,938
5. Other expenses (excluding taxes, licenses and fees).....	27,861	29,341
6. Taxes, licenses and fees (excluding federal and foreign income taxes).....	1,129,634	1,685,216
7.1 Current federal and foreign income taxes (including \$.....58,517 on realized capital gains (losses)).....	263,202	
7.2 Net deferred tax liability.....		
8. Borrowed money \$.....0 and interest thereon \$.....0.....		
9. Unearned premiums (Part 1A, Line 38, Column 5) (after deducting unearned premiums for ceded reinsurance of \$.....70,121,268 and including warranty reserves of \$.....0 and accrued accident and health experience rating refunds including \$.....0 for medical loss ratio rebate per the Public Health Service Act).....	7,791,289	8,219,867
10. Advance premium.....	1,410,533	1,268,150
11. Dividends declared and unpaid:		
11.1 Stockholders.....		
11.2 Policyholders.....		
12. Ceded reinsurance premiums payable (net of ceding commissions).....	57,819,454	63,392,413
13. Funds held by company under reinsurance treaties (Schedule F, Part 3, Column 19).....		
14. Amounts withheld or retained by company for account of others.....		
15. Remittances and items not allocated.....		
16. Provision for reinsurance (including \$.....0 certified) (Schedule F, Part 8).....		
17. Net adjustments in assets and liabilities due to foreign exchange rates.....		
18. Drafts outstanding.....	12,679,147	13,794,878
19. Payable to parent, subsidiaries and affiliates.....	906,323	
20. Derivatives.....		
21. Payable for securities.....		
22. Payable for securities lending.....		
23. Liability for amounts held under uninsured plans.....		
24. Capital notes \$.....0 and interest thereon \$.....0.....		
25. Aggregate write-ins for liabilities.....	682,166	610,487
26. Total liabilities excluding protected cell liabilities (Lines 1 through 25).....	94,636,992	101,654,604
27. Protected cell liabilities.....		
28. Total liabilities (Lines 26 and 27).....	94,636,992	101,654,604
29. Aggregate write-ins for special surplus funds.....	0	0
30. Common capital stock.....	2,610,000	2,610,000
31. Preferred capital stock.....		
32. Aggregate write-ins for other-than-special surplus funds.....	0	0
33. Surplus notes.....		
34. Gross paid in and contributed surplus.....	13,540,000	13,540,000
35. Unassigned funds (surplus).....	15,718,896	18,127,112
36. Less treasury stock, at cost:		
36.10.000 shares common (value included in Line 30 \$.....0).....		
36.20.000 shares preferred (value included in Line 31 \$.....0).....		
37. Surplus as regards policyholders (Lines 29 to 35, less 36) (Page 4, Line 39).....	31,868,896	34,277,112
38. TOTAL (Page 2, Line 28, Col. 3).....	126,505,888	135,931,716

DETAILS OF WRITE-INS		
2501. STATE PLAN LIABILITY.....	348,428	258,952
2502. ESCHEATABLE PROPERTY.....	331,822	350,450
2503. OTHER LIABILITIES.....	1,916	1,085
2598. Summary of remaining write-ins for Line 25 from overflow page.....	0	0
2599. Totals (Lines 2501 through 2503 plus 2598) (Line 25 above).....	682,166	610,487
2901.		
2902.		
2903.		
2998. Summary of remaining write-ins for Line 29 from overflow page.....	0	0
2999. Totals (Lines 2901 through 2903 plus 2998) (Line 29 above).....	0	0
3201.		
3202.		
3203.		
3298. Summary of remaining write-ins for Line 32 from overflow page.....	0	0
3299. Totals (Lines 3201 through 3203 plus 3298) (Line 32 above).....	0	0

PROGRESSIVE WEST INSURANCE COMPANY
STATEMENT OF INCOME

			1	2
UNDERWRITING INCOME			Current Year	Prior Year
1.	Premiums earned (Part 1, Line 35, Column 4).....		28,144,309	30,298,278
DEDUCTIONS:				
2.	Losses incurred (Part 2, Line 35, Column 7).....		18,571,972	20,385,879
3.	Loss adjustment expenses incurred (Part 3, Line 25, Column 1).....		3,142,136	3,829,151
4.	Other underwriting expenses incurred (Part 3, Line 25, Column 2).....		6,177,341	6,638,038
5.	Aggregate write-ins for underwriting deductions.....		0	0
6.	Total underwriting deductions (Lines 2 through 5).....		27,891,449	30,853,068
7.	Net income of protected cells.....			
8.	Net underwriting gain (loss) (Line 1 minus Line 6 plus Line 7).....		252,860	(554,790)
INVESTMENT INCOME				
9.	Net investment income earned (Exhibit of Net Investment Income, Line 17).....		1,233,060	1,217,075
10.	Net realized capital gains (losses) less capital gains tax of \$.....195,329 (Exhibit of Capital Gains (Losses)).....		362,754	341,304
11.	Net investment gain (loss) (Lines 9 + 10).....		1,595,814	1,558,379
OTHER INCOME				
12.	Net gain (loss) from agents' or premium balances charged off (amount recovered \$.....2,416,114 amount charged off \$.....2,659,394).....		(243,280)	(255,036)
13.	Finance and service charges not included in premiums.....		7,612,860	9,247,547
14.	Aggregate write-ins for miscellaneous income.....		(6,819,865)	(8,317,044)
15.	Total other income (Lines 12 through 14).....		549,715	675,467
16.	Net income before dividends to policyholders, after capital gains tax and before all other federal and foreign income taxes (Lines 8 + 11 + 15).....		2,398,389	1,679,056
17.	Dividends to policyholders.....			
18.	Net income, after dividends to policyholders, after capital gains tax and before all other federal and foreign income taxes (Line 16 minus Line 17).....		2,398,389	1,679,056
19.	Federal and foreign income taxes incurred.....		545,254	377,961
20.	Net income (Line 18 minus Line 19) (to Line 22).....		1,853,135	1,301,095
CAPITAL AND SURPLUS ACCOUNT				
21.	Surplus as regards policyholders, December 31 prior year (Page 4, Line 39, Column 2).....		34,277,112	34,605,878
22.	Net income (from Line 20).....		1,853,135	1,301,095
23.	Net transfers (to) from Protected Cell accounts.....			
24.	Change in net unrealized capital gains or (losses) less capital gains tax of \$.....0.....			
25.	Change in net unrealized foreign exchange capital gain (loss).....			
26.	Change in net deferred income tax.....		(213,092)	89,763
27.	Change in nonadmitted assets (Exhibit of Nonadmitted Assets, Line 28, Column 3).....		451,741	(219,624)
28.	Change in provision for reinsurance (Page 3, Line 16, Column 2 minus Column 1).....			
29.	Change in surplus notes.....			
30.	Surplus (contributed to) withdrawn from Protected Cells.....			
31.	Cumulative effect of changes in accounting principles.....			
32.	Capital changes:			
32.1	Paid in.....			
32.2	Transferred from surplus (Stock Dividend).....			
32.3	Transferred to surplus.....			
33.	Surplus adjustments:			
33.1	Paid in.....			
33.2	Transferred to capital (Stock Dividend).....			
33.3.	Transferred from capital.....			
34.	Net remittances from or (to) Home Office.....			
35.	Dividends to stockholders.....		(4,500,000)	(1,500,000)
36.	Change in treasury stock (Page 3, Lines 36.1 and 36.2, Column 2 minus Column 1).....			
37.	Aggregate write-ins for gains and losses in surplus.....		0	0
38.	Change in surplus as regards policyholders for the year (Lines 22 through 37).....		(2,408,216)	(328,766)
39.	Surplus as regards policyholders, December 31 current year (Line 21 plus Line 38) (Page 3, Line 37).....		31,868,896	34,277,112
DETAILS OF WRITE-INS				
0501.			
0502.			
0503.			
0598.	Summary of remaining write-ins for Line 5 from overflow page.....		0	0
0599.	Totals (Lines 0501 through 0503 plus 0598) (Line 5 above).....		0	0
1401.	INTEREST INCOME ON INTERCOMPANY BALANCES.....		32,239	6,107
1402.	MISCELLANEOUS OTHER EXPENSE.....		(530)	(359)
1403.	FINANCE & SERVICE CHARGE REVENUE CEDED.....		(6,851,574)	(8,322,792)
1498.	Summary of remaining write-ins for Line 14 from overflow page.....		0	0
1499.	Totals (Lines 1401 through 1403 plus 1498) (Line 14 above).....		(6,819,865)	(8,317,044)
3701.			
3702.			
3703.			
3798.	Summary of remaining write-ins for Line 37 from overflow page.....		0	0
3799.	Totals (Lines 3701 through 3703 plus 3798) (Line 37 above).....		0	0

PROGRESSIVE WEST INSURANCE COMPANY
CASH FLOW

	1 Current Year	2 Prior Year
CASH FROM OPERATIONS		
1. Premiums collected net of reinsurance.....	27,254,313	25,917,616
2. Net investment income.....	1,537,377	1,593,999
3. Miscellaneous income.....	536,382	680,780
4. Total (Lines 1 through 3).....	29,328,072	28,192,395
5. Benefit and loss related payments.....	17,995,773	16,097,121
6. Net transfers to Separate Accounts, Segregated Accounts and Protected Cell Accounts.....		
7. Commissions, expenses paid and aggregate write-ins for deductions.....	10,073,356	10,802,230
8. Dividends paid to policyholders.....		
9. Federal and foreign income taxes paid (recovered) net of \$.....0 tax on capital gains (losses).....	426,569	874,219
10. Total (Lines 5 through 9).....	28,495,698	27,773,570
11. Net cash from operations (Line 4 minus Line 10).....	832,374	418,825
CASH FROM INVESTMENTS		
12. Proceeds from investments sold, matured or repaid:		
12.1 Bonds.....	53,568,893	40,473,745
12.2 Stocks.....		
12.3 Mortgage loans.....		
12.4 Real estate.....		
12.5 Other invested assets.....		
12.6 Net gains or (losses) on cash, cash equivalents and short-term investments.....		
12.7 Miscellaneous proceeds.....		
12.8 Total investment proceeds (Lines 12.1 to 12.7).....	53,568,893	40,473,745
13. Cost of investments acquired (long-term only):		
13.1 Bonds.....	47,113,759	49,811,565
13.2 Stocks.....		
13.3 Mortgage loans.....		
13.4 Real estate.....		
13.5 Other invested assets.....		
13.6 Miscellaneous applications.....		
13.7 Total investments acquired (Lines 13.1 to 13.6).....	47,113,759	49,811,565
14. Net increase (decrease) in contract loans and premium notes.....		
15. Net cash from investments (Line 12.8 minus Lines 13.7 minus Line 14).....	6,455,134	(9,337,820)
CASH FROM FINANCING AND MISCELLANEOUS SOURCES		
16. Cash provided (applied):		
16.1 Surplus notes, capital notes.....		
16.2 Capital and paid in surplus, less treasury stock.....		
16.3 Borrowed funds.....		
16.4 Net deposits on deposit-type contracts and other insurance liabilities.....		
16.5 Dividends to stockholders.....	4,500,000	1,500,000
16.6 Other cash provided (applied).....	(192,909)	619,250
17. Net cash from financing and miscellaneous sources (Lines 16.1 to 16.4 minus Line 16.5 plus Line 16.6).....	(4,692,909)	(880,750)
RECONCILIATION OF CASH, CASH EQUIVALENTS AND SHORT-TERM INVESTMENTS		
18. Net change in cash, cash equivalents and short-term investments (Line 11, plus Lines 15 and 17).....	2,594,599	(9,799,745)
19. Cash, cash equivalents and short-term investments:		
19.1 Beginning of year.....	499,947	10,299,692
19.2 End of year (Line 18 plus Line 19.1).....	3,094,546	499,947

Note: Supplemental disclosures of cash flow information for non-cash transactions:

20.0001		
---------------	--	--

PROGRESSIVE WEST INSURANCE COMPANY
UNDERWRITING AND INVESTMENT EXHIBIT

PART 1 - PREMIUMS EARNED

Line of Business		1 Net Premiums Written per Column 6, Part 1B	2 Unearned Premiums December 31 Prior Year- per Col. 3, Last Year's Part 1	3 Unearned Premiums December 31 Current Year- per Col. 5, Part 1A	4 Premiums Earned During Year (Cols. 1 + 2 - 3)
1.	Fire.....	0		0	0
2.	Allied lines.....	0		0	0
3.	Farmowners multiple peril.....	0		0	0
4.	Homeowners multiple peril.....	0		0	0
5.	Commercial multiple peril.....	0		0	0
6.	Mortgage guaranty.....	0		0	0
8.	Ocean marine.....	0		0	0
9.	Inland marine.....	3,639	1,967	2,197	3,409
10.	Financial guaranty.....	0		0	0
11.1	Medical professional liability - occurrence.....	0		0	0
11.2	Medical professional liability - claims-made.....	0		0	0
12.	Earthquake.....	0		0	0
13.	Group accident and health.....	0		0	0
14.	Credit accident and health (group and individual).....	0		0	0
15.	Other accident and health.....	0		0	0
16.	Workers' compensation.....	0		0	0
17.1	Other liability - occurrence.....	522	475	376	621
17.2	Other liability - claims-made.....	0		0	0
17.3	Excess workers' compensation.....	0		0	0
18.1	Products liability - occurrence.....	0		0	0
18.2	Products liability - claims-made.....	0		0	0
19.1, 19.2	Private passenger auto liability.....	16,042,660	4,724,356	4,519,202	16,247,814
19.3, 19.4	Commercial auto liability.....	0		0	0
21.	Auto physical damage.....	11,668,910	3,493,069	3,269,514	11,892,465
22.	Aircraft (all perils).....	0		0	0
23.	Fidelity.....	0		0	0
24.	Surety.....	0		0	0
26.	Burglary and theft.....	0		0	0
27.	Boiler and machinery.....	0		0	0
28.	Credit.....	0		0	0
29.	International.....	0		0	0
30.	Warranty.....	0		0	0
31.	Reinsurance - nonproportional assumed property.....	0		0	0
32.	Reinsurance - nonproportional assumed liability.....	0		0	0
33.	Reinsurance - nonproportional assumed financial lines.....	0		0	0
34.	Aggregate write-ins for other lines of business.....	0	0	0	0
35.	TOTALS.....	27,715,731	8,219,867	7,791,289	28,144,309

DETAILS OF WRITE-INS

3401.	0		0	0
3402.	0		0	0
3403.	0		0	0
3498.	Summary of remaining write-ins for Line 34 from overflow page.....	0	0	0	0
3499.	Totals (Lines 3401 through 3403 plus 3498) (Line 34 above).....	0	0	0	0

PROGRESSIVE WEST INSURANCE COMPANY
UNDERWRITING AND INVESTMENT EXHIBIT
PART 1A - RECAPITULATION OF ALL PREMIUMS

Line of Business		1	2	3	4	5
		Amount Unearned (Running One Year or Less from Date of Policy) (a)	Amount Unearned (Running More Than One Year from Date of Policy) (a)	Earned But Unbilled Premium	Reserve for Rate Credits and Retrospective Adjustments Based on Experience	Total Reserve for Unearned Premiums Cols. 1 + 2 + 3 + 4
1.	Fire.....					0
2.	Allied lines.....					0
3.	Farmowners multiple peril.....					0
4.	Homeowners multiple peril.....					0
5.	Commercial multiple peril.....					0
6.	Mortgage guaranty.....					0
8.	Ocean marine.....					0
9.	Inland marine.....	2,197				2,197
10.	Financial guaranty.....					0
11.1	Medical professional liability - occurrence.....					0
11.2	Medical professional liability - claims-made.....					0
12.	Earthquake.....					0
13.	Group accident and health.....					0
14.	Credit accident and health (group and individual).....					0
15.	Other accident and health.....					0
16.	Workers' compensation.....					0
17.1	Other liability - occurrence.....	376				376
17.2	Other liability - claims-made.....					0
17.3	Excess workers' compensation.....					0
18.1	Products liability - occurrence.....					0
18.2	Products liability - claims-made.....					0
19.1, 19.2	Private passenger auto liability.....	4,519,202				4,519,202
19.3, 19.4	Commercial auto liability.....					0
21.	Auto physical damage.....	3,269,514				3,269,514
22.	Aircraft (all perils).....					0
23.	Fidelity.....					0
24.	Surety.....					0
26.	Burglary and theft.....					0
27.	Boiler and machinery.....					0
28.	Credit.....					0
29.	International.....					0
30.	Warranty.....					0
31.	Reinsurance - nonproportional assumed property.....					0
32.	Reinsurance - nonproportional assumed liability.....					0
33.	Reinsurance - nonproportional assumed financial lines.....					0
34.	Aggregate write-ins for other lines of business.....	0	0	0	0	0
35.	TOTALS.....	7,791,289	0	0	0	7,791,289
36.	Accrued retrospective premiums based on experience.....					
37.	Earned but unbilled premiums.....					0
38.	Balance (sum of Lines 35 through 37).....					7,791,289

DETAILS OF WRITE-INS					
3401.				0
3402.				0
3403.				0
3498.	Summary of remaining write-ins for Line 34 from overflow page.....	0	0	0	0
3499.	Totals (Lines 3401 through 3403 plus 3498) (Line 34 above).....	0	0	0	0

(a) State here basis of computation used in each case: Pro Rata

PROGRESSIVE WEST INSURANCE COMPANY
UNDERWRITING AND INVESTMENT EXHIBIT

PART 1B - PREMIUMS WRITTEN

Line of Business		1 Direct Business (a)	Reinsurance Assumed		Reinsurance Ceded		6 Net Premiums Written (Cols. 1 + 2 + 3 - 4 - 5)
			2 From Affiliates	3 From Non-Affiliates	4 To Affiliates	5 To Non-Affiliates	
1.	Fire.....					0
2.	Allied lines.....					0
3.	Farmowners multiple peril.....					0
4.	Homeowners multiple peril.....					0
5.	Commercial multiple peril.....					0
6.	Mortgage guaranty.....					0
8.	Ocean marine.....					0
9.	Inland marine.....	36,389			32,750		3,639
10.	Financial guaranty.....					0
11.1	Medical professional liability - occurrence.....					0
11.2	Medical professional liability - claims-made.....					0
12.	Earthquake.....					0
13.	Group accident and health.....					0
14.	Credit accident and health (group and individual).....					0
15.	Other accident and health.....					0
16.	Workers' compensation.....					0
17.1	Other liability - occurrence.....	5,217			4,695		522
17.2	Other liability - claims-made.....					0
17.3	Excess workers' compensation.....					0
18.1	Products liability - occurrence.....					0
18.2	Products liability - claims-made.....					0
19.1, 19.2	Private passenger auto liability.....	160,426,604			144,383,944		16,042,660
19.3, 19.4	Commercial auto liability.....					0
21.	Auto physical damage.....	116,689,103			105,020,193		11,668,910
22.	Aircraft (all perils).....					0
23.	Fidelity.....					0
24.	Surety.....					0
26.	Burglary and theft.....					0
27.	Boiler and machinery.....					0
28.	Credit.....					0
29.	International.....					0
30.	Warranty.....					0
31.	Reinsurance - nonproportional assumed property.....	XXX				0
32.	Reinsurance - nonproportional assumed liability.....	XXX				0
33.	Reinsurance - nonproportional assumed financial lines.....	XXX				0
34.	Aggregate write-ins for other lines of business.....000000
35.	TOTALS.....	277,157,31300	249,441,5820	27,715,731

DETAILS OF WRITE-INS

3401.0
3402.0
3403.0
3498.	Summary of remaining write-ins for Line 34 from overflow page.....000000
3499.	Totals (Lines 3401 through 3403 plus 3498) (Line 34 above).....000000

(a) Does the company's direct premiums written include premiums recorded on an installment basis? Yes [] No [X]
If yes: 1. The amount of such installment premiums \$.....0.
2. Amount at which such installment premiums would have been reported had they been recorded on an annualized basis \$.....0.

UNDERWRITING AND INVESTMENT EXHIBIT

PART 2 - LOSSES PAID AND INCURRED

Line of Business		Losses Paid Less Salvage				5 Net Losses Unpaid Current Year (Part 2A, Col. 8)	6 Net Losses Unpaid Prior Year	7 Losses Incurred Current Year (Cols. 4 + 5 - 6)	8 Percentage of Losses Incurred (Col. 7, Part 2) to Premiums Earned (Col. 4, Part 1)
		1 Direct Business	2 Reinsurance Assumed	3 Reinsurance Recovered	4 Net Payments (Cols. 1 + 2 - 3)				
1.	Fire.....				0	0		0	0.0
2.	Allied lines.....				0	0		0	0.0
3.	Farmowners multiple peril.....				0	0		0	0.0
4.	Homeowners multiple peril.....				0	0		0	0.0
5.	Commercial multiple peril.....				0	0		0	0.0
6.	Mortgage guaranty.....				0	0		0	0.0
8.	Ocean marine.....				0	0		0	0.0
9.	Inland marine.....	5,634		5,070	564	(28)	435	101	3.0
10.	Financial guaranty.....				0	0		0	0.0
11.1	Medical professional liability - occurrence.....				0	0		0	0.0
11.2	Medical professional liability - claims-made.....				0	0		0	0.0
12.	Earthquake.....				0	0		0	0.0
13.	Group accident and health.....				0	0		0	0.0
14.	Credit accident and health (group and individual).....				0	0		0	0.0
15.	Other accident and health.....				0	0		0	0.0
16.	Workers' compensation.....				0	0		0	0.0
17.1	Other liability - occurrence.....				0	51	58	(7)	(1.1)
17.2	Other liability - claims-made.....				0	0		0	0.0
17.3	Excess workers' compensation.....				0	0		0	0.0
18.1	Products liability - occurrence.....				0	0		0	0.0
18.2	Products liability - claims-made.....				0	0		0	0.0
19.1, 19.2	Private passenger auto liability.....	117,452,371		105,707,135	11,745,236	9,303,468	9,809,316	11,239,388	69.2
19.3, 19.4	Commercial auto liability.....				0	0		0	0.0
21.	Auto physical damage.....	73,557,655		66,201,890	7,355,765	(52,306)	(29,032)	7,332,491	61.7
22.	Aircraft (all perils).....				0	0		0	0.0
23.	Fidelity.....				0	0		0	0.0
24.	Surety.....				0	0		0	0.0
26.	Burglary and theft.....				0	0		0	0.0
27.	Boiler and machinery.....				0	0		0	0.0
28.	Credit.....				0	0		0	0.0
29.	International.....				0	0		0	0.0
30.	Warranty.....				0	0		0	0.0
31.	Reinsurance - nonproportional assumed property.....	XXX			0	0		0	0.0
32.	Reinsurance - nonproportional assumed liability.....	XXX			0	0		0	0.0
33.	Reinsurance - nonproportional assumed financial lines.....	XXX			0	0		0	0.0
34.	Aggregate write-ins for other lines of business.....	0	0	0	0	0	0	0	0.0
35.	TOTALS.....	191,015,660	0	171,914,095	19,101,565	9,251,185	9,780,777	18,571,973	66.0
DETAILS OF WRITE-INS									
3401.				0	0		0	0.0
3402.				0	0		0	0.0
3403.				0	0		0	0.0
3498.	Summary of remaining write-ins for Line 34 from overflow page.....	0	0	0	0	0	0	0	XXX
3499.	Totals (Lines 3401 through 3403 plus 3498) (Line 34 above).....	0	0	0	0	0	0	0	0.0

UNDERWRITING AND INVESTMENT EXHIBIT

PART 2A - UNPAID LOSSES AND LOSS ADJUSTMENT EXPENSES

		Reported Losses				Incurred But Not Reported			8	9
		1	2	3	4	5	6	7		
Line of Business		Direct	Reinsurance Assumed	Deduct Reinsurance Recoverable	Net Losses Excluding Incurred but not Reported (Cols. 1 + 2 - 3)	Direct	Reinsurance Assumed	Reinsurance Ceded	Net Losses Unpaid (Cols. 4 + 5 + 6 - 7)	Net Unpaid Loss Adjustment Expenses
1.	Fire.....				.0				.0	
2.	Allied lines.....				.0				.0	
3.	Farmowners multiple peril.....				.0				.0	
4.	Homeowners multiple peril.....				.0				.0	
5.	Commercial multiple peril.....				.0				.0	
6.	Mortgage guaranty.....				.0				.0	
8.	Ocean marine.....				.0				.0	
9.	Inland marine.....				.0	(282)		(254)	(28)	26
10.	Financial guaranty.....				.0				.0	
11.1	Medical professional liability - occurrence.....				.0				.0	
11.2	Medical professional liability - claims-made.....				.0				.0	
12.	Earthquake.....				.0				.0	
13.	Group accident and health.....				.0				(a).0	
14.	Credit accident and health (group and individual).....				.0				.0	
15.	Other accident and health.....				.0				(a).0	
16.	Workers' compensation.....				.0				.0	
17.1	Other liability - occurrence.....				.0	513		462	51	11
17.2	Other liability - claims-made.....				.0				.0	
17.3	Excess workers' compensation.....				.0				.0	
18.1	Products liability - occurrence.....				.0				.0	
18.2	Products liability - claims-made.....				.0				.0	
19.1, 19.2	Private passenger auto liability.....	76,573,023		68,915,728	7,657,295	16,461,796		14,815,623	9,303,468	2,252,079
19.3, 19.4	Commercial auto liability.....				.0				.0	
21.	Auto physical damage.....	5,150,071		4,635,064	515,007	(5,673,135)		(5,105,822)	(52,306)	162,190
22.	Aircraft (all perils).....				.0				.0	
23.	Fidelity.....				.0				.0	
24.	Surety.....				.0				.0	
26.	Burglary and theft.....				.0				.0	
27.	Boiler and machinery.....				.0				.0	
28.	Credit.....				.0				.0	
29.	International.....				.0				.0	
30.	Warranty.....				.0				.0	
31.	Reinsurance - nonproportional assumed property.....	XXX			.0	XXX			.0	
32.	Reinsurance - nonproportional assumed liability.....	XXX			.0	XXX			.0	
33.	Reinsurance - nonproportional assumed financial lines.....	XXX			.0	XXX			.0	
34.	Aggregate write-ins for other lines of business.....	0	0	0	.0	.0	.0	.0	.0	.0
35.	TOTALS.....	81,723,094	0	73,550,792	8,172,302	10,788,892	0	9,710,009	9,251,185	2,414,306
DETAILS OF WRITE-INS										
3401.0				.0	
3402.0				.0	
3403.0				.0	
3498.	Summary of remaining write-ins for Line 34 from overflow page.....	0	0	0	.0	.0	.0	.0	.0	.0
3499.	Totals (Lines 3401 through 3403 plus 3498) (Line 34 above).....	0	0	0	.0	.0	.0	.0	.0	.0

(a) Including \$.0 for present value of life indemnity claims.

PROGRESSIVE WEST INSURANCE COMPANY
UNDERWRITING AND INVESTMENT EXHIBIT
PART 3 - EXPENSES

	1	2	3	4
	Loss Adjustment Expenses	Other Underwriting Expenses	Investment Expenses	Total
1. Claim adjustment services:				
1.1 Direct.....	4,471,941			4,471,941
1.2 Reinsurance assumed.....				0
1.3 Reinsurance ceded.....	4,024,745			4,024,745
1.4 Net claim adjustment services (1.1 + 1.2 - 1.3).....	447,196	0	0	447,196
2. Commission and brokerage:				
2.1 Direct, excluding contingent.....		28,161,385		28,161,385
2.2 Reinsurance assumed, excluding contingent.....				0
2.3 Reinsurance ceded, excluding contingent.....		25,345,248		25,345,248
2.4 Contingent - direct.....		190,823		190,823
2.5 Contingent - reinsurance assumed.....				0
2.6 Contingent - reinsurance ceded.....		171,740		171,740
2.7 Policy and membership fees.....				0
2.8 Net commission and brokerage (2.1 + 2.2 - 2.3 + 2.4 + 2.5 - 2.6 + 2.7).....	0	2,835,219	0	2,835,219
3. Allowances to manager and agents.....		660		660
4. Advertising.....	491	319,499		319,990
5. Boards, bureaus and associations.....	7,565	4,949		12,514
6. Surveys and underwriting reports.....		183,569		183,569
7. Audit of assureds' records.....				0
8. Salary and related items:				
8.1 Salaries.....	1,822,485	1,294,850	43,889	3,161,225
8.2 Payroll taxes.....	127,736	92,131	1,205	221,073
9. Employee relations and welfare.....	289,852	192,500	1,671	484,023
10. Insurance.....	4,479	4,129		8,609
11. Directors' fees.....				0
12. Travel and travel items.....	73,494	27,051	265	100,810
13. Rent and rent items.....	106,297	52,481	967	159,745
14. Equipment.....	8,347	33,225		41,571
15. Cost or depreciation of EDP equipment and software.....	110,171	195,492	611	306,273
16. Printing and stationery.....	9,662	19,488	99	29,249
17. Postage, telephone and telegraph, exchange and express.....	82,391	173,707	327	256,425
18. Legal and auditing.....	34,434	26,224	9,279	69,937
19. Totals (Lines 3 to 18).....	2,677,405	2,619,955	58,313	5,355,673
20. Taxes, licenses and fees:				
20.1 State and local insurance taxes deducting guaranty association credits of \$.....0.....		664,043		664,043
20.2 Insurance department licenses and fees.....	82	20,785		20,867
20.3 Gross guaranty association assessments.....		190		190
20.4 All other (excluding federal and foreign income and real estate).....	228	18,353		18,581
20.5 Total taxes, licenses and fees (20.1 + 20.2 + 20.3 + 20.4).....	310	703,370	0	703,680
21. Real estate expenses.....				0
22. Real estate taxes.....				0
23. Reimbursements by uninsured plans.....				0
24. Aggregate write-ins for miscellaneous expenses.....	17,226	18,796	9,112	45,134
25. Total expenses incurred.....	3,142,137	6,177,341	67,425	(a) 9,386,903
26. Less unpaid expenses - current year.....	2,414,305	1,418,317	1,071	3,833,694
27. Add unpaid expenses - prior year.....	2,525,537	2,060,964	1,531	4,588,032
28. Amounts receivable relating to uninsured plans, prior year.....				0
29. Amounts receivable relating to uninsured plans, current year.....				0
30. TOTAL EXPENSES PAID (Lines 25 - 26 + 27 - 28 + 29).....	3,253,369	6,819,988	67,885	10,141,241

DETAILS OF WRITE-INS				
2401. MISCELLANEOUS EXPENSES.....	17,226	18,796	9,112	45,134
2402.				0
2403.				0
2498. Summary of remaining write-ins for Line 24 from overflow page.....	0	0	0	0
2499. Totals (Lines 2401 through 2403 plus 2498) (Line 24 above).....	17,226	18,796	9,112	45,134

(a) Includes management fees of \$.....5,437,224 to affiliates and \$.....0 to non-affiliates.

PROGRESSIVE WEST INSURANCE COMPANY
EXHIBIT OF NET INVESTMENT INCOME

	1 Collected During Year	2 Earned During Year
1. U.S. government bonds.....	(a).....289,152259,821
1.1 Bonds exempt from U.S. tax.....	(a).....394,778377,339
1.2 Other bonds (unaffiliated).....	(a).....674,895656,093
1.3 Bonds of affiliates.....	(a).....
2.1 Preferred stocks (unaffiliated).....	(b).....
2.11 Preferred stocks of affiliates.....	(b).....
2.2 Common stocks (unaffiliated).....
2.21 Common stocks of affiliates.....
3. Mortgage loans.....	(c).....
4. Real estate.....	(d).....
5. Contract loans.....
6. Cash, cash equivalents and short-term investments.....	(e).....7,2327,232
7. Derivative instruments.....	(f).....
8. Other invested assets.....
9. Aggregate write-ins for investment income.....00
10. Total gross investment income.....1,366,0571,300,486
11. Investment expenses.....	(g).....67,425
12. Investment taxes, licenses and fees, excluding federal income taxes.....	(g).....
13. Interest expense.....	(h).....
14. Depreciation on real estate and other invested assets.....	(i).....0
15. Aggregate write-ins for deductions from investment income.....0
16. Total deductions (Lines 11 through 15).....67,425
17. Net investment income (Line 10 minus Line 16).....1,233,061

DETAILS OF WRITE-INS

0901.
0902.
0903.
0998. Summary of remaining write-ins for Line 9 from overflow page.....00
0999. Totals (Lines 0901 through 0903 plus 0998) (Line 9 above).....00
1501.
1502.
1503.
1598. Summary of remaining write-ins for Line 15 from overflow page.....0
1599. Totals (Lines 1501 through 1503 plus 1598) (Line 15 above).....0

- (a) Includes \$....45,321 accrual of discount less \$....284,526 amortization of premium and less \$....47,577 paid for accrued interest on purchases.
- (b) Includes \$.....0 accrual of discount less \$.....0 amortization of premium and less \$.....0 paid for accrued dividends on purchases.
- (c) Includes \$.....0 accrual of discount less \$.....0 amortization of premium and less \$.....0 paid for accrued interest on purchases.
- (d) Includes \$.....0 for company's occupancy of its own buildings; and excludes \$.....0 interest on encumbrances.
- (e) Includes \$....7,226 accrual of discount less \$.....0 amortization of premium and less \$.....0 paid for accrued interest on purchases.
- (f) Includes \$.....0 accrual of discount less \$.....0 amortization of premium.
- (g) Includes \$.....0 investment expenses and \$.....0 investment taxes, licenses and fees, excluding federal income taxes, attributable to segregated and Separate Accounts.
- (h) Includes \$.....0 interest on surplus notes and \$.....0 interest on capital notes.
- (i) Includes \$.....0 depreciation on real estate and \$.....0 depreciation on other invested assets.

EXHIBIT OF CAPITAL GAINS (LOSSES)

	1 Realized Gain (Loss) on Sales or Maturity	2 Other Realized Adjustments	3 Total Realized Capital Gain (Loss) (Columns 1 + 2)	4 Change in Unrealized Capital Gain (Loss)	5 Change in Unrealized Foreign Exchange Capital Gain (Loss)
1. U.S. government bonds.....211,331211,331
1.1 Bonds exempt from U.S. tax.....0
1.2 Other bonds (unaffiliated).....346,752346,752
1.3 Bonds of affiliates.....0
2.1 Preferred stocks (unaffiliated).....0
2.11 Preferred stocks of affiliates.....0
2.2 Common stocks (unaffiliated).....0
2.21 Common stocks of affiliates.....0
3. Mortgage loans.....0
4. Real estate.....0
5. Contract loans.....0
6. Cash, cash equivalents and short-term investments.....0
7. Derivative instruments.....0
8. Other invested assets.....0
9. Aggregate write-ins for capital gains (losses).....00000
10. Total capital gains (losses).....558,0830558,08300

DETAILS OF WRITE-INS

0901.0
0902.0
0903.0
0998. Summary of remaining write-ins for Line 9 from overflow page...00000
0999. Totals (Lines 0901 through 0903 plus 0998) (Line 9 above).....00000

PROGRESSIVE WEST INSURANCE COMPANY
EXHIBIT OF NONADMITTED ASSETS

	1 Current Year Total Nonadmitted Assets	2 Prior Year Total Nonadmitted Assets	3 Change in Total Nonadmitted Assets (Col. 2 - Col. 1)
1. Bonds (Schedule D).....			0
2. Stocks (Schedule D):			
2.1 Preferred stocks.....			0
2.2 Common stocks.....			0
3. Mortgage loans on real estate (Schedule B):			
3.1 First liens.....			0
3.2 Other than first liens.....			0
4. Real estate (Schedule A):			
4.1 Properties occupied by the company.....			0
4.2 Properties held for the production of income.....			0
4.3 Properties held for sale.....			0
5. Cash (Schedule E-Part 1), cash equivalents (Schedule E-Part 2) and short-term investments (Schedule DA).....			0
6. Contract loans.....			0
7. Derivatives (Schedule DB).....			0
8. Other invested assets (Schedule BA).....			0
9. Receivables for securities.....			0
10. Securities lending reinvested collateral assets (Schedule DL).....			0
11. Aggregate write-ins for invested assets.....	0	0	0
12. Subtotals, cash and invested assets (Lines 1 to 11).....	0	0	0
13. Title plants (for Title insurers only).....			0
14. Investment income due and accrued.....			0
15. Premiums and considerations:			
15.1 Uncollected premiums and agents' balances in the course of collection.....	969,352	1,416,672	447,320
15.2 Deferred premiums, agents' balances and installments booked but deferred and not yet due.....			0
15.3 Accrued retrospective premiums and contracts subject to redetermination.....			0
16. Reinsurance:			
16.1 Amounts recoverable from reinsurers.....			0
16.2 Funds held by or deposited with reinsured companies.....			0
16.3 Other amounts receivable under reinsurance contracts.....			0
17. Amounts receivable relating to uninsured plans.....			0
18.1 Current federal and foreign income tax recoverable and interest thereon.....			0
18.2 Net deferred tax asset.....			0
19. Guaranty funds receivable or on deposit.....			0
20. Electronic data processing equipment and software.....			0
21. Furniture and equipment, including health care delivery assets.....			0
22. Net adjustment in assets and liabilities due to foreign exchange rates.....			0
23. Receivables from parent, subsidiaries and affiliates.....			0
24. Health care and other amounts receivable.....			0
25. Aggregate write-ins for other-than-invested assets.....	5,039	9,460	4,421
26. Total assets excluding Separate Accounts, Segregated Accounts and Protected Cell Accounts (Lines 12 through 25).....	974,391	1,426,132	451,741
27. From Separate Accounts, Segregated Accounts and Protected Cell Accounts.....			0
28. TOTALS (Lines 26 and 27).....	974,391	1,426,132	451,741

DETAILS OF WRITE-INS

1101.			0
1102.			0
1103.			0
1198. Summary of remaining write-ins for Line 11 from overflow page.....	0	0	0
1199. Totals (Lines 1101 through 1103 plus 1198) (Line 11 above).....	0	0	0
2501. MISCELLANEOUS OTHER ASSETS.....	5,039	9,460	4,421
2502.			0
2503.			0
2598. Summary of remaining write-ins for Line 25 from overflow page.....	0	0	0
2599. Totals (Lines 2501 through 2503 plus 2598) (Line 25 above).....	5,039	9,460	4,421

NOTES TO FINANCIAL STATEMENTS

Note 1 – Summary of Significant Accounting Policies and Going Concern

A. Accounting Practices

The accompanying statutory-basis financial statements of Progressive West Insurance Company (the “Company”) were prepared on the basis of accounting practices prescribed or permitted by the Ohio Department of Insurance (“DOI”).

The Ohio DOI requires insurance companies domiciled in the state of Ohio to prepare their statutory-basis financial statements in accordance with the National Association of Insurance Commissioners’ (“NAIC”) *Accounting Practices and Procedures Manual* subject to any deviations prescribed or permitted by the Ohio DOI. No deviations from NAIC statutory accounting practices (“NAIC SAP”) were used in preparing these statutory-basis financial statements as illustrated in the table below:

	SSAP #	F/S Page	F/S Line #	2016	2015
NET INCOME					
(1) PROGRESSIVE WEST INSURANCE COMPANY state basis (Page 4, Line 20, Columns 1 & 2)	XXX	XXX	XXX	\$ 1,853,135	\$ 1,301,095
(2) State Prescribed Practices that increase/decrease NAIC SAP					
(3) State Permitted Practices that increase/decrease NAIC SAP					
(4) NAIC SAP (1 – 2 – 3 = 4)	XXX	XXX	XXX	\$ 1,853,135	\$ 1,301,095
SURPLUS					
(5) PROGRESSIVE WEST INSURANCE COMPANY state basis (Page 3, line 37, Columns 1 & 2)	XXX	XXX	XXX	\$ 31,868,896	\$ 34,277,112
(6) State Prescribed Practices that increase/decrease NAIC SAP					
(7) State Permitted Practices that increase/decrease NAIC SAP					
(8) NAIC SAP (5 – 6 – 7 = 8)	XXX	XXX	XXX	\$ 31,868,896	\$ 34,277,112

B. Use of Estimates

The Company is required to make estimates and assumptions when preparing its financial statements and accompanying notes in conformity with NAIC SAP. Actual results may differ from those estimates. Material estimates that are susceptible to significant changes in the near term include the loss and loss adjustment expense (“LAE”) reserves.

C. Accounting Policies

Insurance premiums written are being earned into income on a pro-rata basis over the period of risk based on a daily earnings convention. Unearned premiums are established to cover the unexpired portion of premiums written. The Company offers a variety of payment plans to meet individual customer needs. Generally, insurance premiums are collected in advance of providing risk coverage, minimizing the Company’s exposure to credit risk.

Acquisition costs, such as agents’ commissions, premium taxes, and other policy initiation costs, are charged to operations as incurred. Advertising costs are expensed as incurred.

Other income includes finance and service charges collected on premiums receivable. This revenue is offset by finance and service charges ceded under the quota-share reinsurance agreement with Progressive Casualty Insurance Company (“Casualty”), an insurance affiliate domiciled in Ohio.

Certain assets designated as “nonadmitted assets”, in accordance with Statement of Statutory Accounting Principles (“SSAP”) No. 4, Assets and Nonadmitted Assets, are reported on page 13, Exhibit of Nonadmitted Assets. The change in nonadmitted assets is charged directly against surplus as regards policyholders on page 4, Statement of Income, capital and surplus section.

In addition, the Company uses the following accounting policies:

Investments

- Cash and cash equivalents include bank accounts and certificates of deposit as well as short-term investments with original maturities of three months or less that are reported at amortized cost which approximates market value.
- Short-term investments include securities acquired within one year of maturity except for those with original maturities of three months or less (see cash and cash equivalents above) and are reported at amortized cost which approximates market value.
- Investment grade bond valuations are based on NAIC designations or NAIC Credit Rating Provider (“CRP”) designations from the Acceptable Rating Organization (“ARO”) list and are reported at amortized cost using the scientific method which closely approximates the effective interest method. Non-investment grade bond valuations are also based on NAIC designations or NAIC CRP-ARO designations and are reported at the lower of amortized cost or fair market value. Loan-backed and structured securities follow the guidance prescribed by SSAP No. 43R, Loan-backed and Structured Securities (“SSAP No. 43R”), for the determination of the bond valuation and reporting designation. The difference between the original cost and redemption value of these securities is recognized over the lives of the respective issues and included in net investment gain.
- Common stocks, other than investments in stocks of subsidiaries and affiliates, are reported at fair market values based on active market closing quotations from a regulated exchange. Changes in the fair market values of these securities are reflected directly as unrealized gains or losses in statutory surplus, net of deferred income taxes.
- Non-redeemable preferred stocks are reported at fair market values. Changes in the fair market values of these securities are reflected directly as unrealized gains or losses in statutory surplus, net of deferred income taxes. Investment grade redeemable preferred stocks are reported at amortized cost, while non-investment grade redeemable preferred stocks are reported at the lower of amortized cost or fair market value. The difference between the original cost and redemption value of the redeemable preferred securities is recognized using the scientific method, which closely approximates the effective interest method, over the lives of the respective issues and included in net investment gain.
- The fair market values reported are derived from independent and observable market input evaluations provided by reputable pricing services, independent broker/dealer bid lists, independent broker/dealer quotations, independent broker/dealer pricing services, or active market closing quotations from a regulated exchange. In very rare cases, if none of the aforementioned primary sources are available, matrix pricing using the reporting entity’s own market based assumptions may be utilized. The approved methods for computation of fair market value are prescribed in Part Five of the Securities Valuation Office Purposes and Procedures Manual.
- The Company has no investments in mortgage loans.
- Loan-backed and structured securities are accounted for as prescribed by SSAP No. 43R. These securities are generally stated at amortized cost as determined by the estimated value of future cash flows. Prepayment assumptions for loan-backed and structured debt securities are obtained from available market data, broker/dealers, and/or internal estimates, and are consistent with current interest rate and economic trends.
- The Company has no investments in joint ventures, partnerships, or limited liability companies.

NOTES TO FINANCIAL STATEMENTS

- The Company has no investments in derivatives.
- The Company may enter into repurchase agreements in which it borrows cash by providing certain underlying securities as collateral for the arrangement. The cash borrowed is invested in cash equivalents and an offsetting liability is established. The cash equivalent investment maturities and the term of the borrowing arrangement on the collateralized securities match, eliminating duration risk exposure to the Company. The Company did not have any open repurchase agreements at December 31, 2016 and December 31, 2015.
- Realized gains and losses on sales of securities are computed based on the first-in, first-out method.
- The Company’s management routinely monitors individual securities in its investment portfolio for pricing changes that might indicate potential impairments and performs detailed reviews of securities with unrealized losses based on predetermined guidelines to determine whether a decline in the value of a security is other-than-temporary. A review for other-than-temporary impairment (“OTTI”) requires making certain judgments regarding the materiality of the decline, its effect on the financial statements, the probability, extent, and timing of a valuation recovery, and the Company’s ability and intent to hold the security. The scope of this review is broad and requires a forward-looking assessment of the fundamental characteristics of a security, as well as the market-related prospects of the issuer and its industry.
- Management assesses valuation declines to determine the extent to which such changes are attributable to (i) fundamental factors specific to the issuer, such as financial conditions, business prospects or other factors, or (ii) market-related factors such as interest rates or equity market declines (i.e., negative returns at either a sector index level or the broader market level), or (iii) credit-related losses where the present value of cash flows expected to be collected are lower than the amortized cost basis of the security (includes only those securities covered under SSAP No. 43R). This evaluation reflects management’s assessment of current conditions, as well as predictions of uncertain future events that may have a material effect on the financial statements related to security valuation.
- When persuasive evidence exists that causes management to conclude that a decline in fair value is other-than-temporary, the book value of such security is written down and recognized as a realized loss. All other unrealized gains or losses are reflected in statutory surplus.

Loss, Loss Adjustment Expense, and Premium Deficiency Reserves

- Loss reserves represent the estimated liability on claims reported to the Company, plus reserves for losses incurred but not yet reported (“IBNR”). These estimates are reported net of amounts recoverable from salvage and subrogation. LAE reserves represent the estimated expenses required to settle reported claims and IBNR losses. Such loss and LAE reserves could be susceptible to significant change in the near term. The Company conducts extensive reviews each month on portions of its business to help ensure that the Company is meeting its objective of always having reserves that are adequate with minimal variation. Results would differ if different assumptions were made (see Note 25).
- The Company does anticipate investment income when evaluating the need for premium deficiency reserves. See Note 30.

Capitalization of Assets

- Prepaid assets above a \$100,000 threshold are capitalized. Under certain circumstances, the Company may decide to establish a prepaid expense for amounts less than the threshold. Prepaid assets are nonadmitted. There have been no changes to the written policy or predefined capitalization threshold from the prior year.

Pharmaceutical Rebate Receivables

- The Company does not write medical insurance or prescription drug coverage.

D. Going Concern

Management continuously monitors the Company’s financial results and compliance with regulatory requirements and found no reason to expect the Company to not continue as a going concern.

Note 2 – Accounting Changes and Corrections of Errors

Not applicable

Note 3 – Business Combinations and Goodwill

Not applicable

Note 4 – Discontinued Operations

Not applicable

Note 5 – Investments

A. Mortgage Loans, including Mezzanine Real Estate Loans

Not applicable

B. Debt Restructuring

Not applicable

C. Reverse Mortgages

Not applicable

D. Loan-Backed Securities

1. The sources used to determine prepayment assumptions are derived from updated cash flows from widely utilized reputable industry sources. The Company’s portfolio managers review the available cash flow data and prepayment assumptions and make adjustments based on current performance indicators on the underlying assets (e.g., delinquency rates, foreclosure rates, and default rates), credit support (via current levels of subordination), and historical credit ratings.
2. Intent to Sell or Inability to Hold Securities with a Recognized Other-Than-Temporary Impairment

Not applicable
3. During the year, the Company has not recorded an other-than-temporary impairment for loan-backed and structured debt securities during the current year.

NOTES TO FINANCIAL STATEMENTS

4.

At the end of the reporting period, the composition of fair value and gross unrealized losses on loan-backed and structured debt securities by the length of time that individual securities have been in a continuous unrealized loss position is as follows:

a.	The aggregate amount of unrealized losses:	1.	Less than 12 Months	\$	1,248
		2.	12 Months or Longer	\$	43,405
b.	The aggregate related fair value of securities with unrealized losses:	1.	Less than12 Months	\$	5,999,260
		2.	12 Months or Longer	\$	573,643

5.

Additional information

Under SSAP No. 43R, the Company analyzes its structured debt securities to determine if the Company intends to sell, or if it is more likely than not that the Company will be required to sell, the security prior to recovery and, if so, the Company writes down the security to its current fair market value with the entire amount of the write-down recorded as a realized loss. To the extent that it is more likely than not that the Company will hold the debt security until recovery (which could be maturity), the Company determines if any of the decline in value is due to a credit loss (i.e., where the present value of cash flows expected to be collected is lower than the amortized cost basis of the security) and, if so, the Company recognizes that portion of the impairment as a realized loss.

E.

Repurchase Agreements and/or Securities Lending Transactions

Not applicable

F.

Real Estate

Not applicable

G.

Investments in Low-Income Housing Trade Credits (LIHTC)

Not applicable

NOTES TO FINANCIAL STATEMENTS

H. Restricted Assets

1. Restricted assets (including pledged) summarized by restricted asset category are as follows:

Restricted Asset Category	Gross (Admitted & Nonadmitted) Restricted							Current Year			
	Current Year									Percentage	
	1	2	3	4	5	6	7	8	9	10	11
	Total General Account (G/A)	G/A Supporting Protected Cell Account Activity (a)	Total Protected Cell Account Restricted Assets	Protected Cell Account Assets Supporting G/A Activity (b)	Total (1 plus 3)	Total From Prior Year	Increase/ (Decrease) (5 minus 6)	Total Nonadmitted Restricted	Total Admitted Restricted (5 minus 8)	Gross (Admitted & Nonadmitted) Restricted to Total Assets (c)	Admitted Restricted to Total Admitted Assets (d)
a. Subject to contractual obligation for which liability is not shown											
b. Collateral held under security lending arrangements											
c. Subject to repurchase agreements											
d. Subject to reverse repurchase agreements											
e. Subject to dollar repurchase agreements											
f. Subject to dollar reverse repurchase agreements											
g. Placed under option contracts											
h. Letter stock or securities restricted as to sale – excluding FHLB capital stock											
i. FHLB capital stock											
j. On deposit with states	2,585,527				2,585,527	2,512,341	73,186		2,585,527	2.028	2.044
k. On deposit with other regulatory bodies											
l. Pledged as collateral to FHLB (including assets backing funding agreements)											
m. Pledged as collateral not captured in other categories											
n. Other restricted assets											
o. Total Restricted Assets	\$ 2,585,527	\$	\$	\$	\$ 2,585,527	\$ 2,512,341	\$ 73,186		\$ 2,585,527	2.028	2.044%

- (a) Subset of column 1
- (b) Subset of column 3
- (c) Column 5 divided by Asset Page, Column 1, Line 28
- (d) Column 9 divided by Asset Page, Column 3, Line 28

2. Detail of assets pledged as collateral not captured in other categories (from above table) is as follows:

Not applicable

3. Detail of Other Restricted Assets

Not applicable

4. Collateral Received and reflected as Assets Within the Reporting Entity's Financial Statements

Not applicable

I. Working Capital Finance Investments

Not applicable

J. Offsetting and Netting of Assets and Liabilities

Not applicable

K. Structured Notes

Not applicable

NOTES TO FINANCIAL STATEMENTS

L. 5* Securities

Not applicable

Note 6 – Joint Ventures, Partnerships and Limited Liability Companies

Not applicable

Note 7 – Investment Income

A. Accrued Investment Income

The Company nonadmits investment income due and accrued if the amounts are greater than 90 days past due.

B. Amounts Nonadmitted

Not applicable

Note 8 – Derivative Instruments

Not applicable

Note 9 – Income Taxes

A. Deferred Tax Assets/(Liabilities)

1. Components of Net Deferred Tax Asset/(Liability)

Description	2016			2015			Change		
	1 Ordinary	2 Capital	3 (Col 1+2) Total	4 Ordinary	5 Capital	6 (Col 4+5) Total	7 (Col 1-4) Ordinary	8 (Col 2-5) Capital	9 (Col 7+8) Total
a. Gross deferred tax assets	\$ 1,212,881	\$	\$ 1,212,881	\$ 1,446,312	\$	\$ 1,446,312	\$ (233,431)	\$	\$ (233,431)
b. Statutory valuation allowance adjustment									
c. Adjusted gross deferred tax assets (1a-1b)	1,212,881		1,212,881	1,446,312		1,446,312	(233,431)		(233,431)
d. Deferred tax assets nonadmitted									
e. Subtotal net admitted deferred tax asset (1c-1d)	1,212,881		1,212,881	1,446,312		1,446,312	(233,431)		(233,431)
f. Deferred tax liabilities	5,605	26,217	31,822	6,593	45,568	52,161	(988)	(19,351)	(20,339)
g. Net admitted deferred tax assets/(net deferred tax liability) (1e-1f)	\$ 1,207,276	\$ (26,217)	\$ 1,181,059	\$ 1,439,719	\$ (45,568)	\$ 1,394,151	\$ (232,443)	\$ 19,351	\$ (213,092)

2. Admission Calculation Components

Description	2016			2015			Change		
	1 Ordinary	2 Capital	3 (Col 1+2) Total	4 Ordinary	5 Capital	6 (Col 4+5) Total	7 (Col 1-4) Ordinary	8 (Col 2-5) Capital	9 (Col 7+8) Total
a. Federal income taxes paid in prior years recoverable through loss carrybacks	\$ 1,200,711	\$	\$ 1,200,711	\$ 1,412,659	\$	\$ 1,412,659	\$ (211,948)	\$	\$ (211,948)
b. Adjusted gross deferred tax assets expected to be realized (excluding the amount of deferred tax assets from 2(a) above) after application of the threshold limitation. (The lesser of 2(b)1 and 2(b)2 below:	6,694		6,694	18,810		18,810	(12,116)		(12,116)
Adjusted gross deferred tax assets expected to be realized following the balance sheet date	6,694		6,694	18,810		18,810	(12,116)		(12,116)
Adjusted gross deferred tax assets allowed per limitation threshold			4,603,176			4,932,444			(329,269)
c. Adjusted gross deferred tax assets (excluding the amount of deferred tax assets from 2(a) and 2(b) above) offset by gross deferred tax liabilities	5,476		5,476	14,843		14,843	(9,367)		(9,367)
d. Deferred tax assets admitted as the result of application of SSAP 101. Total (2(a)+2(b)+2(c)	\$ 1,212,881	\$	\$ 1,212,881	\$ 1,446,312	\$	\$ 1,446,312	\$ (233,431)	\$	\$ (233,431)

3. Other Admissibility Criteria

Description		2016	2015
a.	Ratio percentage used to determine recovery period and threshold limitation amount	2,571.144%	2,571.000%
b.	Amount of adjusted capital and surplus used to determine recovery period and threshold limitation in 2(b)2 above	\$ 30,687,837	\$ 32,882,961

NOTES TO FINANCIAL STATEMENTS

4. Impact of Tax Planning Strategies

(a) Determination of adjusted gross deferred tax assets and net admitted deferred tax assets, by tax character as a percentage.

	2016		2015		Change	
Description	1 Ordinary	2 Capital	3 Ordinary	4 Capital	5 (Col. 1-3) Ordinary	6 (Col. 2-4) Capital
1. Adjusted gross DTAs amount from Note 9A1(c)	\$ 1,212,881	\$	\$ 1,446,312	\$	\$ (233,431)	\$
2. Percentage of adjusted gross DTAs by tax character attributable to the impact of tax planning strategies	0 %	0 %	0 %	0 %	0 %	0 %
3. Net Admitted Adjusted Gross DTAs amount from Note 9A1(e)	\$ 1,212,881	\$	\$ 1,446,312	\$	\$ (233,431)	\$
4. Percentage of net admitted adjusted gross DTAs by tax character admitted because of the impact of tax planning strategies	0 %	0 %	0 %	0 %	0 %	0 %

(b) Does the company's tax planning strategies include the use of reinsurance? NO

B. Deferred Tax Liabilities Not Recognized

Not applicable

C. Current and Deferred Income Taxes

1. Current Income Tax

Description	1 2016	2 2015	3 (Col 1-2) Change
a. Federal	\$ 545,254	\$ 377,961	\$ 167,293
b. Foreign			
c. Subtotal	\$ 545,254	\$ 377,961	\$ 167,293
d. Federal income tax on net capital gains	195,329	183,779	11,550
e. Utilization of capital loss carry-forwards			
f. Other			
g. Federal and Foreign income taxes incurred	\$ 740,583	\$ 561,740	\$ 178,843

NOTES TO FINANCIAL STATEMENTS

2. Deferred Tax Assets

Description	1 2016	2 2015	3 (Col 1-2) Change
a. Ordinary:			
1. Discounting of unpaid losses	\$ 74,798	\$ 83,034	\$ (8,236)
2. Unearned premium reserve	601,276	624,971	(23,695)
3. Policyholder reserves			
4. Investments			
5. Deferred acquisition costs			
6. Policyholder dividends accrual			
7. Fixed assets			
8. Compensation and benefits accrual			
9. Pension accrual			
10. Receivables - nonadmitted	339,273	495,835	(156,562)
11. Net operating loss carry-forward			
12. Tax credit carry-forward			
13. Other – other nonadmitted assets			
14. Other – bad debt reserve	182,666	229,333	(46,667)
15. Other – foreign currency translation			
16. Other (including items <5% of total ordinary tax assets)	14,868	13,139	1,729
99. Subtotal	\$ 1,212,881	\$ 1,446,312	\$ (233,431)
b. Statutory valuation allowance adjustment			
c. Nonadmitted			
d. Admitted ordinary deferred tax assets (2a99-2b-2c)	\$ 1,212,881	\$ 1,446,312	\$ (233,431)
e. Capital:			
1. Investments	\$	\$	\$
2. Net capital loss carry-forward			
3. Real estate			
4. Other (including items <5% of total capital tax assets)			
99. Subtotal	\$ 0	\$ 0	\$ 0
f. Statutory valuation allowance adjustment			
g. Nonadmitted			
h. Admitted capital deferred tax assets (2e99-2f-2g)		0	
i. Admitted deferred tax assets (2d+2h)	\$ 1,212,881	\$ 1,446,312	\$ (233,431)

3. Deferred Tax Liabilities

Description	1 2016	2 2015	3 (Col 1–2) Change
a. Ordinary:			
1. Investments	\$	\$	\$
2. Fixed assets			
3. Deferred and uncollected premium			
4. Policyholder reserves			
5. Other liabilities – prepaid expenses			
6. Other liabilities – salvage and subrogation	5,605	6,593	(988)
7. Other liabilities – foreign currency translation			
8. Other (including items <5% of total ordinary tax liabilities)			
99. Subtotal	\$ 5,605	\$ 6,593	\$ (988)
b. Capital:			
1. Investments	\$ 26,217	\$ 45,568	\$ (19,351)
2. Real estate			
3. Other (including items <5% of total capital tax liabilities)			
99. Subtotal	26,217	45,568	(19,351)
c. Deferred tax liabilities (3a99+3b99)	\$ 31,822	\$ 52,161	\$ (20,339)

4. Net Deferred Tax Assets (2i – 3c)	\$ 1,181,059	\$ 1,394,151	\$ (213,092)
--------------------------------------	--------------	--------------	--------------

The change in net deferred income tax is comprised of the following (this analysis excludes nonadmitted assets; the change in nonadmitted assets is reported separately from the change in net deferred income tax in the Statement of Income, Surplus section):

Description	2016	2015	Change
Total deferred tax assets	\$ 1,212,881	\$ 1,446,312	\$ (233,431)
Total deferred tax liabilities	31,822	52,161	(20,339)
Net deferred tax asset (liability)	\$ 1,181,059	\$ 1,394,151	\$ (213,092)
Tax effect of unrealized gains (losses)			
Change in net deferred income tax			\$ (213,092)

NOTES TO FINANCIAL STATEMENTS

D. Reconciliation of Federal Income Tax Rate to Actual Effective Rate Among the more significant book to tax adjustments were the following:

Description	Tax Effect	Effective Tax Rate
Provision computed at statutory rate	\$ 907,801	35%
Exempt interest income	(112,238)	-4%
Impact of nonadmitted assets	158,109	6%
Other	3	0%
Total	\$ 953,675	37%
Federal and foreign income taxes incurred	\$ 740,583	
Change in net deferred income tax	213,092	
Total statutory income taxes	\$ 953,675	

E. Operating Loss and Tax Credit Carryforwards and Protective Tax Deposits

At December 31, 2016, the Company did not have any unused operating loss carryforwards available to offset against future taxable income.

The following is income tax expense for 2016 and 2015 that is available for recoupment in the event of future net losses:

Period	Amount
Current tax year:	\$ 739,236
First preceding tax year:	\$ 559,204

The amounts that can be recouped may be subject to the alternative minimum tax rules, and therefore may be limited.

The Company did not have any protective tax deposits under Section 6603 of the Internal Revenue Code.

F. Consolidated Federal Income Tax Return

1. The Company's Federal income tax return is consolidated with The Progressive Corporation ("TPC"), a publicly traded holding company incorporated in Ohio, and all of its wholly-owned United States subsidiaries (the "Group") as detailed in Schedule Y, Part 1.
2. The method of allocation between the companies is subject to written agreement and is jointly approved by an officer of TPC and the Company. The allocation is based upon separate tax return calculations with current credit for net losses or other items utilized in the consolidated tax return. Intercompany tax balances are settled quarterly.

G. Federal or Foreign Federal Income Tax Loss Contingencies

The Company does not have any tax loss contingencies for which it is reasonably possible that the total liability will significantly increase within twelve months of the reporting date.

Note 10 – Information Concerning Parent, Subsidiaries, Affiliates and Other Related Parties

A. Nature of Relationships

The Company is wholly owned by Drive Insurance Holdings, Inc. ("DIH"), a holding company incorporated in Delaware. The structure of the holding company organization is shown on Schedule Y, Part 1.

B. Detail of Transactions Greater than ½% of Admitted Assets

All significant 2016 transactions by the Company or any affiliated insurer with any affiliate are summarized in Schedule Y, Part 2.

See Note 13.4

C. Change in Terms of Intercompany Arrangements

Not applicable

D. Amounts Due to or from Related Parties

The Company reported a \$906,323 payable to parent, subsidiaries, and affiliates at December 31, 2016 and a \$32,058 receivable from parent, subsidiaries, and affiliates at December 31, 2015. These balances are due to cash collections and disbursements on behalf of the Company under the Group's centralized cash management system and the reinsurance and management agreements in which the Company participates. The Company also reported a \$263,202 current Federal income tax payable at December 31, 2016 which is due to TPC for the Company's Federal income tax liability and a \$50,812 current Federal income tax receivable at December 31, 2015 which is due from TPC for the Company's Federal income tax recoverable. The intercompany balances are settled by the end of the following quarter depending on the timing of investment cash transactions. These transactions are dependent upon market timing, investment needs and overall portfolio strategy as to the timing of such settlement transactions.

E. Guarantees or Contingencies for Related Parties

Not applicable

F. Management, Service Contracts, Cost Sharing Arrangements

Management, operations and claims services are provided under a management agreement with Casualty. Under the terms of the agreement, the Company is provided underwriting and loss adjustment services for business produced in exchange for a management fee based on the Company's use of services.

The Company participates in an investment services agreement with Progressive Capital Management Corp., a non-insurance affiliate. Under the terms of the agreement, the Company is provided investment and capital management services in exchange for an investment management fee based on its use of services.

All intercompany agreements are approved by the participating insurance companies' states of domicile when established. Upon redomestication, intercompany agreements are not required to be approved by the new state of domicile.

NOTES TO FINANCIAL STATEMENTS

- G.

Nature of Relationships that Could Affect Operations

All outstanding shares of the Company are owned by DIH.
- H.

Amount Deducted for Investment in Upstream Company

Not applicable
- I.

Detail of Investments in Affiliates Greater than 10% of Admitted Assets

Not applicable
- J.

Write-Downs for Impairment of Investments in Affiliates

Not applicable
- K.

Investment in Foreign Insurance Subsidiary

Not applicable
- L.

Investment in Downstream Non-Insurance Holding Company

Not applicable
- M.

Subsidiary, Controlled and Affiliated Entities (except insurance subsidiary, controlled and affiliated entities) Value

Not applicable
- N.

Insurance Subsidiary, Controlled and Affiliated Entities Valuation That Departs From NAIC Statutory Accounting Practices and Procedures

Not applicable

Note 11 – Debt

Not applicable

Note 12 – Retirement Plans, Deferred Compensation, Postemployment Benefits and Compensated Absences and Other Postretirement Benefit Plans

Not applicable

Note 13 – Capital and Surplus, Dividend Restrictions and Quasi-Reorganizations

1.

Outstanding Shares

The Company has 40,000 shares of \$87 par value common stock authorized and 30,000 shares issued and outstanding. The Company has no preferred stock authorized, issued, or outstanding.
2.

Dividend Rate of Preferred Stock

Not applicable
- 3,4,5,6.

Dividends

The maximum amount of dividends the Company can pay to DIH in 2017 without prior regulatory approval is limited by insurance laws in Ohio. Based on the dividend laws currently in effect, the Company may pay dividends of \$3,186,890 in 2017 without prior approval from the Ohio DOI, provided the dividend payment is not made within 12 months of the previous payment.

Within the limitations described above, there are no additional restrictions placed on the portion of Company profits that may be paid as ordinary dividends to stockholders.

The Company paid dividends to DIH as follows:

Date Paid	Amount Paid	Dividend Type
December 23, 2016	\$ 3,400,000	Ordinary
December 23, 2016	\$ 1,100,000	Extraordinary
December 21, 2015	\$ 1,500,000	Ordinary

The extraordinary cash dividend was approved by the Ohio and California DOI.
7.

Mutual Surplus Advances

Not applicable
8.

Company Stock Held for Special Purposes

Not applicable
9.

Changes in Special Surplus Funds

Not applicable
10.

The portion of unassigned funds (surplus) represented or reduced by unrealized gains and losses.

Not applicable
11.

The reporting entity issued the following surplus debentures or similar obligations:

Not applicable

NOTES TO FINANCIAL STATEMENTS

12.

The impact of any restatement due to prior quasi-reorganizations is as follows:

Not applicable
13.

The effective dates of all quasi-reorganizations in the prior 10 years are:

Not applicable

Note 14 – Liabilities, Contingencies and Assessments

- A.

Contingent Commitments

Not applicable

- B.

Assessments

The Company is subject to state guaranty fund and other assessments by the states in which it writes business. State guaranty fund assessments are accrued at the time of any known insolvencies. Other assessments are accrued either at the time of assessment or at the time the premiums are written. These accruals are based on information received from the states in which the Company writes business and may change due to many factors including the Company’s share of the ultimate cost of current insolvencies.

As of December 31, 2016 and 2015, the Company’s estimated liability for state guaranty fund and other assessments was \$1,000 and \$1,000, respectively. The Company did not recognize any premium tax benefit associated with its various assessments.

As of December 31, 2016 and 2015, the Company’s estimated liability for various surcharges was \$420,921 and \$455,404, respectively.

- C.

Gain Contingencies

Not applicable

- D.

Claims Related Extra Contractual Obligation and Bad Faith Losses Stemming from Lawsuits

PROGRESSIVE WEST INSURANCE COMPANY paid the following amounts in the reporting period to settle claims related extra contractual obligations or bad faith claims stemming from lawsuits:

	Direct
Claims related ECO and bad faith losses paid during the reporting period	\$ 250,000

Number of claims where amounts were paid to settle claims related extra contractual obligations or bad faith claims resulting from lawsuits during the reporting period:

(a) 0-25 Claims	(b) 26-50 Claims	(c) 51-100 Claims	(d) 101-500 Claims	(e) More than 500 Claims
X				

Indicate whether claim count information is disclosed per claim or per claimant:
(f) Per Claim [] (g) Per Claimant [X]

- E.

Product Warranties

Not applicable

- F.

Joint and Several Liabilities

Not applicable

- G.

All Other Contingencies

The Company routinely assesses the collectibility of premiums and agents' balances receivable and records a bad debt reserve for amounts exceeding the nonadmitted balance that the Company believes are uncollectible.

The Company is named as defendant in various lawsuits arising out of its insurance operations. All legal actions relating to claims made under insurance policies are considered by the Company in establishing its loss and LAE reserves. The Company also has potential exposure relating to lawsuits due to its participation in a management agreement for which it is allocated litigation expenses.

The following is a discussion of potentially significant pending cases at the reporting date. Unless specifically noted, the Company does not consider a loss from these cases to be probable and is unable to estimate a range of loss, if any, at this time.

There was one case consolidated into multi-district proceedings alleging that the Company improperly steers automobile repair work to certain auto body repair shops and challenging the labor rates the Company pays to auto body repair shops.

There was a putative class action lawsuit challenging fees charged to insureds. The Company does consider a loss from this case to be probable and a loss reserve was established accordingly.

Note 15 – Leases

Not applicable

Note 16 – Information About Financial Instruments with Off-Balance Sheet Risk and Financial Instruments with Concentrations of Credit Risk

Not applicable

Note 17 – Sale, Transfer and Servicing of Financial Assets and Extinguishments of Liabilities

- A.

Transfers of Receivables Reported as Sales

Not applicable

NOTES TO FINANCIAL STATEMENTS

B. Transfer and Servicing of Financial Assets

Not applicable

C. Wash Sales

Not applicable

Note 18 – Gain or Loss to the Reporting Entity from Uninsured Plans and the Portion of Partially Insured Plans

Not applicable

Note 19 – Direct Premium Written/Produced by Managing General Agents/Third Party Administrators

The Company maintains a Program Administrator Agreement with ASI Underwriters Corp., ("ASIU"), a non-insurance affiliate incorporated in Florida. The agreement gives ASIU authority for designing, implementing, and administering the Company's renters insurance program. The renters insurance program provides tenants with coverage for damage to personal property, personal liability and medical payments to others. The Company has not yet begun writing this business.

Note 20 – Fair Value Measurements

A. Inputs Used for Assets and Liabilities Measured at Fair Value in the Company's Financial Statements

1. Fair Value Measurements by Levels 1, 2 and 3

The Company categorizes its financial instruments, based on the degree of subjectivity inherent in the method by which they are valued, into a fair value hierarchy of three levels, as follows:

Level 1 - Inputs are unadjusted, quoted prices in active markets for identical instruments at the measurement date (e.g., active exchange-traded equity securities).

Level 2 - Inputs (other than quoted prices included within Level 1) that are observable for the instrument either directly or indirectly. This includes: (i) quoted prices for similar instruments in active markets, (ii) quoted prices for identical or similar instruments in markets that are not active, (iii) inputs other than quoted prices that are observable for the instruments, and (iv) inputs that are derived principally from or corroborated by observable market data by correlation or other means.

Level 3 - Inputs that are unobservable. Unobservable inputs reflect the Company's subjective evaluation about the assumptions market participants would use in pricing the financial instrument.

See Note 1, Investment Policies section for further information regarding methods used to determine fair market value.

The Company's management evaluated whether the market was distressed or inactive in determining the fair value of the Company's securities and reviewed certain market level inputs to evaluate whether sufficient activity, volume, and new issuances existed to create an active market. Based on this evaluation, management concluded that there was sufficient activity in determining the fair market value of the Company's securities.

As of the reporting date, the Company did not measure and report any securities at fair value on the balance sheet. All bonds were carried at amortized cost.

2. Roll forward of Level 3 Items

Not applicable

3. Policy on Transfers Into and Out of Level 3

At the end of each reporting period, the Company evaluates whether or not any event has occurred or circumstances have changed that would cause an instrument to be transferred into or out of Level 3.

4. Inputs and Techniques Used for Level 2 and Level 3 Fair Values

See Note 20.A.1 above.

5. Derivative Fair Values

Not applicable

B. Other Fair Value Disclosures

Not applicable

C. Fair Values for all Financial Instruments by Levels 1, 2, and 3

The table below represents the fair value of all financial instruments at the reporting date, however, not all financial instruments are reported at fair value in the Company's financial statements.

Type of Financial Instrument	Aggregate Fair Value	Admitted Assets	(Level 1)	(Level 2)	(Level 3)	Not Practicable (Carrying Value)
Bonds	\$ 59,141,072	\$ 59,449,009	\$ 17,797,545	\$ 41,343,527	\$	\$
Cash equivalents						
Common stock						
Preferred stock						
Short-term investments	3,094,546	3,094,546	3,094,546			

D. Not Practicable to Estimate Fair Value

Not applicable

Note 21 – Other Items

A. Unusual or Infrequent Items

Not applicable

NOTES TO FINANCIAL STATEMENTS

B. Troubled Debt Restructuring Debtors

Not applicable

C. Other Disclosures

Not applicable

D. Business Interruption Insurance Recoveries

Not applicable

E. State Transferable and Non-Transferable Tax Credits

Not applicable

F. Subprime Mortgage Related Risk Exposure

1. Exposure to Subprime Mortgage Related Risk

The following subprime disclosure and the review and procedures described within are completed at a consolidated level for all the Progressive companies. To the extent the Company had any direct subprime exposure, those securities would be listed in Note 21.F.3.

Management’s review of the investment portfolio for securities with direct subprime exposure, such as Alt-A residential mortgage loan-backed bonds and home equity loan-backed bonds is performed in conjunction with the OTTI analysis and procedures (see Note 1.C). Additionally, securities that were determined to have an indirect subprime exposure were also reviewed as part of the OTTI process.

The Company’s management continues to perform a detailed review of its investment portfolio, paying particular attention to the credit profile of the issuers to identify the extent to which any asset values may have been impacted by direct or indirect exposure to the subprime mortgage loan disruption, as well as broader credit and financial market events.

In the reporting period, the Company recorded no OTTI write-downs on any securities as a result of direct subprime exposure.

2. Direct Investment in Subprime Mortgage Loans

Not applicable

3. Direct Investment in Securities with Underlying Subprime Exposure

Not applicable

4 Mortgage or Financial Guaranty Subprime Exposure

Not applicable

G. Insurance-Linked Securities (ILS) Contracts

Not applicable

Note 22 – Events Subsequent

The Company was not impacted by any subsequent events. Subsequent events have been considered through February 15, 2017 for the statutory statement that was available for issuance by March 1, 2017.

The Company does not write health insurance and therefore has no premiums subject to assessment under section 9010 of the Affordable Care Act for either the current or prior years.

Note 23 – Reinsurance

A. Unsecured Reinsurance Recoverables at the reporting date the Company had the following unsecured reinsurance recoverable balances which exceeded 3% of policyholders’ surplus:

Reinsurer	NAIC Code	Federal ID#	Amount
Progressive Casualty Insurance Company	24260	34-6513736	\$ 189,135,000
Total			\$ 189,135,000

B. Reinsurance Recoverable in Dispute

Not applicable

C. Reinsurance Assumed and Ceded

1. The table below summarizes ceded and assumed unearned premiums and the related commission equity at reporting date.

		Assumed Reinsurance		Ceded Reinsurance		Net	
		Premium Reserve	Commission Equity	Premium Reserve	Commission Equity	Premium Reserve	Commission Equity
a.	Affiliates	\$	\$	\$ 70,121,000	\$	\$ (70,121,000)	\$
b.	All Other						
c.	Total	\$	\$	\$ 70,121,000	\$	\$ (70,121,000)	\$
d.	Direct Unearned Premium Reserves			\$ 77,913,000			

NOTES TO FINANCIAL STATEMENTS

	2.	The Company has no return commission or profit sharing arrangements.
D.	Uncollectible Reinsurance	
		Not applicable
E.	Commutation of Ceded Reinsurance	
		Not applicable
F.	Retroactive Reinsurance	
		Not applicable
G.	Reinsurance Accounted for as a Deposit	
		Not applicable
H.	Disclosures for the Transfer of Property and Casualty Run-off Agreements	
		Not applicable
I.	Certified Reinsurer Rating Downgraded or Status Subject to Revocation	
		Not applicable
J.	Reinsurance Agreements Qualifying for Reinsurer Aggregation	
		Not applicable

Note 24 – Retrospectively Rated Contracts and Contracts Subject to Redetermination

Not applicable

Note 25 – Change in Incurred Losses and Loss Adjustment Expenses

Incurred losses and LAE attributable to insured events of prior accident years increased by \$490,000 in 2016, which is 4.0% of the total prior year net unpaid losses and LAE of \$12,306,314. Private passenger auto liability development was unfavorable due to originally anticipated severity for accident year 2015 increasing by 3.7%. The LAE reserves developed favorably primarily from defense and cost containment reserves from accident year 2015 and 2013 and prior.

Note 26 – Intercompany Pooling Arrangements

Not applicable

Note 27 – Structured Settlements

Not applicable

Note 28 – Health Care Receivables

Not applicable

Note 29 – Participating Policies

Not applicable

Note 30 – Premium Deficiency Reserves

1.	Liability carried for premium deficiency reserve:	\$0
2.	Date of most recent evaluation of this liability:	December 31, 2016
3.	Was anticipated investment income utilized in the calculation?	Yes [X] No []

Note 31 – High Deductibles

Not applicable

Note 32 – Discounting of Liabilities for Unpaid Losses or Unpaid Loss Adjustment Expenses

Not applicable

Note 33 – Asbestos/Environmental Reserves

Not applicable

Note 34 – Subscriber Savings Accounts

Not applicable

Note 35 – Multiple Peril Crop Insurance

Not applicable

NOTES TO FINANCIAL STATEMENTS

Note 36 – Financial Guaranty Insurance

Not applicable

GENERAL INTERROGATORIES

PART 1 - COMMON INTERROGATORIES

GENERAL

1.1

Is the reporting entity a member of an Insurance Holding Company System consisting of two or more affiliated persons, one or more of which is an insurer?
If yes, complete Schedule Y, Parts 1, 1A and 2.

Yes [X]No []

1.2

If yes, did the reporting entity register and file with its domiciliary State Insurance Commissioner, Director or Superintendent or with such regulatory official of the state of domicile of the principal insurer in the Holding Company System, a registration statement providing disclosure substantially similar to the standards adopted by the National Association of Insurance Commissioners (NAIC) in its Model Insurance Holding Company System Regulatory Act and model regulations pertaining thereto, or is the reporting entity subject to standards and disclosure requirements substantially similar to those required by such Act and regulations?

Yes [X]No []N/A []

1.3

State regulating?

OHIO

2.1

Has any change been made during the year of this statement in the charter, by-laws, articles of incorporation, or deed of settlement of the reporting entity?

Yes []No [X]

2.2

If yes, date of change:

3.1

State as of what date the latest financial examination of the reporting entity was made or is being made.

12/31/2012

3.2

State the as of date that the latest financial examination report became available from either the state of domicile or the reporting entity.
This date should be the date of the examined balance sheet and not the date the report was completed or released.

12/31/2012

3.3

State as of what date the latest financial examination report became available to other states or the public from either the state of domicile or the reporting entity. This is the release date or completion date of the examination report and not the date of the examination (balance sheet date).

08/06/2013

3.4

By what department or departments?
OHIO

3.5

Have all financial statement adjustments within the latest financial examination report been accounted for in a subsequent financial statement filed with departments?

Yes []No []N/A [X]

3.6

Have all of the recommendations within the latest financial examination report been complied with?

Yes [X]No []N/A []

4.1

During the period covered by this statement, did any agent, broker, sales representative, non-affiliated sales/service organization or any combination thereof under common control (other than salaried employees of the reporting entity) receive credit or commissions for or control a substantial part (more than 20 percent of any major line of business measured on direct premiums) of:

4.11

sales of new business?

Yes []No [X]

4.12

renewals?

Yes []No [X]

4.2

During the period covered by this statement, did any sales/service organization owned in whole or in part by the reporting entity or an affiliate, receive credit or commissions for or control a substantial part (more than 20 percent of any major line of business measured on direct premiums) of:

4.21

sales of new business?

Yes []No [X]

4.22

renewals?

Yes []No [X]

5.1

Has the reporting entity been a party to a merger or consolidation during the period covered by this statement?

Yes []No [X]

5.2

If yes, provide the name of entity, NAIC company code, and state of domicile (use two letter state abbreviation) for any entity that has ceased to exist as a result of the merger or consolidation.

1	2 NAIC Company Code	3 State of Domicile
Name of Entity		

6.1

Has the reporting entity had any Certificates of Authority, licenses or registrations (including corporate registration, if applicable) suspended or revoked by any governmental entity during the reporting period?

Yes []No [X]

6.2

If yes, give full information:

7.1

Does any foreign (non-United States) person or entity directly or indirectly control 10% or more of the reporting entity?

Yes []No [X]

7.2

If yes,

7.21

State the percentage of foreign control

%

7.22

State the nationality(s) of the foreign person(s) or entity(s); or if the entity is a mutual or reciprocal, the nationality of its manager or attorney-in-fact and identify the type of entity(s) (e.g., individual, corporation, government, manager or attorney-in-fact).

1 Nationality	2 Type of Entity

8.1

Is the company a subsidiary of a bank holding company regulated with the Federal Reserve Board?

Yes []No [X]

8.2

If response to 8.1 is yes, please identify the name of the bank holding company.

8.3

Is the company affiliated with one or more banks, thrifts or securities firms?

Yes []No [X]

8.4

If the response to 8.3 is yes, please provide below the names and locations (city and state of the main office) of any affiliates regulated by a federal financial regulatory services agency [i.e. the Federal Reserve Board (FRB), the Office of the Comptroller of the Currency (OCC), the Federal Deposit Insurance Corporation (FDIC) and the Securities Exchange Commission (SEC)] and identify the affiliate's primary federal regulator.

1 Affiliate Name	2 Location (City, State)	3 FRB	4 OCC	5 FDIC	6 SEC

9.

What is the name and address of the independent certified public accountant or accounting firm retained to conduct the annual audit?
PRICEWATERHOUSECOOPERS, LLP 200 PUBLIC SQUARE, 18TH FLOOR CLEVELAND, OH 44114-2301

10.1

Has the insurer been granted any exemptions to the prohibited non-audit services provided by the certified independent public accountant requirements as allowed in Section 7H of the Annual Financial Reporting Model Regulation (Model Audit Rule), or substantially similar state law or regulation?

Yes []No [X]

10.2

If the response to 10.1 is yes, provide information related to this exemption:

10.3

Has the insurer been granted any exemptions related to other requirements of the Annual Financial Reporting Model Regulation as allowed for in Section 18A of the Model Regulation, or substantially similar state law or regulation?

Yes []No [X]

10.4

If the response to 10.3 is yes, provide information related to this exemption:

10.5

Has the reporting entity established an Audit Committee in compliance with the domiciliary state insurance laws?

Yes [X]No []N/A []

10.6

If the response to 10.5 is no or n/a, please explain:

GENERAL INTERROGATORIES

PART 1 - COMMON INTERROGATORIES

11.

What is the name, address and affiliation (officer/employee of the reporting entity or actuary/consultant associated with an actuarial consulting firm) of the individual providing the statement of actuarial opinion/certification?
GARY S. TRACOFF, FCAS, MAAA CORPORATE ACTUARY 6300 WILSON MILLS ROAD MAYFIELD VILLAGE, OH 44143-2182
- 12.1

Does the reporting entity own any securities of a real estate holding company or otherwise hold real estate indirectly?

Yes [☐] No [☒]
- 12.11

Name of real estate holding company
- 12.12

Number of parcels involved
- 12.13

Total book/adjusted carrying value

\$

0
- 12.2

If yes, provide explanation
13.

FOR UNITED STATES BRANCHES OF ALIEN REPORTING ENTITIES ONLY:
- 13.1

What changes have been made during the year in the United States manager or the United States trustees of the reporting entity?
N/A
- 13.2

Does this statement contain all business transacted for the reporting entity through its United States Branch on risks wherever located?

Yes [☐] No [☐]
- 13.3

Have there been any changes made to any of the trust indentures during the year?

Yes [☐] No [☐]
- 13.4

If answer to (13.3) is yes, has the domiciliary or entry state approved the changes?

Yes [☐] No [☐] N/A [☐]
- 14.1

Are the senior officers (principal executive officer, principal financial officer, principal accounting officer or controller, or persons performing similar functions) of the reporting entity subject to a code of ethics, which includes the following standards?

Yes [☒] No [☐]
- (a)

Honest and ethical conduct, including the ethical handling of actual or apparent conflicts of interest between personal and professional relationships;
- (b)

Full, fair, accurate, timely and understandable disclosure in the periodic reports required to be filed by the reporting entity;
- (c)

Compliance with applicable governmental laws, rules and regulations;
- (d)

The prompt internal reporting of violations to an appropriate person or persons identified in the code; and
- (e)

Accountability for adherence to the code.
- 14.11

If the response to 14.1 is no, please explain:
- 14.2

Has the code of ethics for senior managers been amended?

Yes [☐] No [☒]
- 14.21

If the response to 14.2 is yes, provide information related to amendment(s).
- 14.3

Have any provisions of the code of ethics been waived for any of the specified officers?

Yes [☐] No [☒]
- 14.31

If the response to 14.3 is yes, provide the nature of any waiver(s).
- 15.1

Is the reporting entity the beneficiary of a Letter of Credit that is unrelated to reinsurance where the issuing or confirming bank is not on the SVO Bank List?

Yes [☐] No [☒]
- 15.2

If the response to 15.1 is yes, indicate the American Bankers Association (ABA) Routing Number and the name of the issuing or confirming bank of the Letter of Credit and describe the circumstances in which the Letter of Credit is triggered.

1	2	3	4
American Bankers Association (ABA) Routing Number	Issuing or Confirming Bank Name	Circumstances That Can Trigger the Letter of Credit	Amount

BOARD OF DIRECTORS

16.

Is the purchase or sale of all investments of the reporting entity passed upon either by the Board of Directors or a subordinator committee thereof?

Yes [☒] No [☐]
17.

Does the reporting entity keep a complete permanent record of the proceedings of its Board of Directors and all subordinate committees thereof?

Yes [☒] No [☐]
18.

Has the reporting entity an established procedure for disclosure to its Board of Directors or trustees of any material interest or affiliation on the part of any of its officers, directors, trustees or responsible employees that is in conflict or is likely to conflict with the official duties of such person?

Yes [☒] No [☐]

FINANCIAL

19.

Has this statement been prepared using a basis of accounting other than Statutory Accounting Principles (e.g., Generally Accepted Accounting Principles)?

Yes [☐] No [☒]
- 20.1

Total amount loaned during the year (inclusive of Separate Accounts, exclusive of policy loans):
- 20.11

To directors or other officers

\$

0
- 20.12

To stockholders not officers

\$

0
- 20.13

Trustees, supreme or grand (Fraternal only)

\$

0
- 20.2

Total amount of loans outstanding at the end of year (inclusive of Separate Accounts, exclusive of policy loans):
- 20.21

To directors or other officers

\$

0
- 20.22

To stockholders not officers

\$

0
- 20.23

Trustees, supreme or grand (Fraternal only)

\$

0
- 21.1

Were any assets reported in this statement subject to a contractual obligation to transfer to another party without the liability for such obligation being reporting in the statement?

Yes [☐] No [☒]
- 21.2

If yes, state the amount thereof at December 31 of the current year:
- 21.21

Rented from others

\$
- 21.22

Borrowed from others

\$
- 21.23

Leased from others

\$
- 21.24

Other

\$
- 22.1

Does this statement include payments for assessments as described in the *Annual Statement Instructions* other than guaranty fund or guaranty association assessments?

Yes [☐] No [☒]
- 22.2

If answer is yes:
- 22.21

Amount paid as losses or risk adjustment

\$
- 22.22

Amount paid as expenses

\$
- 22.23

Other amounts paid

\$
- 23.1

Does the reporting entity report any amounts due from parent, subsidiaries or affiliates on Page 2 of this statement?

Yes [☐] No [☒]
- 23.2

If yes, indicate any amounts receivable from parent included in the Page 2 amount:

\$

0

PROGRESSIVE WEST INSURANCE COMPANY
GENERAL INTERROGATORIES
PART 1 - COMMON INTERROGATORIES

INVESTMENT

24.01

Were all of stocks, bonds and other securities owned December 31 of current year, over which the reporting entity has exclusive control, in the actual possession of the reporting entity on said date (other than securities lending programs addressed in 24.03)?

Yes [X] No []

24.02

If no, give full and complete information, relating thereto:

24.03

For security lending programs, provide a description of the program including value for collateral and amount of loaned securities, and whether collateral is carried on or off-balance sheet (an alternative is to reference Note 17 where this information is also provided).
N/A

24.04

Does the company's security lending program meet the requirements for a conforming program as outlined in the *Risk-Based Capital Instructions*?

Yes [] No [] N/A [X]

24.05

If answer to 24.04 is yes, report amount of collateral for conforming programs.

\$

24.06

If answer to 24.04 is no, report amount of collateral for other programs

\$

24.07

Does your securities lending program require 102% (domestic securities) and 105% (foreign securities) from the counterparty at the outset of the contract?

Yes [] No [] N/A [X]

24.08

Does the reporting entity non-admit when the collateral received from the counterparty falls below 100%?

Yes [] No [] N/A [X]

24.09

Does the reporting entity or the reporting entity's securities lending agent utilize the Master Securities Lending Agreement (MSLA) to conduct securities lending?

Yes [] No [] N/A [X]

24.10

For the reporting entity's security lending program, state the amount of the following as of December 31 of the current year:

24.101

Total fair value of reinvested collateral assets reported on Schedule DL, Parts 1 and 2:

\$0

24.102

Total book adjusted/carrying value of reinvested collateral assets reported on Schedule DL, Parts 1 and 2:

\$0

24.103

Total payable for securities lending reported on the liability page:

\$0

25.1

Were any of the stocks, bonds or other assets of the reporting entity owned at December 31 of the current year not exclusively under the control of the reporting entity or has the reporting entity sold or transferred any assets subject to a put option contract that is current in force? (Exclude securities subject to Interrogatory 21.1 and 24.03.)

Yes [X] No []

25.2

If yes, state the amount thereof at December 31 of the current year:

25.21

Subject to repurchase agreements

\$0

25.22

Subject to reverse repurchase agreements

\$0

25.23

Subject to dollar repurchase agreements

\$0

25.24

Subject to reverse dollar repurchase agreements

\$0

25.25

Placed under option agreements

\$0

25.26

Letter stock or securities restricted as sale – excluding FHLB Capital Stock

\$0

25.27

FHLB Capital Stock

\$0

25.28

On deposit with states

\$2,585,527

25.29

On deposit with other regulatory bodies

\$0

25.30

Pledged as collateral – excluding collateral pledged to an FHLB

\$0

25.31

Pledged as collateral to FHLB – including assets backing funding agreements

\$0

25.32

Other

\$0

25.3

For category (25.26) provide the following:

1 Nature of Restriction	2 Description	3 Amount
		\$

26.1

Does the reporting entity have any hedging transactions reported on Schedule DB?

Yes [] No [X]

26.2

If yes, has a comprehensive description of the hedging program been made available to the domiciliary state?
If no, attach a description with this statement.

Yes [] No [] N/A [X]

27.1

Were any preferred stocks or bonds owned as of December 31 of the current year mandatorily convertible into equity, or, at the option of the issuer, convertible into equity?

Yes [] No [X]

27.2

If yes, state the amount thereof at December 31 of the current year:

\$

28.

Excluding items in Schedule E-Part 3-Special Deposits, real estate, mortgage loans and investments held physically in the reporting entity's offices, vaults or safety deposit boxes, were all stocks, bonds and other securities, owned throughout the current year held pursuant to a custodial agreement with a qualified bank or trust company in accordance with Section 1, III - General Examination Considerations, F. Outsourcing of Critical Functions, Custodial or Safekeeping Agreements of the NAIC *Financial Condition Examiners Handbook*?

Yes [X] No []

28.01

For all agreements that comply with the requirements of the NAIC *Financial Condition Examiners Handbook*, complete the following:

1 Name of Custodian(s)	2 Custodian's Address
CITIBANK , N.A.	338 GREENWICH STREET, NEW YORK NY 10013

28.02

For all agreements that do not comply with the requirements of the NAIC *Financial Condition Examiners Handbook*, provide the name, location and a complete explanation

1 Name(s)	2 Location(s)	3 Complete Explanation(s)
NONE		

28.03

Have there been any changes, including name changes, in the custodian(s) identified in 28.01 during the current year?

Yes [] No [X]

28.04

If yes, give full and complete information relating thereto:

1 Old Custodian	2 New Custodian	3 Date of Change	4 Reason
NONE			

28.05

Investment management – Identify all investment advisors, investment managers, broker/dealers, including individuals that have the authority to make investment decisions on behalf of the reporting entity. For assets that are managed internally by employees of the reporting entity, note as such. ["...that have access to the investment accounts", "... handle securities"].

1 Name of Firm or Individual	2 Affiliation
PROGRESSIVE CAPITAL MANAGEMENT CORP.	A

GENERAL INTERROGATORIES

PART 1 - COMMON INTERROGATORIES

28.0597 For those firms/individuals listed in the table for Question 28.05, do any firms/individuals unaffiliated with the reporting entity (i.e. designated with a "U") manage more than 10% of the reporting entity's assets?

Yes ☐ No ☐

28.0598 For firms/individuals unaffiliated with the reporting entity (i.e. designated with a "U") listed in the table for Question 28.05, does the total assets under management aggregate to more than 50% of the reporting entity's assets?

Yes ☐ No ☐

28.06 For those firms or individuals listed in the table for 28.05 with an affiliation code of "A" (affiliated) or "U" (unaffiliated), provide the information for the table below.

1	2	3	4	5
Central Registration Depository Number	Name of Firm or Individual	Legal Entity Identifier (LEI)	Registered With	Investment Management Agreement (IMA) Filed
N/A	PROGRESSIVE CAPITAL MANAGEMENT CORP.		N/A	DS

29.1 Does the reporting entity have any diversified mutual funds reported in Schedule D-Part 2 (diversified according to the Securities and Exchange Commission (SEC) in the Investment Company Act of 1940 [Section 5 (b) (1)])?

Yes ☐ No ☒

29.2 If yes, complete the following schedule:

1 CUSIP	2 Name of Mutual Fund	3 Book/Adjusted Carrying Value
29.2999 TOTAL		

29.3 For each mutual fund listed in the table above, complete the following schedule:

1 Name of Mutual Fund (from above table)	2 Name of Significant Holding of the Mutual Fund	3 Amount of Mutual Fund's Book/Adjusted Carrying Value Attributable to the Holding	4 Date of Valuation

30. Provide the following information for all short-term and long-term bonds and all preferred stocks. Do not substitute amortized value or statement value for fair value.

		1 Statement (Admitted) Value	2 Fair Value	3 Excess of Statement over Fair Value (-), or Fair Value over Statement (+)
30.1	Bonds	62,543,555	62,235,618	(307,937)
30.2	Preferred Stocks	0	0	0
30.3	Totals	62,543,555	62,235,618	(307,937)

30.4 Describe the sources or methods utilized in determining the fair values:

THE FAIR MARKET VALUES REPORTED ARE DERIVED FROM INDEPENDENT AND OBSERVABLE MARKET INPUT EVALUATIONS PROVIDED BY WIDELY UTILIZED REPUTABLE PRICING SERVICES, INDEPENDENT BROKER/DEALER BID LISTS, INDEPENDENT BROKER/DEALER QUOTATIONS, INDEPENDENT BROKER/DEALER PRICING SERVICES, OR ACTIVE MARKET CLOSING QUOTATIONS FROM A REGULATED EXCHANGE. IN VERY RARE CASES, IF NONE OF THE AFOREMENTIONED PRIMARY SOURCES ARE AVAILABLE, MATRIX PRICING USING THE REPORTING ENTITY'S OWN MARKET BASED ASSUMPTIONS MAY BE UTILIZED. THE APPROVED METHODS FOR COMPUTATION OF FAIR MARKET VALUE ARE PRESCRIBED IN PART FIVE OF THE SECURITIES VALUATION OFFICE PURPOSES AND PROCEDURES MANUAL.

31.1 Was the rate used to calculate fair value determined by a broker or custodian for any of the securities in Schedule D?

Yes ☐ No ☒

31.2 If the answer to 31.1 is yes, does the reporting entity have a copy of the broker's or custodian's pricing policy (hard copy or electronic copy) for all brokers or custodians used as a pricing source?

Yes ☐ No ☐

31.3 If the answer to 31.2 is no, describe the reporting entity's process for determining a reliable pricing source for purposes of disclosure of fair value for Schedule D:

32.1 Have all the filing requirements of the *Purposes and Procedures Manual of the NAIC Investment Analysis Office* been followed?

Yes ☒ No ☐

32.2 If no, list exceptions:

OTHER

33.1 Amount of payments to trade associations, service organizations and statistical or rating bureaus, if any?

\$12,183

33.2 List the name of the organization and the amount paid if any such payment represented 25% or more of the total payments to trade associations, service organizations and statistical or rating bureaus during the period covered by this statement.

1 Name	2 Amount Paid
INDEPENDENT STATISTICAL SVCS I	\$12,183

34.1 Amount of payments for legal expenses, if any?

\$0

34.2 List the name of the firm and the amount paid if any such payment represented 25% or more of the total payments for legal expenses during the period covered by this statement.

1 Name	2 Amount Paid
NONE	\$

35.1 Amount of payments for expenditures in connection with matters before legislative bodies, officers or departments of government, if any?

\$0

35.2 List the name of the firm and the amount paid if any such payment represented 25% or more of the total payment expenditures in connection with matters before legislative bodies, officers or departments of government during the period covered by this statement.

1 Name	2 Amount Paid
NONE	\$

GENERAL INTERROGATORIES

PART 2 – PROPERTY & CASUALTY INTERROGATORIES

1.1

Does the reporting entity have any direct Medicare Supplement Insurance in force?

Yes []

No [X]

1.2

If yes, indicate premium earned on U.S. business only.

\$

0

1.3

What portion of Item (1.2) is not reported on the Medicare Supplement Insurance Experience Exhibit?

\$

0

1.31

Reason for excluding:

1.4

Indicate amount of earned premium attributable to Canadian and/or Other Alien not included in Item (1.2) above.

\$

0

1.5

Indicate total incurred claims on all Medicare Supplement insurance.

\$

0

1.6

Individual policies:

Most current three years:

1.61

Total premium earned

\$

0

1.62

Total incurred claims

\$

0

1.63

Number of covered lives

0

All years prior to most current three years:

1.64

Total premium earned

\$

0

1.65

Total incurred claims

\$

0

1.66

Number of covered lives

0

1.7

Group policies:

Most current three years:

1.71

Total premium earned

\$

0

1.72

Total incurred claims

\$

0

1.73

Number of covered lives

0

All years prior to most current three years:

1.74

Total premium earned

\$

0

1.75

Total incurred claims

\$

0

1.76

Number of covered lives

0

2.

Health Test:

1

Current Year

2

Prior Year

2.1

Premium Numerator

\$

0

\$

0

2.2

Premium Denominator

\$

28,144,309

\$

30,298,278

2.3

Premium Ratio (2.1/2.2)

2.4

Reserve Numerator

\$

0

\$

0

2.5

Reserve Denominator

\$

19,456,778

\$

20,526,181

2.6

Reserve Ratio (2.4/2.5)

3.1

Does the reporting entity issue both participating and non-participating policies?

Yes []

No [X]

3.2

If yes, state the amount of calendar year premiums written on:

3.21

Participating policies

\$

0

3.22

Non-participating policies

\$

0

4.

FOR MUTUAL REPORTING ENTITIES AND RECIPROCAL EXCHANGES ONLY:

4.1

Does the reporting entity issue assessable policies?

Yes []

No []

4.2

Does the reporting entity issue non-assessable policies?

Yes []

No []

4.3

If assessable policies are issued, what is the extent of the contingent liability of the policyholders?

%

4.4

Total amount of assessments paid or ordered to be paid during the year on deposit notes or contingent premiums.

\$

0

5.

FOR RECIPROCAL EXCHANGES ONLY:

5.1

Does the exchange appoint local agents?

Yes []

No []

5.2

If yes, is the commission paid:

5.21

Out of Attorney's-in-fact compensation

Yes []

No []

N/A []

5.22

As a direct expense of the exchange

Yes []

No []

N/A []

5.3

What expenses of the exchange are not paid out of the compensation of the Attorney-in-fact?

5.4

Has any Attorney-in-fact compensation, contingent on fulfillment of certain conditions, been deferred?

Yes []

No []

5.5

If yes, give full information:

6.1

What provision has this reporting entity made to protect itself from an excessive loss in the event of a catastrophe under a workers' compensation contract issued without limit of loss?
THE COMPANY DOES NOT WRITE WORKERS' COMPENSATION INSURANCE.

6.2

Describe the method used to estimate this reporting entity's probable maximum insurance loss, and identify the type of insured exposures comprising that probable maximum loss, the locations of concentrations of those exposures and the external resources (such as consulting firms or computer software models), if any, used in the estimation process:
THE COMPANY'S PROBABLE MAXIMUM LOSS (PML) IS ESTIMATED BY ANALYZING HISTORICAL MAJOR OCCURRENCES AND ESTIMATING FREQUENCY OF LOSS AND SEVERITY BASED ON THE POTENTIAL FORCE OF AN OCCURRENCE AND THE TOTAL NUMBER OF AUTOS EXPOSED. THE PML ESTIMATE IS COMPLETED EXCLUSIVELY BY PROGRESSIVE EMPLOYEES. THE COMPANY'S TOTAL EXPOSURES ARE IN THE STATE OF CALIFORNIA AND IS 90% REINSURED WITH PROGRESSIVE CASUALTY INSURANCE COMPANY, AN AFFILIATE. THERE IS LIMITED NET EXPOSURE TO THE COMPANY'S TOTAL SURPLUS. THE ESTIMATE OF THE PML IS 4% OF THE TOTAL SURPLUS. THE PRIMARY PROPERTY COVERAGE SOLD BY THE COMPANY IS COMPREHENSIVE FOR AUTOMOBILE.

6.3

What provision has this reporting entity made (such as catastrophic reinsurance program) to protect itself from an excessive loss arising from the types and concentrations of insured exposures comprising its probable maximum property insurance loss?
THE COMPANY'S ESTIMATED PML IS 4% OF THE SURPLUS AND THE COMPANY CARRIES NO EXTERNAL CATASTROPHE REINSURANCE TO COVER ITS LIMITED CATASTROPHE EXPOSURE.

6.4

Does the reporting entity carry catastrophe reinsurance protection for at least one reinstatement, in an amount sufficient to cover its estimated probable maximum loss attributable to a single loss event or occurrence?

Yes []

No [X]

16

GENERAL INTERROGATORIES

PART 2 – PROPERTY & CASUALTY INTERROGATORIES

6.5	If no, describe any arrangements or mechanisms employed by the reporting entity to supplement its catastrophe reinsurance program or to hedge its exposure to unreinsured catastrophic loss: <u>NONE</u>		
7.1	Has the reporting entity reinsured any risk with any other entity under a quota share reinsurance contract that includes a provision that would limit the reinsurer's losses below the stated quota share percentage (e.g., a deductible, a loss ratio corridor, a loss cap, an aggregate limit or any similar provisions)?	Yes [<input type="checkbox"/>]	No [<input checked="" type="checkbox"/> X]
7.2	If yes, indicate the number of reinsurance contracts containing such provisions.	<hr/> 0	
7.3	If yes, does the amount of reinsurance credit taken reflect the reduction in quota share coverage caused by any applicable limiting provision(s)?	Yes [<input type="checkbox"/>]	No [<input type="checkbox"/>]
8.1	Has this reporting entity reinsured any risk with any other entity and agreed to release such entity from liability, in whole or in part, from any loss that may occur on this risk, or portion thereof, reinsured?	Yes [<input type="checkbox"/>]	No [<input checked="" type="checkbox"/> X]
8.2	If yes, give full information		
9.1	Has the reporting entity ceded any risk under any reinsurance contract (or under multiple contracts with the same reinsurer or its affiliates) for which during the period covered by the statement: (i) it recorded a positive or negative underwriting result greater than 5% of prior year-end surplus as regards policyholders or it reported calendar year written premium ceded or year-end loss and loss expense reserves ceded greater than 5% of prior year-end surplus as regards policyholders; (ii) it accounted for that contract as reinsurance and not as a deposit; and (iii) the contract(s) contain one or more of the following features or other features that would have similar results: (a) A contract term longer than two years and the contract is noncancellable by the reporting entity during the contract term; (b) A limited or conditional cancellation provision under which cancellation triggers an obligation by the reporting entity, or an affiliate of the reporting entity, to enter into a new reinsurance contract with the reinsurer, or an affiliate of the reinsurer; (c) Aggregate stop loss reinsurance coverage; (d) A unilateral right by either party (or both parties) to commute the reinsurance contract, whether conditional or not, except for such provisions which are only triggered by a decline in the credit status of the other party; (e) A provision permitting reporting of losses, or payment of losses, less frequently than on a quarterly basis (unless there is no activity during the period); or (f) Payment schedule, accumulating retentions from multiple years or any features inherently designed to delay timing of the reimbursement to the ceding entity?	Yes [<input type="checkbox"/>]	No [<input checked="" type="checkbox"/> X]
9.2	Has the reporting entity during the period covered by the statement ceded any risk under any reinsurance contract (or under multiple contracts with the same reinsurer or its affiliates), for which, during the period covered by the statement, it recorded a positive or negative underwriting result greater than 5% of prior year-end surplus as regards policyholders or it reported calendar year written premium ceded or year-end loss and loss expense reserves ceded greater than 5% of prior year-end surplus as regards policyholders; excluding cessions to approved pooling arrangements or to captive insurance companies that are directly or indirectly controlling, controlled by, or under common control with (i) one or more unaffiliated policyholders of the reporting entity, or (ii) an association of which one or more unaffiliated policyholders of the reporting entity is a member where: (a) The written premium ceded to the reinsurer by the reporting entity or its affiliates represents fifty percent (50%) or more of the entire direct and assumed premium written by the reinsurer based on its most recently available financial statement; or (b) Twenty-five percent (25%) or more of the written premium ceded to the reinsurer has been retroceded back to the reporting entity or its affiliates in a separate reinsurance contract.	Yes [<input type="checkbox"/>]	No [<input checked="" type="checkbox"/> X]
9.3	If yes to 9.1 or 9.2, please provide the following information in the Reinsurance Summary Supplemental Filing for General Interrogatory 9: (a) The aggregate financial statement impact gross of all such ceded reinsurance contracts on the balance sheet and statement of income; (b) A summary of the reinsurance contract terms and indicate whether it applies to the contracts meeting the criteria in 9.1 or 9.2; and (c) A brief discussion of management's principle objectives in entering into the reinsurance contract including the economic purpose to be achieved.		
9.4	Except for transactions meeting the requirements of paragraph 31 of SSAP No. 62R, <i>Property and Casualty Reinsurance</i> , has the reporting entity ceded any risk under any reinsurance contract (or multiple contracts with the same reinsurer or its affiliates) during the period covered by the financial statement, and either: (a) Accounted for that contract as reinsurance (either prospective or retroactive) under statutory accounting principles ("SAP") and as a deposit under generally accepted accounting principles ("GAAP"); or (b) Accounted for that contract as reinsurance under GAAP and as a deposit under SAP?	Yes [<input type="checkbox"/>]	No [<input checked="" type="checkbox"/> X]
9.5	If yes to 9.4, explain in the Reinsurance Summary Supplemental Filing for General Interrogatory 9 (Section D) why the contract(s) is treated differently for GAAP and SAP.		
9.6	The reporting entity is exempt from the Reinsurance Attestation Supplement under one or more of the following criteria: (a) The entity does not utilize reinsurance; or (b) The entity only engages in a 100% quota share contract with an affiliate and the affiliated or lead company has filed an attestation supplement; or (c) The entity has no external cessions and only participates in an intercompany pool and the affiliated or lead company has filed an attestation supplement.	Yes [<input type="checkbox"/>]	No [<input checked="" type="checkbox"/> X]
10.	If the reporting entity has assumed risks from another entity, there should be charged on account of such reinsurances a reserve equal to that which the original entity would have been required to charge had it retained the risks. Has this been done?	Yes [<input type="checkbox"/>]	No [<input type="checkbox"/>] N/A [<input checked="" type="checkbox"/> X]
11.1	Has the reporting entity guaranteed policies issued by any other entity and now in force?	Yes [<input type="checkbox"/>]	No [<input checked="" type="checkbox"/> X]
11.2	If yes, give full information		
12.1	If the reporting entity recorded accrued retrospective premiums on insurance contracts on Line 15.3 of the assets schedule, Page 2, state the amount of corresponding liabilities recorded for: 12.11 Unpaid losses 12.12 Unpaid underwriting expenses (including loss adjustment expenses)	\$	0
		\$	0
12.2	Of the amount on Line 15.3, Page 2, state the amount that is secured by letters of credit, collateral and other funds?	\$	0
12.3	If the reporting entity underwrites commercial insurance risks, such as workers' compensation, are premium notes or promissory notes accepted from its insureds covering unpaid premiums and/or unpaid losses?	Yes [<input type="checkbox"/>]	No [<input type="checkbox"/>] N/A [<input checked="" type="checkbox"/> X]
12.4	If yes, provide the range of interest rates charged under such notes during the period covered by this statement: 12.41 From 12.42 To	<hr/> % <hr/> %	
12.5	Are letters of credit or collateral and other funds received from insureds being utilized by the reporting entity to secure premium notes or promissory notes taken by a reporting entity, or to secure any of the reporting entity's reported direct unpaid loss reserves, including unpaid losses under loss deductible features of commercial policies?	Yes [<input type="checkbox"/>]	No [<input checked="" type="checkbox"/> X]
12.6	If yes, state the amount thereof at December 31 of current year: 12.61 Letters of Credit	\$	0

FIVE-YEAR HISTORICAL DATA

Show amounts in whole dollars only, no cents; show percentages to one decimal place, i.e. 17.6.

	1 2016	2 2015	3 2014	4 2013	5 2012
Gross Premiums Written (Page 8, Part 1B, Cols. 1, 2 & 3)					
1. Liability lines (Lines 11.1, 11.2, 16, 17.1, 17.2, 17.3, 18.1, 18.2, 19.1, 19.2 & 19.3, 19.4).....	160,431,821	172,833,044	171,963,345	168,405,657	166,266,641
2. Property lines (Lines 1, 2, 9, 12, 21 & 26).....	116,725,492	128,215,935	131,915,507	125,304,802	118,884,692
3. Property and liability combined lines (Lines 3, 4, 5, 8, 22 & 27).....					
4. All other lines (Lines 6, 10, 13, 14, 15, 23, 24, 28, 29, 30 & 34).....					
5. Nonproportional reinsurance lines (Lines 31, 32 & 33).....					
6. Total (Line 35).....	277,157,313	301,048,979	303,878,852	293,710,459	285,151,333
Net Premiums Written (Page 8, Part 1B, Col. 6)					
7. Liability lines (Lines 11.1, 11.2, 16, 17.1, 17.2, 17.3, 18.1, 18.2, 19.1, 19.2 & 19.3, 19.4).....	16,043,182	17,283,305	17,196,335	16,840,565	16,626,664
8. Property lines (Lines 1, 2, 9, 12, 21 & 26).....	11,672,549	12,821,594	13,191,551	12,530,480	11,888,469
9. Property and liability combined lines (Lines 3, 4, 5, 8, 22 & 27).....					
10. All other lines (Lines 6, 10, 13, 14, 15, 23, 24, 28, 29, 30 & 34).....					
11. Nonproportional reinsurance lines (Lines 31, 32 & 33).....					
12. Total (Line 35).....	27,715,731	30,104,899	30,387,886	29,371,045	28,515,133
Statement of Income (Page 4)					
13. Net underwriting gain (loss) (Line 8).....	252,860	(554,790)	(578,420)	(1,897,627)	(792,232)
14. Net investment gain (loss) (Line 11).....	1,595,814	1,558,379	2,235,828	1,513,606	1,632,341
15. Total other income (Line 15).....	549,715	675,467	573,440	486,245	521,565
16. Dividends to policyholders (Line 17).....					
17. Federal and foreign income taxes incurred (Line 19).....	545,254	377,961	323,774	(65,835)	268,037
18. Net income (Line 20).....	1,853,135	1,301,095	1,907,074	168,059	1,093,637
Balance Sheet Lines (Pages 2 and 3)					
19. Total admitted assets excluding protected cell business (Page 2, Line 26, Col. 3).....	126,505,888	135,931,716	140,977,032	136,472,012	136,023,974
20. Premiums and considerations (Page 2, Col. 3):					
20.1 In course of collection (Line 15.1).....	7,181,211	7,634,387	7,520,122	7,803,488	7,591,096
20.2 Deferred and not yet due (Line 15.2).....	41,291,419	45,255,089	46,533,481	48,860,438	48,719,506
20.3 Accrued retrospective premiums (Line 15.3).....					
21. Total liabilities excluding protected cell business (Page 3, Line 26).....	94,636,992	101,654,604	106,371,154	103,206,119	104,067,920
22. Losses (Page 3, Line 1).....	9,251,184	9,780,777	9,231,969	8,297,957	6,969,889
23. Loss adjustment expenses (Page 3, Line 3).....	2,414,305	2,525,537	2,349,685	2,202,143	2,063,006
24. Unearned premiums (Page 3, Line 9).....	7,791,289	8,219,867	8,413,247	8,660,514	8,362,239
25. Capital paid up (Page 3, Lines 30 & 31).....	2,610,000	2,610,000	2,610,000	2,610,000	2,610,000
26. Surplus as regards policyholders (Page 3, Line 37).....	31,868,896	34,277,112	34,605,878	33,265,893	31,956,054
Cash Flow (Page 5)					
27. Net cash from operations (Line 11).....	832,374	418,825	3,568,622	2,840,730	653,584
Risk-Based Capital Analysis					
28. Total adjusted capital.....	31,868,896	34,277,112	34,605,878	33,265,893	31,956,054
29. Authorized control level risk-based capital.....	1,193,548	1,279,104	1,180,372	1,086,225	979,118
Percentage Distribution of Cash, Cash Equivalents and Invested Assets (Page 2, Col. 3) (Item divided by Page 2, Line 12, Col. 3) x 100.0					
30. Bonds (Line 1).....	95.1	99.2	84.5	100.0	100.0
31. Stocks (Lines 2.1 & 2.2).....					
32. Mortgage loans on real estate (Lines 3.1 & 3.2).....					
33. Real estate (Lines 4.1, 4.2 & 4.3).....					
34. Cash, cash equivalents and short-term investments (Line 5).....	4.9	0.8	15.5		
35. Contract loans (Line 6).....					
36. Derivatives (Line 7).....					
37. Other invested assets (Line 8).....					
38. Receivables for securities (Line 9).....					
39. Securities lending reinvested collateral assets (Line 10).....					
40. Aggregate write-ins for invested assets (Line 11).....					
41. Cash, cash equivalents and invested assets (Line 12).....	100.0	100.0	100.0	100.0	100.0
Investments in Parent, Subsidiaries and Affiliates					
42. Affiliated bonds (Sch. D, Summary, Line 12, Col. 1).....					
43. Affiliated preferred stocks (Sch. D, Summary, Line 18, Col. 1).....					
44. Affiliated common stocks (Sch. D, Summary, Line 24, Col. 1).....					
45. Affiliated short-term investments (subtotals included in Schedule DA, Verification, Column 5, Line 10).....					
46. Affiliated mortgage loans on real estate.....					
47. All other affiliated.....					
48. Total of above lines 42 to 47.....	0	0	0	0	0
49. Total investment in parent included in Lines 42 to 47 above.....					
50. Percentage of investments in parent, subsidiaries and affiliates to surplus as regards policyholders (Line 48 above divided by Page 3, Col. 1, Line 37 x 100.0).....	0.0				

PROGRESSIVE WEST INSURANCE COMPANY
FIVE-YEAR HISTORICAL DATA
(Continued)

	1	2	3	4	5
	2016	2015	2014	2013	2012
Capital and Surplus Accounts (Page 4)					
51. Net unrealized capital gains (losses) (Line 24).....		20,740(20,740)	
52. Dividends to stockholders (Line 35).....(4,500,000)(1,500,000)(600,000)		
53. Change in surplus as regards policyholders for the year (Line 38).....(2,408,216)(328,766)1,339,9851,309,8391,371,372
Gross Losses Paid (Page 9, Part 2, Cols. 1 & 2)					
54. Liability lines (Lines 11.1, 11.2, 16, 17.1, 17.2, 17.3, 18.1, 18.2, 19.1, 19.2 & 19.3, 19.4).....117,452,371113,697,831112,475,855110,410,890102,042,884
55. Property lines (Lines 1, 2, 9, 12, 21 & 26).....73,563,28984,672,88886,112,50282,562,27181,158,099
56. Property and liability combined lines (Lines 3, 4, 5, 8, 22 & 27).....					
57. All other lines (Lines 6, 10, 13, 14, 15, 23, 24, 28, 29, 30 & 34).....					
58. Nonproportional reinsurance lines (Lines 31, 32 & 33).....					
59. Total (Line 35).....191,015,660198,370,719198,588,357192,973,161183,200,983
Net Losses Paid (Page 9, Part 2, Col. 4)					
60. Liability lines (Lines 11.1, 11.2, 16, 17.1, 17.2, 17.3, 18.1, 18.2, 19.1, 19.2 & 19.3, 19.4).....11,745,23611,369,78311,247,58611,041,08910,204,289
61. Property lines (Lines 1, 2, 9, 12, 21 & 26).....7,356,3298,467,2898,611,2498,256,2278,115,810
62. Property and liability combined lines (Lines 3, 4, 5, 8, 22 & 27).....					
63. All other lines (Lines 6, 10, 13, 14, 15, 23, 24, 28, 29, 30 & 34).....					
64. Nonproportional reinsurance lines (Lines 31, 32 & 33).....					
65. Total (Line 35).....19,101,56519,837,07219,858,83519,297,31618,320,099
Operating Percentages (Page 4) (Item divided by Page 4, Line 1) x 100.0					
66. Premiums earned (Line 1).....100.0100.0100.0100.0100.0
67. Losses incurred (Line 2).....66.067.367.970.967.0
68. Loss expenses incurred (Line 3).....11.212.612.112.812.9
69. Other underwriting expenses incurred (Line 4).....21.921.921.922.722.8
70. Net underwriting gain (loss) (Line 8).....0.9(1.8)(1.9)(6.5)(2.8)
Other Percentages					
71. Other underwriting expenses to net premiums written (Page 4, Lines 4 + 5 - 15 divided by Page 8, Part 1B, Col. 6, Line 35 x 100.0).....20.319.820.220.821.1
72. Losses and loss expenses incurred to premiums earned (Page 4, Lines 2 + 3 divided by Page 4, Line 1 x 100.0).....77.279.980.083.880.0
73. Net premiums written to policyholders' surplus (Page 8, Part 1B, Col. 6, Line 35, divided by Page 3, Line 37, Col. 1 x 100.0).....87.087.887.888.389.2
One Year Loss Development (000 omitted)					
74. Development in estimated losses and loss expenses incurred prior to current year (Schedule P, Part 2-Summary, Line 12, Col. 11).....524189532677(4)
75. Percent of development of losses and loss expenses incurred to policyholders' surplus of prior year-end (Line 74 above divided by Page 4, Line 21, Col. 1 x 100).....1.50.51.62.1(0.0)
Two Year Loss Development (000 omitted)					
76. Development in estimated losses and loss expenses incurred 2 years before the current year and prior year (Schedule P, Part 2-Summary, Line 12, Col. 12).....3167281,202411(423)
77. Percent of development of losses and loss expenses incurred to reported policyholders' surplus of second prior-year end (Line 76 above divided by Page 4, Line 21, Col. 2 x 100.0).....0.92.23.81.3(1.5)

If a party to a merger, have the two most recent years of this exhibit been restated due to a merger in compliance with the disclosure requirements of
SSAP No. 3, *Accounting Changes and Correction of Errors*?
If no, please explain:

Yes[] No[]

SCHEDULE P - ANALYSIS OF LOSSES AND LOSS EXPENSES

SCHEDULE P - PART 1 - SUMMARY

(\$000 Omitted)

Years in Which Premiums Were Earned and Losses Were Incurred	Premiums Earned			Loss and Loss Expense Payments								12 Number of Claims Reported- Direct and Assumed
	1 Direct and Assumed	2 Ceded	3 Net (Cols. 1 - 2)	Loss Payments		Defense and Cost Containment Payments		Adjusting and Other Payments		10 Salvage and Subrogation Received	11 Total Net Paid (Cols. 4 - 5 + 6 - 7 + 8 - 9)	
				4 Direct and Assumed	5 Ceded	6 Direct and Assumed	7 Ceded	8 Direct and Assumed	9 Ceded			
1. Prior.....XXX.....XXX.....XXX.....(35).....(32).....6.....6.....6.....(3).....XXX.....
2. 2007.....388,793.....349,914.....38,879.....235,933.....212,339.....5,774.....5,197.....47,095.....42,385.....3,110.....28,880.....XXX.....
3. 2008.....330,707.....297,636.....33,071.....179,378.....161,440.....4,371.....3,934.....38,679.....34,811.....2,406.....22,243.....XXX.....
4. 2009.....263,052.....236,746.....26,306.....130,585.....117,527.....3,496.....3,147.....27,736.....24,963.....1,724.....16,182.....XXX.....
5. 2010.....238,591.....214,732.....23,859.....133,304.....119,973.....3,759.....3,383.....26,111.....23,500.....1,848.....16,317.....XXX.....
6. 2011.....261,908.....235,718.....26,190.....164,296.....147,867.....4,112.....3,701.....29,764.....26,787.....2,317.....19,817.....XXX.....
7. 2012.....286,625.....257,964.....28,661.....193,717.....174,345.....4,200.....3,780.....32,459.....29,213.....2,684.....23,038.....XXX.....
8. 2013.....290,728.....261,655.....29,073.....197,566.....177,809.....4,116.....3,704.....31,939.....28,745.....2,657.....23,362.....XXX.....
9. 2014.....306,352.....275,716.....30,635.....194,604.....175,144.....3,514.....3,163.....30,078.....27,070.....2,809.....22,820.....XXX.....
10. 2015.....302,983.....272,685.....30,298.....185,929.....167,336.....1,120.....1,008.....28,872.....25,985.....2,453.....21,592.....XXX.....
11. 2016.....281,443.....253,299.....28,144.....123,388.....111,049.....138.....125.....19,837.....17,853.....1,338.....14,336.....XXX.....
12. Totals.....XXX.....XXX.....XXX.....1,738,664.....1,564,798.....34,608.....31,147.....312,570.....281,313.....23,351.....208,584.....XXX.....

	Losses Unpaid				Defense and Cost Containment Unpaid				Adjusting and Other Unpaid		23 Salvage and Subrogation Anticipated	24 Total Net Losses and Expenses Unpaid	25 Number of Claims Outstanding-Direct and Assumed
	Case Basis		Bulk + IBNR		Case Basis		Bulk + IBNR		21	22			
	13 Direct and Assumed	14 Ceded	15 Direct and Assumed	16 Ceded	17 Direct and Assumed	18 Ceded	19 Direct and Assumed	20 Ceded					
1. Prior.....											0XXX.....
2. 2007.....1514		43		11	2XXX.....
3. 2008.....5853		1311		32	7XXX.....
4. 2009.....											0XXX.....
5. 2010.....7366		3531		65	11XXX.....
6. 2011.....1,6151,453		134121		1513	176XXX.....
7. 2012.....1,047943		235212		4641	133XXX.....
8. 2013.....2,1381,925665972565218516716715152328XXX.....
9. 2014.....8,1487,3336756082,7162,445266239545491551,235XXX.....
10. 2015.....19,78617,8082,3992,1593,8173,4356545892,1861,9681172,884XXX.....
11. 2016.....48,84243,9587,6496,8844,3293,8961,1711,0546,8896,2008386,888XXX.....
12. Totals...81,72373,55110,7899,71012,00710,8072,2772,0499,8588,8731,06211,665XXX.....

	Total Losses and Loss Expenses Incurred			Loss and Loss Expense Percentage (Incurred/Premiums Earned)			Nontabular Discount		34 Inter-Company Pooling Participation Percentage	Net Balance Sheet Reserves after Discount	
	26 Direct and Assumed	27 Ceded	28 Net	29 Direct and Assumed	30 Ceded	31 Net	32 Loss	33 Loss Expense		35 Losses Unpaid	36 Loss Expenses Unpaid
1. Prior..XXX.....XXX.....XXX.....XXX.....XXX.....XXX.....XXX.....0.....0.....
2. 2007.288,822.....259,940.....28,882.....74.3.....74.3.....74.3.....2.....1.....
3. 2008.222,502.....200,252.....22,250.....67.3.....67.3.....67.3.....6.....2.....
4. 2009.161,818.....145,636.....16,182.....61.5.....61.5.....61.5.....0.....0.....
5. 2010.163,288.....146,959.....16,329.....68.4.....68.4.....68.4.....7.....4.....
6. 2011.199,936.....179,942.....19,994.....76.3.....76.3.....76.3.....161.....15.....
7. 2012.231,705.....208,534.....23,170.....80.8.....80.8.....80.8.....105.....28.....
8. 2013.236,902.....213,212.....23,690.....81.5.....81.5.....81.5.....220.....108.....
9. 2014.240,547.....216,492.....24,055.....78.5.....78.5.....78.5.....882.....353.....
10. 2015.244,763.....220,287.....24,476.....80.8.....80.8.....80.8.....2,219.....666.....
11. 2016.212,243.....191,019.....21,224.....75.4.....75.4.....75.4.....5,649.....1,239.....
12. TotalsXXX.....XXX.....XXX.....XXX.....XXX.....XXX.....0.....0.....XXX.....9,251.....2,414.....

Note: Parts 2 and 4 are gross of all discounting, including tabular discounting. Part 1 is gross of only nontabular discounting, which is reported in Columns 32 and 33 of Part 1. The tabular discount, if any, is reported in the Notes to Financial Statements, which will reconcile Part 1 with Parts 2 and 4.

SCHEDULE P - PART 2 - SUMMARY

Years in Which Losses Were Incurred	Incurred Net Losses and Defense and Cost Containment Expenses Reported at Year End (\$000 omitted)										DEVELOPMENT	
	1	2	3	4	5	6	7	8	9	10	11	12
	2007	2008	2009	2010	2011	2012	2013	2014	2015	2016	One Year	Two Year
1. Prior.....2,9783,2873,0083,0043,0173,0373,0443,0813,7163,713(3)632
2. 2007.....24,63324,30224,30224,14924,07624,07824,17724,17724,17624,173(3)(4)
3. 2008.....XXX19,27518,57718,61718,48518,41518,39518,38918,38318,382(1)(7)
4. 2009.....XXXXXX14,05613,62113,43813,34313,41413,41913,41113,408(3)(10)
5. 2010.....XXXXXXXXX13,68213,69313,77713,77013,74213,75413,717(37)(25)
6. 2011.....XXXXXXXXXXXX16,60416,66016,92217,37316,95017,01666(358)
7. 2012.....XXXXXXXXXXXXXXX19,68519,94620,01419,97319,920(53)(94)
8. 2013.....XXXXXXXXXXXXXXXXXX20,46920,47620,50620,480(26)4
9. 2014.....XXXXXXXXXXXXXXXXXXXXX20,81320,80720,992186179
10. 2015.....XXXXXXXXXXXXXXXXXXXXXXXX20,97421,371397XXX
11. 2016.....XXXXXXXXXXXXXXXXXXXXXXXXXXX18,552XXXXXX
12. Totals.....										524316

SCHEDULE P - PART 3 - SUMMARY

Years in Which Losses Were Incurred	Cumulative Paid Net Losses and Defense and Cost Containment Expenses Reported at Year End (\$000 omitted)										11	12
	1	2	3	4	5	6	7	8	9	10	Number of Claims Closed With Loss Payment	Number of Claims Closed Without Loss Payment
	2007	2008	2009	2010	2011	2012	2013	2014	2015	2016		
1. Prior.....0002,1822,7452,9273,0003,0293,0353,0763,7163,713XXXXXX
2. 2007.....17,67421,76923,34123,92324,02224,05224,16924,16924,17124,171XXXXXX
3. 2008.....XXX13,26716,59617,83618,26418,35818,38018,38018,37618,375XXXXXX
4. 2009.....XXXXXX9,55511,96112,79313,18013,38413,41113,40913,408XXXXXX
5. 2010.....XXXXXXXXX9,66812,07013,03713,49113,65813,69613,706XXXXXX
6. 2011.....XXXXXXXXXXXX12,07715,00516,18716,68216,80016,841XXXXXX
7. 2012.....XXXXXXXXXXXXXXX14,28617,97419,18519,59119,792XXXXXX
8. 2013.....XXXXXXXXXXXXXXXXXX14,04618,16219,52820,168XXXXXX
9. 2014.....XXXXXXXXXXXXXXXXXXXXX14,27717,99619,812XXXXXX
10. 2015.....XXXXXXXXXXXXXXXXXXXXXXXX14,17618,705XXXXXX
11. 2016.....XXXXXXXXXXXXXXXXXXXXXXXXXXX12,353XXXXXX

SCHEDULE P - PART 4 - SUMMARY

Years in Which Losses Were Incurred	Bulk and IBNR Reserves on Net Losses and Defense and Cost Containment Expenses Reported at Year End (\$000 omitted)									
	1	2	3	4	5	6	7	8	9	10
	2007	2008	2009	2010	2011	2012	2013	2014	2015	2016
1. Prior.....2178311				0		
2. 2007.....1,2112417530			0		
3. 2008.....XXX1,16920910730	(0)0		
4. 2009.....XXXXXX89119475230			
5. 2010.....XXXXXXXXX5511554825			
6. 2011.....XXXXXXXXXXXX69723956400		
7. 2012.....XXXXXXXXXXXXXXX9362626046	
8. 2013.....XXXXXXXXXXXXXXXXXX9992788425
9. 2014.....XXXXXXXXXXXXXXXXXXXXX99529094
10. 2015.....XXXXXXXXXXXXXXXXXXXXXXXX883305
11. 2016.....XXXXXXXXXXXXXXXXXXXXXXXXXXX882

PROGRESSIVE WEST INSURANCE COMPANY
SCHEDULE T - EXHIBIT OF PREMIUMS WRITTEN

Allocated by States and Territories

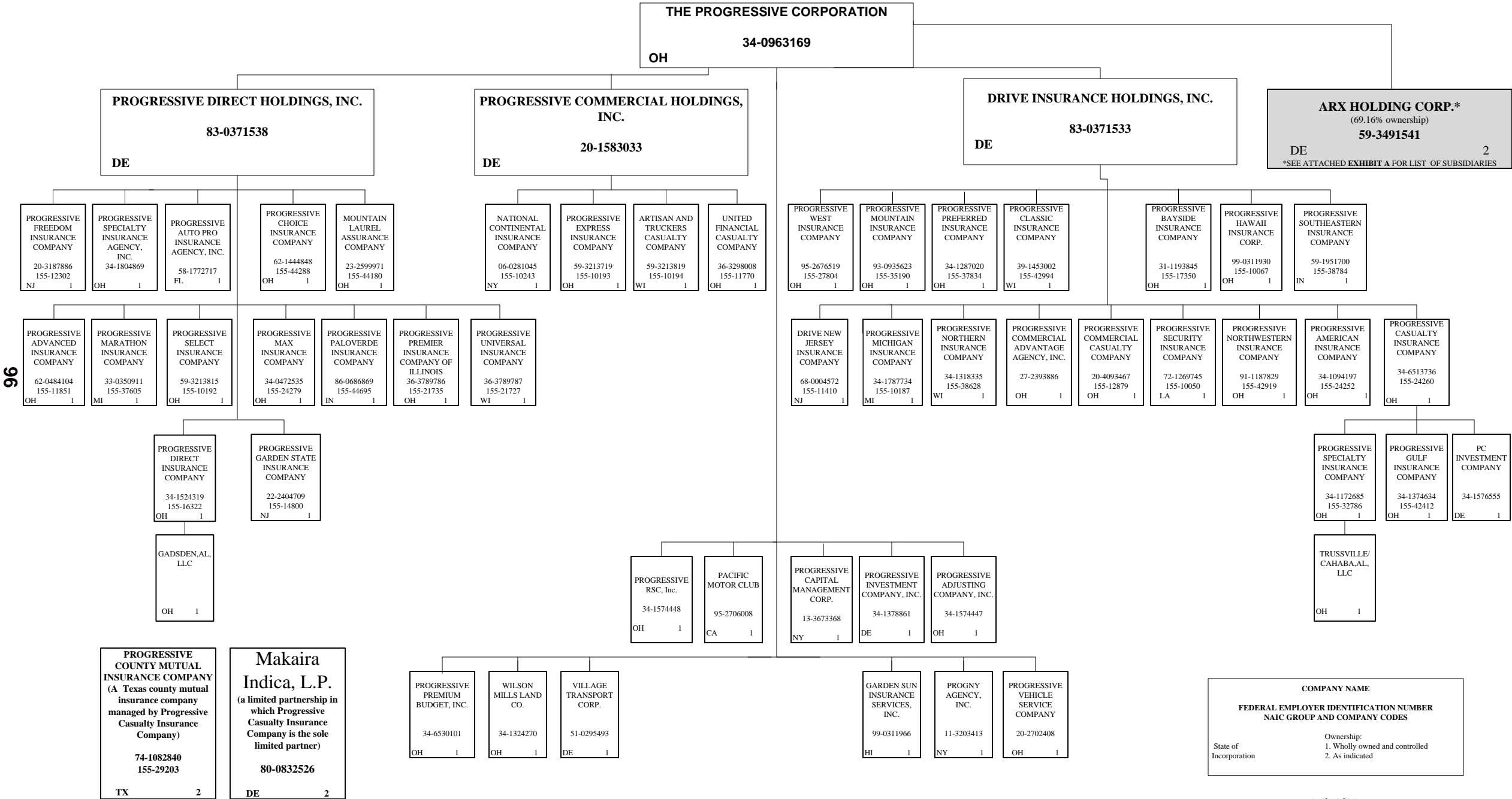
		1 Active Status	Gross Premiums, Including Policy and Membership Fees Less Return Premiums and Premiums on Policies Not Taken		4 Dividends Paid or Credited to Policyholders on Direct Business	5 Direct Losses Paid (Deducting Salvage)	6 Direct Losses Incurred	7 Direct Losses Unpaid	8 Finance and Service Charges not Included in Premiums	9 Direct Premiums Written for Federal Purchasing Groups (Incl. in Col. 2)
			2 Direct Premiums Written	3 Direct Premiums Earned						
States, Etc.										
1.	Alabama.....AL	...N....								
2.	Alaska.....AK	...N....								
3.	Arizona.....AZ	...L....								
4.	Arkansas.....AR	...N....								
5.	California.....CA	...L....	277,157,313	281,443,102		191,019,125	185,723,179	92,511,986	7,612,860	
6.	Colorado.....CO	...L....								
7.	Connecticut.....CT	...N....								
8.	Delaware.....DE	...N....								
9.	District of Columbia.....DC	...N....								
10.	Florida.....FL	...N....								
11.	Georgia.....GA	...N....								
12.	Hawaii.....HI	...N....								
13.	Idaho.....ID	...L....								
14.	Illinois.....IL	...N....								
15.	Indiana.....IN	...N....								
16.	Iowa.....IA	...N....								
17.	Kansas.....KS	...N....								
18.	Kentucky.....KY	...N....								
19.	Louisiana.....LA	...N....								
20.	Maine.....ME	...N....								
21.	Maryland.....MD	...N....								
22.	Massachusetts.....MA	...N....								
23.	Michigan.....MI	...N....								
24.	Minnesota.....MN	...N....								
25.	Mississippi.....MS	...N....								
26.	Missouri.....MO	...N....								
27.	Montana.....MT	...L....								
28.	Nebraska.....NE	...N....								
29.	Nevada.....NV	...L....								
30.	New Hampshire.....NH	...N....								
31.	New Jersey.....NJ	...N....								
32.	New Mexico.....NM	...L....								
33.	New York.....NY	...N....								
34.	North Carolina.....NC	...N....								
35.	North Dakota.....ND	...N....								
36.	Ohio.....OH	...L....								
37.	Oklahoma.....OK	...N....								
38.	Oregon.....OR	...L....				(2,055)	(2,055)			
39.	Pennsylvania.....PA	...N....								
40.	Rhode Island.....RI	...N....								
41.	South Carolina.....SC	...N....								
42.	South Dakota.....SD	...N....								
43.	Tennessee.....TN	...N....								
44.	Texas.....TX	...L....								
45.	Utah.....UT	...L....								
46.	Vermont.....VT	...N....								
47.	Virginia.....VA	...N....								
48.	Washington.....WA	...L....				(1,410)	(1,410)			
49.	West Virginia.....WV	...N....								
50.	Wisconsin.....WI	...N....								
51.	Wyoming.....WY	...L....								
52.	American Samoa.....AS	...N....								
53.	Guam.....GU	...N....								
54.	Puerto Rico.....PR	...N....								
55.	US Virgin Islands.....VI	...N....								
56.	Northern Mariana Islands...MP	...N....								
57.	Canada.....CAN	...N....								
58.	Aggregate Other Alien.....OT	XXX	0	0	0	0	0	0	0	0
59.	Totals.....	(a) ...13	277,157,313	281,443,102	0	191,015,660	185,719,714	92,511,986	7,612,860	0

DETAILS OF WRITE-INS

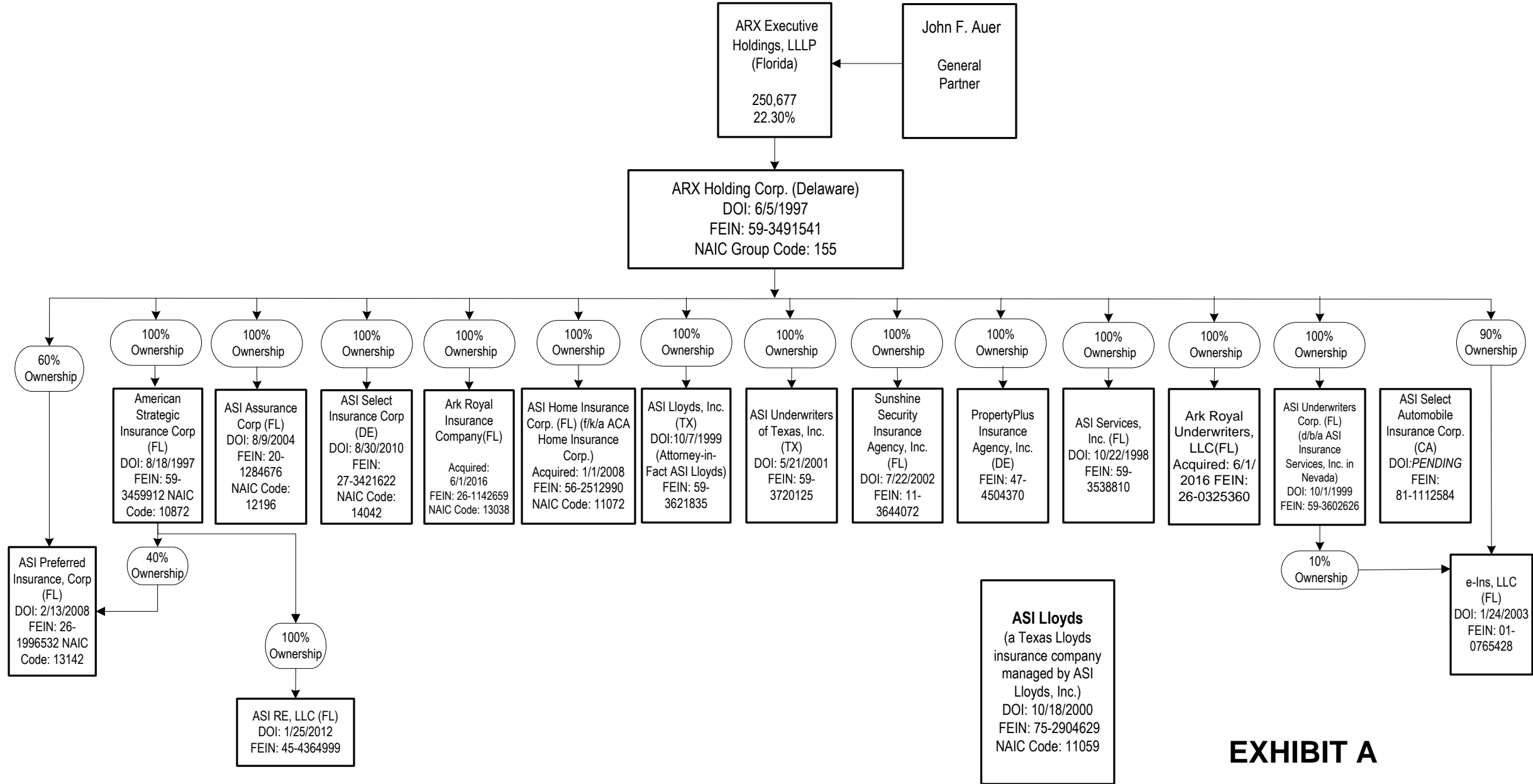
58001.	XXX								
58002.	XXX								
58003.	XXX								
58998. Summary of remaining write-ins for Line 58 from overflow page	XXX	0	0	0	0	0	0	0	0
58999. Totals (Lines 58001 thru 58003+ Line 58998) (Line 58 above)	XXX	0	0	0	0	0	0	0	0

(a) Insert the number of "L" responses except for Canada and Other Alien.
(L) - Licensed or Chartered - Licensed Insurance Carrier or Domiciled RRG; (R) - Registered - Non-domiciled RRGs; (Q) - Qualified - Qualified or Accredited Reinsurer;
(E) - Eligible - Reporting Entities eligible or approved to write Surplus Lines in the state; (N) - None of the above - Not allowed to write business in the state.
Explanation of Basis of Allocation of Premiums by States, etc.
Allocation on the basis of the location where the vehicle is principally garaged and used.

SCHEDULE Y – INFORMATION CONCERNING ACTIVITIES OF INSURER MEMBERS OF A HOLDING COMPANY GROUP -- PART 1 – ORGANIZATIONAL CHART



SCHEDULE Y – INFORMATION CONCERNING ACTIVITIES OF INSURER MEMBERS OF A HOLDING COMPANY GROUP -- PART 1 – ORGANIZATIONAL CHART



2016 ALPHABETICAL INDEX -- PROPERTY & CASUALTY ANNUAL STATEMENT BLANK

Assets	2	Schedule P-Part 2G-Special Liability (Ocean Marine, Aircraft (All Perils), Boiler & Machinery)	58
Cash Flow	5	Schedule P-Part 2H-Section 1-Other Liability-Occurrence	58
Exhibit of Capital Gains (Losses)	12	Schedule P-Part 2H-Section 2-Other Liability-Claims-Made	58
Exhibit of Net Investment Income	12	Schedule P-Part 2I-Spec. Prop. (Fire, Allied Lines, Inland Marine, Earthquake, Burglary, Theft)	59
Exhibit of Nonadmitted Assets	13	Schedule P-Part 2J-Auto Physical Damage	59
Exhibit of Premiums and Losses (State Page)	19	Schedule P-Part 2K-Fidelity, Surety	59
Five-Year Historical Data	17	Schedule P-Part 2L-Other (Including Credit, Accident and Health)	59
General Interrogatories	15	Schedule P-Part 2M-International	59
Jurat Page	1	Schedule P-Part 2N-Reinsurance – Nonproportional Assumed Property	60
Liabilities, Surplus and Other Funds	3	Schedule P-Part 2O-Reinsurance – Nonproportional Assumed Liability	60
Notes To Financial Statements	14	Schedule P-Part 2P-Reinsurance – Nonproportional Assumed Financial Lines	60
Overflow Page For Write-ins	100	Schedule P-Part 2R-Section 1-Products Liability-Occurrence	61
Schedule A-Part 1	E01	Schedule P-Part 2R-Section 2-Products Liability-Claims-Made	61
Schedule A-Part 2	E02	Schedule P-Part 2S-Financial Guaranty/Mortgage Guaranty	61
Schedule A-Part 3	E03	Schedule P-Part 2T-Warranty	61
Schedule A-Verification Between Years	SI02	Schedule P-Part 3A-Homeowners/Farmowners	62
Schedule B-Part 1	E04	Schedule P-Part 3B-Private Passenger Auto Liability/Medical	62
Schedule B-Part 2	E05	Schedule P-Part 3C-Commercial Auto/Truck Liability/Medical	62
Schedule B-Part 3	E06	Schedule P-Part 3D-Workers' Compensation (Excluding Excess Workers Compensation)	62
Schedule B-Verification Between Years	SI02	Schedule P-Part 3E-Commercial Multiple Peril	62
Schedule BA-Part 1	E07	Schedule P-Part 3F-Section 1 –Medical Professional Liability-Occurrence	63
Schedule BA-Part 2	E08	Schedule P-Part 3F-Section 2-Medical Professional Liability-Claims-Made	63
Schedule BA-Part 3	E09	Schedule P-Part 3G-Special Liability (Ocean Marine, Aircraft (All Perils), Boiler & Machinery)	63
Schedule BA-Verification Between Years	SI03	Schedule P-Part 3H-Section 1-Other Liability-Occurrence	63
Schedule D-Part 1	E10	Schedule P-Part 3H-Section 2-Other Liability-Claims-Made	63
Schedule D-Part 1A-Section 1	SI05	Schedule P-Part 3I-Spec. Prop. (Fire, Allied Lines, Inland Marine, Earthquake, Burglary, Theft)	64
Schedule D-Part 1A-Section 2	SI08	Schedule P-Part 3J-Auto Physical Damage	64
Schedule D-Part 2-Section 1	E11	Schedule P-Part 3K-Fidelity/Surety	64
Schedule D-Part 2-Section 2	E12	Schedule P-Part 3L-Other (Including Credit, Accident and Health)	64
Schedule D-Part 3	E13	Schedule P-Part 3M-International	64
Schedule D-Part 4	E14	Schedule P-Part 3N-Reinsurance – Nonproportional Assumed Property	65
Schedule D-Part 5	E15	Schedule P-Part 3O-Reinsurance – Nonproportional Assumed Liability	65
Schedule D-Part 6-Section 1	E16	Schedule P-Part 3P-Reinsurance – Nonproportional Assumed Financial Lines	65
Schedule D-Part 6-Section 2	E16	Schedule P-Part 3R-Section 1-Products Liability-Occurrence	66
Schedule D-Summary By Country	SI04	Schedule P-Part 3R-Section 2-Products Liability-Claims-Made	66
Schedule D-Verification Between Years	SI03	Schedule P-Part 3S-Financial Guaranty/Mortgage Guaranty	66
Schedule DA-Part 1	E17	Schedule P-Part 3T-Warranty	66
Schedule DA-Verification Between Years	SI10	Schedule P-Part 4A-Homeowners/Farmowners	67
Schedule DB-Part A-Section 1	E18	Schedule P-Part 4B-Private Passenger Auto Liability/Medical	67
Schedule DB-Part A-Section 2	E19	Schedule P-Part 4C-Commercial Auto/Truck Liability/Medical	67
Schedule DB-Part A-Verification Between Years	SI11	Schedule P-Part 4D-Workers' Compensation (Excluding Excess Workers Compensation)	67
Schedule DB-Part B-Section 1	E20	Schedule P-Part 4E-Commercial Multiple Peril	67
Schedule DB-Part B-Section 2	E21	Schedule P-Part 4F-Section 1-Medical Professional Liability-Occurrence	68
Schedule DB-Part B-Verification Between Years	SI11	Schedule P-Part 4F-Section 2-Medical Professional Liability-Claims-Made	68
Schedule DB-Part C-Section 1	SI12	Schedule P-Part 4G-Special Liability (Ocean Marine, Aircraft (All Perils), Boiler & Machinery)	68
Schedule DB-Part C-Section 2	SI13	Schedule P-Part 4H-Section 1-Other Liability-Occurrence	68
Schedule DB-Part D-Section 1	E22	Schedule P-Part 4H-Section 2-Other Liability-Claims-Made	68
Schedule DB-Part D-Section 2	E23	Schedule P-Part 4I-Spec. Prop. (Fire, Allied Lines, Inland Marine, Earthquake, Burglary & Theft)	69
Schedule DB-Verification	SI14	Schedule P-Part 4J-Auto Physical Damage	69
Schedule DL-Part 1	E24	Schedule P-Part 4K-Fidelity/Surety	69
Schedule DL-Part 2	E25	Schedule P-Part 4L-Other (Including Credit, Accident and Health)	69
Schedule E-Part 1-Cash	E26	Schedule P-Part 4M-International	69
Schedule E-Part 2-Cash Equivalents	E27	Schedule P-Part 4N-Reinsurance – Nonproportional Assumed Property	70
Schedule E-Part 3-Special Deposits	E28	Schedule P-Part 4O-Reinsurance – Nonproportional Assumed Liability	70
Schedule E-Verification Between Years	SI15	Schedule P-Part 4P-Reinsurance – Nonproportional Assumed Financial Lines	70
Schedule F-Part 1	20	Schedule P-Part 4R-Section 1-Products Liability-Occurrence	71
Schedule F-Part 2	21	Schedule P-Part 4R-Section 2-Products Liability-Claims-Made	71
Schedule F-Part 3	22	Schedule P-Part 4S-Financial Guaranty/Mortgage Guaranty	71
Schedule F-Part 4	23	Schedule P-Part 4T-Warranty	71
Schedule F-Part 5	24	Schedule P-Part 5A-Homeowners/Farmowners	72
Schedule F-Part 6-Section 1	25	Schedule P-Part 5B-Private Passenger Auto Liability/Medical	73
Schedule F-Part 6-Section 2	26	Schedule P-Part 5C-Commercial Auto/Truck Liability/Medical	74
Schedule F-Part 7	27	Schedule P-Part 5D-Workers' Compensation (Excluding Excess Workers Compensation)	75
Schedule F-Part 8	28	Schedule P-Part 5E-Commercial Multiple Peril	76
Schedule F-Part 9	29	Schedule P-Part 5F-Medical Professional Liability-Claims-Made	78
Schedule H-Accident and Health Exhibit-Part 1	30	Schedule P-Part 5F-Medical Professional Liability-Occurrence	77
Schedule H-Part 2, Part 3 and Part 4	31	Schedule P-Part 5H-Other Liability-Claims-Made	80
Schedule H-Part 5-Health Claims	32	Schedule P-Part 5H-Other Liability-Occurrence	79
Schedule P-Part 1-Summary	33	Schedule P-Part 5R-Products Liability-Claims-Made	82
Schedule P-Part 1A-Homeowners/Farmowners	35	Schedule P-Part 5R-Products Liability-Occurrence	81
Schedule P-Part 1B-Private Passenger Auto Liability/Medical	36	Schedule P-Part 5T-Warranty	83
Schedule P-Part 1C-Commercial Auto/Truck Liability/Medical	37	Schedule P-Part 6C-Commercial Auto/Truck Liability/Medical	84
Schedule P-Part 1D-Workers' Compensation (Excluding Excess Workers Compensation)	38	Schedule P-Part 6D-Workers' Compensation (Excluding Excess Workers Compensation)	84
Schedule P-Part 1E-Commercial Multiple Peril	39	Schedule P-Part 6E-Commercial Multiple Peril	85
Schedule P-Part 1F-Section 1-Medical Professional Liability-Occurrence	40	Schedule P-Part 6H-Other Liability-Claims-Made	86
Schedule P-Part 1F-Section 2-Medical Professional Liability-Claims-Made	41	Schedule P-Part 6H-Other Liability-Occurrence	85
Schedule P-Part 1G-Special Liability (Ocean, Marine, Aircraft (All Perils), Boiler & Machinery)	42	Schedule P-Part 6M-International	86
Schedule P-Part 1H-Section 1-Other Liability-Occurrence	43	Schedule P-Part 6N-Reinsurance – Nonproportional Assumed Property	87
Schedule P-Part 1H-Section 2-Other Liability-Claims-Made	44	Schedule P-Part 6O-Reinsurance – Nonproportional Assumed Liability	87
Schedule P-Part 1I-Spec. Prop. (Fire, Allied Lines, Inland Marine, Earthquake, Burglary & Theft)	45	Schedule P-Part 6R-Products Liability-Claims-Made	88
Schedule P-Part 1J-Auto Physical Damage	46	Schedule P-Part 6R-Products Liability-Occurrence	88
Schedule P-Part 1K-Fidelity/Surety	47	Schedule P-Part 7A-Primary Loss Sensitive Contracts	89
Schedule P-Part 1L-Other (Including Credit, Accident and Health)	48	Schedule P-Part 7B-Reinsurance Loss Sensitive Contracts	91
Schedule P-Part 1M-International	49	Schedule P Interrogatories	93
Schedule P-Part 1N-Reinsurance – Nonproportional Assumed Property	50	Schedule T-Exhibit of Premiums Written	94
Schedule P-Part 1O-Reinsurance – Nonproportional Assumed Liability	51	Schedule T-Part 2-Interstate Compact	95
Schedule P-Part 1P-Reinsurance – Nonproportional Assumed Financial Lines	52	Schedule Y-Information Concerning Activities of Insurer Members of a Holding Company Group	96
Schedule P-Part 1R-Section 1-Products Liability-Occurrence	53	Schedule Y-Detail of Insurance Holding Company System	97
Schedule P-Part 1R-Section 2-Products Liability-Claims-Made	54	Schedule Y-Part 2-Summary of Insurer's Transactions With Any Affiliates	98
Schedule P-Part 1S-Financial Guaranty/Mortgage Guaranty	55	Statement of Income	4
Schedule P-Part 1T-Warranty	56	Summary Investment Schedule	SI01
Schedule P-Part 2, Part 3 and Part 4 - Summary	34	Supplemental Exhibits and Schedules Interrogatories	99
Schedule P-Part 2A-Homeowners/Farmowners	57	Underwriting and Investment Exhibit Part 1	6
Schedule P-Part 2B-Private Passenger Auto Liability/Medical	57	Underwriting and Investment Exhibit Part 1A	7
Schedule P-Part 2C-Commercial Auto/Truck Liability/Medical	57	Underwriting and Investment Exhibit Part 1B	8
Schedule P-Part 2D-Workers' Compensation (Excluding Excess Workers Compensation)	57	Underwriting and Investment Exhibit Part 2	9
Schedule P-Part 2E-Commercial Multiple Peril	57	Underwriting and Investment Exhibit Part 2A	10
Schedule P-Part 2F-Section 1-Medical Professional Liability-Occurrence	58	Underwriting and Investment Exhibit Part 3	11
Schedule P-Part 2F-Section 2-Medical Professional Liability-Claims-Made	58		