



LIFE AND ACCIDENT AND HEALTH COMPANIES - ASSOCIATION EDITION

QUARTERLY STATEMENT

AS OF JUNE 30, 2016

OF THE CONDITION AND AFFAIRS OF THE

American Modern Life Insurance Company

NAIC Group Code 0869 (Current) 0869 (Prior) NAIC Company Code 65811 Employer's ID Number 86-6052181

Organized under the Laws of Ohio, State of Domicile or Port of Entry Ohio

Country of Domicile United States of America

Incorporated/Organized 12/12/1956 Commenced Business 01/03/1957

Statutory Home Office 1300 East Ninth Street (Street and Number) Cleveland, OH, US 44114 (City or Town, State, Country and Zip Code)

Main Administrative Office 400 Robert Street North (Street and Number) St. Paul, MN, US 55101-2098 (City or Town, State, Country and Zip Code) 651-665-3500 (Area Code) (Telephone Number)

Mail Address 400 Robert Street North (Street and Number or P.O. Box) St. Paul, MN, US 55101-2098 (City or Town, State, Country and Zip Code)

Primary Location of Books and Records 400 Robert Street North (Street and Number) St. Paul, MN, US 55101-2098 (City or Town, State, Country and Zip Code) 651-665-5678 (Area Code) (Telephone Number)

Internet Website Address www.securian.com

Statutory Statement Contact Nicholas David Boehland (Name) 651-665-5678 (Area Code) (Telephone Number) nicholas.boehland@securian.com (E-mail Address) 651-665-7938 (FAX Number)

OFFICERS

President & CEO William Michael Gould Treasurer David John LePlavy Secretary Mark James Geldernick

OTHER

Barbara Ann Baumann, Second Vice President

DIRECTORS OR TRUSTEES

William Michael Gould David John LePlavy Warren John Zaccaro Kristi Jo Nelson Gary Roger Christensen Suzette Louise Huovinen Daniel Patrick Preiner

State of Minnesota SS: County of Ramsey

The officers of this reporting entity being duly sworn, each depose and say that they are the described officers of said reporting entity, and that on the reporting period stated above, all of the herein described assets were the absolute property of the said reporting entity, free and clear from any liens or claims thereon, except as herein stated, and that this statement, together with related exhibits, schedules and explanations therein contained, annexed or referred to, is a full and true statement of all the assets and liabilities and of the condition and affairs of the said reporting entity as of the reporting period stated above, and of its income and deductions therefrom for the period ended, and have been completed in accordance with the NAIC Annual Statement Instructions and Accounting Practices and Procedures manual except to the extent that: (1) state law may differ; or, (2) that state rules or regulations require differences in reporting not related to accounting practices and procedures, according to the best of their information, knowledge and belief, respectively. Furthermore, the scope of this attestation by the described officers also includes the related corresponding electronic filing with the NAIC, when required, that is an exact copy (except for formatting differences due to electronic filing) of the enclosed statement. The electronic filing may be requested by various regulators in lieu of or in addition to the enclosed statement.

William Michael Gould

William Michael Gould President & CEO

Mark James Geldernick

Mark James Geldernick Secretary

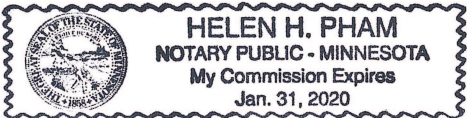
David John LePlavy

David John LePlavy Treasurer

Subscribed and sworn to before me this 01 day of August 2016

Helen H. Pham

Helen H. Pham Notary Public January 31, 2020



- a. Is this an original filing? Yes [ X ] No [ ]
- b. If no,
1. State the amendment number.....
  2. Date filed .....
  3. Number of pages attached.....

STATEMENT AS OF JUNE 30, 2016 OF THE AMERICAN MODERN LIFE INSURANCE COMPANY

ASSETS

	Current Statement Date			4 December 31 Prior Year Net Admitted Assets
	1 Assets	2 Nonadmitted Assets	3 Net Admitted Assets (Cols. 1 - 2)	
1. Bonds .....	29,546,267		29,546,267	30,856,652
2. Stocks:				
2.1 Preferred stocks .....				
2.2 Common stocks .....	12,440,277		12,440,277	12,276,728
3. Mortgage loans on real estate:				
3.1 First liens .....				
3.2 Other than first liens.....				
4. Real estate:				
4.1 Properties occupied by the company (less \$ ..... encumbrances) .....				
4.2 Properties held for the production of income (less \$ ..... encumbrances) .....				
4.3 Properties held for sale (less \$ ..... encumbrances) .....				
5. Cash (\$ .....430,139 ), cash equivalents (\$ ..... ) and short-term investments (\$ .....929,908 ) .....	1,360,047		1,360,047	1,665,890
6. Contract loans (including \$ ..... premium notes) .....				
7. Derivatives .....				
8. Other invested assets .....				
9. Receivables for securities .....	33,750		33,750	53,813
10. Securities lending reinvested collateral assets .....				
11. Aggregate write-ins for invested assets .....				
12. Subtotals, cash and invested assets (Lines 1 to 11) .....	43,380,341		43,380,341	44,853,082
13. Title plants less \$ ..... charged off (for Title insurers only) .....				
14. Investment income due and accrued .....	179,087		179,087	191,191
15. Premiums and considerations:				
15.1 Uncollected premiums and agents' balances in the course of collection .....	243,215		243,215	298,739
15.2 Deferred premiums, agents' balances and installments booked but deferred and not yet due (including \$ ..... earned but unbilled premiums) .....				
15.3 Accrued retrospective premiums (\$ ..... ) and contracts subject to redetermination (\$ ..... ) .....				
16. Reinsurance:				
16.1 Amounts recoverable from reinsurers .....	634,777		634,777	309,801
16.2 Funds held by or deposited with reinsured companies .....				
16.3 Other amounts receivable under reinsurance contracts .....	825,940		825,940	769,625
17. Amounts receivable relating to uninsured plans .....				
18.1 Current federal and foreign income tax recoverable and interest thereon .....	158,637		158,637	
18.2 Net deferred tax asset .....	1,344,037	866,659	477,378	482,288
19. Guaranty funds receivable or on deposit .....	55,103	55,103		
20. Electronic data processing equipment and software .....				
21. Furniture and equipment, including health care delivery assets (\$ ..... ) .....				
22. Net adjustment in assets and liabilities due to foreign exchange rates .....				
23. Receivables from parent, subsidiaries and affiliates .....				
24. Health care (\$ ..... ) and other amounts receivable .....				
25. Aggregate write-ins for other than invested assets .....	394,375	394,375		
26. Total assets excluding Separate Accounts, Segregated Accounts and Protected Cell Accounts (Lines 12 to 25) .....	47,215,513	1,316,138	45,899,375	46,904,726
27. From Separate Accounts, Segregated Accounts and Protected Cell Accounts .....				
28. Total (Lines 26 and 27)	47,215,513	1,316,138	45,899,375	46,904,726
DETAILS OF WRITE-INS				
1101. ....				
1102. ....				
1103. ....				
1198. Summary of remaining write-ins for Line 11 from overflow page .....				
1199. Totals (Lines 1101 through 1103 plus 1198)(Line 11 above)				
2501. Interest maintenance reserve .....	203,375	203,375		
2502. Miscellaneous accounts receivable .....	191,000	191,000		
2503. ....				
2598. Summary of remaining write-ins for Line 25 from overflow page .....				
2599. Totals (Lines 2501 through 2503 plus 2598)(Line 25 above)	394,375	394,375		

LIABILITIES, SURPLUS AND OTHER FUNDS

	1 Current Statement Date	2 December 31 Prior Year
1. Aggregate reserve for life contracts \$ .....6,562,599 less \$ ..... included in Line 6.3 (including \$ .....1,288,066 Modco Reserve) .....	6,562,599	7,063,737
2. Aggregate reserve for accident and health contracts (including \$ .....1,875,783 Modco Reserve) .....	4,703,855	5,021,898
3. Liability for deposit-type contracts (including \$ ..... Modco Reserve) .....		
4. Contract claims:		
4.1 Life .....	548,381	764,517
4.2 Accident and health .....	397,994	433,039
5. Policyholders' dividends \$ ..... and coupons \$ ..... due and unpaid .....		
6. Provision for policyholders' dividends and coupons payable in following calendar year - estimated amounts:		
6.1 Dividends apportioned for payment (including \$ ..... Modco) .....		
6.2 Dividends not yet apportioned (including \$ ..... Modco) .....		
6.3 Coupons and similar benefits (including \$ ..... Modco) .....		
7. Amount provisionally held for deferred dividend policies not included in Line 6 .....		
8. Premiums and annuity considerations for life and accident and health contracts received in advance less \$ ..... discount; including \$ ..... accident and health premiums .....		
9. Contract liabilities not included elsewhere:		
9.1 Surrender values on canceled contracts .....		
9.2 Provision for experience rating refunds, including the liability of \$ ..... accident and health experience rating refunds of which \$ ..... is for medical loss ratio rebate per the Public Health Service Act .....		
9.3 Other amounts payable on reinsurance, including \$ ..... assumed and \$ .....577,120 ceded .....	577,120	672,210
9.4 Interest Maintenance Reserve .....		
10. Commissions to agents due or accrued-life and annuity contracts \$ .....859,543 , accident and health \$ .....117,029 and deposit-type contract funds \$ ..... .....	976,542	947,107
11. Commissions and expense allowances payable on reinsurance assumed .....		840
12. General expenses due or accrued .....	2,015,625	2,012,500
13. Transfers to Separate Accounts due or accrued (net) (including \$ ..... accrued for expense allowances recognized in reserves, net of reinsured allowances) .....		
14. Taxes, licenses and fees due or accrued, excluding federal income taxes .....	31,603	80,152
15.1 Current federal and foreign income taxes, including \$ ..... on realized capital gains (losses) .....		245,978
15.2 Net deferred tax liability .....		
16. Unearned investment income .....		
17. Amounts withheld or retained by company as agent or trustee .....		
18. Amounts held for agents' account, including \$ ..... agents' credit balances .....		
19. Remittances and items not allocated .....	63,612	54,786
20. Net adjustment in assets and liabilities due to foreign exchange rates .....		
21. Liability for benefits for employees and agents if not included above .....		
22. Borrowed money \$ ..... and interest thereon \$ ..... .....		
23. Dividends to stockholders declared and unpaid .....		
24. Miscellaneous liabilities:		
24.01 Asset valuation reserve .....	30,689	25,781
24.02 Reinsurance in unauthorized and certified (\$ ..... ) companies .....		
24.03 Funds held under reinsurance treaties with unauthorized and certified (\$ ..... ) reinsurers .....		
24.04 Payable to parent, subsidiaries and affiliates .....	471,131	525,569
24.05 Drafts outstanding .....		
24.06 Liability for amounts held under uninsured plans .....		
24.07 Funds held under coinsurance .....		
24.08 Derivatives .....		
24.09 Payable for securities .....	18,750	18,750
24.10 Payable for securities lending .....		
24.11 Capital notes \$ ..... and interest thereon \$ ..... .....		
25. Aggregate write-ins for liabilities .....		
26. Total liabilities excluding Separate Accounts business (Lines 1 to 25) .....	16,397,900	17,866,863
27. From Separate Accounts Statement .....		
28. Total liabilities (Lines 26 and 27) .....	16,397,900	17,866,863
29. Common capital stock .....	2,500,000	2,500,000
30. Preferred capital stock .....		
31. Aggregate write-ins for other than special surplus funds .....		
32. Surplus notes .....		
33. Gross paid in and contributed surplus .....	7,000,000	7,000,000
34. Aggregate write-ins for special surplus funds .....		
35. Unassigned funds (surplus) .....	20,001,475	19,537,863
36. Less treasury stock, at cost:		
36.1 ..... shares common (value included in Line 29 \$ ..... ) .....		
36.2 ..... shares preferred (value included in Line 30 \$ ..... ) .....		
37. Surplus (Total Lines 31+32+33+34+35-36) (including \$ ..... in Separate Accounts Statement) .....	27,001,475	26,537,863
38. Totals of Lines 29, 30 and 37 .....	29,501,475	29,037,863
39. Totals of Lines 28 and 38 (Page 2, Line 28, Col. 3) .....	45,899,375	46,904,726
DETAILS OF WRITE-INS		
2501. ....		
2502. ....		
2503. ....		
2598. Summary of remaining write-ins for Line 25 from overflow page .....		
2599. Totals (Lines 2501 through 2503 plus 2598)(Line 25 above) .....		
3101. ....		
3102. ....		
3103. ....		
3198. Summary of remaining write-ins for Line 31 from overflow page .....		
3199. Totals (Lines 3101 through 3103 plus 3198)(Line 31 above) .....		
3401. ....		
3402. ....		
3403. ....		
3498. Summary of remaining write-ins for Line 34 from overflow page .....		
3499. Totals (Lines 3401 through 3403 plus 3498)(Line 34 above) .....		

SUMMARY OF OPERATIONS

	1	2	3
	Current Year To Date	Prior Year To Date	Prior Year Ended December 31
1. Premiums and annuity considerations for life and accident and health contracts .....	1,951,983	2,025,604	4,248,113
2. Considerations for supplementary contracts with life contingencies .....			
3. Net investment income .....	379,283	402,462	800,478
4. Amortization of Interest Maintenance Reserve (IMR) .....	(5,127)	(884)	(742)
5. Separate Accounts net gain from operations excluding unrealized gains or losses .....			
6. Commissions and expense allowances on reinsurance ceded .....	1,258,336	1,694,387	3,230,150
7. Reserve adjustments on reinsurance ceded .....	309,867	1,154,103	1,517,174
8. Miscellaneous Income:			
8.1 Income from fees associated with investment management, administration and contract guarantees from Separate Accounts .....			
8.2 Charges and fees for deposit-type contracts .....			
8.3 Aggregate write-ins for miscellaneous income .....			(44,983)
9. Totals (Lines 1 to 8.3) .....	3,894,342	5,275,672	9,750,190
10. Death benefits .....	603,090	1,393,896	1,652,852
11. Matured endowments (excluding guaranteed annual pure endowments) .....			
12. Annuity benefits .....			
13. Disability benefits and benefits under accident and health contracts .....	604,704	887,455	1,696,870
14. Coupons, guaranteed annual pure endowments and similar benefits .....			
15. Surrender benefits and withdrawals for life contracts .....			
16. Group conversions .....			
17. Interest and adjustments on contract or deposit-type contract funds .....			
18. Payments on supplementary contracts with life contingencies .....			
19. Increase in aggregate reserves for life and accident and health contracts .....	(819,182)	(689,859)	(2,085,183)
20. Totals (Lines 10 to 19) .....	388,612	1,591,492	1,264,540
21. Commissions on premiums, annuity considerations, and deposit-type contract funds (direct business only) .....	1,932,646	2,703,992	4,920,700
22. Commissions and expense allowances on reinsurance assumed .....	8,716	21,331	37,146
23. General insurance expenses .....	840,064	817,533	1,671,967
24. Insurance taxes, licenses and fees, excluding federal income taxes .....	240,595	253,829	441,784
25. Increase in loading on deferred and uncollected premiums .....	(89)	38,137	(9,748)
26. Net transfers to or (from) Separate Accounts net of reinsurance .....			
27. Aggregate write-ins for deductions .....			
28. Totals (Lines 20 to 27) .....	3,410,544	5,426,314	8,326,390
29. Net gain from operations before dividends to policyholders and federal income taxes (Line 9 minus Line 28) .....	483,798	(150,642)	1,423,800
30. Dividends to policyholders .....			
31. Net gain from operations after dividends to policyholders and before federal income taxes (Line 29 minus Line 30) .....	483,798	(150,642)	1,423,800
32. Federal and foreign income taxes incurred (excluding tax on capital gains) .....	168,423	(73,529)	511,117
33. Net gain from operations after dividends to policyholders and federal income taxes and before realized capital gains or (losses) (Line 31 minus Line 32) .....	315,375	(77,113)	912,683
34. Net realized capital gains (losses) (excluding gains (losses) transferred to the IMR) less capital gains tax of \$ .....1,962 (excluding taxes of \$ ..... transferred to the IMR) .....	(1,962)	16,076	14,977
35. Net income (Line 33 plus Line 34) .....	313,413	(61,037)	927,660
CAPITAL AND SURPLUS ACCOUNT			
36. Capital and surplus, December 31, prior year .....	29,037,863	27,926,151	27,926,152
37. Net income (Line 35) .....	313,413	(61,037)	927,660
38. Change in net unrealized capital gains (losses) less capital gains tax of \$ .....	163,550	(491,580)	36,269
39. Change in net unrealized foreign exchange capital gain (loss) .....			
40. Change in net deferred income tax .....	2,282	(33,554)	(18,617)
41. Change in nonadmitted assets .....	(10,723)	47,844	147,995
42. Change in liability for reinsurance in unauthorized and certified companies .....			
43. Change in reserve on account of change in valuation basis, (increase) or decrease .....			
44. Change in asset valuation reserve .....	(4,909)	(512)	18,403
45. Change in treasury stock .....			
46. Surplus (contributed to) withdrawn from Separate Accounts during period .....			
47. Other changes in surplus in Separate Accounts Statement .....			
48. Change in surplus notes .....			
49. Cumulative effect of changes in accounting principles .....			
50. Capital changes:			
50.1 Paid in .....			
50.2 Transferred from surplus (Stock Dividend) .....			
50.3 Transferred to surplus .....			
51. Surplus adjustment:			
51.1 Paid in .....			
51.2 Transferred to capital (Stock Dividend) .....			
51.3 Transferred from capital .....			
51.4 Change in surplus as a result of reinsurance .....			
52. Dividends to stockholders .....			
53. Aggregate write-ins for gains and losses in surplus .....			
54. Net change in capital and surplus for the year (Lines 37 through 53) .....	463,612	(538,840)	1,111,711
55. Capital and surplus, as of statement date (Lines 36 + 54) .....	29,501,475	27,387,312	29,037,863
DETAILS OF WRITE-INS			
08.301. Miscellaneous profit .....			(44,983)
08.302. ....			
08.303. ....			
08.398. Summary of remaining write-ins for Line 8.3 from overflow page .....			
08.399. Totals (Lines 08.301 through 08.303 plus 08.398) (Line 8.3 above) .....			(44,983)
2701. ....			
2702. ....			
2703. ....			
2798. Summary of remaining write-ins for Line 27 from overflow page .....			
2799. Totals (Lines 2701 through 2703 plus 2798)(Line 27 above) .....			
5301. ....			
5302. ....			
5303. ....			
5398. Summary of remaining write-ins for Line 53 from overflow page .....			
5399. Totals (Lines 5301 through 5303 plus 5398)(Line 53 above) .....			

STATEMENT AS OF JUNE 30, 2016 OF THE AMERICAN MODERN LIFE INSURANCE COMPANY

CASH FLOW

	1 Current Year To Date	2 Prior Year To Date	3 Prior Year Ended December 31
Cash from Operations			
1. Premiums collected net of reinsurance .....	1,912,505	2,006,720	4,253,259
2. Net investment income .....	414,150	430,240	855,060
3. Miscellaneous income .....	1,512,749	2,298,678	4,613,804
4. Total (Lines 1 to 3) .....	3,839,404	4,735,638	9,722,123
5. Benefit and loss related payments .....	1,783,950	2,545,969	3,454,854
6. Net transfers to Separate Accounts, Segregated Accounts and Protected Cell Accounts .....			
7. Commissions, expenses paid and aggregate write-ins for deductions .....	3,088,562	3,481,532	6,852,698
8. Dividends paid to policyholders .....			
9. Federal and foreign income taxes paid (recovered) net of \$ .....1,962 tax on capital gains (losses) .....	575,000		211,059
10. Total (Lines 5 through 9) .....	5,447,512	6,027,501	10,518,611
11. Net cash from operations (Line 4 minus Line 10) .....	(1,608,108)	(1,291,863)	(796,488)
Cash from Investments			
12. Proceeds from investments sold, matured or repaid:			
12.1 Bonds .....	3,283,488	678,960	1,357,862
12.2 Stocks .....			
12.3 Mortgage loans .....			
12.4 Real estate .....			
12.5 Other invested assets .....			
12.6 Net gains or (losses) on cash, cash equivalents and short-term investments .....			
12.7 Miscellaneous proceeds .....	20,063	16,750	(1,313)
12.8 Total investment proceeds (Lines 12.1 to 12.7) .....	3,303,551	695,710	1,356,549
13. Cost of investments acquired (long-term only):			
13.1 Bonds .....	1,995,867		254,923
13.2 Stocks .....			
13.3 Mortgage loans .....			
13.4 Real estate .....			
13.5 Other invested assets .....			
13.6 Miscellaneous applications .....			
13.7 Total investments acquired (Lines 13.1 to 13.6) .....	1,995,867		254,923
14. Net increase (or decrease) in contract loans and premium notes .....			
15. Net cash from investments (Line 12.8 minus Line 13.7 and Line 14) .....	1,307,684	695,710	1,101,626
Cash from Financing and Miscellaneous Sources			
16. Cash provided (applied):			
16.1 Surplus notes, capital notes .....			
16.2 Capital and paid in surplus, less treasury stock .....			
16.3 Borrowed funds .....			
16.4 Net deposits on deposit-type contracts and other insurance liabilities .....			
16.5 Dividends to stockholders .....			
16.6 Other cash provided (applied) .....	(5,419)	10,076	(7,606)
17. Net cash from financing and miscellaneous sources (Line 16.1 through Line 16.4 minus Line 16.5 plus Line 16.6) .....	(5,419)	10,076	(7,606)
RECONCILIATION OF CASH, CASH EQUIVALENTS AND SHORT-TERM INVESTMENTS			
18. Net change in cash, cash equivalents and short-term investments (Line 11, plus Lines 15 and 17) ..	(305,843)	(586,077)	297,532
19. Cash, cash equivalents and short-term investments:			
19.1 Beginning of year .....	1,665,890	1,368,357	1,368,357
19.2 End of period (Line 18 plus Line 19.1) .....	1,360,047	782,280	1,665,890

Note: Supplemental disclosures of cash flow information for non-cash transactions:

--	--	--	--

EXHIBIT 1

DIRECT PREMIUMS AND DEPOSIT-TYPE CONTRACTS			
	1 Current Year To Date	2 Prior Year To Date	3 Prior Year Ended December 31
1. Industrial life .....			
2. Ordinary life insurance .....			
3. Ordinary individual annuities .....			
4. Credit life (group and individual) .....	3,067,929	4,054,194	7,496,874
5. Group life insurance .....			
6. Group annuities .....			
7. A & H - group .....			
8. A & H - credit (group and individual) .....	2,316,738	3,068,009	5,576,931
9. A & H - other .....			
10. Aggregate of all other lines of business .....			
11. Subtotal .....	5,384,667	7,122,204	13,073,805
12. Deposit-type contracts .....			
13. Total	5,384,667	7,122,204	13,073,805
DETAILS OF WRITE-INS			
1001. ....			
1002. ....			
1003. ....			
1098. Summary of remaining write-ins for Line 10 from overflow page .....			
1099. Totals (Lines 1001 through 1003 plus 1098)(Line 10 above)			

NOTES TO FINANCIAL STATEMENTS

(1) Summary of Significant Accounting Policies

A. Accounting Practices

The accompanying statutory financial statements of American Modern Life Insurance Company (the Company) have been prepared in accordance with accounting practices prescribed or permitted by the Ohio Department of Insurance (ODOI). The ODOI recognizes statutory accounting practices prescribed or permitted by the state of Ohio for determining and reporting the financial condition and results of operations of an insurance company and for determining its solvency under the Ohio Insurance Law. Prescribed statutory accounting practices are those practices that are incorporated directly or by reference in state laws, regulations and general administrative rules applicable to all insurance enterprises domiciled in a particular state. Permitted statutory accounting practices include practices not prescribed by the domiciliary state, but allowed by the domiciliary state regulatory authority. The National Association of Insurance Commissioners' (NAIC) *Accounting Practices and Procedures* manual (NAIC SAP) has been adopted as a component of prescribed or permitted practices by the state of Ohio. The state has adopted the prescribed accounting practices as stated in NAIC SAP, without modification. The Company has no material statutory accounting practices that differ from those of the state of Ohio or the NAIC accounting practices.

A reconciliation of the Company's net income and capital and surplus between NAIC SAP and practices prescribed and permitted by the state of Ohio is show below:

	<u>06/30/2016</u>	<u>12/31/2015</u>
1. Net Income, Ohio State basis:	\$ 313,413	\$ 927,660
2. State Prescribed Practices (Income): None	-	-
3. State Permitted Practices (Income): None	-	-
4. Net Income, NAIC SAP:	<u>\$ 313,413</u>	<u>\$ 927,660</u>
5. Statutory Surplus, Ohio State basis:	\$ 29,501,475	\$ 29,037,863
6. State Prescribed Practices (Surplus): None	-	-
7. State Permitted Practices (Surplus): None	-	-
8. Statutory Surplus, NAIC SAP	<u>\$ 29,501,475</u>	<u>\$ 29,037,863</u>

B. Use of Estimates

No significant change

C. Accounting Policy

No significant change

(2) Accounting Changes and Corrections of Errors

Not applicable

(3) Business Combinations and Goodwill

Not applicable

(4) Discontinued Operations

Not applicable

(5) Investments

A. Not applicable

B. Not applicable

C. Not applicable

NOTES TO FINANCIAL STATEMENTS

(5) Investments (Continued)

D. Loan-Backed Securities

- 1) Prepayment assumptions for single class and multi-class mortgage-backed/asset-backed securities were obtained from Bloomberg when available. Other payment speed assumptions for a small number of holdings were reviewed with the appropriate affiliated company analyst by evaluating the underlying collateral.
- 2) There were no other-than-temporary-impairments (OTTI) recorded as of June 30, 2016 due to management's intent to sell or inability to hold a security until recovery.
- 3) As of June 30, 2016, the Company did not hold any securities for which an OTTI has previously been recognized.
- 4) All impaired securities (fair value is less than cost or amortized cost) for which an OTTI has not been recognized in earnings as a realized loss (including securities with a recognized OTTI for non-interest related declines when a non-recognized interest related impairment remains) as of June 30, 2016:

	<u>Aggregate</u>	<u>Less than 12 months</u>	<u>12 Months or longer</u>
A. Gross Unrealized Losses	\$ (107)	\$ (107)	\$ -
B. Fair Value of Securities with Unrealized Losses	\$ 5,148	\$ 5,148	\$ -

- 5) In determining whether a decline in value is other than temporary, the Company considers several factors including, but not limited to the following: the extent and duration of the decline in value; the Company's inability or lack of intent to retain the investment for a period of time sufficient to recover the amortized cost basis; and the performance of the security's underlying collateral and projected future cash flows. In projecting future cash flows, the Company incorporates inputs from third-party sources and applies reasonable judgment in developing assumptions used to estimate the probability and timing of collecting all contractual cash flows.

- E. Not applicable
- F. Not applicable
- G. Not applicable
- H. No significant change
- I. Not Applicable
- J. Not applicable
- K. Not applicable

(6) Joint Ventures, Partnerships and Limited Liability Companies

Not applicable

(7) Investment Income

None

(8) Derivative Instruments

Not applicable

(9) Income Taxes

No significant change

(10) Information Concerning Parent, Subsidiaries and Affiliates

No significant change

(11) Debt

Not applicable

(12) Retirement Plans, Deferred Compensation, Postemployment Benefits and Compensated Absences and Other Postretirement Benefit Plans

Not applicable



## NOTES TO FINANCIAL STATEMENTS

### (13) Capital and Surplus, Shareholders' Dividend Restrictions and Quasi-Reorganizations

No significant change

### (14) Contingencies

No significant change

### (15) Leases

Not applicable

### (16) Information About Financial Instruments With Off-Balance Sheet Risk And Financial Instruments With Concentrations of Credit Risk

No significant change

### (17) Sale Transfer and Servicing of Financial Assets and Extinguishments of Liabilities

Not applicable

### (18) Gain or Loss to the Reporting Entity from Uninsured A&H Plans and the Uninsured Portion of Partially Insured Plans

Not applicable

### (19) Direct Premium Written/Produced by Managing General Agents/Third Party Administrators

Not applicable

### (20) Fair Value Measurements

The fair value of the Company's financial assets and financial liabilities has been determined using available market information as of June 30, 2016. Although the Company is not aware of any factors that would significantly affect the fair value of financial assets and financial liabilities, such amounts have not been comprehensively revalued since those dates. Therefore, estimates of fair value subsequent to the valuation dates may differ significantly from the amounts presented herein. Considerable judgment is required to interpret market data to develop the estimates of fair value. The use of different market assumptions and/or estimation methodologies may have a material effect on the estimated fair value amounts.

Fair value is defined as the price that would be received to sell an asset or paid to transfer a liability (exit price) in an orderly transaction between market participants at the measurement date. In determining fair value, the Company primarily uses the market approach which utilizes prices and other relevant information generated by market transactions involving identical or comparable assets or liabilities. To a lesser extent, the Company also uses the income approach which uses discounted cash flows to determine fair value. When applying either approach, the Company maximizes the use of observable inputs and minimizes the use of unobservable inputs. Observable inputs reflect the assumptions market participants would use in valuing a financial instrument based on market data obtained from sources independent of the Company. Unobservable inputs reflect the Company's estimates about the assumptions market participants would use in valuing financial assets and financial liabilities based on the best information available in the circumstances.

The Company is required to categorize its financial assets and financial liabilities carried at fair value on the statutory statements of admitted assets, liabilities and capital and surplus according to a three-level hierarchy. A level is assigned to each financial asset and financial liability based on the lowest level input that is significant to the fair value measurement in its entirety. The levels of fair value hierarchy are as follows:

Level 1 – Fair value is based on unadjusted quoted prices for identical assets or liabilities in an active market. The types of assets and liabilities utilizing Level 1 valuations generally include money-market funds.

Level 2 – Fair value is based on significant inputs, other than quoted prices included in Level 1, that are observable in active markets for identical or similar assets and liabilities.

Level 3 – Fair value is based on at least one or more significant unobservable inputs. These inputs reflect the Company's assumptions about the inputs market participants would use in pricing the assets or liabilities.

The Company uses prices and inputs that are current as of the measurement date. In periods of market disruption, the ability to observe prices and inputs may be reduced, which could cause an asset or liability to be reclassified to a lower level.

Inputs used to measure fair value of an asset or liability may fall into different levels of the fair value hierarchy. In these situations, the Company will determine the level in which the fair value falls based upon the lowest level input that is significant to the determination of the fair value.

NOTES TO FINANCIAL STATEMENTS

(20) Fair Value Measurements (Continued)

The following table summarizes the Company’s financial assets and financial liabilities measured at fair value as of June 30, 2016.

	Level 1	Level 2	Level 3	Total
Short-term investments	<u>\$ 929,908</u>	<u>\$ -</u>	<u>\$ -</u>	<u>\$ 929,908</u>
Total assets	<u>\$ 929,908</u>	<u>\$ -</u>	<u>\$ -</u>	<u>\$ 929,908</u>

- 1. There were no transfers between Level 1 and Level 2 for the period ending June 30, 2016.
- 2. The Company did not have any Level 3 assets as of June 30, 2016.
- 3. Transfers of securities among levels occur at the beginning of the reporting period.
- 4. Not applicable – no Level 2 or Level 3 assets or liabilities.
- 5. Not applicable – no derivative assets or liabilities.

B. Not applicable

C. The following table summarizes by level of fair value hierarchy the aggregate fair value of all financial assets held by the Company as of June 30, 2016:

Type of financial instrument	Aggregate fair value	Admitted assets	Level 1	Level 2	Level 3	Not practicable carrying value
Assets:						
Bonds	\$ 32,302,142	\$ 29,546,267	\$ 19,553,517	\$ 12,748,625	\$ -	\$ -
Short-term	<u>929,908</u>	<u>929,908</u>	<u>929,908</u>	<u>-</u>	<u>-</u>	<u>-</u>
Total assets	<u>\$ 33,232,050</u>	<u>\$ 30,476,175</u>	<u>\$ 20,483,425</u>	<u>\$ 12,748,625</u>	<u>\$ -</u>	<u>\$ -</u>

D. Not applicable

(21) Other Items

No significant change

(22) Events Subsequent

Not applicable

(23) Reinsurance

No significant change

(24) Retrospectively Rated Contracts

Not applicable

NOTES TO FINANCIAL STATEMENTS

(25) Change in Incurred Losses and Loss Adjustment Expenses.

Activity in the liability for unpaid accident and health claims and claim adjustment expenses is summarized as follows:

	<u>Current Year</u>	<u>Prior Year</u>
Balance at January 1	\$ 4,851,355	\$ 6,765,228
Less: reinsurance recoverable	<u>2,831,669</u>	<u>3,963,326</u>
Net balance at January 1	2,019,686	2,801,902
Incurred related to:		
Current year	640,615	1,006,643
Prior years	<u>(153,886)</u>	<u>(127,583)</u>
Total incurred	486,729	879,060
Paid related to:		
Current year	73,160	247,706
Prior years	<u>566,589</u>	<u>1,413,570</u>
Total paid	639,749	1,661,276
Net balance at end of period	1,866,666	2,019,686
Plus: reinsurance recoverable	<u>2,344,203</u>	<u>2,831,669</u>
Balance at end of period	<u>\$ 4,210,869</u>	<u>\$ 4,851,355</u>

(26) Intercompany Pooling Arrangements

Not applicable

(27) Structured Settlements

Not applicable

(28) Health Care Receivables

Not applicable

(29) Participating Policies

Not applicable

(30) Premium Deficiency Reserves

Not applicable

(31) Reserves for Life Contracts and Deposit-Type Contracts

Not applicable

(32) Analysis of Annuity Actuarial Reserves and Deposit Liabilities by Withdrawal Characteristics

Not applicable

(33) Premium and Annuity Considerations Deferred and Uncollected

Not applicable

(34) Separate Accounts

Not applicable

(35) Loss/Claim Adjustment Expenses

No significant change

STATEMENT AS OF JUNE 30, 2016 OF THE AMERICAN MODERN LIFE INSURANCE COMPANY

GENERAL INTERROGATORIES

PART 1 - COMMON INTERROGATORIES

GENERAL

- 1.1

Did the reporting entity experience any material transactions requiring the filing of Disclosure of Material Transactions with the State of Domicile, as required by the Model Act?

Yes [ ] No [ X ]
- 1.2

If yes, has the report been filed with the domiciliary state?

Yes [ ] No [ ]
- 2.1

Has any change been made during the year of this statement in the charter, by-laws, articles of incorporation, or deed of settlement of the reporting entity?

Yes [ ] No [ X ]
- 2.2

If yes, date of change:
- 3.1

Is the reporting entity a member of an Insurance Holding Company System consisting of two or more affiliated persons, one or more of which is an insurer?  
If yes, complete Schedule Y, Parts 1 and 1A.

Yes [ X ] No [ ]
- 3.2

Have there been any substantial changes in the organizational chart since the prior quarter end?

Yes [ X ] No [ ]
- 3.3

If the response to 3.2 is yes, provide a brief description of those changes.  
"Effective May 1, 2016, M & K Financial Services, LLC became a wholly owned subsidiary of Securian Ventures, Inc. Effective May 2, 2016, M & K Financial Services, LLC changed its name to Delaware Valley Advisors, LLC."
- 4.1

Has the reporting entity been a party to a merger or consolidation during the period covered by this statement?

Yes [ ] No [ X ]
- 4.2

If yes, provide the name of the entity, NAIC Company Code, and state of domicile (use two letter state abbreviation) for any entity that has ceased to exist as a result of the merger or consolidation.

1	2	3
Name of Entity	NAIC Company Code	State of Domicile

5.

If the reporting entity is subject to a management agreement, including third-party administrator(s), managing general agent(s), attorney-in-fact, or similar agreement, have there been any significant changes regarding the terms of the agreement or principals involved?  
If yes, attach an explanation.  
N/A

Yes [ ] No [ ] N/A [ X ]
- 6.1

State as of what date the latest financial examination of the reporting entity was made or is being made.

12/31/2012
- 6.2

State the as of date that the latest financial examination report became available from either the state of domicile or the reporting entity. This date should be the date of the examined balance sheet and not the date the report was completed or released.

12/31/2012
- 6.3

State as of what date the latest financial examination report became available to other states or the public from either the state of domicile or the reporting entity. This is the release date or completion date of the examination report and not the date of the examination (balance sheet date).

05/07/2014
- 6.4

By what department or departments?  
The Company has been examined as part of a group level examination by the Minnesota Department of Commerce with California Department of Insurance, Ohio Department of Insurance and Arkansas Department of Insurance participating.
- 6.5

Have all financial statement adjustments within the latest financial examination report been accounted for in a subsequent financial statement filed with Departments?

Yes [ ] No [ ] N/A [ X ]
- 6.6

Have all of the recommendations within the latest financial examination report been complied with?

Yes [ ] No [ ] N/A [ X ]
- 7.1

Has this reporting entity had any Certificates of Authority, licenses or registrations (including corporate registration, if applicable) suspended or revoked by any governmental entity during the reporting period?

Yes [ ] No [ X ]
- 7.2

If yes, give full information:  
N/A
- 8.1

Is the company a subsidiary of a bank holding company regulated by the Federal Reserve Board?

Yes [ ] No [ X ]
- 8.2

If response to 8.1 is yes, please identify the name of the bank holding company.  
N/A
- 8.3

Is the company affiliated with one or more banks, thrifts or securities firms?

Yes [ X ] No [ ]
- 8.4

If response to 8.3 is yes, please provide below the names and location (city and state of the main office) of any affiliates regulated by a federal regulatory services agency [i.e. the Federal Reserve Board (FRB), the Office of the Comptroller of the Currency (OCC), the Federal Deposit Insurance Corporation (FDIC) and the Securities Exchange Commission (SEC)] and identify the affiliate's primary federal regulator.

1	2	3	4	5	6
Affiliate Name	Location (City, State)	FRB	OCC	FDIC	SEC
Securian Financial Services, Inc.	St. Paul, MN	NO	NO	NO	YES
Securian Trust Company N.A.	St. Paul, MN	NO	YES	NO	NO
C.R.I. Securities LLC	St. Paul, MN	NO	NO	NO	YES
H. Beck, Inc.	Rockville, MD	NO	NO	NO	YES
Asset Allocation & Management Company, LLC	Chicago, IL	NO	NO	NO	YES

STATEMENT AS OF JUNE 30, 2016 OF THE AMERICAN MODERN LIFE INSURANCE COMPANY

GENERAL INTERROGATORIES

- 9.1

Are the senior officers (principal executive officer, principal financial officer, principal accounting officer or controller, or persons performing similar functions) of the reporting entity subject to a code of ethics, which includes the following standards? .....  
(a) Honest and ethical conduct, including the ethical handling of actual or apparent conflicts of interest between personal and professional relationships;  
(b) Full, fair, accurate, timely and understandable disclosure in the periodic reports required to be filed by the reporting entity;  
(c) Compliance with applicable governmental laws, rules and regulations;  
(d) The prompt internal reporting of violations to an appropriate person or persons identified in the code; and  
(e) Accountability for adherence to the code.

Yes [ X ] No [ ]
- 9.11

If the response to 9.1 is No, please explain:  
N/A
- 9.2

Has the code of ethics for senior managers been amended? .....

Yes [ ] No [ X ]
- 9.21

If the response to 9.2 is Yes, provide information related to amendment(s).  
N/A
- 9.3

Have any provisions of the code of ethics been waived for any of the specified officers? .....

Yes [ ] No [ X ]
- 9.31

If the response to 9.3 is Yes, provide the nature of any waiver(s).  
N/A

FINANCIAL

- 10.1

Does the reporting entity report any amounts due from parent, subsidiaries or affiliates on Page 2 of this statement? .....

Yes [ ] No [ X ]
- 10.2

If yes, indicate any amounts receivable from parent included in the Page 2 amount: .....

\$ .....

INVESTMENT

- 11.1

Were any of the stocks, bonds, or other assets of the reporting entity loaned, placed under option agreement, or otherwise made available for use by another person? (Exclude securities under securities lending agreements.) .....

Yes [ ] No [ X ]
- 11.2

If yes, give full and complete information relating thereto:
12.

Amount of real estate and mortgages held in other invested assets in Schedule BA: .....

\$ .....
13.

Amount of real estate and mortgages held in short-term investments: .....

\$ .....
- 14.1

Does the reporting entity have any investments in parent, subsidiaries and affiliates? .....

Yes [ X ] No [ ]
- 14.2

If yes, please complete the following:
- |   | 1   | 2  |
|---|---|--|
|   | Prior Year-End Book/Adjusted Carrying Value | Current Quarter Book/Adjusted Carrying Value |
| 14.21 Bonds .....   | \$ .....                                    | \$ .....                                     |
| 14.22 Preferred Stock .....   | \$ .....                                    | \$ .....                                     |
| 14.23 Common Stock .....  | \$ 12,276,728                               | \$ 12,440,277                                |
| 14.24 Short-Term Investments .....  | \$ .....                                    | \$ .....                                     |
| 14.25 Mortgage Loans on Real Estate .....   | \$ .....                                    | \$ .....                                     |
| 14.26 All Other .....   | \$ .....                                    | \$ .....                                     |
| 14.27 Total Investment in Parent, Subsidiaries and Affiliates (Subtotal Lines 14.21 to 14.26) ..... | \$ 12,276,728                               | \$ 12,440,277                                |
| 14.28 Total Investment in Parent included in Lines 14.21 to 14.26 above .....                       | \$ .....                                    | \$ .....                                     |
- 15.1

Has the reporting entity entered into any hedging transactions reported on Schedule DB? .....

Yes [ ] No [ X ]
- 15.2

If yes, has a comprehensive description of the hedging program been made available to the domiciliary state? .....  
If no, attach a description with this statement.

Yes [ ] No [ ]

STATEMENT AS OF JUNE 30, 2016 OF THE AMERICAN MODERN LIFE INSURANCE COMPANY

GENERAL INTERROGATORIES

16. For the reporting entity's security lending program, state the amount of the following as of the current statement date:
- 16.1

Total fair value of reinvested collateral assets reported on Schedule DL, Parts 1 and 2

\$
- 16.2

Total book adjusted/carrying value of reinvested collateral assets reported on Schedule DL, Parts 1 and 2

\$
- 16.3

Total payable for securities lending reported on the liability page

\$

17. Excluding items in Schedule E - Part 3 - Special Deposits, real estate, mortgage loans and investments held physically in the reporting entity's offices, vaults or safety deposit boxes, were all stocks, bonds and other securities, owned throughout the current year held pursuant to a custodial agreement with a qualified bank or trust company in accordance with Section 1, III - General Examination Considerations, F. Outsourcing of Critical Functions, Custodial or Safekeeping Agreements of the NAIC Financial Condition Examiners Handbook? Yes ☒ No ☐

- 17.1 For all agreements that comply with the requirements of the NAIC Financial Condition Examiners Handbook, complete the following:

1 Name of Custodian(s)	2 Custodian Address
State Street Bank & Trust Company	801 Pennsylvania Ave, Kansas City, MO 64105

- 17.2 For all agreements that do not comply with the requirements of the NAIC Financial Condition Examiners Handbook, provide the name, location and a complete explanation:

1 Name(s)	2 Location(s)	3 Complete Explanation(s)

- 17.3 Have there been any changes, including name changes, in the custodian(s) identified in 17.1 during the current quarter? Yes ☐ No ☒

- 17.4 If yes, give full information relating thereto:

1 Old Custodian	2 New Custodian	3 Date of Change	4 Reason

- 17.5 Identify all investment advisors, brokers/dealers or individuals acting on behalf of broker/dealers that have access to the investment accounts, handle securities and have authority to make investments on behalf of the reporting entity:

1 Central Registration Depository	2 Name(s)	3 Address
109905	Advantus Capital Management, Inc.	400 Robert Street North, St. Paul, MN 55101

- 18.1 Have all the filing requirements of the Purposes and Procedures Manual of the NAIC Investment Analysis Office been followed? Yes ☒ No ☐

- 18.2 If no, list exceptions:

GENERAL INTERROGATORIES

PART 2 - LIFE & HEALTH

1.

Report the statement value of mortgage loans at the end of this reporting period for the following categories:

1

Amount

1.1

Long-Term Mortgages In Good Standing

1.11

Farm Mortgages

\$

1.12

Residential Mortgages

\$

1.13

Commercial Mortgages

\$

1.14

Total Mortgages in Good Standing

\$

1.2

Long-Term Mortgages In Good Standing with Restructured Terms

1.21

Total Mortgages in Good Standing with Restructured Terms

\$

1.3

Long-Term Mortgage Loans Upon which Interest is Overdue more than Three Months

1.31

Farm Mortgages

\$

1.32

Residential Mortgages

\$

1.33

Commercial Mortgages

\$

1.34

Total Mortgages with Interest Overdue more than Three Months

\$

1.4

Long-Term Mortgage Loans in Process of Foreclosure

1.41

Farm Mortgages

\$

1.42

Residential Mortgages

\$

1.43

Commercial Mortgages

\$

1.44

Total Mortgages in Process of Foreclosure

\$

1.5

Total Mortgage Loans (Lines 1.14 + 1.21 + 1.34 + 1.44) (Page 2, Column 3, Lines 3.1 + 3.2)

\$

1.6

Long-Term Mortgages Foreclosed, Properties Transferred to Real Estate in Current Quarter

1.61

Farm Mortgages

\$

1.62

Residential Mortgages

\$

1.63

Commercial Mortgages

\$

1.64

Total Mortgages Foreclosed and Transferred to Real Estate

\$

2.

Operating Percentages:

2.1

A&H loss percent

48.000 %

2.2

A&H cost containment percent

%

2.3

A&H expense percent excluding cost containment expenses

59.000 %

3.1

Do you act as a custodian for health savings accounts?

Yes [ ] No [ X ]

3.2

If yes, please provide the amount of custodial funds held as of the reporting date

\$

3.3

Do you act as an administrator for health savings accounts?

Yes [ ] No [ X ]

3.4

If yes, please provide the balance of the funds administered as of the reporting date

\$

## SCHEDULE S - CEDED REINSURANCE

[illegible]



STATEMENT AS OF JUNE 30, 2016 OF THE AMERICAN MODERN LIFE INSURANCE COMPANY

**SCHEDULE T - PREMIUMS AND ANNUITY CONSIDERATIONS**

Current Year To Date - Allocated by States and Territories

States, Etc.	1	Direct Business Only					
		Life Contracts		4 Accident and Health Insurance Premiums, Including Policy, Membership and Other Fees	5 Other Considerations	6 Total Columns 2 Through 5	7 Deposit-Type Contracts
		2 Life Insurance Premiums	3 Annuity Considerations				
1. Alabama .....	AL	L	95,751	1,192		96,943	
2. Alaska .....	AK	L					
3. Arizona .....	AZ	L	9,749	6,443		16,192	
4. Arkansas .....	AR	L	49,154	43,114		92,268	
5. California .....	CA	L	53,083	35,049		88,132	
6. Colorado .....	CO	L	31,614	34,058		65,672	
7. Connecticut .....	CT	L	24,915	34,068		58,983	
8. Delaware .....	DE	L					
9. District of Columbia .....	DC	L					
10. Florida .....	FL	L					
11. Georgia .....	GA	L	24,510	10,756		35,266	
12. Hawaii .....	HI	L					
13. Idaho .....	ID	L	36,044	27,706		63,750	
14. Illinois .....	IL	L	76,892	36,121		113,013	
15. Indiana .....	IN	L	78,009	100,559		178,568	
16. Iowa .....	IA	L	46,053	42,693		88,746	
17. Kansas .....	KS	L	8,902	5,993		14,895	
18. Kentucky .....	KY	L	22,497	1		22,498	
19. Louisiana .....	LA	L					
20. Maine .....	ME	L					
21. Maryland .....	MD	L					
22. Massachusetts .....	MA	L	(2)	(4)		(6)	
23. Michigan .....	MI	L	84,402	39,962		124,364	
24. Minnesota .....	MN	L	108,768	84,589		193,357	
25. Mississippi .....	MS	L	18,627	6,474		25,101	
26. Missouri .....	MO	L	1,120,468	690,148		1,810,616	
27. Montana .....	MT	L	7,957	5,057		13,014	
28. Nebraska .....	NE	L	25,445	27,135		52,580	
29. Nevada .....	NV	L	5,736	1,281		7,017	
30. New Hampshire .....	NH	N					
31. New Jersey .....	NJ	N					
32. New Mexico .....	NM	L					
33. New York .....	NY	L	195,189	80,246		275,435	
34. North Carolina .....	NC	L					
35. North Dakota .....	ND	L	9,919	12,198		22,117	
36. Ohio .....	OH	L	597,319	717,872		1,315,191	
37. Oklahoma .....	OK	L					
38. Oregon .....	OR	L	90,219	80,741		170,960	
39. Pennsylvania .....	PA	L	16,748	4,205		20,953	
40. Rhode Island .....	RI	L					
41. South Carolina .....	SC	L					
42. South Dakota .....	SD	L	7,190	5,074		12,264	
43. Tennessee .....	TN	L	41,177	15,883		57,060	
44. Texas .....	TX	L	342	5		347	
45. Utah .....	UT	L	9,191	4,954		14,145	
46. Vermont .....	VT	L					
47. Virginia .....	VA	L	(102)	(418)		(520)	
48. Washington .....	WA	L	103,654	93,370		197,024	
49. West Virginia .....	WV	L	13,452	(985)		12,467	
50. Wisconsin .....	WI	L	59,348	60,629		119,977	
51. Wyoming .....	WY	L	3,372	3,798		7,170	
52. American Samoa .....	AS	N					
53. Guam .....	GU	N					
54. Puerto Rico .....	PR	N					
55. U.S. Virgin Islands .....	VI	N					
56. Northern Mariana Islands .....	MP	N					
57. Canada .....	CAN	N					
58. Aggregate Other Aliens .....	OT	XXX					
59. Subtotal .....	(a) 49	3,075,592		2,309,967		5,385,559	
90. Reporting entity contributions for employee benefits plans .....	XXX						
91. Dividends or refunds applied to purchase paid-up additions and annuities .....	XXX						
92. Dividends or refunds applied to shorten endowment or premium paying period .....	XXX						
93. Premium or annuity considerations waived under disability or other contract provisions .....	XXX						
94. Aggregate or other amounts not allocable by State .....	XXX						
95. Totals (Direct Business) .....	XXX	3,075,592		2,309,967		5,385,559	
96. Plus Reinsurance Assumed .....	XXX	19,871		26,645		46,516	
97. Totals (All Business) .....	XXX	3,095,463		2,336,612		5,432,075	
98. Less Reinsurance Ceded .....	XXX	1,923,722		1,595,851		3,519,573	
99. Totals (All Business) less Reinsurance Ceded .....	XXX	1,171,741		740,761		1,912,502	
DETAILS OF WRITE-INS							
58001. ZZZ Other Alien .....	XXX						
58002. ....	XXX						
58003. ....	XXX						
58998. Summary of remaining write-ins for Line 58 from overflow page .....	XXX						
58999. Totals (Lines 58001 through 58003 plus 58998)(Line 58 above) .....	XXX						
9401. ....	XXX						
9402. ....	XXX						
9403. ....	XXX						
9498. Summary of remaining write-ins for Line 94 from overflow page .....	XXX						
9499. Totals (Lines 9401 through 9403 plus 9498)(Line 94 above) .....	XXX						

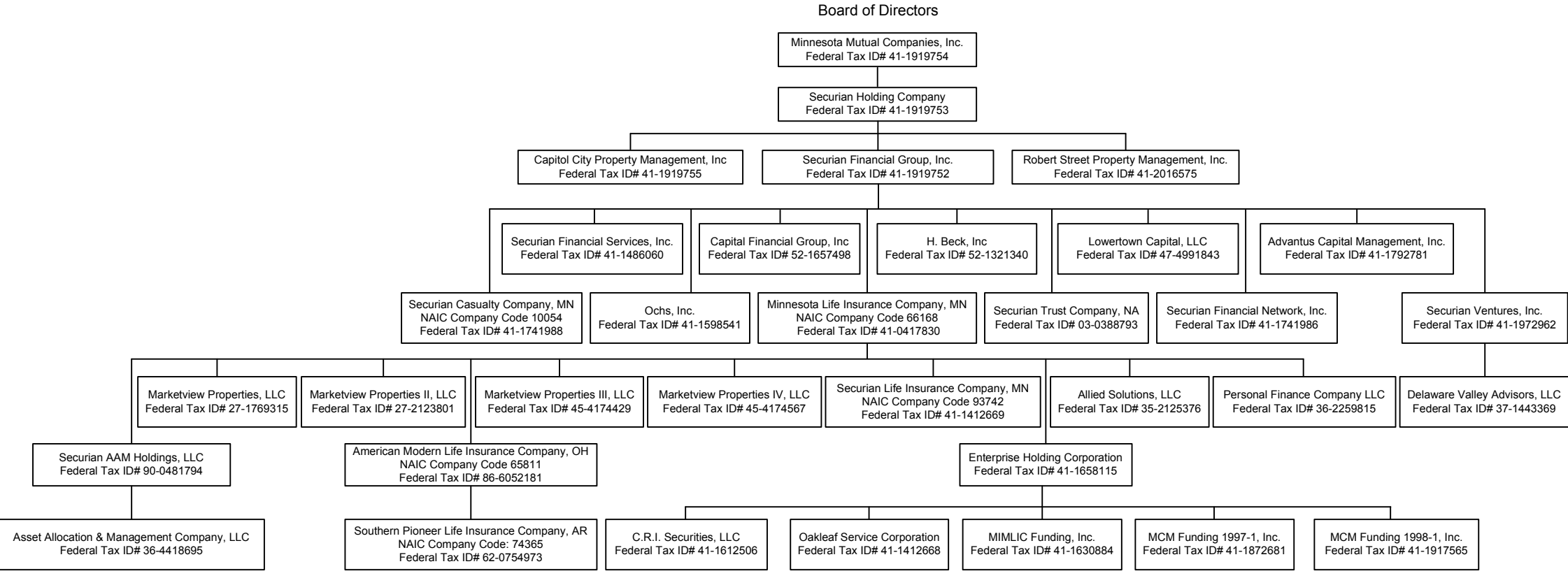
(L) Licensed or Chartered - Licensed Insurance Carrier or Domiciled RRG; (R) Registered - Non-domiciled RRGs; (Q) Qualified - Qualified or Accredited Reinsurer; (E) Eligible - Reporting Entities eligible or approved to write Surplus Lines in the state; (N) None of the above - Not allowed to write business in the state.

(a) Insert the number of L responses except for Canada and Other Alien.

STATEMENT AS OF JUNE 30, 2016 OF THE AMERICAN MODERN LIFE INSURANCE COMPANY

SCHEDULE Y – INFORMATION CONCERNING ACTIVITIES OF INSURER MEMBERS OF A HOLDING COMPANY GROUP  
PART 1 – ORGANIZATIONAL CHART  
Organization Chart of Minnesota Mutual Companies, Inc., Subsidiaries, and Affiliates

Policyholders of Minnesota Mutual Companies, Inc.



STATEMENT AS OF JUNE 30, 2016 OF THE AMERICAN MODERN LIFE INSURANCE COMPANY

SCHEDULE Y

PART 1A - DETAIL OF INSURANCE HOLDING COMPANY SYSTEM

1	2	3	4	5	6	7	8	9	10	11	12	13	14	15
Group Code	Group Name	NAIC Company Code	ID Number	Federal RSSD	CIK	Name of Securities Exchange if Publicly Traded (U.S. or International)	Names of Parent, Subsidiaries Or Affiliates	Domiciliary Location	Relationship to Reporting Entity	Directly Controlled by (Name of Entity/Person)	Type of Control (Ownership, Board, Management, Attorney-in-Fact, Influence, Other)	If Control is Ownership Provide Percentage	Ultimate Controlling Entity(ies)/Person(s)	*
0869	Minnesota Mutual Group	66168	41-0417830				MINNESOTA LIFE INSURANCE COMPANY	MN	UDP	SECURIAN FINANCIAL GROUP, INC.	Ownership	100.000	POLICYHOLDERS OF MINNESOTA MUTUAL COMPANIES, INC.	
			36-2259815				PERSONAL FINANCE COMPANY, LLC	DE	NIA	MINNESOTA LIFE INSURANCE COMPANY	Ownership	100.000	POLICYHOLDERS OF MINNESOTA MUTUAL COMPANIES, INC.	
			41-1412668				OAKLEAF SERVICE CORPORATION	MN	NIA	ENTERPRISE HOLDING CORPORATION	Ownership	100.000	POLICYHOLDERS OF MINNESOTA MUTUAL COMPANIES, INC.	
			41-1792781				ADVANTUS CAPITAL MANAGEMENT, INC.	MN	NIA	SECURIAN FINANCIAL GROUP, INC.	Ownership	100.000	POLICYHOLDERS OF MINNESOTA MUTUAL COMPANIES, INC.	
			41-1486060				SECURIAN FINANCIAL SERVICES, INC.	MN	NIA	SECURIAN FINANCIAL GROUP, INC.	Ownership	100.000	POLICYHOLDERS OF MINNESOTA MUTUAL COMPANIES, INC.	
			41-1612506				C.R.I. SECURITIES, LLC	MN	NIA	ENTERPRISE HOLDING CORPORATION	Ownership	50.000	POLICYHOLDERS OF MINNESOTA MUTUAL COMPANIES, INC.	1
0869	Minnesota Mutual Group	93742	41-1412669				SECURIAN LIFE INSURANCE COMPANY	MN	IA	MINNESOTA LIFE INSURANCE COMPANY	Ownership	100.000	POLICYHOLDERS OF MINNESOTA MUTUAL COMPANIES, INC.	
0869	Minnesota Mutual Group	10054	41-1741988				SECURIAN CASUALTY COMPANY	MN	IA	SECURIAN FINANCIAL GROUP, INC.	Ownership	100.000	POLICYHOLDERS OF MINNESOTA MUTUAL COMPANIES, INC.	
			41-1741986				SECURIAN FINANCIAL NETWORK, INC.	MN	NIA	SECURIAN FINANCIAL GROUP, INC.	Ownership	100.000	POLICYHOLDERS OF MINNESOTA MUTUAL COMPANIES, INC.	
			41-1630884				MIMLIC FUNDING, INC	MN	NIA	ENTERPRISE HOLDING CORPORATION	Ownership	100.000	POLICYHOLDERS OF MINNESOTA MUTUAL COMPANIES, INC.	
			41-1872681				MCM FUNDING 1997-1, INC.	MN	NIA	ENTERPRISE HOLDING CORPORATION	Ownership	100.000	POLICYHOLDERS OF MINNESOTA MUTUAL COMPANIES, INC.	
			41-1917565				MCM FUNDING 1998-1, INC.	MN	NIA	ENTERPRISE HOLDING CORPORATION	Ownership	100.000	POLICYHOLDERS OF MINNESOTA MUTUAL COMPANIES, INC.	
			41-1919755				CAPITOL CITY PROPERTY MANAGEMENT, INC.	MN	NIA	SECURIAN FINANCIAL GROUP, INC.	Ownership	100.000	POLICYHOLDERS OF MINNESOTA MUTUAL COMPANIES, INC.	
			41-1919754				MINNESOTA MUTUAL COMPANIES, INC.	MN	UIP	POLICYHOLDERS OF MINNESOTA MUTUAL COMPANIES, INC.	Ownership	100.000	POLICYHOLDERS OF MINNESOTA MUTUAL COMPANIES, INC.	
			41-1919753				SECURIAN HOLDING COMPANY	DE	UIP	MINNESOTA MUTUAL COMPANIES, INC.	Ownership	100.000	POLICYHOLDERS OF MINNESOTA MUTUAL COMPANIES, INC.	
			41-1919752				SECURIAN FINANCIAL GROUP, INC.	DE	UIP	SECURIAN HOLDING COMPANY	Ownership	100.000	POLICYHOLDERS OF MINNESOTA MUTUAL COMPANIES, INC.	
			03-0388793	3089752			SECURIAN TRUST COMPANY, NA		NIA	SECURIAN FINANCIAL GROUP, INC.	Ownership	100.000	POLICYHOLDERS OF MINNESOTA MUTUAL COMPANIES, INC.	
			41-1972962				SECURIAN VENTURES, INC.	MN	NIA	SECURIAN FINANCIAL GROUP, INC.	Ownership	100.000	POLICYHOLDERS OF MINNESOTA MUTUAL COMPANIES, INC.	
			41-2016575				ROBERT STREET PROPERTY MANAGEMENT, INC.	MN	NIA	SECURIAN FINANCIAL GROUP, INC.	Ownership	100.000	POLICYHOLDERS OF MINNESOTA MUTUAL COMPANIES, INC.	
			35-2125376				ALLIED SOLUTIONS, LLC	IN	NIA	MINNESOTA LIFE INSURANCE COMPANY	Ownership	100.000	POLICYHOLDERS OF MINNESOTA MUTUAL COMPANIES, INC.	
			41-1658115				ENTERPRISE HOLDING COMPANY	MN	NIA	MINNESOTA LIFE INSURANCE COMPANY	Ownership	100.000	POLICYHOLDERS OF MINNESOTA MUTUAL COMPANIES, INC.	
			52-1657498				CAPITAL FINANCIAL GROUP, INC.	MD	NIA	SECURIAN FINANCIAL GROUP, INC.	Ownership	100.000	POLICYHOLDERS OF MINNESOTA MUTUAL COMPANIES, INC.	
			52-1321340				H. BECK, INC.	MD	NIA	SECURIAN FINANCIAL GROUP, INC.	Ownership	100.000	POLICYHOLDERS OF MINNESOTA MUTUAL COMPANIES, INC.	
			41-1598541				OCHS, INC.	MN	NIA	SECURIAN FINANCIAL GROUP, INC.	Ownership	100.000	POLICYHOLDERS OF MINNESOTA MUTUAL COMPANIES, INC.	
			90-0481794				SECURIAN AAM HOLDINGS LLC	DE	NIA	MINNESOTA LIFE INSURANCE COMPANY	Ownership	100.000	POLICYHOLDERS OF MINNESOTA MUTUAL COMPANIES, INC.	

STATEMENT AS OF JUNE 30, 2016 OF THE AMERICAN MODERN LIFE INSURANCE COMPANY

SCHEDULE Y  
PART 1A - DETAIL OF INSURANCE HOLDING COMPANY SYSTEM

1	2	3	4	5	6	7	8	9	10	11	12	13	14	15
Group Code	Group Name	NAIC Company Code	ID Number	Federal RSSD	CIK	Name of Securities Exchange if Publicly Traded (U.S. or International)	Names of Parent, Subsidiaries Or Affiliates	Domi-ciliary Loca-tion	Relation-ship to Reporting Entity	Directly Controlled by (Name of Entity/Person)	Type of Control (Ownership, Board, Management, Attorney-in-Fact, Influence, Other)	If Control is Owner-ship Provide Percen-tage	Ultimate Controlling Entity(ies)/Person(s)	*
			36-4418695				ASSET ALLOCATION & MANAGEMENT COMPANY LLC	IL	NIA	SECURIAN AAM HOLDINGS LLC	Ownership	66.000	POLICYHOLDERS OF MINNESOTA MUTUAL COMPANIES, INC.	
0869	Minnesota Mutual Group	65811	86-6052181				AMERICAN MODERN LIFE INSURANCE COMPANY	OH	RE	MINNESOTA LIFE INSURANCE COMPANY	Ownership	100.000	POLICYHOLDERS OF MINNESOTA MUTUAL COMPANIES, INC.	
0869	Minnesota Mutual Group	74365	62-0754973				SOUTHERN PIONEER LIFE INSURANCE COMPANY	AR	DS	AMERICAN MODERN LIFE INSURANCE COMPANY	Ownership	100.000	POLICYHOLDERS OF MINNESOTA MUTUAL COMPANIES, INC.	
			27-1769315				MARKETVIEW PROPERTIES, LLC	MN	NIA	MINNESOTA LIFE INSURANCE COMPANY	Ownership	100.000	POLICYHOLDERS OF MINNESOTA MUTUAL COMPANIES, INC.	
			27-2123801				MARKETVIEW PROPERTIES II, LLC	MN	NIA	MINNESOTA LIFE INSURANCE COMPANY	Ownership	100.000	POLICYHOLDERS OF MINNESOTA MUTUAL COMPANIES, INC.	
			45-4174429				MARKETVIEW PROPERTIES III, LLC	MN	NIA	MINNESOTA LIFE INSURANCE COMPANY	Ownership	100.000	POLICYHOLDERS OF MINNESOTA MUTUAL COMPANIES, INC.	
			45-4174567				MARKETVIEW PROPERTIES IV, LLC	MN	NIA	MINNESOTA LIFE INSURANCE COMPANY	Ownership	100.000	POLICYHOLDERS OF MINNESOTA MUTUAL COMPANIES, INC.	
			47-4991843				LOWERTOWN CAPITAL, LLC	DE	NIA	SECURIAN FINANCIAL GROUP, INC.	Ownership	100.000	POLICYHOLDERS OF MINNESOTA MUTUAL COMPANIES, INC.	
			37-1443369				DELAWARE VALLEY ADVISORS, LLC	DE	NIA	SECURIAN VENTURES, INC.	Ownership	100.000	POLICYHOLDERS OF MINNESOTA MUTUAL COMPANIES, INC.	

Asterisk	Explanation
1	There are no voting right preferences between the 50% owners.

STATEMENT AS OF JUNE 30, 2016 OF THE AMERICAN MODERN LIFE INSURANCE COMPANY

SUPPLEMENTAL EXHIBITS AND SCHEDULES INTERROGATORIES

The following supplemental reports are required to be filed as part of your statement filing. However, in the event that your company does not transact the type of business for which the special report must be filed, your response of NO to the specific interrogatory will be accepted in lieu of filing a "NONE" report and a bar code will be printed below. If the supplement is required of your company but is not being filed for whatever reason enter SEE EXPLANATION and provide an explanation following the interrogatory questions.

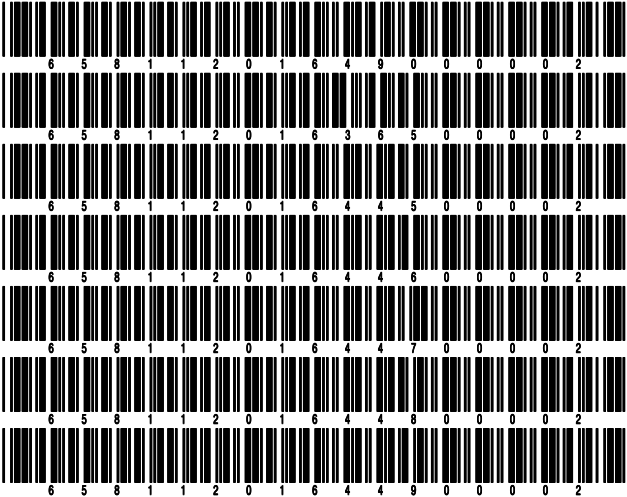
	Response
1. Will the Trusteed Surplus Statement be filed with the state of domicile and the NAIC with this statement? .....	NO
2. Will the Medicare Part D Coverage Supplement be filed with the state of domicile and the NAIC with this statement? .....	NO
3. Will the Reasonableness of Assumptions Certification required by Actuarial Guideline XXXV be filed with the state of domicile and electronically with the NAIC? .....	NO
4. Will the Reasonableness and Consistency of Assumptions Certification required by Actuarial Guideline XXXV be filed with the state of domicile and electronically with the NAIC? .....	NO
5. Will the Reasonableness of Assumptions Certification for Implied Guaranteed Rate Method required by Actuarial Guideline XXXVI be filed with the state of domicile and electronically with the NAIC? .....	NO
6. Will the Reasonableness and Consistency of Assumptions Certification required by Actuarial Guideline XXXVI (Updated Average Market Value) be filed with the state of domicile and electronically with the NAIC? .....	NO
7. Will the Reasonableness and Consistency of Assumptions Certification required by Actuarial Guideline XXXVI (Updated Market Value) be filed with the state of domicile and electronically with the NAIC? .....	NO

Explanation:

1. Not applicable
2. Not applicable
3. Not applicable
4. Not applicable
5. Not applicable
6. Not applicable
7. Not applicable

Bar Code:

1. Trusteed Surplus Statement [Document Identifier 490]
2. Medicare Part D Coverage Supplement [Document Identifier 365]
3. Reasonableness of Assumptions Certification required by Actuarial Guideline XXXV [Document Identifier 445]
4. Reasonableness and Consistency of Assumptions Certification required by Actuarial Guideline XXXV [Document Identifier 446]
5. Reasonableness of Assumptions Certification for Implied Guaranteed Rate Method required by Actuarial Guideline XXXVI [Document Identifier 447]
6. Reasonableness and Consistency of Assumptions Certification required by Actuarial Guideline XXXVI [Document Identifier 448]
7. Reasonableness and Consistency of Assumptions Certification required by Actuarial Guideline XXXVI (Updated Market Value) [Document Identifier 449]



**NONE**

SCHEDULE A - VERIFICATION

Real Estate

	1 Year to Date	2 Prior Year Ended December 31
1. Book/adjusted carrying value, December 31 of prior year		
2. Cost of acquired:		
2.1 Actual cost at time of acquisition		
2.2 Additional investment made after acquisition		
3. Current year change in encumbrances		
4. Total gain (loss) on disposals		
5. Deduct amounts received on disposals		
6. Total foreign exchange change in book/adjusted carrying value		
7. Deduct current year's other than temporary impairment recognized		
8. Deduct current year's depreciation		
9. Book/adjusted carrying value at the end of current period (Lines 1+2+3+4-5+6-7-8)		
10. Deduct total nonadmitted amounts		
11. Statement value at end of current period (Line 9 minus Line 10)		

SCHEDULE B - VERIFICATION

Mortgage Loans

	1 Year to Date	2 Prior Year Ended December 31
1. Book value/recorded investment excluding accrued interest, December 31 of prior year		
2. Cost of acquired:		
2.1 Actual cost at time of acquisition		
2.2 Additional investment made after acquisition		
3. Capitalized deferred interest and other		
4. Accrual of discount		
5. Unrealized valuation increase (decrease)		
6. Total gain (loss) on disposals		
7. Deduct amounts received on disposals		
8. Deduct amortization of premium and mortgage interest points and commitment fees		
9. Total foreign exchange change in book value/recorded investment excluding accrued interest		
10. Deduct current year's other than temporary impairment recognized		
11. Book value/recorded investment excluding accrued interest at end of current period (Lines 1+2+3+4+5+6-7-8+9-10)		
12. Total valuation allowance		
13. Subtotal (Line 11 plus Line 12)		
14. Deduct total nonadmitted amounts		
15. Statement value at end of current period (Line 13 minus Line 14)		

SCHEDULE BA - VERIFICATION

Other Long-Term Invested Assets

	1 Year to Date	2 Prior Year Ended December 31
1. Book/adjusted carrying value, December 31 of prior year		
2. Cost of acquired:		
2.1 Actual cost at time of acquisition		
2.2 Additional investment made after acquisition		
3. Capitalized deferred interest and other		
4. Accrual of discount		
5. Unrealized valuation increase (decrease)		
6. Total gain (loss) on disposals		
7. Deduct amounts received on disposals		
8. Deduct amortization of premium and depreciation		
9. Total foreign exchange change in book/adjusted carrying value		
10. Deduct current year's other than temporary impairment recognized		
11. Book/adjusted carrying value at end of current period (Lines 1+2+3+4+5+6-7-8+9-10)		
12. Deduct total nonadmitted amounts		
13. Statement value at end of current period (Line 11 minus Line 12)		

SCHEDULE D - VERIFICATION

Bonds and Stocks

	1 Year to Date	2 Prior Year Ended December 31
1. Book/adjusted carrying value of bonds and stocks, December 31 of prior year	43,133,380	44,132,720
2. Cost of bonds and stocks acquired	1,995,867	254,923
3. Accrual of discount	15,803	32,052
4. Unrealized valuation increase (decrease)	163,549	18,787
5. Total gain (loss) on disposals		128,696
6. Deduct consideration for bonds and stocks disposed of	3,283,488	1,357,860
7. Deduct amortization of premium	38,566	75,938
8. Total foreign exchange change in book/adjusted carrying value		
9. Deduct current year's other than temporary impairment recognized		
10. Book/adjusted carrying value at end of current period (Lines 1+2+3+4+5-6-7+8-9)	41,986,545	43,133,380
11. Deduct total nonadmitted amounts		
12. Statement value at end of current period (Line 10 minus Line 11)	41,986,545	43,133,380

STATEMENT AS OF JUNE 30, 2016 OF THE AMERICAN MODERN LIFE INSURANCE COMPANY

**SCHEDULE D - PART 1B**

Showing the Acquisitions, Dispositions and Non-Trading Activity  
During the Current Quarter for all Bonds and Preferred Stock by NAIC Designation

NAIC Designation	1 Book/Adjusted Carrying Value Beginning of Current Quarter	2 Acquisitions During Current Quarter	3 Dispositions During Current Quarter	4 Non-Trading Activity During Current Quarter	5 Book/Adjusted Carrying Value End of First Quarter	6 Book/Adjusted Carrying Value End of Second Quarter	7 Book/Adjusted Carrying Value End of Third Quarter	8 Book/Adjusted Carrying Value December 31 Prior Year
BONDS								
1. NAIC 1 (a) .....	28,727,723	2,998,539	3,908,558	(10,786)	28,727,723	27,806,918		28,936,322
2. NAIC 2 (a) .....	2,669,675			(417)	2,669,675	2,669,258		2,632,639
3. NAIC 3 (a) .....								
4. NAIC 4 (a) .....								
5. NAIC 5 (a) .....								
6. NAIC 6 (a) .....								
7. Total Bonds	31,397,398	2,998,539	3,908,558	(11,203)	31,397,398	30,476,176		31,568,961
PREFERRED STOCK								
8. NAIC 1 .....								
9. NAIC 2 .....								
10. NAIC 3 .....								
11. NAIC 4 .....								
12. NAIC 5 .....								
13. NAIC 6 .....								
14. Total Preferred Stock .....								
15. Total Bonds and Preferred Stock	31,397,398	2,998,539	3,908,558	(11,203)	31,397,398	30,476,176		31,568,961

(a) Book/Adjusted Carrying Value column for the end of the current reporting period includes the following amount of non-rated short-term and cash equivalent bonds by NAIC designation: NAIC 1 \$ .....929,908 ; NAIC 2 \$ ..... ; NAIC 3 \$ ..... ;  
NAIC 4 \$ ..... ; NAIC 5 \$ ..... ; NAIC 6 \$ .....



SCHEDULE DA - PART 1

Short-Term Investments

	1	2	3	4	5
	Book/Adjusted Carrying Value	Par Value	Actual Cost	Interest Collected Year-to-Date	Paid for Accrued Interest Year-to-Date
9199999 Totals	929,908	xxx	929,908	1,181	

SCHEDULE DA - VERIFICATION

Short-Term Investments

	1	2
	Year To Date	Prior Year Ended December 31
1. Book/adjusted carrying value, December 31 of prior year .....	712,308	1,469,785
2. Cost of short-term investments acquired .....	1,758,155	2,019,023
3. Accrual of discount .....		
4. Unrealized valuation increase (decrease) .....		
5. Total gain (loss) on disposals .....		
6. Deduct consideration received on disposals .....	1,540,555	2,776,500
7. Deduct amortization of premium .....		
8. Total foreign exchange change in book/adjusted carrying value .....		
9. Deduct current year's other than temporary impairment recognized .....		
10. Book/adjusted carrying value at end of current period (Lines 1+2+3+4+5-6-7+8-9) .....	929,908	712,308
11. Deduct total nonadmitted amounts .....		
12. Statement value at end of current period (Line 10 minus Line 11)	929,908	712,308

Schedule DB - Part A - Verification - Options, Caps, Floors, Collars, Swaps and Forwards

N O N E

Schedule DB - Part B - Verification - Futures Contracts

N O N E

Schedule DB - Part C - Section 1 - Replication (Synthetic Asset) Transactions (RSATs) Open

N O N E

Schedule DB-Part C-Section 2-Reconciliation of Replication (Synthetic Asset) Transactions Open

N O N E

Schedule DB - Verification - Book/Adjusted Carrying Value, Fair Value and Potential Exposure of  
Derivatives

N O N E

Schedule E - Verification - Cash Equivalents

N O N E

Schedule A - Part 2 - Real Estate Acquired and Additions Made

N O N E

Schedule A - Part 3 - Real Estate Disposed

N O N E

Schedule B - Part 2 - Mortgage Loans Acquired and Additions Made

N O N E

Schedule B - Part 3 - Mortgage Loans Disposed, Transferred or Repaid

N O N E

Schedule BA - Part 2 - Other Long-Term Invested Assets Acquired and Additions Made

N O N E

Schedule BA - Part 3 - Other Long-Term Invested Assets Disposed, Transferred or Repaid

N O N E

STATEMENT AS OF JUNE 30, 2016 OF THE AMERICAN MODERN LIFE INSURANCE COMPANY

## SCHEDULE D - PART 3

Show All Long-Term Bonds and Stock Acquired During the Current Quarter

1	2	3	4	5	6	7	8	9	10
CUSIP Identification	Description	Foreign	Date Acquired	Name of Vendor	Number of Shares of Stock	Actual Cost	Par Value	Paid for Accrued Interest and Dividends	NAIC Designation or Market Indicator (a)
912828-P4-6	United States Treasury Note/Bo T 1 5/8 0		04/11/2016	Morgan J P-B		991,215	1,000,000	2,500	1
912828-03-7	United States Treasury Note/Bo T 1 1/4 0		04/11/2016	Morgan J P-B		1,004,652	1,000,000	376	1
0599999. Subtotal - Bonds - U.S. Governments						1,995,867	2,000,000	2,876	XXX
8399997. Total - Bonds - Part 3						1,995,867	2,000,000	2,876	XXX
8399998. Total - Bonds - Part 5						XXX	XXX	XXX	XXX
8399999. Total - Bonds						1,995,867	2,000,000	2,876	XXX
8999997. Total - Preferred Stocks - Part 3							XXX		XXX
8999998. Total - Preferred Stocks - Part 5						XXX	XXX	XXX	XXX
8999999. Total - Preferred Stocks							XXX		XXX
9799997. Total - Common Stocks - Part 3							XXX		XXX
9799998. Total - Common Stocks - Part 5						XXX	XXX	XXX	XXX
9799999. Total - Common Stocks							XXX		XXX
9899999. Total - Preferred and Common Stocks							XXX		XXX
9999999 - Totals						1,995,867	XXX	2,876	XXX

(a) For all common stock bearing the NAIC market indicator "U" provide: the number of such issues .....

STATEMENT AS OF JUNE 30, 2016 OF THE AMERICAN MODERN LIFE INSURANCE COMPANY

SCHEDULE D - PART 4

Show All Long-Term Bonds and Stock Sold, Redeemed or Otherwise Disposed of During the Current Quarter

1	2	3	4	5	6	7	8	9	10	Change In Book/Adjusted Carrying Value					16	17	18	19	20	21	22	
CUSIP Identification	Description	For- eign	Disposal Date	Name of Purchaser	Number of Shares of Stock	Consid- eration	Par Value	Actual Cost	Prior Year Book/ Adjusted Carrying Value	11  Unrealized Valuation Increase/ (Decrease)	12  Current Year's (Amor- tization)/ Accretion	13  Current Year's Other Than Temporary Impairment Recogn- ized	14  Total Change in Book/ Adjusted Carrying Value (11 + 12 - 13)	15  Total Foreign Exchange Change in Book /Adjusted Carrying Value	Book/ Adjusted Carrying Value at Disposal Date	Foreign Exchange Gain (Loss) on Disposal	Realized Gain (Loss) on Disposal	Total Gain (Loss) on Disposal	Bond Interest/ Stock Dividends Received During Year	Stated Con- tractual Maturity Date	NAIC Desig- nation or Market In- dicator (a)	
36179M-VQ-0	Ginnie Mae II Pool #MA0623		06/01/2016	Paydown		29,617	29,617	29,321	29,329		287		287		29,617				312	12/01/2042	1	
36202D-J8-5	Ginnie Mae II Pool #2987		06/01/2016	Paydown		75	75	75	75					75				2	10/01/2030	1		
36202D-LV-1	Ginnie Mae II Pool #3040		06/01/2016	Paydown		153	153	154	154		(1)		(1)	153				4	02/01/2031	1		
36206A-LZ-4	Ginnie Mae I Pool #405444		06/01/2016	Paydown		117	117	124	122		(4)		(4)	117				5	04/01/2025	1		
36224T-AC-4	Ginnie Mae I Pool #337603		06/01/2016	Paydown		217	217	225	222		(5)		(5)	217				7	12/01/2022	1		
912828-OP-8	United States Treasury Note/Bond		05/31/2016	Maturity		200,000	200,000	199,946	199,995		5		5		200,000				1,750	05/31/2016	1	
0599999. Subtotal - Bonds - U.S. Governments						230,179	230,179	229,845	229,897		282		282		230,179				2,080	XXX	XXX	
31292G-7H-3	Freddie Mac Gold Pool #C00896		06/01/2016	Paydown		155	155	155	155					155				5	12/01/2029	1		
31292H-D4-3	Freddie Mac Gold Pool #C01023		06/01/2016	Paydown		38	38	39	39		(1)		(1)	38				1	07/01/2030	1		
31292H-D6-8	Freddie Mac Gold Pool #C01025		06/01/2016	Paydown		45	45	45	45					45				1	07/01/2030	1		
31292H-FT-6	Freddie Mac Gold Pool #C01078		06/01/2016	Paydown		103	103	102	102		1		1	103				3	10/01/2030	1		
31292H-GN-8	Freddie Mac Gold Pool #C01105		06/01/2016	Paydown		3	3	3	3					3					10/01/2030	1		
31293K-7A-8	Freddie Mac Gold Pool #C22689		06/01/2016	Paydown		12	12	11	11					12					03/01/2029	1		
31293S-DX-4	Freddie Mac Gold Pool #C28218		06/01/2016	Paydown		35	35	35	35					35				1	06/01/2029	1		
31293Y-BX-3	Freddie Mac Gold Pool #C32754		06/01/2016	Paydown		84	84	82	83		2		2	84				2	11/01/2029	1		
31298F-UG-4	Freddie Mac Gold Pool #C46902		06/01/2016	Paydown		73	73	73	73					73				2	09/01/2030	1		
31298M-JF-5	Freddie Mac Gold Pool #C51162		06/01/2016	Paydown		167	167	168	168					167				5	05/01/2031	1		
313500-BA-0	Federal National Mortgage Asso FNMA		04/11/2016	Maturity		2,500,000	2,500,000	2,496,825	2,499,816		184		184		2,500,000				29,688	04/11/2016	1	
31384J-4E-1	Fannie Mae Pool #534621		06/01/2016	Paydown		136	136	137	137		(1)		(1)	136				4	11/01/2029	1		
31384V-2A-9	Fannie Mae Pool #535469		06/01/2016	Paydown		100	100	94	94		6		6	100				3	07/01/2030	1		
31384V-T8-5	Fannie Mae Pool #535275		06/01/2016	Paydown		254	254	253	253		2		2	254				7	05/01/2030	1		
31384V-ZC-9	Fannie Mae Pool #535439		06/01/2016	Paydown		41	41	42	41					41				1	08/01/2030	1		
31384W-LC-2	Fannie Mae Pool #535923		06/01/2016	Paydown		1,240	1,240	1,254	1,252		(12)		(12)	1,240				31	05/01/2031	1		
3138WR-WP-1	Fannie Mae Pool #AT4253		06/01/2016	Paydown		9,683	9,683	9,352	9,361		322		322	9,683				128	06/01/2043	1		
3138WV-PE-5	Fannie Mae Pool #AT7620		06/01/2016	Paydown		9,875	9,875	9,549	9,558		317		317	9,875				126	06/01/2043	1		
31403D-SE-0	Fannie Mae Pool #745817		06/01/2016	Paydown		1,464	1,464	1,408	1,408					56				31	09/01/2036	1		
31407M-MR-3	Fannie Mae Pool #834768		06/01/2016	Paydown		1,242	1,242	1,221	1,222		20		20	1,242				33	07/01/2035	1		
31417F-YA-0	Fannie Mae Pool #AB8804		06/01/2016	Paydown		3,629	3,629	3,476	3,483		146		146		3,629				41	03/01/2043	1	
3199999. Subtotal - Bonds - U.S. Special Revenues						2,528,379	2,528,379	2,524,320	2,527,339		1,042		1,042		2,528,379				30,113	XXX	XXX	
8399997. Total - Bonds - Part 4						2,758,558	2,758,558	2,754,165	2,757,236		1,324		1,324		2,758,558				32,193	XXX	XXX	
8399998. Total - Bonds - Part 5						XXX	XXX	XXX	XXX	XXX	XXX	XXX	XXX	XXX	XXX	XXX	XXX	XXX	XXX	XXX	XXX	XXX
8399999. Total - Bonds						2,758,558	2,758,558	2,754,165	2,757,236		1,324		1,324		2,758,558				32,193	XXX	XXX	
8999997. Total - Preferred Stocks - Part 4							XXX													XXX	XXX	
8999998. Total - Preferred Stocks - Part 5						XXX	XXX	XXX	XXX	XXX	XXX	XXX	XXX	XXX	XXX	XXX	XXX	XXX	XXX	XXX	XXX	XXX
8999999. Total - Preferred Stocks							XXX													XXX	XXX	
9799997. Total - Common Stocks - Part 4							XXX													XXX	XXX	
9799998. Total - Common Stocks - Part 5						XXX	XXX	XXX	XXX	XXX	XXX	XXX	XXX	XXX	XXX	XXX	XXX	XXX	XXX	XXX	XXX	XXX
9799999. Total - Common Stocks							XXX													XXX	XXX	
9899999. Total - Preferred and Common Stocks							XXX													XXX	XXX	
9999999 - Totals						2,758,558	XXX	2,754,165	2,757,236		1,324		1,324		2,758,558				32,193	XXX	XXX	

(a) For all common stock bearing the NAIC market indicator "U" provide: the number of such issues.....

Schedule DB - Part A - Section 1 - Options, Caps, Floors, Collars, Swaps and Forwards Open  
**N O N E**

Schedule DB - Part B - Section 1 - Futures Contracts Open  
**N O N E**

Schedule DB - Part B - Section 1B - Brokers with whom cash deposits have been made  
**N O N E**

Schedule DB - Part D - Section 1 - Counterparty Exposure for Derivative Instruments Open  
**N O N E**

Schedule DB - Part D-Section 2 - Collateral for Derivative Instruments Open - Pledged By  
**N O N E**

Schedule DB - Part D-Section 2 - Collateral for Derivative Instruments Open - Pledged To  
**N O N E**

Schedule DL - Part 1 - Reinvested Collateral Assets Owned  
**N O N E**

Schedule DL - Part 2 - Reinvested Collateral Assets Owned  
**N O N E**

SCHEDULE E - PART 1 - CASH

Month End Depository Balances

1	2	3	4	5	Book Balance at End of Each Month During Current Quarter			9
					6	7	8	
					First Month	Second Month	Third Month	
Depository	Code	Rate of Interest	Amount of Interest Received During Current Quarter	Amount of Interest Accrued at Current Statement Date				*
US Bank NA ..... St. Paul, MN .....					199,794	288,988	430,139	XXX
0199998. Deposits in ... depositories that do not exceed the allowable limit in any one depository (See instructions) - Open Depositories	XXX	XXX						XXX
0199999. Totals - Open Depositories	XXX	XXX			199,794	288,988	430,139	XXX
0299998. Deposits in ... depositories that do not exceed the allowable limit in any one depository (See instructions) - Suspended Depositories	XXX	XXX						XXX
0299999. Totals - Suspended Depositories	XXX	XXX						XXX
0399999. Total Cash on Deposit	XXX	XXX			199,794	288,988	430,139	XXX
0499999. Cash in Company's Office	XXX	XXX	XXX	XXX				XXX
0599999. Total - Cash	XXX	XXX			199,794	288,988	430,139	XXX

Schedule E - Part 2 - Cash Equivalents - Investments Owned End of Current Quarter

N O N E